

Perceived Likelihood of Completing High School in Hawaii

Perceived Likelihood of Completing High School in Hawaii, by School Type, Indicator, State, Gender, Grade Level, and DOH Race-Ethnicity,* for the Years 2007 - 2009

The weighted data is available for middle school for all years; high school weighted data is not available for 2001 or 2003. Questions for certain health indicators were not asked in all years.

Below are the indicators included in this report and the long description for each indicator.

YRBS Health Indicator	Health Indicator Description
How likely to complete high school	How likely is it that you will complete high school

Suggested citation:

Hawaii Health Data Warehouse, State of Hawaii, Hawaii School Health Survey: Youth Risk Behavior Survey Module, (report title and years), Report Created: 4/29/16

For documentation on other terms and coding in this report, please go to the following links:

[Click here to access YRBS documentation](#)

[Click here to access Race-Ethnicity coding](#)

[Click here to access Hawai'i Data Guide](#)

For questions about this report, please contact the Hawaii Health Data Warehouse

profiles@hhdw.org

(855) 946-5899 x15

** Race-ethnicity data from 2011 forward may not be comparable to data from previous years.*

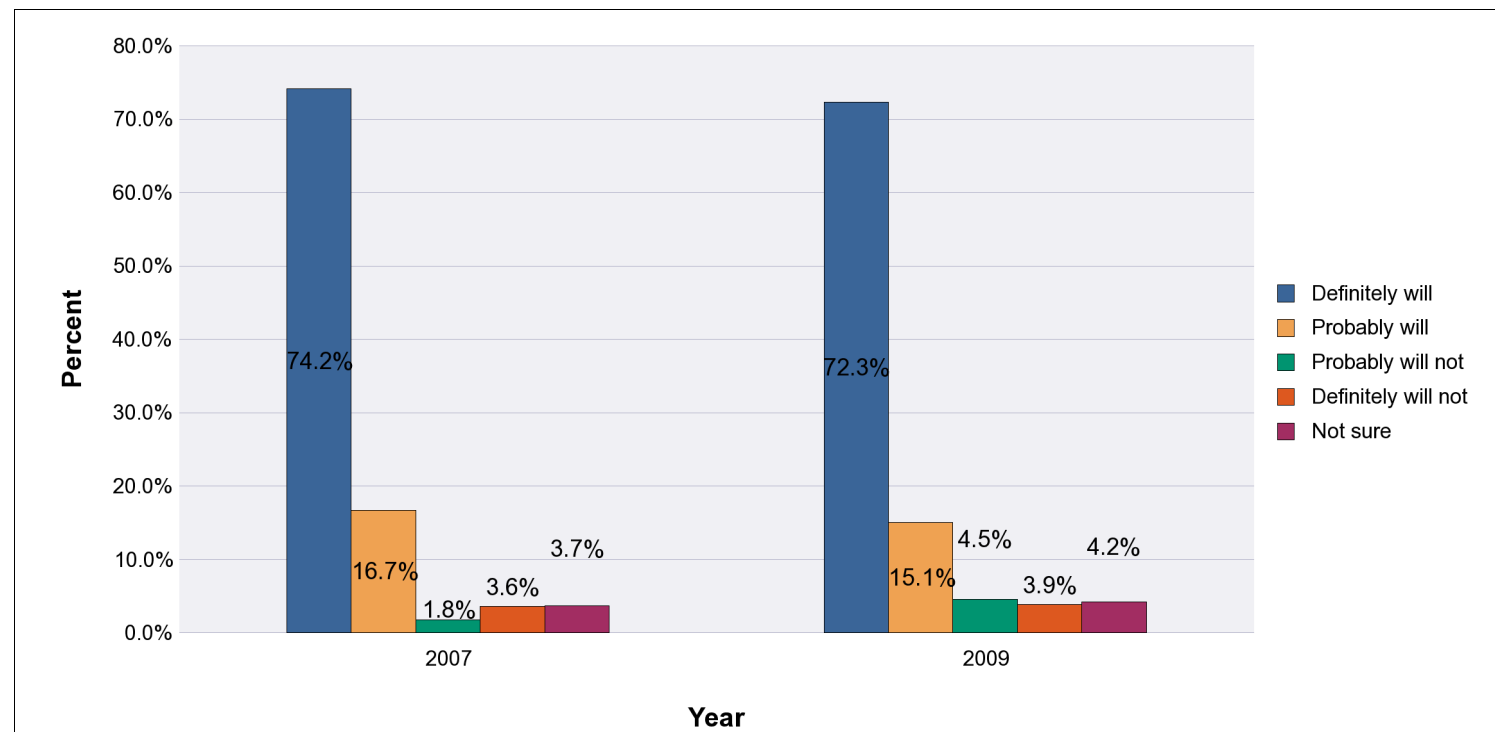
Perceived Likelihood of Completing High School in Hawaii, by School Type and Indicator, for the Years 2007 - 2009

Note: Weighted percentages, 95% confidence interval; n/r (Not Reportable) - Total unweighted responses less than 100

High Schools

How likely to complete high school

Year	YRBS Response	Percent
2007	Definitely will	74.2%
	Probably will	16.7%
	Probably will not	1.8%
	Definitely will not	3.6%
	Not sure	3.7%
Year	YRBS Response	Percent
2009	Definitely will	72.3%
	Probably will	15.1%
	Probably will not	4.5%
	Definitely will not	3.9%
	Not sure	4.2%



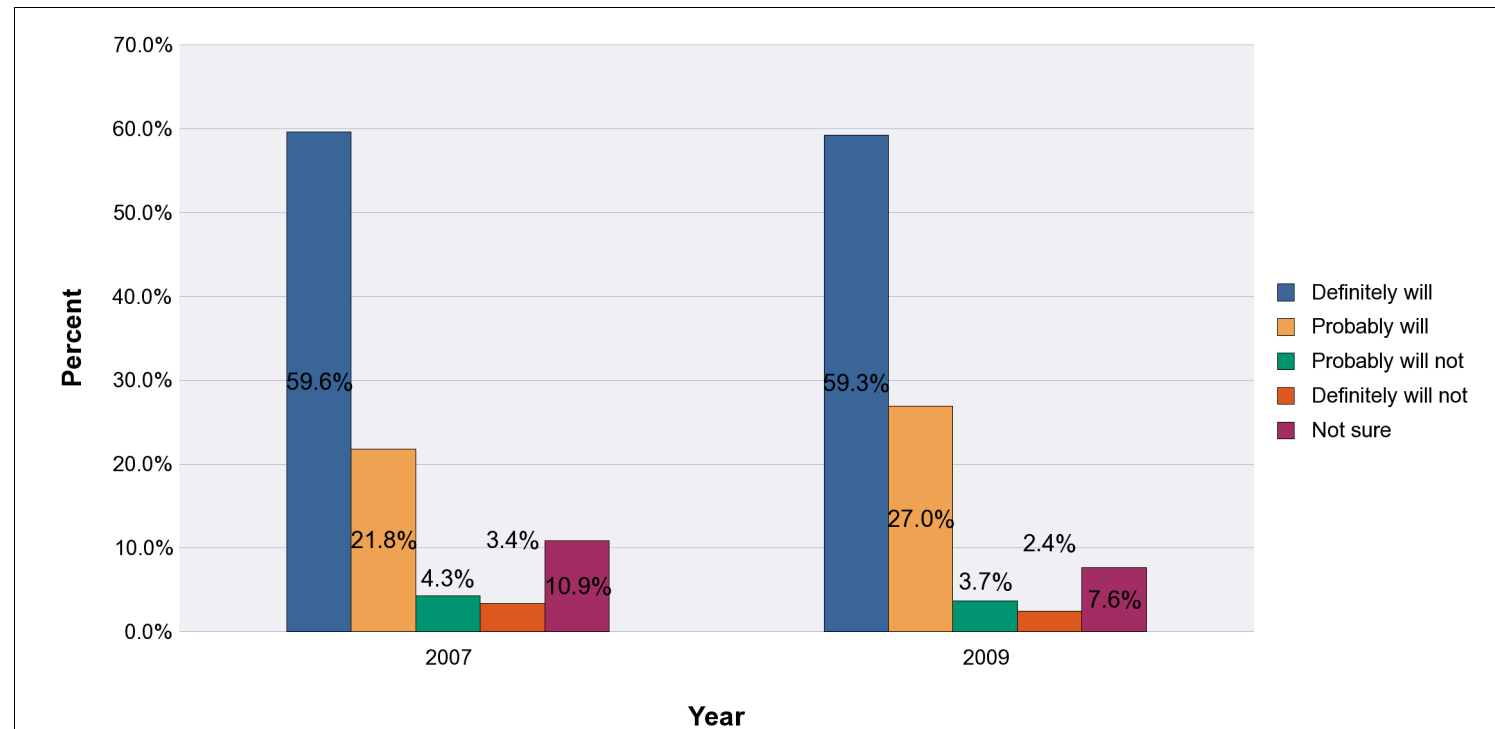
Perceived Likelihood of Completing High School in Hawaii, by School Type and Indicator, for the Years 2007 - 2009

Note: Weighted percentages, 95% confidence interval; n/r (Not Reportable) - Total unweighted responses less than 100

Middle Schools

How likely to complete high school

Year	YRBS Response	Percent
2007	Definitely will	59.6%
	Probably will	21.8%
	Probably will not	4.3%
	Definitely will not	3.4%
	Not sure	10.9%
Year	YRBS Response	Percent
2009	Definitely will	59.3%
	Probably will	27.0%
	Probably will not	3.7%
	Definitely will not	2.4%
	Not sure	7.6%



Perceived Likelihood of Completing High School in Hawaii, by School Type, Indicator, State, Gender, Grade Level, and DOH Race-Ethnicity,* for the Years 2007 - 2009

Note: Weighted counts rounded to nearest 100, weighted percentages, 95% confidence interval; n/r (Not Reportable) - Total unweighted responses less than 100

High Schools

Indicator: How likely to complete high school

Year: 2009

State	How likely to complete high school														
	Definitely will			Probably will			Probably will not			Definitely will not			Not sure		
	#	%	CI	#	%	CI	#	%	CI	#	%	CI	#	%	CI
Totals	34,500	72.3%	69.0 - 75.6	7,200	15.1%	12.4 - 17.7	2,200	4.5%	3.0 - 6.1	1,800	3.9%	2.4 - 5.4	2,000	4.2%	3.0 - 5.5

Gender	How likely to complete high school														
	Definitely will			Probably will			Probably will not			Definitely will not			Not sure		
	#	%	CI	#	%	CI	#	%	CI	#	%	CI	#	%	CI
Male	16,600	67.6%	62.9 - 72.3	3,900	16.1%	12.9 - 19.4	1,500	6.2%	3.3 - 9.2	1,200	5.1%	2.4 - 7.8	1,200	5.0%	2.9 - 7.1
Female	17,800	77.6%	73.0 - 82.2	3,200	13.9%	10.2 - 17.6	600	2.8%	1.4 - 4.2	600	2.5%	0.8 - 4.1	700	3.2%	1.5 - 4.8

Grade Level	How likely to complete high school														
	Definitely will			Probably will			Probably will not			Definitely will not			Not sure		
	#	%	CI	#	%	CI	#	%	CI	#	%	CI	#	%	CI
9th Grade	9,300	65.2%	57.8 - 72.5	2,500	17.7%	13.9 - 21.5	900	6.6%	3.1 - 10.1	800	5.6%	3.5 - 7.8	700	4.9%	2.7 - 7.2
10th Grade	8,400	72.2%	64.3 - 80.1	1,900	16.6%	9.8 - 23.4	600	5.1%	1.0 - 9.2	200	1.9%	0.6 - 3.1	500	4.2%	0.8 - 7.7
11th Grade	8,200	78.2%	72.1 - 84.4	1,300	12.1%	7.7 - 16.4	300	3.0%	0.6 - 5.3	300	2.6%	0.3 - 4.9	400	4.2%	1.4 - 6.9
12th Grade	8,300	75.7%	65.5 - 85.9	1,500	13.5%	4.3 - 22.7	300	3.1%	0.6 - 5.5	500	4.8%	0.8 - 8.7	300	3.0%	0.2 - 5.9

* Race-ethnicity data from 2011 forward may not be comparable to data from previous years.

Perceived Likelihood of Completing High School in Hawaii, by School Type, Indicator, State, Gender, Grade Level, and DOH Race-Ethnicity,* for the Years 2007 - 2009

*Note: Weighted counts rounded to nearest 100, weighted percentages, 95% confidence interval;
n/r (Not Reportable) - Total unweighted responses less than 100*

High Schools

Indicator: How likely to complete high school

Year: 2009

DOH Race-Ethnicity	How likely to complete high school														
	Definitely will			Probably will			Probably will not			Definitely will not			Not sure		
	#	%	CI	#	%	CI	#	%	CI	#	%	CI	#	%	CI
Caucasian	5,100	82.3%	74.7 - 90.0	600	9.6%	4.0 - 15.3	300	4.4%	0.3 - 8.4	100	1.8%	0.0 - 3.8	100	1.9%	0.0 - 4.9
Native Hawaiian	7,100	61.2%	53.7 - 68.7	2,300	19.6%	12.7 - 26.6	900	7.9%	4.3 - 11.5	700	6.3%	0.0 - 12.6	600	5.0%	1.9 - 8.1
Filipino	8,500	74.9%	68.5 - 81.4	1,600	13.9%	9.9 - 17.9	400	3.5%	0.7 - 6.2	300	2.3%	0.8 - 3.8	600	5.4%	1.7 - 9.0
Japanese	3,800	77.1%	64.8 - 89.3	700	13.7%	5.9 - 21.5	200	3.8%	0.0 - 7.5	200	3.7%	0.2 - 7.3	100	1.8%	0.0 - 4.6
Black	n/r	n/r	n/r	n/r	n/r	n/r	n/r	n/r	n/r	n/r	n/r	n/r	n/r	n/r	n/r
Native Alaskan/ American Indian	n/r	n/r	n/r	n/r	n/r	n/r	n/r	n/r	n/r	n/r	n/r	n/r	n/r	n/r	n/r
Other Asian	1,300	78.5%	72.4 - 84.6	100	7.9%	2.4 - 13.3	100	6.2%	0.0 - 13.1	<50	2.0%	0.0 - 4.2	100	5.4%	1.2 - 9.6
Other Pacific Islander	n/r	n/r	n/r	n/r	n/r	n/r	n/r	n/r	n/r	n/r	n/r	n/r	n/r	n/r	n/r
Other	6,500	73.2%	68.8 - 77.7	1,500	16.7%	12.2 - 21.2	200	2.6%	1.1 - 4.1	400	4.1%	2.0 - 6.2	300	3.4%	1.7 - 5.1

* Race-ethnicity data from 2011 forward may not be comparable to data from previous years.

Perceived Likelihood of Completing High School in Hawaii, by School Type, Indicator, State, Gender, Grade Level, and DOH Race-Ethnicity,* for the Years 2007 - 2009

*Note: Weighted counts rounded to nearest 100, weighted percentages, 95% confidence interval;
n/r (Not Reportable) - Total unweighted responses less than 100*

High Schools

Indicator: How likely to complete high school

Year: 2007

State	How likely to complete high school														
	Definitely will			Probably will			Probably will not			Definitely will not			Not sure		
	#	%	CI	#	%	CI	#	%	CI	#	%	CI	#	%	CI
Totals	38,400	74.2%	68.3 - 80.1	8,700	16.7%	12.7 - 20.8	900	1.8%	1.0 - 2.5	1,900	3.6%	1.8 - 5.4	1,900	3.7%	2.0 - 5.4

Gender	How likely to complete high school														
	Definitely will			Probably will			Probably will not			Definitely will not			Not sure		
	#	%	CI	#	%	CI	#	%	CI	#	%	CI	#	%	CI
Male	19,300	71.7%	63.9 - 79.4	5,100	19.0%	12.7 - 25.4	400	1.5%	1.0 - 2.1	1,200	4.5%	1.9 - 7.0	900	3.3%	1.6 - 5.1
Female	19,100	77.0%	72.3 - 81.7	3,500	14.2%	11.0 - 17.4	500	2.0%	0.5 - 3.4	700	2.7%	0.8 - 4.6	1,000	4.1%	1.4 - 6.8

Grade Level	How likely to complete high school														
	Definitely will			Probably will			Probably will not			Definitely will not			Not sure		
	#	%	CI	#	%	CI	#	%	CI	#	%	CI	#	%	CI
9th Grade	9,400	64.8%	52.5 - 77.2	3,100	21.1%	12.8 - 29.4	200	1.3%	0.0 - 2.9	800	5.7%	0.7 - 10.8	1,000	7.0%	3.5 - 10.5
10th Grade	9,100	70.5%	62.9 - 78.0	2,600	20.3%	13.9 - 26.6	200	1.9%	0.0 - 3.9	600	4.8%	0.2 - 9.5	300	2.5%	0.5 - 4.5
11th Grade	10,600	81.3%	73.3 - 89.4	1,600	12.1%	5.7 - 18.5	200	1.6%	0.2 - 3.0	300	2.1%	0.2 - 3.9	400	2.9%	0.6 - 5.3
12th Grade	9,100	83.0%	78.0 - 88.0	1,300	12.4%	8.2 - 16.5	200	1.8%	0.6 - 3.0	100	1.3%	0.1 - 2.6	200	1.5%	0.2 - 2.8

* Race-ethnicity data from 2011 forward may not be comparable to data from previous years.

Perceived Likelihood of Completing High School in Hawaii, by School Type, Indicator, State, Gender, Grade Level, and DOH Race-Ethnicity,* for the Years 2007 - 2009

*Note: Weighted counts rounded to nearest 100, weighted percentages, 95% confidence interval;
n/r (Not Reportable) - Total unweighted responses less than 100*

High Schools

Indicator: How likely to complete high school

Year: 2007

DOH Race-Ethnicity	How likely to complete high school														
	Definitely will			Probably will			Probably will not			Definitely will not			Not sure		
	#	%	CI	#	%	CI	#	%	CI	#	%	CI	#	%	CI
Caucasian	n/r	n/r	n/r	n/r	n/r	n/r	n/r	n/r	n/r	n/r	n/r	n/r	n/r	n/r	n/r
Native Hawaiian	8,900	67.3%	55.0 - 79.5	2,900	21.8%	12.1 - 31.4	100	0.7%	0.0 - 2.1	800	6.3%	0.9 - 11.7	500	3.9%	0.4 - 7.4
Filipino	8,300	72.2%	62.8 - 81.6	1,900	16.2%	9.5 - 23.0	200	2.0%	1.2 - 2.7	500	4.8%	0.2 - 9.3	600	4.9%	1.8 - 8.0
Japanese	4,400	85.5%	77.9 - 93.1	500	10.1%	4.1 - 16.0	100	1.8%	0.0 - 4.3	0	0.0%	0.0 - 0.0	100	2.7%	0.0 - 6.2
Black	n/r	n/r	n/r	n/r	n/r	n/r	n/r	n/r	n/r	n/r	n/r	n/r	n/r	n/r	n/r
Native Alaskan/ American Indian	n/r	n/r	n/r	n/r	n/r	n/r	n/r	n/r	n/r	n/r	n/r	n/r	n/r	n/r	n/r
Other Asian	n/r	n/r	n/r	n/r	n/r	n/r	n/r	n/r	n/r	n/r	n/r	n/r	n/r	n/r	n/r
Other Pacific Islander	n/r	n/r	n/r	n/r	n/r	n/r	n/r	n/r	n/r	n/r	n/r	n/r	n/r	n/r	n/r
Other	7,800	78.4%	73.4 - 83.4	1,500	14.6%	10.4 - 18.9	200	1.9%	0.7 - 3.2	300	2.6%	1.1 - 4.1	200	2.4%	0.8 - 4.1

* Race-ethnicity data from 2011 forward may not be comparable to data from previous years.

Perceived Likelihood of Completing High School in Hawaii, by School Type, Indicator, State, Gender, Grade Level, and DOH Race-Ethnicity,* for the Years 2007 - 2009

Note: Weighted counts rounded to nearest 100, weighted percentages, 95% confidence interval; n/r (Not Reportable) - Total unweighted responses less than 100

Middle Schools

Indicator: How likely to complete high school

Year: 2009

State	How likely to complete high school														
	Definitely will			Probably will			Probably will not			Definitely will not			Not sure		
	#	%	CI	#	%	CI	#	%	CI	#	%	CI	#	%	CI
Totals	16,500	59.3%	56.0 - 62.5	7,500	27.0%	24.2 - 29.7	1,000	3.7%	2.0 - 5.5	700	2.4%	1.3 - 3.5	2,100	7.6%	6.3 - 9.0

Gender	How likely to complete high school														
	Definitely will			Probably will			Probably will not			Definitely will not			Not sure		
	#	%	CI	#	%	CI	#	%	CI	#	%	CI	#	%	CI
Male	7,700	55.1%	51.1 - 59.1	3,900	28.1%	24.7 - 31.5	800	5.9%	2.9 - 8.8	400	2.7%	0.9 - 4.4	1,200	8.3%	6.0 - 10.6
Female	8,700	63.7%	59.6 - 67.9	3,600	25.9%	22.5 - 29.4	200	1.4%	0.5 - 2.3	300	2.0%	1.0 - 3.0	900	6.9%	5.1 - 8.7

Grade Level	How likely to complete high school														
	Definitely will			Probably will			Probably will not			Definitely will not			Not sure		
	#	%	CI	#	%	CI	#	%	CI	#	%	CI	#	%	CI
6th Grade	3,500	55.6%	47.2 - 64.0	1,800	29.0%	22.4 - 35.6	100	1.5%	0.0 - 2.9	200	2.4%	1.1 - 3.7	700	11.5%	7.9 - 15.2
7th Grade	5,900	56.1%	49.7 - 62.4	2,900	28.0%	23.2 - 32.7	500	4.8%	1.2 - 8.3	300	3.0%	1.4 - 4.6	900	8.2%	5.3 - 11.2
8th Grade	7,000	64.7%	59.2 - 70.3	2,700	25.4%	20.8 - 29.9	400	3.6%	1.4 - 5.8	200	1.5%	0.1 - 2.9	500	4.8%	2.9 - 6.7

* Race-ethnicity data from 2011 forward may not be comparable to data from previous years.

Perceived Likelihood of Completing High School in Hawaii, by School Type, Indicator, State, Gender, Grade Level, and DOH Race-Ethnicity,* for the Years 2007 - 2009

*Note: Weighted counts rounded to nearest 100, weighted percentages, 95% confidence interval;
n/r (Not Reportable) - Total unweighted responses less than 100*

Middle Schools

Indicator: How likely to complete high school

Year: 2009

DOH Race-Ethnicity	How likely to complete high school														
	Definitely will			Probably will			Probably will not			Definitely will not			Not sure		
	#	%	CI	#	%	CI	#	%	CI	#	%	CI	#	%	CI
Caucasian	2,200	66.5%	56.0 - 77.0	700	20.9%	12.2 - 29.6	<50	1.3%	0.0 - 4.3	100	3.9%	0.0 - 9.4	200	7.3%	2.7 - 11.9
Native Hawaiian	3,600	54.2%	43.3 - 65.0	2,400	35.6%	24.5 - 46.7	200	2.8%	0.0 - 5.8	<50	0.5%	0.0 - 1.6	500	6.9%	2.3 - 11.4
Filipino	3,400	57.6%	52.1 - 63.2	1,500	25.6%	20.6 - 30.6	200	3.9%	1.5 - 6.4	200	3.3%	1.4 - 5.2	600	9.5%	6.4 - 12.6
Japanese	n/r	n/r	n/r	n/r	n/r	n/r	n/r	n/r	n/r	n/r	n/r	n/r	n/r	n/r	n/r
Black	n/r	n/r	n/r	n/r	n/r	n/r	n/r	n/r	n/r	n/r	n/r	n/r	n/r	n/r	n/r
Native Alaskan/ American Indian	n/r	n/r	n/r	n/r	n/r	n/r	n/r	n/r	n/r	n/r	n/r	n/r	n/r	n/r	n/r
Other Asian	n/r	n/r	n/r	n/r	n/r	n/r	n/r	n/r	n/r	n/r	n/r	n/r	n/r	n/r	n/r
Other Pacific Islander	n/r	n/r	n/r	n/r	n/r	n/r	n/r	n/r	n/r	n/r	n/r	n/r	n/r	n/r	n/r
Other	3,500	61.7%	57.3 - 66.2	1,300	22.9%	19.9 - 26.0	300	4.5%	2.1 - 6.9	100	2.1%	0.8 - 3.3	500	8.8%	6.1 - 11.5

* Race-ethnicity data from 2011 forward may not be comparable to data from previous years.

Perceived Likelihood of Completing High School in Hawaii, by School Type, Indicator, State, Gender, Grade Level, and DOH Race-Ethnicity,* for the Years 2007 - 2009

*Note: Weighted counts rounded to nearest 100, weighted percentages, 95% confidence interval;
n/r (Not Reportable) - Total unweighted responses less than 100*

Middle Schools

Indicator: How likely to complete high school

Year: 2007

State	How likely to complete high school														
	Definitely will			Probably will			Probably will not			Definitely will not			Not sure		
	#	%	CI	#	%	CI	#	%	CI	#	%	CI	#	%	CI
Totals	18,800	59.6%	55.4 - 63.9	6,900	21.8%	18.4 - 25.2	1,400	4.3%	2.7 - 5.9	1,100	3.4%	2.4 - 4.3	3,400	10.9%	8.3 - 13.4

Gender	How likely to complete high school														
	Definitely will			Probably will			Probably will not			Definitely will not			Not sure		
	#	%	CI	#	%	CI	#	%	CI	#	%	CI	#	%	CI
Male	8,300	51.4%	45.4 - 57.4	4,200	26.1%	21.1 - 31.2	1,100	6.9%	3.8 - 10.0	700	4.3%	2.7 - 6.0	1,800	11.2%	8.3 - 14.1
Female	10,500	68.5%	63.8 - 73.3	2,600	17.3%	13.7 - 21.0	200	1.6%	0.1 - 3.1	300	2.2%	0.9 - 3.4	1,600	10.3%	6.7 - 13.9

Grade Level	How likely to complete high school														
	Definitely will			Probably will			Probably will not			Definitely will not			Not sure		
	#	%	CI	#	%	CI	#	%	CI	#	%	CI	#	%	CI
6th Grade	3,000	46.0%	38.6 - 53.5	1,700	25.6%	19.8 - 31.4	500	8.2%	2.2 - 14.2	300	4.2%	1.8 - 6.6	1,000	15.9%	10.9 - 21.0
7th Grade	7,300	59.4%	52.0 - 66.8	3,000	24.3%	17.5 - 31.1	400	3.3%	0.9 - 5.8	300	2.5%	0.6 - 4.4	1,300	10.4%	7.1 - 13.7
8th Grade	8,300	66.9%	61.5 - 72.4	2,100	17.3%	13.8 - 20.8	400	3.4%	1.3 - 5.5	400	3.6%	1.4 - 5.9	1,100	8.8%	4.6 - 13.0

* Race-ethnicity data from 2011 forward may not be comparable to data from previous years.

Perceived Likelihood of Completing High School in Hawaii, by School Type, Indicator, State, Gender, Grade Level, and DOH Race-Ethnicity,* for the Years 2007 - 2009

*Note: Weighted counts rounded to nearest 100, weighted percentages, 95% confidence interval;
n/r (Not Reportable) - Total unweighted responses less than 100*

Middle Schools

Indicator: How likely to complete high school

Year: 2007

DOH Race-Ethnicity	How likely to complete high school														
	Definitely will			Probably will			Probably will not			Definitely will not			Not sure		
	#	%	CI	#	%	CI	#	%	CI	#	%	CI	#	%	CI
Caucasian	n/r	n/r	n/r	n/r	n/r	n/r	n/r	n/r	n/r	n/r	n/r	n/r	n/r	n/r	n/r
Native Hawaiian	n/r	n/r	n/r	n/r	n/r	n/r	n/r	n/r	n/r	n/r	n/r	n/r	n/r	n/r	n/r
Filipino	3,200	50.0%	42.3 - 57.7	1,700	27.5%	20.3 - 34.6	200	2.9%	0.0 - 5.9	500	7.2%	3.2 - 11.3	800	12.4%	8.4 - 16.3
Japanese	n/r	n/r	n/r	n/r	n/r	n/r	n/r	n/r	n/r	n/r	n/r	n/r	n/r	n/r	n/r
Black	n/r	n/r	n/r	n/r	n/r	n/r	n/r	n/r	n/r	n/r	n/r	n/r	n/r	n/r	n/r
Native Alaskan/ American Indian	n/r	n/r	n/r	n/r	n/r	n/r	n/r	n/r	n/r	n/r	n/r	n/r	n/r	n/r	n/r
Other Asian	n/r	n/r	n/r	n/r	n/r	n/r	n/r	n/r	n/r	n/r	n/r	n/r	n/r	n/r	n/r
Other Pacific Islander	n/r	n/r	n/r	n/r	n/r	n/r	n/r	n/r	n/r	n/r	n/r	n/r	n/r	n/r	n/r
Other	3,500	58.1%	53.5 - 62.7	1,500	24.6%	20.7 - 28.5	300	4.7%	2.1 - 7.3	200	4.0%	2.0 - 6.1	500	8.6%	6.0 - 11.2

* Race-ethnicity data from 2011 forward may not be comparable to data from previous years.