

Lifetime Tobacco Use by School Type, State, Gender, Grade Level, DOH Race-Ethnicity, for the Year(s) - 2000, 2003, 2005, 2007, 2009, 2011, 2013, 2015

Note: Weighted counts rounded to the nearest hundred; weighted percentages, positive responses only; public high school and middle school data; n/r (Not Reportable) - Unweighted respondents less than 35

The weighted data is not available for middle school for 2000 or high school for 2003. Questions for certain health indicators were not asked in all years.

Below are the indicators included in this report, with their long description.

YTS Health Indicator	Health Ind Desc
Tobacco use - ever	Ever tobacco use -- those who have ever used any form of tobacco
Cigar smoker - ever	Ever smoked cigars
SLT user - ever	Ever used smokeless tobacco (SLT)
Bidis smoker - ever	Ever smoked bidis
Kreteks smoker - ever	Ever smoked kreteks

For documentation on other terms and coding in this report, please go to the following links:

[Click here to access YTS documentation](#)

[Click here to access DOH Race-Ethnicity coding](#)

[Click here to access Hawai'i Data Guide](#)

For questions about this report, please contact The Hawaii Health Data Warehouse

profiles@hhdw.org

(855) 946-5899 x 15

Lifetime Tobacco Use by School Type, for the Year(s) - 2000, 2003, 2005, 2007, 2009, 2011, 2013, 2015

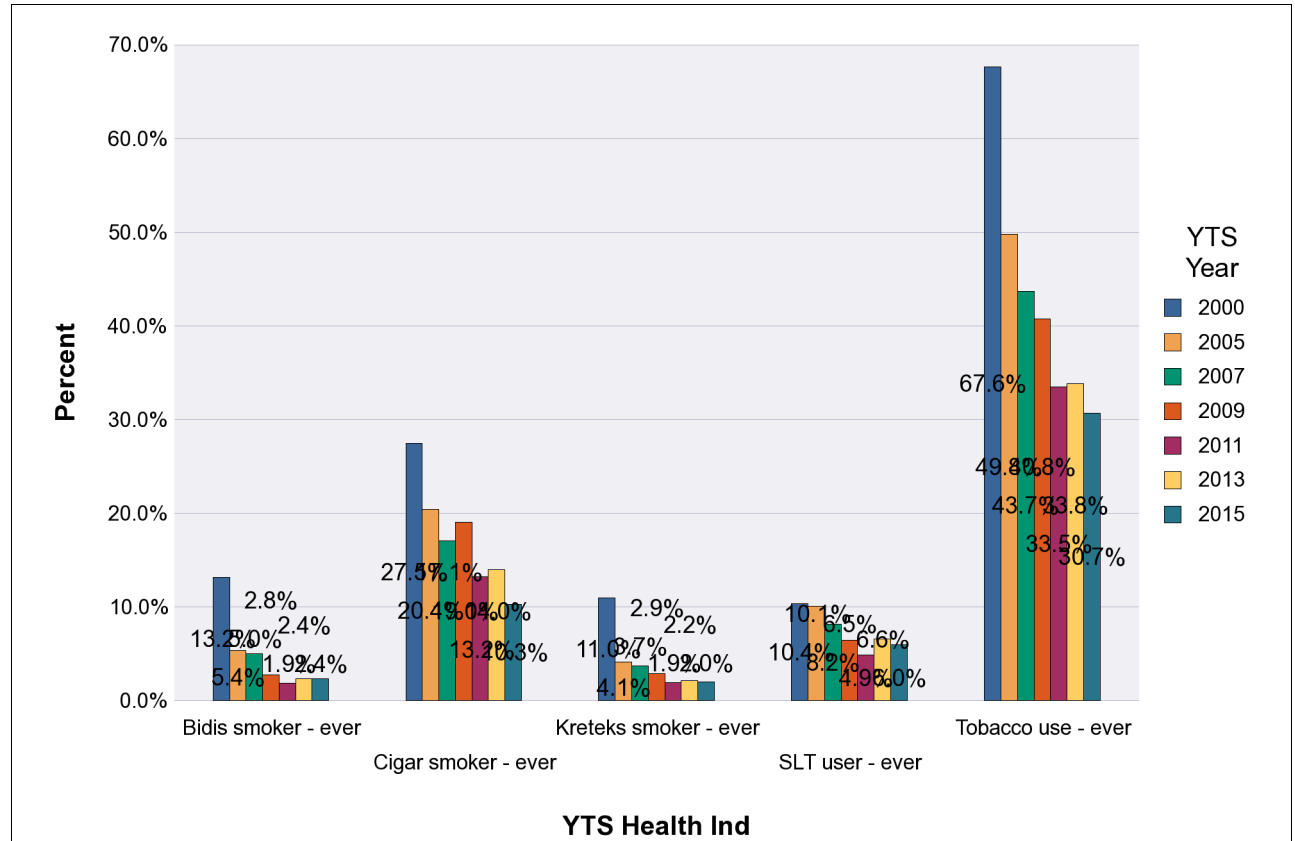
Note: Weighted percentages, positive responses only; n/r (Not Reportable) - Unweighted respondents less than 35

High Schools

	YTS Year	Percent
Tobacco use - ever	2000	67.6%
	2005	49.8%
	2007	43.7%
	2009	40.8%
	2011	33.5%
	2013	33.8%
	2015	30.7%

	YTS Year	Percent
Cigar smoker - ever	2000	27.5%
	2005	20.4%
	2007	17.1%
	2009	19.0%
	2011	13.2%
	2013	14.0%
	2015	10.3%

	YTS Year	Percent
SLT user - ever	2000	10.4%
	2005	10.1%
	2007	8.2%
	2009	6.5%
	2011	4.9%
	2013	6.6%
	2015	6.0%



**Lifetime Tobacco Use by School Type,
for the Year(s) - 2000, 2003, 2005, 2007, 2009, 2011, 2013, 2015**

Note: Weighted percentages, positive responses only; n/r (Not Reportable) - Unweighted respondents less than 35

High Schools

	YTS Year	Percent
Bidis smoker - ever	2000	13.2%
	2005	5.4%
	2007	5.0%
	2009	2.8%
	2011	1.9%
	2013	2.4%
	2015	2.4%

	YTS Year	Percent
Kreteks smoker - ever	2000	11.0%
	2005	4.1%
	2007	3.7%
	2009	2.9%
	2011	1.9%
	2013	2.2%
	2015	2.0%

Lifetime Tobacco Use by School Type, for the Year(s) - 2000, 2003, 2005, 2007, 2009, 2011, 2013, 2015

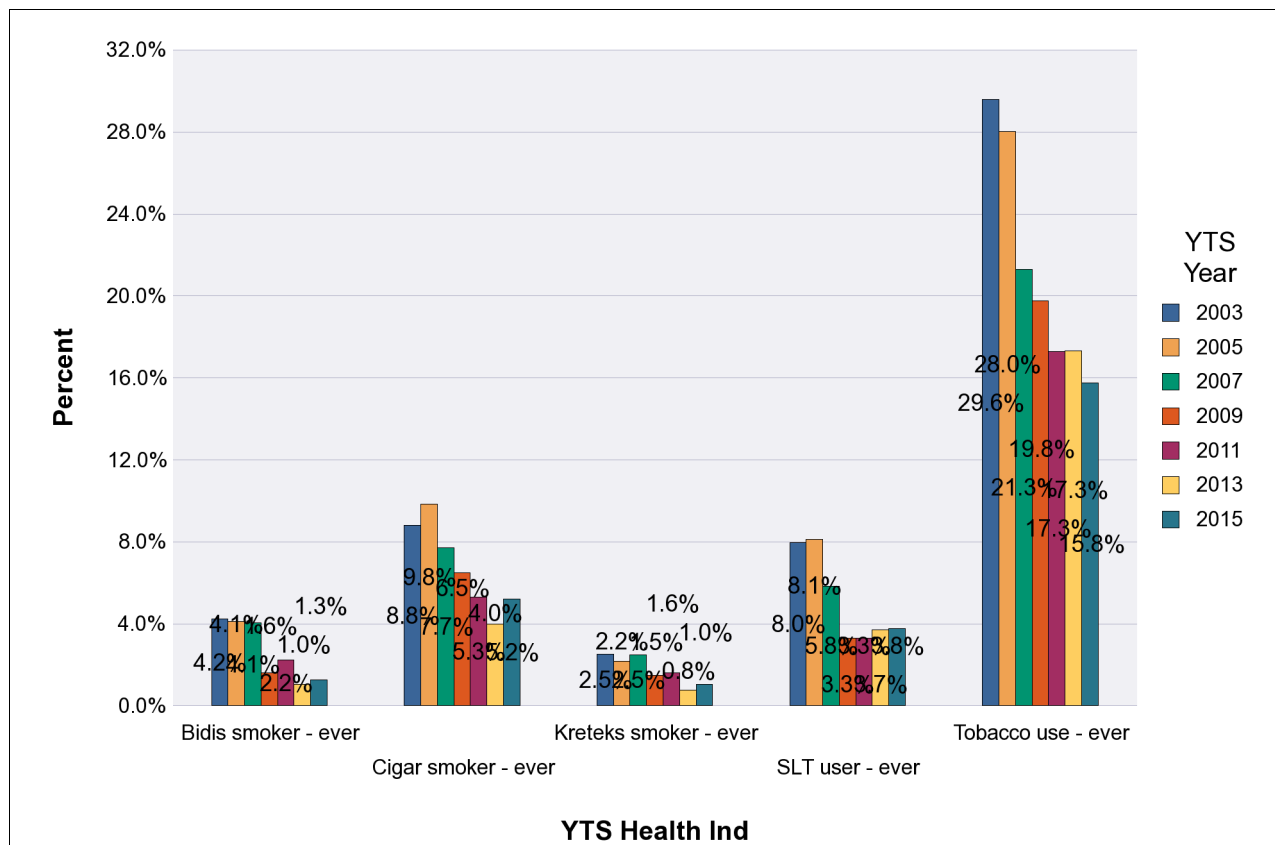
Note: Weighted percentages, positive responses only; n/r (Not Reportable) - Unweighted respondents less than 35

Middle Schools

	YTS Year	Percent
Tobacco use - ever	2003	29.6%
	2005	28.0%
	2007	21.3%
	2009	19.8%
	2011	17.3%
	2013	17.3%
	2015	15.8%

	YTS Year	Percent
Cigar smoker - ever	2003	8.8%
	2005	9.8%
	2007	7.7%
	2009	6.5%
	2011	5.3%
	2013	4.0%
	2015	5.2%

	YTS Year	Percent
SLT user - ever	2003	8.0%
	2005	8.1%
	2007	5.8%
	2009	3.3%
	2011	3.3%
	2013	3.7%
	2015	3.8%



**Lifetime Tobacco Use by School Type,
for the Year(s) - 2000, 2003, 2005, 2007, 2009, 2011, 2013, 2015**

Note: Weighted percentages, positive responses only; n/r (Not Reportable) - Unweighted respondents less than 35

Middle Schools

	YTS Year	Percent
Bidis smoker - ever	2003	4.2%
	2005	4.1%
	2007	4.1%
	2009	1.6%
	2011	2.2%
	2013	1.0%
	2015	1.3%

	YTS Year	Percent
Kreteks smoker - ever	2003	2.5%
	2005	2.2%
	2007	2.5%
	2009	1.5%
	2011	1.6%
	2013	0.8%
	2015	1.0%

Lifetime Tobacco Use by School Type, State, Gender, Grade Level, DOH Race-Ethnicity, for the Year(s) - 2000, 2003, 2005, 2007, 2009, 2011, 2013, 2015

Note: Weighted counts rounded to nearest hundred; weighted percentages, positive responses only; n/r (Not Reportable) - Unweighted respondents less than 35

High Schools

2015

State	Tobacco use - ever			Cigar smoker - ever			SLT user - ever			Bidis smoker - ever		
	#	%	CI	#	%	CI	#	%	CI	#	%	CI
Totals	12,800	30.7%	27.4 - 34.0	4,200	10.3%	8.6 - 11.9	2,400	6.0%	4.6 - 7.4	1,000	2.4%	1.5 - 3.3

Gender	Tobacco use - ever			Cigar smoker - ever			SLT user - ever			Bidis smoker - ever		
	#	%	CI	#	%	CI	#	%	CI	#	%	CI
Male	6,600	32.0%	27.7 - 36.3	2,500	12.5%	9.7 - 15.3	1,500	7.8%	5.7 - 10.0	500	2.7%	1.2 - 4.1
Female	6,100	29.2%	26.0 - 32.4	1,700	8.1%	6.3 - 9.9	800	4.1%	2.6 - 5.5	400	2.0%	1.2 - 2.8

Grade Level	Tobacco use - ever			Cigar smoker - ever			SLT user - ever			Bidis smoker - ever		
	#	%	CI	#	%	CI	#	%	CI	#	%	CI
9th Grade	3,000	25.0%	21.4 - 28.7	700	6.1%	4.5 - 7.7	700	5.8%	4.1 - 7.6	200	1.6%	0.6 - 2.6
10th Grade	3,000	28.5%	24.2 - 32.9	1,100	10.7%	8.4 - 13.0	400	4.2%	2.1 - 6.4	300	3.0%	0.7 - 5.4
11th Grade	3,300	34.6%	29.0 - 40.2	1,100	11.5%	7.3 - 15.8	600	6.6%	3.8 - 9.5	200	2.5%	0.9 - 4.2
12th Grade	3,600	36.5%	27.9 - 45.2	1,300	13.7%	9.6 - 17.8	700	7.4%	4.1 - 10.8	200	2.5%	0.5 - 4.5

Lifetime Tobacco Use by School Type, State, Gender, Grade Level, DOH Race-Ethnicity, for the Year(s) - 2000, 2003, 2005, 2007, 2009, 2011, 2013, 2015

Note: Weighted counts rounded to nearest hundred; weighted percentages, positive responses only; n/r (Not Reportable) - Unweighted respondents less than 35

State	Kreteks smoker - ever		
	#	%	CI
Totals	800	2.0%	1.1 - 2.9

Gender	Kreteks smoker - ever		
	#	%	CI
Male	500	2.4%	1.0 - 3.8
Female	300	1.4%	0.5 - 2.3

Grade Level	Kreteks smoker - ever		
	#	%	CI
9th Grade	100	1.2%	0.2 - 2.1
10th Grade	300	2.6%	1.0 - 4.2
11th Grade	200	2.2%	0.2 - 4.1
12th Grade	200	2.2%	0.4 - 4.0

Lifetime Tobacco Use by School Type, State, Gender, Grade Level, DOH Race-Ethnicity, for the Year(s) - 2000, 2003, 2005, 2007, 2009, 2011, 2013, 2015

Note: Weighted counts rounded to nearest hundred; weighted percentages, positive responses only; n/r (Not Reportable) - Unweighted respondents less than 35

High Schools

2015

DOH Race-Ethnicity	Tobacco use - ever			Cigar smoker - ever			SLT user - ever			Bidis smoker - ever		
	#	%	CI	#	%	CI	#	%	CI	#	%	CI
Caucasian	1,500	30.3%	22.5 - 38.1	800	15.9%	9.5 - 22.3	300	6.9%	2.8 - 11.1	100	2.3%	0.3 - 4.3
Native Hawaiian	3,100	45.4%	38.0 - 52.7	1,000	15.4%	10.4 - 20.5	600	9.6%	4.6 - 14.5	300	5.0%	2.3 - 7.6
Chinese	200	11.9%	6.9 - 16.8	<50	1.1%	0.0 - 3.4	<50	2.2%	0.0 - 5.1	<50	0.9%	0.0 - 2.1
Filipino	2,700	26.5%	20.6 - 32.4	600	5.9%	3.3 - 8.6	300	3.1%	1.6 - 4.6	100	0.7%	0.0 - 1.4
Japanese	400	13.0%	8.2 - 17.8	200	6.1%	2.4 - 9.9	100	3.4%	0.4 - 6.3	100	2.6%	0.0 - 5.1
Black	400	40.6%	26.6 - 54.6	200	24.2%	6.9 - 41.5	100	10.5%	1.8 - 19.2	100	12.4%	5.2 - 19.5
Other Pacific Islander	1,300	44.2%	33.3 - 55.2	300	9.1%	3.9 - 14.4	500	18.1%	7.4 - 28.7	100	2.0%	0.0 - 4.0
Other	2,600	28.3%	23.0 - 33.6	900	9.8%	6.6 - 13.1	400	4.0%	1.6 - 6.5	100	1.6%	0.5 - 2.7

**Lifetime Tobacco Use by School Type, State, Gender, Grade Level, DOH Race-Ethnicity,
for the Year(s) - 2000, 2003, 2005, 2007, 2009, 2011, 2013, 2015**

Note: Weighted counts rounded to nearest hundred; weighted percentages, positive responses only; n/r (Not Reportable) - Unweighted respondents less than 35

DOH Race-Ethnicity	Kreteks smoker - ever		
	#	%	CI
Caucasian	200	3.5%	0.7 - 6.3
Native Hawaiian	200	3.1%	0.6 - 5.7
Chinese	<50	0.9%	0.0 - 2.1
Filipino	100	1.0%	0.0 - 2.0
Japanese	100	3.3%	0.0 - 6.8
Black	100	9.7%	0.0 - 19.8
Other Pacific Islander	<50	1.4%	0.0 - 3.1
Other	<50	0.5%	0.0 - 1.1

Lifetime Tobacco Use by School Type, State, Gender, Grade Level, DOH Race-Ethnicity, for the Year(s) - 2000, 2003, 2005, 2007, 2009, 2011, 2013, 2015

Note: Weighted counts rounded to nearest hundred; weighted percentages, positive responses only; n/r (Not Reportable) - Unweighted respondents less than 35

High Schools

2013

State	Tobacco use - ever			Cigar smoker - ever			SLT user - ever			Bidis smoker - ever		
	#	%	CI	#	%	CI	#	%	CI	#	%	CI
Totals	14,200	33.8%	30.1 - 37.6	5,700	14.0%	10.8 - 17.2	2,700	6.6%	4.8 - 8.4	1,000	2.4%	1.6 - 3.2

Gender	Tobacco use - ever			Cigar smoker - ever			SLT user - ever			Bidis smoker - ever		
	#	%	CI	#	%	CI	#	%	CI	#	%	CI
Male	7,200	34.6%	28.8 - 40.4	3,500	17.7%	13.9 - 21.5	2,000	9.7%	6.4 - 12.9	700	3.5%	1.8 - 5.1
Female	6,900	33.1%	29.9 - 36.3	2,200	10.5%	6.8 - 14.2	700	3.5%	1.8 - 5.2	300	1.3%	0.3 - 2.3

Grade Level	Tobacco use - ever			Cigar smoker - ever			SLT user - ever			Bidis smoker - ever		
	#	%	CI	#	%	CI	#	%	CI	#	%	CI
9th Grade	3,500	29.1%	23.7 - 34.4	1,100	9.1%	5.3 - 13.0	800	6.2%	4.2 - 8.3	200	1.4%	0.1 - 2.6
10th Grade	3,400	32.4%	27.6 - 37.3	1,600	15.0%	10.9 - 19.2	600	5.9%	2.4 - 9.4	300	2.4%	1.0 - 3.8
11th Grade	3,500	35.6%	27.0 - 44.3	1,400	14.5%	9.7 - 19.4	700	7.3%	4.3 - 10.3	100	1.5%	0.0 - 3.5
12th Grade	3,800	39.4%	31.5 - 47.3	1,700	18.3%	13.7 - 22.9	600	6.8%	3.1 - 10.6	400	4.6%	2.4 - 6.8

Lifetime Tobacco Use by School Type, State, Gender, Grade Level, DOH Race-Ethnicity, for the Year(s) - 2000, 2003, 2005, 2007, 2009, 2011, 2013, 2015

Note: Weighted counts rounded to nearest hundred; weighted percentages, positive responses only; n/r (Not Reportable) - Unweighted respondents less than 35

State	Kreteks smoker - ever		
	#	%	CI
Totals	900	2.2%	1.3 - 3.0

Gender	Kreteks smoker - ever		
	#	%	CI
Male	600	3.0%	1.2 - 4.7
Female	300	1.4%	0.3 - 2.5

Grade Level	Kreteks smoker - ever		
	#	%	CI
9th Grade	200	1.4%	0.1 - 2.7
10th Grade	300	2.5%	0.6 - 4.4
11th Grade	100	1.1%	0.2 - 2.1
12th Grade	400	3.9%	1.7 - 6.1

Lifetime Tobacco Use by School Type, State, Gender, Grade Level, DOH Race-Ethnicity, for the Year(s) - 2000, 2003, 2005, 2007, 2009, 2011, 2013, 2015

Note: Weighted counts rounded to nearest hundred; weighted percentages, positive responses only; n/r (Not Reportable) - Unweighted respondents less than 35

High Schools

2013

DOH Race-Ethnicity	Tobacco use - ever			Cigar smoker - ever			SLT user - ever			Bidis smoker - ever		
	#	%	CI	#	%	CI	#	%	CI	#	%	CI
Caucasian	1,900	35.3%	30.8 - 39.9	1,100	20.3%	12.8 - 27.8	300	6.5%	2.5 - 10.4	100	2.5%	0.0 - 5.7
Native Hawaiian	2,400	35.5%	30.6 - 40.4	1,000	14.8%	8.8 - 20.9	500	6.9%	2.1 - 11.8	300	4.0%	1.2 - 6.8
Chinese	100	4.2%	0.0 - 8.7	0	0.0%	0.0 - 0.0	0	0.0%	0.0 - 0.0	<50	0.3%	0.0 - 0.9
Filipino	3,100	31.7%	26.7 - 36.8	1,000	9.9%	6.5 - 13.4	300	3.2%	1.0 - 5.3	200	1.6%	0.1 - 3.0
Japanese	800	24.0%	9.7 - 38.3	300	8.2%	2.4 - 14.1	300	9.8%	4.2 - 15.4	<50	1.0%	0.0 - 2.5
Black	400	38.2%	22.1 - 54.2	200	24.3%	6.2 - 42.4	<50	3.5%	0.0 - 10.8	<50	4.4%	0.0 - 12.0
Other Pacific Islander	1,300	47.8%	31.2 - 64.4	500	19.9%	10.1 - 29.7	400	16.4%	6.5 - 26.2	<50	0.7%	0.0 - 2.2
Other	3,600	38.6%	30.6 - 46.5	1,300	14.3%	9.7 - 18.8	600	6.5%	3.4 - 9.6	200	2.6%	0.4 - 4.8

**Lifetime Tobacco Use by School Type, State, Gender, Grade Level, DOH Race-Ethnicity,
for the Year(s) - 2000, 2003, 2005, 2007, 2009, 2011, 2013, 2015**

Note: Weighted counts rounded to nearest hundred; weighted percentages, positive responses only; n/r (Not Reportable) - Unweighted respondents less than 35

DOH Race-Ethnicity	Kreteks smoker - ever		
	#	%	CI
Caucasian	100	1.8%	0.2 - 3.5
Native Hawaiian	200	3.0%	0.0 - 6.0
Chinese	<50	0.3%	0.0 - 0.9
Filipino	100	0.9%	0.0 - 2.0
Japanese	100	1.5%	0.0 - 3.2
Black	<50	3.5%	0.0 - 10.8
Other Pacific Islander	<50	0.7%	0.0 - 2.2
Other	300	3.4%	0.6 - 6.2

Lifetime Tobacco Use by School Type, State, Gender, Grade Level, DOH Race-Ethnicity, for the Year(s) - 2000, 2003, 2005, 2007, 2009, 2011, 2013, 2015

Note: Weighted counts rounded to nearest hundred; weighted percentages, positive responses only; n/r (Not Reportable) - Unweighted respondents less than 35

High Schools

2011

State	Tobacco use - ever			Cigar smoker - ever			SLT user - ever			Bidis smoker - ever		
	#	%	CI	#	%	CI	#	%	CI	#	%	CI
Totals	14,800	33.5%	27.6 - 39.5	5,800	13.2%	10.4 - 16.1	2,100	4.9%	3.2 - 6.5	800	1.9%	0.8 - 3.0

Gender	Tobacco use - ever			Cigar smoker - ever			SLT user - ever			Bidis smoker - ever		
	#	%	CI	#	%	CI	#	%	CI	#	%	CI
Male	7,200	33.5%	27.8 - 39.2	3,600	16.7%	13.7 - 19.8	1,200	5.7%	3.8 - 7.6	500	2.3%	0.9 - 3.7
Female	7,600	33.8%	25.6 - 42.1	2,200	10.0%	6.7 - 13.3	900	4.1%	1.7 - 6.5	300	1.5%	0.4 - 2.7

Grade Level	Tobacco use - ever			Cigar smoker - ever			SLT user - ever			Bidis smoker - ever		
	#	%	CI	#	%	CI	#	%	CI	#	%	CI
9th Grade	2,800	21.7%	18.0 - 25.4	900	6.8%	4.3 - 9.3	300	2.3%	0.5 - 4.1	200	1.4%	0.6 - 2.3
10th Grade	3,700	33.3%	27.9 - 38.6	1,400	12.4%	9.8 - 15.0	400	3.4%	1.4 - 5.4	100	0.8%	0.0 - 2.1
11th Grade	3,500	33.2%	24.7 - 41.6	1,200	11.8%	7.0 - 16.5	800	8.2%	3.4 - 13.0	300	2.6%	0.1 - 5.2
12th Grade	4,800	50.0%	34.4 - 65.7	2,400	24.5%	17.5 - 31.4	600	6.5%	3.1 - 9.9	300	3.0%	0.4 - 5.5

Lifetime Tobacco Use by School Type, State, Gender, Grade Level, DOH Race-Ethnicity, for the Year(s) - 2000, 2003, 2005, 2007, 2009, 2011, 2013, 2015

Note: Weighted counts rounded to nearest hundred; weighted percentages, positive responses only; n/r (Not Reportable) - Unweighted respondents less than 35

State	Kreteks smoker - ever		
	#	%	CI
Totals	800	1.9%	1.0 - 2.9

Gender	Kreteks smoker - ever		
	#	%	CI
Male	500	2.3%	0.7 - 3.9
Female	300	1.6%	0.6 - 2.5

Grade Level	Kreteks smoker - ever		
	#	%	CI
9th Grade	100	1.1%	0.5 - 1.8
10th Grade	100	0.8%	0.0 - 1.9
11th Grade	300	3.2%	0.6 - 5.7
12th Grade	300	3.0%	0.7 - 5.3

Lifetime Tobacco Use by School Type, State, Gender, Grade Level, DOH Race-Ethnicity, for the Year(s) - 2000, 2003, 2005, 2007, 2009, 2011, 2013, 2015

Note: Weighted counts rounded to nearest hundred; weighted percentages, positive responses only; n/r (Not Reportable) - Unweighted respondents less than 35

High Schools

2011

DOH Race-Ethnicity	Tobacco use - ever			Cigar smoker - ever			SLT user - ever			Bidis smoker - ever		
	#	%	CI	#	%	CI	#	%	CI	#	%	CI
Caucasian	2,300	40.0%	27.3 - 52.7	1,400	24.1%	14.2 - 33.9	500	9.3%	1.7 - 16.9	100	2.1%	0.2 - 4.1
Native Hawaiian	3,600	49.6%	40.2 - 59.1	1,300	18.1%	12.6 - 23.6	400	6.0%	3.7 - 8.3	300	4.4%	0.3 - 8.6
Chinese	400	25.0%	10.2 - 39.9	200	9.7%	0.0 - 20.1	100	4.4%	0.0 - 9.5	0	0.0%	0.0 - 0.0
Filipino	3,500	26.1%	20.6 - 31.7	1,200	8.9%	5.6 - 12.2	400	3.0%	0.0 - 6.3	100	0.9%	0.2 - 1.5
Japanese	1,000	18.4%	12.1 - 24.7	500	9.1%	4.5 - 13.6	100	1.5%	0.0 - 3.4	100	1.8%	0.0 - 3.8
Black	300	39.8%	24.4 - 55.3	100	9.3%	0.0 - 20.9	<50	2.5%	0.0 - 7.8	<50	2.6%	0.0 - 8.1
Other Pacific Islander	1,300	42.6%	30.9 - 54.2	400	11.8%	5.2 - 18.4	300	10.9%	2.0 - 19.9	100	2.1%	0.0 - 5.0
Other	1,100	32.9%	19.8 - 46.0	400	11.6%	6.5 - 16.8	200	4.9%	0.1 - 9.7	<50	1.2%	0.0 - 3.6

**Lifetime Tobacco Use by School Type, State, Gender, Grade Level, DOH Race-Ethnicity,
for the Year(s) - 2000, 2003, 2005, 2007, 2009, 2011, 2013, 2015**

Note: Weighted counts rounded to nearest hundred; weighted percentages, positive responses only; n/r (Not Reportable) - Unweighted respondents less than 35

DOH Race-Ethnicity	Kreteks smoker - ever		
	#	%	CI
Caucasian	200	2.8%	0.4 - 5.2
Native Hawaiian	300	3.8%	0.3 - 7.3
Chinese	<50	1.2%	0.0 - 3.6
Filipino	100	0.7%	0.1 - 1.3
Japanese	100	1.2%	0.0 - 2.7
Black	<50	4.9%	0.0 - 15.6
Other Pacific Islander	100	2.1%	0.0 - 5.0
Other	100	1.5%	0.0 - 4.7

Lifetime Tobacco Use by School Type, State, Gender, Grade Level, DOH Race-Ethnicity, for the Year(s) - 2000, 2003, 2005, 2007, 2009, 2011, 2013, 2015

Note: Weighted counts rounded to nearest hundred; weighted percentages, positive responses only; n/r (Not Reportable) - Unweighted respondents less than 35

High Schools

2009

State	Tobacco use - ever			Cigar smoker - ever			SLT user - ever			Bidis smoker - ever		
	#	%	CI	#	%	CI	#	%	CI	#	%	CI
Totals	20,200	40.8%	37.0 - 44.5	9,300	19.0%	15.4 - 22.7	3,200	6.5%	4.8 - 8.2	1,400	2.8%	1.8 - 3.7

Gender	Tobacco use - ever			Cigar smoker - ever			SLT user - ever			Bidis smoker - ever		
	#	%	CI	#	%	CI	#	%	CI	#	%	CI
Male	10,600	41.3%	36.7 - 46.0	6,200	24.6%	19.1 - 30.1	2,200	8.7%	6.3 - 11.1	1,000	4.1%	2.6 - 5.5
Female	9,500	40.2%	35.9 - 44.6	3,100	13.1%	9.9 - 16.4	1,000	4.2%	2.0 - 6.4	300	1.5%	0.5 - 2.4

Grade Level	Tobacco use - ever			Cigar smoker - ever			SLT user - ever			Bidis smoker - ever		
	#	%	CI	#	%	CI	#	%	CI	#	%	CI
9th Grade	5,000	33.4%	28.3 - 38.5	2,000	13.5%	10.1 - 16.9	700	5.0%	2.4 - 7.6	400	2.5%	1.0 - 4.0
10th Grade	4,600	37.4%	29.9 - 44.9	2,200	17.7%	10.7 - 24.7	700	5.4%	2.4 - 8.3	200	1.7%	0.0 - 3.5
11th Grade	4,600	43.2%	36.2 - 50.2	2,300	22.3%	17.5 - 27.1	700	6.6%	3.9 - 9.4	400	3.4%	1.1 - 5.7
12th Grade	5,800	51.4%	43.7 - 59.1	2,700	24.1%	16.7 - 31.6	1,100	9.7%	6.1 - 13.3	400	3.9%	0.6 - 7.1

Lifetime Tobacco Use by School Type, State, Gender, Grade Level, DOH Race-Ethnicity, for the Year(s) - 2000, 2003, 2005, 2007, 2009, 2011, 2013, 2015

Note: Weighted counts rounded to nearest hundred; weighted percentages, positive responses only; n/r (Not Reportable) - Unweighted respondents less than 35

State	Kreteks smoker - ever		
	#	%	CI
Totals	1,400	2.9%	1.0 - 4.8

Gender	Kreteks smoker - ever		
	#	%	CI
Male	1,100	4.2%	1.8 - 6.6
Female	400	1.5%	0.0 - 3.1

Grade Level	Kreteks smoker - ever		
	#	%	CI
9th Grade	400	2.8%	1.2 - 4.3
10th Grade	200	1.7%	0.0 - 3.8
11th Grade	300	3.0%	0.0 - 5.9
12th Grade	500	4.5%	0.0 - 9.6

Lifetime Tobacco Use by School Type, State, Gender, Grade Level, DOH Race-Ethnicity, for the Year(s) - 2000, 2003, 2005, 2007, 2009, 2011, 2013, 2015

Note: Weighted counts rounded to nearest hundred; weighted percentages, positive responses only; n/r (Not Reportable) - Unweighted respondents less than 35

High Schools

2009

DOH Race-Ethnicity	Tobacco use - ever			Cigar smoker - ever			SLT user - ever			Bidis smoker - ever		
	#	%	CI	#	%	CI	#	%	CI	#	%	CI
Caucasian	2,500	42.3%	36.0 - 48.6	1,500	26.1%	18.8 - 33.5	600	10.8%	4.8 - 16.7	300	4.7%	2.1 - 7.2
Native Hawaiian	5,300	49.0%	40.0 - 58.1	2,400	22.0%	15.6 - 28.4	600	5.2%	2.0 - 8.4	300	2.6%	0.2 - 5.0
Chinese	700	24.1%	13.3 - 35.0	200	6.2%	0.0 - 12.6	100	5.0%	0.0 - 11.4	100	5.4%	0.0 - 10.8
Filipino	4,400	37.9%	31.7 - 44.1	1,500	13.1%	7.9 - 18.3	400	3.8%	1.6 - 6.0	300	2.3%	0.3 - 4.3
Japanese	2,000	30.5%	22.7 - 38.4	1,000	15.8%	10.1 - 21.4	100	1.7%	0.0 - 3.6	100	1.8%	0.0 - 4.0
Black	500	49.4%	33.1 - 65.8	300	23.8%	4.5 - 43.2	100	10.7%	0.0 - 25.0	100	10.5%	0.0 - 24.6
Other Pacific Islander	2,000	54.7%	44.4 - 65.0	900	23.6%	14.3 - 33.0	700	18.8%	10.0 - 27.6	100	3.2%	0.0 - 8.0
Other	1,300	32.8%	22.0 - 43.7	700	18.7%	7.1 - 30.3	300	7.3%	2.8 - 11.9	<50	1.0%	0.0 - 2.9

**Lifetime Tobacco Use by School Type, State, Gender, Grade Level, DOH Race-Ethnicity,
for the Year(s) - 2000, 2003, 2005, 2007, 2009, 2011, 2013, 2015**

Note: Weighted counts rounded to nearest hundred; weighted percentages, positive responses only; n/r (Not Reportable) - Unweighted respondents less than 35

DOH Race-Ethnicity	Kreteks smoker - ever		
	#	%	CI
Caucasian	500	8.7%	1.8 - 15.6
Native Hawaiian	100	1.0%	0.0 - 2.1
Chinese	<50	1.4%	0.0 - 3.5
Filipino	100	0.9%	0.0 - 2.2
Japanese	200	2.6%	0.0 - 6.0
Black	100	13.7%	0.0 - 30.4
Other Pacific Islander	100	3.2%	0.0 - 8.0
Other	100	3.4%	0.0 - 8.4

Lifetime Tobacco Use by School Type, State, Gender, Grade Level, DOH Race-Ethnicity, for the Year(s) - 2000, 2003, 2005, 2007, 2009, 2011, 2013, 2015

Note: Weighted counts rounded to nearest hundred; weighted percentages, positive responses only; n/r (Not Reportable) - Unweighted respondents less than 35

High Schools

2007

State	Tobacco use - ever			Cigar smoker - ever			SLT user - ever			Bidis smoker - ever		
	#	%	CI	#	%	CI	#	%	CI	#	%	CI
Totals	25,600	43.7%	39.1 - 48.3	9,600	17.1%	14.0 - 20.1	4,600	8.2%	6.2 - 10.1	2,800	5.0%	3.3 - 6.8

Gender	Tobacco use - ever			Cigar smoker - ever			SLT user - ever			Bidis smoker - ever		
	#	%	CI	#	%	CI	#	%	CI	#	%	CI
Male	13,000	43.7%	38.1 - 49.3	5,900	20.6%	15.6 - 25.6	3,100	10.8%	7.6 - 13.9	1,800	6.2%	3.7 - 8.7
Female	12,400	43.9%	37.0 - 50.8	3,600	13.3%	10.4 - 16.2	1,500	5.5%	3.7 - 7.3	1,000	3.6%	1.9 - 5.2

Grade Level	Tobacco use - ever			Cigar smoker - ever			SLT user - ever			Bidis smoker - ever		
	#	%	CI	#	%	CI	#	%	CI	#	%	CI
9th Grade	6,300	37.2%	31.0 - 43.4	2,700	16.1%	11.8 - 20.3	1,400	8.8%	4.7 - 12.9	1,200	7.2%	2.7 - 11.6
10th Grade	6,000	42.5%	33.7 - 51.3	2,100	14.7%	8.9 - 20.4	800	5.5%	2.9 - 8.0	500	3.4%	0.9 - 5.9
11th Grade	6,700	46.4%	39.7 - 53.1	2,700	19.9%	15.2 - 24.5	1,400	10.2%	7.5 - 13.0	600	4.8%	2.3 - 7.2
12th Grade	6,300	51.5%	39.8 - 63.2	2,100	18.0%	10.1 - 25.9	900	7.5%	4.1 - 11.0	500	4.1%	1.1 - 7.1

Lifetime Tobacco Use by School Type, State, Gender, Grade Level, DOH Race-Ethnicity, for the Year(s) - 2000, 2003, 2005, 2007, 2009, 2011, 2013, 2015

Note: Weighted counts rounded to nearest hundred; weighted percentages, positive responses only; n/r (Not Reportable) - Unweighted respondents less than 35

State	Kreteks smoker - ever		
	#	%	CI
Totals	2,100	3.7%	2.3 - 5.2

Gender	Kreteks smoker - ever		
	#	%	CI
Male	1,100	3.7%	1.9 - 5.6
Female	1,000	3.6%	1.7 - 5.5

Grade Level	Kreteks smoker - ever		
	#	%	CI
9th Grade	700	4.3%	1.1 - 7.4
10th Grade	400	2.8%	0.2 - 5.3
11th Grade	500	3.8%	1.3 - 6.3
12th Grade	500	3.9%	0.2 - 7.7

Lifetime Tobacco Use by School Type, State, Gender, Grade Level, DOH Race-Ethnicity, for the Year(s) - 2000, 2003, 2005, 2007, 2009, 2011, 2013, 2015

Note: Weighted counts rounded to nearest hundred; weighted percentages, positive responses only; n/r (Not Reportable) - Unweighted respondents less than 35

High Schools

2007

DOH Race-Ethnicity	Tobacco use - ever			Cigar smoker - ever			SLT user - ever			Bidis smoker - ever		
	#	%	CI	#	%	CI	#	%	CI	#	%	CI
Caucasian	2,200	35.8%	22.1 - 49.5	1,100	17.3%	8.3 - 26.3	400	7.1%	2.7 - 11.6	600	9.4%	2.7 - 16.0
Native Hawaiian	5,600	54.4%	44.3 - 64.6	2,000	20.5%	13.0 - 27.9	1,000	10.3%	3.6 - 16.9	400	4.0%	0.6 - 7.4
Chinese	600	23.6%	11.1 - 36.1	200	7.8%	0.0 - 16.0	200	7.1%	0.0 - 18.2	<50	1.2%	0.0 - 3.8
Filipino	6,900	42.4%	35.0 - 49.8	2,500	15.7%	10.5 - 20.9	1,000	6.0%	3.1 - 9.0	800	4.9%	1.8 - 8.0
Japanese	2,300	25.4%	20.1 - 30.6	800	8.9%	4.3 - 13.6	400	4.7%	0.1 - 9.4	200	2.1%	0.4 - 3.7
Black	n/r	n/r	n/r	n/r	n/r	n/r	n/r	n/r	n/r	n/r	n/r	n/r
Other Pacific Islander	2,800	57.9%	46.9 - 68.9	1,300	29.1%	19.7 - 38.6	600	13.3%	4.5 - 22.0	500	11.1%	3.1 - 19.0
Other	2,800	50.1%	40.3 - 59.9	1,100	19.2%	11.3 - 27.2	600	10.1%	5.3 - 14.8	100	2.3%	0.0 - 5.1

**Lifetime Tobacco Use by School Type, State, Gender, Grade Level, DOH Race-Ethnicity,
for the Year(s) - 2000, 2003, 2005, 2007, 2009, 2011, 2013, 2015**

Note: Weighted counts rounded to nearest hundred; weighted percentages, positive responses only; n/r (Not Reportable) - Unweighted respondents less than 35

DOH Race-Ethnicity	Kreteks smoker - ever		
	#	%	CI
Caucasian	400	6.0%	0.7 - 11.3
Native Hawaiian	200	2.6%	0.0 - 5.3
Chinese	100	4.0%	0.0 - 9.4
Filipino	500	3.2%	1.1 - 5.3
Japanese	200	2.0%	0.2 - 3.8
Black	n/r	n/r	n/r
Other Pacific Islander	300	6.6%	0.0 - 13.3
Other	200	3.9%	0.0 - 7.8

Lifetime Tobacco Use by School Type, State, Gender, Grade Level, DOH Race-Ethnicity, for the Year(s) - 2000, 2003, 2005, 2007, 2009, 2011, 2013, 2015

Note: Weighted counts rounded to nearest hundred; weighted percentages, positive responses only; n/r (Not Reportable) - Unweighted respondents less than 35

High Schools

2005

State	Tobacco use - ever			Cigar smoker - ever			SLT user - ever			Bidis smoker - ever		
	#	%	CI	#	%	CI	#	%	CI	#	%	CI
Totals	40,800	49.8%	46.1 - 53.6	16,400	20.4%	18.3 - 22.5	7,900	10.1%	7.2 - 13.0	4,300	5.4%	3.8 - 7.0

Gender	Tobacco use - ever			Cigar smoker - ever			SLT user - ever			Bidis smoker - ever		
	#	%	CI	#	%	CI	#	%	CI	#	%	CI
Male	20,700	49.2%	45.1 - 53.2	9,600	23.3%	20.2 - 26.5	4,700	11.8%	7.9 - 15.7	2,500	5.9%	3.7 - 8.2
Female	19,900	50.4%	45.2 - 55.6	6,700	17.2%	14.3 - 20.1	3,200	8.3%	5.6 - 11.1	1,900	4.8%	3.1 - 6.4

Grade Level	Tobacco use - ever			Cigar smoker - ever			SLT user - ever			Bidis smoker - ever		
	#	%	CI	#	%	CI	#	%	CI	#	%	CI
9th Grade	10,700	44.4%	39.6 - 49.2	3,800	16.0%	12.3 - 19.6	2,600	11.2%	6.5 - 15.9	1,100	4.8%	3.0 - 6.5
10th Grade	8,800	44.5%	36.7 - 52.3	3,000	15.6%	11.1 - 20.1	1,500	8.0%	3.2 - 12.7	900	4.7%	2.1 - 7.3
11th Grade	9,900	52.2%	44.9 - 59.5	3,900	21.2%	16.3 - 26.0	1,800	9.8%	5.3 - 14.3	1,100	6.2%	2.7 - 9.7
12th Grade	10,800	59.5%	51.3 - 67.8	5,300	29.9%	24.3 - 35.5	1,700	10.1%	6.0 - 14.1	900	5.2%	2.7 - 7.8

Lifetime Tobacco Use by School Type, State, Gender, Grade Level, DOH Race-Ethnicity, for the Year(s) - 2000, 2003, 2005, 2007, 2009, 2011, 2013, 2015

Note: Weighted counts rounded to nearest hundred; weighted percentages, positive responses only; n/r (Not Reportable) - Unweighted respondents less than 35

State	Kreteks smoker - ever		
	#	%	CI
Totals	3,300	4.1%	3.1 - 5.1

Gender	Kreteks smoker - ever		
	#	%	CI
Male	2,100	5.0%	3.1 - 6.9
Female	1,200	3.2%	2.1 - 4.3

Grade Level	Kreteks smoker - ever		
	#	%	CI
9th Grade	800	3.2%	1.4 - 5.0
10th Grade	600	2.8%	0.6 - 5.0
11th Grade	800	4.6%	0.8 - 8.4
12th Grade	1,200	6.6%	2.1 - 11.0

Lifetime Tobacco Use by School Type, State, Gender, Grade Level, DOH Race-Ethnicity, for the Year(s) - 2000, 2003, 2005, 2007, 2009, 2011, 2013, 2015

Note: Weighted counts rounded to nearest hundred; weighted percentages, positive responses only; n/r (Not Reportable) - Unweighted respondents less than 35

High Schools

2005

DOH Race-Ethnicity	Tobacco use - ever			Cigar smoker - ever			SLT user - ever			Bidis smoker - ever		
	#	%	CI	#	%	CI	#	%	CI	#	%	CI
Caucasian	6,200	49.0%	40.7 - 57.3	3,000	23.7%	17.0 - 30.5	1,200	9.4%	7.1 - 11.7	900	7.1%	2.7 - 11.4
Native Hawaiian	9,800	59.9%	52.5 - 67.3	3,800	23.7%	17.9 - 29.5	1,900	12.1%	7.0 - 17.3	900	5.4%	1.9 - 9.0
Chinese	800	19.6%	11.4 - 27.9	200	6.0%	0.0 - 12.9	200	5.9%	0.0 - 13.8	100	3.1%	0.5 - 5.7
Filipino	10,100	52.2%	44.7 - 59.7	3,700	19.2%	14.0 - 24.3	1,700	8.7%	4.6 - 12.8	1,000	5.2%	2.4 - 8.0
Japanese	4,400	36.1%	30.2 - 42.0	1,800	15.0%	9.3 - 20.8	800	6.3%	2.4 - 10.3	300	2.8%	1.2 - 4.5
Black	900	51.5%	34.9 - 68.1	500	28.4%	14.3 - 42.5	200	11.4%	0.0 - 24.0	100	7.8%	0.0 - 18.6
Other Pacific Islander	3,700	66.0%	57.7 - 74.4	1,100	20.0%	14.0 - 26.1	1,100	21.3%	13.7 - 28.8	400	6.5%	0.8 - 12.3
Other	2,600	46.8%	37.2 - 56.5	1,200	22.0%	13.5 - 30.4	500	9.6%	4.8 - 14.5	300	6.2%	2.8 - 9.7

**Lifetime Tobacco Use by School Type, State, Gender, Grade Level, DOH Race-Ethnicity,
for the Year(s) - 2000, 2003, 2005, 2007, 2009, 2011, 2013, 2015**

Note: Weighted counts rounded to nearest hundred; weighted percentages, positive responses only; n/r (Not Reportable) - Unweighted respondents less than 35

DOH Race-Ethnicity	Kreteks smoker - ever		
	#	%	CI
Caucasian	1,000	7.9%	3.3 - 12.4
Native Hawaiian	800	4.9%	2.2 - 7.7
Chinese	100	3.1%	0.5 - 5.7
Filipino	400	2.0%	0.6 - 3.4
Japanese	300	2.5%	0.8 - 4.2
Black	100	8.0%	0.0 - 18.3
Other Pacific Islander	300	5.3%	0.5 - 10.1
Other	200	3.7%	0.0 - 7.3

Lifetime Tobacco Use by School Type, State, Gender, Grade Level, DOH Race-Ethnicity, for the Year(s) - 2000, 2003, 2005, 2007, 2009, 2011, 2013, 2015

Note: Weighted counts rounded to nearest hundred; weighted percentages, positive responses only; n/r (Not Reportable) - Unweighted respondents less than 35

High Schools

2000

State	Tobacco use - ever			Cigar smoker - ever			SLT user - ever			Bidis smoker - ever		
	#	%	CI	#	%	CI	#	%	CI	#	%	CI
Totals	34,400	67.6%	64.0 - 71.3	13,400	27.5%	24.5 - 30.5	5,100	10.4%	8.4 - 12.4	6,300	13.2%	10.8 - 15.6

Gender	Tobacco use - ever			Cigar smoker - ever			SLT user - ever			Bidis smoker - ever		
	#	%	CI	#	%	CI	#	%	CI	#	%	CI
Male	17,500	66.5%	62.1 - 70.9	8,400	33.6%	28.8 - 38.5	4,000	15.7%	12.5 - 19.0	3,800	15.4%	12.1 - 18.7
Female	16,600	68.9%	63.7 - 74.0	4,900	21.0%	17.9 - 24.1	1,000	4.3%	2.8 - 5.9	2,400	10.6%	8.0 - 13.2

Grade Level	Tobacco use - ever			Cigar smoker - ever			SLT user - ever			Bidis smoker - ever		
	#	%	CI	#	%	CI	#	%	CI	#	%	CI
9th Grade	8,700	59.5%	51.3 - 67.6	3,000	21.4%	14.2 - 28.7	1,100	7.7%	3.6 - 11.8	1,700	11.7%	6.6 - 16.7
10th Grade	8,400	64.9%	59.6 - 70.2	3,100	25.1%	21.3 - 28.9	800	6.6%	2.9 - 10.2	1,300	10.7%	5.9 - 15.5
11th Grade	8,900	74.3%	69.0 - 79.6	3,600	31.4%	26.1 - 36.6	1,500	13.2%	9.4 - 16.9	1,500	13.7%	10.1 - 17.4
12th Grade	8,000	74.5%	70.5 - 78.5	3,500	33.9%	28.5 - 39.2	1,600	15.1%	11.2 - 18.9	1,700	17.6%	14.6 - 20.6

Lifetime Tobacco Use by School Type, State, Gender, Grade Level, DOH Race-Ethnicity, for the Year(s) - 2000, 2003, 2005, 2007, 2009, 2011, 2013, 2015

Note: Weighted counts rounded to nearest hundred; weighted percentages, positive responses only; n/r (Not Reportable) - Unweighted respondents less than 35

State	Kreteks smoker - ever		
	#	%	CI
Totals	5,200	11.0%	8.4 - 13.6

Gender	Kreteks smoker - ever		
	#	%	CI
Male	2,900	11.6%	7.5 - 15.8
Female	2,300	10.1%	7.7 - 12.6

Grade Level	Kreteks smoker - ever		
	#	%	CI
9th Grade	800	5.7%	2.5 - 8.9
10th Grade	800	6.5%	3.7 - 9.2
11th Grade	1,800	17.3%	11.4 - 23.2
12th Grade	1,700	17.6%	13.2 - 22.0

Lifetime Tobacco Use by School Type, State, Gender, Grade Level, DOH Race-Ethnicity, for the Year(s) - 2000, 2003, 2005, 2007, 2009, 2011, 2013, 2015

Note: Weighted counts rounded to nearest hundred; weighted percentages, positive responses only; n/r (Not Reportable) - Unweighted respondents less than 35

High Schools

2000

DOH Race-Ethnicity	Tobacco use - ever			Cigar smoker - ever			SLT user - ever			Bidis smoker - ever		
	#	%	CI	#	%	CI	#	%	CI	#	%	CI
Caucasian	4,700	70.2%	61.0 - 79.3	2,100	33.3%	25.2 - 41.3	900	14.7%	8.2 - 21.1	1,000	15.9%	9.8 - 21.9
Native Hawaiian	7,500	72.3%	64.5 - 80.0	2,500	25.1%	18.8 - 31.3	1,000	9.5%	5.5 - 13.4	1,400	13.2%	9.0 - 17.5
Chinese	1,100	49.5%	33.5 - 65.5	400	18.7%	7.2 - 30.2	100	6.4%	0.0 - 13.4	300	13.8%	5.2 - 22.3
Filipino	5,300	67.4%	60.5 - 74.3	1,800	24.0%	18.3 - 29.7	400	4.7%	1.8 - 7.6	900	11.1%	5.2 - 17.0
Japanese	1,300	78.9%	62.1 - 95.7	500	30.9%	14.9 - 46.9	200	10.7%	1.4 - 20.0	100	4.6%	0.0 - 10.8
Black	n/r	n/r	n/r	n/r	n/r	n/r	n/r	n/r	n/r	n/r	n/r	n/r
Other Pacific Islander	6,500	65.5%	55.7 - 75.4	2,900	30.7%	22.8 - 38.5	1,100	10.9%	5.8 - 16.0	1,300	13.9%	9.3 - 18.4
Other	4,300	65.8%	58.6 - 73.0	1,600	26.3%	20.3 - 32.3	800	13.5%	8.2 - 18.8	800	12.3%	7.2 - 17.5

**Lifetime Tobacco Use by School Type, State, Gender, Grade Level, DOH Race-Ethnicity,
for the Year(s) - 2000, 2003, 2005, 2007, 2009, 2011, 2013, 2015**

Note: Weighted counts rounded to nearest hundred; weighted percentages, positive responses only; n/r (Not Reportable) - Unweighted respondents less than 35

DOH Race-Ethnicity	Kreteks smoker - ever		
	#	%	CI
Caucasian	1,200	18.7%	12.2 - 25.3
Native Hawaiian	1,000	10.2%	6.0 - 14.4
Chinese	200	7.8%	1.2 - 14.3
Filipino	500	6.6%	3.0 - 10.1
Japanese	300	18.0%	4.2 - 31.8
Black	n/r	n/r	n/r
Other Pacific Islander	1,000	10.4%	6.0 - 14.8
Other	700	10.2%	4.8 - 15.6

Lifetime Tobacco Use by School Type, State, Gender, Grade Level, DOH Race-Ethnicity, for the Year(s) - 2000, 2003, 2005, 2007, 2009, 2011, 2013, 2015

Note: Weighted counts rounded to nearest hundred; weighted percentages, positive responses only; n/r (Not Reportable) - Unweighted respondents less than 35

Middle Schools

2015

State	Tobacco use - ever			Cigar smoker - ever			SLT user - ever			Bidis smoker - ever		
	#	%	CI	#	%	CI	#	%	CI	#	%	CI
Totals	4,200	15.8%	13.1 - 18.4	1,300	5.2%	3.6 - 6.8	1,000	3.8%	2.9 - 4.6	300	1.3%	0.8 - 1.7

Gender	Tobacco use - ever			Cigar smoker - ever			SLT user - ever			Bidis smoker - ever		
	#	%	CI	#	%	CI	#	%	CI	#	%	CI
Male	2,100	15.7%	12.7 - 18.8	800	6.2%	4.3 - 8.1	500	4.0%	2.8 - 5.2	200	1.8%	1.1 - 2.5
Female	2,100	15.6%	12.1 - 19.2	500	4.2%	2.0 - 6.3	500	3.6%	2.4 - 4.8	100	0.8%	0.2 - 1.3

Grade Level	Tobacco use - ever			Cigar smoker - ever			SLT user - ever			Bidis smoker - ever		
	#	%	CI	#	%	CI	#	%	CI	#	%	CI
6th Grade	500	9.8%	5.0 - 14.6	200	3.9%	0.4 - 7.4	100	2.8%	0.9 - 4.6	100	1.1%	0.1 - 2.0
7th Grade	1,700	15.2%	12.3 - 18.1	500	4.5%	2.4 - 6.6	300	3.1%	2.0 - 4.2	100	1.0%	0.2 - 1.8
8th Grade	1,900	19.5%	16.2 - 22.9	700	6.8%	5.1 - 8.5	500	4.8%	3.5 - 6.2	200	1.5%	0.7 - 2.4

Lifetime Tobacco Use by School Type, State, Gender, Grade Level, DOH Race-Ethnicity, for the Year(s) - 2000, 2003, 2005, 2007, 2009, 2011, 2013, 2015

Note: Weighted counts rounded to nearest hundred; weighted percentages, positive responses only; n/r (Not Reportable) - Unweighted respondents less than 35

State	Kreteks smoker - ever		
	#	%	CI
Totals	300	1.0%	0.5 - 1.6

Gender	Kreteks smoker - ever		
	#	%	CI
Male	200	1.3%	0.8 - 1.9
Female	100	0.8%	0.1 - 1.5

Grade Level	Kreteks smoker - ever		
	#	%	CI
6th Grade	100	1.5%	0.0 - 3.0
7th Grade	100	1.0%	0.3 - 1.6
8th Grade	100	0.9%	0.3 - 1.4

Lifetime Tobacco Use by School Type, State, Gender, Grade Level, DOH Race-Ethnicity, for the Year(s) - 2000, 2003, 2005, 2007, 2009, 2011, 2013, 2015

Note: Weighted counts rounded to nearest hundred; weighted percentages, positive responses only; n/r (Not Reportable) - Unweighted respondents less than 35

Middle Schools

2015

DOH Race-Ethnicity	Tobacco use - ever			Cigar smoker - ever			SLT user - ever			Bidis smoker - ever		
	#	%	CI	#	%	CI	#	%	CI	#	%	CI
Caucasian	300	11.6%	5.4 - 17.8	100	3.4%	1.5 - 5.3	<50	0.5%	0.0 - 1.2	<50	0.2%	0.0 - 0.7
Native Hawaiian	700	15.7%	12.2 - 19.3	200	4.1%	1.8 - 6.3	200	4.0%	2.1 - 6.0	100	2.6%	0.5 - 4.7
Chinese	100	9.0%	0.0 - 18.1	<50	1.5%	0.0 - 4.5	<50	3.2%	0.0 - 7.8	<50	1.7%	0.0 - 5.2
Filipino	900	15.5%	13.2 - 17.7	400	6.3%	4.2 - 8.4	100	2.4%	0.2 - 4.5	<50	0.6%	0.0 - 1.4
Japanese	100	7.2%	3.2 - 11.3	<50	2.3%	0.0 - 4.8	<50	1.4%	0.0 - 3.2	<50	0.8%	0.0 - 2.1
Black	100	20.6%	12.2 - 29.1	100	8.3%	2.0 - 14.7	100	8.3%	2.1 - 14.5	<50	5.4%	0.0 - 11.0
Other Pacific Islander	700	31.8%	23.1 - 40.4	200	7.6%	0.6 - 14.6	300	15.6%	8.8 - 22.4	<50	1.1%	0.0 - 2.8
Other	900	15.0%	10.2 - 19.8	400	6.4%	2.9 - 9.9	200	2.7%	1.0 - 4.4	<50	0.8%	0.0 - 1.7

**Lifetime Tobacco Use by School Type, State, Gender, Grade Level, DOH Race-Ethnicity,
for the Year(s) - 2000, 2003, 2005, 2007, 2009, 2011, 2013, 2015**

Note: Weighted counts rounded to nearest hundred; weighted percentages, positive responses only; n/r (Not Reportable) - Unweighted respondents less than 35

DOH Race-Ethnicity	Kreteks smoker - ever		
	#	%	CI
Caucasian	0	0.0%	0.0 - 0.0
Native Hawaiian	100	2.1%	0.3 - 3.9
Chinese	0	0.0%	0.0 - 0.0
Filipino	100	0.9%	0.3 - 1.6
Japanese	<50	0.8%	0.0 - 2.1
Black	<50	0.3%	0.0 - 0.8
Other Pacific Islander	<50	2.1%	0.0 - 5.3
Other	<50	0.6%	0.2 - 0.9

Lifetime Tobacco Use by School Type, State, Gender, Grade Level, DOH Race-Ethnicity, for the Year(s) - 2000, 2003, 2005, 2007, 2009, 2011, 2013, 2015

Note: Weighted counts rounded to nearest hundred; weighted percentages, positive responses only; n/r (Not Reportable) - Unweighted respondents less than 35

Middle Schools

2013

State	Tobacco use - ever			Cigar smoker - ever			SLT user - ever			Bidis smoker - ever		
	#	%	CI	#	%	CI	#	%	CI	#	%	CI
Totals	4,700	17.3%	14.3 - 20.4	1,100	4.0%	2.5 - 5.5	1,000	3.7%	2.0 - 5.4	300	1.0%	0.5 - 1.5

Gender	Tobacco use - ever			Cigar smoker - ever			SLT user - ever			Bidis smoker - ever		
	#	%	CI	#	%	CI	#	%	CI	#	%	CI
Male	2,300	16.9%	12.9 - 20.8	500	4.0%	2.5 - 5.6	400	3.1%	1.6 - 4.6	200	1.2%	0.3 - 2.1
Female	2,400	17.7%	14.4 - 21.0	500	3.9%	2.0 - 5.8	600	4.3%	1.9 - 6.7	100	0.9%	0.3 - 1.4

Grade Level	Tobacco use - ever			Cigar smoker - ever			SLT user - ever			Bidis smoker - ever		
	#	%	CI	#	%	CI	#	%	CI	#	%	CI
6th Grade	800	13.5%	8.7 - 18.3	200	3.5%	1.8 - 5.3	100	2.0%	0.3 - 3.7	100	0.9%	0.0 - 1.7
7th Grade	1,300	12.2%	9.2 - 15.3	300	2.8%	1.3 - 4.2	300	3.1%	1.7 - 4.5	100	0.7%	0.0 - 1.5
8th Grade	2,500	25.0%	20.1 - 30.0	600	5.6%	3.4 - 7.8	500	5.3%	2.0 - 8.7	100	1.5%	0.5 - 2.4

Lifetime Tobacco Use by School Type, State, Gender, Grade Level, DOH Race-Ethnicity, for the Year(s) - 2000, 2003, 2005, 2007, 2009, 2011, 2013, 2015

Note: Weighted counts rounded to nearest hundred; weighted percentages, positive responses only; n/r (Not Reportable) - Unweighted respondents less than 35

State	Kreteks smoker - ever		
	#	%	CI
Totals	200	0.8%	0.3 - 1.3

Gender	Kreteks smoker - ever		
	#	%	CI
Male	100	0.7%	0.0 - 1.4
Female	100	0.8%	0.2 - 1.4

Grade Level	Kreteks smoker - ever		
	#	%	CI
6th Grade	<50	0.4%	0.0 - 1.1
7th Grade	100	0.5%	0.0 - 1.3
8th Grade	100	1.2%	0.4 - 2.0

Lifetime Tobacco Use by School Type, State, Gender, Grade Level, DOH Race-Ethnicity, for the Year(s) - 2000, 2003, 2005, 2007, 2009, 2011, 2013, 2015

Note: Weighted counts rounded to nearest hundred; weighted percentages, positive responses only; n/r (Not Reportable) - Unweighted respondents less than 35

Middle Schools

2013

DOH Race-Ethnicity	Tobacco use - ever			Cigar smoker - ever			SLT user - ever			Bidis smoker - ever		
	#	%	CI	#	%	CI	#	%	CI	#	%	CI
Caucasian	400	12.8%	8.1 - 17.5	100	2.8%	0.0 - 5.7	100	1.7%	0.0 - 3.5	<50	0.5%	0.0 - 1.6
Native Hawaiian	1,100	25.1%	18.5 - 31.7	300	6.7%	3.6 - 9.9	200	4.0%	0.9 - 7.0	100	1.4%	0.0 - 2.8
Chinese	100	9.8%	2.2 - 17.4	<50	1.6%	0.0 - 5.3	<50	1.7%	0.0 - 5.4	0	0.0%	0.0 - 0.0
Filipino	900	14.7%	11.0 - 18.4	200	2.9%	0.3 - 5.6	100	2.1%	0.6 - 3.6	<50	0.8%	0.0 - 1.8
Japanese	100	6.1%	0.8 - 11.5	<50	0.5%	0.0 - 1.6	<50	1.3%	0.0 - 3.4	0	0.0%	0.0 - 0.0
Black	100	15.6%	6.8 - 24.4	<50	3.6%	0.0 - 7.6	100	9.0%	0.3 - 17.6	<50	6.3%	0.0 - 12.8
Other Pacific Islander	600	26.0%	17.4 - 34.7	100	4.4%	1.0 - 7.9	200	10.1%	4.1 - 16.0	0	0.0%	0.0 - 0.0
Other	1,100	17.4%	12.0 - 22.9	300	5.3%	2.9 - 7.7	300	4.3%	1.4 - 7.3	100	1.2%	0.0 - 2.6

**Lifetime Tobacco Use by School Type, State, Gender, Grade Level, DOH Race-Ethnicity,
for the Year(s) - 2000, 2003, 2005, 2007, 2009, 2011, 2013, 2015**

Note: Weighted counts rounded to nearest hundred; weighted percentages, positive responses only; n/r (Not Reportable) - Unweighted respondents less than 35

DOH Race-Ethnicity	Kreteks smoker - ever		
	#	%	CI
Caucasian	<50	1.2%	0.0 - 2.8
Native Hawaiian	<50	0.3%	0.0 - 0.9
Chinese	<50	1.2%	0.0 - 3.6
Filipino	<50	0.5%	0.0 - 1.1
Japanese	0	0.0%	0.0 - 0.0
Black	<50	6.2%	0.0 - 13.0
Other Pacific Islander	<50	0.8%	0.0 - 2.6
Other	<50	0.3%	0.0 - 0.8

Lifetime Tobacco Use by School Type, State, Gender, Grade Level, DOH Race-Ethnicity, for the Year(s) - 2000, 2003, 2005, 2007, 2009, 2011, 2013, 2015

Note: Weighted counts rounded to nearest hundred; weighted percentages, positive responses only; n/r (Not Reportable) - Unweighted respondents less than 35

Middle Schools

2011

State	Tobacco use - ever			Cigar smoker - ever			SLT user - ever			Bidis smoker - ever		
	#	%	CI	#	%	CI	#	%	CI	#	%	CI
Totals	4,600	17.3%	14.6 - 20.0	1,400	5.3%	3.6 - 7.0	900	3.3%	1.9 - 4.7	600	2.2%	1.1 - 3.3

Gender	Tobacco use - ever			Cigar smoker - ever			SLT user - ever			Bidis smoker - ever		
	#	%	CI	#	%	CI	#	%	CI	#	%	CI
Male	2,400	18.0%	14.3 - 21.7	800	6.3%	3.9 - 8.7	500	4.1%	2.1 - 6.1	400	2.8%	0.9 - 4.6
Female	2,200	16.7%	12.8 - 20.5	600	4.3%	2.6 - 6.0	300	2.5%	1.2 - 3.8	200	1.7%	0.6 - 2.8

Grade Level	Tobacco use - ever			Cigar smoker - ever			SLT user - ever			Bidis smoker - ever		
	#	%	CI	#	%	CI	#	%	CI	#	%	CI
6th Grade	600	10.5%	5.5 - 15.4	200	3.7%	0.0 - 7.6	100	2.4%	0.2 - 4.6	100	2.2%	0.4 - 3.9
7th Grade	1,200	11.7%	8.2 - 15.2	300	3.2%	1.5 - 4.9	300	2.6%	1.4 - 3.8	200	1.7%	0.4 - 3.1
8th Grade	2,700	26.8%	21.8 - 31.8	800	8.3%	6.0 - 10.7	500	4.6%	2.8 - 6.3	200	2.5%	0.5 - 4.4

Lifetime Tobacco Use by School Type, State, Gender, Grade Level, DOH Race-Ethnicity, for the Year(s) - 2000, 2003, 2005, 2007, 2009, 2011, 2013, 2015

Note: Weighted counts rounded to nearest hundred; weighted percentages, positive responses only; n/r (Not Reportable) - Unweighted respondents less than 35

State	Kreteks smoker - ever		
	#	%	CI
Totals	400	1.6%	0.7 - 2.6

Gender	Kreteks smoker - ever		
	#	%	CI
Male	200	1.7%	0.2 - 3.2
Female	200	1.5%	0.6 - 2.5

Grade Level	Kreteks smoker - ever		
	#	%	CI
6th Grade	100	1.9%	0.1 - 3.6
7th Grade	100	0.8%	0.0 - 1.6
8th Grade	200	2.0%	0.4 - 3.5

Lifetime Tobacco Use by School Type, State, Gender, Grade Level, DOH Race-Ethnicity, for the Year(s) - 2000, 2003, 2005, 2007, 2009, 2011, 2013, 2015

Note: Weighted counts rounded to nearest hundred; weighted percentages, positive responses only; n/r (Not Reportable) - Unweighted respondents less than 35

Middle Schools

2011

DOH Race-Ethnicity	Tobacco use - ever			Cigar smoker - ever			SLT user - ever			Bidis smoker - ever		
	#	%	CI	#	%	CI	#	%	CI	#	%	CI
Caucasian	400	14.3%	7.6 - 21.0	100	4.6%	1.2 - 7.9	200	6.1%	1.5 - 10.8	<50	0.7%	0.0 - 1.7
Native Hawaiian	1,400	22.1%	14.8 - 29.4	400	7.0%	3.0 - 11.1	200	3.7%	0.8 - 6.7	200	3.2%	0.2 - 6.1
Chinese	100	9.3%	0.0 - 19.7	0	0.0%	0.0 - 0.0	<50	1.4%	0.0 - 3.9	<50	1.2%	0.0 - 3.7
Filipino	1,200	15.0%	10.4 - 19.5	400	4.8%	1.7 - 7.9	200	2.1%	0.6 - 3.7	100	0.8%	0.0 - 1.6
Japanese	200	8.0%	2.9 - 13.0	100	3.7%	1.0 - 6.4	100	2.0%	0.0 - 4.0	100	2.5%	0.0 - 6.3
Black	100	16.3%	9.9 - 22.6	<50	5.1%	0.0 - 10.4	<50	5.5%	1.2 - 9.9	<50	4.6%	0.1 - 9.0
Other Pacific Islander	500	27.9%	17.1 - 38.7	100	6.5%	0.7 - 12.4	100	8.0%	1.1 - 14.8	100	3.8%	0.0 - 9.8
Other	300	15.2%	6.7 - 23.6	100	6.0%	1.8 - 10.3	100	3.9%	0.0 - 7.9	100	2.4%	0.0 - 5.6

**Lifetime Tobacco Use by School Type, State, Gender, Grade Level, DOH Race-Ethnicity,
for the Year(s) - 2000, 2003, 2005, 2007, 2009, 2011, 2013, 2015**

Note: Weighted counts rounded to nearest hundred; weighted percentages, positive responses only; n/r (Not Reportable) - Unweighted respondents less than 35

DOH Race-Ethnicity	Kreteks smoker - ever		
	#	%	CI
Caucasian	<50	0.5%	0.0 - 1.5
Native Hawaiian	200	3.1%	0.2 - 5.9
Chinese	0	0.0%	0.0 - 0.0
Filipino	<50	0.2%	0.0 - 0.6
Japanese	100	2.5%	0.0 - 6.3
Black	<50	1.4%	0.0 - 4.3
Other Pacific Islander	<50	1.4%	0.0 - 4.3
Other	<50	1.3%	0.0 - 3.7

Lifetime Tobacco Use by School Type, State, Gender, Grade Level, DOH Race-Ethnicity, for the Year(s) - 2000, 2003, 2005, 2007, 2009, 2011, 2013, 2015

Note: Weighted counts rounded to nearest hundred; weighted percentages, positive responses only; n/r (Not Reportable) - Unweighted respondents less than 35

Middle Schools

2009

State	Tobacco use - ever			Cigar smoker - ever			SLT user - ever			Bidis smoker - ever		
	#	%	CI	#	%	CI	#	%	CI	#	%	CI
Totals	5,900	19.8%	15.8 - 23.7	1,900	6.5%	4.8 - 8.1	1,000	3.3%	1.8 - 4.8	500	1.6%	0.5 - 2.7

Gender	Tobacco use - ever			Cigar smoker - ever			SLT user - ever			Bidis smoker - ever		
	#	%	CI	#	%	CI	#	%	CI	#	%	CI
Male	2,800	17.7%	13.6 - 21.9	900	5.8%	3.8 - 7.7	600	3.8%	1.9 - 5.6	300	1.7%	0.6 - 2.7
Female	3,200	22.1%	17.0 - 27.2	1,000	7.3%	4.8 - 9.8	400	2.9%	0.9 - 4.8	200	1.6%	0.3 - 2.8

Grade Level	Tobacco use - ever			Cigar smoker - ever			SLT user - ever			Bidis smoker - ever		
	#	%	CI	#	%	CI	#	%	CI	#	%	CI
6th Grade	800	12.6%	9.7 - 15.6	400	5.6%	4.2 - 7.1	100	1.9%	0.5 - 3.2	<50	0.2%	0.0 - 0.6
7th Grade	2,500	20.9%	15.3 - 26.5	600	5.2%	2.7 - 7.8	400	3.1%	1.5 - 4.6	200	1.4%	0.6 - 2.2
8th Grade	2,600	22.6%	16.0 - 29.2	900	8.3%	6.1 - 10.5	500	4.2%	1.8 - 6.7	300	2.7%	0.2 - 5.1

Lifetime Tobacco Use by School Type, State, Gender, Grade Level, DOH Race-Ethnicity, for the Year(s) - 2000, 2003, 2005, 2007, 2009, 2011, 2013, 2015

Note: Weighted counts rounded to nearest hundred; weighted percentages, positive responses only; n/r (Not Reportable) - Unweighted respondents less than 35

State	Kreteks smoker - ever		
	#	%	CI
Totals	400	1.5%	0.4 - 2.6

Gender	Kreteks smoker - ever		
	#	%	CI
Male	200	1.6%	0.5 - 2.6
Female	200	1.5%	0.2 - 2.7

Grade Level	Kreteks smoker - ever		
	#	%	CI
6th Grade	100	0.9%	0.0 - 1.9
7th Grade	200	1.3%	0.3 - 2.3
8th Grade	200	2.1%	0.1 - 4.0

Lifetime Tobacco Use by School Type, State, Gender, Grade Level, DOH Race-Ethnicity, for the Year(s) - 2000, 2003, 2005, 2007, 2009, 2011, 2013, 2015

Note: Weighted counts rounded to nearest hundred; weighted percentages, positive responses only; n/r (Not Reportable) - Unweighted respondents less than 35

Middle Schools

2009

DOH Race-Ethnicity	Tobacco use - ever			Cigar smoker - ever			SLT user - ever			Bidis smoker - ever		
	#	%	CI	#	%	CI	#	%	CI	#	%	CI
Caucasian	400	15.7%	9.9 - 21.5	200	5.9%	1.2 - 10.5	100	2.2%	0.0 - 5.4	100	2.8%	0.0 - 5.8
Native Hawaiian	1,700	28.3%	22.0 - 34.5	400	7.3%	4.3 - 10.3	200	3.4%	0.5 - 6.3	100	2.4%	0.1 - 4.8
Chinese	100	9.4%	2.4 - 16.3	100	5.8%	0.0 - 13.9	100	4.4%	0.0 - 11.0	0	0.0%	0.0 - 0.0
Filipino	1,300	16.3%	11.1 - 21.4	400	5.2%	2.6 - 7.8	200	2.3%	1.0 - 3.7	<50	0.4%	0.0 - 1.1
Japanese	600	12.6%	7.5 - 17.7	200	4.2%	1.1 - 7.2	100	2.4%	0.2 - 4.6	100	1.5%	0.1 - 2.8
Black	100	19.9%	9.9 - 29.8	100	12.6%	4.0 - 21.1	<50	7.9%	0.0 - 16.5	<50	1.4%	0.0 - 3.7
Other Pacific Islander	700	33.9%	20.4 - 47.5	300	13.9%	6.3 - 21.5	200	8.0%	1.3 - 14.8	100	2.8%	0.0 - 7.3
Other	500	16.2%	10.2 - 22.2	100	5.2%	2.0 - 8.4	200	5.5%	0.5 - 10.5	100	1.9%	0.5 - 3.3

**Lifetime Tobacco Use by School Type, State, Gender, Grade Level, DOH Race-Ethnicity,
for the Year(s) - 2000, 2003, 2005, 2007, 2009, 2011, 2013, 2015**

Note: Weighted counts rounded to nearest hundred; weighted percentages, positive responses only; n/r (Not Reportable) - Unweighted respondents less than 35

DOH Race-Ethnicity	Kreteks smoker - ever		
	#	%	CI
Caucasian	100	3.8%	0.0 - 8.3
Native Hawaiian	100	1.8%	0.1 - 3.4
Chinese	0	0.0%	0.0 - 0.0
Filipino	100	0.7%	0.0 - 1.6
Japanese	100	1.6%	0.0 - 3.5
Black	0	0.0%	0.0 - 0.0
Other Pacific Islander	<50	1.0%	0.0 - 3.0
Other	100	1.9%	0.5 - 3.3

Lifetime Tobacco Use by School Type, State, Gender, Grade Level, DOH Race-Ethnicity, for the Year(s) - 2000, 2003, 2005, 2007, 2009, 2011, 2013, 2015

Note: Weighted counts rounded to nearest hundred; weighted percentages, positive responses only; n/r (Not Reportable) - Unweighted respondents less than 35

Middle Schools

2007

State	Tobacco use - ever			Cigar smoker - ever			SLT user - ever			Bidis smoker - ever		
	#	%	CI	#	%	CI	#	%	CI	#	%	CI
Totals	8,900	21.3%	17.3 - 25.3	3,100	7.7%	5.6 - 9.9	2,400	5.8%	3.6 - 8.1	1,600	4.1%	2.5 - 5.6

Gender	Tobacco use - ever			Cigar smoker - ever			SLT user - ever			Bidis smoker - ever		
	#	%	CI	#	%	CI	#	%	CI	#	%	CI
Male	4,500	21.2%	16.3 - 26.1	1,500	7.4%	4.5 - 10.3	1,100	5.4%	2.8 - 8.0	800	3.8%	1.9 - 5.7
Female	4,400	21.3%	16.5 - 26.1	1,500	7.8%	5.3 - 10.4	1,200	6.2%	3.5 - 9.0	800	4.3%	2.1 - 6.4

Grade Level	Tobacco use - ever			Cigar smoker - ever			SLT user - ever			Bidis smoker - ever		
	#	%	CI	#	%	CI	#	%	CI	#	%	CI
6th Grade	1,900	14.1%	5.4 - 22.8	500	4.2%	0.0 - 8.4	900	7.1%	1.0 - 13.1	300	2.2%	0.0 - 4.8
7th Grade	3,400	24.2%	19.7 - 28.6	1,100	8.3%	6.1 - 10.5	700	5.3%	2.9 - 7.7	900	6.4%	3.6 - 9.3
8th Grade	3,600	25.4%	20.0 - 30.8	1,400	10.2%	6.0 - 14.5	700	5.2%	2.8 - 7.5	500	3.5%	1.5 - 5.5

Lifetime Tobacco Use by School Type, State, Gender, Grade Level, DOH Race-Ethnicity, for the Year(s) - 2000, 2003, 2005, 2007, 2009, 2011, 2013, 2015

Note: Weighted counts rounded to nearest hundred; weighted percentages, positive responses only; n/r (Not Reportable) - Unweighted respondents less than 35

State	Kreteks smoker - ever		
	#	%	CI
Totals	1,000	2.5%	1.3 - 3.7

Gender	Kreteks smoker - ever		
	#	%	CI
Male	500	2.3%	0.6 - 4.0
Female	500	2.7%	1.1 - 4.4

Grade Level	Kreteks smoker - ever		
	#	%	CI
6th Grade	200	1.4%	0.0 - 3.0
7th Grade	500	3.4%	1.3 - 5.5
8th Grade	400	2.7%	0.7 - 4.6

Lifetime Tobacco Use by School Type, State, Gender, Grade Level, DOH Race-Ethnicity, for the Year(s) - 2000, 2003, 2005, 2007, 2009, 2011, 2013, 2015

Note: Weighted counts rounded to nearest hundred; weighted percentages, positive responses only; n/r (Not Reportable) - Unweighted respondents less than 35

Middle Schools

2007

DOH Race-Ethnicity	Tobacco use - ever			Cigar smoker - ever			SLT user - ever			Bidis smoker - ever		
	#	%	CI	#	%	CI	#	%	CI	#	%	CI
Caucasian	700	20.1%	12.8 - 27.3	200	5.9%	1.2 - 10.5	200	5.8%	1.2 - 10.3	200	5.8%	1.7 - 9.9
Native Hawaiian	2,100	22.7%	16.6 - 28.9	900	10.1%	5.2 - 15.1	400	5.1%	0.7 - 9.5	300	3.4%	1.1 - 5.7
Chinese	300	13.9%	8.4 - 19.4	100	3.0%	0.0 - 8.1	100	6.7%	0.0 - 13.8	100	4.1%	0.0 - 10.1
Filipino	2,100	17.6%	13.7 - 21.4	700	6.3%	3.8 - 8.8	600	5.5%	2.4 - 8.5	400	3.2%	0.5 - 5.8
Japanese	600	13.0%	4.4 - 21.5	100	2.3%	1.0 - 3.7	200	3.4%	0.0 - 7.0	100	2.8%	0.0 - 7.0
Black	300	30.4%	10.0 - 50.8	100	9.1%	0.0 - 20.8	100	7.0%	0.0 - 14.4	100	4.9%	0.0 - 11.5
Other Pacific Islander	900	33.8%	20.1 - 47.5	300	11.9%	0.0 - 24.4	200	8.0%	0.6 - 15.5	100	5.0%	0.0 - 11.9
Other	1,400	33.6%	25.4 - 41.8	600	16.0%	9.3 - 22.6	500	11.3%	5.6 - 16.9	300	8.1%	0.6 - 15.7

**Lifetime Tobacco Use by School Type, State, Gender, Grade Level, DOH Race-Ethnicity,
for the Year(s) - 2000, 2003, 2005, 2007, 2009, 2011, 2013, 2015**

Note: Weighted counts rounded to nearest hundred; weighted percentages, positive responses only; n/r (Not Reportable) - Unweighted respondents less than 35

DOH Race-Ethnicity	Kreteks smoker - ever		
	#	%	CI
Caucasian	100	4.3%	1.5 - 7.0
Native Hawaiian	100	1.2%	0.0 - 2.8
Chinese	<50	1.7%	0.0 - 5.1
Filipino	200	1.9%	0.1 - 3.6
Japanese	100	2.6%	0.6 - 4.7
Black	100	5.9%	0.0 - 12.7
Other Pacific Islander	100	3.7%	0.0 - 9.8
Other	200	6.1%	0.2 - 11.9

Lifetime Tobacco Use by School Type, State, Gender, Grade Level, DOH Race-Ethnicity, for the Year(s) - 2000, 2003, 2005, 2007, 2009, 2011, 2013, 2015

Note: Weighted counts rounded to nearest hundred; weighted percentages, positive responses only; n/r (Not Reportable) - Unweighted respondents less than 35

Middle Schools

2005

State	Tobacco use - ever			Cigar smoker - ever			SLT user - ever			Bidis smoker - ever		
	#	%	CI	#	%	CI	#	%	CI	#	%	CI
Totals	12,300	28.0%	24.7 - 31.3	4,300	9.8%	7.8 - 11.9	3,500	8.1%	6.1 - 10.1	1,800	4.1%	2.8 - 5.4

Gender	Tobacco use - ever			Cigar smoker - ever			SLT user - ever			Bidis smoker - ever		
	#	%	CI	#	%	CI	#	%	CI	#	%	CI
Male	6,500	29.0%	23.4 - 34.5	2,400	11.0%	7.9 - 14.1	1,900	8.8%	5.8 - 11.8	900	4.2%	2.0 - 6.5
Female	5,800	27.0%	23.3 - 30.7	1,800	8.5%	5.8 - 11.3	1,500	7.3%	5.1 - 9.6	800	3.9%	2.3 - 5.6

Grade Level	Tobacco use - ever			Cigar smoker - ever			SLT user - ever			Bidis smoker - ever		
	#	%	CI	#	%	CI	#	%	CI	#	%	CI
6th Grade	1,600	23.0%	16.3 - 29.6	500	8.0%	3.6 - 12.5	500	7.8%	4.3 - 11.4	300	3.7%	1.1 - 6.3
7th Grade	4,300	23.3%	19.3 - 27.4	1,300	7.3%	6.1 - 8.6	1,100	5.8%	3.9 - 7.8	500	2.8%	1.2 - 4.5
8th Grade	6,400	35.1%	27.8 - 42.5	2,400	13.3%	9.1 - 17.6	1,900	10.7%	6.6 - 14.7	1,000	5.6%	3.9 - 7.3

Lifetime Tobacco Use by School Type, State, Gender, Grade Level, DOH Race-Ethnicity, for the Year(s) - 2000, 2003, 2005, 2007, 2009, 2011, 2013, 2015

Note: Weighted counts rounded to nearest hundred; weighted percentages, positive responses only; n/r (Not Reportable) - Unweighted respondents less than 35

State	Kreteks smoker - ever		
	#	%	CI
Totals	900	2.2%	1.1 - 3.2

Gender	Kreteks smoker - ever		
	#	%	CI
Male	500	2.1%	0.4 - 3.9
Female	500	2.2%	1.1 - 3.3

Grade Level	Kreteks smoker - ever		
	#	%	CI
6th Grade	100	1.1%	0.0 - 2.3
7th Grade	200	1.2%	0.1 - 2.3
8th Grade	600	3.6%	1.7 - 5.5

Lifetime Tobacco Use by School Type, State, Gender, Grade Level, DOH Race-Ethnicity, for the Year(s) - 2000, 2003, 2005, 2007, 2009, 2011, 2013, 2015

Note: Weighted counts rounded to nearest hundred; weighted percentages, positive responses only; n/r (Not Reportable) - Unweighted respondents less than 35

Middle Schools

2005

DOH Race-Ethnicity	Tobacco use - ever			Cigar smoker - ever			SLT user - ever			Bidis smoker - ever		
	#	%	CI	#	%	CI	#	%	CI	#	%	CI
Caucasian	1,600	29.0%	20.0 - 37.9	600	10.9%	5.3 - 16.6	600	10.2%	5.7 - 14.8	300	5.2%	0.2 - 10.2
Native Hawaiian	3,200	35.4%	28.5 - 42.3	1,100	12.6%	7.5 - 17.7	800	9.2%	5.5 - 12.9	300	3.9%	1.5 - 6.3
Chinese	200	10.7%	0.4 - 20.9	100	5.8%	0.8 - 10.8	<50	2.6%	0.0 - 6.4	100	3.7%	0.0 - 9.5
Filipino	3,200	25.5%	18.4 - 32.6	1,000	7.7%	5.2 - 10.3	800	6.1%	1.6 - 10.6	400	3.3%	1.6 - 5.0
Japanese	600	13.9%	7.5 - 20.2	300	7.5%	2.1 - 12.8	200	4.2%	0.9 - 7.6	<50	1.1%	0.0 - 2.5
Black	500	47.2%	30.1 - 64.3	100	12.5%	1.3 - 23.7	200	15.4%	4.4 - 26.4	200	14.5%	2.1 - 27.0
Other Pacific Islander	800	30.2%	19.6 - 40.7	200	7.3%	2.5 - 12.1	300	11.1%	2.2 - 20.0	100	3.4%	0.0 - 6.8
Other	1,500	31.9%	26.4 - 37.5	600	12.3%	6.1 - 18.4	500	10.0%	6.5 - 13.5	300	6.0%	3.7 - 8.4

**Lifetime Tobacco Use by School Type, State, Gender, Grade Level, DOH Race-Ethnicity,
for the Year(s) - 2000, 2003, 2005, 2007, 2009, 2011, 2013, 2015**

Note: Weighted counts rounded to nearest hundred; weighted percentages, positive responses only; n/r (Not Reportable) - Unweighted respondents less than 35

DOH Race-Ethnicity	Kreteks smoker - ever		
	#	%	CI
Caucasian	200	3.1%	0.0 - 6.8
Native Hawaiian	300	2.9%	1.1 - 4.6
Chinese	<50	1.3%	0.0 - 3.9
Filipino	200	1.3%	0.3 - 2.2
Japanese	<50	0.5%	0.0 - 1.5
Black	100	6.6%	0.0 - 15.3
Other Pacific Islander	<50	0.9%	0.0 - 2.5
Other	100	2.2%	0.0 - 4.5

Lifetime Tobacco Use by School Type, State, Gender, Grade Level, DOH Race-Ethnicity, for the Year(s) - 2000, 2003, 2005, 2007, 2009, 2011, 2013, 2015

Note: Weighted counts rounded to nearest hundred; weighted percentages, positive responses only; n/r (Not Reportable) - Unweighted respondents less than 35

Middle Schools

2003

State	Tobacco use - ever			Cigar smoker - ever			SLT user - ever			Bidis smoker - ever		
	#	%	CI	#	%	CI	#	%	CI	#	%	CI
Totals	12,500	29.6%	28.4 - 30.8	3,600	8.8%	8.2 - 9.4	3,300	8.0%	7.4 - 8.6	1,700	4.2%	3.8 - 4.7

Gender	Tobacco use - ever			Cigar smoker - ever			SLT user - ever			Bidis smoker - ever		
	#	%	CI	#	%	CI	#	%	CI	#	%	CI
Male	6,700	30.6%	29.1 - 32.1	2,100	9.9%	9.0 - 10.7	1,900	9.0%	8.1 - 9.8	1,100	5.3%	4.6 - 6.0
Female	5,800	28.4%	26.8 - 30.0	1,500	7.6%	6.8 - 8.5	1,400	6.9%	6.1 - 7.7	600	3.1%	2.6 - 3.6

Grade Level	Tobacco use - ever			Cigar smoker - ever			SLT user - ever			Bidis smoker - ever		
	#	%	CI	#	%	CI	#	%	CI	#	%	CI
6th Grade	3,000	21.6%	20.0 - 23.2	900	6.5%	5.7 - 7.3	1,000	7.3%	6.3 - 8.3	500	3.6%	2.9 - 4.4
7th Grade	3,800	27.3%	25.4 - 29.1	1,100	8.1%	7.1 - 9.1	1,000	7.4%	6.4 - 8.4	500	3.4%	2.8 - 4.0
8th Grade	5,500	39.8%	37.6 - 42.0	1,600	11.6%	10.3 - 12.9	1,200	9.2%	8.1 - 10.4	800	5.6%	4.6 - 6.6

Lifetime Tobacco Use by School Type, State, Gender, Grade Level, DOH Race-Ethnicity, for the Year(s) - 2000, 2003, 2005, 2007, 2009, 2011, 2013, 2015

Note: Weighted counts rounded to nearest hundred; weighted percentages, positive responses only; n/r (Not Reportable) - Unweighted respondents less than 35

State	Kreteks smoker - ever		
	#	%	CI
Totals	1,000	2.5%	2.2 - 2.9

Gender	Kreteks smoker - ever		
	#	%	CI
Male	600	2.9%	2.4 - 3.4
Female	400	2.2%	1.8 - 2.6

Grade Level	Kreteks smoker - ever		
	#	%	CI
6th Grade	300	2.3%	1.8 - 2.9
7th Grade	300	2.1%	1.6 - 2.6
8th Grade	400	3.1%	2.4 - 3.9

Lifetime Tobacco Use by School Type, State, Gender, Grade Level, DOH Race-Ethnicity, for the Year(s) - 2000, 2003, 2005, 2007, 2009, 2011, 2013, 2015

Note: Weighted counts rounded to nearest hundred; weighted percentages, positive responses only; n/r (Not Reportable) - Unweighted respondents less than 35

Middle Schools

2003

DOH Race-Ethnicity	Tobacco use - ever			Cigar smoker - ever			SLT user - ever			Bidis smoker - ever		
	#	%	CI	#	%	CI	#	%	CI	#	%	CI
Caucasian	1,200	29.0%	25.8 - 32.1	400	10.2%	8.2 - 12.2	300	7.0%	5.2 - 8.8	200	3.8%	2.5 - 5.1
Native Hawaiian	3,600	36.6%	34.2 - 38.9	1,000	10.2%	8.7 - 11.6	800	8.8%	7.6 - 10.0	500	5.2%	4.1 - 6.2
Chinese	300	19.6%	15.6 - 23.7	100	7.1%	4.3 - 10.0	100	6.8%	4.2 - 9.4	100	4.6%	2.6 - 6.5
Filipino	2,700	26.5%	24.5 - 28.5	800	7.8%	6.7 - 8.9	700	6.5%	5.4 - 7.6	400	3.6%	2.9 - 4.4
Japanese	1,000	19.2%	16.7 - 21.8	300	5.7%	4.3 - 7.0	400	7.1%	5.6 - 8.6	100	2.9%	1.9 - 3.8
Black	700	40.3%	35.2 - 45.3	200	14.5%	10.8 - 18.2	200	14.4%	10.4 - 18.4	100	7.3%	4.4 - 10.1
Other Pacific Islander	900	36.1%	31.7 - 40.4	200	10.1%	7.5 - 12.8	200	10.1%	7.6 - 12.6	200	6.6%	4.6 - 8.7
Other	1,600	30.1%	27.4 - 32.8	400	7.9%	6.3 - 9.5	400	8.6%	6.9 - 10.2	200	3.5%	2.4 - 4.6

Lifetime Tobacco Use by School Type, State, Gender, Grade Level, DOH Race-Ethnicity, for the Year(s) - 2000, 2003, 2005, 2007, 2009, 2011, 2013, 2015

Note: Weighted counts rounded to nearest hundred; weighted percentages, positive responses only; n/r (Not Reportable) - Unweighted respondents less than 35

DOH Race-Ethnicity	Kreteks smoker - ever		
	#	%	CI
Caucasian	100	2.6%	1.5 - 3.7
Native Hawaiian	300	3.5%	2.7 - 4.3
Chinese	<50	2.3%	0.8 - 3.7
Filipino	200	1.8%	1.2 - 2.3
Japanese	100	1.8%	1.0 - 2.5
Black	100	4.3%	2.4 - 6.3
Other Pacific Islander	100	3.7%	2.1 - 5.3
Other	100	1.9%	1.1 - 2.7