

PRAMS Health Indicator 3-Year Aggregate Report - Breastfeeding (exclusive) duration (grouped)- for the State of Hawaii, for the Year(s)

2000-2002;2001-2003;2002-2004;2003-2005;2004-2006;2005-2007;2006-2008;2007-2009;2008-2010;2009-2011;2010-2012;2011-2013

PRAMS Health Indicator 3-Year Aggregate Report - Breastfeeding (exclusive) duration (grouped)- by State;County;DOH Race-Ethnicity;PRAMS Age Group;Infant Gender;Married;Poverty Level;Income (2000-2003);Income (2004-2011);Birthweight;Smoke 3rd Trimester;Smoke Before Pregnant;WIC During Pregnancy, for the Year(s)

2000-2002;2001-2003;2002-2004;2003-2005;2004-2006;2005-2007;2006-2008;2007-2009;2008-2010;2009-2011;2010-2012;2011-2013

Note: Weighted counts (#) represent 3-yr averages, rounded to the nearest hundred; n/r (Not Reportable) - If the unweighted total responses for a dimension (row) is <30 that row will not be shown

The trend analysis section shows the trend for the selected health variable over selected years in a table and a graph. 3-Year Weighted Total Responses: This number is a weighted representation of the mothers of babies delivered in a given year, who responded to a particular question in the survey. For most questions this will be the mothers of all babies delivered in a given year. For some secondary questions only a subset of the population was asked the question. For example, all survey participants were asked if they smoked during pregnancy, but only those who answered yes were asked how many cigarettes a day. If a dimension value is unknown for a particular survey record, that record will not be included in the counts for that particular dimension.

Note: Data collection for household income changed in 2004 and again in 2012. Because of this, income data does not exist for some 3-year aggregate periods.

Below are the indicators included in this report and the long description for each indicator.

PRAMS Health Indicator	Health Indicator Description
Breastfeeding (exclusive) duration (grouped)	Breastfeeding (exclusive) duration (grouped)

Suggested citation:

Hawaii Health Data Warehouse, Hawaii State Department of Health, Pregnancy Risk Assessment Monitoring System, (report title and years), Report Created: 4/24/17

For documentation on other terms and coding in this report, please go to the following links:

[Click here to access PRAMS documentation](#)

[Click here to access DOH-Race Ethnicity coding](#)

[Click here to access The Hawai'i Data Guide](#)

**For questions about this report, please contact
The Hawai'i Health Data Warehouse**

profiles@hhdw.org

(855) 946-5899 x15

PRAMS Health Indicator 3-Year Aggregate Report - Breastfeeding (exclusive) duration (grouped)- for the State of Hawaii, for the Year(s)

2000-2002;2001-2003;2002-2004;2003-2005;2004-2006;2005-2007;2006-2008;2007-2009;2008-2010;2009-2011;2010-2012;2011-2013

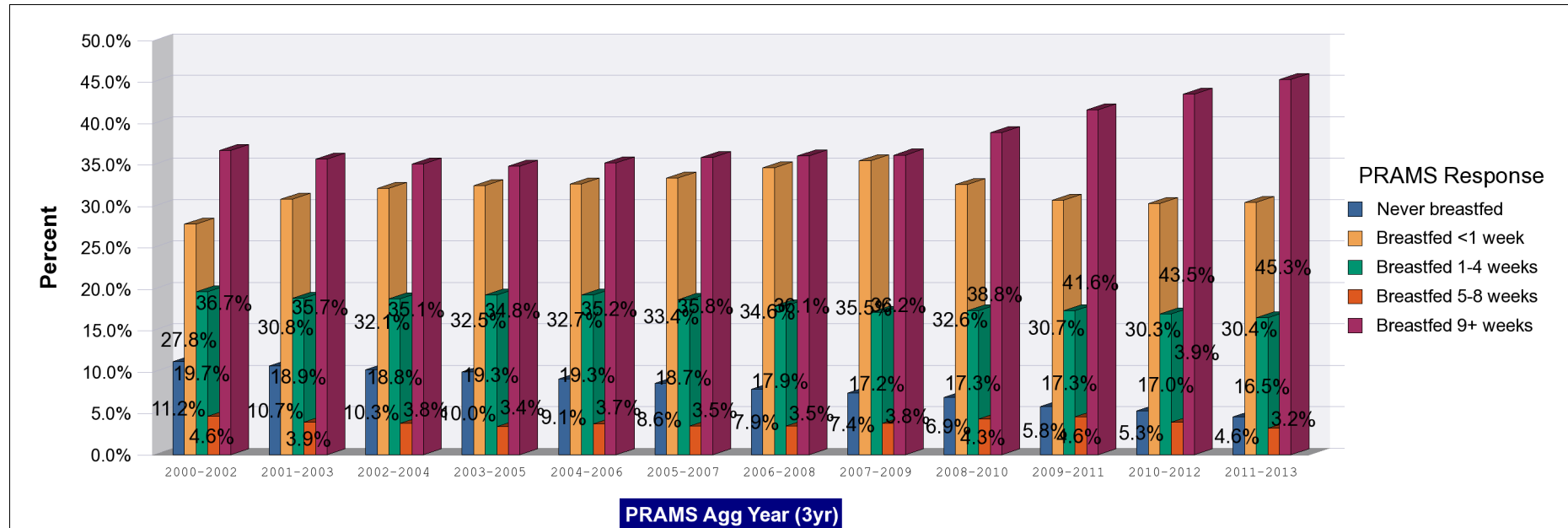
Note: Weighted counts (#) represent 3-yr averages, rounded to the nearest hundred; n/r (Not Reportable) - If the unweighted total responses for a dimension (row) is <30 that row will not be shown

Years	Never breastfed			Breastfed <1 week			Breastfed 1-4 weeks			Breastfed 5-8 weeks			Breastfed 9+ weeks			Weighted Total Responses (3-Yr Avg)
	#	%	C.I.(95%)	#	%	C.I.(95%)	#	%	C.I.(95%)	#	%	C.I.(95%)	#	%	C.I.(95%)	#
2000-2002	1,700	11.2	10.3 - 12.2	4,200	27.8	26.5 - 29.2	3,000	19.7	18.5 - 20.9	700	4.6	4.0 - 5.3	5,500	36.7	35.3 - 38.1	15,100
2001-2003	1,700	10.7	9.8 - 11.7	4,900	30.8	29.4 - 32.3	3,000	18.9	17.7 - 20.1	600	3.9	3.4 - 4.6	5,700	35.7	34.2 - 37.1	16,000
2002-2004	1,700	10.3	9.4 - 11.2	5,300	32.1	30.7 - 33.6	3,100	18.8	17.6 - 20.0	600	3.8	3.2 - 4.4	5,800	35.1	33.6 - 36.5	16,500
2003-2005	1,700	10.0	9.2 - 10.9	5,500	32.5	31.2 - 33.8	3,200	19.3	18.2 - 20.4	600	3.4	2.9 - 4.0	5,800	34.8	33.5 - 36.2	16,800
2004-2006	1,600	9.1	8.3 - 10.0	5,600	32.7	31.4 - 33.9	3,300	19.3	18.2 - 20.4	600	3.7	3.2 - 4.3	6,000	35.2	33.9 - 36.5	17,100
2005-2007	1,500	8.6	7.9 - 9.5	5,800	33.4	32.1 - 34.7	3,200	18.7	17.6 - 19.8	600	3.5	3.0 - 4.0	6,200	35.8	34.5 - 37.2	17,400
2006-2008	1,400	7.9	7.1 - 8.7	6,100	34.6	33.3 - 35.9	3,200	17.9	16.9 - 19.0	600	3.5	3.0 - 4.0	6,400	36.1	34.8 - 37.4	17,700
2007-2009	1,300	7.4	6.6 - 8.3	6,300	35.5	34.0 - 36.9	3,100	17.2	16.1 - 18.4	700	3.8	3.2 - 4.4	6,400	36.2	34.7 - 37.7	17,800
2008-2010	1,200	6.9	6.1 - 7.9	5,800	32.6	31.0 - 34.2	3,100	17.3	16.1 - 18.7	800	4.3	3.7 - 5.1	7,000	38.8	37.2 - 40.5	17,900
2009-2011	1,000	5.8	4.9 - 6.8	5,500	30.7	29.0 - 32.4	3,100	17.3	16.0 - 18.8	800	4.6	3.9 - 5.4	7,500	41.6	39.8 - 43.4	17,900
2010-2012	900	5.3	4.4 - 6.3	5,400	30.3	28.6 - 32.1	3,000	17.0	15.6 - 18.5	700	3.9	3.2 - 4.7	7,800	43.5	41.7 - 45.4	17,900
2011-2013	800	4.6	3.8 - 5.5	5,400	30.4	28.7 - 32.2	2,900	16.5	15.1 - 18.1	600	3.2	2.6 - 4.0	8,000	45.3	43.4 - 47.3	17,700

PRAMS Health Indicator 3-Year Aggregate Report - Breastfeeding (exclusive) duration (grouped)- for the State of Hawaii, for the Year(s)

2000-2002;2001-2003;2002-2004;2003-2005;2004-2006;2005-2007;2006-2008;2007-2009;2008-2010;2009-2011;2010-2012;2011-2013

Note: Weighted counts (#) represent 3-yr averages, rounded to the nearest hundred; n/r (Not Reportable) - If the unweighted total responses for a dimension (row) is <30 that row will not be shown



**PRAMS Health Indicator 3-Year Aggregate Report - Breastfeeding (exclusive) duration (grouped)- by State;County;DOH Race-Ethnicity;PRAMS Age Group;Infant Gender;Married;Poverty Level;Income (2000-2003);Income (2004-2011);Birthweight;Smoke 3rd Trimester;Smoke Before Pregnant;WIC During Pregnancy, for the Year(s)
2000-2002;2001-2003;2002-2004;2003-2005;2004-2006;2005-2007;2006-2008;2007-2009;2008-2010;2009-2011;2010-2012;2011-2013**

Note: Weighted counts (#) represent 3-yr averages, rounded to the nearest hundred; n/r (Not Reportable) - If the unweighted total responses for a dimension (row) is <30 that row will not be shown

Years: 2011-2013

State	Never breastfed			Breastfed <1 week			Breastfed 1-4 weeks			Breastfed 5-8 weeks			Breastfed 9+ weeks			Weighted Total Responses (3-Yr Avg)
	#	%	C.I.(95%)	#	%	C.I.(95%)	#	%	C.I.(95%)	#	%	C.I.(95%)	#	%	C.I.(95%)	#
Totals	800	4.6	3.8 - 5.5	5,400	30.4	28.7 - 32.2	2,900	16.5	15.1 - 18.1	600	3.2	2.6 - 4.0	8,000	45.3	43.4 - 47.3	17,700

County	Never breastfed			Breastfed <1 week			Breastfed 1-4 weeks			Breastfed 5-8 weeks			Breastfed 9+ weeks			Weighted Total Responses (3-Yr Avg)
	#	%	C.I.(95%)	#	%	C.I.(95%)	#	%	C.I.(95%)	#	%	C.I.(95%)	#	%	C.I.(95%)	#
Hawaii	100	5.0	3.7 - 6.6	700	31.5	28.7 - 34.5	300	15.5	13.3 - 17.9	100	3.2	2.2 - 4.5	1,000	44.9	41.8 - 48.0	2,200
Honolulu	600	4.8	3.8 - 6.0	3,800	30.1	27.8 - 32.6	2,200	17.1	15.2 - 19.1	400	3.3	2.4 - 4.3	5,700	44.8	42.2 - 47.4	12,800
Kauai	<50	3.4	2.3 - 4.9	200	24.7	21.8 - 27.9	100	16.1	13.7 - 18.8	<50	2.7	1.7 - 4.1	400	53.1	49.6 - 56.6	800
Maui	100	3.1	2.2 - 4.3	600	33.6	30.9 - 36.5	300	14.4	12.4 - 16.7	100	3.0	2.1 - 4.2	900	45.9	42.9 - 48.9	1,900

PRAMS Health Indicator 3-Year Aggregate Report - Breastfeeding (exclusive) duration (grouped)- by State;County;DOH Race-Ethnicity;PRAMS Age Group;Infant Gender;Married;Poverty Level;Income (2000-2003);Income (2004-2011);Birthweight;Smoke 3rd Trimester;Smoke Before Pregnant;WIC During Pregnancy, for the Year(s) 2000-2002;2001-2003;2002-2004;2003-2005;2004-2006;2005-2007;2006-2008;2007-2009;2008-2010;2009-2011;2010-2012;2011-2013

Note: Weighted counts (#) represent 3-yr averages, rounded to the nearest hundred; n/r (Not Reportable) - If the unweighted total responses for a dimension (row) is <30 that row will not be shown

Years: 2011-2013

DOH Race-Ethnicity	Never breastfed			Breastfed <1 week			Breastfed 1-4 weeks			Breastfed 5-8 weeks			Breastfed 9+ weeks			Weighted Total Responses (3-Yr Avg)
	#	%	C.I.(95%)	#	%	C.I.(95%)	#	%	C.I.(95%)	#	%	C.I.(95%)	#	%	C.I.(95%)	#
Caucasian	100	3.1	1.9 - 4.8	900	19.6	16.7 - 22.9	700	16.5	13.7 - 19.7	100	2.5	1.5 - 4.2	2,600	58.3	54.4 - 62.2	4,400
Native Hawaiian	300	5.7	4.2 - 7.7	1,500	29.2	26.2 - 32.4	1,100	21.2	18.4 - 24.3	200	4.0	2.8 - 5.7	2,000	39.9	36.5 - 43.4	5,100
Chinese	100	7.2	3.5 - 14.0	400	41.3	32.6 - 50.7	100	11.3	6.8 - 18.2	<50	1.9	0.5 - 6.5	300	38.3	29.9 - 47.5	900
Filipino	100	3.5	2.2 - 5.6	1,200	40.3	35.7 - 45.0	500	17.3	14.1 - 21.1	100	4.6	3.0 - 7.2	1,000	34.3	29.9 - 39.0	3,000
Japanese	<50	1.8	0.7 - 4.8	600	37.5	31.5 - 43.9	200	13.4	9.4 - 18.8	<50	1.4	0.5 - 4.0	800	45.8	39.4 - 52.3	1,700
Other	200	6.8	4.5 - 10.1	800	31.5	26.8 - 36.7	300	10.4	7.6 - 14.1	100	2.7	1.4 - 5.0	1,300	48.5	43.2 - 53.9	2,600

PRAMS Age Group	Never breastfed			Breastfed <1 week			Breastfed 1-4 weeks			Breastfed 5-8 weeks			Breastfed 9+ weeks			Weighted Total Responses (3-Yr Avg)
	#	%	C.I.(95%)	#	%	C.I.(95%)	#	%	C.I.(95%)	#	%	C.I.(95%)	#	%	C.I.(95%)	#
<20	<50	4.1	1.5 - 10.3	400	42.1	34.3 - 50.3	200	17.2	11.8 - 24.4	<50	2.4	1.2 - 4.7	300	34.2	26.9 - 42.4	900
20-24	200	4.7	3.2 - 6.9	1,100	26.6	23.1 - 30.3	700	18.5	15.3 - 22.0	200	4.9	3.3 - 7.2	1,800	45.4	41.2 - 49.6	4,000
25-34	400	4.4	3.4 - 5.7	2,800	29.0	26.6 - 31.4	1,600	16.6	14.7 - 18.7	300	3.0	2.2 - 4.1	4,600	47.0	44.4 - 49.7	9,700
35+	200	4.8	3.2 - 7.2	1,100	36.5	32.3 - 41.0	400	13.8	11.0 - 17.1	100	1.9	1.0 - 3.7	1,300	43.0	38.5 - 47.5	3,100

**PRAMS Health Indicator 3-Year Aggregate Report - Breastfeeding (exclusive) duration (grouped)- by State;County;DOH Race-Ethnicity;PRAMS Age Group;Infant Gender;Married;Poverty Level;Income (2000-2003);Income (2004-2011);Birthweight;Smoke 3rd Trimester;Smoke Before Pregnant;WIC During Pregnancy, for the Year(s)
2000-2002;2001-2003;2002-2004;2003-2005;2004-2006;2005-2007;2006-2008;2007-2009;2008-2010;2009-2011;2010-2012;2011-2013**

Note: Weighted counts (#) represent 3-yr averages, rounded to the nearest hundred; n/r (Not Reportable) - If the unweighted total responses for a dimension (row) is <30 that row will not be shown

Years: 2011-2013

Infant Gender	Never breastfed			Breastfed <1 week			Breastfed 1-4 weeks			Breastfed 5-8 weeks			Breastfed 9+ weeks			Weighted Total Responses (3-Yr Avg)
	#	%	C.I.(95%)	#	%	C.I.(95%)	#	%	C.I.(95%)	#	%	C.I.(95%)	#	%	C.I.(95%)	#
Male	400	4.4	3.4 - 5.8	2,600	29.6	27.2 - 32.1	1,400	16.1	14.2 - 18.3	200	2.8	2.0 - 3.8	4,200	47.1	44.4 - 49.9	8,800
Female	400	4.7	3.6 - 6.0	2,800	31.3	28.8 - 33.9	1,500	16.9	14.9 - 19.1	300	3.6	2.7 - 4.9	3,900	43.5	40.8 - 46.3	8,900

Married	Never breastfed			Breastfed <1 week			Breastfed 1-4 weeks			Breastfed 5-8 weeks			Breastfed 9+ weeks			Weighted Total Responses (3-Yr Avg)
	#	%	C.I.(95%)	#	%	C.I.(95%)	#	%	C.I.(95%)	#	%	C.I.(95%)	#	%	C.I.(95%)	#
Yes	400	3.7	2.8 - 4.8	3,100	28.3	26.1 - 30.6	1,900	16.7	14.9 - 18.7	300	3.0	2.2 - 4.1	5,400	48.2	45.7 - 50.7	11,100
No	400	6.0	4.6 - 7.7	2,200	34.0	31.1 - 37.0	1,100	16.2	14.0 - 18.6	200	3.5	2.5 - 4.8	2,700	40.4	37.4 - 43.5	6,600

Poverty Level	Never breastfed			Breastfed <1 week			Breastfed 1-4 weeks			Breastfed 5-8 weeks			Breastfed 9+ weeks			Weighted Total Responses (3-Yr Avg)
	#	%	C.I.(95%)	#	%	C.I.(95%)	#	%	C.I.(95%)	#	%	C.I.(95%)	#	%	C.I.(95%)	#
0-130%	400	6.2	4.7 - 8.0	2,100	32.6	29.6 - 35.6	1,000	16.3	14.1 - 18.8	200	2.9	2.0 - 4.2	2,700	42.1	39.0 - 45.3	6,300
131-185%	200	5.9	3.9 - 9.0	800	29.5	25.1 - 34.3	500	18.8	15.0 - 23.1	100	5.1	3.3 - 8.0	1,100	40.6	35.7 - 45.7	2,700
186+%	200	2.5	1.6 - 3.7	2,100	29.8	27.1 - 32.7	1,100	15.4	13.3 - 17.9	200	2.6	1.8 - 3.9	3,600	49.7	46.6 - 52.8	7,200

**PRAMS Health Indicator 3-Year Aggregate Report - Breastfeeding (exclusive) duration (grouped)- by State;County;DOH Race-Ethnicity;PRAMS Age Group;Infant Gender;Married;Poverty Level;Income (2000-2003);Income (2004-2011);Birthweight;Smoke 3rd Trimester;Smoke Before Pregnant;WIC During Pregnancy, for the Year(s)
2000-2002;2001-2003;2002-2004;2003-2005;2004-2006;2005-2007;2006-2008;2007-2009;2008-2010;2009-2011;2010-2012;2011-2013**

Note: Weighted counts (#) represent 3-yr averages, rounded to the nearest hundred; n/r (Not Reportable) - If the unweighted total responses for a dimension (row) is <30 that row will not be shown

Years: 2011-2013

Birthweight	Never breastfed			Breastfed <1 week			Breastfed 1-4 weeks			Breastfed 5-8 weeks			Breastfed 9+ weeks			Weighted Total Responses (3-Yr Avg)
	#	%	C.I.(95%)	#	%	C.I.(95%)	#	%	C.I.(95%)	#	%	C.I.(95%)	#	%	C.I.(95%)	#
Low birth weight	<50	3.9	2.8 - 5.4	500	43.8	40.6 - 47.0	200	17.5	15.2 - 20.2	<50	2.5	1.7 - 3.7	400	32.3	29.4 - 35.4	1,200
Normal birth weight	800	4.6	3.8 - 5.6	4,900	29.5	27.6 - 31.4	2,700	16.4	14.9 - 18.0	500	3.2	2.6 - 4.1	7,600	46.2	44.2 - 48.3	16,500

Smoke 3rd Trimester	Never breastfed			Breastfed <1 week			Breastfed 1-4 weeks			Breastfed 5-8 weeks			Breastfed 9+ weeks			Weighted Total Responses (3-Yr Avg)
	#	%	C.I.(95%)	#	%	C.I.(95%)	#	%	C.I.(95%)	#	%	C.I.(95%)	#	%	C.I.(95%)	#
Yes	100	7.5	4.3 - 12.9	300	31.6	24.4 - 39.8	200	21.3	15.2 - 29.1	<50	5.4	2.6 - 10.9	300	34.2	26.8 - 42.4	800
No	700	4.4	3.6 - 5.4	5,000	30.5	28.7 - 32.4	2,700	16.2	14.8 - 17.8	500	3.1	2.5 - 3.9	7,500	45.7	43.7 - 47.8	16,500

Smoke Before Pregnant	Never breastfed			Breastfed <1 week			Breastfed 1-4 weeks			Breastfed 5-8 weeks			Breastfed 9+ weeks			Weighted Total Responses (3-Yr Avg)
	#	%	C.I.(95%)	#	%	C.I.(95%)	#	%	C.I.(95%)	#	%	C.I.(95%)	#	%	C.I.(95%)	#
Yes	200	5.9	4.1 - 8.5	900	28.9	24.9 - 33.2	500	17.6	14.3 - 21.4	100	4.5	2.9 - 7.1	1,300	43.1	38.6 - 47.8	3,100
No	600	4.3	3.4 - 5.3	4,400	30.9	28.9 - 32.9	2,300	16.3	14.7 - 18.0	400	3.0	2.3 - 3.8	6,500	45.6	43.4 - 47.8	14,300

**PRAMS Health Indicator 3-Year Aggregate Report - Breastfeeding (exclusive) duration (grouped)- by State;County;DOH Race-Ethnicity;PRAMS Age Group;Infant Gender;Married;Poverty Level;Income (2000-2003);Income (2004-2011);Birthweight;Smoke 3rd Trimester;Smoke Before Pregnant;WIC During Pregnancy, for the Year(s)
2000-2002;2001-2003;2002-2004;2003-2005;2004-2006;2005-2007;2006-2008;2007-2009;2008-2010;2009-2011;2010-2012;2011-2013**

Note: Weighted counts (#) represent 3-yr averages, rounded to the nearest hundred; n/r (Not Reportable) - If the unweighted total responses for a dimension (row) is <30 that row will not be shown

Years: 2011-2013

WIC During Pregnancy	Never breastfed			Breastfed <1 week			Breastfed 1-4 weeks			Breastfed 5-8 weeks			Breastfed 9+ weeks			Weighted Total Responses (3-Yr Avg)
	#	%	C.I.(95%)	#	%	C.I.(95%)	#	%	C.I.(95%)	#	%	C.I.(95%)	#	%	C.I.(95%)	#
Yes	500	6.1	4.8 - 7.7	2,700	33.7	31.0 - 36.5	1,300	16.9	14.8 - 19.2	300	3.4	2.5 - 4.7	3,100	39.8	37.0 - 42.7	7,900
No	300	3.2	2.4 - 4.3	2,700	27.9	25.7 - 30.3	1,600	16.2	14.2 - 18.3	300	2.9	2.1 - 4.0	4,800	49.8	47.1 - 52.4	9,700

**PRAMS Health Indicator 3-Year Aggregate Report - Breastfeeding (exclusive) duration (grouped)- by State;County;DOH Race-Ethnicity;PRAMS Age Group;Infant Gender;Married;Poverty Level;Income (2000-2003);Income (2004-2011);Birthweight;Smoke 3rd Trimester;Smoke Before Pregnant;WIC During Pregnancy, for the Year(s)
2000-2002;2001-2003;2002-2004;2003-2005;2004-2006;2005-2007;2006-2008;2007-2009;2008-2010;2009-2011;2010-2012;2011-2013**

Note: Weighted counts (#) represent 3-yr averages, rounded to the nearest hundred; n/r (Not Reportable) - If the unweighted total responses for a dimension (row) is <30 that row will not be shown

Years: 2010-2012

State	Never breastfed			Breastfed <1 week			Breastfed 1-4 weeks			Breastfed 5-8 weeks			Breastfed 9+ weeks			Weighted Total Responses (3-Yr Avg)
	#	%	C.I.(95%)	#	%	C.I.(95%)	#	%	C.I.(95%)	#	%	C.I.(95%)	#	%	C.I.(95%)	#
Totals	900	5.3	4.4 - 6.3	5,400	30.3	28.6 - 32.1	3,000	17.0	15.6 - 18.5	700	3.9	3.2 - 4.7	7,800	43.5	41.7 - 45.4	17,900

County	Never breastfed			Breastfed <1 week			Breastfed 1-4 weeks			Breastfed 5-8 weeks			Breastfed 9+ weeks			Weighted Total Responses (3-Yr Avg)
	#	%	C.I.(95%)	#	%	C.I.(95%)	#	%	C.I.(95%)	#	%	C.I.(95%)	#	%	C.I.(95%)	#
Hawaii	100	4.5	3.4 - 6.0	700	30.3	27.6 - 33.2	400	16.7	14.6 - 19.1	100	4.4	3.3 - 5.8	1,000	44.0	41.1 - 47.1	2,300
Honolulu	800	5.9	4.8 - 7.2	3,900	30.4	28.1 - 32.7	2,200	17.3	15.4 - 19.3	500	4.0	3.1 - 5.1	5,500	42.5	40.1 - 45.0	13,000
Kauai	<50	3.2	2.2 - 4.8	200	26.4	23.3 - 29.8	100	15.1	12.7 - 17.9	<50	3.5	2.4 - 5.1	400	51.7	48.1 - 55.4	800
Maui	100	3.1	2.3 - 4.2	600	31.8	29.2 - 34.5	300	15.9	13.9 - 18.1	100	3.0	2.2 - 4.1	900	46.2	43.4 - 49.0	1,900

PRAMS Health Indicator 3-Year Aggregate Report - Breastfeeding (exclusive) duration (grouped)- by State;County;DOH Race-Ethnicity;PRAMS Age Group;Infant Gender;Married;Poverty Level;Income (2000-2003);Income (2004-2011);Birthweight;Smoke 3rd Trimester;Smoke Before Pregnant;WIC During Pregnancy, for the Year(s) 2000-2002;2001-2003;2002-2004;2003-2005;2004-2006;2005-2007;2006-2008;2007-2009;2008-2010;2009-2011;2010-2012;2011-2013

Note: Weighted counts (#) represent 3-yr averages, rounded to the nearest hundred; n/r (Not Reportable) - If the unweighted total responses for a dimension (row) is <30 that row will not be shown

Years: 2010-2012

DOH Race-Ethnicity	Never breastfed			Breastfed <1 week			Breastfed 1-4 weeks			Breastfed 5-8 weeks			Breastfed 9+ weeks			Weighted Total Responses (3-Yr Avg)
	#	%	C.I.(95%)	#	%	C.I.(95%)	#	%	C.I.(95%)	#	%	C.I.(95%)	#	%	C.I.(95%)	#
Caucasian	200	4.7	3.2 - 6.8	800	17.8	15.1 - 20.8	800	18.1	15.2 - 21.4	200	3.6	2.4 - 5.5	2,400	55.8	52.0 - 59.6	4,300
Native Hawaiian	300	5.7	4.2 - 7.7	1,600	30.8	27.8 - 34.0	1,000	18.9	16.4 - 21.8	300	5.6	4.2 - 7.4	2,000	39.0	35.7 - 42.3	5,200
Chinese	100	6.2	2.9 - 12.8	300	33.4	25.5 - 42.5	100	9.2	5.4 - 15.4	<50	4.0	1.5 - 9.9	400	47.1	38.3 - 56.2	900
Filipino	200	5.1	3.4 - 7.5	1,200	39.5	35.2 - 44.0	600	20.3	16.9 - 24.2	100	4.4	2.9 - 6.8	1,000	30.6	26.7 - 34.9	3,100
Japanese	<50	1.3	0.5 - 3.8	700	43.2	37.1 - 49.5	200	12.8	9.1 - 17.8	<50	1.0	0.4 - 2.8	700	41.6	35.6 - 47.9	1,700
Other	200	7.7	5.2 - 11.2	800	29.8	25.4 - 34.7	300	12.6	9.5 - 16.5	100	2.4	1.3 - 4.4	1,300	47.5	42.4 - 52.7	2,800

PRAMS Age Group	Never breastfed			Breastfed <1 week			Breastfed 1-4 weeks			Breastfed 5-8 weeks			Breastfed 9+ weeks			Weighted Total Responses (3-Yr Avg)
	#	%	C.I.(95%)	#	%	C.I.(95%)	#	%	C.I.(95%)	#	%	C.I.(95%)	#	%	C.I.(95%)	#
<20	100	5.1	2.2 - 11.2	400	36.3	29.5 - 43.8	200	22.8	16.9 - 30.1	<50	3.1	1.5 - 6.1	300	32.6	26.2 - 39.8	1,000
20-24	300	6.6	4.8 - 9.1	1,200	28.2	24.8 - 32.0	800	19.6	16.5 - 23.1	200	4.8	3.3 - 7.0	1,700	40.7	36.8 - 44.7	4,100
25-34	500	4.8	3.8 - 6.2	2,800	28.8	26.6 - 31.2	1,600	16.4	14.6 - 18.4	400	4.1	3.1 - 5.2	4,400	45.9	43.3 - 48.4	9,700
35+	200	4.9	3.2 - 7.4	1,100	35.6	31.5 - 40.0	400	13.3	10.6 - 16.6	100	2.5	1.5 - 4.2	1,400	43.6	39.2 - 48.0	3,200

PRAMS Health Indicator 3-Year Aggregate Report - Breastfeeding (exclusive) duration (grouped)- by State;County;DOH Race-Ethnicity;PRAMS Age Group;Infant Gender;Married;Poverty Level;Income (2000-2003);Income (2004-2011);Birthweight;Smoke 3rd Trimester;Smoke Before Pregnant;WIC During Pregnancy, for the Year(s) 2000-2002;2001-2003;2002-2004;2003-2005;2004-2006;2005-2007;2006-2008;2007-2009;2008-2010;2009-2011;2010-2012;2011-2013

Note: Weighted counts (#) represent 3-yr averages, rounded to the nearest hundred; n/r (Not Reportable) - If the unweighted total responses for a dimension (row) is <30 that row will not be shown

Years: 2010-2012

Infant Gender	Never breastfed			Breastfed <1 week			Breastfed 1-4 weeks			Breastfed 5-8 weeks			Breastfed 9+ weeks			Weighted Total Responses (3-Yr Avg)
	#	%	C.I.(95%)	#	%	C.I.(95%)	#	%	C.I.(95%)	#	%	C.I.(95%)	#	%	C.I.(95%)	#
Male	500	5.0	3.9 - 6.4	2,800	30.4	28.0 - 32.9	1,500	16.9	15.0 - 19.0	400	4.0	3.1 - 5.2	4,000	43.7	41.1 - 46.4	9,000
Female	500	5.6	4.4 - 7.0	2,700	30.2	27.8 - 32.8	1,500	17.1	15.1 - 19.2	300	3.8	2.9 - 5.0	3,900	43.3	40.7 - 46.0	8,900

Married	Never breastfed			Breastfed <1 week			Breastfed 1-4 weeks			Breastfed 5-8 weeks			Breastfed 9+ weeks			Weighted Total Responses (3-Yr Avg)
	#	%	C.I.(95%)	#	%	C.I.(95%)	#	%	C.I.(95%)	#	%	C.I.(95%)	#	%	C.I.(95%)	#
Yes	500	4.3	3.3 - 5.4	3,200	29.0	26.9 - 31.3	1,900	16.7	14.9 - 18.6	400	3.6	2.8 - 4.7	5,200	46.4	44.0 - 48.8	11,200
No	500	7.0	5.5 - 8.8	2,200	32.5	29.7 - 35.3	1,200	17.4	15.2 - 19.9	300	4.4	3.3 - 5.8	2,600	38.7	35.9 - 41.7	6,800

Poverty Level	Never breastfed			Breastfed <1 week			Breastfed 1-4 weeks			Breastfed 5-8 weeks			Breastfed 9+ weeks			Weighted Total Responses (3-Yr Avg)
	#	%	C.I.(95%)	#	%	C.I.(95%)	#	%	C.I.(95%)	#	%	C.I.(95%)	#	%	C.I.(95%)	#
0-130%	400	6.7	5.2 - 8.6	2,100	32.6	29.7 - 35.6	1,200	18.3	16.0 - 20.9	200	3.1	2.2 - 4.3	2,500	39.3	36.3 - 42.4	6,300
131-185%	200	5.3	3.4 - 8.1	800	29.2	25.0 - 33.8	500	18.6	15.0 - 22.7	200	5.9	4.0 - 8.6	1,200	41.0	36.4 - 45.9	2,900
186+%	200	3.1	2.2 - 4.4	2,200	29.8	27.2 - 32.5	1,100	15.1	13.1 - 17.4	300	3.8	2.7 - 5.1	3,600	48.3	45.4 - 51.2	7,500

**PRAMS Health Indicator 3-Year Aggregate Report - Breastfeeding (exclusive) duration (grouped)- by State;County;DOH Race-Ethnicity;PRAMS Age Group;Infant Gender;Married;Poverty Level;Income (2000-2003);Income (2004-2011);Birthweight;Smoke 3rd Trimester;Smoke Before Pregnant;WIC During Pregnancy, for the Year(s)
2000-2002;2001-2003;2002-2004;2003-2005;2004-2006;2005-2007;2006-2008;2007-2009;2008-2010;2009-2011;2010-2012;2011-2013**

Note: Weighted counts (#) represent 3-yr averages, rounded to the nearest hundred; n/r (Not Reportable) - If the unweighted total responses for a dimension (row) is <30 that row will not be shown

Years: 2010-2012

Birthweight	Never breastfed			Breastfed <1 week			Breastfed 1-4 weeks			Breastfed 5-8 weeks			Breastfed 9+ weeks			Weighted Total Responses (3-Yr Avg)
	#	%	C.I.(95%)	#	%	C.I.(95%)	#	%	C.I.(95%)	#	%	C.I.(95%)	#	%	C.I.(95%)	#
Low birth weight	100	5.2	3.9 - 6.9	500	42.4	39.2 - 45.7	200	15.8	13.5 - 18.5	<50	3.4	2.4 - 4.8	400	33.2	30.2 - 36.3	1,200
Normal birth weight	900	5.3	4.4 - 6.3	4,900	29.5	27.7 - 31.4	2,800	17.0	15.5 - 18.6	700	3.9	3.2 - 4.8	7,400	44.3	42.3 - 46.3	16,700

Smoke 3rd Trimester	Never breastfed			Breastfed <1 week			Breastfed 1-4 weeks			Breastfed 5-8 weeks			Breastfed 9+ weeks			Weighted Total Responses (3-Yr Avg)
	#	%	C.I.(95%)	#	%	C.I.(95%)	#	%	C.I.(95%)	#	%	C.I.(95%)	#	%	C.I.(95%)	#
Yes	100	12.8	8.4 - 19.2	300	30.7	23.9 - 38.3	200	19.5	14.1 - 26.4	<50	5.0	2.5 - 9.6	300	32.0	25.3 - 39.6	1,000
No	800	4.8	4.0 - 5.8	5,100	30.4	28.7 - 32.3	2,800	16.8	15.4 - 18.4	600	3.9	3.2 - 4.8	7,300	44.0	42.1 - 46.0	16,600

Smoke Before Pregnant	Never breastfed			Breastfed <1 week			Breastfed 1-4 weeks			Breastfed 5-8 weeks			Breastfed 9+ weeks			Weighted Total Responses (3-Yr Avg)
	#	%	C.I.(95%)	#	%	C.I.(95%)	#	%	C.I.(95%)	#	%	C.I.(95%)	#	%	C.I.(95%)	#
Yes	200	7.2	5.2 - 9.9	1,000	30.5	26.7 - 34.6	600	19.3	16.0 - 23.0	200	4.6	3.1 - 6.8	1,300	38.5	34.4 - 42.7	3,300
No	700	4.8	3.9 - 5.9	4,400	30.5	28.5 - 32.4	2,300	16.4	14.9 - 18.1	500	3.8	3.1 - 4.8	6,400	44.5	42.4 - 46.6	14,300

**PRAMS Health Indicator 3-Year Aggregate Report - Breastfeeding (exclusive) duration (grouped)- by State;County;DOH Race-Ethnicity;PRAMS Age Group;Infant Gender;Married;Poverty Level;Income (2000-2003);Income (2004-2011);Birthweight;Smoke 3rd Trimester;Smoke Before Pregnant;WIC During Pregnancy, for the Year(s)
2000-2002;2001-2003;2002-2004;2003-2005;2004-2006;2005-2007;2006-2008;2007-2009;2008-2010;2009-2011;2010-2012;2011-2013**

Note: Weighted counts (#) represent 3-yr averages, rounded to the nearest hundred; n/r (Not Reportable) - If the unweighted total responses for a dimension (row) is <30 that row will not be shown

Years: 2010-2012

WIC During Pregnancy	Never breastfed			Breastfed <1 week			Breastfed 1-4 weeks			Breastfed 5-8 weeks			Breastfed 9+ weeks			Weighted Total Responses (3-Yr Avg)
	#	%	C.I.(95%)	#	%	C.I.(95%)	#	%	C.I.(95%)	#	%	C.I.(95%)	#	%	C.I.(95%)	#
Yes	600	6.9	5.5 - 8.6	2,600	32.8	30.2 - 35.5	1,400	17.1	15.1 - 19.3	300	4.1	3.1 - 5.3	3,100	39.1	36.4 - 41.9	8,000
No	400	3.8	2.9 - 5.0	2,800	28.7	26.4 - 31.0	1,700	16.8	14.9 - 18.9	400	3.7	2.8 - 4.9	4,600	47.0	44.4 - 49.6	9,800

**PRAMS Health Indicator 3-Year Aggregate Report - Breastfeeding (exclusive) duration (grouped)- by State;County;DOH Race-Ethnicity;PRAMS Age Group;Infant Gender;Married;Poverty Level;Income (2000-2003);Income (2004-2011);Birthweight;Smoke 3rd Trimester;Smoke Before Pregnant;WIC During Pregnancy, for the Year(s)
2000-2002;2001-2003;2002-2004;2003-2005;2004-2006;2005-2007;2006-2008;2007-2009;2008-2010;2009-2011;2010-2012;2011-2013**

Note: Weighted counts (#) represent 3-yr averages, rounded to the nearest hundred; n/r (Not Reportable) - If the unweighted total responses for a dimension (row) is <30 that row will not be shown

Years: 2009-2011

State	Never breastfed			Breastfed <1 week			Breastfed 1-4 weeks			Breastfed 5-8 weeks			Breastfed 9+ weeks			Weighted Total Responses (3-Yr Avg)
	#	%	C.I.(95%)	#	%	C.I.(95%)	#	%	C.I.(95%)	#	%	C.I.(95%)	#	%	C.I.(95%)	#
Totals	1,000	5.8	4.9 - 6.8	5,500	30.7	29.0 - 32.4	3,100	17.3	16.0 - 18.8	800	4.6	3.9 - 5.4	7,500	41.6	39.8 - 43.4	17,900

County	Never breastfed			Breastfed <1 week			Breastfed 1-4 weeks			Breastfed 5-8 weeks			Breastfed 9+ weeks			Weighted Total Responses (3-Yr Avg)
	#	%	C.I.(95%)	#	%	C.I.(95%)	#	%	C.I.(95%)	#	%	C.I.(95%)	#	%	C.I.(95%)	#
Hawaii	100	5.7	4.4 - 7.3	700	30.3	27.6 - 33.1	400	17.2	15.0 - 19.6	100	5.0	3.8 - 6.4	1,000	41.9	39.0 - 44.8	2,300
Honolulu	800	6.3	5.2 - 7.7	4,000	31.1	28.8 - 33.4	2,300	17.5	15.7 - 19.6	600	4.6	3.6 - 5.7	5,200	40.5	38.1 - 43.0	12,900
Kauai	<50	3.7	2.5 - 5.3	200	23.8	20.8 - 26.9	100	18.0	15.4 - 20.9	<50	5.4	4.0 - 7.3	400	49.2	45.6 - 52.8	800
Maui	100	3.4	2.5 - 4.5	600	31.6	29.1 - 34.2	300	15.9	14.0 - 18.1	100	3.9	3.0 - 5.2	900	45.1	42.4 - 47.9	2,000

PRAMS Health Indicator 3-Year Aggregate Report - Breastfeeding (exclusive) duration (grouped)- by State;County;DOH Race-Ethnicity;PRAMS Age Group;Infant Gender;Married;Poverty Level;Income (2000-2003);Income (2004-2011);Birthweight;Smoke 3rd Trimester;Smoke Before Pregnant;WIC During Pregnancy, for the Year(s) 2000-2002;2001-2003;2002-2004;2003-2005;2004-2006;2005-2007;2006-2008;2007-2009;2008-2010;2009-2011;2010-2012;2011-2013

Note: Weighted counts (#) represent 3-yr averages, rounded to the nearest hundred; n/r (Not Reportable) - If the unweighted total responses for a dimension (row) is <30 that row will not be shown

Years: 2009-2011

DOH Race-Ethnicity	Never breastfed			Breastfed <1 week			Breastfed 1-4 weeks			Breastfed 5-8 weeks			Breastfed 9+ weeks			Weighted Total Responses (3-Yr Avg)
	#	%	C.I.(95%)	#	%	C.I.(95%)	#	%	C.I.(95%)	#	%	C.I.(95%)	#	%	C.I.(95%)	#
Caucasian	200	3.9	2.6 - 5.8	800	19.1	16.4 - 22.2	700	17.3	14.6 - 20.5	200	5.6	4.1 - 7.7	2,300	54.0	50.2 - 57.7	4,300
Native Hawaiian	400	7.9	6.2 - 10.0	1,700	31.3	28.3 - 34.4	1,000	18.9	16.4 - 21.7	300	5.7	4.3 - 7.4	2,000	36.3	33.2 - 39.5	5,400
Chinese	100	7.1	3.3 - 14.6	300	33.4	25.0 - 42.9	100	11.6	6.7 - 19.1	<50	3.6	1.4 - 8.9	300	44.3	35.1 - 54.0	800
Filipino	200	5.7	4.0 - 8.0	1,300	40.6	36.4 - 45.0	600	19.8	16.5 - 23.5	100	3.5	2.3 - 5.3	1,000	30.4	26.5 - 34.6	3,200
Japanese	<50	1.1	0.4 - 2.9	700	43.3	37.4 - 49.5	200	13.3	9.5 - 18.2	<50	1.7	0.7 - 3.7	700	40.6	34.8 - 46.8	1,700
Other	200	7.4	5.0 - 11.0	700	27.5	23.1 - 32.4	400	15.5	11.9 - 19.8	100	4.1	2.4 - 6.8	1,200	45.5	40.4 - 50.8	2,600

PRAMS Age Group	Never breastfed			Breastfed <1 week			Breastfed 1-4 weeks			Breastfed 5-8 weeks			Breastfed 9+ weeks			Weighted Total Responses (3-Yr Avg)
	#	%	C.I.(95%)	#	%	C.I.(95%)	#	%	C.I.(95%)	#	%	C.I.(95%)	#	%	C.I.(95%)	#
<20	100	6.2	3.4 - 11.0	400	32.4	26.5 - 38.9	300	23.8	18.4 - 30.2	<50	3.1	1.6 - 6.2	400	34.5	28.4 - 41.2	1,300
20-24	300	7.4	5.5 - 9.8	1,200	29.4	26.0 - 33.1	900	21.1	18.0 - 24.6	200	5.1	3.6 - 7.2	1,600	37.0	33.3 - 40.8	4,200
25-34	500	5.5	4.4 - 6.9	2,700	28.7	26.5 - 31.1	1,500	16.2	14.3 - 18.2	400	4.8	3.8 - 6.0	4,200	44.8	42.3 - 47.4	9,300
35+	100	4.4	2.9 - 6.7	1,200	37.6	33.4 - 42.0	400	13.1	10.4 - 16.4	100	3.7	2.4 - 5.7	1,300	41.2	36.9 - 45.6	3,100

**PRAMS Health Indicator 3-Year Aggregate Report - Breastfeeding (exclusive) duration (grouped)- by State;County;DOH Race-Ethnicity;PRAMS Age Group;Infant Gender;Married;Poverty Level;Income (2000-2003);Income (2004-2011);Birthweight;Smoke 3rd Trimester;Smoke Before Pregnant;WIC During Pregnancy, for the Year(s)
2000-2002;2001-2003;2002-2004;2003-2005;2004-2006;2005-2007;2006-2008;2007-2009;2008-2010;2009-2011;2010-2012;2011-2013**

Note: Weighted counts (#) represent 3-yr averages, rounded to the nearest hundred; n/r (Not Reportable) - If the unweighted total responses for a dimension (row) is <30 that row will not be shown

Years: 2009-2011

Infant Gender	Never breastfed			Breastfed <1 week			Breastfed 1-4 weeks			Breastfed 5-8 weeks			Breastfed 9+ weeks			Weighted Total Responses (3-Yr Avg)
	#	%	C.I.(95%)	#	%	C.I.(95%)	#	%	C.I.(95%)	#	%	C.I.(95%)	#	%	C.I.(95%)	#
Male	600	6.0	4.8 - 7.5	2,800	30.4	28.1 - 32.8	1,600	17.8	15.9 - 19.9	400	4.5	3.6 - 5.7	3,800	41.3	38.7 - 43.8	9,200
Female	500	5.5	4.4 - 7.0	2,700	31.0	28.6 - 33.5	1,500	16.9	14.9 - 19.0	400	4.6	3.6 - 5.9	3,600	41.9	39.3 - 44.6	8,700

Married	Never breastfed			Breastfed <1 week			Breastfed 1-4 weeks			Breastfed 5-8 weeks			Breastfed 9+ weeks			Weighted Total Responses (3-Yr Avg)
	#	%	C.I.(95%)	#	%	C.I.(95%)	#	%	C.I.(95%)	#	%	C.I.(95%)	#	%	C.I.(95%)	#
Yes	500	4.2	3.3 - 5.4	3,200	29.0	26.9 - 31.2	1,700	15.9	14.2 - 17.7	500	4.5	3.6 - 5.6	5,100	46.4	44.0 - 48.8	11,000
No	600	8.3	6.7 - 10.2	2,300	33.4	30.7 - 36.2	1,400	19.7	17.4 - 22.2	300	4.7	3.6 - 6.1	2,300	33.9	31.2 - 36.7	6,900

Poverty Level	Never breastfed			Breastfed <1 week			Breastfed 1-4 weeks			Breastfed 5-8 weeks			Breastfed 9+ weeks			Weighted Total Responses (3-Yr Avg)
	#	%	C.I.(95%)	#	%	C.I.(95%)	#	%	C.I.(95%)	#	%	C.I.(95%)	#	%	C.I.(95%)	#
0-130%	500	7.9	6.3 - 9.9	2,100	33.2	30.3 - 36.2	1,200	18.5	16.2 - 21.1	200	3.6	2.6 - 4.8	2,300	36.8	33.8 - 39.8	6,300
131-185%	100	5.2	3.3 - 8.0	800	28.8	24.6 - 33.3	500	18.1	14.7 - 22.1	200	6.4	4.4 - 9.1	1,200	41.6	36.9 - 46.4	2,800
186+%	300	3.4	2.4 - 4.7	2,300	30.0	27.4 - 32.7	1,200	16.0	13.9 - 18.2	400	4.9	3.8 - 6.4	3,500	45.8	42.9 - 48.7	7,600

**PRAMS Health Indicator 3-Year Aggregate Report - Breastfeeding (exclusive) duration (grouped)- by State;County;DOH Race-Ethnicity;PRAMS Age Group;Infant Gender;Married;Poverty Level;Income (2000-2003);Income (2004-2011);Birthweight;Smoke 3rd Trimester;Smoke Before Pregnant;WIC During Pregnancy, for the Year(s)
2000-2002;2001-2003;2002-2004;2003-2005;2004-2006;2005-2007;2006-2008;2007-2009;2008-2010;2009-2011;2010-2012;2011-2013**

Note: Weighted counts (#) represent 3-yr averages, rounded to the nearest hundred; n/r (Not Reportable) - If the unweighted total responses for a dimension (row) is <30 that row will not be shown

Years: 2009-2011

Income (2004-2011)	Never breastfed			Breastfed <1 week			Breastfed 1-4 weeks			Breastfed 5-8 weeks			Breastfed 9+ weeks			Weighted Total Responses (3-Yr Avg)
	#	%	C.I.(95%)	#	%	C.I.(95%)	#	%	C.I.(95%)	#	%	C.I.(95%)	#	%	C.I.(95%)	#
<\$10,000	200	7.3	5.3 - 10.0	1,000	33.3	29.2 - 37.6	700	21.3	17.8 - 25.2	100	2.9	1.8 - 4.7	1,100	35.2	31.1 - 39.5	3,100
\$10,000-\$24,999	300	8.3	6.1 - 11.2	1,100	32.5	28.8 - 36.5	600	18.1	15.1 - 21.6	200	4.8	3.4 - 6.7	1,300	36.4	32.4 - 40.5	3,400
\$25,000-\$49,999	200	5.6	4.0 - 7.8	1,200	27.9	24.5 - 31.5	700	17.0	14.3 - 20.2	200	5.0	3.6 - 7.0	1,900	44.4	40.6 - 48.3	4,200
>=\$50,000	200	2.8	1.9 - 4.2	1,900	31.1	28.2 - 34.2	900	15.0	12.8 - 17.5	300	5.2	3.9 - 6.9	2,800	45.9	42.7 - 49.2	6,000

Birthweight	Never breastfed			Breastfed <1 week			Breastfed 1-4 weeks			Breastfed 5-8 weeks			Breastfed 9+ weeks			Weighted Total Responses (3-Yr Avg)
	#	%	C.I.(95%)	#	%	C.I.(95%)	#	%	C.I.(95%)	#	%	C.I.(95%)	#	%	C.I.(95%)	#
Low birth weight	100	7.0	5.5 - 8.9	500	42.8	39.7 - 46.0	200	14.3	12.2 - 16.7	100	4.4	3.3 - 5.9	400	31.4	28.5 - 34.4	1,200
Normal birth weight	1,000	5.7	4.8 - 6.8	5,000	29.8	28.0 - 31.7	2,900	17.6	16.1 - 19.2	800	4.6	3.8 - 5.5	7,100	42.3	40.4 - 44.3	16,700

Smoke 3rd Trimester	Never breastfed			Breastfed <1 week			Breastfed 1-4 weeks			Breastfed 5-8 weeks			Breastfed 9+ weeks			Weighted Total Responses (3-Yr Avg)
	#	%	C.I.(95%)	#	%	C.I.(95%)	#	%	C.I.(95%)	#	%	C.I.(95%)	#	%	C.I.(95%)	#
Yes	200	17.1	12.3 - 23.2	500	36.0	29.7 - 42.9	200	12.7	9.1 - 17.4	100	4.3	2.3 - 7.9	400	29.9	24.1 - 36.5	1,300
No	800	4.9	4.1 - 5.9	5,000	30.3	28.6 - 32.1	2,900	17.6	16.2 - 19.2	800	4.7	3.9 - 5.6	6,900	42.5	40.6 - 44.4	16,300

**PRAMS Health Indicator 3-Year Aggregate Report - Breastfeeding (exclusive) duration (grouped)- by State;County;DOH Race-Ethnicity;PRAMS Age Group;Infant Gender;Married;Poverty Level;Income (2000-2003);Income (2004-2011);Birthweight;Smoke 3rd Trimester;Smoke Before Pregnant;WIC During Pregnancy, for the Year(s)
2000-2002;2001-2003;2002-2004;2003-2005;2004-2006;2005-2007;2006-2008;2007-2009;2008-2010;2009-2011;2010-2012;2011-2013**

Note: Weighted counts (#) represent 3-yr averages, rounded to the nearest hundred; n/r (Not Reportable) - If the unweighted total responses for a dimension (row) is <30 that row will not be shown

Years: 2009-2011

Smoke Before Pregnant	Never breastfed			Breastfed <1 week			Breastfed 1-4 weeks			Breastfed 5-8 weeks			Breastfed 9+ weeks			Weighted Total Responses (3-Yr Avg)
	#	%	C.I.(95%)	#	%	C.I.(95%)	#	%	C.I.(95%)	#	%	C.I.(95%)	#	%	C.I.(95%)	#
Yes	400	10.1	7.8 - 13.0	1,300	33.9	30.2 - 37.9	600	16.3	13.6 - 19.5	200	5.1	3.6 - 7.1	1,300	34.5	30.8 - 38.5	3,700
No	600	4.6	3.8 - 5.7	4,200	29.9	28.0 - 31.9	2,400	17.5	15.9 - 19.2	600	4.5	3.7 - 5.5	6,100	43.4	41.3 - 45.5	14,000

WIC During Pregnancy	Never breastfed			Breastfed <1 week			Breastfed 1-4 weeks			Breastfed 5-8 weeks			Breastfed 9+ weeks			Weighted Total Responses (3-Yr Avg)
	#	%	C.I.(95%)	#	%	C.I.(95%)	#	%	C.I.(95%)	#	%	C.I.(95%)	#	%	C.I.(95%)	#
Yes	600	7.5	6.1 - 9.2	2,500	32.3	29.7 - 35.0	1,400	17.6	15.6 - 19.9	400	4.7	3.6 - 5.9	2,900	37.9	35.2 - 40.7	7,700
No	400	4.5	3.5 - 5.8	2,900	29.5	27.3 - 31.9	1,700	17.2	15.3 - 19.3	400	4.5	3.6 - 5.7	4,400	44.3	41.8 - 46.8	9,900

**PRAMS Health Indicator 3-Year Aggregate Report - Breastfeeding (exclusive) duration (grouped)- by State;County;DOH Race-Ethnicity;PRAMS Age Group;Infant Gender;Married;Poverty Level;Income (2000-2003);Income (2004-2011);Birthweight;Smoke 3rd Trimester;Smoke Before Pregnant;WIC During Pregnancy, for the Year(s)
2000-2002;2001-2003;2002-2004;2003-2005;2004-2006;2005-2007;2006-2008;2007-2009;2008-2010;2009-2011;2010-2012;2011-2013**

Note: Weighted counts (#) represent 3-yr averages, rounded to the nearest hundred; n/r (Not Reportable) - If the unweighted total responses for a dimension (row) is <30 that row will not be shown

Years: 2008-2010

State	Never breastfed			Breastfed <1 week			Breastfed 1-4 weeks			Breastfed 5-8 weeks			Breastfed 9+ weeks			Weighted Total Responses (3-Yr Avg)
	#	%	C.I.(95%)	#	%	C.I.(95%)	#	%	C.I.(95%)	#	%	C.I.(95%)	#	%	C.I.(95%)	#
Totals	1,200	6.9	6.1 - 7.9	5,800	32.6	31.0 - 34.2	3,100	17.3	16.1 - 18.7	800	4.3	3.7 - 5.1	7,000	38.8	37.2 - 40.5	17,900

County	Never breastfed			Breastfed <1 week			Breastfed 1-4 weeks			Breastfed 5-8 weeks			Breastfed 9+ weeks			Weighted Total Responses (3-Yr Avg)
	#	%	C.I.(95%)	#	%	C.I.(95%)	#	%	C.I.(95%)	#	%	C.I.(95%)	#	%	C.I.(95%)	#
Hawaii	200	8.0	6.2 - 10.2	700	29.9	26.9 - 33.1	400	17.0	14.6 - 19.6	100	4.2	3.1 - 5.6	900	40.9	37.7 - 44.3	2,300
Honolulu	900	7.2	6.1 - 8.5	4,300	33.5	31.5 - 35.6	2,200	17.1	15.4 - 18.9	600	4.4	3.5 - 5.4	4,800	37.8	35.7 - 40.0	12,800
Kauai	<50	3.6	2.2 - 5.8	200	25.5	21.4 - 30.0	200	20.5	16.8 - 24.9	<50	5.3	3.6 - 7.7	400	45.1	40.5 - 49.8	800
Maui	100	5.1	3.7 - 7.1	700	32.5	29.5 - 35.7	400	18.2	15.7 - 20.9	100	3.8	2.7 - 5.3	800	40.5	37.3 - 43.7	2,000

PRAMS Health Indicator 3-Year Aggregate Report - Breastfeeding (exclusive) duration (grouped)- by State;County;DOH Race-Ethnicity;PRAMS Age Group;Infant Gender;Married;Poverty Level;Income (2000-2003);Income (2004-2011);Birthweight;Smoke 3rd Trimester;Smoke Before Pregnant;WIC During Pregnancy, for the Year(s) 2000-2002;2001-2003;2002-2004;2003-2005;2004-2006;2005-2007;2006-2008;2007-2009;2008-2010;2009-2011;2010-2012;2011-2013

Note: Weighted counts (#) represent 3-yr averages, rounded to the nearest hundred; n/r (Not Reportable) - If the unweighted total responses for a dimension (row) is <30 that row will not be shown

Years: 2008-2010

DOH Race-Ethnicity	Never breastfed			Breastfed <1 week			Breastfed 1-4 weeks			Breastfed 5-8 weeks			Breastfed 9+ weeks			Weighted Total Responses (3-Yr Avg)
	#	%	C.I.(95%)	#	%	C.I.(95%)	#	%	C.I.(95%)	#	%	C.I.(95%)	#	%	C.I.(95%)	#
Caucasian	200	4.5	3.2 - 6.4	800	19.8	17.3 - 22.7	700	17.2	14.7 - 20.1	300	6.2	4.7 - 8.2	2,200	52.1	48.7 - 55.6	4,300
Native Hawaiian	500	9.2	7.5 - 11.3	1,800	33.0	30.1 - 36.0	1,000	18.0	15.7 - 20.6	300	5.1	3.9 - 6.7	1,900	34.7	31.7 - 37.7	5,400
Chinese	<50	4.9	2.0 - 11.8	200	34.5	27.0 - 42.8	100	15.7	10.8 - 22.5	<50	3.8	1.5 - 9.3	300	41.0	32.8 - 49.8	700
Filipino	200	6.8	5.1 - 9.0	1,400	43.5	39.7 - 47.5	600	18.8	15.9 - 22.2	100	2.3	1.4 - 3.9	900	28.5	25.1 - 32.3	3,200
Japanese	<50	1.5	0.7 - 3.2	800	45.4	40.1 - 50.8	200	14.2	10.9 - 18.3	<50	2.1	1.2 - 3.9	600	36.8	31.7 - 42.1	1,800
Other	300	10.3	7.7 - 13.6	800	30.1	26.0 - 34.4	400	16.9	13.6 - 20.9	100	3.6	2.1 - 6.0	1,000	39.1	34.7 - 43.7	2,600

PRAMS Age Group	Never breastfed			Breastfed <1 week			Breastfed 1-4 weeks			Breastfed 5-8 weeks			Breastfed 9+ weeks			Weighted Total Responses (3-Yr Avg)
	#	%	C.I.(95%)	#	%	C.I.(95%)	#	%	C.I.(95%)	#	%	C.I.(95%)	#	%	C.I.(95%)	#
<20	100	7.4	4.7 - 11.3	500	32.4	27.1 - 38.3	300	21.5	16.7 - 27.2	<50	3.2	1.7 - 6.2	500	35.5	29.8 - 41.5	1,400
20-24	300	8.3	6.4 - 10.6	1,300	30.6	27.3 - 34.0	800	20.1	17.3 - 23.3	200	4.9	3.5 - 6.7	1,500	36.2	32.7 - 39.7	4,100
25-34	600	6.7	5.6 - 8.1	2,800	31.0	28.9 - 33.2	1,500	16.3	14.6 - 18.1	400	4.5	3.6 - 5.6	3,800	41.5	39.2 - 43.9	9,200
35+	200	5.5	3.8 - 7.7	1,300	39.8	36.0 - 43.8	500	15.1	12.5 - 18.1	100	3.6	2.4 - 5.3	1,200	36.0	32.3 - 39.9	3,200

PRAMS Health Indicator 3-Year Aggregate Report - Breastfeeding (exclusive) duration (grouped)- by State;County;DOH Race-Ethnicity;PRAMS Age Group;Infant Gender;Married;Poverty Level;Income (2000-2003);Income (2004-2011);Birthweight;Smoke 3rd Trimester;Smoke Before Pregnant;WIC During Pregnancy, for the Year(s) 2000-2002;2001-2003;2002-2004;2003-2005;2004-2006;2005-2007;2006-2008;2007-2009;2008-2010;2009-2011;2010-2012;2011-2013

Note: Weighted counts (#) represent 3-yr averages, rounded to the nearest hundred; n/r (Not Reportable) - If the unweighted total responses for a dimension (row) is <30 that row will not be shown

Years: 2008-2010

Infant Gender	Never breastfed			Breastfed <1 week			Breastfed 1-4 weeks			Breastfed 5-8 weeks			Breastfed 9+ weeks			Weighted Total Responses (3-Yr Avg)
	#	%	C.I.(95%)	#	%	C.I.(95%)	#	%	C.I.(95%)	#	%	C.I.(95%)	#	%	C.I.(95%)	#
Male	600	7.0	5.8 - 8.4	3,000	32.4	30.3 - 34.7	1,700	17.9	16.2 - 19.8	400	4.6	3.7 - 5.7	3,500	38.1	35.8 - 40.4	9,300
Female	600	6.8	5.7 - 8.2	2,800	32.7	30.5 - 35.1	1,400	16.7	14.9 - 18.7	300	4.0	3.2 - 5.1	3,400	39.6	37.2 - 42.1	8,600

Married	Never breastfed			Breastfed <1 week			Breastfed 1-4 weeks			Breastfed 5-8 weeks			Breastfed 9+ weeks			Weighted Total Responses (3-Yr Avg)
	#	%	C.I.(95%)	#	%	C.I.(95%)	#	%	C.I.(95%)	#	%	C.I.(95%)	#	%	C.I.(95%)	#
Yes	500	4.8	3.9 - 5.8	3,500	31.8	29.8 - 33.8	1,800	16.0	14.5 - 17.7	500	4.3	3.4 - 5.3	4,700	43.1	41.0 - 45.3	11,000
No	700	10.3	8.7 - 12.2	2,300	33.9	31.3 - 36.5	1,300	19.4	17.3 - 21.7	300	4.4	3.4 - 5.7	2,200	32.0	29.5 - 34.6	6,900

Poverty Level	Never breastfed			Breastfed <1 week			Breastfed 1-4 weeks			Breastfed 5-8 weeks			Breastfed 9+ weeks			Weighted Total Responses (3-Yr Avg)
	#	%	C.I.(95%)	#	%	C.I.(95%)	#	%	C.I.(95%)	#	%	C.I.(95%)	#	%	C.I.(95%)	#
0-130%	600	9.8	8.2 - 11.7	2,200	34.6	31.9 - 37.4	1,100	17.5	15.4 - 19.8	200	3.5	2.6 - 4.7	2,200	34.6	31.9 - 37.4	6,400
131-185%	200	6.9	4.9 - 9.6	800	30.7	26.7 - 35.0	500	18.1	15.0 - 21.8	200	5.8	4.0 - 8.4	1,100	38.5	34.3 - 42.9	2,800
186+%	300	3.6	2.7 - 4.8	2,400	31.7	29.4 - 34.1	1,300	16.8	14.9 - 18.9	300	4.6	3.6 - 5.9	3,200	43.3	40.7 - 45.9	7,500

**PRAMS Health Indicator 3-Year Aggregate Report - Breastfeeding (exclusive) duration (grouped)- by State;County;DOH Race-Ethnicity;PRAMS Age Group;Infant Gender;Married;Poverty Level;Income (2000-2003);Income (2004-2011);Birthweight;Smoke 3rd Trimester;Smoke Before Pregnant;WIC During Pregnancy, for the Year(s)
2000-2002;2001-2003;2002-2004;2003-2005;2004-2006;2005-2007;2006-2008;2007-2009;2008-2010;2009-2011;2010-2012;2011-2013**

Note: Weighted counts (#) represent 3-yr averages, rounded to the nearest hundred; n/r (Not Reportable) - If the unweighted total responses for a dimension (row) is <30 that row will not be shown

Years: 2008-2010

Income (2004-2011)	Never breastfed			Breastfed <1 week			Breastfed 1-4 weeks			Breastfed 5-8 weeks			Breastfed 9+ weeks			Weighted Total Responses (3-Yr Avg)
	#	%	C.I.(95%)	#	%	C.I.(95%)	#	%	C.I.(95%)	#	%	C.I.(95%)	#	%	C.I.(95%)	#
<\$10,000	300	9.6	7.4 - 12.3	1,100	35.0	31.1 - 39.2	600	19.0	15.9 - 22.7	100	2.6	1.6 - 4.3	1,000	33.7	29.9 - 37.7	3,100
\$10,000-\$24,999	400	9.7	7.6 - 12.4	1,200	34.0	30.6 - 37.7	600	16.8	14.2 - 19.7	200	4.9	3.6 - 6.8	1,200	34.5	31.0 - 38.2	3,600
\$25,000-\$49,999	300	6.2	4.7 - 8.2	1,200	30.3	27.1 - 33.7	700	17.8	15.2 - 20.7	200	5.3	3.8 - 7.2	1,600	40.4	36.9 - 43.9	4,100
>=\$50,000	200	3.4	2.4 - 4.7	1,900	32.3	29.7 - 35.1	1,000	16.4	14.3 - 18.7	300	4.4	3.2 - 5.8	2,600	43.6	40.7 - 46.5	6,000

Birthweight	Never breastfed			Breastfed <1 week			Breastfed 1-4 weeks			Breastfed 5-8 weeks			Breastfed 9+ weeks			Weighted Total Responses (3-Yr Avg)
	#	%	C.I.(95%)	#	%	C.I.(95%)	#	%	C.I.(95%)	#	%	C.I.(95%)	#	%	C.I.(95%)	#
Low birth weight	100	8.1	6.2 - 10.7	500	44.0	40.1 - 48.1	200	14.8	12.2 - 17.9	100	4.3	3.0 - 6.1	400	28.7	25.3 - 32.4	1,200
Normal birth weight	1,100	6.8	5.9 - 7.8	5,300	31.7	30.1 - 33.4	2,900	17.5	16.2 - 19.0	700	4.3	3.6 - 5.1	6,600	39.6	37.8 - 41.4	16,700

Smoke 3rd Trimester	Never breastfed			Breastfed <1 week			Breastfed 1-4 weeks			Breastfed 5-8 weeks			Breastfed 9+ weeks			Weighted Total Responses (3-Yr Avg)
	#	%	C.I.(95%)	#	%	C.I.(95%)	#	%	C.I.(95%)	#	%	C.I.(95%)	#	%	C.I.(95%)	#
Yes	300	18.1	13.8 - 23.5	500	35.4	29.7 - 41.4	200	14.7	11.2 - 19.0	100	3.3	2.0 - 5.5	400	28.6	23.3 - 34.4	1,500
No	900	5.9	5.1 - 6.8	5,200	32.3	30.7 - 34.0	2,800	17.7	16.3 - 19.1	700	4.5	3.8 - 5.3	6,400	39.6	37.9 - 41.4	16,100

**PRAMS Health Indicator 3-Year Aggregate Report - Breastfeeding (exclusive) duration (grouped)- by State;County;DOH Race-Ethnicity;PRAMS Age Group;Infant Gender;Married;Poverty Level;Income (2000-2003);Income (2004-2011);Birthweight;Smoke 3rd Trimester;Smoke Before Pregnant;WIC During Pregnancy, for the Year(s)
2000-2002;2001-2003;2002-2004;2003-2005;2004-2006;2005-2007;2006-2008;2007-2009;2008-2010;2009-2011;2010-2012;2011-2013**

Note: Weighted counts (#) represent 3-yr averages, rounded to the nearest hundred; n/r (Not Reportable) - If the unweighted total responses for a dimension (row) is <30 that row will not be shown

Years: 2008-2010

Smoke Before Pregnant	Never breastfed			Breastfed <1 week			Breastfed 1-4 weeks			Breastfed 5-8 weeks			Breastfed 9+ weeks			Weighted Total Responses (3-Yr Avg)
	#	%	C.I.(95%)	#	%	C.I.(95%)	#	%	C.I.(95%)	#	%	C.I.(95%)	#	%	C.I.(95%)	#
Yes	400	12.1	9.7 - 14.9	1,300	34.4	30.9 - 38.2	600	17.0	14.4 - 20.0	200	4.8	3.5 - 6.5	1,200	31.6	28.2 - 35.3	3,700
No	800	5.6	4.7 - 6.6	4,500	32.1	30.4 - 33.9	2,400	17.5	16.1 - 19.1	600	4.3	3.5 - 5.2	5,700	40.5	38.6 - 42.4	14,000

WIC During Pregnancy	Never breastfed			Breastfed <1 week			Breastfed 1-4 weeks			Breastfed 5-8 weeks			Breastfed 9+ weeks			Weighted Total Responses (3-Yr Avg)
	#	%	C.I.(95%)	#	%	C.I.(95%)	#	%	C.I.(95%)	#	%	C.I.(95%)	#	%	C.I.(95%)	#
Yes	700	9.4	8.0 - 11.1	2,500	33.9	31.4 - 36.4	1,300	17.1	15.2 - 19.1	300	4.4	3.5 - 5.7	2,700	35.2	32.7 - 37.8	7,500
No	500	5.1	4.1 - 6.3	3,200	31.8	29.7 - 33.9	1,800	17.6	15.9 - 19.5	400	4.3	3.5 - 5.4	4,100	41.2	38.9 - 43.4	10,100

**PRAMS Health Indicator 3-Year Aggregate Report - Breastfeeding (exclusive) duration (grouped)- by State;County;DOH Race-Ethnicity;PRAMS Age Group;Infant Gender;Married;Poverty Level;Income (2000-2003);Income (2004-2011);Birthweight;Smoke 3rd Trimester;Smoke Before Pregnant;WIC During Pregnancy, for the Year(s)
2000-2002;2001-2003;2002-2004;2003-2005;2004-2006;2005-2007;2006-2008;2007-2009;2008-2010;2009-2011;2010-2012;2011-2013**

Note: Weighted counts (#) represent 3-yr averages, rounded to the nearest hundred; n/r (Not Reportable) - If the unweighted total responses for a dimension (row) is <30 that row will not be shown

Years: 2007-2009

State	Never breastfed			Breastfed <1 week			Breastfed 1-4 weeks			Breastfed 5-8 weeks			Breastfed 9+ weeks			Weighted Total Responses (3-Yr Avg)
	#	%	C.I.(95%)	#	%	C.I.(95%)	#	%	C.I.(95%)	#	%	C.I.(95%)	#	%	C.I.(95%)	#
Totals	1,300	7.4	6.6 - 8.3	6,300	35.5	34.0 - 36.9	3,100	17.2	16.1 - 18.4	700	3.8	3.2 - 4.4	6,400	36.2	34.7 - 37.7	17,800

County	Never breastfed			Breastfed <1 week			Breastfed 1-4 weeks			Breastfed 5-8 weeks			Breastfed 9+ weeks			Weighted Total Responses (3-Yr Avg)
	#	%	C.I.(95%)	#	%	C.I.(95%)	#	%	C.I.(95%)	#	%	C.I.(95%)	#	%	C.I.(95%)	#
Hawaii	200	9.9	7.8 - 12.5	700	30.6	27.4 - 34.1	400	15.2	12.7 - 18.0	100	3.3	2.3 - 4.7	1,000	41.0	37.4 - 44.6	2,300
Honolulu	900	7.2	6.3 - 8.4	4,700	37.2	35.4 - 39.1	2,200	17.2	15.8 - 18.7	500	3.7	3.0 - 4.6	4,300	34.6	32.8 - 36.5	12,500
Kauai	100	6.1	3.7 - 9.8	200	22.1	17.8 - 27.1	200	23.6	19.1 - 28.8	<50	5.6	3.7 - 8.6	400	42.7	37.2 - 48.3	900
Maui	100	6.4	4.7 - 8.8	700	35.9	32.3 - 39.6	300	16.8	14.1 - 19.8	100	3.7	2.5 - 5.3	800	37.3	33.7 - 41.0	2,100

**PRAMS Health Indicator 3-Year Aggregate Report - Breastfeeding (exclusive) duration (grouped)- by State;County;DOH Race-Ethnicity;PRAMS Age Group;Infant Gender;Married;Poverty Level;Income (2000-2003);Income (2004-2011);Birthweight;Smoke 3rd Trimester;Smoke Before Pregnant;WIC During Pregnancy, for the Year(s)
2000-2002;2001-2003;2002-2004;2003-2005;2004-2006;2005-2007;2006-2008;2007-2009;2008-2010;2009-2011;2010-2012;2011-2013**

Note: Weighted counts (#) represent 3-yr averages, rounded to the nearest hundred; n/r (Not Reportable) - If the unweighted total responses for a dimension (row) is <30 that row will not be shown

Years: 2007-2009

DOH Race-Ethnicity	Never breastfed			Breastfed <1 week			Breastfed 1-4 weeks			Breastfed 5-8 weeks			Breastfed 9+ weeks			Weighted Total Responses (3-Yr Avg)
	#	%	C.I.(95%)	#	%	C.I.(95%)	#	%	C.I.(95%)	#	%	C.I.(95%)	#	%	C.I.(95%)	#
Caucasian	200	5.6	4.4 - 7.2	900	22.9	20.3 - 25.7	700	15.8	13.6 - 18.2	200	5.8	4.4 - 7.6	2,100	49.9	46.7 - 53.0	4,100
Native Hawaiian	500	9.7	8.0 - 11.8	1,800	34.5	31.7 - 37.4	1,000	20.2	17.8 - 22.7	200	4.0	3.0 - 5.4	1,600	31.6	28.8 - 34.5	5,200
Chinese	<50	6.0	2.8 - 12.6	300	40.6	33.9 - 47.6	100	17.4	13.1 - 22.7	<50	1.9	1.1 - 3.4	200	34.1	27.9 - 40.8	700
Filipino	200	6.9	5.3 - 8.8	1,500	45.7	42.2 - 49.2	600	17.2	14.7 - 20.0	100	2.1	1.4 - 3.1	900	28.1	25.0 - 31.5	3,200
Japanese	<50	2.3	1.3 - 4.3	1,000	50.5	45.9 - 55.1	300	13.9	11.0 - 17.4	<50	2.4	1.4 - 4.1	600	30.8	26.7 - 35.3	1,900
Other	300	10.4	8.1 - 13.2	900	32.6	28.9 - 36.6	400	15.9	13.1 - 19.1	100	3.5	2.1 - 5.7	1,000	37.7	33.8 - 41.7	2,700

PRAMS Age Group	Never breastfed			Breastfed <1 week			Breastfed 1-4 weeks			Breastfed 5-8 weeks			Breastfed 9+ weeks			Weighted Total Responses (3-Yr Avg)
	#	%	C.I.(95%)	#	%	C.I.(95%)	#	%	C.I.(95%)	#	%	C.I.(95%)	#	%	C.I.(95%)	#
<20	100	9.0	6.3 - 12.7	500	33.3	28.2 - 38.7	300	21.3	17.0 - 26.3	<50	3.0	1.5 - 5.6	500	33.5	28.3 - 39.1	1,600
20-24	400	9.0	7.3 - 11.1	1,400	33.0	29.9 - 36.1	800	20.4	17.8 - 23.2	200	4.4	3.2 - 6.0	1,400	33.3	30.3 - 36.4	4,100
25-34	700	7.3	6.2 - 8.6	3,100	34.5	32.5 - 36.5	1,400	15.6	14.1 - 17.2	300	3.8	3.0 - 4.7	3,500	38.9	36.8 - 41.0	9,000
35+	200	5.0	3.6 - 6.8	1,300	42.8	39.3 - 46.4	500	15.5	13.1 - 18.1	100	3.2	2.1 - 4.8	1,000	33.5	30.3 - 37.0	3,100

**PRAMS Health Indicator 3-Year Aggregate Report - Breastfeeding (exclusive) duration (grouped)- by State;County;DOH Race-Ethnicity;PRAMS Age Group;Infant Gender;Married;Poverty Level;Income (2000-2003);Income (2004-2011);Birthweight;Smoke 3rd Trimester;Smoke Before Pregnant;WIC During Pregnancy, for the Year(s)
2000-2002;2001-2003;2002-2004;2003-2005;2004-2006;2005-2007;2006-2008;2007-2009;2008-2010;2009-2011;2010-2012;2011-2013**

Note: Weighted counts (#) represent 3-yr averages, rounded to the nearest hundred; n/r (Not Reportable) - If the unweighted total responses for a dimension (row) is <30 that row will not be shown

Years: 2007-2009

Infant Gender	Never breastfed			Breastfed <1 week			Breastfed 1-4 weeks			Breastfed 5-8 weeks			Breastfed 9+ weeks			Weighted Total Responses (3-Yr Avg)
	#	%	C.I.(95%)	#	%	C.I.(95%)	#	%	C.I.(95%)	#	%	C.I.(95%)	#	%	C.I.(95%)	#
Male	700	7.3	6.2 - 8.5	3,200	34.7	32.7 - 36.8	1,700	18.6	16.9 - 20.3	300	3.6	2.8 - 4.5	3,400	35.9	33.9 - 38.0	9,300
Female	600	7.6	6.5 - 8.9	3,100	36.3	34.2 - 38.5	1,300	15.7	14.1 - 17.4	300	4.0	3.1 - 5.0	3,100	36.4	34.3 - 38.6	8,500

Married	Never breastfed			Breastfed <1 week			Breastfed 1-4 weeks			Breastfed 5-8 weeks			Breastfed 9+ weeks			Weighted Total Responses (3-Yr Avg)
	#	%	C.I.(95%)	#	%	C.I.(95%)	#	%	C.I.(95%)	#	%	C.I.(95%)	#	%	C.I.(95%)	#
Yes	600	5.5	4.7 - 6.5	3,800	34.9	33.1 - 36.8	1,700	15.8	14.4 - 17.2	400	3.8	3.1 - 4.7	4,400	40.0	38.1 - 41.9	11,000
No	700	10.5	9.0 - 12.3	2,500	36.3	33.8 - 38.8	1,300	19.4	17.4 - 21.6	300	3.7	2.8 - 4.7	2,100	30.1	27.8 - 32.5	6,900

Poverty Level	Never breastfed			Breastfed <1 week			Breastfed 1-4 weeks			Breastfed 5-8 weeks			Breastfed 9+ weeks			Weighted Total Responses (3-Yr Avg)
	#	%	C.I.(95%)	#	%	C.I.(95%)	#	%	C.I.(95%)	#	%	C.I.(95%)	#	%	C.I.(95%)	#
0-130%	700	11.0	9.4 - 12.8	2,400	36.5	34.0 - 39.1	1,100	17.0	15.2 - 19.1	200	3.3	2.5 - 4.3	2,100	32.2	29.8 - 34.7	6,500
131-185%	200	7.9	5.9 - 10.4	800	31.5	27.9 - 35.3	500	19.7	16.6 - 23.1	100	4.5	3.0 - 6.8	1,000	36.5	32.8 - 40.4	2,700
186+%	300	3.9	3.1 - 4.9	2,700	36.1	33.9 - 38.4	1,200	16.1	14.4 - 17.9	300	4.1	3.2 - 5.2	2,900	39.8	37.6 - 42.1	7,400

**PRAMS Health Indicator 3-Year Aggregate Report - Breastfeeding (exclusive) duration (grouped)- by State;County;DOH Race-Ethnicity;PRAMS Age Group;Infant Gender;Married;Poverty Level;Income (2000-2003);Income (2004-2011);Birthweight;Smoke 3rd Trimester;Smoke Before Pregnant;WIC During Pregnancy, for the Year(s)
2000-2002;2001-2003;2002-2004;2003-2005;2004-2006;2005-2007;2006-2008;2007-2009;2008-2010;2009-2011;2010-2012;2011-2013**

Note: Weighted counts (#) represent 3-yr averages, rounded to the nearest hundred; n/r (Not Reportable) - If the unweighted total responses for a dimension (row) is <30 that row will not be shown

Years: 2007-2009

Income (2004-2011)	Never breastfed			Breastfed <1 week			Breastfed 1-4 weeks			Breastfed 5-8 weeks			Breastfed 9+ weeks			Weighted Total Responses (3-Yr Avg)
	#	%	C.I.(95%)	#	%	C.I.(95%)	#	%	C.I.(95%)	#	%	C.I.(95%)	#	%	C.I.(95%)	#
<\$10,000	300	11.7	9.3 - 14.6	1,100	37.1	33.2 - 41.0	500	16.6	13.9 - 19.8	100	2.4	1.5 - 3.9	1,000	32.2	28.6 - 36.0	3,000
\$10,000-\$24,999	400	9.6	7.7 - 11.9	1,300	35.6	32.4 - 39.0	700	18.6	16.2 - 21.4	200	4.2	3.0 - 5.8	1,200	32.0	28.9 - 35.3	3,800
\$25,000-\$49,999	300	7.0	5.5 - 8.9	1,300	33.5	30.5 - 36.7	700	18.0	15.7 - 20.6	200	4.6	3.3 - 6.3	1,500	36.9	33.8 - 40.1	3,900
>=\$50,000	200	3.8	3.0 - 4.9	2,200	36.2	33.8 - 38.8	900	15.8	13.9 - 17.8	200	3.8	2.9 - 5.0	2,400	40.4	37.8 - 43.0	6,000

Birthweight	Never breastfed			Breastfed <1 week			Breastfed 1-4 weeks			Breastfed 5-8 weeks			Breastfed 9+ weeks			Weighted Total Responses (3-Yr Avg)
	#	%	C.I.(95%)	#	%	C.I.(95%)	#	%	C.I.(95%)	#	%	C.I.(95%)	#	%	C.I.(95%)	#
Low birth weight	100	8.7	6.4 - 11.8	600	44.6	40.1 - 49.2	200	17.5	14.2 - 21.4	100	4.2	2.8 - 6.4	300	24.9	21.1 - 29.1	1,300
Normal birth weight	1,200	7.3	6.5 - 8.3	5,700	34.7	33.2 - 36.3	2,800	17.2	16.0 - 18.4	600	3.7	3.1 - 4.4	6,100	37.0	35.5 - 38.6	16,500

Smoke 3rd Trimester	Never breastfed			Breastfed <1 week			Breastfed 1-4 weeks			Breastfed 5-8 weeks			Breastfed 9+ weeks			Weighted Total Responses (3-Yr Avg)
	#	%	C.I.(95%)	#	%	C.I.(95%)	#	%	C.I.(95%)	#	%	C.I.(95%)	#	%	C.I.(95%)	#
Yes	300	17.2	13.4 - 22.0	600	37.4	32.2 - 42.9	300	16.6	13.1 - 20.9	100	4.1	2.6 - 6.6	400	24.6	20.2 - 29.7	1,500
No	1,000	6.6	5.8 - 7.5	5,600	35.3	33.7 - 36.8	2,800	17.3	16.1 - 18.6	600	3.8	3.2 - 4.5	5,900	37.1	35.6 - 38.7	16,000

**PRAMS Health Indicator 3-Year Aggregate Report - Breastfeeding (exclusive) duration (grouped)- by State;County;DOH Race-Ethnicity;PRAMS Age Group;Infant Gender;Married;Poverty Level;Income (2000-2003);Income (2004-2011);Birthweight;Smoke 3rd Trimester;Smoke Before Pregnant;WIC During Pregnancy, for the Year(s)
2000-2002;2001-2003;2002-2004;2003-2005;2004-2006;2005-2007;2006-2008;2007-2009;2008-2010;2009-2011;2010-2012;2011-2013**

Note: Weighted counts (#) represent 3-yr averages, rounded to the nearest hundred; n/r (Not Reportable) - If the unweighted total responses for a dimension (row) is <30 that row will not be shown

Years: 2007-2009

Smoke Before Pregnant	Never breastfed			Breastfed <1 week			Breastfed 1-4 weeks			Breastfed 5-8 weeks			Breastfed 9+ weeks			Weighted Total Responses (3-Yr Avg)
	#	%	C.I.(95%)	#	%	C.I.(95%)	#	%	C.I.(95%)	#	%	C.I.(95%)	#	%	C.I.(95%)	#
Yes	500	13.3	11.0 - 16.1	1,300	35.2	31.9 - 38.7	700	18.3	15.9 - 21.1	200	4.8	3.5 - 6.5	1,000	28.4	25.3 - 31.7	3,600
No	800	6.0	5.2 - 6.9	5,000	35.5	33.9 - 37.2	2,400	16.9	15.6 - 18.3	500	3.5	2.9 - 4.3	5,300	38.0	36.3 - 39.7	13,900

WIC During Pregnancy	Never breastfed			Breastfed <1 week			Breastfed 1-4 weeks			Breastfed 5-8 weeks			Breastfed 9+ weeks			Weighted Total Responses (3-Yr Avg)
	#	%	C.I.(95%)	#	%	C.I.(95%)	#	%	C.I.(95%)	#	%	C.I.(95%)	#	%	C.I.(95%)	#
Yes	800	10.6	9.2 - 12.3	2,500	34.6	32.3 - 37.0	1,300	17.5	15.8 - 19.5	300	3.7	2.8 - 4.7	2,500	33.6	31.3 - 35.9	7,300
No	500	5.2	4.3 - 6.3	3,600	36.0	34.1 - 37.9	1,700	16.9	15.4 - 18.5	400	3.9	3.2 - 4.8	3,800	37.9	36.0 - 39.9	10,100

**PRAMS Health Indicator 3-Year Aggregate Report - Breastfeeding (exclusive) duration (grouped)- by State;County;DOH Race-Ethnicity;PRAMS Age Group;Infant Gender;Married;Poverty Level;Income (2000-2003);Income (2004-2011);Birthweight;Smoke 3rd Trimester;Smoke Before Pregnant;WIC During Pregnancy, for the Year(s)
2000-2002;2001-2003;2002-2004;2003-2005;2004-2006;2005-2007;2006-2008;2007-2009;2008-2010;2009-2011;2010-2012;2011-2013**

Note: Weighted counts (#) represent 3-yr averages, rounded to the nearest hundred; n/r (Not Reportable) - If the unweighted total responses for a dimension (row) is <30 that row will not be shown

Years: 2006-2008

State	Never breastfed			Breastfed <1 week			Breastfed 1-4 weeks			Breastfed 5-8 weeks			Breastfed 9+ weeks			Weighted Total Responses (3-Yr Avg)
	#	%	C.I.(95%)	#	%	C.I.(95%)	#	%	C.I.(95%)	#	%	C.I.(95%)	#	%	C.I.(95%)	#
Totals	1,400	7.9	7.1 - 8.7	6,100	34.6	33.3 - 35.9	3,200	17.9	16.9 - 19.0	600	3.5	3.0 - 4.0	6,400	36.1	34.8 - 37.4	17,700

County	Never breastfed			Breastfed <1 week			Breastfed 1-4 weeks			Breastfed 5-8 weeks			Breastfed 9+ weeks			Weighted Total Responses (3-Yr Avg)
	#	%	C.I.(95%)	#	%	C.I.(95%)	#	%	C.I.(95%)	#	%	C.I.(95%)	#	%	C.I.(95%)	#
Hawaii	200	9.8	7.6 - 12.6	700	29.1	25.5 - 32.9	400	15.7	13.0 - 19.0	100	2.7	1.7 - 4.2	1,000	42.7	38.8 - 46.8	2,300
Honolulu	900	7.5	6.7 - 8.5	4,700	37.0	35.5 - 38.6	2,200	17.8	16.6 - 19.1	400	3.5	2.9 - 4.2	4,300	34.1	32.6 - 35.7	12,600
Kauai	100	6.7	4.0 - 11.0	200	19.3	14.8 - 24.8	200	24.1	19.0 - 30.0	<50	5.0	2.8 - 8.6	400	44.9	38.6 - 51.3	900
Maui	200	8.6	6.4 - 11.4	600	32.3	28.4 - 36.4	400	18.4	15.3 - 22.0	100	3.6	2.3 - 5.6	700	37.1	33.1 - 41.4	2,000

PRAMS Health Indicator 3-Year Aggregate Report - Breastfeeding (exclusive) duration (grouped)- by State;County;DOH Race-Ethnicity;PRAMS Age Group;Infant Gender;Married;Poverty Level;Income (2000-2003);Income (2004-2011);Birthweight;Smoke 3rd Trimester;Smoke Before Pregnant;WIC During Pregnancy, for the Year(s) 2000-2002;2001-2003;2002-2004;2003-2005;2004-2006;2005-2007;2006-2008;2007-2009;2008-2010;2009-2011;2010-2012;2011-2013

Note: Weighted counts (#) represent 3-yr averages, rounded to the nearest hundred; n/r (Not Reportable) - If the unweighted total responses for a dimension (row) is <30 that row will not be shown

Years: 2006-2008

DOH Race-Ethnicity	Never breastfed			Breastfed <1 week			Breastfed 1-4 weeks			Breastfed 5-8 weeks			Breastfed 9+ weeks			Weighted Total Responses (3-Yr Avg)
	#	%	C.I.(95%)	#	%	C.I.(95%)	#	%	C.I.(95%)	#	%	C.I.(95%)	#	%	C.I.(95%)	#
Caucasian	300	7.1	5.8 - 8.8	900	22.2	19.9 - 24.7	700	16.0	14.0 - 18.2	200	5.7	4.5 - 7.2	2,000	49.0	46.1 - 51.9	4,200
Native Hawaiian	500	9.5	7.9 - 11.3	1,700	34.0	31.3 - 36.8	1,000	21.2	18.9 - 23.7	200	3.1	2.3 - 4.3	1,600	32.2	29.6 - 35.0	4,900
Chinese	<50	2.4	1.4 - 4.1	200	40.5	36.6 - 44.4	100	20.9	17.8 - 24.3	<50	2.6	1.6 - 4.2	200	33.7	30.1 - 37.6	600
Filipino	200	7.7	6.2 - 9.5	1,400	43.5	40.4 - 46.6	600	17.2	15.0 - 19.7	100	2.9	2.0 - 4.1	900	28.7	26.0 - 31.6	3,200
Japanese	100	3.6	2.2 - 5.7	1,000	49.7	45.7 - 53.8	300	15.6	12.8 - 18.8	<50	2.3	1.4 - 3.8	600	28.7	25.2 - 32.6	2,000
Other	300	10.9	8.7 - 13.5	900	31.9	28.6 - 35.4	500	17.0	14.4 - 19.9	100	2.5	1.6 - 4.0	1,100	37.7	34.3 - 41.3	2,800

PRAMS Age Group	Never breastfed			Breastfed <1 week			Breastfed 1-4 weeks			Breastfed 5-8 weeks			Breastfed 9+ weeks			Weighted Total Responses (3-Yr Avg)
	#	%	C.I.(95%)	#	%	C.I.(95%)	#	%	C.I.(95%)	#	%	C.I.(95%)	#	%	C.I.(95%)	#
<20	100	10.0	7.2 - 13.7	500	31.4	26.7 - 36.5	300	22.8	18.6 - 27.5	<50	2.0	0.9 - 4.2	500	33.9	29.0 - 39.1	1,500
20-24	400	9.6	8.0 - 11.6	1,400	33.0	30.2 - 35.9	800	20.0	17.7 - 22.5	200	4.0	3.0 - 5.4	1,400	33.4	30.6 - 36.3	4,200
25-34	600	7.2	6.2 - 8.4	3,000	34.5	32.6 - 36.3	1,500	16.4	15.0 - 18.0	300	3.6	2.9 - 4.4	3,400	38.3	36.4 - 40.2	8,800
35+	200	6.5	5.0 - 8.4	1,200	38.7	35.7 - 41.8	500	17.1	14.9 - 19.6	100	3.2	2.3 - 4.6	1,100	34.4	31.5 - 37.4	3,200

**PRAMS Health Indicator 3-Year Aggregate Report - Breastfeeding (exclusive) duration (grouped)- by State;County;DOH Race-Ethnicity;PRAMS Age Group;Infant Gender;Married;Poverty Level;Income (2000-2003);Income (2004-2011);Birthweight;Smoke 3rd Trimester;Smoke Before Pregnant;WIC During Pregnancy, for the Year(s)
2000-2002;2001-2003;2002-2004;2003-2005;2004-2006;2005-2007;2006-2008;2007-2009;2008-2010;2009-2011;2010-2012;2011-2013**

Note: Weighted counts (#) represent 3-yr averages, rounded to the nearest hundred; n/r (Not Reportable) - If the unweighted total responses for a dimension (row) is <30 that row will not be shown

Years: 2006-2008

Infant Gender	Never breastfed			Breastfed <1 week			Breastfed 1-4 weeks			Breastfed 5-8 weeks			Breastfed 9+ weeks			Weighted Total Responses (3-Yr Avg)
	#	%	C.I.(95%)	#	%	C.I.(95%)	#	%	C.I.(95%)	#	%	C.I.(95%)	#	%	C.I.(95%)	#
Male	700	7.2	6.3 - 8.4	3,200	34.4	32.6 - 36.2	1,800	19.3	17.8 - 20.9	300	3.6	3.0 - 4.4	3,300	35.5	33.7 - 37.4	9,200
Female	700	8.6	7.5 - 9.9	3,000	34.9	33.0 - 36.8	1,400	16.5	15.0 - 18.1	300	3.3	2.7 - 4.1	3,100	36.7	34.8 - 38.7	8,600

Married	Never breastfed			Breastfed <1 week			Breastfed 1-4 weeks			Breastfed 5-8 weeks			Breastfed 9+ weeks			Weighted Total Responses (3-Yr Avg)
	#	%	C.I.(95%)	#	%	C.I.(95%)	#	%	C.I.(95%)	#	%	C.I.(95%)	#	%	C.I.(95%)	#
Yes	700	6.7	5.8 - 7.6	3,900	35.1	33.5 - 36.7	1,900	16.6	15.4 - 17.9	400	3.4	2.8 - 4.1	4,300	38.2	36.6 - 39.9	11,200
No	700	10.0	8.6 - 11.6	2,200	33.8	31.5 - 36.1	1,300	20.2	18.3 - 22.3	200	3.6	2.8 - 4.7	2,100	32.4	30.1 - 34.7	6,600

Poverty Level	Never breastfed			Breastfed <1 week			Breastfed 1-4 weeks			Breastfed 5-8 weeks			Breastfed 9+ weeks			Weighted Total Responses (3-Yr Avg)
	#	%	C.I.(95%)	#	%	C.I.(95%)	#	%	C.I.(95%)	#	%	C.I.(95%)	#	%	C.I.(95%)	#
0-130%	700	11.2	9.8 - 12.9	2,200	33.9	31.7 - 36.3	1,200	19.2	17.4 - 21.2	200	3.0	2.3 - 4.0	2,100	32.6	30.3 - 34.9	6,400
131-185%	200	9.4	7.4 - 11.9	800	31.4	28.1 - 35.0	500	18.3	15.6 - 21.4	100	3.5	2.3 - 5.2	900	37.4	33.8 - 41.1	2,500
186+%	300	4.4	3.6 - 5.4	2,800	36.2	34.3 - 38.2	1,300	16.5	15.0 - 18.1	300	3.8	3.1 - 4.7	3,000	39.0	37.0 - 41.0	7,600

**PRAMS Health Indicator 3-Year Aggregate Report - Breastfeeding (exclusive) duration (grouped)- by State;County;DOH Race-Ethnicity;PRAMS Age Group;Infant Gender;Married;Poverty Level;Income (2000-2003);Income (2004-2011);Birthweight;Smoke 3rd Trimester;Smoke Before Pregnant;WIC During Pregnancy, for the Year(s)
2000-2002;2001-2003;2002-2004;2003-2005;2004-2006;2005-2007;2006-2008;2007-2009;2008-2010;2009-2011;2010-2012;2011-2013**

Note: Weighted counts (#) represent 3-yr averages, rounded to the nearest hundred; n/r (Not Reportable) - If the unweighted total responses for a dimension (row) is <30 that row will not be shown

Years: 2006-2008

Income (2004-2011)	Never breastfed			Breastfed <1 week			Breastfed 1-4 weeks			Breastfed 5-8 weeks			Breastfed 9+ weeks			Weighted Total Responses (3-Yr Avg)
	#	%	C.I.(95%)	#	%	C.I.(95%)	#	%	C.I.(95%)	#	%	C.I.(95%)	#	%	C.I.(95%)	#
<\$10,000	400	11.9	9.7 - 14.5	1,000	33.2	29.8 - 36.7	600	19.3	16.5 - 22.4	100	2.7	1.7 - 4.3	1,000	32.9	29.6 - 36.4	3,000
\$10,000-\$24,999	300	9.4	7.6 - 11.4	1,300	34.2	31.3 - 37.3	700	20.0	17.6 - 22.6	100	3.3	2.3 - 4.6	1,200	33.2	30.3 - 36.2	3,700
\$25,000-\$49,999	300	7.6	6.1 - 9.3	1,400	34.0	31.3 - 36.8	800	18.8	16.7 - 21.2	200	4.2	3.2 - 5.6	1,500	35.3	32.6 - 38.2	4,100
>=\$50,000	300	4.9	4.0 - 6.1	2,100	36.1	33.9 - 38.3	900	15.4	13.8 - 17.1	200	3.3	2.6 - 4.3	2,400	40.2	38.0 - 42.5	5,900

Birthweight	Never breastfed			Breastfed <1 week			Breastfed 1-4 weeks			Breastfed 5-8 weeks			Breastfed 9+ weeks			Weighted Total Responses (3-Yr Avg)
	#	%	C.I.(95%)	#	%	C.I.(95%)	#	%	C.I.(95%)	#	%	C.I.(95%)	#	%	C.I.(95%)	#
Low birth weight	100	9.7	6.9 - 13.3	600	41.6	36.7 - 46.7	200	18.4	14.7 - 22.8	<50	3.4	2.0 - 5.6	400	26.9	22.6 - 31.7	1,300
Normal birth weight	1,300	7.8	7.0 - 8.6	5,600	34.0	32.7 - 35.4	2,900	17.9	16.8 - 19.1	600	3.5	3.0 - 4.1	6,000	36.8	35.4 - 38.2	16,400

Smoke 3rd Trimester	Never breastfed			Breastfed <1 week			Breastfed 1-4 weeks			Breastfed 5-8 weeks			Breastfed 9+ weeks			Weighted Total Responses (3-Yr Avg)
	#	%	C.I.(95%)	#	%	C.I.(95%)	#	%	C.I.(95%)	#	%	C.I.(95%)	#	%	C.I.(95%)	#
Yes	300	18.2	14.6 - 22.5	500	32.2	27.7 - 37.1	300	19.8	16.0 - 24.2	100	5.7	3.7 - 8.5	400	24.1	20.0 - 28.7	1,500
No	1,100	7.0	6.2 - 7.8	5,500	34.8	33.4 - 36.2	2,800	17.8	16.7 - 19.0	500	3.3	2.8 - 3.9	5,900	37.1	35.7 - 38.6	15,900

**PRAMS Health Indicator 3-Year Aggregate Report - Breastfeeding (exclusive) duration (grouped)- by State;County;DOH Race-Ethnicity;PRAMS Age Group;Infant Gender;Married;Poverty Level;Income (2000-2003);Income (2004-2011);Birthweight;Smoke 3rd Trimester;Smoke Before Pregnant;WIC During Pregnancy, for the Year(s)
2000-2002;2001-2003;2002-2004;2003-2005;2004-2006;2005-2007;2006-2008;2007-2009;2008-2010;2009-2011;2010-2012;2011-2013**

Note: Weighted counts (#) represent 3-yr averages, rounded to the nearest hundred; n/r (Not Reportable) - If the unweighted total responses for a dimension (row) is <30 that row will not be shown

Years: 2006-2008

Smoke Before Pregnant	Never breastfed			Breastfed <1 week			Breastfed 1-4 weeks			Breastfed 5-8 weeks			Breastfed 9+ weeks			Weighted Total Responses (3-Yr Avg)
	#	%	C.I.(95%)	#	%	C.I.(95%)	#	%	C.I.(95%)	#	%	C.I.(95%)	#	%	C.I.(95%)	#
Yes	500	13.0	10.9 - 15.4	1,100	31.3	28.4 - 34.5	800	22.4	19.7 - 25.3	200	5.5	4.2 - 7.2	1,000	27.8	24.9 - 30.8	3,500
No	900	6.7	5.9 - 7.6	4,900	35.3	33.9 - 36.8	2,400	16.9	15.7 - 18.1	400	3.0	2.5 - 3.6	5,300	38.0	36.5 - 39.6	14,000

WIC During Pregnancy	Never breastfed			Breastfed <1 week			Breastfed 1-4 weeks			Breastfed 5-8 weeks			Breastfed 9+ weeks			Weighted Total Responses (3-Yr Avg)
	#	%	C.I.(95%)	#	%	C.I.(95%)	#	%	C.I.(95%)	#	%	C.I.(95%)	#	%	C.I.(95%)	#
Yes	800	11.0	9.6 - 12.5	2,500	33.4	31.3 - 35.5	1,400	18.6	16.9 - 20.4	300	3.4	2.7 - 4.4	2,500	33.6	31.5 - 35.8	7,400
No	600	5.7	4.9 - 6.7	3,600	35.5	33.8 - 37.2	1,700	17.3	15.9 - 18.7	400	3.5	2.9 - 4.3	3,800	38.0	36.2 - 39.7	10,100

**PRAMS Health Indicator 3-Year Aggregate Report - Breastfeeding (exclusive) duration (grouped)- by State;County;DOH Race-Ethnicity;PRAMS Age Group;Infant Gender;Married;Poverty Level;Income (2000-2003);Income (2004-2011);Birthweight;Smoke 3rd Trimester;Smoke Before Pregnant;WIC During Pregnancy, for the Year(s)
2000-2002;2001-2003;2002-2004;2003-2005;2004-2006;2005-2007;2006-2008;2007-2009;2008-2010;2009-2011;2010-2012;2011-2013**

Note: Weighted counts (#) represent 3-yr averages, rounded to the nearest hundred; n/r (Not Reportable) - If the unweighted total responses for a dimension (row) is <30 that row will not be shown

Years: 2005-2007

State	Never breastfed			Breastfed <1 week			Breastfed 1-4 weeks			Breastfed 5-8 weeks			Breastfed 9+ weeks			Weighted Total Responses (3-Yr Avg)
	#	%	C.I.(95%)	#	%	C.I.(95%)	#	%	C.I.(95%)	#	%	C.I.(95%)	#	%	C.I.(95%)	#
Totals	1,500	8.6	7.9 - 9.5	5,800	33.4	32.1 - 34.7	3,200	18.7	17.6 - 19.8	600	3.5	3.0 - 4.0	6,200	35.8	34.5 - 37.2	17,400

County	Never breastfed			Breastfed <1 week			Breastfed 1-4 weeks			Breastfed 5-8 weeks			Breastfed 9+ weeks			Weighted Total Responses (3-Yr Avg)
	#	%	C.I.(95%)	#	%	C.I.(95%)	#	%	C.I.(95%)	#	%	C.I.(95%)	#	%	C.I.(95%)	#
Hawaii	200	10.5	8.2 - 13.3	600	26.4	23.0 - 30.1	400	18.2	15.3 - 21.6	100	3.0	1.9 - 4.7	900	41.9	37.9 - 45.9	2,200
Honolulu	1,100	8.5	7.6 - 9.5	4,500	36.1	34.5 - 37.7	2,300	18.8	17.5 - 20.1	400	3.4	2.8 - 4.0	4,200	33.3	31.8 - 34.9	12,500
Kauai	100	8.2	5.2 - 12.9	100	14.0	10.2 - 19.0	200	23.4	18.3 - 29.4	<50	5.2	3.0 - 9.0	400	49.1	42.6 - 55.7	800
Maui	100	7.6	5.5 - 10.3	600	32.0	28.0 - 36.2	300	16.8	13.7 - 20.4	100	3.8	2.5 - 6.0	700	39.8	35.6 - 44.2	1,800

**PRAMS Health Indicator 3-Year Aggregate Report - Breastfeeding (exclusive) duration (grouped)- by State;County;DOH Race-Ethnicity;PRAMS Age Group;Infant Gender;Married;Poverty Level;Income (2000-2003);Income (2004-2011);Birthweight;Smoke 3rd Trimester;Smoke Before Pregnant;WIC During Pregnancy, for the Year(s)
2000-2002;2001-2003;2002-2004;2003-2005;2004-2006;2005-2007;2006-2008;2007-2009;2008-2010;2009-2011;2010-2012;2011-2013**

Note: Weighted counts (#) represent 3-yr averages, rounded to the nearest hundred; n/r (Not Reportable) - If the unweighted total responses for a dimension (row) is <30 that row will not be shown

Years: 2005-2007

DOH Race-Ethnicity	Never breastfed			Breastfed <1 week			Breastfed 1-4 weeks			Breastfed 5-8 weeks			Breastfed 9+ weeks			Weighted Total Responses (3-Yr Avg)
	#	%	C.I.(95%)	#	%	C.I.(95%)	#	%	C.I.(95%)	#	%	C.I.(95%)	#	%	C.I.(95%)	#
Caucasian	300	7.7	6.3 - 9.5	900	21.7	19.4 - 24.3	600	16.1	14.1 - 18.4	200	4.9	3.8 - 6.4	2,000	49.5	46.5 - 52.4	4,000
Native Hawaiian	500	10.7	9.0 - 12.7	1,500	32.1	29.5 - 34.9	1,000	21.5	19.2 - 24.0	100	3.1	2.2 - 4.3	1,600	32.6	29.9 - 35.4	4,800
Chinese	<50	4.9	3.5 - 6.9	200	39.7	36.0 - 43.6	100	18.7	15.8 - 22.0	<50	3.2	2.1 - 4.9	200	33.5	29.9 - 37.3	600
Filipino	300	8.2	6.6 - 10.0	1,300	41.0	38.0 - 44.0	600	19.4	17.1 - 22.0	100	3.8	2.7 - 5.1	900	27.7	25.0 - 30.5	3,200
Japanese	100	4.1	2.7 - 6.2	1,000	49.7	45.8 - 53.6	300	15.3	12.6 - 18.4	<50	2.1	1.3 - 3.5	600	28.8	25.3 - 32.5	2,100
Other	300	11.2	9.0 - 13.8	800	29.5	26.3 - 32.9	500	19.4	16.7 - 22.5	100	2.6	1.7 - 4.2	1,000	37.2	33.7 - 40.8	2,700

PRAMS Age Group	Never breastfed			Breastfed <1 week			Breastfed 1-4 weeks			Breastfed 5-8 weeks			Breastfed 9+ weeks			Weighted Total Responses (3-Yr Avg)
	#	%	C.I.(95%)	#	%	C.I.(95%)	#	%	C.I.(95%)	#	%	C.I.(95%)	#	%	C.I.(95%)	#
<20	200	10.6	7.7 - 14.3	500	30.3	25.7 - 35.3	400	24.9	20.6 - 29.7	<50	2.2	1.1 - 4.4	500	32.1	27.4 - 37.2	1,500
20-24	400	10.1	8.5 - 12.0	1,400	31.4	28.7 - 34.2	900	21.7	19.4 - 24.2	200	3.7	2.8 - 5.0	1,400	33.1	30.4 - 35.9	4,300
25-34	700	8.0	6.9 - 9.2	2,900	33.6	31.8 - 35.5	1,400	17.0	15.5 - 18.5	300	3.8	3.1 - 4.6	3,200	37.7	35.8 - 39.6	8,500
35+	200	7.4	5.8 - 9.4	1,100	37.0	34.0 - 40.1	500	16.3	14.1 - 18.8	100	2.8	1.9 - 4.1	1,100	36.5	33.5 - 39.6	3,000

**PRAMS Health Indicator 3-Year Aggregate Report - Breastfeeding (exclusive) duration (grouped)- by State;County;DOH Race-Ethnicity;PRAMS Age Group;Infant Gender;Married;Poverty Level;Income (2000-2003);Income (2004-2011);Birthweight;Smoke 3rd Trimester;Smoke Before Pregnant;WIC During Pregnancy, for the Year(s)
2000-2002;2001-2003;2002-2004;2003-2005;2004-2006;2005-2007;2006-2008;2007-2009;2008-2010;2009-2011;2010-2012;2011-2013**

Note: Weighted counts (#) represent 3-yr averages, rounded to the nearest hundred; n/r (Not Reportable) - If the unweighted total responses for a dimension (row) is <30 that row will not be shown

Years: 2005-2007

Infant Gender	Never breastfed			Breastfed <1 week			Breastfed 1-4 weeks			Breastfed 5-8 weeks			Breastfed 9+ weeks			Weighted Total Responses (3-Yr Avg)
	#	%	C.I.(95%)	#	%	C.I.(95%)	#	%	C.I.(95%)	#	%	C.I.(95%)	#	%	C.I.(95%)	#
Male	700	8.2	7.1 - 9.4	3,000	33.7	31.9 - 35.5	1,700	19.5	18.0 - 21.2	300	3.5	2.9 - 4.3	3,100	35.1	33.2 - 37.0	8,900
Female	800	9.1	8.0 - 10.4	2,800	33.0	31.2 - 34.9	1,500	17.8	16.3 - 19.4	300	3.4	2.7 - 4.2	3,100	36.7	34.7 - 38.6	8,500

Married	Never breastfed			Breastfed <1 week			Breastfed 1-4 weeks			Breastfed 5-8 weeks			Breastfed 9+ weeks			Weighted Total Responses (3-Yr Avg)
	#	%	C.I.(95%)	#	%	C.I.(95%)	#	%	C.I.(95%)	#	%	C.I.(95%)	#	%	C.I.(95%)	#
Yes	800	7.5	6.6 - 8.4	3,700	33.9	32.3 - 35.5	1,900	17.1	15.9 - 18.5	400	3.4	2.8 - 4.1	4,200	38.1	36.5 - 39.8	11,000
No	700	10.7	9.2 - 12.3	2,100	32.5	30.3 - 34.8	1,400	21.4	19.5 - 23.5	200	3.5	2.7 - 4.5	2,000	31.9	29.7 - 34.2	6,400

Poverty Level	Never breastfed			Breastfed <1 week			Breastfed 1-4 weeks			Breastfed 5-8 weeks			Breastfed 9+ weeks			Weighted Total Responses (3-Yr Avg)
	#	%	C.I.(95%)	#	%	C.I.(95%)	#	%	C.I.(95%)	#	%	C.I.(95%)	#	%	C.I.(95%)	#
0-130%	800	12.3	10.7 - 14.0	2,000	32.4	30.2 - 34.7	1,300	20.5	18.6 - 22.6	200	2.8	2.1 - 3.7	2,000	32.0	29.8 - 34.3	6,300
131-185%	200	9.6	7.5 - 12.2	700	30.9	27.4 - 34.7	400	19.2	16.3 - 22.6	100	3.8	2.5 - 5.7	800	36.5	32.8 - 40.4	2,200
186+%	400	4.9	4.1 - 5.9	2,700	35.6	33.7 - 37.6	1,200	16.4	14.9 - 18.0	300	4.0	3.2 - 4.9	3,000	39.1	37.2 - 41.1	7,600

**PRAMS Health Indicator 3-Year Aggregate Report - Breastfeeding (exclusive) duration (grouped)- by State;County;DOH Race-Ethnicity;PRAMS Age Group;Infant Gender;Married;Poverty Level;Income (2000-2003);Income (2004-2011);Birthweight;Smoke 3rd Trimester;Smoke Before Pregnant;WIC During Pregnancy, for the Year(s)
2000-2002;2001-2003;2002-2004;2003-2005;2004-2006;2005-2007;2006-2008;2007-2009;2008-2010;2009-2011;2010-2012;2011-2013**

Note: Weighted counts (#) represent 3-yr averages, rounded to the nearest hundred; n/r (Not Reportable) - If the unweighted total responses for a dimension (row) is <30 that row will not be shown

Years: 2005-2007

Income (2004-2011)	Never breastfed			Breastfed <1 week			Breastfed 1-4 weeks			Breastfed 5-8 weeks			Breastfed 9+ weeks			Weighted Total Responses (3-Yr Avg)
	#	%	C.I.(95%)	#	%	C.I.(95%)	#	%	C.I.(95%)	#	%	C.I.(95%)	#	%	C.I.(95%)	#
<\$10,000	400	12.2	10.0 - 14.8	900	31.4	28.2 - 34.8	600	20.4	17.6 - 23.5	100	3.4	2.3 - 5.0	1,000	32.6	29.3 - 36.1	3,000
\$10,000-\$24,999	400	10.7	8.9 - 12.9	1,200	34.1	31.1 - 37.1	800	21.4	19.0 - 24.2	100	2.2	1.4 - 3.3	1,100	31.6	28.7 - 34.6	3,600
\$25,000-\$49,999	300	7.8	6.4 - 9.6	1,300	31.7	29.0 - 34.4	700	18.2	16.1 - 20.6	200	4.5	3.4 - 5.8	1,500	37.8	35.0 - 40.7	4,100
>=\$50,000	300	5.3	4.3 - 6.6	2,000	36.3	34.1 - 38.6	900	15.7	14.1 - 17.6	200	3.6	2.8 - 4.7	2,200	39.0	36.7 - 41.3	5,600

Birthweight	Never breastfed			Breastfed <1 week			Breastfed 1-4 weeks			Breastfed 5-8 weeks			Breastfed 9+ weeks			Weighted Total Responses (3-Yr Avg)
	#	%	C.I.(95%)	#	%	C.I.(95%)	#	%	C.I.(95%)	#	%	C.I.(95%)	#	%	C.I.(95%)	#
Low birth weight	100	9.7	7.0 - 13.2	500	40.9	36.0 - 45.9	200	17.5	13.8 - 21.8	<50	3.6	2.2 - 5.9	400	28.3	23.9 - 33.2	1,300
Normal birth weight	1,400	8.5	7.7 - 9.4	5,200	32.7	31.4 - 34.1	3,000	18.8	17.7 - 20.0	600	3.4	2.9 - 4.0	5,800	36.5	35.1 - 37.9	16,000

Smoke 3rd Trimester	Never breastfed			Breastfed <1 week			Breastfed 1-4 weeks			Breastfed 5-8 weeks			Breastfed 9+ weeks			Weighted Total Responses (3-Yr Avg)
	#	%	C.I.(95%)	#	%	C.I.(95%)	#	%	C.I.(95%)	#	%	C.I.(95%)	#	%	C.I.(95%)	#
Yes	300	20.8	17.0 - 25.3	500	32.2	27.7 - 37.0	300	17.0	13.5 - 21.1	100	3.7	2.2 - 6.2	400	26.3	22.1 - 31.0	1,500
No	1,200	7.5	6.7 - 8.3	5,200	33.4	32.0 - 34.8	2,900	18.8	17.7 - 20.0	500	3.5	3.0 - 4.0	5,800	36.8	35.4 - 38.3	15,600

**PRAMS Health Indicator 3-Year Aggregate Report - Breastfeeding (exclusive) duration (grouped)- by State;County;DOH Race-Ethnicity;PRAMS Age Group;Infant Gender;Married;Poverty Level;Income (2000-2003);Income (2004-2011);Birthweight;Smoke 3rd Trimester;Smoke Before Pregnant;WIC During Pregnancy, for the Year(s)
2000-2002;2001-2003;2002-2004;2003-2005;2004-2006;2005-2007;2006-2008;2007-2009;2008-2010;2009-2011;2010-2012;2011-2013**

Note: Weighted counts (#) represent 3-yr averages, rounded to the nearest hundred; n/r (Not Reportable) - If the unweighted total responses for a dimension (row) is <30 that row will not be shown

Years: 2005-2007

Smoke Before Pregnant	Never breastfed			Breastfed <1 week			Breastfed 1-4 weeks			Breastfed 5-8 weeks			Breastfed 9+ weeks			Weighted Total Responses (3-Yr Avg)
	#	%	C.I.(95%)	#	%	C.I.(95%)	#	%	C.I.(95%)	#	%	C.I.(95%)	#	%	C.I.(95%)	#
Yes	500	13.8	11.7 - 16.2	1,100	30.9	28.0 - 33.9	800	22.4	19.8 - 25.2	200	4.9	3.7 - 6.5	1,000	28.0	25.2 - 30.9	3,600
No	1,000	7.3	6.5 - 8.2	4,600	33.9	32.4 - 35.4	2,400	17.7	16.5 - 19.0	400	3.1	2.6 - 3.7	5,100	38.0	36.5 - 39.5	13,500

WIC During Pregnancy	Never breastfed			Breastfed <1 week			Breastfed 1-4 weeks			Breastfed 5-8 weeks			Breastfed 9+ weeks			Weighted Total Responses (3-Yr Avg)
	#	%	C.I.(95%)	#	%	C.I.(95%)	#	%	C.I.(95%)	#	%	C.I.(95%)	#	%	C.I.(95%)	#
Yes	800	11.4	10.0 - 12.9	2,300	31.1	29.1 - 33.2	1,400	19.7	17.9 - 21.5	200	3.4	2.7 - 4.3	2,500	34.4	32.3 - 36.6	7,300
No	600	6.6	5.7 - 7.6	3,400	34.8	33.1 - 36.5	1,700	17.8	16.4 - 19.2	300	3.5	2.9 - 4.3	3,600	37.3	35.6 - 39.1	9,800

**PRAMS Health Indicator 3-Year Aggregate Report - Breastfeeding (exclusive) duration (grouped)- by State;County;DOH Race-Ethnicity;PRAMS Age Group;Infant Gender;Married;Poverty Level;Income (2000-2003);Income (2004-2011);Birthweight;Smoke 3rd Trimester;Smoke Before Pregnant;WIC During Pregnancy, for the Year(s)
2000-2002;2001-2003;2002-2004;2003-2005;2004-2006;2005-2007;2006-2008;2007-2009;2008-2010;2009-2011;2010-2012;2011-2013**

Note: Weighted counts (#) represent 3-yr averages, rounded to the nearest hundred; n/r (Not Reportable) - If the unweighted total responses for a dimension (row) is <30 that row will not be shown

Years: 2004-2006

State	Never breastfed			Breastfed <1 week			Breastfed 1-4 weeks			Breastfed 5-8 weeks			Breastfed 9+ weeks			Weighted Total Responses (3-Yr Avg)
	#	%	C.I.(95%)	#	%	C.I.(95%)	#	%	C.I.(95%)	#	%	C.I.(95%)	#	%	C.I.(95%)	#
Totals	1,600	9.1	8.3 - 10.0	5,600	32.7	31.4 - 33.9	3,300	19.3	18.2 - 20.4	600	3.7	3.2 - 4.3	6,000	35.2	33.9 - 36.5	17,100

County	Never breastfed			Breastfed <1 week			Breastfed 1-4 weeks			Breastfed 5-8 weeks			Breastfed 9+ weeks			Weighted Total Responses (3-Yr Avg)
	#	%	C.I.(95%)	#	%	C.I.(95%)	#	%	C.I.(95%)	#	%	C.I.(95%)	#	%	C.I.(95%)	#
Hawaii	200	11.0	8.7 - 13.9	500	25.7	22.3 - 29.3	400	20.5	17.4 - 23.9	100	3.2	2.1 - 4.9	800	39.7	35.8 - 43.6	2,100
Honolulu	1,200	9.4	8.5 - 10.4	4,400	35.6	34.1 - 37.1	2,300	18.7	17.5 - 20.0	400	3.5	2.9 - 4.1	4,100	32.9	31.4 - 34.4	12,500
Kauai	<50	5.3	2.9 - 9.4	100	14.0	10.2 - 19.0	200	23.2	18.1 - 29.1	<50	4.9	2.7 - 8.8	400	52.6	46.0 - 59.1	800
Maui	100	6.3	4.4 - 8.8	500	28.6	24.9 - 32.7	400	20.2	17.0 - 24.0	100	5.7	4.0 - 8.0	700	39.2	35.1 - 43.5	1,700

**PRAMS Health Indicator 3-Year Aggregate Report - Breastfeeding (exclusive) duration (grouped)- by State;County;DOH Race-Ethnicity;PRAMS Age Group;Infant Gender;Married;Poverty Level;Income (2000-2003);Income (2004-2011);Birthweight;Smoke 3rd Trimester;Smoke Before Pregnant;WIC During Pregnancy, for the Year(s)
2000-2002;2001-2003;2002-2004;2003-2005;2004-2006;2005-2007;2006-2008;2007-2009;2008-2010;2009-2011;2010-2012;2011-2013**

Note: Weighted counts (#) represent 3-yr averages, rounded to the nearest hundred; n/r (Not Reportable) - If the unweighted total responses for a dimension (row) is <30 that row will not be shown

Years: 2004-2006

DOH Race-Ethnicity	Never breastfed			Breastfed <1 week			Breastfed 1-4 weeks			Breastfed 5-8 weeks			Breastfed 9+ weeks			Weighted Total Responses (3-Yr Avg)
	#	%	C.I.(95%)	#	%	C.I.(95%)	#	%	C.I.(95%)	#	%	C.I.(95%)	#	%	C.I.(95%)	#
Caucasian	200	6.4	5.1 - 7.9	800	20.8	18.5 - 23.2	700	17.1	15.0 - 19.4	200	5.4	4.2 - 6.8	2,000	50.4	47.6 - 53.3	3,900
Native Hawaiian	600	12.6	10.8 - 14.7	1,500	32.6	30.0 - 35.3	1,000	21.2	18.9 - 23.6	200	3.5	2.6 - 4.7	1,400	30.0	27.5 - 32.7	4,700
Chinese	<50	6.0	4.5 - 7.9	200	40.6	37.2 - 44.1	100	18.5	15.9 - 21.4	<50	3.0	2.0 - 4.5	200	31.9	28.7 - 35.3	600
Filipino	300	8.5	6.9 - 10.3	1,200	38.3	35.5 - 41.2	600	20.0	17.8 - 22.5	100	4.1	3.0 - 5.4	900	29.2	26.6 - 31.9	3,200
Japanese	100	4.9	3.5 - 7.0	1,000	46.5	42.8 - 50.4	400	17.0	14.3 - 20.1	<50	2.1	1.2 - 3.4	600	29.5	26.1 - 33.1	2,200
Other	300	11.9	9.7 - 14.5	800	30.3	27.1 - 33.7	500	20.4	17.6 - 23.5	100	2.7	1.7 - 4.2	900	34.8	31.4 - 38.3	2,500

PRAMS Age Group	Never breastfed			Breastfed <1 week			Breastfed 1-4 weeks			Breastfed 5-8 weeks			Breastfed 9+ weeks			Weighted Total Responses (3-Yr Avg)
	#	%	C.I.(95%)	#	%	C.I.(95%)	#	%	C.I.(95%)	#	%	C.I.(95%)	#	%	C.I.(95%)	#
<20	200	11.6	8.6 - 15.4	400	29.7	25.3 - 34.6	300	24.6	20.4 - 29.3	<50	2.7	1.5 - 4.8	400	31.4	26.8 - 36.3	1,400
20-24	400	10.1	8.5 - 12.0	1,300	30.9	28.3 - 33.6	1,000	22.9	20.6 - 25.4	200	4.5	3.4 - 5.8	1,400	31.7	29.1 - 34.4	4,300
25-34	700	8.6	7.5 - 9.8	2,700	32.7	30.9 - 34.5	1,500	17.5	16.1 - 19.0	300	3.9	3.2 - 4.7	3,100	37.4	35.5 - 39.3	8,400
35+	200	8.1	6.5 - 10.0	1,100	36.5	33.6 - 39.4	500	16.7	14.6 - 19.2	100	2.8	1.9 - 3.9	1,100	36.0	33.1 - 38.9	3,100

**PRAMS Health Indicator 3-Year Aggregate Report - Breastfeeding (exclusive) duration (grouped)- by State;County;DOH Race-Ethnicity;PRAMS Age Group;Infant Gender;Married;Poverty Level;Income (2000-2003);Income (2004-2011);Birthweight;Smoke 3rd Trimester;Smoke Before Pregnant;WIC During Pregnancy, for the Year(s)
2000-2002;2001-2003;2002-2004;2003-2005;2004-2006;2005-2007;2006-2008;2007-2009;2008-2010;2009-2011;2010-2012;2011-2013**

Note: Weighted counts (#) represent 3-yr averages, rounded to the nearest hundred; n/r (Not Reportable) - If the unweighted total responses for a dimension (row) is <30 that row will not be shown

Years: 2004-2006

Infant Gender	Never breastfed			Breastfed <1 week			Breastfed 1-4 weeks			Breastfed 5-8 weeks			Breastfed 9+ weeks			Weighted Total Responses (3-Yr Avg)
	#	%	C.I.(95%)	#	%	C.I.(95%)	#	%	C.I.(95%)	#	%	C.I.(95%)	#	%	C.I.(95%)	#
Male	800	9.1	8.1 - 10.3	3,000	33.5	31.8 - 35.3	1,800	19.8	18.3 - 21.3	300	3.8	3.1 - 4.6	3,000	33.9	32.1 - 35.6	8,900
Female	700	9.1	8.0 - 10.3	2,600	31.7	29.9 - 33.6	1,500	18.8	17.3 - 20.4	300	3.7	3.0 - 4.5	3,000	36.7	34.8 - 38.6	8,200

Married	Never breastfed			Breastfed <1 week			Breastfed 1-4 weeks			Breastfed 5-8 weeks			Breastfed 9+ weeks			Weighted Total Responses (3-Yr Avg)
	#	%	C.I.(95%)	#	%	C.I.(95%)	#	%	C.I.(95%)	#	%	C.I.(95%)	#	%	C.I.(95%)	#
Yes	900	7.9	7.1 - 8.9	3,700	32.8	31.3 - 34.4	2,000	17.7	16.4 - 18.9	400	3.8	3.2 - 4.5	4,300	37.8	36.2 - 39.4	11,300
No	700	11.4	9.9 - 13.1	1,900	32.3	30.1 - 34.7	1,300	22.4	20.4 - 24.5	200	3.5	2.8 - 4.5	1,800	30.3	28.1 - 32.7	5,900

Poverty Level	Never breastfed			Breastfed <1 week			Breastfed 1-4 weeks			Breastfed 5-8 weeks			Breastfed 9+ weeks			Weighted Total Responses (3-Yr Avg)
	#	%	C.I.(95%)	#	%	C.I.(95%)	#	%	C.I.(95%)	#	%	C.I.(95%)	#	%	C.I.(95%)	#
0-130%	800	12.9	11.3 - 14.6	1,900	31.3	29.2 - 33.6	1,300	21.6	19.7 - 23.6	200	2.9	2.2 - 3.8	1,900	31.4	29.2 - 33.6	6,200
131-185%	200	10.9	8.7 - 13.7	600	27.8	24.4 - 31.5	400	18.8	15.9 - 22.2	100	5.1	3.6 - 7.1	800	37.3	33.5 - 41.3	2,000
186+%	400	5.0	4.2 - 5.9	2,700	35.3	33.5 - 37.2	1,300	17.1	15.7 - 18.7	300	4.1	3.4 - 5.0	2,900	38.5	36.6 - 40.4	7,600

**PRAMS Health Indicator 3-Year Aggregate Report - Breastfeeding (exclusive) duration (grouped)- by State;County;DOH Race-Ethnicity;PRAMS Age Group;Infant Gender;Married;Poverty Level;Income (2000-2003);Income (2004-2011);Birthweight;Smoke 3rd Trimester;Smoke Before Pregnant;WIC During Pregnancy, for the Year(s)
2000-2002;2001-2003;2002-2004;2003-2005;2004-2006;2005-2007;2006-2008;2007-2009;2008-2010;2009-2011;2010-2012;2011-2013**

Note: Weighted counts (#) represent 3-yr averages, rounded to the nearest hundred; n/r (Not Reportable) - If the unweighted total responses for a dimension (row) is <30 that row will not be shown

Years: 2004-2006

Income (2004-2011)	Never breastfed			Breastfed <1 week			Breastfed 1-4 weeks			Breastfed 5-8 weeks			Breastfed 9+ weeks			Weighted Total Responses (3-Yr Avg)
	#	%	C.I.(95%)	#	%	C.I.(95%)	#	%	C.I.(95%)	#	%	C.I.(95%)	#	%	C.I.(95%)	#
<\$10,000	300	12.0	9.9 - 14.6	900	32.6	29.4 - 36.0	600	22.1	19.3 - 25.2	100	3.1	2.1 - 4.6	900	30.1	26.9 - 33.4	2,800
\$10,000-\$24,999	500	12.3	10.5 - 14.4	1,200	31.4	28.7 - 34.2	800	20.6	18.3 - 23.1	100	3.3	2.4 - 4.6	1,200	32.4	29.7 - 35.2	3,800
\$25,000-\$49,999	300	7.3	6.0 - 8.9	1,200	29.8	27.3 - 32.3	800	19.4	17.3 - 21.7	200	4.8	3.7 - 6.1	1,600	38.8	36.1 - 41.5	4,200
>=\$50,000	300	5.6	4.6 - 6.9	1,900	36.5	34.3 - 38.8	800	16.1	14.4 - 17.9	200	3.6	2.8 - 4.6	2,000	38.2	35.9 - 40.5	5,200

Birthweight	Never breastfed			Breastfed <1 week			Breastfed 1-4 weeks			Breastfed 5-8 weeks			Breastfed 9+ weeks			Weighted Total Responses (3-Yr Avg)
	#	%	C.I.(95%)	#	%	C.I.(95%)	#	%	C.I.(95%)	#	%	C.I.(95%)	#	%	C.I.(95%)	#
Low birth weight	100	10.1	7.3 - 13.8	500	44.1	39.0 - 49.2	200	14.2	10.9 - 18.3	<50	3.6	2.2 - 5.9	300	28.1	23.6 - 33.0	1,200
Normal birth weight	1,400	9.0	8.2 - 9.9	5,100	31.8	30.5 - 33.1	3,100	19.7	18.6 - 20.8	600	3.7	3.2 - 4.3	5,700	35.8	34.4 - 37.1	15,900

Smoke 3rd Trimester	Never breastfed			Breastfed <1 week			Breastfed 1-4 weeks			Breastfed 5-8 weeks			Breastfed 9+ weeks			Weighted Total Responses (3-Yr Avg)
	#	%	C.I.(95%)	#	%	C.I.(95%)	#	%	C.I.(95%)	#	%	C.I.(95%)	#	%	C.I.(95%)	#
Yes	300	22.0	18.1 - 26.5	400	30.3	25.9 - 35.0	300	17.7	14.2 - 21.9	100	4.0	2.5 - 6.5	400	26.0	21.8 - 30.6	1,400
No	1,200	7.9	7.2 - 8.8	5,100	32.7	31.4 - 34.1	3,000	19.4	18.3 - 20.6	600	3.7	3.2 - 4.3	5,600	36.2	34.9 - 37.6	15,500

**PRAMS Health Indicator 3-Year Aggregate Report - Breastfeeding (exclusive) duration (grouped)- by State;County;DOH Race-Ethnicity;PRAMS Age Group;Infant Gender;Married;Poverty Level;Income (2000-2003);Income (2004-2011);Birthweight;Smoke 3rd Trimester;Smoke Before Pregnant;WIC During Pregnancy, for the Year(s)
2000-2002;2001-2003;2002-2004;2003-2005;2004-2006;2005-2007;2006-2008;2007-2009;2008-2010;2009-2011;2010-2012;2011-2013**

Note: Weighted counts (#) represent 3-yr averages, rounded to the nearest hundred; n/r (Not Reportable) - If the unweighted total responses for a dimension (row) is <30 that row will not be shown

Years: 2004-2006

Smoke Before Pregnant	Never breastfed			Breastfed <1 week			Breastfed 1-4 weeks			Breastfed 5-8 weeks			Breastfed 9+ weeks			Weighted Total Responses (3-Yr Avg)
	#	%	C.I.(95%)	#	%	C.I.(95%)	#	%	C.I.(95%)	#	%	C.I.(95%)	#	%	C.I.(95%)	#
Yes	500	14.0	11.9 - 16.4	1,100	29.9	27.2 - 32.9	800	21.6	19.1 - 24.3	200	5.9	4.6 - 7.6	1,000	28.6	25.8 - 31.5	3,600
No	1,000	7.8	7.0 - 8.7	4,400	33.2	31.8 - 34.6	2,500	18.6	17.5 - 19.9	400	3.2	2.7 - 3.8	5,000	37.1	35.7 - 38.6	13,300

WIC During Pregnancy	Never breastfed			Breastfed <1 week			Breastfed 1-4 weeks			Breastfed 5-8 weeks			Breastfed 9+ weeks			Weighted Total Responses (3-Yr Avg)
	#	%	C.I.(95%)	#	%	C.I.(95%)	#	%	C.I.(95%)	#	%	C.I.(95%)	#	%	C.I.(95%)	#
Yes	800	11.4	10.1 - 12.8	2,300	31.0	29.0 - 33.0	1,500	20.8	19.1 - 22.6	300	3.5	2.8 - 4.4	2,500	33.3	31.4 - 35.4	7,400
No	700	7.2	6.3 - 8.3	3,200	33.8	32.2 - 35.5	1,700	18.0	16.6 - 19.4	400	3.9	3.3 - 4.7	3,500	37.0	35.3 - 38.8	9,500

**PRAMS Health Indicator 3-Year Aggregate Report - Breastfeeding (exclusive) duration (grouped)- by State;County;DOH Race-Ethnicity;PRAMS Age Group;Infant Gender;Married;Poverty Level;Income (2000-2003);Income (2004-2011);Birthweight;Smoke 3rd Trimester;Smoke Before Pregnant;WIC During Pregnancy, for the Year(s)
2000-2002;2001-2003;2002-2004;2003-2005;2004-2006;2005-2007;2006-2008;2007-2009;2008-2010;2009-2011;2010-2012;2011-2013**

Note: Weighted counts (#) represent 3-yr averages, rounded to the nearest hundred; n/r (Not Reportable) - If the unweighted total responses for a dimension (row) is <30 that row will not be shown

Years: 2003-2005

State	Never breastfed			Breastfed <1 week			Breastfed 1-4 weeks			Breastfed 5-8 weeks			Breastfed 9+ weeks			Weighted Total Responses (3-Yr Avg)
	#	%	C.I.(95%)	#	%	C.I.(95%)	#	%	C.I.(95%)	#	%	C.I.(95%)	#	%	C.I.(95%)	#
Totals	1,700	10.0	9.2 - 10.9	5,500	32.5	31.2 - 33.8	3,200	19.3	18.2 - 20.4	600	3.4	2.9 - 4.0	5,800	34.8	33.5 - 36.2	16,800

County	Never breastfed			Breastfed <1 week			Breastfed 1-4 weeks			Breastfed 5-8 weeks			Breastfed 9+ weeks			Weighted Total Responses (3-Yr Avg)
	#	%	C.I.(95%)	#	%	C.I.(95%)	#	%	C.I.(95%)	#	%	C.I.(95%)	#	%	C.I.(95%)	#
Hawaii	300	14.3	11.9 - 17.0	500	23.9	21.0 - 27.2	400	19.3	16.6 - 22.4	100	2.9	1.9 - 4.3	800	39.6	36.1 - 43.1	2,100
Honolulu	1,200	10.1	9.1 - 11.2	4,300	35.2	33.6 - 36.9	2,300	19.1	17.8 - 20.5	400	3.2	2.6 - 3.8	4,000	32.4	30.8 - 34.0	12,300
Kauai	<50	6.1	3.9 - 9.4	100	16.6	12.9 - 21.2	200	22.3	17.9 - 27.4	<50	3.9	2.2 - 7.0	400	51.1	45.4 - 56.8	800
Maui	100	5.8	4.3 - 7.9	500	30.2	26.8 - 33.8	300	19.2	16.4 - 22.4	100	5.5	3.9 - 7.6	700	39.3	35.6 - 43.1	1,700

**PRAMS Health Indicator 3-Year Aggregate Report - Breastfeeding (exclusive) duration (grouped)- by State;County;DOH Race-Ethnicity;PRAMS Age Group;Infant Gender;Married;Poverty Level;Income (2000-2003);Income (2004-2011);Birthweight;Smoke 3rd Trimester;Smoke Before Pregnant;WIC During Pregnancy, for the Year(s)
2000-2002;2001-2003;2002-2004;2003-2005;2004-2006;2005-2007;2006-2008;2007-2009;2008-2010;2009-2011;2010-2012;2011-2013**

Note: Weighted counts (#) represent 3-yr averages, rounded to the nearest hundred; n/r (Not Reportable) - If the unweighted total responses for a dimension (row) is <30 that row will not be shown

Years: 2003-2005

DOH Race-Ethnicity	Never breastfed			Breastfed <1 week			Breastfed 1-4 weeks			Breastfed 5-8 weeks			Breastfed 9+ weeks			Weighted Total Responses (3-Yr Avg)
	#	%	C.I.(95%)	#	%	C.I.(95%)	#	%	C.I.(95%)	#	%	C.I.(95%)	#	%	C.I.(95%)	#
Caucasian	200	5.8	4.5 - 7.4	800	20.9	18.4 - 23.7	700	18.1	15.8 - 20.7	200	5.2	4.0 - 6.9	1,800	50.0	46.8 - 53.1	3,700
Native Hawaiian	600	13.8	12.1 - 15.6	1,500	31.9	29.6 - 34.3	900	19.7	17.8 - 21.8	200	3.5	2.7 - 4.6	1,400	31.1	28.8 - 33.4	4,600
Chinese	<50	6.2	4.0 - 9.4	300	41.6	35.7 - 47.9	100	16.5	12.4 - 21.5	<50	2.1	1.3 - 3.4	200	33.6	28.1 - 39.6	700
Filipino	400	10.8	8.9 - 13.1	1,200	36.7	33.7 - 39.9	700	21.3	18.7 - 24.0	100	3.1	2.2 - 4.4	900	28.1	25.3 - 31.1	3,300
Japanese	100	5.7	4.0 - 8.1	1,000	46.0	41.8 - 50.2	300	16.1	13.3 - 19.4	<50	1.7	0.9 - 3.2	700	30.5	26.7 - 34.5	2,100
Other	300	13.1	10.6 - 16.2	700	31.1	27.5 - 35.0	500	21.2	18.0 - 24.8	100	2.5	1.5 - 4.3	800	32.0	28.4 - 35.9	2,400

PRAMS Age Group	Never breastfed			Breastfed <1 week			Breastfed 1-4 weeks			Breastfed 5-8 weeks			Breastfed 9+ weeks			Weighted Total Responses (3-Yr Avg)
	#	%	C.I.(95%)	#	%	C.I.(95%)	#	%	C.I.(95%)	#	%	C.I.(95%)	#	%	C.I.(95%)	#
<20	200	13.4	10.4 - 17.1	400	31.2	26.7 - 36.1	300	23.1	19.2 - 27.6	<50	3.2	1.9 - 5.3	400	29.1	24.9 - 33.7	1,400
20-24	500	11.8	10.0 - 13.7	1,200	28.7	26.2 - 31.4	1,000	23.4	21.0 - 25.9	200	3.8	2.8 - 5.0	1,300	32.3	29.7 - 35.1	4,100
25-34	800	9.6	8.5 - 11.0	2,700	33.1	31.2 - 35.0	1,400	17.5	16.0 - 19.1	300	3.7	3.0 - 4.6	3,000	36.1	34.2 - 38.0	8,300
35+	200	7.0	5.5 - 8.9	1,100	36.6	33.4 - 39.9	500	16.9	14.5 - 19.6	100	2.1	1.3 - 3.2	1,100	37.4	34.3 - 40.7	3,000

**PRAMS Health Indicator 3-Year Aggregate Report - Breastfeeding (exclusive) duration (grouped)- by State;County;DOH Race-Ethnicity;PRAMS Age Group;Infant Gender;Married;Poverty Level;Income (2000-2003);Income (2004-2011);Birthweight;Smoke 3rd Trimester;Smoke Before Pregnant;WIC During Pregnancy, for the Year(s)
2000-2002;2001-2003;2002-2004;2003-2005;2004-2006;2005-2007;2006-2008;2007-2009;2008-2010;2009-2011;2010-2012;2011-2013**

Note: Weighted counts (#) represent 3-yr averages, rounded to the nearest hundred; n/r (Not Reportable) - If the unweighted total responses for a dimension (row) is <30 that row will not be shown

Years: 2003-2005

Infant Gender	Never breastfed			Breastfed <1 week			Breastfed 1-4 weeks			Breastfed 5-8 weeks			Breastfed 9+ weeks			Weighted Total Responses (3-Yr Avg)
	#	%	C.I.(95%)	#	%	C.I.(95%)	#	%	C.I.(95%)	#	%	C.I.(95%)	#	%	C.I.(95%)	#
Male	900	10.3	9.2 - 11.6	2,900	32.8	31.0 - 34.7	1,700	19.5	18.0 - 21.1	300	3.4	2.7 - 4.2	3,000	34.0	32.2 - 35.8	8,900
Female	800	9.7	8.5 - 11.0	2,600	32.1	30.2 - 34.1	1,500	19.1	17.5 - 20.7	300	3.4	2.7 - 4.2	2,800	35.8	33.8 - 37.8	7,900

Married	Never breastfed			Breastfed <1 week			Breastfed 1-4 weeks			Breastfed 5-8 weeks			Breastfed 9+ weeks			Weighted Total Responses (3-Yr Avg)
	#	%	C.I.(95%)	#	%	C.I.(95%)	#	%	C.I.(95%)	#	%	C.I.(95%)	#	%	C.I.(95%)	#
Yes	900	7.7	6.8 - 8.7	3,600	32.6	31.0 - 34.3	2,100	18.4	17.0 - 19.8	400	3.5	2.9 - 4.2	4,200	37.9	36.2 - 39.6	11,200
No	800	14.6	12.9 - 16.5	1,800	32.2	30.0 - 34.6	1,200	21.2	19.2 - 23.2	200	3.2	2.5 - 4.2	1,600	28.8	26.6 - 31.0	5,600

Poverty Level	Never breastfed			Breastfed <1 week			Breastfed 1-4 weeks			Breastfed 5-8 weeks			Breastfed 9+ weeks			Weighted Total Responses (3-Yr Avg)
	#	%	C.I.(95%)	#	%	C.I.(95%)	#	%	C.I.(95%)	#	%	C.I.(95%)	#	%	C.I.(95%)	#
0-130%	1,000	14.7	13.1 - 16.4	2,100	31.1	29.0 - 33.3	1,400	21.1	19.2 - 23.0	200	2.6	2.0 - 3.5	2,000	30.5	28.5 - 32.7	6,600
131-185%	200	10.4	8.1 - 13.3	600	28.5	24.9 - 32.4	400	19.4	16.4 - 22.9	100	4.4	3.0 - 6.5	800	37.3	33.4 - 41.3	2,100
186+%	300	4.4	3.7 - 5.4	2,400	35.1	33.1 - 37.3	1,200	17.4	15.8 - 19.2	300	3.9	3.2 - 4.9	2,600	39.0	36.9 - 41.2	6,700

**PRAMS Health Indicator 3-Year Aggregate Report - Breastfeeding (exclusive) duration (grouped)- by State;County;DOH Race-Ethnicity;PRAMS Age Group;Infant Gender;Married;Poverty Level;Income (2000-2003);Income (2004-2011);Birthweight;Smoke 3rd Trimester;Smoke Before Pregnant;WIC During Pregnancy, for the Year(s)
2000-2002;2001-2003;2002-2004;2003-2005;2004-2006;2005-2007;2006-2008;2007-2009;2008-2010;2009-2011;2010-2012;2011-2013**

Note: Weighted counts (#) represent 3-yr averages, rounded to the nearest hundred; n/r (Not Reportable) - If the unweighted total responses for a dimension (row) is <30 that row will not be shown

Years: 2003-2005

Birthweight	Never breastfed			Breastfed <1 week			Breastfed 1-4 weeks			Breastfed 5-8 weeks			Breastfed 9+ weeks			Weighted Total Responses (3-Yr Avg)
	#	%	C.I.(95%)	#	%	C.I.(95%)	#	%	C.I.(95%)	#	%	C.I.(95%)	#	%	C.I.(95%)	#
Low birth weight	100	9.0	6.5 - 12.4	500	44.2	38.8 - 49.8	200	16.4	12.5 - 21.3	<50	4.4	2.6 - 7.5	300	25.9	21.5 - 30.9	1,100
Normal birth weight	1,600	10.1	9.2 - 11.0	5,000	31.7	30.3 - 33.0	3,100	19.5	18.4 - 20.7	500	3.3	2.8 - 3.9	5,600	35.4	34.1 - 36.8	15,700

Smoke 3rd Trimester	Never breastfed			Breastfed <1 week			Breastfed 1-4 weeks			Breastfed 5-8 weeks			Breastfed 9+ weeks			Weighted Total Responses (3-Yr Avg)
	#	%	C.I.(95%)	#	%	C.I.(95%)	#	%	C.I.(95%)	#	%	C.I.(95%)	#	%	C.I.(95%)	#
Yes	400	26.6	22.3 - 31.4	400	30.2	25.8 - 34.9	200	15.6	12.3 - 19.4	<50	2.6	1.5 - 4.4	400	25.1	21.1 - 29.6	1,400
No	1,300	8.4	7.6 - 9.3	4,900	32.7	31.3 - 34.1	3,000	19.7	18.5 - 20.9	500	3.5	3.0 - 4.1	5,400	35.7	34.3 - 37.2	15,100

Smoke Before Pregnant	Never breastfed			Breastfed <1 week			Breastfed 1-4 weeks			Breastfed 5-8 weeks			Breastfed 9+ weeks			Weighted Total Responses (3-Yr Avg)
	#	%	C.I.(95%)	#	%	C.I.(95%)	#	%	C.I.(95%)	#	%	C.I.(95%)	#	%	C.I.(95%)	#
Yes	600	16.6	14.3 - 19.2	1,100	31.7	28.8 - 34.7	700	19.5	17.2 - 22.1	200	4.6	3.5 - 6.1	1,000	27.6	24.9 - 30.4	3,500
No	1,100	8.1	7.3 - 9.1	4,200	32.6	31.1 - 34.1	2,500	19.3	18.0 - 20.6	400	3.1	2.6 - 3.8	4,800	36.9	35.3 - 38.4	13,000

**PRAMS Health Indicator 3-Year Aggregate Report - Breastfeeding (exclusive) duration (grouped)- by State;County;DOH Race-Ethnicity;PRAMS Age Group;Infant Gender;Married;Poverty Level;Income (2000-2003);Income (2004-2011);Birthweight;Smoke 3rd Trimester;Smoke Before Pregnant;WIC During Pregnancy, for the Year(s)
2000-2002;2001-2003;2002-2004;2003-2005;2004-2006;2005-2007;2006-2008;2007-2009;2008-2010;2009-2011;2010-2012;2011-2013**

Note: Weighted counts (#) represent 3-yr averages, rounded to the nearest hundred; n/r (Not Reportable) - If the unweighted total responses for a dimension (row) is <30 that row will not be shown

Years: 2003-2005

WIC During Pregnancy	Never breastfed			Breastfed <1 week			Breastfed 1-4 weeks			Breastfed 5-8 weeks			Breastfed 9+ weeks			Weighted Total Responses (3-Yr Avg)
	#	%	C.I.(95%)	#	%	C.I.(95%)	#	%	C.I.(95%)	#	%	C.I.(95%)	#	%	C.I.(95%)	#
Yes	1,000	13.4	11.9 - 14.9	2,200	30.6	28.6 - 32.6	1,500	20.5	18.8 - 22.3	200	3.0	2.3 - 3.8	2,400	32.6	30.7 - 34.7	7,200
No	700	7.3	6.3 - 8.3	3,100	33.9	32.1 - 35.7	1,700	18.3	16.9 - 19.9	400	3.8	3.1 - 4.6	3,400	36.8	34.9 - 38.6	9,300

**PRAMS Health Indicator 3-Year Aggregate Report - Breastfeeding (exclusive) duration (grouped)- by State;County;DOH Race-Ethnicity;PRAMS Age Group;Infant Gender;Married;Poverty Level;Income (2000-2003);Income (2004-2011);Birthweight;Smoke 3rd Trimester;Smoke Before Pregnant;WIC During Pregnancy, for the Year(s)
2000-2002;2001-2003;2002-2004;2003-2005;2004-2006;2005-2007;2006-2008;2007-2009;2008-2010;2009-2011;2010-2012;2011-2013**

Note: Weighted counts (#) represent 3-yr averages, rounded to the nearest hundred; n/r (Not Reportable) - If the unweighted total responses for a dimension (row) is <30 that row will not be shown

Years: 2002-2004

State	Never breastfed			Breastfed <1 week			Breastfed 1-4 weeks			Breastfed 5-8 weeks			Breastfed 9+ weeks			Weighted Total Responses (3-Yr Avg)
	#	%	C.I.(95%)	#	%	C.I.(95%)	#	%	C.I.(95%)	#	%	C.I.(95%)	#	%	C.I.(95%)	#
Totals	1,700	10.3	9.4 - 11.2	5,300	32.1	30.7 - 33.6	3,100	18.8	17.6 - 20.0	600	3.8	3.2 - 4.4	5,800	35.1	33.6 - 36.5	16,500

County	Never breastfed			Breastfed <1 week			Breastfed 1-4 weeks			Breastfed 5-8 weeks			Breastfed 9+ weeks			Weighted Total Responses (3-Yr Avg)
	#	%	C.I.(95%)	#	%	C.I.(95%)	#	%	C.I.(95%)	#	%	C.I.(95%)	#	%	C.I.(95%)	#
Hawaii	300	13.5	11.5 - 15.8	500	26.3	23.6 - 29.2	300	17.8	15.5 - 20.3	100	3.1	2.2 - 4.5	800	39.3	36.2 - 42.4	2,000
Honolulu	1,300	10.4	9.3 - 11.7	4,100	34.3	32.5 - 36.2	2,200	18.5	17.0 - 20.0	400	3.7	3.0 - 4.5	4,000	33.1	31.3 - 34.9	12,100
Kauai	100	7.8	5.6 - 10.7	100	17.1	13.6 - 21.2	200	21.6	17.7 - 26.1	<50	3.9	2.3 - 6.5	400	49.7	44.7 - 54.7	700
Maui	100	6.4	5.1 - 8.2	500	29.8	26.8 - 32.9	400	20.7	18.1 - 23.6	100	5.0	3.6 - 6.9	700	38.1	34.9 - 41.4	1,700

PRAMS Health Indicator 3-Year Aggregate Report - Breastfeeding (exclusive) duration (grouped)- by State;County;DOH Race-Ethnicity;PRAMS Age Group;Infant Gender;Married;Poverty Level;Income (2000-2003);Income (2004-2011);Birthweight;Smoke 3rd Trimester;Smoke Before Pregnant;WIC During Pregnancy, for the Year(s) 2000-2002;2001-2003;2002-2004;2003-2005;2004-2006;2005-2007;2006-2008;2007-2009;2008-2010;2009-2011;2010-2012;2011-2013

Note: Weighted counts (#) represent 3-yr averages, rounded to the nearest hundred; n/r (Not Reportable) - If the unweighted total responses for a dimension (row) is <30 that row will not be shown

Years: 2002-2004

DOH Race-Ethnicity	Never breastfed			Breastfed <1 week			Breastfed 1-4 weeks			Breastfed 5-8 weeks			Breastfed 9+ weeks			Weighted Total Responses (3-Yr Avg)
	#	%	C.I.(95%)	#	%	C.I.(95%)	#	%	C.I.(95%)	#	%	C.I.(95%)	#	%	C.I.(95%)	#
Caucasian	200	6.9	5.3 - 9.0	700	20.0	17.3 - 22.9	600	16.1	13.7 - 18.8	300	7.4	5.7 - 9.5	1,800	49.6	46.2 - 53.0	3,600
Native Hawaiian	700	14.5	13.0 - 16.1	1,400	31.0	29.1 - 33.1	900	20.5	18.8 - 22.3	200	3.5	2.7 - 4.4	1,400	30.5	28.6 - 32.4	4,500
Chinese	100	8.1	4.3 - 14.4	300	41.9	34.4 - 49.9	100	18.2	12.8 - 25.2	<50	2.0	0.7 - 5.5	200	29.9	23.4 - 37.2	600
Filipino	300	9.8	7.9 - 12.2	1,200	36.8	33.4 - 40.3	700	20.1	17.4 - 23.1	100	2.7	1.8 - 4.0	1,000	30.6	27.4 - 34.0	3,300
Japanese	100	4.3	2.8 - 6.5	1,000	44.4	39.8 - 49.1	400	18.7	15.3 - 22.6	<50	1.8	0.9 - 3.7	700	30.8	26.7 - 35.2	2,200
Other	300	14.0	10.9 - 17.8	700	32.2	28.0 - 36.7	400	17.9	14.6 - 21.7	100	2.6	1.5 - 4.5	800	33.3	29.1 - 37.9	2,300

PRAMS Age Group	Never breastfed			Breastfed <1 week			Breastfed 1-4 weeks			Breastfed 5-8 weeks			Breastfed 9+ weeks			Weighted Total Responses (3-Yr Avg)
	#	%	C.I.(95%)	#	%	C.I.(95%)	#	%	C.I.(95%)	#	%	C.I.(95%)	#	%	C.I.(95%)	#
<20	200	15.4	12.0 - 19.6	500	34.1	29.4 - 39.1	300	22.8	18.8 - 27.3	<50	3.0	1.6 - 5.5	300	24.7	20.9 - 29.0	1,400
20-24	500	11.4	9.7 - 13.4	1,200	29.0	26.3 - 31.8	900	22.3	19.9 - 24.8	100	3.5	2.6 - 4.8	1,400	33.8	31.1 - 36.7	4,100
25-34	800	9.8	8.5 - 11.2	2,600	32.1	30.1 - 34.2	1,400	16.9	15.3 - 18.6	400	4.3	3.5 - 5.3	3,000	36.9	34.9 - 39.1	8,200
35+	200	7.6	5.8 - 9.8	1,000	35.6	32.2 - 39.2	500	17.3	14.7 - 20.2	100	3.1	2.0 - 4.6	1,000	36.5	33.0 - 40.1	2,900

**PRAMS Health Indicator 3-Year Aggregate Report - Breastfeeding (exclusive) duration (grouped)- by State;County;DOH Race-Ethnicity;PRAMS Age Group;Infant Gender;Married;Poverty Level;Income (2000-2003);Income (2004-2011);Birthweight;Smoke 3rd Trimester;Smoke Before Pregnant;WIC During Pregnancy, for the Year(s)
2000-2002;2001-2003;2002-2004;2003-2005;2004-2006;2005-2007;2006-2008;2007-2009;2008-2010;2009-2011;2010-2012;2011-2013**

Note: Weighted counts (#) represent 3-yr averages, rounded to the nearest hundred; n/r (Not Reportable) - If the unweighted total responses for a dimension (row) is <30 that row will not be shown

Years: 2002-2004

Infant Gender	Never breastfed			Breastfed <1 week			Breastfed 1-4 weeks			Breastfed 5-8 weeks			Breastfed 9+ weeks			Weighted Total Responses (3-Yr Avg)
	#	%	C.I.(95%)	#	%	C.I.(95%)	#	%	C.I.(95%)	#	%	C.I.(95%)	#	%	C.I.(95%)	#
Male	1,000	11.1	9.8 - 12.5	2,800	32.2	30.3 - 34.2	1,600	18.7	17.2 - 20.4	300	3.8	3.1 - 4.7	3,000	34.1	32.2 - 36.1	8,700
Female	700	9.3	8.1 - 10.7	2,500	32.0	29.9 - 34.1	1,500	18.9	17.2 - 20.7	300	3.7	3.0 - 4.6	2,800	36.1	34.0 - 38.2	7,800

Married	Never breastfed			Breastfed <1 week			Breastfed 1-4 weeks			Breastfed 5-8 weeks			Breastfed 9+ weeks			Weighted Total Responses (3-Yr Avg)
	#	%	C.I.(95%)	#	%	C.I.(95%)	#	%	C.I.(95%)	#	%	C.I.(95%)	#	%	C.I.(95%)	#
Yes	900	7.8	6.8 - 8.9	3,600	32.0	30.2 - 33.8	2,000	17.9	16.5 - 19.4	500	4.1	3.4 - 4.9	4,300	38.2	36.4 - 40.0	11,200
No	800	15.5	13.7 - 17.5	1,700	32.4	30.0 - 34.8	1,100	20.6	18.6 - 22.7	200	3.1	2.4 - 4.0	1,500	28.4	26.3 - 30.7	5,300

Poverty Level	Never breastfed			Breastfed <1 week			Breastfed 1-4 weeks			Breastfed 5-8 weeks			Breastfed 9+ weeks			Weighted Total Responses (3-Yr Avg)
	#	%	C.I.(95%)	#	%	C.I.(95%)	#	%	C.I.(95%)	#	%	C.I.(95%)	#	%	C.I.(95%)	#
0-130%	1,000	14.8	13.2 - 16.6	2,000	30.9	28.7 - 33.1	1,300	20.1	18.2 - 22.0	200	2.6	2.0 - 3.5	2,100	31.7	29.6 - 33.9	6,600
131-185%	300	9.7	7.5 - 12.5	700	28.8	25.2 - 32.6	500	17.9	15.1 - 21.1	100	5.2	3.7 - 7.2	1,000	38.4	34.6 - 42.3	2,600
186+%	200	3.8	3.0 - 4.7	2,100	34.8	32.4 - 37.2	1,100	17.8	16.0 - 19.9	300	4.6	3.6 - 5.8	2,300	39.1	36.6 - 41.6	5,900

**PRAMS Health Indicator 3-Year Aggregate Report - Breastfeeding (exclusive) duration (grouped)- by State;County;DOH Race-Ethnicity;PRAMS Age Group;Infant Gender;Married;Poverty Level;Income (2000-2003);Income (2004-2011);Birthweight;Smoke 3rd Trimester;Smoke Before Pregnant;WIC During Pregnancy, for the Year(s)
2000-2002;2001-2003;2002-2004;2003-2005;2004-2006;2005-2007;2006-2008;2007-2009;2008-2010;2009-2011;2010-2012;2011-2013**

Note: Weighted counts (#) represent 3-yr averages, rounded to the nearest hundred; n/r (Not Reportable) - If the unweighted total responses for a dimension (row) is <30 that row will not be shown

Years: 2002-2004

Birthweight	Never breastfed			Breastfed <1 week			Breastfed 1-4 weeks			Breastfed 5-8 weeks			Breastfed 9+ weeks			Weighted Total Responses (3-Yr Avg)
	#	%	C.I.(95%)	#	%	C.I.(95%)	#	%	C.I.(95%)	#	%	C.I.(95%)	#	%	C.I.(95%)	#
Low birth weight	100	8.8	6.4 - 12.1	400	41.7	35.8 - 47.9	200	20.2	15.5 - 25.9	<50	3.8	2.0 - 7.2	300	25.4	20.5 - 31.1	1,000
Normal birth weight	1,600	10.4	9.4 - 11.4	4,900	31.5	30.0 - 33.0	2,900	18.7	17.5 - 19.9	600	3.8	3.2 - 4.4	5,500	35.7	34.2 - 37.2	15,500

Smoke 3rd Trimester	Never breastfed			Breastfed <1 week			Breastfed 1-4 weeks			Breastfed 5-8 weeks			Breastfed 9+ weeks			Weighted Total Responses (3-Yr Avg)
	#	%	C.I.(95%)	#	%	C.I.(95%)	#	%	C.I.(95%)	#	%	C.I.(95%)	#	%	C.I.(95%)	#
Yes	400	28.4	24.0 - 33.4	400	27.7	23.3 - 32.4	200	17.1	13.7 - 21.2	<50	2.9	1.8 - 4.8	300	23.8	19.9 - 28.3	1,400
No	1,300	8.6	7.8 - 9.6	4,900	32.5	31.1 - 34.1	2,800	19.1	17.8 - 20.4	600	3.9	3.3 - 4.6	5,400	35.9	34.4 - 37.4	14,900

Smoke Before Pregnant	Never breastfed			Breastfed <1 week			Breastfed 1-4 weeks			Breastfed 5-8 weeks			Breastfed 9+ weeks			Weighted Total Responses (3-Yr Avg)
	#	%	C.I.(95%)	#	%	C.I.(95%)	#	%	C.I.(95%)	#	%	C.I.(95%)	#	%	C.I.(95%)	#
Yes	600	17.2	14.8 - 19.8	1,000	30.8	27.8 - 33.9	600	19.3	16.8 - 22.0	100	4.3	3.2 - 5.7	900	28.5	25.6 - 31.5	3,300
No	1,100	8.4	7.4 - 9.4	4,200	32.4	30.8 - 34.1	2,400	18.8	17.5 - 20.2	500	3.7	3.1 - 4.5	4,700	36.7	35.1 - 38.4	12,900

**PRAMS Health Indicator 3-Year Aggregate Report - Breastfeeding (exclusive) duration (grouped)- by State;County;DOH Race-Ethnicity;PRAMS Age Group;Infant Gender;Married;Poverty Level;Income (2000-2003);Income (2004-2011);Birthweight;Smoke 3rd Trimester;Smoke Before Pregnant;WIC During Pregnancy, for the Year(s)
2000-2002;2001-2003;2002-2004;2003-2005;2004-2006;2005-2007;2006-2008;2007-2009;2008-2010;2009-2011;2010-2012;2011-2013**

Note: Weighted counts (#) represent 3-yr averages, rounded to the nearest hundred; n/r (Not Reportable) - If the unweighted total responses for a dimension (row) is <30 that row will not be shown

Years: 2002-2004

WIC During Pregnancy	Never breastfed			Breastfed <1 week			Breastfed 1-4 weeks			Breastfed 5-8 weeks			Breastfed 9+ weeks			Weighted Total Responses (3-Yr Avg)
	#	%	C.I.(95%)	#	%	C.I.(95%)	#	%	C.I.(95%)	#	%	C.I.(95%)	#	%	C.I.(95%)	#
Yes	1,000	14.5	12.9 - 16.2	2,200	30.9	28.8 - 33.1	1,400	19.9	18.1 - 21.7	200	3.0	2.3 - 3.9	2,200	31.7	29.7 - 33.8	7,100
No	600	6.9	6.0 - 8.0	3,100	33.0	31.1 - 35.0	1,700	18.0	16.5 - 19.7	400	4.3	3.6 - 5.3	3,500	37.7	35.7 - 39.7	9,300

**PRAMS Health Indicator 3-Year Aggregate Report - Breastfeeding (exclusive) duration (grouped)- by State;County;DOH Race-Ethnicity;PRAMS Age Group;Infant Gender;Married;Poverty Level;Income (2000-2003);Income (2004-2011);Birthweight;Smoke 3rd Trimester;Smoke Before Pregnant;WIC During Pregnancy, for the Year(s)
2000-2002;2001-2003;2002-2004;2003-2005;2004-2006;2005-2007;2006-2008;2007-2009;2008-2010;2009-2011;2010-2012;2011-2013**

Note: Weighted counts (#) represent 3-yr averages, rounded to the nearest hundred; n/r (Not Reportable) - If the unweighted total responses for a dimension (row) is <30 that row will not be shown

Years: 2001-2003

State	Never breastfed			Breastfed <1 week			Breastfed 1-4 weeks			Breastfed 5-8 weeks			Breastfed 9+ weeks			Weighted Total Responses (3-Yr Avg)
	#	%	C.I.(95%)	#	%	C.I.(95%)	#	%	C.I.(95%)	#	%	C.I.(95%)	#	%	C.I.(95%)	#
Totals	1,700	10.7	9.8 - 11.7	4,900	30.8	29.4 - 32.3	3,000	18.9	17.7 - 20.1	600	3.9	3.4 - 4.6	5,700	35.7	34.2 - 37.1	16,000

County	Never breastfed			Breastfed <1 week			Breastfed 1-4 weeks			Breastfed 5-8 weeks			Breastfed 9+ weeks			Weighted Total Responses (3-Yr Avg)
	#	%	C.I.(95%)	#	%	C.I.(95%)	#	%	C.I.(95%)	#	%	C.I.(95%)	#	%	C.I.(95%)	#
Hawaii	300	13.9	12.1 - 15.8	500	25.0	22.7 - 27.4	300	18.1	16.2 - 20.3	100	3.4	2.5 - 4.5	700	39.6	37.0 - 42.3	1,800
Honolulu	1,300	10.6	9.5 - 11.9	3,900	32.8	30.9 - 34.7	2,200	18.8	17.2 - 20.3	500	4.1	3.4 - 5.0	4,000	33.7	31.8 - 35.6	11,800
Kauai	100	8.6	6.4 - 11.6	100	17.6	14.3 - 21.3	200	21.1	17.7 - 25.0	<50	4.3	2.8 - 6.6	300	48.3	43.8 - 52.9	700
Maui	100	8.6	7.1 - 10.4	500	28.9	26.2 - 31.6	300	19.5	17.2 - 21.9	100	3.1	2.2 - 4.3	700	39.9	37.1 - 42.9	1,700

PRAMS Health Indicator 3-Year Aggregate Report - Breastfeeding (exclusive) duration (grouped)- by State;County;DOH Race-Ethnicity;PRAMS Age Group;Infant Gender;Married;Poverty Level;Income (2000-2003);Income (2004-2011);Birthweight;Smoke 3rd Trimester;Smoke Before Pregnant;WIC During Pregnancy, for the Year(s) 2000-2002;2001-2003;2002-2004;2003-2005;2004-2006;2005-2007;2006-2008;2007-2009;2008-2010;2009-2011;2010-2012;2011-2013

Note: Weighted counts (#) represent 3-yr averages, rounded to the nearest hundred; n/r (Not Reportable) - If the unweighted total responses for a dimension (row) is <30 that row will not be shown

Years: 2001-2003

DOH Race-Ethnicity	Never breastfed			Breastfed <1 week			Breastfed 1-4 weeks			Breastfed 5-8 weeks			Breastfed 9+ weeks			Weighted Total Responses (3-Yr Avg)
	#	%	C.I.(95%)	#	%	C.I.(95%)	#	%	C.I.(95%)	#	%	C.I.(95%)	#	%	C.I.(95%)	#
Caucasian	300	7.6	5.9 - 9.9	700	20.0	17.3 - 23.1	500	15.8	13.4 - 18.6	300	7.5	5.7 - 9.7	1,700	49.0	45.5 - 52.5	3,400
Native Hawaiian	700	15.4	14.2 - 16.7	1,300	29.2	27.7 - 30.8	800	19.3	18.0 - 20.7	100	3.2	2.7 - 3.9	1,400	32.8	31.3 - 34.4	4,400
Chinese	<50	7.6	3.8 - 14.8	300	39.9	31.4 - 49.0	100	20.6	14.2 - 28.9	<50	2.9	1.0 - 7.6	200	29.0	21.6 - 37.7	600
Filipino	300	9.8	7.8 - 12.2	1,200	35.4	31.8 - 39.1	700	20.9	18.0 - 24.0	100	2.6	1.7 - 4.1	1,000	31.4	28.1 - 35.0	3,300
Japanese	100	4.0	2.5 - 6.3	900	43.4	38.6 - 48.3	400	19.7	16.1 - 23.9	100	3.1	1.8 - 5.3	600	29.8	25.6 - 34.5	2,100
Other	300	14.9	11.6 - 19.0	600	29.4	25.0 - 34.1	400	18.4	14.9 - 22.5	100	2.9	1.7 - 5.1	700	34.3	29.8 - 39.2	2,200

PRAMS Age Group	Never breastfed			Breastfed <1 week			Breastfed 1-4 weeks			Breastfed 5-8 weeks			Breastfed 9+ weeks			Weighted Total Responses (3-Yr Avg)
	#	%	C.I.(95%)	#	%	C.I.(95%)	#	%	C.I.(95%)	#	%	C.I.(95%)	#	%	C.I.(95%)	#
<20	200	16.1	13.0 - 19.8	500	35.1	30.8 - 39.7	300	23.0	19.4 - 27.2	<50	2.2	1.2 - 4.3	400	23.5	20.1 - 27.3	1,500
20-24	500	12.2	10.5 - 14.2	1,100	27.9	25.2 - 30.6	900	22.2	19.8 - 24.7	100	3.3	2.4 - 4.5	1,400	34.5	31.7 - 37.3	4,000
25-34	800	9.9	8.6 - 11.3	2,400	30.5	28.5 - 32.7	1,300	16.8	15.1 - 18.5	400	4.7	3.8 - 5.8	3,000	38.1	36.0 - 40.3	7,900
35+	200	7.8	5.9 - 10.3	900	33.7	30.0 - 37.7	500	17.8	15.0 - 21.0	100	3.6	2.4 - 5.3	1,000	37.0	33.3 - 40.9	2,600

PRAMS Health Indicator 3-Year Aggregate Report - Breastfeeding (exclusive) duration (grouped)- by State;County;DOH Race-Ethnicity;PRAMS Age Group;Infant Gender;Married;Poverty Level;Income (2000-2003);Income (2004-2011);Birthweight;Smoke 3rd Trimester;Smoke Before Pregnant;WIC During Pregnancy, for the Year(s) 2000-2002;2001-2003;2002-2004;2003-2005;2004-2006;2005-2007;2006-2008;2007-2009;2008-2010;2009-2011;2010-2012;2011-2013

Note: Weighted counts (#) represent 3-yr averages, rounded to the nearest hundred; n/r (Not Reportable) - If the unweighted total responses for a dimension (row) is <30 that row will not be shown

Years: 2001-2003

Infant Gender	Never breastfed			Breastfed <1 week			Breastfed 1-4 weeks			Breastfed 5-8 weeks			Breastfed 9+ weeks			Weighted Total Responses (3-Yr Avg)
	#	%	C.I.(95%)	#	%	C.I.(95%)	#	%	C.I.(95%)	#	%	C.I.(95%)	#	%	C.I.(95%)	#
Male	900	11.0	9.7 - 12.4	2,500	30.7	28.7 - 32.7	1,600	19.3	17.7 - 21.0	300	4.0	3.2 - 4.9	2,900	35.1	33.1 - 37.2	8,300
Female	800	10.4	9.2 - 11.8	2,400	31.0	28.9 - 33.1	1,400	18.4	16.8 - 20.2	300	3.9	3.1 - 4.9	2,800	36.3	34.2 - 38.4	7,800

Married	Never breastfed			Breastfed <1 week			Breastfed 1-4 weeks			Breastfed 5-8 weeks			Breastfed 9+ weeks			Weighted Total Responses (3-Yr Avg)
	#	%	C.I.(95%)	#	%	C.I.(95%)	#	%	C.I.(95%)	#	%	C.I.(95%)	#	%	C.I.(95%)	#
Yes	800	7.7	6.7 - 8.8	3,300	30.9	29.1 - 32.8	1,900	18.1	16.7 - 19.7	500	4.5	3.7 - 5.4	4,200	38.9	37.0 - 40.8	10,700
No	900	16.8	15.0 - 18.8	1,600	30.6	28.4 - 33.0	1,100	20.4	18.5 - 22.4	200	2.9	2.3 - 3.8	1,600	29.2	27.2 - 31.4	5,300

Poverty Level	Never breastfed			Breastfed <1 week			Breastfed 1-4 weeks			Breastfed 5-8 weeks			Breastfed 9+ weeks			Weighted Total Responses (3-Yr Avg)
	#	%	C.I.(95%)	#	%	C.I.(95%)	#	%	C.I.(95%)	#	%	C.I.(95%)	#	%	C.I.(95%)	#
0-130%	1,000	15.7	14.1 - 17.4	1,900	29.8	27.7 - 32.0	1,300	19.8	18.0 - 21.7	200	2.6	2.0 - 3.4	2,100	32.1	30.0 - 34.3	6,500
131-185%	300	9.5	7.5 - 11.9	900	28.9	25.7 - 32.3	600	18.6	16.1 - 21.5	200	5.2	3.8 - 7.1	1,200	37.8	34.4 - 41.4	3,100
186+%	200	3.2	2.4 - 4.3	1,700	32.9	30.3 - 35.7	900	17.7	15.6 - 20.0	300	5.1	4.0 - 6.6	2,100	41.1	38.3 - 43.9	5,100

**PRAMS Health Indicator 3-Year Aggregate Report - Breastfeeding (exclusive) duration (grouped)- by State;County;DOH Race-Ethnicity;PRAMS Age Group;Infant Gender;Married;Poverty Level;Income (2000-2003);Income (2004-2011);Birthweight;Smoke 3rd Trimester;Smoke Before Pregnant;WIC During Pregnancy, for the Year(s)
2000-2002;2001-2003;2002-2004;2003-2005;2004-2006;2005-2007;2006-2008;2007-2009;2008-2010;2009-2011;2010-2012;2011-2013**

Note: Weighted counts (#) represent 3-yr averages, rounded to the nearest hundred; n/r (Not Reportable) - If the unweighted total responses for a dimension (row) is <30 that row will not be shown

Years: 2001-2003

Income (2000-2003)	Never breastfed			Breastfed <1 week			Breastfed 1-4 weeks			Breastfed 5-8 weeks			Breastfed 9+ weeks			Weighted Total Responses (3-Yr Avg)
	#	%	C.I.(95%)	#	%	C.I.(95%)	#	%	C.I.(95%)	#	%	C.I.(95%)	#	%	C.I.(95%)	#
<=\$15,000	600	19.1	16.7 - 21.8	1,000	29.3	26.5 - 32.3	700	20.6	18.2 - 23.3	100	3.0	2.0 - 4.3	900	28.0	25.3 - 30.8	3,400
\$15,001-\$25,000	300	12.5	10.1 - 15.4	600	26.1	22.7 - 29.8	400	20.1	17.0 - 23.7	100	3.1	2.0 - 4.8	800	38.2	34.3 - 42.2	2,200
\$25,001-\$40,000	300	9.6	7.9 - 11.8	1,000	28.7	25.6 - 32.1	700	20.2	17.6 - 23.0	100	4.3	3.1 - 5.9	1,200	37.2	33.9 - 40.5	3,300
>=\$40,001	300	4.4	3.5 - 5.5	2,100	34.2	31.8 - 36.8	1,000	16.9	15.0 - 18.9	300	4.8	3.8 - 6.1	2,400	39.7	37.2 - 42.2	6,200

Birthweight	Never breastfed			Breastfed <1 week			Breastfed 1-4 weeks			Breastfed 5-8 weeks			Breastfed 9+ weeks			Weighted Total Responses (3-Yr Avg)
	#	%	C.I.(95%)	#	%	C.I.(95%)	#	%	C.I.(95%)	#	%	C.I.(95%)	#	%	C.I.(95%)	#
Low birth weight	100	10.4	7.8 - 13.7	400	36.3	30.6 - 42.5	200	22.5	17.6 - 28.3	<50	2.7	1.2 - 5.9	300	28.0	22.9 - 33.8	1,000
Normal birth weight	1,600	10.7	9.8 - 11.7	4,600	30.4	28.9 - 31.9	2,800	18.6	17.4 - 19.9	600	4.0	3.4 - 4.7	5,400	36.2	34.7 - 37.7	15,000

Smoke 3rd Trimester	Never breastfed			Breastfed <1 week			Breastfed 1-4 weeks			Breastfed 5-8 weeks			Breastfed 9+ weeks			Weighted Total Responses (3-Yr Avg)
	#	%	C.I.(95%)	#	%	C.I.(95%)	#	%	C.I.(95%)	#	%	C.I.(95%)	#	%	C.I.(95%)	#
Yes	400	29.6	25.3 - 34.2	400	27.6	23.4 - 32.1	200	17.0	13.8 - 20.9	<50	2.6	1.7 - 4.1	300	23.2	19.4 - 27.5	1,400
No	1,300	8.9	8.0 - 9.9	4,500	31.1	29.6 - 32.7	2,800	19.1	17.9 - 20.4	600	4.1	3.5 - 4.8	5,300	36.7	35.2 - 38.3	14,400

**PRAMS Health Indicator 3-Year Aggregate Report - Breastfeeding (exclusive) duration (grouped)- by State;County;DOH Race-Ethnicity;PRAMS Age Group;Infant Gender;Married;Poverty Level;Income (2000-2003);Income (2004-2011);Birthweight;Smoke 3rd Trimester;Smoke Before Pregnant;WIC During Pregnancy, for the Year(s)
2000-2002;2001-2003;2002-2004;2003-2005;2004-2006;2005-2007;2006-2008;2007-2009;2008-2010;2009-2011;2010-2012;2011-2013**

Note: Weighted counts (#) represent 3-yr averages, rounded to the nearest hundred; n/r (Not Reportable) - If the unweighted total responses for a dimension (row) is <30 that row will not be shown

Years: 2001-2003

Smoke Before Pregnant	Never breastfed			Breastfed <1 week			Breastfed 1-4 weeks			Breastfed 5-8 weeks			Breastfed 9+ weeks			Weighted Total Responses (3-Yr Avg)
	#	%	C.I.(95%)	#	%	C.I.(95%)	#	%	C.I.(95%)	#	%	C.I.(95%)	#	%	C.I.(95%)	#
Yes	600	18.2	15.8 - 20.8	900	29.4	26.5 - 32.5	600	19.3	16.9 - 22.0	100	3.5	2.6 - 4.9	900	29.5	26.6 - 32.6	3,200
No	1,100	8.7	7.7 - 9.7	3,800	31.0	29.4 - 32.7	2,300	18.9	17.5 - 20.3	500	4.1	3.4 - 4.9	4,600	37.3	35.6 - 39.1	12,400

WIC During Pregnancy	Never breastfed			Breastfed <1 week			Breastfed 1-4 weeks			Breastfed 5-8 weeks			Breastfed 9+ weeks			Weighted Total Responses (3-Yr Avg)
	#	%	C.I.(95%)	#	%	C.I.(95%)	#	%	C.I.(95%)	#	%	C.I.(95%)	#	%	C.I.(95%)	#
Yes	1,000	15.5	13.9 - 17.3	2,100	30.4	28.3 - 32.5	1,300	19.1	17.4 - 20.9	200	3.3	2.6 - 4.3	2,100	31.7	29.7 - 33.8	6,800
No	700	7.2	6.2 - 8.3	2,800	31.1	29.2 - 33.2	1,700	18.7	17.1 - 20.3	400	4.4	3.6 - 5.4	3,500	38.7	36.6 - 40.7	9,100

**PRAMS Health Indicator 3-Year Aggregate Report - Breastfeeding (exclusive) duration (grouped)- by State;County;DOH Race-Ethnicity;PRAMS Age Group;Infant Gender;Married;Poverty Level;Income (2000-2003);Income (2004-2011);Birthweight;Smoke 3rd Trimester;Smoke Before Pregnant;WIC During Pregnancy, for the Year(s)
2000-2002;2001-2003;2002-2004;2003-2005;2004-2006;2005-2007;2006-2008;2007-2009;2008-2010;2009-2011;2010-2012;2011-2013**

Note: Weighted counts (#) represent 3-yr averages, rounded to the nearest hundred; n/r (Not Reportable) - If the unweighted total responses for a dimension (row) is <30 that row will not be shown

Years: 2000-2002

State	Never breastfed			Breastfed <1 week			Breastfed 1-4 weeks			Breastfed 5-8 weeks			Breastfed 9+ weeks			Weighted Total Responses (3-Yr Avg)
	#	%	C.I.(95%)	#	%	C.I.(95%)	#	%	C.I.(95%)	#	%	C.I.(95%)	#	%	C.I.(95%)	#
Totals	1,700	11.2	10.3 - 12.2	4,200	27.8	26.5 - 29.2	3,000	19.7	18.5 - 20.9	700	4.6	4.0 - 5.3	5,500	36.7	35.3 - 38.1	15,100

County	Never breastfed			Breastfed <1 week			Breastfed 1-4 weeks			Breastfed 5-8 weeks			Breastfed 9+ weeks			Weighted Total Responses (3-Yr Avg)
	#	%	C.I.(95%)	#	%	C.I.(95%)	#	%	C.I.(95%)	#	%	C.I.(95%)	#	%	C.I.(95%)	#
Hawaii	200	12.3	10.6 - 14.1	400	26.0	23.6 - 28.5	300	19.1	17.0 - 21.4	100	3.8	2.8 - 5.0	700	38.9	36.2 - 41.7	1,700
Honolulu	1,300	11.5	10.4 - 12.7	3,200	29.0	27.3 - 30.7	2,200	19.3	17.9 - 20.8	500	4.9	4.2 - 5.8	4,000	35.3	33.5 - 37.2	11,200
Kauai	<50	7.9	5.7 - 11.0	100	15.1	12.0 - 18.9	100	21.8	18.1 - 26.0	<50	4.9	3.2 - 7.4	300	50.3	45.6 - 55.1	600
Maui	100	9.3	7.6 - 11.2	400	26.6	23.9 - 29.4	300	22.1	19.6 - 24.7	100	3.3	2.3 - 4.6	600	38.8	35.8 - 41.8	1,500

**PRAMS Health Indicator 3-Year Aggregate Report - Breastfeeding (exclusive) duration (grouped)- by State;County;DOH Race-Ethnicity;PRAMS Age Group;Infant Gender;Married;Poverty Level;Income (2000-2003);Income (2004-2011);Birthweight;Smoke 3rd Trimester;Smoke Before Pregnant;WIC During Pregnancy, for the Year(s)
2000-2002;2001-2003;2002-2004;2003-2005;2004-2006;2005-2007;2006-2008;2007-2009;2008-2010;2009-2011;2010-2012;2011-2013**

Note: Weighted counts (#) represent 3-yr averages, rounded to the nearest hundred; n/r (Not Reportable) - If the unweighted total responses for a dimension (row) is <30 that row will not be shown

Years: 2000-2002

DOH Race-Ethnicity	Never breastfed			Breastfed <1 week			Breastfed 1-4 weeks			Breastfed 5-8 weeks			Breastfed 9+ weeks			Weighted Total Responses (3-Yr Avg)
	#	%	C.I.(95%)	#	%	C.I.(95%)	#	%	C.I.(95%)	#	%	C.I.(95%)	#	%	C.I.(95%)	#
Caucasian	300	9.9	8.0 - 12.2	600	16.6	14.2 - 19.3	600	16.8	14.5 - 19.4	200	7.4	5.8 - 9.4	1,600	49.3	46.0 - 52.6	3,300
Native Hawaiian	600	15.5	14.3 - 16.8	1,100	27.6	26.2 - 29.1	900	21.0	19.7 - 22.3	200	4.0	3.4 - 4.7	1,300	31.9	30.4 - 33.4	4,100
Chinese	100	9.8	5.4 - 17.1	200	34.6	26.7 - 43.4	100	21.3	14.9 - 29.5	<50	3.6	1.4 - 9.0	200	30.7	23.3 - 39.2	600
Filipino	300	8.2	6.5 - 10.4	1,000	34.1	30.7 - 37.8	700	21.5	18.7 - 24.6	100	3.8	2.7 - 5.4	1,000	32.3	29.0 - 35.8	3,100
Japanese	100	4.0	2.6 - 6.2	700	38.3	33.7 - 43.1	400	21.3	17.6 - 25.6	100	4.4	2.9 - 6.9	600	31.9	27.6 - 36.5	1,900
Other	300	16.4	13.0 - 20.5	500	25.1	21.1 - 29.5	300	16.9	13.7 - 20.6	100	3.0	1.8 - 4.9	800	38.7	34.1 - 43.5	2,000

PRAMS Age Group	Never breastfed			Breastfed <1 week			Breastfed 1-4 weeks			Breastfed 5-8 weeks			Breastfed 9+ weeks			Weighted Total Responses (3-Yr Avg)
	#	%	C.I.(95%)	#	%	C.I.(95%)	#	%	C.I.(95%)	#	%	C.I.(95%)	#	%	C.I.(95%)	#
<20	200	15.4	12.4 - 18.8	500	32.2	28.3 - 36.3	400	23.3	20.0 - 26.9	<50	3.1	1.8 - 5.3	400	26.0	22.7 - 29.7	1,500
20-24	500	12.0	10.3 - 13.9	1,000	25.9	23.5 - 28.5	900	23.3	21.0 - 25.7	100	3.3	2.5 - 4.5	1,400	35.5	32.9 - 38.3	3,800
25-34	800	10.3	9.1 - 11.7	2,000	27.1	25.1 - 29.1	1,300	17.3	15.7 - 19.0	400	5.5	4.6 - 6.6	2,900	39.8	37.7 - 42.0	7,300
35+	200	10.0	7.9 - 12.7	700	30.3	26.7 - 34.0	500	18.9	16.0 - 22.1	100	5.0	3.6 - 6.8	900	35.9	32.3 - 39.6	2,400

**PRAMS Health Indicator 3-Year Aggregate Report - Breastfeeding (exclusive) duration (grouped)- by State;County;DOH Race-Ethnicity;PRAMS Age Group;Infant Gender;Married;Poverty Level;Income (2000-2003);Income (2004-2011);Birthweight;Smoke 3rd Trimester;Smoke Before Pregnant;WIC During Pregnancy, for the Year(s)
2000-2002;2001-2003;2002-2004;2003-2005;2004-2006;2005-2007;2006-2008;2007-2009;2008-2010;2009-2011;2010-2012;2011-2013**

Note: Weighted counts (#) represent 3-yr averages, rounded to the nearest hundred; n/r (Not Reportable) - If the unweighted total responses for a dimension (row) is <30 that row will not be shown

Years: 2000-2002

Infant Gender	Never breastfed			Breastfed <1 week			Breastfed 1-4 weeks			Breastfed 5-8 weeks			Breastfed 9+ weeks			Weighted Total Responses (3-Yr Avg)
	#	%	C.I.(95%)	#	%	C.I.(95%)	#	%	C.I.(95%)	#	%	C.I.(95%)	#	%	C.I.(95%)	#
Male	900	12.0	10.7 - 13.4	2,100	27.7	25.8 - 29.6	1,500	19.3	17.8 - 21.0	300	4.5	3.7 - 5.4	2,800	36.5	34.6 - 38.5	7,700
Female	800	10.4	9.2 - 11.7	2,100	28.0	26.1 - 30.0	1,500	20.0	18.4 - 21.8	300	4.8	3.9 - 5.8	2,700	36.9	34.8 - 39.0	7,300

Married	Never breastfed			Breastfed <1 week			Breastfed 1-4 weeks			Breastfed 5-8 weeks			Breastfed 9+ weeks			Weighted Total Responses (3-Yr Avg)
	#	%	C.I.(95%)	#	%	C.I.(95%)	#	%	C.I.(95%)	#	%	C.I.(95%)	#	%	C.I.(95%)	#
Yes	900	9.2	8.2 - 10.4	2,800	27.2	25.5 - 28.9	1,900	18.8	17.4 - 20.3	500	5.1	4.4 - 6.1	4,000	39.7	37.8 - 41.5	10,100
No	800	15.3	13.7 - 17.1	1,400	29.1	27.0 - 31.4	1,100	21.4	19.6 - 23.4	200	3.5	2.8 - 4.4	1,500	30.6	28.5 - 32.8	4,900

Poverty Level	Never breastfed			Breastfed <1 week			Breastfed 1-4 weeks			Breastfed 5-8 weeks			Breastfed 9+ weeks			Weighted Total Responses (3-Yr Avg)
	#	%	C.I.(95%)	#	%	C.I.(95%)	#	%	C.I.(95%)	#	%	C.I.(95%)	#	%	C.I.(95%)	#
0-130%	900	15.1	13.7 - 16.8	1,600	26.7	24.7 - 28.8	1,300	20.7	19.0 - 22.5	200	3.1	2.5 - 3.9	2,100	34.4	32.3 - 36.6	6,100
131-185%	300	10.1	8.2 - 12.4	800	26.4	23.4 - 29.7	600	19.6	17.0 - 22.4	200	6.1	4.7 - 8.1	1,100	37.7	34.4 - 41.2	2,900
186+%	200	4.9	3.8 - 6.2	1,500	29.7	27.2 - 32.2	900	17.9	15.9 - 20.0	300	6.0	4.8 - 7.4	2,100	41.6	38.9 - 44.2	5,000

**PRAMS Health Indicator 3-Year Aggregate Report - Breastfeeding (exclusive) duration (grouped)- by State;County;DOH Race-Ethnicity;PRAMS Age Group;Infant Gender;Married;Poverty Level;Income (2000-2003);Income (2004-2011);Birthweight;Smoke 3rd Trimester;Smoke Before Pregnant;WIC During Pregnancy, for the Year(s)
2000-2002;2001-2003;2002-2004;2003-2005;2004-2006;2005-2007;2006-2008;2007-2009;2008-2010;2009-2011;2010-2012;2011-2013**

Note: Weighted counts (#) represent 3-yr averages, rounded to the nearest hundred; n/r (Not Reportable) - If the unweighted total responses for a dimension (row) is <30 that row will not be shown

Years: 2000-2002

Income (2000-2003)	Never breastfed			Breastfed <1 week			Breastfed 1-4 weeks			Breastfed 5-8 weeks			Breastfed 9+ weeks			Weighted Total Responses (3-Yr Avg)
	#	%	C.I.(95%)	#	%	C.I.(95%)	#	%	C.I.(95%)	#	%	C.I.(95%)	#	%	C.I.(95%)	#
<=\$15,000	500	16.8	14.7 - 19.0	800	26.8	24.2 - 29.6	700	21.6	19.3 - 24.1	100	3.5	2.6 - 4.8	1,000	31.3	28.6 - 34.1	3,100
\$15,001-\$25,000	300	13.9	11.5 - 16.7	500	23.8	20.7 - 27.2	500	20.5	17.6 - 23.7	100	3.0	2.0 - 4.5	900	38.8	35.2 - 42.6	2,300
\$25,001-\$40,000	300	10.5	8.6 - 12.6	800	25.3	22.4 - 28.4	700	21.5	19.0 - 24.3	200	5.5	4.2 - 7.2	1,200	37.2	34.1 - 40.4	3,200
>=\$40,001	300	5.8	4.7 - 7.1	1,800	31.1	28.8 - 33.5	1,000	17.4	15.6 - 19.3	300	5.6	4.5 - 6.8	2,300	40.2	37.7 - 42.7	5,700

Birthweight	Never breastfed			Breastfed <1 week			Breastfed 1-4 weeks			Breastfed 5-8 weeks			Breastfed 9+ weeks			Weighted Total Responses (3-Yr Avg)
	#	%	C.I.(95%)	#	%	C.I.(95%)	#	%	C.I.(95%)	#	%	C.I.(95%)	#	%	C.I.(95%)	#
Low birth weight	100	11.9	9.1 - 15.4	300	34.3	28.8 - 40.3	200	22.0	17.4 - 27.3	<50	3.0	1.6 - 5.3	300	28.9	23.7 - 34.7	1,000
Normal birth weight	1,600	11.1	10.2 - 12.1	3,800	27.3	26.0 - 28.8	2,700	19.5	18.4 - 20.7	700	4.7	4.1 - 5.4	5,200	37.3	35.8 - 38.8	14,100

Smoke 3rd Trimester	Never breastfed			Breastfed <1 week			Breastfed 1-4 weeks			Breastfed 5-8 weeks			Breastfed 9+ weeks			Weighted Total Responses (3-Yr Avg)
	#	%	C.I.(95%)	#	%	C.I.(95%)	#	%	C.I.(95%)	#	%	C.I.(95%)	#	%	C.I.(95%)	#
Yes	400	27.6	23.7 - 31.8	300	26.0	22.1 - 30.3	300	20.9	17.5 - 24.8	<50	3.1	1.9 - 4.9	300	22.4	18.9 - 26.4	1,300
No	1,300	9.5	8.6 - 10.5	3,800	28.0	26.6 - 29.5	2,700	19.6	18.4 - 20.9	600	4.8	4.2 - 5.5	5,100	38.0	36.5 - 39.5	13,500

**PRAMS Health Indicator 3-Year Aggregate Report - Breastfeeding (exclusive) duration (grouped)- by State;County;DOH Race-Ethnicity;PRAMS Age Group;Infant Gender;Married;Poverty Level;Income (2000-2003);Income (2004-2011);Birthweight;Smoke 3rd Trimester;Smoke Before Pregnant;WIC During Pregnancy, for the Year(s)
2000-2002;2001-2003;2002-2004;2003-2005;2004-2006;2005-2007;2006-2008;2007-2009;2008-2010;2009-2011;2010-2012;2011-2013**

Note: Weighted counts (#) represent 3-yr averages, rounded to the nearest hundred; n/r (Not Reportable) - If the unweighted total responses for a dimension (row) is <30 that row will not be shown

Years: 2000-2002

Smoke Before Pregnant	Never breastfed			Breastfed <1 week			Breastfed 1-4 weeks			Breastfed 5-8 weeks			Breastfed 9+ weeks			Weighted Total Responses (3-Yr Avg)
	#	%	C.I.(95%)	#	%	C.I.(95%)	#	%	C.I.(95%)	#	%	C.I.(95%)	#	%	C.I.(95%)	#
Yes	500	17.2	15.1 - 19.6	800	25.4	22.8 - 28.3	700	22.3	19.9 - 25.0	100	3.8	2.8 - 5.0	1,000	31.2	28.4 - 34.2	3,000
No	1,100	9.5	8.6 - 10.6	3,300	28.3	26.7 - 29.9	2,200	19.1	17.8 - 20.5	600	4.8	4.1 - 5.6	4,400	38.3	36.6 - 39.9	11,600

WIC During Pregnancy	Never breastfed			Breastfed <1 week			Breastfed 1-4 weeks			Breastfed 5-8 weeks			Breastfed 9+ weeks			Weighted Total Responses (3-Yr Avg)
	#	%	C.I.(95%)	#	%	C.I.(95%)	#	%	C.I.(95%)	#	%	C.I.(95%)	#	%	C.I.(95%)	#
Yes	1,000	15.4	13.9 - 17.0	1,800	27.6	25.6 - 29.6	1,300	19.6	18.0 - 21.3	300	4.0	3.3 - 5.0	2,200	33.4	31.4 - 35.5	6,500
No	700	7.9	6.9 - 9.1	2,400	28.1	26.2 - 30.0	1,700	19.7	18.2 - 21.4	400	5.0	4.2 - 6.0	3,300	39.3	37.3 - 41.3	8,500