

PRAMS Health Indicator 3-Year Aggregate Report - Contraceptive use since giving birth- for the State of Hawaii, for the Year(s) 2000-2002;2001-2003;2002-2004;2003-2005;2004-2006;2005-2007;2006-2008;2007-2009;2008-2010;2009-2011;2010-2012;2011-2013

PRAMS Health Indicator 3-Year Aggregate Report - Contraceptive use since giving birth- by State;County;DOH Race-Ethnicity;PRAMS Age Group;Infant Gender;Married;Poverty Level;Income (2000-2003);Income (2004-2011);Birthweight;Smoke 3rd Trimester;Smoke Before Pregnant;WIC During Pregnancy, for the Year(s) 2000-2002;2001-2003;2002-2004;2003-2005;2004-2006;2005-2007;2006-2008;2007-2009;2008-2010;2009-2011;2010-2012;2011-2013

Note: Weighted counts (#) represent 3-yr averages, rounded to the nearest hundred; n/r (Not Reportable) - If the unweighted total responses for a dimension (row) is <30 that row will not be shown

The trend analysis section shows the trend for the selected health variable over selected years in a table and a graph. 3-Year Weighted Total Responses: This number is a weighted representation of the mothers of babies delivered in a given year, who responded to a particular question in the survey. For most questions this will be the mothers of all babies delivered in a given year. For some secondary questions only a subset of the population was asked the question. For example, all survey participants were asked if they smoked during pregnancy, but only those who answered yes were asked how many cigarettes a day. If a dimension value is unknown for a particular survey record, that record will not be included in the counts for that particular dimension.

Note: Data collection for household income changed in 2004 and again in 2012. Because of this, income data does not exist for some 3-year aggregate periods.

Below are the indicators included in this report and the long description for each indicator.

PRAMS Health Indicator	Health Indicator Description
Contraceptive use since giving birth	Contraceptive use since giving birth

Suggested citation:

Hawaii Health Data Warehouse, Hawaii State Department of Health, Pregnancy Risk Assessment Monitoring System, (report title and years), Report Created: 2/16/17

For documentation on other terms and coding in this report, please go to the following links:

[Click here to access PRAMS documentation](#)

[Click here to access DOH-Race Ethnicity coding](#)

[Click here to access The Hawai'i Data Guide](#)

**For questions about this report, please contact
The Hawai'i Health Data Warehouse**

profiles@hhdw.org

(855) 946-5899 x15

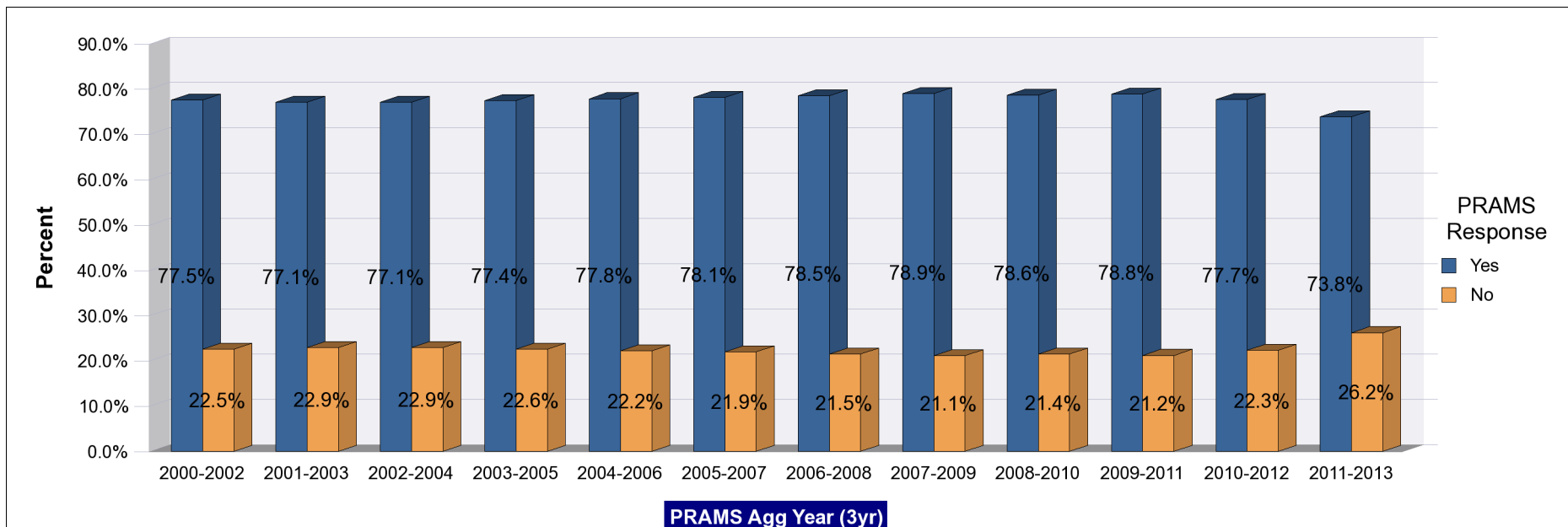
**PRAMS Health Indicator 3-Year Aggregate Report - Contraceptive use since giving birth- for the State of Hawaii, for the Year(s)
2000-2002;2001-2003;2002-2004;2003-2005;2004-2006;2005-2007;2006-2008;2007-2009;2008-2010;2009-2011;2010-2012;2011-2013**

Note: Weighted counts (#) represent 3-yr averages, rounded to the nearest hundred; n/r (Not Reportable) - If the unweighted total responses for a dimension (row) is <30 that row will not be shown

Years	Yes			No			Weighted Total Responses (3-Yr Avg)
	#	%	C.I.(95%)	#	%	C.I.(95%)	#
2000-2002	13,000	77.5	76.3 - 78.7	3,800	22.5	21.3 - 23.7	16,800
2001-2003	13,000	77.1	75.8 - 78.3	3,900	22.9	21.7 - 24.2	16,900
2002-2004	13,300	77.1	75.8 - 78.3	4,000	22.9	21.7 - 24.2	17,300
2003-2005	13,400	77.4	76.2 - 78.6	3,900	22.6	21.4 - 23.8	17,400
2004-2006	13,700	77.8	76.7 - 78.9	3,900	22.2	21.1 - 23.3	17,600
2005-2007	14,000	78.1	76.9 - 79.2	3,900	21.9	20.8 - 23.1	17,900
2006-2008	14,500	78.5	77.4 - 79.6	4,000	21.5	20.4 - 22.6	18,400
2007-2009	14,500	78.9	77.7 - 80.2	3,900	21.1	19.8 - 22.3	18,400
2008-2010	14,400	78.6	77.1 - 80.0	3,900	21.4	20.0 - 22.9	18,300
2009-2011	14,400	78.8	77.3 - 80.3	3,900	21.2	19.7 - 22.7	18,200
2010-2012	14,200	77.7	76.0 - 79.2	4,100	22.3	20.8 - 24.0	18,300
2011-2013	13,600	73.8	72.1 - 75.5	4,800	26.2	24.5 - 27.9	18,400

PRAMS Health Indicator 3-Year Aggregate Report - Contraceptive use since giving birth- for the State of Hawaii, for the Year(s) 2000-2002;2001-2003;2002-2004;2003-2005;2004-2006;2005-2007;2006-2008;2007-2009;2008-2010;2009-2011;2010-2012;2011-2013

Note: Weighted counts (#) represent 3-yr averages, rounded to the nearest hundred; n/r (Not Reportable) - If the unweighted total responses for a dimension (row) is <30 that row will not be shown



**PRAMS Health Indicator 3-Year Aggregate Report - Contraceptive use since giving birth- by State;County;DOH Race-Ethnicity;PRAMS Age Group;Infant Gender;Married;Poverty Level;Income (2000-2003);Income (2004-2011);Birthweight;Smoke 3rd Trimester;Smoke Before Pregnant;WIC During Pregnancy, for the Year(s)
2000-2002;2001-2003;2002-2004;2003-2005;2004-2006;2005-2007;2006-2008;2007-2009;2008-2010;2009-2011;2010-2012;2011-2013**

Note: Weighted counts (#) represent 3-yr averages, rounded to the nearest hundred; n/r (Not Reportable) - If the unweighted total responses for a dimension (row) is <30 that row will not be shown

Years: 2011-2013

State	Yes			No			Weighted Total Responses (3-Yr Avg)
	#	%	C.I.(95%)	#	%	C.I.(95%)	#
Totals	13,600	73.8	72.1 - 75.5	4,800	26.2	24.5 - 27.9	18,400

County	Yes			No			Weighted Total Responses (3-Yr Avg)
	#	%	C.I.(95%)	#	%	C.I.(95%)	#
Hawaii	1,800	75.0	72.2 - 77.6	600	25.0	22.4 - 27.8	2,400
Honolulu	9,600	72.5	70.2 - 74.8	3,600	27.5	25.2 - 29.8	13,200
Kauai	700	78.9	76.0 - 81.6	200	21.1	18.4 - 24.0	800
Maui	1,500	78.9	76.4 - 81.2	400	21.1	18.8 - 23.6	2,000

**PRAMS Health Indicator 3-Year Aggregate Report - Contraceptive use since giving birth- by State;County;DOH Race-Ethnicity;PRAMS Age Group;Infant Gender;Married;Poverty Level;Income (2000-2003);Income (2004-2011);Birthweight;Smoke 3rd Trimester;Smoke Before Pregnant;WIC During Pregnancy, for the Year(s)
2000-2002;2001-2003;2002-2004;2003-2005;2004-2006;2005-2007;2006-2008;2007-2009;2008-2010;2009-2011;2010-2012;2011-2013**

Note: Weighted counts (#) represent 3-yr averages, rounded to the nearest hundred; n/r (Not Reportable) - If the unweighted total responses for a dimension (row) is <30 that row will not be shown

Years: 2011-2013

DOH Race-Ethnicity	Yes			No			Weighted Total Responses (3-Yr Avg)
	#	%	C.I.(95%)	#	%	C.I.(95%)	#
Caucasian	3,500	77.1	73.7 - 80.3	1,000	22.9	19.7 - 26.3	4,500
Native Hawaiian	4,000	76.2	73.1 - 79.1	1,300	23.8	20.9 - 26.9	5,300
Chinese	600	71.2	62.3 - 78.8	300	28.8	21.2 - 37.7	900
Filipino	2,400	75.1	70.9 - 78.9	800	24.9	21.1 - 29.1	3,200
Japanese	1,200	66.8	60.5 - 72.6	600	33.2	27.4 - 39.5	1,800
Other	1,800	67.6	62.5 - 72.3	900	32.4	27.7 - 37.5	2,700

PRAMS Age Group	Yes			No			Weighted Total Responses (3-Yr Avg)
	#	%	C.I.(95%)	#	%	C.I.(95%)	#
<20	700	71.0	62.8 - 77.9	300	29.0	22.1 - 37.2	1,000
20-24	3,100	77.2	73.4 - 80.6	900	22.8	19.4 - 26.6	4,100
25-34	7,500	74.7	72.3 - 76.9	2,500	25.3	23.1 - 27.7	10,000
35+	2,200	68.0	63.7 - 72.0	1,100	32.0	28.0 - 36.3	3,300

**PRAMS Health Indicator 3-Year Aggregate Report - Contraceptive use since giving birth- by State;County;DOH Race-Ethnicity;PRAMS Age Group;Infant Gender;Married;Poverty Level;Income (2000-2003);Income (2004-2011);Birthweight;Smoke 3rd Trimester;Smoke Before Pregnant;WIC During Pregnancy, for the Year(s)
2000-2002;2001-2003;2002-2004;2003-2005;2004-2006;2005-2007;2006-2008;2007-2009;2008-2010;2009-2011;2010-2012;2011-2013**

Note: Weighted counts (#) represent 3-yr averages, rounded to the nearest hundred; n/r (Not Reportable) - If the unweighted total responses for a dimension (row) is <30 that row will not be shown

Years: 2011-2013

Infant Gender	Yes			No			Weighted Total Responses (3-Yr Avg)
	#	%	C.I.(95%)	#	%	C.I.(95%)	#
Male	6,800	74.3	71.8 - 76.6	2,400	25.7	23.4 - 28.2	9,200
Female	6,800	73.4	70.8 - 75.8	2,500	26.6	24.2 - 29.2	9,200

Married	Yes			No			Weighted Total Responses (3-Yr Avg)
	#	%	C.I.(95%)	#	%	C.I.(95%)	#
Yes	8,500	74.0	71.7 - 76.1	3,000	26.0	23.9 - 28.3	11,500
No	5,100	73.6	70.7 - 76.2	1,800	26.4	23.8 - 29.3	6,900

Poverty Level	Yes			No			Weighted Total Responses (3-Yr Avg)
	#	%	C.I.(95%)	#	%	C.I.(95%)	#
0-130%	4,800	73.1	70.2 - 75.9	1,800	26.9	24.1 - 29.8	6,600
131-185%	2,200	80.0	75.6 - 83.7	600	20.0	16.3 - 24.4	2,800
186+%	5,500	74.4	71.6 - 77.0	1,900	25.6	23.0 - 28.4	7,500

**PRAMS Health Indicator 3-Year Aggregate Report - Contraceptive use since giving birth- by State;County;DOH Race-Ethnicity;PRAMS Age Group;Infant Gender;Married;Poverty Level;Income (2000-2003);Income (2004-2011);Birthweight;Smoke 3rd Trimester;Smoke Before Pregnant;WIC During Pregnancy, for the Year(s)
2000-2002;2001-2003;2002-2004;2003-2005;2004-2006;2005-2007;2006-2008;2007-2009;2008-2010;2009-2011;2010-2012;2011-2013**

Note: Weighted counts (#) represent 3-yr averages, rounded to the nearest hundred; n/r (Not Reportable) - If the unweighted total responses for a dimension (row) is <30 that row will not be shown

Years: 2011-2013

Birthweight	Yes			No			Weighted Total Responses (3-Yr Avg)
	#	%	C.I.(95%)	#	%	C.I.(95%)	#
Low birth weight	1,000	74.6	71.9 - 77.1	300	25.4	22.9 - 28.1	1,300
Normal birth weight	12,600	73.8	71.9 - 75.6	4,500	26.2	24.4 - 28.1	17,000

Smoke 3rd Trimester	Yes			No			Weighted Total Responses (3-Yr Avg)
	#	%	C.I.(95%)	#	%	C.I.(95%)	#
Yes	600	71.3	63.5 - 78.0	300	28.7	22.0 - 36.5	900
No	12,600	73.8	71.9 - 75.5	4,500	26.2	24.5 - 28.1	17,100

Smoke Before Pregnant	Yes			No			Weighted Total Responses (3-Yr Avg)
	#	%	C.I.(95%)	#	%	C.I.(95%)	#
Yes	2,300	71.8	67.5 - 75.7	900	28.2	24.3 - 32.5	3,200
No	10,900	74.1	72.1 - 75.9	3,800	25.9	24.1 - 27.9	14,700

**PRAMS Health Indicator 3-Year Aggregate Report - Contraceptive use since giving birth- by State;County;DOH Race-Ethnicity;PRAMS Age Group;Infant Gender;Married;Poverty Level;Income (2000-2003);Income (2004-2011);Birthweight;Smoke 3rd Trimester;Smoke Before Pregnant;WIC During Pregnancy, for the Year(s)
2000-2002;2001-2003;2002-2004;2003-2005;2004-2006;2005-2007;2006-2008;2007-2009;2008-2010;2009-2011;2010-2012;2011-2013**

Note: Weighted counts (#) represent 3-yr averages, rounded to the nearest hundred; n/r (Not Reportable) - If the unweighted total responses for a dimension (row) is <30 that row will not be shown

Years: 2011-2013

WIC During Pregnancy	Yes			No			Weighted Total Responses (3-Yr Avg)
	#	%	C.I.(95%)	#	%	C.I.(95%)	#
Yes	6,000	73.8	71.2 - 76.3	2,100	26.2	23.7 - 28.8	8,200
No	7,400	73.9	71.5 - 76.1	2,600	26.1	23.9 - 28.5	10,100

**PRAMS Health Indicator 3-Year Aggregate Report - Contraceptive use since giving birth- by State;County;DOH Race-Ethnicity;PRAMS Age Group;Infant Gender;Married;Poverty Level;Income (2000-2003);Income (2004-2011);Birthweight;Smoke 3rd Trimester;Smoke Before Pregnant;WIC During Pregnancy, for the Year(s)
2000-2002;2001-2003;2002-2004;2003-2005;2004-2006;2005-2007;2006-2008;2007-2009;2008-2010;2009-2011;2010-2012;2011-2013**

Note: Weighted counts (#) represent 3-yr averages, rounded to the nearest hundred; n/r (Not Reportable) - If the unweighted total responses for a dimension (row) is <30 that row will not be shown

Years: 2010-2012

State	Yes			No			Weighted Total Responses (3-Yr Avg)
	#	%	C.I.(95%)	#	%	C.I.(95%)	#
Totals	14,200	77.7	76.0 - 79.2	4,100	22.3	20.8 - 24.0	18,300

County	Yes			No			Weighted Total Responses (3-Yr Avg)
	#	%	C.I.(95%)	#	%	C.I.(95%)	#
Hawaii	1,900	79.3	76.7 - 81.6	500	20.7	18.4 - 23.3	2,300
Honolulu	10,200	76.8	74.6 - 78.8	3,100	23.2	21.2 - 25.4	13,200
Kauai	700	80.1	77.1 - 82.8	200	19.9	17.2 - 22.9	800
Maui	1,600	80.6	78.3 - 82.7	400	19.4	17.3 - 21.7	2,000

**PRAMS Health Indicator 3-Year Aggregate Report - Contraceptive use since giving birth- by State;County;DOH Race-Ethnicity;PRAMS Age Group;Infant Gender;Married;Poverty Level;Income (2000-2003);Income (2004-2011);Birthweight;Smoke 3rd Trimester;Smoke Before Pregnant;WIC During Pregnancy, for the Year(s)
2000-2002;2001-2003;2002-2004;2003-2005;2004-2006;2005-2007;2006-2008;2007-2009;2008-2010;2009-2011;2010-2012;2011-2013**

Note: Weighted counts (#) represent 3-yr averages, rounded to the nearest hundred; n/r (Not Reportable) - If the unweighted total responses for a dimension (row) is <30 that row will not be shown

Years: 2010-2012

DOH Race-Ethnicity	Yes			No			Weighted Total Responses (3-Yr Avg)
	#	%	C.I.(95%)	#	%	C.I.(95%)	#
Caucasian	3,500	79.7	76.4 - 82.6	900	20.3	17.4 - 23.6	4,400
Native Hawaiian	4,300	81.3	78.4 - 83.8	1,000	18.7	16.2 - 21.6	5,300
Chinese	700	77.6	69.2 - 84.3	200	22.4	15.7 - 30.8	900
Filipino	2,500	75.7	71.7 - 79.3	800	24.3	20.7 - 28.3	3,300
Japanese	1,200	70.8	64.8 - 76.1	500	29.2	23.9 - 35.2	1,700
Other	2,100	74.3	69.6 - 78.4	700	25.7	21.6 - 30.4	2,800

PRAMS Age Group	Yes			No			Weighted Total Responses (3-Yr Avg)
	#	%	C.I.(95%)	#	%	C.I.(95%)	#
<20	800	75.1	67.8 - 81.1	300	24.9	18.9 - 32.2	1,100
20-24	3,400	80.8	77.4 - 83.8	800	19.2	16.2 - 22.6	4,200
25-34	7,800	78.9	76.7 - 80.9	2,100	21.1	19.1 - 23.3	9,900
35+	2,300	70.7	66.5 - 74.6	900	29.3	25.4 - 33.5	3,200

**PRAMS Health Indicator 3-Year Aggregate Report - Contraceptive use since giving birth- by State;County;DOH Race-Ethnicity;PRAMS Age Group;Infant Gender;Married;Poverty Level;Income (2000-2003);Income (2004-2011);Birthweight;Smoke 3rd Trimester;Smoke Before Pregnant;WIC During Pregnancy, for the Year(s)
2000-2002;2001-2003;2002-2004;2003-2005;2004-2006;2005-2007;2006-2008;2007-2009;2008-2010;2009-2011;2010-2012;2011-2013**

Note: Weighted counts (#) represent 3-yr averages, rounded to the nearest hundred; n/r (Not Reportable) - If the unweighted total responses for a dimension (row) is <30 that row will not be shown

Years: 2010-2012

	Yes			No			Weighted Total Responses (3-Yr Avg)
	#	%	C.I.(95%)	#	%	C.I.(95%)	#
Infant Gender							
Male	7,100	77.2	74.9 - 79.3	2,100	22.8	20.7 - 25.1	9,200
Female	7,100	78.1	75.8 - 80.3	2,000	21.9	19.7 - 24.2	9,100

	Yes			No			Weighted Total Responses (3-Yr Avg)
	#	%	C.I.(95%)	#	%	C.I.(95%)	#
Married							
Yes	9,000	78.5	76.4 - 80.4	2,500	21.5	19.6 - 23.6	11,400
No	5,300	76.3	73.6 - 78.8	1,600	23.7	21.2 - 26.4	6,900

	Yes			No			Weighted Total Responses (3-Yr Avg)
	#	%	C.I.(95%)	#	%	C.I.(95%)	#
Poverty Level							
0-130%	5,000	77.0	74.2 - 79.5	1,500	23.0	20.5 - 25.8	6,500
131-185%	2,400	83.5	79.7 - 86.7	500	16.5	13.3 - 20.3	2,900
186+%	5,900	77.9	75.4 - 80.3	1,700	22.1	19.7 - 24.6	7,600

**PRAMS Health Indicator 3-Year Aggregate Report - Contraceptive use since giving birth- by State;County;DOH Race-Ethnicity;PRAMS Age Group;Infant Gender;Married;Poverty Level;Income (2000-2003);Income (2004-2011);Birthweight;Smoke 3rd Trimester;Smoke Before Pregnant;WIC During Pregnancy, for the Year(s)
2000-2002;2001-2003;2002-2004;2003-2005;2004-2006;2005-2007;2006-2008;2007-2009;2008-2010;2009-2011;2010-2012;2011-2013**

Note: Weighted counts (#) represent 3-yr averages, rounded to the nearest hundred; n/r (Not Reportable) - If the unweighted total responses for a dimension (row) is <30 that row will not be shown

Years: 2010-2012

Birthweight	Yes			No			Weighted Total Responses (3-Yr Avg)
	#	%	C.I.(95%)	#	%	C.I.(95%)	#
Low birth weight	1,000	77.6	75.0 - 80.1	300	22.4	19.9 - 25.0	1,300
Normal birth weight	13,200	77.7	76.0 - 79.4	3,800	22.3	20.6 - 24.0	17,000

Smoke 3rd Trimester	Yes			No			Weighted Total Responses (3-Yr Avg)
	#	%	C.I.(95%)	#	%	C.I.(95%)	#
Yes	800	76.5	69.7 - 82.3	200	23.5	17.7 - 30.3	1,000
No	13,200	77.6	75.9 - 79.2	3,800	22.4	20.8 - 24.1	17,000

Smoke Before Pregnant	Yes			No			Weighted Total Responses (3-Yr Avg)
	#	%	C.I.(95%)	#	%	C.I.(95%)	#
Yes	2,700	78.4	74.8 - 81.6	700	21.6	18.4 - 25.2	3,400
No	11,300	77.4	75.5 - 79.1	3,300	22.6	20.9 - 24.5	14,600

**PRAMS Health Indicator 3-Year Aggregate Report - Contraceptive use since giving birth- by State;County;DOH Race-Ethnicity;PRAMS Age Group;Infant Gender;Married;Poverty Level;Income (2000-2003);Income (2004-2011);Birthweight;Smoke 3rd Trimester;Smoke Before Pregnant;WIC During Pregnancy, for the Year(s)
2000-2002;2001-2003;2002-2004;2003-2005;2004-2006;2005-2007;2006-2008;2007-2009;2008-2010;2009-2011;2010-2012;2011-2013**

Note: Weighted counts (#) represent 3-yr averages, rounded to the nearest hundred; n/r (Not Reportable) - If the unweighted total responses for a dimension (row) is <30 that row will not be shown

Years: 2010-2012

WIC During Pregnancy	Yes			No			Weighted Total Responses (3-Yr Avg)
	#	%	C.I.(95%)	#	%	C.I.(95%)	#
Yes	6,400	77.5	75.1 - 79.8	1,800	22.5	20.2 - 24.9	8,200
No	7,800	77.9	75.7 - 80.0	2,200	22.1	20.0 - 24.3	10,000

**PRAMS Health Indicator 3-Year Aggregate Report - Contraceptive use since giving birth- by State;County;DOH Race-Ethnicity;PRAMS Age Group;Infant Gender;Married;Poverty Level;Income (2000-2003);Income (2004-2011);Birthweight;Smoke 3rd Trimester;Smoke Before Pregnant;WIC During Pregnancy, for the Year(s)
2000-2002;2001-2003;2002-2004;2003-2005;2004-2006;2005-2007;2006-2008;2007-2009;2008-2010;2009-2011;2010-2012;2011-2013**

Note: Weighted counts (#) represent 3-yr averages, rounded to the nearest hundred; n/r (Not Reportable) - If the unweighted total responses for a dimension (row) is <30 that row will not be shown

Years: 2009-2011

State	Yes			No			Weighted Total Responses (3-Yr Avg)
	#	%	C.I.(95%)	#	%	C.I.(95%)	#
Totals	14,400	78.8	77.3 - 80.3	3,900	21.2	19.7 - 22.7	18,200

County	Yes			No			Weighted Total Responses (3-Yr Avg)
	#	%	C.I.(95%)	#	%	C.I.(95%)	#
Hawaii	1,900	82.6	80.3 - 84.8	400	17.4	15.2 - 19.7	2,400
Honolulu	10,200	78.0	75.9 - 80.0	2,900	22.0	20.0 - 24.1	13,100
Kauai	700	81.9	79.1 - 84.5	200	18.1	15.5 - 20.9	800
Maui	1,600	78.4	76.1 - 80.6	400	21.6	19.4 - 23.9	2,000

**PRAMS Health Indicator 3-Year Aggregate Report - Contraceptive use since giving birth- by State;County;DOH Race-Ethnicity;PRAMS Age Group;Infant Gender;Married;Poverty Level;Income (2000-2003);Income (2004-2011);Birthweight;Smoke 3rd Trimester;Smoke Before Pregnant;WIC During Pregnancy, for the Year(s)
2000-2002;2001-2003;2002-2004;2003-2005;2004-2006;2005-2007;2006-2008;2007-2009;2008-2010;2009-2011;2010-2012;2011-2013**

Note: Weighted counts (#) represent 3-yr averages, rounded to the nearest hundred; n/r (Not Reportable) - If the unweighted total responses for a dimension (row) is <30 that row will not be shown

Years: 2009-2011

DOH Race-Ethnicity	Yes			No			Weighted Total Responses (3-Yr Avg)
	#	%	C.I.(95%)	#	%	C.I.(95%)	#
Caucasian	3,600	81.0	77.9 - 83.7	800	19.0	16.3 - 22.1	4,400
Native Hawaiian	4,500	81.5	78.7 - 83.9	1,000	18.5	16.1 - 21.3	5,500
Chinese	600	75.4	66.0 - 82.9	200	24.6	17.1 - 34.0	800
Filipino	2,600	79.3	75.5 - 82.6	700	20.7	17.4 - 24.5	3,200
Japanese	1,200	70.5	64.6 - 75.8	500	29.5	24.2 - 35.4	1,700
Other	2,000	75.6	70.9 - 79.7	600	24.4	20.3 - 29.1	2,700

PRAMS Age Group	Yes			No			Weighted Total Responses (3-Yr Avg)
	#	%	C.I.(95%)	#	%	C.I.(95%)	#
<20	1,100	78.9	72.6 - 84.0	300	21.1	16.0 - 27.4	1,300
20-24	3,500	81.5	78.2 - 84.4	800	18.5	15.6 - 21.8	4,300
25-34	7,500	79.3	77.1 - 81.3	2,000	20.7	18.7 - 22.9	9,400
35+	2,300	73.8	69.7 - 77.6	800	26.2	22.4 - 30.3	3,100

**PRAMS Health Indicator 3-Year Aggregate Report - Contraceptive use since giving birth- by State;County;DOH Race-Ethnicity;PRAMS Age Group;Infant Gender;Married;Poverty Level;Income (2000-2003);Income (2004-2011);Birthweight;Smoke 3rd Trimester;Smoke Before Pregnant;WIC During Pregnancy, for the Year(s)
2000-2002;2001-2003;2002-2004;2003-2005;2004-2006;2005-2007;2006-2008;2007-2009;2008-2010;2009-2011;2010-2012;2011-2013**

Note: Weighted counts (#) represent 3-yr averages, rounded to the nearest hundred; n/r (Not Reportable) - If the unweighted total responses for a dimension (row) is <30 that row will not be shown

Years: 2009-2011

Infant Gender	Yes			No			Weighted Total Responses (3-Yr Avg)
	#	%	C.I.(95%)	#	%	C.I.(95%)	#
Male	7,300	77.1	74.9 - 79.3	2,200	22.9	20.7 - 25.1	9,400
Female	7,100	80.6	78.4 - 82.7	1,700	19.4	17.3 - 21.6	8,800

Married	Yes			No			Weighted Total Responses (3-Yr Avg)
	#	%	C.I.(95%)	#	%	C.I.(95%)	#
Yes	8,800	79.0	76.9 - 80.8	2,300	21.0	19.2 - 23.1	11,200
No	5,600	78.7	76.1 - 81.0	1,500	21.3	19.0 - 23.9	7,100

Poverty Level	Yes			No			Weighted Total Responses (3-Yr Avg)
	#	%	C.I.(95%)	#	%	C.I.(95%)	#
0-130%	5,100	79.3	76.7 - 81.7	1,300	20.7	18.3 - 23.3	6,400
131-185%	2,400	83.3	79.3 - 86.6	500	16.7	13.4 - 20.7	2,800
186+%	6,000	77.8	75.3 - 80.1	1,700	22.2	19.9 - 24.7	7,700

**PRAMS Health Indicator 3-Year Aggregate Report - Contraceptive use since giving birth- by State;County;DOH Race-Ethnicity;PRAMS Age Group;Infant Gender;Married;Poverty Level;Income (2000-2003);Income (2004-2011);Birthweight;Smoke 3rd Trimester;Smoke Before Pregnant;WIC During Pregnancy, for the Year(s)
2000-2002;2001-2003;2002-2004;2003-2005;2004-2006;2005-2007;2006-2008;2007-2009;2008-2010;2009-2011;2010-2012;2011-2013**

Note: Weighted counts (#) represent 3-yr averages, rounded to the nearest hundred; n/r (Not Reportable) - If the unweighted total responses for a dimension (row) is <30 that row will not be shown

Years: 2009-2011

Income (2004-2011)	Yes			No			Weighted Total Responses (3-Yr Avg)
	#	%	C.I.(95%)	#	%	C.I.(95%)	#
<\$10,000	2,500	77.1	73.2 - 80.7	700	22.9	19.3 - 26.8	3,300
\$10,000-\$24,999	2,800	80.1	76.4 - 83.3	700	19.9	16.7 - 23.6	3,500
\$25,000-\$49,999	3,500	82.1	78.9 - 84.9	800	17.9	15.1 - 21.1	4,300
>=\$50,000	4,800	77.8	75.0 - 80.3	1,400	22.2	19.7 - 25.0	6,100

Birthweight	Yes			No			Weighted Total Responses (3-Yr Avg)
	#	%	C.I.(95%)	#	%	C.I.(95%)	#
Low birth weight	1,100	81.2	78.8 - 83.5	200	18.8	16.5 - 21.2	1,300
Normal birth weight	13,300	78.7	77.0 - 80.3	3,600	21.3	19.7 - 23.0	16,900

Smoke 3rd Trimester	Yes			No			Weighted Total Responses (3-Yr Avg)
	#	%	C.I.(95%)	#	%	C.I.(95%)	#
Yes	1,000	75.3	69.0 - 80.7	300	24.7	19.3 - 31.0	1,300
No	13,200	79.1	77.5 - 80.7	3,500	20.9	19.3 - 22.5	16,600

**PRAMS Health Indicator 3-Year Aggregate Report - Contraceptive use since giving birth- by State;County;DOH Race-Ethnicity;PRAMS Age Group;Infant Gender;Married;Poverty Level;Income (2000-2003);Income (2004-2011);Birthweight;Smoke 3rd Trimester;Smoke Before Pregnant;WIC During Pregnancy, for the Year(s)
2000-2002;2001-2003;2002-2004;2003-2005;2004-2006;2005-2007;2006-2008;2007-2009;2008-2010;2009-2011;2010-2012;2011-2013**

Note: Weighted counts (#) represent 3-yr averages, rounded to the nearest hundred; n/r (Not Reportable) - If the unweighted total responses for a dimension (row) is <30 that row will not be shown

Years: 2009-2011

Smoke Before Pregnant	Yes			No			Weighted Total Responses (3-Yr Avg)
	#	%	C.I.(95%)	#	%	C.I.(95%)	#
Yes	2,900	76.8	73.3 - 80.1	900	23.2	19.9 - 26.7	3,800
No	11,300	79.4	77.6 - 81.1	2,900	20.6	18.9 - 22.4	14,200

WIC During Pregnancy	Yes			No			Weighted Total Responses (3-Yr Avg)
	#	%	C.I.(95%)	#	%	C.I.(95%)	#
Yes	6,300	79.9	77.5 - 82.1	1,600	20.1	17.9 - 22.5	7,900
No	7,900	78.1	75.9 - 80.1	2,200	21.9	19.9 - 24.1	10,100

**PRAMS Health Indicator 3-Year Aggregate Report - Contraceptive use since giving birth- by State;County;DOH Race-Ethnicity;PRAMS Age Group;Infant Gender;Married;Poverty Level;Income (2000-2003);Income (2004-2011);Birthweight;Smoke 3rd Trimester;Smoke Before Pregnant;WIC During Pregnancy, for the Year(s)
2000-2002;2001-2003;2002-2004;2003-2005;2004-2006;2005-2007;2006-2008;2007-2009;2008-2010;2009-2011;2010-2012;2011-2013**

Note: Weighted counts (#) represent 3-yr averages, rounded to the nearest hundred; n/r (Not Reportable) - If the unweighted total responses for a dimension (row) is <30 that row will not be shown

Years: 2008-2010

State	Yes			No			Weighted Total Responses (3-Yr Avg)
	#	%	C.I.(95%)	#	%	C.I.(95%)	#
Totals	14,400	78.6	77.1 - 80.0	3,900	21.4	20.0 - 22.9	18,300

County	Yes			No			Weighted Total Responses (3-Yr Avg)
	#	%	C.I.(95%)	#	%	C.I.(95%)	#
Hawaii	2,000	83.5	80.9 - 85.9	400	16.5	14.1 - 19.1	2,400
Honolulu	10,100	77.5	75.5 - 79.3	2,900	22.5	20.7 - 24.5	13,000
Kauai	700	81.2	77.3 - 84.6	200	18.8	15.4 - 22.7	800
Maui	1,600	79.0	76.2 - 81.5	400	21.0	18.5 - 23.8	2,100

**PRAMS Health Indicator 3-Year Aggregate Report - Contraceptive use since giving birth- by State;County;DOH Race-Ethnicity;PRAMS Age Group;Infant Gender;Married;Poverty Level;Income (2000-2003);Income (2004-2011);Birthweight;Smoke 3rd Trimester;Smoke Before Pregnant;WIC During Pregnancy, for the Year(s)
2000-2002;2001-2003;2002-2004;2003-2005;2004-2006;2005-2007;2006-2008;2007-2009;2008-2010;2009-2011;2010-2012;2011-2013**

Note: Weighted counts (#) represent 3-yr averages, rounded to the nearest hundred; n/r (Not Reportable) - If the unweighted total responses for a dimension (row) is <30 that row will not be shown

Years: 2008-2010

DOH Race-Ethnicity	Yes			No			Weighted Total Responses (3-Yr Avg)
	#	%	C.I.(95%)	#	%	C.I.(95%)	#
Caucasian	3,600	81.3	78.5 - 83.8	800	18.7	16.2 - 21.5	4,400
Native Hawaiian	4,400	80.1	77.4 - 82.5	1,100	19.9	17.5 - 22.6	5,500
Chinese	500	76.0	67.6 - 82.8	200	24.0	17.2 - 32.4	700
Filipino	2,600	79.6	76.3 - 82.6	700	20.4	17.4 - 23.7	3,300
Japanese	1,200	71.3	66.2 - 76.0	500	28.7	24.0 - 33.8	1,800
Other	2,100	75.3	71.1 - 79.0	700	24.7	21.0 - 28.9	2,700

PRAMS Age Group	Yes			No			Weighted Total Responses (3-Yr Avg)
	#	%	C.I.(95%)	#	%	C.I.(95%)	#
<20	1,200	78.8	73.4 - 83.4	300	21.2	16.6 - 26.6	1,500
20-24	3,400	80.4	77.3 - 83.1	800	19.6	16.9 - 22.7	4,200
25-34	7,400	79.3	77.3 - 81.1	1,900	20.7	18.9 - 22.7	9,400
35+	2,400	74.3	70.6 - 77.6	800	25.7	22.4 - 29.4	3,300

**PRAMS Health Indicator 3-Year Aggregate Report - Contraceptive use since giving birth- by State;County;DOH Race-Ethnicity;PRAMS Age Group;Infant Gender;Married;Poverty Level;Income (2000-2003);Income (2004-2011);Birthweight;Smoke 3rd Trimester;Smoke Before Pregnant;WIC During Pregnancy, for the Year(s)
2000-2002;2001-2003;2002-2004;2003-2005;2004-2006;2005-2007;2006-2008;2007-2009;2008-2010;2009-2011;2010-2012;2011-2013**

Note: Weighted counts (#) represent 3-yr averages, rounded to the nearest hundred; n/r (Not Reportable) - If the unweighted total responses for a dimension (row) is <30 that row will not be shown

Years: 2008-2010

	Yes			No			Weighted Total Responses (3-Yr Avg)
	#	%	C.I.(95%)	#	%	C.I.(95%)	#
Infant Gender							
Male	7,400	77.5	75.5 - 79.5	2,100	22.5	20.5 - 24.5	9,600
Female	7,000	79.7	77.7 - 81.6	1,800	20.3	18.4 - 22.3	8,800

	Yes			No			Weighted Total Responses (3-Yr Avg)
	#	%	C.I.(95%)	#	%	C.I.(95%)	#
Married							
Yes	8,800	78.9	77.0 - 80.6	2,400	21.1	19.4 - 23.0	11,200
No	5,600	78.2	75.8 - 80.4	1,600	21.8	19.6 - 24.2	7,100

	Yes			No			Weighted Total Responses (3-Yr Avg)
	#	%	C.I.(95%)	#	%	C.I.(95%)	#
Poverty Level							
0-130%	5,200	78.6	76.1 - 80.9	1,400	21.4	19.1 - 23.9	6,600
131-185%	2,300	82.7	79.1 - 85.8	500	17.3	14.2 - 20.9	2,800
186+%	6,000	77.8	75.5 - 79.9	1,700	22.2	20.1 - 24.5	7,700

**PRAMS Health Indicator 3-Year Aggregate Report - Contraceptive use since giving birth- by State;County;DOH Race-Ethnicity;PRAMS Age Group;Infant Gender;Married;Poverty Level;Income (2000-2003);Income (2004-2011);Birthweight;Smoke 3rd Trimester;Smoke Before Pregnant;WIC During Pregnancy, for the Year(s)
2000-2002;2001-2003;2002-2004;2003-2005;2004-2006;2005-2007;2006-2008;2007-2009;2008-2010;2009-2011;2010-2012;2011-2013**

Note: Weighted counts (#) represent 3-yr averages, rounded to the nearest hundred; n/r (Not Reportable) - If the unweighted total responses for a dimension (row) is <30 that row will not be shown

Years: 2008-2010

Income (2004-2011)	Yes			No			Weighted Total Responses (3-Yr Avg)
	#	%	C.I.(95%)	#	%	C.I.(95%)	#
<\$10,000	2,400	75.2	71.5 - 78.6	800	24.8	21.4 - 28.5	3,200
\$10,000-\$24,999	3,000	80.5	77.2 - 83.4	700	19.5	16.6 - 22.8	3,700
\$25,000-\$49,999	3,400	81.2	78.3 - 83.9	800	18.8	16.1 - 21.7	4,200
>=\$50,000	4,800	77.9	75.4 - 80.3	1,400	22.1	19.7 - 24.6	6,100

Birthweight	Yes			No			Weighted Total Responses (3-Yr Avg)
	#	%	C.I.(95%)	#	%	C.I.(95%)	#
Low birth weight	1,000	78.7	75.3 - 81.8	300	21.3	18.2 - 24.7	1,300
Normal birth weight	13,400	78.7	77.1 - 80.1	3,600	21.3	19.9 - 22.9	17,000

Smoke 3rd Trimester	Yes			No			Weighted Total Responses (3-Yr Avg)
	#	%	C.I.(95%)	#	%	C.I.(95%)	#
Yes	1,100	73.2	67.5 - 78.1	400	26.8	21.9 - 32.5	1,600
No	13,000	79.3	77.8 - 80.7	3,400	20.7	19.3 - 22.2	16,500

**PRAMS Health Indicator 3-Year Aggregate Report - Contraceptive use since giving birth- by State;County;DOH Race-Ethnicity;PRAMS Age Group;Infant Gender;Married;Poverty Level;Income (2000-2003);Income (2004-2011);Birthweight;Smoke 3rd Trimester;Smoke Before Pregnant;WIC During Pregnancy, for the Year(s)
2000-2002;2001-2003;2002-2004;2003-2005;2004-2006;2005-2007;2006-2008;2007-2009;2008-2010;2009-2011;2010-2012;2011-2013**

Note: Weighted counts (#) represent 3-yr averages, rounded to the nearest hundred; n/r (Not Reportable) - If the unweighted total responses for a dimension (row) is <30 that row will not be shown

Years: 2008-2010

Smoke Before Pregnant	Yes			No			Weighted Total Responses (3-Yr Avg)
	#	%	C.I.(95%)	#	%	C.I.(95%)	#
Yes	2,800	75.8	72.3 - 78.9	900	24.2	21.1 - 27.7	3,700
No	11,400	79.5	77.9 - 81.1	2,900	20.5	18.9 - 22.1	14,300

WIC During Pregnancy	Yes			No			Weighted Total Responses (3-Yr Avg)
	#	%	C.I.(95%)	#	%	C.I.(95%)	#
Yes	6,100	77.9	75.7 - 80.0	1,700	22.1	20.0 - 24.3	7,800
No	8,100	79.3	77.3 - 81.1	2,100	20.7	18.9 - 22.7	10,300

**PRAMS Health Indicator 3-Year Aggregate Report - Contraceptive use since giving birth- by State;County;DOH Race-Ethnicity;PRAMS Age Group;Infant Gender;Married;Poverty Level;Income (2000-2003);Income (2004-2011);Birthweight;Smoke 3rd Trimester;Smoke Before Pregnant;WIC During Pregnancy, for the Year(s)
2000-2002;2001-2003;2002-2004;2003-2005;2004-2006;2005-2007;2006-2008;2007-2009;2008-2010;2009-2011;2010-2012;2011-2013**

Note: Weighted counts (#) represent 3-yr averages, rounded to the nearest hundred; n/r (Not Reportable) - If the unweighted total responses for a dimension (row) is <30 that row will not be shown

Years: 2007-2009

State	Yes			No			Weighted Total Responses (3-Yr Avg)
	#	%	C.I.(95%)	#	%	C.I.(95%)	#
Totals	14,500	78.9	77.7 - 80.2	3,900	21.1	19.8 - 22.3	18,400

County	Yes			No			Weighted Total Responses (3-Yr Avg)
	#	%	C.I.(95%)	#	%	C.I.(95%)	#
Hawaii	2,000	82.1	79.2 - 84.8	400	17.9	15.2 - 20.8	2,400
Honolulu	10,000	77.8	76.2 - 79.4	2,800	22.2	20.6 - 23.8	12,900
Kauai	800	82.6	78.2 - 86.3	200	17.4	13.7 - 21.8	900
Maui	1,700	80.2	77.1 - 83.0	400	19.8	17.0 - 22.9	2,200

**PRAMS Health Indicator 3-Year Aggregate Report - Contraceptive use since giving birth- by State;County;DOH Race-Ethnicity;PRAMS Age Group;Infant Gender;Married;Poverty Level;Income (2000-2003);Income (2004-2011);Birthweight;Smoke 3rd Trimester;Smoke Before Pregnant;WIC During Pregnancy, for the Year(s)
2000-2002;2001-2003;2002-2004;2003-2005;2004-2006;2005-2007;2006-2008;2007-2009;2008-2010;2009-2011;2010-2012;2011-2013**

Note: Weighted counts (#) represent 3-yr averages, rounded to the nearest hundred; n/r (Not Reportable) - If the unweighted total responses for a dimension (row) is <30 that row will not be shown

Years: 2007-2009

DOH Race-Ethnicity	Yes			No			Weighted Total Responses (3-Yr Avg)
	#	%	C.I.(95%)	#	%	C.I.(95%)	#
Caucasian	3,500	81.2	78.7 - 83.5	800	18.8	16.5 - 21.3	4,300
Native Hawaiian	4,300	80.5	78.0 - 82.7	1,100	19.5	17.3 - 22.0	5,400
Chinese	500	77.5	71.3 - 82.7	200	22.5	17.3 - 28.7	700
Filipino	2,700	81.0	78.3 - 83.5	600	19.0	16.5 - 21.7	3,300
Japanese	1,400	72.0	67.6 - 76.0	500	28.0	24.0 - 32.4	1,900
Other	2,100	75.1	71.4 - 78.4	700	24.9	21.6 - 28.6	2,800

PRAMS Age Group	Yes			No			Weighted Total Responses (3-Yr Avg)
	#	%	C.I.(95%)	#	%	C.I.(95%)	#
<20	1,300	77.7	72.7 - 82.0	400	22.3	18.0 - 27.3	1,700
20-24	3,400	80.1	77.4 - 82.6	800	19.9	17.4 - 22.6	4,300
25-34	7,400	80.2	78.4 - 81.8	1,800	19.8	18.2 - 21.6	9,200
35+	2,400	74.5	71.4 - 77.4	800	25.5	22.6 - 28.6	3,200

**PRAMS Health Indicator 3-Year Aggregate Report - Contraceptive use since giving birth- by State;County;DOH Race-Ethnicity;PRAMS Age Group;Infant Gender;Married;Poverty Level;Income (2000-2003);Income (2004-2011);Birthweight;Smoke 3rd Trimester;Smoke Before Pregnant;WIC During Pregnancy, for the Year(s)
2000-2002;2001-2003;2002-2004;2003-2005;2004-2006;2005-2007;2006-2008;2007-2009;2008-2010;2009-2011;2010-2012;2011-2013**

Note: Weighted counts (#) represent 3-yr averages, rounded to the nearest hundred; n/r (Not Reportable) - If the unweighted total responses for a dimension (row) is <30 that row will not be shown

Years: 2007-2009

	Yes			No			Weighted Total Responses (3-Yr Avg)
	#	%	C.I.(95%)	#	%	C.I.(95%)	#
Infant Gender							
Male	7,600	78.9	77.1 - 80.6	2,000	21.1	19.4 - 22.9	9,700
Female	6,900	79.0	77.1 - 80.7	1,800	21.0	19.3 - 22.9	8,700

	Yes			No			Weighted Total Responses (3-Yr Avg)
	#	%	C.I.(95%)	#	%	C.I.(95%)	#
Married							
Yes	8,800	78.5	76.9 - 80.0	2,400	21.5	20.0 - 23.1	11,200
No	5,700	79.6	77.5 - 81.6	1,500	20.4	18.4 - 22.5	7,100

	Yes			No			Weighted Total Responses (3-Yr Avg)
	#	%	C.I.(95%)	#	%	C.I.(95%)	#
Poverty Level							
0-130%	5,300	78.2	76.0 - 80.3	1,500	21.8	19.7 - 24.0	6,800
131-185%	2,300	83.2	79.8 - 86.1	500	16.8	13.9 - 20.2	2,700
186+%	6,000	78.4	76.4 - 80.2	1,600	21.6	19.8 - 23.6	7,600

**PRAMS Health Indicator 3-Year Aggregate Report - Contraceptive use since giving birth- by State;County;DOH Race-Ethnicity;PRAMS Age Group;Infant Gender;Married;Poverty Level;Income (2000-2003);Income (2004-2011);Birthweight;Smoke 3rd Trimester;Smoke Before Pregnant;WIC During Pregnancy, for the Year(s)
2000-2002;2001-2003;2002-2004;2003-2005;2004-2006;2005-2007;2006-2008;2007-2009;2008-2010;2009-2011;2010-2012;2011-2013**

Note: Weighted counts (#) represent 3-yr averages, rounded to the nearest hundred; n/r (Not Reportable) - If the unweighted total responses for a dimension (row) is <30 that row will not be shown

Years: 2007-2009

Income (2004-2011)	Yes			No			Weighted Total Responses (3-Yr Avg)
	#	%	C.I.(95%)	#	%	C.I.(95%)	#
<\$10,000	2,300	72.9	69.2 - 76.2	800	27.1	23.8 - 30.8	3,100
\$10,000-\$24,999	3,200	81.0	78.3 - 83.5	700	19.0	16.5 - 21.7	3,900
\$25,000-\$49,999	3,300	82.4	79.7 - 84.7	700	17.6	15.3 - 20.3	4,100
>=\$50,000	4,800	78.7	76.6 - 80.7	1,300	21.3	19.3 - 23.4	6,100

Birthweight	Yes			No			Weighted Total Responses (3-Yr Avg)
	#	%	C.I.(95%)	#	%	C.I.(95%)	#
Low birth weight	1,000	75.8	71.7 - 79.5	300	24.2	20.5 - 28.3	1,400
Normal birth weight	13,400	79.2	77.9 - 80.5	3,500	20.8	19.5 - 22.1	16,900

Smoke 3rd Trimester	Yes			No			Weighted Total Responses (3-Yr Avg)
	#	%	C.I.(95%)	#	%	C.I.(95%)	#
Yes	1,200	72.3	67.1 - 76.9	400	27.7	23.1 - 32.9	1,600
No	13,100	79.7	78.4 - 81.0	3,300	20.3	19.0 - 21.6	16,400

**PRAMS Health Indicator 3-Year Aggregate Report - Contraceptive use since giving birth- by State;County;DOH Race-Ethnicity;PRAMS Age Group;Infant Gender;Married;Poverty Level;Income (2000-2003);Income (2004-2011);Birthweight;Smoke 3rd Trimester;Smoke Before Pregnant;WIC During Pregnancy, for the Year(s)
2000-2002;2001-2003;2002-2004;2003-2005;2004-2006;2005-2007;2006-2008;2007-2009;2008-2010;2009-2011;2010-2012;2011-2013**

Note: Weighted counts (#) represent 3-yr averages, rounded to the nearest hundred; n/r (Not Reportable) - If the unweighted total responses for a dimension (row) is <30 that row will not be shown

Years: 2007-2009

Smoke Before Pregnant	Yes			No			Weighted Total Responses (3-Yr Avg)
	#	%	C.I.(95%)	#	%	C.I.(95%)	#
Yes	2,800	75.3	72.1 - 78.3	900	24.7	21.7 - 27.9	3,700
No	11,500	80.0	78.6 - 81.3	2,900	20.0	18.7 - 21.4	14,300

WIC During Pregnancy	Yes			No			Weighted Total Responses (3-Yr Avg)
	#	%	C.I.(95%)	#	%	C.I.(95%)	#
Yes	6,000	79.1	77.0 - 81.0	1,600	20.9	19.0 - 23.0	7,600
No	8,200	78.9	77.2 - 80.5	2,200	21.1	19.5 - 22.8	10,300

**PRAMS Health Indicator 3-Year Aggregate Report - Contraceptive use since giving birth- by State;County;DOH Race-Ethnicity;PRAMS Age Group;Infant Gender;Married;Poverty Level;Income (2000-2003);Income (2004-2011);Birthweight;Smoke 3rd Trimester;Smoke Before Pregnant;WIC During Pregnancy, for the Year(s)
2000-2002;2001-2003;2002-2004;2003-2005;2004-2006;2005-2007;2006-2008;2007-2009;2008-2010;2009-2011;2010-2012;2011-2013**

Note: Weighted counts (#) represent 3-yr averages, rounded to the nearest hundred; n/r (Not Reportable) - If the unweighted total responses for a dimension (row) is <30 that row will not be shown

Years: 2006-2008

State	Yes			No			Weighted Total Responses (3-Yr Avg)
	#	%	C.I.(95%)	#	%	C.I.(95%)	#
Totals	14,500	78.5	77.4 - 79.6	4,000	21.5	20.4 - 22.6	18,400

County	Yes			No			Weighted Total Responses (3-Yr Avg)
	#	%	C.I.(95%)	#	%	C.I.(95%)	#
Hawaii	1,900	80.4	76.9 - 83.4	500	19.6	16.6 - 23.1	2,400
Honolulu	10,100	77.4	76.1 - 78.8	2,900	22.6	21.2 - 23.9	13,000
Kauai	800	83.7	78.7 - 87.8	100	16.3	12.2 - 21.3	900
Maui	1,700	81.0	77.5 - 84.0	400	19.0	16.0 - 22.5	2,100

**PRAMS Health Indicator 3-Year Aggregate Report - Contraceptive use since giving birth- by State;County;DOH Race-Ethnicity;PRAMS Age Group;Infant Gender;Married;Poverty Level;Income (2000-2003);Income (2004-2011);Birthweight;Smoke 3rd Trimester;Smoke Before Pregnant;WIC During Pregnancy, for the Year(s)
2000-2002;2001-2003;2002-2004;2003-2005;2004-2006;2005-2007;2006-2008;2007-2009;2008-2010;2009-2011;2010-2012;2011-2013**

Note: Weighted counts (#) represent 3-yr averages, rounded to the nearest hundred; n/r (Not Reportable) - If the unweighted total responses for a dimension (row) is <30 that row will not be shown

Years: 2006-2008

DOH Race-Ethnicity	Yes			No			Weighted Total Responses (3-Yr Avg)
	#	%	C.I.(95%)	#	%	C.I.(95%)	#
Caucasian	3,500	81.4	79.1 - 83.5	800	18.6	16.5 - 20.9	4,300
Native Hawaiian	4,100	80.4	78.0 - 82.6	1,000	19.6	17.4 - 22.0	5,100
Chinese	500	75.8	72.3 - 79.0	200	24.2	21.0 - 27.7	600
Filipino	2,700	79.9	77.3 - 82.2	700	20.1	17.8 - 22.7	3,400
Japanese	1,600	74.0	70.4 - 77.4	500	26.0	22.6 - 29.6	2,100
Other	2,100	73.3	70.0 - 76.3	800	26.7	23.7 - 30.0	2,900

PRAMS Age Group	Yes			No			Weighted Total Responses (3-Yr Avg)
	#	%	C.I.(95%)	#	%	C.I.(95%)	#
<20	1,200	77.5	72.9 - 81.6	400	22.5	18.4 - 27.1	1,600
20-24	3,500	79.5	77.0 - 81.8	900	20.5	18.2 - 23.0	4,400
25-34	7,300	80.1	78.5 - 81.6	1,800	19.9	18.4 - 21.5	9,100
35+	2,400	73.5	70.7 - 76.1	900	26.5	23.9 - 29.3	3,300

**PRAMS Health Indicator 3-Year Aggregate Report - Contraceptive use since giving birth- by State;County;DOH Race-Ethnicity;PRAMS Age Group;Infant Gender;Married;Poverty Level;Income (2000-2003);Income (2004-2011);Birthweight;Smoke 3rd Trimester;Smoke Before Pregnant;WIC During Pregnancy, for the Year(s)
2000-2002;2001-2003;2002-2004;2003-2005;2004-2006;2005-2007;2006-2008;2007-2009;2008-2010;2009-2011;2010-2012;2011-2013**

Note: Weighted counts (#) represent 3-yr averages, rounded to the nearest hundred; n/r (Not Reportable) - If the unweighted total responses for a dimension (row) is <30 that row will not be shown

Years: 2006-2008

	Yes			No			Weighted Total Responses (3-Yr Avg)
	#	%	C.I.(95%)	#	%	C.I.(95%)	#
Infant Gender							
Male	7,500	79.0	77.4 - 80.5	2,000	21.0	19.5 - 22.6	9,500
Female	6,900	78.1	76.4 - 79.7	2,000	21.9	20.3 - 23.6	8,900

	Yes			No			Weighted Total Responses (3-Yr Avg)
	#	%	C.I.(95%)	#	%	C.I.(95%)	#
Married							
Yes	9,100	78.5	77.1 - 79.9	2,500	21.5	20.1 - 22.9	11,500
No	5,400	78.5	76.5 - 80.4	1,500	21.5	19.6 - 23.5	6,900

	Yes			No			Weighted Total Responses (3-Yr Avg)
	#	%	C.I.(95%)	#	%	C.I.(95%)	#
Poverty Level							
0-130%	5,200	77.0	74.9 - 79.0	1,600	23.0	21.0 - 25.1	6,800
131-185%	2,200	83.6	80.8 - 86.1	400	16.4	13.9 - 19.2	2,600
186+%	6,300	78.7	77.0 - 80.3	1,700	21.3	19.7 - 23.0	8,000

**PRAMS Health Indicator 3-Year Aggregate Report - Contraceptive use since giving birth- by State;County;DOH Race-Ethnicity;PRAMS Age Group;Infant Gender;Married;Poverty Level;Income (2000-2003);Income (2004-2011);Birthweight;Smoke 3rd Trimester;Smoke Before Pregnant;WIC During Pregnancy, for the Year(s)
2000-2002;2001-2003;2002-2004;2003-2005;2004-2006;2005-2007;2006-2008;2007-2009;2008-2010;2009-2011;2010-2012;2011-2013**

Note: Weighted counts (#) represent 3-yr averages, rounded to the nearest hundred; n/r (Not Reportable) - If the unweighted total responses for a dimension (row) is <30 that row will not be shown

Years: 2006-2008

Income (2004-2011)	Yes			No			Weighted Total Responses (3-Yr Avg)
	#	%	C.I.(95%)	#	%	C.I.(95%)	#
<\$10,000	2,300	72.3	69.0 - 75.4	900	27.7	24.6 - 31.0	3,100
\$10,000-\$24,999	3,100	79.4	76.8 - 81.8	800	20.6	18.2 - 23.2	3,900
\$25,000-\$49,999	3,600	82.7	80.5 - 84.7	700	17.3	15.3 - 19.5	4,300
>=\$50,000	4,900	79.0	77.1 - 80.8	1,300	21.0	19.2 - 22.9	6,100

Birthweight	Yes			No			Weighted Total Responses (3-Yr Avg)
	#	%	C.I.(95%)	#	%	C.I.(95%)	#
Low birth weight	1,100	74.5	70.0 - 78.6	400	25.5	21.4 - 30.0	1,400
Normal birth weight	13,400	78.9	77.7 - 80.1	3,600	21.1	19.9 - 22.3	16,900

Smoke 3rd Trimester	Yes			No			Weighted Total Responses (3-Yr Avg)
	#	%	C.I.(95%)	#	%	C.I.(95%)	#
Yes	1,200	75.8	71.3 - 79.9	400	24.2	20.1 - 28.7	1,600
No	13,000	78.9	77.7 - 80.0	3,500	21.1	20.0 - 22.3	16,500

**PRAMS Health Indicator 3-Year Aggregate Report - Contraceptive use since giving birth- by State;County;DOH Race-Ethnicity;PRAMS Age Group;Infant Gender;Married;Poverty Level;Income (2000-2003);Income (2004-2011);Birthweight;Smoke 3rd Trimester;Smoke Before Pregnant;WIC During Pregnancy, for the Year(s)
2000-2002;2001-2003;2002-2004;2003-2005;2004-2006;2005-2007;2006-2008;2007-2009;2008-2010;2009-2011;2010-2012;2011-2013**

Note: Weighted counts (#) represent 3-yr averages, rounded to the nearest hundred; n/r (Not Reportable) - If the unweighted total responses for a dimension (row) is <30 that row will not be shown

Years: 2006-2008

Smoke Before Pregnant	Yes			No			Weighted Total Responses (3-Yr Avg)
	#	%	C.I.(95%)	#	%	C.I.(95%)	#
Yes	2,800	77.1	74.3 - 79.7	800	22.9	20.3 - 25.7	3,600
No	11,400	79.0	77.7 - 80.2	3,000	21.0	19.8 - 22.3	14,500

WIC During Pregnancy	Yes			No			Weighted Total Responses (3-Yr Avg)
	#	%	C.I.(95%)	#	%	C.I.(95%)	#
Yes	6,100	78.5	76.7 - 80.3	1,700	21.5	19.7 - 23.3	7,700
No	8,200	78.7	77.2 - 80.1	2,200	21.3	19.9 - 22.8	10,400

**PRAMS Health Indicator 3-Year Aggregate Report - Contraceptive use since giving birth- by State;County;DOH Race-Ethnicity;PRAMS Age Group;Infant Gender;Married;Poverty Level;Income (2000-2003);Income (2004-2011);Birthweight;Smoke 3rd Trimester;Smoke Before Pregnant;WIC During Pregnancy, for the Year(s)
2000-2002;2001-2003;2002-2004;2003-2005;2004-2006;2005-2007;2006-2008;2007-2009;2008-2010;2009-2011;2010-2012;2011-2013**

Note: Weighted counts (#) represent 3-yr averages, rounded to the nearest hundred; n/r (Not Reportable) - If the unweighted total responses for a dimension (row) is <30 that row will not be shown

Years: 2005-2007

State	Yes			No			Weighted Total Responses (3-Yr Avg)
	#	%	C.I.(95%)	#	%	C.I.(95%)	#
Totals	14,000	78.1	76.9 - 79.2	3,900	21.9	20.8 - 23.1	17,900

County	Yes			No			Weighted Total Responses (3-Yr Avg)
	#	%	C.I.(95%)	#	%	C.I.(95%)	#
Hawaii	1,900	81.8	78.5 - 84.7	400	18.2	15.3 - 21.5	2,300
Honolulu	9,800	76.6	75.2 - 78.0	3,000	23.4	22.0 - 24.8	12,800
Kauai	700	83.6	78.4 - 87.7	100	16.4	12.3 - 21.6	900
Maui	1,600	81.1	77.4 - 84.2	400	18.9	15.8 - 22.6	1,900

**PRAMS Health Indicator 3-Year Aggregate Report - Contraceptive use since giving birth- by State;County;DOH Race-Ethnicity;PRAMS Age Group;Infant Gender;Married;Poverty Level;Income (2000-2003);Income (2004-2011);Birthweight;Smoke 3rd Trimester;Smoke Before Pregnant;WIC During Pregnancy, for the Year(s)
2000-2002;2001-2003;2002-2004;2003-2005;2004-2006;2005-2007;2006-2008;2007-2009;2008-2010;2009-2011;2010-2012;2011-2013**

Note: Weighted counts (#) represent 3-yr averages, rounded to the nearest hundred; n/r (Not Reportable) - If the unweighted total responses for a dimension (row) is <30 that row will not be shown

Years: 2005-2007

DOH Race-Ethnicity	Yes			No			Weighted Total Responses (3-Yr Avg)
	#	%	C.I.(95%)	#	%	C.I.(95%)	#
Caucasian	3,300	82.6	80.3 - 84.7	700	17.4	15.3 - 19.7	4,000
Native Hawaiian	4,000	79.7	77.3 - 81.9	1,000	20.3	18.1 - 22.7	5,000
Chinese	500	75.1	71.6 - 78.3	200	24.9	21.7 - 28.4	600
Filipino	2,600	78.3	75.7 - 80.7	700	21.7	19.3 - 24.3	3,300
Japanese	1,600	74.4	70.9 - 77.7	600	25.6	22.3 - 29.1	2,200
Other	2,000	71.9	68.5 - 75.0	800	28.1	25.0 - 31.5	2,800

PRAMS Age Group	Yes			No			Weighted Total Responses (3-Yr Avg)
	#	%	C.I.(95%)	#	%	C.I.(95%)	#
<20	1,200	78.5	73.9 - 82.4	300	21.5	17.6 - 26.1	1,600
20-24	3,500	79.2	76.7 - 81.4	900	20.8	18.6 - 23.3	4,400
25-34	7,000	79.9	78.3 - 81.4	1,800	20.1	18.6 - 21.7	8,800
35+	2,200	71.2	68.3 - 74.0	900	28.8	26.0 - 31.7	3,100

**PRAMS Health Indicator 3-Year Aggregate Report - Contraceptive use since giving birth- by State;County;DOH Race-Ethnicity;PRAMS Age Group;Infant Gender;Married;Poverty Level;Income (2000-2003);Income (2004-2011);Birthweight;Smoke 3rd Trimester;Smoke Before Pregnant;WIC During Pregnancy, for the Year(s)
2000-2002;2001-2003;2002-2004;2003-2005;2004-2006;2005-2007;2006-2008;2007-2009;2008-2010;2009-2011;2010-2012;2011-2013**

Note: Weighted counts (#) represent 3-yr averages, rounded to the nearest hundred; n/r (Not Reportable) - If the unweighted total responses for a dimension (row) is <30 that row will not be shown

Years: 2005-2007

	Yes			No			Weighted Total Responses (3-Yr Avg)
	#	%	C.I.(95%)	#	%	C.I.(95%)	#
Infant Gender							
Male	7,100	78.2	76.5 - 79.7	2,000	21.8	20.3 - 23.5	9,100
Female	6,800	78.0	76.3 - 79.6	1,900	22.0	20.4 - 23.7	8,700

	Yes			No			Weighted Total Responses (3-Yr Avg)
	#	%	C.I.(95%)	#	%	C.I.(95%)	#
Married							
Yes	8,800	78.1	76.7 - 79.5	2,500	21.9	20.5 - 23.3	11,300
No	5,200	78.0	75.9 - 79.9	1,500	22.0	20.1 - 24.1	6,600

	Yes			No			Weighted Total Responses (3-Yr Avg)
	#	%	C.I.(95%)	#	%	C.I.(95%)	#
Poverty Level							
0-130%	5,000	76.2	74.1 - 78.1	1,600	23.8	21.9 - 25.9	6,600
131-185%	1,900	82.5	79.4 - 85.2	400	17.5	14.8 - 20.6	2,400
186+%	6,300	79.3	77.7 - 80.9	1,600	20.7	19.1 - 22.3	7,900

**PRAMS Health Indicator 3-Year Aggregate Report - Contraceptive use since giving birth- by State;County;DOH Race-Ethnicity;PRAMS Age Group;Infant Gender;Married;Poverty Level;Income (2000-2003);Income (2004-2011);Birthweight;Smoke 3rd Trimester;Smoke Before Pregnant;WIC During Pregnancy, for the Year(s)
2000-2002;2001-2003;2002-2004;2003-2005;2004-2006;2005-2007;2006-2008;2007-2009;2008-2010;2009-2011;2010-2012;2011-2013**

Note: Weighted counts (#) represent 3-yr averages, rounded to the nearest hundred; n/r (Not Reportable) - If the unweighted total responses for a dimension (row) is <30 that row will not be shown

Years: 2005-2007

Income (2004-2011)	Yes			No			Weighted Total Responses (3-Yr Avg)
	#	%	C.I.(95%)	#	%	C.I.(95%)	#
<\$10,000	2,200	71.5	68.2 - 74.6	900	28.5	25.4 - 31.8	3,100
\$10,000-\$24,999	3,000	79.3	76.7 - 81.6	800	20.7	18.4 - 23.3	3,800
\$25,000-\$49,999	3,500	82.6	80.4 - 84.7	700	17.4	15.3 - 19.6	4,200
>=\$50,000	4,600	78.6	76.7 - 80.4	1,200	21.4	19.6 - 23.3	5,800

Birthweight	Yes			No			Weighted Total Responses (3-Yr Avg)
	#	%	C.I.(95%)	#	%	C.I.(95%)	#
Low birth weight	1,000	73.0	68.5 - 77.1	400	27.0	22.9 - 31.5	1,400
Normal birth weight	12,900	78.5	77.3 - 79.7	3,500	21.5	20.3 - 22.7	16,400

Smoke 3rd Trimester	Yes			No			Weighted Total Responses (3-Yr Avg)
	#	%	C.I.(95%)	#	%	C.I.(95%)	#
Yes	1,200	77.7	73.2 - 81.6	300	22.3	18.4 - 26.8	1,500
No	12,500	78.1	76.8 - 79.2	3,500	21.9	20.8 - 23.2	16,100

**PRAMS Health Indicator 3-Year Aggregate Report - Contraceptive use since giving birth- by State;County;DOH Race-Ethnicity;PRAMS Age Group;Infant Gender;Married;Poverty Level;Income (2000-2003);Income (2004-2011);Birthweight;Smoke 3rd Trimester;Smoke Before Pregnant;WIC During Pregnancy, for the Year(s)
2000-2002;2001-2003;2002-2004;2003-2005;2004-2006;2005-2007;2006-2008;2007-2009;2008-2010;2009-2011;2010-2012;2011-2013**

Note: Weighted counts (#) represent 3-yr averages, rounded to the nearest hundred; n/r (Not Reportable) - If the unweighted total responses for a dimension (row) is <30 that row will not be shown

Years: 2005-2007

Smoke Before Pregnant	Yes			No			Weighted Total Responses (3-Yr Avg)
	#	%	C.I.(95%)	#	%	C.I.(95%)	#
Yes	2,800	77.7	74.9 - 80.2	800	22.3	19.8 - 25.1	3,700
No	10,900	78.1	76.8 - 79.4	3,000	21.9	20.6 - 23.2	13,900

WIC During Pregnancy	Yes			No			Weighted Total Responses (3-Yr Avg)
	#	%	C.I.(95%)	#	%	C.I.(95%)	#
Yes	6,000	79.5	77.6 - 81.2	1,500	20.5	18.8 - 22.4	7,500
No	7,800	77.4	75.9 - 78.9	2,300	22.6	21.1 - 24.1	10,100

**PRAMS Health Indicator 3-Year Aggregate Report - Contraceptive use since giving birth- by State;County;DOH Race-Ethnicity;PRAMS Age Group;Infant Gender;Married;Poverty Level;Income (2000-2003);Income (2004-2011);Birthweight;Smoke 3rd Trimester;Smoke Before Pregnant;WIC During Pregnancy, for the Year(s)
2000-2002;2001-2003;2002-2004;2003-2005;2004-2006;2005-2007;2006-2008;2007-2009;2008-2010;2009-2011;2010-2012;2011-2013**

Note: Weighted counts (#) represent 3-yr averages, rounded to the nearest hundred; n/r (Not Reportable) - If the unweighted total responses for a dimension (row) is <30 that row will not be shown

Years: 2004-2006

State	Yes			No			Weighted Total Responses (3-Yr Avg)
	#	%	C.I.(95%)	#	%	C.I.(95%)	#
Totals	13,700	77.8	76.7 - 78.9	3,900	22.2	21.1 - 23.3	17,600

County	Yes			No			Weighted Total Responses (3-Yr Avg)
	#	%	C.I.(95%)	#	%	C.I.(95%)	#
Hawaii	1,800	81.0	77.7 - 84.0	400	19.0	16.0 - 22.3	2,200
Honolulu	9,800	76.5	75.1 - 77.8	3,000	23.5	22.2 - 24.9	12,800
Kauai	700	83.0	77.6 - 87.3	100	17.0	12.7 - 22.4	800
Maui	1,500	81.5	77.9 - 84.6	300	18.5	15.4 - 22.1	1,800

**PRAMS Health Indicator 3-Year Aggregate Report - Contraceptive use since giving birth- by State;County;DOH Race-Ethnicity;PRAMS Age Group;Infant Gender;Married;Poverty Level;Income (2000-2003);Income (2004-2011);Birthweight;Smoke 3rd Trimester;Smoke Before Pregnant;WIC During Pregnancy, for the Year(s)
2000-2002;2001-2003;2002-2004;2003-2005;2004-2006;2005-2007;2006-2008;2007-2009;2008-2010;2009-2011;2010-2012;2011-2013**

Note: Weighted counts (#) represent 3-yr averages, rounded to the nearest hundred; n/r (Not Reportable) - If the unweighted total responses for a dimension (row) is <30 that row will not be shown

Years: 2004-2006

DOH Race-Ethnicity	Yes			No			Weighted Total Responses (3-Yr Avg)
	#	%	C.I.(95%)	#	%	C.I.(95%)	#
Caucasian	3,300	82.8	80.6 - 84.9	700	17.2	15.1 - 19.4	3,900
Native Hawaiian	3,900	78.5	76.1 - 80.7	1,100	21.5	19.3 - 23.9	4,900
Chinese	500	75.8	72.7 - 78.7	200	24.2	21.3 - 27.3	600
Filipino	2,500	77.5	75.0 - 79.9	700	22.5	20.1 - 25.0	3,300
Japanese	1,700	76.7	73.4 - 79.7	500	23.3	20.3 - 26.6	2,200
Other	1,900	70.9	67.6 - 74.0	800	29.1	26.0 - 32.4	2,600

PRAMS Age Group	Yes			No			Weighted Total Responses (3-Yr Avg)
	#	%	C.I.(95%)	#	%	C.I.(95%)	#
<20	1,100	77.7	73.2 - 81.6	300	22.3	18.4 - 26.8	1,500
20-24	3,500	79.1	76.7 - 81.3	900	20.9	18.7 - 23.3	4,400
25-34	6,800	79.1	77.5 - 80.6	1,800	20.9	19.4 - 22.5	8,700
35+	2,300	72.6	69.9 - 75.2	900	27.4	24.8 - 30.1	3,200

**PRAMS Health Indicator 3-Year Aggregate Report - Contraceptive use since giving birth- by State;County;DOH Race-Ethnicity;PRAMS Age Group;Infant Gender;Married;Poverty Level;Income (2000-2003);Income (2004-2011);Birthweight;Smoke 3rd Trimester;Smoke Before Pregnant;WIC During Pregnancy, for the Year(s)
2000-2002;2001-2003;2002-2004;2003-2005;2004-2006;2005-2007;2006-2008;2007-2009;2008-2010;2009-2011;2010-2012;2011-2013**

Note: Weighted counts (#) represent 3-yr averages, rounded to the nearest hundred; n/r (Not Reportable) - If the unweighted total responses for a dimension (row) is <30 that row will not be shown

Years: 2004-2006

	Yes			No			Weighted Total Responses (3-Yr Avg)
	#	%	C.I.(95%)	#	%	C.I.(95%)	#
Infant Gender							
Male	7,200	77.8	76.2 - 79.3	2,000	22.2	20.7 - 23.8	9,200
Female	6,600	77.9	76.2 - 79.4	1,900	22.1	20.6 - 23.8	8,400

	Yes			No			Weighted Total Responses (3-Yr Avg)
	#	%	C.I.(95%)	#	%	C.I.(95%)	#
Married							
Yes	9,100	78.4	77.0 - 79.7	2,500	21.6	20.3 - 23.0	11,600
No	4,700	76.8	74.7 - 78.8	1,400	23.2	21.2 - 25.3	6,100

	Yes			No			Weighted Total Responses (3-Yr Avg)
	#	%	C.I.(95%)	#	%	C.I.(95%)	#
Poverty Level							
0-130%	4,900	76.2	74.2 - 78.1	1,500	23.8	21.9 - 25.8	6,400
131-185%	1,700	80.7	77.4 - 83.6	400	19.3	16.4 - 22.6	2,100
186+%	6,300	79.9	78.4 - 81.4	1,600	20.1	18.6 - 21.6	7,900

**PRAMS Health Indicator 3-Year Aggregate Report - Contraceptive use since giving birth- by State;County;DOH Race-Ethnicity;PRAMS Age Group;Infant Gender;Married;Poverty Level;Income (2000-2003);Income (2004-2011);Birthweight;Smoke 3rd Trimester;Smoke Before Pregnant;WIC During Pregnancy, for the Year(s)
2000-2002;2001-2003;2002-2004;2003-2005;2004-2006;2005-2007;2006-2008;2007-2009;2008-2010;2009-2011;2010-2012;2011-2013**

Note: Weighted counts (#) represent 3-yr averages, rounded to the nearest hundred; n/r (Not Reportable) - If the unweighted total responses for a dimension (row) is <30 that row will not be shown

Years: 2004-2006

Income (2004-2011)	Yes			No			Weighted Total Responses (3-Yr Avg)
	#	%	C.I.(95%)	#	%	C.I.(95%)	#
<\$10,000	2,200	72.8	69.6 - 75.8	800	27.2	24.2 - 30.4	3,000
\$10,000-\$24,999	3,100	78.3	75.8 - 80.6	900	21.7	19.4 - 24.2	3,900
\$25,000-\$49,999	3,500	81.2	79.0 - 83.3	800	18.8	16.7 - 21.0	4,300
>=\$50,000	4,300	79.4	77.5 - 81.2	1,100	20.6	18.8 - 22.5	5,500

Birthweight	Yes			No			Weighted Total Responses (3-Yr Avg)
	#	%	C.I.(95%)	#	%	C.I.(95%)	#
Low birth weight	1,000	74.6	70.0 - 78.7	300	25.4	21.3 - 30.0	1,300
Normal birth weight	12,800	78.1	76.9 - 79.3	3,600	21.9	20.7 - 23.1	16,300

Smoke 3rd Trimester	Yes			No			Weighted Total Responses (3-Yr Avg)
	#	%	C.I.(95%)	#	%	C.I.(95%)	#
Yes	1,200	76.2	71.8 - 80.2	400	23.8	19.8 - 28.2	1,500
No	12,400	77.9	76.8 - 79.1	3,500	22.1	20.9 - 23.2	15,900

**PRAMS Health Indicator 3-Year Aggregate Report - Contraceptive use since giving birth- by State;County;DOH Race-Ethnicity;PRAMS Age Group;Infant Gender;Married;Poverty Level;Income (2000-2003);Income (2004-2011);Birthweight;Smoke 3rd Trimester;Smoke Before Pregnant;WIC During Pregnancy, for the Year(s)
2000-2002;2001-2003;2002-2004;2003-2005;2004-2006;2005-2007;2006-2008;2007-2009;2008-2010;2009-2011;2010-2012;2011-2013**

Note: Weighted counts (#) represent 3-yr averages, rounded to the nearest hundred; n/r (Not Reportable) - If the unweighted total responses for a dimension (row) is <30 that row will not be shown

Years: 2004-2006

Smoke Before Pregnant	Yes			No			Weighted Total Responses (3-Yr Avg)
	#	%	C.I.(95%)	#	%	C.I.(95%)	#
Yes	2,800	76.5	73.8 - 79.0	900	23.5	21.0 - 26.2	3,700
No	10,700	78.2	76.9 - 79.4	3,000	21.8	20.6 - 23.1	13,700

WIC During Pregnancy	Yes			No			Weighted Total Responses (3-Yr Avg)
	#	%	C.I.(95%)	#	%	C.I.(95%)	#
Yes	5,900	78.6	76.8 - 80.3	1,600	21.4	19.7 - 23.2	7,600
No	7,600	77.7	76.2 - 79.1	2,200	22.3	20.9 - 23.8	9,800

**PRAMS Health Indicator 3-Year Aggregate Report - Contraceptive use since giving birth- by State;County;DOH Race-Ethnicity;PRAMS Age Group;Infant Gender;Married;Poverty Level;Income (2000-2003);Income (2004-2011);Birthweight;Smoke 3rd Trimester;Smoke Before Pregnant;WIC During Pregnancy, for the Year(s)
2000-2002;2001-2003;2002-2004;2003-2005;2004-2006;2005-2007;2006-2008;2007-2009;2008-2010;2009-2011;2010-2012;2011-2013**

Note: Weighted counts (#) represent 3-yr averages, rounded to the nearest hundred; n/r (Not Reportable) - If the unweighted total responses for a dimension (row) is <30 that row will not be shown

Years: 2003-2005

State	Yes			No			Weighted Total Responses (3-Yr Avg)
	#	%	C.I.(95%)	#	%	C.I.(95%)	#
Totals	13,400	77.4	76.2 - 78.6	3,900	22.6	21.4 - 23.8	17,400

County	Yes			No			Weighted Total Responses (3-Yr Avg)
	#	%	C.I.(95%)	#	%	C.I.(95%)	#
Hawaii	1,700	80.0	77.1 - 82.5	400	20.0	17.5 - 22.9	2,100
Honolulu	9,600	76.3	74.8 - 77.8	3,000	23.7	22.2 - 25.2	12,600
Kauai	600	79.4	74.6 - 83.5	200	20.6	16.5 - 25.4	800
Maui	1,400	81.2	78.1 - 83.9	300	18.8	16.1 - 21.9	1,800

**PRAMS Health Indicator 3-Year Aggregate Report - Contraceptive use since giving birth- by State;County;DOH Race-Ethnicity;PRAMS Age Group;Infant Gender;Married;Poverty Level;Income (2000-2003);Income (2004-2011);Birthweight;Smoke 3rd Trimester;Smoke Before Pregnant;WIC During Pregnancy, for the Year(s)
2000-2002;2001-2003;2002-2004;2003-2005;2004-2006;2005-2007;2006-2008;2007-2009;2008-2010;2009-2011;2010-2012;2011-2013**

Note: Weighted counts (#) represent 3-yr averages, rounded to the nearest hundred; n/r (Not Reportable) - If the unweighted total responses for a dimension (row) is <30 that row will not be shown

Years: 2003-2005

DOH Race-Ethnicity	Yes			No			Weighted Total Responses (3-Yr Avg)
	#	%	C.I.(95%)	#	%	C.I.(95%)	#
Caucasian	3,100	82.5	80.1 - 84.7	700	17.5	15.3 - 19.9	3,800
Native Hawaiian	3,700	76.9	74.8 - 78.9	1,100	23.1	21.1 - 25.2	4,800
Chinese	500	75.1	69.5 - 80.0	200	24.9	20.0 - 30.5	700
Filipino	2,600	76.5	73.6 - 79.1	800	23.5	20.9 - 26.4	3,400
Japanese	1,700	79.7	76.2 - 82.8	400	20.3	17.2 - 23.8	2,200
Other	1,800	70.5	66.7 - 74.1	700	29.5	25.9 - 33.3	2,500

PRAMS Age Group	Yes			No			Weighted Total Responses (3-Yr Avg)
	#	%	C.I.(95%)	#	%	C.I.(95%)	#
<20	1,100	77.6	73.4 - 81.3	300	22.4	18.7 - 26.6	1,500
20-24	3,300	78.7	76.3 - 81.0	900	21.3	19.0 - 23.7	4,200
25-34	6,800	78.6	76.9 - 80.2	1,800	21.4	19.8 - 23.1	8,600
35+	2,200	72.2	69.1 - 75.0	800	27.8	25.0 - 30.9	3,100

**PRAMS Health Indicator 3-Year Aggregate Report - Contraceptive use since giving birth- by State;County;DOH Race-Ethnicity;PRAMS Age Group;Infant Gender;Married;Poverty Level;Income (2000-2003);Income (2004-2011);Birthweight;Smoke 3rd Trimester;Smoke Before Pregnant;WIC During Pregnancy, for the Year(s)
2000-2002;2001-2003;2002-2004;2003-2005;2004-2006;2005-2007;2006-2008;2007-2009;2008-2010;2009-2011;2010-2012;2011-2013**

Note: Weighted counts (#) represent 3-yr averages, rounded to the nearest hundred; n/r (Not Reportable) - If the unweighted total responses for a dimension (row) is <30 that row will not be shown

Years: 2003-2005

	Yes			No			Weighted Total Responses (3-Yr Avg)
	#	%	C.I.(95%)	#	%	C.I.(95%)	#
Infant Gender							
Male	7,000	76.9	75.3 - 78.5	2,100	23.1	21.5 - 24.7	9,200
Female	6,400	77.9	76.2 - 79.6	1,800	22.1	20.4 - 23.8	8,200

	Yes			No			Weighted Total Responses (3-Yr Avg)
	#	%	C.I.(95%)	#	%	C.I.(95%)	#
Married							
Yes	9,000	78.3	76.8 - 79.7	2,500	21.7	20.3 - 23.2	11,500
No	4,400	75.6	73.5 - 77.6	1,400	24.4	22.4 - 26.5	5,800

	Yes			No			Weighted Total Responses (3-Yr Avg)
	#	%	C.I.(95%)	#	%	C.I.(95%)	#
Poverty Level							
0-130%	5,200	75.5	73.5 - 77.4	1,700	24.5	22.6 - 26.5	6,900
131-185%	1,700	80.1	76.7 - 83.1	400	19.9	16.9 - 23.3	2,200
186+%	5,600	79.9	78.2 - 81.6	1,400	20.1	18.4 - 21.8	7,000

**PRAMS Health Indicator 3-Year Aggregate Report - Contraceptive use since giving birth- by State;County;DOH Race-Ethnicity;PRAMS Age Group;Infant Gender;Married;Poverty Level;Income (2000-2003);Income (2004-2011);Birthweight;Smoke 3rd Trimester;Smoke Before Pregnant;WIC During Pregnancy, for the Year(s)
2000-2002;2001-2003;2002-2004;2003-2005;2004-2006;2005-2007;2006-2008;2007-2009;2008-2010;2009-2011;2010-2012;2011-2013**

Note: Weighted counts (#) represent 3-yr averages, rounded to the nearest hundred; n/r (Not Reportable) - If the unweighted total responses for a dimension (row) is <30 that row will not be shown

Years: 2003-2005

Birthweight	Yes			No			Weighted Total Responses (3-Yr Avg)
	#	%	C.I.(95%)	#	%	C.I.(95%)	#
Low birth weight	900	73.0	68.0 - 77.6	300	27.0	22.4 - 32.0	1,200
Normal birth weight	12,600	77.7	76.5 - 78.9	3,600	22.3	21.1 - 23.5	16,200

Smoke 3rd Trimester	Yes			No			Weighted Total Responses (3-Yr Avg)
	#	%	C.I.(95%)	#	%	C.I.(95%)	#
Yes	1,100	74.8	70.4 - 78.7	400	25.2	21.3 - 29.6	1,500
No	12,100	77.6	76.4 - 78.8	3,500	22.4	21.2 - 23.6	15,600

Smoke Before Pregnant	Yes			No			Weighted Total Responses (3-Yr Avg)
	#	%	C.I.(95%)	#	%	C.I.(95%)	#
Yes	2,700	76.2	73.5 - 78.7	800	23.8	21.3 - 26.5	3,600
No	10,500	77.7	76.4 - 79.0	3,000	22.3	21.0 - 23.6	13,400

**PRAMS Health Indicator 3-Year Aggregate Report - Contraceptive use since giving birth- by State;County;DOH Race-Ethnicity;PRAMS Age Group;Infant Gender;Married;Poverty Level;Income (2000-2003);Income (2004-2011);Birthweight;Smoke 3rd Trimester;Smoke Before Pregnant;WIC During Pregnancy, for the Year(s)
2000-2002;2001-2003;2002-2004;2003-2005;2004-2006;2005-2007;2006-2008;2007-2009;2008-2010;2009-2011;2010-2012;2011-2013**

Note: Weighted counts (#) represent 3-yr averages, rounded to the nearest hundred; n/r (Not Reportable) - If the unweighted total responses for a dimension (row) is <30 that row will not be shown

Years: 2003-2005

WIC During Pregnancy	Yes			No			Weighted Total Responses (3-Yr Avg)
	#	%	C.I.(95%)	#	%	C.I.(95%)	#
Yes	5,800	77.4	75.5 - 79.1	1,700	22.6	20.9 - 24.5	7,500
No	7,500	77.8	76.1 - 79.3	2,100	22.2	20.7 - 23.9	9,600

**PRAMS Health Indicator 3-Year Aggregate Report - Contraceptive use since giving birth- by State;County;DOH Race-Ethnicity;PRAMS Age Group;Infant Gender;Married;Poverty Level;Income (2000-2003);Income (2004-2011);Birthweight;Smoke 3rd Trimester;Smoke Before Pregnant;WIC During Pregnancy, for the Year(s)
2000-2002;2001-2003;2002-2004;2003-2005;2004-2006;2005-2007;2006-2008;2007-2009;2008-2010;2009-2011;2010-2012;2011-2013**

Note: Weighted counts (#) represent 3-yr averages, rounded to the nearest hundred; n/r (Not Reportable) - If the unweighted total responses for a dimension (row) is <30 that row will not be shown

Years: 2002-2004

State	Yes			No			Weighted Total Responses (3-Yr Avg)
	#	%	C.I.(95%)	#	%	C.I.(95%)	#
Totals	13,300	77.1	75.8 - 78.3	4,000	22.9	21.7 - 24.2	17,300

County	Yes			No			Weighted Total Responses (3-Yr Avg)
	#	%	C.I.(95%)	#	%	C.I.(95%)	#
Hawaii	1,600	76.7	74.0 - 79.2	500	23.3	20.8 - 26.0	2,100
Honolulu	9,700	76.7	75.1 - 78.3	2,900	23.3	21.7 - 24.9	12,600
Kauai	600	78.6	74.3 - 82.4	200	21.4	17.6 - 25.7	800
Maui	1,400	79.5	76.7 - 81.9	400	20.5	18.1 - 23.3	1,800

**PRAMS Health Indicator 3-Year Aggregate Report - Contraceptive use since giving birth- by State;County;DOH Race-Ethnicity;PRAMS Age Group;Infant Gender;Married;Poverty Level;Income (2000-2003);Income (2004-2011);Birthweight;Smoke 3rd Trimester;Smoke Before Pregnant;WIC During Pregnancy, for the Year(s)
2000-2002;2001-2003;2002-2004;2003-2005;2004-2006;2005-2007;2006-2008;2007-2009;2008-2010;2009-2011;2010-2012;2011-2013**

Note: Weighted counts (#) represent 3-yr averages, rounded to the nearest hundred; n/r (Not Reportable) - If the unweighted total responses for a dimension (row) is <30 that row will not be shown

Years: 2002-2004

DOH Race-Ethnicity	Yes			No			Weighted Total Responses (3-Yr Avg)
	#	%	C.I.(95%)	#	%	C.I.(95%)	#
Caucasian	3,100	83.1	80.6 - 85.3	600	16.9	14.7 - 19.4	3,700
Native Hawaiian	3,600	76.8	75.0 - 78.5	1,100	23.2	21.5 - 25.0	4,700
Chinese	500	74.1	66.7 - 80.3	200	25.9	19.7 - 33.3	700
Filipino	2,700	76.5	73.4 - 79.4	800	23.5	20.6 - 26.6	3,500
Japanese	1,700	78.8	74.8 - 82.3	500	21.2	17.7 - 25.2	2,200
Other	1,600	68.3	63.9 - 72.5	800	31.7	27.5 - 36.1	2,400

PRAMS Age Group	Yes			No			Weighted Total Responses (3-Yr Avg)
	#	%	C.I.(95%)	#	%	C.I.(95%)	#
<20	1,100	74.0	69.6 - 78.0	400	26.0	22.0 - 30.4	1,500
20-24	3,300	78.7	76.2 - 81.0	900	21.3	19.0 - 23.8	4,200
25-34	6,700	77.8	76.0 - 79.6	1,900	22.2	20.4 - 24.0	8,600
35+	2,200	74.1	70.8 - 77.1	800	25.9	22.9 - 29.2	3,000

**PRAMS Health Indicator 3-Year Aggregate Report - Contraceptive use since giving birth- by State;County;DOH Race-Ethnicity;PRAMS Age Group;Infant Gender;Married;Poverty Level;Income (2000-2003);Income (2004-2011);Birthweight;Smoke 3rd Trimester;Smoke Before Pregnant;WIC During Pregnancy, for the Year(s)
2000-2002;2001-2003;2002-2004;2003-2005;2004-2006;2005-2007;2006-2008;2007-2009;2008-2010;2009-2011;2010-2012;2011-2013**

Note: Weighted counts (#) represent 3-yr averages, rounded to the nearest hundred; n/r (Not Reportable) - If the unweighted total responses for a dimension (row) is <30 that row will not be shown

Years: 2002-2004

	Yes			No			Weighted Total Responses (3-Yr Avg)
	#	%	C.I.(95%)	#	%	C.I.(95%)	#
Infant Gender							
Male	6,900	76.7	74.9 - 78.4	2,100	23.3	21.6 - 25.1	9,000
Female	6,400	77.5	75.6 - 79.2	1,800	22.5	20.8 - 24.4	8,200

	Yes			No			Weighted Total Responses (3-Yr Avg)
	#	%	C.I.(95%)	#	%	C.I.(95%)	#
Married							
Yes	9,200	78.4	76.8 - 79.8	2,500	21.6	20.2 - 23.2	11,700
No	4,100	74.4	72.2 - 76.5	1,400	25.6	23.5 - 27.8	5,500

	Yes			No			Weighted Total Responses (3-Yr Avg)
	#	%	C.I.(95%)	#	%	C.I.(95%)	#
Poverty Level							
0-130%	5,200	74.9	72.9 - 76.9	1,800	25.1	23.1 - 27.1	7,000
131-185%	2,200	79.9	76.5 - 82.8	500	20.1	17.2 - 23.5	2,700
186+%	4,900	79.7	77.6 - 81.6	1,300	20.3	18.4 - 22.4	6,200

**PRAMS Health Indicator 3-Year Aggregate Report - Contraceptive use since giving birth- by State;County;DOH Race-Ethnicity;PRAMS Age Group;Infant Gender;Married;Poverty Level;Income (2000-2003);Income (2004-2011);Birthweight;Smoke 3rd Trimester;Smoke Before Pregnant;WIC During Pregnancy, for the Year(s)
2000-2002;2001-2003;2002-2004;2003-2005;2004-2006;2005-2007;2006-2008;2007-2009;2008-2010;2009-2011;2010-2012;2011-2013**

Note: Weighted counts (#) represent 3-yr averages, rounded to the nearest hundred; n/r (Not Reportable) - If the unweighted total responses for a dimension (row) is <30 that row will not be shown

Years: 2002-2004

Birthweight	Yes			No			Weighted Total Responses (3-Yr Avg)
	#	%	C.I.(95%)	#	%	C.I.(95%)	#
Low birth weight	900	75.9	70.5 - 80.6	300	24.1	19.4 - 29.5	1,100
Normal birth weight	12,400	77.3	76.0 - 78.5	3,700	22.7	21.5 - 24.0	16,100

Smoke 3rd Trimester	Yes			No			Weighted Total Responses (3-Yr Avg)
	#	%	C.I.(95%)	#	%	C.I.(95%)	#
Yes	1,100	72.8	68.2 - 76.9	400	27.2	23.1 - 31.8	1,400
No	12,000	77.5	76.2 - 78.8	3,500	22.5	21.2 - 23.8	15,500

Smoke Before Pregnant	Yes			No			Weighted Total Responses (3-Yr Avg)
	#	%	C.I.(95%)	#	%	C.I.(95%)	#
Yes	2,600	75.3	72.5 - 77.9	900	24.7	22.1 - 27.5	3,400
No	10,400	77.5	76.0 - 78.9	3,000	22.5	21.1 - 24.0	13,400

**PRAMS Health Indicator 3-Year Aggregate Report - Contraceptive use since giving birth- by State;County;DOH Race-Ethnicity;PRAMS Age Group;Infant Gender;Married;Poverty Level;Income (2000-2003);Income (2004-2011);Birthweight;Smoke 3rd Trimester;Smoke Before Pregnant;WIC During Pregnancy, for the Year(s)
2000-2002;2001-2003;2002-2004;2003-2005;2004-2006;2005-2007;2006-2008;2007-2009;2008-2010;2009-2011;2010-2012;2011-2013**

Note: Weighted counts (#) represent 3-yr averages, rounded to the nearest hundred; n/r (Not Reportable) - If the unweighted total responses for a dimension (row) is <30 that row will not be shown

Years: 2002-2004

WIC During Pregnancy	Yes			No			Weighted Total Responses (3-Yr Avg)
	#	%	C.I.(95%)	#	%	C.I.(95%)	#
Yes	5,700	77.1	75.2 - 78.9	1,700	22.9	21.1 - 24.8	7,400
No	7,400	77.1	75.3 - 78.8	2,200	22.9	21.2 - 24.7	9,700

**PRAMS Health Indicator 3-Year Aggregate Report - Contraceptive use since giving birth- by State;County;DOH Race-Ethnicity;PRAMS Age Group;Infant Gender;Married;Poverty Level;Income (2000-2003);Income (2004-2011);Birthweight;Smoke 3rd Trimester;Smoke Before Pregnant;WIC During Pregnancy, for the Year(s)
2000-2002;2001-2003;2002-2004;2003-2005;2004-2006;2005-2007;2006-2008;2007-2009;2008-2010;2009-2011;2010-2012;2011-2013**

Note: Weighted counts (#) represent 3-yr averages, rounded to the nearest hundred; n/r (Not Reportable) - If the unweighted total responses for a dimension (row) is <30 that row will not be shown

Years: 2001-2003

State	Yes			No			Weighted Total Responses (3-Yr Avg)
	#	%	C.I.(95%)	#	%	C.I.(95%)	#
Totals	13,000	77.1	75.8 - 78.3	3,900	22.9	21.7 - 24.2	16,900

County	Yes			No			Weighted Total Responses (3-Yr Avg)
	#	%	C.I.(95%)	#	%	C.I.(95%)	#
Hawaii	1,500	75.9	73.6 - 78.1	500	24.1	21.9 - 26.4	1,900
Honolulu	9,600	77.2	75.5 - 78.8	2,800	22.8	21.2 - 24.5	12,400
Kauai	600	76.8	72.9 - 80.2	200	23.2	19.8 - 27.1	800
Maui	1,400	78.2	75.7 - 80.5	400	21.8	19.5 - 24.3	1,800

**PRAMS Health Indicator 3-Year Aggregate Report - Contraceptive use since giving birth- by State;County;DOH Race-Ethnicity;PRAMS Age Group;Infant Gender;Married;Poverty Level;Income (2000-2003);Income (2004-2011);Birthweight;Smoke 3rd Trimester;Smoke Before Pregnant;WIC During Pregnancy, for the Year(s)
2000-2002;2001-2003;2002-2004;2003-2005;2004-2006;2005-2007;2006-2008;2007-2009;2008-2010;2009-2011;2010-2012;2011-2013**

Note: Weighted counts (#) represent 3-yr averages, rounded to the nearest hundred; n/r (Not Reportable) - If the unweighted total responses for a dimension (row) is <30 that row will not be shown

Years: 2001-2003

DOH Race-Ethnicity	Yes			No			Weighted Total Responses (3-Yr Avg)
	#	%	C.I.(95%)	#	%	C.I.(95%)	#
Caucasian	3,000	83.5	80.9 - 85.8	600	16.5	14.2 - 19.1	3,600
Native Hawaiian	3,500	76.6	75.1 - 77.9	1,100	23.4	22.1 - 24.9	4,600
Chinese	500	70.8	62.3 - 78.0	200	29.2	22.0 - 37.7	700
Filipino	2,700	76.8	73.5 - 79.7	800	23.2	20.3 - 26.5	3,600
Japanese	1,700	77.9	73.6 - 81.7	500	22.1	18.3 - 26.4	2,100
Other	1,600	69.7	65.1 - 74.0	700	30.3	26.0 - 34.9	2,300

PRAMS Age Group	Yes			No			Weighted Total Responses (3-Yr Avg)
	#	%	C.I.(95%)	#	%	C.I.(95%)	#
<20	1,200	74.6	70.6 - 78.1	400	25.4	21.9 - 29.4	1,600
20-24	3,300	78.2	75.7 - 80.5	900	21.8	19.5 - 24.3	4,200
25-34	6,600	78.1	76.2 - 79.8	1,800	21.9	20.2 - 23.8	8,400
35+	2,000	74.0	70.4 - 77.3	700	26.0	22.7 - 29.6	2,800

**PRAMS Health Indicator 3-Year Aggregate Report - Contraceptive use since giving birth- by State;County;DOH Race-Ethnicity;PRAMS Age Group;Infant Gender;Married;Poverty Level;Income (2000-2003);Income (2004-2011);Birthweight;Smoke 3rd Trimester;Smoke Before Pregnant;WIC During Pregnancy, for the Year(s)
2000-2002;2001-2003;2002-2004;2003-2005;2004-2006;2005-2007;2006-2008;2007-2009;2008-2010;2009-2011;2010-2012;2011-2013**

Note: Weighted counts (#) represent 3-yr averages, rounded to the nearest hundred; n/r (Not Reportable) - If the unweighted total responses for a dimension (row) is <30 that row will not be shown

Years: 2001-2003

	Yes			No			Weighted Total Responses (3-Yr Avg)
	#	%	C.I.(95%)	#	%	C.I.(95%)	#
Infant Gender							
Male	6,700	77.0	75.2 - 78.8	2,000	23.0	21.2 - 24.8	8,600
Female	6,400	77.2	75.3 - 78.9	1,900	22.8	21.1 - 24.7	8,300

	Yes			No			Weighted Total Responses (3-Yr Avg)
	#	%	C.I.(95%)	#	%	C.I.(95%)	#
Married							
Yes	8,900	78.4	76.8 - 80.0	2,400	21.6	20.0 - 23.2	11,300
No	4,200	74.4	72.3 - 76.5	1,400	25.6	23.5 - 27.7	5,600

	Yes			No			Weighted Total Responses (3-Yr Avg)
	#	%	C.I.(95%)	#	%	C.I.(95%)	#
Poverty Level							
0-130%	5,200	75.6	73.6 - 77.5	1,700	24.4	22.5 - 26.4	6,900
131-185%	2,500	78.7	75.7 - 81.4	700	21.3	18.6 - 24.3	3,200
186+%	4,300	79.3	76.9 - 81.4	1,100	20.7	18.6 - 23.1	5,500

**PRAMS Health Indicator 3-Year Aggregate Report - Contraceptive use since giving birth- by State;County;DOH Race-Ethnicity;PRAMS Age Group;Infant Gender;Married;Poverty Level;Income (2000-2003);Income (2004-2011);Birthweight;Smoke 3rd Trimester;Smoke Before Pregnant;WIC During Pregnancy, for the Year(s)
2000-2002;2001-2003;2002-2004;2003-2005;2004-2006;2005-2007;2006-2008;2007-2009;2008-2010;2009-2011;2010-2012;2011-2013**

Note: Weighted counts (#) represent 3-yr averages, rounded to the nearest hundred; n/r (Not Reportable) - If the unweighted total responses for a dimension (row) is <30 that row will not be shown

Years: 2001-2003

Income (2000-2003)	Yes			No			Weighted Total Responses (3-Yr Avg)
	#	%	C.I.(95%)	#	%	C.I.(95%)	#
<=\$15,000	2,600	72.7	69.9 - 75.4	1,000	27.3	24.6 - 30.1	3,600
\$15,001-\$25,000	1,800	78.4	75.0 - 81.5	500	21.6	18.5 - 25.0	2,300
\$25,001-\$40,000	2,800	79.3	76.5 - 81.9	700	20.7	18.1 - 23.5	3,500
>=\$40,001	5,100	78.4	76.2 - 80.4	1,400	21.6	19.6 - 23.8	6,500

Birthweight	Yes			No			Weighted Total Responses (3-Yr Avg)
	#	%	C.I.(95%)	#	%	C.I.(95%)	#
Low birth weight	800	73.4	67.9 - 78.2	300	26.6	21.8 - 32.1	1,100
Normal birth weight	12,200	77.5	76.1 - 78.7	3,500	22.5	21.3 - 23.9	15,700

Smoke 3rd Trimester	Yes			No			Weighted Total Responses (3-Yr Avg)
	#	%	C.I.(95%)	#	%	C.I.(95%)	#
Yes	1,100	73.6	69.5 - 77.4	400	26.4	22.6 - 30.5	1,500
No	11,700	77.5	76.2 - 78.9	3,400	22.5	21.1 - 23.8	15,100

**PRAMS Health Indicator 3-Year Aggregate Report - Contraceptive use since giving birth- by State;County;DOH Race-Ethnicity;PRAMS Age Group;Infant Gender;Married;Poverty Level;Income (2000-2003);Income (2004-2011);Birthweight;Smoke 3rd Trimester;Smoke Before Pregnant;WIC During Pregnancy, for the Year(s)
2000-2002;2001-2003;2002-2004;2003-2005;2004-2006;2005-2007;2006-2008;2007-2009;2008-2010;2009-2011;2010-2012;2011-2013**

Note: Weighted counts (#) represent 3-yr averages, rounded to the nearest hundred; n/r (Not Reportable) - If the unweighted total responses for a dimension (row) is <30 that row will not be shown

Years: 2001-2003

Smoke Before Pregnant	Yes			No			Weighted Total Responses (3-Yr Avg)
	#	%	C.I.(95%)	#	%	C.I.(95%)	#
Yes	2,600	76.1	73.4 - 78.7	800	23.9	21.3 - 26.6	3,400
No	10,100	77.3	75.8 - 78.8	3,000	22.7	21.2 - 24.2	13,100

WIC During Pregnancy	Yes			No			Weighted Total Responses (3-Yr Avg)
	#	%	C.I.(95%)	#	%	C.I.(95%)	#
Yes	5,400	76.5	74.6 - 78.3	1,700	23.5	21.7 - 25.4	7,100
No	7,500	77.6	75.8 - 79.2	2,200	22.4	20.8 - 24.2	9,700

**PRAMS Health Indicator 3-Year Aggregate Report - Contraceptive use since giving birth- by State;County;DOH Race-Ethnicity;PRAMS Age Group;Infant Gender;Married;Poverty Level;Income (2000-2003);Income (2004-2011);Birthweight;Smoke 3rd Trimester;Smoke Before Pregnant;WIC During Pregnancy, for the Year(s)
2000-2002;2001-2003;2002-2004;2003-2005;2004-2006;2005-2007;2006-2008;2007-2009;2008-2010;2009-2011;2010-2012;2011-2013**

Note: Weighted counts (#) represent 3-yr averages, rounded to the nearest hundred; n/r (Not Reportable) - If the unweighted total responses for a dimension (row) is <30 that row will not be shown

Years: 2000-2002

State	Yes			No			Weighted Total Responses (3-Yr Avg)
	#	%	C.I.(95%)	#	%	C.I.(95%)	#
Totals	13,000	77.5	76.3 - 78.7	3,800	22.5	21.3 - 23.7	16,800

County	Yes			No			Weighted Total Responses (3-Yr Avg)
	#	%	C.I.(95%)	#	%	C.I.(95%)	#
Hawaii	1,500	78.4	76.2 - 80.5	400	21.6	19.5 - 23.8	1,900
Honolulu	9,600	77.1	75.6 - 78.6	2,800	22.9	21.4 - 24.4	12,400
Kauai	500	76.5	72.5 - 80.2	200	23.5	19.8 - 27.5	700
Maui	1,400	79.5	77.0 - 81.7	400	20.5	18.3 - 23.0	1,700

**PRAMS Health Indicator 3-Year Aggregate Report - Contraceptive use since giving birth- by State;County;DOH Race-Ethnicity;PRAMS Age Group;Infant Gender;Married;Poverty Level;Income (2000-2003);Income (2004-2011);Birthweight;Smoke 3rd Trimester;Smoke Before Pregnant;WIC During Pregnancy, for the Year(s)
2000-2002;2001-2003;2002-2004;2003-2005;2004-2006;2005-2007;2006-2008;2007-2009;2008-2010;2009-2011;2010-2012;2011-2013**

Note: Weighted counts (#) represent 3-yr averages, rounded to the nearest hundred; n/r (Not Reportable) - If the unweighted total responses for a dimension (row) is <30 that row will not be shown

Years: 2000-2002

DOH Race-Ethnicity	Yes			No			Weighted Total Responses (3-Yr Avg)
	#	%	C.I.(95%)	#	%	C.I.(95%)	#
Caucasian	3,100	84.0	81.7 - 86.0	600	16.0	14.0 - 18.3	3,700
Native Hawaiian	3,600	78.7	77.4 - 80.0	1,000	21.3	20.0 - 22.6	4,600
Chinese	400	65.7	57.5 - 73.1	200	34.3	26.9 - 42.5	700
Filipino	2,600	76.5	73.4 - 79.3	800	23.5	20.7 - 26.6	3,400
Japanese	1,600	76.4	72.3 - 80.0	500	23.6	20.0 - 27.7	2,100
Other	1,600	70.5	66.1 - 74.5	700	29.5	25.5 - 33.9	2,300

PRAMS Age Group	Yes			No			Weighted Total Responses (3-Yr Avg)
	#	%	C.I.(95%)	#	%	C.I.(95%)	#
<20	1,300	76.9	73.5 - 80.0	400	23.1	20.0 - 26.5	1,700
20-24	3,300	79.6	77.3 - 81.7	900	20.4	18.3 - 22.7	4,200
25-34	6,400	78.3	76.5 - 80.0	1,800	21.7	20.0 - 23.5	8,200
35+	2,000	72.3	68.9 - 75.5	800	27.7	24.5 - 31.1	2,800

**PRAMS Health Indicator 3-Year Aggregate Report - Contraceptive use since giving birth- by State;County;DOH Race-Ethnicity;PRAMS Age Group;Infant Gender;Married;Poverty Level;Income (2000-2003);Income (2004-2011);Birthweight;Smoke 3rd Trimester;Smoke Before Pregnant;WIC During Pregnancy, for the Year(s)
2000-2002;2001-2003;2002-2004;2003-2005;2004-2006;2005-2007;2006-2008;2007-2009;2008-2010;2009-2011;2010-2012;2011-2013**

Note: Weighted counts (#) represent 3-yr averages, rounded to the nearest hundred; n/r (Not Reportable) - If the unweighted total responses for a dimension (row) is <30 that row will not be shown

Years: 2000-2002

	Yes			No			Weighted Total Responses (3-Yr Avg)
	#	%	C.I.(95%)	#	%	C.I.(95%)	#
Infant Gender							
Male	6,600	77.3	75.6 - 78.9	1,900	22.7	21.1 - 24.4	8,500
Female	6,400	77.7	75.9 - 79.3	1,800	22.3	20.7 - 24.1	8,300

	Yes			No			Weighted Total Responses (3-Yr Avg)
	#	%	C.I.(95%)	#	%	C.I.(95%)	#
Married							
Yes	9,000	78.4	76.9 - 79.8	2,500	21.6	20.2 - 23.1	11,400
No	4,100	75.6	73.5 - 77.5	1,300	24.4	22.5 - 26.5	5,400

	Yes			No			Weighted Total Responses (3-Yr Avg)
	#	%	C.I.(95%)	#	%	C.I.(95%)	#
Poverty Level							
0-130%	5,200	77.2	75.3 - 78.9	1,500	22.8	21.1 - 24.7	6,700
131-185%	2,500	78.9	76.0 - 81.6	700	21.1	18.4 - 24.0	3,100
186+%	4,500	78.5	76.3 - 80.5	1,200	21.5	19.5 - 23.7	5,700

**PRAMS Health Indicator 3-Year Aggregate Report - Contraceptive use since giving birth- by State;County;DOH Race-Ethnicity;PRAMS Age Group;Infant Gender;Married;Poverty Level;Income (2000-2003);Income (2004-2011);Birthweight;Smoke 3rd Trimester;Smoke Before Pregnant;WIC During Pregnancy, for the Year(s)
2000-2002;2001-2003;2002-2004;2003-2005;2004-2006;2005-2007;2006-2008;2007-2009;2008-2010;2009-2011;2010-2012;2011-2013**

Note: Weighted counts (#) represent 3-yr averages, rounded to the nearest hundred; n/r (Not Reportable) - If the unweighted total responses for a dimension (row) is <30 that row will not be shown

Years: 2000-2002

Income (2000-2003)	Yes			No			Weighted Total Responses (3-Yr Avg)
	#	%	C.I.(95%)	#	%	C.I.(95%)	#
<=\$15,000	2,700	75.1	72.6 - 77.5	900	24.9	22.5 - 27.4	3,500
\$15,001-\$25,000	2,000	79.3	76.2 - 82.1	500	20.7	17.9 - 23.8	2,500
\$25,001-\$40,000	2,800	79.3	76.6 - 81.7	700	20.7	18.3 - 23.4	3,500
>=\$40,001	5,000	77.8	75.7 - 79.8	1,400	22.2	20.2 - 24.3	6,400

Birthweight	Yes			No			Weighted Total Responses (3-Yr Avg)
	#	%	C.I.(95%)	#	%	C.I.(95%)	#
Low birth weight	800	76.3	71.2 - 80.7	300	23.7	19.3 - 28.8	1,100
Normal birth weight	12,100	77.6	76.4 - 78.8	3,500	22.4	21.2 - 23.6	15,600

Smoke 3rd Trimester	Yes			No			Weighted Total Responses (3-Yr Avg)
	#	%	C.I.(95%)	#	%	C.I.(95%)	#
Yes	1,000	72.1	68.0 - 75.8	400	27.9	24.2 - 32.0	1,400
No	11,700	78.1	76.8 - 79.3	3,300	21.9	20.7 - 23.2	15,000

**PRAMS Health Indicator 3-Year Aggregate Report - Contraceptive use since giving birth- by State;County;DOH Race-Ethnicity;PRAMS Age Group;Infant Gender;Married;Poverty Level;Income (2000-2003);Income (2004-2011);Birthweight;Smoke 3rd Trimester;Smoke Before Pregnant;WIC During Pregnancy, for the Year(s)
2000-2002;2001-2003;2002-2004;2003-2005;2004-2006;2005-2007;2006-2008;2007-2009;2008-2010;2009-2011;2010-2012;2011-2013**

Note: Weighted counts (#) represent 3-yr averages, rounded to the nearest hundred; n/r (Not Reportable) - If the unweighted total responses for a dimension (row) is <30 that row will not be shown

Years: 2000-2002

Smoke Before Pregnant	Yes			No			Weighted Total Responses (3-Yr Avg)
	#	%	C.I.(95%)	#	%	C.I.(95%)	#
Yes	2,500	76.3	73.7 - 78.7	800	23.7	21.3 - 26.3	3,300
No	10,100	77.7	76.3 - 79.1	2,900	22.3	20.9 - 23.7	13,000

WIC During Pregnancy	Yes			No			Weighted Total Responses (3-Yr Avg)
	#	%	C.I.(95%)	#	%	C.I.(95%)	#
Yes	5,600	78.0	76.2 - 79.6	1,600	22.0	20.4 - 23.8	7,100
No	7,300	77.0	75.3 - 78.6	2,200	23.0	21.4 - 24.7	9,500