

# PRAMS Health Indicator 3-Year Aggregate Report - No contraception at conception- didn't mind getting pregnant- for the State of Hawaii, for the Year(s)

2000-2002;2001-2003;2002-2004;2003-2005;2004-2006;2005-2007;2006-2008;2007-2009;2008-2010;2009-2011;2010-2012;2011-2013

PRAMS Health Indicator 3-Year Aggregate Report - No contraception at conception- didn't mind getting pregnant- by State;County;DOH Race-Ethnicity;PRAMS Age Group;Infant Gender;Married;Poverty Level;Income (2000-2003);Income (2004-2011);Birthweight;Smoke 3rd Trimester;Smoke Before Pregnant;WIC During Pregnancy, for the Year(s)

2000-2002;2001-2003;2002-2004;2003-2005;2004-2006;2005-2007;2006-2008;2007-2009;2008-2010;2009-2011;2010-2012;2011-2013

*Note: Weighted counts (#) represent 3-yr averages, rounded to the nearest hundred; n/r (Not Reportable) - If the unweighted total responses for a dimension (row) is <30 that row will not be shown*

*The trend analysis section shows the trend for the selected health variable over selected years in a table and a graph. 3-Year Weighted Total Responses: This number is a weighted representation of the mothers of babies delivered in a given year, who responded to a particular question in the survey. For most questions this will be the mothers of all babies delivered in a given year. For some secondary questions only a subset of the population was asked the question. For example, all survey participants were asked if they smoked during pregnancy, but only those who answered yes were asked how many cigarettes a day. If a dimension value is unknown for a particular survey record, that record will not be included in the counts for that particular dimension.*

*Note: Data collection for household income changed in 2004 and again in 2012. Because of this, income data does not exist for some 3-year aggregate periods.*

*Below are the indicators included in this report and the long description for each indicator.*

PRAMS Health Indicator	Health Indicator Description
No contraception at conception- didn't mind getting pregnant	No contraception at conception- didn't mind getting pregnant

*Suggested citation:*

*Hawaii Health Data Warehouse, Hawaii State Department of Health, Pregnancy Risk Assessment Monitoring System, (report title and years), Report Created: 2/16/17*

*For documentation on other terms and coding in this report, please go to the following links:*

[Click here to access PRAMS documentation](#)

[Click here to access DOH-Race Ethnicity coding](#)

[Click here to access The Hawai'i Data Guide](#)

**For questions about this report, please contact  
The Hawai'i Health Data Warehouse**

[profiles@hhdw.org](mailto:profiles@hhdw.org)

**(855) 946-5899 x15**

**PRAMS Health Indicator 3-Year Aggregate Report - No contraception at conception- didn't mind getting pregnant- for the State of Hawaii, for the Year(s)**

**2000-2002;2001-2003;2002-2004;2003-2005;2004-2006;2005-2007;2006-2008;2007-2009;2008-2010;2009-2011;2010-2012;2011-2013**

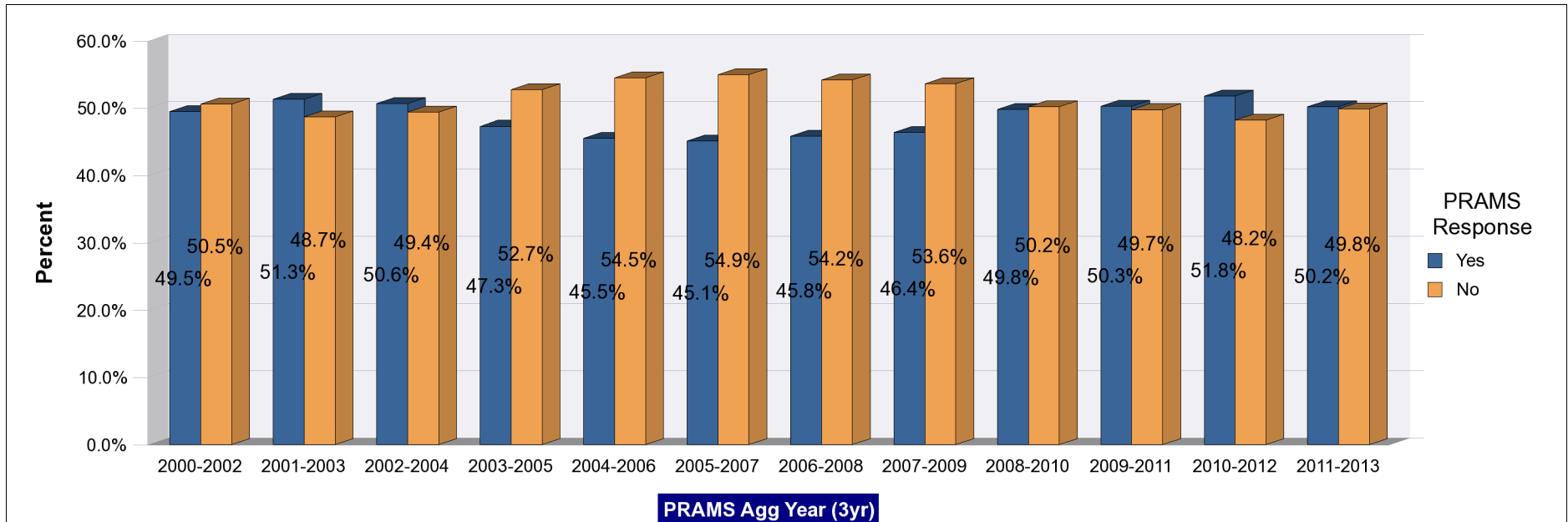
*Note: Weighted counts (#) represent 3-yr averages, rounded to the nearest hundred; n/r (Not Reportable) - If the unweighted total responses for a dimension (row) is <30 that row will not be shown*

Years	Yes			No			Weighted Total Responses (3-Yr Avg)
	#	%	C.I.(95%)	#	%	C.I.(95%)	#
2000-2002	2,700	49.5	47.1 - 51.8	2,800	50.5	48.2 - 52.9	5,600
2001-2003	2,900	51.3	48.8 - 53.8	2,700	48.7	46.2 - 51.2	5,600
2002-2004	2,800	50.6	48.0 - 53.2	2,700	49.4	46.8 - 52.0	5,500
2003-2005	2,500	47.3	44.7 - 49.8	2,800	52.7	50.2 - 55.3	5,400
2004-2006	2,400	45.5	43.0 - 48.0	2,900	54.5	52.0 - 57.0	5,200
2005-2007	2,500	45.1	42.5 - 47.6	3,000	54.9	52.4 - 57.5	5,500
2006-2008	2,500	45.8	43.2 - 48.4	3,000	54.2	51.6 - 56.8	5,500
2007-2009	2,600	46.4	43.6 - 49.2	3,000	53.6	50.8 - 56.4	5,600
2008-2010	2,800	49.8	46.7 - 52.9	2,800	50.2	47.1 - 53.3	5,500
2009-2011	2,700	50.3	46.8 - 53.7	2,700	49.7	46.3 - 53.2	5,500
2010-2012	2,800	51.8	48.3 - 55.3	2,600	48.2	44.7 - 51.7	5,400
2011-2013	2,700	50.2	46.6 - 53.7	2,700	49.8	46.3 - 53.4	5,400

# PRAMS Health Indicator 3-Year Aggregate Report - No contraception at conception- didn't mind getting pregnant- for the State of Hawaii, for the Year(s)

2000-2002;2001-2003;2002-2004;2003-2005;2004-2006;2005-2007;2006-2008;2007-2009;2008-2010;2009-2011;2010-2012;2011-2013

Note: Weighted counts (#) represent 3-yr averages, rounded to the nearest hundred; n/r (Not Reportable) - If the unweighted total responses for a dimension (row) is <30 that row will not be shown



**PRAMS Health Indicator 3-Year Aggregate Report - No contraception at conception- didn't mind getting pregnant- by State;County;DOH Race-Ethnicity;PRAMS Age Group;Infant Gender;Married;Poverty Level;Income (2000-2003);Income (2004-2011);Birthweight;Smoke 3rd Trimester;Smoke Before Pregnant;WIC During Pregnancy, for the Year(s) 2000-2002;2001-2003;2002-2004;2003-2005;2004-2006;2005-2007;2006-2008;2007-2009;2008-2010;2009-2011;2010-2012;2011-2013**

*Note: Weighted counts (#) represent 3-yr averages, rounded to the nearest hundred; n/r (Not Reportable) - If the unweighted total responses for a dimension (row) is <30 that row will not be shown*

**Years: 2011-2013**

State	Yes			No			Weighted Total Responses (3-Yr Avg)
	#	%	C.I.(95%)	#	%	C.I.(95%)	#
<b>Totals</b>	2,700	50.2	46.6 - 53.7	2,700	49.8	46.3 - 53.4	5,400

County	Yes			No			Weighted Total Responses (3-Yr Avg)
	#	%	C.I.(95%)	#	%	C.I.(95%)	#
<b>Hawaii</b>	300	46.9	41.4 - 52.5	400	53.1	47.5 - 58.6	700
<b>Honolulu</b>	2,000	50.6	45.8 - 55.4	1,900	49.4	44.6 - 54.2	3,900
<b>Kauai</b>	100	50.7	44.3 - 57.1	100	49.3	42.9 - 55.7	300
<b>Maui</b>	300	50.9	45.5 - 56.2	300	49.1	43.8 - 54.5	600

**PRAMS Health Indicator 3-Year Aggregate Report - No contraception at conception- didn't mind getting pregnant- by State;County;DOH Race-Ethnicity;PRAMS Age Group;Infant Gender;Married;Poverty Level;Income (2000-2003);Income (2004-2011);Birthweight;Smoke 3rd Trimester;Smoke Before Pregnant;WIC During Pregnancy, for the Year(s) 2000-2002;2001-2003;2002-2004;2003-2005;2004-2006;2005-2007;2006-2008;2007-2009;2008-2010;2009-2011;2010-2012;2011-2013**

*Note: Weighted counts (#) represent 3-yr averages, rounded to the nearest hundred; n/r (Not Reportable) - If the unweighted total responses for a dimension (row) is <30 that row will not be shown*

**Years: 2011-2013**

DOH Race-Ethnicity	Yes			No			Weighted Total Responses (3-Yr Avg)
	#	%	C.I.(95%)	#	%	C.I.(95%)	#
Caucasian	600	58.5	50.1 - 66.4	400	41.5	33.6 - 49.9	1,000
Native Hawaiian	900	49.0	43.3 - 54.6	1,000	51.0	45.4 - 56.7	1,900
Chinese	100	54.4	35.9 - 71.8	100	45.6	28.2 - 64.1	200
Filipino	500	48.5	40.2 - 56.9	500	51.5	43.1 - 59.8	1,000
Japanese	300	67.1	53.9 - 78.1	100	32.9	21.9 - 46.1	400
Other	300	34.3	26.1 - 43.6	500	65.7	56.4 - 73.9	800

PRAMS Age Group	Yes			No			Weighted Total Responses (3-Yr Avg)
	#	%	C.I.(95%)	#	%	C.I.(95%)	#
<20	100	28.8	18.8 - 41.4	300	71.2	58.6 - 81.2	400
20-24	700	43.7	37.1 - 50.5	900	56.3	49.5 - 62.9	1,600
25-34	1,400	54.3	49.1 - 59.4	1,200	45.7	40.6 - 50.9	2,600
35+	500	61.0	52.3 - 69.1	300	39.0	30.9 - 47.7	800

**PRAMS Health Indicator 3-Year Aggregate Report - No contraception at conception- didn't mind getting pregnant- by State;County;DOH Race-Ethnicity;PRAMS Age Group;Infant Gender;Married;Poverty Level;Income (2000-2003);Income (2004-2011);Birthweight;Smoke 3rd Trimester;Smoke Before Pregnant;WIC During Pregnancy, for the Year(s) 2000-2002;2001-2003;2002-2004;2003-2005;2004-2006;2005-2007;2006-2008;2007-2009;2008-2010;2009-2011;2010-2012;2011-2013**

*Note: Weighted counts (#) represent 3-yr averages, rounded to the nearest hundred; n/r (Not Reportable) - If the unweighted total responses for a dimension (row) is <30 that row will not be shown*

**Years: 2011-2013**

	Yes			No			Weighted Total Responses (3-Yr Avg)
	#	%	C.I.(95%)	#	%	C.I.(95%)	#
<b>Infant Gender</b>							
<b>Male</b>	1,300	50.2	45.0 - 55.3	1,300	49.8	44.7 - 55.0	2,600
<b>Female</b>	1,400	50.1	45.2 - 55.0	1,400	49.9	45.0 - 54.8	2,900

	Yes			No			Weighted Total Responses (3-Yr Avg)
	#	%	C.I.(95%)	#	%	C.I.(95%)	#
<b>Married</b>							
<b>Yes</b>	1,600	58.8	53.6 - 63.8	1,100	41.2	36.2 - 46.4	2,700
<b>No</b>	1,100	41.6	36.9 - 46.5	1,600	58.4	53.5 - 63.1	2,700

	Yes			No			Weighted Total Responses (3-Yr Avg)
	#	%	C.I.(95%)	#	%	C.I.(95%)	#
<b>Poverty Level</b>							
<b>0-130%</b>	1,000	40.5	35.6 - 45.6	1,500	59.5	54.4 - 64.4	2,600
<b>131-185%</b>	400	55.3	45.7 - 64.5	400	44.7	35.5 - 54.3	800
<b>186+%</b>	1,000	65.9	59.1 - 72.1	500	34.1	27.9 - 40.9	1,500

**PRAMS Health Indicator 3-Year Aggregate Report - No contraception at conception- didn't mind getting pregnant- by State;County;DOH Race-Ethnicity;PRAMS Age Group;Infant Gender;Married;Poverty Level;Income (2000-2003);Income (2004-2011);Birthweight;Smoke 3rd Trimester;Smoke Before Pregnant;WIC During Pregnancy, for the Year(s) 2000-2002;2001-2003;2002-2004;2003-2005;2004-2006;2005-2007;2006-2008;2007-2009;2008-2010;2009-2011;2010-2012;2011-2013**

*Note: Weighted counts (#) represent 3-yr averages, rounded to the nearest hundred; n/r (Not Reportable) - If the unweighted total responses for a dimension (row) is <30 that row will not be shown*

**Years: 2011-2013**

Birthweight	Yes			No			Weighted Total Responses (3-Yr Avg)
	#	%	C.I.(95%)	#	%	C.I.(95%)	#
Low birth weight	200	48.8	43.0 - 54.6	200	51.2	45.4 - 57.0	400
Normal birth weight	2,600	50.4	46.6 - 54.2	2,500	49.6	45.8 - 53.4	5,100

Smoke 3rd Trimester	Yes			No			Weighted Total Responses (3-Yr Avg)
	#	%	C.I.(95%)	#	%	C.I.(95%)	#
Yes	200	43.8	31.7 - 56.7	200	56.2	43.3 - 68.3	400
No	2,500	51.0	47.2 - 54.7	2,400	49.0	45.3 - 52.8	4,900

Smoke Before Pregnant	Yes			No			Weighted Total Responses (3-Yr Avg)
	#	%	C.I.(95%)	#	%	C.I.(95%)	#
Yes	600	47.7	40.5 - 54.9	600	52.3	45.1 - 59.5	1,200
No	2,100	51.4	47.2 - 55.5	2,000	48.6	44.5 - 52.8	4,200

**PRAMS Health Indicator 3-Year Aggregate Report - No contraception at conception- didn't mind getting pregnant- by State;County;DOH Race-Ethnicity;PRAMS Age Group;Infant Gender;Married;Poverty Level;Income (2000-2003);Income (2004-2011);Birthweight;Smoke 3rd Trimester;Smoke Before Pregnant;WIC During Pregnancy, for the Year(s) 2000-2002;2001-2003;2002-2004;2003-2005;2004-2006;2005-2007;2006-2008;2007-2009;2008-2010;2009-2011;2010-2012;2011-2013**

*Note: Weighted counts (#) represent 3-yr averages, rounded to the nearest hundred; n/r (Not Reportable) - If the unweighted total responses for a dimension (row) is <30 that row will not be shown*

**Years: 2011-2013**

WIC During Pregnancy	Yes			No			Weighted Total Responses (3-Yr Avg)
	#	%	C.I.(95%)	#	%	C.I.(95%)	#
<b>Yes</b>	1,300	45.2	40.5 - 50.0	1,600	54.8	50.0 - 59.5	2,900
<b>No</b>	1,400	57.0	51.6 - 62.3	1,100	43.0	37.7 - 48.4	2,400



**PRAMS Health Indicator 3-Year Aggregate Report - No contraception at conception- didn't mind getting pregnant- by State;County;DOH Race-Ethnicity;PRAMS Age Group;Infant Gender;Married;Poverty Level;Income (2000-2003);Income (2004-2011);Birthweight;Smoke 3rd Trimester;Smoke Before Pregnant;WIC During Pregnancy, for the Year(s) 2000-2002;2001-2003;2002-2004;2003-2005;2004-2006;2005-2007;2006-2008;2007-2009;2008-2010;2009-2011;2010-2012;2011-2013**

*Note: Weighted counts (#) represent 3-yr averages, rounded to the nearest hundred; n/r (Not Reportable) - If the unweighted total responses for a dimension (row) is <30 that row will not be shown*

**Years: 2010-2012**

State	Yes			No			Weighted Total Responses (3-Yr Avg)
	#	%	C.I.(95%)	#	%	C.I.(95%)	#
<b>Totals</b>	2,800	51.8	48.3 - 55.3	2,600	48.2	44.7 - 51.7	5,400

County	Yes			No			Weighted Total Responses (3-Yr Avg)
	#	%	C.I.(95%)	#	%	C.I.(95%)	#
<b>Hawaii</b>	300	47.8	42.5 - 53.2	400	52.2	46.8 - 57.5	700
<b>Honolulu</b>	2,000	52.0	47.3 - 56.7	1,800	48.0	43.3 - 52.7	3,800
<b>Kauai</b>	100	48.6	42.1 - 55.1	100	51.4	44.9 - 57.9	300
<b>Maui</b>	300	56.7	51.4 - 61.7	200	43.3	38.3 - 48.6	600

**PRAMS Health Indicator 3-Year Aggregate Report - No contraception at conception- didn't mind getting pregnant- by State;County;DOH Race-Ethnicity;PRAMS Age Group;Infant Gender;Married;Poverty Level;Income (2000-2003);Income (2004-2011);Birthweight;Smoke 3rd Trimester;Smoke Before Pregnant;WIC During Pregnancy, for the Year(s) 2000-2002;2001-2003;2002-2004;2003-2005;2004-2006;2005-2007;2006-2008;2007-2009;2008-2010;2009-2011;2010-2012;2011-2013**

*Note: Weighted counts (#) represent 3-yr averages, rounded to the nearest hundred; n/r (Not Reportable) - If the unweighted total responses for a dimension (row) is <30 that row will not be shown*

**Years: 2010-2012**

DOH Race-Ethnicity	Yes			No			Weighted Total Responses (3-Yr Avg)
	#	%	C.I.(95%)	#	%	C.I.(95%)	#
Caucasian	600	56.1	48.1 - 63.8	500	43.9	36.2 - 51.9	1,000
Native Hawaiian	900	47.8	42.2 - 53.5	900	52.2	46.5 - 57.8	1,800
Chinese	100	73.3	54.9 - 86.1	100	26.7	13.9 - 45.1	200
Filipino	600	52.7	44.7 - 60.6	500	47.3	39.4 - 55.3	1,100
Japanese	200	59.1	44.9 - 71.9	100	40.9	28.1 - 55.1	300
Other	400	46.7	38.1 - 55.5	500	53.3	44.5 - 61.9	900

PRAMS Age Group	Yes			No			Weighted Total Responses (3-Yr Avg)
	#	%	C.I.(95%)	#	%	C.I.(95%)	#
<20	200	33.0	22.9 - 44.8	300	67.0	55.2 - 77.1	500
20-24	700	43.7	37.2 - 50.4	900	56.3	49.6 - 62.8	1,500
25-34	1,400	57.0	52.0 - 61.8	1,100	43.0	38.2 - 48.0	2,500
35+	500	61.3	52.5 - 69.4	300	38.7	30.6 - 47.5	900

**PRAMS Health Indicator 3-Year Aggregate Report - No contraception at conception- didn't mind getting pregnant- by State;County;DOH Race-Ethnicity;PRAMS Age Group;Infant Gender;Married;Poverty Level;Income (2000-2003);Income (2004-2011);Birthweight;Smoke 3rd Trimester;Smoke Before Pregnant;WIC During Pregnancy, for the Year(s) 2000-2002;2001-2003;2002-2004;2003-2005;2004-2006;2005-2007;2006-2008;2007-2009;2008-2010;2009-2011;2010-2012;2011-2013**

*Note: Weighted counts (#) represent 3-yr averages, rounded to the nearest hundred; n/r (Not Reportable) - If the unweighted total responses for a dimension (row) is <30 that row will not be shown*

**Years: 2010-2012**

Infant Gender	Yes			No			Weighted Total Responses (3-Yr Avg)
	#	%	C.I.(95%)	#	%	C.I.(95%)	#
Male	1,300	49.8	44.9 - 54.8	1,300	50.2	45.2 - 55.1	2,600
Female	1,500	53.6	48.8 - 58.4	1,300	46.4	41.6 - 51.2	2,700

Married	Yes			No			Weighted Total Responses (3-Yr Avg)
	#	%	C.I.(95%)	#	%	C.I.(95%)	#
Yes	1,600	58.5	53.5 - 63.3	1,100	41.5	36.7 - 46.5	2,700
No	1,200	44.8	40.0 - 49.6	1,400	55.2	50.4 - 60.0	2,600

Poverty Level	Yes			No			Weighted Total Responses (3-Yr Avg)
	#	%	C.I.(95%)	#	%	C.I.(95%)	#
0-130%	1,100	43.9	38.9 - 48.9	1,400	56.1	51.1 - 61.1	2,500
131-185%	400	58.6	49.3 - 67.4	300	41.4	32.6 - 50.7	700
186+%	1,000	62.9	56.6 - 68.9	600	37.1	31.1 - 43.4	1,600

**PRAMS Health Indicator 3-Year Aggregate Report - No contraception at conception- didn't mind getting pregnant- by State;County;DOH Race-Ethnicity;PRAMS Age Group;Infant Gender;Married;Poverty Level;Income (2000-2003);Income (2004-2011);Birthweight;Smoke 3rd Trimester;Smoke Before Pregnant;WIC During Pregnancy, for the Year(s) 2000-2002;2001-2003;2002-2004;2003-2005;2004-2006;2005-2007;2006-2008;2007-2009;2008-2010;2009-2011;2010-2012;2011-2013**

*Note: Weighted counts (#) represent 3-yr averages, rounded to the nearest hundred; n/r (Not Reportable) - If the unweighted total responses for a dimension (row) is <30 that row will not be shown*

**Years: 2010-2012**

Birthweight	Yes			No			Weighted Total Responses (3-Yr Avg)
	#	%	C.I.(95%)	#	%	C.I.(95%)	#
Low birth weight	200	49.4	43.3 - 55.4	200	50.6	44.6 - 56.7	400
Normal birth weight	2,600	52.0	48.3 - 55.7	2,400	48.0	44.3 - 51.7	5,000

Smoke 3rd Trimester	Yes			No			Weighted Total Responses (3-Yr Avg)
	#	%	C.I.(95%)	#	%	C.I.(95%)	#
Yes	300	56.0	44.7 - 66.7	200	44.0	33.3 - 55.3	500
No	2,500	51.8	48.0 - 55.4	2,300	48.2	44.6 - 52.0	4,800

Smoke Before Pregnant	Yes			No			Weighted Total Responses (3-Yr Avg)
	#	%	C.I.(95%)	#	%	C.I.(95%)	#
Yes	700	51.4	44.7 - 58.1	600	48.6	41.9 - 55.3	1,300
No	2,100	52.3	48.2 - 56.4	1,900	47.7	43.6 - 51.8	4,000

**PRAMS Health Indicator 3-Year Aggregate Report - No contraception at conception- didn't mind getting pregnant- by State;County;DOH Race-Ethnicity;PRAMS Age Group;Infant Gender;Married;Poverty Level;Income (2000-2003);Income (2004-2011);Birthweight;Smoke 3rd Trimester;Smoke Before Pregnant;WIC During Pregnancy, for the Year(s) 2000-2002;2001-2003;2002-2004;2003-2005;2004-2006;2005-2007;2006-2008;2007-2009;2008-2010;2009-2011;2010-2012;2011-2013**

*Note: Weighted counts (#) represent 3-yr averages, rounded to the nearest hundred; n/r (Not Reportable) - If the unweighted total responses for a dimension (row) is <30 that row will not be shown*

**Years: 2010-2012**

WIC During Pregnancy	Yes			No			Weighted Total Responses (3-Yr Avg)
	#	%	C.I.(95%)	#	%	C.I.(95%)	#
<b>Yes</b>	1,300	46.5	41.8 - 51.2	1,500	53.5	48.8 - 58.2	2,900
<b>No</b>	1,400	58.9	53.6 - 64.0	1,000	41.1	36.0 - 46.4	2,400

**PRAMS Health Indicator 3-Year Aggregate Report - No contraception at conception- didn't mind getting pregnant- by State;County;DOH Race-Ethnicity;PRAMS Age Group;Infant Gender;Married;Poverty Level;Income (2000-2003);Income (2004-2011);Birthweight;Smoke 3rd Trimester;Smoke Before Pregnant;WIC During Pregnancy, for the Year(s) 2000-2002;2001-2003;2002-2004;2003-2005;2004-2006;2005-2007;2006-2008;2007-2009;2008-2010;2009-2011;2010-2012;2011-2013**

*Note: Weighted counts (#) represent 3-yr averages, rounded to the nearest hundred; n/r (Not Reportable) - If the unweighted total responses for a dimension (row) is <30 that row will not be shown*

**Years: 2009-2011**

State	Yes			No			Weighted Total Responses (3-Yr Avg)
	#	%	C.I.(95%)	#	%	C.I.(95%)	#
<b>Totals</b>	2,700	50.3	46.8 - 53.7	2,700	49.7	46.3 - 53.2	5,500

County	Yes			No			Weighted Total Responses (3-Yr Avg)
	#	%	C.I.(95%)	#	%	C.I.(95%)	#
<b>Hawaii</b>	300	42.5	37.4 - 47.9	400	57.5	52.1 - 62.6	700
<b>Honolulu</b>	2,000	50.9	46.3 - 55.5	1,900	49.1	44.5 - 53.7	3,900
<b>Kauai</b>	100	50.7	44.5 - 56.8	100	49.3	43.2 - 55.5	300
<b>Maui</b>	300	55.3	50.3 - 60.3	300	44.7	39.7 - 49.7	600

**PRAMS Health Indicator 3-Year Aggregate Report - No contraception at conception- didn't mind getting pregnant- by State;County;DOH Race-Ethnicity;PRAMS Age Group;Infant Gender;Married;Poverty Level;Income (2000-2003);Income (2004-2011);Birthweight;Smoke 3rd Trimester;Smoke Before Pregnant;WIC During Pregnancy, for the Year(s) 2000-2002;2001-2003;2002-2004;2003-2005;2004-2006;2005-2007;2006-2008;2007-2009;2008-2010;2009-2011;2010-2012;2011-2013**

*Note: Weighted counts (#) represent 3-yr averages, rounded to the nearest hundred; n/r (Not Reportable) - If the unweighted total responses for a dimension (row) is <30 that row will not be shown*

**Years: 2009-2011**

DOH Race-Ethnicity	Yes			No			Weighted Total Responses (3-Yr Avg)
	#	%	C.I.(95%)	#	%	C.I.(95%)	#
Caucasian	600	55.4	47.5 - 63.0	400	44.6	37.0 - 52.5	1,000
Native Hawaiian	900	45.1	39.8 - 50.5	1,100	54.9	49.5 - 60.2	2,000
Chinese	100	67.6	48.3 - 82.4	100	32.4	17.6 - 51.7	200
Filipino	500	47.5	39.6 - 55.5	500	52.5	44.5 - 60.4	1,000
Japanese	200	59.8	46.7 - 71.6	200	40.2	28.4 - 53.3	400
Other	400	50.7	41.7 - 59.7	400	49.3	40.3 - 58.3	900

PRAMS Age Group	Yes			No			Weighted Total Responses (3-Yr Avg)
	#	%	C.I.(95%)	#	%	C.I.(95%)	#
<20	200	27.8	20.0 - 37.2	400	72.2	62.8 - 80.0	600
20-24	700	44.9	38.6 - 51.5	900	55.1	48.5 - 61.4	1,600
25-34	1,400	57.5	52.5 - 62.4	1,000	42.5	37.6 - 47.5	2,400
35+	500	55.2	46.5 - 63.6	400	44.8	36.4 - 53.5	900

**PRAMS Health Indicator 3-Year Aggregate Report - No contraception at conception- didn't mind getting pregnant- by State;County;DOH Race-Ethnicity;PRAMS Age Group;Infant Gender;Married;Poverty Level;Income (2000-2003);Income (2004-2011);Birthweight;Smoke 3rd Trimester;Smoke Before Pregnant;WIC During Pregnancy, for the Year(s) 2000-2002;2001-2003;2002-2004;2003-2005;2004-2006;2005-2007;2006-2008;2007-2009;2008-2010;2009-2011;2010-2012;2011-2013**

*Note: Weighted counts (#) represent 3-yr averages, rounded to the nearest hundred; n/r (Not Reportable) - If the unweighted total responses for a dimension (row) is <30 that row will not be shown*

**Years: 2009-2011**

	Yes			No			Weighted Total Responses (3-Yr Avg)
	#	%	C.I.(95%)	#	%	C.I.(95%)	#
<b>Infant Gender</b>							
<b>Male</b>	1,400	50.8	46.0 - 55.6	1,300	49.2	44.4 - 54.0	2,700
<b>Female</b>	1,400	49.7	44.9 - 54.6	1,400	50.3	45.4 - 55.1	2,700

	Yes			No			Weighted Total Responses (3-Yr Avg)
	#	%	C.I.(95%)	#	%	C.I.(95%)	#
<b>Married</b>							
<b>Yes</b>	1,600	58.9	53.9 - 63.6	1,100	41.1	36.4 - 46.1	2,700
<b>No</b>	1,100	41.7	37.1 - 46.4	1,600	58.3	53.6 - 62.9	2,700

	Yes			No			Weighted Total Responses (3-Yr Avg)
	#	%	C.I.(95%)	#	%	C.I.(95%)	#
<b>Poverty Level</b>							
<b>0-130%</b>	1,000	40.6	35.8 - 45.5	1,500	59.4	54.5 - 64.2	2,600
<b>131-185%</b>	400	59.3	50.1 - 67.8	300	40.7	32.2 - 49.9	700
<b>186+%</b>	1,100	63.7	57.6 - 69.5	600	36.3	30.5 - 42.4	1,700



**PRAMS Health Indicator 3-Year Aggregate Report - No contraception at conception- didn't mind getting pregnant- by State;County;DOH Race-Ethnicity;PRAMS Age Group;Infant Gender;Married;Poverty Level;Income (2000-2003);Income (2004-2011);Birthweight;Smoke 3rd Trimester;Smoke Before Pregnant;WIC During Pregnancy, for the Year(s) 2000-2002;2001-2003;2002-2004;2003-2005;2004-2006;2005-2007;2006-2008;2007-2009;2008-2010;2009-2011;2010-2012;2011-2013**

*Note: Weighted counts (#) represent 3-yr averages, rounded to the nearest hundred; n/r (Not Reportable) - If the unweighted total responses for a dimension (row) is <30 that row will not be shown*

**Years: 2009-2011**

Income (2004-2011)	Yes			No			Weighted Total Responses (3-Yr Avg)
	#	%	C.I.(95%)	#	%	C.I.(95%)	#
<\$10,000	500	34.9	28.7 - 41.7	900	65.1	58.3 - 71.3	1,300
\$10,000-\$24,999	600	48.3	41.1 - 55.6	600	51.7	44.4 - 58.9	1,200
\$25,000-\$49,999	700	57.0	50.1 - 63.7	500	43.0	36.3 - 49.9	1,300
>=\$50,000	800	64.5	57.3 - 71.2	400	35.5	28.8 - 42.7	1,300

Birthweight	Yes			No			Weighted Total Responses (3-Yr Avg)
	#	%	C.I.(95%)	#	%	C.I.(95%)	#
Low birth weight	200	49.9	44.1 - 55.8	200	50.1	44.2 - 55.9	400
Normal birth weight	2,600	50.4	46.8 - 54.0	2,500	49.6	46.0 - 53.2	5,100

Smoke 3rd Trimester	Yes			No			Weighted Total Responses (3-Yr Avg)
	#	%	C.I.(95%)	#	%	C.I.(95%)	#
Yes	300	45.1	35.6 - 55.0	300	54.9	45.0 - 64.4	600
No	2,400	50.4	46.8 - 54.1	2,400	49.6	45.9 - 53.2	4,800

**PRAMS Health Indicator 3-Year Aggregate Report - No contraception at conception- didn't mind getting pregnant- by State;County;DOH Race-Ethnicity;PRAMS Age Group;Infant Gender;Married;Poverty Level;Income (2000-2003);Income (2004-2011);Birthweight;Smoke 3rd Trimester;Smoke Before Pregnant;WIC During Pregnancy, for the Year(s) 2000-2002;2001-2003;2002-2004;2003-2005;2004-2006;2005-2007;2006-2008;2007-2009;2008-2010;2009-2011;2010-2012;2011-2013**

*Note: Weighted counts (#) represent 3-yr averages, rounded to the nearest hundred; n/r (Not Reportable) - If the unweighted total responses for a dimension (row) is <30 that row will not be shown*

**Years: 2009-2011**

Smoke Before Pregnant	Yes			No			Weighted Total Responses (3-Yr Avg)
	#	%	C.I.(95%)	#	%	C.I.(95%)	#
<b>Yes</b>	700	46.3	40.1 - 52.5	800	53.7	47.5 - 59.9	1,500
<b>No</b>	2,000	51.2	47.1 - 55.3	1,900	48.8	44.7 - 52.9	3,900

WIC During Pregnancy	Yes			No			Weighted Total Responses (3-Yr Avg)
	#	%	C.I.(95%)	#	%	C.I.(95%)	#
<b>Yes</b>	1,300	44.4	39.8 - 49.0	1,600	55.6	51.0 - 60.2	2,900
<b>No</b>	1,400	56.6	51.5 - 61.6	1,100	43.4	38.4 - 48.5	2,500

**PRAMS Health Indicator 3-Year Aggregate Report - No contraception at conception- didn't mind getting pregnant- by State;County;DOH Race-Ethnicity;PRAMS Age Group;Infant Gender;Married;Poverty Level;Income (2000-2003);Income (2004-2011);Birthweight;Smoke 3rd Trimester;Smoke Before Pregnant;WIC During Pregnancy, for the Year(s) 2000-2002;2001-2003;2002-2004;2003-2005;2004-2006;2005-2007;2006-2008;2007-2009;2008-2010;2009-2011;2010-2012;2011-2013**

*Note: Weighted counts (#) represent 3-yr averages, rounded to the nearest hundred; n/r (Not Reportable) - If the unweighted total responses for a dimension (row) is <30 that row will not be shown*

**Years: 2008-2010**

State	Yes			No			Weighted Total Responses (3-Yr Avg)
	#	%	C.I.(95%)	#	%	C.I.(95%)	#
<b>Totals</b>	2,800	49.8	46.7 - 52.9	2,800	50.2	47.1 - 53.3	5,500

County	Yes			No			Weighted Total Responses (3-Yr Avg)
	#	%	C.I.(95%)	#	%	C.I.(95%)	#
<b>Hawaii</b>	300	43.2	37.4 - 49.2	400	56.8	50.8 - 62.6	700
<b>Honolulu</b>	2,000	50.7	46.5 - 54.9	1,900	49.3	45.1 - 53.5	3,900
<b>Kauai</b>	100	50.7	42.5 - 58.8	100	49.3	41.2 - 57.5	300
<b>Maui</b>	300	51.5	45.4 - 57.5	300	48.5	42.5 - 54.6	600

**PRAMS Health Indicator 3-Year Aggregate Report - No contraception at conception- didn't mind getting pregnant- by State;County;DOH Race-Ethnicity;PRAMS Age Group;Infant Gender;Married;Poverty Level;Income (2000-2003);Income (2004-2011);Birthweight;Smoke 3rd Trimester;Smoke Before Pregnant;WIC During Pregnancy, for the Year(s) 2000-2002;2001-2003;2002-2004;2003-2005;2004-2006;2005-2007;2006-2008;2007-2009;2008-2010;2009-2011;2010-2012;2011-2013**

*Note: Weighted counts (#) represent 3-yr averages, rounded to the nearest hundred; n/r (Not Reportable) - If the unweighted total responses for a dimension (row) is <30 that row will not be shown*

**Years: 2008-2010**

DOH Race-Ethnicity	Yes			No			Weighted Total Responses (3-Yr Avg)
	#	%	C.I.(95%)	#	%	C.I.(95%)	#
Caucasian	500	53.2	45.8 - 60.3	500	46.8	39.7 - 54.2	1,000
Native Hawaiian	900	45.4	40.3 - 50.5	1,100	54.6	49.5 - 59.7	2,000
Chinese	100	66.7	49.2 - 80.6	100	33.3	19.4 - 50.8	200
Filipino	500	46.8	39.6 - 54.3	500	53.2	45.7 - 60.4	1,000
Japanese	200	61.4	50.1 - 71.7	200	38.6	28.3 - 49.9	400
Other	500	50.2	42.2 - 58.1	500	49.8	41.9 - 57.8	900

PRAMS Age Group	Yes			No			Weighted Total Responses (3-Yr Avg)
	#	%	C.I.(95%)	#	%	C.I.(95%)	#
<20	200	33.1	25.1 - 42.1	400	66.9	57.9 - 74.9	600
20-24	600	42.8	36.9 - 48.9	900	57.2	51.1 - 63.1	1,500
25-34	1,400	57.4	52.9 - 61.8	1,100	42.6	38.2 - 47.1	2,500
35+	500	52.2	44.2 - 60.2	400	47.8	39.8 - 55.8	900

**PRAMS Health Indicator 3-Year Aggregate Report - No contraception at conception- didn't mind getting pregnant- by State;County;DOH Race-Ethnicity;PRAMS Age Group;Infant Gender;Married;Poverty Level;Income (2000-2003);Income (2004-2011);Birthweight;Smoke 3rd Trimester;Smoke Before Pregnant;WIC During Pregnancy, for the Year(s) 2000-2002;2001-2003;2002-2004;2003-2005;2004-2006;2005-2007;2006-2008;2007-2009;2008-2010;2009-2011;2010-2012;2011-2013**

*Note: Weighted counts (#) represent 3-yr averages, rounded to the nearest hundred; n/r (Not Reportable) - If the unweighted total responses for a dimension (row) is <30 that row will not be shown*

**Years: 2008-2010**

Infant Gender	Yes			No			Weighted Total Responses (3-Yr Avg)
	#	%	C.I.(95%)	#	%	C.I.(95%)	#
Male	1,400	48.4	44.1 - 52.8	1,500	51.6	47.2 - 55.9	2,900
Female	1,400	51.3	46.8 - 55.8	1,300	48.7	44.2 - 53.2	2,700

Married	Yes			No			Weighted Total Responses (3-Yr Avg)
	#	%	C.I.(95%)	#	%	C.I.(95%)	#
Yes	1,600	58.5	54.0 - 62.8	1,100	41.5	37.2 - 46.0	2,800
No	1,100	41.2	36.9 - 45.6	1,600	58.8	54.4 - 63.1	2,800

Poverty Level	Yes			No			Weighted Total Responses (3-Yr Avg)
	#	%	C.I.(95%)	#	%	C.I.(95%)	#
0-130%	1,100	42.9	38.4 - 47.4	1,500	57.1	52.6 - 61.6	2,700
131-185%	400	49.6	41.2 - 58.1	400	50.4	41.9 - 58.8	700
186+%	1,000	62.1	56.5 - 67.4	600	37.9	32.6 - 43.5	1,700

**PRAMS Health Indicator 3-Year Aggregate Report - No contraception at conception- didn't mind getting pregnant- by State;County;DOH Race-Ethnicity;PRAMS Age Group;Infant Gender;Married;Poverty Level;Income (2000-2003);Income (2004-2011);Birthweight;Smoke 3rd Trimester;Smoke Before Pregnant;WIC During Pregnancy, for the Year(s) 2000-2002;2001-2003;2002-2004;2003-2005;2004-2006;2005-2007;2006-2008;2007-2009;2008-2010;2009-2011;2010-2012;2011-2013**

*Note: Weighted counts (#) represent 3-yr averages, rounded to the nearest hundred; n/r (Not Reportable) - If the unweighted total responses for a dimension (row) is <30 that row will not be shown*

**Years: 2008-2010**

Income (2004-2011)	Yes			No			Weighted Total Responses (3-Yr Avg)
	#	%	C.I.(95%)	#	%	C.I.(95%)	#
<\$10,000	500	35.9	30.1 - 42.0	900	64.1	58.0 - 69.9	1,400
\$10,000-\$24,999	600	49.5	42.9 - 56.1	600	50.5	43.9 - 57.1	1,200
\$25,000-\$49,999	700	56.6	50.0 - 62.9	500	43.4	37.1 - 50.0	1,300
>=\$50,000	800	60.4	53.8 - 66.6	500	39.6	33.4 - 46.2	1,200

Birthweight	Yes			No			Weighted Total Responses (3-Yr Avg)
	#	%	C.I.(95%)	#	%	C.I.(95%)	#
Low birth weight	200	49.5	42.2 - 56.9	200	50.5	43.1 - 57.8	400
Normal birth weight	2,600	49.9	46.6 - 53.2	2,600	50.1	46.8 - 53.4	5,200

Smoke 3rd Trimester	Yes			No			Weighted Total Responses (3-Yr Avg)
	#	%	C.I.(95%)	#	%	C.I.(95%)	#
Yes	300	46.1	37.7 - 54.7	400	53.9	45.3 - 62.3	800
No	2,300	50.0	46.6 - 53.4	2,300	50.0	46.6 - 53.4	4,700

**PRAMS Health Indicator 3-Year Aggregate Report - No contraception at conception- didn't mind getting pregnant- by State;County;DOH Race-Ethnicity;PRAMS Age Group;Infant Gender;Married;Poverty Level;Income (2000-2003);Income (2004-2011);Birthweight;Smoke 3rd Trimester;Smoke Before Pregnant;WIC During Pregnancy, for the Year(s) 2000-2002;2001-2003;2002-2004;2003-2005;2004-2006;2005-2007;2006-2008;2007-2009;2008-2010;2009-2011;2010-2012;2011-2013**

*Note: Weighted counts (#) represent 3-yr averages, rounded to the nearest hundred; n/r (Not Reportable) - If the unweighted total responses for a dimension (row) is <30 that row will not be shown*

**Years: 2008-2010**

Smoke Before Pregnant	Yes			No			Weighted Total Responses (3-Yr Avg)
	#	%	C.I.(95%)	#	%	C.I.(95%)	#
Yes	700	46.5	40.7 - 52.4	800	53.5	47.6 - 59.3	1,600
No	2,000	50.6	46.8 - 54.3	1,900	49.4	45.7 - 53.2	3,900

WIC During Pregnancy	Yes			No			Weighted Total Responses (3-Yr Avg)
	#	%	C.I.(95%)	#	%	C.I.(95%)	#
Yes	1,300	45.5	41.3 - 49.9	1,600	54.5	50.1 - 58.7	2,900
No	1,400	54.4	49.7 - 59.0	1,200	45.6	41.0 - 50.3	2,500

**PRAMS Health Indicator 3-Year Aggregate Report - No contraception at conception- didn't mind getting pregnant- by State;County;DOH Race-Ethnicity;PRAMS Age Group;Infant Gender;Married;Poverty Level;Income (2000-2003);Income (2004-2011);Birthweight;Smoke 3rd Trimester;Smoke Before Pregnant;WIC During Pregnancy, for the Year(s) 2000-2002;2001-2003;2002-2004;2003-2005;2004-2006;2005-2007;2006-2008;2007-2009;2008-2010;2009-2011;2010-2012;2011-2013**

*Note: Weighted counts (#) represent 3-yr averages, rounded to the nearest hundred; n/r (Not Reportable) - If the unweighted total responses for a dimension (row) is <30 that row will not be shown*

**Years: 2007-2009**

State	Yes			No			Weighted Total Responses (3-Yr Avg)
	#	%	C.I.(95%)	#	%	C.I.(95%)	#
<b>Totals</b>	2,600	46.4	43.6 - 49.2	3,000	53.6	50.8 - 56.4	5,600

County	Yes			No			Weighted Total Responses (3-Yr Avg)
	#	%	C.I.(95%)	#	%	C.I.(95%)	#
<b>Hawaii</b>	300	37.7	31.6 - 44.1	500	62.3	55.9 - 68.4	800
<b>Honolulu</b>	1,800	46.7	43.1 - 50.3	2,100	53.3	49.7 - 56.9	3,900
<b>Kauai</b>	200	54.5	45.2 - 63.5	100	45.5	36.5 - 54.8	300
<b>Maui</b>	300	51.0	44.1 - 57.9	300	49.0	42.1 - 55.9	700



**PRAMS Health Indicator 3-Year Aggregate Report - No contraception at conception- didn't mind getting pregnant- by State;County;DOH Race-Ethnicity;PRAMS Age Group;Infant Gender;Married;Poverty Level;Income (2000-2003);Income (2004-2011);Birthweight;Smoke 3rd Trimester;Smoke Before Pregnant;WIC During Pregnancy, for the Year(s) 2000-2002;2001-2003;2002-2004;2003-2005;2004-2006;2005-2007;2006-2008;2007-2009;2008-2010;2009-2011;2010-2012;2011-2013**

*Note: Weighted counts (#) represent 3-yr averages, rounded to the nearest hundred; n/r (Not Reportable) - If the unweighted total responses for a dimension (row) is <30 that row will not be shown*

**Years: 2007-2009**

DOH Race-Ethnicity	Yes			No			Weighted Total Responses (3-Yr Avg)
	#	%	C.I.(95%)	#	%	C.I.(95%)	#
Caucasian	500	51.0	44.5 - 57.4	400	49.0	42.6 - 55.5	900
Native Hawaiian	900	45.2	40.4 - 50.1	1,100	54.8	49.9 - 59.6	2,100
Chinese	100	55.7	39.1 - 71.0	100	44.3	29.0 - 60.9	200
Filipino	400	41.3	35.2 - 47.7	600	58.7	52.3 - 64.8	1,000
Japanese	300	60.5	51.1 - 69.1	200	39.5	30.9 - 48.9	500
Other	400	40.4	33.8 - 47.4	600	59.6	52.6 - 66.2	1,000

PRAMS Age Group	Yes			No			Weighted Total Responses (3-Yr Avg)
	#	%	C.I.(95%)	#	%	C.I.(95%)	#
<20	200	26.6	20.2 - 34.1	600	73.4	65.9 - 79.8	800
20-24	600	38.1	33.1 - 43.4	1,000	61.9	56.6 - 66.9	1,600
25-34	1,400	55.8	51.7 - 59.9	1,100	44.2	40.1 - 48.3	2,500
35+	400	51.7	44.4 - 59.0	400	48.3	41.0 - 55.6	800

**PRAMS Health Indicator 3-Year Aggregate Report - No contraception at conception- didn't mind getting pregnant- by State;County;DOH Race-Ethnicity;PRAMS Age Group;Infant Gender;Married;Poverty Level;Income (2000-2003);Income (2004-2011);Birthweight;Smoke 3rd Trimester;Smoke Before Pregnant;WIC During Pregnancy, for the Year(s) 2000-2002;2001-2003;2002-2004;2003-2005;2004-2006;2005-2007;2006-2008;2007-2009;2008-2010;2009-2011;2010-2012;2011-2013**

*Note: Weighted counts (#) represent 3-yr averages, rounded to the nearest hundred; n/r (Not Reportable) - If the unweighted total responses for a dimension (row) is <30 that row will not be shown*

**Years: 2007-2009**

Infant Gender	Yes			No			Weighted Total Responses (3-Yr Avg)
	#	%	C.I.(95%)	#	%	C.I.(95%)	#
Male	1,400	47.2	43.3 - 51.1	1,600	52.8	48.9 - 56.7	3,000
Female	1,200	45.5	41.4 - 49.6	1,400	54.5	50.4 - 58.6	2,700

Married	Yes			No			Weighted Total Responses (3-Yr Avg)
	#	%	C.I.(95%)	#	%	C.I.(95%)	#
Yes	1,500	58.1	54.1 - 62.0	1,100	41.9	38.0 - 45.9	2,700
No	1,100	35.9	32.2 - 39.8	1,900	64.1	60.2 - 67.8	3,000

Poverty Level	Yes			No			Weighted Total Responses (3-Yr Avg)
	#	%	C.I.(95%)	#	%	C.I.(95%)	#
0-130%	1,100	37.0	33.2 - 40.9	1,800	63.0	59.1 - 66.8	2,900
131-185%	400	48.8	41.3 - 56.4	400	51.2	43.6 - 58.7	800
186+%	1,000	64.1	59.1 - 68.7	600	35.9	31.3 - 40.9	1,600

**PRAMS Health Indicator 3-Year Aggregate Report - No contraception at conception- didn't mind getting pregnant- by State;County;DOH Race-Ethnicity;PRAMS Age Group;Infant Gender;Married;Poverty Level;Income (2000-2003);Income (2004-2011);Birthweight;Smoke 3rd Trimester;Smoke Before Pregnant;WIC During Pregnancy, for the Year(s) 2000-2002;2001-2003;2002-2004;2003-2005;2004-2006;2005-2007;2006-2008;2007-2009;2008-2010;2009-2011;2010-2012;2011-2013**

*Note: Weighted counts (#) represent 3-yr averages, rounded to the nearest hundred; n/r (Not Reportable) - If the unweighted total responses for a dimension (row) is <30 that row will not be shown*

**Years: 2007-2009**

Income (2004-2011)	Yes			No			Weighted Total Responses (3-Yr Avg)
	#	%	C.I.(95%)	#	%	C.I.(95%)	#
<\$10,000	400	28.6	23.8 - 33.9	1,100	71.4	66.1 - 76.2	1,500
\$10,000-\$24,999	600	44.5	39.1 - 50.1	800	55.5	49.9 - 60.9	1,400
\$25,000-\$49,999	700	56.3	50.2 - 62.2	500	43.7	37.8 - 49.8	1,200
>=\$50,000	700	63.4	57.6 - 68.9	400	36.6	31.1 - 42.4	1,200

Birthweight	Yes			No			Weighted Total Responses (3-Yr Avg)
	#	%	C.I.(95%)	#	%	C.I.(95%)	#
Low birth weight	200	47.8	39.7 - 56.0	200	52.2	44.0 - 60.3	400
Normal birth weight	2,400	46.4	43.4 - 49.3	2,800	53.6	50.7 - 56.6	5,200

Smoke 3rd Trimester	Yes			No			Weighted Total Responses (3-Yr Avg)
	#	%	C.I.(95%)	#	%	C.I.(95%)	#
Yes	300	36.9	29.5 - 44.9	500	63.1	55.1 - 70.5	700
No	2,300	47.5	44.4 - 50.5	2,500	52.5	49.5 - 55.6	4,800

**PRAMS Health Indicator 3-Year Aggregate Report - No contraception at conception- didn't mind getting pregnant- by State;County;DOH Race-Ethnicity;PRAMS Age Group;Infant Gender;Married;Poverty Level;Income (2000-2003);Income (2004-2011);Birthweight;Smoke 3rd Trimester;Smoke Before Pregnant;WIC During Pregnancy, for the Year(s) 2000-2002;2001-2003;2002-2004;2003-2005;2004-2006;2005-2007;2006-2008;2007-2009;2008-2010;2009-2011;2010-2012;2011-2013**

*Note: Weighted counts (#) represent 3-yr averages, rounded to the nearest hundred; n/r (Not Reportable) - If the unweighted total responses for a dimension (row) is <30 that row will not be shown*

**Years: 2007-2009**

Smoke Before Pregnant	Yes			No			Weighted Total Responses (3-Yr Avg)
	#	%	C.I.(95%)	#	%	C.I.(95%)	#
Yes	600	41.0	35.7 - 46.5	900	59.0	53.5 - 64.3	1,500
No	1,900	48.0	44.7 - 51.3	2,100	52.0	48.7 - 55.3	4,000

WIC During Pregnancy	Yes			No			Weighted Total Responses (3-Yr Avg)
	#	%	C.I.(95%)	#	%	C.I.(95%)	#
Yes	1,200	40.0	36.3 - 43.8	1,800	60.0	56.2 - 63.7	3,000
No	1,300	53.6	49.4 - 57.8	1,200	46.4	42.2 - 50.6	2,500

**PRAMS Health Indicator 3-Year Aggregate Report - No contraception at conception- didn't mind getting pregnant- by State;County;DOH Race-Ethnicity;PRAMS Age Group;Infant Gender;Married;Poverty Level;Income (2000-2003);Income (2004-2011);Birthweight;Smoke 3rd Trimester;Smoke Before Pregnant;WIC During Pregnancy, for the Year(s) 2000-2002;2001-2003;2002-2004;2003-2005;2004-2006;2005-2007;2006-2008;2007-2009;2008-2010;2009-2011;2010-2012;2011-2013**

*Note: Weighted counts (#) represent 3-yr averages, rounded to the nearest hundred; n/r (Not Reportable) - If the unweighted total responses for a dimension (row) is <30 that row will not be shown*

**Years: 2006-2008**

State	Yes			No			Weighted Total Responses (3-Yr Avg)
	#	%	C.I.(95%)	#	%	C.I.(95%)	#
<b>Totals</b>	2,500	45.8	43.2 - 48.4	3,000	54.2	51.6 - 56.8	5,500

County	Yes			No			Weighted Total Responses (3-Yr Avg)
	#	%	C.I.(95%)	#	%	C.I.(95%)	#
<b>Hawaii</b>	300	37.3	30.4 - 44.7	400	62.7	55.3 - 69.6	700
<b>Honolulu</b>	1,800	46.5	43.5 - 49.6	2,000	53.5	50.4 - 56.5	3,800
<b>Kauai</b>	200	51.1	40.6 - 61.5	200	48.9	38.5 - 59.4	300
<b>Maui</b>	300	47.8	40.2 - 55.6	300	52.2	44.4 - 59.8	700

**PRAMS Health Indicator 3-Year Aggregate Report - No contraception at conception- didn't mind getting pregnant- by State;County;DOH Race-Ethnicity;PRAMS Age Group;Infant Gender;Married;Poverty Level;Income (2000-2003);Income (2004-2011);Birthweight;Smoke 3rd Trimester;Smoke Before Pregnant;WIC During Pregnancy, for the Year(s) 2000-2002;2001-2003;2002-2004;2003-2005;2004-2006;2005-2007;2006-2008;2007-2009;2008-2010;2009-2011;2010-2012;2011-2013**

*Note: Weighted counts (#) represent 3-yr averages, rounded to the nearest hundred; n/r (Not Reportable) - If the unweighted total responses for a dimension (row) is <30 that row will not be shown*

**Years: 2006-2008**

DOH Race-Ethnicity	Yes			No			Weighted Total Responses (3-Yr Avg)
	#	%	C.I.(95%)	#	%	C.I.(95%)	#
Caucasian	500	51.7	45.7 - 57.7	500	48.3	42.3 - 54.3	1,000
Native Hawaiian	800	43.4	38.8 - 48.1	1,100	56.6	51.9 - 61.2	1,900
Chinese	100	60.3	51.2 - 68.7	<50	39.7	31.3 - 48.8	<50
Filipino	400	46.8	41.1 - 52.7	500	53.2	47.3 - 58.9	900
Japanese	300	55.9	47.4 - 64.1	200	44.1	35.9 - 52.6	500
Other	400	37.5	32.0 - 43.4	700	62.5	56.6 - 68.0	1,100

PRAMS Age Group	Yes			No			Weighted Total Responses (3-Yr Avg)
	#	%	C.I.(95%)	#	%	C.I.(95%)	#
<20	200	23.3	17.2 - 30.7	500	76.7	69.3 - 82.8	700
20-24	600	38.9	34.2 - 43.7	1,000	61.1	56.3 - 65.8	1,600
25-34	1,300	53.4	49.6 - 57.1	1,200	46.6	42.9 - 50.4	2,500
35+	400	55.9	49.2 - 62.3	300	44.1	37.7 - 50.8	700

**PRAMS Health Indicator 3-Year Aggregate Report - No contraception at conception- didn't mind getting pregnant- by State;County;DOH Race-Ethnicity;PRAMS Age Group;Infant Gender;Married;Poverty Level;Income (2000-2003);Income (2004-2011);Birthweight;Smoke 3rd Trimester;Smoke Before Pregnant;WIC During Pregnancy, for the Year(s) 2000-2002;2001-2003;2002-2004;2003-2005;2004-2006;2005-2007;2006-2008;2007-2009;2008-2010;2009-2011;2010-2012;2011-2013**

*Note: Weighted counts (#) represent 3-yr averages, rounded to the nearest hundred; n/r (Not Reportable) - If the unweighted total responses for a dimension (row) is <30 that row will not be shown*

**Years: 2006-2008**

	Yes			No			Weighted Total Responses (3-Yr Avg)
	#	%	C.I.(95%)	#	%	C.I.(95%)	#
<b>Infant Gender</b>							
<b>Male</b>	1,300	46.3	42.7 - 49.9	1,500	53.7	50.1 - 57.3	2,800
<b>Female</b>	1,200	45.3	41.6 - 49.0	1,500	54.7	51.0 - 58.4	2,700

	Yes			No			Weighted Total Responses (3-Yr Avg)
	#	%	C.I.(95%)	#	%	C.I.(95%)	#
<b>Married</b>							
<b>Yes</b>	1,500	54.5	51.0 - 58.1	1,200	45.5	41.9 - 49.0	2,700
<b>No</b>	1,000	37.4	33.9 - 41.1	1,800	62.6	58.9 - 66.1	2,800

	Yes			No			Weighted Total Responses (3-Yr Avg)
	#	%	C.I.(95%)	#	%	C.I.(95%)	#
<b>Poverty Level</b>							
<b>0-130%</b>	1,000	37.9	34.3 - 41.6	1,700	62.1	58.4 - 65.7	2,800
<b>131-185%</b>	300	44.1	37.2 - 51.3	400	55.9	48.7 - 62.8	700
<b>186+%</b>	1,100	63.3	58.9 - 67.6	600	36.7	32.4 - 41.1	1,700

**PRAMS Health Indicator 3-Year Aggregate Report - No contraception at conception- didn't mind getting pregnant- by State;County;DOH Race-Ethnicity;PRAMS Age Group;Infant Gender;Married;Poverty Level;Income (2000-2003);Income (2004-2011);Birthweight;Smoke 3rd Trimester;Smoke Before Pregnant;WIC During Pregnancy, for the Year(s) 2000-2002;2001-2003;2002-2004;2003-2005;2004-2006;2005-2007;2006-2008;2007-2009;2008-2010;2009-2011;2010-2012;2011-2013**

*Note: Weighted counts (#) represent 3-yr averages, rounded to the nearest hundred; n/r (Not Reportable) - If the unweighted total responses for a dimension (row) is <30 that row will not be shown*

**Years: 2006-2008**

Income (2004-2011)	Yes			No			Weighted Total Responses (3-Yr Avg)
	#	%	C.I.(95%)	#	%	C.I.(95%)	#
<\$10,000	400	29.9	25.3 - 34.9	1,000	70.1	65.1 - 74.7	1,400
\$10,000-\$24,999	600	45.3	40.2 - 50.6	800	54.7	49.4 - 59.8	1,400
\$25,000-\$49,999	600	56.4	50.8 - 61.8	500	43.6	38.2 - 49.2	1,100
>=\$50,000	700	61.0	55.6 - 66.1	500	39.0	33.9 - 44.4	1,200

Birthweight	Yes			No			Weighted Total Responses (3-Yr Avg)
	#	%	C.I.(95%)	#	%	C.I.(95%)	#
Low birth weight	200	43.2	34.4 - 52.5	200	56.8	47.5 - 65.6	400
Normal birth weight	2,300	46.0	43.3 - 48.7	2,700	54.0	51.3 - 56.7	5,000

Smoke 3rd Trimester	Yes			No			Weighted Total Responses (3-Yr Avg)
	#	%	C.I.(95%)	#	%	C.I.(95%)	#
Yes	300	35.6	28.9 - 42.9	500	64.4	57.1 - 71.1	700
No	2,200	47.7	44.9 - 50.5	2,400	52.3	49.5 - 55.1	4,700



**PRAMS Health Indicator 3-Year Aggregate Report - No contraception at conception- didn't mind getting pregnant- by State;County;DOH Race-Ethnicity;PRAMS Age Group;Infant Gender;Married;Poverty Level;Income (2000-2003);Income (2004-2011);Birthweight;Smoke 3rd Trimester;Smoke Before Pregnant;WIC During Pregnancy, for the Year(s) 2000-2002;2001-2003;2002-2004;2003-2005;2004-2006;2005-2007;2006-2008;2007-2009;2008-2010;2009-2011;2010-2012;2011-2013**

*Note: Weighted counts (#) represent 3-yr averages, rounded to the nearest hundred; n/r (Not Reportable) - If the unweighted total responses for a dimension (row) is <30 that row will not be shown*

**Years: 2006-2008**

Smoke Before Pregnant	Yes			No			Weighted Total Responses (3-Yr Avg)
	#	%	C.I.(95%)	#	%	C.I.(95%)	#
Yes	600	41.3	36.4 - 46.4	900	58.7	53.6 - 63.6	1,500
No	1,900	47.8	44.8 - 50.9	2,000	52.2	49.1 - 55.2	3,900

WIC During Pregnancy	Yes			No			Weighted Total Responses (3-Yr Avg)
	#	%	C.I.(95%)	#	%	C.I.(95%)	#
Yes	1,200	39.7	36.3 - 43.3	1,800	60.3	56.7 - 63.7	3,000
No	1,300	53.5	49.7 - 57.3	1,100	46.5	42.7 - 50.3	2,400

**PRAMS Health Indicator 3-Year Aggregate Report - No contraception at conception- didn't mind getting pregnant- by State;County;DOH Race-Ethnicity;PRAMS Age Group;Infant Gender;Married;Poverty Level;Income (2000-2003);Income (2004-2011);Birthweight;Smoke 3rd Trimester;Smoke Before Pregnant;WIC During Pregnancy, for the Year(s) 2000-2002;2001-2003;2002-2004;2003-2005;2004-2006;2005-2007;2006-2008;2007-2009;2008-2010;2009-2011;2010-2012;2011-2013**

*Note: Weighted counts (#) represent 3-yr averages, rounded to the nearest hundred; n/r (Not Reportable) - If the unweighted total responses for a dimension (row) is <30 that row will not be shown*

**Years: 2005-2007**

State	Yes			No			Weighted Total Responses (3-Yr Avg)
	#	%	C.I.(95%)	#	%	C.I.(95%)	#
<b>Totals</b>	2,500	45.1	42.5 - 47.6	3,000	54.9	52.4 - 57.5	5,500

County	Yes			No			Weighted Total Responses (3-Yr Avg)
	#	%	C.I.(95%)	#	%	C.I.(95%)	#
<b>Hawaii</b>	300	37.4	30.7 - 44.7	400	62.6	55.3 - 69.3	700
<b>Honolulu</b>	1,800	46.3	43.3 - 49.3	2,100	53.7	50.7 - 56.7	3,900
<b>Kauai</b>	200	47.7	37.2 - 58.4	200	52.3	41.6 - 62.8	300
<b>Maui</b>	300	44.7	36.7 - 53.0	300	55.3	47.0 - 63.3	600

**PRAMS Health Indicator 3-Year Aggregate Report - No contraception at conception- didn't mind getting pregnant- by State;County;DOH Race-Ethnicity;PRAMS Age Group;Infant Gender;Married;Poverty Level;Income (2000-2003);Income (2004-2011);Birthweight;Smoke 3rd Trimester;Smoke Before Pregnant;WIC During Pregnancy, for the Year(s) 2000-2002;2001-2003;2002-2004;2003-2005;2004-2006;2005-2007;2006-2008;2007-2009;2008-2010;2009-2011;2010-2012;2011-2013**

*Note: Weighted counts (#) represent 3-yr averages, rounded to the nearest hundred; n/r (Not Reportable) - If the unweighted total responses for a dimension (row) is <30 that row will not be shown*

**Years: 2005-2007**

DOH Race-Ethnicity	Yes			No			Weighted Total Responses (3-Yr Avg)
	#	%	C.I.(95%)	#	%	C.I.(95%)	#
Caucasian	500	50.0	43.9 - 56.0	500	50.0	44.0 - 56.1	900
Native Hawaiian	800	43.6	39.1 - 48.3	1,100	56.4	51.7 - 60.9	1,900
Chinese	100	60.1	51.1 - 68.5	<50	39.9	31.5 - 48.9	<50
Filipino	400	45.3	39.7 - 51.1	500	54.7	48.9 - 60.3	900
Japanese	300	54.1	46.0 - 62.0	200	45.9	38.0 - 54.0	500
Other	400	37.2	31.8 - 42.9	700	62.8	57.1 - 68.2	1,100

PRAMS Age Group	Yes			No			Weighted Total Responses (3-Yr Avg)
	#	%	C.I.(95%)	#	%	C.I.(95%)	#
<20	200	21.1	15.8 - 27.6	600	78.9	72.4 - 84.2	800
20-24	700	41.1	36.5 - 45.9	1,000	58.9	54.1 - 63.5	1,700
25-34	1,200	52.3	48.5 - 56.1	1,100	47.7	43.9 - 51.5	2,400
35+	400	56.4	49.6 - 63.0	300	43.6	37.0 - 50.4	700

**PRAMS Health Indicator 3-Year Aggregate Report - No contraception at conception- didn't mind getting pregnant- by State;County;DOH Race-Ethnicity;PRAMS Age Group;Infant Gender;Married;Poverty Level;Income (2000-2003);Income (2004-2011);Birthweight;Smoke 3rd Trimester;Smoke Before Pregnant;WIC During Pregnancy, for the Year(s) 2000-2002;2001-2003;2002-2004;2003-2005;2004-2006;2005-2007;2006-2008;2007-2009;2008-2010;2009-2011;2010-2012;2011-2013**

*Note: Weighted counts (#) represent 3-yr averages, rounded to the nearest hundred; n/r (Not Reportable) - If the unweighted total responses for a dimension (row) is <30 that row will not be shown*

**Years: 2005-2007**

Infant Gender	Yes			No			Weighted Total Responses (3-Yr Avg)
	#	%	C.I.(95%)	#	%	C.I.(95%)	#
Male	1,300	46.6	43.0 - 50.2	1,500	53.4	49.8 - 57.0	2,800
Female	1,200	43.5	40.0 - 47.1	1,500	56.5	52.9 - 60.0	2,700

Married	Yes			No			Weighted Total Responses (3-Yr Avg)
	#	%	C.I.(95%)	#	%	C.I.(95%)	#
Yes	1,400	56.0	52.4 - 59.6	1,100	44.0	40.4 - 47.6	2,600
No	1,100	35.6	32.2 - 39.1	1,900	64.4	60.9 - 67.8	3,000

Poverty Level	Yes			No			Weighted Total Responses (3-Yr Avg)
	#	%	C.I.(95%)	#	%	C.I.(95%)	#
0-130%	1,000	36.2	32.8 - 39.9	1,700	63.8	60.1 - 67.2	2,700
131-185%	300	47.1	40.0 - 54.4	300	52.9	45.6 - 60.0	700
186+%	1,000	64.5	60.0 - 68.7	600	35.5	31.3 - 40.0	1,600

**PRAMS Health Indicator 3-Year Aggregate Report - No contraception at conception- didn't mind getting pregnant- by State;County;DOH Race-Ethnicity;PRAMS Age Group;Infant Gender;Married;Poverty Level;Income (2000-2003);Income (2004-2011);Birthweight;Smoke 3rd Trimester;Smoke Before Pregnant;WIC During Pregnancy, for the Year(s) 2000-2002;2001-2003;2002-2004;2003-2005;2004-2006;2005-2007;2006-2008;2007-2009;2008-2010;2009-2011;2010-2012;2011-2013**

*Note: Weighted counts (#) represent 3-yr averages, rounded to the nearest hundred; n/r (Not Reportable) - If the unweighted total responses for a dimension (row) is <30 that row will not be shown*

**Years: 2005-2007**

Income (2004-2011)	Yes			No			Weighted Total Responses (3-Yr Avg)
	#	%	C.I.(95%)	#	%	C.I.(95%)	#
<\$10,000	500	30.8	26.4 - 35.7	1,000	69.2	64.3 - 73.6	1,500
\$10,000-\$24,999	600	42.8	37.8 - 48.0	800	57.2	52.0 - 62.2	1,400
\$25,000-\$49,999	600	52.0	46.5 - 57.5	600	48.0	42.5 - 53.5	1,200
>=\$50,000	700	67.9	62.5 - 73.0	300	32.1	27.0 - 37.5	1,100

Birthweight	Yes			No			Weighted Total Responses (3-Yr Avg)
	#	%	C.I.(95%)	#	%	C.I.(95%)	#
Low birth weight	200	37.1	29.2 - 45.8	300	62.9	54.2 - 70.8	500
Normal birth weight	2,300	45.8	43.1 - 48.5	2,700	54.2	51.5 - 56.9	5,100

Smoke 3rd Trimester	Yes			No			Weighted Total Responses (3-Yr Avg)
	#	%	C.I.(95%)	#	%	C.I.(95%)	#
Yes	300	34.8	28.4 - 41.8	500	65.2	58.2 - 71.6	700
No	2,200	46.9	44.2 - 49.7	2,500	53.1	50.3 - 55.8	4,700

**PRAMS Health Indicator 3-Year Aggregate Report - No contraception at conception- didn't mind getting pregnant- by State;County;DOH Race-Ethnicity;PRAMS Age Group;Infant Gender;Married;Poverty Level;Income (2000-2003);Income (2004-2011);Birthweight;Smoke 3rd Trimester;Smoke Before Pregnant;WIC During Pregnancy, for the Year(s) 2000-2002;2001-2003;2002-2004;2003-2005;2004-2006;2005-2007;2006-2008;2007-2009;2008-2010;2009-2011;2010-2012;2011-2013**

*Note: Weighted counts (#) represent 3-yr averages, rounded to the nearest hundred; n/r (Not Reportable) - If the unweighted total responses for a dimension (row) is <30 that row will not be shown*

**Years: 2005-2007**

Smoke Before Pregnant	Yes			No			Weighted Total Responses (3-Yr Avg)
	#	%	C.I.(95%)	#	%	C.I.(95%)	#
Yes	700	40.4	35.8 - 45.2	1,000	59.6	54.8 - 64.2	1,600
No	1,800	47.4	44.3 - 50.5	2,000	52.6	49.5 - 55.7	3,800

WIC During Pregnancy	Yes			No			Weighted Total Responses (3-Yr Avg)
	#	%	C.I.(95%)	#	%	C.I.(95%)	#
Yes	1,100	37.8	34.5 - 41.3	1,900	62.2	58.7 - 65.5	3,000
No	1,300	54.2	50.4 - 58.0	1,100	45.8	42.0 - 49.6	2,400

**PRAMS Health Indicator 3-Year Aggregate Report - No contraception at conception- didn't mind getting pregnant- by State;County;DOH Race-Ethnicity;PRAMS Age Group;Infant Gender;Married;Poverty Level;Income (2000-2003);Income (2004-2011);Birthweight;Smoke 3rd Trimester;Smoke Before Pregnant;WIC During Pregnancy, for the Year(s) 2000-2002;2001-2003;2002-2004;2003-2005;2004-2006;2005-2007;2006-2008;2007-2009;2008-2010;2009-2011;2010-2012;2011-2013**

*Note: Weighted counts (#) represent 3-yr averages, rounded to the nearest hundred; n/r (Not Reportable) - If the unweighted total responses for a dimension (row) is <30 that row will not be shown*

**Years: 2004-2006**

State	Yes			No			Weighted Total Responses (3-Yr Avg)
	#	%	C.I.(95%)	#	%	C.I.(95%)	#
<b>Totals</b>	2,400	45.5	43.0 - 48.0	2,900	54.5	52.0 - 57.0	5,200

County	Yes			No			Weighted Total Responses (3-Yr Avg)
	#	%	C.I.(95%)	#	%	C.I.(95%)	#
<b>Hawaii</b>	200	36.6	29.9 - 43.8	400	63.4	56.2 - 70.1	700
<b>Honolulu</b>	1,800	47.6	44.7 - 50.6	2,000	52.4	49.4 - 55.3	3,800
<b>Kauai</b>	100	44.7	33.8 - 56.3	100	55.3	43.7 - 66.2	300
<b>Maui</b>	200	41.8	34.1 - 49.9	300	58.2	50.1 - 65.9	500

**PRAMS Health Indicator 3-Year Aggregate Report - No contraception at conception- didn't mind getting pregnant- by State;County;DOH Race-Ethnicity;PRAMS Age Group;Infant Gender;Married;Poverty Level;Income (2000-2003);Income (2004-2011);Birthweight;Smoke 3rd Trimester;Smoke Before Pregnant;WIC During Pregnancy, for the Year(s) 2000-2002;2001-2003;2002-2004;2003-2005;2004-2006;2005-2007;2006-2008;2007-2009;2008-2010;2009-2011;2010-2012;2011-2013**

*Note: Weighted counts (#) represent 3-yr averages, rounded to the nearest hundred; n/r (Not Reportable) - If the unweighted total responses for a dimension (row) is <30 that row will not be shown*

**Years: 2004-2006**

DOH Race-Ethnicity	Yes			No			Weighted Total Responses (3-Yr Avg)
	#	%	C.I.(95%)	#	%	C.I.(95%)	#
Caucasian	400	52.4	46.2 - 58.5	400	47.6	41.5 - 53.8	800
Native Hawaiian	800	43.0	38.5 - 47.6	1,000	57.0	52.4 - 61.5	1,800
Chinese	100	64.3	56.4 - 71.4	<50	35.7	28.6 - 43.6	<50
Filipino	400	46.5	41.1 - 52.0	500	53.5	48.0 - 58.9	900
Japanese	300	52.1	44.1 - 60.0	200	47.9	40.0 - 55.9	500
Other	400	37.6	32.1 - 43.4	600	62.4	56.6 - 67.9	1,000

PRAMS Age Group	Yes			No			Weighted Total Responses (3-Yr Avg)
	#	%	C.I.(95%)	#	%	C.I.(95%)	#
<20	100	20.2	15.0 - 26.6	500	79.8	73.4 - 85.0	700
20-24	700	42.8	38.3 - 47.4	900	57.2	52.6 - 61.7	1,700
25-34	1,200	52.9	49.0 - 56.8	1,000	47.1	43.2 - 51.0	2,200
35+	400	52.6	46.2 - 59.0	300	47.4	41.0 - 53.8	700



**PRAMS Health Indicator 3-Year Aggregate Report - No contraception at conception- didn't mind getting pregnant- by State;County;DOH Race-Ethnicity;PRAMS Age Group;Infant Gender;Married;Poverty Level;Income (2000-2003);Income (2004-2011);Birthweight;Smoke 3rd Trimester;Smoke Before Pregnant;WIC During Pregnancy, for the Year(s) 2000-2002;2001-2003;2002-2004;2003-2005;2004-2006;2005-2007;2006-2008;2007-2009;2008-2010;2009-2011;2010-2012;2011-2013**

*Note: Weighted counts (#) represent 3-yr averages, rounded to the nearest hundred; n/r (Not Reportable) - If the unweighted total responses for a dimension (row) is <30 that row will not be shown*

**Years: 2004-2006**

	Yes			No			Weighted Total Responses (3-Yr Avg)
	#	%	C.I.(95%)	#	%	C.I.(95%)	#
<b>Infant Gender</b>							
<b>Male</b>	1,300	47.0	43.4 - 50.5	1,400	53.0	49.5 - 56.6	2,700
<b>Female</b>	1,100	43.9	40.4 - 47.6	1,400	56.1	52.4 - 59.6	2,600

	Yes			No			Weighted Total Responses (3-Yr Avg)
	#	%	C.I.(95%)	#	%	C.I.(95%)	#
<b>Married</b>							
<b>Yes</b>	1,400	54.2	50.7 - 57.7	1,200	45.8	42.3 - 49.3	2,600
<b>No</b>	1,000	36.9	33.4 - 40.5	1,700	63.1	59.5 - 66.6	2,600

	Yes			No			Weighted Total Responses (3-Yr Avg)
	#	%	C.I.(95%)	#	%	C.I.(95%)	#
<b>Poverty Level</b>							
<b>0-130%</b>	1,000	38.2	34.6 - 41.8	1,600	61.8	58.2 - 65.4	2,500
<b>131-185%</b>	300	47.1	39.7 - 54.5	300	52.9	45.5 - 60.3	600
<b>186+%</b>	1,000	61.5	57.1 - 65.8	600	38.5	34.2 - 42.9	1,600

**PRAMS Health Indicator 3-Year Aggregate Report - No contraception at conception- didn't mind getting pregnant- by State;County;DOH Race-Ethnicity;PRAMS Age Group;Infant Gender;Married;Poverty Level;Income (2000-2003);Income (2004-2011);Birthweight;Smoke 3rd Trimester;Smoke Before Pregnant;WIC During Pregnancy, for the Year(s) 2000-2002;2001-2003;2002-2004;2003-2005;2004-2006;2005-2007;2006-2008;2007-2009;2008-2010;2009-2011;2010-2012;2011-2013**

*Note: Weighted counts (#) represent 3-yr averages, rounded to the nearest hundred; n/r (Not Reportable) - If the unweighted total responses for a dimension (row) is <30 that row will not be shown*

**Years: 2004-2006**

Income (2004-2011)	Yes			No			Weighted Total Responses (3-Yr Avg)
	#	%	C.I.(95%)	#	%	C.I.(95%)	#
<\$10,000	500	34.3	29.6 - 39.3	900	65.7	60.7 - 70.4	1,300
\$10,000-\$24,999	600	44.2	39.2 - 49.2	800	55.8	50.8 - 60.8	1,400
\$25,000-\$49,999	600	51.3	45.8 - 56.7	500	48.7	43.3 - 54.2	1,100
>=\$50,000	600	64.4	58.7 - 69.7	300	35.6	30.3 - 41.3	900

Birthweight	Yes			No			Weighted Total Responses (3-Yr Avg)
	#	%	C.I.(95%)	#	%	C.I.(95%)	#
Low birth weight	100	34.3	26.1 - 43.6	200	65.7	56.4 - 73.9	400
Normal birth weight	2,200	46.3	43.7 - 49.0	2,600	53.7	51.0 - 56.3	4,900

Smoke 3rd Trimester	Yes			No			Weighted Total Responses (3-Yr Avg)
	#	%	C.I.(95%)	#	%	C.I.(95%)	#
Yes	300	36.5	30.2 - 43.3	500	63.5	56.7 - 69.8	800
No	2,100	47.3	44.6 - 50.1	2,300	52.7	49.9 - 55.4	4,400

**PRAMS Health Indicator 3-Year Aggregate Report - No contraception at conception- didn't mind getting pregnant- by State;County;DOH Race-Ethnicity;PRAMS Age Group;Infant Gender;Married;Poverty Level;Income (2000-2003);Income (2004-2011);Birthweight;Smoke 3rd Trimester;Smoke Before Pregnant;WIC During Pregnancy, for the Year(s) 2000-2002;2001-2003;2002-2004;2003-2005;2004-2006;2005-2007;2006-2008;2007-2009;2008-2010;2009-2011;2010-2012;2011-2013**

*Note: Weighted counts (#) represent 3-yr averages, rounded to the nearest hundred; n/r (Not Reportable) - If the unweighted total responses for a dimension (row) is <30 that row will not be shown*

**Years: 2004-2006**

Smoke Before Pregnant	Yes			No			Weighted Total Responses (3-Yr Avg)
	#	%	C.I.(95%)	#	%	C.I.(95%)	#
Yes	700	41.7	37.2 - 46.4	900	58.3	53.6 - 62.8	1,600
No	1,700	47.6	44.5 - 50.7	1,800	52.4	49.3 - 55.5	3,500

WIC During Pregnancy	Yes			No			Weighted Total Responses (3-Yr Avg)
	#	%	C.I.(95%)	#	%	C.I.(95%)	#
Yes	1,100	40.0	36.6 - 43.5	1,700	60.0	56.5 - 63.4	2,800
No	1,200	52.7	48.9 - 56.5	1,100	47.3	43.5 - 51.1	2,200

**PRAMS Health Indicator 3-Year Aggregate Report - No contraception at conception- didn't mind getting pregnant- by State;County;DOH Race-Ethnicity;PRAMS Age Group;Infant Gender;Married;Poverty Level;Income (2000-2003);Income (2004-2011);Birthweight;Smoke 3rd Trimester;Smoke Before Pregnant;WIC During Pregnancy, for the Year(s) 2000-2002;2001-2003;2002-2004;2003-2005;2004-2006;2005-2007;2006-2008;2007-2009;2008-2010;2009-2011;2010-2012;2011-2013**

*Note: Weighted counts (#) represent 3-yr averages, rounded to the nearest hundred; n/r (Not Reportable) - If the unweighted total responses for a dimension (row) is <30 that row will not be shown*

**Years: 2003-2005**

State	Yes			No			Weighted Total Responses (3-Yr Avg)
	#	%	C.I.(95%)	#	%	C.I.(95%)	#
<b>Totals</b>	2,500	47.3	44.7 - 49.8	2,800	52.7	50.2 - 55.3	5,400

County	Yes			No			Weighted Total Responses (3-Yr Avg)
	#	%	C.I.(95%)	#	%	C.I.(95%)	#
<b>Hawaii</b>	300	40.6	34.7 - 46.8	400	59.4	53.2 - 65.3	700
<b>Honolulu</b>	1,900	48.9	45.7 - 52.0	2,000	51.1	48.0 - 54.3	3,900
<b>Kauai</b>	100	44.7	35.3 - 54.5	100	55.3	45.5 - 64.7	300
<b>Maui</b>	200	45.7	39.0 - 52.6	300	54.3	47.4 - 61.0	500

**PRAMS Health Indicator 3-Year Aggregate Report - No contraception at conception- didn't mind getting pregnant- by State;County;DOH Race-Ethnicity;PRAMS Age Group;Infant Gender;Married;Poverty Level;Income (2000-2003);Income (2004-2011);Birthweight;Smoke 3rd Trimester;Smoke Before Pregnant;WIC During Pregnancy, for the Year(s) 2000-2002;2001-2003;2002-2004;2003-2005;2004-2006;2005-2007;2006-2008;2007-2009;2008-2010;2009-2011;2010-2012;2011-2013**

*Note: Weighted counts (#) represent 3-yr averages, rounded to the nearest hundred; n/r (Not Reportable) - If the unweighted total responses for a dimension (row) is <30 that row will not be shown*

**Years: 2003-2005**

DOH Race-Ethnicity	Yes			No			Weighted Total Responses (3-Yr Avg)
	#	%	C.I.(95%)	#	%	C.I.(95%)	#
Caucasian	400	50.1	43.3 - 56.8	400	49.9	43.2 - 56.7	800
Native Hawaiian	800	44.8	40.9 - 48.7	1,000	55.2	51.3 - 59.1	1,900
Chinese	100	61.8	47.7 - 74.1	100	38.2	25.9 - 52.3	200
Filipino	500	44.0	38.5 - 49.7	600	56.0	50.3 - 61.5	1,100
Japanese	300	58.2	49.4 - 66.5	200	41.8	33.5 - 50.6	500
Other	400	45.5	38.9 - 52.3	500	54.5	47.7 - 61.1	900

PRAMS Age Group	Yes			No			Weighted Total Responses (3-Yr Avg)
	#	%	C.I.(95%)	#	%	C.I.(95%)	#
<20	200	22.3	17.2 - 28.3	600	77.7	71.7 - 82.8	800
20-24	700	44.0	39.5 - 48.6	900	56.0	51.4 - 60.5	1,700
25-34	1,200	56.5	52.5 - 60.4	1,000	43.5	39.6 - 47.5	2,200
35+	400	53.1	46.3 - 59.9	300	46.9	40.1 - 53.7	700

**PRAMS Health Indicator 3-Year Aggregate Report - No contraception at conception- didn't mind getting pregnant- by State;County;DOH Race-Ethnicity;PRAMS Age Group;Infant Gender;Married;Poverty Level;Income (2000-2003);Income (2004-2011);Birthweight;Smoke 3rd Trimester;Smoke Before Pregnant;WIC During Pregnancy, for the Year(s) 2000-2002;2001-2003;2002-2004;2003-2005;2004-2006;2005-2007;2006-2008;2007-2009;2008-2010;2009-2011;2010-2012;2011-2013**

*Note: Weighted counts (#) represent 3-yr averages, rounded to the nearest hundred; n/r (Not Reportable) - If the unweighted total responses for a dimension (row) is <30 that row will not be shown*

**Years: 2003-2005**

Infant Gender	Yes			No			Weighted Total Responses (3-Yr Avg)
	#	%	C.I.(95%)	#	%	C.I.(95%)	#
Male	1,500	49.6	46.1 - 53.0	1,500	50.4	47.0 - 53.9	2,900
Female	1,100	44.5	40.8 - 48.3	1,400	55.5	51.7 - 59.2	2,400

Married	Yes			No			Weighted Total Responses (3-Yr Avg)
	#	%	C.I.(95%)	#	%	C.I.(95%)	#
Yes	1,500	57.7	54.1 - 61.3	1,100	42.3	38.7 - 45.9	2,700
No	1,000	36.9	33.5 - 40.4	1,700	63.1	59.6 - 66.5	2,700

Poverty Level	Yes			No			Weighted Total Responses (3-Yr Avg)
	#	%	C.I.(95%)	#	%	C.I.(95%)	#
0-130%	1,200	41.7	38.2 - 45.2	1,600	58.3	54.8 - 61.8	2,800
131-185%	300	55.7	48.0 - 63.1	300	44.3	36.9 - 52.0	600
186+%	800	60.0	55.0 - 64.7	500	40.0	35.3 - 45.0	1,400

**PRAMS Health Indicator 3-Year Aggregate Report - No contraception at conception- didn't mind getting pregnant- by State;County;DOH Race-Ethnicity;PRAMS Age Group;Infant Gender;Married;Poverty Level;Income (2000-2003);Income (2004-2011);Birthweight;Smoke 3rd Trimester;Smoke Before Pregnant;WIC During Pregnancy, for the Year(s) 2000-2002;2001-2003;2002-2004;2003-2005;2004-2006;2005-2007;2006-2008;2007-2009;2008-2010;2009-2011;2010-2012;2011-2013**

*Note: Weighted counts (#) represent 3-yr averages, rounded to the nearest hundred; n/r (Not Reportable) - If the unweighted total responses for a dimension (row) is <30 that row will not be shown*

**Years: 2003-2005**

Birthweight	Yes			No			Weighted Total Responses (3-Yr Avg)
	#	%	C.I.(95%)	#	%	C.I.(95%)	#
Low birth weight	100	35.4	26.7 - 45.3	200	64.6	54.7 - 73.3	400
Normal birth weight	2,400	48.2	45.5 - 50.8	2,600	51.8	49.2 - 54.5	5,000

Smoke 3rd Trimester	Yes			No			Weighted Total Responses (3-Yr Avg)
	#	%	C.I.(95%)	#	%	C.I.(95%)	#
Yes	300	39.1	32.7 - 46.0	500	60.9	54.0 - 67.3	800
No	2,200	48.8	46.0 - 51.6	2,300	51.2	48.4 - 54.0	4,500

Smoke Before Pregnant	Yes			No			Weighted Total Responses (3-Yr Avg)
	#	%	C.I.(95%)	#	%	C.I.(95%)	#
Yes	700	43.4	38.9 - 48.1	900	56.6	51.9 - 61.1	1,600
No	1,700	48.8	45.7 - 51.9	1,800	51.2	48.1 - 54.3	3,600

**PRAMS Health Indicator 3-Year Aggregate Report - No contraception at conception- didn't mind getting pregnant- by State;County;DOH Race-Ethnicity;PRAMS Age Group;Infant Gender;Married;Poverty Level;Income (2000-2003);Income (2004-2011);Birthweight;Smoke 3rd Trimester;Smoke Before Pregnant;WIC During Pregnancy, for the Year(s) 2000-2002;2001-2003;2002-2004;2003-2005;2004-2006;2005-2007;2006-2008;2007-2009;2008-2010;2009-2011;2010-2012;2011-2013**

*Note: Weighted counts (#) represent 3-yr averages, rounded to the nearest hundred; n/r (Not Reportable) - If the unweighted total responses for a dimension (row) is <30 that row will not be shown*

**Years: 2003-2005**

WIC During Pregnancy	Yes			No			Weighted Total Responses (3-Yr Avg)
	#	%	C.I.(95%)	#	%	C.I.(95%)	#
<b>Yes</b>	1,200	41.7	38.4 - 45.2	1,700	58.3	54.8 - 61.6	2,900
<b>No</b>	1,300	54.9	51.0 - 58.8	1,100	45.1	41.2 - 49.0	2,300



**PRAMS Health Indicator 3-Year Aggregate Report - No contraception at conception- didn't mind getting pregnant- by State;County;DOH Race-Ethnicity;PRAMS Age Group;Infant Gender;Married;Poverty Level;Income (2000-2003);Income (2004-2011);Birthweight;Smoke 3rd Trimester;Smoke Before Pregnant;WIC During Pregnancy, for the Year(s) 2000-2002;2001-2003;2002-2004;2003-2005;2004-2006;2005-2007;2006-2008;2007-2009;2008-2010;2009-2011;2010-2012;2011-2013**

*Note: Weighted counts (#) represent 3-yr averages, rounded to the nearest hundred; n/r (Not Reportable) - If the unweighted total responses for a dimension (row) is <30 that row will not be shown*

**Years: 2002-2004**

State	Yes			No			Weighted Total Responses (3-Yr Avg)
	#	%	C.I.(95%)	#	%	C.I.(95%)	#
<b>Totals</b>	2,800	50.6	48.0 - 53.2	2,700	49.4	46.8 - 52.0	5,500

County	Yes			No			Weighted Total Responses (3-Yr Avg)
	#	%	C.I.(95%)	#	%	C.I.(95%)	#
<b>Hawaii</b>	300	43.7	38.7 - 48.8	400	56.3	51.2 - 61.3	700
<b>Honolulu</b>	2,000	52.6	49.2 - 56.0	1,800	47.4	44.0 - 50.8	3,900
<b>Kauai</b>	100	45.1	36.9 - 53.7	100	54.9	46.3 - 63.1	300
<b>Maui</b>	300	48.5	42.9 - 54.2	300	51.5	45.8 - 57.1	600

**PRAMS Health Indicator 3-Year Aggregate Report - No contraception at conception- didn't mind getting pregnant- by State;County;DOH Race-Ethnicity;PRAMS Age Group;Infant Gender;Married;Poverty Level;Income (2000-2003);Income (2004-2011);Birthweight;Smoke 3rd Trimester;Smoke Before Pregnant;WIC During Pregnancy, for the Year(s) 2000-2002;2001-2003;2002-2004;2003-2005;2004-2006;2005-2007;2006-2008;2007-2009;2008-2010;2009-2011;2010-2012;2011-2013**

*Note: Weighted counts (#) represent 3-yr averages, rounded to the nearest hundred; n/r (Not Reportable) - If the unweighted total responses for a dimension (row) is <30 that row will not be shown*

**Years: 2002-2004**

DOH Race-Ethnicity	Yes			No			Weighted Total Responses (3-Yr Avg)
	#	%	C.I.(95%)	#	%	C.I.(95%)	#
Caucasian	500	54.2	47.2 - 61.1	400	45.8	38.9 - 52.8	900
Native Hawaiian	900	45.8	42.6 - 49.1	1,000	54.2	50.9 - 57.4	1,900
Chinese	100	60.6	44.1 - 74.9	100	39.4	25.1 - 55.9	200
Filipino	600	50.9	44.7 - 57.2	500	49.1	42.8 - 55.3	1,100
Japanese	300	58.2	48.1 - 67.7	200	41.8	32.3 - 51.9	500
Other	500	51.0	43.5 - 58.5	400	49.0	41.5 - 56.5	900

PRAMS Age Group	Yes			No			Weighted Total Responses (3-Yr Avg)
	#	%	C.I.(95%)	#	%	C.I.(95%)	#
<20	200	24.0	18.8 - 30.1	600	76.0	69.9 - 81.2	800
20-24	800	48.0	43.4 - 52.6	900	52.0	47.4 - 56.6	1,700
25-34	1,300	59.5	55.3 - 63.6	900	40.5	36.4 - 44.7	2,200
35+	500	57.6	50.6 - 64.2	300	42.4	35.8 - 49.4	800

**PRAMS Health Indicator 3-Year Aggregate Report - No contraception at conception- didn't mind getting pregnant- by State;County;DOH Race-Ethnicity;PRAMS Age Group;Infant Gender;Married;Poverty Level;Income (2000-2003);Income (2004-2011);Birthweight;Smoke 3rd Trimester;Smoke Before Pregnant;WIC During Pregnancy, for the Year(s) 2000-2002;2001-2003;2002-2004;2003-2005;2004-2006;2005-2007;2006-2008;2007-2009;2008-2010;2009-2011;2010-2012;2011-2013**

*Note: Weighted counts (#) represent 3-yr averages, rounded to the nearest hundred; n/r (Not Reportable) - If the unweighted total responses for a dimension (row) is <30 that row will not be shown*

**Years: 2002-2004**

	Yes			No			Weighted Total Responses (3-Yr Avg)
	#	%	C.I.(95%)	#	%	C.I.(95%)	#
<b>Infant Gender</b>							
<b>Male</b>	1,500	51.5	47.9 - 55.1	1,400	48.5	44.9 - 52.1	2,900
<b>Female</b>	1,300	49.6	45.8 - 53.5	1,300	50.4	46.5 - 54.2	2,600

	Yes			No			Weighted Total Responses (3-Yr Avg)
	#	%	C.I.(95%)	#	%	C.I.(95%)	#
<b>Married</b>							
<b>Yes</b>	1,800	61.1	57.4 - 64.7	1,100	38.9	35.3 - 42.6	2,900
<b>No</b>	1,000	38.6	35.1 - 42.3	1,600	61.4	57.7 - 64.9	2,500

	Yes			No			Weighted Total Responses (3-Yr Avg)
	#	%	C.I.(95%)	#	%	C.I.(95%)	#
<b>Poverty Level</b>							
<b>0-130%</b>	1,200	44.1	40.6 - 47.7	1,600	55.9	52.3 - 59.4	2,800
<b>131-185%</b>	500	61.4	54.2 - 68.2	300	38.6	31.8 - 45.8	800
<b>186+%</b>	800	64.1	58.6 - 69.2	400	35.9	30.8 - 41.4	1,200

**PRAMS Health Indicator 3-Year Aggregate Report - No contraception at conception- didn't mind getting pregnant- by State;County;DOH Race-Ethnicity;PRAMS Age Group;Infant Gender;Married;Poverty Level;Income (2000-2003);Income (2004-2011);Birthweight;Smoke 3rd Trimester;Smoke Before Pregnant;WIC During Pregnancy, for the Year(s) 2000-2002;2001-2003;2002-2004;2003-2005;2004-2006;2005-2007;2006-2008;2007-2009;2008-2010;2009-2011;2010-2012;2011-2013**

*Note: Weighted counts (#) represent 3-yr averages, rounded to the nearest hundred; n/r (Not Reportable) - If the unweighted total responses for a dimension (row) is <30 that row will not be shown*

**Years: 2002-2004**

Birthweight	Yes			No			Weighted Total Responses (3-Yr Avg)
	#	%	C.I.(95%)	#	%	C.I.(95%)	#
Low birth weight	200	48.4	38.0 - 59.0	200	51.6	41.0 - 62.0	400
Normal birth weight	2,600	50.8	48.1 - 53.5	2,500	49.2	46.5 - 51.9	5,100

Smoke 3rd Trimester	Yes			No			Weighted Total Responses (3-Yr Avg)
	#	%	C.I.(95%)	#	%	C.I.(95%)	#
Yes	300	41.6	35.1 - 48.5	500	58.4	51.5 - 64.9	800
No	2,400	52.5	49.6 - 55.3	2,200	47.5	44.7 - 50.4	4,600

Smoke Before Pregnant	Yes			No			Weighted Total Responses (3-Yr Avg)
	#	%	C.I.(95%)	#	%	C.I.(95%)	#
Yes	700	44.8	40.1 - 49.6	900	55.2	50.4 - 59.9	1,600
No	2,000	53.3	50.1 - 56.4	1,700	46.7	43.6 - 49.9	3,700

**PRAMS Health Indicator 3-Year Aggregate Report - No contraception at conception- didn't mind getting pregnant- by State;County;DOH Race-Ethnicity;PRAMS Age Group;Infant Gender;Married;Poverty Level;Income (2000-2003);Income (2004-2011);Birthweight;Smoke 3rd Trimester;Smoke Before Pregnant;WIC During Pregnancy, for the Year(s) 2000-2002;2001-2003;2002-2004;2003-2005;2004-2006;2005-2007;2006-2008;2007-2009;2008-2010;2009-2011;2010-2012;2011-2013**

*Note: Weighted counts (#) represent 3-yr averages, rounded to the nearest hundred; n/r (Not Reportable) - If the unweighted total responses for a dimension (row) is <30 that row will not be shown*

**Years: 2002-2004**

WIC During Pregnancy	Yes			No			Weighted Total Responses (3-Yr Avg)
	#	%	C.I.(95%)	#	%	C.I.(95%)	#
<b>Yes</b>	1,300	45.1	41.6 - 48.7	1,600	54.9	51.3 - 58.4	2,900
<b>No</b>	1,400	57.8	53.8 - 61.6	1,000	42.2	38.4 - 46.2	2,500

**PRAMS Health Indicator 3-Year Aggregate Report - No contraception at conception- didn't mind getting pregnant- by State;County;DOH Race-Ethnicity;PRAMS Age Group;Infant Gender;Married;Poverty Level;Income (2000-2003);Income (2004-2011);Birthweight;Smoke 3rd Trimester;Smoke Before Pregnant;WIC During Pregnancy, for the Year(s) 2000-2002;2001-2003;2002-2004;2003-2005;2004-2006;2005-2007;2006-2008;2007-2009;2008-2010;2009-2011;2010-2012;2011-2013**

*Note: Weighted counts (#) represent 3-yr averages, rounded to the nearest hundred; n/r (Not Reportable) - If the unweighted total responses for a dimension (row) is <30 that row will not be shown*

**Years: 2001-2003**

State	Yes			No			Weighted Total Responses (3-Yr Avg)
	#	%	C.I.(95%)	#	%	C.I.(95%)	#
<b>Totals</b>	2,900	51.3	48.8 - 53.8	2,700	48.7	46.2 - 51.2	5,600

County	Yes			No			Weighted Total Responses (3-Yr Avg)
	#	%	C.I.(95%)	#	%	C.I.(95%)	#
<b>Hawaii</b>	400	51.7	47.4 - 56.0	300	48.3	44.0 - 52.6	700
<b>Honolulu</b>	2,100	51.9	48.5 - 55.2	1,900	48.1	44.8 - 51.5	4,000
<b>Kauai</b>	100	45.3	38.5 - 52.4	200	54.7	47.6 - 61.5	300
<b>Maui</b>	300	50.2	45.4 - 55.1	300	49.8	44.9 - 54.6	600

**PRAMS Health Indicator 3-Year Aggregate Report - No contraception at conception- didn't mind getting pregnant- by State;County;DOH Race-Ethnicity;PRAMS Age Group;Infant Gender;Married;Poverty Level;Income (2000-2003);Income (2004-2011);Birthweight;Smoke 3rd Trimester;Smoke Before Pregnant;WIC During Pregnancy, for the Year(s) 2000-2002;2001-2003;2002-2004;2003-2005;2004-2006;2005-2007;2006-2008;2007-2009;2008-2010;2009-2011;2010-2012;2011-2013**

*Note: Weighted counts (#) represent 3-yr averages, rounded to the nearest hundred; n/r (Not Reportable) - If the unweighted total responses for a dimension (row) is <30 that row will not be shown*

**Years: 2001-2003**

DOH Race-Ethnicity	Yes			No			Weighted Total Responses (3-Yr Avg)
	#	%	C.I.(95%)	#	%	C.I.(95%)	#
Caucasian	500	59.0	52.2 - 65.6	400	41.0	34.4 - 47.8	900
Native Hawaiian	900	45.9	43.4 - 48.4	1,100	54.1	51.6 - 56.6	2,000
Chinese	100	63.6	45.9 - 78.3	100	36.4	21.7 - 54.1	200
Filipino	600	49.6	43.4 - 55.8	600	50.4	44.2 - 56.6	1,200
Japanese	300	62.7	52.2 - 72.1	200	37.3	27.9 - 47.8	500
Other	400	49.1	41.4 - 56.8	500	50.9	43.2 - 58.6	900

PRAMS Age Group	Yes			No			Weighted Total Responses (3-Yr Avg)
	#	%	C.I.(95%)	#	%	C.I.(95%)	#
<20	200	25.3	20.7 - 30.6	600	74.7	69.4 - 79.3	900
20-24	900	49.8	45.3 - 54.2	900	50.2	45.8 - 54.7	1,700
25-34	1,300	58.6	54.4 - 62.6	900	41.4	37.4 - 45.6	2,300
35+	500	63.0	55.8 - 69.7	300	37.0	30.3 - 44.2	700

**PRAMS Health Indicator 3-Year Aggregate Report - No contraception at conception- didn't mind getting pregnant- by State;County;DOH Race-Ethnicity;PRAMS Age Group;Infant Gender;Married;Poverty Level;Income (2000-2003);Income (2004-2011);Birthweight;Smoke 3rd Trimester;Smoke Before Pregnant;WIC During Pregnancy, for the Year(s) 2000-2002;2001-2003;2002-2004;2003-2005;2004-2006;2005-2007;2006-2008;2007-2009;2008-2010;2009-2011;2010-2012;2011-2013**

*Note: Weighted counts (#) represent 3-yr averages, rounded to the nearest hundred; n/r (Not Reportable) - If the unweighted total responses for a dimension (row) is <30 that row will not be shown*

**Years: 2001-2003**

Infant Gender	Yes			No			Weighted Total Responses (3-Yr Avg)
	#	%	C.I.(95%)	#	%	C.I.(95%)	#
Male	1,500	51.6	48.1 - 55.1	1,400	48.4	44.9 - 51.9	2,900
Female	1,400	51.0	47.3 - 54.6	1,300	49.0	45.4 - 52.7	2,700

Married	Yes			No			Weighted Total Responses (3-Yr Avg)
	#	%	C.I.(95%)	#	%	C.I.(95%)	#
Yes	1,900	64.1	60.5 - 67.6	1,100	35.9	32.4 - 39.5	3,000
No	1,000	37.0	33.7 - 40.3	1,700	63.0	59.7 - 66.3	2,700

Poverty Level	Yes			No			Weighted Total Responses (3-Yr Avg)
	#	%	C.I.(95%)	#	%	C.I.(95%)	#
0-130%	1,300	45.4	42.0 - 48.8	1,600	54.6	51.2 - 58.0	2,900
131-185%	600	58.5	52.2 - 64.5	400	41.5	35.5 - 47.8	1,000
186+%	800	67.0	61.1 - 72.4	400	33.0	27.6 - 38.9	1,100



**PRAMS Health Indicator 3-Year Aggregate Report - No contraception at conception- didn't mind getting pregnant- by State;County;DOH Race-Ethnicity;PRAMS Age Group;Infant Gender;Married;Poverty Level;Income (2000-2003);Income (2004-2011);Birthweight;Smoke 3rd Trimester;Smoke Before Pregnant;WIC During Pregnancy, for the Year(s) 2000-2002;2001-2003;2002-2004;2003-2005;2004-2006;2005-2007;2006-2008;2007-2009;2008-2010;2009-2011;2010-2012;2011-2013**

*Note: Weighted counts (#) represent 3-yr averages, rounded to the nearest hundred; n/r (Not Reportable) - If the unweighted total responses for a dimension (row) is <30 that row will not be shown*

**Years: 2001-2003**

Income (2000-2003)	Yes			No			Weighted Total Responses (3-Yr Avg)
	#	%	C.I.(95%)	#	%	C.I.(95%)	#
<=\$15,000	700	40.1	35.9 - 44.5	1,100	59.9	55.5 - 64.1	1,800
\$15,001-\$25,000	400	53.8	47.4 - 60.1	400	46.2	39.9 - 52.6	800
\$25,001-\$40,000	600	54.6	48.7 - 60.3	500	45.4	39.7 - 51.3	1,200
>=\$40,001	900	66.2	61.0 - 71.0	500	33.8	29.0 - 39.0	1,400

Birthweight	Yes			No			Weighted Total Responses (3-Yr Avg)
	#	%	C.I.(95%)	#	%	C.I.(95%)	#
Low birth weight	200	50.8	41.2 - 60.3	200	49.2	39.7 - 58.8	400
Normal birth weight	2,700	51.4	48.8 - 54.0	2,500	48.6	46.0 - 51.2	5,200

Smoke 3rd Trimester	Yes			No			Weighted Total Responses (3-Yr Avg)
	#	%	C.I.(95%)	#	%	C.I.(95%)	#
Yes	400	43.8	37.7 - 50.1	500	56.2	49.9 - 62.3	800
No	2,500	52.9	50.1 - 55.7	2,200	47.1	44.3 - 49.9	4,700

**PRAMS Health Indicator 3-Year Aggregate Report - No contraception at conception- didn't mind getting pregnant- by State;County;DOH Race-Ethnicity;PRAMS Age Group;Infant Gender;Married;Poverty Level;Income (2000-2003);Income (2004-2011);Birthweight;Smoke 3rd Trimester;Smoke Before Pregnant;WIC During Pregnancy, for the Year(s) 2000-2002;2001-2003;2002-2004;2003-2005;2004-2006;2005-2007;2006-2008;2007-2009;2008-2010;2009-2011;2010-2012;2011-2013**

*Note: Weighted counts (#) represent 3-yr averages, rounded to the nearest hundred; n/r (Not Reportable) - If the unweighted total responses for a dimension (row) is <30 that row will not be shown*

**Years: 2001-2003**

Smoke Before Pregnant	Yes			No			Weighted Total Responses (3-Yr Avg)
	#	%	C.I.(95%)	#	%	C.I.(95%)	#
Yes	700	46.3	41.7 - 50.8	900	53.7	49.2 - 58.3	1,600
No	2,000	53.8	50.7 - 56.9	1,800	46.2	43.1 - 49.3	3,800

WIC During Pregnancy	Yes			No			Weighted Total Responses (3-Yr Avg)
	#	%	C.I.(95%)	#	%	C.I.(95%)	#
Yes	1,300	45.7	42.3 - 49.1	1,600	54.3	50.9 - 57.7	2,900
No	1,500	57.8	54.0 - 61.5	1,100	42.2	38.5 - 46.0	2,700

**PRAMS Health Indicator 3-Year Aggregate Report - No contraception at conception- didn't mind getting pregnant- by State;County;DOH Race-Ethnicity;PRAMS Age Group;Infant Gender;Married;Poverty Level;Income (2000-2003);Income (2004-2011);Birthweight;Smoke 3rd Trimester;Smoke Before Pregnant;WIC During Pregnancy, for the Year(s) 2000-2002;2001-2003;2002-2004;2003-2005;2004-2006;2005-2007;2006-2008;2007-2009;2008-2010;2009-2011;2010-2012;2011-2013**

*Note: Weighted counts (#) represent 3-yr averages, rounded to the nearest hundred; n/r (Not Reportable) - If the unweighted total responses for a dimension (row) is <30 that row will not be shown*

**Years: 2000-2002**

State	Yes			No			Weighted Total Responses (3-Yr Avg)
	#	%	C.I.(95%)	#	%	C.I.(95%)	#
<b>Totals</b>	2,700	49.5	47.1 - 51.8	2,800	50.5	48.2 - 52.9	5,600

County	Yes			No			Weighted Total Responses (3-Yr Avg)
	#	%	C.I.(95%)	#	%	C.I.(95%)	#
<b>Hawaii</b>	300	48.9	44.6 - 53.2	400	51.1	46.8 - 55.4	700
<b>Honolulu</b>	2,000	49.8	46.7 - 52.9	2,000	50.2	47.1 - 53.3	4,000
<b>Kauai</b>	100	47.2	39.9 - 54.6	100	52.8	45.4 - 60.1	300
<b>Maui</b>	300	49.1	44.2 - 54.0	300	50.9	46.0 - 55.8	600

**PRAMS Health Indicator 3-Year Aggregate Report - No contraception at conception- didn't mind getting pregnant- by State;County;DOH Race-Ethnicity;PRAMS Age Group;Infant Gender;Married;Poverty Level;Income (2000-2003);Income (2004-2011);Birthweight;Smoke 3rd Trimester;Smoke Before Pregnant;WIC During Pregnancy, for the Year(s) 2000-2002;2001-2003;2002-2004;2003-2005;2004-2006;2005-2007;2006-2008;2007-2009;2008-2010;2009-2011;2010-2012;2011-2013**

*Note: Weighted counts (#) represent 3-yr averages, rounded to the nearest hundred; n/r (Not Reportable) - If the unweighted total responses for a dimension (row) is <30 that row will not be shown*

**Years: 2000-2002**

DOH Race-Ethnicity	Yes			No			Weighted Total Responses (3-Yr Avg)
	#	%	C.I.(95%)	#	%	C.I.(95%)	#
Caucasian	500	57.5	51.4 - 63.5	400	42.5	36.5 - 48.6	900
Native Hawaiian	800	44.0	41.7 - 46.4	1,100	56.0	53.6 - 58.3	1,900
Chinese	100	64.5	45.4 - 79.9	<50	35.5	20.1 - 54.6	<50
Filipino	600	50.3	44.5 - 56.0	600	49.7	44.0 - 55.5	1,200
Japanese	300	59.4	50.0 - 68.1	200	40.6	31.9 - 50.0	500
Other	400	43.3	36.2 - 50.7	500	56.7	49.3 - 63.8	900

PRAMS Age Group	Yes			No			Weighted Total Responses (3-Yr Avg)
	#	%	C.I.(95%)	#	%	C.I.(95%)	#
<20	300	27.6	23.2 - 32.4	700	72.4	67.6 - 76.8	900
20-24	800	46.6	42.4 - 50.8	900	53.4	49.2 - 57.6	1,700
25-34	1,300	57.2	53.2 - 61.1	900	42.8	38.9 - 46.8	2,200
35+	400	60.1	53.4 - 66.4	300	39.9	33.6 - 46.6	700

**PRAMS Health Indicator 3-Year Aggregate Report - No contraception at conception- didn't mind getting pregnant- by State;County;DOH Race-Ethnicity;PRAMS Age Group;Infant Gender;Married;Poverty Level;Income (2000-2003);Income (2004-2011);Birthweight;Smoke 3rd Trimester;Smoke Before Pregnant;WIC During Pregnancy, for the Year(s) 2000-2002;2001-2003;2002-2004;2003-2005;2004-2006;2005-2007;2006-2008;2007-2009;2008-2010;2009-2011;2010-2012;2011-2013**

*Note: Weighted counts (#) represent 3-yr averages, rounded to the nearest hundred; n/r (Not Reportable) - If the unweighted total responses for a dimension (row) is <30 that row will not be shown*

**Years: 2000-2002**

	Yes			No			Weighted Total Responses (3-Yr Avg)
	#	%	C.I.(95%)	#	%	C.I.(95%)	#
<b>Infant Gender</b>							
<b>Male</b>	1,400	47.9	44.6 - 51.2	1,500	52.1	48.8 - 55.4	2,900
<b>Female</b>	1,400	51.1	47.6 - 54.5	1,300	48.9	45.5 - 52.4	2,700

	Yes			No			Weighted Total Responses (3-Yr Avg)
	#	%	C.I.(95%)	#	%	C.I.(95%)	#
<b>Married</b>							
<b>Yes</b>	1,800	61.3	57.9 - 64.5	1,200	38.7	35.5 - 42.1	3,000
<b>No</b>	900	35.4	32.4 - 38.5	1,600	64.6	61.5 - 67.6	2,500

	Yes			No			Weighted Total Responses (3-Yr Avg)
	#	%	C.I.(95%)	#	%	C.I.(95%)	#
<b>Poverty Level</b>							
<b>0-130%</b>	1,200	43.3	40.2 - 46.4	1,600	56.7	53.6 - 59.8	2,900
<b>131-185%</b>	500	56.5	50.5 - 62.3	400	43.5	37.7 - 49.5	900
<b>186+%</b>	800	65.8	60.6 - 70.7	400	34.2	29.3 - 39.4	1,200

**PRAMS Health Indicator 3-Year Aggregate Report - No contraception at conception- didn't mind getting pregnant- by State;County;DOH Race-Ethnicity;PRAMS Age Group;Infant Gender;Married;Poverty Level;Income (2000-2003);Income (2004-2011);Birthweight;Smoke 3rd Trimester;Smoke Before Pregnant;WIC During Pregnancy, for the Year(s) 2000-2002;2001-2003;2002-2004;2003-2005;2004-2006;2005-2007;2006-2008;2007-2009;2008-2010;2009-2011;2010-2012;2011-2013**

*Note: Weighted counts (#) represent 3-yr averages, rounded to the nearest hundred; n/r (Not Reportable) - If the unweighted total responses for a dimension (row) is <30 that row will not be shown*

**Years: 2000-2002**

Income (2000-2003)	Yes			No			Weighted Total Responses (3-Yr Avg)
	#	%	C.I.(95%)	#	%	C.I.(95%)	#
<=\$15,000	600	37.7	33.8 - 41.7	1,100	62.3	58.3 - 66.2	1,700
\$15,001-\$25,000	500	51.6	45.8 - 57.3	400	48.4	42.7 - 54.2	900
\$25,001-\$40,000	600	52.6	47.1 - 57.9	500	47.4	42.1 - 52.9	1,100
>=\$40,001	900	65.2	60.4 - 69.7	500	34.8	30.3 - 39.6	1,400

Birthweight	Yes			No			Weighted Total Responses (3-Yr Avg)
	#	%	C.I.(95%)	#	%	C.I.(95%)	#
Low birth weight	200	52.3	43.3 - 61.1	200	47.7	38.9 - 56.7	400
Normal birth weight	2,500	49.2	46.8 - 51.7	2,600	50.8	48.3 - 53.2	5,100

Smoke 3rd Trimester	Yes			No			Weighted Total Responses (3-Yr Avg)
	#	%	C.I.(95%)	#	%	C.I.(95%)	#
Yes	300	45.8	39.9 - 51.8	400	54.2	48.2 - 60.1	700
No	2,400	50.5	47.9 - 53.1	2,300	49.5	46.9 - 52.1	4,700

**PRAMS Health Indicator 3-Year Aggregate Report - No contraception at conception- didn't mind getting pregnant- by State;County;DOH Race-Ethnicity;PRAMS Age Group;Infant Gender;Married;Poverty Level;Income (2000-2003);Income (2004-2011);Birthweight;Smoke 3rd Trimester;Smoke Before Pregnant;WIC During Pregnancy, for the Year(s) 2000-2002;2001-2003;2002-2004;2003-2005;2004-2006;2005-2007;2006-2008;2007-2009;2008-2010;2009-2011;2010-2012;2011-2013**

*Note: Weighted counts (#) represent 3-yr averages, rounded to the nearest hundred; n/r (Not Reportable) - If the unweighted total responses for a dimension (row) is <30 that row will not be shown*

**Years: 2000-2002**

Smoke Before Pregnant	Yes			No			Weighted Total Responses (3-Yr Avg)
	#	%	C.I.(95%)	#	%	C.I.(95%)	#
<b>Yes</b>	700	45.1	40.8 - 49.4	800	54.9	50.6 - 59.2	1,500
<b>No</b>	2,000	52.2	49.3 - 55.1	1,800	47.8	44.9 - 50.7	3,800

WIC During Pregnancy	Yes			No			Weighted Total Responses (3-Yr Avg)
	#	%	C.I.(95%)	#	%	C.I.(95%)	#
<b>Yes</b>	1,300	43.9	40.8 - 47.2	1,600	56.1	52.8 - 59.2	2,900
<b>No</b>	1,500	55.6	52.1 - 59.1	1,200	44.4	40.9 - 47.9	2,700