

PRAMS Health Indicator 3-Year Aggregate Report - Illicit drug use 1 month before pregnancy- for the State of Hawaii, for the Year(s) 2000-2002;2001-2003;2002-2004;2003-2005;2004-2006;2005-2007;2006-2008;2007-2009;2008-2010;2009-2011;2010-2012;2011-2013

PRAMS Health Indicator 3-Year Aggregate Report - Illicit drug use 1 month before pregnancy- by State;County;DOH Race-Ethnicity;PRAMS Age Group;Infant Gender;Married;Poverty Level;Income (2000-2003);Income (2004-2011);Birthweight;Smoke 3rd Trimester;Smoke Before Pregnant;WIC During Pregnancy, for the Year(s) 2000-2002;2001-2003;2002-2004;2003-2005;2004-2006;2005-2007;2006-2008;2007-2009;2008-2010;2009-2011;2010-2012;2011-2013

Note: Weighted counts (#) represent 3-yr averages, rounded to the nearest hundred; n/r (Not Reportable) - If the unweighted total responses for a dimension (row) is <30 that row will not be shown

The trend analysis section shows the trend for the selected health variable over selected years in a table and a graph. 3-Year Weighted Total Responses: This number is a weighted representation of the mothers of babies delivered in a given year, who responded to a particular question in the survey. For most questions this will be the mothers of all babies delivered in a given year. For some secondary questions only a subset of the population was asked the question. For example, all survey participants were asked if they smoked during pregnancy, but only those who answered yes were asked how many cigarettes a day. If a dimension value is unknown for a particular survey record, that record will not be included in the counts for that particular dimension.

Note: Data collection for household income changed in 2004 and again in 2012. Because of this, income data does not exist for some 3-year aggregate periods.

Below are the indicators included in this report and the long description for each indicator.

PRAMS Health Indicator	Health Indicator Description
Illicit drug use 1 month before pregnancy	Illicit drug use 1 month before pregnancy

Suggested citation:

Hawaii Health Data Warehouse, Hawaii State Department of Health, Pregnancy Risk Assessment Monitoring System, (report title and years), Report Created: 2/16/17

For documentation on other terms and coding in this report, please go to the following links:

[Click here to access PRAMS documentation](#)

[Click here to access DOH-Race Ethnicity coding](#)

[Click here to access The Hawai'i Data Guide](#)

**For questions about this report, please contact
The Hawai'i Health Data Warehouse**

profiles@hhdw.org

(855) 946-5899 x15

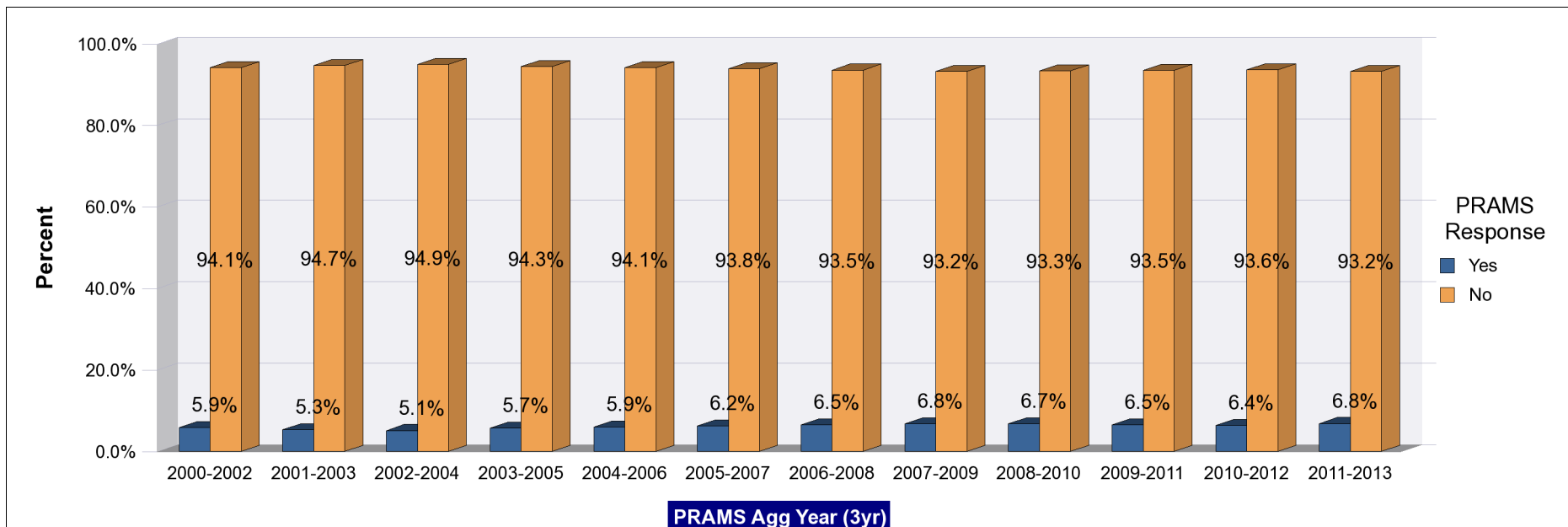
PRAMS Health Indicator 3-Year Aggregate Report - Illicit drug use 1 month before pregnancy- for the State of Hawaii, for the Year(s)
2000-2002;2001-2003;2002-2004;2003-2005;2004-2006;2005-2007;2006-2008;2007-2009;2008-2010;2009-2011;2010-2012;2011-2013

Note: Weighted counts (#) represent 3-yr averages, rounded to the nearest hundred; n/r (Not Reportable) - If the unweighted total responses for a dimension (row) is <30 that row will not be shown

Years	Yes			No			Weighted Total Responses (3-Yr Avg)
	#	%	C.I.(95%)	#	%	C.I.(95%)	#
2000-2002	1,000	5.9	5.3 - 6.4	15,600	94.1	93.6 - 94.7	16,600
2001-2003	900	5.3	4.8 - 5.9	15,900	94.7	94.1 - 95.2	16,800
2002-2004	900	5.1	4.5 - 5.7	16,300	94.9	94.3 - 95.5	17,200
2003-2005	1,000	5.7	5.1 - 6.4	16,400	94.3	93.6 - 94.9	17,400
2004-2006	1,100	5.9	5.3 - 6.6	16,600	94.1	93.4 - 94.7	17,700
2005-2007	1,100	6.2	5.5 - 6.9	16,800	93.8	93.1 - 94.5	18,000
2006-2008	1,200	6.5	5.8 - 7.2	17,200	93.5	92.8 - 94.2	18,400
2007-2009	1,200	6.8	6.1 - 7.6	17,000	93.2	92.4 - 93.9	18,300
2008-2010	1,200	6.7	5.9 - 7.6	17,000	93.3	92.4 - 94.1	18,200
2009-2011	1,200	6.5	5.7 - 7.4	16,900	93.5	92.6 - 94.3	18,100
2010-2012	1,100	6.4	5.5 - 7.3	16,800	93.6	92.7 - 94.5	17,900
2011-2013	1,200	6.8	5.9 - 7.8	16,400	93.2	92.2 - 94.1	17,600

**PRAMS Health Indicator 3-Year Aggregate Report - Illicit drug use 1 month before pregnancy- for the State of Hawaii, for the Year(s)
2000-2002;2001-2003;2002-2004;2003-2005;2004-2006;2005-2007;2006-2008;2007-2009;2008-2010;2009-2011;2010-2012;2011-2013**

Note: Weighted counts (#) represent 3-yr averages, rounded to the nearest hundred; n/r (Not Reportable) - If the unweighted total responses for a dimension (row) is <30 that row will not be shown



**PRAMS Health Indicator 3-Year Aggregate Report - Illicit drug use 1 month before pregnancy- by State;County;DOH Race-Ethnicity;PRAMS Age Group;Infant Gender;Married;Poverty Level;Income (2000-2003);Income (2004-2011);Birthweight;Smoke 3rd Trimester;Smoke Before Pregnant;WIC During Pregnancy, for the Year(s)
2000-2002;2001-2003;2002-2004;2003-2005;2004-2006;2005-2007;2006-2008;2007-2009;2008-2010;2009-2011;2010-2012;2011-2013**

Note: Weighted counts (#) represent 3-yr averages, rounded to the nearest hundred; n/r (Not Reportable) - If the unweighted total responses for a dimension (row) is <30 that row will not be shown

Years: 2011-2013

State	Yes			No			Weighted Total Responses (3-Yr Avg)
	#	%	C.I.(95%)	#	%	C.I.(95%)	#
Totals	1,200	6.8	5.9 - 7.8	16,400	93.2	92.2 - 94.1	17,600

County	Yes			No			Weighted Total Responses (3-Yr Avg)
	#	%	C.I.(95%)	#	%	C.I.(95%)	#
Hawaii	200	9.7	8.0 - 11.7	2,100	90.3	88.3 - 92.0	2,300
Honolulu	700	5.4	4.3 - 6.8	11,900	94.6	93.2 - 95.7	12,600
Kauai	100	9.7	7.8 - 12.0	700	90.3	88.0 - 92.2	800
Maui	200	11.4	9.7 - 13.5	1,700	88.6	86.5 - 90.3	1,900

**PRAMS Health Indicator 3-Year Aggregate Report - Illicit drug use 1 month before pregnancy- by State;County;DOH Race-Ethnicity;PRAMS Age Group;Infant Gender;Married;Poverty Level;Income (2000-2003);Income (2004-2011);Birthweight;Smoke 3rd Trimester;Smoke Before Pregnant;WIC During Pregnancy, for the Year(s)
2000-2002;2001-2003;2002-2004;2003-2005;2004-2006;2005-2007;2006-2008;2007-2009;2008-2010;2009-2011;2010-2012;2011-2013**

Note: Weighted counts (#) represent 3-yr averages, rounded to the nearest hundred; n/r (Not Reportable) - If the unweighted total responses for a dimension (row) is <30 that row will not be shown

Years: 2011-2013

DOH Race-Ethnicity	Yes			No			Weighted Total Responses (3-Yr Avg)
	#	%	C.I.(95%)	#	%	C.I.(95%)	#
Caucasian	300	8.0	6.3 - 10.1	4,000	92.0	89.9 - 93.7	4,300
Native Hawaiian	500	9.8	7.9 - 12.0	4,700	90.2	88.0 - 92.1	5,200
Chinese	<50	4.8	2.3 - 9.7	800	95.2	90.3 - 97.7	900
Filipino	100	3.3	2.0 - 5.6	2,900	96.7	94.4 - 98.0	3,000
Japanese	100	4.8	2.6 - 8.9	1,600	95.2	91.1 - 97.4	1,700
Other	100	4.9	3.2 - 7.6	2,400	95.1	92.4 - 96.8	2,600

PRAMS Age Group	Yes			No			Weighted Total Responses (3-Yr Avg)
	#	%	C.I.(95%)	#	%	C.I.(95%)	#
<20	200	18.6	12.9 - 26.2	800	81.4	73.8 - 87.1	1,000
20-24	400	9.1	7.2 - 11.5	3,600	90.9	88.5 - 92.8	3,900
25-34	600	5.8	4.7 - 7.1	9,100	94.2	92.9 - 95.3	9,600
35+	100	3.3	2.2 - 4.9	3,000	96.7	95.1 - 97.8	3,100

**PRAMS Health Indicator 3-Year Aggregate Report - Illicit drug use 1 month before pregnancy- by State;County;DOH Race-Ethnicity;PRAMS Age Group;Infant Gender;Married;Poverty Level;Income (2000-2003);Income (2004-2011);Birthweight;Smoke 3rd Trimester;Smoke Before Pregnant;WIC During Pregnancy, for the Year(s)
2000-2002;2001-2003;2002-2004;2003-2005;2004-2006;2005-2007;2006-2008;2007-2009;2008-2010;2009-2011;2010-2012;2011-2013**

Note: Weighted counts (#) represent 3-yr averages, rounded to the nearest hundred; n/r (Not Reportable) - If the unweighted total responses for a dimension (row) is <30 that row will not be shown

Years: 2011-2013

Infant Gender	Yes			No			Weighted Total Responses (3-Yr Avg)
	#	%	C.I.(95%)	#	%	C.I.(95%)	#
Male	500	6.2	5.1 - 7.6	8,200	93.8	92.4 - 94.9	8,700
Female	700	7.4	6.1 - 8.9	8,200	92.6	91.1 - 93.9	8,900

Married	Yes			No			Weighted Total Responses (3-Yr Avg)
	#	%	C.I.(95%)	#	%	C.I.(95%)	#
Yes	400	3.3	2.5 - 4.2	10,500	96.7	95.8 - 97.5	10,900
No	800	12.6	10.7 - 14.7	5,900	87.4	85.3 - 89.3	6,700

Poverty Level	Yes			No			Weighted Total Responses (3-Yr Avg)
	#	%	C.I.(95%)	#	%	C.I.(95%)	#
0-130%	600	9.5	7.9 - 11.4	5,800	90.5	88.6 - 92.1	6,400
131-185%	100	5.5	3.7 - 8.1	2,500	94.5	91.9 - 96.3	2,700
186+%	300	4.5	3.4 - 5.8	6,800	95.5	94.2 - 96.6	7,100

**PRAMS Health Indicator 3-Year Aggregate Report - Illicit drug use 1 month before pregnancy- by State;County;DOH Race-Ethnicity;PRAMS Age Group;Infant Gender;Married;Poverty Level;Income (2000-2003);Income (2004-2011);Birthweight;Smoke 3rd Trimester;Smoke Before Pregnant;WIC During Pregnancy, for the Year(s)
2000-2002;2001-2003;2002-2004;2003-2005;2004-2006;2005-2007;2006-2008;2007-2009;2008-2010;2009-2011;2010-2012;2011-2013**

Note: Weighted counts (#) represent 3-yr averages, rounded to the nearest hundred; n/r (Not Reportable) - If the unweighted total responses for a dimension (row) is <30 that row will not be shown

Years: 2011-2013

Birthweight	Yes			No			Weighted Total Responses (3-Yr Avg)
	#	%	C.I.(95%)	#	%	C.I.(95%)	#
Low birth weight	100	7.5	5.9 - 9.4	1,100	92.5	90.6 - 94.1	1,200
Normal birth weight	1,100	6.8	5.8 - 7.8	15,200	93.2	92.2 - 94.2	16,400

Smoke 3rd Trimester	Yes			No			Weighted Total Responses (3-Yr Avg)
	#	%	C.I.(95%)	#	%	C.I.(95%)	#
Yes	200	25.6	19.0 - 33.5	600	74.4	66.5 - 81.0	900
No	900	5.7	4.9 - 6.7	15,400	94.3	93.3 - 95.1	16,400

Smoke Before Pregnant	Yes			No			Weighted Total Responses (3-Yr Avg)
	#	%	C.I.(95%)	#	%	C.I.(95%)	#
Yes	600	18.9	15.7 - 22.7	2,500	81.1	77.3 - 84.3	3,100
No	600	4.0	3.3 - 4.9	13,500	96.0	95.1 - 96.7	14,100

**PRAMS Health Indicator 3-Year Aggregate Report - Illicit drug use 1 month before pregnancy- by State;County;DOH Race-Ethnicity;PRAMS Age Group;Infant Gender;Married;Poverty Level;Income (2000-2003);Income (2004-2011);Birthweight;Smoke 3rd Trimester;Smoke Before Pregnant;WIC During Pregnancy, for the Year(s)
2000-2002;2001-2003;2002-2004;2003-2005;2004-2006;2005-2007;2006-2008;2007-2009;2008-2010;2009-2011;2010-2012;2011-2013**

Note: Weighted counts (#) represent 3-yr averages, rounded to the nearest hundred; n/r (Not Reportable) - If the unweighted total responses for a dimension (row) is <30 that row will not be shown

Years: 2011-2013

WIC During Pregnancy	Yes			No			Weighted Total Responses (3-Yr Avg)
	#	%	C.I.(95%)	#	%	C.I.(95%)	#
Yes	600	7.7	6.4 - 9.3	7,300	92.3	90.7 - 93.6	7,900
No	600	6.0	4.9 - 7.4	9,000	94.0	92.6 - 95.1	9,600

**PRAMS Health Indicator 3-Year Aggregate Report - Illicit drug use 1 month before pregnancy- by State;County;DOH Race-Ethnicity;PRAMS Age Group;Infant Gender;Married;Poverty Level;Income (2000-2003);Income (2004-2011);Birthweight;Smoke 3rd Trimester;Smoke Before Pregnant;WIC During Pregnancy, for the Year(s)
2000-2002;2001-2003;2002-2004;2003-2005;2004-2006;2005-2007;2006-2008;2007-2009;2008-2010;2009-2011;2010-2012;2011-2013**

Note: Weighted counts (#) represent 3-yr averages, rounded to the nearest hundred; n/r (Not Reportable) - If the unweighted total responses for a dimension (row) is <30 that row will not be shown

Years: 2010-2012

State	Yes			No			Weighted Total Responses (3-Yr Avg)
	#	%	C.I.(95%)	#	%	C.I.(95%)	#
Totals	1,100	6.4	5.5 - 7.3	16,800	93.6	92.7 - 94.5	17,900

County	Yes			No			Weighted Total Responses (3-Yr Avg)
	#	%	C.I.(95%)	#	%	C.I.(95%)	#
Hawaii	200	8.5	7.0 - 10.3	2,100	91.5	89.7 - 93.0	2,300
Honolulu	700	5.1	4.1 - 6.4	12,300	94.9	93.6 - 95.9	12,900
Kauai	100	9.2	7.2 - 11.5	700	90.8	88.5 - 92.8	800
Maui	200	11.1	9.4 - 13.0	1,700	88.9	87.0 - 90.6	1,900

**PRAMS Health Indicator 3-Year Aggregate Report - Illicit drug use 1 month before pregnancy- by State;County;DOH Race-Ethnicity;PRAMS Age Group;Infant Gender;Married;Poverty Level;Income (2000-2003);Income (2004-2011);Birthweight;Smoke 3rd Trimester;Smoke Before Pregnant;WIC During Pregnancy, for the Year(s)
2000-2002;2001-2003;2002-2004;2003-2005;2004-2006;2005-2007;2006-2008;2007-2009;2008-2010;2009-2011;2010-2012;2011-2013**

Note: Weighted counts (#) represent 3-yr averages, rounded to the nearest hundred; n/r (Not Reportable) - If the unweighted total responses for a dimension (row) is <30 that row will not be shown

Years: 2010-2012

DOH Race-Ethnicity	Yes			No			Weighted Total Responses (3-Yr Avg)
	#	%	C.I.(95%)	#	%	C.I.(95%)	#
Caucasian	300	8.0	6.3 - 10.1	3,900	92.0	89.9 - 93.7	4,300
Native Hawaiian	400	8.4	6.8 - 10.4	4,800	91.6	89.6 - 93.2	5,200
Chinese	<50	4.8	2.2 - 9.8	800	95.2	90.2 - 97.8	800
Filipino	100	3.7	2.3 - 5.9	3,100	96.3	94.1 - 97.7	3,200
Japanese	<50	2.4	1.1 - 4.8	1,600	97.6	95.2 - 98.9	1,700
Other	200	6.0	4.0 - 8.9	2,600	94.0	91.1 - 96.0	2,700

PRAMS Age Group	Yes			No			Weighted Total Responses (3-Yr Avg)
	#	%	C.I.(95%)	#	%	C.I.(95%)	#
<20	200	14.8	10.1 - 21.3	900	85.2	78.7 - 89.9	1,000
20-24	400	9.2	7.3 - 11.6	3,700	90.8	88.4 - 92.7	4,100
25-34	500	5.3	4.3 - 6.5	9,100	94.7	93.5 - 95.7	9,600
35+	100	3.1	2.0 - 4.8	3,000	96.9	95.2 - 98.0	3,100

**PRAMS Health Indicator 3-Year Aggregate Report - Illicit drug use 1 month before pregnancy- by State;County;DOH Race-Ethnicity;PRAMS Age Group;Infant Gender;Married;Poverty Level;Income (2000-2003);Income (2004-2011);Birthweight;Smoke 3rd Trimester;Smoke Before Pregnant;WIC During Pregnancy, for the Year(s)
2000-2002;2001-2003;2002-2004;2003-2005;2004-2006;2005-2007;2006-2008;2007-2009;2008-2010;2009-2011;2010-2012;2011-2013**

Note: Weighted counts (#) represent 3-yr averages, rounded to the nearest hundred; n/r (Not Reportable) - If the unweighted total responses for a dimension (row) is <30 that row will not be shown

Years: 2010-2012

Infant Gender	Yes			No			Weighted Total Responses (3-Yr Avg)
	#	%	C.I.(95%)	#	%	C.I.(95%)	#
Male	500	5.9	4.9 - 7.2	8,500	94.1	92.8 - 95.1	9,000
Female	600	6.8	5.6 - 8.2	8,300	93.2	91.8 - 94.4	9,000

Married	Yes			No			Weighted Total Responses (3-Yr Avg)
	#	%	C.I.(95%)	#	%	C.I.(95%)	#
Yes	400	3.5	2.7 - 4.4	10,700	96.5	95.6 - 97.3	11,100
No	800	11.0	9.4 - 13.0	6,100	89.0	87.0 - 90.6	6,900

Poverty Level	Yes			No			Weighted Total Responses (3-Yr Avg)
	#	%	C.I.(95%)	#	%	C.I.(95%)	#
0-130%	600	8.6	7.1 - 10.4	5,900	91.4	89.6 - 92.9	6,400
131-185%	200	6.0	4.1 - 8.7	2,700	94.0	91.3 - 95.9	2,900
186+%	300	4.4	3.4 - 5.6	7,100	95.6	94.4 - 96.6	7,400

**PRAMS Health Indicator 3-Year Aggregate Report - Illicit drug use 1 month before pregnancy- by State;County;DOH Race-Ethnicity;PRAMS Age Group;Infant Gender;Married;Poverty Level;Income (2000-2003);Income (2004-2011);Birthweight;Smoke 3rd Trimester;Smoke Before Pregnant;WIC During Pregnancy, for the Year(s)
2000-2002;2001-2003;2002-2004;2003-2005;2004-2006;2005-2007;2006-2008;2007-2009;2008-2010;2009-2011;2010-2012;2011-2013**

Note: Weighted counts (#) represent 3-yr averages, rounded to the nearest hundred; n/r (Not Reportable) - If the unweighted total responses for a dimension (row) is <30 that row will not be shown

Years: 2010-2012

Birthweight	Yes			No			Weighted Total Responses (3-Yr Avg)
	#	%	C.I.(95%)	#	%	C.I.(95%)	#
Low birth weight	100	6.5	5.1 - 8.3	1,200	93.5	91.7 - 94.9	1,200
Normal birth weight	1,100	6.4	5.5 - 7.4	15,600	93.6	92.6 - 94.5	16,700

Smoke 3rd Trimester	Yes			No			Weighted Total Responses (3-Yr Avg)
	#	%	C.I.(95%)	#	%	C.I.(95%)	#
Yes	200	19.9	14.5 - 26.7	800	80.1	73.3 - 85.5	1,000
No	900	5.4	4.6 - 6.3	15,700	94.6	93.7 - 95.4	16,600

Smoke Before Pregnant	Yes			No			Weighted Total Responses (3-Yr Avg)
	#	%	C.I.(95%)	#	%	C.I.(95%)	#
Yes	500	16.0	13.2 - 19.2	2,800	84.0	80.8 - 86.8	3,400
No	600	4.0	3.3 - 4.9	13,700	96.0	95.1 - 96.7	14,300

**PRAMS Health Indicator 3-Year Aggregate Report - Illicit drug use 1 month before pregnancy- by State;County;DOH Race-Ethnicity;PRAMS Age Group;Infant Gender;Married;Poverty Level;Income (2000-2003);Income (2004-2011);Birthweight;Smoke 3rd Trimester;Smoke Before Pregnant;WIC During Pregnancy, for the Year(s)
2000-2002;2001-2003;2002-2004;2003-2005;2004-2006;2005-2007;2006-2008;2007-2009;2008-2010;2009-2011;2010-2012;2011-2013**

Note: Weighted counts (#) represent 3-yr averages, rounded to the nearest hundred; n/r (Not Reportable) - If the unweighted total responses for a dimension (row) is <30 that row will not be shown

Years: 2010-2012

WIC During Pregnancy	Yes			No			Weighted Total Responses (3-Yr Avg)
	#	%	C.I.(95%)	#	%	C.I.(95%)	#
Yes	600	7.5	6.3 - 9.0	7,400	92.5	91.0 - 93.7	8,000
No	500	5.3	4.3 - 6.5	9,200	94.7	93.5 - 95.7	9,700

**PRAMS Health Indicator 3-Year Aggregate Report - Illicit drug use 1 month before pregnancy- by State;County;DOH Race-Ethnicity;PRAMS Age Group;Infant Gender;Married;Poverty Level;Income (2000-2003);Income (2004-2011);Birthweight;Smoke 3rd Trimester;Smoke Before Pregnant;WIC During Pregnancy, for the Year(s)
2000-2002;2001-2003;2002-2004;2003-2005;2004-2006;2005-2007;2006-2008;2007-2009;2008-2010;2009-2011;2010-2012;2011-2013**

Note: Weighted counts (#) represent 3-yr averages, rounded to the nearest hundred; n/r (Not Reportable) - If the unweighted total responses for a dimension (row) is <30 that row will not be shown

Years: 2009-2011

State	Yes			No			Weighted Total Responses (3-Yr Avg)
	#	%	C.I.(95%)	#	%	C.I.(95%)	#
Totals	1,200	6.5	5.7 - 7.4	16,900	93.5	92.6 - 94.3	18,100

County	Yes			No			Weighted Total Responses (3-Yr Avg)
	#	%	C.I.(95%)	#	%	C.I.(95%)	#
Hawaii	200	10.0	8.4 - 11.9	2,100	90.0	88.1 - 91.6	2,300
Honolulu	600	5.0	4.0 - 6.2	12,300	95.0	93.8 - 96.0	12,900
Kauai	100	9.6	7.7 - 11.9	800	90.4	88.1 - 92.3	800
Maui	200	11.1	9.5 - 12.9	1,800	88.9	87.1 - 90.5	2,000

**PRAMS Health Indicator 3-Year Aggregate Report - Illicit drug use 1 month before pregnancy- by State;County;DOH Race-Ethnicity;PRAMS Age Group;Infant Gender;Married;Poverty Level;Income (2000-2003);Income (2004-2011);Birthweight;Smoke 3rd Trimester;Smoke Before Pregnant;WIC During Pregnancy, for the Year(s)
2000-2002;2001-2003;2002-2004;2003-2005;2004-2006;2005-2007;2006-2008;2007-2009;2008-2010;2009-2011;2010-2012;2011-2013**

Note: Weighted counts (#) represent 3-yr averages, rounded to the nearest hundred; n/r (Not Reportable) - If the unweighted total responses for a dimension (row) is <30 that row will not be shown

Years: 2009-2011

DOH Race-Ethnicity	Yes			No			Weighted Total Responses (3-Yr Avg)
	#	%	C.I.(95%)	#	%	C.I.(95%)	#
Caucasian	400	9.0	7.3 - 11.1	4,000	91.0	88.9 - 92.7	4,400
Native Hawaiian	500	8.3	6.7 - 10.1	5,100	91.7	89.9 - 93.3	5,500
Chinese	<50	2.0	0.6 - 6.2	700	98.0	93.8 - 99.4	700
Filipino	100	4.6	2.9 - 7.0	3,100	95.4	93.0 - 97.1	3,200
Japanese	<50	2.6	1.3 - 4.9	1,700	97.4	95.1 - 98.7	1,700
Other	100	4.9	3.2 - 7.5	2,500	95.1	92.5 - 96.8	2,600

PRAMS Age Group	Yes			No			Weighted Total Responses (3-Yr Avg)
	#	%	C.I.(95%)	#	%	C.I.(95%)	#
<20	200	11.5	8.1 - 16.1	1,200	88.5	83.9 - 91.9	1,300
20-24	400	9.3	7.4 - 11.7	3,900	90.7	88.3 - 92.6	4,300
25-34	500	5.5	4.5 - 6.7	8,800	94.5	93.3 - 95.5	9,300
35+	100	3.7	2.4 - 5.6	3,000	96.3	94.4 - 97.6	3,100

**PRAMS Health Indicator 3-Year Aggregate Report - Illicit drug use 1 month before pregnancy- by State;County;DOH Race-Ethnicity;PRAMS Age Group;Infant Gender;Married;Poverty Level;Income (2000-2003);Income (2004-2011);Birthweight;Smoke 3rd Trimester;Smoke Before Pregnant;WIC During Pregnancy, for the Year(s)
2000-2002;2001-2003;2002-2004;2003-2005;2004-2006;2005-2007;2006-2008;2007-2009;2008-2010;2009-2011;2010-2012;2011-2013**

Note: Weighted counts (#) represent 3-yr averages, rounded to the nearest hundred; n/r (Not Reportable) - If the unweighted total responses for a dimension (row) is <30 that row will not be shown

Years: 2009-2011

Infant Gender	Yes			No			Weighted Total Responses (3-Yr Avg)
	#	%	C.I.(95%)	#	%	C.I.(95%)	#
Male	500	5.9	4.9 - 7.1	8,800	94.1	92.9 - 95.1	9,300
Female	600	7.2	6.0 - 8.6	8,100	92.8	91.4 - 94.0	8,800

Married	Yes			No			Weighted Total Responses (3-Yr Avg)
	#	%	C.I.(95%)	#	%	C.I.(95%)	#
Yes	400	3.7	2.9 - 4.6	10,600	96.3	95.4 - 97.1	11,100
No	800	11.0	9.4 - 12.8	6,300	89.0	87.2 - 90.6	7,000

Poverty Level	Yes			No			Weighted Total Responses (3-Yr Avg)
	#	%	C.I.(95%)	#	%	C.I.(95%)	#
0-130%	600	8.8	7.3 - 10.5	5,900	91.2	89.5 - 92.7	6,500
131-185%	200	6.9	4.8 - 9.7	2,600	93.1	90.3 - 95.2	2,800
186+%	400	4.6	3.6 - 5.9	7,300	95.4	94.1 - 96.4	7,700

**PRAMS Health Indicator 3-Year Aggregate Report - Illicit drug use 1 month before pregnancy- by State;County;DOH Race-Ethnicity;PRAMS Age Group;Infant Gender;Married;Poverty Level;Income (2000-2003);Income (2004-2011);Birthweight;Smoke 3rd Trimester;Smoke Before Pregnant;WIC During Pregnancy, for the Year(s)
2000-2002;2001-2003;2002-2004;2003-2005;2004-2006;2005-2007;2006-2008;2007-2009;2008-2010;2009-2011;2010-2012;2011-2013**

Note: Weighted counts (#) represent 3-yr averages, rounded to the nearest hundred; n/r (Not Reportable) - If the unweighted total responses for a dimension (row) is <30 that row will not be shown

Years: 2009-2011

Income (2004-2011)	Yes			No			Weighted Total Responses (3-Yr Avg)
	#	%	C.I.(95%)	#	%	C.I.(95%)	#
<\$10,000	400	11.1	8.7 - 14.0	2,900	88.9	86.0 - 91.3	3,300
\$10,000-\$24,999	300	8.5	6.6 - 10.8	3,200	91.5	89.2 - 93.4	3,500
\$25,000-\$49,999	200	5.1	3.8 - 6.9	4,100	94.9	93.1 - 96.2	4,300
>=\$50,000	300	4.2	3.1 - 5.6	5,800	95.8	94.4 - 96.9	6,100

Birthweight	Yes			No			Weighted Total Responses (3-Yr Avg)
	#	%	C.I.(95%)	#	%	C.I.(95%)	#
Low birth weight	100	5.6	4.3 - 7.3	1,200	94.4	92.7 - 95.7	1,300
Normal birth weight	1,100	6.6	5.8 - 7.6	15,600	93.4	92.4 - 94.2	16,700

Smoke 3rd Trimester	Yes			No			Weighted Total Responses (3-Yr Avg)
	#	%	C.I.(95%)	#	%	C.I.(95%)	#
Yes	200	18.3	13.8 - 23.8	1,100	81.7	76.2 - 86.2	1,400
No	900	5.4	4.6 - 6.2	15,600	94.6	93.8 - 95.4	16,500

**PRAMS Health Indicator 3-Year Aggregate Report - Illicit drug use 1 month before pregnancy- by State;County;DOH Race-Ethnicity;PRAMS Age Group;Infant Gender;Married;Poverty Level;Income (2000-2003);Income (2004-2011);Birthweight;Smoke 3rd Trimester;Smoke Before Pregnant;WIC During Pregnancy, for the Year(s)
2000-2002;2001-2003;2002-2004;2003-2005;2004-2006;2005-2007;2006-2008;2007-2009;2008-2010;2009-2011;2010-2012;2011-2013**

Note: Weighted counts (#) represent 3-yr averages, rounded to the nearest hundred; n/r (Not Reportable) - If the unweighted total responses for a dimension (row) is <30 that row will not be shown

Years: 2009-2011

Smoke Before Pregnant	Yes			No			Weighted Total Responses (3-Yr Avg)
	#	%	C.I.(95%)	#	%	C.I.(95%)	#
Yes	600	15.1	12.6 - 18.0	3,200	84.9	82.0 - 87.4	3,800
No	600	4.0	3.3 - 4.9	13,500	96.0	95.1 - 96.7	14,100

WIC During Pregnancy	Yes			No			Weighted Total Responses (3-Yr Avg)
	#	%	C.I.(95%)	#	%	C.I.(95%)	#
Yes	600	8.2	6.8 - 9.7	7,200	91.8	90.3 - 93.2	7,800
No	500	5.0	4.1 - 6.1	9,500	95.0	93.9 - 95.9	10,000

**PRAMS Health Indicator 3-Year Aggregate Report - Illicit drug use 1 month before pregnancy- by State;County;DOH Race-Ethnicity;PRAMS Age Group;Infant Gender;Married;Poverty Level;Income (2000-2003);Income (2004-2011);Birthweight;Smoke 3rd Trimester;Smoke Before Pregnant;WIC During Pregnancy, for the Year(s)
2000-2002;2001-2003;2002-2004;2003-2005;2004-2006;2005-2007;2006-2008;2007-2009;2008-2010;2009-2011;2010-2012;2011-2013**

Note: Weighted counts (#) represent 3-yr averages, rounded to the nearest hundred; n/r (Not Reportable) - If the unweighted total responses for a dimension (row) is <30 that row will not be shown

Years: 2008-2010

State	Yes			No			Weighted Total Responses (3-Yr Avg)
	#	%	C.I.(95%)	#	%	C.I.(95%)	#
Totals	1,200	6.7	5.9 - 7.6	17,000	93.3	92.4 - 94.1	18,200

County	Yes			No			Weighted Total Responses (3-Yr Avg)
	#	%	C.I.(95%)	#	%	C.I.(95%)	#
Hawaii	200	9.1	7.4 - 11.2	2,200	90.9	88.8 - 92.6	2,400
Honolulu	700	5.3	4.3 - 6.4	12,200	94.7	93.6 - 95.7	12,900
Kauai	100	9.5	7.1 - 12.6	800	90.5	87.4 - 92.9	800
Maui	200	11.8	9.8 - 14.2	1,800	88.2	85.8 - 90.2	2,100

**PRAMS Health Indicator 3-Year Aggregate Report - Illicit drug use 1 month before pregnancy- by State;County;DOH Race-Ethnicity;PRAMS Age Group;Infant Gender;Married;Poverty Level;Income (2000-2003);Income (2004-2011);Birthweight;Smoke 3rd Trimester;Smoke Before Pregnant;WIC During Pregnancy, for the Year(s)
2000-2002;2001-2003;2002-2004;2003-2005;2004-2006;2005-2007;2006-2008;2007-2009;2008-2010;2009-2011;2010-2012;2011-2013**

Note: Weighted counts (#) represent 3-yr averages, rounded to the nearest hundred; n/r (Not Reportable) - If the unweighted total responses for a dimension (row) is <30 that row will not be shown

Years: 2008-2010

DOH Race-Ethnicity	Yes			No			Weighted Total Responses (3-Yr Avg)
	#	%	C.I.(95%)	#	%	C.I.(95%)	#
Caucasian	400	8.5	7.0 - 10.4	4,000	91.5	89.6 - 93.0	4,300
Native Hawaiian	500	9.4	7.8 - 11.3	5,000	90.6	88.7 - 92.2	5,500
Chinese	<50	1.0	0.5 - 2.2	700	99.0	97.8 - 99.5	700
Filipino	100	3.8	2.5 - 5.9	3,100	96.2	94.1 - 97.5	3,300
Japanese	100	5.0	3.2 - 7.8	1,700	95.0	92.2 - 96.8	1,800
Other	100	4.5	2.9 - 6.9	2,600	95.5	93.1 - 97.1	2,700

PRAMS Age Group	Yes			No			Weighted Total Responses (3-Yr Avg)
	#	%	C.I.(95%)	#	%	C.I.(95%)	#
<20	200	11.5	8.4 - 15.5	1,300	88.5	84.5 - 91.6	1,500
20-24	400	9.5	7.6 - 11.8	3,800	90.5	88.2 - 92.4	4,200
25-34	500	5.5	4.5 - 6.6	8,800	94.5	93.4 - 95.5	9,300
35+	100	4.6	3.2 - 6.6	3,100	95.4	93.4 - 96.8	3,200

**PRAMS Health Indicator 3-Year Aggregate Report - Illicit drug use 1 month before pregnancy- by State;County;DOH Race-Ethnicity;PRAMS Age Group;Infant Gender;Married;Poverty Level;Income (2000-2003);Income (2004-2011);Birthweight;Smoke 3rd Trimester;Smoke Before Pregnant;WIC During Pregnancy, for the Year(s)
2000-2002;2001-2003;2002-2004;2003-2005;2004-2006;2005-2007;2006-2008;2007-2009;2008-2010;2009-2011;2010-2012;2011-2013**

Note: Weighted counts (#) represent 3-yr averages, rounded to the nearest hundred; n/r (Not Reportable) - If the unweighted total responses for a dimension (row) is <30 that row will not be shown

Years: 2008-2010

Infant Gender	Yes			No			Weighted Total Responses (3-Yr Avg)
	#	%	C.I.(95%)	#	%	C.I.(95%)	#
Male	600	6.2	5.2 - 7.4	8,900	93.8	92.6 - 94.8	9,500
Female	600	7.3	6.1 - 8.6	8,100	92.7	91.4 - 93.9	8,700

Married	Yes			No			Weighted Total Responses (3-Yr Avg)
	#	%	C.I.(95%)	#	%	C.I.(95%)	#
Yes	400	3.9	3.1 - 4.8	10,700	96.1	95.2 - 96.9	11,100
No	800	11.2	9.6 - 13.0	6,300	88.8	87.0 - 90.4	7,100

Poverty Level	Yes			No			Weighted Total Responses (3-Yr Avg)
	#	%	C.I.(95%)	#	%	C.I.(95%)	#
0-130%	600	9.5	8.0 - 11.2	5,900	90.5	88.8 - 92.0	6,600
131-185%	200	6.4	4.5 - 9.0	2,600	93.6	91.0 - 95.5	2,800
186+%	400	4.9	3.9 - 6.1	7,200	95.1	93.9 - 96.1	7,600

**PRAMS Health Indicator 3-Year Aggregate Report - Illicit drug use 1 month before pregnancy- by State;County;DOH Race-Ethnicity;PRAMS Age Group;Infant Gender;Married;Poverty Level;Income (2000-2003);Income (2004-2011);Birthweight;Smoke 3rd Trimester;Smoke Before Pregnant;WIC During Pregnancy, for the Year(s)
2000-2002;2001-2003;2002-2004;2003-2005;2004-2006;2005-2007;2006-2008;2007-2009;2008-2010;2009-2011;2010-2012;2011-2013**

Note: Weighted counts (#) represent 3-yr averages, rounded to the nearest hundred; n/r (Not Reportable) - If the unweighted total responses for a dimension (row) is <30 that row will not be shown

Years: 2008-2010

Income (2004-2011)	Yes			No			Weighted Total Responses (3-Yr Avg)
	#	%	C.I.(95%)	#	%	C.I.(95%)	#
<\$10,000	400	11.7	9.3 - 14.5	2,800	88.3	85.5 - 90.7	3,200
\$10,000-\$24,999	300	8.7	6.9 - 11.0	3,400	91.3	89.0 - 93.1	3,700
\$25,000-\$49,999	200	5.7	4.3 - 7.5	3,900	94.3	92.5 - 95.7	4,100
>=\$50,000	300	4.2	3.2 - 5.5	5,800	95.8	94.5 - 96.8	6,100

Birthweight	Yes			No			Weighted Total Responses (3-Yr Avg)
	#	%	C.I.(95%)	#	%	C.I.(95%)	#
Low birth weight	100	4.5	3.1 - 6.4	1,200	95.5	93.6 - 96.9	1,300
Normal birth weight	1,200	6.9	6.1 - 7.8	15,700	93.1	92.2 - 93.9	16,900

Smoke 3rd Trimester	Yes			No			Weighted Total Responses (3-Yr Avg)
	#	%	C.I.(95%)	#	%	C.I.(95%)	#
Yes	300	18.7	14.7 - 23.6	1,300	81.3	76.4 - 85.3	1,600
No	900	5.5	4.7 - 6.3	15,400	94.5	93.7 - 95.3	16,300

**PRAMS Health Indicator 3-Year Aggregate Report - Illicit drug use 1 month before pregnancy- by State;County;DOH Race-Ethnicity;PRAMS Age Group;Infant Gender;Married;Poverty Level;Income (2000-2003);Income (2004-2011);Birthweight;Smoke 3rd Trimester;Smoke Before Pregnant;WIC During Pregnancy, for the Year(s)
2000-2002;2001-2003;2002-2004;2003-2005;2004-2006;2005-2007;2006-2008;2007-2009;2008-2010;2009-2011;2010-2012;2011-2013**

Note: Weighted counts (#) represent 3-yr averages, rounded to the nearest hundred; n/r (Not Reportable) - If the unweighted total responses for a dimension (row) is <30 that row will not be shown

Years: 2008-2010

Smoke Before Pregnant	Yes			No			Weighted Total Responses (3-Yr Avg)
	#	%	C.I.(95%)	#	%	C.I.(95%)	#
Yes	600	15.9	13.4 - 18.7	3,200	84.1	81.3 - 86.6	3,700
No	600	4.2	3.5 - 5.0	13,500	95.8	95.0 - 96.5	14,100

WIC During Pregnancy	Yes			No			Weighted Total Responses (3-Yr Avg)
	#	%	C.I.(95%)	#	%	C.I.(95%)	#
Yes	700	8.8	7.4 - 10.4	7,100	91.2	89.6 - 92.6	7,800
No	500	5.0	4.2 - 6.0	9,600	95.0	94.0 - 95.8	10,100

**PRAMS Health Indicator 3-Year Aggregate Report - Illicit drug use 1 month before pregnancy- by State;County;DOH Race-Ethnicity;PRAMS Age Group;Infant Gender;Married;Poverty Level;Income (2000-2003);Income (2004-2011);Birthweight;Smoke 3rd Trimester;Smoke Before Pregnant;WIC During Pregnancy, for the Year(s)
2000-2002;2001-2003;2002-2004;2003-2005;2004-2006;2005-2007;2006-2008;2007-2009;2008-2010;2009-2011;2010-2012;2011-2013**

Note: Weighted counts (#) represent 3-yr averages, rounded to the nearest hundred; n/r (Not Reportable) - If the unweighted total responses for a dimension (row) is <30 that row will not be shown

Years: 2007-2009

State	Yes			No			Weighted Total Responses (3-Yr Avg)
	#	%	C.I.(95%)	#	%	C.I.(95%)	#
Totals	1,200	6.8	6.1 - 7.6	17,000	93.2	92.4 - 93.9	18,300

County	Yes			No			Weighted Total Responses (3-Yr Avg)
	#	%	C.I.(95%)	#	%	C.I.(95%)	#
Hawaii	200	8.3	6.6 - 10.4	2,200	91.7	89.6 - 93.4	2,400
Honolulu	700	5.5	4.6 - 6.5	12,100	94.5	93.5 - 95.4	12,800
Kauai	100	9.0	6.4 - 12.7	800	91.0	87.3 - 93.6	900
Maui	300	12.1	9.8 - 14.8	1,900	87.9	85.2 - 90.2	2,100

**PRAMS Health Indicator 3-Year Aggregate Report - Illicit drug use 1 month before pregnancy- by State;County;DOH Race-Ethnicity;PRAMS Age Group;Infant Gender;Married;Poverty Level;Income (2000-2003);Income (2004-2011);Birthweight;Smoke 3rd Trimester;Smoke Before Pregnant;WIC During Pregnancy, for the Year(s)
2000-2002;2001-2003;2002-2004;2003-2005;2004-2006;2005-2007;2006-2008;2007-2009;2008-2010;2009-2011;2010-2012;2011-2013**

Note: Weighted counts (#) represent 3-yr averages, rounded to the nearest hundred; n/r (Not Reportable) - If the unweighted total responses for a dimension (row) is <30 that row will not be shown

Years: 2007-2009

DOH Race-Ethnicity	Yes			No			Weighted Total Responses (3-Yr Avg)
	#	%	C.I.(95%)	#	%	C.I.(95%)	#
Caucasian	400	8.7	7.2 - 10.5	3,800	91.3	89.5 - 92.8	4,200
Native Hawaiian	500	10.2	8.5 - 12.1	4,800	89.8	87.9 - 91.5	5,400
Chinese	<50	1.8	1.0 - 3.4	700	98.2	96.6 - 99.0	700
Filipino	100	3.5	2.3 - 5.2	3,200	96.5	94.8 - 97.7	3,300
Japanese	100	5.5	3.8 - 8.0	1,800	94.5	92.0 - 96.2	1,900
Other	100	3.4	2.3 - 5.0	2,700	96.6	95.0 - 97.7	2,800

PRAMS Age Group	Yes			No			Weighted Total Responses (3-Yr Avg)
	#	%	C.I.(95%)	#	%	C.I.(95%)	#
<20	200	12.0	8.9 - 16.0	1,500	88.0	84.0 - 91.1	1,700
20-24	400	8.9	7.2 - 10.9	3,900	91.1	89.1 - 92.8	4,300
25-34	500	5.8	4.9 - 6.9	8,600	94.2	93.1 - 95.1	9,200
35+	100	4.0	2.8 - 5.7	3,000	96.0	94.3 - 97.2	3,200

**PRAMS Health Indicator 3-Year Aggregate Report - Illicit drug use 1 month before pregnancy- by State;County;DOH Race-Ethnicity;PRAMS Age Group;Infant Gender;Married;Poverty Level;Income (2000-2003);Income (2004-2011);Birthweight;Smoke 3rd Trimester;Smoke Before Pregnant;WIC During Pregnancy, for the Year(s)
2000-2002;2001-2003;2002-2004;2003-2005;2004-2006;2005-2007;2006-2008;2007-2009;2008-2010;2009-2011;2010-2012;2011-2013**

Note: Weighted counts (#) represent 3-yr averages, rounded to the nearest hundred; n/r (Not Reportable) - If the unweighted total responses for a dimension (row) is <30 that row will not be shown

Years: 2007-2009

Infant Gender	Yes			No			Weighted Total Responses (3-Yr Avg)
	#	%	C.I.(95%)	#	%	C.I.(95%)	#
Male	600	6.0	5.1 - 7.1	9,000	94.0	92.9 - 94.9	9,600
Female	700	7.6	6.5 - 8.9	8,000	92.4	91.1 - 93.5	8,700

Married	Yes			No			Weighted Total Responses (3-Yr Avg)
	#	%	C.I.(95%)	#	%	C.I.(95%)	#
Yes	400	3.8	3.2 - 4.6	10,700	96.2	95.4 - 96.8	11,200
No	800	11.5	9.9 - 13.2	6,300	88.5	86.8 - 90.1	7,100

Poverty Level	Yes			No			Weighted Total Responses (3-Yr Avg)
	#	%	C.I.(95%)	#	%	C.I.(95%)	#
0-130%	700	9.8	8.4 - 11.4	6,100	90.2	88.6 - 91.6	6,700
131-185%	100	5.4	3.7 - 7.6	2,600	94.6	92.4 - 96.3	2,700
186+%	400	5.0	4.1 - 6.1	7,100	95.0	93.9 - 95.9	7,500

**PRAMS Health Indicator 3-Year Aggregate Report - Illicit drug use 1 month before pregnancy- by State;County;DOH Race-Ethnicity;PRAMS Age Group;Infant Gender;Married;Poverty Level;Income (2000-2003);Income (2004-2011);Birthweight;Smoke 3rd Trimester;Smoke Before Pregnant;WIC During Pregnancy, for the Year(s)
2000-2002;2001-2003;2002-2004;2003-2005;2004-2006;2005-2007;2006-2008;2007-2009;2008-2010;2009-2011;2010-2012;2011-2013**

Note: Weighted counts (#) represent 3-yr averages, rounded to the nearest hundred; n/r (Not Reportable) - If the unweighted total responses for a dimension (row) is <30 that row will not be shown

Years: 2007-2009

Income (2004-2011)	Yes			No			Weighted Total Responses (3-Yr Avg)
	#	%	C.I.(95%)	#	%	C.I.(95%)	#
<\$10,000	400	12.1	9.8 - 14.9	2,700	87.9	85.1 - 90.2	3,100
\$10,000-\$24,999	300	8.7	7.0 - 10.8	3,500	91.3	89.2 - 93.0	3,900
\$25,000-\$49,999	200	5.2	4.1 - 6.7	3,800	94.8	93.3 - 95.9	4,000
>=\$50,000	300	4.2	3.3 - 5.4	5,800	95.8	94.6 - 96.7	6,000

Birthweight	Yes			No			Weighted Total Responses (3-Yr Avg)
	#	%	C.I.(95%)	#	%	C.I.(95%)	#
Low birth weight	100	5.4	3.5 - 8.1	1,300	94.6	91.9 - 96.5	1,400
Normal birth weight	1,200	6.9	6.2 - 7.8	15,700	93.1	92.2 - 93.8	16,900

Smoke 3rd Trimester	Yes			No			Weighted Total Responses (3-Yr Avg)
	#	%	C.I.(95%)	#	%	C.I.(95%)	#
Yes	300	21.1	17.1 - 25.8	1,300	78.9	74.2 - 82.9	1,600
No	900	5.3	4.6 - 6.1	15,400	94.7	93.9 - 95.4	16,300

**PRAMS Health Indicator 3-Year Aggregate Report - Illicit drug use 1 month before pregnancy- by State;County;DOH Race-Ethnicity;PRAMS Age Group;Infant Gender;Married;Poverty Level;Income (2000-2003);Income (2004-2011);Birthweight;Smoke 3rd Trimester;Smoke Before Pregnant;WIC During Pregnancy, for the Year(s)
2000-2002;2001-2003;2002-2004;2003-2005;2004-2006;2005-2007;2006-2008;2007-2009;2008-2010;2009-2011;2010-2012;2011-2013**

Note: Weighted counts (#) represent 3-yr averages, rounded to the nearest hundred; n/r (Not Reportable) - If the unweighted total responses for a dimension (row) is <30 that row will not be shown

Years: 2007-2009

Smoke Before Pregnant	Yes			No			Weighted Total Responses (3-Yr Avg)
	#	%	C.I.(95%)	#	%	C.I.(95%)	#
Yes	700	18.1	15.6 - 20.9	3,000	81.9	79.1 - 84.4	3,700
No	500	3.8	3.2 - 4.5	13,700	96.2	95.5 - 96.8	14,200

WIC During Pregnancy	Yes			No			Weighted Total Responses (3-Yr Avg)
	#	%	C.I.(95%)	#	%	C.I.(95%)	#
Yes	700	8.9	7.6 - 10.4	6,900	91.1	89.6 - 92.4	7,600
No	500	5.2	4.4 - 6.1	9,700	94.8	93.9 - 95.6	10,300

**PRAMS Health Indicator 3-Year Aggregate Report - Illicit drug use 1 month before pregnancy- by State;County;DOH Race-Ethnicity;PRAMS Age Group;Infant Gender;Married;Poverty Level;Income (2000-2003);Income (2004-2011);Birthweight;Smoke 3rd Trimester;Smoke Before Pregnant;WIC During Pregnancy, for the Year(s)
2000-2002;2001-2003;2002-2004;2003-2005;2004-2006;2005-2007;2006-2008;2007-2009;2008-2010;2009-2011;2010-2012;2011-2013**

Note: Weighted counts (#) represent 3-yr averages, rounded to the nearest hundred; n/r (Not Reportable) - If the unweighted total responses for a dimension (row) is <30 that row will not be shown

Years: 2006-2008

State	Yes			No			Weighted Total Responses (3-Yr Avg)
	#	%	C.I.(95%)	#	%	C.I.(95%)	#
Totals	1,200	6.5	5.8 - 7.2	17,200	93.5	92.8 - 94.2	18,400

County	Yes			No			Weighted Total Responses (3-Yr Avg)
	#	%	C.I.(95%)	#	%	C.I.(95%)	#
Hawaii	200	7.7	5.8 - 10.1	2,200	92.3	89.9 - 94.2	2,400
Honolulu	700	5.1	4.4 - 5.9	12,300	94.9	94.1 - 95.6	13,000
Kauai	100	11.5	8.0 - 16.3	800	88.5	83.7 - 92.0	900
Maui	200	11.7	9.2 - 14.7	1,900	88.3	85.3 - 90.8	2,100

**PRAMS Health Indicator 3-Year Aggregate Report - Illicit drug use 1 month before pregnancy- by State;County;DOH Race-Ethnicity;PRAMS Age Group;Infant Gender;Married;Poverty Level;Income (2000-2003);Income (2004-2011);Birthweight;Smoke 3rd Trimester;Smoke Before Pregnant;WIC During Pregnancy, for the Year(s)
2000-2002;2001-2003;2002-2004;2003-2005;2004-2006;2005-2007;2006-2008;2007-2009;2008-2010;2009-2011;2010-2012;2011-2013**

Note: Weighted counts (#) represent 3-yr averages, rounded to the nearest hundred; n/r (Not Reportable) - If the unweighted total responses for a dimension (row) is <30 that row will not be shown

Years: 2006-2008

DOH Race-Ethnicity	Yes			No			Weighted Total Responses (3-Yr Avg)
	#	%	C.I.(95%)	#	%	C.I.(95%)	#
Caucasian	300	7.8	6.4 - 9.5	3,900	92.2	90.5 - 93.6	4,200
Native Hawaiian	500	10.2	8.6 - 12.1	4,600	89.8	87.9 - 91.4	5,100
Chinese	<50	2.1	1.2 - 3.8	600	97.9	96.2 - 98.8	600
Filipino	100	2.9	2.0 - 4.1	3,300	97.1	95.9 - 98.0	3,400
Japanese	100	5.3	3.7 - 7.6	2,000	94.7	92.4 - 96.3	2,100
Other	100	3.9	2.8 - 5.6	2,800	96.1	94.4 - 97.2	2,900

PRAMS Age Group	Yes			No			Weighted Total Responses (3-Yr Avg)
	#	%	C.I.(95%)	#	%	C.I.(95%)	#
<20	200	11.3	8.4 - 15.0	1,400	88.7	85.0 - 91.6	1,600
20-24	400	9.1	7.6 - 11.0	4,000	90.9	89.0 - 92.4	4,400
25-34	500	5.5	4.6 - 6.4	8,700	94.5	93.6 - 95.4	9,200
35+	100	3.5	2.5 - 4.9	3,200	96.5	95.1 - 97.5	3,300

**PRAMS Health Indicator 3-Year Aggregate Report - Illicit drug use 1 month before pregnancy- by State;County;DOH Race-Ethnicity;PRAMS Age Group;Infant Gender;Married;Poverty Level;Income (2000-2003);Income (2004-2011);Birthweight;Smoke 3rd Trimester;Smoke Before Pregnant;WIC During Pregnancy, for the Year(s)
2000-2002;2001-2003;2002-2004;2003-2005;2004-2006;2005-2007;2006-2008;2007-2009;2008-2010;2009-2011;2010-2012;2011-2013**

Note: Weighted counts (#) represent 3-yr averages, rounded to the nearest hundred; n/r (Not Reportable) - If the unweighted total responses for a dimension (row) is <30 that row will not be shown

Years: 2006-2008

Infant Gender	Yes			No			Weighted Total Responses (3-Yr Avg)
	#	%	C.I.(95%)	#	%	C.I.(95%)	#
Male	600	5.9	5.1 - 6.9	8,900	94.1	93.1 - 94.9	9,500
Female	600	7.1	6.1 - 8.2	8,200	92.9	91.8 - 93.9	8,900

Married	Yes			No			Weighted Total Responses (3-Yr Avg)
	#	%	C.I.(95%)	#	%	C.I.(95%)	#
Yes	400	3.8	3.2 - 4.5	11,100	96.2	95.5 - 96.8	11,500
No	800	11.0	9.5 - 12.6	6,100	89.0	87.4 - 90.5	6,900

Poverty Level	Yes			No			Weighted Total Responses (3-Yr Avg)
	#	%	C.I.(95%)	#	%	C.I.(95%)	#
0-130%	600	9.3	7.9 - 10.8	6,100	90.7	89.2 - 92.1	6,700
131-185%	100	4.8	3.5 - 6.7	2,500	95.2	93.3 - 96.5	2,600
186+%	400	5.0	4.2 - 6.0	7,400	95.0	94.0 - 95.8	7,800

**PRAMS Health Indicator 3-Year Aggregate Report - Illicit drug use 1 month before pregnancy- by State;County;DOH Race-Ethnicity;PRAMS Age Group;Infant Gender;Married;Poverty Level;Income (2000-2003);Income (2004-2011);Birthweight;Smoke 3rd Trimester;Smoke Before Pregnant;WIC During Pregnancy, for the Year(s)
2000-2002;2001-2003;2002-2004;2003-2005;2004-2006;2005-2007;2006-2008;2007-2009;2008-2010;2009-2011;2010-2012;2011-2013**

Note: Weighted counts (#) represent 3-yr averages, rounded to the nearest hundred; n/r (Not Reportable) - If the unweighted total responses for a dimension (row) is <30 that row will not be shown

Years: 2006-2008

Income (2004-2011)	Yes			No			Weighted Total Responses (3-Yr Avg)
	#	%	C.I.(95%)	#	%	C.I.(95%)	#
<\$10,000	300	11.1	9.0 - 13.6	2,800	88.9	86.4 - 91.0	3,100
\$10,000-\$24,999	300	8.3	6.7 - 10.2	3,500	91.7	89.8 - 93.3	3,900
\$25,000-\$49,999	200	5.7	4.5 - 7.3	4,000	94.3	92.7 - 95.5	4,200
>=\$50,000	200	3.8	3.0 - 4.9	5,800	96.2	95.1 - 97.0	6,000

Birthweight	Yes			No			Weighted Total Responses (3-Yr Avg)
	#	%	C.I.(95%)	#	%	C.I.(95%)	#
Low birth weight	100	6.2	4.1 - 9.3	1,400	93.8	90.7 - 95.9	1,400
Normal birth weight	1,100	6.5	5.8 - 7.3	15,800	93.5	92.7 - 94.2	16,900

Smoke 3rd Trimester	Yes			No			Weighted Total Responses (3-Yr Avg)
	#	%	C.I.(95%)	#	%	C.I.(95%)	#
Yes	400	22.6	18.6 - 27.1	1,200	77.4	72.9 - 81.4	1,600
No	800	4.9	4.3 - 5.6	15,700	95.1	94.4 - 95.7	16,500

**PRAMS Health Indicator 3-Year Aggregate Report - Illicit drug use 1 month before pregnancy- by State;County;DOH Race-Ethnicity;PRAMS Age Group;Infant Gender;Married;Poverty Level;Income (2000-2003);Income (2004-2011);Birthweight;Smoke 3rd Trimester;Smoke Before Pregnant;WIC During Pregnancy, for the Year(s)
2000-2002;2001-2003;2002-2004;2003-2005;2004-2006;2005-2007;2006-2008;2007-2009;2008-2010;2009-2011;2010-2012;2011-2013**

Note: Weighted counts (#) represent 3-yr averages, rounded to the nearest hundred; n/r (Not Reportable) - If the unweighted total responses for a dimension (row) is <30 that row will not be shown

Years: 2006-2008

Smoke Before Pregnant	Yes			No			Weighted Total Responses (3-Yr Avg)
	#	%	C.I.(95%)	#	%	C.I.(95%)	#
Yes	700	18.7	16.3 - 21.4	2,900	81.3	78.6 - 83.7	3,600
No	500	3.4	2.9 - 4.0	13,900	96.6	96.0 - 97.1	14,400

WIC During Pregnancy	Yes			No			Weighted Total Responses (3-Yr Avg)
	#	%	C.I.(95%)	#	%	C.I.(95%)	#
Yes	600	8.4	7.2 - 9.7	7,100	91.6	90.3 - 92.8	7,700
No	500	5.2	4.4 - 6.0	9,800	94.8	94.0 - 95.6	10,300

**PRAMS Health Indicator 3-Year Aggregate Report - Illicit drug use 1 month before pregnancy- by State;County;DOH Race-Ethnicity;PRAMS Age Group;Infant Gender;Married;Poverty Level;Income (2000-2003);Income (2004-2011);Birthweight;Smoke 3rd Trimester;Smoke Before Pregnant;WIC During Pregnancy, for the Year(s)
2000-2002;2001-2003;2002-2004;2003-2005;2004-2006;2005-2007;2006-2008;2007-2009;2008-2010;2009-2011;2010-2012;2011-2013**

Note: Weighted counts (#) represent 3-yr averages, rounded to the nearest hundred; n/r (Not Reportable) - If the unweighted total responses for a dimension (row) is <30 that row will not be shown

Years: 2005-2007

State	Yes			No			Weighted Total Responses (3-Yr Avg)
	#	%	C.I.(95%)	#	%	C.I.(95%)	#
Totals	1,100	6.2	5.5 - 6.9	16,800	93.8	93.1 - 94.5	18,000

County	Yes			No			Weighted Total Responses (3-Yr Avg)
	#	%	C.I.(95%)	#	%	C.I.(95%)	#
Hawaii	200	7.8	5.9 - 10.2	2,100	92.2	89.8 - 94.1	2,300
Honolulu	600	4.8	4.2 - 5.6	12,200	95.2	94.4 - 95.8	12,900
Kauai	100	12.7	8.9 - 17.8	800	87.3	82.2 - 91.1	900
Maui	200	10.4	8.0 - 13.5	1,700	89.6	86.5 - 92.0	1,900

**PRAMS Health Indicator 3-Year Aggregate Report - Illicit drug use 1 month before pregnancy- by State;County;DOH Race-Ethnicity;PRAMS Age Group;Infant Gender;Married;Poverty Level;Income (2000-2003);Income (2004-2011);Birthweight;Smoke 3rd Trimester;Smoke Before Pregnant;WIC During Pregnancy, for the Year(s)
2000-2002;2001-2003;2002-2004;2003-2005;2004-2006;2005-2007;2006-2008;2007-2009;2008-2010;2009-2011;2010-2012;2011-2013**

Note: Weighted counts (#) represent 3-yr averages, rounded to the nearest hundred; n/r (Not Reportable) - If the unweighted total responses for a dimension (row) is <30 that row will not be shown

Years: 2005-2007

DOH Race-Ethnicity	Yes			No			Weighted Total Responses (3-Yr Avg)
	#	%	C.I.(95%)	#	%	C.I.(95%)	#
Caucasian	300	7.9	6.4 - 9.6	3,700	92.1	90.4 - 93.6	4,000
Native Hawaiian	400	8.9	7.4 - 10.7	4,600	91.1	89.3 - 92.6	5,000
Chinese	<50	2.1	1.2 - 3.6	600	97.9	96.4 - 98.8	600
Filipino	100	3.3	2.3 - 4.5	3,200	96.7	95.5 - 97.7	3,300
Japanese	100	4.2	2.8 - 6.1	2,100	95.8	93.9 - 97.2	2,200
Other	100	4.9	3.6 - 6.7	2,600	95.1	93.3 - 96.4	2,800

PRAMS Age Group	Yes			No			Weighted Total Responses (3-Yr Avg)
	#	%	C.I.(95%)	#	%	C.I.(95%)	#
<20	200	9.9	7.2 - 13.4	1,400	90.1	86.6 - 92.8	1,600
20-24	400	8.9	7.4 - 10.7	4,000	91.1	89.3 - 92.6	4,400
25-34	500	5.4	4.6 - 6.4	8,400	94.6	93.6 - 95.4	8,800
35+	100	2.7	1.8 - 4.0	3,000	97.3	96.0 - 98.2	3,100

**PRAMS Health Indicator 3-Year Aggregate Report - Illicit drug use 1 month before pregnancy- by State;County;DOH Race-Ethnicity;PRAMS Age Group;Infant Gender;Married;Poverty Level;Income (2000-2003);Income (2004-2011);Birthweight;Smoke 3rd Trimester;Smoke Before Pregnant;WIC During Pregnancy, for the Year(s)
2000-2002;2001-2003;2002-2004;2003-2005;2004-2006;2005-2007;2006-2008;2007-2009;2008-2010;2009-2011;2010-2012;2011-2013**

Note: Weighted counts (#) represent 3-yr averages, rounded to the nearest hundred; n/r (Not Reportable) - If the unweighted total responses for a dimension (row) is <30 that row will not be shown

Years: 2005-2007

Infant Gender	Yes			No			Weighted Total Responses (3-Yr Avg)
	#	%	C.I.(95%)	#	%	C.I.(95%)	#
Male	500	5.7	4.9 - 6.7	8,700	94.3	93.3 - 95.1	9,200
Female	600	6.7	5.7 - 7.8	8,200	93.3	92.2 - 94.3	8,800

Married	Yes			No			Weighted Total Responses (3-Yr Avg)
	#	%	C.I.(95%)	#	%	C.I.(95%)	#
Yes	400	3.4	2.8 - 4.1	10,900	96.6	95.9 - 97.2	11,300
No	700	11.0	9.6 - 12.6	5,900	89.0	87.4 - 90.4	6,600

Poverty Level	Yes			No			Weighted Total Responses (3-Yr Avg)
	#	%	C.I.(95%)	#	%	C.I.(95%)	#
0-130%	600	9.3	8.0 - 10.8	5,900	90.7	89.2 - 92.0	6,500
131-185%	100	4.3	3.0 - 6.2	2,200	95.7	93.8 - 97.0	2,300
186+%	300	4.4	3.6 - 5.3	7,500	95.6	94.7 - 96.4	7,800

**PRAMS Health Indicator 3-Year Aggregate Report - Illicit drug use 1 month before pregnancy- by State;County;DOH Race-Ethnicity;PRAMS Age Group;Infant Gender;Married;Poverty Level;Income (2000-2003);Income (2004-2011);Birthweight;Smoke 3rd Trimester;Smoke Before Pregnant;WIC During Pregnancy, for the Year(s)
2000-2002;2001-2003;2002-2004;2003-2005;2004-2006;2005-2007;2006-2008;2007-2009;2008-2010;2009-2011;2010-2012;2011-2013**

Note: Weighted counts (#) represent 3-yr averages, rounded to the nearest hundred; n/r (Not Reportable) - If the unweighted total responses for a dimension (row) is <30 that row will not be shown

Years: 2005-2007

Income (2004-2011)	Yes			No			Weighted Total Responses (3-Yr Avg)
	#	%	C.I.(95%)	#	%	C.I.(95%)	#
<\$10,000	300	10.9	8.8 - 13.3	2,700	89.1	86.7 - 91.2	3,000
\$10,000-\$24,999	300	8.4	6.8 - 10.3	3,400	91.6	89.7 - 93.2	3,700
\$25,000-\$49,999	200	5.3	4.1 - 6.7	4,000	94.7	93.3 - 95.9	4,200
>=\$50,000	200	3.2	2.4 - 4.2	5,600	96.8	95.8 - 97.6	5,800

Birthweight	Yes			No			Weighted Total Responses (3-Yr Avg)
	#	%	C.I.(95%)	#	%	C.I.(95%)	#
Low birth weight	100	7.1	4.8 - 10.3	1,300	92.9	89.7 - 95.2	1,400
Normal birth weight	1,000	6.1	5.5 - 6.9	15,500	93.9	93.1 - 94.5	16,500

Smoke 3rd Trimester	Yes			No			Weighted Total Responses (3-Yr Avg)
	#	%	C.I.(95%)	#	%	C.I.(95%)	#
Yes	300	22.2	18.2 - 26.6	1,200	77.8	73.4 - 81.8	1,500
No	800	4.7	4.1 - 5.4	15,400	95.3	94.6 - 95.9	16,100

**PRAMS Health Indicator 3-Year Aggregate Report - Illicit drug use 1 month before pregnancy- by State;County;DOH Race-Ethnicity;PRAMS Age Group;Infant Gender;Married;Poverty Level;Income (2000-2003);Income (2004-2011);Birthweight;Smoke 3rd Trimester;Smoke Before Pregnant;WIC During Pregnancy, for the Year(s)
2000-2002;2001-2003;2002-2004;2003-2005;2004-2006;2005-2007;2006-2008;2007-2009;2008-2010;2009-2011;2010-2012;2011-2013**

Note: Weighted counts (#) represent 3-yr averages, rounded to the nearest hundred; n/r (Not Reportable) - If the unweighted total responses for a dimension (row) is <30 that row will not be shown

Years: 2005-2007

Smoke Before Pregnant	Yes			No			Weighted Total Responses (3-Yr Avg)
	#	%	C.I.(95%)	#	%	C.I.(95%)	#
Yes	700	18.5	16.1 - 21.1	3,000	81.5	78.9 - 83.9	3,700
No	400	3.0	2.5 - 3.6	13,600	97.0	96.4 - 97.5	14,000

WIC During Pregnancy	Yes			No			Weighted Total Responses (3-Yr Avg)
	#	%	C.I.(95%)	#	%	C.I.(95%)	#
Yes	600	8.5	7.3 - 9.8	6,900	91.5	90.2 - 92.7	7,500
No	500	4.6	3.9 - 5.4	9,600	95.4	94.6 - 96.1	10,100

**PRAMS Health Indicator 3-Year Aggregate Report - Illicit drug use 1 month before pregnancy- by State;County;DOH Race-Ethnicity;PRAMS Age Group;Infant Gender;Married;Poverty Level;Income (2000-2003);Income (2004-2011);Birthweight;Smoke 3rd Trimester;Smoke Before Pregnant;WIC During Pregnancy, for the Year(s)
2000-2002;2001-2003;2002-2004;2003-2005;2004-2006;2005-2007;2006-2008;2007-2009;2008-2010;2009-2011;2010-2012;2011-2013**

Note: Weighted counts (#) represent 3-yr averages, rounded to the nearest hundred; n/r (Not Reportable) - If the unweighted total responses for a dimension (row) is <30 that row will not be shown

Years: 2004-2006

State	Yes			No			Weighted Total Responses (3-Yr Avg)
	#	%	C.I.(95%)	#	%	C.I.(95%)	#
Totals	1,100	5.9	5.3 - 6.6	16,600	94.1	93.4 - 94.7	17,700

County	Yes			No			Weighted Total Responses (3-Yr Avg)
	#	%	C.I.(95%)	#	%	C.I.(95%)	#
Hawaii	200	9.6	7.5 - 12.3	2,000	90.4	87.7 - 92.5	2,200
Honolulu	500	4.3	3.6 - 5.0	12,300	95.7	95.0 - 96.4	12,900
Kauai	100	13.6	9.5 - 19.1	700	86.4	80.9 - 90.5	800
Maui	200	10.1	7.7 - 13.1	1,600	89.9	86.9 - 92.3	1,800

**PRAMS Health Indicator 3-Year Aggregate Report - Illicit drug use 1 month before pregnancy- by State;County;DOH Race-Ethnicity;PRAMS Age Group;Infant Gender;Married;Poverty Level;Income (2000-2003);Income (2004-2011);Birthweight;Smoke 3rd Trimester;Smoke Before Pregnant;WIC During Pregnancy, for the Year(s)
2000-2002;2001-2003;2002-2004;2003-2005;2004-2006;2005-2007;2006-2008;2007-2009;2008-2010;2009-2011;2010-2012;2011-2013**

Note: Weighted counts (#) represent 3-yr averages, rounded to the nearest hundred; n/r (Not Reportable) - If the unweighted total responses for a dimension (row) is <30 that row will not be shown

Years: 2004-2006

DOH Race-Ethnicity	Yes			No			Weighted Total Responses (3-Yr Avg)
	#	%	C.I.(95%)	#	%	C.I.(95%)	#
Caucasian	300	6.6	5.3 - 8.2	3,700	93.4	91.8 - 94.7	3,900
Native Hawaiian	500	9.3	7.8 - 11.1	4,500	90.7	88.9 - 92.2	5,000
Chinese	<50	1.9	1.2 - 3.0	600	98.1	97.0 - 98.8	600
Filipino	100	2.9	2.0 - 4.0	3,200	97.1	96.0 - 98.0	3,300
Japanese	100	3.7	2.4 - 5.5	2,100	96.3	94.5 - 97.6	2,200
Other	100	5.3	3.9 - 7.1	2,500	94.7	92.9 - 96.1	2,700

PRAMS Age Group	Yes			No			Weighted Total Responses (3-Yr Avg)
	#	%	C.I.(95%)	#	%	C.I.(95%)	#
<20	200	11.0	8.2 - 14.6	1,300	89.0	85.4 - 91.8	1,400
20-24	400	9.6	8.0 - 11.4	4,000	90.4	88.6 - 92.0	4,400
25-34	400	4.5	3.7 - 5.4	8,300	95.5	94.6 - 96.3	8,700
35+	100	2.7	1.9 - 3.9	3,100	97.3	96.1 - 98.1	3,200

**PRAMS Health Indicator 3-Year Aggregate Report - Illicit drug use 1 month before pregnancy- by State;County;DOH Race-Ethnicity;PRAMS Age Group;Infant Gender;Married;Poverty Level;Income (2000-2003);Income (2004-2011);Birthweight;Smoke 3rd Trimester;Smoke Before Pregnant;WIC During Pregnancy, for the Year(s)
2000-2002;2001-2003;2002-2004;2003-2005;2004-2006;2005-2007;2006-2008;2007-2009;2008-2010;2009-2011;2010-2012;2011-2013**

Note: Weighted counts (#) represent 3-yr averages, rounded to the nearest hundred; n/r (Not Reportable) - If the unweighted total responses for a dimension (row) is <30 that row will not be shown

Years: 2004-2006

Infant Gender	Yes			No			Weighted Total Responses (3-Yr Avg)
	#	%	C.I.(95%)	#	%	C.I.(95%)	#
Male	500	5.7	4.9 - 6.7	8,700	94.3	93.3 - 95.1	9,200
Female	500	6.2	5.3 - 7.3	7,900	93.8	92.7 - 94.7	8,500

Married	Yes			No			Weighted Total Responses (3-Yr Avg)
	#	%	C.I.(95%)	#	%	C.I.(95%)	#
Yes	300	2.9	2.4 - 3.6	11,300	97.1	96.4 - 97.6	11,600
No	700	11.7	10.2 - 13.4	5,400	88.3	86.6 - 89.8	6,100

Poverty Level	Yes			No			Weighted Total Responses (3-Yr Avg)
	#	%	C.I.(95%)	#	%	C.I.(95%)	#
0-130%	600	9.1	7.8 - 10.6	5,800	90.9	89.4 - 92.2	6,400
131-185%	100	4.2	2.9 - 6.2	2,000	95.8	93.8 - 97.1	2,100
186+%	300	3.9	3.2 - 4.8	7,500	96.1	95.2 - 96.8	7,800

**PRAMS Health Indicator 3-Year Aggregate Report - Illicit drug use 1 month before pregnancy- by State;County;DOH Race-Ethnicity;PRAMS Age Group;Infant Gender;Married;Poverty Level;Income (2000-2003);Income (2004-2011);Birthweight;Smoke 3rd Trimester;Smoke Before Pregnant;WIC During Pregnancy, for the Year(s)
2000-2002;2001-2003;2002-2004;2003-2005;2004-2006;2005-2007;2006-2008;2007-2009;2008-2010;2009-2011;2010-2012;2011-2013**

Note: Weighted counts (#) represent 3-yr averages, rounded to the nearest hundred; n/r (Not Reportable) - If the unweighted total responses for a dimension (row) is <30 that row will not be shown

Years: 2004-2006

Income (2004-2011)	Yes			No			Weighted Total Responses (3-Yr Avg)
	#	%	C.I.(95%)	#	%	C.I.(95%)	#
<\$10,000	300	11.0	8.9 - 13.4	2,600	89.0	86.6 - 91.1	2,900
\$10,000-\$24,999	300	7.8	6.3 - 9.5	3,600	92.2	90.5 - 93.7	3,900
\$25,000-\$49,999	200	5.1	4.0 - 6.5	4,000	94.9	93.5 - 96.0	4,200
>=\$50,000	100	2.5	1.9 - 3.4	5,300	97.5	96.6 - 98.1	5,400

Birthweight	Yes			No			Weighted Total Responses (3-Yr Avg)
	#	%	C.I.(95%)	#	%	C.I.(95%)	#
Low birth weight	100	7.0	4.7 - 10.2	1,200	93.0	89.8 - 95.3	1,300
Normal birth weight	1,000	5.9	5.2 - 6.6	15,400	94.1	93.4 - 94.8	16,400

Smoke 3rd Trimester	Yes			No			Weighted Total Responses (3-Yr Avg)
	#	%	C.I.(95%)	#	%	C.I.(95%)	#
Yes	300	18.6	15.0 - 22.9	1,200	81.4	77.1 - 85.0	1,500
No	800	4.8	4.2 - 5.5	15,200	95.2	94.5 - 95.8	15,900

**PRAMS Health Indicator 3-Year Aggregate Report - Illicit drug use 1 month before pregnancy- by State;County;DOH Race-Ethnicity;PRAMS Age Group;Infant Gender;Married;Poverty Level;Income (2000-2003);Income (2004-2011);Birthweight;Smoke 3rd Trimester;Smoke Before Pregnant;WIC During Pregnancy, for the Year(s)
2000-2002;2001-2003;2002-2004;2003-2005;2004-2006;2005-2007;2006-2008;2007-2009;2008-2010;2009-2011;2010-2012;2011-2013**

Note: Weighted counts (#) represent 3-yr averages, rounded to the nearest hundred; n/r (Not Reportable) - If the unweighted total responses for a dimension (row) is <30 that row will not be shown

Years: 2004-2006

Smoke Before Pregnant	Yes			No			Weighted Total Responses (3-Yr Avg)
	#	%	C.I.(95%)	#	%	C.I.(95%)	#
Yes	600	17.1	14.9 - 19.6	3,000	82.9	80.4 - 85.1	3,700
No	400	3.0	2.5 - 3.6	13,300	97.0	96.4 - 97.5	13,700

WIC During Pregnancy	Yes			No			Weighted Total Responses (3-Yr Avg)
	#	%	C.I.(95%)	#	%	C.I.(95%)	#
Yes	600	8.3	7.1 - 9.5	7,000	91.7	90.5 - 92.9	7,600
No	400	4.2	3.5 - 5.0	9,400	95.8	95.0 - 96.5	9,800

**PRAMS Health Indicator 3-Year Aggregate Report - Illicit drug use 1 month before pregnancy- by State;County;DOH Race-Ethnicity;PRAMS Age Group;Infant Gender;Married;Poverty Level;Income (2000-2003);Income (2004-2011);Birthweight;Smoke 3rd Trimester;Smoke Before Pregnant;WIC During Pregnancy, for the Year(s)
2000-2002;2001-2003;2002-2004;2003-2005;2004-2006;2005-2007;2006-2008;2007-2009;2008-2010;2009-2011;2010-2012;2011-2013**

Note: Weighted counts (#) represent 3-yr averages, rounded to the nearest hundred; n/r (Not Reportable) - If the unweighted total responses for a dimension (row) is <30 that row will not be shown

Years: 2003-2005

State	Yes			No			Weighted Total Responses (3-Yr Avg)
	#	%	C.I.(95%)	#	%	C.I.(95%)	#
Totals	1,000	5.7	5.1 - 6.4	16,400	94.3	93.6 - 94.9	17,400

County	Yes			No			Weighted Total Responses (3-Yr Avg)
	#	%	C.I.(95%)	#	%	C.I.(95%)	#
Hawaii	200	8.5	6.6 - 10.8	2,000	91.5	89.2 - 93.4	2,100
Honolulu	500	4.3	3.7 - 5.1	12,100	95.7	94.9 - 96.3	12,700
Kauai	100	10.8	7.6 - 15.2	700	89.2	84.8 - 92.4	800
Maui	200	9.5	7.4 - 12.2	1,600	90.5	87.8 - 92.6	1,800

**PRAMS Health Indicator 3-Year Aggregate Report - Illicit drug use 1 month before pregnancy- by State;County;DOH Race-Ethnicity;PRAMS Age Group;Infant Gender;Married;Poverty Level;Income (2000-2003);Income (2004-2011);Birthweight;Smoke 3rd Trimester;Smoke Before Pregnant;WIC During Pregnancy, for the Year(s)
2000-2002;2001-2003;2002-2004;2003-2005;2004-2006;2005-2007;2006-2008;2007-2009;2008-2010;2009-2011;2010-2012;2011-2013**

Note: Weighted counts (#) represent 3-yr averages, rounded to the nearest hundred; n/r (Not Reportable) - If the unweighted total responses for a dimension (row) is <30 that row will not be shown

Years: 2003-2005

DOH Race-Ethnicity	Yes			No			Weighted Total Responses (3-Yr Avg)
	#	%	C.I.(95%)	#	%	C.I.(95%)	#
Caucasian	300	6.8	5.4 - 8.5	3,500	93.2	91.5 - 94.6	3,800
Native Hawaiian	400	8.6	7.3 - 10.2	4,400	91.4	89.8 - 92.7	4,900
Chinese	<50	1.8	1.0 - 3.1	600	98.2	96.9 - 99.0	600
Filipino	100	3.0	2.0 - 4.3	3,300	97.0	95.7 - 98.0	3,400
Japanese	100	3.0	1.9 - 4.8	2,100	97.0	95.2 - 98.1	2,200
Other	100	5.2	3.7 - 7.4	2,400	94.8	92.6 - 96.3	2,500

PRAMS Age Group	Yes			No			Weighted Total Responses (3-Yr Avg)
	#	%	C.I.(95%)	#	%	C.I.(95%)	#
<20	200	11.5	8.7 - 14.9	1,300	88.5	85.1 - 91.3	1,500
20-24	400	8.7	7.2 - 10.4	3,900	91.3	89.6 - 92.8	4,300
25-34	400	4.1	3.4 - 5.0	8,200	95.9	95.0 - 96.6	8,600
35+	100	3.1	2.1 - 4.5	3,000	96.9	95.5 - 97.9	3,100

**PRAMS Health Indicator 3-Year Aggregate Report - Illicit drug use 1 month before pregnancy- by State;County;DOH Race-Ethnicity;PRAMS Age Group;Infant Gender;Married;Poverty Level;Income (2000-2003);Income (2004-2011);Birthweight;Smoke 3rd Trimester;Smoke Before Pregnant;WIC During Pregnancy, for the Year(s)
2000-2002;2001-2003;2002-2004;2003-2005;2004-2006;2005-2007;2006-2008;2007-2009;2008-2010;2009-2011;2010-2012;2011-2013**

Note: Weighted counts (#) represent 3-yr averages, rounded to the nearest hundred; n/r (Not Reportable) - If the unweighted total responses for a dimension (row) is <30 that row will not be shown

Years: 2003-2005

Infant Gender	Yes			No			Weighted Total Responses (3-Yr Avg)
	#	%	C.I.(95%)	#	%	C.I.(95%)	#
Male	500	5.4	4.7 - 6.4	8,700	94.6	93.6 - 95.3	9,200
Female	500	5.9	5.0 - 7.0	7,700	94.1	93.0 - 95.0	8,200

Married	Yes			No			Weighted Total Responses (3-Yr Avg)
	#	%	C.I.(95%)	#	%	C.I.(95%)	#
Yes	300	2.9	2.4 - 3.6	11,200	97.1	96.4 - 97.6	11,500
No	700	11.1	9.7 - 12.7	5,200	88.9	87.3 - 90.3	5,900

Poverty Level	Yes			No			Weighted Total Responses (3-Yr Avg)
	#	%	C.I.(95%)	#	%	C.I.(95%)	#
0-130%	600	8.3	7.1 - 9.6	6,300	91.7	90.4 - 92.9	6,800
131-185%	100	3.4	2.2 - 5.2	2,100	96.6	94.8 - 97.8	2,100
186+%	200	3.5	2.8 - 4.4	6,700	96.5	95.6 - 97.2	6,900

**PRAMS Health Indicator 3-Year Aggregate Report - Illicit drug use 1 month before pregnancy- by State;County;DOH Race-Ethnicity;PRAMS Age Group;Infant Gender;Married;Poverty Level;Income (2000-2003);Income (2004-2011);Birthweight;Smoke 3rd Trimester;Smoke Before Pregnant;WIC During Pregnancy, for the Year(s)
2000-2002;2001-2003;2002-2004;2003-2005;2004-2006;2005-2007;2006-2008;2007-2009;2008-2010;2009-2011;2010-2012;2011-2013**

Note: Weighted counts (#) represent 3-yr averages, rounded to the nearest hundred; n/r (Not Reportable) - If the unweighted total responses for a dimension (row) is <30 that row will not be shown

Years: 2003-2005

Birthweight	Yes			No			Weighted Total Responses (3-Yr Avg)
	#	%	C.I.(95%)	#	%	C.I.(95%)	#
Low birth weight	100	6.9	4.7 - 10.1	1,100	93.1	89.9 - 95.3	1,200
Normal birth weight	900	5.6	5.0 - 6.3	15,300	94.4	93.7 - 95.0	16,200

Smoke 3rd Trimester	Yes			No			Weighted Total Responses (3-Yr Avg)
	#	%	C.I.(95%)	#	%	C.I.(95%)	#
Yes	300	17.2	13.8 - 21.2	1,200	82.8	78.8 - 86.2	1,500
No	700	4.6	4.0 - 5.2	14,900	95.4	94.8 - 96.0	15,600

Smoke Before Pregnant	Yes			No			Weighted Total Responses (3-Yr Avg)
	#	%	C.I.(95%)	#	%	C.I.(95%)	#
Yes	500	15.0	12.9 - 17.3	3,000	85.0	82.7 - 87.1	3,600
No	400	3.2	2.6 - 3.8	13,000	96.8	96.2 - 97.4	13,400

**PRAMS Health Indicator 3-Year Aggregate Report - Illicit drug use 1 month before pregnancy- by State;County;DOH Race-Ethnicity;PRAMS Age Group;Infant Gender;Married;Poverty Level;Income (2000-2003);Income (2004-2011);Birthweight;Smoke 3rd Trimester;Smoke Before Pregnant;WIC During Pregnancy, for the Year(s)
2000-2002;2001-2003;2002-2004;2003-2005;2004-2006;2005-2007;2006-2008;2007-2009;2008-2010;2009-2011;2010-2012;2011-2013**

Note: Weighted counts (#) represent 3-yr averages, rounded to the nearest hundred; n/r (Not Reportable) - If the unweighted total responses for a dimension (row) is <30 that row will not be shown

Years: 2003-2005

WIC During Pregnancy	Yes			No			Weighted Total Responses (3-Yr Avg)
	#	%	C.I.(95%)	#	%	C.I.(95%)	#
Yes	600	7.8	6.7 - 9.0	6,900	92.2	91.0 - 93.3	7,500
No	400	4.0	3.3 - 4.8	9,200	96.0	95.2 - 96.7	9,600

**PRAMS Health Indicator 3-Year Aggregate Report - Illicit drug use 1 month before pregnancy- by State;County;DOH Race-Ethnicity;PRAMS Age Group;Infant Gender;Married;Poverty Level;Income (2000-2003);Income (2004-2011);Birthweight;Smoke 3rd Trimester;Smoke Before Pregnant;WIC During Pregnancy, for the Year(s)
2000-2002;2001-2003;2002-2004;2003-2005;2004-2006;2005-2007;2006-2008;2007-2009;2008-2010;2009-2011;2010-2012;2011-2013**

Note: Weighted counts (#) represent 3-yr averages, rounded to the nearest hundred; n/r (Not Reportable) - If the unweighted total responses for a dimension (row) is <30 that row will not be shown

Years: 2002-2004

State	Yes			No			Weighted Total Responses (3-Yr Avg)
	#	%	C.I.(95%)	#	%	C.I.(95%)	#
Totals	900	5.1	4.5 - 5.7	16,300	94.9	94.3 - 95.5	17,200

County	Yes			No			Weighted Total Responses (3-Yr Avg)
	#	%	C.I.(95%)	#	%	C.I.(95%)	#
Hawaii	200	8.0	6.4 - 10.0	1,900	92.0	90.0 - 93.6	2,100
Honolulu	500	3.8	3.2 - 4.5	12,100	96.2	95.5 - 96.8	12,600
Kauai	100	9.9	7.2 - 13.5	700	90.1	86.5 - 92.8	800
Maui	200	8.6	6.9 - 10.8	1,600	91.4	89.2 - 93.1	1,800

**PRAMS Health Indicator 3-Year Aggregate Report - Illicit drug use 1 month before pregnancy- by State;County;DOH Race-Ethnicity;PRAMS Age Group;Infant Gender;Married;Poverty Level;Income (2000-2003);Income (2004-2011);Birthweight;Smoke 3rd Trimester;Smoke Before Pregnant;WIC During Pregnancy, for the Year(s)
2000-2002;2001-2003;2002-2004;2003-2005;2004-2006;2005-2007;2006-2008;2007-2009;2008-2010;2009-2011;2010-2012;2011-2013**

Note: Weighted counts (#) represent 3-yr averages, rounded to the nearest hundred; n/r (Not Reportable) - If the unweighted total responses for a dimension (row) is <30 that row will not be shown

Years: 2002-2004

DOH Race-Ethnicity	Yes			No			Weighted Total Responses (3-Yr Avg)
	#	%	C.I.(95%)	#	%	C.I.(95%)	#
Caucasian	200	5.2	4.0 - 6.7	3,500	94.8	93.3 - 96.0	3,700
Native Hawaiian	400	9.1	7.9 - 10.4	4,300	90.9	89.6 - 92.1	4,700
Chinese	<50	2.4	1.0 - 5.8	600	97.6	94.2 - 99.0	600
Filipino	100	2.5	1.6 - 3.9	3,400	97.5	96.1 - 98.4	3,500
Japanese	<50	2.2	1.2 - 3.8	2,100	97.8	96.2 - 98.8	2,200
Other	100	4.1	2.7 - 6.2	2,300	95.9	93.8 - 97.3	2,400

PRAMS Age Group	Yes			No			Weighted Total Responses (3-Yr Avg)
	#	%	C.I.(95%)	#	%	C.I.(95%)	#
<20	200	11.3	8.7 - 14.6	1,300	88.7	85.4 - 91.3	1,500
20-24	400	8.4	7.0 - 9.9	3,900	91.6	90.1 - 93.0	4,200
25-34	300	3.2	2.6 - 4.0	8,300	96.8	96.0 - 97.4	8,500
35+	100	2.7	1.7 - 4.1	2,900	97.3	95.9 - 98.3	3,000

**PRAMS Health Indicator 3-Year Aggregate Report - Illicit drug use 1 month before pregnancy- by State;County;DOH Race-Ethnicity;PRAMS Age Group;Infant Gender;Married;Poverty Level;Income (2000-2003);Income (2004-2011);Birthweight;Smoke 3rd Trimester;Smoke Before Pregnant;WIC During Pregnancy, for the Year(s)
2000-2002;2001-2003;2002-2004;2003-2005;2004-2006;2005-2007;2006-2008;2007-2009;2008-2010;2009-2011;2010-2012;2011-2013**

Note: Weighted counts (#) represent 3-yr averages, rounded to the nearest hundred; n/r (Not Reportable) - If the unweighted total responses for a dimension (row) is <30 that row will not be shown

Years: 2002-2004

Infant Gender	Yes			No			Weighted Total Responses (3-Yr Avg)
	#	%	C.I.(95%)	#	%	C.I.(95%)	#
Male	400	4.8	4.1 - 5.6	8,600	95.2	94.4 - 95.9	9,000
Female	400	5.4	4.6 - 6.4	7,700	94.6	93.6 - 95.4	8,200

Married	Yes			No			Weighted Total Responses (3-Yr Avg)
	#	%	C.I.(95%)	#	%	C.I.(95%)	#
Yes	300	2.6	2.1 - 3.2	11,300	97.4	96.8 - 97.9	11,600
No	600	10.3	9.0 - 11.8	5,000	89.7	88.2 - 91.0	5,600

Poverty Level	Yes			No			Weighted Total Responses (3-Yr Avg)
	#	%	C.I.(95%)	#	%	C.I.(95%)	#
0-130%	500	7.4	6.4 - 8.6	6,400	92.6	91.4 - 93.6	7,000
131-185%	100	3.1	2.1 - 4.5	2,600	96.9	95.5 - 97.9	2,700
186+%	200	2.9	2.2 - 3.7	5,900	97.1	96.3 - 97.8	6,100

**PRAMS Health Indicator 3-Year Aggregate Report - Illicit drug use 1 month before pregnancy- by State;County;DOH Race-Ethnicity;PRAMS Age Group;Infant Gender;Married;Poverty Level;Income (2000-2003);Income (2004-2011);Birthweight;Smoke 3rd Trimester;Smoke Before Pregnant;WIC During Pregnancy, for the Year(s)
2000-2002;2001-2003;2002-2004;2003-2005;2004-2006;2005-2007;2006-2008;2007-2009;2008-2010;2009-2011;2010-2012;2011-2013**

Note: Weighted counts (#) represent 3-yr averages, rounded to the nearest hundred; n/r (Not Reportable) - If the unweighted total responses for a dimension (row) is <30 that row will not be shown

Years: 2002-2004

Birthweight	Yes			No			Weighted Total Responses (3-Yr Avg)
	#	%	C.I.(95%)	#	%	C.I.(95%)	#
Low birth weight	100	6.2	4.1 - 9.2	1,100	93.8	90.8 - 95.9	1,100
Normal birth weight	800	5.0	4.4 - 5.7	15,200	95.0	94.3 - 95.6	16,000

Smoke 3rd Trimester	Yes			No			Weighted Total Responses (3-Yr Avg)
	#	%	C.I.(95%)	#	%	C.I.(95%)	#
Yes	200	14.1	11.1 - 17.7	1,200	85.9	82.3 - 88.9	1,400
No	700	4.2	3.7 - 4.8	14,800	95.8	95.2 - 96.3	15,500

Smoke Before Pregnant	Yes			No			Weighted Total Responses (3-Yr Avg)
	#	%	C.I.(95%)	#	%	C.I.(95%)	#
Yes	500	13.3	11.4 - 15.4	3,000	86.7	84.6 - 88.6	3,400
No	400	2.8	2.4 - 3.4	13,000	97.2	96.6 - 97.6	13,400

**PRAMS Health Indicator 3-Year Aggregate Report - Illicit drug use 1 month before pregnancy- by State;County;DOH Race-Ethnicity;PRAMS Age Group;Infant Gender;Married;Poverty Level;Income (2000-2003);Income (2004-2011);Birthweight;Smoke 3rd Trimester;Smoke Before Pregnant;WIC During Pregnancy, for the Year(s)
2000-2002;2001-2003;2002-2004;2003-2005;2004-2006;2005-2007;2006-2008;2007-2009;2008-2010;2009-2011;2010-2012;2011-2013**

Note: Weighted counts (#) represent 3-yr averages, rounded to the nearest hundred; n/r (Not Reportable) - If the unweighted total responses for a dimension (row) is <30 that row will not be shown

Years: 2002-2004

WIC During Pregnancy	Yes			No			Weighted Total Responses (3-Yr Avg)
	#	%	C.I.(95%)	#	%	C.I.(95%)	#
Yes	500	6.7	5.8 - 7.8	6,900	93.3	92.2 - 94.2	7,400
No	400	3.8	3.1 - 4.5	9,300	96.2	95.5 - 96.9	9,600

**PRAMS Health Indicator 3-Year Aggregate Report - Illicit drug use 1 month before pregnancy- by State;County;DOH Race-Ethnicity;PRAMS Age Group;Infant Gender;Married;Poverty Level;Income (2000-2003);Income (2004-2011);Birthweight;Smoke 3rd Trimester;Smoke Before Pregnant;WIC During Pregnancy, for the Year(s)
2000-2002;2001-2003;2002-2004;2003-2005;2004-2006;2005-2007;2006-2008;2007-2009;2008-2010;2009-2011;2010-2012;2011-2013**

Note: Weighted counts (#) represent 3-yr averages, rounded to the nearest hundred; n/r (Not Reportable) - If the unweighted total responses for a dimension (row) is <30 that row will not be shown

Years: 2001-2003

State	Yes			No			Weighted Total Responses (3-Yr Avg)
	#	%	C.I.(95%)	#	%	C.I.(95%)	#
Totals	900	5.3	4.8 - 5.9	15,900	94.7	94.1 - 95.2	16,800

County	Yes			No			Weighted Total Responses (3-Yr Avg)
	#	%	C.I.(95%)	#	%	C.I.(95%)	#
Hawaii	100	7.7	6.4 - 9.2	1,800	92.3	90.8 - 93.6	1,900
Honolulu	500	4.2	3.6 - 5.0	11,800	95.8	95.0 - 96.4	12,400
Kauai	100	10.3	8.0 - 13.3	700	89.7	86.7 - 92.0	800
Maui	100	8.0	6.6 - 9.8	1,600	92.0	90.2 - 93.4	1,700

**PRAMS Health Indicator 3-Year Aggregate Report - Illicit drug use 1 month before pregnancy- by State;County;DOH Race-Ethnicity;PRAMS Age Group;Infant Gender;Married;Poverty Level;Income (2000-2003);Income (2004-2011);Birthweight;Smoke 3rd Trimester;Smoke Before Pregnant;WIC During Pregnancy, for the Year(s)
2000-2002;2001-2003;2002-2004;2003-2005;2004-2006;2005-2007;2006-2008;2007-2009;2008-2010;2009-2011;2010-2012;2011-2013**

Note: Weighted counts (#) represent 3-yr averages, rounded to the nearest hundred; n/r (Not Reportable) - If the unweighted total responses for a dimension (row) is <30 that row will not be shown

Years: 2001-2003

DOH Race-Ethnicity	Yes			No			Weighted Total Responses (3-Yr Avg)
	#	%	C.I.(95%)	#	%	C.I.(95%)	#
Caucasian	200	6.4	5.1 - 8.0	3,400	93.6	92.0 - 94.9	3,600
Native Hawaiian	400	8.6	7.7 - 9.6	4,200	91.4	90.4 - 92.3	4,600
Chinese	<50	2.7	1.0 - 6.8	600	97.3	93.2 - 99.0	700
Filipino	100	3.2	2.2 - 4.7	3,400	96.8	95.3 - 97.8	3,500
Japanese	<50	2.1	1.2 - 3.8	2,100	97.9	96.2 - 98.8	2,100
Other	100	4.0	2.5 - 6.2	2,200	96.0	93.8 - 97.5	2,300

PRAMS Age Group	Yes			No			Weighted Total Responses (3-Yr Avg)
	#	%	C.I.(95%)	#	%	C.I.(95%)	#
<20	200	10.1	8.0 - 12.8	1,400	89.9	87.2 - 92.0	1,600
20-24	300	7.7	6.5 - 9.0	3,900	92.3	91.0 - 93.5	4,200
25-34	300	3.9	3.2 - 4.7	8,000	96.1	95.3 - 96.8	8,300
35+	100	3.3	2.2 - 4.9	2,600	96.7	95.1 - 97.8	2,700

**PRAMS Health Indicator 3-Year Aggregate Report - Illicit drug use 1 month before pregnancy- by State;County;DOH Race-Ethnicity;PRAMS Age Group;Infant Gender;Married;Poverty Level;Income (2000-2003);Income (2004-2011);Birthweight;Smoke 3rd Trimester;Smoke Before Pregnant;WIC During Pregnancy, for the Year(s)
2000-2002;2001-2003;2002-2004;2003-2005;2004-2006;2005-2007;2006-2008;2007-2009;2008-2010;2009-2011;2010-2012;2011-2013**

Note: Weighted counts (#) represent 3-yr averages, rounded to the nearest hundred; n/r (Not Reportable) - If the unweighted total responses for a dimension (row) is <30 that row will not be shown

Years: 2001-2003

	Yes			No			Weighted Total Responses (3-Yr Avg)
	#	%	C.I.(95%)	#	%	C.I.(95%)	#
Infant Gender							
Male	400	5.1	4.4 - 5.9	8,200	94.9	94.1 - 95.6	8,600
Female	500	5.5	4.7 - 6.4	7,700	94.5	93.6 - 95.3	8,200

	Yes			No			Weighted Total Responses (3-Yr Avg)
	#	%	C.I.(95%)	#	%	C.I.(95%)	#
Married							
Yes	300	3.0	2.5 - 3.7	10,900	97.0	96.3 - 97.5	11,200
No	600	9.9	8.7 - 11.2	5,100	90.1	88.8 - 91.3	5,600

	Yes			No			Weighted Total Responses (3-Yr Avg)
	#	%	C.I.(95%)	#	%	C.I.(95%)	#
Poverty Level							
0-130%	500	7.4	6.4 - 8.5	6,400	92.6	91.5 - 93.6	6,900
131-185%	100	4.0	2.9 - 5.3	3,000	96.0	94.7 - 97.1	3,200
186+%	200	3.0	2.3 - 3.9	5,200	97.0	96.1 - 97.7	5,400

**PRAMS Health Indicator 3-Year Aggregate Report - Illicit drug use 1 month before pregnancy- by State;County;DOH Race-Ethnicity;PRAMS Age Group;Infant Gender;Married;Poverty Level;Income (2000-2003);Income (2004-2011);Birthweight;Smoke 3rd Trimester;Smoke Before Pregnant;WIC During Pregnancy, for the Year(s)
2000-2002;2001-2003;2002-2004;2003-2005;2004-2006;2005-2007;2006-2008;2007-2009;2008-2010;2009-2011;2010-2012;2011-2013**

Note: Weighted counts (#) represent 3-yr averages, rounded to the nearest hundred; n/r (Not Reportable) - If the unweighted total responses for a dimension (row) is <30 that row will not be shown

Years: 2001-2003

Income (2000-2003)	Yes			No			Weighted Total Responses (3-Yr Avg)
	#	%	C.I.(95%)	#	%	C.I.(95%)	#
<=\$15,000	400	10.0	8.6 - 11.7	3,300	90.0	88.3 - 91.4	3,600
\$15,001-\$25,000	100	5.7	4.2 - 7.8	2,200	94.3	92.2 - 95.8	2,300
\$25,001-\$40,000	200	4.5	3.5 - 5.8	3,300	95.5	94.2 - 96.5	3,400
>=\$40,001	200	2.6	2.0 - 3.4	6,200	97.4	96.6 - 98.0	6,400

Birthweight	Yes			No			Weighted Total Responses (3-Yr Avg)
	#	%	C.I.(95%)	#	%	C.I.(95%)	#
Low birth weight	100	5.4	3.6 - 8.1	1,100	94.6	91.9 - 96.4	1,100
Normal birth weight	800	5.3	4.7 - 5.9	14,800	94.7	94.1 - 95.3	15,600

Smoke 3rd Trimester	Yes			No			Weighted Total Responses (3-Yr Avg)
	#	%	C.I.(95%)	#	%	C.I.(95%)	#
Yes	200	15.6	12.8 - 18.9	1,200	84.4	81.1 - 87.2	1,500
No	600	4.2	3.7 - 4.8	14,400	95.8	95.2 - 96.3	15,000

**PRAMS Health Indicator 3-Year Aggregate Report - Illicit drug use 1 month before pregnancy- by State;County;DOH Race-Ethnicity;PRAMS Age Group;Infant Gender;Married;Poverty Level;Income (2000-2003);Income (2004-2011);Birthweight;Smoke 3rd Trimester;Smoke Before Pregnant;WIC During Pregnancy, for the Year(s)
2000-2002;2001-2003;2002-2004;2003-2005;2004-2006;2005-2007;2006-2008;2007-2009;2008-2010;2009-2011;2010-2012;2011-2013**

Note: Weighted counts (#) represent 3-yr averages, rounded to the nearest hundred; n/r (Not Reportable) - If the unweighted total responses for a dimension (row) is <30 that row will not be shown

Years: 2001-2003

Smoke Before Pregnant	Yes			No			Weighted Total Responses (3-Yr Avg)
	#	%	C.I.(95%)	#	%	C.I.(95%)	#
Yes	400	12.9	11.2 - 14.8	2,900	87.1	85.2 - 88.8	3,400
No	400	3.1	2.6 - 3.6	12,600	96.9	96.4 - 97.4	13,000

WIC During Pregnancy	Yes			No			Weighted Total Responses (3-Yr Avg)
	#	%	C.I.(95%)	#	%	C.I.(95%)	#
Yes	500	7.2	6.3 - 8.3	6,600	92.8	91.7 - 93.7	7,100
No	400	3.9	3.3 - 4.6	9,200	96.1	95.4 - 96.7	9,600

**PRAMS Health Indicator 3-Year Aggregate Report - Illicit drug use 1 month before pregnancy- by State;County;DOH Race-Ethnicity;PRAMS Age Group;Infant Gender;Married;Poverty Level;Income (2000-2003);Income (2004-2011);Birthweight;Smoke 3rd Trimester;Smoke Before Pregnant;WIC During Pregnancy, for the Year(s)
2000-2002;2001-2003;2002-2004;2003-2005;2004-2006;2005-2007;2006-2008;2007-2009;2008-2010;2009-2011;2010-2012;2011-2013**

Note: Weighted counts (#) represent 3-yr averages, rounded to the nearest hundred; n/r (Not Reportable) - If the unweighted total responses for a dimension (row) is <30 that row will not be shown

Years: 2000-2002

State	Yes			No			Weighted Total Responses (3-Yr Avg)
	#	%	C.I.(95%)	#	%	C.I.(95%)	#
Totals	1,000	5.9	5.3 - 6.4	15,600	94.1	93.6 - 94.7	16,600

County	Yes			No			Weighted Total Responses (3-Yr Avg)
	#	%	C.I.(95%)	#	%	C.I.(95%)	#
Hawaii	200	8.1	6.8 - 9.7	1,700	91.9	90.3 - 93.2	1,900
Honolulu	600	4.8	4.2 - 5.5	11,700	95.2	94.5 - 95.8	12,300
Kauai	100	10.6	8.2 - 13.6	600	89.4	86.4 - 91.8	700
Maui	200	8.8	7.3 - 10.7	1,600	91.2	89.3 - 92.7	1,700

**PRAMS Health Indicator 3-Year Aggregate Report - Illicit drug use 1 month before pregnancy- by State;County;DOH Race-Ethnicity;PRAMS Age Group;Infant Gender;Married;Poverty Level;Income (2000-2003);Income (2004-2011);Birthweight;Smoke 3rd Trimester;Smoke Before Pregnant;WIC During Pregnancy, for the Year(s)
2000-2002;2001-2003;2002-2004;2003-2005;2004-2006;2005-2007;2006-2008;2007-2009;2008-2010;2009-2011;2010-2012;2011-2013**

Note: Weighted counts (#) represent 3-yr averages, rounded to the nearest hundred; n/r (Not Reportable) - If the unweighted total responses for a dimension (row) is <30 that row will not be shown

Years: 2000-2002

DOH Race-Ethnicity	Yes			No			Weighted Total Responses (3-Yr Avg)
	#	%	C.I.(95%)	#	%	C.I.(95%)	#
Caucasian	200	6.5	5.3 - 7.9	3,400	93.5	92.1 - 94.7	3,700
Native Hawaiian	400	9.5	8.6 - 10.4	4,100	90.5	89.6 - 91.4	4,500
Chinese	<50	3.5	1.5 - 8.0	600	96.5	92.0 - 98.5	600
Filipino	100	4.1	2.9 - 5.6	3,300	95.9	94.4 - 97.1	3,400
Japanese	100	2.7	1.7 - 4.3	2,100	97.3	95.7 - 98.3	2,100
Other	100	4.0	2.6 - 6.0	2,100	96.0	94.0 - 97.4	2,200

PRAMS Age Group	Yes			No			Weighted Total Responses (3-Yr Avg)
	#	%	C.I.(95%)	#	%	C.I.(95%)	#
<20	200	12.4	10.2 - 15.0	1,500	87.6	85.0 - 89.8	1,700
20-24	400	8.6	7.3 - 10.0	3,800	91.4	90.0 - 92.7	4,100
25-34	300	4.0	3.4 - 4.8	7,700	96.0	95.2 - 96.6	8,100
35+	100	3.3	2.3 - 4.6	2,600	96.7	95.4 - 97.7	2,700

**PRAMS Health Indicator 3-Year Aggregate Report - Illicit drug use 1 month before pregnancy- by State;County;DOH Race-Ethnicity;PRAMS Age Group;Infant Gender;Married;Poverty Level;Income (2000-2003);Income (2004-2011);Birthweight;Smoke 3rd Trimester;Smoke Before Pregnant;WIC During Pregnancy, for the Year(s)
2000-2002;2001-2003;2002-2004;2003-2005;2004-2006;2005-2007;2006-2008;2007-2009;2008-2010;2009-2011;2010-2012;2011-2013**

Note: Weighted counts (#) represent 3-yr averages, rounded to the nearest hundred; n/r (Not Reportable) - If the unweighted total responses for a dimension (row) is <30 that row will not be shown

Years: 2000-2002

Infant Gender	Yes			No			Weighted Total Responses (3-Yr Avg)
	#	%	C.I.(95%)	#	%	C.I.(95%)	#
Male	500	6.0	5.3 - 6.9	7,900	94.0	93.1 - 94.7	8,400
Female	500	5.7	4.9 - 6.5	7,700	94.3	93.5 - 95.1	8,200

Married	Yes			No			Weighted Total Responses (3-Yr Avg)
	#	%	C.I.(95%)	#	%	C.I.(95%)	#
Yes	300	3.1	2.6 - 3.6	10,900	96.9	96.4 - 97.4	11,200
No	600	11.7	10.5 - 13.1	4,700	88.3	86.9 - 89.5	5,300

Poverty Level	Yes			No			Weighted Total Responses (3-Yr Avg)
	#	%	C.I.(95%)	#	%	C.I.(95%)	#
0-130%	600	8.4	7.5 - 9.5	6,100	91.6	90.5 - 92.5	6,700
131-185%	100	4.3	3.3 - 5.6	2,900	95.7	94.4 - 96.7	3,100
186+%	200	3.8	3.0 - 4.7	5,400	96.2	95.3 - 97.0	5,600

**PRAMS Health Indicator 3-Year Aggregate Report - Illicit drug use 1 month before pregnancy- by State;County;DOH Race-Ethnicity;PRAMS Age Group;Infant Gender;Married;Poverty Level;Income (2000-2003);Income (2004-2011);Birthweight;Smoke 3rd Trimester;Smoke Before Pregnant;WIC During Pregnancy, for the Year(s)
2000-2002;2001-2003;2002-2004;2003-2005;2004-2006;2005-2007;2006-2008;2007-2009;2008-2010;2009-2011;2010-2012;2011-2013**

Note: Weighted counts (#) represent 3-yr averages, rounded to the nearest hundred; n/r (Not Reportable) - If the unweighted total responses for a dimension (row) is <30 that row will not be shown

Years: 2000-2002

Income (2000-2003)	Yes			No			Weighted Total Responses (3-Yr Avg)
	#	%	C.I.(95%)	#	%	C.I.(95%)	#
<=\$15,000	400	11.2	9.8 - 12.8	3,200	88.8	87.2 - 90.2	3,600
\$15,001-\$25,000	100	5.9	4.5 - 7.7	2,300	94.1	92.3 - 95.5	2,500
\$25,001-\$40,000	200	5.5	4.5 - 6.7	3,300	94.5	93.3 - 95.5	3,400
>=\$40,001	200	3.1	2.4 - 3.9	6,100	96.9	96.1 - 97.6	6,300

Birthweight	Yes			No			Weighted Total Responses (3-Yr Avg)
	#	%	C.I.(95%)	#	%	C.I.(95%)	#
Low birth weight	100	5.6	3.8 - 8.3	1,000	94.4	91.7 - 96.2	1,100
Normal birth weight	900	5.8	5.3 - 6.4	14,500	94.2	93.6 - 94.7	15,400

Smoke 3rd Trimester	Yes			No			Weighted Total Responses (3-Yr Avg)
	#	%	C.I.(95%)	#	%	C.I.(95%)	#
Yes	200	17.2	14.4 - 20.3	1,200	82.8	79.7 - 85.6	1,400
No	700	4.7	4.2 - 5.3	14,100	95.3	94.7 - 95.8	14,800

**PRAMS Health Indicator 3-Year Aggregate Report - Illicit drug use 1 month before pregnancy- by State;County;DOH Race-Ethnicity;PRAMS Age Group;Infant Gender;Married;Poverty Level;Income (2000-2003);Income (2004-2011);Birthweight;Smoke 3rd Trimester;Smoke Before Pregnant;WIC During Pregnancy, for the Year(s)
2000-2002;2001-2003;2002-2004;2003-2005;2004-2006;2005-2007;2006-2008;2007-2009;2008-2010;2009-2011;2010-2012;2011-2013**

Note: Weighted counts (#) represent 3-yr averages, rounded to the nearest hundred; n/r (Not Reportable) - If the unweighted total responses for a dimension (row) is <30 that row will not be shown

Years: 2000-2002

Smoke Before Pregnant	Yes			No			Weighted Total Responses (3-Yr Avg)
	#	%	C.I.(95%)	#	%	C.I.(95%)	#
Yes	500	15.0	13.2 - 16.9	2,800	85.0	83.1 - 86.8	3,300
No	400	3.3	2.9 - 3.9	12,400	96.7	96.1 - 97.1	12,800

WIC During Pregnancy	Yes			No			Weighted Total Responses (3-Yr Avg)
	#	%	C.I.(95%)	#	%	C.I.(95%)	#
Yes	500	7.6	6.7 - 8.6	6,500	92.4	91.4 - 93.3	7,100
No	400	4.6	3.9 - 5.3	9,000	95.4	94.7 - 96.1	9,400