

PRAMS Health Indicator 3-Year Aggregate Report - Discuss seat belt use with HCW during PNC- for the State of Hawaii, for the Year(s)

2000-2002;2001-2003;2002-2004;2003-2005;2004-2006;2005-2007;2006-2008;2007-2009;2008-2010;2009-2011;2010-2012;2011-2013

PRAMS Health Indicator 3-Year Aggregate Report - Discuss seat belt use with HCW during PNC- by State;County;DOH Race-Ethnicity;PRAMS Age Group;Infant Gender;Married;Poverty Level;Income (2000-2003);Income (2004-2011);Birthweight;Smoke 3rd Trimester;Smoke Before Pregnant;WIC During Pregnancy, for the Year(s)

2000-2002;2001-2003;2002-2004;2003-2005;2004-2006;2005-2007;2006-2008;2007-2009;2008-2010;2009-2011;2010-2012;2011-2013

Note: Weighted counts (#) represent 3-yr averages, rounded to the nearest hundred; n/r (Not Reportable) - If the unweighted total responses for a dimension (row) is <30 that row will not be shown

The trend analysis section shows the trend for the selected health variable over selected years in a table and a graph. 3-Year Weighted Total Responses: This number is a weighted representation of the mothers of babies delivered in a given year, who responded to a particular question in the survey. For most questions this will be the mothers of all babies delivered in a given year. For some secondary questions only a subset of the population was asked the question. For example, all survey participants were asked if they smoked during pregnancy, but only those who answered yes were asked how many cigarettes a day. If a dimension value is unknown for a particular survey record, that record will not be included in the counts for that particular dimension.

Note: Data collection for household income changed in 2004 and again in 2012. Because of this, income data does not exist for some 3-year aggregate periods.

Below are the indicators included in this report and the long description for each indicator.

PRAMS Health Indicator	Health Indicator Description
Discuss seat belt use with HCW during PNC	Discuss seat belt use with HCW during PNC

Suggested citation:

Hawaii Health Data Warehouse, Hawaii State Department of Health, Pregnancy Risk Assessment Monitoring System, (report title and years), Report Created: 2/16/17

For documentation on other terms and coding in this report, please go to the following links:

[Click here to access PRAMS documentation](#)

[Click here to access DOH-Race Ethnicity coding](#)

[Click here to access The Hawai'i Data Guide](#)

**For questions about this report, please contact
The Hawai'i Health Data Warehouse**

profiles@hhdw.org

(855) 946-5899 x15

PRAMS Health Indicator 3-Year Aggregate Report - Discuss seat belt use with HCW during PNC- for the State of Hawaii, for the Year(s)

2000-2002;2001-2003;2002-2004;2003-2005;2004-2006;2005-2007;2006-2008;2007-2009;2008-2010;2009-2011;2010-2012;2011-2013

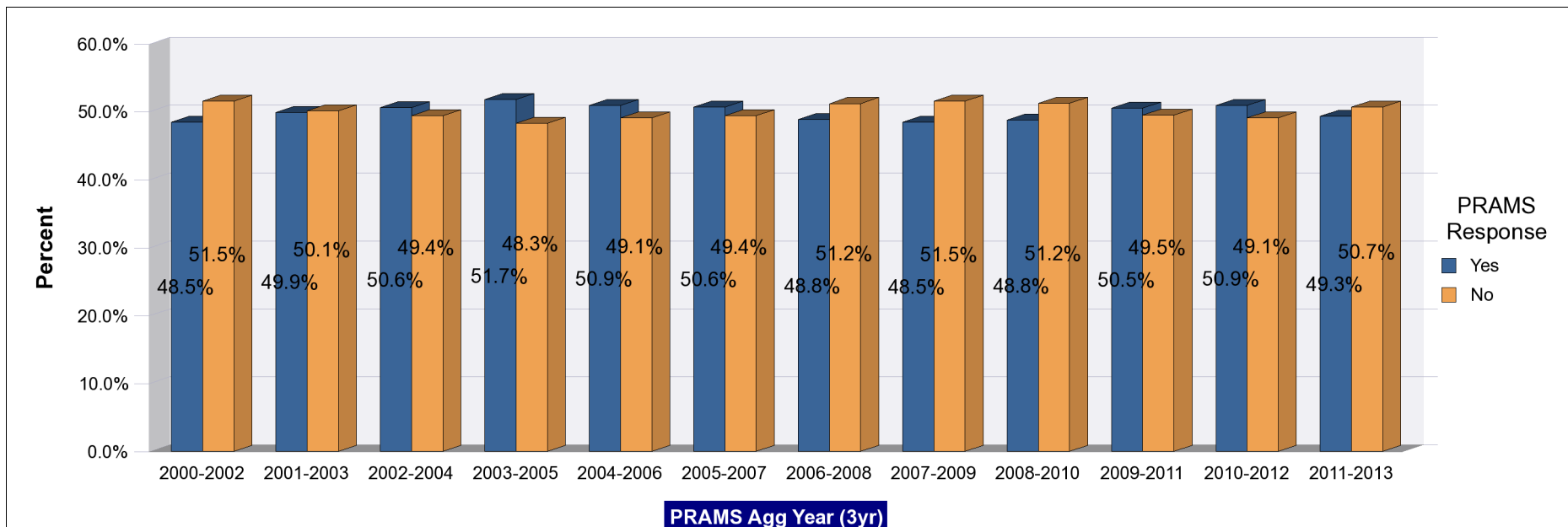
Note: Weighted counts (#) represent 3-yr averages, rounded to the nearest hundred; n/r (Not Reportable) - If the unweighted total responses for a dimension (row) is <30 that row will not be shown

Years	Yes			No			Weighted Total Responses (3-Yr Avg)
	#	%	C.I.(95%)	#	%	C.I.(95%)	#
2000-2002	8,000	48.5	47.0 - 49.9	8,500	51.5	50.1 - 53.0	16,500
2001-2003	8,300	49.9	48.3 - 51.4	8,300	50.1	48.6 - 51.7	16,600
2002-2004	8,500	50.6	49.1 - 52.1	8,300	49.4	47.9 - 50.9	16,900
2003-2005	8,800	51.7	50.3 - 53.2	8,200	48.3	46.8 - 49.7	17,000
2004-2006	8,800	50.9	49.6 - 52.3	8,500	49.1	47.7 - 50.4	17,300
2005-2007	8,900	50.6	49.2 - 52.0	8,600	49.4	48.0 - 50.8	17,500
2006-2008	8,800	48.8	47.4 - 50.2	9,200	51.2	49.8 - 52.6	18,000
2007-2009	8,700	48.5	46.9 - 50.0	9,300	51.5	50.0 - 53.1	18,000
2008-2010	8,800	48.8	47.1 - 50.5	9,300	51.2	49.5 - 52.9	18,100
2009-2011	9,100	50.5	48.6 - 52.4	9,000	49.5	47.6 - 51.4	18,100
2010-2012	9,200	50.9	49.0 - 52.8	8,900	49.1	47.2 - 51.0	18,100
2011-2013	8,900	49.3	47.4 - 51.3	9,200	50.7	48.7 - 52.6	18,100

PRAMS Health Indicator 3-Year Aggregate Report - Discuss seat belt use with HCW during PNC- for the State of Hawaii, for the Year(s)

2000-2002;2001-2003;2002-2004;2003-2005;2004-2006;2005-2007;2006-2008;2007-2009;2008-2010;2009-2011;2010-2012;2011-2013

Note: Weighted counts (#) represent 3-yr averages, rounded to the nearest hundred; n/r (Not Reportable) - If the unweighted total responses for a dimension (row) is <30 that row will not be shown



**PRAMS Health Indicator 3-Year Aggregate Report - Discuss seat belt use with HCW during PNC- by State;County;DOH Race-Ethnicity;PRAMS Age Group;Infant Gender;Married;Poverty Level;Income (2000-2003);Income (2004-2011);Birthweight;Smoke 3rd Trimester;Smoke Before Pregnant;WIC During Pregnancy, for the Year(s)
2000-2002;2001-2003;2002-2004;2003-2005;2004-2006;2005-2007;2006-2008;2007-2009;2008-2010;2009-2011;2010-2012;2011-2013**

Note: Weighted counts (#) represent 3-yr averages, rounded to the nearest hundred; n/r (Not Reportable) - If the unweighted total responses for a dimension (row) is <30 that row will not be shown

Years: 2011-2013

State	Yes			No			Weighted Total Responses (3-Yr Avg)
	#	%	C.I.(95%)	#	%	C.I.(95%)	#
Totals	8,900	49.3	47.4 - 51.3	9,200	50.7	48.7 - 52.6	18,100

County	Yes			No			Weighted Total Responses (3-Yr Avg)
	#	%	C.I.(95%)	#	%	C.I.(95%)	#
Hawaii	1,200	51.5	48.4 - 54.6	1,100	48.5	45.4 - 51.6	2,300
Honolulu	6,400	49.1	46.5 - 51.7	6,600	50.9	48.3 - 53.5	13,000
Kauai	500	54.9	51.5 - 58.4	400	45.1	41.6 - 48.5	800
Maui	900	46.0	43.1 - 49.0	1,000	54.0	51.0 - 56.9	1,900

**PRAMS Health Indicator 3-Year Aggregate Report - Discuss seat belt use with HCW during PNC- by State;County;DOH Race-
Ethnicity;PRAMS Age Group;Infant Gender;Married;Poverty Level;Income (2000-2003);Income (2004-2011);Birthweight;Smoke 3rd
Trimester;Smoke Before Pregnant;WIC During Pregnancy, for the Year(s)
2000-2002;2001-2003;2002-2004;2003-2005;2004-2006;2005-2007;2006-2008;2007-2009;2008-2010;2009-2011;2010-2012;2011-2013**

Note: Weighted counts (#) represent 3-yr averages, rounded to the nearest hundred; n/r (Not Reportable) - If the unweighted total responses for a dimension (row) is <30 that row will not be shown

Years: 2011-2013

DOH Race- Ethnicity	Yes			No			Weighted Total Responses (3-Yr Avg)
	#	%	C.I.(95%)	#	%	C.I.(95%)	#
Caucasian	1,900	41.8	38.0 - 45.7	2,600	58.2	54.3 - 62.0	4,500
Native Hawaiian	2,900	54.7	51.2 - 58.1	2,400	45.3	41.9 - 48.8	5,300
Chinese	300	37.7	29.3 - 46.8	500	62.3	53.2 - 70.7	900
Filipino	1,700	55.5	50.8 - 60.0	1,400	44.5	40.0 - 49.2	3,100
Japanese	500	28.1	22.8 - 34.2	1,200	71.9	65.8 - 77.2	1,700
Other	1,600	61.7	56.4 - 66.7	1,000	38.3	33.3 - 43.6	2,600

PRAMS Age Group	Yes			No			Weighted Total Responses (3-Yr Avg)
	#	%	C.I.(95%)	#	%	C.I.(95%)	#
<20	600	67.5	59.6 - 74.4	300	32.5	25.6 - 40.4	900
20-24	2,200	54.7	50.5 - 58.9	1,800	45.3	41.1 - 49.5	4,000
25-34	4,800	48.5	45.9 - 51.1	5,100	51.5	48.9 - 54.1	9,900
35+	1,300	39.9	35.7 - 44.3	1,900	60.1	55.7 - 64.3	3,200

**PRAMS Health Indicator 3-Year Aggregate Report - Discuss seat belt use with HCW during PNC- by State;County;DOH Race-Ethnicity;PRAMS Age Group;Infant Gender;Married;Poverty Level;Income (2000-2003);Income (2004-2011);Birthweight;Smoke 3rd Trimester;Smoke Before Pregnant;WIC During Pregnancy, for the Year(s)
2000-2002;2001-2003;2002-2004;2003-2005;2004-2006;2005-2007;2006-2008;2007-2009;2008-2010;2009-2011;2010-2012;2011-2013**

Note: Weighted counts (#) represent 3-yr averages, rounded to the nearest hundred; n/r (Not Reportable) - If the unweighted total responses for a dimension (row) is <30 that row will not be shown

Years: 2011-2013

	Yes			No			Weighted Total Responses (3-Yr Avg)
	#	%	C.I.(95%)	#	%	C.I.(95%)	#
Infant Gender							
Male	4,300	48.1	45.4 - 50.9	4,700	51.9	49.1 - 54.6	9,000
Female	4,600	50.5	47.7 - 53.2	4,500	49.5	46.8 - 52.3	9,100

	Yes			No			Weighted Total Responses (3-Yr Avg)
	#	%	C.I.(95%)	#	%	C.I.(95%)	#
Married							
Yes	5,100	45.5	43.1 - 48.0	6,200	54.5	52.0 - 56.9	11,300
No	3,800	55.7	52.6 - 58.7	3,000	44.3	41.3 - 47.4	6,800

	Yes			No			Weighted Total Responses (3-Yr Avg)
	#	%	C.I.(95%)	#	%	C.I.(95%)	#
Poverty Level							
0-130%	3,700	57.4	54.3 - 60.5	2,700	42.6	39.5 - 45.7	6,400
131-185%	1,600	57.5	52.4 - 62.4	1,200	42.5	37.6 - 47.6	2,700
186+%	2,900	38.7	35.8 - 41.7	4,500	61.3	58.3 - 64.2	7,400

**PRAMS Health Indicator 3-Year Aggregate Report - Discuss seat belt use with HCW during PNC- by State;County;DOH Race-Ethnicity;PRAMS Age Group;Infant Gender;Married;Poverty Level;Income (2000-2003);Income (2004-2011);Birthweight;Smoke 3rd Trimester;Smoke Before Pregnant;WIC During Pregnancy, for the Year(s)
2000-2002;2001-2003;2002-2004;2003-2005;2004-2006;2005-2007;2006-2008;2007-2009;2008-2010;2009-2011;2010-2012;2011-2013**

Note: Weighted counts (#) represent 3-yr averages, rounded to the nearest hundred; n/r (Not Reportable) - If the unweighted total responses for a dimension (row) is <30 that row will not be shown

Years: 2011-2013

Birthweight	Yes			No			Weighted Total Responses (3-Yr Avg)
	#	%	C.I.(95%)	#	%	C.I.(95%)	#
Low birth weight	700	52.5	49.4 - 55.6	600	47.5	44.4 - 50.6	1,300
Normal birth weight	8,200	49.1	47.0 - 51.2	8,500	50.9	48.8 - 53.0	16,800

Smoke 3rd Trimester	Yes			No			Weighted Total Responses (3-Yr Avg)
	#	%	C.I.(95%)	#	%	C.I.(95%)	#
Yes	400	49.1	41.1 - 57.2	400	50.9	42.8 - 58.9	900
No	8,300	49.4	47.4 - 51.4	8,500	50.6	48.6 - 52.6	16,800

Smoke Before Pregnant	Yes			No			Weighted Total Responses (3-Yr Avg)
	#	%	C.I.(95%)	#	%	C.I.(95%)	#
Yes	1,500	45.9	41.4 - 50.5	1,700	54.1	49.5 - 58.6	3,200
No	7,300	50.2	48.0 - 52.3	7,200	49.8	47.7 - 52.0	14,500

**PRAMS Health Indicator 3-Year Aggregate Report - Discuss seat belt use with HCW during PNC- by State;County;DOH Race-Ethnicity;PRAMS Age Group;Infant Gender;Married;Poverty Level;Income (2000-2003);Income (2004-2011);Birthweight;Smoke 3rd Trimester;Smoke Before Pregnant;WIC During Pregnancy, for the Year(s)
2000-2002;2001-2003;2002-2004;2003-2005;2004-2006;2005-2007;2006-2008;2007-2009;2008-2010;2009-2011;2010-2012;2011-2013**

Note: Weighted counts (#) represent 3-yr averages, rounded to the nearest hundred; n/r (Not Reportable) - If the unweighted total responses for a dimension (row) is <30 that row will not be shown

Years: 2011-2013

WIC During Pregnancy	Yes			No			Weighted Total Responses (3-Yr Avg)
	#	%	C.I.(95%)	#	%	C.I.(95%)	#
Yes	4,600	57.1	54.2 - 59.9	3,500	42.9	40.1 - 45.8	8,100
No	4,300	43.1	40.6 - 45.8	5,700	56.9	54.2 - 59.4	10,000

**PRAMS Health Indicator 3-Year Aggregate Report - Discuss seat belt use with HCW during PNC- by State;County;DOH Race-Ethnicity;PRAMS Age Group;Infant Gender;Married;Poverty Level;Income (2000-2003);Income (2004-2011);Birthweight;Smoke 3rd Trimester;Smoke Before Pregnant;WIC During Pregnancy, for the Year(s)
2000-2002;2001-2003;2002-2004;2003-2005;2004-2006;2005-2007;2006-2008;2007-2009;2008-2010;2009-2011;2010-2012;2011-2013**

Note: Weighted counts (#) represent 3-yr averages, rounded to the nearest hundred; n/r (Not Reportable) - If the unweighted total responses for a dimension (row) is <30 that row will not be shown

Years: 2010-2012

State	Yes			No			Weighted Total Responses (3-Yr Avg)
	#	%	C.I.(95%)	#	%	C.I.(95%)	#
Totals	9,200	50.9	49.0 - 52.8	8,900	49.1	47.2 - 51.0	18,100

County	Yes			No			Weighted Total Responses (3-Yr Avg)
	#	%	C.I.(95%)	#	%	C.I.(95%)	#
Hawaii	1,200	54.1	51.1 - 57.1	1,100	45.9	42.9 - 48.9	2,300
Honolulu	6,600	50.6	48.1 - 53.1	6,400	49.4	46.9 - 51.9	13,100
Kauai	400	50.4	46.8 - 53.9	400	49.6	46.1 - 53.2	800
Maui	1,000	49.2	46.4 - 52.0	1,000	50.8	48.0 - 53.6	1,900

**PRAMS Health Indicator 3-Year Aggregate Report - Discuss seat belt use with HCW during PNC- by State;County;DOH Race-Ethnicity;PRAMS Age Group;Infant Gender;Married;Poverty Level;Income (2000-2003);Income (2004-2011);Birthweight;Smoke 3rd Trimester;Smoke Before Pregnant;WIC During Pregnancy, for the Year(s)
2000-2002;2001-2003;2002-2004;2003-2005;2004-2006;2005-2007;2006-2008;2007-2009;2008-2010;2009-2011;2010-2012;2011-2013**

Note: Weighted counts (#) represent 3-yr averages, rounded to the nearest hundred; n/r (Not Reportable) - If the unweighted total responses for a dimension (row) is <30 that row will not be shown

Years: 2010-2012

DOH Race-Ethnicity	Yes			No			Weighted Total Responses (3-Yr Avg)
	#	%	C.I.(95%)	#	%	C.I.(95%)	#
Caucasian	2,000	45.3	41.5 - 49.1	2,400	54.7	50.9 - 58.5	4,400
Native Hawaiian	2,900	55.2	51.8 - 58.5	2,400	44.8	41.5 - 48.2	5,200
Chinese	300	35.5	27.5 - 44.5	500	64.5	55.5 - 72.5	800
Filipino	1,800	55.8	51.4 - 60.2	1,400	44.2	39.8 - 48.6	3,200
Japanese	500	28.1	22.9 - 34.0	1,200	71.9	66.0 - 77.1	1,700
Other	1,800	64.2	59.2 - 68.9	1,000	35.8	31.1 - 40.8	2,800

PRAMS Age Group	Yes			No			Weighted Total Responses (3-Yr Avg)
	#	%	C.I.(95%)	#	%	C.I.(95%)	#
<20	700	71.2	64.1 - 77.3	300	28.8	22.7 - 35.9	1,000
20-24	2,300	56.0	52.0 - 60.0	1,800	44.0	40.0 - 48.0	4,200
25-34	4,800	49.3	46.7 - 51.8	4,900	50.7	48.2 - 53.3	9,700
35+	1,400	42.9	38.6 - 47.3	1,800	57.1	52.7 - 61.4	3,200

**PRAMS Health Indicator 3-Year Aggregate Report - Discuss seat belt use with HCW during PNC- by State;County;DOH Race-Ethnicity;PRAMS Age Group;Infant Gender;Married;Poverty Level;Income (2000-2003);Income (2004-2011);Birthweight;Smoke 3rd Trimester;Smoke Before Pregnant;WIC During Pregnancy, for the Year(s)
2000-2002;2001-2003;2002-2004;2003-2005;2004-2006;2005-2007;2006-2008;2007-2009;2008-2010;2009-2011;2010-2012;2011-2013**

Note: Weighted counts (#) represent 3-yr averages, rounded to the nearest hundred; n/r (Not Reportable) - If the unweighted total responses for a dimension (row) is <30 that row will not be shown

Years: 2010-2012

	Yes			No			Weighted Total Responses (3-Yr Avg)
	#	%	C.I.(95%)	#	%	C.I.(95%)	#
Infant Gender							
Male	4,600	50.9	48.3 - 53.6	4,500	49.1	46.4 - 51.7	9,100
Female	4,600	50.8	48.2 - 53.5	4,400	49.2	46.5 - 51.8	9,000

	Yes			No			Weighted Total Responses (3-Yr Avg)
	#	%	C.I.(95%)	#	%	C.I.(95%)	#
Married							
Yes	5,400	47.6	45.2 - 50.1	5,900	52.4	49.9 - 54.8	11,300
No	3,800	56.3	53.3 - 59.3	3,000	43.7	40.7 - 46.7	6,800

	Yes			No			Weighted Total Responses (3-Yr Avg)
	#	%	C.I.(95%)	#	%	C.I.(95%)	#
Poverty Level							
0-130%	3,800	59.4	56.4 - 62.4	2,600	40.6	37.6 - 43.6	6,300
131-185%	1,600	55.8	51.0 - 60.5	1,300	44.2	39.5 - 49.0	2,900
186+%	3,100	41.3	38.5 - 44.3	4,400	58.7	55.7 - 61.5	7,600

**PRAMS Health Indicator 3-Year Aggregate Report - Discuss seat belt use with HCW during PNC- by State;County;DOH Race-Ethnicity;PRAMS Age Group;Infant Gender;Married;Poverty Level;Income (2000-2003);Income (2004-2011);Birthweight;Smoke 3rd Trimester;Smoke Before Pregnant;WIC During Pregnancy, for the Year(s)
2000-2002;2001-2003;2002-2004;2003-2005;2004-2006;2005-2007;2006-2008;2007-2009;2008-2010;2009-2011;2010-2012;2011-2013**

Note: Weighted counts (#) represent 3-yr averages, rounded to the nearest hundred; n/r (Not Reportable) - If the unweighted total responses for a dimension (row) is <30 that row will not be shown

Years: 2010-2012

Birthweight	Yes			No			Weighted Total Responses (3-Yr Avg)
	#	%	C.I.(95%)	#	%	C.I.(95%)	#
Low birth weight	700	52.1	48.9 - 55.3	600	47.9	44.7 - 51.1	1,300
Normal birth weight	8,500	50.8	48.8 - 52.8	8,300	49.2	47.2 - 51.2	16,800

Smoke 3rd Trimester	Yes			No			Weighted Total Responses (3-Yr Avg)
	#	%	C.I.(95%)	#	%	C.I.(95%)	#
Yes	500	47.5	40.0 - 55.2	500	52.5	44.8 - 60.0	1,000
No	8,600	51.2	49.3 - 53.2	8,200	48.8	46.8 - 50.7	16,800

Smoke Before Pregnant	Yes			No			Weighted Total Responses (3-Yr Avg)
	#	%	C.I.(95%)	#	%	C.I.(95%)	#
Yes	1,500	45.1	40.9 - 49.3	1,800	54.9	50.7 - 59.1	3,400
No	7,600	52.4	50.3 - 54.5	6,900	47.6	45.5 - 49.7	14,400

**PRAMS Health Indicator 3-Year Aggregate Report - Discuss seat belt use with HCW during PNC- by State;County;DOH Race-Ethnicity;PRAMS Age Group;Infant Gender;Married;Poverty Level;Income (2000-2003);Income (2004-2011);Birthweight;Smoke 3rd Trimester;Smoke Before Pregnant;WIC During Pregnancy, for the Year(s)
2000-2002;2001-2003;2002-2004;2003-2005;2004-2006;2005-2007;2006-2008;2007-2009;2008-2010;2009-2011;2010-2012;2011-2013**

Note: Weighted counts (#) represent 3-yr averages, rounded to the nearest hundred; n/r (Not Reportable) - If the unweighted total responses for a dimension (row) is <30 that row will not be shown

Years: 2010-2012

WIC During Pregnancy	Yes			No			Weighted Total Responses (3-Yr Avg)
	#	%	C.I.(95%)	#	%	C.I.(95%)	#
Yes	4,700	58.9	56.1 - 61.6	3,300	41.1	38.4 - 43.9	8,100
No	4,400	44.7	42.2 - 47.3	5,500	55.3	52.7 - 57.8	9,900

**PRAMS Health Indicator 3-Year Aggregate Report - Discuss seat belt use with HCW during PNC- by State;County;DOH Race-Ethnicity;PRAMS Age Group;Infant Gender;Married;Poverty Level;Income (2000-2003);Income (2004-2011);Birthweight;Smoke 3rd Trimester;Smoke Before Pregnant;WIC During Pregnancy, for the Year(s)
2000-2002;2001-2003;2002-2004;2003-2005;2004-2006;2005-2007;2006-2008;2007-2009;2008-2010;2009-2011;2010-2012;2011-2013**

Note: Weighted counts (#) represent 3-yr averages, rounded to the nearest hundred; n/r (Not Reportable) - If the unweighted total responses for a dimension (row) is <30 that row will not be shown

Years: 2009-2011

State	Yes			No			Weighted Total Responses (3-Yr Avg)
	#	%	C.I.(95%)	#	%	C.I.(95%)	#
Totals	9,100	50.5	48.6 - 52.4	9,000	49.5	47.6 - 51.4	18,100

County	Yes			No			Weighted Total Responses (3-Yr Avg)
	#	%	C.I.(95%)	#	%	C.I.(95%)	#
Hawaii	1,200	53.0	50.0 - 55.9	1,100	47.0	44.1 - 50.0	2,300
Honolulu	6,500	50.5	48.0 - 53.0	6,400	49.5	47.0 - 52.0	13,000
Kauai	400	50.4	46.9 - 53.9	400	49.6	46.1 - 53.1	800
Maui	900	47.5	44.8 - 50.2	1,000	52.5	49.8 - 55.2	2,000

**PRAMS Health Indicator 3-Year Aggregate Report - Discuss seat belt use with HCW during PNC- by State;County;DOH Race-Ethnicity;PRAMS Age Group;Infant Gender;Married;Poverty Level;Income (2000-2003);Income (2004-2011);Birthweight;Smoke 3rd Trimester;Smoke Before Pregnant;WIC During Pregnancy, for the Year(s)
2000-2002;2001-2003;2002-2004;2003-2005;2004-2006;2005-2007;2006-2008;2007-2009;2008-2010;2009-2011;2010-2012;2011-2013**

Note: Weighted counts (#) represent 3-yr averages, rounded to the nearest hundred; n/r (Not Reportable) - If the unweighted total responses for a dimension (row) is <30 that row will not be shown

Years: 2009-2011

DOH Race-Ethnicity	Yes			No			Weighted Total Responses (3-Yr Avg)
	#	%	C.I.(95%)	#	%	C.I.(95%)	#
Caucasian	2,100	47.0	43.3 - 50.7	2,300	53.0	49.3 - 56.7	4,400
Native Hawaiian	3,100	55.6	52.3 - 58.8	2,400	44.4	41.2 - 47.7	5,500
Chinese	300	34.3	25.9 - 43.9	500	65.7	56.1 - 74.1	700
Filipino	1,800	56.7	52.3 - 61.0	1,400	43.3	39.0 - 47.7	3,200
Japanese	500	28.3	23.1 - 34.1	1,200	71.7	65.9 - 76.9	1,700
Other	1,500	57.1	51.9 - 62.2	1,100	42.9	37.8 - 48.1	2,600

PRAMS Age Group	Yes			No			Weighted Total Responses (3-Yr Avg)
	#	%	C.I.(95%)	#	%	C.I.(95%)	#
<20	800	66.5	59.8 - 72.6	400	33.5	27.4 - 40.2	1,300
20-24	2,400	56.6	52.7 - 60.4	1,900	43.4	39.6 - 47.3	4,300
25-34	4,600	48.7	46.1 - 51.3	4,800	51.3	48.7 - 53.9	9,400
35+	1,300	41.0	36.8 - 45.4	1,900	59.0	54.6 - 63.2	3,100

**PRAMS Health Indicator 3-Year Aggregate Report - Discuss seat belt use with HCW during PNC- by State;County;DOH Race-Ethnicity;PRAMS Age Group;Infant Gender;Married;Poverty Level;Income (2000-2003);Income (2004-2011);Birthweight;Smoke 3rd Trimester;Smoke Before Pregnant;WIC During Pregnancy, for the Year(s)
2000-2002;2001-2003;2002-2004;2003-2005;2004-2006;2005-2007;2006-2008;2007-2009;2008-2010;2009-2011;2010-2012;2011-2013**

Note: Weighted counts (#) represent 3-yr averages, rounded to the nearest hundred; n/r (Not Reportable) - If the unweighted total responses for a dimension (row) is <30 that row will not be shown

Years: 2009-2011

	Yes			No			Weighted Total Responses (3-Yr Avg)
	#	%	C.I.(95%)	#	%	C.I.(95%)	#
Infant Gender							
Male	4,700	50.6	48.0 - 53.2	4,600	49.4	46.8 - 52.0	9,300
Female	4,400	50.4	47.7 - 53.1	4,400	49.6	46.9 - 52.3	8,800

	Yes			No			Weighted Total Responses (3-Yr Avg)
	#	%	C.I.(95%)	#	%	C.I.(95%)	#
Married							
Yes	5,200	47.0	44.6 - 49.3	5,900	53.0	50.7 - 55.4	11,100
No	3,900	56.2	53.2 - 59.1	3,100	43.8	40.9 - 46.8	7,000

	Yes			No			Weighted Total Responses (3-Yr Avg)
	#	%	C.I.(95%)	#	%	C.I.(95%)	#
Poverty Level							
0-130%	3,600	57.8	54.7 - 60.9	2,700	42.2	39.1 - 45.3	6,300
131-185%	1,500	53.9	49.1 - 58.6	1,300	46.1	41.4 - 50.9	2,800
186+%	3,100	40.7	37.9 - 43.5	4,600	59.3	56.5 - 62.1	7,700

**PRAMS Health Indicator 3-Year Aggregate Report - Discuss seat belt use with HCW during PNC- by State;County;DOH Race-Ethnicity;PRAMS Age Group;Infant Gender;Married;Poverty Level;Income (2000-2003);Income (2004-2011);Birthweight;Smoke 3rd Trimester;Smoke Before Pregnant;WIC During Pregnancy, for the Year(s)
2000-2002;2001-2003;2002-2004;2003-2005;2004-2006;2005-2007;2006-2008;2007-2009;2008-2010;2009-2011;2010-2012;2011-2013**

Note: Weighted counts (#) represent 3-yr averages, rounded to the nearest hundred; n/r (Not Reportable) - If the unweighted total responses for a dimension (row) is <30 that row will not be shown

Years: 2009-2011

Income (2004-2011)	Yes			No			Weighted Total Responses (3-Yr Avg)
	#	%	C.I.(95%)	#	%	C.I.(95%)	#
<\$10,000	1,900	60.2	55.8 - 64.4	1,300	39.8	35.6 - 44.2	3,200
\$10,000-\$24,999	1,900	56.6	52.4 - 60.7	1,500	43.4	39.3 - 47.6	3,400
\$25,000-\$49,999	2,200	50.8	47.0 - 54.6	2,100	49.2	45.4 - 53.0	4,300
>=\$50,000	2,300	38.4	35.3 - 41.6	3,800	61.6	58.4 - 64.7	6,100

Birthweight	Yes			No			Weighted Total Responses (3-Yr Avg)
	#	%	C.I.(95%)	#	%	C.I.(95%)	#
Low birth weight	700	52.1	49.0 - 55.2	600	47.9	44.8 - 51.0	1,300
Normal birth weight	8,400	50.3	48.3 - 52.3	8,300	49.7	47.7 - 51.7	16,800

Smoke 3rd Trimester	Yes			No			Weighted Total Responses (3-Yr Avg)
	#	%	C.I.(95%)	#	%	C.I.(95%)	#
Yes	600	44.7	38.1 - 51.4	700	55.3	48.6 - 61.9	1,300
No	8,400	51.1	49.2 - 53.1	8,100	48.9	46.9 - 50.8	16,500

**PRAMS Health Indicator 3-Year Aggregate Report - Discuss seat belt use with HCW during PNC- by State;County;DOH Race-Ethnicity;PRAMS Age Group;Infant Gender;Married;Poverty Level;Income (2000-2003);Income (2004-2011);Birthweight;Smoke 3rd Trimester;Smoke Before Pregnant;WIC During Pregnancy, for the Year(s)
2000-2002;2001-2003;2002-2004;2003-2005;2004-2006;2005-2007;2006-2008;2007-2009;2008-2010;2009-2011;2010-2012;2011-2013**

Note: Weighted counts (#) represent 3-yr averages, rounded to the nearest hundred; n/r (Not Reportable) - If the unweighted total responses for a dimension (row) is <30 that row will not be shown

Years: 2009-2011

Smoke Before Pregnant	Yes			No			Weighted Total Responses (3-Yr Avg)
	#	%	C.I.(95%)	#	%	C.I.(95%)	#
Yes	1,700	45.3	41.4 - 49.4	2,000	54.7	50.6 - 58.6	3,700
No	7,400	52.1	49.9 - 54.2	6,800	47.9	45.8 - 50.1	14,100

WIC During Pregnancy	Yes			No			Weighted Total Responses (3-Yr Avg)
	#	%	C.I.(95%)	#	%	C.I.(95%)	#
Yes	4,500	58.1	55.3 - 60.8	3,300	41.9	39.2 - 44.7	7,800
No	4,500	45.2	42.7 - 47.7	5,500	54.8	52.3 - 57.3	10,000

**PRAMS Health Indicator 3-Year Aggregate Report - Discuss seat belt use with HCW during PNC- by State;County;DOH Race-Ethnicity;PRAMS Age Group;Infant Gender;Married;Poverty Level;Income (2000-2003);Income (2004-2011);Birthweight;Smoke 3rd Trimester;Smoke Before Pregnant;WIC During Pregnancy, for the Year(s)
2000-2002;2001-2003;2002-2004;2003-2005;2004-2006;2005-2007;2006-2008;2007-2009;2008-2010;2009-2011;2010-2012;2011-2013**

Note: Weighted counts (#) represent 3-yr averages, rounded to the nearest hundred; n/r (Not Reportable) - If the unweighted total responses for a dimension (row) is <30 that row will not be shown

Years: 2008-2010

State	Yes			No			Weighted Total Responses (3-Yr Avg)
	#	%	C.I.(95%)	#	%	C.I.(95%)	#
Totals	8,800	48.8	47.1 - 50.5	9,300	51.2	49.5 - 52.9	18,100

County	Yes			No			Weighted Total Responses (3-Yr Avg)
	#	%	C.I.(95%)	#	%	C.I.(95%)	#
Hawaii	1,200	50.3	47.0 - 53.6	1,200	49.7	46.4 - 53.0	2,300
Honolulu	6,300	49.2	47.0 - 51.5	6,500	50.8	48.5 - 53.0	12,900
Kauai	400	48.6	44.0 - 53.3	400	51.4	46.7 - 56.0	800
Maui	900	44.2	40.9 - 47.5	1,100	55.8	52.5 - 59.1	2,100

**PRAMS Health Indicator 3-Year Aggregate Report - Discuss seat belt use with HCW during PNC- by State;County;DOH Race-Ethnicity;PRAMS Age Group;Infant Gender;Married;Poverty Level;Income (2000-2003);Income (2004-2011);Birthweight;Smoke 3rd Trimester;Smoke Before Pregnant;WIC During Pregnancy, for the Year(s)
2000-2002;2001-2003;2002-2004;2003-2005;2004-2006;2005-2007;2006-2008;2007-2009;2008-2010;2009-2011;2010-2012;2011-2013**

Note: Weighted counts (#) represent 3-yr averages, rounded to the nearest hundred; n/r (Not Reportable) - If the unweighted total responses for a dimension (row) is <30 that row will not be shown

Years: 2008-2010

DOH Race-Ethnicity	Yes			No			Weighted Total Responses (3-Yr Avg)
	#	%	C.I.(95%)	#	%	C.I.(95%)	#
Caucasian	2,000	45.1	41.7 - 48.5	2,400	54.9	51.5 - 58.3	4,300
Native Hawaiian	2,900	52.4	49.2 - 55.5	2,600	47.6	44.5 - 50.8	5,500
Chinese	200	32.2	24.7 - 40.8	500	67.8	59.2 - 75.3	700
Filipino	1,800	54.4	50.5 - 58.3	1,500	45.6	41.7 - 49.5	3,300
Japanese	500	30.6	25.8 - 35.7	1,200	69.4	64.3 - 74.2	1,800
Other	1,500	57.2	52.5 - 61.7	1,100	42.8	38.3 - 47.5	2,600

PRAMS Age Group	Yes			No			Weighted Total Responses (3-Yr Avg)
	#	%	C.I.(95%)	#	%	C.I.(95%)	#
<20	900	65.4	59.2 - 71.0	500	34.6	29.0 - 40.8	1,400
20-24	2,300	54.5	50.9 - 58.1	1,900	45.5	41.9 - 49.1	4,200
25-34	4,300	46.0	43.7 - 48.4	5,000	54.0	51.6 - 56.3	9,300
35+	1,300	41.9	38.0 - 45.8	1,900	58.1	54.2 - 62.0	3,200

**PRAMS Health Indicator 3-Year Aggregate Report - Discuss seat belt use with HCW during PNC- by State;County;DOH Race-Ethnicity;PRAMS Age Group;Infant Gender;Married;Poverty Level;Income (2000-2003);Income (2004-2011);Birthweight;Smoke 3rd Trimester;Smoke Before Pregnant;WIC During Pregnancy, for the Year(s)
2000-2002;2001-2003;2002-2004;2003-2005;2004-2006;2005-2007;2006-2008;2007-2009;2008-2010;2009-2011;2010-2012;2011-2013**

Note: Weighted counts (#) represent 3-yr averages, rounded to the nearest hundred; n/r (Not Reportable) - If the unweighted total responses for a dimension (row) is <30 that row will not be shown

Years: 2008-2010

	Yes			No			Weighted Total Responses (3-Yr Avg)
	#	%	C.I.(95%)	#	%	C.I.(95%)	#
Infant Gender							
Male	4,500	47.7	45.4 - 50.1	4,900	52.3	49.9 - 54.6	9,400
Female	4,300	49.9	47.4 - 52.4	4,400	50.1	47.6 - 52.6	8,700

	Yes			No			Weighted Total Responses (3-Yr Avg)
	#	%	C.I.(95%)	#	%	C.I.(95%)	#
Married							
Yes	5,000	45.0	42.8 - 47.1	6,200	55.0	52.9 - 57.2	11,200
No	3,800	54.9	52.1 - 57.6	3,100	45.1	42.4 - 47.9	6,900

	Yes			No			Weighted Total Responses (3-Yr Avg)
	#	%	C.I.(95%)	#	%	C.I.(95%)	#
Poverty Level							
0-130%	3,500	55.2	52.3 - 58.0	2,900	44.8	42.0 - 47.7	6,400
131-185%	1,400	51.1	46.7 - 55.5	1,400	48.9	44.5 - 53.3	2,800
186+%	3,000	39.7	37.1 - 42.3	4,600	60.3	57.7 - 62.9	7,600

**PRAMS Health Indicator 3-Year Aggregate Report - Discuss seat belt use with HCW during PNC- by State;County;DOH Race-Ethnicity;PRAMS Age Group;Infant Gender;Married;Poverty Level;Income (2000-2003);Income (2004-2011);Birthweight;Smoke 3rd Trimester;Smoke Before Pregnant;WIC During Pregnancy, for the Year(s)
2000-2002;2001-2003;2002-2004;2003-2005;2004-2006;2005-2007;2006-2008;2007-2009;2008-2010;2009-2011;2010-2012;2011-2013**

Note: Weighted counts (#) represent 3-yr averages, rounded to the nearest hundred; n/r (Not Reportable) - If the unweighted total responses for a dimension (row) is <30 that row will not be shown

Years: 2008-2010

Income (2004-2011)	Yes			No			Weighted Total Responses (3-Yr Avg)
	#	%	C.I.(95%)	#	%	C.I.(95%)	#
<\$10,000	1,800	57.7	53.6 - 61.8	1,300	42.3	38.2 - 46.4	3,100
\$10,000-\$24,999	2,000	54.0	50.3 - 57.8	1,700	46.0	42.2 - 49.7	3,700
\$25,000-\$49,999	1,900	45.6	42.1 - 49.2	2,300	54.4	50.8 - 57.9	4,100
>=\$50,000	2,400	39.4	36.5 - 42.3	3,700	60.6	57.7 - 63.5	6,100

Birthweight	Yes			No			Weighted Total Responses (3-Yr Avg)
	#	%	C.I.(95%)	#	%	C.I.(95%)	#
Low birth weight	600	48.8	44.9 - 52.7	700	51.2	47.3 - 55.1	1,300
Normal birth weight	8,200	48.7	46.9 - 50.5	8,600	51.3	49.5 - 53.1	16,800

Smoke 3rd Trimester	Yes			No			Weighted Total Responses (3-Yr Avg)
	#	%	C.I.(95%)	#	%	C.I.(95%)	#
Yes	700	48.4	42.4 - 54.4	800	51.6	45.6 - 57.6	1,500
No	8,000	48.8	47.0 - 50.6	8,300	51.2	49.4 - 53.0	16,300

**PRAMS Health Indicator 3-Year Aggregate Report - Discuss seat belt use with HCW during PNC- by State;County;DOH Race-Ethnicity;PRAMS Age Group;Infant Gender;Married;Poverty Level;Income (2000-2003);Income (2004-2011);Birthweight;Smoke 3rd Trimester;Smoke Before Pregnant;WIC During Pregnancy, for the Year(s)
2000-2002;2001-2003;2002-2004;2003-2005;2004-2006;2005-2007;2006-2008;2007-2009;2008-2010;2009-2011;2010-2012;2011-2013**

Note: Weighted counts (#) represent 3-yr averages, rounded to the nearest hundred; n/r (Not Reportable) - If the unweighted total responses for a dimension (row) is <30 that row will not be shown

Years: 2008-2010

Smoke Before Pregnant	Yes			No			Weighted Total Responses (3-Yr Avg)
	#	%	C.I.(95%)	#	%	C.I.(95%)	#
Yes	1,700	45.9	42.1 - 49.7	2,000	54.1	50.3 - 57.9	3,700
No	7,000	49.5	47.6 - 51.5	7,100	50.5	48.5 - 52.4	14,100

WIC During Pregnancy	Yes			No			Weighted Total Responses (3-Yr Avg)
	#	%	C.I.(95%)	#	%	C.I.(95%)	#
Yes	4,300	56.6	54.0 - 59.2	3,300	43.4	40.8 - 46.0	7,700
No	4,400	43.2	41.0 - 45.5	5,800	56.8	54.5 - 59.0	10,200

**PRAMS Health Indicator 3-Year Aggregate Report - Discuss seat belt use with HCW during PNC- by State;County;DOH Race-Ethnicity;PRAMS Age Group;Infant Gender;Married;Poverty Level;Income (2000-2003);Income (2004-2011);Birthweight;Smoke 3rd Trimester;Smoke Before Pregnant;WIC During Pregnancy, for the Year(s)
2000-2002;2001-2003;2002-2004;2003-2005;2004-2006;2005-2007;2006-2008;2007-2009;2008-2010;2009-2011;2010-2012;2011-2013**

Note: Weighted counts (#) represent 3-yr averages, rounded to the nearest hundred; n/r (Not Reportable) - If the unweighted total responses for a dimension (row) is <30 that row will not be shown

Years: 2007-2009

State	Yes			No			Weighted Total Responses (3-Yr Avg)
	#	%	C.I.(95%)	#	%	C.I.(95%)	#
Totals	8,700	48.5	46.9 - 50.0	9,300	51.5	50.0 - 53.1	18,000

County	Yes			No			Weighted Total Responses (3-Yr Avg)
	#	%	C.I.(95%)	#	%	C.I.(95%)	#
Hawaii	1,100	45.8	42.2 - 49.5	1,300	54.2	50.5 - 57.8	2,400
Honolulu	6,300	50.2	48.2 - 52.2	6,300	49.8	47.8 - 51.8	12,600
Kauai	500	49.5	44.0 - 54.9	500	50.5	45.1 - 56.0	900
Maui	900	40.7	37.1 - 44.4	1,300	59.3	55.6 - 62.9	2,100

**PRAMS Health Indicator 3-Year Aggregate Report - Discuss seat belt use with HCW during PNC- by State;County;DOH Race-
Ethnicity;PRAMS Age Group;Infant Gender;Married;Poverty Level;Income (2000-2003);Income (2004-2011);Birthweight;Smoke 3rd
Trimester;Smoke Before Pregnant;WIC During Pregnancy, for the Year(s)
2000-2002;2001-2003;2002-2004;2003-2005;2004-2006;2005-2007;2006-2008;2007-2009;2008-2010;2009-2011;2010-2012;2011-2013**

Note: Weighted counts (#) represent 3-yr averages, rounded to the nearest hundred; n/r (Not Reportable) - If the unweighted total responses for a dimension (row) is <30 that row will not be shown

Years: 2007-2009

DOH Race- Ethnicity	Yes			No			Weighted Total Responses (3-Yr Avg)
	#	%	C.I.(95%)	#	%	C.I.(95%)	#
Caucasian	1,900	44.3	41.2 - 47.5	2,300	55.7	52.5 - 58.8	4,200
Native Hawaiian	2,700	51.8	48.8 - 54.8	2,600	48.2	45.2 - 51.2	5,300
Chinese	200	36.2	29.7 - 43.3	400	63.8	56.7 - 70.3	700
Filipino	1,800	54.3	50.8 - 57.7	1,500	45.7	42.3 - 49.2	3,300
Japanese	600	32.6	28.4 - 37.1	1,300	67.4	62.9 - 71.6	1,900
Other	1,500	55.6	51.5 - 59.7	1,200	44.4	40.3 - 48.5	2,700

PRAMS Age Group	Yes			No			Weighted Total Responses (3-Yr Avg)
	#	%	C.I.(95%)	#	%	C.I.(95%)	#
<20	1,000	62.5	56.9 - 67.7	600	37.5	32.3 - 43.1	1,600
20-24	2,300	54.4	51.2 - 57.7	1,900	45.6	42.3 - 48.8	4,200
25-34	4,100	45.6	43.5 - 47.8	4,900	54.4	52.2 - 56.5	9,100
35+	1,300	41.4	37.9 - 45.0	1,800	58.6	55.0 - 62.1	3,100

**PRAMS Health Indicator 3-Year Aggregate Report - Discuss seat belt use with HCW during PNC- by State;County;DOH Race-Ethnicity;PRAMS Age Group;Infant Gender;Married;Poverty Level;Income (2000-2003);Income (2004-2011);Birthweight;Smoke 3rd Trimester;Smoke Before Pregnant;WIC During Pregnancy, for the Year(s)
2000-2002;2001-2003;2002-2004;2003-2005;2004-2006;2005-2007;2006-2008;2007-2009;2008-2010;2009-2011;2010-2012;2011-2013**

Note: Weighted counts (#) represent 3-yr averages, rounded to the nearest hundred; n/r (Not Reportable) - If the unweighted total responses for a dimension (row) is <30 that row will not be shown

Years: 2007-2009

	Yes			No			Weighted Total Responses (3-Yr Avg)
	#	%	C.I.(95%)	#	%	C.I.(95%)	#
Infant Gender							
Male	4,500	47.2	45.0 - 49.3	5,000	52.8	50.7 - 55.0	9,500
Female	4,300	49.9	47.7 - 52.1	4,300	50.1	47.9 - 52.3	8,600

	Yes			No			Weighted Total Responses (3-Yr Avg)
	#	%	C.I.(95%)	#	%	C.I.(95%)	#
Married							
Yes	5,000	45.1	43.2 - 47.0	6,100	54.9	53.0 - 56.8	11,100
No	3,700	53.9	51.3 - 56.5	3,200	46.1	43.5 - 48.7	6,900

	Yes			No			Weighted Total Responses (3-Yr Avg)
	#	%	C.I.(95%)	#	%	C.I.(95%)	#
Poverty Level							
0-130%	3,600	54.6	51.9 - 57.2	3,000	45.4	42.8 - 48.1	6,500
131-185%	1,300	50.0	46.0 - 54.1	1,300	50.0	45.9 - 54.0	2,700
186+%	3,000	39.9	37.7 - 42.2	4,500	60.1	57.8 - 62.3	7,400

**PRAMS Health Indicator 3-Year Aggregate Report - Discuss seat belt use with HCW during PNC- by State;County;DOH Race-Ethnicity;PRAMS Age Group;Infant Gender;Married;Poverty Level;Income (2000-2003);Income (2004-2011);Birthweight;Smoke 3rd Trimester;Smoke Before Pregnant;WIC During Pregnancy, for the Year(s)
2000-2002;2001-2003;2002-2004;2003-2005;2004-2006;2005-2007;2006-2008;2007-2009;2008-2010;2009-2011;2010-2012;2011-2013**

Note: Weighted counts (#) represent 3-yr averages, rounded to the nearest hundred; n/r (Not Reportable) - If the unweighted total responses for a dimension (row) is <30 that row will not be shown

Years: 2007-2009

Income (2004-2011)	Yes			No			Weighted Total Responses (3-Yr Avg)
	#	%	C.I.(95%)	#	%	C.I.(95%)	#
<\$10,000	1,700	56.0	52.0 - 60.0	1,300	44.0	40.0 - 48.0	3,000
\$10,000-\$24,999	2,100	53.3	49.9 - 56.6	1,800	46.7	43.4 - 50.1	3,900
\$25,000-\$49,999	1,900	46.9	43.6 - 50.1	2,100	53.1	49.9 - 56.4	4,000
>=\$50,000	2,400	39.3	36.8 - 41.9	3,600	60.7	58.1 - 63.2	6,000

Birthweight	Yes			No			Weighted Total Responses (3-Yr Avg)
	#	%	C.I.(95%)	#	%	C.I.(95%)	#
Low birth weight	700	47.7	43.2 - 52.2	700	52.3	47.8 - 56.8	1,400
Normal birth weight	8,100	48.5	46.8 - 50.1	8,600	51.5	49.9 - 53.2	16,600

Smoke 3rd Trimester	Yes			No			Weighted Total Responses (3-Yr Avg)
	#	%	C.I.(95%)	#	%	C.I.(95%)	#
Yes	800	50.8	45.3 - 56.3	800	49.2	43.7 - 54.7	1,500
No	7,800	48.2	46.6 - 49.9	8,400	51.8	50.1 - 53.4	16,100

**PRAMS Health Indicator 3-Year Aggregate Report - Discuss seat belt use with HCW during PNC- by State;County;DOH Race-Ethnicity;PRAMS Age Group;Infant Gender;Married;Poverty Level;Income (2000-2003);Income (2004-2011);Birthweight;Smoke 3rd Trimester;Smoke Before Pregnant;WIC During Pregnancy, for the Year(s)
2000-2002;2001-2003;2002-2004;2003-2005;2004-2006;2005-2007;2006-2008;2007-2009;2008-2010;2009-2011;2010-2012;2011-2013**

Note: Weighted counts (#) represent 3-yr averages, rounded to the nearest hundred; n/r (Not Reportable) - If the unweighted total responses for a dimension (row) is <30 that row will not be shown

Years: 2007-2009

Smoke Before Pregnant	Yes			No			Weighted Total Responses (3-Yr Avg)
	#	%	C.I.(95%)	#	%	C.I.(95%)	#
Yes	1,700	48.6	45.1 - 52.2	1,800	51.4	47.8 - 54.9	3,600
No	6,800	48.4	46.6 - 50.1	7,300	51.6	49.9 - 53.4	14,100

WIC During Pregnancy	Yes			No			Weighted Total Responses (3-Yr Avg)
	#	%	C.I.(95%)	#	%	C.I.(95%)	#
Yes	4,200	55.8	53.4 - 58.2	3,300	44.2	41.8 - 46.6	7,500
No	4,400	43.1	41.1 - 45.2	5,800	56.9	54.8 - 58.9	10,200

**PRAMS Health Indicator 3-Year Aggregate Report - Discuss seat belt use with HCW during PNC- by State;County;DOH Race-Ethnicity;PRAMS Age Group;Infant Gender;Married;Poverty Level;Income (2000-2003);Income (2004-2011);Birthweight;Smoke 3rd Trimester;Smoke Before Pregnant;WIC During Pregnancy, for the Year(s)
2000-2002;2001-2003;2002-2004;2003-2005;2004-2006;2005-2007;2006-2008;2007-2009;2008-2010;2009-2011;2010-2012;2011-2013**

Note: Weighted counts (#) represent 3-yr averages, rounded to the nearest hundred; n/r (Not Reportable) - If the unweighted total responses for a dimension (row) is <30 that row will not be shown

Years: 2006-2008

State	Yes			No			Weighted Total Responses (3-Yr Avg)
	#	%	C.I.(95%)	#	%	C.I.(95%)	#
Totals	8,800	48.8	47.4 - 50.2	9,200	51.2	49.8 - 52.6	18,000

County	Yes			No			Weighted Total Responses (3-Yr Avg)
	#	%	C.I.(95%)	#	%	C.I.(95%)	#
Hawaii	1,000	45.2	41.2 - 49.3	1,300	54.8	50.7 - 58.8	2,300
Honolulu	6,400	50.4	48.8 - 52.1	6,300	49.6	47.9 - 51.2	12,700
Kauai	500	50.6	44.4 - 56.8	500	49.4	43.2 - 55.6	900
Maui	900	42.0	37.8 - 46.2	1,200	58.0	53.8 - 62.2	2,000

**PRAMS Health Indicator 3-Year Aggregate Report - Discuss seat belt use with HCW during PNC- by State;County;DOH Race-Ethnicity;PRAMS Age Group;Infant Gender;Married;Poverty Level;Income (2000-2003);Income (2004-2011);Birthweight;Smoke 3rd Trimester;Smoke Before Pregnant;WIC During Pregnancy, for the Year(s)
2000-2002;2001-2003;2002-2004;2003-2005;2004-2006;2005-2007;2006-2008;2007-2009;2008-2010;2009-2011;2010-2012;2011-2013**

Note: Weighted counts (#) represent 3-yr averages, rounded to the nearest hundred; n/r (Not Reportable) - If the unweighted total responses for a dimension (row) is <30 that row will not be shown

Years: 2006-2008

DOH Race-Ethnicity	Yes			No			Weighted Total Responses (3-Yr Avg)
	#	%	C.I.(95%)	#	%	C.I.(95%)	#
Caucasian	1,900	43.8	41.0 - 46.7	2,400	56.2	53.3 - 59.0	4,200
Native Hawaiian	2,500	49.8	46.9 - 52.7	2,500	50.2	47.3 - 53.1	5,000
Chinese	200	38.2	34.4 - 42.2	400	61.8	57.8 - 65.6	600
Filipino	1,800	55.5	52.5 - 58.5	1,500	44.5	41.5 - 47.5	3,300
Japanese	700	35.7	31.9 - 39.7	1,300	64.3	60.3 - 68.1	2,100
Other	1,600	58.7	55.1 - 62.2	1,100	41.3	37.8 - 44.9	2,800

PRAMS Age Group	Yes			No			Weighted Total Responses (3-Yr Avg)
	#	%	C.I.(95%)	#	%	C.I.(95%)	#
<20	1,000	62.4	57.2 - 67.4	600	37.6	32.6 - 42.8	1,500
20-24	2,200	51.9	48.9 - 54.8	2,100	48.1	45.2 - 51.1	4,300
25-34	4,300	47.7	45.7 - 49.6	4,700	52.3	50.4 - 54.3	9,000
35+	1,300	41.5	38.4 - 44.6	1,900	58.5	55.4 - 61.6	3,200

**PRAMS Health Indicator 3-Year Aggregate Report - Discuss seat belt use with HCW during PNC- by State;County;DOH Race-Ethnicity;PRAMS Age Group;Infant Gender;Married;Poverty Level;Income (2000-2003);Income (2004-2011);Birthweight;Smoke 3rd Trimester;Smoke Before Pregnant;WIC During Pregnancy, for the Year(s)
2000-2002;2001-2003;2002-2004;2003-2005;2004-2006;2005-2007;2006-2008;2007-2009;2008-2010;2009-2011;2010-2012;2011-2013**

Note: Weighted counts (#) represent 3-yr averages, rounded to the nearest hundred; n/r (Not Reportable) - If the unweighted total responses for a dimension (row) is <30 that row will not be shown

Years: 2006-2008

Infant Gender	Yes			No			Weighted Total Responses (3-Yr Avg)
	#	%	C.I.(95%)	#	%	C.I.(95%)	#
Male	4,500	48.3	46.3 - 50.2	4,800	51.7	49.8 - 53.7	9,300
Female	4,300	49.4	47.4 - 51.4	4,400	50.6	48.6 - 52.6	8,700

Married	Yes			No			Weighted Total Responses (3-Yr Avg)
	#	%	C.I.(95%)	#	%	C.I.(95%)	#
Yes	5,300	46.2	44.5 - 47.9	6,100	53.8	52.1 - 55.5	11,400
No	3,500	53.3	50.8 - 55.7	3,100	46.7	44.3 - 49.2	6,600

Poverty Level	Yes			No			Weighted Total Responses (3-Yr Avg)
	#	%	C.I.(95%)	#	%	C.I.(95%)	#
0-130%	3,500	53.7	51.3 - 56.1	3,000	46.3	43.9 - 48.7	6,500
131-185%	1,300	51.6	47.9 - 55.4	1,200	48.4	44.6 - 52.1	2,500
186+%	3,200	41.8	39.7 - 43.8	4,500	58.2	56.2 - 60.3	7,700

**PRAMS Health Indicator 3-Year Aggregate Report - Discuss seat belt use with HCW during PNC- by State;County;DOH Race-Ethnicity;PRAMS Age Group;Infant Gender;Married;Poverty Level;Income (2000-2003);Income (2004-2011);Birthweight;Smoke 3rd Trimester;Smoke Before Pregnant;WIC During Pregnancy, for the Year(s)
2000-2002;2001-2003;2002-2004;2003-2005;2004-2006;2005-2007;2006-2008;2007-2009;2008-2010;2009-2011;2010-2012;2011-2013**

Note: Weighted counts (#) represent 3-yr averages, rounded to the nearest hundred; n/r (Not Reportable) - If the unweighted total responses for a dimension (row) is <30 that row will not be shown

Years: 2006-2008

Income (2004-2011)	Yes			No			Weighted Total Responses (3-Yr Avg)
	#	%	C.I.(95%)	#	%	C.I.(95%)	#
<\$10,000	1,700	55.9	52.3 - 59.5	1,300	44.1	40.5 - 47.7	3,000
\$10,000-\$24,999	1,900	51.1	48.0 - 54.3	1,900	48.9	45.7 - 52.0	3,800
\$25,000-\$49,999	2,000	47.5	44.6 - 50.5	2,200	52.5	49.5 - 55.4	4,100
>=\$50,000	2,500	42.1	39.8 - 44.4	3,400	57.9	55.6 - 60.2	6,000

Birthweight	Yes			No			Weighted Total Responses (3-Yr Avg)
	#	%	C.I.(95%)	#	%	C.I.(95%)	#
Low birth weight	700	48.0	43.0 - 53.0	700	52.0	47.0 - 57.0	1,400
Normal birth weight	8,100	48.9	47.4 - 50.4	8,500	51.1	49.6 - 52.6	16,600

Smoke 3rd Trimester	Yes			No			Weighted Total Responses (3-Yr Avg)
	#	%	C.I.(95%)	#	%	C.I.(95%)	#
Yes	800	51.0	45.9 - 56.0	700	49.0	44.0 - 54.1	1,500
No	7,800	48.5	47.0 - 50.0	8,300	51.5	50.0 - 53.0	16,100

**PRAMS Health Indicator 3-Year Aggregate Report - Discuss seat belt use with HCW during PNC- by State;County;DOH Race-Ethnicity;PRAMS Age Group;Infant Gender;Married;Poverty Level;Income (2000-2003);Income (2004-2011);Birthweight;Smoke 3rd Trimester;Smoke Before Pregnant;WIC During Pregnancy, for the Year(s)
2000-2002;2001-2003;2002-2004;2003-2005;2004-2006;2005-2007;2006-2008;2007-2009;2008-2010;2009-2011;2010-2012;2011-2013**

Note: Weighted counts (#) represent 3-yr averages, rounded to the nearest hundred; n/r (Not Reportable) - If the unweighted total responses for a dimension (row) is <30 that row will not be shown

Years: 2006-2008

Smoke Before Pregnant	Yes			No			Weighted Total Responses (3-Yr Avg)
	#	%	C.I.(95%)	#	%	C.I.(95%)	#
Yes	1,800	49.8	46.5 - 53.1	1,800	50.2	46.9 - 53.5	3,500
No	6,900	48.4	46.9 - 50.0	7,300	51.6	50.0 - 53.1	14,100

WIC During Pregnancy	Yes			No			Weighted Total Responses (3-Yr Avg)
	#	%	C.I.(95%)	#	%	C.I.(95%)	#
Yes	4,200	54.7	52.5 - 56.9	3,500	45.3	43.1 - 47.5	7,600
No	4,500	44.2	42.4 - 46.0	5,700	55.8	54.0 - 57.6	10,200

**PRAMS Health Indicator 3-Year Aggregate Report - Discuss seat belt use with HCW during PNC- by State;County;DOH Race-Ethnicity;PRAMS Age Group;Infant Gender;Married;Poverty Level;Income (2000-2003);Income (2004-2011);Birthweight;Smoke 3rd Trimester;Smoke Before Pregnant;WIC During Pregnancy, for the Year(s)
2000-2002;2001-2003;2002-2004;2003-2005;2004-2006;2005-2007;2006-2008;2007-2009;2008-2010;2009-2011;2010-2012;2011-2013**

Note: Weighted counts (#) represent 3-yr averages, rounded to the nearest hundred; n/r (Not Reportable) - If the unweighted total responses for a dimension (row) is <30 that row will not be shown

Years: 2005-2007

State	Yes			No			Weighted Total Responses (3-Yr Avg)
	#	%	C.I.(95%)	#	%	C.I.(95%)	#
Totals	8,900	50.6	49.2 - 52.0	8,600	49.4	48.0 - 50.8	17,500

County	Yes			No			Weighted Total Responses (3-Yr Avg)
	#	%	C.I.(95%)	#	%	C.I.(95%)	#
Hawaii	1,000	47.4	43.3 - 51.5	1,200	52.6	48.5 - 56.7	2,200
Honolulu	6,500	51.8	50.2 - 53.5	6,000	48.2	46.5 - 49.8	12,500
Kauai	500	54.1	47.7 - 60.3	400	45.9	39.7 - 52.3	900
Maui	800	44.9	40.6 - 49.3	1,000	55.1	50.7 - 59.4	1,900

**PRAMS Health Indicator 3-Year Aggregate Report - Discuss seat belt use with HCW during PNC- by State;County;DOH Race-Ethnicity;PRAMS Age Group;Infant Gender;Married;Poverty Level;Income (2000-2003);Income (2004-2011);Birthweight;Smoke 3rd Trimester;Smoke Before Pregnant;WIC During Pregnancy, for the Year(s)
2000-2002;2001-2003;2002-2004;2003-2005;2004-2006;2005-2007;2006-2008;2007-2009;2008-2010;2009-2011;2010-2012;2011-2013**

Note: Weighted counts (#) represent 3-yr averages, rounded to the nearest hundred; n/r (Not Reportable) - If the unweighted total responses for a dimension (row) is <30 that row will not be shown

Years: 2005-2007

DOH Race-Ethnicity	Yes			No			Weighted Total Responses (3-Yr Avg)
	#	%	C.I.(95%)	#	%	C.I.(95%)	#
Caucasian	1,700	43.4	40.5 - 46.3	2,300	56.6	53.7 - 59.5	4,000
Native Hawaiian	2,600	53.9	51.0 - 56.8	2,200	46.1	43.2 - 49.0	4,800
Chinese	200	40.8	36.9 - 44.7	400	59.2	55.3 - 63.1	600
Filipino	1,900	58.6	55.6 - 61.6	1,300	41.4	38.4 - 44.4	3,200
Japanese	800	37.3	33.6 - 41.2	1,300	62.7	58.8 - 66.4	2,100
Other	1,600	58.8	55.2 - 62.3	1,100	41.2	37.7 - 44.8	2,700

PRAMS Age Group	Yes			No			Weighted Total Responses (3-Yr Avg)
	#	%	C.I.(95%)	#	%	C.I.(95%)	#
<20	1,000	62.2	57.1 - 67.1	600	37.8	32.9 - 42.9	1,600
20-24	2,300	53.4	50.5 - 56.3	2,000	46.6	43.7 - 49.5	4,300
25-34	4,300	49.7	47.7 - 51.7	4,300	50.3	48.3 - 52.3	8,600
35+	1,300	43.5	40.4 - 46.7	1,700	56.5	53.3 - 59.6	3,000

**PRAMS Health Indicator 3-Year Aggregate Report - Discuss seat belt use with HCW during PNC- by State;County;DOH Race- Ethnicity;PRAMS Age Group;Infant Gender;Married;Poverty Level;Income (2000-2003);Income (2004-2011);Birthweight;Smoke 3rd Trimester;Smoke Before Pregnant;WIC During Pregnancy, for the Year(s)
2000-2002;2001-2003;2002-2004;2003-2005;2004-2006;2005-2007;2006-2008;2007-2009;2008-2010;2009-2011;2010-2012;2011-2013**

Note: Weighted counts (#) represent 3-yr averages, rounded to the nearest hundred; n/r (Not Reportable) - If the unweighted total responses for a dimension (row) is <30 that row will not be shown

Years: 2005-2007

	Yes			No			Weighted Total Responses (3-Yr Avg)
	#	%	C.I.(95%)	#	%	C.I.(95%)	#
Infant Gender							
Male	4,500	50.9	48.9 - 52.9	4,400	49.1	47.1 - 51.1	8,900
Female	4,300	50.4	48.4 - 52.4	4,300	49.6	47.6 - 51.6	8,600

	Yes			No			Weighted Total Responses (3-Yr Avg)
	#	%	C.I.(95%)	#	%	C.I.(95%)	#
Married							
Yes	5,400	48.6	46.9 - 50.3	5,700	51.4	49.7 - 53.1	11,100
No	3,500	54.1	51.7 - 56.6	2,900	45.9	43.4 - 48.3	6,400

	Yes			No			Weighted Total Responses (3-Yr Avg)
	#	%	C.I.(95%)	#	%	C.I.(95%)	#
Poverty Level							
0-130%	3,500	55.0	52.6 - 57.4	2,800	45.0	42.6 - 47.4	6,300
131-185%	1,200	52.5	48.6 - 56.4	1,100	47.5	43.6 - 51.4	2,300
186+%	3,400	44.2	42.2 - 46.3	4,300	55.8	53.7 - 57.8	7,600

**PRAMS Health Indicator 3-Year Aggregate Report - Discuss seat belt use with HCW during PNC- by State;County;DOH Race-Ethnicity;PRAMS Age Group;Infant Gender;Married;Poverty Level;Income (2000-2003);Income (2004-2011);Birthweight;Smoke 3rd Trimester;Smoke Before Pregnant;WIC During Pregnancy, for the Year(s)
2000-2002;2001-2003;2002-2004;2003-2005;2004-2006;2005-2007;2006-2008;2007-2009;2008-2010;2009-2011;2010-2012;2011-2013**

Note: Weighted counts (#) represent 3-yr averages, rounded to the nearest hundred; n/r (Not Reportable) - If the unweighted total responses for a dimension (row) is <30 that row will not be shown

Years: 2005-2007

Income (2004-2011)	Yes			No			Weighted Total Responses (3-Yr Avg)
	#	%	C.I.(95%)	#	%	C.I.(95%)	#
<\$10,000	1,700	56.4	52.8 - 59.9	1,300	43.6	40.1 - 47.2	2,900
\$10,000-\$24,999	2,000	53.6	50.5 - 56.7	1,700	46.4	43.3 - 49.5	3,700
\$25,000-\$49,999	2,100	50.8	47.8 - 53.7	2,000	49.2	46.3 - 52.2	4,000
>=\$50,000	2,400	42.9	40.6 - 45.3	3,200	57.1	54.7 - 59.4	5,700

Birthweight	Yes			No			Weighted Total Responses (3-Yr Avg)
	#	%	C.I.(95%)	#	%	C.I.(95%)	#
Low birth weight	700	49.6	44.7 - 54.6	700	50.4	45.4 - 55.3	1,400
Normal birth weight	8,200	50.7	49.3 - 52.2	7,900	49.3	47.8 - 50.7	16,100

Smoke 3rd Trimester	Yes			No			Weighted Total Responses (3-Yr Avg)
	#	%	C.I.(95%)	#	%	C.I.(95%)	#
Yes	700	50.4	45.4 - 55.5	700	49.6	44.5 - 54.6	1,500
No	8,000	50.7	49.2 - 52.1	7,800	49.3	47.9 - 50.8	15,700

**PRAMS Health Indicator 3-Year Aggregate Report - Discuss seat belt use with HCW during PNC- by State;County;DOH Race-Ethnicity;PRAMS Age Group;Infant Gender;Married;Poverty Level;Income (2000-2003);Income (2004-2011);Birthweight;Smoke 3rd Trimester;Smoke Before Pregnant;WIC During Pregnancy, for the Year(s)
2000-2002;2001-2003;2002-2004;2003-2005;2004-2006;2005-2007;2006-2008;2007-2009;2008-2010;2009-2011;2010-2012;2011-2013**

Note: Weighted counts (#) represent 3-yr averages, rounded to the nearest hundred; n/r (Not Reportable) - If the unweighted total responses for a dimension (row) is <30 that row will not be shown

Years: 2005-2007

Smoke Before Pregnant	Yes			No			Weighted Total Responses (3-Yr Avg)
	#	%	C.I.(95%)	#	%	C.I.(95%)	#
Yes	1,800	49.8	46.6 - 53.0	1,800	50.2	47.0 - 53.4	3,600
No	6,900	50.9	49.3 - 52.4	6,700	49.1	47.6 - 50.7	13,700

WIC During Pregnancy	Yes			No			Weighted Total Responses (3-Yr Avg)
	#	%	C.I.(95%)	#	%	C.I.(95%)	#
Yes	4,200	55.5	53.3 - 57.7	3,300	44.5	42.3 - 46.7	7,500
No	4,600	46.5	44.7 - 48.4	5,300	53.5	51.6 - 55.3	9,900

**PRAMS Health Indicator 3-Year Aggregate Report - Discuss seat belt use with HCW during PNC- by State;County;DOH Race-Ethnicity;PRAMS Age Group;Infant Gender;Married;Poverty Level;Income (2000-2003);Income (2004-2011);Birthweight;Smoke 3rd Trimester;Smoke Before Pregnant;WIC During Pregnancy, for the Year(s)
2000-2002;2001-2003;2002-2004;2003-2005;2004-2006;2005-2007;2006-2008;2007-2009;2008-2010;2009-2011;2010-2012;2011-2013**

Note: Weighted counts (#) represent 3-yr averages, rounded to the nearest hundred; n/r (Not Reportable) - If the unweighted total responses for a dimension (row) is <30 that row will not be shown

Years: 2004-2006

State	Yes			No			Weighted Total Responses (3-Yr Avg)
	#	%	C.I.(95%)	#	%	C.I.(95%)	#
Totals	8,800	50.9	49.6 - 52.3	8,500	49.1	47.7 - 50.4	17,300

County	Yes			No			Weighted Total Responses (3-Yr Avg)
	#	%	C.I.(95%)	#	%	C.I.(95%)	#
Hawaii	1,100	49.5	45.5 - 53.6	1,100	50.5	46.4 - 54.5	2,100
Honolulu	6,500	51.3	49.7 - 52.9	6,100	48.7	47.1 - 50.3	12,600
Kauai	400	54.8	48.3 - 61.1	400	45.2	38.9 - 51.7	800
Maui	900	48.2	44.0 - 52.5	900	51.8	47.5 - 56.0	1,800

**PRAMS Health Indicator 3-Year Aggregate Report - Discuss seat belt use with HCW during PNC- by State;County;DOH Race-Ethnicity;PRAMS Age Group;Infant Gender;Married;Poverty Level;Income (2000-2003);Income (2004-2011);Birthweight;Smoke 3rd Trimester;Smoke Before Pregnant;WIC During Pregnancy, for the Year(s)
2000-2002;2001-2003;2002-2004;2003-2005;2004-2006;2005-2007;2006-2008;2007-2009;2008-2010;2009-2011;2010-2012;2011-2013**

Note: Weighted counts (#) represent 3-yr averages, rounded to the nearest hundred; n/r (Not Reportable) - If the unweighted total responses for a dimension (row) is <30 that row will not be shown

Years: 2004-2006

DOH Race-Ethnicity	Yes			No			Weighted Total Responses (3-Yr Avg)
	#	%	C.I.(95%)	#	%	C.I.(95%)	#
Caucasian	1,700	43.7	40.8 - 46.5	2,200	56.3	53.5 - 59.2	3,900
Native Hawaiian	2,600	53.7	50.9 - 56.5	2,200	46.3	43.5 - 49.1	4,800
Chinese	200	40.7	37.2 - 44.2	400	59.3	55.8 - 62.8	600
Filipino	1,900	60.9	58.0 - 63.8	1,200	39.1	36.2 - 42.0	3,200
Japanese	800	37.9	34.3 - 41.7	1,400	62.1	58.3 - 65.7	2,200
Other	1,500	57.8	54.3 - 61.4	1,100	42.2	38.6 - 45.7	2,600

PRAMS Age Group	Yes			No			Weighted Total Responses (3-Yr Avg)
	#	%	C.I.(95%)	#	%	C.I.(95%)	#
<20	900	60.2	55.1 - 65.1	600	39.8	34.9 - 44.9	1,400
20-24	2,300	52.2	49.3 - 55.0	2,100	47.8	45.0 - 50.7	4,300
25-34	4,300	51.1	49.2 - 53.0	4,100	48.9	47.0 - 50.8	8,400
35+	1,400	44.4	41.4 - 47.5	1,700	55.6	52.5 - 58.6	3,100

**PRAMS Health Indicator 3-Year Aggregate Report - Discuss seat belt use with HCW during PNC- by State;County;DOH Race-Ethnicity;PRAMS Age Group;Infant Gender;Married;Poverty Level;Income (2000-2003);Income (2004-2011);Birthweight;Smoke 3rd Trimester;Smoke Before Pregnant;WIC During Pregnancy, for the Year(s)
2000-2002;2001-2003;2002-2004;2003-2005;2004-2006;2005-2007;2006-2008;2007-2009;2008-2010;2009-2011;2010-2012;2011-2013**

Note: Weighted counts (#) represent 3-yr averages, rounded to the nearest hundred; n/r (Not Reportable) - If the unweighted total responses for a dimension (row) is <30 that row will not be shown

Years: 2004-2006

	Yes			No			Weighted Total Responses (3-Yr Avg)
	#	%	C.I.(95%)	#	%	C.I.(95%)	#
Infant Gender							
Male	4,700	51.8	49.9 - 53.7	4,400	48.2	46.3 - 50.1	9,000
Female	4,100	49.9	48.0 - 51.9	4,100	50.1	48.1 - 52.0	8,300

	Yes			No			Weighted Total Responses (3-Yr Avg)
	#	%	C.I.(95%)	#	%	C.I.(95%)	#
Married							
Yes	5,600	49.4	47.8 - 51.1	5,800	50.6	48.9 - 52.2	11,400
No	3,200	53.8	51.3 - 56.2	2,700	46.2	43.8 - 48.7	5,900

	Yes			No			Weighted Total Responses (3-Yr Avg)
	#	%	C.I.(95%)	#	%	C.I.(95%)	#
Poverty Level							
0-130%	3,400	54.5	52.1 - 56.8	2,800	45.5	43.2 - 47.9	6,200
131-185%	1,100	55.2	51.2 - 59.1	900	44.8	40.9 - 48.8	2,100
186+%	3,500	45.2	43.2 - 47.2	4,200	54.8	52.8 - 56.8	7,700

**PRAMS Health Indicator 3-Year Aggregate Report - Discuss seat belt use with HCW during PNC- by State;County;DOH Race-Ethnicity;PRAMS Age Group;Infant Gender;Married;Poverty Level;Income (2000-2003);Income (2004-2011);Birthweight;Smoke 3rd Trimester;Smoke Before Pregnant;WIC During Pregnancy, for the Year(s)
2000-2002;2001-2003;2002-2004;2003-2005;2004-2006;2005-2007;2006-2008;2007-2009;2008-2010;2009-2011;2010-2012;2011-2013**

Note: Weighted counts (#) represent 3-yr averages, rounded to the nearest hundred; n/r (Not Reportable) - If the unweighted total responses for a dimension (row) is <30 that row will not be shown

Years: 2004-2006

Income (2004-2011)	Yes			No			Weighted Total Responses (3-Yr Avg)
	#	%	C.I.(95%)	#	%	C.I.(95%)	#
<\$10,000	1,500	53.0	49.5 - 56.6	1,300	47.0	43.4 - 50.5	2,800
\$10,000-\$24,999	2,100	55.3	52.3 - 58.2	1,700	44.7	41.8 - 47.7	3,800
\$25,000-\$49,999	2,100	51.8	49.0 - 54.5	2,000	48.2	45.5 - 51.0	4,100
>=\$50,000	2,300	43.8	41.4 - 46.1	3,000	56.2	53.9 - 58.6	5,300

Birthweight	Yes			No			Weighted Total Responses (3-Yr Avg)
	#	%	C.I.(95%)	#	%	C.I.(95%)	#
Low birth weight	600	49.5	44.4 - 54.6	600	50.5	45.4 - 55.6	1,200
Normal birth weight	8,200	51.0	49.6 - 52.4	7,900	49.0	47.6 - 50.4	16,000

Smoke 3rd Trimester	Yes			No			Weighted Total Responses (3-Yr Avg)
	#	%	C.I.(95%)	#	%	C.I.(95%)	#
Yes	700	47.7	42.7 - 52.7	800	52.3	47.3 - 57.3	1,400
No	7,900	51.1	49.7 - 52.5	7,600	48.9	47.5 - 50.3	15,500

**PRAMS Health Indicator 3-Year Aggregate Report - Discuss seat belt use with HCW during PNC- by State;County;DOH Race-Ethnicity;PRAMS Age Group;Infant Gender;Married;Poverty Level;Income (2000-2003);Income (2004-2011);Birthweight;Smoke 3rd Trimester;Smoke Before Pregnant;WIC During Pregnancy, for the Year(s)
2000-2002;2001-2003;2002-2004;2003-2005;2004-2006;2005-2007;2006-2008;2007-2009;2008-2010;2009-2011;2010-2012;2011-2013**

Note: Weighted counts (#) represent 3-yr averages, rounded to the nearest hundred; n/r (Not Reportable) - If the unweighted total responses for a dimension (row) is <30 that row will not be shown

Years: 2004-2006

Smoke Before Pregnant	Yes			No			Weighted Total Responses (3-Yr Avg)
	#	%	C.I.(95%)	#	%	C.I.(95%)	#
Yes	1,800	49.2	46.1 - 52.3	1,800	50.8	47.7 - 53.9	3,600
No	6,900	51.3	49.7 - 52.8	6,500	48.7	47.2 - 50.3	13,400

WIC During Pregnancy	Yes			No			Weighted Total Responses (3-Yr Avg)
	#	%	C.I.(95%)	#	%	C.I.(95%)	#
Yes	4,100	55.0	52.9 - 57.1	3,400	45.0	42.9 - 47.1	7,500
No	4,600	47.6	45.8 - 49.4	5,000	52.4	50.6 - 54.2	9,600

**PRAMS Health Indicator 3-Year Aggregate Report - Discuss seat belt use with HCW during PNC- by State;County;DOH Race-Ethnicity;PRAMS Age Group;Infant Gender;Married;Poverty Level;Income (2000-2003);Income (2004-2011);Birthweight;Smoke 3rd Trimester;Smoke Before Pregnant;WIC During Pregnancy, for the Year(s)
2000-2002;2001-2003;2002-2004;2003-2005;2004-2006;2005-2007;2006-2008;2007-2009;2008-2010;2009-2011;2010-2012;2011-2013**

Note: Weighted counts (#) represent 3-yr averages, rounded to the nearest hundred; n/r (Not Reportable) - If the unweighted total responses for a dimension (row) is <30 that row will not be shown

Years: 2003-2005

State	Yes			No			Weighted Total Responses (3-Yr Avg)
	#	%	C.I.(95%)	#	%	C.I.(95%)	#
Totals	8,800	51.7	50.3 - 53.2	8,200	48.3	46.8 - 49.7	17,000

County	Yes			No			Weighted Total Responses (3-Yr Avg)
	#	%	C.I.(95%)	#	%	C.I.(95%)	#
Hawaii	1,100	51.6	48.0 - 55.2	1,000	48.4	44.8 - 52.0	2,100
Honolulu	6,400	51.7	50.0 - 53.4	6,000	48.3	46.6 - 50.0	12,400
Kauai	500	58.2	52.5 - 63.6	300	41.8	36.4 - 47.5	800
Maui	900	49.3	45.5 - 53.1	900	50.7	46.9 - 54.5	1,800

**PRAMS Health Indicator 3-Year Aggregate Report - Discuss seat belt use with HCW during PNC- by State;County;DOH Race-Ethnicity;PRAMS Age Group;Infant Gender;Married;Poverty Level;Income (2000-2003);Income (2004-2011);Birthweight;Smoke 3rd Trimester;Smoke Before Pregnant;WIC During Pregnancy, for the Year(s)
2000-2002;2001-2003;2002-2004;2003-2005;2004-2006;2005-2007;2006-2008;2007-2009;2008-2010;2009-2011;2010-2012;2011-2013**

Note: Weighted counts (#) represent 3-yr averages, rounded to the nearest hundred; n/r (Not Reportable) - If the unweighted total responses for a dimension (row) is <30 that row will not be shown

Years: 2003-2005

DOH Race-Ethnicity	Yes			No			Weighted Total Responses (3-Yr Avg)
	#	%	C.I.(95%)	#	%	C.I.(95%)	#
Caucasian	1,600	43.8	40.8 - 47.0	2,100	56.2	53.0 - 59.2	3,700
Native Hawaiian	2,600	55.0	52.5 - 57.4	2,100	45.0	42.6 - 47.5	4,700
Chinese	300	42.0	36.0 - 48.3	400	58.0	51.7 - 64.0	600
Filipino	2,100	61.3	58.1 - 64.4	1,300	38.7	35.6 - 41.9	3,400
Japanese	800	36.7	32.8 - 40.9	1,400	63.3	59.1 - 67.2	2,200
Other	1,400	60.6	56.6 - 64.4	900	39.4	35.6 - 43.4	2,400

PRAMS Age Group	Yes			No			Weighted Total Responses (3-Yr Avg)
	#	%	C.I.(95%)	#	%	C.I.(95%)	#
<20	900	59.3	54.5 - 64.0	600	40.7	36.0 - 45.5	1,400
20-24	2,300	55.4	52.5 - 58.2	1,900	44.6	41.8 - 47.5	4,200
25-34	4,300	50.8	48.7 - 52.8	4,100	49.2	47.2 - 51.3	8,400
35+	1,400	45.8	42.5 - 49.2	1,600	54.2	50.8 - 57.5	3,000

**PRAMS Health Indicator 3-Year Aggregate Report - Discuss seat belt use with HCW during PNC- by State;County;DOH Race-Ethnicity;PRAMS Age Group;Infant Gender;Married;Poverty Level;Income (2000-2003);Income (2004-2011);Birthweight;Smoke 3rd Trimester;Smoke Before Pregnant;WIC During Pregnancy, for the Year(s)
2000-2002;2001-2003;2002-2004;2003-2005;2004-2006;2005-2007;2006-2008;2007-2009;2008-2010;2009-2011;2010-2012;2011-2013**

Note: Weighted counts (#) represent 3-yr averages, rounded to the nearest hundred; n/r (Not Reportable) - If the unweighted total responses for a dimension (row) is <30 that row will not be shown

Years: 2003-2005

	Yes			No			Weighted Total Responses (3-Yr Avg)
	#	%	C.I.(95%)	#	%	C.I.(95%)	#
Infant Gender							
Male	4,800	52.9	51.0 - 54.9	4,200	47.1	45.1 - 49.0	9,000
Female	4,000	50.4	48.4 - 52.5	4,000	49.6	47.5 - 51.6	8,000

	Yes			No			Weighted Total Responses (3-Yr Avg)
	#	%	C.I.(95%)	#	%	C.I.(95%)	#
Married							
Yes	5,700	50.3	48.5 - 52.0	5,600	49.7	48.0 - 51.5	11,400
No	3,100	54.7	52.3 - 57.1	2,600	45.3	42.9 - 47.7	5,700

	Yes			No			Weighted Total Responses (3-Yr Avg)
	#	%	C.I.(95%)	#	%	C.I.(95%)	#
Poverty Level							
0-130%	3,800	56.4	54.1 - 58.7	2,900	43.6	41.3 - 45.9	6,700
131-185%	1,100	54.4	50.3 - 58.5	1,000	45.6	41.5 - 49.7	2,100
186+%	3,100	44.9	42.7 - 47.1	3,800	55.1	52.9 - 57.3	6,800

**PRAMS Health Indicator 3-Year Aggregate Report - Discuss seat belt use with HCW during PNC- by State;County;DOH Race- Ethnicity;PRAMS Age Group;Infant Gender;Married;Poverty Level;Income (2000-2003);Income (2004-2011);Birthweight;Smoke 3rd Trimester;Smoke Before Pregnant;WIC During Pregnancy, for the Year(s)
2000-2002;2001-2003;2002-2004;2003-2005;2004-2006;2005-2007;2006-2008;2007-2009;2008-2010;2009-2011;2010-2012;2011-2013**

Note: Weighted counts (#) represent 3-yr averages, rounded to the nearest hundred; n/r (Not Reportable) - If the unweighted total responses for a dimension (row) is <30 that row will not be shown

Years: 2003-2005

Birthweight	Yes			No			Weighted Total Responses (3-Yr Avg)
	#	%	C.I.(95%)	#	%	C.I.(95%)	#
Low birth weight	600	49.6	44.1 - 55.1	600	50.4	44.9 - 55.9	1,100
Normal birth weight	8,200	51.9	50.4 - 53.4	7,600	48.1	46.6 - 49.6	15,900

Smoke 3rd Trimester	Yes			No			Weighted Total Responses (3-Yr Avg)
	#	%	C.I.(95%)	#	%	C.I.(95%)	#
Yes	700	47.0	42.0 - 52.0	700	53.0	48.0 - 58.0	1,400
No	8,000	52.2	50.7 - 53.7	7,300	47.8	46.3 - 49.3	15,300

Smoke Before Pregnant	Yes			No			Weighted Total Responses (3-Yr Avg)
	#	%	C.I.(95%)	#	%	C.I.(95%)	#
Yes	1,700	48.8	45.6 - 51.9	1,800	51.2	48.1 - 54.4	3,500
No	6,900	52.6	51.0 - 54.2	6,200	47.4	45.8 - 49.0	13,200

**PRAMS Health Indicator 3-Year Aggregate Report - Discuss seat belt use with HCW during PNC- by State;County;DOH Race-Ethnicity;PRAMS Age Group;Infant Gender;Married;Poverty Level;Income (2000-2003);Income (2004-2011);Birthweight;Smoke 3rd Trimester;Smoke Before Pregnant;WIC During Pregnancy, for the Year(s)
2000-2002;2001-2003;2002-2004;2003-2005;2004-2006;2005-2007;2006-2008;2007-2009;2008-2010;2009-2011;2010-2012;2011-2013**

Note: Weighted counts (#) represent 3-yr averages, rounded to the nearest hundred; n/r (Not Reportable) - If the unweighted total responses for a dimension (row) is <30 that row will not be shown

Years: 2003-2005

WIC During Pregnancy	Yes			No			Weighted Total Responses (3-Yr Avg)
	#	%	C.I.(95%)	#	%	C.I.(95%)	#
Yes	4,200	56.6	54.4 - 58.6	3,200	43.4	41.4 - 45.6	7,400
No	4,500	48.0	46.1 - 49.9	4,900	52.0	50.1 - 53.9	9,400

**PRAMS Health Indicator 3-Year Aggregate Report - Discuss seat belt use with HCW during PNC- by State;County;DOH Race-Ethnicity;PRAMS Age Group;Infant Gender;Married;Poverty Level;Income (2000-2003);Income (2004-2011);Birthweight;Smoke 3rd Trimester;Smoke Before Pregnant;WIC During Pregnancy, for the Year(s)
2000-2002;2001-2003;2002-2004;2003-2005;2004-2006;2005-2007;2006-2008;2007-2009;2008-2010;2009-2011;2010-2012;2011-2013**

Note: Weighted counts (#) represent 3-yr averages, rounded to the nearest hundred; n/r (Not Reportable) - If the unweighted total responses for a dimension (row) is <30 that row will not be shown

Years: 2002-2004

State	Yes			No			Weighted Total Responses (3-Yr Avg)
	#	%	C.I.(95%)	#	%	C.I.(95%)	#
Totals	8,500	50.6	49.1 - 52.1	8,300	49.4	47.9 - 50.9	16,900

County	Yes			No			Weighted Total Responses (3-Yr Avg)
	#	%	C.I.(95%)	#	%	C.I.(95%)	#
Hawaii	1,000	50.8	47.7 - 53.9	1,000	49.2	46.1 - 52.3	2,000
Honolulu	6,200	50.3	48.3 - 52.2	6,100	49.7	47.8 - 51.7	12,300
Kauai	400	56.5	51.5 - 61.4	300	43.5	38.6 - 48.5	800
Maui	900	50.1	46.8 - 53.4	900	49.9	46.6 - 53.2	1,800

**PRAMS Health Indicator 3-Year Aggregate Report - Discuss seat belt use with HCW during PNC- by State;County;DOH Race- Ethnicity;PRAMS Age Group;Infant Gender;Married;Poverty Level;Income (2000-2003);Income (2004-2011);Birthweight;Smoke 3rd Trimester;Smoke Before Pregnant;WIC During Pregnancy, for the Year(s)
2000-2002;2001-2003;2002-2004;2003-2005;2004-2006;2005-2007;2006-2008;2007-2009;2008-2010;2009-2011;2010-2012;2011-2013**

Note: Weighted counts (#) represent 3-yr averages, rounded to the nearest hundred; n/r (Not Reportable) - If the unweighted total responses for a dimension (row) is <30 that row will not be shown

Years: 2002-2004

DOH Race- Ethnicity	Yes			No			Weighted Total Responses (3-Yr Avg)
	#	%	C.I.(95%)	#	%	C.I.(95%)	#
Caucasian	1,700	46.0	42.7 - 49.4	2,000	54.0	50.6 - 57.3	3,700
Native Hawaiian	2,400	51.9	49.8 - 54.0	2,200	48.1	46.0 - 50.2	4,700
Chinese	300	42.5	34.8 - 50.5	400	57.5	49.5 - 65.2	600
Filipino	2,000	58.8	55.3 - 62.3	1,400	41.2	37.7 - 44.7	3,400
Japanese	800	35.0	30.7 - 39.5	1,400	65.0	60.5 - 69.3	2,200
Other	1,400	60.2	55.6 - 64.7	900	39.8	35.3 - 44.4	2,300

PRAMS Age Group	Yes			No			Weighted Total Responses (3-Yr Avg)
	#	%	C.I.(95%)	#	%	C.I.(95%)	#
<20	800	56.0	51.1 - 60.9	600	44.0	39.1 - 48.9	1,400
20-24	2,300	54.3	51.3 - 57.2	1,900	45.7	42.8 - 48.7	4,100
25-34	4,200	50.0	47.8 - 52.2	4,200	50.0	47.8 - 52.2	8,400
35+	1,300	44.4	40.8 - 48.0	1,600	55.6	52.0 - 59.2	2,900

**PRAMS Health Indicator 3-Year Aggregate Report - Discuss seat belt use with HCW during PNC- by State;County;DOH Race- Ethnicity;PRAMS Age Group;Infant Gender;Married;Poverty Level;Income (2000-2003);Income (2004-2011);Birthweight;Smoke 3rd Trimester;Smoke Before Pregnant;WIC During Pregnancy, for the Year(s)
2000-2002;2001-2003;2002-2004;2003-2005;2004-2006;2005-2007;2006-2008;2007-2009;2008-2010;2009-2011;2010-2012;2011-2013**

Note: Weighted counts (#) represent 3-yr averages, rounded to the nearest hundred; n/r (Not Reportable) - If the unweighted total responses for a dimension (row) is <30 that row will not be shown

Years: 2002-2004

	Yes			No			Weighted Total Responses (3-Yr Avg)
	#	%	C.I.(95%)	#	%	C.I.(95%)	#
Infant Gender							
Male	4,600	51.7	49.7 - 53.8	4,300	48.3	46.2 - 50.3	8,900
Female	4,000	49.4	47.2 - 51.6	4,100	50.6	48.4 - 52.8	8,000

	Yes			No			Weighted Total Responses (3-Yr Avg)
	#	%	C.I.(95%)	#	%	C.I.(95%)	#
Married							
Yes	5,700	49.1	47.3 - 51.0	5,900	50.9	49.0 - 52.7	11,500
No	2,900	53.8	51.3 - 56.2	2,500	46.2	43.8 - 48.7	5,400

	Yes			No			Weighted Total Responses (3-Yr Avg)
	#	%	C.I.(95%)	#	%	C.I.(95%)	#
Poverty Level							
0-130%	3,700	54.9	52.6 - 57.2	3,100	45.1	42.8 - 47.4	6,800
131-185%	1,400	52.6	48.6 - 56.6	1,200	47.4	43.4 - 51.4	2,600
186+%	2,600	43.5	41.1 - 46.0	3,400	56.5	54.0 - 58.9	6,100

**PRAMS Health Indicator 3-Year Aggregate Report - Discuss seat belt use with HCW during PNC- by State;County;DOH Race-Ethnicity;PRAMS Age Group;Infant Gender;Married;Poverty Level;Income (2000-2003);Income (2004-2011);Birthweight;Smoke 3rd Trimester;Smoke Before Pregnant;WIC During Pregnancy, for the Year(s)
2000-2002;2001-2003;2002-2004;2003-2005;2004-2006;2005-2007;2006-2008;2007-2009;2008-2010;2009-2011;2010-2012;2011-2013**

Note: Weighted counts (#) represent 3-yr averages, rounded to the nearest hundred; n/r (Not Reportable) - If the unweighted total responses for a dimension (row) is <30 that row will not be shown

Years: 2002-2004

Birthweight	Yes			No			Weighted Total Responses (3-Yr Avg)
	#	%	C.I.(95%)	#	%	C.I.(95%)	#
Low birth weight	500	48.0	42.1 - 53.9	600	52.0	46.1 - 57.9	1,100
Normal birth weight	8,000	50.8	49.3 - 52.4	7,700	49.2	47.6 - 50.7	15,700

Smoke 3rd Trimester	Yes			No			Weighted Total Responses (3-Yr Avg)
	#	%	C.I.(95%)	#	%	C.I.(95%)	#
Yes	600	42.4	37.6 - 47.4	800	57.6	52.6 - 62.4	1,400
No	7,800	51.3	49.7 - 52.9	7,400	48.7	47.1 - 50.3	15,200

Smoke Before Pregnant	Yes			No			Weighted Total Responses (3-Yr Avg)
	#	%	C.I.(95%)	#	%	C.I.(95%)	#
Yes	1,600	46.6	43.3 - 49.8	1,800	53.4	50.2 - 56.7	3,300
No	6,800	51.6	49.9 - 53.3	6,400	48.4	46.7 - 50.1	13,100

**PRAMS Health Indicator 3-Year Aggregate Report - Discuss seat belt use with HCW during PNC- by State;County;DOH Race-
Ethnicity;PRAMS Age Group;Infant Gender;Married;Poverty Level;Income (2000-2003);Income (2004-2011);Birthweight;Smoke 3rd
Trimester;Smoke Before Pregnant;WIC During Pregnancy, for the Year(s)
2000-2002;2001-2003;2002-2004;2003-2005;2004-2006;2005-2007;2006-2008;2007-2009;2008-2010;2009-2011;2010-2012;2011-2013**

Note: Weighted counts (#) represent 3-yr averages, rounded to the nearest hundred; n/r (Not Reportable) - If the unweighted total responses for a dimension (row) is <30 that row will not be shown

Years: 2002-2004

WIC During Pregnancy	Yes			No			Weighted Total Responses (3-Yr Avg)
	#	%	C.I.(95%)	#	%	C.I.(95%)	#
Yes	4,000	55.5	53.3 - 57.7	3,200	44.5	42.3 - 46.7	7,300
No	4,400	46.9	44.9 - 49.0	5,000	53.1	51.0 - 55.1	9,400

**PRAMS Health Indicator 3-Year Aggregate Report - Discuss seat belt use with HCW during PNC- by State;County;DOH Race-Ethnicity;PRAMS Age Group;Infant Gender;Married;Poverty Level;Income (2000-2003);Income (2004-2011);Birthweight;Smoke 3rd Trimester;Smoke Before Pregnant;WIC During Pregnancy, for the Year(s)
2000-2002;2001-2003;2002-2004;2003-2005;2004-2006;2005-2007;2006-2008;2007-2009;2008-2010;2009-2011;2010-2012;2011-2013**

Note: Weighted counts (#) represent 3-yr averages, rounded to the nearest hundred; n/r (Not Reportable) - If the unweighted total responses for a dimension (row) is <30 that row will not be shown

Years: 2001-2003

State	Yes			No			Weighted Total Responses (3-Yr Avg)
	#	%	C.I.(95%)	#	%	C.I.(95%)	#
Totals	8,300	49.9	48.3 - 51.4	8,300	50.1	48.6 - 51.7	16,600

County	Yes			No			Weighted Total Responses (3-Yr Avg)
	#	%	C.I.(95%)	#	%	C.I.(95%)	#
Hawaii	1,000	51.2	48.6 - 53.9	900	48.8	46.1 - 51.4	1,900
Honolulu	6,000	49.4	47.4 - 51.4	6,200	50.6	48.6 - 52.6	12,200
Kauai	400	56.2	51.8 - 60.5	300	43.8	39.5 - 48.2	700
Maui	800	49.0	46.1 - 51.9	900	51.0	48.1 - 53.9	1,700

**PRAMS Health Indicator 3-Year Aggregate Report - Discuss seat belt use with HCW during PNC- by State;County;DOH Race-Ethnicity;PRAMS Age Group;Infant Gender;Married;Poverty Level;Income (2000-2003);Income (2004-2011);Birthweight;Smoke 3rd Trimester;Smoke Before Pregnant;WIC During Pregnancy, for the Year(s)
2000-2002;2001-2003;2002-2004;2003-2005;2004-2006;2005-2007;2006-2008;2007-2009;2008-2010;2009-2011;2010-2012;2011-2013**

Note: Weighted counts (#) represent 3-yr averages, rounded to the nearest hundred; n/r (Not Reportable) - If the unweighted total responses for a dimension (row) is <30 that row will not be shown

Years: 2001-2003

DOH Race-Ethnicity	Yes			No			Weighted Total Responses (3-Yr Avg)
	#	%	C.I.(95%)	#	%	C.I.(95%)	#
Caucasian	1,600	43.9	40.5 - 47.4	2,000	56.1	52.6 - 59.5	3,600
Native Hawaiian	2,300	51.3	49.6 - 52.9	2,200	48.7	47.1 - 50.4	4,500
Chinese	300	44.1	35.6 - 53.0	400	55.9	47.0 - 64.4	700
Filipino	2,100	58.4	54.7 - 62.0	1,500	41.6	38.0 - 45.3	3,500
Japanese	700	33.5	29.0 - 38.2	1,400	66.5	61.8 - 71.0	2,100
Other	1,300	60.6	55.7 - 65.3	900	39.4	34.7 - 44.3	2,200

PRAMS Age Group	Yes			No			Weighted Total Responses (3-Yr Avg)
	#	%	C.I.(95%)	#	%	C.I.(95%)	#
<20	900	55.4	50.9 - 59.8	700	44.6	40.2 - 49.1	1,500
20-24	2,200	53.4	50.6 - 56.3	1,900	46.6	43.7 - 49.4	4,100
25-34	4,100	49.6	47.4 - 51.8	4,200	50.4	48.2 - 52.6	8,200
35+	1,200	42.3	38.5 - 46.1	1,600	57.7	53.9 - 61.5	2,700

**PRAMS Health Indicator 3-Year Aggregate Report - Discuss seat belt use with HCW during PNC- by State;County;DOH Race-Ethnicity;PRAMS Age Group;Infant Gender;Married;Poverty Level;Income (2000-2003);Income (2004-2011);Birthweight;Smoke 3rd Trimester;Smoke Before Pregnant;WIC During Pregnancy, for the Year(s)
2000-2002;2001-2003;2002-2004;2003-2005;2004-2006;2005-2007;2006-2008;2007-2009;2008-2010;2009-2011;2010-2012;2011-2013**

Note: Weighted counts (#) represent 3-yr averages, rounded to the nearest hundred; n/r (Not Reportable) - If the unweighted total responses for a dimension (row) is <30 that row will not be shown

Years: 2001-2003

	Yes			No			Weighted Total Responses (3-Yr Avg)
	#	%	C.I.(95%)	#	%	C.I.(95%)	#
Infant Gender							
Male	4,300	51.0	48.9 - 53.1	4,200	49.0	46.9 - 51.1	8,500
Female	4,000	48.7	46.5 - 50.9	4,200	51.3	49.1 - 53.5	8,100

	Yes			No			Weighted Total Responses (3-Yr Avg)
	#	%	C.I.(95%)	#	%	C.I.(95%)	#
Married							
Yes	5,400	48.1	46.2 - 50.1	5,800	51.9	49.9 - 53.8	11,200
No	2,900	53.4	51.0 - 55.8	2,500	46.6	44.2 - 49.0	5,400

	Yes			No			Weighted Total Responses (3-Yr Avg)
	#	%	C.I.(95%)	#	%	C.I.(95%)	#
Poverty Level							
0-130%	3,600	54.4	52.1 - 56.6	3,100	45.6	43.4 - 47.9	6,700
131-185%	1,600	50.9	47.4 - 54.4	1,500	49.1	45.6 - 52.6	3,100
186+%	2,300	41.8	39.1 - 44.6	3,100	58.2	55.4 - 60.9	5,400

**PRAMS Health Indicator 3-Year Aggregate Report - Discuss seat belt use with HCW during PNC- by State;County;DOH Race-Ethnicity;PRAMS Age Group;Infant Gender;Married;Poverty Level;Income (2000-2003);Income (2004-2011);Birthweight;Smoke 3rd Trimester;Smoke Before Pregnant;WIC During Pregnancy, for the Year(s)
2000-2002;2001-2003;2002-2004;2003-2005;2004-2006;2005-2007;2006-2008;2007-2009;2008-2010;2009-2011;2010-2012;2011-2013**

Note: Weighted counts (#) represent 3-yr averages, rounded to the nearest hundred; n/r (Not Reportable) - If the unweighted total responses for a dimension (row) is <30 that row will not be shown

Years: 2001-2003

Income (2000-2003)	Yes			No			Weighted Total Responses (3-Yr Avg)
	#	%	C.I.(95%)	#	%	C.I.(95%)	#
<=\$15,000	1,900	54.4	51.3 - 57.4	1,600	45.6	42.6 - 48.7	3,500
\$15,001-\$25,000	1,200	52.4	48.4 - 56.4	1,100	47.6	43.6 - 51.6	2,300
\$25,001-\$40,000	1,700	51.1	47.7 - 54.5	1,700	48.9	45.5 - 52.3	3,400
>=\$40,001	2,800	44.0	41.5 - 46.6	3,600	56.0	53.4 - 58.5	6,400

Birthweight	Yes			No			Weighted Total Responses (3-Yr Avg)
	#	%	C.I.(95%)	#	%	C.I.(95%)	#
Low birth weight	600	51.7	45.7 - 57.6	500	48.3	42.4 - 54.3	1,100
Normal birth weight	7,700	49.8	48.2 - 51.4	7,800	50.2	48.6 - 51.8	15,500

Smoke 3rd Trimester	Yes			No			Weighted Total Responses (3-Yr Avg)
	#	%	C.I.(95%)	#	%	C.I.(95%)	#
Yes	600	42.5	38.0 - 47.2	800	57.5	52.8 - 62.0	1,400
No	7,500	50.7	49.0 - 52.3	7,300	49.3	47.7 - 51.0	14,900

**PRAMS Health Indicator 3-Year Aggregate Report - Discuss seat belt use with HCW during PNC- by State;County;DOH Race-Ethnicity;PRAMS Age Group;Infant Gender;Married;Poverty Level;Income (2000-2003);Income (2004-2011);Birthweight;Smoke 3rd Trimester;Smoke Before Pregnant;WIC During Pregnancy, for the Year(s)
2000-2002;2001-2003;2002-2004;2003-2005;2004-2006;2005-2007;2006-2008;2007-2009;2008-2010;2009-2011;2010-2012;2011-2013**

Note: Weighted counts (#) represent 3-yr averages, rounded to the nearest hundred; n/r (Not Reportable) - If the unweighted total responses for a dimension (row) is <30 that row will not be shown

Years: 2001-2003

Smoke Before Pregnant	Yes			No			Weighted Total Responses (3-Yr Avg)
	#	%	C.I.(95%)	#	%	C.I.(95%)	#
Yes	1,500	44.8	41.6 - 48.0	1,800	55.2	52.0 - 58.4	3,300
No	6,600	51.2	49.5 - 53.0	6,300	48.8	47.0 - 50.5	12,800

WIC During Pregnancy	Yes			No			Weighted Total Responses (3-Yr Avg)
	#	%	C.I.(95%)	#	%	C.I.(95%)	#
Yes	3,800	54.5	52.2 - 56.7	3,200	45.5	43.3 - 47.8	7,000
No	4,400	46.5	44.4 - 48.6	5,100	53.5	51.4 - 55.6	9,500

**PRAMS Health Indicator 3-Year Aggregate Report - Discuss seat belt use with HCW during PNC- by State;County;DOH Race-Ethnicity;PRAMS Age Group;Infant Gender;Married;Poverty Level;Income (2000-2003);Income (2004-2011);Birthweight;Smoke 3rd Trimester;Smoke Before Pregnant;WIC During Pregnancy, for the Year(s)
2000-2002;2001-2003;2002-2004;2003-2005;2004-2006;2005-2007;2006-2008;2007-2009;2008-2010;2009-2011;2010-2012;2011-2013**

Note: Weighted counts (#) represent 3-yr averages, rounded to the nearest hundred; n/r (Not Reportable) - If the unweighted total responses for a dimension (row) is <30 that row will not be shown

Years: 2000-2002

State	Yes			No			Weighted Total Responses (3-Yr Avg)
	#	%	C.I.(95%)	#	%	C.I.(95%)	#
Totals	8,000	48.5	47.0 - 49.9	8,500	51.5	50.1 - 53.0	16,500

County	Yes			No			Weighted Total Responses (3-Yr Avg)
	#	%	C.I.(95%)	#	%	C.I.(95%)	#
Hawaii	1,000	50.4	47.7 - 53.0	900	49.6	47.0 - 52.3	1,900
Honolulu	5,900	48.1	46.3 - 49.9	6,300	51.9	50.1 - 53.7	12,200
Kauai	400	51.5	47.0 - 56.1	300	48.5	43.9 - 53.0	700
Maui	800	47.7	44.8 - 50.7	900	52.3	49.3 - 55.2	1,700

**PRAMS Health Indicator 3-Year Aggregate Report - Discuss seat belt use with HCW during PNC- by State;County;DOH Race-Ethnicity;PRAMS Age Group;Infant Gender;Married;Poverty Level;Income (2000-2003);Income (2004-2011);Birthweight;Smoke 3rd Trimester;Smoke Before Pregnant;WIC During Pregnancy, for the Year(s)
2000-2002;2001-2003;2002-2004;2003-2005;2004-2006;2005-2007;2006-2008;2007-2009;2008-2010;2009-2011;2010-2012;2011-2013**

Note: Weighted counts (#) represent 3-yr averages, rounded to the nearest hundred; n/r (Not Reportable) - If the unweighted total responses for a dimension (row) is <30 that row will not be shown

Years: 2000-2002

DOH Race-Ethnicity	Yes			No			Weighted Total Responses (3-Yr Avg)
	#	%	C.I.(95%)	#	%	C.I.(95%)	#
Caucasian	1,600	42.2	39.1 - 45.3	2,100	57.8	54.7 - 60.9	3,700
Native Hawaiian	2,200	49.9	48.4 - 51.5	2,300	50.1	48.5 - 51.6	4,500
Chinese	300	42.3	34.3 - 50.8	400	57.7	49.2 - 65.7	700
Filipino	2,000	58.1	54.6 - 61.5	1,400	41.9	38.5 - 45.4	3,400
Japanese	700	32.0	27.9 - 36.4	1,400	68.0	63.6 - 72.1	2,100
Other	1,300	59.1	54.5 - 63.6	900	40.9	36.4 - 45.5	2,200

PRAMS Age Group	Yes			No			Weighted Total Responses (3-Yr Avg)
	#	%	C.I.(95%)	#	%	C.I.(95%)	#
<20	900	54.6	50.6 - 58.6	700	45.4	41.4 - 49.4	1,600
20-24	2,100	50.6	47.9 - 53.3	2,000	49.4	46.7 - 52.1	4,100
25-34	3,900	49.0	46.9 - 51.1	4,100	51.0	48.9 - 53.1	8,000
35+	1,100	39.9	36.4 - 43.5	1,600	60.1	56.5 - 63.6	2,700

**PRAMS Health Indicator 3-Year Aggregate Report - Discuss seat belt use with HCW during PNC- by State;County;DOH Race-Ethnicity;PRAMS Age Group;Infant Gender;Married;Poverty Level;Income (2000-2003);Income (2004-2011);Birthweight;Smoke 3rd Trimester;Smoke Before Pregnant;WIC During Pregnancy, for the Year(s)
2000-2002;2001-2003;2002-2004;2003-2005;2004-2006;2005-2007;2006-2008;2007-2009;2008-2010;2009-2011;2010-2012;2011-2013**

Note: Weighted counts (#) represent 3-yr averages, rounded to the nearest hundred; n/r (Not Reportable) - If the unweighted total responses for a dimension (row) is <30 that row will not be shown

Years: 2000-2002

	Yes			No			Weighted Total Responses (3-Yr Avg)
	#	%	C.I.(95%)	#	%	C.I.(95%)	#
Infant Gender							
Male	4,100	48.7	46.7 - 50.7	4,300	51.3	49.3 - 53.3	8,400
Female	3,900	48.2	46.2 - 50.2	4,200	51.8	49.8 - 53.8	8,100

	Yes			No			Weighted Total Responses (3-Yr Avg)
	#	%	C.I.(95%)	#	%	C.I.(95%)	#
Married							
Yes	5,300	46.8	45.0 - 48.6	6,000	53.2	51.4 - 55.0	11,300
No	2,700	52.1	49.8 - 54.3	2,500	47.9	45.7 - 50.2	5,200

	Yes			No			Weighted Total Responses (3-Yr Avg)
	#	%	C.I.(95%)	#	%	C.I.(95%)	#
Poverty Level							
0-130%	3,400	52.2	50.1 - 54.3	3,100	47.8	45.7 - 49.9	6,500
131-185%	1,600	50.5	47.2 - 53.9	1,500	49.5	46.1 - 52.8	3,100
186+%	2,300	41.4	38.9 - 43.9	3,300	58.6	56.1 - 61.1	5,600

**PRAMS Health Indicator 3-Year Aggregate Report - Discuss seat belt use with HCW during PNC- by State;County;DOH Race-Ethnicity;PRAMS Age Group;Infant Gender;Married;Poverty Level;Income (2000-2003);Income (2004-2011);Birthweight;Smoke 3rd Trimester;Smoke Before Pregnant;WIC During Pregnancy, for the Year(s)
2000-2002;2001-2003;2002-2004;2003-2005;2004-2006;2005-2007;2006-2008;2007-2009;2008-2010;2009-2011;2010-2012;2011-2013**

Note: Weighted counts (#) represent 3-yr averages, rounded to the nearest hundred; n/r (Not Reportable) - If the unweighted total responses for a dimension (row) is <30 that row will not be shown

Years: 2000-2002

Income (2000-2003)	Yes			No			Weighted Total Responses (3-Yr Avg)
	#	%	C.I.(95%)	#	%	C.I.(95%)	#
<=\$15,000	1,800	51.4	48.5 - 54.2	1,700	48.6	45.8 - 51.5	3,400
\$15,001-\$25,000	1,200	50.7	47.0 - 54.3	1,200	49.3	45.7 - 53.0	2,400
\$25,001-\$40,000	1,800	51.4	48.3 - 54.5	1,700	48.6	45.5 - 51.7	3,400
>=\$40,001	2,700	42.7	40.4 - 45.1	3,600	57.3	54.9 - 59.6	6,300

Birthweight	Yes			No			Weighted Total Responses (3-Yr Avg)
	#	%	C.I.(95%)	#	%	C.I.(95%)	#
Low birth weight	600	55.6	49.9 - 61.1	500	44.4	38.9 - 50.1	1,100
Normal birth weight	7,400	48.0	46.5 - 49.4	8,000	52.0	50.6 - 53.5	15,400

Smoke 3rd Trimester	Yes			No			Weighted Total Responses (3-Yr Avg)
	#	%	C.I.(95%)	#	%	C.I.(95%)	#
Yes	600	45.3	41.0 - 49.7	700	54.7	50.3 - 59.0	1,400
No	7,200	48.9	47.4 - 50.4	7,500	51.1	49.6 - 52.6	14,800

**PRAMS Health Indicator 3-Year Aggregate Report - Discuss seat belt use with HCW during PNC- by State;County;DOH Race-Ethnicity;PRAMS Age Group;Infant Gender;Married;Poverty Level;Income (2000-2003);Income (2004-2011);Birthweight;Smoke 3rd Trimester;Smoke Before Pregnant;WIC During Pregnancy, for the Year(s)
2000-2002;2001-2003;2002-2004;2003-2005;2004-2006;2005-2007;2006-2008;2007-2009;2008-2010;2009-2011;2010-2012;2011-2013**

Note: Weighted counts (#) represent 3-yr averages, rounded to the nearest hundred; n/r (Not Reportable) - If the unweighted total responses for a dimension (row) is <30 that row will not be shown

Years: 2000-2002

Smoke Before Pregnant	Yes			No			Weighted Total Responses (3-Yr Avg)
	#	%	C.I.(95%)	#	%	C.I.(95%)	#
Yes	1,400	45.1	42.2 - 48.1	1,800	54.9	51.9 - 57.8	3,200
No	6,300	49.3	47.7 - 51.0	6,500	50.7	49.0 - 52.3	12,700

WIC During Pregnancy	Yes			No			Weighted Total Responses (3-Yr Avg)
	#	%	C.I.(95%)	#	%	C.I.(95%)	#
Yes	3,700	53.3	51.2 - 55.4	3,300	46.7	44.6 - 48.8	7,000
No	4,200	45.1	43.1 - 47.0	5,100	54.9	53.0 - 56.9	9,300