

Alcohol - current drinker (Adult) by State, County, Island, Community, BRFSS Age Group, DOH Race-Ethnicity, Gender, Education Level, Employment Status (Grouped), Household Income, Poverty Level, Marital Status (Grouped), Married, Health Care Coverage, for the Year(s) - 2001-2005, 2002-2006, 2003-2007, 2004-2008, 2005-2009, 2006-2010

Note: Weighted numbers (#) represent 5-yr averages, percentages and 95% confidence intervals; Respondents aged 18 years and older; n/r (Not Reportable) - If the unweighted total responses for a dimension (row) is <50 that row will not be shown; n/a (Not Available) - Not asked of a subset of respondents

The trend analysis report shows the trend for the selected health variable over selected years in a table and a graph. Estimated Population: This number is a weighted representation of the population who responded to a particular question in the survey. For most questions the eligible population will be the entire adult population. For some secondary questions only a subset of the population was asked the question. For example, all survey participants were asked if they had diabetes, but only those who answered yes were asked if they use insulin. If a dimension value is unknown for a particular survey record, that record will not be included in the counts for that particular dimension.

For documentation on other terms and coding in this report, please go to the following links

[Click here to access BRFSS documentation](#)

[Click here to access DOH Race-Ethnicity coding](#)

[Click here to access The Hawai'i Data Guide](#)

[Click here to access Poverty Level Methodology](#)

**For questions about this report, please contact
The Hawaii Health Data Warehouse**

profiles@hhdw.org

(855) 946-5899 x15

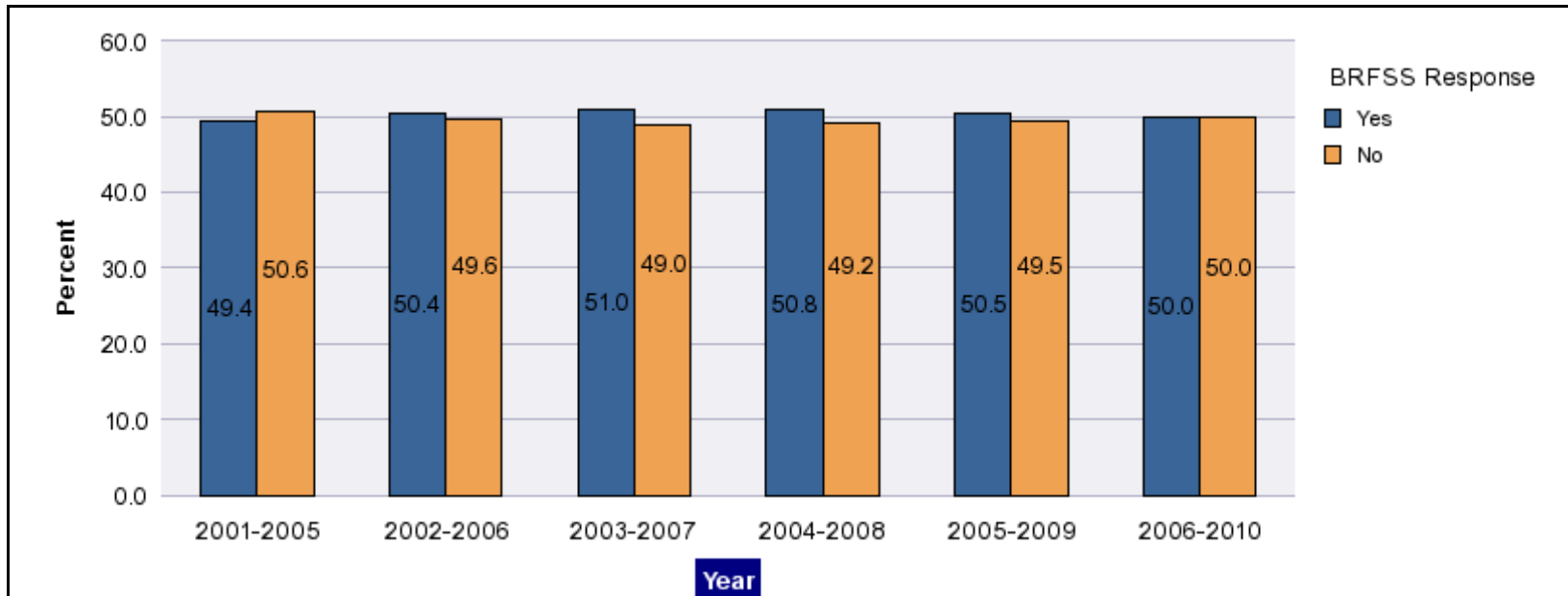
Alcohol - current drinker (Adult) by State, County, Island, Community, BRFSS Age Group, DOH Race-Ethnicity, Gender, Education Level, Employment Status (Grouped), Household Income, Poverty Level, Marital Status (Grouped), Married, Health Care Coverage, for the Year(s) - 2001-2005, 2002-2006, 2003-2007, 2004-2008, 2005-2009, 2006-2010

Note: Weighted numbers (#) represent 5-yr averages, percentages and 95% confidence intervals; Respondents aged 18 years and older; n/r (Not Reportable) - If the unweighted total responses for a dimension (row) is <50 that row will not be shown; n/a (Not Available) - Not asked of a subset of respondents

Year	Yes			No			Estimated Population (5-yr Avg)
	#	%	C.I.(95%)	#	%	C.I.(95%)	#
2001-2005	452,900	49.4	48.5 - 50.4	463,700	50.6	49.6 - 51.5	916,600
2002-2006	470,000	50.4	49.4 - 51.3	463,300	49.6	48.7 - 50.6	933,300
2003-2007	484,400	51.0	50.1 - 51.9	465,900	49.0	48.1 - 49.9	950,300
2004-2008	491,100	50.8	49.9 - 51.7	474,800	49.2	48.3 - 50.1	965,900
2005-2009	497,000	50.5	49.7 - 51.3	487,100	49.5	48.7 - 50.3	984,200
2006-2010	495,300	50.0	49.2 - 50.8	494,800	50.0	49.2 - 50.8	990,100

Alcohol - current drinker (Adult) by State, County, Island, Community, BRFSS Age Group, DOH Race-Ethnicity, Gender, Education Level, Employment Status (Grouped), Household Income, Poverty Level, Marital Status (Grouped), Married, Health Care Coverage, for the Year(s) - 2001-2005, 2002-2006, 2003-2007, 2004-2008, 2005-2009, 2006-2010

Note: Weighted numbers (#) represent 5-yr averages, percentages and 95% confidence intervals; Respondents aged 18 years and older; n/r (Not Reportable) - If the unweighted total responses for a dimension (row) is <50 that row will not be shown; n/a (Not Available) - Not asked of a subset of respondents



Alcohol - current drinker (Adult) by State, County, Island, Community, BRFSS Age Group, DOH Race-Ethnicity, Gender, Education Level, Employment Status (Grouped), Household Income, Poverty Level, Marital Status (Grouped), Married, Health Care Coverage, for the Year(s) - 2001-2005, 2002-2006, 2003-2007, 2004-2008, 2005-2009, 2006-2010

Note: Weighted numbers (#) represent 5-yr averages, percentages and 95% confidence intervals; Respondents aged 18 years and older; n/r (Not Reportable) - If the unweighted total responses for a dimension (row) is <50 that row will not be shown; n/a (Not Available) - Not asked of a subset of respondents

Year: 2006-2010

State	Yes			No			Estimated Population (5-yr Avg)
	#	%	C.I. (95%)	#	%	C.I. (95%)	#
Hawaii State	495,300	50.0	49.2 - 50.8	494,800	50.0	49.2 - 50.8	990,100

County	Yes			No			Estimated Population (5-yr Avg)
	#	%	C.I. (95%)	#	%	C.I. (95%)	#
Hawaii	68,500	51.7	50.2 - 53.2	64,100	48.3	46.8 - 49.8	132,600
Honolulu	342,800	49.0	47.9 - 50.0	357,300	51.0	50.0 - 52.1	700,100
Kauai	26,500	54.9	52.6 - 57.2	21,700	45.1	42.8 - 47.4	48,200
Maui	57,500	52.7	51.0 - 54.4	51,700	47.3	45.6 - 49.0	109,200

Alcohol - current drinker (Adult) by State, County, Island, Community, BRFSS Age Group, DOH Race-Ethnicity, Gender, Education Level, Employment Status (Grouped), Household Income, Poverty Level, Marital Status (Grouped), Married, Health Care Coverage, for the Year(s) - 2001-2005, 2002-2006, 2003-2007, 2004-2008, 2005-2009, 2006-2010

Note: Weighted numbers (#) represent 5-yr averages, percentages and 95% confidence intervals; Respondents aged 18 years and older; n/r (Not Reportable) - If the unweighted total responses for a dimension (row) is <50 that row will not be shown; n/a (Not Available) - Not asked of a subset of respondents

Year: 2006-2010

Island	Yes			No			Estimated Population (5-yr Avg)
	#	%	C.I. (95%)	#	%	C.I. (95%)	#
Hawaii	68,500	51.7	50.2 - 53.2	64,100	48.3	46.8 - 49.8	132,600
Kauai	26,500	54.9	52.6 - 57.2	21,700	45.1	42.8 - 47.4	48,200
Lanai	900	49.9	45.7 - 54.0	900	50.1	46.0 - 54.3	1,900
Maui	52,900	53.1	51.2 - 54.9	46,800	46.9	45.1 - 48.8	99,700
Molokai	3,700	48.7	45.1 - 52.3	3,900	51.3	47.7 - 54.9	7,600
Oahu	342,800	49.0	47.9 - 50.0	357,300	51.0	50.0 - 52.1	700,100

Community	Yes			No			Estimated Population (5-yr Avg)
	#	%	C.I. (95%)	#	%	C.I. (95%)	#
Aiea/ Pearl City	30,000	46.1	42.8 - 49.5	35,000	53.9	50.5 - 57.2	65,000

Alcohol - current drinker (Adult) by State, County, Island, Community, BRFSS Age Group, DOH Race-Ethnicity, Gender, Education Level, Employment Status (Grouped), Household Income, Poverty Level, Marital Status (Grouped), Married, Health Care Coverage, for the Year(s) - 2001-2005, 2002-2006, 2003-2007, 2004-2008, 2005-2009, 2006-2010

Note: Weighted numbers (#) represent 5-yr averages, percentages and 95% confidence intervals; Respondents aged 18 years and older; n/r (Not Reportable) - If the unweighted total responses for a dimension (row) is <50 that row will not be shown; n/a (Not Available) - Not asked of a subset of respondents

Year: 2006-2010

Community	Yes			No			Estimated Population (5-yr Avg)
	#	%	C.I. (95%)	#	%	C.I. (95%)	#
Ala Moana	11,800	41.4	37.1 - 45.6	16,700	58.6	54.4 - 62.9	28,500
Hanalei/ Kapaa	11,800	58.6	55.3 - 61.9	8,400	41.4	38.1 - 44.7	20,200
Hilo	18,400	47.1	44.3 - 49.9	20,700	52.9	50.1 - 55.7	39,200
Kaaawa/ Kahaluu/ Kaneohe	24,900	50.2	46.5 - 53.9	24,700	49.8	46.1 - 53.5	49,600
Kahului	17,000	50.6	47.4 - 53.8	16,600	49.4	46.2 - 52.6	33,600
Kailua/ Waimanalo	30,100	59.4	55.9 - 62.8	20,600	40.6	37.2 - 44.1	50,700
Kaimuki/ Palolo/ Waikiki	30,000	53.0	49.8 - 56.2	26,600	47.0	43.8 - 50.2	56,700
Kona	16,300	55.9	52.8 - 59.0	12,800	44.1	41.0 - 47.2	29,100
Lahaina/ Wailuku	16,000	49.1	45.7 - 52.4	16,600	50.9	47.6 - 54.3	32,700
Lanai	900	49.9	45.7 - 54.0	900	50.1	46.0 - 54.3	1,900
Lihue-Waimea	14,600	52.2	49.1 - 55.4	13,400	47.8	44.6 - 50.9	28,000

Alcohol - current drinker (Adult) by State, County, Island, Community, BRFSS Age Group, DOH Race-Ethnicity, Gender, Education Level, Employment Status (Grouped), Household Income, Poverty Level, Marital Status (Grouped), Married, Health Care Coverage, for the Year(s) - 2001-2005, 2002-2006, 2003-2007, 2004-2008, 2005-2009, 2006-2010

Note: Weighted numbers (#) represent 5-yr averages, percentages and 95% confidence intervals; Respondents aged 18 years and older; n/r (Not Reportable) - If the unweighted total responses for a dimension (row) is <50 that row will not be shown; n/a (Not Available) - Not asked of a subset of respondents

Year: 2006-2010

Community	Yes			No			Estimated Population (5-yr Avg)
	#	%	C.I. (95%)	#	%	C.I. (95%)	#
Manoa/ Upper Makiki	23,700	49.3	45.8 - 52.9	24,300	50.7	47.1 - 54.2	48,000
Mililani/ Wahiawa	36,700	50.2	47.1 - 53.2	36,400	49.8	46.8 - 52.9	73,100
Molokai	3,700	48.7	45.1 - 52.3	3,900	51.3	47.7 - 54.9	7,600
Nanakuli/ Waianae	14,500	41.6	35.9 - 47.3	20,300	58.4	52.7 - 64.1	34,800
N.Hawaii	14,500	53.3	49.9 - 56.7	12,700	46.7	43.3 - 50.1	27,100
N.Shore/ Laie	10,400	45.6	39.8 - 51.5	12,400	54.4	48.5 - 60.2	22,700
Nuuanu/ Kalihi/ Moanalua	28,900	41.6	38.1 - 45.2	40,500	58.4	54.8 - 61.9	69,400
Puna/ Kau	19,400	52.1	49.2 - 54.9	17,800	47.9	45.1 - 50.8	37,200
Salt Lake/ Foster Village	18,100	51.8	47.3 - 56.3	16,800	48.2	43.7 - 52.7	34,900
Upcountry/ Hana	19,800	59.4	56.5 - 62.3	13,600	40.6	37.7 - 43.5	33,400
Waiialae/ Kahala/ Hawaii Kai	26,100	59.3	55.7 - 62.9	17,900	40.7	37.1 - 44.3	44,000

Alcohol - current drinker (Adult) by State, County, Island, Community, BRFSS Age Group, DOH Race-Ethnicity, Gender, Education Level, Employment Status (Grouped), Household Income, Poverty Level, Marital Status (Grouped), Married, Health Care Coverage, for the Year(s) - 2001-2005, 2002-2006, 2003-2007, 2004-2008, 2005-2009, 2006-2010

Note: Weighted numbers (#) represent 5-yr averages, percentages and 95% confidence intervals; Respondents aged 18 years and older; n/r (Not Reportable) - If the unweighted total responses for a dimension (row) is <50 that row will not be shown; n/a (Not Available) - Not asked of a subset of respondents

Year: 2006-2010

Community	Yes			No			Estimated Population (5-yr Avg)
	#	%	C.I. (95%)	#	%	C.I. (95%)	#
Waipahu/ Kapolei/ Ewa	57,700	47.0	44.4 - 49.6	65,000	53.0	50.4 - 55.6	122,700

Alcohol - current drinker (Adult) by State, County, Island, Community, BRFSS Age Group, DOH Race-Ethnicity, Gender, Education Level, Employment Status (Grouped), Household Income, Poverty Level, Marital Status (Grouped), Married, Health Care Coverage, for the Year(s) - 2001-2005, 2002-2006, 2003-2007, 2004-2008, 2005-2009, 2006-2010

Note: Weighted numbers (#) represent 5-yr averages, percentages and 95% confidence intervals; Respondents aged 18 years and older; n/r (Not Reportable) - If the unweighted total responses for a dimension (row) is <50 that row will not be shown; n/a (Not Available) - Not asked of a subset of respondents

Year: 2006-2010

BRFSS Age Group	Yes			No			Estimated Population (5-yr Avg)
	#	%	C.I. (95%)	#	%	C.I. (95%)	#
18-24	62,600	51.3	48.1 - 54.4	59,500	48.7	45.6 - 51.9	122,100
25-34	102,300	59.5	57.2 - 61.7	69,700	40.5	38.3 - 42.8	172,000
35-44	93,400	53.1	51.3 - 54.9	82,400	46.9	45.1 - 48.7	175,800
45-54	96,300	53.7	52.1 - 55.3	83,000	46.3	44.7 - 47.9	179,400
55-64	73,900	48.9	47.3 - 50.4	77,300	51.1	49.6 - 52.7	151,200
65-74	36,400	41.1	39.3 - 42.9	52,100	58.9	57.1 - 60.7	88,400
75+	28,500	29.7	27.9 - 31.4	67,500	70.3	68.6 - 72.1	96,000

Alcohol - current drinker (Adult) by State, County, Island, Community, BRFSS Age Group, DOH Race-Ethnicity, Gender, Education Level, Employment Status (Grouped), Household Income, Poverty Level, Marital Status (Grouped), Married, Health Care Coverage, for the Year(s) - 2001-2005, 2002-2006, 2003-2007, 2004-2008, 2005-2009, 2006-2010

Note: Weighted numbers (#) represent 5-yr averages, percentages and 95% confidence intervals; Respondents aged 18 years and older; n/r (Not Reportable) - If the unweighted total responses for a dimension (row) is <50 that row will not be shown; n/a (Not Available) - Not asked of a subset of respondents

Year: 2006-2010

DOH Race-Ethnicity	Yes			No			Estimated Population (5-yr Avg)
	#	%	C.I. (95%)	#	%	C.I. (95%)	#
Caucasian	200,600	63.2	62.1 - 64.3	116,800	36.8	35.7 - 37.9	317,400
Native Hawaiian	62,000	48.0	45.7 - 50.3	67,200	52.0	49.7 - 54.3	129,300
Chinese	22,800	39.7	36.5 - 42.9	34,700	60.3	57.1 - 63.5	57,500
Filipino	65,700	41.0	38.7 - 43.3	94,500	59.0	56.7 - 61.3	160,200
Japanese	95,100	42.6	41.0 - 44.2	128,000	57.4	55.8 - 59.0	223,200
Black	8,100	53.9	47.3 - 60.4	6,900	46.1	39.6 - 52.7	15,000
Native Alaskan/ American Indian	3,100	60.5	51.4 - 69.6	2,000	39.5	30.4 - 48.6	5,100
Other Asian	12,000	48.0	42.6 - 53.4	13,000	52.0	46.6 - 57.4	24,900
Other Pacific Islander	10,800	39.1	32.8 - 45.5	16,800	60.9	54.5 - 67.2	27,500
Mixed Ethnicity	2,500	51.2	39.6 - 62.8	2,400	48.8	37.2 - 60.4	4,800
Other	11,000	51.1	45.5 - 56.7	10,600	48.9	43.3 - 54.5	21,600

Alcohol - current drinker (Adult) by State, County, Island, Community, BRFSS Age Group, DOH Race-Ethnicity, Gender, Education Level, Employment Status (Grouped), Household Income, Poverty Level, Marital Status (Grouped), Married, Health Care Coverage, for the Year(s) - 2001-2005, 2002-2006, 2003-2007, 2004-2008, 2005-2009, 2006-2010

Note: Weighted numbers (#) represent 5-yr averages, percentages and 95% confidence intervals; Respondents aged 18 years and older; n/r (Not Reportable) - If the unweighted total responses for a dimension (row) is <50 that row will not be shown; n/a (Not Available) - Not asked of a subset of respondents

Year: 2006-2010

Gender	Yes			No			Estimated Population (5-yr Avg)
	#	%	C.I. (95%)	#	%	C.I. (95%)	#
Male	293,600	59.8	58.6 - 61.0	197,400	40.2	39.0 - 41.4	491,000
Female	201,700	40.4	39.4 - 41.4	297,400	59.6	58.6 - 60.6	499,000

Education Level	Yes			No			Estimated Population (5-yr Avg)
	#	%	C.I. (95%)	#	%	C.I. (95%)	#
Never attended school/ Only Kindergarten to Grades 8	2,200	16.9	12.1 - 21.6	11,100	83.1	78.4 - 87.9	13,300
Grades 9 thru 11 (Some High School)	14,600	37.0	32.7 - 41.3	24,800	63.0	58.7 - 67.3	39,300
Grades 12 or GED (High School Grad)	130,000	44.2	42.7 - 45.7	164,100	55.8	54.3 - 57.3	294,100
College 1 to 3 years (Some College/ Tech)	145,000	50.7	49.2 - 52.2	140,900	49.3	47.8 - 50.8	285,900
College 4 years or more (College Grad)	203,300	57.0	55.8 - 58.2	153,300	43.0	41.8 - 44.2	356,500

Alcohol - current drinker (Adult) by State, County, Island, Community, BRFSS Age Group, DOH Race-Ethnicity, Gender, Education Level, Employment Status (Grouped), Household Income, Poverty Level, Marital Status (Grouped), Married, Health Care Coverage, for the Year(s) - 2001-2005, 2002-2006, 2003-2007, 2004-2008, 2005-2009, 2006-2010

Note: Weighted numbers (#) represent 5-yr averages, percentages and 95% confidence intervals; Respondents aged 18 years and older; n/r (Not Reportable) - If the unweighted total responses for a dimension (row) is <50 that row will not be shown; n/a (Not Available) - Not asked of a subset of respondents

Year: 2006-2010

Employment Status (Grouped)	Yes			No			Estimated Population (5-yr Avg)
	#	%	C.I. (95%)	#	%	C.I. (95%)	#
Employed	349,200	56.2	55.2 - 57.2	271,900	43.8	42.8 - 44.8	621,100
Unemployed	24,400	48.9	44.8 - 53.0	25,600	51.1	47.0 - 55.2	50,000
Retired/Unable to work	77,800	35.7	34.4 - 36.9	140,300	64.3	63.1 - 65.6	218,100
Student/Homemaker	43,700	43.6	40.8 - 46.5	56,500	56.4	53.5 - 59.2	100,200

Alcohol - current drinker (Adult) by State, County, Island, Community, BRFSS Age Group, DOH Race-Ethnicity, Gender, Education Level, Employment Status (Grouped), Household Income, Poverty Level, Marital Status (Grouped), Married, Health Care Coverage, for the Year(s) - 2001-2005, 2002-2006, 2003-2007, 2004-2008, 2005-2009, 2006-2010

Note: Weighted numbers (#) represent 5-yr averages, percentages and 95% confidence intervals; Respondents aged 18 years and older; n/r (Not Reportable) - If the unweighted total responses for a dimension (row) is <50 that row will not be shown; n/a (Not Available) - Not asked of a subset of respondents

Year: 2006-2010

Household Income	Yes			No			Estimated Population (5-yr Avg)
	#	%	C.I. (95%)	#	%	C.I. (95%)	#
Less than \$10,000	9,300	31.6	27.3 - 35.8	20,200	68.4	64.2 - 72.7	29,600
\$10,000 to \$14,999	8,700	33.0	28.5 - 37.5	17,600	67.0	62.5 - 71.5	26,200
\$15,000 to \$19,999	17,500	37.7	34.3 - 41.1	28,900	62.3	58.9 - 65.7	46,400
\$20,000 to \$24,999	24,800	40.5	37.4 - 43.7	36,400	59.5	56.3 - 62.6	61,200
\$25,000 to \$34,999	46,000	44.2	41.7 - 46.6	58,200	55.8	53.4 - 58.3	104,200
\$35,000 to \$49,999	71,000	48.0	46.0 - 50.0	76,900	52.0	50.0 - 54.0	147,900
\$50,000 to \$74,999	90,600	53.6	51.8 - 55.4	78,400	46.4	44.6 - 48.2	169,000
\$75,000 or more	183,800	62.3	61.0 - 63.7	111,000	37.7	36.3 - 39.0	294,800

Alcohol - current drinker (Adult) by State, County, Island, Community, BRFSS Age Group, DOH Race-Ethnicity, Gender, Education Level, Employment Status (Grouped), Household Income, Poverty Level, Marital Status (Grouped), Married, Health Care Coverage, for the Year(s) - 2001-2005, 2002-2006, 2003-2007, 2004-2008, 2005-2009, 2006-2010

Note: Weighted numbers (#) represent 5-yr averages, percentages and 95% confidence intervals; Respondents aged 18 years and older; n/r (Not Reportable) - If the unweighted total responses for a dimension (row) is <50 that row will not be shown; n/a (Not Available) - Not asked of a subset of respondents

Year: 2006-2010

Poverty Level	Yes			No			Estimated Population (5-yr Avg)
	#	%	C.I. (95%)	#	%	C.I. (95%)	#
0-130%	77,000	38.8	36.8 - 40.7	121,600	61.2	59.3 - 63.2	198,700
131-185%	58,500	45.7	43.5 - 48.0	69,400	54.3	52.0 - 56.5	127,800
186+%	316,200	57.2	56.3 - 58.1	236,600	42.8	41.9 - 43.7	552,800

Marital Status (Grouped)	Yes			No			Estimated Population (5-yr Avg)
	#	%	C.I. (95%)	#	%	C.I. (95%)	#
Married	292,800	50.3	49.4 - 51.3	288,900	49.7	48.7 - 50.6	581,700
Unmarried Couple	19,500	63.4	58.5 - 68.3	11,300	36.6	31.7 - 41.5	30,800
Widowed	15,700	27.3	25.3 - 29.3	41,800	72.7	70.7 - 74.7	57,500
Other	167,300	52.3	50.7 - 53.8	152,800	47.7	46.2 - 49.3	320,100

Alcohol - current drinker (Adult) by State, County, Island, Community, BRFSS Age Group, DOH Race-Ethnicity, Gender, Education Level, Employment Status (Grouped), Household Income, Poverty Level, Marital Status (Grouped), Married, Health Care Coverage, for the Year(s) - 2001-2005, 2002-2006, 2003-2007, 2004-2008, 2005-2009, 2006-2010

Note: Weighted numbers (#) represent 5-yr averages, percentages and 95% confidence intervals; Respondents aged 18 years and older; n/r (Not Reportable) - If the unweighted total responses for a dimension (row) is <50 that row will not be shown; n/a (Not Available) - Not asked of a subset of respondents

Year: 2006-2010

Married	Yes			No			Estimated Population (5-yr Avg)
	#	%	C.I. (95%)	#	%	C.I. (95%)	#
Yes	298,200	50.3	49.4 - 51.3	294,200	49.7	48.7 - 50.6	592,500
No	196,500	49.6	48.3 - 51.0	199,400	50.4	49.0 - 51.7	395,900

Health Care Coverage	Yes			No			Estimated Population (5-yr Avg)
	#	%	C.I. (95%)	#	%	C.I. (95%)	#
Yes	458,800	49.9	49.1 - 50.7	460,700	50.1	49.3 - 50.9	919,500
No	36,000	52.5	49.0 - 56.1	32,500	47.5	43.9 - 51.0	68,400

Alcohol - current drinker (Adult) by State, County, Island, Community, BRFSS Age Group, DOH Race-Ethnicity, Gender, Education Level, Employment Status (Grouped), Household Income, Poverty Level, Marital Status (Grouped), Married, Health Care Coverage, for the Year(s) - 2001-2005, 2002-2006, 2003-2007, 2004-2008, 2005-2009, 2006-2010

Note: Weighted numbers (#) represent 5-yr averages, percentages and 95% confidence intervals; Respondents aged 18 years and older; n/r (Not Reportable) - If the unweighted total responses for a dimension (row) is <50 that row will not be shown; n/a (Not Available) - Not asked of a subset of respondents

Year: 2005-2009

State	Yes			No			Estimated Population (5-yr Avg)
	#	%	C.I. (95%)	#	%	C.I. (95%)	#
Hawaii State	497,000	50.5	49.7 - 51.3	487,100	49.5	48.7 - 50.3	984,200

County	Yes			No			Estimated Population (5-yr Avg)
	#	%	C.I. (95%)	#	%	C.I. (95%)	#
Hawaii	67,600	52.6	51.1 - 54.0	61,000	47.4	46.0 - 48.9	128,600
Honolulu	345,900	49.4	48.4 - 50.4	354,500	50.6	49.6 - 51.6	700,400
Kauai	25,600	53.7	51.5 - 56.0	22,000	46.3	44.0 - 48.5	47,600
Maui	57,900	53.8	52.1 - 55.5	49,700	46.2	44.5 - 47.9	107,600

Alcohol - current drinker (Adult) by State, County, Island, Community, BRFSS Age Group, DOH Race-Ethnicity, Gender, Education Level, Employment Status (Grouped), Household Income, Poverty Level, Marital Status (Grouped), Married, Health Care Coverage, for the Year(s) - 2001-2005, 2002-2006, 2003-2007, 2004-2008, 2005-2009, 2006-2010

Note: Weighted numbers (#) represent 5-yr averages, percentages and 95% confidence intervals; Respondents aged 18 years and older; n/r (Not Reportable) - If the unweighted total responses for a dimension (row) is <50 that row will not be shown; n/a (Not Available) - Not asked of a subset of respondents

Year: 2005-2009

Island	Yes			No			Estimated Population (5-yr Avg)
	#	%	C.I. (95%)	#	%	C.I. (95%)	#
Hawaii	67,600	52.6	51.1 - 54.0	61,000	47.4	46.0 - 48.9	128,600
Kauai	25,600	53.7	51.5 - 56.0	22,000	46.3	44.0 - 48.5	47,600
Lanai	1,000	49.3	45.3 - 53.4	1,100	50.7	46.6 - 54.7	2,100
Maui	53,300	54.2	52.4 - 56.0	45,000	45.8	44.0 - 47.6	98,300
Molokai	3,600	50.1	46.3 - 53.8	3,600	49.9	46.2 - 53.7	7,200
Oahu	345,900	49.4	48.4 - 50.4	354,500	50.6	49.6 - 51.6	700,400

Community	Yes			No			Estimated Population (5-yr Avg)
	#	%	C.I. (95%)	#	%	C.I. (95%)	#
Aiea/ Pearl City	28,700	43.8	40.5 - 47.1	36,800	56.2	52.9 - 59.5	65,500

Alcohol - current drinker (Adult) by State, County, Island, Community, BRFSS Age Group, DOH Race-Ethnicity, Gender, Education Level, Employment Status (Grouped), Household Income, Poverty Level, Marital Status (Grouped), Married, Health Care Coverage, for the Year(s) - 2001-2005, 2002-2006, 2003-2007, 2004-2008, 2005-2009, 2006-2010

Note: Weighted numbers (#) represent 5-yr averages, percentages and 95% confidence intervals; Respondents aged 18 years and older; n/r (Not Reportable) - If the unweighted total responses for a dimension (row) is <50 that row will not be shown; n/a (Not Available) - Not asked of a subset of respondents

Year: 2005-2009

Community	Yes			No			Estimated Population (5-yr Avg)
	#	%	C.I. (95%)	#	%	C.I. (95%)	#
Ala Moana	13,700	44.2	40.0 - 48.3	17,300	55.8	51.7 - 60.0	31,100
Hanalei/ Kapaa	11,300	57.0	53.7 - 60.3	8,500	43.0	39.7 - 46.3	19,900
Hilo	17,900	47.3	44.6 - 50.0	19,900	52.7	50.0 - 55.4	37,900
Kaaawa/ Kahaluu/ Kaneohe	25,700	52.0	48.4 - 55.7	23,700	48.0	44.3 - 51.6	49,400
Kahului	18,000	53.3	50.1 - 56.5	15,700	46.7	43.5 - 49.9	33,700
Kailua/ Waimanalo	30,300	60.1	56.7 - 63.6	20,100	39.9	36.4 - 43.3	50,300
Kaimuki/ Palolo/ Waikiki	30,600	52.0	48.9 - 55.1	28,200	48.0	44.9 - 51.1	58,800
Kona	16,500	57.3	54.4 - 60.3	12,300	42.7	39.7 - 45.6	28,800
Lahaina/ Wailuku	15,900	49.4	46.2 - 52.6	16,300	50.6	47.4 - 53.8	32,100
Lanai	1,000	49.3	45.3 - 53.4	1,100	50.7	46.6 - 54.7	2,100
Lihue-Waimea	14,200	51.4	48.3 - 54.4	13,500	48.6	45.6 - 51.7	27,700

Alcohol - current drinker (Adult) by State, County, Island, Community, BRFSS Age Group, DOH Race-Ethnicity, Gender, Education Level, Employment Status (Grouped), Household Income, Poverty Level, Marital Status (Grouped), Married, Health Care Coverage, for the Year(s) - 2001-2005, 2002-2006, 2003-2007, 2004-2008, 2005-2009, 2006-2010

Note: Weighted numbers (#) represent 5-yr averages, percentages and 95% confidence intervals; Respondents aged 18 years and older; n/r (Not Reportable) - If the unweighted total responses for a dimension (row) is <50 that row will not be shown; n/a (Not Available) - Not asked of a subset of respondents

Year: 2005-2009

Community	Yes			No			Estimated Population (5-yr Avg)
	#	%	C.I. (95%)	#	%	C.I. (95%)	#
Manoa/ Upper Makiki	22,700	49.6	46.1 - 53.1	23,100	50.4	46.9 - 53.9	45,800
Mililani/ Wahiawa	36,200	49.4	46.4 - 52.4	37,100	50.6	47.6 - 53.6	73,300
Molokai	3,600	50.1	46.3 - 53.8	3,600	49.9	46.2 - 53.7	7,200
Nanakuli/ Waianae	14,400	43.6	38.1 - 49.2	18,600	56.4	50.8 - 61.9	33,100
N.Hawaii	14,400	53.2	50.0 - 56.5	12,600	46.8	43.5 - 50.0	27,000
N.Shore/ Laie	10,300	47.2	41.6 - 52.9	11,500	52.8	47.1 - 58.4	21,800
Nuuanu/ Kalihi/ Moanalua	30,100	42.8	39.3 - 46.3	40,100	57.2	53.7 - 60.7	70,200
Puna/ Kau	18,800	53.9	51.0 - 56.7	16,100	46.1	43.3 - 49.0	34,900
Salt Lake/ Foster Village	18,400	53.1	48.5 - 57.7	16,200	46.9	42.3 - 51.5	34,600
Upcountry/ Hana	19,400	59.9	57.0 - 62.8	13,000	40.1	37.2 - 43.0	32,500
Waiialae/ Kahala/ Hawaii Kai	26,300	58.3	54.7 - 62.0	18,800	41.7	38.0 - 45.3	45,100

Alcohol - current drinker (Adult) by State, County, Island, Community, BRFSS Age Group, DOH Race-Ethnicity, Gender, Education Level, Employment Status (Grouped), Household Income, Poverty Level, Marital Status (Grouped), Married, Health Care Coverage, for the Year(s) - 2001-2005, 2002-2006, 2003-2007, 2004-2008, 2005-2009, 2006-2010

Note: Weighted numbers (#) represent 5-yr averages, percentages and 95% confidence intervals; Respondents aged 18 years and older; n/r (Not Reportable) - If the unweighted total responses for a dimension (row) is <50 that row will not be shown; n/a (Not Available) - Not asked of a subset of respondents

Year: 2005-2009

Community	Yes			No			Estimated Population (5-yr Avg)
	#	%	C.I. (95%)	#	%	C.I. (95%)	#
Waipahu/ Kapolei/ Ewa	58,600	48.3	45.7 - 50.8	62,900	51.7	49.2 - 54.3	121,500

Alcohol - current drinker (Adult) by State, County, Island, Community, BRFSS Age Group, DOH Race-Ethnicity, Gender, Education Level, Employment Status (Grouped), Household Income, Poverty Level, Marital Status (Grouped), Married, Health Care Coverage, for the Year(s) - 2001-2005, 2002-2006, 2003-2007, 2004-2008, 2005-2009, 2006-2010

Note: Weighted numbers (#) represent 5-yr averages, percentages and 95% confidence intervals; Respondents aged 18 years and older; n/r (Not Reportable) - If the unweighted total responses for a dimension (row) is <50 that row will not be shown; n/a (Not Available) - Not asked of a subset of respondents

Year: 2005-2009

BRFSS Age Group	Yes			No			Estimated Population (5-yr Avg)
	#	%	C.I. (95%)	#	%	C.I. (95%)	#
18-24	65,500	53.4	50.4 - 56.5	57,100	46.6	43.5 - 49.6	122,500
25-34	100,600	59.5	57.3 - 61.6	68,600	40.5	38.4 - 42.7	169,200
35-44	95,500	53.8	52.0 - 55.5	82,000	46.2	44.5 - 48.0	177,500
45-54	97,400	54.1	52.5 - 55.6	82,700	45.9	44.4 - 47.5	180,100
55-64	73,100	49.0	47.4 - 50.6	76,000	51.0	49.4 - 52.6	149,100
65-74	35,100	40.5	38.7 - 42.4	51,500	59.5	57.6 - 61.3	86,600
75+	27,900	29.8	28.0 - 31.6	65,800	70.2	68.4 - 72.0	93,700

Alcohol - current drinker (Adult) by State, County, Island, Community, BRFSS Age Group, DOH Race-Ethnicity, Gender, Education Level, Employment Status (Grouped), Household Income, Poverty Level, Marital Status (Grouped), Married, Health Care Coverage, for the Year(s) - 2001-2005, 2002-2006, 2003-2007, 2004-2008, 2005-2009, 2006-2010

Note: Weighted numbers (#) represent 5-yr averages, percentages and 95% confidence intervals; Respondents aged 18 years and older; n/r (Not Reportable) - If the unweighted total responses for a dimension (row) is <50 that row will not be shown; n/a (Not Available) - Not asked of a subset of respondents

Year: 2005-2009

DOH Race-Ethnicity	Yes			No			Estimated Population (5-yr Avg)
	#	%	C.I. (95%)	#	%	C.I. (95%)	#
Caucasian	203,900	63.7	62.6 - 64.8	116,200	36.3	35.2 - 37.4	320,100
Native Hawaiian	60,800	47.9	45.7 - 50.2	66,000	52.1	49.8 - 54.3	126,700
Chinese	22,900	40.1	36.9 - 43.4	34,100	59.9	56.6 - 63.1	57,000
Filipino	67,500	42.4	40.2 - 44.7	91,500	57.6	55.3 - 59.8	159,000
Japanese	91,000	41.7	40.1 - 43.3	127,400	58.3	56.7 - 59.9	218,400
Black	9,100	56.9	50.6 - 63.1	6,900	43.1	36.9 - 49.4	16,000
Native Alaskan/ American Indian	3,100	57.8	48.9 - 66.6	2,200	42.2	33.4 - 51.1	5,300
Other Asian	11,600	48.7	43.3 - 54.0	12,200	51.3	46.0 - 56.7	23,800
Other Pacific Islander	10,400	40.8	34.7 - 47.0	15,100	59.2	53.0 - 65.3	25,500
Mixed Ethnicity	2,500	51.2	39.6 - 62.8	2,400	48.8	37.2 - 60.4	4,800
Other	12,400	52.5	47.4 - 57.5	11,200	47.5	42.5 - 52.6	23,600

Alcohol - current drinker (Adult) by State, County, Island, Community, BRFSS Age Group, DOH Race-Ethnicity, Gender, Education Level, Employment Status (Grouped), Household Income, Poverty Level, Marital Status (Grouped), Married, Health Care Coverage, for the Year(s) - 2001-2005, 2002-2006, 2003-2007, 2004-2008, 2005-2009, 2006-2010

Note: Weighted numbers (#) represent 5-yr averages, percentages and 95% confidence intervals; Respondents aged 18 years and older; n/r (Not Reportable) - If the unweighted total responses for a dimension (row) is <50 that row will not be shown; n/a (Not Available) - Not asked of a subset of respondents

Year: 2005-2009

Gender	Yes			No			Estimated Population (5-yr Avg)
	#	%	C.I. (95%)	#	%	C.I. (95%)	#
Male	295,500	60.6	59.4 - 61.7	192,300	39.4	38.3 - 40.6	487,800
Female	201,500	40.6	39.6 - 41.6	294,800	59.4	58.4 - 60.4	496,300

Education Level	Yes			No			Estimated Population (5-yr Avg)
	#	%	C.I. (95%)	#	%	C.I. (95%)	#
Never attended school/ Only Kindergarten to Grades 8	3,200	21.2	15.5 - 26.9	11,800	78.8	73.1 - 84.5	15,000
Grades 9 thru 11 (Some High School)	14,400	36.9	33.0 - 40.8	24,600	63.1	59.2 - 67.0	39,000
Grades 12 or GED (High School Grad)	131,300	45.0	43.5 - 46.5	160,500	55.0	53.5 - 56.5	291,700
College 1 to 3 years (Some College/ Tech)	146,700	51.4	49.9 - 52.9	138,700	48.6	47.1 - 50.1	285,400
College 4 years or more (College Grad)	201,200	57.2	56.0 - 58.4	150,600	42.8	41.6 - 44.0	351,700

Alcohol - current drinker (Adult) by State, County, Island, Community, BRFSS Age Group, DOH Race-Ethnicity, Gender, Education Level, Employment Status (Grouped), Household Income, Poverty Level, Marital Status (Grouped), Married, Health Care Coverage, for the Year(s) - 2001-2005, 2002-2006, 2003-2007, 2004-2008, 2005-2009, 2006-2010

Note: Weighted numbers (#) represent 5-yr averages, percentages and 95% confidence intervals; Respondents aged 18 years and older; n/r (Not Reportable) - If the unweighted total responses for a dimension (row) is <50 that row will not be shown; n/a (Not Available) - Not asked of a subset of respondents

Year: 2005-2009

Employment Status (Grouped)	Yes			No			Estimated Population (5-yr Avg)
	#	%	C.I. (95%)	#	%	C.I. (95%)	#
Employed	355,500	56.6	55.7 - 57.6	272,200	43.4	42.4 - 44.3	627,700
Unemployed	19,200	48.3	43.8 - 52.7	20,500	51.7	47.3 - 56.2	39,700
Retired/Unable to work	80,500	36.5	35.2 - 37.8	140,200	63.5	62.2 - 64.8	220,800
Student/Homemaker	41,500	43.7	40.9 - 46.5	53,400	56.3	53.5 - 59.1	94,900

Alcohol - current drinker (Adult) by State, County, Island, Community, BRFSS Age Group, DOH Race-Ethnicity, Gender, Education Level, Employment Status (Grouped), Household Income, Poverty Level, Marital Status (Grouped), Married, Health Care Coverage, for the Year(s) - 2001-2005, 2002-2006, 2003-2007, 2004-2008, 2005-2009, 2006-2010

Note: Weighted numbers (#) represent 5-yr averages, percentages and 95% confidence intervals; Respondents aged 18 years and older; n/r (Not Reportable) - If the unweighted total responses for a dimension (row) is <50 that row will not be shown; n/a (Not Available) - Not asked of a subset of respondents

Year: 2005-2009

Household Income	Yes			No			Estimated Population (5-yr Avg)
	#	%	C.I. (95%)	#	%	C.I. (95%)	#
Less than \$10,000	8,900	33.5	29.3 - 37.6	17,800	66.5	62.4 - 70.7	26,700
\$10,000 to \$14,999	9,200	35.1	30.7 - 39.6	17,000	64.9	60.4 - 69.3	26,200
\$15,000 to \$19,999	17,300	38.0	34.7 - 41.3	28,200	62.0	58.7 - 65.3	45,500
\$20,000 to \$24,999	24,600	40.7	37.7 - 43.7	35,700	59.3	56.3 - 62.3	60,300
\$25,000 to \$34,999	46,400	44.6	42.2 - 46.9	57,800	55.4	53.1 - 57.8	104,200
\$35,000 to \$49,999	74,200	49.4	47.5 - 51.4	76,000	50.6	48.6 - 52.5	150,200
\$50,000 to \$74,999	94,800	54.4	52.6 - 56.2	79,400	45.6	43.8 - 47.4	174,300
\$75,000 or more	173,100	62.3	60.9 - 63.6	104,900	37.7	36.4 - 39.1	277,900

Alcohol - current drinker (Adult) by State, County, Island, Community, BRFSS Age Group, DOH Race-Ethnicity, Gender, Education Level, Employment Status (Grouped), Household Income, Poverty Level, Marital Status (Grouped), Married, Health Care Coverage, for the Year(s) - 2001-2005, 2002-2006, 2003-2007, 2004-2008, 2005-2009, 2006-2010

Note: Weighted numbers (#) represent 5-yr averages, percentages and 95% confidence intervals; Respondents aged 18 years and older; n/r (Not Reportable) - If the unweighted total responses for a dimension (row) is <50 that row will not be shown; n/a (Not Available) - Not asked of a subset of respondents

Year: 2005-2009

Poverty Level	Yes			No			Estimated Population (5-yr Avg)
	#	%	C.I. (95%)	#	%	C.I. (95%)	#
0-130%	73,100	39.4	37.5 - 41.4	112,300	60.6	58.6 - 62.5	185,400
131-185%	54,000	45.8	43.4 - 48.2	63,900	54.2	51.8 - 56.6	117,900
186+%	321,500	57.2	56.3 - 58.1	240,500	42.8	41.9 - 43.7	562,000

Marital Status (Grouped)	Yes			No			Estimated Population (5-yr Avg)
	#	%	C.I. (95%)	#	%	C.I. (95%)	#
Married	293,200	50.4	49.4 - 51.3	288,900	49.6	48.7 - 50.6	582,100
Unmarried Couple	19,400	67.1	62.6 - 71.6	9,500	32.9	28.4 - 37.4	29,000
Widowed	15,900	27.8	25.8 - 29.8	41,500	72.2	70.2 - 74.2	57,400
Other	168,400	53.4	51.8 - 54.9	147,200	46.6	45.1 - 48.2	315,600

Alcohol - current drinker (Adult) by State, County, Island, Community, BRFSS Age Group, DOH Race-Ethnicity, Gender, Education Level, Employment Status (Grouped), Household Income, Poverty Level, Marital Status (Grouped), Married, Health Care Coverage, for the Year(s) - 2001-2005, 2002-2006, 2003-2007, 2004-2008, 2005-2009, 2006-2010

Note: Weighted numbers (#) represent 5-yr averages, percentages and 95% confidence intervals; Respondents aged 18 years and older; n/r (Not Reportable) - If the unweighted total responses for a dimension (row) is <50 that row will not be shown; n/a (Not Available) - Not asked of a subset of respondents

Year: 2005-2009

Married	Yes			No			Estimated Population (5-yr Avg)
	#	%	C.I. (95%)	#	%	C.I. (95%)	#
Yes	298,900	50.4	49.5 - 51.4	293,700	49.6	48.6 - 50.5	592,700
No	197,500	50.7	49.3 - 52.0	192,300	49.3	48.0 - 50.7	389,800

Health Care Coverage	Yes			No			Estimated Population (5-yr Avg)
	#	%	C.I. (95%)	#	%	C.I. (95%)	#
Yes	458,300	50.3	49.5 - 51.0	453,700	49.7	49.0 - 50.5	912,000
No	38,200	54.5	51.1 - 57.8	31,900	45.5	42.2 - 48.9	70,100

Alcohol - current drinker (Adult) by State, County, Island, Community, BRFSS Age Group, DOH Race-Ethnicity, Gender, Education Level, Employment Status (Grouped), Household Income, Poverty Level, Marital Status (Grouped), Married, Health Care Coverage, for the Year(s) - 2001-2005, 2002-2006, 2003-2007, 2004-2008, 2005-2009, 2006-2010

Note: Weighted numbers (#) represent 5-yr averages, percentages and 95% confidence intervals; Respondents aged 18 years and older; n/r (Not Reportable) - If the unweighted total responses for a dimension (row) is <50 that row will not be shown; n/a (Not Available) - Not asked of a subset of respondents

Year: 2004-2008

State	Yes			No			Estimated Population (5-yr Avg)
	#	%	C.I. (95%)	#	%	C.I. (95%)	#
Hawaii State	491,100	50.8	49.9 - 51.7	474,800	49.2	48.3 - 50.1	965,900

County	Yes			No			Estimated Population (5-yr Avg)
	#	%	C.I. (95%)	#	%	C.I. (95%)	#
Hawaii	66,400	52.3	50.6 - 54.0	60,600	47.7	46.0 - 49.4	127,100
Honolulu	342,500	49.8	48.6 - 51.0	345,400	50.2	49.0 - 51.4	687,900
Kauai	24,700	53.7	51.3 - 56.1	21,300	46.3	43.9 - 48.7	46,100
Maui	57,400	54.7	52.7 - 56.7	47,500	45.3	43.3 - 47.3	104,900

Alcohol - current drinker (Adult) by State, County, Island, Community, BRFSS Age Group, DOH Race-Ethnicity, Gender, Education Level, Employment Status (Grouped), Household Income, Poverty Level, Marital Status (Grouped), Married, Health Care Coverage, for the Year(s) - 2001-2005, 2002-2006, 2003-2007, 2004-2008, 2005-2009, 2006-2010

Note: Weighted numbers (#) represent 5-yr averages, percentages and 95% confidence intervals; Respondents aged 18 years and older; n/r (Not Reportable) - If the unweighted total responses for a dimension (row) is <50 that row will not be shown; n/a (Not Available) - Not asked of a subset of respondents

Year: 2004-2008

Island	Yes			No			Estimated Population (5-yr Avg)
	#	%	C.I. (95%)	#	%	C.I. (95%)	#
Hawaii	66,400	52.3	50.6 - 54.0	60,600	47.7	46.0 - 49.4	127,100
Kauai	24,700	53.7	51.3 - 56.1	21,300	46.3	43.9 - 48.7	46,100
Lanai	1,000	48.4	44.0 - 52.8	1,000	51.6	47.2 - 56.0	2,000
Maui	52,900	55.0	52.9 - 57.2	43,200	45.0	42.8 - 47.1	96,100
Molokai	3,500	51.9	47.4 - 56.4	3,200	48.1	43.6 - 52.6	6,700
Oahu	342,500	49.8	48.6 - 51.0	345,400	50.2	49.0 - 51.4	687,900

Community	Yes			No			Estimated Population (5-yr Avg)
	#	%	C.I. (95%)	#	%	C.I. (95%)	#
Aiea/ Pearl City	29,300	44.3	40.6 - 48.0	36,800	55.7	52.0 - 59.4	66,100

Alcohol - current drinker (Adult) by State, County, Island, Community, BRFSS Age Group, DOH Race-Ethnicity, Gender, Education Level, Employment Status (Grouped), Household Income, Poverty Level, Marital Status (Grouped), Married, Health Care Coverage, for the Year(s) - 2001-2005, 2002-2006, 2003-2007, 2004-2008, 2005-2009, 2006-2010

Note: Weighted numbers (#) represent 5-yr averages, percentages and 95% confidence intervals; Respondents aged 18 years and older; n/r (Not Reportable) - If the unweighted total responses for a dimension (row) is <50 that row will not be shown; n/a (Not Available) - Not asked of a subset of respondents

Year: 2004-2008

Community	Yes			No			Estimated Population (5-yr Avg)
	#	%	C.I. (95%)	#	%	C.I. (95%)	#
Ala Moana	14,800	46.8	41.8 - 51.7	16,900	53.2	48.3 - 58.2	31,700
Hanalei/ Kapaa	10,900	56.9	53.4 - 60.4	8,300	43.1	39.6 - 46.6	19,200
Hilo	17,400	47.7	44.6 - 50.7	19,100	52.3	49.3 - 55.4	36,600
Kaaawa/ Kahaluu/ Kaneohe	25,300	52.4	48.0 - 56.8	23,000	47.6	43.2 - 52.0	48,200
Kahului	17,200	52.4	48.6 - 56.2	15,600	47.6	43.8 - 51.4	32,800
Kailua/ Waimanalo	29,100	60.1	56.1 - 64.0	19,400	39.9	36.0 - 43.9	48,500
Kaimuki/ Palolo/ Waikiki	31,200	52.8	49.2 - 56.4	27,900	47.2	43.6 - 50.8	59,100
Kona	16,400	58.4	55.0 - 61.7	11,700	41.6	38.3 - 45.0	28,100
Lahaina/ Wailuku	16,500	52.1	48.2 - 56.0	15,100	47.9	44.0 - 51.8	31,600
Lanai	1,000	48.4	44.0 - 52.8	1,000	51.6	47.2 - 56.0	2,000
Lihue-Waimea	13,800	51.3	48.1 - 54.6	13,100	48.7	45.4 - 51.9	26,800

Alcohol - current drinker (Adult) by State, County, Island, Community, BRFSS Age Group, DOH Race-Ethnicity, Gender, Education Level, Employment Status (Grouped), Household Income, Poverty Level, Marital Status (Grouped), Married, Health Care Coverage, for the Year(s) - 2001-2005, 2002-2006, 2003-2007, 2004-2008, 2005-2009, 2006-2010

Note: Weighted numbers (#) represent 5-yr averages, percentages and 95% confidence intervals; Respondents aged 18 years and older; n/r (Not Reportable) - If the unweighted total responses for a dimension (row) is <50 that row will not be shown; n/a (Not Available) - Not asked of a subset of respondents

Year: 2004-2008

Community	Yes			No			Estimated Population (5-yr Avg)
	#	%	C.I. (95%)	#	%	C.I. (95%)	#
Manoa/ Upper Makiki	23,900	51.8	47.7 - 55.9	22,200	48.2	44.1 - 52.3	46,200
Mililani/ Wahiawa	34,700	50.5	46.6 - 54.3	34,100	49.5	45.7 - 53.4	68,800
Molokai	3,500	51.9	47.4 - 56.4	3,200	48.1	43.6 - 52.6	6,700
Nanakuli/ Waianae	15,700	45.3	39.3 - 51.4	18,900	54.7	48.6 - 60.7	34,600
N.Hawaii	14,100	53.9	50.4 - 57.4	12,000	46.1	42.6 - 49.6	26,100
N.Shore/ Laie	10,800	48.6	42.2 - 55.0	11,400	51.4	45.0 - 57.8	22,200
Nuuanu/ Kalihi/ Moanalua	29,200	42.9	39.0 - 46.8	38,800	57.1	53.2 - 61.0	68,000
Puna/ Kau	18,600	51.1	47.7 - 54.5	17,800	48.9	45.5 - 52.3	36,300
Salt Lake/ Foster Village	17,900	53.4	48.1 - 58.7	15,600	46.6	41.3 - 51.9	33,600
Upcountry/ Hana	19,200	60.7	57.3 - 64.0	12,500	39.3	36.0 - 42.7	31,700
Waialae/ Kahala/ Hawaii Kai	23,400	57.6	53.2 - 61.9	17,200	42.4	38.1 - 46.8	40,700

Alcohol - current drinker (Adult) by State, County, Island, Community, BRFSS Age Group, DOH Race-Ethnicity, Gender, Education Level, Employment Status (Grouped), Household Income, Poverty Level, Marital Status (Grouped), Married, Health Care Coverage, for the Year(s) - 2001-2005, 2002-2006, 2003-2007, 2004-2008, 2005-2009, 2006-2010

Note: Weighted numbers (#) represent 5-yr averages, percentages and 95% confidence intervals; Respondents aged 18 years and older; n/r (Not Reportable) - If the unweighted total responses for a dimension (row) is <50 that row will not be shown; n/a (Not Available) - Not asked of a subset of respondents

Year: 2004-2008

Community	Yes			No			Estimated Population (5-yr Avg)
	#	%	C.I. (95%)	#	%	C.I. (95%)	#
Waipahu/ Kapolei/ Ewa	57,200	47.6	44.5 - 50.6	63,000	52.4	49.4 - 55.5	120,200

Alcohol - current drinker (Adult) by State, County, Island, Community, BRFSS Age Group, DOH Race-Ethnicity, Gender, Education Level, Employment Status (Grouped), Household Income, Poverty Level, Marital Status (Grouped), Married, Health Care Coverage, for the Year(s) - 2001-2005, 2002-2006, 2003-2007, 2004-2008, 2005-2009, 2006-2010

Note: Weighted numbers (#) represent 5-yr averages, percentages and 95% confidence intervals; Respondents aged 18 years and older; n/r (Not Reportable) - If the unweighted total responses for a dimension (row) is <50 that row will not be shown; n/a (Not Available) - Not asked of a subset of respondents

Year: 2004-2008

BRFSS Age Group	Yes			No			Estimated Population (5-yr Avg)
	#	%	C.I. (95%)	#	%	C.I. (95%)	#
18-24	64,400	53.6	50.2 - 57.1	55,600	46.4	42.9 - 49.8	120,000
25-34	99,200	59.5	57.1 - 61.9	67,500	40.5	38.1 - 42.9	166,700
35-44	96,700	54.6	52.6 - 56.6	80,400	45.4	43.4 - 47.4	177,100
45-54	97,900	55.0	53.2 - 56.9	80,000	45.0	43.1 - 46.8	177,900
55-64	69,600	48.7	46.7 - 50.6	73,400	51.3	49.4 - 53.3	143,100
65-74	33,300	39.2	36.9 - 41.6	51,600	60.8	58.4 - 63.1	84,900
75+	27,300	30.5	28.2 - 32.9	62,200	69.5	67.1 - 71.8	89,600

Alcohol - current drinker (Adult) by State, County, Island, Community, BRFSS Age Group, DOH Race-Ethnicity, Gender, Education Level, Employment Status (Grouped), Household Income, Poverty Level, Marital Status (Grouped), Married, Health Care Coverage, for the Year(s) - 2001-2005, 2002-2006, 2003-2007, 2004-2008, 2005-2009, 2006-2010

Note: Weighted numbers (#) represent 5-yr averages, percentages and 95% confidence intervals; Respondents aged 18 years and older; n/r (Not Reportable) - If the unweighted total responses for a dimension (row) is <50 that row will not be shown; n/a (Not Available) - Not asked of a subset of respondents

Year: 2004-2008

DOH Race-Ethnicity	Yes			No			Estimated Population (5-yr Avg)
	#	%	C.I. (95%)	#	%	C.I. (95%)	#
Caucasian	202,700	64.2	62.9 - 65.5	113,100	35.8	34.5 - 37.1	315,800
Native Hawaiian	61,800	48.9	46.3 - 51.5	64,600	51.1	48.5 - 53.7	126,400
Chinese	21,900	39.9	36.1 - 43.7	33,000	60.1	56.3 - 63.9	54,900
Filipino	64,100	41.5	38.8 - 44.1	90,500	58.5	55.9 - 61.2	154,600
Japanese	87,300	41.7	39.8 - 43.5	122,100	58.3	56.5 - 60.2	209,400
Black	8,200	55.8	48.8 - 62.7	6,500	44.2	37.3 - 51.2	14,700
Native Alaskan/ American Indian	3,300	58.4	48.0 - 68.8	2,400	41.6	31.2 - 52.0	5,700
Other Asian	10,000	43.0	36.7 - 49.4	13,300	57.0	50.6 - 63.3	23,300
Other Pacific Islander	11,800	48.0	40.0 - 56.0	12,700	52.0	44.0 - 60.0	24,500
Mixed Ethnicity	2,500	51.2	39.6 - 62.8	2,400	48.8	37.2 - 60.4	4,800
Other	12,900	53.8	48.4 - 59.3	11,100	46.2	40.7 - 51.6	23,900

Alcohol - current drinker (Adult) by State, County, Island, Community, BRFSS Age Group, DOH Race-Ethnicity, Gender, Education Level, Employment Status (Grouped), Household Income, Poverty Level, Marital Status (Grouped), Married, Health Care Coverage, for the Year(s) - 2001-2005, 2002-2006, 2003-2007, 2004-2008, 2005-2009, 2006-2010

Note: Weighted numbers (#) represent 5-yr averages, percentages and 95% confidence intervals; Respondents aged 18 years and older; n/r (Not Reportable) - If the unweighted total responses for a dimension (row) is <50 that row will not be shown; n/a (Not Available) - Not asked of a subset of respondents

Year: 2004-2008

Gender	Yes			No			Estimated Population (5-yr Avg)
	#	%	C.I. (95%)	#	%	C.I. (95%)	#
Male	292,800	61.5	60.1 - 62.8	183,400	38.5	37.2 - 39.9	476,200
Female	198,300	40.5	39.4 - 41.6	291,500	59.5	58.4 - 60.6	489,700

Education Level	Yes			No			Estimated Population (5-yr Avg)
	#	%	C.I. (95%)	#	%	C.I. (95%)	#
Never attended school/ Only Kindergarten to Grades 8	3,400	23.7	17.5 - 29.9	11,000	76.3	70.1 - 82.5	14,400
Grades 9 thru 11 (Some High School)	14,100	37.3	32.8 - 41.9	23,600	62.7	58.1 - 67.2	37,700
Grades 12 or GED (High School Grad)	130,800	45.0	43.2 - 46.7	160,100	55.0	53.3 - 56.8	290,900
College 1 to 3 years (Some College/ Tech)	149,200	52.4	50.7 - 54.1	135,500	47.6	45.9 - 49.3	284,600
College 4 years or more (College Grad)	193,200	57.3	56.0 - 58.7	143,700	42.7	41.3 - 44.0	336,900

Alcohol - current drinker (Adult) by State, County, Island, Community, BRFSS Age Group, DOH Race-Ethnicity, Gender, Education Level, Employment Status (Grouped), Household Income, Poverty Level, Marital Status (Grouped), Married, Health Care Coverage, for the Year(s) - 2001-2005, 2002-2006, 2003-2007, 2004-2008, 2005-2009, 2006-2010

Note: Weighted numbers (#) represent 5-yr averages, percentages and 95% confidence intervals; Respondents aged 18 years and older; n/r (Not Reportable) - If the unweighted total responses for a dimension (row) is <50 that row will not be shown; n/a (Not Available) - Not asked of a subset of respondents

Year: 2004-2008

Employment Status (Grouped)	Yes			No			Estimated Population (5-yr Avg)
	#	%	C.I. (95%)	#	%	C.I. (95%)	#
Employed	354,500	57.3	56.1 - 58.4	264,700	42.7	41.6 - 43.9	619,200
Unemployed	15,000	47.8	42.3 - 53.4	16,400	52.2	46.6 - 57.7	31,400
Retired/Unable to work	79,700	36.3	34.7 - 37.8	140,000	63.7	62.2 - 65.3	219,800
Student/Homemaker	41,400	43.9	40.8 - 47.1	52,900	56.1	52.9 - 59.2	94,300

Alcohol - current drinker (Adult) by State, County, Island, Community, BRFSS Age Group, DOH Race-Ethnicity, Gender, Education Level, Employment Status (Grouped), Household Income, Poverty Level, Marital Status (Grouped), Married, Health Care Coverage, for the Year(s) - 2001-2005, 2002-2006, 2003-2007, 2004-2008, 2005-2009, 2006-2010

Note: Weighted numbers (#) represent 5-yr averages, percentages and 95% confidence intervals; Respondents aged 18 years and older; n/r (Not Reportable) - If the unweighted total responses for a dimension (row) is <50 that row will not be shown; n/a (Not Available) - Not asked of a subset of respondents

Year: 2004-2008

Household Income	Yes			No			Estimated Population (5-yr Avg)
	#	%	C.I. (95%)	#	%	C.I. (95%)	#
Less than \$10,000	9,300	38.0	32.9 - 43.1	15,200	62.0	56.9 - 67.1	24,600
\$10,000 to \$14,999	8,600	32.6	27.9 - 37.3	17,800	67.4	62.7 - 72.1	26,500
\$15,000 to \$19,999	17,100	37.8	34.0 - 41.7	28,100	62.2	58.3 - 66.0	45,200
\$20,000 to \$24,999	26,700	42.8	39.3 - 46.4	35,600	57.2	53.6 - 60.7	62,300
\$25,000 to \$34,999	48,900	45.5	42.7 - 48.2	58,700	54.5	51.8 - 57.3	107,700
\$35,000 to \$49,999	73,400	49.6	47.3 - 51.9	74,600	50.4	48.1 - 52.7	148,000
\$50,000 to \$74,999	106,100	54.3	52.2 - 56.5	89,100	45.7	43.5 - 47.8	195,100
\$75,000 or more	161,400	62.7	61.1 - 64.3	96,200	37.3	35.7 - 38.9	257,600

Alcohol - current drinker (Adult) by State, County, Island, Community, BRFSS Age Group, DOH Race-Ethnicity, Gender, Education Level, Employment Status (Grouped), Household Income, Poverty Level, Marital Status (Grouped), Married, Health Care Coverage, for the Year(s) - 2001-2005, 2002-2006, 2003-2007, 2004-2008, 2005-2009, 2006-2010

Note: Weighted numbers (#) represent 5-yr averages, percentages and 95% confidence intervals; Respondents aged 18 years and older; n/r (Not Reportable) - If the unweighted total responses for a dimension (row) is <50 that row will not be shown; n/a (Not Available) - Not asked of a subset of respondents

Year: 2004-2008

Poverty Level	Yes			No			Estimated Population (5-yr Avg)
	#	%	C.I. (95%)	#	%	C.I. (95%)	#
0-130%	71,500	40.5	38.2 - 42.8	105,000	59.5	57.2 - 61.8	176,500
131-185%	50,300	44.9	41.8 - 48.0	61,800	55.1	52.0 - 58.2	112,100
186+%	329,800	57.0	56.0 - 58.1	248,500	43.0	41.9 - 44.0	578,200

Marital Status (Grouped)	Yes			No			Estimated Population (5-yr Avg)
	#	%	C.I. (95%)	#	%	C.I. (95%)	#
Married	288,800	50.5	49.4 - 51.6	282,900	49.5	48.4 - 50.6	571,700
Unmarried Couple	17,900	66.8	61.9 - 71.7	8,900	33.2	28.3 - 38.1	26,700
Widowed	16,000	28.2	25.6 - 30.9	40,600	71.8	69.1 - 74.4	56,600
Other	168,500	54.2	52.5 - 55.9	142,400	45.8	44.1 - 47.5	310,900

Alcohol - current drinker (Adult) by State, County, Island, Community, BRFSS Age Group, DOH Race-Ethnicity, Gender, Education Level, Employment Status (Grouped), Household Income, Poverty Level, Marital Status (Grouped), Married, Health Care Coverage, for the Year(s) - 2001-2005, 2002-2006, 2003-2007, 2004-2008, 2005-2009, 2006-2010

Note: Weighted numbers (#) represent 5-yr averages, percentages and 95% confidence intervals; Respondents aged 18 years and older; n/r (Not Reportable) - If the unweighted total responses for a dimension (row) is <50 that row will not be shown; n/a (Not Available) - Not asked of a subset of respondents

Year: 2004-2008

Married	Yes			No			Estimated Population (5-yr Avg)
	#	%	C.I. (95%)	#	%	C.I. (95%)	#
Yes	294,000	50.5	49.4 - 51.6	288,200	49.5	48.4 - 50.6	582,200
No	196,400	51.5	50.0 - 53.0	185,200	48.5	47.0 - 50.0	381,600

Health Care Coverage	Yes			No			Estimated Population (5-yr Avg)
	#	%	C.I. (95%)	#	%	C.I. (95%)	#
Yes	449,800	50.5	49.5 - 51.4	441,700	49.5	48.6 - 50.5	891,500
No	40,200	55.8	52.2 - 59.4	31,800	44.2	40.6 - 47.8	72,000

Alcohol - current drinker (Adult) by State, County, Island, Community, BRFSS Age Group, DOH Race-Ethnicity, Gender, Education Level, Employment Status (Grouped), Household Income, Poverty Level, Marital Status (Grouped), Married, Health Care Coverage, for the Year(s) - 2001-2005, 2002-2006, 2003-2007, 2004-2008, 2005-2009, 2006-2010

Note: Weighted numbers (#) represent 5-yr averages, percentages and 95% confidence intervals; Respondents aged 18 years and older; n/r (Not Reportable) - If the unweighted total responses for a dimension (row) is <50 that row will not be shown; n/a (Not Available) - Not asked of a subset of respondents

Year: 2003-2007

State	Yes			No			Estimated Population (5-yr Avg)
	#	%	C.I. (95%)	#	%	C.I. (95%)	#
Hawaii State	484,400	51.0	50.1 - 51.9	465,900	49.0	48.1 - 49.9	950,300

County	Yes			No			Estimated Population (5-yr Avg)
	#	%	C.I. (95%)	#	%	C.I. (95%)	#
Hawaii	65,000	52.8	51.1 - 54.5	58,200	47.2	45.5 - 48.9	123,200
Honolulu	340,100	50.0	48.8 - 51.2	339,700	50.0	48.8 - 51.2	679,900
Kauai	23,600	52.8	50.3 - 55.2	21,200	47.2	44.8 - 49.7	44,800
Maui	55,600	54.3	52.2 - 56.4	46,800	45.7	43.6 - 47.8	102,400

Alcohol - current drinker (Adult) by State, County, Island, Community, BRFSS Age Group, DOH Race-Ethnicity, Gender, Education Level, Employment Status (Grouped), Household Income, Poverty Level, Marital Status (Grouped), Married, Health Care Coverage, for the Year(s) - 2001-2005, 2002-2006, 2003-2007, 2004-2008, 2005-2009, 2006-2010

Note: Weighted numbers (#) represent 5-yr averages, percentages and 95% confidence intervals; Respondents aged 18 years and older; n/r (Not Reportable) - If the unweighted total responses for a dimension (row) is <50 that row will not be shown; n/a (Not Available) - Not asked of a subset of respondents

Year: 2003-2007

Island	Yes			No			Estimated Population (5-yr Avg)
	#	%	C.I. (95%)	#	%	C.I. (95%)	#
Hawaii	65,000	52.8	51.1 - 54.5	58,200	47.2	45.5 - 48.9	123,200
Kauai	23,600	52.8	50.3 - 55.2	21,200	47.2	44.8 - 49.7	44,800
Lanai	900	44.0	38.2 - 49.7	1,200	56.0	50.3 - 61.8	2,100
Maui	51,400	54.8	52.6 - 57.0	42,400	45.2	43.0 - 47.4	93,800
Molokai	3,300	50.3	45.2 - 55.3	3,200	49.7	44.7 - 54.8	6,500
Oahu	340,100	50.0	48.8 - 51.2	339,700	50.0	48.8 - 51.2	679,900

Community	Yes			No			Estimated Population (5-yr Avg)
	#	%	C.I. (95%)	#	%	C.I. (95%)	#
Aiea/ Pearl City	29,100	45.4	41.6 - 49.3	34,900	54.6	50.7 - 58.4	63,900

Alcohol - current drinker (Adult) by State, County, Island, Community, BRFSS Age Group, DOH Race-Ethnicity, Gender, Education Level, Employment Status (Grouped), Household Income, Poverty Level, Marital Status (Grouped), Married, Health Care Coverage, for the Year(s) - 2001-2005, 2002-2006, 2003-2007, 2004-2008, 2005-2009, 2006-2010

Note: Weighted numbers (#) represent 5-yr averages, percentages and 95% confidence intervals; Respondents aged 18 years and older; n/r (Not Reportable) - If the unweighted total responses for a dimension (row) is <50 that row will not be shown; n/a (Not Available) - Not asked of a subset of respondents

Year: 2003-2007

Community	Yes			No			Estimated Population (5-yr Avg)
	#	%	C.I. (95%)	#	%	C.I. (95%)	#
Ala Moana	15,200	48.5	43.4 - 53.6	16,100	51.5	46.4 - 56.6	31,300
Hanalei/ Kapaa	10,700	57.0	53.4 - 60.6	8,100	43.0	39.4 - 46.6	18,700
Hilo	17,000	48.6	45.4 - 51.7	18,000	51.4	48.3 - 54.6	35,000
Kaaawa/ Kahaluu/ Kaneohe	26,500	55.7	51.3 - 60.1	21,100	44.3	39.9 - 48.7	47,600
Kahului	17,100	52.7	48.8 - 56.5	15,400	47.3	43.5 - 51.2	32,500
Kailua/ Waimanalo	27,900	57.5	53.5 - 61.5	20,600	42.5	38.5 - 46.5	48,600
Kaimuki/ Palolo/ Waikiki	32,900	54.4	50.8 - 58.1	27,500	45.6	41.9 - 49.2	60,500
Kona	16,800	58.8	55.4 - 62.1	11,800	41.2	37.9 - 44.6	28,500
Lahaina/ Wailuku	16,000	52.8	48.6 - 56.9	14,300	47.2	43.1 - 51.4	30,300
Lanai	900	44.0	38.2 - 49.7	1,200	56.0	50.3 - 61.8	2,100
Lihue-Waimea	13,000	49.7	46.4 - 53.0	13,100	50.3	47.0 - 53.6	26,100

Alcohol - current drinker (Adult) by State, County, Island, Community, BRFSS Age Group, DOH Race-Ethnicity, Gender, Education Level, Employment Status (Grouped), Household Income, Poverty Level, Marital Status (Grouped), Married, Health Care Coverage, for the Year(s) - 2001-2005, 2002-2006, 2003-2007, 2004-2008, 2005-2009, 2006-2010

Note: Weighted numbers (#) represent 5-yr averages, percentages and 95% confidence intervals; Respondents aged 18 years and older; n/r (Not Reportable) - If the unweighted total responses for a dimension (row) is <50 that row will not be shown; n/a (Not Available) - Not asked of a subset of respondents

Year: 2003-2007

Community	Yes			No			Estimated Population (5-yr Avg)
	#	%	C.I. (95%)	#	%	C.I. (95%)	#
Manoa/ Upper Makiki	26,600	55.8	51.6 - 59.9	21,100	44.2	40.1 - 48.4	47,600
Mililani/ Wahiawa	34,400	50.7	46.8 - 54.6	33,400	49.3	45.4 - 53.2	67,800
Molokai	3,300	50.3	45.2 - 55.3	3,200	49.7	44.7 - 54.8	6,500
Nanakuli/ Waianae	14,700	45.0	38.9 - 51.1	17,900	55.0	48.9 - 61.1	32,600
N.Hawaii	13,800	54.6	51.0 - 58.3	11,500	45.4	41.7 - 49.0	25,300
N.Shore/ Laie	10,400	46.3	39.9 - 52.6	12,100	53.7	47.4 - 60.1	22,400
Nuuanu/ Kalihi/ Moanalua	27,300	39.5	35.7 - 43.3	41,900	60.5	56.7 - 64.3	69,200
Puna/ Kau	17,400	50.7	47.1 - 54.2	16,900	49.3	45.8 - 52.9	34,300
Salt Lake/ Foster Village	18,800	53.4	48.2 - 58.6	16,400	46.6	41.4 - 51.8	35,200
Upcountry/ Hana	18,300	59.0	55.4 - 62.6	12,700	41.0	37.4 - 44.6	31,100
Waiialae/ Kahala/ Hawaii Kai	21,900	56.7	52.1 - 61.3	16,700	43.3	38.7 - 47.9	38,700

Alcohol - current drinker (Adult) by State, County, Island, Community, BRFSS Age Group, DOH Race-Ethnicity, Gender, Education Level, Employment Status (Grouped), Household Income, Poverty Level, Marital Status (Grouped), Married, Health Care Coverage, for the Year(s) - 2001-2005, 2002-2006, 2003-2007, 2004-2008, 2005-2009, 2006-2010

Note: Weighted numbers (#) represent 5-yr averages, percentages and 95% confidence intervals; Respondents aged 18 years and older; n/r (Not Reportable) - If the unweighted total responses for a dimension (row) is <50 that row will not be shown; n/a (Not Available) - Not asked of a subset of respondents

Year: 2003-2007

Community	Yes			No			Estimated Population (5-yr Avg)
	#	%	C.I. (95%)	#	%	C.I. (95%)	#
Waipahu/ Kapolei/ Ewa	54,500	47.6	44.5 - 50.8	59,900	52.4	49.2 - 55.5	114,400

Alcohol - current drinker (Adult) by State, County, Island, Community, BRFSS Age Group, DOH Race-Ethnicity, Gender, Education Level, Employment Status (Grouped), Household Income, Poverty Level, Marital Status (Grouped), Married, Health Care Coverage, for the Year(s) - 2001-2005, 2002-2006, 2003-2007, 2004-2008, 2005-2009, 2006-2010

Note: Weighted numbers (#) represent 5-yr averages, percentages and 95% confidence intervals; Respondents aged 18 years and older; n/r (Not Reportable) - If the unweighted total responses for a dimension (row) is <50 that row will not be shown; n/a (Not Available) - Not asked of a subset of respondents

Year: 2003-2007

BRFSS Age Group	Yes			No			Estimated Population (5-yr Avg)
	#	%	C.I. (95%)	#	%	C.I. (95%)	#
18-24	65,700	55.5	52.0 - 58.9	52,700	44.5	41.1 - 48.0	118,400
25-34	99,100	60.6	58.3 - 62.9	64,300	39.4	37.1 - 41.7	163,400
35-44	95,900	54.0	51.9 - 56.1	81,700	46.0	43.9 - 48.1	177,600
45-54	96,900	54.6	52.7 - 56.5	80,600	45.4	43.5 - 47.3	177,500
55-64	66,000	48.1	46.0 - 50.1	71,400	51.9	49.9 - 54.0	137,400
65-74	31,600	37.7	35.2 - 40.2	52,300	62.3	59.8 - 64.8	83,900
75+	26,600	30.8	28.4 - 33.3	59,800	69.2	66.7 - 71.6	86,400

Alcohol - current drinker (Adult) by State, County, Island, Community, BRFSS Age Group, DOH Race-Ethnicity, Gender, Education Level, Employment Status (Grouped), Household Income, Poverty Level, Marital Status (Grouped), Married, Health Care Coverage, for the Year(s) - 2001-2005, 2002-2006, 2003-2007, 2004-2008, 2005-2009, 2006-2010

Note: Weighted numbers (#) represent 5-yr averages, percentages and 95% confidence intervals; Respondents aged 18 years and older; n/r (Not Reportable) - If the unweighted total responses for a dimension (row) is <50 that row will not be shown; n/a (Not Available) - Not asked of a subset of respondents

Year: 2003-2007

DOH Race-Ethnicity	Yes			No			Estimated Population (5-yr Avg)
	#	%	C.I. (95%)	#	%	C.I. (95%)	#
Caucasian	205,600	64.5	63.2 - 65.8	113,200	35.5	34.2 - 36.8	318,800
Native Hawaiian	53,900	46.9	44.2 - 49.6	61,000	53.1	50.4 - 55.8	114,900
Chinese	26,600	41.8	38.2 - 45.4	37,000	58.2	54.6 - 61.8	63,600
Filipino	63,200	41.1	38.4 - 43.7	90,700	58.9	56.3 - 61.6	153,800
Japanese	84,000	42.4	40.5 - 44.4	113,900	57.6	55.6 - 59.5	197,900
Black	7,700	53.6	46.5 - 60.8	6,700	46.4	39.2 - 53.5	14,400
Native Alaskan/ American Indian	2,900	54.7	43.0 - 66.5	2,400	45.3	33.5 - 57.0	5,300
Other Asian	9,100	42.4	35.8 - 49.0	12,400	57.6	51.0 - 64.2	21,500
Other Pacific Islander	10,700	47.6	39.1 - 56.2	11,700	52.4	43.8 - 60.9	22,400
Mixed Ethnicity	2,500	51.2	39.6 - 62.8	2,400	48.8	37.2 - 60.4	4,800
Other	13,500	55.1	49.7 - 60.5	11,000	44.9	39.5 - 50.3	24,500

Alcohol - current drinker (Adult) by State, County, Island, Community, BRFSS Age Group, DOH Race-Ethnicity, Gender, Education Level, Employment Status (Grouped), Household Income, Poverty Level, Marital Status (Grouped), Married, Health Care Coverage, for the Year(s) - 2001-2005, 2002-2006, 2003-2007, 2004-2008, 2005-2009, 2006-2010

Note: Weighted numbers (#) represent 5-yr averages, percentages and 95% confidence intervals; Respondents aged 18 years and older; n/r (Not Reportable) - If the unweighted total responses for a dimension (row) is <50 that row will not be shown; n/a (Not Available) - Not asked of a subset of respondents

Year: 2003-2007

Gender	Yes			No			Estimated Population (5-yr Avg)
	#	%	C.I. (95%)	#	%	C.I. (95%)	#
Male	289,900	61.9	60.5 - 63.2	178,700	38.1	36.8 - 39.5	468,600
Female	194,500	40.4	39.2 - 41.5	287,200	59.6	58.5 - 60.8	481,700

Education Level	Yes			No			Estimated Population (5-yr Avg)
	#	%	C.I. (95%)	#	%	C.I. (95%)	#
Never attended school/ Only Kindergarten to Grades 8	3,900	25.7	19.3 - 32.0	11,300	74.3	68.0 - 80.7	15,200
Grades 9 thru 11 (Some High School)	13,400	36.6	31.9 - 41.3	23,300	63.4	58.7 - 68.1	36,700
Grades 12 or GED (High School Grad)	128,400	44.7	42.9 - 46.4	159,100	55.3	53.6 - 57.1	287,500
College 1 to 3 years (Some College/ Tech)	147,600	52.5	50.8 - 54.2	133,500	47.5	45.8 - 49.2	281,200
College 4 years or more (College Grad)	190,500	58.0	56.6 - 59.4	137,800	42.0	40.6 - 43.4	328,300

Alcohol - current drinker (Adult) by State, County, Island, Community, BRFSS Age Group, DOH Race-Ethnicity, Gender, Education Level, Employment Status (Grouped), Household Income, Poverty Level, Marital Status (Grouped), Married, Health Care Coverage, for the Year(s) - 2001-2005, 2002-2006, 2003-2007, 2004-2008, 2005-2009, 2006-2010

Note: Weighted numbers (#) represent 5-yr averages, percentages and 95% confidence intervals; Respondents aged 18 years and older; n/r (Not Reportable) - If the unweighted total responses for a dimension (row) is <50 that row will not be shown; n/a (Not Available) - Not asked of a subset of respondents

Year: 2003-2007

Employment Status (Grouped)	Yes			No			Estimated Population (5-yr Avg)
	#	%	C.I. (95%)	#	%	C.I. (95%)	#
Employed	352,900	57.6	56.5 - 58.8	259,300	42.4	41.2 - 43.5	612,200
Unemployed	12,900	44.8	39.1 - 50.4	15,900	55.2	49.6 - 60.9	28,800
Retired/Unable to work	77,100	36.0	34.4 - 37.6	137,100	64.0	62.4 - 65.6	214,200
Student/Homemaker	41,100	43.8	40.6 - 47.0	52,800	56.2	53.0 - 59.4	93,900

Alcohol - current drinker (Adult) by State, County, Island, Community, BRFSS Age Group, DOH Race-Ethnicity, Gender, Education Level, Employment Status (Grouped), Household Income, Poverty Level, Marital Status (Grouped), Married, Health Care Coverage, for the Year(s) - 2001-2005, 2002-2006, 2003-2007, 2004-2008, 2005-2009, 2006-2010

Note: Weighted numbers (#) represent 5-yr averages, percentages and 95% confidence intervals; Respondents aged 18 years and older; n/r (Not Reportable) - If the unweighted total responses for a dimension (row) is <50 that row will not be shown; n/a (Not Available) - Not asked of a subset of respondents

Year: 2003-2007

Household Income	Yes			No			Estimated Population (5-yr Avg)
	#	%	C.I. (95%)	#	%	C.I. (95%)	#
Less than \$10,000	11,300	38.5	33.8 - 43.3	18,000	61.5	56.7 - 66.2	29,200
\$10,000 to \$14,999	11,000	34.2	29.6 - 38.8	21,100	65.8	61.2 - 70.4	32,100
\$15,000 to \$19,999	19,000	40.2	36.3 - 44.2	28,200	59.8	55.8 - 63.7	47,200
\$20,000 to \$24,999	27,100	43.4	39.9 - 47.0	35,300	56.6	53.0 - 60.1	62,300
\$25,000 to \$34,999	48,100	46.2	43.4 - 49.1	56,000	53.8	50.9 - 56.6	104,100
\$35,000 to \$49,999	75,500	51.4	49.1 - 53.8	71,300	48.6	46.2 - 50.9	146,900
\$50,000 to \$74,999	101,900	55.1	52.8 - 57.3	83,200	44.9	42.7 - 47.2	185,100
\$75,000 or more	141,400	62.9	61.1 - 64.6	83,500	37.1	35.4 - 38.9	224,900

Alcohol - current drinker (Adult) by State, County, Island, Community, BRFSS Age Group, DOH Race-Ethnicity, Gender, Education Level, Employment Status (Grouped), Household Income, Poverty Level, Marital Status (Grouped), Married, Health Care Coverage, for the Year(s) - 2001-2005, 2002-2006, 2003-2007, 2004-2008, 2005-2009, 2006-2010

Note: Weighted numbers (#) represent 5-yr averages, percentages and 95% confidence intervals; Respondents aged 18 years and older; n/r (Not Reportable) - If the unweighted total responses for a dimension (row) is <50 that row will not be shown; n/a (Not Available) - Not asked of a subset of respondents

Year: 2003-2007

Poverty Level	Yes			No			Estimated Population (5-yr Avg)
	#	%	C.I. (95%)	#	%	C.I. (95%)	#
0-130%	71,700	40.2	37.9 - 42.5	106,600	59.8	57.5 - 62.1	178,300
131-185%	48,400	46.0	42.8 - 49.3	56,700	54.0	50.7 - 57.2	105,100
186+%	315,100	57.5	56.3 - 58.6	233,200	42.5	41.4 - 43.7	548,400

Marital Status (Grouped)	Yes			No			Estimated Population (5-yr Avg)
	#	%	C.I. (95%)	#	%	C.I. (95%)	#
Married	280,200	50.0	48.9 - 51.2	279,800	50.0	48.8 - 51.1	560,000
Unmarried Couple	16,500	66.1	60.9 - 71.3	8,500	33.9	28.7 - 39.1	25,000
Widowed	17,000	29.0	26.3 - 31.7	41,600	71.0	68.3 - 73.7	58,500
Other	170,700	55.6	53.9 - 57.4	136,100	44.4	42.6 - 46.1	306,800

Alcohol - current drinker (Adult) by State, County, Island, Community, BRFSS Age Group, DOH Race-Ethnicity, Gender, Education Level, Employment Status (Grouped), Household Income, Poverty Level, Marital Status (Grouped), Married, Health Care Coverage, for the Year(s) - 2001-2005, 2002-2006, 2003-2007, 2004-2008, 2005-2009, 2006-2010

Note: Weighted numbers (#) represent 5-yr averages, percentages and 95% confidence intervals; Respondents aged 18 years and older; n/r (Not Reportable) - If the unweighted total responses for a dimension (row) is <50 that row will not be shown; n/a (Not Available) - Not asked of a subset of respondents

Year: 2003-2007

Married	Yes			No			Estimated Population (5-yr Avg)
	#	%	C.I. (95%)	#	%	C.I. (95%)	#
Yes	285,500	50.0	48.9 - 51.2	284,900	50.0	48.8 - 51.1	570,400
No	198,300	52.4	50.9 - 54.0	179,900	47.6	46.0 - 49.1	378,200

Health Care Coverage	Yes			No			Estimated Population (5-yr Avg)
	#	%	C.I. (95%)	#	%	C.I. (95%)	#
Yes	441,400	50.5	49.6 - 51.5	432,300	49.5	48.5 - 50.4	873,700
No	42,100	56.6	53.1 - 60.1	32,300	43.4	39.9 - 46.9	74,300

Alcohol - current drinker (Adult) by State, County, Island, Community, BRFSS Age Group, DOH Race-Ethnicity, Gender, Education Level, Employment Status (Grouped), Household Income, Poverty Level, Marital Status (Grouped), Married, Health Care Coverage, for the Year(s) - 2001-2005, 2002-2006, 2003-2007, 2004-2008, 2005-2009, 2006-2010

Note: Weighted numbers (#) represent 5-yr averages, percentages and 95% confidence intervals; Respondents aged 18 years and older; n/r (Not Reportable) - If the unweighted total responses for a dimension (row) is <50 that row will not be shown; n/a (Not Available) - Not asked of a subset of respondents

Year: 2002-2006

State	Yes			No			Estimated Population (5-yr Avg)
	#	%	C.I. (95%)	#	%	C.I. (95%)	#
Hawaii State	470,000	50.4	49.4 - 51.3	463,300	49.6	48.7 - 50.6	933,300

County	Yes			No			Estimated Population (5-yr Avg)
	#	%	C.I. (95%)	#	%	C.I. (95%)	#
Hawaii	62,700	52.5	50.8 - 54.3	56,600	47.5	45.7 - 49.2	119,300
Honolulu	330,800	49.3	48.1 - 50.5	339,600	50.7	49.5 - 51.9	670,300
Kauai	22,800	52.1	49.6 - 54.5	21,000	47.9	45.5 - 50.4	43,800
Maui	53,800	53.8	51.7 - 55.9	46,100	46.2	44.1 - 48.3	99,900

Alcohol - current drinker (Adult) by State, County, Island, Community, BRFSS Age Group, DOH Race-Ethnicity, Gender, Education Level, Employment Status (Grouped), Household Income, Poverty Level, Marital Status (Grouped), Married, Health Care Coverage, for the Year(s) - 2001-2005, 2002-2006, 2003-2007, 2004-2008, 2005-2009, 2006-2010

Note: Weighted numbers (#) represent 5-yr averages, percentages and 95% confidence intervals; Respondents aged 18 years and older; n/r (Not Reportable) - If the unweighted total responses for a dimension (row) is <50 that row will not be shown; n/a (Not Available) - Not asked of a subset of respondents

Year: 2002-2006

Island	Yes			No			Estimated Population (5-yr Avg)
	#	%	C.I. (95%)	#	%	C.I. (95%)	#
Hawaii	62,700	52.5	50.8 - 54.3	56,600	47.5	45.7 - 49.2	119,300
Kauai	22,800	52.1	49.6 - 54.5	21,000	47.9	45.5 - 50.4	43,800
Lanai	1,000	39.3	33.3 - 45.3	1,500	60.7	54.7 - 66.7	2,500
Maui	49,800	54.7	52.4 - 56.9	41,300	45.3	43.1 - 47.6	91,100
Molokai	3,000	47.2	41.9 - 52.6	3,300	52.8	47.4 - 58.1	6,300
Oahu	330,800	49.3	48.1 - 50.5	339,600	50.7	49.5 - 51.9	670,300

Community	Yes			No			Estimated Population (5-yr Avg)
	#	%	C.I. (95%)	#	%	C.I. (95%)	#
Aiea/ Pearl City	28,100	44.3	40.4 - 48.1	35,400	55.7	51.9 - 59.6	63,400

Alcohol - current drinker (Adult) by State, County, Island, Community, BRFSS Age Group, DOH Race-Ethnicity, Gender, Education Level, Employment Status (Grouped), Household Income, Poverty Level, Marital Status (Grouped), Married, Health Care Coverage, for the Year(s) - 2001-2005, 2002-2006, 2003-2007, 2004-2008, 2005-2009, 2006-2010

Note: Weighted numbers (#) represent 5-yr averages, percentages and 95% confidence intervals; Respondents aged 18 years and older; n/r (Not Reportable) - If the unweighted total responses for a dimension (row) is <50 that row will not be shown; n/a (Not Available) - Not asked of a subset of respondents

Year: 2002-2006

Community	Yes			No			Estimated Population (5-yr Avg)
	#	%	C.I. (95%)	#	%	C.I. (95%)	#
Ala Moana	16,400	50.6	45.6 - 55.6	16,000	49.4	44.4 - 54.4	32,300
Hanalei/ Kapaa	10,300	56.4	52.8 - 60.0	8,000	43.6	40.0 - 47.2	18,300
Hilo	17,000	48.9	45.7 - 52.0	17,800	51.1	48.0 - 54.3	34,700
Kaaawa/ Kahaluu/ Kaneohe	24,700	54.3	49.8 - 58.9	20,800	45.7	41.1 - 50.2	45,500
Kahului	16,600	52.3	48.4 - 56.3	15,100	47.7	43.7 - 51.6	31,700
Kailua/ Waimanalo	27,100	57.1	53.0 - 61.2	20,300	42.9	38.8 - 47.0	47,400
Kaimuki/ Palolo/ Waikiki	32,900	52.3	48.8 - 55.8	30,000	47.7	44.2 - 51.2	62,800
Kona	17,000	58.8	55.5 - 62.1	11,900	41.2	37.9 - 44.5	28,900
Lahaina/ Wailuku	15,900	53.3	49.2 - 57.4	13,900	46.7	42.6 - 50.8	29,700
Lanai	1,000	39.3	33.3 - 45.3	1,500	60.7	54.7 - 66.7	2,500
Lihue-Waimea	12,500	48.9	45.6 - 52.3	13,000	51.1	47.7 - 54.4	25,500

Alcohol - current drinker (Adult) by State, County, Island, Community, BRFSS Age Group, DOH Race-Ethnicity, Gender, Education Level, Employment Status (Grouped), Household Income, Poverty Level, Marital Status (Grouped), Married, Health Care Coverage, for the Year(s) - 2001-2005, 2002-2006, 2003-2007, 2004-2008, 2005-2009, 2006-2010

Note: Weighted numbers (#) represent 5-yr averages, percentages and 95% confidence intervals; Respondents aged 18 years and older; n/r (Not Reportable) - If the unweighted total responses for a dimension (row) is <50 that row will not be shown; n/a (Not Available) - Not asked of a subset of respondents

Year: 2002-2006

Community	Yes			No			Estimated Population (5-yr Avg)
	#	%	C.I. (95%)	#	%	C.I. (95%)	#
Manoa/ Upper Makiki	27,400	54.7	50.6 - 58.8	22,700	45.3	41.2 - 49.4	50,100
Mililani/ Wahiawa	33,100	50.5	46.4 - 54.6	32,400	49.5	45.4 - 53.6	65,500
Molokai	3,000	47.2	41.9 - 52.6	3,300	52.8	47.4 - 58.1	6,300
Nanakuli/ Waianae	12,700	42.5	36.2 - 48.7	17,200	57.5	51.3 - 63.8	29,900
N.Hawaii	12,900	53.5	49.8 - 57.2	11,200	46.5	42.8 - 50.2	24,100
N.Shore/ Laie	10,600	48.8	42.4 - 55.1	11,100	51.2	44.9 - 57.6	21,600
Nuuanu/ Kalihi/ Moanalua	26,400	38.3	34.6 - 42.0	42,600	61.7	58.0 - 65.4	69,100
Puna/ Kau	15,800	50.1	46.4 - 53.9	15,700	49.9	46.1 - 53.6	31,500
Salt Lake/ Foster Village	20,000	54.1	49.1 - 59.2	16,900	45.9	40.8 - 50.9	37,000
Upcountry/ Hana	17,300	58.5	54.8 - 62.2	12,300	41.5	37.8 - 45.2	29,700
Waialae/ Kahala/ Hawaii Kai	22,500	55.9	51.4 - 60.4	17,700	44.1	39.6 - 48.6	40,200

Alcohol - current drinker (Adult) by State, County, Island, Community, BRFSS Age Group, DOH Race-Ethnicity, Gender, Education Level, Employment Status (Grouped), Household Income, Poverty Level, Marital Status (Grouped), Married, Health Care Coverage, for the Year(s) - 2001-2005, 2002-2006, 2003-2007, 2004-2008, 2005-2009, 2006-2010

Note: Weighted numbers (#) represent 5-yr averages, percentages and 95% confidence intervals; Respondents aged 18 years and older; n/r (Not Reportable) - If the unweighted total responses for a dimension (row) is <50 that row will not be shown; n/a (Not Available) - Not asked of a subset of respondents

Year: 2002-2006

Community	Yes			No			Estimated Population (5-yr Avg)
	#	%	C.I. (95%)	#	%	C.I. (95%)	#
Waipahu/ Kapolei/ Ewa	49,000	46.5	43.2 - 49.7	56,400	53.5	50.3 - 56.8	105,400

Alcohol - current drinker (Adult) by State, County, Island, Community, BRFSS Age Group, DOH Race-Ethnicity, Gender, Education Level, Employment Status (Grouped), Household Income, Poverty Level, Marital Status (Grouped), Married, Health Care Coverage, for the Year(s) - 2001-2005, 2002-2006, 2003-2007, 2004-2008, 2005-2009, 2006-2010

Note: Weighted numbers (#) represent 5-yr averages, percentages and 95% confidence intervals; Respondents aged 18 years and older; n/r (Not Reportable) - If the unweighted total responses for a dimension (row) is <50 that row will not be shown; n/a (Not Available) - Not asked of a subset of respondents

Year: 2002-2006

BRFSS Age Group	Yes			No			Estimated Population (5-yr Avg)
	#	%	C.I. (95%)	#	%	C.I. (95%)	#
18-24	65,000	56.1	52.7 - 59.4	51,000	43.9	40.6 - 47.3	116,000
25-34	98,100	59.8	57.5 - 62.1	65,900	40.2	37.9 - 42.5	163,900
35-44	95,700	53.4	51.3 - 55.5	83,400	46.6	44.5 - 48.7	179,100
45-54	95,000	54.4	52.4 - 56.3	79,700	45.6	43.7 - 47.6	174,700
55-64	60,800	47.2	45.0 - 49.4	67,900	52.8	50.6 - 55.0	128,600
65-74	29,600	35.7	33.2 - 38.2	53,300	64.3	61.8 - 66.8	82,900
75+	23,400	28.5	25.9 - 31.0	58,900	71.5	69.0 - 74.1	82,300

Alcohol - current drinker (Adult) by State, County, Island, Community, BRFSS Age Group, DOH Race-Ethnicity, Gender, Education Level, Employment Status (Grouped), Household Income, Poverty Level, Marital Status (Grouped), Married, Health Care Coverage, for the Year(s) - 2001-2005, 2002-2006, 2003-2007, 2004-2008, 2005-2009, 2006-2010

Note: Weighted numbers (#) represent 5-yr averages, percentages and 95% confidence intervals; Respondents aged 18 years and older; n/r (Not Reportable) - If the unweighted total responses for a dimension (row) is <50 that row will not be shown; n/a (Not Available) - Not asked of a subset of respondents

Year: 2002-2006

DOH Race-Ethnicity	Yes			No			Estimated Population (5-yr Avg)
	#	%	C.I. (95%)	#	%	C.I. (95%)	#
Caucasian	203,500	64.0	62.6 - 65.3	114,700	36.0	34.7 - 37.4	318,200
Native Hawaiian	51,800	46.9	44.1 - 49.7	58,600	53.1	50.3 - 55.9	110,400
Chinese	27,200	41.3	37.8 - 44.8	38,700	58.7	55.2 - 62.2	65,900
Filipino	58,500	39.9	37.2 - 42.6	88,100	60.1	57.4 - 62.8	146,700
Japanese	78,800	41.0	39.1 - 43.0	113,300	59.0	57.0 - 60.9	192,100
Black	8,000	55.4	48.4 - 62.3	6,400	44.6	37.7 - 51.6	14,400
Native Alaskan/ American Indian	2,100	45.9	33.1 - 58.8	2,500	54.1	41.2 - 66.9	4,600
Other Asian	8,700	40.6	34.1 - 47.1	12,700	59.4	52.9 - 65.9	21,300
Other Pacific Islander	10,600	48.7	40.1 - 57.3	11,200	51.3	42.7 - 59.9	21,900
Mixed Ethnicity	2,500	51.2	39.6 - 62.8	2,400	48.8	37.2 - 60.4	4,800
Other	13,400	54.2	48.9 - 59.6	11,300	45.8	40.4 - 51.1	24,700

Alcohol - current drinker (Adult) by State, County, Island, Community, BRFSS Age Group, DOH Race-Ethnicity, Gender, Education Level, Employment Status (Grouped), Household Income, Poverty Level, Marital Status (Grouped), Married, Health Care Coverage, for the Year(s) - 2001-2005, 2002-2006, 2003-2007, 2004-2008, 2005-2009, 2006-2010

Note: Weighted numbers (#) represent 5-yr averages, percentages and 95% confidence intervals; Respondents aged 18 years and older; n/r (Not Reportable) - If the unweighted total responses for a dimension (row) is <50 that row will not be shown; n/a (Not Available) - Not asked of a subset of respondents

Year: 2002-2006

Gender	Yes			No			Estimated Population (5-yr Avg)
	#	%	C.I. (95%)	#	%	C.I. (95%)	#
Male	284,500	61.7	60.4 - 63.1	176,300	38.3	36.9 - 39.6	460,800
Female	185,500	39.3	38.1 - 40.4	287,000	60.7	59.6 - 61.9	472,500

Education Level	Yes			No			Estimated Population (5-yr Avg)
	#	%	C.I. (95%)	#	%	C.I. (95%)	#
Never attended school/ Only Kindergarten to Grades 8	4,300	27.0	20.7 - 33.3	11,600	73.0	66.7 - 79.3	15,900
Grades 9 thru 11 (Some High School)	12,000	33.4	28.7 - 38.0	24,000	66.6	62.0 - 71.3	36,000
Grades 12 or GED (High School Grad)	127,700	44.5	42.7 - 46.2	159,600	55.5	53.8 - 57.3	287,400
College 1 to 3 years (Some College/ Tech)	143,100	51.9	50.2 - 53.6	132,600	48.1	46.4 - 49.8	275,700
College 4 years or more (College Grad)	182,500	57.5	56.1 - 59.0	134,700	42.5	41.0 - 43.9	317,100

Alcohol - current drinker (Adult) by State, County, Island, Community, BRFSS Age Group, DOH Race-Ethnicity, Gender, Education Level, Employment Status (Grouped), Household Income, Poverty Level, Marital Status (Grouped), Married, Health Care Coverage, for the Year(s) - 2001-2005, 2002-2006, 2003-2007, 2004-2008, 2005-2009, 2006-2010

Note: Weighted numbers (#) represent 5-yr averages, percentages and 95% confidence intervals; Respondents aged 18 years and older; n/r (Not Reportable) - If the unweighted total responses for a dimension (row) is <50 that row will not be shown; n/a (Not Available) - Not asked of a subset of respondents

Year: 2002-2006

Employment Status (Grouped)	Yes			No			Estimated Population (5-yr Avg)
	#	%	C.I. (95%)	#	%	C.I. (95%)	#
Employed	344,300	57.2	56.1 - 58.4	257,500	42.8	41.6 - 43.9	601,800
Unemployed	14,400	47.6	42.2 - 53.1	15,800	52.4	46.9 - 57.8	30,200
Retired/Unable to work	70,200	34.3	32.6 - 36.0	134,400	65.7	64.0 - 67.4	204,500
Student/Homemaker	40,700	42.7	39.6 - 45.8	54,700	57.3	54.2 - 60.4	95,500

Alcohol - current drinker (Adult) by State, County, Island, Community, BRFSS Age Group, DOH Race-Ethnicity, Gender, Education Level, Employment Status (Grouped), Household Income, Poverty Level, Marital Status (Grouped), Married, Health Care Coverage, for the Year(s) - 2001-2005, 2002-2006, 2003-2007, 2004-2008, 2005-2009, 2006-2010

Note: Weighted numbers (#) represent 5-yr averages, percentages and 95% confidence intervals; Respondents aged 18 years and older; n/r (Not Reportable) - If the unweighted total responses for a dimension (row) is <50 that row will not be shown; n/a (Not Available) - Not asked of a subset of respondents

Year: 2002-2006

Household Income	Yes			No			Estimated Population (5-yr Avg)
	#	%	C.I. (95%)	#	%	C.I. (95%)	#
Less than \$10,000	11,400	37.4	32.9 - 41.8	19,200	62.6	58.2 - 67.1	30,600
\$10,000 to \$14,999	11,900	35.8	31.4 - 40.3	21,300	64.2	59.7 - 68.6	33,100
\$15,000 to \$19,999	19,600	42.0	37.8 - 46.3	27,000	58.0	53.7 - 62.2	46,600
\$20,000 to \$24,999	25,600	43.5	39.8 - 47.1	33,300	56.5	52.9 - 60.2	58,900
\$25,000 to \$34,999	45,100	46.8	43.8 - 49.8	51,300	53.2	50.2 - 56.2	96,400
\$35,000 to \$49,999	72,200	52.1	49.7 - 54.5	66,300	47.9	45.5 - 50.3	138,500
\$50,000 to \$74,999	97,400	55.2	52.9 - 57.5	79,000	44.8	42.5 - 47.1	176,300
\$75,000 or more	120,600	62.0	60.1 - 63.9	73,900	38.0	36.1 - 39.9	194,600

Alcohol - current drinker (Adult) by State, County, Island, Community, BRFSS Age Group, DOH Race-Ethnicity, Gender, Education Level, Employment Status (Grouped), Household Income, Poverty Level, Marital Status (Grouped), Married, Health Care Coverage, for the Year(s) - 2001-2005, 2002-2006, 2003-2007, 2004-2008, 2005-2009, 2006-2010

Note: Weighted numbers (#) represent 5-yr averages, percentages and 95% confidence intervals; Respondents aged 18 years and older; n/r (Not Reportable) - If the unweighted total responses for a dimension (row) is <50 that row will not be shown; n/a (Not Available) - Not asked of a subset of respondents

Year: 2002-2006

Poverty Level	Yes			No			Estimated Population (5-yr Avg)
	#	%	C.I. (95%)	#	%	C.I. (95%)	#
0-130%	65,800	39.7	37.3 - 42.1	100,000	60.3	57.9 - 62.7	165,900
131-185%	44,500	46.5	43.0 - 49.9	51,200	53.5	50.1 - 57.0	95,700
186+%	293,500	57.2	56.0 - 58.3	220,000	42.8	41.7 - 44.0	513,500

Marital Status (Grouped)	Yes			No			Estimated Population (5-yr Avg)
	#	%	C.I. (95%)	#	%	C.I. (95%)	#
Married	269,200	49.1	47.9 - 50.2	279,500	50.9	49.8 - 52.1	548,700
Unmarried Couple	16,500	68.7	63.5 - 73.8	7,500	31.3	26.2 - 36.5	24,000
Widowed	16,100	27.7	25.0 - 30.5	42,000	72.3	69.5 - 75.0	58,100
Other	168,200	55.6	53.9 - 57.3	134,400	44.4	42.7 - 46.1	302,600

Alcohol - current drinker (Adult) by State, County, Island, Community, BRFSS Age Group, DOH Race-Ethnicity, Gender, Education Level, Employment Status (Grouped), Household Income, Poverty Level, Marital Status (Grouped), Married, Health Care Coverage, for the Year(s) - 2001-2005, 2002-2006, 2003-2007, 2004-2008, 2005-2009, 2006-2010

Note: Weighted numbers (#) represent 5-yr averages, percentages and 95% confidence intervals; Respondents aged 18 years and older; n/r (Not Reportable) - If the unweighted total responses for a dimension (row) is <50 that row will not be shown; n/a (Not Available) - Not asked of a subset of respondents

Year: 2002-2006

Married	Yes			No			Estimated Population (5-yr Avg)
	#	%	C.I. (95%)	#	%	C.I. (95%)	#
Yes	274,400	49.1	47.9 - 50.2	284,900	50.9	49.8 - 52.1	559,300
No	195,100	52.4	50.9 - 53.9	177,200	47.6	46.1 - 49.1	372,300

Health Care Coverage	Yes			No			Estimated Population (5-yr Avg)
	#	%	C.I. (95%)	#	%	C.I. (95%)	#
Yes	423,800	49.7	48.7 - 50.7	429,000	50.3	49.3 - 51.3	852,800
No	45,200	57.8	54.5 - 61.2	33,000	42.2	38.8 - 45.5	78,200

Alcohol - current drinker (Adult) by State, County, Island, Community, BRFSS Age Group, DOH Race-Ethnicity, Gender, Education Level, Employment Status (Grouped), Household Income, Poverty Level, Marital Status (Grouped), Married, Health Care Coverage, for the Year(s) - 2001-2005, 2002-2006, 2003-2007, 2004-2008, 2005-2009, 2006-2010

Note: Weighted numbers (#) represent 5-yr averages, percentages and 95% confidence intervals; Respondents aged 18 years and older; n/r (Not Reportable) - If the unweighted total responses for a dimension (row) is <50 that row will not be shown; n/a (Not Available) - Not asked of a subset of respondents

Year: 2001-2005

State	Yes			No			Estimated Population (5-yr Avg)
	#	%	C.I. (95%)	#	%	C.I. (95%)	#
Hawaii State	452,900	49.4	48.5 - 50.4	463,700	50.6	49.6 - 51.5	916,600

County	Yes			No			Estimated Population (5-yr Avg)
	#	%	C.I. (95%)	#	%	C.I. (95%)	#
Hawaii	60,300	51.9	50.1 - 53.6	56,000	48.1	46.4 - 49.9	116,300
Honolulu	318,900	48.3	47.1 - 49.6	341,000	51.7	50.4 - 52.9	659,900
Kauai	21,600	50.9	48.4 - 53.4	20,800	49.1	46.6 - 51.6	42,400
Maui	52,100	53.1	50.9 - 55.3	45,900	46.9	44.7 - 49.1	98,000

Alcohol - current drinker (Adult) by State, County, Island, Community, BRFSS Age Group, DOH Race-Ethnicity, Gender, Education Level, Employment Status (Grouped), Household Income, Poverty Level, Marital Status (Grouped), Married, Health Care Coverage, for the Year(s) - 2001-2005, 2002-2006, 2003-2007, 2004-2008, 2005-2009, 2006-2010

Note: Weighted numbers (#) represent 5-yr averages, percentages and 95% confidence intervals; Respondents aged 18 years and older; n/r (Not Reportable) - If the unweighted total responses for a dimension (row) is <50 that row will not be shown; n/a (Not Available) - Not asked of a subset of respondents

Year: 2001-2005

Island	Yes			No			Estimated Population (5-yr Avg)
	#	%	C.I. (95%)	#	%	C.I. (95%)	#
Hawaii	60,300	51.9	50.1 - 53.6	56,000	48.1	46.4 - 49.9	116,300
Kauai	21,600	50.9	48.4 - 53.4	20,800	49.1	46.6 - 51.6	42,400
Lanai	1,000	40.4	34.1 - 46.7	1,500	59.6	53.3 - 65.9	2,500
Maui	48,400	54.0	51.6 - 56.4	41,200	46.0	43.6 - 48.4	89,600
Molokai	2,700	45.7	40.0 - 51.5	3,200	54.3	48.5 - 60.0	5,900
Oahu	318,900	48.3	47.1 - 49.6	341,000	51.7	50.4 - 52.9	659,900

Community	Yes			No			Estimated Population (5-yr Avg)
	#	%	C.I. (95%)	#	%	C.I. (95%)	#
Aiea/ Pearl City	26,900	42.8	38.8 - 46.8	36,000	57.2	53.2 - 61.2	62,900

Alcohol - current drinker (Adult) by State, County, Island, Community, BRFSS Age Group, DOH Race-Ethnicity, Gender, Education Level, Employment Status (Grouped), Household Income, Poverty Level, Marital Status (Grouped), Married, Health Care Coverage, for the Year(s) - 2001-2005, 2002-2006, 2003-2007, 2004-2008, 2005-2009, 2006-2010

Note: Weighted numbers (#) represent 5-yr averages, percentages and 95% confidence intervals; Respondents aged 18 years and older; n/r (Not Reportable) - If the unweighted total responses for a dimension (row) is <50 that row will not be shown; n/a (Not Available) - Not asked of a subset of respondents

Year: 2001-2005

Community	Yes			No			Estimated Population (5-yr Avg)
	#	%	C.I. (95%)	#	%	C.I. (95%)	#
Ala Moana	15,800	51.5	46.2 - 56.7	14,900	48.5	43.3 - 53.8	30,700
Hanalei/ Kapaa	10,100	57.2	53.5 - 60.9	7,500	42.8	39.1 - 46.5	17,600
Hilo	16,600	48.8	45.6 - 52.1	17,400	51.2	47.9 - 54.4	34,100
Kaaawa/ Kahaluu/ Kaneohe	22,600	51.3	46.5 - 56.2	21,400	48.7	43.8 - 53.5	44,000
Kahului	16,800	53.0	48.7 - 57.2	15,000	47.0	42.8 - 51.3	31,800
Kailua/ Waimanalo	26,800	56.4	52.3 - 60.6	20,700	43.6	39.4 - 47.7	47,500
Kaimuki/ Palolo/ Waikiki	33,600	51.1	47.6 - 54.7	32,100	48.9	45.3 - 52.4	65,700
Kona	16,800	57.9	54.5 - 61.3	12,200	42.1	38.7 - 45.5	29,100
Lahaina/ Wailuku	15,200	52.5	48.2 - 56.7	13,800	47.5	43.3 - 51.8	29,000
Lanai	1,000	40.4	34.1 - 46.7	1,500	59.6	53.3 - 65.9	2,500
Lihue-Waimea	11,500	46.4	43.0 - 49.7	13,300	53.6	50.3 - 57.0	24,800

Alcohol - current drinker (Adult) by State, County, Island, Community, BRFSS Age Group, DOH Race-Ethnicity, Gender, Education Level, Employment Status (Grouped), Household Income, Poverty Level, Marital Status (Grouped), Married, Health Care Coverage, for the Year(s) - 2001-2005, 2002-2006, 2003-2007, 2004-2008, 2005-2009, 2006-2010

Note: Weighted numbers (#) represent 5-yr averages, percentages and 95% confidence intervals; Respondents aged 18 years and older; n/r (Not Reportable) - If the unweighted total responses for a dimension (row) is <50 that row will not be shown; n/a (Not Available) - Not asked of a subset of respondents

Year: 2001-2005

Community	Yes			No			Estimated Population (5-yr Avg)
	#	%	C.I. (95%)	#	%	C.I. (95%)	#
Manoa/ Upper Makiki	28,900	55.9	51.7 - 60.0	22,800	44.1	40.0 - 48.3	51,700
Mililani/ Wahiawa	31,300	49.2	44.9 - 53.5	32,300	50.8	46.5 - 55.1	63,600
Molokai	2,700	45.7	40.0 - 51.5	3,200	54.3	48.5 - 60.0	5,900
Nanakuli/ Waianae	13,200	43.6	37.1 - 50.0	17,100	56.4	50.0 - 62.9	30,200
N.Hawaii	12,600	53.2	49.5 - 56.9	11,100	46.8	43.1 - 50.5	23,700
N.Shore/ Laie	10,300	47.0	40.3 - 53.6	11,600	53.0	46.4 - 59.7	21,900
Nuuanu/ Kalihi/ Moanalua	24,900	37.2	33.3 - 41.0	42,200	62.8	59.0 - 66.7	67,100
Puna/ Kau	14,200	48.4	44.4 - 52.4	15,200	51.6	47.6 - 55.6	29,400
Salt Lake/ Foster Village	19,700	53.8	48.7 - 59.0	16,900	46.2	41.0 - 51.3	36,700
Upcountry/ Hana	16,300	56.6	52.9 - 60.4	12,500	43.4	39.6 - 47.1	28,800
Waialae/ Kahala/ Hawaii Kai	20,700	53.1	48.4 - 57.9	18,200	46.9	42.1 - 51.6	38,900

Alcohol - current drinker (Adult) by State, County, Island, Community, BRFSS Age Group, DOH Race-Ethnicity, Gender, Education Level, Employment Status (Grouped), Household Income, Poverty Level, Marital Status (Grouped), Married, Health Care Coverage, for the Year(s) - 2001-2005, 2002-2006, 2003-2007, 2004-2008, 2005-2009, 2006-2010

Note: Weighted numbers (#) represent 5-yr averages, percentages and 95% confidence intervals; Respondents aged 18 years and older; n/r (Not Reportable) - If the unweighted total responses for a dimension (row) is <50 that row will not be shown; n/a (Not Available) - Not asked of a subset of respondents

Year: 2001-2005

Community	Yes			No			Estimated Population (5-yr Avg)
	#	%	C.I. (95%)	#	%	C.I. (95%)	#
Waipahu/ Kapolei/ Ewa	44,300	44.7	41.3 - 48.1	54,800	55.3	51.9 - 58.7	99,000

Alcohol - current drinker (Adult) by State, County, Island, Community, BRFSS Age Group, DOH Race-Ethnicity, Gender, Education Level, Employment Status (Grouped), Household Income, Poverty Level, Marital Status (Grouped), Married, Health Care Coverage, for the Year(s) - 2001-2005, 2002-2006, 2003-2007, 2004-2008, 2005-2009, 2006-2010

Note: Weighted numbers (#) represent 5-yr averages, percentages and 95% confidence intervals; Respondents aged 18 years and older; n/r (Not Reportable) - If the unweighted total responses for a dimension (row) is <50 that row will not be shown; n/a (Not Available) - Not asked of a subset of respondents

Year: 2001-2005

BRFSS Age Group	Yes			No			Estimated Population (5-yr Avg)
	#	%	C.I. (95%)	#	%	C.I. (95%)	#
18-24	63,600	56.5	53.1 - 59.9	49,000	43.5	40.1 - 46.9	112,500
25-34	95,800	58.1	55.8 - 60.4	69,000	41.9	39.6 - 44.2	164,800
35-44	96,700	53.6	51.5 - 55.7	83,700	46.4	44.3 - 48.5	180,400
45-54	89,900	52.8	50.8 - 54.9	80,300	47.2	45.1 - 49.2	170,300
55-64	56,100	45.5	43.1 - 47.9	67,300	54.5	52.1 - 56.9	123,400
65-74	27,400	32.7	30.2 - 35.3	56,300	67.3	64.7 - 69.8	83,800
75+	20,800	27.4	24.6 - 30.1	55,100	72.6	69.9 - 75.4	75,900

Alcohol - current drinker (Adult) by State, County, Island, Community, BRFSS Age Group, DOH Race-Ethnicity, Gender, Education Level, Employment Status (Grouped), Household Income, Poverty Level, Marital Status (Grouped), Married, Health Care Coverage, for the Year(s) - 2001-2005, 2002-2006, 2003-2007, 2004-2008, 2005-2009, 2006-2010

Note: Weighted numbers (#) represent 5-yr averages, percentages and 95% confidence intervals; Respondents aged 18 years and older; n/r (Not Reportable) - If the unweighted total responses for a dimension (row) is <50 that row will not be shown; n/a (Not Available) - Not asked of a subset of respondents

Year: 2001-2005

DOH Race-Ethnicity	Yes			No			Estimated Population (5-yr Avg)
	#	%	C.I. (95%)	#	%	C.I. (95%)	#
Caucasian	197,800	62.9	61.5 - 64.3	116,600	37.1	35.7 - 38.5	314,400
Native Hawaiian	50,600	46.3	43.5 - 49.1	58,700	53.7	50.9 - 56.5	109,300
Chinese	26,800	39.6	36.1 - 43.1	40,900	60.4	56.9 - 63.9	67,600
Filipino	53,800	38.1	35.4 - 40.9	87,300	61.9	59.1 - 64.6	141,100
Japanese	75,100	40.0	38.0 - 42.1	112,500	60.0	57.9 - 62.0	187,600
Black	8,100	54.6	47.6 - 61.6	6,700	45.4	38.4 - 52.4	14,800
Native Alaskan/ American Indian	2,300	47.8	34.9 - 60.8	2,500	52.2	39.2 - 65.1	4,700
Other Asian	8,700	41.3	34.5 - 48.2	12,400	58.7	51.8 - 65.5	21,100
Other Pacific Islander	9,600	46.1	37.0 - 55.3	11,200	53.9	44.7 - 63.0	20,700
Other	15,000	55.4	50.2 - 60.7	12,100	44.6	39.3 - 49.8	27,100

Alcohol - current drinker (Adult) by State, County, Island, Community, BRFSS Age Group, DOH Race-Ethnicity, Gender, Education Level, Employment Status (Grouped), Household Income, Poverty Level, Marital Status (Grouped), Married, Health Care Coverage, for the Year(s) - 2001-2005, 2002-2006, 2003-2007, 2004-2008, 2005-2009, 2006-2010

Note: Weighted numbers (#) represent 5-yr averages, percentages and 95% confidence intervals; Respondents aged 18 years and older; n/r (Not Reportable) - If the unweighted total responses for a dimension (row) is <50 that row will not be shown; n/a (Not Available) - Not asked of a subset of respondents

Year: 2001-2005

Gender	Yes			No			Estimated Population (5-yr Avg)
	#	%	C.I. (95%)	#	%	C.I. (95%)	#
Male	276,600	60.9	59.5 - 62.3	177,500	39.1	37.7 - 40.5	454,100
Female	176,300	38.1	36.9 - 39.3	286,200	61.9	60.7 - 63.1	462,500

Education Level	Yes			No			Estimated Population (5-yr Avg)
	#	%	C.I. (95%)	#	%	C.I. (95%)	#
Never attended school/ Only Kindergarten to Grades 8	4,300	27.4	21.1 - 33.7	11,500	72.6	66.3 - 78.9	15,900
Grades 9 thru 11 (Some High School)	10,800	30.6	25.8 - 35.4	24,600	69.4	64.6 - 74.2	35,400
Grades 12 or GED (High School Grad)	127,500	44.3	42.5 - 46.0	160,600	55.7	54.0 - 57.5	288,100
College 1 to 3 years (Some College/ Tech)	139,700	50.9	49.1 - 52.7	134,700	49.1	47.3 - 50.9	274,300
College 4 years or more (College Grad)	170,200	56.5	55.0 - 58.0	131,100	43.5	42.0 - 45.0	301,300

Alcohol - current drinker (Adult) by State, County, Island, Community, BRFSS Age Group, DOH Race-Ethnicity, Gender, Education Level, Employment Status (Grouped), Household Income, Poverty Level, Marital Status (Grouped), Married, Health Care Coverage, for the Year(s) - 2001-2005, 2002-2006, 2003-2007, 2004-2008, 2005-2009, 2006-2010

Note: Weighted numbers (#) represent 5-yr averages, percentages and 95% confidence intervals; Respondents aged 18 years and older; n/r (Not Reportable) - If the unweighted total responses for a dimension (row) is <50 that row will not be shown; n/a (Not Available) - Not asked of a subset of respondents

Year: 2001-2005

Employment Status (Grouped)	Yes			No			Estimated Population (5-yr Avg)
	#	%	C.I. (95%)	#	%	C.I. (95%)	#
Employed	332,200	56.0	54.8 - 57.1	261,600	44.0	42.9 - 45.2	593,800
Unemployed	14,900	51.2	45.6 - 56.8	14,200	48.8	43.2 - 54.4	29,000
Retired/Unable to work	65,500	33.0	31.3 - 34.8	132,900	67.0	65.2 - 68.7	198,300
Student/Homemaker	40,000	42.4	39.3 - 45.6	54,300	57.6	54.4 - 60.7	94,300

Alcohol - current drinker (Adult) by State, County, Island, Community, BRFSS Age Group, DOH Race-Ethnicity, Gender, Education Level, Employment Status (Grouped), Household Income, Poverty Level, Marital Status (Grouped), Married, Health Care Coverage, for the Year(s) - 2001-2005, 2002-2006, 2003-2007, 2004-2008, 2005-2009, 2006-2010

Note: Weighted numbers (#) represent 5-yr averages, percentages and 95% confidence intervals; Respondents aged 18 years and older; n/r (Not Reportable) - If the unweighted total responses for a dimension (row) is <50 that row will not be shown; n/a (Not Available) - Not asked of a subset of respondents

Year: 2001-2005

Household Income	Yes			No			Estimated Population (5-yr Avg)
	#	%	C.I. (95%)	#	%	C.I. (95%)	#
Less than \$10,000	12,600	38.3	33.9 - 42.8	20,200	61.7	57.2 - 66.1	32,800
\$10,000 to \$14,999	12,900	35.4	31.0 - 39.7	23,500	64.6	60.3 - 69.0	36,400
\$15,000 to \$19,999	19,600	42.9	38.5 - 47.3	26,100	57.1	52.7 - 61.5	45,700
\$20,000 to \$24,999	26,300	45.9	41.9 - 49.8	31,000	54.1	50.2 - 58.1	57,300
\$25,000 to \$34,999	44,600	48.1	45.1 - 51.2	48,100	51.9	48.8 - 54.9	92,700
\$35,000 to \$49,999	70,800	51.0	48.5 - 53.4	68,100	49.0	46.6 - 51.5	138,900
\$50,000 to \$74,999	92,600	54.4	52.0 - 56.8	77,500	45.6	43.2 - 48.0	170,100
\$75,000 or more	102,400	60.0	57.8 - 62.2	68,200	40.0	37.8 - 42.2	170,600

Alcohol - current drinker (Adult) by State, County, Island, Community, BRFSS Age Group, DOH Race-Ethnicity, Gender, Education Level, Employment Status (Grouped), Household Income, Poverty Level, Marital Status (Grouped), Married, Health Care Coverage, for the Year(s) - 2001-2005, 2002-2006, 2003-2007, 2004-2008, 2005-2009, 2006-2010

Note: Weighted numbers (#) represent 5-yr averages, percentages and 95% confidence intervals; Respondents aged 18 years and older; n/r (Not Reportable) - If the unweighted total responses for a dimension (row) is <50 that row will not be shown; n/a (Not Available) - Not asked of a subset of respondents

Year: 2001-2005

Poverty Level	Yes			No			Estimated Population (5-yr Avg)
	#	%	C.I. (95%)	#	%	C.I. (95%)	#
0-130%	65,000	40.7	38.2 - 43.2	94,500	59.3	56.8 - 61.8	159,500
131-185%	43,300	46.0	42.5 - 49.6	50,800	54.0	50.4 - 57.5	94,100
186+%	273,400	55.7	54.4 - 56.9	217,400	44.3	43.1 - 45.6	490,800

Marital Status (Grouped)	Yes			No			Estimated Population (5-yr Avg)
	#	%	C.I. (95%)	#	%	C.I. (95%)	#
Married	255,400	47.8	46.5 - 49.0	279,200	52.2	51.0 - 53.5	534,600
Unmarried Couple	13,600	70.1	64.6 - 75.7	5,800	29.9	24.3 - 35.4	19,400
Widowed	14,800	26.2	23.3 - 29.0	41,800	73.8	71.0 - 76.7	56,700
Other	169,100	55.3	53.5 - 57.0	136,900	44.7	43.0 - 46.5	306,000

Alcohol - current drinker (Adult) by State, County, Island, Community, BRFSS Age Group, DOH Race-Ethnicity, Gender, Education Level, Employment Status (Grouped), Household Income, Poverty Level, Marital Status (Grouped), Married, Health Care Coverage, for the Year(s) - 2001-2005, 2002-2006, 2003-2007, 2004-2008, 2005-2009, 2006-2010

Note: Weighted numbers (#) represent 5-yr averages, percentages and 95% confidence intervals; Respondents aged 18 years and older; n/r (Not Reportable) - If the unweighted total responses for a dimension (row) is <50 that row will not be shown; n/a (Not Available) - Not asked of a subset of respondents

Year: 2001-2005

Married	Yes			No			Estimated Population (5-yr Avg)
	#	%	C.I. (95%)	#	%	C.I. (95%)	#
Yes	260,800	47.7	46.5 - 48.9	286,000	52.3	51.1 - 53.5	546,800
No	191,600	52.0	50.5 - 53.6	176,700	48.0	46.4 - 49.5	368,200

Health Care Coverage	Yes			No			Estimated Population (5-yr Avg)
	#	%	C.I. (95%)	#	%	C.I. (95%)	#
Yes	408,100	48.6	47.6 - 49.6	431,500	51.4	50.4 - 52.4	839,700
No	43,800	58.3	54.9 - 61.7	31,200	41.7	38.3 - 45.1	75,000