

Alcohol - heavy alcohol consumption in men by State, County, Island, Community, BRFSS Age Group, DOH Race-Ethnicity, Education Level, Employment Status (Grouped), Household Income, Poverty Level, Marital Status (Grouped), Married, Health Care Coverage, for the Year(s) - 2001, 2002, 2003, 2004, 2005, 2006, 2007, 2008, 2009, 2010

Note: Weighted numbers (#), percentages and 95% confidence intervals; Respondents aged 18 years and older; n/r (Not Reportable) - If the unweighted total responses for a dimension (row) is <50 that row will not be shown; n/a (Not Available) - Not asked of a subset of respondents

The trend analysis report shows the trend for the selected health variable over selected years in a table and a graph. Estimated Population: This number is a weighted representation of the population who responded to a particular question in the survey. For most questions the eligible population will be the entire adult population. For some secondary questions only a subset of the population was asked the question. For example, all survey participants were asked if they had diabetes, but only those who answered yes were asked if they use insulin. If a dimension value is unknown for a particular survey record, that record will not be included in the counts for that particular dimension.

For documentation on other terms and coding in this report, please go to the following links

[Click here to access BRFSS documentation](#)

[Click here to access DOH Race-Ethnicity coding](#)

[Click here to access The Hawai'i Data Guide](#)

[Click here to access Poverty Level Methodology](#)

**For questions about this report, please contact
The Hawaii Health Data Warehouse**

profiles@hhdw.org

(855) 946-5899 x15

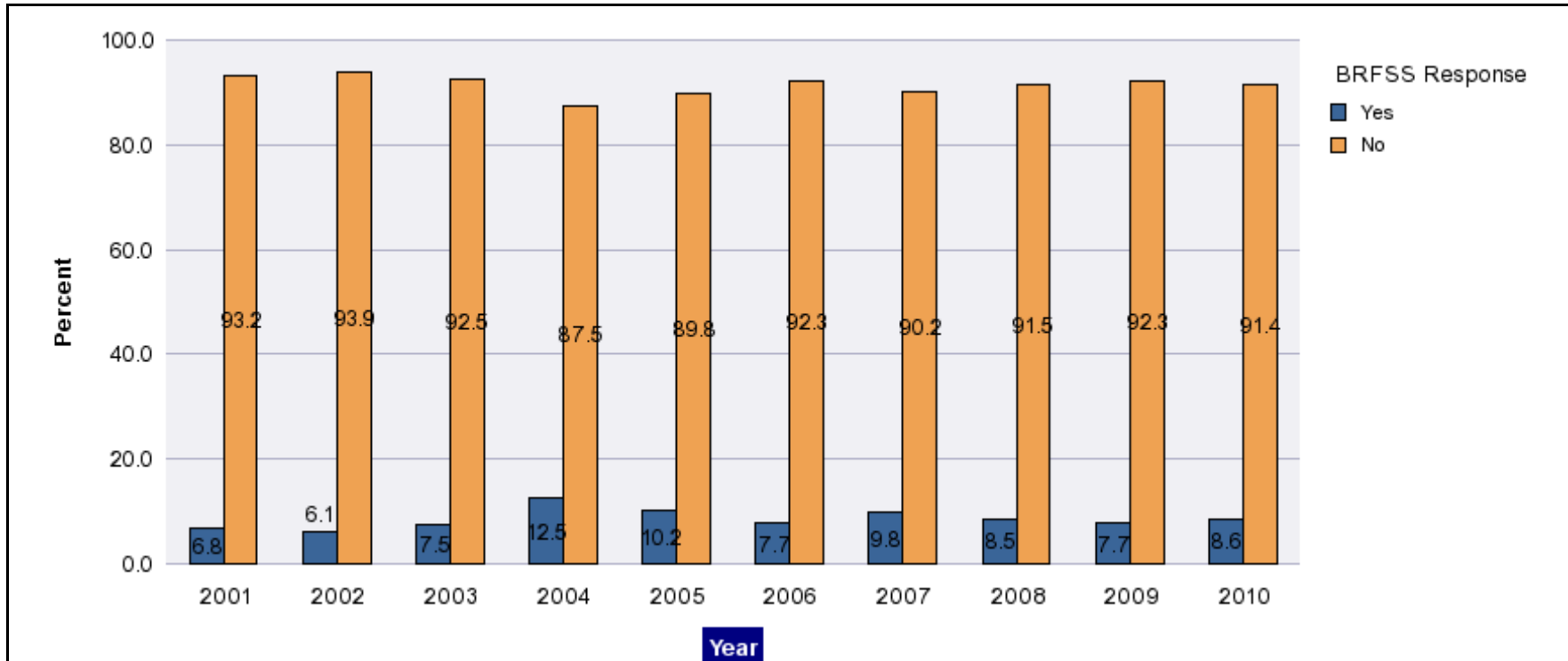
Alcohol - heavy alcohol consumption in men by State, County, Island, Community, BRFSS Age Group, DOH Race-Ethnicity, Education Level, Employment Status (Grouped), Household Income, Poverty Level, Marital Status (Grouped), Married, Health Care Coverage, for the Year(s) - 2001, 2002, 2003, 2004, 2005, 2006, 2007, 2008, 2009, 2010

Note: Weighted numbers (#), percentages and 95% confidence intervals; Respondents aged 18 years and older; n/r (Not Reportable) - If the unweighted total responses for a dimension (row) is <50 that row will not be shown; n/a (Not Available) - Not asked of a subset of respondents

Year	Yes			No			Estimated Population
	#	%	C.I.(95%)	#	%	C.I.(95%)	#
2001	30,200	6.8	5.3 - 8.4	412,600	93.2	91.6 - 94.7	442,700
2002	27,100	6.1	4.8 - 7.4	417,800	93.9	92.6 - 95.2	445,000
2003	34,000	7.5	5.8 - 9.1	419,800	92.5	90.9 - 94.2	453,800
2004	55,400	12.5	9.1 - 16.0	386,100	87.5	84.0 - 90.9	441,500
2005	48,900	10.2	8.5 - 11.9	430,700	89.8	88.1 - 91.5	479,600
2006	36,200	7.7	6.5 - 9.0	433,400	92.3	91.0 - 93.5	469,600
2007	46,500	9.8	8.1 - 11.5	429,500	90.2	88.5 - 91.9	476,000
2008	41,300	8.5	6.9 - 10.1	442,500	91.5	89.9 - 93.1	483,800
2009	37,700	7.7	6.4 - 9.1	450,700	92.3	90.9 - 93.6	488,300
2010	42,500	8.6	7.0 - 10.2	452,200	91.4	89.8 - 93.0	494,700

Alcohol - heavy alcohol consumption in men by State, County, Island, Community, BRFSS Age Group, DOH Race-Ethnicity, Education Level, Employment Status (Grouped), Household Income, Poverty Level, Marital Status (Grouped), Married, Health Care Coverage, for the Year(s) - 2001, 2002, 2003, 2004, 2005, 2006, 2007, 2008, 2009, 2010

Note: Weighted numbers (#), percentages and 95% confidence intervals; Respondents aged 18 years and older; n/r (Not Reportable) - If the unweighted total responses for a dimension (row) is <50 that row will not be shown; n/a (Not Available) - Not asked of a subset of respondents



Alcohol - heavy alcohol consumption in men by State, County, Island, Community, BRFSS Age Group, DOH Race-Ethnicity, Education Level, Employment Status (Grouped), Household Income, Poverty Level, Marital Status (Grouped), Married, Health Care Coverage, for the Year(s) - 2001, 2002, 2003, 2004, 2005, 2006, 2007, 2008, 2009, 2010

Note: Weighted numbers (#), percentages and 95% confidence intervals; Respondents aged 18 years and older; n/r (Not Reportable) - If the unweighted total responses for a dimension (row) is <50 that row will not be shown; n/a (Not Available) - Not asked of a subset of respondents

Year: 2010

State	Yes			No			Estimated Population
	#	%	C.I. (95%)	#	%	C.I. (95%)	#
Hawaii State	42,500	8.6	7.0 - 10.2	452,200	91.4	89.8 - 93.0	494,700

County	Yes			No			Estimated Population
	#	%	C.I. (95%)	#	%	C.I. (95%)	#
Hawaii	6,400	9.1	5.9 - 12.4	63,700	90.9	87.6 - 94.1	70,100
Honolulu	29,600	8.6	6.4 - 10.8	314,400	91.4	89.2 - 93.6	344,000
Kauai	2,900	12.3	6.6 - 18.0	21,000	87.7	82.0 - 93.4	23,900
Maui	3,600	6.4	3.6 - 9.1	53,000	93.6	90.9 - 96.4	56,700

Alcohol - heavy alcohol consumption in men by State, County, Island, Community, BRFSS Age Group, DOH Race-Ethnicity, Education Level, Employment Status (Grouped), Household Income, Poverty Level, Marital Status (Grouped), Married, Health Care Coverage, for the Year(s) - 2001, 2002, 2003, 2004, 2005, 2006, 2007, 2008, 2009, 2010

Note: Weighted numbers (#), percentages and 95% confidence intervals; Respondents aged 18 years and older; n/r (Not Reportable) - If the unweighted total responses for a dimension (row) is <50 that row will not be shown; n/a (Not Available) - Not asked of a subset of respondents

Year: 2010

Island	Yes			No			Estimated Population
	#	%	C.I. (95%)	#	%	C.I. (95%)	#
Hawaii	6,400	9.1	5.9 - 12.4	63,700	90.9	87.6 - 94.1	70,100
Kauai	2,900	12.3	6.6 - 18.0	21,000	87.7	82.0 - 93.4	23,900
Lanai	200	22.7	5.5 - 39.9	700	77.3	60.1 - 94.5	900
Maui	3,100	5.9	3.0 - 8.8	48,900	94.1	91.2 - 97.0	51,900
Molokai	300	9.1	1.6 - 16.6	3,500	90.9	83.4 - 98.4	3,800
Oahu	29,600	8.6	6.4 - 10.8	314,400	91.4	89.2 - 93.6	344,000

Community	Yes			No			Estimated Population
	#	%	C.I. (95%)	#	%	C.I. (95%)	#
Aiea/ Pearl City	4,200	13.8	4.0 - 23.6	26,500	86.2	76.4 - 96.0	30,700

Alcohol - heavy alcohol consumption in men by State, County, Island, Community, BRFSS Age Group, DOH Race-Ethnicity, Education Level, Employment Status (Grouped), Household Income, Poverty Level, Marital Status (Grouped), Married, Health Care Coverage, for the Year(s) - 2001, 2002, 2003, 2004, 2005, 2006, 2007, 2008, 2009, 2010

Note: Weighted numbers (#), percentages and 95% confidence intervals; Respondents aged 18 years and older; n/r (Not Reportable) - If the unweighted total responses for a dimension (row) is <50 that row will not be shown; n/a (Not Available) - Not asked of a subset of respondents

Year: 2010

Community	Yes			No			Estimated Population
	#	%	C.I. (95%)	#	%	C.I. (95%)	#
Hanalei/ Kapaa	1,000	10.7	4.3 - 17.0	8,600	89.3	83.0 - 95.7	9,700
Hilo	2,900	13.6	6.4 - 20.8	18,100	86.4	79.2 - 93.6	21,000
Kaaawa/ Kahaluu/ Kaneohe	1,100	4.4	0.4 - 8.4	23,400	95.6	91.6 - 99.6	24,500
Kahului	900	5.6	1.0 - 10.2	15,300	94.4	89.8 - 99.0	16,200
Kailua/ Waimanalo	3,600	15.7	5.2 - 26.2	19,300	84.3	73.8 - 94.8	22,900
Kaimuki/ Palolo/ Waikiki	1,300	5.4	0.3 - 10.4	23,100	94.6	89.6 - 99.7	24,400
Kona	1,300	8.0	3.4 - 12.5	15,300	92.0	87.5 - 96.6	16,600
Lahaina/ Wailuku	1,800	9.3	2.8 - 15.7	17,200	90.7	84.3 - 97.2	18,900
Lanai	200	22.7	5.5 - 39.9	700	77.3	60.1 - 94.5	900
Lihue-Waimea	1,900	13.4	5.0 - 21.9	12,300	86.6	78.1 - 95.0	14,300

Report Source: The Hawaii Health Data Warehouse;
Data Source: State of Hawaii, Department of Health,
Behavioral Risk Factor Surveillance System (BRFSS)

Alcohol - heavy alcohol consumption in men by State, County, Island, Community, BRFSS Age Group, DOH Race-Ethnicity, Education Level, Employment Status (Grouped), Household Income, Poverty Level, Marital Status (Grouped), Married, Health Care Coverage, for the Year(s) - 2001, 2002, 2003, 2004, 2005, 2006, 2007, 2008, 2009, 2010

Note: Weighted numbers (#), percentages and 95% confidence intervals; Respondents aged 18 years and older; n/r (Not Reportable) - If the unweighted total responses for a dimension (row) is <50 that row will not be shown; n/a (Not Available) - Not asked of a subset of respondents

Year: 2010

Community	Yes			No			Estimated Population
	#	%	C.I. (95%)	#	%	C.I. (95%)	#
Manoa/ Upper Makiki	1,300	4.7	0.0 - 9.4	27,000	95.3	90.6 - 100.0	28,300
Mililani/ Wahiawa	2,300	6.5	1.1 - 11.9	33,400	93.5	88.1 - 98.9	35,700
Molokai	300	9.1	1.6 - 16.6	3,500	90.9	83.4 - 98.4	3,800
N.Hawaii	1,100	8.7	0.0 - 19.2	11,600	91.3	80.8 - 100.0	12,700
Nuuanu/ Kalihi/ Moanalua	1,800	6.1	1.6 - 10.6	28,300	93.9	89.4 - 98.4	30,100
Puna/ Kau	1,100	5.6	2.1 - 9.0	18,600	94.4	91.0 - 97.9	19,700
Salt Lake/ Foster Village	1,500	9.5	0.0 - 19.8	14,700	90.5	80.2 - 100.0	16,300
Upcountry/ Hana	400	2.4	0.0 - 5.0	16,500	97.6	95.0 - 100.0	16,900
Waialae/ Kahala/ Hawaii Kai	1,300	6.6	1.1 - 12.1	17,900	93.4	87.9 - 98.9	19,100
Waipahu/ Kapolei/ Ewa	3,400	5.4	0.8 - 10.0	59,600	94.6	90.0 - 99.2	63,100

Report Source: The Hawaii Health Data Warehouse;
Data Source: State of Hawaii, Department of Health,
Behavioral Risk Factor Surveillance System (BRFSS)

Alcohol - heavy alcohol consumption in men by State, County, Island, Community, BRFSS Age Group, DOH Race-Ethnicity, Education Level, Employment Status (Grouped), Household Income, Poverty Level, Marital Status (Grouped), Married, Health Care Coverage, for the Year(s) - 2001, 2002, 2003, 2004, 2005, 2006, 2007, 2008, 2009, 2010

Note: Weighted numbers (#), percentages and 95% confidence intervals; Respondents aged 18 years and older; n/r (Not Reportable) - If the unweighted total responses for a dimension (row) is <50 that row will not be shown; n/a (Not Available) - Not asked of a subset of respondents

Year: 2010

BRFSS Age Group	Yes			No			Estimated Population
	#	%	C.I. (95%)	#	%	C.I. (95%)	#
18-24	3,200	5.0	0.3 - 9.6	60,500	95.0	90.4 - 99.7	63,700
25-34	13,700	14.3	8.3 - 20.3	81,900	85.7	79.7 - 91.7	95,500
35-44	6,600	7.5	4.2 - 10.8	82,000	92.5	89.2 - 95.8	88,600
45-54	7,400	8.5	5.6 - 11.5	79,400	91.5	88.5 - 94.4	86,800
55-64	5,700	7.7	5.2 - 10.2	68,500	92.3	89.8 - 94.8	74,200
65-74	3,200	7.3	4.5 - 10.0	40,700	92.7	90.0 - 95.5	43,900
75+	2,500	6.3	3.2 - 9.5	37,100	93.7	90.5 - 96.8	39,600

Alcohol - heavy alcohol consumption in men by State, County, Island, Community, BRFSS Age Group, DOH Race-Ethnicity, Education Level, Employment Status (Grouped), Household Income, Poverty Level, Marital Status (Grouped), Married, Health Care Coverage, for the Year(s) - 2001, 2002, 2003, 2004, 2005, 2006, 2007, 2008, 2009, 2010

Note: Weighted numbers (#), percentages and 95% confidence intervals; Respondents aged 18 years and older; n/r (Not Reportable) - If the unweighted total responses for a dimension (row) is <50 that row will not be shown; n/a (Not Available) - Not asked of a subset of respondents

Year: 2010

DOH Race-Ethnicity	Yes			No			Estimated Population
	#	%	C.I. (95%)	#	%	C.I. (95%)	#
Caucasian	14,800	9.0	6.5 - 11.4	149,800	91.0	88.6 - 93.5	164,600
Native Hawaiian	12,300	20.0	12.6 - 27.4	49,300	80.0	72.6 - 87.4	61,700
Chinese	1,300	4.5	0.3 - 8.7	27,000	95.5	91.3 - 99.7	28,200
Filipino	3,600	4.8	2.0 - 7.5	72,400	95.2	92.5 - 98.0	76,000
Japanese	5,300	5.0	3.0 - 7.1	100,700	95.0	92.9 - 97.0	106,000
Other	200	1.4	0.0 - 3.5	12,700	98.6	96.5 - 100.0	12,800

Alcohol - heavy alcohol consumption in men by State, County, Island, Community, BRFSS Age Group, DOH Race-Ethnicity, Education Level, Employment Status (Grouped), Household Income, Poverty Level, Marital Status (Grouped), Married, Health Care Coverage, for the Year(s) - 2001, 2002, 2003, 2004, 2005, 2006, 2007, 2008, 2009, 2010

Note: Weighted numbers (#), percentages and 95% confidence intervals; Respondents aged 18 years and older; n/r (Not Reportable) - If the unweighted total responses for a dimension (row) is <50 that row will not be shown; n/a (Not Available) - Not asked of a subset of respondents

Year: 2010

Education Level	Yes			No			Estimated Population
	#	%	C.I. (95%)	#	%	C.I. (95%)	#
Grades 9 thru 11 (Some High School)	5,500	22.2	7.5 - 36.9	19,400	77.8	63.1 - 92.5	25,000
Grades 12 or GED (High School Grad)	12,200	8.1	5.3 - 11.0	138,400	91.9	89.0 - 94.7	150,600
College 1 to 3 years (Some College/ Tech)	13,500	10.5	7.1 - 13.8	115,800	89.5	86.2 - 92.9	129,300
College 4 years or more (College Grad)	11,000	6.0	4.1 - 7.9	174,200	94.0	92.1 - 95.9	185,300

Alcohol - heavy alcohol consumption in men by State, County, Island, Community, BRFSS Age Group, DOH Race-Ethnicity, Education Level, Employment Status (Grouped), Household Income, Poverty Level, Marital Status (Grouped), Married, Health Care Coverage, for the Year(s) - 2001, 2002, 2003, 2004, 2005, 2006, 2007, 2008, 2009, 2010

Note: Weighted numbers (#), percentages and 95% confidence intervals; Respondents aged 18 years and older; n/r (Not Reportable) - If the unweighted total responses for a dimension (row) is <50 that row will not be shown; n/a (Not Available) - Not asked of a subset of respondents

Year: 2010

Employment Status (Grouped)	Yes			No			Estimated Population
	#	%	C.I. (95%)	#	%	C.I. (95%)	#
Employed	30,200	9.4	7.3 - 11.6	289,300	90.6	88.4 - 92.7	319,400
Unemployed	3,900	10.1	4.8 - 15.4	35,300	89.9	84.6 - 95.2	39,200
Retired/Unable to work	6,900	6.8	3.9 - 9.7	94,100	93.2	90.3 - 96.1	100,900
Student/Homemaker	1,600	4.4	0.0 - 10.4	33,600	95.6	89.6 - 100.0	35,100

Alcohol - heavy alcohol consumption in men by State, County, Island, Community, BRFSS Age Group, DOH Race-Ethnicity, Education Level, Employment Status (Grouped), Household Income, Poverty Level, Marital Status (Grouped), Married, Health Care Coverage, for the Year(s) - 2001, 2002, 2003, 2004, 2005, 2006, 2007, 2008, 2009, 2010

Note: Weighted numbers (#), percentages and 95% confidence intervals; Respondents aged 18 years and older; n/r (Not Reportable) - If the unweighted total responses for a dimension (row) is <50 that row will not be shown; n/a (Not Available) - Not asked of a subset of respondents

Year: 2010

Household Income	Yes			No			Estimated Population
	#	%	C.I. (95%)	#	%	C.I. (95%)	#
Less than \$10,000	400	2.1	0.0 - 4.3	17,100	97.9	95.7 - 100.0	17,500
\$10,000 to \$14,999	1,600	12.6	0.0 - 26.2	11,100	87.4	73.8 - 100.0	12,700
\$15,000 to \$19,999	3,700	14.6	4.5 - 24.8	21,700	85.4	75.2 - 95.5	25,400
\$20,000 to \$24,999	3,500	11.2	2.4 - 20.1	27,700	88.8	79.9 - 97.6	31,200
\$25,000 to \$34,999	3,200	6.3	2.8 - 9.9	46,500	93.7	90.1 - 97.2	49,700
\$35,000 to \$49,999	5,400	7.7	4.3 - 11.1	65,000	92.3	88.9 - 95.7	70,500
\$50,000 to \$74,999	10,100	12.4	7.8 - 17.0	71,400	87.6	83.0 - 92.2	81,500
\$75,000 or more	9,900	6.1	4.1 - 8.1	153,100	93.9	91.9 - 95.9	163,000

Alcohol - heavy alcohol consumption in men by State, County, Island, Community, BRFSS Age Group, DOH Race-Ethnicity, Education Level, Employment Status (Grouped), Household Income, Poverty Level, Marital Status (Grouped), Married, Health Care Coverage, for the Year(s) - 2001, 2002, 2003, 2004, 2005, 2006, 2007, 2008, 2009, 2010

Note: Weighted numbers (#), percentages and 95% confidence intervals; Respondents aged 18 years and older; n/r (Not Reportable) - If the unweighted total responses for a dimension (row) is <50 that row will not be shown; n/a (Not Available) - Not asked of a subset of respondents

Year: 2010

Poverty Level	Yes			No			Estimated Population
	#	%	C.I. (95%)	#	%	C.I. (95%)	#
0-130%	11,000	9.9	5.6 - 14.2	100,200	90.1	85.8 - 94.4	111,200
131-185%	4,900	7.1	3.8 - 10.3	63,900	92.9	89.7 - 96.2	68,700
186+%	21,900	8.1	6.3 - 9.9	249,600	91.9	90.1 - 93.7	271,500

Marital Status (Grouped)	Yes			No			Estimated Population
	#	%	C.I. (95%)	#	%	C.I. (95%)	#
Married	22,600	8.0	6.1 - 9.8	261,100	92.0	90.2 - 93.9	283,700
Unmarried Couple	3,700	20.5	5.4 - 35.7	14,300	79.5	64.3 - 94.6	18,000
Widowed	1,900	14.8	0.6 - 29.1	11,000	85.2	70.9 - 99.4	12,900
Other	14,300	7.9	5.1 - 10.7	165,800	92.1	89.3 - 94.9	180,100

Alcohol - heavy alcohol consumption in men by State, County, Island, Community, BRFSS Age Group, DOH Race-Ethnicity, Education Level, Employment Status (Grouped), Household Income, Poverty Level, Marital Status (Grouped), Married, Health Care Coverage, for the Year(s) - 2001, 2002, 2003, 2004, 2005, 2006, 2007, 2008, 2009, 2010

Note: Weighted numbers (#), percentages and 95% confidence intervals; Respondents aged 18 years and older; n/r (Not Reportable) - If the unweighted total responses for a dimension (row) is <50 that row will not be shown; n/a (Not Available) - Not asked of a subset of respondents

Year: 2010

Married	Yes			No			Estimated Population
	#	%	C.I. (95%)	#	%	C.I. (95%)	#
Yes	22,900	7.8	6.0 - 9.6	268,800	92.2	90.4 - 94.0	291,700
No	19,700	9.7	6.7 - 12.7	183,000	90.3	87.3 - 93.3	202,600

Health Care Coverage	Yes			No			Estimated Population
	#	%	C.I. (95%)	#	%	C.I. (95%)	#
Yes	39,400	8.7	7.0 - 10.4	412,500	91.3	89.6 - 93.0	451,900
No	3,200	7.6	2.1 - 13.1	38,600	92.4	86.9 - 97.9	41,800

Alcohol - heavy alcohol consumption in men by State, County, Island, Community, BRFSS Age Group, DOH Race-Ethnicity, Education Level, Employment Status (Grouped), Household Income, Poverty Level, Marital Status (Grouped), Married, Health Care Coverage, for the Year(s) - 2001, 2002, 2003, 2004, 2005, 2006, 2007, 2008, 2009, 2010

Note: Weighted numbers (#), percentages and 95% confidence intervals; Respondents aged 18 years and older; n/r (Not Reportable) - If the unweighted total responses for a dimension (row) is <50 that row will not be shown; n/a (Not Available) - Not asked of a subset of respondents

Year: 2009

State	Yes			No			Estimated Population
	#	%	C.I. (95%)	#	%	C.I. (95%)	#
Hawaii State	37,700	7.7	6.4 - 9.1	450,700	92.3	90.9 - 93.6	488,300

County	Yes			No			Estimated Population
	#	%	C.I. (95%)	#	%	C.I. (95%)	#
Hawaii	6,400	9.5	6.5 - 12.4	61,300	90.5	87.6 - 93.5	67,700
Honolulu	23,200	6.8	5.1 - 8.5	319,200	93.2	91.5 - 94.9	342,400
Kauai	3,300	14.2	8.1 - 20.2	20,100	85.8	79.8 - 91.9	23,400
Maui	4,800	8.7	6.1 - 11.3	50,100	91.3	88.7 - 93.9	54,800

Alcohol - heavy alcohol consumption in men by State, County, Island, Community, BRFSS Age Group, DOH Race-Ethnicity, Education Level, Employment Status (Grouped), Household Income, Poverty Level, Marital Status (Grouped), Married, Health Care Coverage, for the Year(s) - 2001, 2002, 2003, 2004, 2005, 2006, 2007, 2008, 2009, 2010

Note: Weighted numbers (#), percentages and 95% confidence intervals; Respondents aged 18 years and older; n/r (Not Reportable) - If the unweighted total responses for a dimension (row) is <50 that row will not be shown; n/a (Not Available) - Not asked of a subset of respondents

Year: 2009

Island	Yes			No			Estimated Population
	#	%	C.I. (95%)	#	%	C.I. (95%)	#
Hawaii	6,400	9.5	6.5 - 12.4	61,300	90.5	87.6 - 93.5	67,700
Kauai	3,300	14.2	8.1 - 20.2	20,100	85.8	79.8 - 91.9	23,400
Lanai	200	25.1	9.4 - 40.8	600	74.9	59.2 - 90.6	800
Maui	4,100	8.1	5.3 - 10.8	46,400	91.9	89.2 - 94.7	50,500
Molokai	500	13.5	3.9 - 23.1	3,100	86.5	76.9 - 96.1	3,600
Oahu	23,200	6.8	5.1 - 8.5	319,200	93.2	91.5 - 94.9	342,400

Community	Yes			No			Estimated Population
	#	%	C.I. (95%)	#	%	C.I. (95%)	#
Aiea/ Pearl City	2,100	6.6	1.9 - 11.4	29,400	93.4	88.6 - 98.1	31,400

Alcohol - heavy alcohol consumption in men by State, County, Island, Community, BRFSS Age Group, DOH Race-Ethnicity, Education Level, Employment Status (Grouped), Household Income, Poverty Level, Marital Status (Grouped), Married, Health Care Coverage, for the Year(s) - 2001, 2002, 2003, 2004, 2005, 2006, 2007, 2008, 2009, 2010

Note: Weighted numbers (#), percentages and 95% confidence intervals; Respondents aged 18 years and older; n/r (Not Reportable) - If the unweighted total responses for a dimension (row) is <50 that row will not be shown; n/a (Not Available) - Not asked of a subset of respondents

Year: 2009

Community	Yes			No			Estimated Population
	#	%	C.I. (95%)	#	%	C.I. (95%)	#
Ala Moana	900	5.7	0.0 - 12.4	15,500	94.3	87.6 - 100.0	16,400
Hanalei/ Kapaa	900	10.9	3.8 - 17.9	7,700	89.1	82.1 - 96.2	8,600
Hilo	1,800	8.8	3.7 - 14.0	18,200	91.2	86.0 - 96.3	20,000
Kaaawa/ Kahaluu/ Kaneohe	2,400	8.8	2.2 - 15.4	24,600	91.2	84.6 - 97.8	27,000
Kahului	1,600	9.3	4.2 - 14.3	15,800	90.7	85.7 - 95.8	17,400
Kailua/ Waimanalo	1,200	4.8	0.0 - 10.1	24,000	95.2	89.9 - 100.0	25,200
Kaimuki/ Palolo/ Waikiki	1,200	5.3	1.2 - 9.3	20,800	94.7	90.7 - 98.8	21,900
Kona	900	6.4	1.8 - 11.0	13,200	93.6	89.0 - 98.2	14,100
Lahaina/ Wailuku	1,400	8.5	3.6 - 13.3	14,800	91.5	86.7 - 96.4	16,200
Lanai	200	25.1	9.4 - 40.8	600	74.9	59.2 - 90.6	800

Alcohol - heavy alcohol consumption in men by State, County, Island, Community, BRFSS Age Group, DOH Race-Ethnicity, Education Level, Employment Status (Grouped), Household Income, Poverty Level, Marital Status (Grouped), Married, Health Care Coverage, for the Year(s) - 2001, 2002, 2003, 2004, 2005, 2006, 2007, 2008, 2009, 2010

Note: Weighted numbers (#), percentages and 95% confidence intervals; Respondents aged 18 years and older; n/r (Not Reportable) - If the unweighted total responses for a dimension (row) is <50 that row will not be shown; n/a (Not Available) - Not asked of a subset of respondents

Year: 2009

Community	Yes			No			Estimated Population
	#	%	C.I. (95%)	#	%	C.I. (95%)	#
Lihue-Waimea	2,400	16.1	7.5 - 24.7	12,400	83.9	75.3 - 92.5	14,700
Manoa/ Upper Makiki	1,300	6.0	1.4 - 10.6	20,400	94.0	89.4 - 98.6	21,700
Mililani/ Wahiawa	1,600	3.9	0.9 - 7.0	39,900	96.1	93.0 - 99.1	41,500
Molokai	500	13.5	3.9 - 23.1	3,100	86.5	76.9 - 96.1	3,600
N.Hawaii	1,300	9.1	1.5 - 16.7	13,000	90.9	83.3 - 98.5	14,300
Nuuanu/ Kalihi/ Moanalua	3,100	10.2	1.0 - 19.5	27,300	89.8	80.5 - 99.0	30,400
Puna/ Kau	2,400	12.6	6.6 - 18.7	16,900	87.4	81.3 - 93.4	19,400
Salt Lake/ Foster Village	1,400	7.8	0.1 - 15.5	16,800	92.2	84.5 - 99.9	18,200
Upcountry/ Hana	1,100	6.5	2.0 - 11.0	15,700	93.5	89.0 - 98.0	16,800
Waialae/ Kahala/ Hawaii Kai	2,400	8.6	1.8 - 15.4	25,700	91.4	84.6 - 98.2	28,200

Report Source: The Hawaii Health Data Warehouse;
Data Source: State of Hawaii, Department of Health,
Behavioral Risk Factor Surveillance System (BRFSS)

Alcohol - heavy alcohol consumption in men by State, County, Island, Community, BRFSS Age Group, DOH Race-Ethnicity, Education Level, Employment Status (Grouped), Household Income, Poverty Level, Marital Status (Grouped), Married, Health Care Coverage, for the Year(s) - 2001, 2002, 2003, 2004, 2005, 2006, 2007, 2008, 2009, 2010

Note: Weighted numbers (#), percentages and 95% confidence intervals; Respondents aged 18 years and older; n/r (Not Reportable) - If the unweighted total responses for a dimension (row) is <50 that row will not be shown; n/a (Not Available) - Not asked of a subset of respondents

Year: 2009

Community	Yes			No			Estimated Population
	#	%	C.I. (95%)	#	%	C.I. (95%)	#
Waipahu/ Kapolei/ Ewa	3,600	6.0	2.0 - 10.0	57,100	94.0	90.0 - 98.0	60,700

Alcohol - heavy alcohol consumption in men by State, County, Island, Community, BRFSS Age Group, DOH Race-Ethnicity, Education Level, Employment Status (Grouped), Household Income, Poverty Level, Marital Status (Grouped), Married, Health Care Coverage, for the Year(s) - 2001, 2002, 2003, 2004, 2005, 2006, 2007, 2008, 2009, 2010

Note: Weighted numbers (#), percentages and 95% confidence intervals; Respondents aged 18 years and older; n/r (Not Reportable) - If the unweighted total responses for a dimension (row) is <50 that row will not be shown; n/a (Not Available) - Not asked of a subset of respondents

Year: 2009

BRFSS Age Group	Yes			No			Estimated Population
	#	%	C.I. (95%)	#	%	C.I. (95%)	#
18-24	5,400	8.2	3.2 - 13.1	60,200	91.8	86.9 - 96.8	65,600
25-34	7,200	7.9	4.2 - 11.6	83,800	92.1	88.4 - 95.8	91,100
35-44	8,200	9.4	5.8 - 13.0	79,600	90.6	87.0 - 94.2	87,800
45-54	6,100	7.1	4.5 - 9.6	80,800	92.9	90.4 - 95.5	87,000
55-64	6,500	8.5	5.8 - 11.2	69,700	91.5	88.8 - 94.2	76,200
65-74	2,900	7.0	4.4 - 9.5	39,100	93.0	90.5 - 95.6	42,000
75+	1,300	3.5	1.2 - 5.8	36,800	96.5	94.2 - 98.8	38,200

Alcohol - heavy alcohol consumption in men by State, County, Island, Community, BRFSS Age Group, DOH Race-Ethnicity, Education Level, Employment Status (Grouped), Household Income, Poverty Level, Marital Status (Grouped), Married, Health Care Coverage, for the Year(s) - 2001, 2002, 2003, 2004, 2005, 2006, 2007, 2008, 2009, 2010

Note: Weighted numbers (#), percentages and 95% confidence intervals; Respondents aged 18 years and older; n/r (Not Reportable) - If the unweighted total responses for a dimension (row) is <50 that row will not be shown; n/a (Not Available) - Not asked of a subset of respondents

Year: 2009

DOH Race-Ethnicity	Yes			No			Estimated Population
	#	%	C.I. (95%)	#	%	C.I. (95%)	#
Caucasian	14,200	8.9	6.7 - 11.1	145,500	91.1	88.9 - 93.3	159,600
Native Hawaiian	6,500	12.0	6.5 - 17.5	47,500	88.0	82.5 - 93.5	54,000
Chinese	1,600	5.2	0.0 - 10.4	29,400	94.8	89.6 - 100.0	31,000
Filipino	4,600	5.6	2.4 - 8.9	77,800	94.4	91.1 - 97.6	82,500
Japanese	8,200	7.2	4.7 - 9.7	105,200	92.8	90.3 - 95.3	113,400
Other	1,000	11.1	0.0 - 23.4	8,100	88.9	76.6 - 100.0	9,100

Alcohol - heavy alcohol consumption in men by State, County, Island, Community, BRFSS Age Group, DOH Race-Ethnicity, Education Level, Employment Status (Grouped), Household Income, Poverty Level, Marital Status (Grouped), Married, Health Care Coverage, for the Year(s) - 2001, 2002, 2003, 2004, 2005, 2006, 2007, 2008, 2009, 2010

Note: Weighted numbers (#), percentages and 95% confidence intervals; Respondents aged 18 years and older; n/r (Not Reportable) - If the unweighted total responses for a dimension (row) is <50 that row will not be shown; n/a (Not Available) - Not asked of a subset of respondents

Year: 2009

Education Level	Yes			No			Estimated Population
	#	%	C.I. (95%)	#	%	C.I. (95%)	#
Grades 9 thru 11 (Some High School)	2,300	12.9	2.3 - 23.5	15,500	87.1	76.5 - 97.7	17,700
Grades 12 or GED (High School Grad)	12,800	8.4	5.9 - 11.0	138,700	91.6	89.0 - 94.1	151,500
College 1 to 3 years (Some College/ Tech)	12,000	9.0	6.2 - 11.8	121,200	91.0	88.2 - 93.8	133,200
College 4 years or more (College Grad)	10,600	5.9	4.0 - 7.7	169,100	94.1	92.3 - 96.0	179,600

Alcohol - heavy alcohol consumption in men by State, County, Island, Community, BRFSS Age Group, DOH Race-Ethnicity, Education Level, Employment Status (Grouped), Household Income, Poverty Level, Marital Status (Grouped), Married, Health Care Coverage, for the Year(s) - 2001, 2002, 2003, 2004, 2005, 2006, 2007, 2008, 2009, 2010

Note: Weighted numbers (#), percentages and 95% confidence intervals; Respondents aged 18 years and older; n/r (Not Reportable) - If the unweighted total responses for a dimension (row) is <50 that row will not be shown; n/a (Not Available) - Not asked of a subset of respondents

Year: 2009

Employment Status (Grouped)	Yes			No			Estimated Population
	#	%	C.I. (95%)	#	%	C.I. (95%)	#
Employed	25,500	7.8	6.0 - 9.5	303,000	92.2	90.5 - 94.0	328,500
Unemployed	3,800	9.8	4.6 - 15.0	34,900	90.2	85.0 - 95.4	38,700
Retired/Unable to work	6,100	6.8	4.8 - 8.9	83,500	93.2	91.1 - 95.2	89,700
Student/Homemaker	2,300	7.5	1.0 - 14.0	28,800	92.5	86.0 - 99.0	31,100

Alcohol - heavy alcohol consumption in men by State, County, Island, Community, BRFSS Age Group, DOH Race-Ethnicity, Education Level, Employment Status (Grouped), Household Income, Poverty Level, Marital Status (Grouped), Married, Health Care Coverage, for the Year(s) - 2001, 2002, 2003, 2004, 2005, 2006, 2007, 2008, 2009, 2010

Note: Weighted numbers (#), percentages and 95% confidence intervals; Respondents aged 18 years and older; n/r (Not Reportable) - If the unweighted total responses for a dimension (row) is <50 that row will not be shown; n/a (Not Available) - Not asked of a subset of respondents

Year: 2009

Household Income	Yes			No			Estimated Population
	#	%	C.I. (95%)	#	%	C.I. (95%)	#
Less than \$10,000	500	5.0	0.0 - 10.9	10,100	95.0	89.1 - 100.0	10,600
\$10,000 to \$14,999	500	7.4	1.1 - 13.7	6,700	92.6	86.3 - 98.9	7,200
\$15,000 to \$19,999	2,000	9.5	2.3 - 16.6	19,500	90.5	83.4 - 97.7	21,600
\$20,000 to \$24,999	1,700	7.8	3.4 - 12.2	20,400	92.2	87.8 - 96.6	22,100
\$25,000 to \$34,999	2,500	5.3	2.4 - 8.2	44,600	94.7	91.8 - 97.6	47,100
\$35,000 to \$49,999	6,100	8.5	5.2 - 11.7	66,100	91.5	88.3 - 94.8	72,200
\$50,000 to \$74,999	8,100	8.4	5.2 - 11.5	88,200	91.6	88.5 - 94.8	96,300
\$75,000 or more	13,600	8.1	5.5 - 10.6	155,200	91.9	89.4 - 94.5	168,800

Alcohol - heavy alcohol consumption in men by State, County, Island, Community, BRFSS Age Group, DOH Race-Ethnicity, Education Level, Employment Status (Grouped), Household Income, Poverty Level, Marital Status (Grouped), Married, Health Care Coverage, for the Year(s) - 2001, 2002, 2003, 2004, 2005, 2006, 2007, 2008, 2009, 2010

Note: Weighted numbers (#), percentages and 95% confidence intervals; Respondents aged 18 years and older; n/r (Not Reportable) - If the unweighted total responses for a dimension (row) is <50 that row will not be shown; n/a (Not Available) - Not asked of a subset of respondents

Year: 2009

Poverty Level	Yes			No			Estimated Population
	#	%	C.I. (95%)	#	%	C.I. (95%)	#
0-130%	4,000	4.8	2.3 - 7.3	79,400	95.2	92.7 - 97.7	83,400
131-185%	7,600	10.9	6.7 - 15.1	62,300	89.1	84.9 - 93.3	69,900
186+%	23,500	8.0	6.3 - 9.8	269,100	92.0	90.2 - 93.7	292,600

Marital Status (Grouped)	Yes			No			Estimated Population
	#	%	C.I. (95%)	#	%	C.I. (95%)	#
Married	20,700	7.0	5.4 - 8.6	276,200	93.0	91.4 - 94.6	296,900
Unmarried Couple	2,900	16.5	3.2 - 29.7	14,500	83.5	70.3 - 96.8	17,300
Widowed	400	3.9	0.4 - 7.4	9,000	96.1	92.6 - 99.6	9,400
Other	13,800	8.3	6.0 - 10.7	151,000	91.7	89.3 - 94.0	164,700

Alcohol - heavy alcohol consumption in men by State, County, Island, Community, BRFSS Age Group, DOH Race-Ethnicity, Education Level, Employment Status (Grouped), Household Income, Poverty Level, Marital Status (Grouped), Married, Health Care Coverage, for the Year(s) - 2001, 2002, 2003, 2004, 2005, 2006, 2007, 2008, 2009, 2010

Note: Weighted numbers (#), percentages and 95% confidence intervals; Respondents aged 18 years and older; n/r (Not Reportable) - If the unweighted total responses for a dimension (row) is <50 that row will not be shown; n/a (Not Available) - Not asked of a subset of respondents

Year: 2009

Married	Yes			No			Estimated Population
	#	%	C.I. (95%)	#	%	C.I. (95%)	#
Yes	20,800	6.9	5.4 - 8.5	280,400	93.1	91.5 - 94.6	301,200
No	16,900	9.1	6.6 - 11.5	169,500	90.9	88.5 - 93.4	186,400

Health Care Coverage	Yes			No			Estimated Population
	#	%	C.I. (95%)	#	%	C.I. (95%)	#
Yes	32,900	7.4	6.1 - 8.8	410,200	92.6	91.2 - 93.9	443,100
No	4,800	11.0	4.9 - 17.0	38,700	89.0	83.0 - 95.1	43,400

Alcohol - heavy alcohol consumption in men by State, County, Island, Community, BRFSS Age Group, DOH Race-Ethnicity, Education Level, Employment Status (Grouped), Household Income, Poverty Level, Marital Status (Grouped), Married, Health Care Coverage, for the Year(s) - 2001, 2002, 2003, 2004, 2005, 2006, 2007, 2008, 2009, 2010

Note: Weighted numbers (#), percentages and 95% confidence intervals; Respondents aged 18 years and older; n/r (Not Reportable) - If the unweighted total responses for a dimension (row) is <50 that row will not be shown; n/a (Not Available) - Not asked of a subset of respondents

Year: 2008

State	Yes			No			Estimated Population
	#	%	C.I. (95%)	#	%	C.I. (95%)	#
Hawaii State	41,300	8.5	6.9 - 10.1	442,500	91.5	89.9 - 93.1	483,800

County	Yes			No			Estimated Population
	#	%	C.I. (95%)	#	%	C.I. (95%)	#
Hawaii	5,700	8.7	5.9 - 11.5	59,700	91.3	88.5 - 94.1	65,400
Honolulu	27,400	8.1	6.0 - 10.2	311,800	91.9	89.8 - 94.0	339,200
Kauai	2,700	11.2	6.0 - 16.5	21,500	88.8	83.5 - 94.0	24,300
Maui	5,400	9.9	6.5 - 13.3	49,400	90.1	86.7 - 93.5	54,800

Alcohol - heavy alcohol consumption in men by State, County, Island, Community, BRFSS Age Group, DOH Race-Ethnicity, Education Level, Employment Status (Grouped), Household Income, Poverty Level, Marital Status (Grouped), Married, Health Care Coverage, for the Year(s) - 2001, 2002, 2003, 2004, 2005, 2006, 2007, 2008, 2009, 2010

Note: Weighted numbers (#), percentages and 95% confidence intervals; Respondents aged 18 years and older; n/r (Not Reportable) - If the unweighted total responses for a dimension (row) is <50 that row will not be shown; n/a (Not Available) - Not asked of a subset of respondents

Year: 2008

Island	Yes			No			Estimated Population
	#	%	C.I. (95%)	#	%	C.I. (95%)	#
Hawaii	5,700	8.7	5.9 - 11.5	59,700	91.3	88.5 - 94.1	65,400
Kauai	2,700	11.2	6.0 - 16.5	21,500	88.8	83.5 - 94.0	24,300
Lanai	100	12.6	3.4 - 21.7	900	87.4	78.3 - 96.6	1,100
Maui	4,800	9.5	5.8 - 13.2	45,300	90.5	86.8 - 94.2	50,000
Molokai	500	14.5	2.7 - 26.2	3,200	85.5	73.8 - 97.3	3,700
Oahu	27,400	8.1	6.0 - 10.2	311,800	91.9	89.8 - 94.0	339,200

Community	Yes			No			Estimated Population
	#	%	C.I. (95%)	#	%	C.I. (95%)	#
Aiea/ Pearl City	2,000	7.1	2.0 - 12.1	25,900	92.9	87.9 - 98.0	27,800

Alcohol - heavy alcohol consumption in men by State, County, Island, Community, BRFSS Age Group, DOH Race-Ethnicity, Education Level, Employment Status (Grouped), Household Income, Poverty Level, Marital Status (Grouped), Married, Health Care Coverage, for the Year(s) - 2001, 2002, 2003, 2004, 2005, 2006, 2007, 2008, 2009, 2010

Note: Weighted numbers (#), percentages and 95% confidence intervals; Respondents aged 18 years and older; n/r (Not Reportable) - If the unweighted total responses for a dimension (row) is <50 that row will not be shown; n/a (Not Available) - Not asked of a subset of respondents

Year: 2008

Community	Yes			No			Estimated Population
	#	%	C.I. (95%)	#	%	C.I. (95%)	#
Ala Moana	1,000	5.9	0.7 - 11.2	16,100	94.1	88.8 - 99.3	17,100
Hanalei/ Kapaa	1,800	16.2	7.1 - 25.2	9,100	83.8	74.8 - 92.9	10,900
Hilo	2,500	12.2	5.7 - 18.8	17,800	87.8	81.2 - 94.3	20,300
Kaaawa/ Kahaluu/ Kaneohe	1,100	4.8	0.6 - 9.0	22,300	95.2	91.0 - 99.4	23,400
Kahului	1,200	6.3	1.1 - 11.5	17,300	93.7	88.5 - 98.9	18,500
Kailua/ Waimanalo	1,800	7.0	1.2 - 12.8	24,600	93.0	87.2 - 98.8	26,400
Kaimuki/ Palolo/ Waikiki	800	2.8	0.3 - 5.2	29,200	97.2	94.8 - 99.7	30,000
Kona	1,500	12.8	6.1 - 19.6	10,300	87.2	80.4 - 93.9	11,800
Lahaina/ Wailuku	1,800	10.8	3.2 - 18.4	15,200	89.2	81.6 - 96.8	17,100
Lanai	100	12.6	3.4 - 21.7	900	87.4	78.3 - 96.6	1,100

Report Source: The Hawaii Health Data Warehouse;
Data Source: State of Hawaii, Department of Health,
Behavioral Risk Factor Surveillance System (BRFSS)

Alcohol - heavy alcohol consumption in men by State, County, Island, Community, BRFSS Age Group, DOH Race-Ethnicity, Education Level, Employment Status (Grouped), Household Income, Poverty Level, Marital Status (Grouped), Married, Health Care Coverage, for the Year(s) - 2001, 2002, 2003, 2004, 2005, 2006, 2007, 2008, 2009, 2010

Note: Weighted numbers (#), percentages and 95% confidence intervals; Respondents aged 18 years and older; n/r (Not Reportable) - If the unweighted total responses for a dimension (row) is <50 that row will not be shown; n/a (Not Available) - Not asked of a subset of respondents

Year: 2008

Community	Yes			No			Estimated Population
	#	%	C.I. (95%)	#	%	C.I. (95%)	#
Lihue-Waimea	1,000	7.2	1.3 - 13.1	12,400	92.8	86.9 - 98.7	13,400
Manoa/ Upper Makiki	1,200	5.5	0.5 - 10.6	20,900	94.5	89.4 - 99.5	22,100
Mililani/ Wahiawa	2,400	6.9	0.3 - 13.5	31,800	93.1	86.5 - 99.7	34,100
Molokai	500	14.5	2.7 - 26.2	3,200	85.5	73.8 - 97.3	3,700
N.Hawaii	500	3.4	0.0 - 6.8	13,800	96.6	93.2 - 100.0	14,200
Nuuanu/ Kalihi/ Moanalua	1,800	4.8	0.0 - 9.8	35,800	95.2	90.2 - 100.0	37,600
Puna/ Kau	1,200	6.4	2.2 - 10.7	17,800	93.6	89.3 - 97.8	19,100
Salt Lake/ Foster Village	2,300	14.3	4.1 - 24.4	14,000	85.7	75.6 - 95.9	16,400
Upcountry/ Hana	1,800	12.1	6.3 - 17.9	12,700	87.9	82.1 - 93.7	14,500
Waialae/ Kahala/ Hawaii Kai	1,200	4.7	0.0 - 12.3	23,100	95.3	87.7 - 100.0	24,300

Report Source: The Hawaii Health Data Warehouse;
Data Source: State of Hawaii, Department of Health,
Behavioral Risk Factor Surveillance System (BRFSS)

Alcohol - heavy alcohol consumption in men by State, County, Island, Community, BRFSS Age Group, DOH Race-Ethnicity, Education Level, Employment Status (Grouped), Household Income, Poverty Level, Marital Status (Grouped), Married, Health Care Coverage, for the Year(s) - 2001, 2002, 2003, 2004, 2005, 2006, 2007, 2008, 2009, 2010

Note: Weighted numbers (#), percentages and 95% confidence intervals; Respondents aged 18 years and older; n/r (Not Reportable) - If the unweighted total responses for a dimension (row) is <50 that row will not be shown; n/a (Not Available) - Not asked of a subset of respondents

Year: 2008

Community	Yes			No			Estimated Population
	#	%	C.I. (95%)	#	%	C.I. (95%)	#
Waipahu/ Kapolei/ Ewa	6,900	12.4	5.9 - 18.8	48,700	87.6	81.2 - 94.1	55,600

Alcohol - heavy alcohol consumption in men by State, County, Island, Community, BRFSS Age Group, DOH Race-Ethnicity, Education Level, Employment Status (Grouped), Household Income, Poverty Level, Marital Status (Grouped), Married, Health Care Coverage, for the Year(s) - 2001, 2002, 2003, 2004, 2005, 2006, 2007, 2008, 2009, 2010

Note: Weighted numbers (#), percentages and 95% confidence intervals; Respondents aged 18 years and older; n/r (Not Reportable) - If the unweighted total responses for a dimension (row) is <50 that row will not be shown; n/a (Not Available) - Not asked of a subset of respondents

Year: 2008

BRFSS Age Group	Yes			No			Estimated Population
	#	%	C.I. (95%)	#	%	C.I. (95%)	#
18-24	9,200	13.7	6.4 - 21.0	57,900	86.3	79.0 - 93.6	67,100
25-34	8,200	9.5	5.1 - 13.9	77,500	90.5	86.1 - 94.9	85,700
35-44	7,400	8.3	4.9 - 11.8	81,300	91.7	88.2 - 95.1	88,700
45-54	6,000	6.8	4.2 - 9.4	82,000	93.2	90.6 - 95.8	87,900
55-64	5,600	7.6	5.3 - 10.0	67,800	92.4	90.0 - 94.7	73,400
65-74	3,600	8.7	5.0 - 12.5	37,200	91.3	87.5 - 95.0	40,700
75+	1,200	3.2	0.8 - 5.7	36,800	96.8	94.3 - 99.2	38,000

Alcohol - heavy alcohol consumption in men by State, County, Island, Community, BRFSS Age Group, DOH Race-Ethnicity, Education Level, Employment Status (Grouped), Household Income, Poverty Level, Marital Status (Grouped), Married, Health Care Coverage, for the Year(s) - 2001, 2002, 2003, 2004, 2005, 2006, 2007, 2008, 2009, 2010

Note: Weighted numbers (#), percentages and 95% confidence intervals; Respondents aged 18 years and older; n/r (Not Reportable) - If the unweighted total responses for a dimension (row) is <50 that row will not be shown; n/a (Not Available) - Not asked of a subset of respondents

Year: 2008

DOH Race-Ethnicity	Yes			No			Estimated Population
	#	%	C.I. (95%)	#	%	C.I. (95%)	#
Caucasian	14,400	8.4	5.7 - 11.2	156,300	91.6	88.8 - 94.3	170,600
Native Hawaiian	5,400	8.6	4.3 - 12.8	58,100	91.4	87.2 - 95.7	63,500
Chinese	400	1.1	0.0 - 2.5	36,300	98.9	97.5 - 100.0	36,700
Filipino	7,300	10.8	5.6 - 16.1	59,700	89.2	83.9 - 94.4	66,900
Japanese	8,900	8.6	5.5 - 11.7	94,700	91.4	88.3 - 94.5	103,600

Alcohol - heavy alcohol consumption in men by State, County, Island, Community, BRFSS Age Group, DOH Race-Ethnicity, Education Level, Employment Status (Grouped), Household Income, Poverty Level, Marital Status (Grouped), Married, Health Care Coverage, for the Year(s) - 2001, 2002, 2003, 2004, 2005, 2006, 2007, 2008, 2009, 2010

Note: Weighted numbers (#), percentages and 95% confidence intervals; Respondents aged 18 years and older; n/r (Not Reportable) - If the unweighted total responses for a dimension (row) is <50 that row will not be shown; n/a (Not Available) - Not asked of a subset of respondents

Year: 2008

Education Level	Yes			No			Estimated Population
	#	%	C.I. (95%)	#	%	C.I. (95%)	#
Grades 9 thru 11 (Some High School)	3,900	18.0	7.5 - 28.6	17,800	82.0	71.4 - 92.5	21,700
Grades 12 or GED (High School Grad)	18,100	12.3	8.5 - 16.2	128,400	87.7	83.8 - 91.5	146,500
College 1 to 3 years (Some College/ Tech)	9,900	7.4	5.0 - 9.8	124,100	92.6	90.2 - 95.0	134,000
College 4 years or more (College Grad)	9,200	5.1	3.3 - 7.0	169,200	94.9	93.0 - 96.7	178,300

Alcohol - heavy alcohol consumption in men by State, County, Island, Community, BRFSS Age Group, DOH Race-Ethnicity, Education Level, Employment Status (Grouped), Household Income, Poverty Level, Marital Status (Grouped), Married, Health Care Coverage, for the Year(s) - 2001, 2002, 2003, 2004, 2005, 2006, 2007, 2008, 2009, 2010

Note: Weighted numbers (#), percentages and 95% confidence intervals; Respondents aged 18 years and older; n/r (Not Reportable) - If the unweighted total responses for a dimension (row) is <50 that row will not be shown; n/a (Not Available) - Not asked of a subset of respondents

Year: 2008

Employment Status (Grouped)	Yes			No			Estimated Population
	#	%	C.I. (95%)	#	%	C.I. (95%)	#
Employed	29,300	8.5	6.6 - 10.5	314,000	91.5	89.5 - 93.4	343,300
Unemployed	3,900	21.4	9.6 - 33.3	14,300	78.6	66.7 - 90.4	18,200
Retired/Unable to work	7,200	7.0	4.3 - 9.8	95,200	93.0	90.2 - 95.7	102,400
Student/Homemaker	900	4.5	0.2 - 8.9	18,900	95.5	91.1 - 99.8	19,800

Alcohol - heavy alcohol consumption in men by State, County, Island, Community, BRFSS Age Group, DOH Race-Ethnicity, Education Level, Employment Status (Grouped), Household Income, Poverty Level, Marital Status (Grouped), Married, Health Care Coverage, for the Year(s) - 2001, 2002, 2003, 2004, 2005, 2006, 2007, 2008, 2009, 2010

Note: Weighted numbers (#), percentages and 95% confidence intervals; Respondents aged 18 years and older; n/r (Not Reportable) - If the unweighted total responses for a dimension (row) is <50 that row will not be shown; n/a (Not Available) - Not asked of a subset of respondents

Year: 2008

Household Income	Yes			No			Estimated Population
	#	%	C.I. (95%)	#	%	C.I. (95%)	#
Less than \$10,000	900	9.3	0.0 - 19.2	8,700	90.7	80.8 - 100.0	9,600
\$10,000 to \$14,999	900	8.2	0.0 - 17.1	10,200	91.8	82.9 - 100.0	11,100
\$15,000 to \$19,999	1,700	9.7	2.1 - 17.4	15,600	90.3	82.6 - 97.9	17,300
\$20,000 to \$24,999	1,700	7.2	2.2 - 12.3	21,800	92.8	87.7 - 97.8	23,500
\$25,000 to \$34,999	3,900	8.3	3.7 - 12.9	43,500	91.7	87.1 - 96.3	47,400
\$35,000 to \$49,999	7,900	11.2	7.0 - 15.4	62,100	88.8	84.6 - 93.0	70,000
\$50,000 to \$74,999	8,600	9.1	5.5 - 12.7	85,300	90.9	87.3 - 94.5	93,900
\$75,000 or more	13,700	8.0	4.9 - 11.0	158,600	92.0	89.0 - 95.1	172,300

Alcohol - heavy alcohol consumption in men by State, County, Island, Community, BRFSS Age Group, DOH Race-Ethnicity, Education Level, Employment Status (Grouped), Household Income, Poverty Level, Marital Status (Grouped), Married, Health Care Coverage, for the Year(s) - 2001, 2002, 2003, 2004, 2005, 2006, 2007, 2008, 2009, 2010

Note: Weighted numbers (#), percentages and 95% confidence intervals; Respondents aged 18 years and older; n/r (Not Reportable) - If the unweighted total responses for a dimension (row) is <50 that row will not be shown; n/a (Not Available) - Not asked of a subset of respondents

Year: 2008

Poverty Level	Yes			No			Estimated Population
	#	%	C.I. (95%)	#	%	C.I. (95%)	#
0-130%	5,400	7.1	3.6 - 10.6	71,100	92.9	89.4 - 96.4	76,600
131-185%	8,000	13.9	6.3 - 21.6	49,500	86.1	78.4 - 93.7	57,600
186+%	25,800	8.3	6.6 - 10.0	285,100	91.7	90.0 - 93.4	310,900

Marital Status (Grouped)	Yes			No			Estimated Population
	#	%	C.I. (95%)	#	%	C.I. (95%)	#
Married	20,700	7.1	5.5 - 8.8	270,500	92.9	91.2 - 94.5	291,200
Unmarried Couple	2,200	13.7	2.5 - 24.8	13,600	86.3	75.2 - 97.5	15,800
Widowed	2,000	18.2	3.6 - 32.9	9,000	81.8	67.1 - 96.4	11,000
Other	16,400	9.9	6.6 - 13.2	149,300	90.1	86.8 - 93.4	165,800

Alcohol - heavy alcohol consumption in men by State, County, Island, Community, BRFSS Age Group, DOH Race-Ethnicity, Education Level, Employment Status (Grouped), Household Income, Poverty Level, Marital Status (Grouped), Married, Health Care Coverage, for the Year(s) - 2001, 2002, 2003, 2004, 2005, 2006, 2007, 2008, 2009, 2010

Note: Weighted numbers (#), percentages and 95% confidence intervals; Respondents aged 18 years and older; n/r (Not Reportable) - If the unweighted total responses for a dimension (row) is <50 that row will not be shown; n/a (Not Available) - Not asked of a subset of respondents

Year: 2008

Married	Yes			No			Estimated Population
	#	%	C.I. (95%)	#	%	C.I. (95%)	#
Yes	20,900	7.1	5.5 - 8.7	274,400	92.9	91.3 - 94.5	295,300
No	20,400	10.9	7.7 - 14.1	167,500	89.1	85.9 - 92.3	187,900

Health Care Coverage	Yes			No			Estimated Population
	#	%	C.I. (95%)	#	%	C.I. (95%)	#
Yes	35,400	7.9	6.4 - 9.4	413,600	92.1	90.6 - 93.6	449,000
No	5,500	16.2	5.6 - 26.8	28,400	83.8	73.2 - 94.4	33,900

Alcohol - heavy alcohol consumption in men by State, County, Island, Community, BRFSS Age Group, DOH Race-Ethnicity, Education Level, Employment Status (Grouped), Household Income, Poverty Level, Marital Status (Grouped), Married, Health Care Coverage, for the Year(s) - 2001, 2002, 2003, 2004, 2005, 2006, 2007, 2008, 2009, 2010

Note: Weighted numbers (#), percentages and 95% confidence intervals; Respondents aged 18 years and older; n/r (Not Reportable) - If the unweighted total responses for a dimension (row) is <50 that row will not be shown; n/a (Not Available) - Not asked of a subset of respondents

Year: 2007

State	Yes			No			Estimated Population
	#	%	C.I. (95%)	#	%	C.I. (95%)	#
Hawaii State	46,500	9.8	8.1 - 11.5	429,500	90.2	88.5 - 91.9	476,000

County	Yes			No			Estimated Population
	#	%	C.I. (95%)	#	%	C.I. (95%)	#
Hawaii	6,300	10.2	6.9 - 13.6	55,300	89.8	86.4 - 93.1	61,600
Honolulu	31,400	9.3	7.1 - 11.5	307,000	90.7	88.5 - 92.9	338,400
Kauai	2,900	12.7	7.4 - 18.1	20,200	87.3	81.9 - 92.6	23,100
Maui	5,800	11.0	7.4 - 14.6	47,100	89.0	85.4 - 92.6	52,900

Alcohol - heavy alcohol consumption in men by State, County, Island, Community, BRFSS Age Group, DOH Race-Ethnicity, Education Level, Employment Status (Grouped), Household Income, Poverty Level, Marital Status (Grouped), Married, Health Care Coverage, for the Year(s) - 2001, 2002, 2003, 2004, 2005, 2006, 2007, 2008, 2009, 2010

Note: Weighted numbers (#), percentages and 95% confidence intervals; Respondents aged 18 years and older; n/r (Not Reportable) - If the unweighted total responses for a dimension (row) is <50 that row will not be shown; n/a (Not Available) - Not asked of a subset of respondents

Year: 2007

Island	Yes			No			Estimated Population
	#	%	C.I. (95%)	#	%	C.I. (95%)	#
Hawaii	6,300	10.2	6.9 - 13.6	55,300	89.8	86.4 - 93.1	61,600
Kauai	2,900	12.7	7.4 - 18.1	20,200	87.3	81.9 - 92.6	23,100
Lanai	200	14.5	5.1 - 23.8	900	85.5	76.2 - 94.9	1,100
Maui	5,000	10.3	6.4 - 14.2	43,300	89.7	85.8 - 93.6	48,300
Molokai	700	19.0	10.1 - 28.0	2,900	81.0	72.0 - 89.9	3,600
Oahu	31,400	9.3	7.1 - 11.5	307,000	90.7	88.5 - 92.9	338,400

Community	Yes			No			Estimated Population
	#	%	C.I. (95%)	#	%	C.I. (95%)	#
Aiea/ Pearl City	1,600	5.0	0.7 - 9.3	29,900	95.0	90.7 - 99.3	31,500

Alcohol - heavy alcohol consumption in men by State, County, Island, Community, BRFSS Age Group, DOH Race-Ethnicity, Education Level, Employment Status (Grouped), Household Income, Poverty Level, Marital Status (Grouped), Married, Health Care Coverage, for the Year(s) - 2001, 2002, 2003, 2004, 2005, 2006, 2007, 2008, 2009, 2010

Note: Weighted numbers (#), percentages and 95% confidence intervals; Respondents aged 18 years and older; n/r (Not Reportable) - If the unweighted total responses for a dimension (row) is <50 that row will not be shown; n/a (Not Available) - Not asked of a subset of respondents

Year: 2007

Community	Yes			No			Estimated Population
	#	%	C.I. (95%)	#	%	C.I. (95%)	#
Ala Moana	900	6.3	0.0 - 12.6	13,400	93.7	87.4 - 100.0	14,200
Hanalei/ Kapaa	1,600	16.5	7.5 - 25.4	8,000	83.5	74.6 - 92.5	9,600
Hilo	1,400	8.3	3.4 - 13.2	15,800	91.7	86.8 - 96.6	17,200
Kaaawa/ Kahaluu/ Kaneohe	1,100	4.6	0.3 - 8.9	22,100	95.4	91.1 - 99.7	23,200
Kahului	1,700	9.8	4.4 - 15.1	15,500	90.2	84.9 - 95.6	17,200
Kailua/ Waimanalo	2,100	9.4	2.4 - 16.5	20,400	90.6	83.5 - 97.6	22,500
Kaimuki/ Palolo/ Waikiki	3,200	12.0	0.9 - 23.0	23,500	88.0	77.0 - 99.1	26,600
Kona	1,900	13.3	6.0 - 20.6	12,300	86.7	79.4 - 94.0	14,100
Lahaina/ Wailuku	1,600	11.1	1.6 - 20.7	12,900	88.9	79.3 - 98.4	14,500
Lanai	200	14.5	5.1 - 23.8	900	85.5	76.2 - 94.9	1,100

Alcohol - heavy alcohol consumption in men by State, County, Island, Community, BRFSS Age Group, DOH Race-Ethnicity, Education Level, Employment Status (Grouped), Household Income, Poverty Level, Marital Status (Grouped), Married, Health Care Coverage, for the Year(s) - 2001, 2002, 2003, 2004, 2005, 2006, 2007, 2008, 2009, 2010

Note: Weighted numbers (#), percentages and 95% confidence intervals; Respondents aged 18 years and older; n/r (Not Reportable) - If the unweighted total responses for a dimension (row) is <50 that row will not be shown; n/a (Not Available) - Not asked of a subset of respondents

Year: 2007

Community	Yes			No			Estimated Population
	#	%	C.I. (95%)	#	%	C.I. (95%)	#
Lihue-Waimea	1,400	10.1	3.7 - 16.5	12,100	89.9	83.5 - 96.3	13,500
Manoa/ Upper Makiki	1,600	7.1	1.4 - 12.9	21,400	92.9	87.1 - 98.6	23,000
Mililani/ Wahiawa	3,500	9.0	3.2 - 14.7	35,800	91.0	85.3 - 96.8	39,300
Molokai	700	19.0	10.1 - 28.0	2,900	81.0	72.0 - 89.9	3,600
Nanakuli/ Waianae	3,000	15.2	4.4 - 25.9	16,800	84.8	74.1 - 95.6	19,800
N.Hawaii	1,700	12.9	3.2 - 22.7	11,600	87.1	77.3 - 96.8	13,300
Nuuanu/ Kalihi/ Moanalua	4,100	12.1	4.9 - 19.3	29,900	87.9	80.7 - 95.1	34,000
Puna/ Kau	1,300	7.6	2.9 - 12.2	15,600	92.4	87.8 - 97.1	16,900
Upcountry/ Hana	1,700	10.2	5.0 - 15.5	14,900	89.8	84.5 - 95.0	16,600
Waialae/ Kahala/ Hawaii Kai	800	4.4	0.1 - 8.7	18,500	95.6	91.3 - 99.9	19,300

Report Source: The Hawaii Health Data Warehouse;
Data Source: State of Hawaii, Department of Health,
Behavioral Risk Factor Surveillance System (BRFSS)

Alcohol - heavy alcohol consumption in men by State, County, Island, Community, BRFSS Age Group, DOH Race-Ethnicity, Education Level, Employment Status (Grouped), Household Income, Poverty Level, Marital Status (Grouped), Married, Health Care Coverage, for the Year(s) - 2001, 2002, 2003, 2004, 2005, 2006, 2007, 2008, 2009, 2010

Note: Weighted numbers (#), percentages and 95% confidence intervals; Respondents aged 18 years and older; n/r (Not Reportable) - If the unweighted total responses for a dimension (row) is <50 that row will not be shown; n/a (Not Available) - Not asked of a subset of respondents

Year: 2007

Community	Yes			No			Estimated Population
	#	%	C.I. (95%)	#	%	C.I. (95%)	#
Waipahu/ Kapolei/ Ewa	7,800	12.0	5.0 - 19.0	57,000	88.0	81.0 - 95.0	64,700

Alcohol - heavy alcohol consumption in men by State, County, Island, Community, BRFSS Age Group, DOH Race-Ethnicity, Education Level, Employment Status (Grouped), Household Income, Poverty Level, Marital Status (Grouped), Married, Health Care Coverage, for the Year(s) - 2001, 2002, 2003, 2004, 2005, 2006, 2007, 2008, 2009, 2010

Note: Weighted numbers (#), percentages and 95% confidence intervals; Respondents aged 18 years and older; n/r (Not Reportable) - If the unweighted total responses for a dimension (row) is <50 that row will not be shown; n/a (Not Available) - Not asked of a subset of respondents

Year: 2007

BRFSS Age Group	Yes			No			Estimated Population
	#	%	C.I. (95%)	#	%	C.I. (95%)	#
18-24	6,900	10.3	3.9 - 16.6	60,500	89.7	83.4 - 96.1	67,400
25-34	10,700	13.0	7.4 - 18.6	71,400	87.0	81.4 - 92.6	82,100
35-44	8,100	9.4	6.1 - 12.7	78,300	90.6	87.3 - 93.9	86,400
45-54	7,700	8.7	5.7 - 11.8	80,400	91.3	88.2 - 94.3	88,100
55-64	5,700	7.5	5.3 - 9.8	69,700	92.5	90.2 - 94.7	75,400
65-74	3,600	9.5	5.4 - 13.6	34,800	90.5	86.4 - 94.6	38,500
75+	3,700	10.3	4.7 - 15.9	32,300	89.7	84.1 - 95.3	36,000

Alcohol - heavy alcohol consumption in men by State, County, Island, Community, BRFSS Age Group, DOH Race-Ethnicity, Education Level, Employment Status (Grouped), Household Income, Poverty Level, Marital Status (Grouped), Married, Health Care Coverage, for the Year(s) - 2001, 2002, 2003, 2004, 2005, 2006, 2007, 2008, 2009, 2010

Note: Weighted numbers (#), percentages and 95% confidence intervals; Respondents aged 18 years and older; n/r (Not Reportable) - If the unweighted total responses for a dimension (row) is <50 that row will not be shown; n/a (Not Available) - Not asked of a subset of respondents

Year: 2007

DOH Race-Ethnicity	Yes			No			Estimated Population
	#	%	C.I. (95%)	#	%	C.I. (95%)	#
Caucasian	14,900	9.4	7.4 - 11.4	143,600	90.6	88.6 - 92.6	158,500
Native Hawaiian	5,600	9.5	5.4 - 13.5	53,800	90.5	86.5 - 94.6	59,500
Chinese	2,000	7.5	0.0 - 17.9	24,300	92.5	82.1 - 100.0	26,200
Filipino	10,200	12.8	6.7 - 19.0	69,400	87.2	81.0 - 93.3	79,600
Japanese	9,500	9.1	5.9 - 12.3	94,500	90.9	87.7 - 94.1	104,000
Other	2,200	17.9	4.8 - 31.0	9,900	82.1	69.0 - 95.2	12,100

Alcohol - heavy alcohol consumption in men by State, County, Island, Community, BRFSS Age Group, DOH Race-Ethnicity, Education Level, Employment Status (Grouped), Household Income, Poverty Level, Marital Status (Grouped), Married, Health Care Coverage, for the Year(s) - 2001, 2002, 2003, 2004, 2005, 2006, 2007, 2008, 2009, 2010

Note: Weighted numbers (#), percentages and 95% confidence intervals; Respondents aged 18 years and older; n/r (Not Reportable) - If the unweighted total responses for a dimension (row) is <50 that row will not be shown; n/a (Not Available) - Not asked of a subset of respondents

Year: 2007

Education Level	Yes			No			Estimated Population
	#	%	C.I. (95%)	#	%	C.I. (95%)	#
Grades 9 thru 11 (Some High School)	3,300	21.1	9.1 - 33.2	12,400	78.9	66.8 - 90.9	15,700
Grades 12 or GED (High School Grad)	17,600	10.8	7.7 - 13.9	146,200	89.2	86.1 - 92.3	163,900
College 1 to 3 years (Some College/ Tech)	15,900	11.8	8.1 - 15.6	118,000	88.2	84.4 - 91.9	133,900
College 4 years or more (College Grad)	8,300	5.3	3.7 - 6.9	147,900	94.7	93.1 - 96.3	156,200

Employment Status (Grouped)	Yes			No			Estimated Population
	#	%	C.I. (95%)	#	%	C.I. (95%)	#
Employed	35,500	10.4	8.2 - 12.5	305,900	89.6	87.5 - 91.8	341,400
Unemployed	900	4.9	0.0 - 10.4	18,400	95.1	89.6 - 100.0	19,400
Retired/Unable to work	9,500	9.6	6.6 - 12.6	89,200	90.4	87.4 - 93.4	98,700

Alcohol - heavy alcohol consumption in men by State, County, Island, Community, BRFSS Age Group, DOH Race-Ethnicity, Education Level, Employment Status (Grouped), Household Income, Poverty Level, Marital Status (Grouped), Married, Health Care Coverage, for the Year(s) - 2001, 2002, 2003, 2004, 2005, 2006, 2007, 2008, 2009, 2010

Note: Weighted numbers (#), percentages and 95% confidence intervals; Respondents aged 18 years and older; n/r (Not Reportable) - If the unweighted total responses for a dimension (row) is <50 that row will not be shown; n/a (Not Available) - Not asked of a subset of respondents

Year: 2007

Household Income	Yes			No			Estimated Population
	#	%	C.I. (95%)	#	%	C.I. (95%)	#
Less than \$10,000	2,800	27.3	6.3 - 48.3	7,600	72.7	51.7 - 93.7	10,400
\$10,000 to \$14,999	800	6.7	0.0 - 17.5	10,700	93.3	82.5 - 100.0	11,500
\$15,000 to \$19,999	2,200	11.5	4.1 - 18.9	17,300	88.5	81.1 - 95.9	19,600
\$20,000 to \$24,999	3,900	15.5	7.0 - 24.0	21,100	84.5	76.0 - 93.0	25,000
\$25,000 to \$34,999	4,000	6.9	3.8 - 10.1	53,500	93.1	89.9 - 96.2	57,500
\$35,000 to \$49,999	10,200	12.9	7.9 - 17.9	68,900	87.1	82.1 - 92.1	79,100
\$50,000 to \$74,999	8,000	8.8	5.8 - 11.9	82,600	91.2	88.1 - 94.2	90,600
\$75,000 or more	12,700	8.7	5.6 - 11.7	134,100	91.3	88.3 - 94.4	146,800

Alcohol - heavy alcohol consumption in men by State, County, Island, Community, BRFSS Age Group, DOH Race-Ethnicity, Education Level, Employment Status (Grouped), Household Income, Poverty Level, Marital Status (Grouped), Married, Health Care Coverage, for the Year(s) - 2001, 2002, 2003, 2004, 2005, 2006, 2007, 2008, 2009, 2010

Note: Weighted numbers (#), percentages and 95% confidence intervals; Respondents aged 18 years and older; n/r (Not Reportable) - If the unweighted total responses for a dimension (row) is <50 that row will not be shown; n/a (Not Available) - Not asked of a subset of respondents

Year: 2007

Poverty Level	Yes			No			Estimated Population
	#	%	C.I. (95%)	#	%	C.I. (95%)	#
0-130%	12,700	14.1	8.7 - 19.5	77,000	85.9	80.5 - 91.3	89,600
131-185%	6,800	12.3	5.0 - 19.7	48,400	87.7	80.3 - 95.0	55,200
186+%	25,200	8.5	7.0 - 10.0	270,500	91.5	90.0 - 93.0	295,700

Marital Status (Grouped)	Yes			No			Estimated Population
	#	%	C.I. (95%)	#	%	C.I. (95%)	#
Married	24,100	8.3	6.6 - 10.1	264,600	91.7	89.9 - 93.4	288,700
Unmarried Couple	1,400	9.9	3.1 - 16.7	13,200	90.1	83.3 - 96.9	14,600
Widowed	900	9.0	2.8 - 15.2	9,100	91.0	84.8 - 97.2	10,000
Other	20,000	12.3	8.5 - 16.2	142,700	87.7	83.8 - 91.5	162,700

Alcohol - heavy alcohol consumption in men by State, County, Island, Community, BRFSS Age Group, DOH Race-Ethnicity, Education Level, Employment Status (Grouped), Household Income, Poverty Level, Marital Status (Grouped), Married, Health Care Coverage, for the Year(s) - 2001, 2002, 2003, 2004, 2005, 2006, 2007, 2008, 2009, 2010

Note: Weighted numbers (#), percentages and 95% confidence intervals; Respondents aged 18 years and older; n/r (Not Reportable) - If the unweighted total responses for a dimension (row) is <50 that row will not be shown; n/a (Not Available) - Not asked of a subset of respondents

Year: 2007

Married	Yes			No			Estimated Population
	#	%	C.I. (95%)	#	%	C.I. (95%)	#
Yes	24,700	8.4	6.7 - 10.1	268,200	91.6	89.9 - 93.3	292,800
No	21,800	11.9	8.5 - 15.4	160,900	88.1	84.6 - 91.5	182,700

Health Care Coverage	Yes			No			Estimated Population
	#	%	C.I. (95%)	#	%	C.I. (95%)	#
Yes	42,800	9.7	7.9 - 11.5	397,000	90.3	88.5 - 92.1	439,800
No	3,700	10.4	4.8 - 16.1	31,700	89.6	83.9 - 95.2	35,400

Alcohol - heavy alcohol consumption in men by State, County, Island, Community, BRFSS Age Group, DOH Race-Ethnicity, Education Level, Employment Status (Grouped), Household Income, Poverty Level, Marital Status (Grouped), Married, Health Care Coverage, for the Year(s) - 2001, 2002, 2003, 2004, 2005, 2006, 2007, 2008, 2009, 2010

Note: Weighted numbers (#), percentages and 95% confidence intervals; Respondents aged 18 years and older; n/r (Not Reportable) - If the unweighted total responses for a dimension (row) is <50 that row will not be shown; n/a (Not Available) - Not asked of a subset of respondents

Year: 2006

State	Yes			No			Estimated Population
	#	%	C.I. (95%)	#	%	C.I. (95%)	#
Hawaii State	36,200	7.7	6.5 - 9.0	433,400	92.3	91.0 - 93.5	469,600

County	Yes			No			Estimated Population
	#	%	C.I. (95%)	#	%	C.I. (95%)	#
Hawaii	5,600	9.5	6.9 - 12.1	53,400	90.5	87.9 - 93.1	59,000
Honolulu	22,600	6.7	5.1 - 8.3	313,000	93.3	91.7 - 94.9	335,600
Kauai	2,100	9.2	5.5 - 13.0	21,000	90.8	87.0 - 94.5	23,100
Maui	5,900	11.4	7.8 - 14.9	46,000	88.6	85.1 - 92.2	51,900

Alcohol - heavy alcohol consumption in men by State, County, Island, Community, BRFSS Age Group, DOH Race-Ethnicity, Education Level, Employment Status (Grouped), Household Income, Poverty Level, Marital Status (Grouped), Married, Health Care Coverage, for the Year(s) - 2001, 2002, 2003, 2004, 2005, 2006, 2007, 2008, 2009, 2010

Note: Weighted numbers (#), percentages and 95% confidence intervals; Respondents aged 18 years and older; n/r (Not Reportable) - If the unweighted total responses for a dimension (row) is <50 that row will not be shown; n/a (Not Available) - Not asked of a subset of respondents

Year: 2006

Island	Yes			No			Estimated Population
	#	%	C.I. (95%)	#	%	C.I. (95%)	#
Hawaii	5,600	9.5	6.9 - 12.1	53,400	90.5	87.9 - 93.1	59,000
Kauai	2,100	9.2	5.5 - 13.0	21,000	90.8	87.0 - 94.5	23,100
Lanai	200	17.6	7.0 - 28.1	1,000	82.4	71.9 - 93.0	1,200
Maui	5,300	11.1	7.3 - 14.9	42,200	88.9	85.1 - 92.7	47,400
Molokai	400	13.0	4.7 - 21.4	2,800	87.0	78.6 - 95.3	3,200
Oahu	22,600	6.7	5.1 - 8.3	313,000	93.3	91.7 - 94.9	335,600

Community	Yes			No			Estimated Population
	#	%	C.I. (95%)	#	%	C.I. (95%)	#
Aiea/ Pearl City	2,100	6.3	1.6 - 11.1	31,600	93.7	88.9 - 98.4	33,700

Alcohol - heavy alcohol consumption in men by State, County, Island, Community, BRFSS Age Group, DOH Race-Ethnicity, Education Level, Employment Status (Grouped), Household Income, Poverty Level, Marital Status (Grouped), Married, Health Care Coverage, for the Year(s) - 2001, 2002, 2003, 2004, 2005, 2006, 2007, 2008, 2009, 2010

Note: Weighted numbers (#), percentages and 95% confidence intervals; Respondents aged 18 years and older; n/r (Not Reportable) - If the unweighted total responses for a dimension (row) is <50 that row will not be shown; n/a (Not Available) - Not asked of a subset of respondents

Year: 2006

Community	Yes			No			Estimated Population
	#	%	C.I. (95%)	#	%	C.I. (95%)	#
Ala Moana	900	6.2	0.0 - 12.6	14,000	93.8	87.4 - 100.0	14,900
Hanalei/ Kapaa	600	5.7	1.9 - 9.6	10,100	94.3	90.4 - 98.1	10,700
Hilo	1,700	10.3	5.4 - 15.3	14,800	89.7	84.7 - 94.6	16,600
Kaaawa/ Kahaluu/ Kaneohe	1,900	7.4	0.1 - 14.6	23,600	92.6	85.4 - 99.9	25,500
Kahului	2,200	14.9	6.2 - 23.5	12,800	85.1	76.5 - 93.8	15,000
Kailua/ Waimanalo	2,000	10.0	2.8 - 17.3	17,500	90.0	82.7 - 97.2	19,500
Kaimuki/ Palolo/ Waikiki	1,500	5.1	1.7 - 8.4	28,000	94.9	91.6 - 98.3	29,500
Kona	1,400	10.3	4.4 - 16.2	12,000	89.7	83.8 - 95.6	13,400
Lahaina/ Wailuku	1,400	9.1	3.9 - 14.3	14,400	90.9	85.7 - 96.1	15,900
Lanai	200	17.6	7.0 - 28.1	1,000	82.4	71.9 - 93.0	1,200

Alcohol - heavy alcohol consumption in men by State, County, Island, Community, BRFSS Age Group, DOH Race-Ethnicity, Education Level, Employment Status (Grouped), Household Income, Poverty Level, Marital Status (Grouped), Married, Health Care Coverage, for the Year(s) - 2001, 2002, 2003, 2004, 2005, 2006, 2007, 2008, 2009, 2010

Note: Weighted numbers (#), percentages and 95% confidence intervals; Respondents aged 18 years and older; n/r (Not Reportable) - If the unweighted total responses for a dimension (row) is <50 that row will not be shown; n/a (Not Available) - Not asked of a subset of respondents

Year: 2006

Community	Yes			No			Estimated Population
	#	%	C.I. (95%)	#	%	C.I. (95%)	#
Lihue-Waimea	1,500	12.3	6.1 - 18.4	10,900	87.7	81.6 - 93.9	12,400
Manoa/ Upper Makiki	2,300	9.3	1.5 - 17.2	22,400	90.7	82.8 - 98.5	24,700
Mililani/ Wahiawa	1,400	4.6	0.1 - 9.2	28,100	95.4	90.8 - 99.9	29,500
Molokai	400	13.0	4.7 - 21.4	2,800	87.0	78.6 - 95.3	3,200
N.Hawaii	700	5.2	1.3 - 9.1	12,100	94.8	90.9 - 98.7	12,700
Nuuanu/ Kalihi/ Moanalua	3,600	10.2	3.7 - 16.7	31,800	89.8	83.3 - 96.3	35,400
Puna/ Kau	1,900	11.4	6.0 - 16.9	14,500	88.6	83.1 - 94.0	16,300
Salt Lake/ Foster Village	900	5.2	0.3 - 10.0	16,000	94.8	90.0 - 99.7	16,900
Upcountry/ Hana	1,600	9.6	4.1 - 15.0	15,000	90.4	85.0 - 95.9	16,600
Waialae/ Kahala/ Hawaii Kai	600	3.1	0.0 - 6.4	18,200	96.9	93.6 - 100.0	18,800

Report Source: The Hawaii Health Data Warehouse;
Data Source: State of Hawaii, Department of Health,
Behavioral Risk Factor Surveillance System (BRFSS)

Alcohol - heavy alcohol consumption in men by State, County, Island, Community, BRFSS Age Group, DOH Race-Ethnicity, Education Level, Employment Status (Grouped), Household Income, Poverty Level, Marital Status (Grouped), Married, Health Care Coverage, for the Year(s) - 2001, 2002, 2003, 2004, 2005, 2006, 2007, 2008, 2009, 2010

Note: Weighted numbers (#), percentages and 95% confidence intervals; Respondents aged 18 years and older; n/r (Not Reportable) - If the unweighted total responses for a dimension (row) is <50 that row will not be shown; n/a (Not Available) - Not asked of a subset of respondents

Year: 2006

Community	Yes			No			Estimated Population
	#	%	C.I. (95%)	#	%	C.I. (95%)	#
Waipahu/ Kapolei/ Ewa	4,400	6.8	3.5 - 10.0	60,600	93.2	90.0 - 96.5	64,900

Alcohol - heavy alcohol consumption in men by State, County, Island, Community, BRFSS Age Group, DOH Race-Ethnicity, Education Level, Employment Status (Grouped), Household Income, Poverty Level, Marital Status (Grouped), Married, Health Care Coverage, for the Year(s) - 2001, 2002, 2003, 2004, 2005, 2006, 2007, 2008, 2009, 2010

Note: Weighted numbers (#), percentages and 95% confidence intervals; Respondents aged 18 years and older; n/r (Not Reportable) - If the unweighted total responses for a dimension (row) is <50 that row will not be shown; n/a (Not Available) - Not asked of a subset of respondents

Year: 2006

BRFSS Age Group	Yes			No			Estimated Population
	#	%	C.I. (95%)	#	%	C.I. (95%)	#
18-24	3,900	5.9	1.8 - 10.1	61,700	94.1	89.9 - 98.2	65,600
25-34	8,400	10.1	6.1 - 14.2	74,500	89.9	85.8 - 93.9	83,000
35-44	6,300	7.1	4.4 - 9.8	82,100	92.9	90.2 - 95.6	88,400
45-54	8,200	9.4	6.8 - 12.0	78,800	90.6	88.0 - 93.2	87,000
55-64	3,600	5.1	3.2 - 6.9	66,300	94.9	93.1 - 96.8	69,900
65-74	3,700	9.9	6.2 - 13.6	33,600	90.1	86.4 - 93.8	37,300
75+	2,200	6.2	2.6 - 9.8	33,100	93.8	90.2 - 97.4	35,300

Alcohol - heavy alcohol consumption in men by State, County, Island, Community, BRFSS Age Group, DOH Race-Ethnicity, Education Level, Employment Status (Grouped), Household Income, Poverty Level, Marital Status (Grouped), Married, Health Care Coverage, for the Year(s) - 2001, 2002, 2003, 2004, 2005, 2006, 2007, 2008, 2009, 2010

Note: Weighted numbers (#), percentages and 95% confidence intervals; Respondents aged 18 years and older; n/r (Not Reportable) - If the unweighted total responses for a dimension (row) is <50 that row will not be shown; n/a (Not Available) - Not asked of a subset of respondents

Year: 2006

DOH Race-Ethnicity	Yes			No			Estimated Population
	#	%	C.I. (95%)	#	%	C.I. (95%)	#
Caucasian	15,300	9.7	7.6 - 11.9	141,800	90.3	88.1 - 92.4	157,100
Native Hawaiian	3,200	5.9	2.9 - 8.8	51,500	94.1	91.2 - 97.1	54,700
Chinese	900	3.5	0.2 - 6.9	24,300	96.5	93.1 - 99.8	25,200
Filipino	4,900	6.4	3.3 - 9.5	71,800	93.6	90.5 - 96.7	76,700
Japanese	6,500	7.0	4.2 - 9.7	86,700	93.0	90.3 - 95.8	93,200
Other Asian	200	1.3	0.0 - 3.5	13,900	98.7	96.5 - 100.0	14,100
Mixed Ethnicity	1,600	11.5	0.4 - 22.6	12,100	88.5	77.4 - 99.6	13,700
Other	500	4.0	0.0 - 8.7	11,200	96.0	91.3 - 100.0	11,700

Alcohol - heavy alcohol consumption in men by State, County, Island, Community, BRFSS Age Group, DOH Race-Ethnicity, Education Level, Employment Status (Grouped), Household Income, Poverty Level, Marital Status (Grouped), Married, Health Care Coverage, for the Year(s) - 2001, 2002, 2003, 2004, 2005, 2006, 2007, 2008, 2009, 2010

Note: Weighted numbers (#), percentages and 95% confidence intervals; Respondents aged 18 years and older; n/r (Not Reportable) - If the unweighted total responses for a dimension (row) is <50 that row will not be shown; n/a (Not Available) - Not asked of a subset of respondents

Year: 2006

Education Level	Yes			No			Estimated Population
	#	%	C.I. (95%)	#	%	C.I. (95%)	#
Grades 9 thru 11 (Some High School)	1,600	8.6	3.3 - 13.9	16,900	91.4	86.1 - 96.7	18,500
Grades 12 or GED (High School Grad)	11,100	7.5	5.3 - 9.7	137,600	92.5	90.3 - 94.7	148,700
College 1 to 3 years (Some College/ Tech)	12,700	9.9	7.2 - 12.6	115,200	90.1	87.4 - 92.8	127,900
College 4 years or more (College Grad)	9,800	5.8	3.9 - 7.7	158,600	94.2	92.3 - 96.1	168,500

Employment Status (Grouped)	Yes			No			Estimated Population
	#	%	C.I. (95%)	#	%	C.I. (95%)	#
Employed	28,200	8.2	6.6 - 9.8	315,900	91.8	90.2 - 93.4	344,100
Unemployed	1,200	7.3	0.6 - 14.1	15,200	92.7	85.9 - 99.4	16,400
Retired/Unable to work	6,400	7.1	4.9 - 9.3	84,200	92.9	90.7 - 95.1	90,600

Alcohol - heavy alcohol consumption in men by State, County, Island, Community, BRFSS Age Group, DOH Race-Ethnicity, Education Level, Employment Status (Grouped), Household Income, Poverty Level, Marital Status (Grouped), Married, Health Care Coverage, for the Year(s) - 2001, 2002, 2003, 2004, 2005, 2006, 2007, 2008, 2009, 2010

Note: Weighted numbers (#), percentages and 95% confidence intervals; Respondents aged 18 years and older; n/r (Not Reportable) - If the unweighted total responses for a dimension (row) is <50 that row will not be shown; n/a (Not Available) - Not asked of a subset of respondents

Year: 2006

Household Income	Yes			No			Estimated Population
	#	%	C.I. (95%)	#	%	C.I. (95%)	#
Less than \$10,000	800	9.2	1.2 - 17.3	7,800	90.8	82.7 - 98.8	8,600
\$10,000 to \$14,999	1,400	13.5	2.2 - 24.8	8,800	86.5	75.2 - 97.8	10,100
\$15,000 to \$19,999	1,000	5.1	1.7 - 8.6	19,200	94.9	91.4 - 98.3	20,200
\$20,000 to \$24,999	1,800	6.2	1.7 - 10.8	27,800	93.8	89.2 - 98.3	29,600
\$25,000 to \$34,999	4,700	9.3	5.6 - 13.0	45,800	90.7	87.0 - 94.4	50,500
\$35,000 to \$49,999	5,700	9.1	5.6 - 12.7	56,200	90.9	87.3 - 94.4	61,900
\$50,000 to \$74,999	6,200	7.8	4.8 - 10.9	73,200	92.2	89.1 - 95.2	79,400
\$75,000 or more	10,100	7.3	5.0 - 9.6	128,100	92.7	90.4 - 95.0	138,300

Alcohol - heavy alcohol consumption in men by State, County, Island, Community, BRFSS Age Group, DOH Race-Ethnicity, Education Level, Employment Status (Grouped), Household Income, Poverty Level, Marital Status (Grouped), Married, Health Care Coverage, for the Year(s) - 2001, 2002, 2003, 2004, 2005, 2006, 2007, 2008, 2009, 2010

Note: Weighted numbers (#), percentages and 95% confidence intervals; Respondents aged 18 years and older; n/r (Not Reportable) - If the unweighted total responses for a dimension (row) is <50 that row will not be shown; n/a (Not Available) - Not asked of a subset of respondents

Year: 2006

Poverty Level	Yes			No			Estimated Population
	#	%	C.I. (95%)	#	%	C.I. (95%)	#
0-130%	4,400	5.8	3.0 - 8.7	71,600	94.2	91.3 - 97.0	76,000
131-185%	6,800	12.7	7.7 - 17.8	46,900	87.3	82.2 - 92.3	53,700
186+%	20,500	7.6	6.1 - 9.1	248,400	92.4	90.9 - 93.9	268,900

Marital Status (Grouped)	Yes			No			Estimated Population
	#	%	C.I. (95%)	#	%	C.I. (95%)	#
Married	20,200	7.2	5.8 - 8.7	259,100	92.8	91.3 - 94.2	279,300
Unmarried Couple	2,100	10.7	1.3 - 20.1	17,100	89.3	79.9 - 98.7	19,100
Widowed	400	4.8	0.0 - 9.7	7,500	95.2	90.3 - 100.0	7,900
Other	13,600	8.3	6.0 - 10.7	149,700	91.7	89.3 - 94.0	163,300

Alcohol - heavy alcohol consumption in men by State, County, Island, Community, BRFSS Age Group, DOH Race-Ethnicity, Education Level, Employment Status (Grouped), Household Income, Poverty Level, Marital Status (Grouped), Married, Health Care Coverage, for the Year(s) - 2001, 2002, 2003, 2004, 2005, 2006, 2007, 2008, 2009, 2010

Note: Weighted numbers (#), percentages and 95% confidence intervals; Respondents aged 18 years and older; n/r (Not Reportable) - If the unweighted total responses for a dimension (row) is <50 that row will not be shown; n/a (Not Available) - Not asked of a subset of respondents

Year: 2006

Married	Yes			No			Estimated Population
	#	%	C.I. (95%)	#	%	C.I. (95%)	#
Yes	20,600	7.3	5.8 - 8.7	261,900	92.7	91.3 - 94.2	282,500
No	15,600	8.4	6.1 - 10.7	170,900	91.6	89.3 - 93.9	186,600

Health Care Coverage	Yes			No			Estimated Population
	#	%	C.I. (95%)	#	%	C.I. (95%)	#
Yes	33,000	7.8	6.5 - 9.1	389,400	92.2	90.9 - 93.5	422,400
No	3,300	7.0	3.5 - 10.6	43,000	93.0	89.4 - 96.5	46,200

Alcohol - heavy alcohol consumption in men by State, County, Island, Community, BRFSS Age Group, DOH Race-Ethnicity, Education Level, Employment Status (Grouped), Household Income, Poverty Level, Marital Status (Grouped), Married, Health Care Coverage, for the Year(s) - 2001, 2002, 2003, 2004, 2005, 2006, 2007, 2008, 2009, 2010

Note: Weighted numbers (#), percentages and 95% confidence intervals; Respondents aged 18 years and older; n/r (Not Reportable) - If the unweighted total responses for a dimension (row) is <50 that row will not be shown; n/a (Not Available) - Not asked of a subset of respondents

Year: 2005

State	Yes			No			Estimated Population
	#	%	C.I. (95%)	#	%	C.I. (95%)	#
Hawaii State	48,900	10.2	8.5 - 11.9	430,700	89.8	88.1 - 91.5	479,600

County	Yes			No			Estimated Population
	#	%	C.I. (95%)	#	%	C.I. (95%)	#
Hawaii	7,900	13.2	9.4 - 17.1	51,900	86.8	82.9 - 90.6	59,800
Honolulu	33,700	9.7	7.6 - 11.9	312,400	90.3	88.1 - 92.4	346,100
Kauai	2,500	11.3	6.0 - 16.6	19,600	88.7	83.4 - 94.0	22,100
Maui	4,800	9.3	5.9 - 12.6	46,900	90.7	87.4 - 94.1	51,700

Alcohol - heavy alcohol consumption in men by State, County, Island, Community, BRFSS Age Group, DOH Race-Ethnicity, Education Level, Employment Status (Grouped), Household Income, Poverty Level, Marital Status (Grouped), Married, Health Care Coverage, for the Year(s) - 2001, 2002, 2003, 2004, 2005, 2006, 2007, 2008, 2009, 2010

Note: Weighted numbers (#), percentages and 95% confidence intervals; Respondents aged 18 years and older; n/r (Not Reportable) - If the unweighted total responses for a dimension (row) is <50 that row will not be shown; n/a (Not Available) - Not asked of a subset of respondents

Year: 2005

Island	Yes			No			Estimated Population
	#	%	C.I. (95%)	#	%	C.I. (95%)	#
Hawaii	7,900	13.2	9.4 - 17.1	51,900	86.8	82.9 - 90.6	59,800
Kauai	2,500	11.3	6.0 - 16.6	19,600	88.7	83.4 - 94.0	22,100
Lanai	200	17.7	3.9 - 31.5	1,100	82.3	68.5 - 96.1	1,300
Maui	4,300	9.0	5.4 - 12.5	43,500	91.0	87.5 - 94.6	47,800
Molokai	300	10.7	1.3 - 20.2	2,300	89.3	79.8 - 98.7	2,500
Oahu	33,700	9.7	7.6 - 11.9	312,400	90.3	88.1 - 92.4	346,100

Community	Yes			No			Estimated Population
	#	%	C.I. (95%)	#	%	C.I. (95%)	#
Aiea/ Pearl City	3,400	9.8	3.8 - 15.7	31,700	90.2	84.3 - 96.2	35,200

Alcohol - heavy alcohol consumption in men by State, County, Island, Community, BRFSS Age Group, DOH Race-Ethnicity, Education Level, Employment Status (Grouped), Household Income, Poverty Level, Marital Status (Grouped), Married, Health Care Coverage, for the Year(s) - 2001, 2002, 2003, 2004, 2005, 2006, 2007, 2008, 2009, 2010

Note: Weighted numbers (#), percentages and 95% confidence intervals; Respondents aged 18 years and older; n/r (Not Reportable) - If the unweighted total responses for a dimension (row) is <50 that row will not be shown; n/a (Not Available) - Not asked of a subset of respondents

Year: 2005

Community	Yes			No			Estimated Population
	#	%	C.I. (95%)	#	%	C.I. (95%)	#
Ala Moana	1,800	10.4	0.0 - 22.6	15,500	89.6	77.4 - 100.0	17,300
Hanalei/ Kapaa	1,100	11.6	4.1 - 19.1	8,200	88.4	80.9 - 95.9	9,300
Hilo	2,400	13.9	7.8 - 20.0	14,800	86.1	80.0 - 92.2	17,200
Kaaawa/ Kahaluu/ Kaneohe	2,500	9.9	2.1 - 17.8	22,900	90.1	82.2 - 97.9	25,500
Kahului	1,700	10.9	4.4 - 17.4	14,100	89.1	82.6 - 95.6	15,800
Kailua/ Waimanalo	1,900	9.7	1.3 - 18.2	17,900	90.3	81.8 - 98.7	19,900
Kaimuki/ Palolo/ Waikiki	3,100	9.8	3.9 - 15.7	28,200	90.2	84.3 - 96.1	31,300
Kona	2,400	15.0	7.0 - 22.9	13,400	85.0	77.1 - 93.0	15,800
Lahaina/ Wailuku	1,300	7.4	2.8 - 12.0	16,100	92.6	88.0 - 97.2	17,300
Lanai	200	17.7	3.9 - 31.5	1,100	82.3	68.5 - 96.1	1,300

Report Source: The Hawaii Health Data Warehouse;
Data Source: State of Hawaii, Department of Health,
Behavioral Risk Factor Surveillance System (BRFSS)

Alcohol - heavy alcohol consumption in men by State, County, Island, Community, BRFSS Age Group, DOH Race-Ethnicity, Education Level, Employment Status (Grouped), Household Income, Poverty Level, Marital Status (Grouped), Married, Health Care Coverage, for the Year(s) - 2001, 2002, 2003, 2004, 2005, 2006, 2007, 2008, 2009, 2010

Note: Weighted numbers (#), percentages and 95% confidence intervals; Respondents aged 18 years and older; n/r (Not Reportable) - If the unweighted total responses for a dimension (row) is <50 that row will not be shown; n/a (Not Available) - Not asked of a subset of respondents

Year: 2005

Community	Yes			No			Estimated Population
	#	%	C.I. (95%)	#	%	C.I. (95%)	#
Lihue-Waimea	1,400	11.1	3.6 - 18.5	11,400	88.9	81.5 - 96.4	12,800
Manoa/ Upper Makiki	1,400	5.7	0.9 - 10.4	23,300	94.3	89.6 - 99.1	24,700
Mililani/ Wahiawa	3,600	10.3	4.3 - 16.2	31,800	89.7	83.8 - 95.7	35,500
Molokai	300	10.7	1.3 - 20.2	2,300	89.3	79.8 - 98.7	2,500
N.Hawaii	900	7.5	3.3 - 11.6	10,900	92.5	88.4 - 96.7	11,800
Nuuanu/ Kalihi/ Moanalua	3,500	10.3	1.7 - 18.8	30,900	89.7	81.2 - 98.3	34,500
Puna/ Kau	2,300	15.2	5.4 - 25.0	12,700	84.8	75.0 - 94.6	15,000
Salt Lake/ Foster Village	1,300	6.8	0.0 - 15.4	18,200	93.2	84.6 - 100.0	19,500
Upcountry/ Hana	1,300	8.7	1.4 - 16.1	13,400	91.3	83.9 - 98.6	14,600
Waialae/ Kahala/ Hawaii Kai	2,400	11.1	2.8 - 19.4	18,900	88.9	80.6 - 97.2	21,200

Report Source: The Hawaii Health Data Warehouse;
Data Source: State of Hawaii, Department of Health,
Behavioral Risk Factor Surveillance System (BRFSS)

Alcohol - heavy alcohol consumption in men by State, County, Island, Community, BRFSS Age Group, DOH Race-Ethnicity, Education Level, Employment Status (Grouped), Household Income, Poverty Level, Marital Status (Grouped), Married, Health Care Coverage, for the Year(s) - 2001, 2002, 2003, 2004, 2005, 2006, 2007, 2008, 2009, 2010

Note: Weighted numbers (#), percentages and 95% confidence intervals; Respondents aged 18 years and older; n/r (Not Reportable) - If the unweighted total responses for a dimension (row) is <50 that row will not be shown; n/a (Not Available) - Not asked of a subset of respondents

Year: 2005

Community	Yes			No			Estimated Population
	#	%	C.I. (95%)	#	%	C.I. (95%)	#
Waipahu/ Kapolei/ Ewa	7,700	12.5	6.7 - 18.3	53,800	87.5	81.7 - 93.3	61,400

Alcohol - heavy alcohol consumption in men by State, County, Island, Community, BRFSS Age Group, DOH Race-Ethnicity, Education Level, Employment Status (Grouped), Household Income, Poverty Level, Marital Status (Grouped), Married, Health Care Coverage, for the Year(s) - 2001, 2002, 2003, 2004, 2005, 2006, 2007, 2008, 2009, 2010

Note: Weighted numbers (#), percentages and 95% confidence intervals; Respondents aged 18 years and older; n/r (Not Reportable) - If the unweighted total responses for a dimension (row) is <50 that row will not be shown; n/a (Not Available) - Not asked of a subset of respondents

Year: 2005

BRFSS Age Group	Yes			No			Estimated Population
	#	%	C.I. (95%)	#	%	C.I. (95%)	#
18-24	10,800	16.6	9.6 - 23.6	54,400	83.4	76.4 - 90.4	65,300
25-34	11,700	13.6	9.1 - 18.0	74,600	86.4	82.0 - 90.9	86,200
35-44	5,900	6.5	4.1 - 8.9	85,600	93.5	91.1 - 95.9	91,500
45-54	7,000	7.8	4.6 - 11.0	82,800	92.2	89.0 - 95.4	89,800
55-64	7,900	11.5	6.9 - 16.1	60,900	88.5	83.9 - 93.1	68,800
65-74	3,000	7.7	4.2 - 11.3	35,200	92.3	88.7 - 95.8	38,100
75+	2,400	6.6	2.8 - 10.3	34,500	93.4	89.7 - 97.2	36,900

Alcohol - heavy alcohol consumption in men by State, County, Island, Community, BRFSS Age Group, DOH Race-Ethnicity, Education Level, Employment Status (Grouped), Household Income, Poverty Level, Marital Status (Grouped), Married, Health Care Coverage, for the Year(s) - 2001, 2002, 2003, 2004, 2005, 2006, 2007, 2008, 2009, 2010

Note: Weighted numbers (#), percentages and 95% confidence intervals; Respondents aged 18 years and older; n/r (Not Reportable) - If the unweighted total responses for a dimension (row) is <50 that row will not be shown; n/a (Not Available) - Not asked of a subset of respondents

Year: 2005

DOH Race-Ethnicity	Yes			No			Estimated Population
	#	%	C.I. (95%)	#	%	C.I. (95%)	#
Caucasian	17,700	10.2	8.0 - 12.5	155,400	89.8	87.5 - 92.0	173,100
Native Hawaiian	8,300	15.7	9.7 - 21.7	44,500	84.3	78.3 - 90.3	52,800
Chinese	800	3.1	0.0 - 6.7	25,100	96.9	93.3 - 100.0	25,900
Filipino	8,300	11.6	5.6 - 17.6	63,200	88.4	82.4 - 94.4	71,500
Japanese	8,200	8.1	4.8 - 11.4	92,600	91.9	88.6 - 95.2	100,800
Other	2,500	14.1	4.9 - 23.3	15,300	85.9	76.7 - 95.1	17,800

Alcohol - heavy alcohol consumption in men by State, County, Island, Community, BRFSS Age Group, DOH Race-Ethnicity, Education Level, Employment Status (Grouped), Household Income, Poverty Level, Marital Status (Grouped), Married, Health Care Coverage, for the Year(s) - 2001, 2002, 2003, 2004, 2005, 2006, 2007, 2008, 2009, 2010

Note: Weighted numbers (#), percentages and 95% confidence intervals; Respondents aged 18 years and older; n/r (Not Reportable) - If the unweighted total responses for a dimension (row) is <50 that row will not be shown; n/a (Not Available) - Not asked of a subset of respondents

Year: 2005

Education Level	Yes			No			Estimated Population
	#	%	C.I. (95%)	#	%	C.I. (95%)	#
Grades 9 thru 11 (Some High School)	2,200	12.4	4.3 - 20.6	15,400	87.6	79.4 - 95.7	17,600
Grades 12 or GED (High School Grad)	17,900	13.2	9.8 - 16.6	117,800	86.8	83.4 - 90.2	135,700
College 1 to 3 years (Some College/ Tech)	16,900	12.3	8.6 - 16.0	120,800	87.7	84.0 - 91.4	137,700
College 4 years or more (College Grad)	11,700	6.6	4.5 - 8.6	166,500	93.4	91.4 - 95.5	178,200

Employment Status (Grouped)	Yes			No			Estimated Population
	#	%	C.I. (95%)	#	%	C.I. (95%)	#
Employed	38,100	11.1	9.0 - 13.1	306,600	88.9	86.9 - 91.0	344,700
Retired/Unable to work	7,800	7.5	5.0 - 10.0	96,200	92.5	90.0 - 95.0	104,000
Student/Homemaker	2,800	12.1	1.0 - 23.1	20,700	87.9	76.9 - 99.0	23,600

Alcohol - heavy alcohol consumption in men by State, County, Island, Community, BRFSS Age Group, DOH Race-Ethnicity, Education Level, Employment Status (Grouped), Household Income, Poverty Level, Marital Status (Grouped), Married, Health Care Coverage, for the Year(s) - 2001, 2002, 2003, 2004, 2005, 2006, 2007, 2008, 2009, 2010

Note: Weighted numbers (#), percentages and 95% confidence intervals; Respondents aged 18 years and older; n/r (Not Reportable) - If the unweighted total responses for a dimension (row) is <50 that row will not be shown; n/a (Not Available) - Not asked of a subset of respondents

Year: 2005

Household Income	Yes			No			Estimated Population
	#	%	C.I. (95%)	#	%	C.I. (95%)	#
Less than \$10,000	1,300	9.9	2.2 - 17.7	11,700	90.1	82.3 - 97.8	13,000
\$10,000 to \$14,999	1,900	17.8	0.0 - 35.6	8,700	82.2	64.4 - 100.0	10,500
\$15,000 to \$19,999	1,600	7.1	1.3 - 13.0	20,700	92.9	87.0 - 98.7	22,300
\$20,000 to \$24,999	2,200	8.1	3.2 - 13.1	24,500	91.9	86.9 - 96.8	26,700
\$25,000 to \$34,999	4,100	8.7	3.3 - 14.1	43,500	91.3	85.9 - 96.7	47,700
\$35,000 to \$49,999	8,200	11.1	6.7 - 15.5	65,800	88.9	84.5 - 93.3	74,000
\$50,000 to \$74,999	13,000	13.0	8.8 - 17.3	86,900	87.0	82.7 - 91.2	99,900
\$75,000 or more	13,300	10.4	7.4 - 13.3	115,100	89.6	86.7 - 92.6	128,400

Alcohol - heavy alcohol consumption in men by State, County, Island, Community, BRFSS Age Group, DOH Race-Ethnicity, Education Level, Employment Status (Grouped), Household Income, Poverty Level, Marital Status (Grouped), Married, Health Care Coverage, for the Year(s) - 2001, 2002, 2003, 2004, 2005, 2006, 2007, 2008, 2009, 2010

Note: Weighted numbers (#), percentages and 95% confidence intervals; Respondents aged 18 years and older; n/r (Not Reportable) - If the unweighted total responses for a dimension (row) is <50 that row will not be shown; n/a (Not Available) - Not asked of a subset of respondents

Year: 2005

Poverty Level	Yes			No			Estimated Population
	#	%	C.I. (95%)	#	%	C.I. (95%)	#
0-130%	7,300	10.0	5.0 - 15.0	65,800	90.0	85.0 - 95.0	73,100
131-185%	3,100	7.4	1.9 - 13.0	38,200	92.6	87.0 - 98.1	41,200
186+%	35,300	11.4	9.4 - 13.5	272,900	88.6	86.5 - 90.6	308,200

Marital Status (Grouped)	Yes			No			Estimated Population
	#	%	C.I. (95%)	#	%	C.I. (95%)	#
Married	24,100	8.5	6.6 - 10.4	259,300	91.5	89.6 - 93.4	283,400
Unmarried Couple	1,600	12.2	0.4 - 23.9	11,500	87.8	76.1 - 99.6	13,000
Widowed	1,700	12.7	4.5 - 20.9	11,800	87.3	79.1 - 95.5	13,500
Other	21,500	12.7	9.4 - 15.9	148,300	87.3	84.1 - 90.6	169,800

Alcohol - heavy alcohol consumption in men by State, County, Island, Community, BRFSS Age Group, DOH Race-Ethnicity, Education Level, Employment Status (Grouped), Household Income, Poverty Level, Marital Status (Grouped), Married, Health Care Coverage, for the Year(s) - 2001, 2002, 2003, 2004, 2005, 2006, 2007, 2008, 2009, 2010

Note: Weighted numbers (#), percentages and 95% confidence intervals; Respondents aged 18 years and older; n/r (Not Reportable) - If the unweighted total responses for a dimension (row) is <50 that row will not be shown; n/a (Not Available) - Not asked of a subset of respondents

Year: 2005

Married	Yes			No			Estimated Population
	#	%	C.I. (95%)	#	%	C.I. (95%)	#
Yes	24,500	8.5	6.6 - 10.4	264,100	91.5	89.6 - 93.4	288,600
No	24,300	12.8	9.8 - 15.8	166,000	87.2	84.2 - 90.2	190,300

Health Care Coverage	Yes			No			Estimated Population
	#	%	C.I. (95%)	#	%	C.I. (95%)	#
Yes	42,200	9.6	7.9 - 11.3	397,700	90.4	88.7 - 92.1	439,900
No	6,700	17.3	10.1 - 24.6	32,000	82.7	75.4 - 89.9	38,700

Alcohol - heavy alcohol consumption in men by State, County, Island, Community, BRFSS Age Group, DOH Race-Ethnicity, Education Level, Employment Status (Grouped), Household Income, Poverty Level, Marital Status (Grouped), Married, Health Care Coverage, for the Year(s) - 2001, 2002, 2003, 2004, 2005, 2006, 2007, 2008, 2009, 2010

Note: Weighted numbers (#), percentages and 95% confidence intervals; Respondents aged 18 years and older; n/r (Not Reportable) - If the unweighted total responses for a dimension (row) is <50 that row will not be shown; n/a (Not Available) - Not asked of a subset of respondents

Year: 2004

State	Yes			No			Estimated Population
	#	%	C.I. (95%)	#	%	C.I. (95%)	#
Hawaii State	55,400	12.5	9.1 - 16.0	386,100	87.5	84.0 - 90.9	441,500

County	Yes			No			Estimated Population
	#	%	C.I. (95%)	#	%	C.I. (95%)	#
Hawaii	9,000	14.3	7.6 - 21.0	53,900	85.7	79.0 - 92.4	62,800
Honolulu	37,300	12.0	7.4 - 16.5	274,700	88.0	83.5 - 92.6	312,000
Kauai	3,000	15.8	5.8 - 25.8	15,800	84.2	74.2 - 94.2	18,700
Maui	6,100	12.8	4.6 - 21.1	41,700	87.2	78.9 - 95.4	47,900

Alcohol - heavy alcohol consumption in men by State, County, Island, Community, BRFSS Age Group, DOH Race-Ethnicity, Education Level, Employment Status (Grouped), Household Income, Poverty Level, Marital Status (Grouped), Married, Health Care Coverage, for the Year(s) - 2001, 2002, 2003, 2004, 2005, 2006, 2007, 2008, 2009, 2010

Note: Weighted numbers (#), percentages and 95% confidence intervals; Respondents aged 18 years and older; n/r (Not Reportable) - If the unweighted total responses for a dimension (row) is <50 that row will not be shown; n/a (Not Available) - Not asked of a subset of respondents

Year: 2004

Island	Yes			No			Estimated Population
	#	%	C.I. (95%)	#	%	C.I. (95%)	#
Hawaii	9,000	14.3	7.6 - 21.0	53,900	85.7	79.0 - 92.4	62,800
Kauai	3,000	15.8	5.8 - 25.8	15,800	84.2	74.2 - 94.2	18,700
Maui	5,200	11.6	3.0 - 20.2	39,400	88.4	79.8 - 97.0	44,600
Oahu	37,300	12.0	7.4 - 16.5	274,700	88.0	83.5 - 92.6	312,000

Community	Yes			No			Estimated Population
	#	%	C.I. (95%)	#	%	C.I. (95%)	#
Hilo	3,300	19.1	4.6 - 33.7	13,900	80.9	66.3 - 95.4	17,200
Puna/ Kau	2,500	11.9	0.0 - 23.8	18,700	88.1	76.2 - 100.0	21,200
Waipahu/ Kapolei/ Ewa	1,300	2.5	0.0 - 6.1	53,100	97.5	93.9 - 100.0	54,500

Alcohol - heavy alcohol consumption in men by State, County, Island, Community, BRFSS Age Group, DOH Race-Ethnicity, Education Level, Employment Status (Grouped), Household Income, Poverty Level, Marital Status (Grouped), Married, Health Care Coverage, for the Year(s) - 2001, 2002, 2003, 2004, 2005, 2006, 2007, 2008, 2009, 2010

Note: Weighted numbers (#), percentages and 95% confidence intervals; Respondents aged 18 years and older; n/r (Not Reportable) - If the unweighted total responses for a dimension (row) is <50 that row will not be shown; n/a (Not Available) - Not asked of a subset of respondents

Year: 2004

BRFSS Age Group	Yes			No			Estimated Population
	#	%	C.I. (95%)	#	%	C.I. (95%)	#
18-24	16,400	29.5	11.7 - 47.3	39,300	70.5	52.7 - 88.3	55,700
25-34	8,300	9.7	3.1 - 16.4	77,400	90.3	83.6 - 96.9	85,700
35-44	8,400	9.8	4.2 - 15.5	77,300	90.2	84.5 - 95.8	85,700
45-54	9,400	11.3	5.5 - 17.1	73,600	88.7	82.9 - 94.5	83,000
55-64	8,100	13.9	6.6 - 21.1	50,300	86.1	78.9 - 93.4	58,400
65-74	3,500	9.5	0.0 - 18.9	33,100	90.5	81.1 - 100.0	36,600
75+	1,300	3.9	0.0 - 8.8	31,500	96.1	91.2 - 100.0	32,800

Alcohol - heavy alcohol consumption in men by State, County, Island, Community, BRFSS Age Group, DOH Race-Ethnicity, Education Level, Employment Status (Grouped), Household Income, Poverty Level, Marital Status (Grouped), Married, Health Care Coverage, for the Year(s) - 2001, 2002, 2003, 2004, 2005, 2006, 2007, 2008, 2009, 2010

Note: Weighted numbers (#), percentages and 95% confidence intervals; Respondents aged 18 years and older; n/r (Not Reportable) - If the unweighted total responses for a dimension (row) is <50 that row will not be shown; n/a (Not Available) - Not asked of a subset of respondents

Year: 2004

DOH Race-Ethnicity	Yes			No			Estimated Population
	#	%	C.I. (95%)	#	%	C.I. (95%)	#
Caucasian	21,700	14.1	9.3 - 18.9	132,000	85.9	81.1 - 90.7	153,700
Native Hawaiian	10,100	19.9	9.0 - 30.8	40,800	80.1	69.2 - 91.0	50,900
Filipino	3,600	5.6	0.9 - 10.3	60,700	94.4	89.7 - 99.1	64,300
Japanese	5,600	7.0	1.6 - 12.5	74,200	93.0	87.5 - 98.4	79,700

Education Level	Yes			No			Estimated Population
	#	%	C.I. (95%)	#	%	C.I. (95%)	#
Grades 12 or GED (High School Grad)	13,600	10.8	6.2 - 15.5	111,700	89.2	84.5 - 93.8	125,300
College 1 to 3 years (Some College/ Tech)	22,200	15.1	7.2 - 23.0	124,800	84.9	77.0 - 92.8	146,900
College 4 years or more (College Grad)	14,600	9.9	5.7 - 14.1	132,900	90.1	85.9 - 94.3	147,500

Alcohol - heavy alcohol consumption in men by State, County, Island, Community, BRFSS Age Group, DOH Race-Ethnicity, Education Level, Employment Status (Grouped), Household Income, Poverty Level, Marital Status (Grouped), Married, Health Care Coverage, for the Year(s) - 2001, 2002, 2003, 2004, 2005, 2006, 2007, 2008, 2009, 2010

Note: Weighted numbers (#), percentages and 95% confidence intervals; Respondents aged 18 years and older; n/r (Not Reportable) - If the unweighted total responses for a dimension (row) is <50 that row will not be shown; n/a (Not Available) - Not asked of a subset of respondents

Year: 2004

Employment Status (Grouped)	Yes			No			Estimated Population
	#	%	C.I. (95%)	#	%	C.I. (95%)	#
Employed	45,400	13.9	9.6 - 18.2	280,600	86.1	81.8 - 90.4	325,900
Retired/Unable to work	6,400	7.6	2.4 - 12.9	77,600	92.4	87.1 - 97.6	84,000

Household Income	Yes			No			Estimated Population
	#	%	C.I. (95%)	#	%	C.I. (95%)	#
\$20,000 to \$24,999	1,700	5.4	0.0 - 10.9	29,500	94.6	89.1 - 100.0	31,200
\$25,000 to \$34,999	7,900	14.6	5.6 - 23.5	46,200	85.4	76.5 - 94.4	54,100
\$35,000 to \$49,999	8,200	10.3	4.7 - 16.0	71,300	89.7	84.0 - 95.3	79,600
\$50,000 to \$74,999	15,400	12.2	3.6 - 20.9	110,200	87.8	79.1 - 96.4	125,500
\$75,000 or more	16,500	14.5	8.2 - 20.7	97,400	85.5	79.3 - 91.8	113,900

Alcohol - heavy alcohol consumption in men by State, County, Island, Community, BRFSS Age Group, DOH Race-Ethnicity, Education Level, Employment Status (Grouped), Household Income, Poverty Level, Marital Status (Grouped), Married, Health Care Coverage, for the Year(s) - 2001, 2002, 2003, 2004, 2005, 2006, 2007, 2008, 2009, 2010

Note: Weighted numbers (#), percentages and 95% confidence intervals; Respondents aged 18 years and older; n/r (Not Reportable) - If the unweighted total responses for a dimension (row) is <50 that row will not be shown; n/a (Not Available) - Not asked of a subset of respondents

Year: 2004

Poverty Level	Yes			No			Estimated Population
	#	%	C.I. (95%)	#	%	C.I. (95%)	#
0-130%	8,500	13.2	4.7 - 21.8	55,800	86.8	78.2 - 95.3	64,300
131-185%	6,400	10.9	0.0 - 27.2	52,200	89.1	72.8 - 100.0	58,600
186+%	40,500	12.7	9.3 - 16.1	278,100	87.3	83.9 - 90.7	318,500

Marital Status (Grouped)	Yes			No			Estimated Population
	#	%	C.I. (95%)	#	%	C.I. (95%)	#
Married	23,000	9.2	5.8 - 12.6	226,300	90.8	87.4 - 94.2	249,300
Other	30,000	17.8	10.6 - 25.0	138,800	82.2	75.0 - 89.4	168,800

Alcohol - heavy alcohol consumption in men by State, County, Island, Community, BRFSS Age Group, DOH Race-Ethnicity, Education Level, Employment Status (Grouped), Household Income, Poverty Level, Marital Status (Grouped), Married, Health Care Coverage, for the Year(s) - 2001, 2002, 2003, 2004, 2005, 2006, 2007, 2008, 2009, 2010

Note: Weighted numbers (#), percentages and 95% confidence intervals; Respondents aged 18 years and older; n/r (Not Reportable) - If the unweighted total responses for a dimension (row) is <50 that row will not be shown; n/a (Not Available) - Not asked of a subset of respondents

Year: 2004

Married	Yes			No			Estimated Population
	#	%	C.I. (95%)	#	%	C.I. (95%)	#
Yes	23,100	9.1	5.8 - 12.4	230,100	90.9	87.6 - 94.2	253,200
No	32,300	17.3	10.7 - 24.0	154,200	82.7	76.0 - 89.3	186,600

Health Care Coverage	Yes			No			Estimated Population
	#	%	C.I. (95%)	#	%	C.I. (95%)	#
Yes	48,700	12.5	8.7 - 16.2	342,500	87.5	83.8 - 91.3	391,300
No	5,000	10.5	3.3 - 17.8	42,600	89.5	82.2 - 96.7	47,600

Alcohol - heavy alcohol consumption in men by State, County, Island, Community, BRFSS Age Group, DOH Race-Ethnicity, Education Level, Employment Status (Grouped), Household Income, Poverty Level, Marital Status (Grouped), Married, Health Care Coverage, for the Year(s) - 2001, 2002, 2003, 2004, 2005, 2006, 2007, 2008, 2009, 2010

Note: Weighted numbers (#), percentages and 95% confidence intervals; Respondents aged 18 years and older; n/r (Not Reportable) - If the unweighted total responses for a dimension (row) is <50 that row will not be shown; n/a (Not Available) - Not asked of a subset of respondents

Year: 2003

State	Yes			No			Estimated Population
	#	%	C.I. (95%)	#	%	C.I. (95%)	#
Hawaii State	34,000	7.5	5.8 - 9.1	419,800	92.5	90.9 - 94.2	453,800

County	Yes			No			Estimated Population
	#	%	C.I. (95%)	#	%	C.I. (95%)	#
Hawaii	4,600	8.1	4.8 - 11.3	52,200	91.9	88.7 - 95.2	56,800
Honolulu	25,000	7.6	5.5 - 9.8	302,900	92.4	90.2 - 94.5	328,000
Kauai	1,900	8.8	4.4 - 13.3	19,200	91.2	86.7 - 95.6	21,100
Maui	2,500	5.2	1.8 - 8.7	45,400	94.8	91.3 - 98.2	47,900

Alcohol - heavy alcohol consumption in men by State, County, Island, Community, BRFSS Age Group, DOH Race-Ethnicity, Education Level, Employment Status (Grouped), Household Income, Poverty Level, Marital Status (Grouped), Married, Health Care Coverage, for the Year(s) - 2001, 2002, 2003, 2004, 2005, 2006, 2007, 2008, 2009, 2010

Note: Weighted numbers (#), percentages and 95% confidence intervals; Respondents aged 18 years and older; n/r (Not Reportable) - If the unweighted total responses for a dimension (row) is <50 that row will not be shown; n/a (Not Available) - Not asked of a subset of respondents

Year: 2003

Island	Yes			No			Estimated Population
	#	%	C.I. (95%)	#	%	C.I. (95%)	#
Hawaii	4,600	8.1	4.8 - 11.3	52,200	91.9	88.7 - 95.2	56,800
Kauai	1,900	8.8	4.4 - 13.3	19,200	91.2	86.7 - 95.6	21,100
Maui	2,200	5.2	1.4 - 8.9	41,200	94.8	91.1 - 98.6	43,400
Oahu	25,000	7.6	5.5 - 9.8	302,900	92.4	90.2 - 94.5	328,000

Community	Yes			No			Estimated Population
	#	%	C.I. (95%)	#	%	C.I. (95%)	#
Aiea/ Pearl City	1,500	6.0	0.0 - 12.1	24,200	94.0	87.9 - 100.0	25,800
Hanalei/ Kapaa	1,000	11.6	4.0 - 19.2	7,900	88.4	80.8 - 96.0	8,900
Hilo	2,100	12.8	4.5 - 21.1	14,600	87.2	78.9 - 95.5	16,800

Alcohol - heavy alcohol consumption in men by State, County, Island, Community, BRFSS Age Group, DOH Race-Ethnicity, Education Level, Employment Status (Grouped), Household Income, Poverty Level, Marital Status (Grouped), Married, Health Care Coverage, for the Year(s) - 2001, 2002, 2003, 2004, 2005, 2006, 2007, 2008, 2009, 2010

Note: Weighted numbers (#), percentages and 95% confidence intervals; Respondents aged 18 years and older; n/r (Not Reportable) - If the unweighted total responses for a dimension (row) is <50 that row will not be shown; n/a (Not Available) - Not asked of a subset of respondents

Year: 2003

Community	Yes			No			Estimated Population
	#	%	C.I. (95%)	#	%	C.I. (95%)	#
Kaaawa/ Kahaluu/ Kaneohe	1,500	7.6	0.0 - 17.0	18,100	92.4	83.0 - 100.0	19,600
Kahului	900	5.4	0.4 - 10.3	15,100	94.6	89.7 - 99.6	15,900
Kailua/ Waimanalo	1,500	6.8	0.0 - 13.8	20,300	93.2	86.2 - 100.0	21,800
Kaimuki/ Palolo/ Waikiki	2,500	7.1	2.4 - 11.9	32,100	92.9	88.1 - 97.6	34,600
Kona	900	6.3	1.5 - 11.2	13,600	93.7	88.8 - 98.5	14,500
Lahaina/ Wailuku	1,000	7.2	0.0 - 16.0	12,700	92.8	84.0 - 100.0	13,700
Lihue-Waimea	800	6.8	1.5 - 12.1	11,400	93.2	87.9 - 98.5	12,200
Manoa/ Upper Makiki	3,700	12.4	2.2 - 22.7	25,900	87.6	77.3 - 97.8	29,500
Mililani/ Wahiawa	1,600	5.3	0.0 - 11.6	28,800	94.7	88.4 - 100.0	30,400
N.Hawaii	800	6.2	0.4 - 12.0	11,500	93.8	88.0 - 99.6	12,300

Report Source: The Hawaii Health Data Warehouse;
Data Source: State of Hawaii, Department of Health,
Behavioral Risk Factor Surveillance System (BRFSS)

Alcohol - heavy alcohol consumption in men by State, County, Island, Community, BRFSS Age Group, DOH Race-Ethnicity, Education Level, Employment Status (Grouped), Household Income, Poverty Level, Marital Status (Grouped), Married, Health Care Coverage, for the Year(s) - 2001, 2002, 2003, 2004, 2005, 2006, 2007, 2008, 2009, 2010

Note: Weighted numbers (#), percentages and 95% confidence intervals; Respondents aged 18 years and older; n/r (Not Reportable) - If the unweighted total responses for a dimension (row) is <50 that row will not be shown; n/a (Not Available) - Not asked of a subset of respondents

Year: 2003

Community	Yes			No			Estimated Population
	#	%	C.I. (95%)	#	%	C.I. (95%)	#
Nuuanu/ Kalihi/ Moanalua	1,600	4.2	0.0 - 8.7	36,200	95.8	91.3 - 100.0	37,800
Puna/ Kau	800	5.7	1.2 - 10.1	12,500	94.3	89.9 - 98.8	13,300
Salt Lake/ Foster Village	1,700	7.0	0.0 - 15.1	22,900	93.0	84.9 - 100.0	24,600
Upcountry/ Hana	400	2.9	0.0 - 8.5	13,400	97.1	91.5 - 100.0	13,800
Waipahu/ Kapolei/ Ewa	2,500	5.3	1.2 - 9.5	43,600	94.7	90.5 - 98.8	46,000

Alcohol - heavy alcohol consumption in men by State, County, Island, Community, BRFSS Age Group, DOH Race-Ethnicity, Education Level, Employment Status (Grouped), Household Income, Poverty Level, Marital Status (Grouped), Married, Health Care Coverage, for the Year(s) - 2001, 2002, 2003, 2004, 2005, 2006, 2007, 2008, 2009, 2010

Note: Weighted numbers (#), percentages and 95% confidence intervals; Respondents aged 18 years and older; n/r (Not Reportable) - If the unweighted total responses for a dimension (row) is <50 that row will not be shown; n/a (Not Available) - Not asked of a subset of respondents

Year: 2003

BRFSS Age Group	Yes			No			Estimated Population
	#	%	C.I. (95%)	#	%	C.I. (95%)	#
18-24	7,000	11.3	4.7 - 18.0	54,600	88.7	82.0 - 95.3	61,500
25-34	5,800	6.9	3.4 - 10.5	78,100	93.1	89.5 - 96.6	83,900
35-44	7,500	8.3	4.8 - 11.8	83,000	91.7	88.2 - 95.2	90,500
45-54	5,400	6.1	3.5 - 8.8	82,300	93.9	91.2 - 96.5	87,700
55-64	5,700	9.7	4.2 - 15.2	53,300	90.3	84.8 - 95.8	59,000
65-74	1,500	4.1	1.1 - 7.1	36,200	95.9	92.9 - 98.9	37,800
75+	1,100	3.2	0.0 - 7.5	32,000	96.8	92.5 - 100.0	33,000

Alcohol - heavy alcohol consumption in men by State, County, Island, Community, BRFSS Age Group, DOH Race-Ethnicity, Education Level, Employment Status (Grouped), Household Income, Poverty Level, Marital Status (Grouped), Married, Health Care Coverage, for the Year(s) - 2001, 2002, 2003, 2004, 2005, 2006, 2007, 2008, 2009, 2010

Note: Weighted numbers (#), percentages and 95% confidence intervals; Respondents aged 18 years and older; n/r (Not Reportable) - If the unweighted total responses for a dimension (row) is <50 that row will not be shown; n/a (Not Available) - Not asked of a subset of respondents

Year: 2003

DOH Race-Ethnicity	Yes			No			Estimated Population
	#	%	C.I. (95%)	#	%	C.I. (95%)	#
Caucasian	16,100	8.9	6.1 - 11.7	164,900	91.1	88.3 - 93.9	181,000
Native Hawaiian	3,800	10.3	3.4 - 17.3	32,500	89.7	82.7 - 96.6	36,200
Chinese	3,300	6.4	1.2 - 11.5	49,100	93.6	88.5 - 98.8	52,500
Filipino	2,300	3.5	0.6 - 6.4	62,600	96.5	93.6 - 99.4	64,900
Japanese	5,900	7.3	3.6 - 10.9	75,100	92.7	89.1 - 96.4	81,000

Alcohol - heavy alcohol consumption in men by State, County, Island, Community, BRFSS Age Group, DOH Race-Ethnicity, Education Level, Employment Status (Grouped), Household Income, Poverty Level, Marital Status (Grouped), Married, Health Care Coverage, for the Year(s) - 2001, 2002, 2003, 2004, 2005, 2006, 2007, 2008, 2009, 2010

Note: Weighted numbers (#), percentages and 95% confidence intervals; Respondents aged 18 years and older; n/r (Not Reportable) - If the unweighted total responses for a dimension (row) is <50 that row will not be shown; n/a (Not Available) - Not asked of a subset of respondents

Year: 2003

Education Level	Yes			No			Estimated Population
	#	%	C.I. (95%)	#	%	C.I. (95%)	#
Grades 9 thru 11 (Some High School)	1,700	8.9	0.9 - 16.9	17,600	91.1	83.1 - 99.1	19,300
Grades 12 or GED (High School Grad)	11,900	8.4	5.4 - 11.5	129,000	91.6	88.5 - 94.6	140,900
College 1 to 3 years (Some College/ Tech)	12,000	9.8	5.9 - 13.7	110,300	90.2	86.3 - 94.1	122,300
College 4 years or more (College Grad)	7,400	4.5	2.6 - 6.4	156,200	95.5	93.6 - 97.4	163,600

Employment Status (Grouped)	Yes			No			Estimated Population
	#	%	C.I. (95%)	#	%	C.I. (95%)	#
Employed	25,900	7.9	5.9 - 9.9	302,700	92.1	90.1 - 94.1	328,600
Unemployed	2,200	12.2	2.8 - 21.7	15,600	87.8	78.3 - 97.2	17,800
Retired/Unable to work	4,800	5.4	2.0 - 8.7	85,000	94.6	91.3 - 98.0	89,800

Alcohol - heavy alcohol consumption in men by State, County, Island, Community, BRFSS Age Group, DOH Race-Ethnicity, Education Level, Employment Status (Grouped), Household Income, Poverty Level, Marital Status (Grouped), Married, Health Care Coverage, for the Year(s) - 2001, 2002, 2003, 2004, 2005, 2006, 2007, 2008, 2009, 2010

Note: Weighted numbers (#), percentages and 95% confidence intervals; Respondents aged 18 years and older; n/r (Not Reportable) - If the unweighted total responses for a dimension (row) is <50 that row will not be shown; n/a (Not Available) - Not asked of a subset of respondents

Year: 2003

Household Income	Yes			No			Estimated Population
	#	%	C.I. (95%)	#	%	C.I. (95%)	#
Less than \$10,000	1,400	8.8	0.7 - 16.9	14,300	91.2	83.1 - 99.3	15,700
\$10,000 to \$14,999	1,400	6.2	0.1 - 12.3	21,600	93.8	87.7 - 99.9	23,000
\$15,000 to \$19,999	4,800	19.2	6.7 - 31.6	20,100	80.8	68.4 - 93.3	24,800
\$20,000 to \$24,999	3,200	11.6	3.1 - 20.2	24,300	88.4	79.8 - 96.9	27,400
\$25,000 to \$34,999	2,800	6.3	2.7 - 9.8	42,100	93.7	90.2 - 97.3	44,900
\$35,000 to \$49,999	7,500	10.1	5.6 - 14.5	67,300	89.9	85.5 - 94.4	74,800
\$50,000 to \$74,999	3,300	4.5	1.9 - 7.2	68,900	95.5	92.8 - 98.1	72,100
\$75,000 or more	4,600	5.3	2.2 - 8.4	82,200	94.7	91.6 - 97.8	86,800

Alcohol - heavy alcohol consumption in men by State, County, Island, Community, BRFSS Age Group, DOH Race-Ethnicity, Education Level, Employment Status (Grouped), Household Income, Poverty Level, Marital Status (Grouped), Married, Health Care Coverage, for the Year(s) - 2001, 2002, 2003, 2004, 2005, 2006, 2007, 2008, 2009, 2010

Note: Weighted numbers (#), percentages and 95% confidence intervals; Respondents aged 18 years and older; n/r (Not Reportable) - If the unweighted total responses for a dimension (row) is <50 that row will not be shown; n/a (Not Available) - Not asked of a subset of respondents

Year: 2003

Poverty Level	Yes			No			Estimated Population
	#	%	C.I. (95%)	#	%	C.I. (95%)	#
0-130%	9,200	11.6	6.1 - 17.0	70,500	88.4	83.0 - 93.9	79,800
131-185%	4,200	9.0	3.2 - 14.7	43,100	91.0	85.3 - 96.8	47,300
186+%	15,600	6.4	4.7 - 8.2	227,000	93.6	91.8 - 95.3	242,600

Marital Status (Grouped)	Yes			No			Estimated Population
	#	%	C.I. (95%)	#	%	C.I. (95%)	#
Married	13,300	5.1	3.4 - 6.8	247,600	94.9	93.2 - 96.6	260,900
Widowed	200	1.1	0.0 - 3.1	16,200	98.9	96.9 - 100.0	16,400
Other	18,700	11.2	7.9 - 14.5	148,700	88.8	85.5 - 92.1	167,300

Alcohol - heavy alcohol consumption in men by State, County, Island, Community, BRFSS Age Group, DOH Race-Ethnicity, Education Level, Employment Status (Grouped), Household Income, Poverty Level, Marital Status (Grouped), Married, Health Care Coverage, for the Year(s) - 2001, 2002, 2003, 2004, 2005, 2006, 2007, 2008, 2009, 2010

Note: Weighted numbers (#), percentages and 95% confidence intervals; Respondents aged 18 years and older; n/r (Not Reportable) - If the unweighted total responses for a dimension (row) is <50 that row will not be shown; n/a (Not Available) - Not asked of a subset of respondents

Year: 2003

Married	Yes			No			Estimated Population
	#	%	C.I. (95%)	#	%	C.I. (95%)	#
Yes	14,200	5.3	3.6 - 7.0	252,400	94.7	93.0 - 96.4	266,600
No	19,800	10.6	7.5 - 13.7	167,400	89.4	86.3 - 92.5	187,200

Health Care Coverage	Yes			No			Estimated Population
	#	%	C.I. (95%)	#	%	C.I. (95%)	#
Yes	31,600	7.7	6.0 - 9.5	377,100	92.3	90.5 - 94.0	408,700
No	2,400	5.4	1.5 - 9.2	42,100	94.6	90.8 - 98.5	44,500

Alcohol - heavy alcohol consumption in men by State, County, Island, Community, BRFSS Age Group, DOH Race-Ethnicity, Education Level, Employment Status (Grouped), Household Income, Poverty Level, Marital Status (Grouped), Married, Health Care Coverage, for the Year(s) - 2001, 2002, 2003, 2004, 2005, 2006, 2007, 2008, 2009, 2010

Note: Weighted numbers (#), percentages and 95% confidence intervals; Respondents aged 18 years and older; n/r (Not Reportable) - If the unweighted total responses for a dimension (row) is <50 that row will not be shown; n/a (Not Available) - Not asked of a subset of respondents

Year: 2002

State	Yes			No			Estimated Population
	#	%	C.I. (95%)	#	%	C.I. (95%)	#
Hawaii State	27,100	6.1	4.8 - 7.4	417,800	93.9	92.6 - 95.2	445,000

County	Yes			No			Estimated Population
	#	%	C.I. (95%)	#	%	C.I. (95%)	#
Hawaii	5,100	9.5	6.6 - 12.5	48,800	90.5	87.5 - 93.4	53,900
Honolulu	15,400	4.8	3.2 - 6.3	308,400	95.2	93.7 - 96.8	323,800
Kauai	2,200	10.6	5.4 - 15.8	18,200	89.4	84.2 - 94.6	20,400
Maui	4,400	9.4	6.3 - 12.5	42,400	90.6	87.5 - 93.7	46,800

Alcohol - heavy alcohol consumption in men by State, County, Island, Community, BRFSS Age Group, DOH Race-Ethnicity, Education Level, Employment Status (Grouped), Household Income, Poverty Level, Marital Status (Grouped), Married, Health Care Coverage, for the Year(s) - 2001, 2002, 2003, 2004, 2005, 2006, 2007, 2008, 2009, 2010

Note: Weighted numbers (#), percentages and 95% confidence intervals; Respondents aged 18 years and older; n/r (Not Reportable) - If the unweighted total responses for a dimension (row) is <50 that row will not be shown; n/a (Not Available) - Not asked of a subset of respondents

Year: 2002

Island	Yes			No			Estimated Population
	#	%	C.I. (95%)	#	%	C.I. (95%)	#
Hawaii	5,100	9.5	6.6 - 12.5	48,800	90.5	87.5 - 93.4	53,900
Kauai	2,200	10.6	5.4 - 15.8	18,200	89.4	84.2 - 94.6	20,400
Lanai	100	2.4	0.0 - 5.8	2,100	97.6	94.2 - 100.0	2,200
Maui	4,200	10.1	6.6 - 13.7	36,900	89.9	86.3 - 93.4	41,100
Molokai	200	4.9	0.5 - 9.4	3,400	95.1	90.6 - 99.5	3,600
Oahu	15,400	4.8	3.2 - 6.3	308,400	95.2	93.7 - 96.8	323,800

Community	Yes			No			Estimated Population
	#	%	C.I. (95%)	#	%	C.I. (95%)	#
Aiea/ Pearl City	100	0.3	0.0 - 1.0	32,100	99.7	99.0 - 100.0	32,200

Alcohol - heavy alcohol consumption in men by State, County, Island, Community, BRFSS Age Group, DOH Race-Ethnicity, Education Level, Employment Status (Grouped), Household Income, Poverty Level, Marital Status (Grouped), Married, Health Care Coverage, for the Year(s) - 2001, 2002, 2003, 2004, 2005, 2006, 2007, 2008, 2009, 2010

Note: Weighted numbers (#), percentages and 95% confidence intervals; Respondents aged 18 years and older; n/r (Not Reportable) - If the unweighted total responses for a dimension (row) is <50 that row will not be shown; n/a (Not Available) - Not asked of a subset of respondents

Year: 2002

Community	Yes			No			Estimated Population
	#	%	C.I. (95%)	#	%	C.I. (95%)	#
Ala Moana	900	5.2	0.0 - 10.6	16,500	94.8	89.4 - 100.0	17,400
Hanalei/ Kapaa	1,200	13.6	3.7 - 23.6	7,400	86.4	76.4 - 96.3	8,600
Hilo	1,500	9.1	4.1 - 14.2	15,400	90.9	85.8 - 95.9	16,900
Kaaawa/ Kahaluu/ Kaneohe	1,000	4.9	0.0 - 10.5	19,400	95.1	89.5 - 100.0	20,400
Kahului	1,000	6.7	2.3 - 11.2	13,500	93.3	88.8 - 97.7	14,500
Kailua/ Waimanalo	500	1.9	0.0 - 4.2	23,500	98.1	95.8 - 100.0	24,000
Kaimuki/ Palolo/ Waikiki	2,200	7.8	2.9 - 12.7	25,600	92.2	87.3 - 97.1	27,800
Kona	2,000	12.4	6.0 - 18.7	14,100	87.6	81.3 - 94.0	16,100
Lahaina/ Wailuku	1,800	12.9	5.3 - 20.4	12,300	87.1	79.6 - 94.7	14,100
Lanai	100	2.4	0.0 - 5.8	2,100	97.6	94.2 - 100.0	2,200

Alcohol - heavy alcohol consumption in men by State, County, Island, Community, BRFSS Age Group, DOH Race-Ethnicity, Education Level, Employment Status (Grouped), Household Income, Poverty Level, Marital Status (Grouped), Married, Health Care Coverage, for the Year(s) - 2001, 2002, 2003, 2004, 2005, 2006, 2007, 2008, 2009, 2010

Note: Weighted numbers (#), percentages and 95% confidence intervals; Respondents aged 18 years and older; n/r (Not Reportable) - If the unweighted total responses for a dimension (row) is <50 that row will not be shown; n/a (Not Available) - Not asked of a subset of respondents

Year: 2002

Community	Yes			No			Estimated Population
	#	%	C.I. (95%)	#	%	C.I. (95%)	#
Lihue-Waimea	1,000	8.4	3.4 - 13.5	10,800	91.6	86.5 - 96.6	11,800
Manoa/ Upper Makiki	2,700	8.4	0.0 - 17.1	29,200	91.6	82.9 - 100.0	31,900
Mililani/ Wahiawa	500	1.6	0.0 - 3.5	30,300	98.4	96.5 - 100.0	30,800
Molokai	200	4.9	0.5 - 9.4	3,400	95.1	90.6 - 99.5	3,600
N.Hawaii	800	7.8	2.2 - 13.5	9,400	92.2	86.5 - 97.8	10,200
Nuuanu/ Kalihi/ Moanalua	1,900	5.9	0.5 - 11.3	30,000	94.1	88.7 - 99.5	31,900
Puna/ Kau	800	7.5	1.8 - 13.2	9,900	92.5	86.8 - 98.2	10,700
Salt Lake/ Foster Village	1,400	6.6	0.0 - 16.3	19,700	93.4	83.7 - 100.0	21,000
Upcountry/ Hana	1,400	11.0	5.2 - 16.9	11,100	89.0	83.1 - 94.8	12,400
Waialae/ Kahala/ Hawaii Kai	300	1.3	0.0 - 3.1	23,400	98.7	96.9 - 100.0	23,700

Report Source: The Hawaii Health Data Warehouse;
Data Source: State of Hawaii, Department of Health,
Behavioral Risk Factor Surveillance System (BRFSS)

Alcohol - heavy alcohol consumption in men by State, County, Island, Community, BRFSS Age Group, DOH Race-Ethnicity, Education Level, Employment Status (Grouped), Household Income, Poverty Level, Marital Status (Grouped), Married, Health Care Coverage, for the Year(s) - 2001, 2002, 2003, 2004, 2005, 2006, 2007, 2008, 2009, 2010

Note: Weighted numbers (#), percentages and 95% confidence intervals; Respondents aged 18 years and older; n/r (Not Reportable) - If the unweighted total responses for a dimension (row) is <50 that row will not be shown; n/a (Not Available) - Not asked of a subset of respondents

Year: 2002

Community	Yes			No			Estimated Population
	#	%	C.I. (95%)	#	%	C.I. (95%)	#
Waipahu/ Kapolei/ Ewa	2,500	6.1	1.9 - 10.4	39,100	93.9	89.6 - 98.1	41,600

Alcohol - heavy alcohol consumption in men by State, County, Island, Community, BRFSS Age Group, DOH Race-Ethnicity, Education Level, Employment Status (Grouped), Household Income, Poverty Level, Marital Status (Grouped), Married, Health Care Coverage, for the Year(s) - 2001, 2002, 2003, 2004, 2005, 2006, 2007, 2008, 2009, 2010

Note: Weighted numbers (#), percentages and 95% confidence intervals; Respondents aged 18 years and older; n/r (Not Reportable) - If the unweighted total responses for a dimension (row) is <50 that row will not be shown; n/a (Not Available) - Not asked of a subset of respondents

Year: 2002

BRFSS Age Group	Yes			No			Estimated Population
	#	%	C.I. (95%)	#	%	C.I. (95%)	#
18-24	3,300	5.5	2.4 - 8.7	56,700	94.5	91.3 - 97.6	60,000
25-34	6,500	7.8	4.2 - 11.4	77,100	92.2	88.6 - 95.8	83,600
35-44	5,700	6.3	3.9 - 8.6	84,900	93.7	91.4 - 96.1	90,600
45-54	4,600	5.3	3.3 - 7.3	82,300	94.7	92.7 - 96.7	86,900
55-64	5,400	10.0	4.4 - 15.7	48,600	90.0	84.3 - 95.6	54,100
65-74	1,200	3.5	1.3 - 5.8	32,900	96.5	94.2 - 98.7	34,200
75+	400	1.1	0.0 - 2.5	33,900	98.9	97.5 - 100.0	34,300

Alcohol - heavy alcohol consumption in men by State, County, Island, Community, BRFSS Age Group, DOH Race-Ethnicity, Education Level, Employment Status (Grouped), Household Income, Poverty Level, Marital Status (Grouped), Married, Health Care Coverage, for the Year(s) - 2001, 2002, 2003, 2004, 2005, 2006, 2007, 2008, 2009, 2010

Note: Weighted numbers (#), percentages and 95% confidence intervals; Respondents aged 18 years and older; n/r (Not Reportable) - If the unweighted total responses for a dimension (row) is <50 that row will not be shown; n/a (Not Available) - Not asked of a subset of respondents

Year: 2002

DOH Race-Ethnicity	Yes			No			Estimated Population
	#	%	C.I. (95%)	#	%	C.I. (95%)	#
Caucasian	11,000	6.8	4.7 - 8.9	150,000	93.2	91.1 - 95.3	161,000
Native Hawaiian	5,600	9.6	4.3 - 14.9	52,800	90.4	85.1 - 95.7	58,500
Chinese	1,000	3.1	0.5 - 5.7	29,700	96.9	94.3 - 99.5	30,700
Filipino	3,300	5.1	2.4 - 7.8	60,900	94.9	92.2 - 97.6	64,200
Japanese	4,800	5.5	3.0 - 8.0	81,600	94.5	92.0 - 97.0	86,400

Alcohol - heavy alcohol consumption in men by State, County, Island, Community, BRFSS Age Group, DOH Race-Ethnicity, Education Level, Employment Status (Grouped), Household Income, Poverty Level, Marital Status (Grouped), Married, Health Care Coverage, for the Year(s) - 2001, 2002, 2003, 2004, 2005, 2006, 2007, 2008, 2009, 2010

Note: Weighted numbers (#), percentages and 95% confidence intervals; Respondents aged 18 years and older; n/r (Not Reportable) - If the unweighted total responses for a dimension (row) is <50 that row will not be shown; n/a (Not Available) - Not asked of a subset of respondents

Year: 2002

Education Level	Yes			No			Estimated Population
	#	%	C.I. (95%)	#	%	C.I. (95%)	#
Grades 9 thru 11 (Some High School)	1,100	7.9	0.5 - 15.2	13,200	92.1	84.8 - 99.5	14,300
Grades 12 or GED (High School Grad)	10,700	6.5	4.6 - 8.4	153,900	93.5	91.6 - 95.4	164,500
College 1 to 3 years (Some College/ Tech)	9,100	7.6	4.9 - 10.4	110,400	92.4	89.6 - 95.1	119,500
College 4 years or more (College Grad)	6,000	4.3	2.1 - 6.5	133,800	95.7	93.5 - 97.9	139,800

Alcohol - heavy alcohol consumption in men by State, County, Island, Community, BRFSS Age Group, DOH Race-Ethnicity, Education Level, Employment Status (Grouped), Household Income, Poverty Level, Marital Status (Grouped), Married, Health Care Coverage, for the Year(s) - 2001, 2002, 2003, 2004, 2005, 2006, 2007, 2008, 2009, 2010

Note: Weighted numbers (#), percentages and 95% confidence intervals; Respondents aged 18 years and older; n/r (Not Reportable) - If the unweighted total responses for a dimension (row) is <50 that row will not be shown; n/a (Not Available) - Not asked of a subset of respondents

Year: 2002

Employment Status (Grouped)	Yes			No			Estimated Population
	#	%	C.I. (95%)	#	%	C.I. (95%)	#
Employed	20,700	6.5	5.1 - 8.0	296,000	93.5	92.0 - 94.9	316,700
Unemployed	1,200	5.2	1.1 - 9.3	22,700	94.8	90.7 - 98.9	23,900
Retired/Unable to work	4,700	5.5	2.0 - 8.9	81,400	94.5	91.1 - 98.0	86,100
Student/Homemaker	400	2.5	0.0 - 5.1	17,400	97.5	94.9 - 100.0	17,800

Alcohol - heavy alcohol consumption in men by State, County, Island, Community, BRFSS Age Group, DOH Race-Ethnicity, Education Level, Employment Status (Grouped), Household Income, Poverty Level, Marital Status (Grouped), Married, Health Care Coverage, for the Year(s) - 2001, 2002, 2003, 2004, 2005, 2006, 2007, 2008, 2009, 2010

Note: Weighted numbers (#), percentages and 95% confidence intervals; Respondents aged 18 years and older; n/r (Not Reportable) - If the unweighted total responses for a dimension (row) is <50 that row will not be shown; n/a (Not Available) - Not asked of a subset of respondents

Year: 2002

Household Income	Yes			No			Estimated Population
	#	%	C.I. (95%)	#	%	C.I. (95%)	#
Less than \$10,000	1,100	9.5	2.9 - 16.0	10,400	90.5	84.0 - 97.1	11,400
\$10,000 to \$14,999	700	4.8	0.0 - 10.2	14,000	95.2	89.8 - 100.0	14,700
\$15,000 to \$19,999	3,000	13.4	2.0 - 24.8	19,600	86.6	75.2 - 98.0	22,700
\$20,000 to \$24,999	700	3.1	0.6 - 5.6	20,900	96.9	94.4 - 99.4	21,600
\$25,000 to \$34,999	3,000	8.4	2.3 - 14.6	32,700	91.6	85.4 - 97.7	35,700
\$35,000 to \$49,999	5,200	7.9	4.7 - 11.1	61,100	92.1	88.9 - 95.3	66,300
\$50,000 to \$74,999	3,800	6.0	3.6 - 8.5	60,000	94.0	91.5 - 96.4	63,900
\$75,000 or more	4,800	6.3	3.3 - 9.3	71,200	93.7	90.7 - 96.7	76,000

Alcohol - heavy alcohol consumption in men by State, County, Island, Community, BRFSS Age Group, DOH Race-Ethnicity, Education Level, Employment Status (Grouped), Household Income, Poverty Level, Marital Status (Grouped), Married, Health Care Coverage, for the Year(s) - 2001, 2002, 2003, 2004, 2005, 2006, 2007, 2008, 2009, 2010

Note: Weighted numbers (#), percentages and 95% confidence intervals; Respondents aged 18 years and older; n/r (Not Reportable) - If the unweighted total responses for a dimension (row) is <50 that row will not be shown; n/a (Not Available) - Not asked of a subset of respondents

Year: 2002

Poverty Level	Yes			No			Estimated Population
	#	%	C.I. (95%)	#	%	C.I. (95%)	#
0-130%	5,600	9.0	4.1 - 14.0	56,000	91.0	86.0 - 95.9	61,600
131-185%	1,500	4.6	1.5 - 7.7	31,200	95.4	92.3 - 98.5	32,700
186+%	15,300	7.0	5.2 - 8.8	202,600	93.0	91.2 - 94.8	217,800

Marital Status (Grouped)	Yes			No			Estimated Population
	#	%	C.I. (95%)	#	%	C.I. (95%)	#
Married	11,200	4.2	3.1 - 5.4	252,600	95.8	94.6 - 96.9	263,800
Unmarried Couple	1,000	8.2	1.0 - 15.4	11,300	91.8	84.6 - 99.0	12,300
Widowed	1,300	8.5	1.3 - 15.7	13,500	91.5	84.3 - 98.7	14,800
Other	13,700	8.9	6.0 - 11.7	140,300	91.1	88.3 - 94.0	154,000

Alcohol - heavy alcohol consumption in men by State, County, Island, Community, BRFSS Age Group, DOH Race-Ethnicity, Education Level, Employment Status (Grouped), Household Income, Poverty Level, Marital Status (Grouped), Married, Health Care Coverage, for the Year(s) - 2001, 2002, 2003, 2004, 2005, 2006, 2007, 2008, 2009, 2010

Note: Weighted numbers (#), percentages and 95% confidence intervals; Respondents aged 18 years and older; n/r (Not Reportable) - If the unweighted total responses for a dimension (row) is <50 that row will not be shown; n/a (Not Available) - Not asked of a subset of respondents

Year: 2002

Married	Yes			No			Estimated Population
	#	%	C.I. (95%)	#	%	C.I. (95%)	#
Yes	11,700	4.3	3.2 - 5.5	256,300	95.7	94.5 - 96.8	267,900
No	15,500	8.8	6.2 - 11.4	161,400	91.2	88.6 - 93.8	176,900

Health Care Coverage	Yes			No			Estimated Population
	#	%	C.I. (95%)	#	%	C.I. (95%)	#
Yes	23,500	5.9	4.6 - 7.2	377,000	94.1	92.8 - 95.4	400,400
No	3,600	8.1	3.7 - 12.5	40,500	91.9	87.5 - 96.3	44,000

Alcohol - heavy alcohol consumption in men by State, County, Island, Community, BRFSS Age Group, DOH Race-Ethnicity, Education Level, Employment Status (Grouped), Household Income, Poverty Level, Marital Status (Grouped), Married, Health Care Coverage, for the Year(s) - 2001, 2002, 2003, 2004, 2005, 2006, 2007, 2008, 2009, 2010

Note: Weighted numbers (#), percentages and 95% confidence intervals; Respondents aged 18 years and older; n/r (Not Reportable) - If the unweighted total responses for a dimension (row) is <50 that row will not be shown; n/a (Not Available) - Not asked of a subset of respondents

Year: 2001

State	Yes			No			Estimated Population
	#	%	C.I. (95%)	#	%	C.I. (95%)	#
Hawaii State	30,200	6.8	5.3 - 8.4	412,600	93.2	91.6 - 94.7	442,700

County	Yes			No			Estimated Population
	#	%	C.I. (95%)	#	%	C.I. (95%)	#
Hawaii	3,600	6.8	4.3 - 9.3	49,000	93.2	90.7 - 95.7	52,600
Honolulu	19,900	6.2	4.2 - 8.2	301,800	93.8	91.8 - 95.8	321,800
Kauai	1,900	9.9	5.4 - 14.4	17,500	90.1	85.6 - 94.6	19,500
Maui	4,700	9.6	6.2 - 13.1	44,100	90.4	86.9 - 93.8	48,800

Alcohol - heavy alcohol consumption in men by State, County, Island, Community, BRFSS Age Group, DOH Race-Ethnicity, Education Level, Employment Status (Grouped), Household Income, Poverty Level, Marital Status (Grouped), Married, Health Care Coverage, for the Year(s) - 2001, 2002, 2003, 2004, 2005, 2006, 2007, 2008, 2009, 2010

Note: Weighted numbers (#), percentages and 95% confidence intervals; Respondents aged 18 years and older; n/r (Not Reportable) - If the unweighted total responses for a dimension (row) is <50 that row will not be shown; n/a (Not Available) - Not asked of a subset of respondents

Year: 2001

Island	Yes			No			Estimated Population
	#	%	C.I. (95%)	#	%	C.I. (95%)	#
Hawaii	3,600	6.8	4.3 - 9.3	49,000	93.2	90.7 - 95.7	52,600
Kauai	1,900	9.9	5.4 - 14.4	17,500	90.1	85.6 - 94.6	19,500
Maui	4,300	9.4	5.8 - 13.0	41,700	90.6	87.0 - 94.2	46,000
Oahu	19,900	6.2	4.2 - 8.2	301,800	93.8	91.8 - 95.8	321,800

Community	Yes			No			Estimated Population
	#	%	C.I. (95%)	#	%	C.I. (95%)	#
Aiea/ Pearl City	2,500	8.5	1.0 - 16.1	26,300	91.5	83.9 - 99.0	28,700
Hanalei/ Kapaa	600	6.5	1.1 - 11.9	8,200	93.5	88.1 - 98.9	8,700
Hilo	900	6.2	1.9 - 10.6	14,200	93.8	89.4 - 98.1	15,100

Alcohol - heavy alcohol consumption in men by State, County, Island, Community, BRFSS Age Group, DOH Race-Ethnicity, Education Level, Employment Status (Grouped), Household Income, Poverty Level, Marital Status (Grouped), Married, Health Care Coverage, for the Year(s) - 2001, 2002, 2003, 2004, 2005, 2006, 2007, 2008, 2009, 2010

Note: Weighted numbers (#), percentages and 95% confidence intervals; Respondents aged 18 years and older; n/r (Not Reportable) - If the unweighted total responses for a dimension (row) is <50 that row will not be shown; n/a (Not Available) - Not asked of a subset of respondents

Year: 2001

Community	Yes			No			Estimated Population
	#	%	C.I. (95%)	#	%	C.I. (95%)	#
Kahului	800	4.2	0.6 - 7.8	17,300	95.8	92.2 - 99.4	18,100
Kailua/ Waimanalo	2,600	11.8	3.7 - 20.0	19,300	88.2	80.0 - 96.3	21,900
Kaimuki/ Palolo/ Waikiki	500	1.2	0.0 - 3.0	37,200	98.8	97.0 - 100.0	37,700
Kona	1,000	5.6	1.4 - 9.9	16,500	94.4	90.1 - 98.6	17,400
Lahaina/ Wailuku	2,000	14.2	7.0 - 21.4	12,100	85.8	78.6 - 93.0	14,100
Lihue-Waimea	1,400	12.7	6.0 - 19.4	9,400	87.3	80.6 - 94.0	10,800
Manoa/ Upper Makiki	1,500	5.3	0.0 - 11.0	26,900	94.7	89.0 - 100.0	28,400
Mililani/ Wahiawa	1,700	6.2	0.0 - 14.0	25,300	93.8	86.0 - 100.0	27,000
N.Hawaii	700	7.3	0.7 - 13.9	9,100	92.7	86.1 - 99.3	9,800
Nuuanu/ Kalihi/ Moanalua	1,200	3.5	0.0 - 7.3	32,900	96.5	92.7 - 100.0	34,100

Alcohol - heavy alcohol consumption in men by State, County, Island, Community, BRFSS Age Group, DOH Race-Ethnicity, Education Level, Employment Status (Grouped), Household Income, Poverty Level, Marital Status (Grouped), Married, Health Care Coverage, for the Year(s) - 2001, 2002, 2003, 2004, 2005, 2006, 2007, 2008, 2009, 2010

Note: Weighted numbers (#), percentages and 95% confidence intervals; Respondents aged 18 years and older; n/r (Not Reportable) - If the unweighted total responses for a dimension (row) is <50 that row will not be shown; n/a (Not Available) - Not asked of a subset of respondents

Year: 2001

Community	Yes			No			Estimated Population
	#	%	C.I. (95%)	#	%	C.I. (95%)	#
Puna/ Kau	900	9.2	3.3 - 15.0	9,300	90.8	85.0 - 96.7	10,200
Salt Lake/ Foster Village	400	1.9	0.0 - 5.6	19,200	98.1	94.4 - 100.0	19,500
Upcountry/ Hana	1,500	11.2	3.9 - 18.6	12,200	88.8	81.4 - 96.1	13,700
Waipahu/ Kapolei/ Ewa	3,300	7.0	0.1 - 13.9	44,200	93.0	86.1 - 99.9	47,500

Alcohol - heavy alcohol consumption in men by State, County, Island, Community, BRFSS Age Group, DOH Race-Ethnicity, Education Level, Employment Status (Grouped), Household Income, Poverty Level, Marital Status (Grouped), Married, Health Care Coverage, for the Year(s) - 2001, 2002, 2003, 2004, 2005, 2006, 2007, 2008, 2009, 2010

Note: Weighted numbers (#), percentages and 95% confidence intervals; Respondents aged 18 years and older; n/r (Not Reportable) - If the unweighted total responses for a dimension (row) is <50 that row will not be shown; n/a (Not Available) - Not asked of a subset of respondents

Year: 2001

BRFSS Age Group	Yes			No			Estimated Population
	#	%	C.I. (95%)	#	%	C.I. (95%)	#
18-24	4,300	7.6	2.2 - 13.0	52,600	92.4	87.0 - 97.8	56,900
25-34	6,200	7.2	3.9 - 10.4	79,600	92.8	89.6 - 96.1	85,700
35-44	9,300	9.8	5.2 - 14.4	85,000	90.2	85.6 - 94.8	94,300
45-54	3,300	4.3	2.1 - 6.5	73,100	95.7	93.5 - 97.9	76,400
55-64	4,900	8.4	4.4 - 12.4	53,200	91.6	87.6 - 95.6	58,000
65-74	1,500	3.8	0.6 - 7.0	37,700	96.2	93.0 - 99.4	39,200
75+	200	0.7	0.0 - 1.8	28,400	99.3	98.2 - 100.0	28,600

Alcohol - heavy alcohol consumption in men by State, County, Island, Community, BRFSS Age Group, DOH Race-Ethnicity, Education Level, Employment Status (Grouped), Household Income, Poverty Level, Marital Status (Grouped), Married, Health Care Coverage, for the Year(s) - 2001, 2002, 2003, 2004, 2005, 2006, 2007, 2008, 2009, 2010

Note: Weighted numbers (#), percentages and 95% confidence intervals; Respondents aged 18 years and older; n/r (Not Reportable) - If the unweighted total responses for a dimension (row) is <50 that row will not be shown; n/a (Not Available) - Not asked of a subset of respondents

Year: 2001

DOH Race-Ethnicity	Yes			No			Estimated Population
	#	%	C.I. (95%)	#	%	C.I. (95%)	#
Caucasian	11,200	7.3	4.9 - 9.7	142,100	92.7	90.3 - 95.1	153,400
Native Hawaiian	4,400	8.2	4.0 - 12.3	49,600	91.8	87.7 - 96.0	54,100
Chinese	500	1.8	0.0 - 4.5	28,800	98.2	95.5 - 100.0	29,400
Filipino	3,400	5.6	0.4 - 10.7	58,400	94.4	89.3 - 99.6	61,900
Japanese	6,600	7.6	4.0 - 11.2	79,500	92.4	88.8 - 96.0	86,100
Other	2,200	10.5	0.0 - 22.4	18,900	89.5	77.6 - 100.0	21,100

Alcohol - heavy alcohol consumption in men by State, County, Island, Community, BRFSS Age Group, DOH Race-Ethnicity, Education Level, Employment Status (Grouped), Household Income, Poverty Level, Marital Status (Grouped), Married, Health Care Coverage, for the Year(s) - 2001, 2002, 2003, 2004, 2005, 2006, 2007, 2008, 2009, 2010

Note: Weighted numbers (#), percentages and 95% confidence intervals; Respondents aged 18 years and older; n/r (Not Reportable) - If the unweighted total responses for a dimension (row) is <50 that row will not be shown; n/a (Not Available) - Not asked of a subset of respondents

Year: 2001

Education Level	Yes			No			Estimated Population
	#	%	C.I. (95%)	#	%	C.I. (95%)	#
Grades 9 thru 11 (Some High School)	600	3.7	0.0 - 9.9	15,700	96.3	90.1 - 100.0	16,300
Grades 12 or GED (High School Grad)	14,000	8.9	5.8 - 12.0	142,900	91.1	88.0 - 94.2	156,900
College 1 to 3 years (Some College/ Tech)	9,100	7.1	4.2 - 10.1	118,200	92.9	89.9 - 95.8	127,300
College 4 years or more (College Grad)	6,100	4.6	2.4 - 6.7	128,000	95.4	93.3 - 97.6	134,100

Employment Status (Grouped)	Yes			No			Estimated Population
	#	%	C.I. (95%)	#	%	C.I. (95%)	#
Employed	22,000	7.0	5.1 - 8.8	294,200	93.0	91.2 - 94.9	316,200
Unemployed	3,300	16.5	3.1 - 29.9	16,400	83.5	70.1 - 96.9	19,700
Retired/Unable to work	3,800	4.3	2.0 - 6.6	85,100	95.7	93.4 - 98.0	89,000

Alcohol - heavy alcohol consumption in men by State, County, Island, Community, BRFSS Age Group, DOH Race-Ethnicity, Education Level, Employment Status (Grouped), Household Income, Poverty Level, Marital Status (Grouped), Married, Health Care Coverage, for the Year(s) - 2001, 2002, 2003, 2004, 2005, 2006, 2007, 2008, 2009, 2010

Note: Weighted numbers (#), percentages and 95% confidence intervals; Respondents aged 18 years and older; n/r (Not Reportable) - If the unweighted total responses for a dimension (row) is <50 that row will not be shown; n/a (Not Available) - Not asked of a subset of respondents

Year: 2001

Household Income	Yes			No			Estimated Population
	#	%	C.I. (95%)	#	%	C.I. (95%)	#
Less than \$10,000	800	4.8	0.0 - 11.2	15,800	95.2	88.8 - 100.0	16,600
\$10,000 to \$14,999	800	5.4	0.0 - 11.2	13,800	94.6	88.8 - 100.0	14,500
\$15,000 to \$19,999	1,800	10.4	3.3 - 17.5	15,000	89.6	82.5 - 96.7	16,800
\$20,000 to \$24,999	1,500	4.7	0.7 - 8.6	31,600	95.3	91.4 - 99.3	33,200
\$25,000 to \$34,999	2,700	5.7	2.5 - 8.9	45,200	94.3	91.1 - 97.5	48,000
\$35,000 to \$49,999	3,600	5.3	2.6 - 8.0	64,400	94.7	92.0 - 97.4	68,000
\$50,000 to \$74,999	3,000	4.9	2.1 - 7.7	58,600	95.1	92.3 - 97.9	61,600
\$75,000 or more	5,200	7.1	3.4 - 10.8	67,600	92.9	89.2 - 96.6	72,800

Alcohol - heavy alcohol consumption in men by State, County, Island, Community, BRFSS Age Group, DOH Race-Ethnicity, Education Level, Employment Status (Grouped), Household Income, Poverty Level, Marital Status (Grouped), Married, Health Care Coverage, for the Year(s) - 2001, 2002, 2003, 2004, 2005, 2006, 2007, 2008, 2009, 2010

Note: Weighted numbers (#), percentages and 95% confidence intervals; Respondents aged 18 years and older; n/r (Not Reportable) - If the unweighted total responses for a dimension (row) is <50 that row will not be shown; n/a (Not Available) - Not asked of a subset of respondents

Year: 2001

Poverty Level	Yes			No			Estimated Population
	#	%	C.I. (95%)	#	%	C.I. (95%)	#
0-130%	3,400	5.0	2.1 - 7.9	64,200	95.0	92.1 - 97.9	67,600
131-185%	2,900	5.5	2.5 - 8.5	48,900	94.5	91.5 - 97.5	51,800
186+%	13,100	6.2	4.4 - 8.0	198,900	93.8	92.0 - 95.6	212,000

Marital Status (Grouped)	Yes			No			Estimated Population
	#	%	C.I. (95%)	#	%	C.I. (95%)	#
Married	12,000	4.8	3.2 - 6.3	240,100	95.2	93.7 - 96.8	252,200
Widowed	0	0.0	--	9,900	100.0	100.0 - 100.0	9,900
Other	18,000	10.2	7.0 - 13.3	159,500	89.8	86.7 - 93.0	177,500

Alcohol - heavy alcohol consumption in men by State, County, Island, Community, BRFSS Age Group, DOH Race-Ethnicity, Education Level, Employment Status (Grouped), Household Income, Poverty Level, Marital Status (Grouped), Married, Health Care Coverage, for the Year(s) - 2001, 2002, 2003, 2004, 2005, 2006, 2007, 2008, 2009, 2010

Note: Weighted numbers (#), percentages and 95% confidence intervals; Respondents aged 18 years and older; n/r (Not Reportable) - If the unweighted total responses for a dimension (row) is <50 that row will not be shown; n/a (Not Available) - Not asked of a subset of respondents

Year: 2001

Married	Yes			No			Estimated Population
	#	%	C.I. (95%)	#	%	C.I. (95%)	#
Yes	13,000	5.1	3.5 - 6.6	244,300	94.9	93.4 - 96.5	257,300
No	17,200	9.3	6.3 - 12.3	168,100	90.7	87.7 - 93.7	185,200

Health Care Coverage	Yes			No			Estimated Population
	#	%	C.I. (95%)	#	%	C.I. (95%)	#
Yes	24,800	6.2	4.7 - 7.7	376,800	93.8	92.3 - 95.3	401,700
No	5,300	13.4	5.2 - 21.6	34,400	86.6	78.4 - 94.8	39,700