

**Asthma - still have asthma by State, County, Island, Community, BRFSS Age Group, DOH Race-Ethnicity, Gender, Education Level, Employment Status (Grouped), Household Income, Poverty Level, Marital Status (Grouped), Married, Health Care Coverage, for the Year(s) - 2000-2002, 2001-2003, 2002-2004, 2003-2005, 2004-2006, 2005-2007, 2006-2008, 2007-2009, 2008-2010**

*Note: Weighted numbers (#) represent 3-yr averages, percentages and 95% confidence intervals; Respondents aged 18 years and older; n/r (Not Reportable) - If the unweighted total responses for a dimension (row) is <50 that row will not be shown; n/a (Not Available) - Not asked of a subset of respondents*

*The trend analysis report shows the trend for the selected health variable over selected years in a table and a graph. Estimated Population: This number is a weighted representation of the population who responded to a particular question in the survey. For most questions the eligible population will be the entire adult population. For some secondary questions only a subset of the population was asked the question. For example, all survey participants were asked if they had diabetes, but only those who answered yes were asked if they use insulin. If a dimension value is unknown for a particular survey record, that record will not be included in the counts for that particular dimension.*

*For documentation on other terms and coding in this report, please go to the following links*

[Click here to access BRFSS documentation](#)

[Click here to access DOH Race-Ethnicity coding](#)

[Click here to access The Hawai'i Data Guide](#)

[Click here to access Poverty Level Methodology](#)

**For questions about this report, please contact  
The Hawaii Health Data Warehouse**

[profiles@hhdw.org](mailto:profiles@hhdw.org)

**(855) 946-5899 x15**

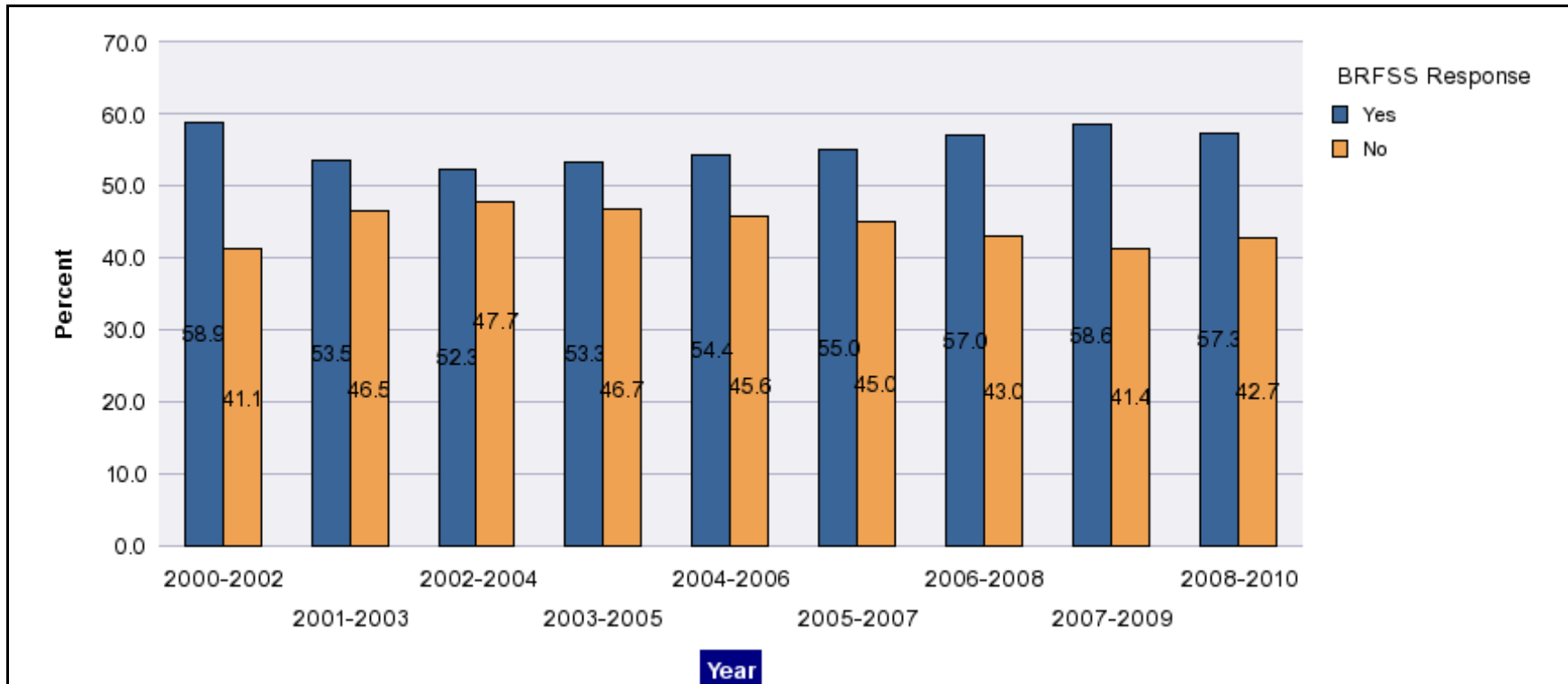
**Asthma - still have asthma by State, County, Island, Community, BRFSS Age Group, DOH Race-Ethnicity, Gender, Education Level, Employment Status (Grouped), Household Income, Poverty Level, Marital Status (Grouped), Married, Health Care Coverage, for the Year(s) - 2000-2002, 2001-2003, 2002-2004, 2003-2005, 2004-2006, 2005-2007, 2006-2008, 2007-2009, 2008-2010**

*Note: Weighted numbers (#) represent 3-yr averages, percentages and 95% confidence intervals; Respondents aged 18 years and older; n/r (Not Reportable) - If the unweighted total responses for a dimension (row) is <50 that row will not be shown; n/a (Not Available) - Not asked of a subset of respondents*

Year	Yes			No			Estimated Population (3-Yr Avg)
	#	%	C.I.(95%)	#	%	C.I.(95%)	#
<b>2000-2002</b>	63,200	58.9	55.8 - 61.9	44,200	41.1	38.1 - 44.2	107,400
<b>2001-2003</b>	59,200	53.5	50.4 - 56.6	51,500	46.5	43.4 - 49.6	110,700
<b>2002-2004</b>	62,500	52.3	48.4 - 56.2	57,000	47.7	43.8 - 51.6	119,400
<b>2003-2005</b>	66,000	53.3	49.5 - 57.1	57,800	46.7	42.9 - 50.5	123,800
<b>2004-2006</b>	74,700	54.4	50.8 - 57.9	62,800	45.6	42.1 - 49.2	137,500
<b>2005-2007</b>	76,400	55.0	52.3 - 57.7	62,600	45.0	42.3 - 47.7	139,000
<b>2006-2008</b>	84,000	57.0	54.3 - 59.7	63,300	43.0	40.3 - 45.7	147,300
<b>2007-2009</b>	89,300	58.6	55.9 - 61.4	62,900	41.4	38.6 - 44.1	152,200
<b>2008-2010</b>	94,400	57.3	54.6 - 60.0	70,300	42.7	40.0 - 45.4	164,700

**Asthma - still have asthma by State, County, Island, Community, BRFSS Age Group, DOH Race-Ethnicity, Gender, Education Level, Employment Status (Grouped), Household Income, Poverty Level, Marital Status (Grouped), Married, Health Care Coverage, for the Year(s) - 2000-2002, 2001-2003, 2002-2004, 2003-2005, 2004-2006, 2005-2007, 2006-2008, 2007-2009, 2008-2010**

*Note: Weighted numbers (#) represent 3-yr averages, percentages and 95% confidence intervals; Respondents aged 18 years and older; n/r (Not Reportable) - If the unweighted total responses for a dimension (row) is <50 that row will not be shown; n/a (Not Available) - Not asked of a subset of respondents*



**Asthma - still have asthma by State, County, Island, Community, BRFSS Age Group, DOH Race-Ethnicity, Gender, Education Level, Employment Status (Grouped), Household Income, Poverty Level, Marital Status (Grouped), Married, Health Care Coverage, for the Year(s) - 2000-2002, 2001-2003, 2002-2004, 2003-2005, 2004-2006, 2005-2007, 2006-2008, 2007-2009, 2008-2010**

*Note: Weighted numbers (#) represent 3-yr averages, percentages and 95% confidence intervals; Respondents aged 18 years and older; n/r (Not Reportable) - If the unweighted total responses for a dimension (row) is <50 that row will not be shown; n/a (Not Available) - Not asked of a subset of respondents*

**Year: 2008-2010**

State	Yes			No			Estimated Population (3-Yr Avg)
	#	%	C.I. (95%)	#	%	C.I. (95%)	#
Hawaii State	94,400	57.3	54.6 - 60.0	70,300	42.7	40.0 - 45.4	164,700

County	Yes			No			Estimated Population (3-Yr Avg)
	#	%	C.I. (95%)	#	%	C.I. (95%)	#
Hawaii	16,100	62.4	57.6 - 67.2	9,700	37.6	32.8 - 42.4	25,900
Honolulu	63,600	55.7	52.1 - 59.2	50,600	44.3	40.8 - 47.9	114,200
Kauai	3,500	49.9	41.4 - 58.3	3,500	50.1	41.7 - 58.6	7,000
Maui	11,200	63.6	58.2 - 68.9	6,400	36.4	31.1 - 41.8	17,600

**Asthma - still have asthma by State, County, Island, Community, BRFSS Age Group, DOH Race-Ethnicity, Gender, Education Level, Employment Status (Grouped), Household Income, Poverty Level, Marital Status (Grouped), Married, Health Care Coverage, for the Year(s) - 2000-2002, 2001-2003, 2002-2004, 2003-2005, 2004-2006, 2005-2007, 2006-2008, 2007-2009, 2008-2010**

*Note: Weighted numbers (#) represent 3-yr averages, percentages and 95% confidence intervals; Respondents aged 18 years and older; n/r (Not Reportable) - If the unweighted total responses for a dimension (row) is <50 that row will not be shown; n/a (Not Available) - Not asked of a subset of respondents*

**Year: 2008-2010**

Island	Yes			No			Estimated Population (3-Yr Avg)
	#	%	C.I. (95%)	#	%	C.I. (95%)	#
Hawaii	16,100	62.4	57.6 - 67.2	9,700	37.6	32.8 - 42.4	25,900
Kauai	3,500	49.9	41.4 - 58.3	3,500	50.1	41.7 - 58.6	7,000
Lanai	200	71.1	58.7 - 83.5	100	28.9	16.5 - 41.3	200
Maui	10,200	63.2	57.4 - 68.9	5,900	36.8	31.1 - 42.6	16,100
Molokai	800	67.0	55.6 - 78.4	400	33.0	21.6 - 44.4	1,300
Oahu	63,600	55.7	52.1 - 59.2	50,600	44.3	40.8 - 47.9	114,200

Community	Yes			No			Estimated Population (3-Yr Avg)
	#	%	C.I. (95%)	#	%	C.I. (95%)	#
Aiea/ Pearl City	5,800	56.6	45.7 - 67.6	4,500	43.4	32.4 - 54.3	10,300
Ala Moana	2,100	66.2	48.4 - 84.0	1,100	33.8	16.0 - 51.6	3,200

**Asthma - still have asthma by State, County, Island, Community, BRFSS Age Group, DOH Race-Ethnicity, Gender, Education Level, Employment Status (Grouped), Household Income, Poverty Level, Marital Status (Grouped), Married, Health Care Coverage, for the Year(s) - 2000-2002, 2001-2003, 2002-2004, 2003-2005, 2004-2006, 2005-2007, 2006-2008, 2007-2009, 2008-2010**

*Note: Weighted numbers (#) represent 3-yr averages, percentages and 95% confidence intervals; Respondents aged 18 years and older; n/r (Not Reportable) - If the unweighted total responses for a dimension (row) is <50 that row will not be shown; n/a (Not Available) - Not asked of a subset of respondents*

**Year: 2008-2010**

Community	Yes			No			Estimated Population (3-Yr Avg)
	#	%	C.I. (95%)	#	%	C.I. (95%)	#
Hanalei/ Kapaa	1,500	53.1	40.1 - 66.1	1,400	46.9	33.9 - 59.9	2,900
Hilo	5,300	61.8	53.0 - 70.6	3,300	38.2	29.4 - 47.0	8,600
Kaaawa/ Kahaluu/ Kaneohe	3,500	53.3	38.5 - 68.1	3,100	46.7	31.9 - 61.5	6,600
Kahului	3,900	69.9	60.8 - 79.1	1,700	30.1	20.9 - 39.2	5,600
Kailua/ Waimanalo	7,000	67.5	56.4 - 78.7	3,400	32.5	21.3 - 43.6	10,400
Kaimuki/ Palolo/ Waikiki	4,300	48.4	37.0 - 59.7	4,600	51.6	40.3 - 63.0	8,900
Kona	3,300	63.0	53.1 - 72.9	2,000	37.0	27.1 - 46.9	5,300
Lahaina/ Wailuku	2,600	50.0	39.5 - 60.4	2,700	50.0	39.6 - 60.5	5,300
Lanai	200	71.1	58.7 - 83.5	100	28.9	16.5 - 41.3	200
Lihue-Waimea	2,000	47.6	36.6 - 58.6	2,200	52.4	41.4 - 63.4	4,100
Manoa/ Upper Makiki	4,600	56.3	42.9 - 69.6	3,600	43.7	30.4 - 57.1	8,200
Mililani/ Wahiawa	7,600	58.3	48.3 - 68.4	5,500	41.7	31.6 - 51.7	13,100

**Asthma - still have asthma by State, County, Island, Community, BRFSS Age Group, DOH Race-Ethnicity, Gender, Education Level, Employment Status (Grouped), Household Income, Poverty Level, Marital Status (Grouped), Married, Health Care Coverage, for the Year(s) - 2000-2002, 2001-2003, 2002-2004, 2003-2005, 2004-2006, 2005-2007, 2006-2008, 2007-2009, 2008-2010**

*Note: Weighted numbers (#) represent 3-yr averages, percentages and 95% confidence intervals; Respondents aged 18 years and older; n/r (Not Reportable) - If the unweighted total responses for a dimension (row) is <50 that row will not be shown; n/a (Not Available) - Not asked of a subset of respondents*

**Year: 2008-2010**

Community	Yes			No			Estimated Population (3-Yr Avg)
	#	%	C.I. (95%)	#	%	C.I. (95%)	#
Molokai	800	67.0	55.6 - 78.4	400	33.0	21.6 - 44.4	1,300
Nanakuli/ Waianae	4,400	57.8	41.3 - 74.2	3,200	42.2	25.8 - 58.7	7,700
N.Hawaii	3,400	63.5	52.2 - 74.8	2,000	36.5	25.2 - 47.8	5,400
Nuuanu/ Kalihi/ Moanalua	6,000	59.2	46.2 - 72.2	4,100	40.8	27.8 - 53.8	10,200
Puna/ Kau	4,100	61.9	53.2 - 70.6	2,500	38.1	29.4 - 46.8	6,600
Salt Lake/ Foster Village	2,400	47.5	32.1 - 62.8	2,700	52.5	37.2 - 67.9	5,100
Upcountry/ Hana	3,700	69.3	60.4 - 78.2	1,600	30.7	21.8 - 39.6	5,300
Waialae/ Kahala/ Hawaii Kai	2,600	44.2	31.2 - 57.2	3,300	55.8	42.8 - 68.8	5,900
Waipahu/ Kapolei/ Ewa	10,100	49.9	41.1 - 58.8	10,100	50.1	41.2 - 58.9	20,100

**Asthma - still have asthma by State, County, Island, Community, BRFSS Age Group, DOH Race-Ethnicity, Gender, Education Level, Employment Status (Grouped), Household Income, Poverty Level, Marital Status (Grouped), Married, Health Care Coverage, for the Year(s) - 2000-2002, 2001-2003, 2002-2004, 2003-2005, 2004-2006, 2005-2007, 2006-2008, 2007-2009, 2008-2010**

*Note: Weighted numbers (#) represent 3-yr averages, percentages and 95% confidence intervals; Respondents aged 18 years and older; n/r (Not Reportable) - If the unweighted total responses for a dimension (row) is <50 that row will not be shown; n/a (Not Available) - Not asked of a subset of respondents*

**Year: 2008-2010**

BRFSS Age Group	Yes			No			Estimated Population (3-Yr Avg)
	#	%	C.I. (95%)	#	%	C.I. (95%)	#
18-24	16,500	52.0	43.9 - 60.1	15,200	48.0	39.9 - 56.1	31,800
25-34	16,600	51.2	43.9 - 58.4	15,800	48.8	41.6 - 56.1	32,400
35-44	14,900	59.5	53.3 - 65.6	10,200	40.5	34.4 - 46.7	25,100
45-54	18,400	63.6	58.8 - 68.4	10,500	36.4	31.6 - 41.2	29,000
55-64	14,600	59.1	54.1 - 64.0	10,100	40.9	36.0 - 45.9	24,700
65-74	7,600	65.1	59.2 - 70.9	4,100	34.9	29.1 - 40.8	11,700
75+	5,400	57.4	49.0 - 65.8	4,000	42.6	34.2 - 51.0	9,500



**Asthma - still have asthma by State, County, Island, Community, BRFSS Age Group, DOH Race-Ethnicity, Gender, Education Level, Employment Status (Grouped), Household Income, Poverty Level, Marital Status (Grouped), Married, Health Care Coverage, for the Year(s) - 2000-2002, 2001-2003, 2002-2004, 2003-2005, 2004-2006, 2005-2007, 2006-2008, 2007-2009, 2008-2010**

*Note: Weighted numbers (#) represent 3-yr averages, percentages and 95% confidence intervals; Respondents aged 18 years and older; n/r (Not Reportable) - If the unweighted total responses for a dimension (row) is <50 that row will not be shown; n/a (Not Available) - Not asked of a subset of respondents*

**Year: 2008-2010**

DOH Race-Ethnicity	Yes			No			Estimated Population (3-Yr Avg)
	#	%	C.I. (95%)	#	%	C.I. (95%)	#
Caucasian	28,400	61.4	57.2 - 65.7	17,800	38.6	34.3 - 42.8	46,300
Native Hawaiian	19,800	58.9	52.6 - 65.2	13,800	41.1	34.8 - 47.4	33,700
Chinese	6,200	55.5	44.8 - 66.2	5,000	44.5	33.8 - 55.2	11,200
Filipino	12,800	56.7	49.2 - 64.3	9,700	43.3	35.7 - 50.8	22,500
Japanese	17,300	50.3	44.3 - 56.3	17,100	49.7	43.7 - 55.7	34,500
Other Asian	1,700	49.5	31.6 - 67.5	1,800	50.5	32.5 - 68.4	3,500
Other	4,600	71.7	56.3 - 87.1	1,800	28.3	12.9 - 43.7	6,400

**Asthma - still have asthma by State, County, Island, Community, BRFSS Age Group, DOH Race-Ethnicity, Gender, Education Level, Employment Status (Grouped), Household Income, Poverty Level, Marital Status (Grouped), Married, Health Care Coverage, for the Year(s) - 2000-2002, 2001-2003, 2002-2004, 2003-2005, 2004-2006, 2005-2007, 2006-2008, 2007-2009, 2008-2010**

*Note: Weighted numbers (#) represent 3-yr averages, percentages and 95% confidence intervals; Respondents aged 18 years and older; n/r (Not Reportable) - If the unweighted total responses for a dimension (row) is <50 that row will not be shown; n/a (Not Available) - Not asked of a subset of respondents*

**Year: 2008-2010**

Gender	Yes			No			Estimated Population (3-Yr Avg)
	#	%	C.I. (95%)	#	%	C.I. (95%)	#
Male	34,700	45.9	41.6 - 50.2	40,800	54.1	49.8 - 58.4	75,500
Female	59,700	67.0	63.9 - 70.1	29,400	33.0	29.9 - 36.1	89,200

Education Level	Yes			No			Estimated Population (3-Yr Avg)
	#	%	C.I. (95%)	#	%	C.I. (95%)	#
Grades 9 thru 11 (Some High School)	5,400	67.3	54.5 - 80.1	2,600	32.7	19.9 - 45.5	8,000
Grades 12 or GED (High School Grad)	32,100	62.9	58.0 - 67.9	18,900	37.1	32.1 - 42.0	51,000
College 1 to 3 years (Some College/ Tech)	26,200	51.0	45.9 - 56.2	25,100	49.0	43.8 - 54.1	51,300
College 4 years or more (College Grad)	30,000	56.6	52.5 - 60.7	23,000	43.4	39.3 - 47.5	52,900

**Asthma - still have asthma by State, County, Island, Community, BRFSS Age Group, DOH Race-Ethnicity, Gender, Education Level, Employment Status (Grouped), Household Income, Poverty Level, Marital Status (Grouped), Married, Health Care Coverage, for the Year(s) - 2000-2002, 2001-2003, 2002-2004, 2003-2005, 2004-2006, 2005-2007, 2006-2008, 2007-2009, 2008-2010**

*Note: Weighted numbers (#) represent 3-yr averages, percentages and 95% confidence intervals; Respondents aged 18 years and older; n/r (Not Reportable) - If the unweighted total responses for a dimension (row) is <50 that row will not be shown; n/a (Not Available) - Not asked of a subset of respondents*

**Year: 2008-2010**

Employment Status (Grouped)	Yes			No			Estimated Population (3-Yr Avg)
	#	%	C.I. (95%)	#	%	C.I. (95%)	#
<b>Employed</b>	57,300	56.5	53.1 - 59.9	44,200	43.5	40.1 - 46.9	101,600
<b>Unemployed</b>	5,900	53.7	42.6 - 64.9	5,100	46.3	35.1 - 57.4	10,900
<b>Retired/Unable to work</b>	19,600	65.0	60.5 - 69.6	10,500	35.0	30.4 - 39.5	30,100
<b>Student/Homemaker</b>	11,600	52.5	43.4 - 61.7	10,500	47.5	38.3 - 56.6	22,000

**Asthma - still have asthma by State, County, Island, Community, BRFSS Age Group, DOH Race-Ethnicity, Gender, Education Level, Employment Status (Grouped), Household Income, Poverty Level, Marital Status (Grouped), Married, Health Care Coverage, for the Year(s) - 2000-2002, 2001-2003, 2002-2004, 2003-2005, 2004-2006, 2005-2007, 2006-2008, 2007-2009, 2008-2010**

*Note: Weighted numbers (#) represent 3-yr averages, percentages and 95% confidence intervals; Respondents aged 18 years and older; n/r (Not Reportable) - If the unweighted total responses for a dimension (row) is <50 that row will not be shown; n/a (Not Available) - Not asked of a subset of respondents*

**Year: 2008-2010**

Household Income	Yes			No			Estimated Population (3-Yr Avg)
	#	%	C.I. (95%)	#	%	C.I. (95%)	#
Less than \$10,000	4,300	70.6	57.9 - 83.2	1,800	29.4	16.8 - 42.1	6,100
\$10,000 to \$14,999	3,200	68.4	55.9 - 81.0	1,500	31.6	19.0 - 44.1	4,700
\$15,000 to \$19,999	5,200	57.3	44.7 - 69.9	3,900	42.7	30.1 - 55.3	9,100
\$20,000 to \$24,999	5,900	55.3	44.4 - 66.1	4,700	44.7	33.9 - 55.6	10,600
\$25,000 to \$34,999	9,200	64.1	56.3 - 71.8	5,200	35.9	28.2 - 43.7	14,300
\$35,000 to \$49,999	16,500	61.0	54.2 - 67.7	10,500	39.0	32.3 - 45.8	27,000
\$50,000 to \$74,999	14,800	50.8	44.7 - 56.9	14,300	49.2	43.1 - 55.3	29,100
\$75,000 or more	24,300	52.5	47.7 - 57.4	21,900	47.5	42.6 - 52.3	46,200

**Asthma - still have asthma by State, County, Island, Community, BRFSS Age Group, DOH Race-Ethnicity, Gender, Education Level, Employment Status (Grouped), Household Income, Poverty Level, Marital Status (Grouped), Married, Health Care Coverage, for the Year(s) - 2000-2002, 2001-2003, 2002-2004, 2003-2005, 2004-2006, 2005-2007, 2006-2008, 2007-2009, 2008-2010**

*Note: Weighted numbers (#) represent 3-yr averages, percentages and 95% confidence intervals; Respondents aged 18 years and older; n/r (Not Reportable) - If the unweighted total responses for a dimension (row) is <50 that row will not be shown; n/a (Not Available) - Not asked of a subset of respondents*

**Year: 2008-2010**

Poverty Level	Yes			No			Estimated Population (3-Yr Avg)
	#	%	C.I. (95%)	#	%	C.I. (95%)	#
<b>0-130%</b>	24,500	62.7	56.8 - 68.6	14,600	37.3	31.4 - 43.2	39,100
<b>131-185%</b>	14,000	56.2	48.8 - 63.5	10,900	43.8	36.5 - 51.2	25,000
<b>186+%</b>	44,800	53.9	50.5 - 57.3	38,300	46.1	42.7 - 49.5	83,100

Marital Status (Grouped)	Yes			No			Estimated Population (3-Yr Avg)
	#	%	C.I. (95%)	#	%	C.I. (95%)	#
<b>Married</b>	48,700	58.9	55.7 - 62.2	33,900	41.1	37.8 - 44.3	82,600
<b>Unmarried Couple</b>	3,600	52.6	39.7 - 65.5	3,300	47.4	34.5 - 60.3	6,900
<b>Widowed</b>	4,800	61.3	50.6 - 72.1	3,000	38.7	27.9 - 49.4	7,900
<b>Other</b>	37,200	55.4	50.5 - 60.2	30,000	44.6	39.8 - 49.5	67,300

**Asthma - still have asthma by State, County, Island, Community, BRFSS Age Group, DOH Race-Ethnicity, Gender, Education Level, Employment Status (Grouped), Household Income, Poverty Level, Marital Status (Grouped), Married, Health Care Coverage, for the Year(s) - 2000-2002, 2001-2003, 2002-2004, 2003-2005, 2004-2006, 2005-2007, 2006-2008, 2007-2009, 2008-2010**

*Note: Weighted numbers (#) represent 3-yr averages, percentages and 95% confidence intervals; Respondents aged 18 years and older; n/r (Not Reportable) - If the unweighted total responses for a dimension (row) is <50 that row will not be shown; n/a (Not Available) - Not asked of a subset of respondents*

**Year: 2008-2010**

<b>Married</b>	<b>Yes</b>			<b>No</b>			<b>Estimated Population (3-Yr Avg)</b>
	<b>#</b>	<b>%</b>	<b>C.I. (95%)</b>	<b>#</b>	<b>%</b>	<b>C.I. (95%)</b>	<b>#</b>
<b>Yes</b>	49,600	59.1	55.8 - 62.3	34,400	40.9	37.7 - 44.2	84,000
<b>No</b>	44,500	55.4	51.1 - 59.8	35,800	44.6	40.2 - 48.9	80,300

<b>Health Care Coverage</b>	<b>Yes</b>			<b>No</b>			<b>Estimated Population (3-Yr Avg)</b>
	<b>#</b>	<b>%</b>	<b>C.I. (95%)</b>	<b>#</b>	<b>%</b>	<b>C.I. (95%)</b>	<b>#</b>
<b>Yes</b>	88,300	57.6	54.9 - 60.3	65,000	42.4	39.7 - 45.1	153,300
<b>No</b>	6,100	55.1	41.9 - 68.2	5,000	44.9	31.8 - 58.1	11,100

**Asthma - still have asthma by State, County, Island, Community, BRFSS Age Group, DOH Race-Ethnicity, Gender, Education Level, Employment Status (Grouped), Household Income, Poverty Level, Marital Status (Grouped), Married, Health Care Coverage, for the Year(s) - 2000-2002, 2001-2003, 2002-2004, 2003-2005, 2004-2006, 2005-2007, 2006-2008, 2007-2009, 2008-2010**

*Note: Weighted numbers (#) represent 3-yr averages, percentages and 95% confidence intervals; Respondents aged 18 years and older; n/r (Not Reportable) - If the unweighted total responses for a dimension (row) is <50 that row will not be shown; n/a (Not Available) - Not asked of a subset of respondents*

**Year: 2007-2009**

State	Yes			No			Estimated Population (3-Yr Avg)
	#	%	C.I. (95%)	#	%	C.I. (95%)	#
Hawaii State	89,300	58.6	55.9 - 61.4	62,900	41.4	38.6 - 44.1	152,200

County	Yes			No			Estimated Population (3-Yr Avg)
	#	%	C.I. (95%)	#	%	C.I. (95%)	#
Hawaii	13,600	60.4	55.4 - 65.4	8,900	39.6	34.6 - 44.6	22,500
Honolulu	61,700	58.4	54.8 - 62.0	44,000	41.6	38.0 - 45.2	105,700
Kauai	3,600	50.1	41.9 - 58.2	3,600	49.9	41.8 - 58.1	7,100
Maui	10,400	61.6	56.3 - 67.0	6,400	38.4	33.0 - 43.7	16,800

**Asthma - still have asthma by State, County, Island, Community, BRFSS Age Group, DOH Race-Ethnicity, Gender, Education Level, Employment Status (Grouped), Household Income, Poverty Level, Marital Status (Grouped), Married, Health Care Coverage, for the Year(s) - 2000-2002, 2001-2003, 2002-2004, 2003-2005, 2004-2006, 2005-2007, 2006-2008, 2007-2009, 2008-2010**

*Note: Weighted numbers (#) represent 3-yr averages, percentages and 95% confidence intervals; Respondents aged 18 years and older; n/r (Not Reportable) - If the unweighted total responses for a dimension (row) is <50 that row will not be shown; n/a (Not Available) - Not asked of a subset of respondents*

**Year: 2007-2009**

Island	Yes			No			Estimated Population (3-Yr Avg)
	#	%	C.I. (95%)	#	%	C.I. (95%)	#
Hawaii	13,600	60.4	55.4 - 65.4	8,900	39.6	34.6 - 44.6	22,500
Kauai	3,600	50.1	41.9 - 58.2	3,600	49.9	41.8 - 58.1	7,100
Lanai	200	65.4	52.7 - 78.1	100	34.6	21.9 - 47.3	300
Maui	9,200	60.9	55.0 - 66.7	5,900	39.1	33.3 - 45.0	15,100
Molokai	1,000	68.9	58.2 - 79.7	400	31.1	20.3 - 41.8	1,400
Oahu	61,700	58.4	54.8 - 62.0	44,000	41.6	38.0 - 45.2	105,700

Community	Yes			No			Estimated Population (3-Yr Avg)
	#	%	C.I. (95%)	#	%	C.I. (95%)	#
Aiea/ Pearl City	6,000	58.6	46.9 - 70.3	4,200	41.4	29.7 - 53.1	10,200
Hanalei/ Kapaa	1,300	44.9	31.9 - 57.8	1,600	55.1	42.2 - 68.1	3,000



**Asthma - still have asthma by State, County, Island, Community, BRFSS Age Group, DOH Race-Ethnicity, Gender, Education Level, Employment Status (Grouped), Household Income, Poverty Level, Marital Status (Grouped), Married, Health Care Coverage, for the Year(s) - 2000-2002, 2001-2003, 2002-2004, 2003-2005, 2004-2006, 2005-2007, 2006-2008, 2007-2009, 2008-2010**

*Note: Weighted numbers (#) represent 3-yr averages, percentages and 95% confidence intervals; Respondents aged 18 years and older; n/r (Not Reportable) - If the unweighted total responses for a dimension (row) is <50 that row will not be shown; n/a (Not Available) - Not asked of a subset of respondents*

**Year: 2007-2009**

Community	Yes			No			Estimated Population (3-Yr Avg)
	#	%	C.I. (95%)	#	%	C.I. (95%)	#
Hilo	4,400	62.8	53.4 - 72.2	2,600	37.2	27.8 - 46.6	7,000
Kaaawa/ Kahaluu/ Kaneohe	3,300	49.8	35.8 - 63.8	3,300	50.2	36.2 - 64.2	6,600
Kahului	3,300	64.3	54.4 - 74.2	1,800	35.7	25.8 - 45.6	5,100
Kailua/ Waimanalo	6,500	70.4	59.3 - 81.4	2,700	29.6	18.6 - 40.7	9,300
Kaimuki/ Palolo/ Waikiki	4,100	60.2	48.3 - 72.2	2,700	39.8	27.8 - 51.7	6,800
Kona	2,600	61.1	51.5 - 70.7	1,600	38.9	29.3 - 48.5	4,200
Lahaina/ Wailuku	2,300	47.8	37.6 - 58.0	2,500	52.2	42.0 - 62.4	4,800
Lanai	200	65.4	52.7 - 78.1	100	34.6	21.9 - 47.3	300
Lihue-Waimea	2,200	53.8	43.4 - 64.2	1,900	46.2	35.8 - 56.6	4,200
Manoa/ Upper Makiki	3,300	48.9	36.2 - 61.7	3,500	51.1	38.3 - 63.8	6,800
Mililani/ Wahiawa	6,700	56.0	45.5 - 66.6	5,300	44.0	33.4 - 54.5	12,000
Molokai	1,000	68.9	58.2 - 79.7	400	31.1	20.3 - 41.8	1,400

**Asthma - still have asthma by State, County, Island, Community, BRFSS Age Group, DOH Race-Ethnicity, Gender, Education Level, Employment Status (Grouped), Household Income, Poverty Level, Marital Status (Grouped), Married, Health Care Coverage, for the Year(s) - 2000-2002, 2001-2003, 2002-2004, 2003-2005, 2004-2006, 2005-2007, 2006-2008, 2007-2009, 2008-2010**

*Note: Weighted numbers (#) represent 3-yr averages, percentages and 95% confidence intervals; Respondents aged 18 years and older; n/r (Not Reportable) - If the unweighted total responses for a dimension (row) is <50 that row will not be shown; n/a (Not Available) - Not asked of a subset of respondents*

**Year: 2007-2009**

Community	Yes			No			Estimated Population (3-Yr Avg)
	#	%	C.I. (95%)	#	%	C.I. (95%)	#
Nanakuli/ Waianae	4,800	76.2	65.2 - 87.2	1,500	23.8	12.8 - 34.8	6,300
N.Hawaii	3,200	59.7	48.5 - 71.0	2,200	40.3	29.0 - 51.5	5,400
Nuuanu/ Kalihi/ Moanalua	5,500	56.4	42.7 - 70.1	4,300	43.6	29.9 - 57.3	9,800
Puna/ Kau	3,400	57.5	48.2 - 66.7	2,500	42.5	33.3 - 51.8	5,900
Salt Lake/ Foster Village	2,300	54.3	37.4 - 71.2	1,900	45.7	28.8 - 62.6	4,300
Upcountry/ Hana	3,600	69.4	60.5 - 78.3	1,600	30.6	21.7 - 39.5	5,200
Waialae/ Kahala/ Hawaii Kai	2,200	37.2	24.7 - 49.7	3,800	62.8	50.3 - 75.3	6,000
Waipahu/ Kapolei/ Ewa	11,700	58.6	49.9 - 67.4	8,300	41.4	32.6 - 50.1	20,000

**Asthma - still have asthma by State, County, Island, Community, BRFSS Age Group, DOH Race-Ethnicity, Gender, Education Level, Employment Status (Grouped), Household Income, Poverty Level, Marital Status (Grouped), Married, Health Care Coverage, for the Year(s) - 2000-2002, 2001-2003, 2002-2004, 2003-2005, 2004-2006, 2005-2007, 2006-2008, 2007-2009, 2008-2010**

*Note: Weighted numbers (#) represent 3-yr averages, percentages and 95% confidence intervals; Respondents aged 18 years and older; n/r (Not Reportable) - If the unweighted total responses for a dimension (row) is <50 that row will not be shown; n/a (Not Available) - Not asked of a subset of respondents*

**Year: 2007-2009**

BRFSS Age Group	Yes			No			Estimated Population (3-Yr Avg)
	#	%	C.I. (95%)	#	%	C.I. (95%)	#
18-24	17,900	56.1	48.2 - 64.0	14,000	43.9	36.0 - 51.8	31,900
25-34	13,600	52.0	44.6 - 59.5	12,600	48.0	40.5 - 55.4	26,200
35-44	13,800	59.0	52.9 - 65.2	9,600	41.0	34.8 - 47.1	23,400
45-54	17,600	64.6	59.7 - 69.4	9,700	35.4	30.6 - 40.3	27,300
55-64	14,200	60.0	54.9 - 65.1	9,500	40.0	34.9 - 45.1	23,700
65-74	6,600	65.6	58.9 - 72.2	3,500	34.4	27.8 - 41.1	10,100
75+	5,100	56.8	47.8 - 65.9	3,900	43.2	34.1 - 52.2	9,000

**Asthma - still have asthma by State, County, Island, Community, BRFSS Age Group, DOH Race-Ethnicity, Gender, Education Level, Employment Status (Grouped), Household Income, Poverty Level, Marital Status (Grouped), Married, Health Care Coverage, for the Year(s) - 2000-2002, 2001-2003, 2002-2004, 2003-2005, 2004-2006, 2005-2007, 2006-2008, 2007-2009, 2008-2010**

*Note: Weighted numbers (#) represent 3-yr averages, percentages and 95% confidence intervals; Respondents aged 18 years and older; n/r (Not Reportable) - If the unweighted total responses for a dimension (row) is <50 that row will not be shown; n/a (Not Available) - Not asked of a subset of respondents*

**Year: 2007-2009**

DOH Race-Ethnicity	Yes			No			Estimated Population (3-Yr Avg)
	#	%	C.I. (95%)	#	%	C.I. (95%)	#
Caucasian	27,000	61.6	57.2 - 65.9	16,900	38.4	34.1 - 42.8	43,900
Native Hawaiian	19,000	59.7	53.6 - 65.7	12,900	40.3	34.3 - 46.4	31,900
Chinese	5,300	59.1	47.6 - 70.7	3,700	40.9	29.3 - 52.4	9,000
Filipino	13,300	60.6	52.7 - 68.6	8,600	39.4	31.4 - 47.3	22,000
Japanese	16,300	52.0	45.9 - 58.1	15,100	48.0	41.9 - 54.1	31,400
Other	3,700	66.8	51.5 - 82.2	1,900	33.2	17.8 - 48.5	5,600

Gender	Yes			No			Estimated Population (3-Yr Avg)
	#	%	C.I. (95%)	#	%	C.I. (95%)	#
Male	34,200	48.7	44.2 - 53.2	36,000	51.3	46.8 - 55.8	70,200
Female	55,100	67.1	64.0 - 70.3	27,000	32.9	29.7 - 36.0	82,100

**Asthma - still have asthma by State, County, Island, Community, BRFSS Age Group, DOH Race-Ethnicity, Gender, Education Level, Employment Status (Grouped), Household Income, Poverty Level, Marital Status (Grouped), Married, Health Care Coverage, for the Year(s) - 2000-2002, 2001-2003, 2002-2004, 2003-2005, 2004-2006, 2005-2007, 2006-2008, 2007-2009, 2008-2010**

*Note: Weighted numbers (#) represent 3-yr averages, percentages and 95% confidence intervals; Respondents aged 18 years and older; n/r (Not Reportable) - If the unweighted total responses for a dimension (row) is <50 that row will not be shown; n/a (Not Available) - Not asked of a subset of respondents*

**Year: 2007-2009**

Education Level	Yes			No			Estimated Population (3-Yr Avg)
	#	%	C.I. (95%)	#	%	C.I. (95%)	#
Grades 9 thru 11 (Some High School)	5,400	64.7	52.6 - 76.8	2,900	35.3	23.2 - 47.4	8,300
Grades 12 or GED (High School Grad)	31,100	64.1	59.2 - 69.0	17,400	35.9	31.0 - 40.8	48,600
College 1 to 3 years (Some College/ Tech)	25,900	55.2	50.2 - 60.3	20,900	44.8	39.7 - 49.8	46,800
College 4 years or more (College Grad)	26,100	55.3	50.9 - 59.6	21,100	44.7	40.4 - 49.1	47,100

Employment Status (Grouped)	Yes			No			Estimated Population (3-Yr Avg)
	#	%	C.I. (95%)	#	%	C.I. (95%)	#
Employed	55,100	57.5	54.1 - 60.9	40,700	42.5	39.1 - 45.9	95,900
Unemployed	5,800	58.2	46.3 - 70.2	4,100	41.8	29.8 - 53.7	9,900
Retired/Unable to work	18,000	65.2	60.3 - 70.1	9,600	34.8	29.9 - 39.7	27,500
Student/Homemaker	10,400	55.4	46.3 - 64.5	8,400	44.6	35.5 - 53.7	18,800

**Asthma - still have asthma by State, County, Island, Community, BRFSS Age Group, DOH Race-Ethnicity, Gender, Education Level, Employment Status (Grouped), Household Income, Poverty Level, Marital Status (Grouped), Married, Health Care Coverage, for the Year(s) - 2000-2002, 2001-2003, 2002-2004, 2003-2005, 2004-2006, 2005-2007, 2006-2008, 2007-2009, 2008-2010**

*Note: Weighted numbers (#) represent 3-yr averages, percentages and 95% confidence intervals; Respondents aged 18 years and older; n/r (Not Reportable) - If the unweighted total responses for a dimension (row) is <50 that row will not be shown; n/a (Not Available) - Not asked of a subset of respondents*

**Year: 2007-2009**

Household Income	Yes			No			Estimated Population (3-Yr Avg)
	#	%	C.I. (95%)	#	%	C.I. (95%)	#
Less than \$10,000	3,900	70.7	56.9 - 84.5	1,600	29.3	15.5 - 43.1	5,500
\$10,000 to \$14,999	3,100	73.9	62.3 - 85.5	1,100	26.1	14.5 - 37.7	4,200
\$15,000 to \$19,999	4,700	61.5	50.1 - 73.0	2,900	38.5	27.0 - 49.9	7,600
\$20,000 to \$24,999	5,900	59.1	47.9 - 70.3	4,100	40.9	29.7 - 52.1	10,000
\$25,000 to \$34,999	8,200	58.0	50.0 - 66.0	5,900	42.0	34.0 - 50.0	14,100
\$35,000 to \$49,999	15,400	58.5	51.7 - 65.3	11,000	41.5	34.7 - 48.3	26,400
\$50,000 to \$74,999	14,400	53.3	47.0 - 59.7	12,600	46.7	40.3 - 53.0	27,000
\$75,000 or more	23,400	55.5	50.6 - 60.5	18,700	44.5	39.5 - 49.4	42,100

**Asthma - still have asthma by State, County, Island, Community, BRFSS Age Group, DOH Race-Ethnicity, Gender, Education Level, Employment Status (Grouped), Household Income, Poverty Level, Marital Status (Grouped), Married, Health Care Coverage, for the Year(s) - 2000-2002, 2001-2003, 2002-2004, 2003-2005, 2004-2006, 2005-2007, 2006-2008, 2007-2009, 2008-2010**

*Note: Weighted numbers (#) represent 3-yr averages, percentages and 95% confidence intervals; Respondents aged 18 years and older; n/r (Not Reportable) - If the unweighted total responses for a dimension (row) is <50 that row will not be shown; n/a (Not Available) - Not asked of a subset of respondents*

**Year: 2007-2009**

Poverty Level	Yes			No			Estimated Population (3-Yr Avg)
	#	%	C.I. (95%)	#	%	C.I. (95%)	#
0-130%	22,500	66.1	60.3 - 71.9	11,600	33.9	28.1 - 39.7	34,100
131-185%	12,200	53.5	45.6 - 61.4	10,600	46.5	38.6 - 54.4	22,900
186+%	44,200	55.3	51.9 - 58.7	35,700	44.7	41.3 - 48.1	79,900

Marital Status (Grouped)	Yes			No			Estimated Population (3-Yr Avg)
	#	%	C.I. (95%)	#	%	C.I. (95%)	#
Married	46,000	59.2	55.9 - 62.6	31,700	40.8	37.4 - 44.1	77,700
Unmarried Couple	3,100	49.5	36.5 - 62.6	3,200	50.5	37.4 - 63.5	6,300
Widowed	4,600	59.8	49.7 - 69.9	3,100	40.2	30.1 - 50.3	7,700
Other	35,500	58.7	53.8 - 63.6	25,000	41.3	36.4 - 46.2	60,500

**Asthma - still have asthma by State, County, Island, Community, BRFSS Age Group, DOH Race-Ethnicity, Gender, Education Level, Employment Status (Grouped), Household Income, Poverty Level, Marital Status (Grouped), Married, Health Care Coverage, for the Year(s) - 2000-2002, 2001-2003, 2002-2004, 2003-2005, 2004-2006, 2005-2007, 2006-2008, 2007-2009, 2008-2010**

*Note: Weighted numbers (#) represent 3-yr averages, percentages and 95% confidence intervals; Respondents aged 18 years and older; n/r (Not Reportable) - If the unweighted total responses for a dimension (row) is <50 that row will not be shown; n/a (Not Available) - Not asked of a subset of respondents*

**Year: 2007-2009**

<b>Married</b>	<b>Yes</b>			<b>No</b>			<b>Estimated Population (3-Yr Avg)</b>
	<b>#</b>	<b>%</b>	<b>C.I. (95%)</b>	<b>#</b>	<b>%</b>	<b>C.I. (95%)</b>	<b>#</b>
<b>Yes</b>	47,300	59.6	56.3 - 62.9	32,100	40.4	37.1 - 43.7	79,400
<b>No</b>	41,900	57.7	53.3 - 62.0	30,800	42.3	38.0 - 46.7	72,600

<b>Health Care Coverage</b>	<b>Yes</b>			<b>No</b>			<b>Estimated Population (3-Yr Avg)</b>
	<b>#</b>	<b>%</b>	<b>C.I. (95%)</b>	<b>#</b>	<b>%</b>	<b>C.I. (95%)</b>	<b>#</b>
<b>Yes</b>	82,800	58.9	56.2 - 61.7	57,700	41.1	38.3 - 43.8	140,500
<b>No</b>	6,400	56.9	45.0 - 68.8	4,900	43.1	31.2 - 55.0	11,300



**Asthma - still have asthma by State, County, Island, Community, BRFSS Age Group, DOH Race-Ethnicity, Gender, Education Level, Employment Status (Grouped), Household Income, Poverty Level, Marital Status (Grouped), Married, Health Care Coverage, for the Year(s) - 2000-2002, 2001-2003, 2002-2004, 2003-2005, 2004-2006, 2005-2007, 2006-2008, 2007-2009, 2008-2010**

*Note: Weighted numbers (#) represent 3-yr averages, percentages and 95% confidence intervals; Respondents aged 18 years and older; n/r (Not Reportable) - If the unweighted total responses for a dimension (row) is <50 that row will not be shown; n/a (Not Available) - Not asked of a subset of respondents*

**Year: 2006-2008**

State	Yes			No			Estimated Population (3-Yr Avg)
	#	%	C.I. (95%)	#	%	C.I. (95%)	#
Hawaii State	84,000	57.0	54.3 - 59.7	63,300	43.0	40.3 - 45.7	147,300

County	Yes			No			Estimated Population (3-Yr Avg)
	#	%	C.I. (95%)	#	%	C.I. (95%)	#
Hawaii	12,000	57.7	52.5 - 62.9	8,800	42.3	37.1 - 47.5	20,800
Honolulu	58,400	57.0	53.4 - 60.6	44,000	43.0	39.4 - 46.6	102,400
Kauai	3,800	51.2	43.0 - 59.5	3,600	48.8	40.5 - 57.0	7,500
Maui	9,800	58.8	53.3 - 64.3	6,900	41.2	35.7 - 46.7	16,600

**Asthma - still have asthma by State, County, Island, Community, BRFSS Age Group, DOH Race-Ethnicity, Gender, Education Level, Employment Status (Grouped), Household Income, Poverty Level, Marital Status (Grouped), Married, Health Care Coverage, for the Year(s) - 2000-2002, 2001-2003, 2002-2004, 2003-2005, 2004-2006, 2005-2007, 2006-2008, 2007-2009, 2008-2010**

*Note: Weighted numbers (#) represent 3-yr averages, percentages and 95% confidence intervals; Respondents aged 18 years and older; n/r (Not Reportable) - If the unweighted total responses for a dimension (row) is <50 that row will not be shown; n/a (Not Available) - Not asked of a subset of respondents*

**Year: 2006-2008**

Island	Yes			No			Estimated Population (3-Yr Avg)
	#	%	C.I. (95%)	#	%	C.I. (95%)	#
Hawaii	12,000	57.7	52.5 - 62.9	8,800	42.3	37.1 - 47.5	20,800
Kauai	3,800	51.2	43.0 - 59.5	3,600	48.8	40.5 - 57.0	7,500
Lanai	200	63.6	51.6 - 75.7	100	36.4	24.3 - 48.4	300
Maui	8,800	58.2	52.2 - 64.2	6,300	41.8	35.8 - 47.8	15,100
Molokai	800	65.0	52.4 - 77.6	400	35.0	22.4 - 47.6	1,300
Oahu	58,400	57.0	53.4 - 60.6	44,000	43.0	39.4 - 46.6	102,400

Community	Yes			No			Estimated Population (3-Yr Avg)
	#	%	C.I. (95%)	#	%	C.I. (95%)	#
Aiea/ Pearl City	5,400	58.0	45.7 - 70.3	3,900	42.0	29.7 - 54.3	9,300
Ala Moana	2,200	61.7	45.1 - 78.3	1,400	38.3	21.7 - 54.9	3,600

**Asthma - still have asthma by State, County, Island, Community, BRFSS Age Group, DOH Race-Ethnicity, Gender, Education Level, Employment Status (Grouped), Household Income, Poverty Level, Marital Status (Grouped), Married, Health Care Coverage, for the Year(s) - 2000-2002, 2001-2003, 2002-2004, 2003-2005, 2004-2006, 2005-2007, 2006-2008, 2007-2009, 2008-2010**

*Note: Weighted numbers (#) represent 3-yr averages, percentages and 95% confidence intervals; Respondents aged 18 years and older; n/r (Not Reportable) - If the unweighted total responses for a dimension (row) is <50 that row will not be shown; n/a (Not Available) - Not asked of a subset of respondents*

**Year: 2006-2008**

Community	Yes			No			Estimated Population (3-Yr Avg)
	#	%	C.I. (95%)	#	%	C.I. (95%)	#
Hanalei/ Kapaa	1,400	47.7	35.1 - 60.3	1,500	52.3	39.7 - 64.9	2,900
Hilo	4,300	62.5	53.3 - 71.7	2,600	37.5	28.3 - 46.7	6,900
Kaaawa/ Kahaluu/ Kaneohe	3,900	50.3	37.0 - 63.6	3,800	49.7	36.4 - 63.0	7,700
Kahului	3,200	67.0	57.0 - 77.0	1,600	33.0	23.0 - 43.0	4,800
Kailua/ Waimanalo	6,100	65.5	54.4 - 76.7	3,200	34.5	23.3 - 45.6	9,300
Kaimuki/ Palolo/ Waikiki	3,300	54.6	41.6 - 67.6	2,800	45.4	32.4 - 58.4	6,100
Kona	1,900	52.7	42.6 - 62.8	1,700	47.3	37.2 - 57.4	3,700
Lahaina/ Wailuku	2,700	51.4	41.4 - 61.4	2,500	48.6	38.6 - 58.6	5,200
Lanai	200	63.6	51.6 - 75.7	100	36.4	24.3 - 48.4	300
Lihue-Waimea	2,500	53.5	42.7 - 64.3	2,100	46.5	35.7 - 57.3	4,600
Manoa/ Upper Makiki	3,300	47.6	36.0 - 59.2	3,700	52.4	40.8 - 64.0	7,000
Mililani/ Wahiawa	5,800	50.8	40.6 - 61.0	5,600	49.2	39.0 - 59.4	11,300

**Asthma - still have asthma by State, County, Island, Community, BRFSS Age Group, DOH Race-Ethnicity, Gender, Education Level, Employment Status (Grouped), Household Income, Poverty Level, Marital Status (Grouped), Married, Health Care Coverage, for the Year(s) - 2000-2002, 2001-2003, 2002-2004, 2003-2005, 2004-2006, 2005-2007, 2006-2008, 2007-2009, 2008-2010**

*Note: Weighted numbers (#) represent 3-yr averages, percentages and 95% confidence intervals; Respondents aged 18 years and older; n/r (Not Reportable) - If the unweighted total responses for a dimension (row) is <50 that row will not be shown; n/a (Not Available) - Not asked of a subset of respondents*

**Year: 2006-2008**

Community	Yes			No			Estimated Population (3-Yr Avg)
	#	%	C.I. (95%)	#	%	C.I. (95%)	#
Molokai	800	65.0	52.4 - 77.6	400	35.0	22.4 - 47.6	1,300
Nanakuli/ Waianae	5,100	70.7	59.2 - 82.3	2,100	29.3	17.7 - 40.8	7,200
N.Hawaii	3,000	57.3	45.7 - 68.9	2,200	42.7	31.1 - 54.3	5,200
Nuuanu/ Kalihi/ Moanalua	5,000	61.6	47.3 - 76.0	3,100	38.4	24.0 - 52.7	8,100
Puna/ Kau	2,800	55.1	45.4 - 64.7	2,200	44.9	35.3 - 54.6	5,000
Salt Lake/ Foster Village	2,800	60.5	43.9 - 77.1	1,800	39.5	22.9 - 56.1	4,600
Upcountry/ Hana	2,900	56.8	46.5 - 67.0	2,200	43.2	33.0 - 53.5	5,100
Waialae/ Kahala/ Hawaii Kai	2,100	45.4	31.2 - 59.6	2,600	54.6	40.4 - 68.8	4,700
Waipahu/ Kapolei/ Ewa	11,000	57.0	47.9 - 66.2	8,300	43.0	33.8 - 52.1	19,300

**Asthma - still have asthma by State, County, Island, Community, BRFSS Age Group, DOH Race-Ethnicity, Gender, Education Level, Employment Status (Grouped), Household Income, Poverty Level, Marital Status (Grouped), Married, Health Care Coverage, for the Year(s) - 2000-2002, 2001-2003, 2002-2004, 2003-2005, 2004-2006, 2005-2007, 2006-2008, 2007-2009, 2008-2010**

*Note: Weighted numbers (#) represent 3-yr averages, percentages and 95% confidence intervals; Respondents aged 18 years and older; n/r (Not Reportable) - If the unweighted total responses for a dimension (row) is <50 that row will not be shown; n/a (Not Available) - Not asked of a subset of respondents*

**Year: 2006-2008**

BRFSS Age Group	Yes			No			Estimated Population (3-Yr Avg)
	#	%	C.I. (95%)	#	%	C.I. (95%)	#
18-24	15,300	52.2	44.1 - 60.4	14,000	47.8	39.6 - 55.9	29,200
25-34	14,800	53.5	46.4 - 60.5	12,800	46.5	39.5 - 53.6	27,600
35-44	13,600	58.8	52.9 - 64.8	9,500	41.2	35.2 - 47.1	23,200
45-54	15,700	59.8	54.5 - 65.1	10,500	40.2	34.9 - 45.5	26,200
55-64	13,400	58.0	52.7 - 63.3	9,700	42.0	36.7 - 47.3	23,100
65-74	6,100	63.2	56.3 - 70.0	3,600	36.8	30.0 - 43.7	9,700
75+	4,700	62.5	53.9 - 71.2	2,800	37.5	28.8 - 46.1	7,400

**Asthma - still have asthma by State, County, Island, Community, BRFSS Age Group, DOH Race-Ethnicity, Gender, Education Level, Employment Status (Grouped), Household Income, Poverty Level, Marital Status (Grouped), Married, Health Care Coverage, for the Year(s) - 2000-2002, 2001-2003, 2002-2004, 2003-2005, 2004-2006, 2005-2007, 2006-2008, 2007-2009, 2008-2010**

*Note: Weighted numbers (#) represent 3-yr averages, percentages and 95% confidence intervals; Respondents aged 18 years and older; n/r (Not Reportable) - If the unweighted total responses for a dimension (row) is <50 that row will not be shown; n/a (Not Available) - Not asked of a subset of respondents*

**Year: 2006-2008**

DOH Race-Ethnicity	Yes			No			Estimated Population (3-Yr Avg)
	#	%	C.I. (95%)	#	%	C.I. (95%)	#
Caucasian	26,200	58.4	54.2 - 62.7	18,600	41.6	37.3 - 45.8	44,800
Native Hawaiian	18,300	60.1	54.2 - 66.0	12,100	39.9	34.0 - 45.8	30,400
Chinese	4,800	56.0	43.9 - 68.2	3,700	44.0	31.8 - 56.1	8,500
Filipino	12,000	56.7	48.1 - 65.3	9,100	43.3	34.7 - 51.9	21,100
Japanese	13,900	49.9	43.9 - 55.9	13,900	50.1	44.1 - 56.1	27,800
Other	3,600	61.6	44.8 - 78.3	2,300	38.4	21.7 - 55.2	5,900

Gender	Yes			No			Estimated Population (3-Yr Avg)
	#	%	C.I. (95%)	#	%	C.I. (95%)	#
Male	32,200	48.4	43.8 - 52.9	34,400	51.6	47.1 - 56.2	66,700
Female	51,800	64.2	61.1 - 67.3	28,900	35.8	32.7 - 38.9	80,700

**Asthma - still have asthma by State, County, Island, Community, BRFSS Age Group, DOH Race-Ethnicity, Gender, Education Level, Employment Status (Grouped), Household Income, Poverty Level, Marital Status (Grouped), Married, Health Care Coverage, for the Year(s) - 2000-2002, 2001-2003, 2002-2004, 2003-2005, 2004-2006, 2005-2007, 2006-2008, 2007-2009, 2008-2010**

*Note: Weighted numbers (#) represent 3-yr averages, percentages and 95% confidence intervals; Respondents aged 18 years and older; n/r (Not Reportable) - If the unweighted total responses for a dimension (row) is <50 that row will not be shown; n/a (Not Available) - Not asked of a subset of respondents*

**Year: 2006-2008**

Education Level	Yes			No			Estimated Population (3-Yr Avg)
	#	%	C.I. (95%)	#	%	C.I. (95%)	#
Grades 9 thru 11 (Some High School)	4,400	59.8	47.3 - 72.4	2,900	40.2	27.6 - 52.7	7,300
Grades 12 or GED (High School Grad)	28,000	59.9	54.7 - 65.1	18,800	40.1	34.9 - 45.3	46,800
College 1 to 3 years (Some College/ Tech)	24,400	54.6	49.6 - 59.5	20,400	45.4	40.5 - 50.4	44,800
College 4 years or more (College Grad)	26,300	55.8	51.5 - 60.0	20,800	44.2	40.0 - 48.5	47,100

Employment Status (Grouped)	Yes			No			Estimated Population (3-Yr Avg)
	#	%	C.I. (95%)	#	%	C.I. (95%)	#
Employed	51,700	55.5	52.1 - 59.0	41,400	44.5	41.0 - 47.9	93,100
Unemployed	4,800	48.9	36.6 - 61.2	5,000	51.1	38.8 - 63.4	9,700
Retired/Unable to work	17,800	66.3	61.5 - 71.2	9,000	33.7	28.8 - 38.5	26,900
Student/Homemaker	9,800	55.5	46.7 - 64.4	7,800	44.5	35.6 - 53.3	17,600

**Asthma - still have asthma by State, County, Island, Community, BRFSS Age Group, DOH Race-Ethnicity, Gender, Education Level, Employment Status (Grouped), Household Income, Poverty Level, Marital Status (Grouped), Married, Health Care Coverage, for the Year(s) - 2000-2002, 2001-2003, 2002-2004, 2003-2005, 2004-2006, 2005-2007, 2006-2008, 2007-2009, 2008-2010**

*Note: Weighted numbers (#) represent 3-yr averages, percentages and 95% confidence intervals; Respondents aged 18 years and older; n/r (Not Reportable) - If the unweighted total responses for a dimension (row) is <50 that row will not be shown; n/a (Not Available) - Not asked of a subset of respondents*

**Year: 2006-2008**

Household Income	Yes			No			Estimated Population (3-Yr Avg)
	#	%	C.I. (95%)	#	%	C.I. (95%)	#
Less than \$10,000	3,700	69.9	57.2 - 82.6	1,600	30.1	17.4 - 42.8	5,200
\$10,000 to \$14,999	3,100	70.5	58.7 - 82.3	1,300	29.5	17.7 - 41.3	4,400
\$15,000 to \$19,999	4,200	63.9	52.8 - 74.9	2,400	36.1	25.1 - 47.2	6,600
\$20,000 to \$24,999	5,300	56.3	44.8 - 67.9	4,100	43.7	32.1 - 55.2	9,500
\$25,000 to \$34,999	9,100	61.1	52.9 - 69.4	5,800	38.9	30.6 - 47.1	15,000
\$35,000 to \$49,999	13,800	55.0	48.3 - 61.7	11,300	45.0	38.3 - 51.7	25,100
\$50,000 to \$74,999	12,700	52.1	45.6 - 58.6	11,700	47.9	41.4 - 54.4	24,400
\$75,000 or more	20,400	53.7	48.7 - 58.7	17,600	46.3	41.3 - 51.3	38,000



**Asthma - still have asthma by State, County, Island, Community, BRFSS Age Group, DOH Race-Ethnicity, Gender, Education Level, Employment Status (Grouped), Household Income, Poverty Level, Marital Status (Grouped), Married, Health Care Coverage, for the Year(s) - 2000-2002, 2001-2003, 2002-2004, 2003-2005, 2004-2006, 2005-2007, 2006-2008, 2007-2009, 2008-2010**

*Note: Weighted numbers (#) represent 3-yr averages, percentages and 95% confidence intervals; Respondents aged 18 years and older; n/r (Not Reportable) - If the unweighted total responses for a dimension (row) is <50 that row will not be shown; n/a (Not Available) - Not asked of a subset of respondents*

**Year: 2006-2008**

Poverty Level	Yes			No			Estimated Population (3-Yr Avg)
	#	%	C.I. (95%)	#	%	C.I. (95%)	#
<b>0-130%</b>	20,300	66.1	60.1 - 72.1	10,400	33.9	27.9 - 39.9	30,800
<b>131-185%</b>	11,600	54.0	45.9 - 62.1	9,900	46.0	37.9 - 54.1	21,500
<b>186+%</b>	40,400	53.3	49.9 - 56.6	35,400	46.7	43.4 - 50.1	75,800

Marital Status (Grouped)	Yes			No			Estimated Population (3-Yr Avg)
	#	%	C.I. (95%)	#	%	C.I. (95%)	#
<b>Married</b>	44,100	57.1	53.7 - 60.5	33,100	42.9	39.5 - 46.3	77,200
<b>Unmarried Couple</b>	3,000	44.3	30.9 - 57.7	3,800	55.7	42.3 - 69.1	6,800
<b>Widowed</b>	4,500	61.5	52.5 - 70.5	2,800	38.5	29.5 - 47.5	7,200
<b>Other</b>	32,400	57.8	53.0 - 62.7	23,600	42.2	37.3 - 47.0	56,100

**Asthma - still have asthma by State, County, Island, Community, BRFSS Age Group, DOH Race-Ethnicity, Gender, Education Level, Employment Status (Grouped), Household Income, Poverty Level, Marital Status (Grouped), Married, Health Care Coverage, for the Year(s) - 2000-2002, 2001-2003, 2002-2004, 2003-2005, 2004-2006, 2005-2007, 2006-2008, 2007-2009, 2008-2010**

*Note: Weighted numbers (#) represent 3-yr averages, percentages and 95% confidence intervals; Respondents aged 18 years and older; n/r (Not Reportable) - If the unweighted total responses for a dimension (row) is <50 that row will not be shown; n/a (Not Available) - Not asked of a subset of respondents*

**Year: 2006-2008**

<b>Married</b>	<b>Yes</b>			<b>No</b>			<b>Estimated Population (3-Yr Avg)</b>
	<b>#</b>	<b>%</b>	<b>C.I. (95%)</b>	<b>#</b>	<b>%</b>	<b>C.I. (95%)</b>	<b>#</b>
<b>Yes</b>	45,500	57.4	54.1 - 60.8	33,700	42.6	39.2 - 45.9	79,300
<b>No</b>	38,400	56.6	52.2 - 60.9	29,500	43.4	39.1 - 47.8	67,900

<b>Health Care Coverage</b>	<b>Yes</b>			<b>No</b>			<b>Estimated Population (3-Yr Avg)</b>
	<b>#</b>	<b>%</b>	<b>C.I. (95%)</b>	<b>#</b>	<b>%</b>	<b>C.I. (95%)</b>	<b>#</b>
<b>Yes</b>	77,100	56.8	54.0 - 59.5	58,700	43.2	40.5 - 46.0	135,800
<b>No</b>	6,800	60.4	49.4 - 71.3	4,500	39.6	28.7 - 50.6	11,300

**Asthma - still have asthma by State, County, Island, Community, BRFSS Age Group, DOH Race-Ethnicity, Gender, Education Level, Employment Status (Grouped), Household Income, Poverty Level, Marital Status (Grouped), Married, Health Care Coverage, for the Year(s) - 2000-2002, 2001-2003, 2002-2004, 2003-2005, 2004-2006, 2005-2007, 2006-2008, 2007-2009, 2008-2010**

*Note: Weighted numbers (#) represent 3-yr averages, percentages and 95% confidence intervals; Respondents aged 18 years and older; n/r (Not Reportable) - If the unweighted total responses for a dimension (row) is <50 that row will not be shown; n/a (Not Available) - Not asked of a subset of respondents*

**Year: 2005-2007**

State	Yes			No			Estimated Population (3-Yr Avg)
	#	%	C.I. (95%)	#	%	C.I. (95%)	#
Hawaii State	76,400	55.0	52.3 - 57.7	62,600	45.0	42.3 - 47.7	139,000

County	Yes			No			Estimated Population (3-Yr Avg)
	#	%	C.I. (95%)	#	%	C.I. (95%)	#
Hawaii	9,900	56.0	51.1 - 60.9	7,800	44.0	39.1 - 48.9	17,800
Honolulu	53,400	54.9	51.3 - 58.5	44,000	45.1	41.5 - 48.7	97,400
Kauai	3,800	48.9	41.1 - 56.7	3,900	51.1	43.3 - 58.9	7,700
Maui	9,300	57.6	51.9 - 63.3	6,800	42.4	36.7 - 48.1	16,100

**Asthma - still have asthma by State, County, Island, Community, BRFSS Age Group, DOH Race-Ethnicity, Gender, Education Level, Employment Status (Grouped), Household Income, Poverty Level, Marital Status (Grouped), Married, Health Care Coverage, for the Year(s) - 2000-2002, 2001-2003, 2002-2004, 2003-2005, 2004-2006, 2005-2007, 2006-2008, 2007-2009, 2008-2010**

*Note: Weighted numbers (#) represent 3-yr averages, percentages and 95% confidence intervals; Respondents aged 18 years and older; n/r (Not Reportable) - If the unweighted total responses for a dimension (row) is <50 that row will not be shown; n/a (Not Available) - Not asked of a subset of respondents*

**Year: 2005-2007**

Island	Yes			No			Estimated Population (3-Yr Avg)
	#	%	C.I. (95%)	#	%	C.I. (95%)	#
Hawaii	9,900	56.0	51.1 - 60.9	7,800	44.0	39.1 - 48.9	17,800
Kauai	3,800	48.9	41.1 - 56.7	3,900	51.1	43.3 - 58.9	7,700
Lanai	200	56.4	40.1 - 72.7	100	43.6	27.3 - 59.9	300
Maui	8,400	56.8	50.7 - 63.0	6,400	43.2	37.0 - 49.3	14,700
Molokai	700	68.2	56.3 - 80.1	300	31.8	19.9 - 43.7	1,100
Oahu	53,400	54.9	51.3 - 58.5	44,000	45.1	41.5 - 48.7	97,400

Community	Yes			No			Estimated Population (3-Yr Avg)
	#	%	C.I. (95%)	#	%	C.I. (95%)	#
Aiea/ Pearl City	4,800	54.1	41.2 - 66.9	4,000	45.9	33.1 - 58.8	8,800
Ala Moana	2,200	55.3	41.2 - 69.4	1,800	44.7	30.6 - 58.8	4,000

**Asthma - still have asthma by State, County, Island, Community, BRFSS Age Group, DOH Race-Ethnicity, Gender, Education Level, Employment Status (Grouped), Household Income, Poverty Level, Marital Status (Grouped), Married, Health Care Coverage, for the Year(s) - 2000-2002, 2001-2003, 2002-2004, 2003-2005, 2004-2006, 2005-2007, 2006-2008, 2007-2009, 2008-2010**

*Note: Weighted numbers (#) represent 3-yr averages, percentages and 95% confidence intervals; Respondents aged 18 years and older; n/r (Not Reportable) - If the unweighted total responses for a dimension (row) is <50 that row will not be shown; n/a (Not Available) - Not asked of a subset of respondents*

**Year: 2005-2007**

Community	Yes			No			Estimated Population (3-Yr Avg)
	#	%	C.I. (95%)	#	%	C.I. (95%)	#
Hanalei/ Kapaa	1,400	47.4	36.5 - 58.3	1,500	52.6	41.7 - 63.5	2,900
Hilo	3,000	58.6	49.7 - 67.6	2,100	41.4	32.4 - 50.3	5,100
Kaaawa/ Kahaluu/ Kaneohe	4,800	60.7	49.0 - 72.3	3,100	39.3	27.7 - 51.0	7,900
Kahului	2,800	58.5	48.7 - 68.4	2,000	41.5	31.6 - 51.3	4,800
Kailua/ Waimanalo	4,900	59.2	46.5 - 71.9	3,400	40.8	28.1 - 53.5	8,300
Kaimuki/ Palolo/ Waikiki	3,500	52.7	40.5 - 64.9	3,200	47.3	35.1 - 59.5	6,700
Kona	2,000	52.4	42.3 - 62.5	1,800	47.6	37.5 - 57.7	3,900
Lahaina/ Wailuku	2,700	58.4	48.1 - 68.6	1,900	41.6	31.4 - 51.9	4,600
Lanai	200	56.4	40.1 - 72.7	100	43.6	27.3 - 59.9	300
Lihue-Waimea	2,400	49.8	39.2 - 60.4	2,400	50.2	39.6 - 60.8	4,800
Manoa/ Upper Makiki	2,800	44.3	32.5 - 56.2	3,500	55.7	43.8 - 67.5	6,200
Mililani/ Wahiawa	4,400	45.5	35.3 - 55.6	5,300	54.5	44.4 - 64.7	9,600

**Asthma - still have asthma by State, County, Island, Community, BRFSS Age Group, DOH Race-Ethnicity, Gender, Education Level, Employment Status (Grouped), Household Income, Poverty Level, Marital Status (Grouped), Married, Health Care Coverage, for the Year(s) - 2000-2002, 2001-2003, 2002-2004, 2003-2005, 2004-2006, 2005-2007, 2006-2008, 2007-2009, 2008-2010**

*Note: Weighted numbers (#) represent 3-yr averages, percentages and 95% confidence intervals; Respondents aged 18 years and older; n/r (Not Reportable) - If the unweighted total responses for a dimension (row) is <50 that row will not be shown; n/a (Not Available) - Not asked of a subset of respondents*

**Year: 2005-2007**

Community	Yes			No			Estimated Population (3-Yr Avg)
	#	%	C.I. (95%)	#	%	C.I. (95%)	#
Molokai	700	68.2	56.3 - 80.1	300	31.8	19.9 - 43.7	1,100
Nanakuli/ Waianae	3,600	59.7	44.8 - 74.7	2,400	40.3	25.3 - 55.2	6,000
N.Hawaii	2,400	56.6	45.6 - 67.7	1,800	43.4	32.3 - 54.4	4,200
N.Shore/ Laie	2,700	66.7	52.5 - 81.0	1,300	33.3	19.0 - 47.5	4,000
Nuuanu/ Kalihi/ Moanalua	5,100	59.0	45.1 - 72.9	3,600	41.0	27.1 - 54.9	8,700
Puna/ Kau	2,600	55.5	46.1 - 64.9	2,000	44.5	35.1 - 53.9	4,600
Upcountry/ Hana	2,900	54.0	42.6 - 65.4	2,500	46.0	34.6 - 57.4	5,400
Waialae/ Kahala/ Hawaii Kai	2,100	42.4	27.8 - 57.1	2,800	57.6	42.9 - 72.2	4,800
Waipahu/ Kapolei/ Ewa	10,000	56.2	47.0 - 65.4	7,800	43.8	34.6 - 53.0	17,900

**Asthma - still have asthma by State, County, Island, Community, BRFSS Age Group, DOH Race-Ethnicity, Gender, Education Level, Employment Status (Grouped), Household Income, Poverty Level, Marital Status (Grouped), Married, Health Care Coverage, for the Year(s) - 2000-2002, 2001-2003, 2002-2004, 2003-2005, 2004-2006, 2005-2007, 2006-2008, 2007-2009, 2008-2010**

*Note: Weighted numbers (#) represent 3-yr averages, percentages and 95% confidence intervals; Respondents aged 18 years and older; n/r (Not Reportable) - If the unweighted total responses for a dimension (row) is <50 that row will not be shown; n/a (Not Available) - Not asked of a subset of respondents*

**Year: 2005-2007**

BRFSS Age Group	Yes			No			Estimated Population (3-Yr Avg)
	#	%	C.I. (95%)	#	%	C.I. (95%)	#
18-24	11,800	47.0	38.3 - 55.8	13,200	53.0	44.2 - 61.7	25,000
25-34	14,800	55.2	48.5 - 61.9	12,000	44.8	38.1 - 51.5	26,700
35-44	11,800	54.5	48.4 - 60.6	9,900	45.5	39.4 - 51.6	21,700
45-54	13,900	55.2	49.7 - 60.6	11,300	44.8	39.4 - 50.3	25,200
55-64	13,400	59.8	54.4 - 65.2	9,000	40.2	34.8 - 45.6	22,500
65-74	5,500	58.8	51.7 - 66.0	3,900	41.2	34.0 - 48.3	9,400
75+	4,800	64.5	56.2 - 72.8	2,700	35.5	27.2 - 43.8	7,500

**Asthma - still have asthma by State, County, Island, Community, BRFSS Age Group, DOH Race-Ethnicity, Gender, Education Level, Employment Status (Grouped), Household Income, Poverty Level, Marital Status (Grouped), Married, Health Care Coverage, for the Year(s) - 2000-2002, 2001-2003, 2002-2004, 2003-2005, 2004-2006, 2005-2007, 2006-2008, 2007-2009, 2008-2010**

*Note: Weighted numbers (#) represent 3-yr averages, percentages and 95% confidence intervals; Respondents aged 18 years and older; n/r (Not Reportable) - If the unweighted total responses for a dimension (row) is <50 that row will not be shown; n/a (Not Available) - Not asked of a subset of respondents*

**Year: 2005-2007**

DOH Race-Ethnicity	Yes			No			Estimated Population (3-Yr Avg)
	#	%	C.I. (95%)	#	%	C.I. (95%)	#
Caucasian	24,300	57.6	53.3 - 62.0	17,900	42.4	38.0 - 46.7	42,200
Native Hawaiian	16,500	59.2	53.4 - 65.0	11,400	40.8	35.0 - 46.6	27,900
Chinese	3,500	52.5	40.7 - 64.4	3,100	47.5	35.6 - 59.3	6,600
Filipino	12,300	53.8	45.5 - 62.1	10,500	46.2	37.9 - 54.5	22,800
Japanese	11,800	45.8	39.8 - 51.8	14,000	54.2	48.2 - 60.2	25,800
Other	3,200	60.3	43.6 - 77.1	2,100	39.7	22.9 - 56.4	5,300

Gender	Yes			No			Estimated Population (3-Yr Avg)
	#	%	C.I. (95%)	#	%	C.I. (95%)	#
Male	27,400	46.3	41.5 - 51.1	31,800	53.7	48.9 - 58.5	59,200
Female	49,100	61.5	58.4 - 64.5	30,800	38.5	35.5 - 41.6	79,800



**Asthma - still have asthma by State, County, Island, Community, BRFSS Age Group, DOH Race-Ethnicity, Gender, Education Level, Employment Status (Grouped), Household Income, Poverty Level, Marital Status (Grouped), Married, Health Care Coverage, for the Year(s) - 2000-2002, 2001-2003, 2002-2004, 2003-2005, 2004-2006, 2005-2007, 2006-2008, 2007-2009, 2008-2010**

*Note: Weighted numbers (#) represent 3-yr averages, percentages and 95% confidence intervals; Respondents aged 18 years and older; n/r (Not Reportable) - If the unweighted total responses for a dimension (row) is <50 that row will not be shown; n/a (Not Available) - Not asked of a subset of respondents*

**Year: 2005-2007**

Education Level	Yes			No			Estimated Population (3-Yr Avg)
	#	%	C.I. (95%)	#	%	C.I. (95%)	#
Grades 9 thru 11 (Some High School)	3,900	57.6	45.0 - 70.3	2,900	42.4	29.7 - 55.0	6,800
Grades 12 or GED (High School Grad)	22,900	53.0	47.7 - 58.3	20,300	47.0	41.7 - 52.3	43,200
College 1 to 3 years (Some College/ Tech)	24,000	56.6	51.8 - 61.4	18,400	43.4	38.6 - 48.2	42,500
College 4 years or more (College Grad)	23,800	53.9	49.4 - 58.3	20,400	46.1	41.7 - 50.6	44,200

Employment Status (Grouped)	Yes			No			Estimated Population (3-Yr Avg)
	#	%	C.I. (95%)	#	%	C.I. (95%)	#
Employed	47,800	53.0	49.6 - 56.5	42,300	47.0	43.5 - 50.4	90,200
Unemployed	3,400	48.8	34.5 - 63.2	3,500	51.2	36.8 - 65.5	6,900
Retired/Unable to work	17,200	63.6	58.6 - 68.5	9,900	36.4	31.5 - 41.4	27,100
Student/Homemaker	8,000	54.7	45.7 - 63.8	6,600	45.3	36.2 - 54.3	14,700

**Asthma - still have asthma by State, County, Island, Community, BRFSS Age Group, DOH Race-Ethnicity, Gender, Education Level, Employment Status (Grouped), Household Income, Poverty Level, Marital Status (Grouped), Married, Health Care Coverage, for the Year(s) - 2000-2002, 2001-2003, 2002-2004, 2003-2005, 2004-2006, 2005-2007, 2006-2008, 2007-2009, 2008-2010**

*Note: Weighted numbers (#) represent 3-yr averages, percentages and 95% confidence intervals; Respondents aged 18 years and older; n/r (Not Reportable) - If the unweighted total responses for a dimension (row) is <50 that row will not be shown; n/a (Not Available) - Not asked of a subset of respondents*

**Year: 2005-2007**

Household Income	Yes			No			Estimated Population (3-Yr Avg)
	#	%	C.I. (95%)	#	%	C.I. (95%)	#
Less than \$10,000	3,000	71.2	60.6 - 81.7	1,200	28.8	18.3 - 39.4	4,200
\$10,000 to \$14,999	3,000	71.5	60.3 - 82.7	1,200	28.5	17.3 - 39.7	4,100
\$15,000 to \$19,999	4,000	57.8	47.5 - 68.0	2,900	42.2	32.0 - 52.5	6,900
\$20,000 to \$24,999	5,900	59.7	49.0 - 70.4	4,000	40.3	29.6 - 51.0	9,800
\$25,000 to \$34,999	7,900	55.1	46.6 - 63.6	6,400	44.9	36.4 - 53.4	14,300
\$35,000 to \$49,999	12,400	52.4	45.8 - 58.9	11,300	47.6	41.1 - 54.2	23,600
\$50,000 to \$74,999	11,500	50.2	43.4 - 57.0	11,400	49.8	43.0 - 56.6	22,900
\$75,000 or more	17,400	52.7	47.5 - 57.8	15,600	47.3	42.2 - 52.5	33,000

**Asthma - still have asthma by State, County, Island, Community, BRFSS Age Group, DOH Race-Ethnicity, Gender, Education Level, Employment Status (Grouped), Household Income, Poverty Level, Marital Status (Grouped), Married, Health Care Coverage, for the Year(s) - 2000-2002, 2001-2003, 2002-2004, 2003-2005, 2004-2006, 2005-2007, 2006-2008, 2007-2009, 2008-2010**

*Note: Weighted numbers (#) represent 3-yr averages, percentages and 95% confidence intervals; Respondents aged 18 years and older; n/r (Not Reportable) - If the unweighted total responses for a dimension (row) is <50 that row will not be shown; n/a (Not Available) - Not asked of a subset of respondents*

**Year: 2005-2007**

Poverty Level	Yes			No			Estimated Population (3-Yr Avg)
	#	%	C.I. (95%)	#	%	C.I. (95%)	#
<b>0-130%</b>	18,000	64.5	58.5 - 70.6	9,900	35.5	29.4 - 41.5	27,900
<b>131-185%</b>	9,600	52.1	43.5 - 60.7	8,800	47.9	39.3 - 56.5	18,400
<b>186+%</b>	37,400	51.5	48.1 - 54.8	35,200	48.5	45.2 - 51.9	72,600

Marital Status (Grouped)	Yes			No			Estimated Population (3-Yr Avg)
	#	%	C.I. (95%)	#	%	C.I. (95%)	#
<b>Married</b>	41,900	55.9	52.6 - 59.2	33,100	44.1	40.8 - 47.4	75,000
<b>Unmarried Couple</b>	2,600	39.9	25.7 - 54.0	3,900	60.1	46.0 - 74.3	6,600
<b>Widowed</b>	4,300	62.7	54.7 - 70.7	2,600	37.3	29.3 - 45.3	6,900
<b>Other</b>	27,600	54.6	49.5 - 59.7	23,000	45.4	40.3 - 50.5	50,600

**Asthma - still have asthma by State, County, Island, Community, BRFSS Age Group, DOH Race-Ethnicity, Gender, Education Level, Employment Status (Grouped), Household Income, Poverty Level, Marital Status (Grouped), Married, Health Care Coverage, for the Year(s) - 2000-2002, 2001-2003, 2002-2004, 2003-2005, 2004-2006, 2005-2007, 2006-2008, 2007-2009, 2008-2010**

*Note: Weighted numbers (#) represent 3-yr averages, percentages and 95% confidence intervals; Respondents aged 18 years and older; n/r (Not Reportable) - If the unweighted total responses for a dimension (row) is <50 that row will not be shown; n/a (Not Available) - Not asked of a subset of respondents*

**Year: 2005-2007**

<b>Married</b>	<b>Yes</b>			<b>No</b>			<b>Estimated Population (3-Yr Avg)</b>
	<b>#</b>	<b>%</b>	<b>C.I. (95%)</b>	<b>#</b>	<b>%</b>	<b>C.I. (95%)</b>	<b>#</b>
<b>Yes</b>	43,100	55.9	52.7 - 59.2	33,900	44.1	40.8 - 47.3	77,000
<b>No</b>	33,200	53.9	49.3 - 58.4	28,400	46.1	41.6 - 50.7	61,700

<b>Health Care Coverage</b>	<b>Yes</b>			<b>No</b>			<b>Estimated Population (3-Yr Avg)</b>
	<b>#</b>	<b>%</b>	<b>C.I. (95%)</b>	<b>#</b>	<b>%</b>	<b>C.I. (95%)</b>	<b>#</b>
<b>Yes</b>	70,200	55.2	52.5 - 58.0	56,900	44.8	42.0 - 47.5	127,000
<b>No</b>	6,100	51.8	40.7 - 62.8	5,700	48.2	37.2 - 59.3	11,800

**Asthma - still have asthma by State, County, Island, Community, BRFSS Age Group, DOH Race-Ethnicity, Gender, Education Level, Employment Status (Grouped), Household Income, Poverty Level, Marital Status (Grouped), Married, Health Care Coverage, for the Year(s) - 2000-2002, 2001-2003, 2002-2004, 2003-2005, 2004-2006, 2005-2007, 2006-2008, 2007-2009, 2008-2010**

*Note: Weighted numbers (#) represent 3-yr averages, percentages and 95% confidence intervals; Respondents aged 18 years and older; n/r (Not Reportable) - If the unweighted total responses for a dimension (row) is <50 that row will not be shown; n/a (Not Available) - Not asked of a subset of respondents*

**Year: 2004-2006**

State	Yes			No			Estimated Population (3-Yr Avg)
	#	%	C.I. (95%)	#	%	C.I. (95%)	#
Hawaii State	74,700	54.4	50.8 - 57.9	62,800	45.6	42.1 - 49.2	137,500

County	Yes			No			Estimated Population (3-Yr Avg)
	#	%	C.I. (95%)	#	%	C.I. (95%)	#
Hawaii	10,500	58.7	52.7 - 64.7	7,400	41.3	35.3 - 47.3	17,800
Honolulu	51,000	52.7	48.0 - 57.4	45,800	47.3	42.6 - 52.0	96,800
Kauai	4,000	53.4	45.0 - 61.7	3,500	46.6	38.3 - 55.0	7,500
Maui	9,200	60.1	52.3 - 67.9	6,100	39.9	32.1 - 47.7	15,300

**Asthma - still have asthma by State, County, Island, Community, BRFSS Age Group, DOH Race-Ethnicity, Gender, Education Level, Employment Status (Grouped), Household Income, Poverty Level, Marital Status (Grouped), Married, Health Care Coverage, for the Year(s) - 2000-2002, 2001-2003, 2002-2004, 2003-2005, 2004-2006, 2005-2007, 2006-2008, 2007-2009, 2008-2010**

*Note: Weighted numbers (#) represent 3-yr averages, percentages and 95% confidence intervals; Respondents aged 18 years and older; n/r (Not Reportable) - If the unweighted total responses for a dimension (row) is <50 that row will not be shown; n/a (Not Available) - Not asked of a subset of respondents*

**Year: 2004-2006**

Island	Yes			No			Estimated Population (3-Yr Avg)
	#	%	C.I. (95%)	#	%	C.I. (95%)	#
Hawaii	10,500	58.7	52.7 - 64.7	7,400	41.3	35.3 - 47.3	17,800
Kauai	4,000	53.4	45.0 - 61.7	3,500	46.6	38.3 - 55.0	7,500
Lanai	200	59.3	39.8 - 78.9	100	40.7	21.1 - 60.2	300
Maui	8,700	60.2	51.9 - 68.4	5,700	39.8	31.6 - 48.1	14,400
Molokai	400	59.1	41.9 - 76.3	300	40.9	23.7 - 58.1	700
Oahu	51,000	52.7	48.0 - 57.4	45,800	47.3	42.6 - 52.0	96,800

Community	Yes			No			Estimated Population (3-Yr Avg)
	#	%	C.I. (95%)	#	%	C.I. (95%)	#
Aiea/ Pearl City	4,000	55.7	39.5 - 71.9	3,200	44.3	28.1 - 60.5	7,200
Ala Moana	2,100	47.6	33.3 - 62.0	2,400	52.4	38.0 - 66.7	4,500

**Asthma - still have asthma by State, County, Island, Community, BRFSS Age Group, DOH Race-Ethnicity, Gender, Education Level, Employment Status (Grouped), Household Income, Poverty Level, Marital Status (Grouped), Married, Health Care Coverage, for the Year(s) - 2000-2002, 2001-2003, 2002-2004, 2003-2005, 2004-2006, 2005-2007, 2006-2008, 2007-2009, 2008-2010**

*Note: Weighted numbers (#) represent 3-yr averages, percentages and 95% confidence intervals; Respondents aged 18 years and older; n/r (Not Reportable) - If the unweighted total responses for a dimension (row) is <50 that row will not be shown; n/a (Not Available) - Not asked of a subset of respondents*

**Year: 2004-2006**

Community	Yes			No			Estimated Population (3-Yr Avg)
	#	%	C.I. (95%)	#	%	C.I. (95%)	#
Hanalei/ Kapaa	1,800	65.2	54.2 - 76.1	1,000	34.8	23.9 - 45.8	2,800
Hilo	3,000	57.8	47.5 - 68.0	2,200	42.2	32.0 - 52.5	5,200
Kaaawa/ Kahaluu/ Kaneohe	4,500	50.6	37.4 - 63.9	4,400	49.4	36.1 - 62.6	8,900
Kahului	2,700	57.7	45.1 - 70.3	2,000	42.3	29.7 - 54.9	4,600
Kailua/ Waimanalo	4,100	58.2	43.3 - 73.1	2,900	41.8	26.9 - 56.7	7,000
Kaimuki/ Palolo/ Waikiki	3,700	54.2	40.6 - 67.9	3,100	45.8	32.1 - 59.4	6,800
Kona	1,900	46.8	35.1 - 58.5	2,100	53.2	41.5 - 64.9	4,000
Lahaina/ Wailuku	2,900	64.6	50.8 - 78.4	1,600	35.4	21.6 - 49.2	4,500
Lanai	200	59.3	39.8 - 78.9	100	40.7	21.1 - 60.2	300
Lihue-Waimea	2,200	46.2	35.2 - 57.3	2,500	53.8	42.7 - 64.8	4,700
Manoa/ Upper Makiki	2,100	39.8	24.7 - 54.9	3,200	60.2	45.1 - 75.3	5,400
Millilani/ Wahiawa	5,300	45.9	28.8 - 63.1	6,300	54.1	36.9 - 71.2	11,600

**Asthma - still have asthma by State, County, Island, Community, BRFSS Age Group, DOH Race-Ethnicity, Gender, Education Level, Employment Status (Grouped), Household Income, Poverty Level, Marital Status (Grouped), Married, Health Care Coverage, for the Year(s) - 2000-2002, 2001-2003, 2002-2004, 2003-2005, 2004-2006, 2005-2007, 2006-2008, 2007-2009, 2008-2010**

*Note: Weighted numbers (#) represent 3-yr averages, percentages and 95% confidence intervals; Respondents aged 18 years and older; n/r (Not Reportable) - If the unweighted total responses for a dimension (row) is <50 that row will not be shown; n/a (Not Available) - Not asked of a subset of respondents*

**Year: 2004-2006**

Community	Yes			No			Estimated Population (3-Yr Avg)
	#	%	C.I. (95%)	#	%	C.I. (95%)	#
Molokai	400	59.1	41.9 - 76.3	300	40.9	23.7 - 58.1	700
N.Hawaii	2,000	63.3	51.0 - 75.6	1,200	36.7	24.4 - 49.0	3,200
Nuuanu/ Kalihi/ Moanalua	4,800	55.3	37.5 - 73.1	3,900	44.7	26.9 - 62.5	8,600
Puna/ Kau	3,600	65.6	53.6 - 77.5	1,900	34.4	22.5 - 46.4	5,500
Upcountry/ Hana	3,100	58.6	42.8 - 74.3	2,200	41.4	25.7 - 57.2	5,300
Waialae/ Kahala/ Hawaii Kai	2,300	46.6	29.2 - 64.1	2,600	53.4	35.9 - 70.8	5,000
Waipahu/ Kapolei/ Ewa	10,500	57.9	46.9 - 68.9	7,600	42.1	31.1 - 53.1	18,100



**Asthma - still have asthma by State, County, Island, Community, BRFSS Age Group, DOH Race-Ethnicity, Gender, Education Level, Employment Status (Grouped), Household Income, Poverty Level, Marital Status (Grouped), Married, Health Care Coverage, for the Year(s) - 2000-2002, 2001-2003, 2002-2004, 2003-2005, 2004-2006, 2005-2007, 2006-2008, 2007-2009, 2008-2010**

*Note: Weighted numbers (#) represent 3-yr averages, percentages and 95% confidence intervals; Respondents aged 18 years and older; n/r (Not Reportable) - If the unweighted total responses for a dimension (row) is <50 that row will not be shown; n/a (Not Available) - Not asked of a subset of respondents*

**Year: 2004-2006**

BRFSS Age Group	Yes			No			Estimated Population (3-Yr Avg)
	#	%	C.I. (95%)	#	%	C.I. (95%)	#
18-24	8,800	40.4	29.1 - 51.7	13,000	59.6	48.3 - 70.9	21,900
25-34	15,200	53.9	46.3 - 61.5	13,000	46.1	38.5 - 53.7	28,200
35-44	14,700	60.6	52.8 - 68.4	9,500	39.4	31.6 - 47.2	24,200
45-54	12,900	52.8	45.7 - 59.9	11,500	47.2	40.1 - 54.3	24,400
55-64	11,700	56.8	49.7 - 63.9	8,900	43.2	36.1 - 50.3	20,700
65-74	6,000	60.7	50.5 - 71.0	3,900	39.3	29.0 - 49.5	9,800
75+	4,900	70.4	60.0 - 80.9	2,100	29.6	19.1 - 40.0	7,000

**Asthma - still have asthma by State, County, Island, Community, BRFSS Age Group, DOH Race-Ethnicity, Gender, Education Level, Employment Status (Grouped), Household Income, Poverty Level, Marital Status (Grouped), Married, Health Care Coverage, for the Year(s) - 2000-2002, 2001-2003, 2002-2004, 2003-2005, 2004-2006, 2005-2007, 2006-2008, 2007-2009, 2008-2010**

*Note: Weighted numbers (#) represent 3-yr averages, percentages and 95% confidence intervals; Respondents aged 18 years and older; n/r (Not Reportable) - If the unweighted total responses for a dimension (row) is <50 that row will not be shown; n/a (Not Available) - Not asked of a subset of respondents*

**Year: 2004-2006**

DOH Race-Ethnicity	Yes			No			Estimated Population (3-Yr Avg)
	#	%	C.I. (95%)	#	%	C.I. (95%)	#
Caucasian	25,300	57.7	52.4 - 63.0	18,600	42.3	37.0 - 47.6	43,900
Native Hawaiian	15,600	63.7	56.7 - 70.8	8,900	36.3	29.2 - 43.3	24,500
Chinese	2,900	51.5	37.2 - 65.9	2,700	48.5	34.1 - 62.8	5,600
Filipino	10,900	51.0	41.5 - 60.5	10,400	49.0	39.5 - 58.5	21,300
Japanese	11,900	45.9	38.4 - 53.3	14,100	54.1	46.7 - 61.6	26,000
Other	3,300	58.4	39.9 - 77.0	2,400	41.6	23.0 - 60.1	5,700

Gender	Yes			No			Estimated Population (3-Yr Avg)
	#	%	C.I. (95%)	#	%	C.I. (95%)	#
Male	25,400	43.2	37.2 - 49.2	33,400	56.8	50.8 - 62.8	58,900
Female	49,300	62.7	59.0 - 66.5	29,300	37.3	33.5 - 41.0	78,600

**Asthma - still have asthma by State, County, Island, Community, BRFSS Age Group, DOH Race-Ethnicity, Gender, Education Level, Employment Status (Grouped), Household Income, Poverty Level, Marital Status (Grouped), Married, Health Care Coverage, for the Year(s) - 2000-2002, 2001-2003, 2002-2004, 2003-2005, 2004-2006, 2005-2007, 2006-2008, 2007-2009, 2008-2010**

*Note: Weighted numbers (#) represent 3-yr averages, percentages and 95% confidence intervals; Respondents aged 18 years and older; n/r (Not Reportable) - If the unweighted total responses for a dimension (row) is <50 that row will not be shown; n/a (Not Available) - Not asked of a subset of respondents*

**Year: 2004-2006**

Education Level	Yes			No			Estimated Population (3-Yr Avg)
	#	%	C.I. (95%)	#	%	C.I. (95%)	#
Grades 9 thru 11 (Some High School)	4,500	69.6	55.0 - 84.3	2,000	30.4	15.7 - 45.0	6,500
Grades 12 or GED (High School Grad)	22,000	51.6	45.1 - 58.1	20,700	48.4	41.9 - 54.9	42,700
College 1 to 3 years (Some College/ Tech)	22,500	53.7	46.8 - 60.6	19,400	46.3	39.4 - 53.2	41,800
College 4 years or more (College Grad)	24,100	54.4	48.8 - 60.1	20,100	45.6	39.9 - 51.2	44,200

Employment Status (Grouped)	Yes			No			Estimated Population (3-Yr Avg)
	#	%	C.I. (95%)	#	%	C.I. (95%)	#
Employed	45,400	50.5	46.0 - 55.0	44,500	49.5	45.0 - 54.0	89,800
Unemployed	3,000	57.8	40.7 - 74.9	2,200	42.2	25.1 - 59.3	5,200
Retired/Unable to work	18,200	65.2	58.6 - 71.7	9,700	34.8	28.3 - 41.4	27,900
Student/Homemaker	8,200	56.6	46.5 - 66.8	6,200	43.4	33.2 - 53.5	14,400

**Asthma - still have asthma by State, County, Island, Community, BRFSS Age Group, DOH Race-Ethnicity, Gender, Education Level, Employment Status (Grouped), Household Income, Poverty Level, Marital Status (Grouped), Married, Health Care Coverage, for the Year(s) - 2000-2002, 2001-2003, 2002-2004, 2003-2005, 2004-2006, 2005-2007, 2006-2008, 2007-2009, 2008-2010**

*Note: Weighted numbers (#) represent 3-yr averages, percentages and 95% confidence intervals; Respondents aged 18 years and older; n/r (Not Reportable) - If the unweighted total responses for a dimension (row) is <50 that row will not be shown; n/a (Not Available) - Not asked of a subset of respondents*

**Year: 2004-2006**

Household Income	Yes			No			Estimated Population (3-Yr Avg)
	#	%	C.I. (95%)	#	%	C.I. (95%)	#
Less than \$10,000	2,300	69.0	56.9 - 81.1	1,100	31.0	18.9 - 43.1	3,400
\$10,000 to \$14,999	2,500	56.7	42.0 - 71.5	1,900	43.3	28.5 - 58.0	4,500
\$15,000 to \$19,999	5,200	74.2	62.6 - 85.7	1,800	25.8	14.3 - 37.4	7,000
\$20,000 to \$24,999	4,900	56.8	44.5 - 69.2	3,700	43.2	30.8 - 55.5	8,600
\$25,000 to \$34,999	7,900	62.5	52.6 - 72.3	4,800	37.5	27.7 - 47.4	12,700
\$35,000 to \$49,999	11,000	49.9	41.5 - 58.3	11,100	50.1	41.7 - 58.5	22,200
\$50,000 to \$74,999	15,900	52.4	43.2 - 61.6	14,500	47.6	38.4 - 56.8	30,400
\$75,000 or more	16,000	49.1	42.2 - 56.0	16,600	50.9	44.0 - 57.8	32,700

**Asthma - still have asthma by State, County, Island, Community, BRFSS Age Group, DOH Race-Ethnicity, Gender, Education Level, Employment Status (Grouped), Household Income, Poverty Level, Marital Status (Grouped), Married, Health Care Coverage, for the Year(s) - 2000-2002, 2001-2003, 2002-2004, 2003-2005, 2004-2006, 2005-2007, 2006-2008, 2007-2009, 2008-2010**

*Note: Weighted numbers (#) represent 3-yr averages, percentages and 95% confidence intervals; Respondents aged 18 years and older; n/r (Not Reportable) - If the unweighted total responses for a dimension (row) is <50 that row will not be shown; n/a (Not Available) - Not asked of a subset of respondents*

**Year: 2004-2006**

Poverty Level	Yes			No			Estimated Population (3-Yr Avg)
	#	%	C.I. (95%)	#	%	C.I. (95%)	#
0-130%	16,500	66.0	58.6 - 73.4	8,500	34.0	26.6 - 41.4	24,900
131-185%	8,500	48.1	34.6 - 61.7	9,200	51.9	38.3 - 65.4	17,800
186+%	40,900	51.9	47.7 - 56.2	37,800	48.1	43.8 - 52.3	78,700

Marital Status (Grouped)	Yes			No			Estimated Population (3-Yr Avg)
	#	%	C.I. (95%)	#	%	C.I. (95%)	#
Married	43,000	56.8	52.5 - 61.1	32,700	43.2	38.9 - 47.5	75,800
Unmarried Couple	2,300	42.6	26.5 - 58.8	3,100	57.4	41.2 - 73.5	5,500
Widowed	4,400	59.2	47.0 - 71.3	3,100	40.8	28.7 - 53.0	7,500
Other	24,900	51.1	44.4 - 57.8	23,800	48.9	42.2 - 55.6	48,700

**Asthma - still have asthma by State, County, Island, Community, BRFSS Age Group, DOH Race-Ethnicity, Gender, Education Level, Employment Status (Grouped), Household Income, Poverty Level, Marital Status (Grouped), Married, Health Care Coverage, for the Year(s) - 2000-2002, 2001-2003, 2002-2004, 2003-2005, 2004-2006, 2005-2007, 2006-2008, 2007-2009, 2008-2010**

*Note: Weighted numbers (#) represent 3-yr averages, percentages and 95% confidence intervals; Respondents aged 18 years and older; n/r (Not Reportable) - If the unweighted total responses for a dimension (row) is <50 that row will not be shown; n/a (Not Available) - Not asked of a subset of respondents*

**Year: 2004-2006**

<b>Married</b>	<b>Yes</b>			<b>No</b>			<b>Estimated Population (3-Yr Avg)</b>
	<b>#</b>	<b>%</b>	<b>C.I. (95%)</b>	<b>#</b>	<b>%</b>	<b>C.I. (95%)</b>	<b>#</b>
<b>Yes</b>	43,700	56.4	52.1 - 60.6	33,900	43.6	39.4 - 47.9	77,600
<b>No</b>	30,900	51.8	45.9 - 57.7	28,700	48.2	42.3 - 54.1	59,600

<b>Health Care Coverage</b>	<b>Yes</b>			<b>No</b>			<b>Estimated Population (3-Yr Avg)</b>
	<b>#</b>	<b>%</b>	<b>C.I. (95%)</b>	<b>#</b>	<b>%</b>	<b>C.I. (95%)</b>	<b>#</b>
<b>Yes</b>	68,400	54.1	50.4 - 57.9	58,000	45.9	42.1 - 49.6	126,400
<b>No</b>	6,100	56.2	44.9 - 67.4	4,800	43.8	32.6 - 55.1	10,900

**Asthma - still have asthma by State, County, Island, Community, BRFSS Age Group, DOH Race-Ethnicity, Gender, Education Level, Employment Status (Grouped), Household Income, Poverty Level, Marital Status (Grouped), Married, Health Care Coverage, for the Year(s) - 2000-2002, 2001-2003, 2002-2004, 2003-2005, 2004-2006, 2005-2007, 2006-2008, 2007-2009, 2008-2010**

*Note: Weighted numbers (#) represent 3-yr averages, percentages and 95% confidence intervals; Respondents aged 18 years and older; n/r (Not Reportable) - If the unweighted total responses for a dimension (row) is <50 that row will not be shown; n/a (Not Available) - Not asked of a subset of respondents*

**Year: 2003-2005**

State	Yes			No			Estimated Population (3-Yr Avg)
	#	%	C.I. (95%)	#	%	C.I. (95%)	#
Hawaii State	66,000	53.3	49.5 - 57.1	57,800	46.7	42.9 - 50.5	123,800

County	Yes			No			Estimated Population (3-Yr Avg)
	#	%	C.I. (95%)	#	%	C.I. (95%)	#
Hawaii	9,300	57.4	50.8 - 64.0	6,900	42.6	36.0 - 49.2	16,200
Honolulu	45,000	52.3	47.2 - 57.4	41,000	47.7	42.6 - 52.8	85,900
Kauai	3,600	52.1	43.3 - 60.9	3,300	47.9	39.1 - 56.7	7,000
Maui	8,100	55.0	46.4 - 63.6	6,600	45.0	36.4 - 53.6	14,700

**Asthma - still have asthma by State, County, Island, Community, BRFSS Age Group, DOH Race-Ethnicity, Gender, Education Level, Employment Status (Grouped), Household Income, Poverty Level, Marital Status (Grouped), Married, Health Care Coverage, for the Year(s) - 2000-2002, 2001-2003, 2002-2004, 2003-2005, 2004-2006, 2005-2007, 2006-2008, 2007-2009, 2008-2010**

*Note: Weighted numbers (#) represent 3-yr averages, percentages and 95% confidence intervals; Respondents aged 18 years and older; n/r (Not Reportable) - If the unweighted total responses for a dimension (row) is <50 that row will not be shown; n/a (Not Available) - Not asked of a subset of respondents*

**Year: 2003-2005**

Island	Yes			No			Estimated Population (3-Yr Avg)
	#	%	C.I. (95%)	#	%	C.I. (95%)	#
Hawaii	9,300	57.4	50.8 - 64.0	6,900	42.6	36.0 - 49.2	16,200
Kauai	3,600	52.1	43.3 - 60.9	3,300	47.9	39.1 - 56.7	7,000
Maui	7,700	55.4	46.4 - 64.4	6,200	44.6	35.6 - 53.6	14,000
Oahu	45,000	52.3	47.2 - 57.4	41,000	47.7	42.6 - 52.8	85,900

Community	Yes			No			Estimated Population (3-Yr Avg)
	#	%	C.I. (95%)	#	%	C.I. (95%)	#
Aiea/ Pearl City	3,200	52.4	34.5 - 70.3	2,900	47.6	29.7 - 65.5	6,200
Hanalei/ Kapaa	1,700	63.9	51.6 - 76.1	1,000	36.1	23.9 - 48.4	2,700
Hilo	2,500	54.6	43.0 - 66.2	2,100	45.4	33.8 - 57.0	4,600
Kaaawa/ Kahaluu/ Kaneohe	4,200	51.0	37.1 - 64.9	4,000	49.0	35.1 - 62.9	8,200



**Asthma - still have asthma by State, County, Island, Community, BRFSS Age Group, DOH Race-Ethnicity, Gender, Education Level, Employment Status (Grouped), Household Income, Poverty Level, Marital Status (Grouped), Married, Health Care Coverage, for the Year(s) - 2000-2002, 2001-2003, 2002-2004, 2003-2005, 2004-2006, 2005-2007, 2006-2008, 2007-2009, 2008-2010**

*Note: Weighted numbers (#) represent 3-yr averages, percentages and 95% confidence intervals; Respondents aged 18 years and older; n/r (Not Reportable) - If the unweighted total responses for a dimension (row) is <50 that row will not be shown; n/a (Not Available) - Not asked of a subset of respondents*

**Year: 2003-2005**

Community	Yes			No			Estimated Population (3-Yr Avg)
	#	%	C.I. (95%)	#	%	C.I. (95%)	#
Kahului	2,200	46.4	32.8 - 60.1	2,500	53.6	39.9 - 67.2	4,700
Kailua/ Waimanalo	4,500	57.2	42.9 - 71.4	3,400	42.8	28.6 - 57.1	7,800
Kaimuki/ Palolo/ Waikiki	3,900	52.1	38.9 - 65.4	3,600	47.9	34.6 - 61.1	7,500
Kona	2,000	50.6	38.1 - 63.1	2,000	49.4	36.9 - 61.9	4,000
Lahaina/ Wailuku	2,500	58.8	43.9 - 73.8	1,800	41.2	26.2 - 56.1	4,300
Lihue-Waimea	1,900	44.7	33.4 - 56.0	2,400	55.3	44.0 - 66.6	4,300
Manoa/ Upper Makiki	1,700	34.5	19.3 - 49.6	3,300	65.5	50.4 - 80.7	5,000
Mililani/ Wahiawa	4,900	50.1	29.1 - 71.1	4,900	49.9	28.9 - 70.9	9,800
N.Hawaii	1,600	62.4	49.0 - 75.8	900	37.6	24.2 - 51.0	2,500
Nuuanu/ Kalihi/ Moanalua	3,700	51.4	32.0 - 70.9	3,500	48.6	29.1 - 68.0	7,200
Puna/ Kau	3,200	62.8	49.6 - 76.0	1,900	37.2	24.0 - 50.4	5,100
Upcountry/ Hana	3,000	61.0	44.3 - 77.6	1,900	39.0	22.4 - 55.7	5,000

**Asthma - still have asthma by State, County, Island, Community, BRFSS Age Group, DOH Race-Ethnicity, Gender, Education Level, Employment Status (Grouped), Household Income, Poverty Level, Marital Status (Grouped), Married, Health Care Coverage, for the Year(s) - 2000-2002, 2001-2003, 2002-2004, 2003-2005, 2004-2006, 2005-2007, 2006-2008, 2007-2009, 2008-2010**

*Note: Weighted numbers (#) represent 3-yr averages, percentages and 95% confidence intervals; Respondents aged 18 years and older; n/r (Not Reportable) - If the unweighted total responses for a dimension (row) is <50 that row will not be shown; n/a (Not Available) - Not asked of a subset of respondents*

**Year: 2003-2005**

Community	Yes			No			Estimated Population (3-Yr Avg)
	#	%	C.I. (95%)	#	%	C.I. (95%)	#
Waipahu/ Kapolei/ Ewa	9,400	63.5	52.1 - 75.0	5,400	36.5	25.0 - 47.9	14,700

DOH Race-Ethnicity	Yes			No			Estimated Population (3-Yr Avg)
	#	%	C.I. (95%)	#	%	C.I. (95%)	#
Caucasian	24,300	57.3	51.8 - 62.9	18,100	42.7	37.1 - 48.2	42,400
Native Hawaiian	12,400	62.1	53.8 - 70.5	7,600	37.9	29.5 - 46.2	20,000
Chinese	2,800	43.4	30.0 - 56.9	3,600	56.6	43.1 - 70.0	6,400
Filipino	9,200	52.2	42.0 - 62.4	8,400	47.8	37.6 - 58.0	17,700
Japanese	11,100	45.9	37.8 - 53.9	13,200	54.1	46.1 - 62.2	24,300
Other	2,500	59.4	39.4 - 79.5	1,700	40.6	20.5 - 60.6	4,200

**Asthma - still have asthma by State, County, Island, Community, BRFSS Age Group, DOH Race-Ethnicity, Gender, Education Level, Employment Status (Grouped), Household Income, Poverty Level, Marital Status (Grouped), Married, Health Care Coverage, for the Year(s) - 2000-2002, 2001-2003, 2002-2004, 2003-2005, 2004-2006, 2005-2007, 2006-2008, 2007-2009, 2008-2010**

*Note: Weighted numbers (#) represent 3-yr averages, percentages and 95% confidence intervals; Respondents aged 18 years and older; n/r (Not Reportable) - If the unweighted total responses for a dimension (row) is <50 that row will not be shown; n/a (Not Available) - Not asked of a subset of respondents*

**Year: 2003-2005**

Gender	Yes			No			Estimated Population (3-Yr Avg)
	#	%	C.I. (95%)	#	%	C.I. (95%)	#
Male	22,400	42.2	35.7 - 48.7	30,800	57.8	51.3 - 64.3	53,200
Female	43,500	61.7	57.6 - 65.8	27,000	38.3	34.2 - 42.4	70,600

Education Level	Yes			No			Estimated Population (3-Yr Avg)
	#	%	C.I. (95%)	#	%	C.I. (95%)	#
Grades 9 thru 11 (Some High School)	4,600	73.2	60.2 - 86.3	1,700	26.8	13.7 - 39.8	6,300
Grades 12 or GED (High School Grad)	19,500	51.5	44.5 - 58.5	18,300	48.5	41.5 - 55.5	37,800
College 1 to 3 years (Some College/ Tech)	20,000	51.9	44.5 - 59.2	18,600	48.1	40.8 - 55.5	38,600
College 4 years or more (College Grad)	20,400	52.1	45.9 - 58.4	18,700	47.9	41.6 - 54.1	39,100

**Asthma - still have asthma by State, County, Island, Community, BRFSS Age Group, DOH Race-Ethnicity, Gender, Education Level, Employment Status (Grouped), Household Income, Poverty Level, Marital Status (Grouped), Married, Health Care Coverage, for the Year(s) - 2000-2002, 2001-2003, 2002-2004, 2003-2005, 2004-2006, 2005-2007, 2006-2008, 2007-2009, 2008-2010**

*Note: Weighted numbers (#) represent 3-yr averages, percentages and 95% confidence intervals; Respondents aged 18 years and older; n/r (Not Reportable) - If the unweighted total responses for a dimension (row) is <50 that row will not be shown; n/a (Not Available) - Not asked of a subset of respondents*

**Year: 2003-2005**

Employment Status (Grouped)	Yes			No			Estimated Population (3-Yr Avg)
	#	%	C.I. (95%)	#	%	C.I. (95%)	#
<b>Employed</b>	40,700	50.5	45.7 - 55.4	39,800	49.5	44.6 - 54.3	80,500
<b>Retired/Unable to work</b>	15,300	59.1	51.5 - 66.6	10,600	40.9	33.4 - 48.5	26,000
<b>Student/Homemaker</b>	7,300	52.8	42.5 - 63.1	6,500	47.2	36.9 - 57.5	13,900

**Asthma - still have asthma by State, County, Island, Community, BRFSS Age Group, DOH Race-Ethnicity, Gender, Education Level, Employment Status (Grouped), Household Income, Poverty Level, Marital Status (Grouped), Married, Health Care Coverage, for the Year(s) - 2000-2002, 2001-2003, 2002-2004, 2003-2005, 2004-2006, 2005-2007, 2006-2008, 2007-2009, 2008-2010**

*Note: Weighted numbers (#) represent 3-yr averages, percentages and 95% confidence intervals; Respondents aged 18 years and older; n/r (Not Reportable) - If the unweighted total responses for a dimension (row) is <50 that row will not be shown; n/a (Not Available) - Not asked of a subset of respondents*

**Year: 2003-2005**

Household Income	Yes			No			Estimated Population (3-Yr Avg)
	#	%	C.I. (95%)	#	%	C.I. (95%)	#
Less than \$10,000	2,500	63.4	49.2 - 77.5	1,400	36.6	22.5 - 50.8	3,900
\$10,000 to \$14,999	2,900	58.8	44.0 - 73.5	2,100	41.2	26.5 - 56.0	5,000
\$15,000 to \$19,999	4,900	71.2	57.6 - 84.7	2,000	28.8	15.3 - 42.4	6,900
\$20,000 to \$24,999	4,900	63.1	50.4 - 75.8	2,900	36.9	24.2 - 49.6	7,800
\$25,000 to \$34,999	5,700	53.7	42.3 - 65.1	4,900	46.3	34.9 - 57.7	10,600
\$35,000 to \$49,999	9,000	46.2	37.3 - 55.1	10,500	53.8	44.9 - 62.7	19,500
\$50,000 to \$74,999	14,600	53.7	43.5 - 63.9	12,600	46.3	36.1 - 56.5	27,200
\$75,000 or more	13,900	51.0	43.0 - 59.0	13,400	49.0	41.0 - 57.0	27,300

**Asthma - still have asthma by State, County, Island, Community, BRFSS Age Group, DOH Race-Ethnicity, Gender, Education Level, Employment Status (Grouped), Household Income, Poverty Level, Marital Status (Grouped), Married, Health Care Coverage, for the Year(s) - 2000-2002, 2001-2003, 2002-2004, 2003-2005, 2004-2006, 2005-2007, 2006-2008, 2007-2009, 2008-2010**

*Note: Weighted numbers (#) represent 3-yr averages, percentages and 95% confidence intervals; Respondents aged 18 years and older; n/r (Not Reportable) - If the unweighted total responses for a dimension (row) is <50 that row will not be shown; n/a (Not Available) - Not asked of a subset of respondents*

**Year: 2003-2005**

Poverty Level	Yes			No			Estimated Population (3-Yr Avg)
	#	%	C.I. (95%)	#	%	C.I. (95%)	#
<b>0-130%</b>	15,400	66.1	58.4 - 73.8	7,900	33.9	26.2 - 41.6	23,300
<b>131-185%</b>	5,700	43.8	27.4 - 60.2	7,300	56.2	39.8 - 72.6	13,000
<b>186+%</b>	37,300	52.0	47.4 - 56.6	34,500	48.0	43.4 - 52.6	71,800

Marital Status (Grouped)	Yes			No			Estimated Population (3-Yr Avg)
	#	%	C.I. (95%)	#	%	C.I. (95%)	#
<b>Married</b>	37,100	55.5	50.7 - 60.3	29,800	44.5	39.7 - 49.3	66,900
<b>Unmarried Couple</b>	1,900	44.5	26.0 - 63.1	2,400	55.5	36.9 - 74.0	4,300
<b>Widowed</b>	4,300	58.0	44.8 - 71.2	3,100	42.0	28.8 - 55.2	7,500
<b>Other</b>	22,600	50.1	43.1 - 57.1	22,500	49.9	42.9 - 56.9	45,100

**Asthma - still have asthma by State, County, Island, Community, BRFSS Age Group, DOH Race-Ethnicity, Gender, Education Level, Employment Status (Grouped), Household Income, Poverty Level, Marital Status (Grouped), Married, Health Care Coverage, for the Year(s) - 2000-2002, 2001-2003, 2002-2004, 2003-2005, 2004-2006, 2005-2007, 2006-2008, 2007-2009, 2008-2010**

*Note: Weighted numbers (#) represent 3-yr averages, percentages and 95% confidence intervals; Respondents aged 18 years and older; n/r (Not Reportable) - If the unweighted total responses for a dimension (row) is <50 that row will not be shown; n/a (Not Available) - Not asked of a subset of respondents*

**Year: 2003-2005**

<b>Married</b>	<b>Yes</b>			<b>No</b>			<b>Estimated Population (3-Yr Avg)</b>
	<b>#</b>	<b>%</b>	<b>C.I. (95%)</b>	<b>#</b>	<b>%</b>	<b>C.I. (95%)</b>	<b>#</b>
<b>Yes</b>	37,700	55.2	50.5 - 59.9	30,600	44.8	40.1 - 49.5	68,300
<b>No</b>	28,100	51.0	44.9 - 57.2	27,000	49.0	42.8 - 55.1	55,100

<b>Health Care Coverage</b>	<b>Yes</b>			<b>No</b>			<b>Estimated Population (3-Yr Avg)</b>
	<b>#</b>	<b>%</b>	<b>C.I. (95%)</b>	<b>#</b>	<b>%</b>	<b>C.I. (95%)</b>	<b>#</b>
<b>Yes</b>	61,100	53.7	49.7 - 57.8	52,600	46.3	42.2 - 50.3	113,700
<b>No</b>	4,900	48.2	36.5 - 59.9	5,200	51.8	40.1 - 63.5	10,100

**Asthma - still have asthma by State, County, Island, Community, BRFSS Age Group, DOH Race-Ethnicity, Gender, Education Level, Employment Status (Grouped), Household Income, Poverty Level, Marital Status (Grouped), Married, Health Care Coverage, for the Year(s) - 2000-2002, 2001-2003, 2002-2004, 2003-2005, 2004-2006, 2005-2007, 2006-2008, 2007-2009, 2008-2010**

*Note: Weighted numbers (#) represent 3-yr averages, percentages and 95% confidence intervals; Respondents aged 18 years and older; n/r (Not Reportable) - If the unweighted total responses for a dimension (row) is <50 that row will not be shown; n/a (Not Available) - Not asked of a subset of respondents*

**Year: 2002-2004**

State	Yes			No			Estimated Population (3-Yr Avg)
	#	%	C.I. (95%)	#	%	C.I. (95%)	#
Hawaii State	62,500	52.3	48.4 - 56.2	57,000	47.7	43.8 - 51.6	119,400

County	Yes			No			Estimated Population (3-Yr Avg)
	#	%	C.I. (95%)	#	%	C.I. (95%)	#
Hawaii	8,800	56.9	50.0 - 63.8	6,700	43.1	36.2 - 50.0	15,500
Honolulu	43,200	51.1	46.0 - 56.3	41,300	48.9	43.7 - 54.0	84,400
Kauai	3,300	54.3	45.1 - 63.5	2,800	45.7	36.5 - 54.9	6,100
Maui	7,200	53.4	44.5 - 62.3	6,200	46.6	37.7 - 55.5	13,400



**Asthma - still have asthma by State, County, Island, Community, BRFSS Age Group, DOH Race-Ethnicity, Gender, Education Level, Employment Status (Grouped), Household Income, Poverty Level, Marital Status (Grouped), Married, Health Care Coverage, for the Year(s) - 2000-2002, 2001-2003, 2002-2004, 2003-2005, 2004-2006, 2005-2007, 2006-2008, 2007-2009, 2008-2010**

*Note: Weighted numbers (#) represent 3-yr averages, percentages and 95% confidence intervals; Respondents aged 18 years and older; n/r (Not Reportable) - If the unweighted total responses for a dimension (row) is <50 that row will not be shown; n/a (Not Available) - Not asked of a subset of respondents*

**Year: 2002-2004**

Island	Yes			No			Estimated Population (3-Yr Avg)
	#	%	C.I. (95%)	#	%	C.I. (95%)	#
Hawaii	8,800	56.9	50.0 - 63.8	6,700	43.1	36.2 - 50.0	15,500
Kauai	3,300	54.3	45.1 - 63.5	2,800	45.7	36.5 - 54.9	6,100
Maui	6,700	53.9	44.5 - 63.4	5,800	46.1	36.6 - 55.5	12,500
Oahu	43,200	51.1	46.0 - 56.3	41,300	48.9	43.7 - 54.0	84,400

Community	Yes			No			Estimated Population (3-Yr Avg)
	#	%	C.I. (95%)	#	%	C.I. (95%)	#
Aiea/ Pearl City	3,900	55.1	38.9 - 71.3	3,200	44.9	28.7 - 61.1	7,100
Hanalei/ Kapaa	1,700	64.1	51.2 - 77.1	900	35.9	22.9 - 48.8	2,600
Hilo	2,200	46.8	35.6 - 58.0	2,500	53.2	42.0 - 64.4	4,700
Kaaawa/ Kahaluu/ Kaneohe	2,900	42.5	27.2 - 57.9	4,000	57.5	42.1 - 72.8	6,900

**Asthma - still have asthma by State, County, Island, Community, BRFSS Age Group, DOH Race-Ethnicity, Gender, Education Level, Employment Status (Grouped), Household Income, Poverty Level, Marital Status (Grouped), Married, Health Care Coverage, for the Year(s) - 2000-2002, 2001-2003, 2002-2004, 2003-2005, 2004-2006, 2005-2007, 2006-2008, 2007-2009, 2008-2010**

*Note: Weighted numbers (#) represent 3-yr averages, percentages and 95% confidence intervals; Respondents aged 18 years and older; n/r (Not Reportable) - If the unweighted total responses for a dimension (row) is <50 that row will not be shown; n/a (Not Available) - Not asked of a subset of respondents*

**Year: 2002-2004**

Community	Yes			No			Estimated Population (3-Yr Avg)
	#	%	C.I. (95%)	#	%	C.I. (95%)	#
Kahului	2,100	48.7	33.9 - 63.5	2,200	51.3	36.5 - 66.1	4,200
Kailua/ Waimanalo	3,900	59.1	44.0 - 74.1	2,700	40.9	25.9 - 56.0	6,500
Kaimuki/ Palolo/ Waikiki	3,800	52.4	39.3 - 65.5	3,500	47.6	34.5 - 60.7	7,300
Kona	1,900	52.1	39.1 - 65.0	1,700	47.9	35.0 - 60.9	3,600
Lahaina/ Wailuku	2,100	51.7	36.3 - 67.0	1,900	48.3	33.0 - 63.7	4,000
Lihue-Waimea	1,700	47.0	34.8 - 59.2	1,900	53.0	40.8 - 65.2	3,500
Manoa/ Upper Makiki	2,300	40.8	25.9 - 55.7	3,400	59.2	44.3 - 74.1	5,800
Mililani/ Wahiawa	5,000	48.6	28.4 - 68.7	5,300	51.4	31.3 - 71.6	10,400
N.Hawaii	1,600	62.7	47.4 - 78.1	900	37.3	21.9 - 52.6	2,500
Nuuanu/ Kalihi/ Moanalua	3,100	37.0	21.5 - 52.6	5,300	63.0	47.4 - 78.5	8,300
Puna/ Kau	3,200	67.6	53.8 - 81.4	1,500	32.4	18.6 - 46.2	4,700
Upcountry/ Hana	2,600	61.3	44.2 - 78.4	1,600	38.7	21.6 - 55.8	4,200

**Asthma - still have asthma by State, County, Island, Community, BRFSS Age Group, DOH Race-Ethnicity, Gender, Education Level, Employment Status (Grouped), Household Income, Poverty Level, Marital Status (Grouped), Married, Health Care Coverage, for the Year(s) - 2000-2002, 2001-2003, 2002-2004, 2003-2005, 2004-2006, 2005-2007, 2006-2008, 2007-2009, 2008-2010**

*Note: Weighted numbers (#) represent 3-yr averages, percentages and 95% confidence intervals; Respondents aged 18 years and older; n/r (Not Reportable) - If the unweighted total responses for a dimension (row) is <50 that row will not be shown; n/a (Not Available) - Not asked of a subset of respondents*

**Year: 2002-2004**

Community	Yes			No			Estimated Population (3-Yr Avg)
	#	%	C.I. (95%)	#	%	C.I. (95%)	#
Waipahu/ Kapolei/ Ewa	9,100	66.1	54.5 - 77.7	4,700	33.9	22.3 - 45.5	13,800

BRFSS Age Group	Yes			No			Estimated Population (3-Yr Avg)
	#	%	C.I. (95%)	#	%	C.I. (95%)	#
18-24	7,700	44.6	31.1 - 58.2	9,600	55.4	41.8 - 68.9	17,400
25-34	12,700	55.9	47.6 - 64.3	10,000	44.1	35.7 - 52.4	22,800
35-44	13,900	56.3	48.4 - 64.3	10,800	43.7	35.7 - 51.6	24,700
45-54	10,200	45.7	37.7 - 53.6	12,100	54.3	46.4 - 62.3	22,200
55-64	8,800	52.7	44.0 - 61.4	7,900	47.3	38.6 - 56.0	16,700
65-74	4,500	52.8	39.7 - 65.9	4,000	47.2	34.1 - 60.3	8,500
75+	4,200	66.6	53.1 - 80.1	2,100	33.4	19.9 - 46.9	6,300

**Asthma - still have asthma by State, County, Island, Community, BRFSS Age Group, DOH Race-Ethnicity, Gender, Education Level, Employment Status (Grouped), Household Income, Poverty Level, Marital Status (Grouped), Married, Health Care Coverage, for the Year(s) - 2000-2002, 2001-2003, 2002-2004, 2003-2005, 2004-2006, 2005-2007, 2006-2008, 2007-2009, 2008-2010**

*Note: Weighted numbers (#) represent 3-yr averages, percentages and 95% confidence intervals; Respondents aged 18 years and older; n/r (Not Reportable) - If the unweighted total responses for a dimension (row) is <50 that row will not be shown; n/a (Not Available) - Not asked of a subset of respondents*

**Year: 2002-2004**

DOH Race-Ethnicity	Yes			No			Estimated Population (3-Yr Avg)
	#	%	C.I. (95%)	#	%	C.I. (95%)	#
Caucasian	24,300	56.8	51.3 - 62.2	18,500	43.2	37.8 - 48.7	42,700
Native Hawaiian	11,600	62.1	53.1 - 71.1	7,100	37.9	28.9 - 46.9	18,700
Chinese	2,900	45.7	32.3 - 59.1	3,400	54.3	40.9 - 67.7	6,300
Filipino	8,200	52.1	41.5 - 62.8	7,600	47.9	37.2 - 58.5	15,800
Japanese	10,600	44.1	36.0 - 52.2	13,400	55.9	47.8 - 64.0	24,000

Gender	Yes			No			Estimated Population (3-Yr Avg)
	#	%	C.I. (95%)	#	%	C.I. (95%)	#
Male	21,400	40.9	34.5 - 47.3	30,800	59.1	52.7 - 65.5	52,200
Female	41,100	61.1	56.9 - 65.4	26,100	38.9	34.6 - 43.1	67,200

**Asthma - still have asthma by State, County, Island, Community, BRFSS Age Group, DOH Race-Ethnicity, Gender, Education Level, Employment Status (Grouped), Household Income, Poverty Level, Marital Status (Grouped), Married, Health Care Coverage, for the Year(s) - 2000-2002, 2001-2003, 2002-2004, 2003-2005, 2004-2006, 2005-2007, 2006-2008, 2007-2009, 2008-2010**

*Note: Weighted numbers (#) represent 3-yr averages, percentages and 95% confidence intervals; Respondents aged 18 years and older; n/r (Not Reportable) - If the unweighted total responses for a dimension (row) is <50 that row will not be shown; n/a (Not Available) - Not asked of a subset of respondents*

**Year: 2002-2004**

Education Level	Yes			No			Estimated Population (3-Yr Avg)
	#	%	C.I. (95%)	#	%	C.I. (95%)	#
Grades 9 thru 11 (Some High School)	3,700	70.0	55.1 - 84.9	1,600	30.0	15.1 - 44.9	5,200
Grades 12 or GED (High School Grad)	21,000	54.1	47.3 - 61.0	17,800	45.9	39.0 - 52.7	38,900
College 1 to 3 years (Some College/ Tech)	18,800	49.9	42.5 - 57.4	18,800	50.1	42.6 - 57.5	37,600
College 4 years or more (College Grad)	18,400	50.3	43.8 - 56.8	18,100	49.7	43.2 - 56.2	36,500

Employment Status (Grouped)	Yes			No			Estimated Population (3-Yr Avg)
	#	%	C.I. (95%)	#	%	C.I. (95%)	#
Employed	37,900	49.2	44.3 - 54.1	39,200	50.8	45.9 - 55.7	77,100
Unemployed	3,200	61.3	45.3 - 77.2	2,000	38.7	22.8 - 54.7	5,200
Retired/Unable to work	14,000	60.2	52.2 - 68.3	9,200	39.8	31.7 - 47.8	23,200
Student/Homemaker	7,400	52.9	42.5 - 63.3	6,600	47.1	36.7 - 57.5	14,000

**Asthma - still have asthma by State, County, Island, Community, BRFSS Age Group, DOH Race-Ethnicity, Gender, Education Level, Employment Status (Grouped), Household Income, Poverty Level, Marital Status (Grouped), Married, Health Care Coverage, for the Year(s) - 2000-2002, 2001-2003, 2002-2004, 2003-2005, 2004-2006, 2005-2007, 2006-2008, 2007-2009, 2008-2010**

*Note: Weighted numbers (#) represent 3-yr averages, percentages and 95% confidence intervals; Respondents aged 18 years and older; n/r (Not Reportable) - If the unweighted total responses for a dimension (row) is <50 that row will not be shown; n/a (Not Available) - Not asked of a subset of respondents*

**Year: 2002-2004**

Household Income	Yes			No			Estimated Population (3-Yr Avg)
	#	%	C.I. (95%)	#	%	C.I. (95%)	#
Less than \$10,000	2,900	68.8	56.0 - 81.6	1,300	31.2	18.4 - 44.0	4,300
\$10,000 to \$14,999	3,000	49.7	35.3 - 64.1	3,000	50.3	35.9 - 64.7	5,900
\$15,000 to \$19,999	4,600	72.7	58.5 - 86.8	1,700	27.3	13.2 - 41.5	6,300
\$20,000 to \$24,999	3,900	59.9	45.9 - 74.0	2,600	40.1	26.0 - 54.1	6,600
\$25,000 to \$34,999	6,000	57.8	46.3 - 69.3	4,400	42.2	30.7 - 53.7	10,400
\$35,000 to \$49,999	8,000	45.1	35.6 - 54.6	9,700	54.9	45.4 - 64.4	17,700
\$50,000 to \$74,999	13,100	55.8	44.4 - 67.3	10,400	44.2	32.7 - 55.6	23,500
\$75,000 or more	11,600	47.9	39.0 - 56.7	12,600	52.1	43.3 - 61.0	24,200

**Asthma - still have asthma by State, County, Island, Community, BRFSS Age Group, DOH Race-Ethnicity, Gender, Education Level, Employment Status (Grouped), Household Income, Poverty Level, Marital Status (Grouped), Married, Health Care Coverage, for the Year(s) - 2000-2002, 2001-2003, 2002-2004, 2003-2005, 2004-2006, 2005-2007, 2006-2008, 2007-2009, 2008-2010**

*Note: Weighted numbers (#) represent 3-yr averages, percentages and 95% confidence intervals; Respondents aged 18 years and older; n/r (Not Reportable) - If the unweighted total responses for a dimension (row) is <50 that row will not be shown; n/a (Not Available) - Not asked of a subset of respondents*

**Year: 2002-2004**

Poverty Level	Yes			No			Estimated Population (3-Yr Avg)
	#	%	C.I. (95%)	#	%	C.I. (95%)	#
<b>0-130%</b>	14,400	64.5	56.2 - 72.8	7,900	35.5	27.2 - 43.8	22,300
<b>131-185%</b>	5,800	46.2	28.9 - 63.6	6,700	53.8	36.4 - 71.1	12,500
<b>186+%</b>	33,000	51.4	46.4 - 56.4	31,100	48.6	43.6 - 53.6	64,100

Marital Status (Grouped)	Yes			No			Estimated Population (3-Yr Avg)
	#	%	C.I. (95%)	#	%	C.I. (95%)	#
<b>Married</b>	34,400	53.6	48.6 - 58.5	29,900	46.4	41.5 - 51.4	64,300
<b>Widowed</b>	4,200	57.1	43.1 - 71.2	3,200	42.9	28.8 - 56.9	7,400
<b>Other</b>	22,000	49.9	42.9 - 56.9	22,100	50.1	43.1 - 57.1	44,000

**Asthma - still have asthma by State, County, Island, Community, BRFSS Age Group, DOH Race-Ethnicity, Gender, Education Level, Employment Status (Grouped), Household Income, Poverty Level, Marital Status (Grouped), Married, Health Care Coverage, for the Year(s) - 2000-2002, 2001-2003, 2002-2004, 2003-2005, 2004-2006, 2005-2007, 2006-2008, 2007-2009, 2008-2010**

*Note: Weighted numbers (#) represent 3-yr averages, percentages and 95% confidence intervals; Respondents aged 18 years and older; n/r (Not Reportable) - If the unweighted total responses for a dimension (row) is <50 that row will not be shown; n/a (Not Available) - Not asked of a subset of respondents*

**Year: 2002-2004**

<b>Married</b>	<b>Yes</b>			<b>No</b>			<b>Estimated Population (3-Yr Avg)</b>
	<b>#</b>	<b>%</b>	<b>C.I. (95%)</b>	<b>#</b>	<b>%</b>	<b>C.I. (95%)</b>	<b>#</b>
<b>Yes</b>	35,000	53.5	48.6 - 58.4	30,500	46.5	41.6 - 51.4	65,500
<b>No</b>	27,400	50.9	44.7 - 57.1	26,400	49.1	42.9 - 55.3	53,800

<b>Health Care Coverage</b>	<b>Yes</b>			<b>No</b>			<b>Estimated Population (3-Yr Avg)</b>
	<b>#</b>	<b>%</b>	<b>C.I. (95%)</b>	<b>#</b>	<b>%</b>	<b>C.I. (95%)</b>	<b>#</b>
<b>Yes</b>	58,000	52.6	48.5 - 56.7	52,400	47.4	43.3 - 51.5	110,400
<b>No</b>	4,400	48.9	36.8 - 61.1	4,600	51.1	38.9 - 63.2	9,000



**Asthma - still have asthma by State, County, Island, Community, BRFSS Age Group, DOH Race-Ethnicity, Gender, Education Level, Employment Status (Grouped), Household Income, Poverty Level, Marital Status (Grouped), Married, Health Care Coverage, for the Year(s) - 2000-2002, 2001-2003, 2002-2004, 2003-2005, 2004-2006, 2005-2007, 2006-2008, 2007-2009, 2008-2010**

*Note: Weighted numbers (#) represent 3-yr averages, percentages and 95% confidence intervals; Respondents aged 18 years and older; n/r (Not Reportable) - If the unweighted total responses for a dimension (row) is <50 that row will not be shown; n/a (Not Available) - Not asked of a subset of respondents*

**Year: 2001-2003**

State	Yes			No			Estimated Population (3-Yr Avg)
	#	%	C.I. (95%)	#	%	C.I. (95%)	#
Hawaii State	59,200	53.5	50.4 - 56.6	51,500	46.5	43.4 - 49.6	110,700

County	Yes			No			Estimated Population (3-Yr Avg)
	#	%	C.I. (95%)	#	%	C.I. (95%)	#
Hawaii	8,400	59.5	53.6 - 65.4	5,700	40.5	34.6 - 46.4	14,200
Honolulu	41,500	52.6	48.6 - 56.6	37,400	47.4	43.4 - 51.4	79,000
Kauai	3,100	54.5	45.8 - 63.3	2,600	45.5	36.7 - 54.2	5,600
Maui	6,200	51.9	45.1 - 58.6	5,800	48.1	41.4 - 54.9	12,000

**Asthma - still have asthma by State, County, Island, Community, BRFSS Age Group, DOH Race-Ethnicity, Gender, Education Level, Employment Status (Grouped), Household Income, Poverty Level, Marital Status (Grouped), Married, Health Care Coverage, for the Year(s) - 2000-2002, 2001-2003, 2002-2004, 2003-2005, 2004-2006, 2005-2007, 2006-2008, 2007-2009, 2008-2010**

*Note: Weighted numbers (#) represent 3-yr averages, percentages and 95% confidence intervals; Respondents aged 18 years and older; n/r (Not Reportable) - If the unweighted total responses for a dimension (row) is <50 that row will not be shown; n/a (Not Available) - Not asked of a subset of respondents*

**Year: 2001-2003**

Island	Yes			No			Estimated Population (3-Yr Avg)
	#	%	C.I. (95%)	#	%	C.I. (95%)	#
Hawaii	8,400	59.5	53.6 - 65.4	5,700	40.5	34.6 - 46.4	14,200
Kauai	3,100	54.5	45.8 - 63.3	2,600	45.5	36.7 - 54.2	5,600
Maui	5,600	51.4	44.1 - 58.8	5,300	48.6	41.2 - 55.9	10,800
Oahu	41,500	52.6	48.6 - 56.6	37,400	47.4	43.4 - 51.4	79,000

Community	Yes			No			Estimated Population (3-Yr Avg)
	#	%	C.I. (95%)	#	%	C.I. (95%)	#
Aiea/ Pearl City	3,200	49.2	35.3 - 63.1	3,300	50.8	36.9 - 64.7	6,500
Hanalei/ Kapaa	1,300	54.9	42.1 - 67.8	1,100	45.1	32.2 - 57.9	2,400
Hilo	2,100	45.4	35.3 - 55.5	2,500	54.6	44.5 - 64.7	4,700
Kaaawa/ Kahaluu/ Kaneohe	3,000	52.8	37.5 - 68.2	2,600	47.2	31.8 - 62.5	5,600

**Asthma - still have asthma by State, County, Island, Community, BRFSS Age Group, DOH Race-Ethnicity, Gender, Education Level, Employment Status (Grouped), Household Income, Poverty Level, Marital Status (Grouped), Married, Health Care Coverage, for the Year(s) - 2000-2002, 2001-2003, 2002-2004, 2003-2005, 2004-2006, 2005-2007, 2006-2008, 2007-2009, 2008-2010**

*Note: Weighted numbers (#) represent 3-yr averages, percentages and 95% confidence intervals; Respondents aged 18 years and older; n/r (Not Reportable) - If the unweighted total responses for a dimension (row) is <50 that row will not be shown; n/a (Not Available) - Not asked of a subset of respondents*

**Year: 2001-2003**

Community	Yes			No			Estimated Population (3-Yr Avg)
	#	%	C.I. (95%)	#	%	C.I. (95%)	#
Kahului	2,000	53.7	40.0 - 67.5	1,700	46.3	32.5 - 60.0	3,700
Kailua/ Waimanalo	4,000	57.3	44.3 - 70.3	3,000	42.7	29.7 - 55.7	7,000
Kaimuki/ Palolo/ Waikiki	4,400	53.1	41.8 - 64.5	3,900	46.9	35.5 - 58.2	8,200
Kona	2,300	64.5	54.3 - 74.7	1,300	35.5	25.3 - 45.7	3,600
Lahaina/ Wailuku	2,000	49.9	38.1 - 61.8	2,000	50.1	38.2 - 61.9	4,000
Lihue-Waimea	1,700	54.2	42.3 - 66.2	1,500	45.8	33.8 - 57.7	3,200
Manoa/ Upper Makiki	2,900	43.2	30.7 - 55.8	3,800	56.8	44.2 - 69.3	6,700
Mililani/ Wahiawa	4,000	54.5	40.7 - 68.3	3,300	45.5	31.7 - 59.3	7,300
N.Hawaii	2,100	68.4	55.2 - 81.7	1,000	31.6	18.3 - 44.8	3,100
Nuuanu/ Kalihi/ Moanalua	2,800	37.6	24.2 - 51.0	4,600	62.4	49.0 - 75.8	7,300
Puna/ Kau	1,900	66.4	54.2 - 78.5	900	33.6	21.5 - 45.8	2,800
Upcountry/ Hana	1,600	50.6	38.1 - 63.2	1,600	49.4	36.8 - 61.9	3,200

**Asthma - still have asthma by State, County, Island, Community, BRFSS Age Group, DOH Race-Ethnicity, Gender, Education Level, Employment Status (Grouped), Household Income, Poverty Level, Marital Status (Grouped), Married, Health Care Coverage, for the Year(s) - 2000-2002, 2001-2003, 2002-2004, 2003-2005, 2004-2006, 2005-2007, 2006-2008, 2007-2009, 2008-2010**

*Note: Weighted numbers (#) represent 3-yr averages, percentages and 95% confidence intervals; Respondents aged 18 years and older; n/r (Not Reportable) - If the unweighted total responses for a dimension (row) is <50 that row will not be shown; n/a (Not Available) - Not asked of a subset of respondents*

**Year: 2001-2003**

Community	Yes			No			Estimated Population (3-Yr Avg)
	#	%	C.I. (95%)	#	%	C.I. (95%)	#
Waipahu/ Kapolei/ Ewa	6,900	59.6	49.3 - 69.9	4,600	40.4	30.1 - 50.7	11,500

BRFSS Age Group	Yes			No			Estimated Population (3-Yr Avg)
	#	%	C.I. (95%)	#	%	C.I. (95%)	#
18-24	8,600	48.9	39.8 - 58.0	9,000	51.1	42.0 - 60.2	17,600
25-34	11,100	56.8	49.7 - 64.0	8,500	43.2	36.0 - 50.3	19,600
35-44	12,800	55.5	48.9 - 62.2	10,300	44.5	37.8 - 51.1	23,100
45-54	10,700	47.2	40.9 - 53.4	12,000	52.8	46.6 - 59.1	22,700
55-64	8,400	57.1	48.7 - 65.5	6,300	42.9	34.5 - 51.3	14,700
65-74	3,800	52.9	42.1 - 63.7	3,400	47.1	36.3 - 57.9	7,200
75+	3,600	64.8	52.3 - 77.2	1,900	35.2	22.8 - 47.7	5,500

**Asthma - still have asthma by State, County, Island, Community, BRFSS Age Group, DOH Race-Ethnicity, Gender, Education Level, Employment Status (Grouped), Household Income, Poverty Level, Marital Status (Grouped), Married, Health Care Coverage, for the Year(s) - 2000-2002, 2001-2003, 2002-2004, 2003-2005, 2004-2006, 2005-2007, 2006-2008, 2007-2009, 2008-2010**

*Note: Weighted numbers (#) represent 3-yr averages, percentages and 95% confidence intervals; Respondents aged 18 years and older; n/r (Not Reportable) - If the unweighted total responses for a dimension (row) is <50 that row will not be shown; n/a (Not Available) - Not asked of a subset of respondents*

**Year: 2001-2003**

DOH Race-Ethnicity	Yes			No			Estimated Population (3-Yr Avg)
	#	%	C.I. (95%)	#	%	C.I. (95%)	#
Caucasian	22,400	55.0	50.2 - 59.8	18,300	45.0	40.2 - 49.8	40,700
Native Hawaiian	10,600	60.3	52.4 - 68.1	7,000	39.7	31.9 - 47.6	17,500
Chinese	3,600	46.3	34.5 - 58.0	4,200	53.7	42.0 - 65.5	7,800
Filipino	7,200	53.5	44.4 - 62.5	6,300	46.5	37.5 - 55.6	13,500
Japanese	9,500	44.2	37.0 - 51.4	12,000	55.8	48.6 - 63.0	21,500

Gender	Yes			No			Estimated Population (3-Yr Avg)
	#	%	C.I. (95%)	#	%	C.I. (95%)	#
Male	21,700	44.8	39.7 - 50.0	26,600	55.2	50.0 - 60.3	48,300
Female	37,600	60.2	56.4 - 63.9	24,900	39.8	36.1 - 43.6	62,400

**Asthma - still have asthma by State, County, Island, Community, BRFSS Age Group, DOH Race-Ethnicity, Gender, Education Level, Employment Status (Grouped), Household Income, Poverty Level, Marital Status (Grouped), Married, Health Care Coverage, for the Year(s) - 2000-2002, 2001-2003, 2002-2004, 2003-2005, 2004-2006, 2005-2007, 2006-2008, 2007-2009, 2008-2010**

*Note: Weighted numbers (#) represent 3-yr averages, percentages and 95% confidence intervals; Respondents aged 18 years and older; n/r (Not Reportable) - If the unweighted total responses for a dimension (row) is <50 that row will not be shown; n/a (Not Available) - Not asked of a subset of respondents*

**Year: 2001-2003**

Education Level	Yes			No			Estimated Population (3-Yr Avg)
	#	%	C.I. (95%)	#	%	C.I. (95%)	#
Grades 9 thru 11 (Some High School)	2,600	55.4	41.5 - 69.3	2,100	44.6	30.7 - 58.5	4,700
Grades 12 or GED (High School Grad)	20,600	55.1	49.5 - 60.8	16,700	44.9	39.2 - 50.5	37,300
College 1 to 3 years (Some College/ Tech)	18,400	51.8	46.3 - 57.4	17,100	48.2	42.6 - 53.7	35,500
College 4 years or more (College Grad)	16,900	53.2	47.8 - 58.6	14,900	46.8	41.4 - 52.2	31,900

Employment Status (Grouped)	Yes			No			Estimated Population (3-Yr Avg)
	#	%	C.I. (95%)	#	%	C.I. (95%)	#
Employed	36,400	51.1	47.3 - 54.9	34,800	48.9	45.1 - 52.7	71,200
Unemployed	3,800	63.9	49.5 - 78.3	2,100	36.1	21.7 - 50.5	5,900
Retired/Unable to work	11,600	60.1	53.2 - 67.1	7,700	39.9	32.9 - 46.8	19,300
Student/Homemaker	7,500	52.0	42.6 - 61.5	6,900	48.0	38.5 - 57.4	14,400

**Asthma - still have asthma by State, County, Island, Community, BRFSS Age Group, DOH Race-Ethnicity, Gender, Education Level, Employment Status (Grouped), Household Income, Poverty Level, Marital Status (Grouped), Married, Health Care Coverage, for the Year(s) - 2000-2002, 2001-2003, 2002-2004, 2003-2005, 2004-2006, 2005-2007, 2006-2008, 2007-2009, 2008-2010**

*Note: Weighted numbers (#) represent 3-yr averages, percentages and 95% confidence intervals; Respondents aged 18 years and older; n/r (Not Reportable) - If the unweighted total responses for a dimension (row) is <50 that row will not be shown; n/a (Not Available) - Not asked of a subset of respondents*

**Year: 2001-2003**

Household Income	Yes			No			Estimated Population (3-Yr Avg)
	#	%	C.I. (95%)	#	%	C.I. (95%)	#
Less than \$10,000	3,500	65.5	53.2 - 77.9	1,900	34.5	22.1 - 46.8	5,400
\$10,000 to \$14,999	3,700	63.0	48.7 - 77.3	2,200	37.0	22.7 - 51.3	5,900
\$15,000 to \$19,999	3,300	62.5	49.4 - 75.7	2,000	37.5	24.3 - 50.6	5,300
\$20,000 to \$24,999	4,300	66.4	55.4 - 77.4	2,100	33.6	22.6 - 44.6	6,400
\$25,000 to \$34,999	5,400	54.7	44.5 - 64.9	4,400	45.3	35.1 - 55.5	9,800
\$35,000 to \$49,999	8,700	48.6	41.0 - 56.2	9,200	51.4	43.8 - 59.0	18,000
\$50,000 to \$74,999	7,000	56.0	47.7 - 64.4	5,500	44.0	35.6 - 52.3	12,600
\$75,000 or more	8,300	50.1	41.8 - 58.4	8,300	49.9	41.6 - 58.2	16,600

**Asthma - still have asthma by State, County, Island, Community, BRFSS Age Group, DOH Race-Ethnicity, Gender, Education Level, Employment Status (Grouped), Household Income, Poverty Level, Marital Status (Grouped), Married, Health Care Coverage, for the Year(s) - 2000-2002, 2001-2003, 2002-2004, 2003-2005, 2004-2006, 2005-2007, 2006-2008, 2007-2009, 2008-2010**

*Note: Weighted numbers (#) represent 3-yr averages, percentages and 95% confidence intervals; Respondents aged 18 years and older; n/r (Not Reportable) - If the unweighted total responses for a dimension (row) is <50 that row will not be shown; n/a (Not Available) - Not asked of a subset of respondents*

**Year: 2001-2003**

Poverty Level	Yes			No			Estimated Population (3-Yr Avg)
	#	%	C.I. (95%)	#	%	C.I. (95%)	#
0-130%	13,300	65.6	58.4 - 72.9	6,900	34.4	27.1 - 41.6	20,200
131-185%	6,500	58.7	48.6 - 68.8	4,600	41.3	31.2 - 51.4	11,000
186+%	24,500	50.4	46.0 - 54.8	24,100	49.6	45.2 - 54.0	48,600

Marital Status (Grouped)	Yes			No			Estimated Population (3-Yr Avg)
	#	%	C.I. (95%)	#	%	C.I. (95%)	#
Married	29,700	53.1	49.0 - 57.3	26,200	46.9	42.7 - 51.0	55,900
Widowed	3,900	63.9	51.4 - 76.3	2,200	36.1	23.7 - 48.6	6,000
Other	24,100	52.9	47.7 - 58.0	21,500	47.1	42.0 - 52.3	45,700



**Asthma - still have asthma by State, County, Island, Community, BRFSS Age Group, DOH Race-Ethnicity, Gender, Education Level, Employment Status (Grouped), Household Income, Poverty Level, Marital Status (Grouped), Married, Health Care Coverage, for the Year(s) - 2000-2002, 2001-2003, 2002-2004, 2003-2005, 2004-2006, 2005-2007, 2006-2008, 2007-2009, 2008-2010**

*Note: Weighted numbers (#) represent 3-yr averages, percentages and 95% confidence intervals; Respondents aged 18 years and older; n/r (Not Reportable) - If the unweighted total responses for a dimension (row) is <50 that row will not be shown; n/a (Not Available) - Not asked of a subset of respondents*

**Year: 2001-2003**

<b>Married</b>	<b>Yes</b>			<b>No</b>			<b>Estimated Population (3-Yr Avg)</b>
	<b>#</b>	<b>%</b>	<b>C.I. (95%)</b>	<b>#</b>	<b>%</b>	<b>C.I. (95%)</b>	<b>#</b>
<b>Yes</b>	31,400	53.9	49.8 - 58.0	26,800	46.1	42.0 - 50.2	58,200
<b>No</b>	27,800	53.0	48.3 - 57.7	24,700	47.0	42.3 - 51.7	52,500

<b>Health Care Coverage</b>	<b>Yes</b>			<b>No</b>			<b>Estimated Population (3-Yr Avg)</b>
	<b>#</b>	<b>%</b>	<b>C.I. (95%)</b>	<b>#</b>	<b>%</b>	<b>C.I. (95%)</b>	<b>#</b>
<b>Yes</b>	54,500	53.5	50.3 - 56.8	47,300	46.5	43.2 - 49.7	101,800
<b>No</b>	4,700	53.0	41.6 - 64.4	4,200	47.0	35.6 - 58.4	8,900

**Asthma - still have asthma by State, County, Island, Community, BRFSS Age Group, DOH Race-Ethnicity, Gender, Education Level, Employment Status (Grouped), Household Income, Poverty Level, Marital Status (Grouped), Married, Health Care Coverage, for the Year(s) - 2000-2002, 2001-2003, 2002-2004, 2003-2005, 2004-2006, 2005-2007, 2006-2008, 2007-2009, 2008-2010**

*Note: Weighted numbers (#) represent 3-yr averages, percentages and 95% confidence intervals; Respondents aged 18 years and older; n/r (Not Reportable) - If the unweighted total responses for a dimension (row) is <50 that row will not be shown; n/a (Not Available) - Not asked of a subset of respondents*

**Year: 2000-2002**

State	Yes			No			Estimated Population (3-Yr Avg)
	#	%	C.I. (95%)	#	%	C.I. (95%)	#
Hawaii State	63,200	58.9	55.8 - 61.9	44,200	41.1	38.1 - 44.2	107,400

County	Yes			No			Estimated Population (3-Yr Avg)
	#	%	C.I. (95%)	#	%	C.I. (95%)	#
Hawaii	8,600	62.9	57.5 - 68.3	5,100	37.1	31.7 - 42.5	13,700
Honolulu	45,100	58.2	54.3 - 62.2	32,400	41.8	37.8 - 45.7	77,500
Kauai	3,100	56.8	49.0 - 64.6	2,300	43.2	35.4 - 51.0	5,400
Maui	6,300	59.4	53.4 - 65.5	4,300	40.6	34.5 - 46.6	10,700

**Asthma - still have asthma by State, County, Island, Community, BRFSS Age Group, DOH Race-Ethnicity, Gender, Education Level, Employment Status (Grouped), Household Income, Poverty Level, Marital Status (Grouped), Married, Health Care Coverage, for the Year(s) - 2000-2002, 2001-2003, 2002-2004, 2003-2005, 2004-2006, 2005-2007, 2006-2008, 2007-2009, 2008-2010**

*Note: Weighted numbers (#) represent 3-yr averages, percentages and 95% confidence intervals; Respondents aged 18 years and older; n/r (Not Reportable) - If the unweighted total responses for a dimension (row) is <50 that row will not be shown; n/a (Not Available) - Not asked of a subset of respondents*

**Year: 2000-2002**

Island	Yes			No			Estimated Population (3-Yr Avg)
	#	%	C.I. (95%)	#	%	C.I. (95%)	#
Hawaii	8,600	62.9	57.5 - 68.3	5,100	37.1	31.7 - 42.5	13,700
Kauai	3,100	56.8	49.0 - 64.6	2,300	43.2	35.4 - 51.0	5,400
Lanai	200	50.7	35.0 - 66.4	200	49.3	33.6 - 65.0	400
Maui	5,600	58.9	52.3 - 65.6	3,900	41.1	34.4 - 47.7	9,600
Oahu	45,100	58.2	54.3 - 62.2	32,400	41.8	37.8 - 45.7	77,500

Community	Yes			No			Estimated Population (3-Yr Avg)
	#	%	C.I. (95%)	#	%	C.I. (95%)	#
Aiea/ Pearl City	4,400	58.0	44.9 - 71.0	3,200	42.0	29.0 - 55.1	7,700
Hanalei/ Kapaa	1,400	56.9	45.1 - 68.8	1,100	43.1	31.2 - 54.9	2,500
Hilo	2,500	53.5	44.0 - 63.0	2,100	46.5	37.0 - 56.0	4,600

**Asthma - still have asthma by State, County, Island, Community, BRFSS Age Group, DOH Race-Ethnicity, Gender, Education Level, Employment Status (Grouped), Household Income, Poverty Level, Marital Status (Grouped), Married, Health Care Coverage, for the Year(s) - 2000-2002, 2001-2003, 2002-2004, 2003-2005, 2004-2006, 2005-2007, 2006-2008, 2007-2009, 2008-2010**

*Note: Weighted numbers (#) represent 3-yr averages, percentages and 95% confidence intervals; Respondents aged 18 years and older; n/r (Not Reportable) - If the unweighted total responses for a dimension (row) is <50 that row will not be shown; n/a (Not Available) - Not asked of a subset of respondents*

**Year: 2000-2002**

Community	Yes			No			Estimated Population (3-Yr Avg)
	#	%	C.I. (95%)	#	%	C.I. (95%)	#
Kaaawa/ Kahaluu/ Kaneohe	3,100	60.2	44.4 - 76.0	2,100	39.8	24.0 - 55.6	5,200
Kahului	2,100	69.2	58.1 - 80.3	1,000	30.8	19.7 - 41.9	3,100
Kailua/ Waimanalo	3,300	63.3	49.4 - 77.2	1,900	36.7	22.8 - 50.6	5,300
Kaimuki/ Palolo/ Waikiki	4,500	59.6	48.6 - 70.7	3,100	40.4	29.3 - 51.4	7,600
Kona	2,300	66.7	57.3 - 76.0	1,200	33.3	24.0 - 42.7	3,500
Lahaina/ Wailuku	1,600	48.3	36.2 - 60.3	1,700	51.7	39.7 - 63.8	3,400
Lanai	200	50.7	35.0 - 66.4	200	49.3	33.6 - 65.0	400
Lihue-Waimea	1,700	56.7	46.4 - 67.0	1,300	43.3	33.0 - 53.6	2,900
Manoa/ Upper Makiki	4,000	56.9	44.2 - 69.6	3,000	43.1	30.4 - 55.8	7,000
Mililani/ Wahiawa	4,300	56.7	44.0 - 69.3	3,300	43.3	30.7 - 56.0	7,600
N.Hawaii	2,100	70.1	57.4 - 82.8	900	29.9	17.2 - 42.6	3,000
Nuuanu/ Kalihi/ Moanalua	2,800	36.1	23.9 - 48.3	5,000	63.9	51.7 - 76.1	7,800

**Asthma - still have asthma by State, County, Island, Community, BRFSS Age Group, DOH Race-Ethnicity, Gender, Education Level, Employment Status (Grouped), Household Income, Poverty Level, Marital Status (Grouped), Married, Health Care Coverage, for the Year(s) - 2000-2002, 2001-2003, 2002-2004, 2003-2005, 2004-2006, 2005-2007, 2006-2008, 2007-2009, 2008-2010**

*Note: Weighted numbers (#) represent 3-yr averages, percentages and 95% confidence intervals; Respondents aged 18 years and older; n/r (Not Reportable) - If the unweighted total responses for a dimension (row) is <50 that row will not be shown; n/a (Not Available) - Not asked of a subset of respondents*

**Year: 2000-2002**

Community	Yes			No			Estimated Population (3-Yr Avg)
	#	%	C.I. (95%)	#	%	C.I. (95%)	#
Puna/ Kau	1,800	66.0	54.9 - 77.0	900	34.0	23.0 - 45.1	2,700
Upcountry/ Hana	1,900	60.2	49.2 - 71.3	1,200	39.8	28.7 - 50.8	3,100
Waipahu/ Kapolei/ Ewa	6,500	60.5	49.9 - 71.1	4,300	39.5	28.9 - 50.1	10,800

**Asthma - still have asthma by State, County, Island, Community, BRFSS Age Group, DOH Race-Ethnicity, Gender, Education Level, Employment Status (Grouped), Household Income, Poverty Level, Marital Status (Grouped), Married, Health Care Coverage, for the Year(s) - 2000-2002, 2001-2003, 2002-2004, 2003-2005, 2004-2006, 2005-2007, 2006-2008, 2007-2009, 2008-2010**

*Note: Weighted numbers (#) represent 3-yr averages, percentages and 95% confidence intervals; Respondents aged 18 years and older; n/r (Not Reportable) - If the unweighted total responses for a dimension (row) is <50 that row will not be shown; n/a (Not Available) - Not asked of a subset of respondents*

**Year: 2000-2002**

BRFSS Age Group	Yes			No			Estimated Population (3-Yr Avg)
	#	%	C.I. (95%)	#	%	C.I. (95%)	#
18-24	8,800	50.7	41.7 - 59.8	8,500	49.3	40.2 - 58.3	17,300
25-34	10,800	55.2	48.2 - 62.1	8,800	44.8	37.9 - 51.8	19,600
35-44	14,800	64.4	58.4 - 70.5	8,200	35.6	29.5 - 41.6	23,000
45-54	11,400	54.2	48.0 - 60.4	9,700	45.8	39.6 - 52.0	21,100
55-64	8,000	63.0	54.5 - 71.6	4,700	37.0	28.4 - 45.5	12,700
65-74	5,800	66.9	57.0 - 76.8	2,800	33.1	23.2 - 43.0	8,600
75+	3,300	71.9	59.9 - 83.8	1,300	28.1	16.2 - 40.1	4,700

**Asthma - still have asthma by State, County, Island, Community, BRFSS Age Group, DOH Race-Ethnicity, Gender, Education Level, Employment Status (Grouped), Household Income, Poverty Level, Marital Status (Grouped), Married, Health Care Coverage, for the Year(s) - 2000-2002, 2001-2003, 2002-2004, 2003-2005, 2004-2006, 2005-2007, 2006-2008, 2007-2009, 2008-2010**

*Note: Weighted numbers (#) represent 3-yr averages, percentages and 95% confidence intervals; Respondents aged 18 years and older; n/r (Not Reportable) - If the unweighted total responses for a dimension (row) is <50 that row will not be shown; n/a (Not Available) - Not asked of a subset of respondents*

**Year: 2000-2002**

DOH Race-Ethnicity	Yes			No			Estimated Population (3-Yr Avg)
	#	%	C.I. (95%)	#	%	C.I. (95%)	#
Caucasian	21,000	60.6	55.8 - 65.5	13,600	39.4	34.5 - 44.2	34,600
Native Hawaiian	13,900	62.8	56.0 - 69.6	8,200	37.2	30.4 - 44.0	22,100
Chinese	3,400	57.8	44.8 - 70.7	2,500	42.2	29.3 - 55.2	6,000
Filipino	7,900	53.1	44.3 - 61.9	6,900	46.9	38.1 - 55.7	14,800
Japanese	10,100	50.5	43.5 - 57.5	9,900	49.5	42.5 - 56.5	20,100
Other	2,900	73.3	59.5 - 87.0	1,000	26.7	13.0 - 40.5	3,900

Gender	Yes			No			Estimated Population (3-Yr Avg)
	#	%	C.I. (95%)	#	%	C.I. (95%)	#
Male	23,700	49.2	44.2 - 54.2	24,400	50.8	45.8 - 55.8	48,100
Female	39,500	66.7	63.2 - 70.3	19,700	33.3	29.7 - 36.8	59,200

**Asthma - still have asthma by State, County, Island, Community, BRFSS Age Group, DOH Race-Ethnicity, Gender, Education Level, Employment Status (Grouped), Household Income, Poverty Level, Marital Status (Grouped), Married, Health Care Coverage, for the Year(s) - 2000-2002, 2001-2003, 2002-2004, 2003-2005, 2004-2006, 2005-2007, 2006-2008, 2007-2009, 2008-2010**

*Note: Weighted numbers (#) represent 3-yr averages, percentages and 95% confidence intervals; Respondents aged 18 years and older; n/r (Not Reportable) - If the unweighted total responses for a dimension (row) is <50 that row will not be shown; n/a (Not Available) - Not asked of a subset of respondents*

**Year: 2000-2002**

Education Level	Yes			No			Estimated Population (3-Yr Avg)
	#	%	C.I. (95%)	#	%	C.I. (95%)	#
Grades 9 thru 11 (Some High School)	2,100	49.4	33.6 - 65.2	2,200	50.6	34.8 - 66.4	4,300
Grades 12 or GED (High School Grad)	24,200	60.7	55.5 - 66.0	15,600	39.3	34.0 - 44.5	39,800
College 1 to 3 years (Some College/ Tech)	18,100	55.9	50.5 - 61.3	14,300	44.1	38.7 - 49.5	32,400
College 4 years or more (College Grad)	17,400	59.9	54.5 - 65.3	11,600	40.1	34.7 - 45.5	29,000

Employment Status (Grouped)	Yes			No			Estimated Population (3-Yr Avg)
	#	%	C.I. (95%)	#	%	C.I. (95%)	#
Employed	37,900	54.4	50.7 - 58.1	31,700	45.6	41.9 - 49.3	69,600
Unemployed	4,100	68.3	54.6 - 81.9	1,900	31.7	18.1 - 45.4	6,000
Retired/Unable to work	13,700	72.1	65.9 - 78.3	5,300	27.9	21.7 - 34.1	18,900
Student/Homemaker	7,400	58.7	48.7 - 68.6	5,200	41.3	31.4 - 51.3	12,700



**Asthma - still have asthma by State, County, Island, Community, BRFSS Age Group, DOH Race-Ethnicity, Gender, Education Level, Employment Status (Grouped), Household Income, Poverty Level, Marital Status (Grouped), Married, Health Care Coverage, for the Year(s) - 2000-2002, 2001-2003, 2002-2004, 2003-2005, 2004-2006, 2005-2007, 2006-2008, 2007-2009, 2008-2010**

*Note: Weighted numbers (#) represent 3-yr averages, percentages and 95% confidence intervals; Respondents aged 18 years and older; n/r (Not Reportable) - If the unweighted total responses for a dimension (row) is <50 that row will not be shown; n/a (Not Available) - Not asked of a subset of respondents*

**Year: 2000-2002**

Household Income	Yes			No			Estimated Population (3-Yr Avg)
	#	%	C.I. (95%)	#	%	C.I. (95%)	#
Less than \$10,000	3,700	66.6	54.7 - 78.4	1,800	33.4	21.6 - 45.3	5,500
\$10,000 to \$14,999	4,200	63.6	50.4 - 76.9	2,400	36.4	23.1 - 49.6	6,600
\$15,000 to \$19,999	3,000	68.5	55.9 - 81.0	1,400	31.5	19.0 - 44.1	4,400
\$20,000 to \$24,999	4,400	74.4	64.7 - 84.1	1,500	25.6	15.9 - 35.3	5,900
\$25,000 to \$34,999	6,500	64.9	56.3 - 73.5	3,500	35.1	26.5 - 43.7	10,000
\$35,000 to \$49,999	10,100	56.2	48.7 - 63.8	7,900	43.8	36.2 - 51.3	17,900
\$50,000 to \$74,999	7,900	57.3	49.3 - 65.4	5,900	42.7	34.6 - 50.7	13,800
\$75,000 or more	7,900	54.1	45.7 - 62.5	6,700	45.9	37.5 - 54.3	14,500

**Asthma - still have asthma by State, County, Island, Community, BRFSS Age Group, DOH Race-Ethnicity, Gender, Education Level, Employment Status (Grouped), Household Income, Poverty Level, Marital Status (Grouped), Married, Health Care Coverage, for the Year(s) - 2000-2002, 2001-2003, 2002-2004, 2003-2005, 2004-2006, 2005-2007, 2006-2008, 2007-2009, 2008-2010**

*Note: Weighted numbers (#) represent 3-yr averages, percentages and 95% confidence intervals; Respondents aged 18 years and older; n/r (Not Reportable) - If the unweighted total responses for a dimension (row) is <50 that row will not be shown; n/a (Not Available) - Not asked of a subset of respondents*

**Year: 2000-2002**

Poverty Level	Yes			No			Estimated Population (3-Yr Avg)
	#	%	C.I. (95%)	#	%	C.I. (95%)	#
<b>0-130%</b>	12,000	67.6	60.2 - 75.1	5,800	32.4	24.9 - 39.8	17,800
<b>131-185%</b>	8,400	70.7	61.9 - 79.5	3,500	29.3	20.5 - 38.1	11,900
<b>186+%</b>	27,200	55.5	51.3 - 59.7	21,800	44.5	40.3 - 48.7	49,000

Marital Status (Grouped)	Yes			No			Estimated Population (3-Yr Avg)
	#	%	C.I. (95%)	#	%	C.I. (95%)	#
<b>Married</b>	32,300	59.9	55.9 - 63.9	21,600	40.1	36.1 - 44.1	53,800
<b>Widowed</b>	3,600	70.0	58.6 - 81.5	1,600	30.0	18.5 - 41.4	5,200
<b>Other</b>	26,200	57.1	52.1 - 62.0	19,700	42.9	38.0 - 47.9	45,900

**Asthma - still have asthma by State, County, Island, Community, BRFSS Age Group, DOH Race-Ethnicity, Gender, Education Level, Employment Status (Grouped), Household Income, Poverty Level, Marital Status (Grouped), Married, Health Care Coverage, for the Year(s) - 2000-2002, 2001-2003, 2002-2004, 2003-2005, 2004-2006, 2005-2007, 2006-2008, 2007-2009, 2008-2010**

*Note: Weighted numbers (#) represent 3-yr averages, percentages and 95% confidence intervals; Respondents aged 18 years and older; n/r (Not Reportable) - If the unweighted total responses for a dimension (row) is <50 that row will not be shown; n/a (Not Available) - Not asked of a subset of respondents*

**Year: 2000-2002**

<b>Married</b>	<b>Yes</b>			<b>No</b>			<b>Estimated Population (3-Yr Avg)</b>
	<b>#</b>	<b>%</b>	<b>C.I. (95%)</b>	<b>#</b>	<b>%</b>	<b>C.I. (95%)</b>	<b>#</b>
<b>Yes</b>	34,100	60.6	56.6 - 64.5	22,200	39.4	35.5 - 43.4	56,300
<b>No</b>	29,100	57.0	52.4 - 61.6	21,900	43.0	38.4 - 47.6	51,000

<b>Health Care Coverage</b>	<b>Yes</b>			<b>No</b>			<b>Estimated Population (3-Yr Avg)</b>
	<b>#</b>	<b>%</b>	<b>C.I. (95%)</b>	<b>#</b>	<b>%</b>	<b>C.I. (95%)</b>	<b>#</b>
<b>Yes</b>	58,300	58.5	55.3 - 61.6	41,400	41.5	38.4 - 44.7	99,700
<b>No</b>	4,900	64.5	53.3 - 75.6	2,700	35.5	24.4 - 46.7	7,600