

## Asthma - child still have asthma, for the State of Hawaii, for the Aggregated Year(s) - 2011-2013, 2012-2014

### Asthma - child still have asthma by State, County, Child DOH Race-Ethnicity, Child Age Group, Child Gender, for the Aggregated Year(s) - 2011-2013, 2012-2014

The trend analysis report shows the trend for the selected health variable over selected years in a table and a graph. Due to the addition of cell phones to the survey and changes in the weighting methodology, results from 2011 and forward cannot be trended with data from prior years. Estimated Population: This number is a weighted representation of the population who responded to a particular question in the survey. For most questions the eligible population will be the entire adult population. For some secondary questions only a subset of the population was asked the question. For example, all survey participants were asked if they had diabetes, but only those who answered yes were asked if they use insulin. If a dimension value is unknown for a particular survey record, that record will not be included in the counts for that particular dimension.

Below are the indicators included in this report and the long description for each indicator.

| BRFSS Health Indicator           | Health Ind Description  |
|----------------------------------|---|
| Asthma - child still have asthma | Child still have asthma (Among those who were told they had asthma) |

*Suggested citation:*

*Hawaii Health Data Warehouse; Hawaii State Department of Health, Behavioral Risk Factor Surveillance System, (report title and years), Report Created: 1/21/16*

*For documentation on other terms and coding in this report, please go to the following links:*

[Click here to access BRFSS documentation](#)

[Click here to access DOH Race-Ethnicity coding](#)

[Click here to access The Hawai'i Data Guide](#)

[Click here to access Poverty Level Methodology](#)

**For questions about this report, please contact  
The Hawaii Health Data Warehouse**

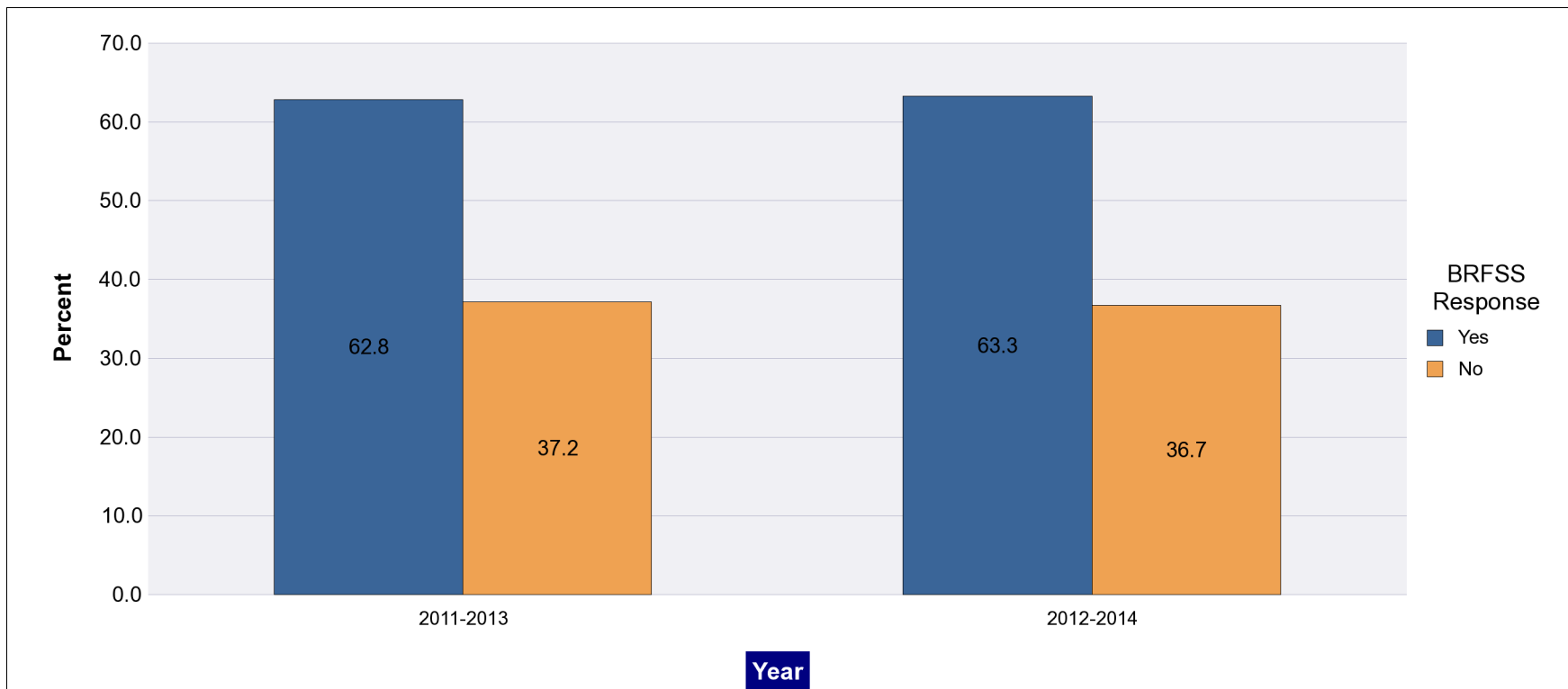
[profiles@hhdw.org](mailto:profiles@hhdw.org)

**(855) 946-5899 x15**

## Asthma - child still have asthma, for the State of Hawaii, for the Aggregated Year(s) - 2011-2013, 2012-2014

*Note: Weighted numbers (#) represent 3-yr averages, percentages and 95% confidence intervals; Respondents aged 18 years and older; n/r (Not Reportable) - If the unweighted total responses for a dimension (row) is <50 or if the relative standard error is > 0.3 that row will not be shown; n/a (Not Available) - Not asked of a subset of respondents*

| Year      | Yes    |      |             | No     |      |             | Estimated Population (3-Yr Avg) |
|-----------|--------|------|-------------|--------|------|-------------|---------------------------------|
|           | #      | %    | C.I.(95%)   | #      | %    | C.I.(95%)   | #                               |
| 2011-2013 | 34,800 | 62.8 | 58.8 - 66.9 | 20,600 | 37.2 | 33.1 - 41.2 | 55,400                          |
| 2012-2014 | 39,600 | 63.3 | 58.2 - 68.3 | 23,000 | 36.7 | 31.7 - 41.8 | 62,600                          |



**Asthma - child still have asthma by State, County, Child DOH Race-Ethnicity, Child Age Group, Child Gender, for the Aggregated Year(s) - 2011-2013, 2012-2014**

*Note: Weighted numbers (#) represent 3-yr averages, percentages and 95% confidence intervals; Respondents aged 18 years and older; n/r (Not Reportable) - If the unweighted total responses for a dimension (row) is <50 or if the relative standard error is > 0.3 that row will not be shown; n/a (Not Available) - Not asked of a subset of respondents*

**Year: 2012-2014**

| State         | Yes    |      |             | No     |      |             | Estimated Population (3-Yr Avg) |
|---------------|--------|------|-------------|--------|------|-------------|---------------------------------|
|               | #      | %    | C.I. (95%)  | #      | %    | C.I. (95%)  | #                               |
| <b>Totals</b> | 39,600 | 63.3 | 58.2 - 68.3 | 23,000 | 36.7 | 31.7 - 41.8 | 62,600                          |

| County          | Yes    |      |             | No     |      |             | Estimated Population (3-Yr Avg) |
|-----------------|--------|------|-------------|--------|------|-------------|---------------------------------|
|                 | #      | %    | C.I. (95%)  | #      | %    | C.I. (95%)  | #                               |
| <b>Hawaii</b>   | 8,600  | 66.3 | 53.3 - 79.3 | 4,400  | 33.7 | 20.7 - 46.7 | 13,000                          |
| <b>Honolulu</b> | 23,800 | 63.3 | 57.0 - 69.6 | 13,800 | 36.7 | 30.4 - 43.0 | 37,600                          |
| <b>Kauai</b>    | 1,600  | 55.0 | 39.1 - 70.8 | 1,300  | 45.0 | 29.2 - 60.9 | 2,900                           |
| <b>Maui</b>     | 5,400  | 60.8 | 47.8 - 73.8 | 3,500  | 39.2 | 26.2 - 52.2 | 8,800                           |

**Asthma - child still have asthma by State, County, Child DOH Race-Ethnicity, Child Age Group, Child Gender, for the Aggregated Year(s) - 2011-2013, 2012-2014**

*Note: Weighted numbers (#) represent 3-yr averages, percentages and 95% confidence intervals; Respondents aged 18 years and older; n/r (Not Reportable) - If the unweighted total responses for a dimension (row) is <50 or if the relative standard error is > 0.3 that row will not be shown; n/a (Not Available) - Not asked of a subset of respondents*

**Year: 2012-2014**

| Child DOH Race-Ethnicity | Yes    |      |             | No    |      |             | Estimated Population (3-Yr Avg) |
|--------------------------|--------|------|-------------|-------|------|-------------|---------------------------------|
|                          | #      | %    | C.I. (95%)  | #     | %    | C.I. (95%)  | #                               |
| Caucasian                | 6,200  | 66.7 | 56.1 - 77.3 | 3,100 | 33.3 | 22.7 - 43.9 | 9,200                           |
| Native Hawaiian          | 17,800 | 69.4 | 61.2 - 77.7 | 7,800 | 30.6 | 22.3 - 38.8 | 25,700                          |
| Chinese                  | n/r    | n/r  | n/r         | n/r   | n/r  | n/r         | 2,100                           |
| Filipino                 | 5,100  | 65.8 | 55.2 - 76.4 | 2,600 | 34.2 | 23.6 - 44.8 | 7,700                           |
| Japanese                 | 3,000  | 49.7 | 35.3 - 64.0 | 3,000 | 50.3 | 36.0 - 64.7 | 5,900                           |
| All Others               | 5,200  | 53.1 | 38.6 - 67.5 | 4,600 | 46.9 | 32.5 - 61.4 | 9,900                           |

**Asthma - child still have asthma by State, County, Child DOH Race-Ethnicity, Child Age Group, Child Gender, for the Aggregated Year(s) - 2011-2013, 2012-2014**

*Note: Weighted numbers (#) represent 3-yr averages, percentages and 95% confidence intervals; Respondents aged 18 years and older; n/r (Not Reportable) - If the unweighted total responses for a dimension (row) is <50 or if the relative standard error is > 0.3 that row will not be shown; n/a (Not Available) - Not asked of a subset of respondents*

**Year: 2012-2014**

| Child Age Group | Yes    |      |             | No    |      |             | Estimated Population (3-Yr Avg) |
|-----------------|--------|------|-------------|-------|------|-------------|---------------------------------|
|                 | #      | %    | C.I. (95%)  | #     | %    | C.I. (95%)  | #                               |
| 0-4             | 7,300  | 67.7 | 54.2 - 81.2 | 3,500 | 32.3 | 18.8 - 45.8 | 10,700                          |
| 5-9             | 12,600 | 67.6 | 59.1 - 76.1 | 6,000 | 32.4 | 23.9 - 40.9 | 18,600                          |
| 10-14           | 9,100  | 58.4 | 48.8 - 68.1 | 6,400 | 41.6 | 31.9 - 51.2 | 15,500                          |
| 15-17           | 8,200  | 58.6 | 47.4 - 69.9 | 5,800 | 41.4 | 30.1 - 52.6 | 13,900                          |

| Child Gender | Yes    |      |             | No     |      |             | Estimated Population (3-Yr Avg) |
|--------------|--------|------|-------------|--------|------|-------------|---------------------------------|
|              | #      | %    | C.I. (95%)  | #      | %    | C.I. (95%)  | #                               |
| Boy          | 21,200 | 64.6 | 58.2 - 70.9 | 11,600 | 35.4 | 29.1 - 41.8 | 32,800                          |
| Girl         | 17,900 | 61.2 | 53.1 - 69.3 | 11,400 | 38.8 | 30.7 - 46.9 | 29,300                          |

**Asthma - child still have asthma by State, County, Child DOH Race-Ethnicity, Child Age Group, Child Gender, for the Aggregated Year(s) - 2011-2013, 2012-2014**

*Note: Weighted numbers (#) represent 3-yr averages, percentages and 95% confidence intervals; Respondents aged 18 years and older; n/r (Not Reportable) - If the unweighted total responses for a dimension (row) is <50 or if the relative standard error is > 0.3 that row will not be shown; n/a (Not Available) - Not asked of a subset of respondents*

**Year: 2011-2013**

| State         | Yes    |      |             | No     |      |             | Estimated Population (3-Yr Avg) |
|---------------|--------|------|-------------|--------|------|-------------|---------------------------------|
|               | #      | %    | C.I. (95%)  | #      | %    | C.I. (95%)  | #                               |
| <b>Totals</b> | 34,800 | 62.8 | 58.8 - 66.9 | 20,600 | 37.2 | 33.1 - 41.2 | 55,400                          |

| County          | Yes    |      |             | No     |      |             | Estimated Population (3-Yr Avg) |
|-----------------|--------|------|-------------|--------|------|-------------|---------------------------------|
|                 | #      | %    | C.I. (95%)  | #      | %    | C.I. (95%)  | #                               |
| <b>Hawaii</b>   | 6,800  | 64.3 | 55.5 - 73.2 | 3,800  | 35.7 | 26.8 - 44.5 | 10,500                          |
| <b>Honolulu</b> | 21,600 | 62.3 | 56.8 - 67.8 | 13,000 | 37.7 | 32.2 - 43.2 | 34,600                          |
| <b>Kauai</b>    | 1,700  | 62.1 | 49.8 - 74.4 | 1,000  | 37.9 | 25.6 - 50.2 | 2,800                           |
| <b>Maui</b>     | 4,600  | 63.2 | 53.8 - 72.7 | 2,700  | 36.8 | 27.3 - 46.2 | 7,300                           |

**Asthma - child still have asthma by State, County, Child DOH Race-Ethnicity, Child Age Group, Child Gender, for the Aggregated Year(s) - 2011-2013, 2012-2014**

*Note: Weighted numbers (#) represent 3-yr averages, percentages and 95% confidence intervals; Respondents aged 18 years and older; n/r (Not Reportable) - If the unweighted total responses for a dimension (row) is <50 or if the relative standard error is > 0.3 that row will not be shown; n/a (Not Available) - Not asked of a subset of respondents*

**Year: 2011-2013**

| Child DOH Race-Ethnicity | Yes    |      |             | No    |      |             | Estimated Population (3-Yr Avg) |
|--------------------------|--------|------|-------------|-------|------|-------------|---------------------------------|
|                          | #      | %    | C.I. (95%)  | #     | %    | C.I. (95%)  | #                               |
| Caucasian                | 7,500  | 68.3 | 60.4 - 76.1 | 3,500 | 31.7 | 23.9 - 39.6 | 11,000                          |
| Native Hawaiian          | 13,200 | 67.0 | 59.7 - 74.2 | 6,500 | 33.0 | 25.8 - 40.3 | 19,700                          |
| Chinese                  | n/r    | n/r  | n/r         | n/r   | n/r  | n/r         | 2,100                           |
| Filipino                 | 4,700  | 54.0 | 43.5 - 64.5 | 4,000 | 46.0 | 35.5 - 56.5 | 8,700                           |
| Japanese                 | 3,800  | 59.0 | 48.0 - 70.0 | 2,700 | 41.0 | 30.0 - 52.0 | 6,500                           |
| All Others               | 4,000  | 61.7 | 49.6 - 73.8 | 2,500 | 38.3 | 26.2 - 50.4 | 6,500                           |

**Asthma - child still have asthma by State, County, Child DOH Race-Ethnicity, Child Age Group, Child Gender, for the Aggregated Year(s) - 2011-2013, 2012-2014**

*Note: Weighted numbers (#) represent 3-yr averages, percentages and 95% confidence intervals; Respondents aged 18 years and older; n/r (Not Reportable) - If the unweighted total responses for a dimension (row) is <50 or if the relative standard error is > 0.3 that row will not be shown; n/a (Not Available) - Not asked of a subset of respondents*

**Year: 2011-2013**

| Child Age Group | Yes    |      |             | No    |      |             | Estimated Population (3-Yr Avg) |
|-----------------|--------|------|-------------|-------|------|-------------|---------------------------------|
|                 | #      | %    | C.I. (95%)  | #     | %    | C.I. (95%)  | #                               |
| 0-4             | 6,600  | 70.2 | 60.2 - 80.1 | 2,800 | 29.8 | 19.9 - 39.8 | 9,400                           |
| 5-9             | 10,700 | 62.9 | 55.3 - 70.5 | 6,300 | 37.1 | 29.5 - 44.7 | 17,100                          |
| 10-14           | 8,200  | 59.4 | 52.0 - 66.8 | 5,600 | 40.6 | 33.2 - 48.0 | 13,800                          |
| 15-17           | 7,100  | 60.4 | 51.3 - 69.4 | 4,700 | 39.6 | 30.6 - 48.7 | 11,800                          |

| Child Gender | Yes    |      |             | No     |      |             | Estimated Population (3-Yr Avg) |
|--------------|--------|------|-------------|--------|------|-------------|---------------------------------|
|              | #      | %    | C.I. (95%)  | #      | %    | C.I. (95%)  | #                               |
| Boy          | 20,800 | 65.0 | 59.9 - 70.0 | 11,200 | 35.0 | 30.0 - 40.1 | 32,000                          |
| Girl         | 13,900 | 60.0 | 53.3 - 66.6 | 9,300  | 40.0 | 33.4 - 46.7 | 23,200                          |