

Asthma - still have asthma by State, County, BRFSS Age Group, DOH Race-Ethnicity, Gender, Island, Community, Education Level, Employment Status (Grouped), Marital Status (Grouped), Household Income, Poverty Level, Married, Health Care Coverage, for the Year(s) - 2000, 2001, 2002, 2003, 2004, 2005, 2006, 2007, 2008, 2009, 2010

Note: Weighted numbers (#), percentages and 95% confidence intervals; Respondents aged 18 years and older; n/r (Not Reportable) - Represents cell size restriction of unweighted count < 50; n/a (Not Available) - Not asked of a subset of respondents

The trend analysis report shows the trend for the selected health variable over selected years in a table and a graph. Estimated Adult Population: This number is a weighted representation of the adult population who responded to a particular question in the survey. For most questions the eligible population will be the entire adult population. For some secondary questions only a subset of the population was asked the question. For example, all survey participants were asked if they had diabetes, but only those who answered yes were asked if they use insulin. If a dimension value is unknown for a particular survey record, that record will not be included in the counts for that particular dimension.

For documentation on other terms and coding in this report, please go to the following links

[Click here to access BRFSS documentation](#)

[Click here to access DOH Race-Ethnicity coding](#)

[Click here to access The Hawai'i Data Guide](#)

[Click here to access Poverty Level Methodology](#)

**For questions about this report, please contact
The Hawaii Health Data Warehouse**

profiles@hhdw.org

(855) 946-5899 x15

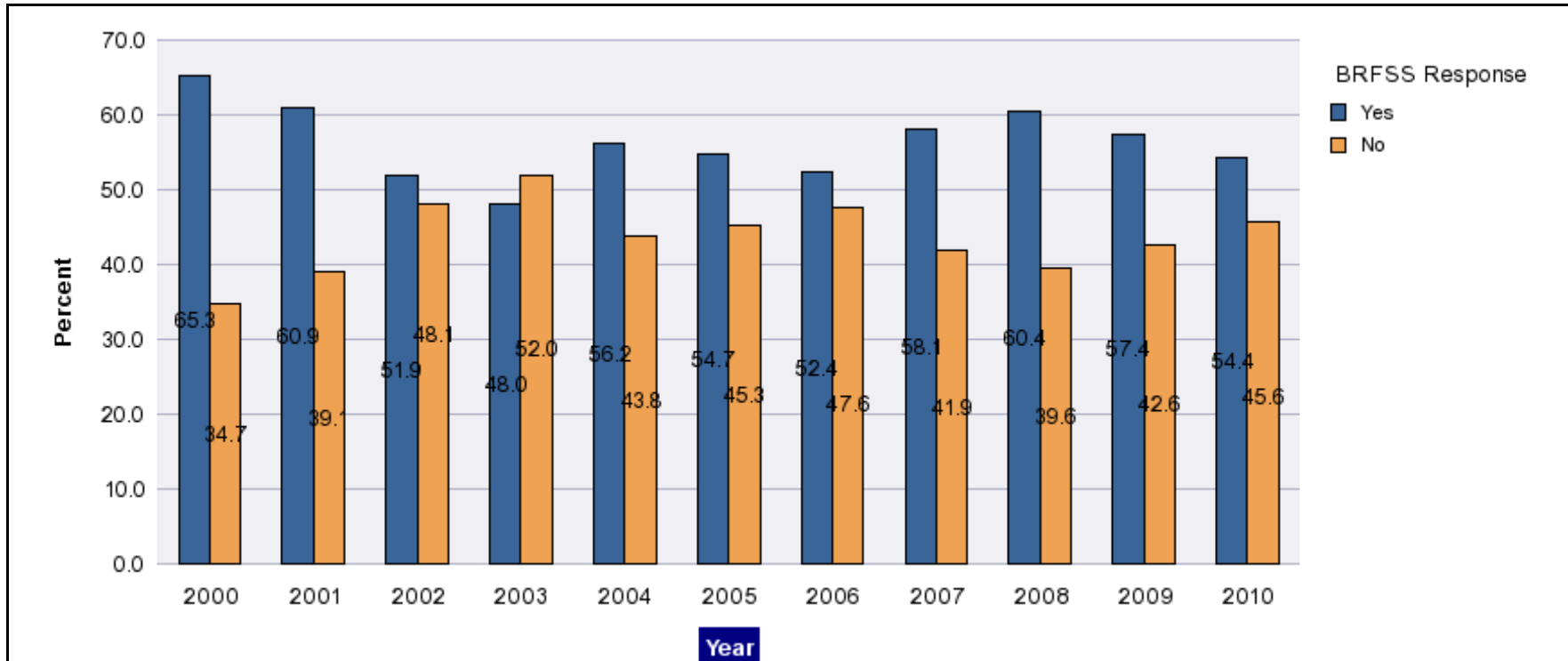
Asthma - still have asthma by State, County, BRFSS Age Group, DOH Race-Ethnicity, Gender, Island, Community, Education Level, Employment Status (Grouped), Marital Status (Grouped), Household Income, Poverty Level, Married, Health Care Coverage, for the Year(s) - 2000, 2001, 2002, 2003, 2004, 2005, 2006, 2007, 2008, 2009, 2010

Note: Weighted numbers (#), percentages and 95% confidence intervals; Respondents aged 18 years and older; n/r (Not Reportable) - Represents cell size restriction of unweighted count < 50; n/a (Not Available) - Not asked of a subset of respondents

Year	Yes			No			Estimated Adult Population
	#	%	C.I.(95%)	#	%	C.I.(95%)	#
2000	63,600	65.3	60.2 - 70.3	33,800	34.7	29.7 - 39.8	97,400
2001	63,700	60.9	55.1 - 66.8	40,800	39.1	33.2 - 44.9	104,500
2002	62,400	51.9	47.2 - 56.6	57,800	48.1	43.4 - 52.8	120,200
2003	51,700	48.0	42.5 - 53.6	55,900	52.0	46.4 - 57.5	107,600
2004	73,400	56.2	47.4 - 65.0	57,200	43.8	35.0 - 52.6	130,600
2005	72,900	54.7	50.1 - 59.4	60,300	45.3	40.6 - 49.9	133,200
2006	77,900	52.4	47.8 - 57.0	70,700	47.6	43.0 - 52.2	148,600
2007	78,500	58.1	53.3 - 62.9	56,600	41.9	37.1 - 46.7	135,100
2008	95,700	60.4	55.9 - 65.0	62,600	39.6	35.0 - 44.1	158,300
2009	93,700	57.4	52.7 - 62.0	69,600	42.6	38.0 - 47.3	163,200
2010	93,800	54.4	49.7 - 59.1	78,700	45.6	40.9 - 50.3	172,500

Asthma - still have asthma by State, County, BRFSS Age Group, DOH Race-Ethnicity, Gender, Island, Community, Education Level, Employment Status (Grouped), Marital Status (Grouped), Household Income, Poverty Level, Married, Health Care Coverage, for the Year(s) - 2000, 2001, 2002, 2003, 2004, 2005, 2006, 2007, 2008, 2009, 2010

Note: Weighted numbers (#), percentages and 95% confidence intervals; Respondents aged 18 years and older; n/r (Not Reportable) - Represents cell size restriction of unweighted count < 50; n/a (Not Available) - Not asked of a subset of respondents



Asthma - still have asthma by State, County, BRFSS Age Group, DOH Race-Ethnicity, Gender, Island, Community, Education Level, Employment Status (Grouped), Marital Status (Grouped), Household Income, Poverty Level, Married, Health Care Coverage, for the Year(s) - 2000, 2001, 2002, 2003, 2004, 2005, 2006, 2007, 2008, 2009, 2010

Note: Weighted numbers (#), percentages and 95% confidence intervals; Respondents aged 18 years and older; n/r (Not Reportable) - Represents cell size restriction of unweighted count < 50; n/a (Not Available) - Not asked of a subset of respondents

Year: 2010

State	Yes			No			Estimated Adult Population
	#	%	C.I. (95%)	#	%	C.I. (95%)	#
Hawaii State	93,800	54.4	49.7 - 59.1	78,700	45.6	40.9 - 50.3	172,500

County	Yes			No			Estimated Adult Population
	#	%	C.I. (95%)	#	%	C.I. (95%)	#
Hawaii	16,700	59.9	51.8 - 68.0	11,200	40.1	32.0 - 48.2	27,900
Honolulu	62,400	52.6	46.3 - 58.9	56,200	47.4	41.1 - 53.7	118,600
Kauai	2,800	41.9	28.0 - 55.8	3,800	58.1	44.2 - 72.0	6,600
Maui	12,000	61.7	52.5 - 70.9	7,400	38.3	29.1 - 47.5	19,400

Asthma - still have asthma by State, County, BRFSS Age Group, DOH Race-Ethnicity, Gender, Island, Community, Education Level, Employment Status (Grouped), Marital Status (Grouped), Household Income, Poverty Level, Married, Health Care Coverage, for the Year(s) - 2000, 2001, 2002, 2003, 2004, 2005, 2006, 2007, 2008, 2009, 2010

Note: Weighted numbers (#), percentages and 95% confidence intervals; Respondents aged 18 years and older; n/r (Not Reportable) - Represents cell size restriction of unweighted count < 50; n/a (Not Available) - Not asked of a subset of respondents

Year: 2010

BRFSS Age Group	Yes			No			Estimated Adult Population
	#	%	C.I. (95%)	#	%	C.I. (95%)	#
18-24	11,300	40.7	25.7 - 55.8	16,500	59.3	44.2 - 74.3	27,900
25-34	21,100	54.3	42.3 - 66.4	17,800	45.7	33.6 - 57.7	38,900
35-44	14,200	55.8	44.6 - 66.9	11,200	44.2	33.1 - 55.4	25,400
45-54	18,600	60.6	52.1 - 69.2	12,100	39.4	30.8 - 47.9	30,700
55-64	14,300	55.9	48.2 - 63.5	11,300	44.1	36.5 - 51.8	25,600
65-74	8,000	60.5	51.3 - 69.6	5,200	39.5	30.4 - 48.7	13,200
75+	6,200	59.5	47.6 - 71.4	4,200	40.5	28.6 - 52.4	10,300

Asthma - still have asthma by State, County, BRFSS Age Group, DOH Race-Ethnicity, Gender, Island, Community, Education Level, Employment Status (Grouped), Marital Status (Grouped), Household Income, Poverty Level, Married, Health Care Coverage, for the Year(s) - 2000, 2001, 2002, 2003, 2004, 2005, 2006, 2007, 2008, 2009, 2010

Note: Weighted numbers (#), percentages and 95% confidence intervals; Respondents aged 18 years and older; n/r (Not Reportable) - Represents cell size restriction of unweighted count < 50; n/a (Not Available) - Not asked of a subset of respondents

Year: 2010

DOH Race-Ethnicity	Yes			No			Estimated Adult Population
	#	%	C.I. (95%)	#	%	C.I. (95%)	#
Caucasian	28,300	63.6	56.8 - 70.4	16,200	36.4	29.6 - 43.2	44,500
Native Hawaiian	19,300	53.0	41.7 - 64.3	17,100	47.0	35.7 - 58.3	36,400
Chinese	6,500	52.8	35.0 - 70.6	5,800	47.2	29.4 - 65.0	12,200
Filipino	12,600	51.5	39.1 - 63.9	11,900	48.5	36.1 - 60.9	24,500
Japanese	16,200	44.5	34.6 - 54.4	20,200	55.5	45.6 - 65.4	36,400

Asthma - still have asthma by State, County, BRFSS Age Group, DOH Race-Ethnicity, Gender, Island, Community, Education Level, Employment Status (Grouped), Marital Status (Grouped), Household Income, Poverty Level, Married, Health Care Coverage, for the Year(s) - 2000, 2001, 2002, 2003, 2004, 2005, 2006, 2007, 2008, 2009, 2010

Note: Weighted numbers (#), percentages and 95% confidence intervals; Respondents aged 18 years and older; n/r (Not Reportable) - Represents cell size restriction of unweighted count < 50; n/a (Not Available) - Not asked of a subset of respondents

Year: 2010

Gender	Yes			No			Estimated Adult Population
	#	%	C.I. (95%)	#	%	C.I. (95%)	#
Male	33,100	42.9	35.4 - 50.3	44,100	57.1	49.7 - 64.6	77,200
Female	60,700	63.7	58.3 - 69.1	34,600	36.3	30.9 - 41.7	95,300

Island	Yes			No			Estimated Adult Population
	#	%	C.I. (95%)	#	%	C.I. (95%)	#
Hawaii	16,700	59.9	51.8 - 68.0	11,200	40.1	32.0 - 48.2	27,900
Kauai	2,800	41.9	28.0 - 55.8	3,800	58.1	44.2 - 72.0	6,600
Maui	11,200	61.0	51.3 - 70.7	7,100	39.0	29.3 - 48.7	18,300
Oahu	62,400	52.6	46.3 - 58.9	56,200	47.4	41.1 - 53.7	118,600

Asthma - still have asthma by State, County, BRFSS Age Group, DOH Race-Ethnicity, Gender, Island, Community, Education Level, Employment Status (Grouped), Marital Status (Grouped), Household Income, Poverty Level, Married, Health Care Coverage, for the Year(s) - 2000, 2001, 2002, 2003, 2004, 2005, 2006, 2007, 2008, 2009, 2010

Note: Weighted numbers (#), percentages and 95% confidence intervals; Respondents aged 18 years and older; n/r (Not Reportable) - Represents cell size restriction of unweighted count < 50; n/a (Not Available) - Not asked of a subset of respondents

Year: 2010

Community	Yes			No			Estimated Adult Population
	#	%	C.I. (95%)	#	%	C.I. (95%)	#
Hanalei/ Kapaa	1,700	53.1	35.5 - 70.8	1,500	46.9	29.2 - 64.5	3,100
Hilo	5,200	58.1	43.5 - 72.7	3,700	41.9	27.3 - 56.5	8,900
Kahului	4,600	70.7	55.9 - 85.4	1,900	29.3	14.6 - 44.1	6,500
Kaimuki/ Palolo/ Waikiki	4,100	37.3	19.5 - 55.1	6,800	62.7	44.9 - 80.5	10,900
Kona	4,000	58.3	41.1 - 75.6	2,800	41.7	24.4 - 58.9	6,800
Lahaina/ Wailuku	2,900	49.8	31.2 - 68.3	2,900	50.2	31.7 - 68.8	5,800
Mililani/ Wahiawa	7,000	54.8	37.9 - 71.6	5,800	45.2	28.4 - 62.1	12,800
Puna/ Kau	4,700	61.5	47.4 - 75.6	2,900	38.5	24.4 - 52.6	7,700
Upcountry/ Hana	3,700	61.3	46.0 - 76.6	2,300	38.7	23.4 - 54.0	6,000

Asthma - still have asthma by State, County, BRFSS Age Group, DOH Race-Ethnicity, Gender, Island, Community, Education Level, Employment Status (Grouped), Marital Status (Grouped), Household Income, Poverty Level, Married, Health Care Coverage, for the Year(s) - 2000, 2001, 2002, 2003, 2004, 2005, 2006, 2007, 2008, 2009, 2010

Note: Weighted numbers (#), percentages and 95% confidence intervals; Respondents aged 18 years and older; n/r (Not Reportable) - Represents cell size restriction of unweighted count < 50; n/a (Not Available) - Not asked of a subset of respondents

Year: 2010

Community	Yes			No			Estimated Adult Population
	#	%	C.I. (95%)	#	%	C.I. (95%)	#
Waipahu/ Kapolei/ Ewa	8,200	45.1	29.1 - 61.1	10,000	54.9	38.9 - 70.9	18,300

Education Level	Yes			No			Estimated Adult Population
	#	%	C.I. (95%)	#	%	C.I. (95%)	#
Grades 12 or GED (High School Grad)	30,400	58.1	49.3 - 67.0	21,900	41.9	33.0 - 50.7	52,300
College 1 to 3 years (Some College/ Tech)	26,500	48.0	39.2 - 56.9	28,700	52.0	43.1 - 60.8	55,300
College 4 years or more (College Grad)	32,300	56.3	49.6 - 63.0	25,000	43.7	37.0 - 50.4	57,400

Asthma - still have asthma by State, County, BRFSS Age Group, DOH Race-Ethnicity, Gender, Island, Community, Education Level, Employment Status (Grouped), Marital Status (Grouped), Household Income, Poverty Level, Married, Health Care Coverage, for the Year(s) - 2000, 2001, 2002, 2003, 2004, 2005, 2006, 2007, 2008, 2009, 2010

Note: Weighted numbers (#), percentages and 95% confidence intervals; Respondents aged 18 years and older; n/r (Not Reportable) - Represents cell size restriction of unweighted count < 50; n/a (Not Available) - Not asked of a subset of respondents

Year: 2010

Employment Status (Grouped)	Yes			No			Estimated Adult Population
	#	%	C.I. (95%)	#	%	C.I. (95%)	#
Employed	57,100	55.1	49.2 - 61.1	46,500	44.9	38.9 - 50.8	103,600
Unemployed	4,200	38.5	19.8 - 57.1	6,700	61.5	42.9 - 80.2	10,900
Retired/Unable to work	20,900	63.9	57.1 - 70.7	11,800	36.1	29.3 - 42.9	32,700
Student/Homemaker	11,600	45.8	30.2 - 61.5	13,700	54.2	38.5 - 69.8	25,300

Asthma - still have asthma by State, County, BRFSS Age Group, DOH Race-Ethnicity, Gender, Island, Community, Education Level, Employment Status (Grouped), Marital Status (Grouped), Household Income, Poverty Level, Married, Health Care Coverage, for the Year(s) - 2000, 2001, 2002, 2003, 2004, 2005, 2006, 2007, 2008, 2009, 2010

Note: Weighted numbers (#), percentages and 95% confidence intervals; Respondents aged 18 years and older; n/r (Not Reportable) - Represents cell size restriction of unweighted count < 50; n/a (Not Available) - Not asked of a subset of respondents

Year: 2010

Marital Status (Grouped)	Yes			No			Estimated Adult Population
	#	%	C.I. (95%)	#	%	C.I. (95%)	#
Other	35,900	50.1	41.6 - 58.7	35,700	49.9	41.3 - 58.4	71,600
Married	48,800	57.5	52.1 - 62.8	36,100	42.5	37.2 - 47.9	84,900
Widowed	4,800	62.1	43.1 - 81.1	2,900	37.9	18.9 - 56.9	7,700

Asthma - still have asthma by State, County, BRFSS Age Group, DOH Race-Ethnicity, Gender, Island, Community, Education Level, Employment Status (Grouped), Marital Status (Grouped), Household Income, Poverty Level, Married, Health Care Coverage, for the Year(s) - 2000, 2001, 2002, 2003, 2004, 2005, 2006, 2007, 2008, 2009, 2010

Note: Weighted numbers (#), percentages and 95% confidence intervals; Respondents aged 18 years and older; n/r (Not Reportable) - Represents cell size restriction of unweighted count < 50; n/a (Not Available) - Not asked of a subset of respondents

Year: 2010

Household Income	Yes			No			Estimated Adult Population
	#	%	C.I. (95%)	#	%	C.I. (95%)	#
Less than \$10,000	4,800	77.8	63.2 - 92.4	1,400	22.2	7.6 - 36.8	6,200
\$15,000 to \$19,999	5,800	47.8	28.2 - 67.3	6,300	52.2	32.7 - 71.8	12,100
\$20,000 to \$24,999	6,300	53.0	34.8 - 71.3	5,600	47.0	28.7 - 65.2	11,900
\$25,000 to \$34,999	9,800	63.8	50.0 - 77.6	5,600	36.2	22.4 - 50.0	15,400
\$35,000 to \$49,999	16,100	61.1	49.5 - 72.7	10,200	38.9	27.3 - 50.5	26,300
\$50,000 to \$74,999	13,700	47.0	36.5 - 57.6	15,400	53.0	42.4 - 63.5	29,200
\$75,000 or more	23,500	49.8	41.6 - 57.9	23,700	50.2	42.1 - 58.4	47,200

Asthma - still have asthma by State, County, BRFSS Age Group, DOH Race-Ethnicity, Gender, Island, Community, Education Level, Employment Status (Grouped), Marital Status (Grouped), Household Income, Poverty Level, Married, Health Care Coverage, for the Year(s) - 2000, 2001, 2002, 2003, 2004, 2005, 2006, 2007, 2008, 2009, 2010

Note: Weighted numbers (#), percentages and 95% confidence intervals; Respondents aged 18 years and older; n/r (Not Reportable) - Represents cell size restriction of unweighted count < 50; n/a (Not Available) - Not asked of a subset of respondents

Year: 2010

Poverty Level	Yes			No			Estimated Adult Population
	#	%	C.I. (95%)	#	%	C.I. (95%)	#
0-130%	26,500	57.1	46.8 - 67.4	19,900	42.9	32.6 - 53.2	46,500
131-185%	14,900	59.5	47.9 - 71.1	10,200	40.5	28.9 - 52.1	25,100
186+%	42,300	51.2	45.4 - 57.0	40,300	48.8	43.0 - 54.6	82,600

Married	Yes			No			Estimated Adult Population
	#	%	C.I. (95%)	#	%	C.I. (95%)	#
Yes	49,300	57.4	52.1 - 62.7	36,600	42.6	37.3 - 47.9	85,900
No	44,000	51.2	43.6 - 58.8	42,000	48.8	41.2 - 56.4	86,000

Asthma - still have asthma by State, County, BRFSS Age Group, DOH Race-Ethnicity, Gender, Island, Community, Education Level, Employment Status (Grouped), Marital Status (Grouped), Household Income, Poverty Level, Married, Health Care Coverage, for the Year(s) - 2000, 2001, 2002, 2003, 2004, 2005, 2006, 2007, 2008, 2009, 2010

Note: Weighted numbers (#), percentages and 95% confidence intervals; Respondents aged 18 years and older; n/r (Not Reportable) - Represents cell size restriction of unweighted count < 50; n/a (Not Available) - Not asked of a subset of respondents

Year: 2010

Health Care Coverage	Yes			No			Estimated Adult Population
	#	%	C.I. (95%)	#	%	C.I. (95%)	#
Yes	89,100	55.0	50.4 - 59.7	72,800	45.0	40.3 - 49.6	161,900

Asthma - still have asthma by State, County, BRFSS Age Group, DOH Race-Ethnicity, Gender, Island, Community, Education Level, Employment Status (Grouped), Marital Status (Grouped), Household Income, Poverty Level, Married, Health Care Coverage, for the Year(s) - 2000, 2001, 2002, 2003, 2004, 2005, 2006, 2007, 2008, 2009, 2010

Note: Weighted numbers (#), percentages and 95% confidence intervals; Respondents aged 18 years and older; n/r (Not Reportable) - Represents cell size restriction of unweighted count < 50; n/a (Not Available) - Not asked of a subset of respondents

Year: 2009

State	Yes			No			Estimated Adult Population
	#	%	C.I. (95%)	#	%	C.I. (95%)	#
Hawaii State	93,700	57.4	52.7 - 62.0	69,600	42.6	38.0 - 47.3	163,200

County	Yes			No			Estimated Adult Population
	#	%	C.I. (95%)	#	%	C.I. (95%)	#
Hawaii	15,300	66.0	58.3 - 73.8	7,900	34.0	26.2 - 41.7	23,200
Honolulu	64,400	54.8	48.7 - 60.8	53,200	45.2	39.2 - 51.3	117,700
Kauai	3,300	52.3	37.5 - 67.0	3,000	47.7	33.0 - 62.5	6,300
Maui	10,600	66.0	57.4 - 74.6	5,400	34.0	25.4 - 42.6	16,000

Asthma - still have asthma by State, County, BRFSS Age Group, DOH Race-Ethnicity, Gender, Island, Community, Education Level, Employment Status (Grouped), Marital Status (Grouped), Household Income, Poverty Level, Married, Health Care Coverage, for the Year(s) - 2000, 2001, 2002, 2003, 2004, 2005, 2006, 2007, 2008, 2009, 2010

Note: Weighted numbers (#), percentages and 95% confidence intervals; Respondents aged 18 years and older; n/r (Not Reportable) - Represents cell size restriction of unweighted count < 50; n/a (Not Available) - Not asked of a subset of respondents

Year: 2009

BRFSS Age Group	Yes			No			Estimated Adult Population
	#	%	C.I. (95%)	#	%	C.I. (95%)	#
18-24	19,600	58.0	44.2 - 71.8	14,200	42.0	28.2 - 55.8	33,800
25-34	12,000	45.1	32.4 - 57.8	14,600	54.9	42.2 - 67.6	26,600
35-44	14,200	56.3	45.7 - 66.9	11,000	43.7	33.1 - 54.3	25,300
45-54	18,900	64.2	56.3 - 72.1	10,500	35.8	27.9 - 43.7	29,400
55-64	15,900	61.0	52.4 - 69.6	10,200	39.0	30.4 - 47.6	26,100
65-74	7,500	68.4	58.4 - 78.4	3,500	31.6	21.6 - 41.6	11,000
75+	5,300	49.4	34.6 - 64.2	5,400	50.6	35.8 - 65.4	10,700

Asthma - still have asthma by State, County, BRFSS Age Group, DOH Race-Ethnicity, Gender, Island, Community, Education Level, Employment Status (Grouped), Marital Status (Grouped), Household Income, Poverty Level, Married, Health Care Coverage, for the Year(s) - 2000, 2001, 2002, 2003, 2004, 2005, 2006, 2007, 2008, 2009, 2010

Note: Weighted numbers (#), percentages and 95% confidence intervals; Respondents aged 18 years and older; n/r (Not Reportable) - Represents cell size restriction of unweighted count < 50; n/a (Not Available) - Not asked of a subset of respondents

Year: 2009

DOH Race-Ethnicity	Yes			No			Estimated Adult Population
	#	%	C.I. (95%)	#	%	C.I. (95%)	#
Caucasian	28,000	61.1	53.7 - 68.6	17,800	38.9	31.4 - 46.3	45,700
Native Hawaiian	19,900	64.7	54.1 - 75.3	10,900	35.3	24.7 - 45.9	30,800
Chinese	5,000	56.7	39.7 - 73.7	3,800	43.3	26.3 - 60.3	8,800
Filipino	15,200	60.7	47.8 - 73.6	9,800	39.3	26.4 - 52.2	25,000
Japanese	17,700	48.3	37.7 - 59.0	18,900	51.7	41.0 - 62.3	36,700

Asthma - still have asthma by State, County, BRFSS Age Group, DOH Race-Ethnicity, Gender, Island, Community, Education Level, Employment Status (Grouped), Marital Status (Grouped), Household Income, Poverty Level, Married, Health Care Coverage, for the Year(s) - 2000, 2001, 2002, 2003, 2004, 2005, 2006, 2007, 2008, 2009, 2010

Note: Weighted numbers (#), percentages and 95% confidence intervals; Respondents aged 18 years and older; n/r (Not Reportable) - Represents cell size restriction of unweighted count < 50; n/a (Not Available) - Not asked of a subset of respondents

Year: 2009

Gender	Yes			No			Estimated Adult Population
	#	%	C.I. (95%)	#	%	C.I. (95%)	#
Male	32,400	44.3	36.9 - 51.6	40,800	55.7	48.4 - 63.1	73,300
Female	61,200	68.1	62.6 - 73.6	28,700	31.9	26.4 - 37.4	90,000

Island	Yes			No			Estimated Adult Population
	#	%	C.I. (95%)	#	%	C.I. (95%)	#
Hawaii	15,300	66.0	58.3 - 73.8	7,900	34.0	26.2 - 41.7	23,200
Kauai	3,300	52.3	37.5 - 67.0	3,000	47.7	33.0 - 62.5	6,300
Maui	9,200	64.5	55.0 - 73.9	5,100	35.5	26.1 - 45.0	14,300
Oahu	64,400	54.8	48.7 - 60.8	53,200	45.2	39.2 - 51.3	117,700

Asthma - still have asthma by State, County, BRFSS Age Group, DOH Race-Ethnicity, Gender, Island, Community, Education Level, Employment Status (Grouped), Marital Status (Grouped), Household Income, Poverty Level, Married, Health Care Coverage, for the Year(s) - 2000, 2001, 2002, 2003, 2004, 2005, 2006, 2007, 2008, 2009, 2010

Note: Weighted numbers (#), percentages and 95% confidence intervals; Respondents aged 18 years and older; n/r (Not Reportable) - Represents cell size restriction of unweighted count < 50; n/a (Not Available) - Not asked of a subset of respondents

Year: 2009

Community	Yes			No			Estimated Adult Population
	#	%	C.I. (95%)	#	%	C.I. (95%)	#
Hilo	3,700	58.7	42.8 - 74.5	2,600	41.3	25.5 - 57.2	6,300
Kahului	3,100	57.0	42.3 - 71.8	2,300	43.0	28.2 - 57.7	5,300
Kona	3,200	69.2	53.4 - 85.0	1,400	30.8	15.0 - 46.6	4,600
Lihue-Waimea	1,900	52.3	33.8 - 70.8	1,800	47.7	29.2 - 66.2	3,700
Mililani/ Wahiawa	7,800	55.9	38.3 - 73.4	6,200	44.1	26.6 - 61.7	14,000
Puna/ Kau	4,600	67.5	54.0 - 81.1	2,200	32.5	18.9 - 46.0	6,900
Upcountry/ Hana	3,800	80.9	70.6 - 91.3	900	19.1	8.7 - 29.4	4,700
Waipahu/ Kapolei/ Ewa	11,100	49.7	35.6 - 63.8	11,200	50.3	36.2 - 64.4	22,400

Asthma - still have asthma by State, County, BRFSS Age Group, DOH Race-Ethnicity, Gender, Island, Community, Education Level, Employment Status (Grouped), Marital Status (Grouped), Household Income, Poverty Level, Married, Health Care Coverage, for the Year(s) - 2000, 2001, 2002, 2003, 2004, 2005, 2006, 2007, 2008, 2009, 2010

Note: Weighted numbers (#), percentages and 95% confidence intervals; Respondents aged 18 years and older; n/r (Not Reportable) - Represents cell size restriction of unweighted count < 50; n/a (Not Available) - Not asked of a subset of respondents

Year: 2009

Education Level	Yes			No			Estimated Adult Population
	#	%	C.I. (95%)	#	%	C.I. (95%)	#
Grades 12 or GED (High School Grad)	31,000	62.2	53.6 - 70.8	18,800	37.8	29.2 - 46.4	49,900
College 1 to 3 years (Some College/ Tech)	30,400	57.7	49.0 - 66.4	22,200	42.3	33.6 - 51.0	52,600
College 4 years or more (College Grad)	25,500	51.7	44.5 - 59.0	23,800	48.3	41.0 - 55.5	49,300

Asthma - still have asthma by State, County, BRFSS Age Group, DOH Race-Ethnicity, Gender, Island, Community, Education Level, Employment Status (Grouped), Marital Status (Grouped), Household Income, Poverty Level, Married, Health Care Coverage, for the Year(s) - 2000, 2001, 2002, 2003, 2004, 2005, 2006, 2007, 2008, 2009, 2010

Note: Weighted numbers (#), percentages and 95% confidence intervals; Respondents aged 18 years and older; n/r (Not Reportable) - Represents cell size restriction of unweighted count < 50; n/a (Not Available) - Not asked of a subset of respondents

Year: 2009

Employment Status (Grouped)	Yes			No			Estimated Adult Population
	#	%	C.I. (95%)	#	%	C.I. (95%)	#
Employed	57,000	54.4	48.6 - 60.3	47,800	45.6	39.7 - 51.4	104,800
Unemployed	7,500	71.4	55.5 - 87.3	3,000	28.6	12.7 - 44.5	10,500
Retired/Unable to work	17,900	63.4	55.0 - 71.8	10,400	36.6	28.2 - 45.0	28,300
Student/Homemaker	11,200	57.2	40.8 - 73.6	8,400	42.8	26.4 - 59.2	19,600

Asthma - still have asthma by State, County, BRFSS Age Group, DOH Race-Ethnicity, Gender, Island, Community, Education Level, Employment Status (Grouped), Marital Status (Grouped), Household Income, Poverty Level, Married, Health Care Coverage, for the Year(s) - 2000, 2001, 2002, 2003, 2004, 2005, 2006, 2007, 2008, 2009, 2010

Note: Weighted numbers (#), percentages and 95% confidence intervals; Respondents aged 18 years and older; n/r (Not Reportable) - Represents cell size restriction of unweighted count < 50; n/a (Not Available) - Not asked of a subset of respondents

Year: 2009

Marital Status (Grouped)	Yes			No			Estimated Adult Population
	#	%	C.I. (95%)	#	%	C.I. (95%)	#
Other	35,600	54.4	45.7 - 63.0	29,900	45.6	37.0 - 54.3	65,400
Married	50,100	59.3	53.8 - 64.9	34,300	40.7	35.1 - 46.2	84,400
Widowed	4,700	58.5	39.7 - 77.3	3,300	41.5	22.7 - 60.3	8,000

Asthma - still have asthma by State, County, BRFSS Age Group, DOH Race-Ethnicity, Gender, Island, Community, Education Level, Employment Status (Grouped), Marital Status (Grouped), Household Income, Poverty Level, Married, Health Care Coverage, for the Year(s) - 2000, 2001, 2002, 2003, 2004, 2005, 2006, 2007, 2008, 2009, 2010

Note: Weighted numbers (#), percentages and 95% confidence intervals; Respondents aged 18 years and older; n/r (Not Reportable) - Represents cell size restriction of unweighted count < 50; n/a (Not Available) - Not asked of a subset of respondents

Year: 2009

Household Income	Yes			No			Estimated Adult Population
	#	%	C.I. (95%)	#	%	C.I. (95%)	#
\$15,000 to \$19,999	5,100	55.2	36.5 - 74.0	4,200	44.8	26.0 - 63.5	9,300
\$20,000 to \$24,999	6,900	56.5	39.4 - 73.5	5,300	43.5	26.5 - 60.6	12,200
\$25,000 to \$34,999	8,100	57.6	43.9 - 71.2	6,000	42.4	28.8 - 56.1	14,100
\$35,000 to \$49,999	17,300	62.7	50.2 - 75.1	10,300	37.3	24.9 - 49.8	27,600
\$50,000 to \$74,999	14,100	51.5	41.0 - 62.0	13,300	48.5	38.0 - 59.0	27,400
\$75,000 or more	23,000	50.6	41.8 - 59.4	22,500	49.4	40.6 - 58.2	45,500

Asthma - still have asthma by State, County, BRFSS Age Group, DOH Race-Ethnicity, Gender, Island, Community, Education Level, Employment Status (Grouped), Marital Status (Grouped), Household Income, Poverty Level, Married, Health Care Coverage, for the Year(s) - 2000, 2001, 2002, 2003, 2004, 2005, 2006, 2007, 2008, 2009, 2010

Note: Weighted numbers (#), percentages and 95% confidence intervals; Respondents aged 18 years and older; n/r (Not Reportable) - Represents cell size restriction of unweighted count < 50; n/a (Not Available) - Not asked of a subset of respondents

Year: 2009

Poverty Level	Yes			No			Estimated Adult Population
	#	%	C.I. (95%)	#	%	C.I. (95%)	#
0-130%	24,400	63.4	53.7 - 73.2	14,100	36.6	26.8 - 46.3	38,400
131-185%	13,800	51.7	39.5 - 63.9	12,900	48.3	36.1 - 60.5	26,700
186+%	42,700	53.8	47.7 - 60.0	36,600	46.2	40.0 - 52.3	79,300

Married	Yes			No			Estimated Adult Population
	#	%	C.I. (95%)	#	%	C.I. (95%)	#
Yes	50,600	59.2	53.7 - 64.7	34,900	40.8	35.3 - 46.3	85,500
No	42,700	55.2	47.5 - 62.9	34,700	44.8	37.1 - 52.5	77,400

Asthma - still have asthma by State, County, BRFSS Age Group, DOH Race-Ethnicity, Gender, Island, Community, Education Level, Employment Status (Grouped), Marital Status (Grouped), Household Income, Poverty Level, Married, Health Care Coverage, for the Year(s) - 2000, 2001, 2002, 2003, 2004, 2005, 2006, 2007, 2008, 2009, 2010

Note: Weighted numbers (#), percentages and 95% confidence intervals; Respondents aged 18 years and older; n/r (Not Reportable) - Represents cell size restriction of unweighted count < 50; n/a (Not Available) - Not asked of a subset of respondents

Year: 2009

Health Care Coverage	Yes			No			Estimated Adult Population
	#	%	C.I. (95%)	#	%	C.I. (95%)	#
Yes	87,300	57.9	53.2 - 62.7	63,400	42.1	37.3 - 46.8	150,700
No	6,200	52.5	31.9 - 73.2	5,600	47.5	26.8 - 68.1	11,900

Asthma - still have asthma by State, County, BRFSS Age Group, DOH Race-Ethnicity, Gender, Island, Community, Education Level, Employment Status (Grouped), Marital Status (Grouped), Household Income, Poverty Level, Married, Health Care Coverage, for the Year(s) - 2000, 2001, 2002, 2003, 2004, 2005, 2006, 2007, 2008, 2009, 2010

Note: Weighted numbers (#), percentages and 95% confidence intervals; Respondents aged 18 years and older; n/r (Not Reportable) - Represents cell size restriction of unweighted count < 50; n/a (Not Available) - Not asked of a subset of respondents

Year: 2008

State	Yes			No			Estimated Adult Population
	#	%	C.I. (95%)	#	%	C.I. (95%)	#
Hawaii State	95,700	60.4	55.9 - 65.0	62,600	39.6	35.0 - 44.1	158,300

County	Yes			No			Estimated Adult Population
	#	%	C.I. (95%)	#	%	C.I. (95%)	#
Hawaii	16,400	61.9	53.0 - 70.8	10,100	38.1	29.2 - 47.0	26,500
Honolulu	63,900	60.1	53.9 - 66.2	42,500	39.9	33.8 - 46.1	106,300
Kauai	4,400	54.5	40.2 - 68.7	3,700	45.5	31.3 - 59.8	8,100
Maui	11,000	63.4	53.6 - 73.1	6,400	36.6	26.9 - 46.4	17,400

Asthma - still have asthma by State, County, BRFSS Age Group, DOH Race-Ethnicity, Gender, Island, Community, Education Level, Employment Status (Grouped), Marital Status (Grouped), Household Income, Poverty Level, Married, Health Care Coverage, for the Year(s) - 2000, 2001, 2002, 2003, 2004, 2005, 2006, 2007, 2008, 2009, 2010

Note: Weighted numbers (#), percentages and 95% confidence intervals; Respondents aged 18 years and older; n/r (Not Reportable) - Represents cell size restriction of unweighted count < 50; n/a (Not Available) - Not asked of a subset of respondents

Year: 2008

BRFSS Age Group	Yes			No			Estimated Adult Population
	#	%	C.I. (95%)	#	%	C.I. (95%)	#
18-24	18,600	55.4	42.9 - 67.8	15,000	44.6	32.2 - 57.1	33,700
25-34	16,600	52.4	39.9 - 64.9	15,100	47.6	35.1 - 60.1	31,700
35-44	16,400	66.6	57.0 - 76.1	8,200	33.4	23.9 - 43.0	24,600
45-54	17,800	66.3	57.9 - 74.8	9,000	33.7	25.2 - 42.1	26,800
55-64	13,600	60.4	51.1 - 69.8	8,900	39.6	30.2 - 48.9	22,500
65-74	7,400	67.3	56.2 - 78.4	3,600	32.7	21.6 - 43.8	11,000
75+	4,900	66.1	50.9 - 81.3	2,500	33.9	18.7 - 49.1	7,400

Asthma - still have asthma by State, County, BRFSS Age Group, DOH Race-Ethnicity, Gender, Island, Community, Education Level, Employment Status (Grouped), Marital Status (Grouped), Household Income, Poverty Level, Married, Health Care Coverage, for the Year(s) - 2000, 2001, 2002, 2003, 2004, 2005, 2006, 2007, 2008, 2009, 2010

Note: Weighted numbers (#), percentages and 95% confidence intervals; Respondents aged 18 years and older; n/r (Not Reportable) - Represents cell size restriction of unweighted count < 50; n/a (Not Available) - Not asked of a subset of respondents

Year: 2008

DOH Race-Ethnicity	Yes			No			Estimated Adult Population
	#	%	C.I. (95%)	#	%	C.I. (95%)	#
Caucasian	29,000	59.8	52.3 - 67.3	19,500	40.2	32.7 - 47.7	48,600
Native Hawaiian	20,300	59.9	49.5 - 70.3	13,500	40.1	29.7 - 50.5	33,800
Chinese	7,200	57.3	37.6 - 77.1	5,400	42.7	22.9 - 62.4	12,500
Filipino	10,500	58.3	44.6 - 71.9	7,500	41.7	28.1 - 55.4	18,000
Japanese	18,100	59.6	49.6 - 69.6	12,300	40.4	30.4 - 50.4	30,300

Asthma - still have asthma by State, County, BRFSS Age Group, DOH Race-Ethnicity, Gender, Island, Community, Education Level, Employment Status (Grouped), Marital Status (Grouped), Household Income, Poverty Level, Married, Health Care Coverage, for the Year(s) - 2000, 2001, 2002, 2003, 2004, 2005, 2006, 2007, 2008, 2009, 2010

Note: Weighted numbers (#), percentages and 95% confidence intervals; Respondents aged 18 years and older; n/r (Not Reportable) - Represents cell size restriction of unweighted count < 50; n/a (Not Available) - Not asked of a subset of respondents

Year: 2008

Gender	Yes			No			Estimated Adult Population
	#	%	C.I. (95%)	#	%	C.I. (95%)	#
Male	38,500	50.6	43.2 - 58.0	37,600	49.4	42.0 - 56.8	76,100
Female	57,200	69.5	64.3 - 74.8	25,000	30.5	25.2 - 35.7	82,200

Island	Yes			No			Estimated Adult Population
	#	%	C.I. (95%)	#	%	C.I. (95%)	#
Hawaii	16,400	61.9	53.0 - 70.8	10,100	38.1	29.2 - 47.0	26,500
Kauai	4,400	54.5	40.2 - 68.7	3,700	45.5	31.3 - 59.8	8,100
Maui	10,200	64.5	54.0 - 75.1	5,600	35.5	24.9 - 46.0	15,800
Oahu	63,900	60.1	53.9 - 66.2	42,500	39.9	33.8 - 46.1	106,300

Asthma - still have asthma by State, County, BRFSS Age Group, DOH Race-Ethnicity, Gender, Island, Community, Education Level, Employment Status (Grouped), Marital Status (Grouped), Household Income, Poverty Level, Married, Health Care Coverage, for the Year(s) - 2000, 2001, 2002, 2003, 2004, 2005, 2006, 2007, 2008, 2009, 2010

Note: Weighted numbers (#), percentages and 95% confidence intervals; Respondents aged 18 years and older; n/r (Not Reportable) - Represents cell size restriction of unweighted count < 50; n/a (Not Available) - Not asked of a subset of respondents

Year: 2008

Community	Yes			No			Estimated Adult Population
	#	%	C.I. (95%)	#	%	C.I. (95%)	#
Hilo	7,100	66.7	52.1 - 81.4	3,500	33.3	18.6 - 47.9	10,600
Kona	2,800	63.7	47.4 - 79.9	1,600	36.3	20.1 - 52.6	4,400
Lahaina/ Wailuku	2,700	46.0	29.7 - 62.2	3,200	54.0	37.8 - 70.3	5,800
Lihue-Waimea	2,800	54.8	38.1 - 71.5	2,300	45.2	28.5 - 61.9	5,200
N.Hawaii	3,600	58.0	37.2 - 78.9	2,600	42.0	21.1 - 62.8	6,200
Puna/ Kau	2,900	55.1	37.7 - 72.5	2,400	44.9	27.5 - 62.3	5,300
Waipahu/ Kapolei/ Ewa	10,800	54.6	39.1 - 70.1	9,000	45.4	29.9 - 60.9	19,800

Asthma - still have asthma by State, County, BRFSS Age Group, DOH Race-Ethnicity, Gender, Island, Community, Education Level, Employment Status (Grouped), Marital Status (Grouped), Household Income, Poverty Level, Married, Health Care Coverage, for the Year(s) - 2000, 2001, 2002, 2003, 2004, 2005, 2006, 2007, 2008, 2009, 2010

Note: Weighted numbers (#), percentages and 95% confidence intervals; Respondents aged 18 years and older; n/r (Not Reportable) - Represents cell size restriction of unweighted count < 50; n/a (Not Available) - Not asked of a subset of respondents

Year: 2008

Education Level	Yes			No			Estimated Adult Population
	#	%	C.I. (95%)	#	%	C.I. (95%)	#
Grades 12 or GED (High School Grad)	34,800	68.5	60.5 - 76.5	16,000	31.5	23.5 - 39.5	50,800
College 1 to 3 years (Some College/ Tech)	21,600	47.0	38.3 - 55.7	24,300	53.0	44.3 - 61.7	45,900
College 4 years or more (College Grad)	32,000	61.6	54.4 - 68.7	20,000	38.4	31.3 - 45.6	52,100

Employment Status (Grouped)	Yes			No			Estimated Adult Population
	#	%	C.I. (95%)	#	%	C.I. (95%)	#
Employed	57,900	60.1	54.3 - 65.9	38,500	39.9	34.1 - 45.7	96,400
Retired/Unable to work	19,900	67.9	59.1 - 76.7	9,400	32.1	23.3 - 40.9	29,300
Student/Homemaker	11,900	56.2	41.6 - 70.7	9,300	43.8	29.3 - 58.4	21,100

Asthma - still have asthma by State, County, BRFSS Age Group, DOH Race-Ethnicity, Gender, Island, Community, Education Level, Employment Status (Grouped), Marital Status (Grouped), Household Income, Poverty Level, Married, Health Care Coverage, for the Year(s) - 2000, 2001, 2002, 2003, 2004, 2005, 2006, 2007, 2008, 2009, 2010

Note: Weighted numbers (#), percentages and 95% confidence intervals; Respondents aged 18 years and older; n/r (Not Reportable) - Represents cell size restriction of unweighted count < 50; n/a (Not Available) - Not asked of a subset of respondents

Year: 2008

Marital Status (Grouped)	Yes			No			Estimated Adult Population
	#	%	C.I. (95%)	#	%	C.I. (95%)	#
Other	40,200	62.1	54.4 - 69.9	24,500	37.9	30.1 - 45.6	64,700
Married	47,200	60.1	53.9 - 66.2	31,400	39.9	33.8 - 46.1	78,600
Widowed	5,100	63.4	45.5 - 81.2	2,900	36.6	18.8 - 54.5	8,000

Asthma - still have asthma by State, County, BRFSS Age Group, DOH Race-Ethnicity, Gender, Island, Community, Education Level, Employment Status (Grouped), Marital Status (Grouped), Household Income, Poverty Level, Married, Health Care Coverage, for the Year(s) - 2000, 2001, 2002, 2003, 2004, 2005, 2006, 2007, 2008, 2009, 2010

Note: Weighted numbers (#), percentages and 95% confidence intervals; Respondents aged 18 years and older; n/r (Not Reportable) - Represents cell size restriction of unweighted count < 50; n/a (Not Available) - Not asked of a subset of respondents

Year: 2008

Household Income	Yes			No			Estimated Adult Population
	#	%	C.I. (95%)	#	%	C.I. (95%)	#
Less than \$10,000	4,300	60.6	38.2 - 82.9	2,800	39.4	17.1 - 61.8	7,000
\$20,000 to \$24,999	4,400	56.9	35.0 - 78.7	3,300	43.1	21.3 - 65.0	7,700
\$25,000 to \$34,999	9,600	71.1	58.9 - 83.4	3,900	28.9	16.6 - 41.1	13,600
\$35,000 to \$49,999	16,000	59.1	48.0 - 70.3	11,100	40.9	29.7 - 52.0	27,100
\$50,000 to \$74,999	16,500	53.9	43.1 - 64.6	14,100	46.1	35.4 - 56.9	30,600
\$75,000 or more	26,300	57.3	49.1 - 65.6	19,600	42.7	34.4 - 50.9	45,900

Asthma - still have asthma by State, County, BRFSS Age Group, DOH Race-Ethnicity, Gender, Island, Community, Education Level, Employment Status (Grouped), Marital Status (Grouped), Household Income, Poverty Level, Married, Health Care Coverage, for the Year(s) - 2000, 2001, 2002, 2003, 2004, 2005, 2006, 2007, 2008, 2009, 2010

Note: Weighted numbers (#), percentages and 95% confidence intervals; Respondents aged 18 years and older; n/r (Not Reportable) - Represents cell size restriction of unweighted count < 50; n/a (Not Available) - Not asked of a subset of respondents

Year: 2008

Poverty Level	Yes			No			Estimated Adult Population
	#	%	C.I. (95%)	#	%	C.I. (95%)	#
0-130%	22,600	69.8	59.9 - 79.7	9,800	30.2	20.3 - 40.1	32,400
131-185%	13,300	57.7	43.9 - 71.5	9,800	42.3	28.5 - 56.1	23,100
186+%	49,300	56.5	50.8 - 62.2	38,000	43.5	37.8 - 49.2	87,300

Married	Yes			No			Estimated Adult Population
	#	%	C.I. (95%)	#	%	C.I. (95%)	#
Yes	48,900	60.7	54.7 - 66.7	31,700	39.3	33.3 - 45.3	80,500
No	46,800	60.4	53.4 - 67.3	30,700	39.6	32.7 - 46.6	77,500

Asthma - still have asthma by State, County, BRFSS Age Group, DOH Race-Ethnicity, Gender, Island, Community, Education Level, Employment Status (Grouped), Marital Status (Grouped), Household Income, Poverty Level, Married, Health Care Coverage, for the Year(s) - 2000, 2001, 2002, 2003, 2004, 2005, 2006, 2007, 2008, 2009, 2010

Note: Weighted numbers (#), percentages and 95% confidence intervals; Respondents aged 18 years and older; n/r (Not Reportable) - Represents cell size restriction of unweighted count < 50; n/a (Not Available) - Not asked of a subset of respondents

Year: 2008

Health Care Coverage	Yes			No			Estimated Adult Population
	#	%	C.I. (95%)	#	%	C.I. (95%)	#
Yes	88,300	60.0	55.3 - 64.8	58,800	40.0	35.2 - 44.7	147,100

Asthma - still have asthma by State, County, BRFSS Age Group, DOH Race-Ethnicity, Gender, Island, Community, Education Level, Employment Status (Grouped), Marital Status (Grouped), Household Income, Poverty Level, Married, Health Care Coverage, for the Year(s) - 2000, 2001, 2002, 2003, 2004, 2005, 2006, 2007, 2008, 2009, 2010

Note: Weighted numbers (#), percentages and 95% confidence intervals; Respondents aged 18 years and older; n/r (Not Reportable) - Represents cell size restriction of unweighted count < 50; n/a (Not Available) - Not asked of a subset of respondents

Year: 2007

State	Yes			No			Estimated Adult Population
	#	%	C.I. (95%)	#	%	C.I. (95%)	#
Hawaii State	78,500	58.1	53.3 - 62.9	56,600	41.9	37.1 - 46.7	135,100

County	Yes			No			Estimated Adult Population
	#	%	C.I. (95%)	#	%	C.I. (95%)	#
Hawaii	9,100	50.8	41.8 - 59.7	8,800	49.2	40.3 - 58.2	17,900
Honolulu	56,900	61.0	54.6 - 67.5	36,300	39.0	32.5 - 45.4	93,200
Kauai	3,000	43.0	30.1 - 55.9	4,000	57.0	44.1 - 69.9	7,000
Maui	9,500	55.7	46.5 - 64.8	7,500	44.3	35.2 - 53.5	17,000

Asthma - still have asthma by State, County, BRFSS Age Group, DOH Race-Ethnicity, Gender, Island, Community, Education Level, Employment Status (Grouped), Marital Status (Grouped), Household Income, Poverty Level, Married, Health Care Coverage, for the Year(s) - 2000, 2001, 2002, 2003, 2004, 2005, 2006, 2007, 2008, 2009, 2010

Note: Weighted numbers (#), percentages and 95% confidence intervals; Respondents aged 18 years and older; n/r (Not Reportable) - Represents cell size restriction of unweighted count < 50; n/a (Not Available) - Not asked of a subset of respondents

Year: 2007

BRFSS Age Group	Yes			No			Estimated Adult Population
	#	%	C.I. (95%)	#	%	C.I. (95%)	#
18-24	15,500	54.6	39.5 - 69.7	12,900	45.4	30.3 - 60.5	28,300
25-34	12,300	60.7	48.2 - 73.1	8,000	39.3	26.9 - 51.8	20,200
35-44	10,900	53.3	42.0 - 64.7	9,500	46.7	35.3 - 58.0	20,400
45-54	16,200	63.1	54.0 - 72.3	9,500	36.9	27.7 - 46.0	25,700
55-64	13,200	58.5	49.9 - 67.2	9,400	41.5	32.8 - 50.1	22,600
65-74	4,900	59.4	46.0 - 72.7	3,300	40.6	27.3 - 54.0	8,200
75+	5,100	58.1	43.3 - 72.9	3,700	41.9	27.1 - 56.7	8,800

Asthma - still have asthma by State, County, BRFSS Age Group, DOH Race-Ethnicity, Gender, Island, Community, Education Level, Employment Status (Grouped), Marital Status (Grouped), Household Income, Poverty Level, Married, Health Care Coverage, for the Year(s) - 2000, 2001, 2002, 2003, 2004, 2005, 2006, 2007, 2008, 2009, 2010

Note: Weighted numbers (#), percentages and 95% confidence intervals; Respondents aged 18 years and older; n/r (Not Reportable) - Represents cell size restriction of unweighted count < 50; n/a (Not Available) - Not asked of a subset of respondents

Year: 2007

DOH Race-Ethnicity	Yes			No			Estimated Adult Population
	#	%	C.I. (95%)	#	%	C.I. (95%)	#
Caucasian	24,000	64.4	57.0 - 71.8	13,300	35.6	28.2 - 43.0	37,200
Native Hawaiian	17,000	54.4	44.0 - 64.8	14,200	45.6	35.2 - 56.0	31,200
Filipino	14,300	62.4	47.9 - 77.0	8,600	37.6	23.0 - 52.1	22,900
Japanese	13,100	48.4	38.2 - 58.6	14,000	51.6	41.4 - 61.8	27,200

Gender	Yes			No			Estimated Adult Population
	#	%	C.I. (95%)	#	%	C.I. (95%)	#
Male	31,600	51.7	43.1 - 60.2	29,500	48.3	39.8 - 56.9	61,100
Female	46,900	63.4	57.9 - 68.8	27,100	36.6	31.2 - 42.1	74,000

Asthma - still have asthma by State, County, BRFSS Age Group, DOH Race-Ethnicity, Gender, Island, Community, Education Level, Employment Status (Grouped), Marital Status (Grouped), Household Income, Poverty Level, Married, Health Care Coverage, for the Year(s) - 2000, 2001, 2002, 2003, 2004, 2005, 2006, 2007, 2008, 2009, 2010

Note: Weighted numbers (#), percentages and 95% confidence intervals; Respondents aged 18 years and older; n/r (Not Reportable) - Represents cell size restriction of unweighted count < 50; n/a (Not Available) - Not asked of a subset of respondents

Year: 2007

Island	Yes			No			Estimated Adult Population
	#	%	C.I. (95%)	#	%	C.I. (95%)	#
Hawaii	9,100	50.8	41.8 - 59.7	8,800	49.2	40.3 - 58.2	17,900
Kauai	3,000	43.0	30.1 - 55.9	4,000	57.0	44.1 - 69.9	7,000
Maui	8,100	53.6	43.6 - 63.7	7,000	46.4	36.3 - 56.4	15,200
Oahu	56,900	61.0	54.6 - 67.5	36,300	39.0	32.5 - 45.4	93,200

Asthma - still have asthma by State, County, BRFSS Age Group, DOH Race-Ethnicity, Gender, Island, Community, Education Level, Employment Status (Grouped), Marital Status (Grouped), Household Income, Poverty Level, Married, Health Care Coverage, for the Year(s) - 2000, 2001, 2002, 2003, 2004, 2005, 2006, 2007, 2008, 2009, 2010

Note: Weighted numbers (#), percentages and 95% confidence intervals; Respondents aged 18 years and older; n/r (Not Reportable) - Represents cell size restriction of unweighted count < 50; n/a (Not Available) - Not asked of a subset of respondents

Year: 2007

Community	Yes			No			Estimated Adult Population
	#	%	C.I. (95%)	#	%	C.I. (95%)	#
Kona	1,700	47.4	30.5 - 64.2	1,900	52.6	35.8 - 69.5	3,500
Puna/ Kau	2,600	47.0	31.3 - 62.7	2,900	53.0	37.3 - 68.7	5,400
Upcountry/ Hana	3,600	61.4	45.2 - 77.7	2,300	38.6	22.3 - 54.8	5,900
Waipahu/ Kapolei/ Ewa	13,200	74.4	61.5 - 87.3	4,500	25.6	12.7 - 38.5	17,700

Asthma - still have asthma by State, County, BRFSS Age Group, DOH Race-Ethnicity, Gender, Island, Community, Education Level, Employment Status (Grouped), Marital Status (Grouped), Household Income, Poverty Level, Married, Health Care Coverage, for the Year(s) - 2000, 2001, 2002, 2003, 2004, 2005, 2006, 2007, 2008, 2009, 2010

Note: Weighted numbers (#), percentages and 95% confidence intervals; Respondents aged 18 years and older; n/r (Not Reportable) - Represents cell size restriction of unweighted count < 50; n/a (Not Available) - Not asked of a subset of respondents

Year: 2007

Education Level	Yes			No			Estimated Adult Population
	#	%	C.I. (95%)	#	%	C.I. (95%)	#
Grades 12 or GED (High School Grad)	27,500	61.1	52.3 - 70.0	17,500	38.9	30.0 - 47.7	45,000
College 1 to 3 years (Some College/ Tech)	25,600	61.2	52.7 - 69.6	16,300	38.8	30.4 - 47.3	41,900
College 4 years or more (College Grad)	20,600	51.5	43.5 - 59.4	19,400	48.5	40.6 - 56.5	40,000

Employment Status (Grouped)	Yes			No			Estimated Adult Population
	#	%	C.I. (95%)	#	%	C.I. (95%)	#
Employed	50,400	58.3	52.3 - 64.3	36,000	41.7	35.7 - 47.7	86,500
Retired/Unable to work	16,000	64.1	55.7 - 72.4	9,000	35.9	27.6 - 44.3	25,000
Student/Homemaker	8,200	52.1	35.9 - 68.3	7,500	47.9	31.7 - 64.1	15,700

Asthma - still have asthma by State, County, BRFSS Age Group, DOH Race-Ethnicity, Gender, Island, Community, Education Level, Employment Status (Grouped), Marital Status (Grouped), Household Income, Poverty Level, Married, Health Care Coverage, for the Year(s) - 2000, 2001, 2002, 2003, 2004, 2005, 2006, 2007, 2008, 2009, 2010

Note: Weighted numbers (#), percentages and 95% confidence intervals; Respondents aged 18 years and older; n/r (Not Reportable) - Represents cell size restriction of unweighted count < 50; n/a (Not Available) - Not asked of a subset of respondents

Year: 2007

Marital Status (Grouped)	Yes			No			Estimated Adult Population
	#	%	C.I. (95%)	#	%	C.I. (95%)	#
Other	30,900	60.0	50.9 - 69.0	20,600	40.0	31.0 - 49.1	51,500
Married	40,800	58.1	52.4 - 63.9	29,400	41.9	36.1 - 47.6	70,200
Widowed	4,100	57.2	42.0 - 72.5	3,000	42.8	27.5 - 58.0	7,100

Asthma - still have asthma by State, County, BRFSS Age Group, DOH Race-Ethnicity, Gender, Island, Community, Education Level, Employment Status (Grouped), Marital Status (Grouped), Household Income, Poverty Level, Married, Health Care Coverage, for the Year(s) - 2000, 2001, 2002, 2003, 2004, 2005, 2006, 2007, 2008, 2009, 2010

Note: Weighted numbers (#), percentages and 95% confidence intervals; Respondents aged 18 years and older; n/r (Not Reportable) - Represents cell size restriction of unweighted count < 50; n/a (Not Available) - Not asked of a subset of respondents

Year: 2007

Household Income	Yes			No			Estimated Adult Population
	#	%	C.I. (95%)	#	%	C.I. (95%)	#
\$15,000 to \$19,999	4,200	54.7	35.6 - 73.8	3,500	45.3	26.2 - 64.4	7,700
\$20,000 to \$24,999	6,500	64.1	44.6 - 83.6	3,600	35.9	16.4 - 55.4	10,100
\$25,000 to \$34,999	6,700	46.1	31.6 - 60.7	7,800	53.9	39.3 - 68.4	14,500
\$35,000 to \$49,999	13,000	53.1	41.4 - 64.7	11,500	46.9	35.3 - 58.6	24,500
\$50,000 to \$74,999	12,500	54.8	43.0 - 66.6	10,400	45.2	33.4 - 57.0	22,900
\$75,000 or more	20,900	59.6	51.4 - 67.8	14,100	40.4	32.2 - 48.6	35,000

Asthma - still have asthma by State, County, BRFSS Age Group, DOH Race-Ethnicity, Gender, Island, Community, Education Level, Employment Status (Grouped), Marital Status (Grouped), Household Income, Poverty Level, Married, Health Care Coverage, for the Year(s) - 2000, 2001, 2002, 2003, 2004, 2005, 2006, 2007, 2008, 2009, 2010

Note: Weighted numbers (#), percentages and 95% confidence intervals; Respondents aged 18 years and older; n/r (Not Reportable) - Represents cell size restriction of unweighted count < 50; n/a (Not Available) - Not asked of a subset of respondents

Year: 2007

Poverty Level	Yes			No			Estimated Adult Population
	#	%	C.I. (95%)	#	%	C.I. (95%)	#
0-130%	20,500	65.5	54.9 - 76.0	10,800	34.5	24.0 - 45.1	31,400
131-185%	9,600	50.9	35.6 - 66.2	9,200	49.1	33.8 - 64.4	18,800
186+%	40,400	55.4	49.7 - 61.1	32,600	44.6	38.9 - 50.3	73,000

Married	Yes			No			Estimated Adult Population
	#	%	C.I. (95%)	#	%	C.I. (95%)	#
Yes	42,400	58.8	53.1 - 64.5	29,700	41.2	35.5 - 46.9	72,100
No	36,100	57.3	49.3 - 65.4	26,900	42.7	34.6 - 50.7	63,000

Asthma - still have asthma by State, County, BRFSS Age Group, DOH Race-Ethnicity, Gender, Island, Community, Education Level, Employment Status (Grouped), Marital Status (Grouped), Household Income, Poverty Level, Married, Health Care Coverage, for the Year(s) - 2000, 2001, 2002, 2003, 2004, 2005, 2006, 2007, 2008, 2009, 2010

Note: Weighted numbers (#), percentages and 95% confidence intervals; Respondents aged 18 years and older; n/r (Not Reportable) - Represents cell size restriction of unweighted count < 50; n/a (Not Available) - Not asked of a subset of respondents

Year: 2007

Health Care Coverage	Yes			No			Estimated Adult Population
	#	%	C.I. (95%)	#	%	C.I. (95%)	#
Yes	72,700	58.8	53.9 - 63.6	51,000	41.2	36.4 - 46.1	123,800
No	5,700	50.6	27.4 - 73.7	5,600	49.4	26.3 - 72.6	11,400

Asthma - still have asthma by State, County, BRFSS Age Group, DOH Race-Ethnicity, Gender, Island, Community, Education Level, Employment Status (Grouped), Marital Status (Grouped), Household Income, Poverty Level, Married, Health Care Coverage, for the Year(s) - 2000, 2001, 2002, 2003, 2004, 2005, 2006, 2007, 2008, 2009, 2010

Note: Weighted numbers (#), percentages and 95% confidence intervals; Respondents aged 18 years and older; n/r (Not Reportable) - Represents cell size restriction of unweighted count < 50; n/a (Not Available) - Not asked of a subset of respondents

Year: 2006

State	Yes			No			Estimated Adult Population
	#	%	C.I. (95%)	#	%	C.I. (95%)	#
Hawaii State	77,900	52.4	47.8 - 57.0	70,700	47.6	43.0 - 52.2	148,600

County	Yes			No			Estimated Adult Population
	#	%	C.I. (95%)	#	%	C.I. (95%)	#
Hawaii	10,500	58.5	50.0 - 67.0	7,400	41.5	33.0 - 50.0	17,900
Honolulu	54,500	50.5	44.6 - 56.5	53,300	49.5	43.5 - 55.4	107,800
Kauai	4,100	55.5	40.4 - 70.6	3,300	44.5	29.4 - 59.6	7,300
Maui	8,900	57.1	47.6 - 66.6	6,700	42.9	33.4 - 52.4	15,600

Asthma - still have asthma by State, County, BRFSS Age Group, DOH Race-Ethnicity, Gender, Island, Community, Education Level, Employment Status (Grouped), Marital Status (Grouped), Household Income, Poverty Level, Married, Health Care Coverage, for the Year(s) - 2000, 2001, 2002, 2003, 2004, 2005, 2006, 2007, 2008, 2009, 2010

Note: Weighted numbers (#), percentages and 95% confidence intervals; Respondents aged 18 years and older; n/r (Not Reportable) - Represents cell size restriction of unweighted count < 50; n/a (Not Available) - Not asked of a subset of respondents

Year: 2006

BRFSS Age Group	Yes			No			Estimated Adult Population
	#	%	C.I. (95%)	#	%	C.I. (95%)	#
18-24	11,700	45.6	31.2 - 59.9	14,000	54.4	40.1 - 68.8	25,700
25-34	15,400	49.9	38.7 - 61.0	15,500	50.1	39.0 - 61.3	30,800
35-44	13,700	55.7	45.7 - 65.7	10,900	44.3	34.3 - 54.3	24,600
45-54	13,100	49.9	40.3 - 59.5	13,100	50.1	40.5 - 59.7	26,200
55-64	13,400	55.3	45.7 - 64.9	10,800	44.7	35.1 - 54.3	24,300
65-74	6,000	61.7	50.6 - 72.8	3,700	38.3	27.2 - 49.4	9,800
75+	4,000	64.7	51.0 - 78.4	2,200	35.3	21.6 - 49.0	6,100

Asthma - still have asthma by State, County, BRFSS Age Group, DOH Race-Ethnicity, Gender, Island, Community, Education Level, Employment Status (Grouped), Marital Status (Grouped), Household Income, Poverty Level, Married, Health Care Coverage, for the Year(s) - 2000, 2001, 2002, 2003, 2004, 2005, 2006, 2007, 2008, 2009, 2010

Note: Weighted numbers (#), percentages and 95% confidence intervals; Respondents aged 18 years and older; n/r (Not Reportable) - Represents cell size restriction of unweighted count < 50; n/a (Not Available) - Not asked of a subset of respondents

Year: 2006

DOH Race-Ethnicity	Yes			No			Estimated Adult Population
	#	%	C.I. (95%)	#	%	C.I. (95%)	#
Caucasian	25,500	52.5	45.6 - 59.5	23,100	47.5	40.5 - 54.4	48,600
Native Hawaiian	17,600	67.2	58.0 - 76.4	8,600	32.8	23.6 - 42.0	26,300
Filipino	11,100	49.5	34.7 - 64.3	11,300	50.5	35.7 - 65.3	22,400
Japanese	10,400	40.3	30.0 - 50.5	15,500	59.7	49.5 - 70.0	25,900

Gender	Yes			No			Estimated Adult Population
	#	%	C.I. (95%)	#	%	C.I. (95%)	#
Male	26,700	42.4	34.8 - 50.0	36,200	57.6	50.0 - 65.2	62,900
Female	51,300	59.8	54.4 - 65.1	34,500	40.2	34.9 - 45.6	85,800

Asthma - still have asthma by State, County, BRFSS Age Group, DOH Race-Ethnicity, Gender, Island, Community, Education Level, Employment Status (Grouped), Marital Status (Grouped), Household Income, Poverty Level, Married, Health Care Coverage, for the Year(s) - 2000, 2001, 2002, 2003, 2004, 2005, 2006, 2007, 2008, 2009, 2010

Note: Weighted numbers (#), percentages and 95% confidence intervals; Respondents aged 18 years and older; n/r (Not Reportable) - Represents cell size restriction of unweighted count < 50; n/a (Not Available) - Not asked of a subset of respondents

Year: 2006

Island	Yes			No			Estimated Adult Population
	#	%	C.I. (95%)	#	%	C.I. (95%)	#
Hawaii	10,500	58.5	50.0 - 67.0	7,400	41.5	33.0 - 50.0	17,900
Kauai	4,100	55.5	40.4 - 70.6	3,300	44.5	29.4 - 59.6	7,300
Maui	8,000	56.0	45.8 - 66.2	6,300	44.0	33.8 - 54.2	14,300
Oahu	54,500	50.5	44.6 - 56.5	53,300	49.5	43.5 - 55.4	107,800

Asthma - still have asthma by State, County, BRFSS Age Group, DOH Race-Ethnicity, Gender, Island, Community, Education Level, Employment Status (Grouped), Marital Status (Grouped), Household Income, Poverty Level, Married, Health Care Coverage, for the Year(s) - 2000, 2001, 2002, 2003, 2004, 2005, 2006, 2007, 2008, 2009, 2010

Note: Weighted numbers (#), percentages and 95% confidence intervals; Respondents aged 18 years and older; n/r (Not Reportable) - Represents cell size restriction of unweighted count < 50; n/a (Not Available) - Not asked of a subset of respondents

Year: 2006

Community	Yes			No			Estimated Adult Population
	#	%	C.I. (95%)	#	%	C.I. (95%)	#
Hilo	3,500	57.5	42.9 - 72.0	2,600	42.5	28.0 - 57.1	6,000
Lahaina/ Wailuku	3,500	64.1	47.4 - 80.7	2,000	35.9	19.3 - 52.6	5,500
Waipahu/ Kapolei/ Ewa	9,000	44.3	29.3 - 59.2	11,300	55.7	40.8 - 70.7	20,300

Education Level	Yes			No			Estimated Adult Population
	#	%	C.I. (95%)	#	%	C.I. (95%)	#
Grades 12 or GED (High School Grad)	21,800	48.8	39.6 - 57.9	22,900	51.2	42.1 - 60.4	44,700
College 1 to 3 years (Some College/ Tech)	26,100	56.1	47.9 - 64.2	20,500	43.9	35.8 - 52.1	46,600
College 4 years or more (College Grad)	26,100	53.2	46.2 - 60.2	23,000	46.8	39.8 - 53.8	49,100

Asthma - still have asthma by State, County, BRFSS Age Group, DOH Race-Ethnicity, Gender, Island, Community, Education Level, Employment Status (Grouped), Marital Status (Grouped), Household Income, Poverty Level, Married, Health Care Coverage, for the Year(s) - 2000, 2001, 2002, 2003, 2004, 2005, 2006, 2007, 2008, 2009, 2010

Note: Weighted numbers (#), percentages and 95% confidence intervals; Respondents aged 18 years and older; n/r (Not Reportable) - Represents cell size restriction of unweighted count < 50; n/a (Not Available) - Not asked of a subset of respondents

Year: 2006

Employment Status (Grouped)	Yes			No			Estimated Adult Population
	#	%	C.I. (95%)	#	%	C.I. (95%)	#
Employed	46,700	48.5	42.7 - 54.3	49,600	51.5	45.7 - 57.3	96,300
Retired/Unable to work	17,500	66.7	58.9 - 74.6	8,700	33.3	25.4 - 41.1	26,300
Student/Homemaker	9,200	58.1	42.9 - 73.4	6,700	41.9	26.6 - 57.1	15,900

Marital Status (Grouped)	Yes			No			Estimated Adult Population
	#	%	C.I. (95%)	#	%	C.I. (95%)	#
Other	26,200	50.4	42.1 - 58.8	25,800	49.6	41.2 - 57.9	52,000
Married	44,300	53.5	47.7 - 59.3	38,500	46.5	40.7 - 52.3	82,900
Widowed	4,200	63.9	51.4 - 76.3	2,400	36.1	23.7 - 48.6	6,600

Asthma - still have asthma by State, County, BRFSS Age Group, DOH Race-Ethnicity, Gender, Island, Community, Education Level, Employment Status (Grouped), Marital Status (Grouped), Household Income, Poverty Level, Married, Health Care Coverage, for the Year(s) - 2000, 2001, 2002, 2003, 2004, 2005, 2006, 2007, 2008, 2009, 2010

Note: Weighted numbers (#), percentages and 95% confidence intervals; Respondents aged 18 years and older; n/r (Not Reportable) - Represents cell size restriction of unweighted count < 50; n/a (Not Available) - Not asked of a subset of respondents

Year: 2006

Household Income	Yes			No			Estimated Adult Population
	#	%	C.I. (95%)	#	%	C.I. (95%)	#
\$15,000 to \$19,999	3,800	59.6	43.5 - 75.8	2,600	40.4	24.2 - 56.5	6,400
\$20,000 to \$24,999	5,200	48.6	30.8 - 66.4	5,400	51.4	33.6 - 69.2	10,600
\$25,000 to \$34,999	11,100	66.1	51.7 - 80.5	5,700	33.9	19.5 - 48.3	16,800
\$35,000 to \$49,999	12,300	52.2	40.3 - 64.1	11,300	47.8	35.9 - 59.7	23,600
\$50,000 to \$74,999	9,200	46.3	35.5 - 57.0	10,700	53.7	43.0 - 64.5	19,800
\$75,000 or more	14,100	42.6	33.4 - 51.7	19,100	57.4	48.3 - 66.6	33,200

Asthma - still have asthma by State, County, BRFSS Age Group, DOH Race-Ethnicity, Gender, Island, Community, Education Level, Employment Status (Grouped), Marital Status (Grouped), Household Income, Poverty Level, Married, Health Care Coverage, for the Year(s) - 2000, 2001, 2002, 2003, 2004, 2005, 2006, 2007, 2008, 2009, 2010

Note: Weighted numbers (#), percentages and 95% confidence intervals; Respondents aged 18 years and older; n/r (Not Reportable) - Represents cell size restriction of unweighted count < 50; n/a (Not Available) - Not asked of a subset of respondents

Year: 2006

Poverty Level	Yes			No			Estimated Adult Population
	#	%	C.I. (95%)	#	%	C.I. (95%)	#
0-130%	17,800	62.6	51.6 - 73.5	10,700	37.4	26.5 - 48.4	28,500
131-185%	12,000	52.8	39.5 - 66.1	10,700	47.2	33.9 - 60.5	22,700
186+%	31,400	46.7	40.9 - 52.6	35,800	53.3	47.4 - 59.1	67,200

Married	Yes			No			Estimated Adult Population
	#	%	C.I. (95%)	#	%	C.I. (95%)	#
Yes	45,400	53.3	47.5 - 59.0	39,800	46.7	41.0 - 52.5	85,200
No	32,300	51.1	43.6 - 58.7	30,800	48.9	41.3 - 56.4	63,100

Asthma - still have asthma by State, County, BRFSS Age Group, DOH Race-Ethnicity, Gender, Island, Community, Education Level, Employment Status (Grouped), Marital Status (Grouped), Household Income, Poverty Level, Married, Health Care Coverage, for the Year(s) - 2000, 2001, 2002, 2003, 2004, 2005, 2006, 2007, 2008, 2009, 2010

Note: Weighted numbers (#), percentages and 95% confidence intervals; Respondents aged 18 years and older; n/r (Not Reportable) - Represents cell size restriction of unweighted count < 50; n/a (Not Available) - Not asked of a subset of respondents

Year: 2006

Health Care Coverage	Yes			No			Estimated Adult Population
	#	%	C.I. (95%)	#	%	C.I. (95%)	#
Yes	70,100	51.4	46.6 - 56.2	66,300	48.6	43.8 - 53.4	136,400
No	7,300	62.5	45.7 - 79.2	4,400	37.5	20.8 - 54.3	11,700

Asthma - still have asthma by State, County, BRFSS Age Group, DOH Race-Ethnicity, Gender, Island, Community, Education Level, Employment Status (Grouped), Marital Status (Grouped), Household Income, Poverty Level, Married, Health Care Coverage, for the Year(s) - 2000, 2001, 2002, 2003, 2004, 2005, 2006, 2007, 2008, 2009, 2010

Note: Weighted numbers (#), percentages and 95% confidence intervals; Respondents aged 18 years and older; n/r (Not Reportable) - Represents cell size restriction of unweighted count < 50; n/a (Not Available) - Not asked of a subset of respondents

Year: 2005

State	Yes			No			Estimated Adult Population
	#	%	C.I. (95%)	#	%	C.I. (95%)	#
Hawaii State	72,900	54.7	50.1 - 59.4	60,300	45.3	40.6 - 49.9	133,200

County	Yes			No			Estimated Adult Population
	#	%	C.I. (95%)	#	%	C.I. (95%)	#
Hawaii	10,200	58.8	50.8 - 66.8	7,200	41.2	33.2 - 49.2	17,400
Honolulu	49,000	53.7	47.5 - 59.9	42,300	46.3	40.1 - 52.5	91,200
Kauai	4,200	48.0	35.7 - 60.3	4,600	52.0	39.7 - 64.3	8,800
Maui	9,500	60.1	49.0 - 71.2	6,300	39.9	28.8 - 51.0	15,800

Asthma - still have asthma by State, County, BRFSS Age Group, DOH Race-Ethnicity, Gender, Island, Community, Education Level, Employment Status (Grouped), Marital Status (Grouped), Household Income, Poverty Level, Married, Health Care Coverage, for the Year(s) - 2000, 2001, 2002, 2003, 2004, 2005, 2006, 2007, 2008, 2009, 2010

Note: Weighted numbers (#), percentages and 95% confidence intervals; Respondents aged 18 years and older; n/r (Not Reportable) - Represents cell size restriction of unweighted count < 50; n/a (Not Available) - Not asked of a subset of respondents

Year: 2005

BRFSS Age Group	Yes			No			Estimated Adult Population
	#	%	C.I. (95%)	#	%	C.I. (95%)	#
18-24	8,100	38.7	24.6 - 52.7	12,900	61.3	47.3 - 75.4	21,000
25-34	16,600	57.1	46.2 - 67.9	12,500	42.9	32.1 - 53.8	29,100
35-44	10,900	54.2	44.0 - 64.5	9,200	45.8	35.5 - 56.0	20,100
45-54	12,500	52.3	43.0 - 61.6	11,400	47.7	38.4 - 57.0	23,900
55-64	13,600	66.6	56.7 - 76.4	6,800	33.4	23.6 - 43.3	20,500
65-74	5,700	55.6	42.9 - 68.2	4,500	44.4	31.8 - 57.1	10,200
75+	5,400	71.8	59.2 - 84.4	2,100	28.2	15.6 - 40.8	7,500

Asthma - still have asthma by State, County, BRFSS Age Group, DOH Race-Ethnicity, Gender, Island, Community, Education Level, Employment Status (Grouped), Marital Status (Grouped), Household Income, Poverty Level, Married, Health Care Coverage, for the Year(s) - 2000, 2001, 2002, 2003, 2004, 2005, 2006, 2007, 2008, 2009, 2010

Note: Weighted numbers (#), percentages and 95% confidence intervals; Respondents aged 18 years and older; n/r (Not Reportable) - Represents cell size restriction of unweighted count < 50; n/a (Not Available) - Not asked of a subset of respondents

Year: 2005

DOH Race-Ethnicity	Yes			No			Estimated Adult Population
	#	%	C.I. (95%)	#	%	C.I. (95%)	#
Caucasian	23,500	57.6	49.4 - 65.7	17,300	42.4	34.3 - 50.6	40,800
Native Hawaiian	14,900	56.9	46.9 - 66.9	11,300	43.1	33.1 - 53.1	26,100
Filipino	11,400	49.3	36.3 - 62.3	11,700	50.7	37.7 - 63.7	23,100
Japanese	11,900	48.8	38.2 - 59.4	12,500	51.2	40.6 - 61.8	24,400

Gender	Yes			No			Estimated Adult Population
	#	%	C.I. (95%)	#	%	C.I. (95%)	#
Male	23,900	44.6	36.3 - 53.0	29,600	55.4	47.0 - 63.7	53,500
Female	49,100	61.5	56.4 - 66.6	30,700	38.5	33.4 - 43.6	79,700

Asthma - still have asthma by State, County, BRFSS Age Group, DOH Race-Ethnicity, Gender, Island, Community, Education Level, Employment Status (Grouped), Marital Status (Grouped), Household Income, Poverty Level, Married, Health Care Coverage, for the Year(s) - 2000, 2001, 2002, 2003, 2004, 2005, 2006, 2007, 2008, 2009, 2010

Note: Weighted numbers (#), percentages and 95% confidence intervals; Respondents aged 18 years and older; n/r (Not Reportable) - Represents cell size restriction of unweighted count < 50; n/a (Not Available) - Not asked of a subset of respondents

Year: 2005

Island	Yes			No			Estimated Adult Population
	#	%	C.I. (95%)	#	%	C.I. (95%)	#
Hawaii	10,200	58.8	50.8 - 66.8	7,200	41.2	33.2 - 49.2	17,400
Kauai	4,200	48.0	35.7 - 60.3	4,600	52.0	39.7 - 64.3	8,800
Maui	9,000	61.0	49.1 - 72.8	5,700	39.0	27.2 - 50.9	14,700
Oahu	49,000	53.7	47.5 - 59.9	42,300	46.3	40.1 - 52.5	91,200

Asthma - still have asthma by State, County, BRFSS Age Group, DOH Race-Ethnicity, Gender, Island, Community, Education Level, Employment Status (Grouped), Marital Status (Grouped), Household Income, Poverty Level, Married, Health Care Coverage, for the Year(s) - 2000, 2001, 2002, 2003, 2004, 2005, 2006, 2007, 2008, 2009, 2010

Note: Weighted numbers (#), percentages and 95% confidence intervals; Respondents aged 18 years and older; n/r (Not Reportable) - Represents cell size restriction of unweighted count < 50; n/a (Not Available) - Not asked of a subset of respondents

Year: 2005

Community	Yes			No			Estimated Adult Population
	#	%	C.I. (95%)	#	%	C.I. (95%)	#
Hilo	3,100	59.5	44.3 - 74.7	2,100	40.5	25.3 - 55.7	5,200
Kona	3,200	61.5	45.8 - 77.3	2,000	38.5	22.7 - 54.2	5,100
Lihue-Waimea	2,600	45.5	29.2 - 61.7	3,100	54.5	38.3 - 70.8	5,700
N.Hawaii	1,700	55.9	39.9 - 72.0	1,300	44.1	28.0 - 60.1	3,000
Puna/ Kau	2,300	56.6	40.5 - 72.6	1,800	43.4	27.4 - 59.5	4,100
Waipahu/ Kapolei/ Ewa	8,000	51.1	36.1 - 66.1	7,600	48.9	33.9 - 63.9	15,600

Asthma - still have asthma by State, County, BRFSS Age Group, DOH Race-Ethnicity, Gender, Island, Community, Education Level, Employment Status (Grouped), Marital Status (Grouped), Household Income, Poverty Level, Married, Health Care Coverage, for the Year(s) - 2000, 2001, 2002, 2003, 2004, 2005, 2006, 2007, 2008, 2009, 2010

Note: Weighted numbers (#), percentages and 95% confidence intervals; Respondents aged 18 years and older; n/r (Not Reportable) - Represents cell size restriction of unweighted count < 50; n/a (Not Available) - Not asked of a subset of respondents

Year: 2005

Education Level	Yes			No			Estimated Adult Population
	#	%	C.I. (95%)	#	%	C.I. (95%)	#
Grades 12 or GED (High School Grad)	19,400	48.7	40.2 - 57.1	20,500	51.3	42.9 - 59.8	39,900
College 1 to 3 years (Some College/ Tech)	20,400	52.3	44.1 - 60.5	18,600	47.7	39.5 - 55.9	39,000
College 4 years or more (College Grad)	24,800	56.8	48.7 - 64.9	18,800	43.2	35.1 - 51.3	43,600

Employment Status (Grouped)	Yes			No			Estimated Adult Population
	#	%	C.I. (95%)	#	%	C.I. (95%)	#
Employed	46,300	52.8	46.9 - 58.6	41,400	47.2	41.4 - 53.1	87,700
Retired/Unable to work	18,100	60.4	51.3 - 69.5	11,900	39.6	30.5 - 48.7	30,000
Student/Homemaker	6,700	53.7	38.8 - 68.5	5,800	46.3	31.5 - 61.2	12,400

Asthma - still have asthma by State, County, BRFSS Age Group, DOH Race-Ethnicity, Gender, Island, Community, Education Level, Employment Status (Grouped), Marital Status (Grouped), Household Income, Poverty Level, Married, Health Care Coverage, for the Year(s) - 2000, 2001, 2002, 2003, 2004, 2005, 2006, 2007, 2008, 2009, 2010

Note: Weighted numbers (#), percentages and 95% confidence intervals; Respondents aged 18 years and older; n/r (Not Reportable) - Represents cell size restriction of unweighted count < 50; n/a (Not Available) - Not asked of a subset of respondents

Year: 2005

Marital Status (Grouped)	Yes			No			Estimated Adult Population
	#	%	C.I. (95%)	#	%	C.I. (95%)	#
Other	25,800	53.3	44.7 - 62.0	22,600	46.7	38.0 - 55.3	48,400
Married	40,600	56.5	50.8 - 62.1	31,300	43.5	37.9 - 49.2	71,800
Widowed	4,600	67.3	54.3 - 80.2	2,200	32.7	19.8 - 45.7	6,800

Asthma - still have asthma by State, County, BRFSS Age Group, DOH Race-Ethnicity, Gender, Island, Community, Education Level, Employment Status (Grouped), Marital Status (Grouped), Household Income, Poverty Level, Married, Health Care Coverage, for the Year(s) - 2000, 2001, 2002, 2003, 2004, 2005, 2006, 2007, 2008, 2009, 2010

Note: Weighted numbers (#), percentages and 95% confidence intervals; Respondents aged 18 years and older; n/r (Not Reportable) - Represents cell size restriction of unweighted count < 50; n/a (Not Available) - Not asked of a subset of respondents

Year: 2005

Household Income	Yes			No			Estimated Adult Population
	#	%	C.I. (95%)	#	%	C.I. (95%)	#
\$15,000 to \$19,999	4,000	59.5	42.5 - 76.5	2,700	40.5	23.5 - 57.5	6,700
\$20,000 to \$24,999	6,000	68.0	52.1 - 83.9	2,800	32.0	16.1 - 47.9	8,800
\$25,000 to \$34,999	5,900	50.6	36.4 - 64.8	5,700	49.4	35.2 - 63.6	11,600
\$35,000 to \$49,999	11,800	51.8	41.4 - 62.2	11,000	48.2	37.8 - 58.6	22,800
\$50,000 to \$74,999	12,700	49.2	37.2 - 61.1	13,200	50.8	38.9 - 62.8	25,900
\$75,000 or more	17,100	55.8	46.6 - 64.9	13,600	44.2	35.1 - 53.4	30,700

Asthma - still have asthma by State, County, BRFSS Age Group, DOH Race-Ethnicity, Gender, Island, Community, Education Level, Employment Status (Grouped), Marital Status (Grouped), Household Income, Poverty Level, Married, Health Care Coverage, for the Year(s) - 2000, 2001, 2002, 2003, 2004, 2005, 2006, 2007, 2008, 2009, 2010

Note: Weighted numbers (#), percentages and 95% confidence intervals; Respondents aged 18 years and older; n/r (Not Reportable) - Represents cell size restriction of unweighted count < 50; n/a (Not Available) - Not asked of a subset of respondents

Year: 2005

Poverty Level	Yes			No			Estimated Adult Population
	#	%	C.I. (95%)	#	%	C.I. (95%)	#
0-130%	15,600	65.6	56.3 - 75.0	8,200	34.4	25.0 - 43.7	23,700
131-185%	7,100	52.4	35.8 - 69.0	6,500	47.6	31.0 - 64.2	13,600
186+%	40,300	51.9	46.1 - 57.6	37,400	48.1	42.4 - 53.9	77,600

Married	Yes			No			Estimated Adult Population
	#	%	C.I. (95%)	#	%	C.I. (95%)	#
Yes	41,600	56.2	50.7 - 61.8	32,300	43.8	38.2 - 49.3	73,900
No	31,200	53.1	45.3 - 60.9	27,600	46.9	39.1 - 54.7	58,800

Asthma - still have asthma by State, County, BRFSS Age Group, DOH Race-Ethnicity, Gender, Island, Community, Education Level, Employment Status (Grouped), Marital Status (Grouped), Household Income, Poverty Level, Married, Health Care Coverage, for the Year(s) - 2000, 2001, 2002, 2003, 2004, 2005, 2006, 2007, 2008, 2009, 2010

Note: Weighted numbers (#), percentages and 95% confidence intervals; Respondents aged 18 years and older; n/r (Not Reportable) - Represents cell size restriction of unweighted count < 50; n/a (Not Available) - Not asked of a subset of respondents

Year: 2005

Health Care Coverage	Yes			No			Estimated Adult Population
	#	%	C.I. (95%)	#	%	C.I. (95%)	#
Yes	67,700	56.0	51.2 - 60.7	53,300	44.0	39.3 - 48.8	120,900
No	5,300	42.7	26.7 - 58.6	7,100	57.3	41.4 - 73.3	12,300

Asthma - still have asthma by State, County, BRFSS Age Group, DOH Race-Ethnicity, Gender, Island, Community, Education Level, Employment Status (Grouped), Marital Status (Grouped), Household Income, Poverty Level, Married, Health Care Coverage, for the Year(s) - 2000, 2001, 2002, 2003, 2004, 2005, 2006, 2007, 2008, 2009, 2010

Note: Weighted numbers (#), percentages and 95% confidence intervals; Respondents aged 18 years and older; n/r (Not Reportable) - Represents cell size restriction of unweighted count < 50; n/a (Not Available) - Not asked of a subset of respondents

Year: 2004

State	Yes			No			Estimated Adult Population
	#	%	C.I. (95%)	#	%	C.I. (95%)	#
Hawaii State	73,400	56.2	47.4 - 65.0	57,200	43.8	35.0 - 52.6	130,600

County	Yes			No			Estimated Adult Population
	#	%	C.I. (95%)	#	%	C.I. (95%)	#
Hawaii	10,700	58.7	45.1 - 72.4	7,500	41.3	27.6 - 54.9	18,200
Honolulu	49,700	54.4	42.6 - 66.1	41,700	45.6	33.9 - 57.4	91,400

Asthma - still have asthma by State, County, BRFSS Age Group, DOH Race-Ethnicity, Gender, Island, Community, Education Level, Employment Status (Grouped), Marital Status (Grouped), Household Income, Poverty Level, Married, Health Care Coverage, for the Year(s) - 2000, 2001, 2002, 2003, 2004, 2005, 2006, 2007, 2008, 2009, 2010

Note: Weighted numbers (#), percentages and 95% confidence intervals; Respondents aged 18 years and older; n/r (Not Reportable) - Represents cell size restriction of unweighted count < 50; n/a (Not Available) - Not asked of a subset of respondents

Year: 2004

BRFSS Age Group	Yes			No			Estimated Adult Population
	#	%	C.I. (95%)	#	%	C.I. (95%)	#
35-44	19,400	69.5	52.8 - 86.2	8,500	30.5	13.8 - 47.2	27,900
45-54	13,100	56.6	39.5 - 73.6	10,000	43.4	26.4 - 60.5	23,100

DOH Race-Ethnicity	Yes			No			Estimated Adult Population
	#	%	C.I. (95%)	#	%	C.I. (95%)	#
Caucasian	27,000	63.8	52.1 - 75.4	15,400	36.2	24.6 - 47.9	42,400
Native Hawaiian	14,400	67.9	50.7 - 85.0	6,800	32.1	15.0 - 49.3	21,200
Japanese	13,400	48.5	32.3 - 64.8	14,200	51.5	35.2 - 67.7	27,600

Asthma - still have asthma by State, County, BRFSS Age Group, DOH Race-Ethnicity, Gender, Island, Community, Education Level, Employment Status (Grouped), Marital Status (Grouped), Household Income, Poverty Level, Married, Health Care Coverage, for the Year(s) - 2000, 2001, 2002, 2003, 2004, 2005, 2006, 2007, 2008, 2009, 2010

Note: Weighted numbers (#), percentages and 95% confidence intervals; Respondents aged 18 years and older; n/r (Not Reportable) - Represents cell size restriction of unweighted count < 50; n/a (Not Available) - Not asked of a subset of respondents

Year: 2004

Gender	Yes			No			Estimated Adult Population
	#	%	C.I. (95%)	#	%	C.I. (95%)	#
Male	25,700	42.7	28.8 - 56.7	34,500	57.3	43.3 - 71.2	60,200
Female	47,600	67.7	58.8 - 76.5	22,800	32.3	23.5 - 41.2	70,400

Island	Yes			No			Estimated Adult Population
	#	%	C.I. (95%)	#	%	C.I. (95%)	#
Hawaii	10,700	58.7	45.1 - 72.4	7,500	41.3	27.6 - 54.9	18,200
Oahu	49,700	54.4	42.6 - 66.1	41,700	45.6	33.9 - 57.4	91,400

Asthma - still have asthma by State, County, BRFSS Age Group, DOH Race-Ethnicity, Gender, Island, Community, Education Level, Employment Status (Grouped), Marital Status (Grouped), Household Income, Poverty Level, Married, Health Care Coverage, for the Year(s) - 2000, 2001, 2002, 2003, 2004, 2005, 2006, 2007, 2008, 2009, 2010

Note: Weighted numbers (#), percentages and 95% confidence intervals; Respondents aged 18 years and older; n/r (Not Reportable) - Represents cell size restriction of unweighted count < 50; n/a (Not Available) - Not asked of a subset of respondents

Year: 2004

Education Level	Yes			No			Estimated Adult Population
	#	%	C.I. (95%)	#	%	C.I. (95%)	#
Grades 12 or GED (High School Grad)	24,900	57.2	42.5 - 71.9	18,600	42.8	28.1 - 57.5	43,500
College 1 to 3 years (Some College/ Tech)	20,900	52.4	34.6 - 70.1	19,000	47.6	29.9 - 65.4	39,900
College 4 years or more (College Grad)	21,300	53.4	39.2 - 67.6	18,600	46.6	32.4 - 60.8	39,900

Employment Status (Grouped)	Yes			No			Estimated Adult Population
	#	%	C.I. (95%)	#	%	C.I. (95%)	#
Employed	43,100	50.4	39.2 - 61.5	42,400	49.6	38.5 - 60.8	85,500
Retired/Unable to work	18,800	68.9	53.8 - 84.1	8,500	31.1	15.9 - 46.2	27,300

Asthma - still have asthma by State, County, BRFSS Age Group, DOH Race-Ethnicity, Gender, Island, Community, Education Level, Employment Status (Grouped), Marital Status (Grouped), Household Income, Poverty Level, Married, Health Care Coverage, for the Year(s) - 2000, 2001, 2002, 2003, 2004, 2005, 2006, 2007, 2008, 2009, 2010

Note: Weighted numbers (#), percentages and 95% confidence intervals; Respondents aged 18 years and older; n/r (Not Reportable) - Represents cell size restriction of unweighted count < 50; n/a (Not Available) - Not asked of a subset of respondents

Year: 2004

Marital Status (Grouped)	Yes			No			Estimated Adult Population
	#	%	C.I. (95%)	#	%	C.I. (95%)	#
Other	22,700	49.6	32.9 - 66.3	23,100	50.4	33.7 - 67.1	45,800
Married	44,200	60.9	50.5 - 71.3	28,400	39.1	28.7 - 49.5	72,600

Household Income	Yes			No			Estimated Adult Population
	#	%	C.I. (95%)	#	%	C.I. (95%)	#
\$50,000 to \$74,999	25,800	56.9	39.7 - 74.1	19,500	43.1	25.9 - 60.3	45,400
\$75,000 or more	16,800	49.4	33.6 - 65.1	17,300	50.6	34.9 - 66.4	34,100

Asthma - still have asthma by State, County, BRFSS Age Group, DOH Race-Ethnicity, Gender, Island, Community, Education Level, Employment Status (Grouped), Marital Status (Grouped), Household Income, Poverty Level, Married, Health Care Coverage, for the Year(s) - 2000, 2001, 2002, 2003, 2004, 2005, 2006, 2007, 2008, 2009, 2010

Note: Weighted numbers (#), percentages and 95% confidence intervals; Respondents aged 18 years and older; n/r (Not Reportable) - Represents cell size restriction of unweighted count < 50; n/a (Not Available) - Not asked of a subset of respondents

Year: 2004

Poverty Level	Yes			No			Estimated Adult Population
	#	%	C.I. (95%)	#	%	C.I. (95%)	#
0-130%	16,000	70.8	54.0 - 87.6	6,600	29.2	12.4 - 46.0	22,500
186+%	50,900	55.8	47.0 - 64.6	40,300	44.2	35.4 - 53.0	91,200

Married	Yes			No			Estimated Adult Population
	#	%	C.I. (95%)	#	%	C.I. (95%)	#
Yes	44,300	60.1	49.7 - 70.4	29,400	39.9	29.6 - 50.3	73,700
No	29,100	51.2	36.8 - 65.7	27,700	48.8	34.3 - 63.2	56,800

Asthma - still have asthma by State, County, BRFSS Age Group, DOH Race-Ethnicity, Gender, Island, Community, Education Level, Employment Status (Grouped), Marital Status (Grouped), Household Income, Poverty Level, Married, Health Care Coverage, for the Year(s) - 2000, 2001, 2002, 2003, 2004, 2005, 2006, 2007, 2008, 2009, 2010

Note: Weighted numbers (#), percentages and 95% confidence intervals; Respondents aged 18 years and older; n/r (Not Reportable) - Represents cell size restriction of unweighted count < 50; n/a (Not Available) - Not asked of a subset of respondents

Year: 2004

Health Care Coverage	Yes			No			Estimated Adult Population
	#	%	C.I. (95%)	#	%	C.I. (95%)	#
Yes	67,500	55.4	46.2 - 64.7	54,300	44.6	35.3 - 53.8	121,800

Asthma - still have asthma by State, County, BRFSS Age Group, DOH Race-Ethnicity, Gender, Island, Community, Education Level, Employment Status (Grouped), Marital Status (Grouped), Household Income, Poverty Level, Married, Health Care Coverage, for the Year(s) - 2000, 2001, 2002, 2003, 2004, 2005, 2006, 2007, 2008, 2009, 2010

Note: Weighted numbers (#), percentages and 95% confidence intervals; Respondents aged 18 years and older; n/r (Not Reportable) - Represents cell size restriction of unweighted count < 50; n/a (Not Available) - Not asked of a subset of respondents

Year: 2003

State	Yes			No			Estimated Adult Population
	#	%	C.I. (95%)	#	%	C.I. (95%)	#
Hawaii State	51,700	48.0	42.5 - 53.6	55,900	52.0	46.4 - 57.5	107,600

County	Yes			No			Estimated Adult Population
	#	%	C.I. (95%)	#	%	C.I. (95%)	#
Hawaii	7,000	53.7	42.1 - 65.4	6,000	46.3	34.6 - 57.9	12,900
Honolulu	36,200	48.2	41.1 - 55.3	39,000	51.8	44.7 - 58.9	75,200
Maui	5,600	40.3	27.8 - 52.9	8,200	59.7	47.1 - 72.2	13,800

Asthma - still have asthma by State, County, BRFSS Age Group, DOH Race-Ethnicity, Gender, Island, Community, Education Level, Employment Status (Grouped), Marital Status (Grouped), Household Income, Poverty Level, Married, Health Care Coverage, for the Year(s) - 2000, 2001, 2002, 2003, 2004, 2005, 2006, 2007, 2008, 2009, 2010

Note: Weighted numbers (#), percentages and 95% confidence intervals; Respondents aged 18 years and older; n/r (Not Reportable) - Represents cell size restriction of unweighted count < 50; n/a (Not Available) - Not asked of a subset of respondents

Year: 2003

BRFSS Age Group	Yes			No			Estimated Adult Population
	#	%	C.I. (95%)	#	%	C.I. (95%)	#
18-24	8,900	49.2	34.2 - 64.2	9,200	50.8	35.8 - 65.8	18,100
25-34	12,200	58.3	45.7 - 70.8	8,700	41.7	29.2 - 54.3	20,900
35-44	9,300	42.9	31.0 - 54.8	12,400	57.1	45.2 - 69.0	21,700
45-54	7,700	40.7	28.9 - 52.5	11,300	59.3	47.5 - 71.1	19,000
55-64	7,200	48.5	33.9 - 63.1	7,700	51.5	36.9 - 66.1	14,900

Asthma - still have asthma by State, County, BRFSS Age Group, DOH Race-Ethnicity, Gender, Island, Community, Education Level, Employment Status (Grouped), Marital Status (Grouped), Household Income, Poverty Level, Married, Health Care Coverage, for the Year(s) - 2000, 2001, 2002, 2003, 2004, 2005, 2006, 2007, 2008, 2009, 2010

Note: Weighted numbers (#), percentages and 95% confidence intervals; Respondents aged 18 years and older; n/r (Not Reportable) - Represents cell size restriction of unweighted count < 50; n/a (Not Available) - Not asked of a subset of respondents

Year: 2003

DOH Race-Ethnicity	Yes			No			Estimated Adult Population
	#	%	C.I. (95%)	#	%	C.I. (95%)	#
Caucasian	22,400	50.9	42.7 - 59.1	21,600	49.1	40.9 - 57.3	43,900
Native Hawaiian	7,900	63.4	47.9 - 78.9	4,600	36.6	21.1 - 52.1	12,500
Filipino	6,100	53.6	37.3 - 69.9	5,300	46.4	30.1 - 62.7	11,400
Japanese	8,100	38.9	25.3 - 52.4	12,800	61.1	47.6 - 74.7	20,900

Gender	Yes			No			Estimated Adult Population
	#	%	C.I. (95%)	#	%	C.I. (95%)	#
Male	17,700	38.6	29.3 - 47.9	28,200	61.4	52.1 - 70.7	45,900
Female	33,900	55.0	48.3 - 61.8	27,700	45.0	38.2 - 51.7	61,600

Asthma - still have asthma by State, County, BRFSS Age Group, DOH Race-Ethnicity, Gender, Island, Community, Education Level, Employment Status (Grouped), Marital Status (Grouped), Household Income, Poverty Level, Married, Health Care Coverage, for the Year(s) - 2000, 2001, 2002, 2003, 2004, 2005, 2006, 2007, 2008, 2009, 2010

Note: Weighted numbers (#), percentages and 95% confidence intervals; Respondents aged 18 years and older; n/r (Not Reportable) - Represents cell size restriction of unweighted count < 50; n/a (Not Available) - Not asked of a subset of respondents

Year: 2003

Island	Yes			No			Estimated Adult Population
	#	%	C.I. (95%)	#	%	C.I. (95%)	#
Hawaii	7,000	53.7	42.1 - 65.4	6,000	46.3	34.6 - 57.9	12,900
Maui	5,200	40.3	27.2 - 53.4	7,800	59.7	46.6 - 72.8	13,000
Oahu	36,200	48.2	41.1 - 55.3	39,000	51.8	44.7 - 58.9	75,200

Education Level	Yes			No			Estimated Adult Population
	#	%	C.I. (95%)	#	%	C.I. (95%)	#
Grades 12 or GED (High School Grad)	14,000	47.0	36.2 - 57.7	15,900	53.0	42.3 - 63.8	29,900
College 1 to 3 years (Some College/ Tech)	18,800	50.9	41.0 - 60.9	18,100	49.1	39.1 - 59.0	37,000
College 4 years or more (College Grad)	15,000	44.5	35.6 - 53.5	18,700	55.5	46.5 - 64.4	33,700

Asthma - still have asthma by State, County, BRFSS Age Group, DOH Race-Ethnicity, Gender, Island, Community, Education Level, Employment Status (Grouped), Marital Status (Grouped), Household Income, Poverty Level, Married, Health Care Coverage, for the Year(s) - 2000, 2001, 2002, 2003, 2004, 2005, 2006, 2007, 2008, 2009, 2010

Note: Weighted numbers (#), percentages and 95% confidence intervals; Respondents aged 18 years and older; n/r (Not Reportable) - Represents cell size restriction of unweighted count < 50; n/a (Not Available) - Not asked of a subset of respondents

Year: 2003

Employment Status (Grouped)	Yes			No			Estimated Adult Population
	#	%	C.I. (95%)	#	%	C.I. (95%)	#
Employed	32,700	47.9	40.9 - 54.9	35,600	52.1	45.1 - 59.1	68,300
Retired/Unable to work	9,000	44.0	32.8 - 55.2	11,500	56.0	44.8 - 67.2	20,600
Student/Homemaker	6,800	47.2	32.3 - 62.1	7,600	52.8	37.9 - 67.7	14,300

Marital Status (Grouped)	Yes			No			Estimated Adult Population
	#	%	C.I. (95%)	#	%	C.I. (95%)	#
Other	19,200	46.8	37.6 - 55.9	21,900	53.2	44.1 - 62.4	41,100
Married	26,700	47.3	39.9 - 54.8	29,700	52.7	45.2 - 60.1	56,300

Asthma - still have asthma by State, County, BRFSS Age Group, DOH Race-Ethnicity, Gender, Island, Community, Education Level, Employment Status (Grouped), Marital Status (Grouped), Household Income, Poverty Level, Married, Health Care Coverage, for the Year(s) - 2000, 2001, 2002, 2003, 2004, 2005, 2006, 2007, 2008, 2009, 2010

Note: Weighted numbers (#), percentages and 95% confidence intervals; Respondents aged 18 years and older; n/r (Not Reportable) - Represents cell size restriction of unweighted count < 50; n/a (Not Available) - Not asked of a subset of respondents

Year: 2003

Household Income	Yes			No			Estimated Adult Population
	#	%	C.I. (95%)	#	%	C.I. (95%)	#
\$25,000 to \$34,999	4,400	41.8	25.3 - 58.3	6,100	58.2	41.7 - 74.7	10,500
\$35,000 to \$49,999	6,300	39.8	26.4 - 53.1	9,500	60.2	46.9 - 73.6	15,800
\$50,000 to \$74,999	5,200	50.9	35.0 - 66.9	5,000	49.1	33.1 - 65.0	10,300
\$75,000 or more	7,700	45.5	30.6 - 60.4	9,200	54.5	39.6 - 69.4	17,000

Poverty Level	Yes			No			Estimated Adult Population
	#	%	C.I. (95%)	#	%	C.I. (95%)	#
0-130%	14,700	62.2	49.9 - 74.5	8,900	37.8	25.5 - 50.1	23,600
186+%	20,800	44.5	36.6 - 52.5	25,900	55.5	47.5 - 63.4	46,700

Asthma - still have asthma by State, County, BRFSS Age Group, DOH Race-Ethnicity, Gender, Island, Community, Education Level, Employment Status (Grouped), Marital Status (Grouped), Household Income, Poverty Level, Married, Health Care Coverage, for the Year(s) - 2000, 2001, 2002, 2003, 2004, 2005, 2006, 2007, 2008, 2009, 2010

Note: Weighted numbers (#), percentages and 95% confidence intervals; Respondents aged 18 years and older; n/r (Not Reportable) - Represents cell size restriction of unweighted count < 50; n/a (Not Available) - Not asked of a subset of respondents

Year: 2003

Married	Yes			No			Estimated Adult Population
	#	%	C.I. (95%)	#	%	C.I. (95%)	#
Yes	27,400	47.7	40.3 - 55.0	30,100	52.3	45.0 - 59.7	57,500
No	24,100	48.4	40.0 - 56.8	25,700	51.6	43.2 - 60.0	49,800

Health Care Coverage	Yes			No			Estimated Adult Population
	#	%	C.I. (95%)	#	%	C.I. (95%)	#
Yes	48,100	49.0	43.2 - 54.8	50,200	51.0	45.2 - 56.8	98,300

Asthma - still have asthma by State, County, BRFSS Age Group, DOH Race-Ethnicity, Gender, Island, Community, Education Level, Employment Status (Grouped), Marital Status (Grouped), Household Income, Poverty Level, Married, Health Care Coverage, for the Year(s) - 2000, 2001, 2002, 2003, 2004, 2005, 2006, 2007, 2008, 2009, 2010

Note: Weighted numbers (#), percentages and 95% confidence intervals; Respondents aged 18 years and older; n/r (Not Reportable) - Represents cell size restriction of unweighted count < 50; n/a (Not Available) - Not asked of a subset of respondents

Year: 2002

State	Yes			No			Estimated Adult Population
	#	%	C.I. (95%)	#	%	C.I. (95%)	#
Hawaii State	62,400	51.9	47.2 - 56.6	57,800	48.1	43.4 - 52.8	120,200

County	Yes			No			Estimated Adult Population
	#	%	C.I. (95%)	#	%	C.I. (95%)	#
Hawaii	8,800	57.3	48.1 - 66.5	6,600	42.7	33.5 - 51.9	15,400
Honolulu	43,500	50.2	44.1 - 56.4	43,100	49.8	43.6 - 55.9	86,600
Kauai	3,300	52.8	39.8 - 65.9	3,000	47.2	34.1 - 60.2	6,300
Maui	6,700	56.5	47.5 - 65.6	5,200	43.5	34.4 - 52.5	11,900

Asthma - still have asthma by State, County, BRFSS Age Group, DOH Race-Ethnicity, Gender, Island, Community, Education Level, Employment Status (Grouped), Marital Status (Grouped), Household Income, Poverty Level, Married, Health Care Coverage, for the Year(s) - 2000, 2001, 2002, 2003, 2004, 2005, 2006, 2007, 2008, 2009, 2010

Note: Weighted numbers (#), percentages and 95% confidence intervals; Respondents aged 18 years and older; n/r (Not Reportable) - Represents cell size restriction of unweighted count < 50; n/a (Not Available) - Not asked of a subset of respondents

Year: 2002

BRFSS Age Group	Yes			No			Estimated Adult Population
	#	%	C.I. (95%)	#	%	C.I. (95%)	#
18-24	7,700	50.8	34.4 - 67.2	7,400	49.2	32.8 - 65.6	15,100
25-34	12,400	54.5	43.2 - 65.8	10,300	45.5	34.2 - 56.8	22,700
35-44	13,100	53.2	44.0 - 62.4	11,500	46.8	37.6 - 56.0	24,600
45-54	9,700	39.3	30.2 - 48.3	14,900	60.7	51.7 - 69.8	24,600
55-64	11,000	61.5	49.6 - 73.4	6,900	38.5	26.6 - 50.4	17,800
65-74	4,600	50.2	36.1 - 64.4	4,600	49.8	35.6 - 63.9	9,200

Asthma - still have asthma by State, County, BRFSS Age Group, DOH Race-Ethnicity, Gender, Island, Community, Education Level, Employment Status (Grouped), Marital Status (Grouped), Household Income, Poverty Level, Married, Health Care Coverage, for the Year(s) - 2000, 2001, 2002, 2003, 2004, 2005, 2006, 2007, 2008, 2009, 2010

Note: Weighted numbers (#), percentages and 95% confidence intervals; Respondents aged 18 years and older; n/r (Not Reportable) - Represents cell size restriction of unweighted count < 50; n/a (Not Available) - Not asked of a subset of respondents

Year: 2002

DOH Race-Ethnicity	Yes			No			Estimated Adult Population
	#	%	C.I. (95%)	#	%	C.I. (95%)	#
Caucasian	23,400	55.8	48.3 - 63.4	18,500	44.2	36.6 - 51.7	41,900
Native Hawaiian	12,600	56.0	44.3 - 67.8	9,900	44.0	32.2 - 55.7	22,500
Filipino	8,500	48.3	35.4 - 61.2	9,100	51.7	38.8 - 64.6	17,500
Japanese	10,200	43.6	33.3 - 53.9	13,300	56.4	46.1 - 66.7	23,500

Gender	Yes			No			Estimated Adult Population
	#	%	C.I. (95%)	#	%	C.I. (95%)	#
Male	20,600	40.8	33.3 - 48.4	29,900	59.2	51.6 - 66.7	50,500
Female	41,800	59.9	54.4 - 65.5	27,900	40.1	34.5 - 45.6	69,700

Asthma - still have asthma by State, County, BRFSS Age Group, DOH Race-Ethnicity, Gender, Island, Community, Education Level, Employment Status (Grouped), Marital Status (Grouped), Household Income, Poverty Level, Married, Health Care Coverage, for the Year(s) - 2000, 2001, 2002, 2003, 2004, 2005, 2006, 2007, 2008, 2009, 2010

Note: Weighted numbers (#), percentages and 95% confidence intervals; Respondents aged 18 years and older; n/r (Not Reportable) - Represents cell size restriction of unweighted count < 50; n/a (Not Available) - Not asked of a subset of respondents

Year: 2002

Island	Yes			No			Estimated Adult Population
	#	%	C.I. (95%)	#	%	C.I. (95%)	#
Hawaii	8,800	57.3	48.1 - 66.5	6,600	42.7	33.5 - 51.9	15,400
Kauai	3,300	52.8	39.8 - 65.9	3,000	47.2	34.1 - 60.2	6,300
Maui	6,000	57.9	47.8 - 67.9	4,300	42.1	32.1 - 52.2	10,300
Oahu	43,500	50.2	44.1 - 56.4	43,100	49.8	43.6 - 55.9	86,600

Asthma - still have asthma by State, County, BRFSS Age Group, DOH Race-Ethnicity, Gender, Island, Community, Education Level, Employment Status (Grouped), Marital Status (Grouped), Household Income, Poverty Level, Married, Health Care Coverage, for the Year(s) - 2000, 2001, 2002, 2003, 2004, 2005, 2006, 2007, 2008, 2009, 2010

Note: Weighted numbers (#), percentages and 95% confidence intervals; Respondents aged 18 years and older; n/r (Not Reportable) - Represents cell size restriction of unweighted count < 50; n/a (Not Available) - Not asked of a subset of respondents

Year: 2002

Community	Yes			No			Estimated Adult Population
	#	%	C.I. (95%)	#	%	C.I. (95%)	#
Hilo	2,200	39.4	25.3 - 53.4	3,400	60.6	46.6 - 74.7	5,600
Kona	2,800	68.4	54.2 - 82.6	1,300	31.6	17.4 - 45.8	4,000
Waipahu/ Kapolei/ Ewa	7,200	56.5	40.7 - 72.3	5,600	43.5	27.7 - 59.3	12,800

Education Level	Yes			No			Estimated Adult Population
	#	%	C.I. (95%)	#	%	C.I. (95%)	#
Grades 12 or GED (High School Grad)	24,200	56.0	47.9 - 64.1	19,000	44.0	35.9 - 52.1	43,200
College 1 to 3 years (Some College/ Tech)	16,600	46.2	37.8 - 54.6	19,300	53.8	45.4 - 62.2	35,900
College 4 years or more (College Grad)	18,800	52.3	43.8 - 60.8	17,100	47.7	39.2 - 56.2	35,900

Asthma - still have asthma by State, County, BRFSS Age Group, DOH Race-Ethnicity, Gender, Island, Community, Education Level, Employment Status (Grouped), Marital Status (Grouped), Household Income, Poverty Level, Married, Health Care Coverage, for the Year(s) - 2000, 2001, 2002, 2003, 2004, 2005, 2006, 2007, 2008, 2009, 2010

Note: Weighted numbers (#), percentages and 95% confidence intervals; Respondents aged 18 years and older; n/r (Not Reportable) - Represents cell size restriction of unweighted count < 50; n/a (Not Available) - Not asked of a subset of respondents

Year: 2002

Employment Status (Grouped)	Yes			No			Estimated Adult Population
	#	%	C.I. (95%)	#	%	C.I. (95%)	#
Employed	38,000	49.0	43.3 - 54.7	39,500	51.0	45.3 - 56.7	77,500
Retired/Unable to work	14,000	64.7	54.9 - 74.5	7,600	35.3	25.5 - 45.1	21,600
Student/Homemaker	6,900	54.0	38.5 - 69.5	5,900	46.0	30.5 - 61.5	12,700

Marital Status (Grouped)	Yes			No			Estimated Adult Population
	#	%	C.I. (95%)	#	%	C.I. (95%)	#
Other	23,900	53.0	44.9 - 61.1	21,200	47.0	38.9 - 55.1	45,100
Married	32,400	50.7	44.8 - 56.7	31,500	49.3	43.3 - 55.2	63,900
Widowed	4,300	64.7	46.1 - 83.2	2,300	35.3	16.8 - 53.9	6,600

Asthma - still have asthma by State, County, BRFSS Age Group, DOH Race-Ethnicity, Gender, Island, Community, Education Level, Employment Status (Grouped), Marital Status (Grouped), Household Income, Poverty Level, Married, Health Care Coverage, for the Year(s) - 2000, 2001, 2002, 2003, 2004, 2005, 2006, 2007, 2008, 2009, 2010

Note: Weighted numbers (#), percentages and 95% confidence intervals; Respondents aged 18 years and older; n/r (Not Reportable) - Represents cell size restriction of unweighted count < 50; n/a (Not Available) - Not asked of a subset of respondents

Year: 2002

Household Income	Yes			No			Estimated Adult Population
	#	%	C.I. (95%)	#	%	C.I. (95%)	#
\$10,000 to \$14,999	3,300	44.1	23.6 - 64.7	4,100	55.9	35.3 - 76.4	7,400
\$25,000 to \$34,999	6,900	61.9	46.0 - 77.8	4,300	38.1	22.2 - 54.0	11,200
\$35,000 to \$49,999	8,700	50.3	38.1 - 62.4	8,600	49.7	37.6 - 61.9	17,300
\$50,000 to \$74,999	8,300	56.0	44.3 - 67.6	6,500	44.0	32.4 - 55.7	14,700
\$75,000 or more	10,200	47.3	35.5 - 59.2	11,400	52.7	40.8 - 64.5	21,600

Asthma - still have asthma by State, County, BRFSS Age Group, DOH Race-Ethnicity, Gender, Island, Community, Education Level, Employment Status (Grouped), Marital Status (Grouped), Household Income, Poverty Level, Married, Health Care Coverage, for the Year(s) - 2000, 2001, 2002, 2003, 2004, 2005, 2006, 2007, 2008, 2009, 2010

Note: Weighted numbers (#), percentages and 95% confidence intervals; Respondents aged 18 years and older; n/r (Not Reportable) - Represents cell size restriction of unweighted count < 50; n/a (Not Available) - Not asked of a subset of respondents

Year: 2002

Poverty Level	Yes			No			Estimated Adult Population
	#	%	C.I. (95%)	#	%	C.I. (95%)	#
0-130%	12,500	60.3	48.5 - 72.2	8,200	39.7	27.8 - 51.5	20,800
131-185%	7,500	60.8	45.0 - 76.7	4,800	39.2	23.3 - 55.0	12,300
186+%	27,200	49.9	43.2 - 56.6	27,300	50.1	43.4 - 56.8	54,500

Married	Yes			No			Estimated Adult Population
	#	%	C.I. (95%)	#	%	C.I. (95%)	#
Yes	33,400	51.1	45.2 - 57.0	31,900	48.9	43.0 - 54.8	65,300
No	29,000	52.8	45.2 - 60.4	25,900	47.2	39.6 - 54.8	54,900

Asthma - still have asthma by State, County, BRFSS Age Group, DOH Race-Ethnicity, Gender, Island, Community, Education Level, Employment Status (Grouped), Marital Status (Grouped), Household Income, Poverty Level, Married, Health Care Coverage, for the Year(s) - 2000, 2001, 2002, 2003, 2004, 2005, 2006, 2007, 2008, 2009, 2010

Note: Weighted numbers (#), percentages and 95% confidence intervals; Respondents aged 18 years and older; n/r (Not Reportable) - Represents cell size restriction of unweighted count < 50; n/a (Not Available) - Not asked of a subset of respondents

Year: 2002

Health Care Coverage	Yes			No			Estimated Adult Population
	#	%	C.I. (95%)	#	%	C.I. (95%)	#
Yes	58,500	52.6	47.8 - 57.5	52,700	47.4	42.5 - 52.2	111,200
No	3,800	42.7	25.7 - 59.8	5,200	57.3	40.2 - 74.3	9,000

Asthma - still have asthma by State, County, BRFSS Age Group, DOH Race-Ethnicity, Gender, Island, Community, Education Level, Employment Status (Grouped), Marital Status (Grouped), Household Income, Poverty Level, Married, Health Care Coverage, for the Year(s) - 2000, 2001, 2002, 2003, 2004, 2005, 2006, 2007, 2008, 2009, 2010

Note: Weighted numbers (#), percentages and 95% confidence intervals; Respondents aged 18 years and older; n/r (Not Reportable) - Represents cell size restriction of unweighted count < 50; n/a (Not Available) - Not asked of a subset of respondents

Year: 2001

State	Yes			No			Estimated Adult Population
	#	%	C.I. (95%)	#	%	C.I. (95%)	#
Hawaii State	63,700	60.9	55.1 - 66.8	40,800	39.1	33.2 - 44.9	104,500

County	Yes			No			Estimated Adult Population
	#	%	C.I. (95%)	#	%	C.I. (95%)	#
Hawaii	9,500	67.0	57.4 - 76.6	4,700	33.0	23.4 - 42.6	14,200
Honolulu	44,800	59.7	52.0 - 67.4	30,300	40.3	32.6 - 48.0	75,100
Kauai	3,000	60.3	46.5 - 74.2	2,000	39.7	25.8 - 53.5	4,900
Maui	6,300	62.0	51.1 - 72.9	3,900	38.0	27.1 - 48.9	10,200

Asthma - still have asthma by State, County, BRFSS Age Group, DOH Race-Ethnicity, Gender, Island, Community, Education Level, Employment Status (Grouped), Marital Status (Grouped), Household Income, Poverty Level, Married, Health Care Coverage, for the Year(s) - 2000, 2001, 2002, 2003, 2004, 2005, 2006, 2007, 2008, 2009, 2010

Note: Weighted numbers (#), percentages and 95% confidence intervals; Respondents aged 18 years and older; n/r (Not Reportable) - Represents cell size restriction of unweighted count < 50; n/a (Not Available) - Not asked of a subset of respondents

Year: 2001

BRFSS Age Group	Yes			No			Estimated Adult Population
	#	%	C.I. (95%)	#	%	C.I. (95%)	#
18-24	9,300	47.2	31.2 - 63.2	10,400	52.8	36.8 - 68.8	19,700
25-34	8,800	58.3	45.0 - 71.7	6,300	41.7	28.3 - 55.0	15,200
35-44	16,100	70.0	58.2 - 81.7	6,900	30.0	18.3 - 41.8	23,000
45-54	14,800	60.1	49.2 - 71.1	9,800	39.9	28.9 - 50.8	24,600
55-64	7,000	61.4	43.5 - 79.3	4,400	38.6	20.7 - 56.5	11,400

Asthma - still have asthma by State, County, BRFSS Age Group, DOH Race-Ethnicity, Gender, Island, Community, Education Level, Employment Status (Grouped), Marital Status (Grouped), Household Income, Poverty Level, Married, Health Care Coverage, for the Year(s) - 2000, 2001, 2002, 2003, 2004, 2005, 2006, 2007, 2008, 2009, 2010

Note: Weighted numbers (#), percentages and 95% confidence intervals; Respondents aged 18 years and older; n/r (Not Reportable) - Represents cell size restriction of unweighted count < 50; n/a (Not Available) - Not asked of a subset of respondents

Year: 2001

DOH Race-Ethnicity	Yes			No			Estimated Adult Population
	#	%	C.I. (95%)	#	%	C.I. (95%)	#
Caucasian	21,400	59.1	50.0 - 68.2	14,800	40.9	31.8 - 50.0	36,200
Native Hawaiian	11,200	63.4	49.7 - 77.2	6,500	36.6	22.8 - 50.3	17,600
Filipino	7,000	61.3	42.0 - 80.5	4,400	38.7	19.5 - 58.0	11,400
Japanese	10,100	50.5	36.9 - 64.0	9,900	49.5	36.0 - 63.1	20,100

Gender	Yes			No			Estimated Adult Population
	#	%	C.I. (95%)	#	%	C.I. (95%)	#
Male	26,700	54.9	45.6 - 64.3	21,900	45.1	35.7 - 54.4	48,500
Female	37,000	66.2	58.9 - 73.4	18,900	33.8	26.6 - 41.1	56,000

Asthma - still have asthma by State, County, BRFSS Age Group, DOH Race-Ethnicity, Gender, Island, Community, Education Level, Employment Status (Grouped), Marital Status (Grouped), Household Income, Poverty Level, Married, Health Care Coverage, for the Year(s) - 2000, 2001, 2002, 2003, 2004, 2005, 2006, 2007, 2008, 2009, 2010

Note: Weighted numbers (#), percentages and 95% confidence intervals; Respondents aged 18 years and older; n/r (Not Reportable) - Represents cell size restriction of unweighted count < 50; n/a (Not Available) - Not asked of a subset of respondents

Year: 2001

Island	Yes			No			Estimated Adult Population
	#	%	C.I. (95%)	#	%	C.I. (95%)	#
Hawaii	9,500	67.0	57.4 - 76.6	4,700	33.0	23.4 - 42.6	14,200
Kauai	3,000	60.3	46.5 - 74.2	2,000	39.7	25.8 - 53.5	4,900
Maui	5,500	60.0	48.0 - 71.9	3,700	40.0	28.1 - 52.0	9,200
Oahu	44,800	59.7	52.0 - 67.4	30,300	40.3	32.6 - 48.0	75,100

Asthma - still have asthma by State, County, BRFSS Age Group, DOH Race-Ethnicity, Gender, Island, Community, Education Level, Employment Status (Grouped), Marital Status (Grouped), Household Income, Poverty Level, Married, Health Care Coverage, for the Year(s) - 2000, 2001, 2002, 2003, 2004, 2005, 2006, 2007, 2008, 2009, 2010

Note: Weighted numbers (#), percentages and 95% confidence intervals; Respondents aged 18 years and older; n/r (Not Reportable) - Represents cell size restriction of unweighted count < 50; n/a (Not Available) - Not asked of a subset of respondents

Year: 2001

Education Level	Yes			No			Estimated Adult Population
	#	%	C.I. (95%)	#	%	C.I. (95%)	#
Grades 12 or GED (High School Grad)	23,500	60.5	49.9 - 71.0	15,400	39.5	29.0 - 50.1	38,800
College 1 to 3 years (Some College/ Tech)	19,700	58.7	48.5 - 68.9	13,900	41.3	31.1 - 51.5	33,600
College 4 years or more (College Grad)	17,000	65.6	55.8 - 75.3	8,900	34.4	24.7 - 44.2	25,900

Employment Status (Grouped)	Yes			No			Estimated Adult Population
	#	%	C.I. (95%)	#	%	C.I. (95%)	#
Employed	38,400	56.8	49.8 - 63.8	29,200	43.2	36.2 - 50.2	67,600
Retired/Unable to work	11,800	75.0	62.2 - 87.8	3,900	25.0	12.2 - 37.8	15,700
Student/Homemaker	8,800	54.8	37.0 - 72.6	7,300	45.2	27.4 - 63.0	16,100

Asthma - still have asthma by State, County, BRFSS Age Group, DOH Race-Ethnicity, Gender, Island, Community, Education Level, Employment Status (Grouped), Marital Status (Grouped), Household Income, Poverty Level, Married, Health Care Coverage, for the Year(s) - 2000, 2001, 2002, 2003, 2004, 2005, 2006, 2007, 2008, 2009, 2010

Note: Weighted numbers (#), percentages and 95% confidence intervals; Respondents aged 18 years and older; n/r (Not Reportable) - Represents cell size restriction of unweighted count < 50; n/a (Not Available) - Not asked of a subset of respondents

Year: 2001

Marital Status (Grouped)	Yes			No			Estimated Adult Population
	#	%	C.I. (95%)	#	%	C.I. (95%)	#
Other	29,300	57.7	48.6 - 66.7	21,500	42.3	33.3 - 51.4	50,800
Married	30,000	63.3	55.4 - 71.3	17,400	36.7	28.7 - 44.6	47,300

Household Income	Yes			No			Estimated Adult Population
	#	%	C.I. (95%)	#	%	C.I. (95%)	#
\$25,000 to \$34,999	4,800	61.9	44.0 - 79.8	2,900	38.1	20.2 - 56.0	7,700
\$35,000 to \$49,999	11,200	53.8	40.3 - 67.4	9,600	46.2	32.6 - 59.7	20,800
\$50,000 to \$74,999	7,600	60.2	43.7 - 76.7	5,000	39.8	23.3 - 56.3	12,600
\$75,000 or more	7,000	62.4	45.4 - 79.4	4,200	37.6	20.6 - 54.6	11,200

Asthma - still have asthma by State, County, BRFSS Age Group, DOH Race-Ethnicity, Gender, Island, Community, Education Level, Employment Status (Grouped), Marital Status (Grouped), Household Income, Poverty Level, Married, Health Care Coverage, for the Year(s) - 2000, 2001, 2002, 2003, 2004, 2005, 2006, 2007, 2008, 2009, 2010

Note: Weighted numbers (#), percentages and 95% confidence intervals; Respondents aged 18 years and older; n/r (Not Reportable) - Represents cell size restriction of unweighted count < 50; n/a (Not Available) - Not asked of a subset of respondents

Year: 2001

Poverty Level	Yes			No			Estimated Adult Population
	#	%	C.I. (95%)	#	%	C.I. (95%)	#
0-130%	12,600	77.5	66.0 - 88.9	3,700	22.5	11.1 - 34.0	16,200
131-185%	8,500	68.8	50.8 - 86.7	3,900	31.2	13.3 - 49.2	12,400
186+%	25,500	57.0	48.6 - 65.4	19,200	43.0	34.6 - 51.4	44,700

Married	Yes			No			Estimated Adult Population
	#	%	C.I. (95%)	#	%	C.I. (95%)	#
Yes	33,300	64.4	56.7 - 72.1	18,400	35.6	27.9 - 43.3	51,700
No	30,400	57.6	48.9 - 66.2	22,400	42.4	33.8 - 51.1	52,800

Asthma - still have asthma by State, County, BRFSS Age Group, DOH Race-Ethnicity, Gender, Island, Community, Education Level, Employment Status (Grouped), Marital Status (Grouped), Household Income, Poverty Level, Married, Health Care Coverage, for the Year(s) - 2000, 2001, 2002, 2003, 2004, 2005, 2006, 2007, 2008, 2009, 2010

Note: Weighted numbers (#), percentages and 95% confidence intervals; Respondents aged 18 years and older; n/r (Not Reportable) - Represents cell size restriction of unweighted count < 50; n/a (Not Available) - Not asked of a subset of respondents

Year: 2001

Health Care Coverage	Yes			No			Estimated Adult Population
	#	%	C.I. (95%)	#	%	C.I. (95%)	#
Yes	56,900	59.3	53.2 - 65.4	39,100	40.7	34.6 - 46.8	96,000

Asthma - still have asthma by State, County, BRFSS Age Group, DOH Race-Ethnicity, Gender, Island, Community, Education Level, Employment Status (Grouped), Marital Status (Grouped), Household Income, Poverty Level, Married, Health Care Coverage, for the Year(s) - 2000, 2001, 2002, 2003, 2004, 2005, 2006, 2007, 2008, 2009, 2010

Note: Weighted numbers (#), percentages and 95% confidence intervals; Respondents aged 18 years and older; n/r (Not Reportable) - Represents cell size restriction of unweighted count < 50; n/a (Not Available) - Not asked of a subset of respondents

Year: 2000

State	Yes			No			Estimated Adult Population
	#	%	C.I. (95%)	#	%	C.I. (95%)	#
Hawaii State	63,600	65.3	60.2 - 70.3	33,800	34.7	29.7 - 39.8	97,400

County	Yes			No			Estimated Adult Population
	#	%	C.I. (95%)	#	%	C.I. (95%)	#
Hawaii	7,600	65.1	56.6 - 73.6	4,100	34.9	26.4 - 43.4	11,600
Honolulu	47,100	66.5	59.9 - 73.0	23,800	33.5	27.0 - 40.1	70,800
Kauai	2,900	58.3	44.8 - 71.9	2,100	41.7	28.1 - 55.2	5,000
Maui	6,000	60.3	48.4 - 72.2	3,900	39.7	27.8 - 51.6	9,900

Asthma - still have asthma by State, County, BRFSS Age Group, DOH Race-Ethnicity, Gender, Island, Community, Education Level, Employment Status (Grouped), Marital Status (Grouped), Household Income, Poverty Level, Married, Health Care Coverage, for the Year(s) - 2000, 2001, 2002, 2003, 2004, 2005, 2006, 2007, 2008, 2009, 2010

Note: Weighted numbers (#), percentages and 95% confidence intervals; Respondents aged 18 years and older; n/r (Not Reportable) - Represents cell size restriction of unweighted count < 50; n/a (Not Available) - Not asked of a subset of respondents

Year: 2000

BRFSS Age Group	Yes			No			Estimated Adult Population
	#	%	C.I. (95%)	#	%	C.I. (95%)	#
18-24	9,400	54.7	40.4 - 69.0	7,800	45.3	31.0 - 59.6	17,200
25-34	11,200	53.5	42.0 - 65.1	9,700	46.5	34.9 - 58.0	20,900
35-44	15,300	71.4	62.5 - 80.3	6,100	28.6	19.7 - 37.5	21,400
45-54	9,800	70.0	59.4 - 80.6	4,200	30.0	19.4 - 40.6	14,000
55-64	6,100	68.1	52.4 - 83.8	2,900	31.9	16.2 - 47.6	9,000
65-74	8,500	77.1	62.2 - 92.0	2,500	22.9	8.0 - 37.8	11,000

Asthma - still have asthma by State, County, BRFSS Age Group, DOH Race-Ethnicity, Gender, Island, Community, Education Level, Employment Status (Grouped), Marital Status (Grouped), Household Income, Poverty Level, Married, Health Care Coverage, for the Year(s) - 2000, 2001, 2002, 2003, 2004, 2005, 2006, 2007, 2008, 2009, 2010

Note: Weighted numbers (#), percentages and 95% confidence intervals; Respondents aged 18 years and older; n/r (Not Reportable) - Represents cell size restriction of unweighted count < 50; n/a (Not Available) - Not asked of a subset of respondents

Year: 2000

DOH Race-Ethnicity	Yes			No			Estimated Adult Population
	#	%	C.I. (95%)	#	%	C.I. (95%)	#
Caucasian	18,200	70.6	62.4 - 78.8	7,600	29.4	21.2 - 37.6	25,800
Native Hawaiian	17,800	68.2	58.5 - 78.0	8,300	31.8	22.0 - 41.5	26,100
Filipino	8,100	52.4	37.2 - 67.6	7,300	47.6	32.4 - 62.8	15,400
Japanese	10,000	60.4	48.4 - 72.3	6,600	39.6	27.7 - 51.6	16,600

Gender	Yes			No			Estimated Adult Population
	#	%	C.I. (95%)	#	%	C.I. (95%)	#
Male	23,800	52.4	43.7 - 61.1	21,600	47.6	38.9 - 56.3	45,400
Female	39,800	76.5	71.2 - 81.7	12,300	23.5	18.3 - 28.8	52,000

Asthma - still have asthma by State, County, BRFSS Age Group, DOH Race-Ethnicity, Gender, Island, Community, Education Level, Employment Status (Grouped), Marital Status (Grouped), Household Income, Poverty Level, Married, Health Care Coverage, for the Year(s) - 2000, 2001, 2002, 2003, 2004, 2005, 2006, 2007, 2008, 2009, 2010

Note: Weighted numbers (#), percentages and 95% confidence intervals; Respondents aged 18 years and older; n/r (Not Reportable) - Represents cell size restriction of unweighted count < 50; n/a (Not Available) - Not asked of a subset of respondents

Year: 2000

Island	Yes			No			Estimated Adult Population
	#	%	C.I. (95%)	#	%	C.I. (95%)	#
Hawaii	7,600	65.1	56.6 - 73.6	4,100	34.9	26.4 - 43.4	11,600
Kauai	2,900	58.3	44.8 - 71.9	2,100	41.7	28.1 - 55.2	5,000
Maui	5,500	59.1	46.4 - 71.7	3,800	40.9	28.3 - 53.6	9,300
Oahu	47,100	66.5	59.9 - 73.0	23,800	33.5	27.0 - 40.1	70,800

Community	Yes			No			Estimated Adult Population
	#	%	C.I. (95%)	#	%	C.I. (95%)	#
Hilo	2,900	75.3	62.6 - 88.1	1,000	24.7	11.9 - 37.4	3,900

Asthma - still have asthma by State, County, BRFSS Age Group, DOH Race-Ethnicity, Gender, Island, Community, Education Level, Employment Status (Grouped), Marital Status (Grouped), Household Income, Poverty Level, Married, Health Care Coverage, for the Year(s) - 2000, 2001, 2002, 2003, 2004, 2005, 2006, 2007, 2008, 2009, 2010

Note: Weighted numbers (#), percentages and 95% confidence intervals; Respondents aged 18 years and older; n/r (Not Reportable) - Represents cell size restriction of unweighted count < 50; n/a (Not Available) - Not asked of a subset of respondents

Year: 2000

Education Level	Yes			No			Estimated Adult Population
	#	%	C.I. (95%)	#	%	C.I. (95%)	#
Grades 12 or GED (High School Grad)	24,800	66.5	58.2 - 74.9	12,500	33.5	25.1 - 41.8	37,200
College 1 to 3 years (Some College/ Tech)	18,000	65.0	56.0 - 74.1	9,700	35.0	25.9 - 44.0	27,700
College 4 years or more (College Grad)	16,300	64.9	55.6 - 74.3	8,800	35.1	25.7 - 44.4	25,200

Employment Status (Grouped)	Yes			No			Estimated Adult Population
	#	%	C.I. (95%)	#	%	C.I. (95%)	#
Employed	37,200	58.5	52.1 - 64.9	26,400	41.5	35.1 - 47.9	63,700
Retired/Unable to work	15,200	78.0	67.4 - 88.5	4,300	22.0	11.5 - 32.6	19,400
Student/Homemaker	6,600	72.1	57.8 - 86.4	2,500	27.9	13.6 - 42.2	9,100

Asthma - still have asthma by State, County, BRFSS Age Group, DOH Race-Ethnicity, Gender, Island, Community, Education Level, Employment Status (Grouped), Marital Status (Grouped), Household Income, Poverty Level, Married, Health Care Coverage, for the Year(s) - 2000, 2001, 2002, 2003, 2004, 2005, 2006, 2007, 2008, 2009, 2010

Note: Weighted numbers (#), percentages and 95% confidence intervals; Respondents aged 18 years and older; n/r (Not Reportable) - Represents cell size restriction of unweighted count < 50; n/a (Not Available) - Not asked of a subset of respondents

Year: 2000

Marital Status (Grouped)	Yes			No			Estimated Adult Population
	#	%	C.I. (95%)	#	%	C.I. (95%)	#
Other	25,500	60.7	52.5 - 68.9	16,500	39.3	31.1 - 47.5	41,900
Married	34,400	68.5	61.7 - 75.3	15,900	31.5	24.7 - 38.3	50,300

Asthma - still have asthma by State, County, BRFSS Age Group, DOH Race-Ethnicity, Gender, Island, Community, Education Level, Employment Status (Grouped), Marital Status (Grouped), Household Income, Poverty Level, Married, Health Care Coverage, for the Year(s) - 2000, 2001, 2002, 2003, 2004, 2005, 2006, 2007, 2008, 2009, 2010

Note: Weighted numbers (#), percentages and 95% confidence intervals; Respondents aged 18 years and older; n/r (Not Reportable) - Represents cell size restriction of unweighted count < 50; n/a (Not Available) - Not asked of a subset of respondents

Year: 2000

Household Income	Yes			No			Estimated Adult Population
	#	%	C.I. (95%)	#	%	C.I. (95%)	#
Less than \$10,000	4,000	64.2	45.0 - 83.4	2,200	35.8	16.6 - 55.0	6,200
\$10,000 to \$14,999	4,900	68.4	49.9 - 86.8	2,300	31.6	13.2 - 50.1	7,200
\$25,000 to \$34,999	7,700	70.0	58.6 - 81.5	3,300	30.0	18.5 - 41.4	11,000
\$35,000 to \$49,999	10,300	66.1	54.5 - 77.6	5,300	33.9	22.4 - 45.5	15,600
\$50,000 to \$74,999	7,900	56.2	42.0 - 70.3	6,200	43.8	29.7 - 58.0	14,100
\$75,000 or more	6,400	59.2	43.9 - 74.5	4,400	40.8	25.5 - 56.1	10,900

Asthma - still have asthma by State, County, BRFSS Age Group, DOH Race-Ethnicity, Gender, Island, Community, Education Level, Employment Status (Grouped), Marital Status (Grouped), Household Income, Poverty Level, Married, Health Care Coverage, for the Year(s) - 2000, 2001, 2002, 2003, 2004, 2005, 2006, 2007, 2008, 2009, 2010

Note: Weighted numbers (#), percentages and 95% confidence intervals; Respondents aged 18 years and older; n/r (Not Reportable) - Represents cell size restriction of unweighted count < 50; n/a (Not Available) - Not asked of a subset of respondents

Year: 2000

Poverty Level	Yes			No			Estimated Adult Population
	#	%	C.I. (95%)	#	%	C.I. (95%)	#
0-130%	11,000	67.2	53.5 - 80.9	5,400	32.8	19.1 - 46.5	16,400
131-185%	9,200	83.9	74.8 - 93.0	1,800	16.1	7.0 - 25.2	10,900
186+%	29,000	60.4	53.6 - 67.2	19,000	39.6	32.8 - 46.4	47,900

Married	Yes			No			Estimated Adult Population
	#	%	C.I. (95%)	#	%	C.I. (95%)	#
Yes	35,600	68.6	61.9 - 75.3	16,300	31.4	24.7 - 38.1	52,000
No	27,800	61.3	53.7 - 69.0	17,500	38.7	31.0 - 46.3	45,300

Asthma - still have asthma by State, County, BRFSS Age Group, DOH Race-Ethnicity, Gender, Island, Community, Education Level, Employment Status (Grouped), Marital Status (Grouped), Household Income, Poverty Level, Married, Health Care Coverage, for the Year(s) - 2000, 2001, 2002, 2003, 2004, 2005, 2006, 2007, 2008, 2009, 2010

Note: Weighted numbers (#), percentages and 95% confidence intervals; Respondents aged 18 years and older; n/r (Not Reportable) - Represents cell size restriction of unweighted count < 50; n/a (Not Available) - Not asked of a subset of respondents

Year: 2000

Health Care Coverage	Yes			No			Estimated Adult Population
	#	%	C.I. (95%)	#	%	C.I. (95%)	#
Yes	59,600	64.7	59.4 - 70.0	32,500	35.3	30.0 - 40.6	92,100