

During the Past 30 Days, How Often Did You Take Asthma Medication Prescribed by a Doctor, Including Using an Inhaler (Among Those Who Currently Have Asthma) by Year Total, County, BRFSS Age Group, DOH Race-Ethnicity, Gender, County and Community, Education Level, Employment Status (Grouped), Household Income, Island, Marital Status (Grouped), Poverty Level, for the Year(s) - 2003, 2004

*Note: Weighted numbers (#), percentages and 95% confidence intervals; Respondents aged 18 years and older;
n/r (Not Reportable) - Represents cell size restriction of unweighted count < 50;
n/a (Not Available) - Not asked of a subset of respondents*

The trend analysis report shows the trend for the selected health variable over selected years in a table and a graph; Estimated Adult Population: This number is a weighted representation of the adult population who responded to a particular question in the survey. For most questions the estimated adult population will be the entire adult population. For some secondary questions only a subset of the population was asked the question. For example, all survey participants were asked if they had diabetes, but only those who answered yes were asked if they use insulin. If a dimension value is unknown for a particular survey record, that record will not be included in the counts for that particular dimension.

For documentation on other terms and coding in this report, please go to the following links

[Click here to access BRFSS documentation](#)

[Click here to access DOH Race-Ethnicity coding](#)

[Click here to access The Hawai'i Data Guide](#)

[Click here to access Poverty Level Methodology](#)

**For questions about this report, please contact
The Hawaii Health Data Warehouse**

profiles@hhdw.org

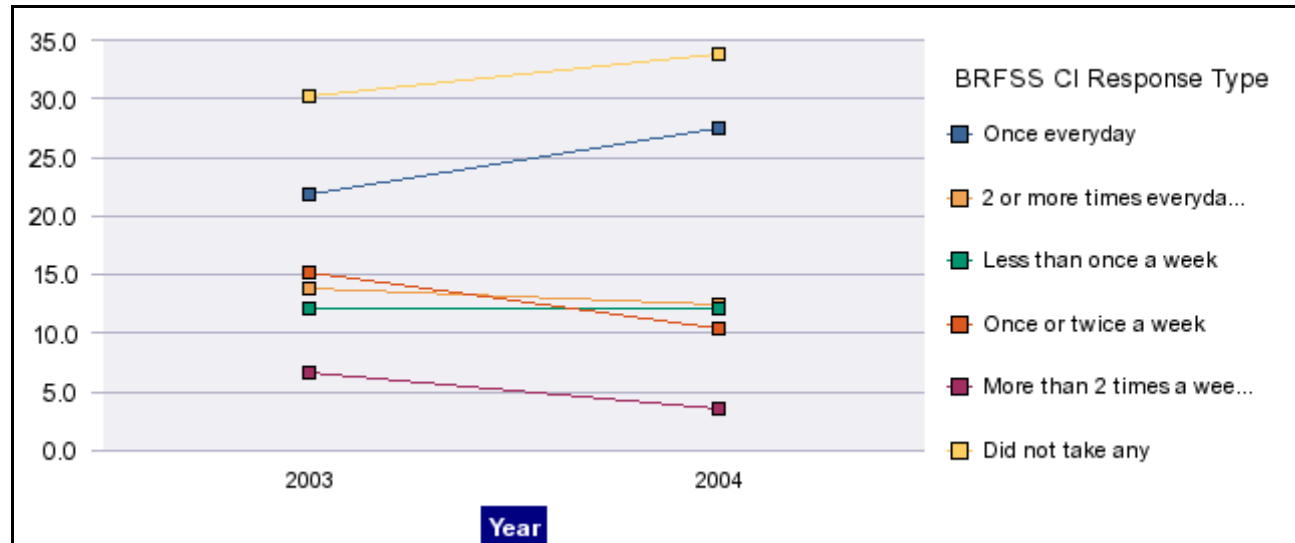
(808) 946-5899 x15

During the Past 30 Days, How Often Did You Take Asthma Medication Prescribed by a Doctor, Including Using an Inhaler (Among Those Who Currently Have Asthma) by Year Total, County, BRFSS Age Group, DOH Race-Ethnicity, Gender, County and Community, Education Level, Employment Status (Grouped), Household Income, Island, Marital Status (Grouped), Poverty Level, for the Year(s) - 2003, 2004

Note: Weighted numbers (#), percentages and 95% confidence intervals; Respondents aged 18 years and older; n/r (Not Reportable) - Represents cell size restriction of unweighted count < 50; n/a (Not Available) - Not asked of a subset of respondents

	Once everyday			2 or more times everyday			Less than once a week			Once or twice a week			More than 2 times a week, but not everyday			Did not take any			Estimated Adult Population
	#	%	C.I.(95 %)	#	%	C.I.(95 %)	#	%	C.I.(95 %)	#	%	C.I.(95 %)	#	%	C.I.(95 %)	#	%	C.I.(95 %)	#
2003	11,378	21.9	16.0 - 27.8	7,158	13.8	8.8 - 18.7	6,307	12.1	6.7 - 17.6	7,921	15.2	8.9 - 21.6	3,476	6.7	2.3 - 11.1	15,726	30.3	22.7 - 37.8	51,966
2004	19,824	27.6	17.3 - 37.8	8,919	12.4	6.2 - 18.6	8,698	12.1	5.4 - 18.8	7,530	10.5	2.4 - 18.6	2,604	3.6	.4 - 6.8	24,373	33.9	24.0 - 43.7	71,948

During the Past 30 Days, How Often Did You Take Asthma Medication Prescribed by a Doctor, Including Using an Inhaler (Among Those Who Currently Have Asthma), for the Year(s) - 2003, 2004



**During the Past 30 Days, How Often Did You Take Asthma Medication Prescribed by a Doctor, Including Using an Inhaler
(Among Those Who Currently Have Asthma) by Year Total, County, BRFSS Age Group, DOH Race-Ethnicity, Gender, County
and Community, Education Level, Employment Status (Grouped), Household Income, Island, Marital Status (Grouped), Poverty
Level, for the Year(s) - 2003, 2004**

*Note: Weighted numbers (#), percentages and 95% confidence intervals; Respondents aged 18 years and older; n/r (Not Reportable) -
Represents cell size restriction of unweighted count < 50; n/a (Not Available) - Not asked of a subset of respondents*

Year: 2003

Year Total	Once everyday			2 or more times everyday			Less than once a week			Once or twice a week			More than 2 times a week, but not everyday			Did not take any			Estimated Adult Population
	#	%	C.I. (95%)	#	%	C.I. (95%)	#	%	C.I. (95%)	#	%	C.I. (95%)	#	%	C.I. (95%)	#	%	C.I. (95%)	#
State	11,378	21.9	6.0 - 27.8	7,158	13.8	8.8 - 18.7	6,307	12.1	6.7 - 17.6	7,921	15.2	8.9 - 21.6	3,476	6.7	2.3 - 11.1	15,726	30.3	2.7 - 37.8	51,966

County	Once everyday			2 or more times everyday			Less than once a week			Once or twice a week			More than 2 times a week, but not everyday			Did not take any			Estimated Adult Population
	#	%	C.I. (95%)	#	%	C.I. (95%)	#	%	C.I. (95%)	#	%	C.I. (95%)	#	%	C.I. (95%)	#	%	C.I. (95%)	#
Hawaii	1,375	20.3	8.7 - 31.9	1,010	14.9	2.3 - 27.5	157	2.3	.0 - 5.7	2,011	29.7	3.3 - 46.1	805	11.9	.0 - 25.9	1,413	20.9	8.2 - 33.5	6,771
Honolulu	7,480	21.8	3.7 - 30.0	5,469	16.0	9.0 - 22.9	4,570	13.3	5.9 - 20.8	4,990	14.6	5.8 - 23.3	1,873	5.5	.0 - 11.1	9,886	28.8	9.3 - 38.4	34,268
Kauai	n/r	n/r	n/r	n/r	n/r	n/r	n/r	n/r	n/r	n/r	n/r	n/r	n/r	n/r	n/r	n/r	n/r	n/r	n/r
Maui	n/r	n/r	n/r	n/r	n/r	n/r	n/r	n/r	n/r	n/r	n/r	n/r	n/r	n/r	n/r	n/r	n/r	n/r	n/r

**During the Past 30 Days, How Often Did You Take Asthma Medication Prescribed by a Doctor, Including Using an Inhaler
(Among Those Who Currently Have Asthma) by Year Total, County, BRFSS Age Group, DOH Race-Ethnicity, Gender, County
and Community, Education Level, Employment Status (Grouped), Household Income, Island, Marital Status (Grouped), Poverty
Level, for the Year(s) - 2003, 2004**

*Note: Weighted numbers (#), percentages and 95% confidence intervals; Respondents aged 18 years and older; n/r (Not Reportable) -
Represents cell size restriction of unweighted count < 50; n/a (Not Available) - Not asked of a subset of respondents*

Year: 2003

BRFSS Age Group	Once everyday			2 or more times everyday			Less than once a week			Once or twice a week			More than 2 times a week, but not everyday			Did not take any			Estimated Adult Population	
	#	%	C.I. (95%)	#	%	C.I. (95%)	#	%	C.I. (95%)	#	%	C.I. (95%)	#	%	C.I. (95%)	#	%	C.I. (95%)	#	
18-24	n/r	n/r	n/r	n/r	n/r	n/r	n/r	n/r	n/r	n/r	n/r	n/r	n/r	n/r	n/r	n/r	n/r	n/r	n/r	n/r
25-34	n/r	n/r	n/r	n/r	n/r	n/r	n/r	n/r	n/r	n/r	n/r	n/r	n/r	n/r	n/r	n/r	n/r	n/r	n/r	n/r
35-44	n/r	n/r	n/r	n/r	n/r	n/r	n/r	n/r	n/r	n/r	n/r	n/r	n/r	n/r	n/r	n/r	n/r	n/r	n/r	n/r
45-54	2,705	35.0	9.2 - 50.7	1,937	25.0	9.1 - 41.0	468	6.0	.0 - 14.2	508	6.6	.0 - 13.7	934	12.1	.0 - 25.8	1,187	15.3	3.6 - 27.1	7,739	
55-64	n/r	n/r	n/r	n/r	n/r	n/r	n/r	n/r	n/r	n/r	n/r	n/r	n/r	n/r	n/r	n/r	n/r	n/r	n/r	n/r
65-74	n/r	n/r	n/r	n/r	n/r	n/r	n/r	n/r	n/r	n/r	n/r	n/r	n/r	n/r	n/r	n/r	n/r	n/r	n/r	n/r
75+	n/r	n/r	n/r	n/r	n/r	n/r	n/r	n/r	n/r	n/r	n/r	n/r	n/r	n/r	n/r	n/r	n/r	n/r	n/r	n/r

**During the Past 30 Days, How Often Did You Take Asthma Medication Prescribed by a Doctor, Including Using an Inhaler
(Among Those Who Currently Have Asthma) by Year Total, County, BRFSS Age Group, DOH Race-Ethnicity, Gender, County
and Community, Education Level, Employment Status (Grouped), Household Income, Island, Marital Status (Grouped), Poverty
Level, for the Year(s) - 2003, 2004**

*Note: Weighted numbers (#), percentages and 95% confidence intervals; Respondents aged 18 years and older; n/r (Not Reportable) -
Represents cell size restriction of unweighted count < 50; n/a (Not Available) - Not asked of a subset of respondents*

Year: 2003

DOH Race-Ethnicity	Once everyday			2 or more times everyday			Less than once a week			Once or twice a week			More than 2 times a week, but not everyday			Did not take any			Estimated Adult Population
	#	%	C.I. (95%)	#	%	C.I. (95%)	#	%	C.I. (95%)	#	%	C.I. (95%)	#	%	C.I. (95%)	#	%	C.I. (95%)	#
White	4,661	21.1	2.6 - 29.6	4,303	19.4	0.6 - 28.3	2,400	10.8	4.0 - 17.7	3,455	15.6	6.3 - 24.9	2,545	11.5	2.4 - 20.6	4,765	21.5	1.9 - 31.2	22,129
Native Hawaiian	n/r	n/r	n/r	n/r	n/r	n/r	n/r	n/r	n/r	n/r	n/r	n/r	n/r	n/r	n/r	n/r	n/r	n/r	n/r
Chinese	n/r	n/r	n/r	n/r	n/r	n/r	n/r	n/r	n/r	n/r	n/r	n/r	n/r	n/r	n/r	n/r	n/r	n/r	n/r
Filipino	n/r	n/r	n/r	n/r	n/r	n/r	n/r	n/r	n/r	n/r	n/r	n/r	n/r	n/r	n/r	n/r	n/r	n/r	n/r
Japanese	n/r	n/r	n/r	n/r	n/r	n/r	n/r	n/r	n/r	n/r	n/r	n/r	n/r	n/r	n/r	n/r	n/r	n/r	n/r
Black	n/r	n/r	n/r	n/r	n/r	n/r	n/r	n/r	n/r	n/r	n/r	n/r	n/r	n/r	n/r	n/r	n/r	n/r	n/r
Other Pacific Islander	n/r	n/r	n/r	n/r	n/r	n/r	n/r	n/r	n/r	n/r	n/r	n/r	n/r	n/r	n/r	n/r	n/r	n/r	n/r
Other Asian	n/r	n/r	n/r	n/r	n/r	n/r	n/r	n/r	n/r	n/r	n/r	n/r	n/r	n/r	n/r	n/r	n/r	n/r	n/r
Native Alaskan/ American Indian	n/r	n/r	n/r	n/r	n/r	n/r	n/r	n/r	n/r	n/r	n/r	n/r	n/r	n/r	n/r	n/r	n/r	n/r	n/r
Other	n/r	n/r	n/r	n/r	n/r	n/r	n/r	n/r	n/r	n/r	n/r	n/r	n/r	n/r	n/r	n/r	n/r	n/r	n/r

**During the Past 30 Days, How Often Did You Take Asthma Medication Prescribed by a Doctor, Including Using an Inhaler
(Among Those Who Currently Have Asthma) by Year Total, County, BRFSS Age Group, DOH Race-Ethnicity, Gender, County
and Community, Education Level, Employment Status (Grouped), Household Income, Island, Marital Status (Grouped), Poverty
Level, for the Year(s) - 2003, 2004**

*Note: Weighted numbers (#), percentages and 95% confidence intervals; Respondents aged 18 years and older; n/r (Not Reportable) -
Represents cell size restriction of unweighted count < 50; n/a (Not Available) - Not asked of a subset of respondents*

Year: 2003

Gender	Once everyday			2 or more times everyday			Less than once a week			Once or twice a week			More than 2 times a week, but not everyday			Did not take any			Estimated Adult Population
	#	%	C.I. (95%)	#	%	C.I. (95%)	#	%	C.I. (95%)	#	%	C.I. (95%)	#	%	C.I. (95%)	#	%	C.I. (95%)	#
Female	7,857	23.0	6.1 - 29.9	5,512	16.1	9.9 - 22.3	4,461	13.1	7.4 - 18.7	4,910	14.4	8.0 - 20.7	1,753	5.1	1.1 - 9.1	9,683	28.3	0.5 - 36.2	34,176
Male	3,521	19.8	8.6 - 31.0	1,646	9.3	1.4 - 17.1	1,846	10.4	.0 - 22.0	3,011	16.9	3.0 - 30.8	1,724	9.7	.0 - 19.8	6,043	34.0	8.2 - 49.8	17,791

County and Community	Once everyday			2 or more times everyday			Less than once a week			Once or twice a week			More than 2 times a week, but not everyday			Did not take any			Estimated Adult Population
	#	%	C.I. (95%)	#	%	C.I. (95%)	#	%	C.I. (95%)	#	%	C.I. (95%)	#	%	C.I. (95%)	#	%	C.I. (95%)	#
Hawaii-Hilo	n/r	n/r	n/r	n/r	n/r	n/r	n/r	n/r	n/r	n/r	n/r	n/r	n/r	n/r	n/r	n/r	n/r	n/r	n/r
Hawaii-Kona	n/r	n/r	n/r	n/r	n/r	n/r	n/r	n/r	n/r	n/r	n/r	n/r	n/r	n/r	n/r	n/r	n/r	n/r	n/r
Hawaii-N.Hawaii	n/r	n/r	n/r	n/r	n/r	n/r	n/r	n/r	n/r	n/r	n/r	n/r	n/r	n/r	n/r	n/r	n/r	n/r	n/r
Hawaii-Puna/ Kau	n/r	n/r	n/r	n/r	n/r	n/r	n/r	n/r	n/r	n/r	n/r	n/r	n/r	n/r	n/r	n/r	n/r	n/r	n/r
Honolulu-Aiea/ Pearl City	n/r	n/r	n/r	n/r	n/r	n/r	n/r	n/r	n/r	n/r	n/r	n/r	n/r	n/r	n/r	n/r	n/r	n/r	n/r
Honolulu-Ala Moana	n/r	n/r	n/r	n/r	n/r	n/r	n/r	n/r	n/r	n/r	n/r	n/r	n/r	n/r	n/r	n/r	n/r	n/r	n/r
Honolulu-Kaaawa/ Kahaluu/ Kaneohe	n/r	n/r	n/r	n/r	n/r	n/r	n/r	n/r	n/r	n/r	n/r	n/r	n/r	n/r	n/r	n/r	n/r	n/r	n/r
Honolulu-Kailua/ Waimanalo	n/r	n/r	n/r	n/r	n/r	n/r	n/r	n/r	n/r	n/r	n/r	n/r	n/r	n/r	n/r	n/r	n/r	n/r	n/r

**During the Past 30 Days, How Often Did You Take Asthma Medication Prescribed by a Doctor, Including Using an Inhaler
(Among Those Who Currently Have Asthma) by Year Total, County, BRFSS Age Group, DOH Race-Ethnicity, Gender, County
and Community, Education Level, Employment Status (Grouped), Household Income, Island, Marital Status (Grouped), Poverty
Level, for the Year(s) - 2003, 2004**

*Note: Weighted numbers (#), percentages and 95% confidence intervals; Respondents aged 18 years and older; n/r (Not Reportable) -
Represents cell size restriction of unweighted count < 50; n/a (Not Available) - Not asked of a subset of respondents*

Year: 2003

County and Community	Once everyday			2 or more times everyday			Less than once a week			Once or twice a week			More than 2 times a week, but not everyday			Did not take any			Estimated Adult Population	
	#	%	C.I. (95%)	#	%	C.I. (95%)	#	%	C.I. (95%)	#	%	C.I. (95%)	#	%	C.I. (95%)	#	%	C.I. (95%)	#	
Honolulu-Kaimuki/ Palolo/ Waikiki	n/r	n/r	n/r	n/r	n/r	n/r	n/r	n/r	n/r	n/r	n/r	n/r	n/r	n/r	n/r	n/r	n/r	n/r	n/r	n/r
Honolulu-Manoa/ Upper Makiki	n/r	n/r	n/r	n/r	n/r	n/r	n/r	n/r	n/r	n/r	n/r	n/r	n/r	n/r	n/r	n/r	n/r	n/r	n/r	n/r
Honolulu-Mililani/ Wahiawa	n/r	n/r	n/r	n/r	n/r	n/r	n/r	n/r	n/r	n/r	n/r	n/r	n/r	n/r	n/r	n/r	n/r	n/r	n/r	n/r
Honolulu-Nanakuli/ Waianae	n/r	n/r	n/r	n/r	n/r	n/r	n/r	n/r	n/r	n/r	n/r	n/r	n/r	n/r	n/r	n/r	n/r	n/r	n/r	n/r
Honolulu-N.Shore/ Laie	n/r	n/r	n/r	n/r	n/r	n/r	n/r	n/r	n/r	n/r	n/r	n/r	n/r	n/r	n/r	n/r	n/r	n/r	n/r	n/r
Honolulu-Nuuanu/ Kalihi/ Moanalua	n/r	n/r	n/r	n/r	n/r	n/r	n/r	n/r	n/r	n/r	n/r	n/r	n/r	n/r	n/r	n/r	n/r	n/r	n/r	n/r
Honolulu-Salt Lake/ Foster Village	n/r	n/r	n/r	n/r	n/r	n/r	n/r	n/r	n/r	n/r	n/r	n/r	n/r	n/r	n/r	n/r	n/r	n/r	n/r	n/r
Honolulu-Waiialae/ Kahala/ Hawaii Kai	n/r	n/r	n/r	n/r	n/r	n/r	n/r	n/r	n/r	n/r	n/r	n/r	n/r	n/r	n/r	n/r	n/r	n/r	n/r	n/r
Honolulu-Waipahu/ Kapolei/ Ewa	n/r	n/r	n/r	n/r	n/r	n/r	n/r	n/r	n/r	n/r	n/r	n/r	n/r	n/r	n/r	n/r	n/r	n/r	n/r	n/r
Kauai-Hanalei/ Kapaa	n/r	n/r	n/r	n/r	n/r	n/r	n/r	n/r	n/r	n/r	n/r	n/r	n/r	n/r	n/r	n/r	n/r	n/r	n/r	n/r
Kauai-Lihue-Waimea	n/r	n/r	n/r	n/r	n/r	n/r	n/r	n/r	n/r	n/r	n/r	n/r	n/r	n/r	n/r	n/r	n/r	n/r	n/r	n/r
Maui-Kahului	n/r	n/r	n/r	n/r	n/r	n/r	n/r	n/r	n/r	n/r	n/r	n/r	n/r	n/r	n/r	n/r	n/r	n/r	n/r	n/r
Maui-Lanai	n/r	n/r	n/r	n/r	n/r	n/r	n/r	n/r	n/r	n/r	n/r	n/r	n/r	n/r	n/r	n/r	n/r	n/r	n/r	n/r

**During the Past 30 Days, How Often Did You Take Asthma Medication Prescribed by a Doctor, Including Using an Inhaler
(Among Those Who Currently Have Asthma) by Year Total, County, BRFSS Age Group, DOH Race-Ethnicity, Gender, County
and Community, Education Level, Employment Status (Grouped), Household Income, Island, Marital Status (Grouped), Poverty
Level, for the Year(s) - 2003, 2004**

*Note: Weighted numbers (#), percentages and 95% confidence intervals; Respondents aged 18 years and older; n/r (Not Reportable) -
Represents cell size restriction of unweighted count < 50; n/a (Not Available) - Not asked of a subset of respondents*

Year: 2003

County and Community	Once everyday			2 or more times everyday			Less than once a week			Once or twice a week			More than 2 times a week, but not everyday			Did not take any			Estimated Adult Population	
	#	%	C.I. (95%)	#	%	C.I. (95%)	#	%	C.I. (95%)	#	%	C.I. (95%)	#	%	C.I. (95%)	#	%	C.I. (95%)	#	
Maui-Lahaina/ Wailuku	n/r	n/r	n/r	n/r	n/r	n/r	n/r	n/r	n/r	n/r	n/r	n/r	n/r	n/r	n/r	n/r	n/r	n/r	n/r	n/r
Maui-Molokai	n/r	n/r	n/r	n/r	n/r	n/r	n/r	n/r	n/r	n/r	n/r	n/r	n/r	n/r	n/r	n/r	n/r	n/r	n/r	n/r
Maui-Upcountry/ Hana	n/r	n/r	n/r	n/r	n/r	n/r	n/r	n/r	n/r	n/r	n/r	n/r	n/r	n/r	n/r	n/r	n/r	n/r	n/r	n/r

Education Level	Once everyday			2 or more times everyday			Less than once a week			Once or twice a week			More than 2 times a week, but not everyday			Did not take any			Estimated Adult Population	
	#	%	C.I. (95%)	#	%	C.I. (95%)	#	%	C.I. (95%)	#	%	C.I. (95%)	#	%	C.I. (95%)	#	%	C.I. (95%)	#	
Grades 9 thru 11 (Some High School)	n/r	n/r	n/r	n/r	n/r	n/r	n/r	n/r	n/r	n/r	n/r	n/r	n/r	n/r	n/r	n/r	n/r	n/r	n/r	n/r
Grades 12 or GED (High School Grad)	2,905	19.7	9.2 - 30.3	1,238	8.4	.6 - 16.2	2,222	15.1	5.4 - 24.7	2,565	17.4	6.0 - 28.8	519	3.5	.0 - 7.5	5,288	35.9	0.6 - 51.1	14,737	
College 1 to 3 years (Some College/ Tech)	2,430	13.3	5.0 - 21.6	4,258	23.2	2.1 - 34.4	2,544	13.9	2.1 - 25.7	3,391	18.5	5.1 - 31.9	1,267	6.9	.0 - 15.5	4,428	24.2	2.8 - 35.5	18,318	
College 4 years or more (College Grad)	4,611	32.6	0.8 - 44.5	1,451	10.3	3.8 - 16.8	1,541	10.9	2.8 - 19.0	1,033	7.3	1.4 - 13.3	1,213	8.6	.1 - 17.1	4,277	30.3	8.6 - 41.9	14,126	
Never attended school/ Only Kindergarten to Grades 8	n/r	n/r	n/r	n/r	n/r	n/r	n/r	n/r	n/r	n/r	n/r	n/r	n/r	n/r	n/r	n/r	n/r	n/r	n/r	n/r

**During the Past 30 Days, How Often Did You Take Asthma Medication Prescribed by a Doctor, Including Using an Inhaler
(Among Those Who Currently Have Asthma) by Year Total, County, BRFSS Age Group, DOH Race-Ethnicity, Gender, County
and Community, Education Level, Employment Status (Grouped), Household Income, Island, Marital Status (Grouped), Poverty
Level, for the Year(s) - 2003, 2004**

*Note: Weighted numbers (#), percentages and 95% confidence intervals; Respondents aged 18 years and older; n/r (Not Reportable) -
Represents cell size restriction of unweighted count < 50; n/a (Not Available) - Not asked of a subset of respondents*

Year: 2003

Employment Status (Grouped)	Once everyday			2 or more times everyday			Less than once a week			Once or twice a week			More than 2 times a week, but not everyday			Did not take any			Estimated Adult Population
	#	%	C.I. (95%)	#	%	C.I. (95%)	#	%	C.I. (95%)	#	%	C.I. (95%)	#	%	C.I. (95%)	#	%	C.I. (95%)	#
Employed	7,117	22.4	4.3 - 30.4	3,308	10.4	4.8 - 15.9	3,762	11.8	4.0 - 19.6	4,186	13.1	5.9 - 20.4	2,519	7.9	1.5 - 14.3	10,946	34.4	4.6 - 44.1	31,838
Unemployed	n/r	n/r	n/r	n/r	n/r	n/r	n/r	n/r	n/r	n/r	n/r	n/r	n/r	n/r	n/r	n/r	n/r	n/r	n/r
Student/Homemaker	n/r	n/r	n/r	n/r	n/r	n/r	n/r	n/r	n/r	n/r	n/r	n/r	n/r	n/r	n/r	n/r	n/r	n/r	n/r
Retired/Unable to work	2,709	29.7	7.3 - 42.2	2,062	22.6	0.3 - 34.9	1,313	14.4	3.7 - 25.1	1,144	12.6	3.8 - 21.3	602	6.6	.0 - 13.8	1,282	14.1	3.8 - 24.3	9,112

**During the Past 30 Days, How Often Did You Take Asthma Medication Prescribed by a Doctor, Including Using an Inhaler
(Among Those Who Currently Have Asthma) by Year Total, County, BRFSS Age Group, DOH Race-Ethnicity, Gender, County
and Community, Education Level, Employment Status (Grouped), Household Income, Island, Marital Status (Grouped), Poverty
Level, for the Year(s) - 2003, 2004**

*Note: Weighted numbers (#), percentages and 95% confidence intervals; Respondents aged 18 years and older; n/r (Not Reportable) -
Represents cell size restriction of unweighted count < 50; n/a (Not Available) - Not asked of a subset of respondents*

Year: 2003

Household Income	Once everyday			2 or more times everyday			Less than once a week			Once or twice a week			More than 2 times a week, but not everyday			Did not take any			Estimated Adult Population	
	#	%	C.I. (95%)	#	%	C.I. (95%)	#	%	C.I. (95%)	#	%	C.I. (95%)	#	%	C.I. (95%)	#	%	C.I. (95%)	#	
Less than \$10,000	n/r	n/r	n/r	n/r	n/r	n/r	n/r	n/r	n/r	n/r	n/r	n/r	n/r	n/r	n/r	n/r	n/r	n/r	n/r	n/r
\$10,000 to \$14,999	n/r	n/r	n/r	n/r	n/r	n/r	n/r	n/r	n/r	n/r	n/r	n/r	n/r	n/r	n/r	n/r	n/r	n/r	n/r	n/r
\$15,000 to \$19,999	n/r	n/r	n/r	n/r	n/r	n/r	n/r	n/r	n/r	n/r	n/r	n/r	n/r	n/r	n/r	n/r	n/r	n/r	n/r	n/r
\$20,000 to \$24,999	n/r	n/r	n/r	n/r	n/r	n/r	n/r	n/r	n/r	n/r	n/r	n/r	n/r	n/r	n/r	n/r	n/r	n/r	n/r	n/r
\$25,000 to \$34,999	n/r	n/r	n/r	n/r	n/r	n/r	n/r	n/r	n/r	n/r	n/r	n/r	n/r	n/r	n/r	n/r	n/r	n/r	n/r	n/r
\$35,000 to \$49,999	n/r	n/r	n/r	n/r	n/r	n/r	n/r	n/r	n/r	n/r	n/r	n/r	n/r	n/r	n/r	n/r	n/r	n/r	n/r	n/r
\$50,000 to \$74,999	n/r	n/r	n/r	n/r	n/r	n/r	n/r	n/r	n/r	n/r	n/r	n/r	n/r	n/r	n/r	n/r	n/r	n/r	n/r	n/r
\$75,000 or more	n/r	n/r	n/r	n/r	n/r	n/r	n/r	n/r	n/r	n/r	n/r	n/r	n/r	n/r	n/r	n/r	n/r	n/r	n/r	n/r

**During the Past 30 Days, How Often Did You Take Asthma Medication Prescribed by a Doctor, Including Using an Inhaler
(Among Those Who Currently Have Asthma) by Year Total, County, BRFSS Age Group, DOH Race-Ethnicity, Gender, County
and Community, Education Level, Employment Status (Grouped), Household Income, Island, Marital Status (Grouped), Poverty
Level, for the Year(s) - 2003, 2004**

*Note: Weighted numbers (#), percentages and 95% confidence intervals; Respondents aged 18 years and older; n/r (Not Reportable) -
Represents cell size restriction of unweighted count < 50; n/a (Not Available) - Not asked of a subset of respondents*

Year: 2003

Island	Once everyday			2 or more times everyday			Less than once a week			Once or twice a week			More than 2 times a week, but not everyday			Did not take any			Estimated Adult Population	
	#	%	C.I. (95%)	#	%	C.I. (95%)	#	%	C.I. (95%)	#	%	C.I. (95%)	#	%	C.I. (95%)	#	%	C.I. (95%)	#	
Hawaii	1,375	20.3	8.9 - 31.7	1,010	14.9	2.5 - 27.3	157	2.3	.0 - 5.7	2,011	29.7	3.6 - 45.8	805	11.9	.0 - 25.7	1,413	20.9	8.4 - 33.3	6,771	
Kauai	n/r	n/r	n/r	n/r	n/r	n/r	n/r	n/r	n/r	n/r	n/r	n/r	n/r	n/r	n/r	n/r	n/r	n/r	n/r	n/r
Maui	n/r	n/r	n/r	n/r	n/r	n/r	n/r	n/r	n/r	n/r	n/r	n/r	n/r	n/r	n/r	n/r	n/r	n/r	n/r	n/r
Lanai	n/r	n/r	n/r	n/r	n/r	n/r	n/r	n/r	n/r	n/r	n/r	n/r	n/r	n/r	n/r	n/r	n/r	n/r	n/r	n/r
Molokai	n/r	n/r	n/r	n/r	n/r	n/r	n/r	n/r	n/r	n/r	n/r	n/r	n/r	n/r	n/r	n/r	n/r	n/r	n/r	n/r
Oahu	7,480	21.8	3.7 - 29.9	5,469	16.0	9.1 - 22.9	4,570	13.3	5.9 - 20.8	4,990	14.6	5.8 - 23.3	1,873	5.5	.0 - 11.1	9,886	28.8	9.3 - 38.4	34,268	

**During the Past 30 Days, How Often Did You Take Asthma Medication Prescribed by a Doctor, Including Using an Inhaler
(Among Those Who Currently Have Asthma) by Year Total, County, BRFSS Age Group, DOH Race-Ethnicity, Gender, County
and Community, Education Level, Employment Status (Grouped), Household Income, Island, Marital Status (Grouped), Poverty
Level, for the Year(s) - 2003, 2004**

*Note: Weighted numbers (#), percentages and 95% confidence intervals; Respondents aged 18 years and older; n/r (Not Reportable) -
Represents cell size restriction of unweighted count < 50; n/a (Not Available) - Not asked of a subset of respondents*

Year: 2003

Marital Status (Grouped)	Once everyday			2 or more times everyday			Less than once a week			Once or twice a week			More than 2 times a week, but not everyday			Did not take any			Estimated Adult Population
	#	%	C.I. (95%)	#	%	C.I. (95%)	#	%	C.I. (95%)	#	%	C.I. (95%)	#	%	C.I. (95%)	#	%	C.I. (95%)	#
Married	7,330	28.1	8.7 - 37.5	3,225	12.4	5.8 - 18.9	2,253	8.6	3.0 - 14.2	2,488	9.5	4.7 - 14.4	2,653	10.2	2.4 - 17.9	8,163	31.3	1.3 - 41.3	26,112
Unmarried Couple	n/r	n/r	n/r	n/r	n/r	n/r	n/r	n/r	n/r	n/r	n/r	n/r	n/r	n/r	n/r	n/r	n/r	n/r	n/r
Widowed	n/r	n/r	n/r	n/r	n/r	n/r	n/r	n/r	n/r	n/r	n/r	n/r	n/r	n/r	n/r	n/r	n/r	n/r	n/r
Other	2,248	11.1	4.8 - 17.4	2,755	13.6	5.2 - 22.1	2,922	14.4	5.9 - 23.0	4,591	22.7	9.4 - 36.0	799	4.0	.0 - 8.4	6,922	34.2	0.6 - 47.8	20,237

**During the Past 30 Days, How Often Did You Take Asthma Medication Prescribed by a Doctor, Including Using an Inhaler
(Among Those Who Currently Have Asthma) by Year Total, County, BRFSS Age Group, DOH Race-Ethnicity, Gender, County
and Community, Education Level, Employment Status (Grouped), Household Income, Island, Marital Status (Grouped), Poverty
Level, for the Year(s) - 2003, 2004**

*Note: Weighted numbers (#), percentages and 95% confidence intervals; Respondents aged 18 years and older; n/r (Not Reportable) -
Represents cell size restriction of unweighted count < 50; n/a (Not Available) - Not asked of a subset of respondents*

Year: 2003

Poverty Level	Once everyday			2 or more times everyday			Less than once a week			Once or twice a week			More than 2 times a week, but not everyday			Did not take any			Estimated Adult Population	
	#	%	C.I. (95%)	#	%	C.I. (95%)	#	%	C.I. (95%)	#	%	C.I. (95%)	#	%	C.I. (95%)	#	%	C.I. (95%)	#	
1-50%	n/r	n/r	n/r	n/r	n/r	n/r	n/r	n/r	n/r	n/r	n/r	n/r	n/r	n/r	n/r	n/r	n/r	n/r	n/r	n/r
51-100%	n/r	n/r	n/r	n/r	n/r	n/r	n/r	n/r	n/r	n/r	n/r	n/r	n/r	n/r	n/r	n/r	n/r	n/r	n/r	n/r
101-120%	n/r	n/r	n/r	n/r	n/r	n/r	n/r	n/r	n/r	n/r	n/r	n/r	n/r	n/r	n/r	n/r	n/r	n/r	n/r	n/r
121-130%	n/r	n/r	n/r	n/r	n/r	n/r	n/r	n/r	n/r	n/r	n/r	n/r	n/r	n/r	n/r	n/r	n/r	n/r	n/r	n/r
131-150%	n/r	n/r	n/r	n/r	n/r	n/r	n/r	n/r	n/r	n/r	n/r	n/r	n/r	n/r	n/r	n/r	n/r	n/r	n/r	n/r
151-170%	n/r	n/r	n/r	n/r	n/r	n/r	n/r	n/r	n/r	n/r	n/r	n/r	n/r	n/r	n/r	n/r	n/r	n/r	n/r	n/r
171-180%	n/r	n/r	n/r	n/r	n/r	n/r	n/r	n/r	n/r	n/r	n/r	n/r	n/r	n/r	n/r	n/r	n/r	n/r	n/r	n/r
186+%	5,110	25.1	5.2 - 35.0	3,597	17.7	9.2 - 26.1	2,531	12.4	4.6 - 20.2	3,232	15.9	5.2 - 26.6	868	4.3	.0 - 9.2	5,036	24.7	4.7 - 34.7	20,374	

**During the Past 30 Days, How Often Did You Take Asthma Medication Prescribed by a Doctor, Including Using an Inhaler
(Among Those Who Currently Have Asthma) by Year Total, County, BRFSS Age Group, DOH Race-Ethnicity, Gender, County
and Community, Education Level, Employment Status (Grouped), Household Income, Island, Marital Status (Grouped), Poverty
Level, for the Year(s) - 2003, 2004**

*Note: Weighted numbers (#), percentages and 95% confidence intervals; Respondents aged 18 years and older; n/r (Not Reportable) -
Represents cell size restriction of unweighted count < 50; n/a (Not Available) - Not asked of a subset of respondents*

Year: 2003

Year: 2004

Year Total	Once everyday			2 or more times everyday			Less than once a week			Once or twice a week			More than 2 times a week, but not everyday			Did not take any			Estimated Adult Population
	#	%	C.I. (95%)	#	%	C.I. (95%)	#	%	C.I. (95%)	#	%	C.I. (95%)	#	%	C.I. (95%)	#	%	C.I. (95%)	#
State	19,824	27.6	7.3 - 37.8	8,919	12.4	6.2 - 18.6	8,698	12.1	5.4 - 18.8	7,530	10.5	2.4 - 18.6	2,604	3.6	.4 - 6.8	24,373	33.9	4.0 - 43.7	71,948

**During the Past 30 Days, How Often Did You Take Asthma Medication Prescribed by a Doctor, Including Using an Inhaler
(Among Those Who Currently Have Asthma) by Year Total, County, BRFSS Age Group, DOH Race-Ethnicity, Gender, County
and Community, Education Level, Employment Status (Grouped), Household Income, Island, Marital Status (Grouped), Poverty
Level, for the Year(s) - 2003, 2004**

*Note: Weighted numbers (#), percentages and 95% confidence intervals; Respondents aged 18 years and older; n/r (Not Reportable) -
Represents cell size restriction of unweighted count < 50; n/a (Not Available) - Not asked of a subset of respondents*

Year: 2004

County	Once everyday			2 or more times everyday			Less than once a week			Once or twice a week			More than 2 times a week, but not everyday			Did not take any			Estimated Adult Population	
	#	%	C.I. (95%)	#	%	C.I. (95%)	#	%	C.I. (95%)	#	%	C.I. (95%)	#	%	C.I. (95%)	#	%	C.I. (95%)	#	
Hawaii	n/r	n/r	n/r	n/r	n/r	n/r	n/r	n/r	n/r	n/r	n/r	n/r	n/r	n/r	n/r	n/r	n/r	n/r	n/r	n/r
Honolulu	15,445	31.5	7.2 - 45.8	5,462	11.1	2.7 - 19.6	6,089	12.4	3.5 - 21.3	5,120	10.4	.0 - 22.1	1,510	3.1	.0 - 7.4	15,409	31.4	8.8 - 44.0	49,035	
Kauai	n/r	n/r	n/r	n/r	n/r	n/r	n/r	n/r	n/r	n/r	n/r	n/r	n/r	n/r	n/r	n/r	n/r	n/r	n/r	n/r
Maui	n/r	n/r	n/r	n/r	n/r	n/r	n/r	n/r	n/r	n/r	n/r	n/r	n/r	n/r	n/r	n/r	n/r	n/r	n/r	n/r

**During the Past 30 Days, How Often Did You Take Asthma Medication Prescribed by a Doctor, Including Using an Inhaler
(Among Those Who Currently Have Asthma) by Year Total, County, BRFSS Age Group, DOH Race-Ethnicity, Gender, County
and Community, Education Level, Employment Status (Grouped), Household Income, Island, Marital Status (Grouped), Poverty
Level, for the Year(s) - 2003, 2004**

*Note: Weighted numbers (#), percentages and 95% confidence intervals; Respondents aged 18 years and older; n/r (Not Reportable) -
Represents cell size restriction of unweighted count < 50; n/a (Not Available) - Not asked of a subset of respondents*

Year: 2004

BRFSS Age Group	Once everyday			2 or more times everyday			Less than once a week			Once or twice a week			More than 2 times a week, but not everyday			Did not take any			Estimated Adult Population	
	#	%	C.I. (95%)	#	%	C.I. (95%)	#	%	C.I. (95%)	#	%	C.I. (95%)	#	%	C.I. (95%)	#	%	C.I. (95%)	#	
18-24	n/r	n/r	n/r	n/r	n/r	n/r	n/r	n/r	n/r	n/r	n/r	n/r	n/r	n/r	n/r	n/r	n/r	n/r	n/r	n/r
25-34	n/r	n/r	n/r	n/r	n/r	n/r	n/r	n/r	n/r	n/r	n/r	n/r	n/r	n/r	n/r	n/r	n/r	n/r	n/r	n/r
35-44	n/r	n/r	n/r	n/r	n/r	n/r	n/r	n/r	n/r	n/r	n/r	n/r	n/r	n/r	n/r	n/r	n/r	n/r	n/r	n/r
45-54	n/r	n/r	n/r	n/r	n/r	n/r	n/r	n/r	n/r	n/r	n/r	n/r	n/r	n/r	n/r	n/r	n/r	n/r	n/r	n/r
55-64	n/r	n/r	n/r	n/r	n/r	n/r	n/r	n/r	n/r	n/r	n/r	n/r	n/r	n/r	n/r	n/r	n/r	n/r	n/r	n/r
65-74	n/r	n/r	n/r	n/r	n/r	n/r	n/r	n/r	n/r	n/r	n/r	n/r	n/r	n/r	n/r	n/r	n/r	n/r	n/r	n/r
75+	n/r	n/r	n/r	n/r	n/r	n/r	n/r	n/r	n/r	n/r	n/r	n/r	n/r	n/r	n/r	n/r	n/r	n/r	n/r	n/r

**During the Past 30 Days, How Often Did You Take Asthma Medication Prescribed by a Doctor, Including Using an Inhaler
(Among Those Who Currently Have Asthma) by Year Total, County, BRFSS Age Group, DOH Race-Ethnicity, Gender, County
and Community, Education Level, Employment Status (Grouped), Household Income, Island, Marital Status (Grouped), Poverty
Level, for the Year(s) - 2003, 2004**

*Note: Weighted numbers (#), percentages and 95% confidence intervals; Respondents aged 18 years and older; n/r (Not Reportable) -
Represents cell size restriction of unweighted count < 50; n/a (Not Available) - Not asked of a subset of respondents*

Year: 2004

DOH Race-Ethnicity	Once everyday			2 or more times everyday			Less than once a week			Once or twice a week			More than 2 times a week, but not everyday			Did not take any			Estimated Adult Population
	#	%	C.I. (95%)	#	%	C.I. (95%)	#	%	C.I. (95%)	#	%	C.I. (95%)	#	%	C.I. (95%)	#	%	C.I. (95%)	#
White	7,705	28.1	1.5 - 44.7	4,065	14.8	4.3 - 25.3	5,067	18.5	6.8 - 30.1	1,827	6.7	.0 - 13.3	861	3.1	.0 - 8.5	7,885	28.8	4.2 - 43.3	27,410
Native Hawaiian	n/r	n/r	n/r	n/r	n/r	n/r	n/r	n/r	n/r	n/r	n/r	n/r	n/r	n/r	n/r	n/r	n/r	n/r	n/r
Chinese	n/r	n/r	n/r	n/r	n/r	n/r	n/r	n/r	n/r	n/r	n/r	n/r	n/r	n/r	n/r	n/r	n/r	n/r	n/r
Filipino	n/r	n/r	n/r	n/r	n/r	n/r	n/r	n/r	n/r	n/r	n/r	n/r	n/r	n/r	n/r	n/r	n/r	n/r	n/r
Japanese	n/r	n/r	n/r	n/r	n/r	n/r	n/r	n/r	n/r	n/r	n/r	n/r	n/r	n/r	n/r	n/r	n/r	n/r	n/r
Black	n/r	n/r	n/r	n/r	n/r	n/r	n/r	n/r	n/r	n/r	n/r	n/r	n/r	n/r	n/r	n/r	n/r	n/r	n/r
Other Pacific Islander	n/r	n/r	n/r	n/r	n/r	n/r	n/r	n/r	n/r	n/r	n/r	n/r	n/r	n/r	n/r	n/r	n/r	n/r	n/r
Other Asian	n/r	n/r	n/r	n/r	n/r	n/r	n/r	n/r	n/r	n/r	n/r	n/r	n/r	n/r	n/r	n/r	n/r	n/r	n/r
Native Alaskan/ American Indian	n/r	n/r	n/r	n/r	n/r	n/r	n/r	n/r	n/r	n/r	n/r	n/r	n/r	n/r	n/r	n/r	n/r	n/r	n/r
Other	n/r	n/r	n/r	n/r	n/r	n/r	n/r	n/r	n/r	n/r	n/r	n/r	n/r	n/r	n/r	n/r	n/r	n/r	n/r

**During the Past 30 Days, How Often Did You Take Asthma Medication Prescribed by a Doctor, Including Using an Inhaler
(Among Those Who Currently Have Asthma) by Year Total, County, BRFSS Age Group, DOH Race-Ethnicity, Gender, County
and Community, Education Level, Employment Status (Grouped), Household Income, Island, Marital Status (Grouped), Poverty
Level, for the Year(s) - 2003, 2004**

*Note: Weighted numbers (#), percentages and 95% confidence intervals; Respondents aged 18 years and older; n/r (Not Reportable) -
Represents cell size restriction of unweighted count < 50; n/a (Not Available) - Not asked of a subset of respondents*

Year: 2004

Gender	Once everyday			2 or more times everyday			Less than once a week			Once or twice a week			More than 2 times a week, but not everyday			Did not take any			Estimated Adult Population
	#	%	C.I. (95%)	#	%	C.I. (95%)	#	%	C.I. (95%)	#	%	C.I. (95%)	#	%	C.I. (95%)	#	%	C.I. (95%)	#
Female	13,501	28.8	6.2 - 41.4	6,652	14.2	6.0 - 22.4	5,897	12.6	3.9 - 21.2	5,437	11.6	.5 - 22.7	2,604	5.6	.7 - 10.5	12,793	27.3	7.0 - 37.6	46,884
Male	n/r	n/r	n/r	n/r	n/r	n/r	n/r	n/r	n/r	n/r	n/r	n/r	n/r	n/r	n/r	n/r	n/r	n/r	n/r

County and Community	Once everyday			2 or more times everyday			Less than once a week			Once or twice a week			More than 2 times a week, but not everyday			Did not take any			Estimated Adult Population
	#	%	C.I. (95%)	#	%	C.I. (95%)	#	%	C.I. (95%)	#	%	C.I. (95%)	#	%	C.I. (95%)	#	%	C.I. (95%)	#
Hawaii-Hilo	n/r	n/r	n/r	n/r	n/r	n/r	n/r	n/r	n/r	n/r	n/r	n/r	n/r	n/r	n/r	n/r	n/r	n/r	n/r
Hawaii-Kona	n/r	n/r	n/r	n/r	n/r	n/r	n/r	n/r	n/r	n/r	n/r	n/r	n/r	n/r	n/r	n/r	n/r	n/r	n/r
Hawaii-N.Hawaii	n/r	n/r	n/r	n/r	n/r	n/r	n/r	n/r	n/r	n/r	n/r	n/r	n/r	n/r	n/r	n/r	n/r	n/r	n/r
Hawaii-Puna/ Kau	n/r	n/r	n/r	n/r	n/r	n/r	n/r	n/r	n/r	n/r	n/r	n/r	n/r	n/r	n/r	n/r	n/r	n/r	n/r
Honolulu-Aiea/ Pearl City	n/r	n/r	n/r	n/r	n/r	n/r	n/r	n/r	n/r	n/r	n/r	n/r	n/r	n/r	n/r	n/r	n/r	n/r	n/r
Honolulu-Ala Moana	n/r	n/r	n/r	n/r	n/r	n/r	n/r	n/r	n/r	n/r	n/r	n/r	n/r	n/r	n/r	n/r	n/r	n/r	n/r
Honolulu-Kaaawa/ Kahaluu/ Kaneohe	n/r	n/r	n/r	n/r	n/r	n/r	n/r	n/r	n/r	n/r	n/r	n/r	n/r	n/r	n/r	n/r	n/r	n/r	n/r
Honolulu-Kailua/ Waimanalo	n/r	n/r	n/r	n/r	n/r	n/r	n/r	n/r	n/r	n/r	n/r	n/r	n/r	n/r	n/r	n/r	n/r	n/r	n/r

**During the Past 30 Days, How Often Did You Take Asthma Medication Prescribed by a Doctor, Including Using an Inhaler
(Among Those Who Currently Have Asthma) by Year Total, County, BRFSS Age Group, DOH Race-Ethnicity, Gender, County
and Community, Education Level, Employment Status (Grouped), Household Income, Island, Marital Status (Grouped), Poverty
Level, for the Year(s) - 2003, 2004**

*Note: Weighted numbers (#), percentages and 95% confidence intervals; Respondents aged 18 years and older; n/r (Not Reportable) -
Represents cell size restriction of unweighted count < 50; n/a (Not Available) - Not asked of a subset of respondents*

Year: 2004

County and Community	Once everyday			2 or more times everyday			Less than once a week			Once or twice a week			More than 2 times a week, but not everyday			Did not take any			Estimated Adult Population	
	#	%	C.I. (95%)	#	%	C.I. (95%)	#	%	C.I. (95%)	#	%	C.I. (95%)	#	%	C.I. (95%)	#	%	C.I. (95%)	#	
Honolulu-Kaimuki/ Palolo/ Waikiki	n/r	n/r	n/r	n/r	n/r	n/r	n/r	n/r	n/r	n/r	n/r	n/r	n/r	n/r	n/r	n/r	n/r	n/r	n/r	n/r
Honolulu-Manoa/ Upper Makiki	n/r	n/r	n/r	n/r	n/r	n/r	n/r	n/r	n/r	n/r	n/r	n/r	n/r	n/r	n/r	n/r	n/r	n/r	n/r	n/r
Honolulu-Mililani/ Wahiawa	n/r	n/r	n/r	n/r	n/r	n/r	n/r	n/r	n/r	n/r	n/r	n/r	n/r	n/r	n/r	n/r	n/r	n/r	n/r	n/r
Honolulu-Nanakuli/ Waianae	n/r	n/r	n/r	n/r	n/r	n/r	n/r	n/r	n/r	n/r	n/r	n/r	n/r	n/r	n/r	n/r	n/r	n/r	n/r	n/r
Honolulu-N.Shore/ Laie	n/r	n/r	n/r	n/r	n/r	n/r	n/r	n/r	n/r	n/r	n/r	n/r	n/r	n/r	n/r	n/r	n/r	n/r	n/r	n/r
Honolulu-Nuuanu/ Kalihi/ Moanalua	n/r	n/r	n/r	n/r	n/r	n/r	n/r	n/r	n/r	n/r	n/r	n/r	n/r	n/r	n/r	n/r	n/r	n/r	n/r	n/r
Honolulu-Salt Lake/ Foster Village	n/r	n/r	n/r	n/r	n/r	n/r	n/r	n/r	n/r	n/r	n/r	n/r	n/r	n/r	n/r	n/r	n/r	n/r	n/r	n/r
Honolulu-Waiialae/ Kahala/ Hawaii Kai	n/r	n/r	n/r	n/r	n/r	n/r	n/r	n/r	n/r	n/r	n/r	n/r	n/r	n/r	n/r	n/r	n/r	n/r	n/r	n/r
Honolulu-Waipahu/ Kapolei/ Ewa	n/r	n/r	n/r	n/r	n/r	n/r	n/r	n/r	n/r	n/r	n/r	n/r	n/r	n/r	n/r	n/r	n/r	n/r	n/r	n/r
Kauai-Hanalei/ Kapaa	n/r	n/r	n/r	n/r	n/r	n/r	n/r	n/r	n/r	n/r	n/r	n/r	n/r	n/r	n/r	n/r	n/r	n/r	n/r	n/r
Kauai-Lihue-Waimea	n/r	n/r	n/r	n/r	n/r	n/r	n/r	n/r	n/r	n/r	n/r	n/r	n/r	n/r	n/r	n/r	n/r	n/r	n/r	n/r
Maui-Kahului	n/r	n/r	n/r	n/r	n/r	n/r	n/r	n/r	n/r	n/r	n/r	n/r	n/r	n/r	n/r	n/r	n/r	n/r	n/r	n/r
Maui-Lanai	n/r	n/r	n/r	n/r	n/r	n/r	n/r	n/r	n/r	n/r	n/r	n/r	n/r	n/r	n/r	n/r	n/r	n/r	n/r	n/r

**During the Past 30 Days, How Often Did You Take Asthma Medication Prescribed by a Doctor, Including Using an Inhaler
(Among Those Who Currently Have Asthma) by Year Total, County, BRFSS Age Group, DOH Race-Ethnicity, Gender, County
and Community, Education Level, Employment Status (Grouped), Household Income, Island, Marital Status (Grouped), Poverty
Level, for the Year(s) - 2003, 2004**

*Note: Weighted numbers (#), percentages and 95% confidence intervals; Respondents aged 18 years and older; n/r (Not Reportable) -
Represents cell size restriction of unweighted count < 50; n/a (Not Available) - Not asked of a subset of respondents*

Year: 2004

County and Community	Once everyday			2 or more times everyday			Less than once a week			Once or twice a week			More than 2 times a week, but not everyday			Did not take any			Estimated Adult Population	
	#	%	C.I. (95%)	#	%	C.I. (95%)	#	%	C.I. (95%)	#	%	C.I. (95%)	#	%	C.I. (95%)	#	%	C.I. (95%)	#	
Maui-Lahaina/ Wailuku	n/r	n/r	n/r	n/r	n/r	n/r	n/r	n/r	n/r	n/r	n/r	n/r	n/r	n/r	n/r	n/r	n/r	n/r	n/r	n/r
Maui-Molokai	n/r	n/r	n/r	n/r	n/r	n/r	n/r	n/r	n/r	n/r	n/r	n/r	n/r	n/r	n/r	n/r	n/r	n/r	n/r	n/r
Maui-Upcountry/ Hana	n/r	n/r	n/r	n/r	n/r	n/r	n/r	n/r	n/r	n/r	n/r	n/r	n/r	n/r	n/r	n/r	n/r	n/r	n/r	n/r

Education Level	Once everyday			2 or more times everyday			Less than once a week			Once or twice a week			More than 2 times a week, but not everyday			Did not take any			Estimated Adult Population	
	#	%	C.I. (95%)	#	%	C.I. (95%)	#	%	C.I. (95%)	#	%	C.I. (95%)	#	%	C.I. (95%)	#	%	C.I. (95%)	#	
Grades 9 thru 11 (Some High School)	n/r	n/r	n/r	n/r	n/r	n/r	n/r	n/r	n/r	n/r	n/r	n/r	n/r	n/r	n/r	n/r	n/r	n/r	n/r	n/r
Grades 12 or GED (High School Grad)	5,195	20.9	4.2 - 37.6	2,791	11.2	.0 - 22.6	3,016	12.1	.8 - 23.5	4,801	19.3	.0 - 38.8	538	2.2	.0 - 5.2	8,530	34.3	6.7 - 51.9	24,871	
College 1 to 3 years (Some College/ Tech)	4,101	21.3	7.8 - 34.8	2,837	14.7	1.6 - 27.9	3,534	18.3	2.4 - 34.3	741	3.8	.0 - 7.7	556	2.9	.0 - 5.8	7,501	38.9	1.9 - 56.0	19,270	
College 4 years or more (College Grad)	n/r	n/r	n/r	n/r	n/r	n/r	n/r	n/r	n/r	n/r	n/r	n/r	n/r	n/r	n/r	n/r	n/r	n/r	n/r	n/r
Never attended school/ Only Kindergarten to Grades 8	n/r	n/r	n/r	n/r	n/r	n/r	n/r	n/r	n/r	n/r	n/r	n/r	n/r	n/r	n/r	n/r	n/r	n/r	n/r	n/r

**During the Past 30 Days, How Often Did You Take Asthma Medication Prescribed by a Doctor, Including Using an Inhaler
(Among Those Who Currently Have Asthma) by Year Total, County, BRFSS Age Group, DOH Race-Ethnicity, Gender, County
and Community, Education Level, Employment Status (Grouped), Household Income, Island, Marital Status (Grouped), Poverty
Level, for the Year(s) - 2003, 2004**

*Note: Weighted numbers (#), percentages and 95% confidence intervals; Respondents aged 18 years and older; n/r (Not Reportable) -
Represents cell size restriction of unweighted count < 50; n/a (Not Available) - Not asked of a subset of respondents*

Year: 2004

Employment Status (Grouped)	Once everyday			2 or more times everyday			Less than once a week			Once or twice a week			More than 2 times a week, but not everyday			Did not take any			Estimated Adult Population
	#	%	C.I. (95%)	#	%	C.I. (95%)	#	%	C.I. (95%)	#	%	C.I. (95%)	#	%	C.I. (95%)	#	%	C.I. (95%)	#
Employed	11,657	27.2	4.8 - 39.7	6,181	14.4	5.4 - 23.5	6,012	14.0	4.4 - 23.7	3,750	8.8	1.8 - 15.7	2,067	4.8	.0 - 9.9	13,157	30.7	9.5 - 42.0	42,824
Unemployed	n/r	n/r	n/r	n/r	n/r	n/r	n/r	n/r	n/r	n/r	n/r	n/r	n/r	n/r	n/r	n/r	n/r	n/r	n/r
Student/Homemaker	n/r	n/r	n/r	n/r	n/r	n/r	n/r	n/r	n/r	n/r	n/r	n/r	n/r	n/r	n/r	n/r	n/r	n/r	n/r
Retired/Unable to work	n/r	n/r	n/r	n/r	n/r	n/r	n/r	n/r	n/r	n/r	n/r	n/r	n/r	n/r	n/r	n/r	n/r	n/r	n/r

**During the Past 30 Days, How Often Did You Take Asthma Medication Prescribed by a Doctor, Including Using an Inhaler
(Among Those Who Currently Have Asthma) by Year Total, County, BRFSS Age Group, DOH Race-Ethnicity, Gender, County
and Community, Education Level, Employment Status (Grouped), Household Income, Island, Marital Status (Grouped), Poverty
Level, for the Year(s) - 2003, 2004**

*Note: Weighted numbers (#), percentages and 95% confidence intervals; Respondents aged 18 years and older; n/r (Not Reportable) -
Represents cell size restriction of unweighted count < 50; n/a (Not Available) - Not asked of a subset of respondents*

Year: 2004

Household Income	Once everyday			2 or more times everyday			Less than once a week			Once or twice a week			More than 2 times a week, but not everyday			Did not take any			Estimated Adult Population	
	#	%	C.I. (95%)	#	%	C.I. (95%)	#	%	C.I. (95%)	#	%	C.I. (95%)	#	%	C.I. (95%)	#	%	C.I. (95%)	#	
Less than \$10,000	n/r	n/r	n/r	n/r	n/r	n/r	n/r	n/r	n/r	n/r	n/r	n/r	n/r	n/r	n/r	n/r	n/r	n/r	n/r	n/r
\$10,000 to \$14,999	n/r	n/r	n/r	n/r	n/r	n/r	n/r	n/r	n/r	n/r	n/r	n/r	n/r	n/r	n/r	n/r	n/r	n/r	n/r	n/r
\$15,000 to \$19,999	n/r	n/r	n/r	n/r	n/r	n/r	n/r	n/r	n/r	n/r	n/r	n/r	n/r	n/r	n/r	n/r	n/r	n/r	n/r	n/r
\$20,000 to \$24,999	n/r	n/r	n/r	n/r	n/r	n/r	n/r	n/r	n/r	n/r	n/r	n/r	n/r	n/r	n/r	n/r	n/r	n/r	n/r	n/r
\$25,000 to \$34,999	n/r	n/r	n/r	n/r	n/r	n/r	n/r	n/r	n/r	n/r	n/r	n/r	n/r	n/r	n/r	n/r	n/r	n/r	n/r	n/r
\$35,000 to \$49,999	n/r	n/r	n/r	n/r	n/r	n/r	n/r	n/r	n/r	n/r	n/r	n/r	n/r	n/r	n/r	n/r	n/r	n/r	n/r	n/r
\$50,000 to \$74,999	5,822	23.1	7.1 - 39.1	2,797	11.1	1.0 - 21.1	3,380	13.4	2.3 - 24.5	1,734	6.9	.0 - 16.4	936	3.7	.0 - 9.8	10,565	41.9	5.4 - 58.4	25,234	
\$75,000 or more	n/r	n/r	n/r	n/r	n/r	n/r	n/r	n/r	n/r	n/r	n/r	n/r	n/r	n/r	n/r	n/r	n/r	n/r	n/r	n/r

**During the Past 30 Days, How Often Did You Take Asthma Medication Prescribed by a Doctor, Including Using an Inhaler
(Among Those Who Currently Have Asthma) by Year Total, County, BRFSS Age Group, DOH Race-Ethnicity, Gender, County
and Community, Education Level, Employment Status (Grouped), Household Income, Island, Marital Status (Grouped), Poverty
Level, for the Year(s) - 2003, 2004**

*Note: Weighted numbers (#), percentages and 95% confidence intervals; Respondents aged 18 years and older; n/r (Not Reportable) -
Represents cell size restriction of unweighted count < 50; n/a (Not Available) - Not asked of a subset of respondents*

Year: 2004

Island	Once everyday			2 or more times everyday			Less than once a week			Once or twice a week			More than 2 times a week, but not everyday			Did not take any			Estimated Adult Population	
	#	%	C.I. (95%)	#	%	C.I. (95%)	#	%	C.I. (95%)	#	%	C.I. (95%)	#	%	C.I. (95%)	#	%	C.I. (95%)	#	
Hawaii	n/r	n/r	n/r	n/r	n/r	n/r	n/r	n/r	n/r	n/r	n/r	n/r	n/r	n/r	n/r	n/r	n/r	n/r	n/r	n/r
Kauai	n/r	n/r	n/r	n/r	n/r	n/r	n/r	n/r	n/r	n/r	n/r	n/r	n/r	n/r	n/r	n/r	n/r	n/r	n/r	n/r
Maui	n/r	n/r	n/r	n/r	n/r	n/r	n/r	n/r	n/r	n/r	n/r	n/r	n/r	n/r	n/r	n/r	n/r	n/r	n/r	n/r
Lanai	n/r	n/r	n/r	n/r	n/r	n/r	n/r	n/r	n/r	n/r	n/r	n/r	n/r	n/r	n/r	n/r	n/r	n/r	n/r	n/r
Molokai	n/r	n/r	n/r	n/r	n/r	n/r	n/r	n/r	n/r	n/r	n/r	n/r	n/r	n/r	n/r	n/r	n/r	n/r	n/r	n/r
Oahu	15,445	31.5	7.3 - 45.7	5,462	11.1	2.8 - 19.5	6,089	12.4	3.6 - 21.2	5,120	10.4	.0 - 21.9	1,510	3.1	.0 - 7.4	15,409	31.4	9.0 - 43.9	49,035	

**During the Past 30 Days, How Often Did You Take Asthma Medication Prescribed by a Doctor, Including Using an Inhaler
(Among Those Who Currently Have Asthma) by Year Total, County, BRFSS Age Group, DOH Race-Ethnicity, Gender, County
and Community, Education Level, Employment Status (Grouped), Household Income, Island, Marital Status (Grouped), Poverty
Level, for the Year(s) - 2003, 2004**

*Note: Weighted numbers (#), percentages and 95% confidence intervals; Respondents aged 18 years and older; n/r (Not Reportable) -
Represents cell size restriction of unweighted count < 50; n/a (Not Available) - Not asked of a subset of respondents*

Year: 2004

Marital Status (Grouped)	Once everyday			2 or more times everyday			Less than once a week			Once or twice a week			More than 2 times a week, but not everyday			Did not take any			Estimated Adult Population
	#	%	C.I. (95%)	#	%	C.I. (95%)	#	%	C.I. (95%)	#	%	C.I. (95%)	#	%	C.I. (95%)	#	%	C.I. (95%)	#
Married	11,654	27.4	3.1 - 41.6	5,223	12.3	3.7 - 20.8	6,308	14.8	4.9 - 24.7	6,337	14.9	2.0 - 27.8	2,143	5.0	.0 - 10.3	10,938	25.7	4.3 - 37.0	42,603
Unmarried Couple	n/r	n/r	n/r	n/r	n/r	n/r	n/r	n/r	n/r	n/r	n/r	n/r	n/r	n/r	n/r	n/r	n/r	n/r	n/r
Widowed	n/r	n/r	n/r	n/r	n/r	n/r	n/r	n/r	n/r	n/r	n/r	n/r	n/r	n/r	n/r	n/r	n/r	n/r	n/r
Other	4,970	21.5	8.6 - 34.4	2,365	10.2	.0 - 20.5	2,228	9.6	.0 - 19.3	620	2.7	.0 - 6.1	462	2.0	.0 - 4.4	12,479	54.0	7.0 - 70.9	23,124

**During the Past 30 Days, How Often Did You Take Asthma Medication Prescribed by a Doctor, Including Using an Inhaler
(Among Those Who Currently Have Asthma) by Year Total, County, BRFSS Age Group, DOH Race-Ethnicity, Gender, County
and Community, Education Level, Employment Status (Grouped), Household Income, Island, Marital Status (Grouped), Poverty
Level, for the Year(s) - 2003, 2004**

*Note: Weighted numbers (#), percentages and 95% confidence intervals; Respondents aged 18 years and older; n/r (Not Reportable) -
Represents cell size restriction of unweighted count < 50; n/a (Not Available) - Not asked of a subset of respondents*

Year: 2004

Poverty Level	Once everyday			2 or more times everyday			Less than once a week			Once or twice a week			More than 2 times a week, but not everyday			Did not take any			Estimated Adult Population	
	#	%	C.I. (95%)	#	%	C.I. (95%)	#	%	C.I. (95%)	#	%	C.I. (95%)	#	%	C.I. (95%)	#	%	C.I. (95%)	#	
1-50%	n/r	n/r	n/r	n/r	n/r	n/r	n/r	n/r	n/r	n/r	n/r	n/r	n/r	n/r	n/r	n/r	n/r	n/r	n/r	n/r
51-100%	n/r	n/r	n/r	n/r	n/r	n/r	n/r	n/r	n/r	n/r	n/r	n/r	n/r	n/r	n/r	n/r	n/r	n/r	n/r	n/r
101-120%	n/r	n/r	n/r	n/r	n/r	n/r	n/r	n/r	n/r	n/r	n/r	n/r	n/r	n/r	n/r	n/r	n/r	n/r	n/r	n/r
121-130%	n/r	n/r	n/r	n/r	n/r	n/r	n/r	n/r	n/r	n/r	n/r	n/r	n/r	n/r	n/r	n/r	n/r	n/r	n/r	n/r
131-150%	n/r	n/r	n/r	n/r	n/r	n/r	n/r	n/r	n/r	n/r	n/r	n/r	n/r	n/r	n/r	n/r	n/r	n/r	n/r	n/r
151-170%	n/r	n/r	n/r	n/r	n/r	n/r	n/r	n/r	n/r	n/r	n/r	n/r	n/r	n/r	n/r	n/r	n/r	n/r	n/r	n/r
171-180%	n/r	n/r	n/r	n/r	n/r	n/r	n/r	n/r	n/r	n/r	n/r	n/r	n/r	n/r	n/r	n/r	n/r	n/r	n/r	n/r
186+%	13,501	26.8	5.1 - 38.6	7,562	15.0	6.6 - 23.4	5,968	11.9	4.8 - 18.9	3,025	6.0	.5 - 11.5	2,104	4.2	.0 - 8.6	18,155	36.1	5.0 - 47.2	50,315	

During the Past 30 Days, How Often Did You Take Asthma Medication Prescribed by a Doctor, Including Using an Inhaler (Among Those Who Currently Have Asthma) by Year Total, County, BRFSS Age Group, DOH Race-Ethnicity, Gender, County and Community, Education Level, Employment Status (Grouped), Household Income, Island, Marital Status (Grouped), Poverty Level, for the Year(s) - 2003, 2004

Note: Weighted numbers (#), percentages and 95% confidence intervals; Respondents aged 18 years and older; n/r (Not Reportable) - Represents cell size restriction of unweighted count < 50; n/a (Not Available) - Not asked of a subset of respondents

Year: 2004