

During the Past 12 Months, How Many Times Did You See a Doctor, Nurse or Other Health Professional for Urgent Treatment of Worsening Asthma Symptoms (Among Those Who Currently Have Asthma) by Year Total, County, BRFSS Age Group, DOH Race-Ethnicity, Gender, County and Community, Education Level, Employment Status (Grouped), Household Income, Island, Marital Status (Grouped), Poverty Level, for the Year(s) - 2003, 2004, 2005

*Note: Weighted numbers (#), percentages and 95% confidence intervals; Respondents aged 18 years and older;
n/r (Not Reportable) - Represents cell size restriction of unweighted count < 50;
n/a (Not Available) - Not asked of a subset of respondents*

The trend analysis report shows the trend for the selected health variable over selected years in a table and a graph; Estimated Adult Population: This number is a weighted representation of the adult population who responded to a particular question in the survey. For most questions the estimated adult population will be the entire adult population. For some secondary questions only a subset of the population was asked the question. For example, all survey participants were asked if they had diabetes, but only those who answered yes were asked if they use insulin. If a dimension value is unknown for a particular survey record, that record will not be included in the counts for that particular dimension.

For documentation on other terms and coding in this report, please go to the following links

[Click here to access BRFSS documentation](#)

[Click here to access DOH Race-Ethnicity coding](#)

[Click here to access The Hawai'i Data Guide](#)

[Click here to access Poverty Level Methodology](#)

**For questions about this report, please contact
The Hawaii Health Data Warehouse**

profiles@hhdw.org

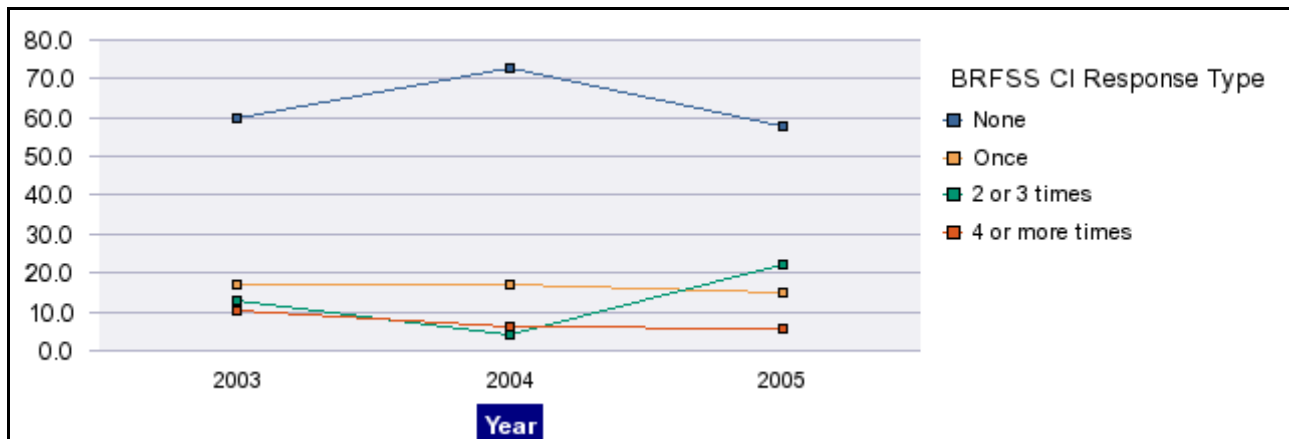
(808) 946-5899 x15

During the Past 12 Months, How Many Times Did You See a Doctor, Nurse or Other Health Professional for Urgent Treatment of Worsening Asthma Symptoms (Among Those Who Currently Have Asthma) by Year Total, County, BRFSS Age Group, DOH Race-Ethnicity, Gender, County and Community, Education Level, Employment Status (Grouped), Household Income, Island, Marital Status (Grouped), Poverty Level, for the Year(s) - 2003, 2004, 2005

Note: Weighted numbers (#), percentages and 95% confidence intervals; Respondents aged 18 years and older; n/r (Not Reportable) - Represents cell size restriction of unweighted count < 50; n/a (Not Available) - Not asked of a subset of respondents

	None			Once			2 or 3 times			4 or more times			Estimated Adult Population
	#	%	C.I.(95%)	#	%	C.I.(95%)	#	%	C.I.(95%)	#	%	C.I.(95%)	#
2003	32,174	60.0	52.0 - 67.9	9,021	16.8	10.5 - 23.1	6,818	12.7	7.0 - 18.4	5,641	10.5	5.8 - 15.3	53,654
2004	53,137	72.9	62.5 - 83.3	12,298	16.9	7.0 - 26.7	2,988	4.1	.9 - 7.3	4,447	6.1	1.3 - 10.9	72,870
2005	38,644	57.6	48.9 - 66.3	9,969	14.9	9.5 - 20.2	14,787	22.0	14.6 - 29.5	3,696	5.5	.2 - 10.8	67,096

Urgent Treatment of Worsening Asthma Symptoms (Among Those Who Currently Have Asthma), for the Year(s) - 2003, 2004, 2005



During the Past 12 Months, How Many Times Did You See a Doctor, Nurse or Other Health Professional for Urgent Treatment of Worsening Asthma Symptoms (Among Those Who Currently Have Asthma) by Year Total, County, BRFSS Age Group, DOH Race-Ethnicity, Gender, County and Community, Education Level, Employment Status (Grouped), Household Income, Island, Marital Status (Grouped), Poverty Level, for the Year(s) - 2003, 2004, 2005

Note: Weighted numbers (#), percentages and 95% confidence intervals; Respondents aged 18 years and older; n/r (Not Reportable) - Represents cell size restriction of unweighted count < 50; n/a (Not Available) - Not asked of a subset of respondents

Year: 2003

Year Total	None			Once			2 or 3 times			4 or more times			Estimated Adult Population
	#	%	C.I. (95%)	#	%	C.I. (95%)	#	%	C.I. (95%)	#	%	C.I. (95%)	#
State	32,174	60.0	2.0 - 67.9	9,021	16.8	0.5 - 23.1	6,818	12.7	7.0 - 18.4	5,641	10.5	5.8 - 15.3	53,654

County	None			Once			2 or 3 times			4 or more times			Estimated Adult Population
	#	%	C.I. (95%)	#	%	C.I. (95%)	#	%	C.I. (95%)	#	%	C.I. (95%)	#
Hawaii	4,075	58.6	1.7 - 75.5	681	9.8	1.0 - 18.6	1,051	15.1	3.8 - 26.5	1,148	16.5	1.3 - 31.7	6,955
Honolulu	21,696	60.4	9.9 - 70.9	5,868	16.3	7.9 - 24.8	5,174	14.4	6.3 - 22.4	3,199	8.9	3.2 - 14.7	35,937
Kauai	n/r	n/r	n/r	n/r	n/r	n/r	n/r	n/r	n/r	n/r	n/r	n/r	n/r
Maui	n/r	n/r	n/r	n/r	n/r	n/r	n/r	n/r	n/r	n/r	n/r	n/r	n/r

During the Past 12 Months, How Many Times Did You See a Doctor, Nurse or Other Health Professional for Urgent Treatment of Worsening Asthma Symptoms (Among Those Who Currently Have Asthma) by Year Total, County, BRFSS Age Group, DOH Race-Ethnicity, Gender, County and Community, Education Level, Employment Status (Grouped), Household Income, Island, Marital Status (Grouped), Poverty Level, for the Year(s) - 2003, 2004, 2005

Note: Weighted numbers (#), percentages and 95% confidence intervals; Respondents aged 18 years and older; n/r (Not Reportable) - Represents cell size restriction of unweighted count < 50; n/a (Not Available) - Not asked of a subset of respondents

Year: 2003

BRFSS Age Group	None			Once			2 or 3 times			4 or more times			Estimated Adult Population
	#	%	C.I. (95%)	#	%	C.I. (95%)	#	%	C.I. (95%)	#	%	C.I. (95%)	#
18-24	n/r	n/r	n/r	n/r	n/r	n/r	n/r	n/r	n/r	n/r	n/r	n/r	n/r
25-34	n/r	n/r	n/r	n/r	n/r	n/r	n/r	n/r	n/r	n/r	n/r	n/r	n/r
35-44	n/r	n/r	n/r	n/r	n/r	n/r	n/r	n/r	n/r	n/r	n/r	n/r	n/r
45-54	4,745	63.9	7.3 - 80.5	726	9.8	1.2 - 18.3	600	8.1	.0 - 17.6	1,357	18.3	4.5 - 32.0	7,428
55-64	n/r	n/r	n/r	n/r	n/r	n/r	n/r	n/r	n/r	n/r	n/r	n/r	n/r
65-74	n/r	n/r	n/r	n/r	n/r	n/r	n/r	n/r	n/r	n/r	n/r	n/r	n/r
75+	n/r	n/r	n/r	n/r	n/r	n/r	n/r	n/r	n/r	n/r	n/r	n/r	n/r

During the Past 12 Months, How Many Times Did You See a Doctor, Nurse or Other Health Professional for Urgent Treatment of Worsening Asthma Symptoms (Among Those Who Currently Have Asthma) by Year Total, County, BRFSS Age Group, DOH Race-Ethnicity, Gender, County and Community, Education Level, Employment Status (Grouped), Household Income, Island, Marital Status (Grouped), Poverty Level, for the Year(s) - 2003, 2004, 2005

Note: Weighted numbers (#), percentages and 95% confidence intervals; Respondents aged 18 years and older; n/r (Not Reportable) - Represents cell size restriction of unweighted count < 50; n/a (Not Available) - Not asked of a subset of respondents

Year: 2003

DOH Race-Ethnicity	None			Once			2 or 3 times			4 or more times			Estimated Adult Population
	#	%	C.I. (95%)	#	%	C.I. (95%)	#	%	C.I. (95%)	#	%	C.I. (95%)	#
White	12,040	51.9	0.2 - 63.5	3,160	13.6	5.7 - 21.5	3,160	13.6	5.3 - 21.9	4,851	20.9	1.1 - 30.7	23,211
Native Hawaiian	n/r	n/r	n/r	n/r	n/r	n/r	n/r	n/r	n/r	n/r	n/r	n/r	n/r
Chinese	n/r	n/r	n/r	n/r	n/r	n/r	n/r	n/r	n/r	n/r	n/r	n/r	n/r
Filipino	n/r	n/r	n/r	n/r	n/r	n/r	n/r	n/r	n/r	n/r	n/r	n/r	n/r
Japanese	n/r	n/r	n/r	n/r	n/r	n/r	n/r	n/r	n/r	n/r	n/r	n/r	n/r
Black	n/r	n/r	n/r	n/r	n/r	n/r	n/r	n/r	n/r	n/r	n/r	n/r	n/r
Other Pacific Islander	n/r	n/r	n/r	n/r	n/r	n/r	n/r	n/r	n/r	n/r	n/r	n/r	n/r
Other Asian	n/r	n/r	n/r	n/r	n/r	n/r	n/r	n/r	n/r	n/r	n/r	n/r	n/r
Native Alaskan/ American Indian	n/r	n/r	n/r	n/r	n/r	n/r	n/r	n/r	n/r	n/r	n/r	n/r	n/r
Other	n/r	n/r	n/r	n/r	n/r	n/r	n/r	n/r	n/r	n/r	n/r	n/r	n/r

During the Past 12 Months, How Many Times Did You See a Doctor, Nurse or Other Health Professional for Urgent Treatment of Worsening Asthma Symptoms (Among Those Who Currently Have Asthma) by Year Total, County, BRFSS Age Group, DOH Race-Ethnicity, Gender, County and Community, Education Level, Employment Status (Grouped), Household Income, Island, Marital Status (Grouped), Poverty Level, for the Year(s) - 2003, 2004, 2005

Note: Weighted numbers (#), percentages and 95% confidence intervals; Respondents aged 18 years and older; n/r (Not Reportable) - Represents cell size restriction of unweighted count < 50; n/a (Not Available) - Not asked of a subset of respondents

Year: 2003

Gender	None			Once			2 or 3 times			4 or more times			Estimated Adult Population
	#	%	C.I. (95%)	#	%	C.I. (95%)	#	%	C.I. (95%)	#	%	C.I. (95%)	#
Female	19,997	57.8	9.3 - 66.4	5,340	15.4	9.4 - 21.5	4,944	14.3	7.7 - 20.9	4,288	12.4	6.7 - 18.1	34,569
Male	12,177	63.8	7.9 - 79.7	3,681	19.3	5.8 - 32.8	1,874	9.8	.0 - 20.4	1,354	7.1	.0 - 15.4	19,086

County and Community	None			Once			2 or 3 times			4 or more times			Estimated Adult Population
	#	%	C.I. (95%)	#	%	C.I. (95%)	#	%	C.I. (95%)	#	%	C.I. (95%)	#
Hawaii-Hilo	n/r	n/r	n/r	n/r	n/r	n/r	n/r	n/r	n/r	n/r	n/r	n/r	n/r
Hawaii-Kona	n/r	n/r	n/r	n/r	n/r	n/r	n/r	n/r	n/r	n/r	n/r	n/r	n/r
Hawaii-N.Hawaii	n/r	n/r	n/r	n/r	n/r	n/r	n/r	n/r	n/r	n/r	n/r	n/r	n/r
Hawaii-Puna/ Kau	n/r	n/r	n/r	n/r	n/r	n/r	n/r	n/r	n/r	n/r	n/r	n/r	n/r
Honolulu-Aiea/ Pearl City	n/r	n/r	n/r	n/r	n/r	n/r	n/r	n/r	n/r	n/r	n/r	n/r	n/r
Honolulu-Ala Moana	n/r	n/r	n/r	n/r	n/r	n/r	n/r	n/r	n/r	n/r	n/r	n/r	n/r
Honolulu-Kaaawa/ Kahaluu/ Kaneohe	n/r	n/r	n/r	n/r	n/r	n/r	n/r	n/r	n/r	n/r	n/r	n/r	n/r
Honolulu-Kailua/ Waimanalo	n/r	n/r	n/r	n/r	n/r	n/r	n/r	n/r	n/r	n/r	n/r	n/r	n/r

During the Past 12 Months, How Many Times Did You See a Doctor, Nurse or Other Health Professional for Urgent Treatment of Worsening Asthma Symptoms (Among Those Who Currently Have Asthma) by Year Total, County, BRFSS Age Group, DOH Race-Ethnicity, Gender, County and Community, Education Level, Employment Status (Grouped), Household Income, Island, Marital Status (Grouped), Poverty Level, for the Year(s) - 2003, 2004, 2005

Note: Weighted numbers (#), percentages and 95% confidence intervals; Respondents aged 18 years and older; n/r (Not Reportable) - Represents cell size restriction of unweighted count < 50; n/a (Not Available) - Not asked of a subset of respondents

Year: 2003

County and Community	None			Once			2 or 3 times			4 or more times			Estimated Adult Population
	#	%	C.I. (95%)	#	%	C.I. (95%)	#	%	C.I. (95%)	#	%	C.I. (95%)	#
Honolulu-Kaimuki/ Palolo/ Waikiki	n/r	n/r	n/r	n/r	n/r	n/r	n/r	n/r	n/r	n/r	n/r	n/r	n/r
Honolulu-Manoa/ Upper Makiki	n/r	n/r	n/r	n/r	n/r	n/r	n/r	n/r	n/r	n/r	n/r	n/r	n/r
Honolulu-Mililani/ Wahiawa	n/r	n/r	n/r	n/r	n/r	n/r	n/r	n/r	n/r	n/r	n/r	n/r	n/r
Honolulu-Nanakuli/ Waianae	n/r	n/r	n/r	n/r	n/r	n/r	n/r	n/r	n/r	n/r	n/r	n/r	n/r
Honolulu-N.Shore/ Laie	n/r	n/r	n/r	n/r	n/r	n/r	n/r	n/r	n/r	n/r	n/r	n/r	n/r
Honolulu-Nuuanu/ Kalihi/ Moanalua	n/r	n/r	n/r	n/r	n/r	n/r	n/r	n/r	n/r	n/r	n/r	n/r	n/r
Honolulu-Salt Lake/ Foster Village	n/r	n/r	n/r	n/r	n/r	n/r	n/r	n/r	n/r	n/r	n/r	n/r	n/r
Honolulu-Waiialae/ Kahala/ Hawaii Kai	n/r	n/r	n/r	n/r	n/r	n/r	n/r	n/r	n/r	n/r	n/r	n/r	n/r
Honolulu-Waipahu/ Kapolei/ Ewa	n/r	n/r	n/r	n/r	n/r	n/r	n/r	n/r	n/r	n/r	n/r	n/r	n/r
Kauai-Hanalei/ Kapaa	n/r	n/r	n/r	n/r	n/r	n/r	n/r	n/r	n/r	n/r	n/r	n/r	n/r
Kauai-Lihue-Waimea	n/r	n/r	n/r	n/r	n/r	n/r	n/r	n/r	n/r	n/r	n/r	n/r	n/r
Maui-Kahului	n/r	n/r	n/r	n/r	n/r	n/r	n/r	n/r	n/r	n/r	n/r	n/r	n/r
Maui-Lanai	n/r	n/r	n/r	n/r	n/r	n/r	n/r	n/r	n/r	n/r	n/r	n/r	n/r

During the Past 12 Months, How Many Times Did You See a Doctor, Nurse or Other Health Professional for Urgent Treatment of Worsening Asthma Symptoms (Among Those Who Currently Have Asthma) by Year Total, County, BRFSS Age Group, DOH Race-Ethnicity, Gender, County and Community, Education Level, Employment Status (Grouped), Household Income, Island, Marital Status (Grouped), Poverty Level, for the Year(s) - 2003, 2004, 2005

Note: Weighted numbers (#), percentages and 95% confidence intervals; Respondents aged 18 years and older; n/r (Not Reportable) - Represents cell size restriction of unweighted count < 50; n/a (Not Available) - Not asked of a subset of respondents

Year: 2003

County and Community	None			Once			2 or 3 times			4 or more times			Estimated Adult Population
	#	%	C.I. (95%)	#	%	C.I. (95%)	#	%	C.I. (95%)	#	%	C.I. (95%)	#
Maui-Lahaina/ Wailuku	n/r	n/r	n/r	n/r	n/r	n/r	n/r	n/r	n/r	n/r	n/r	n/r	n/r
Maui-Molokai	n/r	n/r	n/r	n/r	n/r	n/r	n/r	n/r	n/r	n/r	n/r	n/r	n/r
Maui-Upcountry/ Hana	n/r	n/r	n/r	n/r	n/r	n/r	n/r	n/r	n/r	n/r	n/r	n/r	n/r

Education Level	None			Once			2 or 3 times			4 or more times			Estimated Adult Population
	#	%	C.I. (95%)	#	%	C.I. (95%)	#	%	C.I. (95%)	#	%	C.I. (95%)	#
Grades 9 thru 11 (Some High School)	n/r	n/r	n/r	n/r	n/r	n/r	n/r	n/r	n/r	n/r	n/r	n/r	n/r
Grades 12 or GED (High School Grad)	9,242	63.6	8.8 - 78.3	2,798	19.2	6.3 - 32.2	1,533	10.5	.7 - 20.4	966	6.6	1.2 - 12.1	14,539
College 1 to 3 years (Some College/ Tech)	8,003	41.4	7.8 - 55.1	4,741	24.6	1.7 - 37.4	3,681	19.1	7.0 - 31.1	2,884	14.9	4.7 - 25.2	19,309
College 4 years or more (College Grad)	11,629	77.4	7.6 - 87.3	1,411	9.4	2.9 - 15.9	924	6.2	1.0 - 11.3	1,058	7.0	.6 - 13.5	15,022
Never attended school/ Only Kindergarten to Grades 8	n/r	n/r	n/r	n/r	n/r	n/r	n/r	n/r	n/r	n/r	n/r	n/r	n/r

During the Past 12 Months, How Many Times Did You See a Doctor, Nurse or Other Health Professional for Urgent Treatment of Worsening Asthma Symptoms (Among Those Who Currently Have Asthma) by Year Total, County, BRFSS Age Group, DOH Race-Ethnicity, Gender, County and Community, Education Level, Employment Status (Grouped), Household Income, Island, Marital Status (Grouped), Poverty Level, for the Year(s) - 2003, 2004, 2005

Note: Weighted numbers (#), percentages and 95% confidence intervals; Respondents aged 18 years and older; n/r (Not Reportable) - Represents cell size restriction of unweighted count < 50; n/a (Not Available) - Not asked of a subset of respondents

Year: 2003

Employment Status (Grouped)	None			Once			2 or 3 times			4 or more times			Estimated Adult Population
	#	%	C.I. (95%)	#	%	C.I. (95%)	#	%	C.I. (95%)	#	%	C.I. (95%)	#
Employed	20,114	61.4	1.1 - 71.7	4,923	15.0	7.5 - 22.6	3,569	10.9	3.7 - 18.1	4,161	12.7	5.6 - 19.8	32,767
Unemployed	n/r	n/r	n/r	n/r	n/r	n/r	n/r	n/r	n/r	n/r	n/r	n/r	n/r
Student/Homemaker	n/r	n/r	n/r	n/r	n/r	n/r	n/r	n/r	n/r	n/r	n/r	n/r	n/r
Retired/Unable to work	5,899	59.9	5.8 - 74.0	1,767	17.9	6.4 - 29.5	1,524	15.5	5.2 - 25.8	661	6.7	.8 - 12.6	9,851

During the Past 12 Months, How Many Times Did You See a Doctor, Nurse or Other Health Professional for Urgent Treatment of Worsening Asthma Symptoms (Among Those Who Currently Have Asthma) by Year Total, County, BRFSS Age Group, DOH Race-Ethnicity, Gender, County and Community, Education Level, Employment Status (Grouped), Household Income, Island, Marital Status (Grouped), Poverty Level, for the Year(s) - 2003, 2004, 2005

Note: Weighted numbers (#), percentages and 95% confidence intervals; Respondents aged 18 years and older; n/r (Not Reportable) - Represents cell size restriction of unweighted count < 50; n/a (Not Available) - Not asked of a subset of respondents

Year: 2003

Household Income	None			Once			2 or 3 times			4 or more times			Estimated Adult Population
	#	%	C.I. (95%)	#	%	C.I. (95%)	#	%	C.I. (95%)	#	%	C.I. (95%)	#
Less than \$10,000	n/r	n/r	n/r	n/r	n/r	n/r	n/r	n/r	n/r	n/r	n/r	n/r	n/r
\$10,000 to \$14,999	n/r	n/r	n/r	n/r	n/r	n/r	n/r	n/r	n/r	n/r	n/r	n/r	n/r
\$15,000 to \$19,999	n/r	n/r	n/r	n/r	n/r	n/r	n/r	n/r	n/r	n/r	n/r	n/r	n/r
\$20,000 to \$24,999	n/r	n/r	n/r	n/r	n/r	n/r	n/r	n/r	n/r	n/r	n/r	n/r	n/r
\$25,000 to \$34,999	n/r	n/r	n/r	n/r	n/r	n/r	n/r	n/r	n/r	n/r	n/r	n/r	n/r
\$35,000 to \$49,999	n/r	n/r	n/r	n/r	n/r	n/r	n/r	n/r	n/r	n/r	n/r	n/r	n/r
\$50,000 to \$74,999	n/r	n/r	n/r	n/r	n/r	n/r	n/r	n/r	n/r	n/r	n/r	n/r	n/r
\$75,000 or more	n/r	n/r	n/r	n/r	n/r	n/r	n/r	n/r	n/r	n/r	n/r	n/r	n/r

During the Past 12 Months, How Many Times Did You See a Doctor, Nurse or Other Health Professional for Urgent Treatment of Worsening Asthma Symptoms (Among Those Who Currently Have Asthma) by Year Total, County, BRFSS Age Group, DOH Race-Ethnicity, Gender, County and Community, Education Level, Employment Status (Grouped), Household Income, Island, Marital Status (Grouped), Poverty Level, for the Year(s) - 2003, 2004, 2005

Note: Weighted numbers (#), percentages and 95% confidence intervals; Respondents aged 18 years and older; n/r (Not Reportable) - Represents cell size restriction of unweighted count < 50; n/a (Not Available) - Not asked of a subset of respondents

Year: 2003

Island	None			Once			2 or 3 times			4 or more times			Estimated Adult Population
	#	%	C.I. (95%)	#	%	C.I. (95%)	#	%	C.I. (95%)	#	%	C.I. (95%)	#
Hawaii	4,075	58.6	2.0 - 75.2	681	9.8	1.1 - 18.5	1,051	15.1	4.0 - 26.3	1,148	16.5	1.6 - 31.4	6,955
Kauai	n/r	n/r	n/r	n/r	n/r	n/r	n/r	n/r	n/r	n/r	n/r	n/r	n/r
Maui	n/r	n/r	n/r	n/r	n/r	n/r	n/r	n/r	n/r	n/r	n/r	n/r	n/r
Lanai	n/r	n/r	n/r	n/r	n/r	n/r	n/r	n/r	n/r	n/r	n/r	n/r	n/r
Molokai	n/r	n/r	n/r	n/r	n/r	n/r	n/r	n/r	n/r	n/r	n/r	n/r	n/r
Oahu	21,696	60.4	9.9 - 70.8	5,868	16.3	7.9 - 24.7	5,174	14.4	6.4 - 22.4	3,199	8.9	3.2 - 14.6	35,937

During the Past 12 Months, How Many Times Did You See a Doctor, Nurse or Other Health Professional for Urgent Treatment of Worsening Asthma Symptoms (Among Those Who Currently Have Asthma) by Year Total, County, BRFSS Age Group, DOH Race-Ethnicity, Gender, County and Community, Education Level, Employment Status (Grouped), Household Income, Island, Marital Status (Grouped), Poverty Level, for the Year(s) - 2003, 2004, 2005

Note: Weighted numbers (#), percentages and 95% confidence intervals; Respondents aged 18 years and older; n/r (Not Reportable) - Represents cell size restriction of unweighted count < 50; n/a (Not Available) - Not asked of a subset of respondents

Year: 2003

Marital Status (Grouped)	None			Once			2 or 3 times			4 or more times			Estimated Adult Population
	#	%	C.I. (95%)	#	%	C.I. (95%)	#	%	C.I. (95%)	#	%	C.I. (95%)	#
Married	18,390	67.8	8.2 - 77.3	4,550	16.8	9.1 - 24.4	2,174	8.0	3.1 - 13.0	2,022	7.4	2.1 - 12.8	27,136
Unmarried Couple	n/r	n/r	n/r	n/r	n/r	n/r	n/r	n/r	n/r	n/r	n/r	n/r	n/r
Widowed	n/r	n/r	n/r	n/r	n/r	n/r	n/r	n/r	n/r	n/r	n/r	n/r	n/r
Other	10,256	49.5	5.6 - 63.3	4,400	21.2	8.8 - 33.7	3,265	15.7	5.9 - 25.6	2,811	13.6	4.4 - 22.7	20,732

During the Past 12 Months, How Many Times Did You See a Doctor, Nurse or Other Health Professional for Urgent Treatment of Worsening Asthma Symptoms (Among Those Who Currently Have Asthma) by Year Total, County, BRFSS Age Group, DOH Race-Ethnicity, Gender, County and Community, Education Level, Employment Status (Grouped), Household Income, Island, Marital Status (Grouped), Poverty Level, for the Year(s) - 2003, 2004, 2005

Note: Weighted numbers (#), percentages and 95% confidence intervals; Respondents aged 18 years and older; n/r (Not Reportable) - Represents cell size restriction of unweighted count < 50; n/a (Not Available) - Not asked of a subset of respondents

Year: 2003

Poverty Level	None			Once			2 or 3 times			4 or more times			Estimated Adult Population
	#	%	C.I. (95%)	#	%	C.I. (95%)	#	%	C.I. (95%)	#	%	C.I. (95%)	#
1-50%	n/r	n/r	n/r	n/r	n/r	n/r	n/r	n/r	n/r	n/r	n/r	n/r	n/r
51-100%	n/r	n/r	n/r	n/r	n/r	n/r	n/r	n/r	n/r	n/r	n/r	n/r	n/r
101-120%	n/r	n/r	n/r	n/r	n/r	n/r	n/r	n/r	n/r	n/r	n/r	n/r	n/r
121-130%	n/r	n/r	n/r	n/r	n/r	n/r	n/r	n/r	n/r	n/r	n/r	n/r	n/r
131-150%	n/r	n/r	n/r	n/r	n/r	n/r	n/r	n/r	n/r	n/r	n/r	n/r	n/r
151-170%	n/r	n/r	n/r	n/r	n/r	n/r	n/r	n/r	n/r	n/r	n/r	n/r	n/r
171-180%	n/r	n/r	n/r	n/r	n/r	n/r	n/r	n/r	n/r	n/r	n/r	n/r	n/r
186+%	12,556	59.0	7.1 - 70.9	4,766	22.4	1.3 - 33.5	1,867	8.8	2.7 - 14.8	2,097	9.9	3.0 - 16.7	21,286

During the Past 12 Months, How Many Times Did You See a Doctor, Nurse or Other Health Professional for Urgent Treatment of Worsening Asthma Symptoms (Among Those Who Currently Have Asthma) by Year Total, County, BRFSS Age Group, DOH Race-Ethnicity, Gender, County and Community, Education Level, Employment Status (Grouped), Household Income, Island, Marital Status (Grouped), Poverty Level, for the Year(s) - 2003, 2004, 2005

Note: Weighted numbers (#), percentages and 95% confidence intervals; Respondents aged 18 years and older; n/r (Not Reportable) - Represents cell size restriction of unweighted count < 50; n/a (Not Available) - Not asked of a subset of respondents

Year: 2003

Year: 2004

Year Total	None			Once			2 or 3 times			4 or more times			Estimated Adult Population
	#	%	C.I. (95%)	#	%	C.I. (95%)	#	%	C.I. (95%)	#	%	C.I. (95%)	#
State	53,137	72.9	2.5 - 83.3	12,298	16.9	7.0 - 26.7	2,988	4.1	.9 - 7.3	4,447	6.1	1.3 - 10.9	72,870

During the Past 12 Months, How Many Times Did You See a Doctor, Nurse or Other Health Professional for Urgent Treatment of Worsening Asthma Symptoms (Among Those Who Currently Have Asthma) by Year Total, County, BRFSS Age Group, DOH Race-Ethnicity, Gender, County and Community, Education Level, Employment Status (Grouped), Household Income, Island, Marital Status (Grouped), Poverty Level, for the Year(s) - 2003, 2004, 2005

Note: Weighted numbers (#), percentages and 95% confidence intervals; Respondents aged 18 years and older; n/r (Not Reportable) - Represents cell size restriction of unweighted count < 50; n/a (Not Available) - Not asked of a subset of respondents

Year: 2004

County	None			Once			2 or 3 times			4 or more times			Estimated Adult Population
	#	%	C.I. (95%)	#	%	C.I. (95%)	#	%	C.I. (95%)	#	%	C.I. (95%)	#
Hawaii	n/r	n/r	n/r	n/r	n/r	n/r	n/r	n/r	n/r	n/r	n/r	n/r	n/r
Honolulu	34,017	69.5	4.9 - 84.1	9,916	20.3	6.3 - 34.2	1,382	2.8	.0 - 6.8	3,627	7.4	.3 - 14.5	48,942
Kauai	n/r	n/r	n/r	n/r	n/r	n/r	n/r	n/r	n/r	n/r	n/r	n/r	n/r
Maui	n/r	n/r	n/r	n/r	n/r	n/r	n/r	n/r	n/r	n/r	n/r	n/r	n/r

During the Past 12 Months, How Many Times Did You See a Doctor, Nurse or Other Health Professional for Urgent Treatment of Worsening Asthma Symptoms (Among Those Who Currently Have Asthma) by Year Total, County, BRFSS Age Group, DOH Race-Ethnicity, Gender, County and Community, Education Level, Employment Status (Grouped), Household Income, Island, Marital Status (Grouped), Poverty Level, for the Year(s) - 2003, 2004, 2005

Note: Weighted numbers (#), percentages and 95% confidence intervals; Respondents aged 18 years and older; n/r (Not Reportable) - Represents cell size restriction of unweighted count < 50; n/a (Not Available) - Not asked of a subset of respondents

Year: 2004

BRFSS Age Group	None			Once			2 or 3 times			4 or more times			Estimated Adult Population
	#	%	C.I. (95%)	#	%	C.I. (95%)	#	%	C.I. (95%)	#	%	C.I. (95%)	#
18-24	n/r	n/r	n/r	n/r	n/r	n/r	n/r	n/r	n/r	n/r	n/r	n/r	n/r
25-34	n/r	n/r	n/r	n/r	n/r	n/r	n/r	n/r	n/r	n/r	n/r	n/r	n/r
35-44	n/r	n/r	n/r	n/r	n/r	n/r	n/r	n/r	n/r	n/r	n/r	n/r	n/r
45-54	n/r	n/r	n/r	n/r	n/r	n/r	n/r	n/r	n/r	n/r	n/r	n/r	n/r
55-64	n/r	n/r	n/r	n/r	n/r	n/r	n/r	n/r	n/r	n/r	n/r	n/r	n/r
65-74	n/r	n/r	n/r	n/r	n/r	n/r	n/r	n/r	n/r	n/r	n/r	n/r	n/r
75+	n/r	n/r	n/r	n/r	n/r	n/r	n/r	n/r	n/r	n/r	n/r	n/r	n/r

During the Past 12 Months, How Many Times Did You See a Doctor, Nurse or Other Health Professional for Urgent Treatment of Worsening Asthma Symptoms (Among Those Who Currently Have Asthma) by Year Total, County, BRFSS Age Group, DOH Race-Ethnicity, Gender, County and Community, Education Level, Employment Status (Grouped), Household Income, Island, Marital Status (Grouped), Poverty Level, for the Year(s) - 2003, 2004, 2005

Note: Weighted numbers (#), percentages and 95% confidence intervals; Respondents aged 18 years and older; n/r (Not Reportable) - Represents cell size restriction of unweighted count < 50; n/a (Not Available) - Not asked of a subset of respondents

Year: 2004

DOH Race-Ethnicity	None			Once			2 or 3 times			4 or more times			Estimated Adult Population
	#	%	C.I. (95%)	#	%	C.I. (95%)	#	%	C.I. (95%)	#	%	C.I. (95%)	#
White	17,169	64.7	7.4 - 82.0	5,397	20.3	3.7 - 36.9	1,279	4.8	.0 - 10.7	2,696	10.2	.0 - 20.6	26,541
Native Hawaiian	n/r	n/r	n/r	n/r	n/r	n/r	n/r	n/r	n/r	n/r	n/r	n/r	n/r
Chinese	n/r	n/r	n/r	n/r	n/r	n/r	n/r	n/r	n/r	n/r	n/r	n/r	n/r
Filipino	n/r	n/r	n/r	n/r	n/r	n/r	n/r	n/r	n/r	n/r	n/r	n/r	n/r
Japanese	n/r	n/r	n/r	n/r	n/r	n/r	n/r	n/r	n/r	n/r	n/r	n/r	n/r
Black	n/r	n/r	n/r	n/r	n/r	n/r	n/r	n/r	n/r	n/r	n/r	n/r	n/r
Other Pacific Islander	n/r	n/r	n/r	n/r	n/r	n/r	n/r	n/r	n/r	n/r	n/r	n/r	n/r
Other Asian	n/r	n/r	n/r	n/r	n/r	n/r	n/r	n/r	n/r	n/r	n/r	n/r	n/r
Native Alaskan/ American Indian	n/r	n/r	n/r	n/r	n/r	n/r	n/r	n/r	n/r	n/r	n/r	n/r	n/r
Other	n/r	n/r	n/r	n/r	n/r	n/r	n/r	n/r	n/r	n/r	n/r	n/r	n/r

During the Past 12 Months, How Many Times Did You See a Doctor, Nurse or Other Health Professional for Urgent Treatment of Worsening Asthma Symptoms (Among Those Who Currently Have Asthma) by Year Total, County, BRFSS Age Group, DOH Race-Ethnicity, Gender, County and Community, Education Level, Employment Status (Grouped), Household Income, Island, Marital Status (Grouped), Poverty Level, for the Year(s) - 2003, 2004, 2005

Note: Weighted numbers (#), percentages and 95% confidence intervals; Respondents aged 18 years and older; n/r (Not Reportable) - Represents cell size restriction of unweighted count < 50; n/a (Not Available) - Not asked of a subset of respondents

Year: 2004

Gender	None			Once			2 or 3 times			4 or more times			Estimated Adult Population
	#	%	C.I. (95%)	#	%	C.I. (95%)	#	%	C.I. (95%)	#	%	C.I. (95%)	#
Female	32,919	69.8	6.4 - 83.3	9,057	19.2	5.8 - 32.6	2,106	4.5	.5 - 8.4	3,054	6.5	.9 - 12.0	47,136
Male	n/r	n/r	n/r	n/r	n/r	n/r	n/r	n/r	n/r	n/r	n/r	n/r	n/r

County and Community	None			Once			2 or 3 times			4 or more times			Estimated Adult Population
	#	%	C.I. (95%)	#	%	C.I. (95%)	#	%	C.I. (95%)	#	%	C.I. (95%)	#
Hawaii-Hilo	n/r	n/r	n/r	n/r	n/r	n/r	n/r	n/r	n/r	n/r	n/r	n/r	n/r
Hawaii-Kona	n/r	n/r	n/r	n/r	n/r	n/r	n/r	n/r	n/r	n/r	n/r	n/r	n/r
Hawaii-N.Hawaii	n/r	n/r	n/r	n/r	n/r	n/r	n/r	n/r	n/r	n/r	n/r	n/r	n/r
Hawaii-Puna/ Kau	n/r	n/r	n/r	n/r	n/r	n/r	n/r	n/r	n/r	n/r	n/r	n/r	n/r
Honolulu-Aiea/ Pearl City	n/r	n/r	n/r	n/r	n/r	n/r	n/r	n/r	n/r	n/r	n/r	n/r	n/r
Honolulu-Ala Moana	n/r	n/r	n/r	n/r	n/r	n/r	n/r	n/r	n/r	n/r	n/r	n/r	n/r
Honolulu-Kaaawa/ Kahaluu/ Kaneohe	n/r	n/r	n/r	n/r	n/r	n/r	n/r	n/r	n/r	n/r	n/r	n/r	n/r
Honolulu-Kailua/ Waimanalo	n/r	n/r	n/r	n/r	n/r	n/r	n/r	n/r	n/r	n/r	n/r	n/r	n/r

During the Past 12 Months, How Many Times Did You See a Doctor, Nurse or Other Health Professional for Urgent Treatment of Worsening Asthma Symptoms (Among Those Who Currently Have Asthma) by Year Total, County, BRFSS Age Group, DOH Race-Ethnicity, Gender, County and Community, Education Level, Employment Status (Grouped), Household Income, Island, Marital Status (Grouped), Poverty Level, for the Year(s) - 2003, 2004, 2005

Note: Weighted numbers (#), percentages and 95% confidence intervals; Respondents aged 18 years and older; n/r (Not Reportable) - Represents cell size restriction of unweighted count < 50; n/a (Not Available) - Not asked of a subset of respondents

Year: 2004

County and Community	None			Once			2 or 3 times			4 or more times			Estimated Adult Population
	#	%	C.I. (95%)	#	%	C.I. (95%)	#	%	C.I. (95%)	#	%	C.I. (95%)	#
Honolulu-Kaimuki/ Palolo/ Waikiki	n/r	n/r	n/r	n/r	n/r	n/r	n/r	n/r	n/r	n/r	n/r	n/r	n/r
Honolulu-Manoa/ Upper Makiki	n/r	n/r	n/r	n/r	n/r	n/r	n/r	n/r	n/r	n/r	n/r	n/r	n/r
Honolulu-Mililani/ Wahiawa	n/r	n/r	n/r	n/r	n/r	n/r	n/r	n/r	n/r	n/r	n/r	n/r	n/r
Honolulu-Nanakuli/ Waianae	n/r	n/r	n/r	n/r	n/r	n/r	n/r	n/r	n/r	n/r	n/r	n/r	n/r
Honolulu-N.Shore/ Laie	n/r	n/r	n/r	n/r	n/r	n/r	n/r	n/r	n/r	n/r	n/r	n/r	n/r
Honolulu-Nuuanu/ Kalihi/ Moanalua	n/r	n/r	n/r	n/r	n/r	n/r	n/r	n/r	n/r	n/r	n/r	n/r	n/r
Honolulu-Salt Lake/ Foster Village	n/r	n/r	n/r	n/r	n/r	n/r	n/r	n/r	n/r	n/r	n/r	n/r	n/r
Honolulu-Waiialae/ Kahala/ Hawaii Kai	n/r	n/r	n/r	n/r	n/r	n/r	n/r	n/r	n/r	n/r	n/r	n/r	n/r
Honolulu-Waipahu/ Kapolei/ Ewa	n/r	n/r	n/r	n/r	n/r	n/r	n/r	n/r	n/r	n/r	n/r	n/r	n/r
Kauai-Hanalei/ Kapaa	n/r	n/r	n/r	n/r	n/r	n/r	n/r	n/r	n/r	n/r	n/r	n/r	n/r
Kauai-Lihue-Waimea	n/r	n/r	n/r	n/r	n/r	n/r	n/r	n/r	n/r	n/r	n/r	n/r	n/r
Maui-Kahului	n/r	n/r	n/r	n/r	n/r	n/r	n/r	n/r	n/r	n/r	n/r	n/r	n/r
Maui-Lanai	n/r	n/r	n/r	n/r	n/r	n/r	n/r	n/r	n/r	n/r	n/r	n/r	n/r

During the Past 12 Months, How Many Times Did You See a Doctor, Nurse or Other Health Professional for Urgent Treatment of Worsening Asthma Symptoms (Among Those Who Currently Have Asthma) by Year Total, County, BRFSS Age Group, DOH Race-Ethnicity, Gender, County and Community, Education Level, Employment Status (Grouped), Household Income, Island, Marital Status (Grouped), Poverty Level, for the Year(s) - 2003, 2004, 2005

Note: Weighted numbers (#), percentages and 95% confidence intervals; Respondents aged 18 years and older; n/r (Not Reportable) - Represents cell size restriction of unweighted count < 50; n/a (Not Available) - Not asked of a subset of respondents

Year: 2004

County and Community	None			Once			2 or 3 times			4 or more times			Estimated Adult Population
	#	%	C.I. (95%)	#	%	C.I. (95%)	#	%	C.I. (95%)	#	%	C.I. (95%)	#
Maui-Lahaina/ Wailuku	n/r	n/r	n/r	n/r	n/r	n/r	n/r	n/r	n/r	n/r	n/r	n/r	n/r
Maui-Molokai	n/r	n/r	n/r	n/r	n/r	n/r	n/r	n/r	n/r	n/r	n/r	n/r	n/r
Maui-Upcountry/ Hana	n/r	n/r	n/r	n/r	n/r	n/r	n/r	n/r	n/r	n/r	n/r	n/r	n/r

Education Level	None			Once			2 or 3 times			4 or more times			Estimated Adult Population
	#	%	C.I. (95%)	#	%	C.I. (95%)	#	%	C.I. (95%)	#	%	C.I. (95%)	#
Grades 9 thru 11 (Some High School)	n/r	n/r	n/r	n/r	n/r	n/r	n/r	n/r	n/r	n/r	n/r	n/r	n/r
Grades 12 or GED (High School Grad)	16,412	66.0	5.8 - 86.2	4,845	19.5	.0 - 39.2	1,600	6.4	.0 - 13.7	2,014	8.1	.0 - 18.3	24,871
College 1 to 3 years (Some College/ Tech)	16,355	81.6	8.5 - 94.8	1,335	6.7	.0 - 14.7	1,282	6.4	.0 - 13.6	1,059	5.3	.0 - 14.3	20,031
College 4 years or more (College Grad)	n/r	n/r	n/r	n/r	n/r	n/r	n/r	n/r	n/r	n/r	n/r	n/r	n/r
Never attended school/ Only Kindergarten to Grades 8	n/r	n/r	n/r	n/r	n/r	n/r	n/r	n/r	n/r	n/r	n/r	n/r	n/r

During the Past 12 Months, How Many Times Did You See a Doctor, Nurse or Other Health Professional for Urgent Treatment of Worsening Asthma Symptoms (Among Those Who Currently Have Asthma) by Year Total, County, BRFSS Age Group, DOH Race-Ethnicity, Gender, County and Community, Education Level, Employment Status (Grouped), Household Income, Island, Marital Status (Grouped), Poverty Level, for the Year(s) - 2003, 2004, 2005

Note: Weighted numbers (#), percentages and 95% confidence intervals; Respondents aged 18 years and older; n/r (Not Reportable) - Represents cell size restriction of unweighted count < 50; n/a (Not Available) - Not asked of a subset of respondents

Year: 2004

Employment Status (Grouped)	None			Once			2 or 3 times			4 or more times			Estimated Adult Population
	#	%	C.I. (95%)	#	%	C.I. (95%)	#	%	C.I. (95%)	#	%	C.I. (95%)	#
Employed	29,021	66.9	3.9 - 79.9	8,006	18.5	6.4 - 30.5	2,882	6.6	1.3 - 11.9	3,477	8.0	.4 - 15.6	43,386
Unemployed	n/r	n/r	n/r	n/r	n/r	n/r	n/r	n/r	n/r	n/r	n/r	n/r	n/r
Student/Homemaker	n/r	n/r	n/r	n/r	n/r	n/r	n/r	n/r	n/r	n/r	n/r	n/r	n/r
Retired/Unable to work	n/r	n/r	n/r	n/r	n/r	n/r	n/r	n/r	n/r	n/r	n/r	n/r	n/r

During the Past 12 Months, How Many Times Did You See a Doctor, Nurse or Other Health Professional for Urgent Treatment of Worsening Asthma Symptoms (Among Those Who Currently Have Asthma) by Year Total, County, BRFSS Age Group, DOH Race-Ethnicity, Gender, County and Community, Education Level, Employment Status (Grouped), Household Income, Island, Marital Status (Grouped), Poverty Level, for the Year(s) - 2003, 2004, 2005

Note: Weighted numbers (#), percentages and 95% confidence intervals; Respondents aged 18 years and older; n/r (Not Reportable) - Represents cell size restriction of unweighted count < 50; n/a (Not Available) - Not asked of a subset of respondents

Year: 2004

Household Income	None			Once			2 or 3 times			4 or more times			Estimated Adult Population
	#	%	C.I. (95%)	#	%	C.I. (95%)	#	%	C.I. (95%)	#	%	C.I. (95%)	#
Less than \$10,000	n/r	n/r	n/r	n/r	n/r	n/r	n/r	n/r	n/r	n/r	n/r	n/r	n/r
\$10,000 to \$14,999	n/r	n/r	n/r	n/r	n/r	n/r	n/r	n/r	n/r	n/r	n/r	n/r	n/r
\$15,000 to \$19,999	n/r	n/r	n/r	n/r	n/r	n/r	n/r	n/r	n/r	n/r	n/r	n/r	n/r
\$20,000 to \$24,999	n/r	n/r	n/r	n/r	n/r	n/r	n/r	n/r	n/r	n/r	n/r	n/r	n/r
\$25,000 to \$34,999	n/r	n/r	n/r	n/r	n/r	n/r	n/r	n/r	n/r	n/r	n/r	n/r	n/r
\$35,000 to \$49,999	n/r	n/r	n/r	n/r	n/r	n/r	n/r	n/r	n/r	n/r	n/r	n/r	n/r
\$50,000 to \$74,999	21,567	82.7	9.9 - 95.4	3,222	12.4	1.2 - 23.5	266	1.0	.0 - 2.5	1,035	4.0	.0 - 11.0	26,090
\$75,000 or more	n/r	n/r	n/r	n/r	n/r	n/r	n/r	n/r	n/r	n/r	n/r	n/r	n/r

During the Past 12 Months, How Many Times Did You See a Doctor, Nurse or Other Health Professional for Urgent Treatment of Worsening Asthma Symptoms (Among Those Who Currently Have Asthma) by Year Total, County, BRFSS Age Group, DOH Race-Ethnicity, Gender, County and Community, Education Level, Employment Status (Grouped), Household Income, Island, Marital Status (Grouped), Poverty Level, for the Year(s) - 2003, 2004, 2005

Note: Weighted numbers (#), percentages and 95% confidence intervals; Respondents aged 18 years and older; n/r (Not Reportable) - Represents cell size restriction of unweighted count < 50; n/a (Not Available) - Not asked of a subset of respondents

Year: 2004

Island	None			Once			2 or 3 times			4 or more times			Estimated Adult Population
	#	%	C.I. (95%)	#	%	C.I. (95%)	#	%	C.I. (95%)	#	%	C.I. (95%)	#
Hawaii	n/r	n/r	n/r	n/r	n/r	n/r	n/r	n/r	n/r	n/r	n/r	n/r	n/r
Kauai	n/r	n/r	n/r	n/r	n/r	n/r	n/r	n/r	n/r	n/r	n/r	n/r	n/r
Maui	n/r	n/r	n/r	n/r	n/r	n/r	n/r	n/r	n/r	n/r	n/r	n/r	n/r
Lanai	n/r	n/r	n/r	n/r	n/r	n/r	n/r	n/r	n/r	n/r	n/r	n/r	n/r
Molokai	n/r	n/r	n/r	n/r	n/r	n/r	n/r	n/r	n/r	n/r	n/r	n/r	n/r
Oahu	34,017	69.5	5.1 - 83.9	9,916	20.3	6.4 - 34.1	1,382	2.8	.0 - 6.8	3,627	7.4	.4 - 14.5	48,942

During the Past 12 Months, How Many Times Did You See a Doctor, Nurse or Other Health Professional for Urgent Treatment of Worsening Asthma Symptoms (Among Those Who Currently Have Asthma) by Year Total, County, BRFSS Age Group, DOH Race-Ethnicity, Gender, County and Community, Education Level, Employment Status (Grouped), Household Income, Island, Marital Status (Grouped), Poverty Level, for the Year(s) - 2003, 2004, 2005

Note: Weighted numbers (#), percentages and 95% confidence intervals; Respondents aged 18 years and older; n/r (Not Reportable) - Represents cell size restriction of unweighted count < 50; n/a (Not Available) - Not asked of a subset of respondents

Year: 2004

Marital Status (Grouped)	None			Once			2 or 3 times			4 or more times			Estimated Adult Population
	#	%	C.I. (95%)	#	%	C.I. (95%)	#	%	C.I. (95%)	#	%	C.I. (95%)	#
Married	30,525	69.0	4.1 - 83.9	8,185	18.5	3.9 - 33.1	2,279	5.2	.3 - 10.0	3,246	7.3	.0 - 14.8	44,235
Unmarried Couple	n/r	n/r	n/r	n/r	n/r	n/r	n/r	n/r	n/r	n/r	n/r	n/r	n/r
Widowed	n/r	n/r	n/r	n/r	n/r	n/r	n/r	n/r	n/r	n/r	n/r	n/r	n/r
Other	17,546	78.8	5.7 - 92.0	3,858	17.3	4.8 - 29.9	159	.7	.0 - 2.1	689	3.1	.0 - 7.7	22,252

During the Past 12 Months, How Many Times Did You See a Doctor, Nurse or Other Health Professional for Urgent Treatment of Worsening Asthma Symptoms (Among Those Who Currently Have Asthma) by Year Total, County, BRFSS Age Group, DOH Race-Ethnicity, Gender, County and Community, Education Level, Employment Status (Grouped), Household Income, Island, Marital Status (Grouped), Poverty Level, for the Year(s) - 2003, 2004, 2005

Note: Weighted numbers (#), percentages and 95% confidence intervals; Respondents aged 18 years and older; n/r (Not Reportable) - Represents cell size restriction of unweighted count < 50; n/a (Not Available) - Not asked of a subset of respondents

Year: 2004

Poverty Level	None			Once			2 or 3 times			4 or more times			Estimated Adult Population
	#	%	C.I. (95%)	#	%	C.I. (95%)	#	%	C.I. (95%)	#	%	C.I. (95%)	#
1-50%	n/r	n/r	n/r	n/r	n/r	n/r	n/r	n/r	n/r	n/r	n/r	n/r	n/r
51-100%	n/r	n/r	n/r	n/r	n/r	n/r	n/r	n/r	n/r	n/r	n/r	n/r	n/r
101-120%	n/r	n/r	n/r	n/r	n/r	n/r	n/r	n/r	n/r	n/r	n/r	n/r	n/r
121-130%	n/r	n/r	n/r	n/r	n/r	n/r	n/r	n/r	n/r	n/r	n/r	n/r	n/r
131-150%	n/r	n/r	n/r	n/r	n/r	n/r	n/r	n/r	n/r	n/r	n/r	n/r	n/r
151-170%	n/r	n/r	n/r	n/r	n/r	n/r	n/r	n/r	n/r	n/r	n/r	n/r	n/r
171-180%	n/r	n/r	n/r	n/r	n/r	n/r	n/r	n/r	n/r	n/r	n/r	n/r	n/r
186+%	38,559	75.4	4.1 - 86.6	8,180	16.0	5.7 - 26.3	990	1.9	.2 - 3.7	3,442	6.7	.3 - 13.2	51,171

During the Past 12 Months, How Many Times Did You See a Doctor, Nurse or Other Health Professional for Urgent Treatment of Worsening Asthma Symptoms (Among Those Who Currently Have Asthma) by Year Total, County, BRFSS Age Group, DOH Race-Ethnicity, Gender, County and Community, Education Level, Employment Status (Grouped), Household Income, Island, Marital Status (Grouped), Poverty Level, for the Year(s) - 2003, 2004, 2005

Note: Weighted numbers (#), percentages and 95% confidence intervals; Respondents aged 18 years and older; n/r (Not Reportable) - Represents cell size restriction of unweighted count < 50; n/a (Not Available) - Not asked of a subset of respondents

Year: 2004

Year: 2005

Year Total	None			Once			2 or 3 times			4 or more times			Estimated Adult Population
	#	%	C.I. (95%)	#	%	C.I. (95%)	#	%	C.I. (95%)	#	%	C.I. (95%)	#
State	38,644	57.6	8.9 - 66.3	9,969	14.9	9.5 - 20.2	14,787	22.0	4.6 - 29.5	3,696	5.5	.2 - 10.8	67,096

During the Past 12 Months, How Many Times Did You See a Doctor, Nurse or Other Health Professional for Urgent Treatment of Worsening Asthma Symptoms (Among Those Who Currently Have Asthma) by Year Total, County, BRFSS Age Group, DOH Race-Ethnicity, Gender, County and Community, Education Level, Employment Status (Grouped), Household Income, Island, Marital Status (Grouped), Poverty Level, for the Year(s) - 2003, 2004, 2005

Note: Weighted numbers (#), percentages and 95% confidence intervals; Respondents aged 18 years and older; n/r (Not Reportable) - Represents cell size restriction of unweighted count < 50; n/a (Not Available) - Not asked of a subset of respondents

Year: 2005

County	None			Once			2 or 3 times			4 or more times			Estimated Adult Population
	#	%	C.I. (95%)	#	%	C.I. (95%)	#	%	C.I. (95%)	#	%	C.I. (95%)	#
Hawaii	7,411	64.6	0.9 - 78.4	2,130	18.6	6.8 - 30.3	1,760	15.3	5.8 - 24.9	167	1.5	.0 - 3.2	11,468
Honolulu	24,720	57.8	5.2 - 70.3	4,444	10.4	4.0 - 16.8	10,413	24.3	3.3 - 35.3	3,207	7.5	.0 - 15.7	42,784
Kauai	n/r	n/r	n/r	n/r	n/r	n/r	n/r	n/r	n/r	n/r	n/r	n/r	n/r
Maui	4,889	53.0	5.1 - 71.0	2,294	24.9	7.8 - 41.9	1,833	19.9	6.6 - 33.2	201	2.2	.0 - 4.8	9,217

During the Past 12 Months, How Many Times Did You See a Doctor, Nurse or Other Health Professional for Urgent Treatment of Worsening Asthma Symptoms (Among Those Who Currently Have Asthma) by Year Total, County, BRFSS Age Group, DOH Race-Ethnicity, Gender, County and Community, Education Level, Employment Status (Grouped), Household Income, Island, Marital Status (Grouped), Poverty Level, for the Year(s) - 2003, 2004, 2005

Note: Weighted numbers (#), percentages and 95% confidence intervals; Respondents aged 18 years and older; n/r (Not Reportable) - Represents cell size restriction of unweighted count < 50; n/a (Not Available) - Not asked of a subset of respondents

Year: 2005

BRFSS Age Group	None			Once			2 or 3 times			4 or more times			Estimated Adult Population
	#	%	C.I. (95%)	#	%	C.I. (95%)	#	%	C.I. (95%)	#	%	C.I. (95%)	#
18-24	n/r	n/r	n/r	n/r	n/r	n/r	n/r	n/r	n/r	n/r	n/r	n/r	n/r
25-34	n/r	n/r	n/r	n/r	n/r	n/r	n/r	n/r	n/r	n/r	n/r	n/r	n/r
35-44	n/r	n/r	n/r	n/r	n/r	n/r	n/r	n/r	n/r	n/r	n/r	n/r	n/r
45-54	n/r	n/r	n/r	n/r	n/r	n/r	n/r	n/r	n/r	n/r	n/r	n/r	n/r
55-64	6,774	49.3	9.8 - 68.8	1,878	13.7	2.0 - 25.3	2,354	17.1	5.6 - 28.6	2,747	20.0	.0 - 41.7	13,753
65-74	n/r	n/r	n/r	n/r	n/r	n/r	n/r	n/r	n/r	n/r	n/r	n/r	n/r
75+	n/r	n/r	n/r	n/r	n/r	n/r	n/r	n/r	n/r	n/r	n/r	n/r	n/r

During the Past 12 Months, How Many Times Did You See a Doctor, Nurse or Other Health Professional for Urgent Treatment of Worsening Asthma Symptoms (Among Those Who Currently Have Asthma) by Year Total, County, BRFSS Age Group, DOH Race-Ethnicity, Gender, County and Community, Education Level, Employment Status (Grouped), Household Income, Island, Marital Status (Grouped), Poverty Level, for the Year(s) - 2003, 2004, 2005

Note: Weighted numbers (#), percentages and 95% confidence intervals; Respondents aged 18 years and older; n/r (Not Reportable) - Represents cell size restriction of unweighted count < 50; n/a (Not Available) - Not asked of a subset of respondents

Year: 2005

DOH Race-Ethnicity	None			Once			2 or 3 times			4 or more times			Estimated Adult Population
	#	%	C.I. (95%)	#	%	C.I. (95%)	#	%	C.I. (95%)	#	%	C.I. (95%)	#
White	9,882	51.1	7.1 - 65.1	2,601	13.5	3.8 - 23.2	6,337	32.8	9.0 - 46.6	510	2.6	.1 - 5.2	19,330
Native Hawaiian	n/r	n/r	n/r	n/r	n/r	n/r	n/r	n/r	n/r	n/r	n/r	n/r	n/r
Chinese	n/r	n/r	n/r	n/r	n/r	n/r	n/r	n/r	n/r	n/r	n/r	n/r	n/r
Filipino	n/r	n/r	n/r	n/r	n/r	n/r	n/r	n/r	n/r	n/r	n/r	n/r	n/r
Japanese	n/r	n/r	n/r	n/r	n/r	n/r	n/r	n/r	n/r	n/r	n/r	n/r	n/r
Black	n/r	n/r	n/r	n/r	n/r	n/r	n/r	n/r	n/r	n/r	n/r	n/r	n/r
Other Pacific Islander	n/r	n/r	n/r	n/r	n/r	n/r	n/r	n/r	n/r	n/r	n/r	n/r	n/r
Other Asian	n/r	n/r	n/r	n/r	n/r	n/r	n/r	n/r	n/r	n/r	n/r	n/r	n/r
Native Alaskan/ American Indian	n/r	n/r	n/r	n/r	n/r	n/r	n/r	n/r	n/r	n/r	n/r	n/r	n/r
Other	n/r	n/r	n/r	n/r	n/r	n/r	n/r	n/r	n/r	n/r	n/r	n/r	n/r

During the Past 12 Months, How Many Times Did You See a Doctor, Nurse or Other Health Professional for Urgent Treatment of Worsening Asthma Symptoms (Among Those Who Currently Have Asthma) by Year Total, County, BRFSS Age Group, DOH Race-Ethnicity, Gender, County and Community, Education Level, Employment Status (Grouped), Household Income, Island, Marital Status (Grouped), Poverty Level, for the Year(s) - 2003, 2004, 2005

Note: Weighted numbers (#), percentages and 95% confidence intervals; Respondents aged 18 years and older; n/r (Not Reportable) - Represents cell size restriction of unweighted count < 50; n/a (Not Available) - Not asked of a subset of respondents

Year: 2005

Gender	None			Once			2 or 3 times			4 or more times			Estimated Adult Population
	#	%	C.I. (95%)	#	%	C.I. (95%)	#	%	C.I. (95%)	#	%	C.I. (95%)	#
Female	27,102	57.4	7.7 - 67.1	6,902	14.6	8.6 - 20.7	11,387	24.1	5.3 - 32.9	1,859	3.9	.0 - 8.4	47,250
Male	11,542	58.2	0.0 - 76.4	3,067	15.5	4.6 - 26.3	3,400	17.1	3.2 - 31.0	1,837	9.3	.0 - 23.3	19,846

County and Community	None			Once			2 or 3 times			4 or more times			Estimated Adult Population
	#	%	C.I. (95%)	#	%	C.I. (95%)	#	%	C.I. (95%)	#	%	C.I. (95%)	#
Hawaii-Hilo	n/r	n/r	n/r	n/r	n/r	n/r	n/r	n/r	n/r	n/r	n/r	n/r	n/r
Hawaii-Kona	n/r	n/r	n/r	n/r	n/r	n/r	n/r	n/r	n/r	n/r	n/r	n/r	n/r
Hawaii-N.Hawaii	n/r	n/r	n/r	n/r	n/r	n/r	n/r	n/r	n/r	n/r	n/r	n/r	n/r
Hawaii-Puna/ Kau	n/r	n/r	n/r	n/r	n/r	n/r	n/r	n/r	n/r	n/r	n/r	n/r	n/r
Honolulu-Aiea/ Pearl City	n/r	n/r	n/r	n/r	n/r	n/r	n/r	n/r	n/r	n/r	n/r	n/r	n/r
Honolulu-Ala Moana	n/r	n/r	n/r	n/r	n/r	n/r	n/r	n/r	n/r	n/r	n/r	n/r	n/r
Honolulu-Kaaawa/ Kahaluu/ Kaneohe	n/r	n/r	n/r	n/r	n/r	n/r	n/r	n/r	n/r	n/r	n/r	n/r	n/r
Honolulu-Kailua/ Waimanalo	n/r	n/r	n/r	n/r	n/r	n/r	n/r	n/r	n/r	n/r	n/r	n/r	n/r

During the Past 12 Months, How Many Times Did You See a Doctor, Nurse or Other Health Professional for Urgent Treatment of Worsening Asthma Symptoms (Among Those Who Currently Have Asthma) by Year Total, County, BRFSS Age Group, DOH Race-Ethnicity, Gender, County and Community, Education Level, Employment Status (Grouped), Household Income, Island, Marital Status (Grouped), Poverty Level, for the Year(s) - 2003, 2004, 2005

Note: Weighted numbers (#), percentages and 95% confidence intervals; Respondents aged 18 years and older; n/r (Not Reportable) - Represents cell size restriction of unweighted count < 50; n/a (Not Available) - Not asked of a subset of respondents

Year: 2005

County and Community	None			Once			2 or 3 times			4 or more times			Estimated Adult Population
	#	%	C.I. (95%)	#	%	C.I. (95%)	#	%	C.I. (95%)	#	%	C.I. (95%)	#
Honolulu-Kaimuki/ Palolo/ Waikiki	n/r	n/r	n/r	n/r	n/r	n/r	n/r	n/r	n/r	n/r	n/r	n/r	n/r
Honolulu-Manoa/ Upper Makiki	n/r	n/r	n/r	n/r	n/r	n/r	n/r	n/r	n/r	n/r	n/r	n/r	n/r
Honolulu-Mililani/ Wahiawa	n/r	n/r	n/r	n/r	n/r	n/r	n/r	n/r	n/r	n/r	n/r	n/r	n/r
Honolulu-Nanakuli/ Waianae	n/r	n/r	n/r	n/r	n/r	n/r	n/r	n/r	n/r	n/r	n/r	n/r	n/r
Honolulu-N.Shore/ Laie	n/r	n/r	n/r	n/r	n/r	n/r	n/r	n/r	n/r	n/r	n/r	n/r	n/r
Honolulu-Nuuanu/ Kalihi/ Moanalua	n/r	n/r	n/r	n/r	n/r	n/r	n/r	n/r	n/r	n/r	n/r	n/r	n/r
Honolulu-Salt Lake/ Foster Village	n/r	n/r	n/r	n/r	n/r	n/r	n/r	n/r	n/r	n/r	n/r	n/r	n/r
Honolulu-Waiialae/ Kahala/ Hawaii Kai	n/r	n/r	n/r	n/r	n/r	n/r	n/r	n/r	n/r	n/r	n/r	n/r	n/r
Honolulu-Waipahu/ Kapolei/ Ewa	n/r	n/r	n/r	n/r	n/r	n/r	n/r	n/r	n/r	n/r	n/r	n/r	n/r
Kauai-Hanalei/ Kapaa	n/r	n/r	n/r	n/r	n/r	n/r	n/r	n/r	n/r	n/r	n/r	n/r	n/r
Kauai-Lihue-Waimea	n/r	n/r	n/r	n/r	n/r	n/r	n/r	n/r	n/r	n/r	n/r	n/r	n/r
Maui-Kahului	n/r	n/r	n/r	n/r	n/r	n/r	n/r	n/r	n/r	n/r	n/r	n/r	n/r
Maui-Lanai	n/r	n/r	n/r	n/r	n/r	n/r	n/r	n/r	n/r	n/r	n/r	n/r	n/r

During the Past 12 Months, How Many Times Did You See a Doctor, Nurse or Other Health Professional for Urgent Treatment of Worsening Asthma Symptoms (Among Those Who Currently Have Asthma) by Year Total, County, BRFSS Age Group, DOH Race-Ethnicity, Gender, County and Community, Education Level, Employment Status (Grouped), Household Income, Island, Marital Status (Grouped), Poverty Level, for the Year(s) - 2003, 2004, 2005

Note: Weighted numbers (#), percentages and 95% confidence intervals; Respondents aged 18 years and older; n/r (Not Reportable) - Represents cell size restriction of unweighted count < 50; n/a (Not Available) - Not asked of a subset of respondents

Year: 2005

County and Community	None			Once			2 or 3 times			4 or more times			Estimated Adult Population
	#	%	C.I. (95%)	#	%	C.I. (95%)	#	%	C.I. (95%)	#	%	C.I. (95%)	#
Maui-Lahaina/ Wailuku	n/r	n/r	n/r	n/r	n/r	n/r	n/r	n/r	n/r	n/r	n/r	n/r	n/r
Maui-Molokai	n/r	n/r	n/r	n/r	n/r	n/r	n/r	n/r	n/r	n/r	n/r	n/r	n/r
Maui-Upcountry/ Hana	n/r	n/r	n/r	n/r	n/r	n/r	n/r	n/r	n/r	n/r	n/r	n/r	n/r

Education Level	None			Once			2 or 3 times			4 or more times			Estimated Adult Population
	#	%	C.I. (95%)	#	%	C.I. (95%)	#	%	C.I. (95%)	#	%	C.I. (95%)	#
Grades 9 thru 11 (Some High School)	n/r	n/r	n/r	n/r	n/r	n/r	n/r	n/r	n/r	n/r	n/r	n/r	n/r
Grades 12 or GED (High School Grad)	10,173	61.4	3.9 - 79.0	3,852	23.3	9.4 - 37.1	2,468	14.9	.1 - 29.7	65	.4	.0 - 1.2	16,558
College 1 to 3 years (Some College/ Tech)	12,737	65.5	1.5 - 79.6	3,105	16.0	6.1 - 25.8	3,286	16.9	5.0 - 28.8	306	1.6	.0 - 3.6	19,434
College 4 years or more (College Grad)	12,710	53.0	8.6 - 67.3	2,965	12.4	4.5 - 20.3	6,721	28.0	5.3 - 40.7	1,599	6.7	.0 - 15.3	23,995
Never attended school/ Only Kindergarten to Grades 8	n/r	n/r	n/r	n/r	n/r	n/r	n/r	n/r	n/r	n/r	n/r	n/r	n/r

During the Past 12 Months, How Many Times Did You See a Doctor, Nurse or Other Health Professional for Urgent Treatment of Worsening Asthma Symptoms (Among Those Who Currently Have Asthma) by Year Total, County, BRFSS Age Group, DOH Race-Ethnicity, Gender, County and Community, Education Level, Employment Status (Grouped), Household Income, Island, Marital Status (Grouped), Poverty Level, for the Year(s) - 2003, 2004, 2005

Note: Weighted numbers (#), percentages and 95% confidence intervals; Respondents aged 18 years and older; n/r (Not Reportable) - Represents cell size restriction of unweighted count < 50; n/a (Not Available) - Not asked of a subset of respondents

Year: 2005

Employment Status (Grouped)	None			Once			2 or 3 times			4 or more times			Estimated Adult Population
	#	%	C.I. (95%)	#	%	C.I. (95%)	#	%	C.I. (95%)	#	%	C.I. (95%)	#
Employed	26,435	60.9	0.4 - 71.4	7,313	16.8	9.5 - 24.2	9,514	21.9	2.8 - 31.0	166	.4	.0 - .8	43,428
Unemployed	n/r	n/r	n/r	n/r	n/r	n/r	n/r	n/r	n/r	n/r	n/r	n/r	n/r
Student/Homemaker	n/r	n/r	n/r	n/r	n/r	n/r	n/r	n/r	n/r	n/r	n/r	n/r	n/r
Retired/Unable to work	7,631	54.2	5.7 - 72.6	1,252	8.9	2.4 - 15.3	3,082	21.9	6.3 - 37.5	2,125	15.1	.0 - 33.8	14,090

During the Past 12 Months, How Many Times Did You See a Doctor, Nurse or Other Health Professional for Urgent Treatment of Worsening Asthma Symptoms (Among Those Who Currently Have Asthma) by Year Total, County, BRFSS Age Group, DOH Race-Ethnicity, Gender, County and Community, Education Level, Employment Status (Grouped), Household Income, Island, Marital Status (Grouped), Poverty Level, for the Year(s) - 2003, 2004, 2005

Note: Weighted numbers (#), percentages and 95% confidence intervals; Respondents aged 18 years and older; n/r (Not Reportable) - Represents cell size restriction of unweighted count < 50; n/a (Not Available) - Not asked of a subset of respondents

Year: 2005

Household Income	None			Once			2 or 3 times			4 or more times			Estimated Adult Population
	#	%	C.I. (95%)	#	%	C.I. (95%)	#	%	C.I. (95%)	#	%	C.I. (95%)	#
Less than \$10,000	n/r	n/r	n/r	n/r	n/r	n/r	n/r	n/r	n/r	n/r	n/r	n/r	n/r
\$10,000 to \$14,999	n/r	n/r	n/r	n/r	n/r	n/r	n/r	n/r	n/r	n/r	n/r	n/r	n/r
\$15,000 to \$19,999	n/r	n/r	n/r	n/r	n/r	n/r	n/r	n/r	n/r	n/r	n/r	n/r	n/r
\$20,000 to \$24,999	n/r	n/r	n/r	n/r	n/r	n/r	n/r	n/r	n/r	n/r	n/r	n/r	n/r
\$25,000 to \$34,999	n/r	n/r	n/r	n/r	n/r	n/r	n/r	n/r	n/r	n/r	n/r	n/r	n/r
\$35,000 to \$49,999	n/r	n/r	n/r	n/r	n/r	n/r	n/r	n/r	n/r	n/r	n/r	n/r	n/r
\$50,000 to \$74,999	n/r	n/r	n/r	n/r	n/r	n/r	n/r	n/r	n/r	n/r	n/r	n/r	n/r
\$75,000 or more	9,593	62.0	7.1 - 76.9	3,174	20.5	7.7 - 33.3	2,195	14.2	3.9 - 24.4	514	3.3	.0 - 7.2	15,476

During the Past 12 Months, How Many Times Did You See a Doctor, Nurse or Other Health Professional for Urgent Treatment of Worsening Asthma Symptoms (Among Those Who Currently Have Asthma) by Year Total, County, BRFSS Age Group, DOH Race-Ethnicity, Gender, County and Community, Education Level, Employment Status (Grouped), Household Income, Island, Marital Status (Grouped), Poverty Level, for the Year(s) - 2003, 2004, 2005

Note: Weighted numbers (#), percentages and 95% confidence intervals; Respondents aged 18 years and older; n/r (Not Reportable) - Represents cell size restriction of unweighted count < 50; n/a (Not Available) - Not asked of a subset of respondents

Year: 2005

Island	None			Once			2 or 3 times			4 or more times			Estimated Adult Population
	#	%	C.I. (95%)	#	%	C.I. (95%)	#	%	C.I. (95%)	#	%	C.I. (95%)	#
Hawaii	7,411	64.6	1.0 - 78.2	2,130	18.6	6.9 - 30.2	1,760	15.3	5.9 - 24.8	167	1.5	.0 - 3.2	11,468
Kauai	n/r	n/r	n/r	n/r	n/r	n/r	n/r	n/r	n/r	n/r	n/r	n/r	n/r
Maui	n/r	n/r	n/r	n/r	n/r	n/r	n/r	n/r	n/r	n/r	n/r	n/r	n/r
Lanai	n/r	n/r	n/r	n/r	n/r	n/r	n/r	n/r	n/r	n/r	n/r	n/r	n/r
Molokai	n/r	n/r	n/r	n/r	n/r	n/r	n/r	n/r	n/r	n/r	n/r	n/r	n/r
Oahu	24,720	57.8	5.3 - 70.2	4,444	10.4	4.1 - 16.7	10,413	24.3	3.4 - 35.2	3,207	7.5	.0 - 15.7	42,784

During the Past 12 Months, How Many Times Did You See a Doctor, Nurse or Other Health Professional for Urgent Treatment of Worsening Asthma Symptoms (Among Those Who Currently Have Asthma) by Year Total, County, BRFSS Age Group, DOH Race-Ethnicity, Gender, County and Community, Education Level, Employment Status (Grouped), Household Income, Island, Marital Status (Grouped), Poverty Level, for the Year(s) - 2003, 2004, 2005

Note: Weighted numbers (#), percentages and 95% confidence intervals; Respondents aged 18 years and older; n/r (Not Reportable) - Represents cell size restriction of unweighted count < 50; n/a (Not Available) - Not asked of a subset of respondents

Year: 2005

Marital Status (Grouped)	None			Once			2 or 3 times			4 or more times			Estimated Adult Population
	#	%	C.I. (95%)	#	%	C.I. (95%)	#	%	C.I. (95%)	#	%	C.I. (95%)	#
Married	23,111	58.7	8.0 - 69.4	6,559	16.7	9.4 - 23.9	8,105	20.6	1.3 - 29.9	1,596	4.1	.0 - 9.4	39,371
Unmarried Couple	n/r	n/r	n/r	n/r	n/r	n/r	n/r	n/r	n/r	n/r	n/r	n/r	n/r
Widowed	n/r	n/r	n/r	n/r	n/r	n/r	n/r	n/r	n/r	n/r	n/r	n/r	n/r
Other	10,977	52.4	5.3 - 69.5	3,217	15.4	5.3 - 25.4	4,954	23.6	0.0 - 37.3	1,805	8.6	.0 - 21.9	20,953

During the Past 12 Months, How Many Times Did You See a Doctor, Nurse or Other Health Professional for Urgent Treatment of Worsening Asthma Symptoms (Among Those Who Currently Have Asthma) by Year Total, County, BRFSS Age Group, DOH Race-Ethnicity, Gender, County and Community, Education Level, Employment Status (Grouped), Household Income, Island, Marital Status (Grouped), Poverty Level, for the Year(s) - 2003, 2004, 2005

Note: Weighted numbers (#), percentages and 95% confidence intervals; Respondents aged 18 years and older; n/r (Not Reportable) - Represents cell size restriction of unweighted count < 50; n/a (Not Available) - Not asked of a subset of respondents

Year: 2005

Poverty Level	None			Once			2 or 3 times			4 or more times			Estimated Adult Population
	#	%	C.I. (95%)	#	%	C.I. (95%)	#	%	C.I. (95%)	#	%	C.I. (95%)	#
1-50%	n/r	n/r	n/r	n/r	n/r	n/r	n/r	n/r	n/r	n/r	n/r	n/r	n/r
51-100%	n/r	n/r	n/r	n/r	n/r	n/r	n/r	n/r	n/r	n/r	n/r	n/r	n/r
101-120%	n/r	n/r	n/r	n/r	n/r	n/r	n/r	n/r	n/r	n/r	n/r	n/r	n/r
121-130%	n/r	n/r	n/r	n/r	n/r	n/r	n/r	n/r	n/r	n/r	n/r	n/r	n/r
131-150%	n/r	n/r	n/r	n/r	n/r	n/r	n/r	n/r	n/r	n/r	n/r	n/r	n/r
151-170%	n/r	n/r	n/r	n/r	n/r	n/r	n/r	n/r	n/r	n/r	n/r	n/r	n/r
181-185%	n/r	n/r	n/r	n/r	n/r	n/r	n/r	n/r	n/r	n/r	n/r	n/r	n/r
186+%	23,501	64.2	3.7 - 74.8	5,344	14.6	7.5 - 21.7	6,991	19.1	0.0 - 28.2	749	2.0	.3 - 3.8	36,585

During the Past 12 Months, How Many Times Did You See a Doctor, Nurse or Other Health Professional for Urgent Treatment of Worsening Asthma Symptoms (Among Those Who Currently Have Asthma) by Year Total, County, BRFSS Age Group, DOH Race-Ethnicity, Gender, County and Community, Education Level, Employment Status (Grouped), Household Income, Island, Marital Status (Grouped), Poverty Level, for the Year(s) - 2003, 2004, 2005

Note: Weighted numbers (#), percentages and 95% confidence intervals; Respondents aged 18 years and older; n/r (Not Reportable) - Represents cell size restriction of unweighted count < 50; n/a (Not Available) - Not asked of a subset of respondents

Year: 2005