

Pap Smear - within the past 3 yrs by State, County, Island, Community, BRFSS Age Group, DOH Race-Ethnicity, Education Level, Employment Status (Grouped), Household Income, Poverty Level, Marital Status (Grouped), Married, Health Care Coverage, for the Year(s) - 2000-2002, 2001-2003, 2002-2004, 2003-2005, 2004-2006, 2005-2007, 2006-2008, 2007-2009, 2008-2010

Note: Weighted numbers (#) represent 3-yr averages, percentages and 95% confidence intervals; Respondents aged 18 years and older; n/r (Not Reportable) - If the unweighted total responses for a dimension (row) is <50 that row will not be shown; n/a (Not Available) - Not asked of a subset of respondents

The trend analysis report shows the trend for the selected health variable over selected years in a table and a graph. Estimated Population: This number is a weighted representation of the population who responded to a particular question in the survey. For most questions the eligible population will be the entire adult population. For some secondary questions only a subset of the population was asked the question. For example, all survey participants were asked if they had diabetes, but only those who answered yes were asked if they use insulin. If a dimension value is unknown for a particular survey record, that record will not be included in the counts for that particular dimension.

For documentation on other terms and coding in this report, please go to the following links

[Click here to access BRFSS documentation](#)

[Click here to access DOH Race-Ethnicity coding](#)

[Click here to access The Hawai'i Data Guide](#)

[Click here to access Poverty Level Methodology](#)

**For questions about this report, please contact
The Hawaii Health Data Warehouse**

profiles@hhdw.org

(855) 946-5899 x15

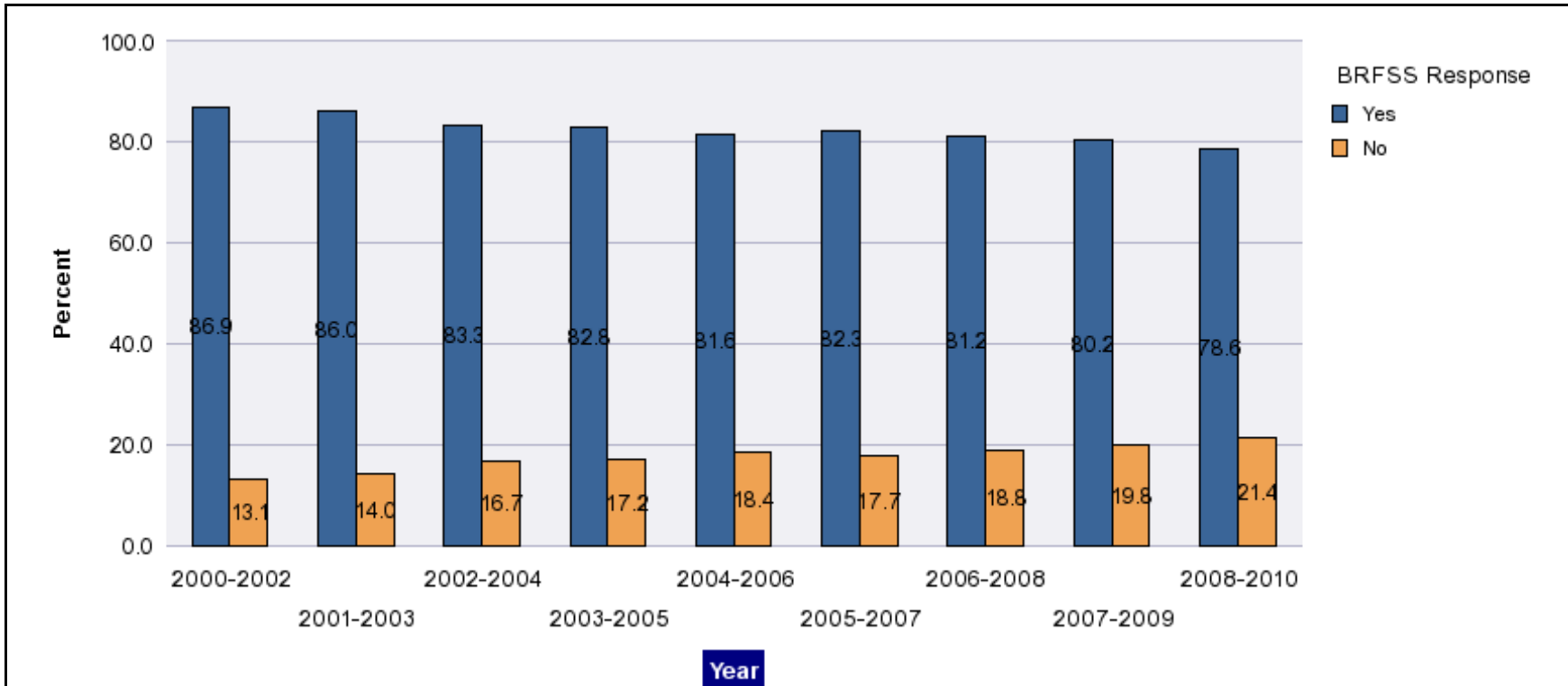
Pap Smear - within the past 3 yrs by State, County, Island, Community, BRFSS Age Group, DOH Race-Ethnicity, Education Level, Employment Status (Grouped), Household Income, Poverty Level, Marital Status (Grouped), Married, Health Care Coverage, for the Year(s) - 2000-2002, 2001-2003, 2002-2004, 2003-2005, 2004-2006, 2005-2007, 2006-2008, 2007-2009, 2008-2010

Note: Weighted numbers (#) represent 3-yr averages, percentages and 95% confidence intervals; Respondents aged 18 years and older; n/r (Not Reportable) - If the unweighted total responses for a dimension (row) is <50 that row will not be shown; n/a (Not Available) - Not asked of a subset of respondents

Year	Yes			No			Estimated Population (3-Yr Avg)
	#	%	C.I.(95%)	#	%	C.I.(95%)	#
2000-2002	383,700	86.9	85.9 - 87.8	58,000	13.1	12.2 - 14.1	441,700
2001-2003	388,000	86.0	85.0 - 87.0	63,300	14.0	13.0 - 15.0	451,300
2002-2004	380,700	83.3	81.9 - 84.6	76,600	16.7	15.4 - 18.1	457,300
2003-2005	382,600	82.8	81.4 - 84.3	79,300	17.2	15.7 - 18.6	461,900
2004-2006	381,300	81.6	80.1 - 83.0	86,200	18.4	17.0 - 19.9	467,500
2005-2007	391,000	82.3	81.2 - 83.4	84,100	17.7	16.6 - 18.8	475,100
2006-2008	394,100	81.2	80.2 - 82.3	91,000	18.8	17.7 - 19.8	485,100
2007-2009	386,600	80.2	79.1 - 81.3	95,200	19.8	18.7 - 20.9	481,900
2008-2010	381,800	78.6	77.4 - 79.7	104,200	21.4	20.3 - 22.6	486,000

Pap Smear - within the past 3 yrs by State, County, Island, Community, BRFSS Age Group, DOH Race-Ethnicity, Education Level, Employment Status (Grouped), Household Income, Poverty Level, Marital Status (Grouped), Married, Health Care Coverage, for the Year(s) - 2000-2002, 2001-2003, 2002-2004, 2003-2005, 2004-2006, 2005-2007, 2006-2008, 2007-2009, 2008-2010

Note: Weighted numbers (#) represent 3-yr averages, percentages and 95% confidence intervals; Respondents aged 18 years and older; n/r (Not Reportable) - If the unweighted total responses for a dimension (row) is <50 that row will not be shown; n/a (Not Available) - Not asked of a subset of respondents



Pap Smear - within the past 3 yrs by State, County, Island, Community, BRFSS Age Group, DOH Race-Ethnicity, Education Level, Employment Status (Grouped), Household Income, Poverty Level, Marital Status (Grouped), Married, Health Care Coverage, for the Year(s) - 2000-2002, 2001-2003, 2002-2004, 2003-2005, 2004-2006, 2005-2007, 2006-2008, 2007-2009, 2008-2010

Note: Weighted numbers (#) represent 3-yr averages, percentages and 95% confidence intervals; Respondents aged 18 years and older; n/r (Not Reportable) - If the unweighted total responses for a dimension (row) is <50 that row will not be shown; n/a (Not Available) - Not asked of a subset of respondents

Year: 2008-2010

State	Yes			No			Estimated Population (3-Yr Avg)
	#	%	C.I. (95%)	#	%	C.I. (95%)	#
Hawaii State	381,800	78.6	77.4 - 79.7	104,200	21.4	20.3 - 22.6	486,000

County	Yes			No			Estimated Population (3-Yr Avg)
	#	%	C.I. (95%)	#	%	C.I. (95%)	#
Hawaii	52,600	78.6	76.4 - 80.7	14,400	21.4	19.3 - 23.6	66,900
Honolulu	270,800	79.1	77.6 - 80.6	71,500	20.9	19.4 - 22.4	342,400
Kauai	17,600	74.6	71.1 - 78.1	6,000	25.4	21.9 - 28.9	23,600
Maui	40,800	76.8	74.5 - 79.2	12,300	23.2	20.8 - 25.5	53,100

Pap Smear - within the past 3 yrs by State, County, Island, Community, BRFSS Age Group, DOH Race-Ethnicity, Education Level, Employment Status (Grouped), Household Income, Poverty Level, Marital Status (Grouped), Married, Health Care Coverage, for the Year(s) - 2000-2002, 2001-2003, 2002-2004, 2003-2005, 2004-2006, 2005-2007, 2006-2008, 2007-2009, 2008-2010

Note: Weighted numbers (#) represent 3-yr averages, percentages and 95% confidence intervals; Respondents aged 18 years and older; n/r (Not Reportable) - If the unweighted total responses for a dimension (row) is <50 that row will not be shown; n/a (Not Available) - Not asked of a subset of respondents

Year: 2008-2010

Island	Yes			No			Estimated Population (3-Yr Avg)
	#	%	C.I. (95%)	#	%	C.I. (95%)	#
Hawaii	52,600	78.6	76.4 - 80.7	14,400	21.4	19.3 - 23.6	66,900
Kauai	17,600	74.6	71.1 - 78.1	6,000	25.4	21.9 - 28.9	23,600
Lanai	600	75.5	69.5 - 81.4	200	24.5	18.6 - 30.5	800
Maui	37,300	76.8	74.3 - 79.3	11,300	23.2	20.7 - 25.7	48,500
Molokai	3,000	77.3	72.6 - 82.0	900	22.7	18.0 - 27.4	3,800
Oahu	270,800	79.1	77.6 - 80.6	71,500	20.9	19.4 - 22.4	342,400

Community	Yes			No			Estimated Population (3-Yr Avg)
	#	%	C.I. (95%)	#	%	C.I. (95%)	#
Aiea/ Pearl City	25,100	78.5	72.7 - 84.3	6,900	21.5	15.7 - 27.3	32,000
Ala Moana	9,200	75.8	69.8 - 81.9	2,900	24.2	18.1 - 30.2	12,100

Pap Smear - within the past 3 yrs by State, County, Island, Community, BRFSS Age Group, DOH Race-Ethnicity, Education Level, Employment Status (Grouped), Household Income, Poverty Level, Marital Status (Grouped), Married, Health Care Coverage, for the Year(s) - 2000-2002, 2001-2003, 2002-2004, 2003-2005, 2004-2006, 2005-2007, 2006-2008, 2007-2009, 2008-2010

Note: Weighted numbers (#) represent 3-yr averages, percentages and 95% confidence intervals; Respondents aged 18 years and older; n/r (Not Reportable) - If the unweighted total responses for a dimension (row) is <50 that row will not be shown; n/a (Not Available) - Not asked of a subset of respondents

Year: 2008-2010

Community	Yes			No			Estimated Population (3-Yr Avg)
	#	%	C.I. (95%)	#	%	C.I. (95%)	#
Hanalei/ Kapaa	7,700	78.8	74.6 - 83.0	2,100	21.2	17.0 - 25.4	9,800
Hilo	16,400	80.9	76.6 - 85.1	3,900	19.1	14.9 - 23.4	20,300
Kaaawa/ Kahaluu/ Kaneohe	20,200	83.5	79.3 - 87.8	4,000	16.5	12.2 - 20.7	24,200
Kahului	13,100	79.6	75.5 - 83.7	3,400	20.4	16.3 - 24.5	16,500
Kailua/ Waimanalo	19,400	79.3	73.9 - 84.6	5,100	20.7	15.4 - 26.1	24,500
Kaimuki/ Palolo/ Waikiki	22,600	75.2	70.0 - 80.3	7,500	24.8	19.7 - 30.0	30,000
Kona	11,200	76.8	72.4 - 81.2	3,400	23.2	18.8 - 27.6	14,600
Lahaina/ Wailuku	11,400	74.7	69.7 - 79.7	3,900	25.3	20.3 - 30.3	15,300
Lanai	600	75.5	69.5 - 81.4	200	24.5	18.6 - 30.5	800
Lihue-Waimea	9,900	71.6	66.6 - 76.7	3,900	28.4	23.3 - 33.4	13,800
Manoa/ Upper Makiki	18,300	78.2	73.5 - 82.8	5,100	21.8	17.2 - 26.5	23,400
Mililani/ Wahiawa	31,800	86.1	82.4 - 89.7	5,100	13.9	10.3 - 17.6	36,900

Pap Smear - within the past 3 yrs by State, County, Island, Community, BRFSS Age Group, DOH Race-Ethnicity, Education Level, Employment Status (Grouped), Household Income, Poverty Level, Marital Status (Grouped), Married, Health Care Coverage, for the Year(s) - 2000-2002, 2001-2003, 2002-2004, 2003-2005, 2004-2006, 2005-2007, 2006-2008, 2007-2009, 2008-2010

Note: Weighted numbers (#) represent 3-yr averages, percentages and 95% confidence intervals; Respondents aged 18 years and older; n/r (Not Reportable) - If the unweighted total responses for a dimension (row) is <50 that row will not be shown; n/a (Not Available) - Not asked of a subset of respondents

Year: 2008-2010

Community	Yes			No			Estimated Population (3-Yr Avg)
	#	%	C.I. (95%)	#	%	C.I. (95%)	#
Molokai	3,000	77.3	72.6 - 82.0	900	22.7	18.0 - 27.4	3,800
Nanakuli/ Waianae	14,400	81.5	74.1 - 88.9	3,300	18.5	11.1 - 25.9	17,700
N.Hawaii	10,200	80.0	75.2 - 84.7	2,600	20.0	15.3 - 24.8	12,700
N.Shore/ Laie	6,600	65.4	53.9 - 77.0	3,500	34.6	23.0 - 46.1	10,000
Nuuanu/ Kalihi/ Moanalua	24,100	71.3	65.7 - 76.9	9,700	28.7	23.1 - 34.3	33,800
Puna/ Kau	14,800	76.5	72.7 - 80.4	4,500	23.5	19.6 - 27.3	19,300
Salt Lake/ Foster Village	16,300	87.2	82.6 - 91.8	2,400	12.8	8.2 - 17.4	18,700
Upcountry/ Hana	12,700	76.0	72.0 - 80.1	4,000	24.0	19.9 - 28.0	16,800
Waiialae/ Kahala/ Hawaii Kai	18,400	84.8	80.4 - 89.2	3,300	15.2	10.8 - 19.6	21,700
Waipahu/ Kapolei/ Ewa	44,600	77.7	73.7 - 81.6	12,800	22.3	18.4 - 26.3	57,400

Pap Smear - within the past 3 yrs by State, County, Island, Community, BRFSS Age Group, DOH Race-Ethnicity, Education Level, Employment Status (Grouped), Household Income, Poverty Level, Marital Status (Grouped), Married, Health Care Coverage, for the Year(s) - 2000-2002, 2001-2003, 2002-2004, 2003-2005, 2004-2006, 2005-2007, 2006-2008, 2007-2009, 2008-2010

Note: Weighted numbers (#) represent 3-yr averages, percentages and 95% confidence intervals; Respondents aged 18 years and older; n/r (Not Reportable) - If the unweighted total responses for a dimension (row) is <50 that row will not be shown; n/a (Not Available) - Not asked of a subset of respondents

Year: 2008-2010

BRFSS Age Group	Yes			No			Estimated Population (3-Yr Avg)
	#	%	C.I. (95%)	#	%	C.I. (95%)	#
18-24	32,700	62.4	56.4 - 68.4	19,700	37.6	31.6 - 43.6	52,400
25-34	72,500	88.6	86.0 - 91.2	9,400	11.4	8.8 - 14.0	81,900
35-44	72,100	86.8	84.7 - 89.0	10,900	13.2	11.0 - 15.3	83,000
45-54	74,200	84.8	82.8 - 86.9	13,300	15.2	13.1 - 17.2	87,500
55-64	59,600	79.9	77.9 - 82.0	15,000	20.1	18.0 - 22.1	74,500
65-74	36,500	75.7	73.1 - 78.3	11,700	24.3	21.7 - 26.9	48,300
75+	31,700	57.0	53.9 - 60.2	23,900	43.0	39.8 - 46.1	55,600

Pap Smear - within the past 3 yrs by State, County, Island, Community, BRFSS Age Group, DOH Race-Ethnicity, Education Level, Employment Status (Grouped), Household Income, Poverty Level, Marital Status (Grouped), Married, Health Care Coverage, for the Year(s) - 2000-2002, 2001-2003, 2002-2004, 2003-2005, 2004-2006, 2005-2007, 2006-2008, 2007-2009, 2008-2010

Note: Weighted numbers (#) represent 3-yr averages, percentages and 95% confidence intervals; Respondents aged 18 years and older; n/r (Not Reportable) - If the unweighted total responses for a dimension (row) is <50 that row will not be shown; n/a (Not Available) - Not asked of a subset of respondents

Year: 2008-2010

DOH Race-Ethnicity	Yes			No			Estimated Population (3-Yr Avg)
	#	%	C.I. (95%)	#	%	C.I. (95%)	#
Caucasian	119,600	80.7	79.2 - 82.2	28,700	19.3	17.8 - 20.8	148,300
Native Hawaiian	52,400	78.5	75.2 - 81.8	14,400	21.5	18.2 - 24.8	66,800
Chinese	22,500	78.2	73.4 - 82.9	6,300	21.8	17.1 - 26.6	28,800
Filipino	58,500	75.7	72.4 - 79.1	18,700	24.3	20.9 - 27.6	77,200
Japanese	93,800	78.7	76.5 - 80.9	25,400	21.3	19.1 - 23.5	119,100
Black	4,800	89.3	82.1 - 96.4	600	10.7	3.6 - 17.9	5,300
Native Alaskan/ American Indian	1,800	78.9	67.2 - 90.5	500	21.1	9.5 - 32.8	2,300
Other Asian	8,500	76.9	69.4 - 84.4	2,600	23.1	15.6 - 30.6	11,100
Other Pacific Islander	9,300	63.5	51.9 - 75.0	5,400	36.5	25.0 - 48.1	14,700
Other	9,200	84.5	77.5 - 91.4	1,700	15.5	8.6 - 22.5	10,900

Pap Smear - within the past 3 yrs by State, County, Island, Community, BRFSS Age Group, DOH Race-Ethnicity, Education Level, Employment Status (Grouped), Household Income, Poverty Level, Marital Status (Grouped), Married, Health Care Coverage, for the Year(s) - 2000-2002, 2001-2003, 2002-2004, 2003-2005, 2004-2006, 2005-2007, 2006-2008, 2007-2009, 2008-2010

Note: Weighted numbers (#) represent 3-yr averages, percentages and 95% confidence intervals; Respondents aged 18 years and older; n/r (Not Reportable) - If the unweighted total responses for a dimension (row) is <50 that row will not be shown; n/a (Not Available) - Not asked of a subset of respondents

Year: 2008-2010

Education Level	Yes			No			Estimated Population (3-Yr Avg)
	#	%	C.I. (95%)	#	%	C.I. (95%)	#
Never attended school/ Only Kindergarten to Grades 8	3,500	52.6	42.4 - 62.9	3,100	47.4	37.1 - 57.6	6,600
Grades 9 thru 11 (Some High School)	11,400	66.3	59.1 - 73.6	5,800	33.7	26.4 - 40.9	17,200
Grades 12 or GED (High School Grad)	97,700	73.5	71.1 - 75.8	35,300	26.5	24.2 - 28.9	133,000
College 1 to 3 years (Some College/ Tech)	113,800	77.4	75.2 - 79.7	33,100	22.6	20.3 - 24.8	146,900
College 4 years or more (College Grad)	155,100	85.3	83.9 - 86.8	26,700	14.7	13.2 - 16.1	181,700

Pap Smear - within the past 3 yrs by State, County, Island, Community, BRFSS Age Group, DOH Race-Ethnicity, Education Level, Employment Status (Grouped), Household Income, Poverty Level, Marital Status (Grouped), Married, Health Care Coverage, for the Year(s) - 2000-2002, 2001-2003, 2002-2004, 2003-2005, 2004-2006, 2005-2007, 2006-2008, 2007-2009, 2008-2010

Note: Weighted numbers (#) represent 3-yr averages, percentages and 95% confidence intervals; Respondents aged 18 years and older; n/r (Not Reportable) - If the unweighted total responses for a dimension (row) is <50 that row will not be shown; n/a (Not Available) - Not asked of a subset of respondents

Year: 2008-2010

Employment Status (Grouped)	Yes			No			Estimated Population (3-Yr Avg)
	#	%	C.I. (95%)	#	%	C.I. (95%)	#
Employed	228,000	83.7	82.3 - 85.1	44,400	16.3	14.9 - 17.7	272,400
Unemployed	19,700	76.0	70.3 - 81.7	6,200	24.0	18.3 - 29.7	25,900
Retired/Unable to work	78,100	69.2	67.0 - 71.4	34,700	30.8	28.6 - 33.0	112,800
Student/Homemaker	55,800	74.9	71.2 - 78.5	18,700	25.1	21.5 - 28.8	74,500

Pap Smear - within the past 3 yrs by State, County, Island, Community, BRFSS Age Group, DOH Race-Ethnicity, Education Level, Employment Status (Grouped), Household Income, Poverty Level, Marital Status (Grouped), Married, Health Care Coverage, for the Year(s) - 2000-2002, 2001-2003, 2002-2004, 2003-2005, 2004-2006, 2005-2007, 2006-2008, 2007-2009, 2008-2010

Note: Weighted numbers (#) represent 3-yr averages, percentages and 95% confidence intervals; Respondents aged 18 years and older; n/r (Not Reportable) - If the unweighted total responses for a dimension (row) is <50 that row will not be shown; n/a (Not Available) - Not asked of a subset of respondents

Year: 2008-2010

Household Income	Yes			No			Estimated Population (3-Yr Avg)
	#	%	C.I. (95%)	#	%	C.I. (95%)	#
Less than \$10,000	10,900	61.8	55.1 - 68.6	6,800	38.2	31.4 - 44.9	17,700
\$10,000 to \$14,999	8,600	60.6	53.4 - 67.7	5,600	39.4	32.3 - 46.6	14,300
\$15,000 to \$19,999	17,200	67.8	62.3 - 73.2	8,200	32.2	26.8 - 37.7	25,400
\$20,000 to \$24,999	23,800	73.1	68.5 - 77.7	8,700	26.9	22.3 - 31.5	32,500
\$25,000 to \$34,999	37,700	75.2	71.6 - 78.8	12,500	24.8	21.2 - 28.4	50,200
\$35,000 to \$49,999	57,800	79.8	77.2 - 82.4	14,700	20.2	17.6 - 22.8	72,500
\$50,000 to \$74,999	69,000	86.3	84.3 - 88.4	10,900	13.7	11.6 - 15.7	80,000
\$75,000 or more	122,600	86.9	85.1 - 88.7	18,500	13.1	11.3 - 14.9	141,200

Pap Smear - within the past 3 yrs by State, County, Island, Community, BRFSS Age Group, DOH Race-Ethnicity, Education Level, Employment Status (Grouped), Household Income, Poverty Level, Marital Status (Grouped), Married, Health Care Coverage, for the Year(s) - 2000-2002, 2001-2003, 2002-2004, 2003-2005, 2004-2006, 2005-2007, 2006-2008, 2007-2009, 2008-2010

Note: Weighted numbers (#) represent 3-yr averages, percentages and 95% confidence intervals; Respondents aged 18 years and older; n/r (Not Reportable) - If the unweighted total responses for a dimension (row) is <50 that row will not be shown; n/a (Not Available) - Not asked of a subset of respondents

Year: 2008-2010

Poverty Level	Yes			No			Estimated Population (3-Yr Avg)
	#	%	C.I. (95%)	#	%	C.I. (95%)	#
0-130%	76,800	70.9	68.0 - 73.8	31,500	29.1	26.2 - 32.0	108,200
131-185%	52,800	78.6	76.0 - 81.3	14,300	21.4	18.7 - 24.0	67,100
186+%	218,300	84.5	83.3 - 85.8	40,000	15.5	14.2 - 16.7	258,200

Marital Status (Grouped)	Yes			No			Estimated Population (3-Yr Avg)
	#	%	C.I. (95%)	#	%	C.I. (95%)	#
Married	237,900	84.8	83.6 - 85.9	42,800	15.2	14.1 - 16.4	280,700
Unmarried Couple	11,500	87.2	81.2 - 93.1	1,700	12.8	6.9 - 18.8	13,200
Widowed	27,200	60.1	56.8 - 63.4	18,100	39.9	36.6 - 43.2	45,300
Other	105,200	71.6	68.9 - 74.3	41,600	28.4	25.7 - 31.1	146,800

Pap Smear - within the past 3 yrs by State, County, Island, Community, BRFSS Age Group, DOH Race-Ethnicity, Education Level, Employment Status (Grouped), Household Income, Poverty Level, Marital Status (Grouped), Married, Health Care Coverage, for the Year(s) - 2000-2002, 2001-2003, 2002-2004, 2003-2005, 2004-2006, 2005-2007, 2006-2008, 2007-2009, 2008-2010

Note: Weighted numbers (#) represent 3-yr averages, percentages and 95% confidence intervals; Respondents aged 18 years and older; n/r (Not Reportable) - If the unweighted total responses for a dimension (row) is <50 that row will not be shown; n/a (Not Available) - Not asked of a subset of respondents

Year: 2008-2010

Married	Yes			No			Estimated Population (3-Yr Avg)
	#	%	C.I. (95%)	#	%	C.I. (95%)	#
Yes	242,800	84.8	83.6 - 85.9	43,600	15.2	14.1 - 16.4	286,400
No	137,900	69.5	67.3 - 71.7	60,500	30.5	28.3 - 32.7	198,500

Health Care Coverage	Yes			No			Estimated Population (3-Yr Avg)
	#	%	C.I. (95%)	#	%	C.I. (95%)	#
Yes	367,400	79.9	78.8 - 81.0	92,200	20.1	19.0 - 21.2	459,600
No	14,400	56.3	48.8 - 63.8	11,200	43.7	36.2 - 51.2	25,600

Pap Smear - within the past 3 yrs by State, County, Island, Community, BRFSS Age Group, DOH Race-Ethnicity, Education Level, Employment Status (Grouped), Household Income, Poverty Level, Marital Status (Grouped), Married, Health Care Coverage, for the Year(s) - 2000-2002, 2001-2003, 2002-2004, 2003-2005, 2004-2006, 2005-2007, 2006-2008, 2007-2009, 2008-2010

Note: Weighted numbers (#) represent 3-yr averages, percentages and 95% confidence intervals; Respondents aged 18 years and older; n/r (Not Reportable) - If the unweighted total responses for a dimension (row) is <50 that row will not be shown; n/a (Not Available) - Not asked of a subset of respondents

Year: 2007-2009

State	Yes			No			Estimated Population (3-Yr Avg)
	#	%	C.I. (95%)	#	%	C.I. (95%)	#
Hawaii State	386,600	80.2	79.1 - 81.3	95,200	19.8	18.7 - 20.9	481,900

County	Yes			No			Estimated Population (3-Yr Avg)
	#	%	C.I. (95%)	#	%	C.I. (95%)	#
Hawaii	52,400	80.1	78.0 - 82.1	13,000	19.9	17.9 - 22.0	65,500
Honolulu	275,300	80.9	79.5 - 82.4	64,900	19.1	17.6 - 20.5	340,200
Kauai	17,900	76.0	72.9 - 79.2	5,600	24.0	20.8 - 27.1	23,500
Maui	41,000	77.9	75.7 - 80.1	11,600	22.1	19.9 - 24.3	52,700

Pap Smear - within the past 3 yrs by State, County, Island, Community, BRFSS Age Group, DOH Race-Ethnicity, Education Level, Employment Status (Grouped), Household Income, Poverty Level, Marital Status (Grouped), Married, Health Care Coverage, for the Year(s) - 2000-2002, 2001-2003, 2002-2004, 2003-2005, 2004-2006, 2005-2007, 2006-2008, 2007-2009, 2008-2010

Note: Weighted numbers (#) represent 3-yr averages, percentages and 95% confidence intervals; Respondents aged 18 years and older; n/r (Not Reportable) - If the unweighted total responses for a dimension (row) is <50 that row will not be shown; n/a (Not Available) - Not asked of a subset of respondents

Year: 2007-2009

Island	Yes			No			Estimated Population (3-Yr Avg)
	#	%	C.I. (95%)	#	%	C.I. (95%)	#
Hawaii	52,400	80.1	78.0 - 82.1	13,000	19.9	17.9 - 22.0	65,500
Kauai	17,900	76.0	72.9 - 79.2	5,600	24.0	20.8 - 27.1	23,500
Lanai	600	75.5	69.9 - 81.1	200	24.5	18.9 - 30.1	800
Maui	37,100	78.0	75.5 - 80.4	10,500	22.0	19.6 - 24.5	47,600
Molokai	3,200	77.4	72.9 - 82.0	900	22.6	18.0 - 27.1	4,200
Oahu	275,300	80.9	79.5 - 82.4	64,900	19.1	17.6 - 20.5	340,200

Community	Yes			No			Estimated Population (3-Yr Avg)
	#	%	C.I. (95%)	#	%	C.I. (95%)	#
Aiea/ Pearl City	25,600	80.6	74.9 - 86.3	6,200	19.4	13.7 - 25.1	31,800
Ala Moana	9,800	76.5	70.4 - 82.7	3,000	23.5	17.3 - 29.6	12,800

Pap Smear - within the past 3 yrs by State, County, Island, Community, BRFSS Age Group, DOH Race-Ethnicity, Education Level, Employment Status (Grouped), Household Income, Poverty Level, Marital Status (Grouped), Married, Health Care Coverage, for the Year(s) - 2000-2002, 2001-2003, 2002-2004, 2003-2005, 2004-2006, 2005-2007, 2006-2008, 2007-2009, 2008-2010

Note: Weighted numbers (#) represent 3-yr averages, percentages and 95% confidence intervals; Respondents aged 18 years and older; n/r (Not Reportable) - If the unweighted total responses for a dimension (row) is <50 that row will not be shown; n/a (Not Available) - Not asked of a subset of respondents

Year: 2007-2009

Community	Yes			No			Estimated Population (3-Yr Avg)
	#	%	C.I. (95%)	#	%	C.I. (95%)	#
Hanalei/ Kapaa	7,500	77.1	72.6 - 81.6	2,200	22.9	18.4 - 27.4	9,700
Hilo	16,000	82.2	78.1 - 86.3	3,500	17.8	13.7 - 21.9	19,500
Kaaawa/ Kahaluu/ Kaneohe	19,700	84.0	79.9 - 88.1	3,800	16.0	11.9 - 20.1	23,500
Kahului	12,400	79.7	75.7 - 83.7	3,200	20.3	16.3 - 24.3	15,600
Kailua/ Waimanalo	21,000	83.4	78.8 - 88.0	4,200	16.6	12.0 - 21.2	25,100
Kaimuki/ Palolo/ Waikiki	21,400	74.7	70.0 - 79.5	7,200	25.3	20.5 - 30.0	28,700
Kona	11,100	76.6	72.1 - 81.2	3,400	23.4	18.8 - 27.9	14,500
Lahaina/ Wailuku	11,700	75.2	70.5 - 79.9	3,900	24.8	20.1 - 29.5	15,600
Lanai	600	75.5	69.9 - 81.1	200	24.5	18.9 - 30.1	800
Lihue-Waimea	10,400	75.3	70.9 - 79.7	3,400	24.7	20.3 - 29.1	13,800
Manoa/ Upper Makiki	17,500	80.0	75.3 - 84.7	4,400	20.0	15.3 - 24.7	21,800
Milliani/ Wahiawa	31,100	85.9	82.2 - 89.7	5,100	14.1	10.3 - 17.8	36,200

Pap Smear - within the past 3 yrs by State, County, Island, Community, BRFSS Age Group, DOH Race-Ethnicity, Education Level, Employment Status (Grouped), Household Income, Poverty Level, Marital Status (Grouped), Married, Health Care Coverage, for the Year(s) - 2000-2002, 2001-2003, 2002-2004, 2003-2005, 2004-2006, 2005-2007, 2006-2008, 2007-2009, 2008-2010

Note: Weighted numbers (#) represent 3-yr averages, percentages and 95% confidence intervals; Respondents aged 18 years and older; n/r (Not Reportable) - If the unweighted total responses for a dimension (row) is <50 that row will not be shown; n/a (Not Available) - Not asked of a subset of respondents

Year: 2007-2009

Community	Yes			No			Estimated Population (3-Yr Avg)
	#	%	C.I. (95%)	#	%	C.I. (95%)	#
Molokai	3,200	77.4	72.9 - 82.0	900	22.6	18.0 - 27.1	4,200
Nanakuli/ Waianae	16,100	84.2	77.3 - 91.2	3,000	15.8	8.8 - 22.7	19,100
N.Hawaii	11,100	82.7	78.3 - 87.0	2,300	17.3	13.0 - 21.7	13,500
N.Shore/ Laie	7,400	71.5	61.3 - 81.8	3,000	28.5	18.2 - 38.7	10,400
Nuuanu/ Kalihi/ Moanalua	24,000	73.6	68.0 - 79.3	8,600	26.4	20.7 - 32.0	32,700
Puna/ Kau	14,100	78.7	75.1 - 82.2	3,800	21.3	17.8 - 24.9	18,000
Salt Lake/ Foster Village	15,600	90.1	85.9 - 94.4	1,700	9.9	5.6 - 14.1	17,400
Upcountry/ Hana	13,000	79.0	75.1 - 82.8	3,500	21.0	17.2 - 24.9	16,400
Waialae/ Kahala/ Hawaii Kai	18,600	85.6	81.3 - 90.0	3,100	14.4	10.0 - 18.7	21,700
Waipahu/ Kapolei/ Ewa	47,400	80.2	76.5 - 83.9	11,700	19.8	16.1 - 23.5	59,100

Pap Smear - within the past 3 yrs by State, County, Island, Community, BRFSS Age Group, DOH Race-Ethnicity, Education Level, Employment Status (Grouped), Household Income, Poverty Level, Marital Status (Grouped), Married, Health Care Coverage, for the Year(s) - 2000-2002, 2001-2003, 2002-2004, 2003-2005, 2004-2006, 2005-2007, 2006-2008, 2007-2009, 2008-2010

Note: Weighted numbers (#) represent 3-yr averages, percentages and 95% confidence intervals; Respondents aged 18 years and older; n/r (Not Reportable) - If the unweighted total responses for a dimension (row) is <50 that row will not be shown; n/a (Not Available) - Not asked of a subset of respondents

Year: 2007-2009

BRFSS Age Group	Yes			No			Estimated Population (3-Yr Avg)
	#	%	C.I. (95%)	#	%	C.I. (95%)	#
18-24	34,900	65.6	59.9 - 71.3	18,300	34.4	28.7 - 40.1	53,200
25-34	71,300	90.4	88.1 - 92.7	7,600	9.6	7.3 - 11.9	78,800
35-44	72,700	87.3	85.2 - 89.3	10,600	12.7	10.7 - 14.8	83,400
45-54	76,000	85.9	84.0 - 87.8	12,500	14.1	12.2 - 16.0	88,400
55-64	60,300	81.3	79.3 - 83.3	13,900	18.7	16.7 - 20.7	74,200
65-74	35,300	76.5	73.8 - 79.2	10,900	23.5	20.8 - 26.2	46,200
75+	33,800	61.4	58.2 - 64.7	21,300	38.6	35.3 - 41.8	55,100

Pap Smear - within the past 3 yrs by State, County, Island, Community, BRFSS Age Group, DOH Race-Ethnicity, Education Level, Employment Status (Grouped), Household Income, Poverty Level, Marital Status (Grouped), Married, Health Care Coverage, for the Year(s) - 2000-2002, 2001-2003, 2002-2004, 2003-2005, 2004-2006, 2005-2007, 2006-2008, 2007-2009, 2008-2010

Note: Weighted numbers (#) represent 3-yr averages, percentages and 95% confidence intervals; Respondents aged 18 years and older; n/r (Not Reportable) - If the unweighted total responses for a dimension (row) is <50 that row will not be shown; n/a (Not Available) - Not asked of a subset of respondents

Year: 2007-2009

DOH Race-Ethnicity	Yes			No			Estimated Population (3-Yr Avg)
	#	%	C.I. (95%)	#	%	C.I. (95%)	#
Caucasian	123,200	82.2	80.7 - 83.7	26,700	17.8	16.3 - 19.3	150,000
Native Hawaiian	54,600	79.5	76.3 - 82.7	14,100	20.5	17.3 - 23.7	68,600
Chinese	21,600	77.2	72.2 - 82.2	6,400	22.8	17.8 - 27.8	27,900
Filipino	61,900	79.2	76.2 - 82.2	16,300	20.8	17.8 - 23.8	78,200
Japanese	89,200	79.6	77.3 - 81.8	22,900	20.4	18.2 - 22.7	112,200
Black	5,000	86.5	76.9 - 96.1	800	13.5	3.9 - 23.1	5,700
Native Alaskan/ American Indian	1,800	82.2	72.4 - 91.9	400	17.8	8.1 - 27.6	2,200
Other Asian	9,300	83.8	78.1 - 89.6	1,800	16.2	10.4 - 21.9	11,100
Other Pacific Islander	9,300	68.7	57.0 - 80.4	4,200	31.3	19.6 - 43.0	13,500
Other	9,500	85.9	80.0 - 91.8	1,600	14.1	8.2 - 20.0	11,100

Pap Smear - within the past 3 yrs by State, County, Island, Community, BRFSS Age Group, DOH Race-Ethnicity, Education Level, Employment Status (Grouped), Household Income, Poverty Level, Marital Status (Grouped), Married, Health Care Coverage, for the Year(s) - 2000-2002, 2001-2003, 2002-2004, 2003-2005, 2004-2006, 2005-2007, 2006-2008, 2007-2009, 2008-2010

Note: Weighted numbers (#) represent 3-yr averages, percentages and 95% confidence intervals; Respondents aged 18 years and older; n/r (Not Reportable) - If the unweighted total responses for a dimension (row) is <50 that row will not be shown; n/a (Not Available) - Not asked of a subset of respondents

Year: 2007-2009

Education Level	Yes			No			Estimated Population (3-Yr Avg)
	#	%	C.I. (95%)	#	%	C.I. (95%)	#
Never attended school/ Only Kindergarten to Grades 8	3,800	55.1	45.0 - 65.2	3,100	44.9	34.8 - 55.0	6,900
Grades 9 thru 11 (Some High School)	12,700	68.8	62.1 - 75.5	5,800	31.2	24.5 - 37.9	18,500
Grades 12 or GED (High School Grad)	102,700	76.6	74.4 - 78.8	31,400	23.4	21.2 - 25.6	134,100
College 1 to 3 years (Some College/ Tech)	115,700	79.3	77.1 - 81.5	30,200	20.7	18.5 - 22.9	145,900
College 4 years or more (College Grad)	151,100	86.0	84.6 - 87.4	24,600	14.0	12.6 - 15.4	175,700

Pap Smear - within the past 3 yrs by State, County, Island, Community, BRFSS Age Group, DOH Race-Ethnicity, Education Level, Employment Status (Grouped), Household Income, Poverty Level, Marital Status (Grouped), Married, Health Care Coverage, for the Year(s) - 2000-2002, 2001-2003, 2002-2004, 2003-2005, 2004-2006, 2005-2007, 2006-2008, 2007-2009, 2008-2010

Note: Weighted numbers (#) represent 3-yr averages, percentages and 95% confidence intervals; Respondents aged 18 years and older; n/r (Not Reportable) - If the unweighted total responses for a dimension (row) is <50 that row will not be shown; n/a (Not Available) - Not asked of a subset of respondents

Year: 2007-2009

Employment Status (Grouped)	Yes			No			Estimated Population (3-Yr Avg)
	#	%	C.I. (95%)	#	%	C.I. (95%)	#
Employed	232,900	84.8	83.5 - 86.1	41,800	15.2	13.9 - 16.5	274,700
Unemployed	15,900	78.0	72.0 - 84.0	4,500	22.0	16.0 - 28.0	20,400
Retired/Unable to work	82,900	71.4	69.2 - 73.6	33,200	28.6	26.4 - 30.8	116,100
Student/Homemaker	54,500	77.7	74.1 - 81.2	15,700	22.3	18.8 - 25.9	70,200

Pap Smear - within the past 3 yrs by State, County, Island, Community, BRFSS Age Group, DOH Race-Ethnicity, Education Level, Employment Status (Grouped), Household Income, Poverty Level, Marital Status (Grouped), Married, Health Care Coverage, for the Year(s) - 2000-2002, 2001-2003, 2002-2004, 2003-2005, 2004-2006, 2005-2007, 2006-2008, 2007-2009, 2008-2010

Note: Weighted numbers (#) represent 3-yr averages, percentages and 95% confidence intervals; Respondents aged 18 years and older; n/r (Not Reportable) - If the unweighted total responses for a dimension (row) is <50 that row will not be shown; n/a (Not Available) - Not asked of a subset of respondents

Year: 2007-2009

Household Income	Yes			No			Estimated Population (3-Yr Avg)
	#	%	C.I. (95%)	#	%	C.I. (95%)	#
Less than \$10,000	10,000	64.6	57.9 - 71.2	5,500	35.4	28.8 - 42.1	15,500
\$10,000 to \$14,999	9,800	64.8	57.8 - 71.7	5,300	35.2	28.3 - 42.2	15,100
\$15,000 to \$19,999	17,100	73.6	68.8 - 78.5	6,100	26.4	21.5 - 31.2	23,300
\$20,000 to \$24,999	24,000	74.3	69.8 - 78.8	8,300	25.7	21.2 - 30.2	32,300
\$25,000 to \$34,999	39,300	76.6	73.1 - 80.1	12,000	23.4	19.9 - 26.9	51,300
\$35,000 to \$49,999	62,300	80.6	78.2 - 83.0	15,000	19.4	17.0 - 21.8	77,300
\$50,000 to \$74,999	68,600	85.1	82.8 - 87.5	12,000	14.9	12.5 - 17.2	80,600
\$75,000 or more	122,000	88.8	87.2 - 90.5	15,300	11.2	9.5 - 12.8	137,300

Pap Smear - within the past 3 yrs by State, County, Island, Community, BRFSS Age Group, DOH Race-Ethnicity, Education Level, Employment Status (Grouped), Household Income, Poverty Level, Marital Status (Grouped), Married, Health Care Coverage, for the Year(s) - 2000-2002, 2001-2003, 2002-2004, 2003-2005, 2004-2006, 2005-2007, 2006-2008, 2007-2009, 2008-2010

Note: Weighted numbers (#) represent 3-yr averages, percentages and 95% confidence intervals; Respondents aged 18 years and older; n/r (Not Reportable) - If the unweighted total responses for a dimension (row) is <50 that row will not be shown; n/a (Not Available) - Not asked of a subset of respondents

Year: 2007-2009

Poverty Level	Yes			No			Estimated Population (3-Yr Avg)
	#	%	C.I. (95%)	#	%	C.I. (95%)	#
0-130%	76,900	74.0	71.2 - 76.7	27,100	26.0	23.3 - 28.8	104,000
131-185%	49,600	79.4	76.6 - 82.2	12,900	20.6	17.8 - 23.4	62,500
186+%	226,400	85.2	84.0 - 86.3	39,400	14.8	13.7 - 16.0	265,900

Marital Status (Grouped)	Yes			No			Estimated Population (3-Yr Avg)
	#	%	C.I. (95%)	#	%	C.I. (95%)	#
Married	240,500	86.3	85.2 - 87.4	38,200	13.7	12.6 - 14.8	278,700
Unmarried Couple	10,800	87.0	81.1 - 92.8	1,600	13.0	7.2 - 18.9	12,400
Widowed	28,600	62.6	59.3 - 65.9	17,100	37.4	34.1 - 40.7	45,700
Other	106,800	73.6	71.0 - 76.2	38,300	26.4	23.8 - 29.0	145,100

Pap Smear - within the past 3 yrs by State, County, Island, Community, BRFSS Age Group, DOH Race-Ethnicity, Education Level, Employment Status (Grouped), Household Income, Poverty Level, Marital Status (Grouped), Married, Health Care Coverage, for the Year(s) - 2000-2002, 2001-2003, 2002-2004, 2003-2005, 2004-2006, 2005-2007, 2006-2008, 2007-2009, 2008-2010

Note: Weighted numbers (#) represent 3-yr averages, percentages and 95% confidence intervals; Respondents aged 18 years and older; n/r (Not Reportable) - If the unweighted total responses for a dimension (row) is <50 that row will not be shown; n/a (Not Available) - Not asked of a subset of respondents

Year: 2007-2009

Married	Yes			No			Estimated Population (3-Yr Avg)
	#	%	C.I. (95%)	#	%	C.I. (95%)	#
Yes	245,600	86.2	85.2 - 87.3	39,200	13.8	12.7 - 14.8	284,700
No	140,100	71.4	69.4 - 73.5	56,000	28.6	26.5 - 30.6	196,200

Health Care Coverage	Yes			No			Estimated Population (3-Yr Avg)
	#	%	C.I. (95%)	#	%	C.I. (95%)	#
Yes	372,400	81.7	80.7 - 82.7	83,400	18.3	17.3 - 19.3	455,800
No	14,100	55.7	48.4 - 63.0	11,200	44.3	37.0 - 51.6	25,400

Pap Smear - within the past 3 yrs by State, County, Island, Community, BRFSS Age Group, DOH Race-Ethnicity, Education Level, Employment Status (Grouped), Household Income, Poverty Level, Marital Status (Grouped), Married, Health Care Coverage, for the Year(s) - 2000-2002, 2001-2003, 2002-2004, 2003-2005, 2004-2006, 2005-2007, 2006-2008, 2007-2009, 2008-2010

Note: Weighted numbers (#) represent 3-yr averages, percentages and 95% confidence intervals; Respondents aged 18 years and older; n/r (Not Reportable) - If the unweighted total responses for a dimension (row) is <50 that row will not be shown; n/a (Not Available) - Not asked of a subset of respondents

Year: 2006-2008

State	Yes			No			Estimated Population (3-Yr Avg)
	#	%	C.I. (95%)	#	%	C.I. (95%)	#
Hawaii State	394,100	81.2	80.2 - 82.3	91,000	18.8	17.7 - 19.8	485,100

County	Yes			No			Estimated Population (3-Yr Avg)
	#	%	C.I. (95%)	#	%	C.I. (95%)	#
Hawaii	51,600	80.7	78.6 - 82.7	12,400	19.3	17.3 - 21.4	64,000
Honolulu	282,200	81.8	80.5 - 83.2	62,600	18.2	16.8 - 19.5	344,900
Kauai	18,600	79.5	76.6 - 82.3	4,800	20.5	17.7 - 23.4	23,400
Maui	41,600	78.8	76.6 - 81.1	11,200	21.2	18.9 - 23.4	52,800

Pap Smear - within the past 3 yrs by State, County, Island, Community, BRFSS Age Group, DOH Race-Ethnicity, Education Level, Employment Status (Grouped), Household Income, Poverty Level, Marital Status (Grouped), Married, Health Care Coverage, for the Year(s) - 2000-2002, 2001-2003, 2002-2004, 2003-2005, 2004-2006, 2005-2007, 2006-2008, 2007-2009, 2008-2010

Note: Weighted numbers (#) represent 3-yr averages, percentages and 95% confidence intervals; Respondents aged 18 years and older; n/r (Not Reportable) - If the unweighted total responses for a dimension (row) is <50 that row will not be shown; n/a (Not Available) - Not asked of a subset of respondents

Year: 2006-2008

Island	Yes			No			Estimated Population (3-Yr Avg)
	#	%	C.I. (95%)	#	%	C.I. (95%)	#
Hawaii	51,600	80.7	78.6 - 82.7	12,400	19.3	17.3 - 21.4	64,000
Kauai	18,600	79.5	76.6 - 82.3	4,800	20.5	17.7 - 23.4	23,400
Lanai	800	80.3	75.4 - 85.3	200	19.7	14.7 - 24.6	900
Maui	38,000	79.3	76.9 - 81.7	9,900	20.7	18.3 - 23.1	48,000
Molokai	2,800	72.7	67.7 - 77.6	1,100	27.3	22.4 - 32.3	3,900
Oahu	282,200	81.8	80.5 - 83.2	62,600	18.2	16.8 - 19.5	344,900

Community	Yes			No			Estimated Population (3-Yr Avg)
	#	%	C.I. (95%)	#	%	C.I. (95%)	#
Aiea/ Pearl City	28,700	84.9	81.0 - 88.8	5,100	15.1	11.2 - 19.0	33,800
Ala Moana	11,500	75.6	69.7 - 81.5	3,700	24.4	18.5 - 30.3	15,200

Pap Smear - within the past 3 yrs by State, County, Island, Community, BRFSS Age Group, DOH Race-Ethnicity, Education Level, Employment Status (Grouped), Household Income, Poverty Level, Marital Status (Grouped), Married, Health Care Coverage, for the Year(s) - 2000-2002, 2001-2003, 2002-2004, 2003-2005, 2004-2006, 2005-2007, 2006-2008, 2007-2009, 2008-2010

Note: Weighted numbers (#) represent 3-yr averages, percentages and 95% confidence intervals; Respondents aged 18 years and older; n/r (Not Reportable) - If the unweighted total responses for a dimension (row) is <50 that row will not be shown; n/a (Not Available) - Not asked of a subset of respondents

Year: 2006-2008

Community	Yes			No			Estimated Population (3-Yr Avg)
	#	%	C.I. (95%)	#	%	C.I. (95%)	#
Hanalei/ Kapaa	7,600	79.7	75.6 - 83.9	1,900	20.3	16.1 - 24.4	9,500
Hilo	16,000	83.5	79.6 - 87.4	3,200	16.5	12.6 - 20.4	19,100
Kaaawa/ Kahaluu/ Kaneohe	19,300	81.8	77.1 - 86.4	4,300	18.2	13.6 - 22.9	23,600
Kahului	12,000	77.9	73.5 - 82.3	3,400	22.1	17.7 - 26.5	15,400
Kailua/ Waimanalo	22,300	82.5	77.7 - 87.3	4,700	17.5	12.7 - 22.3	27,000
Kaimuki/ Palolo/ Waikiki	20,300	74.2	69.4 - 78.9	7,100	25.8	21.1 - 30.6	27,400
Kona	11,300	76.8	72.4 - 81.2	3,400	23.2	18.8 - 27.6	14,700
Lahaina/ Wailuku	12,700	77.9	73.5 - 82.4	3,600	22.1	17.6 - 26.5	16,300
Lanai	800	80.3	75.4 - 85.3	200	19.7	14.7 - 24.6	900
Lihue-Waimea	11,000	79.3	75.4 - 83.1	2,900	20.7	16.9 - 24.6	13,900
Manoa/ Upper Makiki	18,100	81.8	77.2 - 86.4	4,000	18.2	13.6 - 22.8	22,100
Mililani/ Wahiawa	29,600	84.7	80.8 - 88.5	5,400	15.3	11.5 - 19.2	34,900

Pap Smear - within the past 3 yrs by State, County, Island, Community, BRFSS Age Group, DOH Race-Ethnicity, Education Level, Employment Status (Grouped), Household Income, Poverty Level, Marital Status (Grouped), Married, Health Care Coverage, for the Year(s) - 2000-2002, 2001-2003, 2002-2004, 2003-2005, 2004-2006, 2005-2007, 2006-2008, 2007-2009, 2008-2010

Note: Weighted numbers (#) represent 3-yr averages, percentages and 95% confidence intervals; Respondents aged 18 years and older; n/r (Not Reportable) - If the unweighted total responses for a dimension (row) is <50 that row will not be shown; n/a (Not Available) - Not asked of a subset of respondents

Year: 2006-2008

Community	Yes			No			Estimated Population (3-Yr Avg)
	#	%	C.I. (95%)	#	%	C.I. (95%)	#
Molokai	2,800	72.7	67.7 - 77.6	1,100	27.3	22.4 - 32.3	3,900
Nanakuli/ Waianae	16,000	86.0	80.4 - 91.6	2,600	14.0	8.4 - 19.6	18,600
N.Hawaii	11,100	81.0	76.4 - 85.5	2,600	19.0	14.5 - 23.6	13,700
N.Shore/ Laie	10,000	80.7	73.0 - 88.4	2,400	19.3	11.6 - 27.0	12,400
Nuuanu/ Kalihi/ Moanalua	23,900	74.1	68.6 - 79.6	8,400	25.9	20.4 - 31.4	32,200
Puna/ Kau	13,300	80.6	77.2 - 84.0	3,200	19.4	16.0 - 22.8	16,500
Salt Lake/ Foster Village	15,800	91.4	87.3 - 95.4	1,500	8.6	4.6 - 12.7	17,300
Upcountry/ Hana	13,300	82.1	78.4 - 85.8	2,900	17.9	14.2 - 21.6	16,200
Waialae/ Kahala/ Hawaii Kai	17,600	86.5	82.2 - 90.8	2,700	13.5	9.2 - 17.8	20,300
Waipahu/ Kapolei/ Ewa	49,300	82.1	78.7 - 85.5	10,700	17.9	14.5 - 21.3	60,000

Pap Smear - within the past 3 yrs by State, County, Island, Community, BRFSS Age Group, DOH Race-Ethnicity, Education Level, Employment Status (Grouped), Household Income, Poverty Level, Marital Status (Grouped), Married, Health Care Coverage, for the Year(s) - 2000-2002, 2001-2003, 2002-2004, 2003-2005, 2004-2006, 2005-2007, 2006-2008, 2007-2009, 2008-2010

Note: Weighted numbers (#) represent 3-yr averages, percentages and 95% confidence intervals; Respondents aged 18 years and older; n/r (Not Reportable) - If the unweighted total responses for a dimension (row) is <50 that row will not be shown; n/a (Not Available) - Not asked of a subset of respondents

Year: 2006-2008

BRFSS Age Group	Yes			No			Estimated Population (3-Yr Avg)
	#	%	C.I. (95%)	#	%	C.I. (95%)	#
18-24	38,500	70.3	65.4 - 75.1	16,300	29.7	24.9 - 34.6	54,900
25-34	71,000	90.7	88.6 - 92.8	7,300	9.3	7.2 - 11.4	78,200
35-44	75,300	88.3	86.3 - 90.3	10,000	11.7	9.7 - 13.7	85,300
45-54	76,700	85.7	83.8 - 87.7	12,800	14.3	12.3 - 16.2	89,500
55-64	60,300	80.9	78.7 - 83.1	14,200	19.1	16.9 - 21.3	74,500
65-74	35,100	78.3	75.5 - 81.1	9,800	21.7	18.9 - 24.5	44,900
75+	34,600	63.1	59.9 - 66.4	20,200	36.9	33.6 - 40.1	54,800

Pap Smear - within the past 3 yrs by State, County, Island, Community, BRFSS Age Group, DOH Race-Ethnicity, Education Level, Employment Status (Grouped), Household Income, Poverty Level, Marital Status (Grouped), Married, Health Care Coverage, for the Year(s) - 2000-2002, 2001-2003, 2002-2004, 2003-2005, 2004-2006, 2005-2007, 2006-2008, 2007-2009, 2008-2010

Note: Weighted numbers (#) represent 3-yr averages, percentages and 95% confidence intervals; Respondents aged 18 years and older; n/r (Not Reportable) - If the unweighted total responses for a dimension (row) is <50 that row will not be shown; n/a (Not Available) - Not asked of a subset of respondents

Year: 2006-2008

DOH Race-Ethnicity	Yes			No			Estimated Population (3-Yr Avg)
	#	%	C.I. (95%)	#	%	C.I. (95%)	#
Caucasian	126,000	82.4	80.9 - 83.9	26,900	17.6	16.1 - 19.1	153,000
Native Hawaiian	55,200	80.7	77.8 - 83.6	13,200	19.3	16.4 - 22.2	68,300
Chinese	20,400	79.7	75.0 - 84.4	5,200	20.3	15.6 - 25.0	25,600
Filipino	63,100	81.5	78.6 - 84.4	14,300	18.5	15.6 - 21.4	77,500
Japanese	90,000	81.0	78.9 - 83.1	21,100	19.0	16.9 - 21.1	111,200
Black	5,000	85.8	75.7 - 95.8	800	14.2	4.2 - 24.3	5,800
Native Alaskan/ American Indian	2,000	82.4	72.9 - 91.8	400	17.6	8.2 - 27.1	2,400
Other Asian	10,100	81.5	75.8 - 87.2	2,300	18.5	12.8 - 24.2	12,400
Other Pacific Islander	9,100	70.2	60.8 - 79.5	3,900	29.8	20.5 - 39.2	13,000
Mixed Ethnicity	2,900	85.5	74.4 - 96.6	500	14.5	3.4 - 25.6	3,400
Other	8,800	81.2	74.3 - 88.1	2,000	18.8	11.9 - 25.7	10,800

Pap Smear - within the past 3 yrs by State, County, Island, Community, BRFSS Age Group, DOH Race-Ethnicity, Education Level, Employment Status (Grouped), Household Income, Poverty Level, Marital Status (Grouped), Married, Health Care Coverage, for the Year(s) - 2000-2002, 2001-2003, 2002-2004, 2003-2005, 2004-2006, 2005-2007, 2006-2008, 2007-2009, 2008-2010

Note: Weighted numbers (#) represent 3-yr averages, percentages and 95% confidence intervals; Respondents aged 18 years and older; n/r (Not Reportable) - If the unweighted total responses for a dimension (row) is <50 that row will not be shown; n/a (Not Available) - Not asked of a subset of respondents

Year: 2006-2008

Education Level	Yes			No			Estimated Population (3-Yr Avg)
	#	%	C.I. (95%)	#	%	C.I. (95%)	#
Never attended school/ Only Kindergarten to Grades 8	4,600	59.0	50.1 - 68.0	3,200	41.0	32.0 - 49.9	7,800
Grades 9 thru 11 (Some High School)	12,900	65.8	59.4 - 72.1	6,700	34.2	27.9 - 40.6	19,500
Grades 12 or GED (High School Grad)	106,300	76.5	74.3 - 78.7	32,700	23.5	21.3 - 25.7	139,000
College 1 to 3 years (Some College/ Tech)	118,700	81.5	79.7 - 83.4	26,900	18.5	16.6 - 20.3	145,600
College 4 years or more (College Grad)	151,000	87.6	86.3 - 88.9	21,300	12.4	11.1 - 13.7	172,400

Pap Smear - within the past 3 yrs by State, County, Island, Community, BRFSS Age Group, DOH Race-Ethnicity, Education Level, Employment Status (Grouped), Household Income, Poverty Level, Marital Status (Grouped), Married, Health Care Coverage, for the Year(s) - 2000-2002, 2001-2003, 2002-2004, 2003-2005, 2004-2006, 2005-2007, 2006-2008, 2007-2009, 2008-2010

Note: Weighted numbers (#) represent 3-yr averages, percentages and 95% confidence intervals; Respondents aged 18 years and older; n/r (Not Reportable) - If the unweighted total responses for a dimension (row) is <50 that row will not be shown; n/a (Not Available) - Not asked of a subset of respondents

Year: 2006-2008

Employment Status (Grouped)	Yes			No			Estimated Population (3-Yr Avg)
	#	%	C.I. (95%)	#	%	C.I. (95%)	#
Employed	235,900	85.8	84.6 - 87.1	38,900	14.2	12.9 - 15.4	274,900
Unemployed	13,200	74.8	68.0 - 81.6	4,400	25.2	18.4 - 32.0	17,600
Retired/Unable to work	88,000	73.0	71.1 - 75.0	32,500	27.0	25.0 - 28.9	120,500
Student/Homemaker	56,700	79.1	75.8 - 82.3	15,000	20.9	17.7 - 24.2	71,700

Pap Smear - within the past 3 yrs by State, County, Island, Community, BRFSS Age Group, DOH Race-Ethnicity, Education Level, Employment Status (Grouped), Household Income, Poverty Level, Marital Status (Grouped), Married, Health Care Coverage, for the Year(s) - 2000-2002, 2001-2003, 2002-2004, 2003-2005, 2004-2006, 2005-2007, 2006-2008, 2007-2009, 2008-2010

Note: Weighted numbers (#) represent 3-yr averages, percentages and 95% confidence intervals; Respondents aged 18 years and older; n/r (Not Reportable) - If the unweighted total responses for a dimension (row) is <50 that row will not be shown; n/a (Not Available) - Not asked of a subset of respondents

Year: 2006-2008

Household Income	Yes			No			Estimated Population (3-Yr Avg)
	#	%	C.I. (95%)	#	%	C.I. (95%)	#
Less than \$10,000	10,300	63.0	56.1 - 69.9	6,000	37.0	30.1 - 43.9	16,300
\$10,000 to \$14,999	9,800	65.8	59.4 - 72.2	5,100	34.2	27.8 - 40.6	15,000
\$15,000 to \$19,999	16,600	73.4	68.5 - 78.3	6,000	26.6	21.7 - 31.5	22,700
\$20,000 to \$24,999	25,800	77.5	73.5 - 81.6	7,500	22.5	18.4 - 26.5	33,200
\$25,000 to \$34,999	42,700	80.2	77.1 - 83.2	10,600	19.8	16.8 - 22.9	53,300
\$35,000 to \$49,999	61,900	81.4	79.0 - 83.8	14,200	18.6	16.2 - 21.0	76,100
\$50,000 to \$74,999	68,400	85.5	83.2 - 87.9	11,600	14.5	12.1 - 16.8	79,900
\$75,000 or more	113,100	89.7	88.2 - 91.2	13,000	10.3	8.8 - 11.8	126,200

Pap Smear - within the past 3 yrs by State, County, Island, Community, BRFSS Age Group, DOH Race-Ethnicity, Education Level, Employment Status (Grouped), Household Income, Poverty Level, Marital Status (Grouped), Married, Health Care Coverage, for the Year(s) - 2000-2002, 2001-2003, 2002-2004, 2003-2005, 2004-2006, 2005-2007, 2006-2008, 2007-2009, 2008-2010

Note: Weighted numbers (#) represent 3-yr averages, percentages and 95% confidence intervals; Respondents aged 18 years and older; n/r (Not Reportable) - If the unweighted total responses for a dimension (row) is <50 that row will not be shown; n/a (Not Available) - Not asked of a subset of respondents

Year: 2006-2008

Poverty Level	Yes			No			Estimated Population (3-Yr Avg)
	#	%	C.I. (95%)	#	%	C.I. (95%)	#
0-130%	75,800	75.4	72.7 - 78.1	24,700	24.6	21.9 - 27.3	100,600
131-185%	47,300	80.9	78.0 - 83.7	11,200	19.1	16.3 - 22.0	58,400
186+%	225,500	85.6	84.5 - 86.7	37,900	14.4	13.3 - 15.5	263,500

Marital Status (Grouped)	Yes			No			Estimated Population (3-Yr Avg)
	#	%	C.I. (95%)	#	%	C.I. (95%)	#
Married	247,100	86.7	85.6 - 87.8	37,900	13.3	12.2 - 14.4	285,000
Unmarried Couple	10,000	85.7	79.2 - 92.2	1,700	14.3	7.8 - 20.8	11,700
Widowed	28,700	64.4	61.1 - 67.7	15,900	35.6	32.3 - 38.9	44,600
Other	108,300	75.3	73.0 - 77.6	35,500	24.7	22.4 - 27.0	143,700

Pap Smear - within the past 3 yrs by State, County, Island, Community, BRFSS Age Group, DOH Race-Ethnicity, Education Level, Employment Status (Grouped), Household Income, Poverty Level, Marital Status (Grouped), Married, Health Care Coverage, for the Year(s) - 2000-2002, 2001-2003, 2002-2004, 2003-2005, 2004-2006, 2005-2007, 2006-2008, 2007-2009, 2008-2010

Note: Weighted numbers (#) represent 3-yr averages, percentages and 95% confidence intervals; Respondents aged 18 years and older; n/r (Not Reportable) - If the unweighted total responses for a dimension (row) is <50 that row will not be shown; n/a (Not Available) - Not asked of a subset of respondents

Year: 2006-2008

Married	Yes			No			Estimated Population (3-Yr Avg)
	#	%	C.I. (95%)	#	%	C.I. (95%)	#
Yes	252,500	86.7	85.6 - 87.7	38,900	13.3	12.3 - 14.4	291,400
No	140,800	73.0	71.1 - 74.9	52,000	27.0	25.1 - 28.9	192,800

Health Care Coverage	Yes			No			Estimated Population (3-Yr Avg)
	#	%	C.I. (95%)	#	%	C.I. (95%)	#
Yes	376,900	82.4	81.4 - 83.5	80,300	17.6	16.5 - 18.6	457,100
No	16,900	62.3	56.3 - 68.3	10,200	37.7	31.7 - 43.7	27,100

Pap Smear - within the past 3 yrs by State, County, Island, Community, BRFSS Age Group, DOH Race-Ethnicity, Education Level, Employment Status (Grouped), Household Income, Poverty Level, Marital Status (Grouped), Married, Health Care Coverage, for the Year(s) - 2000-2002, 2001-2003, 2002-2004, 2003-2005, 2004-2006, 2005-2007, 2006-2008, 2007-2009, 2008-2010

Note: Weighted numbers (#) represent 3-yr averages, percentages and 95% confidence intervals; Respondents aged 18 years and older; n/r (Not Reportable) - If the unweighted total responses for a dimension (row) is <50 that row will not be shown; n/a (Not Available) - Not asked of a subset of respondents

Year: 2005-2007

State	Yes			No			Estimated Population (3-Yr Avg)
	#	%	C.I. (95%)	#	%	C.I. (95%)	#
Hawaii State	391,000	82.3	81.2 - 83.4	84,100	17.7	16.6 - 18.8	475,100

County	Yes			No			Estimated Population (3-Yr Avg)
	#	%	C.I. (95%)	#	%	C.I. (95%)	#
Hawaii	48,900	80.9	78.7 - 83.2	11,500	19.1	16.8 - 21.3	60,400
Honolulu	282,900	83.1	81.7 - 84.5	57,700	16.9	15.5 - 18.3	340,600
Kauai	18,000	78.1	74.5 - 81.7	5,000	21.9	18.3 - 25.5	23,000
Maui	41,200	80.7	78.4 - 83.1	9,800	19.3	16.9 - 21.6	51,100

Pap Smear - within the past 3 yrs by State, County, Island, Community, BRFSS Age Group, DOH Race-Ethnicity, Education Level, Employment Status (Grouped), Household Income, Poverty Level, Marital Status (Grouped), Married, Health Care Coverage, for the Year(s) - 2000-2002, 2001-2003, 2002-2004, 2003-2005, 2004-2006, 2005-2007, 2006-2008, 2007-2009, 2008-2010

Note: Weighted numbers (#) represent 3-yr averages, percentages and 95% confidence intervals; Respondents aged 18 years and older; n/r (Not Reportable) - If the unweighted total responses for a dimension (row) is <50 that row will not be shown; n/a (Not Available) - Not asked of a subset of respondents

Year: 2005-2007

Island	Yes			No			Estimated Population (3-Yr Avg)
	#	%	C.I. (95%)	#	%	C.I. (95%)	#
Hawaii	48,900	80.9	78.7 - 83.2	11,500	19.1	16.8 - 21.3	60,400
Kauai	18,000	78.1	74.5 - 81.7	5,000	21.9	18.3 - 25.5	23,000
Lanai	800	79.2	72.6 - 85.8	200	20.8	14.2 - 27.4	1,100
Maui	38,000	81.7	79.2 - 84.2	8,500	18.3	15.8 - 20.8	46,500
Molokai	2,400	68.9	62.5 - 75.2	1,100	31.1	24.8 - 37.5	3,500
Oahu	282,900	83.1	81.7 - 84.5	57,700	16.9	15.5 - 18.3	340,600

Community	Yes			No			Estimated Population (3-Yr Avg)
	#	%	C.I. (95%)	#	%	C.I. (95%)	#
Aiea/ Pearl City	29,300	87.4	83.6 - 91.1	4,200	12.6	8.9 - 16.4	33,500
Ala Moana	12,000	75.4	69.1 - 81.7	3,900	24.6	18.3 - 30.9	15,900

Pap Smear - within the past 3 yrs by State, County, Island, Community, BRFSS Age Group, DOH Race-Ethnicity, Education Level, Employment Status (Grouped), Household Income, Poverty Level, Marital Status (Grouped), Married, Health Care Coverage, for the Year(s) - 2000-2002, 2001-2003, 2002-2004, 2003-2005, 2004-2006, 2005-2007, 2006-2008, 2007-2009, 2008-2010

Note: Weighted numbers (#) represent 3-yr averages, percentages and 95% confidence intervals; Respondents aged 18 years and older; n/r (Not Reportable) - If the unweighted total responses for a dimension (row) is <50 that row will not be shown; n/a (Not Available) - Not asked of a subset of respondents

Year: 2005-2007

Community	Yes			No			Estimated Population (3-Yr Avg)
	#	%	C.I. (95%)	#	%	C.I. (95%)	#
Hanalei/ Kapaa	8,000	79.1	74.3 - 84.0	2,100	20.9	16.0 - 25.7	10,200
Hilo	14,900	84.6	80.9 - 88.2	2,700	15.4	11.8 - 19.1	17,700
Kaaawa/ Kahaluu/ Kaneohe	22,000	84.2	79.6 - 88.8	4,100	15.8	11.2 - 20.4	26,100
Kahului	11,300	77.4	72.6 - 82.3	3,300	22.6	17.7 - 27.4	14,600
Kailua/ Waimanalo	24,100	82.3	77.2 - 87.4	5,200	17.7	12.6 - 22.8	29,300
Kaimuki/ Palolo/ Waikiki	21,100	75.8	70.8 - 80.9	6,700	24.2	19.1 - 29.2	27,800
Kona	11,000	78.9	73.7 - 84.1	2,900	21.1	15.9 - 26.3	13,900
Lahaina/ Wailuku	13,200	81.5	77.2 - 85.9	3,000	18.5	14.1 - 22.8	16,100
Lanai	800	79.2	72.6 - 85.8	200	20.8	14.2 - 27.4	1,100
Lihue-Waimea	9,900	77.3	72.2 - 82.4	2,900	22.7	17.6 - 27.8	12,900
Manoa/ Upper Makiki	16,900	85.1	80.4 - 89.7	3,000	14.9	10.3 - 19.6	19,900
Mililani/ Wahiawa	29,200	87.3	83.6 - 90.9	4,300	12.7	9.1 - 16.4	33,500

Pap Smear - within the past 3 yrs by State, County, Island, Community, BRFSS Age Group, DOH Race-Ethnicity, Education Level, Employment Status (Grouped), Household Income, Poverty Level, Marital Status (Grouped), Married, Health Care Coverage, for the Year(s) - 2000-2002, 2001-2003, 2002-2004, 2003-2005, 2004-2006, 2005-2007, 2006-2008, 2007-2009, 2008-2010

Note: Weighted numbers (#) represent 3-yr averages, percentages and 95% confidence intervals; Respondents aged 18 years and older; n/r (Not Reportable) - If the unweighted total responses for a dimension (row) is <50 that row will not be shown; n/a (Not Available) - Not asked of a subset of respondents

Year: 2005-2007

Community	Yes			No			Estimated Population (3-Yr Avg)
	#	%	C.I. (95%)	#	%	C.I. (95%)	#
Molokai	2,400	68.9	62.5 - 75.2	1,100	31.1	24.8 - 37.5	3,500
Nanakuli/ Waianae	15,300	87.1	80.7 - 93.4	2,300	12.9	6.6 - 19.3	17,600
N.Hawaii	10,500	80.8	76.4 - 85.2	2,500	19.2	14.8 - 23.6	13,000
N.Shore/ Laie	10,200	79.4	70.6 - 88.2	2,600	20.6	11.8 - 29.4	12,800
Nuuanu/ Kalihi/ Moanalua	25,600	77.1	71.6 - 82.5	7,600	22.9	17.5 - 28.4	33,300
Puna/ Kau	12,500	78.8	74.1 - 83.5	3,400	21.2	16.5 - 25.9	15,900
Salt Lake/ Foster Village	13,000	87.6	80.9 - 94.3	1,800	12.4	5.7 - 19.1	14,800
Upcountry/ Hana	13,500	85.7	82.0 - 89.5	2,300	14.3	10.5 - 18.0	15,800
Waialae/ Kahala/ Hawaii Kai	18,500	89.7	86.0 - 93.4	2,100	10.3	6.6 - 14.0	20,700
Waipahu/ Kapolei/ Ewa	45,600	82.4	78.6 - 86.1	9,800	17.6	13.9 - 21.4	55,400

Pap Smear - within the past 3 yrs by State, County, Island, Community, BRFSS Age Group, DOH Race-Ethnicity, Education Level, Employment Status (Grouped), Household Income, Poverty Level, Marital Status (Grouped), Married, Health Care Coverage, for the Year(s) - 2000-2002, 2001-2003, 2002-2004, 2003-2005, 2004-2006, 2005-2007, 2006-2008, 2007-2009, 2008-2010

Note: Weighted numbers (#) represent 3-yr averages, percentages and 95% confidence intervals; Respondents aged 18 years and older; n/r (Not Reportable) - If the unweighted total responses for a dimension (row) is <50 that row will not be shown; n/a (Not Available) - Not asked of a subset of respondents

Year: 2005-2007

BRFSS Age Group	Yes			No			Estimated Population (3-Yr Avg)
	#	%	C.I. (95%)	#	%	C.I. (95%)	#
18-24	39,100	73.2	68.1 - 78.4	14,300	26.8	21.6 - 31.9	53,300
25-34	68,000	90.7	88.4 - 93.0	7,000	9.3	7.0 - 11.6	74,900
35-44	76,200	89.5	87.5 - 91.4	9,000	10.5	8.6 - 12.5	85,100
45-54	76,300	84.5	82.2 - 86.8	14,000	15.5	13.2 - 17.8	90,400
55-64	59,600	82.3	79.8 - 84.8	12,800	17.7	15.2 - 20.2	72,400
65-74	35,400	80.5	77.6 - 83.5	8,600	19.5	16.5 - 22.4	44,000
75+	34,600	65.6	62.1 - 69.2	18,100	34.4	30.8 - 37.9	52,700

Pap Smear - within the past 3 yrs by State, County, Island, Community, BRFSS Age Group, DOH Race-Ethnicity, Education Level, Employment Status (Grouped), Household Income, Poverty Level, Marital Status (Grouped), Married, Health Care Coverage, for the Year(s) - 2000-2002, 2001-2003, 2002-2004, 2003-2005, 2004-2006, 2005-2007, 2006-2008, 2007-2009, 2008-2010

Note: Weighted numbers (#) represent 3-yr averages, percentages and 95% confidence intervals; Respondents aged 18 years and older; n/r (Not Reportable) - If the unweighted total responses for a dimension (row) is <50 that row will not be shown; n/a (Not Available) - Not asked of a subset of respondents

Year: 2005-2007

DOH Race-Ethnicity	Yes			No			Estimated Population (3-Yr Avg)
	#	%	C.I. (95%)	#	%	C.I. (95%)	#
Caucasian	126,900	83.7	82.2 - 85.3	24,600	16.3	14.7 - 17.8	151,600
Native Hawaiian	54,100	80.3	77.0 - 83.7	13,200	19.7	16.3 - 23.0	67,300
Chinese	20,700	84.1	79.6 - 88.6	3,900	15.9	11.4 - 20.4	24,600
Filipino	63,800	80.5	77.3 - 83.7	15,400	19.5	16.3 - 22.7	79,300
Japanese	86,400	82.7	80.5 - 84.9	18,000	17.3	15.1 - 19.5	104,400
Black	4,800	85.7	75.1 - 96.4	800	14.3	3.6 - 24.9	5,600
Native Alaskan/ American Indian	1,900	88.1	79.9 - 96.4	300	11.9	3.6 - 20.1	2,200
Other Asian	9,900	80.9	74.3 - 87.5	2,300	19.1	12.5 - 25.7	12,200
Other Pacific Islander	8,500	73.5	63.4 - 83.7	3,100	26.5	16.3 - 36.6	11,600
Mixed Ethnicity	2,900	85.5	74.4 - 96.6	500	14.5	3.4 - 25.6	3,400
Other	9,600	85.2	78.6 - 91.8	1,700	14.8	8.2 - 21.4	11,200

Pap Smear - within the past 3 yrs by State, County, Island, Community, BRFSS Age Group, DOH Race-Ethnicity, Education Level, Employment Status (Grouped), Household Income, Poverty Level, Marital Status (Grouped), Married, Health Care Coverage, for the Year(s) - 2000-2002, 2001-2003, 2002-2004, 2003-2005, 2004-2006, 2005-2007, 2006-2008, 2007-2009, 2008-2010

Note: Weighted numbers (#) represent 3-yr averages, percentages and 95% confidence intervals; Respondents aged 18 years and older; n/r (Not Reportable) - If the unweighted total responses for a dimension (row) is <50 that row will not be shown; n/a (Not Available) - Not asked of a subset of respondents

Year: 2005-2007

Education Level	Yes			No			Estimated Population (3-Yr Avg)
	#	%	C.I. (95%)	#	%	C.I. (95%)	#
Never attended school/ Only Kindergarten to Grades 8	6,000	63.7	53.9 - 73.4	3,400	36.3	26.6 - 46.1	9,500
Grades 9 thru 11 (Some High School)	13,300	67.6	60.7 - 74.4	6,400	32.4	25.6 - 39.3	19,700
Grades 12 or GED (High School Grad)	105,500	78.2	75.9 - 80.5	29,400	21.8	19.5 - 24.1	134,900
College 1 to 3 years (Some College/ Tech)	119,700	82.2	80.1 - 84.3	25,900	17.8	15.7 - 19.9	145,700
College 4 years or more (College Grad)	145,900	88.7	87.4 - 90.0	18,600	11.3	10.0 - 12.6	164,500

Pap Smear - within the past 3 yrs by State, County, Island, Community, BRFSS Age Group, DOH Race-Ethnicity, Education Level, Employment Status (Grouped), Household Income, Poverty Level, Marital Status (Grouped), Married, Health Care Coverage, for the Year(s) - 2000-2002, 2001-2003, 2002-2004, 2003-2005, 2004-2006, 2005-2007, 2006-2008, 2007-2009, 2008-2010

Note: Weighted numbers (#) represent 3-yr averages, percentages and 95% confidence intervals; Respondents aged 18 years and older; n/r (Not Reportable) - If the unweighted total responses for a dimension (row) is <50 that row will not be shown; n/a (Not Available) - Not asked of a subset of respondents

Year: 2005-2007

Employment Status (Grouped)	Yes			No			Estimated Population (3-Yr Avg)
	#	%	C.I. (95%)	#	%	C.I. (95%)	#
Employed	234,100	86.6	85.2 - 87.9	36,300	13.4	12.1 - 14.8	270,400
Unemployed	9,600	71.6	63.1 - 80.1	3,800	28.4	19.9 - 36.9	13,400
Retired/Unable to work	90,900	75.0	72.9 - 77.2	30,200	25.0	22.8 - 27.1	121,100
Student/Homemaker	56,300	80.5	77.1 - 84.0	13,600	19.5	16.0 - 22.9	70,000

Pap Smear - within the past 3 yrs by State, County, Island, Community, BRFSS Age Group, DOH Race-Ethnicity, Education Level, Employment Status (Grouped), Household Income, Poverty Level, Marital Status (Grouped), Married, Health Care Coverage, for the Year(s) - 2000-2002, 2001-2003, 2002-2004, 2003-2005, 2004-2006, 2005-2007, 2006-2008, 2007-2009, 2008-2010

Note: Weighted numbers (#) represent 3-yr averages, percentages and 95% confidence intervals; Respondents aged 18 years and older; n/r (Not Reportable) - If the unweighted total responses for a dimension (row) is <50 that row will not be shown; n/a (Not Available) - Not asked of a subset of respondents

Year: 2005-2007

Household Income	Yes			No			Estimated Population (3-Yr Avg)
	#	%	C.I. (95%)	#	%	C.I. (95%)	#
Less than \$10,000	9,700	61.8	54.2 - 69.5	6,000	38.2	30.5 - 45.8	15,700
\$10,000 to \$14,999	11,700	71.6	64.9 - 78.3	4,600	28.4	21.7 - 35.1	16,300
\$15,000 to \$19,999	17,300	75.3	70.5 - 80.2	5,700	24.7	19.8 - 29.5	22,900
\$20,000 to \$24,999	29,600	80.6	76.4 - 84.9	7,100	19.4	15.1 - 23.6	36,700
\$25,000 to \$34,999	42,000	79.9	76.3 - 83.4	10,600	20.1	16.6 - 23.7	52,600
\$35,000 to \$49,999	64,100	83.2	80.7 - 85.7	13,000	16.8	14.3 - 19.3	77,100
\$50,000 to \$74,999	66,200	87.1	84.8 - 89.5	9,800	12.9	10.5 - 15.2	76,000
\$75,000 or more	101,300	90.3	88.6 - 92.0	10,900	9.7	8.0 - 11.4	112,200

Pap Smear - within the past 3 yrs by State, County, Island, Community, BRFSS Age Group, DOH Race-Ethnicity, Education Level, Employment Status (Grouped), Household Income, Poverty Level, Marital Status (Grouped), Married, Health Care Coverage, for the Year(s) - 2000-2002, 2001-2003, 2002-2004, 2003-2005, 2004-2006, 2005-2007, 2006-2008, 2007-2009, 2008-2010

Note: Weighted numbers (#) represent 3-yr averages, percentages and 95% confidence intervals; Respondents aged 18 years and older; n/r (Not Reportable) - If the unweighted total responses for a dimension (row) is <50 that row will not be shown; n/a (Not Available) - Not asked of a subset of respondents

Year: 2005-2007

Poverty Level	Yes			No			Estimated Population (3-Yr Avg)
	#	%	C.I. (95%)	#	%	C.I. (95%)	#
0-130%	75,700	76.8	73.9 - 79.7	22,900	23.2	20.3 - 26.1	98,600
131-185%	45,600	81.6	78.5 - 84.8	10,300	18.4	15.2 - 21.5	55,900
186+%	220,500	86.5	85.3 - 87.7	34,400	13.5	12.3 - 14.7	254,900

Marital Status (Grouped)	Yes			No			Estimated Population (3-Yr Avg)
	#	%	C.I. (95%)	#	%	C.I. (95%)	#
Married	248,600	87.4	86.2 - 88.6	35,700	12.6	11.4 - 13.8	284,300
Unmarried Couple	10,300	84.5	76.4 - 92.7	1,900	15.5	7.3 - 23.6	12,200
Widowed	28,800	66.8	63.1 - 70.5	14,300	33.2	29.5 - 36.9	43,100
Other	103,300	76.2	73.8 - 78.7	32,200	23.8	21.3 - 26.2	135,500

Pap Smear - within the past 3 yrs by State, County, Island, Community, BRFSS Age Group, DOH Race-Ethnicity, Education Level, Employment Status (Grouped), Household Income, Poverty Level, Marital Status (Grouped), Married, Health Care Coverage, for the Year(s) - 2000-2002, 2001-2003, 2002-2004, 2003-2005, 2004-2006, 2005-2007, 2006-2008, 2007-2009, 2008-2010

Note: Weighted numbers (#) represent 3-yr averages, percentages and 95% confidence intervals; Respondents aged 18 years and older; n/r (Not Reportable) - If the unweighted total responses for a dimension (row) is <50 that row will not be shown; n/a (Not Available) - Not asked of a subset of respondents

Year: 2005-2007

Married	Yes			No			Estimated Population (3-Yr Avg)
	#	%	C.I. (95%)	#	%	C.I. (95%)	#
Yes	253,100	87.2	86.1 - 88.4	37,000	12.8	11.6 - 13.9	290,100
No	137,600	74.5	72.5 - 76.6	47,000	25.5	23.4 - 27.5	184,600

Health Care Coverage	Yes			No			Estimated Population (3-Yr Avg)
	#	%	C.I. (95%)	#	%	C.I. (95%)	#
Yes	249,100	82.7	81.4 - 83.9	52,200	17.3	16.1 - 18.6	301,300
No	11,900	65.0	58.0 - 72.0	6,400	35.0	28.0 - 42.0	18,300

Pap Smear - within the past 3 yrs by State, County, Island, Community, BRFSS Age Group, DOH Race-Ethnicity, Education Level, Employment Status (Grouped), Household Income, Poverty Level, Marital Status (Grouped), Married, Health Care Coverage, for the Year(s) - 2000-2002, 2001-2003, 2002-2004, 2003-2005, 2004-2006, 2005-2007, 2006-2008, 2007-2009, 2008-2010

Note: Weighted numbers (#) represent 3-yr averages, percentages and 95% confidence intervals; Respondents aged 18 years and older; n/r (Not Reportable) - If the unweighted total responses for a dimension (row) is <50 that row will not be shown; n/a (Not Available) - Not asked of a subset of respondents

Year: 2004-2006

State	Yes			No			Estimated Population (3-Yr Avg)
	#	%	C.I. (95%)	#	%	C.I. (95%)	#
Hawaii State	381,300	81.6	80.1 - 83.0	86,200	18.4	17.0 - 19.9	467,500

County	Yes			No			Estimated Population (3-Yr Avg)
	#	%	C.I. (95%)	#	%	C.I. (95%)	#
Hawaii	50,100	82.2	79.7 - 84.7	10,900	17.8	15.3 - 20.3	61,000
Honolulu	273,200	81.7	79.8 - 83.6	61,300	18.3	16.4 - 20.2	334,500
Kauai	17,700	79.2	75.4 - 83.0	4,600	20.8	17.0 - 24.6	22,300
Maui	40,300	81.1	78.0 - 84.2	9,400	18.9	15.8 - 22.0	49,700

Pap Smear - within the past 3 yrs by State, County, Island, Community, BRFSS Age Group, DOH Race-Ethnicity, Education Level, Employment Status (Grouped), Household Income, Poverty Level, Marital Status (Grouped), Married, Health Care Coverage, for the Year(s) - 2000-2002, 2001-2003, 2002-2004, 2003-2005, 2004-2006, 2005-2007, 2006-2008, 2007-2009, 2008-2010

Note: Weighted numbers (#) represent 3-yr averages, percentages and 95% confidence intervals; Respondents aged 18 years and older; n/r (Not Reportable) - If the unweighted total responses for a dimension (row) is <50 that row will not be shown; n/a (Not Available) - Not asked of a subset of respondents

Year: 2004-2006

Island	Yes			No			Estimated Population (3-Yr Avg)
	#	%	C.I. (95%)	#	%	C.I. (95%)	#
Hawaii	50,100	82.2	79.7 - 84.7	10,900	17.8	15.3 - 20.3	61,000
Kauai	17,700	79.2	75.4 - 83.0	4,600	20.8	17.0 - 24.6	22,300
Lanai	800	81.0	73.8 - 88.2	200	19.0	11.8 - 26.2	1,000
Maui	37,400	81.9	78.5 - 85.2	8,300	18.1	14.8 - 21.5	45,700
Molokai	2,100	69.1	60.6 - 77.6	900	30.9	22.4 - 39.4	3,000
Oahu	273,200	81.7	79.8 - 83.6	61,300	18.3	16.4 - 20.2	334,500

Community	Yes			No			Estimated Population (3-Yr Avg)
	#	%	C.I. (95%)	#	%	C.I. (95%)	#
Aiea/ Pearl City	27,300	83.2	77.1 - 89.3	5,500	16.8	10.7 - 22.9	32,800
Ala Moana	12,600	75.1	67.5 - 82.6	4,200	24.9	17.4 - 32.5	16,800

Pap Smear - within the past 3 yrs by State, County, Island, Community, BRFSS Age Group, DOH Race-Ethnicity, Education Level, Employment Status (Grouped), Household Income, Poverty Level, Marital Status (Grouped), Married, Health Care Coverage, for the Year(s) - 2000-2002, 2001-2003, 2002-2004, 2003-2005, 2004-2006, 2005-2007, 2006-2008, 2007-2009, 2008-2010

Note: Weighted numbers (#) represent 3-yr averages, percentages and 95% confidence intervals; Respondents aged 18 years and older; n/r (Not Reportable) - If the unweighted total responses for a dimension (row) is <50 that row will not be shown; n/a (Not Available) - Not asked of a subset of respondents

Year: 2004-2006

Community	Yes			No			Estimated Population (3-Yr Avg)
	#	%	C.I. (95%)	#	%	C.I. (95%)	#
Hanalei/ Kapaa	8,000	82.2	77.2 - 87.2	1,700	17.8	12.8 - 22.8	9,800
Hilo	14,300	85.5	81.5 - 89.4	2,400	14.5	10.6 - 18.5	16,700
Kaaawa/ Kahaluu/ Kaneohe	19,900	81.2	74.1 - 88.4	4,600	18.8	11.6 - 25.9	24,500
Kahului	12,000	75.7	68.7 - 82.7	3,800	24.3	17.3 - 31.3	15,800
Kailua/ Waimanalo	23,400	82.6	77.0 - 88.2	4,900	17.4	11.8 - 23.0	28,300
Kaimuki/ Palolo/ Waikiki	22,300	76.5	70.1 - 82.9	6,900	23.5	17.1 - 29.9	29,200
Kona	12,200	84.8	79.8 - 89.7	2,200	15.2	10.3 - 20.2	14,300
Lahaina/ Wailuku	12,800	85.2	80.5 - 89.9	2,200	14.8	10.1 - 19.5	15,000
Lanai	800	81.0	73.8 - 88.2	200	19.0	11.8 - 26.2	1,000
Lihue-Waimea	9,700	76.9	71.5 - 82.4	2,900	23.1	17.6 - 28.5	12,600
Manoa/ Upper Makiki	15,700	79.8	70.6 - 89.0	4,000	20.2	11.0 - 29.4	19,700
Mililani/ Wahiawa	28,400	87.1	82.7 - 91.5	4,200	12.9	8.5 - 17.3	32,600

Report Source: The Hawaii Health Data Warehouse;
Data Source: State of Hawaii, Department of Health,
Behavioral Risk Factor Surveillance System (BRFSS)

Pap Smear - within the past 3 yrs by State, County, Island, Community, BRFSS Age Group, DOH Race-Ethnicity, Education Level, Employment Status (Grouped), Household Income, Poverty Level, Marital Status (Grouped), Married, Health Care Coverage, for the Year(s) - 2000-2002, 2001-2003, 2002-2004, 2003-2005, 2004-2006, 2005-2007, 2006-2008, 2007-2009, 2008-2010

Note: Weighted numbers (#) represent 3-yr averages, percentages and 95% confidence intervals; Respondents aged 18 years and older; n/r (Not Reportable) - If the unweighted total responses for a dimension (row) is <50 that row will not be shown; n/a (Not Available) - Not asked of a subset of respondents

Year: 2004-2006

Community	Yes			No			Estimated Population (3-Yr Avg)
	#	%	C.I. (95%)	#	%	C.I. (95%)	#
Molokai	2,100	69.1	60.6 - 77.6	900	30.9	22.4 - 39.4	3,000
Nanakuli/ Waianae	15,200	82.7	73.9 - 91.6	3,200	17.3	8.4 - 26.1	18,400
N.Hawaii	9,000	78.2	72.6 - 83.8	2,500	21.8	16.2 - 27.4	11,500
N.Shore/ Laie	10,800	83.7	75.1 - 92.4	2,100	16.3	7.6 - 24.9	12,900
Nuuanu/ Kalihi/ Moanalua	24,700	76.3	69.7 - 82.9	7,700	23.7	17.1 - 30.3	32,400
Puna/ Kau	14,700	79.7	74.4 - 85.1	3,700	20.3	14.9 - 25.6	18,500
Salt Lake/ Foster Village	12,400	83.6	75.6 - 91.7	2,400	16.4	8.3 - 24.4	14,800
Upcountry/ Hana	12,600	85.1	80.3 - 89.9	2,200	14.9	10.1 - 19.7	14,800
Waialae/ Kahala/ Hawaii Kai	17,700	88.1	81.1 - 95.2	2,400	11.9	4.8 - 18.9	20,100
Waipahu/ Kapolei/ Ewa	42,700	82.2	76.8 - 87.5	9,300	17.8	12.5 - 23.2	52,000

Pap Smear - within the past 3 yrs by State, County, Island, Community, BRFSS Age Group, DOH Race-Ethnicity, Education Level, Employment Status (Grouped), Household Income, Poverty Level, Marital Status (Grouped), Married, Health Care Coverage, for the Year(s) - 2000-2002, 2001-2003, 2002-2004, 2003-2005, 2004-2006, 2005-2007, 2006-2008, 2007-2009, 2008-2010

Note: Weighted numbers (#) represent 3-yr averages, percentages and 95% confidence intervals; Respondents aged 18 years and older; n/r (Not Reportable) - If the unweighted total responses for a dimension (row) is <50 that row will not be shown; n/a (Not Available) - Not asked of a subset of respondents

Year: 2004-2006

BRFSS Age Group	Yes			No			Estimated Population (3-Yr Avg)
	#	%	C.I. (95%)	#	%	C.I. (95%)	#
18-24	36,900	71.3	65.0 - 77.6	14,900	28.7	22.4 - 35.0	51,800
25-34	68,700	89.5	86.8 - 92.2	8,100	10.5	7.8 - 13.2	76,700
35-44	77,600	89.4	86.9 - 91.9	9,200	10.6	8.1 - 13.1	86,800
45-54	71,700	82.0	78.4 - 85.6	15,700	18.0	14.4 - 21.6	87,400
55-64	55,200	80.7	77.5 - 84.0	13,200	19.3	16.0 - 22.5	68,400
65-74	35,400	79.3	75.3 - 83.4	9,200	20.7	16.6 - 24.7	44,600
75+	32,300	67.6	62.8 - 72.4	15,500	32.4	27.6 - 37.2	47,800

Pap Smear - within the past 3 yrs by State, County, Island, Community, BRFSS Age Group, DOH Race-Ethnicity, Education Level, Employment Status (Grouped), Household Income, Poverty Level, Marital Status (Grouped), Married, Health Care Coverage, for the Year(s) - 2000-2002, 2001-2003, 2002-2004, 2003-2005, 2004-2006, 2005-2007, 2006-2008, 2007-2009, 2008-2010

Note: Weighted numbers (#) represent 3-yr averages, percentages and 95% confidence intervals; Respondents aged 18 years and older; n/r (Not Reportable) - If the unweighted total responses for a dimension (row) is <50 that row will not be shown; n/a (Not Available) - Not asked of a subset of respondents

Year: 2004-2006

DOH Race-Ethnicity	Yes			No			Estimated Population (3-Yr Avg)
	#	%	C.I. (95%)	#	%	C.I. (95%)	#
Caucasian	124,600	83.9	82.0 - 85.8	23,900	16.1	14.2 - 18.0	148,500
Native Hawaiian	53,200	80.0	75.7 - 84.4	13,300	20.0	15.6 - 24.3	66,500
Chinese	20,300	82.3	74.6 - 90.0	4,400	17.7	10.0 - 25.4	24,600
Filipino	59,900	78.8	74.4 - 83.2	16,100	21.2	16.8 - 25.6	76,000
Japanese	86,300	82.4	79.5 - 85.3	18,400	17.6	14.7 - 20.5	104,700
Black	4,200	90.4	81.1 - 99.7	400	9.6	0.3 - 18.9	4,700
Other Asian	7,900	72.7	61.9 - 83.4	3,000	27.3	16.6 - 38.1	10,900
Other Pacific Islander	6,900	64.5	51.5 - 77.5	3,800	35.5	22.5 - 48.5	10,700
Mixed Ethnicity	2,900	85.5	74.4 - 96.6	500	14.5	3.4 - 25.6	3,400
Other	10,100	88.1	81.4 - 94.8	1,400	11.9	5.2 - 18.6	11,400

Pap Smear - within the past 3 yrs by State, County, Island, Community, BRFSS Age Group, DOH Race-Ethnicity, Education Level, Employment Status (Grouped), Household Income, Poverty Level, Marital Status (Grouped), Married, Health Care Coverage, for the Year(s) - 2000-2002, 2001-2003, 2002-2004, 2003-2005, 2004-2006, 2005-2007, 2006-2008, 2007-2009, 2008-2010

Note: Weighted numbers (#) represent 3-yr averages, percentages and 95% confidence intervals; Respondents aged 18 years and older; n/r (Not Reportable) - If the unweighted total responses for a dimension (row) is <50 that row will not be shown; n/a (Not Available) - Not asked of a subset of respondents

Year: 2004-2006

Education Level	Yes			No			Estimated Population (3-Yr Avg)
	#	%	C.I. (95%)	#	%	C.I. (95%)	#
Never attended school/ Only Kindergarten to Grades 8	6,200	68.1	57.7 - 78.5	2,900	31.9	21.5 - 42.3	9,200
Grades 9 thru 11 (Some High School)	11,200	64.8	56.8 - 72.8	6,100	35.2	27.2 - 43.2	17,200
Grades 12 or GED (High School Grad)	107,000	76.6	73.4 - 79.7	32,700	23.4	20.3 - 26.6	139,800
College 1 to 3 years (Some College/ Tech)	116,200	80.9	78.2 - 83.6	27,400	19.1	16.4 - 21.8	143,600
College 4 years or more (College Grad)	140,300	89.3	87.6 - 91.0	16,800	10.7	9.0 - 12.4	157,200

Pap Smear - within the past 3 yrs by State, County, Island, Community, BRFSS Age Group, DOH Race-Ethnicity, Education Level, Employment Status (Grouped), Household Income, Poverty Level, Marital Status (Grouped), Married, Health Care Coverage, for the Year(s) - 2000-2002, 2001-2003, 2002-2004, 2003-2005, 2004-2006, 2005-2007, 2006-2008, 2007-2009, 2008-2010

Note: Weighted numbers (#) represent 3-yr averages, percentages and 95% confidence intervals; Respondents aged 18 years and older; n/r (Not Reportable) - If the unweighted total responses for a dimension (row) is <50 that row will not be shown; n/a (Not Available) - Not asked of a subset of respondents

Year: 2004-2006

Employment Status (Grouped)	Yes			No			Estimated Population (3-Yr Avg)
	#	%	C.I. (95%)	#	%	C.I. (95%)	#
Employed	225,600	86.0	84.2 - 87.7	36,700	14.0	12.3 - 15.8	262,400
Unemployed	9,800	74.7	65.6 - 83.8	3,300	25.3	16.2 - 34.4	13,100
Retired/Unable to work	88,000	74.7	71.8 - 77.6	29,800	25.3	22.4 - 28.2	117,900
Student/Homemaker	57,800	78.2	73.7 - 82.6	16,200	21.8	17.4 - 26.3	74,000

Pap Smear - within the past 3 yrs by State, County, Island, Community, BRFSS Age Group, DOH Race-Ethnicity, Education Level, Employment Status (Grouped), Household Income, Poverty Level, Marital Status (Grouped), Married, Health Care Coverage, for the Year(s) - 2000-2002, 2001-2003, 2002-2004, 2003-2005, 2004-2006, 2005-2007, 2006-2008, 2007-2009, 2008-2010

Note: Weighted numbers (#) represent 3-yr averages, percentages and 95% confidence intervals; Respondents aged 18 years and older; n/r (Not Reportable) - If the unweighted total responses for a dimension (row) is <50 that row will not be shown; n/a (Not Available) - Not asked of a subset of respondents

Year: 2004-2006

Household Income	Yes			No			Estimated Population (3-Yr Avg)
	#	%	C.I. (95%)	#	%	C.I. (95%)	#
Less than \$10,000	7,900	60.8	51.2 - 70.4	5,100	39.2	29.6 - 48.8	13,000
\$10,000 to \$14,999	10,900	68.8	60.4 - 77.2	4,900	31.2	22.8 - 39.6	15,800
\$15,000 to \$19,999	17,700	74.6	68.3 - 80.9	6,000	25.4	19.1 - 31.7	23,700
\$20,000 to \$24,999	30,500	80.2	75.1 - 85.3	7,500	19.8	14.7 - 24.9	38,000
\$25,000 to \$34,999	42,900	78.5	73.8 - 83.2	11,800	21.5	16.8 - 26.2	54,700
\$35,000 to \$49,999	58,100	83.3	79.7 - 87.0	11,600	16.7	13.0 - 20.3	69,700
\$50,000 to \$74,999	87,900	85.1	81.8 - 88.3	15,400	14.9	11.7 - 18.2	103,300
\$75,000 or more	87,300	88.9	86.2 - 91.5	10,900	11.1	8.5 - 13.8	98,200

Pap Smear - within the past 3 yrs by State, County, Island, Community, BRFSS Age Group, DOH Race-Ethnicity, Education Level, Employment Status (Grouped), Household Income, Poverty Level, Marital Status (Grouped), Married, Health Care Coverage, for the Year(s) - 2000-2002, 2001-2003, 2002-2004, 2003-2005, 2004-2006, 2005-2007, 2006-2008, 2007-2009, 2008-2010

Note: Weighted numbers (#) represent 3-yr averages, percentages and 95% confidence intervals; Respondents aged 18 years and older; n/r (Not Reportable) - If the unweighted total responses for a dimension (row) is <50 that row will not be shown; n/a (Not Available) - Not asked of a subset of respondents

Year: 2004-2006

Poverty Level	Yes			No			Estimated Population (3-Yr Avg)
	#	%	C.I. (95%)	#	%	C.I. (95%)	#
0-130%	70,300	75.4	71.7 - 79.1	22,900	24.6	20.9 - 28.3	93,200
131-185%	44,200	78.1	73.0 - 83.3	12,400	21.9	16.7 - 27.0	56,600
186+%	228,700	85.7	84.1 - 87.4	38,000	14.3	12.6 - 15.9	266,700

Marital Status (Grouped)	Yes			No			Estimated Population (3-Yr Avg)
	#	%	C.I. (95%)	#	%	C.I. (95%)	#
Married	244,600	86.4	84.8 - 88.1	38,300	13.6	11.9 - 15.2	282,900
Unmarried Couple	10,600	83.9	75.8 - 92.0	2,000	16.1	8.0 - 24.2	12,600
Widowed	28,300	67.8	62.5 - 73.0	13,500	32.2	27.0 - 37.5	41,700
Other	97,900	75.2	72.0 - 78.3	32,400	24.8	21.7 - 28.0	130,300

Pap Smear - within the past 3 yrs by State, County, Island, Community, BRFSS Age Group, DOH Race-Ethnicity, Education Level, Employment Status (Grouped), Household Income, Poverty Level, Marital Status (Grouped), Married, Health Care Coverage, for the Year(s) - 2000-2002, 2001-2003, 2002-2004, 2003-2005, 2004-2006, 2005-2007, 2006-2008, 2007-2009, 2008-2010

Note: Weighted numbers (#) represent 3-yr averages, percentages and 95% confidence intervals; Respondents aged 18 years and older; n/r (Not Reportable) - If the unweighted total responses for a dimension (row) is <50 that row will not be shown; n/a (Not Available) - Not asked of a subset of respondents

Year: 2004-2006

Married	Yes			No			Estimated Population (3-Yr Avg)
	#	%	C.I. (95%)	#	%	C.I. (95%)	#
Yes	249,100	86.2	84.6 - 87.9	39,800	13.8	12.1 - 15.4	288,800
No	131,700	74.0	71.3 - 76.6	46,300	26.0	23.4 - 28.7	178,000

Health Care Coverage	Yes			No			Estimated Population (3-Yr Avg)
	#	%	C.I. (95%)	#	%	C.I. (95%)	#
Yes	235,300	81.2	79.3 - 83.1	54,400	18.8	16.9 - 20.7	289,700
No	15,500	71.5	64.0 - 78.9	6,200	28.5	21.1 - 36.0	21,600

Pap Smear - within the past 3 yrs by State, County, Island, Community, BRFSS Age Group, DOH Race-Ethnicity, Education Level, Employment Status (Grouped), Household Income, Poverty Level, Marital Status (Grouped), Married, Health Care Coverage, for the Year(s) - 2000-2002, 2001-2003, 2002-2004, 2003-2005, 2004-2006, 2005-2007, 2006-2008, 2007-2009, 2008-2010

Note: Weighted numbers (#) represent 3-yr averages, percentages and 95% confidence intervals; Respondents aged 18 years and older; n/r (Not Reportable) - If the unweighted total responses for a dimension (row) is <50 that row will not be shown; n/a (Not Available) - Not asked of a subset of respondents

Year: 2003-2005

State	Yes			No			Estimated Population (3-Yr Avg)
	#	%	C.I. (95%)	#	%	C.I. (95%)	#
Hawaii State	382,600	82.8	81.4 - 84.3	79,300	17.2	15.7 - 18.6	461,900

County	Yes			No			Estimated Population (3-Yr Avg)
	#	%	C.I. (95%)	#	%	C.I. (95%)	#
Hawaii	50,200	83.3	80.6 - 86.0	10,000	16.7	14.0 - 19.4	60,200
Honolulu	274,800	83.1	81.2 - 85.0	56,000	16.9	15.0 - 18.8	330,800
Kauai	17,000	78.0	74.0 - 82.0	4,800	22.0	18.0 - 26.0	21,900
Maui	40,600	82.9	79.6 - 86.1	8,400	17.1	13.9 - 20.4	49,000

Pap Smear - within the past 3 yrs by State, County, Island, Community, BRFSS Age Group, DOH Race-Ethnicity, Education Level, Employment Status (Grouped), Household Income, Poverty Level, Marital Status (Grouped), Married, Health Care Coverage, for the Year(s) - 2000-2002, 2001-2003, 2002-2004, 2003-2005, 2004-2006, 2005-2007, 2006-2008, 2007-2009, 2008-2010

Note: Weighted numbers (#) represent 3-yr averages, percentages and 95% confidence intervals; Respondents aged 18 years and older; n/r (Not Reportable) - If the unweighted total responses for a dimension (row) is <50 that row will not be shown; n/a (Not Available) - Not asked of a subset of respondents

Year: 2003-2005

Island	Yes			No			Estimated Population (3-Yr Avg)
	#	%	C.I. (95%)	#	%	C.I. (95%)	#
Hawaii	50,200	83.3	80.6 - 86.0	10,000	16.7	14.0 - 19.4	60,200
Kauai	17,000	78.0	74.0 - 82.0	4,800	22.0	18.0 - 26.0	21,900
Lanai	800	79.6	70.8 - 88.5	200	20.4	11.5 - 29.2	1,000
Maui	37,500	83.4	79.9 - 86.8	7,500	16.6	13.2 - 20.1	44,900
Molokai	2,400	76.4	66.9 - 85.8	700	23.6	14.2 - 33.1	3,100
Oahu	274,800	83.1	81.2 - 85.0	56,000	16.9	15.0 - 18.8	330,800

Community	Yes			No			Estimated Population (3-Yr Avg)
	#	%	C.I. (95%)	#	%	C.I. (95%)	#
Aiea/ Pearl City	26,200	82.8	76.4 - 89.3	5,400	17.2	10.7 - 23.6	31,700
Ala Moana	12,400	76.6	68.9 - 84.4	3,800	23.4	15.6 - 31.1	16,200

Pap Smear - within the past 3 yrs by State, County, Island, Community, BRFSS Age Group, DOH Race-Ethnicity, Education Level, Employment Status (Grouped), Household Income, Poverty Level, Marital Status (Grouped), Married, Health Care Coverage, for the Year(s) - 2000-2002, 2001-2003, 2002-2004, 2003-2005, 2004-2006, 2005-2007, 2006-2008, 2007-2009, 2008-2010

Note: Weighted numbers (#) represent 3-yr averages, percentages and 95% confidence intervals; Respondents aged 18 years and older; n/r (Not Reportable) - If the unweighted total responses for a dimension (row) is <50 that row will not be shown; n/a (Not Available) - Not asked of a subset of respondents

Year: 2003-2005

Community	Yes			No			Estimated Population (3-Yr Avg)
	#	%	C.I. (95%)	#	%	C.I. (95%)	#
Hanalei/ Kapaa	7,600	80.3	74.9 - 85.8	1,900	19.7	14.2 - 25.1	9,500
Hilo	13,900	83.1	78.0 - 88.2	2,800	16.9	11.8 - 22.0	16,700
Kaaawa/ Kahaluu/ Kaneohe	21,600	82.9	76.2 - 89.7	4,400	17.1	10.3 - 23.8	26,100
Kahului	12,500	78.8	71.7 - 85.9	3,400	21.2	14.1 - 28.3	15,800
Kailua/ Waimanalo	23,900	84.4	78.9 - 89.9	4,400	15.6	10.1 - 21.1	28,300
Kaimuki/ Palolo/ Waikiki	23,700	77.5	71.2 - 83.8	6,900	22.5	16.2 - 28.8	30,500
Kona	12,500	87.3	82.0 - 92.5	1,800	12.7	7.5 - 18.0	14,300
Lahaina/ Wailuku	12,400	86.5	81.3 - 91.7	1,900	13.5	8.3 - 18.7	14,300
Lanai	800	79.6	70.8 - 88.5	200	20.4	11.5 - 29.2	1,000
Lihue-Waimea	9,400	76.2	70.5 - 81.9	2,900	23.8	18.1 - 29.5	12,400
Manoa/ Upper Makiki	16,400	80.0	71.1 - 89.0	4,100	20.0	11.0 - 28.9	20,500
Milliani/ Wahiawa	30,500	91.4	87.4 - 95.4	2,900	8.6	4.6 - 12.6	33,400

Pap Smear - within the past 3 yrs by State, County, Island, Community, BRFSS Age Group, DOH Race-Ethnicity, Education Level, Employment Status (Grouped), Household Income, Poverty Level, Marital Status (Grouped), Married, Health Care Coverage, for the Year(s) - 2000-2002, 2001-2003, 2002-2004, 2003-2005, 2004-2006, 2005-2007, 2006-2008, 2007-2009, 2008-2010

Note: Weighted numbers (#) represent 3-yr averages, percentages and 95% confidence intervals; Respondents aged 18 years and older; n/r (Not Reportable) - If the unweighted total responses for a dimension (row) is <50 that row will not be shown; n/a (Not Available) - Not asked of a subset of respondents

Year: 2003-2005

Community	Yes			No			Estimated Population (3-Yr Avg)
	#	%	C.I. (95%)	#	%	C.I. (95%)	#
Molokai	2,400	76.4	66.9 - 85.8	700	23.6	14.2 - 33.1	3,100
Nanakuli/ Waianae	15,200	85.2	76.5 - 93.9	2,600	14.8	6.1 - 23.5	17,800
N.Hawaii	9,000	81.0	75.5 - 86.6	2,100	19.0	13.4 - 24.5	11,100
N.Shore/ Laie	11,100	84.1	75.2 - 93.0	2,100	15.9	7.0 - 24.8	13,200
Nuuanu/ Kalihi/ Moanalua	25,300	81.2	75.1 - 87.4	5,800	18.8	12.6 - 24.9	31,100
Puna/ Kau	14,800	81.9	76.4 - 87.3	3,300	18.1	12.7 - 23.6	18,100
Salt Lake/ Foster Village	12,100	80.0	71.4 - 88.7	3,000	20.0	11.3 - 28.6	15,100
Upcountry/ Hana	12,600	85.2	80.2 - 90.2	2,200	14.8	9.8 - 19.8	14,800
Waialae/ Kahala/ Hawaii Kai	16,000	88.4	80.6 - 96.1	2,100	11.6	3.9 - 19.4	18,100
Waipahu/ Kapolei/ Ewa	40,400	82.8	77.1 - 88.4	8,400	17.3	11.6 - 22.9	48,800

Pap Smear - within the past 3 yrs by State, County, Island, Community, BRFSS Age Group, DOH Race-Ethnicity, Education Level, Employment Status (Grouped), Household Income, Poverty Level, Marital Status (Grouped), Married, Health Care Coverage, for the Year(s) - 2000-2002, 2001-2003, 2002-2004, 2003-2005, 2004-2006, 2005-2007, 2006-2008, 2007-2009, 2008-2010

Note: Weighted numbers (#) represent 3-yr averages, percentages and 95% confidence intervals; Respondents aged 18 years and older; n/r (Not Reportable) - If the unweighted total responses for a dimension (row) is <50 that row will not be shown; n/a (Not Available) - Not asked of a subset of respondents

Year: 2003-2005

BRFSS Age Group	Yes			No			Estimated Population (3-Yr Avg)
	#	%	C.I. (95%)	#	%	C.I. (95%)	#
18-24	37,800	73.8	67.5 - 80.0	13,400	26.2	20.0 - 32.5	51,200
25-34	70,400	90.9	88.4 - 93.4	7,000	9.1	6.6 - 11.6	77,400
35-44	77,900	88.4	85.8 - 91.0	10,200	11.6	9.0 - 14.2	88,200
45-54	72,000	83.1	79.4 - 86.8	14,700	16.9	13.2 - 20.6	86,700
55-64	54,000	83.4	80.1 - 86.7	10,800	16.6	13.3 - 19.9	64,800
65-74	36,200	79.4	75.2 - 83.7	9,400	20.6	16.3 - 24.8	45,600
75+	31,200	69.5	64.4 - 74.7	13,700	30.5	25.3 - 35.6	44,900

Pap Smear - within the past 3 yrs by State, County, Island, Community, BRFSS Age Group, DOH Race-Ethnicity, Education Level, Employment Status (Grouped), Household Income, Poverty Level, Marital Status (Grouped), Married, Health Care Coverage, for the Year(s) - 2000-2002, 2001-2003, 2002-2004, 2003-2005, 2004-2006, 2005-2007, 2006-2008, 2007-2009, 2008-2010

Note: Weighted numbers (#) represent 3-yr averages, percentages and 95% confidence intervals; Respondents aged 18 years and older; n/r (Not Reportable) - If the unweighted total responses for a dimension (row) is <50 that row will not be shown; n/a (Not Available) - Not asked of a subset of respondents

Year: 2003-2005

DOH Race-Ethnicity	Yes			No			Estimated Population (3-Yr Avg)
	#	%	C.I. (95%)	#	%	C.I. (95%)	#
Caucasian	129,700	86.6	84.7 - 88.4	20,200	13.4	11.6 - 15.3	149,900
Native Hawaiian	47,600	79.3	74.6 - 84.1	12,400	20.7	15.9 - 25.4	60,000
Chinese	30,800	83.6	77.9 - 89.2	6,000	16.4	10.8 - 22.1	36,800
Filipino	61,300	79.4	75.1 - 83.7	15,900	20.6	16.3 - 24.9	77,200
Japanese	81,300	82.8	79.7 - 85.9	16,800	17.2	14.1 - 20.3	98,100
Black	3,900	88.7	77.8 - 99.6	500	11.3	0.4 - 22.2	4,300
Other Asian	6,300	71.9	58.7 - 85.1	2,500	28.1	14.9 - 41.3	8,800
Other Pacific Islander	5,400	65.7	50.6 - 80.9	2,800	34.3	19.1 - 49.4	8,100
Other	11,300	90.3	84.3 - 96.4	1,200	9.7	3.6 - 15.7	12,500

Pap Smear - within the past 3 yrs by State, County, Island, Community, BRFSS Age Group, DOH Race-Ethnicity, Education Level, Employment Status (Grouped), Household Income, Poverty Level, Marital Status (Grouped), Married, Health Care Coverage, for the Year(s) - 2000-2002, 2001-2003, 2002-2004, 2003-2005, 2004-2006, 2005-2007, 2006-2008, 2007-2009, 2008-2010

Note: Weighted numbers (#) represent 3-yr averages, percentages and 95% confidence intervals; Respondents aged 18 years and older; n/r (Not Reportable) - If the unweighted total responses for a dimension (row) is <50 that row will not be shown; n/a (Not Available) - Not asked of a subset of respondents

Year: 2003-2005

Education Level	Yes			No			Estimated Population (3-Yr Avg)
	#	%	C.I. (95%)	#	%	C.I. (95%)	#
Never attended school/ Only Kindergarten to Grades 8	5,900	73.9	63.2 - 84.5	2,100	26.1	15.5 - 36.8	8,000
Grades 9 thru 11 (Some High School)	11,000	71.9	63.7 - 80.0	4,300	28.1	20.0 - 36.3	15,300
Grades 12 or GED (High School Grad)	109,300	78.3	75.2 - 81.4	30,300	21.7	18.6 - 24.8	139,600
College 1 to 3 years (Some College/ Tech)	118,700	82.6	80.0 - 85.3	24,900	17.4	14.7 - 20.0	143,700
College 4 years or more (College Grad)	137,000	88.8	87.0 - 90.6	17,400	11.2	9.4 - 13.0	154,400

Pap Smear - within the past 3 yrs by State, County, Island, Community, BRFSS Age Group, DOH Race-Ethnicity, Education Level, Employment Status (Grouped), Household Income, Poverty Level, Marital Status (Grouped), Married, Health Care Coverage, for the Year(s) - 2000-2002, 2001-2003, 2002-2004, 2003-2005, 2004-2006, 2005-2007, 2006-2008, 2007-2009, 2008-2010

Note: Weighted numbers (#) represent 3-yr averages, percentages and 95% confidence intervals; Respondents aged 18 years and older; n/r (Not Reportable) - If the unweighted total responses for a dimension (row) is <50 that row will not be shown; n/a (Not Available) - Not asked of a subset of respondents

Year: 2003-2005

Employment Status (Grouped)	Yes			No			Estimated Population (3-Yr Avg)
	#	%	C.I. (95%)	#	%	C.I. (95%)	#
Employed	225,100	86.1	84.4 - 87.9	36,200	13.9	12.1 - 15.6	261,400
Unemployed	9,300	81.9	73.0 - 90.8	2,100	18.1	9.2 - 27.0	11,300
Retired/Unable to work	86,500	76.5	73.4 - 79.5	26,600	23.5	20.5 - 26.6	113,100
Student/Homemaker	61,600	81.2	77.0 - 85.5	14,200	18.8	14.5 - 23.0	75,800

Pap Smear - within the past 3 yrs by State, County, Island, Community, BRFSS Age Group, DOH Race-Ethnicity, Education Level, Employment Status (Grouped), Household Income, Poverty Level, Marital Status (Grouped), Married, Health Care Coverage, for the Year(s) - 2000-2002, 2001-2003, 2002-2004, 2003-2005, 2004-2006, 2005-2007, 2006-2008, 2007-2009, 2008-2010

Note: Weighted numbers (#) represent 3-yr averages, percentages and 95% confidence intervals; Respondents aged 18 years and older; n/r (Not Reportable) - If the unweighted total responses for a dimension (row) is <50 that row will not be shown; n/a (Not Available) - Not asked of a subset of respondents

Year: 2003-2005

Household Income	Yes			No			Estimated Population (3-Yr Avg)
	#	%	C.I. (95%)	#	%	C.I. (95%)	#
Less than \$10,000	12,500	69.6	62.1 - 77.0	5,500	30.4	23.0 - 37.9	17,900
\$10,000 to \$14,999	15,200	76.3	69.3 - 83.3	4,700	23.7	16.7 - 30.7	19,900
\$15,000 to \$19,999	20,100	80.8	75.2 - 86.4	4,800	19.2	13.6 - 24.8	24,900
\$20,000 to \$24,999	28,900	81.3	75.9 - 86.6	6,700	18.7	13.4 - 24.1	35,600
\$25,000 to \$34,999	39,600	79.1	74.2 - 84.1	10,400	20.9	15.9 - 25.8	50,100
\$35,000 to \$49,999	58,400	85.3	81.6 - 89.1	10,000	14.7	10.9 - 18.4	68,400
\$50,000 to \$74,999	84,000	84.4	81.0 - 87.8	15,600	15.6	12.2 - 19.0	99,600
\$75,000 or more	79,400	89.8	86.9 - 92.6	9,100	10.2	7.4 - 13.1	88,500

Pap Smear - within the past 3 yrs by State, County, Island, Community, BRFSS Age Group, DOH Race-Ethnicity, Education Level, Employment Status (Grouped), Household Income, Poverty Level, Marital Status (Grouped), Married, Health Care Coverage, for the Year(s) - 2000-2002, 2001-2003, 2002-2004, 2003-2005, 2004-2006, 2005-2007, 2006-2008, 2007-2009, 2008-2010

Note: Weighted numbers (#) represent 3-yr averages, percentages and 95% confidence intervals; Respondents aged 18 years and older; n/r (Not Reportable) - If the unweighted total responses for a dimension (row) is <50 that row will not be shown; n/a (Not Available) - Not asked of a subset of respondents

Year: 2003-2005

Poverty Level	Yes			No			Estimated Population (3-Yr Avg)
	#	%	C.I. (95%)	#	%	C.I. (95%)	#
0-130%	77,000	78.8	75.4 - 82.3	20,700	21.2	17.7 - 24.6	97,600
131-185%	37,600	77.2	71.3 - 83.2	11,100	22.8	16.8 - 28.7	48,700
186+%	223,500	86.5	84.7 - 88.2	35,000	13.5	11.8 - 15.3	258,500

Marital Status (Grouped)	Yes			No			Estimated Population (3-Yr Avg)
	#	%	C.I. (95%)	#	%	C.I. (95%)	#
Married	241,600	87.1	85.5 - 88.8	35,600	12.9	11.2 - 14.5	277,300
Unmarried Couple	9,900	86.9	78.5 - 95.3	1,500	13.1	4.7 - 21.5	11,300
Widowed	31,600	72.4	67.2 - 77.5	12,100	27.6	22.5 - 32.8	43,700
Other	99,500	76.8	73.7 - 79.9	30,000	23.2	20.1 - 26.3	129,600

Pap Smear - within the past 3 yrs by State, County, Island, Community, BRFSS Age Group, DOH Race-Ethnicity, Education Level, Employment Status (Grouped), Household Income, Poverty Level, Marital Status (Grouped), Married, Health Care Coverage, for the Year(s) - 2000-2002, 2001-2003, 2002-2004, 2003-2005, 2004-2006, 2005-2007, 2006-2008, 2007-2009, 2008-2010

Note: Weighted numbers (#) represent 3-yr averages, percentages and 95% confidence intervals; Respondents aged 18 years and older; n/r (Not Reportable) - If the unweighted total responses for a dimension (row) is <50 that row will not be shown; n/a (Not Available) - Not asked of a subset of respondents

Year: 2003-2005

Married	Yes			No			Estimated Population (3-Yr Avg)
	#	%	C.I. (95%)	#	%	C.I. (95%)	#
Yes	245,700	86.9	85.2 - 88.6	37,100	13.1	11.4 - 14.8	282,800
No	136,300	76.4	73.8 - 79.0	42,200	23.6	21.0 - 26.2	178,500

Health Care Coverage	Yes			No			Estimated Population (3-Yr Avg)
	#	%	C.I. (95%)	#	%	C.I. (95%)	#
Yes	237,300	83.0	81.0 - 85.0	48,600	17.0	15.0 - 19.0	285,900
No	15,000	73.6	66.1 - 81.1	5,400	26.4	18.9 - 33.9	20,400

Pap Smear - within the past 3 yrs by State, County, Island, Community, BRFSS Age Group, DOH Race-Ethnicity, Education Level, Employment Status (Grouped), Household Income, Poverty Level, Marital Status (Grouped), Married, Health Care Coverage, for the Year(s) - 2000-2002, 2001-2003, 2002-2004, 2003-2005, 2004-2006, 2005-2007, 2006-2008, 2007-2009, 2008-2010

Note: Weighted numbers (#) represent 3-yr averages, percentages and 95% confidence intervals; Respondents aged 18 years and older; n/r (Not Reportable) - If the unweighted total responses for a dimension (row) is <50 that row will not be shown; n/a (Not Available) - Not asked of a subset of respondents

Year: 2002-2004

State	Yes			No			Estimated Population (3-Yr Avg)
	#	%	C.I. (95%)	#	%	C.I. (95%)	#
Hawaii State	380,700	83.3	81.9 - 84.6	76,600	16.7	15.4 - 18.1	457,300

County	Yes			No			Estimated Population (3-Yr Avg)
	#	%	C.I. (95%)	#	%	C.I. (95%)	#
Hawaii	50,400	84.5	82.1 - 86.8	9,300	15.5	13.2 - 17.9	59,700
Honolulu	272,300	83.2	81.4 - 85.0	55,000	16.8	15.0 - 18.6	327,200
Kauai	17,400	81.0	77.6 - 84.3	4,100	19.0	15.7 - 22.4	21,500
Maui	40,600	83.1	80.1 - 86.2	8,200	16.9	13.8 - 19.9	48,900

Pap Smear - within the past 3 yrs by State, County, Island, Community, BRFSS Age Group, DOH Race-Ethnicity, Education Level, Employment Status (Grouped), Household Income, Poverty Level, Marital Status (Grouped), Married, Health Care Coverage, for the Year(s) - 2000-2002, 2001-2003, 2002-2004, 2003-2005, 2004-2006, 2005-2007, 2006-2008, 2007-2009, 2008-2010

Note: Weighted numbers (#) represent 3-yr averages, percentages and 95% confidence intervals; Respondents aged 18 years and older; n/r (Not Reportable) - If the unweighted total responses for a dimension (row) is <50 that row will not be shown; n/a (Not Available) - Not asked of a subset of respondents

Year: 2002-2004

Island	Yes			No			Estimated Population (3-Yr Avg)
	#	%	C.I. (95%)	#	%	C.I. (95%)	#
Hawaii	50,400	84.5	82.1 - 86.8	9,300	15.5	13.2 - 17.9	59,700
Kauai	17,400	81.0	77.6 - 84.3	4,100	19.0	15.7 - 22.4	21,500
Lanai	800	75.0	65.4 - 84.6	300	25.0	15.4 - 34.6	1,100
Maui	37,100	83.7	80.3 - 87.0	7,200	16.3	13.0 - 19.7	44,300
Molokai	2,700	78.8	70.7 - 87.0	700	21.2	13.0 - 29.3	3,500
Oahu	272,300	83.2	81.4 - 85.0	55,000	16.8	15.0 - 18.6	327,200

Community	Yes			No			Estimated Population (3-Yr Avg)
	#	%	C.I. (95%)	#	%	C.I. (95%)	#
Aiea/ Pearl City	25,700	82.4	76.1 - 88.7	5,500	17.6	11.3 - 23.9	31,200
Ala Moana	12,300	76.2	68.5 - 83.8	3,800	23.8	16.2 - 31.5	16,100

Pap Smear - within the past 3 yrs by State, County, Island, Community, BRFSS Age Group, DOH Race-Ethnicity, Education Level, Employment Status (Grouped), Household Income, Poverty Level, Marital Status (Grouped), Married, Health Care Coverage, for the Year(s) - 2000-2002, 2001-2003, 2002-2004, 2003-2005, 2004-2006, 2005-2007, 2006-2008, 2007-2009, 2008-2010

Note: Weighted numbers (#) represent 3-yr averages, percentages and 95% confidence intervals; Respondents aged 18 years and older; n/r (Not Reportable) - If the unweighted total responses for a dimension (row) is <50 that row will not be shown; n/a (Not Available) - Not asked of a subset of respondents

Year: 2002-2004

Community	Yes			No			Estimated Population (3-Yr Avg)
	#	%	C.I. (95%)	#	%	C.I. (95%)	#
Hanalei/ Kapaa	7,400	82.0	77.2 - 86.8	1,600	18.0	13.2 - 22.8	9,000
Hilo	13,900	82.1	77.4 - 86.7	3,000	17.9	13.3 - 22.6	17,000
Kaaawa/ Kahaluu/ Kaneohe	17,200	78.4	70.7 - 86.1	4,700	21.6	13.9 - 29.3	21,900
Kahului	12,800	79.4	72.6 - 86.2	3,300	20.6	13.8 - 27.4	16,100
Kailua/ Waimanalo	22,500	87.4	82.5 - 92.4	3,200	12.6	7.6 - 17.5	25,800
Kaimuki/ Palolo/ Waikiki	27,100	80.6	75.2 - 85.9	6,500	19.4	14.1 - 24.8	33,700
Kona	12,800	88.4	84.4 - 92.4	1,700	11.6	7.6 - 15.6	14,500
Lahaina/ Wailuku	11,700	86.0	80.9 - 91.0	1,900	14.0	9.0 - 19.1	13,700
Lanai	800	75.0	65.4 - 84.6	300	25.0	15.4 - 34.6	1,100
Lihue-Waimea	10,000	80.3	75.7 - 84.9	2,500	19.7	15.1 - 24.3	12,500
Manoa/ Upper Makiki	18,200	78.9	70.9 - 87.0	4,900	21.1	13.0 - 29.1	23,100
Mililani/ Wahiawa	29,000	88.7	84.0 - 93.3	3,700	11.3	6.7 - 16.0	32,700

Pap Smear - within the past 3 yrs by State, County, Island, Community, BRFSS Age Group, DOH Race-Ethnicity, Education Level, Employment Status (Grouped), Household Income, Poverty Level, Marital Status (Grouped), Married, Health Care Coverage, for the Year(s) - 2000-2002, 2001-2003, 2002-2004, 2003-2005, 2004-2006, 2005-2007, 2006-2008, 2007-2009, 2008-2010

Note: Weighted numbers (#) represent 3-yr averages, percentages and 95% confidence intervals; Respondents aged 18 years and older; n/r (Not Reportable) - If the unweighted total responses for a dimension (row) is <50 that row will not be shown; n/a (Not Available) - Not asked of a subset of respondents

Year: 2002-2004

Community	Yes			No			Estimated Population (3-Yr Avg)
	#	%	C.I. (95%)	#	%	C.I. (95%)	#
Molokai	2,700	78.8	70.7 - 87.0	700	21.2	13.0 - 29.3	3,500
Nanakuli/ Waianae	14,300	83.7	75.1 - 92.3	2,800	16.3	7.7 - 24.9	17,100
N.Hawaii	9,600	84.2	79.3 - 89.1	1,800	15.8	10.9 - 20.7	11,400
N.Shore/ Laie	10,400	90.2	84.2 - 96.2	1,100	9.8	3.8 - 15.8	11,500
Nuuanu/ Kalihi/ Moanalua	26,500	82.5	76.7 - 88.2	5,600	17.5	11.8 - 23.3	32,100
Puna/ Kau	14,100	83.7	78.8 - 88.6	2,700	16.3	11.4 - 21.2	16,800
Salt Lake/ Foster Village	14,700	87.3	80.9 - 93.7	2,100	12.7	6.3 - 19.1	16,800
Upcountry/ Hana	12,600	86.2	81.7 - 90.6	2,000	13.8	9.4 - 18.3	14,600
Waialae/ Kahala/ Hawaii Kai	15,600	84.5	77.0 - 92.1	2,900	15.5	7.9 - 23.0	18,500
Waipahu/ Kapolei/ Ewa	38,700	82.9	77.3 - 88.5	8,000	17.1	11.5 - 22.7	46,700

Pap Smear - within the past 3 yrs by State, County, Island, Community, BRFSS Age Group, DOH Race-Ethnicity, Education Level, Employment Status (Grouped), Household Income, Poverty Level, Marital Status (Grouped), Married, Health Care Coverage, for the Year(s) - 2000-2002, 2001-2003, 2002-2004, 2003-2005, 2004-2006, 2005-2007, 2006-2008, 2007-2009, 2008-2010

Note: Weighted numbers (#) represent 3-yr averages, percentages and 95% confidence intervals; Respondents aged 18 years and older; n/r (Not Reportable) - If the unweighted total responses for a dimension (row) is <50 that row will not be shown; n/a (Not Available) - Not asked of a subset of respondents

Year: 2002-2004

BRFSS Age Group	Yes			No			Estimated Population (3-Yr Avg)
	#	%	C.I. (95%)	#	%	C.I. (95%)	#
18-24	41,100	78.5	73.0 - 84.0	11,300	21.5	16.0 - 27.0	52,400
25-34	71,400	90.8	88.4 - 93.2	7,300	9.2	6.8 - 11.6	78,700
35-44	79,500	88.8	86.3 - 91.3	10,000	11.2	8.7 - 13.7	89,600
45-54	71,000	83.8	80.3 - 87.4	13,700	16.2	12.6 - 19.7	84,700
55-64	50,800	83.2	80.0 - 86.5	10,200	16.8	13.5 - 20.0	61,100
65-74	35,800	78.8	74.7 - 83.0	9,600	21.2	17.0 - 25.3	45,400
75+	28,000	66.2	60.9 - 71.4	14,300	33.8	28.6 - 39.1	42,300

Pap Smear - within the past 3 yrs by State, County, Island, Community, BRFSS Age Group, DOH Race-Ethnicity, Education Level, Employment Status (Grouped), Household Income, Poverty Level, Marital Status (Grouped), Married, Health Care Coverage, for the Year(s) - 2000-2002, 2001-2003, 2002-2004, 2003-2005, 2004-2006, 2005-2007, 2006-2008, 2007-2009, 2008-2010

Note: Weighted numbers (#) represent 3-yr averages, percentages and 95% confidence intervals; Respondents aged 18 years and older; n/r (Not Reportable) - If the unweighted total responses for a dimension (row) is <50 that row will not be shown; n/a (Not Available) - Not asked of a subset of respondents

Year: 2002-2004

DOH Race-Ethnicity	Yes			No			Estimated Population (3-Yr Avg)
	#	%	C.I. (95%)	#	%	C.I. (95%)	#
Caucasian	130,100	87.0	85.2 - 88.8	19,400	13.0	11.2 - 14.8	149,500
Native Hawaiian	45,700	80.9	76.5 - 85.4	10,800	19.1	14.6 - 23.5	56,500
Chinese	32,500	81.5	76.2 - 86.7	7,400	18.5	13.3 - 23.8	39,900
Filipino	59,700	79.9	75.8 - 84.1	15,000	20.1	15.9 - 24.2	74,700
Japanese	80,500	83.1	80.2 - 86.0	16,400	16.9	14.0 - 19.8	96,900
Black	4,200	91.2	82.5 - 99.8	400	8.8	0.2 - 17.5	4,600
Other Asian	6,700	75.1	62.5 - 87.7	2,200	24.9	12.3 - 37.5	9,000
Other Pacific Islander	5,600	65.7	52.3 - 79.1	2,900	34.3	20.9 - 47.7	8,500
Other	11,100	90.9	85.0 - 96.7	1,100	9.1	3.3 - 15.0	12,200

Pap Smear - within the past 3 yrs by State, County, Island, Community, BRFSS Age Group, DOH Race-Ethnicity, Education Level, Employment Status (Grouped), Household Income, Poverty Level, Marital Status (Grouped), Married, Health Care Coverage, for the Year(s) - 2000-2002, 2001-2003, 2002-2004, 2003-2005, 2004-2006, 2005-2007, 2006-2008, 2007-2009, 2008-2010

Note: Weighted numbers (#) represent 3-yr averages, percentages and 95% confidence intervals; Respondents aged 18 years and older; n/r (Not Reportable) - If the unweighted total responses for a dimension (row) is <50 that row will not be shown; n/a (Not Available) - Not asked of a subset of respondents

Year: 2002-2004

Education Level	Yes			No			Estimated Population (3-Yr Avg)
	#	%	C.I. (95%)	#	%	C.I. (95%)	#
Never attended school/ Only Kindergarten to Grades 8	6,400	77.0	68.3 - 85.7	1,900	23.0	14.3 - 31.7	8,300
Grades 9 thru 11 (Some High School)	11,000	69.7	62.4 - 77.0	4,800	30.3	23.0 - 37.6	15,800
Grades 12 or GED (High School Grad)	113,900	79.0	76.0 - 82.0	30,300	21.0	18.0 - 24.0	144,200
College 1 to 3 years (Some College/ Tech)	120,400	84.4	82.0 - 86.8	22,200	15.6	13.2 - 18.0	142,600
College 4 years or more (College Grad)	128,600	88.1	86.3 - 90.0	17,300	11.9	10.0 - 13.7	146,000

Pap Smear - within the past 3 yrs by State, County, Island, Community, BRFSS Age Group, DOH Race-Ethnicity, Education Level, Employment Status (Grouped), Household Income, Poverty Level, Marital Status (Grouped), Married, Health Care Coverage, for the Year(s) - 2000-2002, 2001-2003, 2002-2004, 2003-2005, 2004-2006, 2005-2007, 2006-2008, 2007-2009, 2008-2010

Note: Weighted numbers (#) represent 3-yr averages, percentages and 95% confidence intervals; Respondents aged 18 years and older; n/r (Not Reportable) - If the unweighted total responses for a dimension (row) is <50 that row will not be shown; n/a (Not Available) - Not asked of a subset of respondents

Year: 2002-2004

Employment Status (Grouped)	Yes			No			Estimated Population (3-Yr Avg)
	#	%	C.I. (95%)	#	%	C.I. (95%)	#
Employed	226,300	86.8	85.1 - 88.5	34,400	13.2	11.5 - 14.9	260,700
Unemployed	11,200	84.4	77.9 - 90.8	2,100	15.6	9.2 - 22.1	13,200
Retired/Unable to work	77,500	75.1	72.0 - 78.3	25,700	24.9	21.7 - 28.0	103,200
Student/Homemaker	65,600	82.0	78.2 - 85.7	14,400	18.0	14.3 - 21.8	80,100

Pap Smear - within the past 3 yrs by State, County, Island, Community, BRFSS Age Group, DOH Race-Ethnicity, Education Level, Employment Status (Grouped), Household Income, Poverty Level, Marital Status (Grouped), Married, Health Care Coverage, for the Year(s) - 2000-2002, 2001-2003, 2002-2004, 2003-2005, 2004-2006, 2005-2007, 2006-2008, 2007-2009, 2008-2010

Note: Weighted numbers (#) represent 3-yr averages, percentages and 95% confidence intervals; Respondents aged 18 years and older; n/r (Not Reportable) - If the unweighted total responses for a dimension (row) is <50 that row will not be shown; n/a (Not Available) - Not asked of a subset of respondents

Year: 2002-2004

Household Income	Yes			No			Estimated Population (3-Yr Avg)
	#	%	C.I. (95%)	#	%	C.I. (95%)	#
Less than \$10,000	16,300	75.7	69.8 - 81.6	5,200	24.3	18.4 - 30.2	21,500
\$10,000 to \$14,999	16,600	76.8	70.6 - 83.0	5,000	23.2	17.0 - 29.4	21,600
\$15,000 to \$19,999	19,300	82.8	77.1 - 88.5	4,000	17.2	11.5 - 22.9	23,300
\$20,000 to \$24,999	23,500	81.9	76.5 - 87.4	5,200	18.1	12.6 - 23.5	28,700
\$25,000 to \$34,999	37,400	81.4	76.3 - 86.5	8,500	18.6	13.5 - 23.7	45,900
\$35,000 to \$49,999	52,800	86.0	82.1 - 89.9	8,600	14.0	10.1 - 17.9	61,400
\$50,000 to \$74,999	79,100	84.1	80.6 - 87.6	14,900	15.9	12.4 - 19.4	94,000
\$75,000 or more	67,000	90.3	87.2 - 93.4	7,200	9.7	6.6 - 12.8	74,200

Pap Smear - within the past 3 yrs by State, County, Island, Community, BRFSS Age Group, DOH Race-Ethnicity, Education Level, Employment Status (Grouped), Household Income, Poverty Level, Marital Status (Grouped), Married, Health Care Coverage, for the Year(s) - 2000-2002, 2001-2003, 2002-2004, 2003-2005, 2004-2006, 2005-2007, 2006-2008, 2007-2009, 2008-2010

Note: Weighted numbers (#) represent 3-yr averages, percentages and 95% confidence intervals; Respondents aged 18 years and older; n/r (Not Reportable) - If the unweighted total responses for a dimension (row) is <50 that row will not be shown; n/a (Not Available) - Not asked of a subset of respondents

Year: 2002-2004

Poverty Level	Yes			No			Estimated Population (3-Yr Avg)
	#	%	C.I. (95%)	#	%	C.I. (95%)	#
0-130%	74,000	80.0	76.7 - 83.3	18,500	20.0	16.7 - 23.3	92,500
131-185%	35,000	79.6	73.3 - 85.9	9,000	20.4	14.1 - 26.7	44,000
186+%	203,000	86.7	84.9 - 88.5	31,200	13.3	11.5 - 15.1	234,300

Marital Status (Grouped)	Yes			No			Estimated Population (3-Yr Avg)
	#	%	C.I. (95%)	#	%	C.I. (95%)	#
Married	232,900	86.5	84.9 - 88.2	36,300	13.5	11.8 - 15.1	269,200
Unmarried Couple	9,100	87.1	80.0 - 94.2	1,300	12.9	5.8 - 20.0	10,400
Widowed	31,500	72.2	67.0 - 77.3	12,200	27.8	22.7 - 33.0	43,700
Other	107,200	80.0	77.2 - 82.8	26,800	20.0	17.2 - 22.8	133,900

Pap Smear - within the past 3 yrs by State, County, Island, Community, BRFSS Age Group, DOH Race-Ethnicity, Education Level, Employment Status (Grouped), Household Income, Poverty Level, Marital Status (Grouped), Married, Health Care Coverage, for the Year(s) - 2000-2002, 2001-2003, 2002-2004, 2003-2005, 2004-2006, 2005-2007, 2006-2008, 2007-2009, 2008-2010

Note: Weighted numbers (#) represent 3-yr averages, percentages and 95% confidence intervals; Respondents aged 18 years and older; n/r (Not Reportable) - If the unweighted total responses for a dimension (row) is <50 that row will not be shown; n/a (Not Available) - Not asked of a subset of respondents

Year: 2002-2004

Married	Yes			No			Estimated Population (3-Yr Avg)
	#	%	C.I. (95%)	#	%	C.I. (95%)	#
Yes	237,900	86.5	84.8 - 88.1	37,200	13.5	11.9 - 15.2	275,200
No	142,100	78.3	75.9 - 80.8	39,300	21.7	19.2 - 24.1	181,300

Health Care Coverage	Yes			No			Estimated Population (3-Yr Avg)
	#	%	C.I. (95%)	#	%	C.I. (95%)	#
Yes	356,900	84.0	82.6 - 85.5	67,800	16.0	14.5 - 17.4	424,700
No	23,100	73.1	67.6 - 78.6	8,500	26.9	21.4 - 32.4	31,600

Pap Smear - within the past 3 yrs by State, County, Island, Community, BRFSS Age Group, DOH Race-Ethnicity, Education Level, Employment Status (Grouped), Household Income, Poverty Level, Marital Status (Grouped), Married, Health Care Coverage, for the Year(s) - 2000-2002, 2001-2003, 2002-2004, 2003-2005, 2004-2006, 2005-2007, 2006-2008, 2007-2009, 2008-2010

Note: Weighted numbers (#) represent 3-yr averages, percentages and 95% confidence intervals; Respondents aged 18 years and older; n/r (Not Reportable) - If the unweighted total responses for a dimension (row) is <50 that row will not be shown; n/a (Not Available) - Not asked of a subset of respondents

Year: 2001-2003

State	Yes			No			Estimated Population (3-Yr Avg)
	#	%	C.I. (95%)	#	%	C.I. (95%)	#
Hawaii State	388,000	86.0	85.0 - 87.0	63,300	14.0	13.0 - 15.0	451,300

County	Yes			No			Estimated Population (3-Yr Avg)
	#	%	C.I. (95%)	#	%	C.I. (95%)	#
Hawaii	47,500	85.4	83.3 - 87.5	8,100	14.6	12.5 - 16.7	55,600
Honolulu	281,200	86.3	85.0 - 87.6	44,600	13.7	12.4 - 15.0	325,800
Kauai	17,500	81.6	78.4 - 84.8	3,900	18.4	15.2 - 21.6	21,400
Maui	41,800	86.3	84.1 - 88.4	6,700	13.7	11.6 - 15.9	48,500

Pap Smear - within the past 3 yrs by State, County, Island, Community, BRFSS Age Group, DOH Race-Ethnicity, Education Level, Employment Status (Grouped), Household Income, Poverty Level, Marital Status (Grouped), Married, Health Care Coverage, for the Year(s) - 2000-2002, 2001-2003, 2002-2004, 2003-2005, 2004-2006, 2005-2007, 2006-2008, 2007-2009, 2008-2010

Note: Weighted numbers (#) represent 3-yr averages, percentages and 95% confidence intervals; Respondents aged 18 years and older; n/r (Not Reportable) - If the unweighted total responses for a dimension (row) is <50 that row will not be shown; n/a (Not Available) - Not asked of a subset of respondents

Year: 2001-2003

Island	Yes			No			Estimated Population (3-Yr Avg)
	#	%	C.I. (95%)	#	%	C.I. (95%)	#
Hawaii	47,500	85.4	83.3 - 87.5	8,100	14.6	12.5 - 16.7	55,600
Kauai	17,500	81.6	78.4 - 84.8	3,900	18.4	15.2 - 21.6	21,400
Lanai	1,100	79.8	71.7 - 87.9	300	20.2	12.1 - 28.3	1,300
Maui	38,100	87.0	84.7 - 89.3	5,700	13.0	10.7 - 15.3	43,800
Molokai	2,700	79.3	71.5 - 87.0	700	20.7	13.0 - 28.5	3,400
Oahu	281,200	86.3	85.0 - 87.6	44,600	13.7	12.4 - 15.0	325,800

Community	Yes			No			Estimated Population (3-Yr Avg)
	#	%	C.I. (95%)	#	%	C.I. (95%)	#
Aiea/ Pearl City	27,500	88.2	84.0 - 92.3	3,700	11.8	7.7 - 16.0	31,200
Ala Moana	12,200	77.6	71.4 - 83.8	3,500	22.4	16.2 - 28.6	15,700

Pap Smear - within the past 3 yrs by State, County, Island, Community, BRFSS Age Group, DOH Race-Ethnicity, Education Level, Employment Status (Grouped), Household Income, Poverty Level, Marital Status (Grouped), Married, Health Care Coverage, for the Year(s) - 2000-2002, 2001-2003, 2002-2004, 2003-2005, 2004-2006, 2005-2007, 2006-2008, 2007-2009, 2008-2010

Note: Weighted numbers (#) represent 3-yr averages, percentages and 95% confidence intervals; Respondents aged 18 years and older; n/r (Not Reportable) - If the unweighted total responses for a dimension (row) is <50 that row will not be shown; n/a (Not Available) - Not asked of a subset of respondents

Year: 2001-2003

Community	Yes			No			Estimated Population (3-Yr Avg)
	#	%	C.I. (95%)	#	%	C.I. (95%)	#
Hanalei/ Kapaa	7,300	83.0	78.7 - 87.4	1,500	17.0	12.6 - 21.3	8,800
Hilo	14,200	81.8	77.3 - 86.3	3,100	18.2	13.7 - 22.7	17,300
Kaaawa/ Kahaluu/ Kaneohe	18,200	84.6	79.4 - 89.8	3,300	15.4	10.2 - 20.6	21,500
Kahului	12,800	85.2	80.8 - 89.5	2,200	14.8	10.5 - 19.2	15,100
Kailua/ Waimanalo	23,800	89.3	85.2 - 93.3	2,900	10.7	6.7 - 14.8	26,700
Kaimuki/ Palolo/ Waikiki	29,300	85.7	82.3 - 89.2	4,900	14.3	10.8 - 17.7	34,200
Kona	12,000	87.0	82.8 - 91.1	1,800	13.0	8.9 - 17.2	13,800
Lahaina/ Wailuku	12,600	87.7	83.5 - 91.9	1,800	12.3	8.1 - 16.5	14,300
Lanai	1,100	79.8	71.7 - 87.9	300	20.2	12.1 - 28.3	1,300
Lihue-Waimea	10,200	80.6	76.0 - 85.1	2,500	19.4	14.9 - 24.0	12,600
Manoa/ Upper Makiki	21,600	84.2	79.2 - 89.3	4,000	15.8	10.7 - 20.8	25,700
Millilani/ Wahiawa	30,000	92.6	89.1 - 96.1	2,400	7.4	3.9 - 10.9	32,400

Pap Smear - within the past 3 yrs by State, County, Island, Community, BRFSS Age Group, DOH Race-Ethnicity, Education Level, Employment Status (Grouped), Household Income, Poverty Level, Marital Status (Grouped), Married, Health Care Coverage, for the Year(s) - 2000-2002, 2001-2003, 2002-2004, 2003-2005, 2004-2006, 2005-2007, 2006-2008, 2007-2009, 2008-2010

Note: Weighted numbers (#) represent 3-yr averages, percentages and 95% confidence intervals; Respondents aged 18 years and older; n/r (Not Reportable) - If the unweighted total responses for a dimension (row) is <50 that row will not be shown; n/a (Not Available) - Not asked of a subset of respondents

Year: 2001-2003

Community	Yes			No			Estimated Population (3-Yr Avg)
	#	%	C.I. (95%)	#	%	C.I. (95%)	#
Molokai	2,700	79.3	71.5 - 87.0	700	20.7	13.0 - 28.5	3,400
Nanakuli/ Waianae	12,800	87.3	81.3 - 93.3	1,900	12.7	6.7 - 18.7	14,600
N.Hawaii	11,100	87.5	83.9 - 91.2	1,600	12.5	8.8 - 16.1	12,600
N.Shore/ Laie	9,500	85.0	77.2 - 92.8	1,700	15.0	7.2 - 22.8	11,200
Nuuanu/ Kalihi/ Moanalua	26,500	81.3	76.5 - 86.1	6,100	18.7	13.9 - 23.5	32,600
Puna/ Kau	10,300	86.5	82.5 - 90.6	1,600	13.5	9.4 - 17.5	11,900
Salt Lake/ Foster Village	15,700	91.6	86.8 - 96.4	1,400	8.4	3.6 - 13.2	17,100
Upcountry/ Hana	12,700	88.2	84.9 - 91.5	1,700	11.8	8.5 - 15.1	14,400
Waialae/ Kahala/ Hawaii Kai	16,200	86.5	82.1 - 91.0	2,500	13.5	9.0 - 17.9	18,700
Waipahu/ Kapolei/ Ewa	37,900	85.7	81.9 - 89.5	6,300	14.3	10.5 - 18.1	44,200

Pap Smear - within the past 3 yrs by State, County, Island, Community, BRFSS Age Group, DOH Race-Ethnicity, Education Level, Employment Status (Grouped), Household Income, Poverty Level, Marital Status (Grouped), Married, Health Care Coverage, for the Year(s) - 2000-2002, 2001-2003, 2002-2004, 2003-2005, 2004-2006, 2005-2007, 2006-2008, 2007-2009, 2008-2010

Note: Weighted numbers (#) represent 3-yr averages, percentages and 95% confidence intervals; Respondents aged 18 years and older; n/r (Not Reportable) - If the unweighted total responses for a dimension (row) is <50 that row will not be shown; n/a (Not Available) - Not asked of a subset of respondents

Year: 2001-2003

DOH Race-Ethnicity	Yes			No			Estimated Population (3-Yr Avg)
	#	%	C.I. (95%)	#	%	C.I. (95%)	#
Caucasian	135,000	89.3	87.8 - 90.7	16,200	10.7	9.3 - 12.2	151,200
Native Hawaiian	43,500	82.4	79.1 - 85.6	9,300	17.6	14.4 - 20.9	52,900
Chinese	33,800	85.0	81.5 - 88.5	6,000	15.0	11.5 - 18.5	39,800
Filipino	58,800	82.8	79.8 - 85.8	12,200	17.2	14.2 - 20.2	71,000
Japanese	80,600	85.5	83.3 - 87.6	13,700	14.5	12.4 - 16.7	94,300
Black	5,400	92.1	85.0 - 99.1	500	7.9	0.9 - 15.0	5,900
Other Asian	7,900	80.0	71.4 - 88.5	2,000	20.0	11.5 - 28.6	9,900
Other Pacific Islander	7,700	78.6	69.4 - 87.8	2,100	21.4	12.2 - 30.6	9,800
Other	11,600	91.8	87.4 - 96.1	1,000	8.2	3.9 - 12.6	12,600

Pap Smear - within the past 3 yrs by State, County, Island, Community, BRFSS Age Group, DOH Race-Ethnicity, Education Level, Employment Status (Grouped), Household Income, Poverty Level, Marital Status (Grouped), Married, Health Care Coverage, for the Year(s) - 2000-2002, 2001-2003, 2002-2004, 2003-2005, 2004-2006, 2005-2007, 2006-2008, 2007-2009, 2008-2010

Note: Weighted numbers (#) represent 3-yr averages, percentages and 95% confidence intervals; Respondents aged 18 years and older; n/r (Not Reportable) - If the unweighted total responses for a dimension (row) is <50 that row will not be shown; n/a (Not Available) - Not asked of a subset of respondents

Year: 2001-2003

Education Level	Yes			No			Estimated Population (3-Yr Avg)
	#	%	C.I. (95%)	#	%	C.I. (95%)	#
Never attended school/ Only Kindergarten to Grades 8	7,100	79.1	72.5 - 85.7	1,900	20.9	14.3 - 27.5	9,000
Grades 9 thru 11 (Some High School)	14,500	77.6	71.7 - 83.5	4,200	22.4	16.5 - 28.3	18,700
Grades 12 or GED (High School Grad)	113,600	82.3	80.2 - 84.4	24,400	17.7	15.6 - 19.8	138,000
College 1 to 3 years (Some College/ Tech)	126,000	87.5	85.8 - 89.2	18,100	12.5	10.8 - 14.2	144,000
College 4 years or more (College Grad)	126,200	89.7	88.1 - 91.2	14,600	10.3	8.8 - 11.9	140,700

Pap Smear - within the past 3 yrs by State, County, Island, Community, BRFSS Age Group, DOH Race-Ethnicity, Education Level, Employment Status (Grouped), Household Income, Poverty Level, Marital Status (Grouped), Married, Health Care Coverage, for the Year(s) - 2000-2002, 2001-2003, 2002-2004, 2003-2005, 2004-2006, 2005-2007, 2006-2008, 2007-2009, 2008-2010

Note: Weighted numbers (#) represent 3-yr averages, percentages and 95% confidence intervals; Respondents aged 18 years and older; n/r (Not Reportable) - If the unweighted total responses for a dimension (row) is <50 that row will not be shown; n/a (Not Available) - Not asked of a subset of respondents

Year: 2001-2003

Employment Status (Grouped)	Yes			No			Estimated Population (3-Yr Avg)
	#	%	C.I. (95%)	#	%	C.I. (95%)	#
Employed	236,200	88.9	87.7 - 90.1	29,500	11.1	9.9 - 12.3	265,700
Unemployed	10,000	78.9	71.7 - 86.2	2,700	21.1	13.8 - 28.3	12,700
Retired/Unable to work	77,500	79.1	76.8 - 81.5	20,400	20.9	18.5 - 23.2	98,000
Student/Homemaker	63,900	85.7	82.9 - 88.5	10,700	14.3	11.5 - 17.1	74,600

Pap Smear - within the past 3 yrs by State, County, Island, Community, BRFSS Age Group, DOH Race-Ethnicity, Education Level, Employment Status (Grouped), Household Income, Poverty Level, Marital Status (Grouped), Married, Health Care Coverage, for the Year(s) - 2000-2002, 2001-2003, 2002-2004, 2003-2005, 2004-2006, 2005-2007, 2006-2008, 2007-2009, 2008-2010

Note: Weighted numbers (#) represent 3-yr averages, percentages and 95% confidence intervals; Respondents aged 18 years and older; n/r (Not Reportable) - If the unweighted total responses for a dimension (row) is <50 that row will not be shown; n/a (Not Available) - Not asked of a subset of respondents

Year: 2001-2003

Household Income	Yes			No			Estimated Population (3-Yr Avg)
	#	%	C.I. (95%)	#	%	C.I. (95%)	#
Less than \$10,000	19,700	77.7	72.7 - 82.7	5,700	22.3	17.3 - 27.3	25,400
\$10,000 to \$14,999	19,700	78.9	73.6 - 84.2	5,300	21.1	15.8 - 26.4	25,000
\$15,000 to \$19,999	18,900	86.3	81.8 - 90.8	3,000	13.7	9.2 - 18.2	21,900
\$20,000 to \$24,999	20,800	84.0	79.8 - 88.2	4,000	16.0	11.8 - 20.2	24,800
\$25,000 to \$34,999	34,300	86.9	83.4 - 90.4	5,200	13.1	9.6 - 16.6	39,400
\$35,000 to \$49,999	57,000	89.5	87.1 - 91.9	6,700	10.5	8.1 - 12.9	63,700
\$50,000 to \$74,999	56,400	90.1	87.8 - 92.4	6,200	9.9	7.6 - 12.2	62,500
\$75,000 or more	55,100	93.6	91.6 - 95.6	3,800	6.4	4.4 - 8.4	58,900

Pap Smear - within the past 3 yrs by State, County, Island, Community, BRFSS Age Group, DOH Race-Ethnicity, Education Level, Employment Status (Grouped), Household Income, Poverty Level, Marital Status (Grouped), Married, Health Care Coverage, for the Year(s) - 2000-2002, 2001-2003, 2002-2004, 2003-2005, 2004-2006, 2005-2007, 2006-2008, 2007-2009, 2008-2010

Note: Weighted numbers (#) represent 3-yr averages, percentages and 95% confidence intervals; Respondents aged 18 years and older; n/r (Not Reportable) - If the unweighted total responses for a dimension (row) is <50 that row will not be shown; n/a (Not Available) - Not asked of a subset of respondents

Year: 2001-2003

Poverty Level	Yes			No			Estimated Population (3-Yr Avg)
	#	%	C.I. (95%)	#	%	C.I. (95%)	#
0-130%	71,000	81.3	78.6 - 84.0	16,300	18.7	16.0 - 21.4	87,300
131-185%	38,000	89.4	86.2 - 92.6	4,500	10.6	7.4 - 13.8	42,500
186+%	172,900	90.2	88.9 - 91.4	18,900	9.8	8.6 - 11.1	191,800

Marital Status (Grouped)	Yes			No			Estimated Population (3-Yr Avg)
	#	%	C.I. (95%)	#	%	C.I. (95%)	#
Married	231,900	89.2	88.0 - 90.3	28,200	10.8	9.7 - 12.0	260,100
Unmarried Couple	7,400	93.0	87.4 - 98.6	600	7.0	1.4 - 12.6	7,900
Widowed	32,400	76.1	72.3 - 80.0	10,200	23.9	20.0 - 27.7	42,600
Other	116,300	82.6	80.6 - 84.7	24,500	17.4	15.3 - 19.4	140,700

Pap Smear - within the past 3 yrs by State, County, Island, Community, BRFSS Age Group, DOH Race-Ethnicity, Education Level, Employment Status (Grouped), Household Income, Poverty Level, Marital Status (Grouped), Married, Health Care Coverage, for the Year(s) - 2000-2002, 2001-2003, 2002-2004, 2003-2005, 2004-2006, 2005-2007, 2006-2008, 2007-2009, 2008-2010

Note: Weighted numbers (#) represent 3-yr averages, percentages and 95% confidence intervals; Respondents aged 18 years and older; n/r (Not Reportable) - If the unweighted total responses for a dimension (row) is <50 that row will not be shown; n/a (Not Available) - Not asked of a subset of respondents

Year: 2001-2003

Married	Yes			No			Estimated Population (3-Yr Avg)
	#	%	C.I. (95%)	#	%	C.I. (95%)	#
Yes	239,200	89.2	88.0 - 90.3	29,100	10.8	9.7 - 12.0	268,200
No	148,100	81.2	79.4 - 83.0	34,200	18.8	17.0 - 20.6	182,300

Health Care Coverage	Yes			No			Estimated Population (3-Yr Avg)
	#	%	C.I. (95%)	#	%	C.I. (95%)	#
Yes	367,800	87.1	86.1 - 88.1	54,300	12.9	11.9 - 13.9	422,100
No	20,000	69.3	64.0 - 74.5	8,900	30.7	25.5 - 36.0	28,900

Pap Smear - within the past 3 yrs by State, County, Island, Community, BRFSS Age Group, DOH Race-Ethnicity, Education Level, Employment Status (Grouped), Household Income, Poverty Level, Marital Status (Grouped), Married, Health Care Coverage, for the Year(s) - 2000-2002, 2001-2003, 2002-2004, 2003-2005, 2004-2006, 2005-2007, 2006-2008, 2007-2009, 2008-2010

Note: Weighted numbers (#) represent 3-yr averages, percentages and 95% confidence intervals; Respondents aged 18 years and older; n/r (Not Reportable) - If the unweighted total responses for a dimension (row) is <50 that row will not be shown; n/a (Not Available) - Not asked of a subset of respondents

Year: 2000-2002

State	Yes			No			Estimated Population (3-Yr Avg)
	#	%	C.I. (95%)	#	%	C.I. (95%)	#
Hawaii State	383,700	86.9	85.9 - 87.8	58,000	13.1	12.2 - 14.1	441,700

County	Yes			No			Estimated Population (3-Yr Avg)
	#	%	C.I. (95%)	#	%	C.I. (95%)	#
Hawaii	46,300	86.3	84.6 - 88.1	7,300	13.7	11.9 - 15.4	53,600
Honolulu	279,500	87.1	85.9 - 88.4	41,200	12.9	11.6 - 14.1	320,700
Kauai	17,400	82.8	79.6 - 86.0	3,600	17.2	14.0 - 20.4	21,000
Maui	40,600	87.4	85.5 - 89.3	5,800	12.6	10.7 - 14.5	46,500

Pap Smear - within the past 3 yrs by State, County, Island, Community, BRFSS Age Group, DOH Race-Ethnicity, Education Level, Employment Status (Grouped), Household Income, Poverty Level, Marital Status (Grouped), Married, Health Care Coverage, for the Year(s) - 2000-2002, 2001-2003, 2002-2004, 2003-2005, 2004-2006, 2005-2007, 2006-2008, 2007-2009, 2008-2010

Note: Weighted numbers (#) represent 3-yr averages, percentages and 95% confidence intervals; Respondents aged 18 years and older; n/r (Not Reportable) - If the unweighted total responses for a dimension (row) is <50 that row will not be shown; n/a (Not Available) - Not asked of a subset of respondents

Year: 2000-2002

Island	Yes			No			Estimated Population (3-Yr Avg)
	#	%	C.I. (95%)	#	%	C.I. (95%)	#
Hawaii	46,300	86.3	84.6 - 88.1	7,300	13.7	11.9 - 15.4	53,600
Kauai	17,400	82.8	79.6 - 86.0	3,600	17.2	14.0 - 20.4	21,000
Lanai	1,100	81.3	74.1 - 88.5	300	18.7	11.5 - 25.9	1,400
Maui	37,000	88.3	86.2 - 90.3	4,900	11.7	9.7 - 13.8	41,900
Molokai	2,500	79.2	72.8 - 85.7	700	20.8	14.3 - 27.2	3,200
Oahu	279,500	87.1	85.9 - 88.4	41,200	12.9	11.6 - 14.1	320,700

Community	Yes			No			Estimated Population (3-Yr Avg)
	#	%	C.I. (95%)	#	%	C.I. (95%)	#
Aiea/ Pearl City	27,300	87.5	83.6 - 91.5	3,900	12.5	8.5 - 16.4	31,200
Ala Moana	12,200	80.7	75.0 - 86.5	2,900	19.3	13.5 - 25.0	15,100

Pap Smear - within the past 3 yrs by State, County, Island, Community, BRFSS Age Group, DOH Race-Ethnicity, Education Level, Employment Status (Grouped), Household Income, Poverty Level, Marital Status (Grouped), Married, Health Care Coverage, for the Year(s) - 2000-2002, 2001-2003, 2002-2004, 2003-2005, 2004-2006, 2005-2007, 2006-2008, 2007-2009, 2008-2010

Note: Weighted numbers (#) represent 3-yr averages, percentages and 95% confidence intervals; Respondents aged 18 years and older; n/r (Not Reportable) - If the unweighted total responses for a dimension (row) is <50 that row will not be shown; n/a (Not Available) - Not asked of a subset of respondents

Year: 2000-2002

Community	Yes			No			Estimated Population (3-Yr Avg)
	#	%	C.I. (95%)	#	%	C.I. (95%)	#
Hanalei/ Kapaa	7,300	84.5	80.5 - 88.5	1,300	15.5	11.5 - 19.5	8,700
Hilo	14,900	84.9	81.6 - 88.2	2,700	15.1	11.8 - 18.4	17,600
Kaaawa/ Kahaluu/ Kaneohe	16,900	85.5	80.3 - 90.7	2,900	14.5	9.3 - 19.7	19,800
Kahului	12,600	85.9	82.1 - 89.8	2,100	14.1	10.2 - 17.9	14,700
Kailua/ Waimanalo	22,500	89.5	85.4 - 93.5	2,600	10.5	6.5 - 14.6	25,200
Kaimuki/ Palolo/ Waikiki	28,700	86.0	82.6 - 89.5	4,700	14.0	10.5 - 17.4	33,400
Kona	11,400	87.4	84.0 - 90.7	1,600	12.6	9.3 - 16.0	13,000
Lahaina/ Wailuku	12,200	89.0	85.4 - 92.6	1,500	11.0	7.4 - 14.6	13,700
Lanai	1,100	81.3	74.1 - 88.5	300	18.7	11.5 - 25.9	1,400
Lihue-Waimea	10,000	81.6	77.0 - 86.2	2,300	18.4	13.8 - 23.0	12,300
Manoa/ Upper Makiki	23,100	84.7	80.1 - 89.2	4,200	15.3	10.8 - 19.9	27,300
Milliani/ Wahiawa	28,000	90.9	87.1 - 94.7	2,800	9.1	5.3 - 12.9	30,800

Pap Smear - within the past 3 yrs by State, County, Island, Community, BRFSS Age Group, DOH Race-Ethnicity, Education Level, Employment Status (Grouped), Household Income, Poverty Level, Marital Status (Grouped), Married, Health Care Coverage, for the Year(s) - 2000-2002, 2001-2003, 2002-2004, 2003-2005, 2004-2006, 2005-2007, 2006-2008, 2007-2009, 2008-2010

Note: Weighted numbers (#) represent 3-yr averages, percentages and 95% confidence intervals; Respondents aged 18 years and older; n/r (Not Reportable) - If the unweighted total responses for a dimension (row) is <50 that row will not be shown; n/a (Not Available) - Not asked of a subset of respondents

Year: 2000-2002

Community	Yes			No			Estimated Population (3-Yr Avg)
	#	%	C.I. (95%)	#	%	C.I. (95%)	#
Molokai	2,500	79.2	72.8 - 85.7	700	20.8	14.3 - 27.2	3,200
Nanakuli/ Waianae	12,800	87.0	81.2 - 92.8	1,900	13.0	7.2 - 18.8	14,700
N.Hawaii	10,700	88.3	85.1 - 91.6	1,400	11.7	8.4 - 14.9	12,100
N.Shore/ Laie	7,900	82.4	73.7 - 91.1	1,700	17.6	8.9 - 26.3	9,600
Nuuanu/ Kalihi/ Moanalua	26,400	82.7	78.0 - 87.3	5,500	17.3	12.7 - 22.0	31,900
Puna/ Kau	9,300	85.2	81.4 - 89.1	1,600	14.8	10.9 - 18.6	10,900
Salt Lake/ Foster Village	16,500	95.3	92.4 - 98.3	800	4.7	1.7 - 7.6	17,300
Upcountry/ Hana	12,200	90.0	87.1 - 92.9	1,300	10.0	7.1 - 12.9	13,500
Waialae/ Kahala/ Hawaii Kai	18,700	87.8	83.7 - 91.9	2,600	12.2	8.1 - 16.3	21,300
Waipahu/ Kapolei/ Ewa	38,500	89.1	85.8 - 92.4	4,700	10.9	7.6 - 14.2	43,200

Pap Smear - within the past 3 yrs by State, County, Island, Community, BRFSS Age Group, DOH Race-Ethnicity, Education Level, Employment Status (Grouped), Household Income, Poverty Level, Marital Status (Grouped), Married, Health Care Coverage, for the Year(s) - 2000-2002, 2001-2003, 2002-2004, 2003-2005, 2004-2006, 2005-2007, 2006-2008, 2007-2009, 2008-2010

Note: Weighted numbers (#) represent 3-yr averages, percentages and 95% confidence intervals; Respondents aged 18 years and older; n/r (Not Reportable) - If the unweighted total responses for a dimension (row) is <50 that row will not be shown; n/a (Not Available) - Not asked of a subset of respondents

Year: 2000-2002

BRFSS Age Group	Yes			No			Estimated Population (3-Yr Avg)
	#	%	C.I. (95%)	#	%	C.I. (95%)	#
18-24	39,700	79.9	75.8 - 83.9	10,000	20.1	16.1 - 24.2	49,700
25-34	72,100	91.9	89.9 - 94.0	6,300	8.1	6.0 - 10.1	78,400
35-44	83,000	92.0	90.5 - 93.5	7,200	8.0	6.5 - 9.5	90,200
45-54	71,500	88.9	87.0 - 90.8	8,900	11.1	9.2 - 13.0	80,500
55-64	52,300	88.1	85.7 - 90.5	7,100	11.9	9.5 - 14.3	59,300
65-74	38,600	82.6	79.5 - 85.7	8,100	17.4	14.3 - 20.5	46,700
75+	24,400	70.6	66.5 - 74.8	10,200	29.4	25.2 - 33.5	34,600

Pap Smear - within the past 3 yrs by State, County, Island, Community, BRFSS Age Group, DOH Race-Ethnicity, Education Level, Employment Status (Grouped), Household Income, Poverty Level, Marital Status (Grouped), Married, Health Care Coverage, for the Year(s) - 2000-2002, 2001-2003, 2002-2004, 2003-2005, 2004-2006, 2005-2007, 2006-2008, 2007-2009, 2008-2010

Note: Weighted numbers (#) represent 3-yr averages, percentages and 95% confidence intervals; Respondents aged 18 years and older; n/r (Not Reportable) - If the unweighted total responses for a dimension (row) is <50 that row will not be shown; n/a (Not Available) - Not asked of a subset of respondents

Year: 2000-2002

DOH Race-Ethnicity	Yes			No			Estimated Population (3-Yr Avg)
	#	%	C.I. (95%)	#	%	C.I. (95%)	#
Caucasian	128,600	89.5	88.0 - 90.9	15,100	10.5	9.1 - 12.0	143,700
Native Hawaiian	51,200	83.3	80.5 - 86.1	10,300	16.7	13.9 - 19.5	61,500
Chinese	23,400	85.1	81.3 - 89.0	4,100	14.9	11.0 - 18.7	27,500
Filipino	56,100	84.8	81.9 - 87.8	10,000	15.2	12.2 - 18.1	66,100
Japanese	84,900	86.9	85.0 - 88.8	12,800	13.1	11.2 - 15.0	97,700
Black	5,800	94.7	88.8 - 100.0	300	5.3	0.0 - 11.2	6,100
Other Asian	8,800	82.9	75.8 - 90.0	1,800	17.1	10.0 - 24.2	10,600
Other Pacific Islander	7,600	80.2	71.2 - 89.1	1,900	19.8	10.9 - 28.8	9,500
Mixed Ethnicity	2,800	91.0	82.1 - 100.0	300	9.0	0.0 - 17.9	3,100
Other	11,500	90.1	85.3 - 95.0	1,300	9.9	5.0 - 14.7	12,800

Pap Smear - within the past 3 yrs by State, County, Island, Community, BRFSS Age Group, DOH Race-Ethnicity, Education Level, Employment Status (Grouped), Household Income, Poverty Level, Marital Status (Grouped), Married, Health Care Coverage, for the Year(s) - 2000-2002, 2001-2003, 2002-2004, 2003-2005, 2004-2006, 2005-2007, 2006-2008, 2007-2009, 2008-2010

Note: Weighted numbers (#) represent 3-yr averages, percentages and 95% confidence intervals; Respondents aged 18 years and older; n/r (Not Reportable) - If the unweighted total responses for a dimension (row) is <50 that row will not be shown; n/a (Not Available) - Not asked of a subset of respondents

Year: 2000-2002

Education Level	Yes			No			Estimated Population (3-Yr Avg)
	#	%	C.I. (95%)	#	%	C.I. (95%)	#
Never attended school/ Only Kindergarten to Grades 8	8,100	76.9	70.8 - 83.1	2,400	23.1	16.9 - 29.2	10,600
Grades 9 thru 11 (Some High School)	16,400	78.5	73.0 - 84.0	4,500	21.5	16.0 - 27.0	20,900
Grades 12 or GED (High School Grad)	114,400	83.3	81.4 - 85.3	22,900	16.7	14.7 - 18.6	137,300
College 1 to 3 years (Some College/ Tech)	121,500	88.0	86.4 - 89.7	16,500	12.0	10.3 - 13.6	138,000
College 4 years or more (College Grad)	123,100	91.5	90.1 - 92.9	11,400	8.5	7.1 - 9.9	134,500

Pap Smear - within the past 3 yrs by State, County, Island, Community, BRFSS Age Group, DOH Race-Ethnicity, Education Level, Employment Status (Grouped), Household Income, Poverty Level, Marital Status (Grouped), Married, Health Care Coverage, for the Year(s) - 2000-2002, 2001-2003, 2002-2004, 2003-2005, 2004-2006, 2005-2007, 2006-2008, 2007-2009, 2008-2010

Note: Weighted numbers (#) represent 3-yr averages, percentages and 95% confidence intervals; Respondents aged 18 years and older; n/r (Not Reportable) - If the unweighted total responses for a dimension (row) is <50 that row will not be shown; n/a (Not Available) - Not asked of a subset of respondents

Year: 2000-2002

Employment Status (Grouped)	Yes			No			Estimated Population (3-Yr Avg)
	#	%	C.I. (95%)	#	%	C.I. (95%)	#
Employed	238,800	90.3	89.2 - 91.3	25,700	9.7	8.7 - 10.8	264,500
Unemployed	9,200	79.4	72.0 - 86.8	2,400	20.6	13.2 - 28.0	11,600
Retired/Unable to work	74,800	80.0	77.7 - 82.3	18,700	20.0	17.7 - 22.3	93,500
Student/Homemaker	60,500	84.7	81.8 - 87.5	11,000	15.3	12.5 - 18.2	71,500

Pap Smear - within the past 3 yrs by State, County, Island, Community, BRFSS Age Group, DOH Race-Ethnicity, Education Level, Employment Status (Grouped), Household Income, Poverty Level, Marital Status (Grouped), Married, Health Care Coverage, for the Year(s) - 2000-2002, 2001-2003, 2002-2004, 2003-2005, 2004-2006, 2005-2007, 2006-2008, 2007-2009, 2008-2010

Note: Weighted numbers (#) represent 3-yr averages, percentages and 95% confidence intervals; Respondents aged 18 years and older; n/r (Not Reportable) - If the unweighted total responses for a dimension (row) is <50 that row will not be shown; n/a (Not Available) - Not asked of a subset of respondents

Year: 2000-2002

Household Income	Yes			No			Estimated Population (3-Yr Avg)
	#	%	C.I. (95%)	#	%	C.I. (95%)	#
Less than \$10,000	18,900	79.3	74.7 - 84.0	4,900	20.7	16.0 - 25.3	23,800
\$10,000 to \$14,999	20,000	78.1	73.1 - 83.1	5,600	21.9	16.9 - 26.9	25,600
\$15,000 to \$19,999	17,500	86.8	82.5 - 91.1	2,700	13.2	8.9 - 17.5	20,200
\$20,000 to \$24,999	22,000	86.2	82.5 - 90.0	3,500	13.8	10.0 - 17.5	25,500
\$25,000 to \$34,999	39,000	87.9	84.8 - 91.1	5,300	12.1	8.9 - 15.2	44,300
\$35,000 to \$49,999	60,100	90.6	88.6 - 92.6	6,200	9.4	7.4 - 11.4	66,300
\$50,000 to \$74,999	56,700	91.4	89.3 - 93.4	5,400	8.6	6.6 - 10.7	62,100
\$75,000 or more	50,500	94.0	92.1 - 95.9	3,200	6.0	4.1 - 7.9	53,700

Pap Smear - within the past 3 yrs by State, County, Island, Community, BRFSS Age Group, DOH Race-Ethnicity, Education Level, Employment Status (Grouped), Household Income, Poverty Level, Marital Status (Grouped), Married, Health Care Coverage, for the Year(s) - 2000-2002, 2001-2003, 2002-2004, 2003-2005, 2004-2006, 2005-2007, 2006-2008, 2007-2009, 2008-2010

Note: Weighted numbers (#) represent 3-yr averages, percentages and 95% confidence intervals; Respondents aged 18 years and older; n/r (Not Reportable) - If the unweighted total responses for a dimension (row) is <50 that row will not be shown; n/a (Not Available) - Not asked of a subset of respondents

Year: 2000-2002

Poverty Level	Yes			No			Estimated Population (3-Yr Avg)
	#	%	C.I. (95%)	#	%	C.I. (95%)	#
0-130%	58,200	81.2	78.2 - 84.1	13,500	18.8	15.9 - 21.8	71,800
131-185%	45,200	89.2	86.5 - 91.8	5,500	10.8	8.2 - 13.5	50,800
186+%	181,200	91.0	89.9 - 92.2	17,800	9.0	7.8 - 10.1	199,000

Marital Status (Grouped)	Yes			No			Estimated Population (3-Yr Avg)
	#	%	C.I. (95%)	#	%	C.I. (95%)	#
Married	231,800	90.2	89.1 - 91.3	25,100	9.8	8.7 - 10.9	256,900
Unmarried Couple	5,800	90.2	83.3 - 97.2	600	9.8	2.8 - 16.7	6,500
Widowed	30,000	76.9	73.2 - 80.6	9,000	23.1	19.4 - 26.8	39,000
Other	116,200	83.3	81.4 - 85.3	23,200	16.7	14.7 - 18.6	139,400

Pap Smear - within the past 3 yrs by State, County, Island, Community, BRFSS Age Group, DOH Race-Ethnicity, Education Level, Employment Status (Grouped), Household Income, Poverty Level, Marital Status (Grouped), Married, Health Care Coverage, for the Year(s) - 2000-2002, 2001-2003, 2002-2004, 2003-2005, 2004-2006, 2005-2007, 2006-2008, 2007-2009, 2008-2010

Note: Weighted numbers (#) represent 3-yr averages, percentages and 95% confidence intervals; Respondents aged 18 years and older; n/r (Not Reportable) - If the unweighted total responses for a dimension (row) is <50 that row will not be shown; n/a (Not Available) - Not asked of a subset of respondents

Year: 2000-2002

Married	Yes			No			Estimated Population (3-Yr Avg)
	#	%	C.I. (95%)	#	%	C.I. (95%)	#
Yes	239,200	90.2	89.1 - 91.3	26,000	9.8	8.7 - 10.9	265,200
No	143,800	81.8	80.1 - 83.5	31,900	18.2	16.5 - 19.9	175,700

Health Care Coverage	Yes			No			Estimated Population (3-Yr Avg)
	#	%	C.I. (95%)	#	%	C.I. (95%)	#
Yes	364,500	88.1	87.1 - 89.0	49,400	11.9	11.0 - 12.9	413,900
No	19,000	69.2	64.0 - 74.5	8,400	30.8	25.5 - 36.0	27,400