

Smoke - stopped for day or more by State, County, Island, Community, Adult Age Group, DOH Race-Ethnicity, Gender, Education Level, Employment Status (Grouped), Household Income, Poverty Level, Marital Status (Grouped), Married, Health Care Coverage, for the Year(s) - 2000-2004, 2001-2005, 2002-2006, 2003-2007, 2004-2008, 2005-2009, 2006-2010

Note: Weighted numbers (#) represent 5-yr averages, percentages and 95% confidence intervals; Respondents aged 18 years and older; n/r (Not Reportable) - If the unweighted total responses for a dimension (row) is

The trend analysis report shows the trend for the selected health variable over selected years in a table and a graph. Estimated Population: This number is a weighted representation of the population who responded to a particular question in the survey. For most questions the eligible population will be the entire adult population. For some secondary questions only a subset of the population was asked the question. For example, all survey participants were asked if they had diabetes, but only those who answered yes were asked if they use insulin. If a dimension value is unknown for a particular survey record, that record will not be included in the counts for that particular dimension.

For documentation on other terms and coding in this report, please go to the following links

[Click here to access BRFSS documentation](#)

[Click here to access DOH Race-Ethnicity coding](#)

[Click here to access The Hawai'i Data Guide](#)

[Click here to access Poverty Level Methodology](#)

**For questions about this report, please contact
The Hawaii Health Data Warehouse**

profiles@hhdw.org

(855) 946-5899 x15

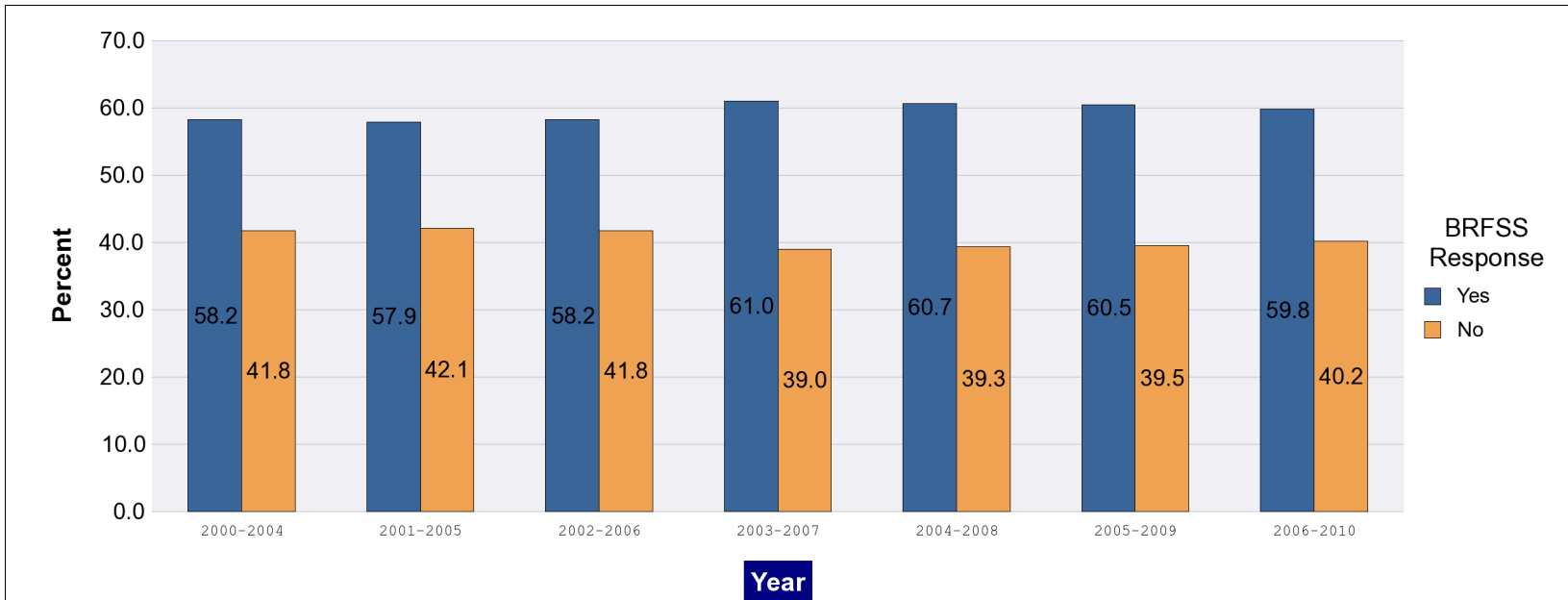
Smoke - stopped for day or more by State, County, Island, Community, Adult Age Group, DOH Race-Ethnicity, Gender, Education Level, Employment Status (Grouped), Household Income, Poverty Level, Marital Status (Grouped), Married, Health Care Coverage, for the Year(s) - 2000-2004, 2001-2005, 2002-2006, 2003-2007, 2004-2008, 2005-2009, 2006-2010

Note: Weighted numbers (#) represent 5-yr averages, percentages and 95% confidence intervals; Respondents aged 18 years and older; n/r (Not Reportable) - If the unweighted total responses for a dimension (row) is

Year	Yes			No			Estimated Population (5-yr Avg)
	#	%	C.I.(95%)	#	%	C.I.(95%)	#
2000-2004	100,200	58.2	56.1 - 60.4	71,900	41.8	39.6 - 43.9	172,000
2001-2005	98,700	57.9	55.7 - 60.0	71,800	42.1	40.0 - 44.3	170,500
2002-2006	97,700	58.2	56.1 - 60.3	70,100	41.8	39.7 - 43.9	167,800
2003-2007	99,900	61.0	58.9 - 63.2	63,800	39.0	36.8 - 41.1	163,700
2004-2008	98,900	60.7	58.5 - 62.8	64,100	39.3	37.2 - 41.5	163,000
2005-2009	98,000	60.5	58.5 - 62.4	64,100	39.5	37.6 - 41.5	162,000
2006-2010	94,500	59.8	57.8 - 61.8	63,500	40.2	38.2 - 42.2	158,100

Smoke - stopped for day or more by State, County, Island, Community, Adult Age Group, DOH Race-Ethnicity, Gender, Education Level, Employment Status (Grouped), Household Income, Poverty Level, Marital Status (Grouped), Married, Health Care Coverage, for the Year(s) - 2000-2004, 2001-2005, 2002-2006, 2003-2007, 2004-2008, 2005-2009, 2006-2010

Note: Weighted numbers (#) represent 5-yr averages, percentages and 95% confidence intervals; Respondents aged 18 years and older; n/r (Not Reportable) - If the unweighted total responses for a dimension (row) is



Smoke - stopped for day or more by State, County, Island, Community, Adult Age Group, DOH Race-Ethnicity, Gender, Education Level, Employment Status (Grouped), Household Income, Poverty Level, Marital Status (Grouped), Married, Health Care Coverage, for the Year(s) - 2000-2004, 2001-2005, 2002-2006, 2003-2007, 2004-2008, 2005-2009, 2006-2010

Note: Weighted numbers (#) represent 5-yr averages, percentages and 95% confidence intervals; Respondents aged 18 years and older; n/r (Not Reportable) - If the unweighted total responses for a dimension (row) is

Year: 2006-2010

State	Yes			No			Estimated Population (5-yr Avg)
	#	%	C.I. (95%)	#	%	C.I. (95%)	#
Totals	94,500	59.8	57.8 - 61.8	63,500	40.2	38.2 - 42.2	158,100

County	Yes			No			Estimated Population (5-yr Avg)
	#	%	C.I. (95%)	#	%	C.I. (95%)	#
Hawaii	16,100	62.4	58.9 - 65.9	9,700	37.6	34.1 - 41.1	25,800
Honolulu	63,000	59.3	56.6 - 62.0	43,200	40.7	38.0 - 43.4	106,200
Kauai	4,800	62.0	56.4 - 67.5	3,000	38.0	32.5 - 43.6	7,800
Maui	10,600	57.9	53.7 - 62.1	7,700	42.1	37.9 - 46.3	18,300

Smoke - stopped for day or more by State, County, Island, Community, Adult Age Group, DOH Race-Ethnicity, Gender, Education Level, Employment Status (Grouped), Household Income, Poverty Level, Marital Status (Grouped), Married, Health Care Coverage, for the Year(s) - 2000-2004, 2001-2005, 2002-2006, 2003-2007, 2004-2008, 2005-2009, 2006-2010

Note: Weighted numbers (#) represent 5-yr averages, percentages and 95% confidence intervals; Respondents aged 18 years and older; n/r (Not Reportable) - If the unweighted total responses for a dimension (row) is

Year: 2006-2010

Island	Yes			No			Estimated Population (5-yr Avg)
	#	%	C.I. (95%)	#	%	C.I. (95%)	#
Hawaii	16,100	62.4	58.9 - 65.9	9,700	37.6	34.1 - 41.1	25,800
Kauai	4,800	62.0	56.4 - 67.5	3,000	38.0	32.5 - 43.6	7,800
Lanai	300	65.9	56.0 - 75.8	100	34.1	24.2 - 44.0	400
Maui	9,400	57.7	53.0 - 62.4	6,900	42.3	37.6 - 47.0	16,300
Molokai	1,000	58.2	50.4 - 66.0	700	41.8	34.0 - 49.6	1,600
Oahu	63,000	59.3	56.6 - 62.0	43,200	40.7	38.0 - 43.4	106,200

Community	Yes			No			Estimated Population (5-yr Avg)
	#	%	C.I. (95%)	#	%	C.I. (95%)	#
Aiea/ Pearl City	5,800	52.6	43.5 - 61.8	5,200	47.4	38.2 - 56.5	10,900

Smoke - stopped for day or more by State, County, Island, Community, Adult Age Group, DOH Race-Ethnicity, Gender, Education Level, Employment Status (Grouped), Household Income, Poverty Level, Marital Status (Grouped), Married, Health Care Coverage, for the Year(s) - 2000-2004, 2001-2005, 2002-2006, 2003-2007, 2004-2008, 2005-2009, 2006-2010

Note: Weighted numbers (#) represent 5-yr averages, percentages and 95% confidence intervals; Respondents aged 18 years and older; n/r (Not Reportable) - If the unweighted total responses for a dimension (row) is

Year: 2006-2010

Community	Yes			No			Estimated Population (5-yr Avg)
	#	%	C.I. (95%)	#	%	C.I. (95%)	#
Ala Moana	2,200	55.2	43.5 - 66.9	1,800	44.8	33.1 - 56.5	4,000
Hanalei/ Kapaa	1,700	63.4	55.3 - 71.5	1,000	36.6	28.5 - 44.7	2,800
Hilo	4,400	60.9	54.0 - 67.8	2,900	39.1	32.2 - 46.0	7,300
Kaaawa/ Kahaluu/ Kaneohe	4,300	65.6	55.2 - 76.0	2,300	34.4	24.0 - 44.8	6,600
Kahului	2,700	45.3	37.1 - 53.6	3,200	54.7	46.4 - 62.9	5,900
Kailua/ Waimanalo	3,300	52.7	41.9 - 63.4	3,000	47.3	36.6 - 58.1	6,300
Kaimuki/ Palolo/ Waikiki	4,500	54.7	45.6 - 63.7	3,800	45.3	36.3 - 54.4	8,300
Kona	3,300	62.2	54.5 - 69.9	2,000	37.8	30.1 - 45.5	5,300
Lahaina/ Wailuku	3,400	64.8	57.2 - 72.5	1,800	35.2	27.5 - 42.8	5,200
Lanai	300	65.9	56.0 - 75.8	100	34.1	24.2 - 44.0	400
Lihue-Waimea	3,100	61.2	53.8 - 68.6	2,000	38.8	31.4 - 46.2	5,100

Smoke - stopped for day or more by State, County, Island, Community, Adult Age Group, DOH Race-Ethnicity, Gender, Education Level, Employment Status (Grouped), Household Income, Poverty Level, Marital Status (Grouped), Married, Health Care Coverage, for the Year(s) - 2000-2004, 2001-2005, 2002-2006, 2003-2007, 2004-2008, 2005-2009, 2006-2010

Note: Weighted numbers (#) represent 5-yr averages, percentages and 95% confidence intervals; Respondents aged 18 years and older; n/r (Not Reportable) - If the unweighted total responses for a dimension (row) is

Year: 2006-2010

Community	Yes			No			Estimated Population (5-yr Avg)
	#	%	C.I. (95%)	#	%	C.I. (95%)	#
Manoa/ Upper Makiki	3,500	53.7	42.9 - 64.6	3,000	46.3	35.4 - 57.1	6,500
Mililani/ Wahiawa	7,400	61.3	53.9 - 68.8	4,600	38.7	31.2 - 46.1	12,000
Molokai	1,000	58.2	50.4 - 66.0	700	41.8	34.0 - 49.6	1,600
Nanakuli/ Waianae	5,400	65.0	54.9 - 75.2	2,900	35.0	24.8 - 45.1	8,300
N.Hawaii	3,200	68.4	60.8 - 76.0	1,500	31.6	24.0 - 39.2	4,700
N.Shore/ Laie	2,000	58.8	43.7 - 74.0	1,400	41.2	26.0 - 56.3	3,400
Nuuanu/ Kalihi/ Moanalua	6,700	63.7	55.0 - 72.4	3,800	36.3	27.6 - 45.0	10,600
Puna/ Kau	5,100	60.5	54.8 - 66.3	3,300	39.5	33.7 - 45.2	8,500
Salt Lake/ Foster Village	3,000	57.5	46.1 - 68.8	2,200	42.5	31.2 - 53.9	5,200
Upcountry/ Hana	3,300	64.8	57.9 - 71.7	1,800	35.2	28.3 - 42.1	5,100
Waiialae/ Kahala/ Hawaii Kai	2,100	64.3	51.1 - 77.6	1,200	35.7	22.4 - 48.9	3,300

Smoke - stopped for day or more by State, County, Island, Community, Adult Age Group, DOH Race-Ethnicity, Gender, Education Level, Employment Status (Grouped), Household Income, Poverty Level, Marital Status (Grouped), Married, Health Care Coverage, for the Year(s) - 2000-2004, 2001-2005, 2002-2006, 2003-2007, 2004-2008, 2005-2009, 2006-2010

Note: Weighted numbers (#) represent 5-yr averages, percentages and 95% confidence intervals; Respondents aged 18 years and older; n/r (Not Reportable) - If the unweighted total responses for a dimension (row) is

Year: 2006-2010

Community	Yes			No			Estimated Population (5-yr Avg)
	#	%	C.I. (95%)	#	%	C.I. (95%)	#
Waipahu/ Kapolei/ Ewa	12,800	61.4	54.9 - 67.9	8,000	38.6	32.1 - 45.1	20,800

Smoke - stopped for day or more by State, County, Island, Community, Adult Age Group, DOH Race-Ethnicity, Gender, Education Level, Employment Status (Grouped), Household Income, Poverty Level, Marital Status (Grouped), Married, Health Care Coverage, for the Year(s) - 2000-2004, 2001-2005, 2002-2006, 2003-2007, 2004-2008, 2005-2009, 2006-2010

Note: Weighted numbers (#) represent 5-yr averages, percentages and 95% confidence intervals; Respondents aged 18 years and older; n/r (Not Reportable) - If the unweighted total responses for a dimension (row) is

Year: 2006-2010

Adult Age Group	Yes			No			Estimated Population (5-yr Avg)
	#	%	C.I. (95%)	#	%	C.I. (95%)	#
40-49	17,800	56.3	52.2 - 60.4	13,800	43.7	39.6 - 47.8	31,500
50-59	15,100	50.7	46.9 - 54.4	14,700	49.3	45.6 - 53.1	29,900
60-69	7,400	52.7	47.9 - 57.5	6,600	47.3	42.5 - 52.1	14,000
70-79	2,200	43.2	35.4 - 51.0	3,000	56.8	49.0 - 64.6	5,200
80+	600	37.1	22.3 - 51.9	1,000	62.9	48.1 - 77.7	1,600
20-29	27,100	71.1	66.5 - 75.7	11,000	28.9	24.3 - 33.5	38,200
18-19	n/r	n/r	n/r	n/r	n/r	n/r	4,100
30-39	21,200	64.4	59.9 - 68.8	11,700	35.6	31.2 - 40.1	32,900

Smoke - stopped for day or more by State, County, Island, Community, Adult Age Group, DOH Race-Ethnicity, Gender, Education Level, Employment Status (Grouped), Household Income, Poverty Level, Marital Status (Grouped), Married, Health Care Coverage, for the Year(s) - 2000-2004, 2001-2005, 2002-2006, 2003-2007, 2004-2008, 2005-2009, 2006-2010

Note: Weighted numbers (#) represent 5-yr averages, percentages and 95% confidence intervals; Respondents aged 18 years and older; n/r (Not Reportable) - If the unweighted total responses for a dimension (row) is

Year: 2006-2010

DOH Race-Ethnicity	Yes			No			Estimated Population (5-yr Avg)
	#	%	C.I. (95%)	#	%	C.I. (95%)	#
Caucasian	28,700	57.6	54.5 - 60.6	21,200	42.4	39.4 - 45.5	49,900
Native Hawaiian	20,700	66.1	61.9 - 70.3	10,600	33.9	29.7 - 38.1	31,400
Chinese	3,000	63.2	50.9 - 75.5	1,800	36.8	24.5 - 49.1	4,800
Filipino	14,700	64.1	58.0 - 70.2	8,300	35.9	29.8 - 42.0	23,000
Japanese	13,700	47.8	43.0 - 52.6	15,000	52.2	47.4 - 57.0	28,700
Black	1,700	63.8	49.1 - 78.5	900	36.2	21.5 - 50.9	2,600
Native Alaskan/ American Indian	n/r	n/r	n/r	n/r	n/r	n/r	800
Other Asian	2,900	69.1	57.8 - 80.4	1,300	30.9	19.6 - 42.2	4,200
Other Pacific Islander	4,300	75.0	64.3 - 85.6	1,400	25.0	14.4 - 35.7	5,700
Other	4,000	62.2	52.0 - 72.4	2,500	37.8	27.6 - 48.0	6,500

Smoke - stopped for day or more by State, County, Island, Community, Adult Age Group, DOH Race-Ethnicity, Gender, Education Level, Employment Status (Grouped), Household Income, Poverty Level, Marital Status (Grouped), Married, Health Care Coverage, for the Year(s) - 2000-2004, 2001-2005, 2002-2006, 2003-2007, 2004-2008, 2005-2009, 2006-2010

Note: Weighted numbers (#) represent 5-yr averages, percentages and 95% confidence intervals; Respondents aged 18 years and older; n/r (Not Reportable) - If the unweighted total responses for a dimension (row) is

Year: 2006-2010

Gender	Yes			No			Estimated Population (5-yr Avg)
	#	%	C.I. (95%)	#	%	C.I. (95%)	#
Male	54,700	62.0	59.1 - 64.8	33,600	38.0	35.2 - 40.9	88,300
Female	39,800	57.1	54.4 - 59.7	30,000	42.9	40.3 - 45.6	69,800

Education Level	Yes			No			Estimated Population (5-yr Avg)
	#	%	C.I. (95%)	#	%	C.I. (95%)	#
Never attended school/ Only Kindergarten to Grades 8	900	58.6	39.4 - 77.8	600	41.4	22.2 - 60.6	1,600
Grades 9 thru 11 (Some High School)	8,100	60.3	52.7 - 67.8	5,400	39.7	32.2 - 47.3	13,500
Grades 12 or GED (High School Grad)	39,800	61.0	57.8 - 64.1	25,500	39.0	35.9 - 42.2	65,300
College 1 to 3 years (Some College/ Tech)	29,400	60.7	57.2 - 64.2	19,000	39.3	35.8 - 42.8	48,400
College 4 years or more (College Grad)	16,200	55.5	51.3 - 59.8	13,000	44.5	40.2 - 48.7	29,200

Smoke - stopped for day or more by State, County, Island, Community, Adult Age Group, DOH Race-Ethnicity, Gender, Education Level, Employment Status (Grouped), Household Income, Poverty Level, Marital Status (Grouped), Married, Health Care Coverage, for the Year(s) - 2000-2004, 2001-2005, 2002-2006, 2003-2007, 2004-2008, 2005-2009, 2006-2010

Note: Weighted numbers (#) represent 5-yr averages, percentages and 95% confidence intervals; Respondents aged 18 years and older; n/r (Not Reportable) - If the unweighted total responses for a dimension (row) is

Year: 2006-2010

Employment Status (Grouped)	Yes			No			Estimated Population (5-yr Avg)
	#	%	C.I. (95%)	#	%	C.I. (95%)	#
Employed	65,100	60.3	57.9 - 62.8	42,800	39.7	37.2 - 42.1	108,000
Unemployed	8,200	65.2	58.0 - 72.4	4,400	34.8	27.6 - 42.0	12,600
Retired/Unable to work	12,900	54.1	49.9 - 58.4	10,900	45.9	41.6 - 50.1	23,800
Student/Homemaker	8,100	60.4	53.6 - 67.2	5,300	39.6	32.8 - 46.4	13,400

Smoke - stopped for day or more by State, County, Island, Community, Adult Age Group, DOH Race-Ethnicity, Gender, Education Level, Employment Status (Grouped), Household Income, Poverty Level, Marital Status (Grouped), Married, Health Care Coverage, for the Year(s) - 2000-2004, 2001-2005, 2002-2006, 2003-2007, 2004-2008, 2005-2009, 2006-2010

Note: Weighted numbers (#) represent 5-yr averages, percentages and 95% confidence intervals; Respondents aged 18 years and older; n/r (Not Reportable) - If the unweighted total responses for a dimension (row) is

Year: 2006-2010

Household Income	Yes			No			Estimated Population (5-yr Avg)
	#	%	C.I. (95%)	#	%	C.I. (95%)	#
Less than \$10,000	5,100	62.5	54.7 - 70.3	3,100	37.5	29.7 - 45.3	8,200
\$10,000 to \$14,999	3,900	63.8	53.9 - 73.7	2,200	36.2	26.3 - 46.1	6,100
\$15,000 to \$19,999	8,400	66.7	60.2 - 73.3	4,200	33.3	26.7 - 39.8	12,500
\$20,000 to \$24,999	7,800	58.7	52.0 - 65.4	5,500	41.3	34.6 - 48.0	13,300
\$25,000 to \$34,999	12,700	62.0	56.9 - 67.0	7,800	38.0	33.0 - 43.1	20,500
\$35,000 to \$49,999	16,400	63.9	59.5 - 68.3	9,200	36.1	31.7 - 40.5	25,600
\$50,000 to \$74,999	13,200	57.3	52.1 - 62.5	9,800	42.7	37.5 - 47.9	23,000
\$75,000 or more	17,300	53.4	48.6 - 58.2	15,100	46.6	41.8 - 51.4	32,300

Smoke - stopped for day or more by State, County, Island, Community, Adult Age Group, DOH Race-Ethnicity, Gender, Education Level, Employment Status (Grouped), Household Income, Poverty Level, Marital Status (Grouped), Married, Health Care Coverage, for the Year(s) - 2000-2004, 2001-2005, 2002-2006, 2003-2007, 2004-2008, 2005-2009, 2006-2010

Note: Weighted numbers (#) represent 5-yr averages, percentages and 95% confidence intervals; Respondents aged 18 years and older; n/r (Not Reportable) - If the unweighted total responses for a dimension (row) is

Year: 2006-2010

Poverty Level	Yes			No			Estimated Population (5-yr Avg)
	#	%	C.I. (95%)	#	%	C.I. (95%)	#
0-130%	32,300	66.5	63.0 - 70.1	16,300	33.5	29.9 - 37.0	48,600
131-185%	15,100	61.9	56.6 - 67.2	9,300	38.1	32.8 - 43.4	24,400
186+%	37,400	54.4	51.6 - 57.2	31,400	45.6	42.8 - 48.4	68,700

Marital Status (Grouped)	Yes			No			Estimated Population (5-yr Avg)
	#	%	C.I. (95%)	#	%	C.I. (95%)	#
Married	41,800	58.0	55.3 - 60.8	30,200	42.0	39.2 - 44.7	72,000
Unmarried Couple	6,100	67.5	58.9 - 76.0	3,000	32.5	24.0 - 41.1	9,100
Widowed	3,200	50.8	42.8 - 58.8	3,100	49.2	41.2 - 57.2	6,300
Other	43,400	61.4	58.2 - 64.6	27,300	38.6	35.4 - 41.8	70,700

Smoke - stopped for day or more by State, County, Island, Community, Adult Age Group, DOH Race-Ethnicity, Gender, Education Level, Employment Status (Grouped), Household Income, Poverty Level, Marital Status (Grouped), Married, Health Care Coverage, for the Year(s) - 2000-2004, 2001-2005, 2002-2006, 2003-2007, 2004-2008, 2005-2009, 2006-2010

Note: Weighted numbers (#) represent 5-yr averages, percentages and 95% confidence intervals; Respondents aged 18 years and older; n/r (Not Reportable) - If the unweighted total responses for a dimension (row) is

Year: 2006-2010

Married	Yes			No			Estimated Population (5-yr Avg)
	#	%	C.I. (95%)	#	%	C.I. (95%)	#
Yes	44,100	58.6	56.0 - 61.3	31,100	41.4	38.7 - 44.0	75,200
No	50,400	60.9	58.0 - 63.8	32,400	39.1	36.2 - 42.0	82,800

Health Care Coverage	Yes			No			Estimated Population (5-yr Avg)
	#	%	C.I. (95%)	#	%	C.I. (95%)	#
Yes	81,800	58.9	56.8 - 61.0	57,100	41.1	39.0 - 43.2	138,900
No	12,500	66.2	60.0 - 72.4	6,400	33.8	27.6 - 40.0	18,900

Smoke - stopped for day or more by State, County, Island, Community, Adult Age Group, DOH Race-Ethnicity, Gender, Education Level, Employment Status (Grouped), Household Income, Poverty Level, Marital Status (Grouped), Married, Health Care Coverage, for the Year(s) - 2000-2004, 2001-2005, 2002-2006, 2003-2007, 2004-2008, 2005-2009, 2006-2010

Note: Weighted numbers (#) represent 5-yr averages, percentages and 95% confidence intervals; Respondents aged 18 years and older; n/r (Not Reportable) - If the unweighted total responses for a dimension (row) is

Year: 2005-2009

State	Yes			No			Estimated Population (5-yr Avg)
	#	%	C.I. (95%)	#	%	C.I. (95%)	#
Totals	98,000	60.5	58.5 - 62.4	64,100	39.5	37.6 - 41.5	162,000

County	Yes			No			Estimated Population (5-yr Avg)
	#	%	C.I. (95%)	#	%	C.I. (95%)	#
Hawaii	15,600	62.4	59.1 - 65.7	9,400	37.6	34.3 - 40.9	25,000
Honolulu	66,500	60.2	57.6 - 62.8	44,000	39.8	37.2 - 42.4	110,400
Kauai	5,000	64.8	59.6 - 69.9	2,700	35.2	30.1 - 40.4	7,800
Maui	10,800	57.6	53.6 - 61.6	8,000	42.4	38.4 - 46.4	18,800

Smoke - stopped for day or more by State, County, Island, Community, Adult Age Group, DOH Race-Ethnicity, Gender, Education Level, Employment Status (Grouped), Household Income, Poverty Level, Marital Status (Grouped), Married, Health Care Coverage, for the Year(s) - 2000-2004, 2001-2005, 2002-2006, 2003-2007, 2004-2008, 2005-2009, 2006-2010

Note: Weighted numbers (#) represent 5-yr averages, percentages and 95% confidence intervals; Respondents aged 18 years and older; n/r (Not Reportable) - If the unweighted total responses for a dimension (row) is

Year: 2005-2009

Island	Yes			No			Estimated Population (5-yr Avg)
	#	%	C.I. (95%)	#	%	C.I. (95%)	#
Hawaii	15,600	62.4	59.1 - 65.7	9,400	37.6	34.3 - 40.9	25,000
Kauai	5,000	64.8	59.6 - 69.9	2,700	35.2	30.1 - 40.4	7,800
Lanai	300	62.1	52.5 - 71.8	200	37.9	28.2 - 47.5	400
Maui	9,700	57.2	52.8 - 61.6	7,200	42.8	38.4 - 47.2	16,900
Molokai	900	60.8	52.9 - 68.7	600	39.2	31.3 - 47.1	1,500
Oahu	66,500	60.2	57.6 - 62.8	44,000	39.8	37.2 - 42.4	110,400

Community	Yes			No			Estimated Population (5-yr Avg)
	#	%	C.I. (95%)	#	%	C.I. (95%)	#
Aiea/ Pearl City	5,800	53.7	44.9 - 62.5	5,000	46.3	37.5 - 55.1	10,800

Smoke - stopped for day or more by State, County, Island, Community, Adult Age Group, DOH Race-Ethnicity, Gender, Education Level, Employment Status (Grouped), Household Income, Poverty Level, Marital Status (Grouped), Married, Health Care Coverage, for the Year(s) - 2000-2004, 2001-2005, 2002-2006, 2003-2007, 2004-2008, 2005-2009, 2006-2010

Note: Weighted numbers (#) represent 5-yr averages, percentages and 95% confidence intervals; Respondents aged 18 years and older; n/r (Not Reportable) - If the unweighted total responses for a dimension (row) is

Year: 2005-2009

Community	Yes			No			Estimated Population (5-yr Avg)
	#	%	C.I. (95%)	#	%	C.I. (95%)	#
Ala Moana	2,600	54.5	43.7 - 65.4	2,100	45.5	34.6 - 56.3	4,700
Hanalei/ Kapaa	2,000	68.0	60.7 - 75.3	900	32.0	24.7 - 39.3	2,900
Hilo	4,300	60.3	54.0 - 66.6	2,800	39.7	33.4 - 46.0	7,100
Kaaawa/ Kahaluu/ Kaneohe	4,300	65.7	55.8 - 75.5	2,300	34.3	24.5 - 44.2	6,600
Kahului	3,100	50.1	42.0 - 58.3	3,100	49.9	41.7 - 58.0	6,200
Kailua/ Waimanalo	3,600	59.8	49.7 - 69.8	2,400	40.2	30.2 - 50.3	6,100
Kaimuki/ Palolo/ Waikiki	4,600	53.4	44.6 - 62.2	4,000	46.6	37.8 - 55.4	8,600
Kona	3,300	64.6	57.6 - 71.5	1,800	35.4	28.5 - 42.4	5,100
Lahaina/ Wailuku	3,200	60.8	53.3 - 68.4	2,100	39.2	31.6 - 46.7	5,300
Lanai	300	62.1	52.5 - 71.8	200	37.9	28.2 - 47.5	400
Lihue-Waimea	3,100	62.8	55.9 - 69.8	1,800	37.2	30.2 - 44.1	4,900

Smoke - stopped for day or more by State, County, Island, Community, Adult Age Group, DOH Race-Ethnicity, Gender, Education Level, Employment Status (Grouped), Household Income, Poverty Level, Marital Status (Grouped), Married, Health Care Coverage, for the Year(s) - 2000-2004, 2001-2005, 2002-2006, 2003-2007, 2004-2008, 2005-2009, 2006-2010

Note: Weighted numbers (#) represent 5-yr averages, percentages and 95% confidence intervals; Respondents aged 18 years and older; n/r (Not Reportable) - If the unweighted total responses for a dimension (row) is

Year: 2005-2009

Community	Yes			No			Estimated Population (5-yr Avg)
	#	%	C.I. (95%)	#	%	C.I. (95%)	#
Manoa/ Upper Makiki	3,400	52.3	41.9 - 62.6	3,100	47.7	37.4 - 58.1	6,600
Mililani/ Wahiawa	7,600	62.3	55.0 - 69.6	4,600	37.7	30.4 - 45.0	12,200
Molokai	900	60.8	52.9 - 68.7	600	39.2	31.3 - 47.1	1,500
Nanakuli/ Waianae	5,700	66.8	57.2 - 76.4	2,900	33.2	23.6 - 42.8	8,600
N.Hawaii	3,000	65.3	57.9 - 72.7	1,600	34.7	27.3 - 42.1	4,600
N.Shore/ Laie	2,400	61.6	47.8 - 75.5	1,500	38.4	24.5 - 52.2	3,800
Nuuanu/ Kalihi/ Moanalua	7,300	65.2	56.9 - 73.4	3,900	34.8	26.6 - 43.1	11,200
Puna/ Kau	5,000	61.3	55.6 - 67.0	3,200	38.7	33.0 - 44.4	8,200
Salt Lake/ Foster Village	2,900	55.2	43.6 - 66.8	2,300	44.8	33.2 - 56.4	5,200
Upcountry/ Hana	3,400	61.7	54.9 - 68.4	2,100	38.3	31.6 - 45.1	5,500
Waiialae/ Kahala/ Hawaii Kai	2,500	61.6	48.5 - 74.6	1,600	38.4	25.4 - 51.5	4,100

Smoke - stopped for day or more by State, County, Island, Community, Adult Age Group, DOH Race-Ethnicity, Gender, Education Level, Employment Status (Grouped), Household Income, Poverty Level, Marital Status (Grouped), Married, Health Care Coverage, for the Year(s) - 2000-2004, 2001-2005, 2002-2006, 2003-2007, 2004-2008, 2005-2009, 2006-2010

Note: Weighted numbers (#) represent 5-yr averages, percentages and 95% confidence intervals; Respondents aged 18 years and older; n/r (Not Reportable) - If the unweighted total responses for a dimension (row) is

Year: 2005-2009

Community	Yes			No			Estimated Population (5-yr Avg)
	#	%	C.I. (95%)	#	%	C.I. (95%)	#
Waipahu/ Kapolei/ Ewa	13,700	62.4	56.3 - 68.6	8,300	37.6	31.4 - 43.7	22,000

Smoke - stopped for day or more by State, County, Island, Community, Adult Age Group, DOH Race-Ethnicity, Gender, Education Level, Employment Status (Grouped), Household Income, Poverty Level, Marital Status (Grouped), Married, Health Care Coverage, for the Year(s) - 2000-2004, 2001-2005, 2002-2006, 2003-2007, 2004-2008, 2005-2009, 2006-2010

Note: Weighted numbers (#) represent 5-yr averages, percentages and 95% confidence intervals; Respondents aged 18 years and older; n/r (Not Reportable) - If the unweighted total responses for a dimension (row) is

Year: 2005-2009

Adult Age Group	Yes			No			Estimated Population (5-yr Avg)
	#	%	C.I. (95%)	#	%	C.I. (95%)	#
40-49	19,900	58.2	54.4 - 62.1	14,300	41.8	37.9 - 45.6	34,100
50-59	15,900	51.0	47.2 - 54.8	15,300	49.0	45.2 - 52.8	31,200
60-69	7,500	54.0	49.0 - 58.9	6,400	46.0	41.1 - 51.0	13,800
70-79	2,500	48.2	40.0 - 56.4	2,700	51.8	43.6 - 60.0	5,200
80+	500	32.5	18.5 - 46.6	1,100	67.5	53.4 - 81.5	1,700
20-29	28,400	71.4	67.0 - 75.7	11,400	28.6	24.3 - 33.0	39,800
18-19	n/r	n/r	n/r	n/r	n/r	n/r	3,500
30-39	20,500	64.1	59.9 - 68.4	11,500	35.9	31.6 - 40.1	31,900

Smoke - stopped for day or more by State, County, Island, Community, Adult Age Group, DOH Race-Ethnicity, Gender, Education Level, Employment Status (Grouped), Household Income, Poverty Level, Marital Status (Grouped), Married, Health Care Coverage, for the Year(s) - 2000-2004, 2001-2005, 2002-2006, 2003-2007, 2004-2008, 2005-2009, 2006-2010

Note: Weighted numbers (#) represent 5-yr averages, percentages and 95% confidence intervals; Respondents aged 18 years and older; n/r (Not Reportable) - If the unweighted total responses for a dimension (row) is

Year: 2005-2009

DOH Race-Ethnicity	Yes			No			Estimated Population (5-yr Avg)
	#	%	C.I. (95%)	#	%	C.I. (95%)	#
Caucasian	30,400	58.5	55.5 - 61.5	21,600	41.5	38.5 - 44.5	52,100
Native Hawaiian	20,800	67.3	63.3 - 71.3	10,100	32.7	28.7 - 36.7	30,900
Chinese	3,200	62.8	51.5 - 74.2	1,900	37.2	25.8 - 48.5	5,100
Filipino	15,500	65.1	59.2 - 71.0	8,300	34.9	29.0 - 40.8	23,800
Japanese	14,200	48.1	43.5 - 52.7	15,300	51.9	47.3 - 56.5	29,400
Black	1,900	65.6	51.6 - 79.6	1,000	34.4	20.4 - 48.4	2,900
Native Alaskan/ American Indian	n/r	n/r	n/r	n/r	n/r	n/r	900
Other Asian	2,400	63.9	52.0 - 75.9	1,300	36.1	24.1 - 48.0	3,700
Other Pacific Islander	4,900	78.5	69.0 - 88.0	1,300	21.5	12.0 - 31.0	6,200
Other	4,100	62.6	53.4 - 71.9	2,400	37.4	28.1 - 46.6	6,500

Smoke - stopped for day or more by State, County, Island, Community, Adult Age Group, DOH Race-Ethnicity, Gender, Education Level, Employment Status (Grouped), Household Income, Poverty Level, Marital Status (Grouped), Married, Health Care Coverage, for the Year(s) - 2000-2004, 2001-2005, 2002-2006, 2003-2007, 2004-2008, 2005-2009, 2006-2010

Note: Weighted numbers (#) represent 5-yr averages, percentages and 95% confidence intervals; Respondents aged 18 years and older; n/r (Not Reportable) - If the unweighted total responses for a dimension (row) is

Year: 2005-2009

Gender	Yes			No			Estimated Population (5-yr Avg)
	#	%	C.I. (95%)	#	%	C.I. (95%)	#
Male	57,100	62.9	60.1 - 65.6	33,700	37.1	34.4 - 39.9	90,800
Female	40,900	57.4	54.8 - 59.9	30,400	42.6	40.1 - 45.2	71,300

Education Level	Yes			No			Estimated Population (5-yr Avg)
	#	%	C.I. (95%)	#	%	C.I. (95%)	#
Never attended school/ Only Kindergarten to Grades 8	1,500	64.8	46.2 - 83.4	800	35.2	16.6 - 53.8	2,300
Grades 9 thru 11 (Some High School)	7,700	60.8	53.7 - 67.9	5,000	39.2	32.1 - 46.3	12,700
Grades 12 or GED (High School Grad)	40,700	62.5	59.4 - 65.5	24,500	37.5	34.5 - 40.6	65,200
College 1 to 3 years (Some College/ Tech)	30,100	60.5	57.1 - 63.9	19,600	39.5	36.1 - 42.9	49,700
College 4 years or more (College Grad)	17,900	55.9	51.9 - 60.0	14,100	44.1	40.0 - 48.1	32,000

Smoke - stopped for day or more by State, County, Island, Community, Adult Age Group, DOH Race-Ethnicity, Gender, Education Level, Employment Status (Grouped), Household Income, Poverty Level, Marital Status (Grouped), Married, Health Care Coverage, for the Year(s) - 2000-2004, 2001-2005, 2002-2006, 2003-2007, 2004-2008, 2005-2009, 2006-2010

Note: Weighted numbers (#) represent 5-yr averages, percentages and 95% confidence intervals; Respondents aged 18 years and older; n/r (Not Reportable) - If the unweighted total responses for a dimension (row) is

Year: 2005-2009

Employment Status (Grouped)	Yes			No			Estimated Population (5-yr Avg)
	#	%	C.I. (95%)	#	%	C.I. (95%)	#
Employed	69,100	61.2	58.8 - 63.5	43,900	38.8	36.5 - 41.2	113,000
Unemployed	7,300	68.8	61.7 - 75.8	3,300	31.2	24.2 - 38.3	10,600
Retired/Unable to work	13,800	55.4	51.3 - 59.5	11,100	44.6	40.5 - 48.7	24,900
Student/Homemaker	7,500	56.9	50.1 - 63.7	5,700	43.1	36.3 - 49.9	13,200

Smoke - stopped for day or more by State, County, Island, Community, Adult Age Group, DOH Race-Ethnicity, Gender, Education Level, Employment Status (Grouped), Household Income, Poverty Level, Marital Status (Grouped), Married, Health Care Coverage, for the Year(s) - 2000-2004, 2001-2005, 2002-2006, 2003-2007, 2004-2008, 2005-2009, 2006-2010

Note: Weighted numbers (#) represent 5-yr averages, percentages and 95% confidence intervals; Respondents aged 18 years and older; n/r (Not Reportable) - If the unweighted total responses for a dimension (row) is

Year: 2005-2009

Household Income	Yes			No			Estimated Population (5-yr Avg)
	#	%	C.I. (95%)	#	%	C.I. (95%)	#
Less than \$10,000	5,200	64.9	57.4 - 72.4	2,800	35.1	27.6 - 42.6	8,000
\$10,000 to \$14,999	4,400	67.0	58.3 - 75.6	2,200	33.0	24.4 - 41.7	6,600
\$15,000 to \$19,999	7,600	62.5	55.8 - 69.2	4,600	37.5	30.8 - 44.2	12,200
\$20,000 to \$24,999	7,500	56.5	49.8 - 63.1	5,800	43.5	36.9 - 50.2	13,300
\$25,000 to \$34,999	12,100	63.3	58.2 - 68.4	7,000	36.7	31.6 - 41.8	19,100
\$35,000 to \$49,999	16,400	63.7	59.4 - 68.1	9,300	36.3	31.9 - 40.6	25,600
\$50,000 to \$74,999	15,100	59.5	54.7 - 64.3	10,300	40.5	35.7 - 45.3	25,500
\$75,000 or more	18,300	54.8	50.2 - 59.4	15,100	45.2	40.6 - 49.8	33,300

Smoke - stopped for day or more by State, County, Island, Community, Adult Age Group, DOH Race-Ethnicity, Gender, Education Level, Employment Status (Grouped), Household Income, Poverty Level, Marital Status (Grouped), Married, Health Care Coverage, for the Year(s) - 2000-2004, 2001-2005, 2002-2006, 2003-2007, 2004-2008, 2005-2009, 2006-2010

Note: Weighted numbers (#) represent 5-yr averages, percentages and 95% confidence intervals; Respondents aged 18 years and older; n/r (Not Reportable) - If the unweighted total responses for a dimension (row) is

Year: 2005-2009

Poverty Level	Yes			No			Estimated Population (5-yr Avg)
	#	%	C.I. (95%)	#	%	C.I. (95%)	#
0-130%	30,600	66.1	62.5 - 69.7	15,700	33.9	30.3 - 37.5	46,300
131-185%	14,300	63.3	57.7 - 68.9	8,300	36.7	31.1 - 42.3	22,500
186+%	41,700	55.8	53.2 - 58.4	33,000	44.2	41.6 - 46.8	74,700

Marital Status (Grouped)	Yes			No			Estimated Population (5-yr Avg)
	#	%	C.I. (95%)	#	%	C.I. (95%)	#
Married	44,600	58.8	56.1 - 61.4	31,300	41.2	38.6 - 43.9	75,900
Unmarried Couple	5,900	69.2	61.4 - 76.9	2,600	30.8	23.1 - 38.6	8,600
Widowed	3,100	49.7	42.3 - 57.2	3,100	50.3	42.8 - 57.7	6,200
Other	44,300	62.1	59.1 - 65.2	27,000	37.9	34.8 - 40.9	71,400

Smoke - stopped for day or more by State, County, Island, Community, Adult Age Group, DOH Race-Ethnicity, Gender, Education Level, Employment Status (Grouped), Household Income, Poverty Level, Marital Status (Grouped), Married, Health Care Coverage, for the Year(s) - 2000-2004, 2001-2005, 2002-2006, 2003-2007, 2004-2008, 2005-2009, 2006-2010

Note: Weighted numbers (#) represent 5-yr averages, percentages and 95% confidence intervals; Respondents aged 18 years and older; n/r (Not Reportable) - If the unweighted total responses for a dimension (row) is

Year: 2005-2009

Married	Yes			No			Estimated Population (5-yr Avg)
	#	%	C.I. (95%)	#	%	C.I. (95%)	#
Yes	46,900	59.3	56.7 - 61.8	32,200	40.7	38.2 - 43.3	79,100
No	51,000	61.6	58.8 - 64.4	31,800	38.4	35.6 - 41.2	82,800

Health Care Coverage	Yes			No			Estimated Population (5-yr Avg)
	#	%	C.I. (95%)	#	%	C.I. (95%)	#
Yes	84,700	59.6	57.6 - 61.6	57,400	40.4	38.4 - 42.4	142,100
No	13,000	66.4	60.6 - 72.1	6,600	33.6	27.9 - 39.4	19,600

Smoke - stopped for day or more by State, County, Island, Community, Adult Age Group, DOH Race-Ethnicity, Gender, Education Level, Employment Status (Grouped), Household Income, Poverty Level, Marital Status (Grouped), Married, Health Care Coverage, for the Year(s) - 2000-2004, 2001-2005, 2002-2006, 2003-2007, 2004-2008, 2005-2009, 2006-2010

Note: Weighted numbers (#) represent 5-yr averages, percentages and 95% confidence intervals; Respondents aged 18 years and older; n/r (Not Reportable) - If the unweighted total responses for a dimension (row) is

Year: 2004-2008

State	Yes			No			Estimated Population (5-yr Avg)
	#	%	C.I. (95%)	#	%	C.I. (95%)	#
Totals	98,900	60.7	58.5 - 62.8	64,100	39.3	37.2 - 41.5	163,000

County	Yes			No			Estimated Population (5-yr Avg)
	#	%	C.I. (95%)	#	%	C.I. (95%)	#
Hawaii	15,500	62.3	58.5 - 66.0	9,400	37.7	34.0 - 41.5	24,800
Honolulu	68,000	61.3	58.4 - 64.1	43,000	38.7	35.9 - 41.6	111,000
Kauai	4,900	60.1	54.2 - 65.9	3,200	39.9	34.1 - 45.8	8,100
Maui	10,600	55.2	50.1 - 60.4	8,600	44.8	39.6 - 49.9	19,100

Smoke - stopped for day or more by State, County, Island, Community, Adult Age Group, DOH Race-Ethnicity, Gender, Education Level, Employment Status (Grouped), Household Income, Poverty Level, Marital Status (Grouped), Married, Health Care Coverage, for the Year(s) - 2000-2004, 2001-2005, 2002-2006, 2003-2007, 2004-2008, 2005-2009, 2006-2010

Note: Weighted numbers (#) represent 5-yr averages, percentages and 95% confidence intervals; Respondents aged 18 years and older; n/r (Not Reportable) - If the unweighted total responses for a dimension (row) is

Year: 2004-2008

Island	Yes			No			Estimated Population (5-yr Avg)
	#	%	C.I. (95%)	#	%	C.I. (95%)	#
Hawaii	15,500	62.3	58.5 - 66.0	9,400	37.7	34.0 - 41.5	24,800
Kauai	4,900	60.1	54.2 - 65.9	3,200	39.9	34.1 - 45.8	8,100
Lanai	200	63.6	53.3 - 74.0	100	36.4	26.0 - 46.7	400
Maui	9,500	54.8	49.2 - 60.4	7,800	45.2	39.6 - 50.8	17,300
Molokai	800	58.5	48.2 - 68.8	600	41.5	31.2 - 51.8	1,400
Oahu	68,000	61.3	58.4 - 64.1	43,000	38.7	35.9 - 41.6	111,000

Community	Yes			No			Estimated Population (5-yr Avg)
	#	%	C.I. (95%)	#	%	C.I. (95%)	#
Aiea/ Pearl City	5,300	54.0	44.6 - 63.4	4,500	46.0	36.6 - 55.4	9,900

Smoke - stopped for day or more by State, County, Island, Community, Adult Age Group, DOH Race-Ethnicity, Gender, Education Level, Employment Status (Grouped), Household Income, Poverty Level, Marital Status (Grouped), Married, Health Care Coverage, for the Year(s) - 2000-2004, 2001-2005, 2002-2006, 2003-2007, 2004-2008, 2005-2009, 2006-2010

Note: Weighted numbers (#) represent 5-yr averages, percentages and 95% confidence intervals; Respondents aged 18 years and older; n/r (Not Reportable) - If the unweighted total responses for a dimension (row) is

Year: 2004-2008

Community	Yes			No			Estimated Population (5-yr Avg)
	#	%	C.I. (95%)	#	%	C.I. (95%)	#
Ala Moana	2,700	56.9	45.0 - 68.7	2,000	43.1	31.3 - 55.0	4,700
Hanalei/ Kapaa	1,900	60.5	51.3 - 69.6	1,300	39.5	30.4 - 48.7	3,200
Hilo	4,800	65.2	58.1 - 72.3	2,600	34.8	27.7 - 41.9	7,400
Kaaawa/ Kahaluu/ Kaneohe	3,900	57.5	46.4 - 68.6	2,900	42.5	31.4 - 53.6	6,700
Kahului	2,700	45.6	35.4 - 55.7	3,200	54.4	44.3 - 64.6	5,900
Kailua/ Waimanalo	3,700	67.1	56.3 - 77.9	1,800	32.9	22.1 - 43.7	5,500
Kaimuki/ Palolo/ Waikiki	5,300	56.4	46.3 - 66.5	4,100	43.6	33.5 - 53.7	9,500
Kona	3,200	69.6	62.5 - 76.6	1,400	30.4	23.4 - 37.5	4,700
Lahaina/ Wailuku	3,500	58.8	50.1 - 67.6	2,400	41.2	32.4 - 49.9	5,900
Lanai	200	63.6	53.3 - 74.0	100	36.4	26.0 - 46.7	400
Lihue-Waimea	2,900	59.8	52.2 - 67.5	2,000	40.2	32.5 - 47.8	4,900

Smoke - stopped for day or more by State, County, Island, Community, Adult Age Group, DOH Race-Ethnicity, Gender, Education Level, Employment Status (Grouped), Household Income, Poverty Level, Marital Status (Grouped), Married, Health Care Coverage, for the Year(s) - 2000-2004, 2001-2005, 2002-2006, 2003-2007, 2004-2008, 2005-2009, 2006-2010

Note: Weighted numbers (#) represent 5-yr averages, percentages and 95% confidence intervals; Respondents aged 18 years and older; n/r (Not Reportable) - If the unweighted total responses for a dimension (row) is

Year: 2004-2008

Community	Yes			No			Estimated Population (5-yr Avg)
	#	%	C.I. (95%)	#	%	C.I. (95%)	#
Manoa/ Upper Makiki	4,500	58.2	47.5 - 68.9	3,200	41.8	31.1 - 52.5	7,700
Mililani/ Wahiawa	7,600	62.4	54.6 - 70.2	4,600	37.6	29.8 - 45.4	12,100
Molokai	800	58.5	48.2 - 68.8	600	41.5	31.2 - 51.8	1,400
Nanakuli/ Waianae	6,100	64.8	54.5 - 75.0	3,300	35.2	25.0 - 45.5	9,400
N.Hawaii	2,600	57.1	48.2 - 66.1	2,000	42.9	33.9 - 51.8	4,600
N.Shore/ Laie	2,700	66.7	52.5 - 81.0	1,400	33.3	19.0 - 47.5	4,100
Nuuanu/ Kalihi/ Moanalua	7,700	65.8	56.8 - 74.8	4,000	34.2	25.2 - 43.2	11,800
Puna/ Kau	4,800	58.4	51.8 - 65.1	3,400	41.6	34.9 - 48.2	8,200
Salt Lake/ Foster Village	2,800	56.0	43.0 - 69.1	2,200	44.0	30.9 - 57.0	5,100
Upcountry/ Hana	3,300	60.3	51.3 - 69.4	2,200	39.7	30.6 - 48.7	5,500
Waialae/ Kahala/ Hawaii Kai	2,000	58.2	43.5 - 72.8	1,500	41.8	27.2 - 56.5	3,500

Smoke - stopped for day or more by State, County, Island, Community, Adult Age Group, DOH Race-Ethnicity, Gender, Education Level, Employment Status (Grouped), Household Income, Poverty Level, Marital Status (Grouped), Married, Health Care Coverage, for the Year(s) - 2000-2004, 2001-2005, 2002-2006, 2003-2007, 2004-2008, 2005-2009, 2006-2010

Note: Weighted numbers (#) represent 5-yr averages, percentages and 95% confidence intervals; Respondents aged 18 years and older; n/r (Not Reportable) - If the unweighted total responses for a dimension (row) is

Year: 2004-2008

Community	Yes			No			Estimated Population (5-yr Avg)
	#	%	C.I. (95%)	#	%	C.I. (95%)	#
Waipahu/ Kapolei/ Ewa	13,600	64.6	57.7 - 71.5	7,400	35.4	28.5 - 42.3	21,000

Smoke - stopped for day or more by State, County, Island, Community, Adult Age Group, DOH Race-Ethnicity, Gender, Education Level, Employment Status (Grouped), Household Income, Poverty Level, Marital Status (Grouped), Married, Health Care Coverage, for the Year(s) - 2000-2004, 2001-2005, 2002-2006, 2003-2007, 2004-2008, 2005-2009, 2006-2010

Note: Weighted numbers (#) represent 5-yr averages, percentages and 95% confidence intervals; Respondents aged 18 years and older; n/r (Not Reportable) - If the unweighted total responses for a dimension (row) is

Year: 2004-2008

Adult Age Group	Yes			No			Estimated Population (5-yr Avg)
	#	%	C.I. (95%)	#	%	C.I. (95%)	#
40-49	19,200	57.6	53.3 - 61.8	14,200	42.4	38.2 - 46.7	33,400
50-59	16,300	52.2	47.9 - 56.6	14,900	47.8	43.4 - 52.1	31,200
60-69	6,800	48.7	42.9 - 54.6	7,100	51.3	45.4 - 57.1	13,900
70-79	2,400	42.5	33.2 - 51.8	3,200	57.5	48.2 - 66.8	5,600
80+	500	29.7	15.2 - 44.1	1,100	70.3	55.9 - 84.8	1,600
20-29	30,500	73.0	68.6 - 77.5	11,300	27.0	22.5 - 31.4	41,800
18-19	n/r	n/r	n/r	n/r	n/r	n/r	2,600
30-39	20,700	65.5	60.7 - 70.3	10,900	34.5	29.7 - 39.3	31,600

Smoke - stopped for day or more by State, County, Island, Community, Adult Age Group, DOH Race-Ethnicity, Gender, Education Level, Employment Status (Grouped), Household Income, Poverty Level, Marital Status (Grouped), Married, Health Care Coverage, for the Year(s) - 2000-2004, 2001-2005, 2002-2006, 2003-2007, 2004-2008, 2005-2009, 2006-2010

Note: Weighted numbers (#) represent 5-yr averages, percentages and 95% confidence intervals; Respondents aged 18 years and older; n/r (Not Reportable) - If the unweighted total responses for a dimension (row) is

Year: 2004-2008

DOH Race-Ethnicity	Yes			No			Estimated Population (5-yr Avg)
	#	%	C.I. (95%)	#	%	C.I. (95%)	#
Caucasian	29,100	57.6	54.3 - 61.0	21,400	42.4	39.0 - 45.7	50,600
Native Hawaiian	21,400	68.0	63.6 - 72.5	10,000	32.0	27.5 - 36.4	31,400
Chinese	2,900	63.0	50.9 - 75.2	1,700	37.0	24.8 - 49.1	4,600
Filipino	17,000	68.0	62.1 - 73.9	8,000	32.0	26.1 - 37.9	25,100
Japanese	14,500	49.4	44.1 - 54.6	14,800	50.6	45.4 - 55.9	29,300
Black	n/r	n/r	n/r	n/r	n/r	n/r	2,500
Native Alaskan/ American Indian	n/r	n/r	n/r	n/r	n/r	n/r	1,300
Other Asian	2,200	55.9	40.3 - 71.5	1,700	44.1	28.5 - 59.7	3,900
Other Pacific Islander	4,200	74.0	62.2 - 85.8	1,500	26.0	14.2 - 37.8	5,700
Other	4,000	60.7	50.6 - 70.8	2,600	39.3	29.2 - 49.4	6,700

Smoke - stopped for day or more by State, County, Island, Community, Adult Age Group, DOH Race-Ethnicity, Gender, Education Level, Employment Status (Grouped), Household Income, Poverty Level, Marital Status (Grouped), Married, Health Care Coverage, for the Year(s) - 2000-2004, 2001-2005, 2002-2006, 2003-2007, 2004-2008, 2005-2009, 2006-2010

Note: Weighted numbers (#) represent 5-yr averages, percentages and 95% confidence intervals; Respondents aged 18 years and older; n/r (Not Reportable) - If the unweighted total responses for a dimension (row) is

Year: 2004-2008

Gender	Yes			No			Estimated Population (5-yr Avg)
	#	%	C.I. (95%)	#	%	C.I. (95%)	#
Male	57,600	62.8	59.8 - 65.8	34,100	37.2	34.2 - 40.2	91,700
Female	41,300	57.9	55.0 - 60.7	30,000	42.1	39.3 - 45.0	71,300

Education Level	Yes			No			Estimated Population (5-yr Avg)
	#	%	C.I. (95%)	#	%	C.I. (95%)	#
Never attended school/ Only Kindergarten to Grades 8	1,300	58.3	39.2 - 77.4	900	41.7	22.6 - 60.8	2,300
Grades 9 thru 11 (Some High School)	6,400	59.9	51.9 - 67.9	4,300	40.1	32.1 - 48.1	10,700
Grades 12 or GED (High School Grad)	41,600	63.3	59.9 - 66.7	24,100	36.7	33.3 - 40.1	65,700
College 1 to 3 years (Some College/ Tech)	30,700	59.1	55.3 - 62.9	21,200	40.9	37.1 - 44.7	51,900
College 4 years or more (College Grad)	18,800	58.5	54.1 - 63.0	13,300	41.5	37.0 - 45.9	32,100

Smoke - stopped for day or more by State, County, Island, Community, Adult Age Group, DOH Race-Ethnicity, Gender, Education Level, Employment Status (Grouped), Household Income, Poverty Level, Marital Status (Grouped), Married, Health Care Coverage, for the Year(s) - 2000-2004, 2001-2005, 2002-2006, 2003-2007, 2004-2008, 2005-2009, 2006-2010

Note: Weighted numbers (#) represent 5-yr averages, percentages and 95% confidence intervals; Respondents aged 18 years and older; n/r (Not Reportable) - If the unweighted total responses for a dimension (row) is

Year: 2004-2008

Employment Status (Grouped)	Yes			No			Estimated Population (5-yr Avg)
	#	%	C.I. (95%)	#	%	C.I. (95%)	#
Employed	69,900	61.9	59.3 - 64.5	43,000	38.1	35.5 - 40.7	112,900
Unemployed	7,200	69.2	59.9 - 78.4	3,200	30.8	21.6 - 40.1	10,300
Retired/Unable to work	13,200	51.7	47.1 - 56.2	12,400	48.3	43.8 - 52.9	25,600
Student/Homemaker	8,300	60.6	53.4 - 67.8	5,400	39.4	32.2 - 46.6	13,700

Smoke - stopped for day or more by State, County, Island, Community, Adult Age Group, DOH Race-Ethnicity, Gender, Education Level, Employment Status (Grouped), Household Income, Poverty Level, Marital Status (Grouped), Married, Health Care Coverage, for the Year(s) - 2000-2004, 2001-2005, 2002-2006, 2003-2007, 2004-2008, 2005-2009, 2006-2010

Note: Weighted numbers (#) represent 5-yr averages, percentages and 95% confidence intervals; Respondents aged 18 years and older; n/r (Not Reportable) - If the unweighted total responses for a dimension (row) is

Year: 2004-2008

Household Income	Yes			No			Estimated Population (5-yr Avg)
	#	%	C.I. (95%)	#	%	C.I. (95%)	#
Less than \$10,000	5,200	68.7	60.5 - 76.8	2,400	31.3	23.2 - 39.5	7,600
\$10,000 to \$14,999	4,500	58.7	49.0 - 68.3	3,100	41.3	31.7 - 51.0	7,600
\$15,000 to \$19,999	8,000	65.6	58.3 - 73.0	4,200	34.4	27.0 - 41.7	12,200
\$20,000 to \$24,999	7,800	55.9	48.6 - 63.2	6,100	44.1	36.8 - 51.4	13,900
\$25,000 to \$34,999	12,200	60.6	54.5 - 66.6	7,900	39.4	33.4 - 45.5	20,100
\$35,000 to \$49,999	16,200	63.6	58.7 - 68.5	9,300	36.4	31.5 - 41.3	25,400
\$50,000 to \$74,999	18,300	61.6	56.4 - 66.9	11,400	38.4	33.1 - 43.6	29,800
\$75,000 or more	16,600	54.6	49.4 - 59.8	13,800	45.4	40.2 - 50.6	30,400

Smoke - stopped for day or more by State, County, Island, Community, Adult Age Group, DOH Race-Ethnicity, Gender, Education Level, Employment Status (Grouped), Household Income, Poverty Level, Marital Status (Grouped), Married, Health Care Coverage, for the Year(s) - 2000-2004, 2001-2005, 2002-2006, 2003-2007, 2004-2008, 2005-2009, 2006-2010

Note: Weighted numbers (#) represent 5-yr averages, percentages and 95% confidence intervals; Respondents aged 18 years and older; n/r (Not Reportable) - If the unweighted total responses for a dimension (row) is

Year: 2004-2008

Poverty Level	Yes			No			Estimated Population (5-yr Avg)
	#	%	C.I. (95%)	#	%	C.I. (95%)	#
0-130%	29,800	65.8	61.8 - 69.9	15,400	34.2	30.1 - 38.2	45,200
131-185%	13,900	64.3	58.3 - 70.3	7,700	35.7	29.7 - 41.7	21,600
186+%	45,000	56.2	53.2 - 59.2	35,100	43.8	40.8 - 46.8	80,100

Marital Status (Grouped)	Yes			No			Estimated Population (5-yr Avg)
	#	%	C.I. (95%)	#	%	C.I. (95%)	#
Married	44,200	59.4	56.4 - 62.5	30,200	40.6	37.5 - 43.6	74,400
Unmarried Couple	5,700	67.9	59.4 - 76.3	2,700	32.1	23.7 - 40.6	8,300
Widowed	2,900	46.7	38.4 - 54.9	3,300	53.3	45.1 - 61.6	6,200
Other	46,100	62.2	58.9 - 65.5	28,000	37.8	34.5 - 41.1	74,100

Smoke - stopped for day or more by State, County, Island, Community, Adult Age Group, DOH Race-Ethnicity, Gender, Education Level, Employment Status (Grouped), Household Income, Poverty Level, Marital Status (Grouped), Married, Health Care Coverage, for the Year(s) - 2000-2004, 2001-2005, 2002-2006, 2003-2007, 2004-2008, 2005-2009, 2006-2010

Note: Weighted numbers (#) represent 5-yr averages, percentages and 95% confidence intervals; Respondents aged 18 years and older; n/r (Not Reportable) - If the unweighted total responses for a dimension (row) is

Year: 2004-2008

Married	Yes			No			Estimated Population (5-yr Avg)
	#	%	C.I. (95%)	#	%	C.I. (95%)	#
Yes	47,000	60.3	57.3 - 63.2	31,000	39.7	36.8 - 42.7	77,900
No	51,800	61.1	58.1 - 64.2	33,000	38.9	35.8 - 41.9	84,800

Health Care Coverage	Yes			No			Estimated Population (5-yr Avg)
	#	%	C.I. (95%)	#	%	C.I. (95%)	#
Yes	84,200	59.9	57.7 - 62.2	56,300	40.1	37.8 - 42.3	140,600
No	14,400	65.0	58.6 - 71.3	7,800	35.0	28.7 - 41.4	22,200

Smoke - stopped for day or more by State, County, Island, Community, Adult Age Group, DOH Race-Ethnicity, Gender, Education Level, Employment Status (Grouped), Household Income, Poverty Level, Marital Status (Grouped), Married, Health Care Coverage, for the Year(s) - 2000-2004, 2001-2005, 2002-2006, 2003-2007, 2004-2008, 2005-2009, 2006-2010

Note: Weighted numbers (#) represent 5-yr averages, percentages and 95% confidence intervals; Respondents aged 18 years and older; n/r (Not Reportable) - If the unweighted total responses for a dimension (row) is

Year: 2003-2007

State	Yes			No			Estimated Population (5-yr Avg)
	#	%	C.I. (95%)	#	%	C.I. (95%)	#
Totals	99,900	61.0	58.9 - 63.2	63,800	39.0	36.8 - 41.1	163,700

County	Yes			No			Estimated Population (5-yr Avg)
	#	%	C.I. (95%)	#	%	C.I. (95%)	#
Hawaii	14,500	61.9	57.9 - 65.8	9,000	38.1	34.2 - 42.1	23,500
Honolulu	69,900	62.1	59.3 - 64.9	42,700	37.9	35.1 - 40.7	112,600
Kauai	4,900	58.3	52.3 - 64.3	3,500	41.7	35.7 - 47.7	8,500
Maui	10,500	55.2	49.9 - 60.4	8,600	44.8	39.6 - 50.1	19,100

Smoke - stopped for day or more by State, County, Island, Community, Adult Age Group, DOH Race-Ethnicity, Gender, Education Level, Employment Status (Grouped), Household Income, Poverty Level, Marital Status (Grouped), Married, Health Care Coverage, for the Year(s) - 2000-2004, 2001-2005, 2002-2006, 2003-2007, 2004-2008, 2005-2009, 2006-2010

Note: Weighted numbers (#) represent 5-yr averages, percentages and 95% confidence intervals; Respondents aged 18 years and older; n/r (Not Reportable) - If the unweighted total responses for a dimension (row) is

Year: 2003-2007

Island	Yes			No			Estimated Population (5-yr Avg)
	#	%	C.I. (95%)	#	%	C.I. (95%)	#
Hawaii	14,500	61.9	57.9 - 65.8	9,000	38.1	34.2 - 42.1	23,500
Kauai	4,900	58.3	52.3 - 64.3	3,500	41.7	35.7 - 47.7	8,500
Lanai	200	57.7	43.9 - 71.4	200	42.3	28.6 - 56.1	400
Maui	9,500	55.1	49.4 - 60.8	7,800	44.9	39.2 - 50.6	17,300
Molokai	800	55.6	44.4 - 66.9	600	44.4	33.1 - 55.6	1,400
Oahu	69,900	62.1	59.3 - 64.9	42,700	37.9	35.1 - 40.7	112,600

Community	Yes			No			Estimated Population (5-yr Avg)
	#	%	C.I. (95%)	#	%	C.I. (95%)	#
Aiea/ Pearl City	4,900	55.0	45.3 - 64.8	4,000	45.0	35.2 - 54.7	8,900

Smoke - stopped for day or more by State, County, Island, Community, Adult Age Group, DOH Race-Ethnicity, Gender, Education Level, Employment Status (Grouped), Household Income, Poverty Level, Marital Status (Grouped), Married, Health Care Coverage, for the Year(s) - 2000-2004, 2001-2005, 2002-2006, 2003-2007, 2004-2008, 2005-2009, 2006-2010

Note: Weighted numbers (#) represent 5-yr averages, percentages and 95% confidence intervals; Respondents aged 18 years and older; n/r (Not Reportable) - If the unweighted total responses for a dimension (row) is

Year: 2003-2007

Community	Yes			No			Estimated Population (5-yr Avg)
	#	%	C.I. (95%)	#	%	C.I. (95%)	#
Ala Moana	3,300	60.5	49.3 - 71.8	2,100	39.5	28.2 - 50.7	5,400
Hanalei/ Kapaa	1,900	58.0	48.7 - 67.2	1,400	42.0	32.8 - 51.3	3,400
Hilo	4,500	64.6	57.3 - 71.9	2,400	35.4	28.1 - 42.7	6,900
Kaaawa/ Kahaluu/ Kaneohe	4,300	61.8	51.0 - 72.5	2,700	38.2	27.5 - 49.0	6,900
Kahului	3,100	48.9	38.6 - 59.1	3,200	51.1	40.9 - 61.4	6,300
Kailua/ Waimanalo	4,400	65.4	54.9 - 75.9	2,300	34.6	24.1 - 45.1	6,700
Kaimuki/ Palolo/ Waikiki	5,400	55.5	45.5 - 65.5	4,300	44.5	34.5 - 54.5	9,700
Kona	3,000	65.3	57.2 - 73.3	1,600	34.7	26.7 - 42.8	4,600
Lahaina/ Wailuku	3,100	58.5	49.2 - 67.9	2,200	41.5	32.1 - 50.8	5,200
Lanai	200	57.7	43.9 - 71.4	200	42.3	28.6 - 56.1	400
Lihue-Waimea	3,000	58.5	50.7 - 66.3	2,100	41.5	33.7 - 49.3	5,100

Smoke - stopped for day or more by State, County, Island, Community, Adult Age Group, DOH Race-Ethnicity, Gender, Education Level, Employment Status (Grouped), Household Income, Poverty Level, Marital Status (Grouped), Married, Health Care Coverage, for the Year(s) - 2000-2004, 2001-2005, 2002-2006, 2003-2007, 2004-2008, 2005-2009, 2006-2010

Note: Weighted numbers (#) represent 5-yr averages, percentages and 95% confidence intervals; Respondents aged 18 years and older; n/r (Not Reportable) - If the unweighted total responses for a dimension (row) is

Year: 2003-2007

Community	Yes			No			Estimated Population (5-yr Avg)
	#	%	C.I. (95%)	#	%	C.I. (95%)	#
Manoa/ Upper Makiki	5,300	58.4	48.1 - 68.8	3,800	41.6	31.2 - 51.9	9,200
Mililani/ Wahiawa	7,700	66.3	58.7 - 73.8	3,900	33.7	26.2 - 41.3	11,600
Molokai	800	55.6	44.4 - 66.9	600	44.4	33.1 - 55.6	1,400
Nanakuli/ Waianae	5,600	62.5	51.7 - 73.2	3,300	37.5	26.8 - 48.3	8,900
N.Hawaii	2,400	56.6	47.1 - 66.1	1,800	43.4	33.9 - 52.9	4,200
N.Shore/ Laie	2,900	67.9	55.0 - 80.9	1,400	32.1	19.1 - 45.0	4,200
Nuuanu/ Kalihi/ Moanalua	8,000	65.0	56.3 - 73.7	4,300	35.0	26.3 - 43.7	12,400
Puna/ Kau	4,700	60.3	53.2 - 67.3	3,100	39.7	32.7 - 46.8	7,700
Salt Lake/ Foster Village	3,100	56.1	43.8 - 68.3	2,400	43.9	31.7 - 56.2	5,600
Upcountry/ Hana	3,400	58.6	49.4 - 67.8	2,400	41.4	32.2 - 50.6	5,800
Waialae/ Kahala/ Hawaii Kai	2,200	60.5	45.8 - 75.2	1,400	39.5	24.8 - 54.2	3,600

Smoke - stopped for day or more by State, County, Island, Community, Adult Age Group, DOH Race-Ethnicity, Gender, Education Level, Employment Status (Grouped), Household Income, Poverty Level, Marital Status (Grouped), Married, Health Care Coverage, for the Year(s) - 2000-2004, 2001-2005, 2002-2006, 2003-2007, 2004-2008, 2005-2009, 2006-2010

Note: Weighted numbers (#) represent 5-yr averages, percentages and 95% confidence intervals; Respondents aged 18 years and older; n/r (Not Reportable) - If the unweighted total responses for a dimension (row) is

Year: 2003-2007

Community	Yes			No			Estimated Population (5-yr Avg)
	#	%	C.I. (95%)	#	%	C.I. (95%)	#
Waipahu/ Kapolei/ Ewa	12,900	65.8	58.7 - 72.9	6,700	34.2	27.1 - 41.3	19,700

Smoke - stopped for day or more by State, County, Island, Community, Adult Age Group, DOH Race-Ethnicity, Gender, Education Level, Employment Status (Grouped), Household Income, Poverty Level, Marital Status (Grouped), Married, Health Care Coverage, for the Year(s) - 2000-2004, 2001-2005, 2002-2006, 2003-2007, 2004-2008, 2005-2009, 2006-2010

Note: Weighted numbers (#) represent 5-yr averages, percentages and 95% confidence intervals; Respondents aged 18 years and older; n/r (Not Reportable) - If the unweighted total responses for a dimension (row) is

Year: 2003-2007

Adult Age Group	Yes			No			Estimated Population (5-yr Avg)
	#	%	C.I. (95%)	#	%	C.I. (95%)	#
40-49	19,900	58.0	53.7 - 62.3	14,400	42.0	37.7 - 46.3	34,300
50-59	16,700	53.0	48.6 - 57.4	14,900	47.0	42.6 - 51.4	31,600
60-69	6,200	45.5	39.2 - 51.8	7,500	54.5	48.2 - 60.8	13,700
70-79	2,400	43.4	33.8 - 53.1	3,200	56.6	46.9 - 66.2	5,600
80+	600	32.8	17.6 - 48.1	1,100	67.2	51.9 - 82.4	1,700
20-29	30,800	74.4	70.1 - 78.7	10,600	25.6	21.3 - 29.9	41,400
18-19	n/r	n/r	n/r	n/r	n/r	n/r	2,500
30-39	20,600	64.9	60.2 - 69.7	11,100	35.1	30.3 - 39.8	31,700

Smoke - stopped for day or more by State, County, Island, Community, Adult Age Group, DOH Race-Ethnicity, Gender, Education Level, Employment Status (Grouped), Household Income, Poverty Level, Marital Status (Grouped), Married, Health Care Coverage, for the Year(s) - 2000-2004, 2001-2005, 2002-2006, 2003-2007, 2004-2008, 2005-2009, 2006-2010

Note: Weighted numbers (#) represent 5-yr averages, percentages and 95% confidence intervals; Respondents aged 18 years and older; n/r (Not Reportable) - If the unweighted total responses for a dimension (row) is

Year: 2003-2007

DOH Race-Ethnicity	Yes			No			Estimated Population (5-yr Avg)
	#	%	C.I. (95%)	#	%	C.I. (95%)	#
Caucasian	31,200	58.7	55.4 - 62.0	22,000	41.3	38.0 - 44.6	53,200
Native Hawaiian	19,900	66.7	62.0 - 71.3	9,900	33.3	28.7 - 38.0	29,800
Chinese	3,700	58.0	47.0 - 68.9	2,700	42.0	31.1 - 53.0	6,400
Filipino	16,900	68.8	63.0 - 74.7	7,700	31.2	25.3 - 37.0	24,600
Japanese	14,100	50.0	44.5 - 55.4	14,100	50.0	44.6 - 55.5	28,300
Black	n/r	n/r	n/r	n/r	n/r	n/r	2,200
Native Alaskan/ American Indian	n/r	n/r	n/r	n/r	n/r	n/r	1,200
Other Asian	2,400	60.7	44.8 - 76.6	1,600	39.3	23.4 - 55.2	3,900
Other Pacific Islander	3,900	78.2	66.9 - 89.6	1,100	21.8	10.4 - 33.1	5,000
Other	4,200	60.4	50.4 - 70.3	2,700	39.6	29.7 - 49.6	6,900

Smoke - stopped for day or more by State, County, Island, Community, Adult Age Group, DOH Race-Ethnicity, Gender, Education Level, Employment Status (Grouped), Household Income, Poverty Level, Marital Status (Grouped), Married, Health Care Coverage, for the Year(s) - 2000-2004, 2001-2005, 2002-2006, 2003-2007, 2004-2008, 2005-2009, 2006-2010

Note: Weighted numbers (#) represent 5-yr averages, percentages and 95% confidence intervals; Respondents aged 18 years and older; n/r (Not Reportable) - If the unweighted total responses for a dimension (row) is

Year: 2003-2007

Gender	Yes			No			Estimated Population (5-yr Avg)
	#	%	C.I. (95%)	#	%	C.I. (95%)	#
Male	58,300	63.4	60.4 - 66.5	33,600	36.6	33.5 - 39.6	91,900
Female	41,600	57.9	55.1 - 60.8	30,200	42.1	39.2 - 44.9	71,800

Education Level	Yes			No			Estimated Population (5-yr Avg)
	#	%	C.I. (95%)	#	%	C.I. (95%)	#
Never attended school/ Only Kindergarten to Grades 8	1,500	60.1	41.7 - 78.6	1,000	39.9	21.4 - 58.3	2,400
Grades 9 thru 11 (Some High School)	6,700	63.8	56.1 - 71.6	3,800	36.2	28.4 - 43.9	10,500
Grades 12 or GED (High School Grad)	41,200	62.7	59.3 - 66.1	24,500	37.3	33.9 - 40.7	65,700
College 1 to 3 years (Some College/ Tech)	31,700	59.9	56.1 - 63.7	21,300	40.1	36.3 - 43.9	53,000
College 4 years or more (College Grad)	18,700	59.0	54.5 - 63.5	13,000	41.0	36.5 - 45.5	31,700

Smoke - stopped for day or more by State, County, Island, Community, Adult Age Group, DOH Race-Ethnicity, Gender, Education Level, Employment Status (Grouped), Household Income, Poverty Level, Marital Status (Grouped), Married, Health Care Coverage, for the Year(s) - 2000-2004, 2001-2005, 2002-2006, 2003-2007, 2004-2008, 2005-2009, 2006-2010

Note: Weighted numbers (#) represent 5-yr averages, percentages and 95% confidence intervals; Respondents aged 18 years and older; n/r (Not Reportable) - If the unweighted total responses for a dimension (row) is

Year: 2003-2007

Employment Status (Grouped)	Yes			No			Estimated Population (5-yr Avg)
	#	%	C.I. (95%)	#	%	C.I. (95%)	#
Employed	71,500	63.0	60.5 - 65.6	42,000	37.0	34.4 - 39.5	113,400
Unemployed	6,600	65.6	56.0 - 75.2	3,500	34.4	24.8 - 44.0	10,100
Retired/Unable to work	13,100	50.4	45.7 - 55.2	12,800	49.6	44.8 - 54.3	25,900
Student/Homemaker	8,600	61.6	54.5 - 68.8	5,400	38.4	31.2 - 45.5	13,900

Smoke - stopped for day or more by State, County, Island, Community, Adult Age Group, DOH Race-Ethnicity, Gender, Education Level, Employment Status (Grouped), Household Income, Poverty Level, Marital Status (Grouped), Married, Health Care Coverage, for the Year(s) - 2000-2004, 2001-2005, 2002-2006, 2003-2007, 2004-2008, 2005-2009, 2006-2010

Note: Weighted numbers (#) represent 5-yr averages, percentages and 95% confidence intervals; Respondents aged 18 years and older; n/r (Not Reportable) - If the unweighted total responses for a dimension (row) is

Year: 2003-2007

Household Income	Yes			No			Estimated Population (5-yr Avg)
	#	%	C.I. (95%)	#	%	C.I. (95%)	#
Less than \$10,000	5,300	65.9	57.5 - 74.3	2,700	34.1	25.7 - 42.5	8,000
\$10,000 to \$14,999	5,700	61.6	52.8 - 70.5	3,500	38.4	29.5 - 47.2	9,200
\$15,000 to \$19,999	8,000	66.2	58.7 - 73.7	4,100	33.8	26.3 - 41.3	12,000
\$20,000 to \$24,999	8,000	57.8	50.7 - 65.0	5,800	42.2	35.0 - 49.3	13,800
\$25,000 to \$34,999	12,000	60.8	54.5 - 67.1	7,700	39.2	32.9 - 45.5	19,700
\$35,000 to \$49,999	17,000	65.3	60.4 - 70.2	9,000	34.7	29.8 - 39.6	26,000
\$50,000 to \$74,999	17,300	61.8	56.4 - 67.2	10,700	38.2	32.8 - 43.6	28,000
\$75,000 or more	14,400	53.4	48.0 - 58.8	12,600	46.6	41.2 - 52.0	26,900

Smoke - stopped for day or more by State, County, Island, Community, Adult Age Group, DOH Race-Ethnicity, Gender, Education Level, Employment Status (Grouped), Household Income, Poverty Level, Marital Status (Grouped), Married, Health Care Coverage, for the Year(s) - 2000-2004, 2001-2005, 2002-2006, 2003-2007, 2004-2008, 2005-2009, 2006-2010

Note: Weighted numbers (#) represent 5-yr averages, percentages and 95% confidence intervals; Respondents aged 18 years and older; n/r (Not Reportable) - If the unweighted total responses for a dimension (row) is

Year: 2003-2007

Poverty Level	Yes			No			Estimated Population (5-yr Avg)
	#	%	C.I. (95%)	#	%	C.I. (95%)	#
0-130%	29,800	66.6	62.5 - 70.6	15,000	33.4	29.4 - 37.5	44,800
131-185%	12,800	62.7	56.4 - 69.0	7,600	37.3	31.0 - 43.6	20,400
186+%	45,000	57.3	54.2 - 60.3	33,500	42.7	39.7 - 45.8	78,500

Marital Status (Grouped)	Yes			No			Estimated Population (5-yr Avg)
	#	%	C.I. (95%)	#	%	C.I. (95%)	#
Married	43,800	59.7	56.6 - 62.8	29,600	40.3	37.2 - 43.4	73,400
Unmarried Couple	5,000	65.4	56.0 - 74.7	2,600	34.6	25.3 - 44.0	7,600
Widowed	3,300	47.8	39.4 - 56.2	3,600	52.2	43.8 - 60.6	6,900
Other	47,900	63.1	59.9 - 66.3	28,000	36.9	33.7 - 40.1	75,900

Smoke - stopped for day or more by State, County, Island, Community, Adult Age Group, DOH Race-Ethnicity, Gender, Education Level, Employment Status (Grouped), Household Income, Poverty Level, Marital Status (Grouped), Married, Health Care Coverage, for the Year(s) - 2000-2004, 2001-2005, 2002-2006, 2003-2007, 2004-2008, 2005-2009, 2006-2010

Note: Weighted numbers (#) represent 5-yr averages, percentages and 95% confidence intervals; Respondents aged 18 years and older; n/r (Not Reportable) - If the unweighted total responses for a dimension (row) is

Year: 2003-2007

Married	Yes			No			Estimated Population (5-yr Avg)
	#	%	C.I. (95%)	#	%	C.I. (95%)	#
Yes	46,300	60.3	57.3 - 63.3	30,500	39.7	36.7 - 42.7	76,900
No	53,500	61.8	58.8 - 64.8	33,100	38.2	35.2 - 41.2	86,600

Health Care Coverage	Yes			No			Estimated Population (5-yr Avg)
	#	%	C.I. (95%)	#	%	C.I. (95%)	#
Yes	85,100	60.4	58.2 - 62.7	55,800	39.6	37.3 - 41.8	140,900
No	14,600	64.5	58.3 - 70.8	8,000	35.5	29.2 - 41.7	22,600

Smoke - stopped for day or more by State, County, Island, Community, Adult Age Group, DOH Race-Ethnicity, Gender, Education Level, Employment Status (Grouped), Household Income, Poverty Level, Marital Status (Grouped), Married, Health Care Coverage, for the Year(s) - 2000-2004, 2001-2005, 2002-2006, 2003-2007, 2004-2008, 2005-2009, 2006-2010

Note: Weighted numbers (#) represent 5-yr averages, percentages and 95% confidence intervals; Respondents aged 18 years and older; n/r (Not Reportable) - If the unweighted total responses for a dimension (row) is

Year: 2002-2006

State	Yes			No			Estimated Population (5-yr Avg)
	#	%	C.I. (95%)	#	%	C.I. (95%)	#
Totals	97,700	58.2	56.1 - 60.3	70,100	41.8	39.7 - 43.9	167,800

County	Yes			No			Estimated Population (5-yr Avg)
	#	%	C.I. (95%)	#	%	C.I. (95%)	#
Hawaii	13,900	59.2	55.3 - 63.2	9,600	40.8	36.8 - 44.7	23,500
Honolulu	68,400	59.5	56.7 - 62.2	46,700	40.5	37.8 - 43.3	115,100
Kauai	4,900	55.2	49.5 - 61.0	4,000	44.8	39.0 - 50.5	8,900
Maui	10,500	51.4	46.4 - 56.4	9,900	48.6	43.6 - 53.6	20,300

Smoke - stopped for day or more by State, County, Island, Community, Adult Age Group, DOH Race-Ethnicity, Gender, Education Level, Employment Status (Grouped), Household Income, Poverty Level, Marital Status (Grouped), Married, Health Care Coverage, for the Year(s) - 2000-2004, 2001-2005, 2002-2006, 2003-2007, 2004-2008, 2005-2009, 2006-2010

Note: Weighted numbers (#) represent 5-yr averages, percentages and 95% confidence intervals; Respondents aged 18 years and older; n/r (Not Reportable) - If the unweighted total responses for a dimension (row) is

Year: 2002-2006

Island	Yes			No			Estimated Population (5-yr Avg)
	#	%	C.I. (95%)	#	%	C.I. (95%)	#
Hawaii	13,900	59.2	55.3 - 63.2	9,600	40.8	36.8 - 44.7	23,500
Kauai	4,900	55.2	49.5 - 61.0	4,000	44.8	39.0 - 50.5	8,900
Lanai	200	38.4	24.2 - 52.6	300	61.6	47.4 - 75.8	500
Maui	9,500	51.9	46.4 - 57.3	8,800	48.1	42.7 - 53.6	18,300
Molokai	800	50.2	39.2 - 61.1	800	49.8	38.9 - 60.8	1,500
Oahu	68,400	59.5	56.7 - 62.2	46,700	40.5	37.8 - 43.3	115,100

Community	Yes			No			Estimated Population (5-yr Avg)
	#	%	C.I. (95%)	#	%	C.I. (95%)	#
Aiea/ Pearl City	4,800	51.3	41.6 - 61.0	4,500	48.7	39.0 - 58.4	9,300

Smoke - stopped for day or more by State, County, Island, Community, Adult Age Group, DOH Race-Ethnicity, Gender, Education Level, Employment Status (Grouped), Household Income, Poverty Level, Marital Status (Grouped), Married, Health Care Coverage, for the Year(s) - 2000-2004, 2001-2005, 2002-2006, 2003-2007, 2004-2008, 2005-2009, 2006-2010

Note: Weighted numbers (#) represent 5-yr averages, percentages and 95% confidence intervals; Respondents aged 18 years and older; n/r (Not Reportable) - If the unweighted total responses for a dimension (row) is

Year: 2002-2006

Community	Yes			No			Estimated Population (5-yr Avg)
	#	%	C.I. (95%)	#	%	C.I. (95%)	#
Ala Moana	4,000	65.7	55.7 - 75.8	2,100	34.3	24.2 - 44.3	6,100
Hanalei/ Kapaa	1,800	53.0	43.9 - 62.0	1,600	47.0	38.0 - 56.1	3,500
Hilo	4,500	61.8	54.7 - 69.0	2,800	38.2	31.0 - 45.3	7,300
Kaaawa/ Kahaluu/ Kaneohe	4,100	54.9	44.7 - 65.1	3,400	45.1	34.9 - 55.3	7,500
Kahului	3,400	50.1	40.7 - 59.6	3,400	49.9	40.4 - 59.3	6,900
Kailua/ Waimanalo	4,700	61.5	51.0 - 72.0	2,900	38.5	28.0 - 49.0	7,600
Kaimuki/ Palolo/ Waikiki	5,200	52.8	43.2 - 62.3	4,700	47.2	37.7 - 56.8	9,900
Kona	3,000	61.9	53.9 - 69.9	1,800	38.1	30.1 - 46.1	4,800
Lahaina/ Wailuku	3,000	51.9	43.0 - 60.8	2,700	48.1	39.2 - 57.0	5,700
Lanai	200	38.4	24.2 - 52.6	300	61.6	47.4 - 75.8	500
Lihue-Waimea	3,100	56.7	49.2 - 64.1	2,300	43.3	35.9 - 50.8	5,400

Smoke - stopped for day or more by State, County, Island, Community, Adult Age Group, DOH Race-Ethnicity, Gender, Education Level, Employment Status (Grouped), Household Income, Poverty Level, Marital Status (Grouped), Married, Health Care Coverage, for the Year(s) - 2000-2004, 2001-2005, 2002-2006, 2003-2007, 2004-2008, 2005-2009, 2006-2010

Note: Weighted numbers (#) represent 5-yr averages, percentages and 95% confidence intervals; Respondents aged 18 years and older; n/r (Not Reportable) - If the unweighted total responses for a dimension (row) is

Year: 2002-2006

Community	Yes			No			Estimated Population (5-yr Avg)
	#	%	C.I. (95%)	#	%	C.I. (95%)	#
Manoa/ Upper Makiki	5,500	56.7	46.5 - 67.0	4,200	43.3	33.0 - 53.5	9,700
Mililani/ Wahiawa	7,000	60.4	52.5 - 68.4	4,600	39.6	31.6 - 47.5	11,600
Molokai	800	50.2	39.2 - 61.1	800	49.8	38.9 - 60.8	1,500
Nanakuli/ Waianae	6,000	67.2	56.9 - 77.5	2,900	32.8	22.5 - 43.1	8,900
N.Hawaii	2,400	57.1	48.1 - 66.1	1,800	42.9	33.9 - 51.9	4,300
N.Shore/ Laie	2,800	64.7	51.3 - 78.1	1,500	35.3	21.9 - 48.7	4,300
Nuuanu/ Kalihi/ Moanalua	7,900	62.7	53.6 - 71.7	4,700	37.3	28.3 - 46.4	12,600
Puna/ Kau	3,900	55.9	48.5 - 63.4	3,100	44.1	36.6 - 51.5	7,100
Salt Lake/ Foster Village	3,200	52.0	40.3 - 63.6	3,000	48.0	36.4 - 59.7	6,200
Upcountry/ Hana	3,100	54.0	44.5 - 63.5	2,600	46.0	36.5 - 55.5	5,700
Waiialae/ Kahala/ Hawaii Kai	2,300	62.7	49.1 - 76.3	1,400	37.3	23.7 - 50.9	3,700

Smoke - stopped for day or more by State, County, Island, Community, Adult Age Group, DOH Race-Ethnicity, Gender, Education Level, Employment Status (Grouped), Household Income, Poverty Level, Marital Status (Grouped), Married, Health Care Coverage, for the Year(s) - 2000-2004, 2001-2005, 2002-2006, 2003-2007, 2004-2008, 2005-2009, 2006-2010

Note: Weighted numbers (#) represent 5-yr averages, percentages and 95% confidence intervals; Respondents aged 18 years and older; n/r (Not Reportable) - If the unweighted total responses for a dimension (row) is

Year: 2002-2006

Community	Yes			No			Estimated Population (5-yr Avg)
	#	%	C.I. (95%)	#	%	C.I. (95%)	#
Waipahu/ Kapolei/ Ewa	10,900	61.8	54.3 - 69.2	6,700	38.2	30.8 - 45.7	17,600

Smoke - stopped for day or more by State, County, Island, Community, Adult Age Group, DOH Race-Ethnicity, Gender, Education Level, Employment Status (Grouped), Household Income, Poverty Level, Marital Status (Grouped), Married, Health Care Coverage, for the Year(s) - 2000-2004, 2001-2005, 2002-2006, 2003-2007, 2004-2008, 2005-2009, 2006-2010

Note: Weighted numbers (#) represent 5-yr averages, percentages and 95% confidence intervals; Respondents aged 18 years and older; n/r (Not Reportable) - If the unweighted total responses for a dimension (row) is

Year: 2002-2006

Adult Age Group	Yes			No			Estimated Population (5-yr Avg)
	#	%	C.I. (95%)	#	%	C.I. (95%)	#
40-49	19,700	53.4	49.4 - 57.5	17,200	46.6	42.5 - 50.6	36,900
50-59	16,600	51.7	47.2 - 56.1	15,500	48.3	43.9 - 52.8	32,100
60-69	6,000	46.3	39.3 - 53.2	6,900	53.7	46.8 - 60.7	12,900
70-79	2,500	44.6	34.9 - 54.3	3,100	55.4	45.7 - 65.1	5,600
80+	n/r	n/r	n/r	n/r	n/r	n/r	1,200
20-29	30,300	69.2	64.8 - 73.6	13,500	30.8	26.4 - 35.2	43,800
18-19	n/r	n/r	n/r	n/r	n/r	n/r	2,000
30-39	20,100	62.8	58.1 - 67.6	11,900	37.2	32.4 - 41.9	32,100

Smoke - stopped for day or more by State, County, Island, Community, Adult Age Group, DOH Race-Ethnicity, Gender, Education Level, Employment Status (Grouped), Household Income, Poverty Level, Marital Status (Grouped), Married, Health Care Coverage, for the Year(s) - 2000-2004, 2001-2005, 2002-2006, 2003-2007, 2004-2008, 2005-2009, 2006-2010

Note: Weighted numbers (#) represent 5-yr averages, percentages and 95% confidence intervals; Respondents aged 18 years and older; n/r (Not Reportable) - If the unweighted total responses for a dimension (row) is

Year: 2002-2006

DOH Race-Ethnicity	Yes			No			Estimated Population (5-yr Avg)
	#	%	C.I. (95%)	#	%	C.I. (95%)	#
Caucasian	31,900	56.2	52.9 - 59.4	24,900	43.8	40.6 - 47.1	56,800
Native Hawaiian	19,700	63.8	59.2 - 68.5	11,200	36.2	31.5 - 40.8	30,900
Chinese	3,500	52.7	42.5 - 62.9	3,100	47.3	37.1 - 57.5	6,600
Filipino	15,800	65.2	59.4 - 71.0	8,500	34.8	29.0 - 40.6	24,300
Japanese	14,000	49.7	44.2 - 55.2	14,100	50.3	44.8 - 55.8	28,100
Black	1,900	82.0	71.5 - 92.4	400	18.0	7.6 - 28.5	2,300
Native Alaskan/ American Indian	n/r	n/r	n/r	n/r	n/r	n/r	1,200
Other Asian	2,400	56.9	42.1 - 71.6	1,900	43.1	28.4 - 57.9	4,300
Other Pacific Islander	3,200	61.1	47.1 - 75.0	2,000	38.9	25.0 - 52.9	5,300
Other	3,500	58.6	48.0 - 69.2	2,500	41.4	30.8 - 52.0	6,000

Smoke - stopped for day or more by State, County, Island, Community, Adult Age Group, DOH Race-Ethnicity, Gender, Education Level, Employment Status (Grouped), Household Income, Poverty Level, Marital Status (Grouped), Married, Health Care Coverage, for the Year(s) - 2000-2004, 2001-2005, 2002-2006, 2003-2007, 2004-2008, 2005-2009, 2006-2010

Note: Weighted numbers (#) represent 5-yr averages, percentages and 95% confidence intervals; Respondents aged 18 years and older; n/r (Not Reportable) - If the unweighted total responses for a dimension (row) is

Year: 2002-2006

Gender	Yes			No			Estimated Population (5-yr Avg)
	#	%	C.I. (95%)	#	%	C.I. (95%)	#
Male	56,100	58.7	55.7 - 61.6	39,500	41.3	38.4 - 44.3	95,600
Female	41,600	57.7	54.8 - 60.5	30,500	42.3	39.5 - 45.2	72,200

Education Level	Yes			No			Estimated Population (5-yr Avg)
	#	%	C.I. (95%)	#	%	C.I. (95%)	#
Never attended school/ Only Kindergarten to Grades 8	1,300	53.2	34.4 - 72.0	1,200	46.8	28.0 - 65.6	2,500
Grades 9 thru 11 (Some High School)	6,300	63.1	55.3 - 70.9	3,700	36.9	29.1 - 44.7	9,900
Grades 12 or GED (High School Grad)	39,700	57.5	54.1 - 60.8	29,400	42.5	39.2 - 45.9	69,200
College 1 to 3 years (Some College/ Tech)	31,400	58.2	54.4 - 61.9	22,600	41.8	38.1 - 45.6	54,000
College 4 years or more (College Grad)	18,900	59.3	54.8 - 63.8	13,000	40.7	36.2 - 45.2	32,000

Smoke - stopped for day or more by State, County, Island, Community, Adult Age Group, DOH Race-Ethnicity, Gender, Education Level, Employment Status (Grouped), Household Income, Poverty Level, Marital Status (Grouped), Married, Health Care Coverage, for the Year(s) - 2000-2004, 2001-2005, 2002-2006, 2003-2007, 2004-2008, 2005-2009, 2006-2010

Note: Weighted numbers (#) represent 5-yr averages, percentages and 95% confidence intervals; Respondents aged 18 years and older; n/r (Not Reportable) - If the unweighted total responses for a dimension (row) is

Year: 2002-2006

Employment Status (Grouped)	Yes			No			Estimated Population (5-yr Avg)
	#	%	C.I. (95%)	#	%	C.I. (95%)	#
Employed	68,400	59.9	57.4 - 62.5	45,800	40.1	37.5 - 42.6	114,200
Unemployed	7,100	58.6	49.7 - 67.6	5,000	41.4	32.4 - 50.3	12,100
Retired/Unable to work	12,700	51.4	46.4 - 56.4	12,000	48.6	43.6 - 53.6	24,700
Student/Homemaker	9,300	56.7	49.9 - 63.5	7,100	43.3	36.5 - 50.1	16,500

Smoke - stopped for day or more by State, County, Island, Community, Adult Age Group, DOH Race-Ethnicity, Gender, Education Level, Employment Status (Grouped), Household Income, Poverty Level, Marital Status (Grouped), Married, Health Care Coverage, for the Year(s) - 2000-2004, 2001-2005, 2002-2006, 2003-2007, 2004-2008, 2005-2009, 2006-2010

Note: Weighted numbers (#) represent 5-yr averages, percentages and 95% confidence intervals; Respondents aged 18 years and older; n/r (Not Reportable) - If the unweighted total responses for a dimension (row) is

Year: 2002-2006

Household Income	Yes			No			Estimated Population (5-yr Avg)
	#	%	C.I. (95%)	#	%	C.I. (95%)	#
Less than \$10,000	5,500	65.2	57.3 - 73.1	2,900	34.8	26.9 - 42.7	8,400
\$10,000 to \$14,999	6,000	62.0	53.6 - 70.5	3,600	38.0	29.5 - 46.4	9,600
\$15,000 to \$19,999	7,800	69.1	61.4 - 76.8	3,500	30.9	23.2 - 38.6	11,300
\$20,000 to \$24,999	7,600	58.1	50.8 - 65.4	5,500	41.9	34.6 - 49.2	13,200
\$25,000 to \$34,999	10,900	57.9	51.3 - 64.5	7,900	42.1	35.5 - 48.7	18,900
\$35,000 to \$49,999	15,600	64.0	58.9 - 69.0	8,800	36.0	31.0 - 41.1	24,300
\$50,000 to \$74,999	16,600	60.9	55.3 - 66.5	10,700	39.1	33.5 - 44.7	27,300
\$75,000 or more	12,200	51.7	46.1 - 57.4	11,400	48.3	42.6 - 53.9	23,600

Smoke - stopped for day or more by State, County, Island, Community, Adult Age Group, DOH Race-Ethnicity, Gender, Education Level, Employment Status (Grouped), Household Income, Poverty Level, Marital Status (Grouped), Married, Health Care Coverage, for the Year(s) - 2000-2004, 2001-2005, 2002-2006, 2003-2007, 2004-2008, 2005-2009, 2006-2010

Note: Weighted numbers (#) represent 5-yr averages, percentages and 95% confidence intervals; Respondents aged 18 years and older; n/r (Not Reportable) - If the unweighted total responses for a dimension (row) is

Year: 2002-2006

Poverty Level	Yes			No			Estimated Population (5-yr Avg)
	#	%	C.I. (95%)	#	%	C.I. (95%)	#
0-130%	27,900	66.8	62.7 - 70.9	13,900	33.2	29.1 - 37.3	41,800
131-185%	11,100	60.7	54.4 - 67.1	7,200	39.3	32.9 - 45.6	18,300
186+%	43,000	56.5	53.4 - 59.6	33,200	43.5	40.4 - 46.6	76,200

Marital Status (Grouped)	Yes			No			Estimated Population (5-yr Avg)
	#	%	C.I. (95%)	#	%	C.I. (95%)	#
Married	41,800	56.1	53.0 - 59.2	32,700	43.9	40.8 - 47.0	74,500
Unmarried Couple	5,100	66.6	57.5 - 75.8	2,600	33.4	24.2 - 42.5	7,700
Widowed	3,200	49.8	40.8 - 58.8	3,200	50.2	41.2 - 59.2	6,400
Other	47,700	60.1	57.0 - 63.2	31,600	39.9	36.8 - 43.0	79,300

Smoke - stopped for day or more by State, County, Island, Community, Adult Age Group, DOH Race-Ethnicity, Gender, Education Level, Employment Status (Grouped), Household Income, Poverty Level, Marital Status (Grouped), Married, Health Care Coverage, for the Year(s) - 2000-2004, 2001-2005, 2002-2006, 2003-2007, 2004-2008, 2005-2009, 2006-2010

Note: Weighted numbers (#) represent 5-yr averages, percentages and 95% confidence intervals; Respondents aged 18 years and older; n/r (Not Reportable) - If the unweighted total responses for a dimension (row) is

Year: 2002-2006

Married	Yes			No			Estimated Population (5-yr Avg)
	#	%	C.I. (95%)	#	%	C.I. (95%)	#
Yes	44,500	56.9	53.9 - 60.0	33,700	43.1	40.0 - 46.1	78,100
No	53,200	59.5	56.6 - 62.4	36,200	40.5	37.6 - 43.4	89,400

Health Care Coverage	Yes			No			Estimated Population (5-yr Avg)
	#	%	C.I. (95%)	#	%	C.I. (95%)	#
Yes	82,600	58.3	56.0 - 60.5	59,200	41.7	39.5 - 44.0	141,800
No	14,800	57.7	51.8 - 63.6	10,900	42.3	36.4 - 48.2	25,700

Smoke - stopped for day or more by State, County, Island, Community, Adult Age Group, DOH Race-Ethnicity, Gender, Education Level, Employment Status (Grouped), Household Income, Poverty Level, Marital Status (Grouped), Married, Health Care Coverage, for the Year(s) - 2000-2004, 2001-2005, 2002-2006, 2003-2007, 2004-2008, 2005-2009, 2006-2010

Note: Weighted numbers (#) represent 5-yr averages, percentages and 95% confidence intervals; Respondents aged 18 years and older; n/r (Not Reportable) - If the unweighted total responses for a dimension (row) is

Year: 2001-2005

State	Yes			No			Estimated Population (5-yr Avg)
	#	%	C.I. (95%)	#	%	C.I. (95%)	#
Totals	98,700	57.9	55.7 - 60.0	71,800	42.1	40.0 - 44.3	170,500

County	Yes			No			Estimated Population (5-yr Avg)
	#	%	C.I. (95%)	#	%	C.I. (95%)	#
Hawaii	14,000	58.9	55.0 - 62.9	9,700	41.1	37.1 - 45.0	23,700
Honolulu	68,600	58.7	55.8 - 61.5	48,300	41.3	38.5 - 44.2	116,900
Kauai	5,400	57.5	51.8 - 63.1	4,000	42.5	36.9 - 48.2	9,400
Maui	10,700	52.3	47.4 - 57.2	9,800	47.7	42.8 - 52.6	20,500

Smoke - stopped for day or more by State, County, Island, Community, Adult Age Group, DOH Race-Ethnicity, Gender, Education Level, Employment Status (Grouped), Household Income, Poverty Level, Marital Status (Grouped), Married, Health Care Coverage, for the Year(s) - 2000-2004, 2001-2005, 2002-2006, 2003-2007, 2004-2008, 2005-2009, 2006-2010

Note: Weighted numbers (#) represent 5-yr averages, percentages and 95% confidence intervals; Respondents aged 18 years and older; n/r (Not Reportable) - If the unweighted total responses for a dimension (row) is

Year: 2001-2005

Island	Yes			No			Estimated Population (5-yr Avg)
	#	%	C.I. (95%)	#	%	C.I. (95%)	#
Hawaii	14,000	58.9	55.0 - 62.9	9,700	41.1	37.1 - 45.0	23,700
Kauai	5,400	57.5	51.8 - 63.1	4,000	42.5	36.9 - 48.2	9,400
Lanai	200	36.6	22.4 - 50.7	300	63.4	49.3 - 77.6	500
Maui	9,800	53.0	47.7 - 58.4	8,700	47.0	41.6 - 52.3	18,500
Molokai	700	48.5	36.7 - 60.3	800	51.5	39.7 - 63.3	1,500
Oahu	68,600	58.7	55.8 - 61.5	48,300	41.3	38.5 - 44.2	116,900

Community	Yes			No			Estimated Population (5-yr Avg)
	#	%	C.I. (95%)	#	%	C.I. (95%)	#
Aiea/ Pearl City	4,800	53.1	43.4 - 62.8	4,200	46.9	37.2 - 56.6	9,000

Smoke - stopped for day or more by State, County, Island, Community, Adult Age Group, DOH Race-Ethnicity, Gender, Education Level, Employment Status (Grouped), Household Income, Poverty Level, Marital Status (Grouped), Married, Health Care Coverage, for the Year(s) - 2000-2004, 2001-2005, 2002-2006, 2003-2007, 2004-2008, 2005-2009, 2006-2010

Note: Weighted numbers (#) represent 5-yr averages, percentages and 95% confidence intervals; Respondents aged 18 years and older; n/r (Not Reportable) - If the unweighted total responses for a dimension (row) is

Year: 2001-2005

Community	Yes			No			Estimated Population (5-yr Avg)
	#	%	C.I. (95%)	#	%	C.I. (95%)	#
Ala Moana	3,800	63.6	53.2 - 74.1	2,100	36.4	25.9 - 46.8	5,900
Hanalei/ Kapaa	2,200	54.4	45.8 - 62.9	1,800	45.6	37.1 - 54.2	4,000
Hilo	4,800	61.7	54.7 - 68.7	3,000	38.3	31.3 - 45.3	7,800
Kaaawa/ Kahaluu/ Kaneohe	3,600	49.0	38.6 - 59.5	3,800	51.0	40.5 - 61.4	7,400
Kahului	3,700	51.8	42.5 - 61.1	3,400	48.2	38.9 - 57.5	7,100
Kailua/ Waimanalo	5,100	62.4	52.2 - 72.5	3,100	37.6	27.5 - 47.8	8,200
Kaimuki/ Palolo/ Waikiki	5,300	51.6	42.2 - 61.0	5,000	48.4	39.0 - 57.8	10,300
Kona	3,100	63.6	55.8 - 71.4	1,800	36.4	28.6 - 44.2	4,900
Lahaina/ Wailuku	3,000	52.0	43.2 - 60.8	2,700	48.0	39.2 - 56.8	5,700
Lanai	200	36.6	22.4 - 50.7	300	63.4	49.3 - 77.6	500
Lihue-Waimea	3,200	59.8	52.4 - 67.3	2,100	40.2	32.7 - 47.6	5,300

Smoke - stopped for day or more by State, County, Island, Community, Adult Age Group, DOH Race-Ethnicity, Gender, Education Level, Employment Status (Grouped), Household Income, Poverty Level, Marital Status (Grouped), Married, Health Care Coverage, for the Year(s) - 2000-2004, 2001-2005, 2002-2006, 2003-2007, 2004-2008, 2005-2009, 2006-2010

Note: Weighted numbers (#) represent 5-yr averages, percentages and 95% confidence intervals; Respondents aged 18 years and older; n/r (Not Reportable) - If the unweighted total responses for a dimension (row) is

Year: 2001-2005

Community	Yes			No			Estimated Population (5-yr Avg)
	#	%	C.I. (95%)	#	%	C.I. (95%)	#
Manoa/ Upper Makiki	5,700	56.3	46.2 - 66.4	4,400	43.7	33.6 - 53.8	10,100
Mililani/ Wahiawa	6,600	60.2	51.7 - 68.7	4,300	39.8	31.3 - 48.3	10,900
Molokai	700	48.5	36.7 - 60.3	800	51.5	39.7 - 63.3	1,500
Nanakuli/ Waianae	6,900	69.0	59.2 - 78.7	3,100	31.0	21.3 - 40.8	10,000
N.Hawaii	2,100	51.6	42.3 - 60.9	2,000	48.4	39.1 - 57.7	4,100
N.Shore/ Laie	2,800	63.5	48.7 - 78.3	1,600	36.5	21.7 - 51.3	4,400
Nuuanu/ Kalihi/ Moanalua	7,600	59.0	49.6 - 68.4	5,300	41.0	31.6 - 50.4	12,900
Puna/ Kau	3,900	56.9	49.3 - 64.5	3,000	43.1	35.5 - 50.7	6,900
Salt Lake/ Foster Village	3,600	57.4	45.6 - 69.2	2,700	42.6	30.8 - 54.4	6,200
Upcountry/ Hana	3,200	55.5	46.3 - 64.7	2,600	44.5	35.3 - 53.7	5,800
Waiialae/ Kahala/ Hawaii Kai	2,500	60.3	46.8 - 73.7	1,700	39.7	26.3 - 53.2	4,200

Smoke - stopped for day or more by State, County, Island, Community, Adult Age Group, DOH Race-Ethnicity, Gender, Education Level, Employment Status (Grouped), Household Income, Poverty Level, Marital Status (Grouped), Married, Health Care Coverage, for the Year(s) - 2000-2004, 2001-2005, 2002-2006, 2003-2007, 2004-2008, 2005-2009, 2006-2010

Note: Weighted numbers (#) represent 5-yr averages, percentages and 95% confidence intervals; Respondents aged 18 years and older; n/r (Not Reportable) - If the unweighted total responses for a dimension (row) is

Year: 2001-2005

Community	Yes			No			Estimated Population (5-yr Avg)
	#	%	C.I. (95%)	#	%	C.I. (95%)	#
Waipahu/ Kapolei/ Ewa	10,300	59.7	51.9 - 67.4	7,000	40.3	32.6 - 48.1	17,300

Smoke - stopped for day or more by State, County, Island, Community, Adult Age Group, DOH Race-Ethnicity, Gender, Education Level, Employment Status (Grouped), Household Income, Poverty Level, Marital Status (Grouped), Married, Health Care Coverage, for the Year(s) - 2000-2004, 2001-2005, 2002-2006, 2003-2007, 2004-2008, 2005-2009, 2006-2010

Note: Weighted numbers (#) represent 5-yr averages, percentages and 95% confidence intervals; Respondents aged 18 years and older; n/r (Not Reportable) - If the unweighted total responses for a dimension (row) is

Year: 2001-2005

Adult Age Group	Yes			No			Estimated Population (5-yr Avg)
	#	%	C.I. (95%)	#	%	C.I. (95%)	#
40-49	19,700	53.8	49.7 - 57.9	16,900	46.2	42.1 - 50.3	36,700
50-59	15,400	50.0	45.2 - 54.8	15,400	50.0	45.2 - 54.8	30,800
60-69	6,500	47.4	40.2 - 54.7	7,200	52.6	45.3 - 59.8	13,700
70-79	3,000	50.8	40.6 - 61.0	2,900	49.2	39.0 - 59.4	5,900
80+	n/r	n/r	n/r	n/r	n/r	n/r	1,200
20-29	29,800	67.4	62.9 - 71.8	14,500	32.6	28.2 - 37.1	44,300
18-19	2,600	75.9	62.1 - 89.7	800	24.1	10.3 - 37.9	3,400
30-39	20,900	62.8	58.0 - 67.5	12,400	37.2	32.5 - 42.0	33,300

Smoke - stopped for day or more by State, County, Island, Community, Adult Age Group, DOH Race-Ethnicity, Gender, Education Level, Employment Status (Grouped), Household Income, Poverty Level, Marital Status (Grouped), Married, Health Care Coverage, for the Year(s) - 2000-2004, 2001-2005, 2002-2006, 2003-2007, 2004-2008, 2005-2009, 2006-2010

Note: Weighted numbers (#) represent 5-yr averages, percentages and 95% confidence intervals; Respondents aged 18 years and older; n/r (Not Reportable) - If the unweighted total responses for a dimension (row) is

Year: 2001-2005

DOH Race-Ethnicity	Yes			No			Estimated Population (5-yr Avg)
	#	%	C.I. (95%)	#	%	C.I. (95%)	#
Caucasian	33,000	55.4	52.2 - 58.7	26,500	44.6	41.3 - 47.8	59,500
Native Hawaiian	19,600	63.7	58.9 - 68.5	11,200	36.3	31.5 - 41.1	30,800
Chinese	3,600	51.7	41.6 - 61.7	3,400	48.3	38.3 - 58.4	6,900
Filipino	16,200	65.3	59.4 - 71.2	8,600	34.7	28.8 - 40.6	24,800
Japanese	13,800	49.9	44.3 - 55.5	13,900	50.1	44.5 - 55.7	27,700
Black	2,000	77.7	64.8 - 90.7	600	22.3	9.3 - 35.2	2,500
Native Alaskan/ American Indian	n/r	n/r	n/r	n/r	n/r	n/r	1,300
Other Asian	2,400	54.2	39.0 - 69.3	2,000	45.8	30.7 - 61.0	4,400
Other Pacific Islander	3,200	63.2	49.3 - 77.1	1,900	36.8	22.9 - 50.7	5,100
Other	2,900	56.9	44.5 - 69.3	2,200	43.1	30.7 - 55.5	5,200

Smoke - stopped for day or more by State, County, Island, Community, Adult Age Group, DOH Race-Ethnicity, Gender, Education Level, Employment Status (Grouped), Household Income, Poverty Level, Marital Status (Grouped), Married, Health Care Coverage, for the Year(s) - 2000-2004, 2001-2005, 2002-2006, 2003-2007, 2004-2008, 2005-2009, 2006-2010

Note: Weighted numbers (#) represent 5-yr averages, percentages and 95% confidence intervals; Respondents aged 18 years and older; n/r (Not Reportable) - If the unweighted total responses for a dimension (row) is

Year: 2001-2005

Gender	Yes			No			Estimated Population (5-yr Avg)
	#	%	C.I. (95%)	#	%	C.I. (95%)	#
Male	57,300	57.7	54.7 - 60.8	42,000	42.3	39.2 - 45.3	99,300
Female	41,300	58.1	55.2 - 61.0	29,800	41.9	39.0 - 44.8	71,200

Education Level	Yes			No			Estimated Population (5-yr Avg)
	#	%	C.I. (95%)	#	%	C.I. (95%)	#
Never attended school/ Only Kindergarten to Grades 8	1,400	51.7	33.9 - 69.4	1,300	48.3	30.6 - 66.1	2,700
Grades 9 thru 11 (Some High School)	5,700	61.2	52.5 - 69.8	3,600	38.8	30.2 - 47.5	9,300
Grades 12 or GED (High School Grad)	39,800	56.1	52.7 - 59.5	31,200	43.9	40.5 - 47.3	71,000
College 1 to 3 years (Some College/ Tech)	32,500	59.0	55.2 - 62.8	22,600	41.0	37.2 - 44.8	55,100
College 4 years or more (College Grad)	19,200	59.9	55.3 - 64.4	12,800	40.1	35.6 - 44.7	32,000

Smoke - stopped for day or more by State, County, Island, Community, Adult Age Group, DOH Race-Ethnicity, Gender, Education Level, Employment Status (Grouped), Household Income, Poverty Level, Marital Status (Grouped), Married, Health Care Coverage, for the Year(s) - 2000-2004, 2001-2005, 2002-2006, 2003-2007, 2004-2008, 2005-2009, 2006-2010

Note: Weighted numbers (#) represent 5-yr averages, percentages and 95% confidence intervals; Respondents aged 18 years and older; n/r (Not Reportable) - If the unweighted total responses for a dimension (row) is

Year: 2001-2005

Employment Status (Grouped)	Yes			No			Estimated Population (5-yr Avg)
	#	%	C.I. (95%)	#	%	C.I. (95%)	#
Employed	68,200	58.8	56.2 - 61.4	47,700	41.2	38.6 - 43.8	115,900
Unemployed	6,900	56.6	47.7 - 65.5	5,300	43.4	34.5 - 52.3	12,200
Retired/Unable to work	13,300	54.0	48.8 - 59.2	11,300	46.0	40.8 - 51.2	24,600
Student/Homemaker	10,200	58.2	51.5 - 64.8	7,400	41.8	35.2 - 48.5	17,600

Smoke - stopped for day or more by State, County, Island, Community, Adult Age Group, DOH Race-Ethnicity, Gender, Education Level, Employment Status (Grouped), Household Income, Poverty Level, Marital Status (Grouped), Married, Health Care Coverage, for the Year(s) - 2000-2004, 2001-2005, 2002-2006, 2003-2007, 2004-2008, 2005-2009, 2006-2010

Note: Weighted numbers (#) represent 5-yr averages, percentages and 95% confidence intervals; Respondents aged 18 years and older; n/r (Not Reportable) - If the unweighted total responses for a dimension (row) is

Year: 2001-2005

Household Income	Yes			No			Estimated Population (5-yr Avg)
	#	%	C.I. (95%)	#	%	C.I. (95%)	#
Less than \$10,000	5,500	61.1	52.8 - 69.3	3,500	38.9	30.7 - 47.2	9,100
\$10,000 to \$14,999	6,700	63.7	55.6 - 71.8	3,800	36.3	28.2 - 44.4	10,500
\$15,000 to \$19,999	7,500	71.0	63.3 - 78.6	3,100	29.0	21.4 - 36.7	10,600
\$20,000 to \$24,999	8,100	60.8	53.3 - 68.2	5,200	39.2	31.8 - 46.7	13,300
\$25,000 to \$34,999	10,400	57.5	50.7 - 64.4	7,700	42.5	35.6 - 49.3	18,200
\$35,000 to \$49,999	15,400	61.6	56.3 - 66.9	9,600	38.4	33.1 - 43.7	25,000
\$50,000 to \$74,999	15,800	59.8	54.1 - 65.6	10,600	40.2	34.4 - 45.9	26,400
\$75,000 or more	10,800	50.1	44.0 - 56.2	10,800	49.9	43.8 - 56.0	21,600

Smoke - stopped for day or more by State, County, Island, Community, Adult Age Group, DOH Race-Ethnicity, Gender, Education Level, Employment Status (Grouped), Household Income, Poverty Level, Marital Status (Grouped), Married, Health Care Coverage, for the Year(s) - 2000-2004, 2001-2005, 2002-2006, 2003-2007, 2004-2008, 2005-2009, 2006-2010

Note: Weighted numbers (#) represent 5-yr averages, percentages and 95% confidence intervals; Respondents aged 18 years and older; n/r (Not Reportable) - If the unweighted total responses for a dimension (row) is

Year: 2001-2005

Poverty Level	Yes			No			Estimated Population (5-yr Avg)
	#	%	C.I. (95%)	#	%	C.I. (95%)	#
0-130%	27,400	67.0	62.8 - 71.3	13,500	33.0	28.7 - 37.2	40,800
131-185%	10,400	60.0	53.2 - 66.7	7,000	40.0	33.3 - 46.8	17,400
186+%	42,500	55.6	52.4 - 58.8	34,000	44.4	41.2 - 47.6	76,500

Marital Status (Grouped)	Yes			No			Estimated Population (5-yr Avg)
	#	%	C.I. (95%)	#	%	C.I. (95%)	#
Married	41,400	55.9	52.6 - 59.1	32,700	44.1	40.9 - 47.4	74,200
Unmarried Couple	4,000	66.4	56.1 - 76.6	2,000	33.6	23.4 - 43.9	6,100
Widowed	3,000	49.0	39.6 - 58.4	3,200	51.0	41.6 - 60.4	6,200
Other	50,200	59.7	56.6 - 62.8	33,900	40.3	37.2 - 43.4	84,100

Smoke - stopped for day or more by State, County, Island, Community, Adult Age Group, DOH Race-Ethnicity, Gender, Education Level, Employment Status (Grouped), Household Income, Poverty Level, Marital Status (Grouped), Married, Health Care Coverage, for the Year(s) - 2000-2004, 2001-2005, 2002-2006, 2003-2007, 2004-2008, 2005-2009, 2006-2010

Note: Weighted numbers (#) represent 5-yr averages, percentages and 95% confidence intervals; Respondents aged 18 years and older; n/r (Not Reportable) - If the unweighted total responses for a dimension (row) is

Year: 2001-2005

Married	Yes			No			Estimated Population (5-yr Avg)
	#	%	C.I. (95%)	#	%	C.I. (95%)	#
Yes	44,200	56.6	53.5 - 59.8	33,900	43.4	40.2 - 46.5	78,100
No	54,400	59.0	56.1 - 62.0	37,800	41.0	38.0 - 43.9	92,200

Health Care Coverage	Yes			No			Estimated Population (5-yr Avg)
	#	%	C.I. (95%)	#	%	C.I. (95%)	#
Yes	83,500	57.9	55.6 - 60.2	60,700	42.1	39.8 - 44.4	144,200
No	14,900	57.4	51.5 - 63.3	11,100	42.6	36.7 - 48.5	25,900

Smoke - stopped for day or more by State, County, Island, Community, Adult Age Group, DOH Race-Ethnicity, Gender, Education Level, Employment Status (Grouped), Household Income, Poverty Level, Marital Status (Grouped), Married, Health Care Coverage, for the Year(s) - 2000-2004, 2001-2005, 2002-2006, 2003-2007, 2004-2008, 2005-2009, 2006-2010

Note: Weighted numbers (#) represent 5-yr averages, percentages and 95% confidence intervals; Respondents aged 18 years and older; n/r (Not Reportable) - If the unweighted total responses for a dimension (row) is

Year: 2000-2004

State	Yes			No			Estimated Population (5-yr Avg)
	#	%	C.I. (95%)	#	%	C.I. (95%)	#
Totals	100,200	58.2	56.1 - 60.4	71,900	41.8	39.6 - 43.9	172,000

County	Yes			No			Estimated Population (5-yr Avg)
	#	%	C.I. (95%)	#	%	C.I. (95%)	#
Hawaii	14,500	60.9	57.0 - 64.8	9,300	39.1	35.2 - 43.0	23,700
Honolulu	70,300	58.9	56.1 - 61.7	49,000	41.1	38.3 - 43.9	119,300
Kauai	5,000	54.2	48.6 - 59.8	4,200	45.8	40.2 - 51.4	9,200
Maui	10,500	52.8	47.9 - 57.7	9,400	47.2	42.3 - 52.1	19,900

Smoke - stopped for day or more by State, County, Island, Community, Adult Age Group, DOH Race-Ethnicity, Gender, Education Level, Employment Status (Grouped), Household Income, Poverty Level, Marital Status (Grouped), Married, Health Care Coverage, for the Year(s) - 2000-2004, 2001-2005, 2002-2006, 2003-2007, 2004-2008, 2005-2009, 2006-2010

Note: Weighted numbers (#) represent 5-yr averages, percentages and 95% confidence intervals; Respondents aged 18 years and older; n/r (Not Reportable) - If the unweighted total responses for a dimension (row) is

Year: 2000-2004

Island	Yes			No			Estimated Population (5-yr Avg)
	#	%	C.I. (95%)	#	%	C.I. (95%)	#
Hawaii	14,500	60.9	57.0 - 64.8	9,300	39.1	35.2 - 43.0	23,700
Kauai	5,000	54.2	48.6 - 59.8	4,200	45.8	40.2 - 51.4	9,200
Lanai	200	36.9	23.3 - 50.6	300	63.1	49.4 - 76.7	500
Maui	9,600	53.4	48.0 - 58.8	8,300	46.6	41.2 - 52.0	17,900
Molokai	700	50.9	38.9 - 63.0	700	49.1	37.0 - 61.1	1,400
Oahu	70,300	58.9	56.1 - 61.7	49,000	41.1	38.3 - 43.9	119,300

Community	Yes			No			Estimated Population (5-yr Avg)
	#	%	C.I. (95%)	#	%	C.I. (95%)	#
Aiea/ Pearl City	5,400	55.7	46.3 - 65.1	4,300	44.3	34.9 - 53.7	9,700

Smoke - stopped for day or more by State, County, Island, Community, Adult Age Group, DOH Race-Ethnicity, Gender, Education Level, Employment Status (Grouped), Household Income, Poverty Level, Marital Status (Grouped), Married, Health Care Coverage, for the Year(s) - 2000-2004, 2001-2005, 2002-2006, 2003-2007, 2004-2008, 2005-2009, 2006-2010

Note: Weighted numbers (#) represent 5-yr averages, percentages and 95% confidence intervals; Respondents aged 18 years and older; n/r (Not Reportable) - If the unweighted total responses for a dimension (row) is

Year: 2000-2004

Community	Yes			No			Estimated Population (5-yr Avg)
	#	%	C.I. (95%)	#	%	C.I. (95%)	#
Ala Moana	3,900	63.7	53.3 - 74.2	2,200	36.3	25.8 - 46.7	6,100
Hanalei/ Kapaa	2,100	50.7	42.4 - 59.0	2,000	49.3	41.0 - 57.6	4,100
Hilo	5,000	63.8	57.0 - 70.6	2,800	36.2	29.4 - 43.0	7,800
Kaaawa/ Kahaluu/ Kaneohe	3,700	49.2	38.5 - 60.0	3,800	50.8	40.0 - 61.5	7,500
Kahului	3,500	51.6	42.5 - 60.8	3,300	48.4	39.2 - 57.5	6,800
Kailua/ Waimanalo	5,300	62.9	52.9 - 73.0	3,100	37.1	27.0 - 47.1	8,400
Kaimuki/ Palolo/ Waikiki	6,100	54.0	44.9 - 63.0	5,200	46.0	37.0 - 55.1	11,300
Kona	3,500	66.7	59.4 - 74.1	1,700	33.3	25.9 - 40.6	5,200
Lahaina/ Wailuku	3,100	53.7	45.0 - 62.4	2,700	46.3	37.6 - 55.0	5,900
Lanai	200	36.9	23.3 - 50.6	300	63.1	49.4 - 76.7	500
Lihue-Waimea	2,900	57.0	49.5 - 64.5	2,200	43.0	35.5 - 50.5	5,000

Smoke - stopped for day or more by State, County, Island, Community, Adult Age Group, DOH Race-Ethnicity, Gender, Education Level, Employment Status (Grouped), Household Income, Poverty Level, Marital Status (Grouped), Married, Health Care Coverage, for the Year(s) - 2000-2004, 2001-2005, 2002-2006, 2003-2007, 2004-2008, 2005-2009, 2006-2010

Note: Weighted numbers (#) represent 5-yr averages, percentages and 95% confidence intervals; Respondents aged 18 years and older; n/r (Not Reportable) - If the unweighted total responses for a dimension (row) is

Year: 2000-2004

Community	Yes			No			Estimated Population (5-yr Avg)
	#	%	C.I. (95%)	#	%	C.I. (95%)	#
Manoa/ Upper Makiki	6,100	58.9	49.2 - 68.6	4,200	41.1	31.4 - 50.8	10,300
Mililani/ Wahiawa	6,000	57.7	48.7 - 66.7	4,400	42.3	33.3 - 51.3	10,400
Molokai	700	50.9	38.9 - 63.0	700	49.1	37.0 - 61.1	1,400
Nanakuli/ Waianae	6,100	63.5	53.0 - 74.0	3,500	36.5	26.0 - 47.0	9,700
N.Hawaii	2,300	53.9	44.7 - 63.0	1,900	46.1	37.0 - 55.3	4,200
N.Shore/ Laie	2,700	61.5	46.2 - 76.8	1,700	38.5	23.2 - 53.8	4,300
Nuuanu/ Kalihi/ Moanalua	8,200	60.6	51.5 - 69.7	5,300	39.4	30.3 - 48.5	13,500
Puna/ Kau	3,700	57.3	49.5 - 65.1	2,800	42.7	34.9 - 50.5	6,500
Salt Lake/ Foster Village	4,400	62.4	51.7 - 73.0	2,600	37.6	27.0 - 48.3	7,000
Upcountry/ Hana	2,900	55.5	45.7 - 65.3	2,300	44.5	34.7 - 54.3	5,200
Waiialae/ Kahala/ Hawaii Kai	2,300	60.9	47.3 - 74.6	1,500	39.1	25.4 - 52.7	3,800

Smoke - stopped for day or more by State, County, Island, Community, Adult Age Group, DOH Race-Ethnicity, Gender, Education Level, Employment Status (Grouped), Household Income, Poverty Level, Marital Status (Grouped), Married, Health Care Coverage, for the Year(s) - 2000-2004, 2001-2005, 2002-2006, 2003-2007, 2004-2008, 2005-2009, 2006-2010

Note: Weighted numbers (#) represent 5-yr averages, percentages and 95% confidence intervals; Respondents aged 18 years and older; n/r (Not Reportable) - If the unweighted total responses for a dimension (row) is

Year: 2000-2004

Community	Yes			No			Estimated Population (5-yr Avg)
	#	%	C.I. (95%)	#	%	C.I. (95%)	#
Waipahu/ Kapolei/ Ewa	10,200	58.8	50.9 - 66.6	7,200	41.2	33.4 - 49.1	17,400

Smoke - stopped for day or more by State, County, Island, Community, Adult Age Group, DOH Race-Ethnicity, Gender, Education Level, Employment Status (Grouped), Household Income, Poverty Level, Marital Status (Grouped), Married, Health Care Coverage, for the Year(s) - 2000-2004, 2001-2005, 2002-2006, 2003-2007, 2004-2008, 2005-2009, 2006-2010

Note: Weighted numbers (#) represent 5-yr averages, percentages and 95% confidence intervals; Respondents aged 18 years and older; n/r (Not Reportable) - If the unweighted total responses for a dimension (row) is

Year: 2000-2004

Adult Age Group	Yes			No			Estimated Population (5-yr Avg)
	#	%	C.I. (95%)	#	%	C.I. (95%)	#
40-49	19,200	51.8	47.7 - 55.9	17,800	48.2	44.1 - 52.3	37,000
50-59	15,100	50.0	45.1 - 54.9	15,000	50.0	45.1 - 54.9	30,100
60-69	6,100	46.3	38.8 - 53.9	7,100	53.7	46.1 - 61.2	13,200
70-79	3,100	50.9	40.6 - 61.3	3,000	49.1	38.7 - 59.4	6,100
80+	n/r	n/r	n/r	n/r	n/r	n/r	1,000
20-29	30,200	67.8	63.4 - 72.2	14,400	32.2	27.8 - 36.6	44,600
18-19	3,700	79.0	67.6 - 90.4	1,000	21.0	9.6 - 32.4	4,700
30-39	22,100	64.5	59.9 - 69.2	12,100	35.5	30.8 - 40.1	34,200

Smoke - stopped for day or more by State, County, Island, Community, Adult Age Group, DOH Race-Ethnicity, Gender, Education Level, Employment Status (Grouped), Household Income, Poverty Level, Marital Status (Grouped), Married, Health Care Coverage, for the Year(s) - 2000-2004, 2001-2005, 2002-2006, 2003-2007, 2004-2008, 2005-2009, 2006-2010

Note: Weighted numbers (#) represent 5-yr averages, percentages and 95% confidence intervals; Respondents aged 18 years and older; n/r (Not Reportable) - If the unweighted total responses for a dimension (row) is

Year: 2000-2004

DOH Race-Ethnicity	Yes			No			Estimated Population (5-yr Avg)
	#	%	C.I. (95%)	#	%	C.I. (95%)	#
Caucasian	32,700	55.3	52.0 - 58.6	26,400	44.7	41.4 - 48.0	59,100
Native Hawaiian	21,100	64.1	59.4 - 68.8	11,800	35.9	31.2 - 40.6	33,000
Chinese	3,800	53.9	43.7 - 64.0	3,200	46.1	36.0 - 56.3	7,000
Filipino	16,000	63.6	57.7 - 69.6	9,100	36.4	30.4 - 42.3	25,100
Japanese	14,300	51.7	46.1 - 57.4	13,300	48.3	42.6 - 53.9	27,700
Black	n/r	n/r	n/r	n/r	n/r	n/r	2,100
Native Alaskan/ American Indian	n/r	n/r	n/r	n/r	n/r	n/r	1,200
Other Asian	2,300	53.1	37.7 - 68.4	2,000	46.9	31.6 - 62.3	4,300
Other Pacific Islander	2,700	57.5	42.2 - 72.8	2,000	42.5	27.2 - 57.8	4,700
Other	3,800	64.3	53.6 - 75.0	2,100	35.7	25.0 - 46.4	6,000

Smoke - stopped for day or more by State, County, Island, Community, Adult Age Group, DOH Race-Ethnicity, Gender, Education Level, Employment Status (Grouped), Household Income, Poverty Level, Marital Status (Grouped), Married, Health Care Coverage, for the Year(s) - 2000-2004, 2001-2005, 2002-2006, 2003-2007, 2004-2008, 2005-2009, 2006-2010

Note: Weighted numbers (#) represent 5-yr averages, percentages and 95% confidence intervals; Respondents aged 18 years and older; n/r (Not Reportable) - If the unweighted total responses for a dimension (row) is

Year: 2000-2004

Gender	Yes			No			Estimated Population (5-yr Avg)
	#	%	C.I. (95%)	#	%	C.I. (95%)	#
Male	58,100	57.5	54.5 - 60.4	43,000	42.5	39.6 - 45.5	101,100
Female	42,100	59.3	56.4 - 62.3	28,900	40.7	37.7 - 43.6	71,000

Education Level	Yes			No			Estimated Population (5-yr Avg)
	#	%	C.I. (95%)	#	%	C.I. (95%)	#
Never attended school/ Only Kindergarten to Grades 8	1,000	46.6	29.3 - 63.9	1,200	53.4	36.1 - 70.7	2,200
Grades 9 thru 11 (Some High School)	6,300	62.0	53.5 - 70.5	3,800	38.0	29.5 - 46.5	10,100
Grades 12 or GED (High School Grad)	41,900	56.3	53.0 - 59.6	32,500	43.7	40.4 - 47.0	74,400
College 1 to 3 years (Some College/ Tech)	32,400	59.2	55.3 - 63.0	22,300	40.8	37.0 - 44.7	54,700
College 4 years or more (College Grad)	18,600	61.0	56.3 - 65.7	11,900	39.0	34.3 - 43.7	30,500

Smoke - stopped for day or more by State, County, Island, Community, Adult Age Group, DOH Race-Ethnicity, Gender, Education Level, Employment Status (Grouped), Household Income, Poverty Level, Marital Status (Grouped), Married, Health Care Coverage, for the Year(s) - 2000-2004, 2001-2005, 2002-2006, 2003-2007, 2004-2008, 2005-2009, 2006-2010

Note: Weighted numbers (#) represent 5-yr averages, percentages and 95% confidence intervals; Respondents aged 18 years and older; n/r (Not Reportable) - If the unweighted total responses for a dimension (row) is

Year: 2000-2004

Employment Status (Grouped)	Yes			No			Estimated Population (5-yr Avg)
	#	%	C.I. (95%)	#	%	C.I. (95%)	#
Employed	69,300	59.0	56.4 - 61.6	48,100	41.0	38.4 - 43.6	117,400
Unemployed	7,200	53.7	45.2 - 62.1	6,200	46.4	37.9 - 54.8	13,500
Retired/Unable to work	12,900	54.8	49.4 - 60.3	10,600	45.2	39.7 - 50.6	23,400
Student/Homemaker	10,800	61.5	55.1 - 68.0	6,800	38.5	32.0 - 44.9	17,600

Smoke - stopped for day or more by State, County, Island, Community, Adult Age Group, DOH Race-Ethnicity, Gender, Education Level, Employment Status (Grouped), Household Income, Poverty Level, Marital Status (Grouped), Married, Health Care Coverage, for the Year(s) - 2000-2004, 2001-2005, 2002-2006, 2003-2007, 2004-2008, 2005-2009, 2006-2010

Note: Weighted numbers (#) represent 5-yr averages, percentages and 95% confidence intervals; Respondents aged 18 years and older; n/r (Not Reportable) - If the unweighted total responses for a dimension (row) is

Year: 2000-2004

Household Income	Yes			No			Estimated Population (5-yr Avg)
	#	%	C.I. (95%)	#	%	C.I. (95%)	#
Less than \$10,000	6,300	62.6	55.1 - 70.2	3,700	37.4	29.8 - 44.9	10,000
\$10,000 to \$14,999	6,900	62.2	54.2 - 70.2	4,200	37.8	29.8 - 45.8	11,200
\$15,000 to \$19,999	7,400	73.6	66.0 - 81.2	2,700	26.4	18.8 - 34.0	10,100
\$20,000 to \$24,999	8,900	61.0	53.9 - 68.2	5,700	39.0	31.8 - 46.1	14,600
\$25,000 to \$34,999	12,100	58.5	52.3 - 64.8	8,500	41.5	35.2 - 47.7	20,600
\$35,000 to \$49,999	15,500	62.2	56.8 - 67.6	9,400	37.8	32.4 - 43.2	24,900
\$50,000 to \$74,999	13,700	58.2	51.9 - 64.4	9,900	41.8	35.6 - 48.1	23,600
\$75,000 or more	9,100	49.2	42.5 - 55.8	9,400	50.8	44.2 - 57.5	18,500

Smoke - stopped for day or more by State, County, Island, Community, Adult Age Group, DOH Race-Ethnicity, Gender, Education Level, Employment Status (Grouped), Household Income, Poverty Level, Marital Status (Grouped), Married, Health Care Coverage, for the Year(s) - 2000-2004, 2001-2005, 2002-2006, 2003-2007, 2004-2008, 2005-2009, 2006-2010

Note: Weighted numbers (#) represent 5-yr averages, percentages and 95% confidence intervals; Respondents aged 18 years and older; n/r (Not Reportable) - If the unweighted total responses for a dimension (row) is

Year: 2000-2004

Poverty Level	Yes			No			Estimated Population (5-yr Avg)
	#	%	C.I. (95%)	#	%	C.I. (95%)	#
0-130%	26,200	66.8	62.4 - 71.2	13,000	33.2	28.8 - 37.6	39,200
131-185%	11,500	59.2	53.1 - 65.3	7,900	40.8	34.7 - 46.9	19,400
186+%	42,300	56.5	53.2 - 59.7	32,600	43.5	40.3 - 46.8	74,900

Marital Status (Grouped)	Yes			No			Estimated Population (5-yr Avg)
	#	%	C.I. (95%)	#	%	C.I. (95%)	#
Married	40,700	55.4	52.1 - 58.6	32,800	44.6	41.4 - 47.9	73,400
Unmarried Couple	3,600	68.0	57.3 - 78.8	1,700	32.0	21.2 - 42.7	5,300
Widowed	3,200	52.0	42.2 - 61.8	2,900	48.0	38.2 - 57.8	6,100
Other	52,700	60.5	57.4 - 63.5	34,500	39.5	36.5 - 42.6	87,200

Smoke - stopped for day or more by State, County, Island, Community, Adult Age Group, DOH Race-Ethnicity, Gender, Education Level, Employment Status (Grouped), Household Income, Poverty Level, Marital Status (Grouped), Married, Health Care Coverage, for the Year(s) - 2000-2004, 2001-2005, 2002-2006, 2003-2007, 2004-2008, 2005-2009, 2006-2010

Note: Weighted numbers (#) represent 5-yr averages, percentages and 95% confidence intervals; Respondents aged 18 years and older; n/r (Not Reportable) - If the unweighted total responses for a dimension (row) is

Year: 2000-2004

Married	Yes			No			Estimated Population (5-yr Avg)
	#	%	C.I. (95%)	#	%	C.I. (95%)	#
Yes	43,300	55.9	52.8 - 59.1	34,100	44.1	40.9 - 47.2	77,400
No	56,900	60.2	57.3 - 63.1	37,600	39.8	36.9 - 42.7	94,500

Health Care Coverage	Yes			No			Estimated Population (5-yr Avg)
	#	%	C.I. (95%)	#	%	C.I. (95%)	#
Yes	85,300	58.4	56.1 - 60.7	60,700	41.6	39.3 - 43.9	146,100
No	14,600	56.8	50.8 - 62.8	11,100	43.2	37.2 - 49.2	25,700