

Children in Household by State, County, Island, Community, BRFSS Age Group, DOH Race-Ethnicity, Gender, Education Level, Employment Status (Grouped), Household Income, Poverty Level, Marital Status (Grouped), Married, Health Care Coverage, for the Year(s) - 2001-2003, 2002-2004, 2003-2005, 2004-2006, 2005-2007, 2006-2008, 2007-2009, 2008-2010

Note: Weighted numbers (#) represent 3-yr averages, percentages and 95% confidence intervals; Respondents aged 18 years and older; n/r (Not Reportable) - If the unweighted total responses for a dimension (row) is <50 that row will not be shown; n/a (Not Available) - Not asked of a subset of respondents

The trend analysis report shows the trend for the selected health variable over selected years in a table and a graph. Estimated Population: This number is a weighted representation of the population who responded to a particular question in the survey. For most questions the eligible population will be the entire adult population. For some secondary questions only a subset of the population was asked the question. For example, all survey participants were asked if they had diabetes, but only those who answered yes were asked if they use insulin. If a dimension value is unknown for a particular survey record, that record will not be included in the counts for that particular dimension.

For documentation on other terms and coding in this report, please go to the following links

[Click here to access BRFSS documentation](#)

[Click here to access DOH Race-Ethnicity coding](#)

[Click here to access The Hawai'i Data Guide](#)

[Click here to access Poverty Level Methodology](#)

**For questions about this report, please contact
The Hawaii Health Data Warehouse**

profiles@hhdw.org

(855) 946-5899 x15

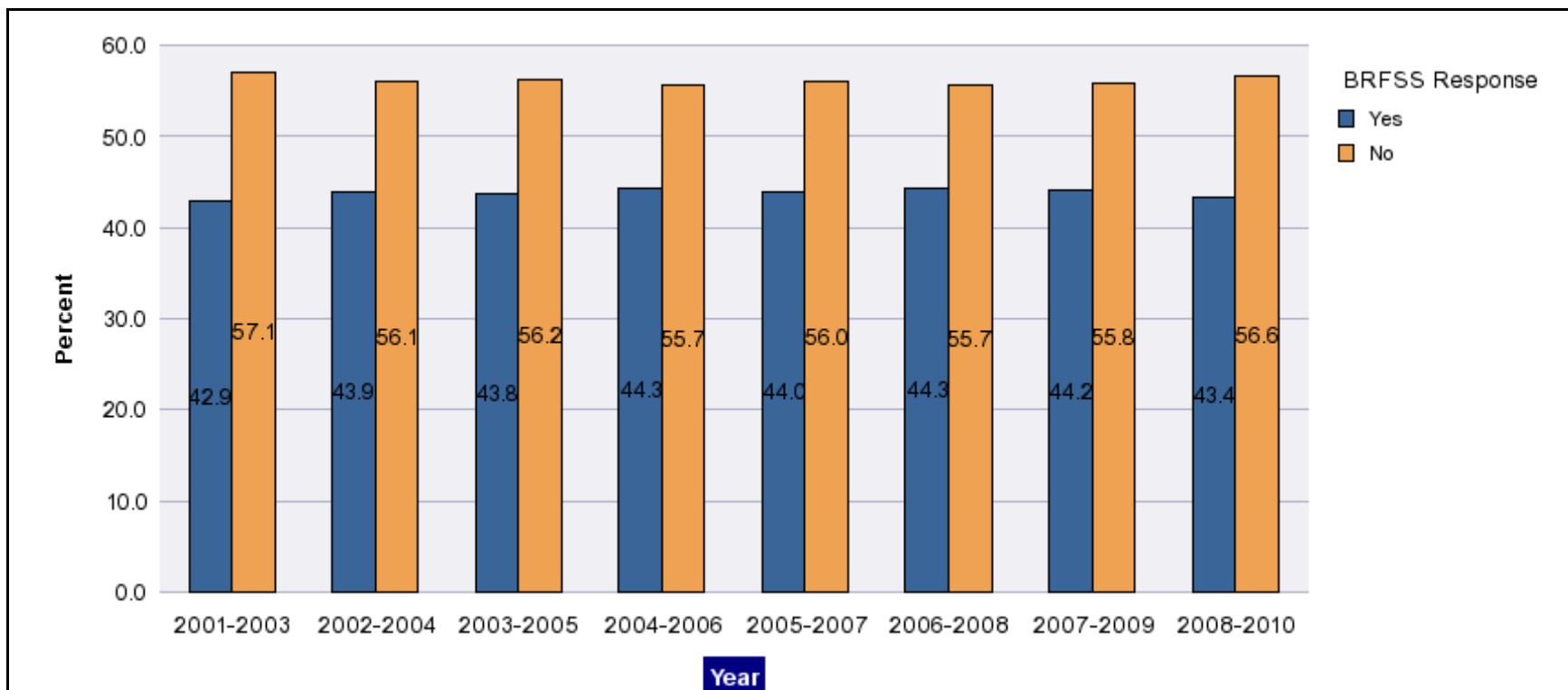
Children in Household by State, County, Island, Community, BRFSS Age Group, DOH Race-Ethnicity, Gender, Education Level, Employment Status (Grouped), Household Income, Poverty Level, Marital Status (Grouped), Married, Health Care Coverage, for the Year(s) - 2001-2003, 2002-2004, 2003-2005, 2004-2006, 2005-2007, 2006-2008, 2007-2009, 2008-2010

Note: Weighted numbers (#) represent 3-yr averages, percentages and 95% confidence intervals; Respondents aged 18 years and older; n/r (Not Reportable) - If the unweighted total responses for a dimension (row) is <50 that row will not be shown; n/a (Not Available) - Not asked of a subset of respondents

Year	Yes			No			Estimated Population (3-Yr Avg)
	#	%	C.I.(95%)	#	%	C.I.(95%)	#
2001-2003	388,800	42.9	41.8 - 44.0	518,300	57.1	56.0 - 58.2	907,000
2002-2004	400,900	43.9	42.6 - 45.3	512,000	56.1	54.7 - 57.4	912,900
2003-2005	409,500	43.8	42.4 - 45.1	526,300	56.2	54.9 - 57.6	935,800
2004-2006	422,100	44.3	43.0 - 45.6	530,300	55.7	54.4 - 57.0	952,400
2005-2007	429,900	44.0	43.0 - 45.0	547,900	56.0	55.0 - 57.0	977,800
2006-2008	437,000	44.3	43.3 - 45.3	549,300	55.7	54.7 - 56.7	986,300
2007-2009	440,400	44.2	43.2 - 45.2	556,500	55.8	54.8 - 56.8	996,800
2008-2010	435,500	43.4	42.3 - 44.4	568,200	56.6	55.6 - 57.7	1,003,700

Children in Household by State, County, Island, Community, BRFSS Age Group, DOH Race-Ethnicity, Gender, Education Level, Employment Status (Grouped), Household Income, Poverty Level, Marital Status (Grouped), Married, Health Care Coverage, for the Year(s) - 2001-2003, 2002-2004, 2003-2005, 2004-2006, 2005-2007, 2006-2008, 2007-2009, 2008-2010

Note: Weighted numbers (#) represent 3-yr averages, percentages and 95% confidence intervals; Respondents aged 18 years and older; n/r (Not Reportable) - If the unweighted total responses for a dimension (row) is <50 that row will not be shown; n/a (Not Available) - Not asked of a subset of respondents



Children in Household by State, County, Island, Community, BRFSS Age Group, DOH Race-Ethnicity, Gender, Education Level, Employment Status (Grouped), Household Income, Poverty Level, Marital Status (Grouped), Married, Health Care Coverage, for the Year(s) - 2001-2003, 2002-2004, 2003-2005, 2004-2006, 2005-2007, 2006-2008, 2007-2009, 2008-2010

Note: Weighted numbers (#) represent 3-yr averages, percentages and 95% confidence intervals; Respondents aged 18 years and older; n/r (Not Reportable) - If the unweighted total responses for a dimension (row) is <50 that row will not be shown; n/a (Not Available) - Not asked of a subset of respondents

Year: 2008-2010

State	Yes			No			Estimated Population (3-Yr Avg)
	#	%	C.I. (95%)	#	%	C.I. (95%)	#
Hawaii State	435,500	43.4	42.3 - 44.4	568,200	56.6	55.6 - 57.7	1,003,700

County	Yes			No			Estimated Population (3-Yr Avg)
	#	%	C.I. (95%)	#	%	C.I. (95%)	#
Hawaii	57,900	42.0	40.0 - 44.0	80,100	58.0	56.0 - 60.0	138,000
Honolulu	306,500	43.5	42.1 - 44.8	398,600	56.5	55.2 - 57.9	705,100
Kauai	20,200	41.3	38.2 - 44.4	28,700	58.7	55.6 - 61.8	48,900
Maui	50,900	45.5	43.3 - 47.8	60,800	54.5	52.2 - 56.7	111,700

Children in Household by State, County, Island, Community, BRFSS Age Group, DOH Race-Ethnicity, Gender, Education Level, Employment Status (Grouped), Household Income, Poverty Level, Marital Status (Grouped), Married, Health Care Coverage, for the Year(s) - 2001-2003, 2002-2004, 2003-2005, 2004-2006, 2005-2007, 2006-2008, 2007-2009, 2008-2010

Note: Weighted numbers (#) represent 3-yr averages, percentages and 95% confidence intervals; Respondents aged 18 years and older; n/r (Not Reportable) - If the unweighted total responses for a dimension (row) is <50 that row will not be shown; n/a (Not Available) - Not asked of a subset of respondents

Year: 2008-2010

Island	Yes			No			Estimated Population (3-Yr Avg)
	#	%	C.I. (95%)	#	%	C.I. (95%)	#
Hawaii	57,900	42.0	40.0 - 44.0	80,100	58.0	56.0 - 60.0	138,000
Kauai	20,200	41.3	38.2 - 44.4	28,700	58.7	55.6 - 61.8	48,900
Lanai	900	50.2	44.3 - 56.0	900	49.8	44.0 - 55.7	1,700
Maui	46,200	45.3	42.8 - 47.7	55,900	54.7	52.3 - 57.2	102,200
Molokai	3,700	48.0	43.2 - 52.8	4,100	52.0	47.2 - 56.8	7,800
Oahu	306,500	43.5	42.1 - 44.8	398,600	56.5	55.2 - 57.9	705,100

Community	Yes			No			Estimated Population (3-Yr Avg)
	#	%	C.I. (95%)	#	%	C.I. (95%)	#
Aiea/ Pearl City	24,000	37.6	33.0 - 42.1	39,900	62.4	57.9 - 67.0	63,900
Ala Moana	6,700	25.1	19.6 - 30.6	20,100	74.9	69.4 - 80.4	26,800

Children in Household by State, County, Island, Community, BRFSS Age Group, DOH Race-Ethnicity, Gender, Education Level, Employment Status (Grouped), Household Income, Poverty Level, Marital Status (Grouped), Married, Health Care Coverage, for the Year(s) - 2001-2003, 2002-2004, 2003-2005, 2004-2006, 2005-2007, 2006-2008, 2007-2009, 2008-2010

Note: Weighted numbers (#) represent 3-yr averages, percentages and 95% confidence intervals; Respondents aged 18 years and older; n/r (Not Reportable) - If the unweighted total responses for a dimension (row) is <50 that row will not be shown; n/a (Not Available) - Not asked of a subset of respondents

Year: 2008-2010

Community	Yes			No			Estimated Population (3-Yr Avg)
	#	%	C.I. (95%)	#	%	C.I. (95%)	#
Hanalei/ Kapaa	7,900	39.1	34.5 - 43.8	12,300	60.9	56.2 - 65.5	20,200
Hilo	17,000	40.8	37.1 - 44.5	24,700	59.2	55.5 - 62.9	41,700
Kaaawa/ Kahaluu/ Kaneohe	21,000	41.9	36.9 - 46.8	29,100	58.1	53.2 - 63.1	50,100
Kahului	17,100	49.3	45.0 - 53.5	17,600	50.7	46.5 - 55.0	34,700
Kailua/ Waimanalo	20,800	40.9	36.1 - 45.7	30,100	59.1	54.3 - 63.9	50,900
Kaimuki/ Palolo/ Waikiki	15,200	26.6	22.7 - 30.5	41,900	73.4	69.5 - 77.3	57,100
Kona	11,500	39.0	34.9 - 43.1	18,000	61.0	56.9 - 65.1	29,600
Lahaina/ Wailuku	15,600	46.5	42.1 - 51.0	17,900	53.5	49.0 - 57.9	33,600
Lanai	900	50.2	44.3 - 56.0	900	49.8	44.0 - 55.7	1,700
Lihue-Waimea	12,300	42.8	38.6 - 47.0	16,400	57.2	53.0 - 61.4	28,800
Manoa/ Upper Makiki	16,300	32.9	28.3 - 37.6	33,100	67.1	62.4 - 71.7	49,400
Mililani/ Wahiawa	40,700	53.9	49.9 - 57.8	34,800	46.1	42.2 - 50.1	75,500

Report Source: The Hawaii Health Data Warehouse;
Data Source: State of Hawaii, Department of Health,
Behavioral Risk Factor Surveillance System (BRFSS)

Children in Household by State, County, Island, Community, BRFSS Age Group, DOH Race-Ethnicity, Gender, Education Level, Employment Status (Grouped), Household Income, Poverty Level, Marital Status (Grouped), Married, Health Care Coverage, for the Year(s) - 2001-2003, 2002-2004, 2003-2005, 2004-2006, 2005-2007, 2006-2008, 2007-2009, 2008-2010

Note: Weighted numbers (#) represent 3-yr averages, percentages and 95% confidence intervals; Respondents aged 18 years and older; n/r (Not Reportable) - If the unweighted total responses for a dimension (row) is <50 that row will not be shown; n/a (Not Available) - Not asked of a subset of respondents

Year: 2008-2010

Community	Yes			No			Estimated Population (3-Yr Avg)
	#	%	C.I. (95%)	#	%	C.I. (95%)	#
Molokai	3,700	48.0	43.2 - 52.8	4,100	52.0	47.2 - 56.8	7,800
Nanakuli/ Waianae	20,300	57.2	49.8 - 64.7	15,200	42.8	35.3 - 50.2	35,500
N.Hawaii	12,300	45.4	40.8 - 50.1	14,800	54.6	49.9 - 59.2	27,100
N.Shore/ Laie	11,000	48.6	40.6 - 56.7	11,600	51.4	43.3 - 59.4	22,500
Nuuanu/ Kalihi/ Moanalua	28,100	40.2	35.5 - 45.0	41,700	59.8	55.0 - 64.5	69,700
Puna/ Kau	17,100	43.1	39.4 - 46.8	22,600	56.9	53.2 - 60.6	39,600
Salt Lake/ Foster Village	21,500	58.8	53.0 - 64.5	15,100	41.2	35.5 - 47.0	36,500
Upcountry/ Hana	13,500	39.9	36.1 - 43.7	20,400	60.1	56.3 - 63.9	33,900
Waialae/ Kahala/ Hawaii Kai	16,600	35.7	30.9 - 40.5	29,900	64.3	59.5 - 69.1	46,500
Waipahu/ Kapolei/ Ewa	64,400	53.4	50.0 - 56.8	56,200	46.6	43.2 - 50.0	120,600

Children in Household by State, County, Island, Community, BRFSS Age Group, DOH Race-Ethnicity, Gender, Education Level, Employment Status (Grouped), Household Income, Poverty Level, Marital Status (Grouped), Married, Health Care Coverage, for the Year(s) - 2001-2003, 2002-2004, 2003-2005, 2004-2006, 2005-2007, 2006-2008, 2007-2009, 2008-2010

Note: Weighted numbers (#) represent 3-yr averages, percentages and 95% confidence intervals; Respondents aged 18 years and older; n/r (Not Reportable) - If the unweighted total responses for a dimension (row) is <50 that row will not be shown; n/a (Not Available) - Not asked of a subset of respondents

Year: 2008-2010

BRFSS Age Group	Yes			No			Estimated Population (3-Yr Avg)
	#	%	C.I. (95%)	#	%	C.I. (95%)	#
18-24	61,900	50.8	46.7 - 54.9	59,900	49.2	45.1 - 53.3	121,900
25-34	116,900	65.1	62.1 - 68.0	62,800	34.9	32.0 - 37.9	179,600
35-44	131,000	74.2	72.2 - 76.3	45,500	25.8	23.7 - 27.8	176,500
45-54	84,400	47.2	45.1 - 49.2	94,400	52.8	50.8 - 54.9	178,800
55-64	24,300	16.0	14.4 - 17.5	127,900	84.0	82.5 - 85.6	152,200
65-74	9,700	10.5	8.8 - 12.2	82,800	89.5	87.8 - 91.2	92,500
75+	6,000	6.2	4.8 - 7.6	91,600	93.8	92.4 - 95.2	97,700

Children in Household by State, County, Island, Community, BRFSS Age Group, DOH Race-Ethnicity, Gender, Education Level, Employment Status (Grouped), Household Income, Poverty Level, Marital Status (Grouped), Married, Health Care Coverage, for the Year(s) - 2001-2003, 2002-2004, 2003-2005, 2004-2006, 2005-2007, 2006-2008, 2007-2009, 2008-2010

Note: Weighted numbers (#) represent 3-yr averages, percentages and 95% confidence intervals; Respondents aged 18 years and older; n/r (Not Reportable) - If the unweighted total responses for a dimension (row) is <50 that row will not be shown; n/a (Not Available) - Not asked of a subset of respondents

Year: 2008-2010

DOH Race-Ethnicity	Yes			No			Estimated Population (3-Yr Avg)
	#	%	C.I. (95%)	#	%	C.I. (95%)	#
Caucasian	126,100	39.3	37.7 - 40.9	194,500	60.7	59.1 - 62.3	320,600
Native Hawaiian	73,800	56.5	53.6 - 59.5	56,700	43.5	40.5 - 46.4	130,500
Chinese	20,500	33.0	29.0 - 36.9	41,800	67.0	63.1 - 71.0	62,300
Filipino	87,100	54.8	51.8 - 57.7	71,900	45.2	42.3 - 48.2	158,900
Japanese	68,900	29.6	27.6 - 31.5	164,100	70.4	68.5 - 72.4	233,100
Black	9,300	63.0	55.2 - 70.9	5,400	37.0	29.1 - 44.8	14,700
Native Alaskan/ American Indian	2,500	51.9	39.4 - 64.5	2,300	48.1	35.5 - 60.6	4,800
Other Asian	10,900	43.7	36.4 - 50.9	14,000	56.3	49.1 - 63.6	24,900
Other Pacific Islander	23,400	77.9	70.9 - 85.0	6,600	22.1	15.0 - 29.1	30,000
Other	12,200	57.5	50.4 - 64.6	9,000	42.5	35.4 - 49.6	21,300

Children in Household by State, County, Island, Community, BRFSS Age Group, DOH Race-Ethnicity, Gender, Education Level, Employment Status (Grouped), Household Income, Poverty Level, Marital Status (Grouped), Married, Health Care Coverage, for the Year(s) - 2001-2003, 2002-2004, 2003-2005, 2004-2006, 2005-2007, 2006-2008, 2007-2009, 2008-2010

Note: Weighted numbers (#) represent 3-yr averages, percentages and 95% confidence intervals; Respondents aged 18 years and older; n/r (Not Reportable) - If the unweighted total responses for a dimension (row) is <50 that row will not be shown; n/a (Not Available) - Not asked of a subset of respondents

Year: 2008-2010

Gender	Yes			No			Estimated Population (3-Yr Avg)
	#	%	C.I. (95%)	#	%	C.I. (95%)	#
Male	208,400	41.7	40.1 - 43.3	291,000	58.3	56.7 - 59.9	499,400
Female	227,100	45.0	43.7 - 46.4	277,200	55.0	53.6 - 56.3	504,300

Education Level	Yes			No			Estimated Population (3-Yr Avg)
	#	%	C.I. (95%)	#	%	C.I. (95%)	#
Never attended school/ Only Kindergarten to Grades 8	3,200	26.8	18.4 - 35.3	8,600	73.2	64.7 - 81.6	11,800
Grades 9 thru 11 (Some High School)	18,800	47.4	41.4 - 53.4	20,900	52.6	46.6 - 58.6	39,700
Grades 12 or GED (High School Grad)	134,300	46.1	44.1 - 48.2	156,800	53.9	51.8 - 55.9	291,100
College 1 to 3 years (Some College/ Tech)	130,300	45.2	43.2 - 47.2	158,000	54.8	52.8 - 56.8	288,400
College 4 years or more (College Grad)	148,800	40.0	38.4 - 41.5	223,300	60.0	58.5 - 61.6	372,100

Children in Household by State, County, Island, Community, BRFSS Age Group, DOH Race-Ethnicity, Gender, Education Level, Employment Status (Grouped), Household Income, Poverty Level, Marital Status (Grouped), Married, Health Care Coverage, for the Year(s) - 2001-2003, 2002-2004, 2003-2005, 2004-2006, 2005-2007, 2006-2008, 2007-2009, 2008-2010

Note: Weighted numbers (#) represent 3-yr averages, percentages and 95% confidence intervals; Respondents aged 18 years and older; n/r (Not Reportable) - If the unweighted total responses for a dimension (row) is <50 that row will not be shown; n/a (Not Available) - Not asked of a subset of respondents

Year: 2008-2010

Employment Status (Grouped)	Yes			No			Estimated Population (3-Yr Avg)
	#	%	C.I. (95%)	#	%	C.I. (95%)	#
Employed	317,900	51.4	50.1 - 52.8	300,200	48.6	47.2 - 49.9	618,100
Unemployed	29,400	47.9	43.0 - 52.8	32,000	52.1	47.2 - 57.0	61,400
Retired/Unable to work	28,600	13.2	11.7 - 14.8	187,700	86.8	85.2 - 88.3	216,300
Student/Homemaker	59,200	55.3	51.6 - 59.0	47,800	44.7	41.0 - 48.4	106,900

Children in Household by State, County, Island, Community, BRFSS Age Group, DOH Race-Ethnicity, Gender, Education Level, Employment Status (Grouped), Household Income, Poverty Level, Marital Status (Grouped), Married, Health Care Coverage, for the Year(s) - 2001-2003, 2002-2004, 2003-2005, 2004-2006, 2005-2007, 2006-2008, 2007-2009, 2008-2010

Note: Weighted numbers (#) represent 3-yr averages, percentages and 95% confidence intervals; Respondents aged 18 years and older; n/r (Not Reportable) - If the unweighted total responses for a dimension (row) is <50 that row will not be shown; n/a (Not Available) - Not asked of a subset of respondents

Year: 2008-2010

Household Income	Yes			No			Estimated Population (3-Yr Avg)
	#	%	C.I. (95%)	#	%	C.I. (95%)	#
Less than \$10,000	10,400	33.2	27.4 - 39.0	20,900	66.8	61.0 - 72.6	31,200
\$10,000 to \$14,999	7,700	30.8	24.4 - 37.2	17,400	69.2	62.8 - 75.6	25,100
\$15,000 to \$19,999	18,200	37.6	32.9 - 42.3	30,300	62.4	57.7 - 67.1	48,500
\$20,000 to \$24,999	24,900	41.2	36.8 - 45.6	35,600	58.8	54.4 - 63.2	60,500
\$25,000 to \$34,999	41,200	40.8	37.6 - 44.0	59,800	59.2	56.0 - 62.4	100,900
\$35,000 to \$49,999	62,700	42.5	39.8 - 45.1	84,900	57.5	54.9 - 60.2	147,600
\$50,000 to \$74,999	79,500	45.7	43.2 - 48.1	94,600	54.3	51.9 - 56.8	174,100
\$75,000 or more	148,800	47.0	45.2 - 48.8	167,500	53.0	51.2 - 54.8	316,300

Children in Household by State, County, Island, Community, BRFSS Age Group, DOH Race-Ethnicity, Gender, Education Level, Employment Status (Grouped), Household Income, Poverty Level, Marital Status (Grouped), Married, Health Care Coverage, for the Year(s) - 2001-2003, 2002-2004, 2003-2005, 2004-2006, 2005-2007, 2006-2008, 2007-2009, 2008-2010

Note: Weighted numbers (#) represent 3-yr averages, percentages and 95% confidence intervals; Respondents aged 18 years and older; n/r (Not Reportable) - If the unweighted total responses for a dimension (row) is <50 that row will not be shown; n/a (Not Available) - Not asked of a subset of respondents

Year: 2008-2010

Poverty Level	Yes			No			Estimated Population (3-Yr Avg)
	#	%	C.I. (95%)	#	%	C.I. (95%)	#
0-130%	118,300	57.2	54.7 - 59.7	88,400	42.8	40.3 - 45.3	206,800
131-185%	67,600	49.3	46.5 - 52.2	69,400	50.7	47.8 - 53.5	136,900
186+%	207,400	37.0	35.8 - 38.2	353,100	63.0	61.8 - 64.2	560,500

Marital Status (Grouped)	Yes			No			Estimated Population (3-Yr Avg)
	#	%	C.I. (95%)	#	%	C.I. (95%)	#
Married	291,200	49.7	48.4 - 50.9	295,100	50.3	49.1 - 51.6	586,200
Unmarried Couple	17,700	55.7	49.2 - 62.2	14,000	44.3	37.8 - 50.8	31,700
Widowed	8,100	13.8	11.2 - 16.3	50,500	86.2	83.7 - 88.8	58,600
Other	118,600	36.3	34.2 - 38.3	208,600	63.7	61.7 - 65.8	327,200

Children in Household by State, County, Island, Community, BRFSS Age Group, DOH Race-Ethnicity, Gender, Education Level, Employment Status (Grouped), Household Income, Poverty Level, Marital Status (Grouped), Married, Health Care Coverage, for the Year(s) - 2001-2003, 2002-2004, 2003-2005, 2004-2006, 2005-2007, 2006-2008, 2007-2009, 2008-2010

Note: Weighted numbers (#) represent 3-yr averages, percentages and 95% confidence intervals; Respondents aged 18 years and older; n/r (Not Reportable) - If the unweighted total responses for a dimension (row) is <50 that row will not be shown; n/a (Not Available) - Not asked of a subset of respondents

Year: 2008-2010

Married	Yes			No			Estimated Population (3-Yr Avg)
	#	%	C.I. (95%)	#	%	C.I. (95%)	#
Yes	297,500	49.8	48.5 - 51.0	300,200	50.2	49.0 - 51.5	597,700
No	137,800	34.1	32.2 - 35.9	266,800	65.9	64.1 - 67.8	404,700

Health Care Coverage	Yes			No			Estimated Population (3-Yr Avg)
	#	%	C.I. (95%)	#	%	C.I. (95%)	#
Yes	403,200	43.2	42.1 - 44.3	530,100	56.8	55.7 - 57.9	933,300
No	31,200	45.7	40.8 - 50.6	37,000	54.3	49.4 - 59.2	68,100

Children in Household by State, County, Island, Community, BRFSS Age Group, DOH Race-Ethnicity, Gender, Education Level, Employment Status (Grouped), Household Income, Poverty Level, Marital Status (Grouped), Married, Health Care Coverage, for the Year(s) - 2001-2003, 2002-2004, 2003-2005, 2004-2006, 2005-2007, 2006-2008, 2007-2009, 2008-2010

Note: Weighted numbers (#) represent 3-yr averages, percentages and 95% confidence intervals; Respondents aged 18 years and older; n/r (Not Reportable) - If the unweighted total responses for a dimension (row) is <50 that row will not be shown; n/a (Not Available) - Not asked of a subset of respondents

Year: 2007-2009

State	Yes			No			Estimated Population (3-Yr Avg)
	#	%	C.I. (95%)	#	%	C.I. (95%)	#
Hawaii State	440,400	44.2	43.2 - 45.2	556,500	55.8	54.8 - 56.8	996,800

County	Yes			No			Estimated Population (3-Yr Avg)
	#	%	C.I. (95%)	#	%	C.I. (95%)	#
Hawaii	55,600	41.5	39.6 - 43.4	78,400	58.5	56.6 - 60.4	134,000
Honolulu	314,500	44.6	43.3 - 45.9	390,400	55.4	54.1 - 56.7	704,900
Kauai	20,200	41.8	38.9 - 44.8	28,000	58.2	55.2 - 61.1	48,200
Maui	50,100	45.7	43.5 - 47.8	59,600	54.3	52.2 - 56.5	109,700

Children in Household by State, County, Island, Community, BRFSS Age Group, DOH Race-Ethnicity, Gender, Education Level, Employment Status (Grouped), Household Income, Poverty Level, Marital Status (Grouped), Married, Health Care Coverage, for the Year(s) - 2001-2003, 2002-2004, 2003-2005, 2004-2006, 2005-2007, 2006-2008, 2007-2009, 2008-2010

Note: Weighted numbers (#) represent 3-yr averages, percentages and 95% confidence intervals; Respondents aged 18 years and older; n/r (Not Reportable) - If the unweighted total responses for a dimension (row) is <50 that row will not be shown; n/a (Not Available) - Not asked of a subset of respondents

Year: 2007-2009

Island	Yes			No			Estimated Population (3-Yr Avg)
	#	%	C.I. (95%)	#	%	C.I. (95%)	#
Hawaii	55,600	41.5	39.6 - 43.4	78,400	58.5	56.6 - 60.4	134,000
Kauai	20,200	41.8	38.9 - 44.8	28,000	58.2	55.2 - 61.1	48,200
Lanai	900	45.8	40.5 - 51.1	1,000	54.2	48.9 - 59.5	1,900
Maui	45,200	45.3	42.9 - 47.6	54,600	54.7	52.4 - 57.1	99,800
Molokai	4,100	50.6	46.0 - 55.3	4,000	49.4	44.7 - 54.0	8,100
Oahu	314,500	44.6	43.3 - 45.9	390,400	55.4	54.1 - 56.7	704,900

Community	Yes			No			Estimated Population (3-Yr Avg)
	#	%	C.I. (95%)	#	%	C.I. (95%)	#
Aiea/ Pearl City	25,300	39.6	35.1 - 44.0	38,700	60.4	56.0 - 64.9	64,000
Ala Moana	7,900	26.4	21.1 - 31.8	21,900	73.6	68.2 - 78.9	29,700

Children in Household by State, County, Island, Community, BRFSS Age Group, DOH Race-Ethnicity, Gender, Education Level, Employment Status (Grouped), Household Income, Poverty Level, Marital Status (Grouped), Married, Health Care Coverage, for the Year(s) - 2001-2003, 2002-2004, 2003-2005, 2004-2006, 2005-2007, 2006-2008, 2007-2009, 2008-2010

Note: Weighted numbers (#) represent 3-yr averages, percentages and 95% confidence intervals; Respondents aged 18 years and older; n/r (Not Reportable) - If the unweighted total responses for a dimension (row) is <50 that row will not be shown; n/a (Not Available) - Not asked of a subset of respondents

Year: 2007-2009

Community	Yes			No			Estimated Population (3-Yr Avg)
	#	%	C.I. (95%)	#	%	C.I. (95%)	#
Hanalei/ Kapaa	7,800	38.9	34.5 - 43.3	12,200	61.1	56.7 - 65.5	19,900
Hilo	15,200	38.4	34.9 - 41.9	24,500	61.6	58.1 - 65.1	39,700
Kaaawa/ Kahaluu/ Kaneohe	21,400	43.7	38.9 - 48.4	27,600	56.3	51.6 - 61.1	49,000
Kahului	16,300	47.9	43.7 - 52.0	17,800	52.1	48.0 - 56.3	34,100
Kailua/ Waimanalo	23,000	44.5	39.9 - 49.1	28,600	55.5	50.9 - 60.1	51,600
Kaimuki/ Palolo/ Waikiki	14,900	26.2	22.3 - 30.0	42,100	73.8	70.0 - 77.7	57,000
Kona	11,100	38.7	34.8 - 42.7	17,600	61.3	57.3 - 65.2	28,600
Lahaina/ Wailuku	15,200	47.2	42.8 - 51.6	17,000	52.8	48.4 - 57.2	32,100
Lanai	900	45.8	40.5 - 51.1	1,000	54.2	48.9 - 59.5	1,900
Lihue-Waimea	12,400	43.9	39.9 - 47.9	15,800	56.1	52.1 - 60.1	28,200
Manoa/ Upper Makiki	13,900	30.1	25.9 - 34.4	32,300	69.9	65.6 - 74.1	46,200
Mililani/ Wahiawa	43,400	56.7	52.9 - 60.5	33,200	43.3	39.5 - 47.1	76,600

Children in Household by State, County, Island, Community, BRFSS Age Group, DOH Race-Ethnicity, Gender, Education Level, Employment Status (Grouped), Household Income, Poverty Level, Marital Status (Grouped), Married, Health Care Coverage, for the Year(s) - 2001-2003, 2002-2004, 2003-2005, 2004-2006, 2005-2007, 2006-2008, 2007-2009, 2008-2010

Note: Weighted numbers (#) represent 3-yr averages, percentages and 95% confidence intervals; Respondents aged 18 years and older; n/r (Not Reportable) - If the unweighted total responses for a dimension (row) is <50 that row will not be shown; n/a (Not Available) - Not asked of a subset of respondents

Year: 2007-2009

Community	Yes			No			Estimated Population (3-Yr Avg)
	#	%	C.I. (95%)	#	%	C.I. (95%)	#
Molokai	4,100	50.6	46.0 - 55.3	4,000	49.4	44.7 - 54.0	8,100
Nanakuli/ Waianae	19,900	57.2	50.5 - 64.0	14,900	42.8	36.0 - 49.5	34,700
N.Hawaii	13,200	47.0	42.6 - 51.4	14,900	53.0	48.6 - 57.4	28,100
N.Shore/ Laie	10,600	48.7	40.9 - 56.4	11,200	51.3	43.6 - 59.1	21,700
Nuuanu/ Kalihi/ Moanalua	29,700	42.4	37.8 - 47.1	40,300	57.6	52.9 - 62.2	70,000
Puna/ Kau	16,000	42.7	39.1 - 46.4	21,500	57.3	53.6 - 60.9	37,500
Salt Lake/ Foster Village	20,100	58.5	52.6 - 64.4	14,300	41.5	35.6 - 47.4	34,400
Upcountry/ Hana	13,700	40.8	37.1 - 44.4	19,800	59.2	55.6 - 62.9	33,500
Waialae/ Kahala/ Hawaii Kai	17,700	38.0	33.2 - 42.7	29,000	62.0	57.3 - 66.8	46,700
Waipahu/ Kapolei/ Ewa	66,600	54.1	50.8 - 57.4	56,600	45.9	42.6 - 49.2	123,200

Children in Household by State, County, Island, Community, BRFSS Age Group, DOH Race-Ethnicity, Gender, Education Level, Employment Status (Grouped), Household Income, Poverty Level, Marital Status (Grouped), Married, Health Care Coverage, for the Year(s) - 2001-2003, 2002-2004, 2003-2005, 2004-2006, 2005-2007, 2006-2008, 2007-2009, 2008-2010

Note: Weighted numbers (#) represent 3-yr averages, percentages and 95% confidence intervals; Respondents aged 18 years and older; n/r (Not Reportable) - If the unweighted total responses for a dimension (row) is <50 that row will not be shown; n/a (Not Available) - Not asked of a subset of respondents

Year: 2007-2009

BRFSS Age Group	Yes			No			Estimated Population (3-Yr Avg)
	#	%	C.I. (95%)	#	%	C.I. (95%)	#
18-24	66,200	53.5	49.5 - 57.5	57,500	46.5	42.5 - 50.5	123,700
25-34	112,000	65.0	62.2 - 67.8	60,300	35.0	32.2 - 37.8	172,300
35-44	132,300	74.7	72.8 - 76.7	44,700	25.3	23.3 - 27.2	177,000
45-54	87,100	48.1	46.1 - 50.0	94,100	51.9	50.0 - 53.9	181,200
55-64	24,700	16.1	14.5 - 17.8	128,500	83.9	82.2 - 85.5	153,300
65-74	11,200	12.7	10.7 - 14.6	77,400	87.3	85.4 - 89.3	88,600
75+	5,700	5.9	4.4 - 7.4	90,700	94.1	92.6 - 95.6	96,400

Children in Household by State, County, Island, Community, BRFSS Age Group, DOH Race-Ethnicity, Gender, Education Level, Employment Status (Grouped), Household Income, Poverty Level, Marital Status (Grouped), Married, Health Care Coverage, for the Year(s) - 2001-2003, 2002-2004, 2003-2005, 2004-2006, 2005-2007, 2006-2008, 2007-2009, 2008-2010

Note: Weighted numbers (#) represent 3-yr averages, percentages and 95% confidence intervals; Respondents aged 18 years and older; n/r (Not Reportable) - If the unweighted total responses for a dimension (row) is <50 that row will not be shown; n/a (Not Available) - Not asked of a subset of respondents

Year: 2007-2009

DOH Race-Ethnicity	Yes			No			Estimated Population (3-Yr Avg)
	#	%	C.I. (95%)	#	%	C.I. (95%)	#
Caucasian	126,300	39.4	37.9 - 41.0	194,100	60.6	59.0 - 62.1	320,400
Native Hawaiian	74,200	56.1	53.3 - 59.0	58,000	43.9	41.0 - 46.7	132,100
Chinese	21,600	35.3	31.2 - 39.3	39,700	64.7	60.7 - 68.8	61,400
Filipino	90,800	56.0	53.1 - 58.9	71,400	44.0	41.1 - 46.9	162,200
Japanese	70,900	31.3	29.3 - 33.3	155,500	68.7	66.7 - 70.7	226,400
Black	10,200	66.3	58.8 - 73.9	5,200	33.7	26.1 - 41.2	15,300
Native Alaskan/ American Indian	2,800	49.5	37.9 - 61.1	2,900	50.5	38.9 - 62.1	5,700
Other Asian	11,100	47.2	40.1 - 54.2	12,400	52.8	45.8 - 59.9	23,500
Other Pacific Islander	19,000	74.1	67.1 - 81.1	6,600	25.9	18.9 - 32.9	25,600
Other	12,500	58.9	52.3 - 65.6	8,700	41.1	34.4 - 47.7	21,200

Children in Household by State, County, Island, Community, BRFSS Age Group, DOH Race-Ethnicity, Gender, Education Level, Employment Status (Grouped), Household Income, Poverty Level, Marital Status (Grouped), Married, Health Care Coverage, for the Year(s) - 2001-2003, 2002-2004, 2003-2005, 2004-2006, 2005-2007, 2006-2008, 2007-2009, 2008-2010

Note: Weighted numbers (#) represent 3-yr averages, percentages and 95% confidence intervals; Respondents aged 18 years and older; n/r (Not Reportable) - If the unweighted total responses for a dimension (row) is <50 that row will not be shown; n/a (Not Available) - Not asked of a subset of respondents

Year: 2007-2009

Gender	Yes			No			Estimated Population (3-Yr Avg)
	#	%	C.I. (95%)	#	%	C.I. (95%)	#
Male	210,000	42.5	41.0 - 44.1	284,000	57.5	55.9 - 59.0	494,000
Female	230,400	45.8	44.5 - 47.1	272,400	54.2	52.9 - 55.5	502,800

Education Level	Yes			No			Estimated Population (3-Yr Avg)
	#	%	C.I. (95%)	#	%	C.I. (95%)	#
Never attended school/ Only Kindergarten to Grades 8	2,700	21.2	13.2 - 29.1	10,200	78.8	70.9 - 86.8	13,000
Grades 9 thru 11 (Some High School)	18,300	47.7	42.4 - 53.0	20,100	52.3	47.0 - 57.6	38,400
Grades 12 or GED (High School Grad)	140,400	47.3	45.3 - 49.2	156,700	52.7	50.8 - 54.7	297,100
College 1 to 3 years (Some College/ Tech)	134,200	46.4	44.5 - 48.3	155,200	53.6	51.7 - 55.5	289,400
College 4 years or more (College Grad)	144,300	40.3	38.8 - 41.9	213,500	59.7	58.1 - 61.2	357,800

Children in Household by State, County, Island, Community, BRFSS Age Group, DOH Race-Ethnicity, Gender, Education Level, Employment Status (Grouped), Household Income, Poverty Level, Marital Status (Grouped), Married, Health Care Coverage, for the Year(s) - 2001-2003, 2002-2004, 2003-2005, 2004-2006, 2005-2007, 2006-2008, 2007-2009, 2008-2010

Note: Weighted numbers (#) represent 3-yr averages, percentages and 95% confidence intervals; Respondents aged 18 years and older; n/r (Not Reportable) - If the unweighted total responses for a dimension (row) is <50 that row will not be shown; n/a (Not Available) - Not asked of a subset of respondents

Year: 2007-2009

Employment Status (Grouped)	Yes			No			Estimated Population (3-Yr Avg)
	#	%	C.I. (95%)	#	%	C.I. (95%)	#
Employed	325,800	51.7	50.4 - 52.9	305,000	48.3	47.1 - 49.6	630,900
Unemployed	24,000	49.5	44.1 - 54.9	24,500	50.5	45.1 - 55.9	48,600
Retired/Unable to work	30,500	13.9	12.3 - 15.4	189,600	86.1	84.6 - 87.7	220,100
Student/Homemaker	59,600	61.9	58.3 - 65.5	36,700	38.1	34.5 - 41.7	96,300

Children in Household by State, County, Island, Community, BRFSS Age Group, DOH Race-Ethnicity, Gender, Education Level, Employment Status (Grouped), Household Income, Poverty Level, Marital Status (Grouped), Married, Health Care Coverage, for the Year(s) - 2001-2003, 2002-2004, 2003-2005, 2004-2006, 2005-2007, 2006-2008, 2007-2009, 2008-2010

Note: Weighted numbers (#) represent 3-yr averages, percentages and 95% confidence intervals; Respondents aged 18 years and older; n/r (Not Reportable) - If the unweighted total responses for a dimension (row) is <50 that row will not be shown; n/a (Not Available) - Not asked of a subset of respondents

Year: 2007-2009

Household Income	Yes			No			Estimated Population (3-Yr Avg)
	#	%	C.I. (95%)	#	%	C.I. (95%)	#
Less than \$10,000	9,100	33.9	28.4 - 39.4	17,700	66.1	60.6 - 71.6	26,700
\$10,000 to \$14,999	9,600	37.4	31.1 - 43.7	16,100	62.6	56.3 - 68.9	25,700
\$15,000 to \$19,999	16,000	35.7	31.2 - 40.2	28,800	64.3	59.8 - 68.8	44,800
\$20,000 to \$24,999	23,100	39.5	35.4 - 43.5	35,400	60.5	56.5 - 64.6	58,400
\$25,000 to \$34,999	45,200	42.8	39.7 - 45.8	60,400	57.2	54.2 - 60.3	105,600
\$35,000 to \$49,999	66,700	42.9	40.4 - 45.4	88,700	57.1	54.6 - 59.6	155,400
\$50,000 to \$74,999	82,800	46.3	44.0 - 48.7	95,800	53.7	51.3 - 56.0	178,600
\$75,000 or more	149,100	48.6	46.8 - 50.4	157,500	51.4	49.6 - 53.2	306,700

Children in Household by State, County, Island, Community, BRFSS Age Group, DOH Race-Ethnicity, Gender, Education Level, Employment Status (Grouped), Household Income, Poverty Level, Marital Status (Grouped), Married, Health Care Coverage, for the Year(s) - 2001-2003, 2002-2004, 2003-2005, 2004-2006, 2005-2007, 2006-2008, 2007-2009, 2008-2010

Note: Weighted numbers (#) represent 3-yr averages, percentages and 95% confidence intervals; Respondents aged 18 years and older; n/r (Not Reportable) - If the unweighted total responses for a dimension (row) is <50 that row will not be shown; n/a (Not Available) - Not asked of a subset of respondents

Year: 2007-2009

Poverty Level	Yes			No			Estimated Population (3-Yr Avg)
	#	%	C.I. (95%)	#	%	C.I. (95%)	#
0-130%	113,700	57.9	55.5 - 60.4	82,500	42.1	39.6 - 44.5	196,200
131-185%	69,200	54.0	51.1 - 57.0	58,900	46.0	43.0 - 48.9	128,100
186+%	218,400	37.8	36.6 - 39.0	359,100	62.2	61.0 - 63.4	577,500

Marital Status (Grouped)	Yes			No			Estimated Population (3-Yr Avg)
	#	%	C.I. (95%)	#	%	C.I. (95%)	#
Married	294,500	50.1	48.9 - 51.3	293,500	49.9	48.7 - 51.1	588,000
Unmarried Couple	15,900	54.7	48.5 - 60.8	13,200	45.3	39.2 - 51.5	29,000
Widowed	8,600	14.7	12.2 - 17.2	49,900	85.3	82.8 - 87.8	58,500
Other	121,400	37.8	35.7 - 39.8	199,900	62.2	60.2 - 64.3	321,300

Children in Household by State, County, Island, Community, BRFSS Age Group, DOH Race-Ethnicity, Gender, Education Level, Employment Status (Grouped), Household Income, Poverty Level, Marital Status (Grouped), Married, Health Care Coverage, for the Year(s) - 2001-2003, 2002-2004, 2003-2005, 2004-2006, 2005-2007, 2006-2008, 2007-2009, 2008-2010

Note: Weighted numbers (#) represent 3-yr averages, percentages and 95% confidence intervals; Respondents aged 18 years and older; n/r (Not Reportable) - If the unweighted total responses for a dimension (row) is <50 that row will not be shown; n/a (Not Available) - Not asked of a subset of respondents

Year: 2007-2009

Married	Yes			No			Estimated Population (3-Yr Avg)
	#	%	C.I. (95%)	#	%	C.I. (95%)	#
Yes	301,000	50.3	49.1 - 51.5	297,500	49.7	48.5 - 50.9	598,400
No	139,300	35.1	33.3 - 36.9	257,800	64.9	63.1 - 66.7	397,000

Health Care Coverage	Yes			No			Estimated Population (3-Yr Avg)
	#	%	C.I. (95%)	#	%	C.I. (95%)	#
Yes	407,800	43.9	42.8 - 44.9	522,000	56.1	55.1 - 57.2	929,800
No	31,500	48.4	43.7 - 53.1	33,600	51.6	46.9 - 56.3	65,000

Children in Household by State, County, Island, Community, BRFSS Age Group, DOH Race-Ethnicity, Gender, Education Level, Employment Status (Grouped), Household Income, Poverty Level, Marital Status (Grouped), Married, Health Care Coverage, for the Year(s) - 2001-2003, 2002-2004, 2003-2005, 2004-2006, 2005-2007, 2006-2008, 2007-2009, 2008-2010

Note: Weighted numbers (#) represent 3-yr averages, percentages and 95% confidence intervals; Respondents aged 18 years and older; n/r (Not Reportable) - If the unweighted total responses for a dimension (row) is <50 that row will not be shown; n/a (Not Available) - Not asked of a subset of respondents

Year: 2006-2008

State	Yes			No			Estimated Population (3-Yr Avg)
	#	%	C.I. (95%)	#	%	C.I. (95%)	#
Hawaii State	437,000	44.3	43.3 - 45.3	549,300	55.7	54.7 - 56.7	986,300

County	Yes			No			Estimated Population (3-Yr Avg)
	#	%	C.I. (95%)	#	%	C.I. (95%)	#
Hawaii	53,600	41.7	39.8 - 43.6	75,100	58.3	56.4 - 60.2	128,700
Honolulu	314,500	44.8	43.5 - 46.1	386,900	55.2	53.9 - 56.5	701,400
Kauai	19,800	41.3	38.4 - 44.2	28,200	58.7	55.8 - 61.6	48,000
Maui	49,000	45.3	43.2 - 47.5	59,100	54.7	52.5 - 56.8	108,100

Children in Household by State, County, Island, Community, BRFSS Age Group, DOH Race-Ethnicity, Gender, Education Level, Employment Status (Grouped), Household Income, Poverty Level, Marital Status (Grouped), Married, Health Care Coverage, for the Year(s) - 2001-2003, 2002-2004, 2003-2005, 2004-2006, 2005-2007, 2006-2008, 2007-2009, 2008-2010

Note: Weighted numbers (#) represent 3-yr averages, percentages and 95% confidence intervals; Respondents aged 18 years and older; n/r (Not Reportable) - If the unweighted total responses for a dimension (row) is <50 that row will not be shown; n/a (Not Available) - Not asked of a subset of respondents

Year: 2006-2008

Island	Yes			No			Estimated Population (3-Yr Avg)
	#	%	C.I. (95%)	#	%	C.I. (95%)	#
Hawaii	53,600	41.7	39.8 - 43.6	75,100	58.3	56.4 - 60.2	128,700
Kauai	19,800	41.3	38.4 - 44.2	28,200	58.7	55.8 - 61.6	48,000
Lanai	1,000	45.2	40.1 - 50.2	1,200	54.8	49.8 - 59.9	2,100
Maui	44,500	45.2	42.8 - 47.5	54,000	54.8	52.5 - 57.2	98,500
Molokai	3,600	47.4	42.7 - 52.0	3,900	52.6	48.0 - 57.3	7,500
Oahu	314,500	44.8	43.5 - 46.1	386,900	55.2	53.9 - 56.5	701,400

Community	Yes			No			Estimated Population (3-Yr Avg)
	#	%	C.I. (95%)	#	%	C.I. (95%)	#
Aiea/ Pearl City	28,300	42.6	38.4 - 46.7	38,200	57.4	53.3 - 61.6	66,500
Ala Moana	8,000	25.4	20.4 - 30.3	23,600	74.6	69.7 - 79.6	31,600

Children in Household by State, County, Island, Community, BRFSS Age Group, DOH Race-Ethnicity, Gender, Education Level, Employment Status (Grouped), Household Income, Poverty Level, Marital Status (Grouped), Married, Health Care Coverage, for the Year(s) - 2001-2003, 2002-2004, 2003-2005, 2004-2006, 2005-2007, 2006-2008, 2007-2009, 2008-2010

Note: Weighted numbers (#) represent 3-yr averages, percentages and 95% confidence intervals; Respondents aged 18 years and older; n/r (Not Reportable) - If the unweighted total responses for a dimension (row) is <50 that row will not be shown; n/a (Not Available) - Not asked of a subset of respondents

Year: 2006-2008

Community	Yes			No			Estimated Population (3-Yr Avg)
	#	%	C.I. (95%)	#	%	C.I. (95%)	#
Hanalei/ Kapaa	7,800	38.6	34.3 - 42.8	12,500	61.4	57.2 - 65.7	20,300
Hilo	14,600	38.5	34.9 - 42.0	23,300	61.5	58.0 - 65.1	37,900
Kaaawa/ Kahaluu/ Kaneohe	19,300	39.6	34.8 - 44.4	29,400	60.4	55.6 - 65.2	48,700
Kahului	15,900	48.0	43.9 - 52.2	17,200	52.0	47.8 - 56.1	33,100
Kailua/ Waimanalo	23,200	45.6	41.2 - 50.1	27,700	54.4	49.9 - 58.8	50,900
Kaimuki/ Palolo/ Waikiki	17,200	29.9	25.9 - 34.0	40,200	70.1	66.0 - 74.1	57,400
Kona	11,200	39.5	35.6 - 43.5	17,200	60.5	56.5 - 64.4	28,400
Lahaina/ Wailuku	15,300	46.9	42.7 - 51.0	17,300	53.1	49.0 - 57.3	32,600
Lanai	1,000	45.2	40.1 - 50.2	1,200	54.8	49.8 - 59.9	2,100
Lihue-Waimea	12,000	43.4	39.5 - 47.2	15,700	56.6	52.8 - 60.5	27,700
Manoa/ Upper Makiki	14,000	29.8	25.6 - 33.9	32,900	70.2	66.1 - 74.4	46,900
Mililani/ Wahiawa	38,500	54.3	50.5 - 58.2	32,400	45.7	41.8 - 49.5	70,900

Children in Household by State, County, Island, Community, BRFSS Age Group, DOH Race-Ethnicity, Gender, Education Level, Employment Status (Grouped), Household Income, Poverty Level, Marital Status (Grouped), Married, Health Care Coverage, for the Year(s) - 2001-2003, 2002-2004, 2003-2005, 2004-2006, 2005-2007, 2006-2008, 2007-2009, 2008-2010

Note: Weighted numbers (#) represent 3-yr averages, percentages and 95% confidence intervals; Respondents aged 18 years and older; n/r (Not Reportable) - If the unweighted total responses for a dimension (row) is <50 that row will not be shown; n/a (Not Available) - Not asked of a subset of respondents

Year: 2006-2008

Community	Yes			No			Estimated Population (3-Yr Avg)
	#	%	C.I. (95%)	#	%	C.I. (95%)	#
Molokai	3,600	47.4	42.7 - 52.0	3,900	52.6	48.0 - 57.3	7,500
Nanakuli/ Waianae	20,300	58.5	52.0 - 65.1	14,400	41.5	34.9 - 48.0	34,600
N.Hawaii	12,600	45.6	41.3 - 49.9	15,000	54.4	50.1 - 58.7	27,500
N.Shore/ Laie	12,100	51.4	44.1 - 58.6	11,400	48.6	41.4 - 55.9	23,500
Nuuanu/ Kalihi/ Moanalua	30,800	44.4	39.8 - 48.9	38,600	55.6	51.1 - 60.2	69,400
Puna/ Kau	15,300	43.8	40.1 - 47.5	19,600	56.2	52.5 - 59.9	34,800
Salt Lake/ Foster Village	19,600	57.8	52.1 - 63.5	14,300	42.2	36.5 - 47.9	33,800
Upcountry/ Hana	13,300	40.6	36.8 - 44.3	19,500	59.4	55.7 - 63.2	32,800
Waialae/ Kahala/ Hawaii Kai	16,500	38.9	34.1 - 43.7	25,800	61.1	56.3 - 65.9	42,300
Waipahu/ Kapolei/ Ewa	66,900	53.5	50.3 - 56.8	58,000	46.5	43.2 - 49.7	124,900

Children in Household by State, County, Island, Community, BRFSS Age Group, DOH Race-Ethnicity, Gender, Education Level, Employment Status (Grouped), Household Income, Poverty Level, Marital Status (Grouped), Married, Health Care Coverage, for the Year(s) - 2001-2003, 2002-2004, 2003-2005, 2004-2006, 2005-2007, 2006-2008, 2007-2009, 2008-2010

Note: Weighted numbers (#) represent 3-yr averages, percentages and 95% confidence intervals; Respondents aged 18 years and older; n/r (Not Reportable) - If the unweighted total responses for a dimension (row) is <50 that row will not be shown; n/a (Not Available) - Not asked of a subset of respondents

Year: 2006-2008

BRFSS Age Group	Yes			No			Estimated Population (3-Yr Avg)
	#	%	C.I. (95%)	#	%	C.I. (95%)	#
18-24	68,000	54.7	50.8 - 58.5	56,400	45.3	41.5 - 49.2	124,400
25-34	107,000	64.2	61.4 - 66.9	59,700	35.8	33.1 - 38.6	166,800
35-44	130,700	73.8	71.9 - 75.7	46,400	26.2	24.3 - 28.1	177,100
45-54	85,100	47.2	45.2 - 49.2	95,300	52.8	50.8 - 54.8	180,400
55-64	27,600	18.3	16.5 - 20.1	123,400	81.7	79.9 - 83.5	151,000
65-74	10,500	12.3	10.2 - 14.3	75,100	87.7	85.7 - 89.8	85,600
75+	5,900	6.2	4.6 - 7.9	89,300	93.8	92.1 - 95.4	95,200

Children in Household by State, County, Island, Community, BRFSS Age Group, DOH Race-Ethnicity, Gender, Education Level, Employment Status (Grouped), Household Income, Poverty Level, Marital Status (Grouped), Married, Health Care Coverage, for the Year(s) - 2001-2003, 2002-2004, 2003-2005, 2004-2006, 2005-2007, 2006-2008, 2007-2009, 2008-2010

Note: Weighted numbers (#) represent 3-yr averages, percentages and 95% confidence intervals; Respondents aged 18 years and older; n/r (Not Reportable) - If the unweighted total responses for a dimension (row) is <50 that row will not be shown; n/a (Not Available) - Not asked of a subset of respondents

Year: 2006-2008

DOH Race-Ethnicity	Yes			No			Estimated Population (3-Yr Avg)
	#	%	C.I. (95%)	#	%	C.I. (95%)	#
Caucasian	125,700	39.2	37.6 - 40.7	195,300	60.8	59.3 - 62.4	320,900
Native Hawaiian	74,800	56.9	54.2 - 59.7	56,600	43.1	40.3 - 45.8	131,400
Chinese	21,400	38.2	34.0 - 42.5	34,700	61.8	57.5 - 66.0	56,100
Filipino	88,600	56.2	53.3 - 59.1	68,900	43.8	40.9 - 46.7	157,500
Japanese	68,200	31.4	29.5 - 33.3	149,000	68.6	66.7 - 70.5	217,200
Black	9,200	61.4	53.1 - 69.6	5,800	38.6	30.4 - 46.9	14,900
Native Alaskan/ American Indian	2,700	46.1	34.9 - 57.3	3,100	53.9	42.7 - 65.1	5,800
Other Asian	11,500	45.7	39.1 - 52.3	13,700	54.3	47.7 - 60.9	25,100
Other Pacific Islander	17,000	71.9	64.8 - 78.9	6,700	28.1	21.1 - 35.2	23,700
Mixed Ethnicity	3,800	46.6	35.0 - 58.3	4,300	53.4	41.7 - 65.0	8,100
Other	12,700	59.2	52.4 - 65.9	8,800	40.8	34.1 - 47.6	21,500

Children in Household by State, County, Island, Community, BRFSS Age Group, DOH Race-Ethnicity, Gender, Education Level, Employment Status (Grouped), Household Income, Poverty Level, Marital Status (Grouped), Married, Health Care Coverage, for the Year(s) - 2001-2003, 2002-2004, 2003-2005, 2004-2006, 2005-2007, 2006-2008, 2007-2009, 2008-2010

Note: Weighted numbers (#) represent 3-yr averages, percentages and 95% confidence intervals; Respondents aged 18 years and older; n/r (Not Reportable) - If the unweighted total responses for a dimension (row) is <50 that row will not be shown; n/a (Not Available) - Not asked of a subset of respondents

Year: 2006-2008

Gender	Yes			No			Estimated Population (3-Yr Avg)
	#	%	C.I. (95%)	#	%	C.I. (95%)	#
Male	208,800	42.9	41.3 - 44.4	278,200	57.1	55.6 - 58.7	487,000
Female	228,200	45.7	44.4 - 47.0	271,100	54.3	53.0 - 55.6	499,300

Education Level	Yes			No			Estimated Population (3-Yr Avg)
	#	%	C.I. (95%)	#	%	C.I. (95%)	#
Never attended school/ Only Kindergarten to Grades 8	3,800	27.6	20.3 - 34.9	10,000	72.4	65.1 - 79.7	13,800
Grades 9 thru 11 (Some High School)	18,500	46.9	41.8 - 52.0	20,900	53.1	48.0 - 58.2	39,500
Grades 12 or GED (High School Grad)	145,300	48.7	46.7 - 50.6	153,300	51.3	49.4 - 53.3	298,600
College 1 to 3 years (Some College/ Tech)	131,700	46.1	44.3 - 48.0	153,900	53.9	52.0 - 55.7	285,600
College 4 years or more (College Grad)	137,300	39.5	38.0 - 41.0	210,400	60.5	59.0 - 62.0	347,600

Children in Household by State, County, Island, Community, BRFSS Age Group, DOH Race-Ethnicity, Gender, Education Level, Employment Status (Grouped), Household Income, Poverty Level, Marital Status (Grouped), Married, Health Care Coverage, for the Year(s) - 2001-2003, 2002-2004, 2003-2005, 2004-2006, 2005-2007, 2006-2008, 2007-2009, 2008-2010

Note: Weighted numbers (#) represent 3-yr averages, percentages and 95% confidence intervals; Respondents aged 18 years and older; n/r (Not Reportable) - If the unweighted total responses for a dimension (row) is <50 that row will not be shown; n/a (Not Available) - Not asked of a subset of respondents

Year: 2006-2008

Employment Status (Grouped)	Yes			No			Estimated Population (3-Yr Avg)
	#	%	C.I. (95%)	#	%	C.I. (95%)	#
Employed	330,000	52.3	51.0 - 53.6	301,000	47.7	46.4 - 49.0	631,000
Unemployed	18,600	49.8	43.7 - 55.9	18,700	50.2	44.1 - 56.3	37,300
Retired/Unable to work	29,600	13.2	11.8 - 14.6	195,100	86.8	85.4 - 88.2	224,700
Student/Homemaker	58,300	63.3	59.7 - 66.9	33,800	36.7	33.1 - 40.3	92,100

Children in Household by State, County, Island, Community, BRFSS Age Group, DOH Race-Ethnicity, Gender, Education Level, Employment Status (Grouped), Household Income, Poverty Level, Marital Status (Grouped), Married, Health Care Coverage, for the Year(s) - 2001-2003, 2002-2004, 2003-2005, 2004-2006, 2005-2007, 2006-2008, 2007-2009, 2008-2010

Note: Weighted numbers (#) represent 3-yr averages, percentages and 95% confidence intervals; Respondents aged 18 years and older; n/r (Not Reportable) - If the unweighted total responses for a dimension (row) is <50 that row will not be shown; n/a (Not Available) - Not asked of a subset of respondents

Year: 2006-2008

Household Income	Yes			No			Estimated Population (3-Yr Avg)
	#	%	C.I. (95%)	#	%	C.I. (95%)	#
Less than \$10,000	10,000	37.8	32.1 - 43.5	16,400	62.2	56.5 - 67.9	26,400
\$10,000 to \$14,999	9,500	36.3	30.4 - 42.2	16,700	63.7	57.8 - 69.6	26,200
\$15,000 to \$19,999	13,900	32.1	27.9 - 36.4	29,400	67.9	63.6 - 72.1	43,300
\$20,000 to \$24,999	24,600	40.5	36.5 - 44.6	36,000	59.5	55.4 - 63.5	60,600
\$25,000 to \$34,999	47,200	43.8	40.8 - 46.9	60,400	56.2	53.1 - 59.2	107,600
\$35,000 to \$49,999	64,800	43.6	41.0 - 46.1	83,900	56.4	53.9 - 59.0	148,600
\$50,000 to \$74,999	82,300	48.2	45.8 - 50.5	88,700	51.8	49.5 - 54.2	171,000
\$75,000 or more	135,300	47.7	45.9 - 49.5	148,200	52.3	50.5 - 54.1	283,500

Children in Household by State, County, Island, Community, BRFSS Age Group, DOH Race-Ethnicity, Gender, Education Level, Employment Status (Grouped), Household Income, Poverty Level, Marital Status (Grouped), Married, Health Care Coverage, for the Year(s) - 2001-2003, 2002-2004, 2003-2005, 2004-2006, 2005-2007, 2006-2008, 2007-2009, 2008-2010

Note: Weighted numbers (#) represent 3-yr averages, percentages and 95% confidence intervals; Respondents aged 18 years and older; n/r (Not Reportable) - If the unweighted total responses for a dimension (row) is <50 that row will not be shown; n/a (Not Available) - Not asked of a subset of respondents

Year: 2006-2008

Poverty Level	Yes			No			Estimated Population (3-Yr Avg)
	#	%	C.I. (95%)	#	%	C.I. (95%)	#
0-130%	107,000	57.4	54.9 - 59.9	79,300	42.6	40.1 - 45.1	186,300
131-185%	68,200	58.4	55.4 - 61.5	48,500	41.6	38.5 - 44.6	116,700
186+%	212,200	37.6	36.5 - 38.8	351,800	62.4	61.2 - 63.5	564,100

Marital Status (Grouped)	Yes			No			Estimated Population (3-Yr Avg)
	#	%	C.I. (95%)	#	%	C.I. (95%)	#
Married	296,200	50.7	49.5 - 51.9	287,600	49.3	48.1 - 50.5	583,700
Unmarried Couple	15,700	55.0	48.9 - 61.1	12,900	45.0	38.9 - 51.1	28,600
Widowed	8,400	14.8	12.2 - 17.4	48,500	85.2	82.6 - 87.8	56,900
Other	116,700	36.8	34.8 - 38.8	200,300	63.2	61.2 - 65.2	316,900

Children in Household by State, County, Island, Community, BRFSS Age Group, DOH Race-Ethnicity, Gender, Education Level, Employment Status (Grouped), Household Income, Poverty Level, Marital Status (Grouped), Married, Health Care Coverage, for the Year(s) - 2001-2003, 2002-2004, 2003-2005, 2004-2006, 2005-2007, 2006-2008, 2007-2009, 2008-2010

Note: Weighted numbers (#) represent 3-yr averages, percentages and 95% confidence intervals; Respondents aged 18 years and older; n/r (Not Reportable) - If the unweighted total responses for a dimension (row) is <50 that row will not be shown; n/a (Not Available) - Not asked of a subset of respondents

Year: 2006-2008

Married	Yes			No			Estimated Population (3-Yr Avg)
	#	%	C.I. (95%)	#	%	C.I. (95%)	#
Yes	302,700	51.0	49.8 - 52.1	291,400	49.0	47.9 - 50.2	594,200
No	134,100	34.3	32.6 - 36.1	256,500	65.7	63.9 - 67.4	390,600

Health Care Coverage	Yes			No			Estimated Population (3-Yr Avg)
	#	%	C.I. (95%)	#	%	C.I. (95%)	#
Yes	404,300	44.1	43.1 - 45.1	512,800	55.9	54.9 - 56.9	917,000
No	31,700	47.0	42.6 - 51.5	35,700	53.0	48.5 - 57.4	67,400

Children in Household by State, County, Island, Community, BRFSS Age Group, DOH Race-Ethnicity, Gender, Education Level, Employment Status (Grouped), Household Income, Poverty Level, Marital Status (Grouped), Married, Health Care Coverage, for the Year(s) - 2001-2003, 2002-2004, 2003-2005, 2004-2006, 2005-2007, 2006-2008, 2007-2009, 2008-2010

Note: Weighted numbers (#) represent 3-yr averages, percentages and 95% confidence intervals; Respondents aged 18 years and older; n/r (Not Reportable) - If the unweighted total responses for a dimension (row) is <50 that row will not be shown; n/a (Not Available) - Not asked of a subset of respondents

Year: 2005-2007

State	Yes			No			Estimated Population (3-Yr Avg)
	#	%	C.I. (95%)	#	%	C.I. (95%)	#
Hawaii State	429,900	44.0	43.0 - 45.0	547,900	56.0	55.0 - 57.0	977,800

County	Yes			No			Estimated Population (3-Yr Avg)
	#	%	C.I. (95%)	#	%	C.I. (95%)	#
Hawaii	49,400	39.9	38.1 - 41.8	74,400	60.1	58.2 - 61.9	123,800
Honolulu	313,100	44.7	43.4 - 46.0	387,300	55.3	54.0 - 56.6	700,400
Kauai	19,900	42.2	39.4 - 45.1	27,200	57.8	54.9 - 60.6	47,200
Maui	47,400	44.5	42.4 - 46.7	59,000	55.5	53.3 - 57.6	106,400

Children in Household by State, County, Island, Community, BRFSS Age Group, DOH Race-Ethnicity, Gender, Education Level, Employment Status (Grouped), Household Income, Poverty Level, Marital Status (Grouped), Married, Health Care Coverage, for the Year(s) - 2001-2003, 2002-2004, 2003-2005, 2004-2006, 2005-2007, 2006-2008, 2007-2009, 2008-2010

Note: Weighted numbers (#) represent 3-yr averages, percentages and 95% confidence intervals; Respondents aged 18 years and older; n/r (Not Reportable) - If the unweighted total responses for a dimension (row) is <50 that row will not be shown; n/a (Not Available) - Not asked of a subset of respondents

Year: 2005-2007

Island	Yes			No			Estimated Population (3-Yr Avg)
	#	%	C.I. (95%)	#	%	C.I. (95%)	#
Hawaii	49,400	39.9	38.1 - 41.8	74,400	60.1	58.2 - 61.9	123,800
Kauai	19,900	42.2	39.4 - 45.1	27,200	57.8	54.9 - 60.6	47,200
Lanai	1,000	44.6	39.4 - 49.7	1,300	55.4	50.3 - 60.6	2,300
Maui	43,100	44.3	42.0 - 46.6	54,300	55.7	53.4 - 58.0	97,400
Molokai	3,200	48.2	43.4 - 53.1	3,500	51.8	46.9 - 56.6	6,700
Oahu	313,100	44.7	43.4 - 46.0	387,300	55.3	54.0 - 56.6	700,400

Community	Yes			No			Estimated Population (3-Yr Avg)
	#	%	C.I. (95%)	#	%	C.I. (95%)	#
Aiea/ Pearl City	29,900	43.7	39.6 - 47.9	38,500	56.3	52.1 - 60.4	68,400
Ala Moana	6,600	20.6	16.2 - 25.0	25,300	79.4	75.0 - 83.8	31,900

Children in Household by State, County, Island, Community, BRFSS Age Group, DOH Race-Ethnicity, Gender, Education Level, Employment Status (Grouped), Household Income, Poverty Level, Marital Status (Grouped), Married, Health Care Coverage, for the Year(s) - 2001-2003, 2002-2004, 2003-2005, 2004-2006, 2005-2007, 2006-2008, 2007-2009, 2008-2010

Note: Weighted numbers (#) represent 3-yr averages, percentages and 95% confidence intervals; Respondents aged 18 years and older; n/r (Not Reportable) - If the unweighted total responses for a dimension (row) is <50 that row will not be shown; n/a (Not Available) - Not asked of a subset of respondents

Year: 2005-2007

Community	Yes			No			Estimated Population (3-Yr Avg)
	#	%	C.I. (95%)	#	%	C.I. (95%)	#
Hanalei/ Kapaa	8,000	39.8	35.7 - 44.0	12,100	60.2	56.0 - 64.3	20,100
Hilo	13,500	37.9	34.5 - 41.2	22,100	62.1	58.8 - 65.5	35,600
Kaaawa/ Kahaluu/ Kaneohe	19,500	38.9	34.2 - 43.6	30,700	61.1	56.4 - 65.8	50,200
Kahului	15,000	44.9	40.9 - 48.9	18,300	55.1	51.1 - 59.1	33,300
Kailua/ Waimanalo	22,900	45.5	40.9 - 50.0	27,400	54.5	50.0 - 59.1	50,300
Kaimuki/ Palolo/ Waikiki	16,700	28.0	24.1 - 31.8	43,000	72.0	68.2 - 75.9	59,700
Kona	11,000	37.9	34.1 - 41.8	17,900	62.1	58.2 - 65.9	28,900
Lahaina/ Wailuku	14,600	46.1	41.9 - 50.2	17,100	53.9	49.8 - 58.1	31,800
Lanai	1,000	44.6	39.4 - 49.7	1,300	55.4	50.3 - 60.6	2,300
Lihue-Waimea	11,900	44.0	40.1 - 48.0	15,200	56.0	52.0 - 59.9	27,100
Manoa/ Upper Makiki	13,300	28.9	24.6 - 33.3	32,600	71.1	66.7 - 75.4	45,900
Mililani/ Wahiawa	38,700	54.7	50.8 - 58.5	32,000	45.3	41.5 - 49.2	70,700

Children in Household by State, County, Island, Community, BRFSS Age Group, DOH Race-Ethnicity, Gender, Education Level, Employment Status (Grouped), Household Income, Poverty Level, Marital Status (Grouped), Married, Health Care Coverage, for the Year(s) - 2001-2003, 2002-2004, 2003-2005, 2004-2006, 2005-2007, 2006-2008, 2007-2009, 2008-2010

Note: Weighted numbers (#) represent 3-yr averages, percentages and 95% confidence intervals; Respondents aged 18 years and older; n/r (Not Reportable) - If the unweighted total responses for a dimension (row) is <50 that row will not be shown; n/a (Not Available) - Not asked of a subset of respondents

Year: 2005-2007

Community	Yes			No			Estimated Population (3-Yr Avg)
	#	%	C.I. (95%)	#	%	C.I. (95%)	#
Molokai	3,200	48.2	43.4 - 53.1	3,500	51.8	46.9 - 56.6	6,700
Nanakuli/ Waianae	20,100	60.3	53.9 - 66.8	13,200	39.7	33.2 - 46.1	33,400
N.Hawaii	11,600	44.0	40.0 - 48.0	14,800	56.0	52.0 - 60.0	26,400
N.Shore/ Laie	11,000	49.1	42.1 - 56.1	11,400	50.9	43.9 - 57.9	22,400
Nuuanu/ Kalihi/ Moanalua	33,100	46.9	42.5 - 51.4	37,400	53.1	48.6 - 57.5	70,500
Puna/ Kau	13,400	40.6	37.0 - 44.3	19,500	59.4	55.7 - 63.0	32,900
Salt Lake/ Foster Village	19,000	58.3	52.4 - 64.2	13,600	41.7	35.8 - 47.6	32,500
Upcountry/ Hana	13,500	41.9	38.0 - 45.8	18,800	58.1	54.2 - 62.0	32,300
Waialae/ Kahala/ Hawaii Kai	15,100	36.5	31.7 - 41.4	26,300	63.5	58.6 - 68.3	41,400
Waipahu/ Kapolei/ Ewa	67,300	54.7	51.4 - 57.9	55,800	45.3	42.1 - 48.6	123,200

Children in Household by State, County, Island, Community, BRFSS Age Group, DOH Race-Ethnicity, Gender, Education Level, Employment Status (Grouped), Household Income, Poverty Level, Marital Status (Grouped), Married, Health Care Coverage, for the Year(s) - 2001-2003, 2002-2004, 2003-2005, 2004-2006, 2005-2007, 2006-2008, 2007-2009, 2008-2010

Note: Weighted numbers (#) represent 3-yr averages, percentages and 95% confidence intervals; Respondents aged 18 years and older; n/r (Not Reportable) - If the unweighted total responses for a dimension (row) is <50 that row will not be shown; n/a (Not Available) - Not asked of a subset of respondents

Year: 2005-2007

BRFSS Age Group	Yes			No			Estimated Population (3-Yr Avg)
	#	%	C.I. (95%)	#	%	C.I. (95%)	#
18-24	65,800	53.3	49.4 - 57.1	57,800	46.7	42.9 - 50.6	123,600
25-34	102,700	63.0	60.4 - 65.6	60,400	37.0	34.4 - 39.6	163,000
35-44	130,900	73.4	71.5 - 75.3	47,400	26.6	24.7 - 28.5	178,300
45-54	84,400	46.4	44.4 - 48.4	97,500	53.6	51.6 - 55.6	181,900
55-64	26,900	18.1	16.3 - 20.0	121,200	81.9	80.0 - 83.7	148,100
65-74	11,000	13.0	10.9 - 15.2	73,400	87.0	84.8 - 89.1	84,400
75+	6,400	6.9	4.9 - 8.8	86,600	93.1	91.2 - 95.1	93,000

Children in Household by State, County, Island, Community, BRFSS Age Group, DOH Race-Ethnicity, Gender, Education Level, Employment Status (Grouped), Household Income, Poverty Level, Marital Status (Grouped), Married, Health Care Coverage, for the Year(s) - 2001-2003, 2002-2004, 2003-2005, 2004-2006, 2005-2007, 2006-2008, 2007-2009, 2008-2010

Note: Weighted numbers (#) represent 3-yr averages, percentages and 95% confidence intervals; Respondents aged 18 years and older; n/r (Not Reportable) - If the unweighted total responses for a dimension (row) is <50 that row will not be shown; n/a (Not Available) - Not asked of a subset of respondents

Year: 2005-2007

DOH Race-Ethnicity	Yes			No			Estimated Population (3-Yr Avg)
	#	%	C.I. (95%)	#	%	C.I. (95%)	#
Caucasian	122,000	38.1	36.7 - 39.6	197,800	61.9	60.4 - 63.3	319,800
Native Hawaiian	68,800	55.2	52.5 - 58.0	55,800	44.8	42.0 - 47.5	124,600
Chinese	20,500	39.2	34.8 - 43.6	31,700	60.8	56.4 - 65.2	52,200
Filipino	92,500	57.1	54.3 - 60.0	69,400	42.9	40.0 - 45.7	162,000
Japanese	65,200	30.9	28.9 - 32.8	146,200	69.1	67.2 - 71.1	211,400
Black	10,200	60.5	52.6 - 68.5	6,600	39.5	31.5 - 47.4	16,800
Native Alaskan/ American Indian	2,200	39.7	28.7 - 50.8	3,300	60.3	49.2 - 71.3	5,400
Other Asian	10,600	44.6	37.8 - 51.4	13,100	55.4	48.6 - 62.2	23,700
Other Pacific Islander	16,900	69.7	62.5 - 77.0	7,300	30.3	23.0 - 37.5	24,200
Mixed Ethnicity	3,800	46.6	35.0 - 58.3	4,300	53.4	41.7 - 65.0	8,100
Other	15,700	61.8	55.9 - 67.7	9,700	38.2	32.3 - 44.1	25,500

Children in Household by State, County, Island, Community, BRFSS Age Group, DOH Race-Ethnicity, Gender, Education Level, Employment Status (Grouped), Household Income, Poverty Level, Marital Status (Grouped), Married, Health Care Coverage, for the Year(s) - 2001-2003, 2002-2004, 2003-2005, 2004-2006, 2005-2007, 2006-2008, 2007-2009, 2008-2010

Note: Weighted numbers (#) represent 3-yr averages, percentages and 95% confidence intervals; Respondents aged 18 years and older; n/r (Not Reportable) - If the unweighted total responses for a dimension (row) is <50 that row will not be shown; n/a (Not Available) - Not asked of a subset of respondents

Year: 2005-2007

Gender	Yes			No			Estimated Population (3-Yr Avg)
	#	%	C.I. (95%)	#	%	C.I. (95%)	#
Male	205,400	42.5	40.9 - 44.0	278,100	57.5	56.0 - 59.1	483,500
Female	224,500	45.4	44.2 - 46.7	269,800	54.6	53.3 - 55.8	494,300

Education Level	Yes			No			Estimated Population (3-Yr Avg)
	#	%	C.I. (95%)	#	%	C.I. (95%)	#
Never attended school/ Only Kindergarten to Grades 8	6,300	36.4	28.5 - 44.3	11,100	63.6	55.7 - 71.5	17,400
Grades 9 thru 11 (Some High School)	18,300	46.5	41.4 - 51.5	21,100	53.5	48.5 - 58.6	39,400
Grades 12 or GED (High School Grad)	140,400	47.8	45.8 - 49.7	153,500	52.2	50.3 - 54.2	293,800
College 1 to 3 years (Some College/ Tech)	129,700	45.5	43.7 - 47.4	155,100	54.5	52.6 - 56.3	284,800
College 4 years or more (College Grad)	134,600	39.5	37.9 - 41.0	206,500	60.5	59.0 - 62.1	341,100

Children in Household by State, County, Island, Community, BRFSS Age Group, DOH Race-Ethnicity, Gender, Education Level, Employment Status (Grouped), Household Income, Poverty Level, Marital Status (Grouped), Married, Health Care Coverage, for the Year(s) - 2001-2003, 2002-2004, 2003-2005, 2004-2006, 2005-2007, 2006-2008, 2007-2009, 2008-2010

Note: Weighted numbers (#) represent 3-yr averages, percentages and 95% confidence intervals; Respondents aged 18 years and older; n/r (Not Reportable) - If the unweighted total responses for a dimension (row) is <50 that row will not be shown; n/a (Not Available) - Not asked of a subset of respondents

Year: 2005-2007

Employment Status (Grouped)	Yes			No			Estimated Population (3-Yr Avg)
	#	%	C.I. (95%)	#	%	C.I. (95%)	#
Employed	324,000	51.5	50.2 - 52.7	305,400	48.5	47.3 - 49.8	629,400
Unemployed	13,600	47.0	40.7 - 53.3	15,300	53.0	46.7 - 59.3	28,900
Retired/Unable to work	33,000	14.6	13.1 - 16.1	193,200	85.4	83.9 - 86.9	226,200
Student/Homemaker	59,000	64.1	60.5 - 67.6	33,100	35.9	32.4 - 39.5	92,100

Children in Household by State, County, Island, Community, BRFSS Age Group, DOH Race-Ethnicity, Gender, Education Level, Employment Status (Grouped), Household Income, Poverty Level, Marital Status (Grouped), Married, Health Care Coverage, for the Year(s) - 2001-2003, 2002-2004, 2003-2005, 2004-2006, 2005-2007, 2006-2008, 2007-2009, 2008-2010

Note: Weighted numbers (#) represent 3-yr averages, percentages and 95% confidence intervals; Respondents aged 18 years and older; n/r (Not Reportable) - If the unweighted total responses for a dimension (row) is <50 that row will not be shown; n/a (Not Available) - Not asked of a subset of respondents

Year: 2005-2007

Household Income	Yes			No			Estimated Population (3-Yr Avg)
	#	%	C.I. (95%)	#	%	C.I. (95%)	#
Less than \$10,000	10,500	38.5	32.7 - 44.3	16,800	61.5	55.7 - 67.3	27,400
\$10,000 to \$14,999	11,500	40.8	34.9 - 46.8	16,600	59.2	53.2 - 65.1	28,100
\$15,000 to \$19,999	14,800	31.8	27.7 - 35.8	31,700	68.2	64.2 - 72.3	46,500
\$20,000 to \$24,999	25,200	40.2	36.4 - 44.1	37,400	59.8	55.9 - 63.6	62,600
\$25,000 to \$34,999	47,500	44.3	41.3 - 47.4	59,700	55.7	52.6 - 58.7	107,100
\$35,000 to \$49,999	67,900	45.2	42.7 - 47.7	82,300	54.8	52.3 - 57.3	150,200
\$50,000 to \$74,999	79,400	47.0	44.6 - 49.3	89,800	53.0	50.7 - 55.4	169,200
\$75,000 or more	119,500	47.2	45.3 - 49.0	133,800	52.8	51.0 - 54.7	253,300

Children in Household by State, County, Island, Community, BRFSS Age Group, DOH Race-Ethnicity, Gender, Education Level, Employment Status (Grouped), Household Income, Poverty Level, Marital Status (Grouped), Married, Health Care Coverage, for the Year(s) - 2001-2003, 2002-2004, 2003-2005, 2004-2006, 2005-2007, 2006-2008, 2007-2009, 2008-2010

Note: Weighted numbers (#) represent 3-yr averages, percentages and 95% confidence intervals; Respondents aged 18 years and older; n/r (Not Reportable) - If the unweighted total responses for a dimension (row) is <50 that row will not be shown; n/a (Not Available) - Not asked of a subset of respondents

Year: 2005-2007

Poverty Level	Yes			No			Estimated Population (3-Yr Avg)
	#	%	C.I. (95%)	#	%	C.I. (95%)	#
0-130%	104,400	57.3	54.8 - 59.8	77,800	42.7	40.2 - 45.2	182,200
131-185%	61,500	56.9	53.8 - 60.1	46,500	43.1	39.9 - 46.2	108,000
186+%	210,500	38.0	36.8 - 39.1	343,800	62.0	60.9 - 63.2	554,300

Marital Status (Grouped)	Yes			No			Estimated Population (3-Yr Avg)
	#	%	C.I. (95%)	#	%	C.I. (95%)	#
Married	294,000	50.6	49.4 - 51.8	287,000	49.4	48.2 - 50.6	581,000
Unmarried Couple	15,400	54.2	47.9 - 60.4	13,000	45.8	39.6 - 52.1	28,300
Widowed	8,900	15.6	13.0 - 18.1	48,200	84.4	81.9 - 87.0	57,100
Other	111,700	35.9	33.9 - 37.8	199,800	64.1	62.2 - 66.1	311,500

Children in Household by State, County, Island, Community, BRFSS Age Group, DOH Race-Ethnicity, Gender, Education Level, Employment Status (Grouped), Household Income, Poverty Level, Marital Status (Grouped), Married, Health Care Coverage, for the Year(s) - 2001-2003, 2002-2004, 2003-2005, 2004-2006, 2005-2007, 2006-2008, 2007-2009, 2008-2010

Note: Weighted numbers (#) represent 3-yr averages, percentages and 95% confidence intervals; Respondents aged 18 years and older; n/r (Not Reportable) - If the unweighted total responses for a dimension (row) is <50 that row will not be shown; n/a (Not Available) - Not asked of a subset of respondents

Year: 2005-2007

Married	Yes			No			Estimated Population (3-Yr Avg)
	#	%	C.I. (95%)	#	%	C.I. (95%)	#
Yes	298,900	50.5	49.4 - 51.7	292,500	49.5	48.3 - 50.6	591,400
No	131,000	34.0	32.3 - 35.7	254,400	66.0	64.3 - 67.7	385,400

Health Care Coverage	Yes			No			Estimated Population (3-Yr Avg)
	#	%	C.I. (95%)	#	%	C.I. (95%)	#
Yes	397,000	43.9	42.9 - 44.9	507,000	56.1	55.1 - 57.1	904,100
No	31,700	44.2	40.1 - 48.2	40,100	55.8	51.8 - 59.9	71,800

Children in Household by State, County, Island, Community, BRFSS Age Group, DOH Race-Ethnicity, Gender, Education Level, Employment Status (Grouped), Household Income, Poverty Level, Marital Status (Grouped), Married, Health Care Coverage, for the Year(s) - 2001-2003, 2002-2004, 2003-2005, 2004-2006, 2005-2007, 2006-2008, 2007-2009, 2008-2010

Note: Weighted numbers (#) represent 3-yr averages, percentages and 95% confidence intervals; Respondents aged 18 years and older; n/r (Not Reportable) - If the unweighted total responses for a dimension (row) is <50 that row will not be shown; n/a (Not Available) - Not asked of a subset of respondents

Year: 2004-2006

State	Yes			No			Estimated Population (3-Yr Avg)
	#	%	C.I. (95%)	#	%	C.I. (95%)	#
Hawaii State	422,100	44.3	43.0 - 45.6	530,300	55.7	54.4 - 57.0	952,400

County	Yes			No			Estimated Population (3-Yr Avg)
	#	%	C.I. (95%)	#	%	C.I. (95%)	#
Hawaii	50,100	40.4	38.0 - 42.7	74,000	59.6	57.3 - 62.0	124,100
Honolulu	308,300	45.3	43.6 - 47.0	372,100	54.7	53.0 - 56.4	680,400
Kauai	18,400	41.1	37.8 - 44.3	26,500	58.9	55.7 - 62.2	44,900
Maui	45,300	44.0	41.0 - 46.9	57,700	56.1	53.1 - 59.0	103,000

Children in Household by State, County, Island, Community, BRFSS Age Group, DOH Race-Ethnicity, Gender, Education Level, Employment Status (Grouped), Household Income, Poverty Level, Marital Status (Grouped), Married, Health Care Coverage, for the Year(s) - 2001-2003, 2002-2004, 2003-2005, 2004-2006, 2005-2007, 2006-2008, 2007-2009, 2008-2010

Note: Weighted numbers (#) represent 3-yr averages, percentages and 95% confidence intervals; Respondents aged 18 years and older; n/r (Not Reportable) - If the unweighted total responses for a dimension (row) is <50 that row will not be shown; n/a (Not Available) - Not asked of a subset of respondents

Year: 2004-2006

Island	Yes			No			Estimated Population (3-Yr Avg)
	#	%	C.I. (95%)	#	%	C.I. (95%)	#
Hawaii	50,100	40.4	38.0 - 42.7	74,000	59.6	57.3 - 62.0	124,100
Kauai	18,400	41.1	37.8 - 44.3	26,500	58.9	55.7 - 62.2	44,900
Lanai	900	45.6	39.6 - 51.7	1,100	54.4	48.3 - 60.4	2,100
Maui	41,600	43.8	40.6 - 46.9	53,400	56.2	53.1 - 59.4	95,000
Molokai	2,700	46.2	39.3 - 53.2	3,200	53.8	46.8 - 60.7	5,900
Oahu	308,300	45.3	43.6 - 47.0	372,100	54.7	53.0 - 56.4	680,400

Community	Yes			No			Estimated Population (3-Yr Avg)
	#	%	C.I. (95%)	#	%	C.I. (95%)	#
Aiea/ Pearl City	29,200	44.3	39.1 - 49.5	36,800	55.7	50.5 - 60.9	66,000
Ala Moana	6,800	21.0	15.0 - 27.0	25,600	79.0	73.0 - 85.0	32,500

Children in Household by State, County, Island, Community, BRFSS Age Group, DOH Race-Ethnicity, Gender, Education Level, Employment Status (Grouped), Household Income, Poverty Level, Marital Status (Grouped), Married, Health Care Coverage, for the Year(s) - 2001-2003, 2002-2004, 2003-2005, 2004-2006, 2005-2007, 2006-2008, 2007-2009, 2008-2010

Note: Weighted numbers (#) represent 3-yr averages, percentages and 95% confidence intervals; Respondents aged 18 years and older; n/r (Not Reportable) - If the unweighted total responses for a dimension (row) is <50 that row will not be shown; n/a (Not Available) - Not asked of a subset of respondents

Year: 2004-2006

Community	Yes			No			Estimated Population (3-Yr Avg)
	#	%	C.I. (95%)	#	%	C.I. (95%)	#
Hanalei/ Kapaa	7,800	41.7	36.9 - 46.5	10,900	58.3	53.5 - 63.1	18,700
Hilo	13,900	40.1	35.9 - 44.3	20,800	59.9	55.7 - 64.1	34,700
Kaaawa/ Kahaluu/ Kaneohe	20,000	42.0	35.5 - 48.4	27,700	58.0	51.6 - 64.5	47,800
Kahului	16,200	49.1	43.8 - 54.4	16,800	50.9	45.6 - 56.2	33,000
Kailua/ Waimanalo	22,600	48.3	42.5 - 54.0	24,200	51.7	46.0 - 57.5	46,700
Kaimuki/ Palolo/ Waikiki	17,300	28.3	23.4 - 33.2	43,800	71.7	66.8 - 76.6	61,100
Kona	10,900	38.3	33.6 - 43.0	17,500	61.7	57.0 - 66.4	28,400
Lahaina/ Wailuku	13,300	43.0	37.4 - 48.6	17,600	57.0	51.4 - 62.6	30,900
Lanai	900	45.6	39.6 - 51.7	1,100	54.4	48.3 - 60.4	2,100
Lihue-Waimea	10,600	40.6	36.3 - 45.0	15,500	59.4	55.0 - 63.7	26,200
Manoa/ Upper Makiki	12,900	27.9	22.4 - 33.3	33,300	72.1	66.7 - 77.6	46,200
Mililani/ Wahiawa	38,500	58.4	53.1 - 63.7	27,400	41.6	36.3 - 46.9	65,900

Report Source: The Hawaii Health Data Warehouse;
 Data Source: State of Hawaii, Department of Health,
 Behavioral Risk Factor Surveillance System (BRFSS)

Children in Household by State, County, Island, Community, BRFSS Age Group, DOH Race-Ethnicity, Gender, Education Level, Employment Status (Grouped), Household Income, Poverty Level, Marital Status (Grouped), Married, Health Care Coverage, for the Year(s) - 2001-2003, 2002-2004, 2003-2005, 2004-2006, 2005-2007, 2006-2008, 2007-2009, 2008-2010

Note: Weighted numbers (#) represent 3-yr averages, percentages and 95% confidence intervals; Respondents aged 18 years and older; n/r (Not Reportable) - If the unweighted total responses for a dimension (row) is <50 that row will not be shown; n/a (Not Available) - Not asked of a subset of respondents

Year: 2004-2006

Community	Yes			No			Estimated Population (3-Yr Avg)
	#	%	C.I. (95%)	#	%	C.I. (95%)	#
Molokai	2,700	46.2	39.3 - 53.2	3,200	53.8	46.8 - 60.7	5,900
Nanakuli/ Waianae	18,000	56.0	47.6 - 64.3	14,200	44.0	35.7 - 52.4	32,200
N.Hawaii	10,200	41.4	36.5 - 46.2	14,500	58.6	53.8 - 63.5	24,700
N.Shore/ Laie	9,100	42.1	33.7 - 50.5	12,500	57.9	49.5 - 66.3	21,600
Nuuanu/ Kalihi/ Moanalua	32,500	46.9	41.5 - 52.3	36,700	53.1	47.7 - 58.5	69,200
Puna/ Kau	15,100	41.5	36.6 - 46.4	21,200	58.5	53.6 - 63.4	36,300
Salt Lake/ Foster Village	20,200	58.8	51.6 - 65.9	14,200	41.2	34.1 - 48.4	34,400
Upcountry/ Hana	12,100	38.8	33.7 - 44.0	19,000	61.2	56.0 - 66.3	31,100
Waialae/ Kahala/ Hawaii Kai	15,700	39.2	32.9 - 45.6	24,300	60.8	54.4 - 67.1	40,000
Waipahu/ Kapolei/ Ewa	65,500	56.1	51.9 - 60.3	51,300	43.9	39.7 - 48.1	116,800

Children in Household by State, County, Island, Community, BRFSS Age Group, DOH Race-Ethnicity, Gender, Education Level, Employment Status (Grouped), Household Income, Poverty Level, Marital Status (Grouped), Married, Health Care Coverage, for the Year(s) - 2001-2003, 2002-2004, 2003-2005, 2004-2006, 2005-2007, 2006-2008, 2007-2009, 2008-2010

Note: Weighted numbers (#) represent 3-yr averages, percentages and 95% confidence intervals; Respondents aged 18 years and older; n/r (Not Reportable) - If the unweighted total responses for a dimension (row) is <50 that row will not be shown; n/a (Not Available) - Not asked of a subset of respondents

Year: 2004-2006

BRFSS Age Group	Yes			No			Estimated Population (3-Yr Avg)
	#	%	C.I. (95%)	#	%	C.I. (95%)	#
18-24	61,400	52.3	47.5 - 57.1	56,000	47.7	42.9 - 52.5	117,500
25-34	103,500	62.4	59.3 - 65.6	62,300	37.6	34.4 - 40.7	165,800
35-44	127,900	71.6	69.1 - 74.0	50,800	28.4	26.0 - 30.9	178,700
45-54	78,800	44.7	42.1 - 47.4	97,300	55.3	52.6 - 57.9	176,100
55-64	27,400	19.9	17.4 - 22.5	109,800	80.1	77.5 - 82.6	137,200
65-74	12,400	14.8	11.5 - 18.1	71,500	85.2	81.9 - 88.5	83,900
75+	7,900	9.2	6.2 - 12.3	78,000	90.8	87.7 - 93.8	86,000

Children in Household by State, County, Island, Community, BRFSS Age Group, DOH Race-Ethnicity, Gender, Education Level, Employment Status (Grouped), Household Income, Poverty Level, Marital Status (Grouped), Married, Health Care Coverage, for the Year(s) - 2001-2003, 2002-2004, 2003-2005, 2004-2006, 2005-2007, 2006-2008, 2007-2009, 2008-2010

Note: Weighted numbers (#) represent 3-yr averages, percentages and 95% confidence intervals; Respondents aged 18 years and older; n/r (Not Reportable) - If the unweighted total responses for a dimension (row) is <50 that row will not be shown; n/a (Not Available) - Not asked of a subset of respondents

Year: 2004-2006

DOH Race-Ethnicity	Yes			No			Estimated Population (3-Yr Avg)
	#	%	C.I. (95%)	#	%	C.I. (95%)	#
Caucasian	120,400	38.4	36.4 - 40.3	193,400	61.6	59.7 - 63.6	313,800
Native Hawaiian	68,000	56.7	53.0 - 60.3	52,000	43.3	39.7 - 47.0	120,000
Chinese	19,400	38.1	32.6 - 43.5	31,500	61.9	56.5 - 67.4	50,900
Filipino	88,900	58.3	54.7 - 61.8	63,700	41.7	38.2 - 45.3	152,600
Japanese	62,600	31.0	28.5 - 33.4	139,500	69.0	66.6 - 71.5	202,100
Black	8,000	56.2	46.6 - 65.8	6,300	43.8	34.2 - 53.4	14,300
Native Alaskan/ American Indian	2,100	39.2	21.7 - 56.8	3,200	60.8	43.2 - 78.3	5,200
Other Asian	9,100	38.5	29.6 - 47.3	14,600	61.5	52.7 - 70.4	23,700
Other Pacific Islander	20,000	79.0	71.8 - 86.2	5,300	21.0	13.8 - 28.2	25,300
Mixed Ethnicity	3,800	46.6	35.0 - 58.3	4,300	53.4	41.7 - 65.0	8,100
Other	15,000	59.3	52.4 - 66.2	10,300	40.7	33.8 - 47.6	25,300

Children in Household by State, County, Island, Community, BRFSS Age Group, DOH Race-Ethnicity, Gender, Education Level, Employment Status (Grouped), Household Income, Poverty Level, Marital Status (Grouped), Married, Health Care Coverage, for the Year(s) - 2001-2003, 2002-2004, 2003-2005, 2004-2006, 2005-2007, 2006-2008, 2007-2009, 2008-2010

Note: Weighted numbers (#) represent 3-yr averages, percentages and 95% confidence intervals; Respondents aged 18 years and older; n/r (Not Reportable) - If the unweighted total responses for a dimension (row) is <50 that row will not be shown; n/a (Not Available) - Not asked of a subset of respondents

Year: 2004-2006

Gender	Yes			No			Estimated Population (3-Yr Avg)
	#	%	C.I. (95%)	#	%	C.I. (95%)	#
Male	200,200	42.7	40.7 - 44.7	268,800	57.3	55.3 - 59.3	469,000
Female	221,900	45.9	44.3 - 47.5	261,500	54.1	52.5 - 55.7	483,400

Education Level	Yes			No			Estimated Population (3-Yr Avg)
	#	%	C.I. (95%)	#	%	C.I. (95%)	#
Never attended school/ Only Kindergarten to Grades 8	6,000	38.1	29.5 - 46.8	9,800	61.9	53.2 - 70.5	15,800
Grades 9 thru 11 (Some High School)	17,100	46.0	39.2 - 52.8	20,000	54.0	47.2 - 60.8	37,100
Grades 12 or GED (High School Grad)	141,200	49.7	47.2 - 52.2	143,100	50.3	47.8 - 52.8	284,300
College 1 to 3 years (Some College/ Tech)	129,000	45.3	42.8 - 47.7	156,000	54.7	52.3 - 57.2	285,000
College 4 years or more (College Grad)	128,500	39.0	37.1 - 41.0	200,800	61.0	59.0 - 62.9	329,300

Children in Household by State, County, Island, Community, BRFSS Age Group, DOH Race-Ethnicity, Gender, Education Level, Employment Status (Grouped), Household Income, Poverty Level, Marital Status (Grouped), Married, Health Care Coverage, for the Year(s) - 2001-2003, 2002-2004, 2003-2005, 2004-2006, 2005-2007, 2006-2008, 2007-2009, 2008-2010

Note: Weighted numbers (#) represent 3-yr averages, percentages and 95% confidence intervals; Respondents aged 18 years and older; n/r (Not Reportable) - If the unweighted total responses for a dimension (row) is <50 that row will not be shown; n/a (Not Available) - Not asked of a subset of respondents

Year: 2004-2006

Employment Status (Grouped)	Yes			No			Estimated Population (3-Yr Avg)
	#	%	C.I. (95%)	#	%	C.I. (95%)	#
Employed	313,100	51.1	49.5 - 52.7	299,300	48.9	47.3 - 50.5	612,500
Unemployed	12,800	47.3	39.3 - 55.3	14,200	52.7	44.7 - 60.7	27,100
Retired/Unable to work	35,200	16.3	14.1 - 18.5	180,900	83.7	81.5 - 85.9	216,100
Student/Homemaker	60,300	63.2	58.9 - 67.6	35,100	36.8	32.4 - 41.1	95,400

Children in Household by State, County, Island, Community, BRFSS Age Group, DOH Race-Ethnicity, Gender, Education Level, Employment Status (Grouped), Household Income, Poverty Level, Marital Status (Grouped), Married, Health Care Coverage, for the Year(s) - 2001-2003, 2002-2004, 2003-2005, 2004-2006, 2005-2007, 2006-2008, 2007-2009, 2008-2010

Note: Weighted numbers (#) represent 3-yr averages, percentages and 95% confidence intervals; Respondents aged 18 years and older; n/r (Not Reportable) - If the unweighted total responses for a dimension (row) is <50 that row will not be shown; n/a (Not Available) - Not asked of a subset of respondents

Year: 2004-2006

Household Income	Yes			No			Estimated Population (3-Yr Avg)
	#	%	C.I. (95%)	#	%	C.I. (95%)	#
Less than \$10,000	8,400	35.8	28.5 - 43.1	15,000	64.2	56.9 - 71.5	23,300
\$10,000 to \$14,999	8,600	32.2	25.8 - 38.5	18,200	67.8	61.5 - 74.2	26,800
\$15,000 to \$19,999	18,100	38.3	32.4 - 44.2	29,100	61.7	55.8 - 67.6	47,200
\$20,000 to \$24,999	28,800	43.9	39.0 - 48.8	36,800	56.1	51.2 - 61.0	65,700
\$25,000 to \$34,999	46,700	43.3	39.3 - 47.3	61,100	56.7	52.7 - 60.7	107,800
\$35,000 to \$49,999	65,300	45.9	42.5 - 49.2	77,100	54.1	50.8 - 57.5	142,400
\$50,000 to \$74,999	95,700	46.1	43.1 - 49.1	111,800	53.9	50.9 - 56.9	207,500
\$75,000 or more	109,100	48.0	45.5 - 50.5	118,400	52.0	49.5 - 54.5	227,500

Children in Household by State, County, Island, Community, BRFSS Age Group, DOH Race-Ethnicity, Gender, Education Level, Employment Status (Grouped), Household Income, Poverty Level, Marital Status (Grouped), Married, Health Care Coverage, for the Year(s) - 2001-2003, 2002-2004, 2003-2005, 2004-2006, 2005-2007, 2006-2008, 2007-2009, 2008-2010

Note: Weighted numbers (#) represent 3-yr averages, percentages and 95% confidence intervals; Respondents aged 18 years and older; n/r (Not Reportable) - If the unweighted total responses for a dimension (row) is <50 that row will not be shown; n/a (Not Available) - Not asked of a subset of respondents

Year: 2004-2006

Poverty Level	Yes			No			Estimated Population (3-Yr Avg)
	#	%	C.I. (95%)	#	%	C.I. (95%)	#
0-130%	96,400	57.5	54.4 - 60.7	71,100	42.5	39.3 - 45.6	167,400
131-185%	64,900	59.6	55.5 - 63.8	43,900	40.4	36.2 - 44.5	108,900
186+%	219,400	38.4	36.8 - 39.9	352,400	61.6	60.1 - 63.2	571,800

Marital Status (Grouped)	Yes			No			Estimated Population (3-Yr Avg)
	#	%	C.I. (95%)	#	%	C.I. (95%)	#
Married	289,700	51.5	49.9 - 53.1	272,800	48.5	46.9 - 50.1	562,500
Unmarried Couple	14,300	52.6	45.3 - 59.9	12,900	47.4	40.1 - 54.7	27,200
Widowed	9,600	17.2	13.1 - 21.3	46,500	82.8	78.7 - 86.9	56,200
Other	108,400	35.4	32.9 - 37.9	198,100	64.6	62.1 - 67.1	306,500

Children in Household by State, County, Island, Community, BRFSS Age Group, DOH Race-Ethnicity, Gender, Education Level, Employment Status (Grouped), Household Income, Poverty Level, Marital Status (Grouped), Married, Health Care Coverage, for the Year(s) - 2001-2003, 2002-2004, 2003-2005, 2004-2006, 2005-2007, 2006-2008, 2007-2009, 2008-2010

Note: Weighted numbers (#) represent 3-yr averages, percentages and 95% confidence intervals; Respondents aged 18 years and older; n/r (Not Reportable) - If the unweighted total responses for a dimension (row) is <50 that row will not be shown; n/a (Not Available) - Not asked of a subset of respondents

Year: 2004-2006

Married	Yes			No			Estimated Population (3-Yr Avg)
	#	%	C.I. (95%)	#	%	C.I. (95%)	#
Yes	294,600	51.4	49.9 - 53.0	278,300	48.6	47.0 - 50.1	573,000
No	127,300	33.7	31.5 - 35.9	250,500	66.3	64.1 - 68.5	377,800

Health Care Coverage	Yes			No			Estimated Population (3-Yr Avg)
	#	%	C.I. (95%)	#	%	C.I. (95%)	#
Yes	386,200	44.4	43.1 - 45.8	483,000	55.6	54.2 - 56.9	869,200
No	34,900	43.7	38.9 - 48.5	45,100	56.3	51.5 - 61.1	80,000

Children in Household by State, County, Island, Community, BRFSS Age Group, DOH Race-Ethnicity, Gender, Education Level, Employment Status (Grouped), Household Income, Poverty Level, Marital Status (Grouped), Married, Health Care Coverage, for the Year(s) - 2001-2003, 2002-2004, 2003-2005, 2004-2006, 2005-2007, 2006-2008, 2007-2009, 2008-2010

Note: Weighted numbers (#) represent 3-yr averages, percentages and 95% confidence intervals; Respondents aged 18 years and older; n/r (Not Reportable) - If the unweighted total responses for a dimension (row) is <50 that row will not be shown; n/a (Not Available) - Not asked of a subset of respondents

Year: 2003-2005

State	Yes			No			Estimated Population (3-Yr Avg)
	#	%	C.I. (95%)	#	%	C.I. (95%)	#
Hawaii State	409,500	43.8	42.4 - 45.1	526,300	56.2	54.9 - 57.6	935,800

County	Yes			No			Estimated Population (3-Yr Avg)
	#	%	C.I. (95%)	#	%	C.I. (95%)	#
Hawaii	50,300	41.1	38.7 - 43.6	71,900	58.9	56.4 - 61.3	122,200
Honolulu	297,500	44.4	42.7 - 46.1	372,200	55.6	53.9 - 57.3	669,700
Kauai	17,600	40.5	37.1 - 43.9	25,900	59.5	56.1 - 62.9	43,500
Maui	44,100	43.9	40.8 - 47.0	56,300	56.1	53.0 - 59.2	100,400

Children in Household by State, County, Island, Community, BRFSS Age Group, DOH Race-Ethnicity, Gender, Education Level, Employment Status (Grouped), Household Income, Poverty Level, Marital Status (Grouped), Married, Health Care Coverage, for the Year(s) - 2001-2003, 2002-2004, 2003-2005, 2004-2006, 2005-2007, 2006-2008, 2007-2009, 2008-2010

Note: Weighted numbers (#) represent 3-yr averages, percentages and 95% confidence intervals; Respondents aged 18 years and older; n/r (Not Reportable) - If the unweighted total responses for a dimension (row) is <50 that row will not be shown; n/a (Not Available) - Not asked of a subset of respondents

Year: 2003-2005

Island	Yes			No			Estimated Population (3-Yr Avg)
	#	%	C.I. (95%)	#	%	C.I. (95%)	#
Hawaii	50,300	41.1	38.7 - 43.6	71,900	58.9	56.4 - 61.3	122,200
Kauai	17,600	40.5	37.1 - 43.9	25,900	59.5	56.1 - 62.9	43,500
Lanai	900	40.5	31.7 - 49.2	1,300	59.5	50.8 - 68.3	2,100
Maui	40,400	43.7	40.3 - 47.1	52,000	56.3	52.9 - 59.7	92,400
Molokai	2,900	48.3	40.3 - 56.4	3,100	51.7	43.6 - 59.7	5,900
Oahu	297,500	44.4	42.7 - 46.1	372,200	55.6	53.9 - 57.3	669,700

Community	Yes			No			Estimated Population (3-Yr Avg)
	#	%	C.I. (95%)	#	%	C.I. (95%)	#
Aiea/ Pearl City	26,400	42.8	37.2 - 48.5	35,200	57.2	51.5 - 62.8	61,600
Ala Moana	7,200	22.8	16.2 - 29.4	24,400	77.2	70.6 - 83.8	31,600

Children in Household by State, County, Island, Community, BRFSS Age Group, DOH Race-Ethnicity, Gender, Education Level, Employment Status (Grouped), Household Income, Poverty Level, Marital Status (Grouped), Married, Health Care Coverage, for the Year(s) - 2001-2003, 2002-2004, 2003-2005, 2004-2006, 2005-2007, 2006-2008, 2007-2009, 2008-2010

Note: Weighted numbers (#) represent 3-yr averages, percentages and 95% confidence intervals; Respondents aged 18 years and older; n/r (Not Reportable) - If the unweighted total responses for a dimension (row) is <50 that row will not be shown; n/a (Not Available) - Not asked of a subset of respondents

Year: 2003-2005

Community	Yes			No			Estimated Population (3-Yr Avg)
	#	%	C.I. (95%)	#	%	C.I. (95%)	#
Hanalei/ Kapaa	7,700	43.2	38.0 - 48.4	10,100	56.8	51.6 - 62.0	17,700
Hilo	14,200	40.7	36.3 - 45.1	20,700	59.3	54.9 - 63.7	34,900
Kaaawa/ Kahaluu/ Kaneohe	21,600	45.8	39.3 - 52.3	25,600	54.2	47.7 - 60.7	47,200
Kahului	15,500	47.0	41.3 - 52.6	17,500	53.0	47.4 - 58.7	33,000
Kailua/ Waimanalo	21,700	46.1	40.2 - 51.9	25,400	53.9	48.1 - 59.8	47,100
Kaimuki/ Palolo/ Waikiki	16,800	26.4	21.6 - 31.2	46,900	73.6	68.8 - 78.4	63,800
Kona	10,900	38.1	33.4 - 42.9	17,700	61.9	57.1 - 66.6	28,600
Lahaina/ Wailuku	12,900	43.8	37.6 - 50.1	16,500	56.2	49.9 - 62.4	29,400
Lanai	900	40.5	31.7 - 49.2	1,300	59.5	50.8 - 68.3	2,100
Lihue-Waimea	9,900	38.6	34.1 - 43.2	15,800	61.4	56.8 - 65.9	25,700
Manoa/ Upper Makiki	11,500	23.8	18.4 - 29.3	36,800	76.2	70.7 - 81.6	48,300
Mililani/ Wahiawa	39,700	59.6	54.3 - 65.0	26,800	40.4	35.0 - 45.7	66,500

Children in Household by State, County, Island, Community, BRFSS Age Group, DOH Race-Ethnicity, Gender, Education Level, Employment Status (Grouped), Household Income, Poverty Level, Marital Status (Grouped), Married, Health Care Coverage, for the Year(s) - 2001-2003, 2002-2004, 2003-2005, 2004-2006, 2005-2007, 2006-2008, 2007-2009, 2008-2010

Note: Weighted numbers (#) represent 3-yr averages, percentages and 95% confidence intervals; Respondents aged 18 years and older; n/r (Not Reportable) - If the unweighted total responses for a dimension (row) is <50 that row will not be shown; n/a (Not Available) - Not asked of a subset of respondents

Year: 2003-2005

Community	Yes			No			Estimated Population (3-Yr Avg)
	#	%	C.I. (95%)	#	%	C.I. (95%)	#
Molokai	2,900	48.3	40.3 - 56.4	3,100	51.7	43.6 - 59.7	5,900
Nanakuli/ Waianae	17,300	54.2	45.7 - 62.8	14,700	45.8	37.2 - 54.3	32,000
N.Hawaii	10,400	43.4	38.2 - 48.6	13,600	56.6	51.4 - 61.8	24,000
N.Shore/ Laie	9,100	41.9	33.2 - 50.7	12,600	58.1	49.3 - 66.8	21,700
Nuuanu/ Kalihi/ Moanalua	31,100	45.5	40.0 - 50.9	37,300	54.5	49.1 - 60.0	68,500
Puna/ Kau	14,800	42.5	37.3 - 47.7	20,000	57.5	52.3 - 62.7	34,700
Salt Lake/ Foster Village	20,600	55.5	48.5 - 62.5	16,500	44.5	37.5 - 51.5	37,100
Upcountry/ Hana	12,000	39.9	34.4 - 45.4	18,000	60.1	54.6 - 65.6	30,000
Waialae/ Kahala/ Hawaii Kai	14,200	37.5	30.6 - 44.3	23,700	62.5	55.7 - 69.4	37,800
Waipahu/ Kapolei/ Ewa	60,300	56.6	52.1 - 61.1	46,300	43.4	38.9 - 47.9	106,500

Children in Household by State, County, Island, Community, BRFSS Age Group, DOH Race-Ethnicity, Gender, Education Level, Employment Status (Grouped), Household Income, Poverty Level, Marital Status (Grouped), Married, Health Care Coverage, for the Year(s) - 2001-2003, 2002-2004, 2003-2005, 2004-2006, 2005-2007, 2006-2008, 2007-2009, 2008-2010

Note: Weighted numbers (#) represent 3-yr averages, percentages and 95% confidence intervals; Respondents aged 18 years and older; n/r (Not Reportable) - If the unweighted total responses for a dimension (row) is <50 that row will not be shown; n/a (Not Available) - Not asked of a subset of respondents

Year: 2003-2005

DOH Race-Ethnicity	Yes			No			Estimated Population (3-Yr Avg)
	#	%	C.I. (95%)	#	%	C.I. (95%)	#
Caucasian	121,600	37.8	35.8 - 39.8	199,900	62.2	60.2 - 64.2	321,500
Native Hawaiian	59,500	55.7	51.7 - 59.6	47,400	44.3	40.4 - 48.3	106,900
Chinese	28,000	38.7	34.1 - 43.3	44,300	61.3	56.7 - 65.9	72,300
Filipino	86,100	58.0	54.4 - 61.6	62,400	42.0	38.4 - 45.6	148,500
Japanese	59,700	31.5	28.8 - 34.2	129,900	68.5	65.8 - 71.2	189,600
Black	8,500	61.9	52.5 - 71.2	5,200	38.1	28.8 - 47.5	13,700
Native Alaskan/ American Indian	2,100	40.9	22.0 - 59.9	3,000	59.1	40.1 - 78.0	5,100
Other Asian	7,400	38.6	28.2 - 49.1	11,800	61.4	50.9 - 71.8	19,300
Other Pacific Islander	16,100	76.0	67.2 - 84.9	5,100	24.0	15.1 - 32.8	21,200
Other	15,200	58.1	51.2 - 65.0	11,000	41.9	35.0 - 48.8	26,100

Children in Household by State, County, Island, Community, BRFSS Age Group, DOH Race-Ethnicity, Gender, Education Level, Employment Status (Grouped), Household Income, Poverty Level, Marital Status (Grouped), Married, Health Care Coverage, for the Year(s) - 2001-2003, 2002-2004, 2003-2005, 2004-2006, 2005-2007, 2006-2008, 2007-2009, 2008-2010

Note: Weighted numbers (#) represent 3-yr averages, percentages and 95% confidence intervals; Respondents aged 18 years and older; n/r (Not Reportable) - If the unweighted total responses for a dimension (row) is <50 that row will not be shown; n/a (Not Available) - Not asked of a subset of respondents

Year: 2003-2005

Gender	Yes			No			Estimated Population (3-Yr Avg)
	#	%	C.I. (95%)	#	%	C.I. (95%)	#
Male	193,600	41.9	39.9 - 44.0	267,900	58.1	56.0 - 60.1	461,500
Female	215,900	45.5	43.8 - 47.2	258,400	54.5	52.8 - 56.2	474,300

Education Level	Yes			No			Estimated Population (3-Yr Avg)
	#	%	C.I. (95%)	#	%	C.I. (95%)	#
Never attended school/ Only Kindergarten to Grades 8	5,700	38.0	28.5 - 47.5	9,300	62.0	52.5 - 71.5	15,000
Grades 9 thru 11 (Some High School)	14,000	39.6	32.2 - 47.0	21,300	60.4	53.0 - 67.8	35,300
Grades 12 or GED (High School Grad)	136,700	48.9	46.3 - 51.4	143,000	51.1	48.6 - 53.7	279,700
College 1 to 3 years (Some College/ Tech)	124,900	44.5	42.0 - 47.0	155,900	55.5	53.0 - 58.0	280,800
College 4 years or more (College Grad)	127,700	39.4	37.4 - 41.5	196,200	60.6	58.5 - 62.6	323,900

Children in Household by State, County, Island, Community, BRFSS Age Group, DOH Race-Ethnicity, Gender, Education Level, Employment Status (Grouped), Household Income, Poverty Level, Marital Status (Grouped), Married, Health Care Coverage, for the Year(s) - 2001-2003, 2002-2004, 2003-2005, 2004-2006, 2005-2007, 2006-2008, 2007-2009, 2008-2010

Note: Weighted numbers (#) represent 3-yr averages, percentages and 95% confidence intervals; Respondents aged 18 years and older; n/r (Not Reportable) - If the unweighted total responses for a dimension (row) is <50 that row will not be shown; n/a (Not Available) - Not asked of a subset of respondents

Year: 2003-2005

Employment Status (Grouped)	Yes			No			Estimated Population (3-Yr Avg)
	#	%	C.I. (95%)	#	%	C.I. (95%)	#
Employed	302,400	50.1	48.4 - 51.7	301,500	49.9	48.3 - 51.6	603,900
Unemployed	11,500	45.1	36.5 - 53.6	14,000	54.9	46.4 - 63.5	25,500
Retired/Unable to work	33,800	16.2	13.9 - 18.5	175,100	83.8	81.5 - 86.1	208,900
Student/Homemaker	61,300	63.6	59.4 - 67.8	35,100	36.4	32.2 - 40.6	96,400

Children in Household by State, County, Island, Community, BRFSS Age Group, DOH Race-Ethnicity, Gender, Education Level, Employment Status (Grouped), Household Income, Poverty Level, Marital Status (Grouped), Married, Health Care Coverage, for the Year(s) - 2001-2003, 2002-2004, 2003-2005, 2004-2006, 2005-2007, 2006-2008, 2007-2009, 2008-2010

Note: Weighted numbers (#) represent 3-yr averages, percentages and 95% confidence intervals; Respondents aged 18 years and older; n/r (Not Reportable) - If the unweighted total responses for a dimension (row) is <50 that row will not be shown; n/a (Not Available) - Not asked of a subset of respondents

Year: 2003-2005

Household Income	Yes			No			Estimated Population (3-Yr Avg)
	#	%	C.I. (95%)	#	%	C.I. (95%)	#
Less than \$10,000	10,300	33.7	27.4 - 40.0	20,200	66.3	60.0 - 72.6	30,500
\$10,000 to \$14,999	12,700	36.0	30.0 - 42.1	22,500	64.0	57.9 - 70.0	35,200
\$15,000 to \$19,999	20,000	40.4	34.5 - 46.3	29,500	59.6	53.7 - 65.5	49,500
\$20,000 to \$24,999	26,400	42.4	37.2 - 47.5	35,900	57.6	52.5 - 62.8	62,300
\$25,000 to \$34,999	42,500	42.3	38.1 - 46.5	58,000	57.7	53.5 - 61.9	100,500
\$35,000 to \$49,999	66,700	45.9	42.5 - 49.3	78,600	54.1	50.7 - 57.5	145,300
\$50,000 to \$74,999	93,800	46.7	43.5 - 49.8	107,200	53.3	50.2 - 56.5	201,000
\$75,000 or more	97,500	48.8	46.0 - 51.6	102,200	51.2	48.4 - 54.0	199,700

Children in Household by State, County, Island, Community, BRFSS Age Group, DOH Race-Ethnicity, Gender, Education Level, Employment Status (Grouped), Household Income, Poverty Level, Marital Status (Grouped), Married, Health Care Coverage, for the Year(s) - 2001-2003, 2002-2004, 2003-2005, 2004-2006, 2005-2007, 2006-2008, 2007-2009, 2008-2010

Note: Weighted numbers (#) represent 3-yr averages, percentages and 95% confidence intervals; Respondents aged 18 years and older; n/r (Not Reportable) - If the unweighted total responses for a dimension (row) is <50 that row will not be shown; n/a (Not Available) - Not asked of a subset of respondents

Year: 2003-2005

Poverty Level	Yes			No			Estimated Population (3-Yr Avg)
	#	%	C.I. (95%)	#	%	C.I. (95%)	#
0-130%	95,200	55.2	52.0 - 58.4	77,300	44.8	41.6 - 48.0	172,400
131-185%	55,900	56.9	52.1 - 61.6	42,400	43.1	38.4 - 47.9	98,300
186+%	218,800	39.5	37.9 - 41.2	334,400	60.5	58.8 - 62.1	553,200

Marital Status (Grouped)	Yes			No			Estimated Population (3-Yr Avg)
	#	%	C.I. (95%)	#	%	C.I. (95%)	#
Married	283,300	51.7	50.0 - 53.4	264,600	48.3	46.6 - 50.0	547,900
Unmarried Couple	10,000	44.4	36.3 - 52.6	12,500	55.6	47.4 - 63.7	22,600
Widowed	11,600	19.2	15.1 - 23.4	48,600	80.8	76.6 - 84.9	60,200
Other	104,500	34.3	31.7 - 36.8	200,600	65.7	63.2 - 68.3	305,100

Children in Household by State, County, Island, Community, BRFSS Age Group, DOH Race-Ethnicity, Gender, Education Level, Employment Status (Grouped), Household Income, Poverty Level, Marital Status (Grouped), Married, Health Care Coverage, for the Year(s) - 2001-2003, 2002-2004, 2003-2005, 2004-2006, 2005-2007, 2006-2008, 2007-2009, 2008-2010

Note: Weighted numbers (#) represent 3-yr averages, percentages and 95% confidence intervals; Respondents aged 18 years and older; n/r (Not Reportable) - If the unweighted total responses for a dimension (row) is <50 that row will not be shown; n/a (Not Available) - Not asked of a subset of respondents

Year: 2003-2005

Married	Yes			No			Estimated Population (3-Yr Avg)
	#	%	C.I. (95%)	#	%	C.I. (95%)	#
Yes	288,700	51.7	50.0 - 53.3	270,000	48.3	46.7 - 50.0	558,700
No	120,600	32.1	29.9 - 34.3	255,100	67.9	65.7 - 70.1	375,700

Health Care Coverage	Yes			No			Estimated Population (3-Yr Avg)
	#	%	C.I. (95%)	#	%	C.I. (95%)	#
Yes	377,900	44.2	42.8 - 45.6	477,500	55.8	54.4 - 57.2	855,400
No	31,100	39.9	35.1 - 44.8	46,800	60.1	55.2 - 64.9	77,900

Children in Household by State, County, Island, Community, BRFSS Age Group, DOH Race-Ethnicity, Gender, Education Level, Employment Status (Grouped), Household Income, Poverty Level, Marital Status (Grouped), Married, Health Care Coverage, for the Year(s) - 2001-2003, 2002-2004, 2003-2005, 2004-2006, 2005-2007, 2006-2008, 2007-2009, 2008-2010

Note: Weighted numbers (#) represent 3-yr averages, percentages and 95% confidence intervals; Respondents aged 18 years and older; n/r (Not Reportable) - If the unweighted total responses for a dimension (row) is <50 that row will not be shown; n/a (Not Available) - Not asked of a subset of respondents

Year: 2002-2004

State	Yes			No			Estimated Population (3-Yr Avg)
	#	%	C.I. (95%)	#	%	C.I. (95%)	#
Hawaii State	400,900	43.9	42.6 - 45.3	512,000	56.1	54.7 - 57.4	912,900

County	Yes			No			Estimated Population (3-Yr Avg)
	#	%	C.I. (95%)	#	%	C.I. (95%)	#
Hawaii	50,900	42.8	40.3 - 45.4	67,900	57.2	54.6 - 59.7	118,700
Honolulu	290,000	44.3	42.6 - 46.0	364,500	55.7	54.0 - 57.4	654,500
Kauai	17,000	40.2	36.8 - 43.6	25,200	59.8	56.4 - 63.2	42,200
Maui	43,100	44.2	41.1 - 47.4	54,300	55.8	52.6 - 58.9	97,400

Children in Household by State, County, Island, Community, BRFSS Age Group, DOH Race-Ethnicity, Gender, Education Level, Employment Status (Grouped), Household Income, Poverty Level, Marital Status (Grouped), Married, Health Care Coverage, for the Year(s) - 2001-2003, 2002-2004, 2003-2005, 2004-2006, 2005-2007, 2006-2008, 2007-2009, 2008-2010

Note: Weighted numbers (#) represent 3-yr averages, percentages and 95% confidence intervals; Respondents aged 18 years and older; n/r (Not Reportable) - If the unweighted total responses for a dimension (row) is <50 that row will not be shown; n/a (Not Available) - Not asked of a subset of respondents

Year: 2002-2004

Island	Yes			No			Estimated Population (3-Yr Avg)
	#	%	C.I. (95%)	#	%	C.I. (95%)	#
Hawaii	50,900	42.8	40.3 - 45.4	67,900	57.2	54.6 - 59.7	118,700
Kauai	17,000	40.2	36.8 - 43.6	25,200	59.8	56.4 - 63.2	42,200
Lanai	1,000	39.5	31.0 - 48.1	1,500	60.5	51.9 - 69.0	2,600
Maui	38,800	44.0	40.6 - 47.4	49,400	56.0	52.6 - 59.4	88,200
Molokai	3,300	49.4	41.9 - 56.9	3,400	50.6	43.1 - 58.1	6,700
Oahu	290,000	44.3	42.6 - 46.0	364,500	55.7	54.0 - 57.4	654,500

Community	Yes			No			Estimated Population (3-Yr Avg)
	#	%	C.I. (95%)	#	%	C.I. (95%)	#
Aiea/ Pearl City	23,900	39.7	34.0 - 45.3	36,400	60.3	54.7 - 66.0	60,300
Ala Moana	9,300	29.3	22.5 - 36.0	22,600	70.7	64.0 - 77.5	32,000

Children in Household by State, County, Island, Community, BRFSS Age Group, DOH Race-Ethnicity, Gender, Education Level, Employment Status (Grouped), Household Income, Poverty Level, Marital Status (Grouped), Married, Health Care Coverage, for the Year(s) - 2001-2003, 2002-2004, 2003-2005, 2004-2006, 2005-2007, 2006-2008, 2007-2009, 2008-2010

Note: Weighted numbers (#) represent 3-yr averages, percentages and 95% confidence intervals; Respondents aged 18 years and older; n/r (Not Reportable) - If the unweighted total responses for a dimension (row) is <50 that row will not be shown; n/a (Not Available) - Not asked of a subset of respondents

Year: 2002-2004

Community	Yes			No			Estimated Population (3-Yr Avg)
	#	%	C.I. (95%)	#	%	C.I. (95%)	#
Hanalei/ Kapaa	7,300	41.7	36.5 - 47.0	10,100	58.3	53.0 - 63.5	17,400
Hilo	14,500	41.8	37.3 - 46.2	20,200	58.2	53.8 - 62.7	34,700
Kaaawa/ Kahaluu/ Kaneohe	20,500	48.0	41.1 - 54.8	22,200	52.0	45.2 - 58.9	42,700
Kahului	14,800	47.5	41.8 - 53.3	16,300	52.5	46.7 - 58.2	31,000
Kailua/ Waimanalo	21,600	46.2	40.4 - 52.1	25,200	53.8	47.9 - 59.6	46,800
Kaimuki/ Palolo/ Waikiki	16,700	26.0	21.3 - 30.8	47,600	74.0	69.2 - 78.7	64,300
Kona	11,600	40.3	35.6 - 45.0	17,200	59.7	55.0 - 64.4	28,800
Lahaina/ Wailuku	12,300	43.7	37.2 - 50.1	15,900	56.3	49.9 - 62.8	28,300
Lanai	1,000	39.5	31.0 - 48.1	1,500	60.5	51.9 - 69.0	2,600
Lihue-Waimea	9,700	39.1	34.7 - 43.5	15,100	60.9	56.5 - 65.3	24,800
Manoa/ Upper Makiki	12,200	23.1	18.1 - 28.1	40,600	76.9	71.9 - 81.9	52,800
Mililani/ Wahiawa	38,500	60.6	55.0 - 66.3	25,000	39.4	33.7 - 45.0	63,600

Children in Household by State, County, Island, Community, BRFSS Age Group, DOH Race-Ethnicity, Gender, Education Level, Employment Status (Grouped), Household Income, Poverty Level, Marital Status (Grouped), Married, Health Care Coverage, for the Year(s) - 2001-2003, 2002-2004, 2003-2005, 2004-2006, 2005-2007, 2006-2008, 2007-2009, 2008-2010

Note: Weighted numbers (#) represent 3-yr averages, percentages and 95% confidence intervals; Respondents aged 18 years and older; n/r (Not Reportable) - If the unweighted total responses for a dimension (row) is <50 that row will not be shown; n/a (Not Available) - Not asked of a subset of respondents

Year: 2002-2004

Community	Yes			No			Estimated Population (3-Yr Avg)
	#	%	C.I. (95%)	#	%	C.I. (95%)	#
Molokai	3,300	49.4	41.9 - 56.9	3,400	50.6	43.1 - 58.1	6,700
Nanakuli/ Waianae	17,000	57.4	48.7 - 66.1	12,600	42.6	33.9 - 51.3	29,600
N.Hawaii	10,500	45.1	39.6 - 50.5	12,800	54.9	49.5 - 60.4	23,400
N.Shore/ Laie	8,700	41.1	32.2 - 49.9	12,500	58.9	50.1 - 67.8	21,100
Nuuanu/ Kalihi/ Moanalua	29,200	43.5	38.0 - 48.9	38,000	56.5	51.1 - 62.0	67,200
Puna/ Kau	14,300	44.7	39.2 - 50.1	17,700	55.3	49.9 - 60.8	31,900
Salt Lake/ Foster Village	19,900	51.4	44.6 - 58.2	18,800	48.6	41.8 - 55.4	38,600
Upcountry/ Hana	11,700	40.4	35.0 - 45.9	17,200	59.6	54.1 - 65.0	28,900
Waialae/ Kahala/ Hawaii Kai	16,800	42.7	36.2 - 49.3	22,500	57.3	50.7 - 63.8	39,300
Waipahu/ Kapolei/ Ewa	55,600	57.8	53.0 - 62.6	40,600	42.2	37.4 - 47.0	96,100

Children in Household by State, County, Island, Community, BRFSS Age Group, DOH Race-Ethnicity, Gender, Education Level, Employment Status (Grouped), Household Income, Poverty Level, Marital Status (Grouped), Married, Health Care Coverage, for the Year(s) - 2001-2003, 2002-2004, 2003-2005, 2004-2006, 2005-2007, 2006-2008, 2007-2009, 2008-2010

Note: Weighted numbers (#) represent 3-yr averages, percentages and 95% confidence intervals; Respondents aged 18 years and older; n/r (Not Reportable) - If the unweighted total responses for a dimension (row) is <50 that row will not be shown; n/a (Not Available) - Not asked of a subset of respondents

Year: 2002-2004

BRFSS Age Group	Yes			No			Estimated Population (3-Yr Avg)
	#	%	C.I. (95%)	#	%	C.I. (95%)	#
18-24	53,400	47.4	42.6 - 52.2	59,200	52.6	47.8 - 57.4	112,600
25-34	94,300	57.2	54.0 - 60.4	70,600	42.8	39.6 - 46.0	165,000
35-44	125,900	69.9	67.3 - 72.4	54,200	30.1	27.6 - 32.7	180,200
45-54	80,900	47.0	44.2 - 49.8	91,100	53.0	50.2 - 55.8	172,000
55-64	25,100	21.0	18.1 - 24.0	94,200	79.0	76.0 - 81.9	119,300
65-74	12,600	15.3	11.6 - 18.9	69,700	84.7	81.1 - 88.4	82,300
75+	7,100	9.2	6.0 - 12.5	69,600	90.8	87.5 - 94.0	76,700

Children in Household by State, County, Island, Community, BRFSS Age Group, DOH Race-Ethnicity, Gender, Education Level, Employment Status (Grouped), Household Income, Poverty Level, Marital Status (Grouped), Married, Health Care Coverage, for the Year(s) - 2001-2003, 2002-2004, 2003-2005, 2004-2006, 2005-2007, 2006-2008, 2007-2009, 2008-2010

Note: Weighted numbers (#) represent 3-yr averages, percentages and 95% confidence intervals; Respondents aged 18 years and older; n/r (Not Reportable) - If the unweighted total responses for a dimension (row) is <50 that row will not be shown; n/a (Not Available) - Not asked of a subset of respondents

Year: 2002-2004

DOH Race-Ethnicity	Yes			No			Estimated Population (3-Yr Avg)
	#	%	C.I. (95%)	#	%	C.I. (95%)	#
Caucasian	121,700	38.4	36.3 - 40.4	195,500	61.6	59.6 - 63.7	317,200
Native Hawaiian	59,900	56.6	52.6 - 60.6	45,900	43.4	39.4 - 47.4	105,800
Chinese	28,800	37.8	33.4 - 42.2	47,400	62.2	57.8 - 66.6	76,200
Filipino	83,000	58.6	54.9 - 62.3	58,700	41.4	37.7 - 45.1	141,700
Japanese	58,400	32.2	29.4 - 34.9	123,100	67.8	65.1 - 70.6	181,500
Black	7,100	56.2	46.3 - 66.1	5,500	43.8	33.9 - 53.7	12,600
Native Alaskan/ American Indian	1,700	36.8	15.9 - 57.8	2,900	63.2	42.2 - 84.1	4,600
Other Asian	7,200	37.1	26.9 - 47.3	12,300	62.9	52.7 - 73.1	19,500
Other Pacific Islander	15,500	79.5	71.3 - 87.8	4,000	20.5	12.2 - 28.7	19,500
Other	12,600	54.5	46.8 - 62.1	10,500	45.5	37.9 - 53.2	23,100

Children in Household by State, County, Island, Community, BRFSS Age Group, DOH Race-Ethnicity, Gender, Education Level, Employment Status (Grouped), Household Income, Poverty Level, Marital Status (Grouped), Married, Health Care Coverage, for the Year(s) - 2001-2003, 2002-2004, 2003-2005, 2004-2006, 2005-2007, 2006-2008, 2007-2009, 2008-2010

Note: Weighted numbers (#) represent 3-yr averages, percentages and 95% confidence intervals; Respondents aged 18 years and older; n/r (Not Reportable) - If the unweighted total responses for a dimension (row) is <50 that row will not be shown; n/a (Not Available) - Not asked of a subset of respondents

Year: 2002-2004

Gender	Yes			No			Estimated Population (3-Yr Avg)
	#	%	C.I. (95%)	#	%	C.I. (95%)	#
Male	188,300	41.9	39.8 - 43.9	261,500	58.1	56.1 - 60.2	449,800
Female	212,600	45.9	44.2 - 47.6	250,400	54.1	52.4 - 55.8	463,000

Education Level	Yes			No			Estimated Population (3-Yr Avg)
	#	%	C.I. (95%)	#	%	C.I. (95%)	#
Never attended school/ Only Kindergarten to Grades 8	3,600	25.1	17.2 - 32.9	10,700	74.9	67.1 - 82.8	14,300
Grades 9 thru 11 (Some High School)	13,800	41.4	33.9 - 48.8	19,600	58.6	51.2 - 66.1	33,400
Grades 12 or GED (High School Grad)	146,900	50.5	48.0 - 53.0	144,000	49.5	47.0 - 52.0	290,800
College 1 to 3 years (Some College/ Tech)	118,800	43.3	40.8 - 45.8	155,700	56.7	54.2 - 59.2	274,500
College 4 years or more (College Grad)	117,500	39.3	37.1 - 41.5	181,400	60.7	58.5 - 62.9	299,000

Children in Household by State, County, Island, Community, BRFSS Age Group, DOH Race-Ethnicity, Gender, Education Level, Employment Status (Grouped), Household Income, Poverty Level, Marital Status (Grouped), Married, Health Care Coverage, for the Year(s) - 2001-2003, 2002-2004, 2003-2005, 2004-2006, 2005-2007, 2006-2008, 2007-2009, 2008-2010

Note: Weighted numbers (#) represent 3-yr averages, percentages and 95% confidence intervals; Respondents aged 18 years and older; n/r (Not Reportable) - If the unweighted total responses for a dimension (row) is <50 that row will not be shown; n/a (Not Available) - Not asked of a subset of respondents

Year: 2002-2004

Employment Status (Grouped)	Yes			No			Estimated Population (3-Yr Avg)
	#	%	C.I. (95%)	#	%	C.I. (95%)	#
Employed	298,800	50.6	48.9 - 52.3	291,500	49.4	47.7 - 51.1	590,400
Unemployed	14,900	46.1	38.7 - 53.4	17,500	53.9	46.6 - 61.3	32,400
Retired/Unable to work	27,700	14.5	12.1 - 16.9	164,000	85.5	83.1 - 87.9	191,800
Student/Homemaker	59,000	60.4	56.3 - 64.6	38,600	39.6	35.4 - 43.7	97,600

Children in Household by State, County, Island, Community, BRFSS Age Group, DOH Race-Ethnicity, Gender, Education Level, Employment Status (Grouped), Household Income, Poverty Level, Marital Status (Grouped), Married, Health Care Coverage, for the Year(s) - 2001-2003, 2002-2004, 2003-2005, 2004-2006, 2005-2007, 2006-2008, 2007-2009, 2008-2010

Note: Weighted numbers (#) represent 3-yr averages, percentages and 95% confidence intervals; Respondents aged 18 years and older; n/r (Not Reportable) - If the unweighted total responses for a dimension (row) is <50 that row will not be shown; n/a (Not Available) - Not asked of a subset of respondents

Year: 2002-2004

Household Income	Yes			No			Estimated Population (3-Yr Avg)
	#	%	C.I. (95%)	#	%	C.I. (95%)	#
Less than \$10,000	11,600	35.0	29.2 - 40.8	21,500	65.0	59.2 - 70.8	33,100
\$10,000 to \$14,999	13,600	36.0	30.4 - 41.6	24,100	64.0	58.4 - 69.6	37,700
\$15,000 to \$19,999	19,400	41.9	35.6 - 48.1	26,900	58.1	51.9 - 64.4	46,300
\$20,000 to \$24,999	24,000	42.9	37.3 - 48.4	31,900	57.1	51.6 - 62.7	55,900
\$25,000 to \$34,999	39,700	43.1	38.6 - 47.5	52,500	56.9	52.5 - 61.4	92,100
\$35,000 to \$49,999	61,500	45.3	41.8 - 48.8	74,200	54.7	51.2 - 58.2	135,700
\$50,000 to \$74,999	85,800	47.0	43.7 - 50.4	96,700	53.0	49.6 - 56.3	182,500
\$75,000 or more	80,600	48.2	44.9 - 51.4	86,800	51.8	48.6 - 55.1	167,400

Children in Household by State, County, Island, Community, BRFSS Age Group, DOH Race-Ethnicity, Gender, Education Level, Employment Status (Grouped), Household Income, Poverty Level, Marital Status (Grouped), Married, Health Care Coverage, for the Year(s) - 2001-2003, 2002-2004, 2003-2005, 2004-2006, 2005-2007, 2006-2008, 2007-2009, 2008-2010

Note: Weighted numbers (#) represent 3-yr averages, percentages and 95% confidence intervals; Respondents aged 18 years and older; n/r (Not Reportable) - If the unweighted total responses for a dimension (row) is <50 that row will not be shown; n/a (Not Available) - Not asked of a subset of respondents

Year: 2002-2004

Poverty Level	Yes			No			Estimated Population (3-Yr Avg)
	#	%	C.I. (95%)	#	%	C.I. (95%)	#
0-130%	87,800	53.8	50.5 - 57.2	75,300	46.2	42.8 - 49.5	163,200
131-185%	52,900	58.4	53.5 - 63.3	37,600	41.6	36.7 - 46.5	90,500
186+%	195,400	39.3	37.5 - 41.1	301,700	60.7	58.9 - 62.5	497,200

Marital Status (Grouped)	Yes			No			Estimated Population (3-Yr Avg)
	#	%	C.I. (95%)	#	%	C.I. (95%)	#
Married	279,300	52.5	50.8 - 54.2	252,200	47.5	45.8 - 49.2	531,500
Unmarried Couple	8,800	41.5	32.9 - 50.1	12,400	58.5	49.9 - 67.1	21,200
Widowed	11,600	19.5	15.1 - 23.9	47,900	80.5	76.1 - 84.9	59,500
Other	101,200	33.7	31.2 - 36.1	199,500	66.3	63.9 - 68.8	300,700

Children in Household by State, County, Island, Community, BRFSS Age Group, DOH Race-Ethnicity, Gender, Education Level, Employment Status (Grouped), Household Income, Poverty Level, Marital Status (Grouped), Married, Health Care Coverage, for the Year(s) - 2001-2003, 2002-2004, 2003-2005, 2004-2006, 2005-2007, 2006-2008, 2007-2009, 2008-2010

Note: Weighted numbers (#) represent 3-yr averages, percentages and 95% confidence intervals; Respondents aged 18 years and older; n/r (Not Reportable) - If the unweighted total responses for a dimension (row) is <50 that row will not be shown; n/a (Not Available) - Not asked of a subset of respondents

Year: 2002-2004

Married	Yes			No			Estimated Population (3-Yr Avg)
	#	%	C.I. (95%)	#	%	C.I. (95%)	#
Yes	285,100	52.6	50.9 - 54.3	257,000	47.4	45.7 - 49.1	542,100
No	115,600	31.3	29.1 - 33.5	253,700	68.7	66.5 - 70.9	369,300

Health Care Coverage	Yes			No			Estimated Population (3-Yr Avg)
	#	%	C.I. (95%)	#	%	C.I. (95%)	#
Yes	368,900	44.3	42.9 - 45.7	463,000	55.7	54.3 - 57.1	831,900
No	31,600	40.2	35.4 - 44.9	47,100	59.8	55.1 - 64.6	78,700

Children in Household by State, County, Island, Community, BRFSS Age Group, DOH Race-Ethnicity, Gender, Education Level, Employment Status (Grouped), Household Income, Poverty Level, Marital Status (Grouped), Married, Health Care Coverage, for the Year(s) - 2001-2003, 2002-2004, 2003-2005, 2004-2006, 2005-2007, 2006-2008, 2007-2009, 2008-2010

Note: Weighted numbers (#) represent 3-yr averages, percentages and 95% confidence intervals; Respondents aged 18 years and older; n/r (Not Reportable) - If the unweighted total responses for a dimension (row) is <50 that row will not be shown; n/a (Not Available) - Not asked of a subset of respondents

Year: 2001-2003

State	Yes			No			Estimated Population (3-Yr Avg)
	#	%	C.I. (95%)	#	%	C.I. (95%)	#
Hawaii State	388,800	42.9	41.8 - 44.0	518,300	57.1	56.0 - 58.2	907,000

County	Yes			No			Estimated Population (3-Yr Avg)
	#	%	C.I. (95%)	#	%	C.I. (95%)	#
Hawaii	46,800	42.1	40.0 - 44.2	64,300	57.9	55.8 - 60.0	111,100
Honolulu	281,300	42.9	41.5 - 44.3	374,900	57.1	55.7 - 58.5	656,200
Kauai	17,600	41.6	38.6 - 44.6	24,700	58.4	55.4 - 61.4	42,300
Maui	43,100	44.2	41.6 - 46.8	54,300	55.8	53.2 - 58.4	97,400

Children in Household by State, County, Island, Community, BRFSS Age Group, DOH Race-Ethnicity, Gender, Education Level, Employment Status (Grouped), Household Income, Poverty Level, Marital Status (Grouped), Married, Health Care Coverage, for the Year(s) - 2001-2003, 2002-2004, 2003-2005, 2004-2006, 2005-2007, 2006-2008, 2007-2009, 2008-2010

Note: Weighted numbers (#) represent 3-yr averages, percentages and 95% confidence intervals; Respondents aged 18 years and older; n/r (Not Reportable) - If the unweighted total responses for a dimension (row) is <50 that row will not be shown; n/a (Not Available) - Not asked of a subset of respondents

Year: 2001-2003

Island	Yes			No			Estimated Population (3-Yr Avg)
	#	%	C.I. (95%)	#	%	C.I. (95%)	#
Hawaii	46,800	42.1	40.0 - 44.2	64,300	57.9	55.8 - 60.0	111,100
Kauai	17,600	41.6	38.6 - 44.6	24,700	58.4	55.4 - 61.4	42,300
Lanai	1,200	41.7	33.7 - 49.7	1,700	58.3	50.3 - 66.3	2,900
Maui	38,800	44.0	41.2 - 46.9	49,300	56.0	53.1 - 58.8	88,100
Molokai	3,000	47.7	40.9 - 54.6	3,300	52.3	45.4 - 59.1	6,300
Oahu	281,300	42.9	41.5 - 44.3	374,900	57.1	55.7 - 58.5	656,200

Community	Yes			No			Estimated Population (3-Yr Avg)
	#	%	C.I. (95%)	#	%	C.I. (95%)	#
Aiea/ Pearl City	22,300	36.7	32.1 - 41.4	38,400	63.3	58.6 - 67.9	60,700
Ala Moana	9,200	30.2	24.7 - 35.7	21,300	69.8	64.3 - 75.3	30,400

Children in Household by State, County, Island, Community, BRFSS Age Group, DOH Race-Ethnicity, Gender, Education Level, Employment Status (Grouped), Household Income, Poverty Level, Marital Status (Grouped), Married, Health Care Coverage, for the Year(s) - 2001-2003, 2002-2004, 2003-2005, 2004-2006, 2005-2007, 2006-2008, 2007-2009, 2008-2010

Note: Weighted numbers (#) represent 3-yr averages, percentages and 95% confidence intervals; Respondents aged 18 years and older; n/r (Not Reportable) - If the unweighted total responses for a dimension (row) is <50 that row will not be shown; n/a (Not Available) - Not asked of a subset of respondents

Year: 2001-2003

Community	Yes			No			Estimated Population (3-Yr Avg)
	#	%	C.I. (95%)	#	%	C.I. (95%)	#
Hanalei/ Kapaa	7,600	43.2	38.6 - 47.8	10,100	56.8	52.2 - 61.4	17,700
Hilo	13,000	38.3	34.6 - 42.1	20,900	61.7	57.9 - 65.4	34,000
Kaaawa/ Kahaluu/ Kaneohe	19,400	46.4	40.8 - 51.9	22,400	53.6	48.1 - 59.2	41,800
Kahului	13,500	42.6	37.1 - 48.1	18,200	57.4	51.9 - 62.9	31,600
Kailua/ Waimanalo	20,000	40.6	35.8 - 45.4	29,300	59.4	54.6 - 64.2	49,300
Kaimuki/ Palolo/ Waikiki	16,400	24.0	20.4 - 27.6	51,800	76.0	72.4 - 79.6	68,200
Kona	12,300	40.9	36.9 - 44.8	17,800	59.1	55.2 - 63.1	30,100
Lahaina/ Wailuku	13,300	46.4	41.6 - 51.1	15,400	53.6	48.9 - 58.4	28,700
Lanai	1,200	41.7	33.7 - 49.7	1,700	58.3	50.3 - 66.3	2,900
Lihue-Waimea	10,000	40.5	36.6 - 44.5	14,700	59.5	55.5 - 63.4	24,600
Manoa/ Upper Makiki	14,300	25.5	21.0 - 30.0	41,800	74.5	70.0 - 79.0	56,100
Mililani/ Wahiawa	35,300	56.7	52.0 - 61.4	26,900	43.3	38.6 - 48.0	62,300

Children in Household by State, County, Island, Community, BRFSS Age Group, DOH Race-Ethnicity, Gender, Education Level, Employment Status (Grouped), Household Income, Poverty Level, Marital Status (Grouped), Married, Health Care Coverage, for the Year(s) - 2001-2003, 2002-2004, 2003-2005, 2004-2006, 2005-2007, 2006-2008, 2007-2009, 2008-2010

Note: Weighted numbers (#) represent 3-yr averages, percentages and 95% confidence intervals; Respondents aged 18 years and older; n/r (Not Reportable) - If the unweighted total responses for a dimension (row) is <50 that row will not be shown; n/a (Not Available) - Not asked of a subset of respondents

Year: 2001-2003

Community	Yes			No			Estimated Population (3-Yr Avg)
	#	%	C.I. (95%)	#	%	C.I. (95%)	#
Molokai	3,000	47.7	40.9 - 54.6	3,300	52.3	45.4 - 59.1	6,300
Nanakuli/ Waianae	16,700	60.4	53.0 - 67.7	11,000	39.6	32.3 - 47.0	27,600
N.Hawaii	11,300	47.9	43.2 - 52.6	12,300	52.1	47.4 - 56.8	23,500
N.Shore/ Laie	11,000	47.8	40.1 - 55.5	12,000	52.2	44.5 - 59.9	23,100
Nuuanu/ Kalihi/ Moanalua	29,200	42.9	38.4 - 47.5	38,700	57.1	52.5 - 61.6	67,900
Puna/ Kau	10,200	43.3	38.8 - 47.7	13,400	56.7	52.3 - 61.2	23,500
Salt Lake/ Foster Village	19,600	50.0	44.3 - 55.7	19,600	50.0	44.3 - 55.7	39,100
Upcountry/ Hana	12,000	43.3	39.1 - 47.5	15,800	56.7	52.5 - 60.9	27,800
Waialae/ Kahala/ Hawaii Kai	15,000	38.0	32.6 - 43.3	24,500	62.0	56.7 - 67.4	39,600
Waipahu/ Kapolei/ Ewa	53,000	58.9	55.0 - 62.7	37,000	41.1	37.3 - 45.0	90,000

Children in Household by State, County, Island, Community, BRFSS Age Group, DOH Race-Ethnicity, Gender, Education Level, Employment Status (Grouped), Household Income, Poverty Level, Marital Status (Grouped), Married, Health Care Coverage, for the Year(s) - 2001-2003, 2002-2004, 2003-2005, 2004-2006, 2005-2007, 2006-2008, 2007-2009, 2008-2010

Note: Weighted numbers (#) represent 3-yr averages, percentages and 95% confidence intervals; Respondents aged 18 years and older; n/r (Not Reportable) - If the unweighted total responses for a dimension (row) is <50 that row will not be shown; n/a (Not Available) - Not asked of a subset of respondents

Year: 2001-2003

BRFSS Age Group	Yes			No			Estimated Population (3-Yr Avg)
	#	%	C.I. (95%)	#	%	C.I. (95%)	#
18-24	51,700	46.0	42.2 - 49.8	60,600	54.0	50.2 - 57.8	112,300
25-34	89,900	54.5	51.9 - 57.1	75,000	45.5	42.9 - 48.1	164,900
35-44	126,100	69.0	66.8 - 71.2	56,600	31.0	28.8 - 33.2	182,700
45-54	79,900	47.5	45.1 - 49.8	88,400	52.5	50.2 - 54.9	168,300
55-64	23,700	20.0	17.4 - 22.6	94,800	80.0	77.4 - 82.6	118,500
65-74	10,800	12.9	10.1 - 15.7	73,300	87.1	84.3 - 89.9	84,100
75+	5,600	7.8	5.5 - 10.1	66,500	92.2	89.9 - 94.5	72,100

Children in Household by State, County, Island, Community, BRFSS Age Group, DOH Race-Ethnicity, Gender, Education Level, Employment Status (Grouped), Household Income, Poverty Level, Marital Status (Grouped), Married, Health Care Coverage, for the Year(s) - 2001-2003, 2002-2004, 2003-2005, 2004-2006, 2005-2007, 2006-2008, 2007-2009, 2008-2010

Note: Weighted numbers (#) represent 3-yr averages, percentages and 95% confidence intervals; Respondents aged 18 years and older; n/r (Not Reportable) - If the unweighted total responses for a dimension (row) is <50 that row will not be shown; n/a (Not Available) - Not asked of a subset of respondents

Year: 2001-2003

DOH Race-Ethnicity	Yes			No			Estimated Population (3-Yr Avg)
	#	%	C.I. (95%)	#	%	C.I. (95%)	#
Caucasian	118,600	37.1	35.5 - 38.8	200,700	62.9	61.2 - 64.5	319,300
Native Hawaiian	57,400	55.4	52.1 - 58.6	46,300	44.6	41.4 - 47.9	103,700
Chinese	30,200	38.9	35.0 - 42.7	47,500	61.1	57.3 - 65.0	77,700
Filipino	78,400	57.7	54.5 - 60.8	57,600	42.3	39.2 - 45.5	136,000
Japanese	57,500	31.9	29.6 - 34.2	122,900	68.1	65.8 - 70.4	180,500
Black	8,000	52.3	43.8 - 60.9	7,200	47.7	39.1 - 56.2	15,200
Native Alaskan/ American Indian	1,100	27.1	14.4 - 39.9	3,000	72.9	60.1 - 85.6	4,100
Other Asian	8,200	38.6	31.2 - 46.1	13,100	61.4	53.9 - 68.8	21,300
Other Pacific Islander	12,400	70.3	61.7 - 78.9	5,300	29.7	21.1 - 38.3	17,700
Other	14,800	54.7	47.9 - 61.5	12,200	45.3	38.5 - 52.1	27,000

Children in Household by State, County, Island, Community, BRFSS Age Group, DOH Race-Ethnicity, Gender, Education Level, Employment Status (Grouped), Household Income, Poverty Level, Marital Status (Grouped), Married, Health Care Coverage, for the Year(s) - 2001-2003, 2002-2004, 2003-2005, 2004-2006, 2005-2007, 2006-2008, 2007-2009, 2008-2010

Note: Weighted numbers (#) represent 3-yr averages, percentages and 95% confidence intervals; Respondents aged 18 years and older; n/r (Not Reportable) - If the unweighted total responses for a dimension (row) is <50 that row will not be shown; n/a (Not Available) - Not asked of a subset of respondents

Year: 2001-2003

Gender	Yes			No			Estimated Population (3-Yr Avg)
	#	%	C.I. (95%)	#	%	C.I. (95%)	#
Male	182,600	40.4	38.7 - 42.0	269,700	59.6	58.0 - 61.3	452,300
Female	206,200	45.3	43.9 - 46.8	248,600	54.7	53.2 - 56.1	454,800

Education Level	Yes			No			Estimated Population (3-Yr Avg)
	#	%	C.I. (95%)	#	%	C.I. (95%)	#
Never attended school/ Only Kindergarten to Grades 8	4,100	25.2	18.0 - 32.3	12,200	74.8	67.7 - 82.0	16,300
Grades 9 thru 11 (Some High School)	14,200	39.6	33.9 - 45.3	21,600	60.4	54.7 - 66.1	35,800
Grades 12 or GED (High School Grad)	144,800	48.9	47.0 - 50.9	151,100	51.1	49.1 - 53.0	295,900
College 1 to 3 years (Some College/ Tech)	111,400	41.4	39.3 - 43.4	157,900	58.6	56.6 - 60.7	269,300
College 4 years or more (College Grad)	113,800	39.5	37.6 - 41.3	174,400	60.5	58.7 - 62.4	288,200

Children in Household by State, County, Island, Community, BRFSS Age Group, DOH Race-Ethnicity, Gender, Education Level, Employment Status (Grouped), Household Income, Poverty Level, Marital Status (Grouped), Married, Health Care Coverage, for the Year(s) - 2001-2003, 2002-2004, 2003-2005, 2004-2006, 2005-2007, 2006-2008, 2007-2009, 2008-2010

Note: Weighted numbers (#) represent 3-yr averages, percentages and 95% confidence intervals; Respondents aged 18 years and older; n/r (Not Reportable) - If the unweighted total responses for a dimension (row) is <50 that row will not be shown; n/a (Not Available) - Not asked of a subset of respondents

Year: 2001-2003

Employment Status (Grouped)	Yes			No			Estimated Population (3-Yr Avg)
	#	%	C.I. (95%)	#	%	C.I. (95%)	#
Employed	295,000	49.8	48.5 - 51.2	296,900	50.2	48.8 - 51.5	591,900
Unemployed	14,900	44.7	38.6 - 50.8	18,400	55.3	49.2 - 61.4	33,300
Retired/Unable to work	23,700	12.6	10.9 - 14.3	164,600	87.4	85.7 - 89.1	188,400
Student/Homemaker	55,000	59.2	55.7 - 62.8	37,900	40.8	37.2 - 44.3	92,900

Children in Household by State, County, Island, Community, BRFSS Age Group, DOH Race-Ethnicity, Gender, Education Level, Employment Status (Grouped), Household Income, Poverty Level, Marital Status (Grouped), Married, Health Care Coverage, for the Year(s) - 2001-2003, 2002-2004, 2003-2005, 2004-2006, 2005-2007, 2006-2008, 2007-2009, 2008-2010

Note: Weighted numbers (#) represent 3-yr averages, percentages and 95% confidence intervals; Respondents aged 18 years and older; n/r (Not Reportable) - If the unweighted total responses for a dimension (row) is <50 that row will not be shown; n/a (Not Available) - Not asked of a subset of respondents

Year: 2001-2003

Household Income	Yes			No			Estimated Population (3-Yr Avg)
	#	%	C.I. (95%)	#	%	C.I. (95%)	#
Less than \$10,000	15,600	38.8	33.7 - 44.0	24,700	61.2	56.0 - 66.3	40,300
\$10,000 to \$14,999	17,400	40.3	35.1 - 45.4	25,800	59.7	54.6 - 64.9	43,100
\$15,000 to \$19,999	16,600	38.0	32.9 - 43.1	27,200	62.0	56.9 - 67.1	43,800
\$20,000 to \$24,999	22,300	42.6	37.6 - 47.6	30,100	57.4	52.4 - 62.4	52,400
\$25,000 to \$34,999	34,600	41.6	38.1 - 45.1	48,600	58.4	54.9 - 61.9	83,100
\$35,000 to \$49,999	58,900	44.0	41.2 - 46.8	75,000	56.0	53.2 - 58.8	133,900
\$50,000 to \$74,999	62,900	48.7	45.8 - 51.6	66,300	51.3	48.4 - 54.2	129,200
\$75,000 or more	64,200	46.4	43.6 - 49.2	74,200	53.6	50.8 - 56.4	138,400

Children in Household by State, County, Island, Community, BRFSS Age Group, DOH Race-Ethnicity, Gender, Education Level, Employment Status (Grouped), Household Income, Poverty Level, Marital Status (Grouped), Married, Health Care Coverage, for the Year(s) - 2001-2003, 2002-2004, 2003-2005, 2004-2006, 2005-2007, 2006-2008, 2007-2009, 2008-2010

Note: Weighted numbers (#) represent 3-yr averages, percentages and 95% confidence intervals; Respondents aged 18 years and older; n/r (Not Reportable) - If the unweighted total responses for a dimension (row) is <50 that row will not be shown; n/a (Not Available) - Not asked of a subset of respondents

Year: 2001-2003

Poverty Level	Yes			No			Estimated Population (3-Yr Avg)
	#	%	C.I. (95%)	#	%	C.I. (95%)	#
0-130%	84,400	53.3	50.4 - 56.2	74,100	46.7	43.8 - 49.6	158,500
131-185%	45,800	52.5	48.8 - 56.2	41,400	47.5	43.8 - 51.2	87,200
186+%	162,300	38.8	37.3 - 40.3	256,200	61.2	59.7 - 62.7	418,500

Marital Status (Grouped)	Yes			No			Estimated Population (3-Yr Avg)
	#	%	C.I. (95%)	#	%	C.I. (95%)	#
Married	271,000	51.7	50.3 - 53.2	253,000	48.3	46.8 - 49.7	524,000
Unmarried Couple	6,400	38.8	30.4 - 47.1	10,000	61.2	52.9 - 69.6	16,400
Widowed	10,200	17.9	14.4 - 21.5	46,800	82.1	78.5 - 85.6	57,000
Other	101,200	32.7	30.8 - 34.6	208,400	67.3	65.4 - 69.2	309,600

Children in Household by State, County, Island, Community, BRFSS Age Group, DOH Race-Ethnicity, Gender, Education Level, Employment Status (Grouped), Household Income, Poverty Level, Marital Status (Grouped), Married, Health Care Coverage, for the Year(s) - 2001-2003, 2002-2004, 2003-2005, 2004-2006, 2005-2007, 2006-2008, 2007-2009, 2008-2010

Note: Weighted numbers (#) represent 3-yr averages, percentages and 95% confidence intervals; Respondents aged 18 years and older; n/r (Not Reportable) - If the unweighted total responses for a dimension (row) is <50 that row will not be shown; n/a (Not Available) - Not asked of a subset of respondents

Year: 2001-2003

Married	Yes			No			Estimated Population (3-Yr Avg)
	#	%	C.I. (95%)	#	%	C.I. (95%)	#
Yes	279,100	51.9	50.5 - 53.4	258,200	48.1	46.6 - 49.5	537,200
No	109,600	29.7	28.0 - 31.4	259,500	70.3	68.6 - 72.0	369,000

Health Care Coverage	Yes			No			Estimated Population (3-Yr Avg)
	#	%	C.I. (95%)	#	%	C.I. (95%)	#
Yes	359,600	43.2	42.0 - 44.3	473,600	56.8	55.7 - 58.0	833,200
No	28,900	39.7	35.8 - 43.7	43,800	60.3	56.3 - 64.2	72,600