

Children in Household by State, County, Island, Community, BRFSS Age Group, DOH Race-Ethnicity, Gender, Education Level, Employment Status (Grouped), Household Income, Poverty Level, Marital Status (Grouped), Married, Health Care Coverage, for the Year(s) - 2001, 2002, 2003, 2004, 2005, 2006, 2007, 2008, 2009, 2010

Note: Weighted numbers (#), percentages and 95% confidence intervals; Respondents aged 18 years and older; n/r (Not Reportable) - If the unweighted total responses for a dimension (row) is <50 that row will not be shown; n/a (Not Available) - Not asked of a subset of respondents

The trend analysis report shows the trend for the selected health variable over selected years in a table and a graph. Estimated Population: This number is a weighted representation of the population who responded to a particular question in the survey. For most questions the eligible population will be the entire adult population. For some secondary questions only a subset of the population was asked the question. For example, all survey participants were asked if they had diabetes, but only those who answered yes were asked if they use insulin. If a dimension value is unknown for a particular survey record, that record will not be included in the counts for that particular dimension.

For documentation on other terms and coding in this report, please go to the following links

[Click here to access BRFSS documentation](#)

[Click here to access DOH Race-Ethnicity coding](#)

[Click here to access The Hawai'i Data Guide](#)

[Click here to access Poverty Level Methodology](#)

**For questions about this report, please contact
The Hawaii Health Data Warehouse**

profiles@hhdw.org

(855) 946-5899 x15

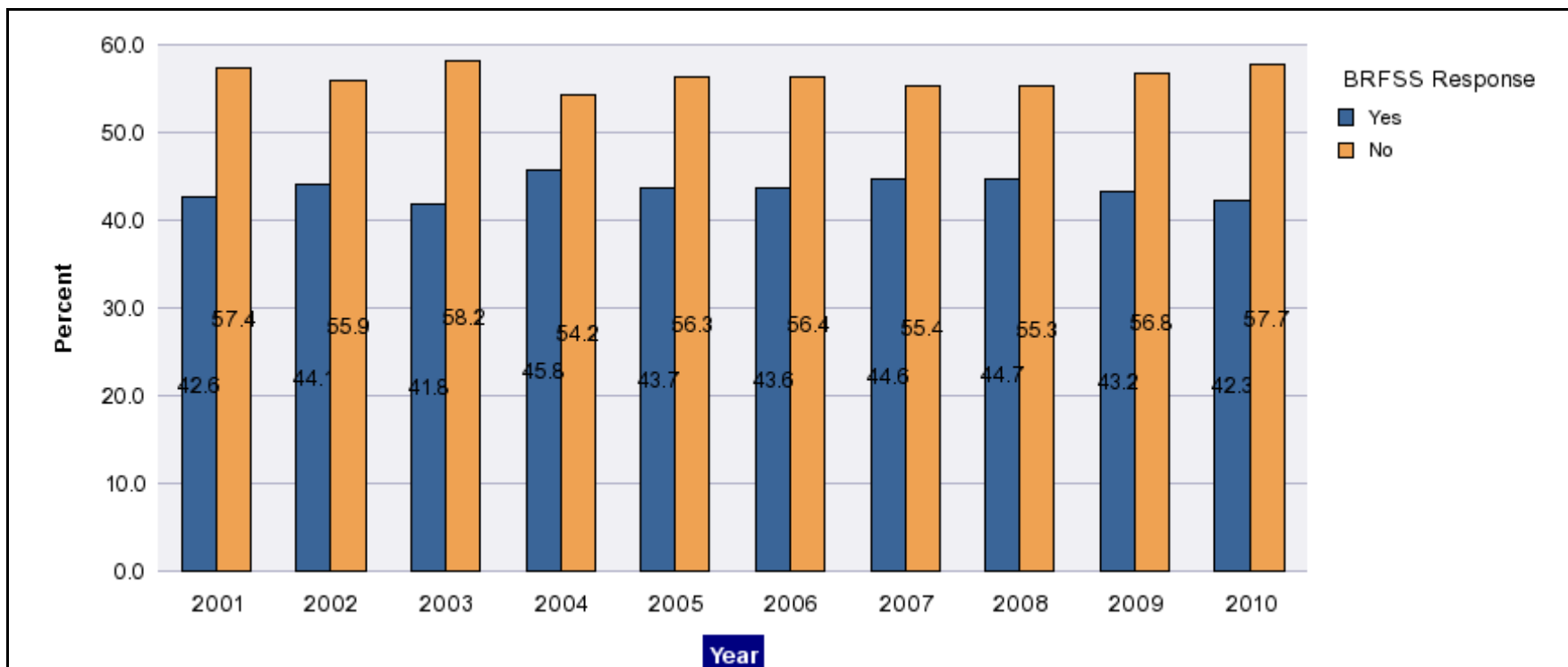
Children in Household by State, County, Island, Community, BRFSS Age Group, DOH Race-Ethnicity, Gender, Education Level, Employment Status (Grouped), Household Income, Poverty Level, Marital Status (Grouped), Married, Health Care Coverage, for the Year(s) - 2001, 2002, 2003, 2004, 2005, 2006, 2007, 2008, 2009, 2010

Note: Weighted numbers (#), percentages and 95% confidence intervals; Respondents aged 18 years and older; n/r (Not Reportable) - If the unweighted total responses for a dimension (row) is <50 that row will not be shown; n/a (Not Available) - Not asked of a subset of respondents

Year	Yes			No			Estimated Population
	#	%	C.I.(95%)	#	%	C.I.(95%)	#
2001	380,200	42.6	40.6 - 44.7	512,100	57.4	55.3 - 59.4	892,300
2002	399,900	44.1	42.4 - 45.9	505,900	55.9	54.1 - 57.6	905,700
2003	386,300	41.8	39.9 - 43.8	536,800	58.2	56.2 - 60.1	923,100
2004	416,500	45.8	42.7 - 48.9	493,300	54.2	51.1 - 57.3	909,800
2005	425,600	43.7	42.0 - 45.4	548,800	56.3	54.6 - 58.0	974,400
2006	424,100	43.6	41.9 - 45.3	548,800	56.4	54.7 - 58.1	972,900
2007	440,000	44.6	42.9 - 46.3	546,100	55.4	53.7 - 57.1	986,100
2008	446,900	44.7	43.0 - 46.5	552,800	55.3	53.5 - 57.0	999,800
2009	434,200	43.2	41.4 - 45.0	570,500	56.8	55.0 - 58.6	1,004,700
2010	425,400	42.3	40.4 - 44.1	581,400	57.7	55.9 - 59.6	1,006,700

Children in Household by State, County, Island, Community, BRFSS Age Group, DOH Race-Ethnicity, Gender, Education Level, Employment Status (Grouped), Household Income, Poverty Level, Marital Status (Grouped), Married, Health Care Coverage, for the Year(s) - 2001, 2002, 2003, 2004, 2005, 2006, 2007, 2008, 2009, 2010

Note: Weighted numbers (#), percentages and 95% confidence intervals; Respondents aged 18 years and older; n/r (Not Reportable) - If the unweighted total responses for a dimension (row) is <50 that row will not be shown; n/a (Not Available) - Not asked of a subset of respondents



Children in Household by State, County, Island, Community, BRFSS Age Group, DOH Race-Ethnicity, Gender, Education Level, Employment Status (Grouped), Household Income, Poverty Level, Marital Status (Grouped), Married, Health Care Coverage, for the Year(s) - 2001, 2002, 2003, 2004, 2005, 2006, 2007, 2008, 2009, 2010

Note: Weighted numbers (#), percentages and 95% confidence intervals; Respondents aged 18 years and older; n/r (Not Reportable) - If the unweighted total responses for a dimension (row) is <50 that row will not be shown; n/a (Not Available) - Not asked of a subset of respondents

Year: 2010

State	Yes			No			Estimated Population
	#	%	C.I. (95%)	#	%	C.I. (95%)	#
Hawaii State	425,400	42.3	40.4 - 44.1	581,400	57.7	55.9 - 59.6	1,006,700

County	Yes			No			Estimated Population
	#	%	C.I. (95%)	#	%	C.I. (95%)	#
Hawaii	60,700	43.1	39.5 - 46.7	80,200	56.9	53.3 - 60.5	141,000
Honolulu	292,600	41.6	39.2 - 44.1	410,000	58.4	55.9 - 60.8	702,500
Kauai	20,900	42.3	36.5 - 48.0	28,600	57.7	52.0 - 63.5	49,500
Maui	51,100	45.0	40.9 - 49.1	62,600	55.0	50.9 - 59.1	113,700

Children in Household by State, County, Island, Community, BRFSS Age Group, DOH Race-Ethnicity, Gender, Education Level, Employment Status (Grouped), Household Income, Poverty Level, Marital Status (Grouped), Married, Health Care Coverage, for the Year(s) - 2001, 2002, 2003, 2004, 2005, 2006, 2007, 2008, 2009, 2010

Note: Weighted numbers (#), percentages and 95% confidence intervals; Respondents aged 18 years and older; n/r (Not Reportable) - If the unweighted total responses for a dimension (row) is <50 that row will not be shown; n/a (Not Available) - Not asked of a subset of respondents

Year: 2010

Island	Yes			No			Estimated Population
	#	%	C.I. (95%)	#	%	C.I. (95%)	#
Hawaii	60,700	43.1	39.5 - 46.7	80,200	56.9	53.3 - 60.5	141,000
Kauai	20,900	42.3	36.5 - 48.0	28,600	57.7	52.0 - 63.5	49,500
Lanai	800	54.5	43.0 - 66.1	700	45.5	33.9 - 57.0	1,500
Maui	46,900	44.8	40.4 - 49.2	57,800	55.2	50.8 - 59.6	104,800
Molokai	3,400	45.6	37.7 - 53.4	4,000	54.4	46.6 - 62.3	7,400
Oahu	292,600	41.6	39.2 - 44.1	410,000	58.4	55.9 - 60.8	702,500

Community	Yes			No			Estimated Population
	#	%	C.I. (95%)	#	%	C.I. (95%)	#
Aiea/ Pearl City	25,700	37.4	29.9 - 45.0	42,900	62.6	55.0 - 70.1	68,600

Children in Household by State, County, Island, Community, BRFSS Age Group, DOH Race-Ethnicity, Gender, Education Level, Employment Status (Grouped), Household Income, Poverty Level, Marital Status (Grouped), Married, Health Care Coverage, for the Year(s) - 2001, 2002, 2003, 2004, 2005, 2006, 2007, 2008, 2009, 2010

Note: Weighted numbers (#), percentages and 95% confidence intervals; Respondents aged 18 years and older; n/r (Not Reportable) - If the unweighted total responses for a dimension (row) is <50 that row will not be shown; n/a (Not Available) - Not asked of a subset of respondents

Year: 2010

Community	Yes			No			Estimated Population
	#	%	C.I. (95%)	#	%	C.I. (95%)	#
Ala Moana	3,000	14.6	7.6 - 21.7	17,500	85.4	78.3 - 92.4	20,500
Hanalei/ Kapaa	8,000	38.6	30.1 - 47.1	12,800	61.4	52.9 - 69.9	20,800
Hilo	19,000	44.9	38.1 - 51.7	23,300	55.1	48.3 - 61.9	42,200
Kaaawa/ Kahaluu/ Kaneohe	19,500	36.8	28.0 - 45.6	33,500	63.2	54.4 - 72.0	52,900
Kahului	16,200	47.5	40.0 - 55.0	17,900	52.5	45.0 - 60.0	34,100
Kailua/ Waimanalo	17,800	35.2	27.0 - 43.4	32,800	64.8	56.6 - 73.0	50,600
Kaimuki/ Palolo/ Waikiki	14,900	26.4	19.2 - 33.7	41,400	73.6	66.3 - 80.8	56,300
Kona	12,100	39.5	32.0 - 47.0	18,600	60.5	53.0 - 68.0	30,700
Lahaina/ Wailuku	16,400	46.7	38.4 - 54.9	18,700	53.3	45.1 - 61.6	35,100

Children in Household by State, County, Island, Community, BRFSS Age Group, DOH Race-Ethnicity, Gender, Education Level, Employment Status (Grouped), Household Income, Poverty Level, Marital Status (Grouped), Married, Health Care Coverage, for the Year(s) - 2001, 2002, 2003, 2004, 2005, 2006, 2007, 2008, 2009, 2010

Note: Weighted numbers (#), percentages and 95% confidence intervals; Respondents aged 18 years and older; n/r (Not Reportable) - If the unweighted total responses for a dimension (row) is <50 that row will not be shown; n/a (Not Available) - Not asked of a subset of respondents

Year: 2010

Community	Yes			No			Estimated Population
	#	%	C.I. (95%)	#	%	C.I. (95%)	#
Lanai	800	54.5	43.0 - 66.1	700	45.5	33.9 - 57.0	1,500
Lihue-Waimea	12,900	44.9	37.1 - 52.8	15,800	55.1	47.2 - 62.9	28,700
Manoa/ Upper Makiki	19,800	35.9	27.5 - 44.3	35,300	64.1	55.7 - 72.5	55,100
Mililani/ Wahiawa	34,600	48.5	41.5 - 55.5	36,700	51.5	44.5 - 58.5	71,300
Molokai	3,400	45.6	37.7 - 53.4	4,000	54.4	46.6 - 62.3	7,400
Nanakuli/ Waianae	25,100	59.9	46.5 - 73.3	16,800	40.1	26.7 - 53.5	41,900
N.Hawaii	11,200	43.9	35.4 - 52.3	14,300	56.1	47.7 - 64.6	25,400
N.Shore/ Laie	11,700	46.9	32.6 - 61.2	13,200	53.1	38.8 - 67.4	24,900
Nuuanu/ Kalihi/ Moanalua	26,000	39.2	30.8 - 47.7	40,300	60.8	52.3 - 69.2	66,300

Children in Household by State, County, Island, Community, BRFSS Age Group, DOH Race-Ethnicity, Gender, Education Level, Employment Status (Grouped), Household Income, Poverty Level, Marital Status (Grouped), Married, Health Care Coverage, for the Year(s) - 2001, 2002, 2003, 2004, 2005, 2006, 2007, 2008, 2009, 2010

Note: Weighted numbers (#), percentages and 95% confidence intervals; Respondents aged 18 years and older; n/r (Not Reportable) - If the unweighted total responses for a dimension (row) is <50 that row will not be shown; n/a (Not Available) - Not asked of a subset of respondents

Year: 2010

Community	Yes			No			Estimated Population
	#	%	C.I. (95%)	#	%	C.I. (95%)	#
Puna/ Kau	18,500	43.4	36.9 - 50.0	24,100	56.6	50.0 - 63.1	42,600
Salt Lake/ Foster Village	19,500	56.7	46.7 - 66.8	14,900	43.3	33.2 - 53.3	34,300
Upcountry/ Hana	14,400	40.3	33.2 - 47.5	21,200	59.7	52.5 - 66.8	35,600
Waialae/ Kahala/ Hawaii Kai	13,000	34.4	25.1 - 43.7	24,900	65.6	56.3 - 74.9	37,900
Waipahu/ Kapolei/ Ewa	62,100	50.9	44.8 - 57.1	59,800	49.1	42.9 - 55.2	121,900

Children in Household by State, County, Island, Community, BRFSS Age Group, DOH Race-Ethnicity, Gender, Education Level, Employment Status (Grouped), Household Income, Poverty Level, Marital Status (Grouped), Married, Health Care Coverage, for the Year(s) - 2001, 2002, 2003, 2004, 2005, 2006, 2007, 2008, 2009, 2010

Note: Weighted numbers (#), percentages and 95% confidence intervals; Respondents aged 18 years and older; n/r (Not Reportable) - If the unweighted total responses for a dimension (row) is <50 that row will not be shown; n/a (Not Available) - Not asked of a subset of respondents

Year: 2010

BRFSS Age Group	Yes			No			Estimated Population
	#	%	C.I. (95%)	#	%	C.I. (95%)	#
18-24	60,500	50.3	43.0 - 57.7	59,700	49.7	42.3 - 57.0	120,200
25-34	114,700	63.2	57.5 - 68.9	66,900	36.8	31.1 - 42.5	181,600
35-44	128,300	73.8	69.9 - 77.7	45,600	26.2	22.3 - 30.1	173,900
45-54	82,900	46.5	42.8 - 50.3	95,300	53.5	49.7 - 57.2	178,200
55-64	25,200	16.5	13.9 - 19.1	127,100	83.5	80.9 - 86.1	152,200
65-74	7,400	7.8	5.3 - 10.2	88,200	92.2	89.8 - 94.7	95,600
75+	5,100	5.1	3.0 - 7.3	95,400	94.9	92.7 - 97.0	100,500

Children in Household by State, County, Island, Community, BRFSS Age Group, DOH Race-Ethnicity, Gender, Education Level, Employment Status (Grouped), Household Income, Poverty Level, Marital Status (Grouped), Married, Health Care Coverage, for the Year(s) - 2001, 2002, 2003, 2004, 2005, 2006, 2007, 2008, 2009, 2010

Note: Weighted numbers (#), percentages and 95% confidence intervals; Respondents aged 18 years and older; n/r (Not Reportable) - If the unweighted total responses for a dimension (row) is <50 that row will not be shown; n/a (Not Available) - Not asked of a subset of respondents

Year: 2010

DOH Race-Ethnicity	Yes			No			Estimated Population
	#	%	C.I. (95%)	#	%	C.I. (95%)	#
Caucasian	124,300	39.7	36.8 - 42.5	189,300	60.3	57.5 - 63.2	313,600
Native Hawaiian	70,200	53.7	48.3 - 59.1	60,600	46.3	40.9 - 51.7	130,800
Chinese	16,700	28.9	22.0 - 35.8	41,100	71.1	64.2 - 78.0	57,800
Filipino	89,100	54.3	49.1 - 59.6	74,900	45.7	40.4 - 50.9	164,000
Japanese	62,600	26.5	23.3 - 29.8	173,400	73.5	70.2 - 76.7	236,000
Black	9,200	62.9	48.9 - 76.9	5,400	37.1	23.1 - 51.1	14,700
Other Asian	10,700	41.0	27.5 - 54.4	15,400	59.0	45.6 - 72.5	26,200
Other Pacific Islander	26,500	75.2	61.6 - 88.9	8,700	24.8	11.1 - 38.4	35,200
Other	13,100	57.6	44.5 - 70.8	9,600	42.4	29.2 - 55.5	22,700

Children in Household by State, County, Island, Community, BRFSS Age Group, DOH Race-Ethnicity, Gender, Education Level, Employment Status (Grouped), Household Income, Poverty Level, Marital Status (Grouped), Married, Health Care Coverage, for the Year(s) - 2001, 2002, 2003, 2004, 2005, 2006, 2007, 2008, 2009, 2010

Note: Weighted numbers (#), percentages and 95% confidence intervals; Respondents aged 18 years and older; n/r (Not Reportable) - If the unweighted total responses for a dimension (row) is <50 that row will not be shown; n/a (Not Available) - Not asked of a subset of respondents

Year: 2010

Gender	Yes			No			Estimated Population
	#	%	C.I. (95%)	#	%	C.I. (95%)	#
Male	207,800	41.4	38.5 - 44.2	294,700	58.6	55.8 - 61.5	502,500
Female	217,600	43.2	40.8 - 45.5	286,700	56.8	54.5 - 59.2	504,200

Children in Household by State, County, Island, Community, BRFSS Age Group, DOH Race-Ethnicity, Gender, Education Level, Employment Status (Grouped), Household Income, Poverty Level, Marital Status (Grouped), Married, Health Care Coverage, for the Year(s) - 2001, 2002, 2003, 2004, 2005, 2006, 2007, 2008, 2009, 2010

Note: Weighted numbers (#), percentages and 95% confidence intervals; Respondents aged 18 years and older; n/r (Not Reportable) - If the unweighted total responses for a dimension (row) is <50 that row will not be shown; n/a (Not Available) - Not asked of a subset of respondents

Year: 2010

Education Level	Yes			No			Estimated Population
	#	%	C.I. (95%)	#	%	C.I. (95%)	#
Never attended school/ Only Kindergarten to Grades 8	4,400	36.8	22.9 - 50.7	7,600	63.2	49.3 - 77.1	12,000
Grades 9 thru 11 (Some High School)	19,600	47.3	35.3 - 59.2	21,900	52.7	40.8 - 64.7	41,500
Grades 12 or GED (High School Grad)	127,600	43.6	39.9 - 47.3	164,800	56.4	52.7 - 60.1	292,300
College 1 to 3 years (Some College/ Tech)	127,100	44.4	40.9 - 48.0	159,200	55.6	52.0 - 59.1	286,300
College 4 years or more (College Grad)	146,200	39.1	36.4 - 41.8	227,700	60.9	58.2 - 63.6	373,900

Children in Household by State, County, Island, Community, BRFSS Age Group, DOH Race-Ethnicity, Gender, Education Level, Employment Status (Grouped), Household Income, Poverty Level, Marital Status (Grouped), Married, Health Care Coverage, for the Year(s) - 2001, 2002, 2003, 2004, 2005, 2006, 2007, 2008, 2009, 2010

Note: Weighted numbers (#), percentages and 95% confidence intervals; Respondents aged 18 years and older; n/r (Not Reportable) - If the unweighted total responses for a dimension (row) is <50 that row will not be shown; n/a (Not Available) - Not asked of a subset of respondents

Year: 2010

Employment Status (Grouped)	Yes			No			Estimated Population
	#	%	C.I. (95%)	#	%	C.I. (95%)	#
Employed	308,800	51.8	49.3 - 54.2	287,500	48.2	45.8 - 50.7	596,300
Unemployed	31,600	44.7	36.7 - 52.7	39,100	55.3	47.3 - 63.3	70,700
Retired/Unable to work	26,500	12.2	9.7 - 14.6	190,800	87.8	85.4 - 90.3	217,200
Student/Homemaker	58,400	47.7	41.5 - 53.9	64,000	52.3	46.1 - 58.5	122,400

Children in Household by State, County, Island, Community, BRFSS Age Group, DOH Race-Ethnicity, Gender, Education Level, Employment Status (Grouped), Household Income, Poverty Level, Marital Status (Grouped), Married, Health Care Coverage, for the Year(s) - 2001, 2002, 2003, 2004, 2005, 2006, 2007, 2008, 2009, 2010

Note: Weighted numbers (#), percentages and 95% confidence intervals; Respondents aged 18 years and older; n/r (Not Reportable) - If the unweighted total responses for a dimension (row) is <50 that row will not be shown; n/a (Not Available) - Not asked of a subset of respondents

Year: 2010

Household Income	Yes			No			Estimated Population
	#	%	C.I. (95%)	#	%	C.I. (95%)	#
Less than \$10,000	15,100	36.2	26.2 - 46.2	26,700	63.8	53.8 - 73.8	41,800
\$10,000 to \$14,999	7,900	27.9	17.5 - 38.2	20,500	72.1	61.8 - 82.5	28,400
\$15,000 to \$19,999	19,500	35.1	27.1 - 43.1	36,100	64.9	56.9 - 72.9	55,600
\$20,000 to \$24,999	26,700	40.4	32.2 - 48.6	39,400	59.6	51.4 - 67.8	66,100
\$25,000 to \$34,999	40,200	39.9	34.0 - 45.9	60,400	60.1	54.1 - 66.0	100,500
\$35,000 to \$49,999	63,300	44.7	39.8 - 49.6	78,300	55.3	50.4 - 60.2	141,600
\$50,000 to \$74,999	71,400	45.6	41.3 - 50.0	85,000	54.4	50.0 - 58.7	156,400
\$75,000 or more	135,100	42.8	39.7 - 46.0	180,300	57.2	54.0 - 60.3	315,400

Children in Household by State, County, Island, Community, BRFSS Age Group, DOH Race-Ethnicity, Gender, Education Level, Employment Status (Grouped), Household Income, Poverty Level, Marital Status (Grouped), Married, Health Care Coverage, for the Year(s) - 2001, 2002, 2003, 2004, 2005, 2006, 2007, 2008, 2009, 2010

Note: Weighted numbers (#), percentages and 95% confidence intervals; Respondents aged 18 years and older; n/r (Not Reportable) - If the unweighted total responses for a dimension (row) is <50 that row will not be shown; n/a (Not Available) - Not asked of a subset of respondents

Year: 2010

Poverty Level	Yes			No			Estimated Population
	#	%	C.I. (95%)	#	%	C.I. (95%)	#
0-130%	130,000	55.5	51.0 - 59.9	104,300	44.5	40.1 - 49.0	234,300
131-185%	61,700	43.2	38.5 - 47.8	81,200	56.8	52.2 - 61.5	142,900
186+%	187,500	35.5	33.3 - 37.7	341,100	64.5	62.3 - 66.7	528,600

Children in Household by State, County, Island, Community, BRFSS Age Group, DOH Race-Ethnicity, Gender, Education Level, Employment Status (Grouped), Household Income, Poverty Level, Marital Status (Grouped), Married, Health Care Coverage, for the Year(s) - 2001, 2002, 2003, 2004, 2005, 2006, 2007, 2008, 2009, 2010

Note: Weighted numbers (#), percentages and 95% confidence intervals; Respondents aged 18 years and older; n/r (Not Reportable) - If the unweighted total responses for a dimension (row) is <50 that row will not be shown; n/a (Not Available) - Not asked of a subset of respondents

Year: 2010

Marital Status (Grouped)	Yes			No			Estimated Population
	#	%	C.I. (95%)	#	%	C.I. (95%)	#
Married	285,000	49.1	46.9 - 51.3	295,700	50.9	48.7 - 53.1	580,700
Unmarried Couple	19,000	54.6	42.4 - 66.9	15,800	45.4	33.1 - 57.6	34,800
Widowed	7,600	13.0	8.4 - 17.7	50,900	87.0	82.3 - 91.6	58,600
Other	113,700	34.2	30.5 - 37.9	218,900	65.8	62.1 - 69.5	332,600

Married	Yes			No			Estimated Population
	#	%	C.I. (95%)	#	%	C.I. (95%)	#
Yes	291,000	49.0	46.8 - 51.2	302,600	51.0	48.8 - 53.2	593,600
No	134,300	32.6	29.4 - 35.8	277,900	67.4	64.2 - 70.6	412,200

Children in Household by State, County, Island, Community, BRFSS Age Group, DOH Race-Ethnicity, Gender, Education Level, Employment Status (Grouped), Household Income, Poverty Level, Marital Status (Grouped), Married, Health Care Coverage, for the Year(s) - 2001, 2002, 2003, 2004, 2005, 2006, 2007, 2008, 2009, 2010

Note: Weighted numbers (#), percentages and 95% confidence intervals; Respondents aged 18 years and older; n/r (Not Reportable) - If the unweighted total responses for a dimension (row) is <50 that row will not be shown; n/a (Not Available) - Not asked of a subset of respondents

Year: 2010

Health Care Coverage	Yes			No			Estimated Population
	#	%	C.I. (95%)	#	%	C.I. (95%)	#
Yes	398,400	42.5	40.6 - 44.4	538,400	57.5	55.6 - 59.4	936,800
No	26,200	38.5	30.2 - 46.8	41,900	61.5	53.2 - 69.8	68,100

Children in Household by State, County, Island, Community, BRFSS Age Group, DOH Race-Ethnicity, Gender, Education Level, Employment Status (Grouped), Household Income, Poverty Level, Marital Status (Grouped), Married, Health Care Coverage, for the Year(s) - 2001, 2002, 2003, 2004, 2005, 2006, 2007, 2008, 2009, 2010

Note: Weighted numbers (#), percentages and 95% confidence intervals; Respondents aged 18 years and older; n/r (Not Reportable) - If the unweighted total responses for a dimension (row) is <50 that row will not be shown; n/a (Not Available) - Not asked of a subset of respondents

Year: 2009

State	Yes			No			Estimated Population
	#	%	C.I. (95%)	#	%	C.I. (95%)	#
Hawaii State	434,200	43.2	41.4 - 45.0	570,500	56.8	55.0 - 58.6	1,004,700

County	Yes			No			Estimated Population
	#	%	C.I. (95%)	#	%	C.I. (95%)	#
Hawaii	53,700	39.0	35.6 - 42.3	84,100	61.0	57.7 - 64.4	137,900
Honolulu	310,400	43.9	41.5 - 46.2	396,800	56.1	53.8 - 58.5	707,200
Kauai	19,400	39.9	34.7 - 45.2	29,100	60.1	54.8 - 65.3	48,500
Maui	50,700	45.6	41.9 - 49.4	60,400	54.4	50.6 - 58.1	111,100

Children in Household by State, County, Island, Community, BRFSS Age Group, DOH Race-Ethnicity, Gender, Education Level, Employment Status (Grouped), Household Income, Poverty Level, Marital Status (Grouped), Married, Health Care Coverage, for the Year(s) - 2001, 2002, 2003, 2004, 2005, 2006, 2007, 2008, 2009, 2010

Note: Weighted numbers (#), percentages and 95% confidence intervals; Respondents aged 18 years and older; n/r (Not Reportable) - If the unweighted total responses for a dimension (row) is <50 that row will not be shown; n/a (Not Available) - Not asked of a subset of respondents

Year: 2009

Island	Yes			No			Estimated Population
	#	%	C.I. (95%)	#	%	C.I. (95%)	#
Hawaii	53,700	39.0	35.6 - 42.3	84,100	61.0	57.7 - 64.4	137,900
Kauai	19,400	39.9	34.7 - 45.2	29,100	60.1	54.8 - 65.3	48,500
Lanai	800	51.4	42.4 - 60.3	800	48.6	39.7 - 57.6	1,600
Maui	45,700	45.1	41.1 - 49.1	55,600	54.9	50.9 - 58.9	101,300
Molokai	4,200	51.1	42.7 - 59.4	4,000	48.9	40.6 - 57.3	8,300
Oahu	310,400	43.9	41.5 - 46.2	396,800	56.1	53.8 - 58.5	707,200

Community	Yes			No			Estimated Population
	#	%	C.I. (95%)	#	%	C.I. (95%)	#
Aiea/ Pearl City	19,800	33.7	24.7 - 42.8	38,900	66.3	57.2 - 75.3	58,600

Children in Household by State, County, Island, Community, BRFSS Age Group, DOH Race-Ethnicity, Gender, Education Level, Employment Status (Grouped), Household Income, Poverty Level, Marital Status (Grouped), Married, Health Care Coverage, for the Year(s) - 2001, 2002, 2003, 2004, 2005, 2006, 2007, 2008, 2009, 2010

Note: Weighted numbers (#), percentages and 95% confidence intervals; Respondents aged 18 years and older; n/r (Not Reportable) - If the unweighted total responses for a dimension (row) is <50 that row will not be shown; n/a (Not Available) - Not asked of a subset of respondents

Year: 2009

Community	Yes			No			Estimated Population
	#	%	C.I. (95%)	#	%	C.I. (95%)	#
Ala Moana	5,800	21.1	12.2 - 30.0	21,700	78.9	70.0 - 87.8	27,600
Hanalei/ Kapaa	7,800	39.6	31.9 - 47.4	11,900	60.4	52.6 - 68.1	19,700
Hilo	14,200	35.4	29.7 - 41.2	25,900	64.6	58.8 - 70.3	40,200
Kaaawa/ Kahaluu/ Kaneohe	21,500	43.9	35.9 - 51.8	27,500	56.1	48.2 - 64.1	49,000
Kahului	18,500	51.5	44.7 - 58.2	17,400	48.5	41.8 - 55.3	36,000
Kailua/ Waimanalo	23,400	45.4	37.0 - 53.9	28,100	54.6	46.1 - 63.0	51,500
Kaimuki/ Palolo/ Waikiki	11,500	20.5	14.6 - 26.3	44,600	79.5	73.7 - 85.4	56,100
Kona	11,300	37.4	30.5 - 44.2	18,900	62.6	55.8 - 69.5	30,200
Lahaina/ Wailuku	14,100	45.0	37.2 - 52.7	17,200	55.0	47.3 - 62.8	31,300

Children in Household by State, County, Island, Community, BRFSS Age Group, DOH Race-Ethnicity, Gender, Education Level, Employment Status (Grouped), Household Income, Poverty Level, Marital Status (Grouped), Married, Health Care Coverage, for the Year(s) - 2001, 2002, 2003, 2004, 2005, 2006, 2007, 2008, 2009, 2010

Note: Weighted numbers (#), percentages and 95% confidence intervals; Respondents aged 18 years and older; n/r (Not Reportable) - If the unweighted total responses for a dimension (row) is <50 that row will not be shown; n/a (Not Available) - Not asked of a subset of respondents

Year: 2009

Community	Yes			No			Estimated Population
	#	%	C.I. (95%)	#	%	C.I. (95%)	#
Lanai	800	51.4	42.4 - 60.3	800	48.6	39.7 - 57.6	1,600
Lihue-Waimea	11,500	40.1	33.0 - 47.2	17,200	59.9	52.8 - 67.0	28,700
Manoa/ Upper Makiki	15,600	33.9	25.5 - 42.3	30,300	66.1	57.7 - 74.5	45,900
Mililani/ Wahiawa	49,000	59.2	52.7 - 65.7	33,700	40.8	34.3 - 47.3	82,700
Molokai	4,200	51.1	42.7 - 59.4	4,000	48.9	40.6 - 57.3	8,300
Nanakuli/ Waianae	15,900	56.7	44.0 - 69.3	12,100	43.3	30.7 - 56.0	28,000
N.Hawaii	12,800	46.0	38.0 - 53.9	15,100	54.0	46.1 - 62.0	27,900
N.Shore/ Laie	9,400	49.5	36.0 - 62.9	9,600	50.5	37.1 - 64.0	18,900
Nuuanu/ Kalihi/ Moanalua	29,100	38.1	30.2 - 46.1	47,200	61.9	53.9 - 69.8	76,300

Children in Household by State, County, Island, Community, BRFSS Age Group, DOH Race-Ethnicity, Gender, Education Level, Employment Status (Grouped), Household Income, Poverty Level, Marital Status (Grouped), Married, Health Care Coverage, for the Year(s) - 2001, 2002, 2003, 2004, 2005, 2006, 2007, 2008, 2009, 2010

Note: Weighted numbers (#), percentages and 95% confidence intervals; Respondents aged 18 years and older; n/r (Not Reportable) - If the unweighted total responses for a dimension (row) is <50 that row will not be shown; n/a (Not Available) - Not asked of a subset of respondents

Year: 2009

Community	Yes			No			Estimated Population
	#	%	C.I. (95%)	#	%	C.I. (95%)	#
Puna/ Kau	15,400	38.9	32.7 - 45.1	24,200	61.1	54.9 - 67.3	39,600
Salt Lake/ Foster Village	23,900	62.3	51.9 - 72.6	14,500	37.7	27.4 - 48.1	38,400
Upcountry/ Hana	13,100	38.5	32.5 - 44.5	20,900	61.5	55.5 - 67.5	34,000
Waialae/ Kahala/ Hawaii Kai	19,800	35.6	27.8 - 43.4	35,900	64.4	56.6 - 72.2	55,700
Waipahu/ Kapolei/ Ewa	65,800	55.6	49.7 - 61.4	52,600	44.4	38.6 - 50.3	118,400

Children in Household by State, County, Island, Community, BRFSS Age Group, DOH Race-Ethnicity, Gender, Education Level, Employment Status (Grouped), Household Income, Poverty Level, Marital Status (Grouped), Married, Health Care Coverage, for the Year(s) - 2001, 2002, 2003, 2004, 2005, 2006, 2007, 2008, 2009, 2010

Note: Weighted numbers (#), percentages and 95% confidence intervals; Respondents aged 18 years and older; n/r (Not Reportable) - If the unweighted total responses for a dimension (row) is <50 that row will not be shown; n/a (Not Available) - Not asked of a subset of respondents

Year: 2009

BRFSS Age Group	Yes			No			Estimated Population
	#	%	C.I. (95%)	#	%	C.I. (95%)	#
18-24	56,900	46.7	39.3 - 54.1	64,900	53.3	45.9 - 60.7	121,800
25-34	115,800	65.0	60.1 - 69.8	62,500	35.0	30.2 - 39.9	178,300
35-44	131,800	74.5	70.9 - 78.2	45,000	25.5	21.8 - 29.1	176,700
45-54	86,800	47.9	44.5 - 51.3	94,300	52.1	48.7 - 55.5	181,100
55-64	22,200	14.4	11.9 - 16.9	131,800	85.6	83.1 - 88.1	154,000
65-74	12,000	13.0	9.7 - 16.3	80,200	87.0	83.7 - 90.3	92,200
75+	8,000	8.2	5.5 - 11.0	89,400	91.8	89.0 - 94.5	97,400

Children in Household by State, County, Island, Community, BRFSS Age Group, DOH Race-Ethnicity, Gender, Education Level, Employment Status (Grouped), Household Income, Poverty Level, Marital Status (Grouped), Married, Health Care Coverage, for the Year(s) - 2001, 2002, 2003, 2004, 2005, 2006, 2007, 2008, 2009, 2010

Note: Weighted numbers (#), percentages and 95% confidence intervals; Respondents aged 18 years and older; n/r (Not Reportable) - If the unweighted total responses for a dimension (row) is <50 that row will not be shown; n/a (Not Available) - Not asked of a subset of respondents

Year: 2009

DOH Race-Ethnicity	Yes			No			Estimated Population
	#	%	C.I. (95%)	#	%	C.I. (95%)	#
Caucasian	120,400	37.8	35.1 - 40.5	198,000	62.2	59.5 - 64.9	318,300
Native Hawaiian	69,500	56.6	51.5 - 61.6	53,400	43.4	38.4 - 48.5	122,900
Chinese	20,400	32.7	26.0 - 39.5	42,000	67.3	60.5 - 74.0	62,400
Filipino	95,500	56.8	51.9 - 61.7	72,700	43.2	38.3 - 48.1	168,200
Japanese	70,300	29.9	26.5 - 33.3	164,800	70.1	66.7 - 73.5	235,100
Black	9,500	60.8	46.8 - 74.7	6,200	39.2	25.3 - 53.2	15,700
Other Asian	10,500	43.8	31.3 - 56.3	13,500	56.2	43.7 - 68.7	24,000
Other Pacific Islander	24,300	78.6	68.4 - 88.9	6,600	21.4	11.1 - 31.6	30,800
Other	11,600	57.3	45.4 - 69.1	8,600	42.7	30.9 - 54.6	20,200

Children in Household by State, County, Island, Community, BRFSS Age Group, DOH Race-Ethnicity, Gender, Education Level, Employment Status (Grouped), Household Income, Poverty Level, Marital Status (Grouped), Married, Health Care Coverage, for the Year(s) - 2001, 2002, 2003, 2004, 2005, 2006, 2007, 2008, 2009, 2010

Note: Weighted numbers (#), percentages and 95% confidence intervals; Respondents aged 18 years and older; n/r (Not Reportable) - If the unweighted total responses for a dimension (row) is <50 that row will not be shown; n/a (Not Available) - Not asked of a subset of respondents

Year: 2009

Gender	Yes			No			Estimated Population
	#	%	C.I. (95%)	#	%	C.I. (95%)	#
Male	203,100	40.6	37.9 - 43.2	297,600	59.4	56.8 - 62.1	500,700
Female	231,100	45.8	43.5 - 48.2	272,900	54.2	51.8 - 56.5	504,000

Children in Household by State, County, Island, Community, BRFSS Age Group, DOH Race-Ethnicity, Gender, Education Level, Employment Status (Grouped), Household Income, Poverty Level, Marital Status (Grouped), Married, Health Care Coverage, for the Year(s) - 2001, 2002, 2003, 2004, 2005, 2006, 2007, 2008, 2009, 2010

Note: Weighted numbers (#), percentages and 95% confidence intervals; Respondents aged 18 years and older; n/r (Not Reportable) - If the unweighted total responses for a dimension (row) is <50 that row will not be shown; n/a (Not Available) - Not asked of a subset of respondents

Year: 2009

Education Level	Yes			No			Estimated Population
	#	%	C.I. (95%)	#	%	C.I. (95%)	#
Never attended school/ Only Kindergarten to Grades 8	3,200	23.4	8.0 - 38.7	10,600	76.6	61.3 - 92.0	13,900
Grades 9 thru 11 (Some High School)	19,700	52.0	42.7 - 61.4	18,100	48.0	38.6 - 57.3	37,800
Grades 12 or GED (High School Grad)	127,100	44.3	40.9 - 47.7	159,700	55.7	52.3 - 59.1	286,800
College 1 to 3 years (Some College/ Tech)	130,800	44.7	41.2 - 48.2	162,100	55.3	51.8 - 58.8	293,000
College 4 years or more (College Grad)	153,300	41.1	38.4 - 43.8	219,600	58.9	56.2 - 61.6	372,900

Children in Household by State, County, Island, Community, BRFSS Age Group, DOH Race-Ethnicity, Gender, Education Level, Employment Status (Grouped), Household Income, Poverty Level, Marital Status (Grouped), Married, Health Care Coverage, for the Year(s) - 2001, 2002, 2003, 2004, 2005, 2006, 2007, 2008, 2009, 2010

Note: Weighted numbers (#), percentages and 95% confidence intervals; Respondents aged 18 years and older; n/r (Not Reportable) - If the unweighted total responses for a dimension (row) is <50 that row will not be shown; n/a (Not Available) - Not asked of a subset of respondents

Year: 2009

Employment Status (Grouped)	Yes			No			Estimated Population
	#	%	C.I. (95%)	#	%	C.I. (95%)	#
Employed	310,900	49.7	47.4 - 52.0	314,600	50.3	48.0 - 52.6	625,500
Unemployed	34,300	49.2	41.6 - 56.9	35,300	50.8	43.1 - 58.4	69,600
Retired/Unable to work	30,100	14.7	11.7 - 17.7	175,400	85.3	82.3 - 88.3	205,500
Student/Homemaker	58,700	56.9	50.3 - 63.4	44,600	43.1	36.6 - 49.7	103,300

Children in Household by State, County, Island, Community, BRFSS Age Group, DOH Race-Ethnicity, Gender, Education Level, Employment Status (Grouped), Household Income, Poverty Level, Marital Status (Grouped), Married, Health Care Coverage, for the Year(s) - 2001, 2002, 2003, 2004, 2005, 2006, 2007, 2008, 2009, 2010

Note: Weighted numbers (#), percentages and 95% confidence intervals; Respondents aged 18 years and older; n/r (Not Reportable) - If the unweighted total responses for a dimension (row) is <50 that row will not be shown; n/a (Not Available) - Not asked of a subset of respondents

Year: 2009

Household Income	Yes			No			Estimated Population
	#	%	C.I. (95%)	#	%	C.I. (95%)	#
Less than \$10,000	8,300	30.5	21.1 - 39.9	18,900	69.5	60.1 - 78.9	27,200
\$10,000 to \$14,999	8,800	36.3	24.6 - 48.0	15,500	63.7	52.0 - 75.4	24,300
\$15,000 to \$19,999	19,800	40.7	32.9 - 48.5	28,800	59.3	51.5 - 67.1	48,600
\$20,000 to \$24,999	24,000	40.3	33.3 - 47.4	35,600	59.7	52.6 - 66.7	59,600
\$25,000 to \$34,999	42,600	42.6	37.0 - 48.2	57,400	57.4	51.8 - 63.0	100,100
\$35,000 to \$49,999	65,600	42.7	38.2 - 47.1	88,100	57.3	52.9 - 61.8	153,700
\$50,000 to \$74,999	74,200	41.5	37.3 - 45.8	104,500	58.5	54.2 - 62.7	178,700
\$75,000 or more	152,500	48.9	45.7 - 52.0	159,500	51.1	48.0 - 54.3	312,000

Children in Household by State, County, Island, Community, BRFSS Age Group, DOH Race-Ethnicity, Gender, Education Level, Employment Status (Grouped), Household Income, Poverty Level, Marital Status (Grouped), Married, Health Care Coverage, for the Year(s) - 2001, 2002, 2003, 2004, 2005, 2006, 2007, 2008, 2009, 2010

Note: Weighted numbers (#), percentages and 95% confidence intervals; Respondents aged 18 years and older; n/r (Not Reportable) - If the unweighted total responses for a dimension (row) is <50 that row will not be shown; n/a (Not Available) - Not asked of a subset of respondents

Year: 2009

Poverty Level	Yes			No			Estimated Population
	#	%	C.I. (95%)	#	%	C.I. (95%)	#
0-130%	119,900	58.5	54.5 - 62.6	84,900	41.5	37.4 - 45.5	204,900
131-185%	72,100	48.3	43.5 - 53.1	77,200	51.7	46.9 - 56.5	149,200
186+%	203,900	37.1	34.9 - 39.3	346,100	62.9	60.7 - 65.1	550,000

Children in Household by State, County, Island, Community, BRFSS Age Group, DOH Race-Ethnicity, Gender, Education Level, Employment Status (Grouped), Household Income, Poverty Level, Marital Status (Grouped), Married, Health Care Coverage, for the Year(s) - 2001, 2002, 2003, 2004, 2005, 2006, 2007, 2008, 2009, 2010

Note: Weighted numbers (#), percentages and 95% confidence intervals; Respondents aged 18 years and older; n/r (Not Reportable) - If the unweighted total responses for a dimension (row) is <50 that row will not be shown; n/a (Not Available) - Not asked of a subset of respondents

Year: 2009

Marital Status (Grouped)	Yes			No			Estimated Population
	#	%	C.I. (95%)	#	%	C.I. (95%)	#
Married	287,900	49.0	46.8 - 51.1	300,000	51.0	48.9 - 53.2	587,900
Unmarried Couple	20,000	60.3	49.8 - 70.8	13,200	39.7	29.2 - 50.2	33,200
Widowed	8,900	15.0	10.9 - 19.1	50,600	85.0	80.9 - 89.1	59,500
Other	117,400	36.2	32.6 - 39.8	206,700	63.8	60.2 - 67.4	324,000

Married	Yes			No			Estimated Population
	#	%	C.I. (95%)	#	%	C.I. (95%)	#
Yes	292,400	48.9	46.8 - 51.0	305,600	51.1	49.0 - 53.2	597,900
No	141,700	34.9	31.8 - 38.0	264,100	65.1	62.0 - 68.2	405,800

Children in Household by State, County, Island, Community, BRFSS Age Group, DOH Race-Ethnicity, Gender, Education Level, Employment Status (Grouped), Household Income, Poverty Level, Marital Status (Grouped), Married, Health Care Coverage, for the Year(s) - 2001, 2002, 2003, 2004, 2005, 2006, 2007, 2008, 2009, 2010

Note: Weighted numbers (#), percentages and 95% confidence intervals; Respondents aged 18 years and older; n/r (Not Reportable) - If the unweighted total responses for a dimension (row) is <50 that row will not be shown; n/a (Not Available) - Not asked of a subset of respondents

Year: 2009

Health Care Coverage	Yes			No			Estimated Population
	#	%	C.I. (95%)	#	%	C.I. (95%)	#
Yes	396,600	42.7	40.9 - 44.6	531,100	57.3	55.4 - 59.1	927,700
No	35,600	48.4	40.1 - 56.6	38,000	51.6	43.4 - 59.9	73,600

Children in Household by State, County, Island, Community, BRFSS Age Group, DOH Race-Ethnicity, Gender, Education Level, Employment Status (Grouped), Household Income, Poverty Level, Marital Status (Grouped), Married, Health Care Coverage, for the Year(s) - 2001, 2002, 2003, 2004, 2005, 2006, 2007, 2008, 2009, 2010

Note: Weighted numbers (#), percentages and 95% confidence intervals; Respondents aged 18 years and older; n/r (Not Reportable) - If the unweighted total responses for a dimension (row) is <50 that row will not be shown; n/a (Not Available) - Not asked of a subset of respondents

Year: 2008

State	Yes			No			Estimated Population
	#	%	C.I. (95%)	#	%	C.I. (95%)	#
Hawaii State	446,900	44.7	43.0 - 46.5	552,800	55.3	53.5 - 57.0	999,800

County	Yes			No			Estimated Population
	#	%	C.I. (95%)	#	%	C.I. (95%)	#
Hawaii	59,300	43.9	40.4 - 47.3	75,900	56.1	52.7 - 59.6	135,200
Honolulu	316,600	44.9	42.6 - 47.2	389,000	55.1	52.8 - 57.4	705,500
Kauai	20,300	41.7	36.5 - 46.9	28,400	58.3	53.1 - 63.5	48,700
Maui	50,700	46.0	42.1 - 49.9	59,500	54.0	50.1 - 57.9	110,200

Children in Household by State, County, Island, Community, BRFSS Age Group, DOH Race-Ethnicity, Gender, Education Level, Employment Status (Grouped), Household Income, Poverty Level, Marital Status (Grouped), Married, Health Care Coverage, for the Year(s) - 2001, 2002, 2003, 2004, 2005, 2006, 2007, 2008, 2009, 2010

Note: Weighted numbers (#), percentages and 95% confidence intervals; Respondents aged 18 years and older; n/r (Not Reportable) - If the unweighted total responses for a dimension (row) is <50 that row will not be shown; n/a (Not Available) - Not asked of a subset of respondents

Year: 2008

Island	Yes			No			Estimated Population
	#	%	C.I. (95%)	#	%	C.I. (95%)	#
Hawaii	59,300	43.9	40.4 - 47.3	75,900	56.1	52.7 - 59.6	135,200
Kauai	20,300	41.7	36.5 - 46.9	28,400	58.3	53.1 - 63.5	48,700
Lanai	1,000	46.1	36.5 - 55.7	1,100	53.9	44.3 - 63.5	2,100
Maui	46,100	45.9	41.7 - 50.1	54,300	54.1	49.9 - 58.3	100,400
Molokai	3,600	46.9	38.4 - 55.5	4,100	53.1	44.5 - 61.6	7,800
Oahu	316,600	44.9	42.6 - 47.2	389,000	55.1	52.8 - 57.4	705,500

Community	Yes			No			Estimated Population
	#	%	C.I. (95%)	#	%	C.I. (95%)	#
Aiea/ Pearl City	26,600	41.3	34.1 - 48.5	37,800	58.7	51.5 - 65.9	64,400

Children in Household by State, County, Island, Community, BRFSS Age Group, DOH Race-Ethnicity, Gender, Education Level, Employment Status (Grouped), Household Income, Poverty Level, Marital Status (Grouped), Married, Health Care Coverage, for the Year(s) - 2001, 2002, 2003, 2004, 2005, 2006, 2007, 2008, 2009, 2010

Note: Weighted numbers (#), percentages and 95% confidence intervals; Respondents aged 18 years and older; n/r (Not Reportable) - If the unweighted total responses for a dimension (row) is <50 that row will not be shown; n/a (Not Available) - Not asked of a subset of respondents

Year: 2008

Community	Yes			No			Estimated Population
	#	%	C.I. (95%)	#	%	C.I. (95%)	#
Ala Moana	11,400	35.1	25.5 - 44.7	21,000	64.9	55.3 - 74.5	32,400
Hanalei/ Kapaa	7,800	39.2	31.3 - 47.1	12,100	60.8	52.9 - 68.7	19,900
Hilo	17,800	41.8	35.3 - 48.3	24,800	58.2	51.7 - 64.7	42,600
Kaaawa/ Kahaluu/ Kaneohe	22,000	45.4	36.7 - 54.1	26,500	54.6	45.9 - 63.3	48,500
Kahului	16,500	48.7	40.9 - 56.5	17,400	51.3	43.5 - 59.1	34,000
Kailua/ Waimanalo	21,200	42.0	34.1 - 49.8	29,300	58.0	50.2 - 65.9	50,400
Kaimuki/ Palolo/ Waikiki	19,300	32.7	25.9 - 39.4	39,700	67.3	60.6 - 74.1	59,000
Kona	11,200	40.3	33.4 - 47.1	16,600	59.7	52.9 - 66.6	27,800
Lahaina/ Wailuku	16,400	47.9	40.8 - 54.9	17,900	52.1	45.1 - 59.2	34,300

Children in Household by State, County, Island, Community, BRFSS Age Group, DOH Race-Ethnicity, Gender, Education Level, Employment Status (Grouped), Household Income, Poverty Level, Marital Status (Grouped), Married, Health Care Coverage, for the Year(s) - 2001, 2002, 2003, 2004, 2005, 2006, 2007, 2008, 2009, 2010

Note: Weighted numbers (#), percentages and 95% confidence intervals; Respondents aged 18 years and older; n/r (Not Reportable) - If the unweighted total responses for a dimension (row) is <50 that row will not be shown; n/a (Not Available) - Not asked of a subset of respondents

Year: 2008

Community	Yes			No			Estimated Population
	#	%	C.I. (95%)	#	%	C.I. (95%)	#
Lanai	1,000	46.1	36.5 - 55.7	1,100	53.9	44.3 - 63.5	2,100
Lihue-Waimea	12,500	43.4	36.5 - 50.3	16,300	56.6	49.7 - 63.5	28,800
Manoa/ Upper Makiki	13,400	28.5	21.7 - 35.3	33,700	71.5	64.7 - 78.3	47,100
Mililani/ Wahiawa	38,500	53.0	46.4 - 59.7	34,100	47.0	40.3 - 53.6	72,500
Molokai	3,600	46.9	38.4 - 55.5	4,100	53.1	44.5 - 61.6	7,800
Nanakuli/ Waianae	20,100	54.7	42.5 - 66.9	16,600	45.3	33.1 - 57.5	36,700
N.Hawaii	13,000	46.3	38.5 - 54.2	15,100	53.7	45.8 - 61.5	28,100
N.Shore/ Laie	11,800	49.8	36.2 - 63.3	11,900	50.2	36.7 - 63.8	23,800
Nuuanu/ Kalihi/ Moanalua	29,000	43.6	35.4 - 51.9	37,500	56.4	48.1 - 64.6	66,500

Children in Household by State, County, Island, Community, BRFSS Age Group, DOH Race-Ethnicity, Gender, Education Level, Employment Status (Grouped), Household Income, Poverty Level, Marital Status (Grouped), Married, Health Care Coverage, for the Year(s) - 2001, 2002, 2003, 2004, 2005, 2006, 2007, 2008, 2009, 2010

Note: Weighted numbers (#), percentages and 95% confidence intervals; Respondents aged 18 years and older; n/r (Not Reportable) - If the unweighted total responses for a dimension (row) is <50 that row will not be shown; n/a (Not Available) - Not asked of a subset of respondents

Year: 2008

Community	Yes			No			Estimated Population
	#	%	C.I. (95%)	#	%	C.I. (95%)	#
Puna/ Kau	17,300	47.2	40.8 - 53.6	19,400	52.8	46.4 - 59.2	36,700
Salt Lake/ Foster Village	21,000	57.1	47.4 - 66.7	15,800	42.9	33.3 - 52.6	36,900
Upcountry/ Hana	13,200	40.9	34.4 - 47.5	19,000	59.1	52.5 - 65.6	32,200
Waialae/ Kahala/ Hawaii Kai	16,900	37.0	28.9 - 45.1	28,800	63.0	54.9 - 71.1	45,800
Waipahu/ Kapolei/ Ewa	65,400	53.8	48.1 - 59.5	56,200	46.2	40.5 - 51.9	121,600

Children in Household by State, County, Island, Community, BRFSS Age Group, DOH Race-Ethnicity, Gender, Education Level, Employment Status (Grouped), Household Income, Poverty Level, Marital Status (Grouped), Married, Health Care Coverage, for the Year(s) - 2001, 2002, 2003, 2004, 2005, 2006, 2007, 2008, 2009, 2010

Note: Weighted numbers (#), percentages and 95% confidence intervals; Respondents aged 18 years and older; n/r (Not Reportable) - If the unweighted total responses for a dimension (row) is <50 that row will not be shown; n/a (Not Available) - Not asked of a subset of respondents

Year: 2008

BRFSS Age Group	Yes			No			Estimated Population
	#	%	C.I. (95%)	#	%	C.I. (95%)	#
18-24	68,500	55.4	48.8 - 61.9	55,200	44.6	38.1 - 51.2	123,600
25-34	120,100	67.1	62.1 - 72.0	59,000	32.9	28.0 - 37.9	179,000
35-44	133,000	74.4	71.1 - 77.6	45,800	25.6	22.4 - 28.9	178,900
45-54	83,300	47.1	43.6 - 50.6	93,600	52.9	49.4 - 56.4	177,000
55-64	25,700	17.1	14.1 - 20.0	124,700	82.9	80.0 - 85.9	150,300
65-74	9,600	10.7	7.6 - 13.8	80,000	89.3	86.2 - 92.4	89,600
75+	5,000	5.2	2.9 - 7.6	90,000	94.8	92.4 - 97.1	95,000

Children in Household by State, County, Island, Community, BRFSS Age Group, DOH Race-Ethnicity, Gender, Education Level, Employment Status (Grouped), Household Income, Poverty Level, Marital Status (Grouped), Married, Health Care Coverage, for the Year(s) - 2001, 2002, 2003, 2004, 2005, 2006, 2007, 2008, 2009, 2010

Note: Weighted numbers (#), percentages and 95% confidence intervals; Respondents aged 18 years and older; n/r (Not Reportable) - If the unweighted total responses for a dimension (row) is <50 that row will not be shown; n/a (Not Available) - Not asked of a subset of respondents

Year: 2008

DOH Race-Ethnicity	Yes			No			Estimated Population
	#	%	C.I. (95%)	#	%	C.I. (95%)	#
Caucasian	133,500	40.5	37.8 - 43.2	196,300	59.5	56.8 - 62.2	329,700
Native Hawaiian	81,600	59.2	54.3 - 64.1	56,300	40.8	35.9 - 45.7	137,800
Chinese	24,500	36.7	29.8 - 43.5	42,300	63.3	56.5 - 70.2	66,800
Filipino	76,500	53.0	47.8 - 58.1	68,000	47.0	41.9 - 52.2	144,500
Japanese	73,900	32.4	29.0 - 35.8	154,200	67.6	64.2 - 71.0	228,000
Black	9,100	65.8	53.0 - 78.5	4,700	34.2	21.5 - 47.0	13,800
Other Asian	11,400	46.4	34.7 - 58.1	13,200	53.6	41.9 - 65.3	24,600
Other Pacific Islander	19,400	80.9	70.1 - 91.6	4,600	19.1	8.4 - 29.9	24,000
Other	12,100	57.6	45.8 - 69.4	8,900	42.4	30.6 - 54.2	21,000

Children in Household by State, County, Island, Community, BRFSS Age Group, DOH Race-Ethnicity, Gender, Education Level, Employment Status (Grouped), Household Income, Poverty Level, Marital Status (Grouped), Married, Health Care Coverage, for the Year(s) - 2001, 2002, 2003, 2004, 2005, 2006, 2007, 2008, 2009, 2010

Note: Weighted numbers (#), percentages and 95% confidence intervals; Respondents aged 18 years and older; n/r (Not Reportable) - If the unweighted total responses for a dimension (row) is <50 that row will not be shown; n/a (Not Available) - Not asked of a subset of respondents

Year: 2008

Gender	Yes			No			Estimated Population
	#	%	C.I. (95%)	#	%	C.I. (95%)	#
Male	214,400	43.3	40.6 - 46.0	280,600	56.7	54.0 - 59.4	495,000
Female	232,600	46.1	43.9 - 48.3	272,200	53.9	51.7 - 56.1	504,700

Children in Household by State, County, Island, Community, BRFSS Age Group, DOH Race-Ethnicity, Gender, Education Level, Employment Status (Grouped), Household Income, Poverty Level, Marital Status (Grouped), Married, Health Care Coverage, for the Year(s) - 2001, 2002, 2003, 2004, 2005, 2006, 2007, 2008, 2009, 2010

Note: Weighted numbers (#), percentages and 95% confidence intervals; Respondents aged 18 years and older; n/r (Not Reportable) - If the unweighted total responses for a dimension (row) is <50 that row will not be shown; n/a (Not Available) - Not asked of a subset of respondents

Year: 2008

Education Level	Yes			No			Estimated Population
	#	%	C.I. (95%)	#	%	C.I. (95%)	#
Never attended school/ Only Kindergarten to Grades 8	1,900	19.3	6.7 - 31.9	7,700	80.7	68.1 - 93.3	9,600
Grades 9 thru 11 (Some High School)	17,100	43.1	33.9 - 52.3	22,600	56.9	47.7 - 66.1	39,700
Grades 12 or GED (High School Grad)	148,100	50.4	46.9 - 53.8	146,000	49.6	46.2 - 53.1	294,100
College 1 to 3 years (Some College/ Tech)	133,000	46.5	43.3 - 49.8	152,800	53.5	50.2 - 56.7	285,900
College 4 years or more (College Grad)	146,800	39.7	37.1 - 42.4	222,600	60.3	57.6 - 62.9	369,400

Children in Household by State, County, Island, Community, BRFSS Age Group, DOH Race-Ethnicity, Gender, Education Level, Employment Status (Grouped), Household Income, Poverty Level, Marital Status (Grouped), Married, Health Care Coverage, for the Year(s) - 2001, 2002, 2003, 2004, 2005, 2006, 2007, 2008, 2009, 2010

Note: Weighted numbers (#), percentages and 95% confidence intervals; Respondents aged 18 years and older; n/r (Not Reportable) - If the unweighted total responses for a dimension (row) is <50 that row will not be shown; n/a (Not Available) - Not asked of a subset of respondents

Year: 2008

Employment Status (Grouped)	Yes			No			Estimated Population
	#	%	C.I. (95%)	#	%	C.I. (95%)	#
Employed	334,000	52.8	50.6 - 55.0	298,500	47.2	45.0 - 49.4	632,400
Unemployed	22,300	50.8	40.3 - 61.3	21,600	49.2	38.7 - 59.7	43,900
Retired/Unable to work	29,300	13.0	10.5 - 15.4	197,000	87.0	84.6 - 89.5	226,300
Student/Homemaker	60,400	63.5	57.5 - 69.4	34,800	36.5	30.6 - 42.5	95,200

Children in Household by State, County, Island, Community, BRFSS Age Group, DOH Race-Ethnicity, Gender, Education Level, Employment Status (Grouped), Household Income, Poverty Level, Marital Status (Grouped), Married, Health Care Coverage, for the Year(s) - 2001, 2002, 2003, 2004, 2005, 2006, 2007, 2008, 2009, 2010

Note: Weighted numbers (#), percentages and 95% confidence intervals; Respondents aged 18 years and older; n/r (Not Reportable) - If the unweighted total responses for a dimension (row) is <50 that row will not be shown; n/a (Not Available) - Not asked of a subset of respondents

Year: 2008

Household Income	Yes			No			Estimated Population
	#	%	C.I. (95%)	#	%	C.I. (95%)	#
Less than \$10,000	7,600	31.0	21.9 - 40.2	17,000	69.0	59.8 - 78.1	24,700
\$10,000 to \$14,999	6,400	28.5	18.1 - 39.0	16,100	71.5	61.0 - 81.9	22,500
\$15,000 to \$19,999	15,300	37.2	28.8 - 45.6	25,900	62.8	54.4 - 71.2	41,300
\$20,000 to \$24,999	24,100	43.0	35.8 - 50.3	31,800	57.0	49.7 - 64.2	55,900
\$25,000 to \$34,999	40,700	39.8	34.5 - 45.2	61,500	60.2	54.8 - 65.5	102,200
\$35,000 to \$49,999	59,300	40.1	35.7 - 44.6	88,400	59.9	55.4 - 64.3	147,600
\$50,000 to \$74,999	92,900	49.6	45.6 - 53.6	94,400	50.4	46.4 - 54.4	187,300
\$75,000 or more	158,600	49.4	46.3 - 52.4	162,800	50.6	47.6 - 53.7	321,400

Children in Household by State, County, Island, Community, BRFSS Age Group, DOH Race-Ethnicity, Gender, Education Level, Employment Status (Grouped), Household Income, Poverty Level, Marital Status (Grouped), Married, Health Care Coverage, for the Year(s) - 2001, 2002, 2003, 2004, 2005, 2006, 2007, 2008, 2009, 2010

Note: Weighted numbers (#), percentages and 95% confidence intervals; Respondents aged 18 years and older; n/r (Not Reportable) - If the unweighted total responses for a dimension (row) is <50 that row will not be shown; n/a (Not Available) - Not asked of a subset of respondents

Year: 2008

Poverty Level	Yes			No			Estimated Population
	#	%	C.I. (95%)	#	%	C.I. (95%)	#
0-130%	105,100	58.0	53.5 - 62.5	76,000	42.0	37.5 - 46.5	181,100
131-185%	68,900	58.1	52.8 - 63.4	49,700	41.9	36.6 - 47.2	118,600
186+%	230,600	38.3	36.2 - 40.3	372,200	61.7	59.7 - 63.8	602,800

Children in Household by State, County, Island, Community, BRFSS Age Group, DOH Race-Ethnicity, Gender, Education Level, Employment Status (Grouped), Household Income, Poverty Level, Marital Status (Grouped), Married, Health Care Coverage, for the Year(s) - 2001, 2002, 2003, 2004, 2005, 2006, 2007, 2008, 2009, 2010

Note: Weighted numbers (#), percentages and 95% confidence intervals; Respondents aged 18 years and older; n/r (Not Reportable) - If the unweighted total responses for a dimension (row) is <50 that row will not be shown; n/a (Not Available) - Not asked of a subset of respondents

Year: 2008

Marital Status (Grouped)	Yes			No			Estimated Population
	#	%	C.I. (95%)	#	%	C.I. (95%)	#
Married	300,700	50.9	48.8 - 53.0	289,500	49.1	47.0 - 51.2	590,100
Unmarried Couple	13,900	51.4	41.1 - 61.7	13,100	48.6	38.3 - 58.9	27,000
Widowed	7,600	13.2	8.7 - 17.7	50,100	86.8	82.3 - 91.3	57,700
Other	124,800	38.4	34.8 - 42.0	200,100	61.6	58.0 - 65.2	324,900

Married	Yes			No			Estimated Population
	#	%	C.I. (95%)	#	%	C.I. (95%)	#
Yes	309,200	51.4	49.3 - 53.5	292,400	48.6	46.5 - 50.7	601,600
No	137,400	34.7	31.6 - 37.8	258,500	65.3	62.2 - 68.4	396,000

Children in Household by State, County, Island, Community, BRFSS Age Group, DOH Race-Ethnicity, Gender, Education Level, Employment Status (Grouped), Household Income, Poverty Level, Marital Status (Grouped), Married, Health Care Coverage, for the Year(s) - 2001, 2002, 2003, 2004, 2005, 2006, 2007, 2008, 2009, 2010

Note: Weighted numbers (#), percentages and 95% confidence intervals; Respondents aged 18 years and older; n/r (Not Reportable) - If the unweighted total responses for a dimension (row) is <50 that row will not be shown; n/a (Not Available) - Not asked of a subset of respondents

Year: 2008

Health Care Coverage	Yes			No			Estimated Population
	#	%	C.I. (95%)	#	%	C.I. (95%)	#
Yes	414,700	44.3	42.5 - 46.1	520,800	55.7	53.9 - 57.5	935,400
No	31,600	50.5	42.3 - 58.7	31,100	49.5	41.3 - 57.7	62,700

Children in Household by State, County, Island, Community, BRFSS Age Group, DOH Race-Ethnicity, Gender, Education Level, Employment Status (Grouped), Household Income, Poverty Level, Marital Status (Grouped), Married, Health Care Coverage, for the Year(s) - 2001, 2002, 2003, 2004, 2005, 2006, 2007, 2008, 2009, 2010

Note: Weighted numbers (#), percentages and 95% confidence intervals; Respondents aged 18 years and older; n/r (Not Reportable) - If the unweighted total responses for a dimension (row) is <50 that row will not be shown; n/a (Not Available) - Not asked of a subset of respondents

Year: 2007

State	Yes			No			Estimated Population
	#	%	C.I. (95%)	#	%	C.I. (95%)	#
Hawaii State	440,000	44.6	42.9 - 46.3	546,100	55.4	53.7 - 57.1	986,100

County	Yes			No			Estimated Population
	#	%	C.I. (95%)	#	%	C.I. (95%)	#
Hawaii	53,800	41.7	38.5 - 44.9	75,300	58.3	55.1 - 61.5	129,000
Honolulu	316,500	45.1	42.8 - 47.3	385,500	54.9	52.7 - 57.2	702,000
Kauai	20,800	44.0	39.0 - 49.0	26,500	56.0	51.0 - 61.0	47,300
Maui	48,900	45.4	41.7 - 49.1	58,800	54.6	50.9 - 58.3	107,700

Children in Household by State, County, Island, Community, BRFSS Age Group, DOH Race-Ethnicity, Gender, Education Level, Employment Status (Grouped), Household Income, Poverty Level, Marital Status (Grouped), Married, Health Care Coverage, for the Year(s) - 2001, 2002, 2003, 2004, 2005, 2006, 2007, 2008, 2009, 2010

Note: Weighted numbers (#), percentages and 95% confidence intervals; Respondents aged 18 years and older; n/r (Not Reportable) - If the unweighted total responses for a dimension (row) is <50 that row will not be shown; n/a (Not Available) - Not asked of a subset of respondents

Year: 2007

Island	Yes			No			Estimated Population
	#	%	C.I. (95%)	#	%	C.I. (95%)	#
Hawaii	53,800	41.7	38.5 - 44.9	75,300	58.3	55.1 - 61.5	129,000
Kauai	20,800	44.0	39.0 - 49.0	26,500	56.0	51.0 - 61.0	47,300
Lanai	800	40.8	32.6 - 48.9	1,100	59.2	51.1 - 67.4	1,900
Maui	43,700	44.8	40.7 - 48.8	53,900	55.2	51.2 - 59.3	97,700
Molokai	4,400	53.7	46.5 - 60.9	3,800	46.3	39.1 - 53.5	8,100
Oahu	316,500	45.1	42.8 - 47.3	385,500	54.9	52.7 - 57.2	702,000

Community	Yes			No			Estimated Population
	#	%	C.I. (95%)	#	%	C.I. (95%)	#
Aiea/ Pearl City	29,600	42.9	35.6 - 50.2	39,400	57.1	49.8 - 64.4	69,100

Children in Household by State, County, Island, Community, BRFSS Age Group, DOH Race-Ethnicity, Gender, Education Level, Employment Status (Grouped), Household Income, Poverty Level, Marital Status (Grouped), Married, Health Care Coverage, for the Year(s) - 2001, 2002, 2003, 2004, 2005, 2006, 2007, 2008, 2009, 2010

Note: Weighted numbers (#), percentages and 95% confidence intervals; Respondents aged 18 years and older; n/r (Not Reportable) - If the unweighted total responses for a dimension (row) is <50 that row will not be shown; n/a (Not Available) - Not asked of a subset of respondents

Year: 2007

Community	Yes			No			Estimated Population
	#	%	C.I. (95%)	#	%	C.I. (95%)	#
Ala Moana	6,400	21.9	13.6 - 30.1	22,800	78.1	69.9 - 86.4	29,100
Hanalei/ Kapaa	7,600	37.9	30.4 - 45.3	12,500	62.1	54.7 - 69.6	20,100
Hilo	13,700	37.7	32.1 - 43.3	22,700	62.3	56.7 - 67.9	36,300
Kaaawa/ Kahaluu/ Kaneohe	20,700	41.7	33.8 - 49.7	29,000	58.3	50.3 - 66.2	49,700
Kahului	14,000	43.0	36.5 - 49.5	18,500	57.0	50.5 - 63.5	32,500
Kailua/ Waimanalo	24,300	46.1	38.6 - 53.6	28,400	53.9	46.4 - 61.4	52,700
Kaimuki/ Palolo/ Waikiki	14,000	25.0	18.0 - 32.1	41,800	75.0	67.9 - 82.0	55,800
Kona	10,800	38.7	32.0 - 45.5	17,100	61.3	54.5 - 68.0	27,900
Lahaina/ Wailuku	15,000	48.7	40.8 - 56.7	15,800	51.3	43.3 - 59.2	30,800

Children in Household by State, County, Island, Community, BRFSS Age Group, DOH Race-Ethnicity, Gender, Education Level, Employment Status (Grouped), Household Income, Poverty Level, Marital Status (Grouped), Married, Health Care Coverage, for the Year(s) - 2001, 2002, 2003, 2004, 2005, 2006, 2007, 2008, 2009, 2010

Note: Weighted numbers (#), percentages and 95% confidence intervals; Respondents aged 18 years and older; n/r (Not Reportable) - If the unweighted total responses for a dimension (row) is <50 that row will not be shown; n/a (Not Available) - Not asked of a subset of respondents

Year: 2007

Community	Yes			No			Estimated Population
	#	%	C.I. (95%)	#	%	C.I. (95%)	#
Lanai	800	40.8	32.6 - 48.9	1,100	59.2	51.1 - 67.4	1,900
Lihue-Waimea	13,200	48.5	41.9 - 55.2	14,000	51.5	44.8 - 58.1	27,100
Manoa/ Upper Makiki	12,800	28.0	21.3 - 34.7	32,900	72.0	65.3 - 78.7	45,700
Mililani/ Wahiawa	42,900	57.5	50.9 - 64.0	31,700	42.5	36.0 - 49.1	74,600
Molokai	4,400	53.7	46.5 - 60.9	3,800	46.3	39.1 - 53.5	8,100
Nanakuli/ Waianae	23,700	60.0	49.5 - 70.5	15,800	40.0	29.5 - 50.5	39,500
N.Hawaii	13,800	48.7	41.6 - 55.8	14,600	51.3	44.2 - 58.4	28,400
N.Shore/ Laie	10,500	46.8	33.8 - 59.9	11,900	53.2	40.1 - 66.2	22,500
Nuuanu/ Kalihi/ Moanalua	30,900	46.1	38.2 - 54.0	36,200	53.9	46.0 - 61.8	67,200

Children in Household by State, County, Island, Community, BRFSS Age Group, DOH Race-Ethnicity, Gender, Education Level, Employment Status (Grouped), Household Income, Poverty Level, Marital Status (Grouped), Married, Health Care Coverage, for the Year(s) - 2001, 2002, 2003, 2004, 2005, 2006, 2007, 2008, 2009, 2010

Note: Weighted numbers (#), percentages and 95% confidence intervals; Respondents aged 18 years and older; n/r (Not Reportable) - If the unweighted total responses for a dimension (row) is <50 that row will not be shown; n/a (Not Available) - Not asked of a subset of respondents

Year: 2007

Community	Yes			No			Estimated Population
	#	%	C.I. (95%)	#	%	C.I. (95%)	#
Puna/ Kau	15,400	42.4	36.3 - 48.6	20,900	57.6	51.4 - 63.7	36,300
Salt Lake/ Foster Village	15,500	55.2	44.9 - 65.6	12,500	44.8	34.4 - 55.1	28,000
Upcountry/ Hana	14,700	42.9	36.5 - 49.3	19,600	57.1	50.7 - 63.5	34,300
Waialae/ Kahala/ Hawaii Kai	16,400	42.6	33.9 - 51.3	22,100	57.4	48.7 - 66.1	38,600
Waipahu/ Kapolei/ Ewa	68,700	53.0	47.4 - 58.6	60,900	47.0	41.4 - 52.6	129,700

Children in Household by State, County, Island, Community, BRFSS Age Group, DOH Race-Ethnicity, Gender, Education Level, Employment Status (Grouped), Household Income, Poverty Level, Marital Status (Grouped), Married, Health Care Coverage, for the Year(s) - 2001, 2002, 2003, 2004, 2005, 2006, 2007, 2008, 2009, 2010

Note: Weighted numbers (#), percentages and 95% confidence intervals; Respondents aged 18 years and older; n/r (Not Reportable) - If the unweighted total responses for a dimension (row) is <50 that row will not be shown; n/a (Not Available) - Not asked of a subset of respondents

Year: 2007

BRFSS Age Group	Yes			No			Estimated Population
	#	%	C.I. (95%)	#	%	C.I. (95%)	#
18-24	73,400	58.3	51.6 - 65.1	52,400	41.7	34.9 - 48.4	125,800
25-34	100,000	62.7	57.9 - 67.4	59,500	37.3	32.6 - 42.1	159,500
35-44	132,100	75.3	72.1 - 78.6	43,200	24.7	21.4 - 27.9	175,300
45-54	91,200	49.1	45.8 - 52.5	94,400	50.9	47.5 - 54.2	185,500
55-64	26,400	17.0	14.0 - 20.0	129,100	83.0	80.0 - 86.0	155,500
65-74	12,000	14.3	10.4 - 18.2	71,900	85.7	81.8 - 89.6	83,900
75+	4,000	4.2	1.7 - 6.7	92,700	95.8	93.3 - 98.3	96,800

Children in Household by State, County, Island, Community, BRFSS Age Group, DOH Race-Ethnicity, Gender, Education Level, Employment Status (Grouped), Household Income, Poverty Level, Marital Status (Grouped), Married, Health Care Coverage, for the Year(s) - 2001, 2002, 2003, 2004, 2005, 2006, 2007, 2008, 2009, 2010

Note: Weighted numbers (#), percentages and 95% confidence intervals; Respondents aged 18 years and older; n/r (Not Reportable) - If the unweighted total responses for a dimension (row) is <50 that row will not be shown; n/a (Not Available) - Not asked of a subset of respondents

Year: 2007

DOH Race-Ethnicity	Yes			No			Estimated Population
	#	%	C.I. (95%)	#	%	C.I. (95%)	#
Caucasian	125,100	40.0	37.4 - 42.6	187,900	60.0	57.4 - 62.6	313,000
Native Hawaiian	71,400	52.6	48.0 - 57.3	64,200	47.4	42.7 - 52.0	135,600
Chinese	20,000	36.4	28.8 - 44.1	34,900	63.6	55.9 - 71.2	54,900
Filipino	100,300	57.7	53.0 - 62.5	73,400	42.3	37.5 - 47.0	173,800
Japanese	68,400	31.7	28.3 - 35.0	147,600	68.3	65.0 - 71.7	215,900
Black	11,800	72.1	60.2 - 83.9	4,600	27.9	16.1 - 39.8	16,400
Other Asian	11,300	51.7	39.5 - 63.9	10,500	48.3	36.1 - 60.5	21,800
Other Pacific Islander	13,400	60.5	46.4 - 74.7	8,700	39.5	25.3 - 53.6	22,100
Other	13,900	61.7	50.6 - 72.7	8,600	38.3	27.3 - 49.4	22,500

Children in Household by State, County, Island, Community, BRFSS Age Group, DOH Race-Ethnicity, Gender, Education Level, Employment Status (Grouped), Household Income, Poverty Level, Marital Status (Grouped), Married, Health Care Coverage, for the Year(s) - 2001, 2002, 2003, 2004, 2005, 2006, 2007, 2008, 2009, 2010

Note: Weighted numbers (#), percentages and 95% confidence intervals; Respondents aged 18 years and older; n/r (Not Reportable) - If the unweighted total responses for a dimension (row) is <50 that row will not be shown; n/a (Not Available) - Not asked of a subset of respondents

Year: 2007

Gender	Yes			No			Estimated Population
	#	%	C.I. (95%)	#	%	C.I. (95%)	#
Male	212,500	43.7	41.0 - 46.3	273,900	56.3	53.7 - 59.0	486,400
Female	227,500	45.5	43.3 - 47.7	272,200	54.5	52.3 - 56.7	499,700

Children in Household by State, County, Island, Community, BRFSS Age Group, DOH Race-Ethnicity, Gender, Education Level, Employment Status (Grouped), Household Income, Poverty Level, Marital Status (Grouped), Married, Health Care Coverage, for the Year(s) - 2001, 2002, 2003, 2004, 2005, 2006, 2007, 2008, 2009, 2010

Note: Weighted numbers (#), percentages and 95% confidence intervals; Respondents aged 18 years and older; n/r (Not Reportable) - If the unweighted total responses for a dimension (row) is <50 that row will not be shown; n/a (Not Available) - Not asked of a subset of respondents

Year: 2007

Education Level	Yes			No			Estimated Population
	#	%	C.I. (95%)	#	%	C.I. (95%)	#
Never attended school/ Only Kindergarten to Grades 8	3,200	20.3	8.0 - 32.6	12,400	79.7	67.4 - 92.0	15,500
Grades 9 thru 11 (Some High School)	18,200	48.1	39.3 - 56.8	19,700	51.9	43.2 - 60.7	37,900
Grades 12 or GED (High School Grad)	146,000	47.0	43.7 - 50.4	164,500	53.0	49.6 - 56.3	310,500
College 1 to 3 years (Some College/ Tech)	138,900	48.0	44.8 - 51.1	150,700	52.0	48.9 - 55.2	289,500
College 4 years or more (College Grad)	132,600	40.1	37.5 - 42.7	198,300	59.9	57.3 - 62.5	331,000

Children in Household by State, County, Island, Community, BRFSS Age Group, DOH Race-Ethnicity, Gender, Education Level, Employment Status (Grouped), Household Income, Poverty Level, Marital Status (Grouped), Married, Health Care Coverage, for the Year(s) - 2001, 2002, 2003, 2004, 2005, 2006, 2007, 2008, 2009, 2010

Note: Weighted numbers (#), percentages and 95% confidence intervals; Respondents aged 18 years and older; n/r (Not Reportable) - If the unweighted total responses for a dimension (row) is <50 that row will not be shown; n/a (Not Available) - Not asked of a subset of respondents

Year: 2007

Employment Status (Grouped)	Yes			No			Estimated Population
	#	%	C.I. (95%)	#	%	C.I. (95%)	#
Employed	332,600	52.4	50.3 - 54.6	302,000	47.6	45.4 - 49.7	634,600
Unemployed	15,600	48.4	37.2 - 59.6	16,600	51.6	40.4 - 62.8	32,200
Retired/Unable to work	32,100	14.0	11.5 - 16.6	196,400	86.0	83.4 - 88.5	228,500
Student/Homemaker	59,700	66.0	59.9 - 72.1	30,700	34.0	27.9 - 40.1	90,400

Children in Household by State, County, Island, Community, BRFSS Age Group, DOH Race-Ethnicity, Gender, Education Level, Employment Status (Grouped), Household Income, Poverty Level, Marital Status (Grouped), Married, Health Care Coverage, for the Year(s) - 2001, 2002, 2003, 2004, 2005, 2006, 2007, 2008, 2009, 2010

Note: Weighted numbers (#), percentages and 95% confidence intervals; Respondents aged 18 years and older; n/r (Not Reportable) - If the unweighted total responses for a dimension (row) is <50 that row will not be shown; n/a (Not Available) - Not asked of a subset of respondents

Year: 2007

Household Income	Yes			No			Estimated Population
	#	%	C.I. (95%)	#	%	C.I. (95%)	#
Less than \$10,000	11,300	39.7	29.9 - 49.4	17,100	60.3	50.6 - 70.1	28,400
\$10,000 to \$14,999	13,700	45.0	34.8 - 55.2	16,700	55.0	44.8 - 65.2	30,400
\$15,000 to \$19,999	12,900	28.9	22.5 - 35.3	31,700	71.1	64.7 - 77.5	44,600
\$20,000 to \$24,999	21,100	35.3	28.7 - 41.8	38,700	64.7	58.2 - 71.3	59,800
\$25,000 to \$34,999	52,100	45.5	40.4 - 50.6	62,300	54.5	49.4 - 59.6	114,400
\$35,000 to \$49,999	75,100	45.6	41.2 - 49.9	89,800	54.4	50.1 - 58.8	164,900
\$50,000 to \$74,999	81,200	47.8	43.7 - 51.9	88,600	52.2	48.1 - 56.3	169,800
\$75,000 or more	136,200	47.5	44.5 - 50.6	150,400	52.5	49.4 - 55.5	286,500

Children in Household by State, County, Island, Community, BRFSS Age Group, DOH Race-Ethnicity, Gender, Education Level, Employment Status (Grouped), Household Income, Poverty Level, Marital Status (Grouped), Married, Health Care Coverage, for the Year(s) - 2001, 2002, 2003, 2004, 2005, 2006, 2007, 2008, 2009, 2010

Note: Weighted numbers (#), percentages and 95% confidence intervals; Respondents aged 18 years and older; n/r (Not Reportable) - If the unweighted total responses for a dimension (row) is <50 that row will not be shown; n/a (Not Available) - Not asked of a subset of respondents

Year: 2007

Poverty Level	Yes			No			Estimated Population
	#	%	C.I. (95%)	#	%	C.I. (95%)	#
0-130%	116,100	57.2	53.2 - 61.3	86,700	42.8	38.7 - 46.8	202,700
131-185%	66,700	57.3	51.8 - 62.8	49,800	42.7	37.2 - 48.2	116,500
186+%	220,700	38.1	36.1 - 40.1	358,900	61.9	59.9 - 63.9	579,600

Children in Household by State, County, Island, Community, BRFSS Age Group, DOH Race-Ethnicity, Gender, Education Level, Employment Status (Grouped), Household Income, Poverty Level, Marital Status (Grouped), Married, Health Care Coverage, for the Year(s) - 2001, 2002, 2003, 2004, 2005, 2006, 2007, 2008, 2009, 2010

Note: Weighted numbers (#), percentages and 95% confidence intervals; Respondents aged 18 years and older; n/r (Not Reportable) - If the unweighted total responses for a dimension (row) is <50 that row will not be shown; n/a (Not Available) - Not asked of a subset of respondents

Year: 2007

Marital Status (Grouped)	Yes			No			Estimated Population
	#	%	C.I. (95%)	#	%	C.I. (95%)	#
Married	295,000	50.3	48.3 - 52.4	291,000	49.7	47.6 - 51.7	586,000
Unmarried Couple	13,700	51.0	40.0 - 62.0	13,200	49.0	38.0 - 60.0	26,800
Widowed	9,300	16.0	11.5 - 20.5	49,000	84.0	79.5 - 88.5	58,300
Other	122,000	38.7	35.1 - 42.3	193,000	61.3	57.7 - 64.9	315,000

Married	Yes			No			Estimated Population
	#	%	C.I. (95%)	#	%	C.I. (95%)	#
Yes	301,300	50.6	48.6 - 52.6	294,500	49.4	47.4 - 51.4	595,800
No	138,600	35.6	32.5 - 38.7	250,700	64.4	61.3 - 67.5	389,300

Children in Household by State, County, Island, Community, BRFSS Age Group, DOH Race-Ethnicity, Gender, Education Level, Employment Status (Grouped), Household Income, Poverty Level, Marital Status (Grouped), Married, Health Care Coverage, for the Year(s) - 2001, 2002, 2003, 2004, 2005, 2006, 2007, 2008, 2009, 2010

Note: Weighted numbers (#), percentages and 95% confidence intervals; Respondents aged 18 years and older; n/r (Not Reportable) - If the unweighted total responses for a dimension (row) is <50 that row will not be shown; n/a (Not Available) - Not asked of a subset of respondents

Year: 2007

Health Care Coverage	Yes			No			Estimated Population
	#	%	C.I. (95%)	#	%	C.I. (95%)	#
Yes	412,100	44.5	42.7 - 46.2	514,200	55.5	53.8 - 57.3	926,300
No	27,200	46.2	38.2 - 54.2	31,700	53.8	45.8 - 61.8	58,900

Children in Household by State, County, Island, Community, BRFSS Age Group, DOH Race-Ethnicity, Gender, Education Level, Employment Status (Grouped), Household Income, Poverty Level, Marital Status (Grouped), Married, Health Care Coverage, for the Year(s) - 2001, 2002, 2003, 2004, 2005, 2006, 2007, 2008, 2009, 2010

Note: Weighted numbers (#), percentages and 95% confidence intervals; Respondents aged 18 years and older; n/r (Not Reportable) - If the unweighted total responses for a dimension (row) is <50 that row will not be shown; n/a (Not Available) - Not asked of a subset of respondents

Year: 2006

State	Yes			No			Estimated Population
	#	%	C.I. (95%)	#	%	C.I. (95%)	#
Hawaii State	424,100	43.6	41.9 - 45.3	548,800	56.4	54.7 - 58.1	972,900

County	Yes			No			Estimated Population
	#	%	C.I. (95%)	#	%	C.I. (95%)	#
Hawaii	47,800	39.2	36.0 - 42.5	74,000	60.8	57.5 - 64.0	121,800
Honolulu	310,500	44.6	42.3 - 46.8	386,200	55.4	53.2 - 57.7	696,700
Kauai	18,400	38.4	33.6 - 43.1	29,600	61.6	56.9 - 66.4	48,000
Maui	47,400	44.5	41.0 - 48.1	59,000	55.5	51.9 - 59.0	106,400

Children in Household by State, County, Island, Community, BRFSS Age Group, DOH Race-Ethnicity, Gender, Education Level, Employment Status (Grouped), Household Income, Poverty Level, Marital Status (Grouped), Married, Health Care Coverage, for the Year(s) - 2001, 2002, 2003, 2004, 2005, 2006, 2007, 2008, 2009, 2010

Note: Weighted numbers (#), percentages and 95% confidence intervals; Respondents aged 18 years and older; n/r (Not Reportable) - If the unweighted total responses for a dimension (row) is <50 that row will not be shown; n/a (Not Available) - Not asked of a subset of respondents

Year: 2006

Island	Yes			No			Estimated Population
	#	%	C.I. (95%)	#	%	C.I. (95%)	#
Hawaii	47,800	39.2	36.0 - 42.5	74,000	60.8	57.5 - 64.0	121,800
Kauai	18,400	38.4	33.6 - 43.1	29,600	61.6	56.9 - 66.4	48,000
Lanai	1,100	47.9	39.7 - 56.1	1,200	52.1	43.9 - 60.3	2,400
Maui	43,600	44.8	40.9 - 48.6	53,800	55.2	51.4 - 59.1	97,500
Molokai	2,600	40.0	31.6 - 48.4	3,900	60.0	51.6 - 68.4	6,600
Oahu	310,500	44.6	42.3 - 46.8	386,200	55.4	53.2 - 57.7	696,700

Community	Yes			No			Estimated Population
	#	%	C.I. (95%)	#	%	C.I. (95%)	#
Aiea/ Pearl City	28,700	43.5	36.3 - 50.7	37,300	56.5	49.3 - 63.7	66,000

Children in Household by State, County, Island, Community, BRFSS Age Group, DOH Race-Ethnicity, Gender, Education Level, Employment Status (Grouped), Household Income, Poverty Level, Marital Status (Grouped), Married, Health Care Coverage, for the Year(s) - 2001, 2002, 2003, 2004, 2005, 2006, 2007, 2008, 2009, 2010

Note: Weighted numbers (#), percentages and 95% confidence intervals; Respondents aged 18 years and older; n/r (Not Reportable) - If the unweighted total responses for a dimension (row) is <50 that row will not be shown; n/a (Not Available) - Not asked of a subset of respondents

Year: 2006

Community	Yes			No			Estimated Population
	#	%	C.I. (95%)	#	%	C.I. (95%)	#
Ala Moana	6,300	18.9	11.8 - 26.1	27,000	81.1	73.9 - 88.2	33,300
Hanalei/ Kapaa	8,000	38.6	31.8 - 45.5	12,800	61.4	54.5 - 68.2	20,800
Hilo	12,200	35.2	29.4 - 41.0	22,500	64.8	59.0 - 70.6	34,800
Kaaawa/ Kahaluu/ Kaneohe	15,100	31.5	23.5 - 39.5	32,900	68.5	60.5 - 76.5	48,100
Kahului	17,200	52.3	45.6 - 59.1	15,700	47.7	40.9 - 54.4	32,900
Kailua/ Waimanalo	24,200	48.9	41.2 - 56.6	25,300	51.1	43.4 - 58.8	49,500
Kaimuki/ Palolo/ Waikiki	18,300	31.9	24.9 - 39.0	39,000	68.1	61.0 - 75.1	57,300
Kona	11,700	39.7	32.9 - 46.4	17,800	60.3	53.6 - 67.1	29,500
Lahaina/ Wailuku	14,400	44.1	37.6 - 50.7	18,300	55.9	49.3 - 62.4	32,700

Children in Household by State, County, Island, Community, BRFSS Age Group, DOH Race-Ethnicity, Gender, Education Level, Employment Status (Grouped), Household Income, Poverty Level, Marital Status (Grouped), Married, Health Care Coverage, for the Year(s) - 2001, 2002, 2003, 2004, 2005, 2006, 2007, 2008, 2009, 2010

Note: Weighted numbers (#), percentages and 95% confidence intervals; Respondents aged 18 years and older; n/r (Not Reportable) - If the unweighted total responses for a dimension (row) is <50 that row will not be shown; n/a (Not Available) - Not asked of a subset of respondents

Year: 2006

Community	Yes			No			Estimated Population
	#	%	C.I. (95%)	#	%	C.I. (95%)	#
Lanai	1,100	47.9	39.7 - 56.1	1,200	52.1	43.9 - 60.3	2,400
Lihue-Waimea	10,400	38.1	31.6 - 44.6	16,800	61.9	55.4 - 68.4	27,200
Manoa/ Upper Makiki	15,700	32.7	24.8 - 40.5	32,300	67.3	59.5 - 75.2	48,000
Mililani/ Wahiawa	34,200	52.2	45.3 - 59.1	31,400	47.8	40.9 - 54.7	65,600
Molokai	2,600	40.0	31.6 - 48.4	3,900	60.0	51.6 - 68.4	6,600
Nanakuli/ Waianae	17,000	61.6	50.1 - 73.0	10,600	38.4	27.0 - 49.9	27,700
N.Hawaii	10,800	41.4	34.0 - 48.8	15,300	58.6	51.2 - 66.0	26,100
N.Shore/ Laie	13,900	57.1	46.2 - 68.0	10,400	42.9	32.0 - 53.8	24,300
Nuuanu/ Kalihi/ Moanalua	32,400	43.5	36.1 - 51.0	42,100	56.5	49.0 - 63.9	74,500

Children in Household by State, County, Island, Community, BRFSS Age Group, DOH Race-Ethnicity, Gender, Education Level, Employment Status (Grouped), Household Income, Poverty Level, Marital Status (Grouped), Married, Health Care Coverage, for the Year(s) - 2001, 2002, 2003, 2004, 2005, 2006, 2007, 2008, 2009, 2010

Note: Weighted numbers (#), percentages and 95% confidence intervals; Respondents aged 18 years and older; n/r (Not Reportable) - If the unweighted total responses for a dimension (row) is <50 that row will not be shown; n/a (Not Available) - Not asked of a subset of respondents

Year: 2006

Community	Yes			No			Estimated Population
	#	%	C.I. (95%)	#	%	C.I. (95%)	#
Puna/ Kau	13,000	41.5	35.0 - 48.0	18,400	58.5	52.0 - 65.0	31,400
Salt Lake/ Foster Village	22,200	60.5	50.7 - 70.4	14,500	39.5	29.6 - 49.3	36,600
Upcountry/ Hana	12,000	37.7	31.4 - 43.9	19,900	62.3	56.1 - 68.6	31,900
Waialae/ Kahala/ Hawaii Kai	16,000	37.7	29.5 - 45.9	26,500	62.3	54.1 - 70.5	42,500
Waipahu/ Kapolei/ Ewa	66,500	53.9	48.1 - 59.6	56,900	46.1	40.4 - 51.9	123,400

Children in Household by State, County, Island, Community, BRFSS Age Group, DOH Race-Ethnicity, Gender, Education Level, Employment Status (Grouped), Household Income, Poverty Level, Marital Status (Grouped), Married, Health Care Coverage, for the Year(s) - 2001, 2002, 2003, 2004, 2005, 2006, 2007, 2008, 2009, 2010

Note: Weighted numbers (#), percentages and 95% confidence intervals; Respondents aged 18 years and older; n/r (Not Reportable) - If the unweighted total responses for a dimension (row) is <50 that row will not be shown; n/a (Not Available) - Not asked of a subset of respondents

Year: 2006

BRFSS Age Group	Yes			No			Estimated Population
	#	%	C.I. (95%)	#	%	C.I. (95%)	#
18-24	62,100	50.2	43.5 - 56.9	61,600	49.8	43.1 - 56.5	123,700
25-34	101,100	62.5	57.9 - 67.0	60,700	37.5	33.0 - 42.1	161,800
35-44	126,900	71.7	68.1 - 75.2	50,200	28.3	24.8 - 31.9	177,100
45-54	80,900	45.3	41.9 - 48.7	97,700	54.7	51.3 - 58.1	178,700
55-64	30,900	21.0	17.4 - 24.5	116,300	79.0	75.5 - 82.6	147,100
65-74	9,900	11.8	8.4 - 15.3	73,400	88.2	84.7 - 91.6	83,300
75+	8,800	9.4	5.7 - 13.1	85,000	90.6	86.9 - 94.3	93,800

DOH Race-Ethnicity	Yes			No			Estimated Population
	#	%	C.I. (95%)	#	%	C.I. (95%)	#

Children in Household by State, County, Island, Community, BRFSS Age Group, DOH Race-Ethnicity, Gender, Education Level, Employment Status (Grouped), Household Income, Poverty Level, Marital Status (Grouped), Married, Health Care Coverage, for the Year(s) - 2001, 2002, 2003, 2004, 2005, 2006, 2007, 2008, 2009, 2010

Note: Weighted numbers (#), percentages and 95% confidence intervals; Respondents aged 18 years and older; n/r (Not Reportable) - If the unweighted total responses for a dimension (row) is <50 that row will not be shown; n/a (Not Available) - Not asked of a subset of respondents

Year: 2006

DOH Race-Ethnicity	Yes			No			Estimated Population
	#	%	C.I. (95%)	#	%	C.I. (95%)	#
Caucasian	118,400	37.0	34.5 - 39.5	201,700	63.0	60.5 - 65.5	320,000
Native Hawaiian	71,500	59.2	54.4 - 63.9	49,400	40.8	36.1 - 45.6	120,900
Chinese	19,800	42.6	34.9 - 50.3	26,700	57.4	49.7 - 65.1	46,600
Filipino	88,900	57.6	52.5 - 62.7	65,400	42.4	37.3 - 47.5	154,200
Japanese	62,400	30.1	26.8 - 33.3	145,200	69.9	66.7 - 73.2	207,700
Black	6,500	44.9	29.6 - 60.3	8,000	55.1	39.7 - 70.4	14,500
Other Asian	11,800	40.5	30.1 - 51.0	17,300	59.5	49.0 - 69.9	29,000
Other Pacific Islander	18,400	73.3	62.8 - 83.9	6,700	26.7	16.1 - 37.2	25,100
Mixed Ethnicity	11,300	46.6	35.0 - 58.3	13,000	53.4	41.7 - 65.0	24,300

Children in Household by State, County, Island, Community, BRFSS Age Group, DOH Race-Ethnicity, Gender, Education Level, Employment Status (Grouped), Household Income, Poverty Level, Marital Status (Grouped), Married, Health Care Coverage, for the Year(s) - 2001, 2002, 2003, 2004, 2005, 2006, 2007, 2008, 2009, 2010

Note: Weighted numbers (#), percentages and 95% confidence intervals; Respondents aged 18 years and older; n/r (Not Reportable) - If the unweighted total responses for a dimension (row) is <50 that row will not be shown; n/a (Not Available) - Not asked of a subset of respondents

Year: 2006

DOH Race-Ethnicity	Yes			No			Estimated Population
	#	%	C.I. (95%)	#	%	C.I. (95%)	#
Other	12,300	58.0	45.9 - 70.1	8,900	42.0	29.9 - 54.1	21,200

Gender	Yes			No			Estimated Population
	#	%	C.I. (95%)	#	%	C.I. (95%)	#
Male	199,600	41.6	39.0 - 44.3	280,000	58.4	55.7 - 61.0	479,600
Female	224,500	45.5	43.3 - 47.7	268,900	54.5	52.3 - 56.7	493,300

Children in Household by State, County, Island, Community, BRFSS Age Group, DOH Race-Ethnicity, Gender, Education Level, Employment Status (Grouped), Household Income, Poverty Level, Marital Status (Grouped), Married, Health Care Coverage, for the Year(s) - 2001, 2002, 2003, 2004, 2005, 2006, 2007, 2008, 2009, 2010

Note: Weighted numbers (#), percentages and 95% confidence intervals; Respondents aged 18 years and older; n/r (Not Reportable) - If the unweighted total responses for a dimension (row) is <50 that row will not be shown; n/a (Not Available) - Not asked of a subset of respondents

Year: 2006

Education Level	Yes			No			Estimated Population
	#	%	C.I. (95%)	#	%	C.I. (95%)	#
Never attended school/ Only Kindergarten to Grades 8	6,400	39.5	27.8 - 51.2	9,800	60.5	48.8 - 72.2	16,200
Grades 9 thru 11 (Some High School)	20,200	49.6	41.0 - 58.1	20,600	50.4	41.9 - 59.0	40,800
Grades 12 or GED (High School Grad)	141,800	48.7	45.3 - 52.1	149,400	51.3	47.9 - 54.7	291,300
College 1 to 3 years (Some College/ Tech)	123,300	43.8	40.6 - 47.0	158,200	56.2	53.0 - 59.4	281,500
College 4 years or more (College Grad)	132,300	38.6	36.1 - 41.2	210,200	61.4	58.8 - 63.9	342,500

Children in Household by State, County, Island, Community, BRFSS Age Group, DOH Race-Ethnicity, Gender, Education Level, Employment Status (Grouped), Household Income, Poverty Level, Marital Status (Grouped), Married, Health Care Coverage, for the Year(s) - 2001, 2002, 2003, 2004, 2005, 2006, 2007, 2008, 2009, 2010

Note: Weighted numbers (#), percentages and 95% confidence intervals; Respondents aged 18 years and older; n/r (Not Reportable) - If the unweighted total responses for a dimension (row) is <50 that row will not be shown; n/a (Not Available) - Not asked of a subset of respondents

Year: 2006

Employment Status (Grouped)	Yes			No			Estimated Population
	#	%	C.I. (95%)	#	%	C.I. (95%)	#
Employed	323,400	51.7	49.5 - 53.8	302,600	48.3	46.2 - 50.5	625,900
Unemployed	17,800	49.9	40.0 - 59.7	17,900	50.1	40.3 - 60.0	35,700
Retired/Unable to work	27,400	12.5	10.3 - 14.7	191,900	87.5	85.3 - 89.7	219,400
Student/Homemaker	54,900	60.5	54.0 - 67.0	35,800	39.5	33.0 - 46.0	90,700

Children in Household by State, County, Island, Community, BRFSS Age Group, DOH Race-Ethnicity, Gender, Education Level, Employment Status (Grouped), Household Income, Poverty Level, Marital Status (Grouped), Married, Health Care Coverage, for the Year(s) - 2001, 2002, 2003, 2004, 2005, 2006, 2007, 2008, 2009, 2010

Note: Weighted numbers (#), percentages and 95% confidence intervals; Respondents aged 18 years and older; n/r (Not Reportable) - If the unweighted total responses for a dimension (row) is <50 that row will not be shown; n/a (Not Available) - Not asked of a subset of respondents

Year: 2006

Household Income	Yes			No			Estimated Population
	#	%	C.I. (95%)	#	%	C.I. (95%)	#
Less than \$10,000	11,000	42.2	32.1 - 52.2	15,100	57.8	47.8 - 67.9	26,200
\$10,000 to \$14,999	8,500	32.9	23.6 - 42.1	17,300	67.1	57.9 - 76.4	25,800
\$15,000 to \$19,999	13,500	30.7	23.9 - 37.5	30,500	69.3	62.5 - 76.1	44,000
\$20,000 to \$24,999	28,500	43.2	36.3 - 50.1	37,600	56.8	49.9 - 63.7	66,100
\$25,000 to \$34,999	48,600	45.9	40.4 - 51.3	57,400	54.1	48.7 - 59.6	106,100
\$35,000 to \$49,999	60,000	45.0	40.5 - 49.4	73,400	55.0	50.6 - 59.5	133,400
\$50,000 to \$74,999	72,900	46.8	42.7 - 50.8	83,000	53.2	49.2 - 57.3	155,900
\$75,000 or more	111,200	45.8	42.6 - 49.1	131,300	54.2	50.9 - 57.4	242,500

Children in Household by State, County, Island, Community, BRFSS Age Group, DOH Race-Ethnicity, Gender, Education Level, Employment Status (Grouped), Household Income, Poverty Level, Marital Status (Grouped), Married, Health Care Coverage, for the Year(s) - 2001, 2002, 2003, 2004, 2005, 2006, 2007, 2008, 2009, 2010

Note: Weighted numbers (#), percentages and 95% confidence intervals; Respondents aged 18 years and older; n/r (Not Reportable) - If the unweighted total responses for a dimension (row) is <50 that row will not be shown; n/a (Not Available) - Not asked of a subset of respondents

Year: 2006

Poverty Level	Yes			No			Estimated Population
	#	%	C.I. (95%)	#	%	C.I. (95%)	#
0-130%	99,900	57.0	52.6 - 61.5	75,200	43.0	38.5 - 47.4	175,100
131-185%	69,000	59.9	55.0 - 64.8	46,100	40.1	35.2 - 45.0	115,100
186+%	185,400	36.4	34.3 - 38.4	324,400	63.6	61.6 - 65.7	509,800

Children in Household by State, County, Island, Community, BRFSS Age Group, DOH Race-Ethnicity, Gender, Education Level, Employment Status (Grouped), Household Income, Poverty Level, Marital Status (Grouped), Married, Health Care Coverage, for the Year(s) - 2001, 2002, 2003, 2004, 2005, 2006, 2007, 2008, 2009, 2010

Note: Weighted numbers (#), percentages and 95% confidence intervals; Respondents aged 18 years and older; n/r (Not Reportable) - If the unweighted total responses for a dimension (row) is <50 that row will not be shown; n/a (Not Available) - Not asked of a subset of respondents

Year: 2006

Marital Status (Grouped)	Yes			No			Estimated Population
	#	%	C.I. (95%)	#	%	C.I. (95%)	#
Married	292,800	50.9	48.8 - 53.0	282,300	49.1	47.0 - 51.2	575,100
Unmarried Couple	19,700	61.4	51.5 - 71.3	12,400	38.6	28.7 - 48.5	32,000
Widowed	8,300	15.2	10.7 - 19.6	46,600	84.8	80.4 - 89.3	54,900
Other	103,300	33.2	29.9 - 36.5	207,600	66.8	63.5 - 70.1	310,900

Married	Yes			No			Estimated Population
	#	%	C.I. (95%)	#	%	C.I. (95%)	#
Yes	297,700	50.9	48.8 - 52.9	287,500	49.1	47.1 - 51.2	585,200
No	126,400	32.7	29.8 - 35.6	260,100	67.3	64.4 - 70.2	386,600

Children in Household by State, County, Island, Community, BRFSS Age Group, DOH Race-Ethnicity, Gender, Education Level, Employment Status (Grouped), Household Income, Poverty Level, Marital Status (Grouped), Married, Health Care Coverage, for the Year(s) - 2001, 2002, 2003, 2004, 2005, 2006, 2007, 2008, 2009, 2010

Note: Weighted numbers (#), percentages and 95% confidence intervals; Respondents aged 18 years and older; n/r (Not Reportable) - If the unweighted total responses for a dimension (row) is <50 that row will not be shown; n/a (Not Available) - Not asked of a subset of respondents

Year: 2006

Health Care Coverage	Yes			No			Estimated Population
	#	%	C.I. (95%)	#	%	C.I. (95%)	#
Yes	386,000	43.4	41.6 - 45.2	503,400	56.6	54.8 - 58.4	889,400
No	36,200	45.0	38.0 - 51.9	44,300	55.0	48.1 - 62.0	80,500

Children in Household by State, County, Island, Community, BRFSS Age Group, DOH Race-Ethnicity, Gender, Education Level, Employment Status (Grouped), Household Income, Poverty Level, Marital Status (Grouped), Married, Health Care Coverage, for the Year(s) - 2001, 2002, 2003, 2004, 2005, 2006, 2007, 2008, 2009, 2010

Note: Weighted numbers (#), percentages and 95% confidence intervals; Respondents aged 18 years and older; n/r (Not Reportable) - If the unweighted total responses for a dimension (row) is <50 that row will not be shown; n/a (Not Available) - Not asked of a subset of respondents

Year: 2005

State	Yes			No			Estimated Population
	#	%	C.I. (95%)	#	%	C.I. (95%)	#
Hawaii State	425,600	43.7	42.0 - 45.4	548,800	56.3	54.6 - 58.0	974,400

County	Yes			No			Estimated Population
	#	%	C.I. (95%)	#	%	C.I. (95%)	#
Hawaii	46,800	38.8	35.7 - 41.9	73,800	61.2	58.1 - 64.3	120,600
Honolulu	312,400	44.5	42.2 - 46.7	390,100	55.5	53.3 - 57.8	702,500
Kauai	20,600	44.5	39.3 - 49.6	25,700	55.5	50.4 - 60.7	46,300
Maui	45,900	43.7	39.8 - 47.6	59,100	56.3	52.4 - 60.2	105,000

Children in Household by State, County, Island, Community, BRFSS Age Group, DOH Race-Ethnicity, Gender, Education Level, Employment Status (Grouped), Household Income, Poverty Level, Marital Status (Grouped), Married, Health Care Coverage, for the Year(s) - 2001, 2002, 2003, 2004, 2005, 2006, 2007, 2008, 2009, 2010

Note: Weighted numbers (#), percentages and 95% confidence intervals; Respondents aged 18 years and older; n/r (Not Reportable) - If the unweighted total responses for a dimension (row) is <50 that row will not be shown; n/a (Not Available) - Not asked of a subset of respondents

Year: 2005

Island	Yes			No			Estimated Population
	#	%	C.I. (95%)	#	%	C.I. (95%)	#
Hawaii	46,800	38.8	35.7 - 41.9	73,800	61.2	58.1 - 64.3	120,600
Kauai	20,600	44.5	39.3 - 49.6	25,700	55.5	50.4 - 60.7	46,300
Lanai	1,100	44.3	34.6 - 53.9	1,400	55.7	46.1 - 65.4	2,500
Maui	42,000	43.3	39.1 - 47.5	55,000	56.7	52.5 - 60.9	97,100
Molokai	2,700	50.0	40.2 - 59.8	2,700	50.0	40.2 - 59.8	5,400
Oahu	312,400	44.5	42.2 - 46.7	390,100	55.5	53.3 - 57.8	702,500

Community	Yes			No			Estimated Population
	#	%	C.I. (95%)	#	%	C.I. (95%)	#
Aiea/ Pearl City	31,400	44.7	37.6 - 51.9	38,800	55.3	48.1 - 62.4	70,200

Children in Household by State, County, Island, Community, BRFSS Age Group, DOH Race-Ethnicity, Gender, Education Level, Employment Status (Grouped), Household Income, Poverty Level, Marital Status (Grouped), Married, Health Care Coverage, for the Year(s) - 2001, 2002, 2003, 2004, 2005, 2006, 2007, 2008, 2009, 2010

Note: Weighted numbers (#), percentages and 95% confidence intervals; Respondents aged 18 years and older; n/r (Not Reportable) - If the unweighted total responses for a dimension (row) is <50 that row will not be shown; n/a (Not Available) - Not asked of a subset of respondents

Year: 2005

Community	Yes			No			Estimated Population
	#	%	C.I. (95%)	#	%	C.I. (95%)	#
Ala Moana	7,000	21.1	13.6 - 28.7	26,200	78.9	71.3 - 86.4	33,300
Hanalei/ Kapaa	8,300	43.1	35.8 - 50.5	10,900	56.9	49.5 - 64.2	19,300
Hilo	14,500	40.6	34.8 - 46.4	21,200	59.4	53.6 - 65.2	35,700
Kaaawa/ Kahaluu/ Kaneohe	22,800	43.1	34.9 - 51.2	30,100	56.9	48.8 - 65.1	52,900
Kahului	13,700	39.6	32.3 - 47.0	20,800	60.4	53.0 - 67.7	34,500
Kailua/ Waimanalo	20,100	41.3	33.1 - 49.4	28,600	58.7	50.6 - 66.9	48,600
Kaimuki/ Palolo/ Waikiki	17,800	27.0	21.2 - 32.9	48,200	73.0	67.1 - 78.8	66,000
Kona	10,300	35.5	29.1 - 41.8	18,800	64.5	58.2 - 70.9	29,100
Lahaina/ Wailuku	14,500	45.4	38.5 - 52.4	17,400	54.6	47.6 - 61.5	31,900

Children in Household by State, County, Island, Community, BRFSS Age Group, DOH Race-Ethnicity, Gender, Education Level, Employment Status (Grouped), Household Income, Poverty Level, Marital Status (Grouped), Married, Health Care Coverage, for the Year(s) - 2001, 2002, 2003, 2004, 2005, 2006, 2007, 2008, 2009, 2010

Note: Weighted numbers (#), percentages and 95% confidence intervals; Respondents aged 18 years and older; n/r (Not Reportable) - If the unweighted total responses for a dimension (row) is <50 that row will not be shown; n/a (Not Available) - Not asked of a subset of respondents

Year: 2005

Community	Yes			No			Estimated Population
	#	%	C.I. (95%)	#	%	C.I. (95%)	#
Lanai	1,100	44.3	34.6 - 53.9	1,400	55.7	46.1 - 65.4	2,500
Lihue-Waimea	12,300	45.4	38.4 - 52.5	14,800	54.6	47.5 - 61.6	27,100
Manoa/ Upper Makiki	11,400	25.9	18.0 - 33.7	32,600	74.1	66.3 - 82.0	44,000
Mililani/ Wahiawa	38,900	54.1	47.5 - 60.6	33,000	45.9	39.4 - 52.5	71,900
Molokai	2,700	50.0	40.2 - 59.8	2,700	50.0	40.2 - 59.8	5,400
Nanakuli/ Waianae	19,700	59.7	48.3 - 71.1	13,300	40.3	28.9 - 51.7	32,900
N.Hawaii	10,300	41.5	35.6 - 47.3	14,500	58.5	52.7 - 64.4	24,800
N.Shore/ Laie	8,500	42.1	30.0 - 54.1	11,800	57.9	45.9 - 70.0	20,300
Nuuanu/ Kalihi/ Moanalua	35,900	51.3	43.7 - 59.0	34,100	48.7	41.0 - 56.3	70,000

Children in Household by State, County, Island, Community, BRFSS Age Group, DOH Race-Ethnicity, Gender, Education Level, Employment Status (Grouped), Household Income, Poverty Level, Marital Status (Grouped), Married, Health Care Coverage, for the Year(s) - 2001, 2002, 2003, 2004, 2005, 2006, 2007, 2008, 2009, 2010

Note: Weighted numbers (#), percentages and 95% confidence intervals; Respondents aged 18 years and older; n/r (Not Reportable) - If the unweighted total responses for a dimension (row) is <50 that row will not be shown; n/a (Not Available) - Not asked of a subset of respondents

Year: 2005

Community	Yes			No			Estimated Population
	#	%	C.I. (95%)	#	%	C.I. (95%)	#
Puna/ Kau	11,700	37.6	31.3 - 44.0	19,300	62.4	56.0 - 68.7	31,000
Salt Lake/ Foster Village	19,300	58.4	47.8 - 69.0	13,700	41.6	31.0 - 52.2	33,000
Upcountry/ Hana	13,900	45.2	37.7 - 52.7	16,800	54.8	47.3 - 62.3	30,700
Waialae/ Kahala/ Hawaii Kai	12,900	29.9	21.7 - 38.2	30,200	70.1	61.8 - 78.3	43,100
Waipahu/ Kapolei/ Ewa	66,800	57.3	51.9 - 62.8	49,700	42.7	37.2 - 48.1	116,500

Children in Household by State, County, Island, Community, BRFSS Age Group, DOH Race-Ethnicity, Gender, Education Level, Employment Status (Grouped), Household Income, Poverty Level, Marital Status (Grouped), Married, Health Care Coverage, for the Year(s) - 2001, 2002, 2003, 2004, 2005, 2006, 2007, 2008, 2009, 2010

Note: Weighted numbers (#), percentages and 95% confidence intervals; Respondents aged 18 years and older; n/r (Not Reportable) - If the unweighted total responses for a dimension (row) is <50 that row will not be shown; n/a (Not Available) - Not asked of a subset of respondents

Year: 2005

BRFSS Age Group	Yes			No			Estimated Population
	#	%	C.I. (95%)	#	%	C.I. (95%)	#
18-24	62,100	51.1	44.7 - 57.6	59,300	48.9	42.4 - 55.3	121,300
25-34	106,900	63.7	59.5 - 68.0	60,900	36.3	32.0 - 40.5	167,800
35-44	133,600	73.2	70.0 - 76.4	48,900	26.8	23.6 - 30.0	182,500
45-54	81,200	44.7	41.2 - 48.3	100,300	55.3	51.7 - 58.8	181,600
55-64	23,300	16.5	13.2 - 19.8	118,200	83.5	80.2 - 86.8	141,500
65-74	11,100	13.0	9.1 - 16.8	74,800	87.0	83.2 - 90.9	85,900
75+	6,300	7.2	3.3 - 11.1	82,100	92.8	88.9 - 96.7	88,400

Children in Household by State, County, Island, Community, BRFSS Age Group, DOH Race-Ethnicity, Gender, Education Level, Employment Status (Grouped), Household Income, Poverty Level, Marital Status (Grouped), Married, Health Care Coverage, for the Year(s) - 2001, 2002, 2003, 2004, 2005, 2006, 2007, 2008, 2009, 2010

Note: Weighted numbers (#), percentages and 95% confidence intervals; Respondents aged 18 years and older; n/r (Not Reportable) - If the unweighted total responses for a dimension (row) is <50 that row will not be shown; n/a (Not Available) - Not asked of a subset of respondents

Year: 2005

DOH Race-Ethnicity	Yes			No			Estimated Population
	#	%	C.I. (95%)	#	%	C.I. (95%)	#
Caucasian	122,400	37.5	34.9 - 40.1	203,900	62.5	59.9 - 65.1	326,300
Native Hawaiian	63,600	54.2	49.4 - 59.1	53,700	45.8	40.9 - 50.6	117,400
Chinese	21,500	39.2	31.7 - 46.6	33,500	60.8	53.4 - 68.3	55,000
Filipino	88,400	56.0	51.1 - 60.9	69,500	44.0	39.1 - 48.9	157,900
Japanese	64,900	30.8	27.4 - 34.2	145,700	69.2	65.8 - 72.6	210,600
Black	12,200	62.3	50.2 - 74.4	7,400	37.7	25.6 - 49.8	19,500
Other Asian	8,800	42.9	30.0 - 55.9	11,600	57.1	44.1 - 70.0	20,400
Other Pacific Islander	19,000	74.2	61.7 - 86.6	6,600	25.8	13.4 - 38.3	25,600
Other	21,100	64.3	55.9 - 72.6	11,700	35.7	27.4 - 44.1	32,800

Children in Household by State, County, Island, Community, BRFSS Age Group, DOH Race-Ethnicity, Gender, Education Level, Employment Status (Grouped), Household Income, Poverty Level, Marital Status (Grouped), Married, Health Care Coverage, for the Year(s) - 2001, 2002, 2003, 2004, 2005, 2006, 2007, 2008, 2009, 2010

Note: Weighted numbers (#), percentages and 95% confidence intervals; Respondents aged 18 years and older; n/r (Not Reportable) - If the unweighted total responses for a dimension (row) is <50 that row will not be shown; n/a (Not Available) - Not asked of a subset of respondents

Year: 2005

Gender	Yes			No			Estimated Population
	#	%	C.I. (95%)	#	%	C.I. (95%)	#
Male	204,100	42.1	39.4 - 44.8	280,400	57.9	55.2 - 60.6	484,500
Female	221,500	45.2	43.1 - 47.4	268,400	54.8	52.6 - 56.9	489,900

Children in Household by State, County, Island, Community, BRFSS Age Group, DOH Race-Ethnicity, Gender, Education Level, Employment Status (Grouped), Household Income, Poverty Level, Marital Status (Grouped), Married, Health Care Coverage, for the Year(s) - 2001, 2002, 2003, 2004, 2005, 2006, 2007, 2008, 2009, 2010

Note: Weighted numbers (#), percentages and 95% confidence intervals; Respondents aged 18 years and older; n/r (Not Reportable) - If the unweighted total responses for a dimension (row) is <50 that row will not be shown; n/a (Not Available) - Not asked of a subset of respondents

Year: 2005

Education Level	Yes			No			Estimated Population
	#	%	C.I. (95%)	#	%	C.I. (95%)	#
Never attended school/ Only Kindergarten to Grades 8	9,500	46.1	32.2 - 59.9	11,100	53.9	40.1 - 67.8	20,600
Grades 9 thru 11 (Some High School)	16,500	41.7	32.7 - 50.7	23,100	58.3	49.3 - 67.3	39,600
Grades 12 or GED (High School Grad)	133,300	47.6	44.4 - 50.9	146,500	52.4	49.1 - 55.6	279,700
College 1 to 3 years (Some College/ Tech)	127,000	44.8	41.5 - 48.1	156,300	55.2	51.9 - 58.5	283,200
College 4 years or more (College Grad)	138,800	39.7	37.0 - 42.4	210,900	60.3	57.6 - 63.0	349,700

Children in Household by State, County, Island, Community, BRFSS Age Group, DOH Race-Ethnicity, Gender, Education Level, Employment Status (Grouped), Household Income, Poverty Level, Marital Status (Grouped), Married, Health Care Coverage, for the Year(s) - 2001, 2002, 2003, 2004, 2005, 2006, 2007, 2008, 2009, 2010

Note: Weighted numbers (#), percentages and 95% confidence intervals; Respondents aged 18 years and older; n/r (Not Reportable) - If the unweighted total responses for a dimension (row) is <50 that row will not be shown; n/a (Not Available) - Not asked of a subset of respondents

Year: 2005

Employment Status (Grouped)	Yes			No			Estimated Population
	#	%	C.I. (95%)	#	%	C.I. (95%)	#
Employed	315,900	50.3	48.2 - 52.5	311,700	49.7	47.5 - 51.8	627,600
Unemployed	7,400	39.3	28.0 - 50.5	11,500	60.7	49.5 - 72.0	18,900
Retired/Unable to work	39,500	17.1	14.2 - 20.0	191,300	82.9	80.0 - 85.8	230,800
Student/Homemaker	62,600	65.6	59.8 - 71.5	32,700	34.4	28.5 - 40.2	95,300

Children in Household by State, County, Island, Community, BRFSS Age Group, DOH Race-Ethnicity, Gender, Education Level, Employment Status (Grouped), Household Income, Poverty Level, Marital Status (Grouped), Married, Health Care Coverage, for the Year(s) - 2001, 2002, 2003, 2004, 2005, 2006, 2007, 2008, 2009, 2010

Note: Weighted numbers (#), percentages and 95% confidence intervals; Respondents aged 18 years and older; n/r (Not Reportable) - If the unweighted total responses for a dimension (row) is <50 that row will not be shown; n/a (Not Available) - Not asked of a subset of respondents

Year: 2005

Household Income	Yes			No			Estimated Population
	#	%	C.I. (95%)	#	%	C.I. (95%)	#
Less than \$10,000	9,300	33.8	23.3 - 44.2	18,300	66.2	55.8 - 76.7	27,600
\$10,000 to \$14,999	12,400	43.7	33.1 - 54.3	15,900	56.3	45.7 - 66.9	28,300
\$15,000 to \$19,999	17,900	35.2	27.8 - 42.7	33,000	64.8	57.3 - 72.2	50,900
\$20,000 to \$24,999	26,000	41.9	35.7 - 48.1	36,000	58.1	51.9 - 64.3	61,900
\$25,000 to \$34,999	41,700	41.4	36.1 - 46.6	59,200	58.6	53.4 - 63.9	100,900
\$35,000 to \$49,999	68,600	45.0	40.8 - 49.3	83,800	55.0	50.7 - 59.2	152,400
\$50,000 to \$74,999	84,200	46.3	42.2 - 50.4	97,700	53.7	49.6 - 57.8	181,900
\$75,000 or more	111,200	48.2	44.8 - 51.6	119,600	51.8	48.4 - 55.2	230,800

Children in Household by State, County, Island, Community, BRFSS Age Group, DOH Race-Ethnicity, Gender, Education Level, Employment Status (Grouped), Household Income, Poverty Level, Marital Status (Grouped), Married, Health Care Coverage, for the Year(s) - 2001, 2002, 2003, 2004, 2005, 2006, 2007, 2008, 2009, 2010

Note: Weighted numbers (#), percentages and 95% confidence intervals; Respondents aged 18 years and older; n/r (Not Reportable) - If the unweighted total responses for a dimension (row) is <50 that row will not be shown; n/a (Not Available) - Not asked of a subset of respondents

Year: 2005

Poverty Level	Yes			No			Estimated Population
	#	%	C.I. (95%)	#	%	C.I. (95%)	#
0-130%	97,200	57.6	53.2 - 62.0	71,500	42.4	38.0 - 46.8	168,600
131-185%	48,800	52.8	46.8 - 58.7	43,700	47.2	41.3 - 53.2	92,500
186+%	225,400	39.3	37.3 - 41.3	348,200	60.7	58.7 - 62.7	573,600

Children in Household by State, County, Island, Community, BRFSS Age Group, DOH Race-Ethnicity, Gender, Education Level, Employment Status (Grouped), Household Income, Poverty Level, Marital Status (Grouped), Married, Health Care Coverage, for the Year(s) - 2001, 2002, 2003, 2004, 2005, 2006, 2007, 2008, 2009, 2010

Note: Weighted numbers (#), percentages and 95% confidence intervals; Respondents aged 18 years and older; n/r (Not Reportable) - If the unweighted total responses for a dimension (row) is <50 that row will not be shown; n/a (Not Available) - Not asked of a subset of respondents

Year: 2005

Marital Status (Grouped)	Yes			No			Estimated Population
	#	%	C.I. (95%)	#	%	C.I. (95%)	#
Married	294,100	50.6	48.4 - 52.7	287,700	49.4	47.3 - 51.6	581,800
Unmarried Couple	12,700	48.6	37.9 - 59.2	13,400	51.4	40.8 - 62.1	26,100
Widowed	9,000	15.5	11.3 - 19.7	49,000	84.5	80.3 - 88.7	58,000
Other	109,900	35.6	32.3 - 38.9	198,700	64.4	61.1 - 67.7	308,500

Married	Yes			No			Estimated Population
	#	%	C.I. (95%)	#	%	C.I. (95%)	#
Yes	297,700	50.2	48.1 - 52.3	295,400	49.8	47.7 - 51.9	593,200
No	127,900	33.6	30.7 - 36.5	252,500	66.4	63.5 - 69.3	380,300

Children in Household by State, County, Island, Community, BRFSS Age Group, DOH Race-Ethnicity, Gender, Education Level, Employment Status (Grouped), Household Income, Poverty Level, Marital Status (Grouped), Married, Health Care Coverage, for the Year(s) - 2001, 2002, 2003, 2004, 2005, 2006, 2007, 2008, 2009, 2010

Note: Weighted numbers (#), percentages and 95% confidence intervals; Respondents aged 18 years and older; n/r (Not Reportable) - If the unweighted total responses for a dimension (row) is <50 that row will not be shown; n/a (Not Available) - Not asked of a subset of respondents

Year: 2005

Health Care Coverage	Yes			No			Estimated Population
	#	%	C.I. (95%)	#	%	C.I. (95%)	#
Yes	393,000	43.8	42.0 - 45.6	503,500	56.2	54.4 - 58.0	896,500
No	31,800	41.8	35.5 - 48.0	44,300	58.2	52.0 - 64.5	76,100

Children in Household by State, County, Island, Community, BRFSS Age Group, DOH Race-Ethnicity, Gender, Education Level, Employment Status (Grouped), Household Income, Poverty Level, Marital Status (Grouped), Married, Health Care Coverage, for the Year(s) - 2001, 2002, 2003, 2004, 2005, 2006, 2007, 2008, 2009, 2010

Note: Weighted numbers (#), percentages and 95% confidence intervals; Respondents aged 18 years and older; n/r (Not Reportable) - If the unweighted total responses for a dimension (row) is <50 that row will not be shown; n/a (Not Available) - Not asked of a subset of respondents

Year: 2004

State	Yes			No			Estimated Population
	#	%	C.I. (95%)	#	%	C.I. (95%)	#
Hawaii State	416,500	45.8	42.7 - 48.9	493,300	54.2	51.1 - 57.3	909,800

County	Yes			No			Estimated Population
	#	%	C.I. (95%)	#	%	C.I. (95%)	#
Hawaii	55,700	42.9	37.6 - 48.1	74,200	57.1	51.9 - 62.4	129,800
Honolulu	302,000	47.0	43.0 - 51.1	340,000	53.0	48.9 - 57.0	642,000
Kauai	16,300	40.4	33.3 - 47.4	24,100	59.6	52.6 - 66.7	40,500
Maui	42,500	43.6	36.3 - 50.9	55,000	56.4	49.1 - 63.7	97,500

Children in Household by State, County, Island, Community, BRFSS Age Group, DOH Race-Ethnicity, Gender, Education Level, Employment Status (Grouped), Household Income, Poverty Level, Marital Status (Grouped), Married, Health Care Coverage, for the Year(s) - 2001, 2002, 2003, 2004, 2005, 2006, 2007, 2008, 2009, 2010

Note: Weighted numbers (#), percentages and 95% confidence intervals; Respondents aged 18 years and older; n/r (Not Reportable) - If the unweighted total responses for a dimension (row) is <50 that row will not be shown; n/a (Not Available) - Not asked of a subset of respondents

Year: 2004

Island	Yes			No			Estimated Population
	#	%	C.I. (95%)	#	%	C.I. (95%)	#
Hawaii	55,700	42.9	37.6 - 48.1	74,200	57.1	51.9 - 62.4	129,800
Kauai	16,300	40.4	33.3 - 47.4	24,100	59.6	52.6 - 66.7	40,500
Lanai	600	44.2	28.2 - 60.1	700	55.8	39.9 - 71.8	1,300
Maui	39,000	43.2	35.4 - 51.0	51,300	56.8	49.0 - 64.6	90,400
Molokai	2,900	49.8	32.9 - 66.7	2,900	50.2	33.3 - 67.1	5,800
Oahu	302,000	47.0	43.0 - 51.1	340,000	53.0	48.9 - 57.0	642,000

Community	Yes			No			Estimated Population
	#	%	C.I. (95%)	#	%	C.I. (95%)	#
Aiea/ Pearl City	27,600	44.7	32.2 - 57.2	34,200	55.3	42.8 - 67.8	61,800

Children in Household by State, County, Island, Community, BRFSS Age Group, DOH Race-Ethnicity, Gender, Education Level, Employment Status (Grouped), Household Income, Poverty Level, Marital Status (Grouped), Married, Health Care Coverage, for the Year(s) - 2001, 2002, 2003, 2004, 2005, 2006, 2007, 2008, 2009, 2010

Note: Weighted numbers (#), percentages and 95% confidence intervals; Respondents aged 18 years and older; n/r (Not Reportable) - If the unweighted total responses for a dimension (row) is <50 that row will not be shown; n/a (Not Available) - Not asked of a subset of respondents

Year: 2004

Community	Yes			No			Estimated Population
	#	%	C.I. (95%)	#	%	C.I. (95%)	#
Ala Moana	7,100	23.0	7.7 - 38.4	23,700	77.0	61.6 - 92.3	30,800
Hanalei/ Kapaa	7,100	43.8	32.7 - 55.0	9,100	56.2	45.0 - 67.3	16,200
Hilo	15,100	44.6	34.9 - 54.3	18,700	55.4	45.7 - 65.1	33,800
Kaaawa/ Kahaluu/ Kaneohe	22,200	52.5	36.5 - 68.4	20,200	47.5	31.6 - 63.5	42,400
Kahului	17,700	56.2	44.1 - 68.4	13,800	43.8	31.6 - 55.9	31,500
Kailua/ Waimanalo	23,400	55.6	42.0 - 69.2	18,700	44.4	30.8 - 58.0	42,100
Kaimuki/ Palolo/ Waikiki	15,700	26.2	14.4 - 38.0	44,300	73.8	62.0 - 85.6	60,000
Kona	10,600	40.0	29.0 - 50.9	15,900	60.0	49.1 - 71.0	26,500
Lahaina/ Wailuku	11,000	39.0	23.8 - 54.2	17,300	61.0	45.8 - 76.2	28,300

Children in Household by State, County, Island, Community, BRFSS Age Group, DOH Race-Ethnicity, Gender, Education Level, Employment Status (Grouped), Household Income, Poverty Level, Marital Status (Grouped), Married, Health Care Coverage, for the Year(s) - 2001, 2002, 2003, 2004, 2005, 2006, 2007, 2008, 2009, 2010

Note: Weighted numbers (#), percentages and 95% confidence intervals; Respondents aged 18 years and older; n/r (Not Reportable) - If the unweighted total responses for a dimension (row) is <50 that row will not be shown; n/a (Not Available) - Not asked of a subset of respondents

Year: 2004

Community	Yes			No			Estimated Population
	#	%	C.I. (95%)	#	%	C.I. (95%)	#
Lanai	600	44.2	28.2 - 60.1	700	55.8	39.9 - 71.8	1,300
Lihue-Waimea	9,200	38.0	29.0 - 47.1	15,000	62.0	52.9 - 71.0	24,300
Manoa/ Upper Makiki	11,600	24.9	13.0 - 36.7	35,000	75.1	63.3 - 87.0	46,600
Mililani/ Wahiawa	42,500	70.4	58.5 - 82.3	17,900	29.6	17.7 - 41.5	60,400
Molokai	2,900	49.8	32.9 - 66.7	2,900	50.2	33.3 - 67.1	5,800
N.Hawaii	9,500	41.2	29.6 - 52.7	13,600	58.8	47.3 - 70.4	23,200
Nuuanu/ Kalihi/ Moanalua	29,100	46.1	33.2 - 58.9	34,100	53.9	41.1 - 66.8	63,300
Puna/ Kau	20,500	44.1	34.4 - 53.8	26,000	55.9	46.2 - 65.6	46,500
Upcountry/ Hana	10,300	33.7	21.5 - 45.9	20,300	66.3	54.1 - 78.5	30,600

Children in Household by State, County, Island, Community, BRFSS Age Group, DOH Race-Ethnicity, Gender, Education Level, Employment Status (Grouped), Household Income, Poverty Level, Marital Status (Grouped), Married, Health Care Coverage, for the Year(s) - 2001, 2002, 2003, 2004, 2005, 2006, 2007, 2008, 2009, 2010

Note: Weighted numbers (#), percentages and 95% confidence intervals; Respondents aged 18 years and older; n/r (Not Reportable) - If the unweighted total responses for a dimension (row) is <50 that row will not be shown; n/a (Not Available) - Not asked of a subset of respondents

Year: 2004

Community	Yes			No			Estimated Population
	#	%	C.I. (95%)	#	%	C.I. (95%)	#
Waialae/ Kahala/ Hawaii Kai	18,200	52.7	37.0 - 68.4	16,300	47.3	31.6 - 63.0	34,500
Waipahu/ Kapolei/ Ewa	63,300	57.2	47.0 - 67.3	47,400	42.8	32.7 - 53.0	110,700

Children in Household by State, County, Island, Community, BRFSS Age Group, DOH Race-Ethnicity, Gender, Education Level, Employment Status (Grouped), Household Income, Poverty Level, Marital Status (Grouped), Married, Health Care Coverage, for the Year(s) - 2001, 2002, 2003, 2004, 2005, 2006, 2007, 2008, 2009, 2010

Note: Weighted numbers (#), percentages and 95% confidence intervals; Respondents aged 18 years and older; n/r (Not Reportable) - If the unweighted total responses for a dimension (row) is <50 that row will not be shown; n/a (Not Available) - Not asked of a subset of respondents

Year: 2004

BRFSS Age Group	Yes			No			Estimated Population
	#	%	C.I. (95%)	#	%	C.I. (95%)	#
18-24	60,200	56.1	44.7 - 67.4	47,200	43.9	32.6 - 55.3	107,400
25-34	102,600	61.1	53.9 - 68.3	65,300	38.9	31.7 - 46.1	167,800
35-44	123,200	69.8	64.0 - 75.5	53,300	30.2	24.5 - 36.0	176,500
45-54	74,200	44.1	37.7 - 50.6	93,900	55.9	49.4 - 62.3	168,100
55-64	27,900	22.7	16.3 - 29.1	95,000	77.3	70.9 - 83.7	122,900
65-74	16,300	19.7	11.4 - 28.1	66,300	80.3	71.9 - 88.6	82,500
75+	8,700	11.5	3.5 - 19.5	67,000	88.5	80.5 - 96.5	75,700

Children in Household by State, County, Island, Community, BRFSS Age Group, DOH Race-Ethnicity, Gender, Education Level, Employment Status (Grouped), Household Income, Poverty Level, Marital Status (Grouped), Married, Health Care Coverage, for the Year(s) - 2001, 2002, 2003, 2004, 2005, 2006, 2007, 2008, 2009, 2010

Note: Weighted numbers (#), percentages and 95% confidence intervals; Respondents aged 18 years and older; n/r (Not Reportable) - If the unweighted total responses for a dimension (row) is <50 that row will not be shown; n/a (Not Available) - Not asked of a subset of respondents

Year: 2004

DOH Race-Ethnicity	Yes			No			Estimated Population
	#	%	C.I. (95%)	#	%	C.I. (95%)	#
Caucasian	120,400	40.8	36.1 - 45.6	174,600	59.2	54.4 - 63.9	295,000
Native Hawaiian	68,800	56.5	48.1 - 64.9	53,000	43.5	35.1 - 51.9	121,700
Chinese	16,700	32.8	20.6 - 45.0	34,300	67.2	55.0 - 79.4	51,100
Filipino	89,500	61.5	53.3 - 69.6	56,100	38.5	30.4 - 46.7	145,600
Japanese	60,500	32.2	26.1 - 38.2	127,600	67.8	61.8 - 73.9	188,000
Other	11,600	53.1	36.5 - 69.8	10,200	46.9	30.2 - 63.5	21,800

Children in Household by State, County, Island, Community, BRFSS Age Group, DOH Race-Ethnicity, Gender, Education Level, Employment Status (Grouped), Household Income, Poverty Level, Marital Status (Grouped), Married, Health Care Coverage, for the Year(s) - 2001, 2002, 2003, 2004, 2005, 2006, 2007, 2008, 2009, 2010

Note: Weighted numbers (#), percentages and 95% confidence intervals; Respondents aged 18 years and older; n/r (Not Reportable) - If the unweighted total responses for a dimension (row) is <50 that row will not be shown; n/a (Not Available) - Not asked of a subset of respondents

Year: 2004

Gender	Yes			No			Estimated Population
	#	%	C.I. (95%)	#	%	C.I. (95%)	#
Male	196,700	44.4	39.6 - 49.2	246,000	55.6	50.8 - 60.4	442,800
Female	219,800	47.1	43.2 - 51.0	247,200	52.9	49.0 - 56.8	467,000

Education Level	Yes			No			Estimated Population
	#	%	C.I. (95%)	#	%	C.I. (95%)	#
Grades 9 thru 11 (Some High School)	14,500	46.9	28.6 - 65.2	16,400	53.1	34.8 - 71.4	30,900
Grades 12 or GED (High School Grad)	148,600	52.7	46.9 - 58.5	133,400	47.3	41.5 - 53.1	282,000
College 1 to 3 years (Some College/ Tech)	136,700	47.1	41.6 - 52.6	153,600	52.9	47.4 - 58.4	290,300
College 4 years or more (College Grad)	114,400	38.7	33.8 - 43.6	181,400	61.3	56.4 - 66.2	295,800

Children in Household by State, County, Island, Community, BRFSS Age Group, DOH Race-Ethnicity, Gender, Education Level, Employment Status (Grouped), Household Income, Poverty Level, Marital Status (Grouped), Married, Health Care Coverage, for the Year(s) - 2001, 2002, 2003, 2004, 2005, 2006, 2007, 2008, 2009, 2010

Note: Weighted numbers (#), percentages and 95% confidence intervals; Respondents aged 18 years and older; n/r (Not Reportable) - If the unweighted total responses for a dimension (row) is <50 that row will not be shown; n/a (Not Available) - Not asked of a subset of respondents

Year: 2004

Employment Status (Grouped)	Yes			No			Estimated Population
	#	%	C.I. (95%)	#	%	C.I. (95%)	#
Employed	300,100	51.4	47.6 - 55.2	283,700	48.6	44.8 - 52.4	583,800
Unemployed	13,200	49.7	30.8 - 68.5	13,400	50.3	31.5 - 69.2	26,500
Retired/Unable to work	38,700	19.5	13.8 - 25.2	159,600	80.5	74.8 - 86.2	198,300
Student/Homemaker	63,600	63.4	54.2 - 72.7	36,700	36.6	27.3 - 45.8	100,300

Children in Household by State, County, Island, Community, BRFSS Age Group, DOH Race-Ethnicity, Gender, Education Level, Employment Status (Grouped), Household Income, Poverty Level, Marital Status (Grouped), Married, Health Care Coverage, for the Year(s) - 2001, 2002, 2003, 2004, 2005, 2006, 2007, 2008, 2009, 2010

Note: Weighted numbers (#), percentages and 95% confidence intervals; Respondents aged 18 years and older; n/r (Not Reportable) - If the unweighted total responses for a dimension (row) is <50 that row will not be shown; n/a (Not Available) - Not asked of a subset of respondents

Year: 2004

Household Income	Yes			No			Estimated Population
	#	%	C.I. (95%)	#	%	C.I. (95%)	#
Less than \$10,000	4,700	29.0	8.9 - 49.0	11,500	71.0	51.0 - 91.1	16,200
\$10,000 to \$14,999	5,000	19.1	7.7 - 30.4	21,300	80.9	69.6 - 92.3	26,300
\$15,000 to \$19,999	22,800	48.8	35.4 - 62.2	23,900	51.2	37.8 - 64.6	46,700
\$20,000 to \$24,999	32,000	46.4	35.6 - 57.3	36,900	53.6	42.7 - 64.4	69,000
\$25,000 to \$34,999	49,700	42.7	34.0 - 51.4	66,700	57.3	48.6 - 66.0	116,400
\$35,000 to \$49,999	67,500	47.7	39.8 - 55.6	74,000	52.3	44.4 - 60.2	141,400
\$50,000 to \$74,999	129,800	45.6	39.9 - 51.3	154,900	54.4	48.7 - 60.1	284,700
\$75,000 or more	105,000	50.2	44.0 - 56.4	104,100	49.8	43.6 - 56.0	209,100

Children in Household by State, County, Island, Community, BRFSS Age Group, DOH Race-Ethnicity, Gender, Education Level, Employment Status (Grouped), Household Income, Poverty Level, Marital Status (Grouped), Married, Health Care Coverage, for the Year(s) - 2001, 2002, 2003, 2004, 2005, 2006, 2007, 2008, 2009, 2010

Note: Weighted numbers (#), percentages and 95% confidence intervals; Respondents aged 18 years and older; n/r (Not Reportable) - If the unweighted total responses for a dimension (row) is <50 that row will not be shown; n/a (Not Available) - Not asked of a subset of respondents

Year: 2004

Poverty Level	Yes			No			Estimated Population
	#	%	C.I. (95%)	#	%	C.I. (95%)	#
0-130%	92,100	58.0	50.6 - 65.5	66,500	42.0	34.5 - 49.4	158,600
131-185%	77,000	64.7	55.7 - 73.7	42,000	35.3	26.3 - 44.3	119,000
186+%	247,400	39.1	35.8 - 42.5	384,800	60.9	57.5 - 64.2	632,200

Children in Household by State, County, Island, Community, BRFSS Age Group, DOH Race-Ethnicity, Gender, Education Level, Employment Status (Grouped), Household Income, Poverty Level, Marital Status (Grouped), Married, Health Care Coverage, for the Year(s) - 2001, 2002, 2003, 2004, 2005, 2006, 2007, 2008, 2009, 2010

Note: Weighted numbers (#), percentages and 95% confidence intervals; Respondents aged 18 years and older; n/r (Not Reportable) - If the unweighted total responses for a dimension (row) is <50 that row will not be shown; n/a (Not Available) - Not asked of a subset of respondents

Year: 2004

Marital Status (Grouped)	Yes			No			Estimated Population
	#	%	C.I. (95%)	#	%	C.I. (95%)	#
Married	282,200	53.2	49.3 - 57.0	248,500	46.8	43.0 - 50.7	530,700
Unmarried Couple	10,500	45.0	27.8 - 62.2	12,800	55.0	37.8 - 72.2	23,300
Widowed	11,600	20.9	10.4 - 31.4	44,000	79.1	68.6 - 89.6	55,600
Other	112,200	37.4	31.5 - 43.3	187,900	62.6	56.7 - 68.5	300,100

Married	Yes			No			Estimated Population
	#	%	C.I. (95%)	#	%	C.I. (95%)	#
Yes	288,500	53.4	49.6 - 57.2	252,000	46.6	42.8 - 50.4	540,500
No	127,500	34.8	29.6 - 40.0	239,000	65.2	60.0 - 70.4	366,500

Children in Household by State, County, Island, Community, BRFSS Age Group, DOH Race-Ethnicity, Gender, Education Level, Employment Status (Grouped), Household Income, Poverty Level, Marital Status (Grouped), Married, Health Care Coverage, for the Year(s) - 2001, 2002, 2003, 2004, 2005, 2006, 2007, 2008, 2009, 2010

Note: Weighted numbers (#), percentages and 95% confidence intervals; Respondents aged 18 years and older; n/r (Not Reportable) - If the unweighted total responses for a dimension (row) is <50 that row will not be shown; n/a (Not Available) - Not asked of a subset of respondents

Year: 2004

Health Care Coverage	Yes			No			Estimated Population
	#	%	C.I. (95%)	#	%	C.I. (95%)	#
Yes	379,700	46.2	43.0 - 49.4	442,200	53.8	50.6 - 57.0	821,800
No	36,800	44.2	33.6 - 54.7	46,600	55.8	45.3 - 66.4	83,400

Children in Household by State, County, Island, Community, BRFSS Age Group, DOH Race-Ethnicity, Gender, Education Level, Employment Status (Grouped), Household Income, Poverty Level, Marital Status (Grouped), Married, Health Care Coverage, for the Year(s) - 2001, 2002, 2003, 2004, 2005, 2006, 2007, 2008, 2009, 2010

Note: Weighted numbers (#), percentages and 95% confidence intervals; Respondents aged 18 years and older; n/r (Not Reportable) - If the unweighted total responses for a dimension (row) is <50 that row will not be shown; n/a (Not Available) - Not asked of a subset of respondents

Year: 2003

State	Yes			No			Estimated Population
	#	%	C.I. (95%)	#	%	C.I. (95%)	#
Hawaii State	386,300	41.8	39.9 - 43.8	536,800	58.2	56.2 - 60.1	923,100

County	Yes			No			Estimated Population
	#	%	C.I. (95%)	#	%	C.I. (95%)	#
Hawaii	48,400	41.7	37.7 - 45.6	67,700	58.3	54.4 - 62.3	116,100
Honolulu	278,100	41.8	39.4 - 44.3	386,500	58.2	55.7 - 60.6	664,600
Kauai	15,900	36.4	30.8 - 42.1	27,800	63.6	57.9 - 69.2	43,700
Maui	43,900	44.4	39.6 - 49.2	54,900	55.6	50.8 - 60.4	98,800

Children in Household by State, County, Island, Community, BRFSS Age Group, DOH Race-Ethnicity, Gender, Education Level, Employment Status (Grouped), Household Income, Poverty Level, Marital Status (Grouped), Married, Health Care Coverage, for the Year(s) - 2001, 2002, 2003, 2004, 2005, 2006, 2007, 2008, 2009, 2010

Note: Weighted numbers (#), percentages and 95% confidence intervals; Respondents aged 18 years and older; n/r (Not Reportable) - If the unweighted total responses for a dimension (row) is <50 that row will not be shown; n/a (Not Available) - Not asked of a subset of respondents

Year: 2003

Island	Yes			No			Estimated Population
	#	%	C.I. (95%)	#	%	C.I. (95%)	#
Hawaii	48,400	41.7	37.7 - 45.6	67,700	58.3	54.4 - 62.3	116,100
Kauai	15,900	36.4	30.8 - 42.1	27,800	63.6	57.9 - 69.2	43,700
Maui	40,000	44.6	39.4 - 49.8	49,700	55.4	50.2 - 60.6	89,700
Molokai	3,000	45.7	32.1 - 59.3	3,500	54.3	40.7 - 67.9	6,500
Oahu	278,100	41.8	39.4 - 44.3	386,500	58.2	55.7 - 60.6	664,600

Community	Yes			No			Estimated Population
	#	%	C.I. (95%)	#	%	C.I. (95%)	#
Aiea/ Pearl City	20,200	38.1	28.9 - 47.3	32,700	61.9	52.7 - 71.1	52,900
Ala Moana	7,500	24.3	13.6 - 35.0	23,300	75.7	65.0 - 86.4	30,700

Children in Household by State, County, Island, Community, BRFSS Age Group, DOH Race-Ethnicity, Gender, Education Level, Employment Status (Grouped), Household Income, Poverty Level, Marital Status (Grouped), Married, Health Care Coverage, for the Year(s) - 2001, 2002, 2003, 2004, 2005, 2006, 2007, 2008, 2009, 2010

Note: Weighted numbers (#), percentages and 95% confidence intervals; Respondents aged 18 years and older; n/r (Not Reportable) - If the unweighted total responses for a dimension (row) is <50 that row will not be shown; n/a (Not Available) - Not asked of a subset of respondents

Year: 2003

Community	Yes			No			Estimated Population
	#	%	C.I. (95%)	#	%	C.I. (95%)	#
Hanalei/ Kapaa	7,600	42.7	34.0 - 51.4	10,200	57.3	48.6 - 66.0	17,800
Hilo	13,000	37.0	29.9 - 44.2	22,100	63.0	55.8 - 70.1	35,100
Kaaawa/ Kahaluu/ Kaneohe	19,800	42.8	33.8 - 51.8	26,400	57.2	48.2 - 66.2	46,200
Kahului	15,200	45.8	37.2 - 54.5	18,000	54.2	45.5 - 62.8	33,200
Kailua/ Waimanalo	21,700	42.8	34.6 - 51.1	29,000	57.2	48.9 - 65.4	50,700
Kaimuki/ Palolo/ Waikiki	17,000	26.0	19.1 - 32.8	48,400	74.0	67.2 - 80.9	65,400
Kona	11,800	39.1	31.8 - 46.4	18,300	60.9	53.6 - 68.2	30,000
Lahaina/ Wailuku	13,100	47.0	37.2 - 56.8	14,800	53.0	43.2 - 62.8	28,000
Lihue-Waimea	8,300	32.1	24.8 - 39.3	17,600	67.9	60.7 - 75.2	25,900

Children in Household by State, County, Island, Community, BRFSS Age Group, DOH Race-Ethnicity, Gender, Education Level, Employment Status (Grouped), Household Income, Poverty Level, Marital Status (Grouped), Married, Health Care Coverage, for the Year(s) - 2001, 2002, 2003, 2004, 2005, 2006, 2007, 2008, 2009, 2010

Note: Weighted numbers (#), percentages and 95% confidence intervals; Respondents aged 18 years and older; n/r (Not Reportable) - If the unweighted total responses for a dimension (row) is <50 that row will not be shown; n/a (Not Available) - Not asked of a subset of respondents

Year: 2003

Community	Yes			No			Estimated Population
	#	%	C.I. (95%)	#	%	C.I. (95%)	#
Manoa/ Upper Makiki	11,600	21.3	13.1 - 29.5	42,700	78.7	70.5 - 86.9	54,200
Mililani/ Wahiawa	37,700	56.0	48.4 - 63.5	29,600	44.0	36.5 - 51.6	67,300
Molokai	3,000	45.7	32.1 - 59.3	3,500	54.3	40.7 - 67.9	6,500
Nanakuli/ Waianae	15,000	55.5	42.4 - 68.5	12,100	44.5	31.5 - 57.6	27,100
N.Hawaii	11,500	47.4	38.5 - 56.3	12,700	52.6	43.7 - 61.5	24,200
N.Shore/ Laie	14,000	56.5	44.3 - 68.7	10,800	43.5	31.3 - 55.7	24,800
Nuuanu/ Kalihi/ Moanalua	28,300	39.2	31.8 - 46.7	43,900	60.8	53.3 - 68.2	72,100
Puna/ Kau	12,200	45.5	37.3 - 53.6	14,600	54.5	46.4 - 62.7	26,700
Salt Lake/ Foster Village	23,300	52.1	42.7 - 61.5	21,500	47.9	38.5 - 57.3	44,800

Children in Household by State, County, Island, Community, BRFSS Age Group, DOH Race-Ethnicity, Gender, Education Level, Employment Status (Grouped), Household Income, Poverty Level, Marital Status (Grouped), Married, Health Care Coverage, for the Year(s) - 2001, 2002, 2003, 2004, 2005, 2006, 2007, 2008, 2009, 2010

Note: Weighted numbers (#), percentages and 95% confidence intervals; Respondents aged 18 years and older; n/r (Not Reportable) - If the unweighted total responses for a dimension (row) is <50 that row will not be shown; n/a (Not Available) - Not asked of a subset of respondents

Year: 2003

Community	Yes			No			Estimated Population
	#	%	C.I. (95%)	#	%	C.I. (95%)	#
Upcountry/ Hana	11,700	40.8	32.5 - 49.1	16,900	59.2	50.9 - 67.5	28,600
Waialae/ Kahala/ Hawaii Kai	11,500	31.8	21.8 - 41.9	24,500	68.2	58.1 - 78.2	36,000
Waipahu/ Kapolei/ Ewa	50,700	54.9	48.0 - 61.8	41,700	45.1	38.2 - 52.0	92,400

Children in Household by State, County, Island, Community, BRFSS Age Group, DOH Race-Ethnicity, Gender, Education Level, Employment Status (Grouped), Household Income, Poverty Level, Marital Status (Grouped), Married, Health Care Coverage, for the Year(s) - 2001, 2002, 2003, 2004, 2005, 2006, 2007, 2008, 2009, 2010

Note: Weighted numbers (#), percentages and 95% confidence intervals; Respondents aged 18 years and older; n/r (Not Reportable) - If the unweighted total responses for a dimension (row) is <50 that row will not be shown; n/a (Not Available) - Not asked of a subset of respondents

Year: 2003

BRFSS Age Group	Yes			No			Estimated Population
	#	%	C.I. (95%)	#	%	C.I. (95%)	#
18-24	46,600	40.3	33.8 - 46.9	69,000	59.7	53.1 - 66.2	115,700
25-34	93,900	57.6	53.0 - 62.1	69,200	42.4	37.9 - 47.0	163,200
35-44	122,400	67.6	63.7 - 71.6	58,600	32.4	28.4 - 36.3	180,900
45-54	82,200	46.9	42.7 - 51.0	93,100	53.1	49.0 - 57.3	175,300
55-64	23,900	19.4	15.1 - 23.7	98,900	80.6	76.3 - 84.9	122,800
65-74	11,500	13.5	8.4 - 18.7	73,300	86.5	81.3 - 91.6	84,800
75+	5,600	7.2	3.7 - 10.7	72,600	92.8	89.3 - 96.3	78,300

Children in Household by State, County, Island, Community, BRFSS Age Group, DOH Race-Ethnicity, Gender, Education Level, Employment Status (Grouped), Household Income, Poverty Level, Marital Status (Grouped), Married, Health Care Coverage, for the Year(s) - 2001, 2002, 2003, 2004, 2005, 2006, 2007, 2008, 2009, 2010

Note: Weighted numbers (#), percentages and 95% confidence intervals; Respondents aged 18 years and older; n/r (Not Reportable) - If the unweighted total responses for a dimension (row) is <50 that row will not be shown; n/a (Not Available) - Not asked of a subset of respondents

Year: 2003

DOH Race-Ethnicity	Yes			No			Estimated Population
	#	%	C.I. (95%)	#	%	C.I. (95%)	#
Caucasian	122,100	35.6	32.7 - 38.4	221,200	64.4	61.6 - 67.3	343,400
Native Hawaiian	46,000	56.4	50.2 - 62.7	35,500	43.6	37.3 - 49.8	81,500
Chinese	45,600	41.2	35.3 - 47.0	65,200	58.8	53.0 - 64.7	110,800
Filipino	80,400	56.6	51.2 - 62.0	61,500	43.4	38.0 - 48.8	141,900
Japanese	53,800	31.6	27.2 - 36.0	116,400	68.4	64.0 - 72.8	170,200
Black	7,700	61.7	46.9 - 76.5	4,800	38.3	23.5 - 53.1	12,500
Other Asian	6,700	42.8	27.3 - 58.3	9,000	57.2	41.7 - 72.7	15,700
Other	12,900	54.2	42.1 - 66.2	10,900	45.8	33.8 - 57.9	23,800

Children in Household by State, County, Island, Community, BRFSS Age Group, DOH Race-Ethnicity, Gender, Education Level, Employment Status (Grouped), Household Income, Poverty Level, Marital Status (Grouped), Married, Health Care Coverage, for the Year(s) - 2001, 2002, 2003, 2004, 2005, 2006, 2007, 2008, 2009, 2010

Note: Weighted numbers (#), percentages and 95% confidence intervals; Respondents aged 18 years and older; n/r (Not Reportable) - If the unweighted total responses for a dimension (row) is <50 that row will not be shown; n/a (Not Available) - Not asked of a subset of respondents

Year: 2003

Gender	Yes			No			Estimated Population
	#	%	C.I. (95%)	#	%	C.I. (95%)	#
Male	179,900	39.4	36.4 - 42.3	277,200	60.6	57.7 - 63.6	457,200
Female	206,400	44.3	41.8 - 46.7	259,600	55.7	53.3 - 58.2	466,000

Children in Household by State, County, Island, Community, BRFSS Age Group, DOH Race-Ethnicity, Gender, Education Level, Employment Status (Grouped), Household Income, Poverty Level, Marital Status (Grouped), Married, Health Care Coverage, for the Year(s) - 2001, 2002, 2003, 2004, 2005, 2006, 2007, 2008, 2009, 2010

Note: Weighted numbers (#), percentages and 95% confidence intervals; Respondents aged 18 years and older; n/r (Not Reportable) - If the unweighted total responses for a dimension (row) is <50 that row will not be shown; n/a (Not Available) - Not asked of a subset of respondents

Year: 2003

Education Level	Yes			No			Estimated Population
	#	%	C.I. (95%)	#	%	C.I. (95%)	#
Never attended school/ Only Kindergarten to Grades 8	5,400	39.3	23.3 - 55.4	8,300	60.7	44.6 - 76.7	13,700
Grades 9 thru 11 (Some High School)	10,900	30.8	21.8 - 39.8	24,400	69.2	60.2 - 78.2	35,300
Grades 12 or GED (High School Grad)	128,100	46.2	42.5 - 49.9	149,100	53.8	50.1 - 57.5	277,300
College 1 to 3 years (Some College/ Tech)	111,200	41.3	37.9 - 44.8	157,800	58.7	55.2 - 62.1	269,000
College 4 years or more (College Grad)	129,900	39.8	36.6 - 43.0	196,300	60.2	57.0 - 63.4	326,200

Children in Household by State, County, Island, Community, BRFSS Age Group, DOH Race-Ethnicity, Gender, Education Level, Employment Status (Grouped), Household Income, Poverty Level, Marital Status (Grouped), Married, Health Care Coverage, for the Year(s) - 2001, 2002, 2003, 2004, 2005, 2006, 2007, 2008, 2009, 2010

Note: Weighted numbers (#), percentages and 95% confidence intervals; Respondents aged 18 years and older; n/r (Not Reportable) - If the unweighted total responses for a dimension (row) is <50 that row will not be shown; n/a (Not Available) - Not asked of a subset of respondents

Year: 2003

Employment Status (Grouped)	Yes			No			Estimated Population
	#	%	C.I. (95%)	#	%	C.I. (95%)	#
Employed	291,200	48.5	46.1 - 50.9	309,200	51.5	49.1 - 53.9	600,400
Unemployed	13,800	44.6	33.5 - 55.8	17,200	55.4	44.2 - 66.5	31,000
Retired/Unable to work	23,300	11.8	9.0 - 14.6	174,400	88.2	85.4 - 91.0	197,700
Student/Homemaker	57,700	61.7	55.6 - 67.8	35,800	38.3	32.2 - 44.4	93,500

Children in Household by State, County, Island, Community, BRFSS Age Group, DOH Race-Ethnicity, Gender, Education Level, Employment Status (Grouped), Household Income, Poverty Level, Marital Status (Grouped), Married, Health Care Coverage, for the Year(s) - 2001, 2002, 2003, 2004, 2005, 2006, 2007, 2008, 2009, 2010

Note: Weighted numbers (#), percentages and 95% confidence intervals; Respondents aged 18 years and older; n/r (Not Reportable) - If the unweighted total responses for a dimension (row) is <50 that row will not be shown; n/a (Not Available) - Not asked of a subset of respondents

Year: 2003

Household Income	Yes			No			Estimated Population
	#	%	C.I. (95%)	#	%	C.I. (95%)	#
Less than \$10,000	16,800	35.2	27.2 - 43.3	30,900	64.8	56.7 - 72.8	47,800
\$10,000 to \$14,999	20,700	40.5	31.8 - 49.3	30,300	59.5	50.7 - 68.2	51,000
\$15,000 to \$19,999	19,300	37.9	29.6 - 46.1	31,600	62.1	53.9 - 70.4	50,800
\$20,000 to \$24,999	21,200	37.8	30.3 - 45.4	34,800	62.2	54.6 - 69.7	55,900
\$25,000 to \$34,999	36,000	42.8	36.3 - 49.3	48,100	57.2	50.7 - 63.7	84,100
\$35,000 to \$49,999	64,000	45.1	40.1 - 50.0	78,000	54.9	50.0 - 59.9	142,100
\$50,000 to \$74,999	67,500	49.4	44.4 - 54.4	69,100	50.6	45.6 - 55.6	136,600
\$75,000 or more	76,300	48.0	43.4 - 52.6	82,800	52.0	47.4 - 56.6	159,100

Children in Household by State, County, Island, Community, BRFSS Age Group, DOH Race-Ethnicity, Gender, Education Level, Employment Status (Grouped), Household Income, Poverty Level, Marital Status (Grouped), Married, Health Care Coverage, for the Year(s) - 2001, 2002, 2003, 2004, 2005, 2006, 2007, 2008, 2009, 2010

Note: Weighted numbers (#), percentages and 95% confidence intervals; Respondents aged 18 years and older; n/r (Not Reportable) - If the unweighted total responses for a dimension (row) is <50 that row will not be shown; n/a (Not Available) - Not asked of a subset of respondents

Year: 2003

Poverty Level	Yes			No			Estimated Population
	#	%	C.I. (95%)	#	%	C.I. (95%)	#
0-130%	96,300	50.6	46.0 - 55.2	93,900	49.4	44.8 - 54.0	190,100
131-185%	41,900	50.2	43.2 - 57.2	41,600	49.8	42.8 - 56.8	83,500
186+%	183,500	40.4	37.9 - 43.0	270,300	59.6	57.0 - 62.1	453,800

Children in Household by State, County, Island, Community, BRFSS Age Group, DOH Race-Ethnicity, Gender, Education Level, Employment Status (Grouped), Household Income, Poverty Level, Marital Status (Grouped), Married, Health Care Coverage, for the Year(s) - 2001, 2002, 2003, 2004, 2005, 2006, 2007, 2008, 2009, 2010

Note: Weighted numbers (#), percentages and 95% confidence intervals; Respondents aged 18 years and older; n/r (Not Reportable) - If the unweighted total responses for a dimension (row) is <50 that row will not be shown; n/a (Not Available) - Not asked of a subset of respondents

Year: 2003

Marital Status (Grouped)	Yes			No			Estimated Population
	#	%	C.I. (95%)	#	%	C.I. (95%)	#
Married	273,700	51.5	49.0 - 54.1	257,500	48.5	45.9 - 51.0	531,200
Unmarried Couple	6,900	37.8	23.6 - 52.0	11,300	62.2	48.0 - 76.4	18,200
Widowed	14,100	21.0	15.3 - 26.8	52,800	79.0	73.2 - 84.7	66,900
Other	91,600	29.9	26.6 - 33.1	215,200	70.1	66.9 - 73.4	306,900

Married	Yes			No			Estimated Population
	#	%	C.I. (95%)	#	%	C.I. (95%)	#
Yes	279,800	51.6	49.1 - 54.1	262,500	48.4	45.9 - 50.9	542,300
No	106,500	28.0	25.2 - 30.8	273,800	72.0	69.2 - 74.8	380,300

Children in Household by State, County, Island, Community, BRFSS Age Group, DOH Race-Ethnicity, Gender, Education Level, Employment Status (Grouped), Household Income, Poverty Level, Marital Status (Grouped), Married, Health Care Coverage, for the Year(s) - 2001, 2002, 2003, 2004, 2005, 2006, 2007, 2008, 2009, 2010

Note: Weighted numbers (#), percentages and 95% confidence intervals; Respondents aged 18 years and older; n/r (Not Reportable) - If the unweighted total responses for a dimension (row) is <50 that row will not be shown; n/a (Not Available) - Not asked of a subset of respondents

Year: 2003

Health Care Coverage	Yes			No			Estimated Population
	#	%	C.I. (95%)	#	%	C.I. (95%)	#
Yes	361,000	42.6	40.6 - 44.6	486,800	57.4	55.4 - 59.4	847,800
No	24,700	33.3	26.9 - 39.7	49,500	66.7	60.3 - 73.1	74,200

Children in Household by State, County, Island, Community, BRFSS Age Group, DOH Race-Ethnicity, Gender, Education Level, Employment Status (Grouped), Household Income, Poverty Level, Marital Status (Grouped), Married, Health Care Coverage, for the Year(s) - 2001, 2002, 2003, 2004, 2005, 2006, 2007, 2008, 2009, 2010

Note: Weighted numbers (#), percentages and 95% confidence intervals; Respondents aged 18 years and older; n/r (Not Reportable) - If the unweighted total responses for a dimension (row) is <50 that row will not be shown; n/a (Not Available) - Not asked of a subset of respondents

Year: 2002

State	Yes			No			Estimated Population
	#	%	C.I. (95%)	#	%	C.I. (95%)	#
Hawaii State	399,900	44.1	42.4 - 45.9	505,900	55.9	54.1 - 57.6	905,700

County	Yes			No			Estimated Population
	#	%	C.I. (95%)	#	%	C.I. (95%)	#
Hawaii	48,600	44.0	40.8 - 47.3	61,700	56.0	52.7 - 59.2	110,300
Honolulu	289,800	44.1	41.9 - 46.3	367,200	55.9	53.7 - 58.1	657,000
Kauai	18,600	43.9	39.1 - 48.7	23,800	56.1	51.3 - 60.9	42,500
Maui	42,900	44.7	41.1 - 48.2	53,100	55.3	51.8 - 58.9	96,000

Children in Household by State, County, Island, Community, BRFSS Age Group, DOH Race-Ethnicity, Gender, Education Level, Employment Status (Grouped), Household Income, Poverty Level, Marital Status (Grouped), Married, Health Care Coverage, for the Year(s) - 2001, 2002, 2003, 2004, 2005, 2006, 2007, 2008, 2009, 2010

Note: Weighted numbers (#), percentages and 95% confidence intervals; Respondents aged 18 years and older; n/r (Not Reportable) - If the unweighted total responses for a dimension (row) is <50 that row will not be shown; n/a (Not Available) - Not asked of a subset of respondents

Year: 2002

Island	Yes			No			Estimated Population
	#	%	C.I. (95%)	#	%	C.I. (95%)	#
Hawaii	48,600	44.0	40.8 - 47.3	61,700	56.0	52.7 - 59.2	110,300
Kauai	18,600	43.9	39.1 - 48.7	23,800	56.1	51.3 - 60.9	42,500
Lanai	1,600	41.1	30.1 - 52.2	2,300	58.9	47.8 - 69.9	3,900
Maui	37,200	44.1	40.3 - 48.0	47,100	55.9	52.0 - 59.7	84,400
Molokai	4,100	52.1	42.8 - 61.4	3,700	47.9	38.6 - 57.2	7,800
Oahu	289,800	44.1	41.9 - 46.3	367,200	55.9	53.7 - 58.1	657,000

Community	Yes			No			Estimated Population
	#	%	C.I. (95%)	#	%	C.I. (95%)	#
Aiea/ Pearl City	24,000	36.2	29.6 - 42.9	42,300	63.8	57.1 - 70.4	66,300

Children in Household by State, County, Island, Community, BRFSS Age Group, DOH Race-Ethnicity, Gender, Education Level, Employment Status (Grouped), Household Income, Poverty Level, Marital Status (Grouped), Married, Health Care Coverage, for the Year(s) - 2001, 2002, 2003, 2004, 2005, 2006, 2007, 2008, 2009, 2010

Note: Weighted numbers (#), percentages and 95% confidence intervals; Respondents aged 18 years and older; n/r (Not Reportable) - If the unweighted total responses for a dimension (row) is <50 that row will not be shown; n/a (Not Available) - Not asked of a subset of respondents

Year: 2002

Community	Yes			No			Estimated Population
	#	%	C.I. (95%)	#	%	C.I. (95%)	#
Ala Moana	13,500	39.2	30.8 - 47.6	20,900	60.8	52.4 - 69.2	34,400
Hanalei/ Kapaa	7,100	38.9	31.6 - 46.1	11,100	61.1	53.9 - 68.4	18,200
Hilo	15,400	43.8	37.9 - 49.6	19,800	56.2	50.4 - 62.1	35,200
Kaaawa/ Kahaluu/ Kaneohe	19,400	49.1	40.3 - 58.0	20,100	50.9	42.0 - 59.7	39,500
Kahului	11,400	39.9	33.3 - 46.5	17,100	60.1	53.5 - 66.7	28,500
Kailua/ Waimanalo	19,700	41.5	33.5 - 49.5	27,800	58.5	50.5 - 66.5	47,500
Kaimuki/ Palolo/ Waikiki	17,500	25.9	20.3 - 31.5	50,100	74.1	68.5 - 79.7	67,600
Kona	12,500	41.9	35.8 - 47.9	17,300	58.1	52.1 - 64.2	29,800
Lahaina/ Wailuku	12,900	45.0	38.0 - 52.1	15,700	55.0	47.9 - 62.0	28,500

Children in Household by State, County, Island, Community, BRFSS Age Group, DOH Race-Ethnicity, Gender, Education Level, Employment Status (Grouped), Household Income, Poverty Level, Marital Status (Grouped), Married, Health Care Coverage, for the Year(s) - 2001, 2002, 2003, 2004, 2005, 2006, 2007, 2008, 2009, 2010

Note: Weighted numbers (#), percentages and 95% confidence intervals; Respondents aged 18 years and older; n/r (Not Reportable) - If the unweighted total responses for a dimension (row) is <50 that row will not be shown; n/a (Not Available) - Not asked of a subset of respondents

Year: 2002

Community	Yes			No			Estimated Population
	#	%	C.I. (95%)	#	%	C.I. (95%)	#
Lanai	1,600	41.1	30.1 - 52.2	2,300	58.9	47.8 - 69.9	3,900
Lihue-Waimea	11,600	47.6	41.2 - 54.0	12,700	52.4	46.0 - 58.8	24,300
Manoa/ Upper Makiki	13,500	23.4	17.4 - 29.4	44,100	76.6	70.6 - 82.6	57,600
Mililani/ Wahiawa	35,400	56.2	48.1 - 64.4	27,600	43.8	35.6 - 51.9	63,000
Molokai	4,100	52.1	42.8 - 61.4	3,700	47.9	38.6 - 57.2	7,800
Nanakuli/ Waianae	18,700	72.1	62.6 - 81.6	7,200	27.9	18.4 - 37.4	25,900
N.Hawaii	10,600	46.6	39.3 - 53.8	12,100	53.4	46.2 - 60.7	22,700
N.Shore/ Laie	7,300	39.1	26.7 - 51.5	11,300	60.9	48.5 - 73.3	18,500
Nuuanu/ Kalihi/ Moanalua	30,200	45.6	38.3 - 53.0	36,000	54.4	47.0 - 61.7	66,100

Children in Household by State, County, Island, Community, BRFSS Age Group, DOH Race-Ethnicity, Gender, Education Level, Employment Status (Grouped), Household Income, Poverty Level, Marital Status (Grouped), Married, Health Care Coverage, for the Year(s) - 2001, 2002, 2003, 2004, 2005, 2006, 2007, 2008, 2009, 2010

Note: Weighted numbers (#), percentages and 95% confidence intervals; Respondents aged 18 years and older; n/r (Not Reportable) - If the unweighted total responses for a dimension (row) is <50 that row will not be shown; n/a (Not Available) - Not asked of a subset of respondents

Year: 2002

Community	Yes			No			Estimated Population
	#	%	C.I. (95%)	#	%	C.I. (95%)	#
Puna/ Kau	10,100	44.8	37.9 - 51.8	12,500	55.2	48.2 - 62.1	22,600
Salt Lake/ Foster Village	17,100	45.5	36.2 - 54.7	20,500	54.5	45.3 - 63.8	37,700
Upcountry/ Hana	13,000	47.6	41.1 - 54.0	14,300	52.4	46.0 - 58.9	27,400
Waialae/ Kahala/ Hawaii Kai	20,800	43.8	36.0 - 51.6	26,700	56.2	48.4 - 64.0	47,400
Waipahu/ Kapolei/ Ewa	52,700	61.8	55.7 - 67.9	32,600	38.2	32.1 - 44.3	85,300

Children in Household by State, County, Island, Community, BRFSS Age Group, DOH Race-Ethnicity, Gender, Education Level, Employment Status (Grouped), Household Income, Poverty Level, Marital Status (Grouped), Married, Health Care Coverage, for the Year(s) - 2001, 2002, 2003, 2004, 2005, 2006, 2007, 2008, 2009, 2010

Note: Weighted numbers (#), percentages and 95% confidence intervals; Respondents aged 18 years and older; n/r (Not Reportable) - If the unweighted total responses for a dimension (row) is <50 that row will not be shown; n/a (Not Available) - Not asked of a subset of respondents

Year: 2002

BRFSS Age Group	Yes			No			Estimated Population
	#	%	C.I. (95%)	#	%	C.I. (95%)	#
18-24	53,200	46.5	40.6 - 52.3	61,400	53.5	47.7 - 59.4	114,600
25-34	86,600	52.8	48.5 - 57.1	77,400	47.2	42.9 - 51.5	164,000
35-44	132,200	72.2	69.0 - 75.5	50,800	27.8	24.5 - 31.0	183,100
45-54	86,400	50.0	46.4 - 53.6	86,400	50.0	46.4 - 53.6	172,800
55-64	23,500	21.0	17.1 - 24.9	88,500	79.0	75.1 - 82.9	112,000
65-74	9,900	12.5	8.2 - 16.8	69,600	87.5	83.2 - 91.8	79,500
75+	6,900	9.1	4.6 - 13.5	69,100	90.9	86.5 - 95.4	75,900

Children in Household by State, County, Island, Community, BRFSS Age Group, DOH Race-Ethnicity, Gender, Education Level, Employment Status (Grouped), Household Income, Poverty Level, Marital Status (Grouped), Married, Health Care Coverage, for the Year(s) - 2001, 2002, 2003, 2004, 2005, 2006, 2007, 2008, 2009, 2010

Note: Weighted numbers (#), percentages and 95% confidence intervals; Respondents aged 18 years and older; n/r (Not Reportable) - If the unweighted total responses for a dimension (row) is <50 that row will not be shown; n/a (Not Available) - Not asked of a subset of respondents

Year: 2002

DOH Race-Ethnicity	Yes			No			Estimated Population
	#	%	C.I. (95%)	#	%	C.I. (95%)	#
Caucasian	122,500	39.1	36.4 - 41.8	190,700	60.9	58.2 - 63.6	313,200
Native Hawaiian	64,800	56.8	51.9 - 61.8	49,300	43.2	38.2 - 48.1	114,100
Chinese	24,100	36.1	29.8 - 42.5	42,700	63.9	57.5 - 70.2	66,800
Filipino	79,200	57.5	52.9 - 62.2	58,400	42.5	37.8 - 47.1	137,600
Japanese	60,900	32.7	29.3 - 36.1	125,400	67.3	63.9 - 70.7	186,400
Black	8,100	49.3	36.4 - 62.1	8,300	50.7	37.9 - 63.6	16,400
Other Asian	8,100	38.5	26.7 - 50.3	13,000	61.5	49.7 - 73.3	21,100
Other Pacific Islander	17,200	83.7	73.7 - 93.7	3,400	16.3	6.3 - 26.3	20,600
Other	13,300	56.0	44.9 - 67.2	10,400	44.0	32.8 - 55.1	23,700

Children in Household by State, County, Island, Community, BRFSS Age Group, DOH Race-Ethnicity, Gender, Education Level, Employment Status (Grouped), Household Income, Poverty Level, Marital Status (Grouped), Married, Health Care Coverage, for the Year(s) - 2001, 2002, 2003, 2004, 2005, 2006, 2007, 2008, 2009, 2010

Note: Weighted numbers (#), percentages and 95% confidence intervals; Respondents aged 18 years and older; n/r (Not Reportable) - If the unweighted total responses for a dimension (row) is <50 that row will not be shown; n/a (Not Available) - Not asked of a subset of respondents

Year: 2002

Gender	Yes			No			Estimated Population
	#	%	C.I. (95%)	#	%	C.I. (95%)	#
Male	188,200	41.9	39.3 - 44.5	261,300	58.1	55.5 - 60.7	449,600
Female	211,600	46.4	44.2 - 48.6	244,500	53.6	51.4 - 55.8	456,200

Children in Household by State, County, Island, Community, BRFSS Age Group, DOH Race-Ethnicity, Gender, Education Level, Employment Status (Grouped), Household Income, Poverty Level, Marital Status (Grouped), Married, Health Care Coverage, for the Year(s) - 2001, 2002, 2003, 2004, 2005, 2006, 2007, 2008, 2009, 2010

Note: Weighted numbers (#), percentages and 95% confidence intervals; Respondents aged 18 years and older; n/r (Not Reportable) - If the unweighted total responses for a dimension (row) is <50 that row will not be shown; n/a (Not Available) - Not asked of a subset of respondents

Year: 2002

Education Level	Yes			No			Estimated Population
	#	%	C.I. (95%)	#	%	C.I. (95%)	#
Never attended school/ Only Kindergarten to Grades 8	3,200	17.1	8.9 - 25.4	15,400	82.9	74.6 - 91.1	18,600
Grades 9 thru 11 (Some High School)	16,100	47.4	38.9 - 55.9	17,900	52.6	44.1 - 61.1	34,000
Grades 12 or GED (High School Grad)	164,000	52.3	49.4 - 55.3	149,300	47.7	44.7 - 50.6	313,200
College 1 to 3 years (Some College/ Tech)	108,400	41.0	37.9 - 44.2	155,800	59.0	55.8 - 62.1	264,200
College 4 years or more (College Grad)	108,200	39.4	36.5 - 42.3	166,600	60.6	57.7 - 63.5	274,900

Children in Household by State, County, Island, Community, BRFSS Age Group, DOH Race-Ethnicity, Gender, Education Level, Employment Status (Grouped), Household Income, Poverty Level, Marital Status (Grouped), Married, Health Care Coverage, for the Year(s) - 2001, 2002, 2003, 2004, 2005, 2006, 2007, 2008, 2009, 2010

Note: Weighted numbers (#), percentages and 95% confidence intervals; Respondents aged 18 years and older; n/r (Not Reportable) - If the unweighted total responses for a dimension (row) is <50 that row will not be shown; n/a (Not Available) - Not asked of a subset of respondents

Year: 2002

Employment Status (Grouped)	Yes			No			Estimated Population
	#	%	C.I. (95%)	#	%	C.I. (95%)	#
Employed	305,200	52.0	49.9 - 54.1	281,700	48.0	45.9 - 50.1	586,900
Unemployed	17,700	44.8	35.5 - 54.1	21,900	55.2	45.9 - 64.5	39,600
Retired/Unable to work	21,200	11.8	9.0 - 14.6	158,200	88.2	85.4 - 91.0	179,300
Student/Homemaker	55,700	56.1	50.6 - 61.6	43,500	43.9	38.4 - 49.4	99,200

Children in Household by State, County, Island, Community, BRFSS Age Group, DOH Race-Ethnicity, Gender, Education Level, Employment Status (Grouped), Household Income, Poverty Level, Marital Status (Grouped), Married, Health Care Coverage, for the Year(s) - 2001, 2002, 2003, 2004, 2005, 2006, 2007, 2008, 2009, 2010

Note: Weighted numbers (#), percentages and 95% confidence intervals; Respondents aged 18 years and older; n/r (Not Reportable) - If the unweighted total responses for a dimension (row) is <50 that row will not be shown; n/a (Not Available) - Not asked of a subset of respondents

Year: 2002

Household Income	Yes			No			Estimated Population
	#	%	C.I. (95%)	#	%	C.I. (95%)	#
Less than \$10,000	13,300	37.5	29.5 - 45.5	22,100	62.5	54.5 - 70.5	35,400
\$10,000 to \$14,999	15,000	41.9	33.7 - 50.2	20,800	58.1	49.8 - 66.3	35,700
\$15,000 to \$19,999	16,200	39.0	30.0 - 48.0	25,300	61.0	52.0 - 70.0	41,500
\$20,000 to \$24,999	18,700	43.7	36.6 - 50.8	24,100	56.3	49.2 - 63.4	42,800
\$25,000 to \$34,999	33,400	44.0	38.4 - 49.6	42,500	56.0	50.4 - 61.6	75,900
\$35,000 to \$49,999	53,000	42.8	38.4 - 47.2	70,700	57.2	52.8 - 61.6	123,700
\$50,000 to \$74,999	60,200	47.7	43.2 - 52.2	66,000	52.3	47.8 - 56.8	126,200
\$75,000 or more	60,600	45.2	40.7 - 49.6	73,500	54.8	50.4 - 59.3	134,100

Children in Household by State, County, Island, Community, BRFSS Age Group, DOH Race-Ethnicity, Gender, Education Level, Employment Status (Grouped), Household Income, Poverty Level, Marital Status (Grouped), Married, Health Care Coverage, for the Year(s) - 2001, 2002, 2003, 2004, 2005, 2006, 2007, 2008, 2009, 2010

Note: Weighted numbers (#), percentages and 95% confidence intervals; Respondents aged 18 years and older; n/r (Not Reportable) - If the unweighted total responses for a dimension (row) is <50 that row will not be shown; n/a (Not Available) - Not asked of a subset of respondents

Year: 2002

Poverty Level	Yes			No			Estimated Population
	#	%	C.I. (95%)	#	%	C.I. (95%)	#
0-130%	75,200	53.4	48.8 - 58.0	65,600	46.6	42.0 - 51.2	140,800
131-185%	39,700	57.5	51.6 - 63.4	29,400	42.5	36.6 - 48.4	69,100
186+%	155,300	38.3	35.9 - 40.7	250,100	61.7	59.3 - 64.1	405,400

Children in Household by State, County, Island, Community, BRFSS Age Group, DOH Race-Ethnicity, Gender, Education Level, Employment Status (Grouped), Household Income, Poverty Level, Marital Status (Grouped), Married, Health Care Coverage, for the Year(s) - 2001, 2002, 2003, 2004, 2005, 2006, 2007, 2008, 2009, 2010

Note: Weighted numbers (#), percentages and 95% confidence intervals; Respondents aged 18 years and older; n/r (Not Reportable) - If the unweighted total responses for a dimension (row) is <50 that row will not be shown; n/a (Not Available) - Not asked of a subset of respondents

Year: 2002

Marital Status (Grouped)	Yes			No			Estimated Population
	#	%	C.I. (95%)	#	%	C.I. (95%)	#
Married	281,900	52.9	50.8 - 55.1	250,700	47.1	44.9 - 49.2	532,600
Unmarried Couple	8,900	40.8	29.0 - 52.6	13,000	59.2	47.4 - 71.0	21,900
Widowed	9,200	16.4	10.0 - 22.7	46,900	83.6	77.3 - 90.0	56,100
Other	99,800	33.8	30.8 - 36.9	195,300	66.2	63.1 - 69.2	295,100

Married	Yes			No			Estimated Population
	#	%	C.I. (95%)	#	%	C.I. (95%)	#
Yes	287,000	52.8	50.7 - 54.9	256,600	47.2	45.1 - 49.3	543,500
No	112,800	31.2	28.5 - 34.0	248,300	68.8	66.0 - 71.5	361,100

Children in Household by State, County, Island, Community, BRFSS Age Group, DOH Race-Ethnicity, Gender, Education Level, Employment Status (Grouped), Household Income, Poverty Level, Marital Status (Grouped), Married, Health Care Coverage, for the Year(s) - 2001, 2002, 2003, 2004, 2005, 2006, 2007, 2008, 2009, 2010

Note: Weighted numbers (#), percentages and 95% confidence intervals; Respondents aged 18 years and older; n/r (Not Reportable) - If the unweighted total responses for a dimension (row) is <50 that row will not be shown; n/a (Not Available) - Not asked of a subset of respondents

Year: 2002

Health Care Coverage	Yes			No			Estimated Population
	#	%	C.I. (95%)	#	%	C.I. (95%)	#
Yes	366,100	44.3	42.5 - 46.1	460,000	55.7	53.9 - 57.5	826,100
No	33,300	42.4	36.5 - 48.3	45,200	57.6	51.7 - 63.5	78,500

Children in Household by State, County, Island, Community, BRFSS Age Group, DOH Race-Ethnicity, Gender, Education Level, Employment Status (Grouped), Household Income, Poverty Level, Marital Status (Grouped), Married, Health Care Coverage, for the Year(s) - 2001, 2002, 2003, 2004, 2005, 2006, 2007, 2008, 2009, 2010

Note: Weighted numbers (#), percentages and 95% confidence intervals; Respondents aged 18 years and older; n/r (Not Reportable) - If the unweighted total responses for a dimension (row) is <50 that row will not be shown; n/a (Not Available) - Not asked of a subset of respondents

Year: 2001

State	Yes			No			Estimated Population
	#	%	C.I. (95%)	#	%	C.I. (95%)	#
Hawaii State	380,200	42.6	40.6 - 44.7	512,100	57.4	55.3 - 59.4	892,300

County	Yes			No			Estimated Population
	#	%	C.I. (95%)	#	%	C.I. (95%)	#
Hawaii	43,400	40.5	36.9 - 44.2	63,600	59.5	55.8 - 63.1	107,000
Honolulu	276,100	42.7	40.0 - 45.3	370,900	57.3	54.7 - 60.0	647,000
Kauai	18,400	44.9	39.7 - 50.0	22,600	55.1	50.0 - 60.3	40,900
Maui	42,400	43.5	38.5 - 48.6	55,000	56.5	51.4 - 61.5	97,400

Children in Household by State, County, Island, Community, BRFSS Age Group, DOH Race-Ethnicity, Gender, Education Level, Employment Status (Grouped), Household Income, Poverty Level, Marital Status (Grouped), Married, Health Care Coverage, for the Year(s) - 2001, 2002, 2003, 2004, 2005, 2006, 2007, 2008, 2009, 2010

Note: Weighted numbers (#), percentages and 95% confidence intervals; Respondents aged 18 years and older; n/r (Not Reportable) - If the unweighted total responses for a dimension (row) is <50 that row will not be shown; n/a (Not Available) - Not asked of a subset of respondents

Year: 2001

Island	Yes			No			Estimated Population
	#	%	C.I. (95%)	#	%	C.I. (95%)	#
Hawaii	43,400	40.5	36.9 - 44.2	63,600	59.5	55.8 - 63.1	107,000
Kauai	18,400	44.9	39.7 - 50.0	22,600	55.1	50.0 - 60.3	40,900
Lanai	1,200	49.8	36.8 - 62.8	1,200	50.2	37.2 - 63.2	2,400
Maui	39,200	43.4	37.9 - 48.8	51,100	56.6	51.2 - 62.1	90,300
Molokai	2,000	43.3	30.6 - 56.0	2,600	56.7	44.0 - 69.4	4,700
Oahu	276,100	42.7	40.0 - 45.3	370,900	57.3	54.7 - 60.0	647,000

Community	Yes			No			Estimated Population
	#	%	C.I. (95%)	#	%	C.I. (95%)	#
Aiea/ Pearl City	22,700	36.1	27.5 - 44.7	40,200	63.9	55.3 - 72.5	62,800

Children in Household by State, County, Island, Community, BRFSS Age Group, DOH Race-Ethnicity, Gender, Education Level, Employment Status (Grouped), Household Income, Poverty Level, Marital Status (Grouped), Married, Health Care Coverage, for the Year(s) - 2001, 2002, 2003, 2004, 2005, 2006, 2007, 2008, 2009, 2010

Note: Weighted numbers (#), percentages and 95% confidence intervals; Respondents aged 18 years and older; n/r (Not Reportable) - If the unweighted total responses for a dimension (row) is <50 that row will not be shown; n/a (Not Available) - Not asked of a subset of respondents

Year: 2001

Community	Yes			No			Estimated Population
	#	%	C.I. (95%)	#	%	C.I. (95%)	#
Ala Moana	6,600	25.1	15.6 - 34.7	19,600	74.9	65.3 - 84.4	26,200
Hanalei/ Kapaa	8,300	48.2	40.2 - 56.3	8,900	51.8	43.7 - 59.8	17,100
Hilo	10,700	33.8	27.5 - 40.1	20,900	66.2	59.9 - 72.5	31,600
Kaaawa/ Kahaluu/ Kaneohe	19,000	47.8	36.7 - 58.8	20,700	52.2	41.2 - 63.3	39,700
Kahului	13,900	41.6	29.7 - 53.5	19,400	58.4	46.5 - 70.3	33,300
Kailua/ Waimanalo	18,600	37.4	29.0 - 45.9	31,100	62.6	54.1 - 71.0	49,700
Kaimuki/ Palolo/ Waikiki	14,600	20.4	14.1 - 26.8	57,000	79.6	73.2 - 85.9	71,600
Kona	12,600	41.6	34.4 - 48.7	17,700	58.4	51.3 - 65.6	30,400
Lahaina/ Wailuku	13,900	47.1	39.2 - 54.9	15,700	52.9	45.1 - 60.8	29,600

Children in Household by State, County, Island, Community, BRFSS Age Group, DOH Race-Ethnicity, Gender, Education Level, Employment Status (Grouped), Household Income, Poverty Level, Marital Status (Grouped), Married, Health Care Coverage, for the Year(s) - 2001, 2002, 2003, 2004, 2005, 2006, 2007, 2008, 2009, 2010

Note: Weighted numbers (#), percentages and 95% confidence intervals; Respondents aged 18 years and older; n/r (Not Reportable) - If the unweighted total responses for a dimension (row) is <50 that row will not be shown; n/a (Not Available) - Not asked of a subset of respondents

Year: 2001

Community	Yes			No			Estimated Population
	#	%	C.I. (95%)	#	%	C.I. (95%)	#
Lanai	1,200	49.8	36.8 - 62.8	1,200	50.2	37.2 - 63.2	2,400
Lihue-Waimea	10,100	42.4	35.8 - 49.1	13,700	57.6	50.9 - 64.2	23,800
Manoa/ Upper Makiki	17,900	31.6	23.0 - 40.2	38,600	68.4	59.8 - 77.0	56,500
Mililani/ Wahiawa	32,900	58.2	49.5 - 67.0	23,600	41.8	33.0 - 50.5	56,500
Molokai	2,000	43.3	30.6 - 56.0	2,600	56.7	44.0 - 69.4	4,700
Nanakuli/ Waianae	16,400	54.7	40.6 - 68.7	13,600	45.3	31.3 - 59.4	30,000
N.Hawaii	11,800	49.7	41.5 - 57.8	11,900	50.3	42.2 - 58.5	23,700
N.Shore/ Laie	11,800	45.7	31.7 - 59.7	14,000	54.3	40.3 - 68.3	25,900
Nuuanu/ Kalihi/ Moanalua	29,000	44.3	35.7 - 53.0	36,400	55.7	47.0 - 64.3	65,400

Children in Household by State, County, Island, Community, BRFSS Age Group, DOH Race-Ethnicity, Gender, Education Level, Employment Status (Grouped), Household Income, Poverty Level, Marital Status (Grouped), Married, Health Care Coverage, for the Year(s) - 2001, 2002, 2003, 2004, 2005, 2006, 2007, 2008, 2009, 2010

Note: Weighted numbers (#), percentages and 95% confidence intervals; Respondents aged 18 years and older; n/r (Not Reportable) - If the unweighted total responses for a dimension (row) is <50 that row will not be shown; n/a (Not Available) - Not asked of a subset of respondents

Year: 2001

Community	Yes			No			Estimated Population
	#	%	C.I. (95%)	#	%	C.I. (95%)	#
Puna/ Kau	8,300	38.9	31.3 - 46.5	13,000	61.1	53.5 - 68.7	21,300
Salt Lake/ Foster Village	18,300	52.2	41.4 - 62.9	16,700	47.8	37.1 - 58.6	35,000
Upcountry/ Hana	11,400	41.6	34.7 - 48.4	16,000	58.4	51.6 - 65.3	27,400
Waialae/ Kahala/ Hawaii Kai	12,800	36.4	26.1 - 46.7	22,400	63.6	53.3 - 73.9	35,200
Waipahu/ Kapolei/ Ewa	55,500	60.1	53.3 - 66.9	36,900	39.9	33.1 - 46.7	92,400

Children in Household by State, County, Island, Community, BRFSS Age Group, DOH Race-Ethnicity, Gender, Education Level, Employment Status (Grouped), Household Income, Poverty Level, Marital Status (Grouped), Married, Health Care Coverage, for the Year(s) - 2001, 2002, 2003, 2004, 2005, 2006, 2007, 2008, 2009, 2010

Note: Weighted numbers (#), percentages and 95% confidence intervals; Respondents aged 18 years and older; n/r (Not Reportable) - If the unweighted total responses for a dimension (row) is <50 that row will not be shown; n/a (Not Available) - Not asked of a subset of respondents

Year: 2001

BRFSS Age Group	Yes			No			Estimated Population
	#	%	C.I. (95%)	#	%	C.I. (95%)	#
18-24	55,100	51.8	44.6 - 58.9	51,400	48.2	41.1 - 55.4	106,500
25-34	89,200	53.2	48.6 - 57.8	78,400	46.8	42.2 - 51.4	167,700
35-44	123,800	67.2	63.1 - 71.3	60,500	32.8	28.7 - 36.9	184,200
45-54	71,200	45.4	40.9 - 49.9	85,600	54.6	50.1 - 59.1	156,800
55-64	23,700	19.7	14.7 - 24.6	96,900	80.3	75.4 - 85.3	120,600
65-74	11,100	12.6	7.6 - 17.7	76,900	87.4	82.3 - 92.4	88,000
75+	4,300	6.9	2.9 - 10.9	57,900	93.1	89.1 - 97.1	62,200

Children in Household by State, County, Island, Community, BRFSS Age Group, DOH Race-Ethnicity, Gender, Education Level, Employment Status (Grouped), Household Income, Poverty Level, Marital Status (Grouped), Married, Health Care Coverage, for the Year(s) - 2001, 2002, 2003, 2004, 2005, 2006, 2007, 2008, 2009, 2010

Note: Weighted numbers (#), percentages and 95% confidence intervals; Respondents aged 18 years and older; n/r (Not Reportable) - If the unweighted total responses for a dimension (row) is <50 that row will not be shown; n/a (Not Available) - Not asked of a subset of respondents

Year: 2001

DOH Race-Ethnicity	Yes			No			Estimated Population
	#	%	C.I. (95%)	#	%	C.I. (95%)	#
Caucasian	111,100	36.9	33.8 - 40.0	190,200	63.1	60.0 - 66.2	301,300
Native Hawaiian	61,500	53.2	47.5 - 58.9	54,100	46.8	41.1 - 52.5	115,600
Chinese	20,800	37.6	29.2 - 45.9	34,600	62.4	54.1 - 70.8	55,400
Filipino	75,800	59.0	52.7 - 65.2	52,700	41.0	34.8 - 47.3	128,500
Japanese	57,900	31.3	27.2 - 35.5	126,800	68.7	64.5 - 72.8	184,800
Black	8,100	48.3	32.7 - 64.0	8,600	51.7	36.0 - 67.3	16,700
Other Asian	9,800	36.3	24.7 - 47.9	17,200	63.7	52.1 - 75.3	27,100
Other Pacific Islander	13,400	67.6	51.8 - 83.3	6,400	32.4	16.7 - 48.2	19,900
Other	18,100	54.1	42.5 - 65.7	15,400	45.9	34.3 - 57.5	33,500

Children in Household by State, County, Island, Community, BRFSS Age Group, DOH Race-Ethnicity, Gender, Education Level, Employment Status (Grouped), Household Income, Poverty Level, Marital Status (Grouped), Married, Health Care Coverage, for the Year(s) - 2001, 2002, 2003, 2004, 2005, 2006, 2007, 2008, 2009, 2010

Note: Weighted numbers (#), percentages and 95% confidence intervals; Respondents aged 18 years and older; n/r (Not Reportable) - If the unweighted total responses for a dimension (row) is <50 that row will not be shown; n/a (Not Available) - Not asked of a subset of respondents

Year: 2001

Gender	Yes			No			Estimated Population
	#	%	C.I. (95%)	#	%	C.I. (95%)	#
Male	179,600	39.9	36.8 - 43.0	270,500	60.1	57.0 - 63.2	450,100
Female	200,600	45.4	42.6 - 48.1	241,600	54.6	51.9 - 57.4	442,200

Children in Household by State, County, Island, Community, BRFSS Age Group, DOH Race-Ethnicity, Gender, Education Level, Employment Status (Grouped), Household Income, Poverty Level, Marital Status (Grouped), Married, Health Care Coverage, for the Year(s) - 2001, 2002, 2003, 2004, 2005, 2006, 2007, 2008, 2009, 2010

Note: Weighted numbers (#), percentages and 95% confidence intervals; Respondents aged 18 years and older; n/r (Not Reportable) - If the unweighted total responses for a dimension (row) is <50 that row will not be shown; n/a (Not Available) - Not asked of a subset of respondents

Year: 2001

Education Level	Yes			No			Estimated Population
	#	%	C.I. (95%)	#	%	C.I. (95%)	#
Never attended school/ Only Kindergarten to Grades 8	3,700	22.5	10.4 - 34.5	12,800	77.5	65.5 - 89.6	16,600
Grades 9 thru 11 (Some High School)	15,500	40.8	29.8 - 51.9	22,500	59.2	48.1 - 70.2	38,000
Grades 12 or GED (High School Grad)	142,300	47.9	44.3 - 51.5	154,900	52.1	48.5 - 55.7	297,200
College 1 to 3 years (Some College/ Tech)	114,600	41.7	37.8 - 45.6	160,100	58.3	54.4 - 62.2	274,700
College 4 years or more (College Grad)	103,200	39.1	35.8 - 42.5	160,400	60.9	57.5 - 64.2	263,600

Children in Household by State, County, Island, Community, BRFSS Age Group, DOH Race-Ethnicity, Gender, Education Level, Employment Status (Grouped), Household Income, Poverty Level, Marital Status (Grouped), Married, Health Care Coverage, for the Year(s) - 2001, 2002, 2003, 2004, 2005, 2006, 2007, 2008, 2009, 2010

Note: Weighted numbers (#), percentages and 95% confidence intervals; Respondents aged 18 years and older; n/r (Not Reportable) - If the unweighted total responses for a dimension (row) is <50 that row will not be shown; n/a (Not Available) - Not asked of a subset of respondents

Year: 2001

Employment Status (Grouped)	Yes			No			Estimated Population
	#	%	C.I. (95%)	#	%	C.I. (95%)	#
Employed	288,700	49.1	46.5 - 51.6	299,800	50.9	48.4 - 53.5	588,400
Unemployed	13,200	44.7	33.1 - 56.4	16,300	55.3	43.6 - 66.9	29,400
Retired/Unable to work	26,800	14.2	10.8 - 17.6	161,300	85.8	82.4 - 89.2	188,000
Student/Homemaker	51,600	60.1	53.2 - 66.9	34,300	39.9	33.1 - 46.8	86,000

Children in Household by State, County, Island, Community, BRFSS Age Group, DOH Race-Ethnicity, Gender, Education Level, Employment Status (Grouped), Household Income, Poverty Level, Marital Status (Grouped), Married, Health Care Coverage, for the Year(s) - 2001, 2002, 2003, 2004, 2005, 2006, 2007, 2008, 2009, 2010

Note: Weighted numbers (#), percentages and 95% confidence intervals; Respondents aged 18 years and older; n/r (Not Reportable) - If the unweighted total responses for a dimension (row) is <50 that row will not be shown; n/a (Not Available) - Not asked of a subset of respondents

Year: 2001

Household Income	Yes			No			Estimated Population
	#	%	C.I. (95%)	#	%	C.I. (95%)	#
Less than \$10,000	16,800	44.6	34.2 - 55.0	20,900	55.4	45.0 - 65.8	37,700
\$10,000 to \$14,999	16,500	38.6	29.4 - 47.9	26,200	61.4	52.1 - 70.6	42,700
\$15,000 to \$19,999	14,400	37.0	27.6 - 46.3	24,600	63.0	53.7 - 72.4	39,000
\$20,000 to \$24,999	27,100	46.4	36.4 - 56.3	31,400	53.6	43.7 - 63.6	58,500
\$25,000 to \$34,999	34,300	38.4	32.6 - 44.2	55,000	61.6	55.8 - 67.4	89,300
\$35,000 to \$49,999	59,600	43.8	38.7 - 48.9	76,400	56.2	51.1 - 61.3	136,000
\$50,000 to \$74,999	61,100	49.0	43.6 - 54.3	63,600	51.0	45.7 - 56.4	124,700
\$75,000 or more	55,700	45.6	40.1 - 51.1	66,400	54.4	48.9 - 59.9	122,100

Children in Household by State, County, Island, Community, BRFSS Age Group, DOH Race-Ethnicity, Gender, Education Level, Employment Status (Grouped), Household Income, Poverty Level, Marital Status (Grouped), Married, Health Care Coverage, for the Year(s) - 2001, 2002, 2003, 2004, 2005, 2006, 2007, 2008, 2009, 2010

Note: Weighted numbers (#), percentages and 95% confidence intervals; Respondents aged 18 years and older; n/r (Not Reportable) - If the unweighted total responses for a dimension (row) is <50 that row will not be shown; n/a (Not Available) - Not asked of a subset of respondents

Year: 2001

Poverty Level	Yes			No			Estimated Population
	#	%	C.I. (95%)	#	%	C.I. (95%)	#
0-130%	81,800	56.6	50.8 - 62.4	62,700	43.4	37.6 - 49.2	144,500
131-185%	55,700	51.1	45.0 - 57.1	53,400	48.9	42.9 - 55.0	109,000
186+%	148,100	37.4	34.6 - 40.1	248,300	62.6	59.9 - 65.4	396,400

Marital Status (Grouped)	Yes			No			Estimated Population
	#	%	C.I. (95%)	#	%	C.I. (95%)	#
Married	257,300	50.6	47.9 - 53.4	250,900	49.4	46.6 - 52.1	508,200
Widowed	7,500	15.5	9.1 - 21.8	40,700	84.5	78.2 - 90.9	48,200
Other	112,200	34.3	30.9 - 37.7	214,700	65.7	62.3 - 69.1	326,800

Children in Household by State, County, Island, Community, BRFSS Age Group, DOH Race-Ethnicity, Gender, Education Level, Employment Status (Grouped), Household Income, Poverty Level, Marital Status (Grouped), Married, Health Care Coverage, for the Year(s) - 2001, 2002, 2003, 2004, 2005, 2006, 2007, 2008, 2009, 2010

Note: Weighted numbers (#), percentages and 95% confidence intervals; Respondents aged 18 years and older; n/r (Not Reportable) - If the unweighted total responses for a dimension (row) is <50 that row will not be shown; n/a (Not Available) - Not asked of a subset of respondents

Year: 2001

Married	Yes			No			Estimated Population
	#	%	C.I. (95%)	#	%	C.I. (95%)	#
Yes	270,400	51.4	48.7 - 54.1	255,400	48.6	45.9 - 51.3	525,800
No	109,500	29.9	26.9 - 33.0	256,200	70.1	67.0 - 73.1	365,700

Health Care Coverage	Yes			No			Estimated Population
	#	%	C.I. (95%)	#	%	C.I. (95%)	#
Yes	351,700	42.6	40.5 - 44.7	474,000	57.4	55.3 - 59.5	825,700
No	28,600	43.8	35.8 - 51.8	36,600	56.2	48.2 - 64.2	65,200