

**Diabetes - now taking insulin by State, County, Island, Community, BRFSS Age Group, DOH Race-Ethnicity, Gender, Education Level, Employment Status (Grouped), Household Income, Poverty Level, Marital Status (Grouped), Married, Health Care Coverage, for the Year(s) - 2000-2002, 2001-2003, 2002-2004, 2003-2005, 2004-2006, 2005-2007, 2006-2008, 2007-2009, 2008-2010**

*Note: Weighted numbers (#) represent 3-yr averages, percentages and 95% confidence intervals; Respondents aged 18 years and older; n/r (Not Reportable) - If the unweighted total responses for a dimension (row) is <50 that row will not be shown; n/a (Not Available) - Not asked of a subset of respondents*

*The trend analysis report shows the trend for the selected health variable over selected years in a table and a graph. Estimated Population: This number is a weighted representation of the population who responded to a particular question in the survey. For most questions the eligible population will be the entire adult population. For some secondary questions only a subset of the population was asked the question. For example, all survey participants were asked if they had diabetes, but only those who answered yes were asked if they use insulin. If a dimension value is unknown for a particular survey record, that record will not be included in the counts for that particular dimension.*

*For documentation on other terms and coding in this report, please go to the following links*

[Click here to access BRFSS documentation](#)

[Click here to access DOH Race-Ethnicity coding](#)

[Click here to access The Hawai'i Data Guide](#)

[Click here to access Poverty Level Methodology](#)

**For questions about this report, please contact  
The Hawaii Health Data Warehouse**

[profiles@hhdw.org](mailto:profiles@hhdw.org)

**(855) 946-5899 x15**

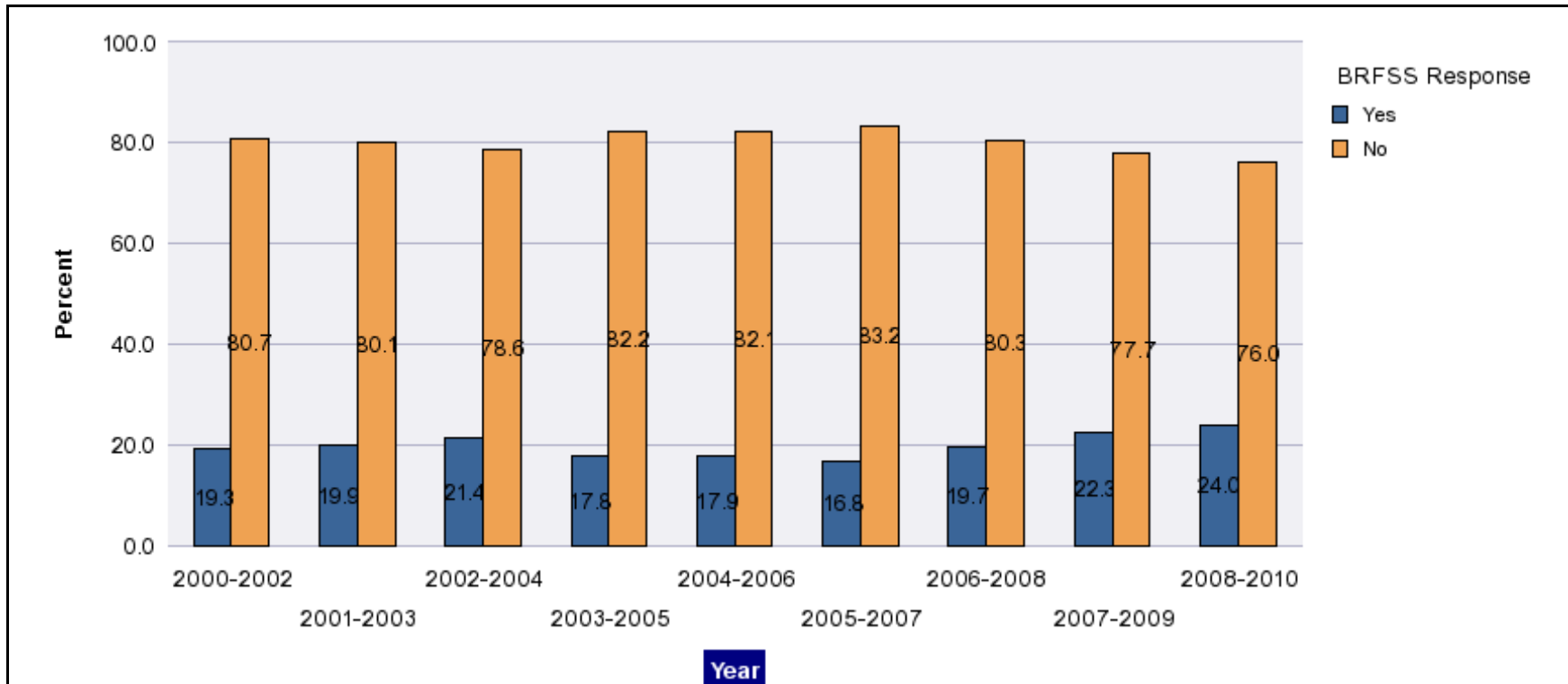
**Diabetes - now taking insulin by State, County, Island, Community, BRFSS Age Group, DOH Race-Ethnicity, Gender, Education Level, Employment Status (Grouped), Household Income, Poverty Level, Marital Status (Grouped), Married, Health Care Coverage, for the Year(s) - 2000-2002, 2001-2003, 2002-2004, 2003-2005, 2004-2006, 2005-2007, 2006-2008, 2007-2009, 2008-2010**

*Note: Weighted numbers (#) represent 3-yr averages, percentages and 95% confidence intervals; Respondents aged 18 years and older; n/r (Not Reportable) - If the unweighted total responses for a dimension (row) is <50 that row will not be shown; n/a (Not Available) - Not asked of a subset of respondents*

Year	Yes			No			Estimated Population (3-Yr Avg)
	#	%	C.I.(95%)	#	%	C.I.(95%)	#
2000-2002	9,900	19.3	16.0 - 22.7	41,200	80.7	77.3 - 84.0	51,100
2001-2003	11,700	19.9	16.3 - 23.4	47,100	80.1	76.6 - 83.7	58,800
2002-2004	13,000	21.4	16.7 - 26.0	47,700	78.6	74.0 - 83.3	60,600
2003-2005	12,500	17.8	13.5 - 22.0	57,900	82.2	78.0 - 86.5	70,500
2004-2006	13,100	17.9	14.0 - 21.8	60,100	82.1	78.2 - 86.0	73,200
2005-2007	13,200	16.8	14.2 - 19.4	65,000	83.2	80.6 - 85.8	78,200
2006-2008	15,400	19.7	17.2 - 22.1	62,900	80.3	77.9 - 82.8	78,300
2007-2009	17,600	22.3	19.0 - 25.5	61,300	77.7	74.5 - 81.0	78,800
2008-2010	19,500	24.0	20.8 - 27.2	61,900	76.0	72.8 - 79.2	81,400

**Diabetes - now taking insulin by State, County, Island, Community, BRFSS Age Group, DOH Race-Ethnicity, Gender, Education Level, Employment Status (Grouped), Household Income, Poverty Level, Marital Status (Grouped), Married, Health Care Coverage, for the Year(s) - 2000-2002, 2001-2003, 2002-2004, 2003-2005, 2004-2006, 2005-2007, 2006-2008, 2007-2009, 2008-2010**

*Note: Weighted numbers (#) represent 3-yr averages, percentages and 95% confidence intervals; Respondents aged 18 years and older; n/r (Not Reportable) - If the unweighted total responses for a dimension (row) is <50 that row will not be shown; n/a (Not Available) - Not asked of a subset of respondents*



**Diabetes - now taking insulin by State, County, Island, Community, BRFSS Age Group, DOH Race-Ethnicity, Gender, Education Level, Employment Status (Grouped), Household Income, Poverty Level, Marital Status (Grouped), Married, Health Care Coverage, for the Year(s) - 2000-2002, 2001-2003, 2002-2004, 2003-2005, 2004-2006, 2005-2007, 2006-2008, 2007-2009, 2008-2010**

*Note: Weighted numbers (#) represent 3-yr averages, percentages and 95% confidence intervals; Respondents aged 18 years and older; n/r (Not Reportable) - If the unweighted total responses for a dimension (row) is <50 that row will not be shown; n/a (Not Available) - Not asked of a subset of respondents*

**Year: 2008-2010**

State	Yes			No			Estimated Population (3-Yr Avg)
	#	%	C.I. (95%)	#	%	C.I. (95%)	#
Hawaii State	19,500	24.0	20.8 - 27.2	61,900	76.0	72.8 - 79.2	81,400

County	Yes			No			Estimated Population (3-Yr Avg)
	#	%	C.I. (95%)	#	%	C.I. (95%)	#
Hawaii	2,700	23.9	18.5 - 29.4	8,600	76.1	70.6 - 81.5	11,300
Honolulu	14,300	24.8	20.5 - 29.0	43,400	75.2	71.0 - 79.5	57,600
Kauai	800	22.4	14.5 - 30.3	2,900	77.6	69.7 - 85.5	3,700
Maui	1,700	19.4	12.6 - 26.2	7,100	80.6	73.8 - 87.4	8,800

**Diabetes - now taking insulin by State, County, Island, Community, BRFSS Age Group, DOH Race-Ethnicity, Gender, Education Level, Employment Status (Grouped), Household Income, Poverty Level, Marital Status (Grouped), Married, Health Care Coverage, for the Year(s) - 2000-2002, 2001-2003, 2002-2004, 2003-2005, 2004-2006, 2005-2007, 2006-2008, 2007-2009, 2008-2010**

*Note: Weighted numbers (#) represent 3-yr averages, percentages and 95% confidence intervals; Respondents aged 18 years and older; n/r (Not Reportable) - If the unweighted total responses for a dimension (row) is <50 that row will not be shown; n/a (Not Available) - Not asked of a subset of respondents*

**Year: 2008-2010**

Island	Yes			No			Estimated Population (3-Yr Avg)
	#	%	C.I. (95%)	#	%	C.I. (95%)	#
Hawaii	2,700	23.9	18.5 - 29.4	8,600	76.1	70.6 - 81.5	11,300
Kauai	800	22.4	14.5 - 30.3	2,900	77.6	69.7 - 85.5	3,700
Lanai	<50	20.3	8.2 - 32.4	100	79.7	67.6 - 91.8	200
Maui	1,600	20.2	12.5 - 27.8	6,200	79.9	72.2 - 87.5	7,800
Molokai	100	12.3	4.0 - 20.6	800	87.7	79.4 - 96.0	900
Oahu	14,300	24.8	20.5 - 29.0	43,400	75.2	71.0 - 79.5	57,600

Community	Yes			No			Estimated Population (3-Yr Avg)
	#	%	C.I. (95%)	#	%	C.I. (95%)	#
Aiea/ Pearl City	1,200	25.8	12.7 - 38.9	3,400	74.2	61.1 - 87.3	4,500
Hanalei/ Kapaa	300	24.0	10.4 - 37.7	900	76.0	62.3 - 89.6	1,200

**Diabetes - now taking insulin by State, County, Island, Community, BRFSS Age Group, DOH Race-Ethnicity, Gender, Education Level, Employment Status (Grouped), Household Income, Poverty Level, Marital Status (Grouped), Married, Health Care Coverage, for the Year(s) - 2000-2002, 2001-2003, 2002-2004, 2003-2005, 2004-2006, 2005-2007, 2006-2008, 2007-2009, 2008-2010**

*Note: Weighted numbers (#) represent 3-yr averages, percentages and 95% confidence intervals; Respondents aged 18 years and older; n/r (Not Reportable) - If the unweighted total responses for a dimension (row) is <50 that row will not be shown; n/a (Not Available) - Not asked of a subset of respondents*

**Year: 2008-2010**

Community	Yes			No			Estimated Population (3-Yr Avg)
	#	%	C.I. (95%)	#	%	C.I. (95%)	#
Hilo	800	22.7	13.5 - 31.8	2,800	77.3	68.2 - 86.5	3,600
Kaaawa/ Kahaluu/ Kaneohe	1,000	24.8	10.9 - 38.8	3,000	75.2	61.2 - 89.1	4,000
Kahului	500	18.1	8.4 - 27.8	2,100	81.9	72.2 - 91.6	2,500
Kailua/ Waimanalo	600	16.1	0.6 - 31.6	3,200	83.9	68.4 - 99.4	3,800
Kaimuki/ Palolo/ Waikiki	1,000	18.8	9.3 - 28.4	4,200	81.2	71.6 - 90.7	5,200
Kona	500	21.1	8.4 - 33.7	1,900	78.9	66.3 - 91.6	2,400
Lahaina/ Wailuku	800	25.8	10.4 - 41.2	2,200	74.2	58.8 - 89.6	3,000
Lanai	<50	20.3	8.2 - 32.4	100	79.7	67.6 - 91.8	200
Lihue-Waimea	500	21.7	12.0 - 31.4	1,900	78.3	68.6 - 88.0	2,500
Manoa/ Upper Makiki	900	22.2	11.3 - 33.1	3,100	77.8	66.9 - 88.7	4,000
Mililani/ Wahiawa	1,900	29.8	14.8 - 44.8	4,400	70.2	55.2 - 85.2	6,200
Molokai	100	12.3	4.0 - 20.6	800	87.7	79.4 - 96.0	900

**Diabetes - now taking insulin by State, County, Island, Community, BRFSS Age Group, DOH Race-Ethnicity, Gender, Education Level, Employment Status (Grouped), Household Income, Poverty Level, Marital Status (Grouped), Married, Health Care Coverage, for the Year(s) - 2000-2002, 2001-2003, 2002-2004, 2003-2005, 2004-2006, 2005-2007, 2006-2008, 2007-2009, 2008-2010**

*Note: Weighted numbers (#) represent 3-yr averages, percentages and 95% confidence intervals; Respondents aged 18 years and older; n/r (Not Reportable) - If the unweighted total responses for a dimension (row) is <50 that row will not be shown; n/a (Not Available) - Not asked of a subset of respondents*

**Year: 2008-2010**

Community	Yes			No			Estimated Population (3-Yr Avg)
	#	%	C.I. (95%)	#	%	C.I. (95%)	#
N.Hawaii	200	11.8	2.5 - 21.1	1,500	88.2	78.9 - 97.5	1,700
Nuuanu/ Kalihi/ Moanalua	1,400	24.6	11.7 - 37.5	4,300	75.4	62.5 - 88.3	5,800
Puna/ Kau	1,200	32.9	22.6 - 43.3	2,400	67.1	56.7 - 77.4	3,600
Upcountry/ Hana	300	15.0	3.8 - 26.1	1,900	85.0	73.9 - 96.2	2,300
Waipahu/ Kapolei/ Ewa	2,800	23.1	13.5 - 32.7	9,200	76.9	67.3 - 86.5	11,900

**Diabetes - now taking insulin by State, County, Island, Community, BRFSS Age Group, DOH Race-Ethnicity, Gender, Education Level, Employment Status (Grouped), Household Income, Poverty Level, Marital Status (Grouped), Married, Health Care Coverage, for the Year(s) - 2000-2002, 2001-2003, 2002-2004, 2003-2005, 2004-2006, 2005-2007, 2006-2008, 2007-2009, 2008-2010**

*Note: Weighted numbers (#) represent 3-yr averages, percentages and 95% confidence intervals; Respondents aged 18 years and older; n/r (Not Reportable) - If the unweighted total responses for a dimension (row) is <50 that row will not be shown; n/a (Not Available) - Not asked of a subset of respondents*

**Year: 2008-2010**

BRFSS Age Group	Yes			No			Estimated Population (3-Yr Avg)
	#	%	C.I. (95%)	#	%	C.I. (95%)	#
35-44	2,400	26.0	13.6 - 38.5	6,800	74.0	61.5 - 86.4	9,100
45-54	3,600	26.8	19.0 - 34.6	10,000	73.2	65.4 - 81.0	13,600
55-64	5,300	26.2	20.4 - 32.1	14,800	73.8	67.9 - 79.6	20,100
65-74	2,900	17.5	11.9 - 23.1	13,500	82.5	76.9 - 88.1	16,400
75+	4,600	25.3	18.6 - 32.1	13,700	74.7	67.9 - 81.4	18,300



**Diabetes - now taking insulin by State, County, Island, Community, BRFSS Age Group, DOH Race-Ethnicity, Gender, Education Level, Employment Status (Grouped), Household Income, Poverty Level, Marital Status (Grouped), Married, Health Care Coverage, for the Year(s) - 2000-2002, 2001-2003, 2002-2004, 2003-2005, 2004-2006, 2005-2007, 2006-2008, 2007-2009, 2008-2010**

*Note: Weighted numbers (#) represent 3-yr averages, percentages and 95% confidence intervals; Respondents aged 18 years and older; n/r (Not Reportable) - If the unweighted total responses for a dimension (row) is <50 that row will not be shown; n/a (Not Available) - Not asked of a subset of respondents*

**Year: 2008-2010**

DOH Race-Ethnicity	Yes			No			Estimated Population (3-Yr Avg)
	#	%	C.I. (95%)	#	%	C.I. (95%)	#
Caucasian	4,300	27.2	20.6 - 33.7	11,400	72.8	66.3 - 79.4	15,700
Native Hawaiian	3,300	22.4	15.7 - 29.2	11,500	77.6	70.8 - 84.3	14,800
Chinese	1,100	20.0	10.4 - 29.6	4,300	80.0	70.4 - 89.6	5,400
Filipino	2,700	17.6	10.3 - 24.9	12,800	82.4	75.1 - 89.7	15,500
Japanese	5,700	24.6	18.1 - 31.2	17,600	75.4	68.8 - 81.9	23,300

Gender	Yes			No			Estimated Population (3-Yr Avg)
	#	%	C.I. (95%)	#	%	C.I. (95%)	#
Male	9,500	23.8	19.2 - 28.4	30,300	76.2	71.6 - 80.8	39,800
Female	10,000	24.1	19.6 - 28.6	31,500	75.9	71.4 - 80.4	41,500

**Diabetes - now taking insulin by State, County, Island, Community, BRFSS Age Group, DOH Race-Ethnicity, Gender, Education Level, Employment Status (Grouped), Household Income, Poverty Level, Marital Status (Grouped), Married, Health Care Coverage, for the Year(s) - 2000-2002, 2001-2003, 2002-2004, 2003-2005, 2004-2006, 2005-2007, 2006-2008, 2007-2009, 2008-2010**

*Note: Weighted numbers (#) represent 3-yr averages, percentages and 95% confidence intervals; Respondents aged 18 years and older; n/r (Not Reportable) - If the unweighted total responses for a dimension (row) is <50 that row will not be shown; n/a (Not Available) - Not asked of a subset of respondents*

**Year: 2008-2010**

Education Level	Yes			No			Estimated Population (3-Yr Avg)
	#	%	C.I. (95%)	#	%	C.I. (95%)	#
Never attended school/ Only Kindergarten to Grades 8	300	12.6	3.9 - 21.2	2,000	87.4	78.8 - 96.1	2,300
Grades 9 thru 11 (Some High School)	1,200	28.3	10.7 - 45.9	3,000	71.7	54.1 - 89.3	4,100
Grades 12 or GED (High School Grad)	6,000	22.2	16.5 - 27.9	21,200	77.8	72.1 - 83.5	27,200
College 1 to 3 years (Some College/ Tech)	6,000	25.4	19.1 - 31.8	17,500	74.6	68.2 - 80.9	23,400
College 4 years or more (College Grad)	6,100	24.9	19.9 - 30.0	18,200	75.1	70.0 - 80.1	24,300

**Diabetes - now taking insulin by State, County, Island, Community, BRFSS Age Group, DOH Race-Ethnicity, Gender, Education Level, Employment Status (Grouped), Household Income, Poverty Level, Marital Status (Grouped), Married, Health Care Coverage, for the Year(s) - 2000-2002, 2001-2003, 2002-2004, 2003-2005, 2004-2006, 2005-2007, 2006-2008, 2007-2009, 2008-2010**

*Note: Weighted numbers (#) represent 3-yr averages, percentages and 95% confidence intervals; Respondents aged 18 years and older; n/r (Not Reportable) - If the unweighted total responses for a dimension (row) is <50 that row will not be shown; n/a (Not Available) - Not asked of a subset of respondents*

**Year: 2008-2010**

Employment Status (Grouped)	Yes			No			Estimated Population (3-Yr Avg)
	#	%	C.I. (95%)	#	%	C.I. (95%)	#
<b>Employed</b>	8,100	23.0	17.9 - 28.2	27,000	77.0	71.8 - 82.1	35,100
<b>Unemployed</b>	1,500	33.8	15.8 - 51.8	3,000	66.2	48.2 - 84.2	4,600
<b>Retired/Unable to work</b>	9,000	23.7	19.4 - 28.0	29,000	76.3	72.0 - 80.6	38,000
<b>Student/Homemaker</b>	900	23.5	11.6 - 35.4	2,800	76.5	64.6 - 88.4	3,700

**Diabetes - now taking insulin by State, County, Island, Community, BRFSS Age Group, DOH Race-Ethnicity, Gender, Education Level, Employment Status (Grouped), Household Income, Poverty Level, Marital Status (Grouped), Married, Health Care Coverage, for the Year(s) - 2000-2002, 2001-2003, 2002-2004, 2003-2005, 2004-2006, 2005-2007, 2006-2008, 2007-2009, 2008-2010**

*Note: Weighted numbers (#) represent 3-yr averages, percentages and 95% confidence intervals; Respondents aged 18 years and older; n/r (Not Reportable) - If the unweighted total responses for a dimension (row) is <50 that row will not be shown; n/a (Not Available) - Not asked of a subset of respondents*

**Year: 2008-2010**

Household Income	Yes			No			Estimated Population (3-Yr Avg)
	#	%	C.I. (95%)	#	%	C.I. (95%)	#
Less than \$10,000	800	23.0	9.7 - 36.3	2,500	77.0	63.7 - 90.3	3,300
\$10,000 to \$14,999	700	19.7	6.2 - 33.3	2,900	80.3	66.7 - 93.8	3,700
\$15,000 to \$19,999	1,500	25.1	11.5 - 38.7	4,600	74.9	61.3 - 88.5	6,100
\$20,000 to \$24,999	1,800	28.6	15.0 - 42.1	4,400	71.4	57.9 - 85.0	6,200
\$25,000 to \$34,999	2,000	22.2	14.8 - 29.7	7,100	77.8	70.3 - 85.2	9,100
\$35,000 to \$49,999	2,900	21.7	14.4 - 29.0	10,500	78.3	71.0 - 85.6	13,500
\$50,000 to \$74,999	2,800	22.0	15.7 - 28.3	9,900	78.0	71.7 - 84.3	12,700
\$75,000 or more	4,900	25.4	18.2 - 32.5	14,300	74.6	67.5 - 81.8	19,200

**Diabetes - now taking insulin by State, County, Island, Community, BRFSS Age Group, DOH Race-Ethnicity, Gender, Education Level, Employment Status (Grouped), Household Income, Poverty Level, Marital Status (Grouped), Married, Health Care Coverage, for the Year(s) - 2000-2002, 2001-2003, 2002-2004, 2003-2005, 2004-2006, 2005-2007, 2006-2008, 2007-2009, 2008-2010**

*Note: Weighted numbers (#) represent 3-yr averages, percentages and 95% confidence intervals; Respondents aged 18 years and older; n/r (Not Reportable) - If the unweighted total responses for a dimension (row) is <50 that row will not be shown; n/a (Not Available) - Not asked of a subset of respondents*

**Year: 2008-2010**

Poverty Level	Yes			No			Estimated Population (3-Yr Avg)
	#	%	C.I. (95%)	#	%	C.I. (95%)	#
0-130%	5,100	27.3	19.3 - 35.3	13,600	72.7	64.7 - 80.7	18,700
131-185%	2,600	20.8	14.7 - 27.0	10,000	79.2	73.0 - 85.3	12,600
186+%	9,700	22.8	18.7 - 26.8	32,800	77.2	73.2 - 81.3	42,400

Marital Status (Grouped)	Yes			No			Estimated Population (3-Yr Avg)
	#	%	C.I. (95%)	#	%	C.I. (95%)	#
Married	11,700	23.0	19.0 - 27.0	39,200	77.0	73.0 - 81.0	50,900
Widowed	2,000	20.6	10.8 - 30.3	7,800	79.4	69.7 - 89.2	9,800
Other	5,500	27.8	21.1 - 34.6	14,300	72.2	65.4 - 78.9	19,900

**Diabetes - now taking insulin by State, County, Island, Community, BRFSS Age Group, DOH Race-Ethnicity, Gender, Education Level, Employment Status (Grouped), Household Income, Poverty Level, Marital Status (Grouped), Married, Health Care Coverage, for the Year(s) - 2000-2002, 2001-2003, 2002-2004, 2003-2005, 2004-2006, 2005-2007, 2006-2008, 2007-2009, 2008-2010**

*Note: Weighted numbers (#) represent 3-yr averages, percentages and 95% confidence intervals; Respondents aged 18 years and older; n/r (Not Reportable) - If the unweighted total responses for a dimension (row) is <50 that row will not be shown; n/a (Not Available) - Not asked of a subset of respondents*

**Year: 2008-2010**

<b>Married</b>	<b>Yes</b>			<b>No</b>			<b>Estimated Population (3-Yr Avg)</b>
	<b>#</b>	<b>%</b>	<b>C.I. (95%)</b>	<b>#</b>	<b>%</b>	<b>C.I. (95%)</b>	<b>#</b>
<b>Yes</b>	11,900	22.7	18.8 - 26.6	40,600	77.3	73.4 - 81.2	52,600
<b>No</b>	7,500	26.1	20.5 - 31.7	21,200	73.9	68.3 - 79.5	28,700

<b>Health Care Coverage</b>	<b>Yes</b>			<b>No</b>			<b>Estimated Population (3-Yr Avg)</b>
	<b>#</b>	<b>%</b>	<b>C.I. (95%)</b>	<b>#</b>	<b>%</b>	<b>C.I. (95%)</b>	<b>#</b>
<b>Yes</b>	12,000	22.6	19.4 - 25.8	41,200	77.4	74.2 - 80.6	53,300

**Diabetes - now taking insulin by State, County, Island, Community, BRFSS Age Group, DOH Race-Ethnicity, Gender, Education Level, Employment Status (Grouped), Household Income, Poverty Level, Marital Status (Grouped), Married, Health Care Coverage, for the Year(s) - 2000-2002, 2001-2003, 2002-2004, 2003-2005, 2004-2006, 2005-2007, 2006-2008, 2007-2009, 2008-2010**

*Note: Weighted numbers (#) represent 3-yr averages, percentages and 95% confidence intervals; Respondents aged 18 years and older; n/r (Not Reportable) - If the unweighted total responses for a dimension (row) is <50 that row will not be shown; n/a (Not Available) - Not asked of a subset of respondents*

**Year: 2007-2009**

State	Yes			No			Estimated Population (3-Yr Avg)
	#	%	C.I. (95%)	#	%	C.I. (95%)	#
Hawaii State	17,600	22.3	19.0 - 25.5	61,300	77.7	74.5 - 81.0	78,800

County	Yes			No			Estimated Population (3-Yr Avg)
	#	%	C.I. (95%)	#	%	C.I. (95%)	#
Hawaii	2,100	20.5	15.0 - 25.9	8,300	79.5	74.1 - 85.0	10,400
Honolulu	12,900	23.0	18.7 - 27.3	43,000	77.0	72.7 - 81.3	55,900
Kauai	700	19.9	12.2 - 27.5	3,000	80.1	72.5 - 87.8	3,800
Maui	1,800	20.8	13.7 - 27.9	6,900	79.2	72.1 - 86.3	8,700

**Diabetes - now taking insulin by State, County, Island, Community, BRFSS Age Group, DOH Race-Ethnicity, Gender, Education Level, Employment Status (Grouped), Household Income, Poverty Level, Marital Status (Grouped), Married, Health Care Coverage, for the Year(s) - 2000-2002, 2001-2003, 2002-2004, 2003-2005, 2004-2006, 2005-2007, 2006-2008, 2007-2009, 2008-2010**

*Note: Weighted numbers (#) represent 3-yr averages, percentages and 95% confidence intervals; Respondents aged 18 years and older; n/r (Not Reportable) - If the unweighted total responses for a dimension (row) is <50 that row will not be shown; n/a (Not Available) - Not asked of a subset of respondents*

**Year: 2007-2009**

Island	Yes			No			Estimated Population (3-Yr Avg)
	#	%	C.I. (95%)	#	%	C.I. (95%)	#
Hawaii	2,100	20.5	15.0 - 25.9	8,300	79.5	74.1 - 85.0	10,400
Kauai	700	19.9	12.2 - 27.5	3,000	80.1	72.5 - 87.8	3,800
Lanai	<50	17.3	6.6 - 28.0	200	82.7	72.0 - 93.4	200
Maui	1,700	21.4	13.5 - 29.3	6,100	78.6	70.7 - 86.5	7,700
Molokai	100	15.4	4.9 - 25.8	700	84.6	74.2 - 95.1	800
Oahu	12,900	23.0	18.7 - 27.3	43,000	77.0	72.7 - 81.3	55,900

Community	Yes			No			Estimated Population (3-Yr Avg)
	#	%	C.I. (95%)	#	%	C.I. (95%)	#
Aiea/ Pearl City	1,300	31.4	16.2 - 46.5	2,900	68.6	53.5 - 83.8	4,200
Hilo	700	22.2	12.7 - 31.8	2,600	77.8	68.2 - 87.3	3,300



**Diabetes - now taking insulin by State, County, Island, Community, BRFSS Age Group, DOH Race-Ethnicity, Gender, Education Level, Employment Status (Grouped), Household Income, Poverty Level, Marital Status (Grouped), Married, Health Care Coverage, for the Year(s) - 2000-2002, 2001-2003, 2002-2004, 2003-2005, 2004-2006, 2005-2007, 2006-2008, 2007-2009, 2008-2010**

*Note: Weighted numbers (#) represent 3-yr averages, percentages and 95% confidence intervals; Respondents aged 18 years and older; n/r (Not Reportable) - If the unweighted total responses for a dimension (row) is <50 that row will not be shown; n/a (Not Available) - Not asked of a subset of respondents*

**Year: 2007-2009**

Community	Yes			No			Estimated Population (3-Yr Avg)
	#	%	C.I. (95%)	#	%	C.I. (95%)	#
Kaaawa/ Kahaluu/ Kaneohe	700	16.3	4.4 - 28.3	3,400	83.7	71.7 - 95.6	4,100
Kahului	400	16.5	7.0 - 26.0	2,100	83.5	74.0 - 93.0	2,500
Kailua/ Waimanalo	300	9.1	1.0 - 17.2	2,800	90.9	82.8 - 99.0	3,100
Kaimuki/ Palolo/ Waikiki	600	12.3	3.6 - 20.9	4,100	87.7	79.1 - 96.4	4,700
Kona	400	17.0	5.3 - 28.7	1,900	83.0	71.3 - 94.7	2,300
Lahaina/ Wailuku	700	25.8	8.7 - 42.9	2,000	74.2	57.1 - 91.3	2,700
Lanai	<50	17.3	6.6 - 28.0	200	82.7	72.0 - 93.4	200
Lihue-Waimea	500	19.6	10.3 - 29.0	2,000	80.4	71.0 - 89.7	2,500
Manoa/ Upper Makiki	600	15.7	5.4 - 25.9	3,100	84.3	74.1 - 94.6	3,600
Mililani/ Wahiawa	1,800	27.3	12.8 - 41.8	4,800	72.7	58.2 - 87.2	6,500
Molokai	100	15.4	4.9 - 25.8	700	84.6	74.2 - 95.1	800
Nanakuli/ Waianae	1,600	31.1	13.4 - 48.8	3,500	68.9	51.2 - 86.6	5,100

**Diabetes - now taking insulin by State, County, Island, Community, BRFSS Age Group, DOH Race-Ethnicity, Gender, Education Level, Employment Status (Grouped), Household Income, Poverty Level, Marital Status (Grouped), Married, Health Care Coverage, for the Year(s) - 2000-2002, 2001-2003, 2002-2004, 2003-2005, 2004-2006, 2005-2007, 2006-2008, 2007-2009, 2008-2010**

*Note: Weighted numbers (#) represent 3-yr averages, percentages and 95% confidence intervals; Respondents aged 18 years and older; n/r (Not Reportable) - If the unweighted total responses for a dimension (row) is <50 that row will not be shown; n/a (Not Available) - Not asked of a subset of respondents*

**Year: 2007-2009**

Community	Yes			No			Estimated Population (3-Yr Avg)
	#	%	C.I. (95%)	#	%	C.I. (95%)	#
N.Hawaii	200	12.2	3.6 - 20.9	1,800	87.8	79.1 - 96.4	2,000
Nuuanu/ Kalihi/ Moanalua	1,000	18.9	6.5 - 31.3	4,200	81.1	68.7 - 93.5	5,100
Puna/ Kau	800	27.3	15.8 - 38.8	2,000	72.7	61.2 - 84.2	2,800
Upcountry/ Hana	500	21.7	9.8 - 33.6	2,000	78.3	66.4 - 90.2	2,500
Waipahu/ Kapolei/ Ewa	2,500	23.0	12.5 - 33.4	8,400	77.0	66.6 - 87.5	10,900

**Diabetes - now taking insulin by State, County, Island, Community, BRFSS Age Group, DOH Race-Ethnicity, Gender, Education Level, Employment Status (Grouped), Household Income, Poverty Level, Marital Status (Grouped), Married, Health Care Coverage, for the Year(s) - 2000-2002, 2001-2003, 2002-2004, 2003-2005, 2004-2006, 2005-2007, 2006-2008, 2007-2009, 2008-2010**

*Note: Weighted numbers (#) represent 3-yr averages, percentages and 95% confidence intervals; Respondents aged 18 years and older; n/r (Not Reportable) - If the unweighted total responses for a dimension (row) is <50 that row will not be shown; n/a (Not Available) - Not asked of a subset of respondents*

**Year: 2007-2009**

BRFSS Age Group	Yes			No			Estimated Population (3-Yr Avg)
	#	%	C.I. (95%)	#	%	C.I. (95%)	#
35-44	1,900	25.1	11.5 - 38.7	5,600	74.9	61.3 - 88.5	7,500
45-54	3,400	23.6	16.5 - 30.8	11,100	76.4	69.2 - 83.5	14,600
55-64	4,800	24.5	18.4 - 30.7	14,600	75.5	69.3 - 81.6	19,400
65-74	2,900	17.6	11.7 - 23.6	13,600	82.4	76.4 - 88.3	16,500
75+	3,500	20.6	14.0 - 27.2	13,500	79.4	72.8 - 86.0	17,000

**Diabetes - now taking insulin by State, County, Island, Community, BRFSS Age Group, DOH Race-Ethnicity, Gender, Education Level, Employment Status (Grouped), Household Income, Poverty Level, Marital Status (Grouped), Married, Health Care Coverage, for the Year(s) - 2000-2002, 2001-2003, 2002-2004, 2003-2005, 2004-2006, 2005-2007, 2006-2008, 2007-2009, 2008-2010**

*Note: Weighted numbers (#) represent 3-yr averages, percentages and 95% confidence intervals; Respondents aged 18 years and older; n/r (Not Reportable) - If the unweighted total responses for a dimension (row) is <50 that row will not be shown; n/a (Not Available) - Not asked of a subset of respondents*

**Year: 2007-2009**

DOH Race-Ethnicity	Yes			No			Estimated Population (3-Yr Avg)
	#	%	C.I. (95%)	#	%	C.I. (95%)	#
Caucasian	3,600	24.4	17.6 - 31.2	11,200	75.6	68.8 - 82.4	14,800
Native Hawaiian	2,300	15.0	9.9 - 20.1	12,800	85.0	79.9 - 90.1	15,000
Chinese	1,500	24.3	14.1 - 34.5	4,500	75.7	65.5 - 85.9	6,000
Filipino	2,900	19.7	11.6 - 27.8	11,700	80.3	72.2 - 88.4	14,500
Japanese	5,500	24.6	17.8 - 31.5	16,700	75.4	68.5 - 82.2	22,100

Gender	Yes			No			Estimated Population (3-Yr Avg)
	#	%	C.I. (95%)	#	%	C.I. (95%)	#
Male	8,900	23.4	18.6 - 28.2	29,300	76.6	71.8 - 81.4	38,200
Female	8,600	21.2	16.8 - 25.6	32,000	78.8	74.4 - 83.2	40,600

**Diabetes - now taking insulin by State, County, Island, Community, BRFSS Age Group, DOH Race-Ethnicity, Gender, Education Level, Employment Status (Grouped), Household Income, Poverty Level, Marital Status (Grouped), Married, Health Care Coverage, for the Year(s) - 2000-2002, 2001-2003, 2002-2004, 2003-2005, 2004-2006, 2005-2007, 2006-2008, 2007-2009, 2008-2010**

*Note: Weighted numbers (#) represent 3-yr averages, percentages and 95% confidence intervals; Respondents aged 18 years and older; n/r (Not Reportable) - If the unweighted total responses for a dimension (row) is <50 that row will not be shown; n/a (Not Available) - Not asked of a subset of respondents*

**Year: 2007-2009**

Education Level	Yes			No			Estimated Population (3-Yr Avg)
	#	%	C.I. (95%)	#	%	C.I. (95%)	#
Never attended school/ Only Kindergarten to Grades 8	200	8.1	2.2 - 14.0	2,300	91.9	86.0 - 97.8	2,500
Grades 9 thru 11 (Some High School)	900	20.4	5.7 - 35.1	3,300	79.6	64.9 - 94.3	4,200
Grades 12 or GED (High School Grad)	6,000	22.7	16.8 - 28.7	20,600	77.3	71.3 - 83.2	26,600
College 1 to 3 years (Some College/ Tech)	5,500	22.8	16.5 - 29.1	18,500	77.2	70.9 - 83.5	24,000
College 4 years or more (College Grad)	5,000	23.1	17.8 - 28.4	16,600	76.9	71.6 - 82.2	21,600

Employment Status (Grouped)	Yes			No			Estimated Population (3-Yr Avg)
	#	%	C.I. (95%)	#	%	C.I. (95%)	#
Employed	8,000	22.7	17.6 - 27.9	27,100	77.3	72.1 - 82.4	35,000
Retired/Unable to work	7,500	20.1	15.9 - 24.2	30,000	79.9	75.8 - 84.1	37,500
Student/Homemaker	800	28.0	12.7 - 43.2	2,000	72.0	56.8 - 87.3	2,700

**Diabetes - now taking insulin by State, County, Island, Community, BRFSS Age Group, DOH Race-Ethnicity, Gender, Education Level, Employment Status (Grouped), Household Income, Poverty Level, Marital Status (Grouped), Married, Health Care Coverage, for the Year(s) - 2000-2002, 2001-2003, 2002-2004, 2003-2005, 2004-2006, 2005-2007, 2006-2008, 2007-2009, 2008-2010**

*Note: Weighted numbers (#) represent 3-yr averages, percentages and 95% confidence intervals; Respondents aged 18 years and older; n/r (Not Reportable) - If the unweighted total responses for a dimension (row) is <50 that row will not be shown; n/a (Not Available) - Not asked of a subset of respondents*

**Year: 2007-2009**

Household Income	Yes			No			Estimated Population (3-Yr Avg)
	#	%	C.I. (95%)	#	%	C.I. (95%)	#
Less than \$10,000	600	18.9	8.9 - 28.9	2,400	81.1	71.1 - 91.1	3,000
\$10,000 to \$14,999	700	18.0	5.7 - 30.3	3,100	82.0	69.7 - 94.3	3,800
\$15,000 to \$19,999	1,000	19.0	4.2 - 33.8	4,400	81.0	66.2 - 95.8	5,500
\$20,000 to \$24,999	1,700	26.2	13.9 - 38.5	4,700	73.8	61.5 - 86.1	6,300
\$25,000 to \$34,999	2,000	21.0	13.1 - 28.8	7,600	79.0	71.2 - 86.9	9,600
\$35,000 to \$49,999	2,700	20.6	13.0 - 28.3	10,300	79.4	71.7 - 87.0	13,000
\$50,000 to \$74,999	2,800	22.4	15.9 - 29.0	9,800	77.6	71.0 - 84.1	12,700
\$75,000 or more	4,400	24.6	17.0 - 32.2	13,400	75.4	67.8 - 83.0	17,700

**Diabetes - now taking insulin by State, County, Island, Community, BRFSS Age Group, DOH Race-Ethnicity, Gender, Education Level, Employment Status (Grouped), Household Income, Poverty Level, Marital Status (Grouped), Married, Health Care Coverage, for the Year(s) - 2000-2002, 2001-2003, 2002-2004, 2003-2005, 2004-2006, 2005-2007, 2006-2008, 2007-2009, 2008-2010**

*Note: Weighted numbers (#) represent 3-yr averages, percentages and 95% confidence intervals; Respondents aged 18 years and older; n/r (Not Reportable) - If the unweighted total responses for a dimension (row) is <50 that row will not be shown; n/a (Not Available) - Not asked of a subset of respondents*

**Year: 2007-2009**

Poverty Level	Yes			No			Estimated Population (3-Yr Avg)
	#	%	C.I. (95%)	#	%	C.I. (95%)	#
<b>0-130%</b>	4,700	24.9	17.2 - 32.6	14,000	75.1	67.4 - 82.8	18,700
<b>131-185%</b>	2,000	19.5	12.2 - 26.8	8,400	80.5	73.2 - 87.8	10,400
<b>186+%</b>	9,200	21.6	17.5 - 25.6	33,300	78.4	74.4 - 82.5	42,500

Marital Status (Grouped)	Yes			No			Estimated Population (3-Yr Avg)
	#	%	C.I. (95%)	#	%	C.I. (95%)	#
<b>Married</b>	10,800	22.5	18.3 - 26.7	37,200	77.5	73.3 - 81.7	48,000
<b>Widowed</b>	1,700	17.2	8.7 - 25.6	8,300	82.8	74.4 - 91.3	10,000
<b>Other</b>	4,900	24.4	17.8 - 31.0	15,100	75.6	69.0 - 82.2	19,900

**Diabetes - now taking insulin by State, County, Island, Community, BRFSS Age Group, DOH Race-Ethnicity, Gender, Education Level, Employment Status (Grouped), Household Income, Poverty Level, Marital Status (Grouped), Married, Health Care Coverage, for the Year(s) - 2000-2002, 2001-2003, 2002-2004, 2003-2005, 2004-2006, 2005-2007, 2006-2008, 2007-2009, 2008-2010**

*Note: Weighted numbers (#) represent 3-yr averages, percentages and 95% confidence intervals; Respondents aged 18 years and older; n/r (Not Reportable) - If the unweighted total responses for a dimension (row) is <50 that row will not be shown; n/a (Not Available) - Not asked of a subset of respondents*

**Year: 2007-2009**

<b>Married</b>	<b>Yes</b>			<b>No</b>			<b>Estimated Population (3-Yr Avg)</b>
	<b>#</b>	<b>%</b>	<b>C.I. (95%)</b>	<b>#</b>	<b>%</b>	<b>C.I. (95%)</b>	<b>#</b>
<b>Yes</b>	11,100	22.3	18.2 - 26.4	38,600	77.7	73.6 - 81.8	49,600
<b>No</b>	6,400	22.0	16.8 - 27.3	22,600	78.0	72.7 - 83.2	29,000

<b>Health Care Coverage</b>	<b>Yes</b>			<b>No</b>			<b>Estimated Population (3-Yr Avg)</b>
	<b>#</b>	<b>%</b>	<b>C.I. (95%)</b>	<b>#</b>	<b>%</b>	<b>C.I. (95%)</b>	<b>#</b>
<b>Yes</b>	10,000	19.7	16.6 - 22.9	40,700	80.3	77.1 - 83.4	50,700



**Diabetes - now taking insulin by State, County, Island, Community, BRFSS Age Group, DOH Race-Ethnicity, Gender, Education Level, Employment Status (Grouped), Household Income, Poverty Level, Marital Status (Grouped), Married, Health Care Coverage, for the Year(s) - 2000-2002, 2001-2003, 2002-2004, 2003-2005, 2004-2006, 2005-2007, 2006-2008, 2007-2009, 2008-2010**

*Note: Weighted numbers (#) represent 3-yr averages, percentages and 95% confidence intervals; Respondents aged 18 years and older; n/r (Not Reportable) - If the unweighted total responses for a dimension (row) is <50 that row will not be shown; n/a (Not Available) - Not asked of a subset of respondents*

**Year: 2006-2008**

State	Yes			No			Estimated Population (3-Yr Avg)
	#	%	C.I. (95%)	#	%	C.I. (95%)	#
Hawaii State	15,400	19.7	17.2 - 22.1	62,900	80.3	77.9 - 82.8	78,300

County	Yes			No			Estimated Population (3-Yr Avg)
	#	%	C.I. (95%)	#	%	C.I. (95%)	#
Hawaii	1,800	20.1	15.2 - 25.0	7,300	79.9	75.0 - 84.8	9,100
Honolulu	11,100	19.4	16.2 - 22.6	46,000	80.6	77.4 - 83.8	57,000
Kauai	700	18.7	11.9 - 25.4	3,200	81.3	74.6 - 88.1	4,000
Maui	1,800	21.4	15.9 - 26.8	6,500	78.6	73.2 - 84.1	8,200

**Diabetes - now taking insulin by State, County, Island, Community, BRFSS Age Group, DOH Race-Ethnicity, Gender, Education Level, Employment Status (Grouped), Household Income, Poverty Level, Marital Status (Grouped), Married, Health Care Coverage, for the Year(s) - 2000-2002, 2001-2003, 2002-2004, 2003-2005, 2004-2006, 2005-2007, 2006-2008, 2007-2009, 2008-2010**

*Note: Weighted numbers (#) represent 3-yr averages, percentages and 95% confidence intervals; Respondents aged 18 years and older; n/r (Not Reportable) - If the unweighted total responses for a dimension (row) is <50 that row will not be shown; n/a (Not Available) - Not asked of a subset of respondents*

**Year: 2006-2008**

Island	Yes			No			Estimated Population (3-Yr Avg)
	#	%	C.I. (95%)	#	%	C.I. (95%)	#
Hawaii	1,800	20.1	15.2 - 25.0	7,300	79.9	75.0 - 84.8	9,100
Kauai	700	18.7	11.9 - 25.4	3,200	81.3	74.6 - 88.1	4,000
Lanai	<50	20.4	9.8 - 31.1	200	79.6	68.9 - 90.2	200
Maui	1,600	21.6	15.6 - 27.6	5,800	78.4	72.4 - 84.4	7,300
Molokai	100	19.4	8.3 - 30.6	600	80.6	69.4 - 91.7	700
Oahu	11,100	19.4	16.2 - 22.6	46,000	80.6	77.4 - 83.8	57,000

Community	Yes			No			Estimated Population (3-Yr Avg)
	#	%	C.I. (95%)	#	%	C.I. (95%)	#
Aiea/ Pearl City	1,500	26.5	14.3 - 38.6	4,100	73.5	61.4 - 85.7	5,600
Ala Moana	1,100	34.5	19.1 - 49.9	2,100	65.5	50.1 - 80.9	3,200

**Diabetes - now taking insulin by State, County, Island, Community, BRFSS Age Group, DOH Race-Ethnicity, Gender, Education Level, Employment Status (Grouped), Household Income, Poverty Level, Marital Status (Grouped), Married, Health Care Coverage, for the Year(s) - 2000-2002, 2001-2003, 2002-2004, 2003-2005, 2004-2006, 2005-2007, 2006-2008, 2007-2009, 2008-2010**

*Note: Weighted numbers (#) represent 3-yr averages, percentages and 95% confidence intervals; Respondents aged 18 years and older; n/r (Not Reportable) - If the unweighted total responses for a dimension (row) is <50 that row will not be shown; n/a (Not Available) - Not asked of a subset of respondents*

**Year: 2006-2008**

Community	Yes			No			Estimated Population (3-Yr Avg)
	#	%	C.I. (95%)	#	%	C.I. (95%)	#
Hanalei/ Kapaa	300	18.3	6.1 - 30.4	1,200	81.7	69.6 - 93.9	1,500
Hilo	700	23.4	14.1 - 32.8	2,300	76.6	67.2 - 85.9	3,000
Kaaawa/ Kahaluu/ Kaneohe	500	14.6	4.3 - 24.9	3,100	85.4	75.1 - 95.7	3,600
Kahului	600	23.9	13.0 - 34.8	1,900	76.1	65.2 - 87.0	2,500
Kailua/ Waimanalo	400	10.5	3.2 - 17.8	3,700	89.5	82.2 - 96.8	4,200
Kaimuki/ Palolo/ Waikiki	600	14.7	5.3 - 24.1	3,600	85.3	75.9 - 94.7	4,200
Kona	300	18.7	8.2 - 29.1	1,300	81.3	70.9 - 91.8	1,600
Lahaina/ Wailuku	600	20.9	11.2 - 30.5	2,100	79.1	69.5 - 88.8	2,700
Lanai	<50	20.4	9.8 - 31.1	200	79.6	68.9 - 90.2	200
Lihue-Waimea	500	18.9	10.9 - 26.9	2,000	81.1	73.1 - 89.1	2,500
Manoa/ Upper Makiki	600	17.8	7.5 - 28.2	2,900	82.2	71.8 - 92.5	3,500
Mililani/ Wahiawa	1,100	17.8	8.4 - 27.3	4,800	82.2	72.7 - 91.6	5,900

**Diabetes - now taking insulin by State, County, Island, Community, BRFSS Age Group, DOH Race-Ethnicity, Gender, Education Level, Employment Status (Grouped), Household Income, Poverty Level, Marital Status (Grouped), Married, Health Care Coverage, for the Year(s) - 2000-2002, 2001-2003, 2002-2004, 2003-2005, 2004-2006, 2005-2007, 2006-2008, 2007-2009, 2008-2010**

*Note: Weighted numbers (#) represent 3-yr averages, percentages and 95% confidence intervals; Respondents aged 18 years and older; n/r (Not Reportable) - If the unweighted total responses for a dimension (row) is <50 that row will not be shown; n/a (Not Available) - Not asked of a subset of respondents*

**Year: 2006-2008**

Community	Yes			No			Estimated Population (3-Yr Avg)
	#	%	C.I. (95%)	#	%	C.I. (95%)	#
Molokai	100	19.4	8.3 - 30.6	600	80.6	69.4 - 91.7	700
Nanakuli/ Waianae	900	18.5	8.7 - 28.2	4,100	81.5	71.8 - 91.3	5,100
N.Hawaii	300	11.9	4.2 - 19.6	1,900	88.1	80.4 - 95.8	2,100
Nuuanu/ Kalihi/ Moanalua	700	13.9	5.8 - 21.9	4,500	86.1	78.1 - 94.2	5,300
Puna/ Kau	600	24.3	14.3 - 34.3	1,800	75.7	65.7 - 85.7	2,300
Upcountry/ Hana	400	19.7	9.2 - 30.2	1,800	80.3	69.8 - 90.8	2,200
Waipahu/ Kapolei/ Ewa	2,500	23.1	14.8 - 31.4	8,500	76.9	68.6 - 85.2	11,000

**Diabetes - now taking insulin by State, County, Island, Community, BRFSS Age Group, DOH Race-Ethnicity, Gender, Education Level, Employment Status (Grouped), Household Income, Poverty Level, Marital Status (Grouped), Married, Health Care Coverage, for the Year(s) - 2000-2002, 2001-2003, 2002-2004, 2003-2005, 2004-2006, 2005-2007, 2006-2008, 2007-2009, 2008-2010**

*Note: Weighted numbers (#) represent 3-yr averages, percentages and 95% confidence intervals; Respondents aged 18 years and older; n/r (Not Reportable) - If the unweighted total responses for a dimension (row) is <50 that row will not be shown; n/a (Not Available) - Not asked of a subset of respondents*

**Year: 2006-2008**

BRFSS Age Group	Yes			No			Estimated Population (3-Yr Avg)
	#	%	C.I. (95%)	#	%	C.I. (95%)	#
35-44	1,500	22.1	11.4 - 32.8	5,100	77.9	67.2 - 88.6	6,600
45-54	3,100	19.9	14.2 - 25.5	12,500	80.1	74.5 - 85.8	15,600
55-64	3,900	18.7	14.0 - 23.5	16,900	81.3	76.5 - 86.0	20,800
65-74	3,000	18.6	13.9 - 23.4	13,000	81.4	76.6 - 86.1	16,000
75+	2,900	18.9	13.6 - 24.1	12,600	81.1	75.9 - 86.4	15,500

**Diabetes - now taking insulin by State, County, Island, Community, BRFSS Age Group, DOH Race-Ethnicity, Gender, Education Level, Employment Status (Grouped), Household Income, Poverty Level, Marital Status (Grouped), Married, Health Care Coverage, for the Year(s) - 2000-2002, 2001-2003, 2002-2004, 2003-2005, 2004-2006, 2005-2007, 2006-2008, 2007-2009, 2008-2010**

*Note: Weighted numbers (#) represent 3-yr averages, percentages and 95% confidence intervals; Respondents aged 18 years and older; n/r (Not Reportable) - If the unweighted total responses for a dimension (row) is <50 that row will not be shown; n/a (Not Available) - Not asked of a subset of respondents*

**Year: 2006-2008**

DOH Race-Ethnicity	Yes			No			Estimated Population (3-Yr Avg)
	#	%	C.I. (95%)	#	%	C.I. (95%)	#
Caucasian	3,700	23.3	17.8 - 28.8	12,300	76.7	71.2 - 82.2	16,000
Native Hawaiian	2,500	16.9	12.1 - 21.8	12,000	83.1	78.2 - 87.9	14,500
Chinese	1,300	22.7	12.7 - 32.6	4,400	77.3	67.4 - 87.3	5,700
Filipino	2,700	17.8	11.5 - 24.0	12,500	82.2	76.0 - 88.5	15,200
Japanese	3,500	18.0	13.4 - 22.5	16,200	82.0	77.5 - 86.6	19,700

Gender	Yes			No			Estimated Population (3-Yr Avg)
	#	%	C.I. (95%)	#	%	C.I. (95%)	#
Male	7,900	20.8	16.8 - 24.7	30,200	79.2	75.3 - 83.2	38,100
Female	7,500	18.6	15.5 - 21.7	32,800	81.4	78.3 - 84.5	40,200

**Diabetes - now taking insulin by State, County, Island, Community, BRFSS Age Group, DOH Race-Ethnicity, Gender, Education Level, Employment Status (Grouped), Household Income, Poverty Level, Marital Status (Grouped), Married, Health Care Coverage, for the Year(s) - 2000-2002, 2001-2003, 2002-2004, 2003-2005, 2004-2006, 2005-2007, 2006-2008, 2007-2009, 2008-2010**

*Note: Weighted numbers (#) represent 3-yr averages, percentages and 95% confidence intervals; Respondents aged 18 years and older; n/r (Not Reportable) - If the unweighted total responses for a dimension (row) is <50 that row will not be shown; n/a (Not Available) - Not asked of a subset of respondents*

**Year: 2006-2008**

Education Level	Yes			No			Estimated Population (3-Yr Avg)
	#	%	C.I. (95%)	#	%	C.I. (95%)	#
Never attended school/ Only Kindergarten to Grades 8	500	18.9	8.6 - 29.1	2,400	81.1	70.9 - 91.4	2,900
Grades 9 thru 11 (Some High School)	1,000	23.3	12.1 - 34.5	3,200	76.7	65.5 - 87.9	4,100
Grades 12 or GED (High School Grad)	5,200	19.8	15.5 - 24.1	21,100	80.2	75.9 - 84.5	26,300
College 1 to 3 years (Some College/ Tech)	4,900	20.1	15.2 - 25.1	19,400	79.9	74.9 - 84.8	24,300
College 4 years or more (College Grad)	3,800	18.3	14.0 - 22.6	16,900	81.7	77.4 - 86.0	20,600

Employment Status (Grouped)	Yes			No			Estimated Population (3-Yr Avg)
	#	%	C.I. (95%)	#	%	C.I. (95%)	#
Employed	6,200	18.4	14.7 - 22.2	27,300	81.6	77.8 - 85.3	33,500
Retired/Unable to work	7,700	19.9	16.6 - 23.2	31,200	80.1	76.8 - 83.4	39,000
Student/Homemaker	800	28.2	13.4 - 43.0	2,100	71.8	57.0 - 86.6	2,900

**Diabetes - now taking insulin by State, County, Island, Community, BRFSS Age Group, DOH Race-Ethnicity, Gender, Education Level, Employment Status (Grouped), Household Income, Poverty Level, Marital Status (Grouped), Married, Health Care Coverage, for the Year(s) - 2000-2002, 2001-2003, 2002-2004, 2003-2005, 2004-2006, 2005-2007, 2006-2008, 2007-2009, 2008-2010**

*Note: Weighted numbers (#) represent 3-yr averages, percentages and 95% confidence intervals; Respondents aged 18 years and older; n/r (Not Reportable) - If the unweighted total responses for a dimension (row) is <50 that row will not be shown; n/a (Not Available) - Not asked of a subset of respondents*

**Year: 2006-2008**

Household Income	Yes			No			Estimated Population (3-Yr Avg)
	#	%	C.I. (95%)	#	%	C.I. (95%)	#
Less than \$10,000	500	18.7	9.7 - 27.6	2,400	81.3	72.4 - 90.3	2,900
\$10,000 to \$14,999	1,000	24.7	12.1 - 37.4	3,000	75.3	62.6 - 87.9	4,000
\$15,000 to \$19,999	900	19.5	11.1 - 27.9	3,700	80.5	72.1 - 88.9	4,600
\$20,000 to \$24,999	1,500	22.7	14.2 - 31.1	5,100	77.3	68.9 - 85.8	6,600
\$25,000 to \$34,999	1,900	19.1	11.9 - 26.4	8,100	80.9	73.6 - 88.1	10,000
\$35,000 to \$49,999	2,800	20.1	14.0 - 26.2	11,100	79.9	73.8 - 86.0	13,900
\$50,000 to \$74,999	2,500	19.0	13.3 - 24.7	10,600	81.0	75.3 - 86.7	13,100
\$75,000 or more	2,400	16.1	11.0 - 21.3	12,500	83.9	78.7 - 89.0	14,900



**Diabetes - now taking insulin by State, County, Island, Community, BRFSS Age Group, DOH Race-Ethnicity, Gender, Education Level, Employment Status (Grouped), Household Income, Poverty Level, Marital Status (Grouped), Married, Health Care Coverage, for the Year(s) - 2000-2002, 2001-2003, 2002-2004, 2003-2005, 2004-2006, 2005-2007, 2006-2008, 2007-2009, 2008-2010**

*Note: Weighted numbers (#) represent 3-yr averages, percentages and 95% confidence intervals; Respondents aged 18 years and older; n/r (Not Reportable) - If the unweighted total responses for a dimension (row) is <50 that row will not be shown; n/a (Not Available) - Not asked of a subset of respondents*

**Year: 2006-2008**

Poverty Level	Yes			No			Estimated Population (3-Yr Avg)
	#	%	C.I. (95%)	#	%	C.I. (95%)	#
0-130%	3,900	20.3	15.0 - 25.7	15,300	79.7	74.3 - 85.0	19,200
131-185%	1,900	20.4	12.7 - 28.1	7,300	79.6	71.9 - 87.3	9,200
186+%	7,700	18.6	15.5 - 21.7	33,900	81.4	78.3 - 84.5	41,600

Marital Status (Grouped)	Yes			No			Estimated Population (3-Yr Avg)
	#	%	C.I. (95%)	#	%	C.I. (95%)	#
Married	9,700	19.8	16.5 - 23.2	39,100	80.2	76.8 - 83.5	48,800
Widowed	1,300	13.7	9.4 - 18.0	8,200	86.3	82.0 - 90.6	9,500
Other	4,300	22.1	17.1 - 27.1	15,000	77.9	72.9 - 82.9	19,200

**Diabetes - now taking insulin by State, County, Island, Community, BRFSS Age Group, DOH Race-Ethnicity, Gender, Education Level, Employment Status (Grouped), Household Income, Poverty Level, Marital Status (Grouped), Married, Health Care Coverage, for the Year(s) - 2000-2002, 2001-2003, 2002-2004, 2003-2005, 2004-2006, 2005-2007, 2006-2008, 2007-2009, 2008-2010**

*Note: Weighted numbers (#) represent 3-yr averages, percentages and 95% confidence intervals; Respondents aged 18 years and older; n/r (Not Reportable) - If the unweighted total responses for a dimension (row) is <50 that row will not be shown; n/a (Not Available) - Not asked of a subset of respondents*

**Year: 2006-2008**

<b>Married</b>	<b>Yes</b>			<b>No</b>			<b>Estimated Population (3-Yr Avg)</b>
	<b>#</b>	<b>%</b>	<b>C.I. (95%)</b>	<b>#</b>	<b>%</b>	<b>C.I. (95%)</b>	<b>#</b>
<b>Yes</b>	10,000	19.9	16.6 - 23.2	40,000	80.1	76.8 - 83.4	50,000
<b>No</b>	5,400	19.2	15.5 - 22.9	22,800	80.8	77.1 - 84.5	28,300

<b>Health Care Coverage</b>	<b>Yes</b>			<b>No</b>			<b>Estimated Population (3-Yr Avg)</b>
	<b>#</b>	<b>%</b>	<b>C.I. (95%)</b>	<b>#</b>	<b>%</b>	<b>C.I. (95%)</b>	<b>#</b>
<b>Yes</b>	15,000	20.0	17.5 - 22.6	60,000	80.0	77.4 - 82.5	75,100
<b>No</b>	300	10.6	2.7 - 18.5	2,900	89.4	81.5 - 97.3	3,200

**Diabetes - now taking insulin by State, County, Island, Community, BRFSS Age Group, DOH Race-Ethnicity, Gender, Education Level, Employment Status (Grouped), Household Income, Poverty Level, Marital Status (Grouped), Married, Health Care Coverage, for the Year(s) - 2000-2002, 2001-2003, 2002-2004, 2003-2005, 2004-2006, 2005-2007, 2006-2008, 2007-2009, 2008-2010**

*Note: Weighted numbers (#) represent 3-yr averages, percentages and 95% confidence intervals; Respondents aged 18 years and older; n/r (Not Reportable) - If the unweighted total responses for a dimension (row) is <50 that row will not be shown; n/a (Not Available) - Not asked of a subset of respondents*

**Year: 2005-2007**

State	Yes			No			Estimated Population (3-Yr Avg)
	#	%	C.I. (95%)	#	%	C.I. (95%)	#
Hawaii State	13,200	16.8	14.2 - 19.4	65,000	83.2	80.6 - 85.8	78,200

County	Yes			No			Estimated Population (3-Yr Avg)
	#	%	C.I. (95%)	#	%	C.I. (95%)	#
Hawaii	1,600	16.3	11.8 - 20.7	8,100	83.7	79.3 - 88.2	9,700
Honolulu	9,400	16.4	13.1 - 19.7	48,100	83.6	80.3 - 86.9	57,500
Kauai	800	21.1	11.6 - 30.6	3,100	78.9	69.4 - 88.4	3,900
Maui	1,300	18.6	13.1 - 24.1	5,800	81.4	75.9 - 86.9	7,100

**Diabetes - now taking insulin by State, County, Island, Community, BRFSS Age Group, DOH Race-Ethnicity, Gender, Education Level, Employment Status (Grouped), Household Income, Poverty Level, Marital Status (Grouped), Married, Health Care Coverage, for the Year(s) - 2000-2002, 2001-2003, 2002-2004, 2003-2005, 2004-2006, 2005-2007, 2006-2008, 2007-2009, 2008-2010**

*Note: Weighted numbers (#) represent 3-yr averages, percentages and 95% confidence intervals; Respondents aged 18 years and older; n/r (Not Reportable) - If the unweighted total responses for a dimension (row) is <50 that row will not be shown; n/a (Not Available) - Not asked of a subset of respondents*

**Year: 2005-2007**

Island	Yes			No			Estimated Population (3-Yr Avg)
	#	%	C.I. (95%)	#	%	C.I. (95%)	#
Hawaii	1,600	16.3	11.8 - 20.7	8,100	83.7	79.3 - 88.2	9,700
Kauai	800	21.1	11.6 - 30.6	3,100	78.9	69.4 - 88.4	3,900
Lanai	<50	17.2	6.3 - 28.0	200	82.8	72.0 - 93.7	200
Maui	1,200	19.1	13.0 - 25.2	5,100	80.9	74.8 - 87.0	6,300
Molokai	100	14.0	3.9 - 24.1	600	86.0	75.9 - 96.1	600
Oahu	9,400	16.4	13.1 - 19.7	48,100	83.6	80.3 - 86.9	57,500

Community	Yes			No			Estimated Population (3-Yr Avg)
	#	%	C.I. (95%)	#	%	C.I. (95%)	#
Aiea/ Pearl City	1,100	21.1	9.0 - 33.2	4,100	78.9	66.8 - 91.0	5,200
Hilo	600	19.2	10.8 - 27.7	2,700	80.8	72.3 - 89.2	3,400

**Diabetes - now taking insulin by State, County, Island, Community, BRFSS Age Group, DOH Race-Ethnicity, Gender, Education Level, Employment Status (Grouped), Household Income, Poverty Level, Marital Status (Grouped), Married, Health Care Coverage, for the Year(s) - 2000-2002, 2001-2003, 2002-2004, 2003-2005, 2004-2006, 2005-2007, 2006-2008, 2007-2009, 2008-2010**

*Note: Weighted numbers (#) represent 3-yr averages, percentages and 95% confidence intervals; Respondents aged 18 years and older; n/r (Not Reportable) - If the unweighted total responses for a dimension (row) is <50 that row will not be shown; n/a (Not Available) - Not asked of a subset of respondents*

**Year: 2005-2007**

Community	Yes			No			Estimated Population (3-Yr Avg)
	#	%	C.I. (95%)	#	%	C.I. (95%)	#
Kahului	400	21.1	10.1 - 32.2	1,600	78.9	67.8 - 89.9	2,000
Kailua/ Waimanalo	400	8.9	1.5 - 16.2	3,700	91.1	83.8 - 98.5	4,100
Kona	200	13.5	4.4 - 22.7	1,500	86.5	77.3 - 95.6	1,700
Lahaina/ Wailuku	400	18.6	7.9 - 29.3	1,700	81.4	70.7 - 92.1	2,000
Lanai	<50	17.2	6.3 - 28.0	200	82.8	72.0 - 93.7	200
Lihue-Waimea	500	19.4	9.4 - 29.4	2,100	80.6	70.6 - 90.6	2,600
Mililani/ Wahiawa	1,000	18.8	5.8 - 31.8	4,500	81.2	68.2 - 94.2	5,500
Molokai	100	14.0	3.9 - 24.1	600	86.0	75.9 - 96.1	600
Nanakuli/ Waianae	700	12.8	3.7 - 22.0	4,600	87.2	78.0 - 96.3	5,300
N.Hawaii	300	16.6	7.6 - 25.5	1,600	83.4	74.5 - 92.4	2,000
Nuuanu/ Kalihi/ Moanalua	700	14.5	4.4 - 24.7	4,100	85.5	75.3 - 95.6	4,800
Puna/ Kau	400	14.2	6.0 - 22.4	2,300	85.8	77.6 - 94.0	2,600

**Diabetes - now taking insulin by State, County, Island, Community, BRFSS Age Group, DOH Race-Ethnicity, Gender, Education Level, Employment Status (Grouped), Household Income, Poverty Level, Marital Status (Grouped), Married, Health Care Coverage, for the Year(s) - 2000-2002, 2001-2003, 2002-2004, 2003-2005, 2004-2006, 2005-2007, 2006-2008, 2007-2009, 2008-2010**

*Note: Weighted numbers (#) represent 3-yr averages, percentages and 95% confidence intervals; Respondents aged 18 years and older; n/r (Not Reportable) - If the unweighted total responses for a dimension (row) is <50 that row will not be shown; n/a (Not Available) - Not asked of a subset of respondents*

**Year: 2005-2007**

Community	Yes			No			Estimated Population (3-Yr Avg)
	#	%	C.I. (95%)	#	%	C.I. (95%)	#
Upcountry/ Hana	400	17.7	7.7 - 27.8	1,900	82.3	72.2 - 92.3	2,300
Waipahu/ Kapolei/ Ewa	1,900	18.6	9.8 - 27.4	8,300	81.4	72.6 - 90.2	10,200

BRFSS Age Group	Yes			No			Estimated Population (3-Yr Avg)
	#	%	C.I. (95%)	#	%	C.I. (95%)	#
35-44	700	11.4	4.8 - 17.9	5,600	88.6	82.1 - 95.2	6,300
45-54	2,900	18.3	11.9 - 24.6	13,100	81.7	75.4 - 88.1	16,000
55-64	3,200	15.6	10.7 - 20.6	17,300	84.4	79.4 - 89.3	20,500
65-74	3,300	20.9	15.2 - 26.7	12,300	79.1	73.3 - 84.8	15,600
75+	2,000	12.7	7.8 - 17.6	13,500	87.3	82.4 - 92.2	15,500

**Diabetes - now taking insulin by State, County, Island, Community, BRFSS Age Group, DOH Race-Ethnicity, Gender, Education Level, Employment Status (Grouped), Household Income, Poverty Level, Marital Status (Grouped), Married, Health Care Coverage, for the Year(s) - 2000-2002, 2001-2003, 2002-2004, 2003-2005, 2004-2006, 2005-2007, 2006-2008, 2007-2009, 2008-2010**

*Note: Weighted numbers (#) represent 3-yr averages, percentages and 95% confidence intervals; Respondents aged 18 years and older; n/r (Not Reportable) - If the unweighted total responses for a dimension (row) is <50 that row will not be shown; n/a (Not Available) - Not asked of a subset of respondents*

**Year: 2005-2007**

DOH Race-Ethnicity	Yes			No			Estimated Population (3-Yr Avg)
	#	%	C.I. (95%)	#	%	C.I. (95%)	#
Caucasian	3,500	20.3	15.1 - 25.4	13,800	79.7	74.6 - 84.9	17,300
Native Hawaiian	2,400	16.0	10.0 - 21.9	12,900	84.0	78.1 - 90.0	15,300
Chinese	900	16.5	6.7 - 26.2	4,500	83.5	73.8 - 93.3	5,400
Filipino	2,200	15.2	8.9 - 21.6	12,100	84.8	78.4 - 91.1	14,300
Japanese	2,700	15.2	10.2 - 20.1	15,100	84.8	79.9 - 89.8	17,800

Gender	Yes			No			Estimated Population (3-Yr Avg)
	#	%	C.I. (95%)	#	%	C.I. (95%)	#
Male	7,000	17.7	13.7 - 21.7	32,800	82.3	78.3 - 86.3	39,900
Female	6,100	16.0	12.7 - 19.2	32,200	84.0	80.8 - 87.3	38,400

**Diabetes - now taking insulin by State, County, Island, Community, BRFSS Age Group, DOH Race-Ethnicity, Gender, Education Level, Employment Status (Grouped), Household Income, Poverty Level, Marital Status (Grouped), Married, Health Care Coverage, for the Year(s) - 2000-2002, 2001-2003, 2002-2004, 2003-2005, 2004-2006, 2005-2007, 2006-2008, 2007-2009, 2008-2010**

*Note: Weighted numbers (#) represent 3-yr averages, percentages and 95% confidence intervals; Respondents aged 18 years and older; n/r (Not Reportable) - If the unweighted total responses for a dimension (row) is <50 that row will not be shown; n/a (Not Available) - Not asked of a subset of respondents*

**Year: 2005-2007**

Education Level	Yes			No			Estimated Population (3-Yr Avg)
	#	%	C.I. (95%)	#	%	C.I. (95%)	#
Never attended school/ Only Kindergarten to Grades 8	700	18.9	6.7 - 31.0	3,200	81.1	69.0 - 93.3	3,900
Grades 9 thru 11 (Some High School)	800	16.7	6.9 - 26.4	3,900	83.3	73.6 - 93.1	4,700
Grades 12 or GED (High School Grad)	4,800	16.7	12.2 - 21.3	23,900	83.3	78.7 - 87.8	28,700
College 1 to 3 years (Some College/ Tech)	3,900	17.9	13.0 - 22.7	18,000	82.1	77.3 - 87.0	21,900
College 4 years or more (College Grad)	2,900	15.4	10.7 - 20.2	16,000	84.6	79.8 - 89.3	18,900

Employment Status (Grouped)	Yes			No			Estimated Population (3-Yr Avg)
	#	%	C.I. (95%)	#	%	C.I. (95%)	#
Employed	5,500	15.8	11.8 - 19.8	29,400	84.2	80.2 - 88.2	34,900
Retired/Unable to work	6,900	17.9	14.3 - 21.5	31,700	82.1	78.5 - 85.7	38,600
Student/Homemaker	400	14.5	3.5 - 25.6	2,600	85.5	74.4 - 96.5	3,000



**Diabetes - now taking insulin by State, County, Island, Community, BRFSS Age Group, DOH Race-Ethnicity, Gender, Education Level, Employment Status (Grouped), Household Income, Poverty Level, Marital Status (Grouped), Married, Health Care Coverage, for the Year(s) - 2000-2002, 2001-2003, 2002-2004, 2003-2005, 2004-2006, 2005-2007, 2006-2008, 2007-2009, 2008-2010**

*Note: Weighted numbers (#) represent 3-yr averages, percentages and 95% confidence intervals; Respondents aged 18 years and older; n/r (Not Reportable) - If the unweighted total responses for a dimension (row) is <50 that row will not be shown; n/a (Not Available) - Not asked of a subset of respondents*

**Year: 2005-2007**

Household Income	Yes			No			Estimated Population (3-Yr Avg)
	#	%	C.I. (95%)	#	%	C.I. (95%)	#
Less than \$10,000	400	14.2	4.9 - 23.4	2,500	85.8	76.6 - 95.1	3,000
\$10,000 to \$14,999	800	16.2	7.0 - 25.4	4,300	83.8	74.6 - 93.0	5,100
\$15,000 to \$19,999	600	11.4	4.6 - 18.2	4,900	88.6	81.8 - 95.4	5,500
\$20,000 to \$24,999	1,600	23.2	13.5 - 33.0	5,100	76.8	67.0 - 86.5	6,700
\$25,000 to \$34,999	1,800	18.9	11.1 - 26.8	7,900	81.1	73.2 - 88.9	9,800
\$35,000 to \$49,999	2,300	18.7	12.0 - 25.4	10,200	81.3	74.6 - 88.0	12,500
\$50,000 to \$74,999	2,000	17.1	10.8 - 23.4	9,900	82.9	76.6 - 89.2	11,900
\$75,000 or more	2,300	18.3	10.8 - 25.7	10,200	81.7	74.3 - 89.2	12,500

**Diabetes - now taking insulin by State, County, Island, Community, BRFSS Age Group, DOH Race-Ethnicity, Gender, Education Level, Employment Status (Grouped), Household Income, Poverty Level, Marital Status (Grouped), Married, Health Care Coverage, for the Year(s) - 2000-2002, 2001-2003, 2002-2004, 2003-2005, 2004-2006, 2005-2007, 2006-2008, 2007-2009, 2008-2010**

*Note: Weighted numbers (#) represent 3-yr averages, percentages and 95% confidence intervals; Respondents aged 18 years and older; n/r (Not Reportable) - If the unweighted total responses for a dimension (row) is <50 that row will not be shown; n/a (Not Available) - Not asked of a subset of respondents*

**Year: 2005-2007**

Poverty Level	Yes			No			Estimated Population (3-Yr Avg)
	#	%	C.I. (95%)	#	%	C.I. (95%)	#
<b>0-130%</b>	2,900	14.4	9.7 - 19.2	17,500	85.6	80.8 - 90.3	20,400
<b>131-185%</b>	1,700	18.7	10.7 - 26.7	7,300	81.3	73.3 - 89.3	8,900
<b>186+%</b>	7,300	19.5	15.6 - 23.4	30,200	80.5	76.6 - 84.4	37,600

Marital Status (Grouped)	Yes			No			Estimated Population (3-Yr Avg)
	#	%	C.I. (95%)	#	%	C.I. (95%)	#
<b>Married</b>	8,400	17.0	13.6 - 20.5	40,900	83.0	79.5 - 86.4	49,300
<b>Widowed</b>	1,400	14.9	9.6 - 20.3	7,900	85.1	79.7 - 90.4	9,300
<b>Other</b>	3,300	17.7	12.5 - 22.8	15,400	82.3	77.2 - 87.5	18,700

**Diabetes - now taking insulin by State, County, Island, Community, BRFSS Age Group, DOH Race-Ethnicity, Gender, Education Level, Employment Status (Grouped), Household Income, Poverty Level, Marital Status (Grouped), Married, Health Care Coverage, for the Year(s) - 2000-2002, 2001-2003, 2002-2004, 2003-2005, 2004-2006, 2005-2007, 2006-2008, 2007-2009, 2008-2010**

*Note: Weighted numbers (#) represent 3-yr averages, percentages and 95% confidence intervals; Respondents aged 18 years and older; n/r (Not Reportable) - If the unweighted total responses for a dimension (row) is <50 that row will not be shown; n/a (Not Available) - Not asked of a subset of respondents*

**Year: 2005-2007**

<b>Married</b>	<b>Yes</b>			<b>No</b>			<b>Estimated Population (3-Yr Avg)</b>
	<b>#</b>	<b>%</b>	<b>C.I. (95%)</b>	<b>#</b>	<b>%</b>	<b>C.I. (95%)</b>	<b>#</b>
<b>Yes</b>	8,600	17.1	13.7 - 20.6	41,600	82.9	79.4 - 86.3	50,200
<b>No</b>	4,600	16.4	12.5 - 20.3	23,300	83.6	79.7 - 87.5	27,800

<b>Health Care Coverage</b>	<b>Yes</b>			<b>No</b>			<b>Estimated Population (3-Yr Avg)</b>
	<b>#</b>	<b>%</b>	<b>C.I. (95%)</b>	<b>#</b>	<b>%</b>	<b>C.I. (95%)</b>	<b>#</b>
<b>Yes</b>	9,800	20.1	17.0 - 23.3	38,800	79.9	76.7 - 83.0	48,500

**Diabetes - now taking insulin by State, County, Island, Community, BRFSS Age Group, DOH Race-Ethnicity, Gender, Education Level, Employment Status (Grouped), Household Income, Poverty Level, Marital Status (Grouped), Married, Health Care Coverage, for the Year(s) - 2000-2002, 2001-2003, 2002-2004, 2003-2005, 2004-2006, 2005-2007, 2006-2008, 2007-2009, 2008-2010**

*Note: Weighted numbers (#) represent 3-yr averages, percentages and 95% confidence intervals; Respondents aged 18 years and older; n/r (Not Reportable) - If the unweighted total responses for a dimension (row) is <50 that row will not be shown; n/a (Not Available) - Not asked of a subset of respondents*

**Year: 2004-2006**

State	Yes			No			Estimated Population (3-Yr Avg)
	#	%	C.I. (95%)	#	%	C.I. (95%)	#
Hawaii State	13,100	17.9	14.0 - 21.8	60,100	82.1	78.2 - 86.0	73,200

County	Yes			No			Estimated Population (3-Yr Avg)
	#	%	C.I. (95%)	#	%	C.I. (95%)	#
Hawaii	1,700	18.1	12.4 - 23.8	7,600	81.9	76.2 - 87.6	9,300
Honolulu	9,900	18.2	13.1 - 23.2	44,400	81.8	76.8 - 86.9	54,200
Kauai	700	16.9	7.3 - 26.6	3,200	83.1	73.4 - 92.7	3,900
Maui	900	15.4	8.3 - 22.6	4,900	84.6	77.4 - 91.7	5,800

**Diabetes - now taking insulin by State, County, Island, Community, BRFSS Age Group, DOH Race-Ethnicity, Gender, Education Level, Employment Status (Grouped), Household Income, Poverty Level, Marital Status (Grouped), Married, Health Care Coverage, for the Year(s) - 2000-2002, 2001-2003, 2002-2004, 2003-2005, 2004-2006, 2005-2007, 2006-2008, 2007-2009, 2008-2010**

*Note: Weighted numbers (#) represent 3-yr averages, percentages and 95% confidence intervals; Respondents aged 18 years and older; n/r (Not Reportable) - If the unweighted total responses for a dimension (row) is <50 that row will not be shown; n/a (Not Available) - Not asked of a subset of respondents*

**Year: 2004-2006**

Island	Yes			No			Estimated Population (3-Yr Avg)
	#	%	C.I. (95%)	#	%	C.I. (95%)	#
Hawaii	1,700	18.1	12.4 - 23.8	7,600	81.9	76.2 - 87.6	9,300
Kauai	700	16.9	7.3 - 26.6	3,200	83.1	73.4 - 92.7	3,900
Maui	800	16.4	8.3 - 24.5	4,300	83.6	75.5 - 91.7	5,100
Oahu	9,900	18.2	13.1 - 23.2	44,400	81.8	76.8 - 86.9	54,200

**Diabetes - now taking insulin by State, County, Island, Community, BRFSS Age Group, DOH Race-Ethnicity, Gender, Education Level, Employment Status (Grouped), Household Income, Poverty Level, Marital Status (Grouped), Married, Health Care Coverage, for the Year(s) - 2000-2002, 2001-2003, 2002-2004, 2003-2005, 2004-2006, 2005-2007, 2006-2008, 2007-2009, 2008-2010**

*Note: Weighted numbers (#) represent 3-yr averages, percentages and 95% confidence intervals; Respondents aged 18 years and older; n/r (Not Reportable) - If the unweighted total responses for a dimension (row) is <50 that row will not be shown; n/a (Not Available) - Not asked of a subset of respondents*

**Year: 2004-2006**

Community	Yes			No			Estimated Population (3-Yr Avg)
	#	%	C.I. (95%)	#	%	C.I. (95%)	#
Hilo	600	20.7	10.4 - 31.0	2,100	79.3	69.0 - 89.6	2,700
Lihue-Waimea	400	13.7	4.4 - 23.0	2,300	86.3	77.0 - 95.6	2,700
N.Hawaii	300	19.0	5.3 - 32.6	1,400	81.0	67.4 - 94.7	1,800
Puna/ Kau	500	15.4	5.5 - 25.4	2,700	84.6	74.6 - 94.5	3,100
Waipahu/ Kapolei/ Ewa	1,000	10.5	3.4 - 17.5	8,600	89.5	82.5 - 96.6	9,600

**Diabetes - now taking insulin by State, County, Island, Community, BRFSS Age Group, DOH Race-Ethnicity, Gender, Education Level, Employment Status (Grouped), Household Income, Poverty Level, Marital Status (Grouped), Married, Health Care Coverage, for the Year(s) - 2000-2002, 2001-2003, 2002-2004, 2003-2005, 2004-2006, 2005-2007, 2006-2008, 2007-2009, 2008-2010**

*Note: Weighted numbers (#) represent 3-yr averages, percentages and 95% confidence intervals; Respondents aged 18 years and older; n/r (Not Reportable) - If the unweighted total responses for a dimension (row) is <50 that row will not be shown; n/a (Not Available) - Not asked of a subset of respondents*

**Year: 2004-2006**

BRFSS Age Group	Yes			No			Estimated Population (3-Yr Avg)
	#	%	C.I. (95%)	#	%	C.I. (95%)	#
35-44	1,400	16.8	0.0 - 35.3	7,100	83.2	64.7 - 100.0	8,600
45-54	3,400	22.4	13.5 - 31.2	11,900	77.6	68.8 - 86.5	15,300
55-64	3,100	16.3	9.6 - 23.0	16,000	83.7	77.0 - 90.4	19,100
65-74	2,400	18.5	12.1 - 24.8	10,600	81.5	75.2 - 87.9	13,000
75+	2,000	14.9	6.6 - 23.2	11,300	85.1	76.8 - 93.4	13,200

**Diabetes - now taking insulin by State, County, Island, Community, BRFSS Age Group, DOH Race-Ethnicity, Gender, Education Level, Employment Status (Grouped), Household Income, Poverty Level, Marital Status (Grouped), Married, Health Care Coverage, for the Year(s) - 2000-2002, 2001-2003, 2002-2004, 2003-2005, 2004-2006, 2005-2007, 2006-2008, 2007-2009, 2008-2010**

*Note: Weighted numbers (#) represent 3-yr averages, percentages and 95% confidence intervals; Respondents aged 18 years and older; n/r (Not Reportable) - If the unweighted total responses for a dimension (row) is <50 that row will not be shown; n/a (Not Available) - Not asked of a subset of respondents*

**Year: 2004-2006**

DOH Race-Ethnicity	Yes			No			Estimated Population (3-Yr Avg)
	#	%	C.I. (95%)	#	%	C.I. (95%)	#
Caucasian	3,500	20.9	14.5 - 27.3	13,100	79.1	72.7 - 85.5	16,600
Native Hawaiian	4,400	28.0	15.4 - 40.6	11,200	72.0	59.4 - 84.6	15,600
Filipino	1,600	11.3	5.7 - 17.0	12,300	88.7	83.0 - 94.3	13,900
Japanese	2,300	15.6	8.9 - 22.2	12,400	84.4	77.8 - 91.1	14,700

Gender	Yes			No			Estimated Population (3-Yr Avg)
	#	%	C.I. (95%)	#	%	C.I. (95%)	#
Male	6,200	16.1	11.3 - 20.8	32,600	83.9	79.2 - 88.7	38,900
Female	6,800	19.9	13.7 - 26.2	27,500	80.1	73.8 - 86.3	34,300



**Diabetes - now taking insulin by State, County, Island, Community, BRFSS Age Group, DOH Race-Ethnicity, Gender, Education Level, Employment Status (Grouped), Household Income, Poverty Level, Marital Status (Grouped), Married, Health Care Coverage, for the Year(s) - 2000-2002, 2001-2003, 2002-2004, 2003-2005, 2004-2006, 2005-2007, 2006-2008, 2007-2009, 2008-2010**

*Note: Weighted numbers (#) represent 3-yr averages, percentages and 95% confidence intervals; Respondents aged 18 years and older; n/r (Not Reportable) - If the unweighted total responses for a dimension (row) is <50 that row will not be shown; n/a (Not Available) - Not asked of a subset of respondents*

**Year: 2004-2006**

Education Level	Yes			No			Estimated Population (3-Yr Avg)
	#	%	C.I. (95%)	#	%	C.I. (95%)	#
Grades 9 thru 11 (Some High School)	600	14.7	4.3 - 25.1	3,400	85.3	74.9 - 95.7	4,000
Grades 12 or GED (High School Grad)	5,500	19.2	11.4 - 27.1	23,100	80.8	72.9 - 88.6	28,600
College 1 to 3 years (Some College/ Tech)	3,300	16.5	10.9 - 22.1	16,700	83.5	77.9 - 89.1	19,900
College 4 years or more (College Grad)	3,000	17.3	10.7 - 23.9	14,400	82.7	76.1 - 89.3	17,400

Employment Status (Grouped)	Yes			No			Estimated Population (3-Yr Avg)
	#	%	C.I. (95%)	#	%	C.I. (95%)	#
Employed	4,200	12.6	8.5 - 16.8	29,200	87.4	83.2 - 91.5	33,400
Retired/Unable to work	7,800	22.7	16.1 - 29.2	26,700	77.3	70.8 - 83.9	34,500

**Diabetes - now taking insulin by State, County, Island, Community, BRFSS Age Group, DOH Race-Ethnicity, Gender, Education Level, Employment Status (Grouped), Household Income, Poverty Level, Marital Status (Grouped), Married, Health Care Coverage, for the Year(s) - 2000-2002, 2001-2003, 2002-2004, 2003-2005, 2004-2006, 2005-2007, 2006-2008, 2007-2009, 2008-2010**

*Note: Weighted numbers (#) represent 3-yr averages, percentages and 95% confidence intervals; Respondents aged 18 years and older; n/r (Not Reportable) - If the unweighted total responses for a dimension (row) is <50 that row will not be shown; n/a (Not Available) - Not asked of a subset of respondents*

**Year: 2004-2006**

Household Income	Yes			No			Estimated Population (3-Yr Avg)
	#	%	C.I. (95%)	#	%	C.I. (95%)	#
Less than \$10,000	200	9.4	0.0 - 19.3	2,000	90.6	80.7 - 100.0	2,200
\$10,000 to \$14,999	500	12.7	3.3 - 22.2	3,500	87.3	77.8 - 96.7	4,000
\$15,000 to \$19,999	2,100	31.2	8.6 - 53.9	4,500	68.8	46.1 - 91.4	6,600
\$20,000 to \$24,999	1,400	22.7	10.8 - 34.6	4,800	77.3	65.4 - 89.2	6,200
\$25,000 to \$34,999	1,700	18.4	7.9 - 29.0	7,600	81.6	71.0 - 92.1	9,300
\$35,000 to \$49,999	2,200	20.8	11.8 - 29.8	8,300	79.2	70.2 - 88.2	10,400
\$50,000 to \$74,999	2,400	18.5	9.5 - 27.4	10,600	81.5	72.6 - 90.5	13,100
\$75,000 or more	1,500	12.8	5.3 - 20.3	10,200	87.2	79.7 - 94.7	11,700

**Diabetes - now taking insulin by State, County, Island, Community, BRFSS Age Group, DOH Race-Ethnicity, Gender, Education Level, Employment Status (Grouped), Household Income, Poverty Level, Marital Status (Grouped), Married, Health Care Coverage, for the Year(s) - 2000-2002, 2001-2003, 2002-2004, 2003-2005, 2004-2006, 2005-2007, 2006-2008, 2007-2009, 2008-2010**

*Note: Weighted numbers (#) represent 3-yr averages, percentages and 95% confidence intervals; Respondents aged 18 years and older; n/r (Not Reportable) - If the unweighted total responses for a dimension (row) is <50 that row will not be shown; n/a (Not Available) - Not asked of a subset of respondents*

**Year: 2004-2006**

Poverty Level	Yes			No			Estimated Population (3-Yr Avg)
	#	%	C.I. (95%)	#	%	C.I. (95%)	#
0-130%	3,100	16.3	6.6 - 26.0	16,000	83.7	74.0 - 93.4	19,100
131-185%	2,000	26.2	13.7 - 38.8	5,700	73.8	61.2 - 86.3	7,700
186+%	6,800	18.6	13.7 - 23.5	29,900	81.4	76.5 - 86.3	36,800

Marital Status (Grouped)	Yes			No			Estimated Population (3-Yr Avg)
	#	%	C.I. (95%)	#	%	C.I. (95%)	#
Married	8,400	17.6	12.4 - 22.8	39,200	82.4	77.2 - 87.6	47,500
Widowed	1,500	19.3	8.3 - 30.2	6,500	80.8	69.8 - 91.7	8,000
Other	3,100	18.3	11.8 - 24.8	13,900	81.7	75.2 - 88.2	17,000

**Diabetes - now taking insulin by State, County, Island, Community, BRFSS Age Group, DOH Race-Ethnicity, Gender, Education Level, Employment Status (Grouped), Household Income, Poverty Level, Marital Status (Grouped), Married, Health Care Coverage, for the Year(s) - 2000-2002, 2001-2003, 2002-2004, 2003-2005, 2004-2006, 2005-2007, 2006-2008, 2007-2009, 2008-2010**

*Note: Weighted numbers (#) represent 3-yr averages, percentages and 95% confidence intervals; Respondents aged 18 years and older; n/r (Not Reportable) - If the unweighted total responses for a dimension (row) is <50 that row will not be shown; n/a (Not Available) - Not asked of a subset of respondents*

**Year: 2004-2006**

<b>Married</b>	<b>Yes</b>			<b>No</b>			<b>Estimated Population (3-Yr Avg)</b>
	<b>#</b>	<b>%</b>	<b>C.I. (95%)</b>	<b>#</b>	<b>%</b>	<b>C.I. (95%)</b>	<b>#</b>
<b>Yes</b>	8,500	17.6	12.4 - 22.7	39,800	82.4	77.3 - 87.6	48,300
<b>No</b>	4,600	18.6	12.9 - 24.3	20,200	81.4	75.7 - 87.1	24,800

<b>Health Care Coverage</b>	<b>Yes</b>			<b>No</b>			<b>Estimated Population (3-Yr Avg)</b>
	<b>#</b>	<b>%</b>	<b>C.I. (95%)</b>	<b>#</b>	<b>%</b>	<b>C.I. (95%)</b>	<b>#</b>
<b>Yes</b>	9,400	21.6	16.1 - 27.0	34,300	78.4	73.0 - 83.9	43,700

**Diabetes - now taking insulin by State, County, Island, Community, BRFSS Age Group, DOH Race-Ethnicity, Gender, Education Level, Employment Status (Grouped), Household Income, Poverty Level, Marital Status (Grouped), Married, Health Care Coverage, for the Year(s) - 2000-2002, 2001-2003, 2002-2004, 2003-2005, 2004-2006, 2005-2007, 2006-2008, 2007-2009, 2008-2010**

*Note: Weighted numbers (#) represent 3-yr averages, percentages and 95% confidence intervals; Respondents aged 18 years and older; n/r (Not Reportable) - If the unweighted total responses for a dimension (row) is <50 that row will not be shown; n/a (Not Available) - Not asked of a subset of respondents*

**Year: 2003-2005**

State	Yes			No			Estimated Population (3-Yr Avg)
	#	%	C.I. (95%)	#	%	C.I. (95%)	#
Hawaii State	12,500	17.8	13.5 - 22.0	57,900	82.2	78.0 - 86.5	70,500

County	Yes			No			Estimated Population (3-Yr Avg)
	#	%	C.I. (95%)	#	%	C.I. (95%)	#
Hawaii	1,600	17.3	11.4 - 23.1	7,700	82.7	76.9 - 88.6	9,300
Honolulu	9,700	18.2	12.8 - 23.6	43,600	81.8	76.4 - 87.2	53,300
Kauai	400	12.3	1.3 - 23.2	2,700	87.7	76.8 - 98.7	3,100
Maui	900	18.0	8.9 - 27.1	3,900	82.0	72.9 - 91.1	4,800

**Diabetes - now taking insulin by State, County, Island, Community, BRFSS Age Group, DOH Race-Ethnicity, Gender, Education Level, Employment Status (Grouped), Household Income, Poverty Level, Marital Status (Grouped), Married, Health Care Coverage, for the Year(s) - 2000-2002, 2001-2003, 2002-2004, 2003-2005, 2004-2006, 2005-2007, 2006-2008, 2007-2009, 2008-2010**

*Note: Weighted numbers (#) represent 3-yr averages, percentages and 95% confidence intervals; Respondents aged 18 years and older; n/r (Not Reportable) - If the unweighted total responses for a dimension (row) is <50 that row will not be shown; n/a (Not Available) - Not asked of a subset of respondents*

**Year: 2003-2005**

Island	Yes			No			Estimated Population (3-Yr Avg)
	#	%	C.I. (95%)	#	%	C.I. (95%)	#
Hawaii	1,600	17.3	11.4 - 23.1	7,700	82.7	76.9 - 88.6	9,300
Kauai	400	12.3	1.3 - 23.2	2,700	87.7	76.8 - 98.7	3,100
Maui	700	18.3	7.9 - 28.7	3,300	81.7	71.3 - 92.1	4,100
Oahu	9,700	18.2	12.8 - 23.6	43,600	81.8	76.4 - 87.2	53,300

Community	Yes			No			Estimated Population (3-Yr Avg)
	#	%	C.I. (95%)	#	%	C.I. (95%)	#
Hilo	600	24.1	11.9 - 36.3	1,800	75.9	63.7 - 88.1	2,300
Puna/ Kau	500	14.8	5.2 - 24.5	2,700	85.2	75.5 - 94.8	3,100

**Diabetes - now taking insulin by State, County, Island, Community, BRFSS Age Group, DOH Race-Ethnicity, Gender, Education Level, Employment Status (Grouped), Household Income, Poverty Level, Marital Status (Grouped), Married, Health Care Coverage, for the Year(s) - 2000-2002, 2001-2003, 2002-2004, 2003-2005, 2004-2006, 2005-2007, 2006-2008, 2007-2009, 2008-2010**

*Note: Weighted numbers (#) represent 3-yr averages, percentages and 95% confidence intervals; Respondents aged 18 years and older; n/r (Not Reportable) - If the unweighted total responses for a dimension (row) is <50 that row will not be shown; n/a (Not Available) - Not asked of a subset of respondents*

**Year: 2003-2005**

BRFSS Age Group	Yes			No			Estimated Population (3-Yr Avg)
	#	%	C.I. (95%)	#	%	C.I. (95%)	#
35-44	1,600	17.9	0.0 - 36.0	7,300	82.1	64.0 - 100.0	8,900
45-54	3,800	25.3	15.0 - 35.6	11,300	74.7	64.4 - 85.0	15,200
55-64	3,100	18.3	10.6 - 26.0	13,900	81.7	74.0 - 89.4	17,100
65-74	1,900	14.2	7.9 - 20.5	11,600	85.8	79.5 - 92.1	13,600
75+	1,700	15.1	5.8 - 24.5	9,800	84.9	75.5 - 94.2	11,500

**Diabetes - now taking insulin by State, County, Island, Community, BRFSS Age Group, DOH Race-Ethnicity, Gender, Education Level, Employment Status (Grouped), Household Income, Poverty Level, Marital Status (Grouped), Married, Health Care Coverage, for the Year(s) - 2000-2002, 2001-2003, 2002-2004, 2003-2005, 2004-2006, 2005-2007, 2006-2008, 2007-2009, 2008-2010**

*Note: Weighted numbers (#) represent 3-yr averages, percentages and 95% confidence intervals; Respondents aged 18 years and older; n/r (Not Reportable) - If the unweighted total responses for a dimension (row) is <50 that row will not be shown; n/a (Not Available) - Not asked of a subset of respondents*

**Year: 2003-2005**

DOH Race-Ethnicity	Yes			No			Estimated Population (3-Yr Avg)
	#	%	C.I. (95%)	#	%	C.I. (95%)	#
Caucasian	3,600	22.5	14.9 - 30.1	12,500	77.5	69.9 - 85.1	16,200
Native Hawaiian	4,300	28.5	14.9 - 42.2	10,700	71.5	57.8 - 85.1	15,000
Filipino	1,500	12.1	5.7 - 18.4	10,700	87.9	81.6 - 94.3	12,100
Japanese	2,000	13.7	6.6 - 20.9	12,700	86.3	79.1 - 93.4	14,700

Gender	Yes			No			Estimated Population (3-Yr Avg)
	#	%	C.I. (95%)	#	%	C.I. (95%)	#
Male	6,500	17.3	11.9 - 22.8	31,000	82.7	77.2 - 88.1	37,500
Female	6,000	18.3	11.7 - 24.9	26,900	81.7	75.1 - 88.3	32,900



**Diabetes - now taking insulin by State, County, Island, Community, BRFSS Age Group, DOH Race-Ethnicity, Gender, Education Level, Employment Status (Grouped), Household Income, Poverty Level, Marital Status (Grouped), Married, Health Care Coverage, for the Year(s) - 2000-2002, 2001-2003, 2002-2004, 2003-2005, 2004-2006, 2005-2007, 2006-2008, 2007-2009, 2008-2010**

*Note: Weighted numbers (#) represent 3-yr averages, percentages and 95% confidence intervals; Respondents aged 18 years and older; n/r (Not Reportable) - If the unweighted total responses for a dimension (row) is <50 that row will not be shown; n/a (Not Available) - Not asked of a subset of respondents*

**Year: 2003-2005**

Education Level	Yes			No			Estimated Population (3-Yr Avg)
	#	%	C.I. (95%)	#	%	C.I. (95%)	#
Grades 9 thru 11 (Some High School)	500	11.6	1.1 - 22.0	4,200	88.4	78.0 - 98.9	4,700
Grades 12 or GED (High School Grad)	5,900	21.6	13.0 - 30.2	21,600	78.4	69.8 - 87.0	27,500
College 1 to 3 years (Some College/ Tech)	2,600	14.3	8.3 - 20.2	15,800	85.7	79.8 - 91.7	18,500
College 4 years or more (College Grad)	3,100	17.8	10.7 - 24.9	14,200	82.2	75.1 - 89.3	17,200

Employment Status (Grouped)	Yes			No			Estimated Population (3-Yr Avg)
	#	%	C.I. (95%)	#	%	C.I. (95%)	#
Employed	4,100	12.5	7.7 - 17.4	28,600	87.5	82.6 - 92.3	32,700
Retired/Unable to work	7,100	21.7	14.7 - 28.7	25,500	78.3	71.3 - 85.3	32,600

**Diabetes - now taking insulin by State, County, Island, Community, BRFSS Age Group, DOH Race-Ethnicity, Gender, Education Level, Employment Status (Grouped), Household Income, Poverty Level, Marital Status (Grouped), Married, Health Care Coverage, for the Year(s) - 2000-2002, 2001-2003, 2002-2004, 2003-2005, 2004-2006, 2005-2007, 2006-2008, 2007-2009, 2008-2010**

*Note: Weighted numbers (#) represent 3-yr averages, percentages and 95% confidence intervals; Respondents aged 18 years and older; n/r (Not Reportable) - If the unweighted total responses for a dimension (row) is <50 that row will not be shown; n/a (Not Available) - Not asked of a subset of respondents*

**Year: 2003-2005**

Household Income	Yes			No			Estimated Population (3-Yr Avg)
	#	%	C.I. (95%)	#	%	C.I. (95%)	#
\$10,000 to \$14,999	800	15.4	3.5 - 27.4	4,100	84.6	72.6 - 96.5	4,900
\$15,000 to \$19,999	2,100	32.8	9.6 - 55.9	4,300	67.2	44.1 - 90.4	6,400
\$20,000 to \$24,999	1,000	17.3	5.7 - 29.0	4,800	82.7	71.0 - 94.3	5,800
\$25,000 to \$34,999	1,400	17.2	5.7 - 28.7	6,800	82.8	71.3 - 94.3	8,200
\$35,000 to \$49,999	1,300	15.5	5.6 - 25.5	7,200	84.5	74.5 - 94.4	8,500
\$50,000 to \$74,999	2,800	22.7	11.7 - 33.6	9,700	77.3	66.4 - 88.3	12,500
\$75,000 or more	1,900	17.7	8.0 - 27.5	9,000	82.3	72.5 - 92.0	10,900

**Diabetes - now taking insulin by State, County, Island, Community, BRFSS Age Group, DOH Race-Ethnicity, Gender, Education Level, Employment Status (Grouped), Household Income, Poverty Level, Marital Status (Grouped), Married, Health Care Coverage, for the Year(s) - 2000-2002, 2001-2003, 2002-2004, 2003-2005, 2004-2006, 2005-2007, 2006-2008, 2007-2009, 2008-2010**

*Note: Weighted numbers (#) represent 3-yr averages, percentages and 95% confidence intervals; Respondents aged 18 years and older; n/r (Not Reportable) - If the unweighted total responses for a dimension (row) is <50 that row will not be shown; n/a (Not Available) - Not asked of a subset of respondents*

**Year: 2003-2005**

Poverty Level	Yes			No			Estimated Population (3-Yr Avg)
	#	%	C.I. (95%)	#	%	C.I. (95%)	#
0-130%	3,400	17.9	7.8 - 28.1	15,400	82.1	71.9 - 92.2	18,800
131-185%	1,700	24.5	11.2 - 37.9	5,300	75.5	62.1 - 88.8	7,000
186+%	6,800	19.7	13.9 - 25.5	27,600	80.3	74.5 - 86.1	34,400

Marital Status (Grouped)	Yes			No			Estimated Population (3-Yr Avg)
	#	%	C.I. (95%)	#	%	C.I. (95%)	#
Married	8,000	18.1	12.3 - 23.9	36,200	81.9	76.1 - 87.7	44,200
Widowed	2,000	21.7	10.8 - 32.6	7,100	78.3	67.4 - 89.2	9,100
Other	2,600	15.4	8.7 - 22.2	14,100	84.6	77.8 - 91.3	16,600

**Diabetes - now taking insulin by State, County, Island, Community, BRFSS Age Group, DOH Race-Ethnicity, Gender, Education Level, Employment Status (Grouped), Household Income, Poverty Level, Marital Status (Grouped), Married, Health Care Coverage, for the Year(s) - 2000-2002, 2001-2003, 2002-2004, 2003-2005, 2004-2006, 2005-2007, 2006-2008, 2007-2009, 2008-2010**

*Note: Weighted numbers (#) represent 3-yr averages, percentages and 95% confidence intervals; Respondents aged 18 years and older; n/r (Not Reportable) - If the unweighted total responses for a dimension (row) is <50 that row will not be shown; n/a (Not Available) - Not asked of a subset of respondents*

**Year: 2003-2005**

<b>Married</b>	<b>Yes</b>			<b>No</b>			<b>Estimated Population (3-Yr Avg)</b>
	<b>#</b>	<b>%</b>	<b>C.I. (95%)</b>	<b>#</b>	<b>%</b>	<b>C.I. (95%)</b>	<b>#</b>
<b>Yes</b>	8,100	18.0	12.3 - 23.8	36,700	82.0	76.2 - 87.7	44,800
<b>No</b>	4,500	17.5	11.5 - 23.4	21,100	82.5	76.6 - 88.5	25,600

<b>Health Care Coverage</b>	<b>Yes</b>			<b>No</b>			<b>Estimated Population (3-Yr Avg)</b>
	<b>#</b>	<b>%</b>	<b>C.I. (95%)</b>	<b>#</b>	<b>%</b>	<b>C.I. (95%)</b>	<b>#</b>
<b>Yes</b>	8,900	21.4	15.3 - 27.6	32,800	78.6	72.4 - 84.7	41,700

**Diabetes - now taking insulin by State, County, Island, Community, BRFSS Age Group, DOH Race-Ethnicity, Gender, Education Level, Employment Status (Grouped), Household Income, Poverty Level, Marital Status (Grouped), Married, Health Care Coverage, for the Year(s) - 2000-2002, 2001-2003, 2002-2004, 2003-2005, 2004-2006, 2005-2007, 2006-2008, 2007-2009, 2008-2010**

*Note: Weighted numbers (#) represent 3-yr averages, percentages and 95% confidence intervals; Respondents aged 18 years and older; n/r (Not Reportable) - If the unweighted total responses for a dimension (row) is <50 that row will not be shown; n/a (Not Available) - Not asked of a subset of respondents*

**Year: 2002-2004**

State	Yes			No			Estimated Population (3-Yr Avg)
	#	%	C.I. (95%)	#	%	C.I. (95%)	#
Hawaii State	13,000	21.4	16.7 - 26.0	47,700	78.6	74.0 - 83.3	60,600

County	Yes			No			Estimated Population (3-Yr Avg)
	#	%	C.I. (95%)	#	%	C.I. (95%)	#
Hawaii	1,500	20.6	13.8 - 27.5	5,900	79.4	72.5 - 86.2	7,400
Honolulu	10,200	22.4	16.5 - 28.3	35,400	77.6	71.7 - 83.5	45,600
Kauai	200	7.2	1.0 - 13.5	2,400	92.8	86.5 - 99.0	2,600
Maui	1,000	20.4	11.6 - 29.2	4,000	79.6	70.8 - 88.4	5,000

**Diabetes - now taking insulin by State, County, Island, Community, BRFSS Age Group, DOH Race-Ethnicity, Gender, Education Level, Employment Status (Grouped), Household Income, Poverty Level, Marital Status (Grouped), Married, Health Care Coverage, for the Year(s) - 2000-2002, 2001-2003, 2002-2004, 2003-2005, 2004-2006, 2005-2007, 2006-2008, 2007-2009, 2008-2010**

*Note: Weighted numbers (#) represent 3-yr averages, percentages and 95% confidence intervals; Respondents aged 18 years and older; n/r (Not Reportable) - If the unweighted total responses for a dimension (row) is <50 that row will not be shown; n/a (Not Available) - Not asked of a subset of respondents*

**Year: 2002-2004**

Island	Yes			No			Estimated Population (3-Yr Avg)
	#	%	C.I. (95%)	#	%	C.I. (95%)	#
Hawaii	1,500	20.6	13.8 - 27.5	5,900	79.4	72.5 - 86.2	7,400
Kauai	200	7.2	1.0 - 13.5	2,400	92.8	86.5 - 99.0	2,600
Maui	800	19.4	9.5 - 29.2	3,500	80.6	70.8 - 90.5	4,300
Oahu	10,200	22.4	16.5 - 28.3	35,400	77.6	71.7 - 83.5	45,600

Community	Yes			No			Estimated Population (3-Yr Avg)
	#	%	C.I. (95%)	#	%	C.I. (95%)	#
Aiea/ Pearl City	800	13.3	3.6 - 23.1	5,000	86.7	76.9 - 96.4	5,800
Hilo	400	22.0	10.4 - 33.6	1,500	78.0	66.4 - 89.6	1,900
Lihue-Waimea	100	7.0	0.0 - 15.2	1,800	93.0	84.8 - 100.0	1,900
Waipahu/ Kapolei/ Ewa	1,000	14.4	4.7 - 24.2	6,200	85.6	75.8 - 95.3	7,200

**Diabetes - now taking insulin by State, County, Island, Community, BRFSS Age Group, DOH Race-Ethnicity, Gender, Education Level, Employment Status (Grouped), Household Income, Poverty Level, Marital Status (Grouped), Married, Health Care Coverage, for the Year(s) - 2000-2002, 2001-2003, 2002-2004, 2003-2005, 2004-2006, 2005-2007, 2006-2008, 2007-2009, 2008-2010**

*Note: Weighted numbers (#) represent 3-yr averages, percentages and 95% confidence intervals; Respondents aged 18 years and older; n/r (Not Reportable) - If the unweighted total responses for a dimension (row) is <50 that row will not be shown; n/a (Not Available) - Not asked of a subset of respondents*

**Year: 2002-2004**

BRFSS Age Group	Yes			No			Estimated Population (3-Yr Avg)
	#	%	C.I. (95%)	#	%	C.I. (95%)	#
35-44	1,700	21.0	1.9 - 40.2	6,400	79.0	59.8 - 98.1	8,100
45-54	3,900	29.8	18.8 - 40.8	9,100	70.2	59.2 - 81.2	12,900
55-64	3,300	22.9	14.4 - 31.3	11,200	77.1	68.7 - 85.6	14,500
65-74	1,800	13.5	7.5 - 19.5	11,300	86.5	80.5 - 92.5	13,000
75+	2,000	21.9	11.2 - 32.7	7,300	78.1	67.3 - 88.8	9,300

**Diabetes - now taking insulin by State, County, Island, Community, BRFSS Age Group, DOH Race-Ethnicity, Gender, Education Level, Employment Status (Grouped), Household Income, Poverty Level, Marital Status (Grouped), Married, Health Care Coverage, for the Year(s) - 2000-2002, 2001-2003, 2002-2004, 2003-2005, 2004-2006, 2005-2007, 2006-2008, 2007-2009, 2008-2010**

*Note: Weighted numbers (#) represent 3-yr averages, percentages and 95% confidence intervals; Respondents aged 18 years and older; n/r (Not Reportable) - If the unweighted total responses for a dimension (row) is <50 that row will not be shown; n/a (Not Available) - Not asked of a subset of respondents*

**Year: 2002-2004**

DOH Race-Ethnicity	Yes			No			Estimated Population (3-Yr Avg)
	#	%	C.I. (95%)	#	%	C.I. (95%)	#
Caucasian	3,500	26.5	17.7 - 35.2	9,700	73.5	64.8 - 82.3	13,200
Native Hawaiian	4,300	35.0	19.9 - 50.1	7,900	65.0	49.9 - 80.1	12,100
Chinese	400	8.5	1.5 - 15.4	4,200	91.5	84.6 - 98.5	4,600
Filipino	1,400	13.3	6.9 - 19.7	9,000	86.7	80.3 - 93.1	10,400
Japanese	2,500	16.6	9.6 - 23.6	12,600	83.4	76.4 - 90.4	15,100

Gender	Yes			No			Estimated Population (3-Yr Avg)
	#	%	C.I. (95%)	#	%	C.I. (95%)	#
Male	6,000	19.9	13.8 - 25.9	24,000	80.1	74.1 - 86.2	30,000
Female	7,000	22.8	15.9 - 29.7	23,700	77.2	70.3 - 84.1	30,700



**Diabetes - now taking insulin by State, County, Island, Community, BRFSS Age Group, DOH Race-Ethnicity, Gender, Education Level, Employment Status (Grouped), Household Income, Poverty Level, Marital Status (Grouped), Married, Health Care Coverage, for the Year(s) - 2000-2002, 2001-2003, 2002-2004, 2003-2005, 2004-2006, 2005-2007, 2006-2008, 2007-2009, 2008-2010**

*Note: Weighted numbers (#) represent 3-yr averages, percentages and 95% confidence intervals; Respondents aged 18 years and older; n/r (Not Reportable) - If the unweighted total responses for a dimension (row) is <50 that row will not be shown; n/a (Not Available) - Not asked of a subset of respondents*

**Year: 2002-2004**

Education Level	Yes			No			Estimated Population (3-Yr Avg)
	#	%	C.I. (95%)	#	%	C.I. (95%)	#
Grades 9 thru 11 (Some High School)	700	20.7	6.5 - 34.9	2,800	79.3	65.1 - 93.5	3,600
Grades 12 or GED (High School Grad)	6,300	27.0	17.7 - 36.3	17,100	73.0	63.7 - 82.3	23,500
College 1 to 3 years (Some College/ Tech)	2,500	14.9	8.8 - 21.1	14,200	85.1	78.9 - 91.2	16,700
College 4 years or more (College Grad)	3,300	21.2	13.6 - 28.7	12,200	78.8	71.3 - 86.4	15,500

Employment Status (Grouped)	Yes			No			Estimated Population (3-Yr Avg)
	#	%	C.I. (95%)	#	%	C.I. (95%)	#
Employed	3,800	14.0	8.7 - 19.3	23,300	86.0	80.7 - 91.3	27,100
Retired/Unable to work	7,400	25.5	18.2 - 32.9	21,400	74.5	67.1 - 81.8	28,800

**Diabetes - now taking insulin by State, County, Island, Community, BRFSS Age Group, DOH Race-Ethnicity, Gender, Education Level, Employment Status (Grouped), Household Income, Poverty Level, Marital Status (Grouped), Married, Health Care Coverage, for the Year(s) - 2000-2002, 2001-2003, 2002-2004, 2003-2005, 2004-2006, 2005-2007, 2006-2008, 2007-2009, 2008-2010**

*Note: Weighted numbers (#) represent 3-yr averages, percentages and 95% confidence intervals; Respondents aged 18 years and older; n/r (Not Reportable) - If the unweighted total responses for a dimension (row) is <50 that row will not be shown; n/a (Not Available) - Not asked of a subset of respondents*

**Year: 2002-2004**

Household Income	Yes			No			Estimated Population (3-Yr Avg)
	#	%	C.I. (95%)	#	%	C.I. (95%)	#
Less than \$10,000	600	18.9	6.1 - 31.6	2,500	81.1	68.4 - 93.9	3,100
\$10,000 to \$14,999	700	19.4	5.1 - 33.6	3,000	80.6	66.4 - 94.9	3,700
\$15,000 to \$19,999	2,200	52.6	27.1 - 78.0	2,000	47.4	22.0 - 72.9	4,300
\$20,000 to \$24,999	800	16.9	4.3 - 29.6	3,800	83.1	70.4 - 95.7	4,500
\$25,000 to \$34,999	1,000	16.0	2.1 - 29.9	5,100	84.0	70.1 - 97.9	6,000
\$35,000 to \$49,999	1,800	21.4	10.7 - 32.1	6,500	78.6	67.9 - 89.3	8,200
\$50,000 to \$74,999	2,800	25.5	13.5 - 37.5	8,100	74.5	62.5 - 86.5	10,900
\$75,000 or more	1,600	16.1	7.3 - 25.0	8,200	83.9	75.0 - 92.7	9,800

**Diabetes - now taking insulin by State, County, Island, Community, BRFSS Age Group, DOH Race-Ethnicity, Gender, Education Level, Employment Status (Grouped), Household Income, Poverty Level, Marital Status (Grouped), Married, Health Care Coverage, for the Year(s) - 2000-2002, 2001-2003, 2002-2004, 2003-2005, 2004-2006, 2005-2007, 2006-2008, 2007-2009, 2008-2010**

*Note: Weighted numbers (#) represent 3-yr averages, percentages and 95% confidence intervals; Respondents aged 18 years and older; n/r (Not Reportable) - If the unweighted total responses for a dimension (row) is <50 that row will not be shown; n/a (Not Available) - Not asked of a subset of respondents*

**Year: 2002-2004**

Poverty Level	Yes			No			Estimated Population (3-Yr Avg)
	#	%	C.I. (95%)	#	%	C.I. (95%)	#
<b>0-130%</b>	3,600	24.1	12.1 - 36.2	11,300	75.9	63.8 - 87.9	14,800
<b>131-185%</b>	1,500	27.9	12.3 - 43.4	3,900	72.1	56.6 - 87.7	5,400
<b>186+%</b>	6,300	20.8	14.7 - 26.9	23,900	79.2	73.1 - 85.3	30,200

Marital Status (Grouped)	Yes			No			Estimated Population (3-Yr Avg)
	#	%	C.I. (95%)	#	%	C.I. (95%)	#
<b>Married</b>	8,100	21.1	14.8 - 27.3	30,300	78.9	72.7 - 85.2	38,300
<b>Widowed</b>	2,100	22.9	12.2 - 33.6	7,200	77.1	66.4 - 87.8	9,300
<b>Other</b>	2,700	21.2	12.9 - 29.6	10,200	78.8	70.4 - 87.1	12,900

**Diabetes - now taking insulin by State, County, Island, Community, BRFSS Age Group, DOH Race-Ethnicity, Gender, Education Level, Employment Status (Grouped), Household Income, Poverty Level, Marital Status (Grouped), Married, Health Care Coverage, for the Year(s) - 2000-2002, 2001-2003, 2002-2004, 2003-2005, 2004-2006, 2005-2007, 2006-2008, 2007-2009, 2008-2010**

*Note: Weighted numbers (#) represent 3-yr averages, percentages and 95% confidence intervals; Respondents aged 18 years and older; n/r (Not Reportable) - If the unweighted total responses for a dimension (row) is <50 that row will not be shown; n/a (Not Available) - Not asked of a subset of respondents*

**Year: 2002-2004**

<b>Married</b>	<b>Yes</b>			<b>No</b>			<b>Estimated Population (3-Yr Avg)</b>
	<b>#</b>	<b>%</b>	<b>C.I. (95%)</b>	<b>#</b>	<b>%</b>	<b>C.I. (95%)</b>	<b>#</b>
<b>Yes</b>	8,200	21.0	14.8 - 27.2	30,700	79.0	72.8 - 85.2	38,800
<b>No</b>	4,800	22.0	15.3 - 28.8	17,000	78.0	71.2 - 84.7	21,800

<b>Health Care Coverage</b>	<b>Yes</b>			<b>No</b>			<b>Estimated Population (3-Yr Avg)</b>
	<b>#</b>	<b>%</b>	<b>C.I. (95%)</b>	<b>#</b>	<b>%</b>	<b>C.I. (95%)</b>	<b>#</b>
<b>Yes</b>	12,400	21.1	16.4 - 25.7	46,400	78.9	74.3 - 83.6	58,800

**Diabetes - now taking insulin by State, County, Island, Community, BRFSS Age Group, DOH Race-Ethnicity, Gender, Education Level, Employment Status (Grouped), Household Income, Poverty Level, Marital Status (Grouped), Married, Health Care Coverage, for the Year(s) - 2000-2002, 2001-2003, 2002-2004, 2003-2005, 2004-2006, 2005-2007, 2006-2008, 2007-2009, 2008-2010**

*Note: Weighted numbers (#) represent 3-yr averages, percentages and 95% confidence intervals; Respondents aged 18 years and older; n/r (Not Reportable) - If the unweighted total responses for a dimension (row) is <50 that row will not be shown; n/a (Not Available) - Not asked of a subset of respondents*

**Year: 2001-2003**

State	Yes			No			Estimated Population (3-Yr Avg)
	#	%	C.I. (95%)	#	%	C.I. (95%)	#
Hawaii State	11,700	19.9	16.3 - 23.4	47,100	80.1	76.6 - 83.7	58,800

County	Yes			No			Estimated Population (3-Yr Avg)
	#	%	C.I. (95%)	#	%	C.I. (95%)	#
Hawaii	1,400	19.7	13.7 - 25.7	5,500	80.3	74.3 - 86.3	6,900
Honolulu	9,000	20.6	16.1 - 25.1	34,600	79.4	74.9 - 83.9	43,500
Kauai	400	16.1	7.1 - 25.1	2,000	83.9	74.9 - 92.9	2,400
Maui	1,000	16.4	8.6 - 24.3	5,000	83.6	75.7 - 91.4	6,000

**Diabetes - now taking insulin by State, County, Island, Community, BRFSS Age Group, DOH Race-Ethnicity, Gender, Education Level, Employment Status (Grouped), Household Income, Poverty Level, Marital Status (Grouped), Married, Health Care Coverage, for the Year(s) - 2000-2002, 2001-2003, 2002-2004, 2003-2005, 2004-2006, 2005-2007, 2006-2008, 2007-2009, 2008-2010**

*Note: Weighted numbers (#) represent 3-yr averages, percentages and 95% confidence intervals; Respondents aged 18 years and older; n/r (Not Reportable) - If the unweighted total responses for a dimension (row) is <50 that row will not be shown; n/a (Not Available) - Not asked of a subset of respondents*

**Year: 2001-2003**

Island	Yes			No			Estimated Population (3-Yr Avg)
	#	%	C.I. (95%)	#	%	C.I. (95%)	#
Hawaii	1,400	19.7	13.7 - 25.7	5,500	80.3	74.3 - 86.3	6,900
Kauai	400	16.1	7.1 - 25.1	2,000	83.9	74.9 - 92.9	2,400
Maui	800	14.7	6.4 - 22.9	4,500	85.3	77.1 - 93.6	5,300
Oahu	9,000	20.6	16.1 - 25.1	34,600	79.4	74.9 - 83.9	43,500

**Diabetes - now taking insulin by State, County, Island, Community, BRFSS Age Group, DOH Race-Ethnicity, Gender, Education Level, Employment Status (Grouped), Household Income, Poverty Level, Marital Status (Grouped), Married, Health Care Coverage, for the Year(s) - 2000-2002, 2001-2003, 2002-2004, 2003-2005, 2004-2006, 2005-2007, 2006-2008, 2007-2009, 2008-2010**

*Note: Weighted numbers (#) represent 3-yr averages, percentages and 95% confidence intervals; Respondents aged 18 years and older; n/r (Not Reportable) - If the unweighted total responses for a dimension (row) is <50 that row will not be shown; n/a (Not Available) - Not asked of a subset of respondents*

**Year: 2001-2003**

Community	Yes			No			Estimated Population (3-Yr Avg)
	#	%	C.I. (95%)	#	%	C.I. (95%)	#
Aiea/ Pearl City	1,400	23.8	11.1 - 36.6	4,600	76.2	63.4 - 88.9	6,000
Hilo	600	23.5	12.9 - 34.1	1,800	76.5	65.9 - 87.1	2,400
Kahului	100	5.1	0.0 - 11.8	2,800	94.9	88.2 - 100.0	2,900
Kaimuki/ Palolo/ Waikiki	800	15.5	5.6 - 25.5	4,100	84.5	74.5 - 94.4	4,900
Lihue-Waimea	300	19.9	7.8 - 32.0	1,300	80.1	68.0 - 92.2	1,600
Waipahu/ Kapolei/ Ewa	1,300	24.9	11.9 - 37.8	3,900	75.1	62.2 - 88.1	5,200

**Diabetes - now taking insulin by State, County, Island, Community, BRFSS Age Group, DOH Race-Ethnicity, Gender, Education Level, Employment Status (Grouped), Household Income, Poverty Level, Marital Status (Grouped), Married, Health Care Coverage, for the Year(s) - 2000-2002, 2001-2003, 2002-2004, 2003-2005, 2004-2006, 2005-2007, 2006-2008, 2007-2009, 2008-2010**

*Note: Weighted numbers (#) represent 3-yr averages, percentages and 95% confidence intervals; Respondents aged 18 years and older; n/r (Not Reportable) - If the unweighted total responses for a dimension (row) is <50 that row will not be shown; n/a (Not Available) - Not asked of a subset of respondents*

**Year: 2001-2003**

BRFSS Age Group	Yes			No			Estimated Population (3-Yr Avg)
	#	%	C.I. (95%)	#	%	C.I. (95%)	#
35-44	800	14.7	5.6 - 23.8	4,400	85.3	76.2 - 94.4	5,200
45-54	2,800	25.2	15.4 - 34.9	8,500	74.8	65.1 - 84.6	11,300
55-64	2,900	21.2	13.9 - 28.4	10,800	78.8	71.6 - 86.1	13,700
65-74	2,800	18.8	12.5 - 25.0	12,100	81.2	75.0 - 87.5	14,900
75+	2,000	21.2	13.1 - 29.4	7,400	78.8	70.6 - 86.9	9,400



**Diabetes - now taking insulin by State, County, Island, Community, BRFSS Age Group, DOH Race-Ethnicity, Gender, Education Level, Employment Status (Grouped), Household Income, Poverty Level, Marital Status (Grouped), Married, Health Care Coverage, for the Year(s) - 2000-2002, 2001-2003, 2002-2004, 2003-2005, 2004-2006, 2005-2007, 2006-2008, 2007-2009, 2008-2010**

*Note: Weighted numbers (#) represent 3-yr averages, percentages and 95% confidence intervals; Respondents aged 18 years and older; n/r (Not Reportable) - If the unweighted total responses for a dimension (row) is <50 that row will not be shown; n/a (Not Available) - Not asked of a subset of respondents*

**Year: 2001-2003**

DOH Race-Ethnicity	Yes			No			Estimated Population (3-Yr Avg)
	#	%	C.I. (95%)	#	%	C.I. (95%)	#
Caucasian	3,400	27.1	19.1 - 35.1	9,200	72.9	64.9 - 80.9	12,600
Native Hawaiian	2,300	23.5	13.2 - 33.8	7,500	76.5	66.2 - 86.8	9,700
Chinese	800	15.2	5.8 - 24.7	4,500	84.8	75.3 - 94.2	5,300
Filipino	1,500	14.9	7.4 - 22.4	8,700	85.1	77.6 - 92.6	10,200
Japanese	2,700	16.5	10.6 - 22.4	13,900	83.5	77.6 - 89.4	16,600

Gender	Yes			No			Estimated Population (3-Yr Avg)
	#	%	C.I. (95%)	#	%	C.I. (95%)	#
Male	5,400	18.7	13.5 - 24.0	23,200	81.3	76.0 - 86.5	28,600
Female	6,300	21.0	16.2 - 25.7	23,900	79.0	74.3 - 83.8	30,200

**Diabetes - now taking insulin by State, County, Island, Community, BRFSS Age Group, DOH Race-Ethnicity, Gender, Education Level, Employment Status (Grouped), Household Income, Poverty Level, Marital Status (Grouped), Married, Health Care Coverage, for the Year(s) - 2000-2002, 2001-2003, 2002-2004, 2003-2005, 2004-2006, 2005-2007, 2006-2008, 2007-2009, 2008-2010**

*Note: Weighted numbers (#) represent 3-yr averages, percentages and 95% confidence intervals; Respondents aged 18 years and older; n/r (Not Reportable) - If the unweighted total responses for a dimension (row) is <50 that row will not be shown; n/a (Not Available) - Not asked of a subset of respondents*

**Year: 2001-2003**

Education Level	Yes			No			Estimated Population (3-Yr Avg)
	#	%	C.I. (95%)	#	%	C.I. (95%)	#
Grades 9 thru 11 (Some High School)	1,200	27.8	12.2 - 43.4	3,200	72.2	56.6 - 87.8	4,500
Grades 12 or GED (High School Grad)	4,700	22.1	15.9 - 28.3	16,600	77.9	71.7 - 84.1	21,300
College 1 to 3 years (Some College/ Tech)	2,300	13.5	7.9 - 19.0	14,600	86.5	81.0 - 92.1	16,800
College 4 years or more (College Grad)	3,300	23.3	16.3 - 30.4	10,800	76.7	69.6 - 83.7	14,100

Employment Status (Grouped)	Yes			No			Estimated Population (3-Yr Avg)
	#	%	C.I. (95%)	#	%	C.I. (95%)	#
Employed	4,000	15.9	10.6 - 21.3	21,300	84.1	78.7 - 89.4	25,300
Retired/Unable to work	6,300	21.4	16.6 - 26.1	23,200	78.6	73.9 - 83.4	29,500

**Diabetes - now taking insulin by State, County, Island, Community, BRFSS Age Group, DOH Race-Ethnicity, Gender, Education Level, Employment Status (Grouped), Household Income, Poverty Level, Marital Status (Grouped), Married, Health Care Coverage, for the Year(s) - 2000-2002, 2001-2003, 2002-2004, 2003-2005, 2004-2006, 2005-2007, 2006-2008, 2007-2009, 2008-2010**

*Note: Weighted numbers (#) represent 3-yr averages, percentages and 95% confidence intervals; Respondents aged 18 years and older; n/r (Not Reportable) - If the unweighted total responses for a dimension (row) is <50 that row will not be shown; n/a (Not Available) - Not asked of a subset of respondents*

**Year: 2001-2003**

Household Income	Yes			No			Estimated Population (3-Yr Avg)
	#	%	C.I. (95%)	#	%	C.I. (95%)	#
Less than \$10,000	700	19.0	7.8 - 30.2	3,200	81.0	69.8 - 92.2	3,900
\$10,000 to \$14,999	1,200	25.6	10.9 - 40.4	3,500	74.4	59.6 - 89.1	4,700
\$15,000 to \$19,999	700	29.7	12.5 - 47.0	1,700	70.3	53.0 - 87.5	2,400
\$20,000 to \$24,999	500	10.5	1.2 - 19.8	4,100	89.5	80.2 - 98.8	4,500
\$25,000 to \$34,999	500	10.4	2.9 - 17.8	4,200	89.6	82.2 - 97.1	4,700
\$35,000 to \$49,999	2,100	24.0	14.6 - 33.5	6,600	76.0	66.5 - 85.4	8,700
\$50,000 to \$74,999	1,700	23.7	10.9 - 36.4	5,500	76.3	63.6 - 89.1	7,200
\$75,000 or more	1,700	22.1	11.4 - 32.7	5,900	77.9	67.3 - 88.6	7,600

**Diabetes - now taking insulin by State, County, Island, Community, BRFSS Age Group, DOH Race-Ethnicity, Gender, Education Level, Employment Status (Grouped), Household Income, Poverty Level, Marital Status (Grouped), Married, Health Care Coverage, for the Year(s) - 2000-2002, 2001-2003, 2002-2004, 2003-2005, 2004-2006, 2005-2007, 2006-2008, 2007-2009, 2008-2010**

*Note: Weighted numbers (#) represent 3-yr averages, percentages and 95% confidence intervals; Respondents aged 18 years and older; n/r (Not Reportable) - If the unweighted total responses for a dimension (row) is <50 that row will not be shown; n/a (Not Available) - Not asked of a subset of respondents*

**Year: 2001-2003**

Poverty Level	Yes			No			Estimated Population (3-Yr Avg)
	#	%	C.I. (95%)	#	%	C.I. (95%)	#
0-130%	2,600	19.7	11.9 - 27.5	10,500	80.3	72.5 - 88.1	13,100
131-185%	1,300	23.4	11.7 - 35.1	4,200	76.6	64.9 - 88.3	5,400
186+%	5,200	20.8	15.1 - 26.5	20,000	79.2	73.5 - 84.9	25,200

Marital Status (Grouped)	Yes			No			Estimated Population (3-Yr Avg)
	#	%	C.I. (95%)	#	%	C.I. (95%)	#
Married	7,100	19.3	14.6 - 23.9	29,900	80.7	76.1 - 85.4	37,100
Widowed	1,900	20.3	12.3 - 28.3	7,400	79.7	71.7 - 87.7	9,300
Other	2,700	21.4	14.1 - 28.7	9,800	78.6	71.3 - 85.9	12,400

**Diabetes - now taking insulin by State, County, Island, Community, BRFSS Age Group, DOH Race-Ethnicity, Gender, Education Level, Employment Status (Grouped), Household Income, Poverty Level, Marital Status (Grouped), Married, Health Care Coverage, for the Year(s) - 2000-2002, 2001-2003, 2002-2004, 2003-2005, 2004-2006, 2005-2007, 2006-2008, 2007-2009, 2008-2010**

*Note: Weighted numbers (#) represent 3-yr averages, percentages and 95% confidence intervals; Respondents aged 18 years and older; n/r (Not Reportable) - If the unweighted total responses for a dimension (row) is <50 that row will not be shown; n/a (Not Available) - Not asked of a subset of respondents*

**Year: 2001-2003**

<b>Married</b>	<b>Yes</b>			<b>No</b>			<b>Estimated Population (3-Yr Avg)</b>
	<b>#</b>	<b>%</b>	<b>C.I. (95%)</b>	<b>#</b>	<b>%</b>	<b>C.I. (95%)</b>	<b>#</b>
<b>Yes</b>	7,300	19.3	14.7 - 23.8	30,500	80.7	76.2 - 85.3	37,700
<b>No</b>	4,400	21.0	15.4 - 26.5	16,600	79.0	73.5 - 84.6	21,000

<b>Health Care Coverage</b>	<b>Yes</b>			<b>No</b>			<b>Estimated Population (3-Yr Avg)</b>
	<b>#</b>	<b>%</b>	<b>C.I. (95%)</b>	<b>#</b>	<b>%</b>	<b>C.I. (95%)</b>	<b>#</b>
<b>Yes</b>	11,500	20.0	16.4 - 23.6	45,900	80.0	76.4 - 83.6	57,400

**Diabetes - now taking insulin by State, County, Island, Community, BRFSS Age Group, DOH Race-Ethnicity, Gender, Education Level, Employment Status (Grouped), Household Income, Poverty Level, Marital Status (Grouped), Married, Health Care Coverage, for the Year(s) - 2000-2002, 2001-2003, 2002-2004, 2003-2005, 2004-2006, 2005-2007, 2006-2008, 2007-2009, 2008-2010**

*Note: Weighted numbers (#) represent 3-yr averages, percentages and 95% confidence intervals; Respondents aged 18 years and older; n/r (Not Reportable) - If the unweighted total responses for a dimension (row) is <50 that row will not be shown; n/a (Not Available) - Not asked of a subset of respondents*

**Year: 2000-2002**

State	Yes			No			Estimated Population (3-Yr Avg)
	#	%	C.I. (95%)	#	%	C.I. (95%)	#
Hawaii State	9,900	19.3	16.0 - 22.7	41,200	80.7	77.3 - 84.0	51,100

County	Yes			No			Estimated Population (3-Yr Avg)
	#	%	C.I. (95%)	#	%	C.I. (95%)	#
Hawaii	1,400	22.9	16.4 - 29.5	4,800	77.1	70.5 - 83.6	6,300
Honolulu	6,900	19.0	14.7 - 23.3	29,600	81.0	76.7 - 85.3	36,600
Kauai	600	25.3	15.2 - 35.5	1,700	74.7	64.5 - 84.8	2,300
Maui	900	15.1	7.5 - 22.8	5,000	84.9	77.2 - 92.5	5,900

**Diabetes - now taking insulin by State, County, Island, Community, BRFSS Age Group, DOH Race-Ethnicity, Gender, Education Level, Employment Status (Grouped), Household Income, Poverty Level, Marital Status (Grouped), Married, Health Care Coverage, for the Year(s) - 2000-2002, 2001-2003, 2002-2004, 2003-2005, 2004-2006, 2005-2007, 2006-2008, 2007-2009, 2008-2010**

*Note: Weighted numbers (#) represent 3-yr averages, percentages and 95% confidence intervals; Respondents aged 18 years and older; n/r (Not Reportable) - If the unweighted total responses for a dimension (row) is <50 that row will not be shown; n/a (Not Available) - Not asked of a subset of respondents*

**Year: 2000-2002**

Island	Yes			No			Estimated Population (3-Yr Avg)
	#	%	C.I. (95%)	#	%	C.I. (95%)	#
Hawaii	1,400	22.9	16.4 - 29.5	4,800	77.1	70.5 - 83.6	6,300
Kauai	600	25.3	15.2 - 35.5	1,700	74.7	64.5 - 84.8	2,300
Maui	700	13.6	5.5 - 21.7	4,500	86.4	78.3 - 94.5	5,300
Oahu	6,900	19.0	14.7 - 23.3	29,600	81.0	76.7 - 85.3	36,600

**Diabetes - now taking insulin by State, County, Island, Community, BRFSS Age Group, DOH Race-Ethnicity, Gender, Education Level, Employment Status (Grouped), Household Income, Poverty Level, Marital Status (Grouped), Married, Health Care Coverage, for the Year(s) - 2000-2002, 2001-2003, 2002-2004, 2003-2005, 2004-2006, 2005-2007, 2006-2008, 2007-2009, 2008-2010**

*Note: Weighted numbers (#) represent 3-yr averages, percentages and 95% confidence intervals; Respondents aged 18 years and older; n/r (Not Reportable) - If the unweighted total responses for a dimension (row) is <50 that row will not be shown; n/a (Not Available) - Not asked of a subset of respondents*

**Year: 2000-2002**

Community	Yes			No			Estimated Population (3-Yr Avg)
	#	%	C.I. (95%)	#	%	C.I. (95%)	#
Aiea/ Pearl City	1,400	24.3	11.4 - 37.1	4,300	75.7	62.9 - 88.6	5,700
Hilo	500	19.3	10.2 - 28.4	1,900	80.7	71.6 - 89.8	2,400
Kaimuki/ Palolo/ Waikiki	600	13.5	4.7 - 22.2	4,100	86.5	77.8 - 95.3	4,700
Kona	500	33.7	18.0 - 49.3	1,000	66.3	50.7 - 82.0	1,500
Lihue-Waimea	500	27.0	14.8 - 39.3	1,300	73.0	60.7 - 85.2	1,800



**Diabetes - now taking insulin by State, County, Island, Community, BRFSS Age Group, DOH Race-Ethnicity, Gender, Education Level, Employment Status (Grouped), Household Income, Poverty Level, Marital Status (Grouped), Married, Health Care Coverage, for the Year(s) - 2000-2002, 2001-2003, 2002-2004, 2003-2005, 2004-2006, 2005-2007, 2006-2008, 2007-2009, 2008-2010**

*Note: Weighted numbers (#) represent 3-yr averages, percentages and 95% confidence intervals; Respondents aged 18 years and older; n/r (Not Reportable) - If the unweighted total responses for a dimension (row) is <50 that row will not be shown; n/a (Not Available) - Not asked of a subset of respondents*

**Year: 2000-2002**

BRFSS Age Group	Yes			No			Estimated Population (3-Yr Avg)
	#	%	C.I. (95%)	#	%	C.I. (95%)	#
35-44	800	16.5	7.3 - 25.8	3,900	83.5	74.2 - 92.7	4,700
45-54	1,700	19.7	12.2 - 27.2	6,800	80.3	72.8 - 87.8	8,400
55-64	2,500	20.3	13.1 - 27.5	10,000	79.7	72.5 - 86.9	12,500
65-74	2,800	20.0	13.9 - 26.1	11,200	80.0	73.9 - 86.1	14,000
75+	1,600	19.8	11.1 - 28.6	6,300	80.2	71.4 - 88.9	7,900

**Diabetes - now taking insulin by State, County, Island, Community, BRFSS Age Group, DOH Race-Ethnicity, Gender, Education Level, Employment Status (Grouped), Household Income, Poverty Level, Marital Status (Grouped), Married, Health Care Coverage, for the Year(s) - 2000-2002, 2001-2003, 2002-2004, 2003-2005, 2004-2006, 2005-2007, 2006-2008, 2007-2009, 2008-2010**

*Note: Weighted numbers (#) represent 3-yr averages, percentages and 95% confidence intervals; Respondents aged 18 years and older; n/r (Not Reportable) - If the unweighted total responses for a dimension (row) is <50 that row will not be shown; n/a (Not Available) - Not asked of a subset of respondents*

**Year: 2000-2002**

DOH Race-Ethnicity	Yes			No			Estimated Population (3-Yr Avg)
	#	%	C.I. (95%)	#	%	C.I. (95%)	#
Caucasian	2,600	27.2	19.2 - 35.2	7,100	72.8	64.8 - 80.8	9,700
Native Hawaiian	1,600	19.4	11.2 - 27.6	6,800	80.6	72.4 - 88.8	8,400
Chinese	800	24.1	9.5 - 38.6	2,400	75.9	61.4 - 90.5	3,200
Filipino	1,500	15.7	7.6 - 23.8	8,000	84.3	76.2 - 92.4	9,500
Japanese	2,600	16.1	10.7 - 21.6	13,500	83.9	78.4 - 89.3	16,100

Gender	Yes			No			Estimated Population (3-Yr Avg)
	#	%	C.I. (95%)	#	%	C.I. (95%)	#
Male	4,500	17.4	12.9 - 21.8	21,600	82.6	78.2 - 87.1	26,100
Female	5,300	21.4	16.4 - 26.3	19,600	78.6	73.7 - 83.6	24,900

**Diabetes - now taking insulin by State, County, Island, Community, BRFSS Age Group, DOH Race-Ethnicity, Gender, Education Level, Employment Status (Grouped), Household Income, Poverty Level, Marital Status (Grouped), Married, Health Care Coverage, for the Year(s) - 2000-2002, 2001-2003, 2002-2004, 2003-2005, 2004-2006, 2005-2007, 2006-2008, 2007-2009, 2008-2010**

*Note: Weighted numbers (#) represent 3-yr averages, percentages and 95% confidence intervals; Respondents aged 18 years and older; n/r (Not Reportable) - If the unweighted total responses for a dimension (row) is <50 that row will not be shown; n/a (Not Available) - Not asked of a subset of respondents*

**Year: 2000-2002**

Education Level	Yes			No			Estimated Population (3-Yr Avg)
	#	%	C.I. (95%)	#	%	C.I. (95%)	#
Never attended school/ Only Kindergarten to Grades 8	400	16.0	5.8 - 26.1	2,000	84.0	73.9 - 94.2	2,300
Grades 9 thru 11 (Some High School)	900	27.7	10.6 - 44.7	2,400	72.3	55.3 - 89.4	3,300
Grades 12 or GED (High School Grad)	3,600	18.5	13.4 - 23.5	15,900	81.5	76.5 - 86.6	19,500
College 1 to 3 years (Some College/ Tech)	2,000	14.7	8.8 - 20.6	11,800	85.3	79.4 - 91.2	13,900
College 4 years or more (College Grad)	2,900	24.5	17.3 - 31.7	9,100	75.5	68.3 - 82.7	12,000

Employment Status (Grouped)	Yes			No			Estimated Population (3-Yr Avg)
	#	%	C.I. (95%)	#	%	C.I. (95%)	#
Employed	3,000	13.6	9.0 - 18.2	19,100	86.4	81.8 - 91.0	22,100
Retired/Unable to work	5,900	22.7	17.8 - 27.6	20,000	77.3	72.4 - 82.2	25,900

**Diabetes - now taking insulin by State, County, Island, Community, BRFSS Age Group, DOH Race-Ethnicity, Gender, Education Level, Employment Status (Grouped), Household Income, Poverty Level, Marital Status (Grouped), Married, Health Care Coverage, for the Year(s) - 2000-2002, 2001-2003, 2002-2004, 2003-2005, 2004-2006, 2005-2007, 2006-2008, 2007-2009, 2008-2010**

*Note: Weighted numbers (#) represent 3-yr averages, percentages and 95% confidence intervals; Respondents aged 18 years and older; n/r (Not Reportable) - If the unweighted total responses for a dimension (row) is <50 that row will not be shown; n/a (Not Available) - Not asked of a subset of respondents*

**Year: 2000-2002**

Household Income	Yes			No			Estimated Population (3-Yr Avg)
	#	%	C.I. (95%)	#	%	C.I. (95%)	#
Less than \$10,000	700	21.1	10.8 - 31.3	2,600	78.9	68.7 - 89.2	3,300
\$10,000 to \$14,999	900	27.9	12.0 - 43.8	2,200	72.1	56.2 - 88.0	3,100
\$15,000 to \$19,999	500	22.5	8.3 - 36.6	1,800	77.5	63.4 - 91.7	2,300
\$20,000 to \$24,999	500	11.5	1.3 - 21.6	3,500	88.5	78.4 - 98.7	3,900
\$25,000 to \$34,999	600	11.6	4.7 - 18.5	4,800	88.4	81.5 - 95.3	5,400
\$35,000 to \$49,999	2,200	25.7	16.1 - 35.2	6,300	74.3	64.8 - 83.9	8,500
\$50,000 to \$74,999	800	16.1	6.2 - 26.1	4,400	83.9	73.9 - 93.8	5,200
\$75,000 or more	900	15.5	7.0 - 23.9	5,000	84.5	76.1 - 93.0	5,900

**Diabetes - now taking insulin by State, County, Island, Community, BRFSS Age Group, DOH Race-Ethnicity, Gender, Education Level, Employment Status (Grouped), Household Income, Poverty Level, Marital Status (Grouped), Married, Health Care Coverage, for the Year(s) - 2000-2002, 2001-2003, 2002-2004, 2003-2005, 2004-2006, 2005-2007, 2006-2008, 2007-2009, 2008-2010**

*Note: Weighted numbers (#) represent 3-yr averages, percentages and 95% confidence intervals; Respondents aged 18 years and older; n/r (Not Reportable) - If the unweighted total responses for a dimension (row) is <50 that row will not be shown; n/a (Not Available) - Not asked of a subset of respondents*

**Year: 2000-2002**

Poverty Level	Yes			No			Estimated Population (3-Yr Avg)
	#	%	C.I. (95%)	#	%	C.I. (95%)	#
<b>0-130%</b>	1,800	19.5	10.8 - 28.3	7,300	80.5	71.7 - 89.2	9,000
<b>131-185%</b>	1,500	23.1	13.0 - 33.2	4,800	76.9	66.8 - 87.0	6,300
<b>186+%</b>	3,900	17.4	12.7 - 22.1	18,600	82.6	77.9 - 87.3	22,500

Marital Status (Grouped)	Yes			No			Estimated Population (3-Yr Avg)
	#	%	C.I. (95%)	#	%	C.I. (95%)	#
<b>Married</b>	6,100	18.4	14.2 - 22.7	27,200	81.6	77.3 - 85.8	33,300
<b>Widowed</b>	1,300	18.4	10.5 - 26.2	5,800	81.6	73.8 - 89.5	7,100
<b>Other</b>	2,400	22.7	15.6 - 29.9	8,200	77.3	70.1 - 84.4	10,600

**Diabetes - now taking insulin by State, County, Island, Community, BRFSS Age Group, DOH Race-Ethnicity, Gender, Education Level, Employment Status (Grouped), Household Income, Poverty Level, Marital Status (Grouped), Married, Health Care Coverage, for the Year(s) - 2000-2002, 2001-2003, 2002-2004, 2003-2005, 2004-2006, 2005-2007, 2006-2008, 2007-2009, 2008-2010**

*Note: Weighted numbers (#) represent 3-yr averages, percentages and 95% confidence intervals; Respondents aged 18 years and older; n/r (Not Reportable) - If the unweighted total responses for a dimension (row) is <50 that row will not be shown; n/a (Not Available) - Not asked of a subset of respondents*

**Year: 2000-2002**

<b>Married</b>	<b>Yes</b>			<b>No</b>			<b>Estimated Population (3-Yr Avg)</b>
	<b>#</b>	<b>%</b>	<b>C.I. (95%)</b>	<b>#</b>	<b>%</b>	<b>C.I. (95%)</b>	<b>#</b>
<b>Yes</b>	6,300	18.5	14.3 - 22.7	27,700	81.5	77.3 - 85.7	33,900
<b>No</b>	3,600	20.9	15.4 - 26.4	13,600	79.1	73.6 - 84.6	17,100

<b>Health Care Coverage</b>	<b>Yes</b>			<b>No</b>			<b>Estimated Population (3-Yr Avg)</b>
	<b>#</b>	<b>%</b>	<b>C.I. (95%)</b>	<b>#</b>	<b>%</b>	<b>C.I. (95%)</b>	<b>#</b>
<b>Yes</b>	9,600	19.3	15.9 - 22.7	40,400	80.7	77.3 - 84.1	50,000