

Diabetes - eye prob, hlth prof. by State, County, Island, Community, BRFSS Age Group, DOH Race-Ethnicity, Gender, Education Level, Employment Status (Grouped), Household Income, Poverty Level, Marital Status (Grouped), Married, Health Care Coverage, for the Year(s) - 2000-2002, 2001-2003, 2002-2004, 2003-2005, 2004-2006, 2005-2007, 2006-2008, 2007-2009, 2008-2010

Note: Weighted numbers (#) represent 3-yr averages, percentages and 95% confidence intervals; Respondents aged 18 years and older; n/r (Not Reportable) - If the unweighted total responses for a dimension (row) is <50 that row will not be shown; n/a (Not Available) - Not asked of a subset of respondents

The trend analysis report shows the trend for the selected health variable over selected years in a table and a graph. Estimated Population: This number is a weighted representation of the population who responded to a particular question in the survey. For most questions the eligible population will be the entire adult population. For some secondary questions only a subset of the population was asked the question. For example, all survey participants were asked if they had diabetes, but only those who answered yes were asked if they use insulin. If a dimension value is unknown for a particular survey record, that record will not be included in the counts for that particular dimension.

For documentation on other terms and coding in this report, please go to the following links

[Click here to access BRFSS documentation](#)

[Click here to access DOH Race-Ethnicity coding](#)

[Click here to access The Hawai'i Data Guide](#)

[Click here to access Poverty Level Methodology](#)

**For questions about this report, please contact
The Hawaii Health Data Warehouse**

profiles@hhdw.org

(855) 946-5899 x15

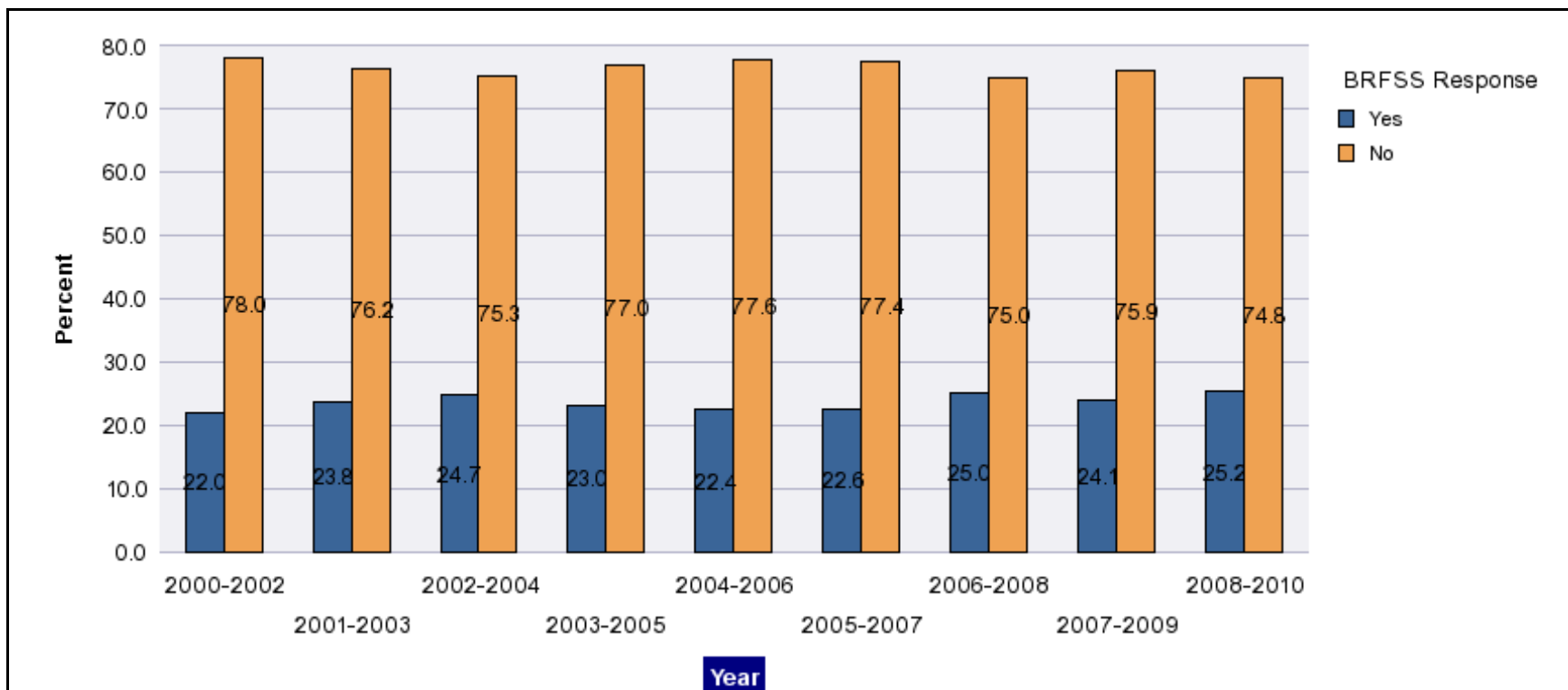
Diabetes - eye prob, hlth prof. by State, County, Island, Community, BRFSS Age Group, DOH Race-Ethnicity, Gender, Education Level, Employment Status (Grouped), Household Income, Poverty Level, Marital Status (Grouped), Married, Health Care Coverage, for the Year(s) - 2000-2002, 2001-2003, 2002-2004, 2003-2005, 2004-2006, 2005-2007, 2006-2008, 2007-2009, 2008-2010

Note: Weighted numbers (#) represent 3-yr averages, percentages and 95% confidence intervals; Respondents aged 18 years and older; n/r (Not Reportable) - If the unweighted total responses for a dimension (row) is <50 that row will not be shown; n/a (Not Available) - Not asked of a subset of respondents

Year	Yes			No			Estimated Population (3-Yr Avg)
	#	%	C.I.(95%)	#	%	C.I.(95%)	#
2000-2002	11,100	22.0	18.1 - 25.9	39,400	78.0	74.1 - 81.9	50,500
2001-2003	13,900	23.8	19.8 - 27.7	44,400	76.2	72.3 - 80.2	58,300
2002-2004	14,900	24.7	20.2 - 29.2	45,400	75.3	70.8 - 79.8	60,200
2003-2005	16,100	23.0	18.6 - 27.4	53,600	77.0	72.6 - 81.4	69,700
2004-2006	16,100	22.4	18.3 - 26.5	55,900	77.6	73.5 - 81.7	72,100
2005-2007	17,300	22.6	19.4 - 25.8	59,500	77.4	74.2 - 80.6	76,800
2006-2008	19,200	25.0	22.1 - 27.8	57,800	75.0	72.2 - 77.9	77,000
2007-2009	18,700	24.1	20.9 - 27.2	58,900	75.9	72.8 - 79.1	77,600
2008-2010	20,200	25.2	22.1 - 28.4	59,800	74.8	71.6 - 77.9	80,000

Diabetes - eye prob, hlth prof. by State, County, Island, Community, BRFSS Age Group, DOH Race-Ethnicity, Gender, Education Level, Employment Status (Grouped), Household Income, Poverty Level, Marital Status (Grouped), Married, Health Care Coverage, for the Year(s) - 2000-2002, 2001-2003, 2002-2004, 2003-2005, 2004-2006, 2005-2007, 2006-2008, 2007-2009, 2008-2010

Note: Weighted numbers (#) represent 3-yr averages, percentages and 95% confidence intervals; Respondents aged 18 years and older; n/r (Not Reportable) - If the unweighted total responses for a dimension (row) is <50 that row will not be shown; n/a (Not Available) - Not asked of a subset of respondents



Diabetes - eye prob, hlth prof. by State, County, Island, Community, BRFSS Age Group, DOH Race-Ethnicity, Gender, Education Level, Employment Status (Grouped), Household Income, Poverty Level, Marital Status (Grouped), Married, Health Care Coverage, for the Year(s) - 2000-2002, 2001-2003, 2002-2004, 2003-2005, 2004-2006, 2005-2007, 2006-2008, 2007-2009, 2008-2010

Note: Weighted numbers (#) represent 3-yr averages, percentages and 95% confidence intervals; Respondents aged 18 years and older; n/r (Not Reportable) - If the unweighted total responses for a dimension (row) is <50 that row will not be shown; n/a (Not Available) - Not asked of a subset of respondents

Year: 2008-2010

State	Yes			No			Estimated Population (3-Yr Avg)
	#	%	C.I. (95%)	#	%	C.I. (95%)	#
Hawaii State	20,200	25.2	22.1 - 28.4	59,800	74.8	71.6 - 77.9	80,000

County	Yes			No			Estimated Population (3-Yr Avg)
	#	%	C.I. (95%)	#	%	C.I. (95%)	#
Hawaii	2,500	22.6	17.1 - 28.1	8,700	77.4	71.9 - 82.9	11,200
Honolulu	14,300	25.3	21.2 - 29.4	42,200	74.7	70.6 - 78.8	56,500
Kauai	1,000	27.7	19.1 - 36.4	2,600	72.3	63.6 - 80.9	3,700
Maui	2,400	27.4	19.5 - 35.3	6,300	72.6	64.7 - 80.5	8,700

Diabetes - eye prob, hlth prof. by State, County, Island, Community, BRFSS Age Group, DOH Race-Ethnicity, Gender, Education Level, Employment Status (Grouped), Household Income, Poverty Level, Marital Status (Grouped), Married, Health Care Coverage, for the Year(s) - 2000-2002, 2001-2003, 2002-2004, 2003-2005, 2004-2006, 2005-2007, 2006-2008, 2007-2009, 2008-2010

Note: Weighted numbers (#) represent 3-yr averages, percentages and 95% confidence intervals; Respondents aged 18 years and older; n/r (Not Reportable) - If the unweighted total responses for a dimension (row) is <50 that row will not be shown; n/a (Not Available) - Not asked of a subset of respondents

Year: 2008-2010

Island	Yes			No			Estimated Population (3-Yr Avg)
	#	%	C.I. (95%)	#	%	C.I. (95%)	#
Hawaii	2,500	22.6	17.1 - 28.1	8,700	77.4	71.9 - 82.9	11,200
Kauai	1,000	27.7	19.1 - 36.4	2,600	72.3	63.6 - 80.9	3,700
Lanai	<50	29.3	13.6 - 45.0	100	70.7	55.0 - 86.4	200
Maui	2,100	27.3	18.5 - 36.1	5,600	72.7	63.9 - 81.5	7,700
Molokai	200	27.7	14.3 - 41.1	600	72.3	58.9 - 85.7	800
Oahu	14,300	25.3	21.2 - 29.4	42,200	74.7	70.6 - 78.8	56,500

Community	Yes			No			Estimated Population (3-Yr Avg)
	#	%	C.I. (95%)	#	%	C.I. (95%)	#
Aiea/ Pearl City	1,100	25.5	11.6 - 39.4	3,300	74.5	60.6 - 88.4	4,400
Hanalei/ Kapaa	300	27.4	12.7 - 42.1	900	72.6	57.9 - 87.3	1,200

Diabetes - eye prob, hlth prof. by State, County, Island, Community, BRFSS Age Group, DOH Race-Ethnicity, Gender, Education Level, Employment Status (Grouped), Household Income, Poverty Level, Marital Status (Grouped), Married, Health Care Coverage, for the Year(s) - 2000-2002, 2001-2003, 2002-2004, 2003-2005, 2004-2006, 2005-2007, 2006-2008, 2007-2009, 2008-2010

Note: Weighted numbers (#) represent 3-yr averages, percentages and 95% confidence intervals; Respondents aged 18 years and older; n/r (Not Reportable) - If the unweighted total responses for a dimension (row) is <50 that row will not be shown; n/a (Not Available) - Not asked of a subset of respondents

Year: 2008-2010

Community	Yes			No			Estimated Population (3-Yr Avg)
	#	%	C.I. (95%)	#	%	C.I. (95%)	#
Hilo	900	25.7	15.3 - 36.1	2,700	74.3	63.9 - 84.7	3,600
Kaaawa/ Kahaluu/ Kaneohe	1,000	25.5	11.1 - 39.9	2,900	74.5	60.1 - 88.9	3,900
Kahului	700	30.1	16.6 - 43.6	1,700	69.9	56.4 - 83.4	2,500
Kailua/ Waimanalo	800	22.0	8.5 - 35.5	2,900	78.0	64.5 - 91.5	3,700
Kaimuki/ Palolo/ Waikiki	1,400	27.2	16.2 - 38.2	3,700	72.8	61.8 - 83.8	5,100
Kona	400	14.9	4.9 - 24.8	2,000	85.1	75.2 - 95.1	2,400
Lahaina/ Wailuku	800	27.2	10.5 - 43.9	2,100	72.8	56.1 - 89.5	2,900
Lanai	<50	29.3	13.6 - 45.0	100	70.7	55.0 - 86.4	200
Lihue-Waimea	700	27.9	17.2 - 38.6	1,800	72.1	61.4 - 82.8	2,500
Manoa/ Upper Makiki	900	22.0	11.4 - 32.7	3,200	78.0	67.3 - 88.6	4,000
Mililani/ Wahiawa	900	15.5	6.1 - 24.9	4,900	84.5	75.1 - 93.9	5,800
Molokai	200	27.7	14.3 - 41.1	600	72.3	58.9 - 85.7	800

Diabetes - eye prob, hlth prof. by State, County, Island, Community, BRFSS Age Group, DOH Race-Ethnicity, Gender, Education Level, Employment Status (Grouped), Household Income, Poverty Level, Marital Status (Grouped), Married, Health Care Coverage, for the Year(s) - 2000-2002, 2001-2003, 2002-2004, 2003-2005, 2004-2006, 2005-2007, 2006-2008, 2007-2009, 2008-2010

Note: Weighted numbers (#) represent 3-yr averages, percentages and 95% confidence intervals; Respondents aged 18 years and older; n/r (Not Reportable) - If the unweighted total responses for a dimension (row) is <50 that row will not be shown; n/a (Not Available) - Not asked of a subset of respondents

Year: 2008-2010

Community	Yes			No			Estimated Population (3-Yr Avg)
	#	%	C.I. (95%)	#	%	C.I. (95%)	#
N.Hawaii	400	23.3	10.2 - 36.5	1,300	76.7	63.5 - 89.8	1,700
Nuuanu/ Kalihi/ Moanalua	1,700	30.3	16.0 - 44.6	3,900	69.7	55.4 - 84.0	5,600
Puna/ Kau	900	24.2	14.4 - 34.0	2,700	75.8	66.0 - 85.6	3,500
Upcountry/ Hana	600	24.4	10.1 - 38.7	1,700	75.6	61.3 - 89.9	2,300
Waipahu/ Kapolei/ Ewa	3,300	27.8	16.5 - 39.2	8,600	72.2	60.8 - 83.5	11,900

Diabetes - eye prob, hlth prof. by State, County, Island, Community, BRFSS Age Group, DOH Race-Ethnicity, Gender, Education Level, Employment Status (Grouped), Household Income, Poverty Level, Marital Status (Grouped), Married, Health Care Coverage, for the Year(s) - 2000-2002, 2001-2003, 2002-2004, 2003-2005, 2004-2006, 2005-2007, 2006-2008, 2007-2009, 2008-2010

Note: Weighted numbers (#) represent 3-yr averages, percentages and 95% confidence intervals; Respondents aged 18 years and older; n/r (Not Reportable) - If the unweighted total responses for a dimension (row) is <50 that row will not be shown; n/a (Not Available) - Not asked of a subset of respondents

Year: 2008-2010

BRFSS Age Group	Yes			No			Estimated Population (3-Yr Avg)
	#	%	C.I. (95%)	#	%	C.I. (95%)	#
35-44	1,900	21.2	10.2 - 32.2	7,200	78.8	67.8 - 89.8	9,100
45-54	4,500	33.5	24.2 - 42.8	9,000	66.5	57.2 - 75.8	13,600
55-64	5,000	25.0	19.5 - 30.6	14,900	75.0	69.4 - 80.5	19,900
65-74	3,900	24.3	18.5 - 30.2	12,300	75.7	69.8 - 81.5	16,200
75+	4,100	23.3	17.3 - 29.2	13,400	76.7	70.8 - 82.7	17,400

Diabetes - eye prob, hlth prof. by State, County, Island, Community, BRFSS Age Group, DOH Race-Ethnicity, Gender, Education Level, Employment Status (Grouped), Household Income, Poverty Level, Marital Status (Grouped), Married, Health Care Coverage, for the Year(s) - 2000-2002, 2001-2003, 2002-2004, 2003-2005, 2004-2006, 2005-2007, 2006-2008, 2007-2009, 2008-2010

Note: Weighted numbers (#) represent 3-yr averages, percentages and 95% confidence intervals; Respondents aged 18 years and older; n/r (Not Reportable) - If the unweighted total responses for a dimension (row) is <50 that row will not be shown; n/a (Not Available) - Not asked of a subset of respondents

Year: 2008-2010

DOH Race-Ethnicity	Yes			No			Estimated Population (3-Yr Avg)
	#	%	C.I. (95%)	#	%	C.I. (95%)	#
Caucasian	2,800	18.3	12.8 - 23.9	12,500	81.7	76.1 - 87.2	15,400
Native Hawaiian	3,900	26.7	20.0 - 33.4	10,700	73.3	66.6 - 80.0	14,500
Chinese	700	13.7	6.4 - 21.0	4,500	86.3	79.0 - 93.6	5,300
Filipino	6,200	40.2	30.8 - 49.7	9,200	59.8	50.3 - 69.2	15,300
Japanese	4,200	18.3	13.8 - 22.8	18,800	81.7	77.2 - 86.2	23,000

Gender	Yes			No			Estimated Population (3-Yr Avg)
	#	%	C.I. (95%)	#	%	C.I. (95%)	#
Male	10,800	27.6	22.7 - 32.6	28,300	72.4	67.4 - 77.3	39,000
Female	9,400	23.0	19.1 - 26.8	31,600	77.0	73.2 - 80.9	41,000

Diabetes - eye prob, hlth prof. by State, County, Island, Community, BRFSS Age Group, DOH Race-Ethnicity, Gender, Education Level, Employment Status (Grouped), Household Income, Poverty Level, Marital Status (Grouped), Married, Health Care Coverage, for the Year(s) - 2000-2002, 2001-2003, 2002-2004, 2003-2005, 2004-2006, 2005-2007, 2006-2008, 2007-2009, 2008-2010

Note: Weighted numbers (#) represent 3-yr averages, percentages and 95% confidence intervals; Respondents aged 18 years and older; n/r (Not Reportable) - If the unweighted total responses for a dimension (row) is <50 that row will not be shown; n/a (Not Available) - Not asked of a subset of respondents

Year: 2008-2010

Education Level	Yes			No			Estimated Population (3-Yr Avg)
	#	%	C.I. (95%)	#	%	C.I. (95%)	#
Never attended school/ Only Kindergarten to Grades 8	800	35.4	17.4 - 53.4	1,500	64.6	46.6 - 82.6	2,300
Grades 9 thru 11 (Some High School)	1,200	31.4	15.1 - 47.7	2,600	68.6	52.3 - 84.9	3,800
Grades 12 or GED (High School Grad)	8,200	30.4	24.2 - 36.6	18,700	69.6	63.4 - 75.8	26,900
College 1 to 3 years (Some College/ Tech)	4,700	20.5	15.6 - 25.3	18,400	79.5	74.7 - 84.4	23,100
College 4 years or more (College Grad)	5,300	22.1	17.0 - 27.3	18,600	77.9	72.7 - 83.0	23,900

Diabetes - eye prob, hlth prof. by State, County, Island, Community, BRFSS Age Group, DOH Race-Ethnicity, Gender, Education Level, Employment Status (Grouped), Household Income, Poverty Level, Marital Status (Grouped), Married, Health Care Coverage, for the Year(s) - 2000-2002, 2001-2003, 2002-2004, 2003-2005, 2004-2006, 2005-2007, 2006-2008, 2007-2009, 2008-2010

Note: Weighted numbers (#) represent 3-yr averages, percentages and 95% confidence intervals; Respondents aged 18 years and older; n/r (Not Reportable) - If the unweighted total responses for a dimension (row) is <50 that row will not be shown; n/a (Not Available) - Not asked of a subset of respondents

Year: 2008-2010

Employment Status (Grouped)	Yes			No			Estimated Population (3-Yr Avg)
	#	%	C.I. (95%)	#	%	C.I. (95%)	#
Employed	8,800	25.2	19.8 - 30.5	26,100	74.8	69.5 - 80.2	34,900
Unemployed	1,600	35.5	18.6 - 52.4	2,900	64.5	47.6 - 81.4	4,600
Retired/Unable to work	8,800	23.9	20.0 - 27.7	28,200	76.1	72.3 - 80.0	37,000
Student/Homemaker	1,000	26.8	15.0 - 38.5	2,600	73.2	61.5 - 85.0	3,600

Diabetes - eye prob, hlth prof. by State, County, Island, Community, BRFSS Age Group, DOH Race-Ethnicity, Gender, Education Level, Employment Status (Grouped), Household Income, Poverty Level, Marital Status (Grouped), Married, Health Care Coverage, for the Year(s) - 2000-2002, 2001-2003, 2002-2004, 2003-2005, 2004-2006, 2005-2007, 2006-2008, 2007-2009, 2008-2010

Note: Weighted numbers (#) represent 3-yr averages, percentages and 95% confidence intervals; Respondents aged 18 years and older; n/r (Not Reportable) - If the unweighted total responses for a dimension (row) is <50 that row will not be shown; n/a (Not Available) - Not asked of a subset of respondents

Year: 2008-2010

Household Income	Yes			No			Estimated Population (3-Yr Avg)
	#	%	C.I. (95%)	#	%	C.I. (95%)	#
Less than \$10,000	1,300	41.9	25.1 - 58.8	1,800	58.1	41.2 - 74.9	3,200
\$10,000 to \$14,999	1,000	28.5	14.4 - 42.6	2,600	71.5	57.4 - 85.6	3,700
\$15,000 to \$19,999	1,900	31.3	19.7 - 42.9	4,100	68.7	57.1 - 80.3	6,000
\$20,000 to \$24,999	1,200	19.2	11.1 - 27.3	5,000	80.8	72.7 - 88.9	6,100
\$25,000 to \$34,999	2,100	24.4	16.8 - 32.0	6,600	75.6	68.0 - 83.2	8,800
\$35,000 to \$49,999	3,600	27.1	19.3 - 35.0	9,800	72.9	65.0 - 80.7	13,400
\$50,000 to \$74,999	3,200	25.7	18.4 - 33.0	9,300	74.3	67.0 - 81.6	12,500
\$75,000 or more	3,500	18.4	12.1 - 24.7	15,400	81.6	75.3 - 87.9	18,900

Diabetes - eye prob, hlth prof. by State, County, Island, Community, BRFSS Age Group, DOH Race-Ethnicity, Gender, Education Level, Employment Status (Grouped), Household Income, Poverty Level, Marital Status (Grouped), Married, Health Care Coverage, for the Year(s) - 2000-2002, 2001-2003, 2002-2004, 2003-2005, 2004-2006, 2005-2007, 2006-2008, 2007-2009, 2008-2010

Note: Weighted numbers (#) represent 3-yr averages, percentages and 95% confidence intervals; Respondents aged 18 years and older; n/r (Not Reportable) - If the unweighted total responses for a dimension (row) is <50 that row will not be shown; n/a (Not Available) - Not asked of a subset of respondents

Year: 2008-2010

Poverty Level	Yes			No			Estimated Population (3-Yr Avg)
	#	%	C.I. (95%)	#	%	C.I. (95%)	#
0-130%	5,900	31.7	24.6 - 38.9	12,600	68.3	61.1 - 75.4	18,500
131-185%	3,500	28.4	20.1 - 36.8	8,800	71.6	63.2 - 79.9	12,300
186+%	8,500	20.4	16.9 - 24.0	33,200	79.6	76.0 - 83.1	41,700

Marital Status (Grouped)	Yes			No			Estimated Population (3-Yr Avg)
	#	%	C.I. (95%)	#	%	C.I. (95%)	#
Married	12,000	24.0	20.1 - 27.9	38,000	76.0	72.1 - 79.9	50,000
Widowed	2,300	24.1	16.9 - 31.4	7,300	75.9	68.6 - 83.1	9,600
Other	5,800	29.3	22.3 - 36.3	13,900	70.7	63.7 - 77.7	19,700

Diabetes - eye prob, hlth prof. by State, County, Island, Community, BRFSS Age Group, DOH Race-Ethnicity, Gender, Education Level, Employment Status (Grouped), Household Income, Poverty Level, Marital Status (Grouped), Married, Health Care Coverage, for the Year(s) - 2000-2002, 2001-2003, 2002-2004, 2003-2005, 2004-2006, 2005-2007, 2006-2008, 2007-2009, 2008-2010

Note: Weighted numbers (#) represent 3-yr averages, percentages and 95% confidence intervals; Respondents aged 18 years and older; n/r (Not Reportable) - If the unweighted total responses for a dimension (row) is <50 that row will not be shown; n/a (Not Available) - Not asked of a subset of respondents

Year: 2008-2010

Married	Yes			No			Estimated Population (3-Yr Avg)
	#	%	C.I. (95%)	#	%	C.I. (95%)	#
Yes	12,900	25.1	20.9 - 29.2	38,700	74.9	70.8 - 79.1	51,600
No	7,200	25.6	21.0 - 30.3	21,100	74.4	69.7 - 79.0	28,300

Health Care Coverage	Yes			No			Estimated Population (3-Yr Avg)
	#	%	C.I. (95%)	#	%	C.I. (95%)	#
Yes	14,000	26.6	23.1 - 30.1	38,500	73.4	69.9 - 76.9	52,400

Diabetes - eye prob, hlth prof. by State, County, Island, Community, BRFSS Age Group, DOH Race-Ethnicity, Gender, Education Level, Employment Status (Grouped), Household Income, Poverty Level, Marital Status (Grouped), Married, Health Care Coverage, for the Year(s) - 2000-2002, 2001-2003, 2002-2004, 2003-2005, 2004-2006, 2005-2007, 2006-2008, 2007-2009, 2008-2010

Note: Weighted numbers (#) represent 3-yr averages, percentages and 95% confidence intervals; Respondents aged 18 years and older; n/r (Not Reportable) - If the unweighted total responses for a dimension (row) is <50 that row will not be shown; n/a (Not Available) - Not asked of a subset of respondents

Year: 2007-2009

State	Yes			No			Estimated Population (3-Yr Avg)
	#	%	C.I. (95%)	#	%	C.I. (95%)	#
Hawaii State	18,700	24.1	20.9 - 27.2	58,900	75.9	72.8 - 79.1	77,600

County	Yes			No			Estimated Population (3-Yr Avg)
	#	%	C.I. (95%)	#	%	C.I. (95%)	#
Hawaii	2,000	19.4	14.0 - 24.8	8,300	80.6	75.2 - 86.0	10,300
Honolulu	13,200	24.0	20.0 - 28.1	41,600	76.0	71.9 - 80.0	54,800
Kauai	1,100	28.6	19.9 - 37.4	2,700	71.4	62.6 - 80.1	3,700
Maui	2,400	28.0	20.1 - 35.9	6,300	72.0	64.1 - 79.9	8,700

Diabetes - eye prob, hlth prof. by State, County, Island, Community, BRFSS Age Group, DOH Race-Ethnicity, Gender, Education Level, Employment Status (Grouped), Household Income, Poverty Level, Marital Status (Grouped), Married, Health Care Coverage, for the Year(s) - 2000-2002, 2001-2003, 2002-2004, 2003-2005, 2004-2006, 2005-2007, 2006-2008, 2007-2009, 2008-2010

Note: Weighted numbers (#) represent 3-yr averages, percentages and 95% confidence intervals; Respondents aged 18 years and older; n/r (Not Reportable) - If the unweighted total responses for a dimension (row) is <50 that row will not be shown; n/a (Not Available) - Not asked of a subset of respondents

Year: 2007-2009

Island	Yes			No			Estimated Population (3-Yr Avg)
	#	%	C.I. (95%)	#	%	C.I. (95%)	#
Hawaii	2,000	19.4	14.0 - 24.8	8,300	80.6	75.2 - 86.0	10,300
Kauai	1,100	28.6	19.9 - 37.4	2,700	71.4	62.6 - 80.1	3,700
Lanai	100	29.9	15.6 - 44.2	100	70.1	55.8 - 84.4	200
Maui	2,100	27.6	18.8 - 36.4	5,600	72.4	63.6 - 81.2	7,700
Molokai	200	31.7	17.3 - 46.0	500	68.3	54.0 - 82.7	800
Oahu	13,200	24.0	20.0 - 28.1	41,600	76.0	71.9 - 80.0	54,800

Community	Yes			No			Estimated Population (3-Yr Avg)
	#	%	C.I. (95%)	#	%	C.I. (95%)	#
Aiea/ Pearl City	1,100	26.4	11.1 - 41.7	3,000	73.6	58.3 - 88.9	4,100
Hilo	700	22.5	11.9 - 33.0	2,500	77.5	67.0 - 88.1	3,300

Diabetes - eye prob, hlth prof. by State, County, Island, Community, BRFSS Age Group, DOH Race-Ethnicity, Gender, Education Level, Employment Status (Grouped), Household Income, Poverty Level, Marital Status (Grouped), Married, Health Care Coverage, for the Year(s) - 2000-2002, 2001-2003, 2002-2004, 2003-2005, 2004-2006, 2005-2007, 2006-2008, 2007-2009, 2008-2010

Note: Weighted numbers (#) represent 3-yr averages, percentages and 95% confidence intervals; Respondents aged 18 years and older; n/r (Not Reportable) - If the unweighted total responses for a dimension (row) is <50 that row will not be shown; n/a (Not Available) - Not asked of a subset of respondents

Year: 2007-2009

Community	Yes			No			Estimated Population (3-Yr Avg)
	#	%	C.I. (95%)	#	%	C.I. (95%)	#
Kaaawa/ Kahaluu/ Kaneohe	800	19.1	5.8 - 32.5	3,200	80.9	67.5 - 94.2	4,000
Kahului	800	30.6	17.3 - 44.0	1,700	69.4	56.0 - 82.7	2,500
Kaimuki/ Palolo/ Waikiki	900	20.6	9.7 - 31.5	3,700	79.4	68.5 - 90.3	4,600
Kona	200	7.3	0.0 - 14.9	2,200	92.7	85.1 - 100.0	2,300
Lahaina/ Wailuku	700	25.0	6.7 - 43.2	2,000	75.0	56.8 - 93.3	2,700
Lanai	100	29.9	15.6 - 44.2	100	70.1	55.8 - 84.4	200
Lihue-Waimea	700	28.1	17.5 - 38.8	1,800	71.9	61.2 - 82.5	2,500
Manoa/ Upper Makiki	800	21.0	10.1 - 32.0	2,900	79.0	68.0 - 89.9	3,600
Mililani/ Wahiawa	1,200	19.3	9.1 - 29.6	5,000	80.7	70.4 - 90.9	6,200
Molokai	200	31.7	17.3 - 46.0	500	68.3	54.0 - 82.7	800
Nanakuli/ Waianae	2,000	40.0	23.9 - 56.1	3,000	60.0	43.9 - 76.1	5,000
N.Hawaii	500	23.1	11.3 - 34.9	1,500	76.9	65.1 - 88.7	2,000

Diabetes - eye prob, hlth prof. by State, County, Island, Community, BRFSS Age Group, DOH Race-Ethnicity, Gender, Education Level, Employment Status (Grouped), Household Income, Poverty Level, Marital Status (Grouped), Married, Health Care Coverage, for the Year(s) - 2000-2002, 2001-2003, 2002-2004, 2003-2005, 2004-2006, 2005-2007, 2006-2008, 2007-2009, 2008-2010

Note: Weighted numbers (#) represent 3-yr averages, percentages and 95% confidence intervals; Respondents aged 18 years and older; n/r (Not Reportable) - If the unweighted total responses for a dimension (row) is <50 that row will not be shown; n/a (Not Available) - Not asked of a subset of respondents

Year: 2007-2009

Community	Yes			No			Estimated Population (3-Yr Avg)
	#	%	C.I. (95%)	#	%	C.I. (95%)	#
Nuuanu/ Kalihi/ Moanalua	1,200	24.7	11.0 - 38.4	3,700	75.3	61.6 - 89.0	5,000
Puna/ Kau	600	23.4	12.5 - 34.4	2,100	76.6	65.6 - 87.5	2,700
Upcountry/ Hana	700	27.3	13.8 - 40.8	1,800	72.7	59.2 - 86.2	2,500
Waipahu/ Kapolei/ Ewa	3,100	28.4	16.7 - 40.0	7,800	71.6	60.0 - 83.3	10,800

Diabetes - eye prob, hlth prof. by State, County, Island, Community, BRFSS Age Group, DOH Race-Ethnicity, Gender, Education Level, Employment Status (Grouped), Household Income, Poverty Level, Marital Status (Grouped), Married, Health Care Coverage, for the Year(s) - 2000-2002, 2001-2003, 2002-2004, 2003-2005, 2004-2006, 2005-2007, 2006-2008, 2007-2009, 2008-2010

Note: Weighted numbers (#) represent 3-yr averages, percentages and 95% confidence intervals; Respondents aged 18 years and older; n/r (Not Reportable) - If the unweighted total responses for a dimension (row) is <50 that row will not be shown; n/a (Not Available) - Not asked of a subset of respondents

Year: 2007-2009

BRFSS Age Group	Yes			No			Estimated Population (3-Yr Avg)
	#	%	C.I. (95%)	#	%	C.I. (95%)	#
35-44	1,200	15.6	7.8 - 23.4	6,300	84.4	76.6 - 92.2	7,500
45-54	4,500	30.6	21.7 - 39.6	10,100	69.4	60.4 - 78.3	14,600
55-64	4,900	25.4	19.4 - 31.3	14,300	74.6	68.7 - 80.6	19,200
65-74	3,800	23.0	17.1 - 29.0	12,600	77.0	71.0 - 82.9	16,400
75+	3,900	24.2	18.0 - 30.5	12,300	75.8	69.5 - 82.0	16,200

Diabetes - eye prob, hlth prof. by State, County, Island, Community, BRFSS Age Group, DOH Race-Ethnicity, Gender, Education Level, Employment Status (Grouped), Household Income, Poverty Level, Marital Status (Grouped), Married, Health Care Coverage, for the Year(s) - 2000-2002, 2001-2003, 2002-2004, 2003-2005, 2004-2006, 2005-2007, 2006-2008, 2007-2009, 2008-2010

Note: Weighted numbers (#) represent 3-yr averages, percentages and 95% confidence intervals; Respondents aged 18 years and older; n/r (Not Reportable) - If the unweighted total responses for a dimension (row) is <50 that row will not be shown; n/a (Not Available) - Not asked of a subset of respondents

Year: 2007-2009

DOH Race-Ethnicity	Yes			No			Estimated Population (3-Yr Avg)
	#	%	C.I. (95%)	#	%	C.I. (95%)	#
Caucasian	2,300	15.9	10.6 - 21.2	12,200	84.1	78.8 - 89.4	14,500
Native Hawaiian	3,900	26.1	19.3 - 32.8	10,900	73.9	67.2 - 80.7	14,800
Chinese	900	14.7	7.0 - 22.3	5,000	85.3	77.7 - 93.0	5,900
Filipino	5,300	36.9	27.4 - 46.5	9,000	63.1	53.5 - 72.6	14,300
Japanese	4,200	19.1	14.4 - 23.8	17,600	80.9	76.2 - 85.6	21,700

Gender	Yes			No			Estimated Population (3-Yr Avg)
	#	%	C.I. (95%)	#	%	C.I. (95%)	#
Male	9,400	25.1	20.2 - 29.9	28,000	74.9	70.1 - 79.8	37,400
Female	9,300	23.1	19.2 - 27.1	30,900	76.9	72.9 - 80.8	40,200

Diabetes - eye prob, hlth prof. by State, County, Island, Community, BRFSS Age Group, DOH Race-Ethnicity, Gender, Education Level, Employment Status (Grouped), Household Income, Poverty Level, Marital Status (Grouped), Married, Health Care Coverage, for the Year(s) - 2000-2002, 2001-2003, 2002-2004, 2003-2005, 2004-2006, 2005-2007, 2006-2008, 2007-2009, 2008-2010

Note: Weighted numbers (#) represent 3-yr averages, percentages and 95% confidence intervals; Respondents aged 18 years and older; n/r (Not Reportable) - If the unweighted total responses for a dimension (row) is <50 that row will not be shown; n/a (Not Available) - Not asked of a subset of respondents

Year: 2007-2009

Education Level	Yes			No			Estimated Population (3-Yr Avg)
	#	%	C.I. (95%)	#	%	C.I. (95%)	#
Never attended school/ Only Kindergarten to Grades 8	700	29.2	12.7 - 45.7	1,700	70.8	54.3 - 87.3	2,400
Grades 9 thru 11 (Some High School)	1,300	32.7	17.3 - 48.1	2,700	67.3	51.9 - 82.7	4,000
Grades 12 or GED (High School Grad)	7,500	28.6	22.4 - 34.7	18,700	71.4	65.3 - 77.6	26,200
College 1 to 3 years (Some College/ Tech)	4,800	20.2	15.1 - 25.4	18,800	79.8	74.6 - 84.9	23,600
College 4 years or more (College Grad)	4,400	20.5	15.6 - 25.4	17,000	79.5	74.6 - 84.4	21,300

Employment Status (Grouped)	Yes			No			Estimated Population (3-Yr Avg)
	#	%	C.I. (95%)	#	%	C.I. (95%)	#
Employed	8,400	24.1	19.1 - 29.2	26,500	75.9	70.8 - 80.9	34,900
Retired/Unable to work	8,700	23.9	19.9 - 27.9	27,800	76.1	72.1 - 80.1	36,600
Student/Homemaker	700	24.5	11.9 - 37.1	2,000	75.5	62.9 - 88.1	2,700

Diabetes - eye prob, hlth prof. by State, County, Island, Community, BRFSS Age Group, DOH Race-Ethnicity, Gender, Education Level, Employment Status (Grouped), Household Income, Poverty Level, Marital Status (Grouped), Married, Health Care Coverage, for the Year(s) - 2000-2002, 2001-2003, 2002-2004, 2003-2005, 2004-2006, 2005-2007, 2006-2008, 2007-2009, 2008-2010

Note: Weighted numbers (#) represent 3-yr averages, percentages and 95% confidence intervals; Respondents aged 18 years and older; n/r (Not Reportable) - If the unweighted total responses for a dimension (row) is <50 that row will not be shown; n/a (Not Available) - Not asked of a subset of respondents

Year: 2007-2009

Household Income	Yes			No			Estimated Population (3-Yr Avg)
	#	%	C.I. (95%)	#	%	C.I. (95%)	#
Less than \$10,000	900	30.0	14.8 - 45.2	2,000	70.0	54.8 - 85.2	2,900
\$10,000 to \$14,999	1,100	28.6	14.7 - 42.5	2,700	71.4	57.5 - 85.3	3,800
\$15,000 to \$19,999	1,200	22.5	12.8 - 32.2	4,200	77.5	67.8 - 87.2	5,400
\$20,000 to \$24,999	1,400	21.5	12.6 - 30.4	5,000	78.5	69.6 - 87.4	6,300
\$25,000 to \$34,999	2,400	25.5	17.2 - 33.7	6,900	74.5	66.3 - 82.8	9,200
\$35,000 to \$49,999	2,900	22.4	15.2 - 29.7	10,000	77.6	70.3 - 84.8	12,900
\$50,000 to \$74,999	3,200	25.9	18.2 - 33.6	9,200	74.1	66.4 - 81.8	12,400
\$75,000 or more	3,300	18.6	12.6 - 24.5	14,300	81.4	75.5 - 87.4	17,600

Diabetes - eye prob, hlth prof. by State, County, Island, Community, BRFSS Age Group, DOH Race-Ethnicity, Gender, Education Level, Employment Status (Grouped), Household Income, Poverty Level, Marital Status (Grouped), Married, Health Care Coverage, for the Year(s) - 2000-2002, 2001-2003, 2002-2004, 2003-2005, 2004-2006, 2005-2007, 2006-2008, 2007-2009, 2008-2010

Note: Weighted numbers (#) represent 3-yr averages, percentages and 95% confidence intervals; Respondents aged 18 years and older; n/r (Not Reportable) - If the unweighted total responses for a dimension (row) is <50 that row will not be shown; n/a (Not Available) - Not asked of a subset of respondents

Year: 2007-2009

Poverty Level	Yes			No			Estimated Population (3-Yr Avg)
	#	%	C.I. (95%)	#	%	C.I. (95%)	#
0-130%	4,900	26.7	19.9 - 33.4	13,600	73.3	66.6 - 80.1	18,500
131-185%	2,300	22.1	14.5 - 29.8	8,000	77.9	70.2 - 85.5	10,200
186+%	9,000	21.7	17.9 - 25.4	32,700	78.3	74.6 - 82.1	41,800

Marital Status (Grouped)	Yes			No			Estimated Population (3-Yr Avg)
	#	%	C.I. (95%)	#	%	C.I. (95%)	#
Married	11,000	23.4	19.4 - 27.5	36,100	76.6	72.5 - 80.6	47,100
Widowed	2,300	23.6	16.6 - 30.5	7,600	76.4	69.5 - 83.4	9,900
Other	4,900	25.0	18.3 - 31.6	14,800	75.0	68.4 - 81.7	19,700

Diabetes - eye prob, hlth prof. by State, County, Island, Community, BRFSS Age Group, DOH Race-Ethnicity, Gender, Education Level, Employment Status (Grouped), Household Income, Poverty Level, Marital Status (Grouped), Married, Health Care Coverage, for the Year(s) - 2000-2002, 2001-2003, 2002-2004, 2003-2005, 2004-2006, 2005-2007, 2006-2008, 2007-2009, 2008-2010

Note: Weighted numbers (#) represent 3-yr averages, percentages and 95% confidence intervals; Respondents aged 18 years and older; n/r (Not Reportable) - If the unweighted total responses for a dimension (row) is <50 that row will not be shown; n/a (Not Available) - Not asked of a subset of respondents

Year: 2007-2009

Married	Yes			No			Estimated Population (3-Yr Avg)
	#	%	C.I. (95%)	#	%	C.I. (95%)	#
Yes	12,000	24.5	20.3 - 28.8	36,800	75.5	71.2 - 79.7	48,800
No	6,700	23.4	19.1 - 27.7	21,900	76.6	72.3 - 80.9	28,700

Health Care Coverage	Yes			No			Estimated Population (3-Yr Avg)
	#	%	C.I. (95%)	#	%	C.I. (95%)	#
Yes	12,300	24.7	21.3 - 28.1	37,700	75.3	71.9 - 78.7	50,000

Diabetes - eye prob, hlth prof. by State, County, Island, Community, BRFSS Age Group, DOH Race-Ethnicity, Gender, Education Level, Employment Status (Grouped), Household Income, Poverty Level, Marital Status (Grouped), Married, Health Care Coverage, for the Year(s) - 2000-2002, 2001-2003, 2002-2004, 2003-2005, 2004-2006, 2005-2007, 2006-2008, 2007-2009, 2008-2010

Note: Weighted numbers (#) represent 3-yr averages, percentages and 95% confidence intervals; Respondents aged 18 years and older; n/r (Not Reportable) - If the unweighted total responses for a dimension (row) is <50 that row will not be shown; n/a (Not Available) - Not asked of a subset of respondents

Year: 2006-2008

State	Yes			No			Estimated Population (3-Yr Avg)
	#	%	C.I. (95%)	#	%	C.I. (95%)	#
Hawaii State	19,200	25.0	22.1 - 27.8	57,800	75.0	72.2 - 77.9	77,000

County	Yes			No			Estimated Population (3-Yr Avg)
	#	%	C.I. (95%)	#	%	C.I. (95%)	#
Hawaii	1,600	17.3	12.9 - 21.7	7,400	82.7	78.3 - 87.1	9,000
Honolulu	14,200	25.3	21.7 - 28.9	41,800	74.7	71.1 - 78.3	56,000
Kauai	1,100	28.3	20.2 - 36.5	2,800	71.7	63.5 - 79.8	3,900
Maui	2,400	29.5	22.9 - 36.2	5,700	70.5	63.8 - 77.1	8,100

Diabetes - eye prob, hlth prof. by State, County, Island, Community, BRFSS Age Group, DOH Race-Ethnicity, Gender, Education Level, Employment Status (Grouped), Household Income, Poverty Level, Marital Status (Grouped), Married, Health Care Coverage, for the Year(s) - 2000-2002, 2001-2003, 2002-2004, 2003-2005, 2004-2006, 2005-2007, 2006-2008, 2007-2009, 2008-2010

Note: Weighted numbers (#) represent 3-yr averages, percentages and 95% confidence intervals; Respondents aged 18 years and older; n/r (Not Reportable) - If the unweighted total responses for a dimension (row) is <50 that row will not be shown; n/a (Not Available) - Not asked of a subset of respondents

Year: 2006-2008

Island	Yes			No			Estimated Population (3-Yr Avg)
	#	%	C.I. (95%)	#	%	C.I. (95%)	#
Hawaii	1,600	17.3	12.9 - 21.7	7,400	82.7	78.3 - 87.1	9,000
Kauai	1,100	28.3	20.2 - 36.5	2,800	71.7	63.5 - 79.8	3,900
Lanai	100	32.5	18.4 - 46.7	100	67.5	53.3 - 81.6	200
Maui	2,100	28.5	21.2 - 35.8	5,200	71.5	64.2 - 78.8	7,300
Molokai	300	40.0	25.2 - 54.7	400	60.0	45.3 - 74.8	700
Oahu	14,200	25.3	21.7 - 28.9	41,800	74.7	71.1 - 78.3	56,000

Community	Yes			No			Estimated Population (3-Yr Avg)
	#	%	C.I. (95%)	#	%	C.I. (95%)	#
Aiea/ Pearl City	1,600	28.1	15.4 - 40.8	4,000	71.9	59.2 - 84.6	5,500
Ala Moana	600	19.2	9.3 - 29.1	2,600	80.8	70.9 - 90.7	3,200

Diabetes - eye prob, hlth prof. by State, County, Island, Community, BRFSS Age Group, DOH Race-Ethnicity, Gender, Education Level, Employment Status (Grouped), Household Income, Poverty Level, Marital Status (Grouped), Married, Health Care Coverage, for the Year(s) - 2000-2002, 2001-2003, 2002-2004, 2003-2005, 2004-2006, 2005-2007, 2006-2008, 2007-2009, 2008-2010

Note: Weighted numbers (#) represent 3-yr averages, percentages and 95% confidence intervals; Respondents aged 18 years and older; n/r (Not Reportable) - If the unweighted total responses for a dimension (row) is <50 that row will not be shown; n/a (Not Available) - Not asked of a subset of respondents

Year: 2006-2008

Community	Yes			No			Estimated Population (3-Yr Avg)
	#	%	C.I. (95%)	#	%	C.I. (95%)	#
Hanalei/ Kapaa	400	26.4	12.3 - 40.4	1,100	73.6	59.6 - 87.7	1,400
Hilo	400	13.8	7.1 - 20.5	2,600	86.2	79.5 - 92.9	3,000
Kaaawa/ Kahaluu/ Kaneohe	600	18.0	4.8 - 31.2	2,900	82.0	68.8 - 95.2	3,500
Kahului	1,100	42.6	29.6 - 55.6	1,400	57.4	44.4 - 70.4	2,500
Kailua/ Waimanalo	800	18.2	8.5 - 27.9	3,400	81.8	72.1 - 91.5	4,200
Kaimuki/ Palolo/ Waikiki	700	17.9	7.8 - 28.0	3,400	82.1	72.0 - 92.2	4,200
Kona	100	8.3	1.4 - 15.2	1,500	91.7	84.8 - 98.6	1,600
Lahaina/ Wailuku	600	22.8	9.9 - 35.7	2,000	77.2	64.3 - 90.1	2,600
Lanai	100	32.5	18.4 - 46.7	100	67.5	53.3 - 81.6	200
Lihue-Waimea	700	29.5	19.6 - 39.4	1,700	70.5	60.6 - 80.4	2,500
Manoa/ Upper Makiki	700	20.9	9.9 - 31.8	2,600	79.1	68.2 - 90.1	3,300
Mililani/ Wahiawa	1,300	22.0	11.2 - 32.8	4,600	78.0	67.2 - 88.8	5,800

Diabetes - eye prob, hlth prof. by State, County, Island, Community, BRFSS Age Group, DOH Race-Ethnicity, Gender, Education Level, Employment Status (Grouped), Household Income, Poverty Level, Marital Status (Grouped), Married, Health Care Coverage, for the Year(s) - 2000-2002, 2001-2003, 2002-2004, 2003-2005, 2004-2006, 2005-2007, 2006-2008, 2007-2009, 2008-2010

Note: Weighted numbers (#) represent 3-yr averages, percentages and 95% confidence intervals; Respondents aged 18 years and older; n/r (Not Reportable) - If the unweighted total responses for a dimension (row) is <50 that row will not be shown; n/a (Not Available) - Not asked of a subset of respondents

Year: 2006-2008

Community	Yes			No			Estimated Population (3-Yr Avg)
	#	%	C.I. (95%)	#	%	C.I. (95%)	#
Molokai	300	40.0	25.2 - 54.7	400	60.0	45.3 - 74.8	700
Nanakuli/ Waianae	1,800	37.9	24.1 - 51.7	3,000	62.1	48.3 - 75.9	4,800
N.Hawaii	500	23.9	13.1 - 34.8	1,600	76.1	65.2 - 86.9	2,100
Nuuanu/ Kalihi/ Moanalua	1,200	22.3	10.0 - 34.6	4,000	77.7	65.4 - 90.0	5,200
Puna/ Kau	500	22.1	12.3 - 31.8	1,800	77.9	68.2 - 87.7	2,300
Upcountry/ Hana	400	19.4	9.7 - 29.1	1,800	80.6	70.9 - 90.3	2,200
Waipahu/ Kapolei/ Ewa	3,300	30.8	21.7 - 40.0	7,400	69.2	60.0 - 78.3	10,800

Diabetes - eye prob, hlth prof. by State, County, Island, Community, BRFSS Age Group, DOH Race-Ethnicity, Gender, Education Level, Employment Status (Grouped), Household Income, Poverty Level, Marital Status (Grouped), Married, Health Care Coverage, for the Year(s) - 2000-2002, 2001-2003, 2002-2004, 2003-2005, 2004-2006, 2005-2007, 2006-2008, 2007-2009, 2008-2010

Note: Weighted numbers (#) represent 3-yr averages, percentages and 95% confidence intervals; Respondents aged 18 years and older; n/r (Not Reportable) - If the unweighted total responses for a dimension (row) is <50 that row will not be shown; n/a (Not Available) - Not asked of a subset of respondents

Year: 2006-2008

BRFSS Age Group	Yes			No			Estimated Population (3-Yr Avg)
	#	%	C.I. (95%)	#	%	C.I. (95%)	#
35-44	1,100	17.1	9.2 - 25.0	5,500	82.9	75.0 - 90.8	6,600
45-54	4,600	30.2	23.1 - 37.3	10,700	69.8	62.7 - 76.9	15,300
55-64	5,600	27.3	21.4 - 33.2	15,000	72.7	66.8 - 78.6	20,600
65-74	3,700	23.4	18.2 - 28.6	12,200	76.6	71.4 - 81.8	15,900
75+	3,500	23.5	17.6 - 29.3	11,400	76.5	70.7 - 82.4	14,800

Diabetes - eye prob, hlth prof. by State, County, Island, Community, BRFSS Age Group, DOH Race-Ethnicity, Gender, Education Level, Employment Status (Grouped), Household Income, Poverty Level, Marital Status (Grouped), Married, Health Care Coverage, for the Year(s) - 2000-2002, 2001-2003, 2002-2004, 2003-2005, 2004-2006, 2005-2007, 2006-2008, 2007-2009, 2008-2010

Note: Weighted numbers (#) represent 3-yr averages, percentages and 95% confidence intervals; Respondents aged 18 years and older; n/r (Not Reportable) - If the unweighted total responses for a dimension (row) is <50 that row will not be shown; n/a (Not Available) - Not asked of a subset of respondents

Year: 2006-2008

DOH Race-Ethnicity	Yes			No			Estimated Population (3-Yr Avg)
	#	%	C.I. (95%)	#	%	C.I. (95%)	#
Caucasian	2,500	16.1	12.1 - 20.1	13,100	83.9	79.9 - 87.9	15,600
Native Hawaiian	4,300	30.1	23.3 - 37.0	10,000	69.9	63.0 - 76.7	14,300
Chinese	1,000	18.6	10.2 - 27.0	4,600	81.4	73.0 - 89.8	5,600
Filipino	5,300	35.0	26.7 - 43.2	9,800	65.0	56.8 - 73.3	15,000
Japanese	4,100	20.9	16.3 - 25.6	15,300	79.1	74.4 - 83.7	19,400

Gender	Yes			No			Estimated Population (3-Yr Avg)
	#	%	C.I. (95%)	#	%	C.I. (95%)	#
Male	9,500	25.6	21.4 - 29.9	27,600	74.4	70.1 - 78.6	37,100
Female	9,700	24.3	20.6 - 28.0	30,200	75.7	72.0 - 79.4	39,900

Diabetes - eye prob, hlth prof. by State, County, Island, Community, BRFSS Age Group, DOH Race-Ethnicity, Gender, Education Level, Employment Status (Grouped), Household Income, Poverty Level, Marital Status (Grouped), Married, Health Care Coverage, for the Year(s) - 2000-2002, 2001-2003, 2002-2004, 2003-2005, 2004-2006, 2005-2007, 2006-2008, 2007-2009, 2008-2010

Note: Weighted numbers (#) represent 3-yr averages, percentages and 95% confidence intervals; Respondents aged 18 years and older; n/r (Not Reportable) - If the unweighted total responses for a dimension (row) is <50 that row will not be shown; n/a (Not Available) - Not asked of a subset of respondents

Year: 2006-2008

Education Level	Yes			No			Estimated Population (3-Yr Avg)
	#	%	C.I. (95%)	#	%	C.I. (95%)	#
Never attended school/ Only Kindergarten to Grades 8	700	26.3	14.5 - 38.2	2,100	73.7	61.8 - 85.5	2,800
Grades 9 thru 11 (Some High School)	1,200	29.6	18.2 - 41.1	2,800	70.4	58.9 - 81.8	4,000
Grades 12 or GED (High School Grad)	8,500	33.0	27.5 - 38.5	17,400	67.0	61.5 - 72.5	25,900
College 1 to 3 years (Some College/ Tech)	5,100	21.4	16.4 - 26.5	18,800	78.6	73.5 - 83.6	23,900
College 4 years or more (College Grad)	3,600	17.7	13.3 - 22.1	16,800	82.3	77.9 - 86.7	20,400

Employment Status (Grouped)	Yes			No			Estimated Population (3-Yr Avg)
	#	%	C.I. (95%)	#	%	C.I. (95%)	#
Employed	8,300	25.1	20.6 - 29.7	24,800	74.9	70.3 - 79.4	33,200
Retired/Unable to work	9,800	25.6	21.9 - 29.4	28,300	74.4	70.6 - 78.1	38,100
Student/Homemaker	800	26.7	12.4 - 41.0	2,100	73.3	59.0 - 87.6	2,900

Diabetes - eye prob, hlth prof. by State, County, Island, Community, BRFSS Age Group, DOH Race-Ethnicity, Gender, Education Level, Employment Status (Grouped), Household Income, Poverty Level, Marital Status (Grouped), Married, Health Care Coverage, for the Year(s) - 2000-2002, 2001-2003, 2002-2004, 2003-2005, 2004-2006, 2005-2007, 2006-2008, 2007-2009, 2008-2010

Note: Weighted numbers (#) represent 3-yr averages, percentages and 95% confidence intervals; Respondents aged 18 years and older; n/r (Not Reportable) - If the unweighted total responses for a dimension (row) is <50 that row will not be shown; n/a (Not Available) - Not asked of a subset of respondents

Year: 2006-2008

Household Income	Yes			No			Estimated Population (3-Yr Avg)
	#	%	C.I. (95%)	#	%	C.I. (95%)	#
Less than \$10,000	600	23.5	13.8 - 33.1	2,100	76.5	66.9 - 86.2	2,800
\$10,000 to \$14,999	1,400	34.3	21.0 - 47.5	2,700	65.7	52.5 - 79.0	4,000
\$15,000 to \$19,999	1,000	21.5	13.4 - 29.6	3,500	78.5	70.4 - 86.6	4,500
\$20,000 to \$24,999	2,100	33.2	23.6 - 42.7	4,300	66.8	57.3 - 76.4	6,400
\$25,000 to \$34,999	2,900	29.3	20.4 - 38.1	7,000	70.7	61.9 - 79.6	9,800
\$35,000 to \$49,999	2,600	19.1	13.0 - 25.2	11,100	80.9	74.8 - 87.0	13,800
\$50,000 to \$74,999	3,400	26.2	18.9 - 33.6	9,500	73.8	66.4 - 81.1	12,800
\$75,000 or more	2,600	17.6	12.0 - 23.2	12,200	82.4	76.8 - 88.0	14,800

Diabetes - eye prob, hlth prof. by State, County, Island, Community, BRFSS Age Group, DOH Race-Ethnicity, Gender, Education Level, Employment Status (Grouped), Household Income, Poverty Level, Marital Status (Grouped), Married, Health Care Coverage, for the Year(s) - 2000-2002, 2001-2003, 2002-2004, 2003-2005, 2004-2006, 2005-2007, 2006-2008, 2007-2009, 2008-2010

Note: Weighted numbers (#) represent 3-yr averages, percentages and 95% confidence intervals; Respondents aged 18 years and older; n/r (Not Reportable) - If the unweighted total responses for a dimension (row) is <50 that row will not be shown; n/a (Not Available) - Not asked of a subset of respondents

Year: 2006-2008

Poverty Level	Yes			No			Estimated Population (3-Yr Avg)
	#	%	C.I. (95%)	#	%	C.I. (95%)	#
0-130%	5,600	29.7	23.4 - 36.0	13,200	70.3	64.0 - 76.6	18,800
131-185%	2,600	27.8	18.7 - 36.8	6,600	72.2	63.2 - 81.3	9,200
186+%	8,500	20.7	17.3 - 24.1	32,500	79.3	75.9 - 82.7	41,000

Marital Status (Grouped)	Yes			No			Estimated Population (3-Yr Avg)
	#	%	C.I. (95%)	#	%	C.I. (95%)	#
Married	12,100	25.2	21.4 - 29.0	36,000	74.8	71.0 - 78.6	48,100
Widowed	2,000	21.5	15.7 - 27.2	7,200	78.5	72.8 - 84.3	9,200
Other	4,900	25.5	20.2 - 30.8	14,200	74.5	69.2 - 79.8	19,000

Diabetes - eye prob, hlth prof. by State, County, Island, Community, BRFSS Age Group, DOH Race-Ethnicity, Gender, Education Level, Employment Status (Grouped), Household Income, Poverty Level, Marital Status (Grouped), Married, Health Care Coverage, for the Year(s) - 2000-2002, 2001-2003, 2002-2004, 2003-2005, 2004-2006, 2005-2007, 2006-2008, 2007-2009, 2008-2010

Note: Weighted numbers (#) represent 3-yr averages, percentages and 95% confidence intervals; Respondents aged 18 years and older; n/r (Not Reportable) - If the unweighted total responses for a dimension (row) is <50 that row will not be shown; n/a (Not Available) - Not asked of a subset of respondents

Year: 2006-2008

Married	Yes			No			Estimated Population (3-Yr Avg)
	#	%	C.I. (95%)	#	%	C.I. (95%)	#
Yes	12,400	25.2	21.4 - 28.9	36,900	74.8	71.1 - 78.6	49,300
No	6,800	24.7	20.5 - 28.8	20,800	75.3	71.2 - 79.5	27,600

Health Care Coverage	Yes			No			Estimated Population (3-Yr Avg)
	#	%	C.I. (95%)	#	%	C.I. (95%)	#
Yes	18,500	25.0	22.2 - 27.9	55,300	75.0	72.1 - 77.8	73,800
No	700	22.9	8.0 - 37.9	2,500	77.1	62.1 - 92.0	3,200

Diabetes - eye prob, hlth prof. by State, County, Island, Community, BRFSS Age Group, DOH Race-Ethnicity, Gender, Education Level, Employment Status (Grouped), Household Income, Poverty Level, Marital Status (Grouped), Married, Health Care Coverage, for the Year(s) - 2000-2002, 2001-2003, 2002-2004, 2003-2005, 2004-2006, 2005-2007, 2006-2008, 2007-2009, 2008-2010

Note: Weighted numbers (#) represent 3-yr averages, percentages and 95% confidence intervals; Respondents aged 18 years and older; n/r (Not Reportable) - If the unweighted total responses for a dimension (row) is <50 that row will not be shown; n/a (Not Available) - Not asked of a subset of respondents

Year: 2005-2007

State	Yes			No			Estimated Population (3-Yr Avg)
	#	%	C.I. (95%)	#	%	C.I. (95%)	#
Hawaii State	17,300	22.6	19.4 - 25.8	59,500	77.4	74.2 - 80.6	76,800

County	Yes			No			Estimated Population (3-Yr Avg)
	#	%	C.I. (95%)	#	%	C.I. (95%)	#
Hawaii	1,700	17.7	12.1 - 23.2	7,800	82.3	76.8 - 87.9	9,500
Honolulu	12,800	22.8	18.7 - 26.9	43,500	77.2	73.1 - 81.3	56,400
Kauai	900	24.5	15.7 - 33.2	2,900	75.5	66.8 - 84.3	3,900
Maui	1,900	26.6	19.7 - 33.5	5,200	73.4	66.5 - 80.3	7,100

Diabetes - eye prob, hlth prof. by State, County, Island, Community, BRFSS Age Group, DOH Race-Ethnicity, Gender, Education Level, Employment Status (Grouped), Household Income, Poverty Level, Marital Status (Grouped), Married, Health Care Coverage, for the Year(s) - 2000-2002, 2001-2003, 2002-2004, 2003-2005, 2004-2006, 2005-2007, 2006-2008, 2007-2009, 2008-2010

Note: Weighted numbers (#) represent 3-yr averages, percentages and 95% confidence intervals; Respondents aged 18 years and older; n/r (Not Reportable) - If the unweighted total responses for a dimension (row) is <50 that row will not be shown; n/a (Not Available) - Not asked of a subset of respondents

Year: 2005-2007

Island	Yes			No			Estimated Population (3-Yr Avg)
	#	%	C.I. (95%)	#	%	C.I. (95%)	#
Hawaii	1,700	17.7	12.1 - 23.2	7,800	82.3	76.8 - 87.9	9,500
Kauai	900	24.5	15.7 - 33.2	2,900	75.5	66.8 - 84.3	3,900
Lanai	100	39.5	21.2 - 57.9	100	60.5	42.1 - 78.8	200
Maui	1,600	26.0	18.4 - 33.6	4,600	74.0	66.4 - 81.6	6,200
Molokai	200	28.3	12.9 - 43.7	500	71.7	56.3 - 87.1	600
Oahu	12,800	22.8	18.7 - 26.9	43,500	77.2	73.1 - 81.3	56,400

Community	Yes			No			Estimated Population (3-Yr Avg)
	#	%	C.I. (95%)	#	%	C.I. (95%)	#
Aiea/ Pearl City	1,400	27.9	14.2 - 41.6	3,600	72.1	58.4 - 85.8	5,000
Hilo	700	22.2	10.2 - 34.3	2,600	77.8	65.7 - 89.8	3,300

Diabetes - eye prob, hlth prof. by State, County, Island, Community, BRFSS Age Group, DOH Race-Ethnicity, Gender, Education Level, Employment Status (Grouped), Household Income, Poverty Level, Marital Status (Grouped), Married, Health Care Coverage, for the Year(s) - 2000-2002, 2001-2003, 2002-2004, 2003-2005, 2004-2006, 2005-2007, 2006-2008, 2007-2009, 2008-2010

Note: Weighted numbers (#) represent 3-yr averages, percentages and 95% confidence intervals; Respondents aged 18 years and older; n/r (Not Reportable) - If the unweighted total responses for a dimension (row) is <50 that row will not be shown; n/a (Not Available) - Not asked of a subset of respondents

Year: 2005-2007

Community	Yes			No			Estimated Population (3-Yr Avg)
	#	%	C.I. (95%)	#	%	C.I. (95%)	#
Kahului	800	38.7	25.2 - 52.2	1,200	61.3	47.8 - 74.8	2,000
Kailua/ Waimanalo	400	8.9	2.1 - 15.8	3,600	91.1	84.2 - 97.9	4,000
Kona	100	8.0	1.2 - 14.7	1,600	92.0	85.3 - 98.8	1,700
Lahaina/ Wailuku	400	18.1	6.0 - 30.1	1,600	81.9	69.9 - 94.0	2,000
Lanai	100	39.5	21.2 - 57.9	100	60.5	42.1 - 78.8	200
Lihue-Waimea	700	27.6	16.6 - 38.7	1,800	72.4	61.3 - 83.4	2,500
Mililani/ Wahiawa	1,100	19.6	8.2 - 31.0	4,400	80.4	69.0 - 91.8	5,400
Molokai	200	28.3	12.9 - 43.7	500	71.7	56.3 - 87.1	600
N.Hawaii	400	19.3	9.9 - 28.7	1,500	80.7	71.3 - 90.1	1,900
Nuuanu/ Kalihi/ Moanalua	700	15.1	3.6 - 26.5	4,100	84.9	73.5 - 96.4	4,800
Puna/ Kau	400	17.2	7.8 - 26.6	2,100	82.8	73.4 - 92.2	2,500
Upcountry/ Hana	500	21.8	8.4 - 35.2	1,800	78.2	64.8 - 91.6	2,300

Diabetes - eye prob, hlth prof. by State, County, Island, Community, BRFSS Age Group, DOH Race-Ethnicity, Gender, Education Level, Employment Status (Grouped), Household Income, Poverty Level, Marital Status (Grouped), Married, Health Care Coverage, for the Year(s) - 2000-2002, 2001-2003, 2002-2004, 2003-2005, 2004-2006, 2005-2007, 2006-2008, 2007-2009, 2008-2010

Note: Weighted numbers (#) represent 3-yr averages, percentages and 95% confidence intervals; Respondents aged 18 years and older; n/r (Not Reportable) - If the unweighted total responses for a dimension (row) is <50 that row will not be shown; n/a (Not Available) - Not asked of a subset of respondents

Year: 2005-2007

Community	Yes			No			Estimated Population (3-Yr Avg)
	#	%	C.I. (95%)	#	%	C.I. (95%)	#
Waipahu/ Kapolei/ Ewa	3,700	36.7	23.6 - 49.8	6,300	63.3	50.2 - 76.4	10,000

BRFSS Age Group	Yes			No			Estimated Population (3-Yr Avg)
	#	%	C.I. (95%)	#	%	C.I. (95%)	#
35-44	800	12.8	3.8 - 21.9	5,500	87.2	78.1 - 96.2	6,300
45-54	4,500	28.3	20.5 - 36.1	11,300	71.7	63.9 - 79.5	15,800
55-64	5,300	26.3	19.1 - 33.6	14,900	73.7	66.4 - 80.9	20,300
65-74	3,600	23.2	17.4 - 29.0	11,900	76.8	71.0 - 82.6	15,500
75+	2,800	18.8	12.8 - 24.8	11,900	81.2	75.2 - 87.2	14,700

Diabetes - eye prob, hlth prof. by State, County, Island, Community, BRFSS Age Group, DOH Race-Ethnicity, Gender, Education Level, Employment Status (Grouped), Household Income, Poverty Level, Marital Status (Grouped), Married, Health Care Coverage, for the Year(s) - 2000-2002, 2001-2003, 2002-2004, 2003-2005, 2004-2006, 2005-2007, 2006-2008, 2007-2009, 2008-2010

Note: Weighted numbers (#) represent 3-yr averages, percentages and 95% confidence intervals; Respondents aged 18 years and older; n/r (Not Reportable) - If the unweighted total responses for a dimension (row) is <50 that row will not be shown; n/a (Not Available) - Not asked of a subset of respondents

Year: 2005-2007

DOH Race-Ethnicity	Yes			No			Estimated Population (3-Yr Avg)
	#	%	C.I. (95%)	#	%	C.I. (95%)	#
Caucasian	2,900	17.3	12.3 - 22.3	14,000	82.7	77.7 - 87.7	17,000
Native Hawaiian	3,500	23.4	16.5 - 30.4	11,500	76.6	69.6 - 83.5	15,000
Chinese	1,100	19.8	9.7 - 30.0	4,400	80.2	70.0 - 90.3	5,400
Filipino	4,300	31.5	21.4 - 41.6	9,500	68.5	58.4 - 78.6	13,800
Japanese	3,500	20.1	14.7 - 25.5	14,100	79.9	74.5 - 85.3	17,600

Gender	Yes			No			Estimated Population (3-Yr Avg)
	#	%	C.I. (95%)	#	%	C.I. (95%)	#
Male	9,100	23.3	18.4 - 28.2	29,800	76.7	71.8 - 81.6	38,900
Female	8,300	21.9	17.8 - 25.9	29,600	78.1	74.1 - 82.2	37,900

Diabetes - eye prob, hlth prof. by State, County, Island, Community, BRFSS Age Group, DOH Race-Ethnicity, Gender, Education Level, Employment Status (Grouped), Household Income, Poverty Level, Marital Status (Grouped), Married, Health Care Coverage, for the Year(s) - 2000-2002, 2001-2003, 2002-2004, 2003-2005, 2004-2006, 2005-2007, 2006-2008, 2007-2009, 2008-2010

Note: Weighted numbers (#) represent 3-yr averages, percentages and 95% confidence intervals; Respondents aged 18 years and older; n/r (Not Reportable) - If the unweighted total responses for a dimension (row) is <50 that row will not be shown; n/a (Not Available) - Not asked of a subset of respondents

Year: 2005-2007

Education Level	Yes			No			Estimated Population (3-Yr Avg)
	#	%	C.I. (95%)	#	%	C.I. (95%)	#
Never attended school/ Only Kindergarten to Grades 8	700	19.1	7.9 - 30.3	3,100	80.9	69.7 - 92.1	3,900
Grades 9 thru 11 (Some High School)	1,300	28.1	15.7 - 40.4	3,300	71.9	59.6 - 84.3	4,600
Grades 12 or GED (High School Grad)	7,700	27.2	21.3 - 33.1	20,600	72.8	66.9 - 78.7	28,200
College 1 to 3 years (Some College/ Tech)	4,600	21.3	15.6 - 27.1	16,900	78.7	72.9 - 84.4	21,500
College 4 years or more (College Grad)	3,000	16.2	10.1 - 22.4	15,600	83.8	77.6 - 89.9	18,600

Employment Status (Grouped)	Yes			No			Estimated Population (3-Yr Avg)
	#	%	C.I. (95%)	#	%	C.I. (95%)	#
Employed	7,900	23.0	17.7 - 28.3	26,600	77.0	71.7 - 82.3	34,500
Retired/Unable to work	8,500	22.6	18.5 - 26.6	29,200	77.4	73.4 - 81.5	37,700
Student/Homemaker	600	20.0	5.1 - 35.0	2,400	80.0	65.0 - 94.9	2,900

Diabetes - eye prob, hlth prof. by State, County, Island, Community, BRFSS Age Group, DOH Race-Ethnicity, Gender, Education Level, Employment Status (Grouped), Household Income, Poverty Level, Marital Status (Grouped), Married, Health Care Coverage, for the Year(s) - 2000-2002, 2001-2003, 2002-2004, 2003-2005, 2004-2006, 2005-2007, 2006-2008, 2007-2009, 2008-2010

Note: Weighted numbers (#) represent 3-yr averages, percentages and 95% confidence intervals; Respondents aged 18 years and older; n/r (Not Reportable) - If the unweighted total responses for a dimension (row) is <50 that row will not be shown; n/a (Not Available) - Not asked of a subset of respondents

Year: 2005-2007

Household Income	Yes			No			Estimated Population (3-Yr Avg)
	#	%	C.I. (95%)	#	%	C.I. (95%)	#
Less than \$10,000	800	29.2	16.4 - 42.1	1,900	70.8	57.9 - 83.6	2,700
\$10,000 to \$14,999	1,100	22.7	11.2 - 34.2	3,900	77.3	65.8 - 88.8	5,000
\$15,000 to \$19,999	900	16.6	7.4 - 25.7	4,600	83.4	74.3 - 92.6	5,500
\$20,000 to \$24,999	2,500	38.3	26.1 - 50.6	4,000	61.7	49.4 - 73.9	6,500
\$25,000 to \$34,999	2,200	22.9	13.7 - 32.0	7,300	77.1	68.0 - 86.3	9,400
\$35,000 to \$49,999	2,900	23.6	16.1 - 31.0	9,500	76.4	69.0 - 83.9	12,500
\$50,000 to \$74,999	2,100	18.3	11.1 - 25.5	9,500	81.7	74.5 - 88.9	11,600
\$75,000 or more	2,300	18.3	9.6 - 27.0	10,100	81.7	73.0 - 90.4	12,400

Diabetes - eye prob, hlth prof. by State, County, Island, Community, BRFSS Age Group, DOH Race-Ethnicity, Gender, Education Level, Employment Status (Grouped), Household Income, Poverty Level, Marital Status (Grouped), Married, Health Care Coverage, for the Year(s) - 2000-2002, 2001-2003, 2002-2004, 2003-2005, 2004-2006, 2005-2007, 2006-2008, 2007-2009, 2008-2010

Note: Weighted numbers (#) represent 3-yr averages, percentages and 95% confidence intervals; Respondents aged 18 years and older; n/r (Not Reportable) - If the unweighted total responses for a dimension (row) is <50 that row will not be shown; n/a (Not Available) - Not asked of a subset of respondents

Year: 2005-2007

Poverty Level	Yes			No			Estimated Population (3-Yr Avg)
	#	%	C.I. (95%)	#	%	C.I. (95%)	#
0-130%	5,300	26.5	19.6 - 33.4	14,600	73.5	66.6 - 80.4	19,900
131-185%	2,000	23.6	14.3 - 32.9	6,600	76.4	67.1 - 85.7	8,700
186+%	7,500	20.3	16.0 - 24.5	29,600	79.7	75.5 - 84.0	37,100

Marital Status (Grouped)	Yes			No			Estimated Population (3-Yr Avg)
	#	%	C.I. (95%)	#	%	C.I. (95%)	#
Married	11,400	23.3	19.0 - 27.6	37,400	76.7	72.4 - 81.0	48,800
Widowed	1,600	19.1	13.0 - 25.2	7,000	80.9	74.8 - 87.0	8,600
Other	4,100	22.1	15.9 - 28.2	14,400	77.9	71.8 - 84.1	18,500

Diabetes - eye prob, hlth prof. by State, County, Island, Community, BRFSS Age Group, DOH Race-Ethnicity, Gender, Education Level, Employment Status (Grouped), Household Income, Poverty Level, Marital Status (Grouped), Married, Health Care Coverage, for the Year(s) - 2000-2002, 2001-2003, 2002-2004, 2003-2005, 2004-2006, 2005-2007, 2006-2008, 2007-2009, 2008-2010

Note: Weighted numbers (#) represent 3-yr averages, percentages and 95% confidence intervals; Respondents aged 18 years and older; n/r (Not Reportable) - If the unweighted total responses for a dimension (row) is <50 that row will not be shown; n/a (Not Available) - Not asked of a subset of respondents

Year: 2005-2007

Married	Yes			No			Estimated Population (3-Yr Avg)
	#	%	C.I. (95%)	#	%	C.I. (95%)	#
Yes	11,600	23.3	19.1 - 27.5	38,100	76.7	72.5 - 80.9	49,700
No	5,800	21.4	16.7 - 26.1	21,200	78.6	73.9 - 83.3	26,900

Health Care Coverage	Yes			No			Estimated Population (3-Yr Avg)
	#	%	C.I. (95%)	#	%	C.I. (95%)	#
Yes	12,000	25.3	21.7 - 28.9	35,500	74.7	71.1 - 78.3	47,600

Diabetes - eye prob, hlth prof. by State, County, Island, Community, BRFSS Age Group, DOH Race-Ethnicity, Gender, Education Level, Employment Status (Grouped), Household Income, Poverty Level, Marital Status (Grouped), Married, Health Care Coverage, for the Year(s) - 2000-2002, 2001-2003, 2002-2004, 2003-2005, 2004-2006, 2005-2007, 2006-2008, 2007-2009, 2008-2010

Note: Weighted numbers (#) represent 3-yr averages, percentages and 95% confidence intervals; Respondents aged 18 years and older; n/r (Not Reportable) - If the unweighted total responses for a dimension (row) is <50 that row will not be shown; n/a (Not Available) - Not asked of a subset of respondents

Year: 2004-2006

State	Yes			No			Estimated Population (3-Yr Avg)
	#	%	C.I. (95%)	#	%	C.I. (95%)	#
Hawaii State	16,100	22.4	18.3 - 26.5	55,900	77.6	73.5 - 81.7	72,100

County	Yes			No			Estimated Population (3-Yr Avg)
	#	%	C.I. (95%)	#	%	C.I. (95%)	#
Hawaii	1,900	21.0	14.1 - 27.9	7,200	79.0	72.1 - 85.9	9,200
Honolulu	12,300	23.0	17.7 - 28.3	41,100	77.0	71.7 - 82.3	53,400
Kauai	800	22.2	12.9 - 31.5	3,000	77.8	68.5 - 87.1	3,800
Maui	1,100	19.0	11.3 - 26.8	4,600	81.0	73.2 - 88.7	5,700

Diabetes - eye prob, hlth prof. by State, County, Island, Community, BRFSS Age Group, DOH Race-Ethnicity, Gender, Education Level, Employment Status (Grouped), Household Income, Poverty Level, Marital Status (Grouped), Married, Health Care Coverage, for the Year(s) - 2000-2002, 2001-2003, 2002-2004, 2003-2005, 2004-2006, 2005-2007, 2006-2008, 2007-2009, 2008-2010

Note: Weighted numbers (#) represent 3-yr averages, percentages and 95% confidence intervals; Respondents aged 18 years and older; n/r (Not Reportable) - If the unweighted total responses for a dimension (row) is <50 that row will not be shown; n/a (Not Available) - Not asked of a subset of respondents

Year: 2004-2006

Island	Yes			No			Estimated Population (3-Yr Avg)
	#	%	C.I. (95%)	#	%	C.I. (95%)	#
Hawaii	1,900	21.0	14.1 - 27.9	7,200	79.0	72.1 - 85.9	9,200
Kauai	800	22.2	12.9 - 31.5	3,000	77.8	68.5 - 87.1	3,800
Maui	900	18.2	9.6 - 26.8	4,100	81.8	73.2 - 90.4	5,000
Oahu	12,300	23.0	17.7 - 28.3	41,100	77.0	71.7 - 82.3	53,400

Diabetes - eye prob, hlth prof. by State, County, Island, Community, BRFSS Age Group, DOH Race-Ethnicity, Gender, Education Level, Employment Status (Grouped), Household Income, Poverty Level, Marital Status (Grouped), Married, Health Care Coverage, for the Year(s) - 2000-2002, 2001-2003, 2002-2004, 2003-2005, 2004-2006, 2005-2007, 2006-2008, 2007-2009, 2008-2010

Note: Weighted numbers (#) represent 3-yr averages, percentages and 95% confidence intervals; Respondents aged 18 years and older; n/r (Not Reportable) - If the unweighted total responses for a dimension (row) is <50 that row will not be shown; n/a (Not Available) - Not asked of a subset of respondents

Year: 2004-2006

Community	Yes			No			Estimated Population (3-Yr Avg)
	#	%	C.I. (95%)	#	%	C.I. (95%)	#
Hilo	700	24.5	9.8 - 39.2	2,000	75.5	60.8 - 90.2	2,700
Lihue-Waimea	600	22.9	11.9 - 33.9	2,000	77.1	66.1 - 88.1	2,700
N.Hawaii	600	32.3	15.7 - 48.9	1,200	67.7	51.1 - 84.3	1,700
Puna/ Kau	500	15.6	5.5 - 25.6	2,600	84.4	74.4 - 94.5	3,100
Waipahu/ Kapolei/ Ewa	3,300	35.2	18.3 - 52.2	6,100	64.8	47.8 - 81.7	9,400

Diabetes - eye prob, hlth prof. by State, County, Island, Community, BRFSS Age Group, DOH Race-Ethnicity, Gender, Education Level, Employment Status (Grouped), Household Income, Poverty Level, Marital Status (Grouped), Married, Health Care Coverage, for the Year(s) - 2000-2002, 2001-2003, 2002-2004, 2003-2005, 2004-2006, 2005-2007, 2006-2008, 2007-2009, 2008-2010

Note: Weighted numbers (#) represent 3-yr averages, percentages and 95% confidence intervals; Respondents aged 18 years and older; n/r (Not Reportable) - If the unweighted total responses for a dimension (row) is <50 that row will not be shown; n/a (Not Available) - Not asked of a subset of respondents

Year: 2004-2006

BRFSS Age Group	Yes			No			Estimated Population (3-Yr Avg)
	#	%	C.I. (95%)	#	%	C.I. (95%)	#
35-44	900	10.6	0.8 - 20.4	7,600	89.4	79.6 - 99.2	8,600
45-54	5,000	33.7	22.6 - 44.7	10,000	66.3	55.3 - 77.4	15,000
55-64	5,400	28.5	19.7 - 37.3	13,600	71.5	62.7 - 80.3	19,000
65-74	2,400	18.6	12.3 - 25.0	10,500	81.4	75.0 - 87.7	12,900
75+	1,800	14.4	8.3 - 20.5	10,800	85.6	79.5 - 91.7	12,600

Diabetes - eye prob, hlth prof. by State, County, Island, Community, BRFSS Age Group, DOH Race-Ethnicity, Gender, Education Level, Employment Status (Grouped), Household Income, Poverty Level, Marital Status (Grouped), Married, Health Care Coverage, for the Year(s) - 2000-2002, 2001-2003, 2002-2004, 2003-2005, 2004-2006, 2005-2007, 2006-2008, 2007-2009, 2008-2010

Note: Weighted numbers (#) represent 3-yr averages, percentages and 95% confidence intervals; Respondents aged 18 years and older; n/r (Not Reportable) - If the unweighted total responses for a dimension (row) is <50 that row will not be shown; n/a (Not Available) - Not asked of a subset of respondents

Year: 2004-2006

DOH Race-Ethnicity	Yes			No			Estimated Population (3-Yr Avg)
	#	%	C.I. (95%)	#	%	C.I. (95%)	#
Caucasian	2,700	16.6	10.7 - 22.4	13,700	83.4	77.6 - 89.3	16,400
Native Hawaiian	3,700	24.1	14.4 - 33.8	11,600	75.9	66.2 - 85.6	15,300
Filipino	4,000	30.1	18.0 - 42.2	9,400	69.9	57.8 - 82.0	13,400
Japanese	2,900	19.9	13.1 - 26.6	11,800	80.1	73.4 - 86.9	14,700

Gender	Yes			No			Estimated Population (3-Yr Avg)
	#	%	C.I. (95%)	#	%	C.I. (95%)	#
Male	8,100	21.3	15.7 - 26.9	30,000	78.7	73.1 - 84.3	38,100
Female	8,000	23.6	17.6 - 29.6	25,900	76.4	70.4 - 82.4	33,900

Diabetes - eye prob, hlth prof. by State, County, Island, Community, BRFSS Age Group, DOH Race-Ethnicity, Gender, Education Level, Employment Status (Grouped), Household Income, Poverty Level, Marital Status (Grouped), Married, Health Care Coverage, for the Year(s) - 2000-2002, 2001-2003, 2002-2004, 2003-2005, 2004-2006, 2005-2007, 2006-2008, 2007-2009, 2008-2010

Note: Weighted numbers (#) represent 3-yr averages, percentages and 95% confidence intervals; Respondents aged 18 years and older; n/r (Not Reportable) - If the unweighted total responses for a dimension (row) is <50 that row will not be shown; n/a (Not Available) - Not asked of a subset of respondents

Year: 2004-2006

Education Level	Yes			No			Estimated Population (3-Yr Avg)
	#	%	C.I. (95%)	#	%	C.I. (95%)	#
Grades 9 thru 11 (Some High School)	900	22.7	9.9 - 35.4	2,900	77.3	64.6 - 90.1	3,800
Grades 12 or GED (High School Grad)	6,700	23.7	16.8 - 30.6	21,500	76.3	69.4 - 83.2	28,200
College 1 to 3 years (Some College/ Tech)	5,200	26.4	17.8 - 34.9	14,500	73.6	65.1 - 82.2	19,800
College 4 years or more (College Grad)	2,800	16.6	9.3 - 24.0	14,300	83.4	76.0 - 90.7	17,100

Employment Status (Grouped)	Yes			No			Estimated Population (3-Yr Avg)
	#	%	C.I. (95%)	#	%	C.I. (95%)	#
Employed	7,200	21.8	15.6 - 28.1	25,900	78.2	71.9 - 84.4	33,100
Retired/Unable to work	6,800	20.2	15.2 - 25.1	26,900	79.8	74.9 - 84.8	33,700

Diabetes - eye prob, hlth prof. by State, County, Island, Community, BRFSS Age Group, DOH Race-Ethnicity, Gender, Education Level, Employment Status (Grouped), Household Income, Poverty Level, Marital Status (Grouped), Married, Health Care Coverage, for the Year(s) - 2000-2002, 2001-2003, 2002-2004, 2003-2005, 2004-2006, 2005-2007, 2006-2008, 2007-2009, 2008-2010

Note: Weighted numbers (#) represent 3-yr averages, percentages and 95% confidence intervals; Respondents aged 18 years and older; n/r (Not Reportable) - If the unweighted total responses for a dimension (row) is <50 that row will not be shown; n/a (Not Available) - Not asked of a subset of respondents

Year: 2004-2006

Household Income	Yes			No			Estimated Population (3-Yr Avg)
	#	%	C.I. (95%)	#	%	C.I. (95%)	#
\$10,000 to \$14,999	700	17.5	5.6 - 29.4	3,300	82.5	70.6 - 94.4	4,000
\$15,000 to \$19,999	1,500	23.1	6.8 - 39.3	5,100	76.9	60.7 - 93.2	6,600
\$20,000 to \$24,999	2,200	35.9	20.7 - 51.1	3,800	64.1	48.9 - 79.3	6,000
\$25,000 to \$34,999	2,400	26.5	11.8 - 41.3	6,600	73.5	58.7 - 88.2	9,000
\$35,000 to \$49,999	2,300	22.5	13.3 - 31.6	8,100	77.5	68.4 - 86.7	10,400
\$50,000 to \$74,999	1,900	15.1	8.3 - 21.9	10,800	84.9	78.1 - 91.7	12,800
\$75,000 or more	2,600	22.3	10.5 - 34.2	9,100	77.7	65.8 - 89.5	11,700

Diabetes - eye prob, hlth prof. by State, County, Island, Community, BRFSS Age Group, DOH Race-Ethnicity, Gender, Education Level, Employment Status (Grouped), Household Income, Poverty Level, Marital Status (Grouped), Married, Health Care Coverage, for the Year(s) - 2000-2002, 2001-2003, 2002-2004, 2003-2005, 2004-2006, 2005-2007, 2006-2008, 2007-2009, 2008-2010

Note: Weighted numbers (#) represent 3-yr averages, percentages and 95% confidence intervals; Respondents aged 18 years and older; n/r (Not Reportable) - If the unweighted total responses for a dimension (row) is <50 that row will not be shown; n/a (Not Available) - Not asked of a subset of respondents

Year: 2004-2006

Poverty Level	Yes			No			Estimated Population (3-Yr Avg)
	#	%	C.I. (95%)	#	%	C.I. (95%)	#
0-130%	5,000	26.9	17.1 - 36.6	13,700	73.1	63.4 - 82.9	18,700
131-185%	1,900	25.7	13.3 - 38.1	5,500	74.3	61.9 - 86.7	7,400
186+%	7,400	20.2	14.9 - 25.5	29,100	79.8	74.5 - 85.1	36,500

Marital Status (Grouped)	Yes			No			Estimated Population (3-Yr Avg)
	#	%	C.I. (95%)	#	%	C.I. (95%)	#
Married	10,000	21.2	15.9 - 26.4	37,300	78.8	73.6 - 84.1	47,300
Widowed	2,100	28.6	16.5 - 40.8	5,200	71.4	59.2 - 83.5	7,300
Other	4,000	23.6	15.9 - 31.4	12,900	76.4	68.6 - 84.1	16,900

Diabetes - eye prob, hlth prof. by State, County, Island, Community, BRFSS Age Group, DOH Race-Ethnicity, Gender, Education Level, Employment Status (Grouped), Household Income, Poverty Level, Marital Status (Grouped), Married, Health Care Coverage, for the Year(s) - 2000-2002, 2001-2003, 2002-2004, 2003-2005, 2004-2006, 2005-2007, 2006-2008, 2007-2009, 2008-2010

Note: Weighted numbers (#) represent 3-yr averages, percentages and 95% confidence intervals; Respondents aged 18 years and older; n/r (Not Reportable) - If the unweighted total responses for a dimension (row) is <50 that row will not be shown; n/a (Not Available) - Not asked of a subset of respondents

Year: 2004-2006

Married	Yes			No			Estimated Population (3-Yr Avg)
	#	%	C.I. (95%)	#	%	C.I. (95%)	#
Yes	10,100	21.1	16.0 - 26.3	37,900	78.9	73.7 - 84.0	48,000
No	6,000	24.9	18.3 - 31.6	18,000	75.1	68.4 - 81.7	23,900

Health Care Coverage	Yes			No			Estimated Population (3-Yr Avg)
	#	%	C.I. (95%)	#	%	C.I. (95%)	#
Yes	10,600	24.7	19.3 - 30.0	32,400	75.3	70.0 - 80.7	43,000

Diabetes - eye prob, hlth prof. by State, County, Island, Community, BRFSS Age Group, DOH Race-Ethnicity, Gender, Education Level, Employment Status (Grouped), Household Income, Poverty Level, Marital Status (Grouped), Married, Health Care Coverage, for the Year(s) - 2000-2002, 2001-2003, 2002-2004, 2003-2005, 2004-2006, 2005-2007, 2006-2008, 2007-2009, 2008-2010

Note: Weighted numbers (#) represent 3-yr averages, percentages and 95% confidence intervals; Respondents aged 18 years and older; n/r (Not Reportable) - If the unweighted total responses for a dimension (row) is <50 that row will not be shown; n/a (Not Available) - Not asked of a subset of respondents

Year: 2003-2005

State	Yes			No			Estimated Population (3-Yr Avg)
	#	%	C.I. (95%)	#	%	C.I. (95%)	#
Hawaii State	16,100	23.0	18.6 - 27.4	53,600	77.0	72.6 - 81.4	69,700

County	Yes			No			Estimated Population (3-Yr Avg)
	#	%	C.I. (95%)	#	%	C.I. (95%)	#
Hawaii	2,400	25.4	16.6 - 34.2	6,900	74.6	65.8 - 83.4	9,200
Honolulu	12,100	23.0	17.5 - 28.5	40,700	77.0	71.5 - 82.5	52,800
Kauai	700	22.2	11.5 - 32.8	2,400	77.8	67.2 - 88.5	3,100
Maui	900	19.7	10.4 - 29.0	3,700	80.3	71.0 - 89.6	4,600

Diabetes - eye prob, hlth prof. by State, County, Island, Community, BRFSS Age Group, DOH Race-Ethnicity, Gender, Education Level, Employment Status (Grouped), Household Income, Poverty Level, Marital Status (Grouped), Married, Health Care Coverage, for the Year(s) - 2000-2002, 2001-2003, 2002-2004, 2003-2005, 2004-2006, 2005-2007, 2006-2008, 2007-2009, 2008-2010

Note: Weighted numbers (#) represent 3-yr averages, percentages and 95% confidence intervals; Respondents aged 18 years and older; n/r (Not Reportable) - If the unweighted total responses for a dimension (row) is <50 that row will not be shown; n/a (Not Available) - Not asked of a subset of respondents

Year: 2003-2005

Island	Yes			No			Estimated Population (3-Yr Avg)
	#	%	C.I. (95%)	#	%	C.I. (95%)	#
Hawaii	2,400	25.4	16.6 - 34.2	6,900	74.6	65.8 - 83.4	9,200
Kauai	700	22.2	11.5 - 32.8	2,400	77.8	67.2 - 88.5	3,100
Maui	700	16.8	6.6 - 27.1	3,200	83.2	72.9 - 93.4	3,900
Oahu	12,100	23.0	17.5 - 28.5	40,700	77.0	71.5 - 82.5	52,800

Community	Yes			No			Estimated Population (3-Yr Avg)
	#	%	C.I. (95%)	#	%	C.I. (95%)	#
Hilo	700	31.6	14.8 - 48.4	1,600	68.4	51.6 - 85.2	2,300
Puna/ Kau	500	16.3	6.1 - 26.4	2,600	83.7	73.6 - 93.9	3,100

Diabetes - eye prob, hlth prof. by State, County, Island, Community, BRFSS Age Group, DOH Race-Ethnicity, Gender, Education Level, Employment Status (Grouped), Household Income, Poverty Level, Marital Status (Grouped), Married, Health Care Coverage, for the Year(s) - 2000-2002, 2001-2003, 2002-2004, 2003-2005, 2004-2006, 2005-2007, 2006-2008, 2007-2009, 2008-2010

Note: Weighted numbers (#) represent 3-yr averages, percentages and 95% confidence intervals; Respondents aged 18 years and older; n/r (Not Reportable) - If the unweighted total responses for a dimension (row) is <50 that row will not be shown; n/a (Not Available) - Not asked of a subset of respondents

Year: 2003-2005

BRFSS Age Group	Yes			No			Estimated Population (3-Yr Avg)
	#	%	C.I. (95%)	#	%	C.I. (95%)	#
35-44	1,200	13.6	2.8 - 24.4	7,700	86.4	75.6 - 97.2	8,900
45-54	5,000	33.2	21.8 - 44.5	10,100	66.8	55.5 - 78.2	15,200
55-64	5,200	30.7	21.1 - 40.4	11,600	69.3	59.6 - 78.9	16,800
65-74	3,000	22.3	13.9 - 30.6	10,500	77.7	69.4 - 86.1	13,500
75+	1,200	11.0	5.3 - 16.8	9,900	89.0	83.2 - 94.7	11,100

Diabetes - eye prob, hlth prof. by State, County, Island, Community, BRFSS Age Group, DOH Race-Ethnicity, Gender, Education Level, Employment Status (Grouped), Household Income, Poverty Level, Marital Status (Grouped), Married, Health Care Coverage, for the Year(s) - 2000-2002, 2001-2003, 2002-2004, 2003-2005, 2004-2006, 2005-2007, 2006-2008, 2007-2009, 2008-2010

Note: Weighted numbers (#) represent 3-yr averages, percentages and 95% confidence intervals; Respondents aged 18 years and older; n/r (Not Reportable) - If the unweighted total responses for a dimension (row) is <50 that row will not be shown; n/a (Not Available) - Not asked of a subset of respondents

Year: 2003-2005

DOH Race-Ethnicity	Yes			No			Estimated Population (3-Yr Avg)
	#	%	C.I. (95%)	#	%	C.I. (95%)	#
Caucasian	3,200	20.0	12.7 - 27.2	12,800	80.0	72.8 - 87.3	16,000
Native Hawaiian	3,500	23.5	13.3 - 33.7	11,300	76.5	66.3 - 86.7	14,700
Filipino	3,700	31.1	17.6 - 44.7	8,200	68.9	55.3 - 82.4	11,800
Japanese	2,900	19.4	12.2 - 26.7	11,800	80.6	73.3 - 87.8	14,700

Gender	Yes			No			Estimated Population (3-Yr Avg)
	#	%	C.I. (95%)	#	%	C.I. (95%)	#
Male	7,800	21.0	15.1 - 26.9	29,400	79.0	73.1 - 84.9	37,300
Female	8,200	25.4	18.8 - 31.9	24,200	74.6	68.1 - 81.2	32,400

Diabetes - eye prob, hlth prof. by State, County, Island, Community, BRFSS Age Group, DOH Race-Ethnicity, Gender, Education Level, Employment Status (Grouped), Household Income, Poverty Level, Marital Status (Grouped), Married, Health Care Coverage, for the Year(s) - 2000-2002, 2001-2003, 2002-2004, 2003-2005, 2004-2006, 2005-2007, 2006-2008, 2007-2009, 2008-2010

Note: Weighted numbers (#) represent 3-yr averages, percentages and 95% confidence intervals; Respondents aged 18 years and older; n/r (Not Reportable) - If the unweighted total responses for a dimension (row) is <50 that row will not be shown; n/a (Not Available) - Not asked of a subset of respondents

Year: 2003-2005

Education Level	Yes			No			Estimated Population (3-Yr Avg)
	#	%	C.I. (95%)	#	%	C.I. (95%)	#
Grades 9 thru 11 (Some High School)	1,100	25.0	10.4 - 39.6	3,400	75.0	60.4 - 89.6	4,500
Grades 12 or GED (High School Grad)	5,500	20.3	13.5 - 27.2	21,700	79.7	72.8 - 86.5	27,200
College 1 to 3 years (Some College/ Tech)	5,700	30.8	21.4 - 40.2	12,700	69.2	59.8 - 78.6	18,400
College 4 years or more (College Grad)	3,400	20.2	11.8 - 28.6	13,600	79.8	71.4 - 88.2	17,000

Employment Status (Grouped)	Yes			No			Estimated Population (3-Yr Avg)
	#	%	C.I. (95%)	#	%	C.I. (95%)	#
Employed	7,100	21.9	15.5 - 28.3	25,400	78.1	71.7 - 84.5	32,600
Retired/Unable to work	6,600	20.7	15.1 - 26.3	25,300	79.3	73.7 - 84.9	31,900

Diabetes - eye prob, hlth prof. by State, County, Island, Community, BRFSS Age Group, DOH Race-Ethnicity, Gender, Education Level, Employment Status (Grouped), Household Income, Poverty Level, Marital Status (Grouped), Married, Health Care Coverage, for the Year(s) - 2000-2002, 2001-2003, 2002-2004, 2003-2005, 2004-2006, 2005-2007, 2006-2008, 2007-2009, 2008-2010

Note: Weighted numbers (#) represent 3-yr averages, percentages and 95% confidence intervals; Respondents aged 18 years and older; n/r (Not Reportable) - If the unweighted total responses for a dimension (row) is <50 that row will not be shown; n/a (Not Available) - Not asked of a subset of respondents

Year: 2003-2005

Household Income	Yes			No			Estimated Population (3-Yr Avg)
	#	%	C.I. (95%)	#	%	C.I. (95%)	#
\$15,000 to \$19,999	1,700	26.5	9.0 - 44.0	4,700	73.5	56.0 - 91.0	6,400
\$20,000 to \$24,999	2,000	34.6	18.3 - 51.0	3,800	65.4	49.0 - 81.7	5,800
\$25,000 to \$34,999	2,000	24.7	8.5 - 40.8	6,000	75.3	59.2 - 91.5	7,900
\$35,000 to \$49,999	2,600	30.4	18.7 - 42.2	5,900	69.6	57.8 - 81.3	8,500
\$50,000 to \$74,999	1,800	14.7	7.5 - 21.9	10,500	85.3	78.1 - 92.5	12,300
\$75,000 or more	2,900	26.7	13.5 - 39.9	8,000	73.3	60.1 - 86.5	10,900

Diabetes - eye prob, hlth prof. by State, County, Island, Community, BRFSS Age Group, DOH Race-Ethnicity, Gender, Education Level, Employment Status (Grouped), Household Income, Poverty Level, Marital Status (Grouped), Married, Health Care Coverage, for the Year(s) - 2000-2002, 2001-2003, 2002-2004, 2003-2005, 2004-2006, 2005-2007, 2006-2008, 2007-2009, 2008-2010

Note: Weighted numbers (#) represent 3-yr averages, percentages and 95% confidence intervals; Respondents aged 18 years and older; n/r (Not Reportable) - If the unweighted total responses for a dimension (row) is <50 that row will not be shown; n/a (Not Available) - Not asked of a subset of respondents

Year: 2003-2005

Poverty Level	Yes			No			Estimated Population (3-Yr Avg)
	#	%	C.I. (95%)	#	%	C.I. (95%)	#
0-130%	5,100	27.2	17.0 - 37.5	13,500	72.8	62.5 - 83.0	18,600
131-185%	1,500	21.5	8.6 - 34.3	5,300	78.5	65.7 - 91.4	6,800
186+%	8,100	23.8	17.8 - 29.8	26,000	76.2	70.2 - 82.2	34,100

Marital Status (Grouped)	Yes			No			Estimated Population (3-Yr Avg)
	#	%	C.I. (95%)	#	%	C.I. (95%)	#
Married	9,100	20.7	15.0 - 26.3	35,000	79.3	73.7 - 85.0	44,100
Widowed	2,900	34.4	22.2 - 46.6	5,600	65.6	53.4 - 77.8	8,600
Other	4,000	24.0	15.5 - 32.5	12,600	76.0	67.5 - 84.5	16,600

Diabetes - eye prob, hlth prof. by State, County, Island, Community, BRFSS Age Group, DOH Race-Ethnicity, Gender, Education Level, Employment Status (Grouped), Household Income, Poverty Level, Marital Status (Grouped), Married, Health Care Coverage, for the Year(s) - 2000-2002, 2001-2003, 2002-2004, 2003-2005, 2004-2006, 2005-2007, 2006-2008, 2007-2009, 2008-2010

Note: Weighted numbers (#) represent 3-yr averages, percentages and 95% confidence intervals; Respondents aged 18 years and older; n/r (Not Reportable) - If the unweighted total responses for a dimension (row) is <50 that row will not be shown; n/a (Not Available) - Not asked of a subset of respondents

Year: 2003-2005

Married	Yes			No			Estimated Population (3-Yr Avg)
	#	%	C.I. (95%)	#	%	C.I. (95%)	#
Yes	9,200	20.6	15.1 - 26.2	35,400	79.4	73.8 - 84.9	44,600
No	6,900	27.5	20.3 - 34.7	18,100	72.5	65.3 - 79.7	25,000

Health Care Coverage	Yes			No			Estimated Population (3-Yr Avg)
	#	%	C.I. (95%)	#	%	C.I. (95%)	#
Yes	10,700	25.9	20.0 - 31.8	30,700	74.1	68.2 - 80.0	41,400

Diabetes - eye prob, hlth prof. by State, County, Island, Community, BRFSS Age Group, DOH Race-Ethnicity, Gender, Education Level, Employment Status (Grouped), Household Income, Poverty Level, Marital Status (Grouped), Married, Health Care Coverage, for the Year(s) - 2000-2002, 2001-2003, 2002-2004, 2003-2005, 2004-2006, 2005-2007, 2006-2008, 2007-2009, 2008-2010

Note: Weighted numbers (#) represent 3-yr averages, percentages and 95% confidence intervals; Respondents aged 18 years and older; n/r (Not Reportable) - If the unweighted total responses for a dimension (row) is <50 that row will not be shown; n/a (Not Available) - Not asked of a subset of respondents

Year: 2002-2004

State	Yes			No			Estimated Population (3-Yr Avg)
	#	%	C.I. (95%)	#	%	C.I. (95%)	#
Hawaii State	14,900	24.7	20.2 - 29.2	45,400	75.3	70.8 - 79.8	60,200

County	Yes			No			Estimated Population (3-Yr Avg)
	#	%	C.I. (95%)	#	%	C.I. (95%)	#
Hawaii	2,000	27.8	18.2 - 37.3	5,300	72.2	62.7 - 81.8	7,400
Honolulu	11,400	25.1	19.4 - 30.8	34,000	74.9	69.2 - 80.6	45,400
Kauai	600	24.1	12.9 - 35.3	2,000	75.9	64.7 - 87.1	2,600
Maui	800	16.3	9.3 - 23.2	4,000	83.7	76.8 - 90.7	4,800

Diabetes - eye prob, hlth prof. by State, County, Island, Community, BRFSS Age Group, DOH Race-Ethnicity, Gender, Education Level, Employment Status (Grouped), Household Income, Poverty Level, Marital Status (Grouped), Married, Health Care Coverage, for the Year(s) - 2000-2002, 2001-2003, 2002-2004, 2003-2005, 2004-2006, 2005-2007, 2006-2008, 2007-2009, 2008-2010

Note: Weighted numbers (#) represent 3-yr averages, percentages and 95% confidence intervals; Respondents aged 18 years and older; n/r (Not Reportable) - If the unweighted total responses for a dimension (row) is <50 that row will not be shown; n/a (Not Available) - Not asked of a subset of respondents

Year: 2002-2004

Island	Yes			No			Estimated Population (3-Yr Avg)
	#	%	C.I. (95%)	#	%	C.I. (95%)	#
Hawaii	2,000	27.8	18.2 - 37.3	5,300	72.2	62.7 - 81.8	7,400
Kauai	600	24.1	12.9 - 35.3	2,000	75.9	64.7 - 87.1	2,600
Maui	500	11.8	4.8 - 18.9	3,600	88.2	81.1 - 95.2	4,100
Oahu	11,400	25.1	19.4 - 30.8	34,000	74.9	69.2 - 80.6	45,400

Community	Yes			No			Estimated Population (3-Yr Avg)
	#	%	C.I. (95%)	#	%	C.I. (95%)	#
Aiea/ Pearl City	1,000	18.0	6.6 - 29.4	4,800	82.0	70.6 - 93.4	5,800
Hilo	400	23.9	10.6 - 37.2	1,400	76.1	62.8 - 89.4	1,800
Lihue-Waimea	300	18.7	7.4 - 30.1	1,500	81.3	69.9 - 92.6	1,900
Waipahu/ Kapolei/ Ewa	1,900	27.3	10.2 - 44.4	5,200	72.7	55.6 - 89.8	7,100

Diabetes - eye prob, hlth prof. by State, County, Island, Community, BRFSS Age Group, DOH Race-Ethnicity, Gender, Education Level, Employment Status (Grouped), Household Income, Poverty Level, Marital Status (Grouped), Married, Health Care Coverage, for the Year(s) - 2000-2002, 2001-2003, 2002-2004, 2003-2005, 2004-2006, 2005-2007, 2006-2008, 2007-2009, 2008-2010

Note: Weighted numbers (#) represent 3-yr averages, percentages and 95% confidence intervals; Respondents aged 18 years and older; n/r (Not Reportable) - If the unweighted total responses for a dimension (row) is <50 that row will not be shown; n/a (Not Available) - Not asked of a subset of respondents

Year: 2002-2004

BRFSS Age Group	Yes			No			Estimated Population (3-Yr Avg)
	#	%	C.I. (95%)	#	%	C.I. (95%)	#
35-44	1,200	14.5	3.7 - 25.2	6,900	85.5	74.8 - 96.3	8,100
45-54	4,700	36.3	24.3 - 48.3	8,200	63.7	51.7 - 75.7	12,900
55-64	4,700	32.9	23.5 - 42.2	9,600	67.1	57.8 - 76.5	14,400
65-74	3,300	25.4	16.7 - 34.0	9,600	74.6	66.0 - 83.3	12,900
75+	700	7.8	3.7 - 12.0	8,600	92.2	88.0 - 96.3	9,300

Diabetes - eye prob, hlth prof. by State, County, Island, Community, BRFSS Age Group, DOH Race-Ethnicity, Gender, Education Level, Employment Status (Grouped), Household Income, Poverty Level, Marital Status (Grouped), Married, Health Care Coverage, for the Year(s) - 2000-2002, 2001-2003, 2002-2004, 2003-2005, 2004-2006, 2005-2007, 2006-2008, 2007-2009, 2008-2010

Note: Weighted numbers (#) represent 3-yr averages, percentages and 95% confidence intervals; Respondents aged 18 years and older; n/r (Not Reportable) - If the unweighted total responses for a dimension (row) is <50 that row will not be shown; n/a (Not Available) - Not asked of a subset of respondents

Year: 2002-2004

DOH Race-Ethnicity	Yes			No			Estimated Population (3-Yr Avg)
	#	%	C.I. (95%)	#	%	C.I. (95%)	#
Caucasian	2,400	18.5	10.9 - 26.1	10,700	81.5	73.9 - 89.1	13,100
Native Hawaiian	3,900	32.3	20.0 - 44.6	8,100	67.7	55.4 - 80.0	12,000
Chinese	600	13.6	4.1 - 23.0	4,000	86.4	77.0 - 95.9	4,600
Filipino	3,200	31.0	18.1 - 44.0	7,200	69.0	56.0 - 81.9	10,400
Japanese	2,700	18.2	11.7 - 24.8	12,300	81.8	75.2 - 88.3	15,000

Gender	Yes			No			Estimated Population (3-Yr Avg)
	#	%	C.I. (95%)	#	%	C.I. (95%)	#
Male	6,500	21.8	15.8 - 27.8	23,400	78.2	72.2 - 84.2	29,900
Female	8,300	27.5	20.9 - 34.1	22,000	72.5	65.9 - 79.1	30,300

Diabetes - eye prob, hlth prof. by State, County, Island, Community, BRFSS Age Group, DOH Race-Ethnicity, Gender, Education Level, Employment Status (Grouped), Household Income, Poverty Level, Marital Status (Grouped), Married, Health Care Coverage, for the Year(s) - 2000-2002, 2001-2003, 2002-2004, 2003-2005, 2004-2006, 2005-2007, 2006-2008, 2007-2009, 2008-2010

Note: Weighted numbers (#) represent 3-yr averages, percentages and 95% confidence intervals; Respondents aged 18 years and older; n/r (Not Reportable) - If the unweighted total responses for a dimension (row) is <50 that row will not be shown; n/a (Not Available) - Not asked of a subset of respondents

Year: 2002-2004

Education Level	Yes			No			Estimated Population (3-Yr Avg)
	#	%	C.I. (95%)	#	%	C.I. (95%)	#
Grades 9 thru 11 (Some High School)	900	25.5	9.9 - 41.1	2,600	74.5	58.9 - 90.1	3,400
Grades 12 or GED (High School Grad)	5,600	24.1	16.7 - 31.4	17,700	76.0	68.6 - 83.3	23,300
College 1 to 3 years (Some College/ Tech)	5,000	29.8	20.1 - 39.4	11,700	70.2	60.6 - 79.9	16,600
College 4 years or more (College Grad)	3,100	19.9	12.4 - 27.4	12,300	80.1	72.6 - 87.6	15,400

Employment Status (Grouped)	Yes			No			Estimated Population (3-Yr Avg)
	#	%	C.I. (95%)	#	%	C.I. (95%)	#
Employed	5,300	19.7	13.7 - 25.7	21,600	80.3	74.3 - 86.3	26,900
Retired/Unable to work	7,200	25.2	19.1 - 31.3	21,300	74.8	68.7 - 80.9	28,500

Diabetes - eye prob, hlth prof. by State, County, Island, Community, BRFSS Age Group, DOH Race-Ethnicity, Gender, Education Level, Employment Status (Grouped), Household Income, Poverty Level, Marital Status (Grouped), Married, Health Care Coverage, for the Year(s) - 2000-2002, 2001-2003, 2002-2004, 2003-2005, 2004-2006, 2005-2007, 2006-2008, 2007-2009, 2008-2010

Note: Weighted numbers (#) represent 3-yr averages, percentages and 95% confidence intervals; Respondents aged 18 years and older; n/r (Not Reportable) - If the unweighted total responses for a dimension (row) is <50 that row will not be shown; n/a (Not Available) - Not asked of a subset of respondents

Year: 2002-2004

Household Income	Yes			No			Estimated Population (3-Yr Avg)
	#	%	C.I. (95%)	#	%	C.I. (95%)	#
Less than \$10,000	900	29.2	14.8 - 43.5	2,200	70.8	56.5 - 85.2	3,100
\$10,000 to \$14,999	900	24.4	6.8 - 42.0	2,800	75.6	58.0 - 93.2	3,700
\$15,000 to \$19,999	1,800	41.1	16.3 - 65.9	2,500	58.9	34.1 - 83.7	4,300
\$20,000 to \$24,999	1,200	25.3	9.8 - 40.9	3,400	74.7	59.1 - 90.2	4,500
\$25,000 to \$34,999	1,800	29.3	9.4 - 49.1	4,200	70.7	50.9 - 90.6	6,000
\$35,000 to \$49,999	1,900	23.1	12.6 - 33.5	6,300	76.9	66.5 - 87.4	8,200
\$50,000 to \$74,999	1,800	16.9	8.9 - 25.0	8,800	83.1	75.0 - 91.1	10,600
\$75,000 or more	2,800	28.7	15.8 - 41.7	7,000	71.3	58.3 - 84.2	9,800

Diabetes - eye prob, hlth prof. by State, County, Island, Community, BRFSS Age Group, DOH Race-Ethnicity, Gender, Education Level, Employment Status (Grouped), Household Income, Poverty Level, Marital Status (Grouped), Married, Health Care Coverage, for the Year(s) - 2000-2002, 2001-2003, 2002-2004, 2003-2005, 2004-2006, 2005-2007, 2006-2008, 2007-2009, 2008-2010

Note: Weighted numbers (#) represent 3-yr averages, percentages and 95% confidence intervals; Respondents aged 18 years and older; n/r (Not Reportable) - If the unweighted total responses for a dimension (row) is <50 that row will not be shown; n/a (Not Available) - Not asked of a subset of respondents

Year: 2002-2004

Poverty Level	Yes			No			Estimated Population (3-Yr Avg)
	#	%	C.I. (95%)	#	%	C.I. (95%)	#
0-130%	4,600	31.1	19.7 - 42.6	10,200	68.9	57.4 - 80.3	14,800
131-185%	1,300	23.6	8.6 - 38.6	4,100	76.4	61.4 - 91.4	5,400
186+%	7,100	23.6	17.6 - 29.6	22,800	76.4	70.4 - 82.4	29,900

Marital Status (Grouped)	Yes			No			Estimated Population (3-Yr Avg)
	#	%	C.I. (95%)	#	%	C.I. (95%)	#
Married	8,300	21.8	16.1 - 27.5	29,800	78.2	72.5 - 83.9	38,100
Widowed	3,000	33.4	21.5 - 45.2	6,100	66.6	54.8 - 78.5	9,100
Other	3,500	26.7	17.5 - 36.0	9,500	73.3	64.0 - 82.5	12,900

Diabetes - eye prob, hlth prof. by State, County, Island, Community, BRFSS Age Group, DOH Race-Ethnicity, Gender, Education Level, Employment Status (Grouped), Household Income, Poverty Level, Marital Status (Grouped), Married, Health Care Coverage, for the Year(s) - 2000-2002, 2001-2003, 2002-2004, 2003-2005, 2004-2006, 2005-2007, 2006-2008, 2007-2009, 2008-2010

Note: Weighted numbers (#) represent 3-yr averages, percentages and 95% confidence intervals; Respondents aged 18 years and older; n/r (Not Reportable) - If the unweighted total responses for a dimension (row) is <50 that row will not be shown; n/a (Not Available) - Not asked of a subset of respondents

Year: 2002-2004

Married	Yes			No			Estimated Population (3-Yr Avg)
	#	%	C.I. (95%)	#	%	C.I. (95%)	#
Yes	8,400	21.7	16.1 - 27.3	30,200	78.3	72.7 - 83.9	38,600
No	6,500	30.0	22.5 - 37.6	15,100	70.0	62.4 - 77.5	21,600

Health Care Coverage	Yes			No			Estimated Population (3-Yr Avg)
	#	%	C.I. (95%)	#	%	C.I. (95%)	#
Yes	14,300	24.5	20.0 - 29.0	44,000	75.5	71.0 - 80.0	58,300

Diabetes - eye prob, hlth prof. by State, County, Island, Community, BRFSS Age Group, DOH Race-Ethnicity, Gender, Education Level, Employment Status (Grouped), Household Income, Poverty Level, Marital Status (Grouped), Married, Health Care Coverage, for the Year(s) - 2000-2002, 2001-2003, 2002-2004, 2003-2005, 2004-2006, 2005-2007, 2006-2008, 2007-2009, 2008-2010

Note: Weighted numbers (#) represent 3-yr averages, percentages and 95% confidence intervals; Respondents aged 18 years and older; n/r (Not Reportable) - If the unweighted total responses for a dimension (row) is <50 that row will not be shown; n/a (Not Available) - Not asked of a subset of respondents

Year: 2001-2003

State	Yes			No			Estimated Population (3-Yr Avg)
	#	%	C.I. (95%)	#	%	C.I. (95%)	#
Hawaii State	13,900	23.8	19.8 - 27.7	44,400	76.2	72.3 - 80.2	58,300

County	Yes			No			Estimated Population (3-Yr Avg)
	#	%	C.I. (95%)	#	%	C.I. (95%)	#
Hawaii	1,800	25.9	16.6 - 35.3	5,100	74.1	64.7 - 83.4	6,800
Honolulu	10,500	24.2	19.3 - 29.1	32,800	75.8	70.9 - 80.7	43,300
Kauai	700	28.1	16.8 - 39.4	1,700	71.9	60.6 - 83.2	2,300
Maui	1,000	16.4	8.5 - 24.3	4,900	83.6	75.7 - 91.5	5,900

Diabetes - eye prob, hlth prof. by State, County, Island, Community, BRFSS Age Group, DOH Race-Ethnicity, Gender, Education Level, Employment Status (Grouped), Household Income, Poverty Level, Marital Status (Grouped), Married, Health Care Coverage, for the Year(s) - 2000-2002, 2001-2003, 2002-2004, 2003-2005, 2004-2006, 2005-2007, 2006-2008, 2007-2009, 2008-2010

Note: Weighted numbers (#) represent 3-yr averages, percentages and 95% confidence intervals; Respondents aged 18 years and older; n/r (Not Reportable) - If the unweighted total responses for a dimension (row) is <50 that row will not be shown; n/a (Not Available) - Not asked of a subset of respondents

Year: 2001-2003

Island	Yes			No			Estimated Population (3-Yr Avg)
	#	%	C.I. (95%)	#	%	C.I. (95%)	#
Hawaii	1,800	25.9	16.6 - 35.3	5,100	74.1	64.7 - 83.4	6,800
Kauai	700	28.1	16.8 - 39.4	1,700	71.9	60.6 - 83.2	2,300
Maui	700	12.7	5.1 - 20.3	4,500	87.3	79.7 - 94.9	5,200
Oahu	10,500	24.2	19.3 - 29.1	32,800	75.8	70.9 - 80.7	43,300

Diabetes - eye prob, hlth prof. by State, County, Island, Community, BRFSS Age Group, DOH Race-Ethnicity, Gender, Education Level, Employment Status (Grouped), Household Income, Poverty Level, Marital Status (Grouped), Married, Health Care Coverage, for the Year(s) - 2000-2002, 2001-2003, 2002-2004, 2003-2005, 2004-2006, 2005-2007, 2006-2008, 2007-2009, 2008-2010

Note: Weighted numbers (#) represent 3-yr averages, percentages and 95% confidence intervals; Respondents aged 18 years and older; n/r (Not Reportable) - If the unweighted total responses for a dimension (row) is <50 that row will not be shown; n/a (Not Available) - Not asked of a subset of respondents

Year: 2001-2003

Community	Yes			No			Estimated Population (3-Yr Avg)
	#	%	C.I. (95%)	#	%	C.I. (95%)	#
Aiea/ Pearl City	1,300	21.5	9.9 - 33.1	4,700	78.5	66.9 - 90.1	6,000
Hilo	500	22.4	11.1 - 33.8	1,800	77.6	66.2 - 88.9	2,300
Kahului	300	9.9	0.0 - 20.4	2,600	90.1	79.6 - 100.0	2,800
Kaimuki/ Palolo/ Waikiki	500	10.2	0.0 - 21.7	4,400	89.8	78.3 - 100.0	4,900
Lihue-Waimea	500	28.8	15.4 - 42.1	1,100	71.2	57.9 - 84.6	1,600
Waipahu/ Kapolei/ Ewa	1,200	24.6	11.7 - 37.5	3,800	75.4	62.5 - 88.3	5,100

Diabetes - eye prob, hlth prof. by State, County, Island, Community, BRFSS Age Group, DOH Race-Ethnicity, Gender, Education Level, Employment Status (Grouped), Household Income, Poverty Level, Marital Status (Grouped), Married, Health Care Coverage, for the Year(s) - 2000-2002, 2001-2003, 2002-2004, 2003-2005, 2004-2006, 2005-2007, 2006-2008, 2007-2009, 2008-2010

Note: Weighted numbers (#) represent 3-yr averages, percentages and 95% confidence intervals; Respondents aged 18 years and older; n/r (Not Reportable) - If the unweighted total responses for a dimension (row) is <50 that row will not be shown; n/a (Not Available) - Not asked of a subset of respondents

Year: 2001-2003

BRFSS Age Group	Yes			No			Estimated Population (3-Yr Avg)
	#	%	C.I. (95%)	#	%	C.I. (95%)	#
35-44	1,000	19.6	8.4 - 30.8	4,100	80.4	69.2 - 91.6	5,200
45-54	3,500	31.3	21.5 - 41.2	7,700	68.7	58.8 - 78.5	11,300
55-64	3,500	26.0	18.0 - 34.0	10,000	74.0	66.0 - 82.0	13,600
65-74	4,300	28.7	20.0 - 37.4	10,600	71.3	62.6 - 80.0	14,900
75+	900	10.4	5.6 - 15.1	8,200	89.6	84.9 - 94.4	9,100

Diabetes - eye prob, hlth prof. by State, County, Island, Community, BRFSS Age Group, DOH Race-Ethnicity, Gender, Education Level, Employment Status (Grouped), Household Income, Poverty Level, Marital Status (Grouped), Married, Health Care Coverage, for the Year(s) - 2000-2002, 2001-2003, 2002-2004, 2003-2005, 2004-2006, 2005-2007, 2006-2008, 2007-2009, 2008-2010

Note: Weighted numbers (#) represent 3-yr averages, percentages and 95% confidence intervals; Respondents aged 18 years and older; n/r (Not Reportable) - If the unweighted total responses for a dimension (row) is <50 that row will not be shown; n/a (Not Available) - Not asked of a subset of respondents

Year: 2001-2003

DOH Race-Ethnicity	Yes			No			Estimated Population (3-Yr Avg)
	#	%	C.I. (95%)	#	%	C.I. (95%)	#
Caucasian	2,500	20.1	13.0 - 27.3	9,900	79.9	72.7 - 87.0	12,400
Native Hawaiian	3,000	30.7	20.4 - 41.0	6,700	69.3	59.0 - 79.6	9,700
Chinese	900	16.1	6.4 - 25.8	4,500	83.9	74.2 - 93.6	5,300
Filipino	2,400	23.5	13.3 - 33.8	7,700	76.5	66.2 - 86.7	10,000
Japanese	3,100	18.8	12.6 - 24.9	13,400	81.2	75.1 - 87.4	16,500

Gender	Yes			No			Estimated Population (3-Yr Avg)
	#	%	C.I. (95%)	#	%	C.I. (95%)	#
Male	6,800	23.8	17.6 - 30.0	21,600	76.2	70.0 - 82.4	28,400
Female	7,100	23.7	18.8 - 28.7	22,800	76.3	71.3 - 81.2	29,900

Diabetes - eye prob, hlth prof. by State, County, Island, Community, BRFSS Age Group, DOH Race-Ethnicity, Gender, Education Level, Employment Status (Grouped), Household Income, Poverty Level, Marital Status (Grouped), Married, Health Care Coverage, for the Year(s) - 2000-2002, 2001-2003, 2002-2004, 2003-2005, 2004-2006, 2005-2007, 2006-2008, 2007-2009, 2008-2010

Note: Weighted numbers (#) represent 3-yr averages, percentages and 95% confidence intervals; Respondents aged 18 years and older; n/r (Not Reportable) - If the unweighted total responses for a dimension (row) is <50 that row will not be shown; n/a (Not Available) - Not asked of a subset of respondents

Year: 2001-2003

Education Level	Yes			No			Estimated Population (3-Yr Avg)
	#	%	C.I. (95%)	#	%	C.I. (95%)	#
Grades 9 thru 11 (Some High School)	1,200	26.0	11.5 - 40.5	3,300	74.0	59.5 - 88.5	4,400
Grades 12 or GED (High School Grad)	5,300	25.3	19.0 - 31.6	15,800	74.7	68.4 - 81.0	21,100
College 1 to 3 years (Some College/ Tech)	4,000	23.9	15.6 - 32.2	12,800	76.1	67.8 - 84.4	16,800
College 4 years or more (College Grad)	2,900	21.0	13.6 - 28.3	11,000	79.0	71.7 - 86.4	13,900

Employment Status (Grouped)	Yes			No			Estimated Population (3-Yr Avg)
	#	%	C.I. (95%)	#	%	C.I. (95%)	#
Employed	4,700	18.6	13.3 - 23.9	20,500	81.4	76.1 - 86.7	25,200
Retired/Unable to work	7,700	26.4	20.7 - 32.2	21,500	73.6	67.8 - 79.3	29,200

Diabetes - eye prob, hlth prof. by State, County, Island, Community, BRFSS Age Group, DOH Race-Ethnicity, Gender, Education Level, Employment Status (Grouped), Household Income, Poverty Level, Marital Status (Grouped), Married, Health Care Coverage, for the Year(s) - 2000-2002, 2001-2003, 2002-2004, 2003-2005, 2004-2006, 2005-2007, 2006-2008, 2007-2009, 2008-2010

Note: Weighted numbers (#) represent 3-yr averages, percentages and 95% confidence intervals; Respondents aged 18 years and older; n/r (Not Reportable) - If the unweighted total responses for a dimension (row) is <50 that row will not be shown; n/a (Not Available) - Not asked of a subset of respondents

Year: 2001-2003

Household Income	Yes			No			Estimated Population (3-Yr Avg)
	#	%	C.I. (95%)	#	%	C.I. (95%)	#
Less than \$10,000	1,400	37.5	21.5 - 53.6	2,300	62.5	46.4 - 78.5	3,700
\$10,000 to \$14,999	1,100	22.9	7.6 - 38.2	3,600	77.1	61.8 - 92.4	4,600
\$15,000 to \$19,999	800	33.8	15.0 - 52.6	1,600	66.2	47.4 - 85.0	2,400
\$20,000 to \$24,999	1,000	21.7	6.2 - 37.3	3,600	78.3	62.7 - 93.8	4,500
\$25,000 to \$34,999	800	16.4	7.0 - 25.7	3,900	83.6	74.3 - 93.0	4,700
\$35,000 to \$49,999	2,700	30.8	19.7 - 41.9	6,000	69.2	58.1 - 80.3	8,700
\$50,000 to \$74,999	1,400	19.6	10.0 - 29.2	5,700	80.4	70.8 - 90.0	7,100
\$75,000 or more	1,800	23.1	12.2 - 34.1	5,800	76.9	65.9 - 87.8	7,600

Diabetes - eye prob, hlth prof. by State, County, Island, Community, BRFSS Age Group, DOH Race-Ethnicity, Gender, Education Level, Employment Status (Grouped), Household Income, Poverty Level, Marital Status (Grouped), Married, Health Care Coverage, for the Year(s) - 2000-2002, 2001-2003, 2002-2004, 2003-2005, 2004-2006, 2005-2007, 2006-2008, 2007-2009, 2008-2010

Note: Weighted numbers (#) represent 3-yr averages, percentages and 95% confidence intervals; Respondents aged 18 years and older; n/r (Not Reportable) - If the unweighted total responses for a dimension (row) is <50 that row will not be shown; n/a (Not Available) - Not asked of a subset of respondents

Year: 2001-2003

Poverty Level	Yes			No			Estimated Population (3-Yr Avg)
	#	%	C.I. (95%)	#	%	C.I. (95%)	#
0-130%	3,700	28.8	19.1 - 38.5	9,200	71.2	61.5 - 80.9	12,900
131-185%	800	14.5	5.0 - 24.0	4,600	85.5	76.0 - 95.0	5,400
186+%	6,300	25.3	19.4 - 31.3	18,700	74.7	68.7 - 80.6	25,100

Marital Status (Grouped)	Yes			No			Estimated Population (3-Yr Avg)
	#	%	C.I. (95%)	#	%	C.I. (95%)	#
Married	8,000	21.7	16.7 - 26.7	28,700	78.3	73.3 - 83.3	36,700
Widowed	2,400	26.0	16.6 - 35.3	6,800	74.0	64.7 - 83.4	9,200
Other	3,500	28.2	19.7 - 36.7	8,900	71.8	63.3 - 80.3	12,400

Diabetes - eye prob, hlth prof. by State, County, Island, Community, BRFSS Age Group, DOH Race-Ethnicity, Gender, Education Level, Employment Status (Grouped), Household Income, Poverty Level, Marital Status (Grouped), Married, Health Care Coverage, for the Year(s) - 2000-2002, 2001-2003, 2002-2004, 2003-2005, 2004-2006, 2005-2007, 2006-2008, 2007-2009, 2008-2010

Note: Weighted numbers (#) represent 3-yr averages, percentages and 95% confidence intervals; Respondents aged 18 years and older; n/r (Not Reportable) - If the unweighted total responses for a dimension (row) is <50 that row will not be shown; n/a (Not Available) - Not asked of a subset of respondents

Year: 2001-2003

Married	Yes			No			Estimated Population (3-Yr Avg)
	#	%	C.I. (95%)	#	%	C.I. (95%)	#
Yes	8,100	21.7	16.7 - 26.6	29,300	78.3	73.4 - 83.3	37,400
No	5,800	27.6	21.1 - 34.1	15,100	72.4	65.9 - 78.9	20,900

Health Care Coverage	Yes			No			Estimated Population (3-Yr Avg)
	#	%	C.I. (95%)	#	%	C.I. (95%)	#
Yes	13,800	24.2	20.2 - 28.3	43,100	75.8	71.7 - 79.8	56,900

Diabetes - eye prob, hlth prof. by State, County, Island, Community, BRFSS Age Group, DOH Race-Ethnicity, Gender, Education Level, Employment Status (Grouped), Household Income, Poverty Level, Marital Status (Grouped), Married, Health Care Coverage, for the Year(s) - 2000-2002, 2001-2003, 2002-2004, 2003-2005, 2004-2006, 2005-2007, 2006-2008, 2007-2009, 2008-2010

Note: Weighted numbers (#) represent 3-yr averages, percentages and 95% confidence intervals; Respondents aged 18 years and older; n/r (Not Reportable) - If the unweighted total responses for a dimension (row) is <50 that row will not be shown; n/a (Not Available) - Not asked of a subset of respondents

Year: 2000-2002

State	Yes			No			Estimated Population (3-Yr Avg)
	#	%	C.I. (95%)	#	%	C.I. (95%)	#
Hawaii State	11,100	22.0	18.1 - 25.9	39,400	78.0	74.1 - 81.9	50,500

County	Yes			No			Estimated Population (3-Yr Avg)
	#	%	C.I. (95%)	#	%	C.I. (95%)	#
Hawaii	1,500	24.9	18.2 - 31.7	4,600	75.1	68.3 - 81.8	6,100
Honolulu	8,200	22.8	17.7 - 27.8	28,000	77.2	72.2 - 82.3	36,200
Kauai	500	22.8	13.4 - 32.2	1,800	77.2	67.8 - 86.6	2,300
Maui	800	13.9	6.6 - 21.2	5,100	86.1	78.8 - 93.4	5,900

Diabetes - eye prob, hlth prof. by State, County, Island, Community, BRFSS Age Group, DOH Race-Ethnicity, Gender, Education Level, Employment Status (Grouped), Household Income, Poverty Level, Marital Status (Grouped), Married, Health Care Coverage, for the Year(s) - 2000-2002, 2001-2003, 2002-2004, 2003-2005, 2004-2006, 2005-2007, 2006-2008, 2007-2009, 2008-2010

Note: Weighted numbers (#) represent 3-yr averages, percentages and 95% confidence intervals; Respondents aged 18 years and older; n/r (Not Reportable) - If the unweighted total responses for a dimension (row) is <50 that row will not be shown; n/a (Not Available) - Not asked of a subset of respondents

Year: 2000-2002

Island	Yes			No			Estimated Population (3-Yr Avg)
	#	%	C.I. (95%)	#	%	C.I. (95%)	#
Hawaii	1,500	24.9	18.2 - 31.7	4,600	75.1	68.3 - 81.8	6,100
Kauai	500	22.8	13.4 - 32.2	1,800	77.2	67.8 - 86.6	2,300
Maui	600	12.3	4.6 - 19.9	4,600	87.7	80.1 - 95.4	5,200
Oahu	8,200	22.8	17.7 - 27.8	28,000	77.2	72.2 - 82.3	36,200

Diabetes - eye prob, hlth prof. by State, County, Island, Community, BRFSS Age Group, DOH Race-Ethnicity, Gender, Education Level, Employment Status (Grouped), Household Income, Poverty Level, Marital Status (Grouped), Married, Health Care Coverage, for the Year(s) - 2000-2002, 2001-2003, 2002-2004, 2003-2005, 2004-2006, 2005-2007, 2006-2008, 2007-2009, 2008-2010

Note: Weighted numbers (#) represent 3-yr averages, percentages and 95% confidence intervals; Respondents aged 18 years and older; n/r (Not Reportable) - If the unweighted total responses for a dimension (row) is <50 that row will not be shown; n/a (Not Available) - Not asked of a subset of respondents

Year: 2000-2002

Community	Yes			No			Estimated Population (3-Yr Avg)
	#	%	C.I. (95%)	#	%	C.I. (95%)	#
Aiea/ Pearl City	1,000	18.3	8.1 - 28.6	4,500	81.7	71.4 - 91.9	5,500
Hilo	500	24.0	13.7 - 34.3	1,700	76.0	65.7 - 86.3	2,300
Kaimuki/ Palolo/ Waikiki	700	15.0	1.4 - 28.7	4,000	85.0	71.3 - 98.6	4,700
Kona	500	36.2	20.5 - 52.0	1,000	63.8	48.0 - 79.5	1,500
Lihue-Waimea	400	23.4	12.1 - 34.7	1,300	76.6	65.3 - 87.9	1,700

Diabetes - eye prob, hlth prof. by State, County, Island, Community, BRFSS Age Group, DOH Race-Ethnicity, Gender, Education Level, Employment Status (Grouped), Household Income, Poverty Level, Marital Status (Grouped), Married, Health Care Coverage, for the Year(s) - 2000-2002, 2001-2003, 2002-2004, 2003-2005, 2004-2006, 2005-2007, 2006-2008, 2007-2009, 2008-2010

Note: Weighted numbers (#) represent 3-yr averages, percentages and 95% confidence intervals; Respondents aged 18 years and older; n/r (Not Reportable) - If the unweighted total responses for a dimension (row) is <50 that row will not be shown; n/a (Not Available) - Not asked of a subset of respondents

Year: 2000-2002

BRFSS Age Group	Yes			No			Estimated Population (3-Yr Avg)
	#	%	C.I. (95%)	#	%	C.I. (95%)	#
35-44	800	16.4	8.1 - 24.6	3,900	83.6	75.4 - 91.9	4,600
45-54	2,700	31.8	21.5 - 42.2	5,700	68.2	57.8 - 78.5	8,400
55-64	2,700	21.9	14.1 - 29.8	9,700	78.1	70.2 - 85.9	12,400
65-74	3,600	26.1	18.1 - 34.1	10,300	73.9	65.9 - 81.9	13,900
75+	800	10.0	4.5 - 15.4	6,800	90.0	84.6 - 95.5	7,600

Diabetes - eye prob, hlth prof. by State, County, Island, Community, BRFSS Age Group, DOH Race-Ethnicity, Gender, Education Level, Employment Status (Grouped), Household Income, Poverty Level, Marital Status (Grouped), Married, Health Care Coverage, for the Year(s) - 2000-2002, 2001-2003, 2002-2004, 2003-2005, 2004-2006, 2005-2007, 2006-2008, 2007-2009, 2008-2010

Note: Weighted numbers (#) represent 3-yr averages, percentages and 95% confidence intervals; Respondents aged 18 years and older; n/r (Not Reportable) - If the unweighted total responses for a dimension (row) is <50 that row will not be shown; n/a (Not Available) - Not asked of a subset of respondents

Year: 2000-2002

DOH Race-Ethnicity	Yes			No			Estimated Population (3-Yr Avg)
	#	%	C.I. (95%)	#	%	C.I. (95%)	#
Caucasian	1,400	14.3	8.8 - 19.8	8,300	85.7	80.2 - 91.2	9,700
Native Hawaiian	2,500	30.2	19.9 - 40.5	5,800	69.8	59.5 - 80.1	8,300
Chinese	600	19.4	6.3 - 32.5	2,600	80.6	67.5 - 93.7	3,200
Filipino	1,800	18.8	10.0 - 27.6	7,600	81.2	72.4 - 90.0	9,400
Japanese	3,300	20.6	14.4 - 26.9	12,500	79.4	73.1 - 85.6	15,800

Gender	Yes			No			Estimated Population (3-Yr Avg)
	#	%	C.I. (95%)	#	%	C.I. (95%)	#
Male	6,300	24.6	18.3 - 30.8	19,400	75.4	69.2 - 81.7	25,700
Female	4,800	19.3	14.9 - 23.8	20,000	80.7	76.2 - 85.1	24,800

Diabetes - eye prob, hlth prof. by State, County, Island, Community, BRFSS Age Group, DOH Race-Ethnicity, Gender, Education Level, Employment Status (Grouped), Household Income, Poverty Level, Marital Status (Grouped), Married, Health Care Coverage, for the Year(s) - 2000-2002, 2001-2003, 2002-2004, 2003-2005, 2004-2006, 2005-2007, 2006-2008, 2007-2009, 2008-2010

Note: Weighted numbers (#) represent 3-yr averages, percentages and 95% confidence intervals; Respondents aged 18 years and older; n/r (Not Reportable) - If the unweighted total responses for a dimension (row) is <50 that row will not be shown; n/a (Not Available) - Not asked of a subset of respondents

Year: 2000-2002

Education Level	Yes			No			Estimated Population (3-Yr Avg)
	#	%	C.I. (95%)	#	%	C.I. (95%)	#
Never attended school/ Only Kindergarten to Grades 8	600	28.2	9.6 - 46.7	1,500	71.8	53.3 - 90.4	2,100
Grades 9 thru 11 (Some High School)	800	24.5	9.8 - 39.1	2,500	75.5	60.9 - 90.2	3,300
Grades 12 or GED (High School Grad)	4,600	23.7	17.7 - 29.8	14,700	76.3	70.2 - 82.3	19,300
College 1 to 3 years (Some College/ Tech)	2,700	19.8	11.2 - 28.5	11,000	80.2	71.5 - 88.8	13,800
College 4 years or more (College Grad)	2,400	20.1	13.3 - 26.9	9,500	79.9	73.1 - 86.7	11,900

Employment Status (Grouped)	Yes			No			Estimated Population (3-Yr Avg)
	#	%	C.I. (95%)	#	%	C.I. (95%)	#
Employed	3,700	16.7	11.3 - 22.1	18,400	83.3	77.9 - 88.7	22,100
Retired/Unable to work	6,500	25.7	20.0 - 31.5	18,900	74.3	68.5 - 80.0	25,400

Diabetes - eye prob, hlth prof. by State, County, Island, Community, BRFSS Age Group, DOH Race-Ethnicity, Gender, Education Level, Employment Status (Grouped), Household Income, Poverty Level, Marital Status (Grouped), Married, Health Care Coverage, for the Year(s) - 2000-2002, 2001-2003, 2002-2004, 2003-2005, 2004-2006, 2005-2007, 2006-2008, 2007-2009, 2008-2010

Note: Weighted numbers (#) represent 3-yr averages, percentages and 95% confidence intervals; Respondents aged 18 years and older; n/r (Not Reportable) - If the unweighted total responses for a dimension (row) is <50 that row will not be shown; n/a (Not Available) - Not asked of a subset of respondents

Year: 2000-2002

Household Income	Yes			No			Estimated Population (3-Yr Avg)
	#	%	C.I. (95%)	#	%	C.I. (95%)	#
Less than \$10,000	1,600	50.5	35.3 - 65.7	1,600	49.5	34.3 - 64.7	3,200
\$10,000 to \$14,999	600	19.9	7.0 - 32.7	2,500	80.1	67.3 - 93.0	3,100
\$15,000 to \$19,999	800	32.6	17.3 - 48.0	1,600	67.4	52.0 - 82.7	2,300
\$20,000 to \$24,999	300	8.8	0.2 - 17.5	3,600	91.2	82.5 - 99.8	3,900
\$25,000 to \$34,999	700	13.1	5.8 - 20.4	4,700	86.9	79.6 - 94.2	5,400
\$35,000 to \$49,999	1,900	22.8	12.5 - 33.1	6,600	77.2	66.9 - 87.5	8,500
\$50,000 to \$74,999	1,000	20.0	9.9 - 30.2	4,100	80.0	69.8 - 90.1	5,200
\$75,000 or more	1,100	19.0	7.8 - 30.3	4,800	81.0	69.7 - 92.2	5,900

Diabetes - eye prob, hlth prof. by State, County, Island, Community, BRFSS Age Group, DOH Race-Ethnicity, Gender, Education Level, Employment Status (Grouped), Household Income, Poverty Level, Marital Status (Grouped), Married, Health Care Coverage, for the Year(s) - 2000-2002, 2001-2003, 2002-2004, 2003-2005, 2004-2006, 2005-2007, 2006-2008, 2007-2009, 2008-2010

Note: Weighted numbers (#) represent 3-yr averages, percentages and 95% confidence intervals; Respondents aged 18 years and older; n/r (Not Reportable) - If the unweighted total responses for a dimension (row) is <50 that row will not be shown; n/a (Not Available) - Not asked of a subset of respondents

Year: 2000-2002

Poverty Level	Yes			No			Estimated Population (3-Yr Avg)
	#	%	C.I. (95%)	#	%	C.I. (95%)	#
0-130%	2,300	25.9	15.6 - 36.2	6,600	74.1	63.8 - 84.4	8,800
131-185%	1,000	16.1	8.1 - 24.1	5,200	83.9	75.9 - 91.9	6,200
186+%	4,800	21.6	15.9 - 27.2	17,600	78.4	72.8 - 84.1	22,400

Marital Status (Grouped)	Yes			No			Estimated Population (3-Yr Avg)
	#	%	C.I. (95%)	#	%	C.I. (95%)	#
Married	6,900	20.9	15.8 - 26.0	26,000	79.1	74.0 - 84.2	32,900
Widowed	1,300	18.0	10.3 - 25.8	5,700	82.0	74.2 - 89.7	7,000
Other	2,900	27.9	20.0 - 35.8	7,600	72.1	64.2 - 80.0	10,600

Diabetes - eye prob, hlth prof. by State, County, Island, Community, BRFSS Age Group, DOH Race-Ethnicity, Gender, Education Level, Employment Status (Grouped), Household Income, Poverty Level, Marital Status (Grouped), Married, Health Care Coverage, for the Year(s) - 2000-2002, 2001-2003, 2002-2004, 2003-2005, 2004-2006, 2005-2007, 2006-2008, 2007-2009, 2008-2010

Note: Weighted numbers (#) represent 3-yr averages, percentages and 95% confidence intervals; Respondents aged 18 years and older; n/r (Not Reportable) - If the unweighted total responses for a dimension (row) is <50 that row will not be shown; n/a (Not Available) - Not asked of a subset of respondents

Year: 2000-2002

Married	Yes			No			Estimated Population (3-Yr Avg)
	#	%	C.I. (95%)	#	%	C.I. (95%)	#
Yes	7,000	20.9	15.9 - 26.0	26,500	79.1	74.0 - 84.1	33,500
No	4,100	24.1	18.2 - 30.1	12,900	75.9	69.9 - 81.8	17,000

Health Care Coverage	Yes			No			Estimated Population (3-Yr Avg)
	#	%	C.I. (95%)	#	%	C.I. (95%)	#
Yes	11,000	22.2	18.2 - 26.1	38,400	77.8	73.9 - 81.8	49,400