

Diabetes - eye exam, dilated by State, County, Island, Community, BRFSS Age Group, DOH Race-Ethnicity, Gender, Education Level, Employment Status (Grouped), Household Income, Poverty Level, Marital Status (Grouped), Married, Health Care Coverage, for the Year(s) - 2000-2002, 2001-2003, 2002-2004, 2003-2005, 2004-2006, 2005-2007, 2006-2008, 2007-2009, 2008-2010

Note: Weighted numbers (#) represent 3-yr averages, percentages and 95% confidence intervals; Respondents aged 18 years and older; n/r (Not Reportable) - If the unweighted total responses for a dimension (row) is <50 that row will not be shown; n/a (Not Available) - Not asked of a subset of respondents

The trend analysis report shows the trend for the selected health variable over selected years in a table and a graph. Estimated Population: This number is a weighted representation of the population who responded to a particular question in the survey. For most questions the eligible population will be the entire adult population. For some secondary questions only a subset of the population was asked the question. For example, all survey participants were asked if they had diabetes, but only those who answered yes were asked if they use insulin. If a dimension value is unknown for a particular survey record, that record will not be included in the counts for that particular dimension.

For documentation on other terms and coding in this report, please go to the following links

[Click here to access BRFSS documentation](#)

[Click here to access DOH Race-Ethnicity coding](#)

[Click here to access The Hawai'i Data Guide](#)

[Click here to access Poverty Level Methodology](#)

**For questions about this report, please contact
The Hawaii Health Data Warehouse**

profiles@hhdw.org

(855) 946-5899 x15

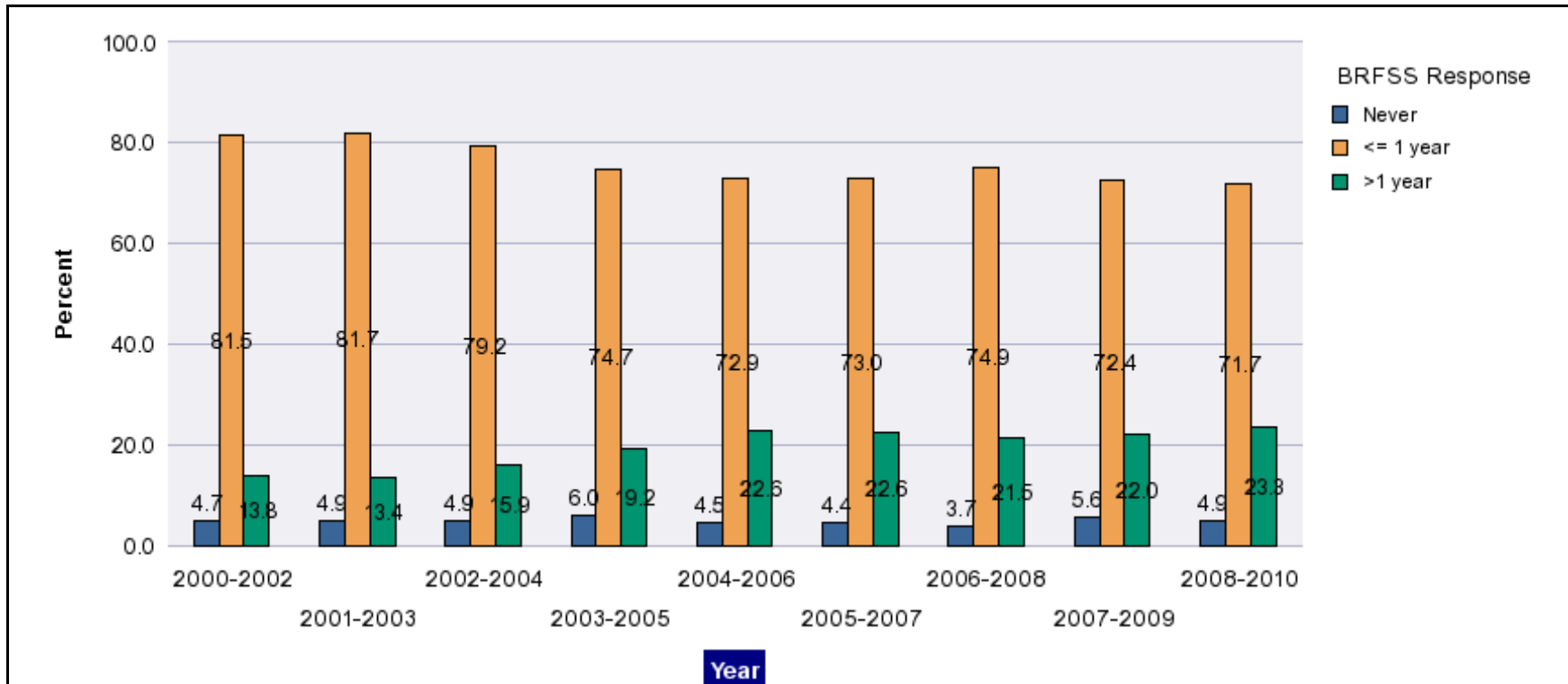
Diabetes - eye exam, dilated by State, County, Island, Community, BRFSS Age Group, DOH Race-Ethnicity, Gender, Education Level, Employment Status (Grouped), Household Income, Poverty Level, Marital Status (Grouped), Married, Health Care Coverage, for the Year(s) - 2000-2002, 2001-2003, 2002-2004, 2003-2005, 2004-2006, 2005-2007, 2006-2008, 2007-2009, 2008-2010

Note: Weighted numbers (#) represent 3-yr averages, percentages and 95% confidence intervals; Respondents aged 18 years and older; n/r (Not Reportable) - If the unweighted total responses for a dimension (row) is <50 that row will not be shown; n/a (Not Available) - Not asked of a subset of respondents

Year	Never			<= 1 year			>1 year			Estimated Population (3-Yr Avg)
	#	%	C.I.(95%)	#	%	C.I.(95%)	#	%	C.I.(95%)	#
2000-2002	2,400	4.7	2.8 - 6.6	41,400	81.5	77.9 - 85.1	7,000	13.8	10.6 - 17.0	50,700
2001-2003	2,800	4.9	2.7 - 7.0	47,700	81.7	78.1 - 85.3	7,800	13.4	10.3 - 16.5	58,400
2002-2004	3,000	4.9	2.7 - 7.2	47,500	79.2	74.5 - 83.9	9,500	15.9	11.5 - 20.3	60,000
2003-2005	4,200	6.0	3.6 - 8.5	51,600	74.7	69.4 - 80.0	13,300	19.2	14.1 - 24.3	69,100
2004-2006	3,200	4.5	2.5 - 6.4	52,200	72.9	67.9 - 78.0	16,200	22.6	17.7 - 27.5	71,500
2005-2007	3,400	4.4	2.7 - 6.1	55,700	73.0	68.9 - 77.1	17,200	22.6	18.6 - 26.5	76,300
2006-2008	2,800	3.7	2.4 - 5.0	57,700	74.9	72.0 - 77.7	16,600	21.5	18.8 - 24.2	77,100
2007-2009	4,300	5.6	3.5 - 7.7	56,300	72.4	69.2 - 75.6	17,100	22.0	19.3 - 24.8	77,800
2008-2010	4,000	4.9	2.9 - 7.0	57,900	71.7	68.6 - 74.9	18,800	23.3	20.6 - 26.1	80,700

Diabetes - eye exam, dilated by State, County, Island, Community, BRFSS Age Group, DOH Race-Ethnicity, Gender, Education Level, Employment Status (Grouped), Household Income, Poverty Level, Marital Status (Grouped), Married, Health Care Coverage, for the Year(s) - 2000-2002, 2001-2003, 2002-2004, 2003-2005, 2004-2006, 2005-2007, 2006-2008, 2007-2009, 2008-2010

Note: Weighted numbers (#) represent 3-yr averages, percentages and 95% confidence intervals; Respondents aged 18 years and older; n/r (Not Reportable) - If the unweighted total responses for a dimension (row) is <50 that row will not be shown; n/a (Not Available) - Not asked of a subset of respondents



Diabetes - eye exam, dilated by State, County, Island, Community, BRFSS Age Group, DOH Race-Ethnicity, Gender, Education Level, Employment Status (Grouped), Household Income, Poverty Level, Marital Status (Grouped), Married, Health Care Coverage, for the Year(s) - 2000-2002, 2001-2003, 2002-2004, 2003-2005, 2004-2006, 2005-2007, 2006-2008, 2007-2009, 2008-2010

Note: Weighted numbers (#) represent 3-yr averages, percentages and 95% confidence intervals; Respondents aged 18 years and older; n/r (Not Reportable) - If the unweighted total responses for a dimension (row) is <50 that row will not be shown; n/a (Not Available) - Not asked of a subset of respondents

Year: 2008-2010

State	Never			≤ 1 year			>1 year			Estimated Population (3-Yr Avg)
	#	%	C.I. (95%)	#	%	C.I. (95%)	#	%	C.I. (95%)	#
Hawaii State	4,000	4.9	2.9 - 7.0	57,900	71.7	68.6 - 74.9	18,800	23.3	20.6 - 26.1	80,700

County	Never			≤ 1 year			>1 year			Estimated Population (3-Yr Avg)
	#	%	C.I. (95%)	#	%	C.I. (95%)	#	%	C.I. (95%)	#
Hawaii	700	6.3	0.1 - 12.5	6,800	61.8	54.5 - 69.2	3,500	31.8	25.3 - 38.4	11,000
Honolulu	2,300	4.0	1.6 - 6.4	43,000	74.7	70.8 - 78.6	12,200	21.3	17.8 - 24.7	57,500
Kauai	100	3.7	0.0 - 10.2	2,500	67.2	57.2 - 77.2	1,100	29.1	19.9 - 38.4	3,700
Maui	800	9.9	3.6 - 16.1	5,600	66.4	59.1 - 73.8	2,000	23.7	17.9 - 29.5	8,500

Diabetes - eye exam, dilated by State, County, Island, Community, BRFSS Age Group, DOH Race-Ethnicity, Gender, Education Level, Employment Status (Grouped), Household Income, Poverty Level, Marital Status (Grouped), Married, Health Care Coverage, for the Year(s) - 2000-2002, 2001-2003, 2002-2004, 2003-2005, 2004-2006, 2005-2007, 2006-2008, 2007-2009, 2008-2010

Note: Weighted numbers (#) represent 3-yr averages, percentages and 95% confidence intervals; Respondents aged 18 years and older; n/r (Not Reportable) - If the unweighted total responses for a dimension (row) is <50 that row will not be shown; n/a (Not Available) - Not asked of a subset of respondents

Year: 2008-2010

Island	Never			<= 1 year			>1 year			Estimated Population (3-Yr Avg)
	#	%	C.I. (95%)	#	%	C.I. (95%)	#	%	C.I. (95%)	#
Hawaii	700	6.3	0.1 - 12.5	6,800	61.8	54.5 - 69.2	3,500	31.8	25.3 - 38.4	11,000
Kauai	100	3.7	0.0 - 10.2	2,500	67.2	57.2 - 77.2	1,100	29.1	19.9 - 38.4	3,700
Lanai	<50	5.5	0.0 - 11.2	100	59.3	42.7 - 76.0	100	35.2	18.4 - 52.0	200
Maui	700	9.9	3.1 - 16.7	5,100	68.5	60.4 - 76.6	1,600	21.6	15.3 - 28.0	7,500
Molokai	100	10.6	0.0 - 28.7	400	50.2	33.8 - 66.7	300	39.2	24.2 - 54.1	900
Oahu	2,300	4.0	1.6 - 6.4	43,000	74.7	70.8 - 78.6	12,200	21.3	17.8 - 24.7	57,500

Community	Never			<= 1 year			>1 year			Estimated Population (3-Yr Avg)
	#	%	C.I. (95%)	#	%	C.I. (95%)	#	%	C.I. (95%)	#
Aiea/ Pearl City	<50	0.8	0.0 - 2.4	3,400	76.1	64.1 - 88.0	1,000	23.1	11.2 - 35.0	4,500
Hanalei/ Kapaa	<50	0.9	0.0 - 2.8	900	74.7	61.2 - 88.2	300	24.4	11.0 - 37.8	1,200

Diabetes - eye exam, dilated by State, County, Island, Community, BRFSS Age Group, DOH Race-Ethnicity, Gender, Education Level, Employment Status (Grouped), Household Income, Poverty Level, Marital Status (Grouped), Married, Health Care Coverage, for the Year(s) - 2000-2002, 2001-2003, 2002-2004, 2003-2005, 2004-2006, 2005-2007, 2006-2008, 2007-2009, 2008-2010

Note: Weighted numbers (#) represent 3-yr averages, percentages and 95% confidence intervals; Respondents aged 18 years and older; n/r (Not Reportable) - If the unweighted total responses for a dimension (row) is <50 that row will not be shown; n/a (Not Available) - Not asked of a subset of respondents

Year: 2008-2010

Community	Never			<= 1 year			>1 year			Estimated Population (3-Yr Avg)
	#	%	C.I. (95%)	#	%	C.I. (95%)	#	%	C.I. (95%)	#
Hilo	0	0.0	--	2,400	67.1	55.7 - 78.6	1,200	32.9	21.4 - 44.3	3,600
Kaaawa/ Kahaluu/ Kaneohe	0	0.0	--	3,200	80.6	69.5 - 91.6	800	19.4	8.4 - 30.5	4,000
Kahului	200	9.5	0.0 - 21.4	1,700	67.5	53.7 - 81.4	600	23.0	12.3 - 33.7	2,500
Kailua/ Waimanalo	100	3.1	0.0 - 9.0	2,200	58.8	41.9 - 75.8	1,400	38.1	21.3 - 55.0	3,800
Kaimuki/ Palolo/ Waikiki	<50	0.1	0.0 - 0.4	3,900	74.9	63.4 - 86.4	1,300	24.9	13.4 - 36.5	5,200
Kona	500	20.6	0.0 - 43.0	1,100	51.7	32.2 - 71.3	600	27.7	12.5 - 42.8	2,200
Lahaina/ Wailuku	400	14.8	1.8 - 27.8	1,800	66.7	52.7 - 80.7	500	18.5	8.9 - 28.1	2,700
Lanai	<50	5.5	0.0 - 11.2	100	59.3	42.7 - 76.0	100	35.2	18.4 - 52.0	200
Lihue-Waimea	100	5.0	0.0 - 14.5	1,600	63.5	50.6 - 76.4	800	31.4	19.5 - 43.4	2,500
Manoa/ Upper Makiki	100	1.6	0.0 - 4.9	2,700	65.8	53.3 - 78.4	1,300	32.5	20.1 - 44.9	4,000
Mililani/ Wahiawa	100	2.2	0.0 - 5.6	4,700	76.0	65.0 - 87.0	1,400	21.7	11.1 - 32.4	6,200
Molokai	100	10.6	0.0 - 28.7	400	50.2	33.8 - 66.7	300	39.2	24.2 - 54.1	900

Diabetes - eye exam, dilated by State, County, Island, Community, BRFSS Age Group, DOH Race-Ethnicity, Gender, Education Level, Employment Status (Grouped), Household Income, Poverty Level, Marital Status (Grouped), Married, Health Care Coverage, for the Year(s) - 2000-2002, 2001-2003, 2002-2004, 2003-2005, 2004-2006, 2005-2007, 2006-2008, 2007-2009, 2008-2010

Note: Weighted numbers (#) represent 3-yr averages, percentages and 95% confidence intervals; Respondents aged 18 years and older; n/r (Not Reportable) - If the unweighted total responses for a dimension (row) is <50 that row will not be shown; n/a (Not Available) - Not asked of a subset of respondents

Year: 2008-2010

Community	Never			<= 1 year			>1 year			Estimated Population (3-Yr Avg)
	#	%	C.I. (95%)	#	%	C.I. (95%)	#	%	C.I. (95%)	#
N.Hawaii	200	13.5	0.0 - 34.6	900	55.0	36.4 - 73.5	500	31.6	16.0 - 47.1	1,700
Nuuanu/ Kalihi/ Moanalua	300	5.3	0.0 - 11.8	4,400	75.8	62.8 - 88.7	1,100	18.9	6.9 - 30.9	5,800
Puna/ Kau	<50	0.4	0.0 - 1.3	2,300	66.0	54.7 - 77.4	1,200	33.5	22.2 - 44.9	3,500
Upcountry/ Hana	100	4.5	0.0 - 13.0	1,600	71.6	57.5 - 85.8	500	23.9	11.1 - 36.6	2,300
Waipahu/ Kapolei/ Ewa	900	7.4	0.1 - 14.8	8,800	73.8	63.7 - 83.9	2,200	18.8	10.7 - 26.8	11,900

Diabetes - eye exam, dilated by State, County, Island, Community, BRFSS Age Group, DOH Race-Ethnicity, Gender, Education Level, Employment Status (Grouped), Household Income, Poverty Level, Marital Status (Grouped), Married, Health Care Coverage, for the Year(s) - 2000-2002, 2001-2003, 2002-2004, 2003-2005, 2004-2006, 2005-2007, 2006-2008, 2007-2009, 2008-2010

Note: Weighted numbers (#) represent 3-yr averages, percentages and 95% confidence intervals; Respondents aged 18 years and older; n/r (Not Reportable) - If the unweighted total responses for a dimension (row) is <50 that row will not be shown; n/a (Not Available) - Not asked of a subset of respondents

Year: 2008-2010

BRFSS Age Group	Never			<= 1 year			>1 year			Estimated Population (3-Yr Avg)
	#	%	C.I. (95%)	#	%	C.I. (95%)	#	%	C.I. (95%)	#
35-44	800	9.3	3.1 - 15.5	5,500	60.4	48.2 - 72.6	2,800	30.3	19.0 - 41.6	9,100
45-54	600	4.3	1.1 - 7.4	9,600	72.0	64.7 - 79.3	3,200	23.7	16.9 - 30.5	13,300
55-64	300	1.3	0.0 - 2.7	14,100	71.2	65.6 - 76.7	5,500	27.5	22.1 - 33.0	19,800
65-74	300	1.6	0.1 - 3.0	12,300	75.7	70.4 - 81.0	3,700	22.7	17.6 - 27.9	16,300
75+	600	3.2	0.0 - 7.7	14,300	79.1	72.7 - 85.4	3,200	17.7	12.4 - 23.0	18,100

Diabetes - eye exam, dilated by State, County, Island, Community, BRFSS Age Group, DOH Race-Ethnicity, Gender, Education Level, Employment Status (Grouped), Household Income, Poverty Level, Marital Status (Grouped), Married, Health Care Coverage, for the Year(s) - 2000-2002, 2001-2003, 2002-2004, 2003-2005, 2004-2006, 2005-2007, 2006-2008, 2007-2009, 2008-2010

Note: Weighted numbers (#) represent 3-yr averages, percentages and 95% confidence intervals; Respondents aged 18 years and older; n/r (Not Reportable) - If the unweighted total responses for a dimension (row) is <50 that row will not be shown; n/a (Not Available) - Not asked of a subset of respondents

Year: 2008-2010

DOH Race-Ethnicity	Never			<= 1 year			>1 year			Estimated Population (3-Yr Avg)
	#	%	C.I. (95%)	#	%	C.I. (95%)	#	%	C.I. (95%)	#
Caucasian	600	4.0	0.8 - 7.2	11,200	72.7	67.0 - 78.5	3,600	23.3	18.0 - 28.5	15,400
Native Hawaiian	700	4.6	0.0 - 9.2	9,200	62.1	54.0 - 70.1	4,900	33.4	25.7 - 41.1	14,800
Chinese	100	1.2	0.0 - 3.6	4,000	74.2	63.7 - 84.7	1,300	24.6	14.2 - 35.0	5,400
Filipino	1,400	9.3	2.8 - 15.9	10,900	70.5	62.1 - 78.8	3,100	20.2	13.6 - 26.8	15,500
Japanese	600	2.5	0.0 - 5.9	18,100	78.0	72.6 - 83.3	4,500	19.5	15.0 - 24.1	23,300

Gender	Never			<= 1 year			>1 year			Estimated Population (3-Yr Avg)
	#	%	C.I. (95%)	#	%	C.I. (95%)	#	%	C.I. (95%)	#
Male	1,400	3.7	1.8 - 5.6	28,700	73.1	68.7 - 77.4	9,100	23.3	19.2 - 27.3	39,200
Female	2,500	6.1	2.6 - 9.6	29,200	70.5	66.0 - 75.0	9,700	23.4	19.7 - 27.1	41,500

Diabetes - eye exam, dilated by State, County, Island, Community, BRFSS Age Group, DOH Race-Ethnicity, Gender, Education Level, Employment Status (Grouped), Household Income, Poverty Level, Marital Status (Grouped), Married, Health Care Coverage, for the Year(s) - 2000-2002, 2001-2003, 2002-2004, 2003-2005, 2004-2006, 2005-2007, 2006-2008, 2007-2009, 2008-2010

Note: Weighted numbers (#) represent 3-yr averages, percentages and 95% confidence intervals; Respondents aged 18 years and older; n/r (Not Reportable) - If the unweighted total responses for a dimension (row) is <50 that row will not be shown; n/a (Not Available) - Not asked of a subset of respondents

Year: 2008-2010

Education Level	Never			<= 1 year			>1 year			Estimated Population (3-Yr Avg)
	#	%	C.I. (95%)	#	%	C.I. (95%)	#	%	C.I. (95%)	#
Never attended school/ Only Kindergarten to Grades 8	100	4.2	0.0 - 12.2	1,900	84.4	71.3 - 97.5	300	11.4	0.4 - 22.4	2,300
Grades 9 thru 11 (Some High School)	100	3.0	0.0 - 8.5	2,600	65.0	48.6 - 81.3	1,300	32.1	15.9 - 48.3	4,100
Grades 12 or GED (High School Grad)	2,100	7.7	2.6 - 12.8	17,700	65.9	59.7 - 72.1	7,100	26.4	21.3 - 31.5	26,800
College 1 to 3 years (Some College/ Tech)	1,000	4.2	1.3 - 7.1	17,100	73.6	68.1 - 79.1	5,200	22.2	17.2 - 27.2	23,200
College 4 years or more (College Grad)	700	3.0	1.1 - 4.9	18,500	76.3	71.6 - 80.9	5,000	20.7	16.3 - 25.1	24,200

Diabetes - eye exam, dilated by State, County, Island, Community, BRFSS Age Group, DOH Race-Ethnicity, Gender, Education Level, Employment Status (Grouped), Household Income, Poverty Level, Marital Status (Grouped), Married, Health Care Coverage, for the Year(s) - 2000-2002, 2001-2003, 2002-2004, 2003-2005, 2004-2006, 2005-2007, 2006-2008, 2007-2009, 2008-2010

Note: Weighted numbers (#) represent 3-yr averages, percentages and 95% confidence intervals; Respondents aged 18 years and older; n/r (Not Reportable) - If the unweighted total responses for a dimension (row) is <50 that row will not be shown; n/a (Not Available) - Not asked of a subset of respondents

Year: 2008-2010

Employment Status (Grouped)	Never			<= 1 year			>1 year			Estimated Population (3-Yr Avg)
	#	%	C.I. (95%)	#	%	C.I. (95%)	#	%	C.I. (95%)	#
Employed	2,200	6.2	2.9 - 9.5	23,500	67.7	62.5 - 72.9	9,100	26.1	21.5 - 30.7	34,700
Unemployed	400	8.2	0.0 - 18.7	3,000	65.3	49.0 - 81.6	1,200	26.5	12.2 - 40.8	4,600
Retired/Unable to work	1,300	3.5	0.7 - 6.3	28,800	75.9	71.7 - 80.1	7,800	20.6	17.0 - 24.2	37,900
Student/Homemaker	100	3.8	0.0 - 10.1	2,700	75.5	64.0 - 87.0	700	20.6	10.2 - 31.1	3,600

Diabetes - eye exam, dilated by State, County, Island, Community, BRFSS Age Group, DOH Race-Ethnicity, Gender, Education Level, Employment Status (Grouped), Household Income, Poverty Level, Marital Status (Grouped), Married, Health Care Coverage, for the Year(s) - 2000-2002, 2001-2003, 2002-2004, 2003-2005, 2004-2006, 2005-2007, 2006-2008, 2007-2009, 2008-2010

Note: Weighted numbers (#) represent 3-yr averages, percentages and 95% confidence intervals; Respondents aged 18 years and older; n/r (Not Reportable) - If the unweighted total responses for a dimension (row) is <50 that row will not be shown; n/a (Not Available) - Not asked of a subset of respondents

Year: 2008-2010

Household Income	Never			<= 1 year			>1 year			Estimated Population (3-Yr Avg)
	#	%	C.I. (95%)	#	%	C.I. (95%)	#	%	C.I. (95%)	#
Less than \$10,000	700	22.2	3.8 - 40.7	2,100	65.1	47.4 - 82.8	400	12.6	4.7 - 20.6	3,300
\$10,000 to \$14,999	100	1.8	0.0 - 5.2	2,500	67.0	54.0 - 80.0	1,100	31.2	18.5 - 44.0	3,700
\$15,000 to \$19,999	700	11.9	0.0 - 25.9	4,200	68.9	55.2 - 82.7	1,200	19.2	10.4 - 27.9	6,100
\$20,000 to \$24,999	800	13.6	0.9 - 26.3	3,700	59.6	46.3 - 72.8	1,700	26.9	15.3 - 38.4	6,200
\$25,000 to \$34,999	200	2.6	0.0 - 6.7	6,800	74.9	67.3 - 82.5	2,000	22.5	15.6 - 29.5	9,100
\$35,000 to \$49,999	200	1.8	0.0 - 3.7	9,100	69.1	61.3 - 76.9	3,800	29.0	21.3 - 36.8	13,200
\$50,000 to \$74,999	400	3.2	0.0 - 6.5	9,400	74.2	67.1 - 81.3	2,900	22.6	16.0 - 29.2	12,700
\$75,000 or more	300	1.6	0.0 - 3.4	14,600	77.0	71.4 - 82.5	4,100	21.4	16.1 - 26.8	18,900

Diabetes - eye exam, dilated by State, County, Island, Community, BRFSS Age Group, DOH Race-Ethnicity, Gender, Education Level, Employment Status (Grouped), Household Income, Poverty Level, Marital Status (Grouped), Married, Health Care Coverage, for the Year(s) - 2000-2002, 2001-2003, 2002-2004, 2003-2005, 2004-2006, 2005-2007, 2006-2008, 2007-2009, 2008-2010

Note: Weighted numbers (#) represent 3-yr averages, percentages and 95% confidence intervals; Respondents aged 18 years and older; n/r (Not Reportable) - If the unweighted total responses for a dimension (row) is <50 that row will not be shown; n/a (Not Available) - Not asked of a subset of respondents

Year: 2008-2010

Poverty Level	Never			<= 1 year			>1 year			Estimated Population (3-Yr Avg)
	#	%	C.I. (95%)	#	%	C.I. (95%)	#	%	C.I. (95%)	#
0-130%	2,300	12.4	5.1 - 19.7	11,800	64.2	56.2 - 72.2	4,300	23.4	17.3 - 29.5	18,400
131-185%	200	1.5	0.0 - 3.2	9,300	74.1	66.5 - 81.7	3,100	24.4	16.9 - 31.8	12,600
186+%	1,100	2.5	0.9 - 4.1	31,200	74.2	70.4 - 77.9	9,800	23.3	19.7 - 26.8	42,100

Marital Status (Grouped)	Never			<= 1 year			>1 year			Estimated Population (3-Yr Avg)
	#	%	C.I. (95%)	#	%	C.I. (95%)	#	%	C.I. (95%)	#
Married	1,600	3.2	1.6 - 4.7	37,400	74.2	70.7 - 77.8	11,400	22.6	19.2 - 26.0	50,400
Widowed	500	4.9	0.0 - 12.8	6,700	69.0	59.4 - 78.7	2,500	26.1	17.9 - 34.3	9,700
Other	1,900	9.4	3.3 - 15.4	13,300	66.9	59.7 - 74.2	4,700	23.7	17.8 - 29.6	19,800

Diabetes - eye exam, dilated by State, County, Island, Community, BRFSS Age Group, DOH Race-Ethnicity, Gender, Education Level, Employment Status (Grouped), Household Income, Poverty Level, Marital Status (Grouped), Married, Health Care Coverage, for the Year(s) - 2000-2002, 2001-2003, 2002-2004, 2003-2005, 2004-2006, 2005-2007, 2006-2008, 2007-2009, 2008-2010

Note: Weighted numbers (#) represent 3-yr averages, percentages and 95% confidence intervals; Respondents aged 18 years and older; n/r (Not Reportable) - If the unweighted total responses for a dimension (row) is <50 that row will not be shown; n/a (Not Available) - Not asked of a subset of respondents

Year: 2008-2010

Married	Never			<= 1 year			>1 year			Estimated Population (3-Yr Avg)
	#	%	C.I. (95%)	#	%	C.I. (95%)	#	%	C.I. (95%)	#
Yes	1,600	3.1	1.6 - 4.5	38,700	74.3	70.7 - 77.9	11,800	22.6	19.3 - 26.0	52,100
No	2,400	8.4	3.4 - 13.3	19,100	66.9	61.2 - 72.7	7,000	24.7	20.0 - 29.4	28,500

Health Care Coverage	Never			<= 1 year			>1 year			Estimated Population (3-Yr Avg)
	#	%	C.I. (95%)	#	%	C.I. (95%)	#	%	C.I. (95%)	#
Yes	1,600	3.1	1.6 - 4.5	39,200	73.7	70.3 - 77.2	12,300	23.2	20.0 - 26.5	53,100

Diabetes - eye exam, dilated by State, County, Island, Community, BRFSS Age Group, DOH Race-Ethnicity, Gender, Education Level, Employment Status (Grouped), Household Income, Poverty Level, Marital Status (Grouped), Married, Health Care Coverage, for the Year(s) - 2000-2002, 2001-2003, 2002-2004, 2003-2005, 2004-2006, 2005-2007, 2006-2008, 2007-2009, 2008-2010

Note: Weighted numbers (#) represent 3-yr averages, percentages and 95% confidence intervals; Respondents aged 18 years and older; n/r (Not Reportable) - If the unweighted total responses for a dimension (row) is <50 that row will not be shown; n/a (Not Available) - Not asked of a subset of respondents

Year: 2007-2009

State	Never			<= 1 year			>1 year			Estimated Population (3-Yr Avg)
	#	%	C.I. (95%)	#	%	C.I. (95%)	#	%	C.I. (95%)	#
Hawaii State	4,300	5.6	3.5 - 7.7	56,300	72.4	69.2 - 75.6	17,100	22.0	19.3 - 24.8	77,800

County	Never			<= 1 year			>1 year			Estimated Population (3-Yr Avg)
	#	%	C.I. (95%)	#	%	C.I. (95%)	#	%	C.I. (95%)	#
Hawaii	800	8.3	1.5 - 15.0	6,300	61.9	54.2 - 69.6	3,000	29.8	23.1 - 36.5	10,200
Honolulu	2,500	4.5	1.9 - 7.0	41,800	75.3	71.3 - 79.3	11,200	20.3	16.8 - 23.7	55,500
Kauai	200	4.1	0.0 - 10.6	2,500	66.3	56.3 - 76.2	1,100	29.6	20.4 - 38.8	3,700
Maui	900	10.4	4.3 - 16.5	5,800	68.8	61.4 - 76.2	1,700	20.8	15.0 - 26.5	8,400

Diabetes - eye exam, dilated by State, County, Island, Community, BRFSS Age Group, DOH Race-Ethnicity, Gender, Education Level, Employment Status (Grouped), Household Income, Poverty Level, Marital Status (Grouped), Married, Health Care Coverage, for the Year(s) - 2000-2002, 2001-2003, 2002-2004, 2003-2005, 2004-2006, 2005-2007, 2006-2008, 2007-2009, 2008-2010

Note: Weighted numbers (#) represent 3-yr averages, percentages and 95% confidence intervals; Respondents aged 18 years and older; n/r (Not Reportable) - If the unweighted total responses for a dimension (row) is <50 that row will not be shown; n/a (Not Available) - Not asked of a subset of respondents

Year: 2007-2009

Island	Never			<= 1 year			>1 year			Estimated Population (3-Yr Avg)
	#	%	C.I. (95%)	#	%	C.I. (95%)	#	%	C.I. (95%)	#
Hawaii	800	8.3	1.5 - 15.0	6,300	61.9	54.2 - 69.6	3,000	29.8	23.1 - 36.5	10,200
Kauai	200	4.1	0.0 - 10.6	2,500	66.3	56.3 - 76.2	1,100	29.6	20.4 - 38.8	3,700
Lanai	<50	3.9	0.0 - 8.5	100	61.5	46.5 - 76.5	100	34.6	19.6 - 49.6	200
Maui	700	9.9	3.3 - 16.4	5,200	70.9	62.8 - 79.1	1,400	19.2	12.9 - 25.5	7,400
Molokai	100	17.0	0.0 - 36.4	400	50.7	33.4 - 68.1	300	32.3	17.5 - 47.0	800
Oahu	2,500	4.5	1.9 - 7.0	41,800	75.3	71.3 - 79.3	11,200	20.3	16.8 - 23.7	55,500

Community	Never			<= 1 year			>1 year			Estimated Population (3-Yr Avg)
	#	%	C.I. (95%)	#	%	C.I. (95%)	#	%	C.I. (95%)	#
Aiea/ Pearl City	100	2.3	0.0 - 5.6	3,100	74.6	61.2 - 88.0	1,000	23.1	9.9 - 36.3	4,200
Hilo	100	3.1	0.0 - 6.7	2,300	71.3	59.5 - 83.1	800	25.6	13.8 - 37.3	3,300

Diabetes - eye exam, dilated by State, County, Island, Community, BRFSS Age Group, DOH Race-Ethnicity, Gender, Education Level, Employment Status (Grouped), Household Income, Poverty Level, Marital Status (Grouped), Married, Health Care Coverage, for the Year(s) - 2000-2002, 2001-2003, 2002-2004, 2003-2005, 2004-2006, 2005-2007, 2006-2008, 2007-2009, 2008-2010

Note: Weighted numbers (#) represent 3-yr averages, percentages and 95% confidence intervals; Respondents aged 18 years and older; n/r (Not Reportable) - If the unweighted total responses for a dimension (row) is <50 that row will not be shown; n/a (Not Available) - Not asked of a subset of respondents

Year: 2007-2009

Community	Never			<= 1 year			>1 year			Estimated Population (3-Yr Avg)
	#	%	C.I. (95%)	#	%	C.I. (95%)	#	%	C.I. (95%)	#
Kaaawa/ Kahaluu/ Kaneohe	0	0.0	--	3,300	79.4	67.9 - 90.9	800	20.6	9.1 - 32.1	4,100
Kahului	300	13.2	0.8 - 25.6	1,800	68.8	55.3 - 82.3	500	18.0	9.1 - 26.9	2,500
Kaimuki/ Palolo/ Waikiki	200	3.8	0.0 - 9.1	3,100	68.8	54.9 - 82.6	1,200	27.4	13.9 - 41.0	4,500
Kona	400	18.1	0.0 - 40.7	1,200	52.4	32.8 - 72.0	700	29.5	14.0 - 44.9	2,200
Lahaina/ Wailuku	300	12.5	0.0 - 25.5	1,600	67.7	52.2 - 83.3	500	19.8	7.9 - 31.7	2,300
Lanai	<50	3.9	0.0 - 8.5	100	61.5	46.5 - 76.5	100	34.6	19.6 - 49.6	200
Lihue-Waimea	100	5.8	0.0 - 15.3	1,500	60.7	47.9 - 73.5	800	33.5	21.5 - 45.5	2,500
Manoa/ Upper Makiki	300	7.8	0.0 - 16.4	2,600	72.4	59.4 - 85.4	700	19.8	8.6 - 31.0	3,600
Mililani/ Wahiawa	100	1.5	0.0 - 4.5	4,700	71.5	58.6 - 84.3	1,800	27.0	14.3 - 39.7	6,500
Molokai	100	17.0	0.0 - 36.4	400	50.7	33.4 - 68.1	300	32.3	17.5 - 47.0	800
Nanakuli/ Waianae	700	13.4	0.0 - 30.0	3,500	70.9	54.0 - 87.7	800	15.8	5.7 - 25.8	5,000
N.Hawaii	300	16.1	0.0 - 34.2	1,100	53.9	37.6 - 70.3	600	29.9	16.1 - 43.8	2,000

Diabetes - eye exam, dilated by State, County, Island, Community, BRFSS Age Group, DOH Race-Ethnicity, Gender, Education Level, Employment Status (Grouped), Household Income, Poverty Level, Marital Status (Grouped), Married, Health Care Coverage, for the Year(s) - 2000-2002, 2001-2003, 2002-2004, 2003-2005, 2004-2006, 2005-2007, 2006-2008, 2007-2009, 2008-2010

Note: Weighted numbers (#) represent 3-yr averages, percentages and 95% confidence intervals; Respondents aged 18 years and older; n/r (Not Reportable) - If the unweighted total responses for a dimension (row) is <50 that row will not be shown; n/a (Not Available) - Not asked of a subset of respondents

Year: 2007-2009

Community	Never			<= 1 year			>1 year			Estimated Population (3-Yr Avg)
	#	%	C.I. (95%)	#	%	C.I. (95%)	#	%	C.I. (95%)	#
Nuuanu/ Kalihi/ Moanalua	300	6.5	0.0 - 13.8	4,300	83.6	73.6 - 93.6	500	9.8	2.5 - 17.1	5,100
Puna/ Kau	<50	0.6	0.0 - 1.9	1,700	64.2	50.9 - 77.5	900	35.2	21.8 - 48.5	2,700
Upcountry/ Hana	100	4.1	0.0 - 11.8	1,900	76.2	63.1 - 89.2	500	19.8	8.1 - 31.5	2,500
Waipahu/ Kapolei/ Ewa	800	7.6	0.0 - 15.6	7,800	71.8	61.0 - 82.6	2,200	20.6	11.8 - 29.4	10,800

Diabetes - eye exam, dilated by State, County, Island, Community, BRFSS Age Group, DOH Race-Ethnicity, Gender, Education Level, Employment Status (Grouped), Household Income, Poverty Level, Marital Status (Grouped), Married, Health Care Coverage, for the Year(s) - 2000-2002, 2001-2003, 2002-2004, 2003-2005, 2004-2006, 2005-2007, 2006-2008, 2007-2009, 2008-2010

Note: Weighted numbers (#) represent 3-yr averages, percentages and 95% confidence intervals; Respondents aged 18 years and older; n/r (Not Reportable) - If the unweighted total responses for a dimension (row) is <50 that row will not be shown; n/a (Not Available) - Not asked of a subset of respondents

Year: 2007-2009

BRFSS Age Group	Never			<= 1 year			>1 year			Estimated Population (3-Yr Avg)
	#	%	C.I. (95%)	#	%	C.I. (95%)	#	%	C.I. (95%)	#
35-44	900	12.1	4.6 - 19.7	4,600	60.9	47.8 - 73.9	2,000	27.0	15.1 - 38.9	7,500
45-54	500	3.7	0.9 - 6.6	10,600	74.0	67.3 - 80.7	3,200	22.3	16.0 - 28.5	14,300
55-64	500	2.4	0.5 - 4.2	13,500	70.6	64.7 - 76.6	5,100	27.0	21.2 - 32.8	19,100
65-74	300	2.0	0.5 - 3.4	12,600	76.7	71.2 - 82.3	3,500	21.3	15.9 - 26.7	16,400
75+	600	3.4	0.0 - 8.2	13,700	82.5	76.4 - 88.5	2,300	14.1	9.6 - 18.6	16,600

Diabetes - eye exam, dilated by State, County, Island, Community, BRFSS Age Group, DOH Race-Ethnicity, Gender, Education Level, Employment Status (Grouped), Household Income, Poverty Level, Marital Status (Grouped), Married, Health Care Coverage, for the Year(s) - 2000-2002, 2001-2003, 2002-2004, 2003-2005, 2004-2006, 2005-2007, 2006-2008, 2007-2009, 2008-2010

Note: Weighted numbers (#) represent 3-yr averages, percentages and 95% confidence intervals; Respondents aged 18 years and older; n/r (Not Reportable) - If the unweighted total responses for a dimension (row) is <50 that row will not be shown; n/a (Not Available) - Not asked of a subset of respondents

Year: 2007-2009

DOH Race-Ethnicity	Never			<= 1 year			>1 year			Estimated Population (3-Yr Avg)
	#	%	C.I. (95%)	#	%	C.I. (95%)	#	%	C.I. (95%)	#
Caucasian	700	5.1	1.5 - 8.7	10,800	74.5	68.7 - 80.2	3,000	20.4	15.4 - 25.4	14,500
Native Hawaiian	800	5.3	0.7 - 10.0	9,100	61.2	53.2 - 69.2	5,000	33.5	26.0 - 41.0	14,900
Chinese	100	1.2	0.0 - 3.4	4,800	79.4	69.7 - 89.1	1,200	19.4	9.8 - 28.9	6,000
Filipino	1,300	9.1	2.3 - 15.9	10,100	69.5	60.8 - 78.3	3,100	21.4	14.4 - 28.5	14,500
Japanese	700	3.2	0.0 - 6.9	17,200	78.6	73.1 - 84.2	4,000	18.2	13.5 - 22.9	21,800

Gender	Never			<= 1 year			>1 year			Estimated Population (3-Yr Avg)
	#	%	C.I. (95%)	#	%	C.I. (95%)	#	%	C.I. (95%)	#
Male	1,700	4.5	2.4 - 6.7	26,800	71.4	66.8 - 76.0	9,000	24.1	19.8 - 28.3	37,500
Female	2,600	6.6	3.0 - 10.1	29,500	73.3	68.9 - 77.8	8,100	20.1	16.6 - 23.6	40,300

Diabetes - eye exam, dilated by State, County, Island, Community, BRFSS Age Group, DOH Race-Ethnicity, Gender, Education Level, Employment Status (Grouped), Household Income, Poverty Level, Marital Status (Grouped), Married, Health Care Coverage, for the Year(s) - 2000-2002, 2001-2003, 2002-2004, 2003-2005, 2004-2006, 2005-2007, 2006-2008, 2007-2009, 2008-2010

Note: Weighted numbers (#) represent 3-yr averages, percentages and 95% confidence intervals; Respondents aged 18 years and older; n/r (Not Reportable) - If the unweighted total responses for a dimension (row) is <50 that row will not be shown; n/a (Not Available) - Not asked of a subset of respondents

Year: 2007-2009

Education Level	Never			<= 1 year			>1 year			Estimated Population (3-Yr Avg)
	#	%	C.I. (95%)	#	%	C.I. (95%)	#	%	C.I. (95%)	#
Never attended school/ Only Kindergarten to Grades 8	300	11.4	0.0 - 22.7	2,000	80.7	67.1 - 94.4	200	7.9	0.0 - 16.5	2,500
Grades 9 thru 11 (Some High School)	100	2.7	0.0 - 6.3	2,900	72.2	59.2 - 85.1	1,000	25.1	12.5 - 37.8	4,100
Grades 12 or GED (High School Grad)	2,400	9.4	4.0 - 14.7	16,900	65.2	58.9 - 71.5	6,600	25.4	20.3 - 30.5	25,900
College 1 to 3 years (Some College/ Tech)	1,000	4.2	1.4 - 7.0	17,600	74.3	68.6 - 80.0	5,100	21.5	16.2 - 26.8	23,800
College 4 years or more (College Grad)	500	2.5	0.6 - 4.4	16,800	78.1	73.3 - 82.9	4,200	19.5	14.9 - 24.0	21,500

Employment Status (Grouped)	Never			<= 1 year			>1 year			Estimated Population (3-Yr Avg)
	#	%	C.I. (95%)	#	%	C.I. (95%)	#	%	C.I. (95%)	#
Employed	2,100	6.1	2.8 - 9.4	24,300	70.2	65.1 - 75.3	8,200	23.7	19.2 - 28.1	34,600
Retired/Unable to work	1,700	4.5	1.6 - 7.5	28,200	76.1	71.9 - 80.3	7,200	19.4	15.9 - 22.9	37,100
Student/Homemaker	200	7.7	0.0 - 16.5	2,000	75.4	62.0 - 88.8	400	16.9	5.6 - 28.2	2,700

Diabetes - eye exam, dilated by State, County, Island, Community, BRFSS Age Group, DOH Race-Ethnicity, Gender, Education Level, Employment Status (Grouped), Household Income, Poverty Level, Marital Status (Grouped), Married, Health Care Coverage, for the Year(s) - 2000-2002, 2001-2003, 2002-2004, 2003-2005, 2004-2006, 2005-2007, 2006-2008, 2007-2009, 2008-2010

Note: Weighted numbers (#) represent 3-yr averages, percentages and 95% confidence intervals; Respondents aged 18 years and older; n/r (Not Reportable) - If the unweighted total responses for a dimension (row) is <50 that row will not be shown; n/a (Not Available) - Not asked of a subset of respondents

Year: 2007-2009

Household Income	Never			<= 1 year			>1 year			Estimated Population (3-Yr Avg)
	#	%	C.I. (95%)	#	%	C.I. (95%)	#	%	C.I. (95%)	#
Less than \$10,000	600	22.4	2.5 - 42.3	1,500	53.2	35.7 - 70.8	700	24.4	12.3 - 36.4	2,900
\$10,000 to \$14,999	100	2.2	0.0 - 5.8	2,600	68.3	55.6 - 81.0	1,100	29.5	17.0 - 42.0	3,800
\$15,000 to \$19,999	700	13.7	0.0 - 29.0	3,600	65.3	50.3 - 80.3	1,100	21.0	10.8 - 31.2	5,500
\$20,000 to \$24,999	1,000	15.7	3.2 - 28.2	3,900	61.8	49.2 - 74.4	1,400	22.5	13.1 - 31.9	6,300
\$25,000 to \$34,999	400	3.7	0.0 - 8.1	7,000	73.2	64.3 - 82.0	2,200	23.1	14.8 - 31.5	9,500
\$35,000 to \$49,999	400	2.8	0.2 - 5.5	9,800	76.8	70.0 - 83.7	2,600	20.3	13.8 - 26.9	12,700
\$50,000 to \$74,999	200	1.8	0.0 - 4.4	9,500	75.8	68.8 - 82.8	2,800	22.4	15.7 - 29.1	12,600
\$75,000 or more	400	2.0	0.1 - 4.0	13,300	76.1	70.0 - 82.1	3,800	21.9	16.1 - 27.7	17,500

Diabetes - eye exam, dilated by State, County, Island, Community, BRFSS Age Group, DOH Race-Ethnicity, Gender, Education Level, Employment Status (Grouped), Household Income, Poverty Level, Marital Status (Grouped), Married, Health Care Coverage, for the Year(s) - 2000-2002, 2001-2003, 2002-2004, 2003-2005, 2004-2006, 2005-2007, 2006-2008, 2007-2009, 2008-2010

Note: Weighted numbers (#) represent 3-yr averages, percentages and 95% confidence intervals; Respondents aged 18 years and older; n/r (Not Reportable) - If the unweighted total responses for a dimension (row) is <50 that row will not be shown; n/a (Not Available) - Not asked of a subset of respondents

Year: 2007-2009

Poverty Level	Never			<= 1 year			>1 year			Estimated Population (3-Yr Avg)
	#	%	C.I. (95%)	#	%	C.I. (95%)	#	%	C.I. (95%)	#
0-130%	2,400	13.3	6.0 - 20.7	11,600	63.6	55.6 - 71.6	4,200	23.1	16.9 - 29.3	18,300
131-185%	400	3.6	0.2 - 7.1	7,600	73.6	65.6 - 81.5	2,400	22.8	15.2 - 30.4	10,400
186+%	1,000	2.3	0.8 - 3.8	31,900	75.8	72.1 - 79.5	9,200	21.9	18.4 - 25.5	42,100

Marital Status (Grouped)	Never			<= 1 year			>1 year			Estimated Population (3-Yr Avg)
	#	%	C.I. (95%)	#	%	C.I. (95%)	#	%	C.I. (95%)	#
Married	1,800	3.8	2.2 - 5.5	35,600	75.1	71.4 - 78.9	10,000	21.0	17.5 - 24.5	47,400
Widowed	600	6.0	0.0 - 13.8	7,100	72.6	63.9 - 81.3	2,100	21.4	14.9 - 27.9	9,800
Other	1,900	9.7	3.6 - 15.9	12,900	65.7	58.4 - 73.0	4,800	24.6	18.6 - 30.5	19,600

Diabetes - eye exam, dilated by State, County, Island, Community, BRFSS Age Group, DOH Race-Ethnicity, Gender, Education Level, Employment Status (Grouped), Household Income, Poverty Level, Marital Status (Grouped), Married, Health Care Coverage, for the Year(s) - 2000-2002, 2001-2003, 2002-2004, 2003-2005, 2004-2006, 2005-2007, 2006-2008, 2007-2009, 2008-2010

Note: Weighted numbers (#) represent 3-yr averages, percentages and 95% confidence intervals; Respondents aged 18 years and older; n/r (Not Reportable) - If the unweighted total responses for a dimension (row) is <50 that row will not be shown; n/a (Not Available) - Not asked of a subset of respondents

Year: 2007-2009

Married	Never			<= 1 year			>1 year			Estimated Population (3-Yr Avg)
	#	%	C.I. (95%)	#	%	C.I. (95%)	#	%	C.I. (95%)	#
Yes	1,800	3.7	2.1 - 5.3	36,900	75.2	71.4 - 78.9	10,400	21.1	17.6 - 24.6	49,100
No	2,500	8.9	3.9 - 13.8	19,300	67.5	61.9 - 73.1	6,800	23.7	19.2 - 28.1	28,500

Health Care Coverage	Never			<= 1 year			>1 year			Estimated Population (3-Yr Avg)
	#	%	C.I. (95%)	#	%	C.I. (95%)	#	%	C.I. (95%)	#
Yes	1,900	3.8	2.2 - 5.5	37,800	75.3	71.8 - 78.7	10,500	20.9	17.7 - 24.1	50,200

Diabetes - eye exam, dilated by State, County, Island, Community, BRFSS Age Group, DOH Race-Ethnicity, Gender, Education Level, Employment Status (Grouped), Household Income, Poverty Level, Marital Status (Grouped), Married, Health Care Coverage, for the Year(s) - 2000-2002, 2001-2003, 2002-2004, 2003-2005, 2004-2006, 2005-2007, 2006-2008, 2007-2009, 2008-2010

Note: Weighted numbers (#) represent 3-yr averages, percentages and 95% confidence intervals; Respondents aged 18 years and older; n/r (Not Reportable) - If the unweighted total responses for a dimension (row) is <50 that row will not be shown; n/a (Not Available) - Not asked of a subset of respondents

Year: 2006-2008

State	Never			<= 1 year			>1 year			Estimated Population (3-Yr Avg)
	#	%	C.I. (95%)	#	%	C.I. (95%)	#	%	C.I. (95%)	#
Hawaii State	2,800	3.7	2.4 - 5.0	57,700	74.9	72.0 - 77.7	16,600	21.5	18.8 - 24.2	77,100

County	Never			<= 1 year			>1 year			Estimated Population (3-Yr Avg)
	#	%	C.I. (95%)	#	%	C.I. (95%)	#	%	C.I. (95%)	#
Hawaii	500	6.1	1.2 - 10.9	6,300	70.3	63.9 - 76.6	2,100	23.7	18.2 - 29.1	9,000
Honolulu	1,800	3.2	1.7 - 4.6	42,400	75.6	71.9 - 79.3	11,900	21.3	17.7 - 24.8	56,100
Kauai	100	2.2	0.0 - 4.6	2,800	71.1	63.5 - 78.7	1,100	26.7	19.3 - 34.1	4,000
Maui	400	5.3	1.6 - 9.0	6,200	76.7	70.6 - 82.7	1,500	18.0	12.7 - 23.3	8,000

Diabetes - eye exam, dilated by State, County, Island, Community, BRFSS Age Group, DOH Race-Ethnicity, Gender, Education Level, Employment Status (Grouped), Household Income, Poverty Level, Marital Status (Grouped), Married, Health Care Coverage, for the Year(s) - 2000-2002, 2001-2003, 2002-2004, 2003-2005, 2004-2006, 2005-2007, 2006-2008, 2007-2009, 2008-2010

Note: Weighted numbers (#) represent 3-yr averages, percentages and 95% confidence intervals; Respondents aged 18 years and older; n/r (Not Reportable) - If the unweighted total responses for a dimension (row) is <50 that row will not be shown; n/a (Not Available) - Not asked of a subset of respondents

Year: 2006-2008

Island	Never			<= 1 year			>1 year			Estimated Population (3-Yr Avg)
	#	%	C.I. (95%)	#	%	C.I. (95%)	#	%	C.I. (95%)	#
Hawaii	500	6.1	1.2 - 10.9	6,300	70.3	63.9 - 76.6	2,100	23.7	18.2 - 29.1	9,000
Kauai	100	2.2	0.0 - 4.6	2,800	71.1	63.5 - 78.7	1,100	26.7	19.3 - 34.1	4,000
Lanai	<50	11.7	0.0 - 24.0	100	63.0	48.5 - 77.5	<50	25.2	13.1 - 37.4	200
Maui	400	4.9	0.8 - 9.0	5,600	78.3	71.6 - 85.0	1,200	16.8	11.0 - 22.7	7,200
Molokai	100	8.0	1.3 - 14.8	400	63.5	50.5 - 76.5	200	28.5	16.4 - 40.6	700
Oahu	1,800	3.2	1.7 - 4.6	42,400	75.6	71.9 - 79.3	11,900	21.3	17.7 - 24.8	56,100

Community	Never			<= 1 year			>1 year			Estimated Population (3-Yr Avg)
	#	%	C.I. (95%)	#	%	C.I. (95%)	#	%	C.I. (95%)	#
Aiea/ Pearl City	100	1.7	0.0 - 4.1	4,300	76.7	65.4 - 88.1	1,200	21.6	10.4 - 32.8	5,600
Ala Moana	0	0.0	--	2,700	82.5	71.7 - 93.3	600	17.5	6.7 - 28.3	3,200

Diabetes - eye exam, dilated by State, County, Island, Community, BRFSS Age Group, DOH Race-Ethnicity, Gender, Education Level, Employment Status (Grouped), Household Income, Poverty Level, Marital Status (Grouped), Married, Health Care Coverage, for the Year(s) - 2000-2002, 2001-2003, 2002-2004, 2003-2005, 2004-2006, 2005-2007, 2006-2008, 2007-2009, 2008-2010

Note: Weighted numbers (#) represent 3-yr averages, percentages and 95% confidence intervals; Respondents aged 18 years and older; n/r (Not Reportable) - If the unweighted total responses for a dimension (row) is <50 that row will not be shown; n/a (Not Available) - Not asked of a subset of respondents

Year: 2006-2008

Community	Never			<= 1 year			>1 year			Estimated Population (3-Yr Avg)
	#	%	C.I. (95%)	#	%	C.I. (95%)	#	%	C.I. (95%)	#
Hanalei/ Kapaa	100	3.5	0.0 - 9.0	1,000	70.7	57.3 - 84.1	400	25.8	12.9 - 38.7	1,500
Hilo	100	4.5	0.1 - 8.9	2,400	80.4	71.3 - 89.5	500	15.1	6.6 - 23.6	3,000
Kaaawa/ Kahaluu/ Kaneohe	0	0.0	--	2,700	74.5	61.5 - 87.5	900	25.5	12.5 - 38.5	3,600
Kahului	200	9.6	1.6 - 17.5	2,000	80.7	71.2 - 90.2	200	9.7	3.8 - 15.6	2,500
Kailua/ Waimanalo	100	1.5	0.0 - 4.5	3,100	75.5	63.6 - 87.3	900	23.0	11.4 - 34.6	4,100
Kaimuki/ Palolo/ Waikiki	200	4.3	0.0 - 10.3	2,800	70.1	56.7 - 83.6	1,000	25.5	12.6 - 38.5	4,000
Kona	0	0.0	--	1,000	60.8	47.0 - 74.6	600	39.2	25.4 - 53.0	1,600
Lahaina/ Wailuku	100	4.5	0.0 - 13.0	2,000	79.8	67.7 - 91.8	400	15.7	5.9 - 25.6	2,500
Lanai	<50	11.7	0.0 - 24.0	100	63.0	48.5 - 77.5	<50	25.2	13.1 - 37.4	200
Lihue-Waimea	<50	1.4	0.0 - 3.4	1,800	71.3	62.2 - 80.4	700	27.3	18.3 - 36.3	2,500
Manoa/ Upper Makiki	200	6.1	0.0 - 14.3	2,800	78.2	65.1 - 91.3	600	15.7	4.3 - 27.2	3,600
Mililani/ Wahiawa	100	1.7	0.0 - 5.0	4,100	69.2	56.0 - 82.3	1,700	29.1	16.0 - 42.2	5,900

Diabetes - eye exam, dilated by State, County, Island, Community, BRFSS Age Group, DOH Race-Ethnicity, Gender, Education Level, Employment Status (Grouped), Household Income, Poverty Level, Marital Status (Grouped), Married, Health Care Coverage, for the Year(s) - 2000-2002, 2001-2003, 2002-2004, 2003-2005, 2004-2006, 2005-2007, 2006-2008, 2007-2009, 2008-2010

Note: Weighted numbers (#) represent 3-yr averages, percentages and 95% confidence intervals; Respondents aged 18 years and older; n/r (Not Reportable) - If the unweighted total responses for a dimension (row) is <50 that row will not be shown; n/a (Not Available) - Not asked of a subset of respondents

Year: 2006-2008

Community	Never			<= 1 year			>1 year			Estimated Population (3-Yr Avg)
	#	%	C.I. (95%)	#	%	C.I. (95%)	#	%	C.I. (95%)	#
Molokai	100	8.0	1.3 - 14.8	400	63.5	50.5 - 76.5	200	28.5	16.4 - 40.6	700
Nanakuli/ Waianae	200	3.2	0.0 - 7.0	4,100	82.6	73.6 - 91.7	700	14.2	5.9 - 22.6	4,900
N.Hawaii	400	18.5	1.4 - 35.5	1,300	62.1	46.4 - 77.8	400	19.4	9.7 - 29.1	2,100
Nuuanu/ Kalihi/ Moanalua	300	4.9	0.0 - 11.4	4,200	81.5	67.3 - 95.6	700	13.6	0.2 - 27.1	5,200
Puna/ Kau	<50	0.7	0.0 - 2.2	1,600	71.1	59.2 - 83.0	600	28.1	16.2 - 40.0	2,300
Upcountry/ Hana	0	0.0	--	1,600	73.8	60.8 - 86.7	600	26.2	13.3 - 39.2	2,200
Waipahu/ Kapolei/ Ewa	600	5.3	0.6 - 10.0	7,400	69.3	60.0 - 78.7	2,700	25.4	16.5 - 34.2	10,600

Diabetes - eye exam, dilated by State, County, Island, Community, BRFSS Age Group, DOH Race-Ethnicity, Gender, Education Level, Employment Status (Grouped), Household Income, Poverty Level, Marital Status (Grouped), Married, Health Care Coverage, for the Year(s) - 2000-2002, 2001-2003, 2002-2004, 2003-2005, 2004-2006, 2005-2007, 2006-2008, 2007-2009, 2008-2010

Note: Weighted numbers (#) represent 3-yr averages, percentages and 95% confidence intervals; Respondents aged 18 years and older; n/r (Not Reportable) - If the unweighted total responses for a dimension (row) is <50 that row will not be shown; n/a (Not Available) - Not asked of a subset of respondents

Year: 2006-2008

BRFSS Age Group	Never			<= 1 year			>1 year			Estimated Population (3-Yr Avg)
	#	%	C.I. (95%)	#	%	C.I. (95%)	#	%	C.I. (95%)	#
35-44	500	8.2	2.0 - 14.4	4,300	66.6	54.3 - 78.9	1,600	25.2	13.4 - 37.1	6,500
45-54	300	2.1	0.0 - 4.2	11,600	74.3	68.0 - 80.5	3,700	23.7	17.6 - 29.8	15,600
55-64	600	2.8	0.9 - 4.6	14,500	71.2	65.1 - 77.2	5,300	26.1	20.1 - 32.0	20,400
65-74	400	2.4	0.7 - 4.2	12,500	78.1	73.0 - 83.2	3,100	19.5	14.6 - 24.4	16,000
75+	200	1.1	0.0 - 2.3	13,000	87.0	82.5 - 91.5	1,800	11.8	7.5 - 16.2	14,900

Diabetes - eye exam, dilated by State, County, Island, Community, BRFSS Age Group, DOH Race-Ethnicity, Gender, Education Level, Employment Status (Grouped), Household Income, Poverty Level, Marital Status (Grouped), Married, Health Care Coverage, for the Year(s) - 2000-2002, 2001-2003, 2002-2004, 2003-2005, 2004-2006, 2005-2007, 2006-2008, 2007-2009, 2008-2010

Note: Weighted numbers (#) represent 3-yr averages, percentages and 95% confidence intervals; Respondents aged 18 years and older; n/r (Not Reportable) - If the unweighted total responses for a dimension (row) is <50 that row will not be shown; n/a (Not Available) - Not asked of a subset of respondents

Year: 2006-2008

DOH Race-Ethnicity	Never			<= 1 year			>1 year			Estimated Population (3-Yr Avg)
	#	%	C.I. (95%)	#	%	C.I. (95%)	#	%	C.I. (95%)	#
Caucasian	500	3.4	0.4 - 6.4	12,100	76.5	71.3 - 81.7	3,200	20.1	15.4 - 24.8	15,900
Native Hawaiian	500	3.2	0.9 - 5.5	9,800	68.9	62.0 - 75.7	4,000	27.9	21.2 - 34.6	14,300
Chinese	<50	0.1	0.0 - 0.4	4,700	81.9	72.6 - 91.2	1,000	18.0	8.7 - 27.2	5,700
Filipino	800	5.5	2.0 - 9.0	10,700	72.0	64.0 - 80.1	3,400	22.5	14.8 - 30.3	14,900
Japanese	400	1.9	0.4 - 3.3	15,100	78.7	73.7 - 83.7	3,700	19.4	14.5 - 24.4	19,200

Gender	Never			<= 1 year			>1 year			Estimated Population (3-Yr Avg)
	#	%	C.I. (95%)	#	%	C.I. (95%)	#	%	C.I. (95%)	#
Male	1,500	3.9	2.1 - 5.8	26,900	72.1	67.6 - 76.6	9,000	24.0	19.6 - 28.3	37,300
Female	1,400	3.4	1.6 - 5.3	30,800	77.5	73.8 - 81.1	7,600	19.1	15.8 - 22.5	39,800

Diabetes - eye exam, dilated by State, County, Island, Community, BRFSS Age Group, DOH Race-Ethnicity, Gender, Education Level, Employment Status (Grouped), Household Income, Poverty Level, Marital Status (Grouped), Married, Health Care Coverage, for the Year(s) - 2000-2002, 2001-2003, 2002-2004, 2003-2005, 2004-2006, 2005-2007, 2006-2008, 2007-2009, 2008-2010

Note: Weighted numbers (#) represent 3-yr averages, percentages and 95% confidence intervals; Respondents aged 18 years and older; n/r (Not Reportable) - If the unweighted total responses for a dimension (row) is <50 that row will not be shown; n/a (Not Available) - Not asked of a subset of respondents

Year: 2006-2008

Education Level	Never			<= 1 year			>1 year			Estimated Population (3-Yr Avg)
	#	%	C.I. (95%)	#	%	C.I. (95%)	#	%	C.I. (95%)	#
Never attended school/ Only Kindergarten to Grades 8	400	15.4	3.3 - 27.5	2,000	73.9	60.4 - 87.5	300	10.7	2.3 - 19.0	2,700
Grades 9 thru 11 (Some High School)	100	2.9	0.0 - 6.6	2,800	68.6	55.9 - 81.3	1,200	28.4	15.9 - 41.0	4,100
Grades 12 or GED (High School Grad)	1,100	4.3	1.9 - 6.7	18,100	70.6	65.2 - 76.1	6,400	25.1	19.9 - 30.3	25,700
College 1 to 3 years (Some College/ Tech)	900	3.8	1.3 - 6.4	17,900	74.5	69.1 - 79.8	5,200	21.7	16.6 - 26.7	24,100
College 4 years or more (College Grad)	300	1.3	0.0 - 2.6	16,800	81.9	77.5 - 86.2	3,500	16.8	12.6 - 21.1	20,600

Employment Status (Grouped)	Never			<= 1 year			>1 year			Estimated Population (3-Yr Avg)
	#	%	C.I. (95%)	#	%	C.I. (95%)	#	%	C.I. (95%)	#
Employed	1,400	4.2	2.2 - 6.3	23,800	71.3	66.5 - 76.2	8,100	24.4	19.8 - 29.1	33,300
Retired/Unable to work	1,000	2.7	1.2 - 4.2	30,300	79.6	76.2 - 83.1	6,700	17.7	14.4 - 20.9	38,100
Student/Homemaker	200	6.5	0.0 - 14.5	2,100	72.0	58.8 - 85.3	600	21.5	10.0 - 33.0	2,900

Diabetes - eye exam, dilated by State, County, Island, Community, BRFSS Age Group, DOH Race-Ethnicity, Gender, Education Level, Employment Status (Grouped), Household Income, Poverty Level, Marital Status (Grouped), Married, Health Care Coverage, for the Year(s) - 2000-2002, 2001-2003, 2002-2004, 2003-2005, 2004-2006, 2005-2007, 2006-2008, 2007-2009, 2008-2010

Note: Weighted numbers (#) represent 3-yr averages, percentages and 95% confidence intervals; Respondents aged 18 years and older; n/r (Not Reportable) - If the unweighted total responses for a dimension (row) is <50 that row will not be shown; n/a (Not Available) - Not asked of a subset of respondents

Year: 2006-2008

Household Income	Never			<= 1 year			>1 year			Estimated Population (3-Yr Avg)
	#	%	C.I. (95%)	#	%	C.I. (95%)	#	%	C.I. (95%)	#
Less than \$10,000	400	12.6	0.0 - 26.3	1,600	55.7	41.5 - 69.9	900	31.7	19.0 - 44.3	2,800
\$10,000 to \$14,999	100	2.2	0.0 - 5.7	2,900	75.6	64.9 - 86.4	800	22.2	11.9 - 32.6	3,800
\$15,000 to \$19,999	200	4.3	0.0 - 9.3	3,500	76.2	65.5 - 86.8	900	19.6	9.5 - 29.6	4,600
\$20,000 to \$24,999	200	3.5	0.0 - 7.3	4,700	70.1	60.3 - 79.8	1,800	26.4	16.9 - 35.9	6,600
\$25,000 to \$34,999	600	6.1	0.9 - 11.2	7,400	74.9	66.5 - 83.2	1,900	19.1	11.7 - 26.4	9,900
\$35,000 to \$49,999	300	2.2	0.1 - 4.3	10,700	76.8	69.2 - 84.3	2,900	21.0	13.6 - 28.4	13,900
\$50,000 to \$74,999	300	2.1	0.0 - 4.7	10,300	79.1	72.8 - 85.3	2,400	18.8	12.9 - 24.7	13,000
\$75,000 or more	100	0.9	0.0 - 1.8	11,100	75.1	68.9 - 81.3	3,600	24.0	17.9 - 30.2	14,800

Diabetes - eye exam, dilated by State, County, Island, Community, BRFSS Age Group, DOH Race-Ethnicity, Gender, Education Level, Employment Status (Grouped), Household Income, Poverty Level, Marital Status (Grouped), Married, Health Care Coverage, for the Year(s) - 2000-2002, 2001-2003, 2002-2004, 2003-2005, 2004-2006, 2005-2007, 2006-2008, 2007-2009, 2008-2010

Note: Weighted numbers (#) represent 3-yr averages, percentages and 95% confidence intervals; Respondents aged 18 years and older; n/r (Not Reportable) - If the unweighted total responses for a dimension (row) is <50 that row will not be shown; n/a (Not Available) - Not asked of a subset of respondents

Year: 2006-2008

Poverty Level	Never			<= 1 year			>1 year			Estimated Population (3-Yr Avg)
	#	%	C.I. (95%)	#	%	C.I. (95%)	#	%	C.I. (95%)	#
0-130%	1,000	5.5	2.2 - 8.8	13,100	69.2	62.4 - 76.0	4,800	25.3	18.8 - 31.8	18,900
131-185%	300	3.1	0.0 - 6.5	7,100	77.2	68.9 - 85.4	1,800	19.7	11.9 - 27.6	9,200
186+%	900	2.1	0.8 - 3.4	31,800	77.1	73.7 - 80.6	8,600	20.8	17.5 - 24.1	41,300

Marital Status (Grouped)	Never			<= 1 year			>1 year			Estimated Population (3-Yr Avg)
	#	%	C.I. (95%)	#	%	C.I. (95%)	#	%	C.I. (95%)	#
Married	1,700	3.5	2.0 - 5.1	36,900	76.5	72.8 - 80.2	9,600	20.0	16.4 - 23.5	48,300
Widowed	200	1.6	0.0 - 3.3	7,300	78.5	72.3 - 84.7	1,800	19.9	13.8 - 25.9	9,300
Other	900	5.1	1.7 - 8.5	12,900	68.8	62.8 - 74.9	4,900	26.1	20.4 - 31.8	18,800

Diabetes - eye exam, dilated by State, County, Island, Community, BRFSS Age Group, DOH Race-Ethnicity, Gender, Education Level, Employment Status (Grouped), Household Income, Poverty Level, Marital Status (Grouped), Married, Health Care Coverage, for the Year(s) - 2000-2002, 2001-2003, 2002-2004, 2003-2005, 2004-2006, 2005-2007, 2006-2008, 2007-2009, 2008-2010

Note: Weighted numbers (#) represent 3-yr averages, percentages and 95% confidence intervals; Respondents aged 18 years and older; n/r (Not Reportable) - If the unweighted total responses for a dimension (row) is <50 that row will not be shown; n/a (Not Available) - Not asked of a subset of respondents

Year: 2006-2008

Married	Never			<= 1 year			>1 year			Estimated Population (3-Yr Avg)
	#	%	C.I. (95%)	#	%	C.I. (95%)	#	%	C.I. (95%)	#
Yes	1,700	3.5	2.0 - 5.0	37,600	76.1	72.4 - 79.8	10,100	20.4	16.9 - 24.0	49,400
No	1,100	4.0	1.6 - 6.4	20,100	72.6	68.0 - 77.1	6,500	23.4	19.2 - 27.7	27,600

Health Care Coverage	Never			<= 1 year			>1 year			Estimated Population (3-Yr Avg)
	#	%	C.I. (95%)	#	%	C.I. (95%)	#	%	C.I. (95%)	#
Yes	2,500	3.4	2.1 - 4.6	56,200	76.1	73.2 - 79.0	15,200	20.6	17.8 - 23.3	74,000
No	300	10.4	0.0 - 22.4	1,500	46.6	29.3 - 64.0	1,400	43.0	26.2 - 59.8	3,200

Diabetes - eye exam, dilated by State, County, Island, Community, BRFSS Age Group, DOH Race-Ethnicity, Gender, Education Level, Employment Status (Grouped), Household Income, Poverty Level, Marital Status (Grouped), Married, Health Care Coverage, for the Year(s) - 2000-2002, 2001-2003, 2002-2004, 2003-2005, 2004-2006, 2005-2007, 2006-2008, 2007-2009, 2008-2010

Note: Weighted numbers (#) represent 3-yr averages, percentages and 95% confidence intervals; Respondents aged 18 years and older; n/r (Not Reportable) - If the unweighted total responses for a dimension (row) is <50 that row will not be shown; n/a (Not Available) - Not asked of a subset of respondents

Year: 2005-2007

State	Never			<= 1 year			>1 year			Estimated Population (3-Yr Avg)
	#	%	C.I. (95%)	#	%	C.I. (95%)	#	%	C.I. (95%)	#
Hawaii State	3,400	4.4	2.7 - 6.1	55,700	73.0	68.9 - 77.1	17,200	22.6	18.6 - 26.5	76,300

County	Never			<= 1 year			>1 year			Estimated Population (3-Yr Avg)
	#	%	C.I. (95%)	#	%	C.I. (95%)	#	%	C.I. (95%)	#
Hawaii	500	5.0	2.1 - 8.0	6,900	73.4	67.6 - 79.1	2,000	21.6	16.3 - 26.9	9,400
Honolulu	2,200	3.9	1.8 - 6.1	41,000	73.2	67.9 - 78.6	12,800	22.8	17.6 - 28.0	56,000
Kauai	300	8.0	0.2 - 15.8	2,800	72.4	62.8 - 81.9	800	19.6	12.2 - 27.0	3,900
Maui	400	5.5	2.0 - 9.0	4,900	71.0	63.4 - 78.6	1,600	23.5	16.2 - 30.8	6,900

Diabetes - eye exam, dilated by State, County, Island, Community, BRFSS Age Group, DOH Race-Ethnicity, Gender, Education Level, Employment Status (Grouped), Household Income, Poverty Level, Marital Status (Grouped), Married, Health Care Coverage, for the Year(s) - 2000-2002, 2001-2003, 2002-2004, 2003-2005, 2004-2006, 2005-2007, 2006-2008, 2007-2009, 2008-2010

Note: Weighted numbers (#) represent 3-yr averages, percentages and 95% confidence intervals; Respondents aged 18 years and older; n/r (Not Reportable) - If the unweighted total responses for a dimension (row) is <50 that row will not be shown; n/a (Not Available) - Not asked of a subset of respondents

Year: 2005-2007

Island	Never			<= 1 year			>1 year			Estimated Population (3-Yr Avg)
	#	%	C.I. (95%)	#	%	C.I. (95%)	#	%	C.I. (95%)	#
Hawaii	500	5.0	2.1 - 8.0	6,900	73.4	67.6 - 79.1	2,000	21.6	16.3 - 26.9	9,400
Kauai	300	8.0	0.2 - 15.8	2,800	72.4	62.8 - 81.9	800	19.6	12.2 - 27.0	3,900
Lanai	<50	9.9	0.0 - 21.9	100	61.5	42.7 - 80.3	100	28.6	10.7 - 46.5	200
Maui	300	4.4	0.7 - 8.1	4,400	72.2	63.7 - 80.7	1,400	23.4	15.2 - 31.6	6,100
Molokai	100	14.9	1.9 - 28.0	400	62.4	46.9 - 77.8	100	22.7	10.7 - 34.7	600
Oahu	2,200	3.9	1.8 - 6.1	41,000	73.2	67.9 - 78.6	12,800	22.8	17.6 - 28.0	56,000

Community	Never			<= 1 year			>1 year			Estimated Population (3-Yr Avg)
	#	%	C.I. (95%)	#	%	C.I. (95%)	#	%	C.I. (95%)	#
Aiea/ Pearl City	100	1.2	0.0 - 3.6	4,000	80.7	68.6 - 92.8	900	18.1	6.1 - 30.1	5,000
Hilo	200	6.6	0.5 - 12.7	2,500	76.3	66.5 - 86.0	600	17.2	8.9 - 25.5	3,300

Diabetes - eye exam, dilated by State, County, Island, Community, BRFSS Age Group, DOH Race-Ethnicity, Gender, Education Level, Employment Status (Grouped), Household Income, Poverty Level, Marital Status (Grouped), Married, Health Care Coverage, for the Year(s) - 2000-2002, 2001-2003, 2002-2004, 2003-2005, 2004-2006, 2005-2007, 2006-2008, 2007-2009, 2008-2010

Note: Weighted numbers (#) represent 3-yr averages, percentages and 95% confidence intervals; Respondents aged 18 years and older; n/r (Not Reportable) - If the unweighted total responses for a dimension (row) is <50 that row will not be shown; n/a (Not Available) - Not asked of a subset of respondents

Year: 2005-2007

Community	Never			<= 1 year			>1 year			Estimated Population (3-Yr Avg)
	#	%	C.I. (95%)	#	%	C.I. (95%)	#	%	C.I. (95%)	#
Kahului	200	8.6	0.1 - 17.1	1,500	76.0	63.6 - 88.5	300	15.4	5.0 - 25.7	1,900
Kailua/ Waimanalo	200	5.6	0.0 - 13.9	2,600	64.4	45.8 - 83.0	1,200	30.0	11.4 - 48.6	4,100
Kona	100	3.6	0.0 - 10.4	1,200	69.4	55.4 - 83.5	500	27.0	13.8 - 40.3	1,700
Lahaina/ Wailuku	100	3.7	0.0 - 10.7	1,400	73.9	58.8 - 89.0	400	22.4	8.0 - 36.8	1,900
Lanai	<50	9.9	0.0 - 21.9	100	61.5	42.7 - 80.3	100	28.6	10.7 - 46.5	200
Lihue-Waimea	100	5.1	0.0 - 10.5	1,900	76.6	66.7 - 86.4	500	18.3	9.6 - 27.1	2,500
Mililani/ Wahiawa	100	1.9	0.0 - 5.6	3,900	72.8	57.4 - 88.3	1,300	25.3	9.9 - 40.7	5,300
Molokai	100	14.9	1.9 - 28.0	400	62.4	46.9 - 77.8	100	22.7	10.7 - 34.7	600
Nanakuli/ Waianae	300	6.6	0.0 - 16.1	4,200	79.5	65.6 - 93.5	700	13.9	2.6 - 25.2	5,300
N.Hawaii	200	8.4	1.5 - 15.2	1,200	63.6	51.4 - 75.7	500	28.0	16.5 - 39.6	2,000
Nuuanu/ Kalihi/ Moanalua	<50	0.6	0.0 - 1.7	3,800	78.3	61.6 - 94.9	1,000	21.2	4.5 - 37.9	4,800
Puna/ Kau	<50	1.4	0.0 - 3.5	2,000	80.0	69.7 - 90.4	500	18.5	8.4 - 28.7	2,500

Diabetes - eye exam, dilated by State, County, Island, Community, BRFSS Age Group, DOH Race-Ethnicity, Gender, Education Level, Employment Status (Grouped), Household Income, Poverty Level, Marital Status (Grouped), Married, Health Care Coverage, for the Year(s) - 2000-2002, 2001-2003, 2002-2004, 2003-2005, 2004-2006, 2005-2007, 2006-2008, 2007-2009, 2008-2010

Note: Weighted numbers (#) represent 3-yr averages, percentages and 95% confidence intervals; Respondents aged 18 years and older; n/r (Not Reportable) - If the unweighted total responses for a dimension (row) is <50 that row will not be shown; n/a (Not Available) - Not asked of a subset of respondents

Year: 2005-2007

Community	Never			<= 1 year			>1 year			Estimated Population (3-Yr Avg)
	#	%	C.I. (95%)	#	%	C.I. (95%)	#	%	C.I. (95%)	#
Upcountry/ Hana	<50	1.3	0.0 - 3.9	1,500	67.5	51.8 - 83.2	700	31.2	15.5 - 46.9	2,200
Waipahu/ Kapolei/ Ewa	300	3.4	0.0 - 7.0	7,200	73.3	61.1 - 85.5	2,300	23.2	11.2 - 35.2	9,900

BRFSS Age Group	Never			<= 1 year			>1 year			Estimated Population (3-Yr Avg)
	#	%	C.I. (95%)	#	%	C.I. (95%)	#	%	C.I. (95%)	#
35-44	900	14.0	1.1 - 26.8	4,200	68.0	53.2 - 82.7	1,100	18.1	7.1 - 29.1	6,200
45-54	300	1.8	0.0 - 4.0	11,300	70.5	62.0 - 79.0	4,400	27.7	19.2 - 36.1	16,000
55-64	700	3.7	1.3 - 6.0	14,500	72.1	64.7 - 79.6	4,900	24.2	16.8 - 31.5	20,100
65-74	500	3.1	0.8 - 5.3	11,900	76.7	70.5 - 82.9	3,100	20.2	14.3 - 26.2	15,500
75+	500	3.4	0.4 - 6.3	11,300	79.4	66.9 - 91.8	2,400	17.3	4.6 - 29.9	14,200

Diabetes - eye exam, dilated by State, County, Island, Community, BRFSS Age Group, DOH Race-Ethnicity, Gender, Education Level, Employment Status (Grouped), Household Income, Poverty Level, Marital Status (Grouped), Married, Health Care Coverage, for the Year(s) - 2000-2002, 2001-2003, 2002-2004, 2003-2005, 2004-2006, 2005-2007, 2006-2008, 2007-2009, 2008-2010

Note: Weighted numbers (#) represent 3-yr averages, percentages and 95% confidence intervals; Respondents aged 18 years and older; n/r (Not Reportable) - If the unweighted total responses for a dimension (row) is <50 that row will not be shown; n/a (Not Available) - Not asked of a subset of respondents

Year: 2005-2007

DOH Race-Ethnicity	Never			<= 1 year			>1 year			Estimated Population (3-Yr Avg)
	#	%	C.I. (95%)	#	%	C.I. (95%)	#	%	C.I. (95%)	#
Caucasian	500	2.8	0.4 - 5.2	12,700	74.6	68.1 - 81.2	3,800	22.5	16.1 - 28.9	17,000
Native Hawaiian	600	3.9	1.4 - 6.3	10,300	68.1	59.0 - 77.2	4,200	28.1	19.0 - 37.2	15,100
Chinese	<50	0.1	0.0 - 0.4	4,700	89.4	81.3 - 97.4	600	10.5	2.4 - 18.5	5,300
Filipino	900	6.7	2.4 - 11.0	9,900	72.3	62.7 - 81.8	2,900	21.1	12.0 - 30.2	13,700
Japanese	500	2.8	0.7 - 4.8	13,000	75.8	68.4 - 83.1	3,700	21.5	14.2 - 28.8	17,100

Gender	Never			<= 1 year			>1 year			Estimated Population (3-Yr Avg)
	#	%	C.I. (95%)	#	%	C.I. (95%)	#	%	C.I. (95%)	#
Male	1,800	4.6	2.0 - 7.2	27,400	70.3	63.8 - 76.8	9,800	25.1	18.7 - 31.5	39,000
Female	1,600	4.2	2.1 - 6.4	28,300	75.8	71.1 - 80.5	7,400	19.9	15.5 - 24.4	37,300

Diabetes - eye exam, dilated by State, County, Island, Community, BRFSS Age Group, DOH Race-Ethnicity, Gender, Education Level, Employment Status (Grouped), Household Income, Poverty Level, Marital Status (Grouped), Married, Health Care Coverage, for the Year(s) - 2000-2002, 2001-2003, 2002-2004, 2003-2005, 2004-2006, 2005-2007, 2006-2008, 2007-2009, 2008-2010

Note: Weighted numbers (#) represent 3-yr averages, percentages and 95% confidence intervals; Respondents aged 18 years and older; n/r (Not Reportable) - If the unweighted total responses for a dimension (row) is <50 that row will not be shown; n/a (Not Available) - Not asked of a subset of respondents

Year: 2005-2007

Education Level	Never			<= 1 year			>1 year			Estimated Population (3-Yr Avg)
	#	%	C.I. (95%)	#	%	C.I. (95%)	#	%	C.I. (95%)	#
Never attended school/ Only Kindergarten to Grades 8	500	14.1	2.4 - 25.9	2,200	62.7	40.7 - 84.7	800	23.2	0.4 - 46.0	3,600
Grades 9 thru 11 (Some High School)	300	6.9	0.9 - 12.9	2,900	62.8	47.3 - 78.4	1,400	30.3	15.0 - 45.5	4,600
Grades 12 or GED (High School Grad)	1,700	6.2	2.5 - 9.9	17,900	64.8	56.9 - 72.8	8,000	28.9	21.0 - 36.9	27,600
College 1 to 3 years (Some College/ Tech)	700	3.4	0.7 - 6.1	17,000	79.1	73.6 - 84.5	3,800	17.5	12.5 - 22.6	21,600
College 4 years or more (College Grad)	100	0.5	0.0 - 1.4	15,600	82.5	75.9 - 89.0	3,200	17.0	10.5 - 23.5	18,900

Employment Status (Grouped)	Never			<= 1 year			>1 year			Estimated Population (3-Yr Avg)
	#	%	C.I. (95%)	#	%	C.I. (95%)	#	%	C.I. (95%)	#
Employed	1,400	4.0	1.8 - 6.2	25,000	72.1	66.2 - 78.1	8,300	23.9	18.1 - 29.6	34,700
Retired/Unable to work	1,500	4.1	1.5 - 6.8	28,200	76.2	70.1 - 82.3	7,300	19.7	13.7 - 25.6	37,000
Student/Homemaker	300	10.3	0.6 - 20.0	1,700	55.1	35.8 - 74.5	1,000	34.6	15.7 - 53.5	3,000

Diabetes - eye exam, dilated by State, County, Island, Community, BRFSS Age Group, DOH Race-Ethnicity, Gender, Education Level, Employment Status (Grouped), Household Income, Poverty Level, Marital Status (Grouped), Married, Health Care Coverage, for the Year(s) - 2000-2002, 2001-2003, 2002-2004, 2003-2005, 2004-2006, 2005-2007, 2006-2008, 2007-2009, 2008-2010

Note: Weighted numbers (#) represent 3-yr averages, percentages and 95% confidence intervals; Respondents aged 18 years and older; n/r (Not Reportable) - If the unweighted total responses for a dimension (row) is <50 that row will not be shown; n/a (Not Available) - Not asked of a subset of respondents

Year: 2005-2007

Household Income	Never			<= 1 year			>1 year			Estimated Population (3-Yr Avg)
	#	%	C.I. (95%)	#	%	C.I. (95%)	#	%	C.I. (95%)	#
Less than \$10,000	200	6.5	0.0 - 13.3	1,700	61.0	47.4 - 74.6	900	32.5	19.4 - 45.6	2,900
\$10,000 to \$14,999	300	5.6	0.0 - 11.8	3,300	68.3	51.7 - 84.9	1,300	26.1	10.0 - 42.3	4,900
\$15,000 to \$19,999	<50	0.9	0.0 - 2.2	4,400	80.5	69.4 - 91.6	1,000	18.6	7.7 - 29.6	5,500
\$20,000 to \$24,999	200	2.6	0.0 - 6.1	4,700	71.0	59.6 - 82.4	1,700	26.4	15.1 - 37.6	6,600
\$25,000 to \$34,999	800	8.9	1.7 - 16.0	6,800	72.6	60.7 - 84.4	1,700	18.6	7.5 - 29.7	9,400
\$35,000 to \$49,999	300	2.1	0.0 - 4.3	9,900	79.3	71.3 - 87.3	2,300	18.6	10.7 - 26.5	12,500
\$50,000 to \$74,999	300	2.8	0.0 - 5.5	9,100	78.9	71.3 - 86.5	2,100	18.3	11.0 - 25.7	11,500
\$75,000 or more	200	1.2	0.0 - 2.4	9,100	73.2	64.5 - 81.8	3,200	25.6	17.0 - 34.3	12,400

Diabetes - eye exam, dilated by State, County, Island, Community, BRFSS Age Group, DOH Race-Ethnicity, Gender, Education Level, Employment Status (Grouped), Household Income, Poverty Level, Marital Status (Grouped), Married, Health Care Coverage, for the Year(s) - 2000-2002, 2001-2003, 2002-2004, 2003-2005, 2004-2006, 2005-2007, 2006-2008, 2007-2009, 2008-2010

Note: Weighted numbers (#) represent 3-yr averages, percentages and 95% confidence intervals; Respondents aged 18 years and older; n/r (Not Reportable) - If the unweighted total responses for a dimension (row) is <50 that row will not be shown; n/a (Not Available) - Not asked of a subset of respondents

Year: 2005-2007

Poverty Level	Never			<= 1 year			>1 year			Estimated Population (3-Yr Avg)
	#	%	C.I. (95%)	#	%	C.I. (95%)	#	%	C.I. (95%)	#
0-130%	1,100	5.5	1.9 - 9.0	13,800	68.6	60.7 - 76.5	5,200	25.9	18.4 - 33.5	20,100
131-185%	300	3.4	0.0 - 7.1	6,600	76.2	64.7 - 87.8	1,800	20.3	8.9 - 31.7	8,600
186+%	900	2.3	0.9 - 3.7	28,800	77.8	73.5 - 82.1	7,400	19.9	15.7 - 24.1	37,000

Marital Status (Grouped)	Never			<= 1 year			>1 year			Estimated Population (3-Yr Avg)
	#	%	C.I. (95%)	#	%	C.I. (95%)	#	%	C.I. (95%)	#
Married	1,800	3.8	2.1 - 5.4	36,100	74.4	69.1 - 79.7	10,600	21.8	16.5 - 27.1	48,500
Widowed	200	2.8	0.3 - 5.4	6,800	78.7	70.8 - 86.6	1,600	18.4	10.7 - 26.2	8,700
Other	1,300	7.2	1.8 - 12.6	11,900	65.7	57.1 - 74.3	4,900	27.1	19.0 - 35.1	18,200

Diabetes - eye exam, dilated by State, County, Island, Community, BRFSS Age Group, DOH Race-Ethnicity, Gender, Education Level, Employment Status (Grouped), Household Income, Poverty Level, Marital Status (Grouped), Married, Health Care Coverage, for the Year(s) - 2000-2002, 2001-2003, 2002-2004, 2003-2005, 2004-2006, 2005-2007, 2006-2008, 2007-2009, 2008-2010

Note: Weighted numbers (#) represent 3-yr averages, percentages and 95% confidence intervals; Respondents aged 18 years and older; n/r (Not Reportable) - If the unweighted total responses for a dimension (row) is <50 that row will not be shown; n/a (Not Available) - Not asked of a subset of respondents

Year: 2005-2007

Married	Never			<= 1 year			>1 year			Estimated Population (3-Yr Avg)
	#	%	C.I. (95%)	#	%	C.I. (95%)	#	%	C.I. (95%)	#
Yes	2,000	4.0	2.3 - 5.6	36,600	74.2	69.0 - 79.5	10,800	21.8	16.6 - 27.0	49,400
No	1,400	5.3	1.6 - 9.0	18,900	70.6	64.1 - 77.1	6,400	24.1	18.0 - 30.2	26,700

Health Care Coverage	Never			<= 1 year			>1 year			Estimated Population (3-Yr Avg)
	#	%	C.I. (95%)	#	%	C.I. (95%)	#	%	C.I. (95%)	#
Yes	1,500	3.2	1.9 - 4.6	36,600	77.2	73.6 - 80.8	9,300	19.6	16.1 - 23.0	47,500

Diabetes - eye exam, dilated by State, County, Island, Community, BRFSS Age Group, DOH Race-Ethnicity, Gender, Education Level, Employment Status (Grouped), Household Income, Poverty Level, Marital Status (Grouped), Married, Health Care Coverage, for the Year(s) - 2000-2002, 2001-2003, 2002-2004, 2003-2005, 2004-2006, 2005-2007, 2006-2008, 2007-2009, 2008-2010

Note: Weighted numbers (#) represent 3-yr averages, percentages and 95% confidence intervals; Respondents aged 18 years and older; n/r (Not Reportable) - If the unweighted total responses for a dimension (row) is <50 that row will not be shown; n/a (Not Available) - Not asked of a subset of respondents

Year: 2004-2006

State	Never			<= 1 year			>1 year			Estimated Population (3-Yr Avg)
	#	%	C.I. (95%)	#	%	C.I. (95%)	#	%	C.I. (95%)	#
Hawaii State	3,200	4.5	2.5 - 6.4	52,200	72.9	67.9 - 78.0	16,200	22.6	17.7 - 27.5	71,500

County	Never			<= 1 year			>1 year			Estimated Population (3-Yr Avg)
	#	%	C.I. (95%)	#	%	C.I. (95%)	#	%	C.I. (95%)	#
Hawaii	500	5.1	1.5 - 8.8	6,600	72.7	65.8 - 79.5	2,000	22.2	16.0 - 28.4	9,100
Honolulu	2,100	3.9	1.5 - 6.4	38,900	73.5	66.9 - 80.1	11,900	22.6	16.1 - 29.0	52,900
Kauai	400	10.0	1.7 - 18.2	2,800	74.3	64.3 - 84.4	600	15.7	8.5 - 22.9	3,800
Maui	300	4.7	1.0 - 8.4	3,800	67.3	56.1 - 78.4	1,600	28.0	16.8 - 39.2	5,700

Diabetes - eye exam, dilated by State, County, Island, Community, BRFSS Age Group, DOH Race-Ethnicity, Gender, Education Level, Employment Status (Grouped), Household Income, Poverty Level, Marital Status (Grouped), Married, Health Care Coverage, for the Year(s) - 2000-2002, 2001-2003, 2002-2004, 2003-2005, 2004-2006, 2005-2007, 2006-2008, 2007-2009, 2008-2010

Note: Weighted numbers (#) represent 3-yr averages, percentages and 95% confidence intervals; Respondents aged 18 years and older; n/r (Not Reportable) - If the unweighted total responses for a dimension (row) is <50 that row will not be shown; n/a (Not Available) - Not asked of a subset of respondents

Year: 2004-2006

Island	Never			<= 1 year			>1 year			Estimated Population (3-Yr Avg)
	#	%	C.I. (95%)	#	%	C.I. (95%)	#	%	C.I. (95%)	#
Hawaii	500	5.1	1.5 - 8.8	6,600	72.7	65.8 - 79.5	2,000	22.2	16.0 - 28.4	9,100
Kauai	400	10.0	1.7 - 18.2	2,800	74.3	64.3 - 84.4	600	15.7	8.5 - 22.9	3,800
Maui	200	3.3	0.0 - 7.0	3,400	68.4	55.9 - 81.0	1,400	28.2	15.7 - 40.8	5,000
Oahu	2,100	3.9	1.5 - 6.4	38,900	73.5	66.9 - 80.1	11,900	22.6	16.1 - 29.0	52,900

Diabetes - eye exam, dilated by State, County, Island, Community, BRFSS Age Group, DOH Race-Ethnicity, Gender, Education Level, Employment Status (Grouped), Household Income, Poverty Level, Marital Status (Grouped), Married, Health Care Coverage, for the Year(s) - 2000-2002, 2001-2003, 2002-2004, 2003-2005, 2004-2006, 2005-2007, 2006-2008, 2007-2009, 2008-2010

Note: Weighted numbers (#) represent 3-yr averages, percentages and 95% confidence intervals; Respondents aged 18 years and older; n/r (Not Reportable) - If the unweighted total responses for a dimension (row) is <50 that row will not be shown; n/a (Not Available) - Not asked of a subset of respondents

Year: 2004-2006

Community	Never			<= 1 year			>1 year			Estimated Population (3-Yr Avg)
	#	%	C.I. (95%)	#	%	C.I. (95%)	#	%	C.I. (95%)	#
Hilo	100	4.3	0.0 - 10.5	2,000	77.6	66.5 - 88.7	500	18.1	8.3 - 27.9	2,600
Lihue-Waimea	200	7.5	1.2 - 13.8	2,100	79.1	69.2 - 89.0	400	13.4	5.3 - 21.5	2,600
N.Hawaii	100	8.1	0.0 - 17.5	1,200	65.5	50.4 - 80.7	500	26.4	12.8 - 39.9	1,800
Puna/ Kau	100	4.9	0.0 - 11.5	2,300	76.0	63.2 - 88.8	600	19.0	7.5 - 30.6	3,000
Waipahu/ Kapolei/ Ewa	300	3.7	0.0 - 7.6	6,600	71.0	53.9 - 88.0	2,400	25.4	8.4 - 42.4	9,300

Diabetes - eye exam, dilated by State, County, Island, Community, BRFSS Age Group, DOH Race-Ethnicity, Gender, Education Level, Employment Status (Grouped), Household Income, Poverty Level, Marital Status (Grouped), Married, Health Care Coverage, for the Year(s) - 2000-2002, 2001-2003, 2002-2004, 2003-2005, 2004-2006, 2005-2007, 2006-2008, 2007-2009, 2008-2010

Note: Weighted numbers (#) represent 3-yr averages, percentages and 95% confidence intervals; Respondents aged 18 years and older; n/r (Not Reportable) - If the unweighted total responses for a dimension (row) is <50 that row will not be shown; n/a (Not Available) - Not asked of a subset of respondents

Year: 2004-2006

BRFSS Age Group	Never			<= 1 year			>1 year			Estimated Population (3-Yr Avg)
	#	%	C.I. (95%)	#	%	C.I. (95%)	#	%	C.I. (95%)	#
35-44	1,000	12.2	0.2 - 24.2	5,600	66.6	46.6 - 86.5	1,800	21.2	2.2 - 40.3	8,500
45-54	400	2.8	0.2 - 5.3	10,800	70.9	60.6 - 81.2	4,000	26.3	16.1 - 36.5	15,200
55-64	500	2.4	0.4 - 4.4	13,800	73.5	64.9 - 82.0	4,500	24.1	15.7 - 32.6	18,800
65-74	400	3.0	0.4 - 5.6	9,600	74.6	66.1 - 83.2	2,900	22.4	14.0 - 30.7	12,900
75+	400	3.1	0.0 - 6.3	9,600	78.5	64.0 - 93.1	2,200	18.4	3.7 - 33.1	12,200

Diabetes - eye exam, dilated by State, County, Island, Community, BRFSS Age Group, DOH Race-Ethnicity, Gender, Education Level, Employment Status (Grouped), Household Income, Poverty Level, Marital Status (Grouped), Married, Health Care Coverage, for the Year(s) - 2000-2002, 2001-2003, 2002-2004, 2003-2005, 2004-2006, 2005-2007, 2006-2008, 2007-2009, 2008-2010

Note: Weighted numbers (#) represent 3-yr averages, percentages and 95% confidence intervals; Respondents aged 18 years and older; n/r (Not Reportable) - If the unweighted total responses for a dimension (row) is <50 that row will not be shown; n/a (Not Available) - Not asked of a subset of respondents

Year: 2004-2006

DOH Race-Ethnicity	Never			<= 1 year			>1 year			Estimated Population (3-Yr Avg)
	#	%	C.I. (95%)	#	%	C.I. (95%)	#	%	C.I. (95%)	#
Caucasian	500	2.8	0.3 - 5.4	12,000	73.9	64.4 - 83.4	3,800	23.3	13.8 - 32.7	16,200
Native Hawaiian	400	2.8	0.9 - 4.7	11,000	71.2	59.8 - 82.6	4,000	26.0	14.7 - 37.4	15,500
Filipino	900	6.5	2.0 - 11.1	9,600	72.5	61.2 - 83.7	2,800	21.0	10.2 - 31.8	13,300
Japanese	200	1.7	0.0 - 3.5	11,200	78.2	69.6 - 86.8	2,900	20.1	11.6 - 28.6	14,300

Gender	Never			<= 1 year			>1 year			Estimated Population (3-Yr Avg)
	#	%	C.I. (95%)	#	%	C.I. (95%)	#	%	C.I. (95%)	#
Male	1,800	4.8	1.7 - 7.9	27,700	72.8	65.3 - 80.4	8,500	22.4	15.0 - 29.8	38,000
Female	1,400	4.1	1.8 - 6.4	24,500	73.1	66.5 - 79.6	7,700	22.8	16.5 - 29.2	33,500

Diabetes - eye exam, dilated by State, County, Island, Community, BRFSS Age Group, DOH Race-Ethnicity, Gender, Education Level, Employment Status (Grouped), Household Income, Poverty Level, Marital Status (Grouped), Married, Health Care Coverage, for the Year(s) - 2000-2002, 2001-2003, 2002-2004, 2003-2005, 2004-2006, 2005-2007, 2006-2008, 2007-2009, 2008-2010

Note: Weighted numbers (#) represent 3-yr averages, percentages and 95% confidence intervals; Respondents aged 18 years and older; n/r (Not Reportable) - If the unweighted total responses for a dimension (row) is <50 that row will not be shown; n/a (Not Available) - Not asked of a subset of respondents

Year: 2004-2006

Education Level	Never			<= 1 year			>1 year			Estimated Population (3-Yr Avg)
	#	%	C.I. (95%)	#	%	C.I. (95%)	#	%	C.I. (95%)	#
Grades 9 thru 11 (Some High School)	200	5.4	0.0 - 11.4	2,300	58.1	40.3 - 75.9	1,400	36.5	18.8 - 54.2	3,900
Grades 12 or GED (High School Grad)	1,800	6.5	2.3 - 10.7	17,200	62.0	52.2 - 71.8	8,700	31.4	21.6 - 41.3	27,800
College 1 to 3 years (Some College/ Tech)	700	3.8	0.7 - 6.8	16,600	85.2	80.1 - 90.2	2,200	11.1	6.9 - 15.2	19,500
College 4 years or more (College Grad)	100	0.7	0.0 - 1.6	14,200	81.3	73.4 - 89.3	3,100	18.0	10.1 - 25.9	17,400

Employment Status (Grouped)	Never			<= 1 year			>1 year			Estimated Population (3-Yr Avg)
	#	%	C.I. (95%)	#	%	C.I. (95%)	#	%	C.I. (95%)	#
Employed	1,600	4.7	1.8 - 7.7	23,400	70.5	62.8 - 78.3	8,200	24.7	17.1 - 32.4	33,200
Retired/Unable to work	1,200	3.6	0.7 - 6.4	25,200	76.3	69.0 - 83.6	6,600	20.1	13.0 - 27.2	33,000

Diabetes - eye exam, dilated by State, County, Island, Community, BRFSS Age Group, DOH Race-Ethnicity, Gender, Education Level, Employment Status (Grouped), Household Income, Poverty Level, Marital Status (Grouped), Married, Health Care Coverage, for the Year(s) - 2000-2002, 2001-2003, 2002-2004, 2003-2005, 2004-2006, 2005-2007, 2006-2008, 2007-2009, 2008-2010

Note: Weighted numbers (#) represent 3-yr averages, percentages and 95% confidence intervals; Respondents aged 18 years and older; n/r (Not Reportable) - If the unweighted total responses for a dimension (row) is <50 that row will not be shown; n/a (Not Available) - Not asked of a subset of respondents

Year: 2004-2006

Household Income	Never			<= 1 year			>1 year			Estimated Population (3-Yr Avg)
	#	%	C.I. (95%)	#	%	C.I. (95%)	#	%	C.I. (95%)	#
Less than \$10,000	200	8.7	0.0 - 17.5	1,400	64.5	48.7 - 80.4	600	26.8	12.1 - 41.5	2,200
\$10,000 to \$14,999	200	5.0	0.0 - 12.1	2,500	66.1	45.6 - 86.6	1,100	29.0	8.9 - 49.0	3,800
\$15,000 to \$19,999	400	5.6	0.0 - 14.9	5,500	84.0	71.7 - 96.3	700	10.5	2.0 - 18.9	6,600
\$20,000 to \$24,999	100	1.7	0.0 - 4.8	4,100	68.1	51.5 - 84.7	1,800	30.2	13.5 - 46.8	6,100
\$25,000 to \$34,999	800	9.2	1.4 - 16.9	6,000	68.9	52.8 - 84.9	1,900	22.0	6.1 - 37.8	8,700
\$35,000 to \$49,999	100	1.4	0.1 - 2.6	8,200	78.3	68.2 - 88.5	2,100	20.3	10.2 - 30.4	10,400
\$50,000 to \$74,999	500	3.7	0.5 - 6.9	10,300	80.3	72.1 - 88.5	2,000	16.0	8.2 - 23.7	12,800
\$75,000 or more	<50	0.3	0.0 - 1.0	8,500	72.4	59.0 - 85.7	3,200	27.3	13.9 - 40.7	11,700

Diabetes - eye exam, dilated by State, County, Island, Community, BRFSS Age Group, DOH Race-Ethnicity, Gender, Education Level, Employment Status (Grouped), Household Income, Poverty Level, Marital Status (Grouped), Married, Health Care Coverage, for the Year(s) - 2000-2002, 2001-2003, 2002-2004, 2003-2005, 2004-2006, 2005-2007, 2006-2008, 2007-2009, 2008-2010

Note: Weighted numbers (#) represent 3-yr averages, percentages and 95% confidence intervals; Respondents aged 18 years and older; n/r (Not Reportable) - If the unweighted total responses for a dimension (row) is <50 that row will not be shown; n/a (Not Available) - Not asked of a subset of respondents

Year: 2004-2006

Poverty Level	Never			<= 1 year			>1 year			Estimated Population (3-Yr Avg)
	#	%	C.I. (95%)	#	%	C.I. (95%)	#	%	C.I. (95%)	#
0-130%	1,200	6.4	1.6 - 11.3	12,500	66.3	55.5 - 77.0	5,100	27.3	17.0 - 37.6	18,800
131-185%	100	1.8	0.0 - 3.7	5,800	78.2	64.6 - 91.9	1,500	20.0	6.3 - 33.6	7,400
186+%	1,000	2.7	1.1 - 4.3	28,300	78.3	72.5 - 84.0	6,900	19.1	13.4 - 24.7	36,200

Marital Status (Grouped)	Never			<= 1 year			>1 year			Estimated Population (3-Yr Avg)
	#	%	C.I. (95%)	#	%	C.I. (95%)	#	%	C.I. (95%)	#
Married	1,900	4.0	1.9 - 6.1	34,100	73.1	66.6 - 79.6	10,600	22.8	16.4 - 29.3	46,600
Widowed	200	2.1	0.0 - 4.6	5,800	76.8	66.7 - 86.9	1,600	21.1	11.2 - 31.0	7,500
Other	1,200	6.9	1.1 - 12.7	11,700	69.9	59.3 - 80.4	3,900	23.2	13.1 - 33.3	16,700

Diabetes - eye exam, dilated by State, County, Island, Community, BRFSS Age Group, DOH Race-Ethnicity, Gender, Education Level, Employment Status (Grouped), Household Income, Poverty Level, Marital Status (Grouped), Married, Health Care Coverage, for the Year(s) - 2000-2002, 2001-2003, 2002-2004, 2003-2005, 2004-2006, 2005-2007, 2006-2008, 2007-2009, 2008-2010

Note: Weighted numbers (#) represent 3-yr averages, percentages and 95% confidence intervals; Respondents aged 18 years and older; n/r (Not Reportable) - If the unweighted total responses for a dimension (row) is <50 that row will not be shown; n/a (Not Available) - Not asked of a subset of respondents

Year: 2004-2006

Married	Never			<= 1 year			>1 year			Estimated Population (3-Yr Avg)
	#	%	C.I. (95%)	#	%	C.I. (95%)	#	%	C.I. (95%)	#
Yes	2,000	4.3	2.1 - 6.4	34,500	73.0	66.5 - 79.4	10,800	22.8	16.4 - 29.1	47,300
No	1,200	4.9	0.8 - 8.9	17,500	72.8	64.7 - 80.8	5,400	22.4	14.7 - 30.0	24,100

Health Care Coverage	Never			<= 1 year			>1 year			Estimated Population (3-Yr Avg)
	#	%	C.I. (95%)	#	%	C.I. (95%)	#	%	C.I. (95%)	#
Yes	1,300	3.1	1.2 - 5.0	32,600	76.1	70.1 - 82.0	8,900	20.8	15.0 - 26.6	42,900

Diabetes - eye exam, dilated by State, County, Island, Community, BRFSS Age Group, DOH Race-Ethnicity, Gender, Education Level, Employment Status (Grouped), Household Income, Poverty Level, Marital Status (Grouped), Married, Health Care Coverage, for the Year(s) - 2000-2002, 2001-2003, 2002-2004, 2003-2005, 2004-2006, 2005-2007, 2006-2008, 2007-2009, 2008-2010

Note: Weighted numbers (#) represent 3-yr averages, percentages and 95% confidence intervals; Respondents aged 18 years and older; n/r (Not Reportable) - If the unweighted total responses for a dimension (row) is <50 that row will not be shown; n/a (Not Available) - Not asked of a subset of respondents

Year: 2003-2005

State	Never			<= 1 year			>1 year			Estimated Population (3-Yr Avg)
	#	%	C.I. (95%)	#	%	C.I. (95%)	#	%	C.I. (95%)	#
Hawaii State	4,200	6.0	3.6 - 8.5	51,600	74.7	69.4 - 80.0	13,300	19.2	14.1 - 24.3	69,100

County	Never			<= 1 year			>1 year			Estimated Population (3-Yr Avg)
	#	%	C.I. (95%)	#	%	C.I. (95%)	#	%	C.I. (95%)	#
Hawaii	900	9.9	2.3 - 17.4	6,400	70.2	61.6 - 78.9	1,800	19.9	13.5 - 26.3	9,100
Honolulu	2,600	4.9	2.1 - 7.7	39,800	76.2	69.5 - 82.9	9,900	18.9	12.4 - 25.4	52,300
Kauai	400	13.3	2.4 - 24.3	2,400	77.1	64.9 - 89.3	300	9.5	2.5 - 16.6	3,100
Maui	300	6.6	1.3 - 12.0	3,100	65.9	52.6 - 79.2	1,300	27.5	14.2 - 40.8	4,700

Diabetes - eye exam, dilated by State, County, Island, Community, BRFSS Age Group, DOH Race-Ethnicity, Gender, Education Level, Employment Status (Grouped), Household Income, Poverty Level, Marital Status (Grouped), Married, Health Care Coverage, for the Year(s) - 2000-2002, 2001-2003, 2002-2004, 2003-2005, 2004-2006, 2005-2007, 2006-2008, 2007-2009, 2008-2010

Note: Weighted numbers (#) represent 3-yr averages, percentages and 95% confidence intervals; Respondents aged 18 years and older; n/r (Not Reportable) - If the unweighted total responses for a dimension (row) is <50 that row will not be shown; n/a (Not Available) - Not asked of a subset of respondents

Year: 2003-2005

Island	Never			<= 1 year			>1 year			Estimated Population (3-Yr Avg)
	#	%	C.I. (95%)	#	%	C.I. (95%)	#	%	C.I. (95%)	#
Hawaii	900	9.9	2.3 - 17.4	6,400	70.2	61.6 - 78.9	1,800	19.9	13.5 - 26.3	9,100
Kauai	400	13.3	2.4 - 24.3	2,400	77.1	64.9 - 89.3	300	9.5	2.5 - 16.6	3,100
Maui	200	5.0	0.0 - 10.5	2,700	67.2	51.9 - 82.5	1,100	27.8	12.5 - 43.1	4,000
Oahu	2,600	4.9	2.1 - 7.7	39,800	76.2	69.5 - 82.9	9,900	18.9	12.4 - 25.4	52,300

Community	Never			<= 1 year			>1 year			Estimated Population (3-Yr Avg)
	#	%	C.I. (95%)	#	%	C.I. (95%)	#	%	C.I. (95%)	#
Hilo	100	6.8	0.0 - 15.9	1,600	72.3	58.1 - 86.4	500	21.0	8.8 - 33.1	2,200
Puna/ Kau	100	4.9	0.0 - 11.4	2,300	76.6	63.9 - 89.4	600	18.5	7.0 - 29.9	3,000

Diabetes - eye exam, dilated by State, County, Island, Community, BRFSS Age Group, DOH Race-Ethnicity, Gender, Education Level, Employment Status (Grouped), Household Income, Poverty Level, Marital Status (Grouped), Married, Health Care Coverage, for the Year(s) - 2000-2002, 2001-2003, 2002-2004, 2003-2005, 2004-2006, 2005-2007, 2006-2008, 2007-2009, 2008-2010

Note: Weighted numbers (#) represent 3-yr averages, percentages and 95% confidence intervals; Respondents aged 18 years and older; n/r (Not Reportable) - If the unweighted total responses for a dimension (row) is <50 that row will not be shown; n/a (Not Available) - Not asked of a subset of respondents

Year: 2003-2005

DOH Race-Ethnicity	Never			<= 1 year			>1 year			Estimated Population (3-Yr Avg)
	#	%	C.I. (95%)	#	%	C.I. (95%)	#	%	C.I. (95%)	#
Caucasian	900	5.9	2.1 - 9.7	11,300	71.5	61.3 - 81.7	3,600	22.6	12.5 - 32.8	15,800
Native Hawaiian	400	2.7	0.8 - 4.7	11,300	75.2	63.4 - 87.0	3,300	22.1	10.3 - 33.8	15,000
Filipino	900	8.0	1.5 - 14.6	8,800	74.8	63.0 - 86.7	2,000	17.1	6.5 - 27.8	11,800
Japanese	200	1.2	0.0 - 2.9	11,900	82.3	73.7 - 90.9	2,400	16.5	7.9 - 25.0	14,400

Gender	Never			<= 1 year			>1 year			Estimated Population (3-Yr Avg)
	#	%	C.I. (95%)	#	%	C.I. (95%)	#	%	C.I. (95%)	#
Male	2,500	6.7	2.7 - 10.7	27,700	75.1	67.2 - 83.1	6,700	18.2	10.6 - 25.8	36,800
Female	1,700	5.3	2.7 - 7.9	24,000	74.3	67.4 - 81.1	6,600	20.4	13.8 - 27.1	32,200

Diabetes - eye exam, dilated by State, County, Island, Community, BRFSS Age Group, DOH Race-Ethnicity, Gender, Education Level, Employment Status (Grouped), Household Income, Poverty Level, Marital Status (Grouped), Married, Health Care Coverage, for the Year(s) - 2000-2002, 2001-2003, 2002-2004, 2003-2005, 2004-2006, 2005-2007, 2006-2008, 2007-2009, 2008-2010

Note: Weighted numbers (#) represent 3-yr averages, percentages and 95% confidence intervals; Respondents aged 18 years and older; n/r (Not Reportable) - If the unweighted total responses for a dimension (row) is <50 that row will not be shown; n/a (Not Available) - Not asked of a subset of respondents

Year: 2003-2005

Education Level	Never			<= 1 year			>1 year			Estimated Population (3-Yr Avg)
	#	%	C.I. (95%)	#	%	C.I. (95%)	#	%	C.I. (95%)	#
Grades 9 thru 11 (Some High School)	200	5.4	0.0 - 10.8	3,300	70.9	55.0 - 86.8	1,100	23.7	8.2 - 39.2	4,600
Grades 12 or GED (High School Grad)	1,800	6.6	2.2 - 11.0	17,900	66.9	56.6 - 77.2	7,100	26.5	16.3 - 36.8	26,800
College 1 to 3 years (Some College/ Tech)	800	4.6	1.1 - 8.2	15,300	84.5	78.5 - 90.5	2,000	10.8	5.9 - 15.8	18,100
College 4 years or more (College Grad)	1,100	6.3	0.8 - 11.8	13,600	79.0	70.0 - 88.1	2,500	14.7	6.8 - 22.6	17,200

Employment Status (Grouped)	Never			<= 1 year			>1 year			Estimated Population (3-Yr Avg)
	#	%	C.I. (95%)	#	%	C.I. (95%)	#	%	C.I. (95%)	#
Employed	2,000	6.1	2.6 - 9.7	23,800	73.8	65.8 - 81.9	6,500	20.0	12.3 - 27.8	32,300
Retired/Unable to work	1,700	5.4	1.7 - 9.1	24,200	76.5	68.7 - 84.4	5,700	18.1	10.6 - 25.5	31,600

Diabetes - eye exam, dilated by State, County, Island, Community, BRFSS Age Group, DOH Race-Ethnicity, Gender, Education Level, Employment Status (Grouped), Household Income, Poverty Level, Marital Status (Grouped), Married, Health Care Coverage, for the Year(s) - 2000-2002, 2001-2003, 2002-2004, 2003-2005, 2004-2006, 2005-2007, 2006-2008, 2007-2009, 2008-2010

Note: Weighted numbers (#) represent 3-yr averages, percentages and 95% confidence intervals; Respondents aged 18 years and older; n/r (Not Reportable) - If the unweighted total responses for a dimension (row) is <50 that row will not be shown; n/a (Not Available) - Not asked of a subset of respondents

Year: 2003-2005

Household Income	Never			<= 1 year			>1 year			Estimated Population (3-Yr Avg)
	#	%	C.I. (95%)	#	%	C.I. (95%)	#	%	C.I. (95%)	#
\$10,000 to \$14,999	500	10.5	0.0 - 23.7	3,500	72.2	53.4 - 91.1	800	17.3	1.1 - 33.4	4,900
\$15,000 to \$19,999	500	7.6	0.0 - 17.3	5,300	82.1	69.0 - 95.1	700	10.4	1.6 - 19.2	6,400
\$20,000 to \$24,999	100	1.7	0.0 - 5.0	4,000	71.5	53.3 - 89.6	1,500	26.9	8.7 - 45.1	5,600
\$25,000 to \$34,999	600	8.5	0.0 - 17.0	5,200	70.1	51.6 - 88.7	1,600	21.3	2.8 - 39.8	7,400
\$35,000 to \$49,999	200	2.0	0.0 - 4.1	7,000	81.8	71.7 - 91.8	1,400	16.3	6.4 - 26.2	8,500
\$50,000 to \$74,999	1,200	9.9	2.9 - 16.8	9,500	77.0	67.2 - 86.9	1,600	13.1	5.2 - 21.0	12,300
\$75,000 or more	<50	0.4	0.0 - 1.1	8,400	76.6	62.1 - 91.1	2,500	23.0	8.5 - 37.5	10,900

Diabetes - eye exam, dilated by State, County, Island, Community, BRFSS Age Group, DOH Race-Ethnicity, Gender, Education Level, Employment Status (Grouped), Household Income, Poverty Level, Marital Status (Grouped), Married, Health Care Coverage, for the Year(s) - 2000-2002, 2001-2003, 2002-2004, 2003-2005, 2004-2006, 2005-2007, 2006-2008, 2007-2009, 2008-2010

Note: Weighted numbers (#) represent 3-yr averages, percentages and 95% confidence intervals; Respondents aged 18 years and older; n/r (Not Reportable) - If the unweighted total responses for a dimension (row) is <50 that row will not be shown; n/a (Not Available) - Not asked of a subset of respondents

Year: 2003-2005

Poverty Level	Never			<= 1 year			>1 year			Estimated Population (3-Yr Avg)
	#	%	C.I. (95%)	#	%	C.I. (95%)	#	%	C.I. (95%)	#
0-130%	1,500	7.9	2.1 - 13.6	13,200	71.4	60.5 - 82.2	3,800	20.8	10.7 - 30.8	18,500
131-185%	100	2.0	0.0 - 4.1	4,900	74.8	59.6 - 90.0	1,500	23.2	7.9 - 38.4	6,600
186+%	1,700	5.1	2.2 - 8.0	27,100	79.9	73.6 - 86.3	5,100	15.0	9.0 - 21.0	33,900

Marital Status (Grouped)	Never			<= 1 year			>1 year			Estimated Population (3-Yr Avg)
	#	%	C.I. (95%)	#	%	C.I. (95%)	#	%	C.I. (95%)	#
Married	2,400	5.5	2.8 - 8.3	32,200	74.2	67.2 - 81.2	8,800	20.3	13.5 - 27.1	43,400
Widowed	200	2.5	0.0 - 5.4	7,000	81.2	72.2 - 90.2	1,400	16.2	7.5 - 24.9	8,600
Other	1,600	9.4	2.5 - 16.3	11,900	72.3	61.1 - 83.5	3,000	18.3	7.9 - 28.7	16,500

Diabetes - eye exam, dilated by State, County, Island, Community, BRFSS Age Group, DOH Race-Ethnicity, Gender, Education Level, Employment Status (Grouped), Household Income, Poverty Level, Marital Status (Grouped), Married, Health Care Coverage, for the Year(s) - 2000-2002, 2001-2003, 2002-2004, 2003-2005, 2004-2006, 2005-2007, 2006-2008, 2007-2009, 2008-2010

Note: Weighted numbers (#) represent 3-yr averages, percentages and 95% confidence intervals; Respondents aged 18 years and older; n/r (Not Reportable) - If the unweighted total responses for a dimension (row) is <50 that row will not be shown; n/a (Not Available) - Not asked of a subset of respondents

Year: 2003-2005

Married	Never			<= 1 year			>1 year			Estimated Population (3-Yr Avg)
	#	%	C.I. (95%)	#	%	C.I. (95%)	#	%	C.I. (95%)	#
Yes	2,500	5.8	3.0 - 8.5	32,500	74.0	67.1 - 80.9	8,900	20.2	13.5 - 27.0	44,000
No	1,600	6.6	1.9 - 11.2	19,000	75.9	67.8 - 84.1	4,400	17.5	10.0 - 25.0	25,000

Health Care Coverage	Never			<= 1 year			>1 year			Estimated Population (3-Yr Avg)
	#	%	C.I. (95%)	#	%	C.I. (95%)	#	%	C.I. (95%)	#
Yes	2,300	5.5	2.5 - 8.5	32,500	79.0	72.7 - 85.3	6,400	15.5	9.6 - 21.4	41,200

Diabetes - eye exam, dilated by State, County, Island, Community, BRFSS Age Group, DOH Race-Ethnicity, Gender, Education Level, Employment Status (Grouped), Household Income, Poverty Level, Marital Status (Grouped), Married, Health Care Coverage, for the Year(s) - 2000-2002, 2001-2003, 2002-2004, 2003-2005, 2004-2006, 2005-2007, 2006-2008, 2007-2009, 2008-2010

Note: Weighted numbers (#) represent 3-yr averages, percentages and 95% confidence intervals; Respondents aged 18 years and older; n/r (Not Reportable) - If the unweighted total responses for a dimension (row) is <50 that row will not be shown; n/a (Not Available) - Not asked of a subset of respondents

Year: 2002-2004

State	Never			<= 1 year			>1 year			Estimated Population (3-Yr Avg)
	#	%	C.I. (95%)	#	%	C.I. (95%)	#	%	C.I. (95%)	#
Hawaii State	3,000	4.9	2.7 - 7.2	47,500	79.2	74.5 - 83.9	9,500	15.9	11.5 - 20.3	60,000

County	Never			<= 1 year			>1 year			Estimated Population (3-Yr Avg)
	#	%	C.I. (95%)	#	%	C.I. (95%)	#	%	C.I. (95%)	#
Hawaii	800	11.0	2.0 - 19.9	5,200	70.9	61.3 - 80.6	1,300	18.1	11.4 - 24.8	7,300
Honolulu	1,700	3.8	1.3 - 6.2	36,400	80.6	74.7 - 86.5	7,100	15.6	10.0 - 21.2	45,200
Kauai	200	7.9	0.5 - 15.4	2,000	79.5	69.1 - 89.9	300	12.6	4.7 - 20.5	2,600
Maui	300	5.4	0.9 - 9.9	3,900	78.0	66.3 - 89.7	800	16.6	5.1 - 28.1	5,000

Diabetes - eye exam, dilated by State, County, Island, Community, BRFSS Age Group, DOH Race-Ethnicity, Gender, Education Level, Employment Status (Grouped), Household Income, Poverty Level, Marital Status (Grouped), Married, Health Care Coverage, for the Year(s) - 2000-2002, 2001-2003, 2002-2004, 2003-2005, 2004-2006, 2005-2007, 2006-2008, 2007-2009, 2008-2010

Note: Weighted numbers (#) represent 3-yr averages, percentages and 95% confidence intervals; Respondents aged 18 years and older; n/r (Not Reportable) - If the unweighted total responses for a dimension (row) is <50 that row will not be shown; n/a (Not Available) - Not asked of a subset of respondents

Year: 2002-2004

Island	Never			<= 1 year			>1 year			Estimated Population (3-Yr Avg)
	#	%	C.I. (95%)	#	%	C.I. (95%)	#	%	C.I. (95%)	#
Hawaii	800	11.0	2.0 - 19.9	5,200	70.9	61.3 - 80.6	1,300	18.1	11.4 - 24.8	7,300
Kauai	200	7.9	0.5 - 15.4	2,000	79.5	69.1 - 89.9	300	12.6	4.7 - 20.5	2,600
Maui	200	4.2	0.0 - 9.0	3,400	80.3	66.9 - 93.8	700	15.5	2.2 - 28.7	4,300
Oahu	1,700	3.8	1.3 - 6.2	36,400	80.6	74.7 - 86.5	7,100	15.6	10.0 - 21.2	45,200

Community	Never			<= 1 year			>1 year			Estimated Population (3-Yr Avg)
	#	%	C.I. (95%)	#	%	C.I. (95%)	#	%	C.I. (95%)	#
Aiea/ Pearl City	100	1.5	0.0 - 4.3	4,800	82.0	65.8 - 98.2	1,000	16.5	0.3 - 32.7	5,800
Hilo	100	7.6	0.0 - 16.0	1,300	73.2	58.9 - 87.5	300	19.3	6.2 - 32.3	1,800
Lihue-Waimea	200	9.9	0.0 - 20.0	1,500	80.1	67.6 - 92.7	200	9.9	1.4 - 18.5	1,800
Waipahu/ Kapolei/ Ewa	400	6.2	0.0 - 13.4	5,100	71.8	53.1 - 90.5	1,600	22.0	3.5 - 40.5	7,100

Diabetes - eye exam, dilated by State, County, Island, Community, BRFSS Age Group, DOH Race-Ethnicity, Gender, Education Level, Employment Status (Grouped), Household Income, Poverty Level, Marital Status (Grouped), Married, Health Care Coverage, for the Year(s) - 2000-2002, 2001-2003, 2002-2004, 2003-2005, 2004-2006, 2005-2007, 2006-2008, 2007-2009, 2008-2010

Note: Weighted numbers (#) represent 3-yr averages, percentages and 95% confidence intervals; Respondents aged 18 years and older; n/r (Not Reportable) - If the unweighted total responses for a dimension (row) is <50 that row will not be shown; n/a (Not Available) - Not asked of a subset of respondents

Year: 2002-2004

BRFSS Age Group	Never			<= 1 year			>1 year			Estimated Population (3-Yr Avg)
	#	%	C.I. (95%)	#	%	C.I. (95%)	#	%	C.I. (95%)	#
35-44	800	9.9	1.0 - 18.9	4,800	60.3	40.5 - 80.2	2,400	29.7	9.8 - 49.6	7,900
45-54	400	3.0	0.3 - 5.6	10,800	83.9	75.1 - 92.7	1,700	13.1	4.7 - 21.6	12,800
55-64	500	3.8	0.4 - 7.1	11,400	78.7	70.8 - 86.7	2,500	17.5	10.0 - 25.0	14,500
65-74	500	4.2	0.0 - 9.4	10,800	84.1	75.8 - 92.4	1,500	11.7	4.7 - 18.7	12,800
75+	100	1.1	0.0 - 3.0	7,800	84.7	75.1 - 94.3	1,300	14.2	4.7 - 23.6	9,200

Diabetes - eye exam, dilated by State, County, Island, Community, BRFSS Age Group, DOH Race-Ethnicity, Gender, Education Level, Employment Status (Grouped), Household Income, Poverty Level, Marital Status (Grouped), Married, Health Care Coverage, for the Year(s) - 2000-2002, 2001-2003, 2002-2004, 2003-2005, 2004-2006, 2005-2007, 2006-2008, 2007-2009, 2008-2010

Note: Weighted numbers (#) represent 3-yr averages, percentages and 95% confidence intervals; Respondents aged 18 years and older; n/r (Not Reportable) - If the unweighted total responses for a dimension (row) is <50 that row will not be shown; n/a (Not Available) - Not asked of a subset of respondents

Year: 2002-2004

DOH Race-Ethnicity	Never			<= 1 year			>1 year			Estimated Population (3-Yr Avg)
	#	%	C.I. (95%)	#	%	C.I. (95%)	#	%	C.I. (95%)	#
Caucasian	700	5.1	1.4 - 8.9	9,400	72.1	60.5 - 83.6	3,000	22.8	11.1 - 34.4	13,000
Native Hawaiian	500	3.8	0.9 - 6.6	9,900	81.4	70.5 - 92.4	1,800	14.8	4.0 - 25.6	12,100
Chinese	700	15.1	0.6 - 29.5	3,200	71.2	52.7 - 89.8	600	13.7	0.0 - 29.7	4,500
Filipino	800	7.4	0.2 - 14.5	8,000	77.9	66.0 - 89.8	1,500	14.7	4.2 - 25.3	10,300
Japanese	100	0.5	0.0 - 1.2	12,900	85.4	79.8 - 91.0	2,100	14.1	8.5 - 19.6	15,100

Gender	Never			<= 1 year			>1 year			Estimated Population (3-Yr Avg)
	#	%	C.I. (95%)	#	%	C.I. (95%)	#	%	C.I. (95%)	#
Male	1,800	5.9	2.0 - 9.9	23,700	80.3	73.5 - 87.1	4,100	13.8	7.8 - 19.8	29,500
Female	1,200	4.0	1.9 - 6.1	23,800	78.1	71.6 - 84.6	5,500	17.9	11.5 - 24.3	30,500

Diabetes - eye exam, dilated by State, County, Island, Community, BRFSS Age Group, DOH Race-Ethnicity, Gender, Education Level, Employment Status (Grouped), Household Income, Poverty Level, Marital Status (Grouped), Married, Health Care Coverage, for the Year(s) - 2000-2002, 2001-2003, 2002-2004, 2003-2005, 2004-2006, 2005-2007, 2006-2008, 2007-2009, 2008-2010

Note: Weighted numbers (#) represent 3-yr averages, percentages and 95% confidence intervals; Respondents aged 18 years and older; n/r (Not Reportable) - If the unweighted total responses for a dimension (row) is <50 that row will not be shown; n/a (Not Available) - Not asked of a subset of respondents

Year: 2002-2004

Education Level	Never			<= 1 year			>1 year			Estimated Population (3-Yr Avg)
	#	%	C.I. (95%)	#	%	C.I. (95%)	#	%	C.I. (95%)	#
Grades 9 thru 11 (Some High School)	100	1.7	0.0 - 4.2	3,100	87.3	78.5 - 96.0	400	11.1	2.7 - 19.4	3,500
Grades 12 or GED (High School Grad)	1,000	4.5	1.2 - 7.8	17,100	74.1	64.6 - 83.7	4,900	21.4	11.9 - 30.8	23,100
College 1 to 3 years (Some College/ Tech)	500	3.3	0.8 - 5.8	13,900	84.5	78.6 - 90.4	2,000	12.2	6.8 - 17.6	16,500
College 4 years or more (College Grad)	1,100	7.0	1.0 - 13.0	12,300	79.4	71.4 - 87.5	2,100	13.5	7.3 - 19.8	15,500

Employment Status (Grouped)	Never			<= 1 year			>1 year			Estimated Population (3-Yr Avg)
	#	%	C.I. (95%)	#	%	C.I. (95%)	#	%	C.I. (95%)	#
Employed	1,500	5.7	2.0 - 9.5	20,400	76.3	68.2 - 84.4	4,800	18.0	10.2 - 25.8	26,800
Retired/Unable to work	1,200	4.3	1.4 - 7.3	23,200	81.5	75.8 - 87.3	4,000	14.1	8.9 - 19.4	28,500

Diabetes - eye exam, dilated by State, County, Island, Community, BRFSS Age Group, DOH Race-Ethnicity, Gender, Education Level, Employment Status (Grouped), Household Income, Poverty Level, Marital Status (Grouped), Married, Health Care Coverage, for the Year(s) - 2000-2002, 2001-2003, 2002-2004, 2003-2005, 2004-2006, 2005-2007, 2006-2008, 2007-2009, 2008-2010

Note: Weighted numbers (#) represent 3-yr averages, percentages and 95% confidence intervals; Respondents aged 18 years and older; n/r (Not Reportable) - If the unweighted total responses for a dimension (row) is <50 that row will not be shown; n/a (Not Available) - Not asked of a subset of respondents

Year: 2002-2004

Household Income	Never			<= 1 year			>1 year			Estimated Population (3-Yr Avg)
	#	%	C.I. (95%)	#	%	C.I. (95%)	#	%	C.I. (95%)	#
Less than \$10,000	100	3.5	0.0 - 7.3	2,500	82.0	71.0 - 93.0	400	14.6	4.2 - 24.9	3,000
\$10,000 to \$14,999	300	8.7	0.0 - 24.6	3,000	81.8	65.5 - 98.2	400	9.4	1.5 - 17.4	3,700
\$15,000 to \$19,999	500	11.0	0.0 - 25.5	3,400	80.7	63.5 - 97.9	400	8.3	0.0 - 17.8	4,300
\$20,000 to \$24,999	100	2.1	0.0 - 6.2	3,100	70.0	49.8 - 90.3	1,300	27.9	7.6 - 48.1	4,500
\$25,000 to \$34,999	300	5.0	0.2 - 9.8	3,900	68.6	47.0 - 90.3	1,500	26.4	4.2 - 48.5	5,600
\$35,000 to \$49,999	100	1.7	0.0 - 3.8	7,000	85.5	76.5 - 94.4	1,100	12.9	4.1 - 21.7	8,200
\$50,000 to \$74,999	1,000	9.6	2.2 - 16.9	8,500	77.8	67.8 - 87.7	1,400	12.7	5.1 - 20.3	10,900
\$75,000 or more	200	1.9	0.0 - 5.5	7,900	80.7	66.0 - 95.5	1,700	17.4	2.7 - 32.0	9,800

Diabetes - eye exam, dilated by State, County, Island, Community, BRFSS Age Group, DOH Race-Ethnicity, Gender, Education Level, Employment Status (Grouped), Household Income, Poverty Level, Marital Status (Grouped), Married, Health Care Coverage, for the Year(s) - 2000-2002, 2001-2003, 2002-2004, 2003-2005, 2004-2006, 2005-2007, 2006-2008, 2007-2009, 2008-2010

Note: Weighted numbers (#) represent 3-yr averages, percentages and 95% confidence intervals; Respondents aged 18 years and older; n/r (Not Reportable) - If the unweighted total responses for a dimension (row) is <50 that row will not be shown; n/a (Not Available) - Not asked of a subset of respondents

Year: 2002-2004

Poverty Level	Never			<= 1 year			>1 year			Estimated Population (3-Yr Avg)
	#	%	C.I. (95%)	#	%	C.I. (95%)	#	%	C.I. (95%)	#
0-130%	1,000	6.6	0.4 - 12.7	10,700	73.5	61.7 - 85.2	2,900	20.0	8.9 - 31.0	14,600
131-185%	200	3.3	0.0 - 6.6	3,800	71.4	54.9 - 87.9	1,400	25.3	8.7 - 41.9	5,400
186+%	1,500	5.0	1.9 - 8.1	24,800	82.5	76.2 - 88.8	3,700	12.5	6.6 - 18.3	30,000

Marital Status (Grouped)	Never			<= 1 year			>1 year			Estimated Population (3-Yr Avg)
	#	%	C.I. (95%)	#	%	C.I. (95%)	#	%	C.I. (95%)	#
Married	2,300	6.0	2.9 - 9.1	29,600	78.2	72.1 - 84.3	6,000	15.8	10.1 - 21.4	37,800
Widowed	100	1.5	0.0 - 3.5	7,600	81.8	71.6 - 91.9	1,500	16.7	6.7 - 26.8	9,200
Other	600	4.4	0.0 - 9.4	10,400	80.4	70.1 - 90.8	2,000	15.2	5.5 - 24.9	12,900

Diabetes - eye exam, dilated by State, County, Island, Community, BRFSS Age Group, DOH Race-Ethnicity, Gender, Education Level, Employment Status (Grouped), Household Income, Poverty Level, Marital Status (Grouped), Married, Health Care Coverage, for the Year(s) - 2000-2002, 2001-2003, 2002-2004, 2003-2005, 2004-2006, 2005-2007, 2006-2008, 2007-2009, 2008-2010

Note: Weighted numbers (#) represent 3-yr averages, percentages and 95% confidence intervals; Respondents aged 18 years and older; n/r (Not Reportable) - If the unweighted total responses for a dimension (row) is <50 that row will not be shown; n/a (Not Available) - Not asked of a subset of respondents

Year: 2002-2004

Married	Never			<= 1 year			>1 year			Estimated Population (3-Yr Avg)
	#	%	C.I. (95%)	#	%	C.I. (95%)	#	%	C.I. (95%)	#
Yes	2,300	6.0	3.0 - 9.0	30,000	78.3	72.2 - 84.3	6,000	15.7	10.2 - 21.3	38,300
No	700	3.1	0.0 - 6.2	17,500	80.8	73.3 - 88.3	3,500	16.1	9.0 - 23.3	21,700

Health Care Coverage	Never			<= 1 year			>1 year			Estimated Population (3-Yr Avg)
	#	%	C.I. (95%)	#	%	C.I. (95%)	#	%	C.I. (95%)	#
Yes	2,800	4.8	2.5 - 7.1	46,200	79.4	74.6 - 84.2	9,200	15.8	11.3 - 20.3	58,200

Diabetes - eye exam, dilated by State, County, Island, Community, BRFSS Age Group, DOH Race-Ethnicity, Gender, Education Level, Employment Status (Grouped), Household Income, Poverty Level, Marital Status (Grouped), Married, Health Care Coverage, for the Year(s) - 2000-2002, 2001-2003, 2002-2004, 2003-2005, 2004-2006, 2005-2007, 2006-2008, 2007-2009, 2008-2010

Note: Weighted numbers (#) represent 3-yr averages, percentages and 95% confidence intervals; Respondents aged 18 years and older; n/r (Not Reportable) - If the unweighted total responses for a dimension (row) is <50 that row will not be shown; n/a (Not Available) - Not asked of a subset of respondents

Year: 2001-2003

State	Never			<= 1 year			>1 year			Estimated Population (3-Yr Avg)
	#	%	C.I. (95%)	#	%	C.I. (95%)	#	%	C.I. (95%)	#
Hawaii State	2,800	4.9	2.7 - 7.0	47,700	81.7	78.1 - 85.3	7,800	13.4	10.3 - 16.5	58,400

County	Never			<= 1 year			>1 year			Estimated Population (3-Yr Avg)
	#	%	C.I. (95%)	#	%	C.I. (95%)	#	%	C.I. (95%)	#
Hawaii	700	10.5	1.2 - 19.8	4,900	73.1	63.6 - 82.6	1,100	16.4	10.4 - 22.4	6,800
Honolulu	1,700	3.8	1.5 - 6.2	35,700	82.4	77.9 - 86.8	6,000	13.8	9.9 - 17.8	43,300
Kauai	200	6.4	0.0 - 13.7	1,900	77.9	67.2 - 88.6	400	15.7	6.9 - 24.5	2,400
Maui	300	5.3	1.1 - 9.6	5,200	88.3	81.6 - 95.1	400	6.4	1.6 - 11.1	5,900

Diabetes - eye exam, dilated by State, County, Island, Community, BRFSS Age Group, DOH Race-Ethnicity, Gender, Education Level, Employment Status (Grouped), Household Income, Poverty Level, Marital Status (Grouped), Married, Health Care Coverage, for the Year(s) - 2000-2002, 2001-2003, 2002-2004, 2003-2005, 2004-2006, 2005-2007, 2006-2008, 2007-2009, 2008-2010

Note: Weighted numbers (#) represent 3-yr averages, percentages and 95% confidence intervals; Respondents aged 18 years and older; n/r (Not Reportable) - If the unweighted total responses for a dimension (row) is <50 that row will not be shown; n/a (Not Available) - Not asked of a subset of respondents

Year: 2001-2003

Island	Never			<= 1 year			>1 year			Estimated Population (3-Yr Avg)
	#	%	C.I. (95%)	#	%	C.I. (95%)	#	%	C.I. (95%)	#
Hawaii	700	10.5	1.2 - 19.8	4,900	73.1	63.6 - 82.6	1,100	16.4	10.4 - 22.4	6,800
Kauai	200	6.4	0.0 - 13.7	1,900	77.9	67.2 - 88.6	400	15.7	6.9 - 24.5	2,400
Maui	300	5.0	0.3 - 9.7	4,700	89.8	82.6 - 97.0	300	5.2	0.2 - 10.2	5,200
Oahu	1,700	3.8	1.5 - 6.2	35,700	82.4	77.9 - 86.8	6,000	13.8	9.9 - 17.8	43,300

Diabetes - eye exam, dilated by State, County, Island, Community, BRFSS Age Group, DOH Race-Ethnicity, Gender, Education Level, Employment Status (Grouped), Household Income, Poverty Level, Marital Status (Grouped), Married, Health Care Coverage, for the Year(s) - 2000-2002, 2001-2003, 2002-2004, 2003-2005, 2004-2006, 2005-2007, 2006-2008, 2007-2009, 2008-2010

Note: Weighted numbers (#) represent 3-yr averages, percentages and 95% confidence intervals; Respondents aged 18 years and older; n/r (Not Reportable) - If the unweighted total responses for a dimension (row) is <50 that row will not be shown; n/a (Not Available) - Not asked of a subset of respondents

Year: 2001-2003

Community	Never			<= 1 year			>1 year			Estimated Population (3-Yr Avg)
	#	%	C.I. (95%)	#	%	C.I. (95%)	#	%	C.I. (95%)	#
Aiea/ Pearl City	0	0.0	--	5,200	87.0	77.8 - 96.2	800	13.0	3.8 - 22.2	6,000
Hilo	100	6.0	0.0 - 12.8	1,700	74.5	62.1 - 87.0	400	19.5	8.0 - 30.9	2,200
Kahului	200	5.6	0.0 - 13.1	2,600	91.9	82.6 - 100.0	100	2.5	0.0 - 6.9	2,800
Kaimuki/ Palolo/ Waikiki	200	4.3	0.0 - 12.6	3,600	74.4	59.2 - 89.6	1,000	21.3	7.4 - 35.2	4,900
Lihue-Waimea	100	7.4	0.0 - 17.4	1,300	78.4	65.3 - 91.6	200	14.2	4.0 - 24.4	1,600
Waipahu/ Kapolei/ Ewa	400	8.8	0.0 - 18.3	3,700	73.2	59.0 - 87.4	900	18.1	5.7 - 30.5	5,000

Diabetes - eye exam, dilated by State, County, Island, Community, BRFSS Age Group, DOH Race-Ethnicity, Gender, Education Level, Employment Status (Grouped), Household Income, Poverty Level, Marital Status (Grouped), Married, Health Care Coverage, for the Year(s) - 2000-2002, 2001-2003, 2002-2004, 2003-2005, 2004-2006, 2005-2007, 2006-2008, 2007-2009, 2008-2010

Note: Weighted numbers (#) represent 3-yr averages, percentages and 95% confidence intervals; Respondents aged 18 years and older; n/r (Not Reportable) - If the unweighted total responses for a dimension (row) is <50 that row will not be shown; n/a (Not Available) - Not asked of a subset of respondents

Year: 2001-2003

BRFSS Age Group	Never			<= 1 year			>1 year			Estimated Population (3-Yr Avg)
	#	%	C.I. (95%)	#	%	C.I. (95%)	#	%	C.I. (95%)	#
35-44	700	13.9	4.1 - 23.7	3,000	58.9	45.0 - 72.8	1,400	27.2	13.6 - 40.7	5,000
45-54	300	2.4	0.0 - 5.0	9,300	82.6	75.0 - 90.3	1,700	14.9	7.6 - 22.3	11,200
55-64	500	3.5	0.1 - 6.8	11,200	82.1	75.1 - 89.2	2,000	14.4	8.0 - 20.8	13,700
65-74	500	3.4	0.0 - 7.9	13,200	89.0	83.5 - 94.5	1,100	7.6	4.1 - 11.2	14,900
75+	100	1.1	0.0 - 2.9	7,800	83.4	74.0 - 92.9	1,400	15.4	6.0 - 24.8	9,300

Diabetes - eye exam, dilated by State, County, Island, Community, BRFSS Age Group, DOH Race-Ethnicity, Gender, Education Level, Employment Status (Grouped), Household Income, Poverty Level, Marital Status (Grouped), Married, Health Care Coverage, for the Year(s) - 2000-2002, 2001-2003, 2002-2004, 2003-2005, 2004-2006, 2005-2007, 2006-2008, 2007-2009, 2008-2010

Note: Weighted numbers (#) represent 3-yr averages, percentages and 95% confidence intervals; Respondents aged 18 years and older; n/r (Not Reportable) - If the unweighted total responses for a dimension (row) is <50 that row will not be shown; n/a (Not Available) - Not asked of a subset of respondents

Year: 2001-2003

DOH Race-Ethnicity	Never			<= 1 year			>1 year			Estimated Population (3-Yr Avg)
	#	%	C.I. (95%)	#	%	C.I. (95%)	#	%	C.I. (95%)	#
Caucasian	700	5.4	1.5 - 9.4	8,700	69.6	60.2 - 79.0	3,100	25.0	15.7 - 34.2	12,500
Native Hawaiian	600	6.1	1.0 - 11.2	8,200	84.4	76.5 - 92.2	900	9.5	3.1 - 15.9	9,700
Chinese	600	11.2	0.0 - 23.5	4,200	79.0	65.4 - 92.6	500	9.8	1.5 - 18.0	5,300
Filipino	800	7.7	0.4 - 14.9	8,600	84.6	76.3 - 93.0	800	7.7	3.2 - 12.1	10,100
Japanese	100	0.4	0.0 - 0.9	14,200	85.7	80.5 - 91.0	2,300	13.9	8.7 - 19.0	16,600

Gender	Never			<= 1 year			>1 year			Estimated Population (3-Yr Avg)
	#	%	C.I. (95%)	#	%	C.I. (95%)	#	%	C.I. (95%)	#
Male	1,900	6.6	2.7 - 10.5	22,400	79.3	73.5 - 85.0	4,000	14.1	9.5 - 18.7	28,300
Female	1,000	3.2	1.3 - 5.2	25,300	84.0	79.5 - 88.5	3,800	12.8	8.6 - 17.0	30,100

Diabetes - eye exam, dilated by State, County, Island, Community, BRFSS Age Group, DOH Race-Ethnicity, Gender, Education Level, Employment Status (Grouped), Household Income, Poverty Level, Marital Status (Grouped), Married, Health Care Coverage, for the Year(s) - 2000-2002, 2001-2003, 2002-2004, 2003-2005, 2004-2006, 2005-2007, 2006-2008, 2007-2009, 2008-2010

Note: Weighted numbers (#) represent 3-yr averages, percentages and 95% confidence intervals; Respondents aged 18 years and older; n/r (Not Reportable) - If the unweighted total responses for a dimension (row) is <50 that row will not be shown; n/a (Not Available) - Not asked of a subset of respondents

Year: 2001-2003

Education Level	Never			<= 1 year			>1 year			Estimated Population (3-Yr Avg)
	#	%	C.I. (95%)	#	%	C.I. (95%)	#	%	C.I. (95%)	#
Grades 9 thru 11 (Some High School)	100	1.3	0.0 - 3.3	4,100	91.3	83.6 - 98.9	300	7.4	0.0 - 14.8	4,500
Grades 12 or GED (High School Grad)	900	4.5	1.5 - 7.4	17,000	81.4	75.4 - 87.4	3,000	14.1	8.6 - 19.7	20,900
College 1 to 3 years (Some College/ Tech)	400	2.3	0.3 - 4.3	13,800	82.1	75.3 - 88.9	2,600	15.6	9.0 - 22.1	16,800
College 4 years or more (College Grad)	1,200	8.7	2.0 - 15.3	11,100	79.2	71.4 - 87.0	1,700	12.1	6.8 - 17.4	14,100

Employment Status (Grouped)	Never			<= 1 year			>1 year			Estimated Population (3-Yr Avg)
	#	%	C.I. (95%)	#	%	C.I. (95%)	#	%	C.I. (95%)	#
Employed	1,600	6.3	2.6 - 10.0	19,800	79.2	73.4 - 85.1	3,600	14.5	9.5 - 19.4	25,000
Retired/Unable to work	1,200	4.1	1.2 - 6.9	24,600	83.4	78.6 - 88.3	3,700	12.5	8.3 - 16.7	29,400

Diabetes - eye exam, dilated by State, County, Island, Community, BRFSS Age Group, DOH Race-Ethnicity, Gender, Education Level, Employment Status (Grouped), Household Income, Poverty Level, Marital Status (Grouped), Married, Health Care Coverage, for the Year(s) - 2000-2002, 2001-2003, 2002-2004, 2003-2005, 2004-2006, 2005-2007, 2006-2008, 2007-2009, 2008-2010

Note: Weighted numbers (#) represent 3-yr averages, percentages and 95% confidence intervals; Respondents aged 18 years and older; n/r (Not Reportable) - If the unweighted total responses for a dimension (row) is <50 that row will not be shown; n/a (Not Available) - Not asked of a subset of respondents

Year: 2001-2003

Household Income	Never			<= 1 year			>1 year			Estimated Population (3-Yr Avg)
	#	%	C.I. (95%)	#	%	C.I. (95%)	#	%	C.I. (95%)	#
Less than \$10,000	100	2.1	0.0 - 4.6	3,300	85.5	76.4 - 94.5	500	12.4	3.7 - 21.1	3,900
\$10,000 to \$14,999	300	6.9	0.0 - 19.7	4,100	88.8	75.8 - 100.0	200	4.3	0.2 - 8.4	4,700
\$15,000 to \$19,999	100	5.0	0.0 - 10.9	1,900	78.5	63.0 - 94.0	400	16.5	1.6 - 31.4	2,400
\$20,000 to \$24,999	0	0.0	--	3,600	78.2	62.1 - 94.2	1,000	21.8	5.8 - 37.9	4,500
\$25,000 to \$34,999	200	4.0	0.0 - 8.6	3,300	74.0	56.9 - 91.2	1,000	22.0	4.6 - 39.3	4,500
\$35,000 to \$49,999	500	6.1	0.4 - 11.7	6,800	78.1	68.2 - 87.9	1,400	15.9	7.0 - 24.7	8,700
\$50,000 to \$74,999	900	12.3	2.0 - 22.6	5,700	78.4	66.9 - 89.8	700	9.4	2.7 - 16.0	7,200
\$75,000 or more	200	2.6	0.0 - 7.3	6,500	85.5	76.3 - 94.7	900	11.9	3.6 - 20.2	7,600

Diabetes - eye exam, dilated by State, County, Island, Community, BRFSS Age Group, DOH Race-Ethnicity, Gender, Education Level, Employment Status (Grouped), Household Income, Poverty Level, Marital Status (Grouped), Married, Health Care Coverage, for the Year(s) - 2000-2002, 2001-2003, 2002-2004, 2003-2005, 2004-2006, 2005-2007, 2006-2008, 2007-2009, 2008-2010

Note: Weighted numbers (#) represent 3-yr averages, percentages and 95% confidence intervals; Respondents aged 18 years and older; n/r (Not Reportable) - If the unweighted total responses for a dimension (row) is <50 that row will not be shown; n/a (Not Available) - Not asked of a subset of respondents

Year: 2001-2003

Poverty Level	Never			<= 1 year			>1 year			Estimated Population (3-Yr Avg)
	#	%	C.I. (95%)	#	%	C.I. (95%)	#	%	C.I. (95%)	#
0-130%	500	4.1	0.0 - 9.0	11,000	85.5	78.3 - 92.7	1,300	10.4	4.9 - 15.9	12,900
131-185%	100	2.1	0.0 - 4.9	3,700	69.3	53.4 - 85.3	1,500	28.6	12.5 - 44.7	5,400
186+%	1,700	6.7	2.8 - 10.6	20,400	80.9	75.4 - 86.4	3,100	12.4	8.1 - 16.8	25,200

Marital Status (Grouped)	Never			<= 1 year			>1 year			Estimated Population (3-Yr Avg)
	#	%	C.I. (95%)	#	%	C.I. (95%)	#	%	C.I. (95%)	#
Married	2,000	5.4	2.6 - 8.2	30,100	81.9	77.4 - 86.4	4,700	12.7	9.0 - 16.4	36,800
Widowed	100	1.1	0.0 - 3.0	7,700	83.4	73.5 - 93.2	1,400	15.5	5.7 - 25.3	9,200
Other	700	6.0	0.5 - 11.5	9,900	80.0	72.5 - 87.5	1,700	14.0	8.0 - 19.9	12,400

Diabetes - eye exam, dilated by State, County, Island, Community, BRFSS Age Group, DOH Race-Ethnicity, Gender, Education Level, Employment Status (Grouped), Household Income, Poverty Level, Marital Status (Grouped), Married, Health Care Coverage, for the Year(s) - 2000-2002, 2001-2003, 2002-2004, 2003-2005, 2004-2006, 2005-2007, 2006-2008, 2007-2009, 2008-2010

Note: Weighted numbers (#) represent 3-yr averages, percentages and 95% confidence intervals; Respondents aged 18 years and older; n/r (Not Reportable) - If the unweighted total responses for a dimension (row) is <50 that row will not be shown; n/a (Not Available) - Not asked of a subset of respondents

Year: 2001-2003

Married	Never			<= 1 year			>1 year			Estimated Population (3-Yr Avg)
	#	%	C.I. (95%)	#	%	C.I. (95%)	#	%	C.I. (95%)	#
Yes	2,000	5.4	2.6 - 8.2	30,700	81.9	77.5 - 86.4	4,700	12.7	9.0 - 16.3	37,500
No	800	3.9	0.5 - 7.3	17,000	81.2	75.1 - 87.4	3,100	14.9	9.3 - 20.4	20,900

Health Care Coverage	Never			<= 1 year			>1 year			Estimated Population (3-Yr Avg)
	#	%	C.I. (95%)	#	%	C.I. (95%)	#	%	C.I. (95%)	#
Yes	2,700	4.8	2.6 - 6.9	46,900	82.2	78.5 - 85.8	7,500	13.1	9.9 - 16.2	57,100

Diabetes - eye exam, dilated by State, County, Island, Community, BRFSS Age Group, DOH Race-Ethnicity, Gender, Education Level, Employment Status (Grouped), Household Income, Poverty Level, Marital Status (Grouped), Married, Health Care Coverage, for the Year(s) - 2000-2002, 2001-2003, 2002-2004, 2003-2005, 2004-2006, 2005-2007, 2006-2008, 2007-2009, 2008-2010

Note: Weighted numbers (#) represent 3-yr averages, percentages and 95% confidence intervals; Respondents aged 18 years and older; n/r (Not Reportable) - If the unweighted total responses for a dimension (row) is <50 that row will not be shown; n/a (Not Available) - Not asked of a subset of respondents

Year: 2000-2002

State	Never			<= 1 year			>1 year			Estimated Population (3-Yr Avg)
	#	%	C.I. (95%)	#	%	C.I. (95%)	#	%	C.I. (95%)	#
Hawaii State	2,400	4.7	2.8 - 6.6	41,400	81.5	77.9 - 85.1	7,000	13.8	10.6 - 17.0	50,700

County	Never			<= 1 year			>1 year			Estimated Population (3-Yr Avg)
	#	%	C.I. (95%)	#	%	C.I. (95%)	#	%	C.I. (95%)	#
Hawaii	400	5.7	2.1 - 9.3	4,800	77.9	71.5 - 84.4	1,000	16.3	10.5 - 22.1	6,200
Honolulu	1,600	4.5	2.0 - 7.0	29,400	80.7	76.0 - 85.4	5,400	14.8	10.5 - 19.0	36,400
Kauai	100	5.9	1.3 - 10.4	1,900	81.3	72.6 - 89.9	300	12.9	5.2 - 20.6	2,300
Maui	300	4.4	0.7 - 8.1	5,300	90.3	84.4 - 96.2	300	5.3	1.1 - 9.5	5,800

Diabetes - eye exam, dilated by State, County, Island, Community, BRFSS Age Group, DOH Race-Ethnicity, Gender, Education Level, Employment Status (Grouped), Household Income, Poverty Level, Marital Status (Grouped), Married, Health Care Coverage, for the Year(s) - 2000-2002, 2001-2003, 2002-2004, 2003-2005, 2004-2006, 2005-2007, 2006-2008, 2007-2009, 2008-2010

Note: Weighted numbers (#) represent 3-yr averages, percentages and 95% confidence intervals; Respondents aged 18 years and older; n/r (Not Reportable) - If the unweighted total responses for a dimension (row) is <50 that row will not be shown; n/a (Not Available) - Not asked of a subset of respondents

Year: 2000-2002

Island	Never			<= 1 year			>1 year			Estimated Population (3-Yr Avg)
	#	%	C.I. (95%)	#	%	C.I. (95%)	#	%	C.I. (95%)	#
Hawaii	400	5.7	2.1 - 9.3	4,800	77.9	71.5 - 84.4	1,000	16.3	10.5 - 22.1	6,200
Kauai	100	5.9	1.3 - 10.4	1,900	81.3	72.6 - 89.9	300	12.9	5.2 - 20.6	2,300
Maui	200	4.6	0.4 - 8.8	4,700	91.0	84.6 - 97.4	200	4.4	0.0 - 8.8	5,200
Oahu	1,600	4.5	2.0 - 7.0	29,400	80.7	76.0 - 85.4	5,400	14.8	10.5 - 19.0	36,400

Diabetes - eye exam, dilated by State, County, Island, Community, BRFSS Age Group, DOH Race-Ethnicity, Gender, Education Level, Employment Status (Grouped), Household Income, Poverty Level, Marital Status (Grouped), Married, Health Care Coverage, for the Year(s) - 2000-2002, 2001-2003, 2002-2004, 2003-2005, 2004-2006, 2005-2007, 2006-2008, 2007-2009, 2008-2010

Note: Weighted numbers (#) represent 3-yr averages, percentages and 95% confidence intervals; Respondents aged 18 years and older; n/r (Not Reportable) - If the unweighted total responses for a dimension (row) is <50 that row will not be shown; n/a (Not Available) - Not asked of a subset of respondents

Year: 2000-2002

Community	Never			<= 1 year			>1 year			Estimated Population (3-Yr Avg)
	#	%	C.I. (95%)	#	%	C.I. (95%)	#	%	C.I. (95%)	#
Aiea/ Pearl City	100	1.2	0.0 - 3.6	4,700	83.7	73.8 - 93.5	800	15.1	5.5 - 24.8	5,600
Hilo	100	6.4	1.0 - 11.8	1,800	77.1	66.1 - 88.0	400	16.6	6.3 - 26.8	2,400
Kaimuki/ Palolo/ Waikiki	400	8.5	0.0 - 19.6	3,400	71.8	56.0 - 87.6	900	19.8	6.0 - 33.5	4,700
Kona	<50	2.2	0.0 - 6.5	1,300	84.4	74.3 - 94.6	200	13.4	3.9 - 22.8	1,500
Lihue-Waimea	100	3.8	0.0 - 8.2	1,500	84.9	75.6 - 94.1	200	11.4	2.9 - 19.8	1,800

Diabetes - eye exam, dilated by State, County, Island, Community, BRFSS Age Group, DOH Race-Ethnicity, Gender, Education Level, Employment Status (Grouped), Household Income, Poverty Level, Marital Status (Grouped), Married, Health Care Coverage, for the Year(s) - 2000-2002, 2001-2003, 2002-2004, 2003-2005, 2004-2006, 2005-2007, 2006-2008, 2007-2009, 2008-2010

Note: Weighted numbers (#) represent 3-yr averages, percentages and 95% confidence intervals; Respondents aged 18 years and older; n/r (Not Reportable) - If the unweighted total responses for a dimension (row) is <50 that row will not be shown; n/a (Not Available) - Not asked of a subset of respondents

Year: 2000-2002

BRFSS Age Group	Never			<= 1 year			>1 year			Estimated Population (3-Yr Avg)
	#	%	C.I. (95%)	#	%	C.I. (95%)	#	%	C.I. (95%)	#
35-44	600	12.8	2.9 - 22.8	2,800	59.0	45.8 - 72.1	1,300	28.2	15.8 - 40.7	4,700
45-54	300	3.2	0.0 - 6.7	6,300	75.8	66.4 - 85.2	1,700	20.9	11.9 - 30.0	8,300
55-64	900	6.9	1.7 - 12.0	10,000	80.7	73.3 - 88.1	1,500	12.4	6.5 - 18.4	12,400
65-74	200	1.2	0.0 - 2.5	12,600	90.8	86.9 - 94.7	1,100	8.0	4.2 - 11.7	13,900
75+	100	1.6	0.0 - 3.6	6,600	84.9	74.3 - 95.5	1,100	13.5	2.9 - 24.1	7,800

Diabetes - eye exam, dilated by State, County, Island, Community, BRFSS Age Group, DOH Race-Ethnicity, Gender, Education Level, Employment Status (Grouped), Household Income, Poverty Level, Marital Status (Grouped), Married, Health Care Coverage, for the Year(s) - 2000-2002, 2001-2003, 2002-2004, 2003-2005, 2004-2006, 2005-2007, 2006-2008, 2007-2009, 2008-2010

Note: Weighted numbers (#) represent 3-yr averages, percentages and 95% confidence intervals; Respondents aged 18 years and older; n/r (Not Reportable) - If the unweighted total responses for a dimension (row) is <50 that row will not be shown; n/a (Not Available) - Not asked of a subset of respondents

Year: 2000-2002

DOH Race-Ethnicity	Never			<= 1 year			>1 year			Estimated Population (3-Yr Avg)
	#	%	C.I. (95%)	#	%	C.I. (95%)	#	%	C.I. (95%)	#
Caucasian	300	3.5	0.3 - 6.8	7,200	74.4	64.3 - 84.6	2,100	22.0	11.9 - 32.2	9,600
Native Hawaiian	500	6.2	0.5 - 12.0	6,900	82.8	74.1 - 91.5	900	11.0	3.8 - 18.2	8,300
Chinese	100	2.5	0.0 - 6.3	2,600	82.5	69.2 - 95.8	500	15.0	2.0 - 28.0	3,200
Filipino	500	4.9	0.4 - 9.3	7,700	81.4	72.9 - 89.8	1,300	13.8	6.6 - 20.9	9,400
Japanese	700	4.5	1.0 - 8.0	13,300	83.2	77.8 - 88.7	2,000	12.3	7.8 - 16.8	16,000

Gender	Never			<= 1 year			>1 year			Estimated Population (3-Yr Avg)
	#	%	C.I. (95%)	#	%	C.I. (95%)	#	%	C.I. (95%)	#
Male	1,500	5.8	2.7 - 8.8	20,500	78.9	73.4 - 84.3	4,000	15.4	10.6 - 20.1	26,000
Female	900	3.6	1.4 - 5.7	20,900	84.3	79.6 - 89.0	3,000	12.1	7.7 - 16.5	24,800

Diabetes - eye exam, dilated by State, County, Island, Community, BRFSS Age Group, DOH Race-Ethnicity, Gender, Education Level, Employment Status (Grouped), Household Income, Poverty Level, Marital Status (Grouped), Married, Health Care Coverage, for the Year(s) - 2000-2002, 2001-2003, 2002-2004, 2003-2005, 2004-2006, 2005-2007, 2006-2008, 2007-2009, 2008-2010

Note: Weighted numbers (#) represent 3-yr averages, percentages and 95% confidence intervals; Respondents aged 18 years and older; n/r (Not Reportable) - If the unweighted total responses for a dimension (row) is <50 that row will not be shown; n/a (Not Available) - Not asked of a subset of respondents

Year: 2000-2002

Education Level	Never			<= 1 year			>1 year			Estimated Population (3-Yr Avg)
	#	%	C.I. (95%)	#	%	C.I. (95%)	#	%	C.I. (95%)	#
Never attended school/ Only Kindergarten to Grades 8	300	12.4	0.0 - 27.6	1,800	77.4	61.2 - 93.6	200	10.2	1.3 - 19.2	2,300
Grades 9 thru 11 (Some High School)	<50	0.5	0.0 - 1.5	2,800	87.5	75.7 - 99.4	400	12.0	0.2 - 23.8	3,200
Grades 12 or GED (High School Grad)	1,100	5.5	2.3 - 8.7	15,600	80.7	74.6 - 86.8	2,700	13.8	8.3 - 19.4	19,300
College 1 to 3 years (Some College/ Tech)	400	2.7	0.3 - 5.0	11,500	83.5	76.6 - 90.5	1,900	13.8	7.3 - 20.4	13,800
College 4 years or more (College Grad)	700	5.4	1.1 - 9.8	9,600	79.6	72.6 - 86.7	1,800	14.9	8.9 - 21.0	12,000

Employment Status (Grouped)	Never			<= 1 year			>1 year			Estimated Population (3-Yr Avg)
	#	%	C.I. (95%)	#	%	C.I. (95%)	#	%	C.I. (95%)	#
Employed	1,500	6.9	3.3 - 10.4	16,800	76.0	69.9 - 82.1	3,800	17.1	11.9 - 22.4	22,100
Retired/Unable to work	800	3.2	1.1 - 5.4	21,800	85.1	80.3 - 89.9	3,000	11.7	7.2 - 16.1	25,600

Diabetes - eye exam, dilated by State, County, Island, Community, BRFSS Age Group, DOH Race-Ethnicity, Gender, Education Level, Employment Status (Grouped), Household Income, Poverty Level, Marital Status (Grouped), Married, Health Care Coverage, for the Year(s) - 2000-2002, 2001-2003, 2002-2004, 2003-2005, 2004-2006, 2005-2007, 2006-2008, 2007-2009, 2008-2010

Note: Weighted numbers (#) represent 3-yr averages, percentages and 95% confidence intervals; Respondents aged 18 years and older; n/r (Not Reportable) - If the unweighted total responses for a dimension (row) is <50 that row will not be shown; n/a (Not Available) - Not asked of a subset of respondents

Year: 2000-2002

Household Income	Never			<= 1 year			>1 year			Estimated Population (3-Yr Avg)
	#	%	C.I. (95%)	#	%	C.I. (95%)	#	%	C.I. (95%)	#
Less than \$10,000	100	3.6	0.0 - 7.3	2,800	82.6	73.7 - 91.6	500	13.8	5.6 - 21.9	3,300
\$10,000 to \$14,999	<50	0.8	0.0 - 2.4	2,600	86.7	76.3 - 97.0	400	12.5	2.3 - 22.7	3,000
\$15,000 to \$19,999	100	2.4	0.0 - 5.8	2,000	87.1	78.0 - 96.2	200	10.5	2.0 - 19.0	2,300
\$20,000 to \$24,999	100	2.1	0.0 - 5.5	3,200	82.5	67.3 - 97.6	600	15.4	1.0 - 29.9	3,900
\$25,000 to \$34,999	100	2.7	0.0 - 5.5	3,800	71.0	56.0 - 85.9	1,400	26.3	11.2 - 41.4	5,400
\$35,000 to \$49,999	500	5.3	0.0 - 10.8	6,800	79.5	70.2 - 88.8	1,300	15.2	7.0 - 23.4	8,500
\$50,000 to \$74,999	200	3.0	0.0 - 6.2	4,400	84.2	74.9 - 93.5	700	12.9	4.0 - 21.8	5,200
\$75,000 or more	500	8.2	0.0 - 17.0	4,700	79.2	67.1 - 91.3	700	12.7	3.1 - 22.2	5,900

Diabetes - eye exam, dilated by State, County, Island, Community, BRFSS Age Group, DOH Race-Ethnicity, Gender, Education Level, Employment Status (Grouped), Household Income, Poverty Level, Marital Status (Grouped), Married, Health Care Coverage, for the Year(s) - 2000-2002, 2001-2003, 2002-2004, 2003-2005, 2004-2006, 2005-2007, 2006-2008, 2007-2009, 2008-2010

Note: Weighted numbers (#) represent 3-yr averages, percentages and 95% confidence intervals; Respondents aged 18 years and older; n/r (Not Reportable) - If the unweighted total responses for a dimension (row) is <50 that row will not be shown; n/a (Not Available) - Not asked of a subset of respondents

Year: 2000-2002

Poverty Level	Never			<= 1 year			>1 year			Estimated Population (3-Yr Avg)
	#	%	C.I. (95%)	#	%	C.I. (95%)	#	%	C.I. (95%)	#
0-130%	100	1.6	0.1 - 3.1	8,000	89.6	84.7 - 94.5	800	8.8	4.3 - 13.3	9,000
131-185%	200	3.4	0.2 - 6.7	4,400	71.9	57.9 - 85.8	1,500	24.7	10.6 - 38.8	6,200
186+%	1,200	5.1	1.9 - 8.4	17,800	79.3	73.8 - 84.8	3,500	15.6	10.7 - 20.4	22,400

Marital Status (Grouped)	Never			<= 1 year			>1 year			Estimated Population (3-Yr Avg)
	#	%	C.I. (95%)	#	%	C.I. (95%)	#	%	C.I. (95%)	#
Married	1,900	5.7	3.0 - 8.5	27,700	83.7	79.4 - 87.9	3,500	10.6	7.2 - 14.0	33,100
Widowed	100	1.3	0.0 - 3.3	5,700	80.9	69.1 - 92.8	1,200	17.8	6.0 - 29.7	7,000
Other	400	3.8	1.0 - 6.6	8,000	75.3	67.8 - 82.8	2,200	20.9	13.7 - 28.2	10,600

Diabetes - eye exam, dilated by State, County, Island, Community, BRFSS Age Group, DOH Race-Ethnicity, Gender, Education Level, Employment Status (Grouped), Household Income, Poverty Level, Marital Status (Grouped), Married, Health Care Coverage, for the Year(s) - 2000-2002, 2001-2003, 2002-2004, 2003-2005, 2004-2006, 2005-2007, 2006-2008, 2007-2009, 2008-2010

Note: Weighted numbers (#) represent 3-yr averages, percentages and 95% confidence intervals; Respondents aged 18 years and older; n/r (Not Reportable) - If the unweighted total responses for a dimension (row) is <50 that row will not be shown; n/a (Not Available) - Not asked of a subset of respondents

Year: 2000-2002

Married	Never			<= 1 year			>1 year			Estimated Population (3-Yr Avg)
	#	%	C.I. (95%)	#	%	C.I. (95%)	#	%	C.I. (95%)	#
Yes	1,900	5.7	3.0 - 8.4	28,200	83.7	79.5 - 87.8	3,600	10.6	7.3 - 14.0	33,700
No	500	2.7	0.8 - 4.6	13,200	77.3	70.6 - 83.9	3,400	20.0	13.5 - 26.6	17,000

Health Care Coverage	Never			<= 1 year			>1 year			Estimated Population (3-Yr Avg)
	#	%	C.I. (95%)	#	%	C.I. (95%)	#	%	C.I. (95%)	#
Yes	2,300	4.6	2.7 - 6.5	40,700	81.9	78.3 - 85.6	6,700	13.4	10.2 - 16.7	49,700