

**Diabetes - times feet chk by doc by State, County, Island, Community, BRFSS Age Group, DOH Race-Ethnicity, Gender, Education Level, Employment Status (Grouped), Household Income, Poverty Level, Marital Status (Grouped), Married, Health Care Coverage, for the Year(s) - 2000-2002, 2001-2003, 2002-2004, 2003-2005, 2004-2006, 2005-2007, 2006-2008, 2007-2009, 2008-2010**

*Note: Weighted numbers (#) represent 3-yr averages, percentages and 95% confidence intervals; Respondents aged 18 years and older; n/r (Not Reportable) - If the unweighted total responses for a dimension (row) is <50 that row will not be shown; n/a (Not Available) - Not asked of a subset of respondents*

*The trend analysis report shows the trend for the selected health variable over selected years in a table and a graph. Estimated Population: This number is a weighted representation of the population who responded to a particular question in the survey. For most questions the eligible population will be the entire adult population. For some secondary questions only a subset of the population was asked the question. For example, all survey participants were asked if they had diabetes, but only those who answered yes were asked if they use insulin. If a dimension value is unknown for a particular survey record, that record will not be included in the counts for that particular dimension.*

*For documentation on other terms and coding in this report, please go to the following links*

[Click here to access BRFSS documentation](#)

[Click here to access DOH Race-Ethnicity coding](#)

[Click here to access The Hawai'i Data Guide](#)

[Click here to access Poverty Level Methodology](#)

**For questions about this report, please contact  
The Hawaii Health Data Warehouse**

[profiles@hhdw.org](mailto:profiles@hhdw.org)

**(855) 946-5899 x15**

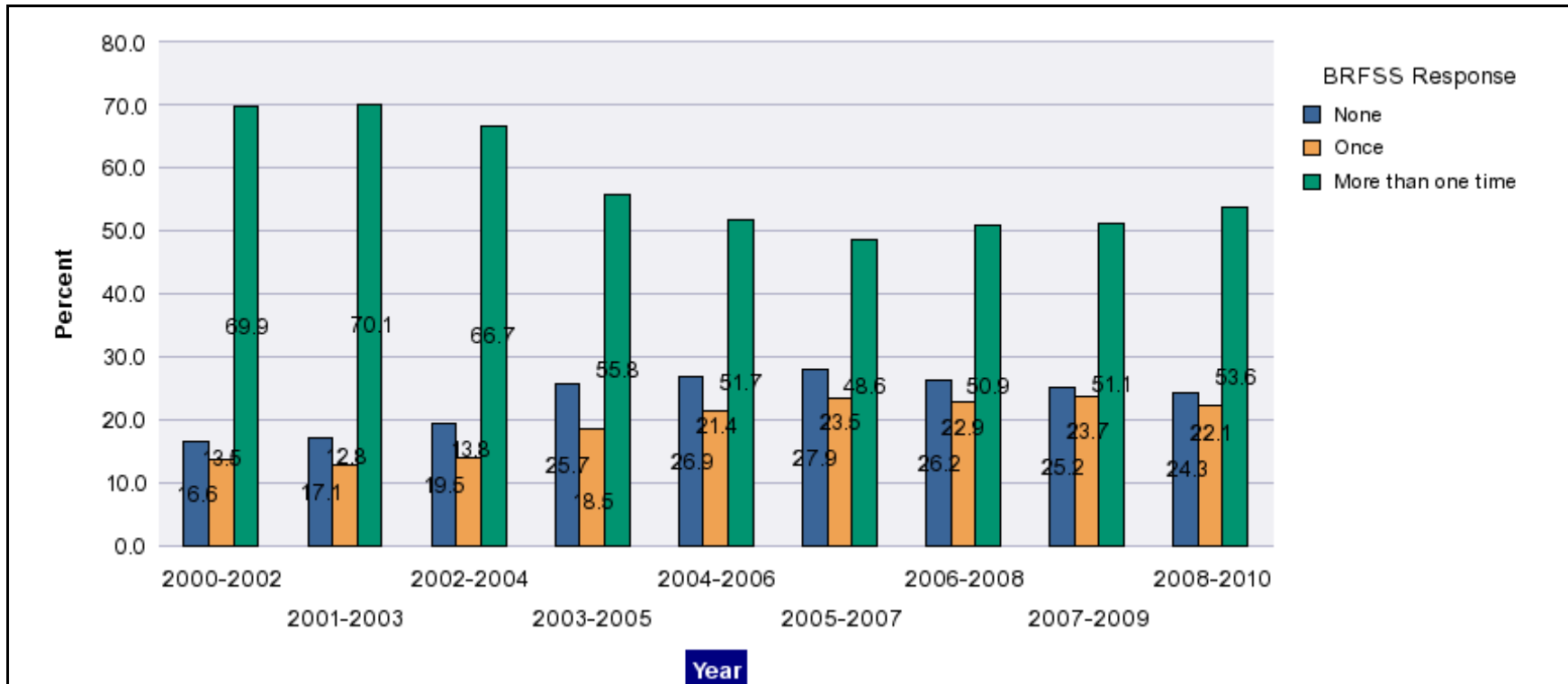
**Diabetes - times feet chk by doc by State, County, Island, Community, BRFSS Age Group, DOH Race-Ethnicity, Gender, Education Level, Employment Status (Grouped), Household Income, Poverty Level, Marital Status (Grouped), Married, Health Care Coverage, for the Year(s) - 2000-2002, 2001-2003, 2002-2004, 2003-2005, 2004-2006, 2005-2007, 2006-2008, 2007-2009, 2008-2010**

*Note: Weighted numbers (#) represent 3-yr averages, percentages and 95% confidence intervals; Respondents aged 18 years and older; n/r (Not Reportable) - If the unweighted total responses for a dimension (row) is <50 that row will not be shown; n/a (Not Available) - Not asked of a subset of respondents*

Year	None			Once			More than one time			Estimated Population (3-Yr Avg)
	#	%	C.I.(95%)	#	%	C.I.(95%)	#	%	C.I.(95%)	#
<b>2000-2002</b>	8,200	16.6	13.3 - 19.9	6,700	13.5	10.5 - 16.6	34,400	69.9	65.7 - 74.1	49,300
<b>2001-2003</b>	9,800	17.1	13.8 - 20.4	7,300	12.8	9.9 - 15.8	40,100	70.1	66.0 - 74.2	57,200
<b>2002-2004</b>	11,400	19.5	15.4 - 23.6	8,100	13.8	10.4 - 17.3	39,000	66.7	61.8 - 71.6	58,500
<b>2003-2005</b>	17,400	25.7	20.7 - 30.6	12,600	18.5	14.3 - 22.8	37,800	55.8	50.3 - 61.3	67,800
<b>2004-2006</b>	19,000	26.9	22.2 - 31.6	15,100	21.4	17.3 - 25.4	36,600	51.7	46.6 - 56.9	70,700
<b>2005-2007</b>	21,200	27.9	24.0 - 31.9	17,800	23.5	20.0 - 27.0	36,900	48.6	44.6 - 52.7	76,000
<b>2006-2008</b>	20,000	26.2	23.3 - 29.0	17,500	22.9	20.3 - 25.6	39,000	50.9	47.7 - 54.1	76,600
<b>2007-2009</b>	19,500	25.2	22.0 - 28.3	18,400	23.7	20.7 - 26.8	39,600	51.1	47.5 - 54.7	77,600
<b>2008-2010</b>	19,500	24.3	21.2 - 27.3	17,800	22.1	19.2 - 25.0	43,100	53.6	50.1 - 57.1	80,300

**Diabetes - times feet chk by doc by State, County, Island, Community, BRFSS Age Group, DOH Race-Ethnicity, Gender, Education Level, Employment Status (Grouped), Household Income, Poverty Level, Marital Status (Grouped), Married, Health Care Coverage, for the Year(s) - 2000-2002, 2001-2003, 2002-2004, 2003-2005, 2004-2006, 2005-2007, 2006-2008, 2007-2009, 2008-2010**

*Note: Weighted numbers (#) represent 3-yr averages, percentages and 95% confidence intervals; Respondents aged 18 years and older; n/r (Not Reportable) - If the unweighted total responses for a dimension (row) is <50 that row will not be shown; n/a (Not Available) - Not asked of a subset of respondents*



**Diabetes - times feet chk by doc by State, County, Island, Community, BRFSS Age Group, DOH Race-Ethnicity, Gender, Education Level, Employment Status (Grouped), Household Income, Poverty Level, Marital Status (Grouped), Married, Health Care Coverage, for the Year(s) - 2000-2002, 2001-2003, 2002-2004, 2003-2005, 2004-2006, 2005-2007, 2006-2008, 2007-2009, 2008-2010**

*Note: Weighted numbers (#) represent 3-yr averages, percentages and 95% confidence intervals; Respondents aged 18 years and older; n/r (Not Reportable) - If the unweighted total responses for a dimension (row) is <50 that row will not be shown; n/a (Not Available) - Not asked of a subset of respondents*

**Year: 2008-2010**

State	None			Once			More than one time			Estimated Population (3-Yr Avg)
	#	%	C.I. (95%)	#	%	C.I. (95%)	#	%	C.I. (95%)	#
Hawaii State	19,500	24.3	21.2 - 27.3	17,800	22.1	19.2 - 25.0	43,100	53.6	50.1 - 57.1	80,300

County	None			Once			More than one time			Estimated Population (3-Yr Avg)
	#	%	C.I. (95%)	#	%	C.I. (95%)	#	%	C.I. (95%)	#
Hawaii	3,800	34.4	27.2 - 41.6	1,800	16.2	11.4 - 20.9	5,500	49.5	42.5 - 56.5	11,200
Honolulu	13,200	23.3	19.4 - 27.2	12,800	22.5	18.7 - 26.3	30,800	54.2	49.6 - 58.7	56,800
Kauai	500	13.4	8.0 - 18.9	900	23.1	14.0 - 32.2	2,300	63.4	53.9 - 73.0	3,700
Maui	1,900	22.2	15.7 - 28.8	2,300	26.8	19.1 - 34.5	4,400	51.0	43.0 - 59.0	8,700

**Diabetes - times feet chk by doc by State, County, Island, Community, BRFSS Age Group, DOH Race-Ethnicity, Gender, Education Level, Employment Status (Grouped), Household Income, Poverty Level, Marital Status (Grouped), Married, Health Care Coverage, for the Year(s) - 2000-2002, 2001-2003, 2002-2004, 2003-2005, 2004-2006, 2005-2007, 2006-2008, 2007-2009, 2008-2010**

*Note: Weighted numbers (#) represent 3-yr averages, percentages and 95% confidence intervals; Respondents aged 18 years and older; n/r (Not Reportable) - If the unweighted total responses for a dimension (row) is <50 that row will not be shown; n/a (Not Available) - Not asked of a subset of respondents*

**Year: 2008-2010**

Island	None			Once			More than one time			Estimated Population (3-Yr Avg)
	#	%	C.I. (95%)	#	%	C.I. (95%)	#	%	C.I. (95%)	#
Hawaii	3,800	34.4	27.2 - 41.6	1,800	16.2	11.4 - 20.9	5,500	49.5	42.5 - 56.5	11,200
Kauai	500	13.4	8.0 - 18.9	900	23.1	14.0 - 32.2	2,300	63.4	53.9 - 73.0	3,700
Lanai	100	36.4	20.0 - 52.8	<50	11.9	4.1 - 19.8	100	51.6	35.1 - 68.2	200
Maui	1,500	19.6	12.6 - 26.7	2,200	28.3	19.8 - 36.9	4,000	52.0	43.1 - 60.9	7,700
Molokai	400	42.8	25.6 - 60.0	100	15.8	6.1 - 25.6	400	41.4	26.0 - 56.8	900
Oahu	13,200	23.3	19.4 - 27.2	12,800	22.5	18.7 - 26.3	30,800	54.2	49.6 - 58.7	56,800

Community	None			Once			More than one time			Estimated Population (3-Yr Avg)
	#	%	C.I. (95%)	#	%	C.I. (95%)	#	%	C.I. (95%)	#
Aiea/ Pearl City	800	17.9	7.3 - 28.6	700	15.8	6.1 - 25.4	3,000	66.3	53.2 - 79.4	4,500
Hanalei/ Kapaa	100	6.2	0.1 - 12.4	300	25.7	11.0 - 40.5	800	68.0	52.7 - 83.4	1,200

**Diabetes - times feet chk by doc by State, County, Island, Community, BRFSS Age Group, DOH Race-Ethnicity, Gender, Education Level, Employment Status (Grouped), Household Income, Poverty Level, Marital Status (Grouped), Married, Health Care Coverage, for the Year(s) - 2000-2002, 2001-2003, 2002-2004, 2003-2005, 2004-2006, 2005-2007, 2006-2008, 2007-2009, 2008-2010**

*Note: Weighted numbers (#) represent 3-yr averages, percentages and 95% confidence intervals; Respondents aged 18 years and older; n/r (Not Reportable) - If the unweighted total responses for a dimension (row) is <50 that row will not be shown; n/a (Not Available) - Not asked of a subset of respondents*

**Year: 2008-2010**

Community	None			Once			More than one time			Estimated Population (3-Yr Avg)
	#	%	C.I. (95%)	#	%	C.I. (95%)	#	%	C.I. (95%)	#
Hilo	1,300	35.1	24.3 - 46.0	400	11.7	4.3 - 19.1	1,900	53.2	41.9 - 64.4	3,600
Kaaawa/ Kahaluu/ Kaneohe	1,000	23.8	11.0 - 36.5	1,000	24.4	10.7 - 38.1	2,100	51.8	36.8 - 66.9	4,000
Kahului	600	23.9	10.9 - 36.8	500	20.1	9.2 - 31.1	1,400	56.0	41.5 - 70.5	2,500
Kailua/ Waimanalo	600	15.4	4.5 - 26.3	700	17.9	5.7 - 30.1	2,600	66.7	51.6 - 81.8	3,800
Kaimuki/ Palolo/ Waikiki	700	14.0	5.5 - 22.4	1,100	20.6	11.3 - 29.9	3,400	65.4	53.9 - 76.9	5,200
Kona	700	31.2	11.0 - 51.4	700	28.8	13.4 - 44.3	900	40.0	22.0 - 58.0	2,300
Lahaina/ Wailuku	500	18.2	5.8 - 30.6	1,400	47.2	31.4 - 63.0	1,000	34.6	21.5 - 47.7	3,000
Lanai	100	36.4	20.0 - 52.8	<50	11.9	4.1 - 19.8	100	51.6	35.1 - 68.2	200
Lihue-Waimea	400	16.9	9.4 - 24.4	500	21.9	10.3 - 33.4	1,500	61.2	49.2 - 73.2	2,500
Manoa/ Upper Makiki	1,100	27.9	16.0 - 39.7	400	11.1	3.6 - 18.5	2,400	61.1	48.2 - 74.0	4,000
Mililani/ Wahiawa	1,600	26.2	14.4 - 38.1	1,600	25.9	11.0 - 40.7	2,900	47.9	33.9 - 61.9	6,000
Molokai	400	42.8	25.6 - 60.0	100	15.8	6.1 - 25.6	400	41.4	26.0 - 56.8	900

**Diabetes - times feet chk by doc by State, County, Island, Community, BRFSS Age Group, DOH Race-Ethnicity, Gender, Education Level, Employment Status (Grouped), Household Income, Poverty Level, Marital Status (Grouped), Married, Health Care Coverage, for the Year(s) - 2000-2002, 2001-2003, 2002-2004, 2003-2005, 2004-2006, 2005-2007, 2006-2008, 2007-2009, 2008-2010**

*Note: Weighted numbers (#) represent 3-yr averages, percentages and 95% confidence intervals; Respondents aged 18 years and older; n/r (Not Reportable) - If the unweighted total responses for a dimension (row) is <50 that row will not be shown; n/a (Not Available) - Not asked of a subset of respondents*

**Year: 2008-2010**

Community	None			Once			More than one time			Estimated Population (3-Yr Avg)
	#	%	C.I. (95%)	#	%	C.I. (95%)	#	%	C.I. (95%)	#
N.Hawaii	600	35.3	15.8 - 54.8	200	9.3	1.7 - 16.9	900	55.4	37.0 - 73.8	1,700
Nuuanu/ Kalihi/ Moanalua	1,300	22.5	10.3 - 34.7	1,100	20.1	9.1 - 31.2	3,200	57.4	42.7 - 72.0	5,700
Puna/ Kau	1,300	35.2	23.5 - 46.8	600	15.7	8.5 - 22.9	1,700	49.1	37.8 - 60.4	3,600
Upcountry/ Hana	400	16.9	6.6 - 27.3	300	12.4	3.5 - 21.3	1,600	70.7	57.8 - 83.6	2,200
Waipahu/ Kapolei/ Ewa	3,100	26.5	16.2 - 36.9	3,100	26.3	15.9 - 36.6	5,500	47.2	35.4 - 59.0	11,700

**Diabetes - times feet chk by doc by State, County, Island, Community, BRFSS Age Group, DOH Race-Ethnicity, Gender, Education Level, Employment Status (Grouped), Household Income, Poverty Level, Marital Status (Grouped), Married, Health Care Coverage, for the Year(s) - 2000-2002, 2001-2003, 2002-2004, 2003-2005, 2004-2006, 2005-2007, 2006-2008, 2007-2009, 2008-2010**

*Note: Weighted numbers (#) represent 3-yr averages, percentages and 95% confidence intervals; Respondents aged 18 years and older; n/r (Not Reportable) - If the unweighted total responses for a dimension (row) is <50 that row will not be shown; n/a (Not Available) - Not asked of a subset of respondents*

**Year: 2008-2010**

BRFSS Age Group	None			Once			More than one time			Estimated Population (3-Yr Avg)
	#	%	C.I. (95%)	#	%	C.I. (95%)	#	%	C.I. (95%)	#
35-44	3,000	33.5	20.8 - 46.2	2,500	27.6	15.3 - 39.9	3,500	38.9	26.5 - 51.3	9,100
45-54	3,000	22.5	15.8 - 29.2	2,800	20.5	13.1 - 27.9	7,700	57.0	48.1 - 65.8	13,500
55-64	4,700	23.7	18.4 - 29.0	4,600	23.4	18.4 - 28.3	10,500	53.0	46.7 - 59.2	19,700
65-74	3,100	19.1	14.1 - 24.1	3,500	21.7	16.8 - 26.5	9,600	59.3	53.0 - 65.5	16,100
75+	3,700	20.7	15.7 - 25.8	3,700	20.5	14.1 - 26.9	10,600	58.8	51.8 - 65.8	18,000



**Diabetes - times feet chk by doc by State, County, Island, Community, BRFSS Age Group, DOH Race-Ethnicity, Gender, Education Level, Employment Status (Grouped), Household Income, Poverty Level, Marital Status (Grouped), Married, Health Care Coverage, for the Year(s) - 2000-2002, 2001-2003, 2002-2004, 2003-2005, 2004-2006, 2005-2007, 2006-2008, 2007-2009, 2008-2010**

*Note: Weighted numbers (#) represent 3-yr averages, percentages and 95% confidence intervals; Respondents aged 18 years and older; n/r (Not Reportable) - If the unweighted total responses for a dimension (row) is <50 that row will not be shown; n/a (Not Available) - Not asked of a subset of respondents*

**Year: 2008-2010**

DOH Race-Ethnicity	None			Once			More than one time			Estimated Population (3-Yr Avg)
	#	%	C.I. (95%)	#	%	C.I. (95%)	#	%	C.I. (95%)	#
Caucasian	3,500	22.4	17.1 - 27.7	3,800	24.5	19.1 - 30.0	8,300	53.1	46.5 - 59.6	15,500
Native Hawaiian	3,600	24.4	17.3 - 31.6	2,700	18.1	12.2 - 24.0	8,500	57.5	49.4 - 65.6	14,700
Chinese	1,300	23.4	12.9 - 33.9	1,400	25.8	16.1 - 35.6	2,700	50.7	38.7 - 62.8	5,400
Filipino	3,700	24.4	15.6 - 33.1	3,100	20.6	13.5 - 27.7	8,400	55.1	45.7 - 64.4	15,300
Japanese	5,900	25.8	20.4 - 31.3	4,600	20.1	14.1 - 26.2	12,400	54.0	47.5 - 60.5	22,900

Gender	None			Once			More than one time			Estimated Population (3-Yr Avg)
	#	%	C.I. (95%)	#	%	C.I. (95%)	#	%	C.I. (95%)	#
Male	9,700	24.6	20.1 - 29.2	9,000	22.7	18.3 - 27.1	20,800	52.6	47.4 - 57.9	39,400
Female	9,800	23.9	19.9 - 27.9	8,800	21.5	17.7 - 25.4	22,300	54.5	49.9 - 59.2	40,900

**Diabetes - times feet chk by doc by State, County, Island, Community, BRFSS Age Group, DOH Race-Ethnicity, Gender, Education Level, Employment Status (Grouped), Household Income, Poverty Level, Marital Status (Grouped), Married, Health Care Coverage, for the Year(s) - 2000-2002, 2001-2003, 2002-2004, 2003-2005, 2004-2006, 2005-2007, 2006-2008, 2007-2009, 2008-2010**

*Note: Weighted numbers (#) represent 3-yr averages, percentages and 95% confidence intervals; Respondents aged 18 years and older; n/r (Not Reportable) - If the unweighted total responses for a dimension (row) is <50 that row will not be shown; n/a (Not Available) - Not asked of a subset of respondents*

**Year: 2008-2010**

Education Level	None			Once			More than one time			Estimated Population (3-Yr Avg)
	#	%	C.I. (95%)	#	%	C.I. (95%)	#	%	C.I. (95%)	#
Never attended school/ Only Kindergarten to Grades 8	800	35.4	17.3 - 53.5	500	20.9	3.8 - 38.0	1,000	43.7	25.6 - 61.8	2,200
Grades 9 thru 11 (Some High School)	1,200	30.1	16.2 - 43.9	600	14.6	5.8 - 23.3	2,300	55.4	39.8 - 70.9	4,100
Grades 12 or GED (High School Grad)	6,500	24.5	19.0 - 30.0	5,500	20.7	15.3 - 26.2	14,600	54.8	48.4 - 61.2	26,600
College 1 to 3 years (Some College/ Tech)	5,000	21.5	16.0 - 27.0	5,900	25.5	19.6 - 31.4	12,400	53.0	46.3 - 59.7	23,300
College 4 years or more (College Grad)	6,000	24.8	19.5 - 30.1	5,200	21.8	17.2 - 26.5	12,800	53.4	47.5 - 59.2	24,000

**Diabetes - times feet chk by doc by State, County, Island, Community, BRFSS Age Group, DOH Race-Ethnicity, Gender, Education Level, Employment Status (Grouped), Household Income, Poverty Level, Marital Status (Grouped), Married, Health Care Coverage, for the Year(s) - 2000-2002, 2001-2003, 2002-2004, 2003-2005, 2004-2006, 2005-2007, 2006-2008, 2007-2009, 2008-2010**

*Note: Weighted numbers (#) represent 3-yr averages, percentages and 95% confidence intervals; Respondents aged 18 years and older; n/r (Not Reportable) - If the unweighted total responses for a dimension (row) is <50 that row will not be shown; n/a (Not Available) - Not asked of a subset of respondents*

**Year: 2008-2010**

Employment Status (Grouped)	None			Once			More than one time			Estimated Population (3-Yr Avg)
	#	%	C.I. (95%)	#	%	C.I. (95%)	#	%	C.I. (95%)	#
<b>Employed</b>	9,500	27.3	22.1 - 32.5	8,600	24.6	19.6 - 29.5	16,800	48.1	42.4 - 53.9	34,900
<b>Unemployed</b>	1,100	25.3	10.5 - 40.0	1,000	21.4	7.1 - 35.7	2,400	53.4	35.5 - 71.2	4,500
<b>Retired/Unable to work</b>	7,800	21.0	17.2 - 24.7	7,600	20.3	16.5 - 24.1	22,000	58.7	54.2 - 63.3	37,400
<b>Student/Homemaker</b>	1,000	28.1	16.1 - 40.1	700	18.3	8.7 - 28.0	1,900	53.6	40.3 - 66.8	3,600

**Diabetes - times feet chk by doc by State, County, Island, Community, BRFSS Age Group, DOH Race-Ethnicity, Gender, Education Level, Employment Status (Grouped), Household Income, Poverty Level, Marital Status (Grouped), Married, Health Care Coverage, for the Year(s) - 2000-2002, 2001-2003, 2002-2004, 2003-2005, 2004-2006, 2005-2007, 2006-2008, 2007-2009, 2008-2010**

*Note: Weighted numbers (#) represent 3-yr averages, percentages and 95% confidence intervals; Respondents aged 18 years and older; n/r (Not Reportable) - If the unweighted total responses for a dimension (row) is <50 that row will not be shown; n/a (Not Available) - Not asked of a subset of respondents*

**Year: 2008-2010**

Household Income	None			Once			More than one time			Estimated Population (3-Yr Avg)
	#	%	C.I. (95%)	#	%	C.I. (95%)	#	%	C.I. (95%)	#
Less than \$10,000	1,400	43.6	26.0 - 61.3	400	12.7	0.2 - 25.2	1,400	43.6	27.2 - 60.1	3,200
\$10,000 to \$14,999	800	23.0	11.1 - 35.0	600	18.0	8.8 - 27.3	2,000	58.9	44.9 - 72.9	3,500
\$15,000 to \$19,999	1,700	27.8	13.3 - 42.3	900	15.5	8.1 - 23.0	3,400	56.7	43.1 - 70.2	6,100
\$20,000 to \$24,999	1,600	27.1	17.4 - 36.8	1,300	21.4	8.9 - 34.0	3,100	51.5	38.9 - 64.0	6,000
\$25,000 to \$34,999	2,600	28.8	20.6 - 37.1	2,000	22.0	14.1 - 30.0	4,400	49.2	40.0 - 58.3	8,900
\$35,000 to \$49,999	2,900	21.9	15.0 - 28.8	3,000	22.6	15.4 - 29.7	7,500	55.6	47.3 - 63.9	13,500
\$50,000 to \$74,999	2,300	18.2	12.0 - 24.3	3,400	26.6	19.0 - 34.1	7,000	55.3	46.9 - 63.6	12,700
\$75,000 or more	4,200	22.2	15.7 - 28.7	5,000	26.5	19.8 - 33.2	9,700	51.3	43.9 - 58.7	18,900

**Diabetes - times feet chk by doc by State, County, Island, Community, BRFSS Age Group, DOH Race-Ethnicity, Gender, Education Level, Employment Status (Grouped), Household Income, Poverty Level, Marital Status (Grouped), Married, Health Care Coverage, for the Year(s) - 2000-2002, 2001-2003, 2002-2004, 2003-2005, 2004-2006, 2005-2007, 2006-2008, 2007-2009, 2008-2010**

*Note: Weighted numbers (#) represent 3-yr averages, percentages and 95% confidence intervals; Respondents aged 18 years and older; n/r (Not Reportable) - If the unweighted total responses for a dimension (row) is <50 that row will not be shown; n/a (Not Available) - Not asked of a subset of respondents*

**Year: 2008-2010**

Poverty Level	None			Once			More than one time			Estimated Population (3-Yr Avg)
	#	%	C.I. (95%)	#	%	C.I. (95%)	#	%	C.I. (95%)	#
<b>0-130%</b>	5,100	27.5	20.1 - 35.0	3,900	21.0	14.0 - 28.1	9,400	51.4	43.4 - 59.5	18,300
<b>131-185%</b>	3,400	27.8	19.6 - 35.9	2,100	17.1	11.4 - 22.8	6,800	55.2	46.7 - 63.6	12,300
<b>186+%</b>	9,100	21.5	17.9 - 25.2	10,700	25.4	21.4 - 29.4	22,300	53.1	48.6 - 57.5	42,100

Marital Status (Grouped)	None			Once			More than one time			Estimated Population (3-Yr Avg)
	#	%	C.I. (95%)	#	%	C.I. (95%)	#	%	C.I. (95%)	#
<b>Married</b>	11,100	22.0	18.3 - 25.7	11,100	22.1	18.3 - 25.9	28,100	55.9	51.5 - 60.3	50,300
<b>Widowed</b>	2,500	25.6	18.8 - 32.5	2,400	24.7	15.3 - 34.0	4,800	49.7	40.8 - 58.6	9,600
<b>Other</b>	5,700	28.9	21.8 - 36.0	4,100	21.0	15.8 - 26.2	9,800	50.1	42.7 - 57.5	19,600

**Diabetes - times feet chk by doc by State, County, Island, Community, BRFSS Age Group, DOH Race-Ethnicity, Gender, Education Level, Employment Status (Grouped), Household Income, Poverty Level, Marital Status (Grouped), Married, Health Care Coverage, for the Year(s) - 2000-2002, 2001-2003, 2002-2004, 2003-2005, 2004-2006, 2005-2007, 2006-2008, 2007-2009, 2008-2010**

*Note: Weighted numbers (#) represent 3-yr averages, percentages and 95% confidence intervals; Respondents aged 18 years and older; n/r (Not Reportable) - If the unweighted total responses for a dimension (row) is <50 that row will not be shown; n/a (Not Available) - Not asked of a subset of respondents*

**Year: 2008-2010**

<b>Married</b>	<b>None</b>			<b>Once</b>			<b>More than one time</b>			<b>Estimated Population (3-Yr Avg)</b>
	<b>#</b>	<b>%</b>	<b>C.I. (95%)</b>	<b>#</b>	<b>%</b>	<b>C.I. (95%)</b>	<b>#</b>	<b>%</b>	<b>C.I. (95%)</b>	<b>#</b>
<b>Yes</b>	11,400	22.0	18.3 - 25.7	11,500	22.1	18.3 - 25.8	29,100	55.9	51.5 - 60.4	51,900
<b>No</b>	8,100	28.5	23.2 - 33.8	6,200	22.0	17.3 - 26.7	14,000	49.5	43.9 - 55.1	28,300

<b>Health Care Coverage</b>	<b>None</b>			<b>Once</b>			<b>More than one time</b>			<b>Estimated Population (3-Yr Avg)</b>
	<b>#</b>	<b>%</b>	<b>C.I. (95%)</b>	<b>#</b>	<b>%</b>	<b>C.I. (95%)</b>	<b>#</b>	<b>%</b>	<b>C.I. (95%)</b>	<b>#</b>
<b>Yes</b>	13,200	25.1	21.7 - 28.5	10,400	19.8	16.9 - 22.7	29,000	55.1	51.3 - 58.9	52,600

**Diabetes - times feet chk by doc by State, County, Island, Community, BRFSS Age Group, DOH Race-Ethnicity, Gender, Education Level, Employment Status (Grouped), Household Income, Poverty Level, Marital Status (Grouped), Married, Health Care Coverage, for the Year(s) - 2000-2002, 2001-2003, 2002-2004, 2003-2005, 2004-2006, 2005-2007, 2006-2008, 2007-2009, 2008-2010**

*Note: Weighted numbers (#) represent 3-yr averages, percentages and 95% confidence intervals; Respondents aged 18 years and older; n/r (Not Reportable) - If the unweighted total responses for a dimension (row) is <50 that row will not be shown; n/a (Not Available) - Not asked of a subset of respondents*

**Year: 2007-2009**

State	None			Once			More than one time			Estimated Population (3-Yr Avg)
	#	%	C.I. (95%)	#	%	C.I. (95%)	#	%	C.I. (95%)	#
Hawaii State	19,500	25.2	22.0 - 28.3	18,400	23.7	20.7 - 26.8	39,600	51.1	47.5 - 54.7	77,600

County	None			Once			More than one time			Estimated Population (3-Yr Avg)
	#	%	C.I. (95%)	#	%	C.I. (95%)	#	%	C.I. (95%)	#
Hawaii	3,600	35.3	27.7 - 42.9	2,000	19.5	14.2 - 24.9	4,600	45.2	38.0 - 52.4	10,200
Honolulu	13,400	24.5	20.5 - 28.5	12,800	23.3	19.4 - 27.3	28,700	52.2	47.5 - 56.8	55,000
Kauai	600	15.9	9.7 - 22.1	900	24.1	15.0 - 33.3	2,200	60.0	50.2 - 69.8	3,700
Maui	1,900	21.6	15.0 - 28.3	2,700	31.0	23.0 - 39.0	4,100	47.4	39.3 - 55.5	8,700

**Diabetes - times feet chk by doc by State, County, Island, Community, BRFSS Age Group, DOH Race-Ethnicity, Gender, Education Level, Employment Status (Grouped), Household Income, Poverty Level, Marital Status (Grouped), Married, Health Care Coverage, for the Year(s) - 2000-2002, 2001-2003, 2002-2004, 2003-2005, 2004-2006, 2005-2007, 2006-2008, 2007-2009, 2008-2010**

*Note: Weighted numbers (#) represent 3-yr averages, percentages and 95% confidence intervals; Respondents aged 18 years and older; n/r (Not Reportable) - If the unweighted total responses for a dimension (row) is <50 that row will not be shown; n/a (Not Available) - Not asked of a subset of respondents*

**Year: 2007-2009**

Island	None			Once			More than one time			Estimated Population (3-Yr Avg)
	#	%	C.I. (95%)	#	%	C.I. (95%)	#	%	C.I. (95%)	#
Hawaii	3,600	35.3	27.7 - 42.9	2,000	19.5	14.2 - 24.9	4,600	45.2	38.0 - 52.4	10,200
Kauai	600	15.9	9.7 - 22.1	900	24.1	15.0 - 33.3	2,200	60.0	50.2 - 69.8	3,700
Lanai	100	31.9	16.9 - 46.8	<50	18.3	7.3 - 29.3	100	49.9	34.4 - 65.3	200
Maui	1,500	19.0	11.9 - 26.1	2,500	32.9	24.0 - 41.8	3,700	48.1	39.2 - 57.0	7,700
Molokai	400	45.3	27.3 - 63.4	100	14.8	4.6 - 25.0	300	39.8	24.2 - 55.5	800
Oahu	13,400	24.5	20.5 - 28.5	12,800	23.3	19.4 - 27.3	28,700	52.2	47.5 - 56.8	55,000

Community	None			Once			More than one time			Estimated Population (3-Yr Avg)
	#	%	C.I. (95%)	#	%	C.I. (95%)	#	%	C.I. (95%)	#
Aiea/ Pearl City	600	14.2	5.2 - 23.2	500	13.3	3.7 - 22.9	3,000	72.5	60.0 - 85.0	4,100
Hilo	1,100	32.6	21.5 - 43.7	600	17.8	8.9 - 26.6	1,600	49.6	37.9 - 61.3	3,300



**Diabetes - times feet chk by doc by State, County, Island, Community, BRFSS Age Group, DOH Race-Ethnicity, Gender, Education Level, Employment Status (Grouped), Household Income, Poverty Level, Marital Status (Grouped), Married, Health Care Coverage, for the Year(s) - 2000-2002, 2001-2003, 2002-2004, 2003-2005, 2004-2006, 2005-2007, 2006-2008, 2007-2009, 2008-2010**

*Note: Weighted numbers (#) represent 3-yr averages, percentages and 95% confidence intervals; Respondents aged 18 years and older; n/r (Not Reportable) - If the unweighted total responses for a dimension (row) is <50 that row will not be shown; n/a (Not Available) - Not asked of a subset of respondents*

**Year: 2007-2009**

Community	None			Once			More than one time			Estimated Population (3-Yr Avg)
	#	%	C.I. (95%)	#	%	C.I. (95%)	#	%	C.I. (95%)	#
<b>Kaaawa/ Kahaluu/ Kaneohe</b>	1,500	36.1	21.3 - 50.9	1,100	26.0	12.0 - 40.1	1,600	37.9	23.6 - 52.1	4,100
<b>Kahului</b>	600	22.9	10.0 - 35.8	600	23.1	11.4 - 34.8	1,400	54.0	39.5 - 68.5	2,500
<b>Kaimuki/ Palolo/ Waikiki</b>	700	13.9	4.0 - 23.8	700	15.5	6.2 - 24.8	3,300	70.6	58.0 - 83.1	4,700
<b>Kona</b>	900	38.7	18.4 - 59.0	600	26.9	11.4 - 42.4	800	34.4	16.6 - 52.3	2,200
<b>Lahaina/ Wailuku</b>	400	14.6	2.3 - 26.9	1,400	52.8	36.0 - 69.5	900	32.6	18.7 - 46.6	2,700
<b>Lanai</b>	100	31.9	16.9 - 46.8	<50	18.3	7.3 - 29.3	100	49.9	34.4 - 65.3	200
<b>Lihue-Waimea</b>	500	19.2	11.0 - 27.5	500	22.1	10.4 - 33.8	1,400	58.7	46.4 - 70.9	2,400
<b>Manoa/ Upper Makiki</b>	1,300	35.4	21.3 - 49.6	700	19.0	8.3 - 29.7	1,600	45.5	30.8 - 60.3	3,500
<b>Mililani/ Wahiawa</b>	1,700	27.0	14.6 - 39.4	1,900	30.2	14.7 - 45.8	2,700	42.8	29.0 - 56.6	6,300
<b>Molokai</b>	400	45.3	27.3 - 63.4	100	14.8	4.6 - 25.0	300	39.8	24.2 - 55.5	800
<b>Nanakuli/ Waianae</b>	1,100	20.9	4.5 - 37.3	1,000	20.4	9.5 - 31.4	3,000	58.6	42.1 - 75.1	5,100
<b>N.Hawaii</b>	800	38.2	21.2 - 55.3	200	11.3	3.4 - 19.2	1,000	50.5	34.5 - 66.5	2,000

**Diabetes - times feet chk by doc by State, County, Island, Community, BRFSS Age Group, DOH Race-Ethnicity, Gender, Education Level, Employment Status (Grouped), Household Income, Poverty Level, Marital Status (Grouped), Married, Health Care Coverage, for the Year(s) - 2000-2002, 2001-2003, 2002-2004, 2003-2005, 2004-2006, 2005-2007, 2006-2008, 2007-2009, 2008-2010**

*Note: Weighted numbers (#) represent 3-yr averages, percentages and 95% confidence intervals; Respondents aged 18 years and older; n/r (Not Reportable) - If the unweighted total responses for a dimension (row) is <50 that row will not be shown; n/a (Not Available) - Not asked of a subset of respondents*

**Year: 2007-2009**

Community	None			Once			More than one time			Estimated Population (3-Yr Avg)
	#	%	C.I. (95%)	#	%	C.I. (95%)	#	%	C.I. (95%)	#
<b>Nuuanu/ Kalihi/ Moanalua</b>	1,100	22.4	10.1 - 34.7	1,100	22.8	9.8 - 35.7	2,700	54.8	39.2 - 70.4	4,900
<b>Puna/ Kau</b>	900	33.5	19.8 - 47.2	600	21.7	12.0 - 31.3	1,200	44.8	31.7 - 58.0	2,700
<b>Upcountry/ Hana</b>	500	19.7	8.4 - 31.1	500	21.4	10.5 - 32.4	1,500	58.8	44.7 - 72.9	2,500
<b>Waipahu/ Kapolei/ Ewa</b>	2,700	24.9	15.1 - 34.7	2,800	25.9	15.5 - 36.3	5,300	49.2	37.1 - 61.4	10,800

**Diabetes - times feet chk by doc by State, County, Island, Community, BRFSS Age Group, DOH Race-Ethnicity, Gender, Education Level, Employment Status (Grouped), Household Income, Poverty Level, Marital Status (Grouped), Married, Health Care Coverage, for the Year(s) - 2000-2002, 2001-2003, 2002-2004, 2003-2005, 2004-2006, 2005-2007, 2006-2008, 2007-2009, 2008-2010**

*Note: Weighted numbers (#) represent 3-yr averages, percentages and 95% confidence intervals; Respondents aged 18 years and older; n/r (Not Reportable) - If the unweighted total responses for a dimension (row) is <50 that row will not be shown; n/a (Not Available) - Not asked of a subset of respondents*

**Year: 2007-2009**

BRFSS Age Group	None			Once			More than one time			Estimated Population (3-Yr Avg)
	#	%	C.I. (95%)	#	%	C.I. (95%)	#	%	C.I. (95%)	#
35-44	2,400	32.6	20.0 - 45.2	2,400	31.5	17.6 - 45.3	2,700	35.9	23.3 - 48.5	7,500
45-54	3,300	23.2	16.7 - 29.6	3,700	25.7	18.4 - 33.1	7,300	51.1	42.4 - 59.7	14,400
55-64	4,400	23.3	17.8 - 28.8	4,600	24.0	18.6 - 29.3	10,100	52.8	46.1 - 59.4	19,100
65-74	3,500	21.3	15.3 - 27.2	4,000	24.3	18.9 - 29.7	8,800	54.4	47.5 - 61.3	16,200
75+	3,700	22.2	16.4 - 27.9	3,300	20.0	13.1 - 26.8	9,700	57.9	50.4 - 65.4	16,700

**Diabetes - times feet chk by doc by State, County, Island, Community, BRFSS Age Group, DOH Race-Ethnicity, Gender, Education Level, Employment Status (Grouped), Household Income, Poverty Level, Marital Status (Grouped), Married, Health Care Coverage, for the Year(s) - 2000-2002, 2001-2003, 2002-2004, 2003-2005, 2004-2006, 2005-2007, 2006-2008, 2007-2009, 2008-2010**

*Note: Weighted numbers (#) represent 3-yr averages, percentages and 95% confidence intervals; Respondents aged 18 years and older; n/r (Not Reportable) - If the unweighted total responses for a dimension (row) is <50 that row will not be shown; n/a (Not Available) - Not asked of a subset of respondents*

**Year: 2007-2009**

DOH Race-Ethnicity	None			Once			More than one time			Estimated Population (3-Yr Avg)
	#	%	C.I. (95%)	#	%	C.I. (95%)	#	%	C.I. (95%)	#
Caucasian	3,800	26.2	20.5 - 31.9	3,400	23.6	18.0 - 29.1	7,300	50.2	43.4 - 57.0	14,600
Native Hawaiian	4,200	28.1	20.5 - 35.7	3,300	22.2	15.9 - 28.5	7,300	49.7	41.3 - 58.0	14,800
Chinese	1,500	25.3	13.3 - 37.3	1,300	22.5	13.6 - 31.5	3,100	52.2	39.9 - 64.4	6,000
Filipino	3,500	24.6	16.1 - 33.1	3,300	23.3	15.6 - 30.9	7,400	52.2	42.6 - 61.7	14,200
Japanese	5,000	22.8	17.4 - 28.3	5,000	23.2	16.7 - 29.7	11,700	54.0	47.1 - 60.8	21,700

Gender	None			Once			More than one time			Estimated Population (3-Yr Avg)
	#	%	C.I. (95%)	#	%	C.I. (95%)	#	%	C.I. (95%)	#
Male	9,400	24.9	20.3 - 29.5	9,500	25.2	20.5 - 29.9	18,800	49.9	44.5 - 55.2	37,600
Female	10,100	25.4	21.1 - 29.7	8,900	22.3	18.4 - 26.3	20,900	52.3	47.5 - 57.1	39,900

**Diabetes - times feet chk by doc by State, County, Island, Community, BRFSS Age Group, DOH Race-Ethnicity, Gender, Education Level, Employment Status (Grouped), Household Income, Poverty Level, Marital Status (Grouped), Married, Health Care Coverage, for the Year(s) - 2000-2002, 2001-2003, 2002-2004, 2003-2005, 2004-2006, 2005-2007, 2006-2008, 2007-2009, 2008-2010**

*Note: Weighted numbers (#) represent 3-yr averages, percentages and 95% confidence intervals; Respondents aged 18 years and older; n/r (Not Reportable) - If the unweighted total responses for a dimension (row) is <50 that row will not be shown; n/a (Not Available) - Not asked of a subset of respondents*

**Year: 2007-2009**

Education Level	None			Once			More than one time			Estimated Population (3-Yr Avg)
	#	%	C.I. (95%)	#	%	C.I. (95%)	#	%	C.I. (95%)	#
Never attended school/ Only Kindergarten to Grades 8	900	36.6	19.2 - 54.0	400	17.9	1.9 - 33.9	1,100	45.5	27.9 - 63.1	2,400
Grades 9 thru 11 (Some High School)	1,200	29.5	16.0 - 43.0	700	15.9	7.0 - 24.7	2,300	54.7	40.0 - 69.3	4,100
Grades 12 or GED (High School Grad)	7,100	27.3	21.3 - 33.2	5,100	19.7	14.4 - 25.1	13,800	53.0	46.4 - 59.5	26,100
College 1 to 3 years (Some College/ Tech)	5,000	21.3	15.7 - 26.8	6,600	27.9	21.8 - 34.1	12,000	50.8	44.0 - 57.6	23,600
College 4 years or more (College Grad)	5,300	24.8	19.5 - 30.1	5,600	26.1	20.9 - 31.4	10,500	49.1	42.9 - 55.2	21,300

Employment Status (Grouped)	None			Once			More than one time			Estimated Population (3-Yr Avg)
	#	%	C.I. (95%)	#	%	C.I. (95%)	#	%	C.I. (95%)	#
Employed	8,800	25.4	20.4 - 30.3	9,700	28.1	23.0 - 33.3	16,100	46.5	40.8 - 52.2	34,600
Retired/Unable to work	8,700	23.5	19.3 - 27.7	7,600	20.7	16.8 - 24.6	20,500	55.7	50.9 - 60.6	36,800
Student/Homemaker	800	31.5	17.1 - 45.8	500	18.1	7.2 - 29.1	1,400	50.4	34.6 - 66.2	2,700

**Diabetes - times feet chk by doc by State, County, Island, Community, BRFSS Age Group, DOH Race-Ethnicity, Gender, Education Level, Employment Status (Grouped), Household Income, Poverty Level, Marital Status (Grouped), Married, Health Care Coverage, for the Year(s) - 2000-2002, 2001-2003, 2002-2004, 2003-2005, 2004-2006, 2005-2007, 2006-2008, 2007-2009, 2008-2010**

*Note: Weighted numbers (#) represent 3-yr averages, percentages and 95% confidence intervals; Respondents aged 18 years and older; n/r (Not Reportable) - If the unweighted total responses for a dimension (row) is <50 that row will not be shown; n/a (Not Available) - Not asked of a subset of respondents*

**Year: 2007-2009**

Household Income	None			Once			More than one time			Estimated Population (3-Yr Avg)
	#	%	C.I. (95%)	#	%	C.I. (95%)	#	%	C.I. (95%)	#
Less than \$10,000	1,100	40.4	21.8 - 59.1	400	15.9	1.7 - 30.0	1,200	43.7	27.3 - 60.2	2,800
\$10,000 to \$14,999	800	21.3	10.4 - 32.2	700	18.1	8.7 - 27.4	2,200	60.6	47.4 - 73.8	3,600
\$15,000 to \$19,999	2,100	38.1	22.9 - 53.3	800	14.3	6.7 - 21.9	2,600	47.5	33.8 - 61.3	5,400
\$20,000 to \$24,999	1,600	26.0	16.1 - 35.8	1,500	23.5	11.2 - 35.9	3,100	50.5	38.4 - 62.6	6,200
\$25,000 to \$34,999	2,600	27.6	19.1 - 36.0	2,300	24.5	16.2 - 32.9	4,500	47.9	38.5 - 57.4	9,400
\$35,000 to \$49,999	2,900	22.1	14.7 - 29.4	3,500	26.7	19.4 - 34.1	6,600	51.2	42.8 - 59.6	13,000
\$50,000 to \$74,999	2,400	19.4	13.0 - 25.9	3,200	25.8	18.1 - 33.5	6,900	54.8	46.2 - 63.4	12,500
\$75,000 or more	4,100	23.4	17.0 - 29.8	5,200	29.4	22.3 - 36.6	8,300	47.1	39.4 - 54.8	17,500

**Diabetes - times feet chk by doc by State, County, Island, Community, BRFSS Age Group, DOH Race-Ethnicity, Gender, Education Level, Employment Status (Grouped), Household Income, Poverty Level, Marital Status (Grouped), Married, Health Care Coverage, for the Year(s) - 2000-2002, 2001-2003, 2002-2004, 2003-2005, 2004-2006, 2005-2007, 2006-2008, 2007-2009, 2008-2010**

*Note: Weighted numbers (#) represent 3-yr averages, percentages and 95% confidence intervals; Respondents aged 18 years and older; n/r (Not Reportable) - If the unweighted total responses for a dimension (row) is <50 that row will not be shown; n/a (Not Available) - Not asked of a subset of respondents*

**Year: 2007-2009**

Poverty Level	None			Once			More than one time			Estimated Population (3-Yr Avg)
	#	%	C.I. (95%)	#	%	C.I. (95%)	#	%	C.I. (95%)	#
<b>0-130%</b>	5,700	31.7	23.9 - 39.6	3,700	20.6	13.6 - 27.6	8,600	47.7	39.7 - 55.6	18,100
<b>131-185%</b>	2,600	25.5	17.6 - 33.3	2,300	22.0	14.9 - 29.0	5,400	52.6	43.5 - 61.6	10,300
<b>186+%</b>	9,200	21.9	18.2 - 25.6	11,500	27.3	23.2 - 31.5	21,400	50.8	46.2 - 55.3	42,100

Marital Status (Grouped)	None			Once			More than one time			Estimated Population (3-Yr Avg)
	#	%	C.I. (95%)	#	%	C.I. (95%)	#	%	C.I. (95%)	#
<b>Married</b>	10,500	22.2	18.4 - 26.0	11,600	24.5	20.5 - 28.5	25,200	53.2	48.6 - 57.9	47,300
<b>Widowed</b>	2,600	26.0	19.0 - 33.0	2,500	25.4	16.1 - 34.8	4,800	48.5	40.0 - 57.1	9,900
<b>Other</b>	6,200	31.5	24.3 - 38.8	4,100	21.1	15.8 - 26.4	9,300	47.4	40.0 - 54.8	19,600

**Diabetes - times feet chk by doc by State, County, Island, Community, BRFSS Age Group, DOH Race-Ethnicity, Gender, Education Level, Employment Status (Grouped), Household Income, Poverty Level, Marital Status (Grouped), Married, Health Care Coverage, for the Year(s) - 2000-2002, 2001-2003, 2002-2004, 2003-2005, 2004-2006, 2005-2007, 2006-2008, 2007-2009, 2008-2010**

*Note: Weighted numbers (#) represent 3-yr averages, percentages and 95% confidence intervals; Respondents aged 18 years and older; n/r (Not Reportable) - If the unweighted total responses for a dimension (row) is <50 that row will not be shown; n/a (Not Available) - Not asked of a subset of respondents*

**Year: 2007-2009**

<b>Married</b>	<b>None</b>			<b>Once</b>			<b>More than one time</b>			<b>Estimated Population (3-Yr Avg)</b>
	<b>#</b>	<b>%</b>	<b>C.I. (95%)</b>	<b>#</b>	<b>%</b>	<b>C.I. (95%)</b>	<b>#</b>	<b>%</b>	<b>C.I. (95%)</b>	<b>#</b>
<b>Yes</b>	10,800	22.2	18.4 - 25.9	12,100	24.7	20.7 - 28.6	26,000	53.2	48.5 - 57.8	48,900
<b>No</b>	8,700	30.5	25.1 - 35.8	6,200	21.9	17.1 - 26.7	13,600	47.6	42.2 - 53.1	28,500

<b>Health Care Coverage</b>	<b>None</b>			<b>Once</b>			<b>More than one time</b>			<b>Estimated Population (3-Yr Avg)</b>
	<b>#</b>	<b>%</b>	<b>C.I. (95%)</b>	<b>#</b>	<b>%</b>	<b>C.I. (95%)</b>	<b>#</b>	<b>%</b>	<b>C.I. (95%)</b>	<b>#</b>
<b>Yes</b>	12,900	25.9	22.4 - 29.4	11,200	22.6	19.3 - 25.8	25,600	51.5	47.6 - 55.5	49,700



**Diabetes - times feet chk by doc by State, County, Island, Community, BRFSS Age Group, DOH Race-Ethnicity, Gender, Education Level, Employment Status (Grouped), Household Income, Poverty Level, Marital Status (Grouped), Married, Health Care Coverage, for the Year(s) - 2000-2002, 2001-2003, 2002-2004, 2003-2005, 2004-2006, 2005-2007, 2006-2008, 2007-2009, 2008-2010**

*Note: Weighted numbers (#) represent 3-yr averages, percentages and 95% confidence intervals; Respondents aged 18 years and older; n/r (Not Reportable) - If the unweighted total responses for a dimension (row) is <50 that row will not be shown; n/a (Not Available) - Not asked of a subset of respondents*

**Year: 2006-2008**

State	None			Once			More than one time			Estimated Population (3-Yr Avg)
	#	%	C.I. (95%)	#	%	C.I. (95%)	#	%	C.I. (95%)	#
Hawaii State	20,000	26.2	23.3 - 29.0	17,500	22.9	20.3 - 25.6	39,000	50.9	47.7 - 54.1	76,600

County	None			Once			More than one time			Estimated Population (3-Yr Avg)
	#	%	C.I. (95%)	#	%	C.I. (95%)	#	%	C.I. (95%)	#
Hawaii	3,000	34.3	28.0 - 40.6	1,700	19.5	14.7 - 24.3	4,100	46.2	40.0 - 52.3	8,900
Honolulu	14,300	25.7	22.0 - 29.4	12,700	22.7	19.4 - 26.1	28,800	51.6	47.5 - 55.7	55,800
Kauai	900	23.8	16.9 - 30.6	700	19.2	12.7 - 25.7	2,200	57.0	48.8 - 65.3	3,800
Maui	1,700	21.7	16.0 - 27.3	2,400	29.7	22.9 - 36.6	3,900	48.6	41.5 - 55.7	8,000

**Diabetes - times feet chk by doc by State, County, Island, Community, BRFSS Age Group, DOH Race-Ethnicity, Gender, Education Level, Employment Status (Grouped), Household Income, Poverty Level, Marital Status (Grouped), Married, Health Care Coverage, for the Year(s) - 2000-2002, 2001-2003, 2002-2004, 2003-2005, 2004-2006, 2005-2007, 2006-2008, 2007-2009, 2008-2010**

*Note: Weighted numbers (#) represent 3-yr averages, percentages and 95% confidence intervals; Respondents aged 18 years and older; n/r (Not Reportable) - If the unweighted total responses for a dimension (row) is <50 that row will not be shown; n/a (Not Available) - Not asked of a subset of respondents*

**Year: 2006-2008**

Island	None			Once			More than one time			Estimated Population (3-Yr Avg)
	#	%	C.I. (95%)	#	%	C.I. (95%)	#	%	C.I. (95%)	#
Hawaii	3,000	34.3	28.0 - 40.6	1,700	19.5	14.7 - 24.3	4,100	46.2	40.0 - 52.3	8,900
Kauai	900	23.8	16.9 - 30.6	700	19.2	12.7 - 25.7	2,200	57.0	48.8 - 65.3	3,800
Lanai	<50	20.2	9.9 - 30.6	<50	18.1	7.1 - 29.2	100	61.6	48.1 - 75.2	200
Maui	1,500	20.7	14.6 - 26.9	2,200	31.0	23.4 - 38.6	3,500	48.2	40.5 - 56.0	7,200
Molokai	200	31.8	19.3 - 44.4	100	19.4	8.2 - 30.6	300	48.7	34.7 - 62.8	700
Oahu	14,300	25.7	22.0 - 29.4	12,700	22.7	19.4 - 26.1	28,800	51.6	47.5 - 55.7	55,800

Community	None			Once			More than one time			Estimated Population (3-Yr Avg)
	#	%	C.I. (95%)	#	%	C.I. (95%)	#	%	C.I. (95%)	#
Aiea/ Pearl City	1,000	17.6	8.1 - 27.0	800	14.9	5.8 - 24.1	3,700	67.5	55.5 - 79.5	5,500
Ala Moana	1,000	31.9	16.9 - 46.8	500	15.4	6.7 - 24.1	1,700	52.7	37.3 - 68.1	3,200

**Diabetes - times feet chk by doc by State, County, Island, Community, BRFSS Age Group, DOH Race-Ethnicity, Gender, Education Level, Employment Status (Grouped), Household Income, Poverty Level, Marital Status (Grouped), Married, Health Care Coverage, for the Year(s) - 2000-2002, 2001-2003, 2002-2004, 2003-2005, 2004-2006, 2005-2007, 2006-2008, 2007-2009, 2008-2010**

*Note: Weighted numbers (#) represent 3-yr averages, percentages and 95% confidence intervals; Respondents aged 18 years and older; n/r (Not Reportable) - If the unweighted total responses for a dimension (row) is <50 that row will not be shown; n/a (Not Available) - Not asked of a subset of respondents*

**Year: 2006-2008**

Community	None			Once			More than one time			Estimated Population (3-Yr Avg)
	#	%	C.I. (95%)	#	%	C.I. (95%)	#	%	C.I. (95%)	#
Hanalei/ Kapaa	300	20.8	9.7 - 31.9	300	20.4	8.8 - 32.0	800	58.7	44.5 - 73.0	1,400
Hilo	1,000	32.4	22.9 - 41.8	600	19.5	10.2 - 28.8	1,400	48.1	37.9 - 58.3	3,000
Kaaawa/ Kahaluu/ Kaneohe	1,400	38.2	23.0 - 53.4	1,000	28.4	14.3 - 42.6	1,200	33.4	19.8 - 47.0	3,600
Kahului	600	23.4	13.3 - 33.6	700	28.2	15.8 - 40.6	1,200	48.3	35.3 - 61.4	2,400
Kailua/ Waimanalo	600	14.8	5.7 - 23.8	800	18.8	7.4 - 30.1	2,700	66.5	53.2 - 79.7	4,000
Kaimuki/ Palolo/ Waikiki	800	18.7	8.3 - 29.1	800	19.5	8.9 - 30.0	2,600	61.9	48.6 - 75.1	4,200
Kona	700	45.4	31.5 - 59.2	300	19.3	9.0 - 29.6	500	35.3	21.8 - 48.8	1,500
Lahaina/ Wailuku	400	13.7	5.3 - 22.1	1,000	37.5	23.5 - 51.6	1,300	48.8	35.2 - 62.3	2,600
Lanai	<50	20.2	9.9 - 30.6	<50	18.1	7.1 - 29.2	100	61.6	48.1 - 75.2	200
Lihue-Waimea	600	25.5	16.9 - 34.1	400	18.5	10.7 - 26.2	1,400	56.0	45.9 - 66.1	2,400
Manoa/ Upper Makiki	1,100	31.6	18.0 - 45.2	1,000	29.2	16.2 - 42.3	1,400	39.2	25.0 - 53.4	3,500
Mililani/ Wahiawa	2,100	36.2	23.2 - 49.1	1,400	23.8	11.8 - 35.9	2,300	40.0	27.5 - 52.5	5,700

**Diabetes - times feet chk by doc by State, County, Island, Community, BRFSS Age Group, DOH Race-Ethnicity, Gender, Education Level, Employment Status (Grouped), Household Income, Poverty Level, Marital Status (Grouped), Married, Health Care Coverage, for the Year(s) - 2000-2002, 2001-2003, 2002-2004, 2003-2005, 2004-2006, 2005-2007, 2006-2008, 2007-2009, 2008-2010**

*Note: Weighted numbers (#) represent 3-yr averages, percentages and 95% confidence intervals; Respondents aged 18 years and older; n/r (Not Reportable) - If the unweighted total responses for a dimension (row) is <50 that row will not be shown; n/a (Not Available) - Not asked of a subset of respondents*

**Year: 2006-2008**

Community	None			Once			More than one time			Estimated Population (3-Yr Avg)
	#	%	C.I. (95%)	#	%	C.I. (95%)	#	%	C.I. (95%)	#
<b>Molokai</b>	200	31.8	19.3 - 44.4	100	19.4	8.2 - 30.6	300	48.7	34.7 - 62.8	700
<b>Nanakuli/ Waianae</b>	700	13.8	5.3 - 22.3	1,400	27.1	14.8 - 39.4	3,000	59.1	45.7 - 72.5	5,000
<b>N.Hawaii</b>	800	36.9	21.1 - 52.7	300	14.6	6.0 - 23.2	1,000	48.5	34.1 - 62.9	2,100
<b>Nuuanu/ Kalihi/ Moanalua</b>	1,600	32.9	17.7 - 48.2	1,100	21.7	10.2 - 33.1	2,300	45.4	30.8 - 60.0	5,000
<b>Puna/ Kau</b>	600	26.9	15.4 - 38.4	500	24.3	14.7 - 34.0	1,100	48.8	36.7 - 60.9	2,300
<b>Upcountry/ Hana</b>	600	26.0	12.9 - 39.2	600	26.5	14.9 - 38.0	1,000	47.5	33.6 - 61.4	2,200
<b>Waipahu/ Kapolei/ Ewa</b>	2,600	24.1	15.3 - 33.0	2,600	24.6	16.5 - 32.6	5,400	51.3	41.4 - 61.2	10,600

**Diabetes - times feet chk by doc by State, County, Island, Community, BRFSS Age Group, DOH Race-Ethnicity, Gender, Education Level, Employment Status (Grouped), Household Income, Poverty Level, Marital Status (Grouped), Married, Health Care Coverage, for the Year(s) - 2000-2002, 2001-2003, 2002-2004, 2003-2005, 2004-2006, 2005-2007, 2006-2008, 2007-2009, 2008-2010**

*Note: Weighted numbers (#) represent 3-yr averages, percentages and 95% confidence intervals; Respondents aged 18 years and older; n/r (Not Reportable) - If the unweighted total responses for a dimension (row) is <50 that row will not be shown; n/a (Not Available) - Not asked of a subset of respondents*

**Year: 2006-2008**

BRFSS Age Group	None			Once			More than one time			Estimated Population (3-Yr Avg)
	#	%	C.I. (95%)	#	%	C.I. (95%)	#	%	C.I. (95%)	#
<b>35-44</b>	2,100	32.2	20.9 - 43.5	1,800	27.4	15.8 - 39.0	2,700	40.4	28.2 - 52.6	6,600
<b>45-54</b>	3,900	25.9	19.8 - 32.0	4,100	26.9	20.3 - 33.5	7,100	47.2	39.8 - 54.6	15,100
<b>55-64</b>	5,100	24.9	19.0 - 30.8	4,900	23.9	18.8 - 29.1	10,500	51.2	44.9 - 57.5	20,600
<b>65-74</b>	3,600	23.2	17.6 - 28.8	3,700	23.7	18.7 - 28.8	8,300	53.1	46.8 - 59.3	15,700
<b>75+</b>	3,900	25.9	20.0 - 31.7	2,300	15.3	10.7 - 20.0	8,900	58.8	52.2 - 65.4	15,100

**Diabetes - times feet chk by doc by State, County, Island, Community, BRFSS Age Group, DOH Race-Ethnicity, Gender, Education Level, Employment Status (Grouped), Household Income, Poverty Level, Marital Status (Grouped), Married, Health Care Coverage, for the Year(s) - 2000-2002, 2001-2003, 2002-2004, 2003-2005, 2004-2006, 2005-2007, 2006-2008, 2007-2009, 2008-2010**

*Note: Weighted numbers (#) represent 3-yr averages, percentages and 95% confidence intervals; Respondents aged 18 years and older; n/r (Not Reportable) - If the unweighted total responses for a dimension (row) is <50 that row will not be shown; n/a (Not Available) - Not asked of a subset of respondents*

**Year: 2006-2008**

DOH Race-Ethnicity	None			Once			More than one time			Estimated Population (3-Yr Avg)
	#	%	C.I. (95%)	#	%	C.I. (95%)	#	%	C.I. (95%)	#
Caucasian	4,500	28.9	23.5 - 34.3	3,200	20.5	16.1 - 24.9	8,000	50.6	44.5 - 56.6	15,700
Native Hawaiian	3,400	23.7	17.3 - 30.2	3,500	24.4	18.2 - 30.6	7,400	51.9	44.4 - 59.4	14,200
Chinese	1,300	23.1	11.4 - 34.8	1,200	21.8	13.1 - 30.6	3,100	55.0	43.0 - 67.0	5,700
Filipino	3,500	24.1	16.3 - 31.8	4,000	27.5	19.9 - 35.2	7,000	48.4	39.8 - 57.0	14,400
Japanese	5,200	26.7	21.6 - 31.8	3,700	18.9	14.4 - 23.4	10,500	54.4	48.6 - 60.3	19,400

Gender	None			Once			More than one time			Estimated Population (3-Yr Avg)
	#	%	C.I. (95%)	#	%	C.I. (95%)	#	%	C.I. (95%)	#
Male	10,000	26.9	22.4 - 31.3	8,000	21.5	17.7 - 25.3	19,200	51.6	46.7 - 56.5	37,100
Female	10,100	25.5	21.8 - 29.2	9,600	24.2	20.6 - 27.9	19,800	50.3	46.0 - 54.5	39,400

**Diabetes - times feet chk by doc by State, County, Island, Community, BRFSS Age Group, DOH Race-Ethnicity, Gender, Education Level, Employment Status (Grouped), Household Income, Poverty Level, Marital Status (Grouped), Married, Health Care Coverage, for the Year(s) - 2000-2002, 2001-2003, 2002-2004, 2003-2005, 2004-2006, 2005-2007, 2006-2008, 2007-2009, 2008-2010**

*Note: Weighted numbers (#) represent 3-yr averages, percentages and 95% confidence intervals; Respondents aged 18 years and older; n/r (Not Reportable) - If the unweighted total responses for a dimension (row) is <50 that row will not be shown; n/a (Not Available) - Not asked of a subset of respondents*

**Year: 2006-2008**

Education Level	None			Once			More than one time			Estimated Population (3-Yr Avg)
	#	%	C.I. (95%)	#	%	C.I. (95%)	#	%	C.I. (95%)	#
Never attended school/ Only Kindergarten to Grades 8	800	31.0	15.9 - 46.0	600	20.6	8.4 - 32.7	1,300	48.5	33.3 - 63.7	2,700
Grades 9 thru 11 (Some High School)	1,000	23.5	12.1 - 34.9	700	16.8	8.2 - 25.5	2,400	59.7	46.9 - 72.4	4,100
Grades 12 or GED (High School Grad)	7,800	30.1	24.5 - 35.6	4,500	17.6	13.3 - 21.8	13,500	52.4	46.6 - 58.1	25,800
College 1 to 3 years (Some College/ Tech)	5,700	24.1	19.0 - 29.2	6,400	27.1	21.8 - 32.5	11,500	48.7	42.7 - 54.7	23,600
College 4 years or more (College Grad)	4,800	23.5	18.8 - 28.2	5,400	26.3	21.3 - 31.3	10,200	50.2	44.4 - 55.9	20,400

Employment Status (Grouped)	None			Once			More than one time			Estimated Population (3-Yr Avg)
	#	%	C.I. (95%)	#	%	C.I. (95%)	#	%	C.I. (95%)	#
Employed	7,900	24.1	19.7 - 28.5	8,800	26.7	22.2 - 31.2	16,100	49.2	44.1 - 54.3	32,800
Retired/Unable to work	9,800	25.8	21.9 - 29.7	7,700	20.3	17.0 - 23.6	20,500	53.9	49.6 - 58.2	38,000
Student/Homemaker	900	32.5	17.8 - 47.2	700	23.5	10.5 - 36.5	1,300	44.0	28.7 - 59.4	2,900

**Diabetes - times feet chk by doc by State, County, Island, Community, BRFSS Age Group, DOH Race-Ethnicity, Gender, Education Level, Employment Status (Grouped), Household Income, Poverty Level, Marital Status (Grouped), Married, Health Care Coverage, for the Year(s) - 2000-2002, 2001-2003, 2002-2004, 2003-2005, 2004-2006, 2005-2007, 2006-2008, 2007-2009, 2008-2010**

*Note: Weighted numbers (#) represent 3-yr averages, percentages and 95% confidence intervals; Respondents aged 18 years and older; n/r (Not Reportable) - If the unweighted total responses for a dimension (row) is <50 that row will not be shown; n/a (Not Available) - Not asked of a subset of respondents*

**Year: 2006-2008**

Household Income	None			Once			More than one time			Estimated Population (3-Yr Avg)
	#	%	C.I. (95%)	#	%	C.I. (95%)	#	%	C.I. (95%)	#
Less than \$10,000	1,200	44.5	29.9 - 59.0	100	3.7	0.5 - 6.9	1,400	51.8	37.6 - 66.0	2,700
\$10,000 to \$14,999	800	20.7	11.1 - 30.2	900	22.1	11.5 - 32.6	2,200	57.3	44.4 - 70.2	3,900
\$15,000 to \$19,999	1,300	29.4	18.8 - 40.0	600	14.0	7.1 - 20.8	2,600	56.6	45.2 - 68.0	4,500
\$20,000 to \$24,999	1,900	28.8	19.6 - 38.0	1,100	16.3	9.2 - 23.3	3,600	54.9	44.7 - 65.1	6,500
\$25,000 to \$34,999	2,800	29.0	20.5 - 37.4	2,600	27.1	18.7 - 35.6	4,300	43.9	34.8 - 53.0	9,800
\$35,000 to \$49,999	3,200	23.2	15.4 - 31.0	3,400	24.9	18.5 - 31.3	7,200	51.9	43.8 - 60.0	13,800
\$50,000 to \$74,999	2,800	22.4	16.0 - 28.8	3,200	25.2	18.5 - 32.0	6,600	52.4	44.6 - 60.2	12,700
\$75,000 or more	3,800	25.5	19.6 - 31.5	3,800	25.6	19.5 - 31.7	7,200	48.9	41.8 - 56.0	14,800



**Diabetes - times feet chk by doc by State, County, Island, Community, BRFSS Age Group, DOH Race-Ethnicity, Gender, Education Level, Employment Status (Grouped), Household Income, Poverty Level, Marital Status (Grouped), Married, Health Care Coverage, for the Year(s) - 2000-2002, 2001-2003, 2002-2004, 2003-2005, 2004-2006, 2005-2007, 2006-2008, 2007-2009, 2008-2010**

*Note: Weighted numbers (#) represent 3-yr averages, percentages and 95% confidence intervals; Respondents aged 18 years and older; n/r (Not Reportable) - If the unweighted total responses for a dimension (row) is <50 that row will not be shown; n/a (Not Available) - Not asked of a subset of respondents*

**Year: 2006-2008**

Poverty Level	None			Once			More than one time			Estimated Population (3-Yr Avg)
	#	%	C.I. (95%)	#	%	C.I. (95%)	#	%	C.I. (95%)	#
<b>0-130%</b>	5,900	31.6	24.7 - 38.4	3,200	17.2	11.7 - 22.7	9,500	51.2	44.0 - 58.4	18,600
<b>131-185%</b>	2,400	25.7	17.3 - 34.1	2,100	22.4	15.0 - 29.9	4,800	51.9	42.2 - 61.5	9,200
<b>186+%</b>	9,600	23.5	20.1 - 27.0	10,500	25.6	22.1 - 29.1	20,800	50.9	46.8 - 54.9	40,900

Marital Status (Grouped)	None			Once			More than one time			Estimated Population (3-Yr Avg)
	#	%	C.I. (95%)	#	%	C.I. (95%)	#	%	C.I. (95%)	#
<b>Married</b>	11,400	24.0	20.2 - 27.7	11,000	23.1	19.7 - 26.6	25,200	52.9	48.6 - 57.1	47,700
<b>Widowed</b>	2,800	29.5	22.7 - 36.3	1,600	17.6	11.5 - 23.7	4,900	52.9	45.4 - 60.3	9,300
<b>Other</b>	5,700	29.9	24.1 - 35.8	4,800	25.2	19.8 - 30.7	8,500	44.8	38.6 - 51.0	18,900

**Diabetes - times feet chk by doc by State, County, Island, Community, BRFSS Age Group, DOH Race-Ethnicity, Gender, Education Level, Employment Status (Grouped), Household Income, Poverty Level, Marital Status (Grouped), Married, Health Care Coverage, for the Year(s) - 2000-2002, 2001-2003, 2002-2004, 2003-2005, 2004-2006, 2005-2007, 2006-2008, 2007-2009, 2008-2010**

*Note: Weighted numbers (#) represent 3-yr averages, percentages and 95% confidence intervals; Respondents aged 18 years and older; n/r (Not Reportable) - If the unweighted total responses for a dimension (row) is <50 that row will not be shown; n/a (Not Available) - Not asked of a subset of respondents*

**Year: 2006-2008**

<b>Married</b>	<b>None</b>			<b>Once</b>			<b>More than one time</b>			<b>Estimated Population (3-Yr Avg)</b>
	<b>#</b>	<b>%</b>	<b>C.I. (95%)</b>	<b>#</b>	<b>%</b>	<b>C.I. (95%)</b>	<b>#</b>	<b>%</b>	<b>C.I. (95%)</b>	<b>#</b>
<b>Yes</b>	11,900	24.4	20.7 - 28.1	11,500	23.6	20.1 - 27.0	25,400	52.1	47.9 - 56.3	48,800
<b>No</b>	8,100	29.3	24.9 - 33.8	6,000	21.9	17.7 - 26.0	13,500	48.8	43.9 - 53.7	27,700

<b>Health Care Coverage</b>	<b>None</b>			<b>Once</b>			<b>More than one time</b>			<b>Estimated Population (3-Yr Avg)</b>
	<b>#</b>	<b>%</b>	<b>C.I. (95%)</b>	<b>#</b>	<b>%</b>	<b>C.I. (95%)</b>	<b>#</b>	<b>%</b>	<b>C.I. (95%)</b>	<b>#</b>
<b>Yes</b>	18,600	25.3	22.4 - 28.2	16,700	22.7	20.0 - 25.4	38,200	52.0	48.7 - 55.2	73,500
<b>No</b>	1,400	45.8	28.2 - 63.4	900	28.2	13.0 - 43.4	800	26.0	9.7 - 42.4	3,100

**Diabetes - times feet chk by doc by State, County, Island, Community, BRFSS Age Group, DOH Race-Ethnicity, Gender, Education Level, Employment Status (Grouped), Household Income, Poverty Level, Marital Status (Grouped), Married, Health Care Coverage, for the Year(s) - 2000-2002, 2001-2003, 2002-2004, 2003-2005, 2004-2006, 2005-2007, 2006-2008, 2007-2009, 2008-2010**

*Note: Weighted numbers (#) represent 3-yr averages, percentages and 95% confidence intervals; Respondents aged 18 years and older; n/r (Not Reportable) - If the unweighted total responses for a dimension (row) is <50 that row will not be shown; n/a (Not Available) - Not asked of a subset of respondents*

**Year: 2005-2007**

State	None			Once			More than one time			Estimated Population (3-Yr Avg)
	#	%	C.I. (95%)	#	%	C.I. (95%)	#	%	C.I. (95%)	#
Hawaii State	21,200	27.9	24.0 - 31.9	17,800	23.5	20.0 - 27.0	36,900	48.6	44.6 - 52.7	76,000

County	None			Once			More than one time			Estimated Population (3-Yr Avg)
	#	%	C.I. (95%)	#	%	C.I. (95%)	#	%	C.I. (95%)	#
Hawaii	3,000	32.5	26.2 - 38.7	2,100	22.9	16.1 - 29.7	4,200	44.6	37.8 - 51.4	9,400
Honolulu	15,400	27.6	22.4 - 32.7	13,200	23.6	19.1 - 28.1	27,300	48.8	43.6 - 54.1	55,900
Kauai	1,000	26.6	17.6 - 35.6	500	13.8	7.7 - 19.9	2,300	59.6	49.6 - 69.6	3,800
Maui	1,700	25.1	18.2 - 32.0	2,000	28.5	21.5 - 35.6	3,200	46.4	38.5 - 54.2	6,900

**Diabetes - times feet chk by doc by State, County, Island, Community, BRFSS Age Group, DOH Race-Ethnicity, Gender, Education Level, Employment Status (Grouped), Household Income, Poverty Level, Marital Status (Grouped), Married, Health Care Coverage, for the Year(s) - 2000-2002, 2001-2003, 2002-2004, 2003-2005, 2004-2006, 2005-2007, 2006-2008, 2007-2009, 2008-2010**

*Note: Weighted numbers (#) represent 3-yr averages, percentages and 95% confidence intervals; Respondents aged 18 years and older; n/r (Not Reportable) - If the unweighted total responses for a dimension (row) is <50 that row will not be shown; n/a (Not Available) - Not asked of a subset of respondents*

**Year: 2005-2007**

Island	None			Once			More than one time			Estimated Population (3-Yr Avg)
	#	%	C.I. (95%)	#	%	C.I. (95%)	#	%	C.I. (95%)	#
Hawaii	3,000	32.5	26.2 - 38.7	2,100	22.9	16.1 - 29.7	4,200	44.6	37.8 - 51.4	9,400
Kauai	1,000	26.6	17.6 - 35.6	500	13.8	7.7 - 19.9	2,300	59.6	49.6 - 69.6	3,800
Lanai	<50	25.2	10.9 - 39.6	<50	23.2	4.8 - 41.6	100	51.6	32.9 - 70.2	200
Maui	1,500	24.2	16.5 - 31.9	1,800	29.7	21.8 - 37.5	2,800	46.1	37.4 - 54.8	6,100
Molokai	200	33.5	19.2 - 47.7	100	19.2	5.5 - 32.9	300	47.3	31.2 - 63.5	600
Oahu	15,400	27.6	22.4 - 32.7	13,200	23.6	19.1 - 28.1	27,300	48.8	43.6 - 54.1	55,900

Community	None			Once			More than one time			Estimated Population (3-Yr Avg)
	#	%	C.I. (95%)	#	%	C.I. (95%)	#	%	C.I. (95%)	#
Aiea/ Pearl City	900	17.1	5.7 - 28.5	700	13.2	3.6 - 22.9	3,500	69.6	55.7 - 83.6	5,000
Hilo	1,000	32.3	21.6 - 43.1	700	21.2	9.3 - 33.1	1,500	46.5	34.8 - 58.2	3,200

**Diabetes - times feet chk by doc by State, County, Island, Community, BRFSS Age Group, DOH Race-Ethnicity, Gender, Education Level, Employment Status (Grouped), Household Income, Poverty Level, Marital Status (Grouped), Married, Health Care Coverage, for the Year(s) - 2000-2002, 2001-2003, 2002-2004, 2003-2005, 2004-2006, 2005-2007, 2006-2008, 2007-2009, 2008-2010**

*Note: Weighted numbers (#) represent 3-yr averages, percentages and 95% confidence intervals; Respondents aged 18 years and older; n/r (Not Reportable) - If the unweighted total responses for a dimension (row) is <50 that row will not be shown; n/a (Not Available) - Not asked of a subset of respondents*

**Year: 2005-2007**

Community	None			Once			More than one time			Estimated Population (3-Yr Avg)
	#	%	C.I. (95%)	#	%	C.I. (95%)	#	%	C.I. (95%)	#
Kahului	500	26.1	13.7 - 38.6	500	27.6	14.6 - 40.5	900	46.3	31.9 - 60.7	1,900
Kailua/ Waimanalo	500	13.4	2.5 - 24.4	600	15.3	5.1 - 25.5	2,800	71.3	56.9 - 85.7	4,000
Kona	700	39.6	24.5 - 54.8	300	19.9	6.0 - 33.9	700	40.4	24.6 - 56.2	1,600
Lahaina/ Wailuku	400	20.1	8.3 - 31.9	500	28.1	14.2 - 41.9	1,000	51.8	36.7 - 66.9	2,000
Lanai	<50	25.2	10.9 - 39.6	<50	23.2	4.8 - 41.6	100	51.6	32.9 - 70.2	200
Lihue-Waimea	600	24.4	13.5 - 35.2	400	16.8	8.5 - 25.1	1,400	58.8	46.7 - 71.0	2,500
Mililani/ Wahiawa	1,800	33.5	18.9 - 48.1	1,400	26.9	12.3 - 41.5	2,100	39.6	24.4 - 54.8	5,400
Molokai	200	33.5	19.2 - 47.7	100	19.2	5.5 - 32.9	300	47.3	31.2 - 63.5	600
Nanakuli/ Waianae	300	5.7	0.0 - 11.5	2,000	36.9	18.8 - 55.1	3,100	57.4	39.5 - 75.2	5,300
N.Hawaii	600	31.7	20.0 - 43.3	300	14.0	5.6 - 22.4	1,100	54.3	41.9 - 66.7	1,900
Nuuanu/ Kalihi/ Moanalua	1,500	31.5	15.1 - 47.9	600	13.3	3.4 - 23.1	2,600	55.2	38.6 - 71.9	4,700
Puna/ Kau	700	28.7	15.9 - 41.5	900	33.8	18.2 - 49.4	1,000	37.5	23.5 - 51.6	2,600

**Diabetes - times feet chk by doc by State, County, Island, Community, BRFSS Age Group, DOH Race-Ethnicity, Gender, Education Level, Employment Status (Grouped), Household Income, Poverty Level, Marital Status (Grouped), Married, Health Care Coverage, for the Year(s) - 2000-2002, 2001-2003, 2002-2004, 2003-2005, 2004-2006, 2005-2007, 2006-2008, 2007-2009, 2008-2010**

*Note: Weighted numbers (#) represent 3-yr averages, percentages and 95% confidence intervals; Respondents aged 18 years and older; n/r (Not Reportable) - If the unweighted total responses for a dimension (row) is <50 that row will not be shown; n/a (Not Available) - Not asked of a subset of respondents*

**Year: 2005-2007**

Community	None			Once			More than one time			Estimated Population (3-Yr Avg)
	#	%	C.I. (95%)	#	%	C.I. (95%)	#	%	C.I. (95%)	#
Upcountry/ Hana	600	26.2	11.6 - 40.7	700	32.8	18.9 - 46.7	900	41.0	25.7 - 56.4	2,300
Waipahu/ Kapolei/ Ewa	1,500	15.6	6.6 - 24.6	3,000	31.7	18.0 - 45.4	5,000	52.7	39.1 - 66.2	9,400

BRFSS Age Group	None			Once			More than one time			Estimated Population (3-Yr Avg)
	#	%	C.I. (95%)	#	%	C.I. (95%)	#	%	C.I. (95%)	#
35-44	2,200	34.5	20.2 - 48.9	1,800	28.2	14.5 - 41.9	2,300	37.3	23.2 - 51.3	6,300
45-54	4,000	26.5	19.1 - 33.9	3,400	22.4	16.0 - 28.8	7,700	51.1	42.4 - 59.8	15,000
55-64	4,700	23.0	16.4 - 29.7	5,800	28.4	20.6 - 36.3	9,900	48.6	40.6 - 56.5	20,300
65-74	3,800	24.9	18.5 - 31.4	3,800	24.6	18.1 - 31.1	7,700	50.5	43.3 - 57.7	15,300
75+	4,900	32.8	21.7 - 44.0	1,800	12.3	7.3 - 17.3	8,200	54.9	44.5 - 65.2	14,900

**Diabetes - times feet chk by doc by State, County, Island, Community, BRFSS Age Group, DOH Race-Ethnicity, Gender, Education Level, Employment Status (Grouped), Household Income, Poverty Level, Marital Status (Grouped), Married, Health Care Coverage, for the Year(s) - 2000-2002, 2001-2003, 2002-2004, 2003-2005, 2004-2006, 2005-2007, 2006-2008, 2007-2009, 2008-2010**

*Note: Weighted numbers (#) represent 3-yr averages, percentages and 95% confidence intervals; Respondents aged 18 years and older; n/r (Not Reportable) - If the unweighted total responses for a dimension (row) is <50 that row will not be shown; n/a (Not Available) - Not asked of a subset of respondents*

**Year: 2005-2007**

DOH Race-Ethnicity	None			Once			More than one time			Estimated Population (3-Yr Avg)
	#	%	C.I. (95%)	#	%	C.I. (95%)	#	%	C.I. (95%)	#
Caucasian	4,800	27.9	21.6 - 34.1	4,300	25.2	18.8 - 31.7	8,000	46.9	39.9 - 53.9	17,100
Native Hawaiian	2,800	19.0	12.6 - 25.3	4,300	28.6	19.5 - 37.8	7,800	52.4	43.1 - 61.7	15,000
Chinese	1,100	19.5	7.0 - 32.0	700	13.0	5.1 - 20.8	3,700	67.5	53.5 - 81.6	5,400
Filipino	3,200	25.0	15.7 - 34.2	3,900	30.2	19.9 - 40.4	5,700	44.9	34.6 - 55.2	12,800
Japanese	6,000	34.1	26.6 - 41.7	2,800	16.1	11.3 - 20.8	8,800	49.8	42.4 - 57.3	17,600

Gender	None			Once			More than one time			Estimated Population (3-Yr Avg)
	#	%	C.I. (95%)	#	%	C.I. (95%)	#	%	C.I. (95%)	#
Male	11,200	28.8	22.5 - 35.2	8,400	21.7	16.7 - 26.8	19,200	49.4	43.2 - 55.7	38,800
Female	10,000	26.9	22.5 - 31.4	9,400	25.3	20.5 - 30.1	17,800	47.7	42.6 - 52.9	37,200

**Diabetes - times feet chk by doc by State, County, Island, Community, BRFSS Age Group, DOH Race-Ethnicity, Gender, Education Level, Employment Status (Grouped), Household Income, Poverty Level, Marital Status (Grouped), Married, Health Care Coverage, for the Year(s) - 2000-2002, 2001-2003, 2002-2004, 2003-2005, 2004-2006, 2005-2007, 2006-2008, 2007-2009, 2008-2010**

*Note: Weighted numbers (#) represent 3-yr averages, percentages and 95% confidence intervals; Respondents aged 18 years and older; n/r (Not Reportable) - If the unweighted total responses for a dimension (row) is <50 that row will not be shown; n/a (Not Available) - Not asked of a subset of respondents*

**Year: 2005-2007**

Education Level	None			Once			More than one time			Estimated Population (3-Yr Avg)
	#	%	C.I. (95%)	#	%	C.I. (95%)	#	%	C.I. (95%)	#
Never attended school/ Only Kindergarten to Grades 8	700	19.0	5.5 - 32.5	1,300	34.8	12.3 - 57.4	1,700	46.2	26.3 - 66.1	3,700
Grades 9 thru 11 (Some High School)	1,100	23.0	10.0 - 35.9	500	11.0	4.0 - 17.9	3,100	66.1	52.0 - 80.2	4,700
Grades 12 or GED (High School Grad)	8,800	31.2	23.6 - 38.9	5,700	20.3	14.5 - 26.1	13,600	48.5	41.2 - 55.8	28,100
College 1 to 3 years (Some College/ Tech)	5,900	27.8	21.6 - 34.0	5,400	25.5	19.4 - 31.6	9,900	46.7	39.8 - 53.7	21,200
College 4 years or more (College Grad)	4,800	26.1	18.8 - 33.3	4,900	26.9	19.9 - 34.0	8,600	47.0	39.3 - 54.7	18,300

Employment Status (Grouped)	None			Once			More than one time			Estimated Population (3-Yr Avg)
	#	%	C.I. (95%)	#	%	C.I. (95%)	#	%	C.I. (95%)	#
Employed	8,600	25.4	19.8 - 31.1	8,900	26.4	20.6 - 32.1	16,200	48.2	41.9 - 54.5	33,700
Retired/Unable to work	11,000	29.3	23.5 - 35.2	7,500	19.8	15.4 - 24.2	19,200	50.9	45.2 - 56.6	37,700
Student/Homemaker	1,000	31.7	13.1 - 50.3	900	30.9	12.0 - 49.8	1,100	37.4	19.6 - 55.2	3,000



**Diabetes - times feet chk by doc by State, County, Island, Community, BRFSS Age Group, DOH Race-Ethnicity, Gender, Education Level, Employment Status (Grouped), Household Income, Poverty Level, Marital Status (Grouped), Married, Health Care Coverage, for the Year(s) - 2000-2002, 2001-2003, 2002-2004, 2003-2005, 2004-2006, 2005-2007, 2006-2008, 2007-2009, 2008-2010**

*Note: Weighted numbers (#) represent 3-yr averages, percentages and 95% confidence intervals; Respondents aged 18 years and older; n/r (Not Reportable) - If the unweighted total responses for a dimension (row) is <50 that row will not be shown; n/a (Not Available) - Not asked of a subset of respondents*

**Year: 2005-2007**

Household Income	None			Once			More than one time			Estimated Population (3-Yr Avg)
	#	%	C.I. (95%)	#	%	C.I. (95%)	#	%	C.I. (95%)	#
Less than \$10,000	800	29.2	16.6 - 41.8	400	13.6	2.8 - 24.5	1,600	57.2	43.2 - 71.1	2,800
\$10,000 to \$14,999	1,300	27.7	13.3 - 42.0	900	19.5	8.5 - 30.6	2,400	52.8	36.9 - 68.7	4,600
\$15,000 to \$19,999	1,400	26.1	12.7 - 39.4	1,500	27.5	9.6 - 45.5	2,500	46.4	29.8 - 63.0	5,500
\$20,000 to \$24,999	2,000	31.0	19.7 - 42.3	800	12.7	6.0 - 19.4	3,700	56.3	44.4 - 68.2	6,600
\$25,000 to \$34,999	3,000	32.3	20.6 - 43.9	2,800	30.2	19.4 - 41.0	3,500	37.5	26.6 - 48.4	9,300
\$35,000 to \$49,999	3,000	23.9	14.8 - 33.0	2,800	22.4	15.6 - 29.1	6,700	53.7	44.5 - 62.9	12,500
\$50,000 to \$74,999	3,100	26.8	19.0 - 34.6	2,300	19.9	12.7 - 27.1	6,100	53.2	44.0 - 62.5	11,400
\$75,000 or more	2,900	23.7	16.3 - 31.1	3,500	27.9	18.7 - 37.1	6,000	48.4	39.1 - 57.8	12,400

**Diabetes - times feet chk by doc by State, County, Island, Community, BRFSS Age Group, DOH Race-Ethnicity, Gender, Education Level, Employment Status (Grouped), Household Income, Poverty Level, Marital Status (Grouped), Married, Health Care Coverage, for the Year(s) - 2000-2002, 2001-2003, 2002-2004, 2003-2005, 2004-2006, 2005-2007, 2006-2008, 2007-2009, 2008-2010**

*Note: Weighted numbers (#) represent 3-yr averages, percentages and 95% confidence intervals; Respondents aged 18 years and older; n/r (Not Reportable) - If the unweighted total responses for a dimension (row) is <50 that row will not be shown; n/a (Not Available) - Not asked of a subset of respondents*

**Year: 2005-2007**

Poverty Level	None			Once			More than one time			Estimated Population (3-Yr Avg)
	#	%	C.I. (95%)	#	%	C.I. (95%)	#	%	C.I. (95%)	#
<b>0-130%</b>	5,900	30.5	22.9 - 38.1	4,100	21.1	13.5 - 28.6	9,500	48.4	40.1 - 56.8	19,500
<b>131-185%</b>	2,800	32.3	20.4 - 44.2	1,900	22.2	13.3 - 31.0	3,900	45.5	33.8 - 57.2	8,600
<b>186+%</b>	8,800	23.9	19.6 - 28.1	8,900	24.2	19.7 - 28.6	19,200	51.9	46.9 - 57.0	37,000

Marital Status (Grouped)	None			Once			More than one time			Estimated Population (3-Yr Avg)
	#	%	C.I. (95%)	#	%	C.I. (95%)	#	%	C.I. (95%)	#
<b>Married</b>	12,700	26.5	21.3 - 31.8	11,500	23.9	19.6 - 28.3	23,700	49.5	44.2 - 54.8	47,800
<b>Widowed</b>	2,300	25.8	18.3 - 33.2	1,500	17.0	10.3 - 23.8	5,100	57.2	48.6 - 65.9	8,900
<b>Other</b>	5,900	32.1	24.2 - 40.1	4,800	25.9	17.7 - 34.1	7,700	42.0	34.1 - 49.9	18,400

**Diabetes - times feet chk by doc by State, County, Island, Community, BRFSS Age Group, DOH Race-Ethnicity, Gender, Education Level, Employment Status (Grouped), Household Income, Poverty Level, Marital Status (Grouped), Married, Health Care Coverage, for the Year(s) - 2000-2002, 2001-2003, 2002-2004, 2003-2005, 2004-2006, 2005-2007, 2006-2008, 2007-2009, 2008-2010**

*Note: Weighted numbers (#) represent 3-yr averages, percentages and 95% confidence intervals; Respondents aged 18 years and older; n/r (Not Reportable) - If the unweighted total responses for a dimension (row) is <50 that row will not be shown; n/a (Not Available) - Not asked of a subset of respondents*

**Year: 2005-2007**

<b>Married</b>	<b>None</b>			<b>Once</b>			<b>More than one time</b>			<b>Estimated Population (3-Yr Avg)</b>
	<b>#</b>	<b>%</b>	<b>C.I. (95%)</b>	<b>#</b>	<b>%</b>	<b>C.I. (95%)</b>	<b>#</b>	<b>%</b>	<b>C.I. (95%)</b>	<b>#</b>
<b>Yes</b>	13,000	26.8	21.6 - 32.0	11,800	24.1	19.8 - 28.4	23,900	49.1	43.8 - 54.3	48,700
<b>No</b>	8,100	29.8	23.8 - 35.7	6,100	22.4	16.4 - 28.5	13,000	47.8	41.5 - 54.1	27,100

<b>Health Care Coverage</b>	<b>None</b>			<b>Once</b>			<b>More than one time</b>			<b>Estimated Population (3-Yr Avg)</b>
	<b>#</b>	<b>%</b>	<b>C.I. (95%)</b>	<b>#</b>	<b>%</b>	<b>C.I. (95%)</b>	<b>#</b>	<b>%</b>	<b>C.I. (95%)</b>	<b>#</b>
<b>Yes</b>	11,800	24.9	21.3 - 28.6	10,700	22.7	19.4 - 26.1	24,700	52.3	48.3 - 56.4	47,200

**Diabetes - times feet chk by doc by State, County, Island, Community, BRFSS Age Group, DOH Race-Ethnicity, Gender, Education Level, Employment Status (Grouped), Household Income, Poverty Level, Marital Status (Grouped), Married, Health Care Coverage, for the Year(s) - 2000-2002, 2001-2003, 2002-2004, 2003-2005, 2004-2006, 2005-2007, 2006-2008, 2007-2009, 2008-2010**

*Note: Weighted numbers (#) represent 3-yr averages, percentages and 95% confidence intervals; Respondents aged 18 years and older; n/r (Not Reportable) - If the unweighted total responses for a dimension (row) is <50 that row will not be shown; n/a (Not Available) - Not asked of a subset of respondents*

**Year: 2004-2006**

State	None			Once			More than one time			Estimated Population (3-Yr Avg)
	#	%	C.I. (95%)	#	%	C.I. (95%)	#	%	C.I. (95%)	#
Hawaii State	19,000	26.9	22.2 - 31.6	15,100	21.4	17.3 - 25.4	36,600	51.7	46.6 - 56.9	70,700

County	None			Once			More than one time			Estimated Population (3-Yr Avg)
	#	%	C.I. (95%)	#	%	C.I. (95%)	#	%	C.I. (95%)	#
Hawaii	2,400	26.9	20.2 - 33.5	2,100	23.8	15.9 - 31.6	4,400	49.4	41.2 - 57.6	9,000
Honolulu	14,000	26.7	20.7 - 32.8	10,700	20.4	15.2 - 25.6	27,700	52.9	46.2 - 59.5	52,300
Kauai	1,000	26.2	16.2 - 36.1	500	14.5	7.3 - 21.8	2,200	59.3	48.1 - 70.5	3,700
Maui	1,700	29.2	18.5 - 39.8	1,800	31.0	21.1 - 40.9	2,300	39.8	29.4 - 50.3	5,700

**Diabetes - times feet chk by doc by State, County, Island, Community, BRFSS Age Group, DOH Race-Ethnicity, Gender, Education Level, Employment Status (Grouped), Household Income, Poverty Level, Marital Status (Grouped), Married, Health Care Coverage, for the Year(s) - 2000-2002, 2001-2003, 2002-2004, 2003-2005, 2004-2006, 2005-2007, 2006-2008, 2007-2009, 2008-2010**

*Note: Weighted numbers (#) represent 3-yr averages, percentages and 95% confidence intervals; Respondents aged 18 years and older; n/r (Not Reportable) - If the unweighted total responses for a dimension (row) is <50 that row will not be shown; n/a (Not Available) - Not asked of a subset of respondents*

**Year: 2004-2006**

Island	None			Once			More than one time			Estimated Population (3-Yr Avg)
	#	%	C.I. (95%)	#	%	C.I. (95%)	#	%	C.I. (95%)	#
Hawaii	2,400	26.9	20.2 - 33.5	2,100	23.8	15.9 - 31.6	4,400	49.4	41.2 - 57.6	9,000
Kauai	1,000	26.2	16.2 - 36.1	500	14.5	7.3 - 21.8	2,200	59.3	48.1 - 70.5	3,700
Maui	1,400	28.3	16.3 - 40.2	1,600	32.7	21.6 - 43.8	1,900	39.0	27.4 - 50.7	5,000
Oahu	14,000	26.7	20.7 - 32.8	10,700	20.4	15.2 - 25.6	27,700	52.9	46.2 - 59.5	52,300

**Diabetes - times feet chk by doc by State, County, Island, Community, BRFSS Age Group, DOH Race-Ethnicity, Gender, Education Level, Employment Status (Grouped), Household Income, Poverty Level, Marital Status (Grouped), Married, Health Care Coverage, for the Year(s) - 2000-2002, 2001-2003, 2002-2004, 2003-2005, 2004-2006, 2005-2007, 2006-2008, 2007-2009, 2008-2010**

*Note: Weighted numbers (#) represent 3-yr averages, percentages and 95% confidence intervals; Respondents aged 18 years and older; n/r (Not Reportable) - If the unweighted total responses for a dimension (row) is <50 that row will not be shown; n/a (Not Available) - Not asked of a subset of respondents*

**Year: 2004-2006**

Community	None			Once			More than one time			Estimated Population (3-Yr Avg)
	#	%	C.I. (95%)	#	%	C.I. (95%)	#	%	C.I. (95%)	#
Hilo	800	31.9	19.3 - 44.4	500	17.5	3.3 - 31.7	1,300	50.7	36.3 - 65.0	2,600
Lihue-Waimea	600	24.3	12.4 - 36.3	400	16.4	7.1 - 25.7	1,500	59.3	45.7 - 72.8	2,500
N.Hawaii	500	27.5	13.9 - 41.2	400	20.0	4.6 - 35.4	900	52.5	36.1 - 68.9	1,800
Puna/ Kau	600	19.7	8.7 - 30.7	900	29.0	13.6 - 44.3	1,600	51.3	35.1 - 67.5	3,000
Waipahu/ Kapolei/ Ewa	900	9.8	1.0 - 18.5	2,200	24.5	8.8 - 40.1	5,800	65.8	49.0 - 82.6	8,800

**Diabetes - times feet chk by doc by State, County, Island, Community, BRFSS Age Group, DOH Race-Ethnicity, Gender, Education Level, Employment Status (Grouped), Household Income, Poverty Level, Marital Status (Grouped), Married, Health Care Coverage, for the Year(s) - 2000-2002, 2001-2003, 2002-2004, 2003-2005, 2004-2006, 2005-2007, 2006-2008, 2007-2009, 2008-2010**

*Note: Weighted numbers (#) represent 3-yr averages, percentages and 95% confidence intervals; Respondents aged 18 years and older; n/r (Not Reportable) - If the unweighted total responses for a dimension (row) is <50 that row will not be shown; n/a (Not Available) - Not asked of a subset of respondents*

**Year: 2004-2006**

BRFSS Age Group	None			Once			More than one time			Estimated Population (3-Yr Avg)
	#	%	C.I. (95%)	#	%	C.I. (95%)	#	%	C.I. (95%)	#
<b>35-44</b>	1,600	18.6	6.3 - 30.9	2,100	25.1	8.7 - 41.5	4,800	56.3	37.3 - 75.4	8,500
<b>45-54</b>	3,500	24.9	16.0 - 33.7	2,400	17.0	10.4 - 23.6	8,100	58.1	47.7 - 68.5	13,900
<b>55-64</b>	4,600	24.4	16.5 - 32.3	4,800	25.2	16.7 - 33.7	9,600	50.4	41.1 - 59.7	19,000
<b>65-74</b>	3,600	27.6	18.8 - 36.4	2,700	21.3	13.7 - 29.0	6,600	51.1	41.5 - 60.6	12,900
<b>75+</b>	4,500	36.2	22.1 - 50.2	1,800	14.0	7.6 - 20.5	6,300	49.8	36.9 - 62.7	12,600

**Diabetes - times feet chk by doc by State, County, Island, Community, BRFSS Age Group, DOH Race-Ethnicity, Gender, Education Level, Employment Status (Grouped), Household Income, Poverty Level, Marital Status (Grouped), Married, Health Care Coverage, for the Year(s) - 2000-2002, 2001-2003, 2002-2004, 2003-2005, 2004-2006, 2005-2007, 2006-2008, 2007-2009, 2008-2010**

*Note: Weighted numbers (#) represent 3-yr averages, percentages and 95% confidence intervals; Respondents aged 18 years and older; n/r (Not Reportable) - If the unweighted total responses for a dimension (row) is <50 that row will not be shown; n/a (Not Available) - Not asked of a subset of respondents*

**Year: 2004-2006**

DOH Race-Ethnicity	None			Once			More than one time			Estimated Population (3-Yr Avg)
	#	%	C.I. (95%)	#	%	C.I. (95%)	#	%	C.I. (95%)	#
Caucasian	4,800	28.9	20.3 - 37.5	4,000	24.4	16.9 - 31.8	7,700	46.7	37.5 - 56.0	16,500
Native Hawaiian	1,800	11.6	6.3 - 16.9	4,100	26.5	15.1 - 37.9	9,500	61.9	50.2 - 73.7	15,400
Filipino	2,600	21.7	10.8 - 32.6	3,100	25.7	15.0 - 36.5	6,400	52.6	39.9 - 65.3	12,100
Japanese	6,100	41.6	32.2 - 51.1	2,100	14.6	9.0 - 20.3	6,400	43.7	34.5 - 52.9	14,600

Gender	None			Once			More than one time			Estimated Population (3-Yr Avg)
	#	%	C.I. (95%)	#	%	C.I. (95%)	#	%	C.I. (95%)	#
Male	11,300	29.6	22.3 - 36.9	6,300	16.4	11.3 - 21.5	20,600	54.0	46.5 - 61.4	38,100
Female	7,700	23.8	18.5 - 29.0	8,900	27.2	20.8 - 33.5	16,000	49.1	42.0 - 56.1	32,600



**Diabetes - times feet chk by doc by State, County, Island, Community, BRFSS Age Group, DOH Race-Ethnicity, Gender, Education Level, Employment Status (Grouped), Household Income, Poverty Level, Marital Status (Grouped), Married, Health Care Coverage, for the Year(s) - 2000-2002, 2001-2003, 2002-2004, 2003-2005, 2004-2006, 2005-2007, 2006-2008, 2007-2009, 2008-2010**

*Note: Weighted numbers (#) represent 3-yr averages, percentages and 95% confidence intervals; Respondents aged 18 years and older; n/r (Not Reportable) - If the unweighted total responses for a dimension (row) is <50 that row will not be shown; n/a (Not Available) - Not asked of a subset of respondents*

**Year: 2004-2006**

Education Level	None			Once			More than one time			Estimated Population (3-Yr Avg)
	#	%	C.I. (95%)	#	%	C.I. (95%)	#	%	C.I. (95%)	#
Grades 9 thru 11 (Some High School)	1,000	24.2	9.6 - 38.8	600	14.0	4.6 - 23.4	2,400	61.8	45.4 - 78.2	4,000
Grades 12 or GED (High School Grad)	7,300	26.6	17.9 - 35.2	5,800	21.2	13.9 - 28.4	14,400	52.3	42.9 - 61.6	27,600
College 1 to 3 years (Some College/ Tech)	6,200	31.9	23.6 - 40.2	3,700	18.9	12.8 - 25.1	9,600	49.2	40.3 - 58.1	19,500
College 4 years or more (College Grad)	4,100	24.9	16.1 - 33.6	3,800	22.6	14.6 - 30.6	8,700	52.5	42.9 - 62.2	16,600

Employment Status (Grouped)	None			Once			More than one time			Estimated Population (3-Yr Avg)
	#	%	C.I. (95%)	#	%	C.I. (95%)	#	%	C.I. (95%)	#
Employed	8,800	27.6	20.6 - 34.6	7,100	22.2	15.5 - 28.9	16,000	50.1	42.3 - 58.0	31,900
Retired/Unable to work	9,100	27.1	20.1 - 34.1	6,300	18.8	13.7 - 23.9	18,200	54.1	46.7 - 61.4	33,600

**Diabetes - times feet chk by doc by State, County, Island, Community, BRFSS Age Group, DOH Race-Ethnicity, Gender, Education Level, Employment Status (Grouped), Household Income, Poverty Level, Marital Status (Grouped), Married, Health Care Coverage, for the Year(s) - 2000-2002, 2001-2003, 2002-2004, 2003-2005, 2004-2006, 2005-2007, 2006-2008, 2007-2009, 2008-2010**

*Note: Weighted numbers (#) represent 3-yr averages, percentages and 95% confidence intervals; Respondents aged 18 years and older; n/r (Not Reportable) - If the unweighted total responses for a dimension (row) is <50 that row will not be shown; n/a (Not Available) - Not asked of a subset of respondents*

**Year: 2004-2006**

Household Income	None			Once			More than one time			Estimated Population (3-Yr Avg)
	#	%	C.I. (95%)	#	%	C.I. (95%)	#	%	C.I. (95%)	#
Less than \$10,000	600	26.7	12.1 - 41.4	400	19.1	4.9 - 33.2	1,200	54.2	37.3 - 71.1	2,200
\$10,000 to \$14,999	1,100	31.4	13.2 - 49.7	800	22.2	8.0 - 36.4	1,600	46.4	26.2 - 66.6	3,500
\$15,000 to \$19,999	900	13.4	2.9 - 24.0	1,600	24.7	7.3 - 42.0	4,000	61.9	42.6 - 81.2	6,500
\$20,000 to \$24,999	1,900	33.2	18.1 - 48.3	600	10.5	3.0 - 17.9	3,200	56.3	40.9 - 71.7	5,600
\$25,000 to \$34,999	2,800	31.1	17.6 - 44.6	2,700	29.7	14.8 - 44.5	3,500	39.3	23.9 - 54.6	9,000
\$35,000 to \$49,999	3,000	29.3	16.6 - 41.9	1,900	18.1	10.5 - 25.7	5,500	52.7	40.6 - 64.7	10,400
\$50,000 to \$74,999	3,000	23.5	15.3 - 31.7	2,200	17.5	10.0 - 25.1	7,400	59.0	48.7 - 69.3	12,600
\$75,000 or more	2,500	21.7	11.2 - 32.1	2,300	19.6	9.5 - 29.8	6,800	58.7	45.8 - 71.7	11,500

**Diabetes - times feet chk by doc by State, County, Island, Community, BRFSS Age Group, DOH Race-Ethnicity, Gender, Education Level, Employment Status (Grouped), Household Income, Poverty Level, Marital Status (Grouped), Married, Health Care Coverage, for the Year(s) - 2000-2002, 2001-2003, 2002-2004, 2003-2005, 2004-2006, 2005-2007, 2006-2008, 2007-2009, 2008-2010**

*Note: Weighted numbers (#) represent 3-yr averages, percentages and 95% confidence intervals; Respondents aged 18 years and older; n/r (Not Reportable) - If the unweighted total responses for a dimension (row) is <50 that row will not be shown; n/a (Not Available) - Not asked of a subset of respondents*

**Year: 2004-2006**

Poverty Level	None			Once			More than one time			Estimated Population (3-Yr Avg)
	#	%	C.I. (95%)	#	%	C.I. (95%)	#	%	C.I. (95%)	#
<b>0-130%</b>	4,800	26.5	17.4 - 35.6	4,100	22.6	12.9 - 32.3	9,200	50.9	39.6 - 62.2	18,000
<b>131-185%</b>	1,900	26.5	12.8 - 40.2	1,200	16.5	7.3 - 25.8	4,200	57.0	42.5 - 71.4	7,400
<b>186+%</b>	9,000	25.0	19.4 - 30.7	7,100	19.8	14.9 - 24.7	19,900	55.2	48.7 - 61.7	36,000

Marital Status (Grouped)	None			Once			More than one time			Estimated Population (3-Yr Avg)
	#	%	C.I. (95%)	#	%	C.I. (95%)	#	%	C.I. (95%)	#
<b>Married</b>	11,400	25.0	19.0 - 31.0	9,000	19.7	15.0 - 24.3	25,200	55.3	48.7 - 61.9	45,600
<b>Widowed</b>	1,500	20.1	12.4 - 27.8	1,400	17.8	9.6 - 26.0	4,700	62.1	51.2 - 72.9	7,600
<b>Other</b>	5,800	34.9	24.9 - 45.0	4,700	27.8	17.4 - 38.2	6,200	37.3	27.9 - 46.6	16,700

**Diabetes - times feet chk by doc by State, County, Island, Community, BRFSS Age Group, DOH Race-Ethnicity, Gender, Education Level, Employment Status (Grouped), Household Income, Poverty Level, Marital Status (Grouped), Married, Health Care Coverage, for the Year(s) - 2000-2002, 2001-2003, 2002-2004, 2003-2005, 2004-2006, 2005-2007, 2006-2008, 2007-2009, 2008-2010**

*Note: Weighted numbers (#) represent 3-yr averages, percentages and 95% confidence intervals; Respondents aged 18 years and older; n/r (Not Reportable) - If the unweighted total responses for a dimension (row) is <50 that row will not be shown; n/a (Not Available) - Not asked of a subset of respondents*

**Year: 2004-2006**

<b>Married</b>	<b>None</b>			<b>Once</b>			<b>More than one time</b>			<b>Estimated Population (3-Yr Avg)</b>
	<b>#</b>	<b>%</b>	<b>C.I. (95%)</b>	<b>#</b>	<b>%</b>	<b>C.I. (95%)</b>	<b>#</b>	<b>%</b>	<b>C.I. (95%)</b>	<b>#</b>
<b>Yes</b>	11,700	25.3	19.3 - 31.2	9,100	19.6	15.0 - 24.2	25,500	55.1	48.6 - 61.7	46,300
<b>No</b>	7,200	29.8	22.2 - 37.3	6,000	24.8	17.1 - 32.6	11,000	45.4	37.4 - 53.4	24,300

<b>Health Care Coverage</b>	<b>None</b>			<b>Once</b>			<b>More than one time</b>			<b>Estimated Population (3-Yr Avg)</b>
	<b>#</b>	<b>%</b>	<b>C.I. (95%)</b>	<b>#</b>	<b>%</b>	<b>C.I. (95%)</b>	<b>#</b>	<b>%</b>	<b>C.I. (95%)</b>	<b>#</b>
<b>Yes</b>	10,100	23.9	18.7 - 29.2	8,400	19.9	15.3 - 24.4	23,700	56.2	50.0 - 62.5	42,200

**Diabetes - times feet chk by doc by State, County, Island, Community, BRFSS Age Group, DOH Race-Ethnicity, Gender, Education Level, Employment Status (Grouped), Household Income, Poverty Level, Marital Status (Grouped), Married, Health Care Coverage, for the Year(s) - 2000-2002, 2001-2003, 2002-2004, 2003-2005, 2004-2006, 2005-2007, 2006-2008, 2007-2009, 2008-2010**

*Note: Weighted numbers (#) represent 3-yr averages, percentages and 95% confidence intervals; Respondents aged 18 years and older; n/r (Not Reportable) - If the unweighted total responses for a dimension (row) is <50 that row will not be shown; n/a (Not Available) - Not asked of a subset of respondents*

**Year: 2003-2005**

State	None			Once			More than one time			Estimated Population (3-Yr Avg)
	#	%	C.I. (95%)	#	%	C.I. (95%)	#	%	C.I. (95%)	#
Hawaii State	17,400	25.7	20.7 - 30.6	12,600	18.5	14.3 - 22.8	37,800	55.8	50.3 - 61.3	67,800

County	None			Once			More than one time			Estimated Population (3-Yr Avg)
	#	%	C.I. (95%)	#	%	C.I. (95%)	#	%	C.I. (95%)	#
Hawaii	2,600	29.1	20.7 - 37.6	1,900	20.9	12.8 - 29.0	4,500	50.0	40.9 - 59.1	9,100
Honolulu	12,400	24.3	18.1 - 30.5	9,000	17.5	12.2 - 22.8	29,800	58.2	51.3 - 65.2	51,200
Kauai	1,000	32.2	18.8 - 45.6	300	11.8	4.0 - 19.6	1,700	56.0	41.9 - 70.1	3,000
Maui	1,400	30.3	17.4 - 43.3	1,400	29.8	17.9 - 41.7	1,800	39.9	27.2 - 52.5	4,600

**Diabetes - times feet chk by doc by State, County, Island, Community, BRFSS Age Group, DOH Race-Ethnicity, Gender, Education Level, Employment Status (Grouped), Household Income, Poverty Level, Marital Status (Grouped), Married, Health Care Coverage, for the Year(s) - 2000-2002, 2001-2003, 2002-2004, 2003-2005, 2004-2006, 2005-2007, 2006-2008, 2007-2009, 2008-2010**

*Note: Weighted numbers (#) represent 3-yr averages, percentages and 95% confidence intervals; Respondents aged 18 years and older; n/r (Not Reportable) - If the unweighted total responses for a dimension (row) is <50 that row will not be shown; n/a (Not Available) - Not asked of a subset of respondents*

**Year: 2003-2005**

Island	None			Once			More than one time			Estimated Population (3-Yr Avg)
	#	%	C.I. (95%)	#	%	C.I. (95%)	#	%	C.I. (95%)	#
Hawaii	2,600	29.1	20.7 - 37.6	1,900	20.9	12.8 - 29.0	4,500	50.0	40.9 - 59.1	9,100
Kauai	1,000	32.2	18.8 - 45.6	300	11.8	4.0 - 19.6	1,700	56.0	41.9 - 70.1	3,000
Maui	1,200	30.8	15.9 - 45.7	1,200	31.9	18.1 - 45.6	1,500	37.4	23.0 - 51.7	3,900
Oahu	12,400	24.3	18.1 - 30.5	9,000	17.5	12.2 - 22.8	29,800	58.2	51.3 - 65.2	51,200

Community	None			Once			More than one time			Estimated Population (3-Yr Avg)
	#	%	C.I. (95%)	#	%	C.I. (95%)	#	%	C.I. (95%)	#
Hilo	600	26.8	13.7 - 39.9	300	13.1	0.0 - 29.0	1,400	60.1	43.6 - 76.6	2,300
Puna/ Kau	800	25.3	13.0 - 37.7	800	28.6	12.5 - 44.7	1,400	46.1	29.3 - 62.8	3,000

**Diabetes - times feet chk by doc by State, County, Island, Community, BRFSS Age Group, DOH Race-Ethnicity, Gender, Education Level, Employment Status (Grouped), Household Income, Poverty Level, Marital Status (Grouped), Married, Health Care Coverage, for the Year(s) - 2000-2002, 2001-2003, 2002-2004, 2003-2005, 2004-2006, 2005-2007, 2006-2008, 2007-2009, 2008-2010**

*Note: Weighted numbers (#) represent 3-yr averages, percentages and 95% confidence intervals; Respondents aged 18 years and older; n/r (Not Reportable) - If the unweighted total responses for a dimension (row) is <50 that row will not be shown; n/a (Not Available) - Not asked of a subset of respondents*

**Year: 2003-2005**

BRFSS Age Group	None			Once			More than one time			Estimated Population (3-Yr Avg)
	#	%	C.I. (95%)	#	%	C.I. (95%)	#	%	C.I. (95%)	#
<b>35-44</b>	1,700	18.9	6.0 - 31.7	2,200	24.6	8.6 - 40.5	5,000	56.6	37.7 - 75.4	8,800
<b>45-54</b>	2,700	19.2	10.8 - 27.7	2,400	16.6	9.5 - 23.7	9,100	64.2	53.7 - 74.7	14,100
<b>55-64</b>	3,600	21.3	13.4 - 29.2	3,700	21.7	12.5 - 30.9	9,700	57.0	46.8 - 67.1	17,000
<b>65-74</b>	3,900	29.8	19.8 - 39.7	2,200	16.6	8.9 - 24.3	7,000	53.6	43.1 - 64.2	13,000
<b>75+</b>	4,200	38.7	22.9 - 54.4	1,000	8.9	3.2 - 14.5	5,700	52.5	37.6 - 67.3	10,900

**Diabetes - times feet chk by doc by State, County, Island, Community, BRFSS Age Group, DOH Race-Ethnicity, Gender, Education Level, Employment Status (Grouped), Household Income, Poverty Level, Marital Status (Grouped), Married, Health Care Coverage, for the Year(s) - 2000-2002, 2001-2003, 2002-2004, 2003-2005, 2004-2006, 2005-2007, 2006-2008, 2007-2009, 2008-2010**

*Note: Weighted numbers (#) represent 3-yr averages, percentages and 95% confidence intervals; Respondents aged 18 years and older; n/r (Not Reportable) - If the unweighted total responses for a dimension (row) is <50 that row will not be shown; n/a (Not Available) - Not asked of a subset of respondents*

**Year: 2003-2005**

DOH Race-Ethnicity	None			Once			More than one time			Estimated Population (3-Yr Avg)
	#	%	C.I. (95%)	#	%	C.I. (95%)	#	%	C.I. (95%)	#
Caucasian	4,500	28.2	19.0 - 37.4	3,200	20.1	12.4 - 27.9	8,200	51.7	41.6 - 61.7	15,900
Native Hawaiian	1,600	10.9	4.8 - 17.0	3,700	25.4	13.4 - 37.4	9,400	63.7	51.1 - 76.3	14,800
Filipino	2,200	20.9	9.5 - 32.3	2,500	23.5	11.4 - 35.5	5,800	55.6	41.7 - 69.6	10,500
Japanese	5,600	38.5	28.3 - 48.6	1,400	9.8	4.8 - 14.7	7,500	51.8	41.6 - 61.9	14,600

Gender	None			Once			More than one time			Estimated Population (3-Yr Avg)
	#	%	C.I. (95%)	#	%	C.I. (95%)	#	%	C.I. (95%)	#
Male	10,400	28.4	20.8 - 36.1	6,200	16.8	11.3 - 22.3	20,100	54.8	46.8 - 62.8	36,700
Female	7,000	22.4	16.8 - 28.0	6,400	20.6	14.1 - 27.1	17,800	57.0	49.6 - 64.4	31,200



**Diabetes - times feet chk by doc by State, County, Island, Community, BRFSS Age Group, DOH Race-Ethnicity, Gender, Education Level, Employment Status (Grouped), Household Income, Poverty Level, Marital Status (Grouped), Married, Health Care Coverage, for the Year(s) - 2000-2002, 2001-2003, 2002-2004, 2003-2005, 2004-2006, 2005-2007, 2006-2008, 2007-2009, 2008-2010**

*Note: Weighted numbers (#) represent 3-yr averages, percentages and 95% confidence intervals; Respondents aged 18 years and older; n/r (Not Reportable) - If the unweighted total responses for a dimension (row) is <50 that row will not be shown; n/a (Not Available) - Not asked of a subset of respondents*

**Year: 2003-2005**

Education Level	None			Once			More than one time			Estimated Population (3-Yr Avg)
	#	%	C.I. (95%)	#	%	C.I. (95%)	#	%	C.I. (95%)	#
Grades 9 thru 11 (Some High School)	1,200	27.8	12.6 - 43.0	500	10.8	2.3 - 19.4	2,700	61.4	44.8 - 77.9	4,400
Grades 12 or GED (High School Grad)	6,300	24.1	15.1 - 33.1	4,500	17.2	9.9 - 24.4	15,400	58.7	48.8 - 68.7	26,100
College 1 to 3 years (Some College/ Tech)	5,100	28.0	19.2 - 36.8	2,900	15.6	9.1 - 22.0	10,300	56.4	46.8 - 66.0	18,300
College 4 years or more (College Grad)	4,300	26.3	16.8 - 35.8	3,700	22.1	13.5 - 30.7	8,500	51.6	41.2 - 61.9	16,500

Employment Status (Grouped)	None			Once			More than one time			Estimated Population (3-Yr Avg)
	#	%	C.I. (95%)	#	%	C.I. (95%)	#	%	C.I. (95%)	#
Employed	8,500	27.1	20.0 - 34.3	7,000	22.3	15.2 - 29.4	15,800	50.6	42.3 - 58.8	31,200
Retired/Unable to work	8,400	26.6	18.9 - 34.2	4,400	14.1	9.0 - 19.2	18,700	59.4	51.4 - 67.4	31,500

**Diabetes - times feet chk by doc by State, County, Island, Community, BRFSS Age Group, DOH Race-Ethnicity, Gender, Education Level, Employment Status (Grouped), Household Income, Poverty Level, Marital Status (Grouped), Married, Health Care Coverage, for the Year(s) - 2000-2002, 2001-2003, 2002-2004, 2003-2005, 2004-2006, 2005-2007, 2006-2008, 2007-2009, 2008-2010**

*Note: Weighted numbers (#) represent 3-yr averages, percentages and 95% confidence intervals; Respondents aged 18 years and older; n/r (Not Reportable) - If the unweighted total responses for a dimension (row) is <50 that row will not be shown; n/a (Not Available) - Not asked of a subset of respondents*

**Year: 2003-2005**

Household Income	None			Once			More than one time			Estimated Population (3-Yr Avg)
	#	%	C.I. (95%)	#	%	C.I. (95%)	#	%	C.I. (95%)	#
<b>\$15,000 to \$19,999</b>	900	14.0	3.0 - 24.9	1,300	20.8	3.3 - 38.3	4,200	65.2	45.8 - 84.7	6,400
<b>\$20,000 to \$24,999</b>	1,400	26.5	10.4 - 42.7	400	7.7	0.4 - 15.0	3,400	65.8	49.2 - 82.3	5,200
<b>\$25,000 to \$34,999</b>	2,600	33.3	17.8 - 48.8	2,200	28.3	11.5 - 45.0	3,000	38.4	21.3 - 55.6	7,800
<b>\$35,000 to \$49,999</b>	3,000	34.7	20.3 - 49.0	1,100	13.2	5.1 - 21.4	4,500	52.1	38.4 - 65.8	8,500
<b>\$50,000 to \$74,999</b>	2,300	18.8	10.8 - 26.8	1,900	15.0	7.4 - 22.5	8,200	66.2	55.8 - 76.7	12,400
<b>\$75,000 or more</b>	2,100	19.8	8.2 - 31.3	2,300	21.6	10.1 - 33.2	6,200	58.6	44.2 - 73.0	10,600

**Diabetes - times feet chk by doc by State, County, Island, Community, BRFSS Age Group, DOH Race-Ethnicity, Gender, Education Level, Employment Status (Grouped), Household Income, Poverty Level, Marital Status (Grouped), Married, Health Care Coverage, for the Year(s) - 2000-2002, 2001-2003, 2002-2004, 2003-2005, 2004-2006, 2005-2007, 2006-2008, 2007-2009, 2008-2010**

*Note: Weighted numbers (#) represent 3-yr averages, percentages and 95% confidence intervals; Respondents aged 18 years and older; n/r (Not Reportable) - If the unweighted total responses for a dimension (row) is <50 that row will not be shown; n/a (Not Available) - Not asked of a subset of respondents*

**Year: 2003-2005**

Poverty Level	None			Once			More than one time			Estimated Population (3-Yr Avg)
	#	%	C.I. (95%)	#	%	C.I. (95%)	#	%	C.I. (95%)	#
<b>0-130%</b>	4,400	25.3	16.0 - 34.7	3,700	21.7	11.5 - 31.9	9,100	53.0	41.1 - 64.8	17,200
<b>131-185%</b>	1,900	28.5	13.1 - 43.9	900	13.1	3.4 - 22.8	3,800	58.4	42.5 - 74.4	6,600
<b>186+%</b>	8,200	24.0	17.8 - 30.2	6,000	17.5	12.3 - 22.8	19,900	58.4	51.3 - 65.6	34,000

Marital Status (Grouped)	None			Once			More than one time			Estimated Population (3-Yr Avg)
	#	%	C.I. (95%)	#	%	C.I. (95%)	#	%	C.I. (95%)	#
<b>Married</b>	10,400	24.6	18.2 - 31.1	7,200	17.1	12.2 - 21.9	24,700	58.3	51.2 - 65.5	42,300
<b>Widowed</b>	1,600	18.9	10.4 - 27.3	1,100	13.1	5.9 - 20.3	5,900	68.0	57.6 - 78.4	8,700
<b>Other</b>	5,200	31.7	21.0 - 42.5	4,100	25.1	14.1 - 36.0	7,100	43.2	32.5 - 53.9	16,400

**Diabetes - times feet chk by doc by State, County, Island, Community, BRFSS Age Group, DOH Race-Ethnicity, Gender, Education Level, Employment Status (Grouped), Household Income, Poverty Level, Marital Status (Grouped), Married, Health Care Coverage, for the Year(s) - 2000-2002, 2001-2003, 2002-2004, 2003-2005, 2004-2006, 2005-2007, 2006-2008, 2007-2009, 2008-2010**

*Note: Weighted numbers (#) represent 3-yr averages, percentages and 95% confidence intervals; Respondents aged 18 years and older; n/r (Not Reportable) - If the unweighted total responses for a dimension (row) is <50 that row will not be shown; n/a (Not Available) - Not asked of a subset of respondents*

**Year: 2003-2005**

<b>Married</b>	<b>None</b>			<b>Once</b>			<b>More than one time</b>			<b>Estimated Population (3-Yr Avg)</b>
	<b>#</b>	<b>%</b>	<b>C.I. (95%)</b>	<b>#</b>	<b>%</b>	<b>C.I. (95%)</b>	<b>#</b>	<b>%</b>	<b>C.I. (95%)</b>	<b>#</b>
<b>Yes</b>	10,600	24.7	18.3 - 31.1	7,200	16.9	12.1 - 21.7	25,000	58.4	51.3 - 65.5	42,800
<b>No</b>	6,800	27.1	19.3 - 34.9	5,300	21.3	13.5 - 29.2	12,900	51.5	43.0 - 60.1	24,900

<b>Health Care Coverage</b>	<b>None</b>			<b>Once</b>			<b>More than one time</b>			<b>Estimated Population (3-Yr Avg)</b>
	<b>#</b>	<b>%</b>	<b>C.I. (95%)</b>	<b>#</b>	<b>%</b>	<b>C.I. (95%)</b>	<b>#</b>	<b>%</b>	<b>C.I. (95%)</b>	<b>#</b>
<b>Yes</b>	8,800	22.0	16.3 - 27.6	5,800	14.5	9.8 - 19.2	25,400	63.6	56.9 - 70.2	39,900

**Diabetes - times feet chk by doc by State, County, Island, Community, BRFSS Age Group, DOH Race-Ethnicity, Gender, Education Level, Employment Status (Grouped), Household Income, Poverty Level, Marital Status (Grouped), Married, Health Care Coverage, for the Year(s) - 2000-2002, 2001-2003, 2002-2004, 2003-2005, 2004-2006, 2005-2007, 2006-2008, 2007-2009, 2008-2010**

*Note: Weighted numbers (#) represent 3-yr averages, percentages and 95% confidence intervals; Respondents aged 18 years and older; n/r (Not Reportable) - If the unweighted total responses for a dimension (row) is <50 that row will not be shown; n/a (Not Available) - Not asked of a subset of respondents*

**Year: 2002-2004**

State	None			Once			More than one time			Estimated Population (3-Yr Avg)
	#	%	C.I. (95%)	#	%	C.I. (95%)	#	%	C.I. (95%)	#
Hawaii State	11,400	19.5	15.4 - 23.6	8,100	13.8	10.4 - 17.3	39,000	66.7	61.8 - 71.6	58,500

County	None			Once			More than one time			Estimated Population (3-Yr Avg)
	#	%	C.I. (95%)	#	%	C.I. (95%)	#	%	C.I. (95%)	#
Hawaii	1,700	23.8	14.4 - 33.2	1,200	16.5	9.5 - 23.5	4,300	59.7	49.8 - 69.5	7,200
Honolulu	7,700	17.4	12.5 - 22.4	5,400	12.2	8.0 - 16.4	31,000	70.4	64.4 - 76.3	44,100
Kauai	600	24.9	12.0 - 37.7	400	15.6	6.4 - 24.8	1,400	59.5	45.6 - 73.5	2,400
Maui	1,400	28.8	16.7 - 41.0	1,100	24.0	13.2 - 34.7	2,300	47.2	35.3 - 59.1	4,800

**Diabetes - times feet chk by doc by State, County, Island, Community, BRFSS Age Group, DOH Race-Ethnicity, Gender, Education Level, Employment Status (Grouped), Household Income, Poverty Level, Marital Status (Grouped), Married, Health Care Coverage, for the Year(s) - 2000-2002, 2001-2003, 2002-2004, 2003-2005, 2004-2006, 2005-2007, 2006-2008, 2007-2009, 2008-2010**

*Note: Weighted numbers (#) represent 3-yr averages, percentages and 95% confidence intervals; Respondents aged 18 years and older; n/r (Not Reportable) - If the unweighted total responses for a dimension (row) is <50 that row will not be shown; n/a (Not Available) - Not asked of a subset of respondents*

**Year: 2002-2004**

Island	None			Once			More than one time			Estimated Population (3-Yr Avg)
	#	%	C.I. (95%)	#	%	C.I. (95%)	#	%	C.I. (95%)	#
Hawaii	1,700	23.8	14.4 - 33.2	1,200	16.5	9.5 - 23.5	4,300	59.7	49.8 - 69.5	7,200
Kauai	600	24.9	12.0 - 37.7	400	15.6	6.4 - 24.8	1,400	59.5	45.6 - 73.5	2,400
Maui	1,200	30.5	16.6 - 44.5	1,100	26.1	13.7 - 38.5	1,800	43.3	30.0 - 56.7	4,100
Oahu	7,700	17.4	12.5 - 22.4	5,400	12.2	8.0 - 16.4	31,000	70.4	64.4 - 76.3	44,100

Community	None			Once			More than one time			Estimated Population (3-Yr Avg)
	#	%	C.I. (95%)	#	%	C.I. (95%)	#	%	C.I. (95%)	#
Aiea/ Pearl City	1,200	23.3	7.9 - 38.7	700	12.2	2.0 - 22.5	3,400	64.4	48.1 - 80.7	5,300
Hilo	400	20.5	8.1 - 33.0	200	8.2	0.0 - 16.5	1,300	71.3	57.5 - 85.1	1,800
Waipahu/ Kapolei/ Ewa	1,200	16.3	5.1 - 27.4	500	7.1	0.5 - 13.8	5,500	76.6	63.6 - 89.6	7,100

**Diabetes - times feet chk by doc by State, County, Island, Community, BRFSS Age Group, DOH Race-Ethnicity, Gender, Education Level, Employment Status (Grouped), Household Income, Poverty Level, Marital Status (Grouped), Married, Health Care Coverage, for the Year(s) - 2000-2002, 2001-2003, 2002-2004, 2003-2005, 2004-2006, 2005-2007, 2006-2008, 2007-2009, 2008-2010**

*Note: Weighted numbers (#) represent 3-yr averages, percentages and 95% confidence intervals; Respondents aged 18 years and older; n/r (Not Reportable) - If the unweighted total responses for a dimension (row) is <50 that row will not be shown; n/a (Not Available) - Not asked of a subset of respondents*

**Year: 2002-2004**

BRFSS Age Group	None			Once			More than one time			Estimated Population (3-Yr Avg)
	#	%	C.I. (95%)	#	%	C.I. (95%)	#	%	C.I. (95%)	#
<b>35-44</b>	1,200	14.5	4.9 - 24.1	1,800	22.2	6.3 - 38.1	5,100	63.3	45.5 - 81.1	8,000
<b>45-54</b>	1,900	15.6	8.0 - 23.2	2,200	18.2	10.6 - 25.9	8,100	66.1	55.9 - 76.4	12,300
<b>55-64</b>	2,700	19.1	11.5 - 26.7	1,600	11.1	5.8 - 16.4	10,000	69.9	61.3 - 78.4	14,400
<b>65-74</b>	2,900	23.2	13.5 - 32.9	1,100	9.3	4.0 - 14.5	8,400	67.5	57.4 - 77.6	12,400
<b>75+</b>	2,200	25.1	12.9 - 37.4	900	9.8	4.1 - 15.4	5,800	65.1	52.6 - 77.6	8,900

**Diabetes - times feet chk by doc by State, County, Island, Community, BRFSS Age Group, DOH Race-Ethnicity, Gender, Education Level, Employment Status (Grouped), Household Income, Poverty Level, Marital Status (Grouped), Married, Health Care Coverage, for the Year(s) - 2000-2002, 2001-2003, 2002-2004, 2003-2005, 2004-2006, 2005-2007, 2006-2008, 2007-2009, 2008-2010**

*Note: Weighted numbers (#) represent 3-yr averages, percentages and 95% confidence intervals; Respondents aged 18 years and older; n/r (Not Reportable) - If the unweighted total responses for a dimension (row) is <50 that row will not be shown; n/a (Not Available) - Not asked of a subset of respondents*

**Year: 2002-2004**

DOH Race-Ethnicity	None			Once			More than one time			Estimated Population (3-Yr Avg)
	#	%	C.I. (95%)	#	%	C.I. (95%)	#	%	C.I. (95%)	#
Caucasian	3,000	23.5	13.8 - 33.2	1,700	13.4	7.2 - 19.6	8,100	63.1	52.6 - 73.6	12,900
Native Hawaiian	1,100	9.2	3.3 - 15.0	2,400	20.0	8.7 - 31.2	8,400	70.9	58.7 - 83.1	11,900
Chinese	1,100	24.3	7.9 - 40.8	900	19.8	6.8 - 32.8	2,600	55.9	38.6 - 73.1	4,600
Filipino	2,100	22.4	10.9 - 34.0	1,300	13.7	5.8 - 21.6	6,000	63.9	51.2 - 76.6	9,400
Japanese	3,500	23.3	15.6 - 30.9	1,400	9.4	4.7 - 14.1	10,000	67.3	59.0 - 75.6	14,900

Gender	None			Once			More than one time			Estimated Population (3-Yr Avg)
	#	%	C.I. (95%)	#	%	C.I. (95%)	#	%	C.I. (95%)	#
Male	6,700	23.1	16.4 - 29.7	3,500	12.0	7.8 - 16.2	18,900	65.0	57.7 - 72.3	29,100
Female	4,700	15.9	11.4 - 20.4	4,600	15.7	10.3 - 21.0	20,100	68.4	62.0 - 74.9	29,300



**Diabetes - times feet chk by doc by State, County, Island, Community, BRFSS Age Group, DOH Race-Ethnicity, Gender, Education Level, Employment Status (Grouped), Household Income, Poverty Level, Marital Status (Grouped), Married, Health Care Coverage, for the Year(s) - 2000-2002, 2001-2003, 2002-2004, 2003-2005, 2004-2006, 2005-2007, 2006-2008, 2007-2009, 2008-2010**

*Note: Weighted numbers (#) represent 3-yr averages, percentages and 95% confidence intervals; Respondents aged 18 years and older; n/r (Not Reportable) - If the unweighted total responses for a dimension (row) is <50 that row will not be shown; n/a (Not Available) - Not asked of a subset of respondents*

**Year: 2002-2004**

Education Level	None			Once			More than one time			Estimated Population (3-Yr Avg)
	#	%	C.I. (95%)	#	%	C.I. (95%)	#	%	C.I. (95%)	#
Grades 9 thru 11 (Some High School)	700	22.6	9.6 - 35.5	300	9.8	0.5 - 19.1	2,200	67.6	52.9 - 82.4	3,200
Grades 12 or GED (High School Grad)	3,700	16.5	10.1 - 22.8	2,900	13.1	6.6 - 19.5	15,700	70.5	62.1 - 78.9	22,300
College 1 to 3 years (Some College/ Tech)	3,500	21.1	12.8 - 29.3	1,600	10.0	5.1 - 14.8	11,400	69.0	60.0 - 77.9	16,500
College 4 years or more (College Grad)	3,200	20.9	12.9 - 28.8	2,800	18.7	11.8 - 25.6	9,200	60.4	51.3 - 69.6	15,200

Employment Status (Grouped)	None			Once			More than one time			Estimated Population (3-Yr Avg)
	#	%	C.I. (95%)	#	%	C.I. (95%)	#	%	C.I. (95%)	#
Employed	5,900	22.7	16.0 - 29.3	4,600	17.8	11.6 - 24.0	15,500	59.5	51.6 - 67.4	26,000
Retired/Unable to work	5,100	18.3	12.6 - 24.0	2,800	10.0	6.3 - 13.7	19,900	71.7	65.2 - 78.1	27,800

**Diabetes - times feet chk by doc by State, County, Island, Community, BRFSS Age Group, DOH Race-Ethnicity, Gender, Education Level, Employment Status (Grouped), Household Income, Poverty Level, Marital Status (Grouped), Married, Health Care Coverage, for the Year(s) - 2000-2002, 2001-2003, 2002-2004, 2003-2005, 2004-2006, 2005-2007, 2006-2008, 2007-2009, 2008-2010**

*Note: Weighted numbers (#) represent 3-yr averages, percentages and 95% confidence intervals; Respondents aged 18 years and older; n/r (Not Reportable) - If the unweighted total responses for a dimension (row) is <50 that row will not be shown; n/a (Not Available) - Not asked of a subset of respondents*

**Year: 2002-2004**

Household Income	None			Once			More than one time			Estimated Population (3-Yr Avg)
	#	%	C.I. (95%)	#	%	C.I. (95%)	#	%	C.I. (95%)	#
Less than \$10,000	700	25.6	11.3 - 39.9	500	18.8	3.0 - 34.6	1,500	55.6	38.6 - 72.6	2,700
\$10,000 to \$14,999	1,100	32.1	13.9 - 50.2	400	12.8	2.0 - 23.6	1,900	55.2	36.7 - 73.6	3,500
\$15,000 to \$19,999	400	9.6	1.3 - 17.9	400	10.2	1.4 - 19.1	3,400	80.2	66.8 - 93.6	4,200
\$25,000 to \$34,999	1,200	20.1	8.0 - 32.2	1,400	23.6	4.1 - 43.2	3,300	56.2	36.2 - 76.2	5,900
\$35,000 to \$49,999	2,300	27.9	13.6 - 42.3	1,000	12.1	4.7 - 19.6	4,900	59.9	46.1 - 73.8	8,200
\$50,000 to \$74,999	1,200	11.6	4.9 - 18.3	1,500	13.7	6.9 - 20.6	8,000	74.7	65.4 - 84.0	10,800
\$75,000 or more	2,300	24.0	11.7 - 36.3	1,300	13.4	5.5 - 21.3	6,000	62.6	48.8 - 76.4	9,500

**Diabetes - times feet chk by doc by State, County, Island, Community, BRFSS Age Group, DOH Race-Ethnicity, Gender, Education Level, Employment Status (Grouped), Household Income, Poverty Level, Marital Status (Grouped), Married, Health Care Coverage, for the Year(s) - 2000-2002, 2001-2003, 2002-2004, 2003-2005, 2004-2006, 2005-2007, 2006-2008, 2007-2009, 2008-2010**

*Note: Weighted numbers (#) represent 3-yr averages, percentages and 95% confidence intervals; Respondents aged 18 years and older; n/r (Not Reportable) - If the unweighted total responses for a dimension (row) is <50 that row will not be shown; n/a (Not Available) - Not asked of a subset of respondents*

**Year: 2002-2004**

Poverty Level	None			Once			More than one time			Estimated Population (3-Yr Avg)
	#	%	C.I. (95%)	#	%	C.I. (95%)	#	%	C.I. (95%)	#
<b>0-130%</b>	3,400	25.2	15.5 - 35.0	2,200	16.1	6.2 - 25.9	8,000	58.7	46.4 - 70.9	13,600
<b>131-185%</b>	800	15.3	5.2 - 25.4	600	11.9	4.0 - 19.7	3,800	72.9	60.2 - 85.5	5,200
<b>186+%</b>	6,100	20.5	14.3 - 26.7	4,100	13.7	9.4 - 18.0	19,600	65.8	58.8 - 72.7	29,800

Marital Status (Grouped)	None			Once			More than one time			Estimated Population (3-Yr Avg)
	#	%	C.I. (95%)	#	%	C.I. (95%)	#	%	C.I. (95%)	#
<b>Married</b>	6,800	18.5	13.6 - 23.4	4,700	12.7	9.0 - 16.4	25,200	68.8	62.9 - 74.7	36,700
<b>Widowed</b>	1,200	13.0	5.9 - 20.0	900	10.3	4.1 - 16.4	7,000	76.8	67.8 - 85.8	9,100
<b>Other</b>	3,400	27.2	16.3 - 38.0	2,500	19.8	9.4 - 30.2	6,700	53.1	41.6 - 64.6	12,600

**Diabetes - times feet chk by doc by State, County, Island, Community, BRFSS Age Group, DOH Race-Ethnicity, Gender, Education Level, Employment Status (Grouped), Household Income, Poverty Level, Marital Status (Grouped), Married, Health Care Coverage, for the Year(s) - 2000-2002, 2001-2003, 2002-2004, 2003-2005, 2004-2006, 2005-2007, 2006-2008, 2007-2009, 2008-2010**

*Note: Weighted numbers (#) represent 3-yr averages, percentages and 95% confidence intervals; Respondents aged 18 years and older; n/r (Not Reportable) - If the unweighted total responses for a dimension (row) is <50 that row will not be shown; n/a (Not Available) - Not asked of a subset of respondents*

**Year: 2002-2004**

<b>Married</b>	<b>None</b>			<b>Once</b>			<b>More than one time</b>			<b>Estimated Population (3-Yr Avg)</b>
	<b>#</b>	<b>%</b>	<b>C.I. (95%)</b>	<b>#</b>	<b>%</b>	<b>C.I. (95%)</b>	<b>#</b>	<b>%</b>	<b>C.I. (95%)</b>	<b>#</b>
<b>Yes</b>	6,900	18.5	13.6 - 23.3	4,700	12.6	8.9 - 16.2	25,600	69.0	63.2 - 74.8	37,200
<b>No</b>	4,500	21.2	13.9 - 28.5	3,400	15.9	9.0 - 22.7	13,400	62.9	54.4 - 71.4	21,300

<b>Health Care Coverage</b>	<b>None</b>			<b>Once</b>			<b>More than one time</b>			<b>Estimated Population (3-Yr Avg)</b>
	<b>#</b>	<b>%</b>	<b>C.I. (95%)</b>	<b>#</b>	<b>%</b>	<b>C.I. (95%)</b>	<b>#</b>	<b>%</b>	<b>C.I. (95%)</b>	<b>#</b>
<b>Yes</b>	11,000	19.4	15.2 - 23.6	7,700	13.5	10.0 - 17.0	38,000	67.1	62.1 - 72.0	56,600

**Diabetes - times feet chk by doc by State, County, Island, Community, BRFSS Age Group, DOH Race-Ethnicity, Gender, Education Level, Employment Status (Grouped), Household Income, Poverty Level, Marital Status (Grouped), Married, Health Care Coverage, for the Year(s) - 2000-2002, 2001-2003, 2002-2004, 2003-2005, 2004-2006, 2005-2007, 2006-2008, 2007-2009, 2008-2010**

*Note: Weighted numbers (#) represent 3-yr averages, percentages and 95% confidence intervals; Respondents aged 18 years and older; n/r (Not Reportable) - If the unweighted total responses for a dimension (row) is <50 that row will not be shown; n/a (Not Available) - Not asked of a subset of respondents*

**Year: 2001-2003**

State	None			Once			More than one time			Estimated Population (3-Yr Avg)
	#	%	C.I. (95%)	#	%	C.I. (95%)	#	%	C.I. (95%)	#
Hawaii State	9,800	17.1	13.8 - 20.4	7,300	12.8	9.9 - 15.8	40,100	70.1	66.0 - 74.2	57,200

County	None			Once			More than one time			Estimated Population (3-Yr Avg)
	#	%	C.I. (95%)	#	%	C.I. (95%)	#	%	C.I. (95%)	#
Hawaii	1,900	28.3	18.7 - 37.8	900	12.7	7.2 - 18.3	3,900	59.0	49.7 - 68.4	6,700
Honolulu	6,400	15.0	11.1 - 18.9	5,500	13.0	9.3 - 16.7	30,600	72.0	67.1 - 77.0	42,600
Kauai	500	20.8	8.8 - 32.8	200	10.8	4.0 - 17.5	1,600	68.4	55.8 - 81.0	2,300
Maui	1,000	18.1	8.8 - 27.4	700	12.6	5.5 - 19.8	3,900	69.2	56.1 - 82.4	5,700

**Diabetes - times feet chk by doc by State, County, Island, Community, BRFSS Age Group, DOH Race-Ethnicity, Gender, Education Level, Employment Status (Grouped), Household Income, Poverty Level, Marital Status (Grouped), Married, Health Care Coverage, for the Year(s) - 2000-2002, 2001-2003, 2002-2004, 2003-2005, 2004-2006, 2005-2007, 2006-2008, 2007-2009, 2008-2010**

*Note: Weighted numbers (#) represent 3-yr averages, percentages and 95% confidence intervals; Respondents aged 18 years and older; n/r (Not Reportable) - If the unweighted total responses for a dimension (row) is <50 that row will not be shown; n/a (Not Available) - Not asked of a subset of respondents*

**Year: 2001-2003**

Island	None			Once			More than one time			Estimated Population (3-Yr Avg)
	#	%	C.I. (95%)	#	%	C.I. (95%)	#	%	C.I. (95%)	#
Hawaii	1,900	28.3	18.7 - 37.8	900	12.7	7.2 - 18.3	3,900	59.0	49.7 - 68.4	6,700
Kauai	500	20.8	8.8 - 32.8	200	10.8	4.0 - 17.5	1,600	68.4	55.8 - 81.0	2,300
Maui	1,000	20.0	8.9 - 31.0	600	12.4	4.5 - 20.4	3,300	67.6	52.2 - 83.1	4,900
Oahu	6,400	15.0	11.1 - 18.9	5,500	13.0	9.3 - 16.7	30,600	72.0	67.1 - 77.0	42,600

**Diabetes - times feet chk by doc by State, County, Island, Community, BRFSS Age Group, DOH Race-Ethnicity, Gender, Education Level, Employment Status (Grouped), Household Income, Poverty Level, Marital Status (Grouped), Married, Health Care Coverage, for the Year(s) - 2000-2002, 2001-2003, 2002-2004, 2003-2005, 2004-2006, 2005-2007, 2006-2008, 2007-2009, 2008-2010**

*Note: Weighted numbers (#) represent 3-yr averages, percentages and 95% confidence intervals; Respondents aged 18 years and older; n/r (Not Reportable) - If the unweighted total responses for a dimension (row) is <50 that row will not be shown; n/a (Not Available) - Not asked of a subset of respondents*

**Year: 2001-2003**

Community	None			Once			More than one time			Estimated Population (3-Yr Avg)
	#	%	C.I. (95%)	#	%	C.I. (95%)	#	%	C.I. (95%)	#
Aiea/ Pearl City	900	15.7	4.8 - 26.7	900	14.4	4.6 - 24.2	4,200	69.9	56.6 - 83.2	6,000
Hilo	500	20.3	9.0 - 31.5	200	10.2	2.3 - 18.1	1,600	69.6	57.0 - 82.1	2,300
Kaimuki/ Palolo/ Waikiki	700	13.8	3.7 - 24.0	900	17.6	3.6 - 31.7	3,300	68.5	52.8 - 84.2	4,900
Lihue-Waimea	300	21.8	7.7 - 35.8	200	11.9	2.9 - 20.8	1,000	66.4	51.5 - 81.3	1,500
Waipahu/ Kapolei/ Ewa	1,300	25.0	11.2 - 38.8	500	10.0	1.3 - 18.7	3,300	65.0	50.4 - 79.7	5,100

**Diabetes - times feet chk by doc by State, County, Island, Community, BRFSS Age Group, DOH Race-Ethnicity, Gender, Education Level, Employment Status (Grouped), Household Income, Poverty Level, Marital Status (Grouped), Married, Health Care Coverage, for the Year(s) - 2000-2002, 2001-2003, 2002-2004, 2003-2005, 2004-2006, 2005-2007, 2006-2008, 2007-2009, 2008-2010**

*Note: Weighted numbers (#) represent 3-yr averages, percentages and 95% confidence intervals; Respondents aged 18 years and older; n/r (Not Reportable) - If the unweighted total responses for a dimension (row) is <50 that row will not be shown; n/a (Not Available) - Not asked of a subset of respondents*

**Year: 2001-2003**

BRFSS Age Group	None			Once			More than one time			Estimated Population (3-Yr Avg)
	#	%	C.I. (95%)	#	%	C.I. (95%)	#	%	C.I. (95%)	#
35-44	1,600	31.3	17.6 - 45.0	1,100	20.8	9.8 - 31.8	2,400	47.9	34.4 - 61.4	5,100
45-54	1,400	12.3	6.7 - 18.0	2,400	21.4	12.8 - 30.0	7,300	66.3	56.6 - 76.0	11,000
55-64	2,100	15.3	8.7 - 21.9	1,100	8.0	3.6 - 12.3	10,400	76.8	69.3 - 84.2	13,600
65-74	2,300	15.7	9.0 - 22.4	1,200	8.3	3.0 - 13.5	10,900	76.0	68.1 - 83.9	14,300
75+	1,700	19.1	11.2 - 27.0	1,000	10.8	5.5 - 16.1	6,300	70.1	61.2 - 79.0	8,900



**Diabetes - times feet chk by doc by State, County, Island, Community, BRFSS Age Group, DOH Race-Ethnicity, Gender, Education Level, Employment Status (Grouped), Household Income, Poverty Level, Marital Status (Grouped), Married, Health Care Coverage, for the Year(s) - 2000-2002, 2001-2003, 2002-2004, 2003-2005, 2004-2006, 2005-2007, 2006-2008, 2007-2009, 2008-2010**

*Note: Weighted numbers (#) represent 3-yr averages, percentages and 95% confidence intervals; Respondents aged 18 years and older; n/r (Not Reportable) - If the unweighted total responses for a dimension (row) is <50 that row will not be shown; n/a (Not Available) - Not asked of a subset of respondents*

**Year: 2001-2003**

DOH Race-Ethnicity	None			Once			More than one time			Estimated Population (3-Yr Avg)
	#	%	C.I. (95%)	#	%	C.I. (95%)	#	%	C.I. (95%)	#
Caucasian	2,400	19.8	12.6 - 27.0	1,200	9.8	5.0 - 14.5	8,600	70.4	62.3 - 78.6	12,200
Native Hawaiian	1,300	14.1	6.7 - 21.4	1,900	19.6	10.4 - 28.8	6,300	66.3	55.7 - 76.9	9,500
Chinese	1,000	18.7	8.2 - 29.2	1,000	18.0	6.8 - 29.2	3,400	63.3	49.5 - 77.1	5,300
Filipino	1,800	19.1	9.1 - 29.0	1,600	16.6	7.6 - 25.6	6,200	64.3	51.7 - 77.0	9,600
Japanese	2,500	15.2	9.7 - 20.7	1,300	7.8	4.0 - 11.6	12,600	77.0	70.6 - 83.4	16,400

Gender	None			Once			More than one time			Estimated Population (3-Yr Avg)
	#	%	C.I. (95%)	#	%	C.I. (95%)	#	%	C.I. (95%)	#
Male	4,600	16.8	11.7 - 21.9	3,500	12.6	8.0 - 17.2	19,500	70.6	64.1 - 77.0	27,600
Female	5,100	17.4	13.1 - 21.6	3,900	13.0	9.3 - 16.7	20,600	69.6	64.4 - 74.8	29,600

**Diabetes - times feet chk by doc by State, County, Island, Community, BRFSS Age Group, DOH Race-Ethnicity, Gender, Education Level, Employment Status (Grouped), Household Income, Poverty Level, Marital Status (Grouped), Married, Health Care Coverage, for the Year(s) - 2000-2002, 2001-2003, 2002-2004, 2003-2005, 2004-2006, 2005-2007, 2006-2008, 2007-2009, 2008-2010**

*Note: Weighted numbers (#) represent 3-yr averages, percentages and 95% confidence intervals; Respondents aged 18 years and older; n/r (Not Reportable) - If the unweighted total responses for a dimension (row) is <50 that row will not be shown; n/a (Not Available) - Not asked of a subset of respondents*

**Year: 2001-2003**

Education Level	None			Once			More than one time			Estimated Population (3-Yr Avg)
	#	%	C.I. (95%)	#	%	C.I. (95%)	#	%	C.I. (95%)	#
Grades 9 thru 11 (Some High School)	1,100	27.2	11.9 - 42.5	200	4.6	0.0 - 9.7	2,800	68.2	52.7 - 83.7	4,200
Grades 12 or GED (High School Grad)	3,600	17.4	12.1 - 22.8	2,000	9.5	5.6 - 13.4	15,100	73.1	66.8 - 79.3	20,600
College 1 to 3 years (Some College/ Tech)	2,000	12.0	6.9 - 17.0	2,100	12.8	6.7 - 18.9	12,500	75.2	67.5 - 82.9	16,600
College 4 years or more (College Grad)	2,600	18.9	11.7 - 26.0	2,600	19.1	12.3 - 25.9	8,600	62.1	53.5 - 70.6	13,900

Employment Status (Grouped)	None			Once			More than one time			Estimated Population (3-Yr Avg)
	#	%	C.I. (95%)	#	%	C.I. (95%)	#	%	C.I. (95%)	#
Employed	4,300	17.3	12.4 - 22.3	4,600	18.4	13.0 - 23.9	15,900	64.2	57.3 - 71.2	24,700
Retired/Unable to work	4,900	17.3	12.4 - 22.2	2,300	8.1	5.0 - 11.3	21,300	74.6	69.1 - 80.0	28,500

**Diabetes - times feet chk by doc by State, County, Island, Community, BRFSS Age Group, DOH Race-Ethnicity, Gender, Education Level, Employment Status (Grouped), Household Income, Poverty Level, Marital Status (Grouped), Married, Health Care Coverage, for the Year(s) - 2000-2002, 2001-2003, 2002-2004, 2003-2005, 2004-2006, 2005-2007, 2006-2008, 2007-2009, 2008-2010**

*Note: Weighted numbers (#) represent 3-yr averages, percentages and 95% confidence intervals; Respondents aged 18 years and older; n/r (Not Reportable) - If the unweighted total responses for a dimension (row) is <50 that row will not be shown; n/a (Not Available) - Not asked of a subset of respondents*

**Year: 2001-2003**

Household Income	None			Once			More than one time			Estimated Population (3-Yr Avg)
	#	%	C.I. (95%)	#	%	C.I. (95%)	#	%	C.I. (95%)	#
Less than \$10,000	700	21.4	9.1 - 33.7	400	12.2	0.0 - 25.1	2,300	66.4	50.7 - 82.2	3,400
\$10,000 to \$14,999	1,300	28.8	12.5 - 45.1	500	10.9	1.8 - 20.0	2,700	60.3	43.7 - 76.9	4,500
\$20,000 to \$24,999	1,100	23.8	8.0 - 39.7	200	3.8	0.0 - 8.5	3,200	72.4	55.2 - 89.6	4,500
\$25,000 to \$34,999	800	17.5	6.9 - 28.1	600	13.5	3.8 - 23.1	3,200	69.0	55.6 - 82.5	4,600
\$35,000 to \$49,999	1,100	12.9	4.7 - 21.2	1,600	18.4	9.0 - 27.9	5,900	68.6	57.6 - 79.7	8,600
\$50,000 to \$74,999	600	9.0	3.0 - 15.0	1,200	16.3	7.2 - 25.5	5,400	74.7	64.1 - 85.3	7,200
\$75,000 or more	1,800	23.4	12.3 - 34.4	1,300	16.7	7.4 - 26.0	4,500	59.9	47.3 - 72.5	7,500

**Diabetes - times feet chk by doc by State, County, Island, Community, BRFSS Age Group, DOH Race-Ethnicity, Gender, Education Level, Employment Status (Grouped), Household Income, Poverty Level, Marital Status (Grouped), Married, Health Care Coverage, for the Year(s) - 2000-2002, 2001-2003, 2002-2004, 2003-2005, 2004-2006, 2005-2007, 2006-2008, 2007-2009, 2008-2010**

*Note: Weighted numbers (#) represent 3-yr averages, percentages and 95% confidence intervals; Respondents aged 18 years and older; n/r (Not Reportable) - If the unweighted total responses for a dimension (row) is <50 that row will not be shown; n/a (Not Available) - Not asked of a subset of respondents*

**Year: 2001-2003**

Poverty Level	None			Once			More than one time			Estimated Population (3-Yr Avg)
	#	%	C.I. (95%)	#	%	C.I. (95%)	#	%	C.I. (95%)	#
<b>0-130%</b>	3,100	24.9	15.8 - 34.0	1,200	10.1	4.3 - 15.9	8,000	65.0	54.6 - 75.4	12,300
<b>131-185%</b>	1,000	18.8	7.0 - 30.6	600	12.3	4.7 - 19.9	3,600	68.9	55.6 - 82.1	5,200
<b>186+%</b>	3,900	15.5	10.8 - 20.3	4,100	16.3	11.3 - 21.4	17,000	68.1	61.8 - 74.4	25,000

Marital Status (Grouped)	None			Once			More than one time			Estimated Population (3-Yr Avg)
	#	%	C.I. (95%)	#	%	C.I. (95%)	#	%	C.I. (95%)	#
<b>Married</b>	6,400	17.7	13.4 - 22.0	5,100	14.2	10.1 - 18.2	24,400	68.1	62.6 - 73.6	35,900
<b>Widowed</b>	1,200	12.6	5.7 - 19.6	600	6.2	1.8 - 10.6	7,400	81.1	73.2 - 89.1	9,100
<b>Other</b>	2,300	18.6	11.2 - 26.0	1,700	13.9	7.9 - 19.9	8,200	67.5	58.9 - 76.1	12,200

**Diabetes - times feet chk by doc by State, County, Island, Community, BRFSS Age Group, DOH Race-Ethnicity, Gender, Education Level, Employment Status (Grouped), Household Income, Poverty Level, Marital Status (Grouped), Married, Health Care Coverage, for the Year(s) - 2000-2002, 2001-2003, 2002-2004, 2003-2005, 2004-2006, 2005-2007, 2006-2008, 2007-2009, 2008-2010**

*Note: Weighted numbers (#) represent 3-yr averages, percentages and 95% confidence intervals; Respondents aged 18 years and older; n/r (Not Reportable) - If the unweighted total responses for a dimension (row) is <50 that row will not be shown; n/a (Not Available) - Not asked of a subset of respondents*

**Year: 2001-2003**

<b>Married</b>	<b>None</b>			<b>Once</b>			<b>More than one time</b>			<b>Estimated Population (3-Yr Avg)</b>
	<b>#</b>	<b>%</b>	<b>C.I. (95%)</b>	<b>#</b>	<b>%</b>	<b>C.I. (95%)</b>	<b>#</b>	<b>%</b>	<b>C.I. (95%)</b>	<b>#</b>
<b>Yes</b>	6,500	17.7	13.5 - 22.0	5,100	14.0	10.0 - 18.0	24,900	68.3	62.8 - 73.7	36,500
<b>No</b>	3,300	16.0	10.7 - 21.3	2,200	10.6	6.6 - 14.6	15,100	73.4	67.2 - 79.6	20,600

<b>Health Care Coverage</b>	<b>None</b>			<b>Once</b>			<b>More than one time</b>			<b>Estimated Population (3-Yr Avg)</b>
	<b>#</b>	<b>%</b>	<b>C.I. (95%)</b>	<b>#</b>	<b>%</b>	<b>C.I. (95%)</b>	<b>#</b>	<b>%</b>	<b>C.I. (95%)</b>	<b>#</b>
<b>Yes</b>	9,300	16.7	13.4 - 20.1	7,000	12.5	9.6 - 15.5	39,500	70.7	66.6 - 74.9	55,800

**Diabetes - times feet chk by doc by State, County, Island, Community, BRFSS Age Group, DOH Race-Ethnicity, Gender, Education Level, Employment Status (Grouped), Household Income, Poverty Level, Marital Status (Grouped), Married, Health Care Coverage, for the Year(s) - 2000-2002, 2001-2003, 2002-2004, 2003-2005, 2004-2006, 2005-2007, 2006-2008, 2007-2009, 2008-2010**

*Note: Weighted numbers (#) represent 3-yr averages, percentages and 95% confidence intervals; Respondents aged 18 years and older; n/r (Not Reportable) - If the unweighted total responses for a dimension (row) is <50 that row will not be shown; n/a (Not Available) - Not asked of a subset of respondents*

**Year: 2000-2002**

State	None			Once			More than one time			Estimated Population (3-Yr Avg)
	#	%	C.I. (95%)	#	%	C.I. (95%)	#	%	C.I. (95%)	#
Hawaii State	8,200	16.6	13.3 - 19.9	6,700	13.5	10.5 - 16.6	34,400	69.9	65.7 - 74.1	49,300

County	None			Once			More than one time			Estimated Population (3-Yr Avg)
	#	%	C.I. (95%)	#	%	C.I. (95%)	#	%	C.I. (95%)	#
Hawaii	1,400	23.1	16.6 - 29.6	800	13.6	8.4 - 18.9	3,800	63.3	55.9 - 70.7	6,000
Honolulu	5,600	15.7	11.6 - 19.8	5,000	14.0	10.0 - 18.1	25,000	70.3	65.0 - 75.5	35,500
Kauai	300	11.5	4.4 - 18.6	200	9.8	3.5 - 16.0	1,700	78.7	69.6 - 87.8	2,200
Maui	1,000	17.3	8.0 - 26.6	600	11.6	5.3 - 18.0	3,900	71.1	58.4 - 83.8	5,500

**Diabetes - times feet chk by doc by State, County, Island, Community, BRFSS Age Group, DOH Race-Ethnicity, Gender, Education Level, Employment Status (Grouped), Household Income, Poverty Level, Marital Status (Grouped), Married, Health Care Coverage, for the Year(s) - 2000-2002, 2001-2003, 2002-2004, 2003-2005, 2004-2006, 2005-2007, 2006-2008, 2007-2009, 2008-2010**

*Note: Weighted numbers (#) represent 3-yr averages, percentages and 95% confidence intervals; Respondents aged 18 years and older; n/r (Not Reportable) - If the unweighted total responses for a dimension (row) is <50 that row will not be shown; n/a (Not Available) - Not asked of a subset of respondents*

**Year: 2000-2002**

Island	None			Once			More than one time			Estimated Population (3-Yr Avg)
	#	%	C.I. (95%)	#	%	C.I. (95%)	#	%	C.I. (95%)	#
Hawaii	1,400	23.1	16.6 - 29.6	800	13.6	8.4 - 18.9	3,800	63.3	55.9 - 70.7	6,000
Kauai	300	11.5	4.4 - 18.6	200	9.8	3.5 - 16.0	1,700	78.7	69.6 - 87.8	2,200
Maui	900	18.6	7.8 - 29.3	500	10.3	3.7 - 17.0	3,500	71.1	56.9 - 85.4	4,900
Oahu	5,600	15.7	11.6 - 19.8	5,000	14.0	10.0 - 18.1	25,000	70.3	65.0 - 75.5	35,500

**Diabetes - times feet chk by doc by State, County, Island, Community, BRFSS Age Group, DOH Race-Ethnicity, Gender, Education Level, Employment Status (Grouped), Household Income, Poverty Level, Marital Status (Grouped), Married, Health Care Coverage, for the Year(s) - 2000-2002, 2001-2003, 2002-2004, 2003-2005, 2004-2006, 2005-2007, 2006-2008, 2007-2009, 2008-2010**

*Note: Weighted numbers (#) represent 3-yr averages, percentages and 95% confidence intervals; Respondents aged 18 years and older; n/r (Not Reportable) - If the unweighted total responses for a dimension (row) is <50 that row will not be shown; n/a (Not Available) - Not asked of a subset of respondents*

**Year: 2000-2002**

Community	None			Once			More than one time			Estimated Population (3-Yr Avg)
	#	%	C.I. (95%)	#	%	C.I. (95%)	#	%	C.I. (95%)	#
Aiea/ Pearl City	800	14.7	3.8 - 25.5	900	16.1	6.3 - 26.0	3,800	69.2	56.0 - 82.3	5,500
Hilo	600	26.3	14.9 - 37.7	300	12.9	5.0 - 20.7	1,400	60.8	48.6 - 73.0	2,200
Kaimuki/ Palolo/ Waikiki	800	16.8	3.6 - 30.0	700	16.1	2.0 - 30.2	3,100	67.1	50.5 - 83.7	4,600
Kona	300	20.0	8.5 - 31.6	200	12.2	1.9 - 22.5	1,000	67.8	53.7 - 82.0	1,500
Lihue-Waimea	200	9.2	1.5 - 16.9	200	10.1	2.6 - 17.7	1,300	80.7	70.4 - 91.0	1,600



**Diabetes - times feet chk by doc by State, County, Island, Community, BRFSS Age Group, DOH Race-Ethnicity, Gender, Education Level, Employment Status (Grouped), Household Income, Poverty Level, Marital Status (Grouped), Married, Health Care Coverage, for the Year(s) - 2000-2002, 2001-2003, 2002-2004, 2003-2005, 2004-2006, 2005-2007, 2006-2008, 2007-2009, 2008-2010**

*Note: Weighted numbers (#) represent 3-yr averages, percentages and 95% confidence intervals; Respondents aged 18 years and older; n/r (Not Reportable) - If the unweighted total responses for a dimension (row) is <50 that row will not be shown; n/a (Not Available) - Not asked of a subset of respondents*

**Year: 2000-2002**

BRFSS Age Group	None			Once			More than one time			Estimated Population (3-Yr Avg)
	#	%	C.I. (95%)	#	%	C.I. (95%)	#	%	C.I. (95%)	#
35-44	1,300	27.7	15.7 - 39.7	1,200	26.3	13.8 - 38.8	2,100	46.0	33.4 - 58.6	4,600
45-54	1,300	15.8	9.2 - 22.5	1,600	19.0	9.9 - 28.2	5,300	65.1	55.1 - 75.2	8,200
55-64	2,100	17.3	10.2 - 24.4	1,200	9.6	4.9 - 14.4	8,900	73.1	65.0 - 81.1	12,100
65-74	1,600	11.8	7.0 - 16.7	1,200	8.8	3.6 - 13.9	10,700	79.4	72.7 - 86.1	13,500
75+	1,100	14.7	6.7 - 22.7	1,100	15.1	8.1 - 22.0	5,100	70.2	60.4 - 80.1	7,300

**Diabetes - times feet chk by doc by State, County, Island, Community, BRFSS Age Group, DOH Race-Ethnicity, Gender, Education Level, Employment Status (Grouped), Household Income, Poverty Level, Marital Status (Grouped), Married, Health Care Coverage, for the Year(s) - 2000-2002, 2001-2003, 2002-2004, 2003-2005, 2004-2006, 2005-2007, 2006-2008, 2007-2009, 2008-2010**

*Note: Weighted numbers (#) represent 3-yr averages, percentages and 95% confidence intervals; Respondents aged 18 years and older; n/r (Not Reportable) - If the unweighted total responses for a dimension (row) is <50 that row will not be shown; n/a (Not Available) - Not asked of a subset of respondents*

**Year: 2000-2002**

DOH Race-Ethnicity	None			Once			More than one time			Estimated Population (3-Yr Avg)
	#	%	C.I. (95%)	#	%	C.I. (95%)	#	%	C.I. (95%)	#
Caucasian	1,700	17.9	10.3 - 25.5	1,200	12.9	7.3 - 18.5	6,500	69.2	60.4 - 77.9	9,400
Native Hawaiian	1,300	15.6	8.3 - 22.9	1,300	15.5	6.4 - 24.7	5,600	68.8	58.4 - 79.3	8,100
Chinese	800	24.2	9.7 - 38.6	300	9.2	0.9 - 17.6	2,100	66.6	51.1 - 82.2	3,100
Filipino	1,500	16.4	7.8 - 25.0	1,400	15.7	6.9 - 24.4	6,100	67.9	55.9 - 80.0	9,000
Japanese	2,300	15.1	9.6 - 20.6	1,800	11.3	6.7 - 15.9	11,400	73.5	66.9 - 80.2	15,500

Gender	None			Once			More than one time			Estimated Population (3-Yr Avg)
	#	%	C.I. (95%)	#	%	C.I. (95%)	#	%	C.I. (95%)	#
Male	4,100	16.5	11.6 - 21.4	3,500	13.9	9.3 - 18.6	17,400	69.6	63.2 - 75.9	24,900
Female	4,100	16.7	12.3 - 21.1	3,200	13.1	9.2 - 17.1	17,100	70.2	64.8 - 75.6	24,300

**Diabetes - times feet chk by doc by State, County, Island, Community, BRFSS Age Group, DOH Race-Ethnicity, Gender, Education Level, Employment Status (Grouped), Household Income, Poverty Level, Marital Status (Grouped), Married, Health Care Coverage, for the Year(s) - 2000-2002, 2001-2003, 2002-2004, 2003-2005, 2004-2006, 2005-2007, 2006-2008, 2007-2009, 2008-2010**

*Note: Weighted numbers (#) represent 3-yr averages, percentages and 95% confidence intervals; Respondents aged 18 years and older; n/r (Not Reportable) - If the unweighted total responses for a dimension (row) is <50 that row will not be shown; n/a (Not Available) - Not asked of a subset of respondents*

**Year: 2000-2002**

Education Level	None			Once			More than one time			Estimated Population (3-Yr Avg)
	#	%	C.I. (95%)	#	%	C.I. (95%)	#	%	C.I. (95%)	#
Never attended school/ Only Kindergarten to Grades 8	400	19.8	3.0 - 36.7	200	9.8	0.1 - 19.5	1,400	70.4	52.7 - 88.1	2,000
Grades 9 thru 11 (Some High School)	700	20.2	3.1 - 37.3	300	8.1	0.0 - 17.0	2,300	71.8	54.2 - 89.3	3,200
Grades 12 or GED (High School Grad)	3,000	16.0	11.0 - 21.0	2,000	10.5	6.4 - 14.6	13,900	73.5	67.5 - 79.6	18,900
College 1 to 3 years (Some College/ Tech)	1,700	12.8	7.2 - 18.5	1,900	14.2	7.3 - 21.1	9,900	73.0	64.2 - 81.7	13,500
College 4 years or more (College Grad)	2,300	20.1	13.3 - 26.9	2,300	20.0	12.9 - 27.0	6,900	59.9	51.6 - 68.3	11,600

Employment Status (Grouped)	None			Once			More than one time			Estimated Population (3-Yr Avg)
	#	%	C.I. (95%)	#	%	C.I. (95%)	#	%	C.I. (95%)	#
Employed	3,700	17.0	12.0 - 22.1	4,000	18.4	12.7 - 24.0	14,000	64.6	57.5 - 71.7	21,600
Retired/Unable to work	3,700	15.1	10.6 - 19.6	2,200	8.8	5.7 - 11.8	18,800	76.1	71.0 - 81.3	24,600

**Diabetes - times feet chk by doc by State, County, Island, Community, BRFSS Age Group, DOH Race-Ethnicity, Gender, Education Level, Employment Status (Grouped), Household Income, Poverty Level, Marital Status (Grouped), Married, Health Care Coverage, for the Year(s) - 2000-2002, 2001-2003, 2002-2004, 2003-2005, 2004-2006, 2005-2007, 2006-2008, 2007-2009, 2008-2010**

*Note: Weighted numbers (#) represent 3-yr averages, percentages and 95% confidence intervals; Respondents aged 18 years and older; n/r (Not Reportable) - If the unweighted total responses for a dimension (row) is <50 that row will not be shown; n/a (Not Available) - Not asked of a subset of respondents*

**Year: 2000-2002**

Household Income	None			Once			More than one time			Estimated Population (3-Yr Avg)
	#	%	C.I. (95%)	#	%	C.I. (95%)	#	%	C.I. (95%)	#
Less than \$10,000	600	20.7	10.6 - 30.9	200	7.3	0.7 - 13.9	2,200	72.0	60.0 - 83.9	3,000
\$10,000 to \$14,999	600	18.4	3.1 - 33.6	600	19.8	6.7 - 33.0	1,900	61.8	45.1 - 78.5	3,000
\$15,000 to \$19,999	500	22.8	8.3 - 37.4	200	12.0	3.3 - 20.8	1,300	65.1	49.4 - 80.8	2,000
\$20,000 to \$24,999	1,100	28.7	8.0 - 49.3	200	6.6	0.0 - 15.1	2,400	64.7	41.5 - 88.0	3,800
\$25,000 to \$34,999	500	8.7	2.5 - 14.9	700	12.2	4.8 - 19.7	4,200	79.1	69.5 - 88.7	5,300
\$35,000 to \$49,999	1,000	11.7	6.2 - 17.2	1,900	22.6	12.4 - 32.8	5,400	65.7	55.1 - 76.3	8,300
\$50,000 to \$74,999	700	13.1	5.7 - 20.6	1,100	21.4	9.2 - 33.7	3,300	65.4	52.6 - 78.3	5,100
\$75,000 or more	1,700	28.4	15.5 - 41.2	700	11.2	3.8 - 18.5	3,600	60.4	46.8 - 74.1	5,900

**Diabetes - times feet chk by doc by State, County, Island, Community, BRFSS Age Group, DOH Race-Ethnicity, Gender, Education Level, Employment Status (Grouped), Household Income, Poverty Level, Marital Status (Grouped), Married, Health Care Coverage, for the Year(s) - 2000-2002, 2001-2003, 2002-2004, 2003-2005, 2004-2006, 2005-2007, 2006-2008, 2007-2009, 2008-2010**

*Note: Weighted numbers (#) represent 3-yr averages, percentages and 95% confidence intervals; Respondents aged 18 years and older; n/r (Not Reportable) - If the unweighted total responses for a dimension (row) is <50 that row will not be shown; n/a (Not Available) - Not asked of a subset of respondents*

**Year: 2000-2002**

Poverty Level	None			Once			More than one time			Estimated Population (3-Yr Avg)
	#	%	C.I. (95%)	#	%	C.I. (95%)	#	%	C.I. (95%)	#
<b>0-130%</b>	1,900	21.9	12.2 - 31.7	800	8.9	3.6 - 14.2	5,900	69.2	57.7 - 80.6	8,600
<b>131-185%</b>	900	15.1	5.8 - 24.4	800	13.5	5.3 - 21.6	4,200	71.4	59.9 - 83.0	5,800
<b>186+%</b>	3,700	17.0	12.3 - 21.6	4,000	18.3	12.9 - 23.7	14,300	64.7	58.4 - 71.0	22,000

Marital Status (Grouped)	None			Once			More than one time			Estimated Population (3-Yr Avg)
	#	%	C.I. (95%)	#	%	C.I. (95%)	#	%	C.I. (95%)	#
<b>Married</b>	5,100	15.9	11.7 - 20.2	4,700	14.6	10.4 - 18.7	22,300	69.5	63.9 - 75.0	32,000
<b>Widowed</b>	700	9.8	4.4 - 15.2	400	5.5	1.8 - 9.2	5,700	84.6	78.1 - 91.2	6,800
<b>Other</b>	2,400	23.0	15.8 - 30.3	1,600	15.6	9.1 - 22.1	6,400	61.3	52.9 - 69.7	10,400

**Diabetes - times feet chk by doc by State, County, Island, Community, BRFSS Age Group, DOH Race-Ethnicity, Gender, Education Level, Employment Status (Grouped), Household Income, Poverty Level, Marital Status (Grouped), Married, Health Care Coverage, for the Year(s) - 2000-2002, 2001-2003, 2002-2004, 2003-2005, 2004-2006, 2005-2007, 2006-2008, 2007-2009, 2008-2010**

*Note: Weighted numbers (#) represent 3-yr averages, percentages and 95% confidence intervals; Respondents aged 18 years and older; n/r (Not Reportable) - If the unweighted total responses for a dimension (row) is <50 that row will not be shown; n/a (Not Available) - Not asked of a subset of respondents*

**Year: 2000-2002**

<b>Married</b>	<b>None</b>			<b>Once</b>			<b>More than one time</b>			<b>Estimated Population (3-Yr Avg)</b>
	<b>#</b>	<b>%</b>	<b>C.I. (95%)</b>	<b>#</b>	<b>%</b>	<b>C.I. (95%)</b>	<b>#</b>	<b>%</b>	<b>C.I. (95%)</b>	<b>#</b>
<b>Yes</b>	5,300	16.2	12.0 - 20.4	4,700	14.4	10.4 - 18.5	22,700	69.4	63.9 - 74.9	32,600
<b>No</b>	2,900	17.4	12.3 - 22.5	2,000	11.8	7.4 - 16.2	11,800	70.8	64.6 - 77.0	16,600

<b>Health Care Coverage</b>	<b>None</b>			<b>Once</b>			<b>More than one time</b>			<b>Estimated Population (3-Yr Avg)</b>
	<b>#</b>	<b>%</b>	<b>C.I. (95%)</b>	<b>#</b>	<b>%</b>	<b>C.I. (95%)</b>	<b>#</b>	<b>%</b>	<b>C.I. (95%)</b>	<b>#</b>
<b>Yes</b>	8,000	16.5	13.2 - 19.9	6,500	13.4	10.3 - 16.6	33,700	70.0	65.8 - 74.3	48,200