

Diabetes - times chk for HbA1C by State, County, Island, Community, BRFSS Age Group, DOH Race-Ethnicity, Gender, Education Level, Employment Status (Grouped), Household Income, Poverty Level, Marital Status (Grouped), Married, Health Care Coverage, for the Year(s) - 2000-2002, 2001-2003, 2002-2004, 2003-2005, 2004-2006, 2005-2007, 2006-2008, 2007-2009, 2008-2010

Note: Weighted numbers (#) represent 3-yr averages, percentages and 95% confidence intervals; Respondents aged 18 years and older; n/r (Not Reportable) - If the unweighted total responses for a dimension (row) is <50 that row will not be shown; n/a (Not Available) - Not asked of a subset of respondents

The trend analysis report shows the trend for the selected health variable over selected years in a table and a graph. Estimated Population: This number is a weighted representation of the population who responded to a particular question in the survey. For most questions the eligible population will be the entire adult population. For some secondary questions only a subset of the population was asked the question. For example, all survey participants were asked if they had diabetes, but only those who answered yes were asked if they use insulin. If a dimension value is unknown for a particular survey record, that record will not be included in the counts for that particular dimension.

For documentation on other terms and coding in this report, please go to the following links

[Click here to access BRFSS documentation](#)

[Click here to access DOH Race-Ethnicity coding](#)

[Click here to access The Hawai'i Data Guide](#)

[Click here to access Poverty Level Methodology](#)

**For questions about this report, please contact
The Hawaii Health Data Warehouse**

profiles@hhdw.org

(855) 946-5899 x15

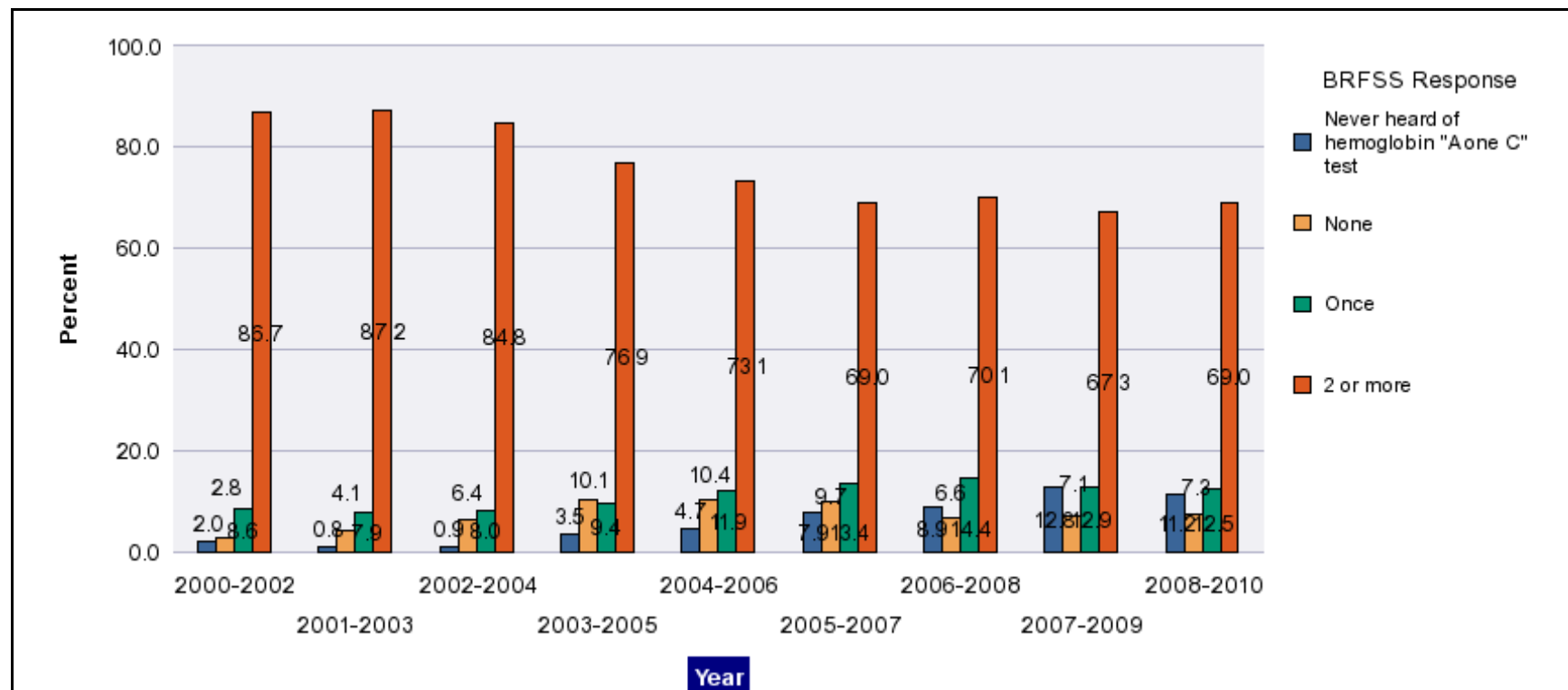
Diabetes - times chk for HbA1C by State, County, Island, Community, BRFSS Age Group, DOH Race-Ethnicity, Gender, Education Level, Employment Status (Grouped), Household Income, Poverty Level, Marital Status (Grouped), Married, Health Care Coverage, for the Year(s) - 2000-2002, 2001-2003, 2002-2004, 2003-2005, 2004-2006, 2005-2007, 2006-2008, 2007-2009, 2008-2010

Note: Weighted numbers (#) represent 3-yr averages, percentages and 95% confidence intervals; Respondents aged 18 years and older; n/r (Not Reportable) - If the unweighted total responses for a dimension (row) is <50 that row will not be shown; n/a (Not Available) - Not asked of a subset of respondents

Year	Never heard of hemoglobin "A one C" test			None			Once			2 or more			Estimated Population (3-Yr Avg)
	#	%	C.I.(95%)	#	%	C.I.(95%)	#	%	C.I.(95%)	#	%	C.I.(95%)	#
2000-2002	900	2.0	0.8 - 3.2	1,300	2.8	1.5 - 4.0	4,000	8.6	6.1 - 11.0	40,400	86.7	83.7 - 89.6	46,600
2001-2003	400	0.8	0.1 - 1.5	2,300	4.1	2.5 - 5.8	4,400	7.9	5.4 - 10.3	48,700	87.2	84.3 - 90.2	55,900
2002-2004	500	0.9	0.2 - 1.5	3,700	6.4	4.2 - 8.6	4,600	8.0	5.3 - 10.6	49,000	84.8	81.4 - 88.2	57,900
2003-2005	2,200	3.5	1.8 - 5.3	6,400	10.1	6.8 - 13.4	6,000	9.4	6.4 - 12.5	48,600	76.9	72.4 - 81.5	63,100
2004-2006	3,000	4.7	2.7 - 6.6	6,600	10.4	7.2 - 13.5	7,500	11.9	8.8 - 14.9	46,500	73.1	68.6 - 77.6	63,600
2005-2007	5,400	7.9	5.7 - 10.1	6,600	9.7	6.9 - 12.6	9,100	13.4	10.7 - 16.1	47,100	69.0	65.1 - 72.8	68,200
2006-2008	6,500	8.9	7.0 - 10.8	4,800	6.6	5.0 - 8.1	10,500	14.4	12.1 - 16.7	51,000	70.1	67.1 - 73.1	72,800
2007-2009	9,600	12.8	9.9 - 15.6	5,300	7.1	4.9 - 9.2	9,700	12.9	10.4 - 15.3	50,500	67.3	63.7 - 70.9	75,100
2008-2010	8,700	11.2	8.6 - 13.8	5,700	7.3	5.3 - 9.3	9,800	12.5	10.1 - 15.0	53,900	69.0	65.5 - 72.5	78,100

Diabetes - times chk for HbA1C by State, County, Island, Community, BRFSS Age Group, DOH Race-Ethnicity, Gender, Education Level, Employment Status (Grouped), Household Income, Poverty Level, Marital Status (Grouped), Married, Health Care Coverage, for the Year(s) - 2000-2002, 2001-2003, 2002-2004, 2003-2005, 2004-2006, 2005-2007, 2006-2008, 2007-2009, 2008-2010

Note: Weighted numbers (#) represent 3-yr averages, percentages and 95% confidence intervals; Respondents aged 18 years and older; n/r (Not Reportable) - If the unweighted total responses for a dimension (row) is <50 that row will not be shown; n/a (Not Available) - Not asked of a subset of respondents



Diabetes - times chk for HbA1C by State, County, Island, Community, BRFSS Age Group, DOH Race-Ethnicity, Gender, Education Level, Employment Status (Grouped), Household Income, Poverty Level, Marital Status (Grouped), Married, Health Care Coverage, for the Year(s) - 2000-2002, 2001-2003, 2002-2004, 2003-2005, 2004-2006, 2005-2007, 2006-2008, 2007-2009, 2008-2010

Note: Weighted numbers (#) represent 3-yr averages, percentages and 95% confidence intervals; Respondents aged 18 years and older; n/r (Not Reportable) - If the unweighted total responses for a dimension (row) is <50 that row will not be shown; n/a (Not Available) - Not asked of a subset of respondents

Year: 2008-2010

State	Never heard of hemoglobin "A one C" test			None			Once			2 or more			Estimated Population (3-Yr Avg)
	#	%	C.I. (95%)	#	%	C.I. (95%)	#	%	C.I. (95%)	#	%	C.I. (95%)	#
Hawaii State	8,700	11.2	8.6 - 13.8	5,700	7.3	5.3 - 9.3	9,800	12.5	10.1 - 15.0	53,900	69.0	65.5 - 72.5	78,100

County	Never heard of hemoglobin "A one C" test			None			Once			2 or more			Estimated Population (3-Yr Avg)
	#	%	C.I. (95%)	#	%	C.I. (95%)	#	%	C.I. (95%)	#	%	C.I. (95%)	#
Hawaii	1,100	9.8	5.9 - 13.8	1,000	9.0	3.2 - 14.8	1,600	14.3	8.6 - 20.0	7,400	66.9	59.5 - 74.2	11,000
Honolulu	6,200	11.3	7.7 - 14.8	3,900	7.1	4.7 - 9.4	6,900	12.5	9.3 - 15.7	38,100	69.2	64.6 - 73.7	55,100
Kauai	200	5.1	1.8 - 8.5	100	2.5	0.1 - 4.9	500	14.9	8.3 - 21.4	2,800	77.5	70.0 - 85.0	3,600
Maui	1,300	15.0	9.1 - 20.9	800	9.0	2.0 - 15.9	800	9.2	4.9 - 13.5	5,600	66.8	58.5 - 75.0	8,400

Diabetes - times chk for HbA1C by State, County, Island, Community, BRFSS Age Group, DOH Race-Ethnicity, Gender, Education Level, Employment Status (Grouped), Household Income, Poverty Level, Marital Status (Grouped), Married, Health Care Coverage, for the Year(s) - 2000-2002, 2001-2003, 2002-2004, 2003-2005, 2004-2006, 2005-2007, 2006-2008, 2007-2009, 2008-2010

Note: Weighted numbers (#) represent 3-yr averages, percentages and 95% confidence intervals; Respondents aged 18 years and older; n/r (Not Reportable) - If the unweighted total responses for a dimension (row) is <50 that row will not be shown; n/a (Not Available) - Not asked of a subset of respondents

Year: 2008-2010

Island	Never heard of hemoglobin "A one C" test			None			Once			2 or more			Estimated Population (3-Yr Avg)
	#	%	C.I. (95%)	#	%	C.I. (95%)	#	%	C.I. (95%)	#	%	C.I. (95%)	#
Hawaii	1,100	9.8	5.9 - 13.8	1,000	9.0	3.2 - 14.8	1,600	14.3	8.6 - 20.0	7,400	66.9	59.5 - 74.2	11,000
Kauai	200	5.1	1.8 - 8.5	100	2.5	0.1 - 4.9	500	14.9	8.3 - 21.4	2,800	77.5	70.0 - 85.0	3,600
Lanai	<50	21.1	9.0 - 33.3	<50	9.6	0.0 - 19.9	<50	9.3	1.2 - 17.4	100	59.9	44.2 - 75.7	200
Maui	1,100	14.9	8.5 - 21.2	700	8.9	1.1 - 16.8	700	9.3	4.5 - 14.1	5,000	66.9	57.7 - 76.1	7,400
Molokai	100	15.2	0.0 - 33.7	100	9.2	2.2 - 16.3	100	8.9	1.4 - 16.4	600	66.7	49.1 - 84.3	900
Oahu	6,200	11.3	7.7 - 14.8	3,900	7.1	4.7 - 9.4	6,900	12.5	9.3 - 15.7	38,100	69.2	64.6 - 73.7	55,100

Community	Never heard of hemoglobin "A one C" test			None			Once			2 or more			Estimated Population (3-Yr Avg)
	#	%	C.I. (95%)	#	%	C.I. (95%)	#	%	C.I. (95%)	#	%	C.I. (95%)	#
Aiea/ Pearl City	400	9.9	0.9 - 18.8	300	7.5	0.0 - 15.7	200	5.0	0.0 - 10.6	3,400	77.6	65.4 - 89.8	4,300
Hanalei/ Kapaa	<50	0.9	0.0 - 2.8	<50	1.4	0.0 - 4.3	200	20.5	6.5 - 34.4	900	77.1	63.0 - 91.3	1,200

Diabetes - times chk for HbA1C by State, County, Island, Community, BRFSS Age Group, DOH Race-Ethnicity, Gender, Education Level, Employment Status (Grouped), Household Income, Poverty Level, Marital Status (Grouped), Married, Health Care Coverage, for the Year(s) - 2000-2002, 2001-2003, 2002-2004, 2003-2005, 2004-2006, 2005-2007, 2006-2008, 2007-2009, 2008-2010

Note: Weighted numbers (#) represent 3-yr averages, percentages and 95% confidence intervals; Respondents aged 18 years and older; n/r (Not Reportable) - If the unweighted total responses for a dimension (row) is <50 that row will not be shown; n/a (Not Available) - Not asked of a subset of respondents

Year: 2008-2010

Community	Never heard of hemoglobin "A one C" test			None			Once			2 or more			Estimated Population (3-Yr Avg)
	#	%	C.I. (95%)	#	%	C.I. (95%)	#	%	C.I. (95%)	#	%	C.I. (95%)	#
Hilo	300	8.6	2.1 - 15.2	300	8.0	2.8 - 13.3	300	9.6	2.5 - 16.8	2,600	73.7	63.8 - 83.6	3,500
Kaaawa/ Kahaluu/ Kaneohe	500	12.5	3.2 - 21.8	300	6.6	0.0 - 13.7	300	8.5	0.8 - 16.3	2,900	72.4	59.5 - 85.3	4,000
Kahului	200	10.2	3.1 - 17.3	300	12.2	0.0 - 25.6	200	9.6	0.0 - 19.6	1,500	68.0	52.7 - 83.3	2,300
Kailua/ Waimanalo	100	3.2	0.0 - 8.0	300	8.7	0.0 - 18.6	800	20.5	6.7 - 34.3	2,500	67.5	51.6 - 83.4	3,700
Kaimuki/ Palolo/ Waikiki	600	12.7	4.0 - 21.4	200	3.3	0.0 - 7.3	400	8.8	2.2 - 15.4	3,700	75.3	64.5 - 86.0	4,900
Kona	200	9.7	3.0 - 16.4	400	16.8	0.0 - 38.8	600	24.1	9.3 - 38.9	1,100	49.4	30.3 - 68.6	2,300
Lahaina/ Wailuku	600	20.9	8.4 - 33.4	300	8.9	0.0 - 25.0	200	7.6	1.6 - 13.5	1,800	62.7	46.1 - 79.2	2,900
Lanai	<50	21.1	9.0 - 33.3	<50	9.6	0.0 - 19.9	<50	9.3	1.2 - 17.4	100	59.9	44.2 - 75.7	200
Lihue-Waimea	200	7.3	2.4 - 12.2	100	3.1	0.0 - 6.4	300	12.0	5.3 - 18.8	1,900	77.6	68.9 - 86.4	2,400
Manoa/ Upper Makiki	300	7.1	0.7 - 13.5	100	3.2	0.0 - 7.1	300	7.3	0.8 - 13.8	3,200	82.4	72.9 - 91.9	3,800
Mililani/ Wahiawa	300	4.8	0.5 - 9.1	400	6.7	0.0 - 13.8	900	15.0	0.3 - 29.7	4,400	73.4	58.5 - 88.3	5,900
Molokai	100	15.2	0.0 - 33.7	100	9.2	2.2 - 16.3	100	8.9	1.4 - 16.4	600	66.7	49.1 - 84.3	900

Diabetes - times chk for HbA1C by State, County, Island, Community, BRFSS Age Group, DOH Race-Ethnicity, Gender, Education Level, Employment Status (Grouped), Household Income, Poverty Level, Marital Status (Grouped), Married, Health Care Coverage, for the Year(s) - 2000-2002, 2001-2003, 2002-2004, 2003-2005, 2004-2006, 2005-2007, 2006-2008, 2007-2009, 2008-2010

Note: Weighted numbers (#) represent 3-yr averages, percentages and 95% confidence intervals; Respondents aged 18 years and older; n/r (Not Reportable) - If the unweighted total responses for a dimension (row) is <50 that row will not be shown; n/a (Not Available) - Not asked of a subset of respondents

Year: 2008-2010

Community	Never heard of hemoglobin "A one C" test			None			Once			2 or more			Estimated Population (3-Yr Avg)
	#	%	C.I. (95%)	#	%	C.I. (95%)	#	%	C.I. (95%)	#	%	C.I. (95%)	#
N.Hawaii	100	4.0	0.0 - 9.7	<50	2.5	0.0 - 7.4	300	16.2	0.0 - 36.8	1,300	77.4	57.1 - 97.7	1,700
Nuuanu/ Kalihi/ Moanalua	900	16.1	2.7 - 29.5	300	5.8	0.0 - 12.0	600	10.9	2.5 - 19.3	3,800	67.3	52.5 - 82.1	5,600
Puna/ Kau	500	14.0	5.1 - 22.9	300	8.1	0.3 - 15.9	400	11.6	3.2 - 20.1	2,300	66.3	54.4 - 78.1	3,500
Upcountry/ Hana	300	11.7	1.0 - 22.4	100	5.7	0.0 - 12.6	300	11.2	1.7 - 20.7	1,600	71.4	57.2 - 85.5	2,200
Waipahu/ Kapolei/ Ewa	1,600	14.0	3.7 - 24.3	1,200	10.6	2.6 - 18.6	1,400	12.6	5.3 - 19.8	7,000	62.8	50.8 - 74.9	11,100

Diabetes - times chk for HbA1C by State, County, Island, Community, BRFSS Age Group, DOH Race-Ethnicity, Gender, Education Level, Employment Status (Grouped), Household Income, Poverty Level, Marital Status (Grouped), Married, Health Care Coverage, for the Year(s) - 2000-2002, 2001-2003, 2002-2004, 2003-2005, 2004-2006, 2005-2007, 2006-2008, 2007-2009, 2008-2010

Note: Weighted numbers (#) represent 3-yr averages, percentages and 95% confidence intervals; Respondents aged 18 years and older; n/r (Not Reportable) - If the unweighted total responses for a dimension (row) is <50 that row will not be shown; n/a (Not Available) - Not asked of a subset of respondents

Year: 2008-2010

BRFSS Age Group	Never heard of hemoglobin "A one C" test			None			Once			2 or more			Estimated Population (3-Yr Avg)
	#	%	C.I. (95%)	#	%	C.I. (95%)	#	%	C.I. (95%)	#	%	C.I. (95%)	#
35-44	600	7.2	1.6 - 12.7	500	5.5	0.5 - 10.4	2,300	27.6	14.9 - 40.3	5,100	59.8	46.7 - 72.8	8,500
45-54	1,600	12.0	3.5 - 20.5	1,500	11.2	5.5 - 16.8	1,300	10.1	5.6 - 14.6	8,800	66.8	57.5 - 76.0	13,200
55-64	1,900	9.6	5.1 - 14.1	1,200	6.1	3.1 - 9.1	2,000	10.3	6.7 - 13.9	14,500	74.0	68.2 - 79.7	19,600
65-74	1,500	9.6	6.1 - 13.1	800	5.1	2.5 - 7.8	1,500	9.6	5.8 - 13.5	11,800	75.7	70.2 - 81.1	15,500
75+	2,600	14.9	9.4 - 20.4	1,100	6.3	1.3 - 11.3	1,100	6.4	3.6 - 9.3	12,600	72.4	65.4 - 79.3	17,400

Diabetes - times chk for HbA1C by State, County, Island, Community, BRFSS Age Group, DOH Race-Ethnicity, Gender, Education Level, Employment Status (Grouped), Household Income, Poverty Level, Marital Status (Grouped), Married, Health Care Coverage, for the Year(s) - 2000-2002, 2001-2003, 2002-2004, 2003-2005, 2004-2006, 2005-2007, 2006-2008, 2007-2009, 2008-2010

Note: Weighted numbers (#) represent 3-yr averages, percentages and 95% confidence intervals; Respondents aged 18 years and older; n/r (Not Reportable) - If the unweighted total responses for a dimension (row) is <50 that row will not be shown; n/a (Not Available) - Not asked of a subset of respondents

Year: 2008-2010

DOH Race-Ethnicity	Never heard of hemoglobin "A one C" test			None			Once			2 or more			Estimated Population (3-Yr Avg)
	#	%	C.I. (95%)	#	%	C.I. (95%)	#	%	C.I. (95%)	#	%	C.I. (95%)	#
Caucasian	1,400	8.9	5.4 - 12.3	800	5.2	2.4 - 8.0	2,000	13.0	8.0 - 17.9	11,300	73.0	67.0 - 79.0	15,500
Native Hawaiian	1,800	12.7	6.5 - 19.0	1,400	9.4	4.0 - 14.8	1,800	12.7	7.4 - 18.1	9,400	65.1	56.8 - 73.3	14,500
Chinese	200	3.2	0.0 - 6.4	200	4.3	0.0 - 10.9	400	7.2	2.0 - 12.4	4,300	85.2	76.7 - 93.8	5,100
Filipino	2,900	19.6	10.1 - 29.0	700	4.6	1.8 - 7.5	1,900	13.2	6.9 - 19.4	9,200	62.7	53.0 - 72.3	14,600
Japanese	1,500	6.6	4.1 - 9.2	1,800	8.2	3.9 - 12.6	2,700	11.9	6.9 - 16.9	16,400	73.2	67.0 - 79.5	22,400

Gender	Never heard of hemoglobin "A one C" test			None			Once			2 or more			Estimated Population (3-Yr Avg)
	#	%	C.I. (95%)	#	%	C.I. (95%)	#	%	C.I. (95%)	#	%	C.I. (95%)	#
Male	3,800	10.0	6.4 - 13.6	2,900	7.6	4.8 - 10.3	4,700	12.2	8.3 - 16.1	26,900	70.2	65.1 - 75.4	38,300
Female	4,900	12.3	8.5 - 16.1	2,800	7.1	4.1 - 10.1	5,100	12.8	9.8 - 15.9	27,000	67.8	63.0 - 72.5	39,800

Diabetes - times chk for HbA1C by State, County, Island, Community, BRFSS Age Group, DOH Race-Ethnicity, Gender, Education Level, Employment Status (Grouped), Household Income, Poverty Level, Marital Status (Grouped), Married, Health Care Coverage, for the Year(s) - 2000-2002, 2001-2003, 2002-2004, 2003-2005, 2004-2006, 2005-2007, 2006-2008, 2007-2009, 2008-2010

Note: Weighted numbers (#) represent 3-yr averages, percentages and 95% confidence intervals; Respondents aged 18 years and older; n/r (Not Reportable) - If the unweighted total responses for a dimension (row) is <50 that row will not be shown; n/a (Not Available) - Not asked of a subset of respondents

Year: 2008-2010

Education Level	Never heard of hemoglobin "A one C" test			None			Once			2 or more			Estimated Population (3-Yr Avg)
	#	%	C.I. (95%)	#	%	C.I. (95%)	#	%	C.I. (95%)	#	%	C.I. (95%)	#
Grades 9 thru 11 (Some High School)	1,200	31.0	14.1 - 47.8	200	5.9	0.1 - 11.6	200	6.3	0.4 - 12.2	2,200	56.9	40.1 - 73.7	3,800
Grades 12 or GED (High School Grad)	3,600	13.9	8.2 - 19.5	2,600	9.8	5.2 - 14.5	3,100	11.7	7.5 - 15.9	16,800	64.6	57.8 - 71.3	26,000
College 1 to 3 years (Some College/ Tech)	2,000	8.8	4.8 - 12.9	1,500	6.8	3.6 - 9.9	3,800	16.7	10.9 - 22.6	15,400	67.7	61.0 - 74.3	22,800
College 4 years or more (College Grad)	1,400	5.9	3.3 - 8.5	1,100	4.7	2.2 - 7.3	2,500	10.6	7.4 - 13.8	18,300	78.7	74.2 - 83.2	23,200

Employment Status (Grouped)	Never heard of hemoglobin "A one C" test			None			Once			2 or more			Estimated Population (3-Yr Avg)
	#	%	C.I. (95%)	#	%	C.I. (95%)	#	%	C.I. (95%)	#	%	C.I. (95%)	#
Employed	3,600	10.5	5.9 - 15.1	3,000	8.7	5.7 - 11.7	5,500	16.1	11.7 - 20.5	22,100	64.7	58.9 - 70.5	34,200
Unemployed	400	8.4	0.0 - 22.0	300	7.2	0.0 - 15.7	1,000	23.1	6.5 - 39.7	2,600	61.2	42.4 - 80.0	4,300
Retired/Unable to work	4,300	12.0	8.9 - 15.2	2,200	6.0	2.9 - 9.0	2,900	8.0	5.6 - 10.4	26,700	74.0	69.6 - 78.4	36,100
Student/Homemaker	400	12.2	4.0 - 20.4	300	8.3	0.0 - 17.2	400	11.0	3.3 - 18.7	2,400	68.5	56.0 - 81.1	3,500

Diabetes - times chk for HbA1C by State, County, Island, Community, BRFSS Age Group, DOH Race-Ethnicity, Gender, Education Level, Employment Status (Grouped), Household Income, Poverty Level, Marital Status (Grouped), Married, Health Care Coverage, for the Year(s) - 2000-2002, 2001-2003, 2002-2004, 2003-2005, 2004-2006, 2005-2007, 2006-2008, 2007-2009, 2008-2010

Note: Weighted numbers (#) represent 3-yr averages, percentages and 95% confidence intervals; Respondents aged 18 years and older; n/r (Not Reportable) - If the unweighted total responses for a dimension (row) is <50 that row will not be shown; n/a (Not Available) - Not asked of a subset of respondents

Year: 2008-2010

Household Income	Never heard of hemoglobin "A one C" test			None			Once			2 or more			Estimated Population (3-Yr Avg)
	#	%	C.I. (95%)	#	%	C.I. (95%)	#	%	C.I. (95%)	#	%	C.I. (95%)	#
Less than \$10,000	600	18.9	5.1 - 32.7	400	12.9	0.0 - 29.5	400	13.7	0.1 - 27.4	1,700	54.4	36.5 - 72.4	3,200
\$10,000 to \$14,999	600	18.3	8.0 - 28.6	100	3.8	0.0 - 8.7	400	10.5	0.9 - 20.2	2,300	67.4	53.9 - 80.8	3,400
\$15,000 to \$19,999	1,200	22.8	7.5 - 38.0	500	10.0	3.5 - 16.4	400	8.4	0.1 - 16.8	3,100	58.8	44.0 - 73.7	5,300
\$20,000 to \$24,999	400	6.9	2.3 - 11.5	1,300	22.2	8.6 - 35.9	400	6.1	1.9 - 10.3	3,800	64.8	51.6 - 78.0	5,900
\$25,000 to \$34,999	800	9.7	4.5 - 14.9	300	4.0	1.4 - 6.7	1,600	17.9	9.7 - 26.2	5,900	68.3	59.4 - 77.3	8,700
\$35,000 to \$49,999	1,100	8.4	4.1 - 12.6	900	7.0	1.9 - 12.1	1,700	12.8	7.2 - 18.5	9,600	71.8	64.1 - 79.5	13,300
\$50,000 to \$74,999	700	5.3	2.0 - 8.6	900	7.3	3.0 - 11.7	1,500	11.6	6.0 - 17.3	9,600	75.7	68.5 - 83.0	12,700
\$75,000 or more	1,100	5.8	2.8 - 8.9	900	4.7	1.7 - 7.6	3,000	16.5	10.3 - 22.7	13,400	73.0	66.1 - 79.8	18,400

Diabetes - times chk for HbA1C by State, County, Island, Community, BRFSS Age Group, DOH Race-Ethnicity, Gender, Education Level, Employment Status (Grouped), Household Income, Poverty Level, Marital Status (Grouped), Married, Health Care Coverage, for the Year(s) - 2000-2002, 2001-2003, 2002-2004, 2003-2005, 2004-2006, 2005-2007, 2006-2008, 2007-2009, 2008-2010

Note: Weighted numbers (#) represent 3-yr averages, percentages and 95% confidence intervals; Respondents aged 18 years and older; n/r (Not Reportable) - If the unweighted total responses for a dimension (row) is <50 that row will not be shown; n/a (Not Available) - Not asked of a subset of respondents

Year: 2008-2010

Poverty Level	Never heard of hemoglobin "A one C" test			None			Once			2 or more			Estimated Population (3-Yr Avg)
	#	%	C.I. (95%)	#	%	C.I. (95%)	#	%	C.I. (95%)	#	%	C.I. (95%)	#
0-130%	2,500	14.6	8.3 - 20.8	2,000	11.3	4.8 - 17.7	2,300	13.4	7.5 - 19.3	10,600	60.7	52.2 - 69.2	17,400
131-185%	1,100	9.2	4.5 - 13.9	1,300	11.4	5.9 - 16.8	1,100	9.3	4.5 - 14.1	8,100	70.2	62.6 - 77.9	11,600
186+%	2,900	7.0	5.0 - 9.0	2,100	5.1	3.2 - 7.1	6,000	14.3	10.8 - 17.8	30,700	73.6	69.5 - 77.6	41,800

Marital Status (Grouped)	Never heard of hemoglobin "A one C" test			None			Once			2 or more			Estimated Population (3-Yr Avg)
	#	%	C.I. (95%)	#	%	C.I. (95%)	#	%	C.I. (95%)	#	%	C.I. (95%)	#
Married	4,600	9.4	6.5 - 12.2	2,900	5.8	3.9 - 7.8	6,500	13.3	9.9 - 16.7	35,000	71.5	67.2 - 75.7	49,000
Widowed	1,400	15.2	9.1 - 21.4	700	7.7	0.0 - 16.2	1,100	12.0	6.4 - 17.6	5,800	65.0	55.5 - 74.5	9,000
Other	2,800	14.4	7.2 - 21.5	2,100	11.1	6.0 - 16.1	1,900	9.9	5.9 - 13.9	12,500	64.6	56.9 - 72.4	19,300

Diabetes - times chk for HbA1C by State, County, Island, Community, BRFSS Age Group, DOH Race-Ethnicity, Gender, Education Level, Employment Status (Grouped), Household Income, Poverty Level, Marital Status (Grouped), Married, Health Care Coverage, for the Year(s) - 2000-2002, 2001-2003, 2002-2004, 2003-2005, 2004-2006, 2005-2007, 2006-2008, 2007-2009, 2008-2010

Note: Weighted numbers (#) represent 3-yr averages, percentages and 95% confidence intervals; Respondents aged 18 years and older; n/r (Not Reportable) - If the unweighted total responses for a dimension (row) is <50 that row will not be shown; n/a (Not Available) - Not asked of a subset of respondents

Year: 2008-2010

Married	Never heard of hemoglobin "A one C" test			None			Once			2 or more			Estimated Population (3-Yr Avg)
	#	%	C.I. (95%)	#	%	C.I. (95%)	#	%	C.I. (95%)	#	%	C.I. (95%)	#
Yes	5,200	10.3	7.0 - 13.7	3,100	6.1	4.0 - 8.1	6,700	13.3	9.9 - 16.6	35,600	70.4	66.0 - 74.8	50,600
No	3,500	12.8	8.6 - 17.0	2,700	9.7	5.4 - 14.0	3,100	11.2	7.8 - 14.7	18,200	66.3	60.5 - 72.0	27,400

Health Care Coverage	Never heard of hemoglobin "A one C" test			None			Once			2 or more			Estimated Population (3-Yr Avg)
	#	%	C.I. (95%)	#	%	C.I. (95%)	#	%	C.I. (95%)	#	%	C.I. (95%)	#
Yes	4,600	9.0	7.0 - 11.1	3,300	6.5	4.7 - 8.4	6,100	12.0	9.4 - 14.6	37,100	72.4	69.0 - 75.8	51,300

Diabetes - times chk for HbA1C by State, County, Island, Community, BRFSS Age Group, DOH Race-Ethnicity, Gender, Education Level, Employment Status (Grouped), Household Income, Poverty Level, Marital Status (Grouped), Married, Health Care Coverage, for the Year(s) - 2000-2002, 2001-2003, 2002-2004, 2003-2005, 2004-2006, 2005-2007, 2006-2008, 2007-2009, 2008-2010

Note: Weighted numbers (#) represent 3-yr averages, percentages and 95% confidence intervals; Respondents aged 18 years and older; n/r (Not Reportable) - If the unweighted total responses for a dimension (row) is <50 that row will not be shown; n/a (Not Available) - Not asked of a subset of respondents

Year: 2007-2009

State	Never heard of hemoglobin "A one C" test			None			Once			2 or more			Estimated Population (3-Yr Avg)
	#	%	C.I. (95%)	#	%	C.I. (95%)	#	%	C.I. (95%)	#	%	C.I. (95%)	#
Hawaii State	9,600	12.8	9.9 - 15.6	5,300	7.1	4.9 - 9.2	9,700	12.9	10.4 - 15.3	50,500	67.3	63.7 - 70.9	75,100

County	Never heard of hemoglobin "A one C" test			None			Once			2 or more			Estimated Population (3-Yr Avg)
	#	%	C.I. (95%)	#	%	C.I. (95%)	#	%	C.I. (95%)	#	%	C.I. (95%)	#
Hawaii	1,200	12.3	7.7 - 16.8	1,000	10.1	3.8 - 16.4	1,700	16.5	10.4 - 22.6	6,100	61.1	53.4 - 68.9	10,000
Honolulu	6,800	12.9	9.1 - 16.7	3,300	6.3	3.8 - 8.8	6,700	12.7	9.5 - 15.9	36,200	68.2	63.5 - 72.9	53,100
Kauai	200	5.3	1.8 - 8.7	100	2.9	0.4 - 5.4	500	14.9	8.3 - 21.4	2,800	76.9	69.4 - 84.5	3,700
Maui	1,300	16.1	10.1 - 22.1	900	10.2	3.1 - 17.3	700	8.9	4.5 - 13.3	5,400	64.8	56.3 - 73.2	8,300

Diabetes - times chk for HbA1C by State, County, Island, Community, BRFSS Age Group, DOH Race-Ethnicity, Gender, Education Level, Employment Status (Grouped), Household Income, Poverty Level, Marital Status (Grouped), Married, Health Care Coverage, for the Year(s) - 2000-2002, 2001-2003, 2002-2004, 2003-2005, 2004-2006, 2005-2007, 2006-2008, 2007-2009, 2008-2010

Note: Weighted numbers (#) represent 3-yr averages, percentages and 95% confidence intervals; Respondents aged 18 years and older; n/r (Not Reportable) - If the unweighted total responses for a dimension (row) is <50 that row will not be shown; n/a (Not Available) - Not asked of a subset of respondents

Year: 2007-2009

Island	Never heard of hemoglobin "A one C" test			None			Once			2 or more			Estimated Population (3-Yr Avg)
	#	%	C.I. (95%)	#	%	C.I. (95%)	#	%	C.I. (95%)	#	%	C.I. (95%)	#
Hawaii	1,200	12.3	7.7 - 16.8	1,000	10.1	3.8 - 16.4	1,700	16.5	10.4 - 22.6	6,100	61.1	53.4 - 68.9	10,000
Kauai	200	5.3	1.8 - 8.7	100	2.9	0.4 - 5.4	500	14.9	8.3 - 21.4	2,800	76.9	69.4 - 84.5	3,700
Lanai	<50	19.0	8.0 - 30.0	<50	9.0	0.0 - 18.1	<50	9.2	2.4 - 16.0	100	62.8	48.5 - 77.0	200
Maui	1,200	15.8	9.4 - 22.2	800	10.5	2.5 - 18.6	700	9.6	4.7 - 14.6	4,700	64.0	54.7 - 73.3	7,400
Molokai	100	18.1	0.0 - 38.1	100	7.3	0.4 - 14.2	<50	2.2	0.0 - 6.4	600	72.4	53.0 - 91.7	800
Oahu	6,800	12.9	9.1 - 16.7	3,300	6.3	3.8 - 8.8	6,700	12.7	9.5 - 15.9	36,200	68.2	63.5 - 72.9	53,100

Community	Never heard of hemoglobin "A one C" test			None			Once			2 or more			Estimated Population (3-Yr Avg)
	#	%	C.I. (95%)	#	%	C.I. (95%)	#	%	C.I. (95%)	#	%	C.I. (95%)	#
Aiea/ Pearl City	400	9.4	0.0 - 18.9	100	3.2	0.0 - 9.3	300	6.6	0.3 - 13.0	3,200	80.8	68.6 - 92.9	4,000
Hilo	400	13.9	5.7 - 22.1	200	6.5	1.5 - 11.6	300	9.7	1.9 - 17.4	2,200	69.9	58.9 - 80.8	3,200

Diabetes - times chk for HbA1C by State, County, Island, Community, BRFSS Age Group, DOH Race-Ethnicity, Gender, Education Level, Employment Status (Grouped), Household Income, Poverty Level, Marital Status (Grouped), Married, Health Care Coverage, for the Year(s) - 2000-2002, 2001-2003, 2002-2004, 2003-2005, 2004-2006, 2005-2007, 2006-2008, 2007-2009, 2008-2010

Note: Weighted numbers (#) represent 3-yr averages, percentages and 95% confidence intervals; Respondents aged 18 years and older; n/r (Not Reportable) - If the unweighted total responses for a dimension (row) is <50 that row will not be shown; n/a (Not Available) - Not asked of a subset of respondents

Year: 2007-2009

Community	Never heard of hemoglobin "A one C" test			None			Once			2 or more			Estimated Population (3-Yr Avg)
	#	%	C.I. (95%)	#	%	C.I. (95%)	#	%	C.I. (95%)	#	%	C.I. (95%)	#
Kaaawa/ Kahaluu/ Kaneohe	400	8.8	0.7 - 17.0	500	12.5	1.3 - 23.8	500	12.5	2.9 - 22.2	2,600	66.1	51.4 - 80.7	4,000
Kahului	300	11.2	3.9 - 18.5	200	9.3	0.0 - 21.5	300	12.3	1.5 - 23.2	1,600	67.1	52.2 - 82.1	2,400
Kaimuki/ Palolo/ Waikiki	600	14.1	4.3 - 23.9	100	1.6	0.0 - 4.9	300	6.6	0.0 - 14.0	3,400	77.7	65.8 - 89.6	4,400
Kona	200	10.9	3.5 - 18.3	400	18.5	0.0 - 40.9	600	26.6	11.0 - 42.2	1,000	44.0	24.8 - 63.1	2,200
Lahaina/ Wailuku	600	23.3	9.7 - 37.0	300	12.8	0.0 - 30.4	200	5.7	0.7 - 10.7	1,600	58.2	40.6 - 75.7	2,700
Lanai	<50	19.0	8.0 - 30.0	<50	9.0	0.0 - 18.1	<50	9.2	2.4 - 16.0	100	62.8	48.5 - 77.0	200
Lihue-Waimea	200	6.4	1.7 - 11.1	100	2.7	0.0 - 5.7	300	11.3	4.8 - 17.8	1,900	79.6	71.2 - 88.0	2,400
Manoa/ Upper Makiki	200	7.0	0.2 - 13.8	100	3.0	0.0 - 7.3	500	13.6	4.0 - 23.2	2,600	76.4	64.5 - 88.2	3,400
Mililani/ Wahiawa	500	7.4	0.0 - 16.7	500	8.4	0.3 - 16.5	1,200	18.9	4.5 - 33.3	4,100	65.3	49.8 - 80.8	6,300
Molokai	100	18.1	0.0 - 38.1	100	7.3	0.4 - 14.2	<50	2.2	0.0 - 6.4	600	72.4	53.0 - 91.7	800
Nanakuli/ Waianae	1,000	20.6	1.5 - 39.7	200	3.2	0.0 - 7.6	500	10.2	1.2 - 19.2	3,200	66.0	47.6 - 84.4	4,900
N.Hawaii	<50	2.0	0.0 - 4.8	100	4.9	0.0 - 10.4	500	22.5	4.8 - 40.3	1,400	70.5	53.2 - 87.9	2,000

Diabetes - times chk for HbA1C by State, County, Island, Community, BRFSS Age Group, DOH Race-Ethnicity, Gender, Education Level, Employment Status (Grouped), Household Income, Poverty Level, Marital Status (Grouped), Married, Health Care Coverage, for the Year(s) - 2000-2002, 2001-2003, 2002-2004, 2003-2005, 2004-2006, 2005-2007, 2006-2008, 2007-2009, 2008-2010

Note: Weighted numbers (#) represent 3-yr averages, percentages and 95% confidence intervals; Respondents aged 18 years and older; n/r (Not Reportable) - If the unweighted total responses for a dimension (row) is <50 that row will not be shown; n/a (Not Available) - Not asked of a subset of respondents

Year: 2007-2009

Community	Never heard of hemoglobin "A one C" test			None			Once			2 or more			Estimated Population (3-Yr Avg)
	#	%	C.I. (95%)	#	%	C.I. (95%)	#	%	C.I. (95%)	#	%	C.I. (95%)	#
Nuuanu/ Kalihi/ Moanalua	1,000	21.2	5.6 - 36.8	300	6.7	0.0 - 15.5	500	9.7	0.5 - 19.0	3,000	62.4	45.8 - 79.0	4,700
Puna/ Kau	500	19.3	7.7 - 30.9	300	11.2	1.0 - 21.5	300	11.7	2.5 - 20.8	1,500	57.8	43.9 - 71.7	2,600
Upcountry/ Hana	300	11.8	1.5 - 22.1	200	9.1	0.8 - 17.5	300	11.5	2.4 - 20.7	1,600	67.6	53.5 - 81.7	2,300
Waipahu/ Kapolei/ Ewa	1,700	16.4	5.5 - 27.2	900	8.6	0.6 - 16.7	1,200	11.1	4.7 - 17.6	6,800	63.9	51.5 - 76.3	10,600

Diabetes - times chk for HbA1C by State, County, Island, Community, BRFSS Age Group, DOH Race-Ethnicity, Gender, Education Level, Employment Status (Grouped), Household Income, Poverty Level, Marital Status (Grouped), Married, Health Care Coverage, for the Year(s) - 2000-2002, 2001-2003, 2002-2004, 2003-2005, 2004-2006, 2005-2007, 2006-2008, 2007-2009, 2008-2010

Note: Weighted numbers (#) represent 3-yr averages, percentages and 95% confidence intervals; Respondents aged 18 years and older; n/r (Not Reportable) - If the unweighted total responses for a dimension (row) is <50 that row will not be shown; n/a (Not Available) - Not asked of a subset of respondents

Year: 2007-2009

BRFSS Age Group	Never heard of hemoglobin "A one C" test			None			Once			2 or more			Estimated Population (3-Yr Avg)
	#	%	C.I. (95%)	#	%	C.I. (95%)	#	%	C.I. (95%)	#	%	C.I. (95%)	#
35-44	900	12.1	2.8 - 21.4	400	5.5	0.2 - 10.9	1,900	25.9	12.7 - 39.2	4,200	56.4	42.5 - 70.4	7,400
45-54	1,700	12.6	4.3 - 20.8	1,000	7.4	2.3 - 12.4	1,500	10.8	6.2 - 15.4	9,500	69.3	60.2 - 78.3	13,700
55-64	2,300	12.0	7.1 - 17.0	900	4.6	1.9 - 7.4	2,000	10.8	6.8 - 14.8	13,600	72.5	66.3 - 78.7	18,800
65-74	1,600	10.3	6.7 - 13.9	900	5.8	2.3 - 9.4	1,700	10.7	6.7 - 14.8	11,300	73.1	67.1 - 79.1	15,500
75+	2,600	16.2	10.2 - 22.3	1,400	8.5	2.9 - 14.1	1,300	8.3	4.8 - 11.8	10,800	67.0	59.4 - 74.5	16,100

Diabetes - times chk for HbA1C by State, County, Island, Community, BRFSS Age Group, DOH Race-Ethnicity, Gender, Education Level, Employment Status (Grouped), Household Income, Poverty Level, Marital Status (Grouped), Married, Health Care Coverage, for the Year(s) - 2000-2002, 2001-2003, 2002-2004, 2003-2005, 2004-2006, 2005-2007, 2006-2008, 2007-2009, 2008-2010

Note: Weighted numbers (#) represent 3-yr averages, percentages and 95% confidence intervals; Respondents aged 18 years and older; n/r (Not Reportable) - If the unweighted total responses for a dimension (row) is <50 that row will not be shown; n/a (Not Available) - Not asked of a subset of respondents

Year: 2007-2009

DOH Race-Ethnicity	Never heard of hemoglobin "A one C" test			None			Once			2 or more			Estimated Population (3-Yr Avg)
	#	%	C.I. (95%)	#	%	C.I. (95%)	#	%	C.I. (95%)	#	%	C.I. (95%)	#
Caucasian	1,600	11.1	7.1 - 15.0	700	4.6	2.1 - 7.1	1,900	12.9	8.1 - 17.6	10,300	71.5	65.4 - 77.5	14,400
Native Hawaiian	1,900	13.3	7.0 - 19.6	1,400	10.0	4.4 - 15.6	2,000	13.6	8.1 - 19.0	9,200	63.2	54.9 - 71.5	14,500
Chinese	300	4.4	0.7 - 8.0	400	7.1	0.0 - 14.9	400	7.0	1.7 - 12.3	4,700	81.5	72.0 - 91.1	5,700
Filipino	3,000	22.2	11.8 - 32.5	500	3.3	0.5 - 6.2	1,700	12.3	6.7 - 17.8	8,500	62.3	52.1 - 72.5	13,600
Japanese	1,600	7.8	5.0 - 10.7	1,600	7.6	3.0 - 12.1	2,800	13.3	7.9 - 18.8	14,900	71.3	64.6 - 77.9	21,000

Gender	Never heard of hemoglobin "A one C" test			None			Once			2 or more			Estimated Population (3-Yr Avg)
	#	%	C.I. (95%)	#	%	C.I. (95%)	#	%	C.I. (95%)	#	%	C.I. (95%)	#
Male	4,500	12.4	8.3 - 16.5	2,000	5.5	3.0 - 8.0	4,800	13.3	9.3 - 17.2	25,100	68.9	63.6 - 74.2	36,500
Female	5,100	13.2	9.2 - 17.1	3,300	8.5	5.2 - 11.9	4,800	12.5	9.5 - 15.6	25,400	65.8	60.8 - 70.7	38,600

Diabetes - times chk for HbA1C by State, County, Island, Community, BRFSS Age Group, DOH Race-Ethnicity, Gender, Education Level, Employment Status (Grouped), Household Income, Poverty Level, Marital Status (Grouped), Married, Health Care Coverage, for the Year(s) - 2000-2002, 2001-2003, 2002-2004, 2003-2005, 2004-2006, 2005-2007, 2006-2008, 2007-2009, 2008-2010

Note: Weighted numbers (#) represent 3-yr averages, percentages and 95% confidence intervals; Respondents aged 18 years and older; n/r (Not Reportable) - If the unweighted total responses for a dimension (row) is <50 that row will not be shown; n/a (Not Available) - Not asked of a subset of respondents

Year: 2007-2009

Education Level	Never heard of hemoglobin "A one C" test			None			Once			2 or more			Estimated Population (3-Yr Avg)
	#	%	C.I. (95%)	#	%	C.I. (95%)	#	%	C.I. (95%)	#	%	C.I. (95%)	#
Grades 9 thru 11 (Some High School)	1,300	33.6	17.0 - 50.1	300	6.5	0.7 - 12.4	300	6.7	0.8 - 12.6	2,000	53.2	37.4 - 69.0	3,800
Grades 12 or GED (High School Grad)	3,700	14.7	8.9 - 20.6	2,500	10.0	5.2 - 14.8	2,800	10.9	7.1 - 14.6	16,300	64.4	57.6 - 71.3	25,300
College 1 to 3 years (Some College/ Tech)	2,600	11.2	6.5 - 15.8	1,400	6.2	3.0 - 9.5	3,700	16.1	10.5 - 21.7	15,300	66.6	59.8 - 73.3	23,000
College 4 years or more (College Grad)	1,400	6.7	3.9 - 9.6	900	4.2	1.5 - 7.0	2,800	13.6	9.6 - 17.7	15,700	75.4	70.2 - 80.6	20,800

Employment Status (Grouped)	Never heard of hemoglobin "A one C" test			None			Once			2 or more			Estimated Population (3-Yr Avg)
	#	%	C.I. (95%)	#	%	C.I. (95%)	#	%	C.I. (95%)	#	%	C.I. (95%)	#
Employed	4,000	11.7	6.9 - 16.6	2,000	6.0	3.4 - 8.7	5,300	15.5	11.3 - 19.7	22,600	66.7	60.9 - 72.5	33,900
Retired/Unable to work	4,600	13.0	9.6 - 16.3	2,600	7.5	4.0 - 10.9	3,400	9.7	7.0 - 12.4	24,700	69.9	65.2 - 74.6	35,300
Student/Homemaker	600	21.0	9.0 - 33.0	300	9.6	0.0 - 19.8	400	13.8	4.0 - 23.7	1,500	55.6	39.9 - 71.2	2,700

Diabetes - times chk for HbA1C by State, County, Island, Community, BRFSS Age Group, DOH Race-Ethnicity, Gender, Education Level, Employment Status (Grouped), Household Income, Poverty Level, Marital Status (Grouped), Married, Health Care Coverage, for the Year(s) - 2000-2002, 2001-2003, 2002-2004, 2003-2005, 2004-2006, 2005-2007, 2006-2008, 2007-2009, 2008-2010

Note: Weighted numbers (#) represent 3-yr averages, percentages and 95% confidence intervals; Respondents aged 18 years and older; n/r (Not Reportable) - If the unweighted total responses for a dimension (row) is <50 that row will not be shown; n/a (Not Available) - Not asked of a subset of respondents

Year: 2007-2009

Household Income	Never heard of hemoglobin "A one C" test			None			Once			2 or more			Estimated Population (3-Yr Avg)
	#	%	C.I. (95%)	#	%	C.I. (95%)	#	%	C.I. (95%)	#	%	C.I. (95%)	#
Less than \$10,000	600	22.9	8.3 - 37.5	400	13.5	0.0 - 31.9	300	9.7	0.0 - 23.6	1,500	53.9	35.5 - 72.4	2,800
\$10,000 to \$14,999	800	22.9	11.3 - 34.4	200	7.2	0.7 - 13.6	600	16.6	5.0 - 28.1	1,800	53.4	38.9 - 67.9	3,400
\$15,000 to \$19,999	1,200	25.1	8.5 - 41.6	600	13.4	4.4 - 22.4	300	6.3	0.6 - 12.0	2,600	55.3	39.6 - 70.9	4,700
\$20,000 to \$24,999	600	10.0	4.2 - 15.7	1,100	18.5	5.2 - 31.7	600	10.7	4.3 - 17.1	3,700	60.9	48.1 - 73.6	6,000
\$25,000 to \$34,999	1,000	11.2	3.6 - 18.8	400	4.5	1.5 - 7.6	1,400	16.4	9.1 - 23.7	6,000	67.9	58.4 - 77.4	8,800
\$35,000 to \$49,999	1,300	10.5	5.7 - 15.4	900	6.9	1.6 - 12.3	1,300	10.1	5.2 - 15.0	9,100	72.4	64.8 - 80.1	12,600
\$50,000 to \$74,999	1,000	8.3	3.9 - 12.6	600	4.6	0.8 - 8.3	1,700	13.3	7.4 - 19.1	9,200	73.9	66.4 - 81.4	12,500
\$75,000 or more	900	5.1	2.0 - 8.1	800	4.5	1.1 - 7.8	3,100	18.2	11.5 - 24.8	12,500	72.3	65.0 - 79.6	17,200

Diabetes - times chk for HbA1C by State, County, Island, Community, BRFSS Age Group, DOH Race-Ethnicity, Gender, Education Level, Employment Status (Grouped), Household Income, Poverty Level, Marital Status (Grouped), Married, Health Care Coverage, for the Year(s) - 2000-2002, 2001-2003, 2002-2004, 2003-2005, 2004-2006, 2005-2007, 2006-2008, 2007-2009, 2008-2010

Note: Weighted numbers (#) represent 3-yr averages, percentages and 95% confidence intervals; Respondents aged 18 years and older; n/r (Not Reportable) - If the unweighted total responses for a dimension (row) is <50 that row will not be shown; n/a (Not Available) - Not asked of a subset of respondents

Year: 2007-2009

Poverty Level	Never heard of hemoglobin "A one C" test			None			Once			2 or more			Estimated Population (3-Yr Avg)
	#	%	C.I. (95%)	#	%	C.I. (95%)	#	%	C.I. (95%)	#	%	C.I. (95%)	#
0-130%	3,100	18.1	11.1 - 25.2	2,400	14.0	7.1 - 20.9	1,800	10.8	6.0 - 15.6	9,600	57.0	48.5 - 65.6	16,900
131-185%	1,000	10.2	4.7 - 15.6	800	7.6	2.7 - 12.5	1,200	12.5	6.4 - 18.6	6,900	69.7	61.2 - 78.2	9,900
186+%	3,300	8.1	5.9 - 10.3	1,800	4.5	2.5 - 6.4	6,200	15.1	11.5 - 18.6	29,800	72.3	68.1 - 76.5	41,200

Marital Status (Grouped)	Never heard of hemoglobin "A one C" test			None			Once			2 or more			Estimated Population (3-Yr Avg)
	#	%	C.I. (95%)	#	%	C.I. (95%)	#	%	C.I. (95%)	#	%	C.I. (95%)	#
Married	4,400	9.6	6.6 - 12.6	2,000	4.3	2.5 - 6.1	6,300	13.7	10.2 - 17.1	33,300	72.5	68.1 - 76.9	45,900
Widowed	1,700	19.1	12.4 - 25.8	1,000	11.1	2.1 - 20.1	1,200	13.5	7.6 - 19.3	5,200	56.3	47.1 - 65.6	9,100
Other	3,500	18.0	10.4 - 25.6	2,300	12.0	6.7 - 17.4	1,900	9.9	6.2 - 13.7	11,500	60.0	52.2 - 67.8	19,200

Diabetes - times chk for HbA1C by State, County, Island, Community, BRFSS Age Group, DOH Race-Ethnicity, Gender, Education Level, Employment Status (Grouped), Household Income, Poverty Level, Marital Status (Grouped), Married, Health Care Coverage, for the Year(s) - 2000-2002, 2001-2003, 2002-2004, 2003-2005, 2004-2006, 2005-2007, 2006-2008, 2007-2009, 2008-2010

Note: Weighted numbers (#) represent 3-yr averages, percentages and 95% confidence intervals; Respondents aged 18 years and older; n/r (Not Reportable) - If the unweighted total responses for a dimension (row) is <50 that row will not be shown; n/a (Not Available) - Not asked of a subset of respondents

Year: 2007-2009

Married	Never heard of hemoglobin "A one C" test			None			Once			2 or more			Estimated Population (3-Yr Avg)
	#	%	C.I. (95%)	#	%	C.I. (95%)	#	%	C.I. (95%)	#	%	C.I. (95%)	#
Yes	5,000	10.5	7.0 - 14.1	2,200	4.7	2.8 - 6.6	6,400	13.5	10.2 - 16.9	33,800	71.2	66.6 - 75.8	47,500
No	4,500	16.5	11.8 - 21.2	3,100	11.1	6.5 - 15.7	3,300	11.8	8.5 - 15.2	16,700	60.6	54.8 - 66.3	27,500

Health Care Coverage	Never heard of hemoglobin "A one C" test			None			Once			2 or more			Estimated Population (3-Yr Avg)
	#	%	C.I. (95%)	#	%	C.I. (95%)	#	%	C.I. (95%)	#	%	C.I. (95%)	#
Yes	5,300	11.0	8.5 - 13.5	2,500	5.3	3.5 - 7.1	6,400	13.3	10.6 - 16.0	34,000	70.5	66.8 - 74.1	48,200

Diabetes - times chk for HbA1C by State, County, Island, Community, BRFSS Age Group, DOH Race-Ethnicity, Gender, Education Level, Employment Status (Grouped), Household Income, Poverty Level, Marital Status (Grouped), Married, Health Care Coverage, for the Year(s) - 2000-2002, 2001-2003, 2002-2004, 2003-2005, 2004-2006, 2005-2007, 2006-2008, 2007-2009, 2008-2010

Note: Weighted numbers (#) represent 3-yr averages, percentages and 95% confidence intervals; Respondents aged 18 years and older; n/r (Not Reportable) - If the unweighted total responses for a dimension (row) is <50 that row will not be shown; n/a (Not Available) - Not asked of a subset of respondents

Year: 2006-2008

State	Never heard of hemoglobin "A one C" test			None			Once			2 or more			Estimated Population (3-Yr Avg)
	#	%	C.I. (95%)	#	%	C.I. (95%)	#	%	C.I. (95%)	#	%	C.I. (95%)	#
Hawaii State	6,500	8.9	7.0 - 10.8	4,800	6.6	5.0 - 8.1	10,500	14.4	12.1 - 16.7	51,000	70.1	67.1 - 73.1	72,800

County	Never heard of hemoglobin "A one C" test			None			Once			2 or more			Estimated Population (3-Yr Avg)
	#	%	C.I. (95%)	#	%	C.I. (95%)	#	%	C.I. (95%)	#	%	C.I. (95%)	#
Hawaii	700	8.3	5.1 - 11.5	800	9.9	6.2 - 13.5	1,400	16.8	10.7 - 22.9	5,500	65.0	58.5 - 71.5	8,500
Honolulu	4,700	8.9	6.5 - 11.3	3,000	5.6	3.6 - 7.6	7,400	14.0	11.1 - 16.9	37,800	71.5	67.7 - 75.3	52,900
Kauai	200	5.1	1.5 - 8.8	300	6.7	2.9 - 10.6	600	17.2	10.3 - 24.1	2,700	71.0	63.1 - 78.8	3,800
Maui	800	11.2	6.3 - 16.1	700	9.5	5.1 - 13.9	1,000	13.4	8.5 - 18.3	5,000	65.9	58.9 - 72.9	7,600

Diabetes - times chk for HbA1C by State, County, Island, Community, BRFSS Age Group, DOH Race-Ethnicity, Gender, Education Level, Employment Status (Grouped), Household Income, Poverty Level, Marital Status (Grouped), Married, Health Care Coverage, for the Year(s) - 2000-2002, 2001-2003, 2002-2004, 2003-2005, 2004-2006, 2005-2007, 2006-2008, 2007-2009, 2008-2010

Note: Weighted numbers (#) represent 3-yr averages, percentages and 95% confidence intervals; Respondents aged 18 years and older; n/r (Not Reportable) - If the unweighted total responses for a dimension (row) is <50 that row will not be shown; n/a (Not Available) - Not asked of a subset of respondents

Year: 2006-2008

Island	Never heard of hemoglobin "A one C" test			None			Once			2 or more			Estimated Population (3-Yr Avg)
	#	%	C.I. (95%)	#	%	C.I. (95%)	#	%	C.I. (95%)	#	%	C.I. (95%)	#
Hawaii	700	8.3	5.1 - 11.5	800	9.9	6.2 - 13.5	1,400	16.8	10.7 - 22.9	5,500	65.0	58.5 - 71.5	8,500
Kauai	200	5.1	1.5 - 8.8	300	6.7	2.9 - 10.6	600	17.2	10.3 - 24.1	2,700	71.0	63.1 - 78.8	3,800
Lanai	<50	17.1	6.4 - 27.8	<50	10.0	0.0 - 20.5	<50	13.0	5.1 - 21.0	100	59.9	45.7 - 74.1	200
Maui	800	11.8	6.3 - 17.3	600	9.4	4.5 - 14.3	1,000	14.6	9.1 - 20.1	4,300	64.2	56.4 - 72.0	6,700
Molokai	<50	3.5	0.0 - 8.4	100	10.6	2.7 - 18.6	<50	1.6	0.0 - 4.6	600	84.3	74.8 - 93.8	700
Oahu	4,700	8.9	6.5 - 11.3	3,000	5.6	3.6 - 7.6	7,400	14.0	11.1 - 16.9	37,800	71.5	67.7 - 75.3	52,900

Community	Never heard of hemoglobin "A one C" test			None			Once			2 or more			Estimated Population (3-Yr Avg)
	#	%	C.I. (95%)	#	%	C.I. (95%)	#	%	C.I. (95%)	#	%	C.I. (95%)	#
Aiea/ Pearl City	400	7.7	0.4 - 15.0	100	2.4	0.0 - 7.0	200	3.9	0.0 - 8.1	4,500	86.0	76.8 - 95.3	5,300
Ala Moana	200	7.6	0.8 - 14.3	200	6.2	0.0 - 14.5	600	19.4	6.0 - 32.7	2,000	66.8	52.0 - 81.7	2,900

Diabetes - times chk for HbA1C by State, County, Island, Community, BRFSS Age Group, DOH Race-Ethnicity, Gender, Education Level, Employment Status (Grouped), Household Income, Poverty Level, Marital Status (Grouped), Married, Health Care Coverage, for the Year(s) - 2000-2002, 2001-2003, 2002-2004, 2003-2005, 2004-2006, 2005-2007, 2006-2008, 2007-2009, 2008-2010

Note: Weighted numbers (#) represent 3-yr averages, percentages and 95% confidence intervals; Respondents aged 18 years and older; n/r (Not Reportable) - If the unweighted total responses for a dimension (row) is <50 that row will not be shown; n/a (Not Available) - Not asked of a subset of respondents

Year: 2006-2008

Community	Never heard of hemoglobin "A one C" test			None			Once			2 or more			Estimated Population (3-Yr Avg)
	#	%	C.I. (95%)	#	%	C.I. (95%)	#	%	C.I. (95%)	#	%	C.I. (95%)	#
Hanalei/ Kapaa	<50	2.8	0.0 - 6.9	100	3.9	0.0 - 9.3	300	23.8	10.0 - 37.5	1,000	69.5	55.2 - 83.8	1,400
Hilo	300	10.2	3.9 - 16.6	200	6.7	1.4 - 12.0	300	9.8	1.6 - 18.0	2,100	73.3	63.1 - 83.4	2,800
Kahului	200	9.5	2.7 - 16.3	200	7.6	1.3 - 14.0	400	18.3	6.3 - 30.3	1,400	64.6	51.4 - 77.8	2,200
Kailua/ Waimanalo	300	6.7	1.0 - 12.4	200	4.1	0.0 - 8.7	700	17.0	5.2 - 28.8	2,900	72.2	59.4 - 85.0	4,000
Kaimuki/ Palolo/ Waikiki	400	9.7	3.1 - 16.3	200	5.2	0.0 - 11.3	500	12.5	3.4 - 21.6	2,900	72.7	60.8 - 84.6	4,000
Kona	200	15.1	5.7 - 24.5	200	14.8	5.3 - 24.4	300	20.5	9.7 - 31.3	700	49.5	35.3 - 63.8	1,400
Lahaina/ Wailuku	500	18.3	6.2 - 30.4	100	3.3	0.0 - 8.5	400	14.6	6.7 - 22.4	1,600	63.9	50.6 - 77.2	2,600
Lanai	<50	17.1	6.4 - 27.8	<50	10.0	0.0 - 20.5	<50	13.0	5.1 - 21.0	100	59.9	45.7 - 74.1	200
Lihue-Waimea	200	6.5	1.4 - 11.7	200	8.4	3.2 - 13.6	300	13.3	6.3 - 20.2	1,700	71.8	62.6 - 81.0	2,400
Manoa/ Upper Makiki	200	5.8	0.0 - 12.4	<50	1.5	0.0 - 4.5	500	16.7	5.0 - 28.3	2,400	76.0	63.1 - 89.0	3,100
Mililani/ Wahiawa	700	11.8	0.9 - 22.6	500	9.2	1.2 - 17.2	900	15.5	6.4 - 24.6	3,600	63.5	50.3 - 76.8	5,700
Molokai	<50	3.5	0.0 - 8.4	100	10.6	2.7 - 18.6	<50	1.6	0.0 - 4.6	600	84.3	74.8 - 93.8	700

Diabetes - times chk for HbA1C by State, County, Island, Community, BRFSS Age Group, DOH Race-Ethnicity, Gender, Education Level, Employment Status (Grouped), Household Income, Poverty Level, Marital Status (Grouped), Married, Health Care Coverage, for the Year(s) - 2000-2002, 2001-2003, 2002-2004, 2003-2005, 2004-2006, 2005-2007, 2006-2008, 2007-2009, 2008-2010

Note: Weighted numbers (#) represent 3-yr averages, percentages and 95% confidence intervals; Respondents aged 18 years and older; n/r (Not Reportable) - If the unweighted total responses for a dimension (row) is <50 that row will not be shown; n/a (Not Available) - Not asked of a subset of respondents

Year: 2006-2008

Community	Never heard of hemoglobin "A one C" test			None			Once			2 or more			Estimated Population (3-Yr Avg)
	#	%	C.I. (95%)	#	%	C.I. (95%)	#	%	C.I. (95%)	#	%	C.I. (95%)	#
Nanakuli/ Waianae	200	4.9	0.0 - 10.0	300	5.7	0.0 - 13.0	700	14.7	3.9 - 25.5	3,400	74.7	61.9 - 87.5	4,500
N.Hawaii	<50	2.1	0.0 - 5.2	200	7.3	0.9 - 13.8	500	25.6	8.8 - 42.5	1,300	64.9	48.7 - 81.0	2,100
Nuuanu/ Kalihi/ Moanalua	600	12.6	4.6 - 20.7	400	7.7	0.0 - 16.9	700	15.5	3.2 - 27.8	2,900	64.1	49.9 - 78.4	4,600
Puna/ Kau	200	7.1	1.0 - 13.3	300	13.1	4.4 - 21.9	300	15.0	4.6 - 25.5	1,400	64.7	52.2 - 77.1	2,200
Upcountry/ Hana	100	5.8	1.3 - 10.3	400	19.4	6.8 - 31.9	200	10.6	2.4 - 18.8	1,300	64.2	50.4 - 78.0	2,000
Waipahu/ Kapolei/ Ewa	1,100	10.5	4.3 - 16.7	600	5.5	1.8 - 9.3	1,400	13.3	6.5 - 20.0	7,300	70.7	61.8 - 79.6	10,300

Diabetes - times chk for HbA1C by State, County, Island, Community, BRFSS Age Group, DOH Race-Ethnicity, Gender, Education Level, Employment Status (Grouped), Household Income, Poverty Level, Marital Status (Grouped), Married, Health Care Coverage, for the Year(s) - 2000-2002, 2001-2003, 2002-2004, 2003-2005, 2004-2006, 2005-2007, 2006-2008, 2007-2009, 2008-2010

Note: Weighted numbers (#) represent 3-yr averages, percentages and 95% confidence intervals; Respondents aged 18 years and older; n/r (Not Reportable) - If the unweighted total responses for a dimension (row) is <50 that row will not be shown; n/a (Not Available) - Not asked of a subset of respondents

Year: 2006-2008

BRFSS Age Group	Never heard of hemoglobin "A one C" test			None			Once			2 or more			Estimated Population (3-Yr Avg)
	#	%	C.I. (95%)	#	%	C.I. (95%)	#	%	C.I. (95%)	#	%	C.I. (95%)	#
35-44	500	8.1	0.0 - 17.4	500	8.3	2.7 - 13.9	1,100	17.8	8.5 - 27.2	4,200	65.8	53.5 - 78.0	6,400
45-54	1,300	9.0	4.2 - 13.8	700	4.7	1.7 - 7.6	1,800	12.5	8.3 - 16.8	10,600	73.8	67.4 - 80.2	14,300
55-64	1,700	8.5	5.1 - 12.0	900	4.5	2.2 - 6.8	3,000	15.2	10.5 - 20.0	14,000	71.7	66.1 - 77.4	19,500
65-74	1,400	9.3	6.1 - 12.5	1,000	6.9	3.3 - 10.5	1,700	11.3	7.5 - 15.1	10,900	72.5	67.0 - 78.0	15,000
75+	1,600	11.1	7.1 - 15.1	1,000	6.9	3.5 - 10.3	1,600	11.2	6.8 - 15.5	10,000	70.8	64.7 - 77.0	14,100

Diabetes - times chk for HbA1C by State, County, Island, Community, BRFSS Age Group, DOH Race-Ethnicity, Gender, Education Level, Employment Status (Grouped), Household Income, Poverty Level, Marital Status (Grouped), Married, Health Care Coverage, for the Year(s) - 2000-2002, 2001-2003, 2002-2004, 2003-2005, 2004-2006, 2005-2007, 2006-2008, 2007-2009, 2008-2010

Note: Weighted numbers (#) represent 3-yr averages, percentages and 95% confidence intervals; Respondents aged 18 years and older; n/r (Not Reportable) - If the unweighted total responses for a dimension (row) is <50 that row will not be shown; n/a (Not Available) - Not asked of a subset of respondents

Year: 2006-2008

DOH Race-Ethnicity	Never heard of hemoglobin "A one C" test			None			Once			2 or more			Estimated Population (3-Yr Avg)
	#	%	C.I. (95%)	#	%	C.I. (95%)	#	%	C.I. (95%)	#	%	C.I. (95%)	#
Caucasian	1,100	7.5	4.6 - 10.5	800	5.5	3.1 - 7.9	2,000	13.4	9.2 - 17.6	11,200	73.6	68.3 - 78.8	15,200
Native Hawaiian	1,000	7.6	3.9 - 11.2	1,300	9.9	5.4 - 14.3	2,200	16.4	10.8 - 21.9	9,000	66.2	59.1 - 73.3	13,600
Chinese	300	5.8	1.6 - 9.9	300	5.0	0.0 - 11.1	400	7.3	1.8 - 12.8	4,500	81.9	73.2 - 90.6	5,500
Filipino	1,800	13.2	6.7 - 19.6	400	3.3	0.6 - 6.0	2,100	15.7	9.7 - 21.7	9,200	67.9	59.8 - 76.0	13,500
Japanese	1,400	7.7	4.9 - 10.5	1,000	5.5	2.9 - 8.1	2,400	13.2	8.7 - 17.6	13,500	73.6	68.2 - 78.9	18,400

Gender	Never heard of hemoglobin "A one C" test			None			Once			2 or more			Estimated Population (3-Yr Avg)
	#	%	C.I. (95%)	#	%	C.I. (95%)	#	%	C.I. (95%)	#	%	C.I. (95%)	#
Male	3,400	9.6	6.6 - 12.6	1,700	4.8	3.0 - 6.5	4,800	13.7	10.3 - 17.0	25,200	72.0	67.6 - 76.3	35,000
Female	3,100	8.3	6.0 - 10.5	3,100	8.2	5.7 - 10.8	5,700	15.1	11.9 - 18.3	25,800	68.4	64.3 - 72.5	37,700

Diabetes - times chk for HbA1C by State, County, Island, Community, BRFSS Age Group, DOH Race-Ethnicity, Gender, Education Level, Employment Status (Grouped), Household Income, Poverty Level, Marital Status (Grouped), Married, Health Care Coverage, for the Year(s) - 2000-2002, 2001-2003, 2002-2004, 2003-2005, 2004-2006, 2005-2007, 2006-2008, 2007-2009, 2008-2010

Note: Weighted numbers (#) represent 3-yr averages, percentages and 95% confidence intervals; Respondents aged 18 years and older; n/r (Not Reportable) - If the unweighted total responses for a dimension (row) is <50 that row will not be shown; n/a (Not Available) - Not asked of a subset of respondents

Year: 2006-2008

Education Level	Never heard of hemoglobin "A one C" test			None			Once			2 or more			Estimated Population (3-Yr Avg)
	#	%	C.I. (95%)	#	%	C.I. (95%)	#	%	C.I. (95%)	#	%	C.I. (95%)	#
Never attended school/ Only Kindergarten to Grades 8	400	14.9	5.2 - 24.5	300	12.6	1.8 - 23.4	200	10.0	0.4 - 19.6	1,500	62.5	47.4 - 77.6	2,400
Grades 9 thru 11 (Some High School)	700	19.2	6.8 - 31.6	300	7.5	1.3 - 13.6	300	7.9	1.8 - 14.0	2,400	65.4	52.0 - 78.7	3,600
Grades 12 or GED (High School Grad)	2,300	9.7	6.3 - 13.0	1,500	6.3	3.7 - 8.8	3,300	13.6	9.4 - 17.8	16,900	70.5	65.2 - 75.8	24,000
College 1 to 3 years (Some College/ Tech)	1,900	8.4	4.9 - 11.9	2,100	9.2	5.7 - 12.7	3,400	14.9	10.5 - 19.3	15,400	67.5	61.7 - 73.3	22,800
College 4 years or more (College Grad)	1,200	5.9	3.2 - 8.7	600	3.0	0.9 - 5.1	3,300	16.6	12.3 - 20.9	14,900	74.4	69.4 - 79.5	20,000

Employment Status (Grouped)	Never heard of hemoglobin "A one C" test			None			Once			2 or more			Estimated Population (3-Yr Avg)
	#	%	C.I. (95%)	#	%	C.I. (95%)	#	%	C.I. (95%)	#	%	C.I. (95%)	#
Employed	2,200	7.1	4.1 - 10.0	1,700	5.3	3.2 - 7.4	5,200	16.5	12.7 - 20.2	22,300	71.2	66.5 - 75.9	31,300
Retired/Unable to work	3,800	10.5	7.9 - 13.1	2,300	6.5	4.3 - 8.7	4,400	12.2	9.3 - 15.0	25,400	70.8	66.9 - 74.8	35,800
Student/Homemaker	300	12.0	3.5 - 20.6	500	16.2	3.2 - 29.1	300	10.3	1.7 - 18.9	1,800	61.5	46.3 - 76.7	2,900

Diabetes - times chk for HbA1C by State, County, Island, Community, BRFSS Age Group, DOH Race-Ethnicity, Gender, Education Level, Employment Status (Grouped), Household Income, Poverty Level, Marital Status (Grouped), Married, Health Care Coverage, for the Year(s) - 2000-2002, 2001-2003, 2002-2004, 2003-2005, 2004-2006, 2005-2007, 2006-2008, 2007-2009, 2008-2010

Note: Weighted numbers (#) represent 3-yr averages, percentages and 95% confidence intervals; Respondents aged 18 years and older; n/r (Not Reportable) - If the unweighted total responses for a dimension (row) is <50 that row will not be shown; n/a (Not Available) - Not asked of a subset of respondents

Year: 2006-2008

Household Income	Never heard of hemoglobin "A one C" test			None			Once			2 or more			Estimated Population (3-Yr Avg)
	#	%	C.I. (95%)	#	%	C.I. (95%)	#	%	C.I. (95%)	#	%	C.I. (95%)	#
Less than \$10,000	400	15.5	6.7 - 24.4	300	12.9	1.8 - 24.1	300	10.8	0.0 - 25.5	1,600	60.7	45.3 - 76.1	2,600
\$10,000 to \$14,999	600	16.0	6.8 - 25.2	300	6.9	0.4 - 13.4	700	18.0	7.3 - 28.6	2,200	59.1	45.7 - 72.6	3,600
\$15,000 to \$19,999	500	12.7	6.2 - 19.2	600	14.9	5.3 - 24.4	400	10.0	3.0 - 17.0	2,500	62.4	50.7 - 74.1	4,000
\$20,000 to \$24,999	500	7.4	2.9 - 11.9	400	6.8	2.7 - 11.0	900	14.9	7.5 - 22.3	4,300	70.9	62.0 - 79.8	6,100
\$25,000 to \$34,999	900	10.2	3.1 - 17.2	500	5.2	2.1 - 8.3	1,800	19.9	12.0 - 27.7	5,800	64.8	55.4 - 74.2	9,000
\$35,000 to \$49,999	1,200	8.9	4.4 - 13.5	500	3.9	1.1 - 6.8	1,600	12.0	6.5 - 17.4	9,800	75.2	68.2 - 82.1	13,000
\$50,000 to \$74,999	1,000	7.9	3.8 - 12.0	800	6.2	2.3 - 10.2	1,900	15.2	9.5 - 21.0	9,000	70.7	63.4 - 77.9	12,800
\$75,000 or more	700	4.8	1.6 - 7.9	700	4.6	1.3 - 7.9	2,100	14.2	9.3 - 19.1	11,000	76.4	70.3 - 82.5	14,400

Diabetes - times chk for HbA1C by State, County, Island, Community, BRFSS Age Group, DOH Race-Ethnicity, Gender, Education Level, Employment Status (Grouped), Household Income, Poverty Level, Marital Status (Grouped), Married, Health Care Coverage, for the Year(s) - 2000-2002, 2001-2003, 2002-2004, 2003-2005, 2004-2006, 2005-2007, 2006-2008, 2007-2009, 2008-2010

Note: Weighted numbers (#) represent 3-yr averages, percentages and 95% confidence intervals; Respondents aged 18 years and older; n/r (Not Reportable) - If the unweighted total responses for a dimension (row) is <50 that row will not be shown; n/a (Not Available) - Not asked of a subset of respondents

Year: 2006-2008

Poverty Level	Never heard of hemoglobin "A one C" test			None			Once			2 or more			Estimated Population (3-Yr Avg)
	#	%	C.I. (95%)	#	%	C.I. (95%)	#	%	C.I. (95%)	#	%	C.I. (95%)	#
0-130%	1,800	11.1	6.5 - 15.6	1,600	9.4	5.5 - 13.4	2,800	16.7	10.9 - 22.5	10,400	62.8	55.6 - 69.9	16,600
131-185%	700	8.0	2.6 - 13.4	400	4.6	1.8 - 7.4	1,200	13.4	6.8 - 19.9	6,500	74.0	65.7 - 82.3	8,700
186+%	3,200	7.9	5.7 - 10.1	2,100	5.2	3.3 - 7.0	5,600	14.0	11.1 - 16.9	29,300	72.9	69.3 - 76.6	40,200

Marital Status (Grouped)	Never heard of hemoglobin "A one C" test			None			Once			2 or more			Estimated Population (3-Yr Avg)
	#	%	C.I. (95%)	#	%	C.I. (95%)	#	%	C.I. (95%)	#	%	C.I. (95%)	#
Married	3,200	6.9	4.7 - 9.2	2,100	4.7	3.1 - 6.2	6,300	13.8	10.8 - 16.8	34,000	74.6	70.9 - 78.3	45,500
Widowed	1,300	15.4	10.0 - 20.7	800	8.8	3.4 - 14.2	1,200	13.4	7.8 - 18.9	5,400	62.5	54.8 - 70.2	8,600
Other	2,000	11.0	6.7 - 15.3	1,800	10.1	5.9 - 14.3	2,900	16.2	11.5 - 20.9	11,300	62.7	56.4 - 69.0	18,000

Diabetes - times chk for HbA1C by State, County, Island, Community, BRFSS Age Group, DOH Race-Ethnicity, Gender, Education Level, Employment Status (Grouped), Household Income, Poverty Level, Marital Status (Grouped), Married, Health Care Coverage, for the Year(s) - 2000-2002, 2001-2003, 2002-2004, 2003-2005, 2004-2006, 2005-2007, 2006-2008, 2007-2009, 2008-2010

Note: Weighted numbers (#) represent 3-yr averages, percentages and 95% confidence intervals; Respondents aged 18 years and older; n/r (Not Reportable) - If the unweighted total responses for a dimension (row) is <50 that row will not be shown; n/a (Not Available) - Not asked of a subset of respondents

Year: 2006-2008

Married	Never heard of hemoglobin "A one C" test			None			Once			2 or more			Estimated Population (3-Yr Avg)
	#	%	C.I. (95%)	#	%	C.I. (95%)	#	%	C.I. (95%)	#	%	C.I. (95%)	#
Yes	3,200	6.9	4.7 - 9.0	2,300	4.9	3.4 - 6.5	6,600	14.2	11.2 - 17.2	34,500	74.0	70.3 - 77.7	46,600
No	3,200	12.3	8.9 - 15.7	2,500	9.5	6.1 - 12.9	3,900	14.8	11.2 - 18.4	16,600	63.4	58.5 - 68.4	26,100

Health Care Coverage	Never heard of hemoglobin "A one C" test			None			Once			2 or more			Estimated Population (3-Yr Avg)
	#	%	C.I. (95%)	#	%	C.I. (95%)	#	%	C.I. (95%)	#	%	C.I. (95%)	#
Yes	6,200	8.9	7.0 - 10.8	3,900	5.6	4.2 - 7.1	9,800	14.0	11.7 - 16.3	49,700	71.5	68.5 - 74.5	69,600
No	300	9.1	0.7 - 17.6	900	27.0	12.0 - 42.1	700	22.9	7.1 - 38.7	1,300	40.9	24.0 - 57.9	3,200

Diabetes - times chk for HbA1C by State, County, Island, Community, BRFSS Age Group, DOH Race-Ethnicity, Gender, Education Level, Employment Status (Grouped), Household Income, Poverty Level, Marital Status (Grouped), Married, Health Care Coverage, for the Year(s) - 2000-2002, 2001-2003, 2002-2004, 2003-2005, 2004-2006, 2005-2007, 2006-2008, 2007-2009, 2008-2010

Note: Weighted numbers (#) represent 3-yr averages, percentages and 95% confidence intervals; Respondents aged 18 years and older; n/r (Not Reportable) - If the unweighted total responses for a dimension (row) is <50 that row will not be shown; n/a (Not Available) - Not asked of a subset of respondents

Year: 2005-2007

State	Never heard of hemoglobin "A one C" test			None			Once			2 or more			Estimated Population (3-Yr Avg)
	#	%	C.I. (95%)	#	%	C.I. (95%)	#	%	C.I. (95%)	#	%	C.I. (95%)	#
Hawaii State	5,400	7.9	5.7 - 10.1	6,600	9.7	6.9 - 12.6	9,100	13.4	10.7 - 16.1	47,100	69.0	65.1 - 72.8	68,200

County	Never heard of hemoglobin "A one C" test			None			Once			2 or more			Estimated Population (3-Yr Avg)
	#	%	C.I. (95%)	#	%	C.I. (95%)	#	%	C.I. (95%)	#	%	C.I. (95%)	#
Hawaii	800	9.8	5.8 - 13.8	900	10.6	6.6 - 14.7	900	10.9	7.1 - 14.7	5,800	68.7	62.5 - 74.9	8,500
Honolulu	3,900	7.9	5.1 - 10.7	4,700	9.4	5.6 - 13.1	6,400	12.8	9.3 - 16.3	34,900	69.9	64.9 - 75.0	49,800
Kauai	100	2.8	0.0 - 6.0	300	8.8	3.2 - 14.4	700	22.0	12.8 - 31.2	2,200	66.4	56.4 - 76.4	3,400
Maui	500	8.2	3.2 - 13.3	800	11.9	6.2 - 17.5	1,100	16.7	11.3 - 22.1	4,100	63.2	55.4 - 71.0	6,600

Diabetes - times chk for HbA1C by State, County, Island, Community, BRFSS Age Group, DOH Race-Ethnicity, Gender, Education Level, Employment Status (Grouped), Household Income, Poverty Level, Marital Status (Grouped), Married, Health Care Coverage, for the Year(s) - 2000-2002, 2001-2003, 2002-2004, 2003-2005, 2004-2006, 2005-2007, 2006-2008, 2007-2009, 2008-2010

Note: Weighted numbers (#) represent 3-yr averages, percentages and 95% confidence intervals; Respondents aged 18 years and older; n/r (Not Reportable) - If the unweighted total responses for a dimension (row) is <50 that row will not be shown; n/a (Not Available) - Not asked of a subset of respondents

Year: 2005-2007

Island	Never heard of hemoglobin "A one C" test			None			Once			2 or more			Estimated Population (3-Yr Avg)
	#	%	C.I. (95%)	#	%	C.I. (95%)	#	%	C.I. (95%)	#	%	C.I. (95%)	#
Hawaii	800	9.8	5.8 - 13.8	900	10.6	6.6 - 14.7	900	10.9	7.1 - 14.7	5,800	68.7	62.5 - 74.9	8,500
Kauai	100	2.8	0.0 - 6.0	300	8.8	3.2 - 14.4	700	22.0	12.8 - 31.2	2,200	66.4	56.4 - 76.4	3,400
Lanai	<50	11.0	0.4 - 21.6	<50	8.5	0.0 - 18.8	<50	22.1	4.4 - 39.8	100	58.4	39.5 - 77.2	200
Maui	500	8.3	2.6 - 14.0	700	12.3	5.9 - 18.7	1,000	16.7	10.7 - 22.7	3,600	62.7	54.0 - 71.4	5,800
Molokai	<50	7.0	0.0 - 16.9	100	8.7	1.2 - 16.1	100	14.8	0.7 - 28.8	400	69.5	53.4 - 85.6	600
Oahu	3,900	7.9	5.1 - 10.7	4,700	9.4	5.6 - 13.1	6,400	12.8	9.3 - 16.3	34,900	69.9	64.9 - 75.0	49,800

Community	Never heard of hemoglobin "A one C" test			None			Once			2 or more			Estimated Population (3-Yr Avg)
	#	%	C.I. (95%)	#	%	C.I. (95%)	#	%	C.I. (95%)	#	%	C.I. (95%)	#
Aiea/ Pearl City	300	6.6	0.0 - 16.5	0	0.0	--	100	3.0	0.0 - 7.5	4,300	90.3	79.7 - 100.0	4,800
Hilo	400	13.4	5.4 - 21.4	200	6.3	0.9 - 11.7	200	6.6	0.8 - 12.4	2,200	73.7	63.3 - 84.1	3,000

Diabetes - times chk for HbA1C by State, County, Island, Community, BRFSS Age Group, DOH Race-Ethnicity, Gender, Education Level, Employment Status (Grouped), Household Income, Poverty Level, Marital Status (Grouped), Married, Health Care Coverage, for the Year(s) - 2000-2002, 2001-2003, 2002-2004, 2003-2005, 2004-2006, 2005-2007, 2006-2008, 2007-2009, 2008-2010

Note: Weighted numbers (#) represent 3-yr averages, percentages and 95% confidence intervals; Respondents aged 18 years and older; n/r (Not Reportable) - If the unweighted total responses for a dimension (row) is <50 that row will not be shown; n/a (Not Available) - Not asked of a subset of respondents

Year: 2005-2007

Community	Never heard of hemoglobin "A one C" test			None			Once			2 or more			Estimated Population (3-Yr Avg)
	#	%	C.I. (95%)	#	%	C.I. (95%)	#	%	C.I. (95%)	#	%	C.I. (95%)	#
Kahului	100	6.1	0.0 - 13.0	200	8.6	1.0 - 16.2	300	15.8	5.5 - 26.2	1,200	69.4	56.3 - 82.6	1,800
Kona	100	6.9	0.0 - 13.8	300	18.7	7.0 - 30.3	200	13.0	3.6 - 22.4	900	61.4	46.5 - 76.3	1,500
Lahaina/ Wailuku	200	9.1	0.0 - 19.9	200	7.9	0.0 - 17.4	400	21.4	10.4 - 32.4	1,200	61.6	46.7 - 76.5	1,900
Lanai	<50	11.0	0.4 - 21.6	<50	8.5	0.0 - 18.8	<50	22.1	4.4 - 39.8	100	58.4	39.5 - 77.2	200
Lihue-Waimea	100	2.9	0.0 - 6.9	200	10.5	2.9 - 18.0	500	20.4	9.2 - 31.5	1,500	66.2	53.8 - 78.6	2,300
Mililani/ Wahiawa	500	11.3	0.0 - 23.8	400	8.8	0.1 - 17.6	1,000	20.8	7.6 - 34.1	2,900	59.1	42.7 - 75.4	4,800
Molokai	<50	7.0	0.0 - 16.9	100	8.7	1.2 - 16.1	100	14.8	0.7 - 28.8	400	69.5	53.4 - 85.6	600
N.Hawaii	100	7.4	0.0 - 14.9	200	8.5	1.9 - 15.2	300	18.0	8.7 - 27.2	1,200	66.1	54.2 - 78.0	1,900
Nuuanu/ Kalihi/ Moanalua	400	10.3	2.2 - 18.3	500	11.0	0.0 - 24.4	400	10.8	0.0 - 22.1	2,800	68.0	51.8 - 84.1	4,200
Puna/ Kau	200	8.8	1.0 - 16.7	300	12.9	3.1 - 22.7	200	9.2	2.3 - 16.1	1,500	69.1	55.7 - 82.4	2,100
Upcountry/ Hana	200	9.3	0.0 - 20.0	400	19.7	6.0 - 33.3	300	13.1	3.5 - 22.6	1,200	57.9	41.7 - 74.2	2,000
Waipahu/ Kapolei/ Ewa	700	8.1	2.0 - 14.2	800	9.0	0.1 - 17.9	600	7.0	1.9 - 12.1	6,800	75.9	64.8 - 86.9	9,000

Diabetes - times chk for HbA1C by State, County, Island, Community, BRFSS Age Group, DOH Race-Ethnicity, Gender, Education Level, Employment Status (Grouped), Household Income, Poverty Level, Marital Status (Grouped), Married, Health Care Coverage, for the Year(s) - 2000-2002, 2001-2003, 2002-2004, 2003-2005, 2004-2006, 2005-2007, 2006-2008, 2007-2009, 2008-2010

Note: Weighted numbers (#) represent 3-yr averages, percentages and 95% confidence intervals; Respondents aged 18 years and older; n/r (Not Reportable) - If the unweighted total responses for a dimension (row) is <50 that row will not be shown; n/a (Not Available) - Not asked of a subset of respondents

Year: 2005-2007

BRFSS Age Group	Never heard of hemoglobin "A one C" test			None			Once			2 or more			Estimated Population (3-Yr Avg)
	#	%	C.I. (95%)	#	%	C.I. (95%)	#	%	C.I. (95%)	#	%	C.I. (95%)	#
35-44	700	11.6	0.4 - 22.8	900	15.6	2.4 - 28.9	800	13.7	3.7 - 23.7	3,500	59.0	43.4 - 74.7	6,000
45-54	600	4.1	0.4 - 7.8	600	4.1	1.3 - 6.9	1,500	10.3	6.2 - 14.3	11,600	81.5	75.5 - 87.6	14,200
55-64	1,000	5.7	3.0 - 8.4	1,200	6.7	1.7 - 11.7	2,900	15.9	10.3 - 21.4	13,100	71.8	64.7 - 78.9	18,200
65-74	1,600	11.1	6.5 - 15.7	1,200	8.5	4.2 - 12.7	1,600	11.0	7.1 - 15.0	9,900	69.4	62.7 - 76.0	14,300
75+	1,200	9.9	4.5 - 15.3	1,300	10.8	5.0 - 16.6	1,500	12.8	7.1 - 18.5	7,900	66.5	58.1 - 74.9	11,900

Diabetes - times chk for HbA1C by State, County, Island, Community, BRFSS Age Group, DOH Race-Ethnicity, Gender, Education Level, Employment Status (Grouped), Household Income, Poverty Level, Marital Status (Grouped), Married, Health Care Coverage, for the Year(s) - 2000-2002, 2001-2003, 2002-2004, 2003-2005, 2004-2006, 2005-2007, 2006-2008, 2007-2009, 2008-2010

Note: Weighted numbers (#) represent 3-yr averages, percentages and 95% confidence intervals; Respondents aged 18 years and older; n/r (Not Reportable) - If the unweighted total responses for a dimension (row) is <50 that row will not be shown; n/a (Not Available) - Not asked of a subset of respondents

Year: 2005-2007

DOH Race-Ethnicity	Never heard of hemoglobin "A one C" test			None			Once			2 or more			Estimated Population (3-Yr Avg)
	#	%	C.I. (95%)	#	%	C.I. (95%)	#	%	C.I. (95%)	#	%	C.I. (95%)	#
Caucasian	1,000	6.4	3.1 - 9.7	900	5.9	3.0 - 8.9	2,100	13.6	9.2 - 17.9	11,600	74.1	68.3 - 79.9	15,600
Native Hawaiian	900	6.5	2.7 - 10.2	1,200	9.4	4.6 - 14.2	2,300	17.4	9.1 - 25.6	8,800	66.8	57.8 - 75.8	13,200
Chinese	200	3.7	0.2 - 7.2	1,100	22.6	5.6 - 39.7	300	5.0	0.0 - 10.1	3,500	68.7	51.8 - 85.5	5,100
Filipino	1,400	11.5	4.0 - 19.0	500	4.0	0.8 - 7.2	1,200	10.2	5.1 - 15.2	9,100	74.3	65.3 - 83.3	12,300
Japanese	1,200	7.7	4.0 - 11.4	1,500	9.3	2.7 - 15.8	2,300	14.7	9.1 - 20.4	10,800	68.3	60.4 - 76.2	15,800

Gender	Never heard of hemoglobin "A one C" test			None			Once			2 or more			Estimated Population (3-Yr Avg)
	#	%	C.I. (95%)	#	%	C.I. (95%)	#	%	C.I. (95%)	#	%	C.I. (95%)	#
Male	3,300	9.4	5.8 - 13.1	2,900	8.4	4.1 - 12.8	4,000	11.7	8.4 - 14.9	24,300	70.5	64.8 - 76.1	34,500
Female	2,100	6.3	4.0 - 8.7	3,700	11.1	7.4 - 14.7	5,100	15.2	10.8 - 19.5	22,800	67.4	62.1 - 72.7	33,800

Diabetes - times chk for HbA1C by State, County, Island, Community, BRFSS Age Group, DOH Race-Ethnicity, Gender, Education Level, Employment Status (Grouped), Household Income, Poverty Level, Marital Status (Grouped), Married, Health Care Coverage, for the Year(s) - 2000-2002, 2001-2003, 2002-2004, 2003-2005, 2004-2006, 2005-2007, 2006-2008, 2007-2009, 2008-2010

Note: Weighted numbers (#) represent 3-yr averages, percentages and 95% confidence intervals; Respondents aged 18 years and older; n/r (Not Reportable) - If the unweighted total responses for a dimension (row) is <50 that row will not be shown; n/a (Not Available) - Not asked of a subset of respondents

Year: 2005-2007

Education Level	Never heard of hemoglobin "A one C" test			None			Once			2 or more			Estimated Population (3-Yr Avg)
	#	%	C.I. (95%)	#	%	C.I. (95%)	#	%	C.I. (95%)	#	%	C.I. (95%)	#
Grades 9 thru 11 (Some High School)	400	10.1	1.6 - 18.6	600	16.0	0.0 - 34.4	200	4.3	0.6 - 8.1	2,600	69.5	51.6 - 87.4	3,800
Grades 12 or GED (High School Grad)	2,300	9.4	5.5 - 13.3	2,000	8.4	4.3 - 12.6	3,200	13.4	8.1 - 18.7	16,700	68.8	62.1 - 75.5	24,200
College 1 to 3 years (Some College/ Tech)	1,500	7.7	3.0 - 12.5	2,300	11.9	7.0 - 16.8	2,800	14.5	9.5 - 19.6	12,800	65.8	58.8 - 72.9	19,500
College 4 years or more (College Grad)	1,000	5.4	2.2 - 8.6	1,100	6.2	0.6 - 11.9	2,700	14.9	10.3 - 19.5	13,400	73.4	66.3 - 80.5	18,200

Employment Status (Grouped)	Never heard of hemoglobin "A one C" test			None			Once			2 or more			Estimated Population (3-Yr Avg)
	#	%	C.I. (95%)	#	%	C.I. (95%)	#	%	C.I. (95%)	#	%	C.I. (95%)	#
Employed	1,900	6.0	2.6 - 9.3	2,200	7.0	3.2 - 10.9	4,900	15.5	10.8 - 20.3	22,700	71.5	65.3 - 77.6	31,700
Retired/Unable to work	3,100	9.5	6.4 - 12.5	3,500	10.7	6.5 - 15.0	3,900	12.2	9.1 - 15.3	21,800	67.6	62.4 - 72.8	32,300
Student/Homemaker	200	7.2	0.1 - 14.2	700	26.1	8.3 - 44.0	100	2.7	0.0 - 6.0	1,700	64.0	45.6 - 82.4	2,600

Diabetes - times chk for HbA1C by State, County, Island, Community, BRFSS Age Group, DOH Race-Ethnicity, Gender, Education Level, Employment Status (Grouped), Household Income, Poverty Level, Marital Status (Grouped), Married, Health Care Coverage, for the Year(s) - 2000-2002, 2001-2003, 2002-2004, 2003-2005, 2004-2006, 2005-2007, 2006-2008, 2007-2009, 2008-2010

Note: Weighted numbers (#) represent 3-yr averages, percentages and 95% confidence intervals; Respondents aged 18 years and older; n/r (Not Reportable) - If the unweighted total responses for a dimension (row) is <50 that row will not be shown; n/a (Not Available) - Not asked of a subset of respondents

Year: 2005-2007

Household Income	Never heard of hemoglobin "A one C" test			None			Once			2 or more			Estimated Population (3-Yr Avg)
	#	%	C.I. (95%)	#	%	C.I. (95%)	#	%	C.I. (95%)	#	%	C.I. (95%)	#
Less than \$10,000	300	13.4	4.3 - 22.5	400	16.6	3.9 - 29.3	100	4.9	0.0 - 10.0	1,500	65.2	50.7 - 79.7	2,300
\$10,000 to \$14,999	1,000	20.4	5.8 - 35.1	300	7.0	0.8 - 13.2	600	13.3	4.3 - 22.4	2,800	59.2	42.1 - 76.3	4,700
\$15,000 to \$19,999	200	4.5	0.9 - 8.1	900	19.1	3.4 - 34.8	1,000	19.3	1.2 - 37.3	2,800	57.2	38.3 - 76.0	4,900
\$20,000 to \$24,999	300	5.6	1.4 - 9.9	400	7.1	2.1 - 12.2	800	13.2	5.7 - 20.6	4,500	74.1	64.5 - 83.7	6,100
\$25,000 to \$34,999	1,000	11.3	2.4 - 20.3	1,100	12.7	0.9 - 24.5	1,100	13.2	6.0 - 20.5	5,300	62.7	49.6 - 75.9	8,400
\$35,000 to \$49,999	1,000	8.8	3.8 - 13.7	600	5.7	1.3 - 10.0	1,400	12.4	5.5 - 19.2	8,300	73.2	64.8 - 81.6	11,300
\$50,000 to \$74,999	1,000	9.4	3.4 - 15.3	600	6.1	1.6 - 10.6	1,400	13.5	8.2 - 18.7	7,400	71.0	62.8 - 79.3	10,500
\$75,000 or more	100	0.9	0.0 - 2.0	600	4.9	0.9 - 8.8	1,500	13.0	7.8 - 18.3	9,700	81.2	74.8 - 87.7	11,900

Diabetes - times chk for HbA1C by State, County, Island, Community, BRFSS Age Group, DOH Race-Ethnicity, Gender, Education Level, Employment Status (Grouped), Household Income, Poverty Level, Marital Status (Grouped), Married, Health Care Coverage, for the Year(s) - 2000-2002, 2001-2003, 2002-2004, 2003-2005, 2004-2006, 2005-2007, 2006-2008, 2007-2009, 2008-2010

Note: Weighted numbers (#) represent 3-yr averages, percentages and 95% confidence intervals; Respondents aged 18 years and older; n/r (Not Reportable) - If the unweighted total responses for a dimension (row) is <50 that row will not be shown; n/a (Not Available) - Not asked of a subset of respondents

Year: 2005-2007

Poverty Level	Never heard of hemoglobin "A one C" test			None			Once			2 or more			Estimated Population (3-Yr Avg)
	#	%	C.I. (95%)	#	%	C.I. (95%)	#	%	C.I. (95%)	#	%	C.I. (95%)	#
0-130%	1,800	10.4	5.0 - 15.9	2,200	12.4	6.3 - 18.4	2,600	14.8	7.9 - 21.8	11,000	62.4	53.4 - 71.3	17,600
131-185%	700	8.3	1.6 - 15.1	900	11.5	0.3 - 22.8	800	9.7	4.4 - 15.0	5,700	70.4	58.2 - 82.6	8,200
186+%	2,300	6.8	4.3 - 9.4	1,900	5.6	3.2 - 7.9	4,600	13.3	10.0 - 16.5	25,600	74.4	70.0 - 78.7	34,400

Marital Status (Grouped)	Never heard of hemoglobin "A one C" test			None			Once			2 or more			Estimated Population (3-Yr Avg)
	#	%	C.I. (95%)	#	%	C.I. (95%)	#	%	C.I. (95%)	#	%	C.I. (95%)	#
Married	2,800	6.5	3.8 - 9.1	2,800	6.4	3.7 - 9.2	5,200	12.1	9.0 - 15.3	32,300	75.0	70.5 - 79.4	43,200
Widowed	1,100	13.6	6.5 - 20.7	900	11.0	4.7 - 17.3	800	9.0	4.0 - 14.1	5,500	66.3	57.1 - 75.5	8,300
Other	1,500	9.0	4.5 - 13.6	2,700	16.8	8.6 - 25.0	3,000	18.7	11.6 - 25.7	9,000	55.5	46.7 - 64.3	16,200

Diabetes - times chk for HbA1C by State, County, Island, Community, BRFSS Age Group, DOH Race-Ethnicity, Gender, Education Level, Employment Status (Grouped), Household Income, Poverty Level, Marital Status (Grouped), Married, Health Care Coverage, for the Year(s) - 2000-2002, 2001-2003, 2002-2004, 2003-2005, 2004-2006, 2005-2007, 2006-2008, 2007-2009, 2008-2010

Note: Weighted numbers (#) represent 3-yr averages, percentages and 95% confidence intervals; Respondents aged 18 years and older; n/r (Not Reportable) - If the unweighted total responses for a dimension (row) is <50 that row will not be shown; n/a (Not Available) - Not asked of a subset of respondents

Year: 2005-2007

Married	Never heard of hemoglobin "A one C" test			None			Once			2 or more			Estimated Population (3-Yr Avg)
	#	%	C.I. (95%)	#	%	C.I. (95%)	#	%	C.I. (95%)	#	%	C.I. (95%)	#
Yes	2,800	6.4	3.8 - 9.0	3,100	7.0	4.2 - 9.7	5,500	12.5	9.4 - 15.7	32,500	74.1	69.6 - 78.6	43,900
No	2,500	10.5	6.5 - 14.4	3,600	14.8	8.8 - 20.9	3,600	15.0	10.0 - 20.1	14,400	59.7	52.8 - 66.5	24,100

Health Care Coverage	Never heard of hemoglobin "A one C" test			None			Once			2 or more			Estimated Population (3-Yr Avg)
	#	%	C.I. (95%)	#	%	C.I. (95%)	#	%	C.I. (95%)	#	%	C.I. (95%)	#
Yes	3,300	7.5	5.2 - 9.9	2,600	5.8	4.0 - 7.7	6,200	14.2	11.4 - 17.1	31,700	72.4	68.7 - 76.1	43,800

Diabetes - times chk for HbA1C by State, County, Island, Community, BRFSS Age Group, DOH Race-Ethnicity, Gender, Education Level, Employment Status (Grouped), Household Income, Poverty Level, Marital Status (Grouped), Married, Health Care Coverage, for the Year(s) - 2000-2002, 2001-2003, 2002-2004, 2003-2005, 2004-2006, 2005-2007, 2006-2008, 2007-2009, 2008-2010

Note: Weighted numbers (#) represent 3-yr averages, percentages and 95% confidence intervals; Respondents aged 18 years and older; n/r (Not Reportable) - If the unweighted total responses for a dimension (row) is <50 that row will not be shown; n/a (Not Available) - Not asked of a subset of respondents

Year: 2004-2006

State	Never heard of hemoglobin "A one C" test			None			Once			2 or more			Estimated Population (3-Yr Avg)
	#	%	C.I. (95%)	#	%	C.I. (95%)	#	%	C.I. (95%)	#	%	C.I. (95%)	#
Hawaii State	3,000	4.7	2.7 - 6.6	6,600	10.4	7.2 - 13.5	7,500	11.9	8.8 - 14.9	46,500	73.1	68.6 - 77.6	63,600

County	Never heard of hemoglobin "A one C" test			None			Once			2 or more			Estimated Population (3-Yr Avg)
	#	%	C.I. (95%)	#	%	C.I. (95%)	#	%	C.I. (95%)	#	%	C.I. (95%)	#
Hawaii	600	6.9	2.8 - 11.0	1,000	12.0	7.1 - 16.9	900	11.0	6.0 - 15.9	5,600	70.1	62.9 - 77.4	8,000
Honolulu	2,100	4.5	2.0 - 7.0	4,500	9.6	5.5 - 13.7	5,000	10.8	6.8 - 14.7	35,300	75.2	69.5 - 80.9	46,900
Kauai	100	3.6	0.0 - 7.7	400	11.7	4.7 - 18.8	800	24.0	13.8 - 34.3	2,000	60.6	49.1 - 72.2	3,300
Maui	200	3.7	0.0 - 8.1	800	14.2	6.6 - 21.7	800	15.4	9.2 - 21.5	3,600	66.8	56.9 - 76.6	5,400

Diabetes - times chk for HbA1C by State, County, Island, Community, BRFSS Age Group, DOH Race-Ethnicity, Gender, Education Level, Employment Status (Grouped), Household Income, Poverty Level, Marital Status (Grouped), Married, Health Care Coverage, for the Year(s) - 2000-2002, 2001-2003, 2002-2004, 2003-2005, 2004-2006, 2005-2007, 2006-2008, 2007-2009, 2008-2010

Note: Weighted numbers (#) represent 3-yr averages, percentages and 95% confidence intervals; Respondents aged 18 years and older; n/r (Not Reportable) - If the unweighted total responses for a dimension (row) is <50 that row will not be shown; n/a (Not Available) - Not asked of a subset of respondents

Year: 2004-2006

Island	Never heard of hemoglobin "A one C" test			None			Once			2 or more			Estimated Population (3-Yr Avg)
	#	%	C.I. (95%)	#	%	C.I. (95%)	#	%	C.I. (95%)	#	%	C.I. (95%)	#
Hawaii	600	6.9	2.8 - 11.0	1,000	12.0	7.1 - 16.9	900	11.0	6.0 - 15.9	5,600	70.1	62.9 - 77.4	8,000
Kauai	100	3.6	0.0 - 7.7	400	11.7	4.7 - 18.8	800	24.0	13.8 - 34.3	2,000	60.6	49.1 - 72.2	3,300
Maui	200	3.4	0.0 - 8.3	700	14.1	5.7 - 22.5	700	14.8	8.2 - 21.5	3,200	67.6	56.7 - 78.6	4,800
Oahu	2,100	4.5	2.0 - 7.0	4,500	9.6	5.5 - 13.7	5,000	10.8	6.8 - 14.7	35,300	75.2	69.5 - 80.9	46,900

Community	Never heard of hemoglobin "A one C" test			None			Once			2 or more			Estimated Population (3-Yr Avg)
	#	%	C.I. (95%)	#	%	C.I. (95%)	#	%	C.I. (95%)	#	%	C.I. (95%)	#
Hilo	200	8.4	0.5 - 16.3	200	7.9	1.1 - 14.7	200	7.4	0.2 - 14.5	1,800	76.3	64.4 - 88.1	2,400
Lihue-Waimea	100	5.0	0.0 - 10.7	400	15.0	5.6 - 24.3	500	22.8	10.7 - 35.0	1,300	57.2	43.0 - 71.4	2,400
Puna/ Kau	200	7.2	0.0 - 15.8	300	11.5	2.7 - 20.4	200	7.2	1.4 - 13.0	1,800	74.1	61.2 - 87.0	2,500
Waipahu/ Kapolei/ Ewa	300	3.4	0.0 - 8.2	600	7.8	0.0 - 17.3	300	3.7	0.0 - 7.9	7,100	85.1	73.8 - 96.5	8,300

Diabetes - times chk for HbA1C by State, County, Island, Community, BRFSS Age Group, DOH Race-Ethnicity, Gender, Education Level, Employment Status (Grouped), Household Income, Poverty Level, Marital Status (Grouped), Married, Health Care Coverage, for the Year(s) - 2000-2002, 2001-2003, 2002-2004, 2003-2005, 2004-2006, 2005-2007, 2006-2008, 2007-2009, 2008-2010

Note: Weighted numbers (#) represent 3-yr averages, percentages and 95% confidence intervals; Respondents aged 18 years and older; n/r (Not Reportable) - If the unweighted total responses for a dimension (row) is <50 that row will not be shown; n/a (Not Available) - Not asked of a subset of respondents

Year: 2004-2006

BRFSS Age Group	Never heard of hemoglobin "A one C" test			None			Once			2 or more			Estimated Population (3-Yr Avg)
	#	%	C.I. (95%)	#	%	C.I. (95%)	#	%	C.I. (95%)	#	%	C.I. (95%)	#
35-44	300	3.4	0.0 - 8.3	900	11.2	0.6 - 21.7	600	7.2	0.0 - 14.6	6,500	78.2	64.5 - 91.9	8,300
45-54	500	3.2	0.0 - 6.9	400	3.0	1.1 - 4.9	1,000	7.3	3.8 - 10.9	12,100	86.4	80.9 - 92.0	14,000
55-64	300	1.7	0.3 - 3.1	2,000	12.1	5.4 - 18.8	3,200	19.1	11.7 - 26.6	11,100	67.1	58.2 - 76.0	16,600
65-74	1,000	8.9	3.6 - 14.1	1,000	8.3	3.5 - 13.1	1,000	9.1	4.8 - 13.4	8,500	73.8	65.9 - 81.7	11,500
75+	600	6.5	0.7 - 12.2	900	9.5	2.8 - 16.1	1,100	11.0	4.8 - 17.1	7,000	73.1	63.1 - 83.1	9,600

Diabetes - times chk for HbA1C by State, County, Island, Community, BRFSS Age Group, DOH Race-Ethnicity, Gender, Education Level, Employment Status (Grouped), Household Income, Poverty Level, Marital Status (Grouped), Married, Health Care Coverage, for the Year(s) - 2000-2002, 2001-2003, 2002-2004, 2003-2005, 2004-2006, 2005-2007, 2006-2008, 2007-2009, 2008-2010

Note: Weighted numbers (#) represent 3-yr averages, percentages and 95% confidence intervals; Respondents aged 18 years and older; n/r (Not Reportable) - If the unweighted total responses for a dimension (row) is <50 that row will not be shown; n/a (Not Available) - Not asked of a subset of respondents

Year: 2004-2006

DOH Race-Ethnicity	Never heard of hemoglobin "A one C" test			None			Once			2 or more			Estimated Population (3-Yr Avg)
	#	%	C.I. (95%)	#	%	C.I. (95%)	#	%	C.I. (95%)	#	%	C.I. (95%)	#
Caucasian	400	2.8	0.0 - 5.5	1,300	8.9	4.0 - 13.8	1,800	11.9	7.3 - 16.5	11,500	76.4	69.4 - 83.5	15,000
Native Hawaiian	500	3.6	0.4 - 6.8	900	7.1	2.9 - 11.4	2,300	17.4	7.6 - 27.1	9,400	71.9	61.1 - 82.7	13,100
Filipino	800	6.7	0.7 - 12.8	500	3.9	1.1 - 6.8	900	7.7	3.2 - 12.1	9,600	81.7	73.6 - 89.7	11,800
Japanese	600	4.9	1.3 - 8.4	1,700	12.7	4.4 - 21.0	1,500	11.6	5.4 - 17.8	9,300	70.8	61.2 - 80.4	13,100

Gender	Never heard of hemoglobin "A one C" test			None			Once			2 or more			Estimated Population (3-Yr Avg)
	#	%	C.I. (95%)	#	%	C.I. (95%)	#	%	C.I. (95%)	#	%	C.I. (95%)	#
Male	1,600	4.6	1.7 - 7.6	3,600	10.4	5.6 - 15.2	3,300	9.7	6.1 - 13.2	26,000	75.3	69.2 - 81.5	34,500
Female	1,400	4.7	2.3 - 7.2	3,000	10.4	6.4 - 14.3	4,200	14.5	9.3 - 19.6	20,500	70.5	64.0 - 76.9	29,100

Diabetes - times chk for HbA1C by State, County, Island, Community, BRFSS Age Group, DOH Race-Ethnicity, Gender, Education Level, Employment Status (Grouped), Household Income, Poverty Level, Marital Status (Grouped), Married, Health Care Coverage, for the Year(s) - 2000-2002, 2001-2003, 2002-2004, 2003-2005, 2004-2006, 2005-2007, 2006-2008, 2007-2009, 2008-2010

Note: Weighted numbers (#) represent 3-yr averages, percentages and 95% confidence intervals; Respondents aged 18 years and older; n/r (Not Reportable) - If the unweighted total responses for a dimension (row) is <50 that row will not be shown; n/a (Not Available) - Not asked of a subset of respondents

Year: 2004-2006

Education Level	Never heard of hemoglobin "A one C" test			None			Once			2 or more			Estimated Population (3-Yr Avg)
	#	%	C.I. (95%)	#	%	C.I. (95%)	#	%	C.I. (95%)	#	%	C.I. (95%)	#
Grades 9 thru 11 (Some High School)	200	6.4	0.3 - 12.6	700	20.6	0.0 - 41.6	200	6.5	1.0 - 12.0	2,100	66.5	46.4 - 86.5	3,200
Grades 12 or GED (High School Grad)	1,500	6.3	2.6 - 10.0	1,900	8.0	3.7 - 12.4	2,700	11.5	5.6 - 17.4	17,400	74.2	66.4 - 81.9	23,500
College 1 to 3 years (Some College/ Tech)	700	4.0	0.1 - 7.9	2,700	14.7	8.6 - 20.9	2,500	13.8	7.5 - 20.0	12,200	67.5	58.9 - 76.1	18,000
College 4 years or more (College Grad)	500	2.9	0.0 - 5.8	900	5.1	0.0 - 10.8	2,000	12.0	7.6 - 16.4	13,600	80.1	72.8 - 87.4	16,900

Employment Status (Grouped)	Never heard of hemoglobin "A one C" test			None			Once			2 or more			Estimated Population (3-Yr Avg)
	#	%	C.I. (95%)	#	%	C.I. (95%)	#	%	C.I. (95%)	#	%	C.I. (95%)	#
Employed	1,100	3.5	0.7 - 6.3	2,800	9.0	4.5 - 13.4	3,900	12.6	7.5 - 17.6	23,400	74.9	68.2 - 81.7	31,200
Retired/Unable to work	1,700	6.0	3.0 - 9.0	3,100	11.1	6.1 - 16.0	3,300	12.0	8.1 - 15.9	19,700	71.0	64.6 - 77.3	27,700

Diabetes - times chk for HbA1C by State, County, Island, Community, BRFSS Age Group, DOH Race-Ethnicity, Gender, Education Level, Employment Status (Grouped), Household Income, Poverty Level, Marital Status (Grouped), Married, Health Care Coverage, for the Year(s) - 2000-2002, 2001-2003, 2002-2004, 2003-2005, 2004-2006, 2005-2007, 2006-2008, 2007-2009, 2008-2010

Note: Weighted numbers (#) represent 3-yr averages, percentages and 95% confidence intervals; Respondents aged 18 years and older; n/r (Not Reportable) - If the unweighted total responses for a dimension (row) is <50 that row will not be shown; n/a (Not Available) - Not asked of a subset of respondents

Year: 2004-2006

Household Income	Never heard of hemoglobin "A one C" test			None			Once			2 or more			Estimated Population (3-Yr Avg)
	#	%	C.I. (95%)	#	%	C.I. (95%)	#	%	C.I. (95%)	#	%	C.I. (95%)	#
\$10,000 to \$14,999	600	14.8	0.0 - 31.2	400	10.7	1.1 - 20.2	400	10.5	1.6 - 19.3	2,500	64.0	44.6 - 83.5	3,900
\$15,000 to \$19,999	100	2.0	0.0 - 4.5	700	12.3	0.0 - 26.4	1,100	19.1	1.3 - 36.9	3,700	66.6	45.5 - 87.7	5,500
\$20,000 to \$24,999	200	3.5	0.0 - 7.8	400	7.8	1.7 - 13.9	500	9.2	2.2 - 16.1	4,100	79.6	69.1 - 90.0	5,200
\$25,000 to \$34,999	500	5.4	0.0 - 11.4	1,300	15.6	3.0 - 28.1	800	9.6	2.8 - 16.4	5,900	69.5	55.1 - 83.9	8,400
\$35,000 to \$49,999	600	5.8	0.8 - 10.7	500	5.0	0.6 - 9.4	1,300	13.3	5.3 - 21.4	7,200	75.9	66.1 - 85.7	9,500
\$50,000 to \$74,999	700	5.6	0.9 - 10.4	1,100	9.1	3.2 - 15.0	1,300	11.3	5.2 - 17.5	8,600	73.9	64.8 - 83.0	11,600
\$75,000 or more	<50	0.2	0.0 - 0.6	600	5.1	0.2 - 10.1	1,100	9.7	2.7 - 16.6	9,700	85.0	76.6 - 93.3	11,400

Diabetes - times chk for HbA1C by State, County, Island, Community, BRFSS Age Group, DOH Race-Ethnicity, Gender, Education Level, Employment Status (Grouped), Household Income, Poverty Level, Marital Status (Grouped), Married, Health Care Coverage, for the Year(s) - 2000-2002, 2001-2003, 2002-2004, 2003-2005, 2004-2006, 2005-2007, 2006-2008, 2007-2009, 2008-2010

Note: Weighted numbers (#) represent 3-yr averages, percentages and 95% confidence intervals; Respondents aged 18 years and older; n/r (Not Reportable) - If the unweighted total responses for a dimension (row) is <50 that row will not be shown; n/a (Not Available) - Not asked of a subset of respondents

Year: 2004-2006

Poverty Level	Never heard of hemoglobin "A one C" test			None			Once			2 or more			Estimated Population (3-Yr Avg)
	#	%	C.I. (95%)	#	%	C.I. (95%)	#	%	C.I. (95%)	#	%	C.I. (95%)	#
0-130%	800	5.1	0.7 - 9.6	1,800	11.3	4.7 - 17.8	2,200	13.5	6.0 - 21.1	11,400	70.1	59.8 - 80.4	16,200
131-185%	300	5.0	0.0 - 12.1	1,000	15.2	2.0 - 28.5	500	7.1	2.1 - 12.2	5,000	72.7	58.3 - 87.0	6,900
186+%	1,400	4.1	1.9 - 6.3	2,400	7.1	4.1 - 10.2	3,900	11.3	7.5 - 15.1	26,500	77.5	72.3 - 82.6	34,200

Marital Status (Grouped)	Never heard of hemoglobin "A one C" test			None			Once			2 or more			Estimated Population (3-Yr Avg)
	#	%	C.I. (95%)	#	%	C.I. (95%)	#	%	C.I. (95%)	#	%	C.I. (95%)	#
Married	2,100	5.0	2.4 - 7.6	3,200	7.6	4.4 - 10.8	4,000	9.7	6.4 - 12.9	32,500	77.7	72.7 - 82.8	41,800
Widowed	600	8.6	1.0 - 16.2	700	9.9	3.7 - 16.1	700	9.9	3.9 - 15.9	4,800	71.6	61.1 - 82.1	6,700
Other	300	2.2	0.4 - 4.0	2,500	16.9	7.8 - 26.1	2,800	19.1	10.5 - 27.8	9,200	61.7	50.9 - 72.6	14,800

Diabetes - times chk for HbA1C by State, County, Island, Community, BRFSS Age Group, DOH Race-Ethnicity, Gender, Education Level, Employment Status (Grouped), Household Income, Poverty Level, Marital Status (Grouped), Married, Health Care Coverage, for the Year(s) - 2000-2002, 2001-2003, 2002-2004, 2003-2005, 2004-2006, 2005-2007, 2006-2008, 2007-2009, 2008-2010

Note: Weighted numbers (#) represent 3-yr averages, percentages and 95% confidence intervals; Respondents aged 18 years and older; n/r (Not Reportable) - If the unweighted total responses for a dimension (row) is <50 that row will not be shown; n/a (Not Available) - Not asked of a subset of respondents

Year: 2004-2006

Married	Never heard of hemoglobin "A one C" test			None			Once			2 or more			Estimated Population (3-Yr Avg)
	#	%	C.I. (95%)	#	%	C.I. (95%)	#	%	C.I. (95%)	#	%	C.I. (95%)	#
Yes	2,100	4.9	2.3 - 7.5	3,400	7.9	4.7 - 11.1	4,200	10.0	6.7 - 13.2	32,800	77.2	72.2 - 82.2	42,400
No	900	4.3	1.5 - 7.1	3,200	15.4	8.5 - 22.3	3,300	15.7	9.3 - 22.0	13,600	64.7	56.3 - 73.1	21,100

Health Care Coverage	Never heard of hemoglobin "A one C" test			None			Once			2 or more			Estimated Population (3-Yr Avg)
	#	%	C.I. (95%)	#	%	C.I. (95%)	#	%	C.I. (95%)	#	%	C.I. (95%)	#
Yes	1,100	2.7	1.1 - 4.3	2,900	7.3	4.7 - 9.9	4,500	11.3	7.9 - 14.7	31,300	78.7	74.1 - 83.2	39,900

Diabetes - times chk for HbA1C by State, County, Island, Community, BRFSS Age Group, DOH Race-Ethnicity, Gender, Education Level, Employment Status (Grouped), Household Income, Poverty Level, Marital Status (Grouped), Married, Health Care Coverage, for the Year(s) - 2000-2002, 2001-2003, 2002-2004, 2003-2005, 2004-2006, 2005-2007, 2006-2008, 2007-2009, 2008-2010

Note: Weighted numbers (#) represent 3-yr averages, percentages and 95% confidence intervals; Respondents aged 18 years and older; n/r (Not Reportable) - If the unweighted total responses for a dimension (row) is <50 that row will not be shown; n/a (Not Available) - Not asked of a subset of respondents

Year: 2003-2005

State	Never heard of hemoglobin "A one C" test			None			Once			2 or more			Estimated Population (3-Yr Avg)
	#	%	C.I. (95%)	#	%	C.I. (95%)	#	%	C.I. (95%)	#	%	C.I. (95%)	#
Hawaii State	2,200	3.5	1.8 - 5.3	6,400	10.1	6.8 - 13.4	6,000	9.4	6.4 - 12.5	48,600	76.9	72.4 - 81.5	63,100

County	Never heard of hemoglobin "A one C" test			None			Once			2 or more			Estimated Population (3-Yr Avg)
	#	%	C.I. (95%)	#	%	C.I. (95%)	#	%	C.I. (95%)	#	%	C.I. (95%)	#
Hawaii	500	6.1	2.2 - 10.1	800	9.5	5.0 - 14.0	1,200	14.8	6.4 - 23.3	5,700	69.6	60.5 - 78.6	8,200
Honolulu	1,500	3.0	0.8 - 5.2	4,600	9.7	5.5 - 13.9	3,700	7.8	4.1 - 11.5	38,000	79.5	73.9 - 85.1	47,900
Kauai	100	2.9	0.0 - 7.1	400	14.2	3.9 - 24.5	500	19.0	7.5 - 30.4	1,600	63.9	49.8 - 78.1	2,500
Maui	200	4.7	0.0 - 10.1	600	13.0	4.4 - 21.6	500	11.6	5.2 - 18.0	3,200	70.7	59.5 - 81.9	4,500

Diabetes - times chk for HbA1C by State, County, Island, Community, BRFSS Age Group, DOH Race-Ethnicity, Gender, Education Level, Employment Status (Grouped), Household Income, Poverty Level, Marital Status (Grouped), Married, Health Care Coverage, for the Year(s) - 2000-2002, 2001-2003, 2002-2004, 2003-2005, 2004-2006, 2005-2007, 2006-2008, 2007-2009, 2008-2010

Note: Weighted numbers (#) represent 3-yr averages, percentages and 95% confidence intervals; Respondents aged 18 years and older; n/r (Not Reportable) - If the unweighted total responses for a dimension (row) is <50 that row will not be shown; n/a (Not Available) - Not asked of a subset of respondents

Year: 2003-2005

Island	Never heard of hemoglobin "A one C" test			None			Once			2 or more			Estimated Population (3-Yr Avg)
	#	%	C.I. (95%)	#	%	C.I. (95%)	#	%	C.I. (95%)	#	%	C.I. (95%)	#
Hawaii	500	6.1	2.2 - 10.1	800	9.5	5.0 - 14.0	1,200	14.8	6.4 - 23.3	5,700	69.6	60.5 - 78.6	8,200
Kauai	100	2.9	0.0 - 7.1	400	14.2	3.9 - 24.5	500	19.0	7.5 - 30.4	1,600	63.9	49.8 - 78.1	2,500
Maui	200	4.5	0.0 - 10.6	500	13.7	3.9 - 23.6	400	10.1	3.2 - 17.0	2,700	71.6	58.9 - 84.3	3,800
Oahu	1,500	3.0	0.8 - 5.2	4,600	9.7	5.5 - 13.9	3,700	7.8	4.1 - 11.5	38,000	79.5	73.9 - 85.1	47,900

Community	Never heard of hemoglobin "A one C" test			None			Once			2 or more			Estimated Population (3-Yr Avg)
	#	%	C.I. (95%)	#	%	C.I. (95%)	#	%	C.I. (95%)	#	%	C.I. (95%)	#
Hilo	200	9.1	0.3 - 17.9	100	3.7	0.0 - 8.3	100	6.8	0.0 - 14.6	1,700	80.5	68.4 - 92.6	2,100

Diabetes - times chk for HbA1C by State, County, Island, Community, BRFSS Age Group, DOH Race-Ethnicity, Gender, Education Level, Employment Status (Grouped), Household Income, Poverty Level, Marital Status (Grouped), Married, Health Care Coverage, for the Year(s) - 2000-2002, 2001-2003, 2002-2004, 2003-2005, 2004-2006, 2005-2007, 2006-2008, 2007-2009, 2008-2010

Note: Weighted numbers (#) represent 3-yr averages, percentages and 95% confidence intervals; Respondents aged 18 years and older; n/r (Not Reportable) - If the unweighted total responses for a dimension (row) is <50 that row will not be shown; n/a (Not Available) - Not asked of a subset of respondents

Year: 2003-2005

BRFSS Age Group	Never heard of hemoglobin "A one C" test			None			Once			2 or more			Estimated Population (3-Yr Avg)
	#	%	C.I. (95%)	#	%	C.I. (95%)	#	%	C.I. (95%)	#	%	C.I. (95%)	#
35-44	300	3.3	0.0 - 8.0	700	8.1	0.0 - 17.8	900	10.0	1.7 - 18.4	6,800	78.6	65.1 - 92.0	8,600
45-54	100	0.7	0.0 - 1.9	500	3.5	1.0 - 5.9	600	4.1	1.5 - 6.8	13,200	91.7	87.8 - 95.7	14,400
55-64	200	1.5	0.1 - 2.9	1,900	12.4	5.1 - 19.6	2,100	13.5	6.0 - 21.0	11,100	72.7	63.2 - 82.2	15,200
65-74	800	6.8	2.1 - 11.6	1,000	7.9	2.0 - 13.9	1,100	9.2	3.0 - 15.5	9,400	76.0	67.0 - 85.0	12,300
75+	500	5.5	0.0 - 11.7	900	10.6	2.8 - 18.5	600	6.9	1.3 - 12.5	6,600	77.0	66.2 - 87.7	8,600

Diabetes - times chk for HbA1C by State, County, Island, Community, BRFSS Age Group, DOH Race-Ethnicity, Gender, Education Level, Employment Status (Grouped), Household Income, Poverty Level, Marital Status (Grouped), Married, Health Care Coverage, for the Year(s) - 2000-2002, 2001-2003, 2002-2004, 2003-2005, 2004-2006, 2005-2007, 2006-2008, 2007-2009, 2008-2010

Note: Weighted numbers (#) represent 3-yr averages, percentages and 95% confidence intervals; Respondents aged 18 years and older; n/r (Not Reportable) - If the unweighted total responses for a dimension (row) is <50 that row will not be shown; n/a (Not Available) - Not asked of a subset of respondents

Year: 2003-2005

DOH Race-Ethnicity	Never heard of hemoglobin "A one C" test			None			Once			2 or more			Estimated Population (3-Yr Avg)
	#	%	C.I. (95%)	#	%	C.I. (95%)	#	%	C.I. (95%)	#	%	C.I. (95%)	#
Caucasian	300	2.0	0.0 - 4.5	1,600	10.8	5.3 - 16.4	1,300	8.5	4.3 - 12.7	11,600	78.7	71.4 - 85.9	14,800
Native Hawaiian	500	4.0	0.5 - 7.6	800	6.1	0.8 - 11.5	1,800	14.1	4.5 - 23.8	9,800	75.7	64.6 - 86.8	13,000
Filipino	500	4.8	0.0 - 10.1	500	4.7	1.1 - 8.2	800	7.0	0.6 - 13.4	9,100	83.5	74.7 - 92.3	10,900
Japanese	500	3.4	0.2 - 6.6	1,700	12.5	4.1 - 20.8	1,200	9.2	3.3 - 15.1	10,100	74.9	65.2 - 84.6	13,500

Gender	Never heard of hemoglobin "A one C" test			None			Once			2 or more			Estimated Population (3-Yr Avg)
	#	%	C.I. (95%)	#	%	C.I. (95%)	#	%	C.I. (95%)	#	%	C.I. (95%)	#
Male	1,400	4.0	1.1 - 6.9	3,400	9.9	5.0 - 14.7	3,600	10.3	6.2 - 14.5	26,100	75.8	69.3 - 82.3	34,500
Female	900	3.0	1.1 - 4.8	3,000	10.4	6.1 - 14.7	2,400	8.4	3.7 - 13.0	22,400	78.3	72.1 - 84.6	28,600

Diabetes - times chk for HbA1C by State, County, Island, Community, BRFSS Age Group, DOH Race-Ethnicity, Gender, Education Level, Employment Status (Grouped), Household Income, Poverty Level, Marital Status (Grouped), Married, Health Care Coverage, for the Year(s) - 2000-2002, 2001-2003, 2002-2004, 2003-2005, 2004-2006, 2005-2007, 2006-2008, 2007-2009, 2008-2010

Note: Weighted numbers (#) represent 3-yr averages, percentages and 95% confidence intervals; Respondents aged 18 years and older; n/r (Not Reportable) - If the unweighted total responses for a dimension (row) is <50 that row will not be shown; n/a (Not Available) - Not asked of a subset of respondents

Year: 2003-2005

Education Level	Never heard of hemoglobin "A one C" test			None			Once			2 or more			Estimated Population (3-Yr Avg)
	#	%	C.I. (95%)	#	%	C.I. (95%)	#	%	C.I. (95%)	#	%	C.I. (95%)	#
Grades 9 thru 11 (Some High School)	300	6.7	0.0 - 13.8	600	14.9	0.0 - 32.3	200	4.6	0.0 - 9.2	3,000	73.8	56.1 - 91.5	4,100
Grades 12 or GED (High School Grad)	900	4.0	1.0 - 6.9	1,900	8.2	3.4 - 13.0	2,000	8.4	3.0 - 13.9	18,600	79.4	71.9 - 86.9	23,500
College 1 to 3 years (Some College/ Tech)	600	3.6	0.0 - 7.7	2,200	12.9	6.5 - 19.2	2,100	12.5	5.9 - 19.1	12,200	71.0	61.9 - 80.0	17,100
College 4 years or more (College Grad)	400	2.4	0.0 - 5.2	1,200	7.1	1.0 - 13.2	1,600	9.2	4.0 - 14.4	13,700	81.3	73.3 - 89.3	16,800

Employment Status (Grouped)	Never heard of hemoglobin "A one C" test			None			Once			2 or more			Estimated Population (3-Yr Avg)
	#	%	C.I. (95%)	#	%	C.I. (95%)	#	%	C.I. (95%)	#	%	C.I. (95%)	#
Employed	700	2.3	0.0 - 4.7	2,600	8.4	3.9 - 12.8	3,300	10.5	5.5 - 15.5	24,500	78.8	72.1 - 85.5	31,000
Retired/Unable to work	1,300	4.8	1.9 - 7.7	3,400	12.4	6.9 - 17.8	2,400	8.7	4.6 - 12.9	20,200	74.1	67.3 - 80.9	27,300

Diabetes - times chk for HbA1C by State, County, Island, Community, BRFSS Age Group, DOH Race-Ethnicity, Gender, Education Level, Employment Status (Grouped), Household Income, Poverty Level, Marital Status (Grouped), Married, Health Care Coverage, for the Year(s) - 2000-2002, 2001-2003, 2002-2004, 2003-2005, 2004-2006, 2005-2007, 2006-2008, 2007-2009, 2008-2010

Note: Weighted numbers (#) represent 3-yr averages, percentages and 95% confidence intervals; Respondents aged 18 years and older; n/r (Not Reportable) - If the unweighted total responses for a dimension (row) is <50 that row will not be shown; n/a (Not Available) - Not asked of a subset of respondents

Year: 2003-2005

Household Income	Never heard of hemoglobin "A one C" test			None			Once			2 or more			Estimated Population (3-Yr Avg)
	#	%	C.I. (95%)	#	%	C.I. (95%)	#	%	C.I. (95%)	#	%	C.I. (95%)	#
\$15,000 to \$19,999	0	0.0	--	700	11.7	0.0 - 25.5	1,100	19.5	1.9 - 37.0	3,900	68.8	48.1 - 89.6	5,600
\$20,000 to \$24,999	200	3.6	0.0 - 8.1	300	6.9	0.0 - 13.8	200	3.4	0.0 - 7.7	4,300	86.1	76.7 - 95.5	5,000
\$25,000 to \$34,999	300	4.0	0.0 - 10.4	1,300	17.3	3.3 - 31.3	800	10.2	2.5 - 17.9	5,200	68.5	52.6 - 84.4	7,600
\$35,000 to \$49,999	500	5.5	0.2 - 10.9	700	8.5	0.7 - 16.3	800	9.5	1.6 - 17.4	6,300	76.5	65.1 - 87.9	8,200
\$50,000 to \$74,999	500	4.4	0.0 - 8.9	1,100	9.9	3.4 - 16.4	900	8.3	2.2 - 14.4	8,700	77.4	68.0 - 86.9	11,200
\$75,000 or more	<50	0.1	0.0 - 0.2	500	4.2	0.0 - 9.3	1,200	10.9	2.7 - 19.0	9,100	84.8	75.4 - 94.3	10,700

Diabetes - times chk for HbA1C by State, County, Island, Community, BRFSS Age Group, DOH Race-Ethnicity, Gender, Education Level, Employment Status (Grouped), Household Income, Poverty Level, Marital Status (Grouped), Married, Health Care Coverage, for the Year(s) - 2000-2002, 2001-2003, 2002-2004, 2003-2005, 2004-2006, 2005-2007, 2006-2008, 2007-2009, 2008-2010

Note: Weighted numbers (#) represent 3-yr averages, percentages and 95% confidence intervals; Respondents aged 18 years and older; n/r (Not Reportable) - If the unweighted total responses for a dimension (row) is <50 that row will not be shown; n/a (Not Available) - Not asked of a subset of respondents

Year: 2003-2005

Poverty Level	Never heard of hemoglobin "A one C" test			None			Once			2 or more			Estimated Population (3-Yr Avg)
	#	%	C.I. (95%)	#	%	C.I. (95%)	#	%	C.I. (95%)	#	%	C.I. (95%)	#
0-130%	900	5.1	0.6 - 9.6	1,400	8.6	2.5 - 14.7	1,600	9.8	2.5 - 17.1	12,800	76.5	66.6 - 86.4	16,800
131-185%	300	4.2	0.0 - 11.6	1,100	17.0	3.0 - 31.0	500	7.1	1.5 - 12.7	4,700	71.6	56.4 - 86.8	6,500
186+%	1,000	3.1	0.9 - 5.2	2,600	8.0	4.3 - 11.7	3,300	10.4	6.2 - 14.6	25,200	78.5	72.8 - 84.2	32,100

Marital Status (Grouped)	Never heard of hemoglobin "A one C" test			None			Once			2 or more			Estimated Population (3-Yr Avg)
	#	%	C.I. (95%)	#	%	C.I. (95%)	#	%	C.I. (95%)	#	%	C.I. (95%)	#
Married	1,500	3.8	1.4 - 6.2	3,200	8.1	4.6 - 11.6	3,200	8.1	4.7 - 11.4	32,000	80.0	74.9 - 85.2	40,000
Widowed	600	7.4	0.5 - 14.3	800	9.8	2.0 - 17.5	500	6.8	2.2 - 11.3	6,000	76.1	65.8 - 86.4	7,900
Other	100	0.9	0.0 - 1.9	2,200	14.6	5.5 - 23.6	2,200	14.7	5.8 - 23.5	10,500	69.9	58.7 - 81.2	15,000

Diabetes - times chk for HbA1C by State, County, Island, Community, BRFSS Age Group, DOH Race-Ethnicity, Gender, Education Level, Employment Status (Grouped), Household Income, Poverty Level, Marital Status (Grouped), Married, Health Care Coverage, for the Year(s) - 2000-2002, 2001-2003, 2002-2004, 2003-2005, 2004-2006, 2005-2007, 2006-2008, 2007-2009, 2008-2010

Note: Weighted numbers (#) represent 3-yr averages, percentages and 95% confidence intervals; Respondents aged 18 years and older; n/r (Not Reportable) - If the unweighted total responses for a dimension (row) is <50 that row will not be shown; n/a (Not Available) - Not asked of a subset of respondents

Year: 2003-2005

Married	Never heard of hemoglobin "A one C" test			None			Once			2 or more			Estimated Population (3-Yr Avg)
	#	%	C.I. (95%)	#	%	C.I. (95%)	#	%	C.I. (95%)	#	%	C.I. (95%)	#
Yes	1,500	3.8	1.4 - 6.2	3,400	8.3	4.8 - 11.8	3,200	8.0	4.6 - 11.3	32,300	80.0	74.8 - 85.1	40,400
No	700	3.2	0.6 - 5.8	3,000	13.4	6.7 - 20.0	2,700	12.0	5.8 - 18.1	16,100	71.5	63.2 - 79.9	22,600

Health Care Coverage	Never heard of hemoglobin "A one C" test			None			Once			2 or more			Estimated Population (3-Yr Avg)
	#	%	C.I. (95%)	#	%	C.I. (95%)	#	%	C.I. (95%)	#	%	C.I. (95%)	#
Yes	300	0.9	0.1 - 1.7	2,800	7.0	4.1 - 9.9	3,100	7.7	4.3 - 11.2	33,900	84.4	79.9 - 88.9	40,100

Diabetes - times chk for HbA1C by State, County, Island, Community, BRFSS Age Group, DOH Race-Ethnicity, Gender, Education Level, Employment Status (Grouped), Household Income, Poverty Level, Marital Status (Grouped), Married, Health Care Coverage, for the Year(s) - 2000-2002, 2001-2003, 2002-2004, 2003-2005, 2004-2006, 2005-2007, 2006-2008, 2007-2009, 2008-2010

Note: Weighted numbers (#) represent 3-yr averages, percentages and 95% confidence intervals; Respondents aged 18 years and older; n/r (Not Reportable) - If the unweighted total responses for a dimension (row) is <50 that row will not be shown; n/a (Not Available) - Not asked of a subset of respondents

Year: 2002-2004

State	Never heard of hemoglobin "A one C" test			None			Once			2 or more			Estimated Population (3-Yr Avg)
	#	%	C.I. (95%)	#	%	C.I. (95%)	#	%	C.I. (95%)	#	%	C.I. (95%)	#
Hawaii State	500	0.9	0.2 - 1.5	3,700	6.4	4.2 - 8.6	4,600	8.0	5.3 - 10.6	49,000	84.8	81.4 - 88.2	57,900

County	Never heard of hemoglobin "A one C" test			None			Once			2 or more			Estimated Population (3-Yr Avg)
	#	%	C.I. (95%)	#	%	C.I. (95%)	#	%	C.I. (95%)	#	%	C.I. (95%)	#
Hawaii	100	2.0	0.0 - 4.9	700	9.9	4.6 - 15.2	1,100	15.6	5.9 - 25.3	5,000	72.5	62.5 - 82.6	6,900
Honolulu	200	0.4	0.0 - 1.0	2,200	4.9	2.4 - 7.5	3,000	6.9	3.9 - 9.9	38,600	87.8	83.9 - 91.7	43,900
Kauai	100	3.8	0.0 - 8.4	300	13.5	3.7 - 23.3	200	8.2	1.1 - 15.3	1,800	74.5	62.5 - 86.5	2,400
Maui	100	2.1	0.0 - 4.6	500	11.3	4.0 - 18.6	300	6.8	1.4 - 12.2	3,700	79.8	70.7 - 88.8	4,600

Diabetes - times chk for HbA1C by State, County, Island, Community, BRFSS Age Group, DOH Race-Ethnicity, Gender, Education Level, Employment Status (Grouped), Household Income, Poverty Level, Marital Status (Grouped), Married, Health Care Coverage, for the Year(s) - 2000-2002, 2001-2003, 2002-2004, 2003-2005, 2004-2006, 2005-2007, 2006-2008, 2007-2009, 2008-2010

Note: Weighted numbers (#) represent 3-yr averages, percentages and 95% confidence intervals; Respondents aged 18 years and older; n/r (Not Reportable) - If the unweighted total responses for a dimension (row) is <50 that row will not be shown; n/a (Not Available) - Not asked of a subset of respondents

Year: 2002-2004

Island	Never heard of hemoglobin "A one C" test			None			Once			2 or more			Estimated Population (3-Yr Avg)
	#	%	C.I. (95%)	#	%	C.I. (95%)	#	%	C.I. (95%)	#	%	C.I. (95%)	#
Hawaii	100	2.0	0.0 - 4.9	700	9.9	4.6 - 15.2	1,100	15.6	5.9 - 25.3	5,000	72.5	62.5 - 82.6	6,900
Kauai	100	3.8	0.0 - 8.4	300	13.5	3.7 - 23.3	200	8.2	1.1 - 15.3	1,800	74.5	62.5 - 86.5	2,400
Maui	100	2.5	0.0 - 5.4	400	11.2	2.8 - 19.6	300	6.4	0.2 - 12.7	3,100	79.9	69.4 - 90.3	3,900
Oahu	200	0.4	0.0 - 1.0	2,200	4.9	2.4 - 7.5	3,000	6.9	3.9 - 9.9	38,600	87.8	83.9 - 91.7	43,900

Community	Never heard of hemoglobin "A one C" test			None			Once			2 or more			Estimated Population (3-Yr Avg)
	#	%	C.I. (95%)	#	%	C.I. (95%)	#	%	C.I. (95%)	#	%	C.I. (95%)	#
Aiea/ Pearl City	0	0.0	--	600	12.0	1.0 - 22.9	200	4.2	0.0 - 9.4	4,400	83.9	72.0 - 95.8	5,300
Hilo	<50	2.2	0.0 - 6.6	200	10.2	0.0 - 21.4	100	5.3	0.0 - 12.3	1,500	82.2	69.3 - 95.2	1,800
Waipahu/ Kapolei/ Ewa	0	0.0	--	200	3.3	0.0 - 7.9	700	9.7	1.7 - 17.8	6,200	87.0	77.7 - 96.3	7,200

Diabetes - times chk for HbA1C by State, County, Island, Community, BRFSS Age Group, DOH Race-Ethnicity, Gender, Education Level, Employment Status (Grouped), Household Income, Poverty Level, Marital Status (Grouped), Married, Health Care Coverage, for the Year(s) - 2000-2002, 2001-2003, 2002-2004, 2003-2005, 2004-2006, 2005-2007, 2006-2008, 2007-2009, 2008-2010

Note: Weighted numbers (#) represent 3-yr averages, percentages and 95% confidence intervals; Respondents aged 18 years and older; n/r (Not Reportable) - If the unweighted total responses for a dimension (row) is <50 that row will not be shown; n/a (Not Available) - Not asked of a subset of respondents

Year: 2002-2004

BRFSS Age Group	Never heard of hemoglobin "A one C" test			None			Once			2 or more			Estimated Population (3-Yr Avg)
	#	%	C.I. (95%)	#	%	C.I. (95%)	#	%	C.I. (95%)	#	%	C.I. (95%)	#
35-44	100	1.2	0.0 - 2.9	400	5.4	0.6 - 10.2	700	8.7	1.9 - 15.5	6,700	84.7	75.7 - 93.8	7,900
45-54	100	0.7	0.0 - 2.2	500	3.9	1.2 - 6.6	600	4.5	1.3 - 7.6	11,600	90.9	86.4 - 95.3	12,700
55-64	<50	0.3	0.0 - 0.8	1,100	7.9	2.5 - 13.3	1,600	11.8	4.5 - 19.1	11,100	80.1	71.6 - 88.5	13,800
65-74	200	1.6	0.0 - 3.6	700	6.0	0.6 - 11.5	1,000	8.4	2.2 - 14.5	10,300	84.0	76.0 - 92.1	12,200
75+	100	0.9	0.0 - 2.1	600	6.7	1.9 - 11.5	400	4.6	0.8 - 8.4	7,500	87.8	81.5 - 94.1	8,500

Diabetes - times chk for HbA1C by State, County, Island, Community, BRFSS Age Group, DOH Race-Ethnicity, Gender, Education Level, Employment Status (Grouped), Household Income, Poverty Level, Marital Status (Grouped), Married, Health Care Coverage, for the Year(s) - 2000-2002, 2001-2003, 2002-2004, 2003-2005, 2004-2006, 2005-2007, 2006-2008, 2007-2009, 2008-2010

Note: Weighted numbers (#) represent 3-yr averages, percentages and 95% confidence intervals; Respondents aged 18 years and older; n/r (Not Reportable) - If the unweighted total responses for a dimension (row) is <50 that row will not be shown; n/a (Not Available) - Not asked of a subset of respondents

Year: 2002-2004

DOH Race-Ethnicity	Never heard of hemoglobin "A one C" test			None			Once			2 or more			Estimated Population (3-Yr Avg)
	#	%	C.I. (95%)	#	%	C.I. (95%)	#	%	C.I. (95%)	#	%	C.I. (95%)	#
Caucasian	0	0.0	--	1,400	11.4	5.2 - 17.6	700	5.7	2.3 - 9.1	10,500	82.9	75.9 - 89.9	12,700
Native Hawaiian	200	1.5	0.0 - 3.6	800	6.6	1.1 - 12.1	1,400	12.0	4.3 - 19.6	9,100	79.9	70.4 - 89.4	11,400
Chinese	100	1.8	0.0 - 4.4	100	2.3	0.0 - 6.1	300	5.9	0.0 - 12.5	4,100	89.9	81.9 - 98.0	4,600
Filipino	100	1.0	0.0 - 3.0	500	5.4	1.4 - 9.4	800	8.7	1.2 - 16.2	7,900	84.9	76.4 - 93.5	9,400
Japanese	100	0.6	0.0 - 1.3	900	5.9	1.8 - 10.1	900	5.8	1.7 - 9.9	12,900	87.7	82.0 - 93.4	14,700

Gender	Never heard of hemoglobin "A one C" test			None			Once			2 or more			Estimated Population (3-Yr Avg)
	#	%	C.I. (95%)	#	%	C.I. (95%)	#	%	C.I. (95%)	#	%	C.I. (95%)	#
Male	200	0.8	0.0 - 1.7	2,100	7.1	3.8 - 10.4	2,700	9.3	5.0 - 13.5	24,200	82.9	77.5 - 88.2	29,200
Female	300	0.9	0.1 - 1.8	1,600	5.7	2.9 - 8.5	1,900	6.6	3.6 - 9.7	24,800	86.7	82.6 - 90.9	28,600

Diabetes - times chk for HbA1C by State, County, Island, Community, BRFSS Age Group, DOH Race-Ethnicity, Gender, Education Level, Employment Status (Grouped), Household Income, Poverty Level, Marital Status (Grouped), Married, Health Care Coverage, for the Year(s) - 2000-2002, 2001-2003, 2002-2004, 2003-2005, 2004-2006, 2005-2007, 2006-2008, 2007-2009, 2008-2010

Note: Weighted numbers (#) represent 3-yr averages, percentages and 95% confidence intervals; Respondents aged 18 years and older; n/r (Not Reportable) - If the unweighted total responses for a dimension (row) is <50 that row will not be shown; n/a (Not Available) - Not asked of a subset of respondents

Year: 2002-2004

Education Level	Never heard of hemoglobin "A one C" test			None			Once			2 or more			Estimated Population (3-Yr Avg)
	#	%	C.I. (95%)	#	%	C.I. (95%)	#	%	C.I. (95%)	#	%	C.I. (95%)	#
Grades 9 thru 11 (Some High School)	200	4.7	0.0 - 11.7	100	3.1	0.0 - 6.8	200	4.7	0.0 - 9.9	3,000	87.4	78.2 - 96.7	3,400
Grades 12 or GED (High School Grad)	200	1.1	0.0 - 2.2	1,500	6.8	3.0 - 10.5	1,600	7.5	3.5 - 11.5	18,400	84.6	79.1 - 90.2	21,700
College 1 to 3 years (Some College/ Tech)	100	0.6	0.0 - 1.3	1,500	9.6	4.2 - 14.9	1,200	7.3	2.0 - 12.6	13,300	82.6	75.3 - 89.8	16,100
College 4 years or more (College Grad)	0	0.0	--	500	3.4	0.9 - 5.9	1,500	9.8	4.1 - 15.6	13,200	86.7	80.6 - 92.9	15,200

Employment Status (Grouped)	Never heard of hemoglobin "A one C" test			None			Once			2 or more			Estimated Population (3-Yr Avg)
	#	%	C.I. (95%)	#	%	C.I. (95%)	#	%	C.I. (95%)	#	%	C.I. (95%)	#
Employed	<50	0.1	0.0 - 0.4	1,600	6.0	2.8 - 9.3	2,100	8.2	4.3 - 12.1	22,500	85.6	80.7 - 90.6	26,200
Retired/Unable to work	300	1.2	0.1 - 2.3	1,900	7.2	3.8 - 10.5	2,000	7.6	3.6 - 11.6	22,600	84.1	78.9 - 89.2	26,900

Diabetes - times chk for HbA1C by State, County, Island, Community, BRFSS Age Group, DOH Race-Ethnicity, Gender, Education Level, Employment Status (Grouped), Household Income, Poverty Level, Marital Status (Grouped), Married, Health Care Coverage, for the Year(s) - 2000-2002, 2001-2003, 2002-2004, 2003-2005, 2004-2006, 2005-2007, 2006-2008, 2007-2009, 2008-2010

Note: Weighted numbers (#) represent 3-yr averages, percentages and 95% confidence intervals; Respondents aged 18 years and older; n/r (Not Reportable) - If the unweighted total responses for a dimension (row) is <50 that row will not be shown; n/a (Not Available) - Not asked of a subset of respondents

Year: 2002-2004

Household Income	Never heard of hemoglobin "A one C" test			None			Once			2 or more			Estimated Population (3-Yr Avg)
	#	%	C.I. (95%)	#	%	C.I. (95%)	#	%	C.I. (95%)	#	%	C.I. (95%)	#
Less than \$10,000	200	6.6	0.0 - 15.0	100	3.2	0.0 - 6.4	100	3.5	0.0 - 7.6	2,500	86.7	76.9 - 96.5	2,900
\$10,000 to \$14,999	0	0.0	--	400	10.4	0.0 - 20.8	400	11.8	0.0 - 28.6	2,700	77.8	59.8 - 95.8	3,500
\$25,000 to \$34,999	<50	0.3	0.0 - 0.9	600	9.9	1.5 - 18.3	600	10.4	2.0 - 18.7	4,600	79.4	67.3 - 91.6	5,800
\$35,000 to \$49,999	0	0.0	--	500	6.1	0.0 - 12.8	300	4.1	0.0 - 8.4	7,300	89.7	82.0 - 97.4	8,200
\$50,000 to \$74,999	100	0.6	0.0 - 1.5	900	8.5	2.3 - 14.6	800	7.6	1.2 - 13.9	8,700	83.3	74.8 - 91.9	10,500
\$75,000 or more	0	0.0	--	300	3.4	0.0 - 8.5	1,000	10.2	1.6 - 18.8	8,400	86.4	76.7 - 96.1	9,800

Diabetes - times chk for HbA1C by State, County, Island, Community, BRFSS Age Group, DOH Race-Ethnicity, Gender, Education Level, Employment Status (Grouped), Household Income, Poverty Level, Marital Status (Grouped), Married, Health Care Coverage, for the Year(s) - 2000-2002, 2001-2003, 2002-2004, 2003-2005, 2004-2006, 2005-2007, 2006-2008, 2007-2009, 2008-2010

Note: Weighted numbers (#) represent 3-yr averages, percentages and 95% confidence intervals; Respondents aged 18 years and older; n/r (Not Reportable) - If the unweighted total responses for a dimension (row) is <50 that row will not be shown; n/a (Not Available) - Not asked of a subset of respondents

Year: 2002-2004

Poverty Level	Never heard of hemoglobin "A one C" test			None			Once			2 or more			Estimated Population (3-Yr Avg)
	#	%	C.I. (95%)	#	%	C.I. (95%)	#	%	C.I. (95%)	#	%	C.I. (95%)	#
0-130%	400	2.8	0.2 - 5.3	700	5.5	1.8 - 9.1	1,200	9.3	3.1 - 15.5	11,100	82.5	74.8 - 90.1	13,400
131-185%	0	0.0	--	400	7.0	2.0 - 11.9	500	10.0	2.3 - 17.7	4,300	83.0	73.7 - 92.3	5,200
186+%	100	0.3	0.0 - 0.6	2,000	6.7	3.2 - 10.3	2,300	7.7	3.9 - 11.6	25,300	85.2	80.2 - 90.3	29,600

Marital Status (Grouped)	Never heard of hemoglobin "A one C" test			None			Once			2 or more			Estimated Population (3-Yr Avg)
	#	%	C.I. (95%)	#	%	C.I. (95%)	#	%	C.I. (95%)	#	%	C.I. (95%)	#
Married	200	0.6	0.0 - 1.2	2,300	6.3	3.7 - 8.9	2,800	7.7	4.6 - 10.7	31,700	85.5	81.5 - 89.5	37,000
Widowed	200	2.0	0.0 - 4.9	600	7.2	0.4 - 13.9	400	5.0	1.1 - 8.9	7,100	85.8	77.8 - 93.8	8,200
Other	100	0.8	0.0 - 1.8	800	6.4	1.7 - 11.1	1,400	10.9	3.2 - 18.6	10,300	82.0	73.3 - 90.7	12,500

Diabetes - times chk for HbA1C by State, County, Island, Community, BRFSS Age Group, DOH Race-Ethnicity, Gender, Education Level, Employment Status (Grouped), Household Income, Poverty Level, Marital Status (Grouped), Married, Health Care Coverage, for the Year(s) - 2000-2002, 2001-2003, 2002-2004, 2003-2005, 2004-2006, 2005-2007, 2006-2008, 2007-2009, 2008-2010

Note: Weighted numbers (#) represent 3-yr averages, percentages and 95% confidence intervals; Respondents aged 18 years and older; n/r (Not Reportable) - If the unweighted total responses for a dimension (row) is <50 that row will not be shown; n/a (Not Available) - Not asked of a subset of respondents

Year: 2002-2004

Married	Never heard of hemoglobin "A one C" test			None			Once			2 or more			Estimated Population (3-Yr Avg)
	#	%	C.I. (95%)	#	%	C.I. (95%)	#	%	C.I. (95%)	#	%	C.I. (95%)	#
Yes	300	0.7	0.0 - 1.4	2,300	6.2	3.6 - 8.8	2,800	7.6	4.6 - 10.5	32,100	85.5	81.6 - 89.5	37,500
No	200	1.1	0.0 - 2.3	1,400	6.8	2.8 - 10.8	1,700	8.6	3.5 - 13.6	16,900	83.6	77.3 - 89.8	20,300

Health Care Coverage	Never heard of hemoglobin "A one C" test			None			Once			2 or more			Estimated Population (3-Yr Avg)
	#	%	C.I. (95%)	#	%	C.I. (95%)	#	%	C.I. (95%)	#	%	C.I. (95%)	#
Yes	500	0.9	0.2 - 1.5	3,400	5.9	3.8 - 8.1	4,200	7.5	4.8 - 10.1	48,400	85.7	82.3 - 89.1	56,500

Diabetes - times chk for HbA1C by State, County, Island, Community, BRFSS Age Group, DOH Race-Ethnicity, Gender, Education Level, Employment Status (Grouped), Household Income, Poverty Level, Marital Status (Grouped), Married, Health Care Coverage, for the Year(s) - 2000-2002, 2001-2003, 2002-2004, 2003-2005, 2004-2006, 2005-2007, 2006-2008, 2007-2009, 2008-2010

Note: Weighted numbers (#) represent 3-yr averages, percentages and 95% confidence intervals; Respondents aged 18 years and older; n/r (Not Reportable) - If the unweighted total responses for a dimension (row) is <50 that row will not be shown; n/a (Not Available) - Not asked of a subset of respondents

Year: 2001-2003

State	Never heard of hemoglobin "A one C" test			None			Once			2 or more			Estimated Population (3-Yr Avg)
	#	%	C.I. (95%)	#	%	C.I. (95%)	#	%	C.I. (95%)	#	%	C.I. (95%)	#
Hawaii State	400	0.8	0.1 - 1.5	2,300	4.1	2.5 - 5.8	4,400	7.9	5.4 - 10.3	48,700	87.2	84.3 - 90.2	55,900

County	Never heard of hemoglobin "A one C" test			None			Once			2 or more			Estimated Population (3-Yr Avg)
	#	%	C.I. (95%)	#	%	C.I. (95%)	#	%	C.I. (95%)	#	%	C.I. (95%)	#
Hawaii	100	0.9	0.0 - 2.2	500	7.2	2.7 - 11.8	1,100	16.5	6.6 - 26.3	4,900	75.4	65.5 - 85.4	6,400
Honolulu	300	0.7	0.0 - 1.6	1,400	3.3	1.3 - 5.2	2,900	6.9	4.2 - 9.6	37,100	89.1	85.8 - 92.5	41,600
Kauai	<50	0.8	0.0 - 2.3	200	8.0	0.0 - 16.5	100	4.1	0.0 - 8.4	2,000	87.1	77.7 - 96.5	2,200
Maui	100	1.1	0.0 - 2.7	300	5.6	1.1 - 10.1	400	6.8	1.6 - 12.0	4,800	86.5	78.8 - 94.1	5,600

Diabetes - times chk for HbA1C by State, County, Island, Community, BRFSS Age Group, DOH Race-Ethnicity, Gender, Education Level, Employment Status (Grouped), Household Income, Poverty Level, Marital Status (Grouped), Married, Health Care Coverage, for the Year(s) - 2000-2002, 2001-2003, 2002-2004, 2003-2005, 2004-2006, 2005-2007, 2006-2008, 2007-2009, 2008-2010

Note: Weighted numbers (#) represent 3-yr averages, percentages and 95% confidence intervals; Respondents aged 18 years and older; n/r (Not Reportable) - If the unweighted total responses for a dimension (row) is <50 that row will not be shown; n/a (Not Available) - Not asked of a subset of respondents

Year: 2001-2003

Island	Never heard of hemoglobin "A one C" test			None			Once			2 or more			Estimated Population (3-Yr Avg)
	#	%	C.I. (95%)	#	%	C.I. (95%)	#	%	C.I. (95%)	#	%	C.I. (95%)	#
Hawaii	100	0.9	0.0 - 2.2	500	7.2	2.7 - 11.8	1,100	16.5	6.6 - 26.3	4,900	75.4	65.5 - 85.4	6,400
Kauai	<50	0.8	0.0 - 2.3	200	8.0	0.0 - 16.5	100	4.1	0.0 - 8.4	2,000	87.1	77.7 - 96.5	2,200
Maui	100	1.2	0.0 - 3.1	300	5.6	0.5 - 10.7	300	6.7	0.8 - 12.5	4,200	86.5	77.8 - 95.1	4,900
Oahu	300	0.7	0.0 - 1.6	1,400	3.3	1.3 - 5.2	2,900	6.9	4.2 - 9.6	37,100	89.1	85.8 - 92.5	41,600

Diabetes - times chk for HbA1C by State, County, Island, Community, BRFSS Age Group, DOH Race-Ethnicity, Gender, Education Level, Employment Status (Grouped), Household Income, Poverty Level, Marital Status (Grouped), Married, Health Care Coverage, for the Year(s) - 2000-2002, 2001-2003, 2002-2004, 2003-2005, 2004-2006, 2005-2007, 2006-2008, 2007-2009, 2008-2010

Note: Weighted numbers (#) represent 3-yr averages, percentages and 95% confidence intervals; Respondents aged 18 years and older; n/r (Not Reportable) - If the unweighted total responses for a dimension (row) is <50 that row will not be shown; n/a (Not Available) - Not asked of a subset of respondents

Year: 2001-2003

Community	Never heard of hemoglobin "A one C" test			None			Once			2 or more			Estimated Population (3-Yr Avg)
	#	%	C.I. (95%)	#	%	C.I. (95%)	#	%	C.I. (95%)	#	%	C.I. (95%)	#
Aiea/ Pearl City	0	0.0	--	200	3.4	0.0 - 8.3	200	3.8	0.0 - 8.5	5,400	92.8	86.1 - 99.6	5,800
Hilo	<50	1.9	0.0 - 5.5	200	9.2	0.0 - 18.7	200	7.3	0.1 - 14.5	1,800	81.6	70.0 - 93.2	2,200
Kaimuki/ Palolo/ Waikiki	0	0.0	--	300	5.8	0.0 - 12.9	200	4.9	0.0 - 11.0	4,400	89.2	80.1 - 98.3	4,900
Lihue-Waimea	0	0.0	--	200	10.8	0.0 - 22.9	100	3.5	0.0 - 8.7	1,300	85.7	72.9 - 98.5	1,500
Waipahu/ Kapolei/ Ewa	0	0.0	--	200	4.7	0.0 - 11.0	600	11.5	1.7 - 21.4	4,200	83.8	72.5 - 95.0	5,000

Diabetes - times chk for HbA1C by State, County, Island, Community, BRFSS Age Group, DOH Race-Ethnicity, Gender, Education Level, Employment Status (Grouped), Household Income, Poverty Level, Marital Status (Grouped), Married, Health Care Coverage, for the Year(s) - 2000-2002, 2001-2003, 2002-2004, 2003-2005, 2004-2006, 2005-2007, 2006-2008, 2007-2009, 2008-2010

Note: Weighted numbers (#) represent 3-yr averages, percentages and 95% confidence intervals; Respondents aged 18 years and older; n/r (Not Reportable) - If the unweighted total responses for a dimension (row) is <50 that row will not be shown; n/a (Not Available) - Not asked of a subset of respondents

Year: 2001-2003

BRFSS Age Group	Never heard of hemoglobin "A one C" test			None			Once			2 or more			Estimated Population (3-Yr Avg)
	#	%	C.I. (95%)	#	%	C.I. (95%)	#	%	C.I. (95%)	#	%	C.I. (95%)	#
35-44	100	1.9	0.0 - 4.6	200	4.9	0.1 - 9.8	1,000	19.2	7.4 - 31.0	3,700	73.9	61.6 - 86.3	5,000
45-54	0	0.0	--	400	3.7	0.8 - 6.5	700	6.3	2.4 - 10.2	9,800	90.0	85.2 - 94.8	10,900
55-64	200	1.3	0.0 - 3.3	200	1.8	0.0 - 3.8	900	6.9	1.9 - 11.9	12,100	90.0	84.4 - 95.6	13,400
65-74	200	1.1	0.0 - 2.7	500	3.4	0.0 - 7.5	1,100	7.6	2.2 - 12.9	12,500	87.9	81.3 - 94.5	14,200
75+	<50	0.2	0.0 - 0.6	700	8.1	2.7 - 13.5	400	4.6	0.9 - 8.2	7,600	87.1	80.8 - 93.5	8,700

Diabetes - times chk for HbA1C by State, County, Island, Community, BRFSS Age Group, DOH Race-Ethnicity, Gender, Education Level, Employment Status (Grouped), Household Income, Poverty Level, Marital Status (Grouped), Married, Health Care Coverage, for the Year(s) - 2000-2002, 2001-2003, 2002-2004, 2003-2005, 2004-2006, 2005-2007, 2006-2008, 2007-2009, 2008-2010

Note: Weighted numbers (#) represent 3-yr averages, percentages and 95% confidence intervals; Respondents aged 18 years and older; n/r (Not Reportable) - If the unweighted total responses for a dimension (row) is <50 that row will not be shown; n/a (Not Available) - Not asked of a subset of respondents

Year: 2001-2003

DOH Race-Ethnicity	Never heard of hemoglobin "A one C" test			None			Once			2 or more			Estimated Population (3-Yr Avg)
	#	%	C.I. (95%)	#	%	C.I. (95%)	#	%	C.I. (95%)	#	%	C.I. (95%)	#
Caucasian	<50	0.1	0.0 - 0.4	900	7.1	2.9 - 11.4	1,000	8.7	3.2 - 14.2	10,100	84.0	77.3 - 90.7	12,000
Native Hawaiian	200	1.8	0.0 - 4.3	700	7.0	0.7 - 13.2	800	8.4	3.4 - 13.4	7,900	82.8	74.8 - 90.8	9,500
Chinese	<50	0.7	0.0 - 2.2	200	3.0	0.0 - 8.0	300	5.3	0.0 - 11.1	4,600	91.0	83.4 - 98.7	5,100
Filipino	0	0.0	--	300	3.1	0.2 - 6.0	1,000	11.0	3.0 - 19.0	7,900	85.9	77.4 - 94.4	9,200
Japanese	<50	0.1	0.0 - 0.4	300	2.1	0.1 - 4.1	1,000	6.1	2.2 - 10.0	14,500	91.7	87.4 - 96.0	15,800

Gender	Never heard of hemoglobin "A one C" test			None			Once			2 or more			Estimated Population (3-Yr Avg)
	#	%	C.I. (95%)	#	%	C.I. (95%)	#	%	C.I. (95%)	#	%	C.I. (95%)	#
Male	200	0.8	0.0 - 1.8	1,200	4.3	2.1 - 6.5	2,600	9.5	5.2 - 13.8	22,900	85.4	80.6 - 90.2	26,900
Female	200	0.7	0.0 - 1.7	1,200	4.0	1.5 - 6.5	1,800	6.3	3.8 - 8.8	25,800	88.9	85.4 - 92.5	29,000

Diabetes - times chk for HbA1C by State, County, Island, Community, BRFSS Age Group, DOH Race-Ethnicity, Gender, Education Level, Employment Status (Grouped), Household Income, Poverty Level, Marital Status (Grouped), Married, Health Care Coverage, for the Year(s) - 2000-2002, 2001-2003, 2002-2004, 2003-2005, 2004-2006, 2005-2007, 2006-2008, 2007-2009, 2008-2010

Note: Weighted numbers (#) represent 3-yr averages, percentages and 95% confidence intervals; Respondents aged 18 years and older; n/r (Not Reportable) - If the unweighted total responses for a dimension (row) is <50 that row will not be shown; n/a (Not Available) - Not asked of a subset of respondents

Year: 2001-2003

Education Level	Never heard of hemoglobin "A one C" test			None			Once			2 or more			Estimated Population (3-Yr Avg)
	#	%	C.I. (95%)	#	%	C.I. (95%)	#	%	C.I. (95%)	#	%	C.I. (95%)	#
Grades 9 thru 11 (Some High School)	100	2.8	0.0 - 8.2	<50	0.4	0.0 - 1.1	100	3.4	0.0 - 7.3	3,800	93.4	86.8 - 100.0	4,100
Grades 12 or GED (High School Grad)	100	0.6	0.0 - 1.2	1,100	5.6	2.0 - 9.3	1,900	9.2	5.3 - 13.1	17,300	84.6	79.4 - 89.8	20,400
College 1 to 3 years (Some College/ Tech)	200	1.3	0.0 - 3.1	600	3.6	1.0 - 6.1	900	5.8	1.7 - 9.9	14,200	89.3	84.2 - 94.4	15,900
College 4 years or more (College Grad)	0	0.0	--	500	3.8	1.1 - 6.6	1,300	9.7	3.5 - 15.8	11,700	86.5	80.0 - 93.0	13,500

Employment Status (Grouped)	Never heard of hemoglobin "A one C" test			None			Once			2 or more			Estimated Population (3-Yr Avg)
	#	%	C.I. (95%)	#	%	C.I. (95%)	#	%	C.I. (95%)	#	%	C.I. (95%)	#
Employed	<50	0.2	0.0 - 0.5	700	2.8	1.0 - 4.6	2,200	9.4	5.7 - 13.0	21,000	87.7	83.6 - 91.8	24,000
Retired/Unable to work	400	1.3	0.0 - 2.6	1,600	5.5	2.6 - 8.4	1,800	6.4	2.9 - 9.9	24,500	86.8	82.3 - 91.3	28,200

Diabetes - times chk for HbA1C by State, County, Island, Community, BRFSS Age Group, DOH Race-Ethnicity, Gender, Education Level, Employment Status (Grouped), Household Income, Poverty Level, Marital Status (Grouped), Married, Health Care Coverage, for the Year(s) - 2000-2002, 2001-2003, 2002-2004, 2003-2005, 2004-2006, 2005-2007, 2006-2008, 2007-2009, 2008-2010

Note: Weighted numbers (#) represent 3-yr averages, percentages and 95% confidence intervals; Respondents aged 18 years and older; n/r (Not Reportable) - If the unweighted total responses for a dimension (row) is <50 that row will not be shown; n/a (Not Available) - Not asked of a subset of respondents

Year: 2001-2003

Household Income	Never heard of hemoglobin "A one C" test			None			Once			2 or more			Estimated Population (3-Yr Avg)
	#	%	C.I. (95%)	#	%	C.I. (95%)	#	%	C.I. (95%)	#	%	C.I. (95%)	#
Less than \$10,000	200	5.2	0.0 - 12.0	100	2.2	0.0 - 4.6	100	3.3	0.0 - 6.7	3,300	89.3	81.3 - 97.2	3,700
\$10,000 to \$14,999	200	3.7	0.0 - 10.0	100	3.5	0.0 - 9.6	400	9.3	0.0 - 23.4	3,500	83.6	68.0 - 99.1	4,200
\$20,000 to \$24,999	0	0.0	--	400	8.8	0.0 - 17.5	500	11.4	0.0 - 23.0	3,500	79.8	64.9 - 94.7	4,400
\$25,000 to \$34,999	<50	0.4	0.0 - 1.2	200	3.9	0.0 - 9.3	700	14.5	4.4 - 24.6	3,700	81.2	70.0 - 92.4	4,500
\$35,000 to \$49,999	0	0.0	--	400	5.2	0.0 - 11.4	300	3.9	0.2 - 7.6	7,700	90.9	83.9 - 97.9	8,400
\$50,000 to \$74,999	0	0.0	--	300	4.6	0.0 - 9.4	600	8.6	2.3 - 15.0	5,900	86.8	78.9 - 94.6	6,800
\$75,000 or more	0	0.0	--	100	1.5	0.0 - 4.1	800	10.9	2.4 - 19.4	6,700	87.6	78.8 - 96.3	7,600

Diabetes - times chk for HbA1C by State, County, Island, Community, BRFSS Age Group, DOH Race-Ethnicity, Gender, Education Level, Employment Status (Grouped), Household Income, Poverty Level, Marital Status (Grouped), Married, Health Care Coverage, for the Year(s) - 2000-2002, 2001-2003, 2002-2004, 2003-2005, 2004-2006, 2005-2007, 2006-2008, 2007-2009, 2008-2010

Note: Weighted numbers (#) represent 3-yr averages, percentages and 95% confidence intervals; Respondents aged 18 years and older; n/r (Not Reportable) - If the unweighted total responses for a dimension (row) is <50 that row will not be shown; n/a (Not Available) - Not asked of a subset of respondents

Year: 2001-2003

Poverty Level	Never heard of hemoglobin "A one C" test			None			Once			2 or more			Estimated Population (3-Yr Avg)
	#	%	C.I. (95%)	#	%	C.I. (95%)	#	%	C.I. (95%)	#	%	C.I. (95%)	#
0-130%	400	3.1	0.1 - 6.2	400	3.1	0.2 - 5.9	1,100	8.9	2.5 - 15.3	10,400	84.9	77.4 - 92.4	12,200
131-185%	0	0.0	--	400	6.9	0.6 - 13.1	700	13.1	3.4 - 22.8	4,200	80.0	68.9 - 91.1	5,300
186+%	<50	0.1	0.0 - 0.2	1,000	3.9	1.2 - 6.7	2,000	8.4	4.8 - 11.9	21,400	87.6	83.2 - 92.0	24,400

Marital Status (Grouped)	Never heard of hemoglobin "A one C" test			None			Once			2 or more			Estimated Population (3-Yr Avg)
	#	%	C.I. (95%)	#	%	C.I. (95%)	#	%	C.I. (95%)	#	%	C.I. (95%)	#
Married	<50	0.1	0.0 - 0.3	1,500	4.3	2.3 - 6.3	2,900	8.1	5.1 - 11.1	30,900	87.5	83.9 - 91.1	35,300
Widowed	300	3.1	0.0 - 7.1	500	5.2	0.0 - 11.4	200	2.7	0.4 - 5.0	7,800	88.9	81.6 - 96.3	8,700
Other	100	1.0	0.0 - 2.1	300	2.8	0.6 - 5.0	1,300	11.0	4.3 - 17.7	10,100	85.2	78.3 - 92.2	11,800

Diabetes - times chk for HbA1C by State, County, Island, Community, BRFSS Age Group, DOH Race-Ethnicity, Gender, Education Level, Employment Status (Grouped), Household Income, Poverty Level, Marital Status (Grouped), Married, Health Care Coverage, for the Year(s) - 2000-2002, 2001-2003, 2002-2004, 2003-2005, 2004-2006, 2005-2007, 2006-2008, 2007-2009, 2008-2010

Note: Weighted numbers (#) represent 3-yr averages, percentages and 95% confidence intervals; Respondents aged 18 years and older; n/r (Not Reportable) - If the unweighted total responses for a dimension (row) is <50 that row will not be shown; n/a (Not Available) - Not asked of a subset of respondents

Year: 2001-2003

Married	Never heard of hemoglobin "A one C" test			None			Once			2 or more			Estimated Population (3-Yr Avg)
	#	%	C.I. (95%)	#	%	C.I. (95%)	#	%	C.I. (95%)	#	%	C.I. (95%)	#
Yes	100	0.3	0.0 - 0.6	1,500	4.3	2.3 - 6.3	2,900	8.0	5.0 - 11.0	31,500	87.5	83.9 - 91.0	36,000
No	300	1.8	0.0 - 3.6	800	3.9	0.9 - 6.9	1,500	7.4	3.2 - 11.6	17,300	86.9	81.7 - 92.1	19,900

Health Care Coverage	Never heard of hemoglobin "A one C" test			None			Once			2 or more			Estimated Population (3-Yr Avg)
	#	%	C.I. (95%)	#	%	C.I. (95%)	#	%	C.I. (95%)	#	%	C.I. (95%)	#
Yes	400	0.8	0.1 - 1.5	2,000	3.6	2.0 - 5.3	4,100	7.6	5.2 - 10.0	48,100	88.0	85.0 - 90.9	54,700

Diabetes - times chk for HbA1C by State, County, Island, Community, BRFSS Age Group, DOH Race-Ethnicity, Gender, Education Level, Employment Status (Grouped), Household Income, Poverty Level, Marital Status (Grouped), Married, Health Care Coverage, for the Year(s) - 2000-2002, 2001-2003, 2002-2004, 2003-2005, 2004-2006, 2005-2007, 2006-2008, 2007-2009, 2008-2010

Note: Weighted numbers (#) represent 3-yr averages, percentages and 95% confidence intervals; Respondents aged 18 years and older; n/r (Not Reportable) - If the unweighted total responses for a dimension (row) is <50 that row will not be shown; n/a (Not Available) - Not asked of a subset of respondents

Year: 2000-2002

State	Never heard of hemoglobin "A one C" test			None			Once			2 or more			Estimated Population (3-Yr Avg)
	#	%	C.I. (95%)	#	%	C.I. (95%)	#	%	C.I. (95%)	#	%	C.I. (95%)	#
Hawaii State	900	2.0	0.8 - 3.2	1,300	2.8	1.5 - 4.0	4,000	8.6	6.1 - 11.0	40,400	86.7	83.7 - 89.6	46,600

County	Never heard of hemoglobin "A one C" test			None			Once			2 or more			Estimated Population (3-Yr Avg)
	#	%	C.I. (95%)	#	%	C.I. (95%)	#	%	C.I. (95%)	#	%	C.I. (95%)	#
Hawaii	100	1.1	0.0 - 2.6	400	6.6	1.8 - 11.5	600	10.7	5.8 - 15.7	4,400	81.6	75.0 - 88.2	5,400
Honolulu	800	2.3	0.6 - 3.9	700	2.0	0.5 - 3.5	2,900	8.5	5.4 - 11.6	29,300	87.2	83.5 - 90.9	33,600
Kauai	100	2.5	0.0 - 6.2	100	4.8	0.3 - 9.3	100	6.6	1.6 - 11.6	1,900	86.1	78.7 - 93.5	2,200
Maui	100	1.1	0.0 - 2.7	200	2.8	0.5 - 5.1	400	7.3	1.9 - 12.7	4,800	88.8	82.2 - 95.4	5,400

Diabetes - times chk for HbA1C by State, County, Island, Community, BRFSS Age Group, DOH Race-Ethnicity, Gender, Education Level, Employment Status (Grouped), Household Income, Poverty Level, Marital Status (Grouped), Married, Health Care Coverage, for the Year(s) - 2000-2002, 2001-2003, 2002-2004, 2003-2005, 2004-2006, 2005-2007, 2006-2008, 2007-2009, 2008-2010

Note: Weighted numbers (#) represent 3-yr averages, percentages and 95% confidence intervals; Respondents aged 18 years and older; n/r (Not Reportable) - If the unweighted total responses for a dimension (row) is <50 that row will not be shown; n/a (Not Available) - Not asked of a subset of respondents

Year: 2000-2002

Island	Never heard of hemoglobin "A one C" test			None			Once			2 or more			Estimated Population (3-Yr Avg)
	#	%	C.I. (95%)	#	%	C.I. (95%)	#	%	C.I. (95%)	#	%	C.I. (95%)	#
Hawaii	100	1.1	0.0 - 2.6	400	6.6	1.8 - 11.5	600	10.7	5.8 - 15.7	4,400	81.6	75.0 - 88.2	5,400
Kauai	100	2.5	0.0 - 6.2	100	4.8	0.3 - 9.3	100	6.6	1.6 - 11.6	1,900	86.1	78.7 - 93.5	2,200
Maui	100	1.2	0.0 - 3.1	100	2.2	0.0 - 4.5	300	7.0	1.0 - 13.1	4,200	89.5	82.3 - 96.7	4,700
Oahu	800	2.3	0.6 - 3.9	700	2.0	0.5 - 3.5	2,900	8.5	5.4 - 11.6	29,300	87.2	83.5 - 90.9	33,600

Diabetes - times chk for HbA1C by State, County, Island, Community, BRFSS Age Group, DOH Race-Ethnicity, Gender, Education Level, Employment Status (Grouped), Household Income, Poverty Level, Marital Status (Grouped), Married, Health Care Coverage, for the Year(s) - 2000-2002, 2001-2003, 2002-2004, 2003-2005, 2004-2006, 2005-2007, 2006-2008, 2007-2009, 2008-2010

Note: Weighted numbers (#) represent 3-yr averages, percentages and 95% confidence intervals; Respondents aged 18 years and older; n/r (Not Reportable) - If the unweighted total responses for a dimension (row) is <50 that row will not be shown; n/a (Not Available) - Not asked of a subset of respondents

Year: 2000-2002

Community	Never heard of hemoglobin "A one C" test			None			Once			2 or more			Estimated Population (3-Yr Avg)
	#	%	C.I. (95%)	#	%	C.I. (95%)	#	%	C.I. (95%)	#	%	C.I. (95%)	#
Aiea/ Pearl City	100	1.3	0.0 - 3.8	100	1.3	0.0 - 3.8	300	4.8	0.0 - 10.2	4,900	92.6	86.2 - 99.0	5,300
Hilo	<50	2.0	0.0 - 5.8	200	10.5	0.3 - 20.8	200	8.0	1.1 - 14.9	1,600	79.5	67.7 - 91.4	2,000
Kaimuki/ Palolo/ Waikiki	0	0.0	--	200	4.6	0.0 - 10.6	<50	0.7	0.0 - 2.2	4,300	94.7	88.5 - 100.0	4,600
Kona	<50	1.4	0.0 - 4.0	0	0.0	--	<50	3.9	0.0 - 8.4	1,200	94.8	89.5 - 100.0	1,300
Lihue-Waimea	<50	2.3	0.0 - 6.7	100	3.3	0.0 - 8.2	100	4.5	0.0 - 9.6	1,500	89.9	81.8 - 97.9	1,700

Diabetes - times chk for HbA1C by State, County, Island, Community, BRFSS Age Group, DOH Race-Ethnicity, Gender, Education Level, Employment Status (Grouped), Household Income, Poverty Level, Marital Status (Grouped), Married, Health Care Coverage, for the Year(s) - 2000-2002, 2001-2003, 2002-2004, 2003-2005, 2004-2006, 2005-2007, 2006-2008, 2007-2009, 2008-2010

Note: Weighted numbers (#) represent 3-yr averages, percentages and 95% confidence intervals; Respondents aged 18 years and older; n/r (Not Reportable) - If the unweighted total responses for a dimension (row) is <50 that row will not be shown; n/a (Not Available) - Not asked of a subset of respondents

Year: 2000-2002

BRFSS Age Group	Never heard of hemoglobin "A one C" test			None			Once			2 or more			Estimated Population (3-Yr Avg)
	#	%	C.I. (95%)	#	%	C.I. (95%)	#	%	C.I. (95%)	#	%	C.I. (95%)	#
35-44	100	2.2	0.0 - 5.3	300	6.8	1.2 - 12.3	700	16.5	4.7 - 28.3	3,200	74.6	62.1 - 87.0	4,300
45-54	0	0.0	--	200	2.5	0.5 - 4.5	800	10.2	4.7 - 15.6	6,900	87.3	81.6 - 93.1	7,900
55-64	400	3.2	0.0 - 6.3	300	2.6	0.0 - 5.6	1,100	9.0	3.7 - 14.3	10,300	85.3	78.7 - 91.9	12,100
65-74	300	2.6	0.0 - 5.6	100	0.7	0.0 - 1.4	900	6.8	3.1 - 10.5	11,300	89.9	85.2 - 94.6	12,500
75+	100	1.9	0.0 - 4.2	300	4.9	0.3 - 9.6	300	4.2	0.5 - 7.9	5,900	89.0	82.7 - 95.2	6,700

Diabetes - times chk for HbA1C by State, County, Island, Community, BRFSS Age Group, DOH Race-Ethnicity, Gender, Education Level, Employment Status (Grouped), Household Income, Poverty Level, Marital Status (Grouped), Married, Health Care Coverage, for the Year(s) - 2000-2002, 2001-2003, 2002-2004, 2003-2005, 2004-2006, 2005-2007, 2006-2008, 2007-2009, 2008-2010

Note: Weighted numbers (#) represent 3-yr averages, percentages and 95% confidence intervals; Respondents aged 18 years and older; n/r (Not Reportable) - If the unweighted total responses for a dimension (row) is <50 that row will not be shown; n/a (Not Available) - Not asked of a subset of respondents

Year: 2000-2002

DOH Race-Ethnicity	Never heard of hemoglobin "A one C" test			None			Once			2 or more			Estimated Population (3-Yr Avg)
	#	%	C.I. (95%)	#	%	C.I. (95%)	#	%	C.I. (95%)	#	%	C.I. (95%)	#
Caucasian	<50	0.2	0.0 - 0.6	300	3.2	0.1 - 6.2	1,300	13.8	6.4 - 21.2	7,600	82.8	75.0 - 90.6	9,100
Native Hawaiian	200	1.9	0.0 - 4.5	300	3.8	0.7 - 7.0	800	10.3	4.1 - 16.5	6,700	84.0	76.7 - 91.2	7,900
Filipino	200	2.1	0.0 - 6.2	200	2.0	0.0 - 4.0	900	10.8	4.5 - 17.1	6,900	85.1	77.3 - 92.9	8,100
Japanese	200	1.6	0.1 - 3.1	300	2.3	0.1 - 4.5	600	4.2	1.6 - 6.8	13,400	91.9	88.2 - 95.6	14,600

Gender	Never heard of hemoglobin "A one C" test			None			Once			2 or more			Estimated Population (3-Yr Avg)
	#	%	C.I. (95%)	#	%	C.I. (95%)	#	%	C.I. (95%)	#	%	C.I. (95%)	#
Male	200	0.8	0.1 - 1.6	1,000	4.4	2.0 - 6.9	2,100	8.9	5.2 - 12.5	20,000	85.9	81.5 - 90.3	23,300
Female	700	3.2	0.9 - 5.5	300	1.1	0.5 - 1.8	1,900	8.3	5.1 - 11.4	20,400	87.4	83.6 - 91.3	23,300

Diabetes - times chk for HbA1C by State, County, Island, Community, BRFSS Age Group, DOH Race-Ethnicity, Gender, Education Level, Employment Status (Grouped), Household Income, Poverty Level, Marital Status (Grouped), Married, Health Care Coverage, for the Year(s) - 2000-2002, 2001-2003, 2002-2004, 2003-2005, 2004-2006, 2005-2007, 2006-2008, 2007-2009, 2008-2010

Note: Weighted numbers (#) represent 3-yr averages, percentages and 95% confidence intervals; Respondents aged 18 years and older; n/r (Not Reportable) - If the unweighted total responses for a dimension (row) is <50 that row will not be shown; n/a (Not Available) - Not asked of a subset of respondents

Year: 2000-2002

Education Level	Never heard of hemoglobin "A one C" test			None			Once			2 or more			Estimated Population (3-Yr Avg)
	#	%	C.I. (95%)	#	%	C.I. (95%)	#	%	C.I. (95%)	#	%	C.I. (95%)	#
Grades 9 thru 11 (Some High School)	200	5.7	0.0 - 13.5	<50	0.5	0.0 - 1.6	100	1.9	0.0 - 4.8	2,600	91.9	83.5 - 100.0	2,900
Grades 12 or GED (High School Grad)	400	2.2	0.0 - 4.5	600	3.5	1.2 - 5.9	2,100	11.7	7.1 - 16.3	14,700	82.5	77.2 - 87.9	17,800
College 1 to 3 years (Some College/ Tech)	300	2.1	0.0 - 4.4	300	2.2	0.2 - 4.1	800	6.3	2.0 - 10.6	11,500	89.4	84.2 - 94.7	12,800
College 4 years or more (College Grad)	<50	0.4	0.0 - 1.0	300	2.8	0.0 - 5.5	900	8.3	3.8 - 12.9	9,700	88.5	83.3 - 93.7	11,000

Employment Status (Grouped)	Never heard of hemoglobin "A one C" test			None			Once			2 or more			Estimated Population (3-Yr Avg)
	#	%	C.I. (95%)	#	%	C.I. (95%)	#	%	C.I. (95%)	#	%	C.I. (95%)	#
Employed	200	1.1	0.0 - 2.8	600	3.0	1.1 - 4.9	2,200	10.6	6.6 - 14.5	17,700	85.3	80.7 - 89.9	20,700
Retired/Unable to work	700	2.9	0.9 - 4.8	600	2.5	0.6 - 4.3	1,300	5.5	2.8 - 8.3	20,600	89.1	85.4 - 92.9	23,100

Diabetes - times chk for HbA1C by State, County, Island, Community, BRFSS Age Group, DOH Race-Ethnicity, Gender, Education Level, Employment Status (Grouped), Household Income, Poverty Level, Marital Status (Grouped), Married, Health Care Coverage, for the Year(s) - 2000-2002, 2001-2003, 2002-2004, 2003-2005, 2004-2006, 2005-2007, 2006-2008, 2007-2009, 2008-2010

Note: Weighted numbers (#) represent 3-yr averages, percentages and 95% confidence intervals; Respondents aged 18 years and older; n/r (Not Reportable) - If the unweighted total responses for a dimension (row) is <50 that row will not be shown; n/a (Not Available) - Not asked of a subset of respondents

Year: 2000-2002

Household Income	Never heard of hemoglobin "A one C" test			None			Once			2 or more			Estimated Population (3-Yr Avg)
	#	%	C.I. (95%)	#	%	C.I. (95%)	#	%	C.I. (95%)	#	%	C.I. (95%)	#
Less than \$10,000	100	3.0	0.0 - 7.2	100	2.5	0.0 - 5.3	100	4.5	0.6 - 8.4	2,800	90.0	83.6 - 96.5	3,100
\$10,000 to \$14,999	200	6.0	0.0 - 16.0	100	2.8	0.0 - 5.7	200	7.3	0.5 - 14.1	2,200	84.0	72.0 - 95.9	2,600
\$15,000 to \$19,999	100	5.3	0.0 - 11.3	100	6.7	0.4 - 13.0	400	18.7	2.7 - 34.6	1,400	69.3	52.9 - 85.7	2,100
\$20,000 to \$24,999	100	2.6	0.0 - 7.7	200	6.6	0.0 - 15.0	600	15.5	0.9 - 30.2	2,800	75.3	56.5 - 94.1	3,700
\$25,000 to \$34,999	200	4.4	0.0 - 11.3	100	2.8	0.0 - 6.2	300	6.4	1.2 - 11.6	4,100	86.4	77.4 - 95.4	4,800
\$35,000 to \$49,999	0	0.0	--	100	0.8	0.0 - 1.8	600	7.7	2.5 - 12.8	7,300	91.5	86.3 - 96.8	8,000
\$50,000 to \$74,999	0	0.0	--	100	1.2	0.0 - 3.0	500	10.4	2.9 - 18.0	4,100	88.3	80.6 - 96.1	4,700
\$75,000 or more	0	0.0	--	100	2.0	0.0 - 5.4	600	10.9	2.0 - 19.8	5,100	87.1	77.7 - 96.5	5,800

Diabetes - times chk for HbA1C by State, County, Island, Community, BRFSS Age Group, DOH Race-Ethnicity, Gender, Education Level, Employment Status (Grouped), Household Income, Poverty Level, Marital Status (Grouped), Married, Health Care Coverage, for the Year(s) - 2000-2002, 2001-2003, 2002-2004, 2003-2005, 2004-2006, 2005-2007, 2006-2008, 2007-2009, 2008-2010

Note: Weighted numbers (#) represent 3-yr averages, percentages and 95% confidence intervals; Respondents aged 18 years and older; n/r (Not Reportable) - If the unweighted total responses for a dimension (row) is <50 that row will not be shown; n/a (Not Available) - Not asked of a subset of respondents

Year: 2000-2002

Poverty Level	Never heard of hemoglobin "A one C" test			None			Once			2 or more			Estimated Population (3-Yr Avg)
	#	%	C.I. (95%)	#	%	C.I. (95%)	#	%	C.I. (95%)	#	%	C.I. (95%)	#
0-130%	300	3.5	0.0 - 7.4	200	2.0	0.4 - 3.6	700	8.3	2.5 - 14.1	6,900	86.2	78.8 - 93.5	8,000
131-185%	300	6.0	0.0 - 12.8	400	7.3	1.4 - 13.3	700	12.9	4.1 - 21.8	4,200	73.7	62.0 - 85.4	5,700
186+%	<50	0.2	0.0 - 0.4	300	1.5	0.3 - 2.7	1,900	9.2	5.6 - 12.9	18,700	89.1	85.3 - 92.9	21,000

Marital Status (Grouped)	Never heard of hemoglobin "A one C" test			None			Once			2 or more			Estimated Population (3-Yr Avg)
	#	%	C.I. (95%)	#	%	C.I. (95%)	#	%	C.I. (95%)	#	%	C.I. (95%)	#
Married	400	1.4	0.3 - 2.6	800	2.5	0.8 - 4.2	2,900	9.4	6.2 - 12.6	26,400	86.6	82.9 - 90.4	30,400
Widowed	300	5.4	0.0 - 11.9	200	2.5	0.2 - 4.9	100	1.8	0.2 - 3.4	5,800	90.3	83.3 - 97.2	6,500
Other	100	1.4	0.0 - 2.9	400	3.8	1.2 - 6.4	1,000	10.4	4.8 - 15.9	8,200	84.4	78.3 - 90.6	9,700

Diabetes - times chk for HbA1C by State, County, Island, Community, BRFSS Age Group, DOH Race-Ethnicity, Gender, Education Level, Employment Status (Grouped), Household Income, Poverty Level, Marital Status (Grouped), Married, Health Care Coverage, for the Year(s) - 2000-2002, 2001-2003, 2002-2004, 2003-2005, 2004-2006, 2005-2007, 2006-2008, 2007-2009, 2008-2010

Note: Weighted numbers (#) represent 3-yr averages, percentages and 95% confidence intervals; Respondents aged 18 years and older; n/r (Not Reportable) - If the unweighted total responses for a dimension (row) is <50 that row will not be shown; n/a (Not Available) - Not asked of a subset of respondents

Year: 2000-2002

Married	Never heard of hemoglobin "A one C" test			None			Once			2 or more			Estimated Population (3-Yr Avg)
	#	%	C.I. (95%)	#	%	C.I. (95%)	#	%	C.I. (95%)	#	%	C.I. (95%)	#
Yes	500	1.6	0.4 - 2.8	800	2.5	0.9 - 4.1	2,900	9.3	6.2 - 12.5	26,900	86.6	82.9 - 90.3	31,000
No	400	2.8	0.0 - 5.7	500	3.3	1.4 - 5.2	1,100	7.0	3.5 - 10.6	13,500	86.8	82.1 - 91.5	15,600

Health Care Coverage	Never heard of hemoglobin "A one C" test			None			Once			2 or more			Estimated Population (3-Yr Avg)
	#	%	C.I. (95%)	#	%	C.I. (95%)	#	%	C.I. (95%)	#	%	C.I. (95%)	#
Yes	800	1.8	0.6 - 3.0	1,200	2.6	1.3 - 3.8	3,800	8.3	5.9 - 10.7	39,800	87.3	84.4 - 90.2	45,600