

**Diabetes - manage class by State, County, Island, Community, BRFSS Age Group, DOH Race-Ethnicity, Gender, Education Level, Employment Status (Grouped), Household Income, Poverty Level, Marital Status (Grouped), Married, Health Care Coverage, for the Year(s) - 2000-2002, 2001-2003, 2002-2004, 2003-2005, 2004-2006, 2005-2007, 2006-2008, 2007-2009, 2008-2010**

*Note: Weighted numbers (#) represent 3-yr averages, percentages and 95% confidence intervals; Respondents aged 18 years and older; n/r (Not Reportable) - If the unweighted total responses for a dimension (row) is <50 that row will not be shown; n/a (Not Available) - Not asked of a subset of respondents*

*The trend analysis report shows the trend for the selected health variable over selected years in a table and a graph. Estimated Population: This number is a weighted representation of the population who responded to a particular question in the survey. For most questions the eligible population will be the entire adult population. For some secondary questions only a subset of the population was asked the question. For example, all survey participants were asked if they had diabetes, but only those who answered yes were asked if they use insulin. If a dimension value is unknown for a particular survey record, that record will not be included in the counts for that particular dimension.*

*For documentation on other terms and coding in this report, please go to the following links*

[Click here to access BRFSS documentation](#)

[Click here to access DOH Race-Ethnicity coding](#)

[Click here to access The Hawai'i Data Guide](#)

[Click here to access Poverty Level Methodology](#)

**For questions about this report, please contact  
The Hawaii Health Data Warehouse**

[profiles@hhdw.org](mailto:profiles@hhdw.org)

**(855) 946-5899 x15**

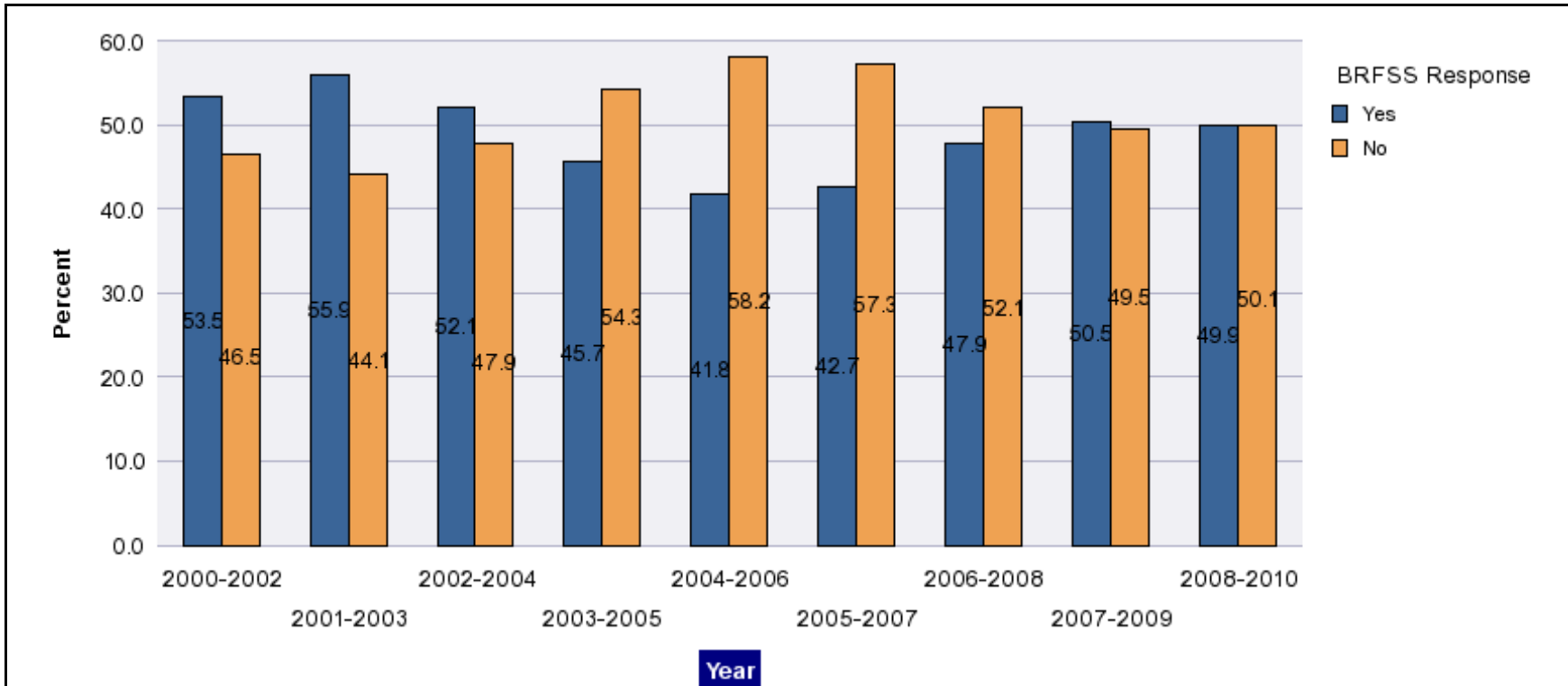
**Diabetes - manage class by State, County, Island, Community, BRFSS Age Group, DOH Race-Ethnicity, Gender, Education Level, Employment Status (Grouped), Household Income, Poverty Level, Marital Status (Grouped), Married, Health Care Coverage, for the Year(s) - 2000-2002, 2001-2003, 2002-2004, 2003-2005, 2004-2006, 2005-2007, 2006-2008, 2007-2009, 2008-2010**

*Note: Weighted numbers (#) represent 3-yr averages, percentages and 95% confidence intervals; Respondents aged 18 years and older; n/r (Not Reportable) - If the unweighted total responses for a dimension (row) is <50 that row will not be shown; n/a (Not Available) - Not asked of a subset of respondents*

Year	Yes			No			Estimated Population (3-Yr Avg)
	#	%	C.I.(95%)	#	%	C.I.(95%)	#
2000-2002	27,200	53.5	48.9 - 58.1	23,700	46.5	41.9 - 51.1	50,900
2001-2003	32,800	55.9	51.4 - 60.4	25,900	44.1	39.6 - 48.6	58,700
2002-2004	31,600	52.1	46.9 - 57.4	29,000	47.9	42.6 - 53.1	60,600
2003-2005	32,100	45.7	40.3 - 51.2	38,000	54.3	48.8 - 59.7	70,100
2004-2006	30,500	41.8	36.8 - 46.8	42,400	58.2	53.2 - 63.2	72,900
2005-2007	33,200	42.7	38.8 - 46.6	44,500	57.3	53.4 - 61.2	77,700
2006-2008	37,400	47.9	44.7 - 51.1	40,700	52.1	48.9 - 55.3	78,100
2007-2009	39,700	50.5	46.9 - 54.0	38,900	49.5	46.0 - 53.1	78,600
2008-2010	40,600	49.9	46.5 - 53.4	40,700	50.1	46.6 - 53.5	81,200

**Diabetes - manage class by State, County, Island, Community, BRFSS Age Group, DOH Race-Ethnicity, Gender, Education Level, Employment Status (Grouped), Household Income, Poverty Level, Marital Status (Grouped), Married, Health Care Coverage, for the Year(s) - 2000-2002, 2001-2003, 2002-2004, 2003-2005, 2004-2006, 2005-2007, 2006-2008, 2007-2009, 2008-2010**

*Note: Weighted numbers (#) represent 3-yr averages, percentages and 95% confidence intervals; Respondents aged 18 years and older; n/r (Not Reportable) - If the unweighted total responses for a dimension (row) is <50 that row will not be shown; n/a (Not Available) - Not asked of a subset of respondents*



**Diabetes - manage class by State, County, Island, Community, BRFSS Age Group, DOH Race-Ethnicity, Gender, Education Level, Employment Status (Grouped), Household Income, Poverty Level, Marital Status (Grouped), Married, Health Care Coverage, for the Year(s) - 2000-2002, 2001-2003, 2002-2004, 2003-2005, 2004-2006, 2005-2007, 2006-2008, 2007-2009, 2008-2010**

*Note: Weighted numbers (#) represent 3-yr averages, percentages and 95% confidence intervals; Respondents aged 18 years and older; n/r (Not Reportable) - If the unweighted total responses for a dimension (row) is <50 that row will not be shown; n/a (Not Available) - Not asked of a subset of respondents*

**Year: 2008-2010**

State	Yes			No			Estimated Population (3-Yr Avg)
	#	%	C.I. (95%)	#	%	C.I. (95%)	#
Hawaii State	40,600	49.9	46.5 - 53.4	40,700	50.1	46.6 - 53.5	81,200

County	Yes			No			Estimated Population (3-Yr Avg)
	#	%	C.I. (95%)	#	%	C.I. (95%)	#
Hawaii	5,100	45.7	38.8 - 52.6	6,100	54.3	47.4 - 61.2	11,300
Honolulu	29,000	50.3	45.8 - 54.9	28,600	49.7	45.1 - 54.2	57,500
Kauai	1,600	43.9	34.4 - 53.5	2,100	56.1	46.5 - 65.6	3,700
Maui	4,900	55.3	47.3 - 63.3	3,900	44.7	36.7 - 52.7	8,800

**Diabetes - manage class by State, County, Island, Community, BRFSS Age Group, DOH Race-Ethnicity, Gender, Education Level, Employment Status (Grouped), Household Income, Poverty Level, Marital Status (Grouped), Married, Health Care Coverage, for the Year(s) - 2000-2002, 2001-2003, 2002-2004, 2003-2005, 2004-2006, 2005-2007, 2006-2008, 2007-2009, 2008-2010**

*Note: Weighted numbers (#) represent 3-yr averages, percentages and 95% confidence intervals; Respondents aged 18 years and older; n/r (Not Reportable) - If the unweighted total responses for a dimension (row) is <50 that row will not be shown; n/a (Not Available) - Not asked of a subset of respondents*

**Year: 2008-2010**

Island	Yes			No			Estimated Population (3-Yr Avg)
	#	%	C.I. (95%)	#	%	C.I. (95%)	#
Hawaii	5,100	45.7	38.8 - 52.6	6,100	54.3	47.4 - 61.2	11,300
Kauai	1,600	43.9	34.4 - 53.5	2,100	56.1	46.5 - 65.6	3,700
Lanai	100	46.4	29.9 - 62.8	100	53.6	37.2 - 70.1	200
Maui	4,300	54.9	46.0 - 63.7	3,500	45.1	36.3 - 54.0	7,800
Molokai	500	61.0	43.5 - 78.5	300	39.0	21.5 - 56.5	900
Oahu	29,000	50.3	45.8 - 54.9	28,600	49.7	45.1 - 54.2	57,500

Community	Yes			No			Estimated Population (3-Yr Avg)
	#	%	C.I. (95%)	#	%	C.I. (95%)	#
Aiea/ Pearl City	2,400	52.0	37.9 - 66.1	2,200	48.0	33.9 - 62.1	4,500
Hanalei/ Kapaa	500	43.5	27.6 - 59.4	700	56.5	40.6 - 72.4	1,200

**Diabetes - manage class by State, County, Island, Community, BRFSS Age Group, DOH Race-Ethnicity, Gender, Education Level, Employment Status (Grouped), Household Income, Poverty Level, Marital Status (Grouped), Married, Health Care Coverage, for the Year(s) - 2000-2002, 2001-2003, 2002-2004, 2003-2005, 2004-2006, 2005-2007, 2006-2008, 2007-2009, 2008-2010**

*Note: Weighted numbers (#) represent 3-yr averages, percentages and 95% confidence intervals; Respondents aged 18 years and older; n/r (Not Reportable) - If the unweighted total responses for a dimension (row) is <50 that row will not be shown; n/a (Not Available) - Not asked of a subset of respondents*

**Year: 2008-2010**

Community	Yes			No			Estimated Population (3-Yr Avg)
	#	%	C.I. (95%)	#	%	C.I. (95%)	#
Hilo	1,300	35.5	24.7 - 46.2	2,300	64.5	53.8 - 75.3	3,600
Kaaawa/ Kahaluu/ Kaneohe	1,600	39.1	24.7 - 53.5	2,400	60.9	46.5 - 75.3	4,000
Kahului	1,300	53.5	39.1 - 67.9	1,200	46.5	32.1 - 60.9	2,500
Kailua/ Waimanalo	2,200	56.3	39.5 - 73.1	1,700	43.7	26.9 - 60.5	3,800
Kaimuki/ Palolo/ Waikiki	2,000	38.8	26.7 - 50.8	3,200	61.2	49.2 - 73.3	5,200
Kona	1,300	54.3	35.2 - 73.4	1,100	45.7	26.6 - 64.8	2,400
Lahaina/ Wailuku	1,700	55.2	39.5 - 71.0	1,300	44.8	29.0 - 60.5	3,000
Lanai	100	46.4	29.9 - 62.8	100	53.6	37.2 - 70.1	200
Lihue-Waimea	1,100	44.2	32.2 - 56.1	1,400	55.8	43.9 - 67.8	2,500
Manoa/ Upper Makiki	2,100	51.6	38.2 - 65.0	2,000	48.4	35.0 - 61.8	4,000
Mililani/ Wahiawa	3,500	57.3	43.7 - 70.9	2,600	42.7	29.1 - 56.3	6,200
Molokai	500	61.0	43.5 - 78.5	300	39.0	21.5 - 56.5	900

**Diabetes - manage class by State, County, Island, Community, BRFSS Age Group, DOH Race-Ethnicity, Gender, Education Level, Employment Status (Grouped), Household Income, Poverty Level, Marital Status (Grouped), Married, Health Care Coverage, for the Year(s) - 2000-2002, 2001-2003, 2002-2004, 2003-2005, 2004-2006, 2005-2007, 2006-2008, 2007-2009, 2008-2010**

*Note: Weighted numbers (#) represent 3-yr averages, percentages and 95% confidence intervals; Respondents aged 18 years and older; n/r (Not Reportable) - If the unweighted total responses for a dimension (row) is <50 that row will not be shown; n/a (Not Available) - Not asked of a subset of respondents*

**Year: 2008-2010**

Community	Yes			No			Estimated Population (3-Yr Avg)
	#	%	C.I. (95%)	#	%	C.I. (95%)	#
N.Hawaii	900	54.1	37.0 - 71.2	800	45.9	28.8 - 63.0	1,700
Nuuanu/ Kalihi/ Moanalua	3,400	58.6	44.2 - 73.1	2,400	41.4	26.9 - 55.8	5,800
Puna/ Kau	1,700	46.4	35.2 - 57.5	1,900	53.6	42.5 - 64.8	3,600
Upcountry/ Hana	1,300	55.9	40.6 - 71.3	1,000	44.1	28.7 - 59.4	2,300
Waipahu/ Kapolei/ Ewa	5,900	49.4	37.7 - 61.0	6,000	50.6	39.0 - 62.3	11,900

**Diabetes - manage class by State, County, Island, Community, BRFSS Age Group, DOH Race-Ethnicity, Gender, Education Level, Employment Status (Grouped), Household Income, Poverty Level, Marital Status (Grouped), Married, Health Care Coverage, for the Year(s) - 2000-2002, 2001-2003, 2002-2004, 2003-2005, 2004-2006, 2005-2007, 2006-2008, 2007-2009, 2008-2010**

*Note: Weighted numbers (#) represent 3-yr averages, percentages and 95% confidence intervals; Respondents aged 18 years and older; n/r (Not Reportable) - If the unweighted total responses for a dimension (row) is <50 that row will not be shown; n/a (Not Available) - Not asked of a subset of respondents*

**Year: 2008-2010**

BRFSS Age Group	Yes			No			Estimated Population (3-Yr Avg)
	#	%	C.I. (95%)	#	%	C.I. (95%)	#
35-44	4,900	54.0	40.9 - 67.2	4,200	46.0	32.8 - 59.1	9,100
45-54	7,800	57.4	48.5 - 66.3	5,800	42.6	33.7 - 51.5	13,600
55-64	11,500	57.4	51.2 - 63.6	8,500	42.6	36.4 - 48.8	20,000
65-74	8,000	48.6	42.2 - 55.1	8,400	51.4	44.9 - 57.8	16,400
75+	7,400	40.4	33.5 - 47.2	10,900	59.6	52.8 - 66.5	18,300



**Diabetes - manage class by State, County, Island, Community, BRFSS Age Group, DOH Race-Ethnicity, Gender, Education Level, Employment Status (Grouped), Household Income, Poverty Level, Marital Status (Grouped), Married, Health Care Coverage, for the Year(s) - 2000-2002, 2001-2003, 2002-2004, 2003-2005, 2004-2006, 2005-2007, 2006-2008, 2007-2009, 2008-2010**

*Note: Weighted numbers (#) represent 3-yr averages, percentages and 95% confidence intervals; Respondents aged 18 years and older; n/r (Not Reportable) - If the unweighted total responses for a dimension (row) is <50 that row will not be shown; n/a (Not Available) - Not asked of a subset of respondents*

**Year: 2008-2010**

DOH Race-Ethnicity	Yes			No			Estimated Population (3-Yr Avg)
	#	%	C.I. (95%)	#	%	C.I. (95%)	#
Caucasian	9,500	60.3	53.8 - 66.8	6,200	39.7	33.2 - 46.2	15,700
Native Hawaiian	7,800	52.9	44.7 - 61.2	7,000	47.1	38.8 - 55.3	14,800
Chinese	3,100	57.3	45.4 - 69.3	2,300	42.7	30.7 - 54.6	5,400
Filipino	7,100	45.7	36.6 - 54.9	8,400	54.3	45.1 - 63.4	15,500
Japanese	9,700	41.9	35.5 - 48.2	13,500	58.1	51.8 - 64.5	23,200

Gender	Yes			No			Estimated Population (3-Yr Avg)
	#	%	C.I. (95%)	#	%	C.I. (95%)	#
Male	19,300	48.6	43.4 - 53.8	20,500	51.4	46.2 - 56.6	39,800
Female	21,200	51.3	46.6 - 55.9	20,200	48.7	44.1 - 53.4	41,400

**Diabetes - manage class by State, County, Island, Community, BRFSS Age Group, DOH Race-Ethnicity, Gender, Education Level, Employment Status (Grouped), Household Income, Poverty Level, Marital Status (Grouped), Married, Health Care Coverage, for the Year(s) - 2000-2002, 2001-2003, 2002-2004, 2003-2005, 2004-2006, 2005-2007, 2006-2008, 2007-2009, 2008-2010**

*Note: Weighted numbers (#) represent 3-yr averages, percentages and 95% confidence intervals; Respondents aged 18 years and older; n/r (Not Reportable) - If the unweighted total responses for a dimension (row) is <50 that row will not be shown; n/a (Not Available) - Not asked of a subset of respondents*

**Year: 2008-2010**

Education Level	Yes			No			Estimated Population (3-Yr Avg)
	#	%	C.I. (95%)	#	%	C.I. (95%)	#
Never attended school/ Only Kindergarten to Grades 8	800	33.8	15.7 - 51.9	1,500	66.2	48.1 - 84.3	2,300
Grades 9 thru 11 (Some High School)	1,000	24.5	12.8 - 36.1	3,100	75.5	63.9 - 87.2	4,100
Grades 12 or GED (High School Grad)	11,300	41.5	35.4 - 47.7	15,900	58.5	52.3 - 64.6	27,100
College 1 to 3 years (Some College/ Tech)	13,300	56.9	50.4 - 63.4	10,100	43.1	36.6 - 49.6	23,400
College 4 years or more (College Grad)	14,200	58.4	52.5 - 64.2	10,100	41.6	35.8 - 47.5	24,300

**Diabetes - manage class by State, County, Island, Community, BRFSS Age Group, DOH Race-Ethnicity, Gender, Education Level, Employment Status (Grouped), Household Income, Poverty Level, Marital Status (Grouped), Married, Health Care Coverage, for the Year(s) - 2000-2002, 2001-2003, 2002-2004, 2003-2005, 2004-2006, 2005-2007, 2006-2008, 2007-2009, 2008-2010**

*Note: Weighted numbers (#) represent 3-yr averages, percentages and 95% confidence intervals; Respondents aged 18 years and older; n/r (Not Reportable) - If the unweighted total responses for a dimension (row) is <50 that row will not be shown; n/a (Not Available) - Not asked of a subset of respondents*

**Year: 2008-2010**

Employment Status (Grouped)	Yes			No			Estimated Population (3-Yr Avg)
	#	%	C.I. (95%)	#	%	C.I. (95%)	#
<b>Employed</b>	18,700	53.2	47.5 - 58.9	16,400	46.8	41.1 - 52.5	35,100
<b>Unemployed</b>	2,000	43.4	26.4 - 60.4	2,600	56.6	39.6 - 73.6	4,600
<b>Retired/Unable to work</b>	18,000	47.5	43.0 - 52.1	19,900	52.5	47.9 - 57.0	37,900
<b>Student/Homemaker</b>	1,900	51.7	38.4 - 65.0	1,800	48.3	35.0 - 61.6	3,700

**Diabetes - manage class by State, County, Island, Community, BRFSS Age Group, DOH Race-Ethnicity, Gender, Education Level, Employment Status (Grouped), Household Income, Poverty Level, Marital Status (Grouped), Married, Health Care Coverage, for the Year(s) - 2000-2002, 2001-2003, 2002-2004, 2003-2005, 2004-2006, 2005-2007, 2006-2008, 2007-2009, 2008-2010**

*Note: Weighted numbers (#) represent 3-yr averages, percentages and 95% confidence intervals; Respondents aged 18 years and older; n/r (Not Reportable) - If the unweighted total responses for a dimension (row) is <50 that row will not be shown; n/a (Not Available) - Not asked of a subset of respondents*

**Year: 2008-2010**

Household Income	Yes			No			Estimated Population (3-Yr Avg)
	#	%	C.I. (95%)	#	%	C.I. (95%)	#
Less than \$10,000	1,500	45.6	28.9 - 62.3	1,800	54.4	37.7 - 71.1	3,300
\$10,000 to \$14,999	1,400	39.6	25.6 - 53.6	2,200	60.4	46.4 - 74.4	3,700
\$15,000 to \$19,999	1,900	31.1	20.6 - 41.5	4,200	68.9	58.5 - 79.4	6,100
\$20,000 to \$24,999	2,500	41.1	29.6 - 52.6	3,600	58.9	47.4 - 70.4	6,200
\$25,000 to \$34,999	4,100	45.5	36.5 - 54.4	5,000	54.5	45.6 - 63.5	9,100
\$35,000 to \$49,999	6,900	51.8	43.4 - 60.2	6,500	48.2	39.8 - 56.6	13,400
\$50,000 to \$74,999	7,300	57.1	48.7 - 65.5	5,500	42.9	34.5 - 51.3	12,700
\$75,000 or more	11,900	62.3	55.2 - 69.4	7,200	37.7	30.6 - 44.8	19,100

**Diabetes - manage class by State, County, Island, Community, BRFSS Age Group, DOH Race-Ethnicity, Gender, Education Level, Employment Status (Grouped), Household Income, Poverty Level, Marital Status (Grouped), Married, Health Care Coverage, for the Year(s) - 2000-2002, 2001-2003, 2002-2004, 2003-2005, 2004-2006, 2005-2007, 2006-2008, 2007-2009, 2008-2010**

*Note: Weighted numbers (#) represent 3-yr averages, percentages and 95% confidence intervals; Respondents aged 18 years and older; n/r (Not Reportable) - If the unweighted total responses for a dimension (row) is <50 that row will not be shown; n/a (Not Available) - Not asked of a subset of respondents*

**Year: 2008-2010**

Poverty Level	Yes			No			Estimated Population (3-Yr Avg)
	#	%	C.I. (95%)	#	%	C.I. (95%)	#
<b>0-130%</b>	7,300	38.8	31.4 - 46.2	11,500	61.2	53.8 - 68.6	18,700
<b>131-185%</b>	6,000	47.7	39.4 - 56.0	6,600	52.3	44.0 - 60.6	12,600
<b>186+%</b>	24,400	57.7	53.3 - 62.0	17,900	42.3	38.0 - 46.7	42,300

Marital Status (Grouped)	Yes			No			Estimated Population (3-Yr Avg)
	#	%	C.I. (95%)	#	%	C.I. (95%)	#
<b>Married</b>	26,200	51.5	47.0 - 55.9	24,700	48.5	44.1 - 53.0	50,900
<b>Widowed</b>	3,900	40.1	31.8 - 48.4	5,800	59.9	51.6 - 68.2	9,700
<b>Other</b>	10,000	50.5	43.2 - 57.8	9,800	49.5	42.2 - 56.8	19,900

**Diabetes - manage class by State, County, Island, Community, BRFSS Age Group, DOH Race-Ethnicity, Gender, Education Level, Employment Status (Grouped), Household Income, Poverty Level, Marital Status (Grouped), Married, Health Care Coverage, for the Year(s) - 2000-2002, 2001-2003, 2002-2004, 2003-2005, 2004-2006, 2005-2007, 2006-2008, 2007-2009, 2008-2010**

*Note: Weighted numbers (#) represent 3-yr averages, percentages and 95% confidence intervals; Respondents aged 18 years and older; n/r (Not Reportable) - If the unweighted total responses for a dimension (row) is <50 that row will not be shown; n/a (Not Available) - Not asked of a subset of respondents*

**Year: 2008-2010**

<b>Married</b>	<b>Yes</b>			<b>No</b>			<b>Estimated Population (3-Yr Avg)</b>
	<b>#</b>	<b>%</b>	<b>C.I. (95%)</b>	<b>#</b>	<b>%</b>	<b>C.I. (95%)</b>	<b>#</b>
<b>Yes</b>	27,300	52.0	47.6 - 56.5	25,200	48.0	43.5 - 52.4	52,500
<b>No</b>	13,200	46.0	40.6 - 51.4	15,500	54.0	48.6 - 59.4	28,600

<b>Health Care Coverage</b>	<b>Yes</b>			<b>No</b>			<b>Estimated Population (3-Yr Avg)</b>
	<b>#</b>	<b>%</b>	<b>C.I. (95%)</b>	<b>#</b>	<b>%</b>	<b>C.I. (95%)</b>	<b>#</b>
<b>Yes</b>	26,800	50.4	46.6 - 54.2	26,400	49.6	45.8 - 53.4	53,100

**Diabetes - manage class by State, County, Island, Community, BRFSS Age Group, DOH Race-Ethnicity, Gender, Education Level, Employment Status (Grouped), Household Income, Poverty Level, Marital Status (Grouped), Married, Health Care Coverage, for the Year(s) - 2000-2002, 2001-2003, 2002-2004, 2003-2005, 2004-2006, 2005-2007, 2006-2008, 2007-2009, 2008-2010**

*Note: Weighted numbers (#) represent 3-yr averages, percentages and 95% confidence intervals; Respondents aged 18 years and older; n/r (Not Reportable) - If the unweighted total responses for a dimension (row) is <50 that row will not be shown; n/a (Not Available) - Not asked of a subset of respondents*

**Year: 2007-2009**

State	Yes			No			Estimated Population (3-Yr Avg)
	#	%	C.I. (95%)	#	%	C.I. (95%)	#
Hawaii State	39,700	50.5	46.9 - 54.0	38,900	49.5	46.0 - 53.1	78,600

County	Yes			No			Estimated Population (3-Yr Avg)
	#	%	C.I. (95%)	#	%	C.I. (95%)	#
Hawaii	4,700	45.1	37.9 - 52.3	5,700	54.9	47.7 - 62.1	10,400
Honolulu	28,200	50.7	46.1 - 55.3	27,500	49.3	44.7 - 53.9	55,700
Kauai	1,800	47.8	38.0 - 57.7	2,000	52.2	42.3 - 62.0	3,700
Maui	4,900	56.6	48.5 - 64.8	3,800	43.4	35.2 - 51.5	8,700

**Diabetes - manage class by State, County, Island, Community, BRFSS Age Group, DOH Race-Ethnicity, Gender, Education Level, Employment Status (Grouped), Household Income, Poverty Level, Marital Status (Grouped), Married, Health Care Coverage, for the Year(s) - 2000-2002, 2001-2003, 2002-2004, 2003-2005, 2004-2006, 2005-2007, 2006-2008, 2007-2009, 2008-2010**

*Note: Weighted numbers (#) represent 3-yr averages, percentages and 95% confidence intervals; Respondents aged 18 years and older; n/r (Not Reportable) - If the unweighted total responses for a dimension (row) is <50 that row will not be shown; n/a (Not Available) - Not asked of a subset of respondents*

**Year: 2007-2009**

Island	Yes			No			Estimated Population (3-Yr Avg)
	#	%	C.I. (95%)	#	%	C.I. (95%)	#
Hawaii	4,700	45.1	37.9 - 52.3	5,700	54.9	47.7 - 62.1	10,400
Kauai	1,800	47.8	38.0 - 57.7	2,000	52.2	42.3 - 62.0	3,700
Lanai	100	39.2	24.3 - 54.1	100	60.8	45.9 - 75.7	200
Maui	4,400	57.3	48.3 - 66.3	3,300	42.7	33.7 - 51.7	7,700
Molokai	400	54.3	36.4 - 72.2	400	45.7	27.8 - 63.6	800
Oahu	28,200	50.7	46.1 - 55.3	27,500	49.3	44.7 - 53.9	55,700

Community	Yes			No			Estimated Population (3-Yr Avg)
	#	%	C.I. (95%)	#	%	C.I. (95%)	#
Aiea/ Pearl City	2,400	56.9	42.2 - 71.5	1,800	43.1	28.5 - 57.8	4,200
Hilo	1,200	35.8	24.5 - 47.0	2,100	64.2	53.0 - 75.5	3,300



**Diabetes - manage class by State, County, Island, Community, BRFSS Age Group, DOH Race-Ethnicity, Gender, Education Level, Employment Status (Grouped), Household Income, Poverty Level, Marital Status (Grouped), Married, Health Care Coverage, for the Year(s) - 2000-2002, 2001-2003, 2002-2004, 2003-2005, 2004-2006, 2005-2007, 2006-2008, 2007-2009, 2008-2010**

*Note: Weighted numbers (#) represent 3-yr averages, percentages and 95% confidence intervals; Respondents aged 18 years and older; n/r (Not Reportable) - If the unweighted total responses for a dimension (row) is <50 that row will not be shown; n/a (Not Available) - Not asked of a subset of respondents*

**Year: 2007-2009**

Community	Yes			No			Estimated Population (3-Yr Avg)
	#	%	C.I. (95%)	#	%	C.I. (95%)	#
Kaaawa/ Kahaluu/ Kaneohe	1,700	42.6	27.8 - 57.5	2,400	57.4	42.5 - 72.2	4,100
Kahului	1,400	54.5	40.2 - 68.8	1,200	45.5	31.2 - 59.8	2,500
Kailua/ Waimanalo	2,000	65.5	51.6 - 79.4	1,100	34.5	20.6 - 48.4	3,100
Kaimuki/ Palolo/ Waikiki	1,600	33.6	20.6 - 46.6	3,100	66.4	53.4 - 79.4	4,700
Kona	1,100	48.7	29.9 - 67.4	1,200	51.3	32.6 - 70.1	2,300
Lahaina/ Wailuku	1,700	63.8	45.9 - 81.8	1,000	36.2	18.2 - 54.1	2,700
Lanai	100	39.2	24.3 - 54.1	100	60.8	45.9 - 75.7	200
Lihue-Waimea	1,300	51.2	38.8 - 63.5	1,200	48.8	36.5 - 61.2	2,500
Manoa/ Upper Makiki	1,900	50.9	36.4 - 65.4	1,800	49.1	34.6 - 63.6	3,600
Milliani/ Wahiawa	4,000	61.8	48.6 - 75.0	2,500	38.2	25.0 - 51.4	6,500
Molokai	400	54.3	36.4 - 72.2	400	45.7	27.8 - 63.6	800
Nanakuli/ Waianae	2,500	47.9	31.8 - 63.9	2,700	52.1	36.1 - 68.2	5,100

**Diabetes - manage class by State, County, Island, Community, BRFSS Age Group, DOH Race-Ethnicity, Gender, Education Level, Employment Status (Grouped), Household Income, Poverty Level, Marital Status (Grouped), Married, Health Care Coverage, for the Year(s) - 2000-2002, 2001-2003, 2002-2004, 2003-2005, 2004-2006, 2005-2007, 2006-2008, 2007-2009, 2008-2010**

*Note: Weighted numbers (#) represent 3-yr averages, percentages and 95% confidence intervals; Respondents aged 18 years and older; n/r (Not Reportable) - If the unweighted total responses for a dimension (row) is <50 that row will not be shown; n/a (Not Available) - Not asked of a subset of respondents*

**Year: 2007-2009**

Community	Yes			No			Estimated Population (3-Yr Avg)
	#	%	C.I. (95%)	#	%	C.I. (95%)	#
N.Hawaii	1,200	57.9	42.8 - 72.9	800	42.1	27.1 - 57.2	2,000
Nuuanu/ Kalihi/ Moanalua	2,800	56.8	41.9 - 71.8	2,100	43.2	28.2 - 58.1	5,000
Puna/ Kau	1,200	44.0	31.1 - 56.9	1,500	56.0	43.1 - 68.9	2,800
Upcountry/ Hana	1,300	53.2	38.6 - 67.8	1,200	46.8	32.2 - 61.4	2,500
Waipahu/ Kapolei/ Ewa	5,300	48.6	36.5 - 60.8	5,600	51.4	39.2 - 63.5	10,900

**Diabetes - manage class by State, County, Island, Community, BRFSS Age Group, DOH Race-Ethnicity, Gender, Education Level, Employment Status (Grouped), Household Income, Poverty Level, Marital Status (Grouped), Married, Health Care Coverage, for the Year(s) - 2000-2002, 2001-2003, 2002-2004, 2003-2005, 2004-2006, 2005-2007, 2006-2008, 2007-2009, 2008-2010**

*Note: Weighted numbers (#) represent 3-yr averages, percentages and 95% confidence intervals; Respondents aged 18 years and older; n/r (Not Reportable) - If the unweighted total responses for a dimension (row) is <50 that row will not be shown; n/a (Not Available) - Not asked of a subset of respondents*

**Year: 2007-2009**

BRFSS Age Group	Yes			No			Estimated Population (3-Yr Avg)
	#	%	C.I. (95%)	#	%	C.I. (95%)	#
35-44	4,400	58.4	45.0 - 71.9	3,100	41.6	28.1 - 55.0	7,500
45-54	8,500	59.2	50.8 - 67.6	5,900	40.8	32.4 - 49.2	14,400
55-64	10,900	56.4	49.9 - 62.9	8,500	43.6	37.1 - 50.1	19,400
65-74	7,600	46.2	39.3 - 53.0	8,900	53.8	47.0 - 60.7	16,500
75+	7,000	41.3	34.1 - 48.6	9,900	58.7	51.4 - 65.9	16,900

**Diabetes - manage class by State, County, Island, Community, BRFSS Age Group, DOH Race-Ethnicity, Gender, Education Level, Employment Status (Grouped), Household Income, Poverty Level, Marital Status (Grouped), Married, Health Care Coverage, for the Year(s) - 2000-2002, 2001-2003, 2002-2004, 2003-2005, 2004-2006, 2005-2007, 2006-2008, 2007-2009, 2008-2010**

*Note: Weighted numbers (#) represent 3-yr averages, percentages and 95% confidence intervals; Respondents aged 18 years and older; n/r (Not Reportable) - If the unweighted total responses for a dimension (row) is <50 that row will not be shown; n/a (Not Available) - Not asked of a subset of respondents*

**Year: 2007-2009**

DOH Race-Ethnicity	Yes			No			Estimated Population (3-Yr Avg)
	#	%	C.I. (95%)	#	%	C.I. (95%)	#
Caucasian	8,400	56.6	50.0 - 63.3	6,400	43.4	36.7 - 50.0	14,800
Native Hawaiian	7,900	52.4	44.2 - 60.7	7,200	47.6	39.3 - 55.8	15,000
Chinese	3,500	58.2	45.9 - 70.5	2,500	41.8	29.5 - 54.1	6,000
Filipino	7,500	51.9	42.5 - 61.4	6,900	48.1	38.6 - 57.5	14,300
Japanese	9,000	40.8	34.2 - 47.5	13,100	59.2	52.5 - 65.8	22,100

Gender	Yes			No			Estimated Population (3-Yr Avg)
	#	%	C.I. (95%)	#	%	C.I. (95%)	#
Male	18,400	48.4	43.0 - 53.7	19,600	51.6	46.3 - 57.0	38,000
Female	21,300	52.4	47.6 - 57.1	19,300	47.6	42.9 - 52.4	40,600

**Diabetes - manage class by State, County, Island, Community, BRFSS Age Group, DOH Race-Ethnicity, Gender, Education Level, Employment Status (Grouped), Household Income, Poverty Level, Marital Status (Grouped), Married, Health Care Coverage, for the Year(s) - 2000-2002, 2001-2003, 2002-2004, 2003-2005, 2004-2006, 2005-2007, 2006-2008, 2007-2009, 2008-2010**

*Note: Weighted numbers (#) represent 3-yr averages, percentages and 95% confidence intervals; Respondents aged 18 years and older; n/r (Not Reportable) - If the unweighted total responses for a dimension (row) is <50 that row will not be shown; n/a (Not Available) - Not asked of a subset of respondents*

**Year: 2007-2009**

Education Level	Yes			No			Estimated Population (3-Yr Avg)
	#	%	C.I. (95%)	#	%	C.I. (95%)	#
Never attended school/ Only Kindergarten to Grades 8	800	34.3	16.6 - 52.0	1,600	65.7	48.0 - 83.4	2,500
Grades 9 thru 11 (Some High School)	1,300	31.4	18.4 - 44.4	2,800	68.6	55.6 - 81.6	4,200
Grades 12 or GED (High School Grad)	10,700	40.4	34.0 - 46.7	15,800	59.6	53.3 - 66.0	26,400
College 1 to 3 years (Some College/ Tech)	14,100	59.0	52.5 - 65.5	9,800	41.0	34.5 - 47.5	24,000
College 4 years or more (College Grad)	12,700	58.9	52.8 - 64.9	8,900	41.1	35.1 - 47.2	21,600

Employment Status (Grouped)	Yes			No			Estimated Population (3-Yr Avg)
	#	%	C.I. (95%)	#	%	C.I. (95%)	#
Employed	19,000	54.5	48.9 - 60.1	15,900	45.5	39.9 - 51.1	34,900
Retired/Unable to work	17,800	47.4	42.6 - 52.1	19,700	52.6	47.9 - 57.4	37,500
Student/Homemaker	1,300	46.8	30.9 - 62.7	1,400	53.2	37.3 - 69.1	2,700

**Diabetes - manage class by State, County, Island, Community, BRFSS Age Group, DOH Race-Ethnicity, Gender, Education Level, Employment Status (Grouped), Household Income, Poverty Level, Marital Status (Grouped), Married, Health Care Coverage, for the Year(s) - 2000-2002, 2001-2003, 2002-2004, 2003-2005, 2004-2006, 2005-2007, 2006-2008, 2007-2009, 2008-2010**

*Note: Weighted numbers (#) represent 3-yr averages, percentages and 95% confidence intervals; Respondents aged 18 years and older; n/r (Not Reportable) - If the unweighted total responses for a dimension (row) is <50 that row will not be shown; n/a (Not Available) - Not asked of a subset of respondents*

**Year: 2007-2009**

Household Income	Yes			No			Estimated Population (3-Yr Avg)
	#	%	C.I. (95%)	#	%	C.I. (95%)	#
Less than \$10,000	1,400	46.5	29.8 - 63.2	1,600	53.5	36.8 - 70.2	3,000
\$10,000 to \$14,999	1,900	50.1	36.2 - 64.0	1,900	49.9	36.0 - 63.8	3,800
\$15,000 to \$19,999	1,800	31.9	20.4 - 43.4	3,700	68.1	56.6 - 79.6	5,500
\$20,000 to \$24,999	2,600	40.3	29.3 - 51.4	3,800	59.7	48.6 - 70.7	6,300
\$25,000 to \$34,999	4,700	50.1	40.6 - 59.6	4,700	49.9	40.4 - 59.4	9,400
\$35,000 to \$49,999	6,600	50.6	42.2 - 59.0	6,400	49.4	41.0 - 57.8	13,000
\$50,000 to \$74,999	6,800	54.1	45.4 - 62.7	5,800	45.9	37.3 - 54.6	12,700
\$75,000 or more	11,200	63.0	55.7 - 70.2	6,600	37.0	29.8 - 44.3	17,700

**Diabetes - manage class by State, County, Island, Community, BRFSS Age Group, DOH Race-Ethnicity, Gender, Education Level, Employment Status (Grouped), Household Income, Poverty Level, Marital Status (Grouped), Married, Health Care Coverage, for the Year(s) - 2000-2002, 2001-2003, 2002-2004, 2003-2005, 2004-2006, 2005-2007, 2006-2008, 2007-2009, 2008-2010**

*Note: Weighted numbers (#) represent 3-yr averages, percentages and 95% confidence intervals; Respondents aged 18 years and older; n/r (Not Reportable) - If the unweighted total responses for a dimension (row) is <50 that row will not be shown; n/a (Not Available) - Not asked of a subset of respondents*

**Year: 2007-2009**

Poverty Level	Yes			No			Estimated Population (3-Yr Avg)
	#	%	C.I. (95%)	#	%	C.I. (95%)	#
0-130%	8,500	46.0	38.2 - 53.8	10,000	54.0	46.2 - 61.8	18,500
131-185%	5,200	49.9	40.8 - 59.0	5,200	50.1	41.0 - 59.2	10,400
186+%	23,200	54.6	50.1 - 59.0	19,300	45.4	41.0 - 49.9	42,400

Marital Status (Grouped)	Yes			No			Estimated Population (3-Yr Avg)
	#	%	C.I. (95%)	#	%	C.I. (95%)	#
Married	24,800	51.9	47.3 - 56.6	23,000	48.1	43.4 - 52.7	47,800
Widowed	4,300	43.0	34.7 - 51.3	5,700	57.0	48.7 - 65.3	10,000
Other	10,100	50.7	43.4 - 58.0	9,800	49.3	42.0 - 56.6	19,900

**Diabetes - manage class by State, County, Island, Community, BRFSS Age Group, DOH Race-Ethnicity, Gender, Education Level, Employment Status (Grouped), Household Income, Poverty Level, Marital Status (Grouped), Married, Health Care Coverage, for the Year(s) - 2000-2002, 2001-2003, 2002-2004, 2003-2005, 2004-2006, 2005-2007, 2006-2008, 2007-2009, 2008-2010**

*Note: Weighted numbers (#) represent 3-yr averages, percentages and 95% confidence intervals; Respondents aged 18 years and older; n/r (Not Reportable) - If the unweighted total responses for a dimension (row) is <50 that row will not be shown; n/a (Not Available) - Not asked of a subset of respondents*

**Year: 2007-2009**

<b>Married</b>	<b>Yes</b>			<b>No</b>			<b>Estimated Population (3-Yr Avg)</b>
	<b>#</b>	<b>%</b>	<b>C.I. (95%)</b>	<b>#</b>	<b>%</b>	<b>C.I. (95%)</b>	<b>#</b>
<b>Yes</b>	25,900	52.4	47.8 - 57.1	23,500	47.6	42.9 - 52.2	49,400
<b>No</b>	13,600	46.8	41.4 - 52.2	15,400	53.2	47.8 - 58.6	29,000

<b>Health Care Coverage</b>	<b>Yes</b>			<b>No</b>			<b>Estimated Population (3-Yr Avg)</b>
	<b>#</b>	<b>%</b>	<b>C.I. (95%)</b>	<b>#</b>	<b>%</b>	<b>C.I. (95%)</b>	<b>#</b>
<b>Yes</b>	25,800	51.0	47.1 - 54.9	24,800	49.0	45.1 - 52.9	50,500



**Diabetes - manage class by State, County, Island, Community, BRFSS Age Group, DOH Race-Ethnicity, Gender, Education Level, Employment Status (Grouped), Household Income, Poverty Level, Marital Status (Grouped), Married, Health Care Coverage, for the Year(s) - 2000-2002, 2001-2003, 2002-2004, 2003-2005, 2004-2006, 2005-2007, 2006-2008, 2007-2009, 2008-2010**

*Note: Weighted numbers (#) represent 3-yr averages, percentages and 95% confidence intervals; Respondents aged 18 years and older; n/r (Not Reportable) - If the unweighted total responses for a dimension (row) is <50 that row will not be shown; n/a (Not Available) - Not asked of a subset of respondents*

**Year: 2006-2008**

State	Yes			No			Estimated Population (3-Yr Avg)
	#	%	C.I. (95%)	#	%	C.I. (95%)	#
Hawaii State	37,400	47.9	44.7 - 51.1	40,700	52.1	48.9 - 55.3	78,100

County	Yes			No			Estimated Population (3-Yr Avg)
	#	%	C.I. (95%)	#	%	C.I. (95%)	#
Hawaii	4,100	45.3	39.1 - 51.5	4,900	54.7	48.5 - 60.9	9,000
Honolulu	26,500	46.7	42.6 - 50.7	30,300	53.3	49.3 - 57.4	56,900
Kauai	2,000	50.1	41.8 - 58.5	2,000	49.9	41.5 - 58.2	4,000
Maui	4,800	58.2	51.4 - 65.1	3,400	41.8	34.9 - 48.6	8,200

**Diabetes - manage class by State, County, Island, Community, BRFSS Age Group, DOH Race-Ethnicity, Gender, Education Level, Employment Status (Grouped), Household Income, Poverty Level, Marital Status (Grouped), Married, Health Care Coverage, for the Year(s) - 2000-2002, 2001-2003, 2002-2004, 2003-2005, 2004-2006, 2005-2007, 2006-2008, 2007-2009, 2008-2010**

*Note: Weighted numbers (#) represent 3-yr averages, percentages and 95% confidence intervals; Respondents aged 18 years and older; n/r (Not Reportable) - If the unweighted total responses for a dimension (row) is <50 that row will not be shown; n/a (Not Available) - Not asked of a subset of respondents*

**Year: 2006-2008**

Island	Yes			No			Estimated Population (3-Yr Avg)
	#	%	C.I. (95%)	#	%	C.I. (95%)	#
Hawaii	4,100	45.3	39.1 - 51.5	4,900	54.7	48.5 - 60.9	9,000
Kauai	2,000	50.1	41.8 - 58.5	2,000	49.9	41.5 - 58.2	4,000
Lanai	100	32.6	19.9 - 45.3	100	67.4	54.7 - 80.1	200
Maui	4,300	58.4	50.8 - 66.0	3,100	41.6	34.0 - 49.2	7,300
Molokai	400	63.3	49.4 - 77.2	300	36.7	22.8 - 50.6	700
Oahu	26,500	46.7	42.6 - 50.7	30,300	53.3	49.3 - 57.4	56,900

Community	Yes			No			Estimated Population (3-Yr Avg)
	#	%	C.I. (95%)	#	%	C.I. (95%)	#
Aiea/ Pearl City	3,100	55.5	42.8 - 68.2	2,500	44.5	31.8 - 57.2	5,600
Ala Moana	1,500	47.0	31.8 - 62.1	1,700	53.0	37.9 - 68.2	3,200

**Diabetes - manage class by State, County, Island, Community, BRFSS Age Group, DOH Race-Ethnicity, Gender, Education Level, Employment Status (Grouped), Household Income, Poverty Level, Marital Status (Grouped), Married, Health Care Coverage, for the Year(s) - 2000-2002, 2001-2003, 2002-2004, 2003-2005, 2004-2006, 2005-2007, 2006-2008, 2007-2009, 2008-2010**

*Note: Weighted numbers (#) represent 3-yr averages, percentages and 95% confidence intervals; Respondents aged 18 years and older; n/r (Not Reportable) - If the unweighted total responses for a dimension (row) is <50 that row will not be shown; n/a (Not Available) - Not asked of a subset of respondents*

**Year: 2006-2008**

Community	Yes			No			Estimated Population (3-Yr Avg)
	#	%	C.I. (95%)	#	%	C.I. (95%)	#
Hanalei/ Kapaa	600	43.7	29.7 - 57.7	800	56.3	42.3 - 70.3	1,500
Hilo	1,100	35.0	25.7 - 44.3	2,000	65.0	55.7 - 74.3	3,000
Kaaawa/ Kahaluu/ Kaneohe	1,500	42.0	27.2 - 56.7	2,100	58.0	43.3 - 72.8	3,600
Kahului	1,500	59.1	46.9 - 71.3	1,000	40.9	28.7 - 53.1	2,500
Kailua/ Waimanalo	2,200	53.9	39.9 - 67.9	1,900	46.1	32.1 - 60.1	4,200
Kaimuki/ Palolo/ Waikiki	1,500	34.5	21.7 - 47.2	2,800	65.5	52.8 - 78.3	4,200
Kona	600	36.6	22.9 - 50.3	1,000	63.4	49.7 - 77.1	1,600
Lahaina/ Wailuku	1,700	64.1	51.2 - 77.1	1,000	35.9	22.9 - 48.8	2,700
Lanai	100	32.6	19.9 - 45.3	100	67.4	54.7 - 80.1	200
Lihue-Waimea	1,300	53.9	43.8 - 64.0	1,200	46.1	36.0 - 56.2	2,500
Manoa/ Upper Makiki	1,600	46.9	32.6 - 61.3	1,900	53.1	38.7 - 67.4	3,500
Mililani/ Wahiawa	3,100	51.8	38.9 - 64.8	2,800	48.2	35.2 - 61.1	5,900

Report Source: The Hawaii Health Data Warehouse;  
 Data Source: State of Hawaii, Department of Health,  
 Behavioral Risk Factor Surveillance System (BRFSS)

**Diabetes - manage class by State, County, Island, Community, BRFSS Age Group, DOH Race-Ethnicity, Gender, Education Level, Employment Status (Grouped), Household Income, Poverty Level, Marital Status (Grouped), Married, Health Care Coverage, for the Year(s) - 2000-2002, 2001-2003, 2002-2004, 2003-2005, 2004-2006, 2005-2007, 2006-2008, 2007-2009, 2008-2010**

*Note: Weighted numbers (#) represent 3-yr averages, percentages and 95% confidence intervals; Respondents aged 18 years and older; n/r (Not Reportable) - If the unweighted total responses for a dimension (row) is <50 that row will not be shown; n/a (Not Available) - Not asked of a subset of respondents*

**Year: 2006-2008**

Community	Yes			No			Estimated Population (3-Yr Avg)
	#	%	C.I. (95%)	#	%	C.I. (95%)	#
Molokai	400	63.3	49.4 - 77.2	300	36.7	22.8 - 50.6	700
Nanakuli/ Waianae	2,400	46.8	33.2 - 60.4	2,700	53.2	39.6 - 66.8	5,100
N.Hawaii	1,300	59.0	45.6 - 72.5	900	41.0	27.5 - 54.4	2,100
Nuuanu/ Kalihi/ Moanalua	2,000	39.2	25.3 - 53.1	3,100	60.8	46.9 - 74.7	5,100
Puna/ Kau	1,200	52.1	40.1 - 64.2	1,100	47.9	35.8 - 59.9	2,300
Upcountry/ Hana	1,100	50.6	36.8 - 64.5	1,100	49.4	35.5 - 63.2	2,200
Waipahu/ Kapolei/ Ewa	5,300	48.1	38.4 - 57.9	5,700	51.9	42.1 - 61.6	11,000

**Diabetes - manage class by State, County, Island, Community, BRFSS Age Group, DOH Race-Ethnicity, Gender, Education Level, Employment Status (Grouped), Household Income, Poverty Level, Marital Status (Grouped), Married, Health Care Coverage, for the Year(s) - 2000-2002, 2001-2003, 2002-2004, 2003-2005, 2004-2006, 2005-2007, 2006-2008, 2007-2009, 2008-2010**

*Note: Weighted numbers (#) represent 3-yr averages, percentages and 95% confidence intervals; Respondents aged 18 years and older; n/r (Not Reportable) - If the unweighted total responses for a dimension (row) is <50 that row will not be shown; n/a (Not Available) - Not asked of a subset of respondents*

**Year: 2006-2008**

BRFSS Age Group	Yes			No			Estimated Population (3-Yr Avg)
	#	%	C.I. (95%)	#	%	C.I. (95%)	#
35-44	3,600	55.1	42.7 - 67.5	3,000	44.9	32.5 - 57.3	6,600
45-54	8,100	52.6	45.3 - 59.9	7,300	47.4	40.1 - 54.7	15,500
55-64	10,300	49.2	43.0 - 55.5	10,600	50.8	44.5 - 57.0	20,800
65-74	7,800	48.5	42.4 - 54.7	8,300	51.5	45.3 - 57.6	16,000
75+	5,800	37.6	31.2 - 44.0	9,700	62.4	56.0 - 68.8	15,500

**Diabetes - manage class by State, County, Island, Community, BRFSS Age Group, DOH Race-Ethnicity, Gender, Education Level, Employment Status (Grouped), Household Income, Poverty Level, Marital Status (Grouped), Married, Health Care Coverage, for the Year(s) - 2000-2002, 2001-2003, 2002-2004, 2003-2005, 2004-2006, 2005-2007, 2006-2008, 2007-2009, 2008-2010**

*Note: Weighted numbers (#) represent 3-yr averages, percentages and 95% confidence intervals; Respondents aged 18 years and older; n/r (Not Reportable) - If the unweighted total responses for a dimension (row) is <50 that row will not be shown; n/a (Not Available) - Not asked of a subset of respondents*

**Year: 2006-2008**

DOH Race-Ethnicity	Yes			No			Estimated Population (3-Yr Avg)
	#	%	C.I. (95%)	#	%	C.I. (95%)	#
Caucasian	7,900	49.6	43.7 - 55.6	8,100	50.4	44.4 - 56.3	16,000
Native Hawaiian	7,200	50.1	42.7 - 57.5	7,200	49.9	42.5 - 57.3	14,500
Chinese	3,300	57.4	45.3 - 69.4	2,400	42.6	30.6 - 54.7	5,700
Filipino	8,000	52.8	44.4 - 61.3	7,100	47.2	38.7 - 55.6	15,100
Japanese	7,600	38.5	32.9 - 44.1	12,100	61.5	55.9 - 67.1	19,600

Gender	Yes			No			Estimated Population (3-Yr Avg)
	#	%	C.I. (95%)	#	%	C.I. (95%)	#
Male	17,900	47.2	42.4 - 52.0	20,000	52.8	48.0 - 57.6	37,900
Female	19,500	48.5	44.4 - 52.7	20,700	51.5	47.3 - 55.6	40,200

**Diabetes - manage class by State, County, Island, Community, BRFSS Age Group, DOH Race-Ethnicity, Gender, Education Level, Employment Status (Grouped), Household Income, Poverty Level, Marital Status (Grouped), Married, Health Care Coverage, for the Year(s) - 2000-2002, 2001-2003, 2002-2004, 2003-2005, 2004-2006, 2005-2007, 2006-2008, 2007-2009, 2008-2010**

*Note: Weighted numbers (#) represent 3-yr averages, percentages and 95% confidence intervals; Respondents aged 18 years and older; n/r (Not Reportable) - If the unweighted total responses for a dimension (row) is <50 that row will not be shown; n/a (Not Available) - Not asked of a subset of respondents*

**Year: 2006-2008**

Education Level	Yes			No			Estimated Population (3-Yr Avg)
	#	%	C.I. (95%)	#	%	C.I. (95%)	#
Never attended school/ Only Kindergarten to Grades 8	1,000	33.9	20.3 - 47.5	1,900	66.1	52.5 - 79.7	2,900
Grades 9 thru 11 (Some High School)	1,300	32.4	20.3 - 44.5	2,800	67.6	55.5 - 79.7	4,100
Grades 12 or GED (High School Grad)	9,800	37.4	32.1 - 42.8	16,300	62.6	57.2 - 67.9	26,100
College 1 to 3 years (Some College/ Tech)	13,500	55.6	49.8 - 61.5	10,800	44.4	38.5 - 50.2	24,300
College 4 years or more (College Grad)	11,800	57.1	51.4 - 62.8	8,900	42.9	37.2 - 48.6	20,600

Employment Status (Grouped)	Yes			No			Estimated Population (3-Yr Avg)
	#	%	C.I. (95%)	#	%	C.I. (95%)	#
Employed	16,700	50.2	45.1 - 55.2	16,600	49.8	44.8 - 54.9	33,400
Retired/Unable to work	18,000	46.3	42.2 - 50.5	20,900	53.7	49.5 - 57.8	38,900
Student/Homemaker	1,400	48.6	33.1 - 64.2	1,500	51.4	35.8 - 66.9	2,900

**Diabetes - manage class by State, County, Island, Community, BRFSS Age Group, DOH Race-Ethnicity, Gender, Education Level, Employment Status (Grouped), Household Income, Poverty Level, Marital Status (Grouped), Married, Health Care Coverage, for the Year(s) - 2000-2002, 2001-2003, 2002-2004, 2003-2005, 2004-2006, 2005-2007, 2006-2008, 2007-2009, 2008-2010**

*Note: Weighted numbers (#) represent 3-yr averages, percentages and 95% confidence intervals; Respondents aged 18 years and older; n/r (Not Reportable) - If the unweighted total responses for a dimension (row) is <50 that row will not be shown; n/a (Not Available) - Not asked of a subset of respondents*

**Year: 2006-2008**

Household Income	Yes			No			Estimated Population (3-Yr Avg)
	#	%	C.I. (95%)	#	%	C.I. (95%)	#
Less than \$10,000	1,300	46.2	32.6 - 59.9	1,600	53.8	40.1 - 67.4	2,900
\$10,000 to \$14,999	2,100	51.4	38.2 - 64.6	2,000	48.6	35.4 - 61.8	4,000
\$15,000 to \$19,999	1,800	39.4	28.3 - 50.5	2,800	60.6	49.5 - 71.7	4,600
\$20,000 to \$24,999	2,500	37.4	28.1 - 46.6	4,100	62.6	53.4 - 71.9	6,600
\$25,000 to \$34,999	4,700	48.4	39.1 - 57.6	5,100	51.6	42.4 - 60.9	9,800
\$35,000 to \$49,999	6,700	48.2	40.2 - 56.2	7,200	51.8	43.8 - 59.8	13,900
\$50,000 to \$74,999	6,900	52.4	44.6 - 60.1	6,300	47.6	39.9 - 55.4	13,100
\$75,000 or more	8,500	56.9	49.9 - 63.8	6,400	43.1	36.2 - 50.1	14,900



**Diabetes - manage class by State, County, Island, Community, BRFSS Age Group, DOH Race-Ethnicity, Gender, Education Level, Employment Status (Grouped), Household Income, Poverty Level, Marital Status (Grouped), Married, Health Care Coverage, for the Year(s) - 2000-2002, 2001-2003, 2002-2004, 2003-2005, 2004-2006, 2005-2007, 2006-2008, 2007-2009, 2008-2010**

*Note: Weighted numbers (#) represent 3-yr averages, percentages and 95% confidence intervals; Respondents aged 18 years and older; n/r (Not Reportable) - If the unweighted total responses for a dimension (row) is <50 that row will not be shown; n/a (Not Available) - Not asked of a subset of respondents*

**Year: 2006-2008**

Poverty Level	Yes			No			Estimated Population (3-Yr Avg)
	#	%	C.I. (95%)	#	%	C.I. (95%)	#
0-130%	8,700	45.6	38.6 - 52.5	10,400	54.4	47.5 - 61.4	19,100
131-185%	4,300	46.8	37.1 - 56.6	4,900	53.2	43.4 - 62.9	9,200
186+%	21,500	51.6	47.6 - 55.7	20,100	48.4	44.3 - 52.4	41,600

Marital Status (Grouped)	Yes			No			Estimated Population (3-Yr Avg)
	#	%	C.I. (95%)	#	%	C.I. (95%)	#
Married	23,800	48.9	44.7 - 53.1	24,900	51.1	46.9 - 55.3	48,600
Widowed	3,700	39.5	32.4 - 46.6	5,700	60.5	53.4 - 67.6	9,500
Other	9,500	49.3	43.1 - 55.5	9,800	50.7	44.5 - 56.9	19,200

**Diabetes - manage class by State, County, Island, Community, BRFSS Age Group, DOH Race-Ethnicity, Gender, Education Level, Employment Status (Grouped), Household Income, Poverty Level, Marital Status (Grouped), Married, Health Care Coverage, for the Year(s) - 2000-2002, 2001-2003, 2002-2004, 2003-2005, 2004-2006, 2005-2007, 2006-2008, 2007-2009, 2008-2010**

*Note: Weighted numbers (#) represent 3-yr averages, percentages and 95% confidence intervals; Respondents aged 18 years and older; n/r (Not Reportable) - If the unweighted total responses for a dimension (row) is <50 that row will not be shown; n/a (Not Available) - Not asked of a subset of respondents*

**Year: 2006-2008**

<b>Married</b>	<b>Yes</b>			<b>No</b>			<b>Estimated Population (3-Yr Avg)</b>
	<b>#</b>	<b>%</b>	<b>C.I. (95%)</b>	<b>#</b>	<b>%</b>	<b>C.I. (95%)</b>	<b>#</b>
<b>Yes</b>	24,100	48.4	44.3 - 52.5	25,700	51.6	47.5 - 55.7	49,800
<b>No</b>	13,200	46.9	42.1 - 51.7	15,000	53.1	48.3 - 57.9	28,200

<b>Health Care Coverage</b>	<b>Yes</b>			<b>No</b>			<b>Estimated Population (3-Yr Avg)</b>
	<b>#</b>	<b>%</b>	<b>C.I. (95%)</b>	<b>#</b>	<b>%</b>	<b>C.I. (95%)</b>	<b>#</b>
<b>Yes</b>	36,500	48.8	45.5 - 52.0	38,300	51.2	48.0 - 54.5	74,800
<b>No</b>	900	28.1	15.0 - 41.3	2,300	71.9	58.7 - 85.0	3,200

**Diabetes - manage class by State, County, Island, Community, BRFSS Age Group, DOH Race-Ethnicity, Gender, Education Level, Employment Status (Grouped), Household Income, Poverty Level, Marital Status (Grouped), Married, Health Care Coverage, for the Year(s) - 2000-2002, 2001-2003, 2002-2004, 2003-2005, 2004-2006, 2005-2007, 2006-2008, 2007-2009, 2008-2010**

*Note: Weighted numbers (#) represent 3-yr averages, percentages and 95% confidence intervals; Respondents aged 18 years and older; n/r (Not Reportable) - If the unweighted total responses for a dimension (row) is <50 that row will not be shown; n/a (Not Available) - Not asked of a subset of respondents*

**Year: 2005-2007**

State	Yes			No			Estimated Population (3-Yr Avg)
	#	%	C.I. (95%)	#	%	C.I. (95%)	#
Hawaii State	33,200	42.7	38.8 - 46.6	44,500	57.3	53.4 - 61.2	77,700

County	Yes			No			Estimated Population (3-Yr Avg)
	#	%	C.I. (95%)	#	%	C.I. (95%)	#
Hawaii	3,800	39.7	33.2 - 46.1	5,800	60.3	53.9 - 66.8	9,600
Honolulu	23,600	41.4	36.4 - 46.4	33,400	58.6	53.6 - 63.6	57,100
Kauai	2,000	51.5	41.2 - 61.7	1,900	48.5	38.3 - 58.8	3,900
Maui	3,700	52.0	44.2 - 59.8	3,400	48.0	40.2 - 55.8	7,100

**Diabetes - manage class by State, County, Island, Community, BRFSS Age Group, DOH Race-Ethnicity, Gender, Education Level, Employment Status (Grouped), Household Income, Poverty Level, Marital Status (Grouped), Married, Health Care Coverage, for the Year(s) - 2000-2002, 2001-2003, 2002-2004, 2003-2005, 2004-2006, 2005-2007, 2006-2008, 2007-2009, 2008-2010**

*Note: Weighted numbers (#) represent 3-yr averages, percentages and 95% confidence intervals; Respondents aged 18 years and older; n/r (Not Reportable) - If the unweighted total responses for a dimension (row) is <50 that row will not be shown; n/a (Not Available) - Not asked of a subset of respondents*

**Year: 2005-2007**

Island	Yes			No			Estimated Population (3-Yr Avg)
	#	%	C.I. (95%)	#	%	C.I. (95%)	#
Hawaii	3,800	39.7	33.2 - 46.1	5,800	60.3	53.9 - 66.8	9,600
Kauai	2,000	51.5	41.2 - 61.7	1,900	48.5	38.3 - 58.8	3,900
Lanai	100	39.1	21.3 - 56.8	100	60.9	43.2 - 78.7	200
Maui	3,300	52.0	43.4 - 60.7	3,000	48.0	39.3 - 56.6	6,300
Molokai	400	55.8	39.8 - 71.8	300	44.2	28.2 - 60.2	600
Oahu	23,600	41.4	36.4 - 46.4	33,400	58.6	53.6 - 63.6	57,100

Community	Yes			No			Estimated Population (3-Yr Avg)
	#	%	C.I. (95%)	#	%	C.I. (95%)	#
Aiea/ Pearl City	2,200	44.2	28.8 - 59.6	2,800	55.8	40.4 - 71.2	5,000
Hilo	1,200	35.0	24.5 - 45.4	2,100	65.0	54.6 - 75.5	3,300

**Diabetes - manage class by State, County, Island, Community, BRFSS Age Group, DOH Race-Ethnicity, Gender, Education Level, Employment Status (Grouped), Household Income, Poverty Level, Marital Status (Grouped), Married, Health Care Coverage, for the Year(s) - 2000-2002, 2001-2003, 2002-2004, 2003-2005, 2004-2006, 2005-2007, 2006-2008, 2007-2009, 2008-2010**

*Note: Weighted numbers (#) represent 3-yr averages, percentages and 95% confidence intervals; Respondents aged 18 years and older; n/r (Not Reportable) - If the unweighted total responses for a dimension (row) is <50 that row will not be shown; n/a (Not Available) - Not asked of a subset of respondents*

**Year: 2005-2007**

Community	Yes			No			Estimated Population (3-Yr Avg)
	#	%	C.I. (95%)	#	%	C.I. (95%)	#
Kahului	1,000	52.8	39.1 - 66.6	900	47.2	33.4 - 60.9	2,000
Kailua/ Waimanalo	2,000	47.9	30.3 - 65.4	2,100	52.1	34.6 - 69.7	4,100
Kona	500	28.6	15.2 - 42.1	1,200	71.4	57.9 - 84.8	1,700
Lahaina/ Wailuku	1,100	54.3	39.0 - 69.6	900	45.7	30.4 - 61.0	2,000
Lanai	100	39.1	21.3 - 56.8	100	60.9	43.2 - 78.7	200
Lihue-Waimea	1,500	57.0	45.0 - 69.0	1,100	43.0	31.0 - 55.0	2,600
Mililani/ Wahiawa	2,800	50.4	35.0 - 65.8	2,700	49.6	34.2 - 65.0	5,500
Molokai	400	55.8	39.8 - 71.8	300	44.2	28.2 - 60.2	600
Nanakuli/ Waianae	1,800	34.7	19.6 - 49.9	3,500	65.3	50.1 - 80.4	5,300
N.Hawaii	1,000	51.1	38.7 - 63.5	1,000	48.9	36.5 - 61.3	2,000
Nuuanu/ Kalihi/ Moanalua	1,600	34.6	19.5 - 49.6	3,100	65.4	50.4 - 80.5	4,700
Puna/ Kau	1,200	44.5	30.0 - 59.0	1,400	55.5	41.0 - 70.0	2,600

**Diabetes - manage class by State, County, Island, Community, BRFSS Age Group, DOH Race-Ethnicity, Gender, Education Level, Employment Status (Grouped), Household Income, Poverty Level, Marital Status (Grouped), Married, Health Care Coverage, for the Year(s) - 2000-2002, 2001-2003, 2002-2004, 2003-2005, 2004-2006, 2005-2007, 2006-2008, 2007-2009, 2008-2010**

*Note: Weighted numbers (#) represent 3-yr averages, percentages and 95% confidence intervals; Respondents aged 18 years and older; n/r (Not Reportable) - If the unweighted total responses for a dimension (row) is <50 that row will not be shown; n/a (Not Available) - Not asked of a subset of respondents*

**Year: 2005-2007**

Community	Yes			No			Estimated Population (3-Yr Avg)
	#	%	C.I. (95%)	#	%	C.I. (95%)	#
Upcountry/ Hana	1,100	49.3	33.7 - 64.8	1,100	50.7	35.2 - 66.3	2,300
Waipahu/ Kapolei/ Ewa	4,200	41.4	28.9 - 53.9	6,000	58.6	46.1 - 71.1	10,200

BRFSS Age Group	Yes			No			Estimated Population (3-Yr Avg)
	#	%	C.I. (95%)	#	%	C.I. (95%)	#
35-44	2,800	44.8	30.2 - 59.3	3,500	55.2	40.7 - 69.8	6,300
45-54	8,200	51.4	42.5 - 60.2	7,700	48.6	39.8 - 57.5	15,900
55-64	8,700	42.5	34.9 - 50.2	11,800	57.5	49.8 - 65.1	20,500
65-74	7,400	47.3	40.2 - 54.4	8,200	52.7	45.6 - 59.8	15,600
75+	4,800	31.6	23.8 - 39.3	10,400	68.4	60.7 - 76.2	15,100

**Diabetes - manage class by State, County, Island, Community, BRFSS Age Group, DOH Race-Ethnicity, Gender, Education Level, Employment Status (Grouped), Household Income, Poverty Level, Marital Status (Grouped), Married, Health Care Coverage, for the Year(s) - 2000-2002, 2001-2003, 2002-2004, 2003-2005, 2004-2006, 2005-2007, 2006-2008, 2007-2009, 2008-2010**

*Note: Weighted numbers (#) represent 3-yr averages, percentages and 95% confidence intervals; Respondents aged 18 years and older; n/r (Not Reportable) - If the unweighted total responses for a dimension (row) is <50 that row will not be shown; n/a (Not Available) - Not asked of a subset of respondents*

**Year: 2005-2007**

DOH Race-Ethnicity	Yes			No			Estimated Population (3-Yr Avg)
	#	%	C.I. (95%)	#	%	C.I. (95%)	#
Caucasian	8,400	48.4	41.3 - 55.4	8,900	51.6	44.6 - 58.7	17,300
Native Hawaiian	7,900	51.7	42.7 - 60.8	7,400	48.3	39.2 - 57.3	15,300
Chinese	2,000	36.7	22.7 - 50.6	3,400	63.3	49.4 - 77.3	5,400
Filipino	5,400	39.2	29.5 - 49.0	8,400	60.8	51.0 - 70.5	13,800
Japanese	6,600	37.0	30.1 - 43.9	11,200	63.0	56.1 - 69.9	17,700

Gender	Yes			No			Estimated Population (3-Yr Avg)
	#	%	C.I. (95%)	#	%	C.I. (95%)	#
Male	16,200	41.0	35.2 - 46.9	23,300	59.0	53.1 - 64.8	39,400
Female	17,000	44.4	39.3 - 49.4	21,300	55.6	50.6 - 60.7	38,300

**Diabetes - manage class by State, County, Island, Community, BRFSS Age Group, DOH Race-Ethnicity, Gender, Education Level, Employment Status (Grouped), Household Income, Poverty Level, Marital Status (Grouped), Married, Health Care Coverage, for the Year(s) - 2000-2002, 2001-2003, 2002-2004, 2003-2005, 2004-2006, 2005-2007, 2006-2008, 2007-2009, 2008-2010**

*Note: Weighted numbers (#) represent 3-yr averages, percentages and 95% confidence intervals; Respondents aged 18 years and older; n/r (Not Reportable) - If the unweighted total responses for a dimension (row) is <50 that row will not be shown; n/a (Not Available) - Not asked of a subset of respondents*

**Year: 2005-2007**

Education Level	Yes			No			Estimated Population (3-Yr Avg)
	#	%	C.I. (95%)	#	%	C.I. (95%)	#
Never attended school/ Only Kindergarten to Grades 8	900	23.4	10.8 - 36.0	3,000	76.6	64.0 - 89.2	3,900
Grades 9 thru 11 (Some High School)	1,200	26.1	14.1 - 38.1	3,500	73.9	61.9 - 85.9	4,700
Grades 12 or GED (High School Grad)	10,700	38.0	31.3 - 44.7	17,500	62.0	55.3 - 68.7	28,300
College 1 to 3 years (Some College/ Tech)	11,100	50.9	44.0 - 57.7	10,800	49.1	42.3 - 56.0	21,900
College 4 years or more (College Grad)	9,200	48.3	40.5 - 56.1	9,800	51.7	43.9 - 59.5	18,900

Employment Status (Grouped)	Yes			No			Estimated Population (3-Yr Avg)
	#	%	C.I. (95%)	#	%	C.I. (95%)	#
Employed	15,600	44.9	38.7 - 51.1	19,100	55.1	48.9 - 61.3	34,700
Retired/Unable to work	15,500	40.6	35.4 - 45.7	22,700	59.4	54.3 - 64.6	38,200
Student/Homemaker	1,300	43.0	23.8 - 62.1	1,700	57.0	37.9 - 76.2	3,000



**Diabetes - manage class by State, County, Island, Community, BRFSS Age Group, DOH Race-Ethnicity, Gender, Education Level, Employment Status (Grouped), Household Income, Poverty Level, Marital Status (Grouped), Married, Health Care Coverage, for the Year(s) - 2000-2002, 2001-2003, 2002-2004, 2003-2005, 2004-2006, 2005-2007, 2006-2008, 2007-2009, 2008-2010**

*Note: Weighted numbers (#) represent 3-yr averages, percentages and 95% confidence intervals; Respondents aged 18 years and older; n/r (Not Reportable) - If the unweighted total responses for a dimension (row) is <50 that row will not be shown; n/a (Not Available) - Not asked of a subset of respondents*

**Year: 2005-2007**

Household Income	Yes			No			Estimated Population (3-Yr Avg)
	#	%	C.I. (95%)	#	%	C.I. (95%)	#
Less than \$10,000	1,100	36.2	23.4 - 49.0	1,900	63.8	51.0 - 76.6	3,000
\$10,000 to \$14,999	2,300	44.5	27.8 - 61.3	2,800	55.5	38.7 - 72.2	5,100
\$15,000 to \$19,999	1,400	25.3	14.4 - 36.3	4,100	74.7	63.7 - 85.6	5,500
\$20,000 to \$24,999	2,400	36.5	25.3 - 47.8	4,200	63.5	52.2 - 74.7	6,700
\$25,000 to \$34,999	4,500	47.8	36.1 - 59.4	4,900	52.2	40.6 - 63.9	9,300
\$35,000 to \$49,999	6,400	51.2	42.1 - 60.3	6,100	48.8	39.7 - 57.9	12,500
\$50,000 to \$74,999	5,200	43.8	34.7 - 52.9	6,700	56.2	47.1 - 65.3	11,900
\$75,000 or more	6,600	53.2	43.8 - 62.5	5,800	46.8	37.5 - 56.2	12,500

**Diabetes - manage class by State, County, Island, Community, BRFSS Age Group, DOH Race-Ethnicity, Gender, Education Level, Employment Status (Grouped), Household Income, Poverty Level, Marital Status (Grouped), Married, Health Care Coverage, for the Year(s) - 2000-2002, 2001-2003, 2002-2004, 2003-2005, 2004-2006, 2005-2007, 2006-2008, 2007-2009, 2008-2010**

*Note: Weighted numbers (#) represent 3-yr averages, percentages and 95% confidence intervals; Respondents aged 18 years and older; n/r (Not Reportable) - If the unweighted total responses for a dimension (row) is <50 that row will not be shown; n/a (Not Available) - Not asked of a subset of respondents*

**Year: 2005-2007**

Poverty Level	Yes			No			Estimated Population (3-Yr Avg)
	#	%	C.I. (95%)	#	%	C.I. (95%)	#
0-130%	7,300	36.3	28.6 - 43.9	12,900	63.7	56.1 - 71.4	20,200
131-185%	3,800	43.6	32.1 - 55.1	4,900	56.4	44.9 - 67.9	8,700
186+%	18,800	50.0	45.0 - 55.0	18,800	50.0	45.0 - 55.0	37,600

Marital Status (Grouped)	Yes			No			Estimated Population (3-Yr Avg)
	#	%	C.I. (95%)	#	%	C.I. (95%)	#
Married	22,000	44.8	39.7 - 50.0	27,100	55.2	50.0 - 60.3	49,100
Widowed	3,400	38.3	30.1 - 46.5	5,500	61.7	53.5 - 69.9	8,900
Other	7,500	40.2	32.6 - 47.8	11,200	59.8	52.2 - 67.4	18,700

**Diabetes - manage class by State, County, Island, Community, BRFSS Age Group, DOH Race-Ethnicity, Gender, Education Level, Employment Status (Grouped), Household Income, Poverty Level, Marital Status (Grouped), Married, Health Care Coverage, for the Year(s) - 2000-2002, 2001-2003, 2002-2004, 2003-2005, 2004-2006, 2005-2007, 2006-2008, 2007-2009, 2008-2010**

*Note: Weighted numbers (#) represent 3-yr averages, percentages and 95% confidence intervals; Respondents aged 18 years and older; n/r (Not Reportable) - If the unweighted total responses for a dimension (row) is <50 that row will not be shown; n/a (Not Available) - Not asked of a subset of respondents*

**Year: 2005-2007**

<b>Married</b>	<b>Yes</b>			<b>No</b>			<b>Estimated Population (3-Yr Avg)</b>
	<b>#</b>	<b>%</b>	<b>C.I. (95%)</b>	<b>#</b>	<b>%</b>	<b>C.I. (95%)</b>	<b>#</b>
<b>Yes</b>	22,300	44.5	39.4 - 49.6	27,800	55.5	50.4 - 60.6	50,000
<b>No</b>	10,800	39.4	33.6 - 45.2	16,700	60.6	54.8 - 66.4	27,500

<b>Health Care Coverage</b>	<b>Yes</b>			<b>No</b>			<b>Estimated Population (3-Yr Avg)</b>
	<b>#</b>	<b>%</b>	<b>C.I. (95%)</b>	<b>#</b>	<b>%</b>	<b>C.I. (95%)</b>	<b>#</b>
<b>Yes</b>	22,800	47.2	43.2 - 51.2	25,500	52.8	48.8 - 56.8	48,300

**Diabetes - manage class by State, County, Island, Community, BRFSS Age Group, DOH Race-Ethnicity, Gender, Education Level, Employment Status (Grouped), Household Income, Poverty Level, Marital Status (Grouped), Married, Health Care Coverage, for the Year(s) - 2000-2002, 2001-2003, 2002-2004, 2003-2005, 2004-2006, 2005-2007, 2006-2008, 2007-2009, 2008-2010**

*Note: Weighted numbers (#) represent 3-yr averages, percentages and 95% confidence intervals; Respondents aged 18 years and older; n/r (Not Reportable) - If the unweighted total responses for a dimension (row) is <50 that row will not be shown; n/a (Not Available) - Not asked of a subset of respondents*

**Year: 2004-2006**

State	Yes			No			Estimated Population (3-Yr Avg)
	#	%	C.I. (95%)	#	%	C.I. (95%)	#
Hawaii State	30,500	41.8	36.8 - 46.8	42,400	58.2	53.2 - 63.2	72,900

County	Yes			No			Estimated Population (3-Yr Avg)
	#	%	C.I. (95%)	#	%	C.I. (95%)	#
Hawaii	4,000	43.8	35.7 - 51.9	5,200	56.2	48.1 - 64.3	9,200
Honolulu	21,900	40.5	34.1 - 46.9	32,100	59.5	53.1 - 65.9	54,000
Kauai	1,700	44.3	33.1 - 55.5	2,200	55.7	44.5 - 66.9	3,900
Maui	2,900	49.1	38.4 - 59.8	3,000	50.9	40.2 - 61.6	5,800

**Diabetes - manage class by State, County, Island, Community, BRFSS Age Group, DOH Race-Ethnicity, Gender, Education Level, Employment Status (Grouped), Household Income, Poverty Level, Marital Status (Grouped), Married, Health Care Coverage, for the Year(s) - 2000-2002, 2001-2003, 2002-2004, 2003-2005, 2004-2006, 2005-2007, 2006-2008, 2007-2009, 2008-2010**

*Note: Weighted numbers (#) represent 3-yr averages, percentages and 95% confidence intervals; Respondents aged 18 years and older; n/r (Not Reportable) - If the unweighted total responses for a dimension (row) is <50 that row will not be shown; n/a (Not Available) - Not asked of a subset of respondents*

**Year: 2004-2006**

Island	Yes			No			Estimated Population (3-Yr Avg)
	#	%	C.I. (95%)	#	%	C.I. (95%)	#
Hawaii	4,000	43.8	35.7 - 51.9	5,200	56.2	48.1 - 64.3	9,200
Kauai	1,700	44.3	33.1 - 55.5	2,200	55.7	44.5 - 66.9	3,900
Maui	2,600	50.3	38.4 - 62.3	2,600	49.7	37.7 - 61.6	5,100
Oahu	21,900	40.5	34.1 - 46.9	32,100	59.5	53.1 - 65.9	54,000

**Diabetes - manage class by State, County, Island, Community, BRFSS Age Group, DOH Race-Ethnicity, Gender, Education Level, Employment Status (Grouped), Household Income, Poverty Level, Marital Status (Grouped), Married, Health Care Coverage, for the Year(s) - 2000-2002, 2001-2003, 2002-2004, 2003-2005, 2004-2006, 2005-2007, 2006-2008, 2007-2009, 2008-2010**

*Note: Weighted numbers (#) represent 3-yr averages, percentages and 95% confidence intervals; Respondents aged 18 years and older; n/r (Not Reportable) - If the unweighted total responses for a dimension (row) is <50 that row will not be shown; n/a (Not Available) - Not asked of a subset of respondents*

**Year: 2004-2006**

Community	Yes			No			Estimated Population (3-Yr Avg)
	#	%	C.I. (95%)	#	%	C.I. (95%)	#
Hilo	1,000	38.9	25.9 - 52.0	1,600	61.1	48.0 - 74.1	2,600
Lihue-Waimea	1,200	43.2	29.8 - 56.6	1,500	56.8	43.4 - 70.2	2,700
N.Hawaii	800	47.5	31.1 - 64.0	900	52.5	36.0 - 68.9	1,800
Puna/ Kau	1,500	49.5	33.5 - 65.5	1,600	50.5	34.5 - 66.5	3,100
Waipahu/ Kapolei/ Ewa	3,200	32.8	18.0 - 47.6	6,500	67.2	52.4 - 82.0	9,600

**Diabetes - manage class by State, County, Island, Community, BRFSS Age Group, DOH Race-Ethnicity, Gender, Education Level, Employment Status (Grouped), Household Income, Poverty Level, Marital Status (Grouped), Married, Health Care Coverage, for the Year(s) - 2000-2002, 2001-2003, 2002-2004, 2003-2005, 2004-2006, 2005-2007, 2006-2008, 2007-2009, 2008-2010**

*Note: Weighted numbers (#) represent 3-yr averages, percentages and 95% confidence intervals; Respondents aged 18 years and older; n/r (Not Reportable) - If the unweighted total responses for a dimension (row) is <50 that row will not be shown; n/a (Not Available) - Not asked of a subset of respondents*

**Year: 2004-2006**

BRFSS Age Group	Yes			No			Estimated Population (3-Yr Avg)
	#	%	C.I. (95%)	#	%	C.I. (95%)	#
35-44	4,000	47.3	27.4 - 67.2	4,500	52.7	32.8 - 72.6	8,600
45-54	8,100	53.1	41.9 - 64.2	7,200	46.9	35.8 - 58.1	15,300
55-64	7,200	37.8	29.1 - 46.5	11,900	62.2	53.5 - 70.9	19,100
65-74	6,100	46.8	37.5 - 56.1	6,900	53.2	43.9 - 62.5	13,000
75+	3,700	28.4	18.3 - 38.5	9,200	71.6	61.5 - 81.7	12,900

**Diabetes - manage class by State, County, Island, Community, BRFSS Age Group, DOH Race-Ethnicity, Gender, Education Level, Employment Status (Grouped), Household Income, Poverty Level, Marital Status (Grouped), Married, Health Care Coverage, for the Year(s) - 2000-2002, 2001-2003, 2002-2004, 2003-2005, 2004-2006, 2005-2007, 2006-2008, 2007-2009, 2008-2010**

*Note: Weighted numbers (#) represent 3-yr averages, percentages and 95% confidence intervals; Respondents aged 18 years and older; n/r (Not Reportable) - If the unweighted total responses for a dimension (row) is <50 that row will not be shown; n/a (Not Available) - Not asked of a subset of respondents*

**Year: 2004-2006**

DOH Race-Ethnicity	Yes			No			Estimated Population (3-Yr Avg)
	#	%	C.I. (95%)	#	%	C.I. (95%)	#
Caucasian	7,400	44.5	35.6 - 53.4	9,200	55.5	46.6 - 64.4	16,600
Native Hawaiian	8,900	57.3	45.5 - 69.1	6,600	42.7	30.9 - 54.5	15,600
Filipino	4,900	35.9	24.7 - 47.2	8,700	64.1	52.8 - 75.3	13,600
Japanese	5,200	35.3	26.6 - 43.9	9,500	64.7	56.1 - 73.4	14,600

Gender	Yes			No			Estimated Population (3-Yr Avg)
	#	%	C.I. (95%)	#	%	C.I. (95%)	#
Male	15,300	39.7	32.8 - 46.6	23,300	60.3	53.4 - 67.2	38,600
Female	15,100	44.2	37.1 - 51.3	19,100	55.8	48.7 - 62.9	34,200



**Diabetes - manage class by State, County, Island, Community, BRFSS Age Group, DOH Race-Ethnicity, Gender, Education Level, Employment Status (Grouped), Household Income, Poverty Level, Marital Status (Grouped), Married, Health Care Coverage, for the Year(s) - 2000-2002, 2001-2003, 2002-2004, 2003-2005, 2004-2006, 2005-2007, 2006-2008, 2007-2009, 2008-2010**

*Note: Weighted numbers (#) represent 3-yr averages, percentages and 95% confidence intervals; Respondents aged 18 years and older; n/r (Not Reportable) - If the unweighted total responses for a dimension (row) is <50 that row will not be shown; n/a (Not Available) - Not asked of a subset of respondents*

**Year: 2004-2006**

Education Level	Yes			No			Estimated Population (3-Yr Avg)
	#	%	C.I. (95%)	#	%	C.I. (95%)	#
Grades 9 thru 11 (Some High School)	1,000	25.4	12.5 - 38.4	3,000	74.6	61.6 - 87.5	4,000
Grades 12 or GED (High School Grad)	11,800	41.5	32.4 - 50.7	16,600	58.5	49.3 - 67.6	28,300
College 1 to 3 years (Some College/ Tech)	8,700	43.6	35.1 - 52.1	11,300	56.4	47.9 - 64.9	19,900
College 4 years or more (College Grad)	8,400	48.3	38.7 - 57.8	9,000	51.7	42.2 - 61.3	17,400

Employment Status (Grouped)	Yes			No			Estimated Population (3-Yr Avg)
	#	%	C.I. (95%)	#	%	C.I. (95%)	#
Employed	14,500	43.3	35.6 - 50.9	19,000	56.7	49.1 - 64.4	33,400
Retired/Unable to work	13,700	40.1	33.1 - 47.0	20,500	59.9	53.0 - 66.9	34,200

**Diabetes - manage class by State, County, Island, Community, BRFSS Age Group, DOH Race-Ethnicity, Gender, Education Level, Employment Status (Grouped), Household Income, Poverty Level, Marital Status (Grouped), Married, Health Care Coverage, for the Year(s) - 2000-2002, 2001-2003, 2002-2004, 2003-2005, 2004-2006, 2005-2007, 2006-2008, 2007-2009, 2008-2010**

*Note: Weighted numbers (#) represent 3-yr averages, percentages and 95% confidence intervals; Respondents aged 18 years and older; n/r (Not Reportable) - If the unweighted total responses for a dimension (row) is <50 that row will not be shown; n/a (Not Available) - Not asked of a subset of respondents*

**Year: 2004-2006**

Household Income	Yes			No			Estimated Population (3-Yr Avg)
	#	%	C.I. (95%)	#	%	C.I. (95%)	#
Less than \$10,000	800	36.2	20.3 - 52.2	1,400	63.8	47.8 - 79.7	2,200
\$10,000 to \$14,999	1,400	34.1	14.5 - 53.8	2,700	65.9	46.2 - 85.5	4,000
\$15,000 to \$19,999	2,100	32.4	11.0 - 53.7	4,400	67.7	46.3 - 89.0	6,600
\$20,000 to \$24,999	2,600	42.3	26.0 - 58.6	3,600	57.7	41.4 - 74.0	6,200
\$25,000 to \$34,999	4,300	47.1	31.8 - 62.5	4,800	52.9	37.5 - 68.2	9,000
\$35,000 to \$49,999	5,100	48.9	37.1 - 60.8	5,300	51.1	39.2 - 62.9	10,400
\$50,000 to \$74,999	6,100	47.0	36.4 - 57.7	6,900	53.0	42.3 - 63.6	13,100
\$75,000 or more	5,400	45.9	32.8 - 59.1	6,300	54.1	40.9 - 67.2	11,700

**Diabetes - manage class by State, County, Island, Community, BRFSS Age Group, DOH Race-Ethnicity, Gender, Education Level, Employment Status (Grouped), Household Income, Poverty Level, Marital Status (Grouped), Married, Health Care Coverage, for the Year(s) - 2000-2002, 2001-2003, 2002-2004, 2003-2005, 2004-2006, 2005-2007, 2006-2008, 2007-2009, 2008-2010**

*Note: Weighted numbers (#) represent 3-yr averages, percentages and 95% confidence intervals; Respondents aged 18 years and older; n/r (Not Reportable) - If the unweighted total responses for a dimension (row) is <50 that row will not be shown; n/a (Not Available) - Not asked of a subset of respondents*

**Year: 2004-2006**

Poverty Level	Yes			No			Estimated Population (3-Yr Avg)
	#	%	C.I. (95%)	#	%	C.I. (95%)	#
0-130%	6,300	32.9	21.7 - 44.2	12,800	67.1	55.8 - 78.3	19,100
131-185%	3,500	47.3	32.9 - 61.7	3,900	52.7	38.3 - 67.1	7,400
186+%	18,000	49.0	42.4 - 55.6	18,800	51.0	44.4 - 57.6	36,800

Marital Status (Grouped)	Yes			No			Estimated Population (3-Yr Avg)
	#	%	C.I. (95%)	#	%	C.I. (95%)	#
Married	21,200	44.7	38.1 - 51.2	26,300	55.3	48.8 - 61.9	47,500
Widowed	2,800	36.0	25.2 - 46.9	4,900	64.0	53.1 - 74.8	7,700
Other	6,300	36.9	27.2 - 46.6	10,700	63.1	53.4 - 72.8	17,000

**Diabetes - manage class by State, County, Island, Community, BRFSS Age Group, DOH Race-Ethnicity, Gender, Education Level, Employment Status (Grouped), Household Income, Poverty Level, Marital Status (Grouped), Married, Health Care Coverage, for the Year(s) - 2000-2002, 2001-2003, 2002-2004, 2003-2005, 2004-2006, 2005-2007, 2006-2008, 2007-2009, 2008-2010**

*Note: Weighted numbers (#) represent 3-yr averages, percentages and 95% confidence intervals; Respondents aged 18 years and older; n/r (Not Reportable) - If the unweighted total responses for a dimension (row) is <50 that row will not be shown; n/a (Not Available) - Not asked of a subset of respondents*

**Year: 2004-2006**

<b>Married</b>	<b>Yes</b>			<b>No</b>			<b>Estimated Population (3-Yr Avg)</b>
	<b>#</b>	<b>%</b>	<b>C.I. (95%)</b>	<b>#</b>	<b>%</b>	<b>C.I. (95%)</b>	<b>#</b>
<b>Yes</b>	21,300	44.2	37.8 - 50.7	26,900	55.8	49.3 - 62.2	48,300
<b>No</b>	9,100	37.2	29.6 - 44.7	15,400	62.8	55.3 - 70.4	24,500

<b>Health Care Coverage</b>	<b>Yes</b>			<b>No</b>			<b>Estimated Population (3-Yr Avg)</b>
	<b>#</b>	<b>%</b>	<b>C.I. (95%)</b>	<b>#</b>	<b>%</b>	<b>C.I. (95%)</b>	<b>#</b>
<b>Yes</b>	20,300	46.5	40.1 - 52.8	23,400	53.5	47.2 - 59.9	43,700

**Diabetes - manage class by State, County, Island, Community, BRFSS Age Group, DOH Race-Ethnicity, Gender, Education Level, Employment Status (Grouped), Household Income, Poverty Level, Marital Status (Grouped), Married, Health Care Coverage, for the Year(s) - 2000-2002, 2001-2003, 2002-2004, 2003-2005, 2004-2006, 2005-2007, 2006-2008, 2007-2009, 2008-2010**

*Note: Weighted numbers (#) represent 3-yr averages, percentages and 95% confidence intervals; Respondents aged 18 years and older; n/r (Not Reportable) - If the unweighted total responses for a dimension (row) is <50 that row will not be shown; n/a (Not Available) - Not asked of a subset of respondents*

**Year: 2003-2005**

State	Yes			No			Estimated Population (3-Yr Avg)
	#	%	C.I. (95%)	#	%	C.I. (95%)	#
Hawaii State	32,100	45.7	40.3 - 51.2	38,000	54.3	48.8 - 59.7	70,100

County	Yes			No			Estimated Population (3-Yr Avg)
	#	%	C.I. (95%)	#	%	C.I. (95%)	#
Hawaii	4,400	47.2	38.1 - 56.2	4,900	52.8	43.8 - 61.9	9,300
Honolulu	23,900	45.1	38.3 - 52.0	29,100	54.9	48.0 - 61.7	53,000
Kauai	1,500	48.9	35.0 - 62.8	1,600	51.1	37.2 - 65.0	3,100
Maui	2,200	47.8	34.8 - 60.8	2,500	52.2	39.2 - 65.2	4,700

**Diabetes - manage class by State, County, Island, Community, BRFSS Age Group, DOH Race-Ethnicity, Gender, Education Level, Employment Status (Grouped), Household Income, Poverty Level, Marital Status (Grouped), Married, Health Care Coverage, for the Year(s) - 2000-2002, 2001-2003, 2002-2004, 2003-2005, 2004-2006, 2005-2007, 2006-2008, 2007-2009, 2008-2010**

*Note: Weighted numbers (#) represent 3-yr averages, percentages and 95% confidence intervals; Respondents aged 18 years and older; n/r (Not Reportable) - If the unweighted total responses for a dimension (row) is <50 that row will not be shown; n/a (Not Available) - Not asked of a subset of respondents*

**Year: 2003-2005**

Island	Yes			No			Estimated Population (3-Yr Avg)
	#	%	C.I. (95%)	#	%	C.I. (95%)	#
Hawaii	4,400	47.2	38.1 - 56.2	4,900	52.8	43.8 - 61.9	9,300
Kauai	1,500	48.9	35.0 - 62.8	1,600	51.1	37.2 - 65.0	3,100
Maui	1,900	46.7	31.9 - 61.5	2,100	53.3	38.5 - 68.1	4,000
Oahu	23,900	45.1	38.3 - 52.0	29,100	54.9	48.0 - 61.7	53,000

Community	Yes			No			Estimated Population (3-Yr Avg)
	#	%	C.I. (95%)	#	%	C.I. (95%)	#
Hilo	900	38.7	23.7 - 53.8	1,400	61.3	46.2 - 76.3	2,300
Puna/ Kau	1,500	48.1	31.9 - 64.3	1,600	51.9	35.7 - 68.1	3,100

**Diabetes - manage class by State, County, Island, Community, BRFSS Age Group, DOH Race-Ethnicity, Gender, Education Level, Employment Status (Grouped), Household Income, Poverty Level, Marital Status (Grouped), Married, Health Care Coverage, for the Year(s) - 2000-2002, 2001-2003, 2002-2004, 2003-2005, 2004-2006, 2005-2007, 2006-2008, 2007-2009, 2008-2010**

*Note: Weighted numbers (#) represent 3-yr averages, percentages and 95% confidence intervals; Respondents aged 18 years and older; n/r (Not Reportable) - If the unweighted total responses for a dimension (row) is <50 that row will not be shown; n/a (Not Available) - Not asked of a subset of respondents*

**Year: 2003-2005**

BRFSS Age Group	Yes			No			Estimated Population (3-Yr Avg)
	#	%	C.I. (95%)	#	%	C.I. (95%)	#
35-44	4,600	51.5	32.2 - 70.8	4,300	48.5	29.2 - 67.8	8,900
45-54	8,600	56.4	44.5 - 68.3	6,600	43.6	31.7 - 55.5	15,200
55-64	7,500	43.9	34.0 - 53.7	9,500	56.1	46.3 - 66.0	17,000
65-74	6,500	47.8	37.6 - 58.0	7,100	52.2	42.0 - 62.4	13,600
75+	3,700	33.1	21.0 - 45.3	7,500	66.9	54.7 - 79.0	11,200

**Diabetes - manage class by State, County, Island, Community, BRFSS Age Group, DOH Race-Ethnicity, Gender, Education Level, Employment Status (Grouped), Household Income, Poverty Level, Marital Status (Grouped), Married, Health Care Coverage, for the Year(s) - 2000-2002, 2001-2003, 2002-2004, 2003-2005, 2004-2006, 2005-2007, 2006-2008, 2007-2009, 2008-2010**

*Note: Weighted numbers (#) represent 3-yr averages, percentages and 95% confidence intervals; Respondents aged 18 years and older; n/r (Not Reportable) - If the unweighted total responses for a dimension (row) is <50 that row will not be shown; n/a (Not Available) - Not asked of a subset of respondents*

**Year: 2003-2005**

DOH Race-Ethnicity	Yes			No			Estimated Population (3-Yr Avg)
	#	%	C.I. (95%)	#	%	C.I. (95%)	#
Caucasian	8,200	51.0	41.0 - 61.0	7,900	49.0	39.0 - 59.0	16,200
Native Hawaiian	8,100	53.9	40.9 - 66.8	6,900	46.1	33.2 - 59.1	15,000
Filipino	4,500	38.0	25.1 - 50.9	7,300	62.0	49.1 - 74.9	11,800
Japanese	5,700	38.9	29.0 - 48.7	9,000	61.1	51.3 - 71.0	14,600

Gender	Yes			No			Estimated Population (3-Yr Avg)
	#	%	C.I. (95%)	#	%	C.I. (95%)	#
Male	15,200	40.7	33.2 - 48.2	22,100	59.3	51.8 - 66.8	37,200
Female	16,900	51.5	44.0 - 59.0	15,900	48.5	41.0 - 56.0	32,900



**Diabetes - manage class by State, County, Island, Community, BRFSS Age Group, DOH Race-Ethnicity, Gender, Education Level, Employment Status (Grouped), Household Income, Poverty Level, Marital Status (Grouped), Married, Health Care Coverage, for the Year(s) - 2000-2002, 2001-2003, 2002-2004, 2003-2005, 2004-2006, 2005-2007, 2006-2008, 2007-2009, 2008-2010**

*Note: Weighted numbers (#) represent 3-yr averages, percentages and 95% confidence intervals; Respondents aged 18 years and older; n/r (Not Reportable) - If the unweighted total responses for a dimension (row) is <50 that row will not be shown; n/a (Not Available) - Not asked of a subset of respondents*

**Year: 2003-2005**

Education Level	Yes			No			Estimated Population (3-Yr Avg)
	#	%	C.I. (95%)	#	%	C.I. (95%)	#
Grades 9 thru 11 (Some High School)	1,700	35.9	20.0 - 51.7	3,000	64.1	48.3 - 80.0	4,700
Grades 12 or GED (High School Grad)	12,400	45.6	35.9 - 55.3	14,800	54.4	44.7 - 64.1	27,200
College 1 to 3 years (Some College/ Tech)	8,500	45.8	36.2 - 55.5	10,000	54.2	44.5 - 63.8	18,500
College 4 years or more (College Grad)	9,400	54.4	44.0 - 64.8	7,900	45.6	35.2 - 56.0	17,200

Employment Status (Grouped)	Yes			No			Estimated Population (3-Yr Avg)
	#	%	C.I. (95%)	#	%	C.I. (95%)	#
Employed	15,100	46.2	38.0 - 54.3	17,600	53.8	45.7 - 62.0	32,600
Retired/Unable to work	14,700	45.4	37.6 - 53.2	17,600	54.6	46.8 - 62.4	32,300

**Diabetes - manage class by State, County, Island, Community, BRFSS Age Group, DOH Race-Ethnicity, Gender, Education Level, Employment Status (Grouped), Household Income, Poverty Level, Marital Status (Grouped), Married, Health Care Coverage, for the Year(s) - 2000-2002, 2001-2003, 2002-2004, 2003-2005, 2004-2006, 2005-2007, 2006-2008, 2007-2009, 2008-2010**

*Note: Weighted numbers (#) represent 3-yr averages, percentages and 95% confidence intervals; Respondents aged 18 years and older; n/r (Not Reportable) - If the unweighted total responses for a dimension (row) is <50 that row will not be shown; n/a (Not Available) - Not asked of a subset of respondents*

**Year: 2003-2005**

Household Income	Yes			No			Estimated Population (3-Yr Avg)
	#	%	C.I. (95%)	#	%	C.I. (95%)	#
\$10,000 to \$14,999	2,400	48.5	28.5 - 68.5	2,500	51.5	31.5 - 71.5	4,900
\$15,000 to \$19,999	2,300	35.3	13.3 - 57.3	4,200	64.7	42.7 - 86.7	6,400
\$20,000 to \$24,999	2,900	50.1	32.5 - 67.6	2,900	49.9	32.4 - 67.5	5,800
\$25,000 to \$34,999	3,800	48.5	31.3 - 65.6	4,100	51.5	34.4 - 68.7	7,900
\$35,000 to \$49,999	4,500	52.2	38.6 - 65.9	4,100	47.8	34.1 - 61.4	8,500
\$50,000 to \$74,999	5,500	43.7	32.0 - 55.4	7,000	56.3	44.6 - 68.0	12,500
\$75,000 or more	5,900	53.9	39.1 - 68.7	5,000	46.1	31.3 - 60.9	10,900

**Diabetes - manage class by State, County, Island, Community, BRFSS Age Group, DOH Race-Ethnicity, Gender, Education Level, Employment Status (Grouped), Household Income, Poverty Level, Marital Status (Grouped), Married, Health Care Coverage, for the Year(s) - 2000-2002, 2001-2003, 2002-2004, 2003-2005, 2004-2006, 2005-2007, 2006-2008, 2007-2009, 2008-2010**

*Note: Weighted numbers (#) represent 3-yr averages, percentages and 95% confidence intervals; Respondents aged 18 years and older; n/r (Not Reportable) - If the unweighted total responses for a dimension (row) is <50 that row will not be shown; n/a (Not Available) - Not asked of a subset of respondents*

**Year: 2003-2005**

Poverty Level	Yes			No			Estimated Population (3-Yr Avg)
	#	%	C.I. (95%)	#	%	C.I. (95%)	#
0-130%	7,900	41.9	30.2 - 53.7	10,900	58.1	46.3 - 69.8	18,800
131-185%	3,400	50.6	35.0 - 66.2	3,300	49.4	33.8 - 65.0	6,800
186+%	17,200	50.1	42.8 - 57.4	17,200	49.9	42.6 - 57.2	34,400

Marital Status (Grouped)	Yes			No			Estimated Population (3-Yr Avg)
	#	%	C.I. (95%)	#	%	C.I. (95%)	#
Married	20,600	46.7	39.5 - 53.8	23,600	53.3	46.2 - 60.5	44,200
Widowed	3,800	43.4	31.9 - 55.0	5,000	56.6	45.0 - 68.1	8,800
Other	7,600	45.7	34.8 - 56.7	9,000	54.3	43.3 - 65.2	16,600

**Diabetes - manage class by State, County, Island, Community, BRFSS Age Group, DOH Race-Ethnicity, Gender, Education Level, Employment Status (Grouped), Household Income, Poverty Level, Marital Status (Grouped), Married, Health Care Coverage, for the Year(s) - 2000-2002, 2001-2003, 2002-2004, 2003-2005, 2004-2006, 2005-2007, 2006-2008, 2007-2009, 2008-2010**

*Note: Weighted numbers (#) represent 3-yr averages, percentages and 95% confidence intervals; Respondents aged 18 years and older; n/r (Not Reportable) - If the unweighted total responses for a dimension (row) is <50 that row will not be shown; n/a (Not Available) - Not asked of a subset of respondents*

**Year: 2003-2005**

<b>Married</b>	<b>Yes</b>			<b>No</b>			<b>Estimated Population (3-Yr Avg)</b>
	<b>#</b>	<b>%</b>	<b>C.I. (95%)</b>	<b>#</b>	<b>%</b>	<b>C.I. (95%)</b>	<b>#</b>
<b>Yes</b>	20,800	46.6	39.5 - 53.7	23,900	53.4	46.3 - 60.5	44,700
<b>No</b>	11,200	44.3	36.1 - 52.6	14,100	55.7	47.4 - 63.9	25,300

<b>Health Care Coverage</b>	<b>Yes</b>			<b>No</b>			<b>Estimated Population (3-Yr Avg)</b>
	<b>#</b>	<b>%</b>	<b>C.I. (95%)</b>	<b>#</b>	<b>%</b>	<b>C.I. (95%)</b>	<b>#</b>
<b>Yes</b>	21,800	52.3	45.3 - 59.3	19,900	47.7	40.7 - 54.7	41,700

**Diabetes - manage class by State, County, Island, Community, BRFSS Age Group, DOH Race-Ethnicity, Gender, Education Level, Employment Status (Grouped), Household Income, Poverty Level, Marital Status (Grouped), Married, Health Care Coverage, for the Year(s) - 2000-2002, 2001-2003, 2002-2004, 2003-2005, 2004-2006, 2005-2007, 2006-2008, 2007-2009, 2008-2010**

*Note: Weighted numbers (#) represent 3-yr averages, percentages and 95% confidence intervals; Respondents aged 18 years and older; n/r (Not Reportable) - If the unweighted total responses for a dimension (row) is <50 that row will not be shown; n/a (Not Available) - Not asked of a subset of respondents*

**Year: 2002-2004**

State	Yes			No			Estimated Population (3-Yr Avg)
	#	%	C.I. (95%)	#	%	C.I. (95%)	#
Hawaii State	31,600	52.1	46.9 - 57.4	29,000	47.9	42.6 - 53.1	60,600

County	Yes			No			Estimated Population (3-Yr Avg)
	#	%	C.I. (95%)	#	%	C.I. (95%)	#
Hawaii	4,100	54.8	45.6 - 64.0	3,400	45.2	36.0 - 54.4	7,400
Honolulu	23,600	51.8	45.2 - 58.5	21,900	48.2	41.5 - 54.8	45,600
Kauai	1,300	51.3	37.7 - 64.8	1,300	48.7	35.2 - 62.3	2,600
Maui	2,600	51.6	39.8 - 63.4	2,400	48.4	36.6 - 60.2	5,000

**Diabetes - manage class by State, County, Island, Community, BRFSS Age Group, DOH Race-Ethnicity, Gender, Education Level, Employment Status (Grouped), Household Income, Poverty Level, Marital Status (Grouped), Married, Health Care Coverage, for the Year(s) - 2000-2002, 2001-2003, 2002-2004, 2003-2005, 2004-2006, 2005-2007, 2006-2008, 2007-2009, 2008-2010**

*Note: Weighted numbers (#) represent 3-yr averages, percentages and 95% confidence intervals; Respondents aged 18 years and older; n/r (Not Reportable) - If the unweighted total responses for a dimension (row) is <50 that row will not be shown; n/a (Not Available) - Not asked of a subset of respondents*

**Year: 2002-2004**

Island	Yes			No			Estimated Population (3-Yr Avg)
	#	%	C.I. (95%)	#	%	C.I. (95%)	#
Hawaii	4,100	54.8	45.6 - 64.0	3,400	45.2	36.0 - 54.4	7,400
Kauai	1,300	51.3	37.7 - 64.8	1,300	48.7	35.2 - 62.3	2,600
Maui	2,200	51.1	37.7 - 64.6	2,100	48.9	35.4 - 62.3	4,300
Oahu	23,600	51.8	45.2 - 58.5	21,900	48.2	41.5 - 54.8	45,600

Community	Yes			No			Estimated Population (3-Yr Avg)
	#	%	C.I. (95%)	#	%	C.I. (95%)	#
Aiea/ Pearl City	2,800	48.5	31.4 - 65.6	3,000	51.5	34.4 - 68.6	5,800
Hilo	800	42.2	27.7 - 56.7	1,100	57.8	43.3 - 72.3	1,900
Lihue-Waimea	800	44.5	28.7 - 60.3	1,100	55.5	39.7 - 71.3	1,900
Waipahu/ Kapolei/ Ewa	3,500	48.1	29.7 - 66.4	3,800	51.9	33.6 - 70.3	7,200

**Diabetes - manage class by State, County, Island, Community, BRFSS Age Group, DOH Race-Ethnicity, Gender, Education Level, Employment Status (Grouped), Household Income, Poverty Level, Marital Status (Grouped), Married, Health Care Coverage, for the Year(s) - 2000-2002, 2001-2003, 2002-2004, 2003-2005, 2004-2006, 2005-2007, 2006-2008, 2007-2009, 2008-2010**

*Note: Weighted numbers (#) represent 3-yr averages, percentages and 95% confidence intervals; Respondents aged 18 years and older; n/r (Not Reportable) - If the unweighted total responses for a dimension (row) is <50 that row will not be shown; n/a (Not Available) - Not asked of a subset of respondents*

**Year: 2002-2004**

BRFSS Age Group	Yes			No			Estimated Population (3-Yr Avg)
	#	%	C.I. (95%)	#	%	C.I. (95%)	#
35-44	4,700	58.1	39.4 - 76.8	3,400	41.9	23.2 - 60.6	8,100
45-54	7,800	60.0	48.3 - 71.8	5,200	40.0	28.2 - 51.7	12,900
55-64	7,700	53.1	43.6 - 62.6	6,800	46.9	37.4 - 56.4	14,500
65-74	6,400	49.1	39.0 - 59.2	6,600	50.9	40.8 - 61.0	13,000
75+	3,600	38.1	26.2 - 49.9	5,800	61.9	50.1 - 73.8	9,300

**Diabetes - manage class by State, County, Island, Community, BRFSS Age Group, DOH Race-Ethnicity, Gender, Education Level, Employment Status (Grouped), Household Income, Poverty Level, Marital Status (Grouped), Married, Health Care Coverage, for the Year(s) - 2000-2002, 2001-2003, 2002-2004, 2003-2005, 2004-2006, 2005-2007, 2006-2008, 2007-2009, 2008-2010**

*Note: Weighted numbers (#) represent 3-yr averages, percentages and 95% confidence intervals; Respondents aged 18 years and older; n/r (Not Reportable) - If the unweighted total responses for a dimension (row) is <50 that row will not be shown; n/a (Not Available) - Not asked of a subset of respondents*

**Year: 2002-2004**

DOH Race-Ethnicity	Yes			No			Estimated Population (3-Yr Avg)
	#	%	C.I. (95%)	#	%	C.I. (95%)	#
Caucasian	7,000	52.6	41.6 - 63.6	6,300	47.4	36.4 - 58.4	13,200
Native Hawaiian	6,700	55.3	41.8 - 68.9	5,400	44.7	31.1 - 58.2	12,100
Chinese	2,800	60.7	43.1 - 78.4	1,800	39.3	21.6 - 56.9	4,600
Filipino	5,400	51.9	38.5 - 65.3	5,000	48.1	34.7 - 61.5	10,400
Japanese	6,600	43.7	34.9 - 52.5	8,500	56.3	47.5 - 65.1	15,100

Gender	Yes			No			Estimated Population (3-Yr Avg)
	#	%	C.I. (95%)	#	%	C.I. (95%)	#
Male	14,200	47.3	39.6 - 54.9	15,800	52.7	45.1 - 60.4	30,000
Female	17,400	56.9	49.9 - 63.9	13,200	43.1	36.1 - 50.1	30,600



**Diabetes - manage class by State, County, Island, Community, BRFSS Age Group, DOH Race-Ethnicity, Gender, Education Level, Employment Status (Grouped), Household Income, Poverty Level, Marital Status (Grouped), Married, Health Care Coverage, for the Year(s) - 2000-2002, 2001-2003, 2002-2004, 2003-2005, 2004-2006, 2005-2007, 2006-2008, 2007-2009, 2008-2010**

*Note: Weighted numbers (#) represent 3-yr averages, percentages and 95% confidence intervals; Respondents aged 18 years and older; n/r (Not Reportable) - If the unweighted total responses for a dimension (row) is <50 that row will not be shown; n/a (Not Available) - Not asked of a subset of respondents*

**Year: 2002-2004**

Education Level	Yes			No			Estimated Population (3-Yr Avg)
	#	%	C.I. (95%)	#	%	C.I. (95%)	#
Grades 9 thru 11 (Some High School)	1,600	44.4	28.0 - 60.7	2,000	55.6	39.3 - 72.0	3,600
Grades 12 or GED (High School Grad)	11,300	48.1	38.5 - 57.7	12,100	51.9	42.3 - 61.5	23,400
College 1 to 3 years (Some College/ Tech)	8,500	50.9	41.1 - 60.7	8,200	49.1	39.3 - 58.9	16,700
College 4 years or more (College Grad)	9,900	63.6	54.7 - 72.4	5,600	36.4	27.6 - 45.3	15,500

Employment Status (Grouped)	Yes			No			Estimated Population (3-Yr Avg)
	#	%	C.I. (95%)	#	%	C.I. (95%)	#
Employed	14,400	53.3	45.2 - 61.4	12,600	46.7	38.6 - 54.8	27,000
Retired/Unable to work	15,000	52.2	44.9 - 59.5	13,800	47.8	40.5 - 55.1	28,800

**Diabetes - manage class by State, County, Island, Community, BRFSS Age Group, DOH Race-Ethnicity, Gender, Education Level, Employment Status (Grouped), Household Income, Poverty Level, Marital Status (Grouped), Married, Health Care Coverage, for the Year(s) - 2000-2002, 2001-2003, 2002-2004, 2003-2005, 2004-2006, 2005-2007, 2006-2008, 2007-2009, 2008-2010**

*Note: Weighted numbers (#) represent 3-yr averages, percentages and 95% confidence intervals; Respondents aged 18 years and older; n/r (Not Reportable) - If the unweighted total responses for a dimension (row) is <50 that row will not be shown; n/a (Not Available) - Not asked of a subset of respondents*

**Year: 2002-2004**

Household Income	Yes			No			Estimated Population (3-Yr Avg)
	#	%	C.I. (95%)	#	%	C.I. (95%)	#
Less than \$10,000	1,300	43.7	26.7 - 60.6	1,700	56.3	39.4 - 73.3	3,100
\$10,000 to \$14,999	2,000	54.4	37.0 - 71.9	1,700	45.6	28.1 - 63.0	3,700
\$15,000 to \$19,999	2,300	52.9	27.1 - 78.6	2,000	47.1	21.4 - 72.9	4,300
\$20,000 to \$24,999	2,300	50.6	31.0 - 70.2	2,200	49.4	29.8 - 69.0	4,500
\$25,000 to \$34,999	3,000	49.0	29.3 - 68.8	3,100	51.0	31.2 - 70.7	6,000
\$35,000 to \$49,999	4,200	50.8	37.5 - 64.0	4,000	49.2	36.0 - 62.5	8,200
\$50,000 to \$74,999	6,000	55.3	42.7 - 68.0	4,900	44.7	32.0 - 57.3	10,900
\$75,000 or more	5,500	55.8	41.0 - 70.7	4,300	44.2	29.3 - 59.0	9,800

**Diabetes - manage class by State, County, Island, Community, BRFSS Age Group, DOH Race-Ethnicity, Gender, Education Level, Employment Status (Grouped), Household Income, Poverty Level, Marital Status (Grouped), Married, Health Care Coverage, for the Year(s) - 2000-2002, 2001-2003, 2002-2004, 2003-2005, 2004-2006, 2005-2007, 2006-2008, 2007-2009, 2008-2010**

*Note: Weighted numbers (#) represent 3-yr averages, percentages and 95% confidence intervals; Respondents aged 18 years and older; n/r (Not Reportable) - If the unweighted total responses for a dimension (row) is <50 that row will not be shown; n/a (Not Available) - Not asked of a subset of respondents*

**Year: 2002-2004**

Poverty Level	Yes			No			Estimated Population (3-Yr Avg)
	#	%	C.I. (95%)	#	%	C.I. (95%)	#
0-130%	7,200	48.8	36.4 - 61.2	7,600	51.2	38.8 - 63.6	14,800
131-185%	3,000	54.6	38.2 - 71.0	2,500	45.4	29.0 - 61.8	5,400
186+%	16,300	54.0	46.4 - 61.5	13,900	46.0	38.5 - 53.6	30,200

Marital Status (Grouped)	Yes			No			Estimated Population (3-Yr Avg)
	#	%	C.I. (95%)	#	%	C.I. (95%)	#
Married	20,100	52.4	45.6 - 59.3	18,200	47.6	40.7 - 54.4	38,300
Widowed	4,100	43.9	32.4 - 55.3	5,200	56.1	44.7 - 67.6	9,300
Other	7,400	57.3	46.5 - 68.0	5,500	42.7	32.0 - 53.5	12,900

**Diabetes - manage class by State, County, Island, Community, BRFSS Age Group, DOH Race-Ethnicity, Gender, Education Level, Employment Status (Grouped), Household Income, Poverty Level, Marital Status (Grouped), Married, Health Care Coverage, for the Year(s) - 2000-2002, 2001-2003, 2002-2004, 2003-2005, 2004-2006, 2005-2007, 2006-2008, 2007-2009, 2008-2010**

*Note: Weighted numbers (#) represent 3-yr averages, percentages and 95% confidence intervals; Respondents aged 18 years and older; n/r (Not Reportable) - If the unweighted total responses for a dimension (row) is <50 that row will not be shown; n/a (Not Available) - Not asked of a subset of respondents*

**Year: 2002-2004**

<b>Married</b>	<b>Yes</b>			<b>No</b>			<b>Estimated Population (3-Yr Avg)</b>
	<b>#</b>	<b>%</b>	<b>C.I. (95%)</b>	<b>#</b>	<b>%</b>	<b>C.I. (95%)</b>	<b>#</b>
<b>Yes</b>	20,400	52.6	45.8 - 59.4	18,400	47.4	40.6 - 54.2	38,800
<b>No</b>	11,100	51.2	43.0 - 59.5	10,600	48.8	40.5 - 57.0	21,800

<b>Health Care Coverage</b>	<b>Yes</b>			<b>No</b>			<b>Estimated Population (3-Yr Avg)</b>
	<b>#</b>	<b>%</b>	<b>C.I. (95%)</b>	<b>#</b>	<b>%</b>	<b>C.I. (95%)</b>	<b>#</b>
<b>Yes</b>	30,800	52.4	47.0 - 57.8	28,000	47.6	42.2 - 53.0	58,700

**Diabetes - manage class by State, County, Island, Community, BRFSS Age Group, DOH Race-Ethnicity, Gender, Education Level, Employment Status (Grouped), Household Income, Poverty Level, Marital Status (Grouped), Married, Health Care Coverage, for the Year(s) - 2000-2002, 2001-2003, 2002-2004, 2003-2005, 2004-2006, 2005-2007, 2006-2008, 2007-2009, 2008-2010**

*Note: Weighted numbers (#) represent 3-yr averages, percentages and 95% confidence intervals; Respondents aged 18 years and older; n/r (Not Reportable) - If the unweighted total responses for a dimension (row) is <50 that row will not be shown; n/a (Not Available) - Not asked of a subset of respondents*

**Year: 2001-2003**

State	Yes			No			Estimated Population (3-Yr Avg)
	#	%	C.I. (95%)	#	%	C.I. (95%)	#
Hawaii State	32,800	55.9	51.4 - 60.4	25,900	44.1	39.6 - 48.6	58,700

County	Yes			No			Estimated Population (3-Yr Avg)
	#	%	C.I. (95%)	#	%	C.I. (95%)	#
Hawaii	3,400	49.1	40.2 - 57.9	3,500	50.9	42.1 - 59.8	6,900
Honolulu	24,700	56.8	51.3 - 62.3	18,800	43.2	37.7 - 48.7	43,500
Kauai	1,300	53.1	40.2 - 66.0	1,100	46.9	34.0 - 59.8	2,400
Maui	3,500	58.5	42.8 - 74.3	2,500	41.5	25.7 - 57.2	5,900

**Diabetes - manage class by State, County, Island, Community, BRFSS Age Group, DOH Race-Ethnicity, Gender, Education Level, Employment Status (Grouped), Household Income, Poverty Level, Marital Status (Grouped), Married, Health Care Coverage, for the Year(s) - 2000-2002, 2001-2003, 2002-2004, 2003-2005, 2004-2006, 2005-2007, 2006-2008, 2007-2009, 2008-2010**

*Note: Weighted numbers (#) represent 3-yr averages, percentages and 95% confidence intervals; Respondents aged 18 years and older; n/r (Not Reportable) - If the unweighted total responses for a dimension (row) is <50 that row will not be shown; n/a (Not Available) - Not asked of a subset of respondents*

**Year: 2001-2003**

Island	Yes			No			Estimated Population (3-Yr Avg)
	#	%	C.I. (95%)	#	%	C.I. (95%)	#
Hawaii	3,400	49.1	40.2 - 57.9	3,500	50.9	42.1 - 59.8	6,900
Kauai	1,300	53.1	40.2 - 66.0	1,100	46.9	34.0 - 59.8	2,400
Maui	3,000	57.8	39.9 - 75.7	2,200	42.2	24.3 - 60.1	5,200
Oahu	24,700	56.8	51.3 - 62.3	18,800	43.2	37.7 - 48.7	43,500

**Diabetes - manage class by State, County, Island, Community, BRFSS Age Group, DOH Race-Ethnicity, Gender, Education Level, Employment Status (Grouped), Household Income, Poverty Level, Marital Status (Grouped), Married, Health Care Coverage, for the Year(s) - 2000-2002, 2001-2003, 2002-2004, 2003-2005, 2004-2006, 2005-2007, 2006-2008, 2007-2009, 2008-2010**

*Note: Weighted numbers (#) represent 3-yr averages, percentages and 95% confidence intervals; Respondents aged 18 years and older; n/r (Not Reportable) - If the unweighted total responses for a dimension (row) is <50 that row will not be shown; n/a (Not Available) - Not asked of a subset of respondents*

**Year: 2001-2003**

Community	Yes			No			Estimated Population (3-Yr Avg)
	#	%	C.I. (95%)	#	%	C.I. (95%)	#
Aiea/ Pearl City	3,300	55.4	41.1 - 69.7	2,700	44.6	30.3 - 58.9	6,000
Hilo	900	39.9	27.1 - 52.7	1,400	60.1	47.3 - 72.9	2,400
Kahului	1,900	67.0	41.8 - 92.1	900	33.0	7.9 - 58.2	2,900
Kaimuki/ Palolo/ Waikiki	3,000	61.5	46.2 - 76.8	1,900	38.5	23.2 - 53.8	4,900
Lihue-Waimea	900	52.4	37.6 - 67.1	800	47.6	32.9 - 62.4	1,600
Waipahu/ Kapolei/ Ewa	3,200	61.2	47.1 - 75.3	2,000	38.8	24.7 - 52.9	5,200

**Diabetes - manage class by State, County, Island, Community, BRFSS Age Group, DOH Race-Ethnicity, Gender, Education Level, Employment Status (Grouped), Household Income, Poverty Level, Marital Status (Grouped), Married, Health Care Coverage, for the Year(s) - 2000-2002, 2001-2003, 2002-2004, 2003-2005, 2004-2006, 2005-2007, 2006-2008, 2007-2009, 2008-2010**

*Note: Weighted numbers (#) represent 3-yr averages, percentages and 95% confidence intervals; Respondents aged 18 years and older; n/r (Not Reportable) - If the unweighted total responses for a dimension (row) is <50 that row will not be shown; n/a (Not Available) - Not asked of a subset of respondents*

**Year: 2001-2003**

BRFSS Age Group	Yes			No			Estimated Population (3-Yr Avg)
	#	%	C.I. (95%)	#	%	C.I. (95%)	#
35-44	2,900	54.9	41.8 - 68.1	2,300	45.1	31.9 - 58.2	5,200
45-54	7,000	62.0	51.8 - 72.2	4,300	38.0	27.8 - 48.2	11,300
55-64	8,700	63.3	54.4 - 72.1	5,000	36.7	27.9 - 45.6	13,700
65-74	7,800	52.4	43.6 - 61.1	7,100	47.6	38.9 - 56.4	14,900
75+	3,800	40.4	30.8 - 50.0	5,600	59.6	50.0 - 69.2	9,400



**Diabetes - manage class by State, County, Island, Community, BRFSS Age Group, DOH Race-Ethnicity, Gender, Education Level, Employment Status (Grouped), Household Income, Poverty Level, Marital Status (Grouped), Married, Health Care Coverage, for the Year(s) - 2000-2002, 2001-2003, 2002-2004, 2003-2005, 2004-2006, 2005-2007, 2006-2008, 2007-2009, 2008-2010**

*Note: Weighted numbers (#) represent 3-yr averages, percentages and 95% confidence intervals; Respondents aged 18 years and older; n/r (Not Reportable) - If the unweighted total responses for a dimension (row) is <50 that row will not be shown; n/a (Not Available) - Not asked of a subset of respondents*

**Year: 2001-2003**

DOH Race-Ethnicity	Yes			No			Estimated Population (3-Yr Avg)
	#	%	C.I. (95%)	#	%	C.I. (95%)	#
Caucasian	7,400	58.6	49.6 - 67.7	5,200	41.4	32.3 - 50.4	12,600
Native Hawaiian	5,300	53.9	42.8 - 65.0	4,500	46.1	35.0 - 57.2	9,700
Chinese	3,800	71.5	58.1 - 84.9	1,500	28.5	15.1 - 41.9	5,300
Filipino	6,100	60.2	47.8 - 72.6	4,000	39.8	27.4 - 52.2	10,200
Japanese	7,500	45.1	37.1 - 53.2	9,100	54.9	46.8 - 62.9	16,600

Gender	Yes			No			Estimated Population (3-Yr Avg)
	#	%	C.I. (95%)	#	%	C.I. (95%)	#
Male	15,300	53.8	46.5 - 61.0	13,200	46.2	39.0 - 53.5	28,600
Female	17,500	57.9	52.3 - 63.6	12,700	42.1	36.4 - 47.7	30,200

**Diabetes - manage class by State, County, Island, Community, BRFSS Age Group, DOH Race-Ethnicity, Gender, Education Level, Employment Status (Grouped), Household Income, Poverty Level, Marital Status (Grouped), Married, Health Care Coverage, for the Year(s) - 2000-2002, 2001-2003, 2002-2004, 2003-2005, 2004-2006, 2005-2007, 2006-2008, 2007-2009, 2008-2010**

*Note: Weighted numbers (#) represent 3-yr averages, percentages and 95% confidence intervals; Respondents aged 18 years and older; n/r (Not Reportable) - If the unweighted total responses for a dimension (row) is <50 that row will not be shown; n/a (Not Available) - Not asked of a subset of respondents*

**Year: 2001-2003**

Education Level	Yes			No			Estimated Population (3-Yr Avg)
	#	%	C.I. (95%)	#	%	C.I. (95%)	#
Grades 9 thru 11 (Some High School)	1,900	41.6	26.1 - 57.2	2,600	58.4	42.8 - 73.9	4,500
Grades 12 or GED (High School Grad)	10,600	50.1	42.9 - 57.3	10,600	49.9	42.7 - 57.1	21,200
College 1 to 3 years (Some College/ Tech)	10,600	63.0	54.0 - 72.0	6,200	37.0	28.0 - 46.0	16,800
College 4 years or more (College Grad)	9,200	65.4	57.2 - 73.6	4,900	34.6	26.4 - 42.8	14,100

Employment Status (Grouped)	Yes			No			Estimated Population (3-Yr Avg)
	#	%	C.I. (95%)	#	%	C.I. (95%)	#
Employed	15,300	60.4	53.2 - 67.7	10,000	39.6	32.3 - 46.8	25,300
Retired/Unable to work	15,700	53.2	47.2 - 59.2	13,800	46.8	40.8 - 52.8	29,500

**Diabetes - manage class by State, County, Island, Community, BRFSS Age Group, DOH Race-Ethnicity, Gender, Education Level, Employment Status (Grouped), Household Income, Poverty Level, Marital Status (Grouped), Married, Health Care Coverage, for the Year(s) - 2000-2002, 2001-2003, 2002-2004, 2003-2005, 2004-2006, 2005-2007, 2006-2008, 2007-2009, 2008-2010**

*Note: Weighted numbers (#) represent 3-yr averages, percentages and 95% confidence intervals; Respondents aged 18 years and older; n/r (Not Reportable) - If the unweighted total responses for a dimension (row) is <50 that row will not be shown; n/a (Not Available) - Not asked of a subset of respondents*

**Year: 2001-2003**

Household Income	Yes			No			Estimated Population (3-Yr Avg)
	#	%	C.I. (95%)	#	%	C.I. (95%)	#
Less than \$10,000	1,800	45.4	29.0 - 61.8	2,100	54.6	38.2 - 71.0	3,900
\$10,000 to \$14,999	3,100	65.3	50.9 - 79.8	1,600	34.7	20.2 - 49.1	4,700
\$15,000 to \$19,999	1,300	54.2	36.0 - 72.5	1,100	45.8	27.5 - 64.0	2,400
\$20,000 to \$24,999	2,700	60.4	39.2 - 81.6	1,800	39.6	18.4 - 60.8	4,500
\$25,000 to \$34,999	1,700	35.3	21.9 - 48.6	3,100	64.7	51.4 - 78.1	4,700
\$35,000 to \$49,999	5,700	65.7	55.4 - 76.0	3,000	34.3	24.0 - 44.6	8,700
\$50,000 to \$74,999	4,000	55.1	41.2 - 69.0	3,200	44.9	31.0 - 58.8	7,200
\$75,000 or more	5,500	72.3	61.4 - 83.2	2,100	27.7	16.8 - 38.6	7,600

**Diabetes - manage class by State, County, Island, Community, BRFSS Age Group, DOH Race-Ethnicity, Gender, Education Level, Employment Status (Grouped), Household Income, Poverty Level, Marital Status (Grouped), Married, Health Care Coverage, for the Year(s) - 2000-2002, 2001-2003, 2002-2004, 2003-2005, 2004-2006, 2005-2007, 2006-2008, 2007-2009, 2008-2010**

*Note: Weighted numbers (#) represent 3-yr averages, percentages and 95% confidence intervals; Respondents aged 18 years and older; n/r (Not Reportable) - If the unweighted total responses for a dimension (row) is <50 that row will not be shown; n/a (Not Available) - Not asked of a subset of respondents*

**Year: 2001-2003**

Poverty Level	Yes			No			Estimated Population (3-Yr Avg)
	#	%	C.I. (95%)	#	%	C.I. (95%)	#
<b>0-130%</b>	7,600	58.3	47.8 - 68.9	5,500	41.7	31.1 - 52.2	13,100
<b>131-185%</b>	2,500	46.5	32.1 - 61.0	2,900	53.5	39.0 - 67.9	5,400
<b>186+%</b>	15,600	61.6	55.0 - 68.3	9,700	38.4	31.7 - 45.0	25,200

Marital Status (Grouped)	Yes			No			Estimated Population (3-Yr Avg)
	#	%	C.I. (95%)	#	%	C.I. (95%)	#
<b>Married</b>	21,200	57.3	51.3 - 63.2	15,800	42.7	36.8 - 48.7	37,000
<b>Widowed</b>	3,900	42.5	32.3 - 52.7	5,300	57.5	47.3 - 67.7	9,300
<b>Other</b>	7,700	62.0	53.6 - 70.5	4,700	38.0	29.5 - 46.4	12,400

**Diabetes - manage class by State, County, Island, Community, BRFSS Age Group, DOH Race-Ethnicity, Gender, Education Level, Employment Status (Grouped), Household Income, Poverty Level, Marital Status (Grouped), Married, Health Care Coverage, for the Year(s) - 2000-2002, 2001-2003, 2002-2004, 2003-2005, 2004-2006, 2005-2007, 2006-2008, 2007-2009, 2008-2010**

*Note: Weighted numbers (#) represent 3-yr averages, percentages and 95% confidence intervals; Respondents aged 18 years and older; n/r (Not Reportable) - If the unweighted total responses for a dimension (row) is <50 that row will not be shown; n/a (Not Available) - Not asked of a subset of respondents*

**Year: 2001-2003**

<b>Married</b>	<b>Yes</b>			<b>No</b>			<b>Estimated Population (3-Yr Avg)</b>
	<b>#</b>	<b>%</b>	<b>C.I. (95%)</b>	<b>#</b>	<b>%</b>	<b>C.I. (95%)</b>	<b>#</b>
<b>Yes</b>	21,800	57.8	52.0 - 63.7	15,900	42.2	36.3 - 48.0	37,700
<b>No</b>	11,000	52.3	45.3 - 59.3	10,000	47.7	40.7 - 54.7	21,000

<b>Health Care Coverage</b>	<b>Yes</b>			<b>No</b>			<b>Estimated Population (3-Yr Avg)</b>
	<b>#</b>	<b>%</b>	<b>C.I. (95%)</b>	<b>#</b>	<b>%</b>	<b>C.I. (95%)</b>	<b>#</b>
<b>Yes</b>	32,100	56.0	51.3 - 60.6	25,300	44.0	39.4 - 48.7	57,400

**Diabetes - manage class by State, County, Island, Community, BRFSS Age Group, DOH Race-Ethnicity, Gender, Education Level, Employment Status (Grouped), Household Income, Poverty Level, Marital Status (Grouped), Married, Health Care Coverage, for the Year(s) - 2000-2002, 2001-2003, 2002-2004, 2003-2005, 2004-2006, 2005-2007, 2006-2008, 2007-2009, 2008-2010**

*Note: Weighted numbers (#) represent 3-yr averages, percentages and 95% confidence intervals; Respondents aged 18 years and older; n/r (Not Reportable) - If the unweighted total responses for a dimension (row) is <50 that row will not be shown; n/a (Not Available) - Not asked of a subset of respondents*

**Year: 2000-2002**

State	Yes			No			Estimated Population (3-Yr Avg)
	#	%	C.I. (95%)	#	%	C.I. (95%)	#
Hawaii State	27,200	53.5	48.9 - 58.1	23,700	46.5	41.9 - 51.1	50,900

County	Yes			No			Estimated Population (3-Yr Avg)
	#	%	C.I. (95%)	#	%	C.I. (95%)	#
Hawaii	2,900	46.4	38.8 - 53.9	3,300	53.6	46.1 - 61.2	6,200
Honolulu	20,100	55.2	49.5 - 60.8	16,300	44.8	39.2 - 50.5	36,400
Kauai	900	39.3	28.0 - 50.5	1,400	60.7	49.5 - 72.0	2,300
Maui	3,300	56.1	39.9 - 72.4	2,600	43.9	27.6 - 60.1	5,900

**Diabetes - manage class by State, County, Island, Community, BRFSS Age Group, DOH Race-Ethnicity, Gender, Education Level, Employment Status (Grouped), Household Income, Poverty Level, Marital Status (Grouped), Married, Health Care Coverage, for the Year(s) - 2000-2002, 2001-2003, 2002-2004, 2003-2005, 2004-2006, 2005-2007, 2006-2008, 2007-2009, 2008-2010**

*Note: Weighted numbers (#) represent 3-yr averages, percentages and 95% confidence intervals; Respondents aged 18 years and older; n/r (Not Reportable) - If the unweighted total responses for a dimension (row) is <50 that row will not be shown; n/a (Not Available) - Not asked of a subset of respondents*

**Year: 2000-2002**

Island	Yes			No			Estimated Population (3-Yr Avg)
	#	%	C.I. (95%)	#	%	C.I. (95%)	#
Hawaii	2,900	46.4	38.8 - 53.9	3,300	53.6	46.1 - 61.2	6,200
Kauai	900	39.3	28.0 - 50.5	1,400	60.7	49.5 - 72.0	2,300
Maui	3,000	56.9	39.0 - 74.9	2,300	43.1	25.1 - 61.0	5,300
Oahu	20,100	55.2	49.5 - 60.8	16,300	44.8	39.2 - 50.5	36,400

**Diabetes - manage class by State, County, Island, Community, BRFSS Age Group, DOH Race-Ethnicity, Gender, Education Level, Employment Status (Grouped), Household Income, Poverty Level, Marital Status (Grouped), Married, Health Care Coverage, for the Year(s) - 2000-2002, 2001-2003, 2002-2004, 2003-2005, 2004-2006, 2005-2007, 2006-2008, 2007-2009, 2008-2010**

*Note: Weighted numbers (#) represent 3-yr averages, percentages and 95% confidence intervals; Respondents aged 18 years and older; n/r (Not Reportable) - If the unweighted total responses for a dimension (row) is <50 that row will not be shown; n/a (Not Available) - Not asked of a subset of respondents*

**Year: 2000-2002**

Community	Yes			No			Estimated Population (3-Yr Avg)
	#	%	C.I. (95%)	#	%	C.I. (95%)	#
Aiea/ Pearl City	3,300	58.2	44.6 - 71.9	2,300	41.8	28.1 - 55.4	5,600
Hilo	900	36.1	24.6 - 47.6	1,500	63.9	52.4 - 75.4	2,400
Kaimuki/ Palolo/ Waikiki	2,800	59.4	43.9 - 75.0	1,900	40.6	25.0 - 56.1	4,700
Kona	900	59.1	44.5 - 73.6	600	40.9	26.4 - 55.5	1,500
Lihue-Waimea	700	37.6	24.9 - 50.3	1,100	62.4	49.7 - 75.1	1,800



**Diabetes - manage class by State, County, Island, Community, BRFSS Age Group, DOH Race-Ethnicity, Gender, Education Level, Employment Status (Grouped), Household Income, Poverty Level, Marital Status (Grouped), Married, Health Care Coverage, for the Year(s) - 2000-2002, 2001-2003, 2002-2004, 2003-2005, 2004-2006, 2005-2007, 2006-2008, 2007-2009, 2008-2010**

*Note: Weighted numbers (#) represent 3-yr averages, percentages and 95% confidence intervals; Respondents aged 18 years and older; n/r (Not Reportable) - If the unweighted total responses for a dimension (row) is <50 that row will not be shown; n/a (Not Available) - Not asked of a subset of respondents*

**Year: 2000-2002**

BRFSS Age Group	Yes			No			Estimated Population (3-Yr Avg)
	#	%	C.I. (95%)	#	%	C.I. (95%)	#
35-44	2,300	49.8	37.1 - 62.6	2,300	50.2	37.4 - 62.9	4,700
45-54	5,200	62.3	52.8 - 71.9	3,200	37.7	28.1 - 47.2	8,400
55-64	7,900	64.1	55.3 - 72.8	4,500	35.9	27.2 - 44.7	12,400
65-74	6,600	47.4	39.1 - 55.8	7,300	52.6	44.2 - 60.9	13,900
75+	2,700	34.8	24.8 - 44.7	5,100	65.2	55.3 - 75.2	7,900

**Diabetes - manage class by State, County, Island, Community, BRFSS Age Group, DOH Race-Ethnicity, Gender, Education Level, Employment Status (Grouped), Household Income, Poverty Level, Marital Status (Grouped), Married, Health Care Coverage, for the Year(s) - 2000-2002, 2001-2003, 2002-2004, 2003-2005, 2004-2006, 2005-2007, 2006-2008, 2007-2009, 2008-2010**

*Note: Weighted numbers (#) represent 3-yr averages, percentages and 95% confidence intervals; Respondents aged 18 years and older; n/r (Not Reportable) - If the unweighted total responses for a dimension (row) is <50 that row will not be shown; n/a (Not Available) - Not asked of a subset of respondents*

**Year: 2000-2002**

DOH Race-Ethnicity	Yes			No			Estimated Population (3-Yr Avg)
	#	%	C.I. (95%)	#	%	C.I. (95%)	#
Caucasian	5,400	56.1	46.5 - 65.7	4,300	43.9	34.3 - 53.5	9,700
Native Hawaiian	4,900	58.8	48.6 - 69.0	3,400	41.2	31.0 - 51.4	8,400
Chinese	2,300	72.8	59.8 - 85.7	900	27.2	14.3 - 40.2	3,200
Filipino	5,200	54.6	41.1 - 68.1	4,300	45.4	31.9 - 58.9	9,500
Japanese	6,900	43.2	35.7 - 50.6	9,100	56.8	49.4 - 64.3	16,000

Gender	Yes			No			Estimated Population (3-Yr Avg)
	#	%	C.I. (95%)	#	%	C.I. (95%)	#
Male	13,700	52.7	45.6 - 59.8	12,300	47.3	40.2 - 54.4	26,000
Female	13,500	54.3	48.4 - 60.2	11,400	45.7	39.8 - 51.6	24,900

**Diabetes - manage class by State, County, Island, Community, BRFSS Age Group, DOH Race-Ethnicity, Gender, Education Level, Employment Status (Grouped), Household Income, Poverty Level, Marital Status (Grouped), Married, Health Care Coverage, for the Year(s) - 2000-2002, 2001-2003, 2002-2004, 2003-2005, 2004-2006, 2005-2007, 2006-2008, 2007-2009, 2008-2010**

*Note: Weighted numbers (#) represent 3-yr averages, percentages and 95% confidence intervals; Respondents aged 18 years and older; n/r (Not Reportable) - If the unweighted total responses for a dimension (row) is <50 that row will not be shown; n/a (Not Available) - Not asked of a subset of respondents*

**Year: 2000-2002**

Education Level	Yes			No			Estimated Population (3-Yr Avg)
	#	%	C.I. (95%)	#	%	C.I. (95%)	#
Never attended school/ Only Kindergarten to Grades 8	600	27.7	11.7 - 43.7	1,700	72.3	56.3 - 88.3	2,300
Grades 9 thru 11 (Some High School)	1,300	38.0	22.0 - 53.9	2,100	62.0	46.1 - 78.0	3,300
Grades 12 or GED (High School Grad)	9,000	46.1	39.1 - 53.1	10,500	53.9	46.9 - 60.9	19,500
College 1 to 3 years (Some College/ Tech)	8,900	64.5	55.0 - 74.0	4,900	35.5	26.0 - 45.0	13,800
College 4 years or more (College Grad)	7,400	62.0	54.0 - 70.1	4,500	38.0	29.9 - 46.0	11,900

Employment Status (Grouped)	Yes			No			Estimated Population (3-Yr Avg)
	#	%	C.I. (95%)	#	%	C.I. (95%)	#
Employed	13,200	59.4	52.2 - 66.6	9,000	40.6	33.4 - 47.8	22,100
Retired/Unable to work	12,300	48.0	41.9 - 54.1	13,400	52.0	45.9 - 58.1	25,700

**Diabetes - manage class by State, County, Island, Community, BRFSS Age Group, DOH Race-Ethnicity, Gender, Education Level, Employment Status (Grouped), Household Income, Poverty Level, Marital Status (Grouped), Married, Health Care Coverage, for the Year(s) - 2000-2002, 2001-2003, 2002-2004, 2003-2005, 2004-2006, 2005-2007, 2006-2008, 2007-2009, 2008-2010**

*Note: Weighted numbers (#) represent 3-yr averages, percentages and 95% confidence intervals; Respondents aged 18 years and older; n/r (Not Reportable) - If the unweighted total responses for a dimension (row) is <50 that row will not be shown; n/a (Not Available) - Not asked of a subset of respondents*

**Year: 2000-2002**

Household Income	Yes			No			Estimated Population (3-Yr Avg)
	#	%	C.I. (95%)	#	%	C.I. (95%)	#
Less than \$10,000	1,400	41.5	26.1 - 57.0	1,900	58.5	43.0 - 73.9	3,300
\$10,000 to \$14,999	1,600	51.9	36.0 - 67.7	1,500	48.1	32.3 - 64.0	3,100
\$15,000 to \$19,999	1,200	51.1	35.4 - 66.7	1,100	48.9	33.3 - 64.6	2,300
\$20,000 to \$24,999	2,100	53.3	27.0 - 79.6	1,900	46.7	20.4 - 73.0	4,000
\$25,000 to \$34,999	2,100	38.5	25.8 - 51.1	3,300	61.5	48.9 - 74.2	5,400
\$35,000 to \$49,999	5,600	66.1	56.5 - 75.7	2,900	33.9	24.3 - 43.5	8,500
\$50,000 to \$74,999	3,300	62.6	50.0 - 75.3	1,900	37.4	24.7 - 50.0	5,200
\$75,000 or more	4,200	70.3	58.2 - 82.4	1,800	29.7	17.6 - 41.8	5,900

**Diabetes - manage class by State, County, Island, Community, BRFSS Age Group, DOH Race-Ethnicity, Gender, Education Level, Employment Status (Grouped), Household Income, Poverty Level, Marital Status (Grouped), Married, Health Care Coverage, for the Year(s) - 2000-2002, 2001-2003, 2002-2004, 2003-2005, 2004-2006, 2005-2007, 2006-2008, 2007-2009, 2008-2010**

*Note: Weighted numbers (#) represent 3-yr averages, percentages and 95% confidence intervals; Respondents aged 18 years and older; n/r (Not Reportable) - If the unweighted total responses for a dimension (row) is <50 that row will not be shown; n/a (Not Available) - Not asked of a subset of respondents*

**Year: 2000-2002**

Poverty Level	Yes			No			Estimated Population (3-Yr Avg)
	#	%	C.I. (95%)	#	%	C.I. (95%)	#
0-130%	4,700	52.6	38.7 - 66.4	4,300	47.4	33.6 - 61.3	9,000
131-185%	2,500	39.3	27.4 - 51.2	3,800	60.7	48.8 - 72.6	6,300
186+%	14,200	63.3	57.2 - 69.4	8,300	36.7	30.6 - 42.8	22,500

Marital Status (Grouped)	Yes			No			Estimated Population (3-Yr Avg)
	#	%	C.I. (95%)	#	%	C.I. (95%)	#
Married	18,700	56.2	50.2 - 62.1	14,600	43.8	37.9 - 49.8	33,200
Widowed	2,900	41.4	30.7 - 52.1	4,100	58.6	47.9 - 69.3	7,000
Other	5,600	53.2	44.8 - 61.6	5,000	46.8	38.4 - 55.2	10,600

**Diabetes - manage class by State, County, Island, Community, BRFSS Age Group, DOH Race-Ethnicity, Gender, Education Level, Employment Status (Grouped), Household Income, Poverty Level, Marital Status (Grouped), Married, Health Care Coverage, for the Year(s) - 2000-2002, 2001-2003, 2002-2004, 2003-2005, 2004-2006, 2005-2007, 2006-2008, 2007-2009, 2008-2010**

*Note: Weighted numbers (#) represent 3-yr averages, percentages and 95% confidence intervals; Respondents aged 18 years and older; n/r (Not Reportable) - If the unweighted total responses for a dimension (row) is <50 that row will not be shown; n/a (Not Available) - Not asked of a subset of respondents*

**Year: 2000-2002**

<b>Married</b>	<b>Yes</b>			<b>No</b>			<b>Estimated Population (3-Yr Avg)</b>
	<b>#</b>	<b>%</b>	<b>C.I. (95%)</b>	<b>#</b>	<b>%</b>	<b>C.I. (95%)</b>	<b>#</b>
<b>Yes</b>	19,100	56.6	50.7 - 62.4	14,700	43.4	37.6 - 49.3	33,800
<b>No</b>	8,100	47.3	40.4 - 54.2	9,000	52.7	45.8 - 59.6	17,100

<b>Health Care Coverage</b>	<b>Yes</b>			<b>No</b>			<b>Estimated Population (3-Yr Avg)</b>
	<b>#</b>	<b>%</b>	<b>C.I. (95%)</b>	<b>#</b>	<b>%</b>	<b>C.I. (95%)</b>	<b>#</b>
<b>Yes</b>	26,700	53.6	48.9 - 58.2	23,100	46.4	41.8 - 51.1	49,800