

Diabetes - times visit doc by State, County, Island, Community, BRFSS Age Group, DOH Race-Ethnicity, Gender, Education Level, Employment Status (Grouped), Household Income, Poverty Level, Marital Status (Grouped), Married, Health Care Coverage, for the Year(s) - 2000-2002, 2001-2003, 2002-2004, 2003-2005, 2004-2006, 2005-2007, 2006-2008, 2007-2009, 2008-2010

Note: Weighted numbers (#) represent 3-yr averages, percentages and 95% confidence intervals; Respondents aged 18 years and older; n/r (Not Reportable) - If the unweighted total responses for a dimension (row) is <50 that row will not be shown; n/a (Not Available) - Not asked of a subset of respondents

The trend analysis report shows the trend for the selected health variable over selected years in a table and a graph. Estimated Population: This number is a weighted representation of the population who responded to a particular question in the survey. For most questions the eligible population will be the entire adult population. For some secondary questions only a subset of the population was asked the question. For example, all survey participants were asked if they had diabetes, but only those who answered yes were asked if they use insulin. If a dimension value is unknown for a particular survey record, that record will not be included in the counts for that particular dimension.

For documentation on other terms and coding in this report, please go to the following links

[Click here to access BRFSS documentation](#)

[Click here to access DOH Race-Ethnicity coding](#)

[Click here to access The Hawai'i Data Guide](#)

[Click here to access Poverty Level Methodology](#)

**For questions about this report, please contact
The Hawaii Health Data Warehouse**

profiles@hhdw.org

(855) 946-5899 x15

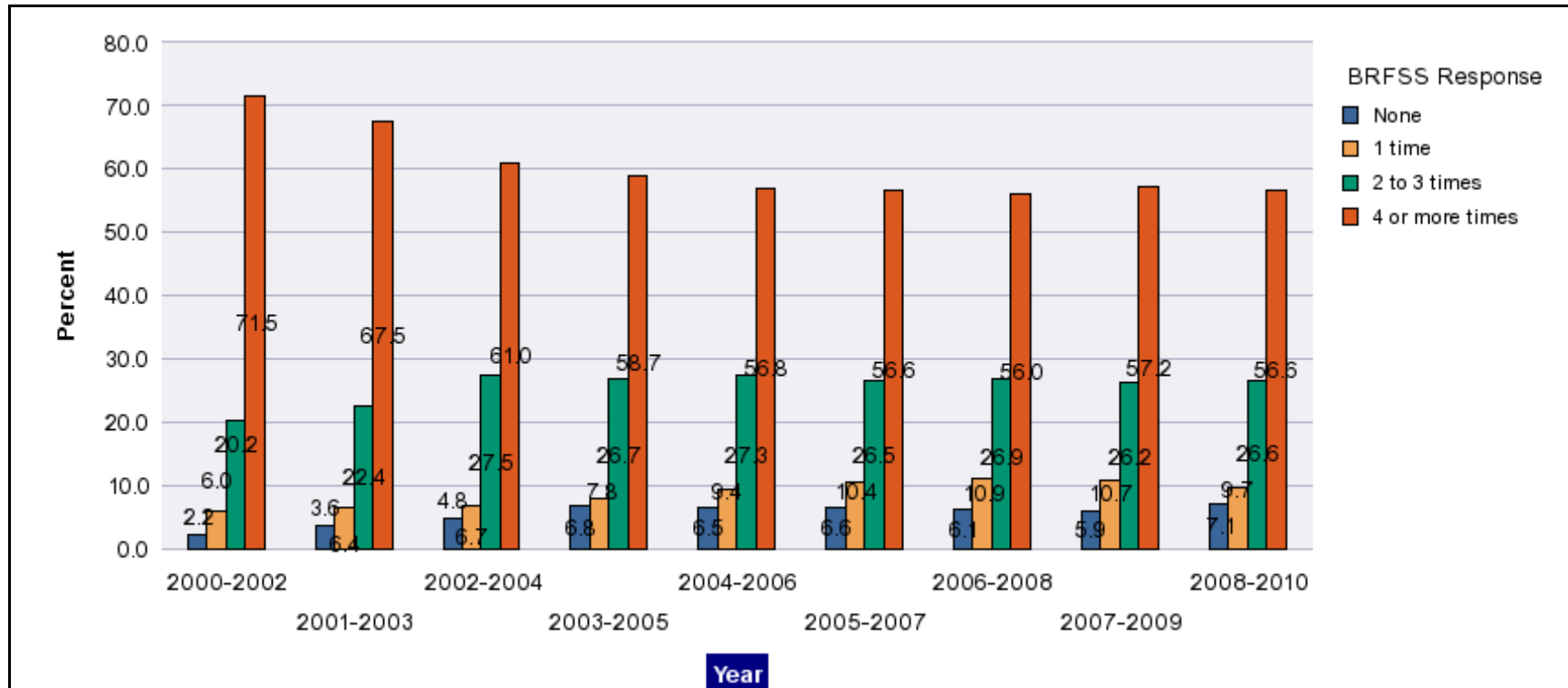
Diabetes - times visit doc by State, County, Island, Community, BRFSS Age Group, DOH Race-Ethnicity, Gender, Education Level, Employment Status (Grouped), Household Income, Poverty Level, Marital Status (Grouped), Married, Health Care Coverage, for the Year(s) - 2000-2002, 2001-2003, 2002-2004, 2003-2005, 2004-2006, 2005-2007, 2006-2008, 2007-2009, 2008-2010

Note: Weighted numbers (#) represent 3-yr averages, percentages and 95% confidence intervals; Respondents aged 18 years and older; n/r (Not Reportable) - If the unweighted total responses for a dimension (row) is <50 that row will not be shown; n/a (Not Available) - Not asked of a subset of respondents

Year	None			1 time			2 to 3 times			4 or more times			Estimated Population (3-Yr Avg)
	#	%	C.I.(95%)	#	%	C.I.(95%)	#	%	C.I.(95%)	#	%	C.I.(95%)	#
2000-2002	1,100	2.2	1.0 - 3.5	3,000	6.0	4.0 - 8.1	10,100	20.2	16.6 - 23.8	35,900	71.5	67.4 - 75.6	50,100
2001-2003	2,100	3.6	2.0 - 5.3	3,700	6.4	4.2 - 8.7	12,900	22.4	18.6 - 26.2	38,900	67.5	63.2 - 71.9	57,600
2002-2004	2,900	4.8	3.1 - 6.6	4,000	6.7	4.5 - 9.0	16,400	27.5	22.7 - 32.3	36,400	61.0	55.8 - 66.1	59,700
2003-2005	4,700	6.8	4.5 - 9.1	5,400	7.8	5.3 - 10.2	18,500	26.7	21.9 - 31.5	40,600	58.7	53.4 - 64.1	69,200
2004-2006	4,700	6.5	4.4 - 8.6	6,800	9.4	6.9 - 11.9	19,700	27.3	22.9 - 31.8	41,000	56.8	51.8 - 61.8	72,200
2005-2007	5,100	6.6	4.6 - 8.5	8,000	10.4	8.0 - 12.7	20,300	26.5	23.1 - 29.9	43,500	56.6	52.6 - 60.5	76,900
2006-2008	4,700	6.1	4.6 - 7.6	8,400	10.9	8.7 - 13.1	20,700	26.9	24.2 - 29.7	43,000	56.0	52.8 - 59.2	76,800
2007-2009	4,600	5.9	4.4 - 7.5	8,300	10.7	8.4 - 13.0	20,300	26.2	23.2 - 29.2	44,300	57.2	53.7 - 60.7	77,400
2008-2010	5,700	7.1	5.5 - 8.8	7,800	9.7	7.5 - 11.9	21,300	26.6	23.6 - 29.5	45,500	56.6	53.2 - 60.1	80,300

Diabetes - times visit doc by State, County, Island, Community, BRFSS Age Group, DOH Race-Ethnicity, Gender, Education Level, Employment Status (Grouped), Household Income, Poverty Level, Marital Status (Grouped), Married, Health Care Coverage, for the Year(s) - 2000-2002, 2001-2003, 2002-2004, 2003-2005, 2004-2006, 2005-2007, 2006-2008, 2007-2009, 2008-2010

Note: Weighted numbers (#) represent 3-yr averages, percentages and 95% confidence intervals; Respondents aged 18 years and older; n/r (Not Reportable) - If the unweighted total responses for a dimension (row) is <50 that row will not be shown; n/a (Not Available) - Not asked of a subset of respondents



Diabetes - times visit doc by State, County, Island, Community, BRFSS Age Group, DOH Race-Ethnicity, Gender, Education Level, Employment Status (Grouped), Household Income, Poverty Level, Marital Status (Grouped), Married, Health Care Coverage, for the Year(s) - 2000-2002, 2001-2003, 2002-2004, 2003-2005, 2004-2006, 2005-2007, 2006-2008, 2007-2009, 2008-2010

Note: Weighted numbers (#) represent 3-yr averages, percentages and 95% confidence intervals; Respondents aged 18 years and older; n/r (Not Reportable) - If the unweighted total responses for a dimension (row) is <50 that row will not be shown; n/a (Not Available) - Not asked of a subset of respondents

Year: 2008-2010

State	None			1 time			2 to 3 times			4 or more times			Estimated Population (3-Yr Avg)
	#	%	C.I. (95%)	#	%	C.I. (95%)	#	%	C.I. (95%)	#	%	C.I. (95%)	#
Hawaii State	5,700	7.1	5.5 - 8.8	7,800	9.7	7.5 - 11.9	21,300	26.6	23.6 - 29.5	45,500	56.6	53.2 - 60.1	80,300

County	None			1 time			2 to 3 times			4 or more times			Estimated Population (3-Yr Avg)
	#	%	C.I. (95%)	#	%	C.I. (95%)	#	%	C.I. (95%)	#	%	C.I. (95%)	#
Hawaii	1,200	10.3	5.1 - 15.6	1,000	8.8	5.0 - 12.5	2,300	20.8	15.4 - 26.1	6,700	60.1	53.2 - 67.0	11,200
Honolulu	3,700	6.5	4.5 - 8.5	5,600	9.9	7.0 - 12.7	15,100	26.6	22.8 - 30.5	32,300	57.0	52.5 - 61.5	56,700
Kauai	200	5.7	2.0 - 9.3	300	6.9	2.7 - 11.1	1,400	37.2	27.3 - 47.1	1,800	50.2	40.4 - 60.1	3,600
Maui	600	7.4	3.9 - 11.0	900	10.8	5.7 - 16.0	2,500	29.2	21.9 - 36.5	4,600	52.5	44.5 - 60.5	8,700

Diabetes - times visit doc by State, County, Island, Community, BRFSS Age Group, DOH Race-Ethnicity, Gender, Education Level, Employment Status (Grouped), Household Income, Poverty Level, Marital Status (Grouped), Married, Health Care Coverage, for the Year(s) - 2000-2002, 2001-2003, 2002-2004, 2003-2005, 2004-2006, 2005-2007, 2006-2008, 2007-2009, 2008-2010

Note: Weighted numbers (#) represent 3-yr averages, percentages and 95% confidence intervals; Respondents aged 18 years and older; n/r (Not Reportable) - If the unweighted total responses for a dimension (row) is <50 that row will not be shown; n/a (Not Available) - Not asked of a subset of respondents

Year: 2008-2010

Island	None			1 time			2 to 3 times			4 or more times			Estimated Population (3-Yr Avg)
	#	%	C.I. (95%)	#	%	C.I. (95%)	#	%	C.I. (95%)	#	%	C.I. (95%)	#
Hawaii	1,200	10.3	5.1 - 15.6	1,000	8.8	5.0 - 12.5	2,300	20.8	15.4 - 26.1	6,700	60.1	53.2 - 67.0	11,200
Kauai	200	5.7	2.0 - 9.3	300	6.9	2.7 - 11.1	1,400	37.2	27.3 - 47.1	1,800	50.2	40.4 - 60.1	3,600
Lanai	<50	7.0	0.6 - 13.5	<50	7.5	1.1 - 13.8	100	40.2	23.4 - 56.9	100	45.4	28.5 - 62.2	200
Maui	500	7.1	3.2 - 11.1	900	11.1	5.4 - 16.9	2,200	29.3	21.2 - 37.4	4,000	52.5	43.6 - 61.3	7,700
Molokai	100	10.2	2.1 - 18.2	100	9.1	2.1 - 16.2	200	26.4	12.2 - 40.7	500	54.3	38.2 - 70.4	900
Oahu	3,700	6.5	4.5 - 8.5	5,600	9.9	7.0 - 12.7	15,100	26.6	22.8 - 30.5	32,300	57.0	52.5 - 61.5	56,700

Community	None			1 time			2 to 3 times			4 or more times			Estimated Population (3-Yr Avg)
	#	%	C.I. (95%)	#	%	C.I. (95%)	#	%	C.I. (95%)	#	%	C.I. (95%)	#
Aiea/ Pearl City	100	2.6	0.0 - 5.6	100	1.6	0.0 - 4.6	1,600	36.6	23.2 - 50.0	2,500	59.3	45.6 - 72.9	4,300
Hanalei/ Kapaa	100	6.6	0.0 - 13.2	100	5.8	0.0 - 14.0	300	26.4	12.5 - 40.4	700	61.2	45.4 - 77.1	1,200

Diabetes - times visit doc by State, County, Island, Community, BRFSS Age Group, DOH Race-Ethnicity, Gender, Education Level, Employment Status (Grouped), Household Income, Poverty Level, Marital Status (Grouped), Married, Health Care Coverage, for the Year(s) - 2000-2002, 2001-2003, 2002-2004, 2003-2005, 2004-2006, 2005-2007, 2006-2008, 2007-2009, 2008-2010

Note: Weighted numbers (#) represent 3-yr averages, percentages and 95% confidence intervals; Respondents aged 18 years and older; n/r (Not Reportable) - If the unweighted total responses for a dimension (row) is <50 that row will not be shown; n/a (Not Available) - Not asked of a subset of respondents

Year: 2008-2010

Community	None			1 time			2 to 3 times			4 or more times			Estimated Population (3-Yr Avg)
	#	%	C.I. (95%)	#	%	C.I. (95%)	#	%	C.I. (95%)	#	%	C.I. (95%)	#
Hilo	300	9.4	2.5 - 16.2	300	8.8	1.8 - 15.8	1,000	26.6	16.2 - 37.0	2,000	55.2	43.9 - 66.6	3,600
Kaaawa/ Kahaluu/ Kaneohe	300	8.3	0.0 - 17.7	500	11.8	0.3 - 23.3	900	22.6	9.7 - 35.4	2,200	57.4	41.8 - 72.9	3,800
Kahului	100	5.6	1.0 - 10.1	400	14.1	1.9 - 26.3	800	33.9	19.3 - 48.4	1,200	46.5	32.3 - 60.7	2,500
Kailua/ Waimanalo	300	7.0	0.0 - 14.3	300	7.0	0.0 - 14.1	1,500	39.6	23.1 - 56.0	1,800	46.5	29.7 - 63.3	3,800
Kaimuki/ Palolo/ Waikiki	300	5.2	0.7 - 9.8	400	8.6	1.8 - 15.5	1,000	19.5	9.5 - 29.5	3,500	66.7	55.0 - 78.3	5,200
Kona	300	10.9	0.1 - 21.6	300	12.6	2.5 - 22.7	500	20.0	8.5 - 31.4	1,300	56.6	38.7 - 74.5	2,300
Lahaina/ Wailuku	200	5.7	0.0 - 13.1	300	9.9	2.0 - 17.8	1,100	37.4	22.8 - 52.0	1,400	47.1	31.4 - 62.7	3,000
Lanai	<50	7.0	0.6 - 13.5	<50	7.5	1.1 - 13.8	100	40.2	23.4 - 56.9	100	45.4	28.5 - 62.2	200
Lihue-Waimea	100	5.2	0.9 - 9.6	200	7.4	2.5 - 12.3	1,000	42.4	29.9 - 54.8	1,100	45.0	33.1 - 56.9	2,500
Manoa/ Upper Makiki	400	10.1	2.8 - 17.3	300	7.7	1.5 - 14.0	1,000	25.7	13.1 - 38.3	2,300	56.5	43.2 - 69.9	4,000
Mililani/ Wahiawa	400	6.5	0.9 - 12.0	1,200	19.1	4.1 - 34.0	1,200	19.7	10.0 - 29.5	3,400	54.7	40.5 - 68.9	6,200
Molokai	100	10.2	2.1 - 18.2	100	9.1	2.1 - 16.2	200	26.4	12.2 - 40.7	500	54.3	38.2 - 70.4	900

Diabetes - times visit doc by State, County, Island, Community, BRFSS Age Group, DOH Race-Ethnicity, Gender, Education Level, Employment Status (Grouped), Household Income, Poverty Level, Marital Status (Grouped), Married, Health Care Coverage, for the Year(s) - 2000-2002, 2001-2003, 2002-2004, 2003-2005, 2004-2006, 2005-2007, 2006-2008, 2007-2009, 2008-2010

Note: Weighted numbers (#) represent 3-yr averages, percentages and 95% confidence intervals; Respondents aged 18 years and older; n/r (Not Reportable) - If the unweighted total responses for a dimension (row) is <50 that row will not be shown; n/a (Not Available) - Not asked of a subset of respondents

Year: 2008-2010

Community	None			1 time			2 to 3 times			4 or more times			Estimated Population (3-Yr Avg)
	#	%	C.I. (95%)	#	%	C.I. (95%)	#	%	C.I. (95%)	#	%	C.I. (95%)	#
N.Hawaii	300	17.4	0.0 - 38.4	100	6.0	0.6 - 11.4	300	17.3	6.6 - 28.0	1,000	59.3	40.6 - 77.9	1,700
Nuuanu/ Kalihi/ Moanalua	0	0.0	--	500	8.8	1.4 - 16.1	1,500	27.2	14.0 - 40.4	3,600	64.0	49.8 - 78.2	5,600
Puna/ Kau	300	7.6	0.0 - 15.4	300	7.5	1.3 - 13.7	600	17.0	7.9 - 26.2	2,400	67.8	56.4 - 79.2	3,600
Upcountry/ Hana	200	10.9	3.0 - 18.8	200	9.3	0.0 - 18.7	300	13.0	3.0 - 23.1	1,500	66.7	52.5 - 80.9	2,200
Waipahu/ Kapolei/ Ewa	1,100	9.2	2.7 - 15.6	1,200	10.5	3.9 - 17.1	3,000	25.9	16.7 - 35.1	6,400	54.4	42.9 - 65.9	11,700

Diabetes - times visit doc by State, County, Island, Community, BRFSS Age Group, DOH Race-Ethnicity, Gender, Education Level, Employment Status (Grouped), Household Income, Poverty Level, Marital Status (Grouped), Married, Health Care Coverage, for the Year(s) - 2000-2002, 2001-2003, 2002-2004, 2003-2005, 2004-2006, 2005-2007, 2006-2008, 2007-2009, 2008-2010

Note: Weighted numbers (#) represent 3-yr averages, percentages and 95% confidence intervals; Respondents aged 18 years and older; n/r (Not Reportable) - If the unweighted total responses for a dimension (row) is <50 that row will not be shown; n/a (Not Available) - Not asked of a subset of respondents

Year: 2008-2010

BRFSS Age Group	None			1 time			2 to 3 times			4 or more times			Estimated Population (3-Yr Avg)
	#	%	C.I. (95%)	#	%	C.I. (95%)	#	%	C.I. (95%)	#	%	C.I. (95%)	#
35-44	1,100	12.1	4.1 - 20.0	1,900	20.4	8.8 - 32.0	2,600	28.9	18.0 - 39.9	3,500	38.6	25.5 - 51.6	9,100
45-54	900	6.8	3.0 - 10.6	1,200	8.7	3.9 - 13.4	3,100	23.0	15.9 - 30.2	8,300	61.5	52.9 - 70.0	13,500
55-64	1,300	6.6	3.7 - 9.5	2,000	10.1	6.8 - 13.4	5,100	25.5	19.9 - 31.0	11,500	57.8	51.7 - 63.9	20,000
65-74	1,100	6.6	3.8 - 9.3	1,200	7.1	3.2 - 11.0	4,400	27.2	21.6 - 32.9	9,600	59.1	52.7 - 65.4	16,200
75+	1,000	5.6	2.8 - 8.5	1,100	6.4	3.3 - 9.6	5,000	28.3	22.0 - 34.6	10,500	59.7	52.8 - 66.6	17,600

Diabetes - times visit doc by State, County, Island, Community, BRFSS Age Group, DOH Race-Ethnicity, Gender, Education Level, Employment Status (Grouped), Household Income, Poverty Level, Marital Status (Grouped), Married, Health Care Coverage, for the Year(s) - 2000-2002, 2001-2003, 2002-2004, 2003-2005, 2004-2006, 2005-2007, 2006-2008, 2007-2009, 2008-2010

Note: Weighted numbers (#) represent 3-yr averages, percentages and 95% confidence intervals; Respondents aged 18 years and older; n/r (Not Reportable) - If the unweighted total responses for a dimension (row) is <50 that row will not be shown; n/a (Not Available) - Not asked of a subset of respondents

Year: 2008-2010

DOH Race-Ethnicity	None			1 time			2 to 3 times			4 or more times			Estimated Population (3-Yr Avg)
	#	%	C.I. (95%)	#	%	C.I. (95%)	#	%	C.I. (95%)	#	%	C.I. (95%)	#
Caucasian	1,600	10.0	5.9 - 14.1	1,300	8.4	5.0 - 11.7	4,100	26.0	20.5 - 31.6	8,700	55.6	49.1 - 62.1	15,700
Native Hawaiian	800	5.6	2.2 - 9.0	2,100	14.4	8.8 - 20.0	2,200	14.9	9.7 - 20.2	9,400	65.0	57.4 - 72.7	14,500
Chinese	100	2.4	0.0 - 4.8	100	2.2	0.0 - 4.8	2,000	36.7	24.6 - 48.8	3,200	58.8	46.7 - 70.8	5,400
Filipino	1,000	6.7	2.4 - 10.9	1,600	10.8	5.4 - 16.3	3,800	25.2	17.8 - 32.5	8,700	57.3	48.4 - 66.3	15,100
Japanese	1,900	8.3	5.0 - 11.6	1,900	8.4	3.8 - 13.0	7,100	30.8	25.0 - 36.6	12,100	52.5	46.0 - 58.9	23,000

Gender	None			1 time			2 to 3 times			4 or more times			Estimated Population (3-Yr Avg)
	#	%	C.I. (95%)	#	%	C.I. (95%)	#	%	C.I. (95%)	#	%	C.I. (95%)	#
Male	3,300	8.5	5.8 - 11.2	3,800	9.8	6.3 - 13.3	10,300	26.3	21.8 - 30.7	21,800	55.4	50.3 - 60.6	39,300
Female	2,400	5.8	3.9 - 7.7	3,900	9.6	7.0 - 12.2	11,000	26.8	22.8 - 30.8	23,600	57.8	53.3 - 62.3	40,900

Diabetes - times visit doc by State, County, Island, Community, BRFSS Age Group, DOH Race-Ethnicity, Gender, Education Level, Employment Status (Grouped), Household Income, Poverty Level, Marital Status (Grouped), Married, Health Care Coverage, for the Year(s) - 2000-2002, 2001-2003, 2002-2004, 2003-2005, 2004-2006, 2005-2007, 2006-2008, 2007-2009, 2008-2010

Note: Weighted numbers (#) represent 3-yr averages, percentages and 95% confidence intervals; Respondents aged 18 years and older; n/r (Not Reportable) - If the unweighted total responses for a dimension (row) is <50 that row will not be shown; n/a (Not Available) - Not asked of a subset of respondents

Year: 2008-2010

Education Level	None			1 time			2 to 3 times			4 or more times			Estimated Population (3-Yr Avg)
	#	%	C.I. (95%)	#	%	C.I. (95%)	#	%	C.I. (95%)	#	%	C.I. (95%)	#
Never attended school/ Only Kindergarten to Grades 8	400	16.2	0.5 - 31.8	100	3.1	0.0 - 7.4	900	39.4	21.4 - 57.3	900	41.4	23.3 - 59.4	2,300
Grades 9 thru 11 (Some High School)	200	3.9	0.0 - 9.1	400	9.1	1.7 - 16.6	800	21.3	5.5 - 37.2	2,600	65.6	49.3 - 81.8	4,000
Grades 12 or GED (High School Grad)	1,800	6.8	4.0 - 9.6	2,200	8.4	5.1 - 11.7	7,100	26.6	21.2 - 32.0	15,500	58.2	52.0 - 64.4	26,600
College 1 to 3 years (Some College/ Tech)	1,700	7.3	3.9 - 10.7	3,100	13.2	8.1 - 18.3	6,200	26.7	21.2 - 32.3	12,200	52.7	46.1 - 59.4	23,100
College 4 years or more (College Grad)	1,700	6.9	4.3 - 9.5	2,100	8.5	5.0 - 11.9	6,300	25.8	20.9 - 30.8	14,300	58.8	53.1 - 64.4	24,300

Diabetes - times visit doc by State, County, Island, Community, BRFSS Age Group, DOH Race-Ethnicity, Gender, Education Level, Employment Status (Grouped), Household Income, Poverty Level, Marital Status (Grouped), Married, Health Care Coverage, for the Year(s) - 2000-2002, 2001-2003, 2002-2004, 2003-2005, 2004-2006, 2005-2007, 2006-2008, 2007-2009, 2008-2010

Note: Weighted numbers (#) represent 3-yr averages, percentages and 95% confidence intervals; Respondents aged 18 years and older; n/r (Not Reportable) - If the unweighted total responses for a dimension (row) is <50 that row will not be shown; n/a (Not Available) - Not asked of a subset of respondents

Year: 2008-2010

Employment Status (Grouped)	None			1 time			2 to 3 times			4 or more times			Estimated Population (3-Yr Avg)
	#	%	C.I. (95%)	#	%	C.I. (95%)	#	%	C.I. (95%)	#	%	C.I. (95%)	#
Employed	2,700	7.8	5.3 - 10.3	3,900	11.1	7.3 - 15.0	10,300	29.3	24.3 - 34.3	18,100	51.8	46.1 - 57.5	35,000
Unemployed	700	14.6	0.2 - 28.9	400	9.6	1.0 - 18.2	800	16.9	2.5 - 31.3	2,700	58.9	41.1 - 76.8	4,600
Retired/Unable to work	2,100	5.7	3.8 - 7.6	3,000	8.2	5.5 - 10.8	9,100	24.5	20.7 - 28.3	22,800	61.6	57.2 - 66.0	37,100
Student/Homemaker	200	5.6	0.6 - 10.7	400	11.3	3.4 - 19.3	1,200	33.1	19.9 - 46.4	1,800	49.9	36.5 - 63.3	3,600

Diabetes - times visit doc by State, County, Island, Community, BRFSS Age Group, DOH Race-Ethnicity, Gender, Education Level, Employment Status (Grouped), Household Income, Poverty Level, Marital Status (Grouped), Married, Health Care Coverage, for the Year(s) - 2000-2002, 2001-2003, 2002-2004, 2003-2005, 2004-2006, 2005-2007, 2006-2008, 2007-2009, 2008-2010

Note: Weighted numbers (#) represent 3-yr averages, percentages and 95% confidence intervals; Respondents aged 18 years and older; n/r (Not Reportable) - If the unweighted total responses for a dimension (row) is <50 that row will not be shown; n/a (Not Available) - Not asked of a subset of respondents

Year: 2008-2010

Household Income	None			1 time			2 to 3 times			4 or more times			Estimated Population (3-Yr Avg)
	#	%	C.I. (95%)	#	%	C.I. (95%)	#	%	C.I. (95%)	#	%	C.I. (95%)	#
Less than \$10,000	500	16.1	2.3 - 29.9	100	4.0	0.0 - 8.5	300	10.2	2.2 - 18.1	2,200	69.7	54.3 - 85.2	3,100
\$10,000 to \$14,999	200	5.9	0.7 - 11.1	200	5.0	1.1 - 8.8	1,000	31.2	16.8 - 45.6	1,900	58.0	43.6 - 72.3	3,300
\$15,000 to \$19,999	300	5.1	1.0 - 9.3	800	13.7	3.9 - 23.6	1,100	18.7	9.5 - 27.9	3,800	62.5	50.1 - 74.9	6,100
\$20,000 to \$24,999	500	8.6	2.9 - 14.3	500	8.8	2.6 - 15.0	1,300	20.7	11.7 - 29.7	3,800	62.0	50.6 - 73.3	6,100
\$25,000 to \$34,999	700	8.0	3.1 - 12.9	1,500	16.4	9.2 - 23.6	2,200	23.7	15.6 - 31.9	4,700	51.9	42.8 - 61.0	9,100
\$35,000 to \$49,999	1,000	7.4	2.6 - 12.2	500	4.1	1.7 - 6.5	4,700	35.0	27.0 - 43.0	7,200	53.5	45.2 - 61.8	13,500
\$50,000 to \$74,999	1,000	8.0	4.0 - 11.9	1,200	9.3	4.1 - 14.6	3,500	27.7	20.0 - 35.3	7,000	55.0	46.6 - 63.4	12,700
\$75,000 or more	1,200	6.3	3.0 - 9.6	2,400	12.4	6.8 - 18.1	5,000	25.9	20.1 - 31.7	10,600	55.3	48.1 - 62.6	19,200

Diabetes - times visit doc by State, County, Island, Community, BRFSS Age Group, DOH Race-Ethnicity, Gender, Education Level, Employment Status (Grouped), Household Income, Poverty Level, Marital Status (Grouped), Married, Health Care Coverage, for the Year(s) - 2000-2002, 2001-2003, 2002-2004, 2003-2005, 2004-2006, 2005-2007, 2006-2008, 2007-2009, 2008-2010

Note: Weighted numbers (#) represent 3-yr averages, percentages and 95% confidence intervals; Respondents aged 18 years and older; n/r (Not Reportable) - If the unweighted total responses for a dimension (row) is <50 that row will not be shown; n/a (Not Available) - Not asked of a subset of respondents

Year: 2008-2010

Poverty Level	None			1 time			2 to 3 times			4 or more times			Estimated Population (3-Yr Avg)
	#	%	C.I. (95%)	#	%	C.I. (95%)	#	%	C.I. (95%)	#	%	C.I. (95%)	#
0-130%	1,500	8.2	3.8 - 12.6	1,600	8.9	4.5 - 13.2	4,100	22.9	16.3 - 29.4	10,900	60.0	52.2 - 67.9	18,100
131-185%	1,000	8.2	4.0 - 12.4	1,100	8.7	4.5 - 13.0	3,200	25.2	18.3 - 32.1	7,300	57.9	49.8 - 66.0	12,500
186+%	3,000	7.0	4.9 - 9.1	4,600	10.8	7.5 - 14.0	11,800	27.8	23.9 - 31.8	23,100	54.4	49.9 - 58.8	42,400

Marital Status (Grouped)	None			1 time			2 to 3 times			4 or more times			Estimated Population (3-Yr Avg)
	#	%	C.I. (95%)	#	%	C.I. (95%)	#	%	C.I. (95%)	#	%	C.I. (95%)	#
Married	3,500	6.9	4.8 - 9.0	5,100	10.1	7.1 - 13.1	13,500	26.9	23.1 - 30.7	28,200	56.2	51.8 - 60.6	50,300
Widowed	400	3.8	1.1 - 6.4	500	5.6	2.6 - 8.6	2,600	27.3	20.0 - 34.7	6,100	63.3	55.2 - 71.3	9,600
Other	1,800	9.1	5.3 - 12.9	1,900	9.9	5.9 - 14.0	5,000	25.5	19.2 - 31.7	10,900	55.5	48.2 - 62.7	19,600

Diabetes - times visit doc by State, County, Island, Community, BRFSS Age Group, DOH Race-Ethnicity, Gender, Education Level, Employment Status (Grouped), Household Income, Poverty Level, Marital Status (Grouped), Married, Health Care Coverage, for the Year(s) - 2000-2002, 2001-2003, 2002-2004, 2003-2005, 2004-2006, 2005-2007, 2006-2008, 2007-2009, 2008-2010

Note: Weighted numbers (#) represent 3-yr averages, percentages and 95% confidence intervals; Respondents aged 18 years and older; n/r (Not Reportable) - If the unweighted total responses for a dimension (row) is <50 that row will not be shown; n/a (Not Available) - Not asked of a subset of respondents

Year: 2008-2010

Married	None			1 time			2 to 3 times			4 or more times			Estimated Population (3-Yr Avg)
	#	%	C.I. (95%)	#	%	C.I. (95%)	#	%	C.I. (95%)	#	%	C.I. (95%)	#
Yes	3,500	6.8	4.8 - 8.9	5,400	10.4	7.4 - 13.4	13,900	26.7	22.9 - 30.5	29,100	56.0	51.6 - 60.5	51,900
No	2,200	7.7	4.9 - 10.4	2,400	8.4	5.7 - 11.1	7,300	26.0	21.2 - 30.8	16,400	58.0	52.5 - 63.4	28,200

Health Care Coverage	None			1 time			2 to 3 times			4 or more times			Estimated Population (3-Yr Avg)
	#	%	C.I. (95%)	#	%	C.I. (95%)	#	%	C.I. (95%)	#	%	C.I. (95%)	#
Yes	4,000	7.7	5.7 - 9.6	4,000	7.7	5.8 - 9.7	13,900	26.6	23.2 - 30.0	30,300	58.0	54.3 - 61.7	52,200

Diabetes - times visit doc by State, County, Island, Community, BRFSS Age Group, DOH Race-Ethnicity, Gender, Education Level, Employment Status (Grouped), Household Income, Poverty Level, Marital Status (Grouped), Married, Health Care Coverage, for the Year(s) - 2000-2002, 2001-2003, 2002-2004, 2003-2005, 2004-2006, 2005-2007, 2006-2008, 2007-2009, 2008-2010

Note: Weighted numbers (#) represent 3-yr averages, percentages and 95% confidence intervals; Respondents aged 18 years and older; n/r (Not Reportable) - If the unweighted total responses for a dimension (row) is <50 that row will not be shown; n/a (Not Available) - Not asked of a subset of respondents

Year: 2007-2009

State	None			1 time			2 to 3 times			4 or more times			Estimated Population (3-Yr Avg)
	#	%	C.I. (95%)	#	%	C.I. (95%)	#	%	C.I. (95%)	#	%	C.I. (95%)	#
Hawaii State	4,600	5.9	4.4 - 7.5	8,300	10.7	8.4 - 13.0	20,300	26.2	23.2 - 29.2	44,300	57.2	53.7 - 60.7	77,400

County	None			1 time			2 to 3 times			4 or more times			Estimated Population (3-Yr Avg)
	#	%	C.I. (95%)	#	%	C.I. (95%)	#	%	C.I. (95%)	#	%	C.I. (95%)	#
Hawaii	1,100	11.0	5.4 - 16.6	1,000	10.0	5.9 - 14.2	2,500	24.1	18.3 - 29.9	5,700	54.9	47.6 - 62.2	10,300
Honolulu	2,700	5.0	3.2 - 6.8	5,900	10.8	7.8 - 13.9	13,700	25.0	21.2 - 28.8	32,500	59.2	54.7 - 63.7	54,800
Kauai	200	6.6	2.8 - 10.4	200	5.9	1.9 - 10.0	1,500	40.8	30.8 - 50.8	1,700	46.7	36.8 - 56.5	3,700
Maui	500	5.4	2.6 - 8.3	1,100	12.7	7.2 - 18.1	2,600	30.1	22.6 - 37.6	4,400	51.8	43.7 - 60.0	8,600

Diabetes - times visit doc by State, County, Island, Community, BRFSS Age Group, DOH Race-Ethnicity, Gender, Education Level, Employment Status (Grouped), Household Income, Poverty Level, Marital Status (Grouped), Married, Health Care Coverage, for the Year(s) - 2000-2002, 2001-2003, 2002-2004, 2003-2005, 2004-2006, 2005-2007, 2006-2008, 2007-2009, 2008-2010

Note: Weighted numbers (#) represent 3-yr averages, percentages and 95% confidence intervals; Respondents aged 18 years and older; n/r (Not Reportable) - If the unweighted total responses for a dimension (row) is <50 that row will not be shown; n/a (Not Available) - Not asked of a subset of respondents

Year: 2007-2009

Island	None			1 time			2 to 3 times			4 or more times			Estimated Population (3-Yr Avg)
	#	%	C.I. (95%)	#	%	C.I. (95%)	#	%	C.I. (95%)	#	%	C.I. (95%)	#
Hawaii	1,100	11.0	5.4 - 16.6	1,000	10.0	5.9 - 14.2	2,500	24.1	18.3 - 29.9	5,700	54.9	47.6 - 62.2	10,300
Kauai	200	6.6	2.8 - 10.4	200	5.9	1.9 - 10.0	1,500	40.8	30.8 - 50.8	1,700	46.7	36.8 - 56.5	3,700
Lanai	<50	6.0	0.6 - 11.3	<50	12.3	3.3 - 21.3	100	31.4	16.8 - 46.0	100	50.4	35.1 - 65.6	200
Maui	400	4.9	1.8 - 8.0	1,000	13.1	7.0 - 19.2	2,300	30.2	21.9 - 38.5	3,900	51.8	42.8 - 60.8	7,600
Molokai	100	10.6	2.6 - 18.6	100	8.4	1.1 - 15.7	200	28.3	13.3 - 43.3	400	52.7	35.6 - 69.9	800
Oahu	2,700	5.0	3.2 - 6.8	5,900	10.8	7.8 - 13.9	13,700	25.0	21.2 - 28.8	32,500	59.2	54.7 - 63.7	54,800

Community	None			1 time			2 to 3 times			4 or more times			Estimated Population (3-Yr Avg)
	#	%	C.I. (95%)	#	%	C.I. (95%)	#	%	C.I. (95%)	#	%	C.I. (95%)	#
Aiea/ Pearl City	100	1.8	0.0 - 4.3	200	4.2	0.0 - 10.0	1,000	25.9	13.1 - 38.6	2,700	68.1	54.6 - 81.7	3,900
Hilo	200	6.9	0.2 - 13.5	300	10.4	2.7 - 18.1	900	27.4	16.5 - 38.3	1,800	55.4	43.5 - 67.2	3,300

Diabetes - times visit doc by State, County, Island, Community, BRFSS Age Group, DOH Race-Ethnicity, Gender, Education Level, Employment Status (Grouped), Household Income, Poverty Level, Marital Status (Grouped), Married, Health Care Coverage, for the Year(s) - 2000-2002, 2001-2003, 2002-2004, 2003-2005, 2004-2006, 2005-2007, 2006-2008, 2007-2009, 2008-2010

Note: Weighted numbers (#) represent 3-yr averages, percentages and 95% confidence intervals; Respondents aged 18 years and older; n/r (Not Reportable) - If the unweighted total responses for a dimension (row) is <50 that row will not be shown; n/a (Not Available) - Not asked of a subset of respondents

Year: 2007-2009

Community	None			1 time			2 to 3 times			4 or more times			Estimated Population (3-Yr Avg)
	#	%	C.I. (95%)	#	%	C.I. (95%)	#	%	C.I. (95%)	#	%	C.I. (95%)	#
Kaaawa/ Kahaluu/ Kaneohe	600	15.4	2.6 - 28.2	400	9.7	0.0 - 20.6	1,300	31.4	17.4 - 45.3	1,800	43.5	28.6 - 58.5	4,000
Kahului	<50	1.1	0.0 - 2.6	500	18.8	6.2 - 31.4	900	36.3	21.9 - 50.6	1,100	43.9	29.9 - 57.8	2,500
Kailua/ Waimanalo	300	9.0	0.1 - 17.8	300	10.0	0.2 - 19.8	1,000	30.9	15.7 - 46.2	1,600	50.1	34.2 - 66.0	3,100
Kaimuki/ Palolo/ Waikiki	0	0.0	--	400	8.4	1.5 - 15.3	1,100	23.0	10.6 - 35.4	3,200	68.6	55.4 - 81.9	4,700
Kona	300	12.3	1.1 - 23.5	300	12.7	2.6 - 22.8	400	18.9	7.3 - 30.6	1,300	56.1	37.8 - 74.3	2,300
Lahaina/ Wailuku	100	4.3	0.0 - 10.0	300	10.8	1.7 - 19.8	900	33.0	17.0 - 49.0	1,400	51.9	34.7 - 69.1	2,600
Lanai	<50	6.0	0.6 - 11.3	<50	12.3	3.3 - 21.3	100	31.4	16.8 - 46.0	100	50.4	35.1 - 65.6	200
Lihue-Waimea	200	6.5	1.9 - 11.1	100	5.2	1.0 - 9.4	1,200	47.7	35.4 - 60.1	1,000	40.6	28.9 - 52.2	2,500
Manoa/ Upper Makiki	300	8.5	0.9 - 16.1	400	12.1	3.2 - 21.1	700	20.2	7.6 - 32.9	2,100	59.1	44.7 - 73.6	3,600
Millilani/ Wahiawa	300	4.7	0.0 - 10.1	1,200	19.0	4.4 - 33.7	1,500	22.7	12.6 - 32.8	3,500	53.5	39.1 - 67.9	6,500
Molokai	100	10.6	2.6 - 18.6	100	8.4	1.1 - 15.7	200	28.3	13.3 - 43.3	400	52.7	35.6 - 69.9	800
Nanakuli/ Waianae	100	2.0	0.0 - 5.2	400	7.9	1.4 - 14.3	1,400	28.4	13.4 - 43.4	3,100	61.7	46.0 - 77.3	5,100

Diabetes - times visit doc by State, County, Island, Community, BRFSS Age Group, DOH Race-Ethnicity, Gender, Education Level, Employment Status (Grouped), Household Income, Poverty Level, Marital Status (Grouped), Married, Health Care Coverage, for the Year(s) - 2000-2002, 2001-2003, 2002-2004, 2003-2005, 2004-2006, 2005-2007, 2006-2008, 2007-2009, 2008-2010

Note: Weighted numbers (#) represent 3-yr averages, percentages and 95% confidence intervals; Respondents aged 18 years and older; n/r (Not Reportable) - If the unweighted total responses for a dimension (row) is <50 that row will not be shown; n/a (Not Available) - Not asked of a subset of respondents

Year: 2007-2009

Community	None			1 time			2 to 3 times			4 or more times			Estimated Population (3-Yr Avg)
	#	%	C.I. (95%)	#	%	C.I. (95%)	#	%	C.I. (95%)	#	%	C.I. (95%)	#
N.Hawaii	300	16.6	0.0 - 34.8	200	8.2	1.7 - 14.7	500	25.4	13.2 - 37.6	1,000	49.9	33.9 - 65.9	2,000
Nuuanu/ Kalihi/ Moanalua	100	1.6	0.0 - 4.0	400	7.6	0.0 - 15.6	1,200	23.7	11.2 - 36.2	3,300	67.0	52.9 - 81.2	4,900
Puna/ Kau	300	10.7	0.9 - 20.6	200	8.8	0.9 - 16.7	600	23.4	12.6 - 34.2	1,600	57.0	43.8 - 70.3	2,800
Upcountry/ Hana	200	9.5	2.3 - 16.7	200	9.7	1.0 - 18.4	500	20.8	9.6 - 32.0	1,500	60.0	45.9 - 74.1	2,400
Waipahu/ Kapolei/ Ewa	600	5.7	0.8 - 10.5	1,200	11.3	3.9 - 18.6	2,500	23.2	14.1 - 32.4	6,400	59.8	48.4 - 71.3	10,700

Diabetes - times visit doc by State, County, Island, Community, BRFSS Age Group, DOH Race-Ethnicity, Gender, Education Level, Employment Status (Grouped), Household Income, Poverty Level, Marital Status (Grouped), Married, Health Care Coverage, for the Year(s) - 2000-2002, 2001-2003, 2002-2004, 2003-2005, 2004-2006, 2005-2007, 2006-2008, 2007-2009, 2008-2010

Note: Weighted numbers (#) represent 3-yr averages, percentages and 95% confidence intervals; Respondents aged 18 years and older; n/r (Not Reportable) - If the unweighted total responses for a dimension (row) is <50 that row will not be shown; n/a (Not Available) - Not asked of a subset of respondents

Year: 2007-2009

BRFSS Age Group	None			1 time			2 to 3 times			4 or more times			Estimated Population (3-Yr Avg)
	#	%	C.I. (95%)	#	%	C.I. (95%)	#	%	C.I. (95%)	#	%	C.I. (95%)	#
35-44	500	6.9	0.7 - 13.0	1,800	24.6	11.2 - 38.0	1,900	25.9	15.1 - 36.8	3,200	42.6	28.9 - 56.2	7,400
45-54	800	5.6	2.2 - 9.1	1,300	9.2	4.6 - 13.7	3,500	24.3	17.5 - 31.1	8,800	60.9	52.8 - 69.0	14,400
55-64	1,000	5.0	2.4 - 7.6	1,900	10.0	6.4 - 13.6	5,200	26.9	21.1 - 32.8	11,200	58.0	51.6 - 64.5	19,300
65-74	1,100	6.4	3.3 - 9.6	1,400	8.5	4.3 - 12.7	4,600	28.0	21.9 - 34.1	9,300	57.0	50.2 - 63.9	16,300
75+	800	4.6	1.8 - 7.4	1,300	7.8	4.1 - 11.5	4,500	27.4	20.8 - 33.9	9,800	60.2	53.0 - 67.5	16,300

Diabetes - times visit doc by State, County, Island, Community, BRFSS Age Group, DOH Race-Ethnicity, Gender, Education Level, Employment Status (Grouped), Household Income, Poverty Level, Marital Status (Grouped), Married, Health Care Coverage, for the Year(s) - 2000-2002, 2001-2003, 2002-2004, 2003-2005, 2004-2006, 2005-2007, 2006-2008, 2007-2009, 2008-2010

Note: Weighted numbers (#) represent 3-yr averages, percentages and 95% confidence intervals; Respondents aged 18 years and older; n/r (Not Reportable) - If the unweighted total responses for a dimension (row) is <50 that row will not be shown; n/a (Not Available) - Not asked of a subset of respondents

Year: 2007-2009

DOH Race-Ethnicity	None			1 time			2 to 3 times			4 or more times			Estimated Population (3-Yr Avg)
	#	%	C.I. (95%)	#	%	C.I. (95%)	#	%	C.I. (95%)	#	%	C.I. (95%)	#
Caucasian	1,400	9.7	5.5 - 13.8	1,400	9.7	5.9 - 13.6	3,800	26.1	20.7 - 31.5	8,000	54.5	47.8 - 61.2	14,700
Native Hawaiian	1,100	7.2	3.2 - 11.2	2,200	14.7	9.1 - 20.3	2,900	19.7	13.6 - 25.8	8,600	58.4	50.3 - 66.4	14,800
Chinese	300	5.0	0.0 - 10.8	100	1.1	0.0 - 3.3	2,100	35.4	22.8 - 47.9	3,400	58.5	45.8 - 71.2	5,800
Filipino	300	2.0	0.5 - 3.5	1,900	13.2	7.0 - 19.4	3,300	23.2	16.3 - 30.0	8,700	61.7	53.0 - 70.4	14,100
Japanese	1,100	5.2	2.3 - 8.2	2,200	10.2	5.2 - 15.1	6,400	29.3	23.5 - 35.2	12,100	55.3	48.5 - 62.0	21,900

Gender	None			1 time			2 to 3 times			4 or more times			Estimated Population (3-Yr Avg)
	#	%	C.I. (95%)	#	%	C.I. (95%)	#	%	C.I. (95%)	#	%	C.I. (95%)	#
Male	2,200	5.8	3.5 - 8.0	4,400	11.7	7.9 - 15.5	10,300	27.5	23.0 - 32.0	20,600	55.0	49.7 - 60.3	37,500
Female	2,400	6.0	3.9 - 8.2	3,900	9.8	7.1 - 12.5	10,000	24.9	21.0 - 28.9	23,700	59.2	54.6 - 63.8	40,000

Diabetes - times visit doc by State, County, Island, Community, BRFSS Age Group, DOH Race-Ethnicity, Gender, Education Level, Employment Status (Grouped), Household Income, Poverty Level, Marital Status (Grouped), Married, Health Care Coverage, for the Year(s) - 2000-2002, 2001-2003, 2002-2004, 2003-2005, 2004-2006, 2005-2007, 2006-2008, 2007-2009, 2008-2010

Note: Weighted numbers (#) represent 3-yr averages, percentages and 95% confidence intervals; Respondents aged 18 years and older; n/r (Not Reportable) - If the unweighted total responses for a dimension (row) is <50 that row will not be shown; n/a (Not Available) - Not asked of a subset of respondents

Year: 2007-2009

Education Level	None			1 time			2 to 3 times			4 or more times			Estimated Population (3-Yr Avg)
	#	%	C.I. (95%)	#	%	C.I. (95%)	#	%	C.I. (95%)	#	%	C.I. (95%)	#
Never attended school/ Only Kindergarten to Grades 8	300	12.6	0.0 - 26.8	100	3.9	0.0 - 9.1	700	30.1	13.8 - 46.5	1,300	53.3	35.3 - 71.4	2,400
Grades 9 thru 11 (Some High School)	200	4.1	0.0 - 9.1	400	8.8	1.8 - 15.7	1,000	23.9	8.3 - 39.5	2,600	63.3	47.7 - 78.8	4,000
Grades 12 or GED (High School Grad)	1,300	4.9	2.8 - 7.0	2,700	10.2	6.6 - 13.8	6,900	26.6	21.1 - 32.2	15,200	58.3	52.0 - 64.6	26,100
College 1 to 3 years (Some College/ Tech)	1,400	5.9	2.7 - 9.1	2,900	12.3	7.2 - 17.4	6,100	26.1	20.9 - 31.2	13,100	55.8	49.2 - 62.4	23,500
College 4 years or more (College Grad)	1,500	6.8	3.8 - 9.8	2,300	10.7	6.6 - 14.8	5,500	25.8	20.7 - 31.0	12,100	56.7	50.6 - 62.7	21,400

Employment Status (Grouped)	None			1 time			2 to 3 times			4 or more times			Estimated Population (3-Yr Avg)
	#	%	C.I. (95%)	#	%	C.I. (95%)	#	%	C.I. (95%)	#	%	C.I. (95%)	#
Employed	1,900	5.6	3.4 - 7.8	4,200	12.1	8.1 - 16.1	9,700	28.0	23.2 - 32.7	18,800	54.3	48.7 - 59.9	34,700
Retired/Unable to work	1,900	5.2	3.2 - 7.1	3,400	9.2	6.3 - 12.1	9,300	25.5	21.4 - 29.5	22,000	60.2	55.5 - 64.8	36,600
Student/Homemaker	200	6.5	0.5 - 12.4	400	14.2	4.0 - 24.4	600	23.9	9.8 - 38.1	1,500	55.4	39.7 - 71.1	2,700

Diabetes - times visit doc by State, County, Island, Community, BRFSS Age Group, DOH Race-Ethnicity, Gender, Education Level, Employment Status (Grouped), Household Income, Poverty Level, Marital Status (Grouped), Married, Health Care Coverage, for the Year(s) - 2000-2002, 2001-2003, 2002-2004, 2003-2005, 2004-2006, 2005-2007, 2006-2008, 2007-2009, 2008-2010

Note: Weighted numbers (#) represent 3-yr averages, percentages and 95% confidence intervals; Respondents aged 18 years and older; n/r (Not Reportable) - If the unweighted total responses for a dimension (row) is <50 that row will not be shown; n/a (Not Available) - Not asked of a subset of respondents

Year: 2007-2009

Household Income	None			1 time			2 to 3 times			4 or more times			Estimated Population (3-Yr Avg)
	#	%	C.I. (95%)	#	%	C.I. (95%)	#	%	C.I. (95%)	#	%	C.I. (95%)	#
Less than \$10,000	400	14.5	0.5 - 28.5	100	2.0	0.0 - 5.0	300	10.9	4.0 - 17.7	2,000	72.7	57.7 - 87.7	2,800
\$10,000 to \$14,999	200	5.7	1.1 - 10.4	200	5.8	1.6 - 10.1	1,000	29.7	16.2 - 43.1	2,000	58.8	45.2 - 72.3	3,400
\$15,000 to \$19,999	400	6.9	0.3 - 13.4	800	15.4	4.6 - 26.2	800	14.7	7.5 - 22.0	3,400	63.0	50.0 - 76.0	5,500
\$20,000 to \$24,999	500	8.5	3.0 - 14.1	800	12.9	5.3 - 20.6	1,400	22.5	13.0 - 32.0	3,500	56.0	44.3 - 67.7	6,300
\$25,000 to \$34,999	500	5.3	1.3 - 9.3	1,600	17.1	9.9 - 24.2	1,900	20.0	13.0 - 27.0	5,500	57.7	48.4 - 66.9	9,500
\$35,000 to \$49,999	500	4.2	1.0 - 7.4	500	3.9	1.4 - 6.5	4,300	33.5	25.6 - 41.4	7,400	58.4	50.2 - 66.6	12,700
\$50,000 to \$74,999	600	4.8	1.8 - 7.8	1,500	11.5	5.7 - 17.4	3,800	29.9	22.1 - 37.7	6,800	53.8	45.2 - 62.4	12,700
\$75,000 or more	1,100	6.3	2.6 - 10.0	2,500	14.1	7.9 - 20.2	4,700	26.7	20.5 - 33.0	9,300	52.9	45.2 - 60.5	17,600

Diabetes - times visit doc by State, County, Island, Community, BRFSS Age Group, DOH Race-Ethnicity, Gender, Education Level, Employment Status (Grouped), Household Income, Poverty Level, Marital Status (Grouped), Married, Health Care Coverage, for the Year(s) - 2000-2002, 2001-2003, 2002-2004, 2003-2005, 2004-2006, 2005-2007, 2006-2008, 2007-2009, 2008-2010

Note: Weighted numbers (#) represent 3-yr averages, percentages and 95% confidence intervals; Respondents aged 18 years and older; n/r (Not Reportable) - If the unweighted total responses for a dimension (row) is <50 that row will not be shown; n/a (Not Available) - Not asked of a subset of respondents

Year: 2007-2009

Poverty Level	None			1 time			2 to 3 times			4 or more times			Estimated Population (3-Yr Avg)
	#	%	C.I. (95%)	#	%	C.I. (95%)	#	%	C.I. (95%)	#	%	C.I. (95%)	#
0-130%	1,300	7.2	3.4 - 11.0	1,900	10.8	6.1 - 15.5	3,100	17.2	11.5 - 22.9	11,700	64.8	57.4 - 72.2	18,100
131-185%	600	5.7	1.8 - 9.6	900	8.9	4.1 - 13.7	3,200	31.3	23.1 - 39.6	5,600	54.0	45.1 - 63.0	10,400
186+%	2,400	5.6	3.7 - 7.6	5,100	12.1	8.7 - 15.5	11,900	28.2	24.2 - 32.1	22,800	54.1	49.6 - 58.6	42,100

Marital Status (Grouped)	None			1 time			2 to 3 times			4 or more times			Estimated Population (3-Yr Avg)
	#	%	C.I. (95%)	#	%	C.I. (95%)	#	%	C.I. (95%)	#	%	C.I. (95%)	#
Married	2,200	4.5	2.8 - 6.3	5,500	11.7	8.4 - 14.9	12,200	25.8	21.8 - 29.7	27,500	58.0	53.4 - 62.6	47,300
Widowed	400	4.3	1.5 - 7.2	700	7.1	3.4 - 10.9	3,200	32.5	24.8 - 40.2	5,500	56.0	47.6 - 64.4	9,800
Other	2,000	10.2	6.0 - 14.5	1,800	9.3	5.4 - 13.3	4,600	23.8	18.1 - 29.4	11,000	56.7	49.6 - 63.8	19,500

Diabetes - times visit doc by State, County, Island, Community, BRFSS Age Group, DOH Race-Ethnicity, Gender, Education Level, Employment Status (Grouped), Household Income, Poverty Level, Marital Status (Grouped), Married, Health Care Coverage, for the Year(s) - 2000-2002, 2001-2003, 2002-2004, 2003-2005, 2004-2006, 2005-2007, 2006-2008, 2007-2009, 2008-2010

Note: Weighted numbers (#) represent 3-yr averages, percentages and 95% confidence intervals; Respondents aged 18 years and older; n/r (Not Reportable) - If the unweighted total responses for a dimension (row) is <50 that row will not be shown; n/a (Not Available) - Not asked of a subset of respondents

Year: 2007-2009

Married	None			1 time			2 to 3 times			4 or more times			Estimated Population (3-Yr Avg)
	#	%	C.I. (95%)	#	%	C.I. (95%)	#	%	C.I. (95%)	#	%	C.I. (95%)	#
Yes	2,200	4.6	2.9 - 6.2	5,900	12.0	8.7 - 15.2	12,500	25.6	21.7 - 29.5	28,300	57.8	53.3 - 62.4	49,000
No	2,300	8.3	5.2 - 11.3	2,400	8.5	5.7 - 11.3	7,600	26.9	22.4 - 31.5	15,900	56.3	50.9 - 61.6	28,300

Health Care Coverage	None			1 time			2 to 3 times			4 or more times			Estimated Population (3-Yr Avg)
	#	%	C.I. (95%)	#	%	C.I. (95%)	#	%	C.I. (95%)	#	%	C.I. (95%)	#
Yes	2,800	5.7	3.9 - 7.6	4,400	9.0	6.7 - 11.2	13,200	26.6	23.2 - 30.0	29,100	58.7	54.9 - 62.6	49,500

Diabetes - times visit doc by State, County, Island, Community, BRFSS Age Group, DOH Race-Ethnicity, Gender, Education Level, Employment Status (Grouped), Household Income, Poverty Level, Marital Status (Grouped), Married, Health Care Coverage, for the Year(s) - 2000-2002, 2001-2003, 2002-2004, 2003-2005, 2004-2006, 2005-2007, 2006-2008, 2007-2009, 2008-2010

Note: Weighted numbers (#) represent 3-yr averages, percentages and 95% confidence intervals; Respondents aged 18 years and older; n/r (Not Reportable) - If the unweighted total responses for a dimension (row) is <50 that row will not be shown; n/a (Not Available) - Not asked of a subset of respondents

Year: 2006-2008

State	None			1 time			2 to 3 times			4 or more times			Estimated Population (3-Yr Avg)
	#	%	C.I. (95%)	#	%	C.I. (95%)	#	%	C.I. (95%)	#	%	C.I. (95%)	#
Hawaii State	4,700	6.1	4.6 - 7.6	8,400	10.9	8.7 - 13.1	20,700	26.9	24.2 - 29.7	43,000	56.0	52.8 - 59.2	76,800

County	None			1 time			2 to 3 times			4 or more times			Estimated Population (3-Yr Avg)
	#	%	C.I. (95%)	#	%	C.I. (95%)	#	%	C.I. (95%)	#	%	C.I. (95%)	#
Hawaii	1,000	10.9	5.7 - 16.1	900	9.8	6.0 - 13.6	2,700	30.1	24.5 - 35.7	4,400	49.2	43.0 - 55.4	9,000
Honolulu	2,800	5.0	3.3 - 6.8	6,200	11.1	8.2 - 13.9	14,200	25.3	21.8 - 28.8	32,800	58.6	54.5 - 62.6	56,000
Kauai	300	8.2	4.2 - 12.2	300	6.8	2.7 - 10.8	1,500	39.1	30.6 - 47.5	1,800	46.0	37.6 - 54.4	3,900
Maui	600	7.5	3.7 - 11.4	1,000	13.1	8.7 - 17.6	2,300	28.8	22.3 - 35.2	4,000	50.6	43.4 - 57.7	7,900

Diabetes - times visit doc by State, County, Island, Community, BRFSS Age Group, DOH Race-Ethnicity, Gender, Education Level, Employment Status (Grouped), Household Income, Poverty Level, Marital Status (Grouped), Married, Health Care Coverage, for the Year(s) - 2000-2002, 2001-2003, 2002-2004, 2003-2005, 2004-2006, 2005-2007, 2006-2008, 2007-2009, 2008-2010

Note: Weighted numbers (#) represent 3-yr averages, percentages and 95% confidence intervals; Respondents aged 18 years and older; n/r (Not Reportable) - If the unweighted total responses for a dimension (row) is <50 that row will not be shown; n/a (Not Available) - Not asked of a subset of respondents

Year: 2006-2008

Island	None			1 time			2 to 3 times			4 or more times			Estimated Population (3-Yr Avg)
	#	%	C.I. (95%)	#	%	C.I. (95%)	#	%	C.I. (95%)	#	%	C.I. (95%)	#
Hawaii	1,000	10.9	5.7 - 16.1	900	9.8	6.0 - 13.6	2,700	30.1	24.5 - 35.7	4,400	49.2	43.0 - 55.4	9,000
Kauai	300	8.2	4.2 - 12.2	300	6.8	2.7 - 10.8	1,500	39.1	30.6 - 47.5	1,800	46.0	37.6 - 54.4	3,900
Lanai	<50	4.1	0.0 - 8.1	<50	15.6	6.1 - 25.1	100	30.4	17.1 - 43.7	100	50.0	35.7 - 64.2	200
Maui	500	7.4	3.2 - 11.6	1,000	13.6	8.7 - 18.6	2,000	28.7	21.6 - 35.8	3,600	50.3	42.4 - 58.2	7,100
Molokai	100	10.1	2.6 - 17.6	<50	6.8	0.5 - 13.0	200	29.4	17.6 - 41.2	300	53.8	40.6 - 67.0	600
Oahu	2,800	5.0	3.3 - 6.8	6,200	11.1	8.2 - 13.9	14,200	25.3	21.8 - 28.8	32,800	58.6	54.5 - 62.6	56,000

Community	None			1 time			2 to 3 times			4 or more times			Estimated Population (3-Yr Avg)
	#	%	C.I. (95%)	#	%	C.I. (95%)	#	%	C.I. (95%)	#	%	C.I. (95%)	#
Aiea/ Pearl City	100	1.3	0.0 - 3.2	300	6.1	0.2 - 12.0	1,500	28.4	16.7 - 40.1	3,500	64.2	51.8 - 76.5	5,400
Ala Moana	300	11.3	1.6 - 20.9	200	8.2	1.9 - 14.6	500	15.9	6.4 - 25.4	1,900	64.6	51.1 - 78.2	3,000

Diabetes - times visit doc by State, County, Island, Community, BRFSS Age Group, DOH Race-Ethnicity, Gender, Education Level, Employment Status (Grouped), Household Income, Poverty Level, Marital Status (Grouped), Married, Health Care Coverage, for the Year(s) - 2000-2002, 2001-2003, 2002-2004, 2003-2005, 2004-2006, 2005-2007, 2006-2008, 2007-2009, 2008-2010

Note: Weighted numbers (#) represent 3-yr averages, percentages and 95% confidence intervals; Respondents aged 18 years and older; n/r (Not Reportable) - If the unweighted total responses for a dimension (row) is <50 that row will not be shown; n/a (Not Available) - Not asked of a subset of respondents

Year: 2006-2008

Community	None			1 time			2 to 3 times			4 or more times			Estimated Population (3-Yr Avg)
	#	%	C.I. (95%)	#	%	C.I. (95%)	#	%	C.I. (95%)	#	%	C.I. (95%)	#
Hanalei/ Kapaa	100	6.8	0.7 - 13.0	100	6.8	0.0 - 14.3	500	32.9	18.3 - 47.5	700	53.5	38.7 - 68.3	1,400
Hilo	100	5.0	0.7 - 9.2	300	9.9	2.0 - 17.9	800	25.1	16.3 - 34.0	1,800	60.0	49.7 - 70.3	3,000
Kaaawa/ Kahaluu/ Kaneohe	700	18.9	4.7 - 33.1	400	10.3	0.0 - 21.6	800	23.0	10.8 - 35.1	1,700	47.9	32.5 - 63.2	3,600
Kahului	100	4.8	0.3 - 9.2	400	17.0	8.5 - 25.4	900	35.6	22.9 - 48.3	1,000	42.7	29.8 - 55.6	2,500
Kailua/ Waimanalo	200	3.9	0.0 - 8.1	200	5.6	0.0 - 11.6	1,200	28.3	15.5 - 41.1	2,600	62.2	48.7 - 75.7	4,200
Kaimuki/ Palolo/ Waikiki	100	1.6	0.0 - 3.8	400	8.3	1.9 - 14.7	700	15.4	4.9 - 25.9	3,200	74.7	62.9 - 86.5	4,200
Kona	200	12.2	3.2 - 21.1	100	9.4	2.8 - 16.0	500	33.5	20.3 - 46.7	700	45.0	31.2 - 58.7	1,600
Lahaina/ Wailuku	100	4.5	0.0 - 10.2	300	13.4	4.4 - 22.4	700	25.7	13.3 - 38.0	1,400	56.5	42.7 - 70.2	2,600
Lanai	<50	4.1	0.0 - 8.1	<50	15.6	6.1 - 25.1	100	30.4	17.1 - 43.7	100	50.0	35.7 - 64.2	200
Lihue-Waimea	200	8.9	3.8 - 14.1	200	6.7	2.0 - 11.5	1,100	42.5	32.2 - 52.8	1,000	41.8	31.7 - 51.9	2,500
Manoa/ Upper Makiki	100	3.4	0.0 - 8.4	300	8.4	0.9 - 15.9	800	23.0	10.1 - 36.0	2,300	65.1	51.0 - 79.1	3,500
Mililani/ Wahiawa	400	7.2	0.3 - 14.0	700	11.2	1.8 - 20.5	1,500	25.7	15.4 - 36.0	3,300	56.0	43.1 - 68.8	5,900

Diabetes - times visit doc by State, County, Island, Community, BRFSS Age Group, DOH Race-Ethnicity, Gender, Education Level, Employment Status (Grouped), Household Income, Poverty Level, Marital Status (Grouped), Married, Health Care Coverage, for the Year(s) - 2000-2002, 2001-2003, 2002-2004, 2003-2005, 2004-2006, 2005-2007, 2006-2008, 2007-2009, 2008-2010

Note: Weighted numbers (#) represent 3-yr averages, percentages and 95% confidence intervals; Respondents aged 18 years and older; n/r (Not Reportable) - If the unweighted total responses for a dimension (row) is <50 that row will not be shown; n/a (Not Available) - Not asked of a subset of respondents

Year: 2006-2008

Community	None			1 time			2 to 3 times			4 or more times			Estimated Population (3-Yr Avg)
	#	%	C.I. (95%)	#	%	C.I. (95%)	#	%	C.I. (95%)	#	%	C.I. (95%)	#
Molokai	100	10.1	2.6 - 17.6	<50	6.8	0.5 - 13.0	200	29.4	17.6 - 41.2	300	53.8	40.6 - 67.0	600
Nanakuli/ Waianae	200	3.5	0.0 - 9.3	800	15.9	5.3 - 26.6	1,200	24.3	12.3 - 36.3	2,800	56.2	42.4 - 70.0	5,000
N.Hawaii	400	17.0	0.0 - 34.2	200	9.7	3.0 - 16.4	800	36.2	23.2 - 49.3	800	37.0	24.2 - 49.8	2,100
Nuuanu/ Kalihi/ Moanalua	100	1.6	0.0 - 3.9	900	18.5	3.5 - 33.4	1,400	27.0	14.0 - 40.0	2,700	52.9	37.7 - 68.2	5,000
Puna/ Kau	300	12.1	4.6 - 19.6	200	9.9	2.8 - 17.1	700	28.7	17.4 - 40.0	1,100	49.3	37.2 - 61.3	2,300
Upcountry/ Hana	300	14.0	3.1 - 25.0	200	10.1	2.2 - 18.0	500	24.3	13.5 - 35.0	1,100	51.6	37.7 - 65.6	2,100
Waipahu/ Kapolei/ Ewa	600	5.1	1.0 - 9.2	1,400	13.2	5.9 - 20.4	3,000	27.5	19.1 - 35.8	5,900	54.3	44.5 - 64.1	10,800

Diabetes - times visit doc by State, County, Island, Community, BRFSS Age Group, DOH Race-Ethnicity, Gender, Education Level, Employment Status (Grouped), Household Income, Poverty Level, Marital Status (Grouped), Married, Health Care Coverage, for the Year(s) - 2000-2002, 2001-2003, 2002-2004, 2003-2005, 2004-2006, 2005-2007, 2006-2008, 2007-2009, 2008-2010

Note: Weighted numbers (#) represent 3-yr averages, percentages and 95% confidence intervals; Respondents aged 18 years and older; n/r (Not Reportable) - If the unweighted total responses for a dimension (row) is <50 that row will not be shown; n/a (Not Available) - Not asked of a subset of respondents

Year: 2006-2008

BRFSS Age Group	None			1 time			2 to 3 times			4 or more times			Estimated Population (3-Yr Avg)
	#	%	C.I. (95%)	#	%	C.I. (95%)	#	%	C.I. (95%)	#	%	C.I. (95%)	#
35-44	700	10.3	3.0 - 17.6	900	14.5	5.9 - 23.2	2,000	30.6	19.4 - 41.9	2,900	44.5	31.9 - 57.1	6,500
45-54	900	5.6	2.7 - 8.5	1,500	9.7	5.2 - 14.3	3,800	24.9	18.9 - 30.9	9,200	59.8	52.7 - 66.9	15,500
55-64	800	3.8	2.0 - 5.6	2,800	13.4	8.3 - 18.6	5,900	28.6	23.0 - 34.2	11,200	54.2	47.9 - 60.5	20,700
65-74	1,000	6.0	3.0 - 9.0	1,400	8.7	5.5 - 11.9	4,100	26.0	20.5 - 31.4	9,400	59.3	53.2 - 65.4	15,900
75+	800	5.4	2.5 - 8.4	1,100	7.5	4.0 - 10.9	4,100	27.8	21.9 - 33.7	8,700	59.3	52.7 - 65.9	14,800

Diabetes - times visit doc by State, County, Island, Community, BRFSS Age Group, DOH Race-Ethnicity, Gender, Education Level, Employment Status (Grouped), Household Income, Poverty Level, Marital Status (Grouped), Married, Health Care Coverage, for the Year(s) - 2000-2002, 2001-2003, 2002-2004, 2003-2005, 2004-2006, 2005-2007, 2006-2008, 2007-2009, 2008-2010

Note: Weighted numbers (#) represent 3-yr averages, percentages and 95% confidence intervals; Respondents aged 18 years and older; n/r (Not Reportable) - If the unweighted total responses for a dimension (row) is <50 that row will not be shown; n/a (Not Available) - Not asked of a subset of respondents

Year: 2006-2008

DOH Race-Ethnicity	None			1 time			2 to 3 times			4 or more times			Estimated Population (3-Yr Avg)
	#	%	C.I. (95%)	#	%	C.I. (95%)	#	%	C.I. (95%)	#	%	C.I. (95%)	#
Caucasian	1,500	9.2	5.5 - 12.9	1,500	9.4	6.3 - 12.4	4,500	28.7	23.4 - 33.9	8,400	52.8	46.8 - 58.7	15,800
Native Hawaiian	1,200	8.2	4.1 - 12.4	2,100	14.7	9.2 - 20.2	3,700	25.9	19.4 - 32.4	7,300	51.2	43.7 - 58.7	14,200
Chinese	200	3.9	0.0 - 9.6	100	1.8	0.0 - 4.5	1,600	29.4	17.5 - 41.2	3,600	64.9	52.7 - 77.2	5,500
Filipino	300	1.9	0.6 - 3.3	2,200	14.6	7.6 - 21.5	3,600	24.6	18.0 - 31.2	8,700	58.9	50.6 - 67.2	14,800
Japanese	800	4.3	1.9 - 6.7	1,600	8.4	5.2 - 11.5	5,400	28.0	22.7 - 33.3	11,500	59.3	53.6 - 65.1	19,400

Gender	None			1 time			2 to 3 times			4 or more times			Estimated Population (3-Yr Avg)
	#	%	C.I. (95%)	#	%	C.I. (95%)	#	%	C.I. (95%)	#	%	C.I. (95%)	#
Male	1,900	5.0	3.1 - 6.9	3,900	10.4	7.2 - 13.7	11,300	30.1	25.8 - 34.4	20,300	54.4	49.6 - 59.2	37,400
Female	2,800	7.2	4.9 - 9.5	4,500	11.4	8.5 - 14.3	9,400	23.9	20.4 - 27.4	22,700	57.5	53.3 - 61.7	39,400

Diabetes - times visit doc by State, County, Island, Community, BRFSS Age Group, DOH Race-Ethnicity, Gender, Education Level, Employment Status (Grouped), Household Income, Poverty Level, Marital Status (Grouped), Married, Health Care Coverage, for the Year(s) - 2000-2002, 2001-2003, 2002-2004, 2003-2005, 2004-2006, 2005-2007, 2006-2008, 2007-2009, 2008-2010

Note: Weighted numbers (#) represent 3-yr averages, percentages and 95% confidence intervals; Respondents aged 18 years and older; n/r (Not Reportable) - If the unweighted total responses for a dimension (row) is <50 that row will not be shown; n/a (Not Available) - Not asked of a subset of respondents

Year: 2006-2008

Education Level	None			1 time			2 to 3 times			4 or more times			Estimated Population (3-Yr Avg)
	#	%	C.I. (95%)	#	%	C.I. (95%)	#	%	C.I. (95%)	#	%	C.I. (95%)	#
Never attended school/ Only Kindergarten to Grades 8	400	13.6	1.1 - 26.0	400	13.6	3.3 - 24.0	500	17.2	6.5 - 27.8	1,600	55.7	40.5 - 70.8	2,800
Grades 9 thru 11 (Some High School)	200	4.1	0.0 - 9.2	300	6.9	2.4 - 11.5	600	16.3	7.0 - 25.6	2,900	72.6	61.7 - 83.6	4,000
Grades 12 or GED (High School Grad)	1,200	4.6	2.5 - 6.6	3,200	12.3	7.7 - 16.9	6,900	26.9	21.8 - 32.0	14,400	56.2	50.4 - 62.0	25,700
College 1 to 3 years (Some College/ Tech)	1,900	7.8	4.5 - 11.1	2,400	10.0	6.4 - 13.7	6,600	27.6	22.5 - 32.6	13,000	54.6	48.8 - 60.5	23,800
College 4 years or more (College Grad)	1,100	5.6	3.1 - 8.0	2,200	10.6	7.2 - 14.0	6,100	29.7	24.5 - 34.9	11,100	54.1	48.5 - 59.8	20,500

Employment Status (Grouped)	None			1 time			2 to 3 times			4 or more times			Estimated Population (3-Yr Avg)
	#	%	C.I. (95%)	#	%	C.I. (95%)	#	%	C.I. (95%)	#	%	C.I. (95%)	#
Employed	1,600	5.0	3.2 - 6.7	4,000	12.2	8.4 - 15.9	9,900	29.7	25.2 - 34.3	17,600	53.1	48.0 - 58.2	33,100
Retired/Unable to work	2,000	5.2	3.3 - 7.0	3,800	10.0	7.2 - 12.7	9,900	26.2	22.5 - 29.9	22,200	58.7	54.5 - 62.9	37,800
Student/Homemaker	400	14.6	3.1 - 26.1	300	9.4	1.5 - 17.3	500	15.5	5.1 - 25.9	1,800	60.5	45.5 - 75.5	2,900

Diabetes - times visit doc by State, County, Island, Community, BRFSS Age Group, DOH Race-Ethnicity, Gender, Education Level, Employment Status (Grouped), Household Income, Poverty Level, Marital Status (Grouped), Married, Health Care Coverage, for the Year(s) - 2000-2002, 2001-2003, 2002-2004, 2003-2005, 2004-2006, 2005-2007, 2006-2008, 2007-2009, 2008-2010

Note: Weighted numbers (#) represent 3-yr averages, percentages and 95% confidence intervals; Respondents aged 18 years and older; n/r (Not Reportable) - If the unweighted total responses for a dimension (row) is <50 that row will not be shown; n/a (Not Available) - Not asked of a subset of respondents

Year: 2006-2008

Household Income	None			1 time			2 to 3 times			4 or more times			Estimated Population (3-Yr Avg)
	#	%	C.I. (95%)	#	%	C.I. (95%)	#	%	C.I. (95%)	#	%	C.I. (95%)	#
Less than \$10,000	700	24.6	9.0 - 40.2	200	6.8	0.0 - 14.4	300	10.9	3.9 - 17.9	1,600	57.7	42.8 - 72.6	2,700
\$10,000 to \$14,999	300	8.1	1.8 - 14.4	200	5.4	1.8 - 8.9	900	25.0	12.7 - 37.3	2,300	61.5	48.8 - 74.3	3,700
\$15,000 to \$19,999	400	9.0	1.3 - 16.7	300	7.3	2.4 - 12.3	800	16.7	10.2 - 23.2	3,000	67.0	56.8 - 77.1	4,500
\$20,000 to \$24,999	300	5.0	1.7 - 8.3	700	10.3	4.3 - 16.4	1,900	29.7	19.8 - 39.6	3,500	55.0	44.6 - 65.3	6,400
\$25,000 to \$34,999	600	6.1	2.0 - 10.2	1,800	18.2	10.9 - 25.5	1,700	17.0	11.3 - 22.7	5,800	58.7	49.8 - 67.6	9,900
\$35,000 to \$49,999	400	3.1	1.1 - 5.0	1,100	7.7	1.9 - 13.5	4,500	33.0	25.4 - 40.7	7,700	56.2	48.1 - 64.3	13,600
\$50,000 to \$74,999	600	4.4	1.6 - 7.2	1,600	12.2	6.6 - 17.8	3,600	27.6	21.0 - 34.1	7,300	55.8	48.2 - 63.5	13,100
\$75,000 or more	900	5.9	2.3 - 9.5	1,400	9.7	5.8 - 13.6	5,100	34.7	28.0 - 41.5	7,400	49.7	42.6 - 56.7	14,800

Diabetes - times visit doc by State, County, Island, Community, BRFSS Age Group, DOH Race-Ethnicity, Gender, Education Level, Employment Status (Grouped), Household Income, Poverty Level, Marital Status (Grouped), Married, Health Care Coverage, for the Year(s) - 2000-2002, 2001-2003, 2002-2004, 2003-2005, 2004-2006, 2005-2007, 2006-2008, 2007-2009, 2008-2010

Note: Weighted numbers (#) represent 3-yr averages, percentages and 95% confidence intervals; Respondents aged 18 years and older; n/r (Not Reportable) - If the unweighted total responses for a dimension (row) is <50 that row will not be shown; n/a (Not Available) - Not asked of a subset of respondents

Year: 2006-2008

Poverty Level	None			1 time			2 to 3 times			4 or more times			Estimated Population (3-Yr Avg)
	#	%	C.I. (95%)	#	%	C.I. (95%)	#	%	C.I. (95%)	#	%	C.I. (95%)	#
0-130%	1,700	9.3	5.3 - 13.4	2,400	12.7	7.4 - 18.1	3,500	19.2	13.3 - 25.0	10,900	58.8	51.6 - 66.0	18,500
131-185%	300	3.3	1.1 - 5.5	400	4.8	1.5 - 8.1	2,900	32.0	23.3 - 40.7	5,500	59.8	50.6 - 69.0	9,100
186+%	2,100	5.2	3.4 - 6.9	4,500	10.9	8.2 - 13.5	12,400	30.0	26.3 - 33.6	22,300	54.0	50.0 - 58.0	41,200

Marital Status (Grouped)	None			1 time			2 to 3 times			4 or more times			Estimated Population (3-Yr Avg)
	#	%	C.I. (95%)	#	%	C.I. (95%)	#	%	C.I. (95%)	#	%	C.I. (95%)	#
Married	2,100	4.4	2.8 - 6.1	4,900	10.2	7.4 - 13.0	13,300	27.5	23.9 - 31.2	27,800	57.8	53.6 - 61.9	48,200
Widowed	500	5.4	2.6 - 8.3	1,000	10.4	5.7 - 15.1	2,800	31.0	23.9 - 38.1	4,900	53.1	45.6 - 60.7	9,200
Other	2,100	11.0	6.8 - 15.1	2,400	12.7	8.0 - 17.3	4,400	23.5	18.6 - 28.5	9,900	52.8	46.6 - 59.1	18,700

Diabetes - times visit doc by State, County, Island, Community, BRFSS Age Group, DOH Race-Ethnicity, Gender, Education Level, Employment Status (Grouped), Household Income, Poverty Level, Marital Status (Grouped), Married, Health Care Coverage, for the Year(s) - 2000-2002, 2001-2003, 2002-2004, 2003-2005, 2004-2006, 2005-2007, 2006-2008, 2007-2009, 2008-2010

Note: Weighted numbers (#) represent 3-yr averages, percentages and 95% confidence intervals; Respondents aged 18 years and older; n/r (Not Reportable) - If the unweighted total responses for a dimension (row) is <50 that row will not be shown; n/a (Not Available) - Not asked of a subset of respondents

Year: 2006-2008

Married	None			1 time			2 to 3 times			4 or more times			Estimated Population (3-Yr Avg)
	#	%	C.I. (95%)	#	%	C.I. (95%)	#	%	C.I. (95%)	#	%	C.I. (95%)	#
Yes	2,300	4.6	3.0 - 6.2	5,400	11.0	8.1 - 13.9	13,400	27.2	23.6 - 30.9	28,200	57.2	53.1 - 61.3	49,300
No	2,500	8.9	5.9 - 11.9	3,000	10.8	7.6 - 14.0	7,200	26.4	22.2 - 30.5	14,800	53.9	49.0 - 58.7	27,400

Health Care Coverage	None			1 time			2 to 3 times			4 or more times			Estimated Population (3-Yr Avg)
	#	%	C.I. (95%)	#	%	C.I. (95%)	#	%	C.I. (95%)	#	%	C.I. (95%)	#
Yes	3,800	5.2	3.8 - 6.6	7,800	10.6	8.4 - 12.7	20,000	27.2	24.3 - 30.0	42,000	57.1	53.9 - 60.3	73,600
No	900	28.4	13.3 - 43.6	600	18.6	3.2 - 33.9	700	21.7	9.4 - 34.1	1,000	31.3	14.8 - 47.7	3,200

Diabetes - times visit doc by State, County, Island, Community, BRFSS Age Group, DOH Race-Ethnicity, Gender, Education Level, Employment Status (Grouped), Household Income, Poverty Level, Marital Status (Grouped), Married, Health Care Coverage, for the Year(s) - 2000-2002, 2001-2003, 2002-2004, 2003-2005, 2004-2006, 2005-2007, 2006-2008, 2007-2009, 2008-2010

Note: Weighted numbers (#) represent 3-yr averages, percentages and 95% confidence intervals; Respondents aged 18 years and older; n/r (Not Reportable) - If the unweighted total responses for a dimension (row) is <50 that row will not be shown; n/a (Not Available) - Not asked of a subset of respondents

Year: 2005-2007

State	None			1 time			2 to 3 times			4 or more times			Estimated Population (3-Yr Avg)
	#	%	C.I. (95%)	#	%	C.I. (95%)	#	%	C.I. (95%)	#	%	C.I. (95%)	#
Hawaii State	5,100	6.6	4.6 - 8.5	8,000	10.4	8.0 - 12.7	20,300	26.5	23.1 - 29.9	43,500	56.6	52.6 - 60.5	76,900

County	None			1 time			2 to 3 times			4 or more times			Estimated Population (3-Yr Avg)
	#	%	C.I. (95%)	#	%	C.I. (95%)	#	%	C.I. (95%)	#	%	C.I. (95%)	#
Hawaii	800	8.0	4.6 - 11.3	1,000	10.2	6.2 - 14.2	3,000	31.1	24.6 - 37.6	4,800	50.7	43.9 - 57.6	9,500
Honolulu	3,400	6.1	3.6 - 8.6	5,600	10.0	7.0 - 13.0	13,800	24.5	20.2 - 28.8	33,700	59.5	54.4 - 64.6	56,600
Kauai	300	7.5	2.9 - 12.1	400	9.6	1.8 - 17.4	1,300	34.0	24.2 - 43.7	1,900	49.0	38.6 - 59.3	3,900
Maui	600	8.3	3.5 - 13.0	1,000	14.5	9.3 - 19.8	2,200	32.4	24.8 - 40.0	3,100	44.8	37.0 - 52.7	6,900

Diabetes - times visit doc by State, County, Island, Community, BRFSS Age Group, DOH Race-Ethnicity, Gender, Education Level, Employment Status (Grouped), Household Income, Poverty Level, Marital Status (Grouped), Married, Health Care Coverage, for the Year(s) - 2000-2002, 2001-2003, 2002-2004, 2003-2005, 2004-2006, 2005-2007, 2006-2008, 2007-2009, 2008-2010

Note: Weighted numbers (#) represent 3-yr averages, percentages and 95% confidence intervals; Respondents aged 18 years and older; n/r (Not Reportable) - If the unweighted total responses for a dimension (row) is <50 that row will not be shown; n/a (Not Available) - Not asked of a subset of respondents

Year: 2005-2007

Island	None			1 time			2 to 3 times			4 or more times			Estimated Population (3-Yr Avg)
	#	%	C.I. (95%)	#	%	C.I. (95%)	#	%	C.I. (95%)	#	%	C.I. (95%)	#
Hawaii	800	8.0	4.6 - 11.3	1,000	10.2	6.2 - 14.2	3,000	31.1	24.6 - 37.6	4,800	50.7	43.9 - 57.6	9,500
Kauai	300	7.5	2.9 - 12.1	400	9.6	1.8 - 17.4	1,300	34.0	24.2 - 43.7	1,900	49.0	38.6 - 59.3	3,900
Lanai	<50	6.8	0.0 - 14.9	<50	20.9	3.1 - 38.7	100	30.4	12.9 - 48.0	100	41.9	24.4 - 59.3	200
Maui	500	8.2	2.9 - 13.5	900	14.8	9.0 - 20.6	2,000	32.7	24.3 - 41.1	2,700	44.3	35.7 - 52.9	6,100
Molokai	100	9.3	1.6 - 17.0	100	9.7	1.0 - 18.5	200	29.6	16.0 - 43.3	300	51.3	35.8 - 66.9	600
Oahu	3,400	6.1	3.6 - 8.6	5,600	10.0	7.0 - 13.0	13,800	24.5	20.2 - 28.8	33,700	59.5	54.4 - 64.6	56,600

Community	None			1 time			2 to 3 times			4 or more times			Estimated Population (3-Yr Avg)
	#	%	C.I. (95%)	#	%	C.I. (95%)	#	%	C.I. (95%)	#	%	C.I. (95%)	#
Aiea/ Pearl City	0	0.0	--	400	8.2	0.0 - 16.3	1,200	23.5	9.5 - 37.6	3,600	68.3	53.3 - 83.3	5,200
Hilo	200	5.5	0.0 - 11.5	200	7.5	1.8 - 13.1	800	25.7	16.3 - 35.1	2,000	61.3	50.2 - 72.4	3,200

Diabetes - times visit doc by State, County, Island, Community, BRFSS Age Group, DOH Race-Ethnicity, Gender, Education Level, Employment Status (Grouped), Household Income, Poverty Level, Marital Status (Grouped), Married, Health Care Coverage, for the Year(s) - 2000-2002, 2001-2003, 2002-2004, 2003-2005, 2004-2006, 2005-2007, 2006-2008, 2007-2009, 2008-2010

Note: Weighted numbers (#) represent 3-yr averages, percentages and 95% confidence intervals; Respondents aged 18 years and older; n/r (Not Reportable) - If the unweighted total responses for a dimension (row) is <50 that row will not be shown; n/a (Not Available) - Not asked of a subset of respondents

Year: 2005-2007

Community	None			1 time			2 to 3 times			4 or more times			Estimated Population (3-Yr Avg)
	#	%	C.I. (95%)	#	%	C.I. (95%)	#	%	C.I. (95%)	#	%	C.I. (95%)	#
Kahului	100	4.6	0.0 - 9.8	400	19.1	8.8 - 29.4	700	36.7	23.1 - 50.2	800	39.7	25.5 - 53.8	1,900
Kailua/ Waimanalo	<50	0.3	0.0 - 0.8	300	8.2	0.0 - 17.4	1,200	30.5	12.4 - 48.5	2,500	61.1	43.1 - 79.1	4,100
Kona	200	9.2	1.0 - 17.4	300	16.3	3.4 - 29.1	400	23.6	11.3 - 35.8	900	51.0	35.4 - 66.5	1,700
Lahaina/ Wailuku	100	4.4	0.0 - 11.3	400	19.2	6.4 - 32.0	600	28.7	14.3 - 43.2	900	47.7	32.3 - 63.1	1,900
Lanai	<50	6.8	0.0 - 14.9	<50	20.9	3.1 - 38.7	100	30.4	12.9 - 48.0	100	41.9	24.4 - 59.3	200
Lihue-Waimea	200	7.4	1.9 - 12.8	100	4.7	0.3 - 9.1	900	37.5	25.5 - 49.6	1,300	50.4	38.0 - 62.8	2,500
Mililani/ Wahiawa	600	11.8	1.3 - 22.3	500	9.6	0.7 - 18.6	1,400	24.6	12.2 - 37.0	3,000	53.9	38.6 - 69.2	5,500
Molokai	100	9.3	1.6 - 17.0	100	9.7	1.0 - 18.5	200	29.6	16.0 - 43.3	300	51.3	35.8 - 66.9	600
Nanakuli/ Waianae	600	10.8	0.0 - 22.6	800	15.6	4.3 - 27.0	900	17.6	6.1 - 29.1	3,000	55.9	38.9 - 73.0	5,300
N.Hawaii	200	9.3	2.6 - 16.0	300	13.6	5.0 - 22.2	700	38.2	25.9 - 50.4	800	38.9	26.8 - 51.0	1,900
Nuuanu/ Kalihi/ Moanalua	100	1.7	0.0 - 4.2	600	13.3	0.0 - 28.3	1,400	28.9	14.4 - 43.3	2,700	56.2	39.4 - 72.9	4,800
Puna/ Kau	200	9.2	2.6 - 15.8	200	7.1	0.6 - 13.6	1,000	37.4	21.9 - 53.0	1,200	46.3	31.6 - 61.0	2,600

Diabetes - times visit doc by State, County, Island, Community, BRFSS Age Group, DOH Race-Ethnicity, Gender, Education Level, Employment Status (Grouped), Household Income, Poverty Level, Marital Status (Grouped), Married, Health Care Coverage, for the Year(s) - 2000-2002, 2001-2003, 2002-2004, 2003-2005, 2004-2006, 2005-2007, 2006-2008, 2007-2009, 2008-2010

Note: Weighted numbers (#) represent 3-yr averages, percentages and 95% confidence intervals; Respondents aged 18 years and older; n/r (Not Reportable) - If the unweighted total responses for a dimension (row) is <50 that row will not be shown; n/a (Not Available) - Not asked of a subset of respondents

Year: 2005-2007

Community	None			1 time			2 to 3 times			4 or more times			Estimated Population (3-Yr Avg)
	#	%	C.I. (95%)	#	%	C.I. (95%)	#	%	C.I. (95%)	#	%	C.I. (95%)	#
Upcountry/ Hana	300	14.5	2.5 - 26.6	200	7.3	0.9 - 13.8	700	32.7	17.4 - 48.0	1,000	45.4	30.1 - 60.8	2,300
Waipahu/ Kapolei/ Ewa	300	2.9	0.3 - 5.4	800	8.3	1.8 - 14.9	2,200	22.1	12.0 - 32.3	6,800	66.7	55.0 - 78.4	10,100

BRFSS Age Group	None			1 time			2 to 3 times			4 or more times			Estimated Population (3-Yr Avg)
	#	%	C.I. (95%)	#	%	C.I. (95%)	#	%	C.I. (95%)	#	%	C.I. (95%)	#
35-44	1,000	16.5	3.2 - 29.8	400	6.5	0.6 - 12.3	1,600	24.7	12.8 - 36.6	3,300	52.4	37.5 - 67.2	6,300
45-54	800	4.8	2.0 - 7.5	1,300	8.5	4.4 - 12.6	4,600	28.9	20.7 - 37.1	9,200	57.8	49.2 - 66.5	15,900
55-64	700	3.4	1.5 - 5.2	3,300	16.3	9.9 - 22.7	5,800	28.2	21.2 - 35.3	10,600	52.1	44.1 - 60.0	20,400
65-74	900	5.9	2.6 - 9.1	1,100	7.1	4.1 - 10.1	4,400	28.1	21.5 - 34.7	9,100	58.9	51.9 - 65.9	15,500
75+	900	5.8	2.3 - 9.4	1,400	9.5	4.5 - 14.4	3,500	23.4	16.6 - 30.2	9,200	61.3	52.4 - 70.2	15,000

Diabetes - times visit doc by State, County, Island, Community, BRFSS Age Group, DOH Race-Ethnicity, Gender, Education Level, Employment Status (Grouped), Household Income, Poverty Level, Marital Status (Grouped), Married, Health Care Coverage, for the Year(s) - 2000-2002, 2001-2003, 2002-2004, 2003-2005, 2004-2006, 2005-2007, 2006-2008, 2007-2009, 2008-2010

Note: Weighted numbers (#) represent 3-yr averages, percentages and 95% confidence intervals; Respondents aged 18 years and older; n/r (Not Reportable) - If the unweighted total responses for a dimension (row) is <50 that row will not be shown; n/a (Not Available) - Not asked of a subset of respondents

Year: 2005-2007

DOH Race-Ethnicity	None			1 time			2 to 3 times			4 or more times			Estimated Population (3-Yr Avg)
	#	%	C.I. (95%)	#	%	C.I. (95%)	#	%	C.I. (95%)	#	%	C.I. (95%)	#
Caucasian	1,100	6.5	3.7 - 9.2	2,200	12.8	7.9 - 17.7	4,900	28.5	22.1 - 34.8	8,900	52.2	45.2 - 59.3	17,100
Native Hawaiian	1,100	7.4	3.0 - 11.7	1,200	7.8	3.7 - 11.9	4,400	29.1	21.0 - 37.1	8,500	55.8	46.9 - 64.7	15,300
Chinese	500	8.7	0.3 - 17.0	100	1.9	0.0 - 4.8	1,900	36.1	18.2 - 54.0	2,800	53.3	36.4 - 70.2	5,300
Filipino	300	1.8	0.4 - 3.2	1,500	11.0	4.0 - 18.0	2,900	20.3	13.6 - 27.0	9,400	66.9	57.8 - 76.0	14,100
Japanese	800	4.3	1.5 - 7.2	2,300	13.0	7.8 - 18.2	4,800	27.0	20.8 - 33.3	9,800	55.6	48.3 - 63.0	17,600

Gender	None			1 time			2 to 3 times			4 or more times			Estimated Population (3-Yr Avg)
	#	%	C.I. (95%)	#	%	C.I. (95%)	#	%	C.I. (95%)	#	%	C.I. (95%)	#
Male	1,700	4.3	1.9 - 6.8	4,000	10.3	6.9 - 13.7	11,900	30.3	25.0 - 35.7	21,500	55.1	49.0 - 61.1	39,100
Female	3,400	8.9	5.9 - 11.9	4,000	10.5	7.3 - 13.8	8,500	22.5	18.3 - 26.6	22,000	58.1	53.0 - 63.2	37,800

Diabetes - times visit doc by State, County, Island, Community, BRFSS Age Group, DOH Race-Ethnicity, Gender, Education Level, Employment Status (Grouped), Household Income, Poverty Level, Marital Status (Grouped), Married, Health Care Coverage, for the Year(s) - 2000-2002, 2001-2003, 2002-2004, 2003-2005, 2004-2006, 2005-2007, 2006-2008, 2007-2009, 2008-2010

Note: Weighted numbers (#) represent 3-yr averages, percentages and 95% confidence intervals; Respondents aged 18 years and older; n/r (Not Reportable) - If the unweighted total responses for a dimension (row) is <50 that row will not be shown; n/a (Not Available) - Not asked of a subset of respondents

Year: 2005-2007

Education Level	None			1 time			2 to 3 times			4 or more times			Estimated Population (3-Yr Avg)
	#	%	C.I. (95%)	#	%	C.I. (95%)	#	%	C.I. (95%)	#	%	C.I. (95%)	#
Never attended school/ Only Kindergarten to Grades 8	300	7.3	0.1 - 14.5	500	13.7	2.9 - 24.5	400	9.5	2.1 - 16.9	2,700	69.5	54.2 - 84.8	3,900
Grades 9 thru 11 (Some High School)	<50	0.8	0.0 - 2.1	500	9.9	1.3 - 18.5	1,300	27.5	11.3 - 43.6	2,900	61.9	45.6 - 78.1	4,600
Grades 12 or GED (High School Grad)	1,600	5.8	2.2 - 9.4	3,100	10.8	6.3 - 15.4	7,200	25.2	19.4 - 31.0	16,500	58.2	51.1 - 65.3	28,400
College 1 to 3 years (Some College/ Tech)	2,100	9.7	5.5 - 13.8	1,700	8.2	4.2 - 12.2	5,700	26.8	21.0 - 32.6	11,800	55.3	48.6 - 62.1	21,300
College 4 years or more (College Grad)	1,100	5.6	2.8 - 8.4	2,200	11.6	7.5 - 15.7	5,900	31.3	24.2 - 38.4	9,600	51.5	43.6 - 59.4	18,700

Employment Status (Grouped)	None			1 time			2 to 3 times			4 or more times			Estimated Population (3-Yr Avg)
	#	%	C.I. (95%)	#	%	C.I. (95%)	#	%	C.I. (95%)	#	%	C.I. (95%)	#
Employed	1,700	4.8	2.5 - 7.1	3,600	10.6	6.8 - 14.4	9,400	27.4	22.0 - 32.8	19,600	57.2	51.0 - 63.3	34,200
Retired/Unable to work	2,600	7.0	4.0 - 9.9	3,700	9.8	6.8 - 12.7	9,700	25.5	20.9 - 30.0	21,900	57.8	52.3 - 63.2	38,000
Student/Homemaker	500	15.5	1.1 - 29.8	500	16.4	0.0 - 33.5	800	28.1	9.3 - 46.9	1,200	40.1	22.5 - 57.8	3,000

Diabetes - times visit doc by State, County, Island, Community, BRFSS Age Group, DOH Race-Ethnicity, Gender, Education Level, Employment Status (Grouped), Household Income, Poverty Level, Marital Status (Grouped), Married, Health Care Coverage, for the Year(s) - 2000-2002, 2001-2003, 2002-2004, 2003-2005, 2004-2006, 2005-2007, 2006-2008, 2007-2009, 2008-2010

Note: Weighted numbers (#) represent 3-yr averages, percentages and 95% confidence intervals; Respondents aged 18 years and older; n/r (Not Reportable) - If the unweighted total responses for a dimension (row) is <50 that row will not be shown; n/a (Not Available) - Not asked of a subset of respondents

Year: 2005-2007

Household Income	None			1 time			2 to 3 times			4 or more times			Estimated Population (3-Yr Avg)
	#	%	C.I. (95%)	#	%	C.I. (95%)	#	%	C.I. (95%)	#	%	C.I. (95%)	#
Less than \$10,000	400	12.9	2.3 - 23.5	400	13.7	2.8 - 24.6	400	14.2	4.9 - 23.5	1,600	59.2	44.9 - 73.5	2,800
\$10,000 to \$14,999	300	5.7	0.7 - 10.8	300	5.4	0.9 - 9.9	1,400	29.8	12.9 - 46.6	2,800	59.1	42.3 - 75.9	4,800
\$15,000 to \$19,999	400	6.8	0.5 - 13.1	300	5.2	1.2 - 9.2	1,500	26.8	11.2 - 42.5	3,400	61.2	45.0 - 77.4	5,500
\$20,000 to \$24,999	300	4.3	0.2 - 8.4	500	7.6	2.1 - 13.1	1,700	26.3	16.0 - 36.5	4,100	61.9	50.5 - 73.2	6,600
\$25,000 to \$34,999	800	8.1	1.5 - 14.7	1,200	12.2	5.5 - 19.0	1,800	18.4	10.3 - 26.5	5,900	61.2	50.2 - 72.2	9,600
\$35,000 to \$49,999	400	3.1	0.9 - 5.3	1,600	12.9	4.8 - 21.0	3,500	28.6	20.4 - 36.8	6,800	55.4	46.1 - 64.7	12,200
\$50,000 to \$74,999	900	7.2	2.3 - 12.1	1,600	13.3	6.6 - 20.0	3,000	25.5	17.7 - 33.2	6,400	54.0	44.8 - 63.2	11,900
\$75,000 or more	700	6.0	2.3 - 9.7	1,000	8.1	4.0 - 12.1	5,000	40.1	31.0 - 49.2	5,700	45.8	36.3 - 55.3	12,400

Diabetes - times visit doc by State, County, Island, Community, BRFSS Age Group, DOH Race-Ethnicity, Gender, Education Level, Employment Status (Grouped), Household Income, Poverty Level, Marital Status (Grouped), Married, Health Care Coverage, for the Year(s) - 2000-2002, 2001-2003, 2002-2004, 2003-2005, 2004-2006, 2005-2007, 2006-2008, 2007-2009, 2008-2010

Note: Weighted numbers (#) represent 3-yr averages, percentages and 95% confidence intervals; Respondents aged 18 years and older; n/r (Not Reportable) - If the unweighted total responses for a dimension (row) is <50 that row will not be shown; n/a (Not Available) - Not asked of a subset of respondents

Year: 2005-2007

Poverty Level	None			1 time			2 to 3 times			4 or more times			Estimated Population (3-Yr Avg)
	#	%	C.I. (95%)	#	%	C.I. (95%)	#	%	C.I. (95%)	#	%	C.I. (95%)	#
0-130%	1,400	7.0	3.3 - 10.7	2,100	10.7	5.6 - 15.7	4,600	23.2	15.6 - 30.8	11,700	59.2	50.8 - 67.6	19,800
131-185%	500	6.0	1.0 - 11.0	300	3.7	0.7 - 6.6	2,600	28.7	18.8 - 38.5	5,500	61.7	50.8 - 72.5	8,900
186+%	2,100	5.8	3.6 - 7.9	4,300	11.6	8.2 - 15.1	11,100	30.1	25.6 - 34.6	19,400	52.5	47.5 - 57.5	37,000

Marital Status (Grouped)	None			1 time			2 to 3 times			4 or more times			Estimated Population (3-Yr Avg)
	#	%	C.I. (95%)	#	%	C.I. (95%)	#	%	C.I. (95%)	#	%	C.I. (95%)	#
Married	1,900	4.0	2.3 - 5.6	5,300	10.8	7.5 - 14.1	14,300	29.3	24.6 - 34.0	27,200	55.9	50.7 - 61.1	48,600
Widowed	600	6.4	2.5 - 10.3	700	7.6	3.3 - 11.8	2,500	28.2	20.3 - 36.0	5,200	57.8	49.1 - 66.6	9,000
Other	2,300	12.8	6.8 - 18.9	1,900	10.6	6.5 - 14.8	3,300	18.1	13.0 - 23.2	10,700	58.4	50.5 - 66.3	18,300

Diabetes - times visit doc by State, County, Island, Community, BRFSS Age Group, DOH Race-Ethnicity, Gender, Education Level, Employment Status (Grouped), Household Income, Poverty Level, Marital Status (Grouped), Married, Health Care Coverage, for the Year(s) - 2000-2002, 2001-2003, 2002-2004, 2003-2005, 2004-2006, 2005-2007, 2006-2008, 2007-2009, 2008-2010

Note: Weighted numbers (#) represent 3-yr averages, percentages and 95% confidence intervals; Respondents aged 18 years and older; n/r (Not Reportable) - If the unweighted total responses for a dimension (row) is <50 that row will not be shown; n/a (Not Available) - Not asked of a subset of respondents

Year: 2005-2007

Married	None			1 time			2 to 3 times			4 or more times			Estimated Population (3-Yr Avg)
	#	%	C.I. (95%)	#	%	C.I. (95%)	#	%	C.I. (95%)	#	%	C.I. (95%)	#
Yes	2,100	4.3	2.6 - 6.0	5,500	11.2	7.9 - 14.4	14,300	28.9	24.3 - 33.5	27,600	55.6	50.5 - 60.8	49,500
No	2,900	10.7	6.3 - 15.1	2,400	9.0	6.0 - 12.0	6,000	22.2	17.7 - 26.7	15,800	58.1	52.0 - 64.2	27,300

Health Care Coverage	None			1 time			2 to 3 times			4 or more times			Estimated Population (3-Yr Avg)
	#	%	C.I. (95%)	#	%	C.I. (95%)	#	%	C.I. (95%)	#	%	C.I. (95%)	#
Yes	2,000	4.2	2.7 - 5.6	5,400	11.4	8.5 - 14.2	13,700	28.7	25.1 - 32.3	26,700	55.7	51.7 - 59.7	47,800

Diabetes - times visit doc by State, County, Island, Community, BRFSS Age Group, DOH Race-Ethnicity, Gender, Education Level, Employment Status (Grouped), Household Income, Poverty Level, Marital Status (Grouped), Married, Health Care Coverage, for the Year(s) - 2000-2002, 2001-2003, 2002-2004, 2003-2005, 2004-2006, 2005-2007, 2006-2008, 2007-2009, 2008-2010

Note: Weighted numbers (#) represent 3-yr averages, percentages and 95% confidence intervals; Respondents aged 18 years and older; n/r (Not Reportable) - If the unweighted total responses for a dimension (row) is <50 that row will not be shown; n/a (Not Available) - Not asked of a subset of respondents

Year: 2004-2006

State	None			1 time			2 to 3 times			4 or more times			Estimated Population (3-Yr Avg)
	#	%	C.I. (95%)	#	%	C.I. (95%)	#	%	C.I. (95%)	#	%	C.I. (95%)	#
Hawaii State	4,700	6.5	4.4 - 8.6	6,800	9.4	6.9 - 11.9	19,700	27.3	22.9 - 31.8	41,000	56.8	51.8 - 61.8	72,200

County	None			1 time			2 to 3 times			4 or more times			Estimated Population (3-Yr Avg)
	#	%	C.I. (95%)	#	%	C.I. (95%)	#	%	C.I. (95%)	#	%	C.I. (95%)	#
Hawaii	600	6.9	3.5 - 10.2	1,100	11.5	6.5 - 16.6	2,800	30.9	23.2 - 38.5	4,600	50.8	42.6 - 58.9	9,200
Honolulu	3,100	5.8	3.2 - 8.3	4,300	7.9	4.9 - 11.0	14,200	26.4	20.7 - 32.1	32,100	59.9	53.5 - 66.2	53,700
Kauai	400	10.1	3.9 - 16.4	500	12.4	3.2 - 21.6	1,200	31.8	20.8 - 42.8	1,700	45.7	34.2 - 57.2	3,700
Maui	600	10.7	4.3 - 17.2	1,000	17.6	10.0 - 25.3	1,500	27.4	18.2 - 36.6	2,500	44.2	33.1 - 55.4	5,600

Diabetes - times visit doc by State, County, Island, Community, BRFSS Age Group, DOH Race-Ethnicity, Gender, Education Level, Employment Status (Grouped), Household Income, Poverty Level, Marital Status (Grouped), Married, Health Care Coverage, for the Year(s) - 2000-2002, 2001-2003, 2002-2004, 2003-2005, 2004-2006, 2005-2007, 2006-2008, 2007-2009, 2008-2010

Note: Weighted numbers (#) represent 3-yr averages, percentages and 95% confidence intervals; Respondents aged 18 years and older; n/r (Not Reportable) - If the unweighted total responses for a dimension (row) is <50 that row will not be shown; n/a (Not Available) - Not asked of a subset of respondents

Year: 2004-2006

Island	None			1 time			2 to 3 times			4 or more times			Estimated Population (3-Yr Avg)
	#	%	C.I. (95%)	#	%	C.I. (95%)	#	%	C.I. (95%)	#	%	C.I. (95%)	#
Hawaii	600	6.9	3.5 - 10.2	1,100	11.5	6.5 - 16.6	2,800	30.9	23.2 - 38.5	4,600	50.8	42.6 - 58.9	9,200
Kauai	400	10.1	3.9 - 16.4	500	12.4	3.2 - 21.6	1,200	31.8	20.8 - 42.8	1,700	45.7	34.2 - 57.2	3,700
Maui	500	11.0	3.9 - 18.2	900	18.5	9.9 - 27.0	1,400	28.0	17.7 - 38.3	2,100	42.5	30.0 - 54.9	4,900
Oahu	3,100	5.8	3.2 - 8.3	4,300	7.9	4.9 - 11.0	14,200	26.4	20.7 - 32.1	32,100	59.9	53.5 - 66.2	53,700

Diabetes - times visit doc by State, County, Island, Community, BRFSS Age Group, DOH Race-Ethnicity, Gender, Education Level, Employment Status (Grouped), Household Income, Poverty Level, Marital Status (Grouped), Married, Health Care Coverage, for the Year(s) - 2000-2002, 2001-2003, 2002-2004, 2003-2005, 2004-2006, 2005-2007, 2006-2008, 2007-2009, 2008-2010

Note: Weighted numbers (#) represent 3-yr averages, percentages and 95% confidence intervals; Respondents aged 18 years and older; n/r (Not Reportable) - If the unweighted total responses for a dimension (row) is <50 that row will not be shown; n/a (Not Available) - Not asked of a subset of respondents

Year: 2004-2006

Community	None			1 time			2 to 3 times			4 or more times			Estimated Population (3-Yr Avg)
	#	%	C.I. (95%)	#	%	C.I. (95%)	#	%	C.I. (95%)	#	%	C.I. (95%)	#
Hilo	100	5.2	0.0 - 12.1	200	8.4	1.6 - 15.3	600	22.3	11.9 - 32.6	1,700	64.1	51.2 - 76.9	2,600
Lihue-Waimea	300	12.3	4.0 - 20.6	200	9.2	0.7 - 17.6	900	35.9	22.3 - 49.6	1,100	42.6	29.0 - 56.2	2,600
N.Hawaii	100	7.1	0.7 - 13.6	300	19.3	4.7 - 34.0	700	39.6	23.4 - 55.7	600	34.0	19.2 - 48.7	1,800
Puna/ Kau	200	7.5	1.7 - 13.3	200	5.9	0.3 - 11.4	1,100	35.3	19.4 - 51.1	1,600	51.3	35.3 - 67.3	3,100
Waipahu/ Kapolei/ Ewa	300	3.2	0.0 - 6.7	500	5.5	0.0 - 11.5	2,800	28.9	12.3 - 45.5	6,000	62.4	45.4 - 79.4	9,500

Diabetes - times visit doc by State, County, Island, Community, BRFSS Age Group, DOH Race-Ethnicity, Gender, Education Level, Employment Status (Grouped), Household Income, Poverty Level, Marital Status (Grouped), Married, Health Care Coverage, for the Year(s) - 2000-2002, 2001-2003, 2002-2004, 2003-2005, 2004-2006, 2005-2007, 2006-2008, 2007-2009, 2008-2010

Note: Weighted numbers (#) represent 3-yr averages, percentages and 95% confidence intervals; Respondents aged 18 years and older; n/r (Not Reportable) - If the unweighted total responses for a dimension (row) is <50 that row will not be shown; n/a (Not Available) - Not asked of a subset of respondents

Year: 2004-2006

BRFSS Age Group	None			1 time			2 to 3 times			4 or more times			Estimated Population (3-Yr Avg)
	#	%	C.I. (95%)	#	%	C.I. (95%)	#	%	C.I. (95%)	#	%	C.I. (95%)	#
35-44	900	11.0	0.3 - 21.6	400	4.9	0.0 - 9.9	2,200	25.2	8.3 - 42.1	5,000	58.9	40.0 - 77.8	8,500
45-54	600	3.9	1.7 - 6.1	1,100	7.4	3.2 - 11.5	3,700	24.7	15.7 - 33.8	9,700	63.9	54.0 - 73.9	15,200
55-64	900	4.8	2.1 - 7.5	2,900	15.3	8.5 - 22.1	5,700	30.1	21.7 - 38.6	9,500	49.8	40.5 - 59.0	19,100
65-74	700	5.8	1.8 - 9.7	700	5.4	2.4 - 8.5	3,600	28.0	19.0 - 36.9	7,800	60.8	51.5 - 70.1	12,900
75+	800	5.9	1.8 - 9.9	1,300	9.8	3.8 - 15.7	3,800	29.5	18.4 - 40.5	7,000	54.9	42.5 - 67.3	12,800

Diabetes - times visit doc by State, County, Island, Community, BRFSS Age Group, DOH Race-Ethnicity, Gender, Education Level, Employment Status (Grouped), Household Income, Poverty Level, Marital Status (Grouped), Married, Health Care Coverage, for the Year(s) - 2000-2002, 2001-2003, 2002-2004, 2003-2005, 2004-2006, 2005-2007, 2006-2008, 2007-2009, 2008-2010

Note: Weighted numbers (#) represent 3-yr averages, percentages and 95% confidence intervals; Respondents aged 18 years and older; n/r (Not Reportable) - If the unweighted total responses for a dimension (row) is <50 that row will not be shown; n/a (Not Available) - Not asked of a subset of respondents

Year: 2004-2006

DOH Race-Ethnicity	None			1 time			2 to 3 times			4 or more times			Estimated Population (3-Yr Avg)
	#	%	C.I. (95%)	#	%	C.I. (95%)	#	%	C.I. (95%)	#	%	C.I. (95%)	#
Caucasian	1,400	8.5	4.5 - 12.4	1,900	11.8	6.6 - 17.0	5,200	31.9	22.3 - 41.4	7,900	47.9	38.6 - 57.1	16,400
Native Hawaiian	700	4.5	0.9 - 8.1	1,100	7.0	2.8 - 11.2	4,200	27.1	16.9 - 37.4	9,500	61.4	50.1 - 72.6	15,500
Filipino	200	1.5	0.3 - 2.8	1,300	9.5	2.4 - 16.5	3,100	22.3	13.0 - 31.7	9,100	66.6	55.6 - 77.7	13,700
Japanese	900	6.4	2.5 - 10.3	1,700	11.6	5.6 - 17.7	4,400	30.1	21.6 - 38.6	7,600	51.8	42.5 - 61.1	14,600

Gender	None			1 time			2 to 3 times			4 or more times			Estimated Population (3-Yr Avg)
	#	%	C.I. (95%)	#	%	C.I. (95%)	#	%	C.I. (95%)	#	%	C.I. (95%)	#
Male	1,800	4.7	2.0 - 7.4	3,400	9.0	5.5 - 12.4	12,500	32.5	25.6 - 39.4	20,600	53.8	46.5 - 61.1	38,400
Female	2,900	8.5	5.4 - 11.7	3,300	9.8	6.2 - 13.5	7,300	21.5	16.3 - 26.7	20,300	60.1	53.6 - 66.7	33,800

Diabetes - times visit doc by State, County, Island, Community, BRFSS Age Group, DOH Race-Ethnicity, Gender, Education Level, Employment Status (Grouped), Household Income, Poverty Level, Marital Status (Grouped), Married, Health Care Coverage, for the Year(s) - 2000-2002, 2001-2003, 2002-2004, 2003-2005, 2004-2006, 2005-2007, 2006-2008, 2007-2009, 2008-2010

Note: Weighted numbers (#) represent 3-yr averages, percentages and 95% confidence intervals; Respondents aged 18 years and older; n/r (Not Reportable) - If the unweighted total responses for a dimension (row) is <50 that row will not be shown; n/a (Not Available) - Not asked of a subset of respondents

Year: 2004-2006

Education Level	None			1 time			2 to 3 times			4 or more times			Estimated Population (3-Yr Avg)
	#	%	C.I. (95%)	#	%	C.I. (95%)	#	%	C.I. (95%)	#	%	C.I. (95%)	#
Grades 9 thru 11 (Some High School)	100	2.8	0.0 - 6.2	500	12.1	1.6 - 22.7	900	23.9	5.2 - 42.6	2,300	61.2	42.6 - 79.8	3,800
Grades 12 or GED (High School Grad)	1,500	5.2	1.5 - 8.8	2,600	9.1	4.6 - 13.7	7,200	25.3	17.4 - 33.3	17,000	60.3	51.4 - 69.2	28,300
College 1 to 3 years (Some College/ Tech)	2,200	11.1	6.2 - 15.9	1,500	7.6	3.3 - 12.0	5,900	30.3	22.2 - 38.3	10,000	51.0	42.3 - 59.8	19,600
College 4 years or more (College Grad)	700	4.2	2.0 - 6.4	1,700	10.1	5.8 - 14.4	5,400	31.3	22.9 - 39.7	9,400	54.4	45.1 - 63.8	17,300

Employment Status (Grouped)	None			1 time			2 to 3 times			4 or more times			Estimated Population (3-Yr Avg)
	#	%	C.I. (95%)	#	%	C.I. (95%)	#	%	C.I. (95%)	#	%	C.I. (95%)	#
Employed	1,600	4.9	2.4 - 7.4	3,200	9.8	5.9 - 13.7	9,300	28.3	21.3 - 35.3	18,800	57.0	49.4 - 64.6	33,000
Retired/Unable to work	2,500	7.2	3.9 - 10.6	2,900	8.6	5.4 - 11.7	9,100	26.8	20.7 - 33.0	19,400	57.4	50.3 - 64.4	33,900

Diabetes - times visit doc by State, County, Island, Community, BRFSS Age Group, DOH Race-Ethnicity, Gender, Education Level, Employment Status (Grouped), Household Income, Poverty Level, Marital Status (Grouped), Married, Health Care Coverage, for the Year(s) - 2000-2002, 2001-2003, 2002-2004, 2003-2005, 2004-2006, 2005-2007, 2006-2008, 2007-2009, 2008-2010

Note: Weighted numbers (#) represent 3-yr averages, percentages and 95% confidence intervals; Respondents aged 18 years and older; n/r (Not Reportable) - If the unweighted total responses for a dimension (row) is <50 that row will not be shown; n/a (Not Available) - Not asked of a subset of respondents

Year: 2004-2006

Household Income	None			1 time			2 to 3 times			4 or more times			Estimated Population (3-Yr Avg)
	#	%	C.I. (95%)	#	%	C.I. (95%)	#	%	C.I. (95%)	#	%	C.I. (95%)	#
\$10,000 to \$14,999	400	10.4	1.1 - 19.7	200	4.7	0.0 - 9.9	1,000	28.0	6.8 - 49.3	2,100	56.9	35.8 - 78.1	3,600
\$15,000 to \$19,999	200	3.0	0.2 - 5.8	300	4.5	0.0 - 9.2	1,400	21.1	6.0 - 36.1	4,700	71.4	55.1 - 87.7	6,600
\$20,000 to \$24,999	200	3.4	0.0 - 7.7	200	3.8	0.6 - 7.0	2,300	38.6	22.3 - 54.8	3,300	54.2	37.8 - 70.7	6,100
\$25,000 to \$34,999	1,000	10.6	2.6 - 18.6	800	9.0	2.3 - 15.7	1,700	18.3	8.8 - 27.8	5,700	62.0	48.4 - 75.7	9,100
\$35,000 to \$49,999	300	3.2	0.6 - 5.7	1,500	14.8	5.2 - 24.4	2,300	21.8	13.0 - 30.6	6,300	60.3	48.8 - 71.8	10,400
\$50,000 to \$74,999	1,000	7.8	2.8 - 12.8	1,600	12.6	6.1 - 19.1	4,000	30.7	20.0 - 41.3	6,300	48.9	38.2 - 59.7	12,900
\$75,000 or more	400	3.5	0.9 - 6.2	500	4.2	1.2 - 7.3	5,200	44.7	31.4 - 58.0	5,600	47.6	34.3 - 60.9	11,700

Diabetes - times visit doc by State, County, Island, Community, BRFSS Age Group, DOH Race-Ethnicity, Gender, Education Level, Employment Status (Grouped), Household Income, Poverty Level, Marital Status (Grouped), Married, Health Care Coverage, for the Year(s) - 2000-2002, 2001-2003, 2002-2004, 2003-2005, 2004-2006, 2005-2007, 2006-2008, 2007-2009, 2008-2010

Note: Weighted numbers (#) represent 3-yr averages, percentages and 95% confidence intervals; Respondents aged 18 years and older; n/r (Not Reportable) - If the unweighted total responses for a dimension (row) is <50 that row will not be shown; n/a (Not Available) - Not asked of a subset of respondents

Year: 2004-2006

Poverty Level	None			1 time			2 to 3 times			4 or more times			Estimated Population (3-Yr Avg)
	#	%	C.I. (95%)	#	%	C.I. (95%)	#	%	C.I. (95%)	#	%	C.I. (95%)	#
0-130%	1,300	7.0	3.0 - 11.0	1,800	9.8	4.4 - 15.3	3,800	20.3	11.7 - 28.9	11,600	62.9	52.5 - 73.3	18,500
131-185%	600	7.9	1.8 - 13.9	100	1.5	0.0 - 3.2	2,400	31.8	18.7 - 45.0	4,500	58.8	45.0 - 72.6	7,700
186+%	2,000	5.3	3.1 - 7.6	3,600	10.0	6.5 - 13.4	12,000	32.9	26.5 - 39.3	18,900	51.8	45.2 - 58.4	36,500

Marital Status (Grouped)	None			1 time			2 to 3 times			4 or more times			Estimated Population (3-Yr Avg)
	#	%	C.I. (95%)	#	%	C.I. (95%)	#	%	C.I. (95%)	#	%	C.I. (95%)	#
Married	2,100	4.5	2.5 - 6.4	4,300	9.2	5.9 - 12.5	14,500	30.9	24.9 - 36.9	26,000	55.5	49.0 - 62.0	46,900
Widowed	600	7.5	2.8 - 12.3	600	7.2	1.8 - 12.7	1,600	20.9	12.0 - 29.7	4,900	64.3	53.4 - 75.2	7,700
Other	1,800	10.9	4.7 - 17.2	1,900	11.3	6.5 - 16.1	3,500	20.5	12.9 - 28.1	9,600	57.3	47.4 - 67.2	16,800

Diabetes - times visit doc by State, County, Island, Community, BRFSS Age Group, DOH Race-Ethnicity, Gender, Education Level, Employment Status (Grouped), Household Income, Poverty Level, Marital Status (Grouped), Married, Health Care Coverage, for the Year(s) - 2000-2002, 2001-2003, 2002-2004, 2003-2005, 2004-2006, 2005-2007, 2006-2008, 2007-2009, 2008-2010

Note: Weighted numbers (#) represent 3-yr averages, percentages and 95% confidence intervals; Respondents aged 18 years and older; n/r (Not Reportable) - If the unweighted total responses for a dimension (row) is <50 that row will not be shown; n/a (Not Available) - Not asked of a subset of respondents

Year: 2004-2006

Married	None			1 time			2 to 3 times			4 or more times			Estimated Population (3-Yr Avg)
	#	%	C.I. (95%)	#	%	C.I. (95%)	#	%	C.I. (95%)	#	%	C.I. (95%)	#
Yes	2,200	4.7	2.7 - 6.6	4,500	9.5	6.2 - 12.8	14,500	30.5	24.6 - 36.4	26,400	55.3	48.9 - 61.7	47,700
No	2,400	10.0	5.4 - 14.7	2,200	9.2	5.6 - 12.7	5,200	21.3	15.3 - 27.3	14,500	59.5	51.9 - 67.2	24,400

Health Care Coverage	None			1 time			2 to 3 times			4 or more times			Estimated Population (3-Yr Avg)
	#	%	C.I. (95%)	#	%	C.I. (95%)	#	%	C.I. (95%)	#	%	C.I. (95%)	#
Yes	2,000	4.7	2.8 - 6.5	4,300	10.0	6.9 - 13.2	13,100	30.3	24.5 - 36.1	23,800	55.0	48.8 - 61.3	43,300

Diabetes - times visit doc by State, County, Island, Community, BRFSS Age Group, DOH Race-Ethnicity, Gender, Education Level, Employment Status (Grouped), Household Income, Poverty Level, Marital Status (Grouped), Married, Health Care Coverage, for the Year(s) - 2000-2002, 2001-2003, 2002-2004, 2003-2005, 2004-2006, 2005-2007, 2006-2008, 2007-2009, 2008-2010

Note: Weighted numbers (#) represent 3-yr averages, percentages and 95% confidence intervals; Respondents aged 18 years and older; n/r (Not Reportable) - If the unweighted total responses for a dimension (row) is <50 that row will not be shown; n/a (Not Available) - Not asked of a subset of respondents

Year: 2003-2005

State	None			1 time			2 to 3 times			4 or more times			Estimated Population (3-Yr Avg)
	#	%	C.I. (95%)	#	%	C.I. (95%)	#	%	C.I. (95%)	#	%	C.I. (95%)	#
Hawaii State	4,700	6.8	4.5 - 9.1	5,400	7.8	5.3 - 10.2	18,500	26.7	21.9 - 31.5	40,600	58.7	53.4 - 64.1	69,200

County	None			1 time			2 to 3 times			4 or more times			Estimated Population (3-Yr Avg)
	#	%	C.I. (95%)	#	%	C.I. (95%)	#	%	C.I. (95%)	#	%	C.I. (95%)	#
Hawaii	500	5.8	2.5 - 9.2	1,300	14.0	6.2 - 21.9	2,300	25.8	17.8 - 33.8	5,000	54.4	45.2 - 63.5	9,100
Honolulu	3,300	6.2	3.4 - 9.1	3,100	5.9	3.2 - 8.6	14,400	27.4	21.3 - 33.4	31,900	60.6	53.9 - 67.2	52,600
Kauai	400	14.0	4.7 - 23.3	300	9.9	0.0 - 20.7	900	29.0	16.0 - 42.0	1,400	47.0	32.9 - 61.2	3,000
Maui	500	10.2	2.9 - 17.6	700	15.9	7.0 - 24.7	900	19.7	9.4 - 30.1	2,400	54.2	41.1 - 67.3	4,500

Diabetes - times visit doc by State, County, Island, Community, BRFSS Age Group, DOH Race-Ethnicity, Gender, Education Level, Employment Status (Grouped), Household Income, Poverty Level, Marital Status (Grouped), Married, Health Care Coverage, for the Year(s) - 2000-2002, 2001-2003, 2002-2004, 2003-2005, 2004-2006, 2005-2007, 2006-2008, 2007-2009, 2008-2010

Note: Weighted numbers (#) represent 3-yr averages, percentages and 95% confidence intervals; Respondents aged 18 years and older; n/r (Not Reportable) - If the unweighted total responses for a dimension (row) is <50 that row will not be shown; n/a (Not Available) - Not asked of a subset of respondents

Year: 2003-2005

Island	None			1 time			2 to 3 times			4 or more times			Estimated Population (3-Yr Avg)
	#	%	C.I. (95%)	#	%	C.I. (95%)	#	%	C.I. (95%)	#	%	C.I. (95%)	#
Hawaii	500	5.8	2.5 - 9.2	1,300	14.0	6.2 - 21.9	2,300	25.8	17.8 - 33.8	5,000	54.4	45.2 - 63.5	9,100
Kauai	400	14.0	4.7 - 23.3	300	9.9	0.0 - 20.7	900	29.0	16.0 - 42.0	1,400	47.0	32.9 - 61.2	3,000
Maui	400	11.0	2.5 - 19.5	600	16.6	6.4 - 26.9	800	20.5	8.5 - 32.6	2,000	51.8	36.6 - 67.1	3,800
Oahu	3,300	6.2	3.4 - 9.1	3,100	5.9	3.2 - 8.6	14,400	27.4	21.3 - 33.4	31,900	60.6	53.9 - 67.2	52,600

Community	None			1 time			2 to 3 times			4 or more times			Estimated Population (3-Yr Avg)
	#	%	C.I. (95%)	#	%	C.I. (95%)	#	%	C.I. (95%)	#	%	C.I. (95%)	#
Hilo	100	4.9	0.0 - 12.8	100	3.7	0.0 - 9.1	300	14.2	4.9 - 23.5	1,700	77.1	64.6 - 89.7	2,200
Puna/ Kau	200	6.3	0.9 - 11.7	200	5.0	0.1 - 9.8	1,200	38.3	21.9 - 54.8	1,500	50.4	34.0 - 66.9	3,100

Diabetes - times visit doc by State, County, Island, Community, BRFSS Age Group, DOH Race-Ethnicity, Gender, Education Level, Employment Status (Grouped), Household Income, Poverty Level, Marital Status (Grouped), Married, Health Care Coverage, for the Year(s) - 2000-2002, 2001-2003, 2002-2004, 2003-2005, 2004-2006, 2005-2007, 2006-2008, 2007-2009, 2008-2010

Note: Weighted numbers (#) represent 3-yr averages, percentages and 95% confidence intervals; Respondents aged 18 years and older; n/r (Not Reportable) - If the unweighted total responses for a dimension (row) is <50 that row will not be shown; n/a (Not Available) - Not asked of a subset of respondents

Year: 2003-2005

BRFSS Age Group	None			1 time			2 to 3 times			4 or more times			Estimated Population (3-Yr Avg)
	#	%	C.I. (95%)	#	%	C.I. (95%)	#	%	C.I. (95%)	#	%	C.I. (95%)	#
35-44	700	8.3	0.0 - 18.2	600	6.7	0.4 - 12.9	2,300	25.5	8.8 - 42.3	5,300	59.5	40.9 - 78.1	8,800
45-54	400	2.5	0.6 - 4.3	700	4.8	1.5 - 8.0	3,500	23.4	13.8 - 33.1	10,400	69.3	59.1 - 79.5	15,000
55-64	1,100	6.6	2.7 - 10.4	2,100	12.4	6.1 - 18.8	5,500	32.6	23.1 - 42.0	8,200	48.4	38.2 - 58.5	17,000
65-74	800	5.7	0.7 - 10.7	800	5.9	0.3 - 11.4	3,300	24.7	15.4 - 33.9	8,500	63.8	53.4 - 74.1	13,300
75+	1,000	8.7	3.1 - 14.3	900	7.8	1.7 - 13.9	2,800	24.9	12.6 - 37.2	6,600	58.6	44.9 - 72.4	11,200

Diabetes - times visit doc by State, County, Island, Community, BRFSS Age Group, DOH Race-Ethnicity, Gender, Education Level, Employment Status (Grouped), Household Income, Poverty Level, Marital Status (Grouped), Married, Health Care Coverage, for the Year(s) - 2000-2002, 2001-2003, 2002-2004, 2003-2005, 2004-2006, 2005-2007, 2006-2008, 2007-2009, 2008-2010

Note: Weighted numbers (#) represent 3-yr averages, percentages and 95% confidence intervals; Respondents aged 18 years and older; n/r (Not Reportable) - If the unweighted total responses for a dimension (row) is <50 that row will not be shown; n/a (Not Available) - Not asked of a subset of respondents

Year: 2003-2005

DOH Race-Ethnicity	None			1 time			2 to 3 times			4 or more times			Estimated Population (3-Yr Avg)
	#	%	C.I. (95%)	#	%	C.I. (95%)	#	%	C.I. (95%)	#	%	C.I. (95%)	#
Caucasian	1,400	8.6	4.4 - 12.7	1,500	9.6	4.3 - 14.9	5,400	33.9	23.6 - 44.2	7,600	48.0	37.9 - 58.0	15,900
Native Hawaiian	600	4.1	0.0 - 8.8	900	6.2	1.4 - 10.9	3,900	26.0	15.2 - 36.8	9,400	63.7	51.7 - 75.7	14,800
Filipino	400	3.0	0.4 - 5.6	1,100	9.1	2.1 - 16.1	2,200	18.5	8.2 - 28.8	8,200	69.4	57.4 - 81.4	11,800
Japanese	1,200	8.5	3.5 - 13.6	1,400	9.6	3.6 - 15.6	4,000	27.1	18.2 - 35.9	8,000	54.8	44.8 - 64.8	14,600

Gender	None			1 time			2 to 3 times			4 or more times			Estimated Population (3-Yr Avg)
	#	%	C.I. (95%)	#	%	C.I. (95%)	#	%	C.I. (95%)	#	%	C.I. (95%)	#
Male	2,000	5.3	2.3 - 8.4	3,100	8.3	4.8 - 11.9	11,900	32.5	25.1 - 40.0	19,800	53.8	45.9 - 61.7	36,700
Female	2,700	8.4	4.9 - 11.9	2,300	7.1	3.7 - 10.5	6,500	20.2	14.6 - 25.7	20,900	64.3	57.5 - 71.1	32,500

Diabetes - times visit doc by State, County, Island, Community, BRFSS Age Group, DOH Race-Ethnicity, Gender, Education Level, Employment Status (Grouped), Household Income, Poverty Level, Marital Status (Grouped), Married, Health Care Coverage, for the Year(s) - 2000-2002, 2001-2003, 2002-2004, 2003-2005, 2004-2006, 2005-2007, 2006-2008, 2007-2009, 2008-2010

Note: Weighted numbers (#) represent 3-yr averages, percentages and 95% confidence intervals; Respondents aged 18 years and older; n/r (Not Reportable) - If the unweighted total responses for a dimension (row) is <50 that row will not be shown; n/a (Not Available) - Not asked of a subset of respondents

Year: 2003-2005

Education Level	None			1 time			2 to 3 times			4 or more times			Estimated Population (3-Yr Avg)
	#	%	C.I. (95%)	#	%	C.I. (95%)	#	%	C.I. (95%)	#	%	C.I. (95%)	#
Grades 9 thru 11 (Some High School)	100	2.3	0.0 - 5.2	400	8.9	0.0 - 17.8	800	16.8	0.1 - 33.5	3,200	72.0	54.6 - 89.4	4,500
Grades 12 or GED (High School Grad)	1,600	5.8	1.6 - 9.9	1,900	6.9	3.0 - 10.8	6,700	24.6	16.2 - 33.0	17,000	62.7	53.4 - 72.0	27,000
College 1 to 3 years (Some College/ Tech)	1,700	9.3	4.3 - 14.3	1,500	8.3	3.5 - 13.1	5,500	30.8	21.9 - 39.7	9,300	51.7	41.9 - 61.5	18,000
College 4 years or more (College Grad)	1,200	6.9	3.2 - 10.6	1,400	8.3	3.2 - 13.4	5,100	30.0	20.8 - 39.2	9,400	54.8	44.7 - 65.0	17,200

Employment Status (Grouped)	None			1 time			2 to 3 times			4 or more times			Estimated Population (3-Yr Avg)
	#	%	C.I. (95%)	#	%	C.I. (95%)	#	%	C.I. (95%)	#	%	C.I. (95%)	#
Employed	1,400	4.4	1.9 - 7.0	2,600	8.2	4.6 - 11.9	9,500	29.8	22.2 - 37.4	18,300	57.5	49.5 - 65.6	31,900
Retired/Unable to work	2,900	9.1	5.0 - 13.2	2,100	6.6	3.3 - 9.9	7,700	24.0	17.5 - 30.6	19,300	60.3	52.7 - 67.8	32,100

Diabetes - times visit doc by State, County, Island, Community, BRFSS Age Group, DOH Race-Ethnicity, Gender, Education Level, Employment Status (Grouped), Household Income, Poverty Level, Marital Status (Grouped), Married, Health Care Coverage, for the Year(s) - 2000-2002, 2001-2003, 2002-2004, 2003-2005, 2004-2006, 2005-2007, 2006-2008, 2007-2009, 2008-2010

Note: Weighted numbers (#) represent 3-yr averages, percentages and 95% confidence intervals; Respondents aged 18 years and older; n/r (Not Reportable) - If the unweighted total responses for a dimension (row) is <50 that row will not be shown; n/a (Not Available) - Not asked of a subset of respondents

Year: 2003-2005

Household Income	None			1 time			2 to 3 times			4 or more times			Estimated Population (3-Yr Avg)
	#	%	C.I. (95%)	#	%	C.I. (95%)	#	%	C.I. (95%)	#	%	C.I. (95%)	#
\$15,000 to \$19,999	200	2.9	0.0 - 5.8	400	6.2	0.8 - 11.6	1,400	22.3	6.0 - 38.5	4,400	68.6	51.0 - 86.3	6,400
\$20,000 to \$24,999	200	2.8	0.0 - 7.1	200	3.5	0.0 - 7.6	2,000	35.2	18.3 - 52.1	3,400	58.5	41.3 - 75.7	5,800
\$25,000 to \$34,999	1,000	12.5	3.0 - 22.0	500	6.8	0.0 - 13.5	1,400	17.5	6.9 - 28.1	5,000	63.2	48.0 - 78.4	7,900
\$35,000 to \$49,999	500	5.9	0.0 - 12.4	1,000	12.0	3.1 - 20.9	1,600	18.8	9.2 - 28.5	5,400	63.3	50.5 - 76.2	8,500
\$50,000 to \$74,999	1,200	9.4	3.9 - 14.9	1,400	11.7	4.3 - 19.1	3,900	31.1	19.1 - 43.0	5,900	47.8	35.7 - 59.9	12,400
\$75,000 or more	500	4.4	0.0 - 8.9	300	3.2	0.1 - 6.3	4,600	42.6	27.9 - 57.2	5,400	49.9	35.2 - 64.5	10,900

Diabetes - times visit doc by State, County, Island, Community, BRFSS Age Group, DOH Race-Ethnicity, Gender, Education Level, Employment Status (Grouped), Household Income, Poverty Level, Marital Status (Grouped), Married, Health Care Coverage, for the Year(s) - 2000-2002, 2001-2003, 2002-2004, 2003-2005, 2004-2006, 2005-2007, 2006-2008, 2007-2009, 2008-2010

Note: Weighted numbers (#) represent 3-yr averages, percentages and 95% confidence intervals; Respondents aged 18 years and older; n/r (Not Reportable) - If the unweighted total responses for a dimension (row) is <50 that row will not be shown; n/a (Not Available) - Not asked of a subset of respondents

Year: 2003-2005

Poverty Level	None			1 time			2 to 3 times			4 or more times			Estimated Population (3-Yr Avg)
	#	%	C.I. (95%)	#	%	C.I. (95%)	#	%	C.I. (95%)	#	%	C.I. (95%)	#
0-130%	1,000	5.3	1.5 - 9.1	1,500	8.4	3.5 - 13.4	3,900	21.6	12.4 - 30.7	11,800	64.7	54.2 - 75.3	18,200
131-185%	700	9.8	2.7 - 16.8	100	1.3	0.0 - 2.8	1,900	27.8	13.6 - 42.0	4,200	61.1	46.2 - 76.0	6,900
186+%	2,400	6.9	3.8 - 10.1	3,100	9.2	5.3 - 13.0	11,000	32.3	25.2 - 39.4	17,600	51.6	44.2 - 59.0	34,100

Marital Status (Grouped)	None			1 time			2 to 3 times			4 or more times			Estimated Population (3-Yr Avg)
	#	%	C.I. (95%)	#	%	C.I. (95%)	#	%	C.I. (95%)	#	%	C.I. (95%)	#
Married	2,300	5.2	2.9 - 7.5	3,700	8.5	5.2 - 11.8	12,600	28.9	22.3 - 35.5	25,000	57.4	50.3 - 64.5	43,500
Widowed	900	10.2	3.1 - 17.4	500	5.3	0.3 - 10.3	2,000	22.9	13.3 - 32.5	5,400	61.6	50.0 - 73.2	8,700
Other	1,400	8.3	2.1 - 14.4	1,200	7.4	2.6 - 12.1	3,800	23.1	14.6 - 31.7	10,100	61.2	50.8 - 71.6	16,500

Diabetes - times visit doc by State, County, Island, Community, BRFSS Age Group, DOH Race-Ethnicity, Gender, Education Level, Employment Status (Grouped), Household Income, Poverty Level, Marital Status (Grouped), Married, Health Care Coverage, for the Year(s) - 2000-2002, 2001-2003, 2002-2004, 2003-2005, 2004-2006, 2005-2007, 2006-2008, 2007-2009, 2008-2010

Note: Weighted numbers (#) represent 3-yr averages, percentages and 95% confidence intervals; Respondents aged 18 years and older; n/r (Not Reportable) - If the unweighted total responses for a dimension (row) is <50 that row will not be shown; n/a (Not Available) - Not asked of a subset of respondents

Year: 2003-2005

Married	None			1 time			2 to 3 times			4 or more times			Estimated Population (3-Yr Avg)
	#	%	C.I. (95%)	#	%	C.I. (95%)	#	%	C.I. (95%)	#	%	C.I. (95%)	#
Yes	2,400	5.4	3.1 - 7.7	3,700	8.5	5.2 - 11.7	12,600	28.7	22.2 - 35.2	25,300	57.5	50.5 - 64.5	44,100
No	2,300	9.2	4.4 - 14.0	1,700	6.6	3.0 - 10.2	5,900	23.4	16.9 - 30.0	15,200	60.7	52.7 - 68.7	25,000

Health Care Coverage	None			1 time			2 to 3 times			4 or more times			Estimated Population (3-Yr Avg)
	#	%	C.I. (95%)	#	%	C.I. (95%)	#	%	C.I. (95%)	#	%	C.I. (95%)	#
Yes	2,200	5.4	3.0 - 7.8	2,900	7.0	4.0 - 9.9	12,200	29.7	23.3 - 36.2	23,800	57.9	51.0 - 64.8	41,100

Diabetes - times visit doc by State, County, Island, Community, BRFSS Age Group, DOH Race-Ethnicity, Gender, Education Level, Employment Status (Grouped), Household Income, Poverty Level, Marital Status (Grouped), Married, Health Care Coverage, for the Year(s) - 2000-2002, 2001-2003, 2002-2004, 2003-2005, 2004-2006, 2005-2007, 2006-2008, 2007-2009, 2008-2010

Note: Weighted numbers (#) represent 3-yr averages, percentages and 95% confidence intervals; Respondents aged 18 years and older; n/r (Not Reportable) - If the unweighted total responses for a dimension (row) is <50 that row will not be shown; n/a (Not Available) - Not asked of a subset of respondents

Year: 2002-2004

State	None			1 time			2 to 3 times			4 or more times			Estimated Population (3-Yr Avg)
	#	%	C.I. (95%)	#	%	C.I. (95%)	#	%	C.I. (95%)	#	%	C.I. (95%)	#
Hawaii State	2,900	4.8	3.1 - 6.6	4,000	6.7	4.5 - 9.0	16,400	27.5	22.7 - 32.3	36,400	61.0	55.8 - 66.1	59,700

County	None			1 time			2 to 3 times			4 or more times			Estimated Population (3-Yr Avg)
	#	%	C.I. (95%)	#	%	C.I. (95%)	#	%	C.I. (95%)	#	%	C.I. (95%)	#
Hawaii	300	4.6	1.7 - 7.6	900	12.6	3.5 - 21.7	1,900	25.9	17.6 - 34.3	4,100	56.8	47.0 - 66.7	7,300
Honolulu	1,800	4.0	1.9 - 6.1	2,300	5.1	2.8 - 7.5	13,100	29.0	22.9 - 35.1	28,000	61.9	55.5 - 68.3	45,300
Kauai	400	16.4	5.8 - 27.0	200	8.6	0.2 - 17.1	800	31.7	18.4 - 45.0	1,100	43.3	29.8 - 56.7	2,500
Maui	300	7.2	1.4 - 12.9	600	12.1	3.9 - 20.2	600	12.9	6.3 - 19.5	3,200	67.8	57.0 - 78.7	4,700

Diabetes - times visit doc by State, County, Island, Community, BRFSS Age Group, DOH Race-Ethnicity, Gender, Education Level, Employment Status (Grouped), Household Income, Poverty Level, Marital Status (Grouped), Married, Health Care Coverage, for the Year(s) - 2000-2002, 2001-2003, 2002-2004, 2003-2005, 2004-2006, 2005-2007, 2006-2008, 2007-2009, 2008-2010

Note: Weighted numbers (#) represent 3-yr averages, percentages and 95% confidence intervals; Respondents aged 18 years and older; n/r (Not Reportable) - If the unweighted total responses for a dimension (row) is <50 that row will not be shown; n/a (Not Available) - Not asked of a subset of respondents

Year: 2002-2004

Island	None			1 time			2 to 3 times			4 or more times			Estimated Population (3-Yr Avg)
	#	%	C.I. (95%)	#	%	C.I. (95%)	#	%	C.I. (95%)	#	%	C.I. (95%)	#
Hawaii	300	4.6	1.7 - 7.6	900	12.6	3.5 - 21.7	1,900	25.9	17.6 - 34.3	4,100	56.8	47.0 - 66.7	7,300
Kauai	400	16.4	5.8 - 27.0	200	8.6	0.2 - 17.1	800	31.7	18.4 - 45.0	1,100	43.3	29.8 - 56.7	2,500
Maui	300	7.3	0.7 - 13.9	500	13.2	3.7 - 22.8	500	13.4	5.7 - 21.2	2,600	66.0	53.4 - 78.6	3,900
Oahu	1,800	4.0	1.9 - 6.1	2,300	5.1	2.8 - 7.5	13,100	29.0	22.9 - 35.1	28,000	61.9	55.5 - 68.3	45,300

Community	None			1 time			2 to 3 times			4 or more times			Estimated Population (3-Yr Avg)
	#	%	C.I. (95%)	#	%	C.I. (95%)	#	%	C.I. (95%)	#	%	C.I. (95%)	#
Aiea/ Pearl City	300	5.8	0.0 - 12.4	200	3.3	0.0 - 8.1	2,100	36.2	18.8 - 53.6	3,100	54.7	37.2 - 72.1	5,700
Hilo	100	2.9	0.0 - 6.1	<50	1.9	0.0 - 5.5	300	16.1	4.3 - 28.0	1,400	79.1	66.7 - 91.5	1,800
Lihue-Waimea	400	22.3	8.1 - 36.5	200	10.0	0.0 - 21.3	600	34.3	17.9 - 50.8	600	33.4	19.2 - 47.7	1,800
Waipahu/ Kapolei/ Ewa	200	2.4	0.0 - 6.0	600	8.1	0.8 - 15.5	2,500	34.7	15.8 - 53.7	4,000	54.7	36.0 - 73.4	7,200

Diabetes - times visit doc by State, County, Island, Community, BRFSS Age Group, DOH Race-Ethnicity, Gender, Education Level, Employment Status (Grouped), Household Income, Poverty Level, Marital Status (Grouped), Married, Health Care Coverage, for the Year(s) - 2000-2002, 2001-2003, 2002-2004, 2003-2005, 2004-2006, 2005-2007, 2006-2008, 2007-2009, 2008-2010

Note: Weighted numbers (#) represent 3-yr averages, percentages and 95% confidence intervals; Respondents aged 18 years and older; n/r (Not Reportable) - If the unweighted total responses for a dimension (row) is <50 that row will not be shown; n/a (Not Available) - Not asked of a subset of respondents

Year: 2002-2004

BRFSS Age Group	None			1 time			2 to 3 times			4 or more times			Estimated Population (3-Yr Avg)
	#	%	C.I. (95%)	#	%	C.I. (95%)	#	%	C.I. (95%)	#	%	C.I. (95%)	#
35-44	200	2.4	0.0 - 5.1	700	8.8	1.7 - 15.8	2,200	27.6	10.4 - 44.8	4,900	61.3	43.0 - 79.5	8,000
45-54	200	1.5	0.1 - 2.9	600	4.6	1.2 - 8.0	3,000	23.6	14.8 - 32.4	9,000	70.3	60.7 - 79.8	12,700
55-64	800	5.6	1.6 - 9.6	1,100	7.6	2.8 - 12.5	4,700	32.3	23.3 - 41.3	7,900	54.4	45.0 - 63.8	14,500
65-74	700	5.5	0.5 - 10.6	900	7.0	1.0 - 13.1	3,000	23.8	14.7 - 32.9	8,100	63.7	53.4 - 74.0	12,700
75+	700	7.8	2.7 - 12.8	500	5.3	0.8 - 9.9	2,300	25.6	12.5 - 38.8	5,600	61.3	48.3 - 74.2	9,100

Diabetes - times visit doc by State, County, Island, Community, BRFSS Age Group, DOH Race-Ethnicity, Gender, Education Level, Employment Status (Grouped), Household Income, Poverty Level, Marital Status (Grouped), Married, Health Care Coverage, for the Year(s) - 2000-2002, 2001-2003, 2002-2004, 2003-2005, 2004-2006, 2005-2007, 2006-2008, 2007-2009, 2008-2010

Note: Weighted numbers (#) represent 3-yr averages, percentages and 95% confidence intervals; Respondents aged 18 years and older; n/r (Not Reportable) - If the unweighted total responses for a dimension (row) is <50 that row will not be shown; n/a (Not Available) - Not asked of a subset of respondents

Year: 2002-2004

DOH Race-Ethnicity	None			1 time			2 to 3 times			4 or more times			Estimated Population (3-Yr Avg)
	#	%	C.I. (95%)	#	%	C.I. (95%)	#	%	C.I. (95%)	#	%	C.I. (95%)	#
Caucasian	1,000	7.9	3.4 - 12.5	700	5.5	1.8 - 9.1	4,600	35.1	23.8 - 46.3	6,700	51.5	40.6 - 62.5	13,100
Native Hawaiian	400	3.0	0.0 - 7.4	1,000	8.2	2.5 - 14.0	2,600	21.8	10.8 - 32.8	8,000	67.0	54.5 - 79.5	11,900
Chinese	200	3.8	0.0 - 9.1	100	2.4	0.0 - 5.3	1,400	29.9	13.5 - 46.3	2,900	63.9	47.3 - 80.5	4,500
Filipino	400	3.5	0.6 - 6.5	1,100	10.5	2.7 - 18.4	3,000	29.9	17.8 - 42.0	5,700	56.0	42.8 - 69.2	10,200
Japanese	900	6.3	2.3 - 10.4	700	4.5	1.1 - 7.9	4,000	26.4	18.2 - 34.5	9,400	62.8	54.2 - 71.5	15,000

Gender	None			1 time			2 to 3 times			4 or more times			Estimated Population (3-Yr Avg)
	#	%	C.I. (95%)	#	%	C.I. (95%)	#	%	C.I. (95%)	#	%	C.I. (95%)	#
Male	1,500	4.9	2.3 - 7.5	2,400	8.2	4.3 - 12.0	10,000	34.0	26.3 - 41.7	15,600	52.9	45.1 - 60.7	29,500
Female	1,400	4.8	2.3 - 7.2	1,600	5.3	2.9 - 7.8	6,400	21.1	15.8 - 26.4	20,800	68.8	62.7 - 74.9	30,200

Diabetes - times visit doc by State, County, Island, Community, BRFSS Age Group, DOH Race-Ethnicity, Gender, Education Level, Employment Status (Grouped), Household Income, Poverty Level, Marital Status (Grouped), Married, Health Care Coverage, for the Year(s) - 2000-2002, 2001-2003, 2002-2004, 2003-2005, 2004-2006, 2005-2007, 2006-2008, 2007-2009, 2008-2010

Note: Weighted numbers (#) represent 3-yr averages, percentages and 95% confidence intervals; Respondents aged 18 years and older; n/r (Not Reportable) - If the unweighted total responses for a dimension (row) is <50 that row will not be shown; n/a (Not Available) - Not asked of a subset of respondents

Year: 2002-2004

Education Level	None			1 time			2 to 3 times			4 or more times			Estimated Population (3-Yr Avg)
	#	%	C.I. (95%)	#	%	C.I. (95%)	#	%	C.I. (95%)	#	%	C.I. (95%)	#
Grades 9 thru 11 (Some High School)	100	4.3	0.0 - 8.9	200	5.4	0.0 - 11.7	200	4.4	0.3 - 8.5	3,000	86.0	77.2 - 94.8	3,400
Grades 12 or GED (High School Grad)	800	3.6	0.7 - 6.5	1,500	6.3	2.7 - 10.0	5,600	24.5	15.9 - 33.1	15,000	65.5	56.4 - 74.7	22,900
College 1 to 3 years (Some College/ Tech)	800	5.1	1.7 - 8.5	1,000	5.8	2.2 - 9.5	5,500	33.2	24.0 - 42.4	9,200	55.9	46.2 - 65.5	16,400
College 4 years or more (College Grad)	1,000	6.6	2.7 - 10.4	1,300	8.7	3.2 - 14.2	4,700	30.4	21.9 - 39.0	8,400	54.3	45.1 - 63.6	15,400

Employment Status (Grouped)	None			1 time			2 to 3 times			4 or more times			Estimated Population (3-Yr Avg)
	#	%	C.I. (95%)	#	%	C.I. (95%)	#	%	C.I. (95%)	#	%	C.I. (95%)	#
Employed	800	2.8	1.1 - 4.6	1,900	7.2	3.9 - 10.6	9,200	34.5	26.7 - 42.4	14,800	55.4	47.3 - 63.5	26,700
Retired/Unable to work	1,900	6.8	3.5 - 10.1	1,600	5.5	2.3 - 8.7	6,300	22.4	16.0 - 28.8	18,500	65.3	58.3 - 72.4	28,300

Diabetes - times visit doc by State, County, Island, Community, BRFSS Age Group, DOH Race-Ethnicity, Gender, Education Level, Employment Status (Grouped), Household Income, Poverty Level, Marital Status (Grouped), Married, Health Care Coverage, for the Year(s) - 2000-2002, 2001-2003, 2002-2004, 2003-2005, 2004-2006, 2005-2007, 2006-2008, 2007-2009, 2008-2010

Note: Weighted numbers (#) represent 3-yr averages, percentages and 95% confidence intervals; Respondents aged 18 years and older; n/r (Not Reportable) - If the unweighted total responses for a dimension (row) is <50 that row will not be shown; n/a (Not Available) - Not asked of a subset of respondents

Year: 2002-2004

Household Income	None			1 time			2 to 3 times			4 or more times			Estimated Population (3-Yr Avg)
	#	%	C.I. (95%)	#	%	C.I. (95%)	#	%	C.I. (95%)	#	%	C.I. (95%)	#
Less than \$10,000	100	4.1	0.0 - 8.8	100	3.3	0.0 - 6.9	500	17.0	2.1 - 31.9	2,300	75.5	60.3 - 90.8	3,000
\$10,000 to \$14,999	400	11.9	1.2 - 22.6	500	12.7	0.0 - 29.6	900	25.9	9.5 - 42.4	1,800	49.4	31.1 - 67.7	3,600
\$15,000 to \$19,999	100	3.2	0.0 - 6.9	500	12.0	1.7 - 22.4	500	12.7	0.2 - 25.1	3,100	72.1	54.0 - 90.2	4,200
\$20,000 to \$24,999	100	1.5	0.0 - 3.8	200	3.6	0.0 - 8.8	1,900	43.0	23.1 - 62.9	2,300	51.9	32.0 - 71.7	4,500
\$25,000 to \$34,999	500	9.3	1.2 - 17.4	400	6.8	0.0 - 14.3	900	16.3	6.3 - 26.2	4,000	67.7	52.1 - 83.3	5,800
\$35,000 to \$49,999	400	4.8	0.0 - 11.4	300	3.7	0.0 - 7.4	1,900	23.5	13.4 - 33.6	5,500	68.0	56.3 - 79.7	8,100
\$50,000 to \$74,999	600	5.7	1.7 - 9.8	800	7.7	1.4 - 14.1	3,600	33.6	21.1 - 46.1	5,700	52.9	40.4 - 65.5	10,800
\$75,000 or more	200	2.2	0.0 - 6.4	500	4.9	0.8 - 9.0	4,400	44.9	30.1 - 59.7	4,700	48.0	33.4 - 62.7	9,800

Diabetes - times visit doc by State, County, Island, Community, BRFSS Age Group, DOH Race-Ethnicity, Gender, Education Level, Employment Status (Grouped), Household Income, Poverty Level, Marital Status (Grouped), Married, Health Care Coverage, for the Year(s) - 2000-2002, 2001-2003, 2002-2004, 2003-2005, 2004-2006, 2005-2007, 2006-2008, 2007-2009, 2008-2010

Note: Weighted numbers (#) represent 3-yr averages, percentages and 95% confidence intervals; Respondents aged 18 years and older; n/r (Not Reportable) - If the unweighted total responses for a dimension (row) is <50 that row will not be shown; n/a (Not Available) - Not asked of a subset of respondents

Year: 2002-2004

Poverty Level	None			1 time			2 to 3 times			4 or more times			Estimated Population (3-Yr Avg)
	#	%	C.I. (95%)	#	%	C.I. (95%)	#	%	C.I. (95%)	#	%	C.I. (95%)	#
0-130%	800	5.2	1.9 - 8.6	1,400	9.5	3.5 - 15.4	2,700	18.7	10.3 - 27.1	9,700	66.7	56.1 - 77.2	14,600
131-185%	300	5.7	1.4 - 10.0	100	1.9	0.0 - 4.3	1,700	32.1	16.1 - 48.2	3,200	60.2	43.9 - 76.5	5,200
186+%	1,500	4.9	1.9 - 7.8	1,800	5.8	2.9 - 8.8	10,400	34.5	27.1 - 41.9	16,400	54.8	47.2 - 62.3	30,000

Marital Status (Grouped)	None			1 time			2 to 3 times			4 or more times			Estimated Population (3-Yr Avg)
	#	%	C.I. (95%)	#	%	C.I. (95%)	#	%	C.I. (95%)	#	%	C.I. (95%)	#
Married	1,700	4.5	2.3 - 6.7	2,600	6.9	4.1 - 9.7	10,800	28.6	22.2 - 35.0	22,800	60.0	53.3 - 66.7	38,000
Widowed	700	7.8	1.5 - 14.2	500	6.0	0.8 - 11.3	1,600	18.4	9.5 - 27.3	6,100	67.7	56.7 - 78.7	9,000
Other	500	3.7	1.0 - 6.4	900	6.7	1.0 - 12.4	3,900	30.8	20.8 - 40.7	7,500	58.8	48.0 - 69.6	12,700

Diabetes - times visit doc by State, County, Island, Community, BRFSS Age Group, DOH Race-Ethnicity, Gender, Education Level, Employment Status (Grouped), Household Income, Poverty Level, Marital Status (Grouped), Married, Health Care Coverage, for the Year(s) - 2000-2002, 2001-2003, 2002-2004, 2003-2005, 2004-2006, 2005-2007, 2006-2008, 2007-2009, 2008-2010

Note: Weighted numbers (#) represent 3-yr averages, percentages and 95% confidence intervals; Respondents aged 18 years and older; n/r (Not Reportable) - If the unweighted total responses for a dimension (row) is <50 that row will not be shown; n/a (Not Available) - Not asked of a subset of respondents

Year: 2002-2004

Married	None			1 time			2 to 3 times			4 or more times			Estimated Population (3-Yr Avg)
	#	%	C.I. (95%)	#	%	C.I. (95%)	#	%	C.I. (95%)	#	%	C.I. (95%)	#
Yes	1,700	4.5	2.3 - 6.6	2,700	7.0	4.2 - 9.7	10,900	28.3	22.0 - 34.6	23,200	60.2	53.6 - 66.9	38,500
No	1,200	5.5	2.3 - 8.7	1,300	6.3	2.2 - 10.3	5,500	26.1	19.0 - 33.1	13,200	62.2	54.2 - 70.1	21,200

Health Care Coverage	None			1 time			2 to 3 times			4 or more times			Estimated Population (3-Yr Avg)
	#	%	C.I. (95%)	#	%	C.I. (95%)	#	%	C.I. (95%)	#	%	C.I. (95%)	#
Yes	2,600	4.4	2.7 - 6.2	3,800	6.5	4.2 - 8.8	16,000	27.6	22.7 - 32.5	35,600	61.5	56.3 - 66.7	57,900

Diabetes - times visit doc by State, County, Island, Community, BRFSS Age Group, DOH Race-Ethnicity, Gender, Education Level, Employment Status (Grouped), Household Income, Poverty Level, Marital Status (Grouped), Married, Health Care Coverage, for the Year(s) - 2000-2002, 2001-2003, 2002-2004, 2003-2005, 2004-2006, 2005-2007, 2006-2008, 2007-2009, 2008-2010

Note: Weighted numbers (#) represent 3-yr averages, percentages and 95% confidence intervals; Respondents aged 18 years and older; n/r (Not Reportable) - If the unweighted total responses for a dimension (row) is <50 that row will not be shown; n/a (Not Available) - Not asked of a subset of respondents

Year: 2001-2003

State	None			1 time			2 to 3 times			4 or more times			Estimated Population (3-Yr Avg)
	#	%	C.I. (95%)	#	%	C.I. (95%)	#	%	C.I. (95%)	#	%	C.I. (95%)	#
Hawaii State	2,100	3.6	2.0 - 5.3	3,700	6.4	4.2 - 8.7	12,900	22.4	18.6 - 26.2	38,900	67.5	63.2 - 71.9	57,600

County	None			1 time			2 to 3 times			4 or more times			Estimated Population (3-Yr Avg)
	#	%	C.I. (95%)	#	%	C.I. (95%)	#	%	C.I. (95%)	#	%	C.I. (95%)	#
Hawaii	300	3.7	0.9 - 6.6	900	13.6	4.3 - 22.8	1,500	22.9	15.5 - 30.2	4,000	59.8	50.5 - 69.2	6,700
Honolulu	1,500	3.4	1.3 - 5.5	2,400	5.6	3.0 - 8.1	10,100	23.7	18.8 - 28.5	28,800	67.3	62.0 - 72.6	42,800
Kauai	200	9.9	0.8 - 19.1	100	3.2	0.0 - 7.0	500	21.9	12.0 - 31.9	1,500	64.9	52.6 - 77.3	2,300
Maui	100	2.4	0.0 - 5.6	300	5.9	0.7 - 11.0	700	12.4	5.7 - 19.1	4,500	79.3	69.3 - 89.2	5,700

Diabetes - times visit doc by State, County, Island, Community, BRFSS Age Group, DOH Race-Ethnicity, Gender, Education Level, Employment Status (Grouped), Household Income, Poverty Level, Marital Status (Grouped), Married, Health Care Coverage, for the Year(s) - 2000-2002, 2001-2003, 2002-2004, 2003-2005, 2004-2006, 2005-2007, 2006-2008, 2007-2009, 2008-2010

Note: Weighted numbers (#) represent 3-yr averages, percentages and 95% confidence intervals; Respondents aged 18 years and older; n/r (Not Reportable) - If the unweighted total responses for a dimension (row) is <50 that row will not be shown; n/a (Not Available) - Not asked of a subset of respondents

Year: 2001-2003

Island	None			1 time			2 to 3 times			4 or more times			Estimated Population (3-Yr Avg)
	#	%	C.I. (95%)	#	%	C.I. (95%)	#	%	C.I. (95%)	#	%	C.I. (95%)	#
Hawaii	300	3.7	0.9 - 6.6	900	13.6	4.3 - 22.8	1,500	22.9	15.5 - 30.2	4,000	59.8	50.5 - 69.2	6,700
Kauai	200	9.9	0.8 - 19.1	100	3.2	0.0 - 7.0	500	21.9	12.0 - 31.9	1,500	64.9	52.6 - 77.3	2,300
Maui	100	2.4	0.0 - 5.9	300	6.1	0.3 - 12.0	600	12.3	4.8 - 19.8	3,900	79.2	68.0 - 90.5	4,900
Oahu	1,500	3.4	1.3 - 5.5	2,400	5.6	3.0 - 8.1	10,100	23.7	18.8 - 28.5	28,800	67.3	62.0 - 72.6	42,800

Diabetes - times visit doc by State, County, Island, Community, BRFSS Age Group, DOH Race-Ethnicity, Gender, Education Level, Employment Status (Grouped), Household Income, Poverty Level, Marital Status (Grouped), Married, Health Care Coverage, for the Year(s) - 2000-2002, 2001-2003, 2002-2004, 2003-2005, 2004-2006, 2005-2007, 2006-2008, 2007-2009, 2008-2010

Note: Weighted numbers (#) represent 3-yr averages, percentages and 95% confidence intervals; Respondents aged 18 years and older; n/r (Not Reportable) - If the unweighted total responses for a dimension (row) is <50 that row will not be shown; n/a (Not Available) - Not asked of a subset of respondents

Year: 2001-2003

Community	None			1 time			2 to 3 times			4 or more times			Estimated Population (3-Yr Avg)
	#	%	C.I. (95%)	#	%	C.I. (95%)	#	%	C.I. (95%)	#	%	C.I. (95%)	#
Aiea/ Pearl City	100	2.2	0.0 - 6.5	200	3.2	0.0 - 7.9	1,200	20.1	8.1 - 32.2	4,400	74.4	61.5 - 87.3	5,900
Hilo	100	2.3	0.0 - 4.8	100	5.1	0.0 - 10.8	500	22.6	10.8 - 34.5	1,600	70.0	57.5 - 82.4	2,300
Kaimuki/ Palolo/ Waikiki	<50	0.8	0.0 - 2.3	200	4.7	0.0 - 11.2	900	18.8	7.1 - 30.6	3,700	75.7	62.5 - 88.8	4,900
Lihue-Waimea	200	13.6	0.8 - 26.3	<50	2.3	0.0 - 6.7	400	24.0	11.9 - 36.1	1,000	60.1	45.1 - 75.2	1,600
Waipahu/ Kapolei/ Ewa	100	1.1	0.0 - 3.4	600	11.3	1.7 - 20.9	1,300	24.1	11.1 - 37.2	3,300	63.4	49.0 - 77.8	5,200

Diabetes - times visit doc by State, County, Island, Community, BRFSS Age Group, DOH Race-Ethnicity, Gender, Education Level, Employment Status (Grouped), Household Income, Poverty Level, Marital Status (Grouped), Married, Health Care Coverage, for the Year(s) - 2000-2002, 2001-2003, 2002-2004, 2003-2005, 2004-2006, 2005-2007, 2006-2008, 2007-2009, 2008-2010

Note: Weighted numbers (#) represent 3-yr averages, percentages and 95% confidence intervals; Respondents aged 18 years and older; n/r (Not Reportable) - If the unweighted total responses for a dimension (row) is <50 that row will not be shown; n/a (Not Available) - Not asked of a subset of respondents

Year: 2001-2003

BRFSS Age Group	None			1 time			2 to 3 times			4 or more times			Estimated Population (3-Yr Avg)
	#	%	C.I. (95%)	#	%	C.I. (95%)	#	%	C.I. (95%)	#	%	C.I. (95%)	#
35-44	100	2.3	0.0 - 4.8	800	16.2	4.7 - 27.7	1,500	29.0	16.9 - 41.1	2,700	52.6	39.0 - 66.1	5,100
45-54	100	1.0	0.0 - 2.2	600	5.2	1.4 - 8.9	2,500	22.8	14.3 - 31.4	7,800	71.0	61.9 - 80.1	10,900
55-64	600	4.5	0.1 - 9.0	800	6.2	1.6 - 10.8	3,500	25.4	17.5 - 33.3	8,700	63.9	55.0 - 72.8	13,700
65-74	500	3.1	0.0 - 6.8	800	5.5	0.5 - 10.6	2,700	18.6	11.0 - 26.1	10,700	72.8	64.1 - 81.5	14,700
75+	700	7.1	2.4 - 11.9	500	5.1	1.1 - 9.0	1,300	13.7	6.6 - 20.8	6,800	74.1	65.5 - 82.7	9,200

Diabetes - times visit doc by State, County, Island, Community, BRFSS Age Group, DOH Race-Ethnicity, Gender, Education Level, Employment Status (Grouped), Household Income, Poverty Level, Marital Status (Grouped), Married, Health Care Coverage, for the Year(s) - 2000-2002, 2001-2003, 2002-2004, 2003-2005, 2004-2006, 2005-2007, 2006-2008, 2007-2009, 2008-2010

Note: Weighted numbers (#) represent 3-yr averages, percentages and 95% confidence intervals; Respondents aged 18 years and older; n/r (Not Reportable) - If the unweighted total responses for a dimension (row) is <50 that row will not be shown; n/a (Not Available) - Not asked of a subset of respondents

Year: 2001-2003

DOH Race-Ethnicity	None			1 time			2 to 3 times			4 or more times			Estimated Population (3-Yr Avg)
	#	%	C.I. (95%)	#	%	C.I. (95%)	#	%	C.I. (95%)	#	%	C.I. (95%)	#
Caucasian	700	5.5	1.3 - 9.6	700	5.8	1.4 - 10.2	3,100	25.0	17.0 - 33.0	7,900	63.7	54.8 - 72.6	12,400
Native Hawaiian	400	3.7	0.0 - 9.0	800	8.3	2.0 - 14.6	1,800	18.5	10.3 - 26.7	6,700	69.5	59.2 - 79.8	9,600
Chinese	100	1.8	0.0 - 5.2	100	2.1	0.0 - 4.7	1,400	27.1	12.6 - 41.7	3,500	69.0	54.4 - 83.6	5,100
Filipino	300	3.2	0.3 - 6.1	1,100	11.4	3.4 - 19.5	2,500	24.9	14.9 - 34.8	6,000	60.5	47.9 - 73.1	10,000
Japanese	600	3.9	0.7 - 7.2	500	2.9	0.4 - 5.3	3,200	19.5	13.2 - 25.9	12,000	73.6	66.6 - 80.7	16,300

Gender	None			1 time			2 to 3 times			4 or more times			Estimated Population (3-Yr Avg)
	#	%	C.I. (95%)	#	%	C.I. (95%)	#	%	C.I. (95%)	#	%	C.I. (95%)	#
Male	1,000	3.8	1.3 - 6.2	2,200	8.0	4.0 - 12.0	6,800	24.7	18.4 - 30.9	17,600	63.5	56.5 - 70.6	27,700
Female	1,000	3.5	1.2 - 5.8	1,500	5.0	2.7 - 7.3	6,100	20.3	15.7 - 24.9	21,300	71.2	66.0 - 76.4	29,900

Diabetes - times visit doc by State, County, Island, Community, BRFSS Age Group, DOH Race-Ethnicity, Gender, Education Level, Employment Status (Grouped), Household Income, Poverty Level, Marital Status (Grouped), Married, Health Care Coverage, for the Year(s) - 2000-2002, 2001-2003, 2002-2004, 2003-2005, 2004-2006, 2005-2007, 2006-2008, 2007-2009, 2008-2010

Note: Weighted numbers (#) represent 3-yr averages, percentages and 95% confidence intervals; Respondents aged 18 years and older; n/r (Not Reportable) - If the unweighted total responses for a dimension (row) is <50 that row will not be shown; n/a (Not Available) - Not asked of a subset of respondents

Year: 2001-2003

Education Level	None			1 time			2 to 3 times			4 or more times			Estimated Population (3-Yr Avg)
	#	%	C.I. (95%)	#	%	C.I. (95%)	#	%	C.I. (95%)	#	%	C.I. (95%)	#
Grades 9 thru 11 (Some High School)	100	1.6	0.0 - 4.3	200	4.0	0.0 - 8.9	200	3.5	0.2 - 6.9	3,900	90.8	84.3 - 97.3	4,200
Grades 12 or GED (High School Grad)	700	3.4	0.4 - 6.4	1,500	7.2	3.1 - 11.3	4,000	19.2	13.8 - 24.6	14,600	70.2	63.5 - 76.8	20,800
College 1 to 3 years (Some College/ Tech)	400	2.5	0.0 - 5.3	900	5.7	2.2 - 9.2	4,000	24.6	16.3 - 32.9	11,000	67.2	58.1 - 76.3	16,400
College 4 years or more (College Grad)	800	6.0	2.0 - 9.9	900	6.5	1.2 - 11.7	4,200	30.0	21.6 - 38.3	8,000	57.6	48.8 - 66.3	14,000

Employment Status (Grouped)	None			1 time			2 to 3 times			4 or more times			Estimated Population (3-Yr Avg)
	#	%	C.I. (95%)	#	%	C.I. (95%)	#	%	C.I. (95%)	#	%	C.I. (95%)	#
Employed	400	1.4	0.3 - 2.5	1,800	7.2	3.6 - 10.8	7,100	28.5	22.0 - 35.0	15,600	62.9	55.8 - 70.0	24,900
Retired/Unable to work	1,600	5.6	2.4 - 8.7	1,500	5.1	2.2 - 8.1	4,700	16.3	11.5 - 21.2	21,000	73.0	67.2 - 78.7	28,800

Diabetes - times visit doc by State, County, Island, Community, BRFSS Age Group, DOH Race-Ethnicity, Gender, Education Level, Employment Status (Grouped), Household Income, Poverty Level, Marital Status (Grouped), Married, Health Care Coverage, for the Year(s) - 2000-2002, 2001-2003, 2002-2004, 2003-2005, 2004-2006, 2005-2007, 2006-2008, 2007-2009, 2008-2010

Note: Weighted numbers (#) represent 3-yr averages, percentages and 95% confidence intervals; Respondents aged 18 years and older; n/r (Not Reportable) - If the unweighted total responses for a dimension (row) is <50 that row will not be shown; n/a (Not Available) - Not asked of a subset of respondents

Year: 2001-2003

Household Income	None			1 time			2 to 3 times			4 or more times			Estimated Population (3-Yr Avg)
	#	%	C.I. (95%)	#	%	C.I. (95%)	#	%	C.I. (95%)	#	%	C.I. (95%)	#
Less than \$10,000	100	1.7	0.0 - 3.9	200	6.0	0.0 - 13.0	500	12.5	0.4 - 24.6	3,100	79.8	66.4 - 93.3	3,900
\$10,000 to \$14,999	200	5.0	0.0 - 11.6	500	10.7	0.0 - 24.2	1,100	23.5	9.5 - 37.5	2,800	60.8	44.2 - 77.4	4,600
\$20,000 to \$24,999	100	1.5	0.0 - 3.8	400	8.1	0.0 - 18.6	800	17.9	4.9 - 30.8	3,200	72.5	55.0 - 90.0	4,500
\$25,000 to \$34,999	200	5.2	0.0 - 11.0	300	7.1	0.0 - 15.7	900	20.9	10.1 - 31.6	3,000	66.8	53.0 - 80.6	4,500
\$35,000 to \$49,999	300	3.8	0.0 - 9.9	200	2.6	0.2 - 5.1	1,800	21.3	12.2 - 30.3	6,100	72.3	62.0 - 82.5	8,400
\$50,000 to \$74,999	200	3.3	0.1 - 6.6	500	6.8	0.0 - 14.5	1,700	24.2	12.4 - 36.0	4,700	65.6	52.7 - 78.6	7,200
\$75,000 or more	400	5.6	0.0 - 13.0	400	4.9	0.3 - 9.4	2,600	33.8	21.8 - 45.7	4,200	55.8	43.1 - 68.6	7,600

Diabetes - times visit doc by State, County, Island, Community, BRFSS Age Group, DOH Race-Ethnicity, Gender, Education Level, Employment Status (Grouped), Household Income, Poverty Level, Marital Status (Grouped), Married, Health Care Coverage, for the Year(s) - 2000-2002, 2001-2003, 2002-2004, 2003-2005, 2004-2006, 2005-2007, 2006-2008, 2007-2009, 2008-2010

Note: Weighted numbers (#) represent 3-yr averages, percentages and 95% confidence intervals; Respondents aged 18 years and older; n/r (Not Reportable) - If the unweighted total responses for a dimension (row) is <50 that row will not be shown; n/a (Not Available) - Not asked of a subset of respondents

Year: 2001-2003

Poverty Level	None			1 time			2 to 3 times			4 or more times			Estimated Population (3-Yr Avg)
	#	%	C.I. (95%)	#	%	C.I. (95%)	#	%	C.I. (95%)	#	%	C.I. (95%)	#
0-130%	400	2.9	0.3 - 5.6	1,300	10.3	3.8 - 16.9	2,600	19.9	11.8 - 28.0	8,600	66.8	56.7 - 77.0	12,900
131-185%	200	4.2	0.3 - 8.0	400	7.2	0.0 - 15.4	900	17.4	6.8 - 28.1	3,700	71.2	58.2 - 84.2	5,200
186+%	1,100	4.5	1.2 - 7.8	1,200	4.6	1.7 - 7.5	6,400	25.8	20.0 - 31.7	16,200	65.0	58.5 - 71.5	24,900

Marital Status (Grouped)	None			1 time			2 to 3 times			4 or more times			Estimated Population (3-Yr Avg)
	#	%	C.I. (95%)	#	%	C.I. (95%)	#	%	C.I. (95%)	#	%	C.I. (95%)	#
Married	1,300	3.7	1.6 - 5.8	2,400	6.5	3.8 - 9.2	8,100	22.2	17.2 - 27.3	24,500	67.6	61.9 - 73.3	36,300
Widowed	600	6.7	0.5 - 12.9	400	4.4	0.4 - 8.4	1,700	18.9	10.2 - 27.7	6,300	70.0	59.8 - 80.2	9,000
Other	200	1.3	0.1 - 2.5	1,000	7.8	1.5 - 14.1	3,100	25.5	17.9 - 33.1	8,000	65.4	56.6 - 74.1	12,200

Diabetes - times visit doc by State, County, Island, Community, BRFSS Age Group, DOH Race-Ethnicity, Gender, Education Level, Employment Status (Grouped), Household Income, Poverty Level, Marital Status (Grouped), Married, Health Care Coverage, for the Year(s) - 2000-2002, 2001-2003, 2002-2004, 2003-2005, 2004-2006, 2005-2007, 2006-2008, 2007-2009, 2008-2010

Note: Weighted numbers (#) represent 3-yr averages, percentages and 95% confidence intervals; Respondents aged 18 years and older; n/r (Not Reportable) - If the unweighted total responses for a dimension (row) is <50 that row will not be shown; n/a (Not Available) - Not asked of a subset of respondents

Year: 2001-2003

Married	None			1 time			2 to 3 times			4 or more times			Estimated Population (3-Yr Avg)
	#	%	C.I. (95%)	#	%	C.I. (95%)	#	%	C.I. (95%)	#	%	C.I. (95%)	#
Yes	1,300	3.6	1.6 - 5.7	2,400	6.6	3.9 - 9.2	8,100	22.0	17.0 - 27.0	25,100	67.8	62.2 - 73.4	37,000
No	700	3.6	0.8 - 6.5	1,300	6.2	2.1 - 10.4	4,800	23.2	17.3 - 29.1	13,800	67.0	60.1 - 73.8	20,600

Health Care Coverage	None			1 time			2 to 3 times			4 or more times			Estimated Population (3-Yr Avg)
	#	%	C.I. (95%)	#	%	C.I. (95%)	#	%	C.I. (95%)	#	%	C.I. (95%)	#
Yes	1,800	3.2	1.6 - 4.9	3,400	6.1	3.8 - 8.3	12,600	22.5	18.6 - 26.4	38,400	68.2	63.9 - 72.6	56,300

Diabetes - times visit doc by State, County, Island, Community, BRFSS Age Group, DOH Race-Ethnicity, Gender, Education Level, Employment Status (Grouped), Household Income, Poverty Level, Marital Status (Grouped), Married, Health Care Coverage, for the Year(s) - 2000-2002, 2001-2003, 2002-2004, 2003-2005, 2004-2006, 2005-2007, 2006-2008, 2007-2009, 2008-2010

Note: Weighted numbers (#) represent 3-yr averages, percentages and 95% confidence intervals; Respondents aged 18 years and older; n/r (Not Reportable) - If the unweighted total responses for a dimension (row) is <50 that row will not be shown; n/a (Not Available) - Not asked of a subset of respondents

Year: 2000-2002

State	None			1 time			2 to 3 times			4 or more times			Estimated Population (3-Yr Avg)
	#	%	C.I. (95%)	#	%	C.I. (95%)	#	%	C.I. (95%)	#	%	C.I. (95%)	#
Hawaii State	1,100	2.2	1.0 - 3.5	3,000	6.0	4.0 - 8.1	10,100	20.2	16.6 - 23.8	35,900	71.5	67.4 - 75.6	50,100

County	None			1 time			2 to 3 times			4 or more times			Estimated Population (3-Yr Avg)
	#	%	C.I. (95%)	#	%	C.I. (95%)	#	%	C.I. (95%)	#	%	C.I. (95%)	#
Hawaii	100	1.6	0.3 - 2.9	500	8.7	4.4 - 13.0	1,500	23.8	17.1 - 30.5	4,100	65.9	58.6 - 73.2	6,200
Honolulu	800	2.3	0.6 - 3.9	2,100	5.8	3.2 - 8.4	7,500	20.9	16.2 - 25.6	25,500	71.0	65.8 - 76.2	36,000
Kauai	200	6.9	0.8 - 13.0	100	3.8	0.0 - 7.7	400	16.9	8.5 - 25.3	1,700	72.4	62.2 - 82.7	2,300
Maui	100	0.9	0.0 - 1.8	300	5.6	1.1 - 10.1	700	13.0	6.3 - 19.7	4,600	80.5	71.4 - 89.6	5,700

Diabetes - times visit doc by State, County, Island, Community, BRFSS Age Group, DOH Race-Ethnicity, Gender, Education Level, Employment Status (Grouped), Household Income, Poverty Level, Marital Status (Grouped), Married, Health Care Coverage, for the Year(s) - 2000-2002, 2001-2003, 2002-2004, 2003-2005, 2004-2006, 2005-2007, 2006-2008, 2007-2009, 2008-2010

Note: Weighted numbers (#) represent 3-yr averages, percentages and 95% confidence intervals; Respondents aged 18 years and older; n/r (Not Reportable) - If the unweighted total responses for a dimension (row) is <50 that row will not be shown; n/a (Not Available) - Not asked of a subset of respondents

Year: 2000-2002

Island	None			1 time			2 to 3 times			4 or more times			Estimated Population (3-Yr Avg)
	#	%	C.I. (95%)	#	%	C.I. (95%)	#	%	C.I. (95%)	#	%	C.I. (95%)	#
Hawaii	100	1.6	0.3 - 2.9	500	8.7	4.4 - 13.0	1,500	23.8	17.1 - 30.5	4,100	65.9	58.6 - 73.2	6,200
Kauai	200	6.9	0.8 - 13.0	100	3.8	0.0 - 7.7	400	16.9	8.5 - 25.3	1,700	72.4	62.2 - 82.7	2,300
Maui	<50	0.3	0.0 - 0.9	300	5.7	0.6 - 10.8	600	13.0	5.5 - 20.5	4,000	81.0	71.0 - 91.1	5,000
Oahu	800	2.3	0.6 - 3.9	2,100	5.8	3.2 - 8.4	7,500	20.9	16.2 - 25.6	25,500	71.0	65.8 - 76.2	36,000

Diabetes - times visit doc by State, County, Island, Community, BRFSS Age Group, DOH Race-Ethnicity, Gender, Education Level, Employment Status (Grouped), Household Income, Poverty Level, Marital Status (Grouped), Married, Health Care Coverage, for the Year(s) - 2000-2002, 2001-2003, 2002-2004, 2003-2005, 2004-2006, 2005-2007, 2006-2008, 2007-2009, 2008-2010

Note: Weighted numbers (#) represent 3-yr averages, percentages and 95% confidence intervals; Respondents aged 18 years and older; n/r (Not Reportable) - If the unweighted total responses for a dimension (row) is <50 that row will not be shown; n/a (Not Available) - Not asked of a subset of respondents

Year: 2000-2002

Community	None			1 time			2 to 3 times			4 or more times			Estimated Population (3-Yr Avg)
	#	%	C.I. (95%)	#	%	C.I. (95%)	#	%	C.I. (95%)	#	%	C.I. (95%)	#
Aiea/ Pearl City	0	0.0	--	200	3.5	0.0 - 8.4	900	16.6	6.9 - 26.4	4,400	79.9	69.3 - 90.5	5,500
Hilo	<50	1.4	0.0 - 3.2	200	7.9	1.5 - 14.4	600	24.5	13.1 - 36.0	1,500	66.1	54.1 - 78.0	2,300
Kaimuki/ Palolo/ Waikiki	100	1.7	0.0 - 4.0	0	0.0	--	800	17.3	5.6 - 29.0	3,800	81.1	69.2 - 92.9	4,700
Kona	0	0.0	--	100	4.6	0.0 - 10.0	300	22.5	9.2 - 35.7	1,100	73.0	59.2 - 86.7	1,500
Lihue-Waimea	100	5.9	0.0 - 13.1	<50	2.1	0.0 - 6.1	300	18.1	8.4 - 27.7	1,300	73.9	62.3 - 85.6	1,800

Diabetes - times visit doc by State, County, Island, Community, BRFSS Age Group, DOH Race-Ethnicity, Gender, Education Level, Employment Status (Grouped), Household Income, Poverty Level, Marital Status (Grouped), Married, Health Care Coverage, for the Year(s) - 2000-2002, 2001-2003, 2002-2004, 2003-2005, 2004-2006, 2005-2007, 2006-2008, 2007-2009, 2008-2010

Note: Weighted numbers (#) represent 3-yr averages, percentages and 95% confidence intervals; Respondents aged 18 years and older; n/r (Not Reportable) - If the unweighted total responses for a dimension (row) is <50 that row will not be shown; n/a (Not Available) - Not asked of a subset of respondents

Year: 2000-2002

BRFSS Age Group	None			1 time			2 to 3 times			4 or more times			Estimated Population (3-Yr Avg)
	#	%	C.I. (95%)	#	%	C.I. (95%)	#	%	C.I. (95%)	#	%	C.I. (95%)	#
35-44	200	3.2	0.4 - 6.0	700	15.7	4.6 - 26.7	1,000	21.0	11.6 - 30.4	2,800	60.1	47.6 - 72.7	4,700
45-54	200	2.3	0.2 - 4.4	500	6.2	2.1 - 10.4	2,200	26.7	17.6 - 35.8	5,300	64.8	55.1 - 74.4	8,200
55-64	400	3.0	0.0 - 6.9	700	5.5	1.7 - 9.2	2,600	20.4	13.2 - 27.6	8,900	71.1	62.8 - 79.4	12,500
65-74	200	1.1	0.0 - 2.2	600	4.1	0.8 - 7.4	2,700	19.6	12.0 - 27.2	10,500	75.2	67.3 - 83.1	13,900
75+	200	3.2	0.1 - 6.4	400	4.7	0.4 - 9.0	900	11.3	5.5 - 17.2	6,200	80.7	73.1 - 88.4	7,600

Diabetes - times visit doc by State, County, Island, Community, BRFSS Age Group, DOH Race-Ethnicity, Gender, Education Level, Employment Status (Grouped), Household Income, Poverty Level, Marital Status (Grouped), Married, Health Care Coverage, for the Year(s) - 2000-2002, 2001-2003, 2002-2004, 2003-2005, 2004-2006, 2005-2007, 2006-2008, 2007-2009, 2008-2010

Note: Weighted numbers (#) represent 3-yr averages, percentages and 95% confidence intervals; Respondents aged 18 years and older; n/r (Not Reportable) - If the unweighted total responses for a dimension (row) is <50 that row will not be shown; n/a (Not Available) - Not asked of a subset of respondents

Year: 2000-2002

DOH Race-Ethnicity	None			1 time			2 to 3 times			4 or more times			Estimated Population (3-Yr Avg)
	#	%	C.I. (95%)	#	%	C.I. (95%)	#	%	C.I. (95%)	#	%	C.I. (95%)	#
Caucasian	300	3.1	0.0 - 7.4	700	7.5	1.9 - 13.2	1,800	18.4	11.9 - 24.9	6,800	71.0	62.4 - 79.5	9,600
Native Hawaiian	100	1.5	0.0 - 2.9	400	5.3	1.3 - 9.2	1,500	18.6	10.1 - 27.1	6,100	74.7	65.6 - 83.8	8,200
Chinese	100	3.1	0.0 - 9.0	100	3.3	0.0 - 7.3	400	14.5	4.1 - 24.9	2,300	79.1	66.9 - 91.3	2,900
Filipino	200	1.7	0.2 - 3.2	800	9.0	2.8 - 15.1	2,400	25.5	15.3 - 35.6	6,000	63.9	51.9 - 75.9	9,400
Japanese	400	2.7	0.4 - 5.1	400	2.5	0.6 - 4.4	2,900	18.1	12.4 - 23.8	12,100	76.6	70.5 - 82.7	15,800

Gender	None			1 time			2 to 3 times			4 or more times			Estimated Population (3-Yr Avg)
	#	%	C.I. (95%)	#	%	C.I. (95%)	#	%	C.I. (95%)	#	%	C.I. (95%)	#
Male	700	2.8	0.7 - 5.0	1,700	6.5	3.5 - 9.6	5,500	21.8	16.1 - 27.5	17,500	68.8	62.5 - 75.2	25,500
Female	400	1.6	0.5 - 2.8	1,400	5.5	2.8 - 8.2	4,600	18.6	14.1 - 23.0	18,300	74.3	69.3 - 79.3	24,700

Diabetes - times visit doc by State, County, Island, Community, BRFSS Age Group, DOH Race-Ethnicity, Gender, Education Level, Employment Status (Grouped), Household Income, Poverty Level, Marital Status (Grouped), Married, Health Care Coverage, for the Year(s) - 2000-2002, 2001-2003, 2002-2004, 2003-2005, 2004-2006, 2005-2007, 2006-2008, 2007-2009, 2008-2010

Note: Weighted numbers (#) represent 3-yr averages, percentages and 95% confidence intervals; Respondents aged 18 years and older; n/r (Not Reportable) - If the unweighted total responses for a dimension (row) is <50 that row will not be shown; n/a (Not Available) - Not asked of a subset of respondents

Year: 2000-2002

Education Level	None			1 time			2 to 3 times			4 or more times			Estimated Population (3-Yr Avg)
	#	%	C.I. (95%)	#	%	C.I. (95%)	#	%	C.I. (95%)	#	%	C.I. (95%)	#
Never attended school/ Only Kindergarten to Grades 8	0	0.0	--	200	9.2	0.0 - 20.6	300	15.5	0.0 - 31.1	1,700	75.3	57.8 - 92.8	2,300
Grades 9 thru 11 (Some High School)	100	2.2	0.0 - 5.8	100	4.1	0.0 - 10.1	400	12.0	2.8 - 21.2	2,600	81.7	70.4 - 92.9	3,100
Grades 12 or GED (High School Grad)	200	1.3	0.3 - 2.2	1,500	8.0	4.1 - 12.0	3,500	18.0	13.0 - 23.0	14,000	72.7	66.6 - 78.7	19,200
College 1 to 3 years (Some College/ Tech)	400	2.8	0.0 - 6.1	500	3.8	1.0 - 6.5	3,400	25.4	16.2 - 34.6	9,200	68.0	58.1 - 77.8	13,500
College 4 years or more (College Grad)	400	3.2	0.2 - 6.2	600	5.4	1.9 - 8.9	2,500	20.9	14.3 - 27.5	8,400	70.5	63.0 - 77.9	11,900

Employment Status (Grouped)	None			1 time			2 to 3 times			4 or more times			Estimated Population (3-Yr Avg)
	#	%	C.I. (95%)	#	%	C.I. (95%)	#	%	C.I. (95%)	#	%	C.I. (95%)	#
Employed	300	1.5	0.6 - 2.4	1,800	8.0	4.4 - 11.7	5,100	23.3	17.6 - 29.1	14,800	67.2	60.5 - 73.8	22,000
Retired/Unable to work	700	2.9	0.6 - 5.1	900	3.4	1.5 - 5.4	4,000	15.7	10.9 - 20.5	19,600	77.9	72.6 - 83.2	25,100

Diabetes - times visit doc by State, County, Island, Community, BRFSS Age Group, DOH Race-Ethnicity, Gender, Education Level, Employment Status (Grouped), Household Income, Poverty Level, Marital Status (Grouped), Married, Health Care Coverage, for the Year(s) - 2000-2002, 2001-2003, 2002-2004, 2003-2005, 2004-2006, 2005-2007, 2006-2008, 2007-2009, 2008-2010

Note: Weighted numbers (#) represent 3-yr averages, percentages and 95% confidence intervals; Respondents aged 18 years and older; n/r (Not Reportable) - If the unweighted total responses for a dimension (row) is <50 that row will not be shown; n/a (Not Available) - Not asked of a subset of respondents

Year: 2000-2002

Household Income	None			1 time			2 to 3 times			4 or more times			Estimated Population (3-Yr Avg)
	#	%	C.I. (95%)	#	%	C.I. (95%)	#	%	C.I. (95%)	#	%	C.I. (95%)	#
Less than \$10,000	100	2.7	0.0 - 5.6	300	7.6	0.0 - 15.8	300	9.5	2.3 - 16.6	2,600	80.2	69.3 - 91.0	3,300
\$10,000 to \$14,999	100	1.7	0.0 - 3.8	100	2.2	0.0 - 5.0	500	17.9	5.8 - 30.0	2,400	78.1	65.6 - 90.6	3,000
\$15,000 to \$19,999	100	6.2	0.0 - 12.8	200	10.6	0.0 - 21.4	400	19.2	5.3 - 33.2	1,500	64.0	48.1 - 79.9	2,300
\$20,000 to \$24,999	<50	0.7	0.0 - 2.0	300	6.9	0.0 - 17.9	400	9.4	0.2 - 18.6	3,200	83.1	68.2 - 97.9	3,800
\$25,000 to \$34,999	100	1.6	0.0 - 3.4	300	6.5	0.0 - 13.7	1,000	18.4	8.9 - 27.9	3,900	73.5	62.0 - 85.0	5,300
\$35,000 to \$49,999	<50	0.2	0.0 - 0.4	200	3.0	0.0 - 6.0	1,700	20.4	12.2 - 28.7	6,300	76.4	67.8 - 85.0	8,300
\$50,000 to \$74,999	100	1.4	0.0 - 3.1	300	5.6	0.7 - 10.4	1,000	19.6	9.9 - 29.2	3,800	73.4	62.9 - 84.0	5,200
\$75,000 or more	200	3.7	0.0 - 10.5	400	7.4	1.3 - 13.5	1,600	26.7	14.7 - 38.6	3,700	62.2	48.8 - 75.6	5,900

Diabetes - times visit doc by State, County, Island, Community, BRFSS Age Group, DOH Race-Ethnicity, Gender, Education Level, Employment Status (Grouped), Household Income, Poverty Level, Marital Status (Grouped), Married, Health Care Coverage, for the Year(s) - 2000-2002, 2001-2003, 2002-2004, 2003-2005, 2004-2006, 2005-2007, 2006-2008, 2007-2009, 2008-2010

Note: Weighted numbers (#) represent 3-yr averages, percentages and 95% confidence intervals; Respondents aged 18 years and older; n/r (Not Reportable) - If the unweighted total responses for a dimension (row) is <50 that row will not be shown; n/a (Not Available) - Not asked of a subset of respondents

Year: 2000-2002

Poverty Level	None			1 time			2 to 3 times			4 or more times			Estimated Population (3-Yr Avg)
	#	%	C.I. (95%)	#	%	C.I. (95%)	#	%	C.I. (95%)	#	%	C.I. (95%)	#
0-130%	200	2.3	0.4 - 4.2	500	5.6	1.2 - 9.9	1,300	14.7	7.4 - 21.9	6,900	77.5	68.5 - 86.5	8,900
131-185%	100	1.6	0.0 - 3.5	600	9.4	0.7 - 18.0	700	11.5	5.0 - 18.1	4,700	77.5	67.1 - 87.8	6,100
186+%	400	1.8	0.0 - 3.7	1,100	4.9	2.5 - 7.3	4,900	22.2	16.9 - 27.4	15,800	71.2	65.4 - 76.9	22,200

Marital Status (Grouped)	None			1 time			2 to 3 times			4 or more times			Estimated Population (3-Yr Avg)
	#	%	C.I. (95%)	#	%	C.I. (95%)	#	%	C.I. (95%)	#	%	C.I. (95%)	#
Married	700	2.1	0.4 - 3.8	2,000	6.3	3.8 - 8.7	7,300	22.3	17.4 - 27.3	22,600	69.3	63.8 - 74.7	32,600
Widowed	100	1.7	0.0 - 3.8	300	4.9	0.0 - 10.4	700	10.3	3.5 - 17.0	5,800	83.1	74.6 - 91.6	7,000
Other	300	3.0	1.0 - 4.9	600	6.1	1.4 - 10.8	2,100	20.2	13.6 - 26.9	7,400	70.7	63.1 - 78.4	10,500

Diabetes - times visit doc by State, County, Island, Community, BRFSS Age Group, DOH Race-Ethnicity, Gender, Education Level, Employment Status (Grouped), Household Income, Poverty Level, Marital Status (Grouped), Married, Health Care Coverage, for the Year(s) - 2000-2002, 2001-2003, 2002-2004, 2003-2005, 2004-2006, 2005-2007, 2006-2008, 2007-2009, 2008-2010

Note: Weighted numbers (#) represent 3-yr averages, percentages and 95% confidence intervals; Respondents aged 18 years and older; n/r (Not Reportable) - If the unweighted total responses for a dimension (row) is <50 that row will not be shown; n/a (Not Available) - Not asked of a subset of respondents

Year: 2000-2002

Married	None			1 time			2 to 3 times			4 or more times			Estimated Population (3-Yr Avg)
	#	%	C.I. (95%)	#	%	C.I. (95%)	#	%	C.I. (95%)	#	%	C.I. (95%)	#
Yes	700	2.1	0.4 - 3.8	2,100	6.4	4.0 - 8.8	7,300	22.1	17.3 - 27.0	23,000	69.4	64.0 - 74.7	33,200
No	400	2.5	1.0 - 3.9	900	5.3	1.7 - 9.0	2,800	16.4	11.4 - 21.5	12,800	75.7	69.8 - 81.7	16,900

Health Care Coverage	None			1 time			2 to 3 times			4 or more times			Estimated Population (3-Yr Avg)
	#	%	C.I. (95%)	#	%	C.I. (95%)	#	%	C.I. (95%)	#	%	C.I. (95%)	#
Yes	1,000	2.0	0.8 - 3.2	2,900	5.8	3.8 - 7.8	9,900	20.1	16.5 - 23.8	35,300	72.0	67.9 - 76.1	49,100