

**Diabetes - chkd blood for sugar by State, County, Island, Community, BRFSS Age Group, DOH Race-Ethnicity, Gender, Education Level, Employment Status (Grouped), Household Income, Poverty Level, Marital Status (Grouped), Married, Health Care Coverage, for the Year(s) - 2000-2002, 2001-2003, 2002-2004, 2003-2005, 2004-2006, 2005-2007, 2006-2008, 2007-2009, 2008-2010**

*Note: Weighted numbers (#) represent 3-yr averages, percentages and 95% confidence intervals; Respondents aged 18 years and older; n/r (Not Reportable) - If the unweighted total responses for a dimension (row) is <50 that row will not be shown; n/a (Not Available) - Not asked of a subset of respondents*

*The trend analysis report shows the trend for the selected health variable over selected years in a table and a graph. Estimated Population: This number is a weighted representation of the population who responded to a particular question in the survey. For most questions the eligible population will be the entire adult population. For some secondary questions only a subset of the population was asked the question. For example, all survey participants were asked if they had diabetes, but only those who answered yes were asked if they use insulin. If a dimension value is unknown for a particular survey record, that record will not be included in the counts for that particular dimension.*

*For documentation on other terms and coding in this report, please go to the following links*

[Click here to access BRFSS documentation](#)

[Click here to access DOH Race-Ethnicity coding](#)

[Click here to access The Hawai'i Data Guide](#)

[Click here to access Poverty Level Methodology](#)

**For questions about this report, please contact  
The Hawaii Health Data Warehouse**

[profiles@hhdw.org](mailto:profiles@hhdw.org)

**(855) 946-5899 x15**

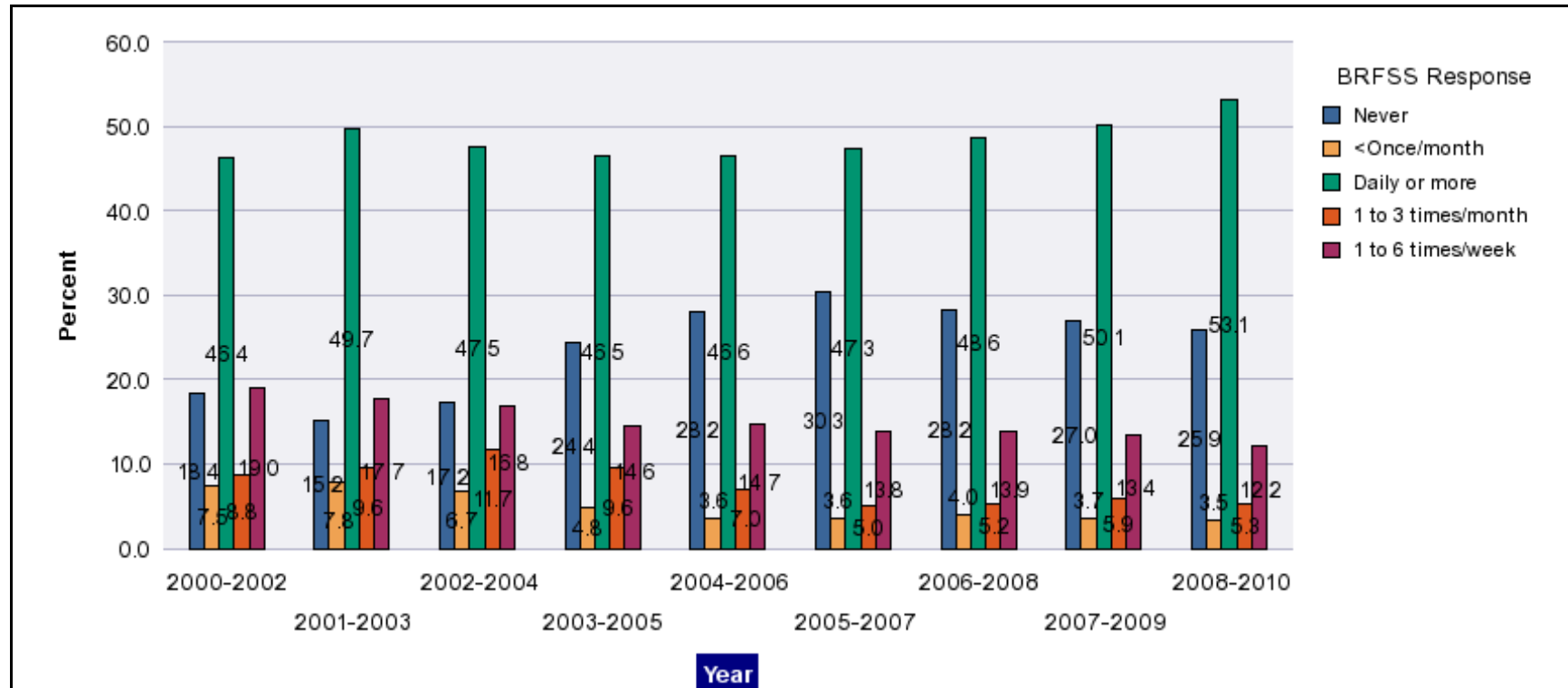
**Diabetes - chkd blood for sugar by State, County, Island, Community, BRFSS Age Group, DOH Race-Ethnicity, Gender, Education Level, Employment Status (Grouped), Household Income, Poverty Level, Marital Status (Grouped), Married, Health Care Coverage, for the Year(s) - 2000-2002, 2001-2003, 2002-2004, 2003-2005, 2004-2006, 2005-2007, 2006-2008, 2007-2009, 2008-2010**

*Note: Weighted numbers (#) represent 3-yr averages, percentages and 95% confidence intervals; Respondents aged 18 years and older; n/r (Not Reportable) - If the unweighted total responses for a dimension (row) is <50 that row will not be shown; n/a (Not Available) - Not asked of a subset of respondents*

Year	Never			<Once/month			Daily or more			1 to 3 times/month			1 to 6 times/week			Estimated Population (3-Yr Avg)
	#	%	C.I.(95%)	#	%	C.I.(95%)	#	%	C.I.(95%)	#	%	C.I.(95%)	#	%	C.I.(95%)	#
<b>2000-2002</b>	9,300	18.4	15.1 - 21.6	3,800	7.5	5.2 - 9.8	23,400	46.4	41.6 - 51.1	4,400	8.8	6.1 - 11.4	9,600	19.0	15.3 - 22.7	50,600
<b>2001-2003</b>	8,900	15.2	12.2 - 18.3	4,500	7.8	5.2 - 10.4	28,900	49.7	45.0 - 54.3	5,600	9.6	6.9 - 12.4	10,300	17.7	14.1 - 21.3	58,200
<b>2002-2004</b>	10,300	17.2	13.2 - 21.2	4,000	6.7	4.2 - 9.3	28,500	47.5	42.2 - 52.8	7,000	11.7	8.0 - 15.5	10,100	16.8	13.0 - 20.6	60,000
<b>2003-2005</b>	16,800	24.4	19.6 - 29.3	3,300	4.8	2.6 - 7.1	32,000	46.5	41.1 - 51.9	6,600	9.6	6.3 - 12.8	10,100	14.6	11.0 - 18.2	68,800
<b>2004-2006</b>	20,100	28.2	23.5 - 32.8	2,600	3.6	1.9 - 5.2	33,300	46.6	41.6 - 51.6	5,000	7.0	4.2 - 9.8	10,500	14.7	11.3 - 18.1	71,500
<b>2005-2007</b>	23,200	30.3	26.5 - 34.2	2,700	3.6	2.2 - 4.9	36,100	47.3	43.4 - 51.2	3,800	5.0	3.4 - 6.6	10,500	13.8	11.2 - 16.4	76,400
<b>2006-2008</b>	21,800	28.2	25.3 - 31.2	3,100	4.0	2.8 - 5.3	37,600	48.6	45.4 - 51.8	4,000	5.2	3.9 - 6.5	10,800	13.9	11.7 - 16.2	77,300
<b>2007-2009</b>	21,000	27.0	23.7 - 30.2	2,900	3.7	2.3 - 5.0	39,100	50.1	46.6 - 53.7	4,600	5.9	4.2 - 7.5	10,400	13.4	11.1 - 15.6	78,000
<b>2008-2010</b>	20,800	25.9	22.8 - 28.9	2,800	3.5	2.2 - 4.7	42,800	53.1	49.7 - 56.6	4,300	5.3	3.8 - 6.8	9,900	12.2	10.1 - 14.4	80,500

**Diabetes - chkd blood for sugar by State, County, Island, Community, BRFSS Age Group, DOH Race-Ethnicity, Gender, Education Level, Employment Status (Grouped), Household Income, Poverty Level, Marital Status (Grouped), Married, Health Care Coverage, for the Year(s) - 2000-2002, 2001-2003, 2002-2004, 2003-2005, 2004-2006, 2005-2007, 2006-2008, 2007-2009, 2008-2010**

*Note: Weighted numbers (#) represent 3-yr averages, percentages and 95% confidence intervals; Respondents aged 18 years and older; n/r (Not Reportable) - If the unweighted total responses for a dimension (row) is <50 that row will not be shown; n/a (Not Available) - Not asked of a subset of respondents*



**Diabetes - chkd blood for sugar by State, County, Island, Community, BRFSS Age Group, DOH Race-Ethnicity, Gender, Education Level, Employment Status (Grouped), Household Income, Poverty Level, Marital Status (Grouped), Married, Health Care Coverage, for the Year(s) - 2000-2002, 2001-2003, 2002-2004, 2003-2005, 2004-2006, 2005-2007, 2006-2008, 2007-2009, 2008-2010**

*Note: Weighted numbers (#) represent 3-yr averages, percentages and 95% confidence intervals; Respondents aged 18 years and older; n/r (Not Reportable) - If the unweighted total responses for a dimension (row) is <50 that row will not be shown; n/a (Not Available) - Not asked of a subset of respondents*

**Year: 2008-2010**

State	Never			<Once/month			Daily or more			1 to 3 times/month			1 to 6 times/week			Estimated Population (3-Yr Avg)
	#	%	C.I. (95%)	#	%	C.I. (95%)	#	%	C.I. (95%)	#	%	C.I. (95%)	#	%	C.I. (95%)	#
Hawaii State	20,800	25.9	22.8 - 28.9	2,800	3.5	2.2 - 4.7	42,800	53.1	49.7 - 56.6	4,300	5.3	3.8 - 6.8	9,900	12.2	10.1 - 14.4	80,500

County	Never			<Once/month			Daily or more			1 to 3 times/month			1 to 6 times/week			Estimated Population (3-Yr Avg)
	#	%	C.I. (95%)	#	%	C.I. (95%)	#	%	C.I. (95%)	#	%	C.I. (95%)	#	%	C.I. (95%)	#
Hawaii	2,700	24.3	17.3 - 31.4	200	1.4	0.1 - 2.8	6,500	58.2	51.1 - 65.3	600	5.2	2.2 - 8.2	1,200	10.9	7.0 - 14.7	11,300
Honolulu	15,300	26.9	22.9 - 30.8	2,200	3.9	2.2 - 5.6	29,900	52.6	48.1 - 57.1	2,700	4.8	3.0 - 6.5	6,800	11.9	9.1 - 14.8	56,900
Kauai	500	14.8	7.8 - 21.8	100	3.1	0.4 - 5.8	2,200	60.7	50.8 - 70.5	100	2.0	0.0 - 4.7	700	19.4	10.7 - 28.1	3,700
Maui	2,200	25.9	18.9 - 32.8	300	3.5	0.9 - 6.1	4,100	47.1	39.2 - 54.9	900	10.5	3.2 - 17.8	1,100	13.1	8.7 - 17.4	8,600

**Diabetes - chkd blood for sugar by State, County, Island, Community, BRFSS Age Group, DOH Race-Ethnicity, Gender, Education Level, Employment Status (Grouped), Household Income, Poverty Level, Marital Status (Grouped), Married, Health Care Coverage, for the Year(s) - 2000-2002, 2001-2003, 2002-2004, 2003-2005, 2004-2006, 2005-2007, 2006-2008, 2007-2009, 2008-2010**

*Note: Weighted numbers (#) represent 3-yr averages, percentages and 95% confidence intervals; Respondents aged 18 years and older; n/r (Not Reportable) - If the unweighted total responses for a dimension (row) is <50 that row will not be shown; n/a (Not Available) - Not asked of a subset of respondents*

**Year: 2008-2010**

Island	Never			<Once/month			Daily or more			1 to 3 times/month			1 to 6 times/week			Estimated Population (3-Yr Avg)
	#	%	C.I. (95%)	#	%	C.I. (95%)	#	%	C.I. (95%)	#	%	C.I. (95%)	#	%	C.I. (95%)	#
Hawaii	2,700	24.3	17.3 - 31.4	200	1.4	0.1 - 2.8	6,500	58.2	51.1 - 65.3	600	5.2	2.2 - 8.2	1,200	10.9	7.0 - 14.7	11,300
Kauai	500	14.8	7.8 - 21.8	100	3.1	0.4 - 5.8	2,200	60.7	50.8 - 70.5	100	2.0	0.0 - 4.7	700	19.4	10.7 - 28.1	3,700
Lanai	<50	20.6	7.9 - 33.3	<50	6.2	0.0 - 12.5	100	50.4	34.0 - 66.8	<50	5.0	0.0 - 11.8	<50	17.8	1.7 - 33.9	200
Maui	2,100	27.4	19.7 - 35.2	300	3.4	0.5 - 6.3	3,500	45.7	37.0 - 54.4	800	10.3	2.2 - 18.3	1,000	13.2	8.4 - 18.0	7,600
Molokai	100	13.1	3.6 - 22.6	<50	4.0	0.0 - 8.8	500	58.2	41.2 - 75.2	100	13.5	0.0 - 31.5	100	11.2	3.1 - 19.4	900
Oahu	15,300	26.9	22.9 - 30.8	2,200	3.9	2.2 - 5.6	29,900	52.6	48.1 - 57.1	2,700	4.8	3.0 - 6.5	6,800	11.9	9.1 - 14.8	56,900

Community	Never			<Once/month			Daily or more			1 to 3 times/month			1 to 6 times/week			Estimated Population (3-Yr Avg)
	#	%	C.I. (95%)	#	%	C.I. (95%)	#	%	C.I. (95%)	#	%	C.I. (95%)	#	%	C.I. (95%)	#
Aiea/ Pearl City	1,300	29.6	17.2 - 41.9	100	1.8	0.0 - 4.3	2,400	55.6	41.6 - 69.5	300	6.8	0.0 - 15.0	300	6.3	0.7 - 11.9	4,400
Hanalei/ Kapaa	300	23.5	7.0 - 40.0	<50	0.9	0.0 - 2.8	700	55.9	39.1 - 72.7	0	0.0	--	200	19.6	7.7 - 31.6	1,200

**Diabetes - chkd blood for sugar by State, County, Island, Community, BRFSS Age Group, DOH Race-Ethnicity, Gender, Education Level, Employment Status (Grouped), Household Income, Poverty Level, Marital Status (Grouped), Married, Health Care Coverage, for the Year(s) - 2000-2002, 2001-2003, 2002-2004, 2003-2005, 2004-2006, 2005-2007, 2006-2008, 2007-2009, 2008-2010**

*Note: Weighted numbers (#) represent 3-yr averages, percentages and 95% confidence intervals; Respondents aged 18 years and older; n/r (Not Reportable) - If the unweighted total responses for a dimension (row) is <50 that row will not be shown; n/a (Not Available) - Not asked of a subset of respondents*

**Year: 2008-2010**

Community	Never			<Once/month			Daily or more			1 to 3 times/month			1 to 6 times/week			Estimated Population (3-Yr Avg)
	#	%	C.I. (95%)	#	%	C.I. (95%)	#	%	C.I. (95%)	#	%	C.I. (95%)	#	%	C.I. (95%)	#
Hilo	900	25.1	15.5 - 34.6	<50	1.1	0.0 - 3.2	2,200	60.7	49.9 - 71.4	200	6.3	0.2 - 12.5	300	6.9	2.5 - 11.3	3,600
Kaaawa/ Kahaluu/ Kaneohe	1,300	31.4	17.1 - 45.6	100	2.4	0.0 - 7.1	1,800	46.0	30.9 - 61.0	200	5.7	0.0 - 11.5	600	14.6	4.8 - 24.4	4,000
Kahului	700	30.4	16.1 - 44.6	100	3.3	0.0 - 6.8	1,200	50.7	36.2 - 65.2	200	6.6	0.2 - 13.0	200	9.0	1.8 - 16.3	2,400
Kailua/ Waimanalo	900	23.2	10.4 - 35.9	200	4.9	0.0 - 11.3	2,100	53.5	36.7 - 70.3	200	5.1	0.0 - 12.1	500	13.3	0.0 - 28.5	3,800
Kaimuki/ Palolo/ Waikiki	1,500	29.3	17.7 - 40.9	100	1.4	0.0 - 3.5	2,800	53.5	40.9 - 66.1	500	10.3	2.5 - 18.1	300	5.5	0.8 - 10.2	5,100
Kona	700	30.0	9.4 - 50.7	<50	1.6	0.0 - 4.9	1,200	50.0	31.2 - 68.7	200	9.4	0.0 - 18.9	200	8.9	0.8 - 17.1	2,400
Lahaina/ Wailuku	800	25.7	13.5 - 37.9	100	3.1	0.0 - 6.7	1,200	38.7	24.3 - 53.1	400	14.5	0.0 - 31.7	500	17.9	8.6 - 27.3	3,000
Lanai	<50	20.6	7.9 - 33.3	<50	6.2	0.0 - 12.5	100	50.4	34.0 - 66.8	<50	5.0	0.0 - 11.8	<50	17.8	1.7 - 33.9	200
Lihue-Waimea	300	10.5	4.8 - 16.2	100	4.1	0.2 - 8.1	1,500	63.0	50.9 - 75.1	100	3.1	0.0 - 7.1	500	19.3	7.7 - 30.9	2,400
Manoa/ Upper Makiki	1,200	29.8	17.9 - 41.8	200	3.7	0.0 - 8.8	2,000	49.6	36.2 - 63.1	200	3.9	0.0 - 8.6	500	12.9	3.8 - 22.1	4,000
Mililani/ Wahiawa	1,300	20.9	10.3 - 31.5	100	1.4	0.0 - 4.0	3,900	62.1	49.2 - 75.1	500	7.6	0.4 - 14.8	500	8.0	1.9 - 14.0	6,200
Molokai	100	13.1	3.6 - 22.6	<50	4.0	0.0 - 8.8	500	58.2	41.2 - 75.2	100	13.5	0.0 - 31.5	100	11.2	3.1 - 19.4	900

**Diabetes - chkd blood for sugar by State, County, Island, Community, BRFSS Age Group, DOH Race-Ethnicity, Gender, Education Level, Employment Status (Grouped), Household Income, Poverty Level, Marital Status (Grouped), Married, Health Care Coverage, for the Year(s) - 2000-2002, 2001-2003, 2002-2004, 2003-2005, 2004-2006, 2005-2007, 2006-2008, 2007-2009, 2008-2010**

*Note: Weighted numbers (#) represent 3-yr averages, percentages and 95% confidence intervals; Respondents aged 18 years and older; n/r (Not Reportable) - If the unweighted total responses for a dimension (row) is <50 that row will not be shown; n/a (Not Available) - Not asked of a subset of respondents*

**Year: 2008-2010**

Community	Never			<Once/month			Daily or more			1 to 3 times/month			1 to 6 times/week			Estimated Population (3-Yr Avg)
	#	%	C.I. (95%)	#	%	C.I. (95%)	#	%	C.I. (95%)	#	%	C.I. (95%)	#	%	C.I. (95%)	#
<b>N.Hawaii</b>	400	21.3	1.0 - 41.6	<50	1.1	0.0 - 3.3	1,100	61.2	42.3 - 80.0	<50	1.8	0.0 - 5.3	300	14.6	4.2 - 25.0	1,700
<b>Nuuanu/ Kalihi/ Moanalua</b>	1,400	24.4	12.5 - 36.3	400	6.5	0.0 - 14.2	2,900	51.5	36.4 - 66.6	200	2.9	0.0 - 6.6	800	14.7	5.2 - 24.1	5,600
<b>Puna/ Kau</b>	800	21.2	10.9 - 31.6	100	1.8	0.0 - 4.6	2,100	59.7	48.3 - 71.2	100	2.8	0.3 - 5.2	500	14.4	6.1 - 22.8	3,500
<b>Upcountry/ Hana</b>	600	26.6	12.9 - 40.3	100	4.0	0.0 - 11.7	1,100	49.8	34.4 - 65.3	200	8.4	0.0 - 19.9	300	11.2	3.8 - 18.6	2,200
<b>Waipahu/ Kapolei/ Ewa</b>	2,700	23.3	12.6 - 34.0	700	6.3	0.6 - 12.1	6,400	55.3	43.6 - 66.9	400	3.6	0.0 - 7.5	1,300	11.5	5.5 - 17.5	11,600

**Diabetes - chkd blood for sugar by State, County, Island, Community, BRFSS Age Group, DOH Race-Ethnicity, Gender, Education Level, Employment Status (Grouped), Household Income, Poverty Level, Marital Status (Grouped), Married, Health Care Coverage, for the Year(s) - 2000-2002, 2001-2003, 2002-2004, 2003-2005, 2004-2006, 2005-2007, 2006-2008, 2007-2009, 2008-2010**

*Note: Weighted numbers (#) represent 3-yr averages, percentages and 95% confidence intervals; Respondents aged 18 years and older; n/r (Not Reportable) - If the unweighted total responses for a dimension (row) is <50 that row will not be shown; n/a (Not Available) - Not asked of a subset of respondents*

**Year: 2008-2010**

BRFSS Age Group	Never			<Once/month			Daily or more			1 to 3 times/month			1 to 6 times/week			Estimated Population (3-Yr Avg)
	#	%	C.I. (95%)	#	%	C.I. (95%)	#	%	C.I. (95%)	#	%	C.I. (95%)	#	%	C.I. (95%)	#
<b>35-44</b>	2,500	28.5	17.0 - 40.1	100	1.4	0.0 - 3.4	4,900	56.0	43.1 - 69.0	400	4.1	0.2 - 7.9	900	10.0	1.9 - 18.1	8,700
<b>45-54</b>	3,200	23.4	14.5 - 32.3	500	3.6	0.8 - 6.4	7,100	52.2	43.0 - 61.3	1,400	10.5	4.4 - 16.5	1,400	10.4	5.5 - 15.3	13,600
<b>55-64</b>	4,700	23.8	18.6 - 29.0	600	3.2	1.1 - 5.3	11,600	58.5	52.4 - 64.5	600	3.0	1.2 - 4.9	2,300	11.5	7.9 - 15.1	19,900
<b>65-74</b>	4,100	25.5	20.0 - 31.0	600	3.8	1.5 - 6.1	8,100	50.2	43.7 - 56.7	800	4.7	1.9 - 7.4	2,600	15.8	10.9 - 20.7	16,200
<b>75+</b>	5,000	27.2	21.3 - 33.0	900	5.0	1.1 - 8.9	8,900	48.9	41.9 - 56.0	1,000	5.7	2.5 - 8.8	2,400	13.2	8.4 - 18.1	18,300



**Diabetes - chkd blood for sugar by State, County, Island, Community, BRFSS Age Group, DOH Race-Ethnicity, Gender, Education Level, Employment Status (Grouped), Household Income, Poverty Level, Marital Status (Grouped), Married, Health Care Coverage, for the Year(s) - 2000-2002, 2001-2003, 2002-2004, 2003-2005, 2004-2006, 2005-2007, 2006-2008, 2007-2009, 2008-2010**

*Note: Weighted numbers (#) represent 3-yr averages, percentages and 95% confidence intervals; Respondents aged 18 years and older; n/r (Not Reportable) - If the unweighted total responses for a dimension (row) is <50 that row will not be shown; n/a (Not Available) - Not asked of a subset of respondents*

**Year: 2008-2010**

DOH Race-Ethnicity	Never			<Once/month			Daily or more			1 to 3 times/month			1 to 6 times/week			Estimated Population (3-Yr Avg)
	#	%	C.I. (95%)	#	%	C.I. (95%)	#	%	C.I. (95%)	#	%	C.I. (95%)	#	%	C.I. (95%)	#
Caucasian	3,300	20.9	14.8 - 27.0	600	3.8	1.3 - 6.3	8,600	54.9	48.3 - 61.6	600	3.8	1.6 - 6.0	2,600	16.6	12.1 - 21.0	15,600
Native Hawaiian	3,900	26.5	19.1 - 33.8	300	2.1	0.4 - 3.8	8,000	54.0	45.8 - 62.3	900	6.0	2.5 - 9.6	1,700	11.3	5.9 - 16.8	14,800
Chinese	1,200	23.0	13.3 - 32.7	200	2.9	0.0 - 6.4	2,700	50.8	38.7 - 62.9	400	7.3	0.5 - 14.0	900	16.0	7.6 - 24.3	5,400
Filipino	4,000	27.0	18.2 - 35.9	900	6.2	2.1 - 10.3	7,200	48.1	38.8 - 57.5	1,200	8.0	3.2 - 12.8	1,600	10.6	6.4 - 14.8	15,000
Japanese	7,200	30.9	25.5 - 36.4	700	3.1	0.5 - 5.7	12,100	52.2	45.8 - 58.6	900	3.9	1.9 - 5.9	2,300	9.9	5.7 - 14.2	23,100

Gender	Never			<Once/month			Daily or more			1 to 3 times/month			1 to 6 times/week			Estimated Population (3-Yr Avg)
	#	%	C.I. (95%)	#	%	C.I. (95%)	#	%	C.I. (95%)	#	%	C.I. (95%)	#	%	C.I. (95%)	#
Male	9,300	23.5	18.9 - 28.1	1,600	4.1	2.1 - 6.1	20,900	53.0	47.8 - 58.2	2,900	7.5	4.7 - 10.2	4,700	12.0	9.0 - 14.9	39,500
Female	11,500	28.1	24.1 - 32.2	1,200	2.8	1.3 - 4.3	21,800	53.3	48.7 - 57.9	1,300	3.2	1.8 - 4.6	5,100	12.5	9.3 - 15.7	41,000

**Diabetes - chkd blood for sugar by State, County, Island, Community, BRFSS Age Group, DOH Race-Ethnicity, Gender, Education Level, Employment Status (Grouped), Household Income, Poverty Level, Marital Status (Grouped), Married, Health Care Coverage, for the Year(s) - 2000-2002, 2001-2003, 2002-2004, 2003-2005, 2004-2006, 2005-2007, 2006-2008, 2007-2009, 2008-2010**

*Note: Weighted numbers (#) represent 3-yr averages, percentages and 95% confidence intervals; Respondents aged 18 years and older; n/r (Not Reportable) - If the unweighted total responses for a dimension (row) is <50 that row will not be shown; n/a (Not Available) - Not asked of a subset of respondents*

**Year: 2008-2010**

Education Level	Never			<Once/month			Daily or more			1 to 3 times/month			1 to 6 times/week			Estimated Population (3-Yr Avg)
	#	%	C.I. (95%)	#	%	C.I. (95%)	#	%	C.I. (95%)	#	%	C.I. (95%)	#	%	C.I. (95%)	#
Never attended school/ Only Kindergarten to Grades 8	900	37.4	18.9 - 55.9	300	12.6	0.0 - 28.7	900	39.2	22.2 - 56.2	0	0.0	--	200	10.8	3.2 - 18.3	2,300
Grades 9 thru 11 (Some High School)	800	19.9	8.0 - 31.7	100	1.4	0.0 - 3.9	1,700	41.5	25.8 - 57.2	500	13.4	3.3 - 23.5	1,000	23.9	8.3 - 39.5	4,100
Grades 12 or GED (High School Grad)	7,900	29.3	23.3 - 35.3	1,100	4.3	1.6 - 7.0	13,300	49.6	43.3 - 56.0	1,500	5.8	2.8 - 8.7	2,900	11.0	7.6 - 14.4	26,800
College 1 to 3 years (Some College/ Tech)	5,700	24.7	19.0 - 30.3	400	1.8	0.4 - 3.1	12,900	55.8	49.2 - 62.4	700	3.1	1.3 - 5.0	3,400	14.7	9.9 - 19.4	23,100
College 4 years or more (College Grad)	5,500	22.9	18.3 - 27.5	900	3.7	1.8 - 5.5	14,000	57.9	52.3 - 63.5	1,400	6.0	3.0 - 9.0	2,300	9.5	6.6 - 12.4	24,200

**Diabetes - chkd blood for sugar by State, County, Island, Community, BRFSS Age Group, DOH Race-Ethnicity, Gender, Education Level, Employment Status (Grouped), Household Income, Poverty Level, Marital Status (Grouped), Married, Health Care Coverage, for the Year(s) - 2000-2002, 2001-2003, 2002-2004, 2003-2005, 2004-2006, 2005-2007, 2006-2008, 2007-2009, 2008-2010**

*Note: Weighted numbers (#) represent 3-yr averages, percentages and 95% confidence intervals; Respondents aged 18 years and older; n/r (Not Reportable) - If the unweighted total responses for a dimension (row) is <50 that row will not be shown; n/a (Not Available) - Not asked of a subset of respondents*

**Year: 2008-2010**

Employment Status (Grouped)	Never			<Once/month			Daily or more			1 to 3 times/month			1 to 6 times/week			Estimated Population (3-Yr Avg)
	#	%	C.I. (95%)	#	%	C.I. (95%)	#	%	C.I. (95%)	#	%	C.I. (95%)	#	%	C.I. (95%)	#
<b>Employed</b>	9,600	27.4	22.3 - 32.5	1,300	3.6	1.7 - 5.5	17,800	50.7	45.0 - 56.5	2,300	6.6	3.8 - 9.5	4,000	11.6	8.3 - 14.9	35,000
<b>Unemployed</b>	1,100	27.1	9.0 - 45.2	100	2.1	0.0 - 6.2	2,600	62.0	43.7 - 80.3	100	1.3	0.0 - 3.1	300	7.5	0.0 - 15.7	4,200
<b>Retired/Unable to work</b>	9,300	24.7	20.8 - 28.5	1,400	3.8	1.9 - 5.8	20,400	54.0	49.5 - 58.6	1,600	4.3	2.5 - 6.2	5,000	13.1	9.9 - 16.4	37,700
<b>Student/Homemaker</b>	800	21.6	10.0 - 33.2	0	0.0	--	2,100	56.8	43.6 - 70.0	300	7.0	0.0 - 14.4	500	14.6	6.2 - 23.1	3,700

**Diabetes - chkd blood for sugar by State, County, Island, Community, BRFSS Age Group, DOH Race-Ethnicity, Gender, Education Level, Employment Status (Grouped), Household Income, Poverty Level, Marital Status (Grouped), Married, Health Care Coverage, for the Year(s) - 2000-2002, 2001-2003, 2002-2004, 2003-2005, 2004-2006, 2005-2007, 2006-2008, 2007-2009, 2008-2010**

*Note: Weighted numbers (#) represent 3-yr averages, percentages and 95% confidence intervals; Respondents aged 18 years and older; n/r (Not Reportable) - If the unweighted total responses for a dimension (row) is <50 that row will not be shown; n/a (Not Available) - Not asked of a subset of respondents*

**Year: 2008-2010**

Household Income	Never			<Once/month			Daily or more			1 to 3 times/month			1 to 6 times/week			Estimated Population (3-Yr Avg)
	#	%	C.I. (95%)	#	%	C.I. (95%)	#	%	C.I. (95%)	#	%	C.I. (95%)	#	%	C.I. (95%)	#
<b>Less than \$10,000</b>	1,100	32.2	14.0 - 50.4	300	10.6	0.0 - 22.7	1,600	49.8	32.8 - 66.7	100	3.9	0.0 - 8.0	100	3.6	0.5 - 6.6	3,300
<b>\$10,000 to \$14,999</b>	900	23.8	11.1 - 36.5	200	4.1	0.0 - 12.0	2,100	56.9	42.5 - 71.3	100	1.5	0.0 - 3.7	500	13.7	4.8 - 22.5	3,700
<b>\$15,000 to \$19,999</b>	1,400	22.7	13.6 - 31.8	100	1.2	0.0 - 3.0	3,500	58.0	45.8 - 70.2	300	5.7	0.5 - 10.8	700	12.5	5.3 - 19.6	6,000
<b>\$20,000 to \$24,999</b>	2,000	33.0	22.2 - 43.8	100	1.6	0.0 - 3.5	3,000	48.6	36.2 - 61.0	200	2.8	0.0 - 6.4	900	13.9	3.5 - 24.4	6,100
<b>\$25,000 to \$34,999</b>	1,900	21.1	13.6 - 28.6	300	3.5	0.8 - 6.1	5,100	56.7	47.7 - 65.6	700	7.8	2.4 - 13.3	1,000	10.9	6.3 - 15.6	8,900
<b>\$35,000 to \$49,999</b>	3,000	23.2	16.4 - 29.9	400	2.9	0.6 - 5.2	7,500	57.1	48.9 - 65.4	1,100	8.0	2.9 - 13.2	1,200	8.8	3.9 - 13.7	13,100
<b>\$50,000 to \$74,999</b>	3,100	24.7	17.7 - 31.8	700	5.8	0.8 - 10.9	6,400	51.2	42.7 - 59.6	400	3.5	0.5 - 6.5	1,900	14.7	9.3 - 20.2	12,600
<b>\$75,000 or more</b>	4,300	22.5	17.0 - 28.1	500	2.4	0.6 - 4.2	10,500	54.6	47.4 - 61.9	1,100	5.9	2.5 - 9.3	2,800	14.5	9.4 - 19.7	19,200

**Diabetes - chkd blood for sugar by State, County, Island, Community, BRFSS Age Group, DOH Race-Ethnicity, Gender, Education Level, Employment Status (Grouped), Household Income, Poverty Level, Marital Status (Grouped), Married, Health Care Coverage, for the Year(s) - 2000-2002, 2001-2003, 2002-2004, 2003-2005, 2004-2006, 2005-2007, 2006-2008, 2007-2009, 2008-2010**

*Note: Weighted numbers (#) represent 3-yr averages, percentages and 95% confidence intervals; Respondents aged 18 years and older; n/r (Not Reportable) - If the unweighted total responses for a dimension (row) is <50 that row will not be shown; n/a (Not Available) - Not asked of a subset of respondents*

**Year: 2008-2010**

Poverty Level	Never			<Once/month			Daily or more			1 to 3 times/month			1 to 6 times/week			Estimated Population (3-Yr Avg)
	#	%	C.I. (95%)	#	%	C.I. (95%)	#	%	C.I. (95%)	#	%	C.I. (95%)	#	%	C.I. (95%)	#
<b>0-130%</b>	4,600	25.6	18.9 - 32.2	700	4.0	0.9 - 7.0	9,800	53.7	45.8 - 61.7	700	3.9	0.6 - 7.1	2,300	12.8	7.3 - 18.3	18,200
<b>131-185%</b>	2,700	22.0	15.4 - 28.6	200	1.7	0.0 - 3.6	7,500	60.1	52.0 - 68.2	1,100	8.9	3.4 - 14.4	900	7.3	4.2 - 10.4	12,400
<b>186+%</b>	10,300	24.3	20.7 - 28.0	1,600	3.8	2.0 - 5.6	22,400	53.0	48.6 - 57.4	2,200	5.2	3.4 - 7.1	5,800	13.6	10.6 - 16.6	42,300

Marital Status (Grouped)	Never			<Once/month			Daily or more			1 to 3 times/month			1 to 6 times/week			Estimated Population (3-Yr Avg)
	#	%	C.I. (95%)	#	%	C.I. (95%)	#	%	C.I. (95%)	#	%	C.I. (95%)	#	%	C.I. (95%)	#
<b>Married</b>	11,800	23.6	19.9 - 27.2	2,000	4.0	2.3 - 5.7	27,100	54.1	49.7 - 58.5	3,100	6.3	4.0 - 8.5	6,100	12.1	9.4 - 14.8	50,200
<b>Widowed</b>	2,500	26.0	18.9 - 33.1	400	4.2	0.0 - 8.5	4,700	48.6	39.8 - 57.4	500	5.1	1.8 - 8.4	1,600	16.1	8.6 - 23.6	9,700
<b>Other</b>	6,100	31.1	23.8 - 38.5	400	1.9	0.3 - 3.4	10,500	53.2	45.8 - 60.6	600	3.2	1.5 - 4.9	2,100	10.6	6.4 - 14.7	19,700

**Diabetes - chkd blood for sugar by State, County, Island, Community, BRFSS Age Group, DOH Race-Ethnicity, Gender, Education Level, Employment Status (Grouped), Household Income, Poverty Level, Marital Status (Grouped), Married, Health Care Coverage, for the Year(s) - 2000-2002, 2001-2003, 2002-2004, 2003-2005, 2004-2006, 2005-2007, 2006-2008, 2007-2009, 2008-2010**

*Note: Weighted numbers (#) represent 3-yr averages, percentages and 95% confidence intervals; Respondents aged 18 years and older; n/r (Not Reportable) - If the unweighted total responses for a dimension (row) is <50 that row will not be shown; n/a (Not Available) - Not asked of a subset of respondents*

**Year: 2008-2010**

<b>Married</b>	<b>Never</b>			<b>&lt;Once/month</b>			<b>Daily or more</b>			<b>1 to 3 times/month</b>			<b>1 to 6 times/week</b>			<b>Estimated Population (3-Yr Avg)</b>
	<b>#</b>	<b>%</b>	<b>C.I. (95%)</b>	<b>#</b>	<b>%</b>	<b>C.I. (95%)</b>	<b>#</b>	<b>%</b>	<b>C.I. (95%)</b>	<b>#</b>	<b>%</b>	<b>C.I. (95%)</b>	<b>#</b>	<b>%</b>	<b>C.I. (95%)</b>	<b>#</b>
<b>Yes</b>	12,800	24.7	20.8 - 28.7	2,000	3.9	2.3 - 5.6	27,600	53.2	48.8 - 57.7	3,200	6.2	4.0 - 8.4	6,200	11.9	9.3 - 14.5	51,900
<b>No</b>	8,000	28.0	23.1 - 32.8	800	2.6	0.8 - 4.5	15,100	52.8	47.3 - 58.3	1,000	3.7	2.1 - 5.2	3,700	12.9	9.0 - 16.8	28,500

<b>Health Care Coverage</b>	<b>Never</b>			<b>&lt;Once/month</b>			<b>Daily or more</b>			<b>1 to 3 times/month</b>			<b>1 to 6 times/week</b>			<b>Estimated Population (3-Yr Avg)</b>
	<b>#</b>	<b>%</b>	<b>C.I. (95%)</b>	<b>#</b>	<b>%</b>	<b>C.I. (95%)</b>	<b>#</b>	<b>%</b>	<b>C.I. (95%)</b>	<b>#</b>	<b>%</b>	<b>C.I. (95%)</b>	<b>#</b>	<b>%</b>	<b>C.I. (95%)</b>	<b>#</b>
<b>Yes</b>	14,500	27.5	24.0 - 30.9	1,900	3.5	2.2 - 4.8	28,000	53.1	49.3 - 56.8	2,300	4.4	2.9 - 6.0	6,100	11.5	9.2 - 13.8	52,800

**Diabetes - chkd blood for sugar by State, County, Island, Community, BRFSS Age Group, DOH Race-Ethnicity, Gender, Education Level, Employment Status (Grouped), Household Income, Poverty Level, Marital Status (Grouped), Married, Health Care Coverage, for the Year(s) - 2000-2002, 2001-2003, 2002-2004, 2003-2005, 2004-2006, 2005-2007, 2006-2008, 2007-2009, 2008-2010**

*Note: Weighted numbers (#) represent 3-yr averages, percentages and 95% confidence intervals; Respondents aged 18 years and older; n/r (Not Reportable) - If the unweighted total responses for a dimension (row) is <50 that row will not be shown; n/a (Not Available) - Not asked of a subset of respondents*

**Year: 2007-2009**

State	Never			<Once/month			Daily or more			1 to 3 times/month			1 to 6 times/week			Estimated Population (3-Yr Avg)
	#	%	C.I. (95%)	#	%	C.I. (95%)	#	%	C.I. (95%)	#	%	C.I. (95%)	#	%	C.I. (95%)	#
Hawaii State	21,000	27.0	23.7 - 30.2	2,900	3.7	2.3 - 5.0	39,100	50.1	46.6 - 53.7	4,600	5.9	4.2 - 7.5	10,400	13.4	11.1 - 15.6	78,000

County	Never			<Once/month			Daily or more			1 to 3 times/month			1 to 6 times/week			Estimated Population (3-Yr Avg)
	#	%	C.I. (95%)	#	%	C.I. (95%)	#	%	C.I. (95%)	#	%	C.I. (95%)	#	%	C.I. (95%)	#
Hawaii	2,800	27.6	20.1 - 35.0	200	1.5	0.3 - 2.7	5,400	52.3	44.9 - 59.7	600	5.3	2.1 - 8.5	1,400	13.2	8.9 - 17.6	10,300
Honolulu	15,600	28.1	23.9 - 32.2	2,500	4.5	2.6 - 6.4	27,300	49.3	44.6 - 53.9	2,800	5.0	3.2 - 6.8	7,300	13.2	10.2 - 16.1	55,500
Kauai	500	14.6	7.6 - 21.6	100	1.7	0.1 - 3.3	2,200	57.6	47.7 - 67.5	200	5.5	0.9 - 10.1	800	20.6	11.9 - 29.4	3,700
Maui	2,100	24.4	17.4 - 31.4	200	1.9	0.4 - 3.3	4,200	49.8	41.7 - 58.0	1,000	12.3	4.7 - 19.9	1,000	11.6	7.3 - 15.9	8,500

**Diabetes - chkd blood for sugar by State, County, Island, Community, BRFSS Age Group, DOH Race-Ethnicity, Gender, Education Level, Employment Status (Grouped), Household Income, Poverty Level, Marital Status (Grouped), Married, Health Care Coverage, for the Year(s) - 2000-2002, 2001-2003, 2002-2004, 2003-2005, 2004-2006, 2005-2007, 2006-2008, 2007-2009, 2008-2010**

*Note: Weighted numbers (#) represent 3-yr averages, percentages and 95% confidence intervals; Respondents aged 18 years and older; n/r (Not Reportable) - If the unweighted total responses for a dimension (row) is <50 that row will not be shown; n/a (Not Available) - Not asked of a subset of respondents*

**Year: 2007-2009**

Island	Never			<Once/month			Daily or more			1 to 3 times/month			1 to 6 times/week			Estimated Population (3-Yr Avg)
	#	%	C.I. (95%)	#	%	C.I. (95%)	#	%	C.I. (95%)	#	%	C.I. (95%)	#	%	C.I. (95%)	#
Hawaii	2,800	27.6	20.1 - 35.0	200	1.5	0.3 - 2.7	5,400	52.3	44.9 - 59.7	600	5.3	2.1 - 8.5	1,400	13.2	8.9 - 17.6	10,300
Kauai	500	14.6	7.6 - 21.6	100	1.7	0.1 - 3.3	2,200	57.6	47.7 - 67.5	200	5.5	0.9 - 10.1	800	20.6	11.9 - 29.4	3,700
Lanai	100	27.5	14.9 - 40.1	<50	2.7	0.0 - 6.7	100	47.4	32.3 - 62.5	<50	4.5	0.0 - 12.0	<50	17.9	3.3 - 32.5	200
Maui	1,900	25.4	17.6 - 33.2	100	1.8	0.3 - 3.4	3,700	49.5	40.5 - 58.5	900	12.2	3.9 - 20.5	800	11.1	6.4 - 15.8	7,600
Molokai	100	13.8	3.6 - 23.9	<50	2.2	0.0 - 6.5	400	53.6	35.8 - 71.5	100	15.3	0.0 - 35.1	100	15.1	5.5 - 24.7	800
Oahu	15,600	28.1	23.9 - 32.2	2,500	4.5	2.6 - 6.4	27,300	49.3	44.6 - 53.9	2,800	5.0	3.2 - 6.8	7,300	13.2	10.2 - 16.1	55,500

Community	Never			<Once/month			Daily or more			1 to 3 times/month			1 to 6 times/week			Estimated Population (3-Yr Avg)
	#	%	C.I. (95%)	#	%	C.I. (95%)	#	%	C.I. (95%)	#	%	C.I. (95%)	#	%	C.I. (95%)	#
Aiea/ Pearl City	900	23.4	11.9 - 34.8	100	1.9	0.0 - 4.7	2,200	53.4	38.3 - 68.4	100	3.5	0.0 - 8.8	700	17.9	5.9 - 29.9	4,000
Hilo	900	29.0	18.3 - 39.7	<50	0.4	0.0 - 1.2	1,800	55.9	44.3 - 67.6	300	8.3	1.3 - 15.3	200	6.4	1.7 - 11.1	3,200



**Diabetes - chkd blood for sugar by State, County, Island, Community, BRFSS Age Group, DOH Race-Ethnicity, Gender, Education Level, Employment Status (Grouped), Household Income, Poverty Level, Marital Status (Grouped), Married, Health Care Coverage, for the Year(s) - 2000-2002, 2001-2003, 2002-2004, 2003-2005, 2004-2006, 2005-2007, 2006-2008, 2007-2009, 2008-2010**

*Note: Weighted numbers (#) represent 3-yr averages, percentages and 95% confidence intervals; Respondents aged 18 years and older; n/r (Not Reportable) - If the unweighted total responses for a dimension (row) is <50 that row will not be shown; n/a (Not Available) - Not asked of a subset of respondents*

**Year: 2007-2009**

Community	Never			<Once/month			Daily or more			1 to 3 times/month			1 to 6 times/week			Estimated Population (3-Yr Avg)
	#	%	C.I. (95%)	#	%	C.I. (95%)	#	%	C.I. (95%)	#	%	C.I. (95%)	#	%	C.I. (95%)	#
<b>Kaaawa/ Kahaluu/ Kaneohe</b>	1,200	28.5	14.4 - 42.6	200	6.0	0.0 - 14.3	1,900	46.8	31.6 - 62.0	200	4.6	0.0 - 10.0	600	14.1	4.2 - 23.9	4,100
<b>Kahului</b>	700	29.8	15.5 - 44.1	100	3.2	0.0 - 6.6	1,300	53.1	38.4 - 67.8	200	9.0	0.8 - 17.2	100	4.9	0.2 - 9.6	2,400
<b>Kaimuki/ Palolo/ Waikiki</b>	1,600	33.7	20.2 - 47.2	300	7.1	0.0 - 15.7	2,000	42.7	28.6 - 56.7	500	11.0	2.5 - 19.6	300	5.4	0.4 - 10.5	4,700
<b>Kona</b>	800	33.9	13.6 - 54.3	<50	1.6	0.0 - 4.0	1,000	44.6	26.3 - 62.9	200	9.5	0.0 - 19.1	200	10.3	2.0 - 18.7	2,300
<b>Lahaina/ Wailuku</b>	600	23.9	10.7 - 37.2	<50	1.4	0.0 - 4.1	1,200	45.4	28.8 - 62.1	500	17.1	0.0 - 35.8	300	12.2	3.7 - 20.7	2,700
<b>Lanai</b>	100	27.5	14.9 - 40.1	<50	2.7	0.0 - 6.7	100	47.4	32.3 - 62.5	<50	4.5	0.0 - 12.0	<50	17.9	3.3 - 32.5	200
<b>Lihue-Waimea</b>	300	10.4	4.7 - 16.1	100	2.1	0.0 - 4.3	1,500	59.9	47.6 - 72.2	200	6.2	0.2 - 12.2	500	21.5	9.7 - 33.2	2,500
<b>Manoa/ Upper Makiki</b>	800	21.2	10.0 - 32.5	300	7.2	0.1 - 14.4	1,900	53.3	39.0 - 67.7	200	6.6	0.1 - 13.2	400	11.5	1.9 - 21.1	3,600
<b>Mililani/ Wahiawa</b>	1,300	19.8	9.2 - 30.5	100	1.3	0.0 - 3.3	3,700	56.3	42.6 - 70.1	700	10.6	2.0 - 19.2	800	11.8	4.5 - 19.2	6,500
<b>Molokai</b>	100	13.8	3.6 - 23.9	<50	2.2	0.0 - 6.5	400	53.6	35.8 - 71.5	100	15.3	0.0 - 35.1	100	15.1	5.5 - 24.7	800
<b>Nanakuli/ Waianae</b>	1,500	29.8	15.9 - 43.6	0	0.0	--	2,500	49.4	33.0 - 65.9	100	2.8	0.0 - 6.6	900	18.0	7.5 - 28.6	5,100
<b>N.Hawaii</b>	500	22.5	4.7 - 40.2	<50	0.7	0.0 - 2.1	1,100	56.3	39.9 - 72.7	0	0.0	--	400	20.6	9.7 - 31.5	2,000

**Diabetes - chkd blood for sugar by State, County, Island, Community, BRFSS Age Group, DOH Race-Ethnicity, Gender, Education Level, Employment Status (Grouped), Household Income, Poverty Level, Marital Status (Grouped), Married, Health Care Coverage, for the Year(s) - 2000-2002, 2001-2003, 2002-2004, 2003-2005, 2004-2006, 2005-2007, 2006-2008, 2007-2009, 2008-2010**

*Note: Weighted numbers (#) represent 3-yr averages, percentages and 95% confidence intervals; Respondents aged 18 years and older; n/r (Not Reportable) - If the unweighted total responses for a dimension (row) is <50 that row will not be shown; n/a (Not Available) - Not asked of a subset of respondents*

**Year: 2007-2009**

Community	Never			<Once/month			Daily or more			1 to 3 times/month			1 to 6 times/week			Estimated Population (3-Yr Avg)
	#	%	C.I. (95%)	#	%	C.I. (95%)	#	%	C.I. (95%)	#	%	C.I. (95%)	#	%	C.I. (95%)	#
<b>Nuuanu/ Kalihi/ Moanalua</b>	1,300	26.7	13.4 - 40.0	400	8.4	0.0 - 17.4	2,300	46.7	30.8 - 62.5	100	2.9	0.0 - 6.8	800	15.3	5.0 - 25.7	5,000
<b>Puna/ Kau</b>	700	24.2	12.3 - 36.1	100	3.3	0.0 - 7.3	1,400	51.8	38.5 - 65.1	100	2.2	0.0 - 4.7	500	18.5	7.9 - 29.1	2,700
<b>Upcountry/ Hana</b>	600	22.8	10.4 - 35.3	<50	0.9	0.0 - 2.8	1,300	50.4	35.7 - 65.2	200	10.0	0.0 - 21.2	400	15.8	6.0 - 25.5	2,500
<b>Waipahu/ Kapolei/ Ewa</b>	3,300	30.2	18.7 - 41.7	600	5.3	0.0 - 10.8	5,600	51.6	39.5 - 63.7	300	2.8	0.0 - 6.5	1,100	10.1	3.8 - 16.4	10,900

**Diabetes - chkd blood for sugar by State, County, Island, Community, BRFSS Age Group, DOH Race-Ethnicity, Gender, Education Level, Employment Status (Grouped), Household Income, Poverty Level, Marital Status (Grouped), Married, Health Care Coverage, for the Year(s) - 2000-2002, 2001-2003, 2002-2004, 2003-2005, 2004-2006, 2005-2007, 2006-2008, 2007-2009, 2008-2010**

*Note: Weighted numbers (#) represent 3-yr averages, percentages and 95% confidence intervals; Respondents aged 18 years and older; n/r (Not Reportable) - If the unweighted total responses for a dimension (row) is <50 that row will not be shown; n/a (Not Available) - Not asked of a subset of respondents*

**Year: 2007-2009**

BRFSS Age Group	Never			<Once/month			Daily or more			1 to 3 times/month			1 to 6 times/week			Estimated Population (3-Yr Avg)
	#	%	C.I. (95%)	#	%	C.I. (95%)	#	%	C.I. (95%)	#	%	C.I. (95%)	#	%	C.I. (95%)	#
<b>35-44</b>	2,100	29.0	16.5 - 41.6	200	2.7	0.0 - 5.8	3,900	53.2	39.4 - 67.0	200	2.5	0.0 - 5.6	900	12.5	3.1 - 21.9	7,300
<b>45-54</b>	3,400	23.2	14.6 - 31.8	300	2.3	0.4 - 4.3	7,200	49.5	40.9 - 58.1	1,900	13.3	7.2 - 19.4	1,700	11.7	6.5 - 16.9	14,500
<b>55-64</b>	5,100	26.6	20.8 - 32.4	500	2.6	0.9 - 4.3	10,200	52.6	46.0 - 59.2	800	4.2	1.7 - 6.8	2,700	13.9	9.8 - 18.0	19,300
<b>65-74</b>	4,100	25.2	19.2 - 31.2	500	3.3	0.9 - 5.6	8,200	50.3	43.4 - 57.3	700	4.2	1.6 - 6.9	2,700	16.9	11.5 - 22.3	16,200
<b>75+</b>	4,900	28.8	22.5 - 35.1	1,100	6.8	2.1 - 11.4	8,000	47.3	39.8 - 54.8	900	5.1	2.0 - 8.2	2,000	12.0	7.6 - 16.4	16,900

**Diabetes - chkd blood for sugar by State, County, Island, Community, BRFSS Age Group, DOH Race-Ethnicity, Gender, Education Level, Employment Status (Grouped), Household Income, Poverty Level, Marital Status (Grouped), Married, Health Care Coverage, for the Year(s) - 2000-2002, 2001-2003, 2002-2004, 2003-2005, 2004-2006, 2005-2007, 2006-2008, 2007-2009, 2008-2010**

*Note: Weighted numbers (#) represent 3-yr averages, percentages and 95% confidence intervals; Respondents aged 18 years and older; n/r (Not Reportable) - If the unweighted total responses for a dimension (row) is <50 that row will not be shown; n/a (Not Available) - Not asked of a subset of respondents*

**Year: 2007-2009**

DOH Race-Ethnicity	Never			<Once/month			Daily or more			1 to 3 times/month			1 to 6 times/week			Estimated Population (3-Yr Avg)
	#	%	C.I. (95%)	#	%	C.I. (95%)	#	%	C.I. (95%)	#	%	C.I. (95%)	#	%	C.I. (95%)	#
Caucasian	3,400	23.3	16.9 - 29.7	600	4.2	1.6 - 6.9	7,700	52.1	45.3 - 58.9	500	3.7	1.6 - 5.7	2,500	16.7	12.0 - 21.4	14,700
Native Hawaiian	4,300	28.5	20.9 - 36.1	400	2.9	0.3 - 5.5	7,600	50.7	42.4 - 58.9	1,100	7.4	3.5 - 11.3	1,600	10.6	6.3 - 14.8	14,900
Chinese	1,400	23.1	12.4 - 33.9	200	4.2	0.1 - 8.2	3,100	52.0	39.8 - 64.3	500	7.8	1.2 - 14.3	800	12.9	5.2 - 20.7	6,000
Filipino	4,400	31.2	21.8 - 40.6	600	4.1	0.7 - 7.5	6,000	42.2	32.8 - 51.6	1,300	9.1	3.8 - 14.4	1,900	13.4	8.1 - 18.7	14,200
Japanese	6,500	29.4	23.9 - 35.0	900	4.3	1.0 - 7.6	11,100	50.7	44.0 - 57.4	700	3.3	1.3 - 5.3	2,700	12.2	7.4 - 17.0	22,000

Gender	Never			<Once/month			Daily or more			1 to 3 times/month			1 to 6 times/week			Estimated Population (3-Yr Avg)
	#	%	C.I. (95%)	#	%	C.I. (95%)	#	%	C.I. (95%)	#	%	C.I. (95%)	#	%	C.I. (95%)	#
Male	9,700	25.4	20.5 - 30.3	1,200	3.2	1.4 - 5.0	19,000	49.9	44.6 - 55.2	3,000	7.8	5.0 - 10.7	5,200	13.7	10.3 - 17.0	38,100
Female	11,400	28.5	24.2 - 32.7	1,700	4.1	2.1 - 6.1	20,100	50.4	45.6 - 55.1	1,600	4.0	2.4 - 5.6	5,200	13.0	9.9 - 16.1	40,000

**Diabetes - chkd blood for sugar by State, County, Island, Community, BRFSS Age Group, DOH Race-Ethnicity, Gender, Education Level, Employment Status (Grouped), Household Income, Poverty Level, Marital Status (Grouped), Married, Health Care Coverage, for the Year(s) - 2000-2002, 2001-2003, 2002-2004, 2003-2005, 2004-2006, 2005-2007, 2006-2008, 2007-2009, 2008-2010**

*Note: Weighted numbers (#) represent 3-yr averages, percentages and 95% confidence intervals; Respondents aged 18 years and older; n/r (Not Reportable) - If the unweighted total responses for a dimension (row) is <50 that row will not be shown; n/a (Not Available) - Not asked of a subset of respondents*

**Year: 2007-2009**

Education Level	Never			<Once/month			Daily or more			1 to 3 times/month			1 to 6 times/week			Estimated Population (3-Yr Avg)
	#	%	C.I. (95%)	#	%	C.I. (95%)	#	%	C.I. (95%)	#	%	C.I. (95%)	#	%	C.I. (95%)	#
Never attended school/ Only Kindergarten to Grades 8	900	37.5	19.6 - 55.4	300	11.7	0.0 - 27.0	900	37.2	20.6 - 53.7	<50	1.3	0.0 - 4.0	300	12.3	2.6 - 21.9	2,400
Grades 9 thru 11 (Some High School)	1,000	25.2	12.8 - 37.6	100	2.1	0.0 - 4.9	1,800	42.7	27.7 - 57.7	500	12.8	3.5 - 22.1	700	17.3	6.0 - 28.6	4,100
Grades 12 or GED (High School Grad)	8,300	31.4	25.0 - 37.7	900	3.6	0.8 - 6.3	12,200	46.1	39.6 - 52.5	1,400	5.3	2.5 - 8.0	3,600	13.8	9.7 - 17.8	26,400
College 1 to 3 years (Some College/ Tech)	6,100	25.7	19.9 - 31.5	600	2.5	0.7 - 4.3	12,600	53.4	46.7 - 60.2	1,000	4.3	1.9 - 6.7	3,300	14.1	9.4 - 18.7	23,600
College 4 years or more (College Grad)	4,700	22.0	17.3 - 26.8	1,000	4.5	2.3 - 6.7	11,700	54.5	48.5 - 60.5	1,600	7.5	3.9 - 11.2	2,500	11.5	8.0 - 14.9	21,500

Employment Status (Grouped)	Never			<Once/month			Daily or more			1 to 3 times/month			1 to 6 times/week			Estimated Population (3-Yr Avg)
	#	%	C.I. (95%)	#	%	C.I. (95%)	#	%	C.I. (95%)	#	%	C.I. (95%)	#	%	C.I. (95%)	#
Employed	9,600	27.5	22.3 - 32.6	1,000	2.9	1.3 - 4.5	17,000	49.0	43.3 - 54.7	2,700	7.8	4.8 - 10.8	4,500	12.9	9.4 - 16.4	34,800
Retired/Unable to work	10,000	26.9	22.6 - 31.1	1,600	4.2	2.0 - 6.5	18,700	50.3	45.5 - 55.1	1,700	4.5	2.6 - 6.4	5,200	14.1	10.8 - 17.3	37,100
Student/Homemaker	500	18.7	6.5 - 31.0	100	2.1	0.0 - 5.2	1,500	53.6	38.0 - 69.2	200	5.7	0.0 - 12.3	500	19.8	7.3 - 32.3	2,700

**Diabetes - chkd blood for sugar by State, County, Island, Community, BRFSS Age Group, DOH Race-Ethnicity, Gender, Education Level, Employment Status (Grouped), Household Income, Poverty Level, Marital Status (Grouped), Married, Health Care Coverage, for the Year(s) - 2000-2002, 2001-2003, 2002-2004, 2003-2005, 2004-2006, 2005-2007, 2006-2008, 2007-2009, 2008-2010**

*Note: Weighted numbers (#) represent 3-yr averages, percentages and 95% confidence intervals; Respondents aged 18 years and older; n/r (Not Reportable) - If the unweighted total responses for a dimension (row) is <50 that row will not be shown; n/a (Not Available) - Not asked of a subset of respondents*

**Year: 2007-2009**

Household Income	Never			<Once/month			Daily or more			1 to 3 times/month			1 to 6 times/week			Estimated Population (3-Yr Avg)
	#	%	C.I. (95%)	#	%	C.I. (95%)	#	%	C.I. (95%)	#	%	C.I. (95%)	#	%	C.I. (95%)	#
<b>Less than \$10,000</b>	1,200	40.2	22.1 - 58.3	300	8.6	0.0 - 21.4	1,300	42.6	27.1 - 58.2	100	3.6	0.0 - 7.1	100	5.0	1.0 - 9.0	3,000
<b>\$10,000 to \$14,999</b>	800	22.9	11.1 - 34.8	<50	0.7	0.0 - 2.1	2,000	53.9	39.8 - 67.9	200	5.6	0.0 - 11.3	600	16.9	6.6 - 27.1	3,700
<b>\$15,000 to \$19,999</b>	1,300	23.8	13.9 - 33.7	300	4.7	0.0 - 10.5	3,000	55.2	41.7 - 68.7	300	5.9	0.2 - 11.6	600	10.4	3.5 - 17.3	5,300
<b>\$20,000 to \$24,999</b>	2,100	32.9	21.8 - 43.9	<50	0.4	0.0 - 1.3	3,000	47.1	35.0 - 59.2	500	7.5	1.3 - 13.6	800	12.2	4.9 - 19.4	6,300
<b>\$25,000 to \$34,999</b>	2,100	22.5	14.5 - 30.5	300	2.8	0.8 - 4.8	4,900	52.3	42.8 - 61.8	900	9.7	3.5 - 16.0	1,200	12.7	6.9 - 18.5	9,400
<b>\$35,000 to \$49,999</b>	3,500	26.9	19.1 - 34.7	400	3.2	0.6 - 5.8	6,500	50.3	41.9 - 58.7	1,000	7.5	2.6 - 12.4	1,600	12.1	6.5 - 17.7	13,000
<b>\$50,000 to \$74,999</b>	3,000	24.2	17.1 - 31.4	700	5.2	0.3 - 10.0	6,400	51.4	42.8 - 60.1	600	4.5	1.3 - 7.8	1,800	14.6	9.1 - 20.1	12,500
<b>\$75,000 or more</b>	4,200	23.9	17.9 - 29.9	500	2.7	0.8 - 4.6	9,300	52.5	44.9 - 60.1	900	5.1	1.7 - 8.5	2,800	15.8	10.1 - 21.5	17,700

**Diabetes - chkd blood for sugar by State, County, Island, Community, BRFSS Age Group, DOH Race-Ethnicity, Gender, Education Level, Employment Status (Grouped), Household Income, Poverty Level, Marital Status (Grouped), Married, Health Care Coverage, for the Year(s) - 2000-2002, 2001-2003, 2002-2004, 2003-2005, 2004-2006, 2005-2007, 2006-2008, 2007-2009, 2008-2010**

*Note: Weighted numbers (#) represent 3-yr averages, percentages and 95% confidence intervals; Respondents aged 18 years and older; n/r (Not Reportable) - If the unweighted total responses for a dimension (row) is <50 that row will not be shown; n/a (Not Available) - Not asked of a subset of respondents*

**Year: 2007-2009**

Poverty Level	Never			<Once/month			Daily or more			1 to 3 times/month			1 to 6 times/week			Estimated Population (3-Yr Avg)
	#	%	C.I. (95%)	#	%	C.I. (95%)	#	%	C.I. (95%)	#	%	C.I. (95%)	#	%	C.I. (95%)	#
<b>0-130%</b>	5,100	27.9	20.8 - 35.0	500	3.0	0.2 - 5.8	8,700	47.7	39.7 - 55.7	1,300	7.1	2.9 - 11.3	2,600	14.3	9.1 - 19.6	18,300
<b>131-185%</b>	2,400	23.5	15.9 - 31.2	<50	0.5	0.0 - 1.2	6,100	59.3	50.3 - 68.3	1,100	11.0	4.7 - 17.3	600	5.7	2.4 - 9.1	10,200
<b>186+%</b>	10,700	25.3	21.5 - 29.1	1,800	4.2	2.3 - 6.1	21,500	50.8	46.3 - 55.4	2,000	4.8	3.0 - 6.6	6,300	14.8	11.7 - 17.9	42,400

Marital Status (Grouped)	Never			<Once/month			Daily or more			1 to 3 times/month			1 to 6 times/week			Estimated Population (3-Yr Avg)
	#	%	C.I. (95%)	#	%	C.I. (95%)	#	%	C.I. (95%)	#	%	C.I. (95%)	#	%	C.I. (95%)	#
<b>Married</b>	12,300	25.9	21.9 - 29.9	1,500	3.1	1.5 - 4.7	23,800	50.1	45.5 - 54.8	3,300	7.0	4.6 - 9.5	6,600	13.9	10.9 - 16.9	47,500
<b>Widowed</b>	2,500	25.1	18.1 - 32.1	400	4.5	0.2 - 8.8	5,000	50.4	41.8 - 59.1	500	5.2	2.0 - 8.5	1,400	14.7	8.8 - 20.7	9,800
<b>Other</b>	6,000	30.4	23.1 - 37.7	1,000	4.9	1.8 - 7.9	10,100	50.7	43.4 - 58.0	700	3.7	1.5 - 5.8	2,100	10.4	6.2 - 14.5	19,900

**Diabetes - chkd blood for sugar by State, County, Island, Community, BRFSS Age Group, DOH Race-Ethnicity, Gender, Education Level, Employment Status (Grouped), Household Income, Poverty Level, Marital Status (Grouped), Married, Health Care Coverage, for the Year(s) - 2000-2002, 2001-2003, 2002-2004, 2003-2005, 2004-2006, 2005-2007, 2006-2008, 2007-2009, 2008-2010**

*Note: Weighted numbers (#) represent 3-yr averages, percentages and 95% confidence intervals; Respondents aged 18 years and older; n/r (Not Reportable) - If the unweighted total responses for a dimension (row) is <50 that row will not be shown; n/a (Not Available) - Not asked of a subset of respondents*

**Year: 2007-2009**

Married	Never			<Once/month			Daily or more			1 to 3 times/month			1 to 6 times/week			Estimated Population (3-Yr Avg)
	#	%	C.I. (95%)	#	%	C.I. (95%)	#	%	C.I. (95%)	#	%	C.I. (95%)	#	%	C.I. (95%)	#
Yes	13,300	27.0	22.7 - 31.3	1,500	3.1	1.5 - 4.6	24,200	49.2	44.5 - 53.9	3,500	7.1	4.7 - 9.5	6,700	13.6	10.6 - 16.6	49,100
No	7,700	26.8	22.0 - 31.6	1,400	4.7	2.2 - 7.2	14,900	51.7	46.2 - 57.1	1,100	3.8	2.0 - 5.6	3,700	13.0	9.4 - 16.6	28,700

Health Care Coverage	Never			<Once/month			Daily or more			1 to 3 times/month			1 to 6 times/week			Estimated Population (3-Yr Avg)
	#	%	C.I. (95%)	#	%	C.I. (95%)	#	%	C.I. (95%)	#	%	C.I. (95%)	#	%	C.I. (95%)	#
Yes	14,700	29.3	25.6 - 33.0	1,800	3.6	2.2 - 5.0	24,300	48.5	44.6 - 52.4	2,700	5.3	3.6 - 7.1	6,700	13.3	10.7 - 15.8	50,100



**Diabetes - chkd blood for sugar by State, County, Island, Community, BRFSS Age Group, DOH Race-Ethnicity, Gender, Education Level, Employment Status (Grouped), Household Income, Poverty Level, Marital Status (Grouped), Married, Health Care Coverage, for the Year(s) - 2000-2002, 2001-2003, 2002-2004, 2003-2005, 2004-2006, 2005-2007, 2006-2008, 2007-2009, 2008-2010**

*Note: Weighted numbers (#) represent 3-yr averages, percentages and 95% confidence intervals; Respondents aged 18 years and older; n/r (Not Reportable) - If the unweighted total responses for a dimension (row) is <50 that row will not be shown; n/a (Not Available) - Not asked of a subset of respondents*

**Year: 2006-2008**

State	Never			<Once/month			Daily or more			1 to 3 times/month			1 to 6 times/week			Estimated Population (3-Yr Avg)
	#	%	C.I. (95%)	#	%	C.I. (95%)	#	%	C.I. (95%)	#	%	C.I. (95%)	#	%	C.I. (95%)	#
Hawaii State	21,800	28.2	25.3 - 31.2	3,100	4.0	2.8 - 5.3	37,600	48.6	45.4 - 51.8	4,000	5.2	3.9 - 6.5	10,800	13.9	11.7 - 16.2	77,300

County	Never			<Once/month			Daily or more			1 to 3 times/month			1 to 6 times/week			Estimated Population (3-Yr Avg)
	#	%	C.I. (95%)	#	%	C.I. (95%)	#	%	C.I. (95%)	#	%	C.I. (95%)	#	%	C.I. (95%)	#
Hawaii	2,600	28.8	22.7 - 34.8	100	1.4	0.3 - 2.5	4,700	52.0	45.7 - 58.2	500	5.3	2.6 - 8.1	1,100	12.5	8.7 - 16.4	8,900
Honolulu	16,800	29.7	25.8 - 33.5	2,700	4.8	3.1 - 6.5	26,400	46.6	42.5 - 50.7	2,900	5.0	3.4 - 6.7	7,900	13.9	11.0 - 16.8	56,600
Kauai	600	14.7	9.2 - 20.2	100	3.6	0.8 - 6.4	2,300	58.6	50.4 - 66.7	300	6.8	2.0 - 11.5	600	16.4	10.7 - 22.1	4,000
Maui	1,900	24.3	18.0 - 30.7	100	1.9	0.4 - 3.4	4,200	54.0	47.0 - 61.0	400	5.5	2.5 - 8.5	1,100	14.3	9.7 - 18.9	7,900

**Diabetes - chkd blood for sugar by State, County, Island, Community, BRFSS Age Group, DOH Race-Ethnicity, Gender, Education Level, Employment Status (Grouped), Household Income, Poverty Level, Marital Status (Grouped), Married, Health Care Coverage, for the Year(s) - 2000-2002, 2001-2003, 2002-2004, 2003-2005, 2004-2006, 2005-2007, 2006-2008, 2007-2009, 2008-2010**

*Note: Weighted numbers (#) represent 3-yr averages, percentages and 95% confidence intervals; Respondents aged 18 years and older; n/r (Not Reportable) - If the unweighted total responses for a dimension (row) is <50 that row will not be shown; n/a (Not Available) - Not asked of a subset of respondents*

**Year: 2006-2008**

Island	Never			<Once/month			Daily or more			1 to 3 times/month			1 to 6 times/week			Estimated Population (3-Yr Avg)
	#	%	C.I. (95%)	#	%	C.I. (95%)	#	%	C.I. (95%)	#	%	C.I. (95%)	#	%	C.I. (95%)	#
Hawaii	2,600	28.8	22.7 - 34.8	100	1.4	0.3 - 2.5	4,700	52.0	45.7 - 58.2	500	5.3	2.6 - 8.1	1,100	12.5	8.7 - 16.4	8,900
Kauai	600	14.7	9.2 - 20.2	100	3.6	0.8 - 6.4	2,300	58.6	50.4 - 66.7	300	6.8	2.0 - 11.5	600	16.4	10.7 - 22.1	4,000
Lanai	<50	23.0	11.3 - 34.7	<50	2.8	0.0 - 7.0	100	57.2	43.0 - 71.3	<50	7.9	0.0 - 16.4	<50	9.1	1.0 - 17.2	200
Maui	1,800	25.5	18.4 - 32.5	100	2.0	0.3 - 3.6	3,800	53.9	46.2 - 61.7	400	5.4	2.1 - 8.6	900	13.3	8.3 - 18.3	7,000
Molokai	100	12.9	5.0 - 20.8	<50	0.7	0.0 - 2.1	400	54.0	39.8 - 68.2	<50	6.2	0.6 - 11.9	200	26.1	12.0 - 40.3	700
Oahu	16,800	29.7	25.8 - 33.5	2,700	4.8	3.1 - 6.5	26,400	46.6	42.5 - 50.7	2,900	5.0	3.4 - 6.7	7,900	13.9	11.0 - 16.8	56,600

Community	Never			<Once/month			Daily or more			1 to 3 times/month			1 to 6 times/week			Estimated Population (3-Yr Avg)
	#	%	C.I. (95%)	#	%	C.I. (95%)	#	%	C.I. (95%)	#	%	C.I. (95%)	#	%	C.I. (95%)	#
Aiea/ Pearl City	1,200	22.1	12.4 - 31.7	300	5.3	0.0 - 11.1	2,700	48.5	35.5 - 61.4	200	2.9	0.0 - 6.9	1,200	21.2	10.0 - 32.3	5,600
Ala Moana	700	23.2	9.0 - 37.3	100	3.6	0.0 - 8.0	1,900	60.0	44.9 - 75.1	100	3.2	0.0 - 7.7	300	10.0	2.0 - 18.0	3,200

**Diabetes - chkd blood for sugar by State, County, Island, Community, BRFSS Age Group, DOH Race-Ethnicity, Gender, Education Level, Employment Status (Grouped), Household Income, Poverty Level, Marital Status (Grouped), Married, Health Care Coverage, for the Year(s) - 2000-2002, 2001-2003, 2002-2004, 2003-2005, 2004-2006, 2005-2007, 2006-2008, 2007-2009, 2008-2010**

*Note: Weighted numbers (#) represent 3-yr averages, percentages and 95% confidence intervals; Respondents aged 18 years and older; n/r (Not Reportable) - If the unweighted total responses for a dimension (row) is <50 that row will not be shown; n/a (Not Available) - Not asked of a subset of respondents*

**Year: 2006-2008**

Community	Never			<Once/month			Daily or more			1 to 3 times/month			1 to 6 times/week			Estimated Population (3-Yr Avg)
	#	%	C.I. (95%)	#	%	C.I. (95%)	#	%	C.I. (95%)	#	%	C.I. (95%)	#	%	C.I. (95%)	#
Hanalei/ Kapaa	200	16.0	5.6 - 26.4	<50	0.8	0.0 - 2.3	900	63.9	50.5 - 77.3	100	4.8	0.0 - 11.0	200	14.5	5.9 - 23.2	1,500
Hilo	900	29.5	20.0 - 39.0	<50	0.4	0.0 - 1.3	1,600	55.0	44.8 - 65.2	200	6.3	1.8 - 10.8	300	8.8	3.5 - 14.0	3,000
Kaaawa/ Kahaluu/ Kaneohe	1,100	31.0	16.4 - 45.6	200	6.8	0.0 - 16.0	1,700	47.6	32.4 - 62.8	100	3.1	0.0 - 7.7	400	11.6	2.6 - 20.5	3,600
Kahului	600	24.3	13.2 - 35.4	100	3.3	0.0 - 6.8	1,300	55.5	42.9 - 68.1	200	7.6	0.7 - 14.4	200	9.3	2.2 - 16.4	2,300
Kailua/ Waimanalo	1,100	26.4	13.0 - 39.8	100	2.2	0.0 - 5.4	2,200	54.2	39.9 - 68.5	400	10.5	1.0 - 20.0	300	6.6	0.1 - 13.2	4,100
Kaimuki/ Palolo/ Waikiki	1,400	33.1	19.9 - 46.4	500	12.3	2.3 - 22.3	1,700	40.6	26.8 - 54.4	300	7.8	1.7 - 13.9	300	6.2	1.2 - 11.2	4,200
Kona	500	29.3	17.3 - 41.3	<50	2.4	0.0 - 5.8	800	49.3	35.7 - 62.9	200	10.8	0.0 - 21.7	100	8.2	1.4 - 15.0	1,600
Lahaina/ Wailuku	800	30.0	16.6 - 43.3	<50	1.4	0.0 - 4.2	1,300	51.7	37.9 - 65.5	100	5.3	1.0 - 9.7	300	11.6	4.2 - 18.9	2,600
Lanai	<50	23.0	11.3 - 34.7	<50	2.8	0.0 - 7.0	100	57.2	43.0 - 71.3	<50	7.9	0.0 - 16.4	<50	9.1	1.0 - 17.2	200
Lihue-Waimea	300	13.9	7.7 - 20.1	100	5.3	1.0 - 9.5	1,400	55.4	45.3 - 65.6	200	8.0	1.4 - 14.5	400	17.5	10.0 - 24.9	2,500
Manoa/ Upper Makiki	800	23.6	11.5 - 35.8	200	5.4	0.0 - 11.8	2,000	58.8	44.7 - 73.0	300	7.5	0.4 - 14.5	200	4.6	0.0 - 10.1	3,400
Mililani/ Wahiawa	1,700	28.1	16.3 - 39.9	100	1.5	0.0 - 3.7	3,000	50.3	37.3 - 63.2	400	6.1	0.0 - 12.7	800	14.0	5.9 - 22.0	5,900

**Diabetes - chkd blood for sugar by State, County, Island, Community, BRFSS Age Group, DOH Race-Ethnicity, Gender, Education Level, Employment Status (Grouped), Household Income, Poverty Level, Marital Status (Grouped), Married, Health Care Coverage, for the Year(s) - 2000-2002, 2001-2003, 2002-2004, 2003-2005, 2004-2006, 2005-2007, 2006-2008, 2007-2009, 2008-2010**

*Note: Weighted numbers (#) represent 3-yr averages, percentages and 95% confidence intervals; Respondents aged 18 years and older; n/r (Not Reportable) - If the unweighted total responses for a dimension (row) is <50 that row will not be shown; n/a (Not Available) - Not asked of a subset of respondents*

**Year: 2006-2008**

Community	Never			<Once/month			Daily or more			1 to 3 times/month			1 to 6 times/week			Estimated Population (3-Yr Avg)
	#	%	C.I. (95%)	#	%	C.I. (95%)	#	%	C.I. (95%)	#	%	C.I. (95%)	#	%	C.I. (95%)	#
<b>Molokai</b>	100	12.9	5.0 - 20.8	<50	0.7	0.0 - 2.1	400	54.0	39.8 - 68.2	<50	6.2	0.6 - 11.9	200	26.1	12.0 - 40.3	700
<b>Nanakuli/ Waianae</b>	1,700	33.9	20.7 - 47.0	300	6.9	0.0 - 14.3	1,800	35.3	22.1 - 48.5	200	3.4	0.0 - 7.5	1,000	20.5	9.8 - 31.3	5,000
<b>N.Hawaii</b>	600	27.7	11.4 - 44.1	<50	1.4	0.0 - 3.4	1,100	51.1	36.5 - 65.8	<50	0.8	0.0 - 2.2	400	19.0	9.3 - 28.7	2,100
<b>Nuuanu/ Kalihi/ Moanalua</b>	1,600	31.3	17.3 - 45.2	300	6.1	0.6 - 11.6	1,800	35.3	22.2 - 48.3	100	1.9	0.0 - 4.7	1,300	25.5	10.4 - 40.5	5,100
<b>Puna/ Kau</b>	600	28.4	18.1 - 38.7	<50	2.0	0.0 - 4.8	1,200	50.7	38.6 - 62.8	100	4.5	0.4 - 8.6	300	14.4	5.5 - 23.2	2,300
<b>Upcountry/ Hana</b>	400	21.1	10.3 - 31.9	<50	1.1	0.0 - 3.4	1,100	54.9	41.1 - 68.6	100	3.0	0.0 - 8.7	400	19.9	8.7 - 31.1	2,100
<b>Waipahu/ Kapolei/ Ewa</b>	3,400	30.8	21.6 - 40.0	400	3.8	0.2 - 7.4	5,200	47.4	37.6 - 57.2	700	6.0	1.4 - 10.6	1,300	12.0	5.7 - 18.3	10,900

**Diabetes - chkd blood for sugar by State, County, Island, Community, BRFSS Age Group, DOH Race-Ethnicity, Gender, Education Level, Employment Status (Grouped), Household Income, Poverty Level, Marital Status (Grouped), Married, Health Care Coverage, for the Year(s) - 2000-2002, 2001-2003, 2002-2004, 2003-2005, 2004-2006, 2005-2007, 2006-2008, 2007-2009, 2008-2010**

*Note: Weighted numbers (#) represent 3-yr averages, percentages and 95% confidence intervals; Respondents aged 18 years and older; n/r (Not Reportable) - If the unweighted total responses for a dimension (row) is <50 that row will not be shown; n/a (Not Available) - Not asked of a subset of respondents*

**Year: 2006-2008**

BRFSS Age Group	Never			<Once/month			Daily or more			1 to 3 times/month			1 to 6 times/week			Estimated Population (3-Yr Avg)
	#	%	C.I. (95%)	#	%	C.I. (95%)	#	%	C.I. (95%)	#	%	C.I. (95%)	#	%	C.I. (95%)	#
<b>35-44</b>	2,200	32.8	20.4 - 45.2	200	3.1	0.0 - 6.4	3,400	52.3	39.8 - 64.7	300	4.4	0.6 - 8.2	500	7.4	2.4 - 12.4	6,600
<b>45-54</b>	3,300	21.2	14.8 - 27.6	1,000	6.7	2.9 - 10.5	7,600	49.0	41.7 - 56.2	1,500	9.3	5.0 - 13.7	2,200	13.8	8.8 - 18.8	15,600
<b>55-64</b>	6,400	31.1	25.1 - 37.0	500	2.2	0.7 - 3.8	9,200	45.1	38.9 - 51.3	700	3.4	1.4 - 5.4	3,700	18.2	12.9 - 23.6	20,500
<b>65-74</b>	4,200	26.7	20.8 - 32.5	500	3.1	0.9 - 5.2	7,900	50.4	44.2 - 56.6	700	4.7	2.4 - 7.0	2,400	15.2	10.8 - 19.6	15,700
<b>75+</b>	4,600	29.7	23.6 - 35.8	800	5.0	1.8 - 8.1	7,600	49.3	42.5 - 56.0	800	5.5	2.6 - 8.4	1,600	10.6	6.6 - 14.5	15,400

**Diabetes - chkd blood for sugar by State, County, Island, Community, BRFSS Age Group, DOH Race-Ethnicity, Gender, Education Level, Employment Status (Grouped), Household Income, Poverty Level, Marital Status (Grouped), Married, Health Care Coverage, for the Year(s) - 2000-2002, 2001-2003, 2002-2004, 2003-2005, 2004-2006, 2005-2007, 2006-2008, 2007-2009, 2008-2010**

*Note: Weighted numbers (#) represent 3-yr averages, percentages and 95% confidence intervals; Respondents aged 18 years and older; n/r (Not Reportable) - If the unweighted total responses for a dimension (row) is <50 that row will not be shown; n/a (Not Available) - Not asked of a subset of respondents*

**Year: 2006-2008**

DOH Race-Ethnicity	Never			<Once/month			Daily or more			1 to 3 times/month			1 to 6 times/week			Estimated Population (3-Yr Avg)
	#	%	C.I. (95%)	#	%	C.I. (95%)	#	%	C.I. (95%)	#	%	C.I. (95%)	#	%	C.I. (95%)	#
Caucasian	4,100	25.6	19.6 - 31.5	600	4.1	1.8 - 6.3	7,900	49.6	43.6 - 55.6	900	5.4	3.2 - 7.7	2,400	15.3	11.1 - 19.5	15,900
Native Hawaiian	3,900	27.9	20.9 - 34.9	700	4.7	1.1 - 8.3	6,900	49.1	41.6 - 56.6	1,000	7.0	3.4 - 10.6	1,600	11.3	7.1 - 15.5	14,100
Chinese	1,300	23.0	12.1 - 33.9	300	5.2	0.7 - 9.8	2,800	49.0	37.0 - 61.0	400	6.2	1.4 - 11.1	900	16.5	7.8 - 25.3	5,700
Filipino	4,700	31.1	23.1 - 39.1	500	3.4	0.8 - 6.1	6,200	41.6	33.4 - 49.7	1,000	6.9	2.6 - 11.3	2,500	17.0	9.9 - 24.0	15,000
Japanese	6,200	32.0	26.6 - 37.4	800	4.2	1.6 - 6.8	9,700	49.8	43.9 - 55.6	500	2.5	0.9 - 4.2	2,200	11.5	7.7 - 15.2	19,500

Gender	Never			<Once/month			Daily or more			1 to 3 times/month			1 to 6 times/week			Estimated Population (3-Yr Avg)
	#	%	C.I. (95%)	#	%	C.I. (95%)	#	%	C.I. (95%)	#	%	C.I. (95%)	#	%	C.I. (95%)	#
Male	10,500	27.8	23.3 - 32.2	1,300	3.4	2.0 - 4.8	18,300	48.3	43.5 - 53.1	1,900	5.1	3.1 - 7.1	5,900	15.4	11.8 - 19.1	37,900
Female	11,300	28.7	24.7 - 32.7	1,800	4.7	2.6 - 6.7	19,300	48.9	44.7 - 53.1	2,100	5.3	3.5 - 7.0	4,900	12.5	9.8 - 15.1	39,400

**Diabetes - chkd blood for sugar by State, County, Island, Community, BRFSS Age Group, DOH Race-Ethnicity, Gender, Education Level, Employment Status (Grouped), Household Income, Poverty Level, Marital Status (Grouped), Married, Health Care Coverage, for the Year(s) - 2000-2002, 2001-2003, 2002-2004, 2003-2005, 2004-2006, 2005-2007, 2006-2008, 2007-2009, 2008-2010**

*Note: Weighted numbers (#) represent 3-yr averages, percentages and 95% confidence intervals; Respondents aged 18 years and older; n/r (Not Reportable) - If the unweighted total responses for a dimension (row) is <50 that row will not be shown; n/a (Not Available) - Not asked of a subset of respondents*

**Year: 2006-2008**

Education Level	Never			<Once/month			Daily or more			1 to 3 times/month			1 to 6 times/week			Estimated Population (3-Yr Avg)
	#	%	C.I. (95%)	#	%	C.I. (95%)	#	%	C.I. (95%)	#	%	C.I. (95%)	#	%	C.I. (95%)	#
Never attended school/ Only Kindergarten to Grades 8	1,100	38.4	23.3 - 53.6	<50	1.4	0.0 - 3.4	1,100	37.7	23.2 - 52.3	200	7.9	0.0 - 15.7	400	14.6	4.7 - 24.4	2,800
Grades 9 thru 11 (Some High School)	1,200	28.7	16.0 - 41.4	200	5.8	0.0 - 12.0	1,700	41.1	28.5 - 53.8	400	9.9	3.1 - 16.8	600	14.5	4.8 - 24.1	4,100
Grades 12 or GED (High School Grad)	8,200	31.7	26.0 - 37.3	900	3.5	1.3 - 5.7	11,800	45.6	40.1 - 51.2	1,100	4.4	2.5 - 6.3	3,800	14.8	10.3 - 19.3	26,000
College 1 to 3 years (Some College/ Tech)	6,400	26.7	21.2 - 32.2	900	3.8	1.6 - 6.1	12,400	51.8	45.8 - 57.7	1,000	4.3	2.1 - 6.6	3,200	13.4	9.4 - 17.3	23,900
College 4 years or more (College Grad)	5,000	24.2	19.5 - 28.8	1,000	5.0	2.5 - 7.4	10,600	51.7	46.0 - 57.4	1,200	5.9	2.9 - 8.9	2,700	13.3	9.7 - 16.8	20,500

Employment Status (Grouped)	Never			<Once/month			Daily or more			1 to 3 times/month			1 to 6 times/week			Estimated Population (3-Yr Avg)
	#	%	C.I. (95%)	#	%	C.I. (95%)	#	%	C.I. (95%)	#	%	C.I. (95%)	#	%	C.I. (95%)	#
Employed	9,700	29.4	24.6 - 34.1	1,200	3.8	2.0 - 5.6	15,000	45.4	40.3 - 50.4	2,100	6.3	3.8 - 8.7	5,000	15.2	11.3 - 19.1	33,100
Retired/Unable to work	10,700	27.9	23.9 - 31.8	1,400	3.6	2.0 - 5.3	19,500	50.7	46.5 - 55.0	1,700	4.5	3.0 - 6.1	5,100	13.2	10.4 - 16.1	38,500
Student/Homemaker	700	23.5	10.3 - 36.6	100	2.9	0.0 - 6.2	1,600	53.9	38.5 - 69.2	200	6.4	0.0 - 13.0	400	13.4	2.8 - 24.0	2,900

**Diabetes - chkd blood for sugar by State, County, Island, Community, BRFSS Age Group, DOH Race-Ethnicity, Gender, Education Level, Employment Status (Grouped), Household Income, Poverty Level, Marital Status (Grouped), Married, Health Care Coverage, for the Year(s) - 2000-2002, 2001-2003, 2002-2004, 2003-2005, 2004-2006, 2005-2007, 2006-2008, 2007-2009, 2008-2010**

*Note: Weighted numbers (#) represent 3-yr averages, percentages and 95% confidence intervals; Respondents aged 18 years and older; n/r (Not Reportable) - If the unweighted total responses for a dimension (row) is <50 that row will not be shown; n/a (Not Available) - Not asked of a subset of respondents*

**Year: 2006-2008**

Household Income	Never			<Once/month			Daily or more			1 to 3 times/month			1 to 6 times/week			Estimated Population (3-Yr Avg)
	#	%	C.I. (95%)	#	%	C.I. (95%)	#	%	C.I. (95%)	#	%	C.I. (95%)	#	%	C.I. (95%)	#
<b>Less than \$10,000</b>	1,100	38.4	23.8 - 53.0	<50	0.4	0.0 - 1.2	1,300	48.6	35.0 - 62.2	100	4.8	0.7 - 8.9	200	7.8	2.0 - 13.6	2,800
<b>\$10,000 to \$14,999</b>	700	18.9	9.5 - 28.3	100	2.5	0.0 - 5.4	2,200	58.2	45.2 - 71.1	200	5.9	0.4 - 11.4	600	14.6	5.2 - 24.0	3,800
<b>\$15,000 to \$19,999</b>	1,300	28.9	18.3 - 39.5	300	7.0	0.0 - 14.0	2,300	50.9	39.4 - 62.4	100	2.2	0.0 - 4.6	500	11.0	3.4 - 18.6	4,400
<b>\$20,000 to \$24,999</b>	1,900	29.5	19.6 - 39.4	100	1.3	0.0 - 2.7	3,000	45.4	35.3 - 55.5	600	8.9	2.8 - 15.1	1,000	14.8	7.3 - 22.4	6,500
<b>\$25,000 to \$34,999</b>	2,200	22.5	15.2 - 29.8	400	4.0	0.6 - 7.4	5,200	53.0	43.8 - 62.2	700	6.8	2.2 - 11.3	1,400	13.8	7.6 - 20.0	9,900
<b>\$35,000 to \$49,999</b>	4,100	29.5	21.6 - 37.4	500	3.3	1.0 - 5.5	6,800	48.9	40.9 - 56.9	600	4.5	1.7 - 7.3	1,900	13.8	7.6 - 20.1	13,900
<b>\$50,000 to \$74,999</b>	3,600	27.7	20.6 - 34.8	500	4.2	1.0 - 7.3	6,400	48.9	41.2 - 56.7	400	3.1	1.1 - 5.1	2,100	16.1	10.2 - 22.0	13,000
<b>\$75,000 or more</b>	3,800	25.3	19.4 - 31.3	600	4.1	1.3 - 6.9	7,500	50.2	43.2 - 57.3	700	5.0	1.7 - 8.4	2,300	15.3	10.5 - 20.2	14,900



**Diabetes - chkd blood for sugar by State, County, Island, Community, BRFSS Age Group, DOH Race-Ethnicity, Gender, Education Level, Employment Status (Grouped), Household Income, Poverty Level, Marital Status (Grouped), Married, Health Care Coverage, for the Year(s) - 2000-2002, 2001-2003, 2002-2004, 2003-2005, 2004-2006, 2005-2007, 2006-2008, 2007-2009, 2008-2010**

*Note: Weighted numbers (#) represent 3-yr averages, percentages and 95% confidence intervals; Respondents aged 18 years and older; n/r (Not Reportable) - If the unweighted total responses for a dimension (row) is <50 that row will not be shown; n/a (Not Available) - Not asked of a subset of respondents*

**Year: 2006-2008**

Poverty Level	Never			<Once/month			Daily or more			1 to 3 times/month			1 to 6 times/week			Estimated Population (3-Yr Avg)
	#	%	C.I. (95%)	#	%	C.I. (95%)	#	%	C.I. (95%)	#	%	C.I. (95%)	#	%	C.I. (95%)	#
<b>0-130%</b>	5,100	27.3	20.8 - 33.7	500	2.9	0.5 - 5.3	9,000	48.0	40.9 - 55.1	1,200	6.4	3.2 - 9.5	2,900	15.4	9.8 - 21.1	18,700
<b>131-185%</b>	2,300	25.7	16.8 - 34.6	100	0.8	0.0 - 1.7	5,300	59.3	49.6 - 69.0	700	7.4	2.1 - 12.7	600	6.8	2.5 - 11.1	9,000
<b>186+%</b>	11,300	27.1	23.5 - 30.8	1,900	4.6	2.9 - 6.2	20,300	49.0	45.0 - 53.0	1,600	3.9	2.5 - 5.3	6,400	15.4	12.5 - 18.3	41,500

Marital Status (Grouped)	Never			<Once/month			Daily or more			1 to 3 times/month			1 to 6 times/week			Estimated Population (3-Yr Avg)
	#	%	C.I. (95%)	#	%	C.I. (95%)	#	%	C.I. (95%)	#	%	C.I. (95%)	#	%	C.I. (95%)	#
<b>Married</b>	14,000	29.0	25.0 - 33.0	1,400	3.0	1.6 - 4.3	23,200	48.0	43.8 - 52.2	2,500	5.1	3.4 - 6.9	7,200	14.9	11.8 - 18.0	48,300
<b>Widowed</b>	2,300	25.2	19.1 - 31.3	300	3.6	1.3 - 6.0	4,500	48.1	40.7 - 55.6	700	7.8	3.8 - 11.9	1,400	15.2	9.6 - 20.8	9,300
<b>Other</b>	5,300	28.0	22.3 - 33.8	1,300	7.1	3.4 - 10.7	9,600	50.6	44.3 - 56.8	800	4.4	2.1 - 6.7	1,900	10.0	6.7 - 13.2	19,000

**Diabetes - chkd blood for sugar by State, County, Island, Community, BRFSS Age Group, DOH Race-Ethnicity, Gender, Education Level, Employment Status (Grouped), Household Income, Poverty Level, Marital Status (Grouped), Married, Health Care Coverage, for the Year(s) - 2000-2002, 2001-2003, 2002-2004, 2003-2005, 2004-2006, 2005-2007, 2006-2008, 2007-2009, 2008-2010**

*Note: Weighted numbers (#) represent 3-yr averages, percentages and 95% confidence intervals; Respondents aged 18 years and older; n/r (Not Reportable) - If the unweighted total responses for a dimension (row) is <50 that row will not be shown; n/a (Not Available) - Not asked of a subset of respondents*

**Year: 2006-2008**

Married	Never			<Once/month			Daily or more			1 to 3 times/month			1 to 6 times/week			Estimated Population (3-Yr Avg)
	#	%	C.I. (95%)	#	%	C.I. (95%)	#	%	C.I. (95%)	#	%	C.I. (95%)	#	%	C.I. (95%)	#
Yes	14,700	29.8	25.8 - 33.8	1,500	3.0	1.7 - 4.3	23,300	47.2	43.1 - 51.4	2,600	5.2	3.5 - 7.0	7,300	14.8	11.7 - 17.8	49,400
No	7,100	25.4	21.2 - 29.6	1,600	5.9	3.3 - 8.5	14,200	51.2	46.3 - 56.0	1,400	5.1	3.1 - 7.1	3,500	12.5	9.4 - 15.5	27,800

Health Care Coverage	Never			<Once/month			Daily or more			1 to 3 times/month			1 to 6 times/week			Estimated Population (3-Yr Avg)
	#	%	C.I. (95%)	#	%	C.I. (95%)	#	%	C.I. (95%)	#	%	C.I. (95%)	#	%	C.I. (95%)	#
Yes	20,600	27.8	24.8 - 30.9	2,900	4.0	2.7 - 5.2	36,200	48.8	45.5 - 52.0	4,000	5.4	4.0 - 6.7	10,500	14.1	11.8 - 16.4	74,200
No	1,200	37.8	21.3 - 54.4	200	5.9	0.0 - 15.2	1,400	45.0	27.4 - 62.6	<50	1.3	0.0 - 3.0	300	10.0	2.3 - 17.6	3,100

**Diabetes - chkd blood for sugar by State, County, Island, Community, BRFSS Age Group, DOH Race-Ethnicity, Gender, Education Level, Employment Status (Grouped), Household Income, Poverty Level, Marital Status (Grouped), Married, Health Care Coverage, for the Year(s) - 2000-2002, 2001-2003, 2002-2004, 2003-2005, 2004-2006, 2005-2007, 2006-2008, 2007-2009, 2008-2010**

*Note: Weighted numbers (#) represent 3-yr averages, percentages and 95% confidence intervals; Respondents aged 18 years and older; n/r (Not Reportable) - If the unweighted total responses for a dimension (row) is <50 that row will not be shown; n/a (Not Available) - Not asked of a subset of respondents*

**Year: 2005-2007**

State	Never			<Once/month			Daily or more			1 to 3 times/month			1 to 6 times/week			Estimated Population (3-Yr Avg)
	#	%	C.I. (95%)	#	%	C.I. (95%)	#	%	C.I. (95%)	#	%	C.I. (95%)	#	%	C.I. (95%)	#
Hawaii State	23,200	30.3	26.5 - 34.2	2,700	3.6	2.2 - 4.9	36,100	47.3	43.4 - 51.2	3,800	5.0	3.4 - 6.6	10,500	13.8	11.2 - 16.4	76,400

County	Never			<Once/month			Daily or more			1 to 3 times/month			1 to 6 times/week			Estimated Population (3-Yr Avg)
	#	%	C.I. (95%)	#	%	C.I. (95%)	#	%	C.I. (95%)	#	%	C.I. (95%)	#	%	C.I. (95%)	#
Hawaii	3,000	31.7	25.1 - 38.3	100	1.1	0.2 - 2.1	4,500	47.8	41.0 - 54.7	600	6.7	2.6 - 10.9	1,200	12.6	8.5 - 16.6	9,500
Honolulu	17,700	31.5	26.5 - 36.5	2,500	4.4	2.5 - 6.2	25,800	45.9	40.9 - 50.9	2,500	4.4	2.4 - 6.3	7,800	13.8	10.5 - 17.2	56,200
Kauai	700	18.6	9.6 - 27.5	100	2.1	0.0 - 4.5	2,200	56.5	46.3 - 66.8	300	7.0	2.0 - 12.0	600	15.8	8.6 - 23.0	3,900
Maui	1,700	25.4	17.9 - 32.8	100	1.2	0.0 - 2.4	3,600	52.7	44.9 - 60.6	500	6.6	3.0 - 10.3	1,000	14.1	8.7 - 19.4	6,900

**Diabetes - chkd blood for sugar by State, County, Island, Community, BRFSS Age Group, DOH Race-Ethnicity, Gender, Education Level, Employment Status (Grouped), Household Income, Poverty Level, Marital Status (Grouped), Married, Health Care Coverage, for the Year(s) - 2000-2002, 2001-2003, 2002-2004, 2003-2005, 2004-2006, 2005-2007, 2006-2008, 2007-2009, 2008-2010**

*Note: Weighted numbers (#) represent 3-yr averages, percentages and 95% confidence intervals; Respondents aged 18 years and older; n/r (Not Reportable) - If the unweighted total responses for a dimension (row) is <50 that row will not be shown; n/a (Not Available) - Not asked of a subset of respondents*

**Year: 2005-2007**

Island	Never			<Once/month			Daily or more			1 to 3 times/month			1 to 6 times/week			Estimated Population (3-Yr Avg)
	#	%	C.I. (95%)	#	%	C.I. (95%)	#	%	C.I. (95%)	#	%	C.I. (95%)	#	%	C.I. (95%)	#
Hawaii	3,000	31.7	25.1 - 38.3	100	1.1	0.2 - 2.1	4,500	47.8	41.0 - 54.7	600	6.7	2.6 - 10.9	1,200	12.6	8.5 - 16.6	9,500
Kauai	700	18.6	9.6 - 27.5	100	2.1	0.0 - 4.5	2,200	56.5	46.3 - 66.8	300	7.0	2.0 - 12.0	600	15.8	8.6 - 23.0	3,900
Lanai	<50	14.0	4.9 - 23.1	<50	13.2	0.0 - 31.0	100	43.3	25.7 - 60.9	<50	9.8	0.4 - 19.2	<50	19.6	3.0 - 36.3	200
Maui	1,600	26.5	18.2 - 34.8	100	0.9	0.0 - 2.1	3,200	52.7	43.9 - 61.4	400	6.7	2.6 - 10.7	800	13.3	7.5 - 19.2	6,100
Molokai	100	18.3	6.2 - 30.4	<50	0.7	0.0 - 2.2	400	56.3	40.2 - 72.5	<50	5.4	0.0 - 10.9	100	19.2	4.9 - 33.5	600
Oahu	17,700	31.5	26.5 - 36.5	2,500	4.4	2.5 - 6.2	25,800	45.9	40.9 - 50.9	2,500	4.4	2.4 - 6.3	7,800	13.8	10.5 - 17.2	56,200

Community	Never			<Once/month			Daily or more			1 to 3 times/month			1 to 6 times/week			Estimated Population (3-Yr Avg)
	#	%	C.I. (95%)	#	%	C.I. (95%)	#	%	C.I. (95%)	#	%	C.I. (95%)	#	%	C.I. (95%)	#
Aiea/ Pearl City	1,800	33.4	16.9 - 49.9	300	5.9	0.0 - 12.6	2,100	39.2	24.4 - 54.0	<50	0.5	0.0 - 1.4	1,100	21.0	8.8 - 33.2	5,200
Hilo	1,000	32.2	21.6 - 42.8	<50	0.4	0.0 - 1.2	1,800	54.6	43.1 - 66.2	200	4.8	1.0 - 8.6	300	8.0	2.5 - 13.5	3,300

**Diabetes - chkd blood for sugar by State, County, Island, Community, BRFSS Age Group, DOH Race-Ethnicity, Gender, Education Level, Employment Status (Grouped), Household Income, Poverty Level, Marital Status (Grouped), Married, Health Care Coverage, for the Year(s) - 2000-2002, 2001-2003, 2002-2004, 2003-2005, 2004-2006, 2005-2007, 2006-2008, 2007-2009, 2008-2010**

*Note: Weighted numbers (#) represent 3-yr averages, percentages and 95% confidence intervals; Respondents aged 18 years and older; n/r (Not Reportable) - If the unweighted total responses for a dimension (row) is <50 that row will not be shown; n/a (Not Available) - Not asked of a subset of respondents*

**Year: 2005-2007**

Community	Never			<Once/month			Daily or more			1 to 3 times/month			1 to 6 times/week			Estimated Population (3-Yr Avg)
	#	%	C.I. (95%)	#	%	C.I. (95%)	#	%	C.I. (95%)	#	%	C.I. (95%)	#	%	C.I. (95%)	#
<b>Kahului</b>	400	22.6	11.2 - 34.1	<50	1.5	0.0 - 4.5	1,000	50.5	36.4 - 64.6	200	10.4	1.2 - 19.6	300	14.9	3.9 - 25.9	1,900
<b>Kailua/ Waimanalo</b>	1,400	35.5	16.0 - 55.0	100	1.4	0.0 - 4.1	1,800	44.7	27.9 - 61.4	400	8.8	0.0 - 18.0	400	9.7	0.9 - 18.5	4,000
<b>Kona</b>	400	26.8	13.8 - 39.8	<50	2.3	0.0 - 5.5	800	45.1	29.9 - 60.2	300	17.0	1.2 - 32.7	100	8.9	2.2 - 15.6	1,700
<b>Lahaina/ Wailuku</b>	500	23.6	10.0 - 37.2	0	0.0	--	1,200	58.5	43.5 - 73.5	100	7.2	1.3 - 13.1	200	10.7	2.2 - 19.2	2,000
<b>Lanai</b>	<50	14.0	4.9 - 23.1	<50	13.2	0.0 - 31.0	100	43.3	25.7 - 60.9	<50	9.8	0.4 - 19.2	<50	19.6	3.0 - 36.3	200
<b>Lihue-Waimea</b>	400	16.5	7.7 - 25.3	100	3.3	0.0 - 6.9	1,500	56.9	44.9 - 68.9	200	8.0	1.3 - 14.6	400	15.5	6.9 - 24.0	2,600
<b>Mililani/ Wahiawa</b>	1,700	30.4	16.6 - 44.2	100	1.6	0.0 - 3.9	2,700	50.0	34.6 - 65.4	300	6.0	0.0 - 13.0	700	12.0	4.1 - 20.0	5,500
<b>Molokai</b>	100	18.3	6.2 - 30.4	<50	0.7	0.0 - 2.2	400	56.3	40.2 - 72.5	<50	5.4	0.0 - 10.9	100	19.2	4.9 - 33.5	600
<b>Nanakuli/ Waianae</b>	1,800	34.2	18.3 - 50.1	600	11.3	0.1 - 22.5	2,000	37.4	19.5 - 55.2	100	2.0	0.0 - 4.9	800	15.2	4.4 - 25.9	5,300
<b>N.Hawaii</b>	500	24.9	13.8 - 36.0	<50	1.6	0.0 - 3.7	1,000	50.6	38.1 - 63.1	<50	0.8	0.0 - 2.5	400	22.1	11.7 - 32.4	1,900
<b>Nuuanu/ Kalihi/ Moanalua</b>	1,200	25.1	11.3 - 39.0	200	4.6	0.0 - 9.3	2,300	47.8	31.4 - 64.1	<50	0.7	0.0 - 2.1	1,100	21.8	6.3 - 37.3	4,800
<b>Puna/ Kau</b>	1,000	39.4	24.0 - 54.7	<50	1.0	0.0 - 2.9	1,000	39.1	25.2 - 53.0	200	7.0	0.0 - 15.9	400	13.6	4.6 - 22.5	2,600

**Diabetes - chkd blood for sugar by State, County, Island, Community, BRFSS Age Group, DOH Race-Ethnicity, Gender, Education Level, Employment Status (Grouped), Household Income, Poverty Level, Marital Status (Grouped), Married, Health Care Coverage, for the Year(s) - 2000-2002, 2001-2003, 2002-2004, 2003-2005, 2004-2006, 2005-2007, 2006-2008, 2007-2009, 2008-2010**

*Note: Weighted numbers (#) represent 3-yr averages, percentages and 95% confidence intervals; Respondents aged 18 years and older; n/r (Not Reportable) - If the unweighted total responses for a dimension (row) is <50 that row will not be shown; n/a (Not Available) - Not asked of a subset of respondents*

**Year: 2005-2007**

Community	Never			<Once/month			Daily or more			1 to 3 times/month			1 to 6 times/week			Estimated Population (3-Yr Avg)
	#	%	C.I. (95%)	#	%	C.I. (95%)	#	%	C.I. (95%)	#	%	C.I. (95%)	#	%	C.I. (95%)	#
Upcountry/ Hana	700	32.5	16.3 - 48.7	<50	1.1	0.0 - 3.3	1,100	49.2	33.6 - 64.8	100	2.8	0.0 - 8.3	300	14.3	3.8 - 24.8	2,200
Waipahu/ Kapolei/ Ewa	3,300	32.8	19.7 - 45.9	300	3.1	0.0 - 6.7	4,900	48.3	34.9 - 61.7	700	7.0	0.7 - 13.3	900	8.9	2.6 - 15.1	10,200

BRFSS Age Group	Never			<Once/month			Daily or more			1 to 3 times/month			1 to 6 times/week			Estimated Population (3-Yr Avg)
	#	%	C.I. (95%)	#	%	C.I. (95%)	#	%	C.I. (95%)	#	%	C.I. (95%)	#	%	C.I. (95%)	#
35-44	1,900	30.6	16.3 - 44.9	100	1.4	0.0 - 3.3	3,800	60.2	45.7 - 74.6	200	3.3	0.0 - 6.9	300	4.6	1.4 - 7.7	6,300
45-54	4,400	27.8	18.9 - 36.7	900	5.8	2.2 - 9.5	7,100	44.3	35.6 - 53.0	1,200	7.5	3.7 - 11.3	2,300	14.6	8.8 - 20.3	16,000
55-64	6,400	32.1	24.3 - 40.0	300	1.4	0.1 - 2.7	8,500	42.3	34.5 - 50.1	800	3.9	0.6 - 7.3	4,100	20.3	13.7 - 26.9	20,100
65-74	3,600	23.1	16.9 - 29.4	300	2.2	0.1 - 4.3	8,200	53.3	46.1 - 60.5	900	6.1	1.9 - 10.3	2,400	15.3	10.2 - 20.4	15,400
75+	4,900	34.5	26.6 - 42.4	700	4.7	1.3 - 8.0	6,900	47.9	39.8 - 55.9	600	4.0	1.6 - 6.3	1,300	9.0	5.0 - 13.1	14,300

**Diabetes - chkd blood for sugar by State, County, Island, Community, BRFSS Age Group, DOH Race-Ethnicity, Gender, Education Level, Employment Status (Grouped), Household Income, Poverty Level, Marital Status (Grouped), Married, Health Care Coverage, for the Year(s) - 2000-2002, 2001-2003, 2002-2004, 2003-2005, 2004-2006, 2005-2007, 2006-2008, 2007-2009, 2008-2010**

*Note: Weighted numbers (#) represent 3-yr averages, percentages and 95% confidence intervals; Respondents aged 18 years and older; n/r (Not Reportable) - If the unweighted total responses for a dimension (row) is <50 that row will not be shown; n/a (Not Available) - Not asked of a subset of respondents*

**Year: 2005-2007**

DOH Race-Ethnicity	Never			<Once/month			Daily or more			1 to 3 times/month			1 to 6 times/week			Estimated Population (3-Yr Avg)
	#	%	C.I. (95%)	#	%	C.I. (95%)	#	%	C.I. (95%)	#	%	C.I. (95%)	#	%	C.I. (95%)	#
Caucasian	4,800	27.8	21.0 - 34.6	400	2.4	0.7 - 4.1	8,900	51.3	44.3 - 58.4	800	4.6	2.5 - 6.8	2,400	13.9	9.1 - 18.6	17,300
Native Hawaiian	4,100	27.1	18.8 - 35.4	600	3.7	0.5 - 6.9	7,800	52.2	43.1 - 61.4	1,000	6.6	3.0 - 10.2	1,600	10.4	5.8 - 15.0	15,000
Chinese	2,000	37.4	20.4 - 54.5	300	4.8	0.0 - 9.5	2,100	39.0	24.1 - 54.0	500	9.1	0.0 - 20.0	500	9.7	1.9 - 17.5	5,300
Filipino	4,500	32.0	21.9 - 42.1	400	2.9	0.3 - 5.5	5,800	41.1	30.9 - 51.2	1,000	7.2	1.9 - 12.5	2,400	16.9	9.0 - 24.7	14,100
Japanese	5,700	32.0	24.6 - 39.5	700	3.8	1.0 - 6.6	8,200	46.3	39.0 - 53.6	300	1.6	0.2 - 3.0	2,900	16.3	10.6 - 21.9	17,700

Gender	Never			<Once/month			Daily or more			1 to 3 times/month			1 to 6 times/week			Estimated Population (3-Yr Avg)
	#	%	C.I. (95%)	#	%	C.I. (95%)	#	%	C.I. (95%)	#	%	C.I. (95%)	#	%	C.I. (95%)	#
Male	12,400	32.1	26.2 - 38.0	900	2.4	1.1 - 3.6	17,600	45.7	39.9 - 51.4	1,500	3.9	1.8 - 6.0	6,200	15.9	11.9 - 20.0	38,600
Female	10,800	28.5	23.6 - 33.3	1,800	4.8	2.4 - 7.2	18,500	49.0	43.7 - 54.2	2,300	6.1	3.8 - 8.5	4,400	11.6	8.6 - 14.7	37,800

**Diabetes - chkd blood for sugar by State, County, Island, Community, BRFSS Age Group, DOH Race-Ethnicity, Gender, Education Level, Employment Status (Grouped), Household Income, Poverty Level, Marital Status (Grouped), Married, Health Care Coverage, for the Year(s) - 2000-2002, 2001-2003, 2002-2004, 2003-2005, 2004-2006, 2005-2007, 2006-2008, 2007-2009, 2008-2010**

*Note: Weighted numbers (#) represent 3-yr averages, percentages and 95% confidence intervals; Respondents aged 18 years and older; n/r (Not Reportable) - If the unweighted total responses for a dimension (row) is <50 that row will not be shown; n/a (Not Available) - Not asked of a subset of respondents*

**Year: 2005-2007**

Education Level	Never			<Once/month			Daily or more			1 to 3 times/month			1 to 6 times/week			Estimated Population (3-Yr Avg)
	#	%	C.I. (95%)	#	%	C.I. (95%)	#	%	C.I. (95%)	#	%	C.I. (95%)	#	%	C.I. (95%)	#
Never attended school/ Only Kindergarten to Grades 8	1,100	29.1	14.0 - 44.2	<50	0.3	0.0 - 1.0	1,900	49.5	29.3 - 69.6	500	13.2	0.0 - 27.8	300	7.9	0.7 - 15.1	3,800
Grades 9 thru 11 (Some High School)	1,900	41.2	24.6 - 57.7	300	5.7	0.0 - 11.9	1,800	38.9	24.4 - 53.5	200	5.2	0.6 - 9.8	400	9.0	2.2 - 15.8	4,700
Grades 12 or GED (High School Grad)	9,000	32.7	25.9 - 39.4	800	2.7	0.7 - 4.8	12,100	44.1	37.6 - 50.6	1,600	5.7	2.8 - 8.7	4,100	14.8	10.1 - 19.6	27,500
College 1 to 3 years (Some College/ Tech)	5,600	25.7	19.7 - 31.8	1,000	4.6	1.4 - 7.8	11,000	50.8	43.9 - 57.7	900	4.3	1.9 - 6.6	3,100	14.6	9.6 - 19.6	21,600
College 4 years or more (College Grad)	5,600	29.6	21.4 - 37.7	700	3.7	1.4 - 6.1	9,400	49.7	41.8 - 57.7	600	3.1	1.0 - 5.2	2,600	13.8	9.2 - 18.4	18,800

Employment Status (Grouped)	Never			<Once/month			Daily or more			1 to 3 times/month			1 to 6 times/week			Estimated Population (3-Yr Avg)
	#	%	C.I. (95%)	#	%	C.I. (95%)	#	%	C.I. (95%)	#	%	C.I. (95%)	#	%	C.I. (95%)	#
Employed	10,400	30.0	23.8 - 36.3	1,200	3.4	1.3 - 5.5	15,700	45.4	39.2 - 51.7	1,900	5.6	3.0 - 8.3	5,400	15.5	11.0 - 20.0	34,500
Retired/Unable to work	11,400	30.6	25.6 - 35.7	1,200	3.1	1.4 - 4.8	18,300	49.2	44.1 - 54.3	1,700	4.4	2.4 - 6.5	4,700	12.6	9.6 - 15.7	37,300
Student/Homemaker	1,100	36.4	16.6 - 56.3	100	2.8	0.0 - 6.0	1,400	47.1	27.8 - 66.3	200	7.2	0.0 - 16.1	200	6.5	0.0 - 14.6	3,000



**Diabetes - chkd blood for sugar by State, County, Island, Community, BRFSS Age Group, DOH Race-Ethnicity, Gender, Education Level, Employment Status (Grouped), Household Income, Poverty Level, Marital Status (Grouped), Married, Health Care Coverage, for the Year(s) - 2000-2002, 2001-2003, 2002-2004, 2003-2005, 2004-2006, 2005-2007, 2006-2008, 2007-2009, 2008-2010**

*Note: Weighted numbers (#) represent 3-yr averages, percentages and 95% confidence intervals; Respondents aged 18 years and older; n/r (Not Reportable) - If the unweighted total responses for a dimension (row) is <50 that row will not be shown; n/a (Not Available) - Not asked of a subset of respondents*

**Year: 2005-2007**

Household Income	Never			<Once/month			Daily or more			1 to 3 times/month			1 to 6 times/week			Estimated Population (3-Yr Avg)
	#	%	C.I. (95%)	#	%	C.I. (95%)	#	%	C.I. (95%)	#	%	C.I. (95%)	#	%	C.I. (95%)	#
<b>Less than \$10,000</b>	1,000	36.3	22.5 - 50.2	0	0.0	--	1,300	47.5	33.6 - 61.5	100	3.6	0.2 - 7.1	300	12.5	2.6 - 22.4	2,800
<b>\$10,000 to \$14,999</b>	1,500	29.8	11.8 - 47.8	100	2.0	0.0 - 4.3	2,500	51.4	33.7 - 69.0	300	6.3	0.0 - 12.6	500	10.5	2.6 - 18.4	4,900
<b>\$15,000 to \$19,999</b>	1,500	27.9	12.4 - 43.4	300	6.3	0.0 - 12.8	2,900	53.3	36.6 - 70.0	400	7.6	0.0 - 17.8	300	4.9	1.1 - 8.7	5,500
<b>\$20,000 to \$24,999</b>	1,700	26.1	14.7 - 37.6	100	1.1	0.0 - 2.4	2,800	41.6	30.0 - 53.1	600	9.6	3.3 - 16.0	1,400	21.5	11.4 - 31.7	6,700
<b>\$25,000 to \$34,999</b>	2,700	28.2	16.7 - 39.6	600	6.3	0.2 - 12.5	4,000	41.6	30.6 - 52.7	900	9.0	1.8 - 16.2	1,400	14.8	6.9 - 22.7	9,700
<b>\$35,000 to \$49,999</b>	3,500	28.2	19.7 - 36.7	300	2.1	0.0 - 4.1	6,300	50.1	41.0 - 59.2	200	2.0	0.3 - 3.6	2,200	17.7	9.5 - 25.8	12,500
<b>\$50,000 to \$74,999</b>	3,600	30.9	21.8 - 40.0	300	3.0	0.0 - 5.9	5,600	47.6	38.3 - 56.8	400	3.6	1.1 - 6.1	1,800	14.9	8.4 - 21.4	11,800
<b>\$75,000 or more</b>	3,900	31.3	21.7 - 40.9	400	3.0	0.3 - 5.7	6,200	49.9	40.5 - 59.3	300	2.1	0.2 - 4.0	1,700	13.6	8.2 - 19.1	12,400

**Diabetes - chkd blood for sugar by State, County, Island, Community, BRFSS Age Group, DOH Race-Ethnicity, Gender, Education Level, Employment Status (Grouped), Household Income, Poverty Level, Marital Status (Grouped), Married, Health Care Coverage, for the Year(s) - 2000-2002, 2001-2003, 2002-2004, 2003-2005, 2004-2006, 2005-2007, 2006-2008, 2007-2009, 2008-2010**

*Note: Weighted numbers (#) represent 3-yr averages, percentages and 95% confidence intervals; Respondents aged 18 years and older; n/r (Not Reportable) - If the unweighted total responses for a dimension (row) is <50 that row will not be shown; n/a (Not Available) - Not asked of a subset of respondents*

**Year: 2005-2007**

Poverty Level	Never			<Once/month			Daily or more			1 to 3 times/month			1 to 6 times/week			Estimated Population (3-Yr Avg)
	#	%	C.I. (95%)	#	%	C.I. (95%)	#	%	C.I. (95%)	#	%	C.I. (95%)	#	%	C.I. (95%)	#
<b>0-130%</b>	5,500	27.7	19.6 - 35.7	800	4.2	0.8 - 7.6	8,900	44.6	36.2 - 53.1	1,500	7.4	3.2 - 11.5	3,200	16.1	10.1 - 22.0	20,000
<b>131-185%</b>	3,000	33.9	21.6 - 46.2	100	0.8	0.0 - 1.7	3,900	44.1	32.8 - 55.5	900	9.6	2.3 - 16.9	1,000	11.6	4.3 - 18.9	8,900
<b>186+%</b>	11,000	29.4	24.5 - 34.3	1,200	3.2	1.6 - 4.8	18,800	50.3	45.3 - 55.3	1,000	2.6	1.4 - 3.7	5,400	14.5	11.0 - 18.0	37,400

Marital Status (Grouped)	Never			<Once/month			Daily or more			1 to 3 times/month			1 to 6 times/week			Estimated Population (3-Yr Avg)
	#	%	C.I. (95%)	#	%	C.I. (95%)	#	%	C.I. (95%)	#	%	C.I. (95%)	#	%	C.I. (95%)	#
<b>Married</b>	14,700	30.7	25.7 - 35.7	900	2.0	0.8 - 3.1	22,600	47.2	42.2 - 52.2	2,400	5.0	2.8 - 7.1	7,300	15.2	11.6 - 18.8	48,000
<b>Widowed</b>	2,600	28.5	19.6 - 37.4	300	3.9	0.7 - 7.0	4,100	45.7	36.8 - 54.6	600	6.8	3.0 - 10.7	1,400	15.1	8.9 - 21.4	9,000
<b>Other</b>	5,600	30.4	22.4 - 38.3	1,400	7.7	3.2 - 12.1	9,100	49.0	40.7 - 57.3	700	3.9	1.5 - 6.3	1,700	9.1	5.4 - 12.8	18,500

**Diabetes - chkd blood for sugar by State, County, Island, Community, BRFSS Age Group, DOH Race-Ethnicity, Gender, Education Level, Employment Status (Grouped), Household Income, Poverty Level, Marital Status (Grouped), Married, Health Care Coverage, for the Year(s) - 2000-2002, 2001-2003, 2002-2004, 2003-2005, 2004-2006, 2005-2007, 2006-2008, 2007-2009, 2008-2010**

*Note: Weighted numbers (#) represent 3-yr averages, percentages and 95% confidence intervals; Respondents aged 18 years and older; n/r (Not Reportable) - If the unweighted total responses for a dimension (row) is <50 that row will not be shown; n/a (Not Available) - Not asked of a subset of respondents*

**Year: 2005-2007**

<b>Married</b>	<b>Never</b>			<b>&lt;Once/month</b>			<b>Daily or more</b>			<b>1 to 3 times/month</b>			<b>1 to 6 times/week</b>			<b>Estimated Population (3-Yr Avg)</b>
	<b>#</b>	<b>%</b>	<b>C.I. (95%)</b>	<b>#</b>	<b>%</b>	<b>C.I. (95%)</b>	<b>#</b>	<b>%</b>	<b>C.I. (95%)</b>	<b>#</b>	<b>%</b>	<b>C.I. (95%)</b>	<b>#</b>	<b>%</b>	<b>C.I. (95%)</b>	<b>#</b>
<b>Yes</b>	15,100	30.8	25.9 - 35.8	1,000	2.1	0.9 - 3.2	22,900	46.8	41.9 - 51.7	2,500	5.0	2.9 - 7.2	7,500	15.3	11.7 - 18.8	48,900
<b>No</b>	8,000	29.3	23.2 - 35.5	1,700	6.3	3.1 - 9.5	13,200	48.2	41.8 - 54.6	1,400	4.9	2.8 - 7.1	3,100	11.2	7.9 - 14.5	27,400

<b>Health Care Coverage</b>	<b>Never</b>			<b>&lt;Once/month</b>			<b>Daily or more</b>			<b>1 to 3 times/month</b>			<b>1 to 6 times/week</b>			<b>Estimated Population (3-Yr Avg)</b>
	<b>#</b>	<b>%</b>	<b>C.I. (95%)</b>	<b>#</b>	<b>%</b>	<b>C.I. (95%)</b>	<b>#</b>	<b>%</b>	<b>C.I. (95%)</b>	<b>#</b>	<b>%</b>	<b>C.I. (95%)</b>	<b>#</b>	<b>%</b>	<b>C.I. (95%)</b>	<b>#</b>
<b>Yes</b>	12,200	25.4	21.8 - 29.1	2,100	4.4	2.6 - 6.1	23,600	49.1	45.1 - 53.1	2,600	5.4	3.7 - 7.0	7,500	15.7	12.6 - 18.8	48,000

**Diabetes - chkd blood for sugar by State, County, Island, Community, BRFSS Age Group, DOH Race-Ethnicity, Gender, Education Level, Employment Status (Grouped), Household Income, Poverty Level, Marital Status (Grouped), Married, Health Care Coverage, for the Year(s) - 2000-2002, 2001-2003, 2002-2004, 2003-2005, 2004-2006, 2005-2007, 2006-2008, 2007-2009, 2008-2010**

*Note: Weighted numbers (#) represent 3-yr averages, percentages and 95% confidence intervals; Respondents aged 18 years and older; n/r (Not Reportable) - If the unweighted total responses for a dimension (row) is <50 that row will not be shown; n/a (Not Available) - Not asked of a subset of respondents*

**Year: 2004-2006**

State	Never			<Once/month			Daily or more			1 to 3 times/month			1 to 6 times/week			Estimated Population (3-Yr Avg)
	#	%	C.I. (95%)	#	%	C.I. (95%)	#	%	C.I. (95%)	#	%	C.I. (95%)	#	%	C.I. (95%)	#
Hawaii State	20,100	28.2	23.5 - 32.8	2,600	3.6	1.9 - 5.2	33,300	46.6	41.6 - 51.6	5,000	7.0	4.2 - 9.8	10,500	14.7	11.3 - 18.1	71,500

County	Never			<Once/month			Daily or more			1 to 3 times/month			1 to 6 times/week			Estimated Population (3-Yr Avg)
	#	%	C.I. (95%)	#	%	C.I. (95%)	#	%	C.I. (95%)	#	%	C.I. (95%)	#	%	C.I. (95%)	#
Hawaii	2,800	30.6	22.8 - 38.5	100	1.0	0.0 - 2.5	4,600	50.8	42.6 - 59.0	700	7.1	2.4 - 11.9	1,000	10.5	6.2 - 14.8	9,100
Honolulu	14,700	27.7	21.8 - 33.7	2,300	4.4	2.1 - 6.6	24,100	45.5	39.0 - 52.0	3,800	7.3	3.6 - 10.9	8,000	15.2	10.7 - 19.6	53,000
Kauai	800	21.7	11.9 - 31.6	100	2.6	0.0 - 5.3	2,000	52.7	41.3 - 64.2	200	6.1	0.8 - 11.4	600	16.8	8.3 - 25.3	3,800
Maui	1,800	32.6	21.2 - 43.9	100	1.0	0.0 - 1.9	2,500	45.5	34.9 - 56.2	300	5.2	2.0 - 8.4	900	15.7	7.2 - 24.2	5,500

**Diabetes - chkd blood for sugar by State, County, Island, Community, BRFSS Age Group, DOH Race-Ethnicity, Gender, Education Level, Employment Status (Grouped), Household Income, Poverty Level, Marital Status (Grouped), Married, Health Care Coverage, for the Year(s) - 2000-2002, 2001-2003, 2002-2004, 2003-2005, 2004-2006, 2005-2007, 2006-2008, 2007-2009, 2008-2010**

*Note: Weighted numbers (#) represent 3-yr averages, percentages and 95% confidence intervals; Respondents aged 18 years and older; n/r (Not Reportable) - If the unweighted total responses for a dimension (row) is <50 that row will not be shown; n/a (Not Available) - Not asked of a subset of respondents*

**Year: 2004-2006**

Island	Never			<Once/month			Daily or more			1 to 3 times/month			1 to 6 times/week			Estimated Population (3-Yr Avg)
	#	%	C.I. (95%)	#	%	C.I. (95%)	#	%	C.I. (95%)	#	%	C.I. (95%)	#	%	C.I. (95%)	#
Hawaii	2,800	30.6	22.8 - 38.5	100	1.0	0.0 - 2.5	4,600	50.8	42.6 - 59.0	700	7.1	2.4 - 11.9	1,000	10.5	6.2 - 14.8	9,100
Kauai	800	21.7	11.9 - 31.6	100	2.6	0.0 - 5.3	2,000	52.7	41.3 - 64.2	200	6.1	0.8 - 11.4	600	16.8	8.3 - 25.3	3,800
Maui	1,700	34.3	21.5 - 47.0	0	0.0	--	2,200	44.4	32.5 - 56.3	300	5.2	1.6 - 8.8	800	16.1	6.5 - 25.7	4,800
Oahu	14,700	27.7	21.8 - 33.7	2,300	4.4	2.1 - 6.6	24,100	45.5	39.0 - 52.0	3,800	7.3	3.6 - 10.9	8,000	15.2	10.7 - 19.6	53,000

**Diabetes - chkd blood for sugar by State, County, Island, Community, BRFSS Age Group, DOH Race-Ethnicity, Gender, Education Level, Employment Status (Grouped), Household Income, Poverty Level, Marital Status (Grouped), Married, Health Care Coverage, for the Year(s) - 2000-2002, 2001-2003, 2002-2004, 2003-2005, 2004-2006, 2005-2007, 2006-2008, 2007-2009, 2008-2010**

*Note: Weighted numbers (#) represent 3-yr averages, percentages and 95% confidence intervals; Respondents aged 18 years and older; n/r (Not Reportable) - If the unweighted total responses for a dimension (row) is <50 that row will not be shown; n/a (Not Available) - Not asked of a subset of respondents*

**Year: 2004-2006**

Community	Never			<Once/month			Daily or more			1 to 3 times/month			1 to 6 times/week			Estimated Population (3-Yr Avg)
	#	%	C.I. (95%)	#	%	C.I. (95%)	#	%	C.I. (95%)	#	%	C.I. (95%)	#	%	C.I. (95%)	#
Hilo	800	29.4	17.4 - 41.5	100	2.7	0.0 - 7.8	1,600	58.6	45.2 - 72.0	100	2.1	0.0 - 4.8	200	7.2	1.0 - 13.3	2,700
Lihue-Waimea	500	19.3	9.2 - 29.3	100	3.8	0.0 - 7.7	1,400	53.1	39.5 - 66.7	200	8.2	0.8 - 15.6	400	15.6	5.6 - 25.6	2,600
N.Hawaii	500	29.3	14.5 - 44.2	<50	0.9	0.0 - 2.7	800	47.8	31.3 - 64.3	100	7.3	0.0 - 19.3	300	14.6	4.6 - 24.6	1,700
Puna/ Kau	1,200	38.8	22.2 - 55.3	0	0.0	--	1,300	42.3	26.9 - 57.6	200	5.8	0.0 - 13.4	400	13.1	3.7 - 22.5	3,100
Waipahu/ Kapolei/ Ewa	2,900	30.3	13.5 - 47.2	100	1.6	0.0 - 4.6	4,400	45.6	28.1 - 63.1	600	6.7	0.0 - 13.5	1,500	15.8	3.0 - 28.6	9,600

**Diabetes - chkd blood for sugar by State, County, Island, Community, BRFSS Age Group, DOH Race-Ethnicity, Gender, Education Level, Employment Status (Grouped), Household Income, Poverty Level, Marital Status (Grouped), Married, Health Care Coverage, for the Year(s) - 2000-2002, 2001-2003, 2002-2004, 2003-2005, 2004-2006, 2005-2007, 2006-2008, 2007-2009, 2008-2010**

*Note: Weighted numbers (#) represent 3-yr averages, percentages and 95% confidence intervals; Respondents aged 18 years and older; n/r (Not Reportable) - If the unweighted total responses for a dimension (row) is <50 that row will not be shown; n/a (Not Available) - Not asked of a subset of respondents*

**Year: 2004-2006**

BRFSS Age Group	Never			<Once/month			Daily or more			1 to 3 times/month			1 to 6 times/week			Estimated Population (3-Yr Avg)
	#	%	C.I. (95%)	#	%	C.I. (95%)	#	%	C.I. (95%)	#	%	C.I. (95%)	#	%	C.I. (95%)	#
<b>35-44</b>	2,300	26.5	9.5 - 43.5	100	0.8	0.0 - 2.5	4,800	56.1	36.7 - 75.5	500	6.1	0.0 - 13.7	900	10.5	0.0 - 22.0	8,500
<b>45-54</b>	4,100	26.6	15.6 - 37.6	900	5.9	1.8 - 10.1	7,300	47.8	36.8 - 58.9	1,000	6.6	0.1 - 13.2	2,000	13.0	6.7 - 19.3	15,300
<b>55-64</b>	6,100	33.0	24.0 - 42.1	<50	0.1	0.0 - 0.3	7,900	42.7	33.4 - 51.9	900	4.8	0.5 - 9.1	3,600	19.4	11.8 - 27.0	18,600
<b>65-74</b>	2,600	20.1	13.1 - 27.1	400	3.2	0.1 - 6.2	6,100	46.9	37.6 - 56.3	1,400	10.9	3.6 - 18.2	2,500	19.0	10.7 - 27.2	13,000
<b>75+</b>	3,500	28.8	19.5 - 38.2	600	5.3	0.0 - 10.8	5,700	46.7	35.9 - 57.5	1,100	8.8	1.0 - 16.5	1,300	10.4	3.6 - 17.3	12,200

**Diabetes - chkd blood for sugar by State, County, Island, Community, BRFSS Age Group, DOH Race-Ethnicity, Gender, Education Level, Employment Status (Grouped), Household Income, Poverty Level, Marital Status (Grouped), Married, Health Care Coverage, for the Year(s) - 2000-2002, 2001-2003, 2002-2004, 2003-2005, 2004-2006, 2005-2007, 2006-2008, 2007-2009, 2008-2010**

*Note: Weighted numbers (#) represent 3-yr averages, percentages and 95% confidence intervals; Respondents aged 18 years and older; n/r (Not Reportable) - If the unweighted total responses for a dimension (row) is <50 that row will not be shown; n/a (Not Available) - Not asked of a subset of respondents*

**Year: 2004-2006**

DOH Race-Ethnicity	Never			<Once/month			Daily or more			1 to 3 times/month			1 to 6 times/week			Estimated Population (3-Yr Avg)
	#	%	C.I. (95%)	#	%	C.I. (95%)	#	%	C.I. (95%)	#	%	C.I. (95%)	#	%	C.I. (95%)	#
Caucasian	4,100	24.8	17.2 - 32.4	400	2.7	0.3 - 5.1	8,800	53.6	44.5 - 62.7	900	5.3	2.1 - 8.4	2,300	13.7	7.5 - 19.9	16,500
Native Hawaiian	3,800	24.9	14.0 - 35.8	600	3.8	0.5 - 7.2	8,100	52.7	40.4 - 65.1	1,400	9.1	1.4 - 16.7	1,500	9.5	4.3 - 14.7	15,300
Filipino	4,500	33.0	20.7 - 45.4	200	1.6	0.0 - 3.6	4,500	32.7	21.9 - 43.5	1,400	10.0	1.7 - 18.3	3,100	22.7	12.2 - 33.1	13,800
Japanese	4,600	31.2	22.2 - 40.1	600	3.9	0.0 - 8.3	6,400	43.9	34.9 - 52.9	500	3.4	0.0 - 6.9	2,600	17.7	10.5 - 24.9	14,700

Gender	Never			<Once/month			Daily or more			1 to 3 times/month			1 to 6 times/week			Estimated Population (3-Yr Avg)
	#	%	C.I. (95%)	#	%	C.I. (95%)	#	%	C.I. (95%)	#	%	C.I. (95%)	#	%	C.I. (95%)	#
Male	10,400	27.7	21.2 - 34.1	1,100	2.9	0.7 - 5.0	16,600	44.1	37.1 - 51.2	2,900	7.6	3.4 - 11.8	6,700	17.7	12.3 - 23.1	37,600
Female	9,700	28.7	22.1 - 35.3	1,500	4.3	1.7 - 7.0	16,700	49.3	42.2 - 56.4	2,200	6.4	2.8 - 10.0	3,800	11.3	7.4 - 15.2	33,900



**Diabetes - chkd blood for sugar by State, County, Island, Community, BRFSS Age Group, DOH Race-Ethnicity, Gender, Education Level, Employment Status (Grouped), Household Income, Poverty Level, Marital Status (Grouped), Married, Health Care Coverage, for the Year(s) - 2000-2002, 2001-2003, 2002-2004, 2003-2005, 2004-2006, 2005-2007, 2006-2008, 2007-2009, 2008-2010**

*Note: Weighted numbers (#) represent 3-yr averages, percentages and 95% confidence intervals; Respondents aged 18 years and older; n/r (Not Reportable) - If the unweighted total responses for a dimension (row) is <50 that row will not be shown; n/a (Not Available) - Not asked of a subset of respondents*

**Year: 2004-2006**

Education Level	Never			<Once/month			Daily or more			1 to 3 times/month			1 to 6 times/week			Estimated Population (3-Yr Avg)
	#	%	C.I. (95%)	#	%	C.I. (95%)	#	%	C.I. (95%)	#	%	C.I. (95%)	#	%	C.I. (95%)	#
Grades 9 thru 11 (Some High School)	1,700	42.8	24.3 - 61.4	200	6.0	0.0 - 13.2	1,800	43.7	26.8 - 60.6	100	2.2	0.1 - 4.4	200	5.3	1.1 - 9.4	4,000
Grades 12 or GED (High School Grad)	7,300	26.5	18.7 - 34.4	400	1.3	0.1 - 2.6	13,100	47.7	38.7 - 56.7	2,600	9.6	3.7 - 15.4	4,100	14.9	9.0 - 20.7	27,400
College 1 to 3 years (Some College/ Tech)	5,500	27.7	19.5 - 36.0	1,200	6.0	1.4 - 10.6	8,800	44.4	35.7 - 53.0	1,100	5.6	2.0 - 9.2	3,200	16.3	9.7 - 22.8	19,700
College 4 years or more (College Grad)	4,800	28.2	18.7 - 37.6	800	4.4	0.9 - 8.0	8,000	46.7	37.1 - 56.3	700	4.2	0.0 - 8.5	2,800	16.4	9.1 - 23.7	17,200

Employment Status (Grouped)	Never			<Once/month			Daily or more			1 to 3 times/month			1 to 6 times/week			Estimated Population (3-Yr Avg)
	#	%	C.I. (95%)	#	%	C.I. (95%)	#	%	C.I. (95%)	#	%	C.I. (95%)	#	%	C.I. (95%)	#
Employed	9,600	29.1	21.7 - 36.5	1,300	3.8	1.2 - 6.4	14,100	42.7	35.0 - 50.4	2,200	6.8	2.5 - 11.1	5,800	17.6	11.8 - 23.4	33,000
Retired/Unable to work	8,600	25.8	20.1 - 31.5	1,100	3.3	0.9 - 5.6	16,600	49.8	43.0 - 56.7	2,600	7.9	3.7 - 12.0	4,400	13.2	8.7 - 17.7	33,300

**Diabetes - chkd blood for sugar by State, County, Island, Community, BRFSS Age Group, DOH Race-Ethnicity, Gender, Education Level, Employment Status (Grouped), Household Income, Poverty Level, Marital Status (Grouped), Married, Health Care Coverage, for the Year(s) - 2000-2002, 2001-2003, 2002-2004, 2003-2005, 2004-2006, 2005-2007, 2006-2008, 2007-2009, 2008-2010**

*Note: Weighted numbers (#) represent 3-yr averages, percentages and 95% confidence intervals; Respondents aged 18 years and older; n/r (Not Reportable) - If the unweighted total responses for a dimension (row) is <50 that row will not be shown; n/a (Not Available) - Not asked of a subset of respondents*

**Year: 2004-2006**

Household Income	Never			<Once/month			Daily or more			1 to 3 times/month			1 to 6 times/week			Estimated Population (3-Yr Avg)
	#	%	C.I. (95%)	#	%	C.I. (95%)	#	%	C.I. (95%)	#	%	C.I. (95%)	#	%	C.I. (95%)	#
<b>\$10,000 to \$14,999</b>	1,500	38.9	17.5 - 60.3	100	1.8	0.0 - 4.4	1,900	47.0	25.8 - 68.2	200	5.8	0.0 - 12.8	300	6.5	0.0 - 13.3	3,900
<b>\$15,000 to \$19,999</b>	1,200	18.9	4.6 - 33.2	200	3.3	0.0 - 7.1	4,100	63.0	44.3 - 81.6	800	11.6	0.0 - 24.1	200	3.1	0.1 - 6.2	6,600
<b>\$20,000 to \$24,999</b>	1,000	15.5	4.4 - 26.7	700	11.5	0.0 - 23.0	2,400	39.0	24.3 - 53.7	800	13.4	0.0 - 28.2	1,300	20.6	7.0 - 34.3	6,200
<b>\$25,000 to \$34,999</b>	3,500	37.8	21.5 - 54.2	500	5.8	0.0 - 12.2	3,600	38.8	25.1 - 52.5	700	7.6	0.2 - 14.9	900	10.0	2.7 - 17.4	9,300
<b>\$35,000 to \$49,999</b>	2,400	23.3	13.8 - 32.8	200	1.8	0.0 - 3.7	5,600	53.9	42.0 - 65.8	200	1.8	0.0 - 4.2	2,000	19.2	8.8 - 29.6	10,400
<b>\$50,000 to \$74,999</b>	3,300	25.8	16.5 - 35.1	200	1.9	0.0 - 4.5	5,200	40.6	30.3 - 50.9	1,400	11.0	1.8 - 20.3	2,600	20.6	11.7 - 29.5	12,800
<b>\$75,000 or more</b>	3,100	26.8	15.1 - 38.4	300	2.9	0.0 - 7.0	5,700	48.8	35.5 - 62.2	300	2.7	0.3 - 5.1	2,200	18.8	8.2 - 29.3	11,700

**Diabetes - chkd blood for sugar by State, County, Island, Community, BRFSS Age Group, DOH Race-Ethnicity, Gender, Education Level, Employment Status (Grouped), Household Income, Poverty Level, Marital Status (Grouped), Married, Health Care Coverage, for the Year(s) - 2000-2002, 2001-2003, 2002-2004, 2003-2005, 2004-2006, 2005-2007, 2006-2008, 2007-2009, 2008-2010**

*Note: Weighted numbers (#) represent 3-yr averages, percentages and 95% confidence intervals; Respondents aged 18 years and older; n/r (Not Reportable) - If the unweighted total responses for a dimension (row) is <50 that row will not be shown; n/a (Not Available) - Not asked of a subset of respondents*

**Year: 2004-2006**

Poverty Level	Never			<Once/month			Daily or more			1 to 3 times/month			1 to 6 times/week			Estimated Population (3-Yr Avg)
	#	%	C.I. (95%)	#	%	C.I. (95%)	#	%	C.I. (95%)	#	%	C.I. (95%)	#	%	C.I. (95%)	#
<b>0-130%</b>	5,900	31.6	20.6 - 42.5	700	3.8	0.4 - 7.2	8,100	43.1	31.7 - 54.4	1,700	9.2	2.4 - 16.0	2,300	12.4	5.7 - 19.0	18,800
<b>131-185%</b>	2,300	29.5	15.3 - 43.8	500	6.6	0.0 - 15.2	3,500	45.4	31.5 - 59.4	500	6.4	0.0 - 14.1	900	12.1	3.9 - 20.2	7,700
<b>186+%</b>	8,700	23.9	18.4 - 29.3	1,100	3.0	1.1 - 4.9	17,900	48.9	42.3 - 55.5	2,300	6.2	2.5 - 9.9	6,600	18.0	12.7 - 23.2	36,500

Marital Status (Grouped)	Never			<Once/month			Daily or more			1 to 3 times/month			1 to 6 times/week			Estimated Population (3-Yr Avg)
	#	%	C.I. (95%)	#	%	C.I. (95%)	#	%	C.I. (95%)	#	%	C.I. (95%)	#	%	C.I. (95%)	#
<b>Married</b>	12,300	26.5	20.8 - 32.3	1,100	2.4	0.5 - 4.3	21,900	47.4	41.0 - 53.9	3,300	7.1	3.3 - 10.9	7,700	16.6	11.8 - 21.3	46,200
<b>Widowed</b>	2,000	25.8	15.4 - 36.2	500	6.0	0.8 - 11.2	3,300	42.0	30.0 - 54.0	900	11.5	2.3 - 20.7	1,200	14.8	6.9 - 22.7	7,900
<b>Other</b>	5,600	33.6	23.2 - 44.1	1,000	5.7	1.4 - 10.0	7,700	46.3	35.9 - 56.6	700	4.4	0.9 - 7.8	1,700	10.0	5.0 - 15.1	16,700

**Diabetes - chkd blood for sugar by State, County, Island, Community, BRFSS Age Group, DOH Race-Ethnicity, Gender, Education Level, Employment Status (Grouped), Household Income, Poverty Level, Marital Status (Grouped), Married, Health Care Coverage, for the Year(s) - 2000-2002, 2001-2003, 2002-2004, 2003-2005, 2004-2006, 2005-2007, 2006-2008, 2007-2009, 2008-2010**

*Note: Weighted numbers (#) represent 3-yr averages, percentages and 95% confidence intervals; Respondents aged 18 years and older; n/r (Not Reportable) - If the unweighted total responses for a dimension (row) is <50 that row will not be shown; n/a (Not Available) - Not asked of a subset of respondents*

**Year: 2004-2006**

Married	Never			<Once/month			Daily or more			1 to 3 times/month			1 to 6 times/week			Estimated Population (3-Yr Avg)
	#	%	C.I. (95%)	#	%	C.I. (95%)	#	%	C.I. (95%)	#	%	C.I. (95%)	#	%	C.I. (95%)	#
Yes	12,500	26.7	21.1 - 32.4	1,100	2.4	0.5 - 4.2	22,200	47.2	40.9 - 53.6	3,300	7.0	3.3 - 10.7	7,800	16.7	12.0 - 21.4	46,900
No	7,600	31.0	23.0 - 39.0	1,400	5.9	2.5 - 9.3	11,000	45.1	37.0 - 53.2	1,700	7.1	3.1 - 11.1	2,700	10.9	6.7 - 15.1	24,500

Health Care Coverage	Never			<Once/month			Daily or more			1 to 3 times/month			1 to 6 times/week			Estimated Population (3-Yr Avg)
	#	%	C.I. (95%)	#	%	C.I. (95%)	#	%	C.I. (95%)	#	%	C.I. (95%)	#	%	C.I. (95%)	#
Yes	9,400	21.7	16.4 - 26.9	2,100	4.8	2.4 - 7.3	20,400	47.1	40.8 - 53.5	3,800	8.7	4.7 - 12.8	7,600	17.6	12.8 - 22.5	43,300

**Diabetes - chkd blood for sugar by State, County, Island, Community, BRFSS Age Group, DOH Race-Ethnicity, Gender, Education Level, Employment Status (Grouped), Household Income, Poverty Level, Marital Status (Grouped), Married, Health Care Coverage, for the Year(s) - 2000-2002, 2001-2003, 2002-2004, 2003-2005, 2004-2006, 2005-2007, 2006-2008, 2007-2009, 2008-2010**

*Note: Weighted numbers (#) represent 3-yr averages, percentages and 95% confidence intervals; Respondents aged 18 years and older; n/r (Not Reportable) - If the unweighted total responses for a dimension (row) is <50 that row will not be shown; n/a (Not Available) - Not asked of a subset of respondents*

**Year: 2003-2005**

State	Never			<Once/month			Daily or more			1 to 3 times/month			1 to 6 times/week			Estimated Population (3-Yr Avg)
	#	%	C.I. (95%)	#	%	C.I. (95%)	#	%	C.I. (95%)	#	%	C.I. (95%)	#	%	C.I. (95%)	#
Hawaii State	16,800	24.4	19.6 - 29.3	3,300	4.8	2.6 - 7.1	32,000	46.5	41.1 - 51.9	6,600	9.6	6.3 - 12.8	10,100	14.6	11.0 - 18.2	68,800

County	Never			<Once/month			Daily or more			1 to 3 times/month			1 to 6 times/week			Estimated Population (3-Yr Avg)
	#	%	C.I. (95%)	#	%	C.I. (95%)	#	%	C.I. (95%)	#	%	C.I. (95%)	#	%	C.I. (95%)	#
Hawaii	2,400	26.8	18.6 - 35.0	300	3.5	0.4 - 6.5	4,200	46.0	37.1 - 55.0	800	8.9	3.7 - 14.0	1,300	14.8	7.2 - 22.5	9,100
Honolulu	12,200	23.5	17.5 - 29.5	2,900	5.6	2.7 - 8.4	24,100	46.3	39.5 - 53.1	5,300	10.1	6.0 - 14.3	7,600	14.5	10.1 - 19.0	52,000
Kauai	800	24.6	12.4 - 36.9	<50	0.7	0.0 - 2.1	1,600	52.5	38.5 - 66.5	200	6.1	0.0 - 12.3	500	16.1	5.8 - 26.3	3,100
Maui	1,400	30.2	16.8 - 43.6	100	2.1	0.0 - 4.3	2,100	46.4	33.5 - 59.2	300	7.2	1.7 - 12.6	700	14.2	4.4 - 24.0	4,600

**Diabetes - chkd blood for sugar by State, County, Island, Community, BRFSS Age Group, DOH Race-Ethnicity, Gender, Education Level, Employment Status (Grouped), Household Income, Poverty Level, Marital Status (Grouped), Married, Health Care Coverage, for the Year(s) - 2000-2002, 2001-2003, 2002-2004, 2003-2005, 2004-2006, 2005-2007, 2006-2008, 2007-2009, 2008-2010**

*Note: Weighted numbers (#) represent 3-yr averages, percentages and 95% confidence intervals; Respondents aged 18 years and older; n/r (Not Reportable) - If the unweighted total responses for a dimension (row) is <50 that row will not be shown; n/a (Not Available) - Not asked of a subset of respondents*

**Year: 2003-2005**

Island	Never			<Once/month			Daily or more			1 to 3 times/month			1 to 6 times/week			Estimated Population (3-Yr Avg)
	#	%	C.I. (95%)	#	%	C.I. (95%)	#	%	C.I. (95%)	#	%	C.I. (95%)	#	%	C.I. (95%)	#
Hawaii	2,400	26.8	18.6 - 35.0	300	3.5	0.4 - 6.5	4,200	46.0	37.1 - 55.0	800	8.9	3.7 - 14.0	1,300	14.8	7.2 - 22.5	9,100
Kauai	800	24.6	12.4 - 36.9	<50	0.7	0.0 - 2.1	1,600	52.5	38.5 - 66.5	200	6.1	0.0 - 12.3	500	16.1	5.8 - 26.3	3,100
Maui	1,300	32.9	17.5 - 48.2	<50	1.2	0.0 - 3.4	1,800	44.7	30.1 - 59.3	300	7.0	1.0 - 13.0	600	14.3	3.0 - 25.6	3,900
Oahu	12,200	23.5	17.5 - 29.5	2,900	5.6	2.7 - 8.4	24,100	46.3	39.5 - 53.1	5,300	10.1	6.0 - 14.3	7,600	14.5	10.1 - 19.0	52,000

Community	Never			<Once/month			Daily or more			1 to 3 times/month			1 to 6 times/week			Estimated Population (3-Yr Avg)
	#	%	C.I. (95%)	#	%	C.I. (95%)	#	%	C.I. (95%)	#	%	C.I. (95%)	#	%	C.I. (95%)	#
Hilo	600	27.7	14.1 - 41.3	100	3.1	0.0 - 9.2	1,300	57.6	42.1 - 73.0	100	6.5	1.1 - 12.0	100	5.1	0.0 - 11.2	2,300
Puna/ Kau	1,100	36.2	19.1 - 53.4	<50	0.8	0.0 - 2.3	1,300	42.1	26.5 - 57.8	200	6.7	0.0 - 14.9	400	14.2	3.8 - 24.6	3,100

**Diabetes - chkd blood for sugar by State, County, Island, Community, BRFSS Age Group, DOH Race-Ethnicity, Gender, Education Level, Employment Status (Grouped), Household Income, Poverty Level, Marital Status (Grouped), Married, Health Care Coverage, for the Year(s) - 2000-2002, 2001-2003, 2002-2004, 2003-2005, 2004-2006, 2005-2007, 2006-2008, 2007-2009, 2008-2010**

*Note: Weighted numbers (#) represent 3-yr averages, percentages and 95% confidence intervals; Respondents aged 18 years and older; n/r (Not Reportable) - If the unweighted total responses for a dimension (row) is <50 that row will not be shown; n/a (Not Available) - Not asked of a subset of respondents*

**Year: 2003-2005**

DOH Race-Ethnicity	Never			<Once/month			Daily or more			1 to 3 times/month			1 to 6 times/week			Estimated Population (3-Yr Avg)
	#	%	C.I. (95%)	#	%	C.I. (95%)	#	%	C.I. (95%)	#	%	C.I. (95%)	#	%	C.I. (95%)	#
Caucasian	3,600	22.9	14.8 - 31.0	500	3.2	0.0 - 6.5	8,500	53.5	43.5 - 63.5	1,100	6.9	2.4 - 11.4	2,100	13.5	6.8 - 20.2	15,900
Native Hawaiian	3,100	20.9	9.9 - 31.9	500	3.7	0.2 - 7.1	8,200	54.6	41.6 - 67.6	1,700	11.6	3.0 - 20.2	1,400	9.2	3.3 - 15.2	15,000
Filipino	3,500	28.9	15.4 - 42.4	200	1.6	0.0 - 3.9	4,200	35.2	22.8 - 47.5	1,500	12.6	2.7 - 22.6	2,600	21.7	10.6 - 32.9	12,000
Japanese	3,400	23.4	14.5 - 32.2	1,500	10.2	2.8 - 17.5	6,100	41.2	31.5 - 51.0	1,100	7.3	2.7 - 11.9	2,600	18.0	10.4 - 25.5	14,700

Gender	Never			<Once/month			Daily or more			1 to 3 times/month			1 to 6 times/week			Estimated Population (3-Yr Avg)
	#	%	C.I. (95%)	#	%	C.I. (95%)	#	%	C.I. (95%)	#	%	C.I. (95%)	#	%	C.I. (95%)	#
Male	8,900	24.7	17.9 - 31.5	1,500	4.1	1.0 - 7.3	15,600	43.2	35.7 - 50.8	4,000	11.1	6.2 - 16.0	6,100	16.9	11.2 - 22.5	36,100
Female	7,900	24.2	17.4 - 31.0	1,800	5.6	2.5 - 8.7	16,400	50.1	42.6 - 57.7	2,600	7.9	3.7 - 12.2	4,000	12.2	7.9 - 16.4	32,700

**Diabetes - chkd blood for sugar by State, County, Island, Community, BRFSS Age Group, DOH Race-Ethnicity, Gender, Education Level, Employment Status (Grouped), Household Income, Poverty Level, Marital Status (Grouped), Married, Health Care Coverage, for the Year(s) - 2000-2002, 2001-2003, 2002-2004, 2003-2005, 2004-2006, 2005-2007, 2006-2008, 2007-2009, 2008-2010**

*Note: Weighted numbers (#) represent 3-yr averages, percentages and 95% confidence intervals; Respondents aged 18 years and older; n/r (Not Reportable) - If the unweighted total responses for a dimension (row) is <50 that row will not be shown; n/a (Not Available) - Not asked of a subset of respondents*

**Year: 2003-2005**

Education Level	Never			<Once/month			Daily or more			1 to 3 times/month			1 to 6 times/week			Estimated Population (3-Yr Avg)
	#	%	C.I. (95%)	#	%	C.I. (95%)	#	%	C.I. (95%)	#	%	C.I. (95%)	#	%	C.I. (95%)	#
Grades 9 thru 11 (Some High School)	1,700	35.9	17.9 - 53.8	200	4.0	0.0 - 8.8	2,300	48.7	31.3 - 66.0	400	9.6	0.0 - 22.0	100	1.9	0.0 - 4.4	4,700
Grades 12 or GED (High School Grad)	5,600	21.2	13.4 - 29.0	500	1.8	0.0 - 3.7	13,200	50.5	41.0 - 60.0	3,300	12.7	6.2 - 19.3	3,600	13.8	8.0 - 19.6	26,200
College 1 to 3 years (Some College/ Tech)	4,800	26.2	17.1 - 35.3	1,600	8.9	2.5 - 15.3	7,500	41.0	31.5 - 50.5	1,600	8.9	4.2 - 13.7	2,800	15.0	8.2 - 21.7	18,400
College 4 years or more (College Grad)	4,300	25.4	15.3 - 35.4	900	5.0	1.1 - 9.0	7,500	44.1	33.9 - 54.3	800	4.9	0.3 - 9.4	3,500	20.7	12.1 - 29.2	17,000

Employment Status (Grouped)	Never			<Once/month			Daily or more			1 to 3 times/month			1 to 6 times/week			Estimated Population (3-Yr Avg)
	#	%	C.I. (95%)	#	%	C.I. (95%)	#	%	C.I. (95%)	#	%	C.I. (95%)	#	%	C.I. (95%)	#
Employed	8,000	24.9	17.2 - 32.5	1,800	5.5	2.0 - 9.1	14,200	44.0	35.8 - 52.1	3,100	9.5	4.7 - 14.4	5,200	16.1	10.4 - 21.8	32,300
Retired/Unable to work	6,700	21.6	15.7 - 27.4	1,500	4.8	1.6 - 8.0	15,400	49.2	41.7 - 56.8	3,200	10.2	5.3 - 15.1	4,400	14.2	9.1 - 19.4	31,300



**Diabetes - chkd blood for sugar by State, County, Island, Community, BRFSS Age Group, DOH Race-Ethnicity, Gender, Education Level, Employment Status (Grouped), Household Income, Poverty Level, Marital Status (Grouped), Married, Health Care Coverage, for the Year(s) - 2000-2002, 2001-2003, 2002-2004, 2003-2005, 2004-2006, 2005-2007, 2006-2008, 2007-2009, 2008-2010**

*Note: Weighted numbers (#) represent 3-yr averages, percentages and 95% confidence intervals; Respondents aged 18 years and older; n/r (Not Reportable) - If the unweighted total responses for a dimension (row) is <50 that row will not be shown; n/a (Not Available) - Not asked of a subset of respondents*

**Year: 2003-2005**

Household Income	Never			<Once/month			Daily or more			1 to 3 times/month			1 to 6 times/week			Estimated Population (3-Yr Avg)
	#	%	C.I. (95%)	#	%	C.I. (95%)	#	%	C.I. (95%)	#	%	C.I. (95%)	#	%	C.I. (95%)	#
<b>\$10,000 to \$14,999</b>	1,700	33.8	14.6 - 53.1	0	0.0	--	2,200	45.1	25.3 - 65.0	400	7.2	0.0 - 14.5	700	13.8	0.0 - 28.5	4,900
<b>\$15,000 to \$19,999</b>	1,000	15.1	1.1 - 29.1	200	3.6	0.0 - 7.9	3,900	61.7	41.9 - 81.5	1,000	16.4	2.0 - 30.7	200	3.2	0.2 - 6.3	6,300
<b>\$20,000 to \$24,999</b>	1,000	16.5	3.8 - 29.2	800	14.6	1.9 - 27.2	2,100	36.7	21.1 - 52.3	600	11.0	0.0 - 26.6	1,200	21.2	6.6 - 35.8	5,800
<b>\$25,000 to \$34,999</b>	3,200	40.2	21.9 - 58.6	500	6.0	0.0 - 12.8	2,700	33.2	18.9 - 47.6	700	9.1	0.4 - 17.8	900	11.5	3.1 - 19.8	8,000
<b>\$35,000 to \$49,999</b>	1,400	16.1	7.1 - 25.1	200	2.2	0.0 - 5.5	4,700	55.4	41.9 - 68.9	800	9.6	1.4 - 17.9	1,400	16.6	6.2 - 27.0	8,500
<b>\$50,000 to \$74,999</b>	3,300	26.6	15.9 - 37.3	100	0.7	0.0 - 2.1	5,100	41.2	29.4 - 53.0	1,800	15.0	4.8 - 25.3	2,000	16.4	7.3 - 25.6	12,300
<b>\$75,000 or more</b>	2,500	22.7	10.3 - 35.0	600	5.1	0.0 - 10.5	5,500	50.6	36.0 - 65.3	100	1.3	0.0 - 3.1	2,200	20.2	8.6 - 31.9	10,900

**Diabetes - chkd blood for sugar by State, County, Island, Community, BRFSS Age Group, DOH Race-Ethnicity, Gender, Education Level, Employment Status (Grouped), Household Income, Poverty Level, Marital Status (Grouped), Married, Health Care Coverage, for the Year(s) - 2000-2002, 2001-2003, 2002-2004, 2003-2005, 2004-2006, 2005-2007, 2006-2008, 2007-2009, 2008-2010**

*Note: Weighted numbers (#) represent 3-yr averages, percentages and 95% confidence intervals; Respondents aged 18 years and older; n/r (Not Reportable) - If the unweighted total responses for a dimension (row) is <50 that row will not be shown; n/a (Not Available) - Not asked of a subset of respondents*

**Year: 2003-2005**

Poverty Level	Never			<Once/month			Daily or more			1 to 3 times/month			1 to 6 times/week			Estimated Population (3-Yr Avg)
	#	%	C.I. (95%)	#	%	C.I. (95%)	#	%	C.I. (95%)	#	%	C.I. (95%)	#	%	C.I. (95%)	#
<b>0-130%</b>	5,600	30.1	19.0 - 41.3	500	2.7	0.0 - 5.8	8,200	44.2	32.5 - 55.9	2,200	11.9	4.3 - 19.5	2,100	11.1	4.6 - 17.5	18,600
<b>131-185%</b>	1,700	25.0	9.8 - 40.1	500	7.1	0.0 - 16.7	2,600	38.4	23.7 - 53.1	800	11.3	1.0 - 21.7	1,300	18.2	7.8 - 28.7	6,900
<b>186+%</b>	7,200	21.2	15.3 - 27.2	1,400	4.1	1.7 - 6.5	16,700	49.0	41.6 - 56.4	3,000	8.9	4.5 - 13.4	5,700	16.8	11.1 - 22.4	34,100

Marital Status (Grouped)	Never			<Once/month			Daily or more			1 to 3 times/month			1 to 6 times/week			Estimated Population (3-Yr Avg)
	#	%	C.I. (95%)	#	%	C.I. (95%)	#	%	C.I. (95%)	#	%	C.I. (95%)	#	%	C.I. (95%)	#
<b>Married</b>	9,900	22.9	16.8 - 29.0	1,700	3.9	1.5 - 6.3	20,500	47.7	40.7 - 54.8	4,100	9.5	5.0 - 13.9	6,900	16.0	11.0 - 20.9	43,000
<b>Widowed</b>	2,100	23.2	13.4 - 33.0	700	7.4	1.4 - 13.5	3,600	40.5	28.6 - 52.3	1,300	14.7	5.0 - 24.3	1,300	14.3	6.7 - 21.8	8,900
<b>Other</b>	4,700	28.9	18.0 - 39.7	1,000	6.0	0.0 - 12.0	7,600	46.8	35.6 - 57.9	1,100	6.7	2.4 - 11.0	1,900	11.7	5.1 - 18.3	16,400

**Diabetes - chkd blood for sugar by State, County, Island, Community, BRFSS Age Group, DOH Race-Ethnicity, Gender, Education Level, Employment Status (Grouped), Household Income, Poverty Level, Marital Status (Grouped), Married, Health Care Coverage, for the Year(s) - 2000-2002, 2001-2003, 2002-2004, 2003-2005, 2004-2006, 2005-2007, 2006-2008, 2007-2009, 2008-2010**

*Note: Weighted numbers (#) represent 3-yr averages, percentages and 95% confidence intervals; Respondents aged 18 years and older; n/r (Not Reportable) - If the unweighted total responses for a dimension (row) is <50 that row will not be shown; n/a (Not Available) - Not asked of a subset of respondents*

**Year: 2003-2005**

Married	Never			<Once/month			Daily or more			1 to 3 times/month			1 to 6 times/week			Estimated Population (3-Yr Avg)
	#	%	C.I. (95%)	#	%	C.I. (95%)	#	%	C.I. (95%)	#	%	C.I. (95%)	#	%	C.I. (95%)	#
Yes	9,900	22.6	16.6 - 28.7	1,700	3.9	1.5 - 6.2	20,800	47.7	40.8 - 54.7	4,100	9.4	5.0 - 13.8	7,100	16.4	11.5 - 21.3	43,500
No	7,000	27.7	19.7 - 35.6	1,600	6.5	2.1 - 11.0	11,100	44.2	35.8 - 52.6	2,500	10.0	5.4 - 14.6	2,900	11.6	6.7 - 16.6	25,100

Health Care Coverage	Never			<Once/month			Daily or more			1 to 3 times/month			1 to 6 times/week			Estimated Population (3-Yr Avg)
	#	%	C.I. (95%)	#	%	C.I. (95%)	#	%	C.I. (95%)	#	%	C.I. (95%)	#	%	C.I. (95%)	#
Yes	6,300	15.4	10.0 - 20.7	2,900	6.9	3.5 - 10.3	19,600	47.4	40.3 - 54.5	5,300	12.8	7.9 - 17.6	7,200	17.5	12.3 - 22.7	41,300

**Diabetes - chkd blood for sugar by State, County, Island, Community, BRFSS Age Group, DOH Race-Ethnicity, Gender, Education Level, Employment Status (Grouped), Household Income, Poverty Level, Marital Status (Grouped), Married, Health Care Coverage, for the Year(s) - 2000-2002, 2001-2003, 2002-2004, 2003-2005, 2004-2006, 2005-2007, 2006-2008, 2007-2009, 2008-2010**

*Note: Weighted numbers (#) represent 3-yr averages, percentages and 95% confidence intervals; Respondents aged 18 years and older; n/r (Not Reportable) - If the unweighted total responses for a dimension (row) is <50 that row will not be shown; n/a (Not Available) - Not asked of a subset of respondents*

**Year: 2002-2004**

State	Never			<Once/month			Daily or more			1 to 3 times/month			1 to 6 times/week			Estimated Population (3-Yr Avg)
	#	%	C.I. (95%)	#	%	C.I. (95%)	#	%	C.I. (95%)	#	%	C.I. (95%)	#	%	C.I. (95%)	#
Hawaii State	10,300	17.2	13.2 - 21.2	4,000	6.7	4.2 - 9.3	28,500	47.5	42.2 - 52.8	7,000	11.7	8.0 - 15.5	10,100	16.8	13.0 - 20.6	60,000

County	Never			<Once/month			Daily or more			1 to 3 times/month			1 to 6 times/week			Estimated Population (3-Yr Avg)
	#	%	C.I. (95%)	#	%	C.I. (95%)	#	%	C.I. (95%)	#	%	C.I. (95%)	#	%	C.I. (95%)	#
Hawaii	1,400	19.4	11.4 - 27.3	500	6.9	2.5 - 11.3	3,400	47.1	37.7 - 56.6	600	8.1	3.6 - 12.5	1,400	18.5	9.4 - 27.7	7,300
Honolulu	7,500	16.5	11.6 - 21.5	3,200	7.1	3.9 - 10.3	21,300	46.9	40.2 - 53.6	5,900	13.0	8.2 - 17.7	7,500	16.4	11.7 - 21.2	45,400
Kauai	400	16.3	7.2 - 25.3	100	2.6	0.0 - 5.3	1,400	55.6	42.2 - 69.1	200	8.6	1.4 - 15.8	400	16.9	6.7 - 27.0	2,500
Maui	1,000	20.8	9.0 - 32.5	200	5.1	0.4 - 9.8	2,400	49.0	37.1 - 61.0	400	7.6	2.2 - 12.9	800	17.6	7.7 - 27.4	4,800

**Diabetes - chkd blood for sugar by State, County, Island, Community, BRFSS Age Group, DOH Race-Ethnicity, Gender, Education Level, Employment Status (Grouped), Household Income, Poverty Level, Marital Status (Grouped), Married, Health Care Coverage, for the Year(s) - 2000-2002, 2001-2003, 2002-2004, 2003-2005, 2004-2006, 2005-2007, 2006-2008, 2007-2009, 2008-2010**

*Note: Weighted numbers (#) represent 3-yr averages, percentages and 95% confidence intervals; Respondents aged 18 years and older; n/r (Not Reportable) - If the unweighted total responses for a dimension (row) is <50 that row will not be shown; n/a (Not Available) - Not asked of a subset of respondents*

**Year: 2002-2004**

Island	Never			<Once/month			Daily or more			1 to 3 times/month			1 to 6 times/week			Estimated Population (3-Yr Avg)
	#	%	C.I. (95%)	#	%	C.I. (95%)	#	%	C.I. (95%)	#	%	C.I. (95%)	#	%	C.I. (95%)	#
Hawaii	1,400	19.4	11.4 - 27.3	500	6.9	2.5 - 11.3	3,400	47.1	37.7 - 56.6	600	8.1	3.6 - 12.5	1,400	18.5	9.4 - 27.7	7,300
Kauai	400	16.3	7.2 - 25.3	100	2.6	0.0 - 5.3	1,400	55.6	42.2 - 69.1	200	8.6	1.4 - 15.8	400	16.9	6.7 - 27.0	2,500
Maui	900	22.2	8.6 - 35.8	200	5.2	0.0 - 10.7	1,900	47.5	33.9 - 61.1	300	6.4	0.8 - 12.1	800	18.7	7.3 - 30.0	4,100
Oahu	7,500	16.5	11.6 - 21.5	3,200	7.1	3.9 - 10.3	21,300	46.9	40.2 - 53.6	5,900	13.0	8.2 - 17.7	7,500	16.4	11.7 - 21.2	45,400

Community	Never			<Once/month			Daily or more			1 to 3 times/month			1 to 6 times/week			Estimated Population (3-Yr Avg)
	#	%	C.I. (95%)	#	%	C.I. (95%)	#	%	C.I. (95%)	#	%	C.I. (95%)	#	%	C.I. (95%)	#
Aiea/ Pearl City	800	12.9	4.2 - 21.7	400	7.2	0.0 - 18.0	2,200	38.3	22.8 - 53.8	1,200	21.4	4.0 - 38.9	1,200	20.1	6.3 - 34.0	5,800
Hilo	500	27.2	12.8 - 41.5	200	10.4	0.8 - 20.1	800	46.0	31.2 - 60.8	200	13.3	5.2 - 21.4	100	3.1	0.0 - 7.4	1,800
Lihue-Waimea	300	16.9	5.8 - 28.1	100	3.6	0.0 - 7.4	900	47.5	30.8 - 64.1	200	11.4	1.6 - 21.2	400	20.6	7.7 - 33.5	1,800
Waipahu/ Kapolei/ Ewa	1,400	19.5	3.3 - 35.8	400	5.9	0.0 - 11.9	3,500	47.9	29.4 - 66.4	400	5.2	0.0 - 11.8	1,600	21.5	5.3 - 37.6	7,200

**Diabetes - chkd blood for sugar by State, County, Island, Community, BRFSS Age Group, DOH Race-Ethnicity, Gender, Education Level, Employment Status (Grouped), Household Income, Poverty Level, Marital Status (Grouped), Married, Health Care Coverage, for the Year(s) - 2000-2002, 2001-2003, 2002-2004, 2003-2005, 2004-2006, 2005-2007, 2006-2008, 2007-2009, 2008-2010**

*Note: Weighted numbers (#) represent 3-yr averages, percentages and 95% confidence intervals; Respondents aged 18 years and older; n/r (Not Reportable) - If the unweighted total responses for a dimension (row) is <50 that row will not be shown; n/a (Not Available) - Not asked of a subset of respondents*

**Year: 2002-2004**

BRFSS Age Group	Never			<Once/month			Daily or more			1 to 3 times/month			1 to 6 times/week			Estimated Population (3-Yr Avg)
	#	%	C.I. (95%)	#	%	C.I. (95%)	#	%	C.I. (95%)	#	%	C.I. (95%)	#	%	C.I. (95%)	#
<b>35-44</b>	1,800	23.2	7.1 - 39.2	400	4.5	0.3 - 8.6	3,900	49.4	29.5 - 69.2	600	7.9	0.0 - 17.2	1,200	15.1	2.3 - 27.9	8,000
<b>45-54</b>	1,900	14.7	5.0 - 24.4	1,100	8.5	1.3 - 15.6	6,900	53.5	41.5 - 65.5	1,800	14.2	5.2 - 23.1	1,200	9.2	3.6 - 14.8	12,900
<b>55-64</b>	2,500	17.3	9.7 - 24.9	800	5.5	1.7 - 9.4	7,100	49.7	40.1 - 59.2	1,100	7.4	3.0 - 11.9	2,900	20.0	12.2 - 27.8	14,300
<b>65-74</b>	1,500	11.7	6.0 - 17.4	1,000	7.3	2.3 - 12.4	5,600	43.2	33.3 - 53.1	1,800	14.3	6.1 - 22.5	3,000	23.5	14.1 - 32.8	13,000
<b>75+</b>	1,900	20.1	12.5 - 27.8	600	6.8	0.0 - 13.8	3,700	39.8	27.8 - 51.8	1,600	17.7	5.4 - 30.1	1,400	15.5	6.6 - 24.4	9,300

**Diabetes - chkd blood for sugar by State, County, Island, Community, BRFSS Age Group, DOH Race-Ethnicity, Gender, Education Level, Employment Status (Grouped), Household Income, Poverty Level, Marital Status (Grouped), Married, Health Care Coverage, for the Year(s) - 2000-2002, 2001-2003, 2002-2004, 2003-2005, 2004-2006, 2005-2007, 2006-2008, 2007-2009, 2008-2010**

*Note: Weighted numbers (#) represent 3-yr averages, percentages and 95% confidence intervals; Respondents aged 18 years and older; n/r (Not Reportable) - If the unweighted total responses for a dimension (row) is <50 that row will not be shown; n/a (Not Available) - Not asked of a subset of respondents*

**Year: 2002-2004**

DOH Race-Ethnicity	Never			<Once/month			Daily or more			1 to 3 times/month			1 to 6 times/week			Estimated Population (3-Yr Avg)
	#	%	C.I. (95%)	#	%	C.I. (95%)	#	%	C.I. (95%)	#	%	C.I. (95%)	#	%	C.I. (95%)	#
Caucasian	1,600	12.4	6.6 - 18.3	700	5.7	1.2 - 10.1	7,100	54.7	43.9 - 65.5	1,600	12.1	4.1 - 20.0	2,000	15.1	7.9 - 22.3	13,000
Native Hawaiian	2,100	17.4	6.0 - 28.8	600	4.9	0.6 - 9.3	6,500	53.8	39.8 - 67.7	1,700	13.7	3.5 - 23.9	1,200	10.2	3.6 - 16.7	12,100
Chinese	1,000	22.2	7.1 - 37.3	100	1.8	0.0 - 4.4	2,200	49.5	32.2 - 66.9	200	5.5	0.0 - 11.6	900	21.0	8.0 - 34.1	4,500
Filipino	2,200	21.2	8.6 - 33.8	300	3.4	0.0 - 6.9	3,800	36.8	25.2 - 48.4	1,300	12.2	1.9 - 22.5	2,700	26.5	14.4 - 38.6	10,400
Japanese	2,800	18.7	12.7 - 24.6	2,100	13.7	6.4 - 21.0	6,300	41.7	33.1 - 50.3	1,500	10.1	4.9 - 15.3	2,400	15.8	9.6 - 22.0	15,100

Gender	Never			<Once/month			Daily or more			1 to 3 times/month			1 to 6 times/week			Estimated Population (3-Yr Avg)
	#	%	C.I. (95%)	#	%	C.I. (95%)	#	%	C.I. (95%)	#	%	C.I. (95%)	#	%	C.I. (95%)	#
Male	4,700	15.8	10.7 - 20.9	2,000	6.9	2.8 - 10.9	13,000	44.1	36.3 - 51.9	4,000	13.7	8.1 - 19.2	5,800	19.6	13.2 - 25.9	29,500
Female	5,700	18.6	12.5 - 24.7	2,000	6.6	3.6 - 9.6	15,500	50.8	43.5 - 58.0	3,000	9.9	5.0 - 14.8	4,300	14.1	9.9 - 18.4	30,500

**Diabetes - chkd blood for sugar by State, County, Island, Community, BRFSS Age Group, DOH Race-Ethnicity, Gender, Education Level, Employment Status (Grouped), Household Income, Poverty Level, Marital Status (Grouped), Married, Health Care Coverage, for the Year(s) - 2000-2002, 2001-2003, 2002-2004, 2003-2005, 2004-2006, 2005-2007, 2006-2008, 2007-2009, 2008-2010**

*Note: Weighted numbers (#) represent 3-yr averages, percentages and 95% confidence intervals; Respondents aged 18 years and older; n/r (Not Reportable) - If the unweighted total responses for a dimension (row) is <50 that row will not be shown; n/a (Not Available) - Not asked of a subset of respondents*

**Year: 2002-2004**

Education Level	Never			<Once/month			Daily or more			1 to 3 times/month			1 to 6 times/week			Estimated Population (3-Yr Avg)
	#	%	C.I. (95%)	#	%	C.I. (95%)	#	%	C.I. (95%)	#	%	C.I. (95%)	#	%	C.I. (95%)	#
Grades 9 thru 11 (Some High School)	700	18.3	7.3 - 29.3	100	3.0	0.0 - 7.0	2,000	55.5	39.0 - 72.0	500	14.7	0.0 - 30.4	300	8.5	1.3 - 15.8	3,600
Grades 12 or GED (High School Grad)	3,300	14.1	7.7 - 20.5	1,100	4.6	1.8 - 7.4	11,900	51.4	41.8 - 61.0	3,400	14.7	7.2 - 22.2	3,500	15.2	9.0 - 21.4	23,200
College 1 to 3 years (Some College/ Tech)	3,600	21.3	12.4 - 30.3	1,700	9.9	3.3 - 16.5	6,900	41.2	31.7 - 50.7	1,800	10.9	5.4 - 16.4	2,800	16.6	9.8 - 23.4	16,600
College 4 years or more (College Grad)	2,700	18.0	11.0 - 25.0	1,000	6.6	2.1 - 11.1	7,000	45.8	36.5 - 55.1	1,200	7.9	2.6 - 13.2	3,300	21.7	13.0 - 30.3	15,200

Employment Status (Grouped)	Never			<Once/month			Daily or more			1 to 3 times/month			1 to 6 times/week			Estimated Population (3-Yr Avg)
	#	%	C.I. (95%)	#	%	C.I. (95%)	#	%	C.I. (95%)	#	%	C.I. (95%)	#	%	C.I. (95%)	#
Employed	5,000	18.8	12.1 - 25.5	2,300	8.6	4.4 - 12.8	11,900	44.4	36.3 - 52.5	2,900	10.7	5.3 - 16.0	4,700	17.5	11.6 - 23.5	26,800
Retired/Unable to work	4,100	14.3	10.3 - 18.2	1,700	5.9	2.4 - 9.4	14,100	49.6	42.2 - 57.0	3,900	13.7	7.9 - 19.5	4,700	16.6	11.1 - 22.1	28,400



**Diabetes - chkd blood for sugar by State, County, Island, Community, BRFSS Age Group, DOH Race-Ethnicity, Gender, Education Level, Employment Status (Grouped), Household Income, Poverty Level, Marital Status (Grouped), Married, Health Care Coverage, for the Year(s) - 2000-2002, 2001-2003, 2002-2004, 2003-2005, 2004-2006, 2005-2007, 2006-2008, 2007-2009, 2008-2010**

*Note: Weighted numbers (#) represent 3-yr averages, percentages and 95% confidence intervals; Respondents aged 18 years and older; n/r (Not Reportable) - If the unweighted total responses for a dimension (row) is <50 that row will not be shown; n/a (Not Available) - Not asked of a subset of respondents*

**Year: 2002-2004**

Household Income	Never			<Once/month			Daily or more			1 to 3 times/month			1 to 6 times/week			Estimated Population (3-Yr Avg)
	#	%	C.I. (95%)	#	%	C.I. (95%)	#	%	C.I. (95%)	#	%	C.I. (95%)	#	%	C.I. (95%)	#
<b>Less than \$10,000</b>	600	20.6	9.1 - 32.1	<50	1.0	0.0 - 2.3	1,400	46.1	29.0 - 63.2	600	19.1	3.5 - 34.7	400	13.2	3.9 - 22.4	3,000
<b>\$10,000 to \$14,999</b>	800	21.1	8.2 - 34.0	<50	0.9	0.0 - 2.7	1,900	50.3	32.3 - 68.2	300	7.5	0.1 - 14.9	700	20.2	2.2 - 38.2	3,700
<b>\$15,000 to \$19,999</b>	100	3.1	0.0 - 6.7	200	4.2	0.0 - 9.5	3,000	72.9	53.4 - 92.5	700	15.9	0.0 - 33.2	200	3.8	0.0 - 7.7	4,200
<b>\$20,000 to \$24,999</b>	600	12.5	1.5 - 23.5	800	18.3	2.6 - 34.0	1,800	39.6	22.0 - 57.2	600	14.0	0.0 - 33.3	700	15.6	0.0 - 31.1	4,500
<b>\$25,000 to \$34,999</b>	2,000	34.2	11.7 - 56.7	300	4.4	0.1 - 8.8	2,200	38.1	19.9 - 56.3	800	14.4	0.0 - 29.2	500	9.0	1.8 - 16.1	5,800
<b>\$35,000 to \$49,999</b>	1,400	17.7	8.0 - 27.4	400	4.6	0.3 - 8.9	4,100	50.2	36.9 - 63.4	900	10.8	2.3 - 19.4	1,400	16.7	7.5 - 25.9	8,200
<b>\$50,000 to \$74,999</b>	1,800	17.2	8.0 - 26.4	400	3.7	0.4 - 7.1	4,400	40.7	28.7 - 52.8	2,100	19.6	8.1 - 31.1	2,000	18.7	8.8 - 28.6	10,700
<b>\$75,000 or more</b>	1,200	11.9	3.6 - 20.2	700	7.0	0.8 - 13.2	5,300	54.1	39.6 - 68.6	400	4.0	0.0 - 8.3	2,300	23.0	10.5 - 35.6	9,800

**Diabetes - chkd blood for sugar by State, County, Island, Community, BRFSS Age Group, DOH Race-Ethnicity, Gender, Education Level, Employment Status (Grouped), Household Income, Poverty Level, Marital Status (Grouped), Married, Health Care Coverage, for the Year(s) - 2000-2002, 2001-2003, 2002-2004, 2003-2005, 2004-2006, 2005-2007, 2006-2008, 2007-2009, 2008-2010**

*Note: Weighted numbers (#) represent 3-yr averages, percentages and 95% confidence intervals; Respondents aged 18 years and older; n/r (Not Reportable) - If the unweighted total responses for a dimension (row) is <50 that row will not be shown; n/a (Not Available) - Not asked of a subset of respondents*

**Year: 2002-2004**

Poverty Level	Never			<Once/month			Daily or more			1 to 3 times/month			1 to 6 times/week			Estimated Population (3-Yr Avg)
	#	%	C.I. (95%)	#	%	C.I. (95%)	#	%	C.I. (95%)	#	%	C.I. (95%)	#	%	C.I. (95%)	#
<b>0-130%</b>	3,700	25.5	13.9 - 37.0	400	2.4	0.5 - 4.3	6,900	46.9	34.5 - 59.3	2,000	13.4	4.7 - 22.1	1,700	11.8	4.5 - 19.1	14,700
<b>131-185%</b>	500	9.6	3.0 - 16.2	500	9.4	0.0 - 21.9	2,500	48.6	31.7 - 65.6	900	17.3	1.3 - 33.4	800	15.1	5.6 - 24.6	5,200
<b>186+%</b>	4,300	14.3	9.5 - 19.1	1,900	6.5	3.5 - 9.5	14,600	48.8	41.2 - 56.3	3,500	11.7	6.5 - 16.8	5,600	18.8	12.8 - 24.8	30,000

Marital Status (Grouped)	Never			<Once/month			Daily or more			1 to 3 times/month			1 to 6 times/week			Estimated Population (3-Yr Avg)
	#	%	C.I. (95%)	#	%	C.I. (95%)	#	%	C.I. (95%)	#	%	C.I. (95%)	#	%	C.I. (95%)	#
<b>Married</b>	5,400	14.2	9.4 - 19.1	2,500	6.6	3.7 - 9.6	18,800	49.6	42.6 - 56.5	4,300	11.3	6.6 - 16.1	6,900	18.2	13.1 - 23.4	38,000
<b>Widowed</b>	1,700	18.7	11.3 - 26.0	700	7.4	1.6 - 13.1	3,900	41.9	30.1 - 53.6	1,600	17.4	5.6 - 29.1	1,400	14.7	7.4 - 22.0	9,200
<b>Other</b>	3,200	25.2	14.5 - 35.9	900	6.7	0.0 - 13.5	5,700	45.1	34.1 - 56.1	1,100	9.0	3.6 - 14.3	1,800	14.1	6.3 - 21.9	12,700

**Diabetes - chkd blood for sugar by State, County, Island, Community, BRFSS Age Group, DOH Race-Ethnicity, Gender, Education Level, Employment Status (Grouped), Household Income, Poverty Level, Marital Status (Grouped), Married, Health Care Coverage, for the Year(s) - 2000-2002, 2001-2003, 2002-2004, 2003-2005, 2004-2006, 2005-2007, 2006-2008, 2007-2009, 2008-2010**

*Note: Weighted numbers (#) represent 3-yr averages, percentages and 95% confidence intervals; Respondents aged 18 years and older; n/r (Not Reportable) - If the unweighted total responses for a dimension (row) is <50 that row will not be shown; n/a (Not Available) - Not asked of a subset of respondents*

**Year: 2002-2004**

<b>Married</b>	<b>Never</b>			<b>&lt;Once/month</b>			<b>Daily or more</b>			<b>1 to 3 times/month</b>			<b>1 to 6 times/week</b>			<b>Estimated Population (3-Yr Avg)</b>
	<b>#</b>	<b>%</b>	<b>C.I. (95%)</b>	<b>#</b>	<b>%</b>	<b>C.I. (95%)</b>	<b>#</b>	<b>%</b>	<b>C.I. (95%)</b>	<b>#</b>	<b>%</b>	<b>C.I. (95%)</b>	<b>#</b>	<b>%</b>	<b>C.I. (95%)</b>	<b>#</b>
<b>Yes</b>	5,500	14.3	9.5 - 19.1	2,500	6.5	3.6 - 9.4	19,100	49.6	42.7 - 56.4	4,400	11.4	6.7 - 16.1	7,000	18.3	13.1 - 23.4	38,500
<b>No</b>	4,800	22.5	15.3 - 29.7	1,500	7.1	2.4 - 11.8	9,400	43.7	35.5 - 51.9	2,700	12.4	6.3 - 18.5	3,000	14.2	8.7 - 19.7	21,400

<b>Health Care Coverage</b>	<b>Never</b>			<b>&lt;Once/month</b>			<b>Daily or more</b>			<b>1 to 3 times/month</b>			<b>1 to 6 times/week</b>			<b>Estimated Population (3-Yr Avg)</b>
	<b>#</b>	<b>%</b>	<b>C.I. (95%)</b>	<b>#</b>	<b>%</b>	<b>C.I. (95%)</b>	<b>#</b>	<b>%</b>	<b>C.I. (95%)</b>	<b>#</b>	<b>%</b>	<b>C.I. (95%)</b>	<b>#</b>	<b>%</b>	<b>C.I. (95%)</b>	<b>#</b>
<b>Yes</b>	10,000	17.2	13.1 - 21.3	4,000	6.9	4.3 - 9.5	27,500	47.2	41.8 - 52.6	6,900	11.8	8.0 - 15.6	9,800	16.8	12.9 - 20.7	58,200

**Diabetes - chkd blood for sugar by State, County, Island, Community, BRFSS Age Group, DOH Race-Ethnicity, Gender, Education Level, Employment Status (Grouped), Household Income, Poverty Level, Marital Status (Grouped), Married, Health Care Coverage, for the Year(s) - 2000-2002, 2001-2003, 2002-2004, 2003-2005, 2004-2006, 2005-2007, 2006-2008, 2007-2009, 2008-2010**

*Note: Weighted numbers (#) represent 3-yr averages, percentages and 95% confidence intervals; Respondents aged 18 years and older; n/r (Not Reportable) - If the unweighted total responses for a dimension (row) is <50 that row will not be shown; n/a (Not Available) - Not asked of a subset of respondents*

**Year: 2001-2003**

State	Never			<Once/month			Daily or more			1 to 3 times/month			1 to 6 times/week			Estimated Population (3-Yr Avg)
	#	%	C.I. (95%)	#	%	C.I. (95%)	#	%	C.I. (95%)	#	%	C.I. (95%)	#	%	C.I. (95%)	#
Hawaii State	8,900	15.2	12.2 - 18.3	4,500	7.8	5.2 - 10.4	28,900	49.7	45.0 - 54.3	5,600	9.6	6.9 - 12.4	10,300	17.7	14.1 - 21.3	58,200

County	Never			<Once/month			Daily or more			1 to 3 times/month			1 to 6 times/week			Estimated Population (3-Yr Avg)
	#	%	C.I. (95%)	#	%	C.I. (95%)	#	%	C.I. (95%)	#	%	C.I. (95%)	#	%	C.I. (95%)	#
Hawaii	1,200	17.5	11.3 - 23.6	600	9.0	4.2 - 13.9	2,600	38.7	30.5 - 46.9	800	12.2	7.2 - 17.2	1,500	22.6	13.1 - 32.2	6,700
Honolulu	6,800	15.7	11.8 - 19.5	3,600	8.2	4.9 - 11.5	21,400	49.4	43.8 - 54.9	4,100	9.5	6.0 - 13.0	7,500	17.3	12.9 - 21.7	43,300
Kauai	300	13.5	5.6 - 21.5	100	3.3	0.3 - 6.2	1,400	61.0	48.7 - 73.4	100	6.2	1.0 - 11.4	400	16.0	6.4 - 25.6	2,300
Maui	600	10.2	4.1 - 16.3	300	5.1	0.8 - 9.5	3,500	60.2	44.9 - 75.5	500	9.2	3.5 - 14.9	900	15.3	7.4 - 23.2	5,900

**Diabetes - chkd blood for sugar by State, County, Island, Community, BRFSS Age Group, DOH Race-Ethnicity, Gender, Education Level, Employment Status (Grouped), Household Income, Poverty Level, Marital Status (Grouped), Married, Health Care Coverage, for the Year(s) - 2000-2002, 2001-2003, 2002-2004, 2003-2005, 2004-2006, 2005-2007, 2006-2008, 2007-2009, 2008-2010**

*Note: Weighted numbers (#) represent 3-yr averages, percentages and 95% confidence intervals; Respondents aged 18 years and older; n/r (Not Reportable) - If the unweighted total responses for a dimension (row) is <50 that row will not be shown; n/a (Not Available) - Not asked of a subset of respondents*

**Year: 2001-2003**

Island	Never			<Once/month			Daily or more			1 to 3 times/month			1 to 6 times/week			Estimated Population (3-Yr Avg)
	#	%	C.I. (95%)	#	%	C.I. (95%)	#	%	C.I. (95%)	#	%	C.I. (95%)	#	%	C.I. (95%)	#
Hawaii	1,200	17.5	11.3 - 23.6	600	9.0	4.2 - 13.9	2,600	38.7	30.5 - 46.9	800	12.2	7.2 - 17.2	1,500	22.6	13.1 - 32.2	6,700
Kauai	300	13.5	5.6 - 21.5	100	3.3	0.3 - 6.2	1,400	61.0	48.7 - 73.4	100	6.2	1.0 - 11.4	400	16.0	6.4 - 25.6	2,300
Maui	500	10.6	3.6 - 17.5	300	5.5	0.5 - 10.5	3,200	61.6	44.7 - 78.4	300	6.7	1.3 - 12.1	800	15.6	6.7 - 24.5	5,200
Oahu	6,800	15.7	11.8 - 19.5	3,600	8.2	4.9 - 11.5	21,400	49.4	43.8 - 54.9	4,100	9.5	6.0 - 13.0	7,500	17.3	12.9 - 21.7	43,300

**Diabetes - chkd blood for sugar by State, County, Island, Community, BRFSS Age Group, DOH Race-Ethnicity, Gender, Education Level, Employment Status (Grouped), Household Income, Poverty Level, Marital Status (Grouped), Married, Health Care Coverage, for the Year(s) - 2000-2002, 2001-2003, 2002-2004, 2003-2005, 2004-2006, 2005-2007, 2006-2008, 2007-2009, 2008-2010**

*Note: Weighted numbers (#) represent 3-yr averages, percentages and 95% confidence intervals; Respondents aged 18 years and older; n/r (Not Reportable) - If the unweighted total responses for a dimension (row) is <50 that row will not be shown; n/a (Not Available) - Not asked of a subset of respondents*

**Year: 2001-2003**

Community	Never			<Once/month			Daily or more			1 to 3 times/month			1 to 6 times/week			Estimated Population (3-Yr Avg)
	#	%	C.I. (95%)	#	%	C.I. (95%)	#	%	C.I. (95%)	#	%	C.I. (95%)	#	%	C.I. (95%)	#
<b>Aiea/ Pearl City</b>	1,200	20.3	8.0 - 32.5	100	1.7	0.0 - 5.0	2,900	48.4	34.0 - 62.7	700	11.3	1.7 - 20.8	1,100	18.5	7.2 - 29.7	6,000
<b>Hilo</b>	500	22.4	10.8 - 34.1	200	10.6	3.1 - 18.1	1,000	42.1	29.1 - 55.1	300	13.6	5.9 - 21.3	300	11.2	2.8 - 19.7	2,300
<b>Kahului</b>	300	9.0	0.0 - 18.8	200	7.6	0.0 - 16.4	2,000	67.8	43.5 - 92.2	200	6.9	0.0 - 15.3	300	8.6	0.0 - 17.6	2,900
<b>Kaimuki/ Palolo/ Waikiki</b>	400	8.9	2.0 - 15.9	800	15.4	0.0 - 31.7	2,100	43.9	27.4 - 60.5	700	14.7	3.9 - 25.5	800	17.1	5.3 - 28.8	4,900
<b>Lihue-Waimea</b>	200	12.8	3.7 - 22.0	100	4.8	0.4 - 9.1	800	50.7	35.6 - 65.8	100	8.3	0.9 - 15.7	400	23.4	10.2 - 36.5	1,600
<b>Waipahu/ Kapolei/ Ewa</b>	800	15.2	5.0 - 25.3	500	10.5	1.6 - 19.3	2,700	51.4	36.8 - 66.0	400	7.3	0.0 - 16.1	800	15.7	5.3 - 26.1	5,200

**Diabetes - chkd blood for sugar by State, County, Island, Community, BRFSS Age Group, DOH Race-Ethnicity, Gender, Education Level, Employment Status (Grouped), Household Income, Poverty Level, Marital Status (Grouped), Married, Health Care Coverage, for the Year(s) - 2000-2002, 2001-2003, 2002-2004, 2003-2005, 2004-2006, 2005-2007, 2006-2008, 2007-2009, 2008-2010**

*Note: Weighted numbers (#) represent 3-yr averages, percentages and 95% confidence intervals; Respondents aged 18 years and older; n/r (Not Reportable) - If the unweighted total responses for a dimension (row) is <50 that row will not be shown; n/a (Not Available) - Not asked of a subset of respondents*

**Year: 2001-2003**

BRFSS Age Group	Never			<Once/month			Daily or more			1 to 3 times/month			1 to 6 times/week			Estimated Population (3-Yr Avg)
	#	%	C.I. (95%)	#	%	C.I. (95%)	#	%	C.I. (95%)	#	%	C.I. (95%)	#	%	C.I. (95%)	#
<b>35-44</b>	1,300	26.5	13.5 - 39.5	300	5.6	0.1 - 11.0	2,300	45.2	31.8 - 58.6	600	11.3	1.8 - 20.7	600	11.5	4.1 - 18.9	5,100
<b>45-54</b>	1,200	10.6	5.5 - 15.7	1,600	14.0	4.9 - 23.1	5,700	50.9	40.2 - 61.5	1,400	12.3	5.6 - 19.1	1,400	12.2	6.0 - 18.4	11,200
<b>55-64</b>	1,600	12.1	5.8 - 18.4	1,000	7.7	2.8 - 12.6	7,400	54.7	45.5 - 63.9	700	5.3	2.6 - 8.0	2,700	20.2	12.2 - 28.1	13,600
<b>65-74</b>	2,000	13.8	8.5 - 19.1	900	5.9	1.9 - 10.0	6,800	45.8	37.1 - 54.5	1,500	9.8	4.1 - 15.6	3,700	24.6	16.0 - 33.3	14,800
<b>75+</b>	2,000	21.1	13.8 - 28.4	600	6.6	2.2 - 11.1	3,800	40.9	31.4 - 50.5	1,400	14.6	5.3 - 23.8	1,600	16.8	9.4 - 24.2	9,300

**Diabetes - chkd blood for sugar by State, County, Island, Community, BRFSS Age Group, DOH Race-Ethnicity, Gender, Education Level, Employment Status (Grouped), Household Income, Poverty Level, Marital Status (Grouped), Married, Health Care Coverage, for the Year(s) - 2000-2002, 2001-2003, 2002-2004, 2003-2005, 2004-2006, 2005-2007, 2006-2008, 2007-2009, 2008-2010**

*Note: Weighted numbers (#) represent 3-yr averages, percentages and 95% confidence intervals; Respondents aged 18 years and older; n/r (Not Reportable) - If the unweighted total responses for a dimension (row) is <50 that row will not be shown; n/a (Not Available) - Not asked of a subset of respondents*

**Year: 2001-2003**

DOH Race-Ethnicity	Never			<Once/month			Daily or more			1 to 3 times/month			1 to 6 times/week			Estimated Population (3-Yr Avg)
	#	%	C.I. (95%)	#	%	C.I. (95%)	#	%	C.I. (95%)	#	%	C.I. (95%)	#	%	C.I. (95%)	#
Caucasian	1,700	13.8	7.4 - 20.2	800	6.6	1.8 - 11.3	6,700	54.1	44.9 - 63.3	1,500	12.1	4.3 - 19.8	1,700	13.5	7.9 - 19.1	12,400
Native Hawaiian	1,100	11.8	6.0 - 17.6	900	9.0	1.4 - 16.6	5,700	58.8	48.0 - 69.7	900	9.1	2.8 - 15.5	1,100	11.2	4.6 - 17.8	9,700
Chinese	1,000	18.6	5.7 - 31.6	100	1.6	0.0 - 3.8	2,500	48.6	33.8 - 63.4	400	7.6	0.9 - 14.3	1,200	23.6	10.9 - 36.3	5,200
Filipino	1,500	14.5	7.0 - 21.9	400	4.3	0.5 - 8.1	5,100	50.2	36.4 - 64.0	700	6.8	1.2 - 12.4	2,400	24.2	13.4 - 35.0	10,100
Japanese	2,800	17.0	11.3 - 22.8	2,300	13.7	7.4 - 20.0	6,800	40.9	33.1 - 48.7	1,700	10.4	5.9 - 14.9	3,000	18.0	11.6 - 24.4	16,600

Gender	Never			<Once/month			Daily or more			1 to 3 times/month			1 to 6 times/week			Estimated Population (3-Yr Avg)
	#	%	C.I. (95%)	#	%	C.I. (95%)	#	%	C.I. (95%)	#	%	C.I. (95%)	#	%	C.I. (95%)	#
Male	4,500	15.8	11.0 - 20.7	2,300	8.1	3.8 - 12.3	13,600	48.2	40.7 - 55.7	2,900	10.1	6.4 - 13.8	5,000	17.7	12.0 - 23.4	28,100
Female	4,400	14.7	10.9 - 18.5	2,300	7.5	4.5 - 10.6	15,300	51.0	45.3 - 56.8	2,800	9.2	5.1 - 13.2	5,300	17.6	13.2 - 22.1	30,100



**Diabetes - chkd blood for sugar by State, County, Island, Community, BRFSS Age Group, DOH Race-Ethnicity, Gender, Education Level, Employment Status (Grouped), Household Income, Poverty Level, Marital Status (Grouped), Married, Health Care Coverage, for the Year(s) - 2000-2002, 2001-2003, 2002-2004, 2003-2005, 2004-2006, 2005-2007, 2006-2008, 2007-2009, 2008-2010**

*Note: Weighted numbers (#) represent 3-yr averages, percentages and 95% confidence intervals; Respondents aged 18 years and older; n/r (Not Reportable) - If the unweighted total responses for a dimension (row) is <50 that row will not be shown; n/a (Not Available) - Not asked of a subset of respondents*

**Year: 2001-2003**

Education Level	Never			<Once/month			Daily or more			1 to 3 times/month			1 to 6 times/week			Estimated Population (3-Yr Avg)
	#	%	C.I. (95%)	#	%	C.I. (95%)	#	%	C.I. (95%)	#	%	C.I. (95%)	#	%	C.I. (95%)	#
Grades 9 thru 11 (Some High School)	500	12.3	3.7 - 20.9	100	2.4	0.0 - 5.6	2,100	47.9	32.2 - 63.5	700	14.6	1.5 - 27.7	1,000	22.9	9.2 - 36.6	4,500
Grades 12 or GED (High School Grad)	3,400	16.2	11.3 - 21.2	1,700	8.2	3.9 - 12.4	10,500	50.1	42.8 - 57.4	2,600	12.4	6.7 - 18.0	2,800	13.2	8.6 - 17.7	20,900
College 1 to 3 years (Some College/ Tech)	2,300	13.4	7.8 - 19.1	1,400	8.4	2.6 - 14.1	8,100	48.4	38.1 - 58.7	1,200	7.3	3.2 - 11.5	3,800	22.5	14.1 - 30.8	16,800
College 4 years or more (College Grad)	2,500	18.0	10.9 - 25.1	900	6.6	2.4 - 10.7	7,100	50.9	42.2 - 59.5	1,000	7.1	3.7 - 10.4	2,400	17.5	10.3 - 24.7	13,900

Employment Status (Grouped)	Never			<Once/month			Daily or more			1 to 3 times/month			1 to 6 times/week			Estimated Population (3-Yr Avg)
	#	%	C.I. (95%)	#	%	C.I. (95%)	#	%	C.I. (95%)	#	%	C.I. (95%)	#	%	C.I. (95%)	#
Employed	3,700	14.6	9.7 - 19.5	2,700	10.6	5.9 - 15.4	12,400	49.2	41.4 - 56.9	2,100	8.4	4.9 - 11.9	4,300	17.2	11.7 - 22.7	25,100
Retired/Unable to work	4,600	15.9	11.8 - 19.9	1,600	5.5	2.7 - 8.3	14,500	49.7	43.6 - 55.8	3,200	10.9	6.6 - 15.2	5,300	18.0	12.9 - 23.2	29,200

**Diabetes - chkd blood for sugar by State, County, Island, Community, BRFSS Age Group, DOH Race-Ethnicity, Gender, Education Level, Employment Status (Grouped), Household Income, Poverty Level, Marital Status (Grouped), Married, Health Care Coverage, for the Year(s) - 2000-2002, 2001-2003, 2002-2004, 2003-2005, 2004-2006, 2005-2007, 2006-2008, 2007-2009, 2008-2010**

*Note: Weighted numbers (#) represent 3-yr averages, percentages and 95% confidence intervals; Respondents aged 18 years and older; n/r (Not Reportable) - If the unweighted total responses for a dimension (row) is <50 that row will not be shown; n/a (Not Available) - Not asked of a subset of respondents*

**Year: 2001-2003**

Household Income	Never			<Once/month			Daily or more			1 to 3 times/month			1 to 6 times/week			Estimated Population (3-Yr Avg)
	#	%	C.I. (95%)	#	%	C.I. (95%)	#	%	C.I. (95%)	#	%	C.I. (95%)	#	%	C.I. (95%)	#
<b>Less than \$10,000</b>	600	15.8	6.8 - 24.8	200	5.2	0.0 - 11.8	2,100	52.7	36.6 - 68.7	600	14.9	2.1 - 27.6	400	11.5	3.8 - 19.3	3,900
<b>\$10,000 to \$14,999</b>	900	19.3	7.4 - 31.3	<50	0.7	0.0 - 2.1	2,300	48.8	32.7 - 64.9	300	6.1	0.5 - 11.7	1,200	25.1	8.7 - 41.5	4,700
<b>\$20,000 to \$24,999</b>	800	18.7	3.8 - 33.6	200	4.4	0.0 - 9.6	2,700	60.0	38.4 - 81.6	100	3.1	0.0 - 6.8	600	13.8	2.7 - 24.9	4,500
<b>\$25,000 to \$34,999</b>	900	19.8	7.6 - 31.9	400	8.1	1.3 - 15.0	1,700	37.1	22.7 - 51.6	700	15.3	0.0 - 32.0	900	19.7	8.5 - 30.9	4,500
<b>\$35,000 to \$49,999</b>	1,100	13.1	6.1 - 20.2	700	8.1	1.0 - 15.2	4,500	52.2	40.9 - 63.5	1,000	11.4	3.4 - 19.5	1,300	15.1	7.6 - 22.6	8,700
<b>\$50,000 to \$74,999</b>	1,200	16.1	5.2 - 27.0	400	5.8	0.8 - 10.7	3,400	46.9	33.5 - 60.3	1,100	14.8	6.1 - 23.6	1,200	16.4	6.0 - 26.8	7,200
<b>\$75,000 or more</b>	700	9.3	3.5 - 15.2	800	9.9	2.3 - 17.6	4,300	57.2	44.4 - 69.9	300	4.0	0.0 - 9.0	1,500	19.6	8.5 - 30.7	7,600

**Diabetes - chkd blood for sugar by State, County, Island, Community, BRFSS Age Group, DOH Race-Ethnicity, Gender, Education Level, Employment Status (Grouped), Household Income, Poverty Level, Marital Status (Grouped), Married, Health Care Coverage, for the Year(s) - 2000-2002, 2001-2003, 2002-2004, 2003-2005, 2004-2006, 2005-2007, 2006-2008, 2007-2009, 2008-2010**

*Note: Weighted numbers (#) represent 3-yr averages, percentages and 95% confidence intervals; Respondents aged 18 years and older; n/r (Not Reportable) - If the unweighted total responses for a dimension (row) is <50 that row will not be shown; n/a (Not Available) - Not asked of a subset of respondents*

**Year: 2001-2003**

Poverty Level	Never			<Once/month			Daily or more			1 to 3 times/month			1 to 6 times/week			Estimated Population (3-Yr Avg)
	#	%	C.I. (95%)	#	%	C.I. (95%)	#	%	C.I. (95%)	#	%	C.I. (95%)	#	%	C.I. (95%)	#
<b>0-130%</b>	2,300	17.3	10.3 - 24.3	500	3.5	0.8 - 6.2	7,200	55.0	43.9 - 66.1	1,100	8.6	3.1 - 14.2	2,000	15.6	8.0 - 23.2	13,000
<b>131-185%</b>	700	14.1	4.3 - 23.8	0	0.0	--	2,300	44.4	29.7 - 59.2	1,000	18.6	2.7 - 34.5	1,200	22.9	11.3 - 34.6	5,100
<b>186+%</b>	3,500	14.0	9.4 - 18.6	2,300	9.2	5.4 - 13.1	12,800	50.9	44.1 - 57.7	2,300	9.2	5.4 - 13.0	4,200	16.6	11.4 - 21.9	25,200

Marital Status (Grouped)	Never			<Once/month			Daily or more			1 to 3 times/month			1 to 6 times/week			Estimated Population (3-Yr Avg)
	#	%	C.I. (95%)	#	%	C.I. (95%)	#	%	C.I. (95%)	#	%	C.I. (95%)	#	%	C.I. (95%)	#
<b>Married</b>	4,800	12.9	9.0 - 16.8	2,600	7.2	4.4 - 9.9	19,200	52.2	46.1 - 58.4	3,100	8.4	5.4 - 11.5	7,100	19.2	14.4 - 24.1	36,800
<b>Widowed</b>	1,800	19.3	12.1 - 26.5	800	8.9	2.5 - 15.3	3,800	41.5	31.2 - 51.8	1,400	15.2	4.9 - 25.5	1,400	15.2	8.6 - 21.8	9,200
<b>Other</b>	2,300	19.3	12.7 - 25.8	1,100	8.8	1.1 - 16.5	5,800	48.0	38.9 - 57.1	1,100	9.0	4.8 - 13.3	1,800	14.8	7.8 - 21.9	12,200

**Diabetes - chkd blood for sugar by State, County, Island, Community, BRFSS Age Group, DOH Race-Ethnicity, Gender, Education Level, Employment Status (Grouped), Household Income, Poverty Level, Marital Status (Grouped), Married, Health Care Coverage, for the Year(s) - 2000-2002, 2001-2003, 2002-2004, 2003-2005, 2004-2006, 2005-2007, 2006-2008, 2007-2009, 2008-2010**

*Note: Weighted numbers (#) represent 3-yr averages, percentages and 95% confidence intervals; Respondents aged 18 years and older; n/r (Not Reportable) - If the unweighted total responses for a dimension (row) is <50 that row will not be shown; n/a (Not Available) - Not asked of a subset of respondents*

**Year: 2001-2003**

Married	Never			<Once/month			Daily or more			1 to 3 times/month			1 to 6 times/week			Estimated Population (3-Yr Avg)
	#	%	C.I. (95%)	#	%	C.I. (95%)	#	%	C.I. (95%)	#	%	C.I. (95%)	#	%	C.I. (95%)	#
Yes	4,800	12.9	9.0 - 16.8	2,600	7.1	4.4 - 9.8	19,600	52.3	46.3 - 58.4	3,200	8.5	5.4 - 11.5	7,200	19.2	14.4 - 24.0	37,500
No	4,000	19.5	14.5 - 24.5	1,900	9.1	3.8 - 14.5	9,200	44.8	37.8 - 51.7	2,400	11.7	6.4 - 17.0	3,100	14.9	9.9 - 19.9	20,700

Health Care Coverage	Never			<Once/month			Daily or more			1 to 3 times/month			1 to 6 times/week			Estimated Population (3-Yr Avg)
	#	%	C.I. (95%)	#	%	C.I. (95%)	#	%	C.I. (95%)	#	%	C.I. (95%)	#	%	C.I. (95%)	#
Yes	8,600	15.1	12.0 - 18.2	4,500	8.0	5.3 - 10.6	28,500	50.1	45.4 - 54.9	5,400	9.6	6.8 - 12.3	9,800	17.2	13.6 - 20.8	56,900

**Diabetes - chkd blood for sugar by State, County, Island, Community, BRFSS Age Group, DOH Race-Ethnicity, Gender, Education Level, Employment Status (Grouped), Household Income, Poverty Level, Marital Status (Grouped), Married, Health Care Coverage, for the Year(s) - 2000-2002, 2001-2003, 2002-2004, 2003-2005, 2004-2006, 2005-2007, 2006-2008, 2007-2009, 2008-2010**

*Note: Weighted numbers (#) represent 3-yr averages, percentages and 95% confidence intervals; Respondents aged 18 years and older; n/r (Not Reportable) - If the unweighted total responses for a dimension (row) is <50 that row will not be shown; n/a (Not Available) - Not asked of a subset of respondents*

**Year: 2000-2002**

State	Never			<Once/month			Daily or more			1 to 3 times/month			1 to 6 times/week			Estimated Population (3-Yr Avg)
	#	%	C.I. (95%)	#	%	C.I. (95%)	#	%	C.I. (95%)	#	%	C.I. (95%)	#	%	C.I. (95%)	#
Hawaii State	9,300	18.4	15.1 - 21.6	3,800	7.5	5.2 - 9.8	23,400	46.4	41.6 - 51.1	4,400	8.8	6.1 - 11.4	9,600	19.0	15.3 - 22.7	50,600

County	Never			<Once/month			Daily or more			1 to 3 times/month			1 to 6 times/week			Estimated Population (3-Yr Avg)
	#	%	C.I. (95%)	#	%	C.I. (95%)	#	%	C.I. (95%)	#	%	C.I. (95%)	#	%	C.I. (95%)	#
Hawaii	1,200	19.2	12.8 - 25.6	600	9.1	4.8 - 13.3	2,500	40.5	33.2 - 47.8	700	10.7	6.1 - 15.3	1,300	20.5	14.3 - 26.7	6,200
Honolulu	7,000	19.2	15.0 - 23.3	2,700	7.5	4.5 - 10.6	16,400	45.2	39.6 - 50.9	3,100	8.6	5.2 - 12.1	7,100	19.4	14.6 - 24.3	36,300
Kauai	300	14.1	6.7 - 21.6	100	6.4	2.0 - 10.7	1,200	53.4	41.4 - 65.3	200	8.5	1.4 - 15.6	400	17.6	8.1 - 27.1	2,300
Maui	800	14.1	6.9 - 21.2	400	6.2	1.4 - 11.0	3,300	56.8	40.5 - 73.1	400	7.7	2.7 - 12.6	900	15.3	7.4 - 23.2	5,800

**Diabetes - chkd blood for sugar by State, County, Island, Community, BRFSS Age Group, DOH Race-Ethnicity, Gender, Education Level, Employment Status (Grouped), Household Income, Poverty Level, Marital Status (Grouped), Married, Health Care Coverage, for the Year(s) - 2000-2002, 2001-2003, 2002-2004, 2003-2005, 2004-2006, 2005-2007, 2006-2008, 2007-2009, 2008-2010**

*Note: Weighted numbers (#) represent 3-yr averages, percentages and 95% confidence intervals; Respondents aged 18 years and older; n/r (Not Reportable) - If the unweighted total responses for a dimension (row) is <50 that row will not be shown; n/a (Not Available) - Not asked of a subset of respondents*

**Year: 2000-2002**

Island	Never			<Once/month			Daily or more			1 to 3 times/month			1 to 6 times/week			Estimated Population (3-Yr Avg)
	#	%	C.I. (95%)	#	%	C.I. (95%)	#	%	C.I. (95%)	#	%	C.I. (95%)	#	%	C.I. (95%)	#
Hawaii	1,200	19.2	12.8 - 25.6	600	9.1	4.8 - 13.3	2,500	40.5	33.2 - 47.8	700	10.7	6.1 - 15.3	1,300	20.5	14.3 - 26.7	6,200
Kauai	300	14.1	6.7 - 21.6	100	6.4	2.0 - 10.7	1,200	53.4	41.4 - 65.3	200	8.5	1.4 - 15.6	400	17.6	8.1 - 27.1	2,300
Maui	700	13.9	6.0 - 21.8	300	6.4	1.0 - 11.9	3,000	57.5	39.5 - 75.6	300	5.9	1.1 - 10.7	800	16.2	7.1 - 25.2	5,100
Oahu	7,000	19.2	15.0 - 23.3	2,700	7.5	4.5 - 10.6	16,400	45.2	39.6 - 50.9	3,100	8.6	5.2 - 12.1	7,100	19.4	14.6 - 24.3	36,300

**Diabetes - chkd blood for sugar by State, County, Island, Community, BRFSS Age Group, DOH Race-Ethnicity, Gender, Education Level, Employment Status (Grouped), Household Income, Poverty Level, Marital Status (Grouped), Married, Health Care Coverage, for the Year(s) - 2000-2002, 2001-2003, 2002-2004, 2003-2005, 2004-2006, 2005-2007, 2006-2008, 2007-2009, 2008-2010**

*Note: Weighted numbers (#) represent 3-yr averages, percentages and 95% confidence intervals; Respondents aged 18 years and older; n/r (Not Reportable) - If the unweighted total responses for a dimension (row) is <50 that row will not be shown; n/a (Not Available) - Not asked of a subset of respondents*

**Year: 2000-2002**

Community	Never			<Once/month			Daily or more			1 to 3 times/month			1 to 6 times/week			Estimated Population (3-Yr Avg)
	#	%	C.I. (95%)	#	%	C.I. (95%)	#	%	C.I. (95%)	#	%	C.I. (95%)	#	%	C.I. (95%)	#
Aiea/ Pearl City	1,500	26.7	13.8 - 39.6	200	3.7	0.0 - 8.2	2,500	44.1	30.5 - 57.7	400	6.4	0.7 - 12.0	1,100	19.1	7.8 - 30.4	5,700
Hilo	500	21.3	10.6 - 32.0	300	14.8	6.6 - 22.9	900	36.8	25.3 - 48.3	300	12.2	5.2 - 19.3	300	14.8	6.0 - 23.7	2,300
Kaimuki/ Palolo/ Waikiki	600	12.0	3.7 - 20.3	400	8.2	0.0 - 16.8	2,200	46.1	30.0 - 62.2	800	16.3	4.1 - 28.6	800	17.4	5.0 - 29.7	4,700
Kona	200	14.7	0.4 - 29.1	100	3.9	0.0 - 11.5	700	47.5	32.3 - 62.7	<50	2.7	0.0 - 6.5	500	31.1	16.8 - 45.4	1,500
Lihue-Waimea	200	14.0	5.6 - 22.4	100	7.7	2.2 - 13.2	800	44.6	31.0 - 58.2	200	10.5	1.4 - 19.7	400	23.2	11.2 - 35.1	1,700

**Diabetes - chkd blood for sugar by State, County, Island, Community, BRFSS Age Group, DOH Race-Ethnicity, Gender, Education Level, Employment Status (Grouped), Household Income, Poverty Level, Marital Status (Grouped), Married, Health Care Coverage, for the Year(s) - 2000-2002, 2001-2003, 2002-2004, 2003-2005, 2004-2006, 2005-2007, 2006-2008, 2007-2009, 2008-2010**

*Note: Weighted numbers (#) represent 3-yr averages, percentages and 95% confidence intervals; Respondents aged 18 years and older; n/r (Not Reportable) - If the unweighted total responses for a dimension (row) is <50 that row will not be shown; n/a (Not Available) - Not asked of a subset of respondents*

**Year: 2000-2002**

BRFSS Age Group	Never			<Once/month			Daily or more			1 to 3 times/month			1 to 6 times/week			Estimated Population (3-Yr Avg)
	#	%	C.I. (95%)	#	%	C.I. (95%)	#	%	C.I. (95%)	#	%	C.I. (95%)	#	%	C.I. (95%)	#
<b>35-44</b>	1,200	24.9	13.4 - 36.5	200	4.4	0.0 - 9.2	2,100	44.2	31.4 - 56.9	400	7.7	1.6 - 13.7	900	18.8	9.3 - 28.3	4,600
<b>45-54</b>	1,400	16.6	9.5 - 23.7	1,300	15.1	6.7 - 23.5	3,600	42.7	32.5 - 52.9	500	5.9	1.9 - 10.0	1,700	19.7	11.3 - 28.1	8,400
<b>55-64</b>	1,800	14.2	7.4 - 21.0	900	7.5	2.7 - 12.3	6,400	51.6	42.3 - 60.9	1,100	8.5	4.1 - 12.8	2,300	18.3	10.8 - 25.7	12,400
<b>65-74</b>	3,000	21.4	15.1 - 27.7	800	5.6	2.2 - 9.0	5,700	41.4	33.4 - 49.3	1,300	9.4	4.4 - 14.4	3,100	22.2	14.1 - 30.4	13,800
<b>75+</b>	1,800	23.4	15.4 - 31.5	500	6.2	1.4 - 10.9	3,000	38.4	28.0 - 48.8	1,100	14.8	4.1 - 25.6	1,300	17.2	8.9 - 25.6	7,700



**Diabetes - chkd blood for sugar by State, County, Island, Community, BRFSS Age Group, DOH Race-Ethnicity, Gender, Education Level, Employment Status (Grouped), Household Income, Poverty Level, Marital Status (Grouped), Married, Health Care Coverage, for the Year(s) - 2000-2002, 2001-2003, 2002-2004, 2003-2005, 2004-2006, 2005-2007, 2006-2008, 2007-2009, 2008-2010**

*Note: Weighted numbers (#) represent 3-yr averages, percentages and 95% confidence intervals; Respondents aged 18 years and older; n/r (Not Reportable) - If the unweighted total responses for a dimension (row) is <50 that row will not be shown; n/a (Not Available) - Not asked of a subset of respondents*

**Year: 2000-2002**

DOH Race-Ethnicity	Never			<Once/month			Daily or more			1 to 3 times/month			1 to 6 times/week			Estimated Population (3-Yr Avg)
	#	%	C.I. (95%)	#	%	C.I. (95%)	#	%	C.I. (95%)	#	%	C.I. (95%)	#	%	C.I. (95%)	#
Caucasian	1,100	11.1	5.4 - 16.9	600	6.3	1.7 - 10.9	5,800	60.1	50.5 - 69.8	800	8.1	0.0 - 16.6	1,400	14.3	8.5 - 20.1	9,700
Native Hawaiian	1,400	17.4	10.1 - 24.7	700	8.2	0.2 - 16.1	4,600	55.3	44.7 - 65.9	600	7.0	3.5 - 10.5	1,000	12.1	5.9 - 18.2	8,300
Filipino	1,900	20.7	11.6 - 29.7	400	3.8	0.7 - 7.0	4,200	44.9	29.9 - 59.8	900	10.0	3.7 - 16.3	1,900	20.6	10.9 - 30.4	9,400
Japanese	3,700	22.9	16.7 - 29.2	2,000	12.5	7.7 - 17.2	5,400	33.3	26.4 - 40.2	1,800	11.3	6.6 - 16.1	3,200	20.0	13.6 - 26.4	16,100

Gender	Never			<Once/month			Daily or more			1 to 3 times/month			1 to 6 times/week			Estimated Population (3-Yr Avg)
	#	%	C.I. (95%)	#	%	C.I. (95%)	#	%	C.I. (95%)	#	%	C.I. (95%)	#	%	C.I. (95%)	#
Male	4,200	16.3	11.7 - 20.9	2,300	8.8	5.1 - 12.5	12,300	47.5	40.2 - 54.8	2,200	8.4	5.3 - 11.5	4,900	19.1	13.6 - 24.5	25,900
Female	5,100	20.5	16.0 - 25.1	1,500	6.2	3.5 - 8.9	11,100	45.1	39.2 - 51.1	2,300	9.2	4.9 - 13.4	4,700	19.0	14.0 - 23.9	24,700

**Diabetes - chkd blood for sugar by State, County, Island, Community, BRFSS Age Group, DOH Race-Ethnicity, Gender, Education Level, Employment Status (Grouped), Household Income, Poverty Level, Marital Status (Grouped), Married, Health Care Coverage, for the Year(s) - 2000-2002, 2001-2003, 2002-2004, 2003-2005, 2004-2006, 2005-2007, 2006-2008, 2007-2009, 2008-2010**

*Note: Weighted numbers (#) represent 3-yr averages, percentages and 95% confidence intervals; Respondents aged 18 years and older; n/r (Not Reportable) - If the unweighted total responses for a dimension (row) is <50 that row will not be shown; n/a (Not Available) - Not asked of a subset of respondents*

**Year: 2000-2002**

Education Level	Never			<Once/month			Daily or more			1 to 3 times/month			1 to 6 times/week			Estimated Population (3-Yr Avg)
	#	%	C.I. (95%)	#	%	C.I. (95%)	#	%	C.I. (95%)	#	%	C.I. (95%)	#	%	C.I. (95%)	#
Never attended school/ Only Kindergarten to Grades 8	300	13.1	4.3 - 21.9	300	12.4	0.5 - 24.2	1,000	44.4	27.0 - 61.8	200	8.6	0.6 - 16.6	500	21.5	7.7 - 35.4	2,300
Grades 9 thru 11 (Some High School)	700	20.7	8.4 - 33.0	<50	1.5	0.0 - 3.3	1,200	37.3	21.4 - 53.2	300	9.5	2.2 - 16.7	1,000	31.1	14.3 - 47.9	3,200
Grades 12 or GED (High School Grad)	4,200	21.9	16.3 - 27.5	2,000	10.2	5.6 - 14.7	8,700	45.2	38.2 - 52.2	2,000	10.5	5.0 - 15.9	2,400	12.2	8.1 - 16.4	19,200
College 1 to 3 years (Some College/ Tech)	1,800	12.7	7.2 - 18.3	900	6.3	2.1 - 10.4	6,700	48.7	37.3 - 60.0	800	5.6	1.8 - 9.4	3,700	26.8	17.1 - 36.4	13,800
College 4 years or more (College Grad)	2,300	19.4	12.6 - 26.2	600	5.4	1.8 - 8.9	5,800	48.6	40.4 - 56.9	1,100	9.2	4.8 - 13.6	2,100	17.4	10.9 - 23.8	11,900

Employment Status (Grouped)	Never			<Once/month			Daily or more			1 to 3 times/month			1 to 6 times/week			Estimated Population (3-Yr Avg)
	#	%	C.I. (95%)	#	%	C.I. (95%)	#	%	C.I. (95%)	#	%	C.I. (95%)	#	%	C.I. (95%)	#
Employed	3,700	16.6	11.8 - 21.5	2,200	9.8	5.7 - 14.0	9,900	44.7	36.7 - 52.7	1,900	8.7	5.1 - 12.4	4,400	20.1	14.3 - 26.0	22,100
Retired/Unable to work	5,400	21.1	16.4 - 25.8	1,400	5.4	2.9 - 7.8	11,800	46.3	40.2 - 52.5	2,400	9.3	5.2 - 13.5	4,600	17.9	12.7 - 23.0	25,500

**Diabetes - chkd blood for sugar by State, County, Island, Community, BRFSS Age Group, DOH Race-Ethnicity, Gender, Education Level, Employment Status (Grouped), Household Income, Poverty Level, Marital Status (Grouped), Married, Health Care Coverage, for the Year(s) - 2000-2002, 2001-2003, 2002-2004, 2003-2005, 2004-2006, 2005-2007, 2006-2008, 2007-2009, 2008-2010**

*Note: Weighted numbers (#) represent 3-yr averages, percentages and 95% confidence intervals; Respondents aged 18 years and older; n/r (Not Reportable) - If the unweighted total responses for a dimension (row) is <50 that row will not be shown; n/a (Not Available) - Not asked of a subset of respondents*

**Year: 2000-2002**

Household Income	Never			<Once/month			Daily or more			1 to 3 times/month			1 to 6 times/week			Estimated Population (3-Yr Avg)
	#	%	C.I. (95%)	#	%	C.I. (95%)	#	%	C.I. (95%)	#	%	C.I. (95%)	#	%	C.I. (95%)	#
<b>Less than \$10,000</b>	800	23.5	12.7 - 34.3	200	6.1	0.0 - 13.8	1,600	49.7	34.5 - 64.9	200	4.7	0.4 - 9.0	500	16.0	6.1 - 25.9	3,300
<b>\$10,000 to \$14,999</b>	700	23.4	8.6 - 38.1	200	7.2	0.3 - 14.1	1,300	43.3	27.9 - 58.8	200	6.1	1.2 - 11.0	600	20.0	4.9 - 35.0	3,100
<b>\$15,000 to \$19,999</b>	400	16.5	6.9 - 26.0	200	7.5	1.0 - 14.0	1,200	52.9	37.2 - 68.7	100	6.2	0.0 - 13.5	400	16.9	5.8 - 28.0	2,200
<b>\$20,000 to \$24,999</b>	700	18.0	2.9 - 33.1	100	3.5	0.0 - 9.6	2,400	62.9	39.5 - 86.2	200	5.7	0.0 - 12.0	400	10.0	0.3 - 19.7	3,800
<b>\$25,000 to \$34,999</b>	900	16.9	7.8 - 26.0	400	7.4	1.8 - 13.0	2,000	37.4	23.8 - 51.1	1,200	21.7	6.5 - 37.0	900	16.5	7.1 - 25.9	5,300
<b>\$35,000 to \$49,999</b>	1,600	18.4	10.7 - 26.2	800	9.1	1.7 - 16.6	4,400	51.2	40.4 - 62.1	400	4.3	1.0 - 7.7	1,400	16.9	8.8 - 24.9	8,500
<b>\$50,000 to \$74,999</b>	600	12.2	4.3 - 20.0	500	9.1	2.4 - 15.8	2,300	45.1	32.2 - 57.9	600	11.4	3.9 - 18.9	1,200	22.3	10.4 - 34.2	5,200
<b>\$75,000 or more</b>	700	12.2	4.4 - 20.1	400	7.4	0.2 - 14.6	3,000	49.8	35.8 - 63.9	500	8.2	0.0 - 16.7	1,300	22.3	9.4 - 35.3	5,900

**Diabetes - chkd blood for sugar by State, County, Island, Community, BRFSS Age Group, DOH Race-Ethnicity, Gender, Education Level, Employment Status (Grouped), Household Income, Poverty Level, Marital Status (Grouped), Married, Health Care Coverage, for the Year(s) - 2000-2002, 2001-2003, 2002-2004, 2003-2005, 2004-2006, 2005-2007, 2006-2008, 2007-2009, 2008-2010**

*Note: Weighted numbers (#) represent 3-yr averages, percentages and 95% confidence intervals; Respondents aged 18 years and older; n/r (Not Reportable) - If the unweighted total responses for a dimension (row) is <50 that row will not be shown; n/a (Not Available) - Not asked of a subset of respondents*

**Year: 2000-2002**

Poverty Level	Never			<Once/month			Daily or more			1 to 3 times/month			1 to 6 times/week			Estimated Population (3-Yr Avg)
	#	%	C.I. (95%)	#	%	C.I. (95%)	#	%	C.I. (95%)	#	%	C.I. (95%)	#	%	C.I. (95%)	#
<b>0-130%</b>	1,500	17.2	9.7 - 24.7	500	5.9	1.6 - 10.1	5,200	58.3	45.5 - 71.1	300	3.8	1.1 - 6.4	1,300	14.9	7.2 - 22.5	9,000
<b>131-185%</b>	1,200	19.5	9.8 - 29.2	300	5.1	0.5 - 9.6	2,300	38.9	26.4 - 51.3	1,100	18.5	4.7 - 32.3	1,100	18.0	9.0 - 27.1	5,900
<b>186+%</b>	3,700	16.4	11.9 - 20.8	2,000	8.8	4.9 - 12.7	10,700	47.4	40.9 - 53.9	1,900	8.3	4.9 - 11.7	4,300	19.1	13.6 - 24.6	22,500

Marital Status (Grouped)	Never			<Once/month			Daily or more			1 to 3 times/month			1 to 6 times/week			Estimated Population (3-Yr Avg)
	#	%	C.I. (95%)	#	%	C.I. (95%)	#	%	C.I. (95%)	#	%	C.I. (95%)	#	%	C.I. (95%)	#
<b>Married</b>	5,000	15.2	11.3 - 19.1	2,400	7.2	4.4 - 9.9	16,100	48.9	42.7 - 55.2	2,500	7.6	4.9 - 10.3	7,000	21.1	16.0 - 26.3	32,900
<b>Widowed</b>	1,500	22.1	13.8 - 30.3	700	9.3	2.6 - 16.0	2,600	36.9	26.5 - 47.4	1,100	16.2	4.1 - 28.2	1,100	15.6	8.4 - 22.7	7,000
<b>Other</b>	2,700	25.9	18.4 - 33.3	800	7.4	1.9 - 12.8	4,700	44.3	35.9 - 52.8	800	7.6	3.9 - 11.4	1,600	14.8	9.1 - 20.4	10,600

**Diabetes - chkd blood for sugar by State, County, Island, Community, BRFSS Age Group, DOH Race-Ethnicity, Gender, Education Level, Employment Status (Grouped), Household Income, Poverty Level, Marital Status (Grouped), Married, Health Care Coverage, for the Year(s) - 2000-2002, 2001-2003, 2002-2004, 2003-2005, 2004-2006, 2005-2007, 2006-2008, 2007-2009, 2008-2010**

*Note: Weighted numbers (#) represent 3-yr averages, percentages and 95% confidence intervals; Respondents aged 18 years and older; n/r (Not Reportable) - If the unweighted total responses for a dimension (row) is <50 that row will not be shown; n/a (Not Available) - Not asked of a subset of respondents*

**Year: 2000-2002**

Married	Never			<Once/month			Daily or more			1 to 3 times/month			1 to 6 times/week			Estimated Population (3-Yr Avg)
	#	%	C.I. (95%)	#	%	C.I. (95%)	#	%	C.I. (95%)	#	%	C.I. (95%)	#	%	C.I. (95%)	#
<b>Yes</b>	5,100	15.2	11.3 - 19.1	2,400	7.1	4.4 - 9.8	16,500	49.3	43.1 - 55.5	2,600	7.7	5.0 - 10.3	7,000	20.8	15.8 - 25.9	33,600
<b>No</b>	4,200	24.6	18.9 - 30.3	1,400	8.4	4.0 - 12.8	6,900	40.6	33.8 - 47.3	1,900	11.0	5.3 - 16.6	2,600	15.5	10.9 - 20.0	17,000

Health Care Coverage	Never			<Once/month			Daily or more			1 to 3 times/month			1 to 6 times/week			Estimated Population (3-Yr Avg)
	#	%	C.I. (95%)	#	%	C.I. (95%)	#	%	C.I. (95%)	#	%	C.I. (95%)	#	%	C.I. (95%)	#
<b>Yes</b>	9,000	18.2	15.0 - 21.5	3,800	7.7	5.3 - 10.0	23,200	46.7	41.9 - 51.6	4,400	8.8	6.2 - 11.5	9,200	18.5	14.8 - 22.3	49,600