

Diabetes - now taking insulin by State, County, Island, Community, BRFSS Age Group, DOH Race-Ethnicity, Gender, Education Level, Employment Status (Grouped), Household Income, Poverty Level, Marital Status (Grouped), Married, Health Care Coverage, for the Year(s) - 2001, 2002, 2003, 2004, 2005, 2006, 2007, 2008, 2009, 2010

Note: Weighted numbers (#), percentages and 95% confidence intervals; Respondents aged 18 years and older; n/r (Not Reportable) - If the unweighted total responses for a dimension (row) is <50 that row will not be shown; n/a (Not Available) - Not asked of a subset of respondents

The trend analysis report shows the trend for the selected health variable over selected years in a table and a graph. Estimated Population: This number is a weighted representation of the population who responded to a particular question in the survey. For most questions the eligible population will be the entire adult population. For some secondary questions only a subset of the population was asked the question. For example, all survey participants were asked if they had diabetes, but only those who answered yes were asked if they use insulin. If a dimension value is unknown for a particular survey record, that record will not be included in the counts for that particular dimension.

For documentation on other terms and coding in this report, please go to the following links

[Click here to access BRFSS documentation](#)

[Click here to access DOH Race-Ethnicity coding](#)

[Click here to access The Hawai'i Data Guide](#)

[Click here to access Poverty Level Methodology](#)

**For questions about this report, please contact
The Hawaii Health Data Warehouse**

profiles@hhdw.org

(855) 946-5899 x15

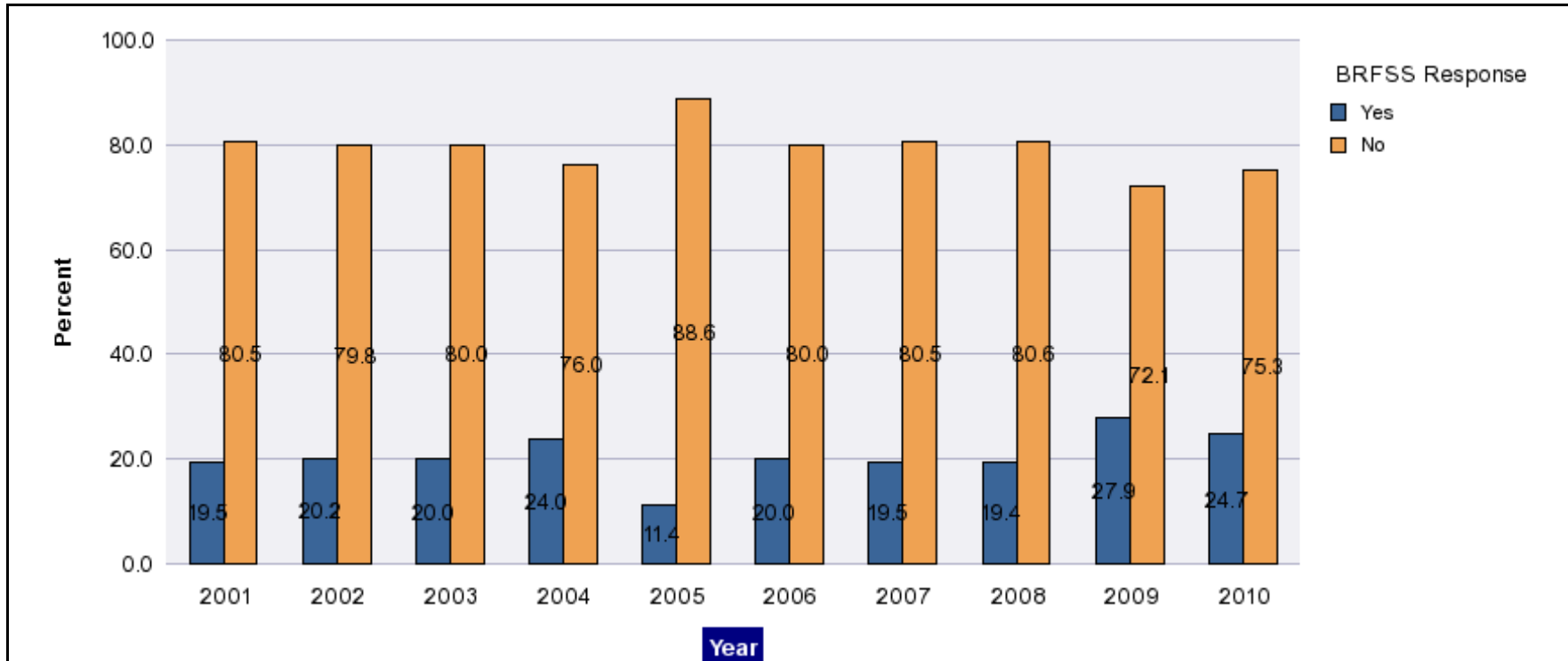
Diabetes - now taking insulin by State, County, Island, Community, BRFSS Age Group, DOH Race-Ethnicity, Gender, Education Level, Employment Status (Grouped), Household Income, Poverty Level, Marital Status (Grouped), Married, Health Care Coverage, for the Year(s) - 2001, 2002, 2003, 2004, 2005, 2006, 2007, 2008, 2009, 2010

Note: Weighted numbers (#), percentages and 95% confidence intervals; Respondents aged 18 years and older; n/r (Not Reportable) - If the unweighted total responses for a dimension (row) is <50 that row will not be shown; n/a (Not Available) - Not asked of a subset of respondents

Year	Yes			No			Estimated Population
	#	%	C.I.(95%)	#	%	C.I.(95%)	#
2001	10,700	19.5	12.8 - 26.1	44,300	80.5	73.9 - 87.2	55,000
2002	10,600	20.2	14.9 - 25.4	42,000	79.8	74.6 - 85.1	52,600
2003	13,800	20.0	13.8 - 26.2	55,000	80.0	73.8 - 86.2	68,800
2004	14,500	24.0	12.8 - 35.1	46,000	76.0	64.9 - 87.2	60,600
2005	9,300	11.4	6.9 - 15.8	72,700	88.6	84.2 - 93.1	82,000
2006	15,400	20.0	15.8 - 24.3	61,600	80.0	75.7 - 84.2	77,000
2007	14,700	19.5	15.0 - 24.0	60,900	80.5	76.0 - 85.0	75,600
2008	16,000	19.4	15.1 - 23.8	66,300	80.6	76.2 - 84.9	82,300
2009	21,900	27.9	20.6 - 35.2	56,600	72.1	64.8 - 79.4	78,500
2010	20,600	24.7	20.1 - 29.3	62,700	75.3	70.7 - 79.9	83,300

Diabetes - now taking insulin by State, County, Island, Community, BRFSS Age Group, DOH Race-Ethnicity, Gender, Education Level, Employment Status (Grouped), Household Income, Poverty Level, Marital Status (Grouped), Married, Health Care Coverage, for the Year(s) - 2001, 2002, 2003, 2004, 2005, 2006, 2007, 2008, 2009, 2010

Note: Weighted numbers (#), percentages and 95% confidence intervals; Respondents aged 18 years and older; n/r (Not Reportable) - If the unweighted total responses for a dimension (row) is <50 that row will not be shown; n/a (Not Available) - Not asked of a subset of respondents



Diabetes - now taking insulin by State, County, Island, Community, BRFSS Age Group, DOH Race-Ethnicity, Gender, Education Level, Employment Status (Grouped), Household Income, Poverty Level, Marital Status (Grouped), Married, Health Care Coverage, for the Year(s) - 2001, 2002, 2003, 2004, 2005, 2006, 2007, 2008, 2009, 2010

Note: Weighted numbers (#), percentages and 95% confidence intervals; Respondents aged 18 years and older; n/r (Not Reportable) - If the unweighted total responses for a dimension (row) is <50 that row will not be shown; n/a (Not Available) - Not asked of a subset of respondents

Year: 2010

State	Yes			No			Estimated Population
	#	%	C.I. (95%)	#	%	C.I. (95%)	#
Hawaii State	20,600	24.7	20.1 - 29.3	62,700	75.3	70.7 - 79.9	83,300

County	Yes			No			Estimated Population
	#	%	C.I. (95%)	#	%	C.I. (95%)	#
Hawaii	3,100	27.3	19.4 - 35.2	8,400	72.7	64.8 - 80.6	11,500
Honolulu	14,900	24.9	18.9 - 30.9	45,000	75.1	69.1 - 81.1	60,000
Kauai	800	25.1	12.4 - 37.9	2,200	74.9	62.1 - 87.6	3,000
Maui	1,800	19.8	12.4 - 27.3	7,100	80.2	72.7 - 87.6	8,800

Diabetes - now taking insulin by State, County, Island, Community, BRFSS Age Group, DOH Race-Ethnicity, Gender, Education Level, Employment Status (Grouped), Household Income, Poverty Level, Marital Status (Grouped), Married, Health Care Coverage, for the Year(s) - 2001, 2002, 2003, 2004, 2005, 2006, 2007, 2008, 2009, 2010

Note: Weighted numbers (#), percentages and 95% confidence intervals; Respondents aged 18 years and older; n/r (Not Reportable) - If the unweighted total responses for a dimension (row) is <50 that row will not be shown; n/a (Not Available) - Not asked of a subset of respondents

Year: 2010

Island	Yes			No			Estimated Population
	#	%	C.I. (95%)	#	%	C.I. (95%)	#
Hawaii	3,100	27.3	19.4 - 35.2	8,400	72.7	64.8 - 80.6	11,500
Kauai	800	25.1	12.4 - 37.9	2,200	74.9	62.1 - 87.6	3,000
Maui	1,600	20.6	12.2 - 29.0	6,200	79.4	71.0 - 87.8	7,800
Oahu	14,900	24.9	18.9 - 30.9	45,000	75.1	69.1 - 81.1	60,000

Diabetes - now taking insulin by State, County, Island, Community, BRFSS Age Group, DOH Race-Ethnicity, Gender, Education Level, Employment Status (Grouped), Household Income, Poverty Level, Marital Status (Grouped), Married, Health Care Coverage, for the Year(s) - 2001, 2002, 2003, 2004, 2005, 2006, 2007, 2008, 2009, 2010

Note: Weighted numbers (#), percentages and 95% confidence intervals; Respondents aged 18 years and older; n/r (Not Reportable) - If the unweighted total responses for a dimension (row) is <50 that row will not be shown; n/a (Not Available) - Not asked of a subset of respondents

Year: 2010

Community	Yes			No			Estimated Population
	#	%	C.I. (95%)	#	%	C.I. (95%)	#
Hilo	800	18.8	6.9 - 30.7	3,300	81.2	69.3 - 93.1	4,000
Puna/ Kau	1,600	37.0	22.7 - 51.4	2,800	63.0	48.6 - 77.3	4,400
Waipahu/ Kapolei/ Ewa	3,700	28.5	14.8 - 42.1	9,300	71.5	57.9 - 85.2	13,000

Diabetes - now taking insulin by State, County, Island, Community, BRFSS Age Group, DOH Race-Ethnicity, Gender, Education Level, Employment Status (Grouped), Household Income, Poverty Level, Marital Status (Grouped), Married, Health Care Coverage, for the Year(s) - 2001, 2002, 2003, 2004, 2005, 2006, 2007, 2008, 2009, 2010

Note: Weighted numbers (#), percentages and 95% confidence intervals; Respondents aged 18 years and older; n/r (Not Reportable) - If the unweighted total responses for a dimension (row) is <50 that row will not be shown; n/a (Not Available) - Not asked of a subset of respondents

Year: 2010

BRFSS Age Group	Yes			No			Estimated Population
	#	%	C.I. (95%)	#	%	C.I. (95%)	#
45-54	3,400	26.0	14.0 - 38.0	9,600	74.0	62.0 - 86.0	13,000
55-64	6,300	29.7	21.1 - 38.2	14,900	70.3	61.8 - 78.9	21,200
65-74	2,900	16.7	10.5 - 23.0	14,400	83.3	77.0 - 89.5	17,300
75+	5,300	29.7	18.9 - 40.4	12,500	70.3	59.6 - 81.1	17,800

Diabetes - now taking insulin by State, County, Island, Community, BRFSS Age Group, DOH Race-Ethnicity, Gender, Education Level, Employment Status (Grouped), Household Income, Poverty Level, Marital Status (Grouped), Married, Health Care Coverage, for the Year(s) - 2001, 2002, 2003, 2004, 2005, 2006, 2007, 2008, 2009, 2010

Note: Weighted numbers (#), percentages and 95% confidence intervals; Respondents aged 18 years and older; n/r (Not Reportable) - If the unweighted total responses for a dimension (row) is <50 that row will not be shown; n/a (Not Available) - Not asked of a subset of respondents

Year: 2010

DOH Race-Ethnicity	Yes			No			Estimated Population
	#	%	C.I. (95%)	#	%	C.I. (95%)	#
Caucasian	5,300	30.6	22.2 - 39.0	12,000	69.4	61.0 - 77.8	17,400
Native Hawaiian	5,100	34.0	21.0 - 47.0	9,800	66.0	53.0 - 79.0	14,900
Filipino	2,700	16.4	7.7 - 25.0	13,800	83.6	75.0 - 92.3	16,500
Japanese	3,900	16.8	9.0 - 24.6	19,300	83.2	75.4 - 91.0	23,200

Gender	Yes			No			Estimated Population
	#	%	C.I. (95%)	#	%	C.I. (95%)	#
Male	10,400	23.9	17.5 - 30.4	32,900	76.1	69.6 - 82.5	43,300
Female	10,200	25.6	19.1 - 32.0	29,800	74.4	68.0 - 80.9	40,100

Diabetes - now taking insulin by State, County, Island, Community, BRFSS Age Group, DOH Race-Ethnicity, Gender, Education Level, Employment Status (Grouped), Household Income, Poverty Level, Marital Status (Grouped), Married, Health Care Coverage, for the Year(s) - 2001, 2002, 2003, 2004, 2005, 2006, 2007, 2008, 2009, 2010

Note: Weighted numbers (#), percentages and 95% confidence intervals; Respondents aged 18 years and older; n/r (Not Reportable) - If the unweighted total responses for a dimension (row) is <50 that row will not be shown; n/a (Not Available) - Not asked of a subset of respondents

Year: 2010

Education Level	Yes			No			Estimated Population
	#	%	C.I. (95%)	#	%	C.I. (95%)	#
Grades 12 or GED (High School Grad)	6,000	21.2	14.3 - 28.0	22,500	78.8	72.0 - 85.7	28,500
College 1 to 3 years (Some College/ Tech)	6,200	27.4	18.5 - 36.2	16,400	72.6	63.8 - 81.5	22,600
College 4 years or more (College Grad)	6,400	24.2	16.5 - 31.9	20,100	75.8	68.1 - 83.5	26,500

Employment Status (Grouped)	Yes			No			Estimated Population
	#	%	C.I. (95%)	#	%	C.I. (95%)	#
Employed	7,300	21.7	14.5 - 28.8	26,500	78.3	71.2 - 85.5	33,900
Retired/Unable to work	11,100	27.9	21.5 - 34.4	28,600	72.1	65.6 - 78.5	39,700

Diabetes - now taking insulin by State, County, Island, Community, BRFSS Age Group, DOH Race-Ethnicity, Gender, Education Level, Employment Status (Grouped), Household Income, Poverty Level, Marital Status (Grouped), Married, Health Care Coverage, for the Year(s) - 2001, 2002, 2003, 2004, 2005, 2006, 2007, 2008, 2009, 2010

Note: Weighted numbers (#), percentages and 95% confidence intervals; Respondents aged 18 years and older; n/r (Not Reportable) - If the unweighted total responses for a dimension (row) is <50 that row will not be shown; n/a (Not Available) - Not asked of a subset of respondents

Year: 2010

Household Income	Yes			No			Estimated Population
	#	%	C.I. (95%)	#	%	C.I. (95%)	#
\$15,000 to \$19,999	1,900	30.3	13.9 - 46.7	4,300	69.7	53.3 - 86.1	6,200
\$20,000 to \$24,999	2,200	31.1	9.8 - 52.4	4,900	68.9	47.6 - 90.2	7,000
\$25,000 to \$34,999	2,200	25.6	14.2 - 37.0	6,500	74.4	63.0 - 85.8	8,700
\$35,000 to \$49,999	3,500	21.7	11.1 - 32.3	12,700	78.3	67.7 - 88.9	16,300
\$50,000 to \$74,999	2,600	22.3	12.9 - 31.8	9,100	77.7	68.2 - 87.1	11,800
\$75,000 or more	4,100	21.5	12.7 - 30.3	14,800	78.5	69.7 - 87.3	18,900

Diabetes - now taking insulin by State, County, Island, Community, BRFSS Age Group, DOH Race-Ethnicity, Gender, Education Level, Employment Status (Grouped), Household Income, Poverty Level, Marital Status (Grouped), Married, Health Care Coverage, for the Year(s) - 2001, 2002, 2003, 2004, 2005, 2006, 2007, 2008, 2009, 2010

Note: Weighted numbers (#), percentages and 95% confidence intervals; Respondents aged 18 years and older; n/r (Not Reportable) - If the unweighted total responses for a dimension (row) is <50 that row will not be shown; n/a (Not Available) - Not asked of a subset of respondents

Year: 2010

Poverty Level	Yes			No			Estimated Population
	#	%	C.I. (95%)	#	%	C.I. (95%)	#
0-130%	6,000	27.9	16.6 - 39.1	15,400	72.1	60.9 - 83.4	21,400
131-185%	3,400	21.2	12.8 - 29.6	12,600	78.8	70.4 - 87.2	16,000
186+%	9,700	24.3	18.3 - 30.4	30,000	75.7	69.6 - 81.7	39,700

Marital Status (Grouped)	Yes			No			Estimated Population
	#	%	C.I. (95%)	#	%	C.I. (95%)	#
Married	12,400	22.7	17.5 - 27.8	42,400	77.3	72.2 - 82.5	54,800
Widowed	2,500	27.1	10.6 - 43.6	6,800	72.9	56.4 - 89.4	9,400
Other	5,400	28.9	18.3 - 39.5	13,200	71.1	60.5 - 81.7	18,500

Diabetes - now taking insulin by State, County, Island, Community, BRFSS Age Group, DOH Race-Ethnicity, Gender, Education Level, Employment Status (Grouped), Household Income, Poverty Level, Marital Status (Grouped), Married, Health Care Coverage, for the Year(s) - 2001, 2002, 2003, 2004, 2005, 2006, 2007, 2008, 2009, 2010

Note: Weighted numbers (#), percentages and 95% confidence intervals; Respondents aged 18 years and older; n/r (Not Reportable) - If the unweighted total responses for a dimension (row) is <50 that row will not be shown; n/a (Not Available) - Not asked of a subset of respondents

Year: 2010

Married	Yes			No			Estimated Population
	#	%	C.I. (95%)	#	%	C.I. (95%)	#
Yes	12,600	22.6	17.6 - 27.7	43,000	77.4	72.3 - 82.4	55,600
No	8,000	28.9	19.9 - 37.9	19,700	71.1	62.1 - 80.1	27,700

Health Care Coverage	Yes			No			Estimated Population
	#	%	C.I. (95%)	#	%	C.I. (95%)	#
Yes	20,300	25.3	20.6 - 29.9	59,900	74.7	70.1 - 79.4	80,200

Diabetes - now taking insulin by State, County, Island, Community, BRFSS Age Group, DOH Race-Ethnicity, Gender, Education Level, Employment Status (Grouped), Household Income, Poverty Level, Marital Status (Grouped), Married, Health Care Coverage, for the Year(s) - 2001, 2002, 2003, 2004, 2005, 2006, 2007, 2008, 2009, 2010

Note: Weighted numbers (#), percentages and 95% confidence intervals; Respondents aged 18 years and older; n/r (Not Reportable) - If the unweighted total responses for a dimension (row) is <50 that row will not be shown; n/a (Not Available) - Not asked of a subset of respondents

Year: 2009

State	Yes			No			Estimated Population
	#	%	C.I. (95%)	#	%	C.I. (95%)	#
Hawaii State	21,900	27.9	20.6 - 35.2	56,600	72.1	64.8 - 79.4	78,500

County	Yes			No			Estimated Population
	#	%	C.I. (95%)	#	%	C.I. (95%)	#
Hawaii	2,700	21.3	11.0 - 31.6	9,900	78.7	68.4 - 89.0	12,600
Honolulu	16,500	31.7	21.6 - 41.8	35,600	68.3	58.2 - 78.4	52,100
Maui	1,800	18.5	3.2 - 33.7	8,100	81.5	66.3 - 96.8	9,900

Diabetes - now taking insulin by State, County, Island, Community, BRFSS Age Group, DOH Race-Ethnicity, Gender, Education Level, Employment Status (Grouped), Household Income, Poverty Level, Marital Status (Grouped), Married, Health Care Coverage, for the Year(s) - 2001, 2002, 2003, 2004, 2005, 2006, 2007, 2008, 2009, 2010

Note: Weighted numbers (#), percentages and 95% confidence intervals; Respondents aged 18 years and older; n/r (Not Reportable) - If the unweighted total responses for a dimension (row) is <50 that row will not be shown; n/a (Not Available) - Not asked of a subset of respondents

Year: 2009

Island	Yes			No			Estimated Population
	#	%	C.I. (95%)	#	%	C.I. (95%)	#
Hawaii	2,700	21.3	11.0 - 31.6	9,900	78.7	68.4 - 89.0	12,600
Maui	1,800	20.1	3.1 - 37.1	7,000	79.9	62.9 - 96.9	8,800
Oahu	16,500	31.7	21.6 - 41.8	35,600	68.3	58.2 - 78.4	52,100

Diabetes - now taking insulin by State, County, Island, Community, BRFSS Age Group, DOH Race-Ethnicity, Gender, Education Level, Employment Status (Grouped), Household Income, Poverty Level, Marital Status (Grouped), Married, Health Care Coverage, for the Year(s) - 2001, 2002, 2003, 2004, 2005, 2006, 2007, 2008, 2009, 2010

Note: Weighted numbers (#), percentages and 95% confidence intervals; Respondents aged 18 years and older; n/r (Not Reportable) - If the unweighted total responses for a dimension (row) is <50 that row will not be shown; n/a (Not Available) - Not asked of a subset of respondents

Year: 2009

BRFSS Age Group	Yes			No			Estimated Population
	#	%	C.I. (95%)	#	%	C.I. (95%)	#
45-54	4,600	33.1	16.2 - 50.0	9,200	66.9	50.0 - 83.8	13,800
55-64	5,500	30.5	16.6 - 44.4	12,500	69.5	55.6 - 83.4	18,000
65-74	3,700	22.7	8.6 - 36.9	12,600	77.3	63.1 - 91.4	16,300
75+	4,500	23.6	9.7 - 37.4	14,700	76.4	62.6 - 90.3	19,300

Diabetes - now taking insulin by State, County, Island, Community, BRFSS Age Group, DOH Race-Ethnicity, Gender, Education Level, Employment Status (Grouped), Household Income, Poverty Level, Marital Status (Grouped), Married, Health Care Coverage, for the Year(s) - 2001, 2002, 2003, 2004, 2005, 2006, 2007, 2008, 2009, 2010

Note: Weighted numbers (#), percentages and 95% confidence intervals; Respondents aged 18 years and older; n/r (Not Reportable) - If the unweighted total responses for a dimension (row) is <50 that row will not be shown; n/a (Not Available) - Not asked of a subset of respondents

Year: 2009

DOH Race-Ethnicity	Yes			No			Estimated Population
	#	%	C.I. (95%)	#	%	C.I. (95%)	#
Caucasian	3,800	27.5	13.2 - 41.7	10,200	72.5	58.3 - 86.8	14,000
Native Hawaiian	2,500	16.3	5.2 - 27.3	12,900	83.7	72.7 - 94.8	15,400
Filipino	2,300	17.4	0.0 - 36.5	11,000	82.6	63.5 - 100.0	13,300
Japanese	9,700	38.0	23.9 - 52.1	15,900	62.0	47.9 - 76.1	25,600

Gender	Yes			No			Estimated Population
	#	%	C.I. (95%)	#	%	C.I. (95%)	#
Male	9,200	24.8	14.7 - 35.0	27,900	75.2	65.0 - 85.3	37,100
Female	12,700	30.7	20.3 - 41.0	28,700	69.3	59.0 - 79.7	41,400

Diabetes - now taking insulin by State, County, Island, Community, BRFSS Age Group, DOH Race-Ethnicity, Gender, Education Level, Employment Status (Grouped), Household Income, Poverty Level, Marital Status (Grouped), Married, Health Care Coverage, for the Year(s) - 2001, 2002, 2003, 2004, 2005, 2006, 2007, 2008, 2009, 2010

Note: Weighted numbers (#), percentages and 95% confidence intervals; Respondents aged 18 years and older; n/r (Not Reportable) - If the unweighted total responses for a dimension (row) is <50 that row will not be shown; n/a (Not Available) - Not asked of a subset of respondents

Year: 2009

Education Level	Yes			No			Estimated Population
	#	%	C.I. (95%)	#	%	C.I. (95%)	#
Grades 12 or GED (High School Grad)	7,500	26.8	13.2 - 40.4	20,500	73.2	59.6 - 86.8	28,100
College 1 to 3 years (Some College/ Tech)	5,900	27.5	13.0 - 42.1	15,600	72.5	57.9 - 87.0	21,500
College 4 years or more (College Grad)	7,100	32.0	20.7 - 43.3	15,100	68.0	56.7 - 79.3	22,100

Employment Status (Grouped)	Yes			No			Estimated Population
	#	%	C.I. (95%)	#	%	C.I. (95%)	#
Employed	11,000	29.1	17.9 - 40.4	26,800	70.9	59.6 - 82.1	37,800
Retired/Unable to work	8,100	24.1	13.8 - 34.4	25,600	75.9	65.6 - 86.2	33,700

Diabetes - now taking insulin by State, County, Island, Community, BRFSS Age Group, DOH Race-Ethnicity, Gender, Education Level, Employment Status (Grouped), Household Income, Poverty Level, Marital Status (Grouped), Married, Health Care Coverage, for the Year(s) - 2001, 2002, 2003, 2004, 2005, 2006, 2007, 2008, 2009, 2010

Note: Weighted numbers (#), percentages and 95% confidence intervals; Respondents aged 18 years and older; n/r (Not Reportable) - If the unweighted total responses for a dimension (row) is <50 that row will not be shown; n/a (Not Available) - Not asked of a subset of respondents

Year: 2009

Household Income	Yes			No			Estimated Population
	#	%	C.I. (95%)	#	%	C.I. (95%)	#
\$35,000 to \$49,999	3,200	30.1	11.1 - 49.1	7,400	69.9	50.9 - 88.9	10,600
\$75,000 or more	7,400	37.3	21.5 - 53.2	12,500	62.7	46.8 - 78.5	19,900

Poverty Level	Yes			No			Estimated Population
	#	%	C.I. (95%)	#	%	C.I. (95%)	#
0-130%	5,300	29.3	10.8 - 47.8	12,800	70.7	52.2 - 89.2	18,100
131-185%	2,400	20.2	8.2 - 32.2	9,500	79.8	67.8 - 91.8	11,900
186+%	12,000	31.0	21.1 - 40.9	26,700	69.0	59.1 - 78.9	38,700

Diabetes - now taking insulin by State, County, Island, Community, BRFSS Age Group, DOH Race-Ethnicity, Gender, Education Level, Employment Status (Grouped), Household Income, Poverty Level, Marital Status (Grouped), Married, Health Care Coverage, for the Year(s) - 2001, 2002, 2003, 2004, 2005, 2006, 2007, 2008, 2009, 2010

Note: Weighted numbers (#), percentages and 95% confidence intervals; Respondents aged 18 years and older; n/r (Not Reportable) - If the unweighted total responses for a dimension (row) is <50 that row will not be shown; n/a (Not Available) - Not asked of a subset of respondents

Year: 2009

Marital Status (Grouped)	Yes			No			Estimated Population
	#	%	C.I. (95%)	#	%	C.I. (95%)	#
Married	12,700	26.4	17.4 - 35.5	35,200	73.6	64.5 - 82.6	47,800
Widowed	2,400	23.6	2.3 - 44.9	7,900	76.4	55.1 - 97.7	10,300
Other	6,500	33.8	18.0 - 49.6	12,800	66.2	50.4 - 82.0	19,300

Married	Yes			No			Estimated Population
	#	%	C.I. (95%)	#	%	C.I. (95%)	#
Yes	12,800	25.4	16.5 - 34.2	37,600	74.6	65.8 - 83.5	50,400
No	8,800	31.9	19.2 - 44.7	18,800	68.1	55.3 - 80.8	27,700

Diabetes - now taking insulin by State, County, Island, Community, BRFSS Age Group, DOH Race-Ethnicity, Gender, Education Level, Employment Status (Grouped), Household Income, Poverty Level, Marital Status (Grouped), Married, Health Care Coverage, for the Year(s) - 2001, 2002, 2003, 2004, 2005, 2006, 2007, 2008, 2009, 2010

Note: Weighted numbers (#), percentages and 95% confidence intervals; Respondents aged 18 years and older; n/r (Not Reportable) - If the unweighted total responses for a dimension (row) is <50 that row will not be shown; n/a (Not Available) - Not asked of a subset of respondents

Year: 2008

State	Yes			No			Estimated Population
	#	%	C.I. (95%)	#	%	C.I. (95%)	#
Hawaii State	16,000	19.4	15.1 - 23.8	66,300	80.6	76.2 - 84.9	82,300

County	Yes			No			Estimated Population
	#	%	C.I. (95%)	#	%	C.I. (95%)	#
Hawaii	2,300	23.3	13.9 - 32.8	7,500	76.7	67.2 - 86.1	9,700
Honolulu	11,400	18.7	13.2 - 24.1	49,400	81.3	75.9 - 86.8	60,800
Kauai	800	20.2	8.3 - 32.2	3,300	79.8	67.8 - 91.7	4,200
Maui	1,500	20.1	10.1 - 30.0	6,100	79.9	70.0 - 89.9	7,600

Diabetes - now taking insulin by State, County, Island, Community, BRFSS Age Group, DOH Race-Ethnicity, Gender, Education Level, Employment Status (Grouped), Household Income, Poverty Level, Marital Status (Grouped), Married, Health Care Coverage, for the Year(s) - 2001, 2002, 2003, 2004, 2005, 2006, 2007, 2008, 2009, 2010

Note: Weighted numbers (#), percentages and 95% confidence intervals; Respondents aged 18 years and older; n/r (Not Reportable) - If the unweighted total responses for a dimension (row) is <50 that row will not be shown; n/a (Not Available) - Not asked of a subset of respondents

Year: 2008

Island	Yes			No			Estimated Population
	#	%	C.I. (95%)	#	%	C.I. (95%)	#
Hawaii	2,300	23.3	13.9 - 32.8	7,500	76.7	67.2 - 86.1	9,700
Kauai	800	20.2	8.3 - 32.2	3,300	79.8	67.8 - 91.7	4,200
Maui	1,300	19.7	8.7 - 30.7	5,400	80.3	69.3 - 91.3	6,800
Oahu	11,400	18.7	13.2 - 24.1	49,400	81.3	75.9 - 86.8	60,800

Diabetes - now taking insulin by State, County, Island, Community, BRFSS Age Group, DOH Race-Ethnicity, Gender, Education Level, Employment Status (Grouped), Household Income, Poverty Level, Marital Status (Grouped), Married, Health Care Coverage, for the Year(s) - 2001, 2002, 2003, 2004, 2005, 2006, 2007, 2008, 2009, 2010

Note: Weighted numbers (#), percentages and 95% confidence intervals; Respondents aged 18 years and older; n/r (Not Reportable) - If the unweighted total responses for a dimension (row) is <50 that row will not be shown; n/a (Not Available) - Not asked of a subset of respondents

Year: 2008

BRFSS Age Group	Yes			No			Estimated Population
	#	%	C.I. (95%)	#	%	C.I. (95%)	#
45-54	3,000	21.3	10.3 - 32.4	11,000	78.7	67.6 - 89.7	14,000
55-64	4,000	19.1	11.7 - 26.4	17,000	80.9	73.6 - 88.3	21,000
65-74	2,000	13.0	7.4 - 18.5	13,500	87.0	81.5 - 92.6	15,500
75+	4,100	22.8	13.2 - 32.4	13,700	77.2	67.6 - 86.8	17,800

Diabetes - now taking insulin by State, County, Island, Community, BRFSS Age Group, DOH Race-Ethnicity, Gender, Education Level, Employment Status (Grouped), Household Income, Poverty Level, Marital Status (Grouped), Married, Health Care Coverage, for the Year(s) - 2001, 2002, 2003, 2004, 2005, 2006, 2007, 2008, 2009, 2010

Note: Weighted numbers (#), percentages and 95% confidence intervals; Respondents aged 18 years and older; n/r (Not Reportable) - If the unweighted total responses for a dimension (row) is <50 that row will not be shown; n/a (Not Available) - Not asked of a subset of respondents

Year: 2008

DOH Race-Ethnicity	Yes			No			Estimated Population
	#	%	C.I. (95%)	#	%	C.I. (95%)	#
Caucasian	3,600	23.1	11.2 - 34.9	12,100	76.9	65.1 - 88.8	15,700
Native Hawaiian	2,400	17.1	8.6 - 25.5	11,900	82.9	74.5 - 91.4	14,300
Filipino	3,200	19.0	8.3 - 29.6	13,600	81.0	70.4 - 91.7	16,700
Japanese	3,600	17.1	10.4 - 23.8	17,600	82.9	76.2 - 89.6	21,200

Gender	Yes			No			Estimated Population
	#	%	C.I. (95%)	#	%	C.I. (95%)	#
Male	8,900	22.8	15.4 - 30.1	30,300	77.2	69.9 - 84.6	39,200
Female	7,100	16.4	11.8 - 21.1	36,100	83.6	78.9 - 88.2	43,200

Diabetes - now taking insulin by State, County, Island, Community, BRFSS Age Group, DOH Race-Ethnicity, Gender, Education Level, Employment Status (Grouped), Household Income, Poverty Level, Marital Status (Grouped), Married, Health Care Coverage, for the Year(s) - 2001, 2002, 2003, 2004, 2005, 2006, 2007, 2008, 2009, 2010

Note: Weighted numbers (#), percentages and 95% confidence intervals; Respondents aged 18 years and older; n/r (Not Reportable) - If the unweighted total responses for a dimension (row) is <50 that row will not be shown; n/a (Not Available) - Not asked of a subset of respondents

Year: 2008

Education Level	Yes			No			Estimated Population
	#	%	C.I. (95%)	#	%	C.I. (95%)	#
Grades 12 or GED (High School Grad)	4,600	18.2	11.6 - 24.7	20,500	81.8	75.3 - 88.4	25,100
College 1 to 3 years (Some College/ Tech)	5,800	22.1	12.5 - 31.7	20,400	77.9	68.3 - 87.5	26,100
College 4 years or more (College Grad)	4,600	19.2	12.3 - 26.2	19,500	80.8	73.8 - 87.7	24,200

Employment Status (Grouped)	Yes			No			Estimated Population
	#	%	C.I. (95%)	#	%	C.I. (95%)	#
Employed	5,900	17.5	11.5 - 23.6	27,800	82.5	76.4 - 88.5	33,700
Retired/Unable to work	7,800	19.2	13.9 - 24.5	32,800	80.8	75.5 - 86.1	40,600

Diabetes - now taking insulin by State, County, Island, Community, BRFSS Age Group, DOH Race-Ethnicity, Gender, Education Level, Employment Status (Grouped), Household Income, Poverty Level, Marital Status (Grouped), Married, Health Care Coverage, for the Year(s) - 2001, 2002, 2003, 2004, 2005, 2006, 2007, 2008, 2009, 2010

Note: Weighted numbers (#), percentages and 95% confidence intervals; Respondents aged 18 years and older; n/r (Not Reportable) - If the unweighted total responses for a dimension (row) is <50 that row will not be shown; n/a (Not Available) - Not asked of a subset of respondents

Year: 2008

Household Income	Yes			No			Estimated Population
	#	%	C.I. (95%)	#	%	C.I. (95%)	#
\$20,000 to \$24,999	1,000	19.9	7.9 - 31.8	4,100	80.1	68.2 - 92.1	5,100
\$25,000 to \$34,999	2,000	17.7	6.5 - 28.9	9,200	82.3	71.1 - 93.5	11,200
\$35,000 to \$49,999	2,000	15.1	7.5 - 22.7	11,500	84.9	77.3 - 92.5	13,500
\$50,000 to \$74,999	2,500	15.9	7.2 - 24.7	13,200	84.1	75.3 - 92.8	15,700
\$75,000 or more	3,100	16.5	8.7 - 24.4	15,600	83.5	75.6 - 91.3	18,700

Diabetes - now taking insulin by State, County, Island, Community, BRFSS Age Group, DOH Race-Ethnicity, Gender, Education Level, Employment Status (Grouped), Household Income, Poverty Level, Marital Status (Grouped), Married, Health Care Coverage, for the Year(s) - 2001, 2002, 2003, 2004, 2005, 2006, 2007, 2008, 2009, 2010

Note: Weighted numbers (#), percentages and 95% confidence intervals; Respondents aged 18 years and older; n/r (Not Reportable) - If the unweighted total responses for a dimension (row) is <50 that row will not be shown; n/a (Not Available) - Not asked of a subset of respondents

Year: 2008

Poverty Level	Yes			No			Estimated Population
	#	%	C.I. (95%)	#	%	C.I. (95%)	#
0-130%	4,100	24.3	13.8 - 34.8	12,600	75.7	65.2 - 86.2	16,700
131-185%	2,100	21.0	8.0 - 33.9	7,800	79.0	66.1 - 92.0	9,900
186+%	7,300	15.0	10.7 - 19.2	41,600	85.0	80.8 - 89.3	48,900

Marital Status (Grouped)	Yes			No			Estimated Population
	#	%	C.I. (95%)	#	%	C.I. (95%)	#
Married	10,100	20.1	13.9 - 26.2	40,100	79.9	73.8 - 86.1	50,200
Widowed	1,100	11.0	5.0 - 17.0	8,600	89.0	83.0 - 95.0	9,600
Other	4,700	21.7	14.1 - 29.3	17,000	78.3	70.7 - 85.9	21,700

Diabetes - now taking insulin by State, County, Island, Community, BRFSS Age Group, DOH Race-Ethnicity, Gender, Education Level, Employment Status (Grouped), Household Income, Poverty Level, Marital Status (Grouped), Married, Health Care Coverage, for the Year(s) - 2001, 2002, 2003, 2004, 2005, 2006, 2007, 2008, 2009, 2010

Note: Weighted numbers (#), percentages and 95% confidence intervals; Respondents aged 18 years and older; n/r (Not Reportable) - If the unweighted total responses for a dimension (row) is <50 that row will not be shown; n/a (Not Available) - Not asked of a subset of respondents

Year: 2008

Married	Yes			No			Estimated Population
	#	%	C.I. (95%)	#	%	C.I. (95%)	#
Yes	10,400	20.1	14.1 - 26.2	41,300	79.9	73.8 - 85.9	51,700
No	5,600	18.3	12.7 - 23.9	25,000	81.7	76.1 - 87.3	30,700

Health Care Coverage	Yes			No			Estimated Population
	#	%	C.I. (95%)	#	%	C.I. (95%)	#
Yes	15,800	19.9	15.5 - 24.3	63,700	80.1	75.7 - 84.5	79,600

Diabetes - now taking insulin by State, County, Island, Community, BRFSS Age Group, DOH Race-Ethnicity, Gender, Education Level, Employment Status (Grouped), Household Income, Poverty Level, Marital Status (Grouped), Married, Health Care Coverage, for the Year(s) - 2001, 2002, 2003, 2004, 2005, 2006, 2007, 2008, 2009, 2010

Note: Weighted numbers (#), percentages and 95% confidence intervals; Respondents aged 18 years and older; n/r (Not Reportable) - If the unweighted total responses for a dimension (row) is <50 that row will not be shown; n/a (Not Available) - Not asked of a subset of respondents

Year: 2007

State	Yes			No			Estimated Population
	#	%	C.I. (95%)	#	%	C.I. (95%)	#
Hawaii State	14,700	19.5	15.0 - 24.0	60,900	80.5	76.0 - 85.0	75,600

County	Yes			No			Estimated Population
	#	%	C.I. (95%)	#	%	C.I. (95%)	#
Hawaii	1,500	16.1	9.2 - 23.1	7,500	83.9	76.9 - 90.8	9,000
Honolulu	10,700	19.5	13.7 - 25.4	44,000	80.5	74.6 - 86.3	54,700
Maui	2,100	24.0	14.4 - 33.6	6,600	76.0	66.4 - 85.6	8,700

Diabetes - now taking insulin by State, County, Island, Community, BRFSS Age Group, DOH Race-Ethnicity, Gender, Education Level, Employment Status (Grouped), Household Income, Poverty Level, Marital Status (Grouped), Married, Health Care Coverage, for the Year(s) - 2001, 2002, 2003, 2004, 2005, 2006, 2007, 2008, 2009, 2010

Note: Weighted numbers (#), percentages and 95% confidence intervals; Respondents aged 18 years and older; n/r (Not Reportable) - If the unweighted total responses for a dimension (row) is <50 that row will not be shown; n/a (Not Available) - Not asked of a subset of respondents

Year: 2007

Island	Yes			No			Estimated Population
	#	%	C.I. (95%)	#	%	C.I. (95%)	#
Hawaii	1,500	16.1	9.2 - 23.1	7,500	83.9	76.9 - 90.8	9,000
Maui	1,900	24.4	13.8 - 35.0	5,800	75.6	65.0 - 86.2	7,700
Oahu	10,700	19.5	13.7 - 25.4	44,000	80.5	74.6 - 86.3	54,700

Diabetes - now taking insulin by State, County, Island, Community, BRFSS Age Group, DOH Race-Ethnicity, Gender, Education Level, Employment Status (Grouped), Household Income, Poverty Level, Marital Status (Grouped), Married, Health Care Coverage, for the Year(s) - 2001, 2002, 2003, 2004, 2005, 2006, 2007, 2008, 2009, 2010

Note: Weighted numbers (#), percentages and 95% confidence intervals; Respondents aged 18 years and older; n/r (Not Reportable) - If the unweighted total responses for a dimension (row) is <50 that row will not be shown; n/a (Not Available) - Not asked of a subset of respondents

Year: 2007

BRFSS Age Group	Yes			No			Estimated Population
	#	%	C.I. (95%)	#	%	C.I. (95%)	#
45-54	2,800	17.4	8.2 - 26.6	13,100	82.6	73.4 - 91.8	15,900
55-64	4,800	24.9	15.0 - 34.9	14,400	75.1	65.1 - 85.0	19,200
65-74	3,000	17.0	8.6 - 25.4	14,700	83.0	74.6 - 91.4	17,800
75+	1,900	13.6	6.3 - 20.9	12,000	86.4	79.1 - 93.7	13,900

Diabetes - now taking insulin by State, County, Island, Community, BRFSS Age Group, DOH Race-Ethnicity, Gender, Education Level, Employment Status (Grouped), Household Income, Poverty Level, Marital Status (Grouped), Married, Health Care Coverage, for the Year(s) - 2001, 2002, 2003, 2004, 2005, 2006, 2007, 2008, 2009, 2010

Note: Weighted numbers (#), percentages and 95% confidence intervals; Respondents aged 18 years and older; n/r (Not Reportable) - If the unweighted total responses for a dimension (row) is <50 that row will not be shown; n/a (Not Available) - Not asked of a subset of respondents

Year: 2007

DOH Race-Ethnicity	Yes			No			Estimated Population
	#	%	C.I. (95%)	#	%	C.I. (95%)	#
Caucasian	3,300	22.8	14.2 - 31.4	11,300	77.2	68.6 - 85.8	14,600
Native Hawaiian	1,800	11.8	5.2 - 18.4	13,600	88.2	81.6 - 94.8	15,500
Filipino	3,100	22.8	9.9 - 35.7	10,400	77.2	64.3 - 90.1	13,500
Japanese	3,000	15.4	7.3 - 23.5	16,600	84.6	76.5 - 92.7	19,600

Gender	Yes			No			Estimated Population
	#	%	C.I. (95%)	#	%	C.I. (95%)	#
Male	8,700	22.6	15.5 - 29.8	29,600	77.4	70.2 - 84.5	38,300
Female	6,100	16.3	11.2 - 21.4	31,200	83.7	78.6 - 88.8	37,300

Diabetes - now taking insulin by State, County, Island, Community, BRFSS Age Group, DOH Race-Ethnicity, Gender, Education Level, Employment Status (Grouped), Household Income, Poverty Level, Marital Status (Grouped), Married, Health Care Coverage, for the Year(s) - 2001, 2002, 2003, 2004, 2005, 2006, 2007, 2008, 2009, 2010

Note: Weighted numbers (#), percentages and 95% confidence intervals; Respondents aged 18 years and older; n/r (Not Reportable) - If the unweighted total responses for a dimension (row) is <50 that row will not be shown; n/a (Not Available) - Not asked of a subset of respondents

Year: 2007

Education Level	Yes			No			Estimated Population
	#	%	C.I. (95%)	#	%	C.I. (95%)	#
Grades 12 or GED (High School Grad)	6,100	22.7	14.6 - 30.8	20,600	77.3	69.2 - 85.4	26,700
College 1 to 3 years (Some College/ Tech)	4,700	19.4	11.4 - 27.5	19,500	80.6	72.5 - 88.6	24,200
College 4 years or more (College Grad)	3,200	17.6	9.1 - 26.0	15,200	82.4	74.0 - 90.9	18,500

Employment Status (Grouped)	Yes			No			Estimated Population
	#	%	C.I. (95%)	#	%	C.I. (95%)	#
Employed	7,000	20.8	13.3 - 28.2	26,600	79.2	71.8 - 86.7	33,600
Retired/Unable to work	6,600	17.4	11.9 - 22.9	31,600	82.6	77.1 - 88.1	38,200

Diabetes - now taking insulin by State, County, Island, Community, BRFSS Age Group, DOH Race-Ethnicity, Gender, Education Level, Employment Status (Grouped), Household Income, Poverty Level, Marital Status (Grouped), Married, Health Care Coverage, for the Year(s) - 2001, 2002, 2003, 2004, 2005, 2006, 2007, 2008, 2009, 2010

Note: Weighted numbers (#), percentages and 95% confidence intervals; Respondents aged 18 years and older; n/r (Not Reportable) - If the unweighted total responses for a dimension (row) is <50 that row will not be shown; n/a (Not Available) - Not asked of a subset of respondents

Year: 2007

Household Income	Yes			No			Estimated Population
	#	%	C.I. (95%)	#	%	C.I. (95%)	#
\$20,000 to \$24,999	1,900	24.9	9.3 - 40.6	5,700	75.1	59.4 - 90.7	7,600
\$25,000 to \$34,999	2,200	21.5	7.7 - 35.4	7,900	78.5	64.6 - 92.3	10,100
\$35,000 to \$49,999	2,800	18.9	7.2 - 30.6	12,000	81.1	69.4 - 92.8	14,900
\$50,000 to \$74,999	2,800	23.8	12.8 - 34.8	8,800	76.2	65.2 - 87.2	11,600
\$75,000 or more	2,500	17.5	7.9 - 27.1	12,000	82.5	72.9 - 92.1	14,500

Diabetes - now taking insulin by State, County, Island, Community, BRFSS Age Group, DOH Race-Ethnicity, Gender, Education Level, Employment Status (Grouped), Household Income, Poverty Level, Marital Status (Grouped), Married, Health Care Coverage, for the Year(s) - 2001, 2002, 2003, 2004, 2005, 2006, 2007, 2008, 2009, 2010

Note: Weighted numbers (#), percentages and 95% confidence intervals; Respondents aged 18 years and older; n/r (Not Reportable) - If the unweighted total responses for a dimension (row) is <50 that row will not be shown; n/a (Not Available) - Not asked of a subset of respondents

Year: 2007

Poverty Level	Yes			No			Estimated Population
	#	%	C.I. (95%)	#	%	C.I. (95%)	#
0-130%	4,600	21.6	12.5 - 30.8	16,700	78.4	69.2 - 87.5	21,300
131-185%	1,600	17.1	3.8 - 30.5	7,800	82.9	69.5 - 96.2	9,400
186+%	8,100	20.4	14.4 - 26.4	31,700	79.6	73.6 - 85.6	39,800

Marital Status (Grouped)	Yes			No			Estimated Population
	#	%	C.I. (95%)	#	%	C.I. (95%)	#
Married	9,700	21.2	15.1 - 27.3	36,200	78.8	72.7 - 84.9	45,900
Widowed	1,700	16.5	8.3 - 24.8	8,400	83.5	75.2 - 91.7	10,100
Other	3,300	17.8	9.0 - 26.7	15,400	82.2	73.3 - 91.0	18,700

Diabetes - now taking insulin by State, County, Island, Community, BRFSS Age Group, DOH Race-Ethnicity, Gender, Education Level, Employment Status (Grouped), Household Income, Poverty Level, Marital Status (Grouped), Married, Health Care Coverage, for the Year(s) - 2001, 2002, 2003, 2004, 2005, 2006, 2007, 2008, 2009, 2010

Note: Weighted numbers (#), percentages and 95% confidence intervals; Respondents aged 18 years and older; n/r (Not Reportable) - If the unweighted total responses for a dimension (row) is <50 that row will not be shown; n/a (Not Available) - Not asked of a subset of respondents

Year: 2007

Married	Yes			No			Estimated Population
	#	%	C.I. (95%)	#	%	C.I. (95%)	#
Yes	10,000	21.4	15.4 - 27.5	36,700	78.6	72.5 - 84.6	46,800
No	4,700	16.5	10.1 - 22.8	24,000	83.5	77.2 - 89.9	28,700

Health Care Coverage	Yes			No			Estimated Population
	#	%	C.I. (95%)	#	%	C.I. (95%)	#
Yes	14,200	19.5	15.0 - 24.1	58,400	80.5	75.9 - 85.0	72,600

Diabetes - now taking insulin by State, County, Island, Community, BRFSS Age Group, DOH Race-Ethnicity, Gender, Education Level, Employment Status (Grouped), Household Income, Poverty Level, Marital Status (Grouped), Married, Health Care Coverage, for the Year(s) - 2001, 2002, 2003, 2004, 2005, 2006, 2007, 2008, 2009, 2010

Note: Weighted numbers (#), percentages and 95% confidence intervals; Respondents aged 18 years and older; n/r (Not Reportable) - If the unweighted total responses for a dimension (row) is <50 that row will not be shown; n/a (Not Available) - Not asked of a subset of respondents

Year: 2006

State	Yes			No			Estimated Population
	#	%	C.I. (95%)	#	%	C.I. (95%)	#
Hawaii State	15,400	20.0	15.8 - 24.3	61,600	80.0	75.7 - 84.2	77,000

County	Yes			No			Estimated Population
	#	%	C.I. (95%)	#	%	C.I. (95%)	#
Hawaii	1,800	20.7	12.0 - 29.4	6,800	79.3	70.6 - 88.0	8,500
Honolulu	11,100	20.0	14.5 - 25.5	44,400	80.0	74.5 - 85.5	55,500
Kauai	900	19.2	7.4 - 30.9	3,700	80.8	69.1 - 92.6	4,600
Maui	1,700	19.8	11.0 - 28.6	6,700	80.2	71.4 - 89.0	8,400

Diabetes - now taking insulin by State, County, Island, Community, BRFSS Age Group, DOH Race-Ethnicity, Gender, Education Level, Employment Status (Grouped), Household Income, Poverty Level, Marital Status (Grouped), Married, Health Care Coverage, for the Year(s) - 2001, 2002, 2003, 2004, 2005, 2006, 2007, 2008, 2009, 2010

Note: Weighted numbers (#), percentages and 95% confidence intervals; Respondents aged 18 years and older; n/r (Not Reportable) - If the unweighted total responses for a dimension (row) is <50 that row will not be shown; n/a (Not Available) - Not asked of a subset of respondents

Year: 2006

Island	Yes			No			Estimated Population
	#	%	C.I. (95%)	#	%	C.I. (95%)	#
Hawaii	1,800	20.7	12.0 - 29.4	6,800	79.3	70.6 - 88.0	8,500
Kauai	900	19.2	7.4 - 30.9	3,700	80.8	69.1 - 92.6	4,600
Maui	1,500	20.4	10.8 - 30.0	6,000	79.6	70.0 - 89.2	7,600
Oahu	11,100	20.0	14.5 - 25.5	44,400	80.0	74.5 - 85.5	55,500

Diabetes - now taking insulin by State, County, Island, Community, BRFSS Age Group, DOH Race-Ethnicity, Gender, Education Level, Employment Status (Grouped), Household Income, Poverty Level, Marital Status (Grouped), Married, Health Care Coverage, for the Year(s) - 2001, 2002, 2003, 2004, 2005, 2006, 2007, 2008, 2009, 2010

Note: Weighted numbers (#), percentages and 95% confidence intervals; Respondents aged 18 years and older; n/r (Not Reportable) - If the unweighted total responses for a dimension (row) is <50 that row will not be shown; n/a (Not Available) - Not asked of a subset of respondents

Year: 2006

BRFSS Age Group	Yes			No			Estimated Population
	#	%	C.I. (95%)	#	%	C.I. (95%)	#
45-54	3,600	21.0	11.6 - 30.3	13,400	79.0	69.7 - 88.4	17,000
55-64	2,900	13.1	6.1 - 20.0	19,400	86.9	80.0 - 93.9	22,300
65-74	3,900	26.6	17.0 - 36.1	10,900	73.4	63.9 - 83.0	14,800
75+	2,800	19.1	9.5 - 28.6	12,100	80.9	71.4 - 90.5	14,900

Diabetes - now taking insulin by State, County, Island, Community, BRFSS Age Group, DOH Race-Ethnicity, Gender, Education Level, Employment Status (Grouped), Household Income, Poverty Level, Marital Status (Grouped), Married, Health Care Coverage, for the Year(s) - 2001, 2002, 2003, 2004, 2005, 2006, 2007, 2008, 2009, 2010

Note: Weighted numbers (#), percentages and 95% confidence intervals; Respondents aged 18 years and older; n/r (Not Reportable) - If the unweighted total responses for a dimension (row) is <50 that row will not be shown; n/a (Not Available) - Not asked of a subset of respondents

Year: 2006

DOH Race-Ethnicity	Yes			No			Estimated Population
	#	%	C.I. (95%)	#	%	C.I. (95%)	#
Caucasian	4,200	23.8	15.9 - 31.8	13,400	76.2	68.2 - 84.1	17,600
Native Hawaiian	3,100	22.5	12.5 - 32.6	10,600	77.5	67.4 - 87.5	13,700
Filipino	1,900	12.0	3.5 - 20.6	13,600	88.0	79.4 - 96.5	15,400
Japanese	4,000	21.8	12.9 - 30.7	14,300	78.2	69.3 - 87.1	18,300

Gender	Yes			No			Estimated Population
	#	%	C.I. (95%)	#	%	C.I. (95%)	#
Male	6,100	16.7	11.2 - 22.2	30,600	83.3	77.8 - 88.8	36,800
Female	9,300	23.0	16.8 - 29.3	31,000	77.0	70.7 - 83.2	40,200

Diabetes - now taking insulin by State, County, Island, Community, BRFSS Age Group, DOH Race-Ethnicity, Gender, Education Level, Employment Status (Grouped), Household Income, Poverty Level, Marital Status (Grouped), Married, Health Care Coverage, for the Year(s) - 2001, 2002, 2003, 2004, 2005, 2006, 2007, 2008, 2009, 2010

Note: Weighted numbers (#), percentages and 95% confidence intervals; Respondents aged 18 years and older; n/r (Not Reportable) - If the unweighted total responses for a dimension (row) is <50 that row will not be shown; n/a (Not Available) - Not asked of a subset of respondents

Year: 2006

Education Level	Yes			No			Estimated Population
	#	%	C.I. (95%)	#	%	C.I. (95%)	#
Grades 12 or GED (High School Grad)	5,000	18.5	11.3 - 25.7	22,100	81.5	74.3 - 88.7	27,100
College 1 to 3 years (Some College/ Tech)	4,200	18.7	11.0 - 26.4	18,400	81.3	73.6 - 89.0	22,600
College 4 years or more (College Grad)	3,400	17.8	10.5 - 25.2	15,900	82.2	74.8 - 89.5	19,300

Employment Status (Grouped)	Yes			No			Estimated Population
	#	%	C.I. (95%)	#	%	C.I. (95%)	#
Employed	5,600	16.9	11.1 - 22.7	27,600	83.1	77.3 - 88.9	33,300
Retired/Unable to work	8,800	23.1	16.7 - 29.4	29,300	76.9	70.6 - 83.3	38,000

Diabetes - now taking insulin by State, County, Island, Community, BRFSS Age Group, DOH Race-Ethnicity, Gender, Education Level, Employment Status (Grouped), Household Income, Poverty Level, Marital Status (Grouped), Married, Health Care Coverage, for the Year(s) - 2001, 2002, 2003, 2004, 2005, 2006, 2007, 2008, 2009, 2010

Note: Weighted numbers (#), percentages and 95% confidence intervals; Respondents aged 18 years and older; n/r (Not Reportable) - If the unweighted total responses for a dimension (row) is <50 that row will not be shown; n/a (Not Available) - Not asked of a subset of respondents

Year: 2006

Household Income	Yes			No			Estimated Population
	#	%	C.I. (95%)	#	%	C.I. (95%)	#
\$20,000 to \$24,999	1,600	22.3	8.1 - 36.5	5,500	77.7	63.5 - 91.9	7,100
\$25,000 to \$34,999	1,600	18.1	5.5 - 30.7	7,100	81.9	69.3 - 94.5	8,700
\$35,000 to \$49,999	3,500	26.4	14.6 - 38.2	9,800	73.6	61.8 - 85.4	13,400
\$50,000 to \$74,999	2,200	18.4	8.3 - 28.5	9,900	81.6	71.5 - 91.7	12,100
\$75,000 or more	1,600	13.8	3.9 - 23.7	9,900	86.2	76.3 - 96.1	11,500

Diabetes - now taking insulin by State, County, Island, Community, BRFSS Age Group, DOH Race-Ethnicity, Gender, Education Level, Employment Status (Grouped), Household Income, Poverty Level, Marital Status (Grouped), Married, Health Care Coverage, for the Year(s) - 2001, 2002, 2003, 2004, 2005, 2006, 2007, 2008, 2009, 2010

Note: Weighted numbers (#), percentages and 95% confidence intervals; Respondents aged 18 years and older; n/r (Not Reportable) - If the unweighted total responses for a dimension (row) is <50 that row will not be shown; n/a (Not Available) - Not asked of a subset of respondents

Year: 2006

Poverty Level	Yes			No			Estimated Population
	#	%	C.I. (95%)	#	%	C.I. (95%)	#
0-130%	3,100	15.5	7.6 - 23.4	16,700	84.5	76.6 - 92.4	19,700
131-185%	1,900	23.6	9.7 - 37.5	6,300	76.4	62.5 - 90.3	8,200
186+%	7,800	21.5	15.5 - 27.6	28,400	78.5	72.4 - 84.5	36,200

Marital Status (Grouped)	Yes			No			Estimated Population
	#	%	C.I. (95%)	#	%	C.I. (95%)	#
Married	9,300	18.4	13.2 - 23.6	41,100	81.6	76.4 - 86.8	50,400
Widowed	1,200	13.4	5.4 - 21.4	7,600	86.6	78.6 - 94.6	8,800
Other	4,700	27.3	17.6 - 37.0	12,500	72.7	63.0 - 82.4	17,200

Diabetes - now taking insulin by State, County, Island, Community, BRFSS Age Group, DOH Race-Ethnicity, Gender, Education Level, Employment Status (Grouped), Household Income, Poverty Level, Marital Status (Grouped), Married, Health Care Coverage, for the Year(s) - 2001, 2002, 2003, 2004, 2005, 2006, 2007, 2008, 2009, 2010

Note: Weighted numbers (#), percentages and 95% confidence intervals; Respondents aged 18 years and older; n/r (Not Reportable) - If the unweighted total responses for a dimension (row) is <50 that row will not be shown; n/a (Not Available) - Not asked of a subset of respondents

Year: 2006

Married	Yes			No			Estimated Population
	#	%	C.I. (95%)	#	%	C.I. (95%)	#
Yes	9,400	18.3	13.2 - 23.5	42,000	81.7	76.5 - 86.8	51,400
No	6,000	23.4	16.1 - 30.8	19,500	76.6	69.2 - 83.9	25,500

Health Care Coverage	Yes			No			Estimated Population
	#	%	C.I. (95%)	#	%	C.I. (95%)	#
Yes	15,100	20.7	16.3 - 25.1	57,900	79.3	74.9 - 83.7	73,000

Diabetes - now taking insulin by State, County, Island, Community, BRFSS Age Group, DOH Race-Ethnicity, Gender, Education Level, Employment Status (Grouped), Household Income, Poverty Level, Marital Status (Grouped), Married, Health Care Coverage, for the Year(s) - 2001, 2002, 2003, 2004, 2005, 2006, 2007, 2008, 2009, 2010

Note: Weighted numbers (#), percentages and 95% confidence intervals; Respondents aged 18 years and older; n/r (Not Reportable) - If the unweighted total responses for a dimension (row) is <50 that row will not be shown; n/a (Not Available) - Not asked of a subset of respondents

Year: 2005

State	Yes			No			Estimated Population
	#	%	C.I. (95%)	#	%	C.I. (95%)	#
Hawaii State	9,300	11.4	6.9 - 15.8	72,700	88.6	84.2 - 93.1	82,000

County	Yes			No			Estimated Population
	#	%	C.I. (95%)	#	%	C.I. (95%)	#
Hawaii	1,500	13.2	6.0 - 20.4	10,000	86.8	79.6 - 94.0	11,500
Honolulu	6,500	10.4	5.0 - 15.9	55,700	89.6	84.1 - 95.0	62,200

Diabetes - now taking insulin by State, County, Island, Community, BRFSS Age Group, DOH Race-Ethnicity, Gender, Education Level, Employment Status (Grouped), Household Income, Poverty Level, Marital Status (Grouped), Married, Health Care Coverage, for the Year(s) - 2001, 2002, 2003, 2004, 2005, 2006, 2007, 2008, 2009, 2010

Note: Weighted numbers (#), percentages and 95% confidence intervals; Respondents aged 18 years and older; n/r (Not Reportable) - If the unweighted total responses for a dimension (row) is <50 that row will not be shown; n/a (Not Available) - Not asked of a subset of respondents

Year: 2005

Island	Yes			No			Estimated Population
	#	%	C.I. (95%)	#	%	C.I. (95%)	#
Hawaii	1,500	13.2	6.0 - 20.4	10,000	86.8	79.6 - 94.0	11,500
Oahu	6,500	10.4	5.0 - 15.9	55,700	89.6	84.1 - 95.0	62,200

BRFSS Age Group	Yes			No			Estimated Population
	#	%	C.I. (95%)	#	%	C.I. (95%)	#
55-64	1,900	9.6	2.0 - 17.1	18,100	90.4	82.9 - 98.0	20,000
65-74	2,800	20.0	8.0 - 32.0	11,300	80.0	68.0 - 92.0	14,200

Diabetes - now taking insulin by State, County, Island, Community, BRFSS Age Group, DOH Race-Ethnicity, Gender, Education Level, Employment Status (Grouped), Household Income, Poverty Level, Marital Status (Grouped), Married, Health Care Coverage, for the Year(s) - 2001, 2002, 2003, 2004, 2005, 2006, 2007, 2008, 2009, 2010

Note: Weighted numbers (#), percentages and 95% confidence intervals; Respondents aged 18 years and older; n/r (Not Reportable) - If the unweighted total responses for a dimension (row) is <50 that row will not be shown; n/a (Not Available) - Not asked of a subset of respondents

Year: 2005

DOH Race-Ethnicity	Yes			No			Estimated Population
	#	%	C.I. (95%)	#	%	C.I. (95%)	#
Caucasian	3,000	15.2	5.9 - 24.4	16,700	84.8	75.6 - 94.1	19,600
Native Hawaiian	2,400	14.5	1.9 - 27.0	14,400	85.5	73.0 - 98.1	16,900
Japanese	1,100	7.0	0.0 - 14.6	14,300	93.0	85.4 - 100.0	15,400

Gender	Yes			No			Estimated Population
	#	%	C.I. (95%)	#	%	C.I. (95%)	#
Male	6,300	14.2	6.9 - 21.5	38,200	85.8	78.5 - 93.1	44,500
Female	3,000	8.0	3.3 - 12.7	34,500	92.0	87.3 - 96.7	37,500

Diabetes - now taking insulin by State, County, Island, Community, BRFSS Age Group, DOH Race-Ethnicity, Gender, Education Level, Employment Status (Grouped), Household Income, Poverty Level, Marital Status (Grouped), Married, Health Care Coverage, for the Year(s) - 2001, 2002, 2003, 2004, 2005, 2006, 2007, 2008, 2009, 2010

Note: Weighted numbers (#), percentages and 95% confidence intervals; Respondents aged 18 years and older; n/r (Not Reportable) - If the unweighted total responses for a dimension (row) is <50 that row will not be shown; n/a (Not Available) - Not asked of a subset of respondents

Year: 2005

Education Level	Yes			No			Estimated Population
	#	%	C.I. (95%)	#	%	C.I. (95%)	#
Grades 12 or GED (High School Grad)	3,300	10.3	2.7 - 18.0	28,900	89.7	82.0 - 97.3	32,200
College 1 to 3 years (Some College/ Tech)	2,800	14.9	5.2 - 24.6	16,000	85.1	75.4 - 94.8	18,800
College 4 years or more (College Grad)	2,100	10.9	2.6 - 19.2	17,000	89.1	80.8 - 97.4	19,100

Employment Status (Grouped)	Yes			No			Estimated Population
	#	%	C.I. (95%)	#	%	C.I. (95%)	#
Employed	4,000	10.5	3.6 - 17.3	33,900	89.5	82.7 - 96.4	37,800
Retired/Unable to work	5,300	13.4	6.9 - 20.0	34,200	86.6	80.0 - 93.1	39,500

Diabetes - now taking insulin by State, County, Island, Community, BRFSS Age Group, DOH Race-Ethnicity, Gender, Education Level, Employment Status (Grouped), Household Income, Poverty Level, Marital Status (Grouped), Married, Health Care Coverage, for the Year(s) - 2001, 2002, 2003, 2004, 2005, 2006, 2007, 2008, 2009, 2010

Note: Weighted numbers (#), percentages and 95% confidence intervals; Respondents aged 18 years and older; n/r (Not Reportable) - If the unweighted total responses for a dimension (row) is <50 that row will not be shown; n/a (Not Available) - Not asked of a subset of respondents

Year: 2005

Poverty Level	Yes			No			Estimated Population
	#	%	C.I. (95%)	#	%	C.I. (95%)	#
0-130%	1,200	5.7	0.0 - 11.7	19,000	94.3	88.3 - 100.0	20,200
186+%	6,000	16.4	8.4 - 24.4	30,600	83.6	75.6 - 91.6	36,600

Marital Status (Grouped)	Yes			No			Estimated Population
	#	%	C.I. (95%)	#	%	C.I. (95%)	#
Married	6,200	12.0	5.7 - 18.2	45,400	88.0	81.8 - 94.3	51,600
Other	1,900	9.2	2.3 - 16.1	18,200	90.8	83.9 - 97.7	20,100

Diabetes - now taking insulin by State, County, Island, Community, BRFSS Age Group, DOH Race-Ethnicity, Gender, Education Level, Employment Status (Grouped), Household Income, Poverty Level, Marital Status (Grouped), Married, Health Care Coverage, for the Year(s) - 2001, 2002, 2003, 2004, 2005, 2006, 2007, 2008, 2009, 2010

Note: Weighted numbers (#), percentages and 95% confidence intervals; Respondents aged 18 years and older; n/r (Not Reportable) - If the unweighted total responses for a dimension (row) is <50 that row will not be shown; n/a (Not Available) - Not asked of a subset of respondents

Year: 2005

Married	Yes			No			Estimated Population
	#	%	C.I. (95%)	#	%	C.I. (95%)	#
Yes	6,400	12.1	6.0 - 18.3	46,100	87.9	81.7 - 94.0	52,400
No	3,000	10.1	4.2 - 16.0	26,400	89.9	84.0 - 95.8	29,300

Diabetes - now taking insulin by State, County, Island, Community, BRFSS Age Group, DOH Race-Ethnicity, Gender, Education Level, Employment Status (Grouped), Household Income, Poverty Level, Marital Status (Grouped), Married, Health Care Coverage, for the Year(s) - 2001, 2002, 2003, 2004, 2005, 2006, 2007, 2008, 2009, 2010

Note: Weighted numbers (#), percentages and 95% confidence intervals; Respondents aged 18 years and older; n/r (Not Reportable) - If the unweighted total responses for a dimension (row) is <50 that row will not be shown; n/a (Not Available) - Not asked of a subset of respondents

Year: 2004

State	Yes			No			Estimated Population
	#	%	C.I. (95%)	#	%	C.I. (95%)	#
Hawaii State	14,500	24.0	12.8 - 35.1	46,000	76.0	64.9 - 87.2	60,600

County	Yes			No			Estimated Population
	#	%	C.I. (95%)	#	%	C.I. (95%)	#
Honolulu	11,900	26.6	12.0 - 41.2	33,000	73.4	58.8 - 88.0	44,900

Island	Yes			No			Estimated Population
	#	%	C.I. (95%)	#	%	C.I. (95%)	#
Oahu	11,900	26.6	12.0 - 41.2	33,000	73.4	58.8 - 88.0	44,900

Diabetes - now taking insulin by State, County, Island, Community, BRFSS Age Group, DOH Race-Ethnicity, Gender, Education Level, Employment Status (Grouped), Household Income, Poverty Level, Marital Status (Grouped), Married, Health Care Coverage, for the Year(s) - 2001, 2002, 2003, 2004, 2005, 2006, 2007, 2008, 2009, 2010

Note: Weighted numbers (#), percentages and 95% confidence intervals; Respondents aged 18 years and older; n/r (Not Reportable) - If the unweighted total responses for a dimension (row) is <50 that row will not be shown; n/a (Not Available) - Not asked of a subset of respondents

Year: 2004

Gender	Yes			No			Estimated Population
	#	%	C.I. (95%)	#	%	C.I. (95%)	#
Male	6,300	17.8	6.4 - 29.1	29,100	82.2	70.9 - 93.6	35,300
Female	8,200	32.7	12.4 - 52.9	17,000	67.3	47.1 - 87.6	25,200

Education Level	Yes			No			Estimated Population
	#	%	C.I. (95%)	#	%	C.I. (95%)	#
Grades 12 or GED (High School Grad)	8,200	30.9	9.8 - 52.1	18,200	69.1	47.9 - 90.2	26,400

Diabetes - now taking insulin by State, County, Island, Community, BRFSS Age Group, DOH Race-Ethnicity, Gender, Education Level, Employment Status (Grouped), Household Income, Poverty Level, Marital Status (Grouped), Married, Health Care Coverage, for the Year(s) - 2001, 2002, 2003, 2004, 2005, 2006, 2007, 2008, 2009, 2010

Note: Weighted numbers (#), percentages and 95% confidence intervals; Respondents aged 18 years and older; n/r (Not Reportable) - If the unweighted total responses for a dimension (row) is <50 that row will not be shown; n/a (Not Available) - Not asked of a subset of respondents

Year: 2004

Employment Status (Grouped)	Yes			No			Estimated Population
	#	%	C.I. (95%)	#	%	C.I. (95%)	#
Employed	3,100	10.5	1.7 - 19.3	26,100	89.5	80.7 - 98.3	29,200
Retired/Unable to work	9,400	36.1	16.5 - 55.7	16,600	63.9	44.3 - 83.5	26,000

Poverty Level	Yes			No			Estimated Population
	#	%	C.I. (95%)	#	%	C.I. (95%)	#
186+%	6,700	17.9	7.1 - 28.7	30,800	82.1	71.3 - 92.9	37,500

Marital Status (Grouped)	Yes			No			Estimated Population
	#	%	C.I. (95%)	#	%	C.I. (95%)	#
Married	9,600	23.7	9.1 - 38.3	31,000	76.3	61.7 - 90.9	40,600

Diabetes - now taking insulin by State, County, Island, Community, BRFSS Age Group, DOH Race-Ethnicity, Gender, Education Level, Employment Status (Grouped), Household Income, Poverty Level, Marital Status (Grouped), Married, Health Care Coverage, for the Year(s) - 2001, 2002, 2003, 2004, 2005, 2006, 2007, 2008, 2009, 2010

Note: Weighted numbers (#), percentages and 95% confidence intervals; Respondents aged 18 years and older; n/r (Not Reportable) - If the unweighted total responses for a dimension (row) is <50 that row will not be shown; n/a (Not Available) - Not asked of a subset of respondents

Year: 2004

Married	Yes			No			Estimated Population
	#	%	C.I. (95%)	#	%	C.I. (95%)	#
Yes	9,600	23.5	9.0 - 38.0	31,300	76.5	62.0 - 91.0	40,900
No	4,900	24.9	8.3 - 41.6	14,800	75.1	58.4 - 91.7	19,700

Health Care Coverage	Yes			No			Estimated Population
	#	%	C.I. (95%)	#	%	C.I. (95%)	#
Yes	13,200	22.6	11.5 - 33.8	45,000	77.4	66.2 - 88.5	58,100

Diabetes - now taking insulin by State, County, Island, Community, BRFSS Age Group, DOH Race-Ethnicity, Gender, Education Level, Employment Status (Grouped), Household Income, Poverty Level, Marital Status (Grouped), Married, Health Care Coverage, for the Year(s) - 2001, 2002, 2003, 2004, 2005, 2006, 2007, 2008, 2009, 2010

Note: Weighted numbers (#), percentages and 95% confidence intervals; Respondents aged 18 years and older; n/r (Not Reportable) - If the unweighted total responses for a dimension (row) is <50 that row will not be shown; n/a (Not Available) - Not asked of a subset of respondents

Year: 2003

State	Yes			No			Estimated Population
	#	%	C.I. (95%)	#	%	C.I. (95%)	#
Hawaii State	13,800	20.0	13.8 - 26.2	55,000	80.0	73.8 - 86.2	68,800

County	Yes			No			Estimated Population
	#	%	C.I. (95%)	#	%	C.I. (95%)	#
Hawaii	1,600	17.9	8.1 - 27.6	7,100	82.1	72.4 - 91.9	8,700
Honolulu	10,600	20.2	12.4 - 27.9	42,100	79.8	72.1 - 87.6	52,700

Diabetes - now taking insulin by State, County, Island, Community, BRFSS Age Group, DOH Race-Ethnicity, Gender, Education Level, Employment Status (Grouped), Household Income, Poverty Level, Marital Status (Grouped), Married, Health Care Coverage, for the Year(s) - 2001, 2002, 2003, 2004, 2005, 2006, 2007, 2008, 2009, 2010

Note: Weighted numbers (#), percentages and 95% confidence intervals; Respondents aged 18 years and older; n/r (Not Reportable) - If the unweighted total responses for a dimension (row) is <50 that row will not be shown; n/a (Not Available) - Not asked of a subset of respondents

Year: 2003

Island	Yes			No			Estimated Population
	#	%	C.I. (95%)	#	%	C.I. (95%)	#
Hawaii	1,600	17.9	8.1 - 27.6	7,100	82.1	72.4 - 91.9	8,700
Oahu	10,600	20.2	12.4 - 27.9	42,100	79.8	72.1 - 87.6	52,700

BRFSS Age Group	Yes			No			Estimated Population
	#	%	C.I. (95%)	#	%	C.I. (95%)	#
45-54	4,800	28.9	12.2 - 45.6	11,900	71.1	54.4 - 87.8	16,700
55-64	2,900	18.0	6.8 - 29.2	13,300	82.0	70.8 - 93.2	16,200
65-74	2,500	15.2	4.8 - 25.6	13,900	84.8	74.4 - 95.2	16,400
75+	2,100	22.1	9.2 - 35.0	7,500	77.9	65.0 - 90.8	9,700

Diabetes - now taking insulin by State, County, Island, Community, BRFSS Age Group, DOH Race-Ethnicity, Gender, Education Level, Employment Status (Grouped), Household Income, Poverty Level, Marital Status (Grouped), Married, Health Care Coverage, for the Year(s) - 2001, 2002, 2003, 2004, 2005, 2006, 2007, 2008, 2009, 2010

Note: Weighted numbers (#), percentages and 95% confidence intervals; Respondents aged 18 years and older; n/r (Not Reportable) - If the unweighted total responses for a dimension (row) is <50 that row will not be shown; n/a (Not Available) - Not asked of a subset of respondents

Year: 2003

DOH Race-Ethnicity	Yes			No			Estimated Population
	#	%	C.I. (95%)	#	%	C.I. (95%)	#
Caucasian	4,700	28.9	15.4 - 42.4	11,500	71.1	57.6 - 84.6	16,200
Japanese	3,200	17.3	6.4 - 28.3	15,100	82.7	71.7 - 93.6	18,200

Gender	Yes			No			Estimated Population
	#	%	C.I. (95%)	#	%	C.I. (95%)	#
Male	6,900	21.2	11.1 - 31.3	25,800	78.8	68.7 - 88.9	32,700
Female	6,800	18.9	11.5 - 26.3	29,300	81.1	73.7 - 88.5	36,100

Diabetes - now taking insulin by State, County, Island, Community, BRFSS Age Group, DOH Race-Ethnicity, Gender, Education Level, Employment Status (Grouped), Household Income, Poverty Level, Marital Status (Grouped), Married, Health Care Coverage, for the Year(s) - 2001, 2002, 2003, 2004, 2005, 2006, 2007, 2008, 2009, 2010

Note: Weighted numbers (#), percentages and 95% confidence intervals; Respondents aged 18 years and older; n/r (Not Reportable) - If the unweighted total responses for a dimension (row) is <50 that row will not be shown; n/a (Not Available) - Not asked of a subset of respondents

Year: 2003

Education Level	Yes			No			Estimated Population
	#	%	C.I. (95%)	#	%	C.I. (95%)	#
Grades 12 or GED (High School Grad)	6,300	26.4	14.1 - 38.7	17,700	73.6	61.3 - 85.9	24,000
College 1 to 3 years (Some College/ Tech)	2,300	12.4	2.9 - 21.9	15,900	87.6	78.1 - 97.1	18,200
College 4 years or more (College Grad)	3,600	19.2	8.8 - 29.6	15,200	80.8	70.4 - 91.2	18,800

Employment Status (Grouped)	Yes			No			Estimated Population
	#	%	C.I. (95%)	#	%	C.I. (95%)	#
Employed	5,200	16.9	7.3 - 26.5	25,700	83.1	73.5 - 92.7	30,900
Retired/Unable to work	6,500	20.2	12.2 - 28.2	25,700	79.8	71.8 - 87.8	32,200

Diabetes - now taking insulin by State, County, Island, Community, BRFSS Age Group, DOH Race-Ethnicity, Gender, Education Level, Employment Status (Grouped), Household Income, Poverty Level, Marital Status (Grouped), Married, Health Care Coverage, for the Year(s) - 2001, 2002, 2003, 2004, 2005, 2006, 2007, 2008, 2009, 2010

Note: Weighted numbers (#), percentages and 95% confidence intervals; Respondents aged 18 years and older; n/r (Not Reportable) - If the unweighted total responses for a dimension (row) is <50 that row will not be shown; n/a (Not Available) - Not asked of a subset of respondents

Year: 2003

Poverty Level	Yes			No			Estimated Population
	#	%	C.I. (95%)	#	%	C.I. (95%)	#
0-130%	3,800	20.3	8.8 - 31.7	14,900	79.7	68.3 - 91.2	18,700
186+%	7,600	26.0	14.8 - 37.3	21,500	74.0	62.7 - 85.2	29,000

Marital Status (Grouped)	Yes			No			Estimated Population
	#	%	C.I. (95%)	#	%	C.I. (95%)	#
Married	8,200	20.3	11.8 - 28.7	32,300	79.7	71.3 - 88.2	40,500
Widowed	2,500	20.5	7.2 - 33.8	9,500	79.5	66.2 - 92.8	12,000
Other	3,100	19.0	7.0 - 30.9	13,200	81.0	69.1 - 93.0	16,300

Diabetes - now taking insulin by State, County, Island, Community, BRFSS Age Group, DOH Race-Ethnicity, Gender, Education Level, Employment Status (Grouped), Household Income, Poverty Level, Marital Status (Grouped), Married, Health Care Coverage, for the Year(s) - 2001, 2002, 2003, 2004, 2005, 2006, 2007, 2008, 2009, 2010

Note: Weighted numbers (#), percentages and 95% confidence intervals; Respondents aged 18 years and older; n/r (Not Reportable) - If the unweighted total responses for a dimension (row) is <50 that row will not be shown; n/a (Not Available) - Not asked of a subset of respondents

Year: 2003

Married	Yes			No			Estimated Population
	#	%	C.I. (95%)	#	%	C.I. (95%)	#
Yes	8,200	20.1	11.7 - 28.4	32,700	79.9	71.6 - 88.3	41,000
No	5,500	20.0	10.9 - 29.0	22,200	80.0	71.0 - 89.1	27,700

Health Care Coverage	Yes			No			Estimated Population
	#	%	C.I. (95%)	#	%	C.I. (95%)	#
Yes	13,700	20.4	14.1 - 26.7	53,300	79.6	73.3 - 85.9	66,900

Diabetes - now taking insulin by State, County, Island, Community, BRFSS Age Group, DOH Race-Ethnicity, Gender, Education Level, Employment Status (Grouped), Household Income, Poverty Level, Marital Status (Grouped), Married, Health Care Coverage, for the Year(s) - 2001, 2002, 2003, 2004, 2005, 2006, 2007, 2008, 2009, 2010

Note: Weighted numbers (#), percentages and 95% confidence intervals; Respondents aged 18 years and older; n/r (Not Reportable) - If the unweighted total responses for a dimension (row) is <50 that row will not be shown; n/a (Not Available) - Not asked of a subset of respondents

Year: 2002

State	Yes			No			Estimated Population
	#	%	C.I. (95%)	#	%	C.I. (95%)	#
Hawaii State	10,600	20.2	14.9 - 25.4	42,000	79.8	74.6 - 85.1	52,600

County	Yes			No			Estimated Population
	#	%	C.I. (95%)	#	%	C.I. (95%)	#
Hawaii	1,300	22.1	11.8 - 32.3	4,500	77.9	67.7 - 88.2	5,800
Honolulu	8,000	20.6	13.9 - 27.3	31,000	79.4	72.7 - 86.1	39,100
Maui	700	14.4	5.9 - 22.9	4,400	85.6	77.1 - 94.1	5,200

Diabetes - now taking insulin by State, County, Island, Community, BRFSS Age Group, DOH Race-Ethnicity, Gender, Education Level, Employment Status (Grouped), Household Income, Poverty Level, Marital Status (Grouped), Married, Health Care Coverage, for the Year(s) - 2001, 2002, 2003, 2004, 2005, 2006, 2007, 2008, 2009, 2010

Note: Weighted numbers (#), percentages and 95% confidence intervals; Respondents aged 18 years and older; n/r (Not Reportable) - If the unweighted total responses for a dimension (row) is <50 that row will not be shown; n/a (Not Available) - Not asked of a subset of respondents

Year: 2002

Island	Yes			No			Estimated Population
	#	%	C.I. (95%)	#	%	C.I. (95%)	#
Hawaii	1,300	22.1	11.8 - 32.3	4,500	77.9	67.7 - 88.2	5,800
Oahu	8,000	20.6	13.9 - 27.3	31,000	79.4	72.7 - 86.1	39,100

BRFSS Age Group	Yes			No			Estimated Population
	#	%	C.I. (95%)	#	%	C.I. (95%)	#
45-54	2,500	29.6	14.3 - 44.8	6,000	70.4	55.2 - 85.7	8,500
55-64	2,500	20.4	9.4 - 31.3	9,900	79.6	68.7 - 90.6	12,500
65-74	2,300	18.7	8.2 - 29.1	10,200	81.3	70.9 - 91.8	12,500
75+	2,100	19.0	7.8 - 30.2	9,000	81.0	69.8 - 92.2	11,100

Diabetes - now taking insulin by State, County, Island, Community, BRFSS Age Group, DOH Race-Ethnicity, Gender, Education Level, Employment Status (Grouped), Household Income, Poverty Level, Marital Status (Grouped), Married, Health Care Coverage, for the Year(s) - 2001, 2002, 2003, 2004, 2005, 2006, 2007, 2008, 2009, 2010

Note: Weighted numbers (#), percentages and 95% confidence intervals; Respondents aged 18 years and older; n/r (Not Reportable) - If the unweighted total responses for a dimension (row) is <50 that row will not be shown; n/a (Not Available) - Not asked of a subset of respondents

Year: 2002

DOH Race-Ethnicity	Yes			No			Estimated Population
	#	%	C.I. (95%)	#	%	C.I. (95%)	#
Caucasian	2,600	23.7	11.1 - 36.2	8,300	76.3	63.8 - 88.9	10,900
Native Hawaiian	2,400	28.5	14.0 - 43.1	5,900	71.5	56.9 - 86.0	8,300
Filipino	1,300	15.6	5.5 - 25.7	7,300	84.4	74.3 - 94.5	8,600
Japanese	2,600	15.3	6.8 - 23.8	14,200	84.7	76.2 - 93.2	16,700

Gender	Yes			No			Estimated Population
	#	%	C.I. (95%)	#	%	C.I. (95%)	#
Male	4,700	21.3	13.5 - 29.0	17,300	78.7	71.0 - 86.5	21,900
Female	5,900	19.4	12.3 - 26.4	24,700	80.6	73.6 - 87.7	30,600

Diabetes - now taking insulin by State, County, Island, Community, BRFSS Age Group, DOH Race-Ethnicity, Gender, Education Level, Employment Status (Grouped), Household Income, Poverty Level, Marital Status (Grouped), Married, Health Care Coverage, for the Year(s) - 2001, 2002, 2003, 2004, 2005, 2006, 2007, 2008, 2009, 2010

Note: Weighted numbers (#), percentages and 95% confidence intervals; Respondents aged 18 years and older; n/r (Not Reportable) - If the unweighted total responses for a dimension (row) is <50 that row will not be shown; n/a (Not Available) - Not asked of a subset of respondents

Year: 2002

Education Level	Yes			No			Estimated Population
	#	%	C.I. (95%)	#	%	C.I. (95%)	#
Grades 12 or GED (High School Grad)	4,500	22.5	13.4 - 31.5	15,500	77.5	68.5 - 86.6	20,000
College 1 to 3 years (Some College/ Tech)	2,400	17.7	8.1 - 27.4	11,100	82.3	72.6 - 91.9	13,400
College 4 years or more (College Grad)	2,700	19.6	9.4 - 29.8	11,100	80.4	70.2 - 90.6	13,800

Employment Status (Grouped)	Yes			No			Estimated Population
	#	%	C.I. (95%)	#	%	C.I. (95%)	#
Employed	3,100	14.6	7.1 - 22.1	18,000	85.4	77.9 - 92.9	21,100
Retired/Unable to work	6,200	21.9	14.7 - 29.1	22,000	78.1	70.9 - 85.3	28,200

Diabetes - now taking insulin by State, County, Island, Community, BRFSS Age Group, DOH Race-Ethnicity, Gender, Education Level, Employment Status (Grouped), Household Income, Poverty Level, Marital Status (Grouped), Married, Health Care Coverage, for the Year(s) - 2001, 2002, 2003, 2004, 2005, 2006, 2007, 2008, 2009, 2010

Note: Weighted numbers (#), percentages and 95% confidence intervals; Respondents aged 18 years and older; n/r (Not Reportable) - If the unweighted total responses for a dimension (row) is <50 that row will not be shown; n/a (Not Available) - Not asked of a subset of respondents

Year: 2002

Household Income	Yes			No			Estimated Population
	#	%	C.I. (95%)	#	%	C.I. (95%)	#
\$35,000 to \$49,999	2,000	23.7	9.5 - 38.0	6,300	76.3	62.0 - 90.5	8,300

Poverty Level	Yes			No			Estimated Population
	#	%	C.I. (95%)	#	%	C.I. (95%)	#
0-130%	1,800	21.5	9.7 - 33.4	6,600	78.5	66.6 - 90.3	8,400
186+%	4,600	19.0	11.0 - 27.1	19,500	81.0	72.9 - 89.0	24,100

Diabetes - now taking insulin by State, County, Island, Community, BRFSS Age Group, DOH Race-Ethnicity, Gender, Education Level, Employment Status (Grouped), Household Income, Poverty Level, Marital Status (Grouped), Married, Health Care Coverage, for the Year(s) - 2001, 2002, 2003, 2004, 2005, 2006, 2007, 2008, 2009, 2010

Note: Weighted numbers (#), percentages and 95% confidence intervals; Respondents aged 18 years and older; n/r (Not Reportable) - If the unweighted total responses for a dimension (row) is <50 that row will not be shown; n/a (Not Available) - Not asked of a subset of respondents

Year: 2002

Marital Status (Grouped)	Yes			No			Estimated Population
	#	%	C.I. (95%)	#	%	C.I. (95%)	#
Married	6,400	18.9	12.5 - 25.4	27,400	81.1	74.6 - 87.5	33,800
Widowed	1,800	18.6	6.4 - 30.8	7,800	81.4	69.2 - 93.6	9,600
Other	2,400	26.6	13.8 - 39.5	6,600	73.4	60.5 - 86.2	9,000

Married	Yes			No			Estimated Population
	#	%	C.I. (95%)	#	%	C.I. (95%)	#
Yes	6,600	19.2	12.8 - 25.5	28,000	80.8	74.5 - 87.2	34,700
No	4,000	22.1	12.8 - 31.4	13,900	77.9	68.6 - 87.2	17,900

Diabetes - now taking insulin by State, County, Island, Community, BRFSS Age Group, DOH Race-Ethnicity, Gender, Education Level, Employment Status (Grouped), Household Income, Poverty Level, Marital Status (Grouped), Married, Health Care Coverage, for the Year(s) - 2001, 2002, 2003, 2004, 2005, 2006, 2007, 2008, 2009, 2010

Note: Weighted numbers (#), percentages and 95% confidence intervals; Respondents aged 18 years and older; n/r (Not Reportable) - If the unweighted total responses for a dimension (row) is <50 that row will not be shown; n/a (Not Available) - Not asked of a subset of respondents

Year: 2002

Health Care Coverage	Yes			No			Estimated Population
	#	%	C.I. (95%)	#	%	C.I. (95%)	#
Yes	10,300	20.2	14.8 - 25.5	40,900	79.8	74.5 - 85.2	51,200

Diabetes - now taking insulin by State, County, Island, Community, BRFSS Age Group, DOH Race-Ethnicity, Gender, Education Level, Employment Status (Grouped), Household Income, Poverty Level, Marital Status (Grouped), Married, Health Care Coverage, for the Year(s) - 2001, 2002, 2003, 2004, 2005, 2006, 2007, 2008, 2009, 2010

Note: Weighted numbers (#), percentages and 95% confidence intervals; Respondents aged 18 years and older; n/r (Not Reportable) - If the unweighted total responses for a dimension (row) is <50 that row will not be shown; n/a (Not Available) - Not asked of a subset of respondents

Year: 2001

State	Yes			No			Estimated Population
	#	%	C.I. (95%)	#	%	C.I. (95%)	#
Hawaii State	10,700	19.5	12.8 - 26.1	44,300	80.5	73.9 - 87.2	55,000

County	Yes			No			Estimated Population
	#	%	C.I. (95%)	#	%	C.I. (95%)	#
Hawaii	1,200	20.0	9.0 - 31.0	4,900	80.0	69.0 - 91.0	6,200
Honolulu	8,200	21.1	12.5 - 29.7	30,600	78.9	70.3 - 87.5	38,800
Maui	700	8.9	0.0 - 18.6	7,000	91.1	81.4 - 100.0	7,600

Diabetes - now taking insulin by State, County, Island, Community, BRFSS Age Group, DOH Race-Ethnicity, Gender, Education Level, Employment Status (Grouped), Household Income, Poverty Level, Marital Status (Grouped), Married, Health Care Coverage, for the Year(s) - 2001, 2002, 2003, 2004, 2005, 2006, 2007, 2008, 2009, 2010

Note: Weighted numbers (#), percentages and 95% confidence intervals; Respondents aged 18 years and older; n/r (Not Reportable) - If the unweighted total responses for a dimension (row) is <50 that row will not be shown; n/a (Not Available) - Not asked of a subset of respondents

Year: 2001

Island	Yes			No			Estimated Population
	#	%	C.I. (95%)	#	%	C.I. (95%)	#
Hawaii	1,200	20.0	9.0 - 31.0	4,900	80.0	69.0 - 91.0	6,200
Oahu	8,200	21.1	12.5 - 29.7	30,600	78.9	70.3 - 87.5	38,800

BRFSS Age Group	Yes			No			Estimated Population
	#	%	C.I. (95%)	#	%	C.I. (95%)	#
45-54	1,200	13.7	2.2 - 25.3	7,500	86.3	74.7 - 97.8	8,700
65-74	3,600	22.6	10.9 - 34.2	12,300	77.4	65.8 - 89.1	15,800

Diabetes - now taking insulin by State, County, Island, Community, BRFSS Age Group, DOH Race-Ethnicity, Gender, Education Level, Employment Status (Grouped), Household Income, Poverty Level, Marital Status (Grouped), Married, Health Care Coverage, for the Year(s) - 2001, 2002, 2003, 2004, 2005, 2006, 2007, 2008, 2009, 2010

Note: Weighted numbers (#), percentages and 95% confidence intervals; Respondents aged 18 years and older; n/r (Not Reportable) - If the unweighted total responses for a dimension (row) is <50 that row will not be shown; n/a (Not Available) - Not asked of a subset of respondents

Year: 2001

DOH Race-Ethnicity	Yes			No			Estimated Population
	#	%	C.I. (95%)	#	%	C.I. (95%)	#
Caucasian	2,900	27.8	13.1 - 42.5	7,600	72.2	57.5 - 86.9	10,600
Filipino	1,700	14.3	0.0 - 29.0	10,100	85.7	71.0 - 100.0	11,800
Japanese	2,500	16.8	5.6 - 27.9	12,400	83.2	72.1 - 94.4	14,900

Gender	Yes			No			Estimated Population
	#	%	C.I. (95%)	#	%	C.I. (95%)	#
Male	4,500	14.3	6.7 - 22.0	26,600	85.7	78.0 - 93.3	31,100
Female	6,200	26.1	15.5 - 36.8	17,700	73.9	63.2 - 84.5	23,900

Diabetes - now taking insulin by State, County, Island, Community, BRFSS Age Group, DOH Race-Ethnicity, Gender, Education Level, Employment Status (Grouped), Household Income, Poverty Level, Marital Status (Grouped), Married, Health Care Coverage, for the Year(s) - 2001, 2002, 2003, 2004, 2005, 2006, 2007, 2008, 2009, 2010

Note: Weighted numbers (#), percentages and 95% confidence intervals; Respondents aged 18 years and older; n/r (Not Reportable) - If the unweighted total responses for a dimension (row) is <50 that row will not be shown; n/a (Not Available) - Not asked of a subset of respondents

Year: 2001

Education Level	Yes			No			Estimated Population
	#	%	C.I. (95%)	#	%	C.I. (95%)	#
Grades 12 or GED (High School Grad)	3,200	16.4	7.2 - 25.5	16,500	83.6	74.5 - 92.8	19,800
College 1 to 3 years (Some College/ Tech)	2,200	11.4	2.3 - 20.6	16,700	88.6	79.4 - 97.7	18,900

Employment Status (Grouped)	Yes			No			Estimated Population
	#	%	C.I. (95%)	#	%	C.I. (95%)	#
Employed	3,800	15.8	6.2 - 25.4	20,200	84.2	74.6 - 93.8	24,000
Retired/Unable to work	6,300	22.2	12.7 - 31.7	22,000	77.8	68.3 - 87.3	28,200

Diabetes - now taking insulin by State, County, Island, Community, BRFSS Age Group, DOH Race-Ethnicity, Gender, Education Level, Employment Status (Grouped), Household Income, Poverty Level, Marital Status (Grouped), Married, Health Care Coverage, for the Year(s) - 2001, 2002, 2003, 2004, 2005, 2006, 2007, 2008, 2009, 2010

Note: Weighted numbers (#), percentages and 95% confidence intervals; Respondents aged 18 years and older; n/r (Not Reportable) - If the unweighted total responses for a dimension (row) is <50 that row will not be shown; n/a (Not Available) - Not asked of a subset of respondents

Year: 2001

Poverty Level	Yes			No			Estimated Population
	#	%	C.I. (95%)	#	%	C.I. (95%)	#
186+%	3,600	15.9	7.3 - 24.5	19,000	84.1	75.5 - 92.7	22,600

Marital Status (Grouped)	Yes			No			Estimated Population
	#	%	C.I. (95%)	#	%	C.I. (95%)	#
Married	6,800	18.5	9.9 - 27.0	30,000	81.5	73.0 - 90.1	36,800
Other	2,500	20.9	8.4 - 33.4	9,500	79.1	66.6 - 91.6	12,000

Diabetes - now taking insulin by State, County, Island, Community, BRFSS Age Group, DOH Race-Ethnicity, Gender, Education Level, Employment Status (Grouped), Household Income, Poverty Level, Marital Status (Grouped), Married, Health Care Coverage, for the Year(s) - 2001, 2002, 2003, 2004, 2005, 2006, 2007, 2008, 2009, 2010

Note: Weighted numbers (#), percentages and 95% confidence intervals; Respondents aged 18 years and older; n/r (Not Reportable) - If the unweighted total responses for a dimension (row) is <50 that row will not be shown; n/a (Not Available) - Not asked of a subset of respondents

Year: 2001

Married	Yes			No			Estimated Population
	#	%	C.I. (95%)	#	%	C.I. (95%)	#
Yes	7,000	18.6	10.2 - 26.9	30,600	81.4	73.1 - 89.8	37,600
No	3,700	21.4	11.1 - 31.7	13,700	78.6	68.3 - 88.9	17,400

Health Care Coverage	Yes			No			Estimated Population
	#	%	C.I. (95%)	#	%	C.I. (95%)	#
Yes	10,500	19.4	12.7 - 26.1	43,700	80.6	73.9 - 87.3	54,200