

Diabetes - eye prob, hlth prof. by State, County, Island, Community, BRFSS Age Group, DOH Race-Ethnicity, Gender, Education Level, Employment Status (Grouped), Household Income, Poverty Level, Marital Status (Grouped), Married, Health Care Coverage, for the Year(s) - 2001, 2002, 2003, 2004, 2005, 2006, 2007, 2008, 2009, 2010

Note: Weighted numbers (#), percentages and 95% confidence intervals; Respondents aged 18 years and older; n/r (Not Reportable) - If the unweighted total responses for a dimension (row) is <50 that row will not be shown; n/a (Not Available) - Not asked of a subset of respondents

The trend analysis report shows the trend for the selected health variable over selected years in a table and a graph. Estimated Population: This number is a weighted representation of the population who responded to a particular question in the survey. For most questions the eligible population will be the entire adult population. For some secondary questions only a subset of the population was asked the question. For example, all survey participants were asked if they had diabetes, but only those who answered yes were asked if they use insulin. If a dimension value is unknown for a particular survey record, that record will not be included in the counts for that particular dimension.

For documentation on other terms and coding in this report, please go to the following links

[Click here to access BRFSS documentation](#)

[Click here to access DOH Race-Ethnicity coding](#)

[Click here to access The Hawai'i Data Guide](#)

[Click here to access Poverty Level Methodology](#)

**For questions about this report, please contact
The Hawaii Health Data Warehouse**

profiles@hhdw.org

(855) 946-5899 x15

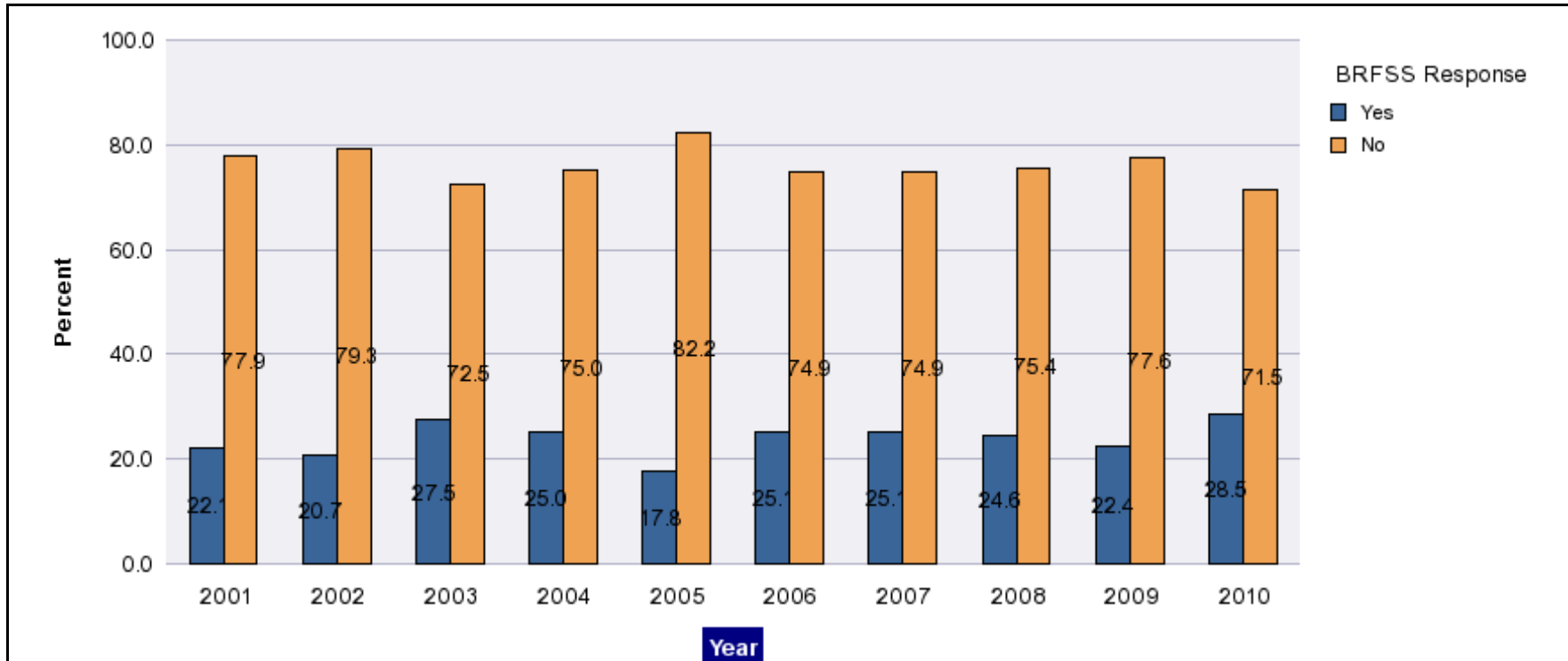
Diabetes - eye prob, hlth prof. by State, County, Island, Community, BRFSS Age Group, DOH Race-Ethnicity, Gender, Education Level, Employment Status (Grouped), Household Income, Poverty Level, Marital Status (Grouped), Married, Health Care Coverage, for the Year(s) - 2001, 2002, 2003, 2004, 2005, 2006, 2007, 2008, 2009, 2010

Note: Weighted numbers (#), percentages and 95% confidence intervals; Respondents aged 18 years and older; n/r (Not Reportable) - If the unweighted total responses for a dimension (row) is <50 that row will not be shown; n/a (Not Available) - Not asked of a subset of respondents

Year	Yes			No			Estimated Population
	#	%	C.I.(95%)	#	%	C.I.(95%)	#
2001	12,100	22.1	14.1 - 30.1	42,400	77.9	69.9 - 85.9	54,400
2002	10,800	20.7	15.1 - 26.2	41,400	79.3	73.8 - 84.9	52,200
2003	18,700	27.5	20.8 - 34.1	49,500	72.5	65.9 - 79.2	68,200
2004	15,100	25.0	14.7 - 35.3	45,200	75.0	64.7 - 85.3	60,200
2005	14,400	17.8	11.6 - 24.0	66,300	82.2	76.0 - 88.4	80,700
2006	18,900	25.1	20.1 - 30.2	56,300	74.9	69.8 - 79.9	75,200
2007	18,700	25.1	20.3 - 30.0	55,800	74.9	70.0 - 79.7	74,500
2008	20,000	24.6	19.9 - 29.3	61,200	75.4	70.7 - 80.1	81,200
2009	17,300	22.4	15.9 - 29.0	59,700	77.6	71.0 - 84.1	77,000
2010	23,300	28.5	23.4 - 33.5	58,600	71.5	66.5 - 76.6	81,900

Diabetes - eye prob, hlth prof. by State, County, Island, Community, BRFSS Age Group, DOH Race-Ethnicity, Gender, Education Level, Employment Status (Grouped), Household Income, Poverty Level, Marital Status (Grouped), Married, Health Care Coverage, for the Year(s) - 2001, 2002, 2003, 2004, 2005, 2006, 2007, 2008, 2009, 2010

Note: Weighted numbers (#), percentages and 95% confidence intervals; Respondents aged 18 years and older; n/r (Not Reportable) - If the unweighted total responses for a dimension (row) is <50 that row will not be shown; n/a (Not Available) - Not asked of a subset of respondents



Diabetes - eye prob, hlth prof. by State, County, Island, Community, BRFSS Age Group, DOH Race-Ethnicity, Gender, Education Level, Employment Status (Grouped), Household Income, Poverty Level, Marital Status (Grouped), Married, Health Care Coverage, for the Year(s) - 2001, 2002, 2003, 2004, 2005, 2006, 2007, 2008, 2009, 2010

Note: Weighted numbers (#), percentages and 95% confidence intervals; Respondents aged 18 years and older; n/r (Not Reportable) - If the unweighted total responses for a dimension (row) is <50 that row will not be shown; n/a (Not Available) - Not asked of a subset of respondents

Year: 2010

State	Yes			No			Estimated Population
	#	%	C.I. (95%)	#	%	C.I. (95%)	#
Hawaii State	23,300	28.5	23.4 - 33.5	58,600	71.5	66.5 - 76.6	81,900

County	Yes			No			Estimated Population
	#	%	C.I. (95%)	#	%	C.I. (95%)	#
Hawaii	3,100	27.6	19.2 - 36.1	8,200	72.4	63.9 - 80.8	11,400
Honolulu	17,100	29.0	22.4 - 35.7	41,800	71.0	64.3 - 77.6	59,000
Kauai	600	20.2	7.7 - 32.6	2,400	79.8	67.4 - 92.3	3,000
Maui	2,400	28.4	18.7 - 38.1	6,200	71.6	61.9 - 81.3	8,600

Diabetes - eye prob, hlth prof. by State, County, Island, Community, BRFSS Age Group, DOH Race-Ethnicity, Gender, Education Level, Employment Status (Grouped), Household Income, Poverty Level, Marital Status (Grouped), Married, Health Care Coverage, for the Year(s) - 2001, 2002, 2003, 2004, 2005, 2006, 2007, 2008, 2009, 2010

Note: Weighted numbers (#), percentages and 95% confidence intervals; Respondents aged 18 years and older; n/r (Not Reportable) - If the unweighted total responses for a dimension (row) is <50 that row will not be shown; n/a (Not Available) - Not asked of a subset of respondents

Year: 2010

Island	Yes			No			Estimated Population
	#	%	C.I. (95%)	#	%	C.I. (95%)	#
Hawaii	3,100	27.6	19.2 - 36.1	8,200	72.4	63.9 - 80.8	11,400
Kauai	600	20.2	7.7 - 32.6	2,400	79.8	67.4 - 92.3	3,000
Maui	2,200	28.6	17.9 - 39.3	5,400	71.4	60.7 - 82.1	7,600
Oahu	17,100	29.0	22.4 - 35.7	41,800	71.0	64.3 - 77.6	59,000

Diabetes - eye prob, hlth prof. by State, County, Island, Community, BRFSS Age Group, DOH Race-Ethnicity, Gender, Education Level, Employment Status (Grouped), Household Income, Poverty Level, Marital Status (Grouped), Married, Health Care Coverage, for the Year(s) - 2001, 2002, 2003, 2004, 2005, 2006, 2007, 2008, 2009, 2010

Note: Weighted numbers (#), percentages and 95% confidence intervals; Respondents aged 18 years and older; n/r (Not Reportable) - If the unweighted total responses for a dimension (row) is <50 that row will not be shown; n/a (Not Available) - Not asked of a subset of respondents

Year: 2010

Community	Yes			No			Estimated Population
	#	%	C.I. (95%)	#	%	C.I. (95%)	#
Hilo	1,100	27.5	12.9 - 42.0	2,900	72.5	58.0 - 87.1	3,900
Puna/ Kau	1,200	28.1	13.5 - 42.6	3,100	71.9	57.4 - 86.5	4,300
Waipahu/ Kapolei/ Ewa	4,200	32.6	16.1 - 49.0	8,800	67.4	51.0 - 83.9	13,000

Diabetes - eye prob, hlth prof. by State, County, Island, Community, BRFSS Age Group, DOH Race-Ethnicity, Gender, Education Level, Employment Status (Grouped), Household Income, Poverty Level, Marital Status (Grouped), Married, Health Care Coverage, for the Year(s) - 2001, 2002, 2003, 2004, 2005, 2006, 2007, 2008, 2009, 2010

Note: Weighted numbers (#), percentages and 95% confidence intervals; Respondents aged 18 years and older; n/r (Not Reportable) - If the unweighted total responses for a dimension (row) is <50 that row will not be shown; n/a (Not Available) - Not asked of a subset of respondents

Year: 2010

BRFSS Age Group	Yes			No			Estimated Population
	#	%	C.I. (95%)	#	%	C.I. (95%)	#
45-54	4,600	35.7	22.7 - 48.6	8,300	64.3	51.4 - 77.3	12,900
55-64	6,100	29.4	20.7 - 38.1	14,600	70.6	61.9 - 79.3	20,700
65-74	5,000	28.8	20.2 - 37.3	12,300	71.2	62.7 - 79.8	17,200
75+	3,400	20.0	11.7 - 28.3	13,600	80.0	71.7 - 88.3	17,000

Diabetes - eye prob, hlth prof. by State, County, Island, Community, BRFSS Age Group, DOH Race-Ethnicity, Gender, Education Level, Employment Status (Grouped), Household Income, Poverty Level, Marital Status (Grouped), Married, Health Care Coverage, for the Year(s) - 2001, 2002, 2003, 2004, 2005, 2006, 2007, 2008, 2009, 2010

Note: Weighted numbers (#), percentages and 95% confidence intervals; Respondents aged 18 years and older; n/r (Not Reportable) - If the unweighted total responses for a dimension (row) is <50 that row will not be shown; n/a (Not Available) - Not asked of a subset of respondents

Year: 2010

DOH Race-Ethnicity	Yes			No			Estimated Population
	#	%	C.I. (95%)	#	%	C.I. (95%)	#
Caucasian	4,100	24.5	15.4 - 33.6	12,800	75.5	66.4 - 84.6	16,900
Native Hawaiian	4,900	33.7	21.9 - 45.6	9,500	66.3	54.4 - 78.1	14,400
Filipino	6,700	40.8	25.7 - 55.8	9,700	59.2	44.2 - 74.3	16,400
Japanese	3,900	16.7	10.2 - 23.3	19,200	83.3	76.7 - 89.8	23,100

Gender	Yes			No			Estimated Population
	#	%	C.I. (95%)	#	%	C.I. (95%)	#
Male	14,700	34.4	26.5 - 42.3	27,900	65.6	57.7 - 73.5	42,500
Female	8,700	22.0	16.3 - 27.6	30,700	78.0	72.4 - 83.7	39,400

Diabetes - eye prob, hlth prof. by State, County, Island, Community, BRFSS Age Group, DOH Race-Ethnicity, Gender, Education Level, Employment Status (Grouped), Household Income, Poverty Level, Marital Status (Grouped), Married, Health Care Coverage, for the Year(s) - 2001, 2002, 2003, 2004, 2005, 2006, 2007, 2008, 2009, 2010

Note: Weighted numbers (#), percentages and 95% confidence intervals; Respondents aged 18 years and older; n/r (Not Reportable) - If the unweighted total responses for a dimension (row) is <50 that row will not be shown; n/a (Not Available) - Not asked of a subset of respondents

Year: 2010

Education Level	Yes			No			Estimated Population
	#	%	C.I. (95%)	#	%	C.I. (95%)	#
Grades 12 or GED (High School Grad)	9,900	34.9	25.7 - 44.1	18,400	65.1	55.9 - 74.3	28,300
College 1 to 3 years (Some College/ Tech)	5,100	23.1	15.5 - 30.7	17,100	76.9	69.3 - 84.5	22,300
College 4 years or more (College Grad)	6,100	23.7	14.3 - 33.1	19,800	76.3	66.9 - 85.7	25,900

Employment Status (Grouped)	Yes			No			Estimated Population
	#	%	C.I. (95%)	#	%	C.I. (95%)	#
Employed	9,700	29.0	19.8 - 38.2	23,800	71.0	61.8 - 80.2	33,500
Retired/Unable to work	9,900	25.5	19.9 - 31.2	28,900	74.5	68.8 - 80.1	38,900

Diabetes - eye prob, hlth prof. by State, County, Island, Community, BRFSS Age Group, DOH Race-Ethnicity, Gender, Education Level, Employment Status (Grouped), Household Income, Poverty Level, Marital Status (Grouped), Married, Health Care Coverage, for the Year(s) - 2001, 2002, 2003, 2004, 2005, 2006, 2007, 2008, 2009, 2010

Note: Weighted numbers (#), percentages and 95% confidence intervals; Respondents aged 18 years and older; n/r (Not Reportable) - If the unweighted total responses for a dimension (row) is <50 that row will not be shown; n/a (Not Available) - Not asked of a subset of respondents

Year: 2010

Household Income	Yes			No			Estimated Population
	#	%	C.I. (95%)	#	%	C.I. (95%)	#
\$15,000 to \$19,999	3,200	52.7	35.2 - 70.3	2,900	47.3	29.7 - 64.8	6,000
\$20,000 to \$24,999	1,700	24.2	8.7 - 39.7	5,300	75.8	60.3 - 91.3	7,000
\$25,000 to \$34,999	2,100	24.4	12.0 - 36.7	6,500	75.6	63.3 - 88.0	8,600
\$35,000 to \$49,999	5,500	33.8	20.8 - 46.7	10,800	66.2	53.3 - 79.2	16,300
\$50,000 to \$74,999	3,000	26.1	15.1 - 37.1	8,500	73.9	62.9 - 84.9	11,500
\$75,000 or more	3,000	16.3	4.6 - 28.0	15,300	83.7	72.0 - 95.4	18,200

Diabetes - eye prob, hlth prof. by State, County, Island, Community, BRFSS Age Group, DOH Race-Ethnicity, Gender, Education Level, Employment Status (Grouped), Household Income, Poverty Level, Marital Status (Grouped), Married, Health Care Coverage, for the Year(s) - 2001, 2002, 2003, 2004, 2005, 2006, 2007, 2008, 2009, 2010

Note: Weighted numbers (#), percentages and 95% confidence intervals; Respondents aged 18 years and older; n/r (Not Reportable) - If the unweighted total responses for a dimension (row) is <50 that row will not be shown; n/a (Not Available) - Not asked of a subset of respondents

Year: 2010

Poverty Level	Yes			No			Estimated Population
	#	%	C.I. (95%)	#	%	C.I. (95%)	#
0-130%	8,400	39.9	28.3 - 51.5	12,700	60.1	48.5 - 71.7	21,100
131-185%	6,300	40.1	25.9 - 54.2	9,500	59.9	45.8 - 74.1	15,800
186+%	6,900	17.9	13.2 - 22.6	31,800	82.1	77.4 - 86.8	38,700

Marital Status (Grouped)	Yes			No			Estimated Population
	#	%	C.I. (95%)	#	%	C.I. (95%)	#
Married	15,600	29.0	22.7 - 35.3	38,300	71.0	64.7 - 77.3	53,900
Widowed	1,500	16.6	7.7 - 25.6	7,500	83.4	74.4 - 92.3	8,900
Other	6,200	33.7	22.1 - 45.2	12,200	66.3	54.8 - 77.9	18,400

Diabetes - eye prob, hlth prof. by State, County, Island, Community, BRFSS Age Group, DOH Race-Ethnicity, Gender, Education Level, Employment Status (Grouped), Household Income, Poverty Level, Marital Status (Grouped), Married, Health Care Coverage, for the Year(s) - 2001, 2002, 2003, 2004, 2005, 2006, 2007, 2008, 2009, 2010

Note: Weighted numbers (#), percentages and 95% confidence intervals; Respondents aged 18 years and older; n/r (Not Reportable) - If the unweighted total responses for a dimension (row) is <50 that row will not be shown; n/a (Not Available) - Not asked of a subset of respondents

Year: 2010

Married	Yes			No			Estimated Population
	#	%	C.I. (95%)	#	%	C.I. (95%)	#
Yes	16,000	29.3	23.1 - 35.5	38,600	70.7	64.5 - 76.9	54,600
No	7,300	26.8	18.2 - 35.4	19,900	73.2	64.6 - 81.8	27,200

Health Care Coverage	Yes			No			Estimated Population
	#	%	C.I. (95%)	#	%	C.I. (95%)	#
Yes	22,600	28.7	23.5 - 33.8	56,200	71.3	66.2 - 76.5	78,800

Diabetes - eye prob, hlth prof. by State, County, Island, Community, BRFSS Age Group, DOH Race-Ethnicity, Gender, Education Level, Employment Status (Grouped), Household Income, Poverty Level, Marital Status (Grouped), Married, Health Care Coverage, for the Year(s) - 2001, 2002, 2003, 2004, 2005, 2006, 2007, 2008, 2009, 2010

Note: Weighted numbers (#), percentages and 95% confidence intervals; Respondents aged 18 years and older; n/r (Not Reportable) - If the unweighted total responses for a dimension (row) is <50 that row will not be shown; n/a (Not Available) - Not asked of a subset of respondents

Year: 2009

State	Yes			No			Estimated Population
	#	%	C.I. (95%)	#	%	C.I. (95%)	#
Hawaii State	17,300	22.4	15.9 - 29.0	59,700	77.6	71.0 - 84.1	77,000

County	Yes			No			Estimated Population
	#	%	C.I. (95%)	#	%	C.I. (95%)	#
Hawaii	2,600	20.8	10.0 - 31.6	9,900	79.2	68.4 - 90.0	12,500
Honolulu	11,400	22.6	13.6 - 31.5	39,200	77.4	68.5 - 86.4	50,700
Maui	2,100	21.8	5.8 - 37.7	7,700	78.2	62.3 - 94.2	9,900

Diabetes - eye prob, hlth prof. by State, County, Island, Community, BRFSS Age Group, DOH Race-Ethnicity, Gender, Education Level, Employment Status (Grouped), Household Income, Poverty Level, Marital Status (Grouped), Married, Health Care Coverage, for the Year(s) - 2001, 2002, 2003, 2004, 2005, 2006, 2007, 2008, 2009, 2010

Note: Weighted numbers (#), percentages and 95% confidence intervals; Respondents aged 18 years and older; n/r (Not Reportable) - If the unweighted total responses for a dimension (row) is <50 that row will not be shown; n/a (Not Available) - Not asked of a subset of respondents

Year: 2009

Island	Yes			No			Estimated Population
	#	%	C.I. (95%)	#	%	C.I. (95%)	#
Hawaii	2,600	20.8	10.0 - 31.6	9,900	79.2	68.4 - 90.0	12,500
Maui	1,900	21.9	4.1 - 39.7	6,800	78.1	60.3 - 95.9	8,800
Oahu	11,400	22.6	13.6 - 31.5	39,200	77.4	68.5 - 86.4	50,700

Diabetes - eye prob, hlth prof. by State, County, Island, Community, BRFSS Age Group, DOH Race-Ethnicity, Gender, Education Level, Employment Status (Grouped), Household Income, Poverty Level, Marital Status (Grouped), Married, Health Care Coverage, for the Year(s) - 2001, 2002, 2003, 2004, 2005, 2006, 2007, 2008, 2009, 2010

Note: Weighted numbers (#), percentages and 95% confidence intervals; Respondents aged 18 years and older; n/r (Not Reportable) - If the unweighted total responses for a dimension (row) is <50 that row will not be shown; n/a (Not Available) - Not asked of a subset of respondents

Year: 2009

BRFSS Age Group	Yes			No			Estimated Population
	#	%	C.I. (95%)	#	%	C.I. (95%)	#
45-54	4,900	35.6	14.9 - 56.4	8,900	64.4	43.6 - 85.1	13,800
55-64	3,600	19.9	8.4 - 31.5	14,400	80.1	68.5 - 91.6	18,000
65-74	3,300	20.6	7.8 - 33.3	12,800	79.4	66.7 - 92.2	16,100
75+	4,500	24.6	13.0 - 36.3	13,700	75.4	63.7 - 87.0	18,200

Diabetes - eye prob, hlth prof. by State, County, Island, Community, BRFSS Age Group, DOH Race-Ethnicity, Gender, Education Level, Employment Status (Grouped), Household Income, Poverty Level, Marital Status (Grouped), Married, Health Care Coverage, for the Year(s) - 2001, 2002, 2003, 2004, 2005, 2006, 2007, 2008, 2009, 2010

Note: Weighted numbers (#), percentages and 95% confidence intervals; Respondents aged 18 years and older; n/r (Not Reportable) - If the unweighted total responses for a dimension (row) is <50 that row will not be shown; n/a (Not Available) - Not asked of a subset of respondents

Year: 2009

DOH Race-Ethnicity	Yes			No			Estimated Population
	#	%	C.I. (95%)	#	%	C.I. (95%)	#
Caucasian	2,200	16.4	3.6 - 29.3	11,400	83.6	70.7 - 96.4	13,600
Native Hawaiian	2,400	16.2	5.3 - 27.1	12,600	83.8	72.9 - 94.7	15,000
Filipino	4,800	37.9	15.9 - 59.9	7,900	62.1	40.1 - 84.1	12,800
Japanese	4,700	18.5	9.7 - 27.3	20,600	81.5	72.7 - 90.3	25,300

Gender	Yes			No			Estimated Population
	#	%	C.I. (95%)	#	%	C.I. (95%)	#
Male	7,700	21.3	10.9 - 31.7	28,300	78.7	68.3 - 89.1	36,000
Female	9,600	23.4	15.1 - 31.7	31,400	76.6	68.3 - 84.9	41,000

Diabetes - eye prob, hlth prof. by State, County, Island, Community, BRFSS Age Group, DOH Race-Ethnicity, Gender, Education Level, Employment Status (Grouped), Household Income, Poverty Level, Marital Status (Grouped), Married, Health Care Coverage, for the Year(s) - 2001, 2002, 2003, 2004, 2005, 2006, 2007, 2008, 2009, 2010

Note: Weighted numbers (#), percentages and 95% confidence intervals; Respondents aged 18 years and older; n/r (Not Reportable) - If the unweighted total responses for a dimension (row) is <50 that row will not be shown; n/a (Not Available) - Not asked of a subset of respondents

Year: 2009

Education Level	Yes			No			Estimated Population
	#	%	C.I. (95%)	#	%	C.I. (95%)	#
Grades 12 or GED (High School Grad)	6,800	24.3	11.1 - 37.6	21,000	75.7	62.4 - 88.9	27,800
College 1 to 3 years (Some College/ Tech)	3,100	14.8	6.4 - 23.2	18,000	85.2	76.8 - 93.6	21,100
College 4 years or more (College Grad)	4,900	22.7	13.2 - 32.2	16,700	77.3	67.8 - 86.8	21,600

Employment Status (Grouped)	Yes			No			Estimated Population
	#	%	C.I. (95%)	#	%	C.I. (95%)	#
Employed	7,800	20.8	10.6 - 31.0	29,700	79.2	69.0 - 89.4	37,500
Retired/Unable to work	6,400	19.8	11.5 - 28.2	26,100	80.2	71.8 - 88.5	32,500

Diabetes - eye prob, hlth prof. by State, County, Island, Community, BRFSS Age Group, DOH Race-Ethnicity, Gender, Education Level, Employment Status (Grouped), Household Income, Poverty Level, Marital Status (Grouped), Married, Health Care Coverage, for the Year(s) - 2001, 2002, 2003, 2004, 2005, 2006, 2007, 2008, 2009, 2010

Note: Weighted numbers (#), percentages and 95% confidence intervals; Respondents aged 18 years and older; n/r (Not Reportable) - If the unweighted total responses for a dimension (row) is <50 that row will not be shown; n/a (Not Available) - Not asked of a subset of respondents

Year: 2009

Household Income	Yes			No			Estimated Population
	#	%	C.I. (95%)	#	%	C.I. (95%)	#
\$35,000 to \$49,999	3,300	31.2	13.9 - 48.4	7,300	68.8	51.6 - 86.1	10,600
\$75,000 or more	4,000	19.9	8.1 - 31.6	15,900	80.1	68.4 - 91.9	19,900

Poverty Level	Yes			No			Estimated Population
	#	%	C.I. (95%)	#	%	C.I. (95%)	#
0-130%	3,700	20.3	7.4 - 33.2	14,400	79.7	66.8 - 92.6	18,100
131-185%	1,900	16.5	7.4 - 25.6	9,400	83.5	74.4 - 92.6	11,300
186+%	8,100	21.3	13.4 - 29.2	29,900	78.7	70.8 - 86.6	38,000

Diabetes - eye prob, hlth prof. by State, County, Island, Community, BRFSS Age Group, DOH Race-Ethnicity, Gender, Education Level, Employment Status (Grouped), Household Income, Poverty Level, Marital Status (Grouped), Married, Health Care Coverage, for the Year(s) - 2001, 2002, 2003, 2004, 2005, 2006, 2007, 2008, 2009, 2010

Note: Weighted numbers (#), percentages and 95% confidence intervals; Respondents aged 18 years and older; n/r (Not Reportable) - If the unweighted total responses for a dimension (row) is <50 that row will not be shown; n/a (Not Available) - Not asked of a subset of respondents

Year: 2009

Marital Status (Grouped)	Yes			No			Estimated Population
	#	%	C.I. (95%)	#	%	C.I. (95%)	#
Married	9,200	19.8	12.1 - 27.5	37,300	80.2	72.5 - 87.9	46,500
Widowed	3,100	30.6	14.3 - 46.8	7,100	69.4	53.2 - 85.7	10,300
Other	4,600	24.1	8.1 - 40.1	14,600	75.9	59.9 - 91.9	19,200

Married	Yes			No			Estimated Population
	#	%	C.I. (95%)	#	%	C.I. (95%)	#
Yes	11,300	22.9	13.9 - 31.9	37,900	77.1	68.1 - 86.1	49,100
No	6,000	21.8	13.1 - 30.5	21,500	78.2	69.5 - 86.9	27,500

Diabetes - eye prob, hlth prof. by State, County, Island, Community, BRFSS Age Group, DOH Race-Ethnicity, Gender, Education Level, Employment Status (Grouped), Household Income, Poverty Level, Marital Status (Grouped), Married, Health Care Coverage, for the Year(s) - 2001, 2002, 2003, 2004, 2005, 2006, 2007, 2008, 2009, 2010

Note: Weighted numbers (#), percentages and 95% confidence intervals; Respondents aged 18 years and older; n/r (Not Reportable) - If the unweighted total responses for a dimension (row) is <50 that row will not be shown; n/a (Not Available) - Not asked of a subset of respondents

Year: 2008

State	Yes			No			Estimated Population
	#	%	C.I. (95%)	#	%	C.I. (95%)	#
Hawaii State	20,000	24.6	19.9 - 29.3	61,200	75.4	70.7 - 80.1	81,200

County	Yes			No			Estimated Population
	#	%	C.I. (95%)	#	%	C.I. (95%)	#
Hawaii	1,800	18.9	10.5 - 27.3	7,900	81.1	72.7 - 89.5	9,700
Honolulu	14,300	23.8	18.0 - 29.7	45,700	76.2	70.3 - 82.0	59,900
Kauai	1,400	33.4	19.8 - 46.9	2,700	66.6	53.1 - 80.2	4,100
Maui	2,500	33.6	19.5 - 47.6	5,000	66.4	52.4 - 80.5	7,500

Diabetes - eye prob, hlth prof. by State, County, Island, Community, BRFSS Age Group, DOH Race-Ethnicity, Gender, Education Level, Employment Status (Grouped), Household Income, Poverty Level, Marital Status (Grouped), Married, Health Care Coverage, for the Year(s) - 2001, 2002, 2003, 2004, 2005, 2006, 2007, 2008, 2009, 2010

Note: Weighted numbers (#), percentages and 95% confidence intervals; Respondents aged 18 years and older; n/r (Not Reportable) - If the unweighted total responses for a dimension (row) is <50 that row will not be shown; n/a (Not Available) - Not asked of a subset of respondents

Year: 2008

Island	Yes			No			Estimated Population
	#	%	C.I. (95%)	#	%	C.I. (95%)	#
Hawaii	1,800	18.9	10.5 - 27.3	7,900	81.1	72.7 - 89.5	9,700
Kauai	1,400	33.4	19.8 - 46.9	2,700	66.6	53.1 - 80.2	4,100
Maui	2,200	32.9	17.2 - 48.6	4,500	67.1	51.4 - 82.8	6,700
Oahu	14,300	23.8	18.0 - 29.7	45,700	76.2	70.3 - 82.0	59,900

Diabetes - eye prob, hlth prof. by State, County, Island, Community, BRFSS Age Group, DOH Race-Ethnicity, Gender, Education Level, Employment Status (Grouped), Household Income, Poverty Level, Marital Status (Grouped), Married, Health Care Coverage, for the Year(s) - 2001, 2002, 2003, 2004, 2005, 2006, 2007, 2008, 2009, 2010

Note: Weighted numbers (#), percentages and 95% confidence intervals; Respondents aged 18 years and older; n/r (Not Reportable) - If the unweighted total responses for a dimension (row) is <50 that row will not be shown; n/a (Not Available) - Not asked of a subset of respondents

Year: 2008

BRFSS Age Group	Yes			No			Estimated Population
	#	%	C.I. (95%)	#	%	C.I. (95%)	#
45-54	4,100	29.4	16.4 - 42.4	9,900	70.6	57.6 - 83.6	14,000
55-64	5,200	25.1	16.6 - 33.7	15,600	74.9	66.3 - 83.4	20,900
65-74	3,600	23.3	14.4 - 32.1	11,800	76.7	67.9 - 85.6	15,400
75+	4,300	25.1	14.5 - 35.8	12,700	74.9	64.2 - 85.5	17,000

Diabetes - eye prob, hlth prof. by State, County, Island, Community, BRFSS Age Group, DOH Race-Ethnicity, Gender, Education Level, Employment Status (Grouped), Household Income, Poverty Level, Marital Status (Grouped), Married, Health Care Coverage, for the Year(s) - 2001, 2002, 2003, 2004, 2005, 2006, 2007, 2008, 2009, 2010

Note: Weighted numbers (#), percentages and 95% confidence intervals; Respondents aged 18 years and older; n/r (Not Reportable) - If the unweighted total responses for a dimension (row) is <50 that row will not be shown; n/a (Not Available) - Not asked of a subset of respondents

Year: 2008

DOH Race-Ethnicity	Yes			No			Estimated Population
	#	%	C.I. (95%)	#	%	C.I. (95%)	#
Caucasian	2,100	13.3	7.0 - 19.6	13,400	86.7	80.4 - 93.0	15,500
Native Hawaiian	4,400	30.7	19.5 - 41.9	9,900	69.3	58.1 - 80.5	14,200
Filipino	6,900	41.5	28.0 - 55.0	9,800	58.5	45.0 - 72.0	16,700
Japanese	4,100	19.9	12.4 - 27.4	16,600	80.1	72.6 - 87.6	20,700

Gender	Yes			No			Estimated Population
	#	%	C.I. (95%)	#	%	C.I. (95%)	#
Male	10,000	26.0	18.6 - 33.3	28,500	74.0	66.7 - 81.4	38,500
Female	10,000	23.4	17.4 - 29.4	32,700	76.6	70.6 - 82.6	42,700

Diabetes - eye prob, hlth prof. by State, County, Island, Community, BRFSS Age Group, DOH Race-Ethnicity, Gender, Education Level, Employment Status (Grouped), Household Income, Poverty Level, Marital Status (Grouped), Married, Health Care Coverage, for the Year(s) - 2001, 2002, 2003, 2004, 2005, 2006, 2007, 2008, 2009, 2010

Note: Weighted numbers (#), percentages and 95% confidence intervals; Respondents aged 18 years and older; n/r (Not Reportable) - If the unweighted total responses for a dimension (row) is <50 that row will not be shown; n/a (Not Available) - Not asked of a subset of respondents

Year: 2008

Education Level	Yes			No			Estimated Population
	#	%	C.I. (95%)	#	%	C.I. (95%)	#
Grades 12 or GED (High School Grad)	7,900	32.1	22.9 - 41.3	16,600	67.9	58.7 - 77.1	24,500
College 1 to 3 years (Some College/ Tech)	5,900	22.8	14.1 - 31.6	20,000	77.2	68.4 - 85.9	25,900
College 4 years or more (College Grad)	4,800	19.9	12.2 - 27.6	19,400	80.1	72.4 - 87.8	24,200

Employment Status (Grouped)	Yes			No			Estimated Population
	#	%	C.I. (95%)	#	%	C.I. (95%)	#
Employed	8,800	26.2	18.3 - 34.2	24,800	73.8	65.8 - 81.7	33,700
Retired/Unable to work	10,100	25.5	19.2 - 31.9	29,500	74.5	68.1 - 80.8	39,600

Diabetes - eye prob, hlth prof. by State, County, Island, Community, BRFSS Age Group, DOH Race-Ethnicity, Gender, Education Level, Employment Status (Grouped), Household Income, Poverty Level, Marital Status (Grouped), Married, Health Care Coverage, for the Year(s) - 2001, 2002, 2003, 2004, 2005, 2006, 2007, 2008, 2009, 2010

Note: Weighted numbers (#), percentages and 95% confidence intervals; Respondents aged 18 years and older; n/r (Not Reportable) - If the unweighted total responses for a dimension (row) is <50 that row will not be shown; n/a (Not Available) - Not asked of a subset of respondents

Year: 2008

Household Income	Yes			No			Estimated Population
	#	%	C.I. (95%)	#	%	C.I. (95%)	#
\$20,000 to \$24,999	1,600	30.9	15.9 - 45.8	3,500	69.1	54.2 - 84.1	5,100
\$25,000 to \$34,999	3,300	30.2	16.8 - 43.6	7,600	69.8	56.4 - 83.2	10,900
\$35,000 to \$49,999	2,100	15.8	5.6 - 26.1	11,200	84.2	73.9 - 94.4	13,300
\$50,000 to \$74,999	4,700	30.0	17.5 - 42.6	11,000	70.0	57.4 - 82.5	15,700
\$75,000 or more	3,500	18.9	9.9 - 28.0	15,100	81.1	72.0 - 90.1	18,600

Diabetes - eye prob, hlth prof. by State, County, Island, Community, BRFSS Age Group, DOH Race-Ethnicity, Gender, Education Level, Employment Status (Grouped), Household Income, Poverty Level, Marital Status (Grouped), Married, Health Care Coverage, for the Year(s) - 2001, 2002, 2003, 2004, 2005, 2006, 2007, 2008, 2009, 2010

Note: Weighted numbers (#), percentages and 95% confidence intervals; Respondents aged 18 years and older; n/r (Not Reportable) - If the unweighted total responses for a dimension (row) is <50 that row will not be shown; n/a (Not Available) - Not asked of a subset of respondents

Year: 2008

Poverty Level	Yes			No			Estimated Population
	#	%	C.I. (95%)	#	%	C.I. (95%)	#
0-130%	5,500	33.9	22.1 - 45.7	10,800	66.1	54.3 - 77.9	16,300
131-185%	2,300	23.5	9.1 - 37.9	7,600	76.5	62.1 - 90.9	9,900
186+%	10,500	21.8	16.1 - 27.5	37,800	78.2	72.5 - 83.9	48,300

Marital Status (Grouped)	Yes			No			Estimated Population
	#	%	C.I. (95%)	#	%	C.I. (95%)	#
Married	11,200	22.5	16.1 - 28.9	38,400	77.5	71.1 - 83.9	49,600
Widowed	2,300	24.3	14.3 - 34.3	7,200	75.7	65.7 - 85.7	9,500
Other	6,500	30.2	21.3 - 39.1	14,900	69.8	60.9 - 78.7	21,400

Diabetes - eye prob, hlth prof. by State, County, Island, Community, BRFSS Age Group, DOH Race-Ethnicity, Gender, Education Level, Employment Status (Grouped), Household Income, Poverty Level, Marital Status (Grouped), Married, Health Care Coverage, for the Year(s) - 2001, 2002, 2003, 2004, 2005, 2006, 2007, 2008, 2009, 2010

Note: Weighted numbers (#), percentages and 95% confidence intervals; Respondents aged 18 years and older; n/r (Not Reportable) - If the unweighted total responses for a dimension (row) is <50 that row will not be shown; n/a (Not Available) - Not asked of a subset of respondents

Year: 2008

Married	Yes			No			Estimated Population
	#	%	C.I. (95%)	#	%	C.I. (95%)	#
Yes	11,600	22.6	16.3 - 29.0	39,500	77.4	71.0 - 83.7	51,100
No	8,400	28.0	21.2 - 34.9	21,700	72.0	65.1 - 78.8	30,200

Health Care Coverage	Yes			No			Estimated Population
	#	%	C.I. (95%)	#	%	C.I. (95%)	#
Yes	19,300	24.6	19.9 - 29.3	59,200	75.4	70.7 - 80.1	78,500

Diabetes - eye prob, hlth prof. by State, County, Island, Community, BRFSS Age Group, DOH Race-Ethnicity, Gender, Education Level, Employment Status (Grouped), Household Income, Poverty Level, Marital Status (Grouped), Married, Health Care Coverage, for the Year(s) - 2001, 2002, 2003, 2004, 2005, 2006, 2007, 2008, 2009, 2010

Note: Weighted numbers (#), percentages and 95% confidence intervals; Respondents aged 18 years and older; n/r (Not Reportable) - If the unweighted total responses for a dimension (row) is <50 that row will not be shown; n/a (Not Available) - Not asked of a subset of respondents

Year: 2007

State	Yes			No			Estimated Population
	#	%	C.I. (95%)	#	%	C.I. (95%)	#
Hawaii State	18,700	25.1	20.3 - 30.0	55,800	74.9	70.0 - 79.7	74,500

County	Yes			No			Estimated Population
	#	%	C.I. (95%)	#	%	C.I. (95%)	#
Hawaii	1,600	17.9	11.0 - 24.9	7,200	82.1	75.1 - 89.0	8,800
Honolulu	13,800	25.6	19.2 - 32.0	40,100	74.4	68.0 - 80.8	53,800
Maui	2,600	30.2	20.2 - 40.3	6,000	69.8	59.7 - 79.8	8,600

Diabetes - eye prob, hlth prof. by State, County, Island, Community, BRFSS Age Group, DOH Race-Ethnicity, Gender, Education Level, Employment Status (Grouped), Household Income, Poverty Level, Marital Status (Grouped), Married, Health Care Coverage, for the Year(s) - 2001, 2002, 2003, 2004, 2005, 2006, 2007, 2008, 2009, 2010

Note: Weighted numbers (#), percentages and 95% confidence intervals; Respondents aged 18 years and older; n/r (Not Reportable) - If the unweighted total responses for a dimension (row) is <50 that row will not be shown; n/a (Not Available) - Not asked of a subset of respondents

Year: 2007

Island	Yes			No			Estimated Population
	#	%	C.I. (95%)	#	%	C.I. (95%)	#
Hawaii	1,600	17.9	11.0 - 24.9	7,200	82.1	75.1 - 89.0	8,800
Maui	2,300	29.4	18.3 - 40.4	5,400	70.6	59.6 - 81.7	7,700
Oahu	13,800	25.6	19.2 - 32.0	40,100	74.4	68.0 - 80.8	53,800

Diabetes - eye prob, hlth prof. by State, County, Island, Community, BRFSS Age Group, DOH Race-Ethnicity, Gender, Education Level, Employment Status (Grouped), Household Income, Poverty Level, Marital Status (Grouped), Married, Health Care Coverage, for the Year(s) - 2001, 2002, 2003, 2004, 2005, 2006, 2007, 2008, 2009, 2010

Note: Weighted numbers (#), percentages and 95% confidence intervals; Respondents aged 18 years and older; n/r (Not Reportable) - If the unweighted total responses for a dimension (row) is <50 that row will not be shown; n/a (Not Available) - Not asked of a subset of respondents

Year: 2007

BRFSS Age Group	Yes			No			Estimated Population
	#	%	C.I. (95%)	#	%	C.I. (95%)	#
45-54	4,300	27.3	15.9 - 38.6	11,500	72.7	61.4 - 84.1	15,800
55-64	5,800	30.8	19.8 - 41.8	13,000	69.2	58.2 - 80.2	18,800
65-74	4,400	25.1	15.8 - 34.4	13,200	74.9	65.6 - 84.2	17,600
75+	3,000	22.6	13.0 - 32.2	10,400	77.4	67.8 - 87.0	13,400

Diabetes - eye prob, hlth prof. by State, County, Island, Community, BRFSS Age Group, DOH Race-Ethnicity, Gender, Education Level, Employment Status (Grouped), Household Income, Poverty Level, Marital Status (Grouped), Married, Health Care Coverage, for the Year(s) - 2001, 2002, 2003, 2004, 2005, 2006, 2007, 2008, 2009, 2010

Note: Weighted numbers (#), percentages and 95% confidence intervals; Respondents aged 18 years and older; n/r (Not Reportable) - If the unweighted total responses for a dimension (row) is <50 that row will not be shown; n/a (Not Available) - Not asked of a subset of respondents

Year: 2007

DOH Race-Ethnicity	Yes			No			Estimated Population
	#	%	C.I. (95%)	#	%	C.I. (95%)	#
Caucasian	2,600	18.2	10.7 - 25.8	11,600	81.8	74.2 - 89.3	14,200
Native Hawaiian	4,800	31.5	19.4 - 43.6	10,400	68.5	56.4 - 80.6	15,200
Filipino	4,100	30.3	16.1 - 44.6	9,400	69.7	55.4 - 83.9	13,500
Japanese	3,700	19.2	11.8 - 26.6	15,500	80.8	73.4 - 88.2	19,200

Gender	Yes			No			Estimated Population
	#	%	C.I. (95%)	#	%	C.I. (95%)	#
Male	10,400	27.8	20.2 - 35.3	27,200	72.2	64.7 - 79.8	37,600
Female	8,300	22.5	16.4 - 28.5	28,600	77.5	71.5 - 83.6	36,900

Diabetes - eye prob, hlth prof. by State, County, Island, Community, BRFSS Age Group, DOH Race-Ethnicity, Gender, Education Level, Employment Status (Grouped), Household Income, Poverty Level, Marital Status (Grouped), Married, Health Care Coverage, for the Year(s) - 2001, 2002, 2003, 2004, 2005, 2006, 2007, 2008, 2009, 2010

Note: Weighted numbers (#), percentages and 95% confidence intervals; Respondents aged 18 years and older; n/r (Not Reportable) - If the unweighted total responses for a dimension (row) is <50 that row will not be shown; n/a (Not Available) - Not asked of a subset of respondents

Year: 2007

Education Level	Yes			No			Estimated Population
	#	%	C.I. (95%)	#	%	C.I. (95%)	#
Grades 12 or GED (High School Grad)	7,900	29.8	21.1 - 38.5	18,500	70.2	61.5 - 78.9	26,400
College 1 to 3 years (Some College/ Tech)	5,200	22.2	13.0 - 31.3	18,400	77.8	68.7 - 87.0	23,700
College 4 years or more (College Grad)	3,400	18.7	10.5 - 26.9	14,800	81.3	73.1 - 89.5	18,200

Employment Status (Grouped)	Yes			No			Estimated Population
	#	%	C.I. (95%)	#	%	C.I. (95%)	#
Employed	8,600	25.8	17.9 - 33.6	24,800	74.2	66.4 - 82.1	33,400
Retired/Unable to work	9,600	25.7	19.2 - 32.1	27,900	74.3	67.9 - 80.8	37,600

Diabetes - eye prob, hlth prof. by State, County, Island, Community, BRFSS Age Group, DOH Race-Ethnicity, Gender, Education Level, Employment Status (Grouped), Household Income, Poverty Level, Marital Status (Grouped), Married, Health Care Coverage, for the Year(s) - 2001, 2002, 2003, 2004, 2005, 2006, 2007, 2008, 2009, 2010

Note: Weighted numbers (#), percentages and 95% confidence intervals; Respondents aged 18 years and older; n/r (Not Reportable) - If the unweighted total responses for a dimension (row) is <50 that row will not be shown; n/a (Not Available) - Not asked of a subset of respondents

Year: 2007

Household Income	Yes			No			Estimated Population
	#	%	C.I. (95%)	#	%	C.I. (95%)	#
\$20,000 to \$24,999	2,300	29.6	12.7 - 46.5	5,400	70.4	53.5 - 87.3	7,600
\$25,000 to \$34,999	2,700	27.3	11.9 - 42.8	7,200	72.7	57.2 - 88.1	9,900
\$35,000 to \$49,999	3,300	22.1	11.7 - 32.5	11,500	77.9	67.5 - 88.3	14,700
\$50,000 to \$74,999	3,000	26.7	12.9 - 40.4	8,300	73.3	59.6 - 87.1	11,300
\$75,000 or more	2,300	16.3	7.6 - 25.0	12,000	83.7	75.0 - 92.4	14,300

Diabetes - eye prob, hlth prof. by State, County, Island, Community, BRFSS Age Group, DOH Race-Ethnicity, Gender, Education Level, Employment Status (Grouped), Household Income, Poverty Level, Marital Status (Grouped), Married, Health Care Coverage, for the Year(s) - 2001, 2002, 2003, 2004, 2005, 2006, 2007, 2008, 2009, 2010

Note: Weighted numbers (#), percentages and 95% confidence intervals; Respondents aged 18 years and older; n/r (Not Reportable) - If the unweighted total responses for a dimension (row) is <50 that row will not be shown; n/a (Not Available) - Not asked of a subset of respondents

Year: 2007

Poverty Level	Yes			No			Estimated Population
	#	%	C.I. (95%)	#	%	C.I. (95%)	#
0-130%	5,600	26.5	16.5 - 36.5	15,500	73.5	63.5 - 83.5	21,100
131-185%	2,600	27.4	11.7 - 43.1	6,800	72.6	56.9 - 88.3	9,400
186+%	8,500	21.8	16.1 - 27.6	30,400	78.2	72.4 - 83.9	38,900

Marital Status (Grouped)	Yes			No			Estimated Population
	#	%	C.I. (95%)	#	%	C.I. (95%)	#
Married	12,800	28.2	21.5 - 35.0	32,500	71.8	65.0 - 78.5	45,200
Widowed	1,600	15.7	7.9 - 23.5	8,400	84.3	76.5 - 92.1	10,000
Other	3,700	19.8	11.4 - 28.3	14,800	80.2	71.7 - 88.6	18,500

Diabetes - eye prob, hlth prof. by State, County, Island, Community, BRFSS Age Group, DOH Race-Ethnicity, Gender, Education Level, Employment Status (Grouped), Household Income, Poverty Level, Marital Status (Grouped), Married, Health Care Coverage, for the Year(s) - 2001, 2002, 2003, 2004, 2005, 2006, 2007, 2008, 2009, 2010

Note: Weighted numbers (#), percentages and 95% confidence intervals; Respondents aged 18 years and older; n/r (Not Reportable) - If the unweighted total responses for a dimension (row) is <50 that row will not be shown; n/a (Not Available) - Not asked of a subset of respondents

Year: 2007

Married	Yes			No			Estimated Population
	#	%	C.I. (95%)	#	%	C.I. (95%)	#
Yes	13,100	28.4	21.7 - 35.0	33,000	71.6	65.0 - 78.3	46,100
No	5,700	20.0	13.5 - 26.6	22,600	80.0	73.4 - 86.5	28,300

Health Care Coverage	Yes			No			Estimated Population
	#	%	C.I. (95%)	#	%	C.I. (95%)	#
Yes	17,700	24.7	19.8 - 29.7	53,800	75.3	70.3 - 80.2	71,500

Diabetes - eye prob, hlth prof. by State, County, Island, Community, BRFSS Age Group, DOH Race-Ethnicity, Gender, Education Level, Employment Status (Grouped), Household Income, Poverty Level, Marital Status (Grouped), Married, Health Care Coverage, for the Year(s) - 2001, 2002, 2003, 2004, 2005, 2006, 2007, 2008, 2009, 2010

Note: Weighted numbers (#), percentages and 95% confidence intervals; Respondents aged 18 years and older; n/r (Not Reportable) - If the unweighted total responses for a dimension (row) is <50 that row will not be shown; n/a (Not Available) - Not asked of a subset of respondents

Year: 2006

State	Yes			No			Estimated Population
	#	%	C.I. (95%)	#	%	C.I. (95%)	#
Hawaii State	18,900	25.1	20.1 - 30.2	56,300	74.9	69.8 - 79.9	75,200

County	Yes			No			Estimated Population
	#	%	C.I. (95%)	#	%	C.I. (95%)	#
Hawaii	1,300	14.9	7.6 - 22.2	7,200	85.1	77.8 - 92.4	8,400
Honolulu	14,400	26.6	19.9 - 33.3	39,800	73.4	66.7 - 80.1	54,200
Kauai	1,200	27.0	12.5 - 41.4	3,200	73.0	58.6 - 87.5	4,400
Maui	2,100	25.1	14.6 - 35.6	6,200	74.9	64.4 - 85.4	8,200

Diabetes - eye prob, hlth prof. by State, County, Island, Community, BRFSS Age Group, DOH Race-Ethnicity, Gender, Education Level, Employment Status (Grouped), Household Income, Poverty Level, Marital Status (Grouped), Married, Health Care Coverage, for the Year(s) - 2001, 2002, 2003, 2004, 2005, 2006, 2007, 2008, 2009, 2010

Note: Weighted numbers (#), percentages and 95% confidence intervals; Respondents aged 18 years and older; n/r (Not Reportable) - If the unweighted total responses for a dimension (row) is <50 that row will not be shown; n/a (Not Available) - Not asked of a subset of respondents

Year: 2006

Island	Yes			No			Estimated Population
	#	%	C.I. (95%)	#	%	C.I. (95%)	#
Hawaii	1,300	14.9	7.6 - 22.2	7,200	85.1	77.8 - 92.4	8,400
Kauai	1,200	27.0	12.5 - 41.4	3,200	73.0	58.6 - 87.5	4,400
Maui	1,800	23.6	12.4 - 34.8	5,700	76.4	65.2 - 87.6	7,400
Oahu	14,400	26.6	19.9 - 33.3	39,800	73.4	66.7 - 80.1	54,200

Diabetes - eye prob, hlth prof. by State, County, Island, Community, BRFSS Age Group, DOH Race-Ethnicity, Gender, Education Level, Employment Status (Grouped), Household Income, Poverty Level, Marital Status (Grouped), Married, Health Care Coverage, for the Year(s) - 2001, 2002, 2003, 2004, 2005, 2006, 2007, 2008, 2009, 2010

Note: Weighted numbers (#), percentages and 95% confidence intervals; Respondents aged 18 years and older; n/r (Not Reportable) - If the unweighted total responses for a dimension (row) is <50 that row will not be shown; n/a (Not Available) - Not asked of a subset of respondents

Year: 2006

BRFSS Age Group	Yes			No			Estimated Population
	#	%	C.I. (95%)	#	%	C.I. (95%)	#
45-54	5,500	33.7	21.2 - 46.3	10,700	66.3	53.7 - 78.8	16,200
55-64	5,900	26.4	15.7 - 37.1	16,400	73.6	62.9 - 84.3	22,300
65-74	3,200	21.5	12.9 - 30.1	11,500	78.5	69.9 - 87.1	14,700
75+	3,200	22.3	12.8 - 31.8	11,000	77.7	68.2 - 87.2	14,200

Diabetes - eye prob, hlth prof. by State, County, Island, Community, BRFSS Age Group, DOH Race-Ethnicity, Gender, Education Level, Employment Status (Grouped), Household Income, Poverty Level, Marital Status (Grouped), Married, Health Care Coverage, for the Year(s) - 2001, 2002, 2003, 2004, 2005, 2006, 2007, 2008, 2009, 2010

Note: Weighted numbers (#), percentages and 95% confidence intervals; Respondents aged 18 years and older; n/r (Not Reportable) - If the unweighted total responses for a dimension (row) is <50 that row will not be shown; n/a (Not Available) - Not asked of a subset of respondents

Year: 2006

DOH Race-Ethnicity	Yes			No			Estimated Population
	#	%	C.I. (95%)	#	%	C.I. (95%)	#
Caucasian	2,900	16.9	10.0 - 23.7	14,100	83.1	76.3 - 90.0	17,000
Native Hawaiian	3,800	28.0	15.6 - 40.4	9,700	72.0	59.6 - 84.4	13,500
Filipino	4,700	31.8	17.2 - 46.4	10,100	68.2	53.6 - 82.8	14,800
Japanese	4,400	24.0	14.7 - 33.3	13,800	76.0	66.7 - 85.3	18,200

Gender	Yes			No			Estimated Population
	#	%	C.I. (95%)	#	%	C.I. (95%)	#
Male	8,100	23.0	15.9 - 30.2	27,100	77.0	69.8 - 84.1	35,300
Female	10,800	27.0	19.9 - 34.1	29,200	73.0	65.9 - 80.1	40,000

Diabetes - eye prob, hlth prof. by State, County, Island, Community, BRFSS Age Group, DOH Race-Ethnicity, Gender, Education Level, Employment Status (Grouped), Household Income, Poverty Level, Marital Status (Grouped), Married, Health Care Coverage, for the Year(s) - 2001, 2002, 2003, 2004, 2005, 2006, 2007, 2008, 2009, 2010

Note: Weighted numbers (#), percentages and 95% confidence intervals; Respondents aged 18 years and older; n/r (Not Reportable) - If the unweighted total responses for a dimension (row) is <50 that row will not be shown; n/a (Not Available) - Not asked of a subset of respondents

Year: 2006

Education Level	Yes			No			Estimated Population
	#	%	C.I. (95%)	#	%	C.I. (95%)	#
Grades 12 or GED (High School Grad)	9,900	37.0	26.8 - 47.3	16,900	63.0	52.7 - 73.2	26,800
College 1 to 3 years (Some College/ Tech)	4,200	19.0	10.6 - 27.3	17,900	81.0	72.7 - 89.4	22,100
College 4 years or more (College Grad)	2,600	13.9	7.1 - 20.7	16,200	86.1	79.3 - 92.9	18,800

Employment Status (Grouped)	Yes			No			Estimated Population
	#	%	C.I. (95%)	#	%	C.I. (95%)	#
Employed	7,600	23.3	15.5 - 31.2	24,900	76.7	68.8 - 84.5	32,500
Retired/Unable to work	9,500	25.7	18.8 - 32.6	27,500	74.3	67.4 - 81.2	37,100

Diabetes - eye prob, hlth prof. by State, County, Island, Community, BRFSS Age Group, DOH Race-Ethnicity, Gender, Education Level, Employment Status (Grouped), Household Income, Poverty Level, Marital Status (Grouped), Married, Health Care Coverage, for the Year(s) - 2001, 2002, 2003, 2004, 2005, 2006, 2007, 2008, 2009, 2010

Note: Weighted numbers (#), percentages and 95% confidence intervals; Respondents aged 18 years and older; n/r (Not Reportable) - If the unweighted total responses for a dimension (row) is <50 that row will not be shown; n/a (Not Available) - Not asked of a subset of respondents

Year: 2006

Household Income	Yes			No			Estimated Population
	#	%	C.I. (95%)	#	%	C.I. (95%)	#
\$20,000 to \$24,999	2,600	39.2	22.7 - 55.7	4,000	60.8	44.3 - 77.3	6,500
\$25,000 to \$34,999	2,600	30.3	12.7 - 47.8	6,100	69.7	52.2 - 87.3	8,700
\$35,000 to \$49,999	2,500	19.1	7.9 - 30.2	10,800	80.9	69.8 - 92.1	13,400
\$50,000 to \$74,999	2,400	20.7	9.1 - 32.2	9,200	79.3	67.8 - 90.9	11,600
\$75,000 or more	1,900	17.0	5.2 - 28.7	9,500	83.0	71.3 - 94.8	11,500

Diabetes - eye prob, hlth prof. by State, County, Island, Community, BRFSS Age Group, DOH Race-Ethnicity, Gender, Education Level, Employment Status (Grouped), Household Income, Poverty Level, Marital Status (Grouped), Married, Health Care Coverage, for the Year(s) - 2001, 2002, 2003, 2004, 2005, 2006, 2007, 2008, 2009, 2010

Note: Weighted numbers (#), percentages and 95% confidence intervals; Respondents aged 18 years and older; n/r (Not Reportable) - If the unweighted total responses for a dimension (row) is <50 that row will not be shown; n/a (Not Available) - Not asked of a subset of respondents

Year: 2006

Poverty Level	Yes			No			Estimated Population
	#	%	C.I. (95%)	#	%	C.I. (95%)	#
0-130%	5,700	29.6	18.4 - 40.8	13,400	70.4	59.2 - 81.6	19,100
131-185%	2,700	33.3	16.4 - 50.3	5,500	66.7	49.7 - 83.6	8,200
186+%	6,400	17.9	11.9 - 24.0	29,300	82.1	76.0 - 88.1	35,700

Marital Status (Grouped)	Yes			No			Estimated Population
	#	%	C.I. (95%)	#	%	C.I. (95%)	#
Married	12,400	25.1	18.5 - 31.6	37,200	74.9	68.4 - 81.5	49,600
Widowed	2,000	25.3	13.4 - 37.2	6,000	74.7	62.8 - 86.6	8,100
Other	4,400	25.8	15.6 - 36.1	12,800	74.2	63.9 - 84.4	17,200

Diabetes - eye prob, hlth prof. by State, County, Island, Community, BRFSS Age Group, DOH Race-Ethnicity, Gender, Education Level, Employment Status (Grouped), Household Income, Poverty Level, Marital Status (Grouped), Married, Health Care Coverage, for the Year(s) - 2001, 2002, 2003, 2004, 2005, 2006, 2007, 2008, 2009, 2010

Note: Weighted numbers (#), percentages and 95% confidence intervals; Respondents aged 18 years and older; n/r (Not Reportable) - If the unweighted total responses for a dimension (row) is <50 that row will not be shown; n/a (Not Available) - Not asked of a subset of respondents

Year: 2006

Married	Yes			No			Estimated Population
	#	%	C.I. (95%)	#	%	C.I. (95%)	#
Yes	12,600	24.8	18.4 - 31.3	38,100	75.2	68.7 - 81.6	50,700
No	6,300	25.9	17.7 - 34.0	18,200	74.1	66.0 - 82.3	24,500

Health Care Coverage	Yes			No			Estimated Population
	#	%	C.I. (95%)	#	%	C.I. (95%)	#
Yes	18,400	25.9	20.6 - 31.1	52,800	74.1	68.9 - 79.4	71,300

Diabetes - eye prob, hlth prof. by State, County, Island, Community, BRFSS Age Group, DOH Race-Ethnicity, Gender, Education Level, Employment Status (Grouped), Household Income, Poverty Level, Marital Status (Grouped), Married, Health Care Coverage, for the Year(s) - 2001, 2002, 2003, 2004, 2005, 2006, 2007, 2008, 2009, 2010

Note: Weighted numbers (#), percentages and 95% confidence intervals; Respondents aged 18 years and older; n/r (Not Reportable) - If the unweighted total responses for a dimension (row) is <50 that row will not be shown; n/a (Not Available) - Not asked of a subset of respondents

Year: 2005

State	Yes			No			Estimated Population
	#	%	C.I. (95%)	#	%	C.I. (95%)	#
Hawaii State	14,400	17.8	11.6 - 24.0	66,300	82.2	76.0 - 88.4	80,700

County	Yes			No			Estimated Population
	#	%	C.I. (95%)	#	%	C.I. (95%)	#
Hawaii	2,200	19.6	7.9 - 31.3	9,100	80.4	68.7 - 92.1	11,300
Honolulu	10,400	16.9	9.2 - 24.6	50,800	83.1	75.4 - 90.8	61,100

Diabetes - eye prob, hlth prof. by State, County, Island, Community, BRFSS Age Group, DOH Race-Ethnicity, Gender, Education Level, Employment Status (Grouped), Household Income, Poverty Level, Marital Status (Grouped), Married, Health Care Coverage, for the Year(s) - 2001, 2002, 2003, 2004, 2005, 2006, 2007, 2008, 2009, 2010

Note: Weighted numbers (#), percentages and 95% confidence intervals; Respondents aged 18 years and older; n/r (Not Reportable) - If the unweighted total responses for a dimension (row) is <50 that row will not be shown; n/a (Not Available) - Not asked of a subset of respondents

Year: 2005

Island	Yes			No			Estimated Population
	#	%	C.I. (95%)	#	%	C.I. (95%)	#
Hawaii	2,200	19.6	7.9 - 31.3	9,100	80.4	68.7 - 92.1	11,300
Oahu	10,400	16.9	9.2 - 24.6	50,800	83.1	75.4 - 90.8	61,100

BRFSS Age Group	Yes			No			Estimated Population
	#	%	C.I. (95%)	#	%	C.I. (95%)	#
55-64	4,400	22.1	6.2 - 37.9	15,400	77.9	62.1 - 93.8	19,800
65-74	3,200	22.5	10.3 - 34.8	11,000	77.5	65.2 - 89.7	14,200

Diabetes - eye prob, hlth prof. by State, County, Island, Community, BRFSS Age Group, DOH Race-Ethnicity, Gender, Education Level, Employment Status (Grouped), Household Income, Poverty Level, Marital Status (Grouped), Married, Health Care Coverage, for the Year(s) - 2001, 2002, 2003, 2004, 2005, 2006, 2007, 2008, 2009, 2010

Note: Weighted numbers (#), percentages and 95% confidence intervals; Respondents aged 18 years and older; n/r (Not Reportable) - If the unweighted total responses for a dimension (row) is <50 that row will not be shown; n/a (Not Available) - Not asked of a subset of respondents

Year: 2005

DOH Race-Ethnicity	Yes			No			Estimated Population
	#	%	C.I. (95%)	#	%	C.I. (95%)	#
Caucasian	3,300	17.0	6.7 - 27.2	16,300	83.0	72.8 - 93.3	19,600
Native Hawaiian	2,000	12.2	3.2 - 21.3	14,400	87.8	78.7 - 96.8	16,400
Japanese	2,600	16.7	5.4 - 28.0	12,800	83.3	72.0 - 94.6	15,400

Gender	Yes			No			Estimated Population
	#	%	C.I. (95%)	#	%	C.I. (95%)	#
Male	8,600	19.6	9.9 - 29.3	35,200	80.4	70.7 - 90.1	43,800
Female	5,800	15.7	8.5 - 23.0	31,100	84.3	77.0 - 91.5	36,900

Diabetes - eye prob, hlth prof. by State, County, Island, Community, BRFSS Age Group, DOH Race-Ethnicity, Gender, Education Level, Employment Status (Grouped), Household Income, Poverty Level, Marital Status (Grouped), Married, Health Care Coverage, for the Year(s) - 2001, 2002, 2003, 2004, 2005, 2006, 2007, 2008, 2009, 2010

Note: Weighted numbers (#), percentages and 95% confidence intervals; Respondents aged 18 years and older; n/r (Not Reportable) - If the unweighted total responses for a dimension (row) is <50 that row will not be shown; n/a (Not Available) - Not asked of a subset of respondents

Year: 2005

Education Level	Yes			No			Estimated Population
	#	%	C.I. (95%)	#	%	C.I. (95%)	#
Grades 12 or GED (High School Grad)	5,300	16.7	7.0 - 26.3	26,300	83.3	73.7 - 93.0	31,500
College 1 to 3 years (Some College/ Tech)	4,300	23.1	10.4 - 35.8	14,400	76.9	64.2 - 89.6	18,700
College 4 years or more (College Grad)	3,000	16.1	1.1 - 31.2	15,700	83.9	68.8 - 98.9	18,700

Employment Status (Grouped)	Yes			No			Estimated Population
	#	%	C.I. (95%)	#	%	C.I. (95%)	#
Employed	7,600	20.2	9.2 - 31.1	30,100	79.8	68.9 - 90.8	37,700
Retired/Unable to work	6,300	16.5	9.6 - 23.4	32,100	83.5	76.6 - 90.4	38,400

Diabetes - eye prob, hlth prof. by State, County, Island, Community, BRFSS Age Group, DOH Race-Ethnicity, Gender, Education Level, Employment Status (Grouped), Household Income, Poverty Level, Marital Status (Grouped), Married, Health Care Coverage, for the Year(s) - 2001, 2002, 2003, 2004, 2005, 2006, 2007, 2008, 2009, 2010

Note: Weighted numbers (#), percentages and 95% confidence intervals; Respondents aged 18 years and older; n/r (Not Reportable) - If the unweighted total responses for a dimension (row) is <50 that row will not be shown; n/a (Not Available) - Not asked of a subset of respondents

Year: 2005

Poverty Level	Yes			No			Estimated Population
	#	%	C.I. (95%)	#	%	C.I. (95%)	#
0-130%	4,600	23.4	9.0 - 37.8	15,000	76.6	62.2 - 91.0	19,600
186+%	7,600	20.9	11.0 - 30.7	29,000	79.1	69.3 - 89.0	36,600

Marital Status (Grouped)	Yes			No			Estimated Population
	#	%	C.I. (95%)	#	%	C.I. (95%)	#
Married	8,900	17.3	8.9 - 25.6	42,700	82.7	74.4 - 91.1	51,600
Other	4,200	20.9	8.7 - 33.2	15,700	79.1	66.8 - 91.3	19,900

Diabetes - eye prob, hlth prof. by State, County, Island, Community, BRFSS Age Group, DOH Race-Ethnicity, Gender, Education Level, Employment Status (Grouped), Household Income, Poverty Level, Marital Status (Grouped), Married, Health Care Coverage, for the Year(s) - 2001, 2002, 2003, 2004, 2005, 2006, 2007, 2008, 2009, 2010

Note: Weighted numbers (#), percentages and 95% confidence intervals; Respondents aged 18 years and older; n/r (Not Reportable) - If the unweighted total responses for a dimension (row) is <50 that row will not be shown; n/a (Not Available) - Not asked of a subset of respondents

Year: 2005

Married	Yes			No			Estimated Population
	#	%	C.I. (95%)	#	%	C.I. (95%)	#
Yes	9,100	17.4	9.1 - 25.6	43,300	82.6	74.4 - 90.9	52,400
No	5,300	18.9	9.7 - 28.1	22,700	81.1	71.9 - 90.3	28,000

Diabetes - eye prob, hlth prof. by State, County, Island, Community, BRFSS Age Group, DOH Race-Ethnicity, Gender, Education Level, Employment Status (Grouped), Household Income, Poverty Level, Marital Status (Grouped), Married, Health Care Coverage, for the Year(s) - 2001, 2002, 2003, 2004, 2005, 2006, 2007, 2008, 2009, 2010

Note: Weighted numbers (#), percentages and 95% confidence intervals; Respondents aged 18 years and older; n/r (Not Reportable) - If the unweighted total responses for a dimension (row) is <50 that row will not be shown; n/a (Not Available) - Not asked of a subset of respondents

Year: 2004

State	Yes			No			Estimated Population
	#	%	C.I. (95%)	#	%	C.I. (95%)	#
Hawaii State	15,100	25.0	14.7 - 35.3	45,200	75.0	64.7 - 85.3	60,200

County	Yes			No			Estimated Population
	#	%	C.I. (95%)	#	%	C.I. (95%)	#
Honolulu	12,000	26.8	13.3 - 40.3	32,900	73.2	59.7 - 86.7	44,900

Island	Yes			No			Estimated Population
	#	%	C.I. (95%)	#	%	C.I. (95%)	#
Oahu	12,000	26.8	13.3 - 40.3	32,900	73.2	59.7 - 86.7	44,900

Diabetes - eye prob, hlth prof. by State, County, Island, Community, BRFSS Age Group, DOH Race-Ethnicity, Gender, Education Level, Employment Status (Grouped), Household Income, Poverty Level, Marital Status (Grouped), Married, Health Care Coverage, for the Year(s) - 2001, 2002, 2003, 2004, 2005, 2006, 2007, 2008, 2009, 2010

Note: Weighted numbers (#), percentages and 95% confidence intervals; Respondents aged 18 years and older; n/r (Not Reportable) - If the unweighted total responses for a dimension (row) is <50 that row will not be shown; n/a (Not Available) - Not asked of a subset of respondents

Year: 2004

Gender	Yes			No			Estimated Population
	#	%	C.I. (95%)	#	%	C.I. (95%)	#
Male	7,600	21.6	9.9 - 33.3	27,700	78.4	66.7 - 90.1	35,300
Female	7,400	29.8	11.5 - 48.2	17,500	70.2	51.8 - 88.5	24,900

Education Level	Yes			No			Estimated Population
	#	%	C.I. (95%)	#	%	C.I. (95%)	#
Grades 12 or GED (High School Grad)	4,900	18.6	4.0 - 33.2	21,500	81.4	66.8 - 96.0	26,400

Diabetes - eye prob, hlth prof. by State, County, Island, Community, BRFSS Age Group, DOH Race-Ethnicity, Gender, Education Level, Employment Status (Grouped), Household Income, Poverty Level, Marital Status (Grouped), Married, Health Care Coverage, for the Year(s) - 2001, 2002, 2003, 2004, 2005, 2006, 2007, 2008, 2009, 2010

Note: Weighted numbers (#), percentages and 95% confidence intervals; Respondents aged 18 years and older; n/r (Not Reportable) - If the unweighted total responses for a dimension (row) is <50 that row will not be shown; n/a (Not Available) - Not asked of a subset of respondents

Year: 2004

Employment Status (Grouped)	Yes			No			Estimated Population
	#	%	C.I. (95%)	#	%	C.I. (95%)	#
Employed	6,500	22.3	8.9 - 35.7	22,700	77.7	64.3 - 91.1	29,200
Retired/Unable to work	4,500	17.6	4.9 - 30.3	21,100	82.4	69.7 - 95.1	25,600

Poverty Level	Yes			No			Estimated Population
	#	%	C.I. (95%)	#	%	C.I. (95%)	#
186+%	8,100	21.7	10.8 - 32.6	29,100	78.3	67.4 - 89.2	37,100

Marital Status (Grouped)	Yes			No			Estimated Population
	#	%	C.I. (95%)	#	%	C.I. (95%)	#
Married	8,700	21.4	8.7 - 34.1	31,900	78.6	65.9 - 91.3	40,600

Diabetes - eye prob, hlth prof. by State, County, Island, Community, BRFSS Age Group, DOH Race-Ethnicity, Gender, Education Level, Employment Status (Grouped), Household Income, Poverty Level, Marital Status (Grouped), Married, Health Care Coverage, for the Year(s) - 2001, 2002, 2003, 2004, 2005, 2006, 2007, 2008, 2009, 2010

Note: Weighted numbers (#), percentages and 95% confidence intervals; Respondents aged 18 years and older; n/r (Not Reportable) - If the unweighted total responses for a dimension (row) is <50 that row will not be shown; n/a (Not Available) - Not asked of a subset of respondents

Year: 2004

Married	Yes			No			Estimated Population
	#	%	C.I. (95%)	#	%	C.I. (95%)	#
Yes	8,800	21.4	8.8 - 34.0	32,100	78.6	66.0 - 91.2	40,900
No	6,300	32.5	14.6 - 50.4	13,000	67.5	49.6 - 85.4	19,300

Health Care Coverage	Yes			No			Estimated Population
	#	%	C.I. (95%)	#	%	C.I. (95%)	#
Yes	13,400	23.2	13.1 - 33.4	44,400	76.8	66.6 - 86.9	57,800

Diabetes - eye prob, hlth prof. by State, County, Island, Community, BRFSS Age Group, DOH Race-Ethnicity, Gender, Education Level, Employment Status (Grouped), Household Income, Poverty Level, Marital Status (Grouped), Married, Health Care Coverage, for the Year(s) - 2001, 2002, 2003, 2004, 2005, 2006, 2007, 2008, 2009, 2010

Note: Weighted numbers (#), percentages and 95% confidence intervals; Respondents aged 18 years and older; n/r (Not Reportable) - If the unweighted total responses for a dimension (row) is <50 that row will not be shown; n/a (Not Available) - Not asked of a subset of respondents

Year: 2003

State	Yes			No			Estimated Population
	#	%	C.I. (95%)	#	%	C.I. (95%)	#
Hawaii State	18,700	27.5	20.8 - 34.1	49,500	72.5	65.9 - 79.2	68,200

County	Yes			No			Estimated Population
	#	%	C.I. (95%)	#	%	C.I. (95%)	#
Hawaii	2,500	29.2	10.5 - 47.8	6,200	70.8	52.2 - 89.5	8,700
Honolulu	14,000	26.7	18.8 - 34.5	38,400	73.3	65.5 - 81.2	52,300

Diabetes - eye prob, hlth prof. by State, County, Island, Community, BRFSS Age Group, DOH Race-Ethnicity, Gender, Education Level, Employment Status (Grouped), Household Income, Poverty Level, Marital Status (Grouped), Married, Health Care Coverage, for the Year(s) - 2001, 2002, 2003, 2004, 2005, 2006, 2007, 2008, 2009, 2010

Note: Weighted numbers (#), percentages and 95% confidence intervals; Respondents aged 18 years and older; n/r (Not Reportable) - If the unweighted total responses for a dimension (row) is <50 that row will not be shown; n/a (Not Available) - Not asked of a subset of respondents

Year: 2003

Island	Yes			No			Estimated Population
	#	%	C.I. (95%)	#	%	C.I. (95%)	#
Hawaii	2,500	29.2	10.5 - 47.8	6,200	70.8	52.2 - 89.5	8,700
Oahu	14,000	26.7	18.8 - 34.5	38,400	73.3	65.5 - 81.2	52,300

BRFSS Age Group	Yes			No			Estimated Population
	#	%	C.I. (95%)	#	%	C.I. (95%)	#
45-54	5,400	32.5	17.5 - 47.4	11,300	67.5	52.6 - 82.5	16,700
55-64	5,100	32.6	19.2 - 46.1	10,500	67.4	53.9 - 80.8	15,700
65-74	4,900	30.1	15.1 - 45.2	11,500	69.9	54.8 - 84.9	16,400
75+	1,400	14.3	5.2 - 23.4	8,200	85.7	76.6 - 94.8	9,600

Diabetes - eye prob, hlth prof. by State, County, Island, Community, BRFSS Age Group, DOH Race-Ethnicity, Gender, Education Level, Employment Status (Grouped), Household Income, Poverty Level, Marital Status (Grouped), Married, Health Care Coverage, for the Year(s) - 2001, 2002, 2003, 2004, 2005, 2006, 2007, 2008, 2009, 2010

Note: Weighted numbers (#), percentages and 95% confidence intervals; Respondents aged 18 years and older; n/r (Not Reportable) - If the unweighted total responses for a dimension (row) is <50 that row will not be shown; n/a (Not Available) - Not asked of a subset of respondents

Year: 2003

DOH Race-Ethnicity	Yes			No			Estimated Population
	#	%	C.I. (95%)	#	%	C.I. (95%)	#
Caucasian	4,300	27.2	13.8 - 40.6	11,600	72.8	59.4 - 86.2	15,900
Japanese	4,200	22.9	11.5 - 34.3	14,100	77.1	65.7 - 88.5	18,200

Gender	Yes			No			Estimated Population
	#	%	C.I. (95%)	#	%	C.I. (95%)	#
Male	7,300	22.3	13.0 - 31.6	25,400	77.7	68.4 - 87.0	32,700
Female	11,400	32.2	23.1 - 41.4	24,100	67.8	58.6 - 76.9	35,500

Diabetes - eye prob, hlth prof. by State, County, Island, Community, BRFSS Age Group, DOH Race-Ethnicity, Gender, Education Level, Employment Status (Grouped), Household Income, Poverty Level, Marital Status (Grouped), Married, Health Care Coverage, for the Year(s) - 2001, 2002, 2003, 2004, 2005, 2006, 2007, 2008, 2009, 2010

Note: Weighted numbers (#), percentages and 95% confidence intervals; Respondents aged 18 years and older; n/r (Not Reportable) - If the unweighted total responses for a dimension (row) is <50 that row will not be shown; n/a (Not Available) - Not asked of a subset of respondents

Year: 2003

Education Level	Yes			No			Estimated Population
	#	%	C.I. (95%)	#	%	C.I. (95%)	#
Grades 12 or GED (High School Grad)	6,500	27.1	16.0 - 38.1	17,400	72.9	61.9 - 84.0	23,900
College 1 to 3 years (Some College/ Tech)	5,600	30.8	18.0 - 43.7	12,500	69.2	56.3 - 82.0	18,100
College 4 years or more (College Grad)	4,400	23.7	10.8 - 36.6	14,100	76.3	63.4 - 89.2	18,400

Employment Status (Grouped)	Yes			No			Estimated Population
	#	%	C.I. (95%)	#	%	C.I. (95%)	#
Employed	7,300	23.6	15.0 - 32.2	23,500	76.4	67.8 - 85.0	30,800
Retired/Unable to work	9,000	28.3	18.4 - 38.2	22,800	71.7	61.8 - 81.6	31,800

Diabetes - eye prob, hlth prof. by State, County, Island, Community, BRFSS Age Group, DOH Race-Ethnicity, Gender, Education Level, Employment Status (Grouped), Household Income, Poverty Level, Marital Status (Grouped), Married, Health Care Coverage, for the Year(s) - 2001, 2002, 2003, 2004, 2005, 2006, 2007, 2008, 2009, 2010

Note: Weighted numbers (#), percentages and 95% confidence intervals; Respondents aged 18 years and older; n/r (Not Reportable) - If the unweighted total responses for a dimension (row) is <50 that row will not be shown; n/a (Not Available) - Not asked of a subset of respondents

Year: 2003

Poverty Level	Yes			No			Estimated Population
	#	%	C.I. (95%)	#	%	C.I. (95%)	#
0-130%	5,800	30.8	16.4 - 45.1	13,000	69.2	54.9 - 83.6	18,700
186+%	8,700	30.4	20.0 - 40.8	19,900	69.6	59.2 - 80.0	28,600

Marital Status (Grouped)	Yes			No			Estimated Population
	#	%	C.I. (95%)	#	%	C.I. (95%)	#
Married	9,700	24.3	16.1 - 32.4	30,300	75.7	67.6 - 83.9	40,000
Widowed	4,600	38.8	22.5 - 55.1	7,300	61.2	44.9 - 77.5	11,900
Other	4,400	27.0	12.7 - 41.3	11,900	73.0	58.7 - 87.3	16,300

Diabetes - eye prob, hlth prof. by State, County, Island, Community, BRFSS Age Group, DOH Race-Ethnicity, Gender, Education Level, Employment Status (Grouped), Household Income, Poverty Level, Marital Status (Grouped), Married, Health Care Coverage, for the Year(s) - 2001, 2002, 2003, 2004, 2005, 2006, 2007, 2008, 2009, 2010

Note: Weighted numbers (#), percentages and 95% confidence intervals; Respondents aged 18 years and older; n/r (Not Reportable) - If the unweighted total responses for a dimension (row) is <50 that row will not be shown; n/a (Not Available) - Not asked of a subset of respondents

Year: 2003

Married	Yes			No			Estimated Population
	#	%	C.I. (95%)	#	%	C.I. (95%)	#
Yes	9,700	24.0	16.0 - 32.1	30,700	76.0	67.9 - 84.0	40,400
No	9,000	32.6	21.5 - 43.7	18,600	67.4	56.3 - 78.5	27,600

Health Care Coverage	Yes			No			Estimated Population
	#	%	C.I. (95%)	#	%	C.I. (95%)	#
Yes	18,700	28.2	21.4 - 35.0	47,600	71.8	65.0 - 78.6	66,300

Diabetes - eye prob, hlth prof. by State, County, Island, Community, BRFSS Age Group, DOH Race-Ethnicity, Gender, Education Level, Employment Status (Grouped), Household Income, Poverty Level, Marital Status (Grouped), Married, Health Care Coverage, for the Year(s) - 2001, 2002, 2003, 2004, 2005, 2006, 2007, 2008, 2009, 2010

Note: Weighted numbers (#), percentages and 95% confidence intervals; Respondents aged 18 years and older; n/r (Not Reportable) - If the unweighted total responses for a dimension (row) is <50 that row will not be shown; n/a (Not Available) - Not asked of a subset of respondents

Year: 2002

State	Yes			No			Estimated Population
	#	%	C.I. (95%)	#	%	C.I. (95%)	#
Hawaii State	10,800	20.7	15.1 - 26.2	41,400	79.3	73.8 - 84.9	52,200

County	Yes			No			Estimated Population
	#	%	C.I. (95%)	#	%	C.I. (95%)	#
Hawaii	1,300	23.1	12.1 - 34.0	4,400	76.9	66.0 - 87.9	5,700
Honolulu	8,200	21.0	13.9 - 28.1	30,900	79.0	71.9 - 86.1	39,100
Maui	600	12.0	4.7 - 19.4	4,500	88.0	80.6 - 95.3	5,100

Diabetes - eye prob, hlth prof. by State, County, Island, Community, BRFSS Age Group, DOH Race-Ethnicity, Gender, Education Level, Employment Status (Grouped), Household Income, Poverty Level, Marital Status (Grouped), Married, Health Care Coverage, for the Year(s) - 2001, 2002, 2003, 2004, 2005, 2006, 2007, 2008, 2009, 2010

Note: Weighted numbers (#), percentages and 95% confidence intervals; Respondents aged 18 years and older; n/r (Not Reportable) - If the unweighted total responses for a dimension (row) is <50 that row will not be shown; n/a (Not Available) - Not asked of a subset of respondents

Year: 2002

Island	Yes			No			Estimated Population
	#	%	C.I. (95%)	#	%	C.I. (95%)	#
Hawaii	1,300	23.1	12.1 - 34.0	4,400	76.9	66.0 - 87.9	5,700
Oahu	8,200	21.0	13.9 - 28.1	30,900	79.0	71.9 - 86.1	39,100

BRFSS Age Group	Yes			No			Estimated Population
	#	%	C.I. (95%)	#	%	C.I. (95%)	#
45-54	2,500	30.0	14.7 - 45.4	5,800	70.0	54.6 - 85.3	8,300
55-64	3,000	24.4	11.8 - 37.0	9,400	75.6	63.0 - 88.2	12,500
65-74	4,000	32.1	19.0 - 45.3	8,500	67.9	54.7 - 81.0	12,500
75+	600	5.5	0.1 - 10.9	10,400	94.5	89.1 - 99.9	11,000

Diabetes - eye prob, hlth prof. by State, County, Island, Community, BRFSS Age Group, DOH Race-Ethnicity, Gender, Education Level, Employment Status (Grouped), Household Income, Poverty Level, Marital Status (Grouped), Married, Health Care Coverage, for the Year(s) - 2001, 2002, 2003, 2004, 2005, 2006, 2007, 2008, 2009, 2010

Note: Weighted numbers (#), percentages and 95% confidence intervals; Respondents aged 18 years and older; n/r (Not Reportable) - If the unweighted total responses for a dimension (row) is <50 that row will not be shown; n/a (Not Available) - Not asked of a subset of respondents

Year: 2002

DOH Race-Ethnicity	Yes			No			Estimated Population
	#	%	C.I. (95%)	#	%	C.I. (95%)	#
Caucasian	1,000	9.2	1.5 - 16.9	9,900	90.8	83.1 - 98.5	10,900
Native Hawaiian	3,200	39.3	23.9 - 54.7	5,000	60.7	45.3 - 76.1	8,200
Filipino	2,800	32.3	14.6 - 50.1	5,800	67.7	49.9 - 85.4	8,600
Japanese	2,200	13.6	5.5 - 21.7	14,200	86.4	78.3 - 94.5	16,500

Gender	Yes			No			Estimated Population
	#	%	C.I. (95%)	#	%	C.I. (95%)	#
Male	4,600	21.4	12.8 - 30.0	17,100	78.6	70.0 - 87.2	21,700
Female	6,100	20.1	12.9 - 27.4	24,400	79.9	72.6 - 87.1	30,500

Diabetes - eye prob, hlth prof. by State, County, Island, Community, BRFSS Age Group, DOH Race-Ethnicity, Gender, Education Level, Employment Status (Grouped), Household Income, Poverty Level, Marital Status (Grouped), Married, Health Care Coverage, for the Year(s) - 2001, 2002, 2003, 2004, 2005, 2006, 2007, 2008, 2009, 2010

Note: Weighted numbers (#), percentages and 95% confidence intervals; Respondents aged 18 years and older; n/r (Not Reportable) - If the unweighted total responses for a dimension (row) is <50 that row will not be shown; n/a (Not Available) - Not asked of a subset of respondents

Year: 2002

Education Level	Yes			No			Estimated Population
	#	%	C.I. (95%)	#	%	C.I. (95%)	#
Grades 12 or GED (High School Grad)	5,500	27.7	17.8 - 37.7	14,300	72.3	62.3 - 82.2	19,700
College 1 to 3 years (Some College/ Tech)	2,200	16.3	5.9 - 26.7	11,200	83.7	73.3 - 94.1	13,400
College 4 years or more (College Grad)	1,900	13.8	4.9 - 22.7	11,900	86.2	77.3 - 95.1	13,800

Employment Status (Grouped)	Yes			No			Estimated Population
	#	%	C.I. (95%)	#	%	C.I. (95%)	#
Employed	2,100	10.2	3.7 - 16.6	18,700	89.8	83.4 - 96.3	20,800
Retired/Unable to work	8,000	28.6	20.1 - 37.1	20,100	71.4	62.9 - 79.9	28,100

Diabetes - eye prob, hlth prof. by State, County, Island, Community, BRFSS Age Group, DOH Race-Ethnicity, Gender, Education Level, Employment Status (Grouped), Household Income, Poverty Level, Marital Status (Grouped), Married, Health Care Coverage, for the Year(s) - 2001, 2002, 2003, 2004, 2005, 2006, 2007, 2008, 2009, 2010

Note: Weighted numbers (#), percentages and 95% confidence intervals; Respondents aged 18 years and older; n/r (Not Reportable) - If the unweighted total responses for a dimension (row) is <50 that row will not be shown; n/a (Not Available) - Not asked of a subset of respondents

Year: 2002

Household Income	Yes			No			Estimated Population
	#	%	C.I. (95%)	#	%	C.I. (95%)	#
\$35,000 to \$49,999	900	10.4	0.3 - 20.5	7,300	89.6	79.5 - 99.7	8,200

Poverty Level	Yes			No			Estimated Population
	#	%	C.I. (95%)	#	%	C.I. (95%)	#
0-130%	3,300	38.9	25.4 - 52.5	5,100	61.1	47.5 - 74.6	8,400
186+%	4,400	18.4	9.6 - 27.1	19,500	81.6	72.9 - 90.4	23,900

Diabetes - eye prob, hlth prof. by State, County, Island, Community, BRFSS Age Group, DOH Race-Ethnicity, Gender, Education Level, Employment Status (Grouped), Household Income, Poverty Level, Marital Status (Grouped), Married, Health Care Coverage, for the Year(s) - 2001, 2002, 2003, 2004, 2005, 2006, 2007, 2008, 2009, 2010

Note: Weighted numbers (#), percentages and 95% confidence intervals; Respondents aged 18 years and older; n/r (Not Reportable) - If the unweighted total responses for a dimension (row) is <50 that row will not be shown; n/a (Not Available) - Not asked of a subset of respondents

Year: 2002

Marital Status (Grouped)	Yes			No			Estimated Population
	#	%	C.I. (95%)	#	%	C.I. (95%)	#
Married	6,500	19.3	12.2 - 26.3	27,100	80.7	73.7 - 87.8	33,600
Widowed	1,600	17.2	4.8 - 29.6	7,900	82.8	70.4 - 95.2	9,500
Other	2,600	29.2	16.8 - 41.6	6,300	70.8	58.4 - 83.2	9,000

Married	Yes			No			Estimated Population
	#	%	C.I. (95%)	#	%	C.I. (95%)	#
Yes	6,600	19.3	12.4 - 26.2	27,800	80.7	73.8 - 87.6	34,400
No	4,100	23.3	14.0 - 32.7	13,600	76.7	67.3 - 86.0	17,800

Diabetes - eye prob, hlth prof. by State, County, Island, Community, BRFSS Age Group, DOH Race-Ethnicity, Gender, Education Level, Employment Status (Grouped), Household Income, Poverty Level, Marital Status (Grouped), Married, Health Care Coverage, for the Year(s) - 2001, 2002, 2003, 2004, 2005, 2006, 2007, 2008, 2009, 2010

Note: Weighted numbers (#), percentages and 95% confidence intervals; Respondents aged 18 years and older; n/r (Not Reportable) - If the unweighted total responses for a dimension (row) is <50 that row will not be shown; n/a (Not Available) - Not asked of a subset of respondents

Year: 2002

Health Care Coverage	Yes			No			Estimated Population
	#	%	C.I. (95%)	#	%	C.I. (95%)	#
Yes	10,700	21.1	15.5 - 26.8	40,100	78.9	73.2 - 84.5	50,900

Diabetes - eye prob, hlth prof. by State, County, Island, Community, BRFSS Age Group, DOH Race-Ethnicity, Gender, Education Level, Employment Status (Grouped), Household Income, Poverty Level, Marital Status (Grouped), Married, Health Care Coverage, for the Year(s) - 2001, 2002, 2003, 2004, 2005, 2006, 2007, 2008, 2009, 2010

Note: Weighted numbers (#), percentages and 95% confidence intervals; Respondents aged 18 years and older; n/r (Not Reportable) - If the unweighted total responses for a dimension (row) is <50 that row will not be shown; n/a (Not Available) - Not asked of a subset of respondents

Year: 2001

State	Yes			No			Estimated Population
	#	%	C.I. (95%)	#	%	C.I. (95%)	#
Hawaii State	12,100	22.1	14.1 - 30.1	42,400	77.9	69.9 - 85.9	54,400

County	Yes			No			Estimated Population
	#	%	C.I. (95%)	#	%	C.I. (95%)	#
Hawaii	1,500	24.0	11.8 - 36.1	4,600	76.0	63.9 - 88.2	6,100
Honolulu	9,300	24.1	13.6 - 34.6	29,100	75.9	65.4 - 86.4	38,400
Maui	700	9.8	0.0 - 19.8	6,800	90.2	80.2 - 100.0	7,600

Diabetes - eye prob, hlth prof. by State, County, Island, Community, BRFSS Age Group, DOH Race-Ethnicity, Gender, Education Level, Employment Status (Grouped), Household Income, Poverty Level, Marital Status (Grouped), Married, Health Care Coverage, for the Year(s) - 2001, 2002, 2003, 2004, 2005, 2006, 2007, 2008, 2009, 2010

Note: Weighted numbers (#), percentages and 95% confidence intervals; Respondents aged 18 years and older; n/r (Not Reportable) - If the unweighted total responses for a dimension (row) is <50 that row will not be shown; n/a (Not Available) - Not asked of a subset of respondents

Year: 2001

Island	Yes			No			Estimated Population
	#	%	C.I. (95%)	#	%	C.I. (95%)	#
Hawaii	1,500	24.0	11.8 - 36.1	4,600	76.0	63.9 - 88.2	6,100
Oahu	9,300	24.1	13.6 - 34.6	29,100	75.9	65.4 - 86.4	38,400

BRFSS Age Group	Yes			No			Estimated Population
	#	%	C.I. (95%)	#	%	C.I. (95%)	#
45-54	2,600	30.3	9.2 - 51.5	6,100	69.7	48.5 - 90.8	8,700
65-74	3,900	24.5	8.2 - 40.8	11,900	75.5	59.2 - 91.8	15,800

Diabetes - eye prob, hlth prof. by State, County, Island, Community, BRFSS Age Group, DOH Race-Ethnicity, Gender, Education Level, Employment Status (Grouped), Household Income, Poverty Level, Marital Status (Grouped), Married, Health Care Coverage, for the Year(s) - 2001, 2002, 2003, 2004, 2005, 2006, 2007, 2008, 2009, 2010

Note: Weighted numbers (#), percentages and 95% confidence intervals; Respondents aged 18 years and older; n/r (Not Reportable) - If the unweighted total responses for a dimension (row) is <50 that row will not be shown; n/a (Not Available) - Not asked of a subset of respondents

Year: 2001

DOH Race-Ethnicity	Yes			No			Estimated Population
	#	%	C.I. (95%)	#	%	C.I. (95%)	#
Caucasian	2,200	20.9	9.2 - 32.6	8,300	79.1	67.4 - 90.8	10,500
Japanese	2,900	19.4	7.1 - 31.7	12,000	80.6	68.3 - 92.9	14,800

Gender	Yes			No			Estimated Population
	#	%	C.I. (95%)	#	%	C.I. (95%)	#
Male	8,300	27.2	14.4 - 40.0	22,300	72.8	60.0 - 85.6	30,700
Female	3,700	15.6	8.1 - 23.2	20,100	84.4	76.8 - 91.9	23,800

Diabetes - eye prob, hlth prof. by State, County, Island, Community, BRFSS Age Group, DOH Race-Ethnicity, Gender, Education Level, Employment Status (Grouped), Household Income, Poverty Level, Marital Status (Grouped), Married, Health Care Coverage, for the Year(s) - 2001, 2002, 2003, 2004, 2005, 2006, 2007, 2008, 2009, 2010

Note: Weighted numbers (#), percentages and 95% confidence intervals; Respondents aged 18 years and older; n/r (Not Reportable) - If the unweighted total responses for a dimension (row) is <50 that row will not be shown; n/a (Not Available) - Not asked of a subset of respondents

Year: 2001

Education Level	Yes			No			Estimated Population
	#	%	C.I. (95%)	#	%	C.I. (95%)	#
Grades 12 or GED (High School Grad)	4,100	20.8	9.1 - 32.4	15,600	79.2	67.6 - 90.9	19,700
College 1 to 3 years (Some College/ Tech)	4,300	22.7	5.7 - 39.6	14,600	77.3	60.4 - 94.3	18,800

Employment Status (Grouped)	Yes			No			Estimated Population
	#	%	C.I. (95%)	#	%	C.I. (95%)	#
Employed	4,700	19.6	8.2 - 31.0	19,300	80.4	69.0 - 91.8	24,000
Retired/Unable to work	6,100	22.1	10.4 - 33.8	21,600	77.9	66.2 - 89.6	27,700

Diabetes - eye prob, hlth prof. by State, County, Island, Community, BRFSS Age Group, DOH Race-Ethnicity, Gender, Education Level, Employment Status (Grouped), Household Income, Poverty Level, Marital Status (Grouped), Married, Health Care Coverage, for the Year(s) - 2001, 2002, 2003, 2004, 2005, 2006, 2007, 2008, 2009, 2010

Note: Weighted numbers (#), percentages and 95% confidence intervals; Respondents aged 18 years and older; n/r (Not Reportable) - If the unweighted total responses for a dimension (row) is <50 that row will not be shown; n/a (Not Available) - Not asked of a subset of respondents

Year: 2001

Poverty Level	Yes			No			Estimated Population
	#	%	C.I. (95%)	#	%	C.I. (95%)	#
186+%	5,900	26.3	14.5 - 38.0	16,700	73.7	62.0 - 85.5	22,600

Marital Status (Grouped)	Yes			No			Estimated Population
	#	%	C.I. (95%)	#	%	C.I. (95%)	#
Married	7,700	21.1	10.5 - 31.7	28,700	78.9	68.3 - 89.5	36,400
Other	3,400	29.1	13.7 - 44.4	8,400	70.9	55.6 - 86.3	11,900

Diabetes - eye prob, hlth prof. by State, County, Island, Community, BRFSS Age Group, DOH Race-Ethnicity, Gender, Education Level, Employment Status (Grouped), Household Income, Poverty Level, Marital Status (Grouped), Married, Health Care Coverage, for the Year(s) - 2001, 2002, 2003, 2004, 2005, 2006, 2007, 2008, 2009, 2010

Note: Weighted numbers (#), percentages and 95% confidence intervals; Respondents aged 18 years and older; n/r (Not Reportable) - If the unweighted total responses for a dimension (row) is <50 that row will not be shown; n/a (Not Available) - Not asked of a subset of respondents

Year: 2001

Married	Yes			No			Estimated Population
	#	%	C.I. (95%)	#	%	C.I. (95%)	#
Yes	7,900	21.3	10.9 - 31.6	29,300	78.7	68.4 - 89.1	37,200
No	4,100	24.0	12.3 - 35.7	13,100	76.0	64.3 - 87.7	17,200

Health Care Coverage	Yes			No			Estimated Population
	#	%	C.I. (95%)	#	%	C.I. (95%)	#
Yes	11,900	22.2	14.1 - 30.4	41,700	77.8	69.6 - 85.9	53,600