

Diabetes - times chk for HbA1C by State, County, Island, Community, BRFSS Age Group, DOH Race-Ethnicity, Gender, Education Level, Employment Status (Grouped), Household Income, Poverty Level, Marital Status (Grouped), Married, Health Care Coverage, for the Year(s) - 2001, 2002, 2003, 2004, 2005, 2006, 2007, 2008, 2009, 2010

Note: Weighted numbers (#), percentages and 95% confidence intervals; Respondents aged 18 years and older; n/r (Not Reportable) - If the unweighted total responses for a dimension (row) is <50 that row will not be shown; n/a (Not Available) - Not asked of a subset of respondents

The trend analysis report shows the trend for the selected health variable over selected years in a table and a graph. Estimated Population: This number is a weighted representation of the population who responded to a particular question in the survey. For most questions the eligible population will be the entire adult population. For some secondary questions only a subset of the population was asked the question. For example, all survey participants were asked if they had diabetes, but only those who answered yes were asked if they use insulin. If a dimension value is unknown for a particular survey record, that record will not be included in the counts for that particular dimension.

For documentation on other terms and coding in this report, please go to the following links

[Click here to access BRFSS documentation](#)

[Click here to access DOH Race-Ethnicity coding](#)

[Click here to access The Hawai'i Data Guide](#)

[Click here to access Poverty Level Methodology](#)

**For questions about this report, please contact
The Hawaii Health Data Warehouse**

profiles@hhdw.org

(855) 946-5899 x15

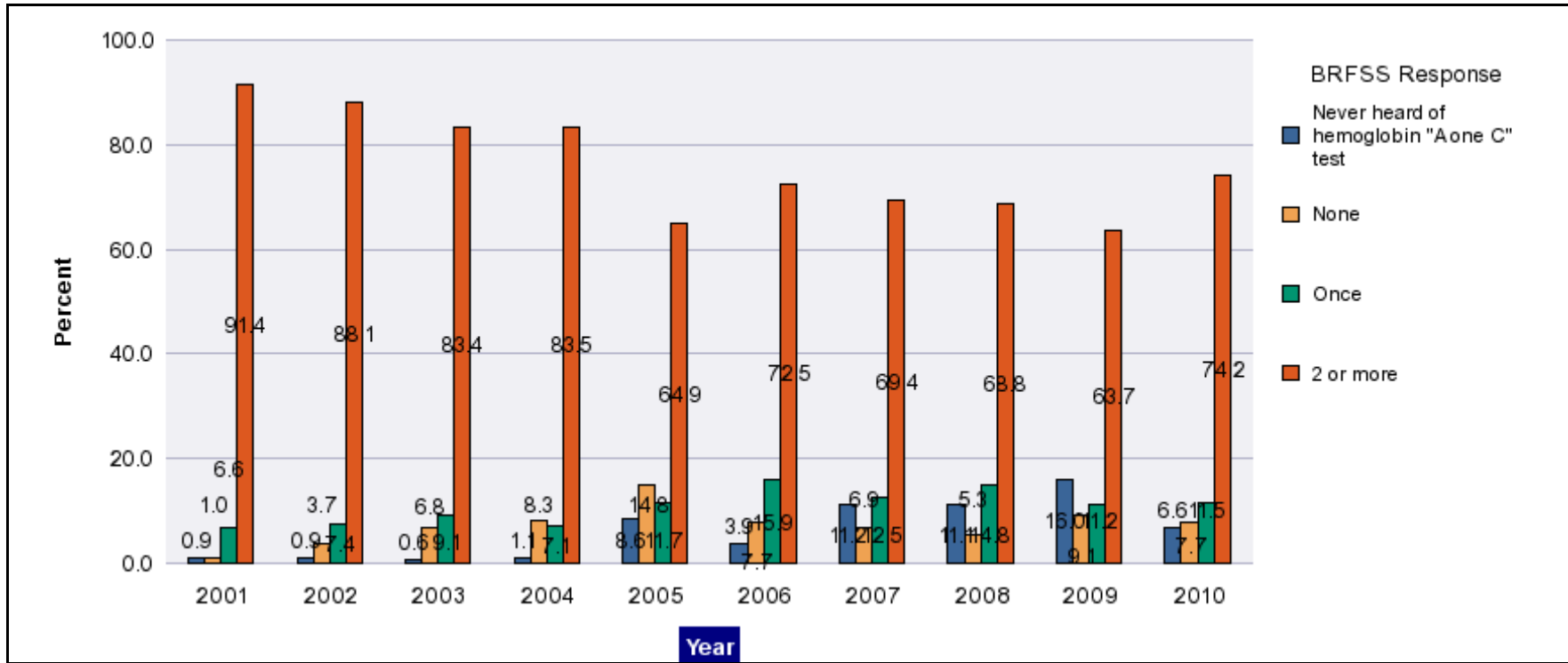
Diabetes - times chk for HbA1C by State, County, Island, Community, BRFSS Age Group, DOH Race-Ethnicity, Gender, Education Level, Employment Status (Grouped), Household Income, Poverty Level, Marital Status (Grouped), Married, Health Care Coverage, for the Year(s) - 2001, 2002, 2003, 2004, 2005, 2006, 2007, 2008, 2009, 2010

Note: Weighted numbers (#), percentages and 95% confidence intervals; Respondents aged 18 years and older; n/r (Not Reportable) - If the unweighted total responses for a dimension (row) is <50 that row will not be shown; n/a (Not Available) - Not asked of a subset of respondents

Year	Never heard of hemoglobin "A one C" test			None			Once			2 or more			Estimated Population
	#	%	C.I.(95%)	#	%	C.I.(95%)	#	%	C.I.(95%)	#	%	C.I.(95%)	#
2001	500	0.9	0.0 - 2.5	500	1.0	0.0 - 2.6	3,400	6.6	2.5 - 10.8	46,300	91.4	86.7 - 96.1	50,700
2002	500	0.9	0.0 - 1.8	1,900	3.7	1.4 - 6.0	3,700	7.4	3.7 - 11.0	44,500	88.1	83.8 - 92.4	50,500
2003	400	0.6	0.0 - 1.7	4,500	6.8	3.2 - 10.4	6,100	9.1	4.7 - 13.6	55,400	83.4	77.9 - 88.9	66,500
2004	600	1.1	0.0 - 2.3	4,700	8.3	3.4 - 13.2	4,000	7.1	1.8 - 12.5	47,200	83.5	76.2 - 90.8	56,600
2005	5,700	8.6	3.7 - 13.4	9,800	14.8	7.4 - 22.3	7,800	11.7	5.6 - 17.8	43,000	64.9	55.7 - 74.1	66,300
2006	2,600	3.9	1.4 - 6.4	5,300	7.7	5.0 - 10.5	10,800	15.9	11.8 - 20.1	49,300	72.5	67.4 - 77.5	68,000
2007	7,900	11.2	7.4 - 14.9	4,900	6.9	3.7 - 10.0	8,800	12.5	8.9 - 16.1	48,900	69.4	64.1 - 74.7	70,400
2008	8,900	11.1	7.9 - 14.4	4,200	5.3	2.9 - 7.6	11,800	14.8	10.6 - 19.0	55,000	68.8	63.6 - 73.9	79,900
2009	12,000	16.0	9.2 - 22.9	6,800	9.1	4.1 - 14.1	8,400	11.2	6.4 - 16.0	47,800	63.7	55.8 - 71.6	75,100
2010	5,300	6.6	4.4 - 8.9	6,100	7.7	5.0 - 10.4	9,100	11.5	7.7 - 15.3	58,900	74.2	69.5 - 78.8	79,400

Diabetes - times chk for HbA1C by State, County, Island, Community, BRFSS Age Group, DOH Race-Ethnicity, Gender, Education Level, Employment Status (Grouped), Household Income, Poverty Level, Marital Status (Grouped), Married, Health Care Coverage, for the Year(s) - 2001, 2002, 2003, 2004, 2005, 2006, 2007, 2008, 2009, 2010

Note: Weighted numbers (#), percentages and 95% confidence intervals; Respondents aged 18 years and older; n/r (Not Reportable) - If the unweighted total responses for a dimension (row) is <50 that row will not be shown; n/a (Not Available) - Not asked of a subset of respondents



Diabetes - times chk for HbA1C by State, County, Island, Community, BRFSS Age Group, DOH Race-Ethnicity, Gender, Education Level, Employment Status (Grouped), Household Income, Poverty Level, Marital Status (Grouped), Married, Health Care Coverage, for the Year(s) - 2001, 2002, 2003, 2004, 2005, 2006, 2007, 2008, 2009, 2010

Note: Weighted numbers (#), percentages and 95% confidence intervals; Respondents aged 18 years and older; n/r (Not Reportable) - If the unweighted total responses for a dimension (row) is <50 that row will not be shown; n/a (Not Available) - Not asked of a subset of respondents

Year: 2010

State	Never heard of hemoglobin "A one C" test			None			Once			2 or more			Estimated Population
	#	%	C.I. (95%)	#	%	C.I. (95%)	#	%	C.I. (95%)	#	%	C.I. (95%)	#
Hawaii State	5,300	6.6	4.4 - 8.9	6,100	7.7	5.0 - 10.4	9,100	11.5	7.7 - 15.3	58,900	74.2	69.5 - 78.8	79,400

County	Never heard of hemoglobin "A one C" test			None			Once			2 or more			Estimated Population
	#	%	C.I. (95%)	#	%	C.I. (95%)	#	%	C.I. (95%)	#	%	C.I. (95%)	#
Hawaii	700	5.9	1.7 - 10.1	500	4.0	0.6 - 7.4	900	7.5	1.8 - 13.1	9,400	82.6	75.3 - 89.9	11,400
Honolulu	3,500	6.3	3.5 - 9.0	5,100	8.9	5.3 - 12.6	7,100	12.5	7.5 - 17.5	41,000	72.3	66.2 - 78.5	56,700
Kauai	100	4.5	0.0 - 9.6	100	4.6	0.0 - 10.4	200	5.4	0.0 - 11.7	2,500	85.5	76.0 - 95.1	2,900
Maui	900	10.9	2.3 - 19.5	500	5.6	0.3 - 11.0	1,000	12.2	5.6 - 18.8	6,000	71.2	60.7 - 81.8	8,400

Diabetes - times chk for HbA1C by State, County, Island, Community, BRFSS Age Group, DOH Race-Ethnicity, Gender, Education Level, Employment Status (Grouped), Household Income, Poverty Level, Marital Status (Grouped), Married, Health Care Coverage, for the Year(s) - 2001, 2002, 2003, 2004, 2005, 2006, 2007, 2008, 2009, 2010

Note: Weighted numbers (#), percentages and 95% confidence intervals; Respondents aged 18 years and older; n/r (Not Reportable) - If the unweighted total responses for a dimension (row) is <50 that row will not be shown; n/a (Not Available) - Not asked of a subset of respondents

Year: 2010

Island	Never heard of hemoglobin "A one C" test			None			Once			2 or more			Estimated Population
	#	%	C.I. (95%)	#	%	C.I. (95%)	#	%	C.I. (95%)	#	%	C.I. (95%)	#
Hawaii	700	5.9	1.7 - 10.1	500	4.0	0.6 - 7.4	900	7.5	1.8 - 13.1	9,400	82.6	75.3 - 89.9	11,400
Kauai	100	4.5	0.0 - 9.6	100	4.6	0.0 - 10.4	200	5.4	0.0 - 11.7	2,500	85.5	76.0 - 95.1	2,900
Maui	900	11.9	2.2 - 21.7	300	4.5	0.0 - 10.4	800	11.2	4.0 - 18.5	5,300	72.4	60.5 - 84.2	7,300
Oahu	3,500	6.3	3.5 - 9.0	5,100	8.9	5.3 - 12.6	7,100	12.5	7.5 - 17.5	41,000	72.3	66.2 - 78.5	56,700

Diabetes - times chk for HbA1C by State, County, Island, Community, BRFSS Age Group, DOH Race-Ethnicity, Gender, Education Level, Employment Status (Grouped), Household Income, Poverty Level, Marital Status (Grouped), Married, Health Care Coverage, for the Year(s) - 2001, 2002, 2003, 2004, 2005, 2006, 2007, 2008, 2009, 2010

Note: Weighted numbers (#), percentages and 95% confidence intervals; Respondents aged 18 years and older; n/r (Not Reportable) - If the unweighted total responses for a dimension (row) is <50 that row will not be shown; n/a (Not Available) - Not asked of a subset of respondents

Year: 2010

Community	Never heard of hemoglobin "A one C" test			None			Once			2 or more			Estimated Population
	#	%	C.I. (95%)	#	%	C.I. (95%)	#	%	C.I. (95%)	#	%	C.I. (95%)	#
Hilo	200	4.7	0.0 - 10.1	200	5.6	0.0 - 12.4	200	4.0	0.0 - 8.6	3,400	85.7	76.1 - 95.3	4,000
Puna/ Kau	300	6.2	0.0 - 13.5	100	2.6	0.0 - 6.3	500	11.4	0.0 - 24.4	3,500	79.7	65.6 - 93.9	4,400
Waipahu/ Kapolei/ Ewa	800	7.0	0.0 - 14.0	1,200	10.9	2.2 - 19.7	2,000	17.3	3.3 - 31.2	7,400	64.8	49.5 - 80.1	11,400

Diabetes - times chk for HbA1C by State, County, Island, Community, BRFSS Age Group, DOH Race-Ethnicity, Gender, Education Level, Employment Status (Grouped), Household Income, Poverty Level, Marital Status (Grouped), Married, Health Care Coverage, for the Year(s) - 2001, 2002, 2003, 2004, 2005, 2006, 2007, 2008, 2009, 2010

Note: Weighted numbers (#), percentages and 95% confidence intervals; Respondents aged 18 years and older; n/r (Not Reportable) - If the unweighted total responses for a dimension (row) is <50 that row will not be shown; n/a (Not Available) - Not asked of a subset of respondents

Year: 2010

BRFSS Age Group	Never heard of hemoglobin "A one C" test			None			Once			2 or more			Estimated Population
	#	%	C.I. (95%)	#	%	C.I. (95%)	#	%	C.I. (95%)	#	%	C.I. (95%)	#
45-54	300	2.0	0.0 - 5.3	2,200	17.6	7.5 - 27.8	1,100	8.7	1.8 - 15.6	9,000	71.6	59.7 - 83.5	12,500
55-64	1,100	5.4	1.4 - 9.5	1,200	5.8	1.3 - 10.2	2,100	10.1	5.3 - 15.0	16,500	78.6	71.5 - 85.8	20,900
65-74	1,500	8.7	3.8 - 13.6	1,200	7.0	2.8 - 11.3	1,500	8.8	3.3 - 14.2	12,800	75.5	67.8 - 83.2	17,000
75+	1,800	10.8	4.9 - 16.7	300	1.8	0.0 - 4.3	900	5.5	0.6 - 10.4	13,700	81.8	74.1 - 89.5	16,800

Diabetes - times chk for HbA1C by State, County, Island, Community, BRFSS Age Group, DOH Race-Ethnicity, Gender, Education Level, Employment Status (Grouped), Household Income, Poverty Level, Marital Status (Grouped), Married, Health Care Coverage, for the Year(s) - 2001, 2002, 2003, 2004, 2005, 2006, 2007, 2008, 2009, 2010

Note: Weighted numbers (#), percentages and 95% confidence intervals; Respondents aged 18 years and older; n/r (Not Reportable) - If the unweighted total responses for a dimension (row) is <50 that row will not be shown; n/a (Not Available) - Not asked of a subset of respondents

Year: 2010

DOH Race-Ethnicity	Never heard of hemoglobin "A one C" test			None			Once			2 or more			Estimated Population
	#	%	C.I. (95%)	#	%	C.I. (95%)	#	%	C.I. (95%)	#	%	C.I. (95%)	#
Caucasian	1,100	6.3	2.2 - 10.4	1,000	6.0	1.1 - 10.9	2,000	12.0	3.8 - 20.1	12,900	75.7	66.5 - 84.9	17,000
Native Hawaiian	900	6.0	1.5 - 10.4	1,000	6.6	0.7 - 12.6	1,500	10.6	2.7 - 18.5	11,200	76.8	66.6 - 86.9	14,600
Filipino	1,700	11.0	3.6 - 18.4	1,400	9.5	2.5 - 16.5	2,500	16.6	3.7 - 29.4	9,400	62.9	48.9 - 76.9	15,000
Japanese	1,400	6.3	2.1 - 10.6	1,800	7.9	3.0 - 12.8	2,000	8.9	4.3 - 13.5	17,400	76.8	69.5 - 84.2	22,600

Gender	Never heard of hemoglobin "A one C" test			None			Once			2 or more			Estimated Population
	#	%	C.I. (95%)	#	%	C.I. (95%)	#	%	C.I. (95%)	#	%	C.I. (95%)	#
Male	2,900	7.2	3.7 - 10.8	3,800	9.5	5.2 - 13.7	4,000	9.8	4.5 - 15.1	29,700	73.5	66.7 - 80.3	40,400
Female	2,300	6.0	3.3 - 8.7	2,300	5.9	2.5 - 9.3	5,200	13.3	7.9 - 18.6	29,200	74.9	68.6 - 81.1	39,000

Diabetes - times chk for HbA1C by State, County, Island, Community, BRFSS Age Group, DOH Race-Ethnicity, Gender, Education Level, Employment Status (Grouped), Household Income, Poverty Level, Marital Status (Grouped), Married, Health Care Coverage, for the Year(s) - 2001, 2002, 2003, 2004, 2005, 2006, 2007, 2008, 2009, 2010

Note: Weighted numbers (#), percentages and 95% confidence intervals; Respondents aged 18 years and older; n/r (Not Reportable) - If the unweighted total responses for a dimension (row) is <50 that row will not be shown; n/a (Not Available) - Not asked of a subset of respondents

Year: 2010

Education Level	Never heard of hemoglobin "A one C" test			None			Once			2 or more			Estimated Population
	#	%	C.I. (95%)	#	%	C.I. (95%)	#	%	C.I. (95%)	#	%	C.I. (95%)	#
Grades 12 or GED (High School Grad)	2,400	8.7	4.6 - 12.8	2,000	7.2	3.0 - 11.4	3,700	13.3	5.8 - 20.8	19,600	70.8	62.3 - 79.3	27,700
College 1 to 3 years (Some College/ Tech)	800	3.8	0.3 - 7.2	2,300	10.3	4.1 - 16.5	3,400	15.4	7.1 - 23.7	15,700	70.5	61.0 - 80.1	22,200
College 4 years or more (College Grad)	1,400	5.8	1.7 - 10.0	1,600	6.5	1.9 - 11.1	1,700	6.8	3.5 - 10.1	19,700	80.8	74.3 - 87.4	24,400

Employment Status (Grouped)	Never heard of hemoglobin "A one C" test			None			Once			2 or more			Estimated Population
	#	%	C.I. (95%)	#	%	C.I. (95%)	#	%	C.I. (95%)	#	%	C.I. (95%)	#
Employed	1,200	3.9	0.7 - 7.0	3,900	12.3	6.9 - 17.8	5,300	16.8	9.6 - 24.0	21,200	67.0	58.5 - 75.4	31,700
Retired/Unable to work	3,800	10.1	6.3 - 13.8	1,300	3.4	1.4 - 5.5	2,500	6.5	3.5 - 9.5	30,500	80.0	75.0 - 84.9	38,100

Diabetes - times chk for HbA1C by State, County, Island, Community, BRFSS Age Group, DOH Race-Ethnicity, Gender, Education Level, Employment Status (Grouped), Household Income, Poverty Level, Marital Status (Grouped), Married, Health Care Coverage, for the Year(s) - 2001, 2002, 2003, 2004, 2005, 2006, 2007, 2008, 2009, 2010

Note: Weighted numbers (#), percentages and 95% confidence intervals; Respondents aged 18 years and older; n/r (Not Reportable) - If the unweighted total responses for a dimension (row) is <50 that row will not be shown; n/a (Not Available) - Not asked of a subset of respondents

Year: 2010

Household Income	Never heard of hemoglobin "A one C" test			None			Once			2 or more			Estimated Population
	#	%	C.I. (95%)	#	%	C.I. (95%)	#	%	C.I. (95%)	#	%	C.I. (95%)	#
\$15,000 to \$19,999	400	6.3	0.7 - 11.9	700	11.1	1.2 - 21.0	1,100	18.3	0.0 - 37.7	3,800	64.3	45.3 - 83.3	5,900
\$20,000 to \$24,999	300	4.6	0.0 - 9.6	700	9.9	0.0 - 21.1	100	1.9	0.0 - 4.7	5,700	83.5	71.0 - 95.9	6,800
\$25,000 to \$34,999	1,100	13.1	3.4 - 22.7	300	3.8	0.0 - 8.0	1,300	16.2	0.3 - 32.1	5,500	66.9	50.8 - 83.0	8,200
\$35,000 to \$49,999	700	4.1	0.4 - 7.8	900	5.6	0.0 - 11.5	2,300	14.1	3.9 - 24.3	12,300	76.2	64.7 - 87.7	16,200
\$50,000 to \$74,999	100	1.1	0.0 - 3.2	1,500	13.2	3.8 - 22.5	900	7.7	0.5 - 14.9	9,200	78.1	67.1 - 89.1	11,800
\$75,000 or more	800	4.9	0.6 - 9.1	900	5.5	0.6 - 10.4	2,200	12.7	6.0 - 19.4	13,200	76.9	68.4 - 85.5	17,200

Diabetes - times chk for HbA1C by State, County, Island, Community, BRFSS Age Group, DOH Race-Ethnicity, Gender, Education Level, Employment Status (Grouped), Household Income, Poverty Level, Marital Status (Grouped), Married, Health Care Coverage, for the Year(s) - 2001, 2002, 2003, 2004, 2005, 2006, 2007, 2008, 2009, 2010

Note: Weighted numbers (#), percentages and 95% confidence intervals; Respondents aged 18 years and older; n/r (Not Reportable) - If the unweighted total responses for a dimension (row) is <50 that row will not be shown; n/a (Not Available) - Not asked of a subset of respondents

Year: 2010

Poverty Level	Never heard of hemoglobin "A one C" test			None			Once			2 or more			Estimated Population
	#	%	C.I. (95%)	#	%	C.I. (95%)	#	%	C.I. (95%)	#	%	C.I. (95%)	#
0-130%	1,900	9.2	3.8 - 14.5	900	4.6	0.9 - 8.3	3,600	17.5	6.3 - 28.6	14,100	68.8	57.1 - 80.4	20,500
131-185%	1,200	8.2	2.4 - 14.1	1,800	12.5	3.7 - 21.3	700	5.3	0.8 - 9.8	10,400	74.0	63.4 - 84.6	14,000
186+%	1,700	4.4	1.8 - 6.9	2,600	6.6	3.1 - 10.0	4,300	11.0	6.9 - 15.1	30,500	78.1	72.6 - 83.6	39,000

Marital Status (Grouped)	Never heard of hemoglobin "A one C" test			None			Once			2 or more			Estimated Population
	#	%	C.I. (95%)	#	%	C.I. (95%)	#	%	C.I. (95%)	#	%	C.I. (95%)	#
Married	3,300	6.2	3.4 - 9.1	4,300	8.2	4.7 - 11.7	6,100	11.6	6.8 - 16.4	38,500	73.9	68.0 - 79.8	52,100
Widowed	600	7.1	1.0 - 13.1	200	2.7	0.0 - 5.8	500	5.6	0.0 - 12.7	7,500	84.6	75.1 - 94.1	8,900
Other	1,400	7.7	3.3 - 12.2	1,600	8.9	2.6 - 15.2	2,200	12.4	4.1 - 20.6	12,700	71.0	60.6 - 81.3	17,900

Diabetes - times chk for HbA1C by State, County, Island, Community, BRFSS Age Group, DOH Race-Ethnicity, Gender, Education Level, Employment Status (Grouped), Household Income, Poverty Level, Marital Status (Grouped), Married, Health Care Coverage, for the Year(s) - 2001, 2002, 2003, 2004, 2005, 2006, 2007, 2008, 2009, 2010

Note: Weighted numbers (#), percentages and 95% confidence intervals; Respondents aged 18 years and older; n/r (Not Reportable) - If the unweighted total responses for a dimension (row) is <50 that row will not be shown; n/a (Not Available) - Not asked of a subset of respondents

Year: 2010

Married	Never heard of hemoglobin "A one C" test			None			Once			2 or more			Estimated Population
	#	%	C.I. (95%)	#	%	C.I. (95%)	#	%	C.I. (95%)	#	%	C.I. (95%)	#
Yes	3,400	6.5	3.6 - 9.3	4,400	8.3	4.8 - 11.7	6,300	12.0	7.2 - 16.7	38,800	73.3	67.5 - 79.1	52,900
No	1,800	7.0	3.4 - 10.5	1,700	6.6	2.2 - 10.9	2,800	10.5	4.4 - 16.6	20,100	75.9	68.2 - 83.7	26,500

Health Care Coverage	Never heard of hemoglobin "A one C" test			None			Once			2 or more			Estimated Population
	#	%	C.I. (95%)	#	%	C.I. (95%)	#	%	C.I. (95%)	#	%	C.I. (95%)	#
Yes	5,300	6.9	4.6 - 9.2	6,000	7.8	5.0 - 10.6	7,900	10.3	6.9 - 13.7	57,400	75.0	70.5 - 79.6	76,500

Diabetes - times chk for HbA1C by State, County, Island, Community, BRFSS Age Group, DOH Race-Ethnicity, Gender, Education Level, Employment Status (Grouped), Household Income, Poverty Level, Marital Status (Grouped), Married, Health Care Coverage, for the Year(s) - 2001, 2002, 2003, 2004, 2005, 2006, 2007, 2008, 2009, 2010

Note: Weighted numbers (#), percentages and 95% confidence intervals; Respondents aged 18 years and older; n/r (Not Reportable) - If the unweighted total responses for a dimension (row) is <50 that row will not be shown; n/a (Not Available) - Not asked of a subset of respondents

Year: 2009

State	Never heard of hemoglobin "A one C" test			None			Once			2 or more			Estimated Population
	#	%	C.I. (95%)	#	%	C.I. (95%)	#	%	C.I. (95%)	#	%	C.I. (95%)	#
Hawaii State	12,000	16.0	9.2 - 22.9	6,800	9.1	4.1 - 14.1	8,400	11.2	6.4 - 16.0	47,800	63.7	55.8 - 71.6	75,100

County	Never heard of hemoglobin "A one C" test			None			Once			2 or more			Estimated Population
	#	%	C.I. (95%)	#	%	C.I. (95%)	#	%	C.I. (95%)	#	%	C.I. (95%)	#
Hawaii	1,700	14.3	5.0 - 23.5	1,800	14.8	0.2 - 29.3	1,700	14.0	4.9 - 23.2	6,800	57.0	42.0 - 71.9	12,000
Honolulu	8,700	17.5	7.6 - 27.3	3,500	7.1	1.3 - 12.9	5,600	11.3	4.5 - 18.0	31,700	64.1	53.3 - 75.0	49,500
Maui	1,500	15.7	4.9 - 26.6	1,500	15.3	0.0 - 31.8	500	5.7	0.0 - 11.5	6,100	63.3	46.6 - 79.9	9,700

Diabetes - times chk for HbA1C by State, County, Island, Community, BRFSS Age Group, DOH Race-Ethnicity, Gender, Education Level, Employment Status (Grouped), Household Income, Poverty Level, Marital Status (Grouped), Married, Health Care Coverage, for the Year(s) - 2001, 2002, 2003, 2004, 2005, 2006, 2007, 2008, 2009, 2010

Note: Weighted numbers (#), percentages and 95% confidence intervals; Respondents aged 18 years and older; n/r (Not Reportable) - If the unweighted total responses for a dimension (row) is <50 that row will not be shown; n/a (Not Available) - Not asked of a subset of respondents

Year: 2009

Island	Never heard of hemoglobin "A one C" test			None			Once			2 or more			Estimated Population
	#	%	C.I. (95%)	#	%	C.I. (95%)	#	%	C.I. (95%)	#	%	C.I. (95%)	#
Hawaii	1,700	14.3	5.0 - 23.5	1,800	14.8	0.2 - 29.3	1,700	14.0	4.9 - 23.2	6,800	57.0	42.0 - 71.9	12,000
Maui	1,200	13.5	2.7 - 24.3	1,400	16.5	0.0 - 34.8	500	5.8	0.0 - 12.3	5,500	64.2	45.9 - 82.6	8,600
Oahu	8,700	17.5	7.6 - 27.3	3,500	7.1	1.3 - 12.9	5,600	11.3	4.5 - 18.0	31,700	64.1	53.3 - 75.0	49,500

Diabetes - times chk for HbA1C by State, County, Island, Community, BRFSS Age Group, DOH Race-Ethnicity, Gender, Education Level, Employment Status (Grouped), Household Income, Poverty Level, Marital Status (Grouped), Married, Health Care Coverage, for the Year(s) - 2001, 2002, 2003, 2004, 2005, 2006, 2007, 2008, 2009, 2010

Note: Weighted numbers (#), percentages and 95% confidence intervals; Respondents aged 18 years and older; n/r (Not Reportable) - If the unweighted total responses for a dimension (row) is <50 that row will not be shown; n/a (Not Available) - Not asked of a subset of respondents

Year: 2009

BRFSS Age Group	Never heard of hemoglobin "A one C" test			None			Once			2 or more			Estimated Population
	#	%	C.I. (95%)	#	%	C.I. (95%)	#	%	C.I. (95%)	#	%	C.I. (95%)	#
45-54	2,400	17.7	0.0 - 39.1	1,700	12.4	0.0 - 25.2	1,200	9.0	0.1 - 17.9	8,200	60.9	40.2 - 81.6	13,500
55-64	2,000	11.2	0.0 - 22.7	600	3.4	0.0 - 9.1	1,900	11.1	3.7 - 18.6	12,900	74.2	61.0 - 87.5	17,400
65-74	1,600	10.4	2.7 - 18.2	900	5.8	0.0 - 12.0	1,400	9.2	1.4 - 17.1	11,200	74.5	62.7 - 86.4	15,000
75+	3,600	20.0	6.7 - 33.4	2,300	13.0	0.0 - 26.1	1,100	6.2	1.4 - 11.1	11,000	60.8	45.2 - 76.3	18,100

Diabetes - times chk for HbA1C by State, County, Island, Community, BRFSS Age Group, DOH Race-Ethnicity, Gender, Education Level, Employment Status (Grouped), Household Income, Poverty Level, Marital Status (Grouped), Married, Health Care Coverage, for the Year(s) - 2001, 2002, 2003, 2004, 2005, 2006, 2007, 2008, 2009, 2010

Note: Weighted numbers (#), percentages and 95% confidence intervals; Respondents aged 18 years and older; n/r (Not Reportable) - If the unweighted total responses for a dimension (row) is <50 that row will not be shown; n/a (Not Available) - Not asked of a subset of respondents

Year: 2009

DOH Race-Ethnicity	Never heard of hemoglobin "A one C" test			None			Once			2 or more			Estimated Population
	#	%	C.I. (95%)	#	%	C.I. (95%)	#	%	C.I. (95%)	#	%	C.I. (95%)	#
Caucasian	1,700	12.3	3.7 - 21.0	700	5.3	0.0 - 11.4	2,100	14.8	5.6 - 24.1	9,300	67.5	54.9 - 80.2	13,800
Native Hawaiian	2,900	19.4	4.3 - 34.6	1,900	12.5	0.0 - 25.1	1,400	9.5	0.9 - 18.1	8,700	58.5	41.3 - 75.8	14,900
Filipino	4,500	36.3	11.6 - 61.1	400	3.4	0.0 - 8.1	400	3.0	0.0 - 6.3	7,200	57.3	33.8 - 80.7	12,500
Japanese	1,300	5.3	1.0 - 9.6	2,500	10.2	0.0 - 20.6	4,000	16.5	4.6 - 28.3	16,600	68.1	54.1 - 82.0	24,400

Gender	Never heard of hemoglobin "A one C" test			None			Once			2 or more			Estimated Population
	#	%	C.I. (95%)	#	%	C.I. (95%)	#	%	C.I. (95%)	#	%	C.I. (95%)	#
Male	4,500	12.4	3.1 - 21.7	3,100	8.7	2.2 - 15.2	3,800	10.6	2.5 - 18.7	24,700	68.3	56.7 - 79.9	36,100
Female	7,600	19.4	9.5 - 29.3	3,700	9.4	1.9 - 17.0	4,600	11.8	6.3 - 17.3	23,100	59.4	48.7 - 70.0	39,000

Diabetes - times chk for HbA1C by State, County, Island, Community, BRFSS Age Group, DOH Race-Ethnicity, Gender, Education Level, Employment Status (Grouped), Household Income, Poverty Level, Marital Status (Grouped), Married, Health Care Coverage, for the Year(s) - 2001, 2002, 2003, 2004, 2005, 2006, 2007, 2008, 2009, 2010

Note: Weighted numbers (#), percentages and 95% confidence intervals; Respondents aged 18 years and older; n/r (Not Reportable) - If the unweighted total responses for a dimension (row) is <50 that row will not be shown; n/a (Not Available) - Not asked of a subset of respondents

Year: 2009

Education Level	Never heard of hemoglobin "A one C" test			None			Once			2 or more			Estimated Population
	#	%	C.I. (95%)	#	%	C.I. (95%)	#	%	C.I. (95%)	#	%	C.I. (95%)	#
Grades 12 or GED (High School Grad)	5,900	22.3	7.9 - 36.7	4,900	18.5	6.3 - 30.7	2,300	8.8	2.7 - 14.9	13,400	50.4	36.2 - 64.6	26,700
College 1 to 3 years (Some College/ Tech)	2,200	10.8	0.0 - 21.8	500	2.4	0.0 - 6.3	3,300	16.1	2.8 - 29.3	14,600	70.7	55.4 - 86.0	20,600
College 4 years or more (College Grad)	900	4.1	0.2 - 8.0	1,200	5.5	0.0 - 11.3	2,400	11.0	4.3 - 17.7	17,000	79.4	70.2 - 88.5	21,500

Employment Status (Grouped)	Never heard of hemoglobin "A one C" test			None			Once			2 or more			Estimated Population
	#	%	C.I. (95%)	#	%	C.I. (95%)	#	%	C.I. (95%)	#	%	C.I. (95%)	#
Employed	6,500	17.2	6.1 - 28.3	2,600	7.0	1.4 - 12.6	5,500	14.6	6.2 - 23.1	23,000	61.2	49.2 - 73.1	37,600
Retired/Unable to work	4,000	12.7	4.9 - 20.5	3,500	11.2	1.8 - 20.7	2,700	8.7	3.6 - 13.7	21,000	67.4	56.3 - 78.5	31,100

Diabetes - times chk for HbA1C by State, County, Island, Community, BRFSS Age Group, DOH Race-Ethnicity, Gender, Education Level, Employment Status (Grouped), Household Income, Poverty Level, Marital Status (Grouped), Married, Health Care Coverage, for the Year(s) - 2001, 2002, 2003, 2004, 2005, 2006, 2007, 2008, 2009, 2010

Note: Weighted numbers (#), percentages and 95% confidence intervals; Respondents aged 18 years and older; n/r (Not Reportable) - If the unweighted total responses for a dimension (row) is <50 that row will not be shown; n/a (Not Available) - Not asked of a subset of respondents

Year: 2009

Household Income	Never heard of hemoglobin "A one C" test			None			Once			2 or more			Estimated Population
	#	%	C.I. (95%)	#	%	C.I. (95%)	#	%	C.I. (95%)	#	%	C.I. (95%)	#
\$35,000 to \$49,999	800	7.5	0.4 - 14.7	1,600	15.2	0.0 - 31.1	700	6.9	0.7 - 13.0	7,300	70.4	53.8 - 87.1	10,400
\$75,000 or more	600	3.2	0.0 - 7.2	700	3.5	0.0 - 8.9	4,500	23.2	8.8 - 37.6	13,700	70.1	55.2 - 84.9	19,600

Poverty Level	Never heard of hemoglobin "A one C" test			None			Once			2 or more			Estimated Population
	#	%	C.I. (95%)	#	%	C.I. (95%)	#	%	C.I. (95%)	#	%	C.I. (95%)	#
0-130%	4,000	23.8	7.3 - 40.3	4,300	25.4	8.2 - 42.7	900	5.1	0.0 - 11.2	7,700	45.7	28.4 - 63.0	16,900
131-185%	1,100	10.5	2.3 - 18.8	1,400	12.7	1.1 - 24.3	1,000	9.6	1.6 - 17.7	7,200	67.1	52.8 - 81.5	10,800
186+%	1,800	4.7	1.4 - 8.0	1,200	3.1	0.0 - 6.4	6,300	16.7	8.3 - 25.1	28,700	75.5	66.5 - 84.5	38,000

Diabetes - times chk for HbA1C by State, County, Island, Community, BRFSS Age Group, DOH Race-Ethnicity, Gender, Education Level, Employment Status (Grouped), Household Income, Poverty Level, Marital Status (Grouped), Married, Health Care Coverage, for the Year(s) - 2001, 2002, 2003, 2004, 2005, 2006, 2007, 2008, 2009, 2010

Note: Weighted numbers (#), percentages and 95% confidence intervals; Respondents aged 18 years and older; n/r (Not Reportable) - If the unweighted total responses for a dimension (row) is <50 that row will not be shown; n/a (Not Available) - Not asked of a subset of respondents

Year: 2009

Marital Status (Grouped)	Never heard of hemoglobin "A one C" test			None			Once			2 or more			Estimated Population
	#	%	C.I. (95%)	#	%	C.I. (95%)	#	%	C.I. (95%)	#	%	C.I. (95%)	#
Married	5,400	11.7	4.8 - 18.5	2,400	5.2	1.0 - 9.4	6,200	13.4	6.4 - 20.5	32,200	69.7	60.4 - 78.9	46,200
Widowed	1,600	18.4	3.7 - 33.2	1,500	17.0	0.0 - 39.9	1,100	11.9	0.2 - 23.6	4,700	52.6	31.6 - 73.5	8,900
Other	5,000	26.4	7.8 - 44.9	2,900	15.2	3.0 - 27.4	800	4.1	0.5 - 7.7	10,300	54.3	37.2 - 71.5	19,000

Married	Never heard of hemoglobin "A one C" test			None			Once			2 or more			Estimated Population
	#	%	C.I. (95%)	#	%	C.I. (95%)	#	%	C.I. (95%)	#	%	C.I. (95%)	#
Yes	7,100	14.5	5.8 - 23.3	2,900	6.0	1.6 - 10.4	6,200	12.8	6.0 - 19.5	32,400	66.7	56.7 - 76.7	48,600
No	5,000	19.0	7.8 - 30.2	3,900	14.9	3.6 - 26.2	2,200	8.4	2.9 - 14.0	15,100	57.6	44.8 - 70.5	26,200

Diabetes - times chk for HbA1C by State, County, Island, Community, BRFSS Age Group, DOH Race-Ethnicity, Gender, Education Level, Employment Status (Grouped), Household Income, Poverty Level, Marital Status (Grouped), Married, Health Care Coverage, for the Year(s) - 2001, 2002, 2003, 2004, 2005, 2006, 2007, 2008, 2009, 2010

Note: Weighted numbers (#), percentages and 95% confidence intervals; Respondents aged 18 years and older; n/r (Not Reportable) - If the unweighted total responses for a dimension (row) is <50 that row will not be shown; n/a (Not Available) - Not asked of a subset of respondents

Year: 2008

State	Never heard of hemoglobin "A one C" test			None			Once			2 or more			Estimated Population
	#	%	C.I. (95%)	#	%	C.I. (95%)	#	%	C.I. (95%)	#	%	C.I. (95%)	#
Hawaii State	8,900	11.1	7.9 - 14.4	4,200	5.3	2.9 - 7.6	11,800	14.8	10.6 - 19.0	55,000	68.8	63.6 - 73.9	79,900

County	Never heard of hemoglobin "A one C" test			None			Once			2 or more			Estimated Population
	#	%	C.I. (95%)	#	%	C.I. (95%)	#	%	C.I. (95%)	#	%	C.I. (95%)	#
Hawaii	900	8.9	3.6 - 14.2	700	7.8	2.6 - 13.0	2,200	22.7	9.3 - 36.0	5,800	60.6	48.1 - 73.1	9,600
Honolulu	6,400	10.8	6.8 - 14.9	3,100	5.2	2.2 - 8.2	8,000	13.6	8.6 - 18.6	41,500	70.4	64.0 - 76.7	59,000
Kauai	300	7.3	0.9 - 13.7	100	2.2	0.0 - 6.4	800	21.0	9.1 - 33.0	2,800	69.5	56.5 - 82.5	4,000
Maui	1,400	18.8	7.8 - 29.9	300	4.3	0.0 - 8.9	800	10.6	0.4 - 20.7	4,800	66.3	52.8 - 79.8	7,200

Diabetes - times chk for HbA1C by State, County, Island, Community, BRFSS Age Group, DOH Race-Ethnicity, Gender, Education Level, Employment Status (Grouped), Household Income, Poverty Level, Marital Status (Grouped), Married, Health Care Coverage, for the Year(s) - 2001, 2002, 2003, 2004, 2005, 2006, 2007, 2008, 2009, 2010

Note: Weighted numbers (#), percentages and 95% confidence intervals; Respondents aged 18 years and older; n/r (Not Reportable) - If the unweighted total responses for a dimension (row) is <50 that row will not be shown; n/a (Not Available) - Not asked of a subset of respondents

Year: 2008

Island	Never heard of hemoglobin "A one C" test			None			Once			2 or more			Estimated Population
	#	%	C.I. (95%)	#	%	C.I. (95%)	#	%	C.I. (95%)	#	%	C.I. (95%)	#
Hawaii	900	8.9	3.6 - 14.2	700	7.8	2.6 - 13.0	2,200	22.7	9.3 - 36.0	5,800	60.6	48.1 - 73.1	9,600
Kauai	300	7.3	0.9 - 13.7	100	2.2	0.0 - 6.4	800	21.0	9.1 - 33.0	2,800	69.5	56.5 - 82.5	4,000
Maui	1,300	20.1	7.6 - 32.6	200	3.9	0.0 - 8.8	700	11.7	0.3 - 23.2	4,100	64.3	49.2 - 79.5	6,400
Oahu	6,400	10.8	6.8 - 14.9	3,100	5.2	2.2 - 8.2	8,000	13.6	8.6 - 18.6	41,500	70.4	64.0 - 76.7	59,000

Diabetes - times chk for HbA1C by State, County, Island, Community, BRFSS Age Group, DOH Race-Ethnicity, Gender, Education Level, Employment Status (Grouped), Household Income, Poverty Level, Marital Status (Grouped), Married, Health Care Coverage, for the Year(s) - 2001, 2002, 2003, 2004, 2005, 2006, 2007, 2008, 2009, 2010

Note: Weighted numbers (#), percentages and 95% confidence intervals; Respondents aged 18 years and older; n/r (Not Reportable) - If the unweighted total responses for a dimension (row) is <50 that row will not be shown; n/a (Not Available) - Not asked of a subset of respondents

Year: 2008

BRFSS Age Group	Never heard of hemoglobin "A one C" test			None			Once			2 or more			Estimated Population
	#	%	C.I. (95%)	#	%	C.I. (95%)	#	%	C.I. (95%)	#	%	C.I. (95%)	#
45-54	2,100	15.5	5.5 - 25.5	500	3.9	0.0 - 8.6	1,700	12.4	5.1 - 19.8	9,300	68.1	55.9 - 80.3	13,600
55-64	2,600	12.6	5.3 - 19.9	1,800	8.7	3.1 - 14.3	2,000	9.7	3.3 - 16.1	14,000	68.9	59.3 - 78.6	20,300
65-74	1,400	9.8	4.6 - 15.1	300	2.1	0.0 - 4.6	1,600	11.0	4.1 - 18.0	11,300	77.0	68.5 - 85.4	14,600
75+	2,400	13.5	6.9 - 20.2	600	3.7	0.0 - 7.5	1,300	7.5	2.4 - 12.6	13,200	75.3	66.5 - 84.0	17,500

Diabetes - times chk for HbA1C by State, County, Island, Community, BRFSS Age Group, DOH Race-Ethnicity, Gender, Education Level, Employment Status (Grouped), Household Income, Poverty Level, Marital Status (Grouped), Married, Health Care Coverage, for the Year(s) - 2001, 2002, 2003, 2004, 2005, 2006, 2007, 2008, 2009, 2010

Note: Weighted numbers (#), percentages and 95% confidence intervals; Respondents aged 18 years and older; n/r (Not Reportable) - If the unweighted total responses for a dimension (row) is <50 that row will not be shown; n/a (Not Available) - Not asked of a subset of respondents

Year: 2008

DOH Race-Ethnicity	Never heard of hemoglobin "A one C" test			None			Once			2 or more			Estimated Population
	#	%	C.I. (95%)	#	%	C.I. (95%)	#	%	C.I. (95%)	#	%	C.I. (95%)	#
Caucasian	1,300	8.6	3.5 - 13.7	600	4.2	1.0 - 7.4	1,900	12.4	3.9 - 21.0	11,600	74.8	65.0 - 84.5	15,500
Native Hawaiian	1,800	12.6	4.1 - 21.1	1,300	9.1	1.5 - 16.7	2,600	18.4	7.5 - 29.3	8,400	59.9	46.7 - 73.1	13,900
Filipino	2,400	14.6	6.1 - 23.1	200	1.0	0.0 - 2.6	2,900	17.8	7.3 - 28.3	10,900	66.6	54.2 - 79.0	16,400
Japanese	1,700	8.5	3.9 - 13.1	1,300	6.3	1.6 - 10.9	2,000	9.7	3.5 - 16.0	15,300	75.5	67.3 - 83.7	20,200

Gender	Never heard of hemoglobin "A one C" test			None			Once			2 or more			Estimated Population
	#	%	C.I. (95%)	#	%	C.I. (95%)	#	%	C.I. (95%)	#	%	C.I. (95%)	#
Male	4,100	10.7	5.7 - 15.7	1,700	4.4	1.6 - 7.3	6,200	16.3	9.5 - 23.0	26,300	68.6	60.7 - 76.5	38,400
Female	4,800	11.6	7.4 - 15.7	2,500	6.1	2.4 - 9.7	5,600	13.4	8.3 - 18.6	28,600	68.9	62.3 - 75.6	41,500

Diabetes - times chk for HbA1C by State, County, Island, Community, BRFSS Age Group, DOH Race-Ethnicity, Gender, Education Level, Employment Status (Grouped), Household Income, Poverty Level, Marital Status (Grouped), Married, Health Care Coverage, for the Year(s) - 2001, 2002, 2003, 2004, 2005, 2006, 2007, 2008, 2009, 2010

Note: Weighted numbers (#), percentages and 95% confidence intervals; Respondents aged 18 years and older; n/r (Not Reportable) - If the unweighted total responses for a dimension (row) is <50 that row will not be shown; n/a (Not Available) - Not asked of a subset of respondents

Year: 2008

Education Level	Never heard of hemoglobin "A one C" test			None			Once			2 or more			Estimated Population
	#	%	C.I. (95%)	#	%	C.I. (95%)	#	%	C.I. (95%)	#	%	C.I. (95%)	#
Grades 12 or GED (High School Grad)	2,500	10.4	5.2 - 15.7	800	3.2	0.8 - 5.6	3,100	13.2	5.4 - 21.0	17,400	73.2	64.3 - 82.0	23,700
College 1 to 3 years (Some College/ Tech)	3,000	11.6	6.0 - 17.2	1,800	7.2	1.7 - 12.7	4,700	18.5	9.6 - 27.3	16,000	62.7	52.5 - 72.9	25,600
College 4 years or more (College Grad)	1,800	7.6	2.4 - 12.8	600	2.3	0.0 - 4.8	3,400	14.1	7.9 - 20.3	18,100	75.9	68.1 - 83.8	23,900

Employment Status (Grouped)	Never heard of hemoglobin "A one C" test			None			Once			2 or more			Estimated Population
	#	%	C.I. (95%)	#	%	C.I. (95%)	#	%	C.I. (95%)	#	%	C.I. (95%)	#
Employed	3,100	9.3	4.6 - 14.0	2,300	7.1	2.7 - 11.4	5,700	17.2	10.5 - 23.9	22,100	66.5	58.3 - 74.7	33,200
Retired/Unable to work	5,200	13.4	8.4 - 18.4	1,700	4.2	1.3 - 7.1	3,500	8.9	4.6 - 13.3	28,700	73.4	66.9 - 79.9	39,100

Diabetes - times chk for HbA1C by State, County, Island, Community, BRFSS Age Group, DOH Race-Ethnicity, Gender, Education Level, Employment Status (Grouped), Household Income, Poverty Level, Marital Status (Grouped), Married, Health Care Coverage, for the Year(s) - 2001, 2002, 2003, 2004, 2005, 2006, 2007, 2008, 2009, 2010

Note: Weighted numbers (#), percentages and 95% confidence intervals; Respondents aged 18 years and older; n/r (Not Reportable) - If the unweighted total responses for a dimension (row) is <50 that row will not be shown; n/a (Not Available) - Not asked of a subset of respondents

Year: 2008

Household Income	Never heard of hemoglobin "A one C" test			None			Once			2 or more			Estimated Population
	#	%	C.I. (95%)	#	%	C.I. (95%)	#	%	C.I. (95%)	#	%	C.I. (95%)	#
\$20,000 to \$24,999	400	9.4	1.7 - 17.0	500	11.3	0.0 - 22.8	500	11.0	1.2 - 20.8	3,200	68.3	53.3 - 83.3	4,700
\$25,000 to \$34,999	800	7.3	0.9 - 13.7	400	3.9	0.0 - 8.1	2,800	25.2	11.7 - 38.8	7,000	63.6	49.6 - 77.6	10,900
\$35,000 to \$49,999	1,900	14.0	4.1 - 24.0	300	2.3	0.0 - 5.6	2,100	15.9	5.8 - 26.1	9,100	67.7	54.9 - 80.5	13,500
\$50,000 to \$74,999	1,400	8.6	2.5 - 14.8	1,200	7.9	0.4 - 15.5	2,400	15.6	4.9 - 26.4	10,600	67.8	55.2 - 80.4	15,700
\$75,000 or more	1,800	9.6	2.6 - 16.5	900	5.1	0.0 - 10.2	2,400	13.0	5.5 - 20.6	13,300	72.3	62.0 - 82.6	18,400

Diabetes - times chk for HbA1C by State, County, Island, Community, BRFSS Age Group, DOH Race-Ethnicity, Gender, Education Level, Employment Status (Grouped), Household Income, Poverty Level, Marital Status (Grouped), Married, Health Care Coverage, for the Year(s) - 2001, 2002, 2003, 2004, 2005, 2006, 2007, 2008, 2009, 2010

Note: Weighted numbers (#), percentages and 95% confidence intervals; Respondents aged 18 years and older; n/r (Not Reportable) - If the unweighted total responses for a dimension (row) is <50 that row will not be shown; n/a (Not Available) - Not asked of a subset of respondents

Year: 2008

Poverty Level	Never heard of hemoglobin "A one C" test			None			Once			2 or more			Estimated Population
	#	%	C.I. (95%)	#	%	C.I. (95%)	#	%	C.I. (95%)	#	%	C.I. (95%)	#
0-130%	1,700	11.6	5.4 - 17.8	700	4.5	0.0 - 9.1	2,600	17.2	6.2 - 28.2	10,000	66.7	54.7 - 78.7	14,900
131-185%	900	9.0	0.0 - 20.1	800	8.3	1.6 - 15.1	1,400	14.5	1.9 - 27.0	6,800	68.2	52.4 - 84.0	9,900
186+%	5,300	10.9	6.9 - 14.8	2,700	5.6	2.3 - 9.0	7,300	15.1	9.8 - 20.3	33,000	68.4	62.0 - 74.8	48,300

Marital Status (Grouped)	Never heard of hemoglobin "A one C" test			None			Once			2 or more			Estimated Population
	#	%	C.I. (95%)	#	%	C.I. (95%)	#	%	C.I. (95%)	#	%	C.I. (95%)	#
Married	5,100	10.5	6.0 - 15.0	1,900	3.9	1.5 - 6.3	7,300	15.0	9.2 - 20.8	34,500	70.6	63.7 - 77.5	48,800
Widowed	1,800	20.1	11.0 - 29.1	300	3.5	0.0 - 8.7	1,700	18.3	8.8 - 27.8	5,300	58.1	46.4 - 69.9	9,100
Other	1,900	9.2	4.2 - 14.2	1,900	9.2	2.7 - 15.7	2,800	13.1	5.7 - 20.4	14,500	68.5	59.0 - 78.1	21,200

Diabetes - times chk for HbA1C by State, County, Island, Community, BRFSS Age Group, DOH Race-Ethnicity, Gender, Education Level, Employment Status (Grouped), Household Income, Poverty Level, Marital Status (Grouped), Married, Health Care Coverage, for the Year(s) - 2001, 2002, 2003, 2004, 2005, 2006, 2007, 2008, 2009, 2010

Note: Weighted numbers (#), percentages and 95% confidence intervals; Respondents aged 18 years and older; n/r (Not Reportable) - If the unweighted total responses for a dimension (row) is <50 that row will not be shown; n/a (Not Available) - Not asked of a subset of respondents

Year: 2008

Married	Never heard of hemoglobin "A one C" test			None			Once			2 or more			Estimated Population
	#	%	C.I. (95%)	#	%	C.I. (95%)	#	%	C.I. (95%)	#	%	C.I. (95%)	#
Yes	5,200	10.3	5.9 - 14.7	1,900	3.8	1.5 - 6.1	7,600	15.0	9.3 - 20.7	35,700	70.9	64.1 - 77.7	50,300
No	3,700	12.6	8.0 - 17.2	2,300	7.8	2.9 - 12.8	4,300	14.4	8.5 - 20.3	19,300	65.2	57.6 - 72.8	29,600

Health Care Coverage	Never heard of hemoglobin "A one C" test			None			Once			2 or more			Estimated Population
	#	%	C.I. (95%)	#	%	C.I. (95%)	#	%	C.I. (95%)	#	%	C.I. (95%)	#
Yes	8,600	11.2	7.9 - 14.5	4,100	5.3	2.8 - 7.7	10,600	13.7	9.7 - 17.6	54,000	69.9	64.8 - 75.0	77,300

Diabetes - times chk for HbA1C by State, County, Island, Community, BRFSS Age Group, DOH Race-Ethnicity, Gender, Education Level, Employment Status (Grouped), Household Income, Poverty Level, Marital Status (Grouped), Married, Health Care Coverage, for the Year(s) - 2001, 2002, 2003, 2004, 2005, 2006, 2007, 2008, 2009, 2010

Note: Weighted numbers (#), percentages and 95% confidence intervals; Respondents aged 18 years and older; n/r (Not Reportable) - If the unweighted total responses for a dimension (row) is <50 that row will not be shown; n/a (Not Available) - Not asked of a subset of respondents

Year: 2007

State	Never heard of hemoglobin "A one C" test			None			Once			2 or more			Estimated Population
	#	%	C.I. (95%)	#	%	C.I. (95%)	#	%	C.I. (95%)	#	%	C.I. (95%)	#
Hawaii State	7,900	11.2	7.4 - 14.9	4,900	6.9	3.7 - 10.0	8,800	12.5	8.9 - 16.1	48,900	69.4	64.1 - 74.7	70,400

County	Never heard of hemoglobin "A one C" test			None			Once			2 or more			Estimated Population
	#	%	C.I. (95%)	#	%	C.I. (95%)	#	%	C.I. (95%)	#	%	C.I. (95%)	#
Hawaii	1,100	13.2	6.1 - 20.3	500	6.0	2.0 - 10.1	1,100	13.0	6.5 - 19.5	5,700	67.7	58.5 - 77.0	8,400
Honolulu	5,500	10.7	5.9 - 15.6	3,400	6.7	2.6 - 10.8	6,600	13.0	8.3 - 17.7	35,400	69.5	62.6 - 76.4	50,800
Maui	1,100	14.1	5.0 - 23.1	800	9.3	2.0 - 16.6	900	11.4	4.3 - 18.5	5,300	65.2	53.6 - 76.8	8,100

Diabetes - times chk for HbA1C by State, County, Island, Community, BRFSS Age Group, DOH Race-Ethnicity, Gender, Education Level, Employment Status (Grouped), Household Income, Poverty Level, Marital Status (Grouped), Married, Health Care Coverage, for the Year(s) - 2001, 2002, 2003, 2004, 2005, 2006, 2007, 2008, 2009, 2010

Note: Weighted numbers (#), percentages and 95% confidence intervals; Respondents aged 18 years and older; n/r (Not Reportable) - If the unweighted total responses for a dimension (row) is <50 that row will not be shown; n/a (Not Available) - Not asked of a subset of respondents

Year: 2007

Island	Never heard of hemoglobin "A one C" test			None			Once			2 or more			Estimated Population
	#	%	C.I. (95%)	#	%	C.I. (95%)	#	%	C.I. (95%)	#	%	C.I. (95%)	#
Hawaii	1,100	13.2	6.1 - 20.3	500	6.0	2.0 - 10.1	1,100	13.0	6.5 - 19.5	5,700	67.7	58.5 - 77.0	8,400
Maui	1,100	14.8	4.6 - 24.9	700	9.3	1.2 - 17.4	900	12.4	4.4 - 20.5	4,500	63.5	50.5 - 76.4	7,200
Oahu	5,500	10.7	5.9 - 15.6	3,400	6.7	2.6 - 10.8	6,600	13.0	8.3 - 17.7	35,400	69.5	62.6 - 76.4	50,800

Diabetes - times chk for HbA1C by State, County, Island, Community, BRFSS Age Group, DOH Race-Ethnicity, Gender, Education Level, Employment Status (Grouped), Household Income, Poverty Level, Marital Status (Grouped), Married, Health Care Coverage, for the Year(s) - 2001, 2002, 2003, 2004, 2005, 2006, 2007, 2008, 2009, 2010

Note: Weighted numbers (#), percentages and 95% confidence intervals; Respondents aged 18 years and older; n/r (Not Reportable) - If the unweighted total responses for a dimension (row) is <50 that row will not be shown; n/a (Not Available) - Not asked of a subset of respondents

Year: 2007

BRFSS Age Group	Never heard of hemoglobin "A one C" test			None			Once			2 or more			Estimated Population
	#	%	C.I. (95%)	#	%	C.I. (95%)	#	%	C.I. (95%)	#	%	C.I. (95%)	#
45-54	700	4.8	0.0 - 9.9	800	5.8	0.0 - 12.4	1,500	10.9	3.6 - 18.3	11,000	78.5	68.2 - 88.7	14,000
55-64	2,300	12.2	5.4 - 19.0	200	1.3	0.0 - 2.8	2,200	11.6	4.6 - 18.7	13,900	74.8	65.6 - 84.0	18,600
65-74	1,800	10.7	5.0 - 16.3	1,500	9.1	1.3 - 16.8	2,000	11.9	5.4 - 18.3	11,500	68.4	58.0 - 78.7	16,900
75+	1,900	14.6	6.0 - 23.2	1,100	8.6	1.3 - 16.0	1,600	12.3	3.7 - 21.0	8,300	64.4	52.4 - 76.5	12,900

Diabetes - times chk for HbA1C by State, County, Island, Community, BRFSS Age Group, DOH Race-Ethnicity, Gender, Education Level, Employment Status (Grouped), Household Income, Poverty Level, Marital Status (Grouped), Married, Health Care Coverage, for the Year(s) - 2001, 2002, 2003, 2004, 2005, 2006, 2007, 2008, 2009, 2010

Note: Weighted numbers (#), percentages and 95% confidence intervals; Respondents aged 18 years and older; n/r (Not Reportable) - If the unweighted total responses for a dimension (row) is <50 that row will not be shown; n/a (Not Available) - Not asked of a subset of respondents

Year: 2007

DOH Race-Ethnicity	Never heard of hemoglobin "A one C" test			None			Once			2 or more			Estimated Population
	#	%	C.I. (95%)	#	%	C.I. (95%)	#	%	C.I. (95%)	#	%	C.I. (95%)	#
Caucasian	1,700	12.5	5.9 - 19.1	600	4.4	1.3 - 7.6	1,600	11.4	4.8 - 17.9	10,000	71.7	62.8 - 80.6	13,900
Native Hawaiian	1,100	7.8	2.1 - 13.4	1,200	8.2	0.5 - 15.9	1,900	13.1	4.8 - 21.4	10,500	71.0	59.5 - 82.4	14,800
Filipino	2,100	17.8	2.8 - 32.7	800	6.3	0.0 - 14.3	1,700	14.3	3.9 - 24.7	7,400	61.7	45.4 - 77.9	12,100
Japanese	1,900	10.5	4.4 - 16.5	1,000	5.5	0.4 - 10.6	2,400	13.2	6.1 - 20.3	13,000	70.9	61.4 - 80.3	18,300

Gender	Never heard of hemoglobin "A one C" test			None			Once			2 or more			Estimated Population
	#	%	C.I. (95%)	#	%	C.I. (95%)	#	%	C.I. (95%)	#	%	C.I. (95%)	#
Male	5,000	14.2	7.8 - 20.7	1,100	3.3	0.6 - 5.9	4,400	12.7	7.6 - 17.8	24,400	69.8	62.0 - 77.6	34,900
Female	2,900	8.2	4.5 - 11.8	3,700	10.5	4.9 - 16.0	4,400	12.3	7.3 - 17.4	24,500	69.0	61.8 - 76.3	35,400

Diabetes - times chk for HbA1C by State, County, Island, Community, BRFSS Age Group, DOH Race-Ethnicity, Gender, Education Level, Employment Status (Grouped), Household Income, Poverty Level, Marital Status (Grouped), Married, Health Care Coverage, for the Year(s) - 2001, 2002, 2003, 2004, 2005, 2006, 2007, 2008, 2009, 2010

Note: Weighted numbers (#), percentages and 95% confidence intervals; Respondents aged 18 years and older; n/r (Not Reportable) - If the unweighted total responses for a dimension (row) is <50 that row will not be shown; n/a (Not Available) - Not asked of a subset of respondents

Year: 2007

Education Level	Never heard of hemoglobin "A one C" test			None			Once			2 or more			Estimated Population
	#	%	C.I. (95%)	#	%	C.I. (95%)	#	%	C.I. (95%)	#	%	C.I. (95%)	#
Grades 12 or GED (High School Grad)	2,800	10.8	5.5 - 16.1	1,900	7.3	2.6 - 12.0	2,800	10.9	5.5 - 16.3	18,200	71.0	62.8 - 79.2	25,600
College 1 to 3 years (Some College/ Tech)	2,500	10.9	2.8 - 19.0	2,000	8.6	2.0 - 15.3	3,000	13.4	6.6 - 20.1	15,200	67.1	56.7 - 77.5	22,700
College 4 years or more (College Grad)	1,500	8.7	3.1 - 14.4	900	5.4	0.0 - 11.5	2,800	16.3	8.1 - 24.5	11,800	69.6	59.4 - 79.8	17,000

Employment Status (Grouped)	Never heard of hemoglobin "A one C" test			None			Once			2 or more			Estimated Population
	#	%	C.I. (95%)	#	%	C.I. (95%)	#	%	C.I. (95%)	#	%	C.I. (95%)	#
Employed	2,400	7.7	1.6 - 13.9	1,200	3.8	0.8 - 6.7	4,600	14.9	8.8 - 20.9	22,700	73.6	65.5 - 81.7	30,900
Retired/Unable to work	4,500	12.7	7.9 - 17.6	2,800	7.7	3.0 - 12.4	4,100	11.4	6.7 - 16.0	24,400	68.2	61.0 - 75.4	35,700

Diabetes - times chk for HbA1C by State, County, Island, Community, BRFSS Age Group, DOH Race-Ethnicity, Gender, Education Level, Employment Status (Grouped), Household Income, Poverty Level, Marital Status (Grouped), Married, Health Care Coverage, for the Year(s) - 2001, 2002, 2003, 2004, 2005, 2006, 2007, 2008, 2009, 2010

Note: Weighted numbers (#), percentages and 95% confidence intervals; Respondents aged 18 years and older; n/r (Not Reportable) - If the unweighted total responses for a dimension (row) is <50 that row will not be shown; n/a (Not Available) - Not asked of a subset of respondents

Year: 2007

Household Income	Never heard of hemoglobin "A one C" test			None			Once			2 or more			Estimated Population
	#	%	C.I. (95%)	#	%	C.I. (95%)	#	%	C.I. (95%)	#	%	C.I. (95%)	#
\$20,000 to \$24,999	900	12.4	2.5 - 22.4	100	1.5	0.0 - 3.7	1,000	13.6	1.4 - 25.8	5,300	72.5	57.5 - 87.5	7,300
\$25,000 to \$34,999	1,500	17.6	0.0 - 36.3	500	5.4	0.0 - 11.7	1,000	11.4	1.9 - 20.9	5,600	65.6	47.0 - 84.2	8,500
\$35,000 to \$49,999	1,300	9.4	2.5 - 16.3	700	5.2	0.0 - 11.8	1,000	6.9	0.0 - 14.0	11,000	78.5	67.5 - 89.5	14,000
\$50,000 to \$74,999	1,200	10.8	1.5 - 20.0	500	4.3	0.0 - 10.8	1,400	12.9	4.7 - 21.2	7,900	72.0	59.5 - 84.6	11,000
\$75,000 or more	200	1.7	0.0 - 4.5	700	5.0	0.0 - 11.9	2,400	17.8	8.6 - 27.1	10,300	75.5	64.5 - 86.5	13,700

Diabetes - times chk for HbA1C by State, County, Island, Community, BRFSS Age Group, DOH Race-Ethnicity, Gender, Education Level, Employment Status (Grouped), Household Income, Poverty Level, Marital Status (Grouped), Married, Health Care Coverage, for the Year(s) - 2001, 2002, 2003, 2004, 2005, 2006, 2007, 2008, 2009, 2010

Note: Weighted numbers (#), percentages and 95% confidence intervals; Respondents aged 18 years and older; n/r (Not Reportable) - If the unweighted total responses for a dimension (row) is <50 that row will not be shown; n/a (Not Available) - Not asked of a subset of respondents

Year: 2007

Poverty Level	Never heard of hemoglobin "A one C" test			None			Once			2 or more			Estimated Population
	#	%	C.I. (95%)	#	%	C.I. (95%)	#	%	C.I. (95%)	#	%	C.I. (95%)	#
0-130%	3,400	18.2	8.0 - 28.5	2,100	11.3	3.7 - 18.9	2,000	10.9	3.6 - 18.1	11,200	59.6	47.4 - 71.8	18,900
131-185%	1,000	11.1	1.9 - 20.2	100	0.9	0.0 - 2.1	1,200	13.7	2.8 - 24.6	6,800	74.3	60.8 - 87.9	9,100
186+%	3,000	8.0	4.1 - 12.0	1,700	4.4	1.0 - 7.9	5,000	13.4	8.6 - 18.1	27,700	74.1	67.8 - 80.5	37,400

Marital Status (Grouped)	Never heard of hemoglobin "A one C" test			None			Once			2 or more			Estimated Population
	#	%	C.I. (95%)	#	%	C.I. (95%)	#	%	C.I. (95%)	#	%	C.I. (95%)	#
Married	2,700	6.3	3.0 - 9.6	1,600	3.6	1.2 - 6.1	5,300	12.4	7.7 - 17.0	33,300	77.7	71.8 - 83.5	42,800
Widowed	1,800	18.7	8.2 - 29.2	1,200	12.8	1.1 - 24.6	1,000	10.3	1.2 - 19.5	5,500	58.2	44.4 - 72.0	9,400
Other	3,400	19.6	9.0 - 30.3	2,100	12.0	3.3 - 20.8	2,200	12.5	5.7 - 19.3	9,700	55.8	44.0 - 67.6	17,400

Diabetes - times chk for HbA1C by State, County, Island, Community, BRFSS Age Group, DOH Race-Ethnicity, Gender, Education Level, Employment Status (Grouped), Household Income, Poverty Level, Marital Status (Grouped), Married, Health Care Coverage, for the Year(s) - 2001, 2002, 2003, 2004, 2005, 2006, 2007, 2008, 2009, 2010

Note: Weighted numbers (#), percentages and 95% confidence intervals; Respondents aged 18 years and older; n/r (Not Reportable) - If the unweighted total responses for a dimension (row) is <50 that row will not be shown; n/a (Not Available) - Not asked of a subset of respondents

Year: 2007

Married	Never heard of hemoglobin "A one C" test			None			Once			2 or more			Estimated Population
	#	%	C.I. (95%)	#	%	C.I. (95%)	#	%	C.I. (95%)	#	%	C.I. (95%)	#
Yes	2,700	6.3	3.0 - 9.5	1,900	4.4	1.8 - 7.0	5,500	12.7	8.0 - 17.3	33,300	76.6	70.8 - 82.5	43,400
No	4,900	18.4	10.6 - 26.2	2,900	10.9	4.0 - 17.8	3,300	12.4	6.7 - 18.1	15,600	58.2	49.1 - 67.4	26,800

Health Care Coverage	Never heard of hemoglobin "A one C" test			None			Once			2 or more			Estimated Population
	#	%	C.I. (95%)	#	%	C.I. (95%)	#	%	C.I. (95%)	#	%	C.I. (95%)	#
Yes	7,200	10.8	7.0 - 14.5	3,500	5.3	2.5 - 8.0	8,700	12.9	9.1 - 16.6	47,900	71.1	65.8 - 76.4	67,300

Diabetes - times chk for HbA1C by State, County, Island, Community, BRFSS Age Group, DOH Race-Ethnicity, Gender, Education Level, Employment Status (Grouped), Household Income, Poverty Level, Marital Status (Grouped), Married, Health Care Coverage, for the Year(s) - 2001, 2002, 2003, 2004, 2005, 2006, 2007, 2008, 2009, 2010

Note: Weighted numbers (#), percentages and 95% confidence intervals; Respondents aged 18 years and older; n/r (Not Reportable) - If the unweighted total responses for a dimension (row) is <50 that row will not be shown; n/a (Not Available) - Not asked of a subset of respondents

Year: 2006

State	Never heard of hemoglobin "A one C" test			None			Once			2 or more			Estimated Population
	#	%	C.I. (95%)	#	%	C.I. (95%)	#	%	C.I. (95%)	#	%	C.I. (95%)	#
Hawaii State	2,600	3.9	1.4 - 6.4	5,300	7.7	5.0 - 10.5	10,800	15.9	11.8 - 20.1	49,300	72.5	67.4 - 77.5	68,000

County	Never heard of hemoglobin "A one C" test			None			Once			2 or more			Estimated Population
	#	%	C.I. (95%)	#	%	C.I. (95%)	#	%	C.I. (95%)	#	%	C.I. (95%)	#
Hawaii	200	2.1	0.0 - 4.7	1,300	16.8	7.7 - 25.9	1,000	13.5	6.2 - 20.9	5,100	67.6	56.9 - 78.2	7,500
Honolulu	2,300	4.7	1.3 - 8.2	2,400	4.9	1.8 - 8.0	7,500	15.4	10.0 - 20.9	36,600	74.9	68.4 - 81.5	48,900
Kauai	100	3.2	0.0 - 9.3	500	11.8	3.3 - 20.2	900	21.8	8.6 - 35.1	2,600	63.2	48.6 - 77.9	4,200
Maui	<50	0.6	0.0 - 1.6	1,100	14.8	5.2 - 24.4	1,400	18.3	9.7 - 26.8	5,000	66.4	55.0 - 77.8	7,500

Diabetes - times chk for HbA1C by State, County, Island, Community, BRFSS Age Group, DOH Race-Ethnicity, Gender, Education Level, Employment Status (Grouped), Household Income, Poverty Level, Marital Status (Grouped), Married, Health Care Coverage, for the Year(s) - 2001, 2002, 2003, 2004, 2005, 2006, 2007, 2008, 2009, 2010

Note: Weighted numbers (#), percentages and 95% confidence intervals; Respondents aged 18 years and older; n/r (Not Reportable) - If the unweighted total responses for a dimension (row) is <50 that row will not be shown; n/a (Not Available) - Not asked of a subset of respondents

Year: 2006

Island	Never heard of hemoglobin "A one C" test			None			Once			2 or more			Estimated Population
	#	%	C.I. (95%)	#	%	C.I. (95%)	#	%	C.I. (95%)	#	%	C.I. (95%)	#
Hawaii	200	2.1	0.0 - 4.7	1,300	16.8	7.7 - 25.9	1,000	13.5	6.2 - 20.9	5,100	67.6	56.9 - 78.2	7,500
Kauai	100	3.2	0.0 - 9.3	500	11.8	3.3 - 20.2	900	21.8	8.6 - 35.1	2,600	63.2	48.6 - 77.9	4,200
Maui	<50	0.6	0.0 - 1.8	1,000	14.8	4.2 - 25.5	1,300	19.7	10.2 - 29.2	4,300	64.9	52.3 - 77.4	6,700
Oahu	2,300	4.7	1.3 - 8.2	2,400	4.9	1.8 - 8.0	7,500	15.4	10.0 - 20.9	36,600	74.9	68.4 - 81.5	48,900

Diabetes - times chk for HbA1C by State, County, Island, Community, BRFSS Age Group, DOH Race-Ethnicity, Gender, Education Level, Employment Status (Grouped), Household Income, Poverty Level, Marital Status (Grouped), Married, Health Care Coverage, for the Year(s) - 2001, 2002, 2003, 2004, 2005, 2006, 2007, 2008, 2009, 2010

Note: Weighted numbers (#), percentages and 95% confidence intervals; Respondents aged 18 years and older; n/r (Not Reportable) - If the unweighted total responses for a dimension (row) is <50 that row will not be shown; n/a (Not Available) - Not asked of a subset of respondents

Year: 2006

BRFSS Age Group	Never heard of hemoglobin "A one C" test			None			Once			2 or more			Estimated Population
	#	%	C.I. (95%)	#	%	C.I. (95%)	#	%	C.I. (95%)	#	%	C.I. (95%)	#
45-54	1,100	7.0	0.0 - 15.9	700	4.3	0.6 - 8.1	2,200	14.1	6.7 - 21.5	11,400	74.6	63.6 - 85.6	15,300
55-64	200	0.8	0.0 - 2.3	600	3.1	0.0 - 6.4	4,800	24.3	14.1 - 34.5	14,000	71.7	61.3 - 82.1	19,600
65-74	1,000	7.0	1.0 - 13.0	1,300	9.4	3.1 - 15.7	1,500	10.8	4.7 - 17.0	9,900	72.8	63.2 - 82.3	13,600
75+	500	3.8	0.0 - 7.6	1,200	9.7	2.8 - 16.6	1,800	15.2	5.5 - 24.9	8,600	71.3	59.7 - 82.8	12,100

Diabetes - times chk for HbA1C by State, County, Island, Community, BRFSS Age Group, DOH Race-Ethnicity, Gender, Education Level, Employment Status (Grouped), Household Income, Poverty Level, Marital Status (Grouped), Married, Health Care Coverage, for the Year(s) - 2001, 2002, 2003, 2004, 2005, 2006, 2007, 2008, 2009, 2010

Note: Weighted numbers (#), percentages and 95% confidence intervals; Respondents aged 18 years and older; n/r (Not Reportable) - If the unweighted total responses for a dimension (row) is <50 that row will not be shown; n/a (Not Available) - Not asked of a subset of respondents

Year: 2006

DOH Race-Ethnicity	Never heard of hemoglobin "A one C" test			None			Once			2 or more			Estimated Population
	#	%	C.I. (95%)	#	%	C.I. (95%)	#	%	C.I. (95%)	#	%	C.I. (95%)	#
Caucasian	300	2.2	0.0 - 5.5	1,300	7.8	2.4 - 13.1	2,600	16.0	9.5 - 22.6	11,900	74.0	65.6 - 82.5	16,100
Native Hawaiian	200	1.6	0.0 - 3.9	1,500	12.7	4.7 - 20.8	2,200	18.0	8.4 - 27.6	8,200	67.7	56.0 - 79.3	12,100
Filipino	800	6.6	0.0 - 17.2	400	3.2	0.0 - 6.6	1,700	14.3	4.6 - 23.9	9,200	75.9	62.5 - 89.2	12,100
Japanese	600	3.7	0.4 - 7.1	800	4.6	1.0 - 8.2	2,900	17.4	7.5 - 27.3	12,300	74.3	64.0 - 84.6	16,600

Gender	Never heard of hemoglobin "A one C" test			None			Once			2 or more			Estimated Population
	#	%	C.I. (95%)	#	%	C.I. (95%)	#	%	C.I. (95%)	#	%	C.I. (95%)	#
Male	1,000	3.1	0.2 - 6.0	2,200	6.8	3.3 - 10.3	3,700	11.6	6.8 - 16.4	25,000	78.5	72.2 - 84.8	31,800
Female	1,700	4.6	0.6 - 8.5	3,100	8.5	4.4 - 12.7	7,100	19.7	13.3 - 26.2	24,300	67.2	59.7 - 74.6	36,200

Diabetes - times chk for HbA1C by State, County, Island, Community, BRFSS Age Group, DOH Race-Ethnicity, Gender, Education Level, Employment Status (Grouped), Household Income, Poverty Level, Marital Status (Grouped), Married, Health Care Coverage, for the Year(s) - 2001, 2002, 2003, 2004, 2005, 2006, 2007, 2008, 2009, 2010

Note: Weighted numbers (#), percentages and 95% confidence intervals; Respondents aged 18 years and older; n/r (Not Reportable) - If the unweighted total responses for a dimension (row) is <50 that row will not be shown; n/a (Not Available) - Not asked of a subset of respondents

Year: 2006

Education Level	Never heard of hemoglobin "A one C" test			None			Once			2 or more			Estimated Population
	#	%	C.I. (95%)	#	%	C.I. (95%)	#	%	C.I. (95%)	#	%	C.I. (95%)	#
Grades 12 or GED (High School Grad)	1,700	7.5	0.7 - 14.4	1,900	8.3	2.8 - 13.9	3,900	17.0	8.5 - 25.4	15,200	67.1	56.9 - 77.4	22,700
College 1 to 3 years (Some College/ Tech)	300	1.5	0.0 - 3.2	2,500	12.4	6.1 - 18.7	2,400	12.1	6.0 - 18.1	14,900	74.0	65.6 - 82.4	20,100
College 4 years or more (College Grad)	300	1.3	0.0 - 3.2	300	1.7	0.0 - 3.6	3,800	20.1	11.9 - 28.2	14,600	76.9	68.5 - 85.3	19,000

Employment Status (Grouped)	Never heard of hemoglobin "A one C" test			None			Once			2 or more			Estimated Population
	#	%	C.I. (95%)	#	%	C.I. (95%)	#	%	C.I. (95%)	#	%	C.I. (95%)	#
Employed	1,200	3.9	0.0 - 8.6	1,400	4.8	1.7 - 8.0	5,200	17.3	10.6 - 24.1	22,100	74.0	65.9 - 82.0	29,900
Retired/Unable to work	1,500	4.5	1.5 - 7.5	2,600	8.0	4.3 - 11.6	5,500	16.9	10.9 - 22.9	23,100	70.6	63.7 - 77.6	32,700

Diabetes - times chk for HbA1C by State, County, Island, Community, BRFSS Age Group, DOH Race-Ethnicity, Gender, Education Level, Employment Status (Grouped), Household Income, Poverty Level, Marital Status (Grouped), Married, Health Care Coverage, for the Year(s) - 2001, 2002, 2003, 2004, 2005, 2006, 2007, 2008, 2009, 2010

Note: Weighted numbers (#), percentages and 95% confidence intervals; Respondents aged 18 years and older; n/r (Not Reportable) - If the unweighted total responses for a dimension (row) is <50 that row will not be shown; n/a (Not Available) - Not asked of a subset of respondents

Year: 2006

Household Income	Never heard of hemoglobin "A one C" test			None			Once			2 or more			Estimated Population
	#	%	C.I. (95%)	#	%	C.I. (95%)	#	%	C.I. (95%)	#	%	C.I. (95%)	#
\$20,000 to \$24,999	0	0.0	--	600	9.7	2.1 - 17.4	1,200	19.3	4.8 - 33.7	4,400	71.0	55.4 - 86.6	6,200
\$25,000 to \$34,999	400	5.9	0.0 - 12.2	500	6.8	0.8 - 12.8	1,600	21.6	6.0 - 37.3	4,900	65.6	48.7 - 82.6	7,500
\$35,000 to \$49,999	300	2.5	0.0 - 6.9	500	4.3	0.7 - 7.9	1,600	13.5	2.4 - 24.6	9,200	79.8	67.9 - 91.6	11,600
\$50,000 to \$74,999	500	4.1	0.0 - 10.2	700	5.8	0.3 - 11.3	2,000	16.9	7.5 - 26.3	8,500	73.1	61.6 - 84.7	11,600
\$75,000 or more	100	0.5	0.0 - 1.5	400	3.6	0.0 - 7.8	1,300	11.7	3.2 - 20.2	9,400	84.2	74.9 - 93.6	11,200

Diabetes - times chk for HbA1C by State, County, Island, Community, BRFSS Age Group, DOH Race-Ethnicity, Gender, Education Level, Employment Status (Grouped), Household Income, Poverty Level, Marital Status (Grouped), Married, Health Care Coverage, for the Year(s) - 2001, 2002, 2003, 2004, 2005, 2006, 2007, 2008, 2009, 2010

Note: Weighted numbers (#), percentages and 95% confidence intervals; Respondents aged 18 years and older; n/r (Not Reportable) - If the unweighted total responses for a dimension (row) is <50 that row will not be shown; n/a (Not Available) - Not asked of a subset of respondents

Year: 2006

Poverty Level	Never heard of hemoglobin "A one C" test			None			Once			2 or more			Estimated Population
	#	%	C.I. (95%)	#	%	C.I. (95%)	#	%	C.I. (95%)	#	%	C.I. (95%)	#
0-130%	300	2.2	0.0 - 4.7	1,900	11.8	4.5 - 19.1	3,700	23.2	11.5 - 34.9	10,100	62.9	50.3 - 75.5	16,000
131-185%	200	2.8	0.0 - 6.8	300	4.2	0.0 - 8.4	800	11.4	2.6 - 20.2	5,900	81.6	70.9 - 92.3	7,200
186+%	1,300	3.6	0.8 - 6.5	1,800	5.3	2.6 - 7.9	4,600	13.3	8.5 - 18.0	27,200	77.8	72.1 - 83.6	34,900

Marital Status (Grouped)	Never heard of hemoglobin "A one C" test			None			Once			2 or more			Estimated Population
	#	%	C.I. (95%)	#	%	C.I. (95%)	#	%	C.I. (95%)	#	%	C.I. (95%)	#
Married	1,700	3.7	0.3 - 7.1	2,900	6.4	3.3 - 9.6	6,200	13.8	9.0 - 18.7	34,100	76.0	69.8 - 82.2	44,900
Widowed	400	5.4	0.0 - 11.0	800	10.2	1.0 - 19.3	800	11.2	1.0 - 21.4	5,400	73.3	59.7 - 86.8	7,400
Other	600	3.8	0.0 - 7.9	1,400	9.1	2.8 - 15.3	3,800	24.7	14.5 - 34.9	9,600	62.4	51.4 - 73.4	15,300

Diabetes - times chk for HbA1C by State, County, Island, Community, BRFSS Age Group, DOH Race-Ethnicity, Gender, Education Level, Employment Status (Grouped), Household Income, Poverty Level, Marital Status (Grouped), Married, Health Care Coverage, for the Year(s) - 2001, 2002, 2003, 2004, 2005, 2006, 2007, 2008, 2009, 2010

Note: Weighted numbers (#), percentages and 95% confidence intervals; Respondents aged 18 years and older; n/r (Not Reportable) - If the unweighted total responses for a dimension (row) is <50 that row will not be shown; n/a (Not Available) - Not asked of a subset of respondents

Year: 2006

Married	Never heard of hemoglobin "A one C" test			None			Once			2 or more			Estimated Population
	#	%	C.I. (95%)	#	%	C.I. (95%)	#	%	C.I. (95%)	#	%	C.I. (95%)	#
Yes	1,700	3.6	0.2 - 7.0	3,100	6.6	3.5 - 9.8	6,800	14.8	9.8 - 19.8	34,500	74.9	68.7 - 81.1	46,000
No	1,000	4.5	1.0 - 7.9	2,200	10.0	4.6 - 15.4	4,000	18.3	10.8 - 25.8	14,800	67.2	58.5 - 76.0	22,000

Health Care Coverage	Never heard of hemoglobin "A one C" test			None			Once			2 or more			Estimated Population
	#	%	C.I. (95%)	#	%	C.I. (95%)	#	%	C.I. (95%)	#	%	C.I. (95%)	#
Yes	2,600	4.1	1.4 - 6.8	4,100	6.4	3.9 - 9.0	10,100	15.7	11.4 - 20.0	47,300	73.7	68.6 - 78.9	64,100

Diabetes - times chk for HbA1C by State, County, Island, Community, BRFSS Age Group, DOH Race-Ethnicity, Gender, Education Level, Employment Status (Grouped), Household Income, Poverty Level, Marital Status (Grouped), Married, Health Care Coverage, for the Year(s) - 2001, 2002, 2003, 2004, 2005, 2006, 2007, 2008, 2009, 2010

Note: Weighted numbers (#), percentages and 95% confidence intervals; Respondents aged 18 years and older; n/r (Not Reportable) - If the unweighted total responses for a dimension (row) is <50 that row will not be shown; n/a (Not Available) - Not asked of a subset of respondents

Year: 2005

State	Never heard of hemoglobin "A one C" test			None			Once			2 or more			Estimated Population
	#	%	C.I. (95%)	#	%	C.I. (95%)	#	%	C.I. (95%)	#	%	C.I. (95%)	#
Hawaii State	5,700	8.6	3.7 - 13.4	9,800	14.8	7.4 - 22.3	7,800	11.7	5.6 - 17.8	43,000	64.9	55.7 - 74.1	66,300

County	Never heard of hemoglobin "A one C" test			None			Once			2 or more			Estimated Population
	#	%	C.I. (95%)	#	%	C.I. (95%)	#	%	C.I. (95%)	#	%	C.I. (95%)	#
Hawaii	1,200	12.9	4.5 - 21.3	900	9.8	2.8 - 16.8	700	6.9	1.1 - 12.8	6,700	70.4	58.6 - 82.2	9,500
Honolulu	4,000	8.0	2.0 - 14.1	8,200	16.5	6.8 - 26.2	5,000	10.0	2.2 - 17.8	32,600	65.5	53.6 - 77.3	49,800

Diabetes - times chk for HbA1C by State, County, Island, Community, BRFSS Age Group, DOH Race-Ethnicity, Gender, Education Level, Employment Status (Grouped), Household Income, Poverty Level, Marital Status (Grouped), Married, Health Care Coverage, for the Year(s) - 2001, 2002, 2003, 2004, 2005, 2006, 2007, 2008, 2009, 2010

Note: Weighted numbers (#), percentages and 95% confidence intervals; Respondents aged 18 years and older; n/r (Not Reportable) - If the unweighted total responses for a dimension (row) is <50 that row will not be shown; n/a (Not Available) - Not asked of a subset of respondents

Year: 2005

Island	Never heard of hemoglobin "A one C" test			None			Once			2 or more			Estimated Population
	#	%	C.I. (95%)	#	%	C.I. (95%)	#	%	C.I. (95%)	#	%	C.I. (95%)	#
Hawaii	1,200	12.9	4.5 - 21.3	900	9.8	2.8 - 16.8	700	6.9	1.1 - 12.8	6,700	70.4	58.6 - 82.2	9,500
Oahu	4,000	8.0	2.0 - 14.1	8,200	16.5	6.8 - 26.2	5,000	10.0	2.2 - 17.8	32,600	65.5	53.6 - 77.3	49,800

BRFSS Age Group	Never heard of hemoglobin "A one C" test			None			Once			2 or more			Estimated Population
	#	%	C.I. (95%)	#	%	C.I. (95%)	#	%	C.I. (95%)	#	%	C.I. (95%)	#
55-64	700	4.1	0.1 - 8.1	2,800	17.0	1.7 - 32.3	1,700	10.5	0.1 - 21.0	11,200	68.4	51.2 - 85.7	16,400
65-74	2,000	16.1	3.8 - 28.4	800	6.7	0.0 - 14.2	1,200	10.1	2.1 - 18.2	8,300	67.1	51.9 - 82.2	12,300

Diabetes - times chk for HbA1C by State, County, Island, Community, BRFSS Age Group, DOH Race-Ethnicity, Gender, Education Level, Employment Status (Grouped), Household Income, Poverty Level, Marital Status (Grouped), Married, Health Care Coverage, for the Year(s) - 2001, 2002, 2003, 2004, 2005, 2006, 2007, 2008, 2009, 2010

Note: Weighted numbers (#), percentages and 95% confidence intervals; Respondents aged 18 years and older; n/r (Not Reportable) - If the unweighted total responses for a dimension (row) is <50 that row will not be shown; n/a (Not Available) - Not asked of a subset of respondents

Year: 2005

DOH Race-Ethnicity	Never heard of hemoglobin "A one C" test			None			Once			2 or more			Estimated Population
	#	%	C.I. (95%)	#	%	C.I. (95%)	#	%	C.I. (95%)	#	%	C.I. (95%)	#
Caucasian	900	5.4	0.0 - 12.0	900	5.4	0.0 - 11.2	2,200	13.0	4.0 - 22.0	12,700	76.2	64.1 - 88.2	16,700

Gender	Never heard of hemoglobin "A one C" test			None			Once			2 or more			Estimated Population
	#	%	C.I. (95%)	#	%	C.I. (95%)	#	%	C.I. (95%)	#	%	C.I. (95%)	#
Male	3,800	10.4	2.6 - 18.1	5,400	14.8	3.5 - 26.0	3,900	10.7	4.3 - 17.1	23,500	64.1	51.3 - 77.0	36,700
Female	1,900	6.3	1.5 - 11.1	4,400	14.9	5.6 - 24.3	3,800	13.0	1.9 - 24.0	19,500	65.8	52.7 - 78.9	29,600

Diabetes - times chk for HbA1C by State, County, Island, Community, BRFSS Age Group, DOH Race-Ethnicity, Gender, Education Level, Employment Status (Grouped), Household Income, Poverty Level, Marital Status (Grouped), Married, Health Care Coverage, for the Year(s) - 2001, 2002, 2003, 2004, 2005, 2006, 2007, 2008, 2009, 2010

Note: Weighted numbers (#), percentages and 95% confidence intervals; Respondents aged 18 years and older; n/r (Not Reportable) - If the unweighted total responses for a dimension (row) is <50 that row will not be shown; n/a (Not Available) - Not asked of a subset of respondents

Year: 2005

Education Level	Never heard of hemoglobin "A one C" test			None			Once			2 or more			Estimated Population
	#	%	C.I. (95%)	#	%	C.I. (95%)	#	%	C.I. (95%)	#	%	C.I. (95%)	#
Grades 12 or GED (High School Grad)	2,400	9.7	1.7 - 17.7	2,300	9.6	0.0 - 19.8	3,100	12.6	0.0 - 25.2	16,600	68.1	52.8 - 83.4	24,400
College 1 to 3 years (Some College/ Tech)	1,800	11.2	0.0 - 23.7	2,500	16.0	2.9 - 29.1	3,000	19.3	5.3 - 33.3	8,400	53.5	35.6 - 71.4	15,700
College 4 years or more (College Grad)	1,200	6.5	0.0 - 14.2	2,200	11.6	0.0 - 26.7	1,600	8.5	2.3 - 14.7	13,600	73.4	56.8 - 89.9	18,600

Employment Status (Grouped)	Never heard of hemoglobin "A one C" test			None			Once			2 or more			Estimated Population
	#	%	C.I. (95%)	#	%	C.I. (95%)	#	%	C.I. (95%)	#	%	C.I. (95%)	#
Employed	2,100	6.2	0.0 - 12.6	4,100	11.9	2.1 - 21.7	5,000	14.6	4.0 - 25.2	23,200	67.4	53.6 - 81.2	34,500
Retired/Unable to work	3,200	11.2	3.5 - 18.9	5,000	17.7	5.6 - 29.7	2,200	7.8	2.7 - 13.0	18,000	63.3	50.6 - 76.0	28,400

Diabetes - times chk for HbA1C by State, County, Island, Community, BRFSS Age Group, DOH Race-Ethnicity, Gender, Education Level, Employment Status (Grouped), Household Income, Poverty Level, Marital Status (Grouped), Married, Health Care Coverage, for the Year(s) - 2001, 2002, 2003, 2004, 2005, 2006, 2007, 2008, 2009, 2010

Note: Weighted numbers (#), percentages and 95% confidence intervals; Respondents aged 18 years and older; n/r (Not Reportable) - If the unweighted total responses for a dimension (row) is <50 that row will not be shown; n/a (Not Available) - Not asked of a subset of respondents

Year: 2005

Poverty Level	Never heard of hemoglobin "A one C" test			None			Once			2 or more			Estimated Population
	#	%	C.I. (95%)	#	%	C.I. (95%)	#	%	C.I. (95%)	#	%	C.I. (95%)	#
186+%	2,700	8.9	2.5 - 15.3	2,200	7.2	1.4 - 13.1	4,100	13.1	5.7 - 20.6	21,800	70.7	60.2 - 81.3	30,900

Marital Status (Grouped)	Never heard of hemoglobin "A one C" test			None			Once			2 or more			Estimated Population
	#	%	C.I. (95%)	#	%	C.I. (95%)	#	%	C.I. (95%)	#	%	C.I. (95%)	#
Married	4,000	9.6	3.0 - 16.3	3,900	9.3	1.9 - 16.7	4,200	10.1	3.5 - 16.7	29,700	71.0	60.3 - 81.7	41,800
Other	400	2.5	0.0 - 5.5	4,700	29.6	8.6 - 50.5	3,100	19.5	1.9 - 37.2	7,600	48.4	27.9 - 68.9	15,800

Diabetes - times chk for HbA1C by State, County, Island, Community, BRFSS Age Group, DOH Race-Ethnicity, Gender, Education Level, Employment Status (Grouped), Household Income, Poverty Level, Marital Status (Grouped), Married, Health Care Coverage, for the Year(s) - 2001, 2002, 2003, 2004, 2005, 2006, 2007, 2008, 2009, 2010

Note: Weighted numbers (#), percentages and 95% confidence intervals; Respondents aged 18 years and older; n/r (Not Reportable) - If the unweighted total responses for a dimension (row) is <50 that row will not be shown; n/a (Not Available) - Not asked of a subset of respondents

Year: 2005

Married	Never heard of hemoglobin "A one C" test			None			Once			2 or more			Estimated Population
	#	%	C.I. (95%)	#	%	C.I. (95%)	#	%	C.I. (95%)	#	%	C.I. (95%)	#
Yes	4,000	9.5	3.0 - 16.0	4,200	9.9	2.5 - 17.4	4,200	10.0	3.4 - 16.5	29,900	70.6	60.0 - 81.2	42,400
No	1,700	7.0	0.3 - 13.7	5,600	23.8	8.5 - 39.0	3,500	15.0	2.7 - 27.2	12,800	54.2	38.4 - 70.1	23,600

Diabetes - times chk for HbA1C by State, County, Island, Community, BRFSS Age Group, DOH Race-Ethnicity, Gender, Education Level, Employment Status (Grouped), Household Income, Poverty Level, Marital Status (Grouped), Married, Health Care Coverage, for the Year(s) - 2001, 2002, 2003, 2004, 2005, 2006, 2007, 2008, 2009, 2010

Note: Weighted numbers (#), percentages and 95% confidence intervals; Respondents aged 18 years and older; n/r (Not Reportable) - If the unweighted total responses for a dimension (row) is <50 that row will not be shown; n/a (Not Available) - Not asked of a subset of respondents

Year: 2004

State	Never heard of hemoglobin "A one C" test			None			Once			2 or more			Estimated Population
	#	%	C.I. (95%)	#	%	C.I. (95%)	#	%	C.I. (95%)	#	%	C.I. (95%)	#
Hawaii State	600	1.1	0.0 - 2.3	4,700	8.3	3.4 - 13.2	4,000	7.1	1.8 - 12.5	47,200	83.5	76.2 - 90.8	56,600

County	Never heard of hemoglobin "A one C" test			None			Once			2 or more			Estimated Population
	#	%	C.I. (95%)	#	%	C.I. (95%)	#	%	C.I. (95%)	#	%	C.I. (95%)	#
Honolulu	0	0.0	--	2,900	6.8	0.9 - 12.7	2,600	6.2	0.0 - 12.9	36,600	87.0	78.2 - 95.9	42,100

Island	Never heard of hemoglobin "A one C" test			None			Once			2 or more			Estimated Population
	#	%	C.I. (95%)	#	%	C.I. (95%)	#	%	C.I. (95%)	#	%	C.I. (95%)	#
Oahu	0	0.0	--	2,900	6.8	0.9 - 12.7	2,600	6.2	0.0 - 12.9	36,600	87.0	78.2 - 95.9	42,100

Diabetes - times chk for HbA1C by State, County, Island, Community, BRFSS Age Group, DOH Race-Ethnicity, Gender, Education Level, Employment Status (Grouped), Household Income, Poverty Level, Marital Status (Grouped), Married, Health Care Coverage, for the Year(s) - 2001, 2002, 2003, 2004, 2005, 2006, 2007, 2008, 2009, 2010

Note: Weighted numbers (#), percentages and 95% confidence intervals; Respondents aged 18 years and older; n/r (Not Reportable) - If the unweighted total responses for a dimension (row) is <50 that row will not be shown; n/a (Not Available) - Not asked of a subset of respondents

Year: 2004

Gender	Never heard of hemoglobin "A one C" test			None			Once			2 or more			Estimated Population
	#	%	C.I. (95%)	#	%	C.I. (95%)	#	%	C.I. (95%)	#	%	C.I. (95%)	#
Male	0	0.0	--	3,200	9.1	2.0 - 16.1	2,400	6.8	0.0 - 13.6	29,500	84.1	74.5 - 93.7	35,100
Female	600	2.9	0.0 - 6.2	1,500	7.1	1.5 - 12.7	1,600	7.6	0.0 - 16.2	17,700	82.4	71.2 - 93.6	21,500

Education Level	Never heard of hemoglobin "A one C" test			None			Once			2 or more			Estimated Population
	#	%	C.I. (95%)	#	%	C.I. (95%)	#	%	C.I. (95%)	#	%	C.I. (95%)	#
Grades 12 or GED (High School Grad)	400	1.6	0.0 - 4.1	1,400	6.0	0.6 - 11.4	1,200	5.1	0.0 - 12.7	20,400	87.3	77.4 - 97.3	23,300

Diabetes - times chk for HbA1C by State, County, Island, Community, BRFSS Age Group, DOH Race-Ethnicity, Gender, Education Level, Employment Status (Grouped), Household Income, Poverty Level, Marital Status (Grouped), Married, Health Care Coverage, for the Year(s) - 2001, 2002, 2003, 2004, 2005, 2006, 2007, 2008, 2009, 2010

Note: Weighted numbers (#), percentages and 95% confidence intervals; Respondents aged 18 years and older; n/r (Not Reportable) - If the unweighted total responses for a dimension (row) is <50 that row will not be shown; n/a (Not Available) - Not asked of a subset of respondents

Year: 2004

Employment Status (Grouped)	Never heard of hemoglobin "A one C" test			None			Once			2 or more			Estimated Population
	#	%	C.I. (95%)	#	%	C.I. (95%)	#	%	C.I. (95%)	#	%	C.I. (95%)	#
Employed	0	0.0	--	2,900	9.8	1.9 - 17.7	1,600	5.3	0.0 - 12.8	24,800	84.9	74.2 - 95.5	29,200
Retired/Unable to work	300	1.5	0.0 - 3.3	1,600	7.1	0.5 - 13.7	2,200	10.0	0.8 - 19.3	17,900	81.4	69.6 - 93.1	22,000

Poverty Level	Never heard of hemoglobin "A one C" test			None			Once			2 or more			Estimated Population
	#	%	C.I. (95%)	#	%	C.I. (95%)	#	%	C.I. (95%)	#	%	C.I. (95%)	#
186+%	200	0.5	0.0 - 1.3	3,200	8.8	2.1 - 15.6	2,900	7.9	0.4 - 15.4	30,400	82.7	72.9 - 92.6	36,700

Marital Status (Grouped)	Never heard of hemoglobin "A one C" test			None			Once			2 or more			Estimated Population
	#	%	C.I. (95%)	#	%	C.I. (95%)	#	%	C.I. (95%)	#	%	C.I. (95%)	#
Married	500	1.4	0.0 - 3.1	2,800	7.2	1.6 - 12.8	1,700	4.3	0.0 - 9.3	33,600	87.1	79.3 - 94.8	38,600

Diabetes - times chk for HbA1C by State, County, Island, Community, BRFSS Age Group, DOH Race-Ethnicity, Gender, Education Level, Employment Status (Grouped), Household Income, Poverty Level, Marital Status (Grouped), Married, Health Care Coverage, for the Year(s) - 2001, 2002, 2003, 2004, 2005, 2006, 2007, 2008, 2009, 2010

Note: Weighted numbers (#), percentages and 95% confidence intervals; Respondents aged 18 years and older; n/r (Not Reportable) - If the unweighted total responses for a dimension (row) is <50 that row will not be shown; n/a (Not Available) - Not asked of a subset of respondents

Year: 2004

Married	Never heard of hemoglobin "A one C" test			None			Once			2 or more			Estimated Population
	#	%	C.I. (95%)	#	%	C.I. (95%)	#	%	C.I. (95%)	#	%	C.I. (95%)	#
Yes	500	1.4	0.0 - 3.1	2,800	7.2	1.6 - 12.7	1,700	4.3	0.0 - 9.2	33,900	87.2	79.5 - 94.8	38,900
No	100	0.5	0.0 - 1.4	1,900	10.9	1.2 - 20.6	2,400	13.3	0.4 - 26.2	13,300	75.4	59.8 - 91.0	17,700

Health Care Coverage	Never heard of hemoglobin "A one C" test			None			Once			2 or more			Estimated Population
	#	%	C.I. (95%)	#	%	C.I. (95%)	#	%	C.I. (95%)	#	%	C.I. (95%)	#
Yes	600	1.1	0.0 - 2.4	4,600	8.3	3.3 - 13.3	3,400	6.2	1.0 - 11.5	46,800	84.4	77.1 - 91.6	55,500

Diabetes - times chk for HbA1C by State, County, Island, Community, BRFSS Age Group, DOH Race-Ethnicity, Gender, Education Level, Employment Status (Grouped), Household Income, Poverty Level, Marital Status (Grouped), Married, Health Care Coverage, for the Year(s) - 2001, 2002, 2003, 2004, 2005, 2006, 2007, 2008, 2009, 2010

Note: Weighted numbers (#), percentages and 95% confidence intervals; Respondents aged 18 years and older; n/r (Not Reportable) - If the unweighted total responses for a dimension (row) is <50 that row will not be shown; n/a (Not Available) - Not asked of a subset of respondents

Year: 2003

State	Never heard of hemoglobin "A one C" test			None			Once			2 or more			Estimated Population
	#	%	C.I. (95%)	#	%	C.I. (95%)	#	%	C.I. (95%)	#	%	C.I. (95%)	#
Hawaii State	400	0.6	0.0 - 1.7	4,500	6.8	3.2 - 10.4	6,100	9.1	4.7 - 13.6	55,400	83.4	77.9 - 88.9	66,500

County	Never heard of hemoglobin "A one C" test			None			Once			2 or more			Estimated Population
	#	%	C.I. (95%)	#	%	C.I. (95%)	#	%	C.I. (95%)	#	%	C.I. (95%)	#
Hawaii	0	0.0	--	700	8.8	1.3 - 16.4	2,000	25.2	5.1 - 45.3	5,400	66.0	46.8 - 85.2	8,100
Honolulu	300	0.7	0.0 - 2.0	2,800	5.5	1.3 - 9.7	3,600	7.0	2.7 - 11.2	44,900	86.8	80.9 - 92.8	51,700

Diabetes - times chk for HbA1C by State, County, Island, Community, BRFSS Age Group, DOH Race-Ethnicity, Gender, Education Level, Employment Status (Grouped), Household Income, Poverty Level, Marital Status (Grouped), Married, Health Care Coverage, for the Year(s) - 2001, 2002, 2003, 2004, 2005, 2006, 2007, 2008, 2009, 2010

Note: Weighted numbers (#), percentages and 95% confidence intervals; Respondents aged 18 years and older; n/r (Not Reportable) - If the unweighted total responses for a dimension (row) is <50 that row will not be shown; n/a (Not Available) - Not asked of a subset of respondents

Year: 2003

Island	Never heard of hemoglobin "A one C" test			None			Once			2 or more			Estimated Population
	#	%	C.I. (95%)	#	%	C.I. (95%)	#	%	C.I. (95%)	#	%	C.I. (95%)	#
Hawaii	0	0.0	--	700	8.8	1.3 - 16.4	2,000	25.2	5.1 - 45.3	5,400	66.0	46.8 - 85.2	8,100
Oahu	300	0.7	0.0 - 2.0	2,800	5.5	1.3 - 9.7	3,600	7.0	2.7 - 11.2	44,900	86.8	80.9 - 92.8	51,700

BRFSS Age Group	Never heard of hemoglobin "A one C" test			None			Once			2 or more			Estimated Population
	#	%	C.I. (95%)	#	%	C.I. (95%)	#	%	C.I. (95%)	#	%	C.I. (95%)	#
45-54	0	0.0	--	900	5.4	0.1 - 10.7	900	5.3	0.5 - 10.0	14,700	89.3	82.2 - 96.5	16,400
55-64	0	0.0	--	300	1.7	0.0 - 3.7	1,400	9.1	0.0 - 18.3	13,900	89.3	79.8 - 98.7	15,500
65-74	400	2.6	0.0 - 6.9	1,400	8.4	0.0 - 18.9	1,800	10.9	0.0 - 23.0	12,500	78.0	63.1 - 93.0	16,100

Diabetes - times chk for HbA1C by State, County, Island, Community, BRFSS Age Group, DOH Race-Ethnicity, Gender, Education Level, Employment Status (Grouped), Household Income, Poverty Level, Marital Status (Grouped), Married, Health Care Coverage, for the Year(s) - 2001, 2002, 2003, 2004, 2005, 2006, 2007, 2008, 2009, 2010

Note: Weighted numbers (#), percentages and 95% confidence intervals; Respondents aged 18 years and older; n/r (Not Reportable) - If the unweighted total responses for a dimension (row) is <50 that row will not be shown; n/a (Not Available) - Not asked of a subset of respondents

Year: 2003

DOH Race-Ethnicity	Never heard of hemoglobin "A one C" test			None			Once			2 or more			Estimated Population
	#	%	C.I. (95%)	#	%	C.I. (95%)	#	%	C.I. (95%)	#	%	C.I. (95%)	#
Caucasian	0	0.0	--	2,000	13.2	4.4 - 21.9	1,000	6.4	1.6 - 11.3	12,500	80.4	70.6 - 90.3	15,500
Japanese	100	0.4	0.0 - 1.2	800	4.5	0.0 - 9.6	2,000	11.5	2.2 - 20.9	14,700	83.5	73.1 - 93.9	17,600

Gender	Never heard of hemoglobin "A one C" test			None			Once			2 or more			Estimated Population
	#	%	C.I. (95%)	#	%	C.I. (95%)	#	%	C.I. (95%)	#	%	C.I. (95%)	#
Male	300	1.1	0.0 - 3.2	1,600	5.0	1.4 - 8.7	4,400	13.8	5.5 - 22.2	25,400	80.0	71.0 - 89.1	31,700
Female	100	0.2	0.0 - 0.6	2,900	8.5	2.5 - 14.4	1,700	4.9	1.4 - 8.3	30,100	86.4	79.8 - 93.1	34,800

Diabetes - times chk for HbA1C by State, County, Island, Community, BRFSS Age Group, DOH Race-Ethnicity, Gender, Education Level, Employment Status (Grouped), Household Income, Poverty Level, Marital Status (Grouped), Married, Health Care Coverage, for the Year(s) - 2001, 2002, 2003, 2004, 2005, 2006, 2007, 2008, 2009, 2010

Note: Weighted numbers (#), percentages and 95% confidence intervals; Respondents aged 18 years and older; n/r (Not Reportable) - If the unweighted total responses for a dimension (row) is <50 that row will not be shown; n/a (Not Available) - Not asked of a subset of respondents

Year: 2003

Education Level	Never heard of hemoglobin "A one C" test			None			Once			2 or more			Estimated Population
	#	%	C.I. (95%)	#	%	C.I. (95%)	#	%	C.I. (95%)	#	%	C.I. (95%)	#
Grades 12 or GED (High School Grad)	100	0.3	0.0 - 0.9	2,000	8.7	0.5 - 16.9	1,700	7.4	1.6 - 13.3	19,000	83.5	73.9 - 93.1	22,700
College 1 to 3 years (Some College/ Tech)	0	0.0	--	1,200	6.7	1.1 - 12.3	1,400	8.2	0.8 - 15.5	14,900	85.1	76.1 - 94.2	17,500
College 4 years or more (College Grad)	0	0.0	--	1,400	7.2	1.3 - 13.2	2,400	12.8	1.2 - 24.3	14,900	80.0	67.7 - 92.3	18,700

Employment Status (Grouped)	Never heard of hemoglobin "A one C" test			None			Once			2 or more			Estimated Population
	#	%	C.I. (95%)	#	%	C.I. (95%)	#	%	C.I. (95%)	#	%	C.I. (95%)	#
Employed	0	0.0	--	800	2.9	0.3 - 5.5	3,200	11.0	4.9 - 17.0	25,400	86.2	79.6 - 92.8	29,500
Retired/Unable to work	400	1.3	0.0 - 3.5	3,500	11.3	4.3 - 18.2	2,700	8.6	1.2 - 16.0	24,800	78.8	69.3 - 88.3	31,500

Diabetes - times chk for HbA1C by State, County, Island, Community, BRFSS Age Group, DOH Race-Ethnicity, Gender, Education Level, Employment Status (Grouped), Household Income, Poverty Level, Marital Status (Grouped), Married, Health Care Coverage, for the Year(s) - 2001, 2002, 2003, 2004, 2005, 2006, 2007, 2008, 2009, 2010

Note: Weighted numbers (#), percentages and 95% confidence intervals; Respondents aged 18 years and older; n/r (Not Reportable) - If the unweighted total responses for a dimension (row) is <50 that row will not be shown; n/a (Not Available) - Not asked of a subset of respondents

Year: 2003

Poverty Level	Never heard of hemoglobin "A one C" test			None			Once			2 or more			Estimated Population
	#	%	C.I. (95%)	#	%	C.I. (95%)	#	%	C.I. (95%)	#	%	C.I. (95%)	#
0-130%	400	2.3	0.0 - 6.2	700	4.2	0.0 - 9.7	2,100	11.6	0.2 - 23.1	14,500	81.8	69.1 - 94.5	17,700
186+%	0	0.0	--	2,200	7.8	1.2 - 14.3	3,100	10.7	4.0 - 17.4	23,500	81.5	72.6 - 90.4	28,800

Marital Status (Grouped)	Never heard of hemoglobin "A one C" test			None			Once			2 or more			Estimated Population
	#	%	C.I. (95%)	#	%	C.I. (95%)	#	%	C.I. (95%)	#	%	C.I. (95%)	#
Married	0	0.0	--	3,100	7.7	3.2 - 12.2	3,800	9.5	4.0 - 15.0	32,700	82.8	75.9 - 89.6	39,600
Widowed	400	3.8	0.0 - 9.9	1,100	9.8	0.0 - 23.5	400	4.0	0.0 - 8.8	9,100	82.4	67.6 - 97.2	11,000
Other	0	0.0	--	400	2.6	0.0 - 5.3	1,900	11.8	0.0 - 23.6	13,600	85.6	73.7 - 97.5	15,900

Diabetes - times chk for HbA1C by State, County, Island, Community, BRFSS Age Group, DOH Race-Ethnicity, Gender, Education Level, Employment Status (Grouped), Household Income, Poverty Level, Marital Status (Grouped), Married, Health Care Coverage, for the Year(s) - 2001, 2002, 2003, 2004, 2005, 2006, 2007, 2008, 2009, 2010

Note: Weighted numbers (#), percentages and 95% confidence intervals; Respondents aged 18 years and older; n/r (Not Reportable) - If the unweighted total responses for a dimension (row) is <50 that row will not be shown; n/a (Not Available) - Not asked of a subset of respondents

Year: 2003

Married	Never heard of hemoglobin "A one C" test			None			Once			2 or more			Estimated Population
	#	%	C.I. (95%)	#	%	C.I. (95%)	#	%	C.I. (95%)	#	%	C.I. (95%)	#
Yes	0	0.0	--	3,100	7.6	3.2 - 12.1	3,800	9.4	4.0 - 14.9	33,100	82.9	76.2 - 89.7	40,000
No	400	1.6	0.0 - 4.2	1,500	5.7	0.0 - 11.8	2,200	8.3	0.8 - 15.8	22,300	84.4	75.0 - 93.9	26,400

Health Care Coverage	Never heard of hemoglobin "A one C" test			None			Once			2 or more			Estimated Population
	#	%	C.I. (95%)	#	%	C.I. (95%)	#	%	C.I. (95%)	#	%	C.I. (95%)	#
Yes	400	0.6	0.0 - 1.7	3,800	5.9	2.4 - 9.4	5,900	9.0	4.5 - 13.5	54,800	84.4	78.9 - 90.0	64,900

Diabetes - times chk for HbA1C by State, County, Island, Community, BRFSS Age Group, DOH Race-Ethnicity, Gender, Education Level, Employment Status (Grouped), Household Income, Poverty Level, Marital Status (Grouped), Married, Health Care Coverage, for the Year(s) - 2001, 2002, 2003, 2004, 2005, 2006, 2007, 2008, 2009, 2010

Note: Weighted numbers (#), percentages and 95% confidence intervals; Respondents aged 18 years and older; n/r (Not Reportable) - If the unweighted total responses for a dimension (row) is <50 that row will not be shown; n/a (Not Available) - Not asked of a subset of respondents

Year: 2002

State	Never heard of hemoglobin "A one C" test			None			Once			2 or more			Estimated Population
	#	%	C.I. (95%)	#	%	C.I. (95%)	#	%	C.I. (95%)	#	%	C.I. (95%)	#
Hawaii State	500	0.9	0.0 - 1.8	1,900	3.7	1.4 - 6.0	3,700	7.4	3.7 - 11.0	44,500	88.1	83.8 - 92.4	50,500

County	Never heard of hemoglobin "A one C" test			None			Once			2 or more			Estimated Population
	#	%	C.I. (95%)	#	%	C.I. (95%)	#	%	C.I. (95%)	#	%	C.I. (95%)	#
Hawaii	100	2.2	0.0 - 6.5	600	11.6	0.3 - 22.9	200	3.8	0.0 - 8.2	4,500	82.3	70.2 - 94.4	5,400
Honolulu	200	0.4	0.0 - 1.3	800	2.2	0.0 - 4.5	2,900	7.5	3.0 - 12.0	34,200	89.9	84.8 - 95.0	38,000
Maui	100	2.4	0.0 - 7.1	300	6.4	0.2 - 12.6	400	8.3	0.0 - 20.0	3,800	82.9	69.8 - 96.0	4,600

Diabetes - times chk for HbA1C by State, County, Island, Community, BRFSS Age Group, DOH Race-Ethnicity, Gender, Education Level, Employment Status (Grouped), Household Income, Poverty Level, Marital Status (Grouped), Married, Health Care Coverage, for the Year(s) - 2001, 2002, 2003, 2004, 2005, 2006, 2007, 2008, 2009, 2010

Note: Weighted numbers (#), percentages and 95% confidence intervals; Respondents aged 18 years and older; n/r (Not Reportable) - If the unweighted total responses for a dimension (row) is <50 that row will not be shown; n/a (Not Available) - Not asked of a subset of respondents

Year: 2002

Island	Never heard of hemoglobin "A one C" test			None			Once			2 or more			Estimated Population
	#	%	C.I. (95%)	#	%	C.I. (95%)	#	%	C.I. (95%)	#	%	C.I. (95%)	#
Hawaii	100	2.2	0.0 - 6.5	600	11.6	0.3 - 22.9	200	3.8	0.0 - 8.2	4,500	82.3	70.2 - 94.4	5,400
Oahu	200	0.4	0.0 - 1.3	800	2.2	0.0 - 4.5	2,900	7.5	3.0 - 12.0	34,200	89.9	84.8 - 95.0	38,000

BRFSS Age Group	Never heard of hemoglobin "A one C" test			None			Once			2 or more			Estimated Population
	#	%	C.I. (95%)	#	%	C.I. (95%)	#	%	C.I. (95%)	#	%	C.I. (95%)	#
45-54	0	0.0	--	300	3.3	0.0 - 7.2	600	7.2	0.0 - 16.0	7,300	89.5	80.0 - 99.0	8,200
55-64	100	0.9	0.0 - 2.7	400	3.3	0.0 - 9.1	500	3.8	0.0 - 8.7	11,300	91.9	84.3 - 99.5	12,300
65-74	100	0.4	0.0 - 1.3	100	0.8	0.0 - 1.9	900	7.5	0.0 - 15.0	11,000	91.3	83.7 - 98.8	12,100
75+	0	0.0	--	500	5.1	0.0 - 10.2	500	5.2	0.0 - 11.4	9,400	89.7	81.6 - 97.7	10,500

Diabetes - times chk for HbA1C by State, County, Island, Community, BRFSS Age Group, DOH Race-Ethnicity, Gender, Education Level, Employment Status (Grouped), Household Income, Poverty Level, Marital Status (Grouped), Married, Health Care Coverage, for the Year(s) - 2001, 2002, 2003, 2004, 2005, 2006, 2007, 2008, 2009, 2010

Note: Weighted numbers (#), percentages and 95% confidence intervals; Respondents aged 18 years and older; n/r (Not Reportable) - If the unweighted total responses for a dimension (row) is <50 that row will not be shown; n/a (Not Available) - Not asked of a subset of respondents

Year: 2002

DOH Race-Ethnicity	Never heard of hemoglobin "A one C" test			None			Once			2 or more			Estimated Population
	#	%	C.I. (95%)	#	%	C.I. (95%)	#	%	C.I. (95%)	#	%	C.I. (95%)	#
Caucasian	0	0.0	--	500	4.4	0.0 - 11.2	600	5.5	0.0 - 12.4	9,400	90.2	80.6 - 99.7	10,400
Native Hawaiian	200	2.2	0.0 - 5.4	800	10.5	1.5 - 19.4	1,300	16.9	3.6 - 30.2	5,600	70.5	55.6 - 85.4	8,000
Japanese	0	0.0	--	200	1.2	0.0 - 3.1	500	3.2	0.0 - 7.3	15,500	95.6	91.1 - 100.0	16,200

Gender	Never heard of hemoglobin "A one C" test			None			Once			2 or more			Estimated Population
	#	%	C.I. (95%)	#	%	C.I. (95%)	#	%	C.I. (95%)	#	%	C.I. (95%)	#
Male	300	1.6	0.0 - 3.6	1,400	6.9	1.7 - 12.1	1,400	6.5	1.2 - 11.8	17,800	85.0	77.7 - 92.3	21,000
Female	100	0.4	0.0 - 1.1	400	1.4	0.2 - 2.6	2,400	8.0	3.0 - 13.0	26,700	90.2	85.1 - 95.4	29,600

Diabetes - times chk for HbA1C by State, County, Island, Community, BRFSS Age Group, DOH Race-Ethnicity, Gender, Education Level, Employment Status (Grouped), Household Income, Poverty Level, Marital Status (Grouped), Married, Health Care Coverage, for the Year(s) - 2001, 2002, 2003, 2004, 2005, 2006, 2007, 2008, 2009, 2010

Note: Weighted numbers (#), percentages and 95% confidence intervals; Respondents aged 18 years and older; n/r (Not Reportable) - If the unweighted total responses for a dimension (row) is <50 that row will not be shown; n/a (Not Available) - Not asked of a subset of respondents

Year: 2002

Education Level	Never heard of hemoglobin "A one C" test			None			Once			2 or more			Estimated Population
	#	%	C.I. (95%)	#	%	C.I. (95%)	#	%	C.I. (95%)	#	%	C.I. (95%)	#
Grades 12 or GED (High School Grad)	300	1.4	0.0 - 3.5	1,000	5.4	0.7 - 10.0	2,000	10.5	3.4 - 17.6	15,900	82.7	74.3 - 91.1	19,200
College 1 to 3 years (Some College/ Tech)	200	1.4	0.0 - 3.4	500	4.1	0.0 - 9.3	100	0.9	0.0 - 1.9	11,900	93.6	88.0 - 99.2	12,700
College 4 years or more (College Grad)	0	0.0	--	100	0.9	0.0 - 2.2	1,400	10.4	2.1 - 18.6	12,100	88.7	80.4 - 97.1	13,600

Employment Status (Grouped)	Never heard of hemoglobin "A one C" test			None			Once			2 or more			Estimated Population
	#	%	C.I. (95%)	#	%	C.I. (95%)	#	%	C.I. (95%)	#	%	C.I. (95%)	#
Employed	100	0.6	0.0 - 1.7	1,000	5.2	0.4 - 10.1	1,700	8.3	2.4 - 14.2	17,200	85.9	78.5 - 93.3	20,000
Retired/Unable to work	200	0.8	0.0 - 2.1	700	2.6	0.5 - 4.7	1,200	4.3	0.7 - 8.0	25,100	92.3	87.9 - 96.7	27,200

Diabetes - times chk for HbA1C by State, County, Island, Community, BRFSS Age Group, DOH Race-Ethnicity, Gender, Education Level, Employment Status (Grouped), Household Income, Poverty Level, Marital Status (Grouped), Married, Health Care Coverage, for the Year(s) - 2001, 2002, 2003, 2004, 2005, 2006, 2007, 2008, 2009, 2010

Note: Weighted numbers (#), percentages and 95% confidence intervals; Respondents aged 18 years and older; n/r (Not Reportable) - If the unweighted total responses for a dimension (row) is <50 that row will not be shown; n/a (Not Available) - Not asked of a subset of respondents

Year: 2002

Household Income	Never heard of hemoglobin "A one C" test			None			Once			2 or more			Estimated Population
	#	%	C.I. (95%)	#	%	C.I. (95%)	#	%	C.I. (95%)	#	%	C.I. (95%)	#
\$35,000 to \$49,999	0	0.0	--	100	1.4	0.0 - 4.2	300	4.2	0.0 - 11.7	7,700	94.4	86.5 - 100.0	8,200

Poverty Level	Never heard of hemoglobin "A one C" test			None			Once			2 or more			Estimated Population
	#	%	C.I. (95%)	#	%	C.I. (95%)	#	%	C.I. (95%)	#	%	C.I. (95%)	#
0-130%	300	3.5	0.0 - 8.4	400	4.8	0.7 - 8.9	900	11.4	0.7 - 22.1	6,400	80.3	68.6 - 92.1	7,900
186+%	100	0.2	0.0 - 0.7	500	2.2	0.0 - 5.1	900	3.8	0.3 - 7.4	21,900	93.7	89.2 - 98.2	23,400

Diabetes - times chk for HbA1C by State, County, Island, Community, BRFSS Age Group, DOH Race-Ethnicity, Gender, Education Level, Employment Status (Grouped), Household Income, Poverty Level, Marital Status (Grouped), Married, Health Care Coverage, for the Year(s) - 2001, 2002, 2003, 2004, 2005, 2006, 2007, 2008, 2009, 2010

Note: Weighted numbers (#), percentages and 95% confidence intervals; Respondents aged 18 years and older; n/r (Not Reportable) - If the unweighted total responses for a dimension (row) is <50 that row will not be shown; n/a (Not Available) - Not asked of a subset of respondents

Year: 2002

Marital Status (Grouped)	Never heard of hemoglobin "A one C" test			None			Once			2 or more			Estimated Population
	#	%	C.I. (95%)	#	%	C.I. (95%)	#	%	C.I. (95%)	#	%	C.I. (95%)	#
Married	100	0.3	0.0 - 1.0	1,100	3.4	0.6 - 6.2	3,100	9.3	4.2 - 14.4	28,700	87.0	81.3 - 92.7	33,000
Widowed	0	0.0	--	200	2.7	0.0 - 6.2	100	1.1	0.0 - 2.6	8,800	96.3	92.4 - 100.0	9,100
Other	300	3.4	0.0 - 8.2	500	6.1	0.0 - 13.5	600	6.7	0.0 - 15.0	7,000	83.8	72.5 - 95.1	8,300

Married	Never heard of hemoglobin "A one C" test			None			Once			2 or more			Estimated Population
	#	%	C.I. (95%)	#	%	C.I. (95%)	#	%	C.I. (95%)	#	%	C.I. (95%)	#
Yes	300	0.8	0.0 - 2.0	1,200	3.4	0.7 - 6.2	3,100	9.1	4.1 - 14.1	29,300	86.7	81.0 - 92.3	33,800
No	200	1.0	0.0 - 2.6	700	4.2	0.0 - 8.4	700	3.9	0.0 - 8.2	15,200	90.9	84.8 - 97.0	16,700

Diabetes - times chk for HbA1C by State, County, Island, Community, BRFSS Age Group, DOH Race-Ethnicity, Gender, Education Level, Employment Status (Grouped), Household Income, Poverty Level, Marital Status (Grouped), Married, Health Care Coverage, for the Year(s) - 2001, 2002, 2003, 2004, 2005, 2006, 2007, 2008, 2009, 2010

Note: Weighted numbers (#), percentages and 95% confidence intervals; Respondents aged 18 years and older; n/r (Not Reportable) - If the unweighted total responses for a dimension (row) is <50 that row will not be shown; n/a (Not Available) - Not asked of a subset of respondents

Year: 2002

Health Care Coverage	Never heard of hemoglobin "A one C" test			None			Once			2 or more			Estimated Population
	#	%	C.I. (95%)	#	%	C.I. (95%)	#	%	C.I. (95%)	#	%	C.I. (95%)	#
Yes	500	0.9	0.0 - 1.9	1,600	3.3	1.0 - 5.6	3,300	6.8	3.3 - 10.3	43,700	89.0	84.8 - 93.1	49,200

Diabetes - times chk for HbA1C by State, County, Island, Community, BRFSS Age Group, DOH Race-Ethnicity, Gender, Education Level, Employment Status (Grouped), Household Income, Poverty Level, Marital Status (Grouped), Married, Health Care Coverage, for the Year(s) - 2001, 2002, 2003, 2004, 2005, 2006, 2007, 2008, 2009, 2010

Note: Weighted numbers (#), percentages and 95% confidence intervals; Respondents aged 18 years and older; n/r (Not Reportable) - If the unweighted total responses for a dimension (row) is <50 that row will not be shown; n/a (Not Available) - Not asked of a subset of respondents

Year: 2001

State	Never heard of hemoglobin "A one C" test			None			Once			2 or more			Estimated Population
	#	%	C.I. (95%)	#	%	C.I. (95%)	#	%	C.I. (95%)	#	%	C.I. (95%)	#
Hawaii State	500	0.9	0.0 - 2.5	500	1.0	0.0 - 2.6	3,400	6.6	2.5 - 10.8	46,300	91.4	86.7 - 96.1	50,700

County	Never heard of hemoglobin "A one C" test			None			Once			2 or more			Estimated Population
	#	%	C.I. (95%)	#	%	C.I. (95%)	#	%	C.I. (95%)	#	%	C.I. (95%)	#
Hawaii	100	0.9	0.0 - 2.7	<50	0.8	0.0 - 2.3	900	16.1	4.8 - 27.4	4,700	82.3	70.8 - 93.7	5,800
Honolulu	400	1.2	0.0 - 3.4	400	1.1	0.0 - 3.3	2,100	6.0	0.5 - 11.5	32,300	91.7	85.5 - 98.0	35,200
Maui	0	0.0	--	100	1.2	0.0 - 2.9	300	4.5	0.0 - 10.2	7,100	94.3	87.9 - 100.0	7,500

Diabetes - times chk for HbA1C by State, County, Island, Community, BRFSS Age Group, DOH Race-Ethnicity, Gender, Education Level, Employment Status (Grouped), Household Income, Poverty Level, Marital Status (Grouped), Married, Health Care Coverage, for the Year(s) - 2001, 2002, 2003, 2004, 2005, 2006, 2007, 2008, 2009, 2010

Note: Weighted numbers (#), percentages and 95% confidence intervals; Respondents aged 18 years and older; n/r (Not Reportable) - If the unweighted total responses for a dimension (row) is <50 that row will not be shown; n/a (Not Available) - Not asked of a subset of respondents

Year: 2001

Island	Never heard of hemoglobin "A one C" test			None			Once			2 or more			Estimated Population
	#	%	C.I. (95%)	#	%	C.I. (95%)	#	%	C.I. (95%)	#	%	C.I. (95%)	#
Hawaii	100	0.9	0.0 - 2.7	<50	0.8	0.0 - 2.3	900	16.1	4.8 - 27.4	4,700	82.3	70.8 - 93.7	5,800
Oahu	400	1.2	0.0 - 3.4	400	1.1	0.0 - 3.3	2,100	6.0	0.5 - 11.5	32,300	91.7	85.5 - 98.0	35,200

BRFSS Age Group	Never heard of hemoglobin "A one C" test			None			Once			2 or more			Estimated Population
	#	%	C.I. (95%)	#	%	C.I. (95%)	#	%	C.I. (95%)	#	%	C.I. (95%)	#
65-74	0	0.0	--	0	0.0	--	600	3.9	0.0 - 8.6	13,900	96.1	91.4 - 100.0	14,500

Diabetes - times chk for HbA1C by State, County, Island, Community, BRFSS Age Group, DOH Race-Ethnicity, Gender, Education Level, Employment Status (Grouped), Household Income, Poverty Level, Marital Status (Grouped), Married, Health Care Coverage, for the Year(s) - 2001, 2002, 2003, 2004, 2005, 2006, 2007, 2008, 2009, 2010

Note: Weighted numbers (#), percentages and 95% confidence intervals; Respondents aged 18 years and older; n/r (Not Reportable) - If the unweighted total responses for a dimension (row) is <50 that row will not be shown; n/a (Not Available) - Not asked of a subset of respondents

Year: 2001

DOH Race-Ethnicity	Never heard of hemoglobin "A one C" test			None			Once			2 or more			Estimated Population
	#	%	C.I. (95%)	#	%	C.I. (95%)	#	%	C.I. (95%)	#	%	C.I. (95%)	#
Caucasian	100	0.5	0.0 - 1.5	100	0.9	0.0 - 2.1	1,600	15.4	0.0 - 31.2	8,500	83.2	67.5 - 98.8	10,200
Japanese	0	0.0	--	0	0.0	--	300	2.3	0.0 - 4.9	13,200	97.7	95.1 - 100.0	13,500

Gender	Never heard of hemoglobin "A one C" test			None			Once			2 or more			Estimated Population
	#	%	C.I. (95%)	#	%	C.I. (95%)	#	%	C.I. (95%)	#	%	C.I. (95%)	#
Male	0	0.0	--	400	1.5	0.0 - 4.3	1,900	6.8	0.3 - 13.4	25,700	91.7	84.5 - 98.8	28,000
Female	500	2.0	0.0 - 5.6	100	0.5	0.0 - 1.0	1,500	6.4	1.8 - 11.0	20,700	91.1	85.4 - 96.8	22,700

Diabetes - times chk for HbA1C by State, County, Island, Community, BRFSS Age Group, DOH Race-Ethnicity, Gender, Education Level, Employment Status (Grouped), Household Income, Poverty Level, Marital Status (Grouped), Married, Health Care Coverage, for the Year(s) - 2001, 2002, 2003, 2004, 2005, 2006, 2007, 2008, 2009, 2010

Note: Weighted numbers (#), percentages and 95% confidence intervals; Respondents aged 18 years and older; n/r (Not Reportable) - If the unweighted total responses for a dimension (row) is <50 that row will not be shown; n/a (Not Available) - Not asked of a subset of respondents

Year: 2001

Education Level	Never heard of hemoglobin "A one C" test			None			Once			2 or more			Estimated Population
	#	%	C.I. (95%)	#	%	C.I. (95%)	#	%	C.I. (95%)	#	%	C.I. (95%)	#
Grades 12 or GED (High School Grad)	0	0.0	--	400	2.3	0.0 - 6.3	1,900	9.9	2.3 - 17.6	16,900	87.8	79.4 - 96.3	19,300
College 1 to 3 years (Some College/ Tech)	500	2.6	0.0 - 7.3	0	0.0	--	1,200	7.0	0.0 - 15.4	15,700	90.3	80.7 - 100.0	17,400

Employment Status (Grouped)	Never heard of hemoglobin "A one C" test			None			Once			2 or more			Estimated Population
	#	%	C.I. (95%)	#	%	C.I. (95%)	#	%	C.I. (95%)	#	%	C.I. (95%)	#
Employed	0	0.0	--	100	0.5	0.0 - 1.1	1,800	8.2	1.2 - 15.2	20,600	91.3	84.2 - 98.3	22,500
Retired/Unable to work	500	1.8	0.0 - 4.9	400	1.6	0.0 - 4.6	1,500	5.9	0.3 - 11.5	23,400	90.7	83.8 - 97.6	25,800

Diabetes - times chk for HbA1C by State, County, Island, Community, BRFSS Age Group, DOH Race-Ethnicity, Gender, Education Level, Employment Status (Grouped), Household Income, Poverty Level, Marital Status (Grouped), Married, Health Care Coverage, for the Year(s) - 2001, 2002, 2003, 2004, 2005, 2006, 2007, 2008, 2009, 2010

Note: Weighted numbers (#), percentages and 95% confidence intervals; Respondents aged 18 years and older; n/r (Not Reportable) - If the unweighted total responses for a dimension (row) is <50 that row will not be shown; n/a (Not Available) - Not asked of a subset of respondents

Year: 2001

Poverty Level	Never heard of hemoglobin "A one C" test			None			Once			2 or more			Estimated Population
	#	%	C.I. (95%)	#	%	C.I. (95%)	#	%	C.I. (95%)	#	%	C.I. (95%)	#
186+%	0	0.0	--	100	0.6	0.0 - 1.3	2,100	10.1	2.5 - 17.7	18,800	89.3	81.6 - 96.9	21,000

Marital Status (Grouped)	Never heard of hemoglobin "A one C" test			None			Once			2 or more			Estimated Population
	#	%	C.I. (95%)	#	%	C.I. (95%)	#	%	C.I. (95%)	#	%	C.I. (95%)	#
Married	0	0.0	--	400	1.2	0.0 - 3.5	1,700	5.2	0.3 - 10.0	31,200	93.7	88.3 - 99.0	33,400
Other	100	0.5	0.0 - 1.4	100	0.8	0.0 - 1.7	1,500	13.1	1.7 - 24.4	9,700	85.7	74.3 - 97.1	11,300

Diabetes - times chk for HbA1C by State, County, Island, Community, BRFSS Age Group, DOH Race-Ethnicity, Gender, Education Level, Employment Status (Grouped), Household Income, Poverty Level, Marital Status (Grouped), Married, Health Care Coverage, for the Year(s) - 2001, 2002, 2003, 2004, 2005, 2006, 2007, 2008, 2009, 2010

Note: Weighted numbers (#), percentages and 95% confidence intervals; Respondents aged 18 years and older; n/r (Not Reportable) - If the unweighted total responses for a dimension (row) is <50 that row will not be shown; n/a (Not Available) - Not asked of a subset of respondents

Year: 2001

Married	Never heard of hemoglobin "A one C" test			None			Once			2 or more			Estimated Population
	#	%	C.I. (95%)	#	%	C.I. (95%)	#	%	C.I. (95%)	#	%	C.I. (95%)	#
Yes	0	0.0	--	400	1.1	0.0 - 3.4	1,800	5.3	0.5 - 10.0	32,000	93.6	88.4 - 98.8	34,200
No	500	2.8	0.0 - 7.6	100	0.8	0.0 - 1.6	1,600	9.5	1.5 - 17.6	14,300	86.9	77.7 - 96.1	16,500

Health Care Coverage	Never heard of hemoglobin "A one C" test			None			Once			2 or more			Estimated Population
	#	%	C.I. (95%)	#	%	C.I. (95%)	#	%	C.I. (95%)	#	%	C.I. (95%)	#
Yes	500	0.9	0.0 - 2.5	500	1.0	0.0 - 2.6	3,200	6.5	2.3 - 10.7	45,700	91.5	86.8 - 96.3	50,000