

Diabetes - manage class by State, County, Island, Community, BRFSS Age Group, DOH Race-Ethnicity, Gender, Education Level, Employment Status (Grouped), Household Income, Poverty Level, Marital Status (Grouped), Married, Health Care Coverage, for the Year(s) - 2001, 2002, 2003, 2004, 2005, 2006, 2007, 2008, 2009, 2010

Note: Weighted numbers (#), percentages and 95% confidence intervals; Respondents aged 18 years and older; n/r (Not Reportable) - If the unweighted total responses for a dimension (row) is <50 that row will not be shown; n/a (Not Available) - Not asked of a subset of respondents

The trend analysis report shows the trend for the selected health variable over selected years in a table and a graph. Estimated Population: This number is a weighted representation of the population who responded to a particular question in the survey. For most questions the eligible population will be the entire adult population. For some secondary questions only a subset of the population was asked the question. For example, all survey participants were asked if they had diabetes, but only those who answered yes were asked if they use insulin. If a dimension value is unknown for a particular survey record, that record will not be included in the counts for that particular dimension.

For documentation on other terms and coding in this report, please go to the following links

[Click here to access BRFSS documentation](#)

[Click here to access DOH Race-Ethnicity coding](#)

[Click here to access The Hawai'i Data Guide](#)

[Click here to access Poverty Level Methodology](#)

**For questions about this report, please contact
The Hawaii Health Data Warehouse**

profiles@hhdw.org

(855) 946-5899 x15

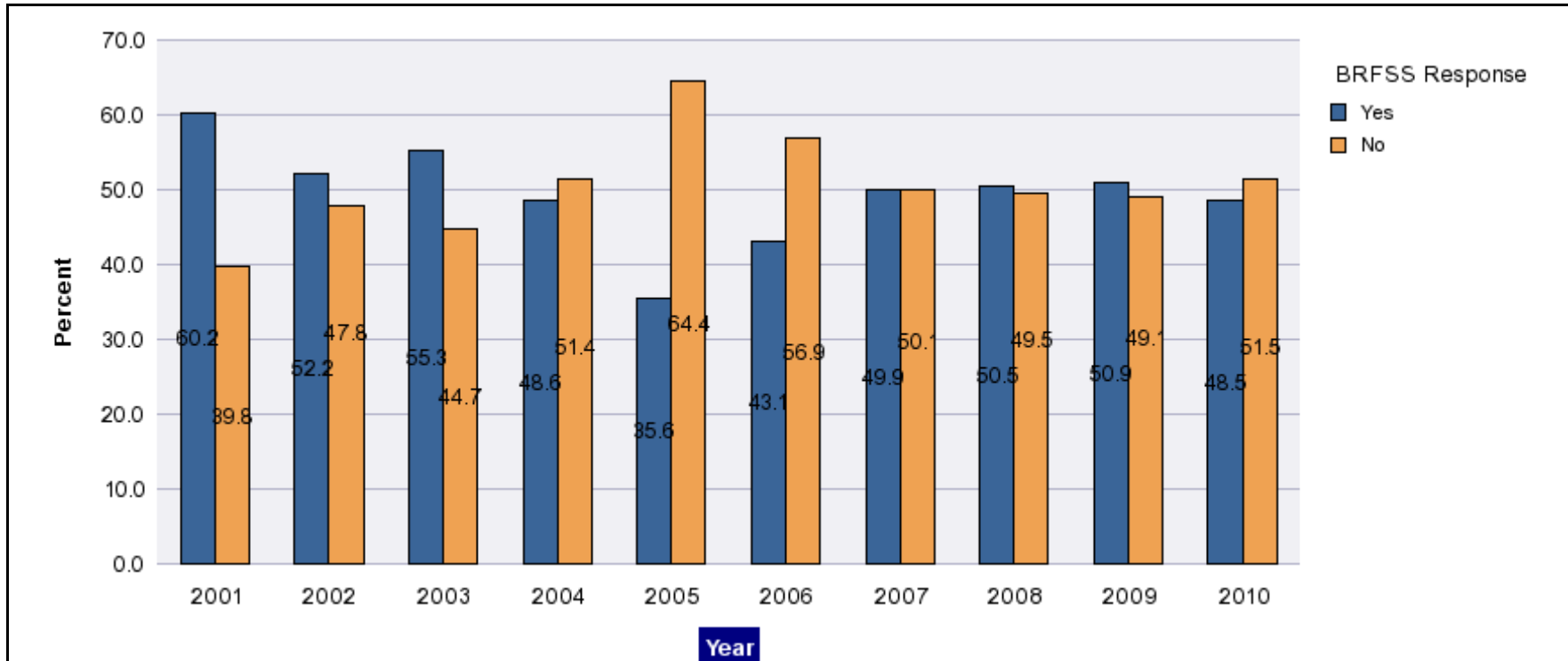
Diabetes - manage class by State, County, Island, Community, BRFSS Age Group, DOH Race-Ethnicity, Gender, Education Level, Employment Status (Grouped), Household Income, Poverty Level, Marital Status (Grouped), Married, Health Care Coverage, for the Year(s) - 2001, 2002, 2003, 2004, 2005, 2006, 2007, 2008, 2009, 2010

Note: Weighted numbers (#), percentages and 95% confidence intervals; Respondents aged 18 years and older; n/r (Not Reportable) - If the unweighted total responses for a dimension (row) is <50 that row will not be shown; n/a (Not Available) - Not asked of a subset of respondents

Year	Yes			No			Estimated Population
	#	%	C.I.(95%)	#	%	C.I.(95%)	#
2001	33,100	60.2	51.4 - 69.1	21,900	39.8	30.9 - 48.6	55,000
2002	27,400	52.2	45.3 - 59.0	25,100	47.8	41.0 - 54.7	52,600
2003	37,900	55.3	47.9 - 62.7	30,700	44.7	37.3 - 52.1	68,600
2004	29,400	48.6	36.3 - 60.8	31,100	51.4	39.2 - 63.7	60,600
2005	28,900	35.6	27.5 - 43.6	52,300	64.4	56.4 - 72.5	81,100
2006	33,100	43.1	37.7 - 48.5	43,700	56.9	51.5 - 62.3	76,900
2007	37,500	49.9	44.4 - 55.5	37,600	50.1	44.5 - 55.6	75,100
2008	41,600	50.5	45.1 - 55.9	40,700	49.5	44.1 - 54.9	82,200
2009	39,900	50.9	43.5 - 58.3	38,500	49.1	41.7 - 56.5	78,500
2010	40,300	48.5	43.3 - 53.7	42,800	51.5	46.3 - 56.7	83,100

Diabetes - manage class by State, County, Island, Community, BRFSS Age Group, DOH Race-Ethnicity, Gender, Education Level, Employment Status (Grouped), Household Income, Poverty Level, Marital Status (Grouped), Married, Health Care Coverage, for the Year(s) - 2001, 2002, 2003, 2004, 2005, 2006, 2007, 2008, 2009, 2010

Note: Weighted numbers (#), percentages and 95% confidence intervals; Respondents aged 18 years and older; n/r (Not Reportable) - If the unweighted total responses for a dimension (row) is <50 that row will not be shown; n/a (Not Available) - Not asked of a subset of respondents



Diabetes - manage class by State, County, Island, Community, BRFSS Age Group, DOH Race-Ethnicity, Gender, Education Level, Employment Status (Grouped), Household Income, Poverty Level, Marital Status (Grouped), Married, Health Care Coverage, for the Year(s) - 2001, 2002, 2003, 2004, 2005, 2006, 2007, 2008, 2009, 2010

Note: Weighted numbers (#), percentages and 95% confidence intervals; Respondents aged 18 years and older; n/r (Not Reportable) - If the unweighted total responses for a dimension (row) is <50 that row will not be shown; n/a (Not Available) - Not asked of a subset of respondents

Year: 2010

State	Yes			No			Estimated Population
	#	%	C.I. (95%)	#	%	C.I. (95%)	#
Hawaii State	40,300	48.5	43.3 - 53.7	42,800	51.5	46.3 - 56.7	83,100

County	Yes			No			Estimated Population
	#	%	C.I. (95%)	#	%	C.I. (95%)	#
Hawaii	5,500	47.6	38.5 - 56.6	6,000	52.4	43.4 - 61.5	11,500
Honolulu	28,800	48.3	41.5 - 55.1	30,900	51.7	44.9 - 58.5	59,700
Kauai	1,400	46.8	32.1 - 61.5	1,600	53.2	38.5 - 67.9	3,000
Maui	4,600	51.4	40.7 - 62.2	4,300	48.6	37.8 - 59.3	8,800

Diabetes - manage class by State, County, Island, Community, BRFSS Age Group, DOH Race-Ethnicity, Gender, Education Level, Employment Status (Grouped), Household Income, Poverty Level, Marital Status (Grouped), Married, Health Care Coverage, for the Year(s) - 2001, 2002, 2003, 2004, 2005, 2006, 2007, 2008, 2009, 2010

Note: Weighted numbers (#), percentages and 95% confidence intervals; Respondents aged 18 years and older; n/r (Not Reportable) - If the unweighted total responses for a dimension (row) is <50 that row will not be shown; n/a (Not Available) - Not asked of a subset of respondents

Year: 2010

Island	Yes			No			Estimated Population
	#	%	C.I. (95%)	#	%	C.I. (95%)	#
Hawaii	5,500	47.6	38.5 - 56.6	6,000	52.4	43.4 - 61.5	11,500
Kauai	1,400	46.8	32.1 - 61.5	1,600	53.2	38.5 - 67.9	3,000
Maui	3,700	48.2	36.3 - 60.1	4,000	51.8	39.9 - 63.7	7,800
Oahu	28,800	48.3	41.5 - 55.1	30,900	51.7	44.9 - 58.5	59,700

Diabetes - manage class by State, County, Island, Community, BRFSS Age Group, DOH Race-Ethnicity, Gender, Education Level, Employment Status (Grouped), Household Income, Poverty Level, Marital Status (Grouped), Married, Health Care Coverage, for the Year(s) - 2001, 2002, 2003, 2004, 2005, 2006, 2007, 2008, 2009, 2010

Note: Weighted numbers (#), percentages and 95% confidence intervals; Respondents aged 18 years and older; n/r (Not Reportable) - If the unweighted total responses for a dimension (row) is <50 that row will not be shown; n/a (Not Available) - Not asked of a subset of respondents

Year: 2010

Community	Yes			No			Estimated Population
	#	%	C.I. (95%)	#	%	C.I. (95%)	#
Hilo	1,400	34.0	19.2 - 48.8	2,700	66.0	51.2 - 80.8	4,000
Puna/ Kau	2,400	53.6	38.2 - 68.9	2,000	46.4	31.1 - 61.8	4,400
Waipahu/ Kapolei/ Ewa	7,100	54.3	37.5 - 71.2	5,900	45.7	28.8 - 62.5	13,000

Diabetes - manage class by State, County, Island, Community, BRFSS Age Group, DOH Race-Ethnicity, Gender, Education Level, Employment Status (Grouped), Household Income, Poverty Level, Marital Status (Grouped), Married, Health Care Coverage, for the Year(s) - 2001, 2002, 2003, 2004, 2005, 2006, 2007, 2008, 2009, 2010

Note: Weighted numbers (#), percentages and 95% confidence intervals; Respondents aged 18 years and older; n/r (Not Reportable) - If the unweighted total responses for a dimension (row) is <50 that row will not be shown; n/a (Not Available) - Not asked of a subset of respondents

Year: 2010

BRFSS Age Group	Yes			No			Estimated Population
	#	%	C.I. (95%)	#	%	C.I. (95%)	#
45-54	6,700	51.5	37.6 - 65.4	6,300	48.5	34.6 - 62.4	13,000
55-64	11,900	56.5	47.4 - 65.6	9,200	43.5	34.4 - 52.6	21,100
65-74	8,700	50.4	41.4 - 59.3	8,600	49.6	40.7 - 58.6	17,300
75+	6,800	38.4	28.8 - 47.9	11,000	61.6	52.1 - 71.2	17,800

Diabetes - manage class by State, County, Island, Community, BRFSS Age Group, DOH Race-Ethnicity, Gender, Education Level, Employment Status (Grouped), Household Income, Poverty Level, Marital Status (Grouped), Married, Health Care Coverage, for the Year(s) - 2001, 2002, 2003, 2004, 2005, 2006, 2007, 2008, 2009, 2010

Note: Weighted numbers (#), percentages and 95% confidence intervals; Respondents aged 18 years and older; n/r (Not Reportable) - If the unweighted total responses for a dimension (row) is <50 that row will not be shown; n/a (Not Available) - Not asked of a subset of respondents

Year: 2010

DOH Race-Ethnicity	Yes			No			Estimated Population
	#	%	C.I. (95%)	#	%	C.I. (95%)	#
Caucasian	10,600	61.1	51.6 - 70.7	6,800	38.9	29.3 - 48.4	17,400
Native Hawaiian	8,200	55.7	42.9 - 68.5	6,500	44.3	31.5 - 57.1	14,800
Filipino	6,000	36.3	23.5 - 49.1	10,500	63.7	50.9 - 76.5	16,500
Japanese	9,700	42.3	33.4 - 51.2	13,300	57.7	48.8 - 66.6	23,000

Gender	Yes			No			Estimated Population
	#	%	C.I. (95%)	#	%	C.I. (95%)	#
Male	20,400	47.1	39.4 - 54.7	22,900	52.9	45.3 - 60.6	43,300
Female	19,900	50.0	43.1 - 56.9	19,900	50.0	43.1 - 56.9	39,800

Diabetes - manage class by State, County, Island, Community, BRFSS Age Group, DOH Race-Ethnicity, Gender, Education Level, Employment Status (Grouped), Household Income, Poverty Level, Marital Status (Grouped), Married, Health Care Coverage, for the Year(s) - 2001, 2002, 2003, 2004, 2005, 2006, 2007, 2008, 2009, 2010

Note: Weighted numbers (#), percentages and 95% confidence intervals; Respondents aged 18 years and older; n/r (Not Reportable) - If the unweighted total responses for a dimension (row) is <50 that row will not be shown; n/a (Not Available) - Not asked of a subset of respondents

Year: 2010

Education Level	Yes			No			Estimated Population
	#	%	C.I. (95%)	#	%	C.I. (95%)	#
Grades 12 or GED (High School Grad)	11,500	40.4	32.0 - 48.9	16,900	59.6	51.1 - 68.0	28,300
College 1 to 3 years (Some College/ Tech)	11,700	52.0	42.2 - 61.8	10,800	48.0	38.2 - 57.8	22,500
College 4 years or more (College Grad)	15,400	58.2	48.8 - 67.5	11,100	41.8	32.5 - 51.2	26,500

Employment Status (Grouped)	Yes			No			Estimated Population
	#	%	C.I. (95%)	#	%	C.I. (95%)	#
Employed	17,000	50.3	41.0 - 59.5	16,800	49.7	40.5 - 59.0	33,800
Retired/Unable to work	19,000	48.1	41.6 - 54.5	20,500	51.9	45.5 - 58.4	39,600

Diabetes - manage class by State, County, Island, Community, BRFSS Age Group, DOH Race-Ethnicity, Gender, Education Level, Employment Status (Grouped), Household Income, Poverty Level, Marital Status (Grouped), Married, Health Care Coverage, for the Year(s) - 2001, 2002, 2003, 2004, 2005, 2006, 2007, 2008, 2009, 2010

Note: Weighted numbers (#), percentages and 95% confidence intervals; Respondents aged 18 years and older; n/r (Not Reportable) - If the unweighted total responses for a dimension (row) is <50 that row will not be shown; n/a (Not Available) - Not asked of a subset of respondents

Year: 2010

Household Income	Yes			No			Estimated Population
	#	%	C.I. (95%)	#	%	C.I. (95%)	#
\$15,000 to \$19,999	2,300	36.5	20.9 - 52.1	4,000	63.5	47.9 - 79.1	6,200
\$20,000 to \$24,999	2,500	35.4	18.3 - 52.6	4,500	64.6	47.4 - 81.7	7,000
\$25,000 to \$34,999	4,000	46.4	31.8 - 61.1	4,600	53.6	38.9 - 68.2	8,700
\$35,000 to \$49,999	8,400	52.1	38.5 - 65.7	7,700	47.9	34.3 - 61.5	16,100
\$50,000 to \$74,999	6,500	55.3	43.1 - 67.4	5,300	44.7	32.6 - 56.9	11,800
\$75,000 or more	11,100	59.1	47.5 - 70.8	7,700	40.9	29.2 - 52.5	18,800

Diabetes - manage class by State, County, Island, Community, BRFSS Age Group, DOH Race-Ethnicity, Gender, Education Level, Employment Status (Grouped), Household Income, Poverty Level, Marital Status (Grouped), Married, Health Care Coverage, for the Year(s) - 2001, 2002, 2003, 2004, 2005, 2006, 2007, 2008, 2009, 2010

Note: Weighted numbers (#), percentages and 95% confidence intervals; Respondents aged 18 years and older; n/r (Not Reportable) - If the unweighted total responses for a dimension (row) is <50 that row will not be shown; n/a (Not Available) - Not asked of a subset of respondents

Year: 2010

Poverty Level	Yes			No			Estimated Population
	#	%	C.I. (95%)	#	%	C.I. (95%)	#
0-130%	7,200	33.8	23.3 - 44.3	14,100	66.2	55.7 - 76.7	21,400
131-185%	7,100	44.8	32.3 - 57.2	8,800	55.2	42.8 - 67.7	16,000
186+%	23,500	59.8	53.3 - 66.3	15,800	40.2	33.7 - 46.7	39,400

Marital Status (Grouped)	Yes			No			Estimated Population
	#	%	C.I. (95%)	#	%	C.I. (95%)	#
Married	27,600	50.4	44.0 - 56.9	27,100	49.6	43.1 - 56.0	54,700
Widowed	3,500	37.6	25.1 - 50.1	5,700	62.4	49.9 - 74.9	9,200
Other	9,000	48.7	37.2 - 60.3	9,500	51.3	39.7 - 62.8	18,500

Diabetes - manage class by State, County, Island, Community, BRFSS Age Group, DOH Race-Ethnicity, Gender, Education Level, Employment Status (Grouped), Household Income, Poverty Level, Marital Status (Grouped), Married, Health Care Coverage, for the Year(s) - 2001, 2002, 2003, 2004, 2005, 2006, 2007, 2008, 2009, 2010

Note: Weighted numbers (#), percentages and 95% confidence intervals; Respondents aged 18 years and older; n/r (Not Reportable) - If the unweighted total responses for a dimension (row) is <50 that row will not be shown; n/a (Not Available) - Not asked of a subset of respondents

Year: 2010

Married	Yes			No			Estimated Population
	#	%	C.I. (95%)	#	%	C.I. (95%)	#
Yes	28,000	50.4	44.1 - 56.8	27,500	49.6	43.2 - 55.9	55,500
No	12,300	44.6	35.7 - 53.6	15,300	55.4	46.4 - 64.3	27,600

Health Care Coverage	Yes			No			Estimated Population
	#	%	C.I. (95%)	#	%	C.I. (95%)	#
Yes	39,300	49.2	43.9 - 54.4	40,600	50.8	45.6 - 56.1	79,900

Diabetes - manage class by State, County, Island, Community, BRFSS Age Group, DOH Race-Ethnicity, Gender, Education Level, Employment Status (Grouped), Household Income, Poverty Level, Marital Status (Grouped), Married, Health Care Coverage, for the Year(s) - 2001, 2002, 2003, 2004, 2005, 2006, 2007, 2008, 2009, 2010

Note: Weighted numbers (#), percentages and 95% confidence intervals; Respondents aged 18 years and older; n/r (Not Reportable) - If the unweighted total responses for a dimension (row) is <50 that row will not be shown; n/a (Not Available) - Not asked of a subset of respondents

Year: 2009

State	Yes			No			Estimated Population
	#	%	C.I. (95%)	#	%	C.I. (95%)	#
Hawaii State	39,900	50.9	43.5 - 58.3	38,500	49.1	41.7 - 56.5	78,500

County	Yes			No			Estimated Population
	#	%	C.I. (95%)	#	%	C.I. (95%)	#
Hawaii	5,500	44.0	30.1 - 58.0	7,000	56.0	42.0 - 69.9	12,600
Honolulu	27,700	53.2	43.1 - 63.2	24,400	46.8	36.8 - 56.9	52,100
Maui	5,000	51.0	35.1 - 66.9	4,800	49.0	33.1 - 64.9	9,900

Diabetes - manage class by State, County, Island, Community, BRFSS Age Group, DOH Race-Ethnicity, Gender, Education Level, Employment Status (Grouped), Household Income, Poverty Level, Marital Status (Grouped), Married, Health Care Coverage, for the Year(s) - 2001, 2002, 2003, 2004, 2005, 2006, 2007, 2008, 2009, 2010

Note: Weighted numbers (#), percentages and 95% confidence intervals; Respondents aged 18 years and older; n/r (Not Reportable) - If the unweighted total responses for a dimension (row) is <50 that row will not be shown; n/a (Not Available) - Not asked of a subset of respondents

Year: 2009

Island	Yes			No			Estimated Population
	#	%	C.I. (95%)	#	%	C.I. (95%)	#
Hawaii	5,500	44.0	30.1 - 58.0	7,000	56.0	42.0 - 69.9	12,600
Maui	4,700	53.4	35.7 - 71.1	4,100	46.6	28.9 - 64.3	8,800
Oahu	27,700	53.2	43.1 - 63.2	24,400	46.8	36.8 - 56.9	52,100

Diabetes - manage class by State, County, Island, Community, BRFSS Age Group, DOH Race-Ethnicity, Gender, Education Level, Employment Status (Grouped), Household Income, Poverty Level, Marital Status (Grouped), Married, Health Care Coverage, for the Year(s) - 2001, 2002, 2003, 2004, 2005, 2006, 2007, 2008, 2009, 2010

Note: Weighted numbers (#), percentages and 95% confidence intervals; Respondents aged 18 years and older; n/r (Not Reportable) - If the unweighted total responses for a dimension (row) is <50 that row will not be shown; n/a (Not Available) - Not asked of a subset of respondents

Year: 2009

BRFSS Age Group	Yes			No			Estimated Population
	#	%	C.I. (95%)	#	%	C.I. (95%)	#
45-54	9,100	65.7	48.6 - 82.8	4,700	34.3	17.2 - 51.4	13,800
55-64	10,500	58.1	44.4 - 71.9	7,600	41.9	28.1 - 55.6	18,000
65-74	7,500	46.2	32.1 - 60.3	8,700	53.8	39.7 - 67.9	16,300
75+	8,100	42.3	28.0 - 56.6	11,100	57.7	43.4 - 72.0	19,300

Diabetes - manage class by State, County, Island, Community, BRFSS Age Group, DOH Race-Ethnicity, Gender, Education Level, Employment Status (Grouped), Household Income, Poverty Level, Marital Status (Grouped), Married, Health Care Coverage, for the Year(s) - 2001, 2002, 2003, 2004, 2005, 2006, 2007, 2008, 2009, 2010

Note: Weighted numbers (#), percentages and 95% confidence intervals; Respondents aged 18 years and older; n/r (Not Reportable) - If the unweighted total responses for a dimension (row) is <50 that row will not be shown; n/a (Not Available) - Not asked of a subset of respondents

Year: 2009

DOH Race-Ethnicity	Yes			No			Estimated Population
	#	%	C.I. (95%)	#	%	C.I. (95%)	#
Caucasian	9,500	67.5	55.6 - 79.5	4,500	32.5	20.5 - 44.4	14,000
Native Hawaiian	8,800	57.0	40.8 - 73.3	6,600	43.0	26.7 - 59.2	15,400
Filipino	5,700	43.2	21.9 - 64.4	7,500	56.8	35.6 - 78.1	13,300
Japanese	11,100	43.5	30.1 - 56.9	14,500	56.5	43.1 - 69.9	25,600

Gender	Yes			No			Estimated Population
	#	%	C.I. (95%)	#	%	C.I. (95%)	#
Male	18,100	48.9	37.7 - 60.1	19,000	51.1	39.9 - 62.3	37,100
Female	21,800	52.6	42.7 - 62.6	19,600	47.4	37.4 - 57.3	41,400

Diabetes - manage class by State, County, Island, Community, BRFSS Age Group, DOH Race-Ethnicity, Gender, Education Level, Employment Status (Grouped), Household Income, Poverty Level, Marital Status (Grouped), Married, Health Care Coverage, for the Year(s) - 2001, 2002, 2003, 2004, 2005, 2006, 2007, 2008, 2009, 2010

Note: Weighted numbers (#), percentages and 95% confidence intervals; Respondents aged 18 years and older; n/r (Not Reportable) - If the unweighted total responses for a dimension (row) is <50 that row will not be shown; n/a (Not Available) - Not asked of a subset of respondents

Year: 2009

Education Level	Yes			No			Estimated Population
	#	%	C.I. (95%)	#	%	C.I. (95%)	#
Grades 12 or GED (High School Grad)	12,600	45.0	31.4 - 58.6	15,400	55.0	41.4 - 68.6	28,100
College 1 to 3 years (Some College/ Tech)	12,400	57.7	43.9 - 71.5	9,100	42.3	28.5 - 56.1	21,500
College 4 years or more (College Grad)	12,900	58.1	46.2 - 70.0	9,300	41.9	30.0 - 53.8	22,100

Employment Status (Grouped)	Yes			No			Estimated Population
	#	%	C.I. (95%)	#	%	C.I. (95%)	#
Employed	21,200	56.1	44.9 - 67.4	16,600	43.9	32.6 - 55.1	37,800
Retired/Unable to work	15,300	45.3	34.8 - 55.8	18,400	54.7	44.2 - 65.2	33,700

Diabetes - manage class by State, County, Island, Community, BRFSS Age Group, DOH Race-Ethnicity, Gender, Education Level, Employment Status (Grouped), Household Income, Poverty Level, Marital Status (Grouped), Married, Health Care Coverage, for the Year(s) - 2001, 2002, 2003, 2004, 2005, 2006, 2007, 2008, 2009, 2010

Note: Weighted numbers (#), percentages and 95% confidence intervals; Respondents aged 18 years and older; n/r (Not Reportable) - If the unweighted total responses for a dimension (row) is <50 that row will not be shown; n/a (Not Available) - Not asked of a subset of respondents

Year: 2009

Household Income	Yes			No			Estimated Population
	#	%	C.I. (95%)	#	%	C.I. (95%)	#
\$35,000 to \$49,999	5,700	53.4	35.7 - 71.0	4,900	46.6	29.0 - 64.3	10,600
\$75,000 or more	12,700	63.6	49.4 - 77.8	7,200	36.4	22.2 - 50.6	19,900

Poverty Level	Yes			No			Estimated Population
	#	%	C.I. (95%)	#	%	C.I. (95%)	#
0-130%	5,600	31.2	16.7 - 45.7	12,400	68.8	54.3 - 83.3	18,100
131-185%	6,400	53.7	39.3 - 68.2	5,500	46.3	31.8 - 60.7	11,900
186+%	23,300	60.1	50.5 - 69.7	15,400	39.9	30.3 - 49.5	38,700

Diabetes - manage class by State, County, Island, Community, BRFSS Age Group, DOH Race-Ethnicity, Gender, Education Level, Employment Status (Grouped), Household Income, Poverty Level, Marital Status (Grouped), Married, Health Care Coverage, for the Year(s) - 2001, 2002, 2003, 2004, 2005, 2006, 2007, 2008, 2009, 2010

Note: Weighted numbers (#), percentages and 95% confidence intervals; Respondents aged 18 years and older; n/r (Not Reportable) - If the unweighted total responses for a dimension (row) is <50 that row will not be shown; n/a (Not Available) - Not asked of a subset of respondents

Year: 2009

Marital Status (Grouped)	Yes			No			Estimated Population
	#	%	C.I. (95%)	#	%	C.I. (95%)	#
Married	25,500	53.3	44.0 - 62.5	22,400	46.7	37.5 - 56.0	47,800
Widowed	4,200	40.3	22.6 - 58.1	6,100	59.7	41.9 - 77.4	10,300
Other	9,700	50.2	34.0 - 66.5	9,600	49.8	33.5 - 66.0	19,300

Married	Yes			No			Estimated Population
	#	%	C.I. (95%)	#	%	C.I. (95%)	#
Yes	27,900	55.4	46.1 - 64.6	22,500	44.6	35.4 - 53.9	50,400
No	11,700	42.1	30.9 - 53.3	16,000	57.9	46.7 - 69.1	27,700

Diabetes - manage class by State, County, Island, Community, BRFSS Age Group, DOH Race-Ethnicity, Gender, Education Level, Employment Status (Grouped), Household Income, Poverty Level, Marital Status (Grouped), Married, Health Care Coverage, for the Year(s) - 2001, 2002, 2003, 2004, 2005, 2006, 2007, 2008, 2009, 2010

Note: Weighted numbers (#), percentages and 95% confidence intervals; Respondents aged 18 years and older; n/r (Not Reportable) - If the unweighted total responses for a dimension (row) is <50 that row will not be shown; n/a (Not Available) - Not asked of a subset of respondents

Year: 2008

State	Yes			No			Estimated Population
	#	%	C.I. (95%)	#	%	C.I. (95%)	#
Hawaii State	41,600	50.5	45.1 - 55.9	40,700	49.5	44.1 - 54.9	82,200

County	Yes			No			Estimated Population
	#	%	C.I. (95%)	#	%	C.I. (95%)	#
Hawaii	4,400	45.6	33.7 - 57.5	5,300	54.4	42.5 - 66.3	9,700
Honolulu	30,300	49.9	43.1 - 56.7	30,500	50.1	43.3 - 56.9	60,800
Kauai	1,800	43.7	30.3 - 57.2	2,300	56.3	42.8 - 69.7	4,100
Maui	5,000	65.4	53.4 - 77.5	2,600	34.6	22.5 - 46.6	7,600

Diabetes - manage class by State, County, Island, Community, BRFSS Age Group, DOH Race-Ethnicity, Gender, Education Level, Employment Status (Grouped), Household Income, Poverty Level, Marital Status (Grouped), Married, Health Care Coverage, for the Year(s) - 2001, 2002, 2003, 2004, 2005, 2006, 2007, 2008, 2009, 2010

Note: Weighted numbers (#), percentages and 95% confidence intervals; Respondents aged 18 years and older; n/r (Not Reportable) - If the unweighted total responses for a dimension (row) is <50 that row will not be shown; n/a (Not Available) - Not asked of a subset of respondents

Year: 2008

Island	Yes			No			Estimated Population
	#	%	C.I. (95%)	#	%	C.I. (95%)	#
Hawaii	4,400	45.6	33.7 - 57.5	5,300	54.4	42.5 - 66.3	9,700
Kauai	1,800	43.7	30.3 - 57.2	2,300	56.3	42.8 - 69.7	4,100
Maui	4,400	64.5	51.0 - 78.0	2,400	35.5	22.0 - 49.0	6,800
Oahu	30,300	49.9	43.1 - 56.7	30,500	50.1	43.3 - 56.9	60,800

Diabetes - manage class by State, County, Island, Community, BRFSS Age Group, DOH Race-Ethnicity, Gender, Education Level, Employment Status (Grouped), Household Income, Poverty Level, Marital Status (Grouped), Married, Health Care Coverage, for the Year(s) - 2001, 2002, 2003, 2004, 2005, 2006, 2007, 2008, 2009, 2010

Note: Weighted numbers (#), percentages and 95% confidence intervals; Respondents aged 18 years and older; n/r (Not Reportable) - If the unweighted total responses for a dimension (row) is <50 that row will not be shown; n/a (Not Available) - Not asked of a subset of respondents

Year: 2008

BRFSS Age Group	Yes			No			Estimated Population
	#	%	C.I. (95%)	#	%	C.I. (95%)	#
45-54	7,700	54.6	41.0 - 68.3	6,400	45.4	31.7 - 59.0	14,000
55-64	12,100	57.6	48.0 - 67.3	8,900	42.4	32.7 - 52.0	21,000
65-74	7,600	49.3	39.0 - 59.6	7,900	50.7	40.4 - 61.0	15,500
75+	7,100	40.3	29.4 - 51.2	10,600	59.7	48.8 - 70.6	17,700

Diabetes - manage class by State, County, Island, Community, BRFSS Age Group, DOH Race-Ethnicity, Gender, Education Level, Employment Status (Grouped), Household Income, Poverty Level, Marital Status (Grouped), Married, Health Care Coverage, for the Year(s) - 2001, 2002, 2003, 2004, 2005, 2006, 2007, 2008, 2009, 2010

Note: Weighted numbers (#), percentages and 95% confidence intervals; Respondents aged 18 years and older; n/r (Not Reportable) - If the unweighted total responses for a dimension (row) is <50 that row will not be shown; n/a (Not Available) - Not asked of a subset of respondents

Year: 2008

DOH Race-Ethnicity	Yes			No			Estimated Population
	#	%	C.I. (95%)	#	%	C.I. (95%)	#
Caucasian	8,300	53.0	41.3 - 64.6	7,400	47.0	35.4 - 58.7	15,700
Native Hawaiian	6,500	45.6	32.7 - 58.6	7,800	54.4	41.4 - 67.3	14,300
Filipino	9,600	57.1	43.9 - 70.3	7,200	42.9	29.7 - 56.1	16,700
Japanese	8,300	39.4	30.1 - 48.8	12,800	60.6	51.2 - 69.9	21,100

Gender	Yes			No			Estimated Population
	#	%	C.I. (95%)	#	%	C.I. (95%)	#
Male	19,600	49.9	41.6 - 58.2	19,600	50.1	41.8 - 58.4	39,200
Female	22,000	51.1	44.1 - 58.1	21,000	48.9	41.9 - 55.9	43,000

Diabetes - manage class by State, County, Island, Community, BRFSS Age Group, DOH Race-Ethnicity, Gender, Education Level, Employment Status (Grouped), Household Income, Poverty Level, Marital Status (Grouped), Married, Health Care Coverage, for the Year(s) - 2001, 2002, 2003, 2004, 2005, 2006, 2007, 2008, 2009, 2010

Note: Weighted numbers (#), percentages and 95% confidence intervals; Respondents aged 18 years and older; n/r (Not Reportable) - If the unweighted total responses for a dimension (row) is <50 that row will not be shown; n/a (Not Available) - Not asked of a subset of respondents

Year: 2008

Education Level	Yes			No			Estimated Population
	#	%	C.I. (95%)	#	%	C.I. (95%)	#
Grades 12 or GED (High School Grad)	9,700	38.9	29.9 - 48.0	15,300	61.1	52.0 - 70.1	25,000
College 1 to 3 years (Some College/ Tech)	15,800	60.5	50.1 - 70.8	10,300	39.5	29.2 - 49.9	26,100
College 4 years or more (College Grad)	14,200	58.8	49.5 - 68.1	9,900	41.2	31.9 - 50.5	24,200

Employment Status (Grouped)	Yes			No			Estimated Population
	#	%	C.I. (95%)	#	%	C.I. (95%)	#
Employed	17,800	52.9	44.3 - 61.5	15,900	47.1	38.5 - 55.7	33,700
Retired/Unable to work	19,800	48.9	41.8 - 55.9	20,700	51.1	44.1 - 58.2	40,600

Diabetes - manage class by State, County, Island, Community, BRFSS Age Group, DOH Race-Ethnicity, Gender, Education Level, Employment Status (Grouped), Household Income, Poverty Level, Marital Status (Grouped), Married, Health Care Coverage, for the Year(s) - 2001, 2002, 2003, 2004, 2005, 2006, 2007, 2008, 2009, 2010

Note: Weighted numbers (#), percentages and 95% confidence intervals; Respondents aged 18 years and older; n/r (Not Reportable) - If the unweighted total responses for a dimension (row) is <50 that row will not be shown; n/a (Not Available) - Not asked of a subset of respondents

Year: 2008

Household Income	Yes			No			Estimated Population
	#	%	C.I. (95%)	#	%	C.I. (95%)	#
\$20,000 to \$24,999	2,500	48.7	31.8 - 65.5	2,600	51.3	34.5 - 68.2	5,100
\$25,000 to \$34,999	4,800	43.6	29.8 - 57.4	6,300	56.4	42.6 - 70.2	11,100
\$35,000 to \$49,999	6,800	50.2	37.1 - 63.3	6,700	49.8	36.7 - 62.9	13,500
\$50,000 to \$74,999	8,400	53.5	40.3 - 66.8	7,300	46.5	33.2 - 59.7	15,700
\$75,000 or more	12,000	64.1	53.4 - 74.7	6,700	35.9	25.3 - 46.6	18,700

Diabetes - manage class by State, County, Island, Community, BRFSS Age Group, DOH Race-Ethnicity, Gender, Education Level, Employment Status (Grouped), Household Income, Poverty Level, Marital Status (Grouped), Married, Health Care Coverage, for the Year(s) - 2001, 2002, 2003, 2004, 2005, 2006, 2007, 2008, 2009, 2010

Note: Weighted numbers (#), percentages and 95% confidence intervals; Respondents aged 18 years and older; n/r (Not Reportable) - If the unweighted total responses for a dimension (row) is <50 that row will not be shown; n/a (Not Available) - Not asked of a subset of respondents

Year: 2008

Poverty Level	Yes			No			Estimated Population
	#	%	C.I. (95%)	#	%	C.I. (95%)	#
0-130%	8,900	53.4	41.4 - 65.4	7,800	46.6	34.6 - 58.6	16,700
131-185%	4,500	45.2	28.5 - 61.8	5,400	54.8	38.2 - 71.5	9,900
186+%	26,300	54.0	47.4 - 60.6	22,400	46.0	39.4 - 52.6	48,800

Marital Status (Grouped)	Yes			No			Estimated Population
	#	%	C.I. (95%)	#	%	C.I. (95%)	#
Married	25,500	50.9	43.5 - 58.3	24,600	49.1	41.7 - 56.5	50,100
Widowed	4,000	42.1	30.9 - 53.4	5,500	57.9	46.6 - 69.1	9,600
Other	11,400	52.2	42.3 - 62.2	10,400	47.8	37.8 - 57.7	21,700

Diabetes - manage class by State, County, Island, Community, BRFSS Age Group, DOH Race-Ethnicity, Gender, Education Level, Employment Status (Grouped), Household Income, Poverty Level, Marital Status (Grouped), Married, Health Care Coverage, for the Year(s) - 2001, 2002, 2003, 2004, 2005, 2006, 2007, 2008, 2009, 2010

Note: Weighted numbers (#), percentages and 95% confidence intervals; Respondents aged 18 years and older; n/r (Not Reportable) - If the unweighted total responses for a dimension (row) is <50 that row will not be shown; n/a (Not Available) - Not asked of a subset of respondents

Year: 2008

Married	Yes			No			Estimated Population
	#	%	C.I. (95%)	#	%	C.I. (95%)	#
Yes	26,000	50.4	43.1 - 57.7	25,600	49.6	42.3 - 56.9	51,600
No	15,500	50.8	43.1 - 58.4	15,100	49.2	41.6 - 56.9	30,600

Health Care Coverage	Yes			No			Estimated Population
	#	%	C.I. (95%)	#	%	C.I. (95%)	#
Yes	41,000	51.6	46.2 - 57.0	38,500	48.4	43.0 - 53.8	79,500

Diabetes - manage class by State, County, Island, Community, BRFSS Age Group, DOH Race-Ethnicity, Gender, Education Level, Employment Status (Grouped), Household Income, Poverty Level, Marital Status (Grouped), Married, Health Care Coverage, for the Year(s) - 2001, 2002, 2003, 2004, 2005, 2006, 2007, 2008, 2009, 2010

Note: Weighted numbers (#), percentages and 95% confidence intervals; Respondents aged 18 years and older; n/r (Not Reportable) - If the unweighted total responses for a dimension (row) is <50 that row will not be shown; n/a (Not Available) - Not asked of a subset of respondents

Year: 2007

State	Yes			No			Estimated Population
	#	%	C.I. (95%)	#	%	C.I. (95%)	#
Hawaii State	37,500	49.9	44.4 - 55.5	37,600	50.1	44.5 - 55.6	75,100

County	Yes			No			Estimated Population
	#	%	C.I. (95%)	#	%	C.I. (95%)	#
Hawaii	4,100	46.0	36.4 - 55.7	4,900	54.0	44.3 - 63.6	9,000
Honolulu	26,600	49.1	41.9 - 56.3	27,600	50.9	43.7 - 58.1	54,200
Maui	4,800	55.3	43.7 - 66.9	3,900	44.7	33.1 - 56.3	8,700

Diabetes - manage class by State, County, Island, Community, BRFSS Age Group, DOH Race-Ethnicity, Gender, Education Level, Employment Status (Grouped), Household Income, Poverty Level, Marital Status (Grouped), Married, Health Care Coverage, for the Year(s) - 2001, 2002, 2003, 2004, 2005, 2006, 2007, 2008, 2009, 2010

Note: Weighted numbers (#), percentages and 95% confidence intervals; Respondents aged 18 years and older; n/r (Not Reportable) - If the unweighted total responses for a dimension (row) is <50 that row will not be shown; n/a (Not Available) - Not asked of a subset of respondents

Year: 2007

Island	Yes			No			Estimated Population
	#	%	C.I. (95%)	#	%	C.I. (95%)	#
Hawaii	4,100	46.0	36.4 - 55.7	4,900	54.0	44.3 - 63.6	9,000
Maui	4,300	55.4	42.5 - 68.4	3,400	44.6	31.6 - 57.5	7,700
Oahu	26,600	49.1	41.9 - 56.3	27,600	50.9	43.7 - 58.1	54,200

Diabetes - manage class by State, County, Island, Community, BRFSS Age Group, DOH Race-Ethnicity, Gender, Education Level, Employment Status (Grouped), Household Income, Poverty Level, Marital Status (Grouped), Married, Health Care Coverage, for the Year(s) - 2001, 2002, 2003, 2004, 2005, 2006, 2007, 2008, 2009, 2010

Note: Weighted numbers (#), percentages and 95% confidence intervals; Respondents aged 18 years and older; n/r (Not Reportable) - If the unweighted total responses for a dimension (row) is <50 that row will not be shown; n/a (Not Available) - Not asked of a subset of respondents

Year: 2007

BRFSS Age Group	Yes			No			Estimated Population
	#	%	C.I. (95%)	#	%	C.I. (95%)	#
45-54	8,900	57.6	45.7 - 69.5	6,500	42.4	30.5 - 54.3	15,400
55-64	10,300	53.5	42.7 - 64.3	8,900	46.5	35.7 - 57.3	19,200
65-74	7,700	43.4	32.5 - 54.4	10,000	56.6	45.6 - 67.5	17,800
75+	5,800	41.4	29.9 - 52.9	8,100	58.6	47.1 - 70.1	13,900

Diabetes - manage class by State, County, Island, Community, BRFSS Age Group, DOH Race-Ethnicity, Gender, Education Level, Employment Status (Grouped), Household Income, Poverty Level, Marital Status (Grouped), Married, Health Care Coverage, for the Year(s) - 2001, 2002, 2003, 2004, 2005, 2006, 2007, 2008, 2009, 2010

Note: Weighted numbers (#), percentages and 95% confidence intervals; Respondents aged 18 years and older; n/r (Not Reportable) - If the unweighted total responses for a dimension (row) is <50 that row will not be shown; n/a (Not Available) - Not asked of a subset of respondents

Year: 2007

DOH Race-Ethnicity	Yes			No			Estimated Population
	#	%	C.I. (95%)	#	%	C.I. (95%)	#
Caucasian	7,300	50.1	40.4 - 59.9	7,300	49.9	40.1 - 59.6	14,600
Native Hawaiian	8,400	54.2	41.7 - 66.7	7,100	45.8	33.3 - 58.3	15,500
Filipino	7,100	54.2	39.2 - 69.3	6,000	45.8	30.7 - 60.8	13,000
Japanese	7,600	38.9	29.0 - 48.7	12,000	61.1	51.3 - 71.0	19,600

Gender	Yes			No			Estimated Population
	#	%	C.I. (95%)	#	%	C.I. (95%)	#
Male	17,500	46.3	38.1 - 54.6	20,300	53.7	45.4 - 61.9	37,800
Female	20,000	53.6	46.1 - 61.0	17,300	46.4	39.0 - 53.9	37,300

Diabetes - manage class by State, County, Island, Community, BRFSS Age Group, DOH Race-Ethnicity, Gender, Education Level, Employment Status (Grouped), Household Income, Poverty Level, Marital Status (Grouped), Married, Health Care Coverage, for the Year(s) - 2001, 2002, 2003, 2004, 2005, 2006, 2007, 2008, 2009, 2010

Note: Weighted numbers (#), percentages and 95% confidence intervals; Respondents aged 18 years and older; n/r (Not Reportable) - If the unweighted total responses for a dimension (row) is <50 that row will not be shown; n/a (Not Available) - Not asked of a subset of respondents

Year: 2007

Education Level	Yes			No			Estimated Population
	#	%	C.I. (95%)	#	%	C.I. (95%)	#
Grades 12 or GED (High School Grad)	9,600	36.7	27.8 - 45.6	16,600	63.3	54.4 - 72.2	26,200
College 1 to 3 years (Some College/ Tech)	14,200	58.6	48.7 - 68.5	10,000	41.4	31.5 - 51.3	24,200
College 4 years or more (College Grad)	11,100	59.9	49.8 - 70.0	7,400	40.1	30.0 - 50.2	18,500

Employment Status (Grouped)	Yes			No			Estimated Population
	#	%	C.I. (95%)	#	%	C.I. (95%)	#
Employed	17,900	54.2	45.6 - 62.8	15,200	45.8	37.2 - 54.4	33,100
Retired/Unable to work	18,200	47.6	40.2 - 55.1	20,000	52.4	44.9 - 59.8	38,200

Diabetes - manage class by State, County, Island, Community, BRFSS Age Group, DOH Race-Ethnicity, Gender, Education Level, Employment Status (Grouped), Household Income, Poverty Level, Marital Status (Grouped), Married, Health Care Coverage, for the Year(s) - 2001, 2002, 2003, 2004, 2005, 2006, 2007, 2008, 2009, 2010

Note: Weighted numbers (#), percentages and 95% confidence intervals; Respondents aged 18 years and older; n/r (Not Reportable) - If the unweighted total responses for a dimension (row) is <50 that row will not be shown; n/a (Not Available) - Not asked of a subset of respondents

Year: 2007

Household Income	Yes			No			Estimated Population
	#	%	C.I. (95%)	#	%	C.I. (95%)	#
\$20,000 to \$24,999	2,600	34.0	18.7 - 49.4	5,000	66.0	50.6 - 81.3	7,600
\$25,000 to \$34,999	5,700	60.0	44.1 - 75.8	3,800	40.0	24.2 - 55.9	9,600
\$35,000 to \$49,999	7,300	49.0	35.5 - 62.4	7,600	51.0	37.6 - 64.5	14,900
\$50,000 to \$74,999	5,200	45.2	31.5 - 58.8	6,400	54.8	41.2 - 68.5	11,600
\$75,000 or more	8,800	60.7	48.8 - 72.6	5,700	39.3	27.4 - 51.2	14,500

Diabetes - manage class by State, County, Island, Community, BRFSS Age Group, DOH Race-Ethnicity, Gender, Education Level, Employment Status (Grouped), Household Income, Poverty Level, Marital Status (Grouped), Married, Health Care Coverage, for the Year(s) - 2001, 2002, 2003, 2004, 2005, 2006, 2007, 2008, 2009, 2010

Note: Weighted numbers (#), percentages and 95% confidence intervals; Respondents aged 18 years and older; n/r (Not Reportable) - If the unweighted total responses for a dimension (row) is <50 that row will not be shown; n/a (Not Available) - Not asked of a subset of respondents

Year: 2007

Poverty Level	Yes			No			Estimated Population
	#	%	C.I. (95%)	#	%	C.I. (95%)	#
0-130%	11,000	52.9	41.3 - 64.6	9,800	47.1	35.4 - 58.7	20,800
131-185%	4,700	50.1	33.7 - 66.5	4,700	49.9	33.5 - 66.3	9,400
186+%	19,900	49.9	42.8 - 56.9	20,000	50.1	43.1 - 57.2	39,800

Marital Status (Grouped)	Yes			No			Estimated Population
	#	%	C.I. (95%)	#	%	C.I. (95%)	#
Married	23,500	51.6	44.4 - 58.9	22,000	48.4	41.1 - 55.6	45,400
Widowed	4,700	46.6	33.9 - 59.3	5,400	53.4	40.7 - 66.1	10,100
Other	9,300	49.4	38.0 - 60.8	9,500	50.6	39.2 - 62.0	18,700

Diabetes - manage class by State, County, Island, Community, BRFSS Age Group, DOH Race-Ethnicity, Gender, Education Level, Employment Status (Grouped), Household Income, Poverty Level, Marital Status (Grouped), Married, Health Care Coverage, for the Year(s) - 2001, 2002, 2003, 2004, 2005, 2006, 2007, 2008, 2009, 2010

Note: Weighted numbers (#), percentages and 95% confidence intervals; Respondents aged 18 years and older; n/r (Not Reportable) - If the unweighted total responses for a dimension (row) is <50 that row will not be shown; n/a (Not Available) - Not asked of a subset of respondents

Year: 2007

Married	Yes			No			Estimated Population
	#	%	C.I. (95%)	#	%	C.I. (95%)	#
Yes	23,800	51.5	44.3 - 58.7	22,400	48.5	41.3 - 55.7	46,300
No	13,500	47.1	38.4 - 55.8	15,200	52.9	44.2 - 61.6	28,700

Health Care Coverage	Yes			No			Estimated Population
	#	%	C.I. (95%)	#	%	C.I. (95%)	#
Yes	36,200	50.3	44.6 - 55.9	35,900	49.7	44.1 - 55.4	72,100

Diabetes - manage class by State, County, Island, Community, BRFSS Age Group, DOH Race-Ethnicity, Gender, Education Level, Employment Status (Grouped), Household Income, Poverty Level, Marital Status (Grouped), Married, Health Care Coverage, for the Year(s) - 2001, 2002, 2003, 2004, 2005, 2006, 2007, 2008, 2009, 2010

Note: Weighted numbers (#), percentages and 95% confidence intervals; Respondents aged 18 years and older; n/r (Not Reportable) - If the unweighted total responses for a dimension (row) is <50 that row will not be shown; n/a (Not Available) - Not asked of a subset of respondents

Year: 2006

State	Yes			No			Estimated Population
	#	%	C.I. (95%)	#	%	C.I. (95%)	#
Hawaii State	33,100	43.1	37.7 - 48.5	43,700	56.9	51.5 - 62.3	76,900

County	Yes			No			Estimated Population
	#	%	C.I. (95%)	#	%	C.I. (95%)	#
Hawaii	3,700	44.2	33.7 - 54.7	4,700	55.8	45.3 - 66.3	8,400
Honolulu	22,600	40.7	33.7 - 47.7	32,900	59.3	52.3 - 66.3	55,500
Kauai	2,200	48.8	34.7 - 63.0	2,300	51.2	37.0 - 65.3	4,600
Maui	4,600	54.7	43.1 - 66.2	3,800	45.3	33.8 - 56.9	8,400

Diabetes - manage class by State, County, Island, Community, BRFSS Age Group, DOH Race-Ethnicity, Gender, Education Level, Employment Status (Grouped), Household Income, Poverty Level, Marital Status (Grouped), Married, Health Care Coverage, for the Year(s) - 2001, 2002, 2003, 2004, 2005, 2006, 2007, 2008, 2009, 2010

Note: Weighted numbers (#), percentages and 95% confidence intervals; Respondents aged 18 years and older; n/r (Not Reportable) - If the unweighted total responses for a dimension (row) is <50 that row will not be shown; n/a (Not Available) - Not asked of a subset of respondents

Year: 2006

Island	Yes			No			Estimated Population
	#	%	C.I. (95%)	#	%	C.I. (95%)	#
Hawaii	3,700	44.2	33.7 - 54.7	4,700	55.8	45.3 - 66.3	8,400
Kauai	2,200	48.8	34.7 - 63.0	2,300	51.2	37.0 - 65.3	4,600
Maui	4,200	56.0	43.4 - 68.5	3,300	44.0	31.5 - 56.6	7,600
Oahu	22,600	40.7	33.7 - 47.7	32,900	59.3	52.3 - 66.3	55,500

Diabetes - manage class by State, County, Island, Community, BRFSS Age Group, DOH Race-Ethnicity, Gender, Education Level, Employment Status (Grouped), Household Income, Poverty Level, Marital Status (Grouped), Married, Health Care Coverage, for the Year(s) - 2001, 2002, 2003, 2004, 2005, 2006, 2007, 2008, 2009, 2010

Note: Weighted numbers (#), percentages and 95% confidence intervals; Respondents aged 18 years and older; n/r (Not Reportable) - If the unweighted total responses for a dimension (row) is <50 that row will not be shown; n/a (Not Available) - Not asked of a subset of respondents

Year: 2006

BRFSS Age Group	Yes			No			Estimated Population
	#	%	C.I. (95%)	#	%	C.I. (95%)	#
45-54	7,900	46.4	34.1 - 58.7	9,100	53.6	41.3 - 65.9	17,000
55-64	8,400	37.6	26.7 - 48.6	13,900	62.4	51.4 - 73.3	22,300
65-74	8,000	53.8	43.5 - 64.2	6,800	46.2	35.8 - 56.5	14,800
75+	4,600	30.9	20.5 - 41.2	10,300	69.1	58.8 - 79.5	14,800

Diabetes - manage class by State, County, Island, Community, BRFSS Age Group, DOH Race-Ethnicity, Gender, Education Level, Employment Status (Grouped), Household Income, Poverty Level, Marital Status (Grouped), Married, Health Care Coverage, for the Year(s) - 2001, 2002, 2003, 2004, 2005, 2006, 2007, 2008, 2009, 2010

Note: Weighted numbers (#), percentages and 95% confidence intervals; Respondents aged 18 years and older; n/r (Not Reportable) - If the unweighted total responses for a dimension (row) is <50 that row will not be shown; n/a (Not Available) - Not asked of a subset of respondents

Year: 2006

DOH Race-Ethnicity	Yes			No			Estimated Population
	#	%	C.I. (95%)	#	%	C.I. (95%)	#
Caucasian	8,200	46.3	36.7 - 55.9	9,500	53.7	44.1 - 63.3	17,600
Native Hawaiian	6,800	50.1	37.4 - 62.9	6,800	49.9	37.1 - 62.6	13,600
Filipino	7,200	47.0	31.7 - 62.3	8,200	53.0	37.7 - 68.3	15,400
Japanese	6,800	37.1	27.0 - 47.1	11,500	62.9	52.9 - 73.0	18,200

Gender	Yes			No			Estimated Population
	#	%	C.I. (95%)	#	%	C.I. (95%)	#
Male	16,600	45.3	36.9 - 53.7	20,100	54.7	46.3 - 63.1	36,800
Female	16,500	41.1	34.2 - 48.0	23,600	58.9	52.0 - 65.8	40,100

Diabetes - manage class by State, County, Island, Community, BRFSS Age Group, DOH Race-Ethnicity, Gender, Education Level, Employment Status (Grouped), Household Income, Poverty Level, Marital Status (Grouped), Married, Health Care Coverage, for the Year(s) - 2001, 2002, 2003, 2004, 2005, 2006, 2007, 2008, 2009, 2010

Note: Weighted numbers (#), percentages and 95% confidence intervals; Respondents aged 18 years and older; n/r (Not Reportable) - If the unweighted total responses for a dimension (row) is <50 that row will not be shown; n/a (Not Available) - Not asked of a subset of respondents

Year: 2006

Education Level	Yes			No			Estimated Population
	#	%	C.I. (95%)	#	%	C.I. (95%)	#
Grades 12 or GED (High School Grad)	10,000	36.8	27.2 - 46.3	17,100	63.2	53.7 - 72.8	27,100
College 1 to 3 years (Some College/ Tech)	10,600	46.9	37.0 - 56.8	12,000	53.1	43.2 - 63.0	22,600
College 4 years or more (College Grad)	10,100	52.3	42.0 - 62.6	9,200	47.7	37.4 - 58.0	19,300

Employment Status (Grouped)	Yes			No			Estimated Population
	#	%	C.I. (95%)	#	%	C.I. (95%)	#
Employed	14,400	43.4	34.6 - 52.2	18,800	56.6	47.8 - 65.4	33,300
Retired/Unable to work	16,100	42.4	35.2 - 49.6	21,800	57.6	50.4 - 64.8	37,900

Diabetes - manage class by State, County, Island, Community, BRFSS Age Group, DOH Race-Ethnicity, Gender, Education Level, Employment Status (Grouped), Household Income, Poverty Level, Marital Status (Grouped), Married, Health Care Coverage, for the Year(s) - 2001, 2002, 2003, 2004, 2005, 2006, 2007, 2008, 2009, 2010

Note: Weighted numbers (#), percentages and 95% confidence intervals; Respondents aged 18 years and older; n/r (Not Reportable) - If the unweighted total responses for a dimension (row) is <50 that row will not be shown; n/a (Not Available) - Not asked of a subset of respondents

Year: 2006

Household Income	Yes			No			Estimated Population
	#	%	C.I. (95%)	#	%	C.I. (95%)	#
\$20,000 to \$24,999	2,300	32.8	17.8 - 47.8	4,800	67.2	52.2 - 82.2	7,100
\$25,000 to \$34,999	3,600	41.7	25.4 - 58.0	5,100	58.3	42.0 - 74.6	8,700
\$35,000 to \$49,999	6,100	45.3	30.6 - 60.1	7,300	54.7	39.9 - 69.4	13,400
\$50,000 to \$74,999	7,000	57.7	44.9 - 70.6	5,100	42.3	29.4 - 55.1	12,100
\$75,000 or more	4,600	40.3	27.3 - 53.2	6,900	59.7	46.8 - 72.7	11,500

Diabetes - manage class by State, County, Island, Community, BRFSS Age Group, DOH Race-Ethnicity, Gender, Education Level, Employment Status (Grouped), Household Income, Poverty Level, Marital Status (Grouped), Married, Health Care Coverage, for the Year(s) - 2001, 2002, 2003, 2004, 2005, 2006, 2007, 2008, 2009, 2010

Note: Weighted numbers (#), percentages and 95% confidence intervals; Respondents aged 18 years and older; n/r (Not Reportable) - If the unweighted total responses for a dimension (row) is <50 that row will not be shown; n/a (Not Available) - Not asked of a subset of respondents

Year: 2006

Poverty Level	Yes			No			Estimated Population
	#	%	C.I. (95%)	#	%	C.I. (95%)	#
0-130%	6,100	31.2	21.1 - 41.3	13,600	68.8	58.7 - 78.9	19,700
131-185%	3,700	45.0	27.6 - 62.5	4,500	55.0	37.5 - 72.4	8,200
186+%	18,300	50.4	43.2 - 57.7	18,000	49.6	42.3 - 56.8	36,200

Marital Status (Grouped)	Yes			No			Estimated Population
	#	%	C.I. (95%)	#	%	C.I. (95%)	#
Married	22,300	44.3	37.2 - 51.4	28,100	55.7	48.6 - 62.8	50,400
Widowed	2,500	28.4	16.5 - 40.2	6,200	71.6	59.8 - 83.5	8,700
Other	7,800	45.4	34.7 - 56.0	9,400	54.6	44.0 - 65.3	17,200

Diabetes - manage class by State, County, Island, Community, BRFSS Age Group, DOH Race-Ethnicity, Gender, Education Level, Employment Status (Grouped), Household Income, Poverty Level, Marital Status (Grouped), Married, Health Care Coverage, for the Year(s) - 2001, 2002, 2003, 2004, 2005, 2006, 2007, 2008, 2009, 2010

Note: Weighted numbers (#), percentages and 95% confidence intervals; Respondents aged 18 years and older; n/r (Not Reportable) - If the unweighted total responses for a dimension (row) is <50 that row will not be shown; n/a (Not Available) - Not asked of a subset of respondents

Year: 2006

Married	Yes			No			Estimated Population
	#	%	C.I. (95%)	#	%	C.I. (95%)	#
Yes	22,400	43.6	36.6 - 50.6	29,000	56.4	49.4 - 63.4	51,400
No	10,700	42.0	33.6 - 50.4	14,700	58.0	49.6 - 66.4	25,400

Health Care Coverage	Yes			No			Estimated Population
	#	%	C.I. (95%)	#	%	C.I. (95%)	#
Yes	32,200	44.2	38.6 - 49.8	40,700	55.8	50.2 - 61.4	72,900

Diabetes - manage class by State, County, Island, Community, BRFSS Age Group, DOH Race-Ethnicity, Gender, Education Level, Employment Status (Grouped), Household Income, Poverty Level, Marital Status (Grouped), Married, Health Care Coverage, for the Year(s) - 2001, 2002, 2003, 2004, 2005, 2006, 2007, 2008, 2009, 2010

Note: Weighted numbers (#), percentages and 95% confidence intervals; Respondents aged 18 years and older; n/r (Not Reportable) - If the unweighted total responses for a dimension (row) is <50 that row will not be shown; n/a (Not Available) - Not asked of a subset of respondents

Year: 2005

State	Yes			No			Estimated Population
	#	%	C.I. (95%)	#	%	C.I. (95%)	#
Hawaii State	28,900	35.6	27.5 - 43.6	52,300	64.4	56.4 - 72.5	81,100

County	Yes			No			Estimated Population
	#	%	C.I. (95%)	#	%	C.I. (95%)	#
Hawaii	3,600	31.4	19.7 - 43.0	7,800	68.6	57.0 - 80.3	11,400
Honolulu	21,700	35.2	25.0 - 45.5	39,800	64.8	54.5 - 75.0	61,500

Diabetes - manage class by State, County, Island, Community, BRFSS Age Group, DOH Race-Ethnicity, Gender, Education Level, Employment Status (Grouped), Household Income, Poverty Level, Marital Status (Grouped), Married, Health Care Coverage, for the Year(s) - 2001, 2002, 2003, 2004, 2005, 2006, 2007, 2008, 2009, 2010

Note: Weighted numbers (#), percentages and 95% confidence intervals; Respondents aged 18 years and older; n/r (Not Reportable) - If the unweighted total responses for a dimension (row) is <50 that row will not be shown; n/a (Not Available) - Not asked of a subset of respondents

Year: 2005

Island	Yes			No			Estimated Population
	#	%	C.I. (95%)	#	%	C.I. (95%)	#
Hawaii	3,600	31.4	19.7 - 43.0	7,800	68.6	57.0 - 80.3	11,400
Oahu	21,700	35.2	25.0 - 45.5	39,800	64.8	54.5 - 75.0	61,500

BRFSS Age Group	Yes			No			Estimated Population
	#	%	C.I. (95%)	#	%	C.I. (95%)	#
55-64	7,500	37.4	20.9 - 54.0	12,500	62.6	46.0 - 79.1	20,000
65-74	6,400	45.5	29.9 - 61.0	7,700	54.5	39.0 - 70.1	14,200

Diabetes - manage class by State, County, Island, Community, BRFSS Age Group, DOH Race-Ethnicity, Gender, Education Level, Employment Status (Grouped), Household Income, Poverty Level, Marital Status (Grouped), Married, Health Care Coverage, for the Year(s) - 2001, 2002, 2003, 2004, 2005, 2006, 2007, 2008, 2009, 2010

Note: Weighted numbers (#), percentages and 95% confidence intervals; Respondents aged 18 years and older; n/r (Not Reportable) - If the unweighted total responses for a dimension (row) is <50 that row will not be shown; n/a (Not Available) - Not asked of a subset of respondents

Year: 2005

DOH Race-Ethnicity	Yes			No			Estimated Population
	#	%	C.I. (95%)	#	%	C.I. (95%)	#
Caucasian	9,600	48.9	34.2 - 63.6	10,000	51.1	36.4 - 65.8	19,600
Native Hawaiian	8,600	50.8	31.4 - 70.3	8,300	49.2	29.7 - 68.6	16,900
Japanese	5,300	34.6	18.2 - 51.0	10,000	65.4	49.0 - 81.8	15,300

Gender	Yes			No			Estimated Population
	#	%	C.I. (95%)	#	%	C.I. (95%)	#
Male	14,400	32.9	21.6 - 44.2	29,400	67.1	55.8 - 78.4	43,800
Female	14,500	38.7	27.5 - 49.9	22,900	61.3	50.1 - 72.5	37,400

Diabetes - manage class by State, County, Island, Community, BRFSS Age Group, DOH Race-Ethnicity, Gender, Education Level, Employment Status (Grouped), Household Income, Poverty Level, Marital Status (Grouped), Married, Health Care Coverage, for the Year(s) - 2001, 2002, 2003, 2004, 2005, 2006, 2007, 2008, 2009, 2010

Note: Weighted numbers (#), percentages and 95% confidence intervals; Respondents aged 18 years and older; n/r (Not Reportable) - If the unweighted total responses for a dimension (row) is <50 that row will not be shown; n/a (Not Available) - Not asked of a subset of respondents

Year: 2005

Education Level	Yes			No			Estimated Population
	#	%	C.I. (95%)	#	%	C.I. (95%)	#
Grades 12 or GED (High School Grad)	12,700	40.2	25.6 - 54.8	18,900	59.8	45.2 - 74.4	31,500
College 1 to 3 years (Some College/ Tech)	8,600	45.7	29.9 - 61.5	10,200	54.3	38.5 - 70.1	18,800
College 4 years or more (College Grad)	6,300	33.1	17.1 - 49.0	12,800	66.9	51.0 - 82.9	19,100

Employment Status (Grouped)	Yes			No			Estimated Population
	#	%	C.I. (95%)	#	%	C.I. (95%)	#
Employed	14,400	38.1	25.4 - 50.9	23,400	61.9	49.1 - 74.6	37,800
Retired/Unable to work	12,300	31.9	21.4 - 42.4	26,300	68.1	57.6 - 78.6	38,600

Diabetes - manage class by State, County, Island, Community, BRFSS Age Group, DOH Race-Ethnicity, Gender, Education Level, Employment Status (Grouped), Household Income, Poverty Level, Marital Status (Grouped), Married, Health Care Coverage, for the Year(s) - 2001, 2002, 2003, 2004, 2005, 2006, 2007, 2008, 2009, 2010

Note: Weighted numbers (#), percentages and 95% confidence intervals; Respondents aged 18 years and older; n/r (Not Reportable) - If the unweighted total responses for a dimension (row) is <50 that row will not be shown; n/a (Not Available) - Not asked of a subset of respondents

Year: 2005

Poverty Level	Yes			No			Estimated Population
	#	%	C.I. (95%)	#	%	C.I. (95%)	#
0-130%	4,900	24.1	8.8 - 39.3	15,300	75.9	60.7 - 91.2	20,200
186+%	18,200	49.6	38.3 - 61.0	18,400	50.4	39.0 - 61.7	36,600

Marital Status (Grouped)	Yes			No			Estimated Population
	#	%	C.I. (95%)	#	%	C.I. (95%)	#
Married	20,300	39.3	28.2 - 50.4	31,300	60.7	49.6 - 71.8	51,600
Other	5,500	27.1	13.8 - 40.5	14,600	72.9	59.5 - 86.2	20,100

Diabetes - manage class by State, County, Island, Community, BRFSS Age Group, DOH Race-Ethnicity, Gender, Education Level, Employment Status (Grouped), Household Income, Poverty Level, Marital Status (Grouped), Married, Health Care Coverage, for the Year(s) - 2001, 2002, 2003, 2004, 2005, 2006, 2007, 2008, 2009, 2010

Note: Weighted numbers (#), percentages and 95% confidence intervals; Respondents aged 18 years and older; n/r (Not Reportable) - If the unweighted total responses for a dimension (row) is <50 that row will not be shown; n/a (Not Available) - Not asked of a subset of respondents

Year: 2005

Married	Yes			No			Estimated Population
	#	%	C.I. (95%)	#	%	C.I. (95%)	#
Yes	20,500	39.2	28.3 - 50.1	31,900	60.8	49.9 - 71.7	52,400
No	8,300	29.2	18.3 - 40.0	20,200	70.8	60.0 - 81.7	28,500

Diabetes - manage class by State, County, Island, Community, BRFSS Age Group, DOH Race-Ethnicity, Gender, Education Level, Employment Status (Grouped), Household Income, Poverty Level, Marital Status (Grouped), Married, Health Care Coverage, for the Year(s) - 2001, 2002, 2003, 2004, 2005, 2006, 2007, 2008, 2009, 2010

Note: Weighted numbers (#), percentages and 95% confidence intervals; Respondents aged 18 years and older; n/r (Not Reportable) - If the unweighted total responses for a dimension (row) is <50 that row will not be shown; n/a (Not Available) - Not asked of a subset of respondents

Year: 2004

State	Yes			No			Estimated Population
	#	%	C.I. (95%)	#	%	C.I. (95%)	#
Hawaii State	29,400	48.6	36.3 - 60.8	31,100	51.4	39.2 - 63.7	60,600

County	Yes			No			Estimated Population
	#	%	C.I. (95%)	#	%	C.I. (95%)	#
Honolulu	21,300	47.5	31.7 - 63.4	23,600	52.5	36.6 - 68.3	44,900

Island	Yes			No			Estimated Population
	#	%	C.I. (95%)	#	%	C.I. (95%)	#
Oahu	21,300	47.5	31.7 - 63.4	23,600	52.5	36.6 - 68.3	44,900

Diabetes - manage class by State, County, Island, Community, BRFSS Age Group, DOH Race-Ethnicity, Gender, Education Level, Employment Status (Grouped), Household Income, Poverty Level, Marital Status (Grouped), Married, Health Care Coverage, for the Year(s) - 2001, 2002, 2003, 2004, 2005, 2006, 2007, 2008, 2009, 2010

Note: Weighted numbers (#), percentages and 95% confidence intervals; Respondents aged 18 years and older; n/r (Not Reportable) - If the unweighted total responses for a dimension (row) is <50 that row will not be shown; n/a (Not Available) - Not asked of a subset of respondents

Year: 2004

Gender	Yes			No			Estimated Population
	#	%	C.I. (95%)	#	%	C.I. (95%)	#
Male	15,000	42.4	27.4 - 57.4	20,400	57.6	42.6 - 72.6	35,300
Female	14,400	57.2	38.1 - 76.3	10,800	42.8	23.7 - 61.9	25,200

Education Level	Yes			No			Estimated Population
	#	%	C.I. (95%)	#	%	C.I. (95%)	#
Grades 12 or GED (High School Grad)	12,700	48.1	26.7 - 69.5	13,700	51.9	30.5 - 73.3	26,400

Diabetes - manage class by State, County, Island, Community, BRFSS Age Group, DOH Race-Ethnicity, Gender, Education Level, Employment Status (Grouped), Household Income, Poverty Level, Marital Status (Grouped), Married, Health Care Coverage, for the Year(s) - 2001, 2002, 2003, 2004, 2005, 2006, 2007, 2008, 2009, 2010

Note: Weighted numbers (#), percentages and 95% confidence intervals; Respondents aged 18 years and older; n/r (Not Reportable) - If the unweighted total responses for a dimension (row) is <50 that row will not be shown; n/a (Not Available) - Not asked of a subset of respondents

Year: 2004

Employment Status (Grouped)	Yes			No			Estimated Population
	#	%	C.I. (95%)	#	%	C.I. (95%)	#
Employed	14,600	49.9	32.3 - 67.5	14,600	50.1	32.5 - 67.7	29,200
Retired/Unable to work	12,700	48.8	30.3 - 67.3	13,300	51.2	32.7 - 69.7	26,000

Poverty Level	Yes			No			Estimated Population
	#	%	C.I. (95%)	#	%	C.I. (95%)	#
186+%	17,600	47.0	32.7 - 61.3	19,900	53.0	38.7 - 67.3	37,500

Marital Status (Grouped)	Yes			No			Estimated Population
	#	%	C.I. (95%)	#	%	C.I. (95%)	#
Married	21,100	51.9	36.3 - 67.4	19,500	48.1	32.6 - 63.7	40,600

Diabetes - manage class by State, County, Island, Community, BRFSS Age Group, DOH Race-Ethnicity, Gender, Education Level, Employment Status (Grouped), Household Income, Poverty Level, Marital Status (Grouped), Married, Health Care Coverage, for the Year(s) - 2001, 2002, 2003, 2004, 2005, 2006, 2007, 2008, 2009, 2010

Note: Weighted numbers (#), percentages and 95% confidence intervals; Respondents aged 18 years and older; n/r (Not Reportable) - If the unweighted total responses for a dimension (row) is <50 that row will not be shown; n/a (Not Available) - Not asked of a subset of respondents

Year: 2004

Married	Yes			No			Estimated Population
	#	%	C.I. (95%)	#	%	C.I. (95%)	#
Yes	21,100	51.5	36.0 - 66.9	19,800	48.5	33.1 - 64.0	40,900
No	8,400	42.5	22.8 - 62.2	11,300	57.5	37.8 - 77.2	19,700

Health Care Coverage	Yes			No			Estimated Population
	#	%	C.I. (95%)	#	%	C.I. (95%)	#
Yes	28,700	49.3	36.8 - 61.9	29,500	50.7	38.1 - 63.2	58,100

Diabetes - manage class by State, County, Island, Community, BRFSS Age Group, DOH Race-Ethnicity, Gender, Education Level, Employment Status (Grouped), Household Income, Poverty Level, Marital Status (Grouped), Married, Health Care Coverage, for the Year(s) - 2001, 2002, 2003, 2004, 2005, 2006, 2007, 2008, 2009, 2010

Note: Weighted numbers (#), percentages and 95% confidence intervals; Respondents aged 18 years and older; n/r (Not Reportable) - If the unweighted total responses for a dimension (row) is <50 that row will not be shown; n/a (Not Available) - Not asked of a subset of respondents

Year: 2003

State	Yes			No			Estimated Population
	#	%	C.I. (95%)	#	%	C.I. (95%)	#
Hawaii State	37,900	55.3	47.9 - 62.7	30,700	44.7	37.3 - 52.1	68,600

County	Yes			No			Estimated Population
	#	%	C.I. (95%)	#	%	C.I. (95%)	#
Hawaii	4,800	55.1	39.2 - 70.9	3,900	44.9	29.1 - 60.8	8,700
Honolulu	28,800	54.6	45.5 - 63.7	23,900	45.4	36.3 - 54.5	52,700

Diabetes - manage class by State, County, Island, Community, BRFSS Age Group, DOH Race-Ethnicity, Gender, Education Level, Employment Status (Grouped), Household Income, Poverty Level, Marital Status (Grouped), Married, Health Care Coverage, for the Year(s) - 2001, 2002, 2003, 2004, 2005, 2006, 2007, 2008, 2009, 2010

Note: Weighted numbers (#), percentages and 95% confidence intervals; Respondents aged 18 years and older; n/r (Not Reportable) - If the unweighted total responses for a dimension (row) is <50 that row will not be shown; n/a (Not Available) - Not asked of a subset of respondents

Year: 2003

Island	Yes			No			Estimated Population
	#	%	C.I. (95%)	#	%	C.I. (95%)	#
Hawaii	4,800	55.1	39.2 - 70.9	3,900	44.9	29.1 - 60.8	8,700
Oahu	28,800	54.6	45.5 - 63.7	23,900	45.4	36.3 - 54.5	52,700

BRFSS Age Group	Yes			No			Estimated Population
	#	%	C.I. (95%)	#	%	C.I. (95%)	#
45-54	9,300	55.3	38.4 - 72.1	7,500	44.7	27.9 - 61.6	16,700
55-64	9,100	57.0	42.5 - 71.5	6,900	43.0	28.5 - 57.5	16,000
65-74	9,100	55.7	40.4 - 70.9	7,300	44.3	29.1 - 59.6	16,400
75+	4,700	48.5	32.6 - 64.5	5,000	51.5	35.5 - 67.4	9,700

Diabetes - manage class by State, County, Island, Community, BRFSS Age Group, DOH Race-Ethnicity, Gender, Education Level, Employment Status (Grouped), Household Income, Poverty Level, Marital Status (Grouped), Married, Health Care Coverage, for the Year(s) - 2001, 2002, 2003, 2004, 2005, 2006, 2007, 2008, 2009, 2010

Note: Weighted numbers (#), percentages and 95% confidence intervals; Respondents aged 18 years and older; n/r (Not Reportable) - If the unweighted total responses for a dimension (row) is <50 that row will not be shown; n/a (Not Available) - Not asked of a subset of respondents

Year: 2003

DOH Race-Ethnicity	Yes			No			Estimated Population
	#	%	C.I. (95%)	#	%	C.I. (95%)	#
Caucasian	10,700	65.8	52.6 - 78.9	5,600	34.2	21.1 - 47.4	16,200
Japanese	8,300	45.7	31.1 - 60.3	9,900	54.3	39.7 - 68.9	18,200

Gender	Yes			No			Estimated Population
	#	%	C.I. (95%)	#	%	C.I. (95%)	#
Male	16,100	49.3	37.6 - 61.0	16,600	50.7	39.0 - 62.4	32,700
Female	21,800	60.7	51.6 - 69.8	14,100	39.3	30.2 - 48.4	36,000

Diabetes - manage class by State, County, Island, Community, BRFSS Age Group, DOH Race-Ethnicity, Gender, Education Level, Employment Status (Grouped), Household Income, Poverty Level, Marital Status (Grouped), Married, Health Care Coverage, for the Year(s) - 2001, 2002, 2003, 2004, 2005, 2006, 2007, 2008, 2009, 2010

Note: Weighted numbers (#), percentages and 95% confidence intervals; Respondents aged 18 years and older; n/r (Not Reportable) - If the unweighted total responses for a dimension (row) is <50 that row will not be shown; n/a (Not Available) - Not asked of a subset of respondents

Year: 2003

Education Level	Yes			No			Estimated Population
	#	%	C.I. (95%)	#	%	C.I. (95%)	#
Grades 12 or GED (High School Grad)	11,900	50.1	37.4 - 62.8	11,900	49.9	37.2 - 62.6	23,800
College 1 to 3 years (Some College/ Tech)	9,900	54.5	40.4 - 68.6	8,300	45.5	31.4 - 59.6	18,200
College 4 years or more (College Grad)	13,000	69.3	55.9 - 82.6	5,800	30.7	17.4 - 44.1	18,800

Employment Status (Grouped)	Yes			No			Estimated Population
	#	%	C.I. (95%)	#	%	C.I. (95%)	#
Employed	16,200	52.5	41.0 - 64.1	14,600	47.5	35.9 - 59.0	30,800
Retired/Unable to work	19,000	58.9	48.8 - 69.0	13,200	41.1	31.0 - 51.2	32,200

Diabetes - manage class by State, County, Island, Community, BRFSS Age Group, DOH Race-Ethnicity, Gender, Education Level, Employment Status (Grouped), Household Income, Poverty Level, Marital Status (Grouped), Married, Health Care Coverage, for the Year(s) - 2001, 2002, 2003, 2004, 2005, 2006, 2007, 2008, 2009, 2010

Note: Weighted numbers (#), percentages and 95% confidence intervals; Respondents aged 18 years and older; n/r (Not Reportable) - If the unweighted total responses for a dimension (row) is <50 that row will not be shown; n/a (Not Available) - Not asked of a subset of respondents

Year: 2003

Poverty Level	Yes			No			Estimated Population
	#	%	C.I. (95%)	#	%	C.I. (95%)	#
0-130%	10,900	58.1	43.7 - 72.5	7,900	41.9	27.5 - 56.3	18,700
186+%	15,900	54.6	42.8 - 66.5	13,200	45.4	33.5 - 57.2	29,000

Marital Status (Grouped)	Yes			No			Estimated Population
	#	%	C.I. (95%)	#	%	C.I. (95%)	#
Married	20,500	50.8	40.9 - 60.6	19,900	49.2	39.4 - 59.1	40,400
Widowed	5,600	46.8	30.7 - 62.8	6,400	53.2	37.2 - 69.3	12,000
Other	11,800	72.9	60.0 - 85.8	4,400	27.1	14.2 - 40.0	16,200

Diabetes - manage class by State, County, Island, Community, BRFSS Age Group, DOH Race-Ethnicity, Gender, Education Level, Employment Status (Grouped), Household Income, Poverty Level, Marital Status (Grouped), Married, Health Care Coverage, for the Year(s) - 2001, 2002, 2003, 2004, 2005, 2006, 2007, 2008, 2009, 2010

Note: Weighted numbers (#), percentages and 95% confidence intervals; Respondents aged 18 years and older; n/r (Not Reportable) - If the unweighted total responses for a dimension (row) is <50 that row will not be shown; n/a (Not Available) - Not asked of a subset of respondents

Year: 2003

Married	Yes			No			Estimated Population
	#	%	C.I. (95%)	#	%	C.I. (95%)	#
Yes	20,900	51.2	41.4 - 61.0	19,900	48.8	39.0 - 58.6	40,800
No	16,900	61.1	50.3 - 71.9	10,800	38.9	28.1 - 49.7	27,700

Health Care Coverage	Yes			No			Estimated Population
	#	%	C.I. (95%)	#	%	C.I. (95%)	#
Yes	36,600	54.9	47.3 - 62.4	30,200	45.1	37.6 - 52.7	66,800

Diabetes - manage class by State, County, Island, Community, BRFSS Age Group, DOH Race-Ethnicity, Gender, Education Level, Employment Status (Grouped), Household Income, Poverty Level, Marital Status (Grouped), Married, Health Care Coverage, for the Year(s) - 2001, 2002, 2003, 2004, 2005, 2006, 2007, 2008, 2009, 2010

Note: Weighted numbers (#), percentages and 95% confidence intervals; Respondents aged 18 years and older; n/r (Not Reportable) - If the unweighted total responses for a dimension (row) is <50 that row will not be shown; n/a (Not Available) - Not asked of a subset of respondents

Year: 2002

State	Yes			No			Estimated Population
	#	%	C.I. (95%)	#	%	C.I. (95%)	#
Hawaii State	27,400	52.2	45.3 - 59.0	25,100	47.8	41.0 - 54.7	52,600

County	Yes			No			Estimated Population
	#	%	C.I. (95%)	#	%	C.I. (95%)	#
Hawaii	2,700	45.5	32.6 - 58.4	3,200	54.5	41.6 - 67.4	5,800
Honolulu	20,700	53.0	44.3 - 61.7	18,400	47.0	38.3 - 55.7	39,100
Maui	2,700	52.5	37.7 - 67.3	2,500	47.5	32.7 - 62.3	5,200

Diabetes - manage class by State, County, Island, Community, BRFSS Age Group, DOH Race-Ethnicity, Gender, Education Level, Employment Status (Grouped), Household Income, Poverty Level, Marital Status (Grouped), Married, Health Care Coverage, for the Year(s) - 2001, 2002, 2003, 2004, 2005, 2006, 2007, 2008, 2009, 2010

Note: Weighted numbers (#), percentages and 95% confidence intervals; Respondents aged 18 years and older; n/r (Not Reportable) - If the unweighted total responses for a dimension (row) is <50 that row will not be shown; n/a (Not Available) - Not asked of a subset of respondents

Year: 2002

Island	Yes			No			Estimated Population
	#	%	C.I. (95%)	#	%	C.I. (95%)	#
Hawaii	2,700	45.5	32.6 - 58.4	3,200	54.5	41.6 - 67.4	5,800
Oahu	20,700	53.0	44.3 - 61.7	18,400	47.0	38.3 - 55.7	39,100

BRFSS Age Group	Yes			No			Estimated Population
	#	%	C.I. (95%)	#	%	C.I. (95%)	#
45-54	5,300	62.8	47.6 - 78.0	3,100	37.2	22.0 - 52.4	8,500
55-64	8,200	65.8	53.0 - 78.5	4,300	34.2	21.5 - 47.0	12,500
65-74	6,200	49.2	35.3 - 63.0	6,400	50.8	37.0 - 64.7	12,500
75+	3,500	31.8	18.5 - 45.1	7,600	68.2	54.9 - 81.5	11,100

Diabetes - manage class by State, County, Island, Community, BRFSS Age Group, DOH Race-Ethnicity, Gender, Education Level, Employment Status (Grouped), Household Income, Poverty Level, Marital Status (Grouped), Married, Health Care Coverage, for the Year(s) - 2001, 2002, 2003, 2004, 2005, 2006, 2007, 2008, 2009, 2010

Note: Weighted numbers (#), percentages and 95% confidence intervals; Respondents aged 18 years and older; n/r (Not Reportable) - If the unweighted total responses for a dimension (row) is <50 that row will not be shown; n/a (Not Available) - Not asked of a subset of respondents

Year: 2002

DOH Race-Ethnicity	Yes			No			Estimated Population
	#	%	C.I. (95%)	#	%	C.I. (95%)	#
Caucasian	5,800	53.1	36.0 - 70.2	5,100	46.9	29.8 - 64.0	10,900
Native Hawaiian	4,500	53.9	38.5 - 69.3	3,800	46.1	30.7 - 61.5	8,300
Filipino	4,600	53.4	35.7 - 71.1	4,000	46.6	28.9 - 64.3	8,600
Japanese	8,100	48.2	36.3 - 60.1	8,700	51.8	39.9 - 63.7	16,700

Gender	Yes			No			Estimated Population
	#	%	C.I. (95%)	#	%	C.I. (95%)	#
Male	11,400	52.2	42.2 - 62.1	10,500	47.8	37.9 - 57.8	21,900
Female	16,000	52.2	42.9 - 61.5	14,700	47.8	38.5 - 57.1	30,600

Diabetes - manage class by State, County, Island, Community, BRFSS Age Group, DOH Race-Ethnicity, Gender, Education Level, Employment Status (Grouped), Household Income, Poverty Level, Marital Status (Grouped), Married, Health Care Coverage, for the Year(s) - 2001, 2002, 2003, 2004, 2005, 2006, 2007, 2008, 2009, 2010

Note: Weighted numbers (#), percentages and 95% confidence intervals; Respondents aged 18 years and older; n/r (Not Reportable) - If the unweighted total responses for a dimension (row) is <50 that row will not be shown; n/a (Not Available) - Not asked of a subset of respondents

Year: 2002

Education Level	Yes			No			Estimated Population
	#	%	C.I. (95%)	#	%	C.I. (95%)	#
Grades 12 or GED (High School Grad)	9,200	45.8	34.4 - 57.3	10,800	54.2	42.7 - 65.6	20,000
College 1 to 3 years (Some College/ Tech)	8,700	64.5	51.5 - 77.4	4,800	35.5	22.6 - 48.5	13,400
College 4 years or more (College Grad)	7,700	55.8	43.8 - 67.9	6,100	44.2	32.1 - 56.2	13,800

Employment Status (Grouped)	Yes			No			Estimated Population
	#	%	C.I. (95%)	#	%	C.I. (95%)	#
Employed	12,500	59.1	48.9 - 69.4	8,600	40.9	30.6 - 51.1	21,100
Retired/Unable to work	13,400	47.6	38.3 - 56.9	14,800	52.4	43.1 - 61.7	28,200

Diabetes - manage class by State, County, Island, Community, BRFSS Age Group, DOH Race-Ethnicity, Gender, Education Level, Employment Status (Grouped), Household Income, Poverty Level, Marital Status (Grouped), Married, Health Care Coverage, for the Year(s) - 2001, 2002, 2003, 2004, 2005, 2006, 2007, 2008, 2009, 2010

Note: Weighted numbers (#), percentages and 95% confidence intervals; Respondents aged 18 years and older; n/r (Not Reportable) - If the unweighted total responses for a dimension (row) is <50 that row will not be shown; n/a (Not Available) - Not asked of a subset of respondents

Year: 2002

Household Income	Yes			No			Estimated Population
	#	%	C.I. (95%)	#	%	C.I. (95%)	#
\$35,000 to \$49,999	5,000	60.1	43.8 - 76.4	3,300	39.9	23.6 - 56.2	8,300

Poverty Level	Yes			No			Estimated Population
	#	%	C.I. (95%)	#	%	C.I. (95%)	#
0-130%	3,000	35.2	22.4 - 48.1	5,400	64.8	51.9 - 77.6	8,400
186+%	15,400	64.1	54.5 - 73.7	8,700	35.9	26.3 - 45.5	24,100

Diabetes - manage class by State, County, Island, Community, BRFSS Age Group, DOH Race-Ethnicity, Gender, Education Level, Employment Status (Grouped), Household Income, Poverty Level, Marital Status (Grouped), Married, Health Care Coverage, for the Year(s) - 2001, 2002, 2003, 2004, 2005, 2006, 2007, 2008, 2009, 2010

Note: Weighted numbers (#), percentages and 95% confidence intervals; Respondents aged 18 years and older; n/r (Not Reportable) - If the unweighted total responses for a dimension (row) is <50 that row will not be shown; n/a (Not Available) - Not asked of a subset of respondents

Year: 2002

Marital Status (Grouped)	Yes			No			Estimated Population
	#	%	C.I. (95%)	#	%	C.I. (95%)	#
Married	18,700	55.1	46.8 - 63.4	15,200	44.9	36.6 - 53.2	33,900
Widowed	3,900	40.6	23.0 - 58.2	5,700	59.4	41.8 - 77.0	9,600
Other	4,900	54.1	40.9 - 67.2	4,100	45.9	32.8 - 59.1	9,000

Married	Yes			No			Estimated Population
	#	%	C.I. (95%)	#	%	C.I. (95%)	#
Yes	19,300	55.6	47.5 - 63.7	15,400	44.4	36.3 - 52.5	34,700
No	8,100	45.5	33.7 - 57.3	9,700	54.5	42.7 - 66.3	17,900

Diabetes - manage class by State, County, Island, Community, BRFSS Age Group, DOH Race-Ethnicity, Gender, Education Level, Employment Status (Grouped), Household Income, Poverty Level, Marital Status (Grouped), Married, Health Care Coverage, for the Year(s) - 2001, 2002, 2003, 2004, 2005, 2006, 2007, 2008, 2009, 2010

Note: Weighted numbers (#), percentages and 95% confidence intervals; Respondents aged 18 years and older; n/r (Not Reportable) - If the unweighted total responses for a dimension (row) is <50 that row will not be shown; n/a (Not Available) - Not asked of a subset of respondents

Year: 2002

Health Care Coverage	Yes			No			Estimated Population
	#	%	C.I. (95%)	#	%	C.I. (95%)	#
Yes	27,000	52.6	45.7 - 59.6	24,200	47.4	40.4 - 54.3	51,200

Diabetes - manage class by State, County, Island, Community, BRFSS Age Group, DOH Race-Ethnicity, Gender, Education Level, Employment Status (Grouped), Household Income, Poverty Level, Marital Status (Grouped), Married, Health Care Coverage, for the Year(s) - 2001, 2002, 2003, 2004, 2005, 2006, 2007, 2008, 2009, 2010

Note: Weighted numbers (#), percentages and 95% confidence intervals; Respondents aged 18 years and older; n/r (Not Reportable) - If the unweighted total responses for a dimension (row) is <50 that row will not be shown; n/a (Not Available) - Not asked of a subset of respondents

Year: 2001

State	Yes			No			Estimated Population
	#	%	C.I. (95%)	#	%	C.I. (95%)	#
Hawaii State	33,100	60.2	51.4 - 69.1	21,900	39.8	30.9 - 48.6	55,000

County	Yes			No			Estimated Population
	#	%	C.I. (95%)	#	%	C.I. (95%)	#
Hawaii	2,700	44.0	29.7 - 58.3	3,500	56.0	41.7 - 70.3	6,200
Honolulu	24,600	63.5	53.1 - 74.0	14,100	36.5	26.0 - 46.9	38,800
Maui	5,000	64.9	35.9 - 94.0	2,700	35.1	6.0 - 64.1	7,600

Diabetes - manage class by State, County, Island, Community, BRFSS Age Group, DOH Race-Ethnicity, Gender, Education Level, Employment Status (Grouped), Household Income, Poverty Level, Marital Status (Grouped), Married, Health Care Coverage, for the Year(s) - 2001, 2002, 2003, 2004, 2005, 2006, 2007, 2008, 2009, 2010

Note: Weighted numbers (#), percentages and 95% confidence intervals; Respondents aged 18 years and older; n/r (Not Reportable) - If the unweighted total responses for a dimension (row) is <50 that row will not be shown; n/a (Not Available) - Not asked of a subset of respondents

Year: 2001

Island	Yes			No			Estimated Population
	#	%	C.I. (95%)	#	%	C.I. (95%)	#
Hawaii	2,700	44.0	29.7 - 58.3	3,500	56.0	41.7 - 70.3	6,200
Oahu	24,600	63.5	53.1 - 74.0	14,100	36.5	26.0 - 46.9	38,800

BRFSS Age Group	Yes			No			Estimated Population
	#	%	C.I. (95%)	#	%	C.I. (95%)	#
45-54	6,500	74.1	58.6 - 89.6	2,300	25.9	10.4 - 41.4	8,700
65-74	8,100	51.5	35.8 - 67.2	7,700	48.5	32.8 - 64.2	15,800

Diabetes - manage class by State, County, Island, Community, BRFSS Age Group, DOH Race-Ethnicity, Gender, Education Level, Employment Status (Grouped), Household Income, Poverty Level, Marital Status (Grouped), Married, Health Care Coverage, for the Year(s) - 2001, 2002, 2003, 2004, 2005, 2006, 2007, 2008, 2009, 2010

Note: Weighted numbers (#), percentages and 95% confidence intervals; Respondents aged 18 years and older; n/r (Not Reportable) - If the unweighted total responses for a dimension (row) is <50 that row will not be shown; n/a (Not Available) - Not asked of a subset of respondents

Year: 2001

DOH Race-Ethnicity	Yes			No			Estimated Population
	#	%	C.I. (95%)	#	%	C.I. (95%)	#
Caucasian	5,600	53.3	36.5 - 70.2	4,900	46.7	29.8 - 63.5	10,600
Filipino	7,700	65.2	42.4 - 88.0	4,100	34.8	12.0 - 57.6	11,800
Japanese	6,100	41.0	25.7 - 56.3	8,800	59.0	43.7 - 74.3	14,900

Gender	Yes			No			Estimated Population
	#	%	C.I. (95%)	#	%	C.I. (95%)	#
Male	18,500	59.5	46.3 - 72.8	12,600	40.5	27.2 - 53.7	31,100
Female	14,600	61.2	49.9 - 72.4	9,300	38.8	27.6 - 50.1	23,900

Diabetes - manage class by State, County, Island, Community, BRFSS Age Group, DOH Race-Ethnicity, Gender, Education Level, Employment Status (Grouped), Household Income, Poverty Level, Marital Status (Grouped), Married, Health Care Coverage, for the Year(s) - 2001, 2002, 2003, 2004, 2005, 2006, 2007, 2008, 2009, 2010

Note: Weighted numbers (#), percentages and 95% confidence intervals; Respondents aged 18 years and older; n/r (Not Reportable) - If the unweighted total responses for a dimension (row) is <50 that row will not be shown; n/a (Not Available) - Not asked of a subset of respondents

Year: 2001

Education Level	Yes			No			Estimated Population
	#	%	C.I. (95%)	#	%	C.I. (95%)	#
Grades 12 or GED (High School Grad)	10,800	54.4	41.6 - 67.2	9,000	45.6	32.8 - 58.4	19,800
College 1 to 3 years (Some College/ Tech)	13,200	70.2	54.1 - 86.2	5,600	29.8	13.8 - 45.9	18,900

Employment Status (Grouped)	Yes			No			Estimated Population
	#	%	C.I. (95%)	#	%	C.I. (95%)	#
Employed	17,200	71.8	59.3 - 84.3	6,800	28.2	15.7 - 40.7	24,000
Retired/Unable to work	14,800	52.3	40.7 - 63.9	13,500	47.7	36.1 - 59.3	28,200

Diabetes - manage class by State, County, Island, Community, BRFSS Age Group, DOH Race-Ethnicity, Gender, Education Level, Employment Status (Grouped), Household Income, Poverty Level, Marital Status (Grouped), Married, Health Care Coverage, for the Year(s) - 2001, 2002, 2003, 2004, 2005, 2006, 2007, 2008, 2009, 2010

Note: Weighted numbers (#), percentages and 95% confidence intervals; Respondents aged 18 years and older; n/r (Not Reportable) - If the unweighted total responses for a dimension (row) is <50 that row will not be shown; n/a (Not Available) - Not asked of a subset of respondents

Year: 2001

Poverty Level	Yes			No			Estimated Population
	#	%	C.I. (95%)	#	%	C.I. (95%)	#
186+%	15,400	68.0	56.2 - 79.7	7,200	32.0	20.3 - 43.8	22,600

Marital Status (Grouped)	Yes			No			Estimated Population
	#	%	C.I. (95%)	#	%	C.I. (95%)	#
Married	24,400	66.4	55.5 - 77.3	12,400	33.6	22.7 - 44.5	36,800
Other	6,400	53.3	37.7 - 68.8	5,600	46.7	31.2 - 62.3	12,000

Diabetes - manage class by State, County, Island, Community, BRFSS Age Group, DOH Race-Ethnicity, Gender, Education Level, Employment Status (Grouped), Household Income, Poverty Level, Marital Status (Grouped), Married, Health Care Coverage, for the Year(s) - 2001, 2002, 2003, 2004, 2005, 2006, 2007, 2008, 2009, 2010

Note: Weighted numbers (#), percentages and 95% confidence intervals; Respondents aged 18 years and older; n/r (Not Reportable) - If the unweighted total responses for a dimension (row) is <50 that row will not be shown; n/a (Not Available) - Not asked of a subset of respondents

Year: 2001

Married	Yes			No			Estimated Population
	#	%	C.I. (95%)	#	%	C.I. (95%)	#
Yes	25,200	67.1	56.5 - 77.8	12,400	32.9	22.2 - 43.5	37,600
No	7,900	45.4	32.6 - 58.1	9,500	54.6	41.9 - 67.4	17,400

Health Care Coverage	Yes			No			Estimated Population
	#	%	C.I. (95%)	#	%	C.I. (95%)	#
Yes	32,800	60.5	51.5 - 69.4	21,400	39.5	30.6 - 48.5	54,200