

**Disability - use special equip by State, County, Island, Community, BRFSS Age Group, DOH Race-Ethnicity, Gender, Education Level, Employment Status (Grouped), Household Income, Poverty Level, Marital Status (Grouped), Married, Health Care Coverage, for the Year(s) - 2001-2005, 2002-2006, 2003-2007, 2004-2008, 2005-2009, 2006-2010**

*Note: Weighted numbers (#) represent 5-yr averages, percentages and 95% confidence intervals; Respondents aged 18 years and older; n/r (Not Reportable) - If the unweighted total responses for a dimension (row) is <50 that row will not be shown; n/a (Not Available) - Not asked of a subset of respondents*

*The trend analysis report shows the trend for the selected health variable over selected years in a table and a graph. Estimated Population: This number is a weighted representation of the population who responded to a particular question in the survey. For most questions the eligible population will be the entire adult population. For some secondary questions only a subset of the population was asked the question. For example, all survey participants were asked if they had diabetes, but only those who answered yes were asked if they use insulin. If a dimension value is unknown for a particular survey record, that record will not be included in the counts for that particular dimension.*

*For documentation on other terms and coding in this report, please go to the following links*

[Click here to access BRFSS documentation](#)

[Click here to access DOH Race-Ethnicity coding](#)

[Click here to access The Hawai'i Data Guide](#)

[Click here to access Poverty Level Methodology](#)

**For questions about this report, please contact  
The Hawaii Health Data Warehouse**

[profiles@hhdw.org](mailto:profiles@hhdw.org)

**(855) 946-5899 x15**

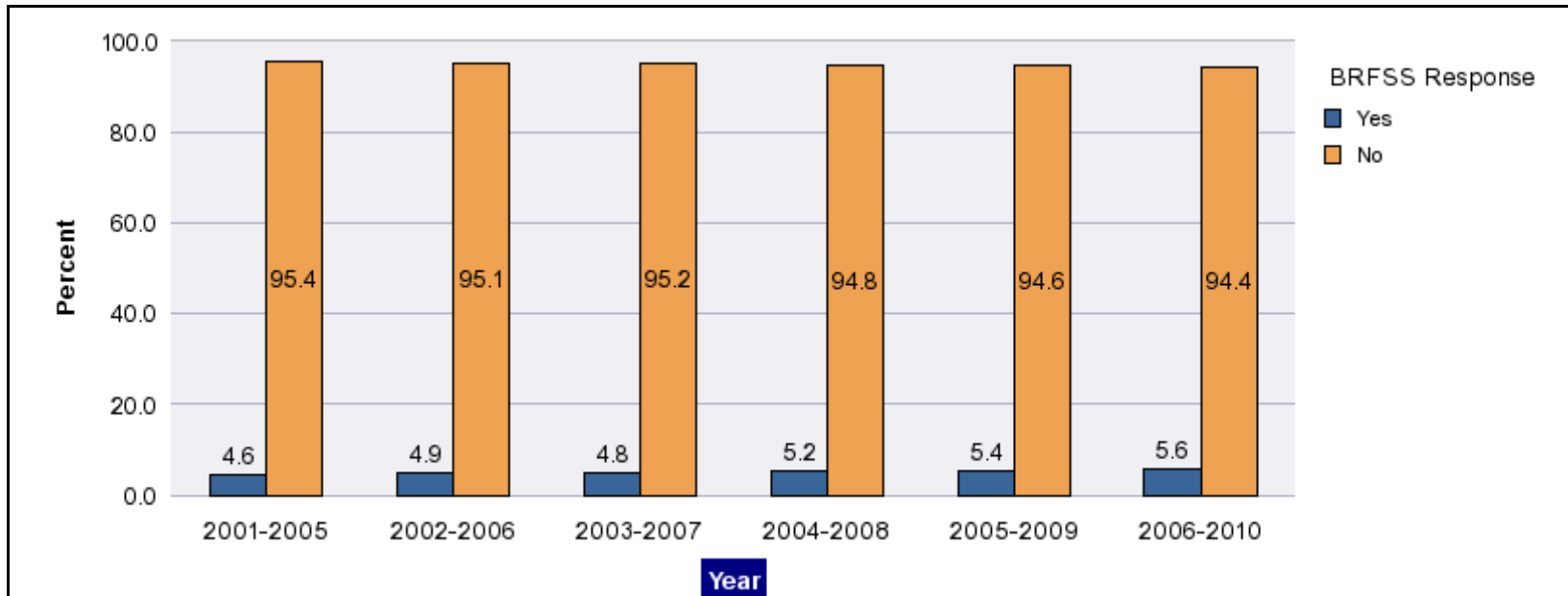
**Disability - use special equip by State, County, Island, Community, BRFSS Age Group, DOH Race-Ethnicity, Gender, Education Level, Employment Status (Grouped), Household Income, Poverty Level, Marital Status (Grouped), Married, Health Care Coverage, for the Year(s) - 2001-2005, 2002-2006, 2003-2007, 2004-2008, 2005-2009, 2006-2010**

*Note: Weighted numbers (#) represent 5-yr averages, percentages and 95% confidence intervals; Respondents aged 18 years and older; n/r (Not Reportable) - If the unweighted total responses for a dimension (row) is <50 that row will not be shown; n/a (Not Available) - Not asked of a subset of respondents*

Year	Yes			No			Estimated Population (5-yr Avg)
	#	%	C.I.(95%)	#	%	C.I.(95%)	#
<b>2001-2005</b>	42,700	4.6	4.3 - 5.0	876,800	95.4	95.0 - 95.7	919,500
<b>2002-2006</b>	45,400	4.9	4.5 - 5.2	890,600	95.1	94.8 - 95.5	936,000
<b>2003-2007</b>	45,700	4.8	4.5 - 5.1	905,400	95.2	94.9 - 95.5	951,100
<b>2004-2008</b>	50,300	5.2	4.9 - 5.5	916,200	94.8	94.5 - 95.1	966,500
<b>2005-2009</b>	53,000	5.4	5.1 - 5.7	930,600	94.6	94.3 - 94.9	983,600
<b>2006-2010</b>	55,500	5.6	5.3 - 5.9	936,800	94.4	94.1 - 94.7	992,300

**Disability - use special equip by State, County, Island, Community, BRFSS Age Group, DOH Race-Ethnicity, Gender, Education Level, Employment Status (Grouped), Household Income, Poverty Level, Marital Status (Grouped), Married, Health Care Coverage, for the Year(s) - 2001-2005, 2002-2006, 2003-2007, 2004-2008, 2005-2009, 2006-2010**

*Note: Weighted numbers (#) represent 5-yr averages, percentages and 95% confidence intervals; Respondents aged 18 years and older; n/r (Not Reportable) - If the unweighted total responses for a dimension (row) is <50 that row will not be shown; n/a (Not Available) - Not asked of a subset of respondents*



**Disability - use special equip by State, County, Island, Community, BRFSS Age Group, DOH Race-Ethnicity, Gender, Education Level, Employment Status (Grouped), Household Income, Poverty Level, Marital Status (Grouped), Married, Health Care Coverage, for the Year(s) - 2001-2005, 2002-2006, 2003-2007, 2004-2008, 2005-2009, 2006-2010**

*Note: Weighted numbers (#) represent 5-yr averages, percentages and 95% confidence intervals; Respondents aged 18 years and older; n/r (Not Reportable) - If the unweighted total responses for a dimension (row) is <50 that row will not be shown; n/a (Not Available) - Not asked of a subset of respondents*

**Year: 2006-2010**

State	Yes			No			Estimated Population (5-yr Avg)
	#	%	C.I. (95%)	#	%	C.I. (95%)	#
Hawaii State	55,500	5.6	5.3 - 5.9	936,800	94.4	94.1 - 94.7	992,300

County	Yes			No			Estimated Population (5-yr Avg)
	#	%	C.I. (95%)	#	%	C.I. (95%)	#
Hawaii	7,700	5.8	5.2 - 6.4	125,200	94.2	93.6 - 94.8	132,800
Honolulu	39,300	5.6	5.2 - 6.0	662,300	94.4	94.0 - 94.8	701,600
Kauai	2,300	4.8	4.0 - 5.5	46,000	95.2	94.5 - 96.0	48,300
Maui	6,200	5.7	5.0 - 6.3	103,400	94.3	93.7 - 95.0	109,600

**Disability - use special equip by State, County, Island, Community, BRFSS Age Group, DOH Race-Ethnicity, Gender, Education Level, Employment Status (Grouped), Household Income, Poverty Level, Marital Status (Grouped), Married, Health Care Coverage, for the Year(s) - 2001-2005, 2002-2006, 2003-2007, 2004-2008, 2005-2009, 2006-2010**

*Note: Weighted numbers (#) represent 5-yr averages, percentages and 95% confidence intervals; Respondents aged 18 years and older; n/r (Not Reportable) - If the unweighted total responses for a dimension (row) is <50 that row will not be shown; n/a (Not Available) - Not asked of a subset of respondents*

**Year: 2006-2010**

Island	Yes			No			Estimated Population (5-yr Avg)
	#	%	C.I. (95%)	#	%	C.I. (95%)	#
Hawaii	7,700	5.8	5.2 - 6.4	125,200	94.2	93.6 - 94.8	132,800
Kauai	2,300	4.8	4.0 - 5.5	46,000	95.2	94.5 - 96.0	48,300
Lanai	100	7.2	5.3 - 9.1	1,800	92.8	90.9 - 94.7	1,900
Maui	5,700	5.7	5.0 - 6.4	94,500	94.3	93.6 - 95.0	100,100
Molokai	400	5.3	3.7 - 6.9	7,200	94.7	93.1 - 96.3	7,600
Oahu	39,300	5.6	5.2 - 6.0	662,300	94.4	94.0 - 94.8	701,600

Community	Yes			No			Estimated Population (5-yr Avg)
	#	%	C.I. (95%)	#	%	C.I. (95%)	#
Aiea/ Pearl City	4,000	6.2	4.7 - 7.7	61,200	93.8	92.3 - 95.3	65,300

**Disability - use special equip by State, County, Island, Community, BRFSS Age Group, DOH Race-Ethnicity, Gender, Education Level, Employment Status (Grouped), Household Income, Poverty Level, Marital Status (Grouped), Married, Health Care Coverage, for the Year(s) - 2001-2005, 2002-2006, 2003-2007, 2004-2008, 2005-2009, 2006-2010**

*Note: Weighted numbers (#) represent 5-yr averages, percentages and 95% confidence intervals; Respondents aged 18 years and older; n/r (Not Reportable) - If the unweighted total responses for a dimension (row) is <50 that row will not be shown; n/a (Not Available) - Not asked of a subset of respondents*

**Year: 2006-2010**

Community	Yes			No			Estimated Population (5-yr Avg)
	#	%	C.I. (95%)	#	%	C.I. (95%)	#
Ala Moana	2,100	7.4	5.4 - 9.4	26,500	92.6	90.6 - 94.6	28,600
Hanalei/ Kapaa	1,000	4.9	3.7 - 6.0	19,200	95.1	94.0 - 96.3	20,200
Hilo	2,000	5.2	4.2 - 6.1	37,200	94.8	93.9 - 95.8	39,200
Kaaawa/ Kahaluu/ Kaneohe	3,000	6.1	4.5 - 7.7	46,600	93.9	92.3 - 95.5	49,700
Kahului	1,900	5.7	4.5 - 6.8	31,900	94.3	93.2 - 95.5	33,800
Kailua/ Waimanalo	3,300	6.5	5.0 - 8.1	47,400	93.5	91.9 - 95.0	50,700
Kaimuki/ Palolo/ Waikiki	4,100	7.3	5.8 - 8.7	52,600	92.7	91.3 - 94.2	56,700
Kona	1,600	5.4	4.2 - 6.7	27,600	94.6	93.3 - 95.8	29,200
Lahaina/ Wailuku	1,700	5.3	4.2 - 6.4	31,100	94.7	93.6 - 95.8	32,800
Lanai	100	7.2	5.3 - 9.1	1,800	92.8	90.9 - 94.7	1,900
Lihue-Waimea	1,300	4.7	3.7 - 5.7	26,700	95.3	94.3 - 96.3	28,000

**Disability - use special equip by State, County, Island, Community, BRFSS Age Group, DOH Race-Ethnicity, Gender, Education Level, Employment Status (Grouped), Household Income, Poverty Level, Marital Status (Grouped), Married, Health Care Coverage, for the Year(s) - 2001-2005, 2002-2006, 2003-2007, 2004-2008, 2005-2009, 2006-2010**

*Note: Weighted numbers (#) represent 5-yr averages, percentages and 95% confidence intervals; Respondents aged 18 years and older; n/r (Not Reportable) - If the unweighted total responses for a dimension (row) is <50 that row will not be shown; n/a (Not Available) - Not asked of a subset of respondents*

**Year: 2006-2010**

Community	Yes			No			Estimated Population (5-yr Avg)
	#	%	C.I. (95%)	#	%	C.I. (95%)	#
Manoa/ Upper Makiki	3,200	6.7	4.9 - 8.4	44,900	93.3	91.6 - 95.1	48,200
Mililani/ Wahiawa	3,400	4.6	3.4 - 5.8	69,900	95.4	94.2 - 96.6	73,200
Molokai	400	5.3	3.7 - 6.9	7,200	94.7	93.1 - 96.3	7,600
Nanakuli/ Waianae	2,400	7.0	4.9 - 9.0	32,400	93.0	91.0 - 95.1	34,800
N.Hawaii	1,600	6.0	4.5 - 7.5	25,600	94.0	92.5 - 95.5	27,200
N.Shore/ Laie	1,900	8.3	5.4 - 11.1	20,700	91.7	88.9 - 94.6	22,600
Nuuanu/ Kalihi/ Moanalua	2,500	3.6	2.7 - 4.5	67,200	96.4	95.5 - 97.3	69,700
Puna/ Kau	2,500	6.6	5.4 - 7.8	34,800	93.4	92.2 - 94.6	37,200
Salt Lake/ Foster Village	1,100	3.0	1.8 - 4.3	34,000	97.0	95.7 - 98.2	35,000
Upcountry/ Hana	2,000	6.0	4.7 - 7.3	31,500	94.0	92.7 - 95.3	33,500
Waiialae/ Kahala/ Hawaii Kai	1,800	4.1	2.9 - 5.4	42,200	95.9	94.6 - 97.1	44,000

**Disability - use special equip by State, County, Island, Community, BRFSS Age Group, DOH Race-Ethnicity, Gender, Education Level, Employment Status (Grouped), Household Income, Poverty Level, Marital Status (Grouped), Married, Health Care Coverage, for the Year(s) - 2001-2005, 2002-2006, 2003-2007, 2004-2008, 2005-2009, 2006-2010**

*Note: Weighted numbers (#) represent 5-yr averages, percentages and 95% confidence intervals; Respondents aged 18 years and older; n/r (Not Reportable) - If the unweighted total responses for a dimension (row) is <50 that row will not be shown; n/a (Not Available) - Not asked of a subset of respondents*

**Year: 2006-2010**

Community	Yes			No			Estimated Population (5-yr Avg)
	#	%	C.I. (95%)	#	%	C.I. (95%)	#
Waipahu/ Kapolei/ Ewa	6,300	5.1	4.1 - 6.2	116,700	94.9	93.8 - 95.9	123,000



**Disability - use special equip by State, County, Island, Community, BRFSS Age Group, DOH Race-Ethnicity, Gender, Education Level, Employment Status (Grouped), Household Income, Poverty Level, Marital Status (Grouped), Married, Health Care Coverage, for the Year(s) - 2001-2005, 2002-2006, 2003-2007, 2004-2008, 2005-2009, 2006-2010**

*Note: Weighted numbers (#) represent 5-yr averages, percentages and 95% confidence intervals; Respondents aged 18 years and older; n/r (Not Reportable) - If the unweighted total responses for a dimension (row) is <50 that row will not be shown; n/a (Not Available) - Not asked of a subset of respondents*

**Year: 2006-2010**

BRFSS Age Group	Yes			No			Estimated Population (5-yr Avg)
	#	%	C.I. (95%)	#	%	C.I. (95%)	#
18-24	700	0.6	0.1 - 1.0	121,800	99.4	99.0 - 99.9	122,500
25-34	3,000	1.7	1.1 - 2.3	169,100	98.3	97.7 - 98.9	172,100
35-44	4,100	2.3	1.8 - 2.9	171,800	97.7	97.1 - 98.2	176,000
45-54	7,600	4.2	3.6 - 4.8	172,400	95.8	95.2 - 96.4	180,000
55-64	11,100	7.3	6.5 - 8.2	140,400	92.7	91.8 - 93.5	151,500
65-74	9,000	10.1	9.0 - 11.2	79,600	89.9	88.8 - 91.0	88,600
75+	19,700	20.4	18.8 - 22.0	76,700	79.6	78.0 - 81.2	96,400

**Disability - use special equip by State, County, Island, Community, BRFSS Age Group, DOH Race-Ethnicity, Gender, Education Level, Employment Status (Grouped), Household Income, Poverty Level, Marital Status (Grouped), Married, Health Care Coverage, for the Year(s) - 2001-2005, 2002-2006, 2003-2007, 2004-2008, 2005-2009, 2006-2010**

*Note: Weighted numbers (#) represent 5-yr averages, percentages and 95% confidence intervals; Respondents aged 18 years and older; n/r (Not Reportable) - If the unweighted total responses for a dimension (row) is <50 that row will not be shown; n/a (Not Available) - Not asked of a subset of respondents*

**Year: 2006-2010**

DOH Race-Ethnicity	Yes			No			Estimated Population (5-yr Avg)
	#	%	C.I. (95%)	#	%	C.I. (95%)	#
Caucasian	20,800	6.5	6.0 - 7.1	297,400	93.5	92.9 - 94.0	318,100
Native Hawaiian	8,600	6.6	5.6 - 7.6	121,100	93.4	92.4 - 94.4	129,600
Chinese	2,800	4.8	3.7 - 5.9	54,800	95.2	94.1 - 96.3	57,600
Filipino	5,500	3.4	2.7 - 4.2	154,800	96.6	95.8 - 97.3	160,300
Japanese	12,700	5.7	5.0 - 6.3	211,200	94.3	93.7 - 95.0	223,900
Black	800	5.2	2.5 - 7.9	14,200	94.8	92.1 - 97.5	15,000
Native Alaskan/ American Indian	800	16.1	9.5 - 22.8	4,300	83.9	77.2 - 90.5	5,100
Other Asian	1,200	5.0	2.4 - 7.5	23,900	95.0	92.5 - 97.6	25,100
Other Pacific Islander	800	2.7	1.1 - 4.4	26,800	97.3	95.6 - 98.9	27,600
Mixed Ethnicity	200	4.6	0.8 - 8.3	4,600	95.4	91.7 - 99.2	4,900
Other	1,200	5.7	3.7 - 7.7	20,400	94.3	92.3 - 96.3	21,600

**Disability - use special equip by State, County, Island, Community, BRFSS Age Group, DOH Race-Ethnicity, Gender, Education Level, Employment Status (Grouped), Household Income, Poverty Level, Marital Status (Grouped), Married, Health Care Coverage, for the Year(s) - 2001-2005, 2002-2006, 2003-2007, 2004-2008, 2005-2009, 2006-2010**

*Note: Weighted numbers (#) represent 5-yr averages, percentages and 95% confidence intervals; Respondents aged 18 years and older; n/r (Not Reportable) - If the unweighted total responses for a dimension (row) is <50 that row will not be shown; n/a (Not Available) - Not asked of a subset of respondents*

**Year: 2006-2010**

Gender	Yes			No			Estimated Population (5-yr Avg)
	#	%	C.I. (95%)	#	%	C.I. (95%)	#
Male	25,500	5.2	4.7 - 5.7	466,400	94.8	94.3 - 95.3	492,000
Female	29,900	6.0	5.6 - 6.4	470,400	94.0	93.6 - 94.4	500,400

Education Level	Yes			No			Estimated Population (5-yr Avg)
	#	%	C.I. (95%)	#	%	C.I. (95%)	#
Never attended school/ Only Kindergarten to Grades 8	2,900	22.0	17.2 - 26.9	10,300	78.0	73.1 - 82.8	13,200
Grades 9 thru 11 (Some High School)	3,800	9.7	7.6 - 11.8	35,500	90.3	88.2 - 92.4	39,400
Grades 12 or GED (High School Grad)	17,300	5.9	5.3 - 6.5	277,200	94.1	93.5 - 94.7	294,500
College 1 to 3 years (Some College/ Tech)	15,000	5.2	4.7 - 5.8	271,900	94.8	94.2 - 95.3	286,900
College 4 years or more (College Grad)	16,400	4.6	4.1 - 5.0	341,000	95.4	95.0 - 95.9	357,400

**Disability - use special equip by State, County, Island, Community, BRFSS Age Group, DOH Race-Ethnicity, Gender, Education Level, Employment Status (Grouped), Household Income, Poverty Level, Marital Status (Grouped), Married, Health Care Coverage, for the Year(s) - 2001-2005, 2002-2006, 2003-2007, 2004-2008, 2005-2009, 2006-2010**

*Note: Weighted numbers (#) represent 5-yr averages, percentages and 95% confidence intervals; Respondents aged 18 years and older; n/r (Not Reportable) - If the unweighted total responses for a dimension (row) is <50 that row will not be shown; n/a (Not Available) - Not asked of a subset of respondents*

**Year: 2006-2010**

Employment Status (Grouped)	Yes			No			Estimated Population (5-yr Avg)
	#	%	C.I. (95%)	#	%	C.I. (95%)	#
<b>Employed</b>	12,600	2.0	1.8 - 2.3	609,800	98.0	97.7 - 98.2	622,400
<b>Unemployed</b>	2,700	5.3	3.7 - 7.0	47,400	94.7	93.0 - 96.3	50,000
<b>Retired/Unable to work</b>	37,300	17.1	16.1 - 18.1	181,300	82.9	81.9 - 83.9	218,600
<b>Student/Homemaker</b>	2,900	2.9	2.1 - 3.7	97,400	97.1	96.3 - 97.9	100,300

**Disability - use special equip by State, County, Island, Community, BRFSS Age Group, DOH Race-Ethnicity, Gender, Education Level, Employment Status (Grouped), Household Income, Poverty Level, Marital Status (Grouped), Married, Health Care Coverage, for the Year(s) - 2001-2005, 2002-2006, 2003-2007, 2004-2008, 2005-2009, 2006-2010**

*Note: Weighted numbers (#) represent 5-yr averages, percentages and 95% confidence intervals; Respondents aged 18 years and older; n/r (Not Reportable) - If the unweighted total responses for a dimension (row) is <50 that row will not be shown; n/a (Not Available) - Not asked of a subset of respondents*

**Year: 2006-2010**

Household Income	Yes			No			Estimated Population (5-yr Avg)
	#	%	C.I. (95%)	#	%	C.I. (95%)	#
Less than \$10,000	4,200	14.2	11.7 - 16.7	25,300	85.8	83.3 - 88.3	29,500
\$10,000 to \$14,999	3,800	14.4	11.7 - 17.1	22,500	85.6	82.9 - 88.3	26,300
\$15,000 to \$19,999	4,400	9.5	7.9 - 11.1	42,100	90.5	88.9 - 92.1	46,600
\$20,000 to \$24,999	5,500	9.0	7.3 - 10.7	55,800	91.0	89.3 - 92.7	61,300
\$25,000 to \$34,999	6,100	5.9	4.9 - 6.9	98,000	94.1	93.1 - 95.1	104,200
\$35,000 to \$49,999	8,300	5.6	4.8 - 6.4	139,800	94.4	93.6 - 95.2	148,100
\$50,000 to \$74,999	6,700	4.0	3.3 - 4.6	162,600	96.0	95.4 - 96.7	169,400
\$75,000 or more	9,600	3.3	2.8 - 3.7	285,400	96.7	96.3 - 97.2	295,000

**Disability - use special equip by State, County, Island, Community, BRFSS Age Group, DOH Race-Ethnicity, Gender, Education Level, Employment Status (Grouped), Household Income, Poverty Level, Marital Status (Grouped), Married, Health Care Coverage, for the Year(s) - 2001-2005, 2002-2006, 2003-2007, 2004-2008, 2005-2009, 2006-2010**

*Note: Weighted numbers (#) represent 5-yr averages, percentages and 95% confidence intervals; Respondents aged 18 years and older; n/r (Not Reportable) - If the unweighted total responses for a dimension (row) is <50 that row will not be shown; n/a (Not Available) - Not asked of a subset of respondents*

**Year: 2006-2010**

Poverty Level	Yes			No			Estimated Population (5-yr Avg)
	#	%	C.I. (95%)	#	%	C.I. (95%)	#
<b>0-130%</b>	16,000	8.1	7.2 - 8.9	182,600	91.9	91.1 - 92.8	198,600
<b>131-185%</b>	8,100	6.3	5.4 - 7.3	119,900	93.7	92.7 - 94.6	128,000
<b>186+%</b>	24,500	4.4	4.1 - 4.8	529,000	95.6	95.2 - 95.9	553,500

Marital Status (Grouped)	Yes			No			Estimated Population (5-yr Avg)
	#	%	C.I. (95%)	#	%	C.I. (95%)	#
<b>Married</b>	29,300	5.0	4.6 - 5.4	553,600	95.0	94.6 - 95.4	582,900
<b>Unmarried Couple</b>	800	2.7	1.5 - 3.9	29,900	97.3	96.1 - 98.5	30,800
<b>Widowed</b>	11,600	20.2	18.2 - 22.2	46,000	79.8	77.8 - 81.8	57,600
<b>Other</b>	13,700	4.3	3.8 - 4.8	307,300	95.7	95.2 - 96.2	321,100

**Disability - use special equip by State, County, Island, Community, BRFSS Age Group, DOH Race-Ethnicity, Gender, Education Level, Employment Status (Grouped), Household Income, Poverty Level, Marital Status (Grouped), Married, Health Care Coverage, for the Year(s) - 2001-2005, 2002-2006, 2003-2007, 2004-2008, 2005-2009, 2006-2010**

*Note: Weighted numbers (#) represent 5-yr averages, percentages and 95% confidence intervals; Respondents aged 18 years and older; n/r (Not Reportable) - If the unweighted total responses for a dimension (row) is <50 that row will not be shown; n/a (Not Available) - Not asked of a subset of respondents*

**Year: 2006-2010**

<b>Married</b>	<b>Yes</b>			<b>No</b>			<b>Estimated Population (5-yr Avg)</b>
	<b>#</b>	<b>%</b>	<b>C.I. (95%)</b>	<b>#</b>	<b>%</b>	<b>C.I. (95%)</b>	<b>#</b>
<b>Yes</b>	29,800	5.0	4.6 - 5.4	563,900	95.0	94.6 - 95.4	593,700
<b>No</b>	25,700	6.5	5.9 - 7.0	371,200	93.5	93.0 - 94.1	396,900

<b>Health Care Coverage</b>	<b>Yes</b>			<b>No</b>			<b>Estimated Population (5-yr Avg)</b>
	<b>#</b>	<b>%</b>	<b>C.I. (95%)</b>	<b>#</b>	<b>%</b>	<b>C.I. (95%)</b>	<b>#</b>
<b>Yes</b>	53,100	5.8	5.4 - 6.1	868,700	94.2	93.9 - 94.6	921,700
<b>No</b>	2,400	3.4	2.3 - 4.6	66,100	96.6	95.4 - 97.7	68,500

**Disability - use special equip by State, County, Island, Community, BRFSS Age Group, DOH Race-Ethnicity, Gender, Education Level, Employment Status (Grouped), Household Income, Poverty Level, Marital Status (Grouped), Married, Health Care Coverage, for the Year(s) - 2001-2005, 2002-2006, 2003-2007, 2004-2008, 2005-2009, 2006-2010**

*Note: Weighted numbers (#) represent 5-yr averages, percentages and 95% confidence intervals; Respondents aged 18 years and older; n/r (Not Reportable) - If the unweighted total responses for a dimension (row) is <50 that row will not be shown; n/a (Not Available) - Not asked of a subset of respondents*

**Year: 2005-2009**

State	Yes			No			Estimated Population (5-yr Avg)
	#	%	C.I. (95%)	#	%	C.I. (95%)	#
Hawaii State	53,000	5.4	5.1 - 5.7	930,600	94.6	94.3 - 94.9	983,600

County	Yes			No			Estimated Population (5-yr Avg)
	#	%	C.I. (95%)	#	%	C.I. (95%)	#
Hawaii	7,100	5.6	5.0 - 6.1	121,600	94.4	93.9 - 95.0	128,700
Honolulu	37,800	5.4	5.0 - 5.8	662,000	94.6	94.2 - 95.0	699,800
Kauai	2,200	4.7	3.9 - 5.4	45,200	95.3	94.6 - 96.1	47,400
Maui	5,800	5.4	4.8 - 6.1	101,800	94.6	93.9 - 95.2	107,700



**Disability - use special equip by State, County, Island, Community, BRFSS Age Group, DOH Race-Ethnicity, Gender, Education Level, Employment Status (Grouped), Household Income, Poverty Level, Marital Status (Grouped), Married, Health Care Coverage, for the Year(s) - 2001-2005, 2002-2006, 2003-2007, 2004-2008, 2005-2009, 2006-2010**

*Note: Weighted numbers (#) represent 5-yr averages, percentages and 95% confidence intervals; Respondents aged 18 years and older; n/r (Not Reportable) - If the unweighted total responses for a dimension (row) is <50 that row will not be shown; n/a (Not Available) - Not asked of a subset of respondents*

**Year: 2005-2009**

Island	Yes			No			Estimated Population (5-yr Avg)
	#	%	C.I. (95%)	#	%	C.I. (95%)	#
Hawaii	7,100	5.6	5.0 - 6.1	121,600	94.4	93.9 - 95.0	128,700
Kauai	2,200	4.7	3.9 - 5.4	45,200	95.3	94.6 - 96.1	47,400
Lanai	200	7.5	5.5 - 9.6	1,900	92.5	90.4 - 94.5	2,100
Maui	5,300	5.4	4.7 - 6.1	93,100	94.6	93.9 - 95.3	98,400
Molokai	400	5.4	3.8 - 7.1	6,800	94.6	92.9 - 96.2	7,200
Oahu	37,800	5.4	5.0 - 5.8	662,000	94.6	94.2 - 95.0	699,800

Community	Yes			No			Estimated Population (5-yr Avg)
	#	%	C.I. (95%)	#	%	C.I. (95%)	#
Aiea/ Pearl City	4,100	6.4	4.9 - 7.9	61,000	93.6	92.1 - 95.1	65,100

**Disability - use special equip by State, County, Island, Community, BRFSS Age Group, DOH Race-Ethnicity, Gender, Education Level, Employment Status (Grouped), Household Income, Poverty Level, Marital Status (Grouped), Married, Health Care Coverage, for the Year(s) - 2001-2005, 2002-2006, 2003-2007, 2004-2008, 2005-2009, 2006-2010**

*Note: Weighted numbers (#) represent 5-yr averages, percentages and 95% confidence intervals; Respondents aged 18 years and older; n/r (Not Reportable) - If the unweighted total responses for a dimension (row) is <50 that row will not be shown; n/a (Not Available) - Not asked of a subset of respondents*

**Year: 2005-2009**

Community	Yes			No			Estimated Population (5-yr Avg)
	#	%	C.I. (95%)	#	%	C.I. (95%)	#
Ala Moana	2,200	7.2	5.3 - 9.1	28,900	92.8	90.9 - 94.7	31,100
Hanalei/ Kapaa	1,000	5.1	3.9 - 6.3	18,800	94.9	93.7 - 96.1	19,800
Hilo	1,900	5.0	4.0 - 5.9	36,000	95.0	94.1 - 96.0	37,900
Kaaawa/ Kahaluu/ Kaneohe	3,000	6.1	4.5 - 7.7	46,400	93.9	92.3 - 95.5	49,400
Kahului	1,800	5.3	4.2 - 6.4	31,900	94.7	93.6 - 95.8	33,700
Kailua/ Waimanalo	2,700	5.4	4.1 - 6.7	47,500	94.6	93.3 - 95.9	50,300
Kaimuki/ Palolo/ Waikiki	4,300	7.3	5.9 - 8.8	54,400	92.7	91.2 - 94.1	58,700
Kona	1,600	5.4	4.2 - 6.7	27,300	94.6	93.3 - 95.8	28,900
Lahaina/ Wailuku	1,600	5.0	3.9 - 6.1	30,600	95.0	93.9 - 96.1	32,200
Lanai	200	7.5	5.5 - 9.6	1,900	92.5	90.4 - 94.5	2,100
Lihue-Waimea	1,200	4.4	3.4 - 5.3	26,400	95.6	94.7 - 96.6	27,600

**Disability - use special equip by State, County, Island, Community, BRFSS Age Group, DOH Race-Ethnicity, Gender, Education Level, Employment Status (Grouped), Household Income, Poverty Level, Marital Status (Grouped), Married, Health Care Coverage, for the Year(s) - 2001-2005, 2002-2006, 2003-2007, 2004-2008, 2005-2009, 2006-2010**

*Note: Weighted numbers (#) represent 5-yr averages, percentages and 95% confidence intervals; Respondents aged 18 years and older; n/r (Not Reportable) - If the unweighted total responses for a dimension (row) is <50 that row will not be shown; n/a (Not Available) - Not asked of a subset of respondents*

**Year: 2005-2009**

Community	Yes			No			Estimated Population (5-yr Avg)
	#	%	C.I. (95%)	#	%	C.I. (95%)	#
Manoa/ Upper Makiki	2,700	6.0	4.5 - 7.5	43,100	94.0	92.5 - 95.5	45,800
Mililani/ Wahiawa	3,700	5.0	3.8 - 6.2	69,500	95.0	93.8 - 96.2	73,200
Molokai	400	5.4	3.8 - 7.1	6,800	94.6	92.9 - 96.2	7,200
Nanakuli/ Waianae	2,300	7.0	4.9 - 9.2	30,700	93.0	90.8 - 95.1	33,000
N.Hawaii	1,400	5.4	4.1 - 6.6	25,600	94.6	93.4 - 95.9	27,000
N.Shore/ Laie	1,800	8.5	5.6 - 11.4	19,800	91.5	88.6 - 94.4	21,700
Nuuanu/ Kalihi/ Moanalua	2,500	3.5	2.6 - 4.5	67,900	96.5	95.5 - 97.4	70,400
Puna/ Kau	2,300	6.4	5.2 - 7.7	32,700	93.6	92.3 - 94.8	35,000
Salt Lake/ Foster Village	800	2.4	1.4 - 3.3	33,800	97.6	96.7 - 98.6	34,600
Upcountry/ Hana	1,900	5.8	4.5 - 7.2	30,600	94.2	92.8 - 95.5	32,500
Waialae/ Kahala/ Hawaii Kai	1,700	3.7	2.6 - 4.9	43,400	96.3	95.1 - 97.4	45,100

**Disability - use special equip by State, County, Island, Community, BRFSS Age Group, DOH Race-Ethnicity, Gender, Education Level, Employment Status (Grouped), Household Income, Poverty Level, Marital Status (Grouped), Married, Health Care Coverage, for the Year(s) - 2001-2005, 2002-2006, 2003-2007, 2004-2008, 2005-2009, 2006-2010**

*Note: Weighted numbers (#) represent 5-yr averages, percentages and 95% confidence intervals; Respondents aged 18 years and older; n/r (Not Reportable) - If the unweighted total responses for a dimension (row) is <50 that row will not be shown; n/a (Not Available) - Not asked of a subset of respondents*

**Year: 2005-2009**

Community	Yes			No			Estimated Population (5-yr Avg)
	#	%	C.I. (95%)	#	%	C.I. (95%)	#
Waipahu/ Kapolei/ Ewa	5,800	4.8	3.7 - 5.8	115,700	95.2	94.2 - 96.3	121,500

**Disability - use special equip by State, County, Island, Community, BRFSS Age Group, DOH Race-Ethnicity, Gender, Education Level, Employment Status (Grouped), Household Income, Poverty Level, Marital Status (Grouped), Married, Health Care Coverage, for the Year(s) - 2001-2005, 2002-2006, 2003-2007, 2004-2008, 2005-2009, 2006-2010**

*Note: Weighted numbers (#) represent 5-yr averages, percentages and 95% confidence intervals; Respondents aged 18 years and older; n/r (Not Reportable) - If the unweighted total responses for a dimension (row) is <50 that row will not be shown; n/a (Not Available) - Not asked of a subset of respondents*

**Year: 2005-2009**

BRFSS Age Group	Yes			No			Estimated Population (5-yr Avg)
	#	%	C.I. (95%)	#	%	C.I. (95%)	#
18-24	800	0.6	0.2 - 1.1	121,400	99.4	98.9 - 99.8	122,200
25-34	2,300	1.4	0.9 - 1.9	166,600	98.6	98.1 - 99.1	168,900
35-44	4,200	2.4	1.9 - 2.9	173,200	97.6	97.1 - 98.1	177,400
45-54	7,500	4.2	3.6 - 4.8	172,800	95.8	95.2 - 96.4	180,400
55-64	10,600	7.1	6.2 - 7.9	138,500	92.9	92.1 - 93.8	149,000
65-74	8,900	10.2	9.1 - 11.4	77,700	89.8	88.6 - 90.9	86,600
75+	18,500	19.7	18.1 - 21.3	75,200	80.3	78.7 - 81.9	93,700

**Disability - use special equip by State, County, Island, Community, BRFSS Age Group, DOH Race-Ethnicity, Gender, Education Level, Employment Status (Grouped), Household Income, Poverty Level, Marital Status (Grouped), Married, Health Care Coverage, for the Year(s) - 2001-2005, 2002-2006, 2003-2007, 2004-2008, 2005-2009, 2006-2010**

*Note: Weighted numbers (#) represent 5-yr averages, percentages and 95% confidence intervals; Respondents aged 18 years and older; n/r (Not Reportable) - If the unweighted total responses for a dimension (row) is <50 that row will not be shown; n/a (Not Available) - Not asked of a subset of respondents*

**Year: 2005-2009**

DOH Race-Ethnicity	Yes			No			Estimated Population (5-yr Avg)
	#	%	C.I. (95%)	#	%	C.I. (95%)	#
Caucasian	19,500	6.1	5.6 - 6.6	300,700	93.9	93.4 - 94.4	320,200
Native Hawaiian	8,400	6.6	5.7 - 7.6	118,300	93.4	92.4 - 94.3	126,700
Chinese	2,700	4.7	3.6 - 5.8	54,500	95.3	94.2 - 96.4	57,200
Filipino	5,600	3.6	2.8 - 4.3	153,000	96.4	95.7 - 97.2	158,600
Japanese	12,100	5.6	4.9 - 6.2	205,900	94.4	93.8 - 95.1	218,000
Black	700	4.5	2.0 - 6.9	15,300	95.5	93.1 - 98.0	16,000
Native Alaskan/ American Indian	1,100	20.1	12.9 - 27.3	4,200	79.9	72.7 - 87.1	5,300
Other Asian	700	2.8	1.3 - 4.2	23,300	97.2	95.8 - 98.7	24,000
Other Pacific Islander	800	3.1	1.3 - 4.9	24,700	96.9	95.1 - 98.7	25,500
Mixed Ethnicity	200	4.6	0.8 - 8.3	4,600	95.4	91.7 - 99.2	4,900
Other	1,100	4.7	2.8 - 6.5	22,500	95.3	93.5 - 97.2	23,600

**Disability - use special equip by State, County, Island, Community, BRFSS Age Group, DOH Race-Ethnicity, Gender, Education Level, Employment Status (Grouped), Household Income, Poverty Level, Marital Status (Grouped), Married, Health Care Coverage, for the Year(s) - 2001-2005, 2002-2006, 2003-2007, 2004-2008, 2005-2009, 2006-2010**

*Note: Weighted numbers (#) represent 5-yr averages, percentages and 95% confidence intervals; Respondents aged 18 years and older; n/r (Not Reportable) - If the unweighted total responses for a dimension (row) is <50 that row will not be shown; n/a (Not Available) - Not asked of a subset of respondents*

**Year: 2005-2009**

Gender	Yes			No			Estimated Population (5-yr Avg)
	#	%	C.I. (95%)	#	%	C.I. (95%)	#
Male	24,600	5.0	4.6 - 5.5	462,900	95.0	94.5 - 95.4	487,500
Female	28,400	5.7	5.3 - 6.1	467,700	94.3	93.9 - 94.7	496,100

Education Level	Yes			No			Estimated Population (5-yr Avg)
	#	%	C.I. (95%)	#	%	C.I. (95%)	#
Never attended school/ Only Kindergarten to Grades 8	2,800	18.6	14.2 - 23.0	12,100	81.4	77.0 - 85.8	14,900
Grades 9 thru 11 (Some High School)	4,200	10.8	8.7 - 12.9	34,600	89.2	87.1 - 91.3	38,800
Grades 12 or GED (High School Grad)	17,300	5.9	5.3 - 6.6	273,800	94.1	93.4 - 94.7	291,100
College 1 to 3 years (Some College/ Tech)	14,300	5.0	4.5 - 5.5	271,300	95.0	94.5 - 95.5	285,600
College 4 years or more (College Grad)	14,400	4.1	3.7 - 4.5	337,600	95.9	95.5 - 96.3	352,000

**Disability - use special equip by State, County, Island, Community, BRFSS Age Group, DOH Race-Ethnicity, Gender, Education Level, Employment Status (Grouped), Household Income, Poverty Level, Marital Status (Grouped), Married, Health Care Coverage, for the Year(s) - 2001-2005, 2002-2006, 2003-2007, 2004-2008, 2005-2009, 2006-2010**

*Note: Weighted numbers (#) represent 5-yr averages, percentages and 95% confidence intervals; Respondents aged 18 years and older; n/r (Not Reportable) - If the unweighted total responses for a dimension (row) is <50 that row will not be shown; n/a (Not Available) - Not asked of a subset of respondents*

**Year: 2005-2009**

Employment Status (Grouped)	Yes			No			Estimated Population (5-yr Avg)
	#	%	C.I. (95%)	#	%	C.I. (95%)	#
<b>Employed</b>	12,100	1.9	1.7 - 2.2	615,300	98.1	97.8 - 98.3	627,300
<b>Unemployed</b>	2,100	5.4	3.6 - 7.2	37,500	94.6	92.8 - 96.4	39,600
<b>Retired/Unable to work</b>	36,500	16.5	15.5 - 17.5	184,400	83.5	82.5 - 84.5	220,900
<b>Student/Homemaker</b>	2,300	2.4	1.7 - 3.1	92,400	97.6	96.9 - 98.3	94,700



**Disability - use special equip by State, County, Island, Community, BRFSS Age Group, DOH Race-Ethnicity, Gender, Education Level, Employment Status (Grouped), Household Income, Poverty Level, Marital Status (Grouped), Married, Health Care Coverage, for the Year(s) - 2001-2005, 2002-2006, 2003-2007, 2004-2008, 2005-2009, 2006-2010**

*Note: Weighted numbers (#) represent 5-yr averages, percentages and 95% confidence intervals; Respondents aged 18 years and older; n/r (Not Reportable) - If the unweighted total responses for a dimension (row) is <50 that row will not be shown; n/a (Not Available) - Not asked of a subset of respondents*

**Year: 2005-2009**

Household Income	Yes			No			Estimated Population (5-yr Avg)
	#	%	C.I. (95%)	#	%	C.I. (95%)	#
Less than \$10,000	3,700	13.8	11.4 - 16.2	22,900	86.2	83.8 - 88.6	26,600
\$10,000 to \$14,999	4,000	15.4	12.6 - 18.3	22,100	84.6	81.7 - 87.4	26,200
\$15,000 to \$19,999	4,400	9.7	8.0 - 11.3	41,200	90.3	88.7 - 92.0	45,600
\$20,000 to \$24,999	4,700	7.8	6.4 - 9.2	55,600	92.2	90.8 - 93.6	60,300
\$25,000 to \$34,999	5,700	5.5	4.5 - 6.4	98,400	94.5	93.6 - 95.5	104,100
\$35,000 to \$49,999	8,000	5.3	4.5 - 6.1	142,200	94.7	93.9 - 95.5	150,200
\$50,000 to \$74,999	6,600	3.8	3.1 - 4.4	167,700	96.2	95.6 - 96.9	174,200
\$75,000 or more	8,500	3.0	2.6 - 3.5	269,500	97.0	96.5 - 97.4	277,900

**Disability - use special equip by State, County, Island, Community, BRFSS Age Group, DOH Race-Ethnicity, Gender, Education Level, Employment Status (Grouped), Household Income, Poverty Level, Marital Status (Grouped), Married, Health Care Coverage, for the Year(s) - 2001-2005, 2002-2006, 2003-2007, 2004-2008, 2005-2009, 2006-2010**

*Note: Weighted numbers (#) represent 5-yr averages, percentages and 95% confidence intervals; Respondents aged 18 years and older; n/r (Not Reportable) - If the unweighted total responses for a dimension (row) is <50 that row will not be shown; n/a (Not Available) - Not asked of a subset of respondents*

**Year: 2005-2009**

Poverty Level	Yes			No			Estimated Population (5-yr Avg)
	#	%	C.I. (95%)	#	%	C.I. (95%)	#
<b>0-130%</b>	14,900	8.0	7.2 - 8.9	170,200	92.0	91.1 - 92.8	185,100
<b>131-185%</b>	6,900	5.9	4.9 - 6.8	110,900	94.1	93.2 - 95.1	117,900
<b>186+%</b>	23,700	4.2	3.9 - 4.6	538,300	95.8	95.4 - 96.1	562,100

Marital Status (Grouped)	Yes			No			Estimated Population (5-yr Avg)
	#	%	C.I. (95%)	#	%	C.I. (95%)	#
<b>Married</b>	27,900	4.8	4.4 - 5.2	554,200	95.2	94.8 - 95.6	582,100
<b>Unmarried Couple</b>	800	2.7	1.4 - 4.1	28,200	97.3	95.9 - 98.6	29,000
<b>Widowed</b>	10,800	18.9	17.0 - 20.8	46,400	81.1	79.2 - 83.0	57,300
<b>Other</b>	13,400	4.3	3.8 - 4.7	301,800	95.7	95.3 - 96.2	315,200

**Disability - use special equip by State, County, Island, Community, BRFSS Age Group, DOH Race-Ethnicity, Gender, Education Level, Employment Status (Grouped), Household Income, Poverty Level, Marital Status (Grouped), Married, Health Care Coverage, for the Year(s) - 2001-2005, 2002-2006, 2003-2007, 2004-2008, 2005-2009, 2006-2010**

*Note: Weighted numbers (#) represent 5-yr averages, percentages and 95% confidence intervals; Respondents aged 18 years and older; n/r (Not Reportable) - If the unweighted total responses for a dimension (row) is <50 that row will not be shown; n/a (Not Available) - Not asked of a subset of respondents*

**Year: 2005-2009**

<b>Married</b>	<b>Yes</b>			<b>No</b>			<b>Estimated Population (5-yr Avg)</b>
	<b>#</b>	<b>%</b>	<b>C.I. (95%)</b>	<b>#</b>	<b>%</b>	<b>C.I. (95%)</b>	<b>#</b>
<b>Yes</b>	28,500	4.8	4.4 - 5.2	564,100	95.2	94.8 - 95.6	592,600
<b>No</b>	24,400	6.3	5.8 - 6.8	364,900	93.7	93.2 - 94.2	389,300

<b>Health Care Coverage</b>	<b>Yes</b>			<b>No</b>			<b>Estimated Population (5-yr Avg)</b>
	<b>#</b>	<b>%</b>	<b>C.I. (95%)</b>	<b>#</b>	<b>%</b>	<b>C.I. (95%)</b>	<b>#</b>
<b>Yes</b>	50,100	5.5	5.2 - 5.8	861,500	94.5	94.2 - 94.8	911,600
<b>No</b>	2,900	4.1	2.9 - 5.3	67,100	95.9	94.7 - 97.1	69,900

**Disability - use special equip by State, County, Island, Community, BRFSS Age Group, DOH Race-Ethnicity, Gender, Education Level, Employment Status (Grouped), Household Income, Poverty Level, Marital Status (Grouped), Married, Health Care Coverage, for the Year(s) - 2001-2005, 2002-2006, 2003-2007, 2004-2008, 2005-2009, 2006-2010**

*Note: Weighted numbers (#) represent 5-yr averages, percentages and 95% confidence intervals; Respondents aged 18 years and older; n/r (Not Reportable) - If the unweighted total responses for a dimension (row) is <50 that row will not be shown; n/a (Not Available) - Not asked of a subset of respondents*

**Year: 2004-2008**

State	Yes			No			Estimated Population (5-yr Avg)
	#	%	C.I. (95%)	#	%	C.I. (95%)	#
Hawaii State	50,300	5.2	4.9 - 5.5	916,200	94.8	94.5 - 95.1	966,500

County	Yes			No			Estimated Population (5-yr Avg)
	#	%	C.I. (95%)	#	%	C.I. (95%)	#
Hawaii	6,900	5.4	4.8 - 6.0	120,400	94.6	94.0 - 95.2	127,300
Honolulu	35,600	5.2	4.7 - 5.6	652,500	94.8	94.4 - 95.3	688,100
Kauai	2,200	4.7	3.8 - 5.7	43,700	95.3	94.3 - 96.2	45,900
Maui	5,600	5.3	4.6 - 6.1	99,600	94.7	93.9 - 95.4	105,200

**Disability - use special equip by State, County, Island, Community, BRFSS Age Group, DOH Race-Ethnicity, Gender, Education Level, Employment Status (Grouped), Household Income, Poverty Level, Marital Status (Grouped), Married, Health Care Coverage, for the Year(s) - 2001-2005, 2002-2006, 2003-2007, 2004-2008, 2005-2009, 2006-2010**

*Note: Weighted numbers (#) represent 5-yr averages, percentages and 95% confidence intervals; Respondents aged 18 years and older; n/r (Not Reportable) - If the unweighted total responses for a dimension (row) is <50 that row will not be shown; n/a (Not Available) - Not asked of a subset of respondents*

**Year: 2004-2008**

Island	Yes			No			Estimated Population (5-yr Avg)
	#	%	C.I. (95%)	#	%	C.I. (95%)	#
Hawaii	6,900	5.4	4.8 - 6.0	120,400	94.6	94.0 - 95.2	127,300
Kauai	2,200	4.7	3.8 - 5.7	43,700	95.3	94.3 - 96.2	45,900
Lanai	200	7.8	5.5 - 10.1	1,900	92.2	89.9 - 94.5	2,000
Maui	5,100	5.3	4.5 - 6.2	91,300	94.7	93.8 - 95.5	96,400
Molokai	300	4.4	3.0 - 5.9	6,400	95.6	94.1 - 97.0	6,700
Oahu	35,600	5.2	4.7 - 5.6	652,500	94.8	94.4 - 95.3	688,100

Community	Yes			No			Estimated Population (5-yr Avg)
	#	%	C.I. (95%)	#	%	C.I. (95%)	#
Aiea/ Pearl City	3,600	5.5	4.0 - 7.0	62,100	94.5	93.0 - 96.0	65,700

**Disability - use special equip by State, County, Island, Community, BRFSS Age Group, DOH Race-Ethnicity, Gender, Education Level, Employment Status (Grouped), Household Income, Poverty Level, Marital Status (Grouped), Married, Health Care Coverage, for the Year(s) - 2001-2005, 2002-2006, 2003-2007, 2004-2008, 2005-2009, 2006-2010**

*Note: Weighted numbers (#) represent 5-yr averages, percentages and 95% confidence intervals; Respondents aged 18 years and older; n/r (Not Reportable) - If the unweighted total responses for a dimension (row) is <50 that row will not be shown; n/a (Not Available) - Not asked of a subset of respondents*

**Year: 2004-2008**

Community	Yes			No			Estimated Population (5-yr Avg)
	#	%	C.I. (95%)	#	%	C.I. (95%)	#
Ala Moana	1,800	5.8	4.0 - 7.5	29,900	94.2	92.5 - 96.0	31,700
Hanalei/ Kapaa	900	4.9	3.5 - 6.4	18,200	95.1	93.6 - 96.5	19,100
Hilo	1,800	4.8	3.8 - 5.9	34,800	95.2	94.1 - 96.2	36,600
Kaaawa/ Kahaluu/ Kaneohe	3,200	6.7	4.6 - 8.7	45,000	93.3	91.3 - 95.4	48,200
Kahului	1,500	4.5	3.4 - 5.5	31,500	95.5	94.5 - 96.6	32,900
Kailua/ Waimanalo	2,400	4.9	3.5 - 6.2	46,200	95.1	93.8 - 96.5	48,500
Kaimuki/ Palolo/ Waikiki	4,000	6.7	5.2 - 8.3	55,400	93.3	91.7 - 94.8	59,400
Kona	1,400	4.9	3.5 - 6.3	26,700	95.1	93.7 - 96.5	28,100
Lahaina/ Wailuku	1,600	4.9	3.6 - 6.2	30,100	95.1	93.8 - 96.4	31,600
Lanai	200	7.8	5.5 - 10.1	1,900	92.2	89.9 - 94.5	2,000
Lihue-Waimea	1,200	4.6	3.3 - 5.8	25,600	95.4	94.2 - 96.7	26,800

**Disability - use special equip by State, County, Island, Community, BRFSS Age Group, DOH Race-Ethnicity, Gender, Education Level, Employment Status (Grouped), Household Income, Poverty Level, Marital Status (Grouped), Married, Health Care Coverage, for the Year(s) - 2001-2005, 2002-2006, 2003-2007, 2004-2008, 2005-2009, 2006-2010**

*Note: Weighted numbers (#) represent 5-yr averages, percentages and 95% confidence intervals; Respondents aged 18 years and older; n/r (Not Reportable) - If the unweighted total responses for a dimension (row) is <50 that row will not be shown; n/a (Not Available) - Not asked of a subset of respondents*

**Year: 2004-2008**

Community	Yes			No			Estimated Population (5-yr Avg)
	#	%	C.I. (95%)	#	%	C.I. (95%)	#
Manoa/ Upper Makiki	2,600	5.6	4.0 - 7.2	43,600	94.4	92.8 - 96.0	46,200
Mililani/ Wahiawa	3,600	5.3	3.8 - 6.8	65,200	94.7	93.2 - 96.2	68,800
Molokai	300	4.4	3.0 - 5.9	6,400	95.6	94.1 - 97.0	6,700
Nanakuli/ Waianae	2,600	7.4	4.7 - 10.1	32,100	92.6	89.9 - 95.3	34,600
N.Hawaii	1,400	5.5	3.9 - 7.1	24,600	94.5	92.9 - 96.1	26,100
N.Shore/ Laie	1,600	7.2	4.3 - 10.0	20,500	92.8	90.0 - 95.7	22,000
Nuuanu/ Kalihi/ Moanalua	2,100	3.1	2.2 - 4.1	66,000	96.9	95.9 - 97.8	68,100
Puna/ Kau	2,300	6.3	5.0 - 7.5	34,200	93.7	92.5 - 95.0	36,500
Salt Lake/ Foster Village	700	2.2	1.1 - 3.3	32,900	97.8	96.7 - 98.9	33,600
Upcountry/ Hana	2,100	6.6	4.8 - 8.4	29,700	93.4	91.6 - 95.2	31,800
Waiialae/ Kahala/ Hawaii Kai	1,700	4.2	2.0 - 6.5	39,200	95.8	93.5 - 98.0	40,900

**Disability - use special equip by State, County, Island, Community, BRFSS Age Group, DOH Race-Ethnicity, Gender, Education Level, Employment Status (Grouped), Household Income, Poverty Level, Marital Status (Grouped), Married, Health Care Coverage, for the Year(s) - 2001-2005, 2002-2006, 2003-2007, 2004-2008, 2005-2009, 2006-2010**

*Note: Weighted numbers (#) represent 5-yr averages, percentages and 95% confidence intervals; Respondents aged 18 years and older; n/r (Not Reportable) - If the unweighted total responses for a dimension (row) is <50 that row will not be shown; n/a (Not Available) - Not asked of a subset of respondents*

**Year: 2004-2008**

Community	Yes			No			Estimated Population (5-yr Avg)
	#	%	C.I. (95%)	#	%	C.I. (95%)	#
Waipahu/ Kapolei/ Ewa	5,700	4.7	3.6 - 5.8	114,500	95.3	94.2 - 96.4	120,200



**Disability - use special equip by State, County, Island, Community, BRFSS Age Group, DOH Race-Ethnicity, Gender, Education Level, Employment Status (Grouped), Household Income, Poverty Level, Marital Status (Grouped), Married, Health Care Coverage, for the Year(s) - 2001-2005, 2002-2006, 2003-2007, 2004-2008, 2005-2009, 2006-2010**

*Note: Weighted numbers (#) represent 5-yr averages, percentages and 95% confidence intervals; Respondents aged 18 years and older; n/r (Not Reportable) - If the unweighted total responses for a dimension (row) is <50 that row will not be shown; n/a (Not Available) - Not asked of a subset of respondents*

**Year: 2004-2008**

BRFSS Age Group	Yes			No			Estimated Population (5-yr Avg)
	#	%	C.I. (95%)	#	%	C.I. (95%)	#
18-24	700	0.6	0.1 - 1.1	119,100	99.4	98.9 - 99.9	119,800
25-34	2,200	1.3	0.8 - 1.8	164,700	98.7	98.2 - 99.2	166,900
35-44	4,100	2.3	1.8 - 2.8	173,400	97.7	97.2 - 98.2	177,500
45-54	7,300	4.1	3.4 - 4.7	171,000	95.9	95.3 - 96.6	178,200
55-64	10,000	7.0	6.0 - 8.0	133,000	93.0	92.0 - 94.0	143,000
65-74	8,300	9.7	8.3 - 11.1	76,600	90.3	88.9 - 91.7	84,800
75+	17,200	19.2	17.2 - 21.3	72,400	80.8	78.7 - 82.8	89,600

**Disability - use special equip by State, County, Island, Community, BRFSS Age Group, DOH Race-Ethnicity, Gender, Education Level, Employment Status (Grouped), Household Income, Poverty Level, Marital Status (Grouped), Married, Health Care Coverage, for the Year(s) - 2001-2005, 2002-2006, 2003-2007, 2004-2008, 2005-2009, 2006-2010**

*Note: Weighted numbers (#) represent 5-yr averages, percentages and 95% confidence intervals; Respondents aged 18 years and older; n/r (Not Reportable) - If the unweighted total responses for a dimension (row) is <50 that row will not be shown; n/a (Not Available) - Not asked of a subset of respondents*

**Year: 2004-2008**

DOH Race-Ethnicity	Yes			No			Estimated Population (5-yr Avg)
	#	%	C.I. (95%)	#	%	C.I. (95%)	#
Caucasian	18,400	5.8	5.2 - 6.4	297,700	94.2	93.6 - 94.8	316,100
Native Hawaiian	7,400	5.8	4.9 - 6.8	119,100	94.2	93.2 - 95.1	126,500
Chinese	2,500	4.6	3.4 - 5.8	52,400	95.4	94.2 - 96.6	55,000
Filipino	4,600	3.0	2.3 - 3.6	150,000	97.0	96.4 - 97.7	154,600
Japanese	12,400	5.9	5.1 - 6.8	196,600	94.1	93.2 - 94.9	209,000
Black	800	5.4	2.5 - 8.4	13,800	94.6	91.6 - 97.5	14,600
Native Alaskan/ American Indian	900	16.0	9.2 - 22.7	4,800	84.0	77.3 - 90.8	5,700
Other Asian	600	2.6	1.1 - 4.0	22,900	97.4	96.0 - 98.9	23,500
Other Pacific Islander	800	3.2	1.3 - 5.1	23,700	96.8	94.9 - 98.7	24,400
Mixed Ethnicity	200	4.6	0.8 - 8.3	4,600	95.4	91.7 - 99.2	4,900
Other	1,500	6.2	3.3 - 9.0	22,400	93.8	91.0 - 96.7	23,900

**Disability - use special equip by State, County, Island, Community, BRFSS Age Group, DOH Race-Ethnicity, Gender, Education Level, Employment Status (Grouped), Household Income, Poverty Level, Marital Status (Grouped), Married, Health Care Coverage, for the Year(s) - 2001-2005, 2002-2006, 2003-2007, 2004-2008, 2005-2009, 2006-2010**

*Note: Weighted numbers (#) represent 5-yr averages, percentages and 95% confidence intervals; Respondents aged 18 years and older; n/r (Not Reportable) - If the unweighted total responses for a dimension (row) is <50 that row will not be shown; n/a (Not Available) - Not asked of a subset of respondents*

**Year: 2004-2008**

Gender	Yes			No			Estimated Population (5-yr Avg)
	#	%	C.I. (95%)	#	%	C.I. (95%)	#
Male	22,700	4.8	4.3 - 5.3	454,200	95.2	94.7 - 95.7	476,900
Female	27,600	5.6	5.1 - 6.1	462,000	94.4	93.9 - 94.9	489,600

Education Level	Yes			No			Estimated Population (5-yr Avg)
	#	%	C.I. (95%)	#	%	C.I. (95%)	#
Never attended school/ Only Kindergarten to Grades 8	2,700	18.7	13.8 - 23.5	11,600	81.3	76.5 - 86.2	14,300
Grades 9 thru 11 (Some High School)	4,100	11.0	8.8 - 13.3	33,300	89.0	86.7 - 91.2	37,500
Grades 12 or GED (High School Grad)	17,600	6.0	5.3 - 6.7	273,200	94.0	93.3 - 94.7	290,800
College 1 to 3 years (Some College/ Tech)	13,400	4.7	4.1 - 5.3	272,100	95.3	94.7 - 95.9	285,500
College 4 years or more (College Grad)	12,500	3.7	3.2 - 4.2	324,800	96.3	95.8 - 96.8	337,300

**Disability - use special equip by State, County, Island, Community, BRFSS Age Group, DOH Race-Ethnicity, Gender, Education Level, Employment Status (Grouped), Household Income, Poverty Level, Marital Status (Grouped), Married, Health Care Coverage, for the Year(s) - 2001-2005, 2002-2006, 2003-2007, 2004-2008, 2005-2009, 2006-2010**

*Note: Weighted numbers (#) represent 5-yr averages, percentages and 95% confidence intervals; Respondents aged 18 years and older; n/r (Not Reportable) - If the unweighted total responses for a dimension (row) is <50 that row will not be shown; n/a (Not Available) - Not asked of a subset of respondents*

**Year: 2004-2008**

Employment Status (Grouped)	Yes			No			Estimated Population (5-yr Avg)
	#	%	C.I. (95%)	#	%	C.I. (95%)	#
<b>Employed</b>	10,500	1.7	1.4 - 1.9	609,500	98.3	98.1 - 98.6	620,000
<b>Unemployed</b>	1,800	5.9	3.7 - 8.1	29,500	94.1	91.9 - 96.3	31,300
<b>Retired/Unable to work</b>	35,600	16.2	15.0 - 17.4	184,300	83.8	82.6 - 85.0	219,900
<b>Student/Homemaker</b>	2,300	2.5	1.6 - 3.3	91,800	97.5	96.7 - 98.4	94,100

**Disability - use special equip by State, County, Island, Community, BRFSS Age Group, DOH Race-Ethnicity, Gender, Education Level, Employment Status (Grouped), Household Income, Poverty Level, Marital Status (Grouped), Married, Health Care Coverage, for the Year(s) - 2001-2005, 2002-2006, 2003-2007, 2004-2008, 2005-2009, 2006-2010**

*Note: Weighted numbers (#) represent 5-yr averages, percentages and 95% confidence intervals; Respondents aged 18 years and older; n/r (Not Reportable) - If the unweighted total responses for a dimension (row) is <50 that row will not be shown; n/a (Not Available) - Not asked of a subset of respondents*

**Year: 2004-2008**

Household Income	Yes			No			Estimated Population (5-yr Avg)
	#	%	C.I. (95%)	#	%	C.I. (95%)	#
Less than \$10,000	3,200	13.2	10.6 - 15.7	21,200	86.8	84.3 - 89.4	24,400
\$10,000 to \$14,999	3,900	14.6	11.4 - 17.7	22,700	85.4	82.3 - 88.6	26,600
\$15,000 to \$19,999	4,500	10.0	8.0 - 12.1	40,800	90.0	87.9 - 92.0	45,300
\$20,000 to \$24,999	4,100	6.6	5.2 - 7.9	58,300	93.4	92.1 - 94.8	62,400
\$25,000 to \$34,999	5,900	5.5	4.4 - 6.6	101,800	94.5	93.4 - 95.6	107,700
\$35,000 to \$49,999	7,400	5.0	4.1 - 5.8	140,700	95.0	94.2 - 95.9	148,100
\$50,000 to \$74,999	6,900	3.5	2.9 - 4.2	188,800	96.5	95.8 - 97.1	195,700
\$75,000 or more	7,700	3.0	2.4 - 3.6	249,900	97.0	96.4 - 97.6	257,700

**Disability - use special equip by State, County, Island, Community, BRFSS Age Group, DOH Race-Ethnicity, Gender, Education Level, Employment Status (Grouped), Household Income, Poverty Level, Marital Status (Grouped), Married, Health Care Coverage, for the Year(s) - 2001-2005, 2002-2006, 2003-2007, 2004-2008, 2005-2009, 2006-2010**

*Note: Weighted numbers (#) represent 5-yr averages, percentages and 95% confidence intervals; Respondents aged 18 years and older; n/r (Not Reportable) - If the unweighted total responses for a dimension (row) is <50 that row will not be shown; n/a (Not Available) - Not asked of a subset of respondents*

**Year: 2004-2008**

Poverty Level	Yes			No			Estimated Population (5-yr Avg)
	#	%	C.I. (95%)	#	%	C.I. (95%)	#
0-130%	14,200	8.0	7.0 - 9.0	162,400	92.0	91.0 - 93.0	176,600
131-185%	5,800	5.2	4.2 - 6.2	106,300	94.8	93.8 - 95.8	112,100
186+%	23,600	4.1	3.7 - 4.5	555,500	95.9	95.5 - 96.3	579,100

Marital Status (Grouped)	Yes			No			Estimated Population (5-yr Avg)
	#	%	C.I. (95%)	#	%	C.I. (95%)	#
Married	26,700	4.7	4.2 - 5.1	545,000	95.3	94.9 - 95.8	571,800
Unmarried Couple	700	2.7	1.3 - 4.1	26,300	97.3	95.9 - 98.7	27,100
Widowed	10,300	18.2	15.7 - 20.7	46,300	81.8	79.3 - 84.3	56,600
Other	12,500	4.0	3.6 - 4.5	298,600	96.0	95.5 - 96.4	311,100

**Disability - use special equip by State, County, Island, Community, BRFSS Age Group, DOH Race-Ethnicity, Gender, Education Level, Employment Status (Grouped), Household Income, Poverty Level, Marital Status (Grouped), Married, Health Care Coverage, for the Year(s) - 2001-2005, 2002-2006, 2003-2007, 2004-2008, 2005-2009, 2006-2010**

*Note: Weighted numbers (#) represent 5-yr averages, percentages and 95% confidence intervals; Respondents aged 18 years and older; n/r (Not Reportable) - If the unweighted total responses for a dimension (row) is <50 that row will not be shown; n/a (Not Available) - Not asked of a subset of respondents*

**Year: 2004-2008**

<b>Married</b>	<b>Yes</b>			<b>No</b>			<b>Estimated Population (5-yr Avg)</b>
	<b>#</b>	<b>%</b>	<b>C.I. (95%)</b>	<b>#</b>	<b>%</b>	<b>C.I. (95%)</b>	<b>#</b>
<b>Yes</b>	27,300	4.7	4.3 - 5.1	554,900	95.3	94.9 - 95.7	582,200
<b>No</b>	22,900	6.0	5.4 - 6.5	359,400	94.0	93.5 - 94.6	382,200

<b>Health Care Coverage</b>	<b>Yes</b>			<b>No</b>			<b>Estimated Population (5-yr Avg)</b>
	<b>#</b>	<b>%</b>	<b>C.I. (95%)</b>	<b>#</b>	<b>%</b>	<b>C.I. (95%)</b>	<b>#</b>
<b>Yes</b>	47,300	5.3	4.9 - 5.7	844,800	94.7	94.3 - 95.1	892,100
<b>No</b>	2,900	4.0	2.8 - 5.3	69,100	96.0	94.7 - 97.2	72,000

**Disability - use special equip by State, County, Island, Community, BRFSS Age Group, DOH Race-Ethnicity, Gender, Education Level, Employment Status (Grouped), Household Income, Poverty Level, Marital Status (Grouped), Married, Health Care Coverage, for the Year(s) - 2001-2005, 2002-2006, 2003-2007, 2004-2008, 2005-2009, 2006-2010**

*Note: Weighted numbers (#) represent 5-yr averages, percentages and 95% confidence intervals; Respondents aged 18 years and older; n/r (Not Reportable) - If the unweighted total responses for a dimension (row) is <50 that row will not be shown; n/a (Not Available) - Not asked of a subset of respondents*

**Year: 2003-2007**

State	Yes			No			Estimated Population (5-yr Avg)
	#	%	C.I. (95%)	#	%	C.I. (95%)	#
Hawaii State	45,700	4.8	4.5 - 5.1	905,400	95.2	94.9 - 95.5	951,100

County	Yes			No			Estimated Population (5-yr Avg)
	#	%	C.I. (95%)	#	%	C.I. (95%)	#
Hawaii	6,200	5.0	4.4 - 5.7	117,300	95.0	94.3 - 95.6	123,500
Honolulu	32,400	4.8	4.3 - 5.2	647,500	95.2	94.8 - 95.7	679,900
Kauai	1,900	4.3	3.3 - 5.3	43,000	95.7	94.7 - 96.7	44,900
Maui	5,200	5.0	4.3 - 5.8	97,600	95.0	94.2 - 95.7	102,800



**Disability - use special equip by State, County, Island, Community, BRFSS Age Group, DOH Race-Ethnicity, Gender, Education Level, Employment Status (Grouped), Household Income, Poverty Level, Marital Status (Grouped), Married, Health Care Coverage, for the Year(s) - 2001-2005, 2002-2006, 2003-2007, 2004-2008, 2005-2009, 2006-2010**

*Note: Weighted numbers (#) represent 5-yr averages, percentages and 95% confidence intervals; Respondents aged 18 years and older; n/r (Not Reportable) - If the unweighted total responses for a dimension (row) is <50 that row will not be shown; n/a (Not Available) - Not asked of a subset of respondents*

**Year: 2003-2007**

Island	Yes			No			Estimated Population (5-yr Avg)
	#	%	C.I. (95%)	#	%	C.I. (95%)	#
Hawaii	6,200	5.0	4.4 - 5.7	117,300	95.0	94.3 - 95.6	123,500
Kauai	1,900	4.3	3.3 - 5.3	43,000	95.7	94.7 - 96.7	44,900
Lanai	100	6.5	4.3 - 8.7	2,000	93.5	91.3 - 95.7	2,100
Maui	4,600	4.9	4.0 - 5.7	89,600	95.1	94.3 - 96.0	94,200
Molokai	500	6.9	4.1 - 9.8	6,000	93.1	90.2 - 95.9	6,500
Oahu	32,400	4.8	4.3 - 5.2	647,500	95.2	94.8 - 95.7	679,900

Community	Yes			No			Estimated Population (5-yr Avg)
	#	%	C.I. (95%)	#	%	C.I. (95%)	#
Aiea/ Pearl City	2,700	4.3	2.9 - 5.6	60,800	95.7	94.4 - 97.1	63,500

**Disability - use special equip by State, County, Island, Community, BRFSS Age Group, DOH Race-Ethnicity, Gender, Education Level, Employment Status (Grouped), Household Income, Poverty Level, Marital Status (Grouped), Married, Health Care Coverage, for the Year(s) - 2001-2005, 2002-2006, 2003-2007, 2004-2008, 2005-2009, 2006-2010**

*Note: Weighted numbers (#) represent 5-yr averages, percentages and 95% confidence intervals; Respondents aged 18 years and older; n/r (Not Reportable) - If the unweighted total responses for a dimension (row) is <50 that row will not be shown; n/a (Not Available) - Not asked of a subset of respondents*

**Year: 2003-2007**

Community	Yes			No			Estimated Population (5-yr Avg)
	#	%	C.I. (95%)	#	%	C.I. (95%)	#
Ala Moana	1,900	5.9	4.2 - 7.6	29,500	94.1	92.4 - 95.8	31,400
Hanalei/ Kapaa	700	3.7	2.5 - 5.0	18,000	96.3	95.0 - 97.5	18,700
Hilo	1,700	4.9	3.8 - 5.9	33,400	95.1	94.1 - 96.2	35,100
Kaaawa/ Kahaluu/ Kaneohe	2,600	5.4	3.5 - 7.3	45,100	94.6	92.7 - 96.5	47,700
Kahului	1,300	3.9	2.9 - 4.9	31,400	96.1	95.1 - 97.1	32,700
Kailua/ Waimanalo	2,200	4.5	3.2 - 5.8	46,400	95.5	94.2 - 96.8	48,600
Kaimuki/ Palolo/ Waikiki	4,200	6.9	5.3 - 8.5	56,500	93.1	91.5 - 94.7	60,700
Kona	1,400	4.8	3.4 - 6.2	27,200	95.2	93.8 - 96.6	28,600
Lahaina/ Wailuku	1,400	4.6	3.2 - 5.9	29,000	95.4	94.1 - 96.8	30,400
Lanai	100	6.5	4.3 - 8.7	2,000	93.5	91.3 - 95.7	2,100
Lihue-Waimea	1,200	4.7	3.2 - 6.1	25,000	95.3	93.9 - 96.8	26,200

**Disability - use special equip by State, County, Island, Community, BRFSS Age Group, DOH Race-Ethnicity, Gender, Education Level, Employment Status (Grouped), Household Income, Poverty Level, Marital Status (Grouped), Married, Health Care Coverage, for the Year(s) - 2001-2005, 2002-2006, 2003-2007, 2004-2008, 2005-2009, 2006-2010**

*Note: Weighted numbers (#) represent 5-yr averages, percentages and 95% confidence intervals; Respondents aged 18 years and older; n/r (Not Reportable) - If the unweighted total responses for a dimension (row) is <50 that row will not be shown; n/a (Not Available) - Not asked of a subset of respondents*

**Year: 2003-2007**

Community	Yes			No			Estimated Population (5-yr Avg)
	#	%	C.I. (95%)	#	%	C.I. (95%)	#
Manoa/ Upper Makiki	2,300	4.8	3.3 - 6.3	45,300	95.2	93.7 - 96.7	47,600
Mililani/ Wahiawa	2,900	4.3	2.9 - 5.7	64,800	95.7	94.3 - 97.1	67,800
Molokai	500	6.9	4.1 - 9.8	6,000	93.1	90.2 - 95.9	6,500
Nanakuli/ Waianae	2,500	7.6	4.7 - 10.5	30,200	92.4	89.5 - 95.3	32,700
N.Hawaii	1,300	5.0	3.4 - 6.5	24,000	95.0	93.5 - 96.6	25,300
N.Shore/ Laie	1,800	8.2	4.9 - 11.4	20,400	91.8	88.6 - 95.1	22,200
Nuuanu/ Kalihi/ Moanalua	2,500	3.5	2.5 - 4.6	66,800	96.5	95.4 - 97.5	69,200
Puna/ Kau	1,900	5.4	4.2 - 6.6	32,700	94.6	93.4 - 95.8	34,500
Salt Lake/ Foster Village	500	1.3	0.5 - 2.1	34,800	98.7	97.9 - 99.5	35,200
Upcountry/ Hana	1,900	6.1	4.3 - 7.9	29,200	93.9	92.1 - 95.7	31,100
Waiialae/ Kahala/ Hawaii Kai	1,800	4.6	2.1 - 7.0	37,200	95.4	93.0 - 97.9	39,000

**Disability - use special equip by State, County, Island, Community, BRFSS Age Group, DOH Race-Ethnicity, Gender, Education Level, Employment Status (Grouped), Household Income, Poverty Level, Marital Status (Grouped), Married, Health Care Coverage, for the Year(s) - 2001-2005, 2002-2006, 2003-2007, 2004-2008, 2005-2009, 2006-2010**

*Note: Weighted numbers (#) represent 5-yr averages, percentages and 95% confidence intervals; Respondents aged 18 years and older; n/r (Not Reportable) - If the unweighted total responses for a dimension (row) is <50 that row will not be shown; n/a (Not Available) - Not asked of a subset of respondents*

**Year: 2003-2007**

Community	Yes			No			Estimated Population (5-yr Avg)
	#	%	C.I. (95%)	#	%	C.I. (95%)	#
Waipahu/ Kapolei/ Ewa	4,700	4.1	3.0 - 5.1	109,700	95.9	94.9 - 97.0	114,300

**Disability - use special equip by State, County, Island, Community, BRFSS Age Group, DOH Race-Ethnicity, Gender, Education Level, Employment Status (Grouped), Household Income, Poverty Level, Marital Status (Grouped), Married, Health Care Coverage, for the Year(s) - 2001-2005, 2002-2006, 2003-2007, 2004-2008, 2005-2009, 2006-2010**

*Note: Weighted numbers (#) represent 5-yr averages, percentages and 95% confidence intervals; Respondents aged 18 years and older; n/r (Not Reportable) - If the unweighted total responses for a dimension (row) is <50 that row will not be shown; n/a (Not Available) - Not asked of a subset of respondents*

**Year: 2003-2007**

BRFSS Age Group	Yes			No			Estimated Population (5-yr Avg)
	#	%	C.I. (95%)	#	%	C.I. (95%)	#
18-24	700	0.6	0.1 - 1.1	117,600	99.4	98.9 - 99.9	118,300
25-34	2,000	1.2	0.8 - 1.6	161,700	98.8	98.4 - 99.2	163,700
35-44	3,200	1.8	1.3 - 2.2	174,700	98.2	97.8 - 98.7	177,900
45-54	6,700	3.8	3.1 - 4.4	171,200	96.2	95.6 - 96.9	177,900
55-64	9,100	6.6	5.6 - 7.7	128,300	93.4	92.3 - 94.4	137,400
65-74	7,600	9.1	7.6 - 10.5	76,200	90.9	89.5 - 92.4	83,900
75+	16,100	18.7	16.6 - 20.8	70,200	81.3	79.2 - 83.4	86,300

**Disability - use special equip by State, County, Island, Community, BRFSS Age Group, DOH Race-Ethnicity, Gender, Education Level, Employment Status (Grouped), Household Income, Poverty Level, Marital Status (Grouped), Married, Health Care Coverage, for the Year(s) - 2001-2005, 2002-2006, 2003-2007, 2004-2008, 2005-2009, 2006-2010**

*Note: Weighted numbers (#) represent 5-yr averages, percentages and 95% confidence intervals; Respondents aged 18 years and older; n/r (Not Reportable) - If the unweighted total responses for a dimension (row) is <50 that row will not be shown; n/a (Not Available) - Not asked of a subset of respondents*

**Year: 2003-2007**

DOH Race-Ethnicity	Yes			No			Estimated Population (5-yr Avg)
	#	%	C.I. (95%)	#	%	C.I. (95%)	#
Caucasian	16,600	5.2	4.6 - 5.8	302,400	94.8	94.2 - 95.4	319,000
Native Hawaiian	6,600	5.8	4.8 - 6.7	108,600	94.2	93.3 - 95.2	115,200
Chinese	2,500	4.0	2.8 - 5.1	61,200	96.0	94.9 - 97.2	63,700
Filipino	4,500	2.9	2.3 - 3.6	149,600	97.1	96.4 - 97.7	154,000
Japanese	11,200	5.7	4.8 - 6.6	186,300	94.3	93.4 - 95.2	197,400
Black	700	5.1	2.2 - 8.0	13,600	94.9	92.0 - 97.8	14,400
Native Alaskan/ American Indian	700	12.7	6.4 - 19.1	4,600	87.3	80.9 - 93.6	5,300
Other Asian	500	2.5	1.1 - 4.0	21,200	97.5	96.0 - 98.9	21,700
Other Pacific Islander	600	2.7	0.9 - 4.4	21,600	97.3	95.6 - 99.1	22,200
Mixed Ethnicity	200	4.6	0.8 - 8.3	4,600	95.4	91.7 - 99.2	4,900
Other	1,300	5.3	2.7 - 8.0	23,200	94.7	92.0 - 97.3	24,500

**Disability - use special equip by State, County, Island, Community, BRFSS Age Group, DOH Race-Ethnicity, Gender, Education Level, Employment Status (Grouped), Household Income, Poverty Level, Marital Status (Grouped), Married, Health Care Coverage, for the Year(s) - 2001-2005, 2002-2006, 2003-2007, 2004-2008, 2005-2009, 2006-2010**

*Note: Weighted numbers (#) represent 5-yr averages, percentages and 95% confidence intervals; Respondents aged 18 years and older; n/r (Not Reportable) - If the unweighted total responses for a dimension (row) is <50 that row will not be shown; n/a (Not Available) - Not asked of a subset of respondents*

**Year: 2003-2007**

Gender	Yes			No			Estimated Population (5-yr Avg)
	#	%	C.I. (95%)	#	%	C.I. (95%)	#
Male	19,300	4.1	3.6 - 4.6	450,100	95.9	95.4 - 96.4	469,300
Female	26,400	5.5	5.0 - 6.0	455,300	94.5	94.0 - 95.0	481,800

Education Level	Yes			No			Estimated Population (5-yr Avg)
	#	%	C.I. (95%)	#	%	C.I. (95%)	#
Never attended school/ Only Kindergarten to Grades 8	2,500	16.3	11.8 - 20.8	12,700	83.7	79.2 - 88.2	15,100
Grades 9 thru 11 (Some High School)	3,700	10.2	8.0 - 12.4	32,800	89.8	87.6 - 92.0	36,600
Grades 12 or GED (High School Grad)	16,700	5.8	5.1 - 6.5	270,800	94.2	93.5 - 94.9	287,400
College 1 to 3 years (Some College/ Tech)	11,600	4.1	3.5 - 4.7	270,400	95.9	95.3 - 96.5	282,000
College 4 years or more (College Grad)	11,100	3.4	2.9 - 3.8	317,500	96.6	96.2 - 97.1	328,700

**Disability - use special equip by State, County, Island, Community, BRFSS Age Group, DOH Race-Ethnicity, Gender, Education Level, Employment Status (Grouped), Household Income, Poverty Level, Marital Status (Grouped), Married, Health Care Coverage, for the Year(s) - 2001-2005, 2002-2006, 2003-2007, 2004-2008, 2005-2009, 2006-2010**

*Note: Weighted numbers (#) represent 5-yr averages, percentages and 95% confidence intervals; Respondents aged 18 years and older; n/r (Not Reportable) - If the unweighted total responses for a dimension (row) is <50 that row will not be shown; n/a (Not Available) - Not asked of a subset of respondents*

**Year: 2003-2007**

Employment Status (Grouped)	Yes			No			Estimated Population (5-yr Avg)
	#	%	C.I. (95%)	#	%	C.I. (95%)	#
<b>Employed</b>	9,300	1.5	1.3 - 1.8	604,400	98.5	98.2 - 98.7	613,600
<b>Unemployed</b>	1,400	5.0	2.8 - 7.1	27,300	95.0	92.9 - 97.2	28,700
<b>Retired/Unable to work</b>	32,700	15.3	14.1 - 16.5	181,400	84.7	83.5 - 85.9	214,100
<b>Student/Homemaker</b>	2,300	2.5	1.6 - 3.3	91,500	97.5	96.7 - 98.4	93,800



**Disability - use special equip by State, County, Island, Community, BRFSS Age Group, DOH Race-Ethnicity, Gender, Education Level, Employment Status (Grouped), Household Income, Poverty Level, Marital Status (Grouped), Married, Health Care Coverage, for the Year(s) - 2001-2005, 2002-2006, 2003-2007, 2004-2008, 2005-2009, 2006-2010**

*Note: Weighted numbers (#) represent 5-yr averages, percentages and 95% confidence intervals; Respondents aged 18 years and older; n/r (Not Reportable) - If the unweighted total responses for a dimension (row) is <50 that row will not be shown; n/a (Not Available) - Not asked of a subset of respondents*

**Year: 2003-2007**

Household Income	Yes			No			Estimated Population (5-yr Avg)
	#	%	C.I. (95%)	#	%	C.I. (95%)	#
Less than \$10,000	3,300	11.4	9.1 - 13.7	25,700	88.6	86.3 - 90.9	29,100
\$10,000 to \$14,999	4,000	12.4	9.7 - 15.1	28,300	87.6	84.9 - 90.3	32,300
\$15,000 to \$19,999	4,000	8.6	6.6 - 10.5	43,200	91.5	89.5 - 93.4	47,200
\$20,000 to \$24,999	3,700	5.9	4.6 - 7.2	58,800	94.1	92.8 - 95.4	62,400
\$25,000 to \$34,999	5,000	4.8	3.7 - 5.9	99,200	95.2	94.1 - 96.3	104,200
\$35,000 to \$49,999	6,500	4.4	3.6 - 5.2	140,400	95.6	94.8 - 96.4	146,900
\$50,000 to \$74,999	5,000	2.7	2.1 - 3.3	180,500	97.3	96.7 - 97.9	185,500
\$75,000 or more	6,500	2.9	2.2 - 3.6	218,700	97.1	96.4 - 97.8	225,200

**Disability - use special equip by State, County, Island, Community, BRFSS Age Group, DOH Race-Ethnicity, Gender, Education Level, Employment Status (Grouped), Household Income, Poverty Level, Marital Status (Grouped), Married, Health Care Coverage, for the Year(s) - 2001-2005, 2002-2006, 2003-2007, 2004-2008, 2005-2009, 2006-2010**

*Note: Weighted numbers (#) represent 5-yr averages, percentages and 95% confidence intervals; Respondents aged 18 years and older; n/r (Not Reportable) - If the unweighted total responses for a dimension (row) is <50 that row will not be shown; n/a (Not Available) - Not asked of a subset of respondents*

**Year: 2003-2007**

Poverty Level	Yes			No			Estimated Population (5-yr Avg)
	#	%	C.I. (95%)	#	%	C.I. (95%)	#
<b>0-130%</b>	13,100	7.4	6.4 - 8.3	165,200	92.6	91.7 - 93.6	178,400
<b>131-185%</b>	4,900	4.7	3.7 - 5.7	100,200	95.3	94.3 - 96.3	105,100
<b>186+%</b>	20,100	3.7	3.2 - 4.1	529,300	96.3	95.9 - 96.8	549,400

Marital Status (Grouped)	Yes			No			Estimated Population (5-yr Avg)
	#	%	C.I. (95%)	#	%	C.I. (95%)	#
<b>Married</b>	23,700	4.2	3.8 - 4.7	536,300	95.8	95.3 - 96.2	560,000
<b>Unmarried Couple</b>	600	2.5	1.1 - 3.9	24,700	97.5	96.1 - 98.9	25,300
<b>Widowed</b>	9,700	16.5	14.1 - 19.0	48,700	83.5	81.0 - 85.9	58,400
<b>Other</b>	11,700	3.8	3.4 - 4.3	295,600	96.2	95.7 - 96.6	307,400

**Disability - use special equip by State, County, Island, Community, BRFSS Age Group, DOH Race-Ethnicity, Gender, Education Level, Employment Status (Grouped), Household Income, Poverty Level, Marital Status (Grouped), Married, Health Care Coverage, for the Year(s) - 2001-2005, 2002-2006, 2003-2007, 2004-2008, 2005-2009, 2006-2010**

*Note: Weighted numbers (#) represent 5-yr averages, percentages and 95% confidence intervals; Respondents aged 18 years and older; n/r (Not Reportable) - If the unweighted total responses for a dimension (row) is <50 that row will not be shown; n/a (Not Available) - Not asked of a subset of respondents*

**Year: 2003-2007**

<b>Married</b>	<b>Yes</b>			<b>No</b>			<b>Estimated Population (5-yr Avg)</b>
	<b>#</b>	<b>%</b>	<b>C.I. (95%)</b>	<b>#</b>	<b>%</b>	<b>C.I. (95%)</b>	<b>#</b>
<b>Yes</b>	24,300	4.3	3.8 - 4.7	546,100	95.7	95.3 - 96.2	570,400
<b>No</b>	21,300	5.6	5.1 - 6.2	357,700	94.4	93.8 - 94.9	379,000

<b>Health Care Coverage</b>	<b>Yes</b>			<b>No</b>			<b>Estimated Population (5-yr Avg)</b>
	<b>#</b>	<b>%</b>	<b>C.I. (95%)</b>	<b>#</b>	<b>%</b>	<b>C.I. (95%)</b>	<b>#</b>
<b>Yes</b>	42,900	4.9	4.5 - 5.3	831,700	95.1	94.7 - 95.5	874,500
<b>No</b>	2,800	3.8	2.6 - 4.9	71,600	96.2	95.1 - 97.4	74,300

**Disability - use special equip by State, County, Island, Community, BRFSS Age Group, DOH Race-Ethnicity, Gender, Education Level, Employment Status (Grouped), Household Income, Poverty Level, Marital Status (Grouped), Married, Health Care Coverage, for the Year(s) - 2001-2005, 2002-2006, 2003-2007, 2004-2008, 2005-2009, 2006-2010**

*Note: Weighted numbers (#) represent 5-yr averages, percentages and 95% confidence intervals; Respondents aged 18 years and older; n/r (Not Reportable) - If the unweighted total responses for a dimension (row) is <50 that row will not be shown; n/a (Not Available) - Not asked of a subset of respondents*

**Year: 2002-2006**

State	Yes			No			Estimated Population (5-yr Avg)
	#	%	C.I. (95%)	#	%	C.I. (95%)	#
Hawaii State	45,400	4.9	4.5 - 5.2	890,600	95.1	94.8 - 95.5	936,000

County	Yes			No			Estimated Population (5-yr Avg)
	#	%	C.I. (95%)	#	%	C.I. (95%)	#
Hawaii	6,400	5.3	4.7 - 6.0	113,400	94.7	94.0 - 95.3	119,800
Honolulu	31,700	4.7	4.3 - 5.2	640,100	95.3	94.8 - 95.7	671,800
Kauai	2,100	4.8	3.8 - 5.9	41,900	95.2	94.1 - 96.2	44,000
Maui	5,300	5.2	4.4 - 6.0	95,200	94.8	94.0 - 95.6	100,500

**Disability - use special equip by State, County, Island, Community, BRFSS Age Group, DOH Race-Ethnicity, Gender, Education Level, Employment Status (Grouped), Household Income, Poverty Level, Marital Status (Grouped), Married, Health Care Coverage, for the Year(s) - 2001-2005, 2002-2006, 2003-2007, 2004-2008, 2005-2009, 2006-2010**

*Note: Weighted numbers (#) represent 5-yr averages, percentages and 95% confidence intervals; Respondents aged 18 years and older; n/r (Not Reportable) - If the unweighted total responses for a dimension (row) is <50 that row will not be shown; n/a (Not Available) - Not asked of a subset of respondents*

**Year: 2002-2006**

Island	Yes			No			Estimated Population (5-yr Avg)
	#	%	C.I. (95%)	#	%	C.I. (95%)	#
Hawaii	6,400	5.3	4.7 - 6.0	113,400	94.7	94.0 - 95.3	119,800
Kauai	2,100	4.8	3.8 - 5.9	41,900	95.2	94.1 - 96.2	44,000
Lanai	300	11.2	7.8 - 14.7	2,200	88.8	85.3 - 92.2	2,500
Maui	4,300	4.7	3.9 - 5.6	87,200	95.3	94.4 - 96.1	91,500
Molokai	700	10.1	7.0 - 13.3	5,800	89.9	86.7 - 93.0	6,400
Oahu	31,700	4.7	4.3 - 5.2	640,100	95.3	94.8 - 95.7	671,800

Community	Yes			No			Estimated Population (5-yr Avg)
	#	%	C.I. (95%)	#	%	C.I. (95%)	#
Aiea/ Pearl City	2,900	4.6	3.1 - 6.0	60,200	95.4	94.0 - 96.9	63,100

**Disability - use special equip by State, County, Island, Community, BRFSS Age Group, DOH Race-Ethnicity, Gender, Education Level, Employment Status (Grouped), Household Income, Poverty Level, Marital Status (Grouped), Married, Health Care Coverage, for the Year(s) - 2001-2005, 2002-2006, 2003-2007, 2004-2008, 2005-2009, 2006-2010**

*Note: Weighted numbers (#) represent 5-yr averages, percentages and 95% confidence intervals; Respondents aged 18 years and older; n/r (Not Reportable) - If the unweighted total responses for a dimension (row) is <50 that row will not be shown; n/a (Not Available) - Not asked of a subset of respondents*

**Year: 2002-2006**

Community	Yes			No			Estimated Population (5-yr Avg)
	#	%	C.I. (95%)	#	%	C.I. (95%)	#
Ala Moana	1,600	4.9	3.4 - 6.5	30,800	95.1	93.5 - 96.6	32,400
Hanalei/ Kapaa	800	4.1	2.8 - 5.5	17,600	95.9	94.5 - 97.2	18,300
Hilo	2,100	5.9	4.7 - 7.2	32,800	94.1	92.8 - 95.3	34,900
Kaaawa/ Kahaluu/ Kaneohe	2,300	5.1	3.2 - 7.0	43,400	94.9	93.0 - 96.8	45,700
Kahului	1,100	3.4	2.5 - 4.4	30,800	96.6	95.6 - 97.5	31,900
Kailua/ Waimanalo	2,200	4.7	3.2 - 6.1	45,400	95.3	93.9 - 96.8	47,600
Kaimuki/ Palolo/ Waikiki	4,100	6.4	4.9 - 7.9	59,200	93.6	92.1 - 95.1	63,300
Kona	1,500	5.1	3.7 - 6.4	27,500	94.9	93.6 - 96.3	29,000
Lahaina/ Wailuku	1,400	4.6	3.2 - 6.0	28,500	95.4	94.0 - 96.8	29,900
Lanai	300	11.2	7.8 - 14.7	2,200	88.8	85.3 - 92.2	2,500
Lihue-Waimea	1,400	5.3	3.8 - 6.8	24,300	94.7	93.2 - 96.2	25,600

**Disability - use special equip by State, County, Island, Community, BRFSS Age Group, DOH Race-Ethnicity, Gender, Education Level, Employment Status (Grouped), Household Income, Poverty Level, Marital Status (Grouped), Married, Health Care Coverage, for the Year(s) - 2001-2005, 2002-2006, 2003-2007, 2004-2008, 2005-2009, 2006-2010**

*Note: Weighted numbers (#) represent 5-yr averages, percentages and 95% confidence intervals; Respondents aged 18 years and older; n/r (Not Reportable) - If the unweighted total responses for a dimension (row) is <50 that row will not be shown; n/a (Not Available) - Not asked of a subset of respondents*

**Year: 2002-2006**

Community	Yes			No			Estimated Population (5-yr Avg)
	#	%	C.I. (95%)	#	%	C.I. (95%)	#
Manoa/ Upper Makiki	3,000	6.1	4.4 - 7.7	46,900	93.9	92.3 - 95.6	50,000
Mililani/ Wahiawa	2,500	3.9	2.5 - 5.2	63,000	96.1	94.8 - 97.5	65,600
Molokai	700	10.1	7.0 - 13.3	5,800	89.9	86.7 - 93.0	6,400
Nanakuli/ Waianae	2,000	6.7	3.7 - 9.7	28,000	93.3	90.3 - 96.3	30,000
N.Hawaii	1,200	4.8	3.2 - 6.4	23,000	95.2	93.6 - 96.8	24,200
N.Shore/ Laie	1,600	7.4	4.2 - 10.6	20,000	92.6	89.4 - 95.8	21,600
Nuuanu/ Kalihi/ Moanalua	2,800	4.0	2.9 - 5.1	66,400	96.0	94.9 - 97.1	69,200
Puna/ Kau	1,700	5.3	4.1 - 6.5	30,100	94.7	93.5 - 95.9	31,800
Salt Lake/ Foster Village	500	1.4	0.5 - 2.2	36,500	98.6	97.8 - 99.5	37,000
Upcountry/ Hana	1,900	6.2	4.4 - 8.1	27,900	93.8	91.9 - 95.6	29,800
Waiialae/ Kahala/ Hawaii Kai	1,900	4.6	2.3 - 6.9	38,900	95.4	93.1 - 97.7	40,800

**Disability - use special equip by State, County, Island, Community, BRFSS Age Group, DOH Race-Ethnicity, Gender, Education Level, Employment Status (Grouped), Household Income, Poverty Level, Marital Status (Grouped), Married, Health Care Coverage, for the Year(s) - 2001-2005, 2002-2006, 2003-2007, 2004-2008, 2005-2009, 2006-2010**

*Note: Weighted numbers (#) represent 5-yr averages, percentages and 95% confidence intervals; Respondents aged 18 years and older; n/r (Not Reportable) - If the unweighted total responses for a dimension (row) is <50 that row will not be shown; n/a (Not Available) - Not asked of a subset of respondents*

**Year: 2002-2006**

Community	Yes			No			Estimated Population (5-yr Avg)
	#	%	C.I. (95%)	#	%	C.I. (95%)	#
Waipahu/ Kapolei/ Ewa	4,300	4.1	3.0 - 5.1	101,300	95.9	94.9 - 97.0	105,500



**Disability - use special equip by State, County, Island, Community, BRFSS Age Group, DOH Race-Ethnicity, Gender, Education Level, Employment Status (Grouped), Household Income, Poverty Level, Marital Status (Grouped), Married, Health Care Coverage, for the Year(s) - 2001-2005, 2002-2006, 2003-2007, 2004-2008, 2005-2009, 2006-2010**

*Note: Weighted numbers (#) represent 5-yr averages, percentages and 95% confidence intervals; Respondents aged 18 years and older; n/r (Not Reportable) - If the unweighted total responses for a dimension (row) is <50 that row will not be shown; n/a (Not Available) - Not asked of a subset of respondents*

**Year: 2002-2006**

BRFSS Age Group	Yes			No			Estimated Population (5-yr Avg)
	#	%	C.I. (95%)	#	%	C.I. (95%)	#
18-24	600	0.6	0.2 - 0.9	115,400	99.4	99.1 - 99.8	116,000
25-34	1,500	0.9	0.5 - 1.3	163,000	99.1	98.7 - 99.5	164,500
35-44	2,800	1.6	1.1 - 2.0	177,100	98.4	98.0 - 98.9	179,900
45-54	6,600	3.8	3.1 - 4.4	168,900	96.2	95.6 - 96.9	175,400
55-64	8,400	6.5	5.4 - 7.6	120,600	93.5	92.4 - 94.6	129,000
65-74	7,800	9.4	7.9 - 10.9	75,300	90.6	89.1 - 92.1	83,100
75+	17,200	21.0	18.8 - 23.2	64,900	79.0	76.8 - 81.2	82,200

**Disability - use special equip by State, County, Island, Community, BRFSS Age Group, DOH Race-Ethnicity, Gender, Education Level, Employment Status (Grouped), Household Income, Poverty Level, Marital Status (Grouped), Married, Health Care Coverage, for the Year(s) - 2001-2005, 2002-2006, 2003-2007, 2004-2008, 2005-2009, 2006-2010**

*Note: Weighted numbers (#) represent 5-yr averages, percentages and 95% confidence intervals; Respondents aged 18 years and older; n/r (Not Reportable) - If the unweighted total responses for a dimension (row) is <50 that row will not be shown; n/a (Not Available) - Not asked of a subset of respondents*

**Year: 2002-2006**

DOH Race-Ethnicity	Yes			No			Estimated Population (5-yr Avg)
	#	%	C.I. (95%)	#	%	C.I. (95%)	#
Caucasian	16,000	5.0	4.5 - 5.6	303,400	95.0	94.4 - 95.5	319,400
Native Hawaiian	6,300	5.6	4.7 - 6.6	104,600	94.4	93.4 - 95.3	110,900
Chinese	2,600	4.0	2.9 - 5.1	63,500	96.0	94.9 - 97.1	66,100
Filipino	5,000	3.4	2.6 - 4.1	142,000	96.6	95.9 - 97.4	147,000
Japanese	11,000	5.7	4.8 - 6.6	180,900	94.3	93.4 - 95.2	191,900
Black	700	4.9	2.1 - 7.7	13,700	95.1	92.3 - 97.9	14,400
Native Alaskan/ American Indian	600	12.8	6.1 - 19.4	4,100	87.2	80.6 - 93.9	4,600
Other Asian	600	3.0	1.3 - 4.7	20,900	97.0	95.3 - 98.7	21,600
Other Pacific Islander	900	4.1	1.9 - 6.4	20,900	95.9	93.6 - 98.1	21,800
Mixed Ethnicity	200	4.6	0.8 - 8.3	4,600	95.4	91.7 - 99.2	4,900
Other	1,300	5.2	2.5 - 7.8	23,400	94.8	92.2 - 97.5	24,700

**Disability - use special equip by State, County, Island, Community, BRFSS Age Group, DOH Race-Ethnicity, Gender, Education Level, Employment Status (Grouped), Household Income, Poverty Level, Marital Status (Grouped), Married, Health Care Coverage, for the Year(s) - 2001-2005, 2002-2006, 2003-2007, 2004-2008, 2005-2009, 2006-2010**

*Note: Weighted numbers (#) represent 5-yr averages, percentages and 95% confidence intervals; Respondents aged 18 years and older; n/r (Not Reportable) - If the unweighted total responses for a dimension (row) is <50 that row will not be shown; n/a (Not Available) - Not asked of a subset of respondents*

**Year: 2002-2006**

Gender	Yes			No			Estimated Population (5-yr Avg)
	#	%	C.I. (95%)	#	%	C.I. (95%)	#
Male	19,900	4.3	3.8 - 4.8	442,700	95.7	95.2 - 96.2	462,500
Female	25,600	5.4	4.9 - 5.9	447,900	94.6	94.1 - 95.1	473,500

Education Level	Yes			No			Estimated Population (5-yr Avg)
	#	%	C.I. (95%)	#	%	C.I. (95%)	#
Never attended school/ Only Kindergarten to Grades 8	2,300	14.5	10.3 - 18.6	13,600	85.5	81.4 - 89.7	15,900
Grades 9 thru 11 (Some High School)	4,100	11.4	9.0 - 13.8	31,800	88.6	86.2 - 91.0	35,900
Grades 12 or GED (High School Grad)	17,800	6.2	5.5 - 6.9	270,200	93.8	93.1 - 94.5	288,100
College 1 to 3 years (Some College/ Tech)	10,800	3.9	3.3 - 4.5	266,400	96.1	95.5 - 96.7	277,200
College 4 years or more (College Grad)	10,300	3.2	2.8 - 3.7	307,600	96.8	96.3 - 97.2	317,800

**Disability - use special equip by State, County, Island, Community, BRFSS Age Group, DOH Race-Ethnicity, Gender, Education Level, Employment Status (Grouped), Household Income, Poverty Level, Marital Status (Grouped), Married, Health Care Coverage, for the Year(s) - 2001-2005, 2002-2006, 2003-2007, 2004-2008, 2005-2009, 2006-2010**

*Note: Weighted numbers (#) represent 5-yr averages, percentages and 95% confidence intervals; Respondents aged 18 years and older; n/r (Not Reportable) - If the unweighted total responses for a dimension (row) is <50 that row will not be shown; n/a (Not Available) - Not asked of a subset of respondents*

**Year: 2002-2006**

Employment Status (Grouped)	Yes			No			Estimated Population (5-yr Avg)
	#	%	C.I. (95%)	#	%	C.I. (95%)	#
<b>Employed</b>	8,200	1.4	1.1 - 1.6	596,300	98.6	98.4 - 98.9	604,500
<b>Unemployed</b>	1,500	4.8	3.0 - 6.7	28,700	95.2	93.3 - 97.0	30,200
<b>Retired/Unable to work</b>	32,700	16.0	14.7 - 17.2	172,000	84.0	82.8 - 85.3	204,700
<b>Student/Homemaker</b>	3,000	3.1	2.2 - 4.0	92,600	96.9	96.0 - 97.8	95,600

**Disability - use special equip by State, County, Island, Community, BRFSS Age Group, DOH Race-Ethnicity, Gender, Education Level, Employment Status (Grouped), Household Income, Poverty Level, Marital Status (Grouped), Married, Health Care Coverage, for the Year(s) - 2001-2005, 2002-2006, 2003-2007, 2004-2008, 2005-2009, 2006-2010**

*Note: Weighted numbers (#) represent 5-yr averages, percentages and 95% confidence intervals; Respondents aged 18 years and older; n/r (Not Reportable) - If the unweighted total responses for a dimension (row) is <50 that row will not be shown; n/a (Not Available) - Not asked of a subset of respondents*

**Year: 2002-2006**

Household Income	Yes			No			Estimated Population (5-yr Avg)
	#	%	C.I. (95%)	#	%	C.I. (95%)	#
Less than \$10,000	3,100	10.1	8.0 - 12.3	27,400	89.9	87.7 - 92.0	30,500
\$10,000 to \$14,999	3,600	10.9	8.4 - 13.4	29,700	89.1	86.6 - 91.6	33,400
\$15,000 to \$19,999	3,700	8.0	6.1 - 9.9	43,000	92.0	90.1 - 93.9	46,700
\$20,000 to \$24,999	3,200	5.4	4.1 - 6.6	55,900	94.6	93.4 - 95.9	59,000
\$25,000 to \$34,999	4,300	4.5	3.4 - 5.6	92,300	95.5	94.4 - 96.6	96,700
\$35,000 to \$49,999	4,600	3.3	2.6 - 4.1	134,000	96.7	95.9 - 97.4	138,700
\$50,000 to \$74,999	4,700	2.7	2.0 - 3.3	172,300	97.3	96.7 - 98.0	177,000
\$75,000 or more	5,300	2.7	2.0 - 3.5	189,700	97.3	96.5 - 98.0	195,100

**Disability - use special equip by State, County, Island, Community, BRFSS Age Group, DOH Race-Ethnicity, Gender, Education Level, Employment Status (Grouped), Household Income, Poverty Level, Marital Status (Grouped), Married, Health Care Coverage, for the Year(s) - 2001-2005, 2002-2006, 2003-2007, 2004-2008, 2005-2009, 2006-2010**

*Note: Weighted numbers (#) represent 5-yr averages, percentages and 95% confidence intervals; Respondents aged 18 years and older; n/r (Not Reportable) - If the unweighted total responses for a dimension (row) is <50 that row will not be shown; n/a (Not Available) - Not asked of a subset of respondents*

**Year: 2002-2006**

Poverty Level	Yes			No			Estimated Population (5-yr Avg)
	#	%	C.I. (95%)	#	%	C.I. (95%)	#
<b>0-130%</b>	11,700	7.0	6.1 - 8.0	154,600	93.0	92.0 - 93.9	166,300
<b>131-185%</b>	3,700	3.9	3.0 - 4.8	92,000	96.1	95.2 - 97.0	95,800
<b>186+%</b>	17,200	3.3	2.9 - 3.8	497,700	96.7	96.2 - 97.1	514,900

Marital Status (Grouped)	Yes			No			Estimated Population (5-yr Avg)
	#	%	C.I. (95%)	#	%	C.I. (95%)	#
<b>Married</b>	23,700	4.3	3.9 - 4.7	526,300	95.7	95.3 - 96.1	550,000
<b>Unmarried Couple</b>	400	1.7	0.6 - 2.8	23,900	98.3	97.2 - 99.4	24,300
<b>Widowed</b>	10,700	18.3	15.8 - 20.9	47,400	81.7	79.1 - 84.2	58,100
<b>Other</b>	10,700	3.5	3.1 - 4.0	293,000	96.5	96.0 - 96.9	303,700

**Disability - use special equip by State, County, Island, Community, BRFSS Age Group, DOH Race-Ethnicity, Gender, Education Level, Employment Status (Grouped), Household Income, Poverty Level, Marital Status (Grouped), Married, Health Care Coverage, for the Year(s) - 2001-2005, 2002-2006, 2003-2007, 2004-2008, 2005-2009, 2006-2010**

*Note: Weighted numbers (#) represent 5-yr averages, percentages and 95% confidence intervals; Respondents aged 18 years and older; n/r (Not Reportable) - If the unweighted total responses for a dimension (row) is <50 that row will not be shown; n/a (Not Available) - Not asked of a subset of respondents*

**Year: 2002-2006**

<b>Married</b>	<b>Yes</b>			<b>No</b>			<b>Estimated Population (5-yr Avg)</b>
	<b>#</b>	<b>%</b>	<b>C.I. (95%)</b>	<b>#</b>	<b>%</b>	<b>C.I. (95%)</b>	<b>#</b>
<b>Yes</b>	24,300	4.3	3.9 - 4.8	536,300	95.7	95.2 - 96.1	560,600
<b>No</b>	21,000	5.6	5.1 - 6.2	352,800	94.4	93.8 - 94.9	373,800

<b>Health Care Coverage</b>	<b>Yes</b>			<b>No</b>			<b>Estimated Population (5-yr Avg)</b>
	<b>#</b>	<b>%</b>	<b>C.I. (95%)</b>	<b>#</b>	<b>%</b>	<b>C.I. (95%)</b>	<b>#</b>
<b>Yes</b>	42,800	5.0	4.6 - 5.4	812,600	95.0	94.6 - 95.4	855,400
<b>No</b>	2,600	3.3	2.3 - 4.3	75,800	96.7	95.7 - 97.7	78,400

**Disability - use special equip by State, County, Island, Community, BRFSS Age Group, DOH Race-Ethnicity, Gender, Education Level, Employment Status (Grouped), Household Income, Poverty Level, Marital Status (Grouped), Married, Health Care Coverage, for the Year(s) - 2001-2005, 2002-2006, 2003-2007, 2004-2008, 2005-2009, 2006-2010**

*Note: Weighted numbers (#) represent 5-yr averages, percentages and 95% confidence intervals; Respondents aged 18 years and older; n/r (Not Reportable) - If the unweighted total responses for a dimension (row) is <50 that row will not be shown; n/a (Not Available) - Not asked of a subset of respondents*

**Year: 2001-2005**

State	Yes			No			Estimated Population (5-yr Avg)
	#	%	C.I. (95%)	#	%	C.I. (95%)	#
Hawaii State	42,700	4.6	4.3 - 5.0	876,800	95.4	95.0 - 95.7	919,500

County	Yes			No			Estimated Population (5-yr Avg)
	#	%	C.I. (95%)	#	%	C.I. (95%)	#
Hawaii	6,300	5.4	4.7 - 6.1	110,500	94.6	93.9 - 95.3	116,800
Honolulu	29,600	4.5	4.0 - 4.9	631,800	95.5	95.1 - 96.0	661,400
Kauai	2,000	4.7	3.7 - 5.8	40,500	95.3	94.2 - 96.3	42,600
Maui	4,800	4.8	4.1 - 5.6	93,900	95.2	94.4 - 95.9	98,600



**Disability - use special equip by State, County, Island, Community, BRFSS Age Group, DOH Race-Ethnicity, Gender, Education Level, Employment Status (Grouped), Household Income, Poverty Level, Marital Status (Grouped), Married, Health Care Coverage, for the Year(s) - 2001-2005, 2002-2006, 2003-2007, 2004-2008, 2005-2009, 2006-2010**

*Note: Weighted numbers (#) represent 5-yr averages, percentages and 95% confidence intervals; Respondents aged 18 years and older; n/r (Not Reportable) - If the unweighted total responses for a dimension (row) is <50 that row will not be shown; n/a (Not Available) - Not asked of a subset of respondents*

**Year: 2001-2005**

Island	Yes			No			Estimated Population (5-yr Avg)
	#	%	C.I. (95%)	#	%	C.I. (95%)	#
Hawaii	6,300	5.4	4.7 - 6.1	110,500	94.6	93.9 - 95.3	116,800
Kauai	2,000	4.7	3.7 - 5.8	40,500	95.3	94.2 - 96.3	42,600
Lanai	300	10.1	6.7 - 13.5	2,300	89.9	86.5 - 93.3	2,500
Maui	3,900	4.4	3.5 - 5.2	86,100	95.6	94.8 - 96.5	90,100
Molokai	600	9.8	6.5 - 13.0	5,500	90.2	87.0 - 93.5	6,100
Oahu	29,600	4.5	4.0 - 4.9	631,800	95.5	95.1 - 96.0	661,400

Community	Yes			No			Estimated Population (5-yr Avg)
	#	%	C.I. (95%)	#	%	C.I. (95%)	#
Aiea/ Pearl City	3,100	5.0	3.3 - 6.6	59,300	95.0	93.4 - 96.7	62,400

**Disability - use special equip by State, County, Island, Community, BRFSS Age Group, DOH Race-Ethnicity, Gender, Education Level, Employment Status (Grouped), Household Income, Poverty Level, Marital Status (Grouped), Married, Health Care Coverage, for the Year(s) - 2001-2005, 2002-2006, 2003-2007, 2004-2008, 2005-2009, 2006-2010**

*Note: Weighted numbers (#) represent 5-yr averages, percentages and 95% confidence intervals; Respondents aged 18 years and older; n/r (Not Reportable) - If the unweighted total responses for a dimension (row) is <50 that row will not be shown; n/a (Not Available) - Not asked of a subset of respondents*

**Year: 2001-2005**

Community	Yes			No			Estimated Population (5-yr Avg)
	#	%	C.I. (95%)	#	%	C.I. (95%)	#
Ala Moana	1,800	5.8	4.0 - 7.6	29,200	94.2	92.4 - 96.0	31,000
Hanalei/ Kapaa	700	4.2	2.7 - 5.6	16,900	95.8	94.4 - 97.3	17,600
Hilo	2,100	6.2	4.9 - 7.5	32,100	93.8	92.5 - 95.1	34,300
Kaaawa/ Kahaluu/ Kaneohe	2,100	4.9	2.7 - 7.1	41,900	95.1	92.9 - 97.3	44,000
Kahului	1,100	3.3	2.4 - 4.3	30,900	96.7	95.7 - 97.6	32,000
Kailua/ Waimanalo	1,900	4.0	2.6 - 5.4	45,800	96.0	94.6 - 97.4	47,700
Kaimuki/ Palolo/ Waikiki	4,000	6.0	4.5 - 7.5	62,100	94.0	92.5 - 95.5	66,100
Kona	1,500	5.1	3.8 - 6.5	27,600	94.9	93.5 - 96.2	29,100
Lahaina/ Wailuku	1,200	4.2	2.8 - 5.6	28,000	95.8	94.4 - 97.2	29,300
Lanai	300	10.1	6.7 - 13.5	2,300	89.9	86.5 - 93.3	2,500
Lihue-Waimea	1,300	5.2	3.6 - 6.7	23,700	94.8	93.3 - 96.4	25,000

**Disability - use special equip by State, County, Island, Community, BRFSS Age Group, DOH Race-Ethnicity, Gender, Education Level, Employment Status (Grouped), Household Income, Poverty Level, Marital Status (Grouped), Married, Health Care Coverage, for the Year(s) - 2001-2005, 2002-2006, 2003-2007, 2004-2008, 2005-2009, 2006-2010**

*Note: Weighted numbers (#) represent 5-yr averages, percentages and 95% confidence intervals; Respondents aged 18 years and older; n/r (Not Reportable) - If the unweighted total responses for a dimension (row) is <50 that row will not be shown; n/a (Not Available) - Not asked of a subset of respondents*

**Year: 2001-2005**

Community	Yes			No			Estimated Population (5-yr Avg)
	#	%	C.I. (95%)	#	%	C.I. (95%)	#
Manoa/ Upper Makiki	2,400	4.6	3.3 - 5.9	49,300	95.4	94.1 - 96.7	51,700
Mililani/ Wahiawa	2,700	4.2	2.7 - 5.7	61,000	95.8	94.3 - 97.3	63,700
Molokai	600	9.8	6.5 - 13.0	5,500	90.2	87.0 - 93.5	6,100
Nanakuli/ Waianae	1,700	5.6	2.7 - 8.4	28,700	94.4	91.6 - 97.3	30,400
N.Hawaii	1,100	4.8	3.1 - 6.5	22,500	95.2	93.5 - 96.9	23,700
N.Shore/ Laie	1,200	5.4	2.5 - 8.2	20,700	94.6	91.8 - 97.5	21,900
Nuuanu/ Kalihi/ Moanalua	2,800	4.2	2.9 - 5.5	64,500	95.8	94.5 - 97.1	67,300
Puna/ Kau	1,500	5.2	3.9 - 6.5	28,200	94.8	93.5 - 96.1	29,800
Salt Lake/ Foster Village	400	1.2	0.3 - 2.1	36,300	98.8	97.9 - 99.7	36,700
Upcountry/ Hana	1,700	5.7	3.9 - 7.6	27,200	94.3	92.4 - 96.1	28,800
Waiialae/ Kahala/ Hawaii Kai	2,100	5.3	2.8 - 7.8	37,300	94.7	92.2 - 97.2	39,300

**Disability - use special equip by State, County, Island, Community, BRFSS Age Group, DOH Race-Ethnicity, Gender, Education Level, Employment Status (Grouped), Household Income, Poverty Level, Marital Status (Grouped), Married, Health Care Coverage, for the Year(s) - 2001-2005, 2002-2006, 2003-2007, 2004-2008, 2005-2009, 2006-2010**

*Note: Weighted numbers (#) represent 5-yr averages, percentages and 95% confidence intervals; Respondents aged 18 years and older; n/r (Not Reportable) - If the unweighted total responses for a dimension (row) is <50 that row will not be shown; n/a (Not Available) - Not asked of a subset of respondents*

**Year: 2001-2005**

Community	Yes			No			Estimated Population (5-yr Avg)
	#	%	C.I. (95%)	#	%	C.I. (95%)	#
Waipahu/ Kapolei/ Ewa	3,400	3.5	2.4 - 4.5	95,800	96.5	95.5 - 97.6	99,200

**Disability - use special equip by State, County, Island, Community, BRFSS Age Group, DOH Race-Ethnicity, Gender, Education Level, Employment Status (Grouped), Household Income, Poverty Level, Marital Status (Grouped), Married, Health Care Coverage, for the Year(s) - 2001-2005, 2002-2006, 2003-2007, 2004-2008, 2005-2009, 2006-2010**

*Note: Weighted numbers (#) represent 5-yr averages, percentages and 95% confidence intervals; Respondents aged 18 years and older; n/r (Not Reportable) - If the unweighted total responses for a dimension (row) is <50 that row will not be shown; n/a (Not Available) - Not asked of a subset of respondents*

**Year: 2001-2005**

BRFSS Age Group	Yes			No			Estimated Population (5-yr Avg)
	#	%	C.I. (95%)	#	%	C.I. (95%)	#
18-24	800	0.7	0.3 - 1.2	111,800	99.3	98.8 - 99.7	112,600
25-34	1,300	0.8	0.4 - 1.1	164,400	99.2	98.9 - 99.6	165,700
35-44	3,500	1.9	1.4 - 2.5	177,800	98.1	97.5 - 98.6	181,300
45-54	5,800	3.4	2.7 - 4.1	165,000	96.6	95.9 - 97.3	170,800
55-64	6,900	5.5	4.5 - 6.6	116,800	94.5	93.4 - 95.5	123,700
65-74	7,900	9.4	7.8 - 11.1	76,100	90.6	88.9 - 92.2	84,000
75+	16,100	21.3	18.9 - 23.6	59,700	78.7	76.4 - 81.1	75,900

**Disability - use special equip by State, County, Island, Community, BRFSS Age Group, DOH Race-Ethnicity, Gender, Education Level, Employment Status (Grouped), Household Income, Poverty Level, Marital Status (Grouped), Married, Health Care Coverage, for the Year(s) - 2001-2005, 2002-2006, 2003-2007, 2004-2008, 2005-2009, 2006-2010**

*Note: Weighted numbers (#) represent 5-yr averages, percentages and 95% confidence intervals; Respondents aged 18 years and older; n/r (Not Reportable) - If the unweighted total responses for a dimension (row) is <50 that row will not be shown; n/a (Not Available) - Not asked of a subset of respondents*

**Year: 2001-2005**

DOH Race-Ethnicity	Yes			No			Estimated Population (5-yr Avg)
	#	%	C.I. (95%)	#	%	C.I. (95%)	#
Caucasian	14,700	4.7	4.1 - 5.2	300,900	95.3	94.8 - 95.9	315,600
Native Hawaiian	5,400	4.9	4.0 - 5.8	104,400	95.1	94.2 - 96.0	109,800
Chinese	3,000	4.4	3.2 - 5.6	64,800	95.6	94.4 - 96.8	67,800
Filipino	4,700	3.3	2.6 - 4.0	137,000	96.7	96.0 - 97.4	141,700
Japanese	10,500	5.6	4.7 - 6.6	176,800	94.4	93.4 - 95.3	187,300
Black	600	4.0	1.7 - 6.2	14,200	96.0	93.8 - 98.3	14,800
Native Alaskan/ American Indian	600	13.0	5.7 - 20.2	4,100	87.0	79.8 - 94.3	4,700
Other Asian	600	2.8	1.1 - 4.5	20,600	97.2	95.5 - 98.9	21,200
Other Pacific Islander	1,100	5.2	1.8 - 8.5	19,600	94.8	91.5 - 98.2	20,700
Other	1,400	5.1	2.6 - 7.7	25,700	94.9	92.3 - 97.4	27,100

**Disability - use special equip by State, County, Island, Community, BRFSS Age Group, DOH Race-Ethnicity, Gender, Education Level, Employment Status (Grouped), Household Income, Poverty Level, Marital Status (Grouped), Married, Health Care Coverage, for the Year(s) - 2001-2005, 2002-2006, 2003-2007, 2004-2008, 2005-2009, 2006-2010**

*Note: Weighted numbers (#) represent 5-yr averages, percentages and 95% confidence intervals; Respondents aged 18 years and older; n/r (Not Reportable) - If the unweighted total responses for a dimension (row) is <50 that row will not be shown; n/a (Not Available) - Not asked of a subset of respondents*

**Year: 2001-2005**

Gender	Yes			No			Estimated Population (5-yr Avg)
	#	%	C.I. (95%)	#	%	C.I. (95%)	#
Male	18,700	4.1	3.6 - 4.6	437,600	95.9	95.4 - 96.4	456,300
Female	24,000	5.2	4.7 - 5.7	439,200	94.8	94.3 - 95.3	463,200

Education Level	Yes			No			Estimated Population (5-yr Avg)
	#	%	C.I. (95%)	#	%	C.I. (95%)	#
Never attended school/ Only Kindergarten to Grades 8	1,900	11.7	7.8 - 15.6	14,100	88.3	84.4 - 92.2	16,000
Grades 9 thru 11 (Some High School)	4,100	11.5	9.0 - 14.1	31,300	88.5	85.9 - 91.0	35,400
Grades 12 or GED (High School Grad)	17,600	6.1	5.3 - 6.8	271,500	93.9	93.2 - 94.7	289,000
College 1 to 3 years (Some College/ Tech)	10,100	3.7	3.0 - 4.3	265,700	96.3	95.7 - 97.0	275,800
College 4 years or more (College Grad)	9,000	3.0	2.5 - 3.5	292,900	97.0	96.5 - 97.5	301,900

**Disability - use special equip by State, County, Island, Community, BRFSS Age Group, DOH Race-Ethnicity, Gender, Education Level, Employment Status (Grouped), Household Income, Poverty Level, Marital Status (Grouped), Married, Health Care Coverage, for the Year(s) - 2001-2005, 2002-2006, 2003-2007, 2004-2008, 2005-2009, 2006-2010**

*Note: Weighted numbers (#) represent 5-yr averages, percentages and 95% confidence intervals; Respondents aged 18 years and older; n/r (Not Reportable) - If the unweighted total responses for a dimension (row) is <50 that row will not be shown; n/a (Not Available) - Not asked of a subset of respondents*

**Year: 2001-2005**

Employment Status (Grouped)	Yes			No			Estimated Population (5-yr Avg)
	#	%	C.I. (95%)	#	%	C.I. (95%)	#
<b>Employed</b>	8,300	1.4	1.1 - 1.6	588,400	98.6	98.4 - 98.9	596,700
<b>Unemployed</b>	1,400	4.9	2.9 - 6.9	27,600	95.1	93.1 - 97.1	29,000
<b>Retired/Unable to work</b>	30,400	15.3	14.0 - 16.6	168,000	84.7	83.4 - 86.0	198,400
<b>Student/Homemaker</b>	2,500	2.7	1.8 - 3.5	92,200	97.3	96.5 - 98.2	94,700



**Disability - use special equip by State, County, Island, Community, BRFSS Age Group, DOH Race-Ethnicity, Gender, Education Level, Employment Status (Grouped), Household Income, Poverty Level, Marital Status (Grouped), Married, Health Care Coverage, for the Year(s) - 2001-2005, 2002-2006, 2003-2007, 2004-2008, 2005-2009, 2006-2010**

*Note: Weighted numbers (#) represent 5-yr averages, percentages and 95% confidence intervals; Respondents aged 18 years and older; n/r (Not Reportable) - If the unweighted total responses for a dimension (row) is <50 that row will not be shown; n/a (Not Available) - Not asked of a subset of respondents*

**Year: 2001-2005**

Household Income	Yes			No			Estimated Population (5-yr Avg)
	#	%	C.I. (95%)	#	%	C.I. (95%)	#
Less than \$10,000	2,800	8.5	6.6 - 10.4	30,100	91.5	89.6 - 93.4	32,900
\$10,000 to \$14,999	3,700	10.2	7.8 - 12.6	33,000	89.8	87.4 - 92.2	36,700
\$15,000 to \$19,999	3,200	7.0	5.1 - 8.9	42,500	93.0	91.1 - 94.9	45,700
\$20,000 to \$24,999	2,300	4.0	2.8 - 5.1	55,200	96.0	94.9 - 97.2	57,500
\$25,000 to \$34,999	4,000	4.3	3.2 - 5.4	89,400	95.7	94.6 - 96.8	93,400
\$35,000 to \$49,999	4,300	3.1	2.4 - 3.8	134,800	96.9	96.2 - 97.6	139,100
\$50,000 to \$74,999	4,500	2.6	2.0 - 3.3	166,300	97.4	96.7 - 98.0	170,700
\$75,000 or more	4,500	2.7	1.8 - 3.5	166,400	97.3	96.5 - 98.2	171,000

**Disability - use special equip by State, County, Island, Community, BRFSS Age Group, DOH Race-Ethnicity, Gender, Education Level, Employment Status (Grouped), Household Income, Poverty Level, Marital Status (Grouped), Married, Health Care Coverage, for the Year(s) - 2001-2005, 2002-2006, 2003-2007, 2004-2008, 2005-2009, 2006-2010**

*Note: Weighted numbers (#) represent 5-yr averages, percentages and 95% confidence intervals; Respondents aged 18 years and older; n/r (Not Reportable) - If the unweighted total responses for a dimension (row) is <50 that row will not be shown; n/a (Not Available) - Not asked of a subset of respondents*

**Year: 2001-2005**

Poverty Level	Yes			No			Estimated Population (5-yr Avg)
	#	%	C.I. (95%)	#	%	C.I. (95%)	#
0-130%	10,300	6.4	5.5 - 7.4	150,000	93.6	92.6 - 94.5	160,300
131-185%	3,200	3.4	2.5 - 4.3	91,300	96.6	95.7 - 97.5	94,600
186+%	15,800	3.2	2.8 - 3.7	476,400	96.8	96.3 - 97.2	492,200

Marital Status (Grouped)	Yes			No			Estimated Population (5-yr Avg)
	#	%	C.I. (95%)	#	%	C.I. (95%)	#
Married	22,400	4.2	3.7 - 4.6	513,800	95.8	95.4 - 96.3	536,300
Unmarried Couple	400	1.9	0.5 - 3.4	19,400	98.1	96.6 - 99.5	19,700
Widowed	10,000	17.6	15.0 - 20.2	46,700	82.4	79.8 - 85.0	56,700
Other	9,900	3.2	2.8 - 3.7	296,800	96.8	96.3 - 97.2	306,800

**Disability - use special equip by State, County, Island, Community, BRFSS Age Group, DOH Race-Ethnicity, Gender, Education Level, Employment Status (Grouped), Household Income, Poverty Level, Marital Status (Grouped), Married, Health Care Coverage, for the Year(s) - 2001-2005, 2002-2006, 2003-2007, 2004-2008, 2005-2009, 2006-2010**

*Note: Weighted numbers (#) represent 5-yr averages, percentages and 95% confidence intervals; Respondents aged 18 years and older; n/r (Not Reportable) - If the unweighted total responses for a dimension (row) is <50 that row will not be shown; n/a (Not Available) - Not asked of a subset of respondents*

**Year: 2001-2005**

<b>Married</b>	<b>Yes</b>			<b>No</b>			<b>Estimated Population (5-yr Avg)</b>
	<b>#</b>	<b>%</b>	<b>C.I. (95%)</b>	<b>#</b>	<b>%</b>	<b>C.I. (95%)</b>	<b>#</b>
<b>Yes</b>	23,100	4.2	3.8 - 4.7	525,300	95.8	95.3 - 96.2	548,400
<b>No</b>	19,500	5.3	4.7 - 5.8	350,000	94.7	94.2 - 95.3	369,500

<b>Health Care Coverage</b>	<b>Yes</b>			<b>No</b>			<b>Estimated Population (5-yr Avg)</b>
	<b>#</b>	<b>%</b>	<b>C.I. (95%)</b>	<b>#</b>	<b>%</b>	<b>C.I. (95%)</b>	<b>#</b>
<b>Yes</b>	40,500	4.8	4.4 - 5.2	801,700	95.2	94.8 - 95.6	842,200
<b>No</b>	2,200	2.9	2.0 - 3.8	73,100	97.1	96.2 - 98.0	75,300