

Health status - two level by State, County, Island, Community, BRFSS Age Group, DOH Race-Ethnicity, Gender, Education Level, Employment Status (Grouped), Household Income, Poverty Level, Marital Status (Grouped), Married, Health Care Coverage, for the Year(s) - 2000-2002, 2001-2003, 2002-2004, 2003-2005, 2004-2006, 2005-2007, 2006-2008, 2007-2009, 2008-2010

Note: Weighted numbers (#) represent 3-yr averages, percentages and 95% confidence intervals; Respondents aged 18 years and older; n/r (Not Reportable) - If the unweighted total responses for a dimension (row) is <50 that row will not be shown; n/a (Not Available) - Not asked of a subset of respondents

The trend analysis report shows the trend for the selected health variable over selected years in a table and a graph. Estimated Population: This number is a weighted representation of the population who responded to a particular question in the survey. For most questions the eligible population will be the entire adult population. For some secondary questions only a subset of the population was asked the question. For example, all survey participants were asked if they had diabetes, but only those who answered yes were asked if they use insulin. If a dimension value is unknown for a particular survey record, that record will not be included in the counts for that particular dimension.

For documentation on other terms and coding in this report, please go to the following links

[Click here to access BRFSS documentation](#)

[Click here to access DOH Race-Ethnicity coding](#)

[Click here to access The Hawai'i Data Guide](#)

[Click here to access Poverty Level Methodology](#)

**For questions about this report, please contact
The Hawaii Health Data Warehouse**

profiles@hhdw.org

(855) 946-5899 x15

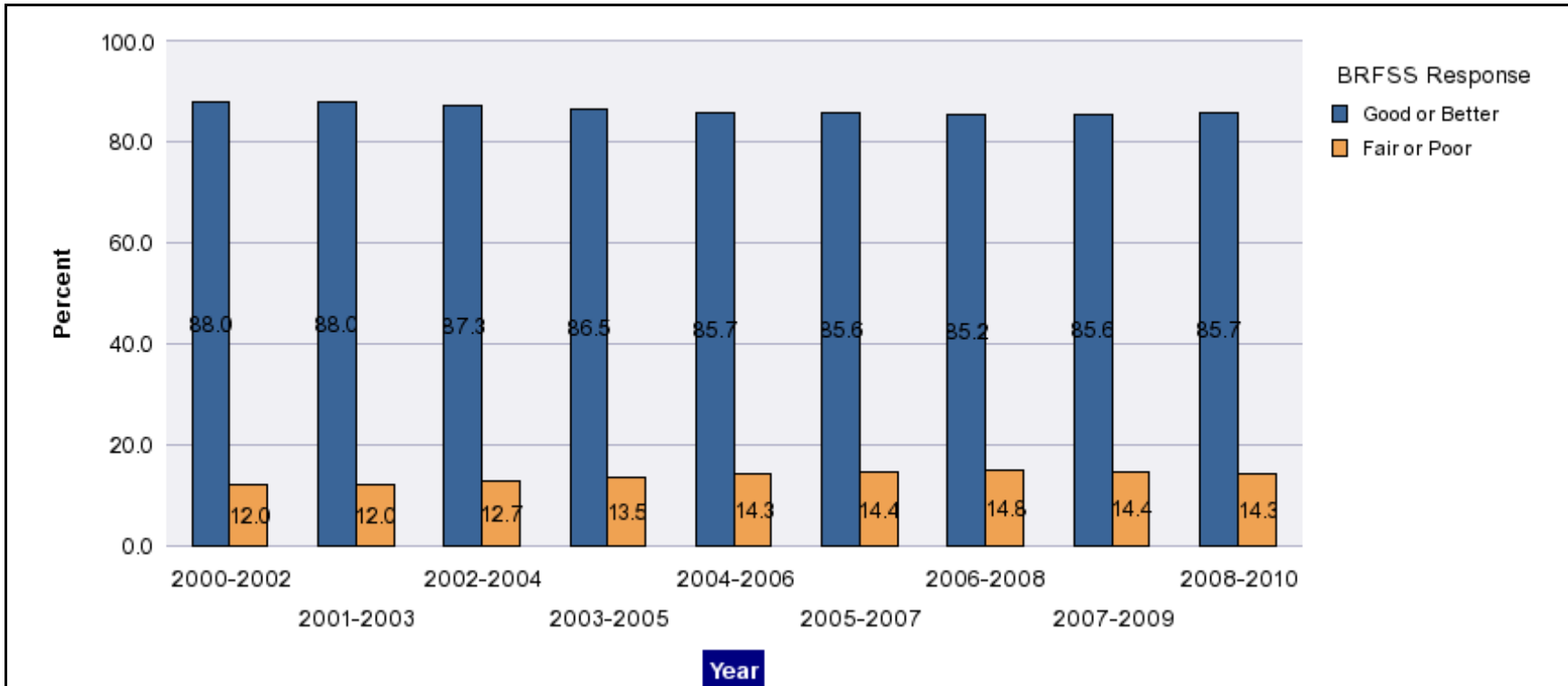
Health status - two level by State, County, Island, Community, BRFSS Age Group, DOH Race-Ethnicity, Gender, Education Level, Employment Status (Grouped), Household Income, Poverty Level, Marital Status (Grouped), Married, Health Care Coverage, for the Year(s) - 2000-2002, 2001-2003, 2002-2004, 2003-2005, 2004-2006, 2005-2007, 2006-2008, 2007-2009, 2008-2010

Note: Weighted numbers (#) represent 3-yr averages, percentages and 95% confidence intervals; Respondents aged 18 years and older; n/r (Not Reportable) - If the unweighted total responses for a dimension (row) is <50 that row will not be shown; n/a (Not Available) - Not asked of a subset of respondents

Year	Good or Better			Fair or Poor			Estimated Population (3-Yr Avg)
	#	%	C.I.(95%)	#	%	C.I.(95%)	#
2000-2002	784,600	88.0	87.3 - 88.7	106,700	12.0	11.3 - 12.7	891,300
2001-2003	798,100	88.0	87.3 - 88.7	108,700	12.0	11.3 - 12.7	906,800
2002-2004	797,100	87.3	86.4 - 88.2	115,700	12.7	11.8 - 13.6	912,800
2003-2005	810,600	86.5	85.6 - 87.5	126,000	13.5	12.5 - 14.4	936,600
2004-2006	817,700	85.7	84.8 - 86.6	136,200	14.3	13.4 - 15.2	953,900
2005-2007	838,800	85.6	85.0 - 86.3	140,600	14.4	13.7 - 15.0	979,400
2006-2008	841,500	85.2	84.6 - 85.9	145,700	14.8	14.1 - 15.4	987,200
2007-2009	853,400	85.6	84.9 - 86.2	143,900	14.4	13.8 - 15.1	997,300
2008-2010	861,100	85.7	85.1 - 86.4	143,200	14.3	13.6 - 14.9	1,004,300

Health status - two level by State, County, Island, Community, BRFSS Age Group, DOH Race-Ethnicity, Gender, Education Level, Employment Status (Grouped), Household Income, Poverty Level, Marital Status (Grouped), Married, Health Care Coverage, for the Year(s) - 2000-2002, 2001-2003, 2002-2004, 2003-2005, 2004-2006, 2005-2007, 2006-2008, 2007-2009, 2008-2010

Note: Weighted numbers (#) represent 3-yr averages, percentages and 95% confidence intervals; Respondents aged 18 years and older; n/r (Not Reportable) - If the unweighted total responses for a dimension (row) is <50 that row will not be shown; n/a (Not Available) - Not asked of a subset of respondents



Health status - two level by State, County, Island, Community, BRFSS Age Group, DOH Race-Ethnicity, Gender, Education Level, Employment Status (Grouped), Household Income, Poverty Level, Marital Status (Grouped), Married, Health Care Coverage, for the Year(s) - 2000-2002, 2001-2003, 2002-2004, 2003-2005, 2004-2006, 2005-2007, 2006-2008, 2007-2009, 2008-2010

Note: Weighted numbers (#) represent 3-yr averages, percentages and 95% confidence intervals; Respondents aged 18 years and older; n/r (Not Reportable) - If the unweighted total responses for a dimension (row) is <50 that row will not be shown; n/a (Not Available) - Not asked of a subset of respondents

Year: 2008-2010

State	Good or Better			Fair or Poor			Estimated Population (3-Yr Avg)
	#	%	C.I. (95%)	#	%	C.I. (95%)	#
Hawaii State	861,100	85.7	85.1 - 86.4	143,200	14.3	13.6 - 14.9	1,004,300

County	Good or Better			Fair or Poor			Estimated Population (3-Yr Avg)
	#	%	C.I. (95%)	#	%	C.I. (95%)	#
Hawaii	117,000	84.8	83.5 - 86.1	21,000	15.2	13.9 - 16.5	138,000
Honolulu	606,800	86.0	85.1 - 86.9	98,800	14.0	13.1 - 14.9	705,600
Kauai	41,200	84.1	82.0 - 86.3	7,800	15.9	13.7 - 18.0	49,000
Maui	96,100	86.0	84.5 - 87.4	15,700	14.0	12.6 - 15.5	111,800

Health status - two level by State, County, Island, Community, BRFSS Age Group, DOH Race-Ethnicity, Gender, Education Level, Employment Status (Grouped), Household Income, Poverty Level, Marital Status (Grouped), Married, Health Care Coverage, for the Year(s) - 2000-2002, 2001-2003, 2002-2004, 2003-2005, 2004-2006, 2005-2007, 2006-2008, 2007-2009, 2008-2010

Note: Weighted numbers (#) represent 3-yr averages, percentages and 95% confidence intervals; Respondents aged 18 years and older; n/r (Not Reportable) - If the unweighted total responses for a dimension (row) is <50 that row will not be shown; n/a (Not Available) - Not asked of a subset of respondents

Year: 2008-2010

Island	Good or Better			Fair or Poor			Estimated Population (3-Yr Avg)
	#	%	C.I. (95%)	#	%	C.I. (95%)	#
Hawaii	117,000	84.8	83.5 - 86.1	21,000	15.2	13.9 - 16.5	138,000
Kauai	41,200	84.1	82.0 - 86.3	7,800	15.9	13.7 - 18.0	49,000
Lanai	1,500	84.8	81.3 - 88.3	300	15.2	11.7 - 18.7	1,700
Maui	88,300	86.4	84.8 - 87.9	13,900	13.6	12.1 - 15.2	102,200
Molokai	6,300	81.2	77.6 - 84.9	1,500	18.8	15.1 - 22.4	7,800
Oahu	606,800	86.0	85.1 - 86.9	98,800	14.0	13.1 - 14.9	705,600

Community	Good or Better			Fair or Poor			Estimated Population (3-Yr Avg)
	#	%	C.I. (95%)	#	%	C.I. (95%)	#
Aiea/ Pearl City	54,200	84.7	81.5 - 87.8	9,800	15.3	12.2 - 18.5	64,000
Ala Moana	22,400	83.5	79.3 - 87.6	4,400	16.5	12.4 - 20.7	26,800

Health status - two level by State, County, Island, Community, BRFSS Age Group, DOH Race-Ethnicity, Gender, Education Level, Employment Status (Grouped), Household Income, Poverty Level, Marital Status (Grouped), Married, Health Care Coverage, for the Year(s) - 2000-2002, 2001-2003, 2002-2004, 2003-2005, 2004-2006, 2005-2007, 2006-2008, 2007-2009, 2008-2010

Note: Weighted numbers (#) represent 3-yr averages, percentages and 95% confidence intervals; Respondents aged 18 years and older; n/r (Not Reportable) - If the unweighted total responses for a dimension (row) is <50 that row will not be shown; n/a (Not Available) - Not asked of a subset of respondents

Year: 2008-2010

Community	Good or Better			Fair or Poor			Estimated Population (3-Yr Avg)
	#	%	C.I. (95%)	#	%	C.I. (95%)	#
Hanalei/ Kapaa	17,300	85.9	83.0 - 88.9	2,800	14.1	11.1 - 17.0	20,200
Hilo	35,700	85.7	83.5 - 87.9	6,000	14.3	12.1 - 16.5	41,700
Kaaawa/ Kahaluu/ Kaneohe	44,600	88.4	85.5 - 91.4	5,800	11.6	8.6 - 14.5	50,400
Kahului	30,000	86.6	83.8 - 89.3	4,700	13.4	10.7 - 16.2	34,700
Kailua/ Waimanalo	43,700	86.1	82.8 - 89.5	7,000	13.9	10.5 - 17.2	50,700
Kaimuki/ Palolo/ Waikiki	47,200	82.7	79.5 - 85.9	9,900	17.3	14.1 - 20.5	57,100
Kona	25,000	84.4	81.4 - 87.5	4,600	15.6	12.5 - 18.6	29,600
Lahaina/ Wailuku	28,600	85.4	82.6 - 88.2	4,900	14.6	11.8 - 17.4	33,600
Lanai	1,500	84.8	81.3 - 88.3	300	15.2	11.7 - 18.7	1,700
Lihue-Waimea	23,800	82.8	79.8 - 85.8	4,900	17.2	14.2 - 20.2	28,800
Manoa/ Upper Makiki	43,800	88.4	85.7 - 91.2	5,700	11.6	8.8 - 14.3	49,500
Mililani/ Wahiawa	66,300	88.0	85.6 - 90.4	9,000	12.0	9.6 - 14.4	75,300

Health status - two level by State, County, Island, Community, BRFSS Age Group, DOH Race-Ethnicity, Gender, Education Level, Employment Status (Grouped), Household Income, Poverty Level, Marital Status (Grouped), Married, Health Care Coverage, for the Year(s) - 2000-2002, 2001-2003, 2002-2004, 2003-2005, 2004-2006, 2005-2007, 2006-2008, 2007-2009, 2008-2010

Note: Weighted numbers (#) represent 3-yr averages, percentages and 95% confidence intervals; Respondents aged 18 years and older; n/r (Not Reportable) - If the unweighted total responses for a dimension (row) is <50 that row will not be shown; n/a (Not Available) - Not asked of a subset of respondents

Year: 2008-2010

Community	Good or Better			Fair or Poor			Estimated Population (3-Yr Avg)
	#	%	C.I. (95%)	#	%	C.I. (95%)	#
Molokai	6,300	81.2	77.6 - 84.9	1,500	18.8	15.1 - 22.4	7,800
Nanakuli/ Waianae	27,100	76.4	70.4 - 82.5	8,400	23.6	17.5 - 29.6	35,500
N.Hawaii	23,000	84.9	81.7 - 88.2	4,100	15.1	11.8 - 18.3	27,100
N.Shore/ Laie	20,900	93.0	89.1 - 96.8	1,600	7.0	3.2 - 10.9	22,500
Nuuanu/ Kalihi/ Moanalua	58,800	84.4	81.3 - 87.5	10,900	15.6	12.5 - 18.7	69,700
Puna/ Kau	33,300	84.0	81.7 - 86.4	6,300	16.0	13.6 - 18.3	39,600
Salt Lake/ Foster Village	33,800	92.5	90.0 - 95.0	2,700	7.5	5.0 - 10.0	36,500
Upcountry/ Hana	29,600	87.2	84.6 - 89.7	4,400	12.8	10.3 - 15.4	34,000
Waiialae/ Kahala/ Hawaii Kai	42,100	90.7	87.8 - 93.5	4,300	9.3	6.5 - 12.2	46,500
Waipahu/ Kapolei/ Ewa	101,900	84.2	81.7 - 86.7	19,100	15.8	13.3 - 18.3	121,000

Health status - two level by State, County, Island, Community, BRFSS Age Group, DOH Race-Ethnicity, Gender, Education Level, Employment Status (Grouped), Household Income, Poverty Level, Marital Status (Grouped), Married, Health Care Coverage, for the Year(s) - 2000-2002, 2001-2003, 2002-2004, 2003-2005, 2004-2006, 2005-2007, 2006-2008, 2007-2009, 2008-2010

Note: Weighted numbers (#) represent 3-yr averages, percentages and 95% confidence intervals; Respondents aged 18 years and older; n/r (Not Reportable) - If the unweighted total responses for a dimension (row) is <50 that row will not be shown; n/a (Not Available) - Not asked of a subset of respondents

Year: 2008-2010

BRFSS Age Group	Good or Better			Fair or Poor			Estimated Population (3-Yr Avg)
	#	%	C.I. (95%)	#	%	C.I. (95%)	#
18-24	110,900	91.0	88.5 - 93.5	11,000	9.0	6.5 - 11.5	121,900
25-34	163,000	90.7	88.9 - 92.4	16,700	9.3	7.6 - 11.1	179,700
35-44	157,600	89.1	87.4 - 90.7	19,300	10.9	9.3 - 12.6	176,900
45-54	153,300	85.7	84.2 - 87.1	25,600	14.3	12.9 - 15.8	178,900
55-64	126,000	82.7	81.2 - 84.1	26,400	17.3	15.9 - 18.8	152,400
65-74	74,800	81.1	79.3 - 82.9	17,400	18.9	17.1 - 20.7	92,200
75+	71,500	73.4	71.3 - 75.6	25,900	26.6	24.4 - 28.7	97,400

Health status - two level by State, County, Island, Community, BRFSS Age Group, DOH Race-Ethnicity, Gender, Education Level, Employment Status (Grouped), Household Income, Poverty Level, Marital Status (Grouped), Married, Health Care Coverage, for the Year(s) - 2000-2002, 2001-2003, 2002-2004, 2003-2005, 2004-2006, 2005-2007, 2006-2008, 2007-2009, 2008-2010

Note: Weighted numbers (#) represent 3-yr averages, percentages and 95% confidence intervals; Respondents aged 18 years and older; n/r (Not Reportable) - If the unweighted total responses for a dimension (row) is <50 that row will not be shown; n/a (Not Available) - Not asked of a subset of respondents

Year: 2008-2010

DOH Race-Ethnicity	Good or Better			Fair or Poor			Estimated Population (3-Yr Avg)
	#	%	C.I. (95%)	#	%	C.I. (95%)	#
Caucasian	283,200	88.3	87.4 - 89.3	37,400	11.7	10.7 - 12.6	320,600
Native Hawaiian	105,200	80.6	78.2 - 82.9	25,400	19.4	17.1 - 21.8	130,600
Chinese	55,300	88.6	86.5 - 90.8	7,100	11.4	9.2 - 13.5	62,400
Filipino	136,200	85.8	83.8 - 87.8	22,600	14.2	12.2 - 16.2	158,800
Japanese	197,900	84.9	83.6 - 86.3	35,100	15.1	13.7 - 16.4	233,000
Black	13,200	89.1	84.4 - 93.8	1,600	10.9	6.2 - 15.6	14,800
Native Alaskan/ American Indian	4,000	82.8	74.4 - 91.2	800	17.2	8.8 - 25.6	4,800
Other Asian	21,000	84.5	79.1 - 89.9	3,900	15.5	10.1 - 20.9	24,900
Other Pacific Islander	25,100	83.5	77.7 - 89.4	5,000	16.5	10.6 - 22.3	30,100
Other	17,400	81.6	76.3 - 86.8	3,900	18.4	13.2 - 23.7	21,300

Health status - two level by State, County, Island, Community, BRFSS Age Group, DOH Race-Ethnicity, Gender, Education Level, Employment Status (Grouped), Household Income, Poverty Level, Marital Status (Grouped), Married, Health Care Coverage, for the Year(s) - 2000-2002, 2001-2003, 2002-2004, 2003-2005, 2004-2006, 2005-2007, 2006-2008, 2007-2009, 2008-2010

Note: Weighted numbers (#) represent 3-yr averages, percentages and 95% confidence intervals; Respondents aged 18 years and older; n/r (Not Reportable) - If the unweighted total responses for a dimension (row) is <50 that row will not be shown; n/a (Not Available) - Not asked of a subset of respondents

Year: 2008-2010

Gender	Good or Better			Fair or Poor			Estimated Population (3-Yr Avg)
	#	%	C.I. (95%)	#	%	C.I. (95%)	#
Male	433,100	86.7	85.7 - 87.8	66,200	13.3	12.2 - 14.3	499,300
Female	428,000	84.8	83.8 - 85.7	77,000	15.2	14.3 - 16.2	505,000

Education Level	Good or Better			Fair or Poor			Estimated Population (3-Yr Avg)
	#	%	C.I. (95%)	#	%	C.I. (95%)	#
Never attended school/ Only Kindergarten to Grades 8	7,700	65.6	58.2 - 72.9	4,000	34.4	27.1 - 41.8	11,700
Grades 9 thru 11 (Some High School)	28,000	70.7	65.7 - 75.6	11,600	29.3	24.4 - 34.3	39,600
Grades 12 or GED (High School Grad)	235,800	81.0	79.6 - 82.5	55,100	19.0	17.5 - 20.4	290,900
College 1 to 3 years (Some College/ Tech)	248,200	86.0	84.6 - 87.3	40,500	14.0	12.7 - 15.4	288,700
College 4 years or more (College Grad)	340,600	91.4	90.6 - 92.3	31,900	8.6	7.7 - 9.4	372,500

Health status - two level by State, County, Island, Community, BRFSS Age Group, DOH Race-Ethnicity, Gender, Education Level, Employment Status (Grouped), Household Income, Poverty Level, Marital Status (Grouped), Married, Health Care Coverage, for the Year(s) - 2000-2002, 2001-2003, 2002-2004, 2003-2005, 2004-2006, 2005-2007, 2006-2008, 2007-2009, 2008-2010

Note: Weighted numbers (#) represent 3-yr averages, percentages and 95% confidence intervals; Respondents aged 18 years and older; n/r (Not Reportable) - If the unweighted total responses for a dimension (row) is <50 that row will not be shown; n/a (Not Available) - Not asked of a subset of respondents

Year: 2008-2010

Employment Status (Grouped)	Good or Better			Fair or Poor			Estimated Population (3-Yr Avg)
	#	%	C.I. (95%)	#	%	C.I. (95%)	#
Employed	558,300	90.2	89.4 - 91.0	60,400	9.8	9.0 - 10.6	618,800
Unemployed	50,100	81.6	78.0 - 85.2	11,300	18.4	14.8 - 22.0	61,400
Retired/Unable to work	157,700	73.0	71.5 - 74.5	58,400	27.0	25.5 - 28.5	216,100
Student/Homemaker	94,100	88.0	85.5 - 90.5	12,900	12.0	9.5 - 14.5	107,000

Health status - two level by State, County, Island, Community, BRFSS Age Group, DOH Race-Ethnicity, Gender, Education Level, Employment Status (Grouped), Household Income, Poverty Level, Marital Status (Grouped), Married, Health Care Coverage, for the Year(s) - 2000-2002, 2001-2003, 2002-2004, 2003-2005, 2004-2006, 2005-2007, 2006-2008, 2007-2009, 2008-2010

Note: Weighted numbers (#) represent 3-yr averages, percentages and 95% confidence intervals; Respondents aged 18 years and older; n/r (Not Reportable) - If the unweighted total responses for a dimension (row) is <50 that row will not be shown; n/a (Not Available) - Not asked of a subset of respondents

Year: 2008-2010

Household Income	Good or Better			Fair or Poor			Estimated Population (3-Yr Avg)
	#	%	C.I. (95%)	#	%	C.I. (95%)	#
Less than \$10,000	21,200	68.1	63.1 - 73.2	9,900	31.9	26.8 - 36.9	31,100
\$10,000 to \$14,999	17,600	70.5	64.9 - 76.0	7,400	29.5	24.0 - 35.1	24,900
\$15,000 to \$19,999	36,900	76.2	72.7 - 79.6	11,600	23.8	20.4 - 27.3	48,500
\$20,000 to \$24,999	48,500	80.0	76.7 - 83.3	12,100	20.0	16.7 - 23.3	60,600
\$25,000 to \$34,999	83,800	82.9	80.7 - 85.1	17,200	17.1	14.9 - 19.3	101,100
\$35,000 to \$49,999	126,500	85.6	83.9 - 87.4	21,200	14.4	12.6 - 16.1	147,700
\$50,000 to \$74,999	154,600	88.7	87.3 - 90.1	19,600	11.3	9.9 - 12.7	174,200
\$75,000 or more	289,100	91.4	90.3 - 92.4	27,300	8.6	7.6 - 9.7	316,300

Health status - two level by State, County, Island, Community, BRFSS Age Group, DOH Race-Ethnicity, Gender, Education Level, Employment Status (Grouped), Household Income, Poverty Level, Marital Status (Grouped), Married, Health Care Coverage, for the Year(s) - 2000-2002, 2001-2003, 2002-2004, 2003-2005, 2004-2006, 2005-2007, 2006-2008, 2007-2009, 2008-2010

Note: Weighted numbers (#) represent 3-yr averages, percentages and 95% confidence intervals; Respondents aged 18 years and older; n/r (Not Reportable) - If the unweighted total responses for a dimension (row) is <50 that row will not be shown; n/a (Not Available) - Not asked of a subset of respondents

Year: 2008-2010

Poverty Level	Good or Better			Fair or Poor			Estimated Population (3-Yr Avg)
	#	%	C.I. (95%)	#	%	C.I. (95%)	#
0-130%	163,300	79.0	77.1 - 80.9	43,400	21.0	19.1 - 22.9	206,800
131-185%	114,000	83.3	81.4 - 85.2	22,800	16.7	14.8 - 18.6	136,900
186+%	500,600	89.3	88.5 - 90.0	60,100	10.7	10.0 - 11.5	560,700

Marital Status (Grouped)	Good or Better			Fair or Poor			Estimated Population (3-Yr Avg)
	#	%	C.I. (95%)	#	%	C.I. (95%)	#
Married	510,500	87.0	86.2 - 87.9	76,000	13.0	12.1 - 13.8	586,500
Unmarried Couple	26,900	85.0	80.5 - 89.4	4,800	15.0	10.6 - 19.5	31,600
Widowed	43,200	73.9	71.3 - 76.5	15,300	26.1	23.5 - 28.7	58,500
Other	280,500	85.6	84.2 - 87.0	47,200	14.4	13.0 - 15.8	327,700

Health status - two level by State, County, Island, Community, BRFSS Age Group, DOH Race-Ethnicity, Gender, Education Level, Employment Status (Grouped), Household Income, Poverty Level, Marital Status (Grouped), Married, Health Care Coverage, for the Year(s) - 2000-2002, 2001-2003, 2002-2004, 2003-2005, 2004-2006, 2005-2007, 2006-2008, 2007-2009, 2008-2010

Note: Weighted numbers (#) represent 3-yr averages, percentages and 95% confidence intervals; Respondents aged 18 years and older; n/r (Not Reportable) - If the unweighted total responses for a dimension (row) is <50 that row will not be shown; n/a (Not Available) - Not asked of a subset of respondents

Year: 2008-2010

Married	Good or Better			Fair or Poor			Estimated Population (3-Yr Avg)
	#	%	C.I. (95%)	#	%	C.I. (95%)	#
Yes	520,300	87.0	86.2 - 87.8	77,600	13.0	12.2 - 13.8	597,900
No	338,900	83.8	82.6 - 85.0	65,500	16.2	15.0 - 17.4	404,400

Health Care Coverage	Good or Better			Fair or Poor			Estimated Population (3-Yr Avg)
	#	%	C.I. (95%)	#	%	C.I. (95%)	#
Yes	801,200	85.8	85.1 - 86.5	132,700	14.2	13.5 - 14.9	933,900
No	57,800	84.9	81.2 - 88.6	10,300	15.1	11.4 - 18.8	68,100

Health status - two level by State, County, Island, Community, BRFSS Age Group, DOH Race-Ethnicity, Gender, Education Level, Employment Status (Grouped), Household Income, Poverty Level, Marital Status (Grouped), Married, Health Care Coverage, for the Year(s) - 2000-2002, 2001-2003, 2002-2004, 2003-2005, 2004-2006, 2005-2007, 2006-2008, 2007-2009, 2008-2010

Note: Weighted numbers (#) represent 3-yr averages, percentages and 95% confidence intervals; Respondents aged 18 years and older; n/r (Not Reportable) - If the unweighted total responses for a dimension (row) is <50 that row will not be shown; n/a (Not Available) - Not asked of a subset of respondents

Year: 2007-2009

State	Good or Better			Fair or Poor			Estimated Population (3-Yr Avg)
	#	%	C.I. (95%)	#	%	C.I. (95%)	#
Hawaii State	853,400	85.6	84.9 - 86.2	143,900	14.4	13.8 - 15.1	997,300

County	Good or Better			Fair or Poor			Estimated Population (3-Yr Avg)
	#	%	C.I. (95%)	#	%	C.I. (95%)	#
Hawaii	112,300	83.8	82.4 - 85.1	21,800	16.2	14.9 - 17.6	134,000
Honolulu	606,400	86.0	85.1 - 86.9	98,800	14.0	13.1 - 14.9	705,200
Kauai	40,600	84.3	82.1 - 86.4	7,600	15.7	13.6 - 17.9	48,200
Maui	94,100	85.7	84.2 - 87.1	15,700	14.3	12.9 - 15.8	109,800

Health status - two level by State, County, Island, Community, BRFSS Age Group, DOH Race-Ethnicity, Gender, Education Level, Employment Status (Grouped), Household Income, Poverty Level, Marital Status (Grouped), Married, Health Care Coverage, for the Year(s) - 2000-2002, 2001-2003, 2002-2004, 2003-2005, 2004-2006, 2005-2007, 2006-2008, 2007-2009, 2008-2010

Note: Weighted numbers (#) represent 3-yr averages, percentages and 95% confidence intervals; Respondents aged 18 years and older; n/r (Not Reportable) - If the unweighted total responses for a dimension (row) is <50 that row will not be shown; n/a (Not Available) - Not asked of a subset of respondents

Year: 2007-2009

Island	Good or Better			Fair or Poor			Estimated Population (3-Yr Avg)
	#	%	C.I. (95%)	#	%	C.I. (95%)	#
Hawaii	112,300	83.8	82.4 - 85.1	21,800	16.2	14.9 - 17.6	134,000
Kauai	40,600	84.3	82.1 - 86.4	7,600	15.7	13.6 - 17.9	48,200
Lanai	1,500	83.0	79.4 - 86.5	300	17.0	13.5 - 20.6	1,900
Maui	86,000	86.0	84.5 - 87.6	14,000	14.0	12.4 - 15.5	99,900
Molokai	6,600	81.8	78.2 - 85.3	1,500	18.2	14.7 - 21.8	8,100
Oahu	606,400	86.0	85.1 - 86.9	98,800	14.0	13.1 - 14.9	705,200

Community	Good or Better			Fair or Poor			Estimated Population (3-Yr Avg)
	#	%	C.I. (95%)	#	%	C.I. (95%)	#
Aiea/ Pearl City	54,700	85.2	82.3 - 88.1	9,500	14.8	11.9 - 17.7	64,200
Ala Moana	24,300	81.8	77.8 - 85.9	5,400	18.2	14.1 - 22.2	29,700

Health status - two level by State, County, Island, Community, BRFSS Age Group, DOH Race-Ethnicity, Gender, Education Level, Employment Status (Grouped), Household Income, Poverty Level, Marital Status (Grouped), Married, Health Care Coverage, for the Year(s) - 2000-2002, 2001-2003, 2002-2004, 2003-2005, 2004-2006, 2005-2007, 2006-2008, 2007-2009, 2008-2010

Note: Weighted numbers (#) represent 3-yr averages, percentages and 95% confidence intervals; Respondents aged 18 years and older; n/r (Not Reportable) - If the unweighted total responses for a dimension (row) is <50 that row will not be shown; n/a (Not Available) - Not asked of a subset of respondents

Year: 2007-2009

Community	Good or Better			Fair or Poor			Estimated Population (3-Yr Avg)
	#	%	C.I. (95%)	#	%	C.I. (95%)	#
Hanalei/ Kapaa	16,900	84.9	81.6 - 88.1	3,000	15.1	11.9 - 18.4	19,900
Hilo	33,200	83.6	81.3 - 85.9	6,500	16.4	14.1 - 18.7	39,700
Kaaawa/ Kahaluu/ Kaneohe	43,600	88.8	86.1 - 91.4	5,500	11.2	8.6 - 13.9	49,100
Kahului	29,200	85.4	82.5 - 88.3	5,000	14.6	11.7 - 17.5	34,200
Kailua/ Waimanalo	44,400	86.4	83.0 - 89.7	7,000	13.6	10.3 - 17.0	51,400
Kaimuki/ Palolo/ Waikiki	48,500	85.0	82.1 - 87.9	8,500	15.0	12.1 - 17.9	57,000
Kona	24,100	84.0	81.0 - 87.0	4,600	16.0	13.0 - 19.0	28,700
Lahaina/ Wailuku	27,900	86.6	84.0 - 89.2	4,300	13.4	10.8 - 16.0	32,200
Lanai	1,500	83.0	79.4 - 86.5	300	17.0	13.5 - 20.6	1,900
Lihue-Waimea	23,700	83.9	81.1 - 86.7	4,600	16.1	13.3 - 18.9	28,300
Manoa/ Upper Makiki	40,800	88.1	85.4 - 90.8	5,500	11.9	9.2 - 14.6	46,300
Mililani/ Wahiawa	66,800	87.4	84.8 - 90.0	9,600	12.6	10.0 - 15.2	76,500

Health status - two level by State, County, Island, Community, BRFSS Age Group, DOH Race-Ethnicity, Gender, Education Level, Employment Status (Grouped), Household Income, Poverty Level, Marital Status (Grouped), Married, Health Care Coverage, for the Year(s) - 2000-2002, 2001-2003, 2002-2004, 2003-2005, 2004-2006, 2005-2007, 2006-2008, 2007-2009, 2008-2010

Note: Weighted numbers (#) represent 3-yr averages, percentages and 95% confidence intervals; Respondents aged 18 years and older; n/r (Not Reportable) - If the unweighted total responses for a dimension (row) is <50 that row will not be shown; n/a (Not Available) - Not asked of a subset of respondents

Year: 2007-2009

Community	Good or Better			Fair or Poor			Estimated Population (3-Yr Avg)
	#	%	C.I. (95%)	#	%	C.I. (95%)	#
Molokai	6,600	81.8	78.2 - 85.3	1,500	18.2	14.7 - 21.8	8,100
Nanakuli/ Waianae	25,700	74.1	68.4 - 79.8	9,000	25.9	20.2 - 31.6	34,700
N.Hawaii	23,200	82.6	79.2 - 86.0	4,900	17.4	14.0 - 20.8	28,100
N.Shore/ Laie	19,500	89.7	85.0 - 94.3	2,200	10.3	5.7 - 15.0	21,700
Nuuanu/ Kalihi/ Moanalua	59,400	85.0	82.0 - 88.0	10,500	15.0	12.0 - 18.0	70,000
Puna/ Kau	31,700	84.5	82.2 - 86.9	5,800	15.5	13.1 - 17.8	37,500
Salt Lake/ Foster Village	31,400	90.8	87.9 - 93.7	3,200	9.2	6.3 - 12.1	34,500
Upcountry/ Hana	28,900	86.1	83.6 - 88.7	4,700	13.9	11.3 - 16.4	33,600
Waialae/ Kahala/ Hawaii Kai	42,500	91.0	88.1 - 93.9	4,200	9.0	6.1 - 11.9	46,700
Waipahu/ Kapolei/ Ewa	104,700	85.0	82.7 - 87.3	18,500	15.0	12.7 - 17.3	123,300

Health status - two level by State, County, Island, Community, BRFSS Age Group, DOH Race-Ethnicity, Gender, Education Level, Employment Status (Grouped), Household Income, Poverty Level, Marital Status (Grouped), Married, Health Care Coverage, for the Year(s) - 2000-2002, 2001-2003, 2002-2004, 2003-2005, 2004-2006, 2005-2007, 2006-2008, 2007-2009, 2008-2010

Note: Weighted numbers (#) represent 3-yr averages, percentages and 95% confidence intervals; Respondents aged 18 years and older; n/r (Not Reportable) - If the unweighted total responses for a dimension (row) is <50 that row will not be shown; n/a (Not Available) - Not asked of a subset of respondents

Year: 2007-2009

BRFSS Age Group	Good or Better			Fair or Poor			Estimated Population (3-Yr Avg)
	#	%	C.I. (95%)	#	%	C.I. (95%)	#
18-24	110,800	89.5	87.1 - 92.0	13,000	10.5	8.0 - 12.9	123,700
25-34	156,000	90.4	88.7 - 92.1	16,500	9.6	7.9 - 11.3	172,600
35-44	159,200	89.9	88.4 - 91.3	18,000	10.1	8.7 - 11.6	177,200
45-54	155,000	85.6	84.2 - 87.0	26,100	14.4	13.0 - 15.8	181,100
55-64	127,300	83.0	81.5 - 84.5	26,100	17.0	15.5 - 18.5	153,400
65-74	71,300	80.6	78.6 - 82.6	17,100	19.4	17.4 - 21.4	88,400
75+	70,000	72.8	70.5 - 75.1	26,200	27.2	24.9 - 29.5	96,100

Health status - two level by State, County, Island, Community, BRFSS Age Group, DOH Race-Ethnicity, Gender, Education Level, Employment Status (Grouped), Household Income, Poverty Level, Marital Status (Grouped), Married, Health Care Coverage, for the Year(s) - 2000-2002, 2001-2003, 2002-2004, 2003-2005, 2004-2006, 2005-2007, 2006-2008, 2007-2009, 2008-2010

Note: Weighted numbers (#) represent 3-yr averages, percentages and 95% confidence intervals; Respondents aged 18 years and older; n/r (Not Reportable) - If the unweighted total responses for a dimension (row) is <50 that row will not be shown; n/a (Not Available) - Not asked of a subset of respondents

Year: 2007-2009

DOH Race-Ethnicity	Good or Better			Fair or Poor			Estimated Population (3-Yr Avg)
	#	%	C.I. (95%)	#	%	C.I. (95%)	#
Caucasian	284,000	88.7	87.7 - 89.6	36,300	11.3	10.4 - 12.3	320,200
Native Hawaiian	105,700	79.9	77.6 - 82.2	26,600	20.1	17.8 - 22.4	132,300
Chinese	54,100	88.0	85.6 - 90.3	7,400	12.0	9.7 - 14.4	61,500
Filipino	139,400	86.0	84.2 - 87.8	22,600	14.0	12.2 - 15.8	162,000
Japanese	190,800	84.3	82.9 - 85.7	35,500	15.7	14.3 - 17.1	226,300
Black	13,500	87.3	81.7 - 92.8	2,000	12.7	7.2 - 18.3	15,400
Native Alaskan/ American Indian	4,600	81.8	73.8 - 89.8	1,000	18.2	10.2 - 26.2	5,700
Other Asian	20,700	88.4	84.4 - 92.4	2,700	11.6	7.6 - 15.6	23,500
Other Pacific Islander	21,600	83.4	77.6 - 89.3	4,300	16.6	10.7 - 22.4	25,800
Other	16,200	76.2	70.0 - 82.3	5,100	23.8	17.7 - 30.0	21,200

Health status - two level by State, County, Island, Community, BRFSS Age Group, DOH Race-Ethnicity, Gender, Education Level, Employment Status (Grouped), Household Income, Poverty Level, Marital Status (Grouped), Married, Health Care Coverage, for the Year(s) - 2000-2002, 2001-2003, 2002-2004, 2003-2005, 2004-2006, 2005-2007, 2006-2008, 2007-2009, 2008-2010

Note: Weighted numbers (#) represent 3-yr averages, percentages and 95% confidence intervals; Respondents aged 18 years and older; n/r (Not Reportable) - If the unweighted total responses for a dimension (row) is <50 that row will not be shown; n/a (Not Available) - Not asked of a subset of respondents

Year: 2007-2009

Gender	Good or Better			Fair or Poor			Estimated Population (3-Yr Avg)
	#	%	C.I. (95%)	#	%	C.I. (95%)	#
Male	425,700	86.2	85.1 - 87.2	68,400	13.8	12.8 - 14.9	494,100
Female	427,700	85.0	84.1 - 85.9	75,500	15.0	14.1 - 15.9	503,200

Education Level	Good or Better			Fair or Poor			Estimated Population (3-Yr Avg)
	#	%	C.I. (95%)	#	%	C.I. (95%)	#
Never attended school/ Only Kindergarten to Grades 8	8,800	68.7	61.6 - 75.7	4,000	31.3	24.3 - 38.4	12,800
Grades 9 thru 11 (Some High School)	25,900	67.5	62.7 - 72.3	12,500	32.5	27.7 - 37.3	38,400
Grades 12 or GED (High School Grad)	240,500	80.9	79.5 - 82.4	56,700	19.1	17.6 - 20.5	297,200
College 1 to 3 years (Some College/ Tech)	250,400	86.4	85.1 - 87.6	39,500	13.6	12.4 - 14.9	289,800
College 4 years or more (College Grad)	326,800	91.3	90.5 - 92.1	31,100	8.7	7.9 - 9.5	357,800

Health status - two level by State, County, Island, Community, BRFSS Age Group, DOH Race-Ethnicity, Gender, Education Level, Employment Status (Grouped), Household Income, Poverty Level, Marital Status (Grouped), Married, Health Care Coverage, for the Year(s) - 2000-2002, 2001-2003, 2002-2004, 2003-2005, 2004-2006, 2005-2007, 2006-2008, 2007-2009, 2008-2010

Note: Weighted numbers (#) represent 3-yr averages, percentages and 95% confidence intervals; Respondents aged 18 years and older; n/r (Not Reportable) - If the unweighted total responses for a dimension (row) is <50 that row will not be shown; n/a (Not Available) - Not asked of a subset of respondents

Year: 2007-2009

Employment Status (Grouped)	Good or Better			Fair or Poor			Estimated Population (3-Yr Avg)
	#	%	C.I. (95%)	#	%	C.I. (95%)	#
Employed	567,800	89.9	89.2 - 90.7	63,700	10.1	9.3 - 10.8	631,400
Unemployed	38,500	79.4	75.1 - 83.7	10,000	20.6	16.3 - 24.9	48,500
Retired/Unable to work	160,600	73.1	71.5 - 74.6	59,200	26.9	25.4 - 28.5	219,800
Student/Homemaker	85,600	88.9	86.5 - 91.2	10,700	11.1	8.8 - 13.5	96,300

Health status - two level by State, County, Island, Community, BRFSS Age Group, DOH Race-Ethnicity, Gender, Education Level, Employment Status (Grouped), Household Income, Poverty Level, Marital Status (Grouped), Married, Health Care Coverage, for the Year(s) - 2000-2002, 2001-2003, 2002-2004, 2003-2005, 2004-2006, 2005-2007, 2006-2008, 2007-2009, 2008-2010

Note: Weighted numbers (#) represent 3-yr averages, percentages and 95% confidence intervals; Respondents aged 18 years and older; n/r (Not Reportable) - If the unweighted total responses for a dimension (row) is <50 that row will not be shown; n/a (Not Available) - Not asked of a subset of respondents

Year: 2007-2009

Household Income	Good or Better			Fair or Poor			Estimated Population (3-Yr Avg)
	#	%	C.I. (95%)	#	%	C.I. (95%)	#
Less than \$10,000	17,400	65.3	60.2 - 70.5	9,200	34.7	29.5 - 39.8	26,600
\$10,000 to \$14,999	17,700	69.1	63.6 - 74.7	7,900	30.9	25.3 - 36.4	25,600
\$15,000 to \$19,999	33,800	75.4	72.0 - 78.8	11,000	24.6	21.2 - 28.0	44,800
\$20,000 to \$24,999	45,700	78.2	75.1 - 81.3	12,700	21.8	18.7 - 24.9	58,500
\$25,000 to \$34,999	87,800	83.1	81.0 - 85.3	17,800	16.9	14.7 - 19.0	105,600
\$35,000 to \$49,999	133,300	85.7	84.0 - 87.4	22,200	14.3	12.6 - 16.0	155,600
\$50,000 to \$74,999	158,700	88.8	87.4 - 90.2	20,000	11.2	9.8 - 12.6	178,700
\$75,000 or more	280,600	91.5	90.5 - 92.5	26,100	8.5	7.5 - 9.5	306,800

Health status - two level by State, County, Island, Community, BRFSS Age Group, DOH Race-Ethnicity, Gender, Education Level, Employment Status (Grouped), Household Income, Poverty Level, Marital Status (Grouped), Married, Health Care Coverage, for the Year(s) - 2000-2002, 2001-2003, 2002-2004, 2003-2005, 2004-2006, 2005-2007, 2006-2008, 2007-2009, 2008-2010

Note: Weighted numbers (#) represent 3-yr averages, percentages and 95% confidence intervals; Respondents aged 18 years and older; n/r (Not Reportable) - If the unweighted total responses for a dimension (row) is <50 that row will not be shown; n/a (Not Available) - Not asked of a subset of respondents

Year: 2007-2009

Poverty Level	Good or Better			Fair or Poor			Estimated Population (3-Yr Avg)
	#	%	C.I. (95%)	#	%	C.I. (95%)	#
0-130%	152,700	77.9	76.0 - 79.9	43,200	22.1	20.1 - 24.0	195,900
131-185%	106,800	83.4	81.3 - 85.4	21,300	16.6	14.6 - 18.7	128,100
186+%	515,300	89.2	88.5 - 89.9	62,600	10.8	10.1 - 11.5	577,900

Marital Status (Grouped)	Good or Better			Fair or Poor			Estimated Population (3-Yr Avg)
	#	%	C.I. (95%)	#	%	C.I. (95%)	#
Married	512,500	87.1	86.3 - 87.9	75,800	12.9	12.1 - 13.7	588,300
Unmarried Couple	25,000	86.2	81.9 - 90.4	4,000	13.8	9.6 - 18.1	29,000
Widowed	43,300	74.3	71.7 - 76.9	15,000	25.7	23.1 - 28.3	58,300
Other	272,600	84.7	83.4 - 86.1	49,100	15.3	13.9 - 16.6	321,600

Health status - two level by State, County, Island, Community, BRFSS Age Group, DOH Race-Ethnicity, Gender, Education Level, Employment Status (Grouped), Household Income, Poverty Level, Marital Status (Grouped), Married, Health Care Coverage, for the Year(s) - 2000-2002, 2001-2003, 2002-2004, 2003-2005, 2004-2006, 2005-2007, 2006-2008, 2007-2009, 2008-2010

Note: Weighted numbers (#) represent 3-yr averages, percentages and 95% confidence intervals; Respondents aged 18 years and older; n/r (Not Reportable) - If the unweighted total responses for a dimension (row) is <50 that row will not be shown; n/a (Not Available) - Not asked of a subset of respondents

Year: 2007-2009

Married	Good or Better			Fair or Poor			Estimated Population (3-Yr Avg)
	#	%	C.I. (95%)	#	%	C.I. (95%)	#
Yes	520,900	87.0	86.2 - 87.8	77,800	13.0	12.2 - 13.8	598,700
No	330,700	83.4	82.2 - 84.6	66,000	16.6	15.4 - 17.8	396,700

Health Care Coverage	Good or Better			Fair or Poor			Estimated Population (3-Yr Avg)
	#	%	C.I. (95%)	#	%	C.I. (95%)	#
Yes	796,600	85.6	85.0 - 86.3	133,700	14.4	13.7 - 15.0	930,300
No	55,000	84.6	81.2 - 87.9	10,000	15.4	12.1 - 18.8	65,000

Health status - two level by State, County, Island, Community, BRFSS Age Group, DOH Race-Ethnicity, Gender, Education Level, Employment Status (Grouped), Household Income, Poverty Level, Marital Status (Grouped), Married, Health Care Coverage, for the Year(s) - 2000-2002, 2001-2003, 2002-2004, 2003-2005, 2004-2006, 2005-2007, 2006-2008, 2007-2009, 2008-2010

Note: Weighted numbers (#) represent 3-yr averages, percentages and 95% confidence intervals; Respondents aged 18 years and older; n/r (Not Reportable) - If the unweighted total responses for a dimension (row) is <50 that row will not be shown; n/a (Not Available) - Not asked of a subset of respondents

Year: 2006-2008

State	Good or Better			Fair or Poor			Estimated Population (3-Yr Avg)
	#	%	C.I. (95%)	#	%	C.I. (95%)	#
Hawaii State	841,500	85.2	84.6 - 85.9	145,700	14.8	14.1 - 15.4	987,200

County	Good or Better			Fair or Poor			Estimated Population (3-Yr Avg)
	#	%	C.I. (95%)	#	%	C.I. (95%)	#
Hawaii	107,100	83.3	81.9 - 84.6	21,500	16.7	15.4 - 18.1	128,600
Honolulu	601,500	85.6	84.8 - 86.5	100,900	14.4	13.5 - 15.2	702,300
Kauai	40,100	83.6	81.4 - 85.7	7,900	16.4	14.3 - 18.6	48,000
Maui	92,800	85.8	84.4 - 87.3	15,400	14.2	12.7 - 15.6	108,200

Health status - two level by State, County, Island, Community, BRFSS Age Group, DOH Race-Ethnicity, Gender, Education Level, Employment Status (Grouped), Household Income, Poverty Level, Marital Status (Grouped), Married, Health Care Coverage, for the Year(s) - 2000-2002, 2001-2003, 2002-2004, 2003-2005, 2004-2006, 2005-2007, 2006-2008, 2007-2009, 2008-2010

Note: Weighted numbers (#) represent 3-yr averages, percentages and 95% confidence intervals; Respondents aged 18 years and older; n/r (Not Reportable) - If the unweighted total responses for a dimension (row) is <50 that row will not be shown; n/a (Not Available) - Not asked of a subset of respondents

Year: 2006-2008

Island	Good or Better			Fair or Poor			Estimated Population (3-Yr Avg)
	#	%	C.I. (95%)	#	%	C.I. (95%)	#
Hawaii	107,100	83.3	81.9 - 84.6	21,500	16.7	15.4 - 18.1	128,600
Kauai	40,100	83.6	81.4 - 85.7	7,900	16.4	14.3 - 18.6	48,000
Lanai	1,700	81.5	77.7 - 85.4	400	18.5	14.6 - 22.3	2,100
Maui	84,900	86.1	84.5 - 87.7	13,700	13.9	12.3 - 15.5	98,600
Molokai	6,200	83.1	79.9 - 86.4	1,300	16.9	13.6 - 20.1	7,500
Oahu	601,500	85.6	84.8 - 86.5	100,900	14.4	13.5 - 15.2	702,300

Community	Good or Better			Fair or Poor			Estimated Population (3-Yr Avg)
	#	%	C.I. (95%)	#	%	C.I. (95%)	#
Aiea/ Pearl City	56,600	84.9	82.1 - 87.7	10,100	15.1	12.3 - 17.9	66,700
Ala Moana	26,100	82.3	78.6 - 86.1	5,600	17.7	13.9 - 21.4	31,700

Health status - two level by State, County, Island, Community, BRFSS Age Group, DOH Race-Ethnicity, Gender, Education Level, Employment Status (Grouped), Household Income, Poverty Level, Marital Status (Grouped), Married, Health Care Coverage, for the Year(s) - 2000-2002, 2001-2003, 2002-2004, 2003-2005, 2004-2006, 2005-2007, 2006-2008, 2007-2009, 2008-2010

Note: Weighted numbers (#) represent 3-yr averages, percentages and 95% confidence intervals; Respondents aged 18 years and older; n/r (Not Reportable) - If the unweighted total responses for a dimension (row) is <50 that row will not be shown; n/a (Not Available) - Not asked of a subset of respondents

Year: 2006-2008

Community	Good or Better			Fair or Poor			Estimated Population (3-Yr Avg)
	#	%	C.I. (95%)	#	%	C.I. (95%)	#
Hanalei/ Kapaa	16,700	82.3	78.7 - 85.9	3,600	17.7	14.1 - 21.3	20,300
Hilo	31,200	82.4	79.9 - 84.9	6,700	17.6	15.1 - 20.1	37,800
Kaaawa/ Kahaluu/ Kaneohe	42,700	87.4	84.4 - 90.4	6,200	12.6	9.6 - 15.6	48,900
Kahului	28,800	87.0	84.3 - 89.6	4,300	13.0	10.4 - 15.7	33,100
Kailua/ Waimanalo	44,400	87.6	84.9 - 90.4	6,300	12.4	9.6 - 15.1	50,700
Kaimuki/ Palolo/ Waikiki	49,000	85.4	82.3 - 88.4	8,400	14.6	11.6 - 17.7	57,300
Kona	24,000	84.6	81.7 - 87.4	4,400	15.4	12.6 - 18.3	28,400
Lahaina/ Wailuku	28,000	85.8	83.1 - 88.6	4,600	14.2	11.4 - 16.9	32,700
Lanai	1,700	81.5	77.7 - 85.4	400	18.5	14.6 - 22.3	2,100
Lihue-Waimea	23,400	84.5	81.9 - 87.1	4,300	15.5	12.9 - 18.1	27,700
Manoa/ Upper Makiki	40,500	86.5	83.5 - 89.5	6,300	13.5	10.5 - 16.5	46,800
Mililani/ Wahiawa	61,500	86.8	84.2 - 89.4	9,400	13.2	10.6 - 15.8	70,900

Health status - two level by State, County, Island, Community, BRFSS Age Group, DOH Race-Ethnicity, Gender, Education Level, Employment Status (Grouped), Household Income, Poverty Level, Marital Status (Grouped), Married, Health Care Coverage, for the Year(s) - 2000-2002, 2001-2003, 2002-2004, 2003-2005, 2004-2006, 2005-2007, 2006-2008, 2007-2009, 2008-2010

Note: Weighted numbers (#) represent 3-yr averages, percentages and 95% confidence intervals; Respondents aged 18 years and older; n/r (Not Reportable) - If the unweighted total responses for a dimension (row) is <50 that row will not be shown; n/a (Not Available) - Not asked of a subset of respondents

Year: 2006-2008

Community	Good or Better			Fair or Poor			Estimated Population (3-Yr Avg)
	#	%	C.I. (95%)	#	%	C.I. (95%)	#
Molokai	6,200	83.1	79.9 - 86.4	1,300	16.9	13.6 - 20.1	7,500
Nanakuli/ Waianae	26,400	76.0	70.7 - 81.2	8,400	24.0	18.8 - 29.3	34,800
N.Hawaii	23,200	84.2	81.0 - 87.4	4,400	15.8	12.6 - 19.0	27,500
N.Shore/ Laie	20,600	87.4	82.7 - 92.1	3,000	12.6	7.9 - 17.3	23,500
Nuuanu/ Kalihi/ Moanalua	58,000	83.6	80.4 - 86.7	11,400	16.4	13.3 - 19.6	69,500
Puna/ Kau	28,700	82.4	79.9 - 84.9	6,100	17.6	15.1 - 20.1	34,900
Salt Lake/ Foster Village	30,600	90.0	86.7 - 93.2	3,400	10.0	6.8 - 13.3	34,100
Upcountry/ Hana	28,100	85.5	82.7 - 88.2	4,800	14.5	11.8 - 17.3	32,800
Waialae/ Kahala/ Hawaii Kai	38,700	91.3	88.4 - 94.3	3,700	8.7	5.7 - 11.6	42,400
Waipahu/ Kapolei/ Ewa	106,300	84.9	82.6 - 87.2	18,800	15.1	12.8 - 17.4	125,100

Health status - two level by State, County, Island, Community, BRFSS Age Group, DOH Race-Ethnicity, Gender, Education Level, Employment Status (Grouped), Household Income, Poverty Level, Marital Status (Grouped), Married, Health Care Coverage, for the Year(s) - 2000-2002, 2001-2003, 2002-2004, 2003-2005, 2004-2006, 2005-2007, 2006-2008, 2007-2009, 2008-2010

Note: Weighted numbers (#) represent 3-yr averages, percentages and 95% confidence intervals; Respondents aged 18 years and older; n/r (Not Reportable) - If the unweighted total responses for a dimension (row) is <50 that row will not be shown; n/a (Not Available) - Not asked of a subset of respondents

Year: 2006-2008

BRFSS Age Group	Good or Better			Fair or Poor			Estimated Population (3-Yr Avg)
	#	%	C.I. (95%)	#	%	C.I. (95%)	#
18-24	111,600	89.7	87.4 - 92.0	12,800	10.3	8.0 - 12.6	124,400
25-34	151,200	90.4	88.8 - 92.0	16,000	9.6	8.0 - 11.2	167,200
35-44	159,800	90.2	88.8 - 91.5	17,400	9.8	8.5 - 11.2	177,300
45-54	153,500	85.0	83.6 - 86.5	27,100	15.0	13.5 - 16.4	180,600
55-64	123,200	81.5	79.8 - 83.2	28,000	18.5	16.8 - 20.2	151,200
65-74	67,500	79.0	76.8 - 81.1	18,000	21.0	18.9 - 23.2	85,500
75+	69,400	73.2	70.8 - 75.5	25,400	26.8	24.5 - 29.2	94,800

Health status - two level by State, County, Island, Community, BRFSS Age Group, DOH Race-Ethnicity, Gender, Education Level, Employment Status (Grouped), Household Income, Poverty Level, Marital Status (Grouped), Married, Health Care Coverage, for the Year(s) - 2000-2002, 2001-2003, 2002-2004, 2003-2005, 2004-2006, 2005-2007, 2006-2008, 2007-2009, 2008-2010

Note: Weighted numbers (#) represent 3-yr averages, percentages and 95% confidence intervals; Respondents aged 18 years and older; n/r (Not Reportable) - If the unweighted total responses for a dimension (row) is <50 that row will not be shown; n/a (Not Available) - Not asked of a subset of respondents

Year: 2006-2008

DOH Race-Ethnicity	Good or Better			Fair or Poor			Estimated Population (3-Yr Avg)
	#	%	C.I. (95%)	#	%	C.I. (95%)	#
Caucasian	283,100	88.2	87.3 - 89.2	37,800	11.8	10.8 - 12.7	320,900
Native Hawaiian	105,200	80.1	77.9 - 82.3	26,100	19.9	17.7 - 22.1	131,300
Chinese	49,800	88.6	86.2 - 90.9	6,400	11.4	9.1 - 13.8	56,200
Filipino	133,800	84.8	82.9 - 86.7	23,900	15.2	13.3 - 17.1	157,700
Japanese	182,700	84.1	82.7 - 85.5	34,500	15.9	14.5 - 17.3	217,200
Black	12,900	86.7	80.9 - 92.5	2,000	13.3	7.5 - 19.1	14,900
Native Alaskan/ American Indian	4,700	80.9	73.0 - 88.8	1,100	19.1	11.2 - 27.0	5,800
Other Asian	21,800	86.6	82.0 - 91.2	3,400	13.4	8.8 - 18.0	25,200
Other Pacific Islander	20,200	83.9	78.3 - 89.5	3,900	16.1	10.5 - 21.7	24,100
Mixed Ethnicity	7,000	86.2	78.7 - 93.7	1,100	13.8	6.3 - 21.3	8,100
Other	16,800	77.3	71.2 - 83.3	4,900	22.7	16.7 - 28.8	21,700

Health status - two level by State, County, Island, Community, BRFSS Age Group, DOH Race-Ethnicity, Gender, Education Level, Employment Status (Grouped), Household Income, Poverty Level, Marital Status (Grouped), Married, Health Care Coverage, for the Year(s) - 2000-2002, 2001-2003, 2002-2004, 2003-2005, 2004-2006, 2005-2007, 2006-2008, 2007-2009, 2008-2010

Note: Weighted numbers (#) represent 3-yr averages, percentages and 95% confidence intervals; Respondents aged 18 years and older; n/r (Not Reportable) - If the unweighted total responses for a dimension (row) is <50 that row will not be shown; n/a (Not Available) - Not asked of a subset of respondents

Year: 2006-2008

Gender	Good or Better			Fair or Poor			Estimated Population (3-Yr Avg)
	#	%	C.I. (95%)	#	%	C.I. (95%)	#
Male	417,900	85.7	84.7 - 86.7	69,600	14.3	13.3 - 15.3	487,500
Female	423,600	84.8	83.9 - 85.7	76,100	15.2	14.3 - 16.1	499,700

Education Level	Good or Better			Fair or Poor			Estimated Population (3-Yr Avg)
	#	%	C.I. (95%)	#	%	C.I. (95%)	#
Never attended school/ Only Kindergarten to Grades 8	9,100	66.3	59.4 - 73.2	4,600	33.7	26.8 - 40.6	13,700
Grades 9 thru 11 (Some High School)	27,400	69.4	65.0 - 73.9	12,000	30.6	26.1 - 35.0	39,400
Grades 12 or GED (High School Grad)	240,500	80.5	79.1 - 81.9	58,300	19.5	18.1 - 20.9	298,800
College 1 to 3 years (Some College/ Tech)	246,600	86.2	85.0 - 87.4	39,400	13.8	12.6 - 15.0	286,000
College 4 years or more (College Grad)	316,800	91.1	90.2 - 91.9	31,100	8.9	8.1 - 9.8	347,900

Health status - two level by State, County, Island, Community, BRFSS Age Group, DOH Race-Ethnicity, Gender, Education Level, Employment Status (Grouped), Household Income, Poverty Level, Marital Status (Grouped), Married, Health Care Coverage, for the Year(s) - 2000-2002, 2001-2003, 2002-2004, 2003-2005, 2004-2006, 2005-2007, 2006-2008, 2007-2009, 2008-2010

Note: Weighted numbers (#) represent 3-yr averages, percentages and 95% confidence intervals; Respondents aged 18 years and older; n/r (Not Reportable) - If the unweighted total responses for a dimension (row) is <50 that row will not be shown; n/a (Not Available) - Not asked of a subset of respondents

Year: 2006-2008

Employment Status (Grouped)	Good or Better			Fair or Poor			Estimated Population (3-Yr Avg)
	#	%	C.I. (95%)	#	%	C.I. (95%)	#
Employed	567,500	89.8	89.0 - 90.5	64,600	10.2	9.5 - 11.0	632,100
Unemployed	28,300	76.0	71.0 - 80.9	9,000	24.0	19.1 - 29.0	37,200
Retired/Unable to work	163,700	72.9	71.4 - 74.5	60,700	27.1	25.5 - 28.6	224,400
Student/Homemaker	81,100	88.0	85.6 - 90.4	11,100	12.0	9.6 - 14.4	92,200

Health status - two level by State, County, Island, Community, BRFSS Age Group, DOH Race-Ethnicity, Gender, Education Level, Employment Status (Grouped), Household Income, Poverty Level, Marital Status (Grouped), Married, Health Care Coverage, for the Year(s) - 2000-2002, 2001-2003, 2002-2004, 2003-2005, 2004-2006, 2005-2007, 2006-2008, 2007-2009, 2008-2010

Note: Weighted numbers (#) represent 3-yr averages, percentages and 95% confidence intervals; Respondents aged 18 years and older; n/r (Not Reportable) - If the unweighted total responses for a dimension (row) is <50 that row will not be shown; n/a (Not Available) - Not asked of a subset of respondents

Year: 2006-2008

Household Income	Good or Better			Fair or Poor			Estimated Population (3-Yr Avg)
	#	%	C.I. (95%)	#	%	C.I. (95%)	#
Less than \$10,000	17,300	66.0	60.9 - 71.1	8,900	34.0	28.9 - 39.1	26,300
\$10,000 to \$14,999	17,700	67.7	62.3 - 73.1	8,500	32.3	26.9 - 37.7	26,200
\$15,000 to \$19,999	31,800	73.6	70.0 - 77.1	11,400	26.4	22.9 - 30.0	43,200
\$20,000 to \$24,999	47,500	78.3	75.4 - 81.3	13,100	21.7	18.7 - 24.6	60,700
\$25,000 to \$34,999	88,400	82.2	79.9 - 84.5	19,100	17.8	15.5 - 20.1	107,600
\$35,000 to \$49,999	126,900	85.2	83.5 - 87.0	22,000	14.8	13.0 - 16.5	148,900
\$50,000 to \$74,999	151,800	88.7	87.3 - 90.2	19,300	11.3	9.8 - 12.7	171,100
\$75,000 or more	260,200	91.8	90.8 - 92.8	23,400	8.2	7.2 - 9.2	283,500

Health status - two level by State, County, Island, Community, BRFSS Age Group, DOH Race-Ethnicity, Gender, Education Level, Employment Status (Grouped), Household Income, Poverty Level, Marital Status (Grouped), Married, Health Care Coverage, for the Year(s) - 2000-2002, 2001-2003, 2002-2004, 2003-2005, 2004-2006, 2005-2007, 2006-2008, 2007-2009, 2008-2010

Note: Weighted numbers (#) represent 3-yr averages, percentages and 95% confidence intervals; Respondents aged 18 years and older; n/r (Not Reportable) - If the unweighted total responses for a dimension (row) is <50 that row will not be shown; n/a (Not Available) - Not asked of a subset of respondents

Year: 2006-2008

Poverty Level	Good or Better			Fair or Poor			Estimated Population (3-Yr Avg)
	#	%	C.I. (95%)	#	%	C.I. (95%)	#
0-130%	143,200	77.0	74.9 - 79.0	42,900	23.0	21.0 - 25.1	186,100
131-185%	96,500	82.7	80.5 - 84.9	20,200	17.3	15.1 - 19.5	116,700
186+%	501,900	88.9	88.2 - 89.6	62,600	11.1	10.4 - 11.8	564,600

Marital Status (Grouped)	Good or Better			Fair or Poor			Estimated Population (3-Yr Avg)
	#	%	C.I. (95%)	#	%	C.I. (95%)	#
Married	506,700	86.7	85.9 - 87.5	77,800	13.3	12.5 - 14.1	584,400
Unmarried Couple	24,900	86.9	82.5 - 91.2	3,800	13.1	8.8 - 17.5	28,600
Widowed	41,600	73.4	70.7 - 76.2	15,000	26.6	23.8 - 29.3	56,600
Other	268,400	84.5	83.2 - 85.8	49,100	15.5	14.2 - 16.8	317,500

Health status - two level by State, County, Island, Community, BRFSS Age Group, DOH Race-Ethnicity, Gender, Education Level, Employment Status (Grouped), Household Income, Poverty Level, Marital Status (Grouped), Married, Health Care Coverage, for the Year(s) - 2000-2002, 2001-2003, 2002-2004, 2003-2005, 2004-2006, 2005-2007, 2006-2008, 2007-2009, 2008-2010

Note: Weighted numbers (#) represent 3-yr averages, percentages and 95% confidence intervals; Respondents aged 18 years and older; n/r (Not Reportable) - If the unweighted total responses for a dimension (row) is <50 that row will not be shown; n/a (Not Available) - Not asked of a subset of respondents

Year: 2006-2008

Married	Good or Better			Fair or Poor			Estimated Population (3-Yr Avg)
	#	%	C.I. (95%)	#	%	C.I. (95%)	#
Yes	515,200	86.6	85.8 - 87.4	79,700	13.4	12.6 - 14.2	594,900
No	324,700	83.2	82.0 - 84.3	65,700	16.8	15.7 - 18.0	390,500

Health Care Coverage	Good or Better			Fair or Poor			Estimated Population (3-Yr Avg)
	#	%	C.I. (95%)	#	%	C.I. (95%)	#
Yes	784,400	85.5	84.8 - 86.1	133,600	14.5	13.9 - 15.2	918,000
No	55,800	82.8	79.4 - 86.2	11,600	17.2	13.8 - 20.6	67,300

Health status - two level by State, County, Island, Community, BRFSS Age Group, DOH Race-Ethnicity, Gender, Education Level, Employment Status (Grouped), Household Income, Poverty Level, Marital Status (Grouped), Married, Health Care Coverage, for the Year(s) - 2000-2002, 2001-2003, 2002-2004, 2003-2005, 2004-2006, 2005-2007, 2006-2008, 2007-2009, 2008-2010

Note: Weighted numbers (#) represent 3-yr averages, percentages and 95% confidence intervals; Respondents aged 18 years and older; n/r (Not Reportable) - If the unweighted total responses for a dimension (row) is <50 that row will not be shown; n/a (Not Available) - Not asked of a subset of respondents

Year: 2005-2007

State	Good or Better			Fair or Poor			Estimated Population (3-Yr Avg)
	#	%	C.I. (95%)	#	%	C.I. (95%)	#
Hawaii State	838,800	85.6	85.0 - 86.3	140,600	14.4	13.7 - 15.0	979,400

County	Good or Better			Fair or Poor			Estimated Population (3-Yr Avg)
	#	%	C.I. (95%)	#	%	C.I. (95%)	#
Hawaii	102,000	82.3	80.9 - 83.7	21,900	17.7	16.3 - 19.1	123,900
Honolulu	604,700	86.2	85.3 - 87.0	97,100	13.8	13.0 - 14.7	701,800
Kauai	39,400	83.6	81.4 - 85.7	7,800	16.4	14.3 - 18.6	47,200
Maui	92,600	87.0	85.7 - 88.4	13,800	13.0	11.6 - 14.3	106,500

Health status - two level by State, County, Island, Community, BRFSS Age Group, DOH Race-Ethnicity, Gender, Education Level, Employment Status (Grouped), Household Income, Poverty Level, Marital Status (Grouped), Married, Health Care Coverage, for the Year(s) - 2000-2002, 2001-2003, 2002-2004, 2003-2005, 2004-2006, 2005-2007, 2006-2008, 2007-2009, 2008-2010

Note: Weighted numbers (#) represent 3-yr averages, percentages and 95% confidence intervals; Respondents aged 18 years and older; n/r (Not Reportable) - If the unweighted total responses for a dimension (row) is <50 that row will not be shown; n/a (Not Available) - Not asked of a subset of respondents

Year: 2005-2007

Island	Good or Better			Fair or Poor			Estimated Population (3-Yr Avg)
	#	%	C.I. (95%)	#	%	C.I. (95%)	#
Hawaii	102,000	82.3	80.9 - 83.7	21,900	17.7	16.3 - 19.1	123,900
Kauai	39,400	83.6	81.4 - 85.7	7,800	16.4	14.3 - 18.6	47,200
Lanai	1,900	82.1	78.3 - 85.9	400	17.9	14.1 - 21.7	2,300
Maui	85,200	87.4	85.9 - 88.8	12,300	12.6	11.2 - 14.1	97,500
Molokai	5,600	83.5	80.1 - 86.9	1,100	16.5	13.1 - 19.9	6,700
Oahu	604,700	86.2	85.3 - 87.0	97,100	13.8	13.0 - 14.7	701,800

Community	Good or Better			Fair or Poor			Estimated Population (3-Yr Avg)
	#	%	C.I. (95%)	#	%	C.I. (95%)	#
Aiea/ Pearl City	60,100	87.3	84.9 - 89.8	8,700	12.7	10.2 - 15.1	68,800
Ala Moana	26,000	81.5	77.8 - 85.2	5,900	18.5	14.8 - 22.2	31,900

Health status - two level by State, County, Island, Community, BRFSS Age Group, DOH Race-Ethnicity, Gender, Education Level, Employment Status (Grouped), Household Income, Poverty Level, Marital Status (Grouped), Married, Health Care Coverage, for the Year(s) - 2000-2002, 2001-2003, 2002-2004, 2003-2005, 2004-2006, 2005-2007, 2006-2008, 2007-2009, 2008-2010

Note: Weighted numbers (#) represent 3-yr averages, percentages and 95% confidence intervals; Respondents aged 18 years and older; n/r (Not Reportable) - If the unweighted total responses for a dimension (row) is <50 that row will not be shown; n/a (Not Available) - Not asked of a subset of respondents

Year: 2005-2007

Community	Good or Better			Fair or Poor			Estimated Population (3-Yr Avg)
	#	%	C.I. (95%)	#	%	C.I. (95%)	#
Hanalei/ Kapaa	16,400	81.7	78.0 - 85.3	3,700	18.3	14.7 - 22.0	20,100
Hilo	28,400	79.8	77.3 - 82.3	7,200	20.2	17.7 - 22.7	35,500
Kaaawa/ Kahaluu/ Kaneohe	44,000	87.5	84.7 - 90.4	6,300	12.5	9.6 - 15.3	50,300
Kahului	29,000	87.1	84.7 - 89.6	4,300	12.9	10.4 - 15.3	33,300
Kailua/ Waimanalo	44,700	88.7	86.2 - 91.3	5,700	11.3	8.7 - 13.8	50,300
Kaimuki/ Palolo/ Waikiki	50,700	85.0	82.1 - 87.9	9,000	15.0	12.1 - 17.9	59,700
Kona	24,800	85.8	83.2 - 88.5	4,100	14.2	11.5 - 16.8	28,900
Lahaina/ Wailuku	28,200	88.5	86.0 - 90.9	3,700	11.5	9.1 - 14.0	31,900
Lanai	1,900	82.1	78.3 - 85.9	400	17.9	14.1 - 21.7	2,300
Lihue-Waimea	23,000	85.0	82.4 - 87.6	4,100	15.0	12.4 - 17.6	27,100
Manoa/ Upper Makiki	39,400	86.4	83.4 - 89.5	6,200	13.6	10.5 - 16.6	45,600
Mililani/ Wahiawa	61,700	87.0	84.5 - 89.5	9,200	13.0	10.5 - 15.5	70,900

Health status - two level by State, County, Island, Community, BRFSS Age Group, DOH Race-Ethnicity, Gender, Education Level, Employment Status (Grouped), Household Income, Poverty Level, Marital Status (Grouped), Married, Health Care Coverage, for the Year(s) - 2000-2002, 2001-2003, 2002-2004, 2003-2005, 2004-2006, 2005-2007, 2006-2008, 2007-2009, 2008-2010

Note: Weighted numbers (#) represent 3-yr averages, percentages and 95% confidence intervals; Respondents aged 18 years and older; n/r (Not Reportable) - If the unweighted total responses for a dimension (row) is <50 that row will not be shown; n/a (Not Available) - Not asked of a subset of respondents

Year: 2005-2007

Community	Good or Better			Fair or Poor			Estimated Population (3-Yr Avg)
	#	%	C.I. (95%)	#	%	C.I. (95%)	#
Molokai	5,600	83.5	80.1 - 86.9	1,100	16.5	13.1 - 19.9	6,700
Nanakuli/ Waianae	25,700	76.6	71.2 - 82.1	7,800	23.4	17.9 - 28.8	33,500
N.Hawaii	22,100	83.7	80.7 - 86.6	4,300	16.3	13.4 - 19.3	26,500
N.Shore/ Laie	18,900	84.5	79.6 - 89.4	3,500	15.5	10.6 - 20.4	22,400
Nuuanu/ Kalihi/ Moanalua	59,700	84.6	81.6 - 87.5	10,900	15.4	12.5 - 18.4	70,600
Puna/ Kau	26,700	80.8	78.1 - 83.6	6,300	19.2	16.4 - 21.9	33,000
Salt Lake/ Foster Village	30,000	91.4	88.4 - 94.5	2,800	8.6	5.5 - 11.6	32,800
Upcountry/ Hana	28,000	86.5	84.0 - 89.1	4,400	13.5	10.9 - 16.0	32,300
Waialae/ Kahala/ Hawaii Kai	37,900	91.2	88.6 - 93.8	3,700	8.8	6.2 - 11.4	41,500
Waipahu/ Kapolei/ Ewa	105,900	85.8	83.6 - 88.1	17,500	14.2	11.9 - 16.4	123,400

Health status - two level by State, County, Island, Community, BRFSS Age Group, DOH Race-Ethnicity, Gender, Education Level, Employment Status (Grouped), Household Income, Poverty Level, Marital Status (Grouped), Married, Health Care Coverage, for the Year(s) - 2000-2002, 2001-2003, 2002-2004, 2003-2005, 2004-2006, 2005-2007, 2006-2008, 2007-2009, 2008-2010

Note: Weighted numbers (#) represent 3-yr averages, percentages and 95% confidence intervals; Respondents aged 18 years and older; n/r (Not Reportable) - If the unweighted total responses for a dimension (row) is <50 that row will not be shown; n/a (Not Available) - Not asked of a subset of respondents

Year: 2005-2007

BRFSS Age Group	Good or Better			Fair or Poor			Estimated Population (3-Yr Avg)
	#	%	C.I. (95%)	#	%	C.I. (95%)	#
18-24	111,800	90.4	88.2 - 92.6	11,800	9.6	7.4 - 11.8	123,600
25-34	150,400	92.0	90.6 - 93.4	13,100	8.0	6.6 - 9.4	163,500
35-44	161,100	90.3	89.0 - 91.5	17,400	9.7	8.5 - 11.0	178,500
45-54	154,500	84.7	83.2 - 86.1	28,000	15.3	13.9 - 16.8	182,500
55-64	122,600	82.7	81.0 - 84.4	25,600	17.3	15.6 - 19.0	148,200
65-74	66,300	78.5	76.3 - 80.7	18,100	21.5	19.3 - 23.7	84,400
75+	66,700	71.9	69.5 - 74.3	26,000	28.1	25.7 - 30.5	92,800

Health status - two level by State, County, Island, Community, BRFSS Age Group, DOH Race-Ethnicity, Gender, Education Level, Employment Status (Grouped), Household Income, Poverty Level, Marital Status (Grouped), Married, Health Care Coverage, for the Year(s) - 2000-2002, 2001-2003, 2002-2004, 2003-2005, 2004-2006, 2005-2007, 2006-2008, 2007-2009, 2008-2010

Note: Weighted numbers (#) represent 3-yr averages, percentages and 95% confidence intervals; Respondents aged 18 years and older; n/r (Not Reportable) - If the unweighted total responses for a dimension (row) is <50 that row will not be shown; n/a (Not Available) - Not asked of a subset of respondents

Year: 2005-2007

DOH Race-Ethnicity	Good or Better			Fair or Poor			Estimated Population (3-Yr Avg)
	#	%	C.I. (95%)	#	%	C.I. (95%)	#
Caucasian	284,700	89.0	88.1 - 89.9	35,300	11.0	10.1 - 11.9	320,000
Native Hawaiian	99,800	80.3	78.1 - 82.4	24,500	19.7	17.6 - 21.9	124,400
Chinese	45,300	86.4	83.6 - 89.2	7,100	13.6	10.8 - 16.4	52,400
Filipino	137,400	84.7	82.8 - 86.6	24,800	15.3	13.4 - 17.2	162,200
Japanese	179,000	84.6	83.2 - 86.0	32,500	15.4	14.0 - 16.8	211,500
Black	15,100	89.4	84.3 - 94.6	1,800	10.6	5.4 - 15.7	16,900
Native Alaskan/ American Indian	4,000	73.9	64.0 - 83.9	1,400	26.1	16.1 - 36.0	5,400
Other Asian	20,300	85.4	80.6 - 90.3	3,500	14.6	9.7 - 19.4	23,700
Other Pacific Islander	21,600	87.8	83.0 - 92.5	3,000	12.2	7.5 - 17.0	24,600
Mixed Ethnicity	7,000	86.2	78.7 - 93.7	1,100	13.8	6.3 - 21.3	8,100
Other	20,700	80.9	76.1 - 85.6	4,900	19.1	14.4 - 23.9	25,600

Health status - two level by State, County, Island, Community, BRFSS Age Group, DOH Race-Ethnicity, Gender, Education Level, Employment Status (Grouped), Household Income, Poverty Level, Marital Status (Grouped), Married, Health Care Coverage, for the Year(s) - 2000-2002, 2001-2003, 2002-2004, 2003-2005, 2004-2006, 2005-2007, 2006-2008, 2007-2009, 2008-2010

Note: Weighted numbers (#) represent 3-yr averages, percentages and 95% confidence intervals; Respondents aged 18 years and older; n/r (Not Reportable) - If the unweighted total responses for a dimension (row) is <50 that row will not be shown; n/a (Not Available) - Not asked of a subset of respondents

Year: 2005-2007

Gender	Good or Better			Fair or Poor			Estimated Population (3-Yr Avg)
	#	%	C.I. (95%)	#	%	C.I. (95%)	#
Male	418,400	86.3	85.4 - 87.3	66,200	13.7	12.7 - 14.6	484,600
Female	420,300	85.0	84.1 - 85.8	74,400	15.0	14.2 - 15.9	494,800

Education Level	Good or Better			Fair or Poor			Estimated Population (3-Yr Avg)
	#	%	C.I. (95%)	#	%	C.I. (95%)	#
Never attended school/ Only Kindergarten to Grades 8	12,000	69.0	62.3 - 75.7	5,400	31.0	24.3 - 37.7	17,400
Grades 9 thru 11 (Some High School)	27,600	69.9	65.6 - 74.2	11,900	30.1	25.8 - 34.4	39,400
Grades 12 or GED (High School Grad)	238,400	81.1	79.7 - 82.5	55,600	18.9	17.5 - 20.3	294,000
College 1 to 3 years (Some College/ Tech)	247,700	86.9	85.7 - 88.1	37,400	13.1	11.9 - 14.3	285,000
College 4 years or more (College Grad)	311,700	91.2	90.4 - 92.0	30,100	8.8	8.0 - 9.6	341,800

Health status - two level by State, County, Island, Community, BRFSS Age Group, DOH Race-Ethnicity, Gender, Education Level, Employment Status (Grouped), Household Income, Poverty Level, Marital Status (Grouped), Married, Health Care Coverage, for the Year(s) - 2000-2002, 2001-2003, 2002-2004, 2003-2005, 2004-2006, 2005-2007, 2006-2008, 2007-2009, 2008-2010

Note: Weighted numbers (#) represent 3-yr averages, percentages and 95% confidence intervals; Respondents aged 18 years and older; n/r (Not Reportable) - If the unweighted total responses for a dimension (row) is <50 that row will not be shown; n/a (Not Available) - Not asked of a subset of respondents

Year: 2005-2007

Employment Status (Grouped)	Good or Better			Fair or Poor			Estimated Population (3-Yr Avg)
	#	%	C.I. (95%)	#	%	C.I. (95%)	#
Employed	567,300	89.9	89.2 - 90.7	63,400	10.1	9.3 - 10.8	630,700
Unemployed	22,000	76.2	71.0 - 81.3	6,900	23.8	18.7 - 29.0	28,900
Retired/Unable to work	166,300	73.6	72.1 - 75.1	59,700	26.4	24.9 - 27.9	226,000
Student/Homemaker	81,800	88.7	86.5 - 91.0	10,400	11.3	9.0 - 13.5	92,100

Health status - two level by State, County, Island, Community, BRFSS Age Group, DOH Race-Ethnicity, Gender, Education Level, Employment Status (Grouped), Household Income, Poverty Level, Marital Status (Grouped), Married, Health Care Coverage, for the Year(s) - 2000-2002, 2001-2003, 2002-2004, 2003-2005, 2004-2006, 2005-2007, 2006-2008, 2007-2009, 2008-2010

Note: Weighted numbers (#) represent 3-yr averages, percentages and 95% confidence intervals; Respondents aged 18 years and older; n/r (Not Reportable) - If the unweighted total responses for a dimension (row) is <50 that row will not be shown; n/a (Not Available) - Not asked of a subset of respondents

Year: 2005-2007

Household Income	Good or Better			Fair or Poor			Estimated Population (3-Yr Avg)
	#	%	C.I. (95%)	#	%	C.I. (95%)	#
Less than \$10,000	18,400	67.5	62.6 - 72.4	8,900	32.5	27.6 - 37.4	27,300
\$10,000 to \$14,999	19,100	67.9	62.8 - 73.0	9,000	32.1	27.0 - 37.2	28,200
\$15,000 to \$19,999	34,100	73.5	70.0 - 77.0	12,300	26.5	23.0 - 30.0	46,400
\$20,000 to \$24,999	49,700	79.2	76.3 - 82.1	13,000	20.8	17.9 - 23.7	62,700
\$25,000 to \$34,999	89,400	83.5	81.3 - 85.6	17,700	16.5	14.4 - 18.7	107,100
\$35,000 to \$49,999	129,100	85.7	84.0 - 87.4	21,600	14.3	12.6 - 16.0	150,600
\$50,000 to \$74,999	152,200	89.8	88.5 - 91.2	17,200	10.2	8.8 - 11.5	169,400
\$75,000 or more	234,400	92.5	91.5 - 93.5	18,900	7.5	6.5 - 8.5	253,300

Health status - two level by State, County, Island, Community, BRFSS Age Group, DOH Race-Ethnicity, Gender, Education Level, Employment Status (Grouped), Household Income, Poverty Level, Marital Status (Grouped), Married, Health Care Coverage, for the Year(s) - 2000-2002, 2001-2003, 2002-2004, 2003-2005, 2004-2006, 2005-2007, 2006-2008, 2007-2009, 2008-2010

Note: Weighted numbers (#) represent 3-yr averages, percentages and 95% confidence intervals; Respondents aged 18 years and older; n/r (Not Reportable) - If the unweighted total responses for a dimension (row) is <50 that row will not be shown; n/a (Not Available) - Not asked of a subset of respondents

Year: 2005-2007

Poverty Level	Good or Better			Fair or Poor			Estimated Population (3-Yr Avg)
	#	%	C.I. (95%)	#	%	C.I. (95%)	#
0-130%	139,000	76.3	74.3 - 78.3	43,100	23.7	21.7 - 25.7	182,100
131-185%	90,100	83.5	81.3 - 85.6	17,800	16.5	14.4 - 18.7	108,000
186+%	497,300	89.6	88.9 - 90.3	57,700	10.4	9.7 - 11.1	555,000

Marital Status (Grouped)	Good or Better			Fair or Poor			Estimated Population (3-Yr Avg)
	#	%	C.I. (95%)	#	%	C.I. (95%)	#
Married	506,400	87.0	86.2 - 87.8	75,700	13.0	12.2 - 13.8	582,100
Unmarried Couple	25,500	89.9	86.0 - 93.8	2,900	10.1	6.2 - 14.0	28,300
Widowed	41,900	73.8	71.1 - 76.5	14,900	26.2	23.5 - 28.9	56,800
Other	265,000	84.9	83.6 - 86.1	47,200	15.1	13.9 - 16.4	312,200

Health status - two level by State, County, Island, Community, BRFSS Age Group, DOH Race-Ethnicity, Gender, Education Level, Employment Status (Grouped), Household Income, Poverty Level, Marital Status (Grouped), Married, Health Care Coverage, for the Year(s) - 2000-2002, 2001-2003, 2002-2004, 2003-2005, 2004-2006, 2005-2007, 2006-2008, 2007-2009, 2008-2010

Note: Weighted numbers (#) represent 3-yr averages, percentages and 95% confidence intervals; Respondents aged 18 years and older; n/r (Not Reportable) - If the unweighted total responses for a dimension (row) is <50 that row will not be shown; n/a (Not Available) - Not asked of a subset of respondents

Year: 2005-2007

Married	Good or Better			Fair or Poor			Estimated Population (3-Yr Avg)
	#	%	C.I. (95%)	#	%	C.I. (95%)	#
Yes	514,500	86.8	86.0 - 87.6	78,000	13.2	12.4 - 14.0	592,500
No	322,900	83.8	82.7 - 84.9	62,400	16.2	15.1 - 17.3	385,300

Health Care Coverage	Good or Better			Fair or Poor			Estimated Population (3-Yr Avg)
	#	%	C.I. (95%)	#	%	C.I. (95%)	#
Yes	777,300	85.8	85.2 - 86.5	128,200	14.2	13.5 - 14.8	905,600
No	60,000	83.5	80.4 - 86.6	11,900	16.5	13.4 - 19.6	71,900

Health status - two level by State, County, Island, Community, BRFSS Age Group, DOH Race-Ethnicity, Gender, Education Level, Employment Status (Grouped), Household Income, Poverty Level, Marital Status (Grouped), Married, Health Care Coverage, for the Year(s) - 2000-2002, 2001-2003, 2002-2004, 2003-2005, 2004-2006, 2005-2007, 2006-2008, 2007-2009, 2008-2010

Note: Weighted numbers (#) represent 3-yr averages, percentages and 95% confidence intervals; Respondents aged 18 years and older; n/r (Not Reportable) - If the unweighted total responses for a dimension (row) is <50 that row will not be shown; n/a (Not Available) - Not asked of a subset of respondents

Year: 2004-2006

State	Good or Better			Fair or Poor			Estimated Population (3-Yr Avg)
	#	%	C.I. (95%)	#	%	C.I. (95%)	#
Hawaii State	817,700	85.7	84.8 - 86.6	136,200	14.3	13.4 - 15.2	953,900

County	Good or Better			Fair or Poor			Estimated Population (3-Yr Avg)
	#	%	C.I. (95%)	#	%	C.I. (95%)	#
Hawaii	103,400	83.2	81.6 - 84.8	20,900	16.8	15.2 - 18.4	124,300
Honolulu	588,400	86.3	85.2 - 87.5	93,100	13.7	12.5 - 14.8	681,600
Kauai	37,600	83.7	81.4 - 86.1	7,300	16.3	13.9 - 18.6	44,900
Maui	88,200	85.6	83.3 - 88.0	14,800	14.4	12.0 - 16.7	103,000

Health status - two level by State, County, Island, Community, BRFSS Age Group, DOH Race-Ethnicity, Gender, Education Level, Employment Status (Grouped), Household Income, Poverty Level, Marital Status (Grouped), Married, Health Care Coverage, for the Year(s) - 2000-2002, 2001-2003, 2002-2004, 2003-2005, 2004-2006, 2005-2007, 2006-2008, 2007-2009, 2008-2010

Note: Weighted numbers (#) represent 3-yr averages, percentages and 95% confidence intervals; Respondents aged 18 years and older; n/r (Not Reportable) - If the unweighted total responses for a dimension (row) is <50 that row will not be shown; n/a (Not Available) - Not asked of a subset of respondents

Year: 2004-2006

Island	Good or Better			Fair or Poor			Estimated Population (3-Yr Avg)
	#	%	C.I. (95%)	#	%	C.I. (95%)	#
Hawaii	103,400	83.2	81.6 - 84.8	20,900	16.8	15.2 - 18.4	124,300
Kauai	37,600	83.7	81.4 - 86.1	7,300	16.3	13.9 - 18.6	44,900
Lanai	1,700	81.5	77.0 - 86.0	400	18.5	14.0 - 23.0	2,100
Maui	81,600	85.9	83.3 - 88.4	13,400	14.1	11.6 - 16.7	95,000
Molokai	5,000	83.2	78.7 - 87.8	1,000	16.8	12.2 - 21.3	6,000
Oahu	588,400	86.3	85.2 - 87.5	93,100	13.7	12.5 - 14.8	681,600

Community	Good or Better			Fair or Poor			Estimated Population (3-Yr Avg)
	#	%	C.I. (95%)	#	%	C.I. (95%)	#
Aiea/ Pearl City	57,100	86.1	82.4 - 89.7	9,200	13.9	10.3 - 17.6	66,400
Ala Moana	27,900	86.1	82.4 - 89.8	4,500	13.9	10.2 - 17.6	32,500

Health status - two level by State, County, Island, Community, BRFSS Age Group, DOH Race-Ethnicity, Gender, Education Level, Employment Status (Grouped), Household Income, Poverty Level, Marital Status (Grouped), Married, Health Care Coverage, for the Year(s) - 2000-2002, 2001-2003, 2002-2004, 2003-2005, 2004-2006, 2005-2007, 2006-2008, 2007-2009, 2008-2010

Note: Weighted numbers (#) represent 3-yr averages, percentages and 95% confidence intervals; Respondents aged 18 years and older; n/r (Not Reportable) - If the unweighted total responses for a dimension (row) is <50 that row will not be shown; n/a (Not Available) - Not asked of a subset of respondents

Year: 2004-2006

Community	Good or Better			Fair or Poor			Estimated Population (3-Yr Avg)
	#	%	C.I. (95%)	#	%	C.I. (95%)	#
Hanalei/ Kapaa	15,500	82.6	78.8 - 86.3	3,300	17.4	13.7 - 21.2	18,800
Hilo	28,200	81.2	78.3 - 84.1	6,500	18.8	15.9 - 21.7	34,700
Kaaawa/ Kahaluu/ Kaneohe	41,600	87.0	83.1 - 91.0	6,200	13.0	9.0 - 16.9	47,800
Kahului	28,800	87.5	84.3 - 90.7	4,100	12.5	9.3 - 15.7	33,000
Kailua/ Waimanalo	42,000	89.8	86.9 - 92.7	4,800	10.2	7.3 - 13.1	46,800
Kaimuki/ Palolo/ Waikiki	51,600	84.6	81.1 - 88.1	9,400	15.4	11.9 - 18.9	61,000
Kona	25,000	87.8	85.2 - 90.5	3,500	12.2	9.5 - 14.8	28,400
Lahaina/ Wailuku	25,800	83.5	78.1 - 88.9	5,100	16.5	11.1 - 21.9	30,900
Lanai	1,700	81.5	77.0 - 86.0	400	18.5	14.0 - 23.0	2,100
Lihue-Waimea	22,100	84.6	81.6 - 87.6	4,000	15.4	12.4 - 18.4	26,200
Manoa/ Upper Makiki	39,200	85.2	80.5 - 89.9	6,800	14.8	10.1 - 19.5	46,000
Mililani/ Wahiawa	55,600	84.1	78.7 - 89.4	10,500	15.9	10.6 - 21.3	66,100

Health status - two level by State, County, Island, Community, BRFSS Age Group, DOH Race-Ethnicity, Gender, Education Level, Employment Status (Grouped), Household Income, Poverty Level, Marital Status (Grouped), Married, Health Care Coverage, for the Year(s) - 2000-2002, 2001-2003, 2002-2004, 2003-2005, 2004-2006, 2005-2007, 2006-2008, 2007-2009, 2008-2010

Note: Weighted numbers (#) represent 3-yr averages, percentages and 95% confidence intervals; Respondents aged 18 years and older; n/r (Not Reportable) - If the unweighted total responses for a dimension (row) is <50 that row will not be shown; n/a (Not Available) - Not asked of a subset of respondents

Year: 2004-2006

Community	Good or Better			Fair or Poor			Estimated Population (3-Yr Avg)
	#	%	C.I. (95%)	#	%	C.I. (95%)	#
Molokai	5,000	83.2	78.7 - 87.8	1,000	16.8	12.2 - 21.3	6,000
Nanakuli/ Waianae	24,100	74.4	66.9 - 81.8	8,300	25.6	18.2 - 33.1	32,400
N.Hawaii	20,900	84.9	81.6 - 88.1	3,700	15.1	11.9 - 18.4	24,700
N.Shore/ Laie	17,900	82.9	76.3 - 89.6	3,700	17.1	10.4 - 23.7	21,600
Nuuanu/ Kalihi/ Moanalua	59,100	85.3	81.8 - 88.7	10,200	14.7	11.3 - 18.2	69,300
Puna/ Kau	29,300	80.2	76.6 - 83.8	7,200	19.8	16.2 - 23.4	36,600
Salt Lake/ Foster Village	32,000	93.2	90.2 - 96.2	2,300	6.8	3.8 - 9.8	34,400
Upcountry/ Hana	26,900	86.5	82.2 - 90.9	4,200	13.5	9.1 - 17.8	31,100
Waialae/ Kahala/ Hawaii Kai	37,400	93.1	90.8 - 95.4	2,800	6.9	4.6 - 9.2	40,200
Waipahu/ Kapolei/ Ewa	102,700	87.7	85.2 - 90.2	14,400	12.3	9.8 - 14.8	117,100

Health status - two level by State, County, Island, Community, BRFSS Age Group, DOH Race-Ethnicity, Gender, Education Level, Employment Status (Grouped), Household Income, Poverty Level, Marital Status (Grouped), Married, Health Care Coverage, for the Year(s) - 2000-2002, 2001-2003, 2002-2004, 2003-2005, 2004-2006, 2005-2007, 2006-2008, 2007-2009, 2008-2010

Note: Weighted numbers (#) represent 3-yr averages, percentages and 95% confidence intervals; Respondents aged 18 years and older; n/r (Not Reportable) - If the unweighted total responses for a dimension (row) is <50 that row will not be shown; n/a (Not Available) - Not asked of a subset of respondents

Year: 2004-2006

BRFSS Age Group	Good or Better			Fair or Poor			Estimated Population (3-Yr Avg)
	#	%	C.I. (95%)	#	%	C.I. (95%)	#
18-24	107,300	91.3	87.8 - 94.8	10,200	8.7	5.2 - 12.2	117,500
25-34	154,400	93.0	91.4 - 94.7	11,600	7.0	5.3 - 8.6	166,000
35-44	162,700	90.9	89.4 - 92.4	16,300	9.1	7.6 - 10.6	178,900
45-54	150,300	85.1	83.1 - 87.0	26,400	14.9	13.0 - 16.9	176,700
55-64	110,500	80.5	78.1 - 82.8	26,800	19.5	17.2 - 21.9	137,300
65-74	64,900	77.3	74.3 - 80.3	19,000	22.7	19.7 - 25.7	83,900
75+	60,800	70.9	67.5 - 74.2	25,000	29.1	25.8 - 32.5	85,800

Health status - two level by State, County, Island, Community, BRFSS Age Group, DOH Race-Ethnicity, Gender, Education Level, Employment Status (Grouped), Household Income, Poverty Level, Marital Status (Grouped), Married, Health Care Coverage, for the Year(s) - 2000-2002, 2001-2003, 2002-2004, 2003-2005, 2004-2006, 2005-2007, 2006-2008, 2007-2009, 2008-2010

Note: Weighted numbers (#) represent 3-yr averages, percentages and 95% confidence intervals; Respondents aged 18 years and older; n/r (Not Reportable) - If the unweighted total responses for a dimension (row) is <50 that row will not be shown; n/a (Not Available) - Not asked of a subset of respondents

Year: 2004-2006

DOH Race-Ethnicity	Good or Better			Fair or Poor			Estimated Population (3-Yr Avg)
	#	%	C.I. (95%)	#	%	C.I. (95%)	#
Caucasian	277,600	88.4	87.2 - 89.6	36,400	11.6	10.4 - 12.8	314,000
Native Hawaiian	94,000	78.6	75.4 - 81.8	25,600	21.4	18.2 - 24.6	119,600
Chinese	44,900	87.8	84.7 - 90.9	6,200	12.2	9.1 - 15.3	51,100
Filipino	130,100	85.1	82.8 - 87.4	22,800	14.9	12.6 - 17.2	152,800
Japanese	173,900	86.0	84.3 - 87.6	28,400	14.0	12.4 - 15.7	202,300
Black	13,300	92.4	87.5 - 97.3	1,100	7.6	2.7 - 12.5	14,400
Native Alaskan/ American Indian	4,000	76.7	65.5 - 87.9	1,200	23.3	12.1 - 34.5	5,200
Other Asian	19,800	83.7	77.1 - 90.4	3,800	16.3	9.6 - 22.9	23,700
Other Pacific Islander	21,500	84.4	72.0 - 96.8	4,000	15.6	3.2 - 28.0	25,500
Mixed Ethnicity	7,000	86.2	78.7 - 93.7	1,100	13.8	6.3 - 21.3	8,100
Other	21,200	83.4	78.4 - 88.4	4,200	16.6	11.6 - 21.6	25,400

Health status - two level by State, County, Island, Community, BRFSS Age Group, DOH Race-Ethnicity, Gender, Education Level, Employment Status (Grouped), Household Income, Poverty Level, Marital Status (Grouped), Married, Health Care Coverage, for the Year(s) - 2000-2002, 2001-2003, 2002-2004, 2003-2005, 2004-2006, 2005-2007, 2006-2008, 2007-2009, 2008-2010

Note: Weighted numbers (#) represent 3-yr averages, percentages and 95% confidence intervals; Respondents aged 18 years and older; n/r (Not Reportable) - If the unweighted total responses for a dimension (row) is <50 that row will not be shown; n/a (Not Available) - Not asked of a subset of respondents

Year: 2004-2006

Gender	Good or Better			Fair or Poor			Estimated Population (3-Yr Avg)
	#	%	C.I. (95%)	#	%	C.I. (95%)	#
Male	407,200	86.6	85.3 - 88.0	62,900	13.4	12.0 - 14.7	470,000
Female	410,500	84.8	83.7 - 86.0	73,300	15.2	14.0 - 16.3	483,800

Education Level	Good or Better			Fair or Poor			Estimated Population (3-Yr Avg)
	#	%	C.I. (95%)	#	%	C.I. (95%)	#
Never attended school/ Only Kindergarten to Grades 8	10,200	64.7	56.6 - 72.8	5,600	35.3	27.2 - 43.4	15,800
Grades 9 thru 11 (Some High School)	25,700	69.2	63.4 - 75.0	11,400	30.8	25.0 - 36.6	37,100
Grades 12 or GED (High School Grad)	233,200	82.0	80.2 - 83.7	51,200	18.0	16.3 - 19.8	284,400
College 1 to 3 years (Some College/ Tech)	247,800	86.9	85.2 - 88.7	37,300	13.1	11.3 - 14.8	285,100
College 4 years or more (College Grad)	299,500	90.7	89.6 - 91.9	30,600	9.3	8.1 - 10.4	330,100

Health status - two level by State, County, Island, Community, BRFSS Age Group, DOH Race-Ethnicity, Gender, Education Level, Employment Status (Grouped), Household Income, Poverty Level, Marital Status (Grouped), Married, Health Care Coverage, for the Year(s) - 2000-2002, 2001-2003, 2002-2004, 2003-2005, 2004-2006, 2005-2007, 2006-2008, 2007-2009, 2008-2010

Note: Weighted numbers (#) represent 3-yr averages, percentages and 95% confidence intervals; Respondents aged 18 years and older; n/r (Not Reportable) - If the unweighted total responses for a dimension (row) is <50 that row will not be shown; n/a (Not Available) - Not asked of a subset of respondents

Year: 2004-2006

Employment Status (Grouped)	Good or Better			Fair or Poor			Estimated Population (3-Yr Avg)
	#	%	C.I. (95%)	#	%	C.I. (95%)	#
Employed	552,200	90.0	89.0 - 91.1	61,200	10.0	8.9 - 11.0	613,400
Unemployed	21,500	79.7	74.5 - 84.8	5,500	20.3	15.2 - 25.5	27,000
Retired/Unable to work	156,500	72.5	70.4 - 74.5	59,500	27.5	25.5 - 29.6	216,000
Student/Homemaker	85,500	89.6	87.0 - 92.1	10,000	10.4	7.9 - 13.0	95,400

Health status - two level by State, County, Island, Community, BRFSS Age Group, DOH Race-Ethnicity, Gender, Education Level, Employment Status (Grouped), Household Income, Poverty Level, Marital Status (Grouped), Married, Health Care Coverage, for the Year(s) - 2000-2002, 2001-2003, 2002-2004, 2003-2005, 2004-2006, 2005-2007, 2006-2008, 2007-2009, 2008-2010

Note: Weighted numbers (#) represent 3-yr averages, percentages and 95% confidence intervals; Respondents aged 18 years and older; n/r (Not Reportable) - If the unweighted total responses for a dimension (row) is <50 that row will not be shown; n/a (Not Available) - Not asked of a subset of respondents

Year: 2004-2006

Household Income	Good or Better			Fair or Poor			Estimated Population (3-Yr Avg)
	#	%	C.I. (95%)	#	%	C.I. (95%)	#
Less than \$10,000	16,600	71.3	65.9 - 76.7	6,700	28.7	23.3 - 34.1	23,300
\$10,000 to \$14,999	17,900	66.8	60.7 - 72.9	8,900	33.2	27.1 - 39.3	26,800
\$15,000 to \$19,999	34,300	72.8	68.0 - 77.6	12,800	27.2	22.4 - 32.0	47,100
\$20,000 to \$24,999	53,400	81.2	78.1 - 84.3	12,300	18.8	15.7 - 21.9	65,700
\$25,000 to \$34,999	90,000	83.5	80.7 - 86.3	17,800	16.5	13.7 - 19.3	107,800
\$35,000 to \$49,999	123,400	86.6	84.3 - 88.8	19,200	13.4	11.2 - 15.7	142,600
\$50,000 to \$74,999	181,700	87.4	85.0 - 89.8	26,200	12.6	10.2 - 15.0	207,900
\$75,000 or more	211,200	92.9	91.6 - 94.2	16,200	7.1	5.8 - 8.4	227,500

Health status - two level by State, County, Island, Community, BRFSS Age Group, DOH Race-Ethnicity, Gender, Education Level, Employment Status (Grouped), Household Income, Poverty Level, Marital Status (Grouped), Married, Health Care Coverage, for the Year(s) - 2000-2002, 2001-2003, 2002-2004, 2003-2005, 2004-2006, 2005-2007, 2006-2008, 2007-2009, 2008-2010

Note: Weighted numbers (#) represent 3-yr averages, percentages and 95% confidence intervals; Respondents aged 18 years and older; n/r (Not Reportable) - If the unweighted total responses for a dimension (row) is <50 that row will not be shown; n/a (Not Available) - Not asked of a subset of respondents

Year: 2004-2006

Poverty Level	Good or Better			Fair or Poor			Estimated Population (3-Yr Avg)
	#	%	C.I. (95%)	#	%	C.I. (95%)	#
0-130%	128,200	76.6	74.1 - 79.1	39,200	23.4	20.9 - 25.9	167,400
131-185%	90,600	83.3	79.3 - 87.2	18,200	16.7	12.8 - 20.7	108,800
186+%	509,700	89.0	88.1 - 90.0	62,800	11.0	10.0 - 11.9	572,500

Marital Status (Grouped)	Good or Better			Fair or Poor			Estimated Population (3-Yr Avg)
	#	%	C.I. (95%)	#	%	C.I. (95%)	#
Married	491,600	87.3	86.2 - 88.3	71,700	12.7	11.7 - 13.8	563,300
Unmarried Couple	24,500	90.0	85.7 - 94.2	2,700	10.0	5.8 - 14.3	27,200
Widowed	39,800	71.1	66.9 - 75.2	16,200	28.9	24.8 - 33.1	56,000
Other	261,800	85.2	83.4 - 86.9	45,500	14.8	13.1 - 16.6	307,400

Health status - two level by State, County, Island, Community, BRFSS Age Group, DOH Race-Ethnicity, Gender, Education Level, Employment Status (Grouped), Household Income, Poverty Level, Marital Status (Grouped), Married, Health Care Coverage, for the Year(s) - 2000-2002, 2001-2003, 2002-2004, 2003-2005, 2004-2006, 2005-2007, 2006-2008, 2007-2009, 2008-2010

Note: Weighted numbers (#) represent 3-yr averages, percentages and 95% confidence intervals; Respondents aged 18 years and older; n/r (Not Reportable) - If the unweighted total responses for a dimension (row) is <50 that row will not be shown; n/a (Not Available) - Not asked of a subset of respondents

Year: 2004-2006

Married	Good or Better			Fair or Poor			Estimated Population (3-Yr Avg)
	#	%	C.I. (95%)	#	%	C.I. (95%)	#
Yes	500,100	87.2	86.1 - 88.2	73,600	12.8	11.8 - 13.9	573,700
No	315,400	83.5	81.9 - 85.1	62,300	16.5	14.9 - 18.1	377,800

Health Care Coverage	Good or Better			Fair or Poor			Estimated Population (3-Yr Avg)
	#	%	C.I. (95%)	#	%	C.I. (95%)	#
Yes	745,400	85.6	84.7 - 86.5	125,300	14.4	13.5 - 15.3	870,700
No	69,700	87.0	84.1 - 89.9	10,400	13.0	10.1 - 15.9	80,100

Health status - two level by State, County, Island, Community, BRFSS Age Group, DOH Race-Ethnicity, Gender, Education Level, Employment Status (Grouped), Household Income, Poverty Level, Marital Status (Grouped), Married, Health Care Coverage, for the Year(s) - 2000-2002, 2001-2003, 2002-2004, 2003-2005, 2004-2006, 2005-2007, 2006-2008, 2007-2009, 2008-2010

Note: Weighted numbers (#) represent 3-yr averages, percentages and 95% confidence intervals; Respondents aged 18 years and older; n/r (Not Reportable) - If the unweighted total responses for a dimension (row) is <50 that row will not be shown; n/a (Not Available) - Not asked of a subset of respondents

Year: 2003-2005

State	Good or Better			Fair or Poor			Estimated Population (3-Yr Avg)
	#	%	C.I. (95%)	#	%	C.I. (95%)	#
Hawaii State	810,600	86.5	85.6 - 87.5	126,000	13.5	12.5 - 14.4	936,600

County	Good or Better			Fair or Poor			Estimated Population (3-Yr Avg)
	#	%	C.I. (95%)	#	%	C.I. (95%)	#
Hawaii	103,300	84.4	82.7 - 86.0	19,200	15.6	14.0 - 17.3	122,500
Honolulu	583,400	87.0	85.9 - 88.2	86,900	13.0	11.8 - 14.1	670,200
Kauai	37,200	85.5	83.2 - 87.8	6,300	14.5	12.2 - 16.8	43,500
Maui	86,700	86.4	83.9 - 88.8	13,700	13.6	11.2 - 16.1	100,400

Health status - two level by State, County, Island, Community, BRFSS Age Group, DOH Race-Ethnicity, Gender, Education Level, Employment Status (Grouped), Household Income, Poverty Level, Marital Status (Grouped), Married, Health Care Coverage, for the Year(s) - 2000-2002, 2001-2003, 2002-2004, 2003-2005, 2004-2006, 2005-2007, 2006-2008, 2007-2009, 2008-2010

Note: Weighted numbers (#) represent 3-yr averages, percentages and 95% confidence intervals; Respondents aged 18 years and older; n/r (Not Reportable) - If the unweighted total responses for a dimension (row) is <50 that row will not be shown; n/a (Not Available) - Not asked of a subset of respondents

Year: 2003-2005

Island	Good or Better			Fair or Poor			Estimated Population (3-Yr Avg)
	#	%	C.I. (95%)	#	%	C.I. (95%)	#
Hawaii	103,300	84.4	82.7 - 86.0	19,200	15.6	14.0 - 17.3	122,500
Kauai	37,200	85.5	83.2 - 87.8	6,300	14.5	12.2 - 16.8	43,500
Lanai	1,800	86.1	81.3 - 90.9	300	13.9	9.1 - 18.7	2,100
Maui	79,900	86.5	83.9 - 89.2	12,400	13.5	10.8 - 16.1	92,400
Molokai	5,000	83.8	78.6 - 88.9	1,000	16.2	11.1 - 21.4	5,900
Oahu	583,400	87.0	85.9 - 88.2	86,900	13.0	11.8 - 14.1	670,200

Community	Good or Better			Fair or Poor			Estimated Population (3-Yr Avg)
	#	%	C.I. (95%)	#	%	C.I. (95%)	#
Aiea/ Pearl City	53,100	85.7	81.5 - 89.8	8,900	14.3	10.2 - 18.5	61,900
Ala Moana	27,300	86.8	82.8 - 90.7	4,200	13.2	9.3 - 17.2	31,400

Health status - two level by State, County, Island, Community, BRFSS Age Group, DOH Race-Ethnicity, Gender, Education Level, Employment Status (Grouped), Household Income, Poverty Level, Marital Status (Grouped), Married, Health Care Coverage, for the Year(s) - 2000-2002, 2001-2003, 2002-2004, 2003-2005, 2004-2006, 2005-2007, 2006-2008, 2007-2009, 2008-2010

Note: Weighted numbers (#) represent 3-yr averages, percentages and 95% confidence intervals; Respondents aged 18 years and older; n/r (Not Reportable) - If the unweighted total responses for a dimension (row) is <50 that row will not be shown; n/a (Not Available) - Not asked of a subset of respondents

Year: 2003-2005

Community	Good or Better			Fair or Poor			Estimated Population (3-Yr Avg)
	#	%	C.I. (95%)	#	%	C.I. (95%)	#
Hanalei/ Kapaa	15,400	86.7	83.3 - 90.1	2,400	13.3	9.9 - 16.7	17,800
Hilo	28,600	82.1	79.1 - 85.2	6,200	17.9	14.8 - 20.9	34,900
Kaaawa/ Kahaluu/ Kaneohe	41,900	89.0	85.1 - 92.8	5,200	11.0	7.2 - 14.9	47,200
Kahului	29,000	87.9	84.4 - 91.3	4,000	12.1	8.7 - 15.6	33,000
Kailua/ Waimanalo	42,200	89.4	86.1 - 92.8	5,000	10.6	7.2 - 13.9	47,200
Kaimuki/ Palolo/ Waikiki	55,000	86.1	82.9 - 89.4	8,800	13.9	10.6 - 17.1	63,800
Kona	25,200	88.3	85.6 - 91.0	3,400	11.7	9.0 - 14.4	28,600
Lahaina/ Wailuku	24,800	84.3	78.6 - 90.1	4,600	15.7	9.9 - 21.4	29,400
Lanai	1,800	86.1	81.3 - 90.9	300	13.9	9.1 - 18.7	2,100
Lihue-Waimea	21,800	84.7	81.6 - 87.9	3,900	15.3	12.1 - 18.4	25,700
Manoa/ Upper Makiki	41,400	85.7	81.0 - 90.4	6,900	14.3	9.6 - 19.0	48,300
Mililani/ Wahiawa	56,800	85.3	79.9 - 90.7	9,800	14.7	9.3 - 20.1	66,600

Health status - two level by State, County, Island, Community, BRFSS Age Group, DOH Race-Ethnicity, Gender, Education Level, Employment Status (Grouped), Household Income, Poverty Level, Marital Status (Grouped), Married, Health Care Coverage, for the Year(s) - 2000-2002, 2001-2003, 2002-2004, 2003-2005, 2004-2006, 2005-2007, 2006-2008, 2007-2009, 2008-2010

Note: Weighted numbers (#) represent 3-yr averages, percentages and 95% confidence intervals; Respondents aged 18 years and older; n/r (Not Reportable) - If the unweighted total responses for a dimension (row) is <50 that row will not be shown; n/a (Not Available) - Not asked of a subset of respondents

Year: 2003-2005

Community	Good or Better			Fair or Poor			Estimated Population (3-Yr Avg)
	#	%	C.I. (95%)	#	%	C.I. (95%)	#
Molokai	5,000	83.8	78.6 - 88.9	1,000	16.2	11.1 - 21.4	5,900
Nanakuli/ Waianae	24,400	76.4	69.0 - 83.9	7,500	23.6	16.1 - 31.0	31,900
N.Hawaii	20,600	85.8	82.3 - 89.4	3,400	14.2	10.6 - 17.7	24,000
N.Shore/ Laie	18,200	83.6	76.7 - 90.6	3,600	16.4	9.4 - 23.3	21,800
Nuuanu/ Kalihi/ Moanalua	58,800	86.0	82.5 - 89.5	9,600	14.0	10.5 - 17.5	68,400
Puna/ Kau	28,800	82.4	78.7 - 86.1	6,200	17.6	13.9 - 21.3	35,000
Salt Lake/ Foster Village	34,700	93.5	90.7 - 96.3	2,400	6.5	3.7 - 9.3	37,100
Upcountry/ Hana	26,100	87.2	82.7 - 91.8	3,800	12.8	8.2 - 17.3	29,900
Waialae/ Kahala/ Hawaii Kai	35,100	92.4	89.7 - 95.2	2,900	7.6	4.8 - 10.3	37,900
Waipahu/ Kapolei/ Ewa	94,500	88.6	85.9 - 91.2	12,200	11.4	8.8 - 14.1	106,700

Health status - two level by State, County, Island, Community, BRFSS Age Group, DOH Race-Ethnicity, Gender, Education Level, Employment Status (Grouped), Household Income, Poverty Level, Marital Status (Grouped), Married, Health Care Coverage, for the Year(s) - 2000-2002, 2001-2003, 2002-2004, 2003-2005, 2004-2006, 2005-2007, 2006-2008, 2007-2009, 2008-2010

Note: Weighted numbers (#) represent 3-yr averages, percentages and 95% confidence intervals; Respondents aged 18 years and older; n/r (Not Reportable) - If the unweighted total responses for a dimension (row) is <50 that row will not be shown; n/a (Not Available) - Not asked of a subset of respondents

Year: 2003-2005

BRFSS Age Group	Good or Better			Fair or Poor			Estimated Population (3-Yr Avg)
	#	%	C.I. (95%)	#	%	C.I. (95%)	#
18-24	106,100	92.4	88.9 - 95.9	8,700	7.6	4.1 - 11.1	114,800
25-34	155,400	93.5	91.9 - 95.1	10,800	6.5	4.9 - 8.1	166,100
35-44	164,400	91.2	89.6 - 92.9	15,800	8.8	7.1 - 10.4	180,100
45-54	151,700	86.4	84.4 - 88.4	23,800	13.6	11.6 - 15.6	175,500
55-64	104,600	81.1	78.6 - 83.6	24,400	18.9	16.4 - 21.4	129,000
65-74	66,000	78.2	75.0 - 81.3	18,400	21.8	18.7 - 25.0	84,400
75+	57,700	71.3	67.7 - 74.9	23,200	28.7	25.1 - 32.3	80,900

Health status - two level by State, County, Island, Community, BRFSS Age Group, DOH Race-Ethnicity, Gender, Education Level, Employment Status (Grouped), Household Income, Poverty Level, Marital Status (Grouped), Married, Health Care Coverage, for the Year(s) - 2000-2002, 2001-2003, 2002-2004, 2003-2005, 2004-2006, 2005-2007, 2006-2008, 2007-2009, 2008-2010

Note: Weighted numbers (#) represent 3-yr averages, percentages and 95% confidence intervals; Respondents aged 18 years and older; n/r (Not Reportable) - If the unweighted total responses for a dimension (row) is <50 that row will not be shown; n/a (Not Available) - Not asked of a subset of respondents

Year: 2003-2005

DOH Race-Ethnicity	Good or Better			Fair or Poor			Estimated Population (3-Yr Avg)
	#	%	C.I. (95%)	#	%	C.I. (95%)	#
Caucasian	288,700	89.7	88.5 - 90.9	33,200	10.3	9.1 - 11.5	321,900
Native Hawaiian	85,100	79.7	76.2 - 83.2	21,700	20.3	16.8 - 23.8	106,800
Chinese	62,100	85.7	82.7 - 88.6	10,400	14.3	11.4 - 17.3	72,500
Filipino	127,000	85.6	83.2 - 88.0	21,300	14.4	12.0 - 16.8	148,400
Japanese	163,600	86.2	84.5 - 88.0	26,100	13.8	12.0 - 15.5	189,700
Black	12,500	91.8	86.6 - 96.9	1,100	8.2	3.1 - 13.4	13,600
Native Alaskan/ American Indian	4,300	84.4	74.3 - 94.6	800	15.6	5.4 - 25.7	5,100
Other Asian	16,200	84.2	76.9 - 91.4	3,000	15.8	8.6 - 23.1	19,200
Other Pacific Islander	18,100	85.5	70.9 - 100.0	3,100	14.5	0.0 - 29.1	21,200
Other	22,300	85.4	80.5 - 90.4	3,800	14.6	9.6 - 19.5	26,100

Health status - two level by State, County, Island, Community, BRFSS Age Group, DOH Race-Ethnicity, Gender, Education Level, Employment Status (Grouped), Household Income, Poverty Level, Marital Status (Grouped), Married, Health Care Coverage, for the Year(s) - 2000-2002, 2001-2003, 2002-2004, 2003-2005, 2004-2006, 2005-2007, 2006-2008, 2007-2009, 2008-2010

Note: Weighted numbers (#) represent 3-yr averages, percentages and 95% confidence intervals; Respondents aged 18 years and older; n/r (Not Reportable) - If the unweighted total responses for a dimension (row) is <50 that row will not be shown; n/a (Not Available) - Not asked of a subset of respondents

Year: 2003-2005

Gender	Good or Better			Fair or Poor			Estimated Population (3-Yr Avg)
	#	%	C.I. (95%)	#	%	C.I. (95%)	#
Male	405,200	87.7	86.3 - 89.1	56,800	12.3	10.9 - 13.7	461,900
Female	405,400	85.4	84.2 - 86.6	69,200	14.6	13.4 - 15.8	474,700

Education Level	Good or Better			Fair or Poor			Estimated Population (3-Yr Avg)
	#	%	C.I. (95%)	#	%	C.I. (95%)	#
Never attended school/ Only Kindergarten to Grades 8	10,100	67.6	58.9 - 76.4	4,800	32.4	23.6 - 41.1	14,900
Grades 9 thru 11 (Some High School)	24,400	69.2	62.9 - 75.5	10,900	30.8	24.5 - 37.1	35,300
Grades 12 or GED (High School Grad)	232,900	83.3	81.6 - 85.1	46,600	16.7	14.9 - 18.4	279,500
College 1 to 3 years (Some College/ Tech)	247,100	87.9	86.2 - 89.7	33,900	12.1	10.3 - 13.8	281,000
College 4 years or more (College Grad)	294,700	90.9	89.6 - 92.1	29,600	9.1	7.9 - 10.4	324,300

Health status - two level by State, County, Island, Community, BRFSS Age Group, DOH Race-Ethnicity, Gender, Education Level, Employment Status (Grouped), Household Income, Poverty Level, Marital Status (Grouped), Married, Health Care Coverage, for the Year(s) - 2000-2002, 2001-2003, 2002-2004, 2003-2005, 2004-2006, 2005-2007, 2006-2008, 2007-2009, 2008-2010

Note: Weighted numbers (#) represent 3-yr averages, percentages and 95% confidence intervals; Respondents aged 18 years and older; n/r (Not Reportable) - If the unweighted total responses for a dimension (row) is <50 that row will not be shown; n/a (Not Available) - Not asked of a subset of respondents

Year: 2003-2005

Employment Status (Grouped)	Good or Better			Fair or Poor			Estimated Population (3-Yr Avg)
	#	%	C.I. (95%)	#	%	C.I. (95%)	#
Employed	548,800	90.8	89.7 - 91.9	55,600	9.2	8.1 - 10.3	604,400
Unemployed	21,600	84.6	79.8 - 89.5	3,900	15.4	10.5 - 20.2	25,500
Retired/Unable to work	151,400	72.5	70.3 - 74.8	57,400	27.5	25.2 - 29.7	208,800
Student/Homemaker	87,300	90.6	88.2 - 93.1	9,000	9.4	6.9 - 11.8	96,400

Health status - two level by State, County, Island, Community, BRFSS Age Group, DOH Race-Ethnicity, Gender, Education Level, Employment Status (Grouped), Household Income, Poverty Level, Marital Status (Grouped), Married, Health Care Coverage, for the Year(s) - 2000-2002, 2001-2003, 2002-2004, 2003-2005, 2004-2006, 2005-2007, 2006-2008, 2007-2009, 2008-2010

Note: Weighted numbers (#) represent 3-yr averages, percentages and 95% confidence intervals; Respondents aged 18 years and older; n/r (Not Reportable) - If the unweighted total responses for a dimension (row) is <50 that row will not be shown; n/a (Not Available) - Not asked of a subset of respondents

Year: 2003-2005

Household Income	Good or Better			Fair or Poor			Estimated Population (3-Yr Avg)
	#	%	C.I. (95%)	#	%	C.I. (95%)	#
Less than \$10,000	23,100	75.7	71.1 - 80.4	7,400	24.3	19.6 - 28.9	30,500
\$10,000 to \$14,999	24,600	70.0	64.6 - 75.5	10,500	30.0	24.5 - 35.4	35,200
\$15,000 to \$19,999	38,100	77.1	72.5 - 81.7	11,300	22.9	18.3 - 27.5	49,400
\$20,000 to \$24,999	52,200	83.8	80.6 - 87.0	10,100	16.2	13.0 - 19.4	62,300
\$25,000 to \$34,999	85,900	85.4	82.6 - 88.3	14,700	14.6	11.7 - 17.4	100,600
\$35,000 to \$49,999	128,200	88.2	86.0 - 90.3	17,200	11.8	9.7 - 14.0	145,400
\$50,000 to \$74,999	177,100	88.0	85.5 - 90.5	24,200	12.0	9.5 - 14.5	201,300
\$75,000 or more	186,500	93.3	91.9 - 94.7	13,400	6.7	5.3 - 8.1	199,800

Health status - two level by State, County, Island, Community, BRFSS Age Group, DOH Race-Ethnicity, Gender, Education Level, Employment Status (Grouped), Household Income, Poverty Level, Marital Status (Grouped), Married, Health Care Coverage, for the Year(s) - 2000-2002, 2001-2003, 2002-2004, 2003-2005, 2004-2006, 2005-2007, 2006-2008, 2007-2009, 2008-2010

Note: Weighted numbers (#) represent 3-yr averages, percentages and 95% confidence intervals; Respondents aged 18 years and older; n/r (Not Reportable) - If the unweighted total responses for a dimension (row) is <50 that row will not be shown; n/a (Not Available) - Not asked of a subset of respondents

Year: 2003-2005

Poverty Level	Good or Better			Fair or Poor			Estimated Population (3-Yr Avg)
	#	%	C.I. (95%)	#	%	C.I. (95%)	#
0-130%	135,100	78.4	75.9 - 80.8	37,300	21.6	19.2 - 24.1	172,400
131-185%	82,400	83.9	79.5 - 88.3	15,900	16.1	11.7 - 20.5	98,300
186+%	498,200	89.9	89.0 - 90.9	55,700	10.1	9.1 - 11.0	553,900

Marital Status (Grouped)	Good or Better			Fair or Poor			Estimated Population (3-Yr Avg)
	#	%	C.I. (95%)	#	%	C.I. (95%)	#
Married	484,200	88.3	87.2 - 89.4	64,100	11.7	10.6 - 12.8	548,300
Unmarried Couple	20,700	91.9	88.2 - 95.7	1,800	8.1	4.3 - 11.8	22,600
Widowed	44,100	73.3	69.3 - 77.3	16,100	26.7	22.7 - 30.7	60,200
Other	261,500	85.6	83.8 - 87.4	44,000	14.4	12.6 - 16.2	305,500

Health status - two level by State, County, Island, Community, BRFSS Age Group, DOH Race-Ethnicity, Gender, Education Level, Employment Status (Grouped), Household Income, Poverty Level, Marital Status (Grouped), Married, Health Care Coverage, for the Year(s) - 2000-2002, 2001-2003, 2002-2004, 2003-2005, 2004-2006, 2005-2007, 2006-2008, 2007-2009, 2008-2010

Note: Weighted numbers (#) represent 3-yr averages, percentages and 95% confidence intervals; Respondents aged 18 years and older; n/r (Not Reportable) - If the unweighted total responses for a dimension (row) is <50 that row will not be shown; n/a (Not Available) - Not asked of a subset of respondents

Year: 2003-2005

Married	Good or Better			Fair or Poor			Estimated Population (3-Yr Avg)
	#	%	C.I. (95%)	#	%	C.I. (95%)	#
Yes	493,000	88.2	87.1 - 89.2	66,100	11.8	10.8 - 12.9	559,100
No	315,800	84.1	82.5 - 85.7	59,800	15.9	14.3 - 17.5	375,600

Health Care Coverage	Good or Better			Fair or Poor			Estimated Population (3-Yr Avg)
	#	%	C.I. (95%)	#	%	C.I. (95%)	#
Yes	738,900	86.3	85.3 - 87.3	117,200	13.7	12.7 - 14.7	856,200
No	69,400	89.0	86.4 - 91.6	8,600	11.0	8.4 - 13.6	78,000

Health status - two level by State, County, Island, Community, BRFSS Age Group, DOH Race-Ethnicity, Gender, Education Level, Employment Status (Grouped), Household Income, Poverty Level, Marital Status (Grouped), Married, Health Care Coverage, for the Year(s) - 2000-2002, 2001-2003, 2002-2004, 2003-2005, 2004-2006, 2005-2007, 2006-2008, 2007-2009, 2008-2010

Note: Weighted numbers (#) represent 3-yr averages, percentages and 95% confidence intervals; Respondents aged 18 years and older; n/r (Not Reportable) - If the unweighted total responses for a dimension (row) is <50 that row will not be shown; n/a (Not Available) - Not asked of a subset of respondents

Year: 2002-2004

State	Good or Better			Fair or Poor			Estimated Population (3-Yr Avg)
	#	%	C.I. (95%)	#	%	C.I. (95%)	#
Hawaii State	797,100	87.3	86.4 - 88.2	115,700	12.7	11.8 - 13.6	912,800

County	Good or Better			Fair or Poor			Estimated Population (3-Yr Avg)
	#	%	C.I. (95%)	#	%	C.I. (95%)	#
Hawaii	102,500	86.2	84.6 - 87.8	16,400	13.8	12.2 - 15.4	118,900
Honolulu	574,000	87.7	86.5 - 88.9	80,400	12.3	11.1 - 13.5	654,400
Kauai	37,000	87.7	85.5 - 89.8	5,200	12.3	10.2 - 14.5	42,200
Maui	83,700	85.9	83.4 - 88.4	13,700	14.1	11.6 - 16.6	97,400

Health status - two level by State, County, Island, Community, BRFSS Age Group, DOH Race-Ethnicity, Gender, Education Level, Employment Status (Grouped), Household Income, Poverty Level, Marital Status (Grouped), Married, Health Care Coverage, for the Year(s) - 2000-2002, 2001-2003, 2002-2004, 2003-2005, 2004-2006, 2005-2007, 2006-2008, 2007-2009, 2008-2010

Note: Weighted numbers (#) represent 3-yr averages, percentages and 95% confidence intervals; Respondents aged 18 years and older; n/r (Not Reportable) - If the unweighted total responses for a dimension (row) is <50 that row will not be shown; n/a (Not Available) - Not asked of a subset of respondents

Year: 2002-2004

Island	Good or Better			Fair or Poor			Estimated Population (3-Yr Avg)
	#	%	C.I. (95%)	#	%	C.I. (95%)	#
Hawaii	102,500	86.2	84.6 - 87.8	16,400	13.8	12.2 - 15.4	118,900
Kauai	37,000	87.7	85.5 - 89.8	5,200	12.3	10.2 - 14.5	42,200
Lanai	2,200	88.1	83.3 - 92.9	300	11.9	7.1 - 16.7	2,500
Maui	75,700	85.9	83.1 - 88.7	12,400	14.1	11.3 - 16.9	88,100
Molokai	5,700	85.4	80.8 - 90.0	1,000	14.6	10.0 - 19.2	6,700
Oahu	574,000	87.7	86.5 - 88.9	80,400	12.3	11.1 - 13.5	654,400

Community	Good or Better			Fair or Poor			Estimated Population (3-Yr Avg)
	#	%	C.I. (95%)	#	%	C.I. (95%)	#
Aiea/ Pearl City	51,300	84.8	80.4 - 89.1	9,200	15.2	10.9 - 19.6	60,500
Ala Moana	28,100	88.5	84.7 - 92.3	3,700	11.5	7.7 - 15.3	31,800

Health status - two level by State, County, Island, Community, BRFSS Age Group, DOH Race-Ethnicity, Gender, Education Level, Employment Status (Grouped), Household Income, Poverty Level, Marital Status (Grouped), Married, Health Care Coverage, for the Year(s) - 2000-2002, 2001-2003, 2002-2004, 2003-2005, 2004-2006, 2005-2007, 2006-2008, 2007-2009, 2008-2010

Note: Weighted numbers (#) represent 3-yr averages, percentages and 95% confidence intervals; Respondents aged 18 years and older; n/r (Not Reportable) - If the unweighted total responses for a dimension (row) is <50 that row will not be shown; n/a (Not Available) - Not asked of a subset of respondents

Year: 2002-2004

Community	Good or Better			Fair or Poor			Estimated Population (3-Yr Avg)
	#	%	C.I. (95%)	#	%	C.I. (95%)	#
Hanalei/ Kapaa	15,400	88.4	85.3 - 91.6	2,000	11.6	8.4 - 14.7	17,400
Hilo	29,700	85.5	82.6 - 88.4	5,000	14.5	11.6 - 17.4	34,700
Kaaawa/ Kahaluu/ Kaneohe	37,400	87.5	83.2 - 91.9	5,300	12.5	8.1 - 16.8	42,700
Kahului	27,200	87.6	84.0 - 91.2	3,800	12.4	8.8 - 16.0	31,000
Kailua/ Waimanalo	42,400	90.5	87.3 - 93.7	4,400	9.5	6.3 - 12.7	46,800
Kaimuki/ Palolo/ Waikiki	56,000	87.0	83.7 - 90.2	8,400	13.0	9.8 - 16.3	64,300
Kona	25,400	88.6	86.0 - 91.2	3,300	11.4	8.8 - 14.0	28,700
Lahaina/ Wailuku	23,300	82.4	76.5 - 88.4	5,000	17.6	11.6 - 23.5	28,300
Lanai	2,200	88.1	83.3 - 92.9	300	11.9	7.1 - 16.7	2,500
Lihue-Waimea	21,600	87.1	84.1 - 90.1	3,200	12.9	9.9 - 15.9	24,700
Manoa/ Upper Makiki	45,800	86.8	82.4 - 91.1	7,000	13.2	8.9 - 17.6	52,800
Mililani/ Wahiawa	55,300	87.1	81.4 - 92.7	8,200	12.9	7.3 - 18.6	63,600

Health status - two level by State, County, Island, Community, BRFSS Age Group, DOH Race-Ethnicity, Gender, Education Level, Employment Status (Grouped), Household Income, Poverty Level, Marital Status (Grouped), Married, Health Care Coverage, for the Year(s) - 2000-2002, 2001-2003, 2002-2004, 2003-2005, 2004-2006, 2005-2007, 2006-2008, 2007-2009, 2008-2010

Note: Weighted numbers (#) represent 3-yr averages, percentages and 95% confidence intervals; Respondents aged 18 years and older; n/r (Not Reportable) - If the unweighted total responses for a dimension (row) is <50 that row will not be shown; n/a (Not Available) - Not asked of a subset of respondents

Year: 2002-2004

Community	Good or Better			Fair or Poor			Estimated Population (3-Yr Avg)
	#	%	C.I. (95%)	#	%	C.I. (95%)	#
Molokai	5,700	85.4	80.8 - 90.0	1,000	14.6	10.0 - 19.2	6,700
Nanakuli/ Waianae	23,200	78.9	71.3 - 86.5	6,200	21.1	13.5 - 28.7	29,400
N.Hawaii	20,400	87.4	83.9 - 91.0	2,900	12.6	9.0 - 16.1	23,300
N.Shore/ Laie	18,000	85.3	78.3 - 92.3	3,100	14.7	7.7 - 21.7	21,100
Nuuanu/ Kalihi/ Moanalua	57,600	85.8	82.3 - 89.3	9,500	14.2	10.7 - 17.7	67,200
Puna/ Kau	27,000	83.8	80.0 - 87.6	5,200	16.2	12.4 - 20.0	32,200
Salt Lake/ Foster Village	35,500	92.0	88.9 - 95.2	3,100	8.0	4.8 - 11.1	38,600
Upcountry/ Hana	25,200	87.4	82.8 - 92.1	3,600	12.6	7.9 - 17.2	28,800
Waialae/ Kahala/ Hawaii Kai	37,300	94.8	92.5 - 97.2	2,000	5.2	2.8 - 7.5	39,300
Waipahu/ Kapolei/ Ewa	86,100	89.4	86.8 - 92.1	10,200	10.6	7.9 - 13.2	96,200

Health status - two level by State, County, Island, Community, BRFSS Age Group, DOH Race-Ethnicity, Gender, Education Level, Employment Status (Grouped), Household Income, Poverty Level, Marital Status (Grouped), Married, Health Care Coverage, for the Year(s) - 2000-2002, 2001-2003, 2002-2004, 2003-2005, 2004-2006, 2005-2007, 2006-2008, 2007-2009, 2008-2010

Note: Weighted numbers (#) represent 3-yr averages, percentages and 95% confidence intervals; Respondents aged 18 years and older; n/r (Not Reportable) - If the unweighted total responses for a dimension (row) is <50 that row will not be shown; n/a (Not Available) - Not asked of a subset of respondents

Year: 2002-2004

BRFSS Age Group	Good or Better			Fair or Poor			Estimated Population (3-Yr Avg)
	#	%	C.I. (95%)	#	%	C.I. (95%)	#
18-24	105,100	93.4	89.9 - 96.8	7,500	6.6	3.2 - 10.1	112,600
25-34	154,900	94.0	92.4 - 95.6	9,800	6.0	4.4 - 7.6	164,800
35-44	165,000	91.6	90.0 - 93.2	15,200	8.4	6.8 - 10.0	180,200
45-54	151,500	88.0	86.0 - 89.9	20,700	12.0	10.1 - 14.0	172,200
55-64	95,900	80.5	77.8 - 83.2	23,200	19.5	16.8 - 22.2	119,100
65-74	64,200	78.2	75.0 - 81.4	17,900	21.8	18.6 - 25.0	82,100
75+	56,400	73.4	69.7 - 77.2	20,400	26.6	22.8 - 30.3	76,700

Health status - two level by State, County, Island, Community, BRFSS Age Group, DOH Race-Ethnicity, Gender, Education Level, Employment Status (Grouped), Household Income, Poverty Level, Marital Status (Grouped), Married, Health Care Coverage, for the Year(s) - 2000-2002, 2001-2003, 2002-2004, 2003-2005, 2004-2006, 2005-2007, 2006-2008, 2007-2009, 2008-2010

Note: Weighted numbers (#) represent 3-yr averages, percentages and 95% confidence intervals; Respondents aged 18 years and older; n/r (Not Reportable) - If the unweighted total responses for a dimension (row) is <50 that row will not be shown; n/a (Not Available) - Not asked of a subset of respondents

Year: 2002-2004

DOH Race-Ethnicity	Good or Better			Fair or Poor			Estimated Population (3-Yr Avg)
	#	%	C.I. (95%)	#	%	C.I. (95%)	#
Caucasian	286,500	90.3	89.1 - 91.4	30,900	9.7	8.6 - 10.9	317,400
Native Hawaiian	86,000	81.3	77.8 - 84.8	19,800	18.7	15.2 - 22.2	105,800
Chinese	66,300	87.1	84.3 - 89.9	9,900	12.9	10.1 - 15.7	76,200
Filipino	122,500	86.6	84.2 - 89.1	18,900	13.4	10.9 - 15.8	141,300
Japanese	157,100	86.6	84.7 - 88.4	24,400	13.4	11.6 - 15.3	181,500
Black	11,300	91.0	86.0 - 96.0	1,100	9.0	4.0 - 14.0	12,400
Native Alaskan/ American Indian	4,400	96.5	93.0 - 99.9	200	3.5	0.1 - 7.0	4,600
Other Asian	16,400	84.2	76.9 - 91.5	3,100	15.8	8.5 - 23.1	19,500
Other Pacific Islander	16,300	83.6	67.9 - 99.3	3,200	16.4	0.7 - 32.1	19,500
Other	20,100	86.8	81.6 - 92.0	3,000	13.2	8.0 - 18.4	23,100

Health status - two level by State, County, Island, Community, BRFSS Age Group, DOH Race-Ethnicity, Gender, Education Level, Employment Status (Grouped), Household Income, Poverty Level, Marital Status (Grouped), Married, Health Care Coverage, for the Year(s) - 2000-2002, 2001-2003, 2002-2004, 2003-2005, 2004-2006, 2005-2007, 2006-2008, 2007-2009, 2008-2010

Note: Weighted numbers (#) represent 3-yr averages, percentages and 95% confidence intervals; Respondents aged 18 years and older; n/r (Not Reportable) - If the unweighted total responses for a dimension (row) is <50 that row will not be shown; n/a (Not Available) - Not asked of a subset of respondents

Year: 2002-2004

Gender	Good or Better			Fair or Poor			Estimated Population (3-Yr Avg)
	#	%	C.I. (95%)	#	%	C.I. (95%)	#
Male	395,800	88.0	86.5 - 89.4	54,100	12.0	10.6 - 13.5	449,900
Female	401,300	86.7	85.5 - 87.9	61,600	13.3	12.1 - 14.5	462,900

Education Level	Good or Better			Fair or Poor			Estimated Population (3-Yr Avg)
	#	%	C.I. (95%)	#	%	C.I. (95%)	#
Never attended school/ Only Kindergarten to Grades 8	9,300	65.5	56.9 - 74.2	4,900	34.5	25.8 - 43.1	14,200
Grades 9 thru 11 (Some High School)	23,800	71.3	64.9 - 77.7	9,600	28.7	22.3 - 35.1	33,300
Grades 12 or GED (High School Grad)	247,300	85.1	83.4 - 86.7	43,400	14.9	13.3 - 16.6	290,700
College 1 to 3 years (Some College/ Tech)	243,400	88.7	86.9 - 90.4	31,200	11.3	9.6 - 13.1	274,600
College 4 years or more (College Grad)	272,300	91.1	89.8 - 92.4	26,600	8.9	7.6 - 10.2	298,900

Health status - two level by State, County, Island, Community, BRFSS Age Group, DOH Race-Ethnicity, Gender, Education Level, Employment Status (Grouped), Household Income, Poverty Level, Marital Status (Grouped), Married, Health Care Coverage, for the Year(s) - 2000-2002, 2001-2003, 2002-2004, 2003-2005, 2004-2006, 2005-2007, 2006-2008, 2007-2009, 2008-2010

Note: Weighted numbers (#) represent 3-yr averages, percentages and 95% confidence intervals; Respondents aged 18 years and older; n/r (Not Reportable) - If the unweighted total responses for a dimension (row) is <50 that row will not be shown; n/a (Not Available) - Not asked of a subset of respondents

Year: 2002-2004

Employment Status (Grouped)	Good or Better			Fair or Poor			Estimated Population (3-Yr Avg)
	#	%	C.I. (95%)	#	%	C.I. (95%)	#
Employed	539,300	91.3	90.3 - 92.4	51,100	8.7	7.6 - 9.7	590,300
Unemployed	28,000	86.4	82.4 - 90.5	4,400	13.6	9.5 - 17.6	32,300
Retired/Unable to work	139,100	72.6	70.2 - 75.0	52,400	27.4	25.0 - 29.8	191,500
Student/Homemaker	89,900	92.1	89.8 - 94.3	7,800	7.9	5.7 - 10.2	97,700

Health status - two level by State, County, Island, Community, BRFSS Age Group, DOH Race-Ethnicity, Gender, Education Level, Employment Status (Grouped), Household Income, Poverty Level, Marital Status (Grouped), Married, Health Care Coverage, for the Year(s) - 2000-2002, 2001-2003, 2002-2004, 2003-2005, 2004-2006, 2005-2007, 2006-2008, 2007-2009, 2008-2010

Note: Weighted numbers (#) represent 3-yr averages, percentages and 95% confidence intervals; Respondents aged 18 years and older; n/r (Not Reportable) - If the unweighted total responses for a dimension (row) is <50 that row will not be shown; n/a (Not Available) - Not asked of a subset of respondents

Year: 2002-2004

Household Income	Good or Better			Fair or Poor			Estimated Population (3-Yr Avg)
	#	%	C.I. (95%)	#	%	C.I. (95%)	#
Less than \$10,000	25,500	76.9	72.5 - 81.3	7,700	23.1	18.7 - 27.5	33,100
\$10,000 to \$14,999	27,900	74.2	69.3 - 79.1	9,700	25.8	20.9 - 30.7	37,700
\$15,000 to \$19,999	38,000	82.3	77.6 - 86.9	8,200	17.7	13.1 - 22.4	46,200
\$20,000 to \$24,999	47,900	85.7	82.4 - 88.9	8,000	14.3	11.1 - 17.6	55,900
\$25,000 to \$34,999	80,400	87.2	84.2 - 90.1	11,900	12.8	9.9 - 15.8	92,300
\$35,000 to \$49,999	120,500	88.9	86.6 - 91.2	15,100	11.1	8.8 - 13.4	135,600
\$50,000 to \$74,999	159,800	87.5	84.8 - 90.3	22,800	12.5	9.7 - 15.2	182,600
\$75,000 or more	156,300	93.3	91.6 - 94.9	11,300	6.7	5.1 - 8.4	167,600

Health status - two level by State, County, Island, Community, BRFSS Age Group, DOH Race-Ethnicity, Gender, Education Level, Employment Status (Grouped), Household Income, Poverty Level, Marital Status (Grouped), Married, Health Care Coverage, for the Year(s) - 2000-2002, 2001-2003, 2002-2004, 2003-2005, 2004-2006, 2005-2007, 2006-2008, 2007-2009, 2008-2010

Note: Weighted numbers (#) represent 3-yr averages, percentages and 95% confidence intervals; Respondents aged 18 years and older; n/r (Not Reportable) - If the unweighted total responses for a dimension (row) is <50 that row will not be shown; n/a (Not Available) - Not asked of a subset of respondents

Year: 2002-2004

Poverty Level	Good or Better			Fair or Poor			Estimated Population (3-Yr Avg)
	#	%	C.I. (95%)	#	%	C.I. (95%)	#
0-130%	132,300	81.1	78.7 - 83.5	30,800	18.9	16.5 - 21.3	163,100
131-185%	76,300	84.3	79.6 - 89.0	14,200	15.7	11.0 - 20.4	90,500
186+%	447,800	90.0	89.0 - 91.1	49,600	10.0	8.9 - 11.0	497,400

Marital Status (Grouped)	Good or Better			Fair or Poor			Estimated Population (3-Yr Avg)
	#	%	C.I. (95%)	#	%	C.I. (95%)	#
Married	472,500	88.9	87.8 - 90.0	58,900	11.1	10.0 - 12.2	531,400
Unmarried Couple	19,700	93.1	89.5 - 96.8	1,500	6.9	3.2 - 10.5	21,200
Widowed	44,000	73.9	69.8 - 78.1	15,500	26.1	21.9 - 30.2	59,500
Other	260,900	86.8	85.0 - 88.5	39,800	13.2	11.5 - 15.0	300,700

Health status - two level by State, County, Island, Community, BRFSS Age Group, DOH Race-Ethnicity, Gender, Education Level, Employment Status (Grouped), Household Income, Poverty Level, Marital Status (Grouped), Married, Health Care Coverage, for the Year(s) - 2000-2002, 2001-2003, 2002-2004, 2003-2005, 2004-2006, 2005-2007, 2006-2008, 2007-2009, 2008-2010

Note: Weighted numbers (#) represent 3-yr averages, percentages and 95% confidence intervals; Respondents aged 18 years and older; n/r (Not Reportable) - If the unweighted total responses for a dimension (row) is <50 that row will not be shown; n/a (Not Available) - Not asked of a subset of respondents

Year: 2002-2004

Married	Good or Better			Fair or Poor			Estimated Population (3-Yr Avg)
	#	%	C.I. (95%)	#	%	C.I. (95%)	#
Yes	481,400	88.8	87.7 - 89.9	60,600	11.2	10.1 - 12.3	542,000
No	314,100	85.1	83.5 - 86.7	55,000	14.9	13.3 - 16.5	369,100

Health Care Coverage	Good or Better			Fair or Poor			Estimated Population (3-Yr Avg)
	#	%	C.I. (95%)	#	%	C.I. (95%)	#
Yes	724,700	87.1	86.1 - 88.1	107,200	12.9	11.9 - 13.9	831,900
No	70,400	89.5	87.1 - 92.0	8,200	10.5	8.0 - 12.9	78,600

Health status - two level by State, County, Island, Community, BRFSS Age Group, DOH Race-Ethnicity, Gender, Education Level, Employment Status (Grouped), Household Income, Poverty Level, Marital Status (Grouped), Married, Health Care Coverage, for the Year(s) - 2000-2002, 2001-2003, 2002-2004, 2003-2005, 2004-2006, 2005-2007, 2006-2008, 2007-2009, 2008-2010

Note: Weighted numbers (#) represent 3-yr averages, percentages and 95% confidence intervals; Respondents aged 18 years and older; n/r (Not Reportable) - If the unweighted total responses for a dimension (row) is <50 that row will not be shown; n/a (Not Available) - Not asked of a subset of respondents

Year: 2001-2003

State	Good or Better			Fair or Poor			Estimated Population (3-Yr Avg)
	#	%	C.I. (95%)	#	%	C.I. (95%)	#
Hawaii State	798,100	88.0	87.3 - 88.7	108,700	12.0	11.3 - 12.7	906,800

County	Good or Better			Fair or Poor			Estimated Population (3-Yr Avg)
	#	%	C.I. (95%)	#	%	C.I. (95%)	#
Hawaii	95,900	86.3	84.9 - 87.7	15,200	13.7	12.3 - 15.1	111,100
Honolulu	579,400	88.3	87.4 - 89.2	76,600	11.7	10.8 - 12.6	656,000
Kauai	37,400	88.4	86.6 - 90.2	4,900	11.6	9.8 - 13.4	42,300
Maui	85,400	87.7	85.4 - 90.0	12,000	12.3	10.0 - 14.6	97,400

Health status - two level by State, County, Island, Community, BRFSS Age Group, DOH Race-Ethnicity, Gender, Education Level, Employment Status (Grouped), Household Income, Poverty Level, Marital Status (Grouped), Married, Health Care Coverage, for the Year(s) - 2000-2002, 2001-2003, 2002-2004, 2003-2005, 2004-2006, 2005-2007, 2006-2008, 2007-2009, 2008-2010

Note: Weighted numbers (#) represent 3-yr averages, percentages and 95% confidence intervals; Respondents aged 18 years and older; n/r (Not Reportable) - If the unweighted total responses for a dimension (row) is <50 that row will not be shown; n/a (Not Available) - Not asked of a subset of respondents

Year: 2001-2003

Island	Good or Better			Fair or Poor			Estimated Population (3-Yr Avg)
	#	%	C.I. (95%)	#	%	C.I. (95%)	#
Hawaii	95,900	86.3	84.9 - 87.7	15,200	13.7	12.3 - 15.1	111,100
Kauai	37,400	88.4	86.6 - 90.2	4,900	11.6	9.8 - 13.4	42,300
Lanai	2,600	87.3	82.6 - 92.0	400	12.7	8.0 - 17.4	2,900
Maui	77,500	88.0	85.5 - 90.5	10,600	12.0	9.5 - 14.5	88,100
Molokai	5,300	83.5	78.7 - 88.3	1,000	16.5	11.7 - 21.3	6,300
Oahu	579,400	88.3	87.4 - 89.2	76,600	11.7	10.8 - 12.6	656,000

Community	Good or Better			Fair or Poor			Estimated Population (3-Yr Avg)
	#	%	C.I. (95%)	#	%	C.I. (95%)	#
Aiea/ Pearl City	52,600	86.5	83.1 - 89.9	8,200	13.5	10.1 - 16.9	60,900
Ala Moana	26,300	87.0	83.3 - 90.6	4,000	13.0	9.4 - 16.7	30,300

Health status - two level by State, County, Island, Community, BRFSS Age Group, DOH Race-Ethnicity, Gender, Education Level, Employment Status (Grouped), Household Income, Poverty Level, Marital Status (Grouped), Married, Health Care Coverage, for the Year(s) - 2000-2002, 2001-2003, 2002-2004, 2003-2005, 2004-2006, 2005-2007, 2006-2008, 2007-2009, 2008-2010

Note: Weighted numbers (#) represent 3-yr averages, percentages and 95% confidence intervals; Respondents aged 18 years and older; n/r (Not Reportable) - If the unweighted total responses for a dimension (row) is <50 that row will not be shown; n/a (Not Available) - Not asked of a subset of respondents

Year: 2001-2003

Community	Good or Better			Fair or Poor			Estimated Population (3-Yr Avg)
	#	%	C.I. (95%)	#	%	C.I. (95%)	#
Hanalei/ Kapaa	15,800	89.4	86.8 - 92.0	1,900	10.6	8.0 - 13.2	17,700
Hilo	28,900	84.9	82.2 - 87.6	5,100	15.1	12.4 - 17.8	34,000
Kaaawa/ Kahaluu/ Kaneohe	36,900	88.3	84.4 - 92.3	4,900	11.7	7.7 - 15.6	41,800
Kahului	27,500	86.8	81.0 - 92.7	4,200	13.2	7.3 - 19.0	31,600
Kailua/ Waimanalo	44,500	90.0	86.8 - 93.2	4,900	10.0	6.8 - 13.2	49,400
Kaimuki/ Palolo/ Waikiki	60,500	88.6	86.2 - 91.1	7,700	11.4	8.9 - 13.8	68,200
Kona	26,300	87.8	85.4 - 90.2	3,700	12.2	9.8 - 14.6	30,000
Lahaina/ Wailuku	25,000	87.1	84.0 - 90.2	3,700	12.9	9.8 - 16.0	28,700
Lanai	2,600	87.3	82.6 - 92.0	400	12.7	8.0 - 17.4	2,900
Lihue-Waimea	21,500	87.7	85.1 - 90.2	3,000	12.3	9.8 - 14.9	24,600
Manoa/ Upper Makiki	50,800	90.8	88.1 - 93.5	5,200	9.2	6.5 - 11.9	56,000
Mililani/ Wahiawa	56,900	91.4	89.0 - 93.7	5,400	8.6	6.3 - 11.0	62,300

Health status - two level by State, County, Island, Community, BRFSS Age Group, DOH Race-Ethnicity, Gender, Education Level, Employment Status (Grouped), Household Income, Poverty Level, Marital Status (Grouped), Married, Health Care Coverage, for the Year(s) - 2000-2002, 2001-2003, 2002-2004, 2003-2005, 2004-2006, 2005-2007, 2006-2008, 2007-2009, 2008-2010

Note: Weighted numbers (#) represent 3-yr averages, percentages and 95% confidence intervals; Respondents aged 18 years and older; n/r (Not Reportable) - If the unweighted total responses for a dimension (row) is <50 that row will not be shown; n/a (Not Available) - Not asked of a subset of respondents

Year: 2001-2003

Community	Good or Better			Fair or Poor			Estimated Population (3-Yr Avg)
	#	%	C.I. (95%)	#	%	C.I. (95%)	#
Molokai	5,300	83.5	78.7 - 88.3	1,000	16.5	11.7 - 21.3	6,300
Nanakuli/ Waianae	22,000	80.3	74.2 - 86.4	5,400	19.7	13.6 - 25.8	27,400
N.Hawaii	20,300	86.1	82.7 - 89.5	3,300	13.9	10.5 - 17.3	23,500
N.Shore/ Laie	19,200	83.5	77.5 - 89.5	3,800	16.5	10.5 - 22.5	23,100
Nuuanu/ Kalihi/ Moanalua	56,500	83.3	79.7 - 86.8	11,400	16.7	13.2 - 20.3	67,900
Puna/ Kau	20,500	86.8	84.0 - 89.6	3,100	13.2	10.4 - 16.0	23,600
Salt Lake/ Foster Village	36,100	92.4	89.4 - 95.3	3,000	7.6	4.7 - 10.6	39,100
Upcountry/ Hana	25,100	90.2	87.8 - 92.7	2,700	9.8	7.3 - 12.2	27,800
Waialae/ Kahala/ Hawaii Kai	36,600	92.2	89.3 - 95.2	3,100	7.8	4.8 - 10.7	39,700
Waipahu/ Kapolei/ Ewa	80,400	89.2	86.8 - 91.6	9,700	10.8	8.4 - 13.2	90,100

Health status - two level by State, County, Island, Community, BRFSS Age Group, DOH Race-Ethnicity, Gender, Education Level, Employment Status (Grouped), Household Income, Poverty Level, Marital Status (Grouped), Married, Health Care Coverage, for the Year(s) - 2000-2002, 2001-2003, 2002-2004, 2003-2005, 2004-2006, 2005-2007, 2006-2008, 2007-2009, 2008-2010

Note: Weighted numbers (#) represent 3-yr averages, percentages and 95% confidence intervals; Respondents aged 18 years and older; n/r (Not Reportable) - If the unweighted total responses for a dimension (row) is <50 that row will not be shown; n/a (Not Available) - Not asked of a subset of respondents

Year: 2001-2003

BRFSS Age Group	Good or Better			Fair or Poor			Estimated Population (3-Yr Avg)
	#	%	C.I. (95%)	#	%	C.I. (95%)	#
18-24	104,800	93.3	91.0 - 95.7	7,500	6.7	4.3 - 9.0	112,300
25-34	154,400	93.7	92.4 - 95.0	10,400	6.3	5.0 - 7.6	164,800
35-44	165,300	90.5	88.9 - 92.1	17,400	9.5	7.9 - 11.1	182,700
45-54	149,500	88.8	87.3 - 90.3	18,900	11.2	9.7 - 12.7	168,400
55-64	99,800	84.3	82.0 - 86.6	18,600	15.7	13.4 - 18.0	118,400
65-74	67,100	79.9	77.2 - 82.6	16,800	20.1	17.4 - 22.8	83,900
75+	53,900	74.8	71.8 - 77.7	18,200	25.2	22.3 - 28.2	72,100

Health status - two level by State, County, Island, Community, BRFSS Age Group, DOH Race-Ethnicity, Gender, Education Level, Employment Status (Grouped), Household Income, Poverty Level, Marital Status (Grouped), Married, Health Care Coverage, for the Year(s) - 2000-2002, 2001-2003, 2002-2004, 2003-2005, 2004-2006, 2005-2007, 2006-2008, 2007-2009, 2008-2010

Note: Weighted numbers (#) represent 3-yr averages, percentages and 95% confidence intervals; Respondents aged 18 years and older; n/r (Not Reportable) - If the unweighted total responses for a dimension (row) is <50 that row will not be shown; n/a (Not Available) - Not asked of a subset of respondents

Year: 2001-2003

DOH Race-Ethnicity	Good or Better			Fair or Poor			Estimated Population (3-Yr Avg)
	#	%	C.I. (95%)	#	%	C.I. (95%)	#
Caucasian	291,900	91.4	90.5 - 92.3	27,500	8.6	7.7 - 9.5	319,400
Native Hawaiian	87,600	84.4	82.1 - 86.8	16,100	15.6	13.2 - 17.9	103,800
Chinese	68,000	87.5	85.0 - 90.1	9,700	12.5	9.9 - 15.0	77,700
Filipino	116,800	86.1	83.6 - 88.5	18,900	13.9	11.5 - 16.4	135,600
Japanese	155,100	85.9	84.3 - 87.6	25,400	14.1	12.4 - 15.7	180,400
Black	13,300	88.8	83.0 - 94.7	1,700	11.2	5.3 - 17.0	15,000
Native Alaskan/ American Indian	3,500	86.0	76.5 - 95.5	600	14.0	4.5 - 23.5	4,100
Other Asian	18,900	88.9	84.7 - 93.1	2,400	11.1	6.9 - 15.3	21,300
Other Pacific Islander	14,800	83.7	75.5 - 92.0	2,900	16.3	8.0 - 24.5	17,700
Other	23,900	88.6	84.3 - 92.8	3,100	11.4	7.2 - 15.7	27,000

Health status - two level by State, County, Island, Community, BRFSS Age Group, DOH Race-Ethnicity, Gender, Education Level, Employment Status (Grouped), Household Income, Poverty Level, Marital Status (Grouped), Married, Health Care Coverage, for the Year(s) - 2000-2002, 2001-2003, 2002-2004, 2003-2005, 2004-2006, 2005-2007, 2006-2008, 2007-2009, 2008-2010

Note: Weighted numbers (#) represent 3-yr averages, percentages and 95% confidence intervals; Respondents aged 18 years and older; n/r (Not Reportable) - If the unweighted total responses for a dimension (row) is <50 that row will not be shown; n/a (Not Available) - Not asked of a subset of respondents

Year: 2001-2003

Gender	Good or Better			Fair or Poor			Estimated Population (3-Yr Avg)
	#	%	C.I. (95%)	#	%	C.I. (95%)	#
Male	400,600	88.6	87.5 - 89.8	51,400	11.4	10.2 - 12.5	452,000
Female	397,400	87.4	86.4 - 88.3	57,400	12.6	11.7 - 13.6	454,800

Education Level	Good or Better			Fair or Poor			Estimated Population (3-Yr Avg)
	#	%	C.I. (95%)	#	%	C.I. (95%)	#
Never attended school/ Only Kindergarten to Grades 8	10,800	66.6	59.5 - 73.7	5,400	33.4	26.3 - 40.5	16,200
Grades 9 thru 11 (Some High School)	25,800	72.2	67.2 - 77.2	9,900	27.8	22.8 - 32.8	35,700
Grades 12 or GED (High School Grad)	252,800	85.4	84.1 - 86.8	43,000	14.6	13.2 - 15.9	295,800
College 1 to 3 years (Some College/ Tech)	240,400	89.3	87.8 - 90.7	29,000	10.7	9.3 - 12.2	269,400
College 4 years or more (College Grad)	266,800	92.6	91.6 - 93.6	21,300	7.4	6.4 - 8.4	288,100

Health status - two level by State, County, Island, Community, BRFSS Age Group, DOH Race-Ethnicity, Gender, Education Level, Employment Status (Grouped), Household Income, Poverty Level, Marital Status (Grouped), Married, Health Care Coverage, for the Year(s) - 2000-2002, 2001-2003, 2002-2004, 2003-2005, 2004-2006, 2005-2007, 2006-2008, 2007-2009, 2008-2010

Note: Weighted numbers (#) represent 3-yr averages, percentages and 95% confidence intervals; Respondents aged 18 years and older; n/r (Not Reportable) - If the unweighted total responses for a dimension (row) is <50 that row will not be shown; n/a (Not Available) - Not asked of a subset of respondents

Year: 2001-2003

Employment Status (Grouped)	Good or Better			Fair or Poor			Estimated Population (3-Yr Avg)
	#	%	C.I. (95%)	#	%	C.I. (95%)	#
Employed	544,100	91.9	91.1 - 92.7	47,900	8.1	7.3 - 8.9	592,100
Unemployed	28,400	85.2	81.3 - 89.2	4,900	14.8	10.8 - 18.7	33,300
Retired/Unable to work	140,800	74.9	73.0 - 76.9	47,100	25.1	23.1 - 27.0	187,900
Student/Homemaker	84,200	90.7	88.5 - 92.8	8,700	9.3	7.2 - 11.5	92,900

Health status - two level by State, County, Island, Community, BRFSS Age Group, DOH Race-Ethnicity, Gender, Education Level, Employment Status (Grouped), Household Income, Poverty Level, Marital Status (Grouped), Married, Health Care Coverage, for the Year(s) - 2000-2002, 2001-2003, 2002-2004, 2003-2005, 2004-2006, 2005-2007, 2006-2008, 2007-2009, 2008-2010

Note: Weighted numbers (#) represent 3-yr averages, percentages and 95% confidence intervals; Respondents aged 18 years and older; n/r (Not Reportable) - If the unweighted total responses for a dimension (row) is <50 that row will not be shown; n/a (Not Available) - Not asked of a subset of respondents

Year: 2001-2003

Household Income	Good or Better			Fair or Poor			Estimated Population (3-Yr Avg)
	#	%	C.I. (95%)	#	%	C.I. (95%)	#
Less than \$10,000	30,300	75.3	70.9 - 79.6	10,000	24.7	20.4 - 29.1	40,300
\$10,000 to \$14,999	31,800	73.8	69.3 - 78.3	11,300	26.2	21.7 - 30.7	43,100
\$15,000 to \$19,999	38,000	87.1	84.0 - 90.3	5,600	12.9	9.7 - 16.0	43,600
\$20,000 to \$24,999	44,500	84.9	80.3 - 89.4	7,900	15.1	10.6 - 19.7	52,400
\$25,000 to \$34,999	74,000	88.9	86.6 - 91.1	9,200	11.1	8.9 - 13.4	83,300
\$35,000 to \$49,999	120,400	90.0	88.2 - 91.7	13,400	10.0	8.3 - 11.8	133,800
\$50,000 to \$74,999	117,700	91.2	89.5 - 92.9	11,400	8.8	7.1 - 10.5	129,000
\$75,000 or more	130,800	94.4	93.0 - 95.8	7,800	5.6	4.2 - 7.0	138,600

Health status - two level by State, County, Island, Community, BRFSS Age Group, DOH Race-Ethnicity, Gender, Education Level, Employment Status (Grouped), Household Income, Poverty Level, Marital Status (Grouped), Married, Health Care Coverage, for the Year(s) - 2000-2002, 2001-2003, 2002-2004, 2003-2005, 2004-2006, 2005-2007, 2006-2008, 2007-2009, 2008-2010

Note: Weighted numbers (#) represent 3-yr averages, percentages and 95% confidence intervals; Respondents aged 18 years and older; n/r (Not Reportable) - If the unweighted total responses for a dimension (row) is <50 that row will not be shown; n/a (Not Available) - Not asked of a subset of respondents

Year: 2001-2003

Poverty Level	Good or Better			Fair or Poor			Estimated Population (3-Yr Avg)
	#	%	C.I. (95%)	#	%	C.I. (95%)	#
0-130%	127,200	80.3	77.9 - 82.7	31,200	19.7	17.3 - 22.1	158,400
131-185%	75,800	87.0	84.4 - 89.6	11,300	13.0	10.4 - 15.6	87,100
186+%	384,500	91.9	91.0 - 92.7	34,100	8.1	7.3 - 9.0	418,500

Marital Status (Grouped)	Good or Better			Fair or Poor			Estimated Population (3-Yr Avg)
	#	%	C.I. (95%)	#	%	C.I. (95%)	#
Married	467,900	89.3	88.4 - 90.3	55,900	10.7	9.7 - 11.6	523,800
Unmarried Couple	15,400	93.7	90.4 - 97.0	1,000	6.3	3.0 - 9.6	16,400
Widowed	44,000	77.1	73.9 - 80.3	13,000	22.9	19.7 - 26.1	57,000
Other	270,800	87.5	86.2 - 88.7	38,700	12.5	11.3 - 13.8	309,500

Health status - two level by State, County, Island, Community, BRFSS Age Group, DOH Race-Ethnicity, Gender, Education Level, Employment Status (Grouped), Household Income, Poverty Level, Marital Status (Grouped), Married, Health Care Coverage, for the Year(s) - 2000-2002, 2001-2003, 2002-2004, 2003-2005, 2004-2006, 2005-2007, 2006-2008, 2007-2009, 2008-2010

Note: Weighted numbers (#) represent 3-yr averages, percentages and 95% confidence intervals; Respondents aged 18 years and older; n/r (Not Reportable) - If the unweighted total responses for a dimension (row) is <50 that row will not be shown; n/a (Not Available) - Not asked of a subset of respondents

Year: 2001-2003

Married	Good or Better			Fair or Poor			Estimated Population (3-Yr Avg)
	#	%	C.I. (95%)	#	%	C.I. (95%)	#
Yes	478,400	89.1	88.1 - 90.1	58,600	10.9	9.9 - 11.9	537,000
No	318,700	86.4	85.3 - 87.6	50,000	13.6	12.4 - 14.7	368,800

Health Care Coverage	Good or Better			Fair or Poor			Estimated Population (3-Yr Avg)
	#	%	C.I. (95%)	#	%	C.I. (95%)	#
Yes	733,900	88.1	87.3 - 88.9	99,100	11.9	11.1 - 12.7	833,000
No	63,300	87.3	84.5 - 90.0	9,200	12.7	10.0 - 15.5	72,600

Health status - two level by State, County, Island, Community, BRFSS Age Group, DOH Race-Ethnicity, Gender, Education Level, Employment Status (Grouped), Household Income, Poverty Level, Marital Status (Grouped), Married, Health Care Coverage, for the Year(s) - 2000-2002, 2001-2003, 2002-2004, 2003-2005, 2004-2006, 2005-2007, 2006-2008, 2007-2009, 2008-2010

Note: Weighted numbers (#) represent 3-yr averages, percentages and 95% confidence intervals; Respondents aged 18 years and older; n/r (Not Reportable) - If the unweighted total responses for a dimension (row) is <50 that row will not be shown; n/a (Not Available) - Not asked of a subset of respondents

Year: 2000-2002

State	Good or Better			Fair or Poor			Estimated Population (3-Yr Avg)
	#	%	C.I. (95%)	#	%	C.I. (95%)	#
Hawaii State	784,600	88.0	87.3 - 88.7	106,700	12.0	11.3 - 12.7	891,300

County	Good or Better			Fair or Poor			Estimated Population (3-Yr Avg)
	#	%	C.I. (95%)	#	%	C.I. (95%)	#
Hawaii	92,000	86.0	84.7 - 87.3	15,000	14.0	12.7 - 15.3	107,000
Honolulu	574,400	88.5	87.6 - 89.4	74,800	11.5	10.6 - 12.4	649,200
Kauai	36,600	88.4	86.7 - 90.2	4,800	11.6	9.8 - 13.3	41,400
Maui	81,500	87.0	84.8 - 89.3	12,200	13.0	10.7 - 15.2	93,700

Health status - two level by State, County, Island, Community, BRFSS Age Group, DOH Race-Ethnicity, Gender, Education Level, Employment Status (Grouped), Household Income, Poverty Level, Marital Status (Grouped), Married, Health Care Coverage, for the Year(s) - 2000-2002, 2001-2003, 2002-2004, 2003-2005, 2004-2006, 2005-2007, 2006-2008, 2007-2009, 2008-2010

Note: Weighted numbers (#) represent 3-yr averages, percentages and 95% confidence intervals; Respondents aged 18 years and older; n/r (Not Reportable) - If the unweighted total responses for a dimension (row) is <50 that row will not be shown; n/a (Not Available) - Not asked of a subset of respondents

Year: 2000-2002

Island	Good or Better			Fair or Poor			Estimated Population (3-Yr Avg)
	#	%	C.I. (95%)	#	%	C.I. (95%)	#
Hawaii	92,000	86.0	84.7 - 87.3	15,000	14.0	12.7 - 15.3	107,000
Kauai	36,600	88.4	86.7 - 90.2	4,800	11.6	9.8 - 13.3	41,400
Lanai	2,500	86.0	81.5 - 90.5	400	14.0	9.5 - 18.5	2,900
Maui	74,100	87.3	84.8 - 89.7	10,800	12.7	10.3 - 15.2	84,900
Molokai	5,000	84.4	80.2 - 88.5	900	15.6	11.5 - 19.8	6,000
Oahu	574,400	88.5	87.6 - 89.4	74,800	11.5	10.6 - 12.4	649,200

Community	Good or Better			Fair or Poor			Estimated Population (3-Yr Avg)
	#	%	C.I. (95%)	#	%	C.I. (95%)	#
Aiea/ Pearl City	55,700	87.5	84.4 - 90.5	8,000	12.5	9.5 - 15.6	63,600
Ala Moana	26,000	85.8	82.0 - 89.5	4,300	14.2	10.5 - 18.0	30,300

Health status - two level by State, County, Island, Community, BRFSS Age Group, DOH Race-Ethnicity, Gender, Education Level, Employment Status (Grouped), Household Income, Poverty Level, Marital Status (Grouped), Married, Health Care Coverage, for the Year(s) - 2000-2002, 2001-2003, 2002-2004, 2003-2005, 2004-2006, 2005-2007, 2006-2008, 2007-2009, 2008-2010

Note: Weighted numbers (#) represent 3-yr averages, percentages and 95% confidence intervals; Respondents aged 18 years and older; n/r (Not Reportable) - If the unweighted total responses for a dimension (row) is <50 that row will not be shown; n/a (Not Available) - Not asked of a subset of respondents

Year: 2000-2002

Community	Good or Better			Fair or Poor			Estimated Population (3-Yr Avg)
	#	%	C.I. (95%)	#	%	C.I. (95%)	#
Hanalei/ Kapaa	15,600	89.0	86.4 - 91.7	1,900	11.0	8.3 - 13.6	17,500
Hilo	28,800	85.3	82.9 - 87.6	5,000	14.7	12.4 - 17.1	33,800
Kaaawa/ Kahaluu/ Kaneohe	35,600	88.4	84.4 - 92.3	4,700	11.6	7.7 - 15.6	40,300
Kahului	25,800	85.3	79.3 - 91.2	4,500	14.7	8.8 - 20.7	30,200
Kailua/ Waimanalo	43,800	90.6	87.6 - 93.6	4,500	9.4	6.4 - 12.4	48,300
Kaimuki/ Palolo/ Waikiki	58,300	88.8	86.4 - 91.3	7,300	11.2	8.7 - 13.6	65,600
Kona	25,900	87.7	85.3 - 90.1	3,600	12.3	9.9 - 14.7	29,500
Lahaina/ Wailuku	24,700	86.9	84.1 - 89.8	3,700	13.1	10.2 - 15.9	28,400
Lanai	2,500	86.0	81.5 - 90.5	400	14.0	9.5 - 18.5	2,900
Lihue-Waimea	21,000	88.0	85.7 - 90.3	2,900	12.0	9.7 - 14.3	23,900
Manoa/ Upper Makiki	51,200	90.3	87.7 - 92.9	5,500	9.7	7.1 - 12.3	56,700
Mililani/ Wahiawa	54,800	90.6	88.2 - 93.0	5,700	9.4	7.0 - 11.8	60,500

Health status - two level by State, County, Island, Community, BRFSS Age Group, DOH Race-Ethnicity, Gender, Education Level, Employment Status (Grouped), Household Income, Poverty Level, Marital Status (Grouped), Married, Health Care Coverage, for the Year(s) - 2000-2002, 2001-2003, 2002-2004, 2003-2005, 2004-2006, 2005-2007, 2006-2008, 2007-2009, 2008-2010

Note: Weighted numbers (#) represent 3-yr averages, percentages and 95% confidence intervals; Respondents aged 18 years and older; n/r (Not Reportable) - If the unweighted total responses for a dimension (row) is <50 that row will not be shown; n/a (Not Available) - Not asked of a subset of respondents

Year: 2000-2002

Community	Good or Better			Fair or Poor			Estimated Population (3-Yr Avg)
	#	%	C.I. (95%)	#	%	C.I. (95%)	#
Molokai	5,000	84.4	80.2 - 88.5	900	15.6	11.5 - 19.8	6,000
Nanakuli/ Waianae	23,100	82.9	77.2 - 88.6	4,800	17.1	11.4 - 22.8	27,900
N.Hawaii	19,100	85.5	82.4 - 88.6	3,200	14.5	11.4 - 17.6	22,300
N.Shore/ Laie	18,300	83.0	77.3 - 88.8	3,700	17.0	11.2 - 22.7	22,100
Nuuanu/ Kalihi/ Moanalua	55,900	84.7	81.3 - 88.1	10,100	15.3	11.9 - 18.7	66,000
Puna/ Kau	18,200	85.2	82.5 - 88.0	3,200	14.8	12.0 - 17.5	21,400
Salt Lake/ Foster Village	34,400	92.6	89.7 - 95.4	2,800	7.4	4.6 - 10.3	37,200
Upcountry/ Hana	23,600	89.9	87.7 - 92.1	2,700	10.1	7.9 - 12.3	26,300
Waialae/ Kahala/ Hawaii Kai	38,900	93.0	90.4 - 95.6	2,900	7.0	4.4 - 9.6	41,900
Waipahu/ Kapolei/ Ewa	78,500	88.3	85.7 - 90.8	10,400	11.7	9.2 - 14.3	88,900

Health status - two level by State, County, Island, Community, BRFSS Age Group, DOH Race-Ethnicity, Gender, Education Level, Employment Status (Grouped), Household Income, Poverty Level, Marital Status (Grouped), Married, Health Care Coverage, for the Year(s) - 2000-2002, 2001-2003, 2002-2004, 2003-2005, 2004-2006, 2005-2007, 2006-2008, 2007-2009, 2008-2010

Note: Weighted numbers (#) represent 3-yr averages, percentages and 95% confidence intervals; Respondents aged 18 years and older; n/r (Not Reportable) - If the unweighted total responses for a dimension (row) is <50 that row will not be shown; n/a (Not Available) - Not asked of a subset of respondents

Year: 2000-2002

BRFSS Age Group	Good or Better			Fair or Poor			Estimated Population (3-Yr Avg)
	#	%	C.I. (95%)	#	%	C.I. (95%)	#
18-24	101,600	93.0	90.7 - 95.4	7,600	7.0	4.6 - 9.3	109,200
25-34	156,100	93.4	92.2 - 94.7	10,900	6.6	5.3 - 7.8	167,000
35-44	166,800	90.6	89.1 - 92.1	17,300	9.4	7.9 - 10.9	184,100
45-54	142,400	88.6	87.2 - 90.1	18,300	11.4	9.9 - 12.8	160,700
55-64	99,400	85.9	83.8 - 88.0	16,300	14.1	12.0 - 16.2	115,700
65-74	68,200	78.7	76.0 - 81.4	18,400	21.3	18.6 - 24.0	86,600
75+	46,500	73.3	70.3 - 76.3	16,900	26.7	23.7 - 29.7	63,500

Health status - two level by State, County, Island, Community, BRFSS Age Group, DOH Race-Ethnicity, Gender, Education Level, Employment Status (Grouped), Household Income, Poverty Level, Marital Status (Grouped), Married, Health Care Coverage, for the Year(s) - 2000-2002, 2001-2003, 2002-2004, 2003-2005, 2004-2006, 2005-2007, 2006-2008, 2007-2009, 2008-2010

Note: Weighted numbers (#) represent 3-yr averages, percentages and 95% confidence intervals; Respondents aged 18 years and older; n/r (Not Reportable) - If the unweighted total responses for a dimension (row) is <50 that row will not be shown; n/a (Not Available) - Not asked of a subset of respondents

Year: 2000-2002

DOH Race-Ethnicity	Good or Better			Fair or Poor			Estimated Population (3-Yr Avg)
	#	%	C.I. (95%)	#	%	C.I. (95%)	#
Caucasian	268,000	91.2	90.3 - 92.1	25,700	8.8	7.9 - 9.7	293,700
Native Hawaiian	101,900	82.6	80.3 - 84.9	21,400	17.4	15.1 - 19.7	123,400
Chinese	50,700	90.7	88.3 - 93.1	5,200	9.3	6.9 - 11.7	55,900
Filipino	115,800	86.9	84.6 - 89.2	17,500	13.1	10.8 - 15.4	133,300
Japanese	164,600	86.8	85.4 - 88.3	24,900	13.2	11.7 - 14.6	189,500
Black	14,300	90.8	85.6 - 96.1	1,400	9.2	3.9 - 14.4	15,800
Native Alaskan/ American Indian	2,900	79.3	67.9 - 90.7	700	20.7	9.3 - 32.1	3,600
Other Asian	19,100	88.8	84.7 - 93.0	2,400	11.2	7.0 - 15.3	21,500
Other Pacific Islander	13,900	81.8	73.3 - 90.2	3,100	18.2	9.8 - 26.7	17,000
Mixed Ethnicity	6,800	91.4	85.2 - 97.6	600	8.6	2.4 - 14.8	7,500
Other	23,600	88.1	83.8 - 92.3	3,200	11.9	7.7 - 16.2	26,700

Health status - two level by State, County, Island, Community, BRFSS Age Group, DOH Race-Ethnicity, Gender, Education Level, Employment Status (Grouped), Household Income, Poverty Level, Marital Status (Grouped), Married, Health Care Coverage, for the Year(s) - 2000-2002, 2001-2003, 2002-2004, 2003-2005, 2004-2006, 2005-2007, 2006-2008, 2007-2009, 2008-2010

Note: Weighted numbers (#) represent 3-yr averages, percentages and 95% confidence intervals; Respondents aged 18 years and older; n/r (Not Reportable) - If the unweighted total responses for a dimension (row) is <50 that row will not be shown; n/a (Not Available) - Not asked of a subset of respondents

Year: 2000-2002

Gender	Good or Better			Fair or Poor			Estimated Population (3-Yr Avg)
	#	%	C.I. (95%)	#	%	C.I. (95%)	#
Male	393,600	88.1	87.0 - 89.3	52,900	11.9	10.7 - 13.0	446,500
Female	391,000	87.9	87.0 - 88.8	53,700	12.1	11.2 - 13.0	444,700

Education Level	Good or Better			Fair or Poor			Estimated Population (3-Yr Avg)
	#	%	C.I. (95%)	#	%	C.I. (95%)	#
Never attended school/ Only Kindergarten to Grades 8	12,400	65.8	58.9 - 72.8	6,400	34.2	27.2 - 41.1	18,800
Grades 9 thru 11 (Some High School)	29,100	74.5	69.9 - 79.0	10,000	25.5	21.0 - 30.1	39,000
Grades 12 or GED (High School Grad)	254,800	85.4	84.0 - 86.7	43,600	14.6	13.3 - 16.0	298,400
College 1 to 3 years (Some College/ Tech)	236,200	89.3	88.0 - 90.7	28,200	10.7	9.3 - 12.0	264,400
College 4 years or more (College Grad)	251,000	93.2	92.3 - 94.1	18,300	6.8	5.9 - 7.7	269,300

Health status - two level by State, County, Island, Community, BRFSS Age Group, DOH Race-Ethnicity, Gender, Education Level, Employment Status (Grouped), Household Income, Poverty Level, Marital Status (Grouped), Married, Health Care Coverage, for the Year(s) - 2000-2002, 2001-2003, 2002-2004, 2003-2005, 2004-2006, 2005-2007, 2006-2008, 2007-2009, 2008-2010

Note: Weighted numbers (#) represent 3-yr averages, percentages and 95% confidence intervals; Respondents aged 18 years and older; n/r (Not Reportable) - If the unweighted total responses for a dimension (row) is <50 that row will not be shown; n/a (Not Available) - Not asked of a subset of respondents

Year: 2000-2002

Employment Status (Grouped)	Good or Better			Fair or Poor			Estimated Population (3-Yr Avg)
	#	%	C.I. (95%)	#	%	C.I. (95%)	#
Employed	542,500	91.9	91.1 - 92.7	47,600	8.1	7.3 - 8.9	590,100
Unemployed	27,500	84.8	80.9 - 88.8	4,900	15.2	11.2 - 19.1	32,400
Retired/Unable to work	135,300	74.9	73.0 - 76.9	45,200	25.1	23.1 - 27.0	180,500
Student/Homemaker	78,800	90.0	87.8 - 92.2	8,800	10.0	7.8 - 12.2	87,600

Health status - two level by State, County, Island, Community, BRFSS Age Group, DOH Race-Ethnicity, Gender, Education Level, Employment Status (Grouped), Household Income, Poverty Level, Marital Status (Grouped), Married, Health Care Coverage, for the Year(s) - 2000-2002, 2001-2003, 2002-2004, 2003-2005, 2004-2006, 2005-2007, 2006-2008, 2007-2009, 2008-2010

Note: Weighted numbers (#) represent 3-yr averages, percentages and 95% confidence intervals; Respondents aged 18 years and older; n/r (Not Reportable) - If the unweighted total responses for a dimension (row) is <50 that row will not be shown; n/a (Not Available) - Not asked of a subset of respondents

Year: 2000-2002

Household Income	Good or Better			Fair or Poor			Estimated Population (3-Yr Avg)
	#	%	C.I. (95%)	#	%	C.I. (95%)	#
Less than \$10,000	28,300	73.7	69.4 - 78.1	10,100	26.3	21.9 - 30.6	38,400
\$10,000 to \$14,999	31,500	76.1	72.0 - 80.2	9,900	23.9	19.8 - 28.0	41,300
\$15,000 to \$19,999	34,100	83.5	79.9 - 87.1	6,700	16.5	12.9 - 20.1	40,800
\$20,000 to \$24,999	46,400	83.9	79.7 - 88.2	8,900	16.1	11.8 - 20.3	55,200
\$25,000 to \$34,999	83,700	90.1	88.3 - 92.0	9,200	9.9	8.0 - 11.7	92,800
\$35,000 to \$49,999	123,300	89.7	87.9 - 91.4	14,200	10.3	8.6 - 12.1	137,500
\$50,000 to \$74,999	114,200	91.2	89.6 - 92.8	11,100	8.8	7.2 - 10.4	125,200
\$75,000 or more	121,800	94.6	93.3 - 96.0	6,900	5.4	4.0 - 6.7	128,700

Health status - two level by State, County, Island, Community, BRFSS Age Group, DOH Race-Ethnicity, Gender, Education Level, Employment Status (Grouped), Household Income, Poverty Level, Marital Status (Grouped), Married, Health Care Coverage, for the Year(s) - 2000-2002, 2001-2003, 2002-2004, 2003-2005, 2004-2006, 2005-2007, 2006-2008, 2007-2009, 2008-2010

Note: Weighted numbers (#) represent 3-yr averages, percentages and 95% confidence intervals; Respondents aged 18 years and older; n/r (Not Reportable) - If the unweighted total responses for a dimension (row) is <50 that row will not be shown; n/a (Not Available) - Not asked of a subset of respondents

Year: 2000-2002

Poverty Level	Good or Better			Fair or Poor			Estimated Population (3-Yr Avg)
	#	%	C.I. (95%)	#	%	C.I. (95%)	#
0-130%	104,900	79.5	76.9 - 82.1	27,000	20.5	17.9 - 23.1	131,900
131-185%	84,100	86.1	83.9 - 88.2	13,600	13.9	11.8 - 16.1	97,700
186+%	394,200	91.6	90.8 - 92.4	36,200	8.4	7.6 - 9.2	430,400

Marital Status (Grouped)	Good or Better			Fair or Poor			Estimated Population (3-Yr Avg)
	#	%	C.I. (95%)	#	%	C.I. (95%)	#
Married	459,200	88.9	88.0 - 89.9	57,100	11.1	10.1 - 12.0	516,200
Unmarried Couple	12,800	92.2	88.3 - 96.1	1,100	7.8	3.9 - 11.7	13,900
Widowed	38,400	76.5	73.2 - 79.7	11,800	23.5	20.3 - 26.8	50,200
Other	274,300	88.2	87.0 - 89.4	36,700	11.8	10.6 - 13.0	311,000

Health status - two level by State, County, Island, Community, BRFSS Age Group, DOH Race-Ethnicity, Gender, Education Level, Employment Status (Grouped), Household Income, Poverty Level, Marital Status (Grouped), Married, Health Care Coverage, for the Year(s) - 2000-2002, 2001-2003, 2002-2004, 2003-2005, 2004-2006, 2005-2007, 2006-2008, 2007-2009, 2008-2010

Note: Weighted numbers (#) represent 3-yr averages, percentages and 95% confidence intervals; Respondents aged 18 years and older; n/r (Not Reportable) - If the unweighted total responses for a dimension (row) is <50 that row will not be shown; n/a (Not Available) - Not asked of a subset of respondents

Year: 2000-2002

Married	Good or Better			Fair or Poor			Estimated Population (3-Yr Avg)
	#	%	C.I. (95%)	#	%	C.I. (95%)	#
Yes	469,700	88.7	87.8 - 89.7	59,700	11.3	10.3 - 12.2	529,500
No	313,900	87.0	86.0 - 88.1	46,800	13.0	11.9 - 14.0	360,600

Health Care Coverage	Good or Better			Fair or Poor			Estimated Population (3-Yr Avg)
	#	%	C.I. (95%)	#	%	C.I. (95%)	#
Yes	724,400	88.1	87.4 - 88.9	97,500	11.9	11.1 - 12.6	822,000
No	59,400	87.1	84.3 - 89.9	8,800	12.9	10.1 - 15.7	68,200