

HIV - ever been tested (18-64) by State, County, Island, Community, BRFSS Age Group, DOH Race-Ethnicity, Gender, Education Level, Employment Status (Grouped), Household Income, Poverty Level, Marital Status (Grouped), Married, Health Care Coverage, for the Year(s) - 2000-2002, 2001-2003, 2002-2004, 2003-2005, 2004-2006, 2005-2007, 2006-2008, 2007-2009, 2008-2010

Note: Weighted numbers (#) represent 3-yr averages, percentages and 95% confidence intervals; Respondents aged 18 years and older; n/r (Not Reportable) - If the unweighted total responses for a dimension (row) is <50 that row will not be shown; n/a (Not Available) - Not asked of a subset of respondents

The trend analysis report shows the trend for the selected health variable over selected years in a table and a graph. Estimated Population: This number is a weighted representation of the population who responded to a particular question in the survey. For most questions the eligible population will be the entire adult population. For some secondary questions only a subset of the population was asked the question. For example, all survey participants were asked if they had diabetes, but only those who answered yes were asked if they use insulin. If a dimension value is unknown for a particular survey record, that record will not be included in the counts for that particular dimension.

For documentation on other terms and coding in this report, please go to the following links

[Click here to access BRFSS documentation](#)

[Click here to access DOH Race-Ethnicity coding](#)

[Click here to access The Hawai'i Data Guide](#)

[Click here to access Poverty Level Methodology](#)

**For questions about this report, please contact
The Hawaii Health Data Warehouse**

profiles@hhdw.org

(855) 946-5899 x15

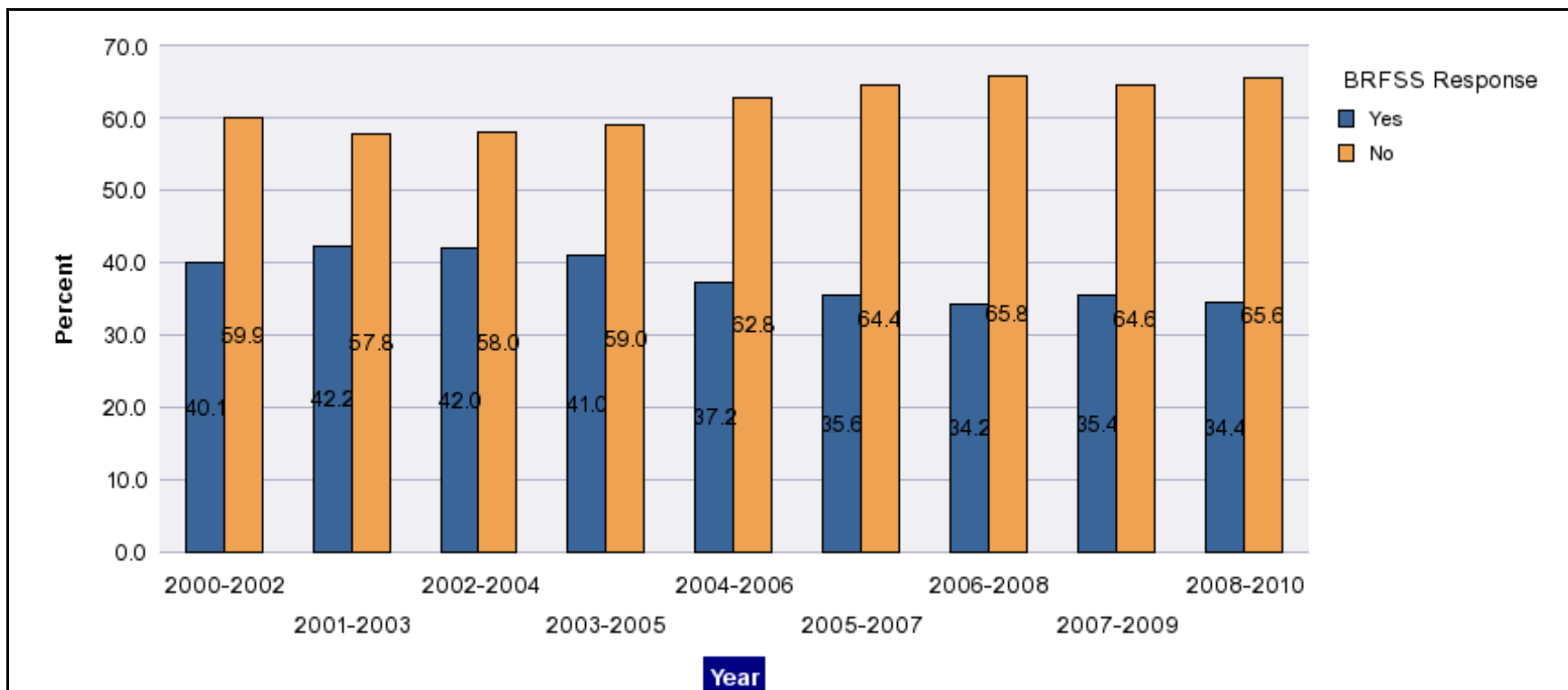
HIV - ever been tested (18-64) by State, County, Island, Community, BRFSS Age Group, DOH Race-Ethnicity, Gender, Education Level, Employment Status (Grouped), Household Income, Poverty Level, Marital Status (Grouped), Married, Health Care Coverage, for the Year(s) - 2000-2002, 2001-2003, 2002-2004, 2003-2005, 2004-2006, 2005-2007, 2006-2008, 2007-2009, 2008-2010

Note: Weighted numbers (#) represent 3-yr averages, percentages and 95% confidence intervals; Respondents aged 18 years and older; n/r (Not Reportable) - If the unweighted total responses for a dimension (row) is <50 that row will not be shown; n/a (Not Available) - Not asked of a subset of respondents

Year	Yes			No			Estimated Population (3-Yr Avg)
	#	%	C.I.(95%)	#	%	C.I.(95%)	#
2000-2002	265,500	40.1	38.9 - 41.3	397,000	59.9	58.7 - 61.1	662,600
2001-2003	308,900	42.2	41.0 - 43.5	422,300	57.8	56.5 - 59.0	731,200
2002-2004	309,300	42.0	40.5 - 43.5	427,300	58.0	56.5 - 59.5	736,500
2003-2005	306,800	41.0	39.6 - 42.5	440,800	59.0	57.5 - 60.4	747,600
2004-2006	279,400	37.2	35.8 - 38.7	470,800	62.8	61.3 - 64.2	750,200
2005-2007	271,900	35.6	34.5 - 36.6	492,900	64.4	63.4 - 65.5	764,700
2006-2008	263,100	34.2	33.1 - 35.3	506,600	65.8	64.7 - 66.9	769,800
2007-2009	272,900	35.4	34.3 - 36.6	497,100	64.6	63.4 - 65.7	770,100
2008-2010	264,000	34.4	33.2 - 35.5	504,000	65.6	64.5 - 66.8	768,000

HIV - ever been tested (18-64) by State, County, Island, Community, BRFSS Age Group, DOH Race-Ethnicity, Gender, Education Level, Employment Status (Grouped), Household Income, Poverty Level, Marital Status (Grouped), Married, Health Care Coverage, for the Year(s) - 2000-2002, 2001-2003, 2002-2004, 2003-2005, 2004-2006, 2005-2007, 2006-2008, 2007-2009, 2008-2010

Note: Weighted numbers (#) represent 3-yr averages, percentages and 95% confidence intervals; Respondents aged 18 years and older; n/r (Not Reportable) - If the unweighted total responses for a dimension (row) is <50 that row will not be shown; n/a (Not Available) - Not asked of a subset of respondents



HIV - ever been tested (18-64) by State, County, Island, Community, BRFSS Age Group, DOH Race-Ethnicity, Gender, Education Level, Employment Status (Grouped), Household Income, Poverty Level, Marital Status (Grouped), Married, Health Care Coverage, for the Year(s) - 2000-2002, 2001-2003, 2002-2004, 2003-2005, 2004-2006, 2005-2007, 2006-2008, 2007-2009, 2008-2010

Note: Weighted numbers (#) represent 3-yr averages, percentages and 95% confidence intervals; Respondents aged 18 years and older; n/r (Not Reportable) - If the unweighted total responses for a dimension (row) is <50 that row will not be shown; n/a (Not Available) - Not asked of a subset of respondents

Year: 2008-2010

State	Yes			No			Estimated Population (3-Yr Avg)
	#	%	C.I. (95%)	#	%	C.I. (95%)	#
Hawaii State	264,000	34.4	33.2 - 35.5	504,000	65.6	64.5 - 66.8	768,000

County	Yes			No			Estimated Population (3-Yr Avg)
	#	%	C.I. (95%)	#	%	C.I. (95%)	#
Hawaii	38,600	35.9	33.7 - 38.1	68,900	64.1	61.9 - 66.3	107,500
Honolulu	181,600	33.9	32.4 - 35.4	353,800	66.1	64.6 - 67.6	535,400
Kauai	12,300	33.2	29.7 - 36.6	24,700	66.8	63.4 - 70.3	36,900
Maui	31,500	35.8	33.3 - 38.3	56,600	64.2	61.7 - 66.7	88,100

HIV - ever been tested (18-64) by State, County, Island, Community, BRFSS Age Group, DOH Race-Ethnicity, Gender, Education Level, Employment Status (Grouped), Household Income, Poverty Level, Marital Status (Grouped), Married, Health Care Coverage, for the Year(s) - 2000-2002, 2001-2003, 2002-2004, 2003-2005, 2004-2006, 2005-2007, 2006-2008, 2007-2009, 2008-2010

Note: Weighted numbers (#) represent 3-yr averages, percentages and 95% confidence intervals; Respondents aged 18 years and older; n/r (Not Reportable) - If the unweighted total responses for a dimension (row) is <50 that row will not be shown; n/a (Not Available) - Not asked of a subset of respondents

Year: 2008-2010

Island	Yes			No			Estimated Population (3-Yr Avg)
	#	%	C.I. (95%)	#	%	C.I. (95%)	#
Hawaii	38,600	35.9	33.7 - 38.1	68,900	64.1	61.9 - 66.3	107,500
Kauai	12,300	33.2	29.7 - 36.6	24,700	66.8	63.4 - 70.3	36,900
Lanai	400	29.6	22.9 - 36.2	1,000	70.4	63.8 - 77.1	1,400
Maui	29,000	36.0	33.3 - 38.7	51,500	64.0	61.3 - 66.7	80,500
Molokai	2,100	34.5	29.3 - 39.8	4,100	65.5	60.2 - 70.7	6,200
Oahu	181,600	33.9	32.4 - 35.4	353,800	66.1	64.6 - 67.6	535,400

Community	Yes			No			Estimated Population (3-Yr Avg)
	#	%	C.I. (95%)	#	%	C.I. (95%)	#
Aiea/ Pearl City	13,000	28.9	23.9 - 33.9	32,000	71.1	66.1 - 76.1	45,000
Ala Moana	6,200	32.6	25.7 - 39.5	12,900	67.4	60.5 - 74.3	19,100

HIV - ever been tested (18-64) by State, County, Island, Community, BRFSS Age Group, DOH Race-Ethnicity, Gender, Education Level, Employment Status (Grouped), Household Income, Poverty Level, Marital Status (Grouped), Married, Health Care Coverage, for the Year(s) - 2000-2002, 2001-2003, 2002-2004, 2003-2005, 2004-2006, 2005-2007, 2006-2008, 2007-2009, 2008-2010

Note: Weighted numbers (#) represent 3-yr averages, percentages and 95% confidence intervals; Respondents aged 18 years and older; n/r (Not Reportable) - If the unweighted total responses for a dimension (row) is <50 that row will not be shown; n/a (Not Available) - Not asked of a subset of respondents

Year: 2008-2010

Community	Yes			No			Estimated Population (3-Yr Avg)
	#	%	C.I. (95%)	#	%	C.I. (95%)	#
Hanalei/ Kapaa	6,200	40.2	35.1 - 45.3	9,200	59.8	54.7 - 64.9	15,400
Hilo	11,300	35.2	31.0 - 39.3	20,900	64.8	60.7 - 69.0	32,200
Kaaawa/ Kahaluu/ Kaneohe	10,500	28.3	23.0 - 33.7	26,600	71.7	66.3 - 77.0	37,100
Kahului	9,300	34.6	29.9 - 39.3	17,600	65.4	60.7 - 70.1	26,900
Kailua/ Waimanalo	15,000	39.9	34.2 - 45.6	22,600	60.1	54.4 - 65.8	37,600
Kaimuki/ Palolo/ Waikiki	13,300	34.5	29.4 - 39.6	25,200	65.5	60.4 - 70.6	38,500
Kona	7,900	36.2	31.6 - 40.8	13,900	63.8	59.2 - 68.4	21,800
Lahaina/ Wailuku	9,200	35.1	30.2 - 40.1	16,900	64.9	59.9 - 69.8	26,100
Lanai	400	29.6	22.9 - 36.2	1,000	70.4	63.8 - 77.1	1,400
Lihue-Waimea	6,100	28.2	23.6 - 32.8	15,500	71.8	67.2 - 76.4	21,600
Manoa/ Upper Makiki	11,500	33.2	27.7 - 38.6	23,200	66.8	61.4 - 72.3	34,600
Millilani/ Wahiawa	25,700	41.0	36.5 - 45.5	36,900	59.0	54.5 - 63.5	62,600

HIV - ever been tested (18-64) by State, County, Island, Community, BRFSS Age Group, DOH Race-Ethnicity, Gender, Education Level, Employment Status (Grouped), Household Income, Poverty Level, Marital Status (Grouped), Married, Health Care Coverage, for the Year(s) - 2000-2002, 2001-2003, 2002-2004, 2003-2005, 2004-2006, 2005-2007, 2006-2008, 2007-2009, 2008-2010

Note: Weighted numbers (#) represent 3-yr averages, percentages and 95% confidence intervals; Respondents aged 18 years and older; n/r (Not Reportable) - If the unweighted total responses for a dimension (row) is <50 that row will not be shown; n/a (Not Available) - Not asked of a subset of respondents

Year: 2008-2010

Community	Yes			No			Estimated Population (3-Yr Avg)
	#	%	C.I. (95%)	#	%	C.I. (95%)	#
Molokai	2,100	34.5	29.3 - 39.8	4,100	65.5	60.2 - 70.7	6,200
Nanakuli/ Waianae	8,300	28.3	20.8 - 35.9	21,000	71.7	64.1 - 79.2	29,300
N.Hawaii	7,100	33.7	28.7 - 38.7	14,000	66.3	61.3 - 71.3	21,100
N.Shore/ Laie	5,700	31.3	22.5 - 40.1	12,500	68.7	59.9 - 77.5	18,200
Nuuanu/ Kalihi/ Moanalua	12,700	25.5	20.4 - 30.5	37,300	74.5	69.5 - 79.6	50,100
Puna/ Kau	12,300	37.9	33.9 - 42.0	20,100	62.1	58.0 - 66.1	32,400
Salt Lake/ Foster Village	16,800	55.6	48.9 - 62.3	13,400	44.4	37.7 - 51.1	30,200
Upcountry/ Hana	10,500	38.2	34.0 - 42.3	17,000	61.8	57.7 - 66.0	27,500
Waialae/ Kahala/ Hawaii Kai	9,500	29.3	23.6 - 35.0	22,900	70.7	65.0 - 76.4	32,400
Waipahu/ Kapolei/ Ewa	33,400	33.2	29.5 - 36.8	67,300	66.8	63.2 - 70.5	100,700

HIV - ever been tested (18-64) by State, County, Island, Community, BRFSS Age Group, DOH Race-Ethnicity, Gender, Education Level, Employment Status (Grouped), Household Income, Poverty Level, Marital Status (Grouped), Married, Health Care Coverage, for the Year(s) - 2000-2002, 2001-2003, 2002-2004, 2003-2005, 2004-2006, 2005-2007, 2006-2008, 2007-2009, 2008-2010

Note: Weighted numbers (#) represent 3-yr averages, percentages and 95% confidence intervals; Respondents aged 18 years and older; n/r (Not Reportable) - If the unweighted total responses for a dimension (row) is <50 that row will not be shown; n/a (Not Available) - Not asked of a subset of respondents

Year: 2008-2010

BRFSS Age Group	Yes			No			Estimated Population (3-Yr Avg)
	#	%	C.I. (95%)	#	%	C.I. (95%)	#
18-24	25,100	21.6	18.3 - 25.0	90,800	78.4	75.0 - 81.7	115,900
25-34	81,700	47.9	44.8 - 51.1	88,800	52.1	48.9 - 55.2	170,500
35-44	76,200	45.6	43.2 - 48.1	90,900	54.4	51.9 - 56.8	167,100
45-54	50,100	29.6	27.7 - 31.5	119,100	70.4	68.5 - 72.3	169,200
55-64	30,900	21.2	19.7 - 22.8	114,400	78.8	77.2 - 80.3	145,300

HIV - ever been tested (18-64) by State, County, Island, Community, BRFSS Age Group, DOH Race-Ethnicity, Gender, Education Level, Employment Status (Grouped), Household Income, Poverty Level, Marital Status (Grouped), Married, Health Care Coverage, for the Year(s) - 2000-2002, 2001-2003, 2002-2004, 2003-2005, 2004-2006, 2005-2007, 2006-2008, 2007-2009, 2008-2010

Note: Weighted numbers (#) represent 3-yr averages, percentages and 95% confidence intervals; Respondents aged 18 years and older; n/r (Not Reportable) - If the unweighted total responses for a dimension (row) is <50 that row will not be shown; n/a (Not Available) - Not asked of a subset of respondents

Year: 2008-2010

DOH Race-Ethnicity	Yes			No			Estimated Population (3-Yr Avg)
	#	%	C.I. (95%)	#	%	C.I. (95%)	#
Caucasian	118,700	49.0	47.1 - 50.8	123,800	51.0	49.2 - 52.9	242,500
Native Hawaiian	33,600	31.4	28.3 - 34.6	73,400	68.6	65.4 - 71.7	107,000
Chinese	10,200	22.6	18.3 - 27.0	34,900	77.4	73.0 - 81.7	45,000
Filipino	27,800	21.5	18.8 - 24.3	101,500	78.5	75.7 - 81.2	129,300
Japanese	35,700	22.7	20.4 - 25.0	121,700	77.3	75.0 - 79.6	157,300
Black	9,700	73.8	65.7 - 82.0	3,500	26.2	18.0 - 34.3	13,200
Native Alaskan/ American Indian	2,200	55.0	40.6 - 69.4	1,800	45.0	30.6 - 59.4	4,100
Other Asian	6,900	33.1	25.0 - 41.1	13,900	66.9	58.9 - 75.0	20,800
Other Pacific Islander	9,500	33.7	25.6 - 41.8	18,600	66.3	58.2 - 74.4	28,100
Other	8,800	47.2	39.0 - 55.4	9,800	52.8	44.6 - 61.0	18,700

HIV - ever been tested (18-64) by State, County, Island, Community, BRFSS Age Group, DOH Race-Ethnicity, Gender, Education Level, Employment Status (Grouped), Household Income, Poverty Level, Marital Status (Grouped), Married, Health Care Coverage, for the Year(s) - 2000-2002, 2001-2003, 2002-2004, 2003-2005, 2004-2006, 2005-2007, 2006-2008, 2007-2009, 2008-2010

Note: Weighted numbers (#) represent 3-yr averages, percentages and 95% confidence intervals; Respondents aged 18 years and older; n/r (Not Reportable) - If the unweighted total responses for a dimension (row) is <50 that row will not be shown; n/a (Not Available) - Not asked of a subset of respondents

Year: 2008-2010

Gender	Yes			No			Estimated Population (3-Yr Avg)
	#	%	C.I. (95%)	#	%	C.I. (95%)	#
Male	132,900	33.7	32.0 - 35.4	261,500	66.3	64.6 - 68.0	394,500
Female	131,100	35.1	33.6 - 36.6	242,400	64.9	63.4 - 66.4	373,500

Education Level	Yes			No			Estimated Population (3-Yr Avg)
	#	%	C.I. (95%)	#	%	C.I. (95%)	#
Never attended school/ Only Kindergarten to Grades 8	1,200	27.8	13.9 - 41.7	3,200	72.2	58.3 - 86.1	4,400
Grades 9 thru 11 (Some High School)	8,000	30.2	23.2 - 37.2	18,600	69.8	62.8 - 76.8	26,600
Grades 12 or GED (High School Grad)	62,100	28.8	26.6 - 31.1	153,400	71.2	68.9 - 73.4	215,500
College 1 to 3 years (Some College/ Tech)	82,400	36.0	33.8 - 38.2	146,600	64.0	61.8 - 66.2	229,000
College 4 years or more (College Grad)	110,200	37.7	36.0 - 39.5	182,000	62.3	60.5 - 64.0	292,200

HIV - ever been tested (18-64) by State, County, Island, Community, BRFSS Age Group, DOH Race-Ethnicity, Gender, Education Level, Employment Status (Grouped), Household Income, Poverty Level, Marital Status (Grouped), Married, Health Care Coverage, for the Year(s) - 2000-2002, 2001-2003, 2002-2004, 2003-2005, 2004-2006, 2005-2007, 2006-2008, 2007-2009, 2008-2010

Note: Weighted numbers (#) represent 3-yr averages, percentages and 95% confidence intervals; Respondents aged 18 years and older; n/r (Not Reportable) - If the unweighted total responses for a dimension (row) is <50 that row will not be shown; n/a (Not Available) - Not asked of a subset of respondents

Year: 2008-2010

Employment Status (Grouped)	Yes			No			Estimated Population (3-Yr Avg)
	#	%	C.I. (95%)	#	%	C.I. (95%)	#
Employed	193,500	34.8	33.4 - 36.2	362,600	65.2	63.8 - 66.6	556,100
Unemployed	18,200	32.5	27.8 - 37.1	37,900	67.5	62.9 - 72.2	56,100
Retired/Unable to work	19,600	31.6	28.3 - 35.0	42,400	68.4	65.0 - 71.7	62,000
Student/Homemaker	32,500	34.8	31.2 - 38.5	60,800	65.2	61.5 - 68.8	93,400

HIV - ever been tested (18-64) by State, County, Island, Community, BRFSS Age Group, DOH Race-Ethnicity, Gender, Education Level, Employment Status (Grouped), Household Income, Poverty Level, Marital Status (Grouped), Married, Health Care Coverage, for the Year(s) - 2000-2002, 2001-2003, 2002-2004, 2003-2005, 2004-2006, 2005-2007, 2006-2008, 2007-2009, 2008-2010

Note: Weighted numbers (#) represent 3-yr averages, percentages and 95% confidence intervals; Respondents aged 18 years and older; n/r (Not Reportable) - If the unweighted total responses for a dimension (row) is <50 that row will not be shown; n/a (Not Available) - Not asked of a subset of respondents

Year: 2008-2010

Household Income	Yes			No			Estimated Population (3-Yr Avg)
	#	%	C.I. (95%)	#	%	C.I. (95%)	#
Less than \$10,000	7,800	33.0	26.7 - 39.2	15,800	67.0	60.8 - 73.3	23,600
\$10,000 to \$14,999	5,900	39.6	30.6 - 48.5	9,000	60.4	51.5 - 69.4	14,900
\$15,000 to \$19,999	12,100	36.5	30.5 - 42.4	21,100	63.5	57.6 - 69.5	33,100
\$20,000 to \$24,999	13,900	34.6	29.5 - 39.6	26,300	65.4	60.4 - 70.5	40,200
\$25,000 to \$34,999	23,800	33.0	29.1 - 36.8	48,400	67.0	63.2 - 70.9	72,200
\$35,000 to \$49,999	34,500	31.5	28.6 - 34.3	75,100	68.5	65.7 - 71.4	109,700
\$50,000 to \$74,999	49,300	36.1	33.4 - 38.8	87,200	63.9	61.2 - 66.6	136,500
\$75,000 or more	99,900	37.5	35.6 - 39.4	166,400	62.5	60.6 - 64.4	266,300

HIV - ever been tested (18-64) by State, County, Island, Community, BRFSS Age Group, DOH Race-Ethnicity, Gender, Education Level, Employment Status (Grouped), Household Income, Poverty Level, Marital Status (Grouped), Married, Health Care Coverage, for the Year(s) - 2000-2002, 2001-2003, 2002-2004, 2003-2005, 2004-2006, 2005-2007, 2006-2008, 2007-2009, 2008-2010

Note: Weighted numbers (#) represent 3-yr averages, percentages and 95% confidence intervals; Respondents aged 18 years and older; n/r (Not Reportable) - If the unweighted total responses for a dimension (row) is <50 that row will not be shown; n/a (Not Available) - Not asked of a subset of respondents

Year: 2008-2010

Poverty Level	Yes			No			Estimated Population (3-Yr Avg)
	#	%	C.I. (95%)	#	%	C.I. (95%)	#
0-130%	53,200	33.1	30.3 - 35.9	107,700	66.9	64.1 - 69.7	160,900
131-185%	31,700	31.6	28.4 - 34.8	68,700	68.4	65.2 - 71.6	100,500
186+%	162,000	37.2	35.8 - 38.7	273,000	62.8	61.3 - 64.2	435,000

Marital Status (Grouped)	Yes			No			Estimated Population (3-Yr Avg)
	#	%	C.I. (95%)	#	%	C.I. (95%)	#
Married	159,400	35.8	34.4 - 37.2	286,100	64.2	62.8 - 65.6	445,400
Unmarried Couple	14,600	49.5	42.4 - 56.5	15,000	50.5	43.5 - 57.6	29,600
Widowed	2,600	26.5	19.3 - 33.6	7,300	73.5	66.4 - 80.7	9,900
Other	87,400	30.9	28.8 - 32.9	195,700	69.1	67.1 - 71.2	283,100

HIV - ever been tested (18-64) by State, County, Island, Community, BRFSS Age Group, DOH Race-Ethnicity, Gender, Education Level, Employment Status (Grouped), Household Income, Poverty Level, Marital Status (Grouped), Married, Health Care Coverage, for the Year(s) - 2000-2002, 2001-2003, 2002-2004, 2003-2005, 2004-2006, 2005-2007, 2006-2008, 2007-2009, 2008-2010

Note: Weighted numbers (#) represent 3-yr averages, percentages and 95% confidence intervals; Respondents aged 18 years and older; n/r (Not Reportable) - If the unweighted total responses for a dimension (row) is <50 that row will not be shown; n/a (Not Available) - Not asked of a subset of respondents

Year: 2008-2010

Married	Yes			No			Estimated Population (3-Yr Avg)
	#	%	C.I. (95%)	#	%	C.I. (95%)	#
Yes	164,000	36.0	34.6 - 37.4	291,200	64.0	62.6 - 65.4	455,100
No	99,800	32.0	30.0 - 33.9	212,200	68.0	66.1 - 70.0	312,000

Health Care Coverage	Yes			No			Estimated Population (3-Yr Avg)
	#	%	C.I. (95%)	#	%	C.I. (95%)	#
Yes	243,000	34.6	33.4 - 35.8	460,000	65.4	64.2 - 66.6	703,000
No	20,600	32.7	28.2 - 37.2	42,300	67.3	62.8 - 71.8	62,900

HIV - ever been tested (18-64) by State, County, Island, Community, BRFSS Age Group, DOH Race-Ethnicity, Gender, Education Level, Employment Status (Grouped), Household Income, Poverty Level, Marital Status (Grouped), Married, Health Care Coverage, for the Year(s) - 2000-2002, 2001-2003, 2002-2004, 2003-2005, 2004-2006, 2005-2007, 2006-2008, 2007-2009, 2008-2010

Note: Weighted numbers (#) represent 3-yr averages, percentages and 95% confidence intervals; Respondents aged 18 years and older; n/r (Not Reportable) - If the unweighted total responses for a dimension (row) is <50 that row will not be shown; n/a (Not Available) - Not asked of a subset of respondents

Year: 2007-2009

State	Yes			No			Estimated Population (3-Yr Avg)
	#	%	C.I. (95%)	#	%	C.I. (95%)	#
Hawaii State	272,900	35.4	34.3 - 36.6	497,100	64.6	63.4 - 65.7	770,100

County	Yes			No			Estimated Population (3-Yr Avg)
	#	%	C.I. (95%)	#	%	C.I. (95%)	#
Hawaii	38,400	36.7	34.6 - 38.9	66,100	63.3	61.1 - 65.4	104,400
Honolulu	189,700	35.0	33.6 - 36.5	351,800	65.0	63.5 - 66.4	541,600
Kauai	12,500	34.0	30.7 - 37.4	24,200	66.0	62.6 - 69.3	36,800
Maui	32,300	37.0	34.7 - 39.4	55,000	63.0	60.6 - 65.3	87,300

HIV - ever been tested (18-64) by State, County, Island, Community, BRFSS Age Group, DOH Race-Ethnicity, Gender, Education Level, Employment Status (Grouped), Household Income, Poverty Level, Marital Status (Grouped), Married, Health Care Coverage, for the Year(s) - 2000-2002, 2001-2003, 2002-2004, 2003-2005, 2004-2006, 2005-2007, 2006-2008, 2007-2009, 2008-2010

Note: Weighted numbers (#) represent 3-yr averages, percentages and 95% confidence intervals; Respondents aged 18 years and older; n/r (Not Reportable) - If the unweighted total responses for a dimension (row) is <50 that row will not be shown; n/a (Not Available) - Not asked of a subset of respondents

Year: 2007-2009

Island	Yes			No			Estimated Population (3-Yr Avg)
	#	%	C.I. (95%)	#	%	C.I. (95%)	#
Hawaii	38,400	36.7	34.6 - 38.9	66,100	63.3	61.1 - 65.4	104,400
Kauai	12,500	34.0	30.7 - 37.4	24,200	66.0	62.6 - 69.3	36,800
Lanai	500	32.3	26.4 - 38.2	1,000	67.7	61.8 - 73.6	1,400
Maui	29,500	37.2	34.6 - 39.7	49,800	62.8	60.3 - 65.4	79,300
Molokai	2,400	36.2	31.2 - 41.2	4,200	63.8	58.8 - 68.8	6,600
Oahu	189,700	35.0	33.6 - 36.5	351,800	65.0	63.5 - 66.4	541,600

Community	Yes			No			Estimated Population (3-Yr Avg)
	#	%	C.I. (95%)	#	%	C.I. (95%)	#
Aiea/ Pearl City	15,500	33.1	28.1 - 38.2	31,200	66.9	61.8 - 71.9	46,700
Ala Moana	6,400	29.9	23.5 - 36.4	14,900	70.1	63.6 - 76.5	21,200

HIV - ever been tested (18-64) by State, County, Island, Community, BRFSS Age Group, DOH Race-Ethnicity, Gender, Education Level, Employment Status (Grouped), Household Income, Poverty Level, Marital Status (Grouped), Married, Health Care Coverage, for the Year(s) - 2000-2002, 2001-2003, 2002-2004, 2003-2005, 2004-2006, 2005-2007, 2006-2008, 2007-2009, 2008-2010

Note: Weighted numbers (#) represent 3-yr averages, percentages and 95% confidence intervals; Respondents aged 18 years and older; n/r (Not Reportable) - If the unweighted total responses for a dimension (row) is <50 that row will not be shown; n/a (Not Available) - Not asked of a subset of respondents

Year: 2007-2009

Community	Yes			No			Estimated Population (3-Yr Avg)
	#	%	C.I. (95%)	#	%	C.I. (95%)	#
Hanalei/ Kapaa	6,200	41.0	35.9 - 46.1	9,000	59.0	53.9 - 64.1	15,200
Hilo	10,200	34.2	30.2 - 38.2	19,600	65.8	61.8 - 69.8	29,800
Kaaawa/ Kahaluu/ Kaneohe	12,300	33.0	27.7 - 38.4	25,000	67.0	61.6 - 72.3	37,300
Kahului	9,700	36.9	32.3 - 41.6	16,500	63.1	58.4 - 67.7	26,100
Kailua/ Waimanalo	14,300	37.3	32.1 - 42.6	24,000	62.7	57.4 - 67.9	38,400
Kaimuki/ Palolo/ Waikiki	13,200	34.8	29.8 - 39.8	24,800	65.2	60.2 - 70.2	38,000
Kona	8,000	36.9	32.5 - 41.2	13,600	63.1	58.8 - 67.5	21,600
Lahaina/ Wailuku	8,900	34.2	29.5 - 38.9	17,100	65.8	61.1 - 70.5	25,900
Lanai	500	32.3	26.4 - 38.2	1,000	67.7	61.8 - 73.6	1,400
Lihue-Waimea	6,300	29.1	24.9 - 33.4	15,300	70.9	66.6 - 75.1	21,500
Manoa/ Upper Makiki	10,400	32.6	27.4 - 37.8	21,600	67.4	62.2 - 72.6	32,000
Mililani/ Wahiawa	27,100	41.6	37.3 - 45.9	38,100	58.4	54.1 - 62.7	65,200

HIV - ever been tested (18-64) by State, County, Island, Community, BRFSS Age Group, DOH Race-Ethnicity, Gender, Education Level, Employment Status (Grouped), Household Income, Poverty Level, Marital Status (Grouped), Married, Health Care Coverage, for the Year(s) - 2000-2002, 2001-2003, 2002-2004, 2003-2005, 2004-2006, 2005-2007, 2006-2008, 2007-2009, 2008-2010

Note: Weighted numbers (#) represent 3-yr averages, percentages and 95% confidence intervals; Respondents aged 18 years and older; n/r (Not Reportable) - If the unweighted total responses for a dimension (row) is <50 that row will not be shown; n/a (Not Available) - Not asked of a subset of respondents

Year: 2007-2009

Community	Yes			No			Estimated Population (3-Yr Avg)
	#	%	C.I. (95%)	#	%	C.I. (95%)	#
Molokai	2,400	36.2	31.2 - 41.2	4,200	63.8	58.8 - 68.8	6,600
Nanakuli/ Waianae	7,700	27.8	20.8 - 34.8	19,900	72.2	65.2 - 79.2	27,500
N.Hawaii	8,100	36.4	31.8 - 41.1	14,100	63.6	58.9 - 68.2	22,200
N.Shore/ Laie	5,400	31.2	22.6 - 39.8	12,000	68.8	60.2 - 77.4	17,500
Nuuanu/ Kalihi/ Moanalua	14,500	28.0	23.1 - 32.9	37,400	72.0	67.1 - 76.9	51,900
Puna/ Kau	12,100	39.3	35.4 - 43.3	18,700	60.7	56.7 - 64.6	30,800
Salt Lake/ Foster Village	15,000	51.6	44.9 - 58.3	14,100	48.4	41.7 - 55.1	29,100
Upcountry/ Hana	11,000	40.2	36.3 - 44.2	16,300	59.8	55.8 - 63.7	27,300
Waialae/ Kahala/ Hawaii Kai	10,800	33.0	27.3 - 38.7	22,000	67.0	61.3 - 72.7	32,900
Waipahu/ Kapolei/ Ewa	36,900	35.6	32.1 - 39.1	66,900	64.4	60.9 - 67.9	103,800

HIV - ever been tested (18-64) by State, County, Island, Community, BRFSS Age Group, DOH Race-Ethnicity, Gender, Education Level, Employment Status (Grouped), Household Income, Poverty Level, Marital Status (Grouped), Married, Health Care Coverage, for the Year(s) - 2000-2002, 2001-2003, 2002-2004, 2003-2005, 2004-2006, 2005-2007, 2006-2008, 2007-2009, 2008-2010

Note: Weighted numbers (#) represent 3-yr averages, percentages and 95% confidence intervals; Respondents aged 18 years and older; n/r (Not Reportable) - If the unweighted total responses for a dimension (row) is <50 that row will not be shown; n/a (Not Available) - Not asked of a subset of respondents

Year: 2007-2009

BRFSS Age Group	Yes			No			Estimated Population (3-Yr Avg)
	#	%	C.I. (95%)	#	%	C.I. (95%)	#
18-24	29,800	25.1	21.7 - 28.5	88,800	74.9	71.5 - 78.3	118,600
25-34	84,200	51.0	48.0 - 54.0	80,900	49.0	46.0 - 52.0	165,200
35-44	76,200	45.5	43.2 - 47.8	91,300	54.5	52.2 - 56.8	167,400
45-54	52,600	30.5	28.7 - 32.3	119,700	69.5	67.7 - 71.3	172,300
55-64	30,200	20.6	19.0 - 22.2	116,400	79.4	77.8 - 81.0	146,600

HIV - ever been tested (18-64) by State, County, Island, Community, BRFSS Age Group, DOH Race-Ethnicity, Gender, Education Level, Employment Status (Grouped), Household Income, Poverty Level, Marital Status (Grouped), Married, Health Care Coverage, for the Year(s) - 2000-2002, 2001-2003, 2002-2004, 2003-2005, 2004-2006, 2005-2007, 2006-2008, 2007-2009, 2008-2010

Note: Weighted numbers (#) represent 3-yr averages, percentages and 95% confidence intervals; Respondents aged 18 years and older; n/r (Not Reportable) - If the unweighted total responses for a dimension (row) is <50 that row will not be shown; n/a (Not Available) - Not asked of a subset of respondents

Year: 2007-2009

DOH Race-Ethnicity	Yes			No			Estimated Population (3-Yr Avg)
	#	%	C.I. (95%)	#	%	C.I. (95%)	#
Caucasian	120,100	48.9	47.1 - 50.7	125,300	51.1	49.3 - 52.9	245,400
Native Hawaiian	34,900	31.5	28.5 - 34.4	76,100	68.5	65.6 - 71.5	111,000
Chinese	11,700	26.6	21.9 - 31.2	32,300	73.4	68.8 - 78.1	43,900
Filipino	31,600	23.8	21.1 - 26.6	101,000	76.2	73.4 - 78.9	132,600
Japanese	35,400	23.1	20.8 - 25.3	117,900	76.9	74.7 - 79.2	153,300
Black	10,200	72.0	63.7 - 80.4	4,000	28.0	19.6 - 36.3	14,200
Native Alaskan/ American Indian	2,800	59.4	46.4 - 72.4	1,900	40.6	27.6 - 53.6	4,800
Other Asian	7,900	39.5	31.7 - 47.3	12,200	60.5	52.7 - 68.3	20,100
Other Pacific Islander	8,500	35.1	26.9 - 43.3	15,800	64.9	56.7 - 73.1	24,300
Other	8,600	46.7	38.9 - 54.4	9,900	53.3	45.6 - 61.1	18,500

HIV - ever been tested (18-64) by State, County, Island, Community, BRFSS Age Group, DOH Race-Ethnicity, Gender, Education Level, Employment Status (Grouped), Household Income, Poverty Level, Marital Status (Grouped), Married, Health Care Coverage, for the Year(s) - 2000-2002, 2001-2003, 2002-2004, 2003-2005, 2004-2006, 2005-2007, 2006-2008, 2007-2009, 2008-2010

Note: Weighted numbers (#) represent 3-yr averages, percentages and 95% confidence intervals; Respondents aged 18 years and older; n/r (Not Reportable) - If the unweighted total responses for a dimension (row) is <50 that row will not be shown; n/a (Not Available) - Not asked of a subset of respondents

Year: 2007-2009

Gender	Yes			No			Estimated Population (3-Yr Avg)
	#	%	C.I. (95%)	#	%	C.I. (95%)	#
Male	133,800	33.9	32.2 - 35.5	261,200	66.1	64.5 - 67.8	395,000
Female	139,100	37.1	35.6 - 38.6	235,900	62.9	61.4 - 64.4	375,000

Education Level	Yes			No			Estimated Population (3-Yr Avg)
	#	%	C.I. (95%)	#	%	C.I. (95%)	#
Never attended school/ Only Kindergarten to Grades 8	700	17.4	5.0 - 29.8	3,200	82.6	70.2 - 95.0	3,900
Grades 9 thru 11 (Some High School)	8,000	32.0	25.3 - 38.7	17,000	68.0	61.3 - 74.7	25,000
Grades 12 or GED (High School Grad)	67,100	30.0	27.8 - 32.1	156,700	70.0	67.9 - 72.2	223,800
College 1 to 3 years (Some College/ Tech)	88,500	37.8	35.7 - 39.9	145,700	62.2	60.1 - 64.3	234,200
College 4 years or more (College Grad)	108,500	38.4	36.7 - 40.1	174,200	61.6	59.9 - 63.3	282,700

HIV - ever been tested (18-64) by State, County, Island, Community, BRFSS Age Group, DOH Race-Ethnicity, Gender, Education Level, Employment Status (Grouped), Household Income, Poverty Level, Marital Status (Grouped), Married, Health Care Coverage, for the Year(s) - 2000-2002, 2001-2003, 2002-2004, 2003-2005, 2004-2006, 2005-2007, 2006-2008, 2007-2009, 2008-2010

Note: Weighted numbers (#) represent 3-yr averages, percentages and 95% confidence intervals; Respondents aged 18 years and older; n/r (Not Reportable) - If the unweighted total responses for a dimension (row) is <50 that row will not be shown; n/a (Not Available) - Not asked of a subset of respondents

Year: 2007-2009

Employment Status (Grouped)	Yes			No			Estimated Population (3-Yr Avg)
	#	%	C.I. (95%)	#	%	C.I. (95%)	#
Employed	204,000	35.6	34.3 - 36.9	369,400	64.4	63.1 - 65.7	573,400
Unemployed	15,600	34.7	29.5 - 39.8	29,400	65.3	60.2 - 70.5	45,000
Retired/Unable to work	20,300	31.2	27.8 - 34.5	44,800	68.8	65.5 - 72.2	65,000
Student/Homemaker	32,900	38.1	34.5 - 41.8	53,400	61.9	58.2 - 65.5	86,300

HIV - ever been tested (18-64) by State, County, Island, Community, BRFSS Age Group, DOH Race-Ethnicity, Gender, Education Level, Employment Status (Grouped), Household Income, Poverty Level, Marital Status (Grouped), Married, Health Care Coverage, for the Year(s) - 2000-2002, 2001-2003, 2002-2004, 2003-2005, 2004-2006, 2005-2007, 2006-2008, 2007-2009, 2008-2010

Note: Weighted numbers (#) represent 3-yr averages, percentages and 95% confidence intervals; Respondents aged 18 years and older; n/r (Not Reportable) - If the unweighted total responses for a dimension (row) is <50 that row will not be shown; n/a (Not Available) - Not asked of a subset of respondents

Year: 2007-2009

Household Income	Yes			No			Estimated Population (3-Yr Avg)
	#	%	C.I. (95%)	#	%	C.I. (95%)	#
Less than \$10,000	8,000	39.3	32.9 - 45.7	12,300	60.7	54.3 - 67.1	20,300
\$10,000 to \$14,999	6,500	41.0	32.7 - 49.4	9,300	59.0	50.6 - 67.3	15,700
\$15,000 to \$19,999	10,800	36.5	30.8 - 42.2	18,800	63.5	57.8 - 69.2	29,600
\$20,000 to \$24,999	14,600	37.1	32.2 - 42.1	24,800	62.9	57.9 - 67.8	39,400
\$25,000 to \$34,999	28,300	36.9	33.2 - 40.6	48,500	63.1	59.4 - 66.8	76,800
\$35,000 to \$49,999	38,700	33.2	30.5 - 36.0	77,700	66.8	64.0 - 69.5	116,300
\$50,000 to \$74,999	51,100	35.2	32.7 - 37.8	94,000	64.8	62.2 - 67.3	145,000
\$75,000 or more	98,200	37.7	35.8 - 39.6	162,200	62.3	60.4 - 64.2	260,400

HIV - ever been tested (18-64) by State, County, Island, Community, BRFSS Age Group, DOH Race-Ethnicity, Gender, Education Level, Employment Status (Grouped), Household Income, Poverty Level, Marital Status (Grouped), Married, Health Care Coverage, for the Year(s) - 2000-2002, 2001-2003, 2002-2004, 2003-2005, 2004-2006, 2005-2007, 2006-2008, 2007-2009, 2008-2010

Note: Weighted numbers (#) represent 3-yr averages, percentages and 95% confidence intervals; Respondents aged 18 years and older; n/r (Not Reportable) - If the unweighted total responses for a dimension (row) is <50 that row will not be shown; n/a (Not Available) - Not asked of a subset of respondents

Year: 2007-2009

Poverty Level	Yes			No			Estimated Population (3-Yr Avg)
	#	%	C.I. (95%)	#	%	C.I. (95%)	#
0-130%	56,500	37.1	34.2 - 39.9	96,000	62.9	60.1 - 65.8	152,500
131-185%	31,600	32.1	28.9 - 35.4	66,700	67.9	64.6 - 71.1	98,200
186+%	168,000	37.1	35.7 - 38.5	284,800	62.9	61.5 - 64.3	452,900

Marital Status (Grouped)	Yes			No			Estimated Population (3-Yr Avg)
	#	%	C.I. (95%)	#	%	C.I. (95%)	#
Married	164,500	36.3	35.0 - 37.7	288,200	63.7	62.3 - 65.0	452,800
Unmarried Couple	14,600	53.1	46.5 - 59.7	12,800	46.9	40.3 - 53.5	27,400
Widowed	2,700	26.6	19.7 - 33.6	7,500	73.4	66.4 - 80.3	10,200
Other	91,100	32.6	30.6 - 34.6	188,600	67.4	65.4 - 69.4	279,700

HIV - ever been tested (18-64) by State, County, Island, Community, BRFSS Age Group, DOH Race-Ethnicity, Gender, Education Level, Employment Status (Grouped), Household Income, Poverty Level, Marital Status (Grouped), Married, Health Care Coverage, for the Year(s) - 2000-2002, 2001-2003, 2002-2004, 2003-2005, 2004-2006, 2005-2007, 2006-2008, 2007-2009, 2008-2010

Note: Weighted numbers (#) represent 3-yr averages, percentages and 95% confidence intervals; Respondents aged 18 years and older; n/r (Not Reportable) - If the unweighted total responses for a dimension (row) is <50 that row will not be shown; n/a (Not Available) - Not asked of a subset of respondents

Year: 2007-2009

Married	Yes			No			Estimated Population (3-Yr Avg)
	#	%	C.I. (95%)	#	%	C.I. (95%)	#
Yes	168,700	36.5	35.2 - 37.9	293,200	63.5	62.1 - 64.8	461,900
No	104,000	33.8	31.9 - 35.8	203,400	66.2	64.2 - 68.1	307,400

Health Care Coverage	Yes			No			Estimated Population (3-Yr Avg)
	#	%	C.I. (95%)	#	%	C.I. (95%)	#
Yes	251,400	35.5	34.3 - 36.7	456,900	64.5	63.3 - 65.7	708,300
No	21,100	35.2	30.7 - 39.7	38,800	64.8	60.3 - 69.3	59,900

HIV - ever been tested (18-64) by State, County, Island, Community, BRFSS Age Group, DOH Race-Ethnicity, Gender, Education Level, Employment Status (Grouped), Household Income, Poverty Level, Marital Status (Grouped), Married, Health Care Coverage, for the Year(s) - 2000-2002, 2001-2003, 2002-2004, 2003-2005, 2004-2006, 2005-2007, 2006-2008, 2007-2009, 2008-2010

Note: Weighted numbers (#) represent 3-yr averages, percentages and 95% confidence intervals; Respondents aged 18 years and older; n/r (Not Reportable) - If the unweighted total responses for a dimension (row) is <50 that row will not be shown; n/a (Not Available) - Not asked of a subset of respondents

Year: 2006-2008

State	Yes			No			Estimated Population (3-Yr Avg)
	#	%	C.I. (95%)	#	%	C.I. (95%)	#
Hawaii State	263,100	34.2	33.1 - 35.3	506,600	65.8	64.7 - 66.9	769,800

County	Yes			No			Estimated Population (3-Yr Avg)
	#	%	C.I. (95%)	#	%	C.I. (95%)	#
Hawaii	35,000	34.5	32.4 - 36.6	66,500	65.5	63.4 - 67.6	101,500
Honolulu	185,100	34.0	32.6 - 35.5	358,600	66.0	64.5 - 67.4	543,800
Kauai	12,500	33.6	30.5 - 36.8	24,700	66.4	63.2 - 69.5	37,200
Maui	30,500	34.9	32.7 - 37.1	56,800	65.1	62.9 - 67.3	87,300

HIV - ever been tested (18-64) by State, County, Island, Community, BRFSS Age Group, DOH Race-Ethnicity, Gender, Education Level, Employment Status (Grouped), Household Income, Poverty Level, Marital Status (Grouped), Married, Health Care Coverage, for the Year(s) - 2000-2002, 2001-2003, 2002-2004, 2003-2005, 2004-2006, 2005-2007, 2006-2008, 2007-2009, 2008-2010

Note: Weighted numbers (#) represent 3-yr averages, percentages and 95% confidence intervals; Respondents aged 18 years and older; n/r (Not Reportable) - If the unweighted total responses for a dimension (row) is <50 that row will not be shown; n/a (Not Available) - Not asked of a subset of respondents

Year: 2006-2008

Island	Yes			No			Estimated Population (3-Yr Avg)
	#	%	C.I. (95%)	#	%	C.I. (95%)	#
Hawaii	35,000	34.5	32.4 - 36.6	66,500	65.5	63.4 - 67.6	101,500
Kauai	12,500	33.6	30.5 - 36.8	24,700	66.4	63.2 - 69.5	37,200
Lanai	500	32.3	26.7 - 37.8	1,100	67.7	62.2 - 73.3	1,700
Maui	27,800	35.0	32.6 - 37.5	51,600	65.0	62.5 - 67.4	79,400
Molokai	2,100	34.1	29.0 - 39.1	4,100	65.9	60.9 - 71.0	6,200
Oahu	185,100	34.0	32.6 - 35.5	358,600	66.0	64.5 - 67.4	543,800

Community	Yes			No			Estimated Population (3-Yr Avg)
	#	%	C.I. (95%)	#	%	C.I. (95%)	#
Aiea/ Pearl City	17,100	35.0	30.2 - 39.9	31,700	65.0	60.1 - 69.8	48,800
Ala Moana	6,700	29.7	23.8 - 35.6	15,800	70.3	64.4 - 76.2	22,400

HIV - ever been tested (18-64) by State, County, Island, Community, BRFSS Age Group, DOH Race-Ethnicity, Gender, Education Level, Employment Status (Grouped), Household Income, Poverty Level, Marital Status (Grouped), Married, Health Care Coverage, for the Year(s) - 2000-2002, 2001-2003, 2002-2004, 2003-2005, 2004-2006, 2005-2007, 2006-2008, 2007-2009, 2008-2010

Note: Weighted numbers (#) represent 3-yr averages, percentages and 95% confidence intervals; Respondents aged 18 years and older; n/r (Not Reportable) - If the unweighted total responses for a dimension (row) is <50 that row will not be shown; n/a (Not Available) - Not asked of a subset of respondents

Year: 2006-2008

Community	Yes			No			Estimated Population (3-Yr Avg)
	#	%	C.I. (95%)	#	%	C.I. (95%)	#
Hanalei/ Kapaa	6,100	38.4	33.6 - 43.2	9,700	61.6	56.8 - 66.4	15,800
Hilo	8,600	31.0	27.0 - 34.9	19,300	69.0	65.1 - 73.0	27,900
Kaaawa/ Kahaluu/ Kaneohe	12,100	32.5	27.0 - 38.0	25,200	67.5	62.0 - 73.0	37,300
Kahului	9,300	36.0	31.5 - 40.4	16,600	64.0	59.6 - 68.5	25,900
Kailua/ Waimanalo	13,700	36.9	31.8 - 41.9	23,400	63.1	58.1 - 68.2	37,100
Kaimuki/ Palolo/ Waikiki	13,400	34.8	30.0 - 39.7	25,100	65.2	60.3 - 70.0	38,600
Kona	8,100	36.4	32.2 - 40.6	14,100	63.6	59.4 - 67.8	22,100
Lahaina/ Wailuku	8,300	31.7	27.5 - 35.9	18,000	68.3	64.1 - 72.5	26,300
Lanai	500	32.3	26.7 - 37.8	1,100	67.7	62.2 - 73.3	1,700
Lihue-Waimea	6,500	30.1	26.1 - 34.1	15,000	69.9	65.9 - 73.9	21,400
Manoa/ Upper Makiki	10,800	33.1	27.7 - 38.4	21,800	66.9	61.6 - 72.3	32,600
Mililani/ Wahiawa	23,700	38.8	34.6 - 43.0	37,400	61.2	57.0 - 65.4	61,100

HIV - ever been tested (18-64) by State, County, Island, Community, BRFSS Age Group, DOH Race-Ethnicity, Gender, Education Level, Employment Status (Grouped), Household Income, Poverty Level, Marital Status (Grouped), Married, Health Care Coverage, for the Year(s) - 2000-2002, 2001-2003, 2002-2004, 2003-2005, 2004-2006, 2005-2007, 2006-2008, 2007-2009, 2008-2010

Note: Weighted numbers (#) represent 3-yr averages, percentages and 95% confidence intervals; Respondents aged 18 years and older; n/r (Not Reportable) - If the unweighted total responses for a dimension (row) is <50 that row will not be shown; n/a (Not Available) - Not asked of a subset of respondents

Year: 2006-2008

Community	Yes			No			Estimated Population (3-Yr Avg)
	#	%	C.I. (95%)	#	%	C.I. (95%)	#
Molokai	2,100	34.1	29.0 - 39.1	4,100	65.9	60.9 - 71.0	6,200
Nanakuli/ Waianae	7,300	26.2	19.4 - 33.1	20,600	73.8	66.9 - 80.6	27,900
N.Hawaii	7,300	32.8	28.4 - 37.2	15,000	67.2	62.8 - 71.6	22,300
N.Shore/ Laie	5,400	28.1	20.5 - 35.8	13,700	71.9	64.2 - 79.5	19,100
Nuuanu/ Kalihi/ Moanalua	14,300	26.7	22.2 - 31.2	39,200	73.3	68.8 - 77.8	53,500
Puna/ Kau	11,000	37.8	33.8 - 41.7	18,100	62.2	58.3 - 66.2	29,100
Salt Lake/ Foster Village	15,400	53.4	47.1 - 59.7	13,500	46.6	40.3 - 52.9	28,900
Upcountry/ Hana	10,200	37.3	33.4 - 41.3	17,000	62.7	58.7 - 66.6	27,200
Waialae/ Kahala/ Hawaii Kai	10,000	33.1	27.4 - 38.7	20,200	66.9	61.3 - 72.6	30,100
Waipahu/ Kapolei/ Ewa	35,300	33.2	29.8 - 36.5	71,000	66.8	63.5 - 70.2	106,200

HIV - ever been tested (18-64) by State, County, Island, Community, BRFSS Age Group, DOH Race-Ethnicity, Gender, Education Level, Employment Status (Grouped), Household Income, Poverty Level, Marital Status (Grouped), Married, Health Care Coverage, for the Year(s) - 2000-2002, 2001-2003, 2002-2004, 2003-2005, 2004-2006, 2005-2007, 2006-2008, 2007-2009, 2008-2010

Note: Weighted numbers (#) represent 3-yr averages, percentages and 95% confidence intervals; Respondents aged 18 years and older; n/r (Not Reportable) - If the unweighted total responses for a dimension (row) is <50 that row will not be shown; n/a (Not Available) - Not asked of a subset of respondents

Year: 2006-2008

BRFSS Age Group	Yes			No			Estimated Population (3-Yr Avg)
	#	%	C.I. (95%)	#	%	C.I. (95%)	#
18-24	29,900	24.8	21.5 - 28.1	90,800	75.2	71.9 - 78.5	120,700
25-34	80,100	49.4	46.6 - 52.3	82,000	50.6	47.7 - 53.4	162,100
35-44	73,200	43.0	40.8 - 45.2	96,900	57.0	54.8 - 59.2	170,100
45-54	52,000	30.2	28.4 - 32.0	120,400	69.8	68.0 - 71.6	172,400
55-64	27,900	19.3	17.8 - 20.9	116,600	80.7	79.1 - 82.2	144,600

HIV - ever been tested (18-64) by State, County, Island, Community, BRFSS Age Group, DOH Race-Ethnicity, Gender, Education Level, Employment Status (Grouped), Household Income, Poverty Level, Marital Status (Grouped), Married, Health Care Coverage, for the Year(s) - 2000-2002, 2001-2003, 2002-2004, 2003-2005, 2004-2006, 2005-2007, 2006-2008, 2007-2009, 2008-2010

Note: Weighted numbers (#) represent 3-yr averages, percentages and 95% confidence intervals; Respondents aged 18 years and older; n/r (Not Reportable) - If the unweighted total responses for a dimension (row) is <50 that row will not be shown; n/a (Not Available) - Not asked of a subset of respondents

Year: 2006-2008

DOH Race-Ethnicity	Yes			No			Estimated Population (3-Yr Avg)
	#	%	C.I. (95%)	#	%	C.I. (95%)	#
Caucasian	119,200	47.6	45.9 - 49.4	131,000	52.4	50.6 - 54.1	250,100
Native Hawaiian	33,300	29.8	27.0 - 32.7	78,400	70.2	67.3 - 73.0	111,700
Chinese	9,200	23.0	18.7 - 27.3	30,800	77.0	72.7 - 81.3	40,000
Filipino	29,800	22.8	20.2 - 25.5	101,000	77.2	74.5 - 79.8	130,800
Japanese	33,600	23.0	20.8 - 25.3	112,400	77.0	74.7 - 79.2	146,100
Black	9,800	69.9	61.6 - 78.1	4,200	30.1	21.9 - 38.4	14,000
Native Alaskan/ American Indian	2,700	55.9	43.5 - 68.2	2,100	44.1	31.8 - 56.5	4,900
Other Asian	7,200	34.0	27.2 - 40.8	14,000	66.0	59.2 - 72.8	21,200
Other Pacific Islander	7,000	31.5	23.7 - 39.2	15,300	68.5	60.8 - 76.3	22,300
Mixed Ethnicity	2,400	33.7	21.9 - 45.5	4,600	66.3	54.5 - 78.1	7,000
Other	8,000	40.5	32.9 - 48.2	11,700	59.5	51.8 - 67.1	19,600

HIV - ever been tested (18-64) by State, County, Island, Community, BRFSS Age Group, DOH Race-Ethnicity, Gender, Education Level, Employment Status (Grouped), Household Income, Poverty Level, Marital Status (Grouped), Married, Health Care Coverage, for the Year(s) - 2000-2002, 2001-2003, 2002-2004, 2003-2005, 2004-2006, 2005-2007, 2006-2008, 2007-2009, 2008-2010

Note: Weighted numbers (#) represent 3-yr averages, percentages and 95% confidence intervals; Respondents aged 18 years and older; n/r (Not Reportable) - If the unweighted total responses for a dimension (row) is <50 that row will not be shown; n/a (Not Available) - Not asked of a subset of respondents

Year: 2006-2008

Gender	Yes			No			Estimated Population (3-Yr Avg)
	#	%	C.I. (95%)	#	%	C.I. (95%)	#
Male	130,000	33.0	31.4 - 34.6	264,200	67.0	65.4 - 68.6	394,100
Female	133,200	35.4	34.0 - 36.9	242,500	64.6	63.1 - 66.0	375,600

Education Level	Yes			No			Estimated Population (3-Yr Avg)
	#	%	C.I. (95%)	#	%	C.I. (95%)	#
Never attended school/ Only Kindergarten to Grades 8	600	14.3	6.0 - 22.6	3,700	85.7	77.4 - 94.0	4,300
Grades 9 thru 11 (Some High School)	6,900	26.8	21.1 - 32.5	18,800	73.2	67.5 - 78.9	25,700
Grades 12 or GED (High School Grad)	65,200	28.4	26.4 - 30.5	164,100	71.6	69.5 - 73.6	229,300
College 1 to 3 years (Some College/ Tech)	86,200	36.7	34.7 - 38.7	148,400	63.3	61.3 - 65.3	234,500
College 4 years or more (College Grad)	104,200	37.8	36.1 - 39.5	171,500	62.2	60.5 - 63.9	275,600

HIV - ever been tested (18-64) by State, County, Island, Community, BRFSS Age Group, DOH Race-Ethnicity, Gender, Education Level, Employment Status (Grouped), Household Income, Poverty Level, Marital Status (Grouped), Married, Health Care Coverage, for the Year(s) - 2000-2002, 2001-2003, 2002-2004, 2003-2005, 2004-2006, 2005-2007, 2006-2008, 2007-2009, 2008-2010

Note: Weighted numbers (#) represent 3-yr averages, percentages and 95% confidence intervals; Respondents aged 18 years and older; n/r (Not Reportable) - If the unweighted total responses for a dimension (row) is <50 that row will not be shown; n/a (Not Available) - Not asked of a subset of respondents

Year: 2006-2008

Employment Status (Grouped)	Yes			No			Estimated Population (3-Yr Avg)
	#	%	C.I. (95%)	#	%	C.I. (95%)	#
Employed	201,000	34.6	33.3 - 35.8	380,300	65.4	64.2 - 66.7	581,200
Unemployed	10,800	30.8	25.2 - 36.3	24,300	69.2	63.7 - 74.8	35,100
Retired/Unable to work	20,600	29.7	26.6 - 32.8	48,700	70.3	67.2 - 73.4	69,300
Student/Homemaker	30,600	36.5	32.9 - 40.0	53,300	63.5	60.0 - 67.1	83,900

HIV - ever been tested (18-64) by State, County, Island, Community, BRFSS Age Group, DOH Race-Ethnicity, Gender, Education Level, Employment Status (Grouped), Household Income, Poverty Level, Marital Status (Grouped), Married, Health Care Coverage, for the Year(s) - 2000-2002, 2001-2003, 2002-2004, 2003-2005, 2004-2006, 2005-2007, 2006-2008, 2007-2009, 2008-2010

Note: Weighted numbers (#) represent 3-yr averages, percentages and 95% confidence intervals; Respondents aged 18 years and older; n/r (Not Reportable) - If the unweighted total responses for a dimension (row) is <50 that row will not be shown; n/a (Not Available) - Not asked of a subset of respondents

Year: 2006-2008

Household Income	Yes			No			Estimated Population (3-Yr Avg)
	#	%	C.I. (95%)	#	%	C.I. (95%)	#
Less than \$10,000	7,400	36.5	30.1 - 42.9	12,900	63.5	57.1 - 69.9	20,300
\$10,000 to \$14,999	5,700	34.4	27.5 - 41.4	10,800	65.6	58.6 - 72.5	16,400
\$15,000 to \$19,999	9,600	33.7	28.3 - 39.1	18,900	66.3	60.9 - 71.7	28,400
\$20,000 to \$24,999	15,600	36.3	31.5 - 41.1	27,300	63.7	58.9 - 68.5	42,800
\$25,000 to \$34,999	29,600	36.8	33.1 - 40.4	51,000	63.2	59.6 - 66.9	80,700
\$35,000 to \$49,999	37,500	32.7	29.9 - 35.4	77,300	67.3	64.6 - 70.1	114,800
\$50,000 to \$74,999	45,800	32.5	30.1 - 34.8	95,400	67.5	65.2 - 69.9	141,200
\$75,000 or more	90,900	37.3	35.4 - 39.2	152,800	62.7	60.8 - 64.6	243,700

HIV - ever been tested (18-64) by State, County, Island, Community, BRFSS Age Group, DOH Race-Ethnicity, Gender, Education Level, Employment Status (Grouped), Household Income, Poverty Level, Marital Status (Grouped), Married, Health Care Coverage, for the Year(s) - 2000-2002, 2001-2003, 2002-2004, 2003-2005, 2004-2006, 2005-2007, 2006-2008, 2007-2009, 2008-2010

Note: Weighted numbers (#) represent 3-yr averages, percentages and 95% confidence intervals; Respondents aged 18 years and older; n/r (Not Reportable) - If the unweighted total responses for a dimension (row) is <50 that row will not be shown; n/a (Not Available) - Not asked of a subset of respondents

Year: 2006-2008

Poverty Level	Yes			No			Estimated Population (3-Yr Avg)
	#	%	C.I. (95%)	#	%	C.I. (95%)	#
0-130%	51,600	34.8	32.0 - 37.6	96,800	65.2	62.4 - 68.0	148,400
131-185%	29,700	31.7	28.5 - 34.9	64,100	68.3	65.1 - 71.5	93,800
186+%	160,500	36.0	34.7 - 37.3	285,400	64.0	62.7 - 65.3	445,900

Marital Status (Grouped)	Yes			No			Estimated Population (3-Yr Avg)
	#	%	C.I. (95%)	#	%	C.I. (95%)	#
Married	158,700	35.1	33.7 - 36.4	294,000	64.9	63.6 - 66.3	452,700
Unmarried Couple	13,200	48.0	41.6 - 54.5	14,300	52.0	45.5 - 58.4	27,600
Widowed	2,600	23.6	17.1 - 30.1	8,400	76.4	69.9 - 82.9	11,000
Other	88,600	31.8	29.9 - 33.8	189,900	68.2	66.2 - 70.1	278,500

HIV - ever been tested (18-64) by State, County, Island, Community, BRFSS Age Group, DOH Race-Ethnicity, Gender, Education Level, Employment Status (Grouped), Household Income, Poverty Level, Marital Status (Grouped), Married, Health Care Coverage, for the Year(s) - 2000-2002, 2001-2003, 2002-2004, 2003-2005, 2004-2006, 2005-2007, 2006-2008, 2007-2009, 2008-2010

Note: Weighted numbers (#) represent 3-yr averages, percentages and 95% confidence intervals; Respondents aged 18 years and older; n/r (Not Reportable) - If the unweighted total responses for a dimension (row) is <50 that row will not be shown; n/a (Not Available) - Not asked of a subset of respondents

Year: 2006-2008

Married	Yes			No			Estimated Population (3-Yr Avg)
	#	%	C.I. (95%)	#	%	C.I. (95%)	#
Yes	162,200	35.1	33.8 - 36.5	299,500	64.9	63.5 - 66.2	461,700
No	100,800	32.8	30.9 - 34.6	206,700	67.2	65.4 - 69.1	307,500

Health Care Coverage	Yes			No			Estimated Population (3-Yr Avg)
	#	%	C.I. (95%)	#	%	C.I. (95%)	#
Yes	241,300	34.2	33.1 - 35.3	464,600	65.8	64.7 - 66.9	705,900
No	21,700	34.7	30.6 - 38.9	40,800	65.3	61.1 - 69.4	62,500

HIV - ever been tested (18-64) by State, County, Island, Community, BRFSS Age Group, DOH Race-Ethnicity, Gender, Education Level, Employment Status (Grouped), Household Income, Poverty Level, Marital Status (Grouped), Married, Health Care Coverage, for the Year(s) - 2000-2002, 2001-2003, 2002-2004, 2003-2005, 2004-2006, 2005-2007, 2006-2008, 2007-2009, 2008-2010

Note: Weighted numbers (#) represent 3-yr averages, percentages and 95% confidence intervals; Respondents aged 18 years and older; n/r (Not Reportable) - If the unweighted total responses for a dimension (row) is <50 that row will not be shown; n/a (Not Available) - Not asked of a subset of respondents

Year: 2005-2007

State	Yes			No			Estimated Population (3-Yr Avg)
	#	%	C.I. (95%)	#	%	C.I. (95%)	#
Hawaii State	271,900	35.6	34.5 - 36.6	492,900	64.4	63.4 - 65.5	764,700

County	Yes			No			Estimated Population (3-Yr Avg)
	#	%	C.I. (95%)	#	%	C.I. (95%)	#
Hawaii	33,500	34.4	32.5 - 36.4	63,800	65.6	63.6 - 67.5	97,400
Honolulu	195,300	35.8	34.4 - 37.2	350,400	64.2	62.8 - 65.6	545,800
Kauai	13,000	35.9	32.7 - 39.1	23,200	64.1	60.9 - 67.3	36,200
Maui	30,000	35.1	32.9 - 37.4	55,400	64.9	62.6 - 67.1	85,400

HIV - ever been tested (18-64) by State, County, Island, Community, BRFSS Age Group, DOH Race-Ethnicity, Gender, Education Level, Employment Status (Grouped), Household Income, Poverty Level, Marital Status (Grouped), Married, Health Care Coverage, for the Year(s) - 2000-2002, 2001-2003, 2002-2004, 2003-2005, 2004-2006, 2005-2007, 2006-2008, 2007-2009, 2008-2010

Note: Weighted numbers (#) represent 3-yr averages, percentages and 95% confidence intervals; Respondents aged 18 years and older; n/r (Not Reportable) - If the unweighted total responses for a dimension (row) is <50 that row will not be shown; n/a (Not Available) - Not asked of a subset of respondents

Year: 2005-2007

Island	Yes			No			Estimated Population (3-Yr Avg)
	#	%	C.I. (95%)	#	%	C.I. (95%)	#
Hawaii	33,500	34.4	32.5 - 36.4	63,800	65.6	63.6 - 67.5	97,400
Kauai	13,000	35.9	32.7 - 39.1	23,200	64.1	60.9 - 67.3	36,200
Lanai	500	25.8	20.9 - 30.7	1,300	74.2	69.3 - 79.1	1,800
Maui	27,800	35.5	33.1 - 38.0	50,500	64.5	62.0 - 66.9	78,200
Molokai	1,800	32.7	27.6 - 37.8	3,600	67.3	62.2 - 72.4	5,400
Oahu	195,300	35.8	34.4 - 37.2	350,400	64.2	62.8 - 65.6	545,800

Community	Yes			No			Estimated Population (3-Yr Avg)
	#	%	C.I. (95%)	#	%	C.I. (95%)	#
Aiea/ Pearl City	17,400	34.1	29.5 - 38.8	33,500	65.9	61.2 - 70.5	50,900
Ala Moana	6,700	29.3	23.4 - 35.1	16,100	70.7	64.9 - 76.6	22,800

HIV - ever been tested (18-64) by State, County, Island, Community, BRFSS Age Group, DOH Race-Ethnicity, Gender, Education Level, Employment Status (Grouped), Household Income, Poverty Level, Marital Status (Grouped), Married, Health Care Coverage, for the Year(s) - 2000-2002, 2001-2003, 2002-2004, 2003-2005, 2004-2006, 2005-2007, 2006-2008, 2007-2009, 2008-2010

Note: Weighted numbers (#) represent 3-yr averages, percentages and 95% confidence intervals; Respondents aged 18 years and older; n/r (Not Reportable) - If the unweighted total responses for a dimension (row) is <50 that row will not be shown; n/a (Not Available) - Not asked of a subset of respondents

Year: 2005-2007

Community	Yes			No			Estimated Population (3-Yr Avg)
	#	%	C.I. (95%)	#	%	C.I. (95%)	#
Hanalei/ Kapaa	6,100	40.2	35.4 - 44.9	9,000	59.8	55.1 - 64.6	15,100
Hilo	8,300	31.5	27.8 - 35.2	18,000	68.5	64.8 - 72.2	26,200
Kaaawa/ Kahaluu/ Kaneohe	14,900	38.6	33.0 - 44.2	23,800	61.4	55.8 - 67.0	38,700
Kahului	9,500	37.2	32.7 - 41.6	16,000	62.8	58.4 - 67.3	25,500
Kailua/ Waimanalo	14,100	38.4	33.2 - 43.6	22,500	61.6	56.4 - 66.8	36,600
Kaimuki/ Palolo/ Waikiki	14,800	36.2	31.5 - 41.0	26,000	63.8	59.0 - 68.5	40,800
Kona	7,700	34.4	30.4 - 38.4	14,700	65.6	61.6 - 69.6	22,500
Lahaina/ Wailuku	8,100	31.6	27.4 - 35.8	17,700	68.4	64.2 - 72.6	25,800
Lanai	500	25.8	20.9 - 30.7	1,300	74.2	69.3 - 79.1	1,800
Lihue-Waimea	6,900	32.8	28.5 - 37.0	14,200	67.2	63.0 - 71.5	21,100
Manoa/ Upper Makiki	10,600	32.9	27.5 - 38.3	21,600	67.1	61.7 - 72.5	32,100
Mililani/ Wahiawa	25,600	42.5	38.2 - 46.7	34,600	57.5	53.3 - 61.8	60,200

HIV - ever been tested (18-64) by State, County, Island, Community, BRFSS Age Group, DOH Race-Ethnicity, Gender, Education Level, Employment Status (Grouped), Household Income, Poverty Level, Marital Status (Grouped), Married, Health Care Coverage, for the Year(s) - 2000-2002, 2001-2003, 2002-2004, 2003-2005, 2004-2006, 2005-2007, 2006-2008, 2007-2009, 2008-2010

Note: Weighted numbers (#) represent 3-yr averages, percentages and 95% confidence intervals; Respondents aged 18 years and older; n/r (Not Reportable) - If the unweighted total responses for a dimension (row) is <50 that row will not be shown; n/a (Not Available) - Not asked of a subset of respondents

Year: 2005-2007

Community	Yes			No			Estimated Population (3-Yr Avg)
	#	%	C.I. (95%)	#	%	C.I. (95%)	#
Molokai	1,800	32.7	27.6 - 37.8	3,600	67.3	62.2 - 72.4	5,400
Nanakuli/ Waianae	7,400	27.0	20.4 - 33.5	20,100	73.0	66.5 - 79.6	27,500
N.Hawaii	7,300	34.1	30.0 - 38.2	14,000	65.9	61.8 - 70.0	21,300
N.Shore/ Laie	5,100	28.8	21.7 - 35.9	12,500	71.2	64.1 - 78.3	17,600
Nuuanu/ Kalihi/ Moanalua	16,400	30.2	25.3 - 35.0	38,000	69.8	65.0 - 74.7	54,500
Puna/ Kau	10,300	37.6	33.7 - 41.5	17,100	62.4	58.5 - 66.3	27,400
Salt Lake/ Foster Village	15,900	55.0	48.5 - 61.5	13,000	45.0	38.5 - 51.5	28,900
Upcountry/ Hana	10,200	37.8	33.6 - 41.9	16,800	62.2	58.1 - 66.4	26,900
Waiialae/ Kahala/ Hawaii Kai	9,900	34.0	28.3 - 39.7	19,300	66.0	60.3 - 71.7	29,300
Waipahu/ Kapolei/ Ewa	36,600	34.6	31.3 - 37.8	69,300	65.4	62.2 - 68.7	105,900

HIV - ever been tested (18-64) by State, County, Island, Community, BRFSS Age Group, DOH Race-Ethnicity, Gender, Education Level, Employment Status (Grouped), Household Income, Poverty Level, Marital Status (Grouped), Married, Health Care Coverage, for the Year(s) - 2000-2002, 2001-2003, 2002-2004, 2003-2005, 2004-2006, 2005-2007, 2006-2008, 2007-2009, 2008-2010

Note: Weighted numbers (#) represent 3-yr averages, percentages and 95% confidence intervals; Respondents aged 18 years and older; n/r (Not Reportable) - If the unweighted total responses for a dimension (row) is <50 that row will not be shown; n/a (Not Available) - Not asked of a subset of respondents

Year: 2005-2007

BRFSS Age Group	Yes			No			Estimated Population (3-Yr Avg)
	#	%	C.I. (95%)	#	%	C.I. (95%)	#
18-24	32,400	27.3	23.9 - 30.7	86,100	72.7	69.3 - 76.1	118,500
25-34	83,100	52.5	49.7 - 55.2	75,300	47.5	44.8 - 50.3	158,400
35-44	76,500	44.6	42.4 - 46.8	95,100	55.4	53.2 - 57.6	171,500
45-54	53,400	30.5	28.7 - 32.3	121,500	69.5	67.7 - 71.3	174,800
55-64	26,600	18.8	17.2 - 20.4	114,900	81.2	79.6 - 82.8	141,500

HIV - ever been tested (18-64) by State, County, Island, Community, BRFSS Age Group, DOH Race-Ethnicity, Gender, Education Level, Employment Status (Grouped), Household Income, Poverty Level, Marital Status (Grouped), Married, Health Care Coverage, for the Year(s) - 2000-2002, 2001-2003, 2002-2004, 2003-2005, 2004-2006, 2005-2007, 2006-2008, 2007-2009, 2008-2010

Note: Weighted numbers (#) represent 3-yr averages, percentages and 95% confidence intervals; Respondents aged 18 years and older; n/r (Not Reportable) - If the unweighted total responses for a dimension (row) is <50 that row will not be shown; n/a (Not Available) - Not asked of a subset of respondents

Year: 2005-2007

DOH Race-Ethnicity	Yes			No			Estimated Population (3-Yr Avg)
	#	%	C.I. (95%)	#	%	C.I. (95%)	#
Caucasian	123,500	48.8	47.1 - 50.6	129,400	51.2	49.4 - 52.9	252,900
Native Hawaiian	31,500	30.0	27.2 - 32.8	73,400	70.0	67.2 - 72.8	104,800
Chinese	8,700	23.4	18.9 - 28.0	28,400	76.6	72.0 - 81.1	37,100
Filipino	30,400	22.7	20.1 - 25.3	103,600	77.3	74.7 - 79.9	134,000
Japanese	35,500	25.1	22.8 - 27.5	105,700	74.9	72.5 - 77.2	141,200
Black	11,100	69.9	61.8 - 77.9	4,800	30.1	22.1 - 38.2	15,900
Native Alaskan/ American Indian	2,600	61.1	49.2 - 73.0	1,700	38.9	27.0 - 50.8	4,300
Other Asian	6,700	34.0	27.3 - 40.8	12,900	66.0	59.2 - 72.7	19,600
Other Pacific Islander	8,000	35.3	27.6 - 43.1	14,700	64.7	56.9 - 72.4	22,700
Mixed Ethnicity	2,400	33.7	21.9 - 45.5	4,600	66.3	54.5 - 78.1	7,000
Other	10,500	46.3	39.5 - 53.2	12,200	53.7	46.8 - 60.5	22,700

HIV - ever been tested (18-64) by State, County, Island, Community, BRFSS Age Group, DOH Race-Ethnicity, Gender, Education Level, Employment Status (Grouped), Household Income, Poverty Level, Marital Status (Grouped), Married, Health Care Coverage, for the Year(s) - 2000-2002, 2001-2003, 2002-2004, 2003-2005, 2004-2006, 2005-2007, 2006-2008, 2007-2009, 2008-2010

Note: Weighted numbers (#) represent 3-yr averages, percentages and 95% confidence intervals; Respondents aged 18 years and older; n/r (Not Reportable) - If the unweighted total responses for a dimension (row) is <50 that row will not be shown; n/a (Not Available) - Not asked of a subset of respondents

Year: 2005-2007

Gender	Yes			No			Estimated Population (3-Yr Avg)
	#	%	C.I. (95%)	#	%	C.I. (95%)	#
Male	138,600	35.4	33.8 - 37.1	252,700	64.6	62.9 - 66.2	391,300
Female	133,300	35.7	34.3 - 37.1	240,200	64.3	62.9 - 65.7	373,500

Education Level	Yes			No			Estimated Population (3-Yr Avg)
	#	%	C.I. (95%)	#	%	C.I. (95%)	#
Never attended school/ Only Kindergarten to Grades 8	1,100	16.1	4.9 - 27.2	5,900	83.9	72.8 - 95.1	7,000
Grades 9 thru 11 (Some High School)	7,400	30.4	24.3 - 36.5	16,900	69.6	63.5 - 75.7	24,300
Grades 12 or GED (High School Grad)	65,500	29.2	27.2 - 31.3	158,400	70.8	68.7 - 72.8	223,900
College 1 to 3 years (Some College/ Tech)	88,800	37.9	35.9 - 40.0	145,300	62.1	60.0 - 64.1	234,100
College 4 years or more (College Grad)	108,800	39.6	37.9 - 41.3	166,100	60.4	58.7 - 62.1	274,900

HIV - ever been tested (18-64) by State, County, Island, Community, BRFSS Age Group, DOH Race-Ethnicity, Gender, Education Level, Employment Status (Grouped), Household Income, Poverty Level, Marital Status (Grouped), Married, Health Care Coverage, for the Year(s) - 2000-2002, 2001-2003, 2002-2004, 2003-2005, 2004-2006, 2005-2007, 2006-2008, 2007-2009, 2008-2010

Note: Weighted numbers (#) represent 3-yr averages, percentages and 95% confidence intervals; Respondents aged 18 years and older; n/r (Not Reportable) - If the unweighted total responses for a dimension (row) is <50 that row will not be shown; n/a (Not Available) - Not asked of a subset of respondents

Year: 2005-2007

Employment Status (Grouped)	Yes			No			Estimated Population (3-Yr Avg)
	#	%	C.I. (95%)	#	%	C.I. (95%)	#
Employed	210,900	36.3	35.1 - 37.6	369,700	63.7	62.4 - 64.9	580,600
Unemployed	8,400	31.2	25.4 - 37.0	18,400	68.8	63.0 - 74.6	26,800
Retired/Unable to work	21,300	29.3	26.4 - 32.3	51,300	70.7	67.7 - 73.6	72,500
Student/Homemaker	31,100	36.8	33.4 - 40.3	53,400	63.2	59.7 - 66.6	84,500

HIV - ever been tested (18-64) by State, County, Island, Community, BRFSS Age Group, DOH Race-Ethnicity, Gender, Education Level, Employment Status (Grouped), Household Income, Poverty Level, Marital Status (Grouped), Married, Health Care Coverage, for the Year(s) - 2000-2002, 2001-2003, 2002-2004, 2003-2005, 2004-2006, 2005-2007, 2006-2008, 2007-2009, 2008-2010

Note: Weighted numbers (#) represent 3-yr averages, percentages and 95% confidence intervals; Respondents aged 18 years and older; n/r (Not Reportable) - If the unweighted total responses for a dimension (row) is <50 that row will not be shown; n/a (Not Available) - Not asked of a subset of respondents

Year: 2005-2007

Household Income	Yes			No			Estimated Population (3-Yr Avg)
	#	%	C.I. (95%)	#	%	C.I. (95%)	#
Less than \$10,000	8,300	41.4	34.4 - 48.3	11,800	58.6	51.7 - 65.6	20,100
\$10,000 to \$14,999	6,200	34.2	27.2 - 41.2	12,000	65.8	58.8 - 72.8	18,200
\$15,000 to \$19,999	10,000	32.8	27.6 - 38.0	20,500	67.2	62.0 - 72.4	30,500
\$20,000 to \$24,999	16,300	36.4	31.8 - 41.0	28,400	63.6	59.0 - 68.2	44,700
\$25,000 to \$34,999	30,400	37.2	33.7 - 40.7	51,200	62.8	59.3 - 66.3	81,600
\$35,000 to \$49,999	40,500	34.2	31.5 - 36.9	77,900	65.8	63.1 - 68.5	118,400
\$50,000 to \$74,999	48,200	33.8	31.4 - 36.2	94,300	66.2	63.8 - 68.6	142,600
\$75,000 or more	85,800	39.3	37.3 - 41.2	132,700	60.7	58.8 - 62.7	218,400

HIV - ever been tested (18-64) by State, County, Island, Community, BRFSS Age Group, DOH Race-Ethnicity, Gender, Education Level, Employment Status (Grouped), Household Income, Poverty Level, Marital Status (Grouped), Married, Health Care Coverage, for the Year(s) - 2000-2002, 2001-2003, 2002-2004, 2003-2005, 2004-2006, 2005-2007, 2006-2008, 2007-2009, 2008-2010

Note: Weighted numbers (#) represent 3-yr averages, percentages and 95% confidence intervals; Respondents aged 18 years and older; n/r (Not Reportable) - If the unweighted total responses for a dimension (row) is <50 that row will not be shown; n/a (Not Available) - Not asked of a subset of respondents

Year: 2005-2007

Poverty Level	Yes			No			Estimated Population (3-Yr Avg)
	#	%	C.I. (95%)	#	%	C.I. (95%)	#
0-130%	49,800	34.9	32.0 - 37.7	93,100	65.1	62.3 - 68.0	142,900
131-185%	30,500	35.2	31.7 - 38.8	56,000	64.8	61.2 - 68.3	86,500
186+%	165,500	37.2	35.9 - 38.5	279,800	62.8	61.5 - 64.1	445,200

Marital Status (Grouped)	Yes			No			Estimated Population (3-Yr Avg)
	#	%	C.I. (95%)	#	%	C.I. (95%)	#
Married	163,500	36.1	34.8 - 37.4	289,600	63.9	62.6 - 65.2	453,100
Unmarried Couple	11,800	43.8	37.5 - 50.2	15,100	56.2	49.8 - 62.5	27,000
Widowed	2,700	22.8	17.4 - 28.3	9,200	77.2	71.7 - 82.6	11,900
Other	93,800	34.4	32.4 - 36.4	178,900	65.6	63.6 - 67.6	272,700

HIV - ever been tested (18-64) by State, County, Island, Community, BRFSS Age Group, DOH Race-Ethnicity, Gender, Education Level, Employment Status (Grouped), Household Income, Poverty Level, Marital Status (Grouped), Married, Health Care Coverage, for the Year(s) - 2000-2002, 2001-2003, 2002-2004, 2003-2005, 2004-2006, 2005-2007, 2006-2008, 2007-2009, 2008-2010

Note: Weighted numbers (#) represent 3-yr averages, percentages and 95% confidence intervals; Respondents aged 18 years and older; n/r (Not Reportable) - If the unweighted total responses for a dimension (row) is <50 that row will not be shown; n/a (Not Available) - Not asked of a subset of respondents

Year: 2005-2007

Married	Yes			No			Estimated Population (3-Yr Avg)
	#	%	C.I. (95%)	#	%	C.I. (95%)	#
Yes	167,300	36.2	34.9 - 37.5	294,800	63.8	62.5 - 65.1	462,200
No	104,400	34.6	32.7 - 36.4	197,800	65.4	63.6 - 67.3	302,200

Health Care Coverage	Yes			No			Estimated Population (3-Yr Avg)
	#	%	C.I. (95%)	#	%	C.I. (95%)	#
Yes	249,000	35.7	34.6 - 36.8	448,100	64.3	63.2 - 65.4	697,100
No	22,600	34.1	30.3 - 38.0	43,600	65.9	62.0 - 69.7	66,200

HIV - ever been tested (18-64) by State, County, Island, Community, BRFSS Age Group, DOH Race-Ethnicity, Gender, Education Level, Employment Status (Grouped), Household Income, Poverty Level, Marital Status (Grouped), Married, Health Care Coverage, for the Year(s) - 2000-2002, 2001-2003, 2002-2004, 2003-2005, 2004-2006, 2005-2007, 2006-2008, 2007-2009, 2008-2010

Note: Weighted numbers (#) represent 3-yr averages, percentages and 95% confidence intervals; Respondents aged 18 years and older; n/r (Not Reportable) - If the unweighted total responses for a dimension (row) is <50 that row will not be shown; n/a (Not Available) - Not asked of a subset of respondents

Year: 2004-2006

State	Yes			No			Estimated Population (3-Yr Avg)
	#	%	C.I. (95%)	#	%	C.I. (95%)	#
Hawaii State	279,400	37.2	35.8 - 38.7	470,800	62.8	61.3 - 64.2	750,200

County	Yes			No			Estimated Population (3-Yr Avg)
	#	%	C.I. (95%)	#	%	C.I. (95%)	#
Hawaii	35,100	35.9	33.3 - 38.5	62,800	64.1	61.5 - 66.7	98,000
Honolulu	200,800	37.7	35.8 - 39.5	332,500	62.3	60.5 - 64.2	533,400
Kauai	13,600	39.2	35.5 - 42.9	21,000	60.8	57.1 - 64.5	34,600
Maui	29,900	35.4	32.4 - 38.5	54,400	64.6	61.5 - 67.6	84,200

HIV - ever been tested (18-64) by State, County, Island, Community, BRFSS Age Group, DOH Race-Ethnicity, Gender, Education Level, Employment Status (Grouped), Household Income, Poverty Level, Marital Status (Grouped), Married, Health Care Coverage, for the Year(s) - 2000-2002, 2001-2003, 2002-2004, 2003-2005, 2004-2006, 2005-2007, 2006-2008, 2007-2009, 2008-2010

Note: Weighted numbers (#) represent 3-yr averages, percentages and 95% confidence intervals; Respondents aged 18 years and older; n/r (Not Reportable) - If the unweighted total responses for a dimension (row) is <50 that row will not be shown; n/a (Not Available) - Not asked of a subset of respondents

Year: 2004-2006

Island	Yes			No			Estimated Population (3-Yr Avg)
	#	%	C.I. (95%)	#	%	C.I. (95%)	#
Hawaii	35,100	35.9	33.3 - 38.5	62,800	64.1	61.5 - 66.7	98,000
Kauai	13,600	39.2	35.5 - 42.9	21,000	60.8	57.1 - 64.5	34,600
Lanai	400	24.7	19.1 - 30.4	1,200	75.3	69.6 - 80.9	1,600
Maui	28,000	36.0	32.7 - 39.3	49,800	64.0	60.7 - 67.3	77,800
Molokai	1,400	30.1	22.8 - 37.5	3,400	69.9	62.5 - 77.2	4,800
Oahu	200,800	37.7	35.8 - 39.5	332,500	62.3	60.5 - 64.2	533,400

Community	Yes			No			Estimated Population (3-Yr Avg)
	#	%	C.I. (95%)	#	%	C.I. (95%)	#
Aiea/ Pearl City	17,500	35.9	29.9 - 41.9	31,200	64.1	58.1 - 70.1	48,700
Ala Moana	9,600	38.3	29.3 - 47.3	15,500	61.7	52.7 - 70.7	25,100

HIV - ever been tested (18-64) by State, County, Island, Community, BRFSS Age Group, DOH Race-Ethnicity, Gender, Education Level, Employment Status (Grouped), Household Income, Poverty Level, Marital Status (Grouped), Married, Health Care Coverage, for the Year(s) - 2000-2002, 2001-2003, 2002-2004, 2003-2005, 2004-2006, 2005-2007, 2006-2008, 2007-2009, 2008-2010

Note: Weighted numbers (#) represent 3-yr averages, percentages and 95% confidence intervals; Respondents aged 18 years and older; n/r (Not Reportable) - If the unweighted total responses for a dimension (row) is <50 that row will not be shown; n/a (Not Available) - Not asked of a subset of respondents

Year: 2004-2006

Community	Yes			No			Estimated Population (3-Yr Avg)
	#	%	C.I. (95%)	#	%	C.I. (95%)	#
Hanalei/ Kapaa	6,200	42.2	36.8 - 47.7	8,500	57.8	52.3 - 63.2	14,700
Hilo	9,400	34.8	30.0 - 39.6	17,600	65.2	60.4 - 70.0	27,000
Kaaawa/ Kahaluu/ Kaneohe	13,800	39.8	32.4 - 47.2	20,900	60.2	52.8 - 67.6	34,700
Kahului	9,900	37.7	31.6 - 43.8	16,300	62.3	56.2 - 68.4	26,200
Kailua/ Waimanalo	16,900	46.0	39.2 - 52.9	19,800	54.0	47.1 - 60.8	36,700
Kaimuki/ Palolo/ Waikiki	16,800	41.4	35.0 - 47.9	23,800	58.6	52.1 - 65.0	40,600
Kona	8,100	37.1	31.9 - 42.3	13,800	62.9	57.7 - 68.1	21,900
Lahaina/ Wailuku	7,900	31.3	25.8 - 36.8	17,400	68.7	63.2 - 74.2	25,300
Lanai	400	24.7	19.1 - 30.4	1,200	75.3	69.6 - 80.9	1,600
Lihue-Waimea	7,300	36.9	31.9 - 42.0	12,500	63.1	58.0 - 68.1	19,900
Manoa/ Upper Makiki	11,500	32.7	26.2 - 39.2	23,700	67.3	60.8 - 73.8	35,200
Mililani/ Wahiawa	22,800	40.6	34.7 - 46.5	33,300	59.4	53.5 - 65.3	56,100

HIV - ever been tested (18-64) by State, County, Island, Community, BRFSS Age Group, DOH Race-Ethnicity, Gender, Education Level, Employment Status (Grouped), Household Income, Poverty Level, Marital Status (Grouped), Married, Health Care Coverage, for the Year(s) - 2000-2002, 2001-2003, 2002-2004, 2003-2005, 2004-2006, 2005-2007, 2006-2008, 2007-2009, 2008-2010

Note: Weighted numbers (#) represent 3-yr averages, percentages and 95% confidence intervals; Respondents aged 18 years and older; n/r (Not Reportable) - If the unweighted total responses for a dimension (row) is <50 that row will not be shown; n/a (Not Available) - Not asked of a subset of respondents

Year: 2004-2006

Community	Yes			No			Estimated Population (3-Yr Avg)
	#	%	C.I. (95%)	#	%	C.I. (95%)	#
Molokai	1,400	30.1	22.8 - 37.5	3,400	69.9	62.5 - 77.2	4,800
Nanakuli/ Waianae	8,000	30.8	21.6 - 40.0	18,100	69.2	60.0 - 78.4	26,100
N.Hawaii	6,000	30.8	26.1 - 35.5	13,400	69.2	64.5 - 73.9	19,400
N.Shore/ Laie	4,600	27.7	19.5 - 35.9	12,000	72.3	64.1 - 80.5	16,600
Nuuanu/ Kalihi/ Moanalua	16,200	30.5	24.7 - 36.3	37,000	69.5	63.7 - 75.3	53,200
Puna/ Kau	11,600	39.3	33.8 - 44.8	18,000	60.7	55.2 - 66.2	29,700
Salt Lake/ Foster Village	16,600	55.8	47.8 - 63.8	13,100	44.2	36.2 - 52.2	29,700
Upcountry/ Hana	10,200	38.8	33.4 - 44.2	16,100	61.2	55.8 - 66.6	26,300
Waiialae/ Kahala/ Hawaii Kai	11,400	39.2	31.9 - 46.6	17,700	60.8	53.4 - 68.1	29,100
Waipahu/ Kapolei/ Ewa	35,100	34.5	30.3 - 38.8	66,400	65.5	61.2 - 69.7	101,500

HIV - ever been tested (18-64) by State, County, Island, Community, BRFSS Age Group, DOH Race-Ethnicity, Gender, Education Level, Employment Status (Grouped), Household Income, Poverty Level, Marital Status (Grouped), Married, Health Care Coverage, for the Year(s) - 2000-2002, 2001-2003, 2002-2004, 2003-2005, 2004-2006, 2005-2007, 2006-2008, 2007-2009, 2008-2010

Note: Weighted numbers (#) represent 3-yr averages, percentages and 95% confidence intervals; Respondents aged 18 years and older; n/r (Not Reportable) - If the unweighted total responses for a dimension (row) is <50 that row will not be shown; n/a (Not Available) - Not asked of a subset of respondents

Year: 2004-2006

BRFSS Age Group	Yes			No			Estimated Population (3-Yr Avg)
	#	%	C.I. (95%)	#	%	C.I. (95%)	#
18-24	34,500	30.5	26.1 - 35.0	78,700	69.5	65.0 - 73.9	113,300
25-34	89,800	55.7	52.3 - 59.1	71,500	44.3	40.9 - 47.7	161,300
35-44	80,600	46.4	43.5 - 49.3	93,100	53.6	50.7 - 56.5	173,700
45-54	49,300	28.9	26.6 - 31.1	121,400	71.1	68.9 - 73.4	170,700
55-64	25,100	19.1	17.1 - 21.2	106,000	80.9	78.8 - 82.9	131,100

HIV - ever been tested (18-64) by State, County, Island, Community, BRFSS Age Group, DOH Race-Ethnicity, Gender, Education Level, Employment Status (Grouped), Household Income, Poverty Level, Marital Status (Grouped), Married, Health Care Coverage, for the Year(s) - 2000-2002, 2001-2003, 2002-2004, 2003-2005, 2004-2006, 2005-2007, 2006-2008, 2007-2009, 2008-2010

Note: Weighted numbers (#) represent 3-yr averages, percentages and 95% confidence intervals; Respondents aged 18 years and older; n/r (Not Reportable) - If the unweighted total responses for a dimension (row) is <50 that row will not be shown; n/a (Not Available) - Not asked of a subset of respondents

Year: 2004-2006

DOH Race-Ethnicity	Yes			No			Estimated Population (3-Yr Avg)
	#	%	C.I. (95%)	#	%	C.I. (95%)	#
Caucasian	128,400	51.2	49.0 - 53.4	122,400	48.8	46.6 - 51.0	250,900
Native Hawaiian	31,400	30.6	26.9 - 34.3	71,300	69.4	65.7 - 73.1	102,700
Chinese	9,300	26.5	20.0 - 33.1	25,700	73.5	66.9 - 80.0	34,900
Filipino	30,200	23.7	20.3 - 27.0	97,300	76.3	73.0 - 79.7	127,500
Japanese	33,800	25.1	22.2 - 28.0	101,000	74.9	72.0 - 77.8	134,800
Black	9,400	71.5	62.3 - 80.7	3,800	28.5	19.3 - 37.7	13,200
Native Alaskan/ American Indian	2,800	62.8	46.6 - 79.0	1,600	37.2	21.0 - 53.4	4,400
Other Asian	8,100	41.2	30.1 - 52.4	11,500	58.8	47.6 - 69.9	19,600
Other Pacific Islander	6,200	25.6	17.5 - 33.6	18,000	74.4	66.4 - 82.5	24,200
Mixed Ethnicity	2,400	33.7	21.9 - 45.5	4,600	66.3	54.5 - 78.1	7,000
Other	11,500	51.5	43.8 - 59.1	10,800	48.5	40.9 - 56.2	22,200

HIV - ever been tested (18-64) by State, County, Island, Community, BRFSS Age Group, DOH Race-Ethnicity, Gender, Education Level, Employment Status (Grouped), Household Income, Poverty Level, Marital Status (Grouped), Married, Health Care Coverage, for the Year(s) - 2000-2002, 2001-2003, 2002-2004, 2003-2005, 2004-2006, 2005-2007, 2006-2008, 2007-2009, 2008-2010

Note: Weighted numbers (#) represent 3-yr averages, percentages and 95% confidence intervals; Respondents aged 18 years and older; n/r (Not Reportable) - If the unweighted total responses for a dimension (row) is <50 that row will not be shown; n/a (Not Available) - Not asked of a subset of respondents

Year: 2004-2006

Gender	Yes			No			Estimated Population (3-Yr Avg)
	#	%	C.I. (95%)	#	%	C.I. (95%)	#
Male	143,000	37.6	35.4 - 39.8	237,200	62.4	60.2 - 64.6	380,200
Female	136,400	36.9	35.1 - 38.7	233,500	63.1	61.3 - 64.9	370,000

Education Level	Yes			No			Estimated Population (3-Yr Avg)
	#	%	C.I. (95%)	#	%	C.I. (95%)	#
Never attended school/ Only Kindergarten to Grades 8	1,200	17.6	5.7 - 29.5	5,400	82.4	70.5 - 94.3	6,600
Grades 9 thru 11 (Some High School)	6,700	28.0	20.7 - 35.4	17,100	72.0	64.6 - 79.3	23,800
Grades 12 or GED (High School Grad)	70,100	32.3	29.5 - 35.0	147,200	67.7	65.0 - 70.5	217,300
College 1 to 3 years (Some College/ Tech)	94,100	40.2	37.5 - 42.8	140,100	59.8	57.2 - 62.5	234,200
College 4 years or more (College Grad)	107,300	40.0	37.9 - 42.2	160,700	60.0	57.8 - 62.1	268,000

HIV - ever been tested (18-64) by State, County, Island, Community, BRFSS Age Group, DOH Race-Ethnicity, Gender, Education Level, Employment Status (Grouped), Household Income, Poverty Level, Marital Status (Grouped), Married, Health Care Coverage, for the Year(s) - 2000-2002, 2001-2003, 2002-2004, 2003-2005, 2004-2006, 2005-2007, 2006-2008, 2007-2009, 2008-2010

Note: Weighted numbers (#) represent 3-yr averages, percentages and 95% confidence intervals; Respondents aged 18 years and older; n/r (Not Reportable) - If the unweighted total responses for a dimension (row) is <50 that row will not be shown; n/a (Not Available) - Not asked of a subset of respondents

Year: 2004-2006

Employment Status (Grouped)	Yes			No			Estimated Population (3-Yr Avg)
	#	%	C.I. (95%)	#	%	C.I. (95%)	#
Employed	214,600	37.8	36.2 - 39.4	353,400	62.2	60.6 - 63.8	568,000
Unemployed	8,300	33.2	25.3 - 41.1	16,600	66.8	58.9 - 74.7	24,800
Retired/Unable to work	21,400	30.7	26.7 - 34.7	48,400	69.3	65.3 - 73.3	69,800
Student/Homemaker	34,700	39.9	35.5 - 44.3	52,200	60.1	55.7 - 64.5	86,900

HIV - ever been tested (18-64) by State, County, Island, Community, BRFSS Age Group, DOH Race-Ethnicity, Gender, Education Level, Employment Status (Grouped), Household Income, Poverty Level, Marital Status (Grouped), Married, Health Care Coverage, for the Year(s) - 2000-2002, 2001-2003, 2002-2004, 2003-2005, 2004-2006, 2005-2007, 2006-2008, 2007-2009, 2008-2010

Note: Weighted numbers (#) represent 3-yr averages, percentages and 95% confidence intervals; Respondents aged 18 years and older; n/r (Not Reportable) - If the unweighted total responses for a dimension (row) is <50 that row will not be shown; n/a (Not Available) - Not asked of a subset of respondents

Year: 2004-2006

Household Income	Yes			No			Estimated Population (3-Yr Avg)
	#	%	C.I. (95%)	#	%	C.I. (95%)	#
Less than \$10,000	6,000	34.1	26.2 - 41.9	11,700	65.9	58.1 - 73.8	17,700
\$10,000 to \$14,999	6,200	35.2	27.2 - 43.2	11,500	64.8	56.8 - 72.8	17,700
\$15,000 to \$19,999	11,300	34.2	27.0 - 41.3	21,800	65.8	58.7 - 73.0	33,100
\$20,000 to \$24,999	18,200	37.6	32.1 - 43.1	30,200	62.4	56.9 - 67.9	48,400
\$25,000 to \$34,999	30,500	36.3	32.0 - 40.5	53,700	63.7	59.5 - 68.0	84,200
\$35,000 to \$49,999	41,500	36.4	32.9 - 40.0	72,400	63.6	60.0 - 67.1	113,900
\$50,000 to \$74,999	65,900	39.1	35.8 - 42.4	102,600	60.9	57.6 - 64.2	168,600
\$75,000 or more	79,000	40.3	37.7 - 43.0	117,000	59.7	57.0 - 62.3	196,100

HIV - ever been tested (18-64) by State, County, Island, Community, BRFSS Age Group, DOH Race-Ethnicity, Gender, Education Level, Employment Status (Grouped), Household Income, Poverty Level, Marital Status (Grouped), Married, Health Care Coverage, for the Year(s) - 2000-2002, 2001-2003, 2002-2004, 2003-2005, 2004-2006, 2005-2007, 2006-2008, 2007-2009, 2008-2010

Note: Weighted numbers (#) represent 3-yr averages, percentages and 95% confidence intervals; Respondents aged 18 years and older; n/r (Not Reportable) - If the unweighted total responses for a dimension (row) is <50 that row will not be shown; n/a (Not Available) - Not asked of a subset of respondents

Year: 2004-2006

Poverty Level	Yes			No			Estimated Population (3-Yr Avg)
	#	%	C.I. (95%)	#	%	C.I. (95%)	#
0-130%	43,700	32.9	29.5 - 36.4	89,000	67.1	63.6 - 70.5	132,700
131-185%	32,000	35.7	31.0 - 40.4	57,600	64.3	59.6 - 69.0	89,700
186+%	183,100	40.0	38.3 - 41.8	274,300	60.0	58.2 - 61.7	457,400

Marital Status (Grouped)	Yes			No			Estimated Population (3-Yr Avg)
	#	%	C.I. (95%)	#	%	C.I. (95%)	#
Married	165,900	37.5	35.7 - 39.3	276,700	62.5	60.7 - 64.3	442,700
Unmarried Couple	10,400	41.0	33.8 - 48.1	15,100	59.0	51.9 - 66.2	25,500
Widowed	2,800	24.0	17.1 - 30.9	8,900	76.0	69.1 - 82.9	11,800
Other	100,200	37.1	34.6 - 39.6	170,000	62.9	60.4 - 65.4	270,200

HIV - ever been tested (18-64) by State, County, Island, Community, BRFSS Age Group, DOH Race-Ethnicity, Gender, Education Level, Employment Status (Grouped), Household Income, Poverty Level, Marital Status (Grouped), Married, Health Care Coverage, for the Year(s) - 2000-2002, 2001-2003, 2002-2004, 2003-2005, 2004-2006, 2005-2007, 2006-2008, 2007-2009, 2008-2010

Note: Weighted numbers (#) represent 3-yr averages, percentages and 95% confidence intervals; Respondents aged 18 years and older; n/r (Not Reportable) - If the unweighted total responses for a dimension (row) is <50 that row will not be shown; n/a (Not Available) - Not asked of a subset of respondents

Year: 2004-2006

Married	Yes			No			Estimated Population (3-Yr Avg)
	#	%	C.I. (95%)	#	%	C.I. (95%)	#
Yes	170,000	37.6	35.9 - 39.4	281,900	62.4	60.6 - 64.1	451,900
No	109,100	36.7	34.4 - 39.1	188,200	63.3	60.9 - 65.6	297,300

Health Care Coverage	Yes			No			Estimated Population (3-Yr Avg)
	#	%	C.I. (95%)	#	%	C.I. (95%)	#
Yes	252,300	37.5	36.0 - 39.0	420,600	62.5	61.0 - 64.0	672,900
No	26,800	35.8	31.2 - 40.5	48,000	64.2	59.5 - 68.8	74,800

HIV - ever been tested (18-64) by State, County, Island, Community, BRFSS Age Group, DOH Race-Ethnicity, Gender, Education Level, Employment Status (Grouped), Household Income, Poverty Level, Marital Status (Grouped), Married, Health Care Coverage, for the Year(s) - 2000-2002, 2001-2003, 2002-2004, 2003-2005, 2004-2006, 2005-2007, 2006-2008, 2007-2009, 2008-2010

Note: Weighted numbers (#) represent 3-yr averages, percentages and 95% confidence intervals; Respondents aged 18 years and older; n/r (Not Reportable) - If the unweighted total responses for a dimension (row) is <50 that row will not be shown; n/a (Not Available) - Not asked of a subset of respondents

Year: 2003-2005

State	Yes			No			Estimated Population (3-Yr Avg)
	#	%	C.I. (95%)	#	%	C.I. (95%)	#
Hawaii State	306,800	41.0	39.6 - 42.5	440,800	59.0	57.5 - 60.4	747,600

County	Yes			No			Estimated Population (3-Yr Avg)
	#	%	C.I. (95%)	#	%	C.I. (95%)	#
Hawaii	37,400	38.8	36.1 - 41.6	59,000	61.2	58.4 - 63.9	96,400
Honolulu	222,300	41.6	39.7 - 43.5	311,500	58.4	56.5 - 60.3	533,700
Kauai	14,300	42.0	38.0 - 45.9	19,700	58.0	54.1 - 62.0	34,000
Maui	32,800	39.3	35.9 - 42.6	50,700	60.7	57.4 - 64.1	83,500

HIV - ever been tested (18-64) by State, County, Island, Community, BRFSS Age Group, DOH Race-Ethnicity, Gender, Education Level, Employment Status (Grouped), Household Income, Poverty Level, Marital Status (Grouped), Married, Health Care Coverage, for the Year(s) - 2000-2002, 2001-2003, 2002-2004, 2003-2005, 2004-2006, 2005-2007, 2006-2008, 2007-2009, 2008-2010

Note: Weighted numbers (#) represent 3-yr averages, percentages and 95% confidence intervals; Respondents aged 18 years and older; n/r (Not Reportable) - If the unweighted total responses for a dimension (row) is <50 that row will not be shown; n/a (Not Available) - Not asked of a subset of respondents

Year: 2003-2005

Island	Yes			No			Estimated Population (3-Yr Avg)
	#	%	C.I. (95%)	#	%	C.I. (95%)	#
Hawaii	37,400	38.8	36.1 - 41.6	59,000	61.2	58.4 - 63.9	96,400
Kauai	14,300	42.0	38.0 - 45.9	19,700	58.0	54.1 - 62.0	34,000
Lanai	500	29.1	18.9 - 39.3	1,100	70.9	60.7 - 81.1	1,600
Maui	30,800	40.0	36.4 - 43.5	46,300	60.0	56.5 - 63.6	77,000
Molokai	1,500	32.0	23.8 - 40.2	3,300	68.0	59.8 - 76.2	4,800
Oahu	222,300	41.6	39.7 - 43.5	311,500	58.4	56.5 - 60.3	533,700

Community	Yes			No			Estimated Population (3-Yr Avg)
	#	%	C.I. (95%)	#	%	C.I. (95%)	#
Aiea/ Pearl City	17,900	38.6	32.3 - 45.0	28,300	61.4	55.0 - 67.7	46,200
Ala Moana	10,800	43.1	34.1 - 52.1	14,200	56.9	47.9 - 65.9	24,900

HIV - ever been tested (18-64) by State, County, Island, Community, BRFSS Age Group, DOH Race-Ethnicity, Gender, Education Level, Employment Status (Grouped), Household Income, Poverty Level, Marital Status (Grouped), Married, Health Care Coverage, for the Year(s) - 2000-2002, 2001-2003, 2002-2004, 2003-2005, 2004-2006, 2005-2007, 2006-2008, 2007-2009, 2008-2010

Note: Weighted numbers (#) represent 3-yr averages, percentages and 95% confidence intervals; Respondents aged 18 years and older; n/r (Not Reportable) - If the unweighted total responses for a dimension (row) is <50 that row will not be shown; n/a (Not Available) - Not asked of a subset of respondents

Year: 2003-2005

Community	Yes			No			Estimated Population (3-Yr Avg)
	#	%	C.I. (95%)	#	%	C.I. (95%)	#
Hanalei/ Kapaa	5,900	42.1	36.2 - 47.9	8,100	57.9	52.1 - 63.8	14,000
Hilo	9,900	35.4	30.4 - 40.4	18,000	64.6	59.6 - 69.6	27,800
Kaaawa/ Kahaluu/ Kaneohe	14,500	40.0	32.8 - 47.2	21,800	60.0	52.8 - 67.2	36,300
Kahului	10,900	40.6	34.3 - 46.9	16,000	59.4	53.1 - 65.7	26,900
Kailua/ Waimanalo	18,600	48.1	41.4 - 54.8	20,000	51.9	45.2 - 58.6	38,600
Kaimuki/ Palolo/ Waikiki	18,400	42.8	36.4 - 49.2	24,600	57.2	50.8 - 63.6	43,000
Kona	9,200	42.3	36.8 - 47.8	12,500	57.7	52.2 - 63.2	21,700
Lahaina/ Wailuku	9,000	37.1	30.6 - 43.6	15,300	62.9	56.4 - 69.4	24,400
Lanai	500	29.1	18.9 - 39.3	1,100	70.9	60.7 - 81.1	1,600
Lihue-Waimea	8,400	41.9	36.6 - 47.3	11,600	58.1	52.7 - 63.4	19,900
Manoa/ Upper Makiki	14,000	36.4	29.8 - 42.9	24,500	63.6	57.1 - 70.2	38,500
Mililani/ Wahiawa	28,100	48.5	42.2 - 54.7	29,900	51.5	45.3 - 57.8	58,000

HIV - ever been tested (18-64) by State, County, Island, Community, BRFSS Age Group, DOH Race-Ethnicity, Gender, Education Level, Employment Status (Grouped), Household Income, Poverty Level, Marital Status (Grouped), Married, Health Care Coverage, for the Year(s) - 2000-2002, 2001-2003, 2002-2004, 2003-2005, 2004-2006, 2005-2007, 2006-2008, 2007-2009, 2008-2010

Note: Weighted numbers (#) represent 3-yr averages, percentages and 95% confidence intervals; Respondents aged 18 years and older; n/r (Not Reportable) - If the unweighted total responses for a dimension (row) is <50 that row will not be shown; n/a (Not Available) - Not asked of a subset of respondents

Year: 2003-2005

Community	Yes			No			Estimated Population (3-Yr Avg)
	#	%	C.I. (95%)	#	%	C.I. (95%)	#
Molokai	1,500	32.0	23.8 - 40.2	3,300	68.0	59.8 - 76.2	4,800
Nanakuli/ Waianae	10,100	39.2	29.7 - 48.7	15,600	60.8	51.3 - 70.3	25,700
N.Hawaii	6,500	34.8	29.8 - 39.8	12,200	65.2	60.2 - 70.2	18,800
N.Shore/ Laie	5,700	34.8	25.5 - 44.1	10,700	65.2	55.9 - 74.5	16,500
Nuuanu/ Kalihi/ Moanalua	17,500	33.7	27.7 - 39.6	34,600	66.3	60.4 - 72.3	52,100
Puna/ Kau	11,900	42.3	36.4 - 48.2	16,200	57.7	51.8 - 63.6	28,100
Salt Lake/ Foster Village	18,600	57.1	49.4 - 64.8	13,900	42.9	35.2 - 50.6	32,500
Upcountry/ Hana	10,800	42.0	36.2 - 47.7	14,900	58.0	52.3 - 63.8	25,800
Waialae/ Kahala/ Hawaii Kai	10,800	39.5	31.5 - 47.4	16,600	60.5	52.6 - 68.5	27,400
Waipahu/ Kapolei/ Ewa	37,300	39.7	35.0 - 44.4	56,700	60.3	55.6 - 65.0	94,100

HIV - ever been tested (18-64) by State, County, Island, Community, BRFSS Age Group, DOH Race-Ethnicity, Gender, Education Level, Employment Status (Grouped), Household Income, Poverty Level, Marital Status (Grouped), Married, Health Care Coverage, for the Year(s) - 2000-2002, 2001-2003, 2002-2004, 2003-2005, 2004-2006, 2005-2007, 2006-2008, 2007-2009, 2008-2010

Note: Weighted numbers (#) represent 3-yr averages, percentages and 95% confidence intervals; Respondents aged 18 years and older; n/r (Not Reportable) - If the unweighted total responses for a dimension (row) is <50 that row will not be shown; n/a (Not Available) - Not asked of a subset of respondents

Year: 2003-2005

BRFSS Age Group	Yes			No			Estimated Population (3-Yr Avg)
	#	%	C.I. (95%)	#	%	C.I. (95%)	#
18-24	40,100	35.9	31.3 - 40.5	71,500	64.1	59.5 - 68.7	111,600
25-34	96,200	59.1	55.7 - 62.5	66,500	40.9	37.5 - 44.3	162,800
35-44	89,500	50.5	47.6 - 53.5	87,600	49.5	46.5 - 52.4	177,100
45-54	54,000	31.5	29.0 - 33.9	117,500	68.5	66.1 - 71.0	171,500
55-64	26,900	21.6	19.2 - 24.1	97,600	78.4	75.9 - 80.8	124,600

HIV - ever been tested (18-64) by State, County, Island, Community, BRFSS Age Group, DOH Race-Ethnicity, Gender, Education Level, Employment Status (Grouped), Household Income, Poverty Level, Marital Status (Grouped), Married, Health Care Coverage, for the Year(s) - 2000-2002, 2001-2003, 2002-2004, 2003-2005, 2004-2006, 2005-2007, 2006-2008, 2007-2009, 2008-2010

Note: Weighted numbers (#) represent 3-yr averages, percentages and 95% confidence intervals; Respondents aged 18 years and older; n/r (Not Reportable) - If the unweighted total responses for a dimension (row) is <50 that row will not be shown; n/a (Not Available) - Not asked of a subset of respondents

Year: 2003-2005

DOH Race-Ethnicity	Yes			No			Estimated Population (3-Yr Avg)
	#	%	C.I. (95%)	#	%	C.I. (95%)	#
Caucasian	146,200	55.6	53.4 - 57.8	116,600	44.4	42.2 - 46.6	262,700
Native Hawaiian	31,600	34.6	30.5 - 38.8	59,700	65.4	61.2 - 69.5	91,300
Chinese	15,500	29.4	24.2 - 34.6	37,100	70.6	65.4 - 75.8	52,600
Filipino	35,600	28.4	24.9 - 32.0	89,700	71.6	68.0 - 75.1	125,300
Japanese	32,500	25.2	22.1 - 28.2	96,700	74.8	71.8 - 77.9	129,200
Black	9,600	75.1	65.9 - 84.3	3,200	24.9	15.7 - 34.1	12,800
Native Alaskan/ American Indian	2,900	65.3	48.1 - 82.5	1,500	34.7	17.5 - 51.9	4,400
Other Asian	7,600	47.5	34.7 - 60.3	8,400	52.5	39.7 - 65.3	16,000
Other Pacific Islander	5,100	25.3	16.3 - 34.3	15,100	74.7	65.7 - 83.7	20,300
Other	13,300	57.6	50.3 - 65.0	9,800	42.4	35.0 - 49.7	23,100

HIV - ever been tested (18-64) by State, County, Island, Community, BRFSS Age Group, DOH Race-Ethnicity, Gender, Education Level, Employment Status (Grouped), Household Income, Poverty Level, Marital Status (Grouped), Married, Health Care Coverage, for the Year(s) - 2000-2002, 2001-2003, 2002-2004, 2003-2005, 2004-2006, 2005-2007, 2006-2008, 2007-2009, 2008-2010

Note: Weighted numbers (#) represent 3-yr averages, percentages and 95% confidence intervals; Respondents aged 18 years and older; n/r (Not Reportable) - If the unweighted total responses for a dimension (row) is <50 that row will not be shown; n/a (Not Available) - Not asked of a subset of respondents

Year: 2003-2005

Gender	Yes			No			Estimated Population (3-Yr Avg)
	#	%	C.I. (95%)	#	%	C.I. (95%)	#
Male	159,500	42.1	39.9 - 44.4	219,000	57.9	55.6 - 60.1	378,500
Female	147,300	39.9	38.0 - 41.8	221,800	60.1	58.2 - 62.0	369,100

Education Level	Yes			No			Estimated Population (3-Yr Avg)
	#	%	C.I. (95%)	#	%	C.I. (95%)	#
Never attended school/ Only Kindergarten to Grades 8	900	14.5	2.1 - 26.9	5,400	85.5	73.1 - 97.9	6,300
Grades 9 thru 11 (Some High School)	7,700	35.1	26.5 - 43.7	14,300	64.9	56.3 - 73.5	22,000
Grades 12 or GED (High School Grad)	78,700	36.5	33.6 - 39.4	136,900	63.5	60.6 - 66.4	215,600
College 1 to 3 years (Some College/ Tech)	103,100	44.0	41.3 - 46.7	130,900	56.0	53.3 - 58.7	234,000
College 4 years or more (College Grad)	116,300	43.2	41.0 - 45.5	152,900	56.8	54.5 - 59.0	269,200

HIV - ever been tested (18-64) by State, County, Island, Community, BRFSS Age Group, DOH Race-Ethnicity, Gender, Education Level, Employment Status (Grouped), Household Income, Poverty Level, Marital Status (Grouped), Married, Health Care Coverage, for the Year(s) - 2000-2002, 2001-2003, 2002-2004, 2003-2005, 2004-2006, 2005-2007, 2006-2008, 2007-2009, 2008-2010

Note: Weighted numbers (#) represent 3-yr averages, percentages and 95% confidence intervals; Respondents aged 18 years and older; n/r (Not Reportable) - If the unweighted total responses for a dimension (row) is <50 that row will not be shown; n/a (Not Available) - Not asked of a subset of respondents

Year: 2003-2005

Employment Status (Grouped)	Yes			No			Estimated Population (3-Yr Avg)
	#	%	C.I. (95%)	#	%	C.I. (95%)	#
Employed	237,500	41.8	40.1 - 43.5	330,200	58.2	56.5 - 59.9	567,700
Unemployed	9,500	39.7	31.3 - 48.2	14,500	60.3	51.8 - 68.7	24,000
Retired/Unable to work	20,900	31.9	27.6 - 36.3	44,600	68.1	63.7 - 72.4	65,500
Student/Homemaker	38,400	42.7	38.3 - 47.1	51,400	57.3	52.9 - 61.7	89,800

HIV - ever been tested (18-64) by State, County, Island, Community, BRFSS Age Group, DOH Race-Ethnicity, Gender, Education Level, Employment Status (Grouped), Household Income, Poverty Level, Marital Status (Grouped), Married, Health Care Coverage, for the Year(s) - 2000-2002, 2001-2003, 2002-2004, 2003-2005, 2004-2006, 2005-2007, 2006-2008, 2007-2009, 2008-2010

Note: Weighted numbers (#) represent 3-yr averages, percentages and 95% confidence intervals; Respondents aged 18 years and older; n/r (Not Reportable) - If the unweighted total responses for a dimension (row) is <50 that row will not be shown; n/a (Not Available) - Not asked of a subset of respondents

Year: 2003-2005

Household Income	Yes			No			Estimated Population (3-Yr Avg)
	#	%	C.I. (95%)	#	%	C.I. (95%)	#
Less than \$10,000	9,400	41.0	33.6 - 48.5	13,500	59.0	51.5 - 66.4	22,800
\$10,000 to \$14,999	9,600	39.8	32.3 - 47.3	14,500	60.2	52.7 - 67.7	24,100
\$15,000 to \$19,999	13,100	35.4	28.5 - 42.4	23,800	64.6	57.6 - 71.5	36,800
\$20,000 to \$24,999	18,800	39.5	33.9 - 45.1	28,800	60.5	54.9 - 66.1	47,600
\$25,000 to \$34,999	32,500	40.7	36.1 - 45.3	47,400	59.3	54.7 - 63.9	79,800
\$35,000 to \$49,999	51,000	42.9	39.2 - 46.5	68,000	57.1	53.5 - 60.8	119,000
\$50,000 to \$74,999	71,500	43.2	39.8 - 46.7	93,900	56.8	53.3 - 60.2	165,400
\$75,000 or more	74,100	42.7	39.8 - 45.7	99,400	57.3	54.3 - 60.2	173,500

HIV - ever been tested (18-64) by State, County, Island, Community, BRFSS Age Group, DOH Race-Ethnicity, Gender, Education Level, Employment Status (Grouped), Household Income, Poverty Level, Marital Status (Grouped), Married, Health Care Coverage, for the Year(s) - 2000-2002, 2001-2003, 2002-2004, 2003-2005, 2004-2006, 2005-2007, 2006-2008, 2007-2009, 2008-2010

Note: Weighted numbers (#) represent 3-yr averages, percentages and 95% confidence intervals; Respondents aged 18 years and older; n/r (Not Reportable) - If the unweighted total responses for a dimension (row) is <50 that row will not be shown; n/a (Not Available) - Not asked of a subset of respondents

Year: 2003-2005

Poverty Level	Yes			No			Estimated Population (3-Yr Avg)
	#	%	C.I. (95%)	#	%	C.I. (95%)	#
0-130%	51,000	37.3	33.7 - 40.8	85,900	62.7	59.2 - 66.3	137,000
131-185%	32,000	39.1	33.9 - 44.4	49,700	60.9	55.6 - 66.1	81,700
186+%	197,000	43.7	41.9 - 45.5	253,500	56.3	54.5 - 58.1	450,500

Marital Status (Grouped)	Yes			No			Estimated Population (3-Yr Avg)
	#	%	C.I. (95%)	#	%	C.I. (95%)	#
Married	181,500	41.3	39.5 - 43.2	257,700	58.7	56.8 - 60.5	439,200
Unmarried Couple	9,300	44.4	36.2 - 52.6	11,600	55.6	47.4 - 63.8	20,900
Widowed	3,200	24.3	17.5 - 31.2	9,900	75.7	68.8 - 82.5	13,100
Other	112,800	41.1	38.6 - 43.6	161,600	58.9	56.4 - 61.4	274,300

HIV - ever been tested (18-64) by State, County, Island, Community, BRFSS Age Group, DOH Race-Ethnicity, Gender, Education Level, Employment Status (Grouped), Household Income, Poverty Level, Marital Status (Grouped), Married, Health Care Coverage, for the Year(s) - 2000-2002, 2001-2003, 2002-2004, 2003-2005, 2004-2006, 2005-2007, 2006-2008, 2007-2009, 2008-2010

Note: Weighted numbers (#) represent 3-yr averages, percentages and 95% confidence intervals; Respondents aged 18 years and older; n/r (Not Reportable) - If the unweighted total responses for a dimension (row) is <50 that row will not be shown; n/a (Not Available) - Not asked of a subset of respondents

Year: 2003-2005

Married	Yes			No			Estimated Population (3-Yr Avg)
	#	%	C.I. (95%)	#	%	C.I. (95%)	#
Yes	186,800	41.6	39.8 - 43.4	262,400	58.4	56.6 - 60.2	449,200
No	119,700	40.2	37.8 - 42.6	177,700	59.8	57.4 - 62.2	297,400

Health Care Coverage	Yes			No			Estimated Population (3-Yr Avg)
	#	%	C.I. (95%)	#	%	C.I. (95%)	#
Yes	278,300	41.4	39.9 - 43.0	393,200	58.6	57.0 - 60.1	671,500
No	28,100	37.9	33.2 - 42.7	46,000	62.1	57.3 - 66.8	74,100

HIV - ever been tested (18-64) by State, County, Island, Community, BRFSS Age Group, DOH Race-Ethnicity, Gender, Education Level, Employment Status (Grouped), Household Income, Poverty Level, Marital Status (Grouped), Married, Health Care Coverage, for the Year(s) - 2000-2002, 2001-2003, 2002-2004, 2003-2005, 2004-2006, 2005-2007, 2006-2008, 2007-2009, 2008-2010

Note: Weighted numbers (#) represent 3-yr averages, percentages and 95% confidence intervals; Respondents aged 18 years and older; n/r (Not Reportable) - If the unweighted total responses for a dimension (row) is <50 that row will not be shown; n/a (Not Available) - Not asked of a subset of respondents

Year: 2002-2004

State	Yes			No			Estimated Population (3-Yr Avg)
	#	%	C.I. (95%)	#	%	C.I. (95%)	#
Hawaii State	309,300	42.0	40.5 - 43.5	427,300	58.0	56.5 - 59.5	736,500

County	Yes			No			Estimated Population (3-Yr Avg)
	#	%	C.I. (95%)	#	%	C.I. (95%)	#
Hawaii	38,000	40.3	37.4 - 43.1	56,300	59.7	56.9 - 62.6	94,300
Honolulu	225,000	42.7	40.8 - 44.6	302,000	57.3	55.4 - 59.2	527,000
Kauai	13,200	39.5	35.7 - 43.3	20,200	60.5	56.7 - 64.3	33,400
Maui	33,100	40.5	37.1 - 43.8	48,800	59.5	56.2 - 62.9	81,900

HIV - ever been tested (18-64) by State, County, Island, Community, BRFSS Age Group, DOH Race-Ethnicity, Gender, Education Level, Employment Status (Grouped), Household Income, Poverty Level, Marital Status (Grouped), Married, Health Care Coverage, for the Year(s) - 2000-2002, 2001-2003, 2002-2004, 2003-2005, 2004-2006, 2005-2007, 2006-2008, 2007-2009, 2008-2010

Note: Weighted numbers (#) represent 3-yr averages, percentages and 95% confidence intervals; Respondents aged 18 years and older; n/r (Not Reportable) - If the unweighted total responses for a dimension (row) is <50 that row will not be shown; n/a (Not Available) - Not asked of a subset of respondents

Year: 2002-2004

Island	Yes			No			Estimated Population (3-Yr Avg)
	#	%	C.I. (95%)	#	%	C.I. (95%)	#
Hawaii	38,000	40.3	37.4 - 43.1	56,300	59.7	56.9 - 62.6	94,300
Kauai	13,200	39.5	35.7 - 43.3	20,200	60.5	56.7 - 64.3	33,400
Lanai	500	26.1	16.6 - 35.6	1,400	73.9	64.4 - 83.4	1,900
Maui	30,900	41.3	37.7 - 45.0	43,800	58.7	55.0 - 62.3	74,600
Molokai	1,800	33.2	25.4 - 41.0	3,600	66.8	59.0 - 74.6	5,400
Oahu	225,000	42.7	40.8 - 44.6	302,000	57.3	55.4 - 59.2	527,000

Community	Yes			No			Estimated Population (3-Yr Avg)
	#	%	C.I. (95%)	#	%	C.I. (95%)	#
Aiea/ Pearl City	18,300	39.8	33.4 - 46.1	27,800	60.2	53.9 - 66.6	46,100
Ala Moana	10,900	41.5	32.9 - 50.2	15,400	58.5	49.8 - 67.1	26,300

HIV - ever been tested (18-64) by State, County, Island, Community, BRFSS Age Group, DOH Race-Ethnicity, Gender, Education Level, Employment Status (Grouped), Household Income, Poverty Level, Marital Status (Grouped), Married, Health Care Coverage, for the Year(s) - 2000-2002, 2001-2003, 2002-2004, 2003-2005, 2004-2006, 2005-2007, 2006-2008, 2007-2009, 2008-2010

Note: Weighted numbers (#) represent 3-yr averages, percentages and 95% confidence intervals; Respondents aged 18 years and older; n/r (Not Reportable) - If the unweighted total responses for a dimension (row) is <50 that row will not be shown; n/a (Not Available) - Not asked of a subset of respondents

Year: 2002-2004

Community	Yes			No			Estimated Population (3-Yr Avg)
	#	%	C.I. (95%)	#	%	C.I. (95%)	#
Hanalei/ Kapaa	5,900	41.2	35.5 - 46.9	8,500	58.8	53.1 - 64.5	14,400
Hilo	9,800	35.4	30.4 - 40.5	17,900	64.6	59.5 - 69.6	27,700
Kaaawa/ Kahaluu/ Kaneohe	13,400	41.3	33.6 - 49.0	19,000	58.7	51.0 - 66.4	32,400
Kahului	10,900	41.3	35.1 - 47.6	15,500	58.7	52.4 - 64.9	26,500
Kailua/ Waimanalo	19,000	49.2	42.6 - 55.9	19,600	50.8	44.1 - 57.4	38,700
Kaimuki/ Palolo/ Waikiki	19,500	45.4	39.1 - 51.6	23,500	54.6	48.4 - 60.9	43,000
Kona	10,100	45.3	39.9 - 50.7	12,200	54.7	49.3 - 60.1	22,300
Lahaina/ Wailuku	9,100	38.6	31.9 - 45.3	14,400	61.4	54.7 - 68.1	23,500
Lanai	500	26.1	16.6 - 35.6	1,400	73.9	64.4 - 83.4	1,900
Lihue-Waimea	7,300	38.2	33.0 - 43.4	11,700	61.8	56.6 - 67.0	19,000
Manoa/ Upper Makiki	16,100	38.1	31.9 - 44.3	26,200	61.9	55.7 - 68.1	42,400
Mililani/ Wahiawa	28,300	50.0	43.4 - 56.6	28,300	50.0	43.4 - 56.6	56,600

HIV - ever been tested (18-64) by State, County, Island, Community, BRFSS Age Group, DOH Race-Ethnicity, Gender, Education Level, Employment Status (Grouped), Household Income, Poverty Level, Marital Status (Grouped), Married, Health Care Coverage, for the Year(s) - 2000-2002, 2001-2003, 2002-2004, 2003-2005, 2004-2006, 2005-2007, 2006-2008, 2007-2009, 2008-2010

Note: Weighted numbers (#) represent 3-yr averages, percentages and 95% confidence intervals; Respondents aged 18 years and older; n/r (Not Reportable) - If the unweighted total responses for a dimension (row) is <50 that row will not be shown; n/a (Not Available) - Not asked of a subset of respondents

Year: 2002-2004

Community	Yes			No			Estimated Population (3-Yr Avg)
	#	%	C.I. (95%)	#	%	C.I. (95%)	#
Molokai	1,800	33.2	25.4 - 41.0	3,600	66.8	59.0 - 74.6	5,400
Nanakuli/ Waianae	10,600	44.8	34.9 - 54.6	13,100	55.2	45.4 - 65.1	23,600
N.Hawaii	6,900	37.2	31.7 - 42.6	11,700	62.8	57.4 - 68.3	18,500
N.Shore/ Laie	5,800	34.1	25.0 - 43.2	11,200	65.9	56.8 - 75.0	17,000
Nuuanu/ Kalihi/ Moanalua	16,200	31.4	25.8 - 37.0	35,500	68.6	63.0 - 74.2	51,700
Puna/ Kau	11,200	43.3	37.0 - 49.6	14,600	56.7	50.4 - 63.0	25,800
Salt Lake/ Foster Village	19,800	58.2	50.9 - 65.5	14,200	41.8	34.5 - 49.1	34,000
Upcountry/ Hana	10,800	43.9	38.2 - 49.7	13,800	56.1	50.3 - 61.8	24,700
Waialae/ Kahala/ Hawaii Kai	11,700	38.9	31.5 - 46.2	18,300	61.1	53.8 - 68.5	30,000
Waipahu/ Kapolei/ Ewa	35,200	41.4	36.3 - 46.5	49,900	58.6	53.5 - 63.7	85,200

HIV - ever been tested (18-64) by State, County, Island, Community, BRFSS Age Group, DOH Race-Ethnicity, Gender, Education Level, Employment Status (Grouped), Household Income, Poverty Level, Marital Status (Grouped), Married, Health Care Coverage, for the Year(s) - 2000-2002, 2001-2003, 2002-2004, 2003-2005, 2004-2006, 2005-2007, 2006-2008, 2007-2009, 2008-2010

Note: Weighted numbers (#) represent 3-yr averages, percentages and 95% confidence intervals; Respondents aged 18 years and older; n/r (Not Reportable) - If the unweighted total responses for a dimension (row) is <50 that row will not be shown; n/a (Not Available) - Not asked of a subset of respondents

Year: 2002-2004

BRFSS Age Group	Yes			No			Estimated Population (3-Yr Avg)
	#	%	C.I. (95%)	#	%	C.I. (95%)	#
18-24	44,600	40.1	35.5 - 44.7	66,500	59.9	55.3 - 64.5	111,100
25-34	93,700	57.7	54.4 - 61.0	68,700	42.3	39.0 - 45.6	162,400
35-44	91,000	51.2	48.2 - 54.1	86,800	48.8	45.9 - 51.8	177,900
45-54	53,100	31.3	28.9 - 33.8	116,500	68.7	66.2 - 71.1	169,700
55-64	26,800	23.2	20.5 - 26.0	88,700	76.8	74.0 - 79.5	115,500

HIV - ever been tested (18-64) by State, County, Island, Community, BRFSS Age Group, DOH Race-Ethnicity, Gender, Education Level, Employment Status (Grouped), Household Income, Poverty Level, Marital Status (Grouped), Married, Health Care Coverage, for the Year(s) - 2000-2002, 2001-2003, 2002-2004, 2003-2005, 2004-2006, 2005-2007, 2006-2008, 2007-2009, 2008-2010

Note: Weighted numbers (#) represent 3-yr averages, percentages and 95% confidence intervals; Respondents aged 18 years and older; n/r (Not Reportable) - If the unweighted total responses for a dimension (row) is <50 that row will not be shown; n/a (Not Available) - Not asked of a subset of respondents

Year: 2002-2004

DOH Race-Ethnicity	Yes			No			Estimated Population (3-Yr Avg)
	#	%	C.I. (95%)	#	%	C.I. (95%)	#
Caucasian	147,400	56.1	53.9 - 58.3	115,200	43.9	41.7 - 46.1	262,600
Native Hawaiian	33,300	36.5	32.3 - 40.7	57,800	63.5	59.3 - 67.7	91,100
Chinese	17,500	31.4	26.4 - 36.5	38,200	68.6	63.5 - 73.6	55,800
Filipino	36,700	30.6	26.9 - 34.2	83,200	69.4	65.8 - 73.1	119,900
Japanese	30,100	24.1	21.0 - 27.2	94,600	75.9	72.8 - 79.0	124,700
Black	9,400	78.6	69.8 - 87.5	2,600	21.4	12.5 - 30.2	12,000
Native Alaskan/ American Indian	3,200	73.0	57.3 - 88.6	1,200	27.0	11.4 - 42.7	4,300
Other Asian	7,900	47.6	35.1 - 60.1	8,700	52.4	39.9 - 64.9	16,700
Other Pacific Islander	3,600	19.3	10.9 - 27.7	15,100	80.7	72.3 - 89.1	18,700
Other	13,500	63.9	56.3 - 71.5	7,600	36.1	28.5 - 43.7	21,100

HIV - ever been tested (18-64) by State, County, Island, Community, BRFSS Age Group, DOH Race-Ethnicity, Gender, Education Level, Employment Status (Grouped), Household Income, Poverty Level, Marital Status (Grouped), Married, Health Care Coverage, for the Year(s) - 2000-2002, 2001-2003, 2002-2004, 2003-2005, 2004-2006, 2005-2007, 2006-2008, 2007-2009, 2008-2010

Note: Weighted numbers (#) represent 3-yr averages, percentages and 95% confidence intervals; Respondents aged 18 years and older; n/r (Not Reportable) - If the unweighted total responses for a dimension (row) is <50 that row will not be shown; n/a (Not Available) - Not asked of a subset of respondents

Year: 2002-2004

Gender	Yes			No			Estimated Population (3-Yr Avg)
	#	%	C.I. (95%)	#	%	C.I. (95%)	#
Male	160,800	43.2	41.0 - 45.5	211,300	56.8	54.5 - 59.0	372,100
Female	148,400	40.7	38.8 - 42.6	216,000	59.3	57.4 - 61.2	364,400

Education Level	Yes			No			Estimated Population (3-Yr Avg)
	#	%	C.I. (95%)	#	%	C.I. (95%)	#
Never attended school/ Only Kindergarten to Grades 8	600	12.2	4.1 - 20.2	4,200	87.8	79.8 - 95.9	4,800
Grades 9 thru 11 (Some High School)	7,200	34.7	26.0 - 43.4	13,600	65.3	56.6 - 74.0	20,800
Grades 12 or GED (High School Grad)	88,300	38.6	35.9 - 41.4	140,200	61.4	58.6 - 64.1	228,500
College 1 to 3 years (Some College/ Tech)	103,700	44.8	42.1 - 47.5	127,800	55.2	52.5 - 57.9	231,500
College 4 years or more (College Grad)	109,400	43.7	41.3 - 46.0	141,200	56.3	54.0 - 58.7	250,500

HIV - ever been tested (18-64) by State, County, Island, Community, BRFSS Age Group, DOH Race-Ethnicity, Gender, Education Level, Employment Status (Grouped), Household Income, Poverty Level, Marital Status (Grouped), Married, Health Care Coverage, for the Year(s) - 2000-2002, 2001-2003, 2002-2004, 2003-2005, 2004-2006, 2005-2007, 2006-2008, 2007-2009, 2008-2010

Note: Weighted numbers (#) represent 3-yr averages, percentages and 95% confidence intervals; Respondents aged 18 years and older; n/r (Not Reportable) - If the unweighted total responses for a dimension (row) is <50 that row will not be shown; n/a (Not Available) - Not asked of a subset of respondents

Year: 2002-2004

Employment Status (Grouped)	Yes			No			Estimated Population (3-Yr Avg)
	#	%	C.I. (95%)	#	%	C.I. (95%)	#
Employed	240,300	42.9	41.2 - 44.6	319,500	57.1	55.4 - 58.8	559,800
Unemployed	11,800	37.9	30.8 - 45.1	19,400	62.1	54.9 - 69.2	31,200
Retired/Unable to work	18,700	34.2	29.1 - 39.4	35,800	65.8	60.6 - 70.9	54,500
Student/Homemaker	37,900	42.0	37.6 - 46.3	52,500	58.0	53.7 - 62.4	90,400

HIV - ever been tested (18-64) by State, County, Island, Community, BRFSS Age Group, DOH Race-Ethnicity, Gender, Education Level, Employment Status (Grouped), Household Income, Poverty Level, Marital Status (Grouped), Married, Health Care Coverage, for the Year(s) - 2000-2002, 2001-2003, 2002-2004, 2003-2005, 2004-2006, 2005-2007, 2006-2008, 2007-2009, 2008-2010

Note: Weighted numbers (#) represent 3-yr averages, percentages and 95% confidence intervals; Respondents aged 18 years and older; n/r (Not Reportable) - If the unweighted total responses for a dimension (row) is <50 that row will not be shown; n/a (Not Available) - Not asked of a subset of respondents

Year: 2002-2004

Household Income	Yes			No			Estimated Population (3-Yr Avg)
	#	%	C.I. (95%)	#	%	C.I. (95%)	#
Less than \$10,000	10,600	42.4	35.6 - 49.3	14,400	57.6	50.7 - 64.4	25,000
\$10,000 to \$14,999	11,700	43.2	36.4 - 50.0	15,300	56.8	50.0 - 63.6	27,000
\$15,000 to \$19,999	15,900	42.8	35.5 - 50.1	21,300	57.2	49.9 - 64.5	37,200
\$20,000 to \$24,999	19,300	43.0	37.1 - 48.8	25,600	57.0	51.2 - 62.9	44,900
\$25,000 to \$34,999	33,700	44.8	40.0 - 49.6	41,500	55.2	50.4 - 60.0	75,200
\$35,000 to \$49,999	54,100	47.5	43.6 - 51.3	59,900	52.5	48.7 - 56.4	114,000
\$50,000 to \$74,999	66,800	44.4	40.8 - 48.1	83,500	55.6	51.9 - 59.2	150,200
\$75,000 or more	64,700	44.3	41.0 - 47.7	81,300	55.7	52.3 - 59.0	146,000

HIV - ever been tested (18-64) by State, County, Island, Community, BRFSS Age Group, DOH Race-Ethnicity, Gender, Education Level, Employment Status (Grouped), Household Income, Poverty Level, Marital Status (Grouped), Married, Health Care Coverage, for the Year(s) - 2000-2002, 2001-2003, 2002-2004, 2003-2005, 2004-2006, 2005-2007, 2006-2008, 2007-2009, 2008-2010

Note: Weighted numbers (#) represent 3-yr averages, percentages and 95% confidence intervals; Respondents aged 18 years and older; n/r (Not Reportable) - If the unweighted total responses for a dimension (row) is <50 that row will not be shown; n/a (Not Available) - Not asked of a subset of respondents

Year: 2002-2004

Poverty Level	Yes			No			Estimated Population (3-Yr Avg)
	#	%	C.I. (95%)	#	%	C.I. (95%)	#
0-130%	56,200	42.3	38.6 - 46.0	76,700	57.7	54.0 - 61.4	132,900
131-185%	31,800	41.3	35.8 - 46.7	45,200	58.7	53.3 - 64.2	76,900
186+%	188,700	46.1	44.1 - 48.0	220,900	53.9	52.0 - 55.9	409,600

Marital Status (Grouped)	Yes			No			Estimated Population (3-Yr Avg)
	#	%	C.I. (95%)	#	%	C.I. (95%)	#
Married	178,400	41.7	39.8 - 43.6	249,200	58.3	56.4 - 60.2	427,600
Unmarried Couple	9,100	45.0	36.5 - 53.5	11,100	55.0	46.5 - 63.5	20,200
Widowed	4,100	32.2	23.6 - 40.8	8,600	67.8	59.2 - 76.4	12,700
Other	117,700	42.6	40.1 - 45.2	158,400	57.4	54.8 - 59.9	276,100

HIV - ever been tested (18-64) by State, County, Island, Community, BRFSS Age Group, DOH Race-Ethnicity, Gender, Education Level, Employment Status (Grouped), Household Income, Poverty Level, Marital Status (Grouped), Married, Health Care Coverage, for the Year(s) - 2000-2002, 2001-2003, 2002-2004, 2003-2005, 2004-2006, 2005-2007, 2006-2008, 2007-2009, 2008-2010

Note: Weighted numbers (#) represent 3-yr averages, percentages and 95% confidence intervals; Respondents aged 18 years and older; n/r (Not Reportable) - If the unweighted total responses for a dimension (row) is <50 that row will not be shown; n/a (Not Available) - Not asked of a subset of respondents

Year: 2002-2004

Married	Yes			No			Estimated Population (3-Yr Avg)
	#	%	C.I. (95%)	#	%	C.I. (95%)	#
Yes	183,800	42.0	40.2 - 43.9	253,500	58.0	56.1 - 59.8	437,400
No	125,200	42.0	39.6 - 44.4	172,800	58.0	55.6 - 60.4	298,000

Health Care Coverage	Yes			No			Estimated Population (3-Yr Avg)
	#	%	C.I. (95%)	#	%	C.I. (95%)	#
Yes	279,800	42.5	40.9 - 44.0	379,200	57.5	56.0 - 59.1	659,000
No	29,300	38.7	34.1 - 43.3	46,400	61.3	56.7 - 65.9	75,700

HIV - ever been tested (18-64) by State, County, Island, Community, BRFSS Age Group, DOH Race-Ethnicity, Gender, Education Level, Employment Status (Grouped), Household Income, Poverty Level, Marital Status (Grouped), Married, Health Care Coverage, for the Year(s) - 2000-2002, 2001-2003, 2002-2004, 2003-2005, 2004-2006, 2005-2007, 2006-2008, 2007-2009, 2008-2010

Note: Weighted numbers (#) represent 3-yr averages, percentages and 95% confidence intervals; Respondents aged 18 years and older; n/r (Not Reportable) - If the unweighted total responses for a dimension (row) is <50 that row will not be shown; n/a (Not Available) - Not asked of a subset of respondents

Year: 2001-2003

State	Yes			No			Estimated Population (3-Yr Avg)
	#	%	C.I. (95%)	#	%	C.I. (95%)	#
Hawaii State	308,900	42.2	41.0 - 43.5	422,300	57.8	56.5 - 59.0	731,200

County	Yes			No			Estimated Population (3-Yr Avg)
	#	%	C.I. (95%)	#	%	C.I. (95%)	#
Hawaii	35,000	39.8	37.5 - 42.1	52,900	60.2	57.9 - 62.5	88,000
Honolulu	227,800	43.0	41.5 - 44.6	301,500	57.0	55.4 - 58.5	529,300
Kauai	12,300	36.6	33.4 - 39.9	21,300	63.4	60.1 - 66.6	33,600
Maui	33,800	42.1	39.2 - 45.0	46,600	57.9	55.0 - 60.8	80,400

HIV - ever been tested (18-64) by State, County, Island, Community, BRFSS Age Group, DOH Race-Ethnicity, Gender, Education Level, Employment Status (Grouped), Household Income, Poverty Level, Marital Status (Grouped), Married, Health Care Coverage, for the Year(s) - 2000-2002, 2001-2003, 2002-2004, 2003-2005, 2004-2006, 2005-2007, 2006-2008, 2007-2009, 2008-2010

Note: Weighted numbers (#) represent 3-yr averages, percentages and 95% confidence intervals; Respondents aged 18 years and older; n/r (Not Reportable) - If the unweighted total responses for a dimension (row) is <50 that row will not be shown; n/a (Not Available) - Not asked of a subset of respondents

Year: 2001-2003

Island	Yes			No			Estimated Population (3-Yr Avg)
	#	%	C.I. (95%)	#	%	C.I. (95%)	#
Hawaii	35,000	39.8	37.5 - 42.1	52,900	60.2	57.9 - 62.5	88,000
Kauai	12,300	36.6	33.4 - 39.9	21,300	63.4	60.1 - 66.6	33,600
Lanai	600	29.4	20.4 - 38.3	1,500	70.6	61.7 - 79.6	2,100
Maui	31,600	43.1	40.0 - 46.3	41,700	56.9	53.7 - 60.0	73,300
Molokai	1,600	31.9	24.9 - 38.9	3,400	68.1	61.1 - 75.1	5,000
Oahu	227,800	43.0	41.5 - 44.6	301,500	57.0	55.4 - 58.5	529,300

Community	Yes			No			Estimated Population (3-Yr Avg)
	#	%	C.I. (95%)	#	%	C.I. (95%)	#
Aiea/ Pearl City	17,500	38.0	32.8 - 43.2	28,600	62.0	56.8 - 67.2	46,100
Ala Moana	8,900	37.8	31.5 - 44.1	14,700	62.2	55.9 - 68.5	23,600

HIV - ever been tested (18-64) by State, County, Island, Community, BRFSS Age Group, DOH Race-Ethnicity, Gender, Education Level, Employment Status (Grouped), Household Income, Poverty Level, Marital Status (Grouped), Married, Health Care Coverage, for the Year(s) - 2000-2002, 2001-2003, 2002-2004, 2003-2005, 2004-2006, 2005-2007, 2006-2008, 2007-2009, 2008-2010

Note: Weighted numbers (#) represent 3-yr averages, percentages and 95% confidence intervals; Respondents aged 18 years and older; n/r (Not Reportable) - If the unweighted total responses for a dimension (row) is <50 that row will not be shown; n/a (Not Available) - Not asked of a subset of respondents

Year: 2001-2003

Community	Yes			No			Estimated Population (3-Yr Avg)
	#	%	C.I. (95%)	#	%	C.I. (95%)	#
Hanalei/ Kapaa	5,600	38.4	33.6 - 43.3	9,000	61.6	56.7 - 66.4	14,600
Hilo	8,800	33.7	29.5 - 38.0	17,200	66.3	62.0 - 70.5	26,000
Kaaawa/ Kahaluu/ Kaneohe	13,700	40.4	34.2 - 46.6	20,200	59.6	53.4 - 65.8	33,800
Kahului	12,300	46.2	40.1 - 52.2	14,300	53.8	47.8 - 59.9	26,600
Kailua/ Waimanalo	18,700	48.2	42.7 - 53.8	20,000	51.8	46.2 - 57.3	38,700
Kaimuki/ Palolo/ Waikiki	21,400	43.1	38.2 - 48.0	28,200	56.9	52.0 - 61.8	49,600
Kona	10,400	44.0	39.5 - 48.5	13,300	56.0	51.5 - 60.5	23,700
Lahaina/ Wailuku	9,200	39.5	34.2 - 44.7	14,100	60.5	55.3 - 65.8	23,200
Lanai	600	29.4	20.4 - 38.3	1,500	70.6	61.7 - 79.6	2,100
Lihue-Waimea	6,700	35.3	30.9 - 39.7	12,300	64.7	60.3 - 69.1	19,000
Manoa/ Upper Makiki	18,200	42.5	36.8 - 48.1	24,700	57.5	51.9 - 63.2	42,900
Millilani/ Wahiawa	29,900	53.9	48.9 - 58.9	25,600	46.1	41.1 - 51.1	55,500

HIV - ever been tested (18-64) by State, County, Island, Community, BRFSS Age Group, DOH Race-Ethnicity, Gender, Education Level, Employment Status (Grouped), Household Income, Poverty Level, Marital Status (Grouped), Married, Health Care Coverage, for the Year(s) - 2000-2002, 2001-2003, 2002-2004, 2003-2005, 2004-2006, 2005-2007, 2006-2008, 2007-2009, 2008-2010

Note: Weighted numbers (#) represent 3-yr averages, percentages and 95% confidence intervals; Respondents aged 18 years and older; n/r (Not Reportable) - If the unweighted total responses for a dimension (row) is <50 that row will not be shown; n/a (Not Available) - Not asked of a subset of respondents

Year: 2001-2003

Community	Yes			No			Estimated Population (3-Yr Avg)
	#	%	C.I. (95%)	#	%	C.I. (95%)	#
Molokai	1,600	31.9	24.9 - 38.9	3,400	68.1	61.1 - 75.1	5,000
Nanakuli/ Waianae	10,100	44.4	36.2 - 52.5	12,700	55.6	47.5 - 63.8	22,800
N.Hawaii	7,900	41.3	36.3 - 46.3	11,200	58.7	53.7 - 63.7	19,100
N.Shore/ Laie	7,000	37.4	29.2 - 45.7	11,800	62.6	54.3 - 70.8	18,800
Nuuanu/ Kalihi/ Moanalua	15,400	29.5	24.8 - 34.2	36,600	70.5	65.8 - 75.2	52,000
Puna/ Kau	7,900	41.5	36.4 - 46.5	11,200	58.5	53.5 - 63.6	19,100
Salt Lake/ Foster Village	22,400	63.5	57.6 - 69.4	12,900	36.5	30.6 - 42.4	35,300
Upcountry/ Hana	10,200	43.3	38.8 - 47.9	13,300	56.7	52.1 - 61.2	23,500
Waialae/ Kahala/ Hawaii Kai	10,700	36.2	29.9 - 42.5	19,000	63.8	57.5 - 70.1	29,700
Waipahu/ Kapolei/ Ewa	33,800	42.0	37.8 - 46.1	46,700	58.0	53.9 - 62.2	80,400

HIV - ever been tested (18-64) by State, County, Island, Community, BRFSS Age Group, DOH Race-Ethnicity, Gender, Education Level, Employment Status (Grouped), Household Income, Poverty Level, Marital Status (Grouped), Married, Health Care Coverage, for the Year(s) - 2000-2002, 2001-2003, 2002-2004, 2003-2005, 2004-2006, 2005-2007, 2006-2008, 2007-2009, 2008-2010

Note: Weighted numbers (#) represent 3-yr averages, percentages and 95% confidence intervals; Respondents aged 18 years and older; n/r (Not Reportable) - If the unweighted total responses for a dimension (row) is <50 that row will not be shown; n/a (Not Available) - Not asked of a subset of respondents

Year: 2001-2003

BRFSS Age Group	Yes			No			Estimated Population (3-Yr Avg)
	#	%	C.I. (95%)	#	%	C.I. (95%)	#
18-24	46,500	42.1	38.3 - 45.9	64,000	57.9	54.1 - 61.7	110,500
25-34	91,600	56.4	53.8 - 59.0	70,800	43.6	41.0 - 46.2	162,400
35-44	88,200	49.1	46.7 - 51.5	91,300	50.9	48.5 - 53.3	179,500
45-54	54,800	33.4	31.2 - 35.6	109,300	66.6	64.4 - 68.8	164,100
55-64	27,700	24.2	21.5 - 26.9	86,900	75.8	73.1 - 78.5	114,700

HIV - ever been tested (18-64) by State, County, Island, Community, BRFSS Age Group, DOH Race-Ethnicity, Gender, Education Level, Employment Status (Grouped), Household Income, Poverty Level, Marital Status (Grouped), Married, Health Care Coverage, for the Year(s) - 2000-2002, 2001-2003, 2002-2004, 2003-2005, 2004-2006, 2005-2007, 2006-2008, 2007-2009, 2008-2010

Note: Weighted numbers (#) represent 3-yr averages, percentages and 95% confidence intervals; Respondents aged 18 years and older; n/r (Not Reportable) - If the unweighted total responses for a dimension (row) is <50 that row will not be shown; n/a (Not Available) - Not asked of a subset of respondents

Year: 2001-2003

DOH Race-Ethnicity	Yes			No			Estimated Population (3-Yr Avg)
	#	%	C.I. (95%)	#	%	C.I. (95%)	#
Caucasian	148,900	55.8	53.9 - 57.7	118,000	44.2	42.3 - 46.1	266,900
Native Hawaiian	35,600	40.6	37.0 - 44.1	52,200	59.4	55.9 - 63.0	87,800
Chinese	17,200	29.7	25.5 - 33.8	40,700	70.3	66.2 - 74.5	57,900
Filipino	35,700	31.6	28.3 - 34.9	77,300	68.4	65.1 - 71.7	113,000
Japanese	29,600	23.8	21.2 - 26.4	94,800	76.2	73.6 - 78.8	124,400
Black	11,500	77.8	70.1 - 85.5	3,300	22.2	14.5 - 29.9	14,800
Native Alaskan/ American Indian	2,700	70.3	56.6 - 84.1	1,100	29.7	15.9 - 43.4	3,900
Other Asian	6,200	35.6	27.1 - 44.2	11,200	64.4	55.8 - 72.9	17,400
Other Pacific Islander	5,000	30.9	22.1 - 39.7	11,200	69.1	60.3 - 77.9	16,300
Other	14,700	57.9	51.1 - 64.8	10,700	42.1	35.2 - 48.9	25,400

HIV - ever been tested (18-64) by State, County, Island, Community, BRFSS Age Group, DOH Race-Ethnicity, Gender, Education Level, Employment Status (Grouped), Household Income, Poverty Level, Marital Status (Grouped), Married, Health Care Coverage, for the Year(s) - 2000-2002, 2001-2003, 2002-2004, 2003-2005, 2004-2006, 2005-2007, 2006-2008, 2007-2009, 2008-2010

Note: Weighted numbers (#) represent 3-yr averages, percentages and 95% confidence intervals; Respondents aged 18 years and older; n/r (Not Reportable) - If the unweighted total responses for a dimension (row) is <50 that row will not be shown; n/a (Not Available) - Not asked of a subset of respondents

Year: 2001-2003

Gender	Yes			No			Estimated Population (3-Yr Avg)
	#	%	C.I. (95%)	#	%	C.I. (95%)	#
Male	162,400	43.5	41.6 - 45.4	210,800	56.5	54.6 - 58.4	373,200
Female	146,600	40.9	39.4 - 42.5	211,500	59.1	57.5 - 60.6	358,000

Education Level	Yes			No			Estimated Population (3-Yr Avg)
	#	%	C.I. (95%)	#	%	C.I. (95%)	#
Never attended school/ Only Kindergarten to Grades 8	1,000	17.7	7.9 - 27.6	4,500	82.3	72.4 - 92.1	5,500
Grades 9 thru 11 (Some High School)	7,000	33.9	27.2 - 40.6	13,600	66.1	59.4 - 72.8	20,600
Grades 12 or GED (High School Grad)	90,700	39.0	36.8 - 41.2	141,900	61.0	58.8 - 63.2	232,600
College 1 to 3 years (Some College/ Tech)	102,000	45.0	42.7 - 47.3	124,800	55.0	52.7 - 57.3	226,800
College 4 years or more (College Grad)	108,100	44.1	42.1 - 46.1	136,800	55.9	53.9 - 57.9	244,800

HIV - ever been tested (18-64) by State, County, Island, Community, BRFSS Age Group, DOH Race-Ethnicity, Gender, Education Level, Employment Status (Grouped), Household Income, Poverty Level, Marital Status (Grouped), Married, Health Care Coverage, for the Year(s) - 2000-2002, 2001-2003, 2002-2004, 2003-2005, 2004-2006, 2005-2007, 2006-2008, 2007-2009, 2008-2010

Note: Weighted numbers (#) represent 3-yr averages, percentages and 95% confidence intervals; Respondents aged 18 years and older; n/r (Not Reportable) - If the unweighted total responses for a dimension (row) is <50 that row will not be shown; n/a (Not Available) - Not asked of a subset of respondents

Year: 2001-2003

Employment Status (Grouped)	Yes			No			Estimated Population (3-Yr Avg)
	#	%	C.I. (95%)	#	%	C.I. (95%)	#
Employed	245,700	43.8	42.4 - 45.2	315,700	56.2	54.8 - 57.6	561,400
Unemployed	12,300	38.0	32.1 - 43.9	20,100	62.0	56.1 - 67.9	32,500
Retired/Unable to work	15,900	31.3	27.1 - 35.6	34,800	68.7	64.4 - 72.9	50,700
Student/Homemaker	34,700	40.2	36.6 - 43.8	51,600	59.8	56.2 - 63.4	86,300

HIV - ever been tested (18-64) by State, County, Island, Community, BRFSS Age Group, DOH Race-Ethnicity, Gender, Education Level, Employment Status (Grouped), Household Income, Poverty Level, Marital Status (Grouped), Married, Health Care Coverage, for the Year(s) - 2000-2002, 2001-2003, 2002-2004, 2003-2005, 2004-2006, 2005-2007, 2006-2008, 2007-2009, 2008-2010

Note: Weighted numbers (#) represent 3-yr averages, percentages and 95% confidence intervals; Respondents aged 18 years and older; n/r (Not Reportable) - If the unweighted total responses for a dimension (row) is <50 that row will not be shown; n/a (Not Available) - Not asked of a subset of respondents

Year: 2001-2003

Household Income	Yes			No			Estimated Population (3-Yr Avg)
	#	%	C.I. (95%)	#	%	C.I. (95%)	#
Less than \$10,000	14,300	47.1	41.1 - 53.2	16,100	52.9	46.8 - 58.9	30,400
\$10,000 to \$14,999	14,500	47.6	41.5 - 53.8	16,000	52.4	46.2 - 58.5	30,500
\$15,000 to \$19,999	16,600	48.0	41.8 - 54.1	18,000	52.0	45.9 - 58.2	34,600
\$20,000 to \$24,999	19,500	44.9	39.2 - 50.6	23,900	55.1	49.4 - 60.8	43,300
\$25,000 to \$34,999	34,500	50.6	46.7 - 54.4	33,700	49.4	45.6 - 53.3	68,200
\$35,000 to \$49,999	55,300	48.5	45.4 - 51.6	58,800	51.5	48.4 - 54.6	114,100
\$50,000 to \$74,999	49,900	44.2	41.2 - 47.3	62,900	55.8	52.7 - 58.8	112,900
\$75,000 or more	54,700	44.5	41.6 - 47.5	68,200	55.5	52.5 - 58.4	122,800

HIV - ever been tested (18-64) by State, County, Island, Community, BRFSS Age Group, DOH Race-Ethnicity, Gender, Education Level, Employment Status (Grouped), Household Income, Poverty Level, Marital Status (Grouped), Married, Health Care Coverage, for the Year(s) - 2000-2002, 2001-2003, 2002-2004, 2003-2005, 2004-2006, 2005-2007, 2006-2008, 2007-2009, 2008-2010

Note: Weighted numbers (#) represent 3-yr averages, percentages and 95% confidence intervals; Respondents aged 18 years and older; n/r (Not Reportable) - If the unweighted total responses for a dimension (row) is <50 that row will not be shown; n/a (Not Available) - Not asked of a subset of respondents

Year: 2001-2003

Poverty Level	Yes			No			Estimated Population (3-Yr Avg)
	#	%	C.I. (95%)	#	%	C.I. (95%)	#
0-130%	60,100	47.3	44.0 - 50.6	66,900	52.7	49.4 - 56.0	126,900
131-185%	34,400	47.0	42.9 - 51.1	38,700	53.0	48.9 - 57.1	73,100
186+%	164,900	46.2	44.6 - 47.9	191,900	53.8	52.1 - 55.4	356,700

Marital Status (Grouped)	Yes			No			Estimated Population (3-Yr Avg)
	#	%	C.I. (95%)	#	%	C.I. (95%)	#
Married	174,000	41.7	40.1 - 43.3	243,500	58.3	56.7 - 59.9	417,500
Unmarried Couple	8,000	49.9	41.4 - 58.4	8,000	50.1	41.6 - 58.6	15,900
Widowed	4,200	33.7	25.5 - 41.9	8,300	66.3	58.1 - 74.5	12,500
Other	122,800	43.0	41.0 - 45.0	162,500	57.0	55.0 - 59.0	285,300

HIV - ever been tested (18-64) by State, County, Island, Community, BRFSS Age Group, DOH Race-Ethnicity, Gender, Education Level, Employment Status (Grouped), Household Income, Poverty Level, Marital Status (Grouped), Married, Health Care Coverage, for the Year(s) - 2000-2002, 2001-2003, 2002-2004, 2003-2005, 2004-2006, 2005-2007, 2006-2008, 2007-2009, 2008-2010

Note: Weighted numbers (#) represent 3-yr averages, percentages and 95% confidence intervals; Respondents aged 18 years and older; n/r (Not Reportable) - If the unweighted total responses for a dimension (row) is <50 that row will not be shown; n/a (Not Available) - Not asked of a subset of respondents

Year: 2001-2003

Married	Yes			No			Estimated Population (3-Yr Avg)
	#	%	C.I. (95%)	#	%	C.I. (95%)	#
Yes	180,400	42.0	40.4 - 43.6	249,300	58.0	56.4 - 59.6	429,700
No	128,300	42.6	40.7 - 44.6	172,600	57.4	55.4 - 59.3	300,900

Health Care Coverage	Yes			No			Estimated Population (3-Yr Avg)
	#	%	C.I. (95%)	#	%	C.I. (95%)	#
Yes	282,500	42.8	41.5 - 44.1	377,400	57.2	55.9 - 58.5	659,900
No	26,300	37.3	33.5 - 41.2	44,100	62.7	58.8 - 66.5	70,400

HIV - ever been tested (18-64) by State, County, Island, Community, BRFSS Age Group, DOH Race-Ethnicity, Gender, Education Level, Employment Status (Grouped), Household Income, Poverty Level, Marital Status (Grouped), Married, Health Care Coverage, for the Year(s) - 2000-2002, 2001-2003, 2002-2004, 2003-2005, 2004-2006, 2005-2007, 2006-2008, 2007-2009, 2008-2010

Note: Weighted numbers (#) represent 3-yr averages, percentages and 95% confidence intervals; Respondents aged 18 years and older; n/r (Not Reportable) - If the unweighted total responses for a dimension (row) is <50 that row will not be shown; n/a (Not Available) - Not asked of a subset of respondents

Year: 2000-2002

State	Yes			No			Estimated Population (3-Yr Avg)
	#	%	C.I. (95%)	#	%	C.I. (95%)	#
Hawaii State	265,500	40.1	38.9 - 41.3	397,000	59.9	58.7 - 61.1	662,600

County	Yes			No			Estimated Population (3-Yr Avg)
	#	%	C.I. (95%)	#	%	C.I. (95%)	#
Hawaii	31,900	40.0	37.7 - 42.2	47,800	60.0	57.8 - 62.3	79,700
Honolulu	192,600	40.1	38.5 - 41.7	287,600	59.9	58.3 - 61.5	480,200
Kauai	11,300	36.9	33.7 - 40.0	19,300	63.1	60.0 - 66.3	30,600
Maui	29,800	41.4	38.5 - 44.2	42,300	58.6	55.8 - 61.5	72,100

HIV - ever been tested (18-64) by State, County, Island, Community, BRFSS Age Group, DOH Race-Ethnicity, Gender, Education Level, Employment Status (Grouped), Household Income, Poverty Level, Marital Status (Grouped), Married, Health Care Coverage, for the Year(s) - 2000-2002, 2001-2003, 2002-2004, 2003-2005, 2004-2006, 2005-2007, 2006-2008, 2007-2009, 2008-2010

Note: Weighted numbers (#) represent 3-yr averages, percentages and 95% confidence intervals; Respondents aged 18 years and older; n/r (Not Reportable) - If the unweighted total responses for a dimension (row) is <50 that row will not be shown; n/a (Not Available) - Not asked of a subset of respondents

Year: 2000-2002

Island	Yes			No			Estimated Population (3-Yr Avg)
	#	%	C.I. (95%)	#	%	C.I. (95%)	#
Hawaii	31,900	40.0	37.7 - 42.2	47,800	60.0	57.8 - 62.3	79,700
Kauai	11,300	36.9	33.7 - 40.0	19,300	63.1	60.0 - 66.3	30,600
Lanai	500	26.4	19.7 - 33.0	1,500	73.6	67.0 - 80.3	2,100
Maui	27,800	42.4	39.3 - 45.4	37,900	57.6	54.6 - 60.7	65,800
Molokai	1,400	33.7	27.1 - 40.4	2,800	66.3	59.6 - 72.9	4,300
Oahu	192,600	40.1	38.5 - 41.7	287,600	59.9	58.3 - 61.5	480,200

Community	Yes			No			Estimated Population (3-Yr Avg)
	#	%	C.I. (95%)	#	%	C.I. (95%)	#
Aiea/ Pearl City	15,200	34.4	29.5 - 39.4	29,000	65.6	60.6 - 70.5	44,200
Ala Moana	7,700	34.6	28.6 - 40.7	14,600	65.4	59.3 - 71.4	22,400

HIV - ever been tested (18-64) by State, County, Island, Community, BRFSS Age Group, DOH Race-Ethnicity, Gender, Education Level, Employment Status (Grouped), Household Income, Poverty Level, Marital Status (Grouped), Married, Health Care Coverage, for the Year(s) - 2000-2002, 2001-2003, 2002-2004, 2003-2005, 2004-2006, 2005-2007, 2006-2008, 2007-2009, 2008-2010

Note: Weighted numbers (#) represent 3-yr averages, percentages and 95% confidence intervals; Respondents aged 18 years and older; n/r (Not Reportable) - If the unweighted total responses for a dimension (row) is <50 that row will not be shown; n/a (Not Available) - Not asked of a subset of respondents

Year: 2000-2002

Community	Yes			No			Estimated Population (3-Yr Avg)
	#	%	C.I. (95%)	#	%	C.I. (95%)	#
Hanalei/ Kapaa	5,600	40.8	36.0 - 45.6	8,100	59.2	54.4 - 64.0	13,600
Hilo	8,500	36.3	32.3 - 40.2	15,000	63.7	59.8 - 67.7	23,500
Kaaawa/ Kahaluu/ Kaneohe	11,400	39.7	33.2 - 46.3	17,300	60.3	53.7 - 66.8	28,700
Kahului	11,100	46.4	40.3 - 52.5	12,800	53.6	47.5 - 59.7	23,900
Kailua/ Waimanalo	16,100	48.7	42.9 - 54.5	17,000	51.3	45.5 - 57.1	33,100
Kaimuki/ Palolo/ Waikiki	18,400	40.8	35.9 - 45.7	26,800	59.2	54.3 - 64.1	45,200
Kona	9,900	44.1	39.6 - 48.6	12,600	55.9	51.4 - 60.4	22,500
Lahaina/ Wailuku	8,300	38.6	34.0 - 43.3	13,200	61.4	56.7 - 66.0	21,500
Lanai	500	26.4	19.7 - 33.0	1,500	73.6	67.0 - 80.3	2,100
Lihue-Waimea	5,700	33.7	29.6 - 37.9	11,200	66.3	62.1 - 70.4	17,000
Manoa/ Upper Makiki	15,200	38.7	32.9 - 44.5	24,100	61.3	55.5 - 67.1	39,300
Mililani/ Wahiawa	24,300	51.5	46.2 - 56.8	22,900	48.5	43.2 - 53.8	47,200

HIV - ever been tested (18-64) by State, County, Island, Community, BRFSS Age Group, DOH Race-Ethnicity, Gender, Education Level, Employment Status (Grouped), Household Income, Poverty Level, Marital Status (Grouped), Married, Health Care Coverage, for the Year(s) - 2000-2002, 2001-2003, 2002-2004, 2003-2005, 2004-2006, 2005-2007, 2006-2008, 2007-2009, 2008-2010

Note: Weighted numbers (#) represent 3-yr averages, percentages and 95% confidence intervals; Respondents aged 18 years and older; n/r (Not Reportable) - If the unweighted total responses for a dimension (row) is <50 that row will not be shown; n/a (Not Available) - Not asked of a subset of respondents

Year: 2000-2002

Community	Yes			No			Estimated Population (3-Yr Avg)
	#	%	C.I. (95%)	#	%	C.I. (95%)	#
Molokai	1,400	33.7	27.1 - 40.4	2,800	66.3	59.6 - 72.9	4,300
Nanakuli/ Waianae	8,900	41.5	33.4 - 49.6	12,600	58.5	50.4 - 66.6	21,500
N.Hawaii	7,200	41.5	36.5 - 46.4	10,100	58.5	53.6 - 63.5	17,200
N.Shore/ Laie	6,300	36.5	28.2 - 44.9	10,900	63.5	55.1 - 71.8	17,200
Nuuanu/ Kalihi/ Moanalua	13,000	26.4	21.8 - 31.1	36,100	73.6	68.9 - 78.2	49,100
Puna/ Kau	6,200	38.1	33.6 - 42.6	10,100	61.9	57.4 - 66.4	16,400
Salt Lake/ Foster Village	17,600	58.9	52.7 - 65.2	12,300	41.1	34.8 - 47.3	29,800
Upcountry/ Hana	8,400	41.5	37.1 - 45.9	11,900	58.5	54.1 - 62.9	20,300
Waialae/ Kahala/ Hawaii Kai	10,300	34.7	28.8 - 40.6	19,400	65.3	59.4 - 71.2	29,800
Waipahu/ Kapolei/ Ewa	28,100	38.5	34.4 - 42.7	44,700	61.5	57.3 - 65.6	72,800

HIV - ever been tested (18-64) by State, County, Island, Community, BRFSS Age Group, DOH Race-Ethnicity, Gender, Education Level, Employment Status (Grouped), Household Income, Poverty Level, Marital Status (Grouped), Married, Health Care Coverage, for the Year(s) - 2000-2002, 2001-2003, 2002-2004, 2003-2005, 2004-2006, 2005-2007, 2006-2008, 2007-2009, 2008-2010

Note: Weighted numbers (#) represent 3-yr averages, percentages and 95% confidence intervals; Respondents aged 18 years and older; n/r (Not Reportable) - If the unweighted total responses for a dimension (row) is <50 that row will not be shown; n/a (Not Available) - Not asked of a subset of respondents

Year: 2000-2002

BRFSS Age Group	Yes			No			Estimated Population (3-Yr Avg)
	#	%	C.I. (95%)	#	%	C.I. (95%)	#
18-24	42,100	42.2	38.4 - 46.0	57,700	57.8	54.0 - 61.6	99,700
25-34	79,200	53.6	51.0 - 56.3	68,400	46.4	43.7 - 49.0	147,600
35-44	74,000	45.0	42.7 - 47.4	90,300	55.0	52.6 - 57.3	164,300
45-54	46,400	32.0	29.9 - 34.2	98,400	68.0	65.8 - 70.1	144,900
55-64	23,900	22.5	19.9 - 25.2	82,200	77.5	74.8 - 80.1	106,100

HIV - ever been tested (18-64) by State, County, Island, Community, BRFSS Age Group, DOH Race-Ethnicity, Gender, Education Level, Employment Status (Grouped), Household Income, Poverty Level, Marital Status (Grouped), Married, Health Care Coverage, for the Year(s) - 2000-2002, 2001-2003, 2002-2004, 2003-2005, 2004-2006, 2005-2007, 2006-2008, 2007-2009, 2008-2010

Note: Weighted numbers (#) represent 3-yr averages, percentages and 95% confidence intervals; Respondents aged 18 years and older; n/r (Not Reportable) - If the unweighted total responses for a dimension (row) is <50 that row will not be shown; n/a (Not Available) - Not asked of a subset of respondents

Year: 2000-2002

DOH Race-Ethnicity	Yes			No			Estimated Population (3-Yr Avg)
	#	%	C.I. (95%)	#	%	C.I. (95%)	#
Caucasian	119,900	54.0	52.1 - 56.0	102,100	46.0	44.0 - 47.9	221,900
Native Hawaiian	37,500	38.4	35.2 - 41.6	60,100	61.6	58.4 - 64.8	97,600
Chinese	10,900	28.2	23.5 - 33.0	27,700	71.8	67.0 - 76.5	38,600
Filipino	30,700	29.1	25.8 - 32.4	74,700	70.9	67.6 - 74.2	105,400
Japanese	28,400	23.6	21.1 - 26.0	92,300	76.4	74.0 - 78.9	120,700
Black	10,300	78.6	70.4 - 86.8	2,800	21.4	13.2 - 29.6	13,100
Native Alaskan/ American Indian	2,300	68.8	55.6 - 82.0	1,000	31.2	18.0 - 44.4	3,300
Other Asian	4,600	27.6	19.8 - 35.3	12,100	72.4	64.7 - 80.2	16,800
Other Pacific Islander	4,800	31.6	22.7 - 40.4	10,500	68.4	59.6 - 77.3	15,300
Mixed Ethnicity	2,700	55.5	43.5 - 67.5	2,100	44.5	32.5 - 56.5	4,800
Other	12,500	54.4	47.2 - 61.5	10,500	45.6	38.5 - 52.8	23,000

HIV - ever been tested (18-64) by State, County, Island, Community, BRFSS Age Group, DOH Race-Ethnicity, Gender, Education Level, Employment Status (Grouped), Household Income, Poverty Level, Marital Status (Grouped), Married, Health Care Coverage, for the Year(s) - 2000-2002, 2001-2003, 2002-2004, 2003-2005, 2004-2006, 2005-2007, 2006-2008, 2007-2009, 2008-2010

Note: Weighted numbers (#) represent 3-yr averages, percentages and 95% confidence intervals; Respondents aged 18 years and older; n/r (Not Reportable) - If the unweighted total responses for a dimension (row) is <50 that row will not be shown; n/a (Not Available) - Not asked of a subset of respondents

Year: 2000-2002

Gender	Yes			No			Estimated Population (3-Yr Avg)
	#	%	C.I. (95%)	#	%	C.I. (95%)	#
Male	135,200	40.6	38.8 - 42.5	197,400	59.4	57.5 - 61.2	332,700
Female	130,300	39.5	37.9 - 41.1	199,600	60.5	58.9 - 62.1	329,900

Education Level	Yes			No			Estimated Population (3-Yr Avg)
	#	%	C.I. (95%)	#	%	C.I. (95%)	#
Never attended school/ Only Kindergarten to Grades 8	1,500	24.8	13.1 - 36.5	4,700	75.2	63.5 - 86.9	6,200
Grades 9 thru 11 (Some High School)	7,000	30.3	24.0 - 36.5	16,200	69.7	63.5 - 76.0	23,300
Grades 12 or GED (High School Grad)	82,300	37.2	35.1 - 39.4	138,700	62.8	60.6 - 64.9	221,000
College 1 to 3 years (Some College/ Tech)	87,700	42.6	40.3 - 44.9	118,000	57.4	55.1 - 59.7	205,700
College 4 years or more (College Grad)	86,700	42.2	40.1 - 44.2	118,900	57.8	55.8 - 59.9	205,600

HIV - ever been tested (18-64) by State, County, Island, Community, BRFSS Age Group, DOH Race-Ethnicity, Gender, Education Level, Employment Status (Grouped), Household Income, Poverty Level, Marital Status (Grouped), Married, Health Care Coverage, for the Year(s) - 2000-2002, 2001-2003, 2002-2004, 2003-2005, 2004-2006, 2005-2007, 2006-2008, 2007-2009, 2008-2010

Note: Weighted numbers (#) represent 3-yr averages, percentages and 95% confidence intervals; Respondents aged 18 years and older; n/r (Not Reportable) - If the unweighted total responses for a dimension (row) is <50 that row will not be shown; n/a (Not Available) - Not asked of a subset of respondents

Year: 2000-2002

Employment Status (Grouped)	Yes			No			Estimated Population (3-Yr Avg)
	#	%	C.I. (95%)	#	%	C.I. (95%)	#
Employed	211,000	41.4	40.0 - 42.8	298,400	58.6	57.2 - 60.0	509,500
Unemployed	10,500	34.6	28.7 - 40.4	20,000	65.4	59.6 - 71.3	30,500
Retired/Unable to work	13,800	29.3	25.1 - 33.5	33,300	70.7	66.5 - 74.9	47,200
Student/Homemaker	29,900	39.9	36.1 - 43.6	45,100	60.1	56.4 - 63.9	75,000

HIV - ever been tested (18-64) by State, County, Island, Community, BRFSS Age Group, DOH Race-Ethnicity, Gender, Education Level, Employment Status (Grouped), Household Income, Poverty Level, Marital Status (Grouped), Married, Health Care Coverage, for the Year(s) - 2000-2002, 2001-2003, 2002-2004, 2003-2005, 2004-2006, 2005-2007, 2006-2008, 2007-2009, 2008-2010

Note: Weighted numbers (#) represent 3-yr averages, percentages and 95% confidence intervals; Respondents aged 18 years and older; n/r (Not Reportable) - If the unweighted total responses for a dimension (row) is <50 that row will not be shown; n/a (Not Available) - Not asked of a subset of respondents

Year: 2000-2002

Household Income	Yes			No			Estimated Population (3-Yr Avg)
	#	%	C.I. (95%)	#	%	C.I. (95%)	#
Less than \$10,000	13,400	47.7	41.7 - 53.8	14,600	52.3	46.2 - 58.3	28,000
\$10,000 to \$14,999	14,200	49.9	44.1 - 55.7	14,300	50.1	44.3 - 55.9	28,500
\$15,000 to \$19,999	15,800	52.1	46.0 - 58.2	14,500	47.9	41.8 - 54.0	30,300
\$20,000 to \$24,999	18,100	44.9	39.2 - 50.7	22,200	55.1	49.3 - 60.8	40,200
\$25,000 to \$34,999	32,800	48.0	44.4 - 51.6	35,600	52.0	48.4 - 55.6	68,400
\$35,000 to \$49,999	45,400	43.1	40.1 - 46.1	60,000	56.9	53.9 - 59.9	105,400
\$50,000 to \$74,999	41,400	41.6	38.6 - 44.7	58,100	58.4	55.3 - 61.4	99,500
\$75,000 or more	42,800	42.0	38.9 - 45.1	59,000	58.0	54.9 - 61.1	101,800

HIV - ever been tested (18-64) by State, County, Island, Community, BRFSS Age Group, DOH Race-Ethnicity, Gender, Education Level, Employment Status (Grouped), Household Income, Poverty Level, Marital Status (Grouped), Married, Health Care Coverage, for the Year(s) - 2000-2002, 2001-2003, 2002-2004, 2003-2005, 2004-2006, 2005-2007, 2006-2008, 2007-2009, 2008-2010

Note: Weighted numbers (#) represent 3-yr averages, percentages and 95% confidence intervals; Respondents aged 18 years and older; n/r (Not Reportable) - If the unweighted total responses for a dimension (row) is <50 that row will not be shown; n/a (Not Available) - Not asked of a subset of respondents

Year: 2000-2002

Poverty Level	Yes			No			Estimated Population (3-Yr Avg)
	#	%	C.I. (95%)	#	%	C.I. (95%)	#
0-130%	49,500	48.8	45.2 - 52.3	52,000	51.2	47.7 - 54.8	101,400
131-185%	32,200	44.7	40.9 - 48.5	39,800	55.3	51.5 - 59.1	72,000
186+%	142,300	43.3	41.6 - 44.9	186,500	56.7	55.1 - 58.4	328,700

Marital Status (Grouped)	Yes			No			Estimated Population (3-Yr Avg)
	#	%	C.I. (95%)	#	%	C.I. (95%)	#
Married	145,900	39.0	37.4 - 40.7	227,700	61.0	59.3 - 62.6	373,600
Unmarried Couple	6,500	50.9	42.1 - 59.6	6,300	49.1	40.4 - 57.9	12,800
Widowed	3,800	33.9	25.4 - 42.3	7,500	66.1	57.7 - 74.6	11,300
Other	109,300	41.3	39.3 - 43.3	155,500	58.7	56.7 - 60.7	264,900

HIV - ever been tested (18-64) by State, County, Island, Community, BRFSS Age Group, DOH Race-Ethnicity, Gender, Education Level, Employment Status (Grouped), Household Income, Poverty Level, Marital Status (Grouped), Married, Health Care Coverage, for the Year(s) - 2000-2002, 2001-2003, 2002-2004, 2003-2005, 2004-2006, 2005-2007, 2006-2008, 2007-2009, 2008-2010

Note: Weighted numbers (#) represent 3-yr averages, percentages and 95% confidence intervals; Respondents aged 18 years and older; n/r (Not Reportable) - If the unweighted total responses for a dimension (row) is <50 that row will not be shown; n/a (Not Available) - Not asked of a subset of respondents

Year: 2000-2002

Married	Yes			No			Estimated Population (3-Yr Avg)
	#	%	C.I. (95%)	#	%	C.I. (95%)	#
Yes	151,700	39.4	37.8 - 41.0	233,200	60.6	59.0 - 62.2	384,900
No	113,600	41.0	39.1 - 43.0	163,400	59.0	57.0 - 60.9	277,100

Health Care Coverage	Yes			No			Estimated Population (3-Yr Avg)
	#	%	C.I. (95%)	#	%	C.I. (95%)	#
Yes	241,700	40.4	39.1 - 41.7	356,900	59.6	58.3 - 60.9	598,500
No	23,800	37.6	33.7 - 41.6	39,400	62.4	58.4 - 66.3	63,200