

**Was your test for HIV a rapid test? by State, County, Island, Community, BRFSS Age Group, DOH Race-Ethnicity, Gender, Education Level, Employment Status (Grouped), Household Income, Poverty Level, Marital Status (Grouped), Married, Health Care Coverage, for the Year(s) - 2006-2008, 2007-2009, 2008-2010**

*Note: Weighted numbers (#) represent 3-yr averages, percentages and 95% confidence intervals; Respondents aged 18 years and older; n/r (Not Reportable) - If the unweighted total responses for a dimension (row) is <50 that row will not be shown; n/a (Not Available) - Not asked of a subset of respondents*

*The trend analysis report shows the trend for the selected health variable over selected years in a table and a graph. Estimated Population: This number is a weighted representation of the population who responded to a particular question in the survey. For most questions the eligible population will be the entire adult population. For some secondary questions only a subset of the population was asked the question. For example, all survey participants were asked if they had diabetes, but only those who answered yes were asked if they use insulin. If a dimension value is unknown for a particular survey record, that record will not be included in the counts for that particular dimension.*

*For documentation on other terms and coding in this report, please go to the following links*

[Click here to access BRFSS documentation](#)

[Click here to access DOH Race-Ethnicity coding](#)

[Click here to access The Hawai'i Data Guide](#)

[Click here to access Poverty Level Methodology](#)

**For questions about this report, please contact  
The Hawaii Health Data Warehouse**

[profiles@hhdw.org](mailto:profiles@hhdw.org)

**(855) 946-5899 x15**

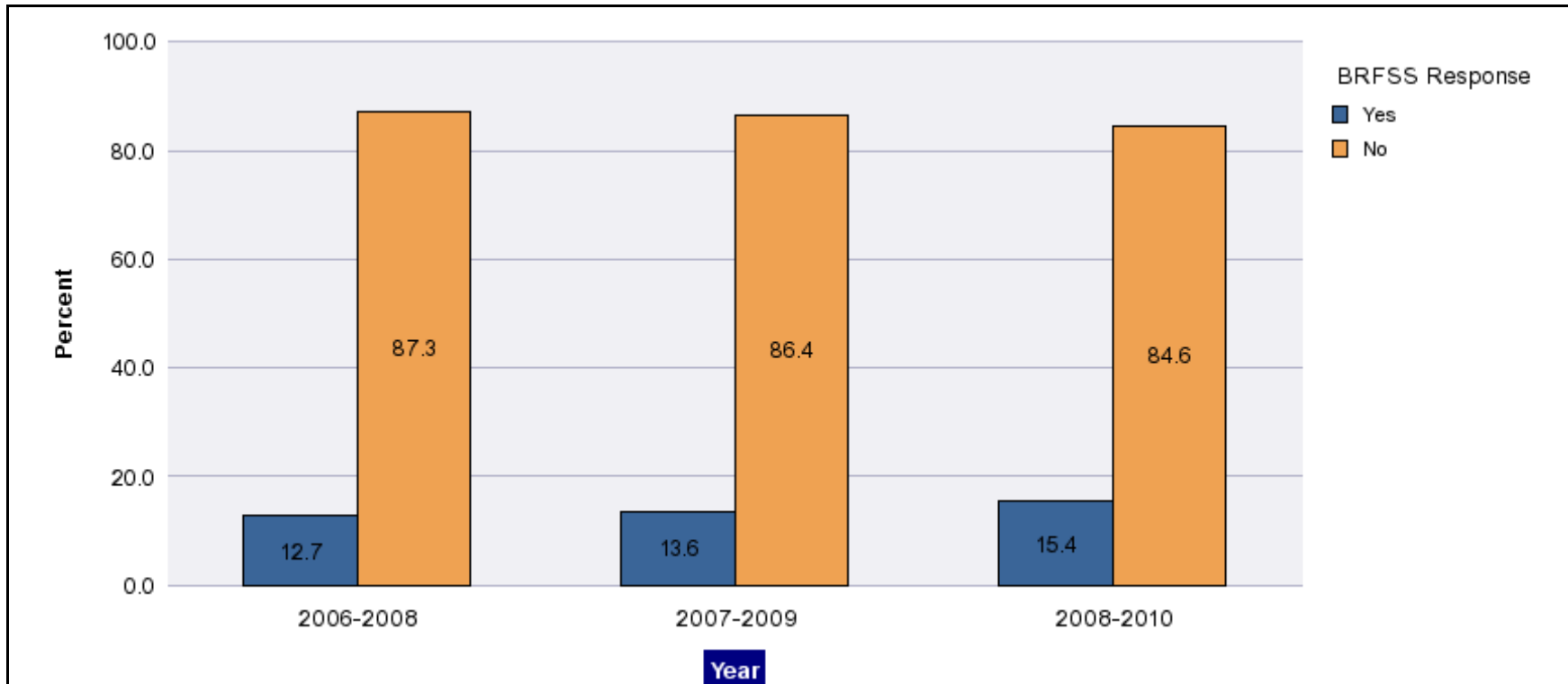
**Was your test for HIV a rapid test? by State, County, Island, Community, BRFSS Age Group, DOH Race-Ethnicity, Gender, Education Level, Employment Status (Grouped), Household Income, Poverty Level, Marital Status (Grouped), Married, Health Care Coverage, for the Year(s) - 2006-2008, 2007-2009, 2008-2010**

*Note: Weighted numbers (#) represent 3-yr averages, percentages and 95% confidence intervals; Respondents aged 18 years and older; n/r (Not Reportable) - If the unweighted total responses for a dimension (row) is <50 that row will not be shown; n/a (Not Available) - Not asked of a subset of respondents*

Year	Yes			No			Estimated Population (3-Yr Avg)
	#	%	C.I.(95%)	#	%	C.I.(95%)	#
<b>2006-2008</b>	9,200	12.7	9.9 - 15.6	62,800	87.3	84.4 - 90.1	72,000
<b>2007-2009</b>	10,600	13.6	10.6 - 16.6	67,500	86.4	83.4 - 89.4	78,100
<b>2008-2010</b>	10,900	15.4	11.9 - 18.9	59,800	84.6	81.1 - 88.1	70,700

**Was your test for HIV a rapid test? by State, County, Island, Community, BRFSS Age Group, DOH Race-Ethnicity, Gender, Education Level, Employment Status (Grouped), Household Income, Poverty Level, Marital Status (Grouped), Married, Health Care Coverage, for the Year(s) - 2006-2008, 2007-2009, 2008-2010**

*Note: Weighted numbers (#) represent 3-yr averages, percentages and 95% confidence intervals; Respondents aged 18 years and older; n/r (Not Reportable) - If the unweighted total responses for a dimension (row) is <50 that row will not be shown; n/a (Not Available) - Not asked of a subset of respondents*



**Was your test for HIV a rapid test? by State, County, Island, Community, BRFSS Age Group, DOH Race-Ethnicity, Gender, Education Level, Employment Status (Grouped), Household Income, Poverty Level, Marital Status (Grouped), Married, Health Care Coverage, for the Year(s) - 2006-2008, 2007-2009, 2008-2010**

*Note: Weighted numbers (#) represent 3-yr averages, percentages and 95% confidence intervals; Respondents aged 18 years and older; n/r (Not Reportable) - If the unweighted total responses for a dimension (row) is <50 that row will not be shown; n/a (Not Available) - Not asked of a subset of respondents*

**Year: 2008-2010**

State	Yes			No			Estimated Population (3-Yr Avg)
	#	%	C.I. (95%)	#	%	C.I. (95%)	#
Hawaii State	10,900	15.4	11.9 - 18.9	59,800	84.6	81.1 - 88.1	70,700

County	Yes			No			Estimated Population (3-Yr Avg)
	#	%	C.I. (95%)	#	%	C.I. (95%)	#
Hawaii	900	11.5	5.1 - 18.0	7,100	88.5	82.0 - 94.9	8,000
Honolulu	8,100	15.0	10.8 - 19.2	45,700	85.0	80.8 - 89.2	53,800
Kauai	400	17.7	2.7 - 32.7	2,100	82.3	67.3 - 97.3	2,500
Maui	1,400	22.6	11.0 - 34.1	4,900	77.4	65.9 - 89.0	6,300

**Was your test for HIV a rapid test? by State, County, Island, Community, BRFSS Age Group, DOH Race-Ethnicity, Gender, Education Level, Employment Status (Grouped), Household Income, Poverty Level, Marital Status (Grouped), Married, Health Care Coverage, for the Year(s) - 2006-2008, 2007-2009, 2008-2010**

*Note: Weighted numbers (#) represent 3-yr averages, percentages and 95% confidence intervals; Respondents aged 18 years and older; n/r (Not Reportable) - If the unweighted total responses for a dimension (row) is <50 that row will not be shown; n/a (Not Available) - Not asked of a subset of respondents*

**Year: 2008-2010**

Island	Yes			No			Estimated Population (3-Yr Avg)
	#	%	C.I. (95%)	#	%	C.I. (95%)	#
Hawaii	900	11.5	5.1 - 18.0	7,100	88.5	82.0 - 94.9	8,000
Kauai	400	17.7	2.7 - 32.7	2,100	82.3	67.3 - 97.3	2,500
Maui	1,400	23.2	10.7 - 35.6	4,500	76.8	64.4 - 89.3	5,800
Oahu	8,100	15.0	10.8 - 19.2	45,700	85.0	80.8 - 89.2	53,800

**Was your test for HIV a rapid test? by State, County, Island, Community, BRFSS Age Group, DOH Race-Ethnicity, Gender, Education Level, Employment Status (Grouped), Household Income, Poverty Level, Marital Status (Grouped), Married, Health Care Coverage, for the Year(s) - 2006-2008, 2007-2009, 2008-2010**

*Note: Weighted numbers (#) represent 3-yr averages, percentages and 95% confidence intervals; Respondents aged 18 years and older; n/r (Not Reportable) - If the unweighted total responses for a dimension (row) is <50 that row will not be shown; n/a (Not Available) - Not asked of a subset of respondents*

**Year: 2008-2010**

Community	Yes			No			Estimated Population (3-Yr Avg)
	#	%	C.I. (95%)	#	%	C.I. (95%)	#
Hilo	300	11.3	2.4 - 20.1	2,700	88.7	79.9 - 97.6	3,100
Mililani/ Wahiawa	900	11.8	3.4 - 20.1	7,100	88.2	79.9 - 96.6	8,000
Puna/ Kau	500	21.3	5.5 - 37.1	2,000	78.7	62.9 - 94.5	2,500
Salt Lake/ Foster Village	400	6.2	0.0 - 12.5	6,500	93.8	87.5 - 100.0	6,900
Upcountry/ Hana	200	13.2	0.0 - 27.0	1,600	86.8	73.0 - 100.0	1,800
Waipahu/ Kapolei/ Ewa	1,300	12.3	2.3 - 22.4	8,900	87.7	77.6 - 97.7	10,200

**Was your test for HIV a rapid test? by State, County, Island, Community, BRFSS Age Group, DOH Race-Ethnicity, Gender, Education Level, Employment Status (Grouped), Household Income, Poverty Level, Marital Status (Grouped), Married, Health Care Coverage, for the Year(s) - 2006-2008, 2007-2009, 2008-2010**

*Note: Weighted numbers (#) represent 3-yr averages, percentages and 95% confidence intervals; Respondents aged 18 years and older; n/r (Not Reportable) - If the unweighted total responses for a dimension (row) is <50 that row will not be shown; n/a (Not Available) - Not asked of a subset of respondents*

**Year: 2008-2010**

BRFSS Age Group	Yes			No			Estimated Population (3-Yr Avg)
	#	%	C.I. (95%)	#	%	C.I. (95%)	#
18-24	2,900	22.3	11.6 - 33.1	10,000	77.7	66.9 - 88.4	12,900
25-34	4,000	14.4	8.4 - 20.4	24,000	85.6	79.6 - 91.6	28,100
35-44	2,400	13.8	8.2 - 19.4	14,800	86.2	80.6 - 91.8	17,100
45-54	1,000	12.7	6.4 - 19.0	6,800	87.3	81.0 - 93.6	7,800
55-64	600	13.4	6.8 - 20.1	3,900	86.6	79.9 - 93.2	4,500

**Was your test for HIV a rapid test? by State, County, Island, Community, BRFSS Age Group, DOH Race-Ethnicity, Gender, Education Level, Employment Status (Grouped), Household Income, Poverty Level, Marital Status (Grouped), Married, Health Care Coverage, for the Year(s) - 2006-2008, 2007-2009, 2008-2010**

*Note: Weighted numbers (#) represent 3-yr averages, percentages and 95% confidence intervals; Respondents aged 18 years and older; n/r (Not Reportable) - If the unweighted total responses for a dimension (row) is <50 that row will not be shown; n/a (Not Available) - Not asked of a subset of respondents*

**Year: 2008-2010**

DOH Race-Ethnicity	Yes			No			Estimated Population (3-Yr Avg)
	#	%	C.I. (95%)	#	%	C.I. (95%)	#
Caucasian	3,200	10.1	6.2 - 14.0	28,100	89.9	86.0 - 93.8	31,300
Native Hawaiian	2,100	25.2	14.2 - 36.2	6,300	74.8	63.8 - 85.8	8,400
Filipino	1,800	23.6	11.3 - 35.9	5,800	76.4	64.1 - 88.7	7,600
Japanese	900	14.8	0.0 - 29.9	5,100	85.2	70.1 - 100.0	6,000

Gender	Yes			No			Estimated Population (3-Yr Avg)
	#	%	C.I. (95%)	#	%	C.I. (95%)	#
Male	7,500	18.1	13.1 - 23.2	33,900	81.9	76.8 - 86.9	41,400
Female	3,400	11.6	7.2 - 16.0	25,900	88.4	84.0 - 92.8	29,300



**Was your test for HIV a rapid test? by State, County, Island, Community, BRFSS Age Group, DOH Race-Ethnicity, Gender, Education Level, Employment Status (Grouped), Household Income, Poverty Level, Marital Status (Grouped), Married, Health Care Coverage, for the Year(s) - 2006-2008, 2007-2009, 2008-2010**

*Note: Weighted numbers (#) represent 3-yr averages, percentages and 95% confidence intervals; Respondents aged 18 years and older; n/r (Not Reportable) - If the unweighted total responses for a dimension (row) is <50 that row will not be shown; n/a (Not Available) - Not asked of a subset of respondents*

**Year: 2008-2010**

Education Level	Yes			No			Estimated Population (3-Yr Avg)
	#	%	C.I. (95%)	#	%	C.I. (95%)	#
Grades 12 or GED (High School Grad)	4,200	21.5	13.1 - 29.9	15,400	78.5	70.1 - 86.9	19,700
College 1 to 3 years (Some College/ Tech)	3,100	13.5	8.1 - 18.9	20,100	86.5	81.1 - 91.9	23,300
College 4 years or more (College Grad)	2,500	10.0	6.0 - 14.0	22,500	90.0	86.0 - 94.0	25,000

Employment Status (Grouped)	Yes			No			Estimated Population (3-Yr Avg)
	#	%	C.I. (95%)	#	%	C.I. (95%)	#
Employed	7,000	13.5	9.7 - 17.3	44,700	86.5	82.7 - 90.3	51,600
Unemployed	1,500	28.1	11.6 - 44.6	3,900	71.9	55.4 - 88.4	5,500
Retired/Unable to work	1,000	24.0	8.6 - 39.4	3,300	76.0	60.6 - 91.4	4,300
Student/Homemaker	1,400	14.6	4.5 - 24.8	7,900	85.4	75.2 - 95.5	9,300

**Was your test for HIV a rapid test? by State, County, Island, Community, BRFSS Age Group, DOH Race-Ethnicity, Gender, Education Level, Employment Status (Grouped), Household Income, Poverty Level, Marital Status (Grouped), Married, Health Care Coverage, for the Year(s) - 2006-2008, 2007-2009, 2008-2010**

*Note: Weighted numbers (#) represent 3-yr averages, percentages and 95% confidence intervals; Respondents aged 18 years and older; n/r (Not Reportable) - If the unweighted total responses for a dimension (row) is <50 that row will not be shown; n/a (Not Available) - Not asked of a subset of respondents*

**Year: 2008-2010**

Household Income	Yes			No			Estimated Population (3-Yr Avg)
	#	%	C.I. (95%)	#	%	C.I. (95%)	#
Less than \$10,000	700	26.1	1.5 - 50.7	2,000	73.9	49.3 - 98.5	2,700
\$20,000 to \$24,999	400	8.4	0.2 - 16.5	3,900	91.6	83.5 - 99.8	4,200
\$25,000 to \$34,999	1,700	26.5	10.8 - 42.2	4,800	73.5	57.8 - 89.2	6,600
\$35,000 to \$49,999	1,100	12.2	5.1 - 19.3	8,200	87.8	80.7 - 94.9	9,400
\$50,000 to \$74,999	1,900	13.7	6.9 - 20.4	11,900	86.3	79.6 - 93.1	13,800
\$75,000 or more	2,200	9.6	5.2 - 14.0	20,500	90.4	86.0 - 94.8	22,700

**Was your test for HIV a rapid test? by State, County, Island, Community, BRFSS Age Group, DOH Race-Ethnicity, Gender, Education Level, Employment Status (Grouped), Household Income, Poverty Level, Marital Status (Grouped), Married, Health Care Coverage, for the Year(s) - 2006-2008, 2007-2009, 2008-2010**

*Note: Weighted numbers (#) represent 3-yr averages, percentages and 95% confidence intervals; Respondents aged 18 years and older; n/r (Not Reportable) - If the unweighted total responses for a dimension (row) is <50 that row will not be shown; n/a (Not Available) - Not asked of a subset of respondents*

**Year: 2008-2010**

Poverty Level	Yes			No			Estimated Population (3-Yr Avg)
	#	%	C.I. (95%)	#	%	C.I. (95%)	#
<b>0-130%</b>	4,000	24.7	15.1 - 34.3	12,300	75.3	65.7 - 84.9	16,300
<b>131-185%</b>	1,600	16.0	7.1 - 25.0	8,300	84.0	75.0 - 92.9	9,900
<b>186+%</b>	4,000	10.3	6.9 - 13.6	34,700	89.7	86.4 - 93.1	38,700

Marital Status (Grouped)	Yes			No			Estimated Population (3-Yr Avg)
	#	%	C.I. (95%)	#	%	C.I. (95%)	#
<b>Married</b>	4,100	10.2	6.8 - 13.6	35,700	89.8	86.4 - 93.2	39,700
<b>Other</b>	6,200	22.5	15.5 - 29.5	21,300	77.5	70.5 - 84.5	27,400

**Was your test for HIV a rapid test? by State, County, Island, Community, BRFSS Age Group, DOH Race-Ethnicity, Gender, Education Level, Employment Status (Grouped), Household Income, Poverty Level, Marital Status (Grouped), Married, Health Care Coverage, for the Year(s) - 2006-2008, 2007-2009, 2008-2010**

*Note: Weighted numbers (#) represent 3-yr averages, percentages and 95% confidence intervals; Respondents aged 18 years and older; n/r (Not Reportable) - If the unweighted total responses for a dimension (row) is <50 that row will not be shown; n/a (Not Available) - Not asked of a subset of respondents*

**Year: 2008-2010**

<b>Married</b>	<b>Yes</b>			<b>No</b>			<b>Estimated Population (3-Yr Avg)</b>
	<b>#</b>	<b>%</b>	<b>C.I. (95%)</b>	<b>#</b>	<b>%</b>	<b>C.I. (95%)</b>	<b>#</b>
<b>Yes</b>	4,200	10.3	7.0 - 13.7	36,400	89.7	86.3 - 93.0	40,600
<b>No</b>	6,600	22.2	15.6 - 28.8	23,300	77.8	71.2 - 84.4	30,000

<b>Health Care Coverage</b>	<b>Yes</b>			<b>No</b>			<b>Estimated Population (3-Yr Avg)</b>
	<b>#</b>	<b>%</b>	<b>C.I. (95%)</b>	<b>#</b>	<b>%</b>	<b>C.I. (95%)</b>	<b>#</b>
<b>Yes</b>	10,000	15.6	12.0 - 19.2	54,400	84.4	80.8 - 88.0	64,500
<b>No</b>	800	14.3	0.1 - 28.5	5,000	85.7	71.5 - 99.9	5,900

**Was your test for HIV a rapid test? by State, County, Island, Community, BRFSS Age Group, DOH Race-Ethnicity, Gender, Education Level, Employment Status (Grouped), Household Income, Poverty Level, Marital Status (Grouped), Married, Health Care Coverage, for the Year(s) - 2006-2008, 2007-2009, 2008-2010**

*Note: Weighted numbers (#) represent 3-yr averages, percentages and 95% confidence intervals; Respondents aged 18 years and older; n/r (Not Reportable) - If the unweighted total responses for a dimension (row) is <50 that row will not be shown; n/a (Not Available) - Not asked of a subset of respondents*

**Year: 2007-2009**

State	Yes			No			Estimated Population (3-Yr Avg)
	#	%	C.I. (95%)	#	%	C.I. (95%)	#
Hawaii State	10,600	13.6	10.6 - 16.6	67,500	86.4	83.4 - 89.4	78,100

County	Yes			No			Estimated Population (3-Yr Avg)
	#	%	C.I. (95%)	#	%	C.I. (95%)	#
Hawaii	800	10.6	5.8 - 15.5	7,100	89.4	84.5 - 94.2	7,900
Honolulu	7,600	12.9	9.3 - 16.5	51,700	87.1	83.5 - 90.7	59,400
Kauai	400	13.2	4.3 - 22.0	2,800	86.8	78.0 - 95.7	3,200
Maui	1,700	22.4	12.3 - 32.6	5,900	77.6	67.4 - 87.7	7,600

**Was your test for HIV a rapid test? by State, County, Island, Community, BRFSS Age Group, DOH Race-Ethnicity, Gender, Education Level, Employment Status (Grouped), Household Income, Poverty Level, Marital Status (Grouped), Married, Health Care Coverage, for the Year(s) - 2006-2008, 2007-2009, 2008-2010**

*Note: Weighted numbers (#) represent 3-yr averages, percentages and 95% confidence intervals; Respondents aged 18 years and older; n/r (Not Reportable) - If the unweighted total responses for a dimension (row) is <50 that row will not be shown; n/a (Not Available) - Not asked of a subset of respondents*

**Year: 2007-2009**

Island	Yes			No			Estimated Population (3-Yr Avg)
	#	%	C.I. (95%)	#	%	C.I. (95%)	#
Hawaii	800	10.6	5.8 - 15.5	7,100	89.4	84.5 - 94.2	7,900
Kauai	400	13.2	4.3 - 22.0	2,800	86.8	78.0 - 95.7	3,200
Maui	1,600	23.1	12.3 - 34.0	5,400	76.9	66.0 - 87.7	7,000
Oahu	7,600	12.9	9.3 - 16.5	51,700	87.1	83.5 - 90.7	59,400

**Was your test for HIV a rapid test? by State, County, Island, Community, BRFSS Age Group, DOH Race-Ethnicity, Gender, Education Level, Employment Status (Grouped), Household Income, Poverty Level, Marital Status (Grouped), Married, Health Care Coverage, for the Year(s) - 2006-2008, 2007-2009, 2008-2010**

*Note: Weighted numbers (#) represent 3-yr averages, percentages and 95% confidence intervals; Respondents aged 18 years and older; n/r (Not Reportable) - If the unweighted total responses for a dimension (row) is <50 that row will not be shown; n/a (Not Available) - Not asked of a subset of respondents*

**Year: 2007-2009**

Community	Yes			No			Estimated Population (3-Yr Avg)
	#	%	C.I. (95%)	#	%	C.I. (95%)	#
Hilo	400	14.2	4.2 - 24.3	2,400	85.8	75.7 - 95.8	2,800
Lahaina/ Wailuku	900	32.6	10.3 - 55.0	1,800	67.4	45.0 - 89.7	2,600
Mililani/ Wahiawa	1,300	14.6	6.1 - 23.1	7,500	85.4	76.9 - 93.9	8,800
Puna/ Kau	200	8.9	1.0 - 16.8	2,100	91.1	83.2 - 99.0	2,300
Salt Lake/ Foster Village	500	8.0	0.5 - 15.4	5,800	92.0	84.6 - 99.5	6,300
Upcountry/ Hana	300	13.1	1.9 - 24.4	2,000	86.9	75.6 - 98.1	2,400
Waipahu/ Kapolei/ Ewa	1,200	9.8	1.5 - 18.1	11,200	90.2	81.9 - 98.5	12,400

**Was your test for HIV a rapid test? by State, County, Island, Community, BRFSS Age Group, DOH Race-Ethnicity, Gender, Education Level, Employment Status (Grouped), Household Income, Poverty Level, Marital Status (Grouped), Married, Health Care Coverage, for the Year(s) - 2006-2008, 2007-2009, 2008-2010**

*Note: Weighted numbers (#) represent 3-yr averages, percentages and 95% confidence intervals; Respondents aged 18 years and older; n/r (Not Reportable) - If the unweighted total responses for a dimension (row) is <50 that row will not be shown; n/a (Not Available) - Not asked of a subset of respondents*

**Year: 2007-2009**

BRFSS Age Group	Yes			No			Estimated Population (3-Yr Avg)
	#	%	C.I. (95%)	#	%	C.I. (95%)	#
18-24	2,600	16.5	8.0 - 25.0	13,300	83.5	75.0 - 92.0	15,900
25-34	3,900	12.8	7.8 - 17.9	26,800	87.2	82.1 - 92.2	30,700
35-44	2,100	11.8	6.8 - 16.8	15,600	88.2	83.2 - 93.2	17,600
45-54	1,300	15.3	9.0 - 21.6	7,100	84.7	78.4 - 91.0	8,400
55-64	700	13.3	7.0 - 19.6	4,400	86.7	80.4 - 93.0	5,100



**Was your test for HIV a rapid test? by State, County, Island, Community, BRFSS Age Group, DOH Race-Ethnicity, Gender, Education Level, Employment Status (Grouped), Household Income, Poverty Level, Marital Status (Grouped), Married, Health Care Coverage, for the Year(s) - 2006-2008, 2007-2009, 2008-2010**

*Note: Weighted numbers (#) represent 3-yr averages, percentages and 95% confidence intervals; Respondents aged 18 years and older; n/r (Not Reportable) - If the unweighted total responses for a dimension (row) is <50 that row will not be shown; n/a (Not Available) - Not asked of a subset of respondents*

**Year: 2007-2009**

DOH Race-Ethnicity	Yes			No			Estimated Population (3-Yr Avg)
	#	%	C.I. (95%)	#	%	C.I. (95%)	#
Caucasian	3,000	9.1	5.8 - 12.4	29,600	90.9	87.6 - 94.2	32,600
Native Hawaiian	2,100	21.3	12.3 - 30.4	7,800	78.7	69.6 - 87.7	9,900
Filipino	1,500	15.8	7.1 - 24.5	7,800	84.2	75.5 - 92.9	9,300
Japanese	1,100	16.4	3.0 - 29.9	5,700	83.6	70.1 - 97.0	6,800
Black	500	10.2	1.7 - 18.8	4,000	89.8	81.2 - 98.3	4,400

Gender	Yes			No			Estimated Population (3-Yr Avg)
	#	%	C.I. (95%)	#	%	C.I. (95%)	#
Male	7,300	16.1	11.7 - 20.4	38,000	83.9	79.6 - 88.3	45,200
Female	3,300	10.1	6.4 - 13.9	29,500	89.9	86.1 - 93.6	32,800

**Was your test for HIV a rapid test? by State, County, Island, Community, BRFSS Age Group, DOH Race-Ethnicity, Gender, Education Level, Employment Status (Grouped), Household Income, Poverty Level, Marital Status (Grouped), Married, Health Care Coverage, for the Year(s) - 2006-2008, 2007-2009, 2008-2010**

*Note: Weighted numbers (#) represent 3-yr averages, percentages and 95% confidence intervals; Respondents aged 18 years and older; n/r (Not Reportable) - If the unweighted total responses for a dimension (row) is <50 that row will not be shown; n/a (Not Available) - Not asked of a subset of respondents*

**Year: 2007-2009**

Education Level	Yes			No			Estimated Population (3-Yr Avg)
	#	%	C.I. (95%)	#	%	C.I. (95%)	#
Grades 12 or GED (High School Grad)	3,800	16.6	9.9 - 23.3	19,300	83.4	76.7 - 90.1	23,200
College 1 to 3 years (Some College/ Tech)	3,400	13.1	8.4 - 17.8	22,500	86.9	82.2 - 91.6	25,900
College 4 years or more (College Grad)	2,600	10.0	6.2 - 13.9	23,700	90.0	86.1 - 93.8	26,300

Employment Status (Grouped)	Yes			No			Estimated Population (3-Yr Avg)
	#	%	C.I. (95%)	#	%	C.I. (95%)	#
Employed	7,700	13.2	9.8 - 16.6	50,900	86.8	83.4 - 90.2	58,700
Unemployed	800	17.6	3.6 - 31.7	3,900	82.4	68.3 - 96.4	4,700
Retired/Unable to work	1,000	18.6	5.8 - 31.4	4,400	81.4	68.6 - 94.2	5,400
Student/Homemaker	1,000	11.0	2.6 - 19.5	8,200	89.0	80.5 - 97.4	9,200

**Was your test for HIV a rapid test? by State, County, Island, Community, BRFSS Age Group, DOH Race-Ethnicity, Gender, Education Level, Employment Status (Grouped), Household Income, Poverty Level, Marital Status (Grouped), Married, Health Care Coverage, for the Year(s) - 2006-2008, 2007-2009, 2008-2010**

*Note: Weighted numbers (#) represent 3-yr averages, percentages and 95% confidence intervals; Respondents aged 18 years and older; n/r (Not Reportable) - If the unweighted total responses for a dimension (row) is <50 that row will not be shown; n/a (Not Available) - Not asked of a subset of respondents*

**Year: 2007-2009**

Household Income	Yes			No			Estimated Population (3-Yr Avg)
	#	%	C.I. (95%)	#	%	C.I. (95%)	#
Less than \$10,000	200	8.4	1.4 - 15.4	2,700	91.6	84.6 - 98.6	2,900
\$20,000 to \$24,999	200	4.2	0.1 - 8.4	4,000	95.8	91.6 - 99.9	4,200
\$25,000 to \$34,999	1,800	21.1	8.7 - 33.5	6,700	78.9	66.5 - 91.3	8,500
\$35,000 to \$49,999	1,000	9.6	4.7 - 14.5	9,800	90.4	85.5 - 95.3	10,900
\$50,000 to \$74,999	2,100	13.9	6.9 - 20.9	13,000	86.1	79.1 - 93.1	15,100
\$75,000 or more	2,600	10.6	6.4 - 14.9	21,900	89.4	85.1 - 93.6	24,500

**Was your test for HIV a rapid test? by State, County, Island, Community, BRFSS Age Group, DOH Race-Ethnicity, Gender, Education Level, Employment Status (Grouped), Household Income, Poverty Level, Marital Status (Grouped), Married, Health Care Coverage, for the Year(s) - 2006-2008, 2007-2009, 2008-2010**

*Note: Weighted numbers (#) represent 3-yr averages, percentages and 95% confidence intervals; Respondents aged 18 years and older; n/r (Not Reportable) - If the unweighted total responses for a dimension (row) is <50 that row will not be shown; n/a (Not Available) - Not asked of a subset of respondents*

**Year: 2007-2009**

Poverty Level	Yes			No			Estimated Population (3-Yr Avg)
	#	%	C.I. (95%)	#	%	C.I. (95%)	#
<b>0-130%</b>	3,100	18.0	10.0 - 25.9	14,000	82.0	74.1 - 90.0	17,100
<b>131-185%</b>	600	6.0	1.5 - 10.5	9,000	94.0	89.5 - 98.5	9,600
<b>186+%</b>	5,200	11.7	8.3 - 15.1	39,300	88.3	84.9 - 91.7	44,600

Marital Status (Grouped)	Yes			No			Estimated Population (3-Yr Avg)
	#	%	C.I. (95%)	#	%	C.I. (95%)	#
<b>Married</b>	4,900	11.2	8.0 - 14.5	38,300	88.8	85.5 - 92.0	43,200
<b>Unmarried Couple</b>	500	11.8	0.5 - 23.1	3,400	88.2	76.9 - 99.5	3,900
<b>Other</b>	5,300	17.1	11.3 - 22.9	25,500	82.9	77.1 - 88.7	30,700

**Was your test for HIV a rapid test? by State, County, Island, Community, BRFSS Age Group, DOH Race-Ethnicity, Gender, Education Level, Employment Status (Grouped), Household Income, Poverty Level, Marital Status (Grouped), Married, Health Care Coverage, for the Year(s) - 2006-2008, 2007-2009, 2008-2010**

*Note: Weighted numbers (#) represent 3-yr averages, percentages and 95% confidence intervals; Respondents aged 18 years and older; n/r (Not Reportable) - If the unweighted total responses for a dimension (row) is <50 that row will not be shown; n/a (Not Available) - Not asked of a subset of respondents*

**Year: 2007-2009**

<b>Married</b>	<b>Yes</b>			<b>No</b>			<b>Estimated Population (3-Yr Avg)</b>
	<b>#</b>	<b>%</b>	<b>C.I. (95%)</b>	<b>#</b>	<b>%</b>	<b>C.I. (95%)</b>	<b>#</b>
<b>Yes</b>	5,000	11.3	8.1 - 14.5	39,200	88.7	85.5 - 91.9	44,200
<b>No</b>	5,600	16.5	11.1 - 21.8	28,300	83.5	78.2 - 88.9	33,900

<b>Health Care Coverage</b>	<b>Yes</b>			<b>No</b>			<b>Estimated Population (3-Yr Avg)</b>
	<b>#</b>	<b>%</b>	<b>C.I. (95%)</b>	<b>#</b>	<b>%</b>	<b>C.I. (95%)</b>	<b>#</b>
<b>Yes</b>	9,800	13.6	10.5 - 16.6	62,700	86.4	83.4 - 89.5	72,600
<b>No</b>	800	14.6	0.5 - 28.7	4,500	85.4	71.3 - 99.5	5,200

**Was your test for HIV a rapid test? by State, County, Island, Community, BRFSS Age Group, DOH Race-Ethnicity, Gender, Education Level, Employment Status (Grouped), Household Income, Poverty Level, Marital Status (Grouped), Married, Health Care Coverage, for the Year(s) - 2006-2008, 2007-2009, 2008-2010**

*Note: Weighted numbers (#) represent 3-yr averages, percentages and 95% confidence intervals; Respondents aged 18 years and older; n/r (Not Reportable) - If the unweighted total responses for a dimension (row) is <50 that row will not be shown; n/a (Not Available) - Not asked of a subset of respondents*

**Year: 2006-2008**

State	Yes			No			Estimated Population (3-Yr Avg)
	#	%	C.I. (95%)	#	%	C.I. (95%)	#
Hawaii State	9,200	12.7	9.9 - 15.6	62,800	87.3	84.4 - 90.1	72,000

County	Yes			No			Estimated Population (3-Yr Avg)
	#	%	C.I. (95%)	#	%	C.I. (95%)	#
Hawaii	1,100	15.8	9.5 - 22.0	6,000	84.2	78.0 - 90.5	7,100
Honolulu	6,600	12.0	8.5 - 15.5	48,200	88.0	84.5 - 91.5	54,800
Kauai	400	14.5	5.1 - 23.9	2,500	85.5	76.1 - 94.9	3,000
Maui	1,000	14.6	8.0 - 21.1	6,100	85.4	78.9 - 92.0	7,100

**Was your test for HIV a rapid test? by State, County, Island, Community, BRFSS Age Group, DOH Race-Ethnicity, Gender, Education Level, Employment Status (Grouped), Household Income, Poverty Level, Marital Status (Grouped), Married, Health Care Coverage, for the Year(s) - 2006-2008, 2007-2009, 2008-2010**

*Note: Weighted numbers (#) represent 3-yr averages, percentages and 95% confidence intervals; Respondents aged 18 years and older; n/r (Not Reportable) - If the unweighted total responses for a dimension (row) is <50 that row will not be shown; n/a (Not Available) - Not asked of a subset of respondents*

**Year: 2006-2008**

Island	Yes			No			Estimated Population (3-Yr Avg)
	#	%	C.I. (95%)	#	%	C.I. (95%)	#
Hawaii	1,100	15.8	9.5 - 22.0	6,000	84.2	78.0 - 90.5	7,100
Kauai	400	14.5	5.1 - 23.9	2,500	85.5	76.1 - 94.9	3,000
Maui	1,000	14.7	7.6 - 21.7	5,600	85.3	78.3 - 92.4	6,500
Oahu	6,600	12.0	8.5 - 15.5	48,200	88.0	84.5 - 91.5	54,800

**Was your test for HIV a rapid test? by State, County, Island, Community, BRFSS Age Group, DOH Race-Ethnicity, Gender, Education Level, Employment Status (Grouped), Household Income, Poverty Level, Marital Status (Grouped), Married, Health Care Coverage, for the Year(s) - 2006-2008, 2007-2009, 2008-2010**

*Note: Weighted numbers (#) represent 3-yr averages, percentages and 95% confidence intervals; Respondents aged 18 years and older; n/r (Not Reportable) - If the unweighted total responses for a dimension (row) is <50 that row will not be shown; n/a (Not Available) - Not asked of a subset of respondents*

**Year: 2006-2008**

Community	Yes			No			Estimated Population (3-Yr Avg)
	#	%	C.I. (95%)	#	%	C.I. (95%)	#
Aiea/ Pearl City	500	8.6	0.0 - 17.9	5,300	91.4	82.1 - 100.0	5,800
Hilo	400	17.9	6.2 - 29.7	2,000	82.1	70.3 - 93.8	2,500
Kahului	400	16.8	3.2 - 30.5	1,900	83.2	69.5 - 96.8	2,300
Lahaina/ Wailuku	400	19.4	5.5 - 33.3	1,700	80.6	66.7 - 94.5	2,200
Mililani/ Wahiawa	1,200	16.7	7.7 - 25.7	6,200	83.3	74.3 - 92.3	7,400
Puna/ Kau	200	11.5	2.2 - 20.9	1,600	88.5	79.1 - 97.8	1,800
Salt Lake/ Foster Village	500	8.9	0.7 - 17.1	5,000	91.1	82.9 - 99.3	5,500
Upcountry/ Hana	200	7.6	1.3 - 13.9	2,000	92.4	86.1 - 98.7	2,100
Waipahu/ Kapolei/ Ewa	1,200	10.8	1.9 - 19.8	9,900	89.2	80.2 - 98.1	11,100



**Was your test for HIV a rapid test? by State, County, Island, Community, BRFSS Age Group, DOH Race-Ethnicity, Gender, Education Level, Employment Status (Grouped), Household Income, Poverty Level, Marital Status (Grouped), Married, Health Care Coverage, for the Year(s) - 2006-2008, 2007-2009, 2008-2010**

*Note: Weighted numbers (#) represent 3-yr averages, percentages and 95% confidence intervals; Respondents aged 18 years and older; n/r (Not Reportable) - If the unweighted total responses for a dimension (row) is <50 that row will not be shown; n/a (Not Available) - Not asked of a subset of respondents*

**Year: 2006-2008**

BRFSS Age Group	Yes			No			Estimated Population (3-Yr Avg)
	#	%	C.I. (95%)	#	%	C.I. (95%)	#
18-24	2,400	16.0	7.7 - 24.2	12,400	84.0	75.8 - 92.3	14,700
25-34	3,400	12.4	7.5 - 17.3	24,100	87.6	82.7 - 92.5	27,500
35-44	1,400	9.0	5.1 - 12.9	14,500	91.0	87.1 - 94.9	16,000
45-54	1,400	17.8	10.7 - 24.8	6,600	82.2	75.2 - 89.3	8,000
55-64	600	10.4	5.1 - 15.8	4,800	89.6	84.2 - 94.9	5,400

**Was your test for HIV a rapid test? by State, County, Island, Community, BRFSS Age Group, DOH Race-Ethnicity, Gender, Education Level, Employment Status (Grouped), Household Income, Poverty Level, Marital Status (Grouped), Married, Health Care Coverage, for the Year(s) - 2006-2008, 2007-2009, 2008-2010**

*Note: Weighted numbers (#) represent 3-yr averages, percentages and 95% confidence intervals; Respondents aged 18 years and older; n/r (Not Reportable) - If the unweighted total responses for a dimension (row) is <50 that row will not be shown; n/a (Not Available) - Not asked of a subset of respondents*

**Year: 2006-2008**

DOH Race-Ethnicity	Yes			No			Estimated Population (3-Yr Avg)
	#	%	C.I. (95%)	#	%	C.I. (95%)	#
Caucasian	3,100	9.6	6.4 - 12.7	29,100	90.4	87.3 - 93.6	32,200
Native Hawaiian	1,800	22.4	12.3 - 32.5	6,400	77.6	67.5 - 87.7	8,200
Filipino	1,200	13.2	5.6 - 20.8	8,200	86.8	79.2 - 94.4	9,500
Japanese	900	13.7	0.9 - 26.5	5,700	86.3	73.5 - 99.1	6,700
Black	1,000	25.6	11.2 - 39.9	2,900	74.4	60.1 - 88.8	3,900

Gender	Yes			No			Estimated Population (3-Yr Avg)
	#	%	C.I. (95%)	#	%	C.I. (95%)	#
Male	5,500	13.2	9.4 - 17.1	36,300	86.8	82.9 - 90.6	41,800
Female	3,700	12.1	8.0 - 16.2	26,600	87.9	83.8 - 92.0	30,200

**Was your test for HIV a rapid test? by State, County, Island, Community, BRFSS Age Group, DOH Race-Ethnicity, Gender, Education Level, Employment Status (Grouped), Household Income, Poverty Level, Marital Status (Grouped), Married, Health Care Coverage, for the Year(s) - 2006-2008, 2007-2009, 2008-2010**

*Note: Weighted numbers (#) represent 3-yr averages, percentages and 95% confidence intervals; Respondents aged 18 years and older; n/r (Not Reportable) - If the unweighted total responses for a dimension (row) is <50 that row will not be shown; n/a (Not Available) - Not asked of a subset of respondents*

**Year: 2006-2008**

Education Level	Yes			No			Estimated Population (3-Yr Avg)
	#	%	C.I. (95%)	#	%	C.I. (95%)	#
Grades 12 or GED (High School Grad)	3,100	15.2	8.7 - 21.7	17,400	84.8	78.3 - 91.3	20,600
College 1 to 3 years (Some College/ Tech)	2,800	11.9	7.2 - 16.7	20,300	88.1	83.3 - 92.8	23,100
College 4 years or more (College Grad)	3,000	11.4	7.4 - 15.3	23,400	88.6	84.7 - 92.6	26,400

Employment Status (Grouped)	Yes			No			Estimated Population (3-Yr Avg)
	#	%	C.I. (95%)	#	%	C.I. (95%)	#
Employed	7,500	13.1	9.7 - 16.4	49,600	86.9	83.6 - 90.3	57,000
Retired/Unable to work	700	13.4	5.4 - 21.3	4,500	86.6	78.7 - 94.6	5,200
Student/Homemaker	800	11.4	4.5 - 18.3	6,500	88.6	81.7 - 95.5	7,400

**Was your test for HIV a rapid test? by State, County, Island, Community, BRFSS Age Group, DOH Race-Ethnicity, Gender, Education Level, Employment Status (Grouped), Household Income, Poverty Level, Marital Status (Grouped), Married, Health Care Coverage, for the Year(s) - 2006-2008, 2007-2009, 2008-2010**

*Note: Weighted numbers (#) represent 3-yr averages, percentages and 95% confidence intervals; Respondents aged 18 years and older; n/r (Not Reportable) - If the unweighted total responses for a dimension (row) is <50 that row will not be shown; n/a (Not Available) - Not asked of a subset of respondents*

**Year: 2006-2008**

Household Income	Yes			No			Estimated Population (3-Yr Avg)
	#	%	C.I. (95%)	#	%	C.I. (95%)	#
\$20,000 to \$24,999	300	7.2	1.7 - 12.8	3,800	92.8	87.2 - 98.3	4,100
\$25,000 to \$34,999	1,600	17.1	5.9 - 28.4	7,800	82.9	71.6 - 94.1	9,400
\$35,000 to \$49,999	1,200	13.2	6.6 - 19.7	7,800	86.8	80.3 - 93.4	8,900
\$50,000 to \$74,999	1,800	14.2	6.8 - 21.6	10,900	85.8	78.4 - 93.2	12,700
\$75,000 or more	2,300	10.0	6.3 - 13.7	20,400	90.0	86.3 - 93.7	22,700

Poverty Level	Yes			No			Estimated Population (3-Yr Avg)
	#	%	C.I. (95%)	#	%	C.I. (95%)	#
0-130%	2,400	15.9	7.8 - 24.0	12,400	84.1	76.0 - 92.2	14,800
131-185%	600	9.0	2.6 - 15.3	6,600	91.0	84.7 - 97.4	7,200
186+%	4,900	11.7	8.5 - 14.9	37,200	88.3	85.1 - 91.5	42,200

**Was your test for HIV a rapid test? by State, County, Island, Community, BRFSS Age Group, DOH Race-Ethnicity, Gender, Education Level, Employment Status (Grouped), Household Income, Poverty Level, Marital Status (Grouped), Married, Health Care Coverage, for the Year(s) - 2006-2008, 2007-2009, 2008-2010**

*Note: Weighted numbers (#) represent 3-yr averages, percentages and 95% confidence intervals; Respondents aged 18 years and older; n/r (Not Reportable) - If the unweighted total responses for a dimension (row) is <50 that row will not be shown; n/a (Not Available) - Not asked of a subset of respondents*

**Year: 2006-2008**

Marital Status (Grouped)	Yes			No			Estimated Population (3-Yr Avg)
	#	%	C.I. (95%)	#	%	C.I. (95%)	#
Married	4,700	12.0	8.7 - 15.2	34,700	88.0	84.8 - 91.3	39,400
Unmarried Couple	200	6.6	0.0 - 13.3	3,200	93.4	86.7 - 100.0	3,400
Other	4,000	14.0	8.7 - 19.4	24,700	86.0	80.6 - 91.3	28,800

Married	Yes			No			Estimated Population (3-Yr Avg)
	#	%	C.I. (95%)	#	%	C.I. (95%)	#
Yes	4,900	12.1	8.8 - 15.3	35,500	87.9	84.7 - 91.2	40,400
No	4,300	13.6	8.6 - 18.5	27,300	86.4	81.5 - 91.4	31,600

**Was your test for HIV a rapid test? by State, County, Island, Community, BRFSS Age Group, DOH Race-Ethnicity, Gender, Education Level, Employment Status (Grouped), Household Income, Poverty Level, Marital Status (Grouped), Married, Health Care Coverage, for the Year(s) - 2006-2008, 2007-2009, 2008-2010**

*Note: Weighted numbers (#) represent 3-yr averages, percentages and 95% confidence intervals; Respondents aged 18 years and older; n/r (Not Reportable) - If the unweighted total responses for a dimension (row) is <50 that row will not be shown; n/a (Not Available) - Not asked of a subset of respondents*

**Year: 2006-2008**

Health Care Coverage	Yes			No			Estimated Population (3-Yr Avg)
	#	%	C.I. (95%)	#	%	C.I. (95%)	#
<b>Yes</b>	8,600	12.6	9.8 - 15.5	59,300	87.4	84.5 - 90.2	67,800
<b>No</b>	600	15.1	0.0 - 30.7	3,500	84.9	69.3 - 100.0	4,100