

HIV - within past 2 years (18-64) by State, County, Island, Community, BRFSS Age Group, DOH Race-Ethnicity, Gender, Education Level, Employment Status (Grouped), Household Income, Poverty Level, Marital Status (Grouped), Married, Health Care Coverage, for the Year(s) - 2001-2003, 2002-2004, 2003-2005, 2004-2006, 2005-2007, 2006-2008, 2007-2009, 2008-2010

Note: Weighted numbers (#) represent 3-yr averages, percentages and 95% confidence intervals; Respondents aged 18 years and older; n/r (Not Reportable) - If the unweighted total responses for a dimension (row) is <50 that row will not be shown; n/a (Not Available) - Not asked of a subset of respondents

The trend analysis report shows the trend for the selected health variable over selected years in a table and a graph. Estimated Population: This number is a weighted representation of the population who responded to a particular question in the survey. For most questions the eligible population will be the entire adult population. For some secondary questions only a subset of the population was asked the question. For example, all survey participants were asked if they had diabetes, but only those who answered yes were asked if they use insulin. If a dimension value is unknown for a particular survey record, that record will not be included in the counts for that particular dimension.

For documentation on other terms and coding in this report, please go to the following links

[Click here to access BRFSS documentation](#)

[Click here to access DOH Race-Ethnicity coding](#)

[Click here to access The Hawai'i Data Guide](#)

[Click here to access Poverty Level Methodology](#)

**For questions about this report, please contact
The Hawaii Health Data Warehouse**

profiles@hhdw.org

(855) 946-5899 x15

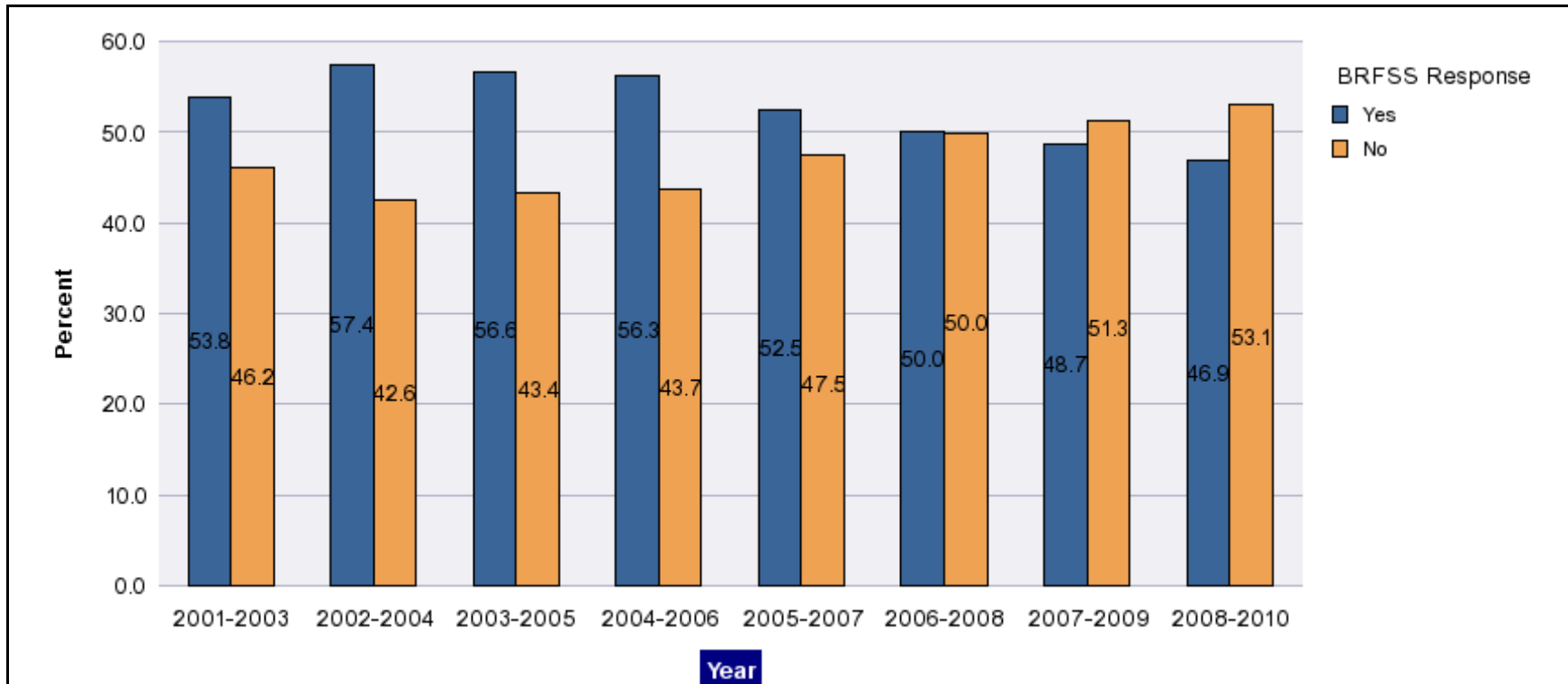
HIV - within past 2 years (18-64) by State, County, Island, Community, BRFSS Age Group, DOH Race-Ethnicity, Gender, Education Level, Employment Status (Grouped), Household Income, Poverty Level, Marital Status (Grouped), Married, Health Care Coverage, for the Year(s) - 2001-2003, 2002-2004, 2003-2005, 2004-2006, 2005-2007, 2006-2008, 2007-2009, 2008-2010

Note: Weighted numbers (#) represent 3-yr averages, percentages and 95% confidence intervals; Respondents aged 18 years and older; n/r (Not Reportable) - If the unweighted total responses for a dimension (row) is <50 that row will not be shown; n/a (Not Available) - Not asked of a subset of respondents

Year	Yes			No			Estimated Population (3-Yr Avg)
	#	%	C.I.(95%)	#	%	C.I.(95%)	#
2001-2003	150,300	53.8	51.8 - 55.8	128,900	46.2	44.2 - 48.2	279,200
2002-2004	155,400	57.4	55.1 - 59.8	115,300	42.6	40.2 - 44.9	270,600
2003-2005	154,500	56.6	54.2 - 58.9	118,600	43.4	41.1 - 45.8	273,100
2004-2006	134,700	56.3	53.8 - 58.8	104,600	43.7	41.2 - 46.2	239,300
2005-2007	122,900	52.5	50.5 - 54.5	111,100	47.5	45.5 - 49.5	234,000
2006-2008	113,200	50.0	47.9 - 52.1	113,200	50.0	47.9 - 52.1	226,400
2007-2009	123,900	48.7	46.7 - 50.7	130,600	51.3	49.3 - 53.3	254,400
2008-2010	115,400	46.9	44.7 - 49.0	130,800	53.1	51.0 - 55.3	246,200

HIV - within past 2 years (18-64) by State, County, Island, Community, BRFSS Age Group, DOH Race-Ethnicity, Gender, Education Level, Employment Status (Grouped), Household Income, Poverty Level, Marital Status (Grouped), Married, Health Care Coverage, for the Year(s) - 2001-2003, 2002-2004, 2003-2005, 2004-2006, 2005-2007, 2006-2008, 2007-2009, 2008-2010

Note: Weighted numbers (#) represent 3-yr averages, percentages and 95% confidence intervals; Respondents aged 18 years and older; n/r (Not Reportable) - If the unweighted total responses for a dimension (row) is <50 that row will not be shown; n/a (Not Available) - Not asked of a subset of respondents



HIV - within past 2 years (18-64) by State, County, Island, Community, BRFSS Age Group, DOH Race-Ethnicity, Gender, Education Level, Employment Status (Grouped), Household Income, Poverty Level, Marital Status (Grouped), Married, Health Care Coverage, for the Year(s) - 2001-2003, 2002-2004, 2003-2005, 2004-2006, 2005-2007, 2006-2008, 2007-2009, 2008-2010

Note: Weighted numbers (#) represent 3-yr averages, percentages and 95% confidence intervals; Respondents aged 18 years and older; n/r (Not Reportable) - If the unweighted total responses for a dimension (row) is <50 that row will not be shown; n/a (Not Available) - Not asked of a subset of respondents

Year: 2008-2010

State	Yes			No			Estimated Population (3-Yr Avg)
	#	%	C.I. (95%)	#	%	C.I. (95%)	#
Hawaii State	115,400	46.9	44.7 - 49.0	130,800	53.1	51.0 - 55.3	246,200

County	Yes			No			Estimated Population (3-Yr Avg)
	#	%	C.I. (95%)	#	%	C.I. (95%)	#
Hawaii	12,800	35.5	31.7 - 39.2	23,300	64.5	60.8 - 68.3	36,000
Honolulu	87,900	51.8	49.0 - 54.6	81,700	48.2	45.4 - 51.0	169,600
Kauai	4,100	36.2	29.4 - 43.0	7,200	63.8	57.0 - 70.6	11,300
Maui	10,600	36.3	31.8 - 40.7	18,700	63.7	59.3 - 68.2	29,300

HIV - within past 2 years (18-64) by State, County, Island, Community, BRFSS Age Group, DOH Race-Ethnicity, Gender, Education Level, Employment Status (Grouped), Household Income, Poverty Level, Marital Status (Grouped), Married, Health Care Coverage, for the Year(s) - 2001-2003, 2002-2004, 2003-2005, 2004-2006, 2005-2007, 2006-2008, 2007-2009, 2008-2010

Note: Weighted numbers (#) represent 3-yr averages, percentages and 95% confidence intervals; Respondents aged 18 years and older; n/r (Not Reportable) - If the unweighted total responses for a dimension (row) is <50 that row will not be shown; n/a (Not Available) - Not asked of a subset of respondents

Year: 2008-2010

Island	Yes			No			Estimated Population (3-Yr Avg)
	#	%	C.I. (95%)	#	%	C.I. (95%)	#
Hawaii	12,800	35.5	31.7 - 39.2	23,300	64.5	60.8 - 68.3	36,000
Kauai	4,100	36.2	29.4 - 43.0	7,200	63.8	57.0 - 70.6	11,300
Lanai	100	33.3	19.6 - 47.0	300	66.7	53.0 - 80.4	400
Maui	9,800	36.5	31.8 - 41.2	17,100	63.5	58.8 - 68.2	27,000
Molokai	600	33.7	24.1 - 43.2	1,300	66.3	56.8 - 75.9	1,900
Oahu	87,900	51.8	49.0 - 54.6	81,700	48.2	45.4 - 51.0	169,600

Community	Yes			No			Estimated Population (3-Yr Avg)
	#	%	C.I. (95%)	#	%	C.I. (95%)	#
Aiea/ Pearl City	5,700	48.5	37.7 - 59.2	6,000	51.5	40.8 - 62.3	11,700
Ala Moana	2,500	41.7	28.8 - 54.5	3,500	58.3	45.5 - 71.2	6,000

HIV - within past 2 years (18-64) by State, County, Island, Community, BRFSS Age Group, DOH Race-Ethnicity, Gender, Education Level, Employment Status (Grouped), Household Income, Poverty Level, Marital Status (Grouped), Married, Health Care Coverage, for the Year(s) - 2001-2003, 2002-2004, 2003-2005, 2004-2006, 2005-2007, 2006-2008, 2007-2009, 2008-2010

Note: Weighted numbers (#) represent 3-yr averages, percentages and 95% confidence intervals; Respondents aged 18 years and older; n/r (Not Reportable) - If the unweighted total responses for a dimension (row) is <50 that row will not be shown; n/a (Not Available) - Not asked of a subset of respondents

Year: 2008-2010

Community	Yes			No			Estimated Population (3-Yr Avg)
	#	%	C.I. (95%)	#	%	C.I. (95%)	#
Hanalei/ Kapaa	1,700	30.7	22.5 - 38.8	3,900	69.3	61.2 - 77.5	5,600
Hilo	4,700	44.3	36.8 - 51.9	6,000	55.7	48.1 - 63.2	10,700
Kaaawa/ Kahaluu/ Kaneohe	4,300	45.6	33.9 - 57.2	5,100	54.4	42.8 - 66.1	9,400
Kahului	2,800	34.1	26.0 - 42.2	5,400	65.9	57.8 - 74.0	8,300
Kailua/ Waimanalo	6,900	47.8	38.3 - 57.3	7,500	52.2	42.7 - 61.7	14,300
Kaimuki/ Palolo/ Waikiki	6,000	47.3	38.1 - 56.5	6,700	52.7	43.5 - 61.9	12,600
Kona	2,200	29.4	22.2 - 36.7	5,200	70.6	63.3 - 77.8	7,300
Lahaina/ Wailuku	3,800	44.1	34.8 - 53.5	4,800	55.9	46.5 - 65.2	8,700
Lanai	100	33.3	19.6 - 47.0	300	66.7	53.0 - 80.4	400
Lihue-Waimea	2,400	41.7	31.2 - 52.2	3,300	58.3	47.8 - 68.8	5,700
Manoa/ Upper Makiki	3,500	32.8	23.2 - 42.3	7,200	67.2	57.7 - 76.8	10,700
Mililani/ Wahiawa	15,500	61.6	54.6 - 68.6	9,600	38.4	31.4 - 45.4	25,100

HIV - within past 2 years (18-64) by State, County, Island, Community, BRFSS Age Group, DOH Race-Ethnicity, Gender, Education Level, Employment Status (Grouped), Household Income, Poverty Level, Marital Status (Grouped), Married, Health Care Coverage, for the Year(s) - 2001-2003, 2002-2004, 2003-2005, 2004-2006, 2005-2007, 2006-2008, 2007-2009, 2008-2010

Note: Weighted numbers (#) represent 3-yr averages, percentages and 95% confidence intervals; Respondents aged 18 years and older; n/r (Not Reportable) - If the unweighted total responses for a dimension (row) is <50 that row will not be shown; n/a (Not Available) - Not asked of a subset of respondents

Year: 2008-2010

Community	Yes			No			Estimated Population (3-Yr Avg)
	#	%	C.I. (95%)	#	%	C.I. (95%)	#
Molokai	600	33.7	24.1 - 43.2	1,300	66.3	56.8 - 75.9	1,900
Nanakuli/ Waianae	4,000	54.2	39.1 - 69.4	3,400	45.8	30.6 - 60.9	7,400
N.Hawaii	2,200	31.6	22.8 - 40.4	4,700	68.4	59.6 - 77.2	6,800
Nuuanu/ Kalihi/ Moanalua	6,100	53.9	41.7 - 66.1	5,200	46.1	33.9 - 58.3	11,300
Puna/ Kau	3,700	33.2	26.9 - 39.6	7,500	66.8	60.4 - 73.1	11,200
Salt Lake/ Foster Village	11,400	68.9	60.9 - 76.9	5,100	31.1	23.1 - 39.1	16,500
Upcountry/ Hana	3,200	31.9	25.2 - 38.6	6,900	68.1	61.4 - 74.8	10,100
Waialae/ Kahala/ Hawaii Kai	3,300	40.0	27.5 - 52.5	5,000	60.0	47.5 - 72.5	8,300
Waipahu/ Kapolei/ Ewa	16,500	53.7	46.9 - 60.5	14,200	46.3	39.5 - 53.1	30,700

HIV - within past 2 years (18-64) by State, County, Island, Community, BRFSS Age Group, DOH Race-Ethnicity, Gender, Education Level, Employment Status (Grouped), Household Income, Poverty Level, Marital Status (Grouped), Married, Health Care Coverage, for the Year(s) - 2001-2003, 2002-2004, 2003-2005, 2004-2006, 2005-2007, 2006-2008, 2007-2009, 2008-2010

Note: Weighted numbers (#) represent 3-yr averages, percentages and 95% confidence intervals; Respondents aged 18 years and older; n/r (Not Reportable) - If the unweighted total responses for a dimension (row) is <50 that row will not be shown; n/a (Not Available) - Not asked of a subset of respondents

Year: 2008-2010

BRFSS Age Group	Yes			No			Estimated Population (3-Yr Avg)
	#	%	C.I. (95%)	#	%	C.I. (95%)	#
18-24	18,100	79.7	72.8 - 86.6	4,600	20.3	13.4 - 27.2	22,800
25-34	48,300	61.0	56.9 - 65.1	30,900	39.0	34.9 - 43.1	79,200
35-44	28,300	39.7	36.1 - 43.3	42,900	60.3	56.7 - 63.9	71,200
45-54	13,400	29.5	25.9 - 33.0	32,100	70.5	67.0 - 74.1	45,500
55-64	7,200	26.3	22.3 - 30.2	20,300	73.7	69.8 - 77.7	27,600

HIV - within past 2 years (18-64) by State, County, Island, Community, BRFSS Age Group, DOH Race-Ethnicity, Gender, Education Level, Employment Status (Grouped), Household Income, Poverty Level, Marital Status (Grouped), Married, Health Care Coverage, for the Year(s) - 2001-2003, 2002-2004, 2003-2005, 2004-2006, 2005-2007, 2006-2008, 2007-2009, 2008-2010

Note: Weighted numbers (#) represent 3-yr averages, percentages and 95% confidence intervals; Respondents aged 18 years and older; n/r (Not Reportable) - If the unweighted total responses for a dimension (row) is <50 that row will not be shown; n/a (Not Available) - Not asked of a subset of respondents

Year: 2008-2010

DOH Race-Ethnicity	Yes			No			Estimated Population (3-Yr Avg)
	#	%	C.I. (95%)	#	%	C.I. (95%)	#
Caucasian	49,900	44.6	41.8 - 47.5	61,900	55.4	52.5 - 58.2	111,700
Native Hawaiian	15,100	49.0	42.9 - 55.1	15,800	51.0	44.9 - 57.1	30,900
Chinese	5,100	53.7	42.3 - 65.0	4,400	46.3	35.0 - 57.7	9,600
Filipino	12,300	47.8	40.3 - 55.3	13,500	52.2	44.7 - 59.7	25,800
Japanese	11,700	36.8	30.6 - 42.9	20,200	63.2	57.1 - 69.4	32,000
Black	6,500	68.9	60.1 - 77.8	2,900	31.1	22.2 - 39.9	9,400
Native Alaskan/ American Indian	1,300	58.9	41.6 - 76.2	900	41.1	23.8 - 58.4	2,200
Other Asian	3,600	53.8	38.4 - 69.3	3,100	46.2	30.7 - 61.6	6,800
Other Pacific Islander	5,200	60.8	46.7 - 74.9	3,400	39.2	25.1 - 53.3	8,600
Other	4,300	50.3	38.3 - 62.4	4,200	49.7	37.6 - 61.7	8,500

HIV - within past 2 years (18-64) by State, County, Island, Community, BRFSS Age Group, DOH Race-Ethnicity, Gender, Education Level, Employment Status (Grouped), Household Income, Poverty Level, Marital Status (Grouped), Married, Health Care Coverage, for the Year(s) - 2001-2003, 2002-2004, 2003-2005, 2004-2006, 2005-2007, 2006-2008, 2007-2009, 2008-2010

Note: Weighted numbers (#) represent 3-yr averages, percentages and 95% confidence intervals; Respondents aged 18 years and older; n/r (Not Reportable) - If the unweighted total responses for a dimension (row) is <50 that row will not be shown; n/a (Not Available) - Not asked of a subset of respondents

Year: 2008-2010

Gender	Yes			No			Estimated Population (3-Yr Avg)
	#	%	C.I. (95%)	#	%	C.I. (95%)	#
Male	62,400	51.2	48.0 - 54.4	59,500	48.8	45.6 - 52.0	121,900
Female	52,900	42.6	39.8 - 45.4	71,300	57.4	54.6 - 60.2	124,300

Education Level	Yes			No			Estimated Population (3-Yr Avg)
	#	%	C.I. (95%)	#	%	C.I. (95%)	#
Grades 9 thru 11 (Some High School)	3,300	46.3	32.7 - 59.8	3,800	53.7	40.2 - 67.3	7,100
Grades 12 or GED (High School Grad)	29,500	51.6	46.9 - 56.4	27,600	48.4	43.6 - 53.1	57,000
College 1 to 3 years (Some College/ Tech)	39,400	50.4	46.5 - 54.3	38,800	49.6	45.7 - 53.5	78,100
College 4 years or more (College Grad)	42,600	41.5	38.5 - 44.4	60,100	58.5	55.6 - 61.5	102,700

HIV - within past 2 years (18-64) by State, County, Island, Community, BRFSS Age Group, DOH Race-Ethnicity, Gender, Education Level, Employment Status (Grouped), Household Income, Poverty Level, Marital Status (Grouped), Married, Health Care Coverage, for the Year(s) - 2001-2003, 2002-2004, 2003-2005, 2004-2006, 2005-2007, 2006-2008, 2007-2009, 2008-2010

Note: Weighted numbers (#) represent 3-yr averages, percentages and 95% confidence intervals; Respondents aged 18 years and older; n/r (Not Reportable) - If the unweighted total responses for a dimension (row) is <50 that row will not be shown; n/a (Not Available) - Not asked of a subset of respondents

Year: 2008-2010

Employment Status (Grouped)	Yes			No			Estimated Population (3-Yr Avg)
	#	%	C.I. (95%)	#	%	C.I. (95%)	#
Employed	83,000	46.0	43.5 - 48.4	97,600	54.0	51.6 - 56.5	180,600
Unemployed	8,300	47.6	38.9 - 56.2	9,100	52.4	43.8 - 61.1	17,400
Retired/Unable to work	6,500	38.9	32.1 - 45.8	10,200	61.1	54.2 - 67.9	16,600
Student/Homemaker	17,600	56.0	50.1 - 61.8	13,800	44.0	38.2 - 49.9	31,400

HIV - within past 2 years (18-64) by State, County, Island, Community, BRFSS Age Group, DOH Race-Ethnicity, Gender, Education Level, Employment Status (Grouped), Household Income, Poverty Level, Marital Status (Grouped), Married, Health Care Coverage, for the Year(s) - 2001-2003, 2002-2004, 2003-2005, 2004-2006, 2005-2007, 2006-2008, 2007-2009, 2008-2010

Note: Weighted numbers (#) represent 3-yr averages, percentages and 95% confidence intervals; Respondents aged 18 years and older; n/r (Not Reportable) - If the unweighted total responses for a dimension (row) is <50 that row will not be shown; n/a (Not Available) - Not asked of a subset of respondents

Year: 2008-2010

Household Income	Yes			No			Estimated Population (3-Yr Avg)
	#	%	C.I. (95%)	#	%	C.I. (95%)	#
Less than \$10,000	4,000	55.9	45.5 - 66.2	3,200	44.1	33.8 - 54.5	7,200
\$10,000 to \$14,999	2,600	47.1	33.1 - 61.1	2,900	52.9	38.9 - 66.9	5,500
\$15,000 to \$19,999	6,000	56.0	45.3 - 66.6	4,700	44.0	33.4 - 54.7	10,700
\$20,000 to \$24,999	6,100	45.4	36.6 - 54.2	7,400	54.6	45.8 - 63.4	13,500
\$25,000 to \$34,999	10,600	48.5	41.0 - 56.0	11,200	51.5	44.0 - 59.0	21,800
\$35,000 to \$49,999	15,600	47.0	41.6 - 52.4	17,600	53.0	47.6 - 58.4	33,100
\$50,000 to \$74,999	22,800	49.8	44.8 - 54.7	23,000	50.2	45.3 - 55.2	45,900
\$75,000 or more	39,800	42.3	39.0 - 45.7	54,200	57.7	54.3 - 61.0	93,900

HIV - within past 2 years (18-64) by State, County, Island, Community, BRFSS Age Group, DOH Race-Ethnicity, Gender, Education Level, Employment Status (Grouped), Household Income, Poverty Level, Marital Status (Grouped), Married, Health Care Coverage, for the Year(s) - 2001-2003, 2002-2004, 2003-2005, 2004-2006, 2005-2007, 2006-2008, 2007-2009, 2008-2010

Note: Weighted numbers (#) represent 3-yr averages, percentages and 95% confidence intervals; Respondents aged 18 years and older; n/r (Not Reportable) - If the unweighted total responses for a dimension (row) is <50 that row will not be shown; n/a (Not Available) - Not asked of a subset of respondents

Year: 2008-2010

Poverty Level	Yes			No			Estimated Population (3-Yr Avg)
	#	%	C.I. (95%)	#	%	C.I. (95%)	#
0-130%	25,300	51.3	46.1 - 56.5	24,100	48.7	43.5 - 53.9	49,400
131-185%	15,700	51.4	45.5 - 57.3	14,900	48.6	42.7 - 54.5	30,600
186+%	66,300	43.7	41.2 - 46.3	85,300	56.3	53.7 - 58.8	151,500

Marital Status (Grouped)	Yes			No			Estimated Population (3-Yr Avg)
	#	%	C.I. (95%)	#	%	C.I. (95%)	#
Married	64,900	43.2	40.6 - 45.8	85,100	56.8	54.2 - 59.4	150,000
Unmarried Couple	5,100	39.0	29.2 - 48.8	8,000	61.0	51.2 - 70.8	13,200
Widowed	900	35.0	17.2 - 52.9	1,600	65.0	47.1 - 82.8	2,500
Other	44,500	55.3	51.4 - 59.1	36,000	44.7	40.9 - 48.6	80,600

HIV - within past 2 years (18-64) by State, County, Island, Community, BRFSS Age Group, DOH Race-Ethnicity, Gender, Education Level, Employment Status (Grouped), Household Income, Poverty Level, Marital Status (Grouped), Married, Health Care Coverage, for the Year(s) - 2001-2003, 2002-2004, 2003-2005, 2004-2006, 2005-2007, 2006-2008, 2007-2009, 2008-2010

Note: Weighted numbers (#) represent 3-yr averages, percentages and 95% confidence intervals; Respondents aged 18 years and older; n/r (Not Reportable) - If the unweighted total responses for a dimension (row) is <50 that row will not be shown; n/a (Not Available) - Not asked of a subset of respondents

Year: 2008-2010

Married	Yes			No			Estimated Population (3-Yr Avg)
	#	%	C.I. (95%)	#	%	C.I. (95%)	#
Yes	66,400	43.1	40.6 - 45.7	87,500	56.9	54.3 - 59.4	153,900
No	49,000	53.1	49.5 - 56.8	43,200	46.9	43.2 - 50.5	92,200

Health Care Coverage	Yes			No			Estimated Population (3-Yr Avg)
	#	%	C.I. (95%)	#	%	C.I. (95%)	#
Yes	107,100	47.2	45.0 - 49.4	119,700	52.8	50.6 - 55.0	226,800
No	8,000	41.9	33.6 - 50.1	11,100	58.1	49.9 - 66.4	19,000

HIV - within past 2 years (18-64) by State, County, Island, Community, BRFSS Age Group, DOH Race-Ethnicity, Gender, Education Level, Employment Status (Grouped), Household Income, Poverty Level, Marital Status (Grouped), Married, Health Care Coverage, for the Year(s) - 2001-2003, 2002-2004, 2003-2005, 2004-2006, 2005-2007, 2006-2008, 2007-2009, 2008-2010

Note: Weighted numbers (#) represent 3-yr averages, percentages and 95% confidence intervals; Respondents aged 18 years and older; n/r (Not Reportable) - If the unweighted total responses for a dimension (row) is <50 that row will not be shown; n/a (Not Available) - Not asked of a subset of respondents

Year: 2007-2009

State	Yes			No			Estimated Population (3-Yr Avg)
	#	%	C.I. (95%)	#	%	C.I. (95%)	#
Hawaii State	123,900	48.7	46.7 - 50.7	130,600	51.3	49.3 - 53.3	254,400

County	Yes			No			Estimated Population (3-Yr Avg)
	#	%	C.I. (95%)	#	%	C.I. (95%)	#
Hawaii	13,600	37.6	34.0 - 41.3	22,500	62.4	58.7 - 66.0	36,100
Honolulu	93,600	52.9	50.2 - 55.6	83,300	47.1	44.4 - 49.8	177,000
Kauai	4,800	42.0	35.5 - 48.6	6,600	58.0	51.4 - 64.5	11,300
Maui	11,900	39.6	35.4 - 43.7	18,100	60.4	56.3 - 64.6	30,000

HIV - within past 2 years (18-64) by State, County, Island, Community, BRFSS Age Group, DOH Race-Ethnicity, Gender, Education Level, Employment Status (Grouped), Household Income, Poverty Level, Marital Status (Grouped), Married, Health Care Coverage, for the Year(s) - 2001-2003, 2002-2004, 2003-2005, 2004-2006, 2005-2007, 2006-2008, 2007-2009, 2008-2010

Note: Weighted numbers (#) represent 3-yr averages, percentages and 95% confidence intervals; Respondents aged 18 years and older; n/r (Not Reportable) - If the unweighted total responses for a dimension (row) is <50 that row will not be shown; n/a (Not Available) - Not asked of a subset of respondents

Year: 2007-2009

Island	Yes			No			Estimated Population (3-Yr Avg)
	#	%	C.I. (95%)	#	%	C.I. (95%)	#
Hawaii	13,600	37.6	34.0 - 41.3	22,500	62.4	58.7 - 66.0	36,100
Kauai	4,800	42.0	35.5 - 48.6	6,600	58.0	51.4 - 64.5	11,300
Lanai	200	35.1	23.2 - 46.9	300	64.9	53.1 - 76.8	400
Maui	10,900	39.6	35.1 - 44.0	16,600	60.4	56.0 - 64.9	27,500
Molokai	900	40.5	31.4 - 49.6	1,300	59.5	50.4 - 68.6	2,100
Oahu	93,600	52.9	50.2 - 55.6	83,300	47.1	44.4 - 49.8	177,000

Community	Yes			No			Estimated Population (3-Yr Avg)
	#	%	C.I. (95%)	#	%	C.I. (95%)	#
Aiea/ Pearl City	8,000	56.8	47.6 - 66.1	6,100	43.2	33.9 - 52.4	14,100
Ala Moana	2,600	44.6	31.4 - 57.8	3,300	55.4	42.2 - 68.6	5,900

HIV - within past 2 years (18-64) by State, County, Island, Community, BRFSS Age Group, DOH Race-Ethnicity, Gender, Education Level, Employment Status (Grouped), Household Income, Poverty Level, Marital Status (Grouped), Married, Health Care Coverage, for the Year(s) - 2001-2003, 2002-2004, 2003-2005, 2004-2006, 2005-2007, 2006-2008, 2007-2009, 2008-2010

Note: Weighted numbers (#) represent 3-yr averages, percentages and 95% confidence intervals; Respondents aged 18 years and older; n/r (Not Reportable) - If the unweighted total responses for a dimension (row) is <50 that row will not be shown; n/a (Not Available) - Not asked of a subset of respondents

Year: 2007-2009

Community	Yes			No			Estimated Population (3-Yr Avg)
	#	%	C.I. (95%)	#	%	C.I. (95%)	#
Hanalei/ Kapaa	2,100	36.4	27.4 - 45.4	3,600	63.6	54.6 - 72.6	5,700
Hilo	4,500	46.5	39.0 - 53.9	5,200	53.5	46.1 - 61.0	9,700
Kaaawa/ Kahaluu/ Kaneohe	6,100	53.9	43.6 - 64.1	5,200	46.1	35.9 - 56.4	11,300
Kahului	3,400	38.9	31.1 - 46.7	5,400	61.1	53.3 - 68.9	8,800
Kailua/ Waimanalo	6,600	48.4	39.4 - 57.4	7,100	51.6	42.6 - 60.6	13,700
Kaimuki/ Palolo/ Waikiki	5,400	43.1	34.1 - 52.0	7,100	56.9	48.0 - 65.9	12,500
Kona	2,200	29.9	22.8 - 36.9	5,100	70.1	63.1 - 77.2	7,300
Lahaina/ Wailuku	3,600	43.9	34.9 - 53.0	4,600	56.1	47.0 - 65.1	8,100
Lanai	200	35.1	23.2 - 46.9	300	64.9	53.1 - 76.8	400
Lihue-Waimea	2,700	47.7	38.3 - 57.1	3,000	52.3	42.9 - 61.7	5,600
Manoa/ Upper Makiki	4,100	43.7	33.6 - 53.9	5,300	56.3	46.1 - 66.4	9,300
Mililani/ Wahiawa	15,800	59.7	52.9 - 66.5	10,700	40.3	33.5 - 47.1	26,400

HIV - within past 2 years (18-64) by State, County, Island, Community, BRFSS Age Group, DOH Race-Ethnicity, Gender, Education Level, Employment Status (Grouped), Household Income, Poverty Level, Marital Status (Grouped), Married, Health Care Coverage, for the Year(s) - 2001-2003, 2002-2004, 2003-2005, 2004-2006, 2005-2007, 2006-2008, 2007-2009, 2008-2010

Note: Weighted numbers (#) represent 3-yr averages, percentages and 95% confidence intervals; Respondents aged 18 years and older; n/r (Not Reportable) - If the unweighted total responses for a dimension (row) is <50 that row will not be shown; n/a (Not Available) - Not asked of a subset of respondents

Year: 2007-2009

Community	Yes			No			Estimated Population (3-Yr Avg)
	#	%	C.I. (95%)	#	%	C.I. (95%)	#
Molokai	900	40.5	31.4 - 49.6	1,300	59.5	50.4 - 68.6	2,100
Nanakuli/ Waianae	3,400	49.9	35.1 - 64.8	3,400	50.1	35.2 - 64.9	6,800
N.Hawaii	2,700	35.0	26.8 - 43.3	5,000	65.0	56.7 - 73.2	7,700
N.Shore/ Laie	2,500	47.6	30.4 - 64.9	2,800	52.4	35.1 - 69.6	5,300
Nuuanu/ Kalihi/ Moanalua	6,100	47.6	36.4 - 58.8	6,700	52.4	41.2 - 63.6	12,800
Puna/ Kau	4,200	36.9	30.8 - 43.0	7,200	63.1	57.0 - 69.2	11,400
Salt Lake/ Foster Village	10,300	70.0	61.9 - 78.1	4,400	30.0	21.9 - 38.1	14,700
Upcountry/ Hana	3,900	36.8	30.4 - 43.2	6,700	63.2	56.8 - 69.6	10,500
Waialae/ Kahala/ Hawaii Kai	3,900	39.7	28.2 - 51.1	5,900	60.3	48.9 - 71.8	9,800
Waipahu/ Kapolei/ Ewa	18,800	54.9	48.7 - 61.1	15,500	45.1	38.9 - 51.3	34,300

HIV - within past 2 years (18-64) by State, County, Island, Community, BRFSS Age Group, DOH Race-Ethnicity, Gender, Education Level, Employment Status (Grouped), Household Income, Poverty Level, Marital Status (Grouped), Married, Health Care Coverage, for the Year(s) - 2001-2003, 2002-2004, 2003-2005, 2004-2006, 2005-2007, 2006-2008, 2007-2009, 2008-2010

Note: Weighted numbers (#) represent 3-yr averages, percentages and 95% confidence intervals; Respondents aged 18 years and older; n/r (Not Reportable) - If the unweighted total responses for a dimension (row) is <50 that row will not be shown; n/a (Not Available) - Not asked of a subset of respondents

Year: 2007-2009

BRFSS Age Group	Yes			No			Estimated Population (3-Yr Avg)
	#	%	C.I. (95%)	#	%	C.I. (95%)	#
18-24	21,900	79.2	72.6 - 85.9	5,700	20.8	14.1 - 27.4	27,700
25-34	50,000	60.9	57.1 - 64.7	32,100	39.1	35.3 - 42.9	82,100
35-44	29,100	40.4	36.9 - 43.8	43,100	59.6	56.2 - 63.1	72,200
45-54	14,800	32.1	28.6 - 35.6	31,300	67.9	64.4 - 71.4	46,100
55-64	7,900	30.2	26.0 - 34.5	18,300	69.8	65.5 - 74.0	26,300

HIV - within past 2 years (18-64) by State, County, Island, Community, BRFSS Age Group, DOH Race-Ethnicity, Gender, Education Level, Employment Status (Grouped), Household Income, Poverty Level, Marital Status (Grouped), Married, Health Care Coverage, for the Year(s) - 2001-2003, 2002-2004, 2003-2005, 2004-2006, 2005-2007, 2006-2008, 2007-2009, 2008-2010

Note: Weighted numbers (#) represent 3-yr averages, percentages and 95% confidence intervals; Respondents aged 18 years and older; n/r (Not Reportable) - If the unweighted total responses for a dimension (row) is <50 that row will not be shown; n/a (Not Available) - Not asked of a subset of respondents

Year: 2007-2009

DOH Race-Ethnicity	Yes			No			Estimated Population (3-Yr Avg)
	#	%	C.I. (95%)	#	%	C.I. (95%)	#
Caucasian	51,800	46.0	43.3 - 48.7	60,800	54.0	51.3 - 56.7	112,600
Native Hawaiian	15,800	49.4	43.5 - 55.2	16,200	50.6	44.8 - 56.5	32,100
Chinese	5,500	49.9	39.2 - 60.5	5,500	50.1	39.5 - 60.8	11,000
Filipino	14,500	49.6	42.7 - 56.4	14,800	50.4	43.6 - 57.3	29,300
Japanese	12,900	40.3	34.3 - 46.3	19,100	59.7	53.7 - 65.7	31,900
Black	7,200	72.9	64.6 - 81.2	2,700	27.1	18.8 - 35.4	9,900
Native Alaskan/ American Indian	1,700	61.7	46.5 - 76.9	1,100	38.3	23.1 - 53.5	2,800
Other Asian	4,700	59.4	47.0 - 71.9	3,200	40.6	28.1 - 53.0	7,900
Other Pacific Islander	4,900	63.6	49.9 - 77.3	2,800	36.4	22.7 - 50.1	7,800
Other	4,400	54.2	42.0 - 66.5	3,700	45.8	33.5 - 58.0	8,200

HIV - within past 2 years (18-64) by State, County, Island, Community, BRFSS Age Group, DOH Race-Ethnicity, Gender, Education Level, Employment Status (Grouped), Household Income, Poverty Level, Marital Status (Grouped), Married, Health Care Coverage, for the Year(s) - 2001-2003, 2002-2004, 2003-2005, 2004-2006, 2005-2007, 2006-2008, 2007-2009, 2008-2010

Note: Weighted numbers (#) represent 3-yr averages, percentages and 95% confidence intervals; Respondents aged 18 years and older; n/r (Not Reportable) - If the unweighted total responses for a dimension (row) is <50 that row will not be shown; n/a (Not Available) - Not asked of a subset of respondents

Year: 2007-2009

Gender	Yes			No			Estimated Population (3-Yr Avg)
	#	%	C.I. (95%)	#	%	C.I. (95%)	#
Male	67,500	54.8	51.8 - 57.8	55,700	45.2	42.2 - 48.2	123,200
Female	56,300	42.9	40.3 - 45.6	74,800	57.1	54.4 - 59.7	131,200

Education Level	Yes			No			Estimated Population (3-Yr Avg)
	#	%	C.I. (95%)	#	%	C.I. (95%)	#
Grades 9 thru 11 (Some High School)	3,200	43.1	30.1 - 56.2	4,300	56.9	43.8 - 69.9	7,500
Grades 12 or GED (High School Grad)	33,500	54.2	49.9 - 58.5	28,300	45.8	41.5 - 50.1	61,700
College 1 to 3 years (Some College/ Tech)	43,500	51.8	48.3 - 55.4	40,500	48.2	44.6 - 51.7	84,000
College 4 years or more (College Grad)	43,100	42.9	39.9 - 45.8	57,400	57.1	54.2 - 60.1	100,400

HIV - within past 2 years (18-64) by State, County, Island, Community, BRFSS Age Group, DOH Race-Ethnicity, Gender, Education Level, Employment Status (Grouped), Household Income, Poverty Level, Marital Status (Grouped), Married, Health Care Coverage, for the Year(s) - 2001-2003, 2002-2004, 2003-2005, 2004-2006, 2005-2007, 2006-2008, 2007-2009, 2008-2010

Note: Weighted numbers (#) represent 3-yr averages, percentages and 95% confidence intervals; Respondents aged 18 years and older; n/r (Not Reportable) - If the unweighted total responses for a dimension (row) is <50 that row will not be shown; n/a (Not Available) - Not asked of a subset of respondents

Year: 2007-2009

Employment Status (Grouped)	Yes			No			Estimated Population (3-Yr Avg)
	#	%	C.I. (95%)	#	%	C.I. (95%)	#
Employed	92,100	48.4	46.1 - 50.7	98,200	51.6	49.3 - 53.9	190,300
Unemployed	6,900	48.0	38.8 - 57.2	7,500	52.0	42.8 - 61.2	14,500
Retired/Unable to work	7,700	43.7	36.6 - 50.9	9,900	56.3	49.1 - 63.4	17,700
Student/Homemaker	17,000	53.6	47.8 - 59.3	14,800	46.4	40.7 - 52.2	31,800

HIV - within past 2 years (18-64) by State, County, Island, Community, BRFSS Age Group, DOH Race-Ethnicity, Gender, Education Level, Employment Status (Grouped), Household Income, Poverty Level, Marital Status (Grouped), Married, Health Care Coverage, for the Year(s) - 2001-2003, 2002-2004, 2003-2005, 2004-2006, 2005-2007, 2006-2008, 2007-2009, 2008-2010

Note: Weighted numbers (#) represent 3-yr averages, percentages and 95% confidence intervals; Respondents aged 18 years and older; n/r (Not Reportable) - If the unweighted total responses for a dimension (row) is <50 that row will not be shown; n/a (Not Available) - Not asked of a subset of respondents

Year: 2007-2009

Household Income	Yes			No			Estimated Population (3-Yr Avg)
	#	%	C.I. (95%)	#	%	C.I. (95%)	#
Less than \$10,000	4,000	55.5	45.6 - 65.3	3,200	44.5	34.7 - 54.4	7,200
\$10,000 to \$14,999	2,900	46.3	32.8 - 59.7	3,300	53.7	40.3 - 67.2	6,200
\$15,000 to \$19,999	5,600	56.9	46.7 - 67.1	4,200	43.1	32.9 - 53.3	9,800
\$20,000 to \$24,999	6,300	46.1	37.6 - 54.6	7,400	53.9	45.4 - 62.4	13,700
\$25,000 to \$34,999	14,000	52.7	46.0 - 59.4	12,600	47.3	40.6 - 54.0	26,600
\$35,000 to \$49,999	17,200	47.1	42.0 - 52.2	19,300	52.9	47.8 - 58.0	36,500
\$50,000 to \$74,999	23,700	49.6	44.9 - 54.3	24,100	50.4	45.7 - 55.1	47,900
\$75,000 or more	40,900	44.5	41.2 - 47.7	51,000	55.5	52.3 - 58.8	91,900

HIV - within past 2 years (18-64) by State, County, Island, Community, BRFSS Age Group, DOH Race-Ethnicity, Gender, Education Level, Employment Status (Grouped), Household Income, Poverty Level, Marital Status (Grouped), Married, Health Care Coverage, for the Year(s) - 2001-2003, 2002-2004, 2003-2005, 2004-2006, 2005-2007, 2006-2008, 2007-2009, 2008-2010

Note: Weighted numbers (#) represent 3-yr averages, percentages and 95% confidence intervals; Respondents aged 18 years and older; n/r (Not Reportable) - If the unweighted total responses for a dimension (row) is <50 that row will not be shown; n/a (Not Available) - Not asked of a subset of respondents

Year: 2007-2009

Poverty Level	Yes			No			Estimated Population (3-Yr Avg)
	#	%	C.I. (95%)	#	%	C.I. (95%)	#
0-130%	27,200	51.7	46.8 - 56.7	25,400	48.3	43.3 - 53.2	52,700
131-185%	15,600	51.6	45.6 - 57.6	14,600	48.4	42.4 - 54.4	30,200
186+%	71,600	45.7	43.3 - 48.1	85,200	54.3	51.9 - 56.7	156,800

Marital Status (Grouped)	Yes			No			Estimated Population (3-Yr Avg)
	#	%	C.I. (95%)	#	%	C.I. (95%)	#
Married	69,900	45.4	42.9 - 47.8	84,200	54.6	52.2 - 57.1	154,100
Unmarried Couple	6,100	45.9	36.7 - 55.0	7,200	54.1	45.0 - 63.3	13,200
Widowed	800	33.8	15.6 - 52.1	1,600	66.2	47.9 - 84.4	2,500
Other	47,100	55.6	51.9 - 59.3	37,600	44.4	40.7 - 48.1	84,600

HIV - within past 2 years (18-64) by State, County, Island, Community, BRFSS Age Group, DOH Race-Ethnicity, Gender, Education Level, Employment Status (Grouped), Household Income, Poverty Level, Marital Status (Grouped), Married, Health Care Coverage, for the Year(s) - 2001-2003, 2002-2004, 2003-2005, 2004-2006, 2005-2007, 2006-2008, 2007-2009, 2008-2010

Note: Weighted numbers (#) represent 3-yr averages, percentages and 95% confidence intervals; Respondents aged 18 years and older; n/r (Not Reportable) - If the unweighted total responses for a dimension (row) is <50 that row will not be shown; n/a (Not Available) - Not asked of a subset of respondents

Year: 2007-2009

Married	Yes			No			Estimated Population (3-Yr Avg)
	#	%	C.I. (95%)	#	%	C.I. (95%)	#
Yes	71,300	45.2	42.8 - 47.7	86,300	54.8	52.3 - 57.2	157,600
No	52,500	54.3	50.9 - 57.8	44,200	45.7	42.2 - 49.1	96,700

Health Care Coverage	Yes			No			Estimated Population (3-Yr Avg)
	#	%	C.I. (95%)	#	%	C.I. (95%)	#
Yes	115,400	49.2	47.1 - 51.2	119,400	50.8	48.8 - 52.9	234,800
No	8,100	42.3	34.6 - 50.0	11,100	57.7	50.0 - 65.4	19,200

HIV - within past 2 years (18-64) by State, County, Island, Community, BRFSS Age Group, DOH Race-Ethnicity, Gender, Education Level, Employment Status (Grouped), Household Income, Poverty Level, Marital Status (Grouped), Married, Health Care Coverage, for the Year(s) - 2001-2003, 2002-2004, 2003-2005, 2004-2006, 2005-2007, 2006-2008, 2007-2009, 2008-2010

Note: Weighted numbers (#) represent 3-yr averages, percentages and 95% confidence intervals; Respondents aged 18 years and older; n/r (Not Reportable) - If the unweighted total responses for a dimension (row) is <50 that row will not be shown; n/a (Not Available) - Not asked of a subset of respondents

Year: 2006-2008

State	Yes			No			Estimated Population (3-Yr Avg)
	#	%	C.I. (95%)	#	%	C.I. (95%)	#
Hawaii State	113,200	50.0	47.9 - 52.1	113,200	50.0	47.9 - 52.1	226,400

County	Yes			No			Estimated Population (3-Yr Avg)
	#	%	C.I. (95%)	#	%	C.I. (95%)	#
Hawaii	11,800	39.8	35.8 - 43.7	17,900	60.2	56.3 - 64.2	29,700
Honolulu	85,700	53.7	51.0 - 56.4	74,000	46.3	43.6 - 49.0	159,700
Kauai	4,700	45.3	39.0 - 51.6	5,700	54.7	48.4 - 61.0	10,500
Maui	11,000	41.3	37.1 - 45.4	15,600	58.7	54.6 - 62.9	26,600

HIV - within past 2 years (18-64) by State, County, Island, Community, BRFSS Age Group, DOH Race-Ethnicity, Gender, Education Level, Employment Status (Grouped), Household Income, Poverty Level, Marital Status (Grouped), Married, Health Care Coverage, for the Year(s) - 2001-2003, 2002-2004, 2003-2005, 2004-2006, 2005-2007, 2006-2008, 2007-2009, 2008-2010

Note: Weighted numbers (#) represent 3-yr averages, percentages and 95% confidence intervals; Respondents aged 18 years and older; n/r (Not Reportable) - If the unweighted total responses for a dimension (row) is <50 that row will not be shown; n/a (Not Available) - Not asked of a subset of respondents

Year: 2006-2008

Island	Yes			No			Estimated Population (3-Yr Avg)
	#	%	C.I. (95%)	#	%	C.I. (95%)	#
Hawaii	11,800	39.8	35.8 - 43.7	17,900	60.2	56.3 - 64.2	29,700
Kauai	4,700	45.3	39.0 - 51.6	5,700	54.7	48.4 - 61.0	10,500
Lanai	200	35.7	23.6 - 47.8	300	64.3	52.2 - 76.4	400
Maui	10,000	41.0	36.5 - 45.4	14,300	59.0	54.6 - 63.5	24,300
Molokai	800	46.6	36.5 - 56.8	1,000	53.4	43.2 - 63.5	1,800
Oahu	85,700	53.7	51.0 - 56.4	74,000	46.3	43.6 - 49.0	159,700

Community	Yes			No			Estimated Population (3-Yr Avg)
	#	%	C.I. (95%)	#	%	C.I. (95%)	#
Aiea/ Pearl City	8,500	58.3	49.7 - 66.9	6,100	41.7	33.1 - 50.3	14,600
Ala Moana	2,100	38.4	25.7 - 51.2	3,400	61.6	48.8 - 74.3	5,500

HIV - within past 2 years (18-64) by State, County, Island, Community, BRFSS Age Group, DOH Race-Ethnicity, Gender, Education Level, Employment Status (Grouped), Household Income, Poverty Level, Marital Status (Grouped), Married, Health Care Coverage, for the Year(s) - 2001-2003, 2002-2004, 2003-2005, 2004-2006, 2005-2007, 2006-2008, 2007-2009, 2008-2010

Note: Weighted numbers (#) represent 3-yr averages, percentages and 95% confidence intervals; Respondents aged 18 years and older; n/r (Not Reportable) - If the unweighted total responses for a dimension (row) is <50 that row will not be shown; n/a (Not Available) - Not asked of a subset of respondents

Year: 2006-2008

Community	Yes			No			Estimated Population (3-Yr Avg)
	#	%	C.I. (95%)	#	%	C.I. (95%)	#
Hanalei/ Kapaa	2,000	41.3	32.1 - 50.6	2,900	58.7	49.4 - 67.9	5,000
Hilo	3,500	48.0	39.6 - 56.4	3,800	52.0	43.6 - 60.4	7,400
Kaaawa/ Kahaluu/ Kaneohe	5,300	53.7	42.4 - 65.0	4,600	46.3	35.0 - 57.6	9,800
Kahului	3,600	45.0	36.9 - 53.1	4,400	55.0	46.9 - 63.1	8,000
Kailua/ Waimanalo	6,100	51.0	42.3 - 59.7	5,900	49.0	40.3 - 57.7	12,000
Kaimuki/ Palolo/ Waikiki	5,000	43.6	34.5 - 52.8	6,400	56.4	47.2 - 65.5	11,400
Kona	2,000	31.7	24.3 - 39.0	4,300	68.3	61.0 - 75.7	6,300
Lahaina/ Wailuku	3,100	41.8	33.6 - 50.0	4,400	58.2	50.0 - 66.4	7,500
Lanai	200	35.7	23.6 - 47.8	300	64.3	52.2 - 76.4	400
Lihue-Waimea	2,700	48.8	40.3 - 57.4	2,800	51.2	42.6 - 59.7	5,500
Manoa/ Upper Makiki	4,500	52.8	42.2 - 63.4	4,000	47.2	36.6 - 57.8	8,500
Mililani/ Wahiawa	11,900	55.1	47.9 - 62.4	9,700	44.9	37.6 - 52.1	21,500

HIV - within past 2 years (18-64) by State, County, Island, Community, BRFSS Age Group, DOH Race-Ethnicity, Gender, Education Level, Employment Status (Grouped), Household Income, Poverty Level, Marital Status (Grouped), Married, Health Care Coverage, for the Year(s) - 2001-2003, 2002-2004, 2003-2005, 2004-2006, 2005-2007, 2006-2008, 2007-2009, 2008-2010

Note: Weighted numbers (#) represent 3-yr averages, percentages and 95% confidence intervals; Respondents aged 18 years and older; n/r (Not Reportable) - If the unweighted total responses for a dimension (row) is <50 that row will not be shown; n/a (Not Available) - Not asked of a subset of respondents

Year: 2006-2008

Community	Yes			No			Estimated Population (3-Yr Avg)
	#	%	C.I. (95%)	#	%	C.I. (95%)	#
Molokai	800	46.6	36.5 - 56.8	1,000	53.4	43.2 - 63.5	1,800
Nanakuli/ Waianae	3,100	49.5	33.3 - 65.8	3,100	50.5	34.2 - 66.7	6,200
N.Hawaii	2,600	40.2	31.2 - 49.1	3,800	59.8	50.9 - 68.8	6,400
N.Shore/ Laie	2,500	50.1	33.0 - 67.2	2,500	49.9	32.8 - 67.0	5,000
Nuuanu/ Kalihi/ Moanalua	6,800	56.3	45.9 - 66.7	5,300	43.7	33.3 - 54.1	12,100
Puna/ Kau	3,700	38.6	31.9 - 45.3	5,900	61.4	54.7 - 68.1	9,700
Salt Lake/ Foster Village	9,000	66.4	57.7 - 75.2	4,500	33.6	24.8 - 42.3	13,500
Upcountry/ Hana	3,200	36.6	29.7 - 43.4	5,600	63.4	56.6 - 70.3	8,800
Waialae/ Kahala/ Hawaii Kai	3,400	41.1	29.5 - 52.7	4,800	58.9	47.3 - 70.5	8,200
Waipahu/ Kapolei/ Ewa	17,600	56.2	50.0 - 62.5	13,700	43.8	37.5 - 50.0	31,300

HIV - within past 2 years (18-64) by State, County, Island, Community, BRFSS Age Group, DOH Race-Ethnicity, Gender, Education Level, Employment Status (Grouped), Household Income, Poverty Level, Marital Status (Grouped), Married, Health Care Coverage, for the Year(s) - 2001-2003, 2002-2004, 2003-2005, 2004-2006, 2005-2007, 2006-2008, 2007-2009, 2008-2010

Note: Weighted numbers (#) represent 3-yr averages, percentages and 95% confidence intervals; Respondents aged 18 years and older; n/r (Not Reportable) - If the unweighted total responses for a dimension (row) is <50 that row will not be shown; n/a (Not Available) - Not asked of a subset of respondents

Year: 2006-2008

BRFSS Age Group	Yes			No			Estimated Population (3-Yr Avg)
	#	%	C.I. (95%)	#	%	C.I. (95%)	#
18-24	21,600	81.6	75.3 - 87.9	4,900	18.4	12.1 - 24.7	26,500
25-34	44,000	60.5	56.6 - 64.4	28,800	39.5	35.6 - 43.4	72,700
35-44	25,800	40.3	36.8 - 43.8	38,200	59.7	56.2 - 63.2	64,000
45-54	14,000	33.8	30.0 - 37.5	27,400	66.2	62.5 - 70.0	41,400
55-64	7,900	36.1	30.9 - 41.3	13,900	63.9	58.7 - 69.1	21,800

HIV - within past 2 years (18-64) by State, County, Island, Community, BRFSS Age Group, DOH Race-Ethnicity, Gender, Education Level, Employment Status (Grouped), Household Income, Poverty Level, Marital Status (Grouped), Married, Health Care Coverage, for the Year(s) - 2001-2003, 2002-2004, 2003-2005, 2004-2006, 2005-2007, 2006-2008, 2007-2009, 2008-2010

Note: Weighted numbers (#) represent 3-yr averages, percentages and 95% confidence intervals; Respondents aged 18 years and older; n/r (Not Reportable) - If the unweighted total responses for a dimension (row) is <50 that row will not be shown; n/a (Not Available) - Not asked of a subset of respondents

Year: 2006-2008

DOH Race-Ethnicity	Yes			No			Estimated Population (3-Yr Avg)
	#	%	C.I. (95%)	#	%	C.I. (95%)	#
Caucasian	50,200	48.3	45.6 - 51.1	53,700	51.7	48.9 - 54.4	103,900
Native Hawaiian	13,600	47.6	41.6 - 53.6	14,900	52.4	46.4 - 58.4	28,500
Chinese	4,000	50.3	38.8 - 61.7	3,900	49.7	38.3 - 61.2	7,900
Filipino	14,500	55.3	48.3 - 62.3	11,700	44.7	37.7 - 51.7	26,300
Japanese	10,700	40.1	33.9 - 46.2	16,100	59.9	53.8 - 66.1	26,800
Black	6,500	75.4	67.0 - 83.8	2,100	24.6	16.2 - 33.0	8,600
Native Alaskan/ American Indian	1,200	52.2	34.3 - 70.1	1,100	47.8	29.9 - 65.7	2,400
Other Asian	3,900	60.7	48.7 - 72.6	2,500	39.3	27.4 - 51.3	6,400
Other Pacific Islander	4,200	67.0	53.4 - 80.7	2,100	33.0	19.3 - 46.6	6,300
Other	3,200	46.8	32.6 - 60.9	3,700	53.2	39.1 - 67.4	6,900

HIV - within past 2 years (18-64) by State, County, Island, Community, BRFSS Age Group, DOH Race-Ethnicity, Gender, Education Level, Employment Status (Grouped), Household Income, Poverty Level, Marital Status (Grouped), Married, Health Care Coverage, for the Year(s) - 2001-2003, 2002-2004, 2003-2005, 2004-2006, 2005-2007, 2006-2008, 2007-2009, 2008-2010

Note: Weighted numbers (#) represent 3-yr averages, percentages and 95% confidence intervals; Respondents aged 18 years and older; n/r (Not Reportable) - If the unweighted total responses for a dimension (row) is <50 that row will not be shown; n/a (Not Available) - Not asked of a subset of respondents

Year: 2006-2008

Gender	Yes			No			Estimated Population (3-Yr Avg)
	#	%	C.I. (95%)	#	%	C.I. (95%)	#
Male	62,000	55.9	52.7 - 59.0	49,000	44.1	41.0 - 47.3	111,000
Female	51,200	44.4	41.7 - 47.1	64,200	55.6	52.9 - 58.3	115,500

Education Level	Yes			No			Estimated Population (3-Yr Avg)
	#	%	C.I. (95%)	#	%	C.I. (95%)	#
Grades 9 thru 11 (Some High School)	2,300	38.9	26.3 - 51.5	3,600	61.1	48.5 - 73.7	6,000
Grades 12 or GED (High School Grad)	30,500	56.1	51.6 - 60.5	23,900	43.9	39.5 - 48.4	54,400
College 1 to 3 years (Some College/ Tech)	38,200	51.0	47.4 - 54.7	36,700	49.0	45.3 - 52.6	74,900
College 4 years or more (College Grad)	41,900	46.2	43.1 - 49.2	48,800	53.8	50.8 - 56.9	90,600

HIV - within past 2 years (18-64) by State, County, Island, Community, BRFSS Age Group, DOH Race-Ethnicity, Gender, Education Level, Employment Status (Grouped), Household Income, Poverty Level, Marital Status (Grouped), Married, Health Care Coverage, for the Year(s) - 2001-2003, 2002-2004, 2003-2005, 2004-2006, 2005-2007, 2006-2008, 2007-2009, 2008-2010

Note: Weighted numbers (#) represent 3-yr averages, percentages and 95% confidence intervals; Respondents aged 18 years and older; n/r (Not Reportable) - If the unweighted total responses for a dimension (row) is <50 that row will not be shown; n/a (Not Available) - Not asked of a subset of respondents

Year: 2006-2008

Employment Status (Grouped)	Yes			No			Estimated Population (3-Yr Avg)
	#	%	C.I. (95%)	#	%	C.I. (95%)	#
Employed	87,300	50.6	48.2 - 52.9	85,300	49.4	47.1 - 51.8	172,600
Unemployed	3,700	42.8	32.4 - 53.3	5,000	57.2	46.7 - 67.6	8,700
Retired/Unable to work	7,800	46.1	38.8 - 53.5	9,100	53.9	46.5 - 61.2	16,900
Student/Homemaker	14,400	51.1	45.2 - 57.0	13,800	48.9	43.0 - 54.8	28,100

HIV - within past 2 years (18-64) by State, County, Island, Community, BRFSS Age Group, DOH Race-Ethnicity, Gender, Education Level, Employment Status (Grouped), Household Income, Poverty Level, Marital Status (Grouped), Married, Health Care Coverage, for the Year(s) - 2001-2003, 2002-2004, 2003-2005, 2004-2006, 2005-2007, 2006-2008, 2007-2009, 2008-2010

Note: Weighted numbers (#) represent 3-yr averages, percentages and 95% confidence intervals; Respondents aged 18 years and older; n/r (Not Reportable) - If the unweighted total responses for a dimension (row) is <50 that row will not be shown; n/a (Not Available) - Not asked of a subset of respondents

Year: 2006-2008

Household Income	Yes			No			Estimated Population (3-Yr Avg)
	#	%	C.I. (95%)	#	%	C.I. (95%)	#
Less than \$10,000	3,300	53.9	43.0 - 64.9	2,800	46.1	35.1 - 57.0	6,000
\$10,000 to \$14,999	2,800	54.0	42.0 - 66.1	2,300	46.0	33.9 - 58.0	5,100
\$15,000 to \$19,999	4,500	54.4	43.9 - 65.0	3,700	45.6	35.0 - 56.1	8,200
\$20,000 to \$24,999	6,500	49.7	41.0 - 58.4	6,600	50.3	41.6 - 59.0	13,100
\$25,000 to \$34,999	13,900	54.5	47.6 - 61.4	11,600	45.5	38.6 - 52.4	25,600
\$35,000 to \$49,999	15,600	48.4	43.2 - 53.7	16,600	51.6	46.3 - 56.8	32,200
\$50,000 to \$74,999	18,700	47.2	42.5 - 52.0	20,900	52.8	48.0 - 57.5	39,600
\$75,000 or more	37,500	46.7	43.4 - 50.1	42,800	53.3	49.9 - 56.6	80,300

HIV - within past 2 years (18-64) by State, County, Island, Community, BRFSS Age Group, DOH Race-Ethnicity, Gender, Education Level, Employment Status (Grouped), Household Income, Poverty Level, Marital Status (Grouped), Married, Health Care Coverage, for the Year(s) - 2001-2003, 2002-2004, 2003-2005, 2004-2006, 2005-2007, 2006-2008, 2007-2009, 2008-2010

Note: Weighted numbers (#) represent 3-yr averages, percentages and 95% confidence intervals; Respondents aged 18 years and older; n/r (Not Reportable) - If the unweighted total responses for a dimension (row) is <50 that row will not be shown; n/a (Not Available) - Not asked of a subset of respondents

Year: 2006-2008

Poverty Level	Yes			No			Estimated Population (3-Yr Avg)
	#	%	C.I. (95%)	#	%	C.I. (95%)	#
0-130%	23,700	52.9	47.6 - 58.2	21,100	47.1	41.8 - 52.4	44,800
131-185%	13,200	51.0	44.8 - 57.3	12,600	49.0	42.7 - 55.2	25,800
186+%	65,800	47.2	44.8 - 49.6	73,600	52.8	50.4 - 55.2	139,400

Marital Status (Grouped)	Yes			No			Estimated Population (3-Yr Avg)
	#	%	C.I. (95%)	#	%	C.I. (95%)	#
Married	63,800	46.7	44.1 - 49.2	72,900	53.3	50.8 - 55.9	136,700
Unmarried Couple	5,400	46.5	37.5 - 55.6	6,200	53.5	44.4 - 62.5	11,500
Widowed	1,000	46.9	27.6 - 66.1	1,100	53.1	33.9 - 72.4	2,000
Other	43,100	56.6	52.8 - 60.4	33,000	43.4	39.6 - 47.2	76,100

HIV - within past 2 years (18-64) by State, County, Island, Community, BRFSS Age Group, DOH Race-Ethnicity, Gender, Education Level, Employment Status (Grouped), Household Income, Poverty Level, Marital Status (Grouped), Married, Health Care Coverage, for the Year(s) - 2001-2003, 2002-2004, 2003-2005, 2004-2006, 2005-2007, 2006-2008, 2007-2009, 2008-2010

Note: Weighted numbers (#) represent 3-yr averages, percentages and 95% confidence intervals; Respondents aged 18 years and older; n/r (Not Reportable) - If the unweighted total responses for a dimension (row) is <50 that row will not be shown; n/a (Not Available) - Not asked of a subset of respondents

Year: 2006-2008

Married	Yes			No			Estimated Population (3-Yr Avg)
	#	%	C.I. (95%)	#	%	C.I. (95%)	#
Yes	65,000	46.6	44.1 - 49.1	74,500	53.4	50.9 - 55.9	139,500
No	48,200	55.5	52.1 - 59.0	38,600	44.5	41.0 - 47.9	86,800

Health Care Coverage	Yes			No			Estimated Population (3-Yr Avg)
	#	%	C.I. (95%)	#	%	C.I. (95%)	#
Yes	105,200	50.7	48.6 - 52.9	102,200	49.3	47.1 - 51.4	207,400
No	7,900	42.0	34.5 - 49.6	10,900	58.0	50.4 - 65.5	18,900

HIV - within past 2 years (18-64) by State, County, Island, Community, BRFSS Age Group, DOH Race-Ethnicity, Gender, Education Level, Employment Status (Grouped), Household Income, Poverty Level, Marital Status (Grouped), Married, Health Care Coverage, for the Year(s) - 2001-2003, 2002-2004, 2003-2005, 2004-2006, 2005-2007, 2006-2008, 2007-2009, 2008-2010

Note: Weighted numbers (#) represent 3-yr averages, percentages and 95% confidence intervals; Respondents aged 18 years and older; n/r (Not Reportable) - If the unweighted total responses for a dimension (row) is <50 that row will not be shown; n/a (Not Available) - Not asked of a subset of respondents

Year: 2005-2007

State	Yes			No			Estimated Population (3-Yr Avg)
	#	%	C.I. (95%)	#	%	C.I. (95%)	#
Hawaii State	122,900	52.5	50.5 - 54.5	111,100	47.5	45.5 - 49.5	234,000

County	Yes			No			Estimated Population (3-Yr Avg)
	#	%	C.I. (95%)	#	%	C.I. (95%)	#
Hawaii	12,200	43.7	39.9 - 47.4	15,800	56.3	52.6 - 60.1	28,000
Honolulu	93,800	55.5	53.0 - 58.1	75,100	44.5	41.9 - 47.0	168,800
Kauai	5,000	46.3	40.0 - 52.5	5,800	53.7	47.5 - 60.0	10,800
Maui	11,900	45.1	40.8 - 49.4	14,500	54.9	50.6 - 59.2	26,400

HIV - within past 2 years (18-64) by State, County, Island, Community, BRFSS Age Group, DOH Race-Ethnicity, Gender, Education Level, Employment Status (Grouped), Household Income, Poverty Level, Marital Status (Grouped), Married, Health Care Coverage, for the Year(s) - 2001-2003, 2002-2004, 2003-2005, 2004-2006, 2005-2007, 2006-2008, 2007-2009, 2008-2010

Note: Weighted numbers (#) represent 3-yr averages, percentages and 95% confidence intervals; Respondents aged 18 years and older; n/r (Not Reportable) - If the unweighted total responses for a dimension (row) is <50 that row will not be shown; n/a (Not Available) - Not asked of a subset of respondents

Year: 2005-2007

Island	Yes			No			Estimated Population (3-Yr Avg)
	#	%	C.I. (95%)	#	%	C.I. (95%)	#
Hawaii	12,200	43.7	39.9 - 47.4	15,800	56.3	52.6 - 60.1	28,000
Kauai	5,000	46.3	40.0 - 52.5	5,800	53.7	47.5 - 60.0	10,800
Lanai	100	38.5	26.6 - 50.4	200	61.5	49.6 - 73.4	400
Maui	10,900	44.7	40.1 - 49.3	13,500	55.3	50.7 - 59.9	24,500
Molokai	800	52.6	42.4 - 62.8	700	47.4	37.2 - 57.6	1,500
Oahu	93,800	55.5	53.0 - 58.1	75,100	44.5	41.9 - 47.0	168,800

Community	Yes			No			Estimated Population (3-Yr Avg)
	#	%	C.I. (95%)	#	%	C.I. (95%)	#
Aiea/ Pearl City	8,500	56.6	47.9 - 65.2	6,500	43.4	34.8 - 52.1	15,000
Ala Moana	2,000	38.5	24.8 - 52.3	3,200	61.5	47.7 - 75.2	5,200

HIV - within past 2 years (18-64) by State, County, Island, Community, BRFSS Age Group, DOH Race-Ethnicity, Gender, Education Level, Employment Status (Grouped), Household Income, Poverty Level, Marital Status (Grouped), Married, Health Care Coverage, for the Year(s) - 2001-2003, 2002-2004, 2003-2005, 2004-2006, 2005-2007, 2006-2008, 2007-2009, 2008-2010

Note: Weighted numbers (#) represent 3-yr averages, percentages and 95% confidence intervals; Respondents aged 18 years and older; n/r (Not Reportable) - If the unweighted total responses for a dimension (row) is <50 that row will not be shown; n/a (Not Available) - Not asked of a subset of respondents

Year: 2005-2007

Community	Yes			No			Estimated Population (3-Yr Avg)
	#	%	C.I. (95%)	#	%	C.I. (95%)	#
Hanalei/ Kapaa	2,400	46.7	38.1 - 55.4	2,700	53.3	44.6 - 61.9	5,100
Hilo	3,300	47.3	39.5 - 55.1	3,600	52.7	44.9 - 60.5	6,900
Kaaawa/ Kahaluu/ Kaneohe	6,200	51.6	41.2 - 61.9	5,800	48.4	38.1 - 58.8	12,100
Kahului	4,400	52.4	44.5 - 60.2	4,000	47.6	39.8 - 55.5	8,300
Kailua/ Waimanalo	6,900	54.6	46.1 - 63.2	5,700	45.4	36.8 - 53.9	12,600
Kaimuki/ Palolo/ Waikiki	6,000	46.6	38.2 - 55.0	6,900	53.4	45.0 - 61.8	12,900
Kona	2,400	38.9	31.5 - 46.3	3,700	61.1	53.7 - 68.5	6,100
Lahaina/ Wailuku	3,200	43.9	35.5 - 52.2	4,100	56.1	47.8 - 64.5	7,300
Lanai	100	38.5	26.6 - 50.4	200	61.5	49.6 - 73.4	400
Lihue-Waimea	2,600	45.9	36.9 - 54.8	3,100	54.1	45.2 - 63.1	5,700
Manoa/ Upper Makiki	4,700	55.6	44.9 - 66.3	3,700	44.4	33.7 - 55.1	8,400
Mililani/ Wahiawa	13,900	59.5	52.9 - 66.2	9,500	40.5	33.8 - 47.1	23,400

HIV - within past 2 years (18-64) by State, County, Island, Community, BRFSS Age Group, DOH Race-Ethnicity, Gender, Education Level, Employment Status (Grouped), Household Income, Poverty Level, Marital Status (Grouped), Married, Health Care Coverage, for the Year(s) - 2001-2003, 2002-2004, 2003-2005, 2004-2006, 2005-2007, 2006-2008, 2007-2009, 2008-2010

Note: Weighted numbers (#) represent 3-yr averages, percentages and 95% confidence intervals; Respondents aged 18 years and older; n/r (Not Reportable) - If the unweighted total responses for a dimension (row) is <50 that row will not be shown; n/a (Not Available) - Not asked of a subset of respondents

Year: 2005-2007

Community	Yes			No			Estimated Population (3-Yr Avg)
	#	%	C.I. (95%)	#	%	C.I. (95%)	#
Molokai	800	52.6	42.4 - 62.8	700	47.4	37.2 - 57.6	1,500
Nanakuli/ Waianae	3,200	51.3	35.9 - 66.7	3,000	48.7	33.3 - 64.1	6,300
N.Hawaii	2,500	40.5	32.7 - 48.3	3,700	59.5	51.7 - 67.3	6,200
N.Shore/ Laie	1,900	42.6	27.1 - 58.0	2,600	57.4	42.0 - 72.9	4,600
Nuuanu/ Kalihi/ Moanalua	8,400	58.4	48.4 - 68.4	6,000	41.6	31.6 - 51.6	14,400
Puna/ Kau	4,100	46.3	39.4 - 53.2	4,800	53.7	46.8 - 60.6	8,800
Salt Lake/ Foster Village	9,900	71.8	64.4 - 79.3	3,900	28.2	20.7 - 35.6	13,800
Upcountry/ Hana	3,400	38.3	30.4 - 46.1	5,500	61.7	53.9 - 69.6	8,800
Waiialae/ Kahala/ Hawaii Kai	2,900	35.6	24.7 - 46.5	5,200	64.4	53.5 - 75.3	8,000
Waipahu/ Kapolei/ Ewa	19,200	59.7	54.1 - 65.3	13,000	40.3	34.7 - 45.9	32,200

HIV - within past 2 years (18-64) by State, County, Island, Community, BRFSS Age Group, DOH Race-Ethnicity, Gender, Education Level, Employment Status (Grouped), Household Income, Poverty Level, Marital Status (Grouped), Married, Health Care Coverage, for the Year(s) - 2001-2003, 2002-2004, 2003-2005, 2004-2006, 2005-2007, 2006-2008, 2007-2009, 2008-2010

Note: Weighted numbers (#) represent 3-yr averages, percentages and 95% confidence intervals; Respondents aged 18 years and older; n/r (Not Reportable) - If the unweighted total responses for a dimension (row) is <50 that row will not be shown; n/a (Not Available) - Not asked of a subset of respondents

Year: 2005-2007

BRFSS Age Group	Yes			No			Estimated Population (3-Yr Avg)
	#	%	C.I. (95%)	#	%	C.I. (95%)	#
18-24	24,600	85.0	79.6 - 90.5	4,300	15.0	9.5 - 20.4	28,900
25-34	46,500	62.1	58.5 - 65.8	28,300	37.9	34.2 - 41.5	74,800
35-44	28,500	42.8	39.3 - 46.2	38,200	57.2	53.8 - 60.7	66,700
45-54	15,400	36.2	32.5 - 40.0	27,200	63.8	60.0 - 67.5	42,600
55-64	7,800	37.4	32.0 - 42.8	13,100	62.6	57.2 - 68.0	20,900

HIV - within past 2 years (18-64) by State, County, Island, Community, BRFSS Age Group, DOH Race-Ethnicity, Gender, Education Level, Employment Status (Grouped), Household Income, Poverty Level, Marital Status (Grouped), Married, Health Care Coverage, for the Year(s) - 2001-2003, 2002-2004, 2003-2005, 2004-2006, 2005-2007, 2006-2008, 2007-2009, 2008-2010

Note: Weighted numbers (#) represent 3-yr averages, percentages and 95% confidence intervals; Respondents aged 18 years and older; n/r (Not Reportable) - If the unweighted total responses for a dimension (row) is <50 that row will not be shown; n/a (Not Available) - Not asked of a subset of respondents

Year: 2005-2007

DOH Race-Ethnicity	Yes			No			Estimated Population (3-Yr Avg)
	#	%	C.I. (95%)	#	%	C.I. (95%)	#
Caucasian	55,900	51.5	48.9 - 54.1	52,700	48.5	45.9 - 51.1	108,600
Native Hawaiian	12,500	47.7	41.9 - 53.5	13,700	52.3	46.5 - 58.1	26,200
Chinese	3,200	43.8	31.6 - 55.9	4,200	56.2	44.1 - 68.4	7,400
Filipino	15,700	58.3	51.6 - 65.0	11,200	41.7	35.0 - 48.4	26,900
Japanese	12,100	42.5	36.4 - 48.5	16,400	57.5	51.5 - 63.6	28,400
Black	7,500	74.7	66.1 - 83.2	2,500	25.3	16.8 - 33.9	10,000
Native Alaskan/ American Indian	1,400	60.7	43.7 - 77.7	900	39.3	22.3 - 56.3	2,200
Other Asian	3,500	62.1	50.5 - 73.7	2,100	37.9	26.3 - 49.5	5,600
Other Pacific Islander	4,600	65.7	52.8 - 78.6	2,400	34.3	21.4 - 47.2	7,000
Other	5,400	58.1	46.3 - 69.9	3,900	41.9	30.1 - 53.7	9,200

HIV - within past 2 years (18-64) by State, County, Island, Community, BRFSS Age Group, DOH Race-Ethnicity, Gender, Education Level, Employment Status (Grouped), Household Income, Poverty Level, Marital Status (Grouped), Married, Health Care Coverage, for the Year(s) - 2001-2003, 2002-2004, 2003-2005, 2004-2006, 2005-2007, 2006-2008, 2007-2009, 2008-2010

Note: Weighted numbers (#) represent 3-yr averages, percentages and 95% confidence intervals; Respondents aged 18 years and older; n/r (Not Reportable) - If the unweighted total responses for a dimension (row) is <50 that row will not be shown; n/a (Not Available) - Not asked of a subset of respondents

Year: 2005-2007

Gender	Yes			No			Estimated Population (3-Yr Avg)
	#	%	C.I. (95%)	#	%	C.I. (95%)	#
Male	70,400	59.0	56.0 - 61.9	49,000	41.0	38.1 - 44.0	119,400
Female	52,400	45.8	43.2 - 48.3	62,100	54.2	51.7 - 56.8	114,500

Education Level	Yes			No			Estimated Population (3-Yr Avg)
	#	%	C.I. (95%)	#	%	C.I. (95%)	#
Grades 9 thru 11 (Some High School)	2,800	43.1	30.7 - 55.5	3,600	56.9	44.5 - 69.3	6,400
Grades 12 or GED (High School Grad)	32,200	59.2	55.1 - 63.4	22,200	40.8	36.6 - 44.9	54,400
College 1 to 3 years (Some College/ Tech)	41,600	54.3	50.8 - 57.7	35,000	45.7	42.3 - 49.2	76,600
College 4 years or more (College Grad)	45,500	47.6	44.6 - 50.7	50,000	52.4	49.3 - 55.4	95,500

HIV - within past 2 years (18-64) by State, County, Island, Community, BRFSS Age Group, DOH Race-Ethnicity, Gender, Education Level, Employment Status (Grouped), Household Income, Poverty Level, Marital Status (Grouped), Married, Health Care Coverage, for the Year(s) - 2001-2003, 2002-2004, 2003-2005, 2004-2006, 2005-2007, 2006-2008, 2007-2009, 2008-2010

Note: Weighted numbers (#) represent 3-yr averages, percentages and 95% confidence intervals; Respondents aged 18 years and older; n/r (Not Reportable) - If the unweighted total responses for a dimension (row) is <50 that row will not be shown; n/a (Not Available) - Not asked of a subset of respondents

Year: 2005-2007

Employment Status (Grouped)	Yes			No			Estimated Population (3-Yr Avg)
	#	%	C.I. (95%)	#	%	C.I. (95%)	#
Employed	96,100	52.9	50.6 - 55.1	85,700	47.1	44.9 - 49.4	181,800
Unemployed	3,500	56.2	45.3 - 67.1	2,700	43.8	32.9 - 54.7	6,300
Retired/Unable to work	8,700	48.4	41.5 - 55.2	9,300	51.6	44.8 - 58.5	17,900
Student/Homemaker	14,500	51.9	46.2 - 57.6	13,400	48.1	42.4 - 53.8	27,900

HIV - within past 2 years (18-64) by State, County, Island, Community, BRFSS Age Group, DOH Race-Ethnicity, Gender, Education Level, Employment Status (Grouped), Household Income, Poverty Level, Marital Status (Grouped), Married, Health Care Coverage, for the Year(s) - 2001-2003, 2002-2004, 2003-2005, 2004-2006, 2005-2007, 2006-2008, 2007-2009, 2008-2010

Note: Weighted numbers (#) represent 3-yr averages, percentages and 95% confidence intervals; Respondents aged 18 years and older; n/r (Not Reportable) - If the unweighted total responses for a dimension (row) is <50 that row will not be shown; n/a (Not Available) - Not asked of a subset of respondents

Year: 2005-2007

Household Income	Yes			No			Estimated Population (3-Yr Avg)
	#	%	C.I. (95%)	#	%	C.I. (95%)	#
Less than \$10,000	3,300	54.3	43.4 - 65.2	2,800	45.7	34.8 - 56.6	6,000
\$10,000 to \$14,999	3,400	61.1	49.0 - 73.2	2,200	38.9	26.8 - 51.0	5,500
\$15,000 to \$19,999	5,100	58.2	48.2 - 68.2	3,700	41.8	31.8 - 51.8	8,800
\$20,000 to \$24,999	7,400	54.6	46.4 - 62.9	6,200	45.4	37.1 - 53.6	13,600
\$25,000 to \$34,999	14,600	54.6	48.2 - 61.0	12,100	45.4	39.0 - 51.8	26,800
\$35,000 to \$49,999	18,400	52.2	47.1 - 57.3	16,900	47.8	42.7 - 52.9	35,300
\$50,000 to \$74,999	20,800	50.0	45.4 - 54.5	20,900	50.0	45.5 - 54.6	41,700
\$75,000 or more	36,100	47.6	44.3 - 51.0	39,700	52.4	49.0 - 55.7	75,800

HIV - within past 2 years (18-64) by State, County, Island, Community, BRFSS Age Group, DOH Race-Ethnicity, Gender, Education Level, Employment Status (Grouped), Household Income, Poverty Level, Marital Status (Grouped), Married, Health Care Coverage, for the Year(s) - 2001-2003, 2002-2004, 2003-2005, 2004-2006, 2005-2007, 2006-2008, 2007-2009, 2008-2010

Note: Weighted numbers (#) represent 3-yr averages, percentages and 95% confidence intervals; Respondents aged 18 years and older; n/r (Not Reportable) - If the unweighted total responses for a dimension (row) is <50 that row will not be shown; n/a (Not Available) - Not asked of a subset of respondents

Year: 2005-2007

Poverty Level	Yes			No			Estimated Population (3-Yr Avg)
	#	%	C.I. (95%)	#	%	C.I. (95%)	#
0-130%	22,900	53.9	48.6 - 59.2	19,600	46.1	40.8 - 51.4	42,500
131-185%	15,200	57.7	51.4 - 64.1	11,100	42.3	35.9 - 48.6	26,300
186+%	71,100	49.1	46.8 - 51.5	73,600	50.9	48.5 - 53.2	144,700

Marital Status (Grouped)	Yes			No			Estimated Population (3-Yr Avg)
	#	%	C.I. (95%)	#	%	C.I. (95%)	#
Married	69,900	49.4	46.9 - 51.9	71,600	50.6	48.1 - 53.1	141,500
Unmarried Couple	5,600	52.3	43.0 - 61.5	5,100	47.7	38.5 - 57.0	10,600
Widowed	900	42.7	28.1 - 57.3	1,200	57.3	42.7 - 71.9	2,100
Other	46,500	58.3	54.8 - 61.9	33,200	41.7	38.1 - 45.2	79,800

HIV - within past 2 years (18-64) by State, County, Island, Community, BRFSS Age Group, DOH Race-Ethnicity, Gender, Education Level, Employment Status (Grouped), Household Income, Poverty Level, Marital Status (Grouped), Married, Health Care Coverage, for the Year(s) - 2001-2003, 2002-2004, 2003-2005, 2004-2006, 2005-2007, 2006-2008, 2007-2009, 2008-2010

Note: Weighted numbers (#) represent 3-yr averages, percentages and 95% confidence intervals; Respondents aged 18 years and older; n/r (Not Reportable) - If the unweighted total responses for a dimension (row) is <50 that row will not be shown; n/a (Not Available) - Not asked of a subset of respondents

Year: 2005-2007

Married	Yes			No			Estimated Population (3-Yr Avg)
	#	%	C.I. (95%)	#	%	C.I. (95%)	#
Yes	71,800	49.6	47.1 - 52.0	73,000	50.4	48.0 - 52.9	144,700
No	51,100	57.3	54.0 - 60.6	38,100	42.7	39.4 - 46.0	89,200

Health Care Coverage	Yes			No			Estimated Population (3-Yr Avg)
	#	%	C.I. (95%)	#	%	C.I. (95%)	#
Yes	113,200	52.9	50.8 - 55.0	100,800	47.1	45.0 - 49.2	214,100
No	9,600	48.6	41.6 - 55.5	10,100	51.4	44.5 - 58.4	19,700

HIV - within past 2 years (18-64) by State, County, Island, Community, BRFSS Age Group, DOH Race-Ethnicity, Gender, Education Level, Employment Status (Grouped), Household Income, Poverty Level, Marital Status (Grouped), Married, Health Care Coverage, for the Year(s) - 2001-2003, 2002-2004, 2003-2005, 2004-2006, 2005-2007, 2006-2008, 2007-2009, 2008-2010

Note: Weighted numbers (#) represent 3-yr averages, percentages and 95% confidence intervals; Respondents aged 18 years and older; n/r (Not Reportable) - If the unweighted total responses for a dimension (row) is <50 that row will not be shown; n/a (Not Available) - Not asked of a subset of respondents

Year: 2004-2006

State	Yes			No			Estimated Population (3-Yr Avg)
	#	%	C.I. (95%)	#	%	C.I. (95%)	#
Hawaii State	134,700	56.3	53.8 - 58.8	104,600	43.7	41.2 - 46.2	239,300

County	Yes			No			Estimated Population (3-Yr Avg)
	#	%	C.I. (95%)	#	%	C.I. (95%)	#
Hawaii	13,200	46.1	41.1 - 51.0	15,500	53.9	49.0 - 58.9	28,700
Honolulu	104,100	59.8	56.6 - 63.0	70,100	40.2	37.0 - 43.4	174,100
Kauai	5,100	45.9	39.0 - 52.7	6,000	54.1	47.3 - 61.0	11,000
Maui	12,300	48.4	42.7 - 54.2	13,200	51.6	45.8 - 57.3	25,500

HIV - within past 2 years (18-64) by State, County, Island, Community, BRFSS Age Group, DOH Race-Ethnicity, Gender, Education Level, Employment Status (Grouped), Household Income, Poverty Level, Marital Status (Grouped), Married, Health Care Coverage, for the Year(s) - 2001-2003, 2002-2004, 2003-2005, 2004-2006, 2005-2007, 2006-2008, 2007-2009, 2008-2010

Note: Weighted numbers (#) represent 3-yr averages, percentages and 95% confidence intervals; Respondents aged 18 years and older; n/r (Not Reportable) - If the unweighted total responses for a dimension (row) is <50 that row will not be shown; n/a (Not Available) - Not asked of a subset of respondents

Year: 2004-2006

Island	Yes			No			Estimated Population (3-Yr Avg)
	#	%	C.I. (95%)	#	%	C.I. (95%)	#
Hawaii	13,200	46.1	41.1 - 51.0	15,500	53.9	49.0 - 58.9	28,700
Kauai	5,100	45.9	39.0 - 52.7	6,000	54.1	47.3 - 61.0	11,000
Lanai	100	40.1	25.5 - 54.7	200	59.9	45.3 - 74.5	300
Maui	11,700	48.8	42.8 - 54.9	12,300	51.2	45.1 - 57.2	24,000
Molokai	500	42.7	27.7 - 57.7	700	57.3	42.3 - 72.3	1,200
Oahu	104,100	59.8	56.6 - 63.0	70,100	40.2	37.0 - 43.4	174,100

Community	Yes			No			Estimated Population (3-Yr Avg)
	#	%	C.I. (95%)	#	%	C.I. (95%)	#
Aiea/ Pearl City	10,200	68.2	58.6 - 77.9	4,700	31.8	22.1 - 41.4	14,900
Ala Moana	4,500	55.8	37.6 - 73.9	3,600	44.2	26.1 - 62.4	8,100

HIV - within past 2 years (18-64) by State, County, Island, Community, BRFSS Age Group, DOH Race-Ethnicity, Gender, Education Level, Employment Status (Grouped), Household Income, Poverty Level, Marital Status (Grouped), Married, Health Care Coverage, for the Year(s) - 2001-2003, 2002-2004, 2003-2005, 2004-2006, 2005-2007, 2006-2008, 2007-2009, 2008-2010

Note: Weighted numbers (#) represent 3-yr averages, percentages and 95% confidence intervals; Respondents aged 18 years and older; n/r (Not Reportable) - If the unweighted total responses for a dimension (row) is <50 that row will not be shown; n/a (Not Available) - Not asked of a subset of respondents

Year: 2004-2006

Community	Yes			No			Estimated Population (3-Yr Avg)
	#	%	C.I. (95%)	#	%	C.I. (95%)	#
Hanalei/ Kapaa	2,400	47.1	37.7 - 56.6	2,700	52.9	43.4 - 62.3	5,000
Hilo	3,800	48.2	38.5 - 57.9	4,100	51.8	42.1 - 61.5	7,900
Kaaawa/ Kahaluu/ Kaneohe	4,400	40.2	27.2 - 53.2	6,500	59.8	46.8 - 72.8	10,900
Kahului	5,200	61.0	50.5 - 71.5	3,300	39.0	28.5 - 49.5	8,600
Kailua/ Waimanalo	9,000	59.4	48.8 - 69.9	6,100	40.6	30.1 - 51.2	15,100
Kaimuki/ Palolo/ Waikiki	7,200	49.9	38.8 - 61.0	7,300	50.1	39.0 - 61.2	14,500
Kona	2,900	43.7	34.0 - 53.4	3,700	56.3	46.6 - 66.0	6,600
Lahaina/ Wailuku	3,100	44.5	34.2 - 54.7	3,900	55.5	45.3 - 65.8	7,000
Lanai	100	40.1	25.5 - 54.7	200	59.9	45.3 - 74.5	300
Lihue-Waimea	2,700	44.8	34.9 - 54.7	3,300	55.2	45.3 - 65.1	6,000
Manoa/ Upper Makiki	6,000	65.1	53.5 - 76.6	3,200	34.9	23.4 - 46.5	9,200
Mililani/ Wahiawa	13,100	64.3	56.5 - 72.0	7,300	35.7	28.0 - 43.5	20,400

HIV - within past 2 years (18-64) by State, County, Island, Community, BRFSS Age Group, DOH Race-Ethnicity, Gender, Education Level, Employment Status (Grouped), Household Income, Poverty Level, Marital Status (Grouped), Married, Health Care Coverage, for the Year(s) - 2001-2003, 2002-2004, 2003-2005, 2004-2006, 2005-2007, 2006-2008, 2007-2009, 2008-2010

Note: Weighted numbers (#) represent 3-yr averages, percentages and 95% confidence intervals; Respondents aged 18 years and older; n/r (Not Reportable) - If the unweighted total responses for a dimension (row) is <50 that row will not be shown; n/a (Not Available) - Not asked of a subset of respondents

Year: 2004-2006

Community	Yes			No			Estimated Population (3-Yr Avg)
	#	%	C.I. (95%)	#	%	C.I. (95%)	#
Molokai	500	42.7	27.7 - 57.7	700	57.3	42.3 - 72.3	1,200
Nanakuli/ Waianae	3,000	41.5	22.5 - 60.5	4,300	58.5	39.5 - 77.5	7,300
N.Hawaii	2,300	45.6	36.2 - 55.1	2,700	54.4	44.9 - 63.8	5,000
Nuuanu/ Kalihi/ Moanalua	9,800	67.6	56.9 - 78.2	4,700	32.4	21.8 - 43.1	14,500
Puna/ Kau	4,200	46.1	36.4 - 55.9	4,900	53.9	44.1 - 63.6	9,200
Salt Lake/ Foster Village	11,400	77.6	69.9 - 85.3	3,300	22.4	14.7 - 30.1	14,700
Upcountry/ Hana	3,400	40.1	30.6 - 49.6	5,100	59.9	50.4 - 69.4	8,500
Waialae/ Kahala/ Hawaii Kai	5,100	54.5	40.5 - 68.5	4,300	45.5	31.5 - 59.5	9,400
Waipahu/ Kapolei/ Ewa	18,900	61.1	53.6 - 68.6	12,000	38.9	31.4 - 46.4	30,900

HIV - within past 2 years (18-64) by State, County, Island, Community, BRFSS Age Group, DOH Race-Ethnicity, Gender, Education Level, Employment Status (Grouped), Household Income, Poverty Level, Marital Status (Grouped), Married, Health Care Coverage, for the Year(s) - 2001-2003, 2002-2004, 2003-2005, 2004-2006, 2005-2007, 2006-2008, 2007-2009, 2008-2010

Note: Weighted numbers (#) represent 3-yr averages, percentages and 95% confidence intervals; Respondents aged 18 years and older; n/r (Not Reportable) - If the unweighted total responses for a dimension (row) is <50 that row will not be shown; n/a (Not Available) - Not asked of a subset of respondents

Year: 2004-2006

BRFSS Age Group	Yes			No			Estimated Population (3-Yr Avg)
	#	%	C.I. (95%)	#	%	C.I. (95%)	#
18-24	28,400	90.4	86.1 - 94.7	3,000	9.6	5.3 - 13.9	31,400
25-34	52,700	65.8	61.5 - 70.0	27,400	34.2	30.0 - 38.5	80,100
35-44	30,800	44.4	39.8 - 49.1	38,500	55.6	50.9 - 60.2	69,300
45-54	15,700	40.3	35.6 - 45.1	23,300	59.7	54.9 - 64.4	39,000
55-64	7,000	36.2	29.3 - 43.0	12,500	63.8	57.0 - 70.7	19,500

HIV - within past 2 years (18-64) by State, County, Island, Community, BRFSS Age Group, DOH Race-Ethnicity, Gender, Education Level, Employment Status (Grouped), Household Income, Poverty Level, Marital Status (Grouped), Married, Health Care Coverage, for the Year(s) - 2001-2003, 2002-2004, 2003-2005, 2004-2006, 2005-2007, 2006-2008, 2007-2009, 2008-2010

Note: Weighted numbers (#) represent 3-yr averages, percentages and 95% confidence intervals; Respondents aged 18 years and older; n/r (Not Reportable) - If the unweighted total responses for a dimension (row) is <50 that row will not be shown; n/a (Not Available) - Not asked of a subset of respondents

Year: 2004-2006

DOH Race-Ethnicity	Yes			No			Estimated Population (3-Yr Avg)
	#	%	C.I. (95%)	#	%	C.I. (95%)	#
Caucasian	60,400	53.7	50.3 - 57.0	52,100	46.3	43.0 - 49.7	112,500
Native Hawaiian	14,100	52.7	44.9 - 60.4	12,700	47.3	39.6 - 55.1	26,800
Chinese	4,100	54.2	37.9 - 70.6	3,500	45.8	29.4 - 62.1	7,600
Filipino	15,800	60.7	52.4 - 69.0	10,300	39.3	31.0 - 47.6	26,100
Japanese	13,200	49.0	41.1 - 56.8	13,700	51.0	43.2 - 58.9	26,900
Black	6,800	80.4	71.5 - 89.3	1,700	19.6	10.7 - 28.5	8,500
Other Asian	4,600	67.6	48.3 - 86.8	2,200	32.4	13.2 - 51.7	6,800
Other Pacific Islander	3,600	67.0	52.5 - 81.5	1,800	33.0	18.5 - 47.5	5,400
Other	5,800	56.7	44.3 - 69.0	4,400	43.3	31.0 - 55.7	10,100

HIV - within past 2 years (18-64) by State, County, Island, Community, BRFSS Age Group, DOH Race-Ethnicity, Gender, Education Level, Employment Status (Grouped), Household Income, Poverty Level, Marital Status (Grouped), Married, Health Care Coverage, for the Year(s) - 2001-2003, 2002-2004, 2003-2005, 2004-2006, 2005-2007, 2006-2008, 2007-2009, 2008-2010

Note: Weighted numbers (#) represent 3-yr averages, percentages and 95% confidence intervals; Respondents aged 18 years and older; n/r (Not Reportable) - If the unweighted total responses for a dimension (row) is <50 that row will not be shown; n/a (Not Available) - Not asked of a subset of respondents

Year: 2004-2006

Gender	Yes			No			Estimated Population (3-Yr Avg)
	#	%	C.I. (95%)	#	%	C.I. (95%)	#
Male	75,400	61.5	57.8 - 65.1	47,300	38.5	34.9 - 42.2	122,600
Female	59,300	50.8	47.5 - 54.2	57,400	49.2	45.8 - 52.5	116,700

Education Level	Yes			No			Estimated Population (3-Yr Avg)
	#	%	C.I. (95%)	#	%	C.I. (95%)	#
Grades 9 thru 11 (Some High School)	3,600	61.5	46.9 - 76.0	2,200	38.6	24.0 - 53.1	5,800
Grades 12 or GED (High School Grad)	35,900	60.4	54.9 - 65.9	23,600	39.6	34.1 - 45.1	59,500
College 1 to 3 years (Some College/ Tech)	46,200	57.4	52.9 - 61.8	34,300	42.6	38.2 - 47.1	80,500
College 4 years or more (College Grad)	48,400	52.2	48.5 - 55.9	44,300	47.8	44.1 - 51.5	92,600

HIV - within past 2 years (18-64) by State, County, Island, Community, BRFSS Age Group, DOH Race-Ethnicity, Gender, Education Level, Employment Status (Grouped), Household Income, Poverty Level, Marital Status (Grouped), Married, Health Care Coverage, for the Year(s) - 2001-2003, 2002-2004, 2003-2005, 2004-2006, 2005-2007, 2006-2008, 2007-2009, 2008-2010

Note: Weighted numbers (#) represent 3-yr averages, percentages and 95% confidence intervals; Respondents aged 18 years and older; n/r (Not Reportable) - If the unweighted total responses for a dimension (row) is <50 that row will not be shown; n/a (Not Available) - Not asked of a subset of respondents

Year: 2004-2006

Employment Status (Grouped)	Yes			No			Estimated Population (3-Yr Avg)
	#	%	C.I. (95%)	#	%	C.I. (95%)	#
Employed	102,400	55.9	53.1 - 58.8	80,600	44.1	41.2 - 46.9	183,000
Unemployed	4,300	65.6	50.9 - 80.3	2,200	34.4	19.7 - 49.1	6,500
Retired/Unable to work	9,100	50.7	41.5 - 59.9	8,800	49.3	40.1 - 58.5	17,900
Student/Homemaker	18,600	59.0	52.3 - 65.8	12,900	41.0	34.2 - 47.7	31,600

HIV - within past 2 years (18-64) by State, County, Island, Community, BRFSS Age Group, DOH Race-Ethnicity, Gender, Education Level, Employment Status (Grouped), Household Income, Poverty Level, Marital Status (Grouped), Married, Health Care Coverage, for the Year(s) - 2001-2003, 2002-2004, 2003-2005, 2004-2006, 2005-2007, 2006-2008, 2007-2009, 2008-2010

Note: Weighted numbers (#) represent 3-yr averages, percentages and 95% confidence intervals; Respondents aged 18 years and older; n/r (Not Reportable) - If the unweighted total responses for a dimension (row) is <50 that row will not be shown; n/a (Not Available) - Not asked of a subset of respondents

Year: 2004-2006

Household Income	Yes			No			Estimated Population (3-Yr Avg)
	#	%	C.I. (95%)	#	%	C.I. (95%)	#
Less than \$10,000	2,100	48.2	35.8 - 60.6	2,200	51.8	39.4 - 64.2	4,300
\$10,000 to \$14,999	3,100	57.9	43.0 - 72.8	2,300	42.1	27.2 - 57.0	5,400
\$15,000 to \$19,999	5,400	51.8	37.4 - 66.1	5,000	48.2	33.9 - 62.6	10,300
\$20,000 to \$24,999	9,700	61.3	52.6 - 70.0	6,100	38.7	30.0 - 47.4	15,800
\$25,000 to \$34,999	15,500	59.1	51.6 - 66.7	10,700	40.9	33.3 - 48.4	26,200
\$35,000 to \$49,999	19,800	54.8	48.5 - 61.2	16,300	45.2	38.8 - 51.5	36,100
\$50,000 to \$74,999	34,000	59.6	54.1 - 65.1	23,000	40.4	34.9 - 45.9	57,000
\$75,000 or more	35,100	51.1	46.5 - 55.7	33,500	48.9	44.3 - 53.5	68,600

HIV - within past 2 years (18-64) by State, County, Island, Community, BRFSS Age Group, DOH Race-Ethnicity, Gender, Education Level, Employment Status (Grouped), Household Income, Poverty Level, Marital Status (Grouped), Married, Health Care Coverage, for the Year(s) - 2001-2003, 2002-2004, 2003-2005, 2004-2006, 2005-2007, 2006-2008, 2007-2009, 2008-2010

Note: Weighted numbers (#) represent 3-yr averages, percentages and 95% confidence intervals; Respondents aged 18 years and older; n/r (Not Reportable) - If the unweighted total responses for a dimension (row) is <50 that row will not be shown; n/a (Not Available) - Not asked of a subset of respondents

Year: 2004-2006

Poverty Level	Yes			No			Estimated Population (3-Yr Avg)
	#	%	C.I. (95%)	#	%	C.I. (95%)	#
0-130%	19,000	51.0	44.3 - 57.6	18,300	49.0	42.4 - 55.7	37,400
131-185%	17,400	62.8	55.3 - 70.2	10,300	37.2	29.8 - 44.7	27,700
186+%	88,100	55.6	52.5 - 58.6	70,500	44.4	41.4 - 47.5	158,600

Marital Status (Grouped)	Yes			No			Estimated Population (3-Yr Avg)
	#	%	C.I. (95%)	#	%	C.I. (95%)	#
Married	74,600	52.2	48.9 - 55.5	68,300	47.8	44.5 - 51.1	142,900
Unmarried Couple	4,200	45.9	34.9 - 56.8	5,000	54.1	43.2 - 65.1	9,200
Widowed	1,000	42.6	25.5 - 59.8	1,300	57.4	40.2 - 74.5	2,300
Other	54,900	64.6	60.6 - 68.5	30,100	35.4	31.5 - 39.4	84,900

HIV - within past 2 years (18-64) by State, County, Island, Community, BRFSS Age Group, DOH Race-Ethnicity, Gender, Education Level, Employment Status (Grouped), Household Income, Poverty Level, Marital Status (Grouped), Married, Health Care Coverage, for the Year(s) - 2001-2003, 2002-2004, 2003-2005, 2004-2006, 2005-2007, 2006-2008, 2007-2009, 2008-2010

Note: Weighted numbers (#) represent 3-yr averages, percentages and 95% confidence intervals; Respondents aged 18 years and older; n/r (Not Reportable) - If the unweighted total responses for a dimension (row) is <50 that row will not be shown; n/a (Not Available) - Not asked of a subset of respondents

Year: 2004-2006

Married	Yes			No			Estimated Population (3-Yr Avg)
	#	%	C.I. (95%)	#	%	C.I. (95%)	#
Yes	76,300	52.2	48.9 - 55.4	69,900	47.8	44.6 - 51.1	146,200
No	58,400	62.7	58.9 - 66.6	34,700	37.3	33.4 - 41.1	93,100

Health Care Coverage	Yes			No			Estimated Population (3-Yr Avg)
	#	%	C.I. (95%)	#	%	C.I. (95%)	#
Yes	122,100	56.5	53.9 - 59.2	93,900	43.5	40.8 - 46.1	216,000
No	12,500	54.1	45.8 - 62.3	10,600	45.9	37.7 - 54.2	23,200

HIV - within past 2 years (18-64) by State, County, Island, Community, BRFSS Age Group, DOH Race-Ethnicity, Gender, Education Level, Employment Status (Grouped), Household Income, Poverty Level, Marital Status (Grouped), Married, Health Care Coverage, for the Year(s) - 2001-2003, 2002-2004, 2003-2005, 2004-2006, 2005-2007, 2006-2008, 2007-2009, 2008-2010

Note: Weighted numbers (#) represent 3-yr averages, percentages and 95% confidence intervals; Respondents aged 18 years and older; n/r (Not Reportable) - If the unweighted total responses for a dimension (row) is <50 that row will not be shown; n/a (Not Available) - Not asked of a subset of respondents

Year: 2003-2005

State	Yes			No			Estimated Population (3-Yr Avg)
	#	%	C.I. (95%)	#	%	C.I. (95%)	#
Hawaii State	154,500	56.6	54.2 - 58.9	118,600	43.4	41.1 - 45.8	273,100

County	Yes			No			Estimated Population (3-Yr Avg)
	#	%	C.I. (95%)	#	%	C.I. (95%)	#
Hawaii	14,800	45.0	40.3 - 49.7	18,100	55.0	50.3 - 59.7	33,000
Honolulu	121,600	60.9	58.0 - 63.9	78,000	39.1	36.1 - 42.0	199,600
Kauai	5,300	43.6	36.8 - 50.4	6,900	56.4	49.6 - 63.2	12,200
Maui	12,800	45.1	39.5 - 50.8	15,500	54.9	49.2 - 60.5	28,300

HIV - within past 2 years (18-64) by State, County, Island, Community, BRFSS Age Group, DOH Race-Ethnicity, Gender, Education Level, Employment Status (Grouped), Household Income, Poverty Level, Marital Status (Grouped), Married, Health Care Coverage, for the Year(s) - 2001-2003, 2002-2004, 2003-2005, 2004-2006, 2005-2007, 2006-2008, 2007-2009, 2008-2010

Note: Weighted numbers (#) represent 3-yr averages, percentages and 95% confidence intervals; Respondents aged 18 years and older; n/r (Not Reportable) - If the unweighted total responses for a dimension (row) is <50 that row will not be shown; n/a (Not Available) - Not asked of a subset of respondents

Year: 2003-2005

Island	Yes			No			Estimated Population (3-Yr Avg)
	#	%	C.I. (95%)	#	%	C.I. (95%)	#
Hawaii	14,800	45.0	40.3 - 49.7	18,100	55.0	50.3 - 59.7	33,000
Kauai	5,300	43.6	36.8 - 50.4	6,900	56.4	49.6 - 63.2	12,200
Maui	12,100	45.7	39.7 - 51.6	14,400	54.3	48.4 - 60.3	26,600
Molokai	500	33.9	20.1 - 47.8	900	66.1	52.2 - 79.9	1,300
Oahu	121,600	60.9	58.0 - 63.9	78,000	39.1	36.1 - 42.0	199,600

Community	Yes			No			Estimated Population (3-Yr Avg)
	#	%	C.I. (95%)	#	%	C.I. (95%)	#
Aiea/ Pearl City	10,200	64.3	54.4 - 74.2	5,700	35.7	25.8 - 45.6	15,900
Ala Moana	5,700	59.4	44.0 - 74.8	3,900	40.6	25.2 - 56.0	9,700
Hanalei/ Kapaa	2,500	47.6	38.1 - 57.0	2,800	52.4	43.0 - 61.9	5,300

HIV - within past 2 years (18-64) by State, County, Island, Community, BRFSS Age Group, DOH Race-Ethnicity, Gender, Education Level, Employment Status (Grouped), Household Income, Poverty Level, Marital Status (Grouped), Married, Health Care Coverage, for the Year(s) - 2001-2003, 2002-2004, 2003-2005, 2004-2006, 2005-2007, 2006-2008, 2007-2009, 2008-2010

Note: Weighted numbers (#) represent 3-yr averages, percentages and 95% confidence intervals; Respondents aged 18 years and older; n/r (Not Reportable) - If the unweighted total responses for a dimension (row) is <50 that row will not be shown; n/a (Not Available) - Not asked of a subset of respondents

Year: 2003-2005

Community	Yes			No			Estimated Population (3-Yr Avg)
	#	%	C.I. (95%)	#	%	C.I. (95%)	#
Hilo	4,000	45.3	36.1 - 54.5	4,800	54.7	45.5 - 63.9	8,800
Kaaawa/ Kahaluu/ Kaneohe	5,700	46.6	33.8 - 59.3	6,500	53.4	40.7 - 66.2	12,200
Kahului	5,000	52.7	41.8 - 63.6	4,500	47.3	36.4 - 58.2	9,400
Kailua/ Waimanalo	9,800	59.1	49.1 - 69.1	6,800	40.9	30.9 - 50.9	16,600
Kaimuki/ Palolo/ Waikiki	8,500	52.5	41.9 - 63.0	7,700	47.5	37.0 - 58.1	16,200
Kona	3,800	44.0	35.3 - 52.7	4,800	56.0	47.3 - 64.7	8,600
Lahaina/ Wailuku	3,400	44.4	33.7 - 55.2	4,300	55.6	44.8 - 66.3	7,700
Lihue-Waimea	2,800	40.6	31.0 - 50.1	4,100	59.4	49.9 - 69.0	6,900
Manoa/ Upper Makiki	7,600	61.2	50.3 - 72.2	4,800	38.8	27.8 - 49.7	12,400
Mililani/ Wahiawa	17,800	69.0	62.4 - 75.5	8,000	31.0	24.5 - 37.6	25,900
Molokai	500	33.9	20.1 - 47.8	900	66.1	52.2 - 79.9	1,300
Nanakuli/ Waianae	3,900	42.3	26.5 - 58.0	5,400	57.7	42.0 - 73.5	9,300

HIV - within past 2 years (18-64) by State, County, Island, Community, BRFSS Age Group, DOH Race-Ethnicity, Gender, Education Level, Employment Status (Grouped), Household Income, Poverty Level, Marital Status (Grouped), Married, Health Care Coverage, for the Year(s) - 2001-2003, 2002-2004, 2003-2005, 2004-2006, 2005-2007, 2006-2008, 2007-2009, 2008-2010

Note: Weighted numbers (#) represent 3-yr averages, percentages and 95% confidence intervals; Respondents aged 18 years and older; n/r (Not Reportable) - If the unweighted total responses for a dimension (row) is <50 that row will not be shown; n/a (Not Available) - Not asked of a subset of respondents

Year: 2003-2005

Community	Yes			No			Estimated Population (3-Yr Avg)
	#	%	C.I. (95%)	#	%	C.I. (95%)	#
N.Hawaii	2,100	36.2	27.6 - 44.9	3,700	63.8	55.1 - 72.4	5,800
N.Shore/ Laie	2,500	47.9	31.4 - 64.3	2,700	52.1	35.7 - 68.6	5,200
Nuuanu/ Kalihi/ Moanalua	9,800	63.6	52.9 - 74.4	5,600	36.4	25.6 - 47.1	15,500
Puna/ Kau	4,900	50.9	41.2 - 60.6	4,800	49.1	39.4 - 58.8	9,700
Salt Lake/ Foster Village	13,300	74.6	67.0 - 82.3	4,500	25.4	17.7 - 33.0	17,900
Upcountry/ Hana	3,700	39.7	30.9 - 48.5	5,700	60.3	51.5 - 69.1	9,400
Waialae/ Kahala/ Hawaii Kai	5,300	53.3	39.5 - 67.1	4,600	46.7	32.9 - 60.5	9,900
Waipahu/ Kapolei/ Ewa	21,300	64.5	57.3 - 71.7	11,700	35.5	28.3 - 42.7	33,100

HIV - within past 2 years (18-64) by State, County, Island, Community, BRFSS Age Group, DOH Race-Ethnicity, Gender, Education Level, Employment Status (Grouped), Household Income, Poverty Level, Marital Status (Grouped), Married, Health Care Coverage, for the Year(s) - 2001-2003, 2002-2004, 2003-2005, 2004-2006, 2005-2007, 2006-2008, 2007-2009, 2008-2010

Note: Weighted numbers (#) represent 3-yr averages, percentages and 95% confidence intervals; Respondents aged 18 years and older; n/r (Not Reportable) - If the unweighted total responses for a dimension (row) is <50 that row will not be shown; n/a (Not Available) - Not asked of a subset of respondents

Year: 2003-2005

BRFSS Age Group	Yes			No			Estimated Population (3-Yr Avg)
	#	%	C.I. (95%)	#	%	C.I. (95%)	#
18-24	33,900	88.8	84.6 - 92.9	4,300	11.2	7.1 - 15.4	38,200
25-34	56,900	64.5	60.5 - 68.5	31,300	35.5	31.5 - 39.5	88,200
35-44	36,400	46.0	41.6 - 50.4	42,700	54.0	49.6 - 58.4	79,100
45-54	19,800	43.2	38.4 - 47.9	26,000	56.8	52.1 - 61.6	45,700
55-64	7,600	34.7	28.0 - 41.4	14,300	65.3	58.6 - 72.0	21,900

HIV - within past 2 years (18-64) by State, County, Island, Community, BRFSS Age Group, DOH Race-Ethnicity, Gender, Education Level, Employment Status (Grouped), Household Income, Poverty Level, Marital Status (Grouped), Married, Health Care Coverage, for the Year(s) - 2001-2003, 2002-2004, 2003-2005, 2004-2006, 2005-2007, 2006-2008, 2007-2009, 2008-2010

Note: Weighted numbers (#) represent 3-yr averages, percentages and 95% confidence intervals; Respondents aged 18 years and older; n/r (Not Reportable) - If the unweighted total responses for a dimension (row) is <50 that row will not be shown; n/a (Not Available) - Not asked of a subset of respondents

Year: 2003-2005

DOH Race-Ethnicity	Yes			No			Estimated Population (3-Yr Avg)
	#	%	C.I. (95%)	#	%	C.I. (95%)	#
Caucasian	71,900	54.3	51.1 - 57.4	60,700	45.7	42.6 - 48.9	132,600
Native Hawaiian	15,500	53.9	46.4 - 61.4	13,300	46.1	38.6 - 53.6	28,800
Chinese	6,200	53.1	40.8 - 65.4	5,500	46.9	34.6 - 59.2	11,700
Filipino	18,200	58.8	51.2 - 66.4	12,800	41.2	33.6 - 48.8	31,000
Japanese	14,500	51.4	43.7 - 59.2	13,700	48.6	40.8 - 56.3	28,200
Black	6,400	72.1	62.1 - 82.1	2,500	27.9	17.9 - 37.9	8,900
Other Asian	4,500	65.6	45.3 - 85.8	2,400	34.4	14.2 - 54.7	6,800
Other	7,700	63.1	52.7 - 73.5	4,500	36.9	26.5 - 47.3	12,200

HIV - within past 2 years (18-64) by State, County, Island, Community, BRFSS Age Group, DOH Race-Ethnicity, Gender, Education Level, Employment Status (Grouped), Household Income, Poverty Level, Marital Status (Grouped), Married, Health Care Coverage, for the Year(s) - 2001-2003, 2002-2004, 2003-2005, 2004-2006, 2005-2007, 2006-2008, 2007-2009, 2008-2010

Note: Weighted numbers (#) represent 3-yr averages, percentages and 95% confidence intervals; Respondents aged 18 years and older; n/r (Not Reportable) - If the unweighted total responses for a dimension (row) is <50 that row will not be shown; n/a (Not Available) - Not asked of a subset of respondents

Year: 2003-2005

Gender	Yes			No			Estimated Population (3-Yr Avg)
	#	%	C.I. (95%)	#	%	C.I. (95%)	#
Male	86,000	60.7	57.2 - 64.1	55,800	39.3	35.9 - 42.8	141,800
Female	68,500	52.2	49.1 - 55.3	62,800	47.8	44.7 - 50.9	131,300

Education Level	Yes			No			Estimated Population (3-Yr Avg)
	#	%	C.I. (95%)	#	%	C.I. (95%)	#
Grades 9 thru 11 (Some High School)	4,400	66.3	53.5 - 79.1	2,300	33.7	20.9 - 46.5	6,700
Grades 12 or GED (High School Grad)	41,300	58.7	53.7 - 63.7	29,100	41.3	36.3 - 46.3	70,400
College 1 to 3 years (Some College/ Tech)	54,000	58.5	54.4 - 62.6	38,300	41.5	37.4 - 45.6	92,400
College 4 years or more (College Grad)	54,200	52.7	49.2 - 56.2	48,600	47.3	43.8 - 50.8	102,800

HIV - within past 2 years (18-64) by State, County, Island, Community, BRFSS Age Group, DOH Race-Ethnicity, Gender, Education Level, Employment Status (Grouped), Household Income, Poverty Level, Marital Status (Grouped), Married, Health Care Coverage, for the Year(s) - 2001-2003, 2002-2004, 2003-2005, 2004-2006, 2005-2007, 2006-2008, 2007-2009, 2008-2010

Note: Weighted numbers (#) represent 3-yr averages, percentages and 95% confidence intervals; Respondents aged 18 years and older; n/r (Not Reportable) - If the unweighted total responses for a dimension (row) is <50 that row will not be shown; n/a (Not Available) - Not asked of a subset of respondents

Year: 2003-2005

Employment Status (Grouped)	Yes			No			Estimated Population (3-Yr Avg)
	#	%	C.I. (95%)	#	%	C.I. (95%)	#
Employed	118,800	56.2	53.6 - 58.9	92,500	43.8	41.1 - 46.4	211,200
Unemployed	4,900	58.8	44.7 - 72.8	3,400	41.2	27.2 - 55.3	8,300
Retired/Unable to work	9,100	50.3	41.0 - 59.5	9,000	49.7	40.5 - 59.0	18,200
Student/Homemaker	21,300	61.0	54.8 - 67.1	13,700	39.0	32.9 - 45.2	35,000

HIV - within past 2 years (18-64) by State, County, Island, Community, BRFSS Age Group, DOH Race-Ethnicity, Gender, Education Level, Employment Status (Grouped), Household Income, Poverty Level, Marital Status (Grouped), Married, Health Care Coverage, for the Year(s) - 2001-2003, 2002-2004, 2003-2005, 2004-2006, 2005-2007, 2006-2008, 2007-2009, 2008-2010

Note: Weighted numbers (#) represent 3-yr averages, percentages and 95% confidence intervals; Respondents aged 18 years and older; n/r (Not Reportable) - If the unweighted total responses for a dimension (row) is <50 that row will not be shown; n/a (Not Available) - Not asked of a subset of respondents

Year: 2003-2005

Household Income	Yes			No			Estimated Population (3-Yr Avg)
	#	%	C.I. (95%)	#	%	C.I. (95%)	#
Less than \$10,000	3,800	51.4	40.3 - 62.5	3,600	48.6	37.5 - 59.7	7,400
\$10,000 to \$14,999	4,500	54.7	42.5 - 66.9	3,800	45.3	33.1 - 57.5	8,300
\$15,000 to \$19,999	7,500	60.8	47.5 - 74.2	4,800	39.2	25.8 - 52.5	12,300
\$20,000 to \$24,999	10,700	61.7	53.4 - 70.0	6,700	38.3	30.0 - 46.6	17,400
\$25,000 to \$34,999	16,900	57.9	50.8 - 64.9	12,300	42.1	35.1 - 49.2	29,200
\$35,000 to \$49,999	26,100	56.4	50.8 - 62.0	20,200	43.6	38.0 - 49.2	46,300
\$50,000 to \$74,999	37,400	59.2	54.0 - 64.4	25,800	40.8	35.6 - 46.0	63,200
\$75,000 or more	33,600	50.7	45.9 - 55.5	32,700	49.3	44.5 - 54.1	66,300

HIV - within past 2 years (18-64) by State, County, Island, Community, BRFSS Age Group, DOH Race-Ethnicity, Gender, Education Level, Employment Status (Grouped), Household Income, Poverty Level, Marital Status (Grouped), Married, Health Care Coverage, for the Year(s) - 2001-2003, 2002-2004, 2003-2005, 2004-2006, 2005-2007, 2006-2008, 2007-2009, 2008-2010

Note: Weighted numbers (#) represent 3-yr averages, percentages and 95% confidence intervals; Respondents aged 18 years and older; n/r (Not Reportable) - If the unweighted total responses for a dimension (row) is <50 that row will not be shown; n/a (Not Available) - Not asked of a subset of respondents

Year: 2003-2005

Poverty Level	Yes			No			Estimated Population (3-Yr Avg)
	#	%	C.I. (95%)	#	%	C.I. (95%)	#
0-130%	24,200	52.6	46.6 - 58.6	21,800	47.4	41.4 - 53.4	46,100
131-185%	17,600	61.4	53.9 - 68.9	11,100	38.6	31.1 - 46.1	28,700
186+%	98,700	56.2	53.3 - 59.1	76,900	43.8	40.9 - 46.7	175,600

Marital Status (Grouped)	Yes			No			Estimated Population (3-Yr Avg)
	#	%	C.I. (95%)	#	%	C.I. (95%)	#
Married	85,800	52.7	49.7 - 55.8	76,900	47.3	44.2 - 50.3	162,800
Unmarried Couple	4,300	50.1	38.5 - 61.7	4,300	49.9	38.3 - 61.5	8,600
Widowed	1,100	38.2	22.8 - 53.6	1,700	61.8	46.4 - 77.2	2,800
Other	63,300	64.0	60.3 - 67.7	35,600	36.0	32.3 - 39.7	99,000

HIV - within past 2 years (18-64) by State, County, Island, Community, BRFSS Age Group, DOH Race-Ethnicity, Gender, Education Level, Employment Status (Grouped), Household Income, Poverty Level, Marital Status (Grouped), Married, Health Care Coverage, for the Year(s) - 2001-2003, 2002-2004, 2003-2005, 2004-2006, 2005-2007, 2006-2008, 2007-2009, 2008-2010

Note: Weighted numbers (#) represent 3-yr averages, percentages and 95% confidence intervals; Respondents aged 18 years and older; n/r (Not Reportable) - If the unweighted total responses for a dimension (row) is <50 that row will not be shown; n/a (Not Available) - Not asked of a subset of respondents

Year: 2003-2005

Married	Yes			No			Estimated Population (3-Yr Avg)
	#	%	C.I. (95%)	#	%	C.I. (95%)	#
Yes	88,400	52.9	49.9 - 55.9	78,700	47.1	44.1 - 50.1	167,100
No	66,100	62.4	58.8 - 66.0	39,800	37.6	34.0 - 41.2	105,900

Health Care Coverage	Yes			No			Estimated Population (3-Yr Avg)
	#	%	C.I. (95%)	#	%	C.I. (95%)	#
Yes	140,900	56.8	54.3 - 59.3	107,200	43.2	40.7 - 45.7	248,200
No	13,500	54.6	46.8 - 62.4	11,200	45.4	37.6 - 53.2	24,800

HIV - within past 2 years (18-64) by State, County, Island, Community, BRFSS Age Group, DOH Race-Ethnicity, Gender, Education Level, Employment Status (Grouped), Household Income, Poverty Level, Marital Status (Grouped), Married, Health Care Coverage, for the Year(s) - 2001-2003, 2002-2004, 2003-2005, 2004-2006, 2005-2007, 2006-2008, 2007-2009, 2008-2010

Note: Weighted numbers (#) represent 3-yr averages, percentages and 95% confidence intervals; Respondents aged 18 years and older; n/r (Not Reportable) - If the unweighted total responses for a dimension (row) is <50 that row will not be shown; n/a (Not Available) - Not asked of a subset of respondents

Year: 2002-2004

State	Yes			No			Estimated Population (3-Yr Avg)
	#	%	C.I. (95%)	#	%	C.I. (95%)	#
Hawaii State	155,400	57.4	55.1 - 59.8	115,300	42.6	40.2 - 44.9	270,600

County	Yes			No			Estimated Population (3-Yr Avg)
	#	%	C.I. (95%)	#	%	C.I. (95%)	#
Hawaii	15,000	46.3	41.5 - 51.1	17,500	53.7	48.9 - 58.5	32,500
Honolulu	122,500	61.4	58.5 - 64.4	76,900	38.6	35.6 - 41.5	199,400
Kauai	4,500	43.0	35.9 - 50.1	6,000	57.0	49.9 - 64.1	10,500
Maui	13,300	47.2	41.6 - 52.7	14,900	52.8	47.3 - 58.4	28,200

HIV - within past 2 years (18-64) by State, County, Island, Community, BRFSS Age Group, DOH Race-Ethnicity, Gender, Education Level, Employment Status (Grouped), Household Income, Poverty Level, Marital Status (Grouped), Married, Health Care Coverage, for the Year(s) - 2001-2003, 2002-2004, 2003-2005, 2004-2006, 2005-2007, 2006-2008, 2007-2009, 2008-2010

Note: Weighted numbers (#) represent 3-yr averages, percentages and 95% confidence intervals; Respondents aged 18 years and older; n/r (Not Reportable) - If the unweighted total responses for a dimension (row) is <50 that row will not be shown; n/a (Not Available) - Not asked of a subset of respondents

Year: 2002-2004

Island	Yes			No			Estimated Population (3-Yr Avg)
	#	%	C.I. (95%)	#	%	C.I. (95%)	#
Hawaii	15,000	46.3	41.5 - 51.1	17,500	53.7	48.9 - 58.5	32,500
Kauai	4,500	43.0	35.9 - 50.1	6,000	57.0	49.9 - 64.1	10,500
Maui	12,600	48.0	42.1 - 53.8	13,600	52.0	46.2 - 57.9	26,200
Molokai	500	31.5	19.0 - 44.0	1,100	68.5	56.0 - 81.0	1,500
Oahu	122,500	61.4	58.5 - 64.4	76,900	38.6	35.6 - 41.5	199,400

Community	Yes			No			Estimated Population (3-Yr Avg)
	#	%	C.I. (95%)	#	%	C.I. (95%)	#
Aiea/ Pearl City	10,500	65.8	56.1 - 75.4	5,500	34.2	24.6 - 43.9	16,000
Ala Moana	6,400	64.1	50.1 - 78.2	3,600	35.9	21.8 - 49.9	10,000
Hanalei/ Kapaa	2,100	45.2	35.1 - 55.3	2,600	54.8	44.7 - 64.9	4,800

HIV - within past 2 years (18-64) by State, County, Island, Community, BRFSS Age Group, DOH Race-Ethnicity, Gender, Education Level, Employment Status (Grouped), Household Income, Poverty Level, Marital Status (Grouped), Married, Health Care Coverage, for the Year(s) - 2001-2003, 2002-2004, 2003-2005, 2004-2006, 2005-2007, 2006-2008, 2007-2009, 2008-2010

Note: Weighted numbers (#) represent 3-yr averages, percentages and 95% confidence intervals; Respondents aged 18 years and older; n/r (Not Reportable) - If the unweighted total responses for a dimension (row) is <50 that row will not be shown; n/a (Not Available) - Not asked of a subset of respondents

Year: 2002-2004

Community	Yes			No			Estimated Population (3-Yr Avg)
	#	%	C.I. (95%)	#	%	C.I. (95%)	#
Hilo	3,600	41.8	32.4 - 51.2	5,000	58.2	48.8 - 67.6	8,500
Kaaawa/ Kahaluu/ Kaneohe	5,600	48.7	35.4 - 62.1	5,900	51.3	37.9 - 64.6	11,500
Kahului	4,800	51.6	40.7 - 62.5	4,500	48.4	37.5 - 59.3	9,300
Kailua/ Waimanalo	9,800	59.8	49.7 - 69.8	6,600	40.2	30.2 - 50.3	16,400
Kaimuki/ Palolo/ Waikiki	8,900	53.4	43.0 - 63.9	7,700	46.6	36.1 - 57.0	16,600
Kona	4,400	48.2	39.7 - 56.7	4,700	51.8	43.3 - 60.3	9,100
Lahaina/ Wailuku	3,600	47.8	36.8 - 58.7	4,000	52.2	41.3 - 63.2	7,600
Lihue-Waimea	2,400	41.2	31.3 - 51.0	3,400	58.8	49.0 - 68.7	5,800
Manoa/ Upper Makiki	8,600	60.5	50.2 - 70.7	5,600	39.5	29.3 - 49.8	14,200
Mililani/ Wahiawa	18,900	73.5	66.9 - 80.0	6,800	26.5	20.0 - 33.1	25,700
Molokai	500	31.5	19.0 - 44.0	1,100	68.5	56.0 - 81.0	1,500
Nanakuli/ Waianae	4,100	42.2	26.9 - 57.4	5,600	57.8	42.6 - 73.1	9,600

HIV - within past 2 years (18-64) by State, County, Island, Community, BRFSS Age Group, DOH Race-Ethnicity, Gender, Education Level, Employment Status (Grouped), Household Income, Poverty Level, Marital Status (Grouped), Married, Health Care Coverage, for the Year(s) - 2001-2003, 2002-2004, 2003-2005, 2004-2006, 2005-2007, 2006-2008, 2007-2009, 2008-2010

Note: Weighted numbers (#) represent 3-yr averages, percentages and 95% confidence intervals; Respondents aged 18 years and older; n/r (Not Reportable) - If the unweighted total responses for a dimension (row) is <50 that row will not be shown; n/a (Not Available) - Not asked of a subset of respondents

Year: 2002-2004

Community	Yes			No			Estimated Population (3-Yr Avg)
	#	%	C.I. (95%)	#	%	C.I. (95%)	#
N.Hawaii	2,400	39.9	30.4 - 49.3	3,600	60.1	50.7 - 69.6	6,000
N.Shore/ Laie	2,800	54.9	38.3 - 71.5	2,300	45.1	28.5 - 61.7	5,100
Nuuanu/ Kalihi/ Moanalua	8,400	59.4	48.4 - 70.4	5,700	40.6	29.6 - 51.6	14,200
Puna/ Kau	4,700	53.0	42.6 - 63.4	4,200	47.0	36.6 - 57.4	8,900
Salt Lake/ Foster Village	14,300	74.6	67.4 - 81.9	4,800	25.4	18.1 - 32.6	19,100
Upcountry/ Hana	4,100	44.5	36.2 - 52.7	5,200	55.5	47.3 - 63.8	9,300
Waialae/ Kahala/ Hawaii Kai	6,000	56.5	43.4 - 69.5	4,600	43.5	30.5 - 56.6	10,600
Waipahu/ Kapolei/ Ewa	18,300	60.2	52.3 - 68.0	12,100	39.8	32.0 - 47.7	30,400

HIV - within past 2 years (18-64) by State, County, Island, Community, BRFSS Age Group, DOH Race-Ethnicity, Gender, Education Level, Employment Status (Grouped), Household Income, Poverty Level, Marital Status (Grouped), Married, Health Care Coverage, for the Year(s) - 2001-2003, 2002-2004, 2003-2005, 2004-2006, 2005-2007, 2006-2008, 2007-2009, 2008-2010

Note: Weighted numbers (#) represent 3-yr averages, percentages and 95% confidence intervals; Respondents aged 18 years and older; n/r (Not Reportable) - If the unweighted total responses for a dimension (row) is <50 that row will not be shown; n/a (Not Available) - Not asked of a subset of respondents

Year: 2002-2004

BRFSS Age Group	Yes			No			Estimated Population (3-Yr Avg)
	#	%	C.I. (95%)	#	%	C.I. (95%)	#
18-24	36,100	86.3	82.0 - 90.6	5,700	13.7	9.4 - 18.0	41,900
25-34	56,300	65.9	61.9 - 70.0	29,100	34.1	30.0 - 38.1	85,400
35-44	36,000	45.4	41.0 - 49.8	43,300	54.6	50.2 - 59.0	79,300
45-54	19,600	45.3	40.4 - 50.1	23,700	54.7	49.9 - 59.6	43,300
55-64	7,300	35.1	27.7 - 42.5	13,400	64.9	57.5 - 72.3	20,700

HIV - within past 2 years (18-64) by State, County, Island, Community, BRFSS Age Group, DOH Race-Ethnicity, Gender, Education Level, Employment Status (Grouped), Household Income, Poverty Level, Marital Status (Grouped), Married, Health Care Coverage, for the Year(s) - 2001-2003, 2002-2004, 2003-2005, 2004-2006, 2005-2007, 2006-2008, 2007-2009, 2008-2010

Note: Weighted numbers (#) represent 3-yr averages, percentages and 95% confidence intervals; Respondents aged 18 years and older; n/r (Not Reportable) - If the unweighted total responses for a dimension (row) is <50 that row will not be shown; n/a (Not Available) - Not asked of a subset of respondents

Year: 2002-2004

DOH Race-Ethnicity	Yes			No			Estimated Population (3-Yr Avg)
	#	%	C.I. (95%)	#	%	C.I. (95%)	#
Caucasian	71,300	54.9	51.7 - 58.1	58,500	45.1	41.9 - 48.3	129,900
Native Hawaiian	16,700	54.2	46.8 - 61.6	14,100	45.8	38.4 - 53.2	30,700
Chinese	6,500	53.5	41.7 - 65.4	5,600	46.5	34.6 - 58.3	12,100
Filipino	17,900	57.4	50.0 - 64.9	13,200	42.6	35.1 - 50.0	31,100
Japanese	14,100	53.7	45.8 - 61.6	12,200	46.3	38.4 - 54.2	26,300
Black	6,900	77.6	68.9 - 86.3	2,000	22.4	13.7 - 31.1	8,900
Other Asian	5,000	66.3	47.3 - 85.4	2,500	33.7	14.6 - 52.7	7,500
Other	8,000	64.1	53.9 - 74.3	4,500	35.9	25.7 - 46.1	12,500

HIV - within past 2 years (18-64) by State, County, Island, Community, BRFSS Age Group, DOH Race-Ethnicity, Gender, Education Level, Employment Status (Grouped), Household Income, Poverty Level, Marital Status (Grouped), Married, Health Care Coverage, for the Year(s) - 2001-2003, 2002-2004, 2003-2005, 2004-2006, 2005-2007, 2006-2008, 2007-2009, 2008-2010

Note: Weighted numbers (#) represent 3-yr averages, percentages and 95% confidence intervals; Respondents aged 18 years and older; n/r (Not Reportable) - If the unweighted total responses for a dimension (row) is <50 that row will not be shown; n/a (Not Available) - Not asked of a subset of respondents

Year: 2002-2004

Gender	Yes			No			Estimated Population (3-Yr Avg)
	#	%	C.I. (95%)	#	%	C.I. (95%)	#
Male	86,900	61.6	58.2 - 65.1	54,100	38.4	34.9 - 41.8	141,000
Female	68,500	52.8	49.7 - 56.0	61,200	47.2	44.0 - 50.3	129,700

Education Level	Yes			No			Estimated Population (3-Yr Avg)
	#	%	C.I. (95%)	#	%	C.I. (95%)	#
Grades 9 thru 11 (Some High School)	4,700	75.1	64.9 - 85.3	1,600	24.9	14.7 - 35.1	6,200
Grades 12 or GED (High School Grad)	45,300	58.4	53.7 - 63.1	32,300	41.6	36.9 - 46.3	77,600
College 1 to 3 years (Some College/ Tech)	53,800	58.1	54.0 - 62.3	38,800	41.9	37.7 - 46.0	92,600
College 4 years or more (College Grad)	51,400	54.7	51.0 - 58.4	42,500	45.3	41.6 - 49.0	93,900

HIV - within past 2 years (18-64) by State, County, Island, Community, BRFSS Age Group, DOH Race-Ethnicity, Gender, Education Level, Employment Status (Grouped), Household Income, Poverty Level, Marital Status (Grouped), Married, Health Care Coverage, for the Year(s) - 2001-2003, 2002-2004, 2003-2005, 2004-2006, 2005-2007, 2006-2008, 2007-2009, 2008-2010

Note: Weighted numbers (#) represent 3-yr averages, percentages and 95% confidence intervals; Respondents aged 18 years and older; n/r (Not Reportable) - If the unweighted total responses for a dimension (row) is <50 that row will not be shown; n/a (Not Available) - Not asked of a subset of respondents

Year: 2002-2004

Employment Status (Grouped)	Yes			No			Estimated Population (3-Yr Avg)
	#	%	C.I. (95%)	#	%	C.I. (95%)	#
Employed	117,900	56.4	53.7 - 59.1	91,200	43.6	40.9 - 46.3	209,100
Unemployed	5,700	54.1	41.5 - 66.6	4,800	45.9	33.4 - 58.5	10,500
Retired/Unable to work	8,200	53.3	42.2 - 64.4	7,200	46.7	35.6 - 57.8	15,300
Student/Homemaker	23,100	66.0	60.0 - 72.0	11,900	34.0	28.0 - 40.0	35,100

HIV - within past 2 years (18-64) by State, County, Island, Community, BRFSS Age Group, DOH Race-Ethnicity, Gender, Education Level, Employment Status (Grouped), Household Income, Poverty Level, Marital Status (Grouped), Married, Health Care Coverage, for the Year(s) - 2001-2003, 2002-2004, 2003-2005, 2004-2006, 2005-2007, 2006-2008, 2007-2009, 2008-2010

Note: Weighted numbers (#) represent 3-yr averages, percentages and 95% confidence intervals; Respondents aged 18 years and older; n/r (Not Reportable) - If the unweighted total responses for a dimension (row) is <50 that row will not be shown; n/a (Not Available) - Not asked of a subset of respondents

Year: 2002-2004

Household Income	Yes			No			Estimated Population (3-Yr Avg)
	#	%	C.I. (95%)	#	%	C.I. (95%)	#
Less than \$10,000	5,200	58.9	48.9 - 68.8	3,600	41.1	31.2 - 51.1	8,800
\$10,000 to \$14,999	5,500	54.8	44.5 - 65.1	4,600	45.2	34.9 - 55.5	10,100
\$15,000 to \$19,999	8,600	57.5	45.1 - 69.9	6,400	42.5	30.1 - 54.9	15,000
\$20,000 to \$24,999	11,100	63.0	54.8 - 71.1	6,500	37.0	28.9 - 45.2	17,600
\$25,000 to \$34,999	17,600	59.1	52.3 - 66.0	12,200	40.9	34.0 - 47.7	29,700
\$35,000 to \$49,999	28,200	57.4	52.1 - 62.8	20,900	42.6	37.2 - 47.9	49,100
\$50,000 to \$74,999	34,300	59.6	54.1 - 65.2	23,200	40.4	34.8 - 45.9	57,500
\$75,000 or more	29,000	52.0	46.4 - 57.5	26,800	48.0	42.5 - 53.6	55,900

HIV - within past 2 years (18-64) by State, County, Island, Community, BRFSS Age Group, DOH Race-Ethnicity, Gender, Education Level, Employment Status (Grouped), Household Income, Poverty Level, Marital Status (Grouped), Married, Health Care Coverage, for the Year(s) - 2001-2003, 2002-2004, 2003-2005, 2004-2006, 2005-2007, 2006-2008, 2007-2009, 2008-2010

Note: Weighted numbers (#) represent 3-yr averages, percentages and 95% confidence intervals; Respondents aged 18 years and older; n/r (Not Reportable) - If the unweighted total responses for a dimension (row) is <50 that row will not be shown; n/a (Not Available) - Not asked of a subset of respondents

Year: 2002-2004

Poverty Level	Yes			No			Estimated Population (3-Yr Avg)
	#	%	C.I. (95%)	#	%	C.I. (95%)	#
0-130%	27,400	54.0	48.4 - 59.7	23,300	46.0	40.3 - 51.6	50,700
131-185%	16,500	59.2	51.7 - 66.7	11,400	40.8	33.3 - 48.3	27,800
186+%	95,600	57.9	54.8 - 60.9	69,500	42.1	39.1 - 45.2	165,200

Marital Status (Grouped)	Yes			No			Estimated Population (3-Yr Avg)
	#	%	C.I. (95%)	#	%	C.I. (95%)	#
Married	83,800	53.6	50.4 - 56.7	72,600	46.4	43.3 - 49.6	156,400
Unmarried Couple	4,300	52.1	39.6 - 64.6	3,900	47.9	35.4 - 60.4	8,200
Widowed	1,300	41.5	24.7 - 58.4	1,800	58.5	41.6 - 75.3	3,100
Other	66,000	64.1	60.6 - 67.7	36,900	35.9	32.3 - 39.4	102,900

HIV - within past 2 years (18-64) by State, County, Island, Community, BRFSS Age Group, DOH Race-Ethnicity, Gender, Education Level, Employment Status (Grouped), Household Income, Poverty Level, Marital Status (Grouped), Married, Health Care Coverage, for the Year(s) - 2001-2003, 2002-2004, 2003-2005, 2004-2006, 2005-2007, 2006-2008, 2007-2009, 2008-2010

Note: Weighted numbers (#) represent 3-yr averages, percentages and 95% confidence intervals; Respondents aged 18 years and older; n/r (Not Reportable) - If the unweighted total responses for a dimension (row) is <50 that row will not be shown; n/a (Not Available) - Not asked of a subset of respondents

Year: 2002-2004

Married	Yes			No			Estimated Population (3-Yr Avg)
	#	%	C.I. (95%)	#	%	C.I. (95%)	#
Yes	86,300	53.7	50.6 - 56.8	74,500	46.3	43.2 - 49.4	160,800
No	68,900	62.8	59.3 - 66.4	40,800	37.2	33.6 - 40.7	109,700

Health Care Coverage	Yes			No			Estimated Population (3-Yr Avg)
	#	%	C.I. (95%)	#	%	C.I. (95%)	#
Yes	141,400	57.7	55.2 - 60.1	103,800	42.3	39.9 - 44.8	245,200
No	13,900	55.0	47.3 - 62.8	11,400	45.0	37.2 - 52.7	25,300

HIV - within past 2 years (18-64) by State, County, Island, Community, BRFSS Age Group, DOH Race-Ethnicity, Gender, Education Level, Employment Status (Grouped), Household Income, Poverty Level, Marital Status (Grouped), Married, Health Care Coverage, for the Year(s) - 2001-2003, 2002-2004, 2003-2005, 2004-2006, 2005-2007, 2006-2008, 2007-2009, 2008-2010

Note: Weighted numbers (#) represent 3-yr averages, percentages and 95% confidence intervals; Respondents aged 18 years and older; n/r (Not Reportable) - If the unweighted total responses for a dimension (row) is <50 that row will not be shown; n/a (Not Available) - Not asked of a subset of respondents

Year: 2001-2003

State	Yes			No			Estimated Population (3-Yr Avg)
	#	%	C.I. (95%)	#	%	C.I. (95%)	#
Hawaii State	150,300	53.8	51.8 - 55.8	128,900	46.2	44.2 - 48.2	279,200

County	Yes			No			Estimated Population (3-Yr Avg)
	#	%	C.I. (95%)	#	%	C.I. (95%)	#
Hawaii	14,200	45.2	41.3 - 49.1	17,200	54.8	50.9 - 58.7	31,400
Honolulu	118,600	57.3	54.8 - 59.8	88,300	42.7	40.2 - 45.2	207,000
Kauai	4,000	38.8	32.8 - 44.7	6,400	61.2	55.3 - 67.2	10,400
Maui	13,400	44.1	39.1 - 49.1	17,000	55.9	50.9 - 60.9	30,500

HIV - within past 2 years (18-64) by State, County, Island, Community, BRFSS Age Group, DOH Race-Ethnicity, Gender, Education Level, Employment Status (Grouped), Household Income, Poverty Level, Marital Status (Grouped), Married, Health Care Coverage, for the Year(s) - 2001-2003, 2002-2004, 2003-2005, 2004-2006, 2005-2007, 2006-2008, 2007-2009, 2008-2010

Note: Weighted numbers (#) represent 3-yr averages, percentages and 95% confidence intervals; Respondents aged 18 years and older; n/r (Not Reportable) - If the unweighted total responses for a dimension (row) is <50 that row will not be shown; n/a (Not Available) - Not asked of a subset of respondents

Year: 2001-2003

Island	Yes			No			Estimated Population (3-Yr Avg)
	#	%	C.I. (95%)	#	%	C.I. (95%)	#
Hawaii	14,200	45.2	41.3 - 49.1	17,200	54.8	50.9 - 58.7	31,400
Kauai	4,000	38.8	32.8 - 44.7	6,400	61.2	55.3 - 67.2	10,400
Lanai	300	50.6	32.1 - 69.2	300	49.4	30.8 - 67.9	600
Maui	12,600	44.4	39.1 - 49.7	15,800	55.6	50.3 - 60.9	28,400
Molokai	500	34.5	22.0 - 46.9	1,000	65.5	53.1 - 78.0	1,500
Oahu	118,600	57.3	54.8 - 59.8	88,300	42.7	40.2 - 45.2	207,000

Community	Yes			No			Estimated Population (3-Yr Avg)
	#	%	C.I. (95%)	#	%	C.I. (95%)	#
Aiea/ Pearl City	8,300	52.7	43.8 - 61.5	7,500	47.3	38.5 - 56.2	15,800
Ala Moana	4,300	52.0	41.3 - 62.7	4,000	48.0	37.3 - 58.7	8,300

HIV - within past 2 years (18-64) by State, County, Island, Community, BRFSS Age Group, DOH Race-Ethnicity, Gender, Education Level, Employment Status (Grouped), Household Income, Poverty Level, Marital Status (Grouped), Married, Health Care Coverage, for the Year(s) - 2001-2003, 2002-2004, 2003-2005, 2004-2006, 2005-2007, 2006-2008, 2007-2009, 2008-2010

Note: Weighted numbers (#) represent 3-yr averages, percentages and 95% confidence intervals; Respondents aged 18 years and older; n/r (Not Reportable) - If the unweighted total responses for a dimension (row) is <50 that row will not be shown; n/a (Not Available) - Not asked of a subset of respondents

Year: 2001-2003

Community	Yes			No			Estimated Population (3-Yr Avg)
	#	%	C.I. (95%)	#	%	C.I. (95%)	#
Hanalei/ Kapaa	1,900	40.3	31.7 - 48.9	2,900	59.7	51.1 - 68.3	4,800
Hilo	3,200	40.7	32.7 - 48.7	4,600	59.3	51.3 - 67.3	7,800
Kaaawa/ Kahaluu/ Kaneohe	6,900	56.7	46.3 - 67.2	5,200	43.3	32.8 - 53.7	12,100
Kahului	4,500	40.9	30.9 - 50.8	6,500	59.1	49.2 - 69.1	11,000
Kailua/ Waimanalo	8,500	51.3	43.0 - 59.6	8,000	48.7	40.4 - 57.0	16,500
Kaimuki/ Palolo/ Waikiki	9,600	50.1	42.1 - 58.1	9,500	49.9	41.9 - 57.9	19,100
Kona	4,500	47.2	40.4 - 54.0	5,000	52.8	46.0 - 59.6	9,500
Lahaina/ Wailuku	4,000	48.8	39.9 - 57.8	4,200	51.2	42.2 - 60.1	8,100
Lanai	300	50.6	32.1 - 69.2	300	49.4	30.8 - 67.9	600
Lihue-Waimea	2,100	37.5	29.3 - 45.7	3,500	62.5	54.3 - 70.7	5,600
Manoa/ Upper Makiki	9,400	56.0	46.6 - 65.3	7,400	44.0	34.7 - 53.4	16,900
Mililani/ Wahiawa	20,300	73.0	67.1 - 78.8	7,500	27.0	21.2 - 32.9	27,800

HIV - within past 2 years (18-64) by State, County, Island, Community, BRFSS Age Group, DOH Race-Ethnicity, Gender, Education Level, Employment Status (Grouped), Household Income, Poverty Level, Marital Status (Grouped), Married, Health Care Coverage, for the Year(s) - 2001-2003, 2002-2004, 2003-2005, 2004-2006, 2005-2007, 2006-2008, 2007-2009, 2008-2010

Note: Weighted numbers (#) represent 3-yr averages, percentages and 95% confidence intervals; Respondents aged 18 years and older; n/r (Not Reportable) - If the unweighted total responses for a dimension (row) is <50 that row will not be shown; n/a (Not Available) - Not asked of a subset of respondents

Year: 2001-2003

Community	Yes			No			Estimated Population (3-Yr Avg)
	#	%	C.I. (95%)	#	%	C.I. (95%)	#
Molokai	500	34.5	22.0 - 46.9	1,000	65.5	53.1 - 78.0	1,500
Nanakuli/ Waianae	4,200	46.1	33.1 - 59.0	5,000	53.9	41.0 - 66.9	9,200
N.Hawaii	2,700	38.3	30.3 - 46.3	4,400	61.7	53.7 - 69.7	7,100
N.Shore/ Laie	3,600	56.8	42.5 - 71.0	2,800	43.2	29.0 - 57.5	6,400
Nuuanu/ Kalihi/ Moanalua	7,600	55.4	45.5 - 65.3	6,100	44.6	34.7 - 54.5	13,700
Puna/ Kau	3,800	54.5	46.0 - 63.1	3,200	45.5	36.9 - 54.0	7,000
Salt Lake/ Foster Village	15,000	69.3	62.5 - 76.1	6,700	30.7	23.9 - 37.5	21,700
Upcountry/ Hana	4,100	44.8	37.7 - 51.9	5,100	55.2	48.1 - 62.3	9,200
Waialae/ Kahala/ Hawaii Kai	3,900	39.3	27.6 - 51.0	6,000	60.7	49.0 - 72.4	9,900
Waipahu/ Kapolei/ Ewa	16,900	57.5	50.9 - 64.1	12,500	42.5	35.9 - 49.1	29,400

HIV - within past 2 years (18-64) by State, County, Island, Community, BRFSS Age Group, DOH Race-Ethnicity, Gender, Education Level, Employment Status (Grouped), Household Income, Poverty Level, Marital Status (Grouped), Married, Health Care Coverage, for the Year(s) - 2001-2003, 2002-2004, 2003-2005, 2004-2006, 2005-2007, 2006-2008, 2007-2009, 2008-2010

Note: Weighted numbers (#) represent 3-yr averages, percentages and 95% confidence intervals; Respondents aged 18 years and older; n/r (Not Reportable) - If the unweighted total responses for a dimension (row) is <50 that row will not be shown; n/a (Not Available) - Not asked of a subset of respondents

Year: 2001-2003

BRFSS Age Group	Yes			No			Estimated Population (3-Yr Avg)
	#	%	C.I. (95%)	#	%	C.I. (95%)	#
18-24	34,300	78.3	72.6 - 83.9	9,500	21.7	16.1 - 27.4	43,800
25-34	51,800	60.4	57.0 - 63.9	33,900	39.6	36.1 - 43.0	85,700
35-44	37,000	46.9	43.3 - 50.5	42,000	53.1	49.5 - 56.7	79,000
45-54	19,700	41.4	37.0 - 45.7	27,900	58.6	54.3 - 63.0	47,600
55-64	7,400	32.2	25.6 - 38.9	15,600	67.8	61.1 - 74.4	23,000

HIV - within past 2 years (18-64) by State, County, Island, Community, BRFSS Age Group, DOH Race-Ethnicity, Gender, Education Level, Employment Status (Grouped), Household Income, Poverty Level, Marital Status (Grouped), Married, Health Care Coverage, for the Year(s) - 2001-2003, 2002-2004, 2003-2005, 2004-2006, 2005-2007, 2006-2008, 2007-2009, 2008-2010

Note: Weighted numbers (#) represent 3-yr averages, percentages and 95% confidence intervals; Respondents aged 18 years and older; n/r (Not Reportable) - If the unweighted total responses for a dimension (row) is <50 that row will not be shown; n/a (Not Available) - Not asked of a subset of respondents

Year: 2001-2003

DOH Race-Ethnicity	Yes			No			Estimated Population (3-Yr Avg)
	#	%	C.I. (95%)	#	%	C.I. (95%)	#
Caucasian	73,400	54.3	51.6 - 56.9	61,900	45.7	43.1 - 48.4	135,300
Native Hawaiian	16,900	50.6	44.6 - 56.6	16,500	49.4	43.4 - 55.4	33,400
Chinese	5,900	47.5	38.1 - 56.9	6,500	52.5	43.1 - 61.9	12,400
Filipino	16,400	52.1	45.1 - 59.1	15,100	47.9	40.9 - 54.9	31,400
Japanese	12,400	46.3	39.7 - 52.8	14,400	53.7	47.2 - 60.3	26,800
Black	8,100	73.5	64.8 - 82.2	2,900	26.5	17.8 - 35.2	11,000
Native Alaskan/ American Indian	1,700	62.8	45.0 - 80.6	1,000	37.2	19.4 - 55.0	2,700
Other Asian	2,800	47.6	31.8 - 63.4	3,100	52.4	36.6 - 68.2	5,900
Other Pacific Islander	2,600	54.6	37.1 - 72.1	2,200	45.4	27.9 - 62.9	4,800
Other	9,200	65.7	57.0 - 74.3	4,800	34.3	25.7 - 43.0	14,000

HIV - within past 2 years (18-64) by State, County, Island, Community, BRFSS Age Group, DOH Race-Ethnicity, Gender, Education Level, Employment Status (Grouped), Household Income, Poverty Level, Marital Status (Grouped), Married, Health Care Coverage, for the Year(s) - 2001-2003, 2002-2004, 2003-2005, 2004-2006, 2005-2007, 2006-2008, 2007-2009, 2008-2010

Note: Weighted numbers (#) represent 3-yr averages, percentages and 95% confidence intervals; Respondents aged 18 years and older; n/r (Not Reportable) - If the unweighted total responses for a dimension (row) is <50 that row will not be shown; n/a (Not Available) - Not asked of a subset of respondents

Year: 2001-2003

Gender	Yes			No			Estimated Population (3-Yr Avg)
	#	%	C.I. (95%)	#	%	C.I. (95%)	#
Male	87,000	59.1	56.1 - 62.1	60,200	40.9	37.9 - 43.9	147,200
Female	63,300	48.0	45.4 - 50.5	68,700	52.0	49.5 - 54.6	132,000

Education Level	Yes			No			Estimated Population (3-Yr Avg)
	#	%	C.I. (95%)	#	%	C.I. (95%)	#
Grades 9 thru 11 (Some High School)	3,900	64.6	53.8 - 75.4	2,100	35.4	24.6 - 46.2	6,000
Grades 12 or GED (High School Grad)	46,200	56.5	52.8 - 60.2	35,600	43.5	39.8 - 47.2	81,800
College 1 to 3 years (Some College/ Tech)	50,700	54.0	50.3 - 57.6	43,200	46.0	42.4 - 49.7	93,900
College 4 years or more (College Grad)	49,000	50.8	47.6 - 54.0	47,500	49.2	46.0 - 52.4	96,500

HIV - within past 2 years (18-64) by State, County, Island, Community, BRFSS Age Group, DOH Race-Ethnicity, Gender, Education Level, Employment Status (Grouped), Household Income, Poverty Level, Marital Status (Grouped), Married, Health Care Coverage, for the Year(s) - 2001-2003, 2002-2004, 2003-2005, 2004-2006, 2005-2007, 2006-2008, 2007-2009, 2008-2010

Note: Weighted numbers (#) represent 3-yr averages, percentages and 95% confidence intervals; Respondents aged 18 years and older; n/r (Not Reportable) - If the unweighted total responses for a dimension (row) is <50 that row will not be shown; n/a (Not Available) - Not asked of a subset of respondents

Year: 2001-2003

Employment Status (Grouped)	Yes			No			Estimated Population (3-Yr Avg)
	#	%	C.I. (95%)	#	%	C.I. (95%)	#
Employed	118,200	53.2	51.0 - 55.5	103,900	46.8	44.5 - 49.0	222,100
Unemployed	6,200	54.9	44.8 - 65.0	5,100	45.1	35.0 - 55.2	11,200
Retired/Unable to work	6,200	45.9	36.8 - 54.9	7,300	54.1	45.1 - 63.2	13,500
Student/Homemaker	19,600	61.0	55.4 - 66.7	12,500	39.0	33.3 - 44.6	32,100

HIV - within past 2 years (18-64) by State, County, Island, Community, BRFSS Age Group, DOH Race-Ethnicity, Gender, Education Level, Employment Status (Grouped), Household Income, Poverty Level, Marital Status (Grouped), Married, Health Care Coverage, for the Year(s) - 2001-2003, 2002-2004, 2003-2005, 2004-2006, 2005-2007, 2006-2008, 2007-2009, 2008-2010

Note: Weighted numbers (#) represent 3-yr averages, percentages and 95% confidence intervals; Respondents aged 18 years and older; n/r (Not Reportable) - If the unweighted total responses for a dimension (row) is <50 that row will not be shown; n/a (Not Available) - Not asked of a subset of respondents

Year: 2001-2003

Household Income	Yes			No			Estimated Population (3-Yr Avg)
	#	%	C.I. (95%)	#	%	C.I. (95%)	#
Less than \$10,000	6,500	51.2	42.0 - 60.4	6,200	48.8	39.6 - 58.0	12,600
\$10,000 to \$14,999	6,800	51.6	42.7 - 60.5	6,400	48.4	39.5 - 57.3	13,200
\$15,000 to \$19,999	9,800	62.5	53.3 - 71.7	5,900	37.5	28.3 - 46.7	15,700
\$20,000 to \$24,999	10,600	58.9	48.9 - 68.8	7,400	41.1	31.2 - 51.1	18,000
\$25,000 to \$34,999	17,700	56.2	50.6 - 61.7	13,800	43.8	38.3 - 49.4	31,600
\$35,000 to \$49,999	30,100	58.5	54.1 - 62.9	21,400	41.5	37.1 - 45.9	51,500
\$50,000 to \$74,999	22,300	50.4	45.5 - 55.3	21,900	49.6	44.7 - 54.5	44,200
\$75,000 or more	22,200	45.9	41.2 - 50.6	26,200	54.1	49.4 - 58.8	48,400

HIV - within past 2 years (18-64) by State, County, Island, Community, BRFSS Age Group, DOH Race-Ethnicity, Gender, Education Level, Employment Status (Grouped), Household Income, Poverty Level, Marital Status (Grouped), Married, Health Care Coverage, for the Year(s) - 2001-2003, 2002-2004, 2003-2005, 2004-2006, 2005-2007, 2006-2008, 2007-2009, 2008-2010

Note: Weighted numbers (#) represent 3-yr averages, percentages and 95% confidence intervals; Respondents aged 18 years and older; n/r (Not Reportable) - If the unweighted total responses for a dimension (row) is <50 that row will not be shown; n/a (Not Available) - Not asked of a subset of respondents

Year: 2001-2003

Poverty Level	Yes			No			Estimated Population (3-Yr Avg)
	#	%	C.I. (95%)	#	%	C.I. (95%)	#
0-130%	29,200	53.1	48.0 - 58.2	25,800	46.9	41.8 - 52.0	55,000
131-185%	18,600	59.7	53.7 - 65.7	12,600	40.3	34.3 - 46.3	31,200
186+%	78,200	52.5	49.9 - 55.1	70,800	47.5	44.9 - 50.1	149,000

Marital Status (Grouped)	Yes			No			Estimated Population (3-Yr Avg)
	#	%	C.I. (95%)	#	%	C.I. (95%)	#
Married	79,800	50.8	48.1 - 53.5	77,300	49.2	46.5 - 51.9	157,100
Unmarried Couple	4,400	59.1	47.2 - 71.0	3,000	40.9	29.0 - 52.8	7,400
Widowed	1,200	36.9	21.4 - 52.5	2,100	63.1	47.5 - 78.6	3,300
Other	64,900	58.2	55.2 - 61.3	46,500	41.8	38.7 - 44.8	111,400

HIV - within past 2 years (18-64) by State, County, Island, Community, BRFSS Age Group, DOH Race-Ethnicity, Gender, Education Level, Employment Status (Grouped), Household Income, Poverty Level, Marital Status (Grouped), Married, Health Care Coverage, for the Year(s) - 2001-2003, 2002-2004, 2003-2005, 2004-2006, 2005-2007, 2006-2008, 2007-2009, 2008-2010

Note: Weighted numbers (#) represent 3-yr averages, percentages and 95% confidence intervals; Respondents aged 18 years and older; n/r (Not Reportable) - If the unweighted total responses for a dimension (row) is <50 that row will not be shown; n/a (Not Available) - Not asked of a subset of respondents

Year: 2001-2003

Married	Yes			No			Estimated Population (3-Yr Avg)
	#	%	C.I. (95%)	#	%	C.I. (95%)	#
Yes	82,900	50.9	48.3 - 53.6	79,900	49.1	46.4 - 51.7	162,800
No	67,300	57.9	54.9 - 60.9	48,900	42.1	39.1 - 45.1	116,200

Health Care Coverage	Yes			No			Estimated Population (3-Yr Avg)
	#	%	C.I. (95%)	#	%	C.I. (95%)	#
Yes	138,000	54.0	51.9 - 56.1	117,500	46.0	43.9 - 48.1	255,500
No	12,200	51.7	45.2 - 58.2	11,400	48.3	41.8 - 54.8	23,600