

Talked to Doctor, Nurse, or Other Health Professional about Preventing Sexually Transmitted Diseases through Condom Use (Among Adults Age 18-64) by Year Total, County, BRFSS Age Group, DOH Race-Ethnicity, Gender, County and Community, Education Level, Employment Status (Grouped), Household Income, Island, Marital Status (Grouped), Poverty Level, for the Year(s) - 2001, 2002, 2003, 2004

*Note: Weighted numbers (#), percentages and 95% confidence intervals; Respondents aged 18 years and older;
n/r (Not Reportable) - Represents cell size restriction of unweighted count < 50;
n/a (Not Available) - Not asked of a subset of respondents*

The trend analysis report shows the trend for the selected health variable over selected years in a table and a graph; Estimated Adult Population: This number is a weighted representation of the adult population who responded to a particular question in the survey. For most questions the estimated adult population will be the entire adult population. For some secondary questions only a subset of the population was asked the question. For example, all survey participants were asked if they had diabetes, but only those who answered yes were asked if they use insulin. If a dimension value is unknown for a particular survey record, that record will not be included in the counts for that particular dimension.

For documentation on other terms and coding in this report, please go to the following links

[Click here to access BRFSS documentation](#)

[Click here to access DOH Race-Ethnicity coding](#)

[Click here to access The Hawai'i Data Guide](#)

[Click here to access Poverty Level Methodology](#)

**For questions about this report, please contact
The Hawaii Health Data Warehouse**

profiles@hhdw.org

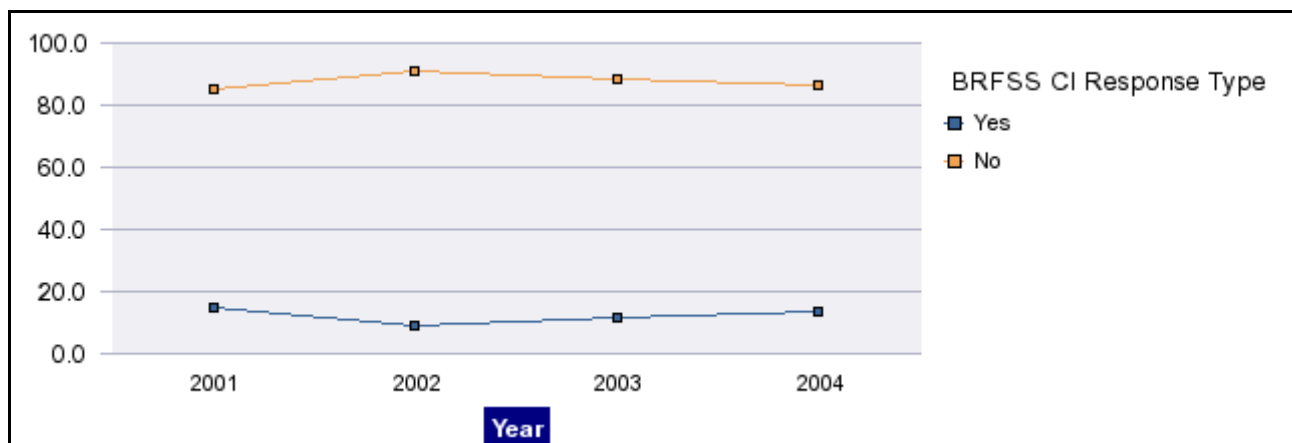
(808) 946-5899 x15

Talked to Doctor, Nurse, or Other Health Professional about Preventing Sexually Transmitted Diseases through Condom Use (Among Adults Age 18-64) by Year Total, County, BRFSS Age Group, DOH Race-Ethnicity, Gender, County and Community, Education Level, Employment Status (Grouped), Household Income, Island, Marital Status (Grouped), Poverty Level, for the Year(s) - 2001, 2002, 2003, 2004

Note: Weighted numbers (#), percentages and 95% confidence intervals; Respondents aged 18 years and older; n/r (Not Reportable) - Represents cell size restriction of unweighted count < 50; n/a (Not Available) - Not asked of a subset of respondents

	Yes			No			Estimated Adult Population
	#	%	C.I.(95%)	#	%	C.I.(95%)	#
2001	111,681	14.9	13.3 - 16.6	636,656	85.1	83.4 - 86.7	748,337
2002	70,938	9.3	8.2 - 10.5	687,985	90.7	89.5 - 91.8	758,923
2003	93,136	12.0	10.5 - 13.5	683,551	88.0	86.5 - 89.5	776,687
2004	103,922	13.9	11.4 - 16.3	644,925	86.1	83.7 - 88.6	748,847

Talked to Doctor, Nurse, or Other Health Professional about Preventing Sexually Transmitted Diseases through Condom Use (Among Adults Age 18-64), for the Year(s) - 2001, 2002, 2003, 2004



Talked to Doctor, Nurse, or Other Health Professional about Preventing Sexually Transmitted Diseases through Condom Use (Among Adults Age 18-64) by Year Total, County, BRFSS Age Group, DOH Race-Ethnicity, Gender, County and Community, Education Level, Employment Status (Grouped), Household Income, Island, Marital Status (Grouped), Poverty Level, for the Year(s) - 2001, 2002, 2003, 2004

Note: Weighted numbers (#), percentages and 95% confidence intervals; Respondents aged 18 years and older; n/r (Not Reportable) - Represents cell size restriction of unweighted count < 50; n/a (Not Available) - Not asked of a subset of respondents

Year: 2001

Year Total	Yes			No			Estimated Adult Population
	#	%	C.I. (95%)	#	%	C.I. (95%)	#
State	111,681	14.9	13.3 - 16.6	636,656	85.1	83.4 - 86.7	748,337

County	Yes			No			Estimated Adult Population
	#	%	C.I. (95%)	#	%	C.I. (95%)	#
Hawaii	12,036	14.2	10.9 - 17.4	73,020	85.8	82.6 - 89.1	85,056
Honolulu	83,553	15.8	13.6 - 18.0	445,052	84.2	82.0 - 86.4	528,605
Kauai	4,377	13.2	8.8 - 17.6	28,778	86.8	82.4 - 91.2	33,155
Maui	8,384	10.3	7.4 - 13.3	72,700	89.7	86.7 - 92.6	81,084

**Talked to Doctor, Nurse, or Other Health Professional about Preventing Sexually Transmitted Diseases through Condom Use
(Among Adults Age 18-64) by Year Total, County, BRFSS Age Group, DOH Race-Ethnicity, Gender, County and Community,
Education Level, Employment Status (Grouped), Household Income, Island, Marital Status (Grouped), Poverty Level, for the
Year(s) - 2001, 2002, 2003, 2004**

*Note: Weighted numbers (#), percentages and 95% confidence intervals; Respondents aged 18 years and older; n/r (Not Reportable) -
Represents cell size restriction of unweighted count < 50; n/a (Not Available) - Not asked of a subset of respondents*

Year: 2001

BRFSS Age Group	Yes			No			Estimated Adult Population
	#	%	C.I. (95%)	#	%	C.I. (95%)	#
18-24	35,558	32.7	26.3 - 39.1	73,274	67.3	60.9 - 73.7	108,832
25-34	34,716	20.3	16.4 - 24.2	136,205	79.7	75.8 - 83.6	170,921
35-44	26,036	13.9	10.7 - 17.1	161,325	86.1	82.9 - 89.3	187,361
45-54	11,425	7.2	4.8 - 9.5	148,117	92.8	90.5 - 95.2	159,542
55-64	3,946	3.2	1.2 - 5.3	117,735	96.8	94.7 - 98.8	121,681
65-74	n/r	n/r	n/r	n/r	n/r	n/r	n/r
75+	n/r	n/r	n/r	n/r	n/r	n/r	n/r

**Talked to Doctor, Nurse, or Other Health Professional about Preventing Sexually Transmitted Diseases through Condom Use
(Among Adults Age 18-64) by Year Total, County, BRFSS Age Group, DOH Race-Ethnicity, Gender, County and Community,
Education Level, Employment Status (Grouped), Household Income, Island, Marital Status (Grouped), Poverty Level, for the
Year(s) - 2001, 2002, 2003, 2004**

*Note: Weighted numbers (#), percentages and 95% confidence intervals; Respondents aged 18 years and older; n/r (Not Reportable) -
Represents cell size restriction of unweighted count < 50; n/a (Not Available) - Not asked of a subset of respondents*

Year: 2001

DOH Race-Ethnicity	Yes			No			Estimated Adult Population
	#	%	C.I. (95%)	#	%	C.I. (95%)	#
White	42,781	16.4	13.7 - 19.1	217,893	83.6	80.9 - 86.3	260,674
Native Hawaiian	16,570	15.9	11.8 - 20.0	87,670	84.1	80.0 - 88.2	104,240
Chinese	4,434	11.3	5.3 - 17.3	34,790	88.7	82.7 - 94.7	39,224
Filipino	16,288	14.7	9.7 - 19.7	94,469	85.3	80.3 - 90.3	110,757
Japanese	13,720	10.2	6.8 - 13.6	120,532	89.8	86.4 - 93.2	134,252
Black	4,042	24.8	11.3 - 38.3	12,266	75.2	61.7 - 88.7	16,308
Other Pacific Islander	5,555	28.8	14.3 - 43.3	13,762	71.2	56.7 - 85.7	19,317
Other Asian	1,464	6.5	.2 - 12.8	20,924	93.5	87.2 - 99.8	22,388
Native Alaskan/ American Indian	n/r	n/r	n/r	n/r	n/r	n/r	n/r
Other	5,456	16.8	6.2 - 27.4	27,017	83.2	72.6 - 93.8	32,473

**Talked to Doctor, Nurse, or Other Health Professional about Preventing Sexually Transmitted Diseases through Condom Use
(Among Adults Age 18-64) by Year Total, County, BRFSS Age Group, DOH Race-Ethnicity, Gender, County and Community,
Education Level, Employment Status (Grouped), Household Income, Island, Marital Status (Grouped), Poverty Level, for the
Year(s) - 2001, 2002, 2003, 2004**

*Note: Weighted numbers (#), percentages and 95% confidence intervals; Respondents aged 18 years and older; n/r (Not Reportable) -
Represents cell size restriction of unweighted count < 50; n/a (Not Available) - Not asked of a subset of respondents*

Year: 2001

Gender	Yes			No			Estimated Adult Population
	#	%	C.I. (95%)	#	%	C.I. (95%)	#
Female	58,681	16.1	13.8 - 18.5	305,114	83.9	81.5 - 86.2	363,795
Male	53,001	13.8	11.4 - 16.1	331,542	86.2	83.9 - 88.6	384,543

County and Community	Yes			No			Estimated Adult Population
	#	%	C.I. (95%)	#	%	C.I. (95%)	#
Hawaii-Hilo	3,548	15.2	9.2 - 21.2	19,784	84.8	78.8 - 90.8	23,332
Hawaii-Kona	2,524	9.9	6.0 - 13.9	22,918	90.1	86.1 - 94.0	25,442
Hawaii-N.Hawaii	3,771	19.8	10.5 - 29.1	15,255	80.2	70.9 - 89.5	19,026
Hawaii-Puna/ Kau	2,192	12.7	6.3 - 19.1	15,064	87.3	80.9 - 93.7	17,256
Honolulu-Aiea/ Pearl City	7,939	16.9	8.8 - 25.0	38,937	83.1	75.0 - 91.2	46,876
Honolulu-Ala Moana	1,594	8.1	2.1 - 14.2	18,024	91.9	85.8 - 97.9	19,618
Honolulu-Kaaawa/ Kahaluu/ Kaneohe	5,113	15.1	6.9 - 23.4	28,636	84.9	76.6 - 93.1	33,749
Honolulu-Kailua/ Waimanalo	8,964	22.4	14.1 - 30.8	30,971	77.6	69.2 - 85.9	39,935

**Talked to Doctor, Nurse, or Other Health Professional about Preventing Sexually Transmitted Diseases through Condom Use
(Among Adults Age 18-64) by Year Total, County, BRFSS Age Group, DOH Race-Ethnicity, Gender, County and Community,
Education Level, Employment Status (Grouped), Household Income, Island, Marital Status (Grouped), Poverty Level, for the
Year(s) - 2001, 2002, 2003, 2004**

*Note: Weighted numbers (#), percentages and 95% confidence intervals; Respondents aged 18 years and older; n/r (Not Reportable) -
Represents cell size restriction of unweighted count < 50; n/a (Not Available) - Not asked of a subset of respondents*

Year: 2001

County and Community	Yes			No			Estimated Adult Population
	#	%	C.I. (95%)	#	%	C.I. (95%)	#
Honolulu-Kaimuki/ Palolo/ Waikiki	8,324	14.5	8.2 - 20.8	49,131	85.5	79.2 - 91.8	57,455
Honolulu-Manoa/ Upper Makiki	7,184	16.8	9.1 - 24.5	35,678	83.2	75.5 - 90.9	42,862
Honolulu-Mililani/ Wahiawa	8,755	17.3	9.7 - 25.0	41,712	82.7	75.0 - 90.3	50,467
Honolulu-Nanakuli/ Waianae	5,748	23.3	10.1 - 36.4	18,972	76.7	63.6 - 89.9	24,720
Honolulu-N.Shore/ Laie	1,255	6.1	.1 - 12.1	19,429	93.9	87.9 - 99.9	20,684
Honolulu-Nuuanu/ Kalihi/ Moanalua	3,265	6.4	1.8 - 11.0	47,795	93.6	89.0 - 98.2	51,060
Honolulu-Salt Lake/ Foster Village	5,697	17.8	10.0 - 25.7	26,221	82.2	74.3 - 90.0	31,918
Honolulu-Waiialae/ Kahala/ Hawaii Kai	4,934	19.0	7.8 - 30.2	21,067	81.0	69.8 - 92.2	26,001
Honolulu-Waipahu/ Kapolei/ Ewa	14,783	17.8	11.5 - 24.0	68,478	82.2	76.0 - 88.5	83,261
Kauai-Hanalei/ Kapaa	2,279	15.6	7.9 - 23.3	12,353	84.4	76.7 - 92.1	14,632
Kauai-Lihue-Waimea	2,097	11.3	6.5 - 16.1	16,424	88.7	83.9 - 93.5	18,521
Maui-Kahului	3,157	11.4	5.0 - 17.8	24,452	88.6	82.2 - 95.0	27,609
Maui-Lanai	46	2.4	.0 - 6.0	1,846	97.6	94.0 - 100.0	1,892

**Talked to Doctor, Nurse, or Other Health Professional about Preventing Sexually Transmitted Diseases through Condom Use
(Among Adults Age 18-64) by Year Total, County, BRFSS Age Group, DOH Race-Ethnicity, Gender, County and Community,
Education Level, Employment Status (Grouped), Household Income, Island, Marital Status (Grouped), Poverty Level, for the
Year(s) - 2001, 2002, 2003, 2004**

*Note: Weighted numbers (#), percentages and 95% confidence intervals; Respondents aged 18 years and older; n/r (Not Reportable) -
Represents cell size restriction of unweighted count < 50; n/a (Not Available) - Not asked of a subset of respondents*

Year: 2001

County and Community	Yes			No			Estimated Adult Population
	#	%	C.I. (95%)	#	%	C.I. (95%)	#
Maui-Lahaina/ Wailuku	1,908	7.8	3.6 - 12.1	22,509	92.2	87.9 - 96.4	24,417
Maui-Molokai	366	9.9	.0 - 19.9	3,327	90.1	80.1 - 100.0	3,693
Maui-Upcountry/ Hana	2,907	12.4	7.3 - 17.4	20,567	87.6	82.6 - 92.7	23,474

Education Level	Yes			No			Estimated Adult Population
	#	%	C.I. (95%)	#	%	C.I. (95%)	#
Grades 9 thru 11 (Some High School)	2,498	10.9	4.5 - 17.3	20,419	89.1	82.7 - 95.5	22,917
Grades 12 or GED (High School Grad)	47,488	19.4	15.9 - 22.9	197,496	80.6	77.1 - 84.1	244,984
College 1 to 3 years (Some College/ Tech)	39,655	16.9	13.7 - 20.0	195,657	83.1	80.0 - 86.3	235,312
College 4 years or more (College Grad)	21,501	9.1	7.1 - 11.1	215,274	90.9	88.9 - 92.9	236,775
Never attended school/ Only Kindergarten to Grades 8	n/r	n/r	n/r	n/r	n/r	n/r	n/r

**Talked to Doctor, Nurse, or Other Health Professional about Preventing Sexually Transmitted Diseases through Condom Use
(Among Adults Age 18-64) by Year Total, County, BRFSS Age Group, DOH Race-Ethnicity, Gender, County and Community,
Education Level, Employment Status (Grouped), Household Income, Island, Marital Status (Grouped), Poverty Level, for the
Year(s) - 2001, 2002, 2003, 2004**

*Note: Weighted numbers (#), percentages and 95% confidence intervals; Respondents aged 18 years and older; n/r (Not Reportable) -
Represents cell size restriction of unweighted count < 50; n/a (Not Available) - Not asked of a subset of respondents*

Year: 2001

Employment Status (Grouped)	Yes			No			Estimated Adult Population
	#	%	C.I. (95%)	#	%	C.I. (95%)	#
Employed	83,079	14.3	12.5 - 16.1	497,486	85.7	83.9 - 87.5	580,565
Unemployed	5,964	19.6	10.0 - 29.2	24,503	80.4	70.8 - 90.0	30,467
Student/Homemaker	18,675	22.1	15.8 - 28.3	66,001	77.9	71.7 - 84.2	84,676
Retired/Unable to work	3,963	7.6	3.4 - 11.8	48,258	92.4	88.2 - 96.6	52,221

**Talked to Doctor, Nurse, or Other Health Professional about Preventing Sexually Transmitted Diseases through Condom Use
(Among Adults Age 18-64) by Year Total, County, BRFSS Age Group, DOH Race-Ethnicity, Gender, County and Community,
Education Level, Employment Status (Grouped), Household Income, Island, Marital Status (Grouped), Poverty Level, for the
Year(s) - 2001, 2002, 2003, 2004**

*Note: Weighted numbers (#), percentages and 95% confidence intervals; Respondents aged 18 years and older; n/r (Not Reportable) -
Represents cell size restriction of unweighted count < 50; n/a (Not Available) - Not asked of a subset of respondents*

Year: 2001

Household Income	Yes			No			Estimated Adult Population
	#	%	C.I. (95%)	#	%	C.I. (95%)	#
Less than \$10,000	8,182	26.6	15.1 - 38.1	22,576	73.4	61.9 - 84.9	30,758
\$10,000 to \$14,999	8,474	28.1	17.7 - 38.6	21,648	71.9	61.4 - 82.3	30,122
\$15,000 to \$19,999	5,201	17.8	10.7 - 24.8	24,085	82.2	75.2 - 89.3	29,286
\$20,000 to \$24,999	9,126	17.0	9.7 - 24.3	44,626	83.0	75.7 - 90.3	53,752
\$25,000 to \$34,999	12,845	17.2	12.1 - 22.3	61,854	82.8	77.7 - 87.9	74,699
\$35,000 to \$49,999	17,588	14.7	10.8 - 18.7	101,829	85.3	81.3 - 89.2	119,417
\$50,000 to \$74,999	15,074	13.6	9.3 - 17.9	95,617	86.4	82.1 - 90.7	110,691
\$75,000 or more	12,310	10.9	7.3 - 14.5	100,702	89.1	85.5 - 92.7	113,012

**Talked to Doctor, Nurse, or Other Health Professional about Preventing Sexually Transmitted Diseases through Condom Use
(Among Adults Age 18-64) by Year Total, County, BRFSS Age Group, DOH Race-Ethnicity, Gender, County and Community,
Education Level, Employment Status (Grouped), Household Income, Island, Marital Status (Grouped), Poverty Level, for the
Year(s) - 2001, 2002, 2003, 2004**

*Note: Weighted numbers (#), percentages and 95% confidence intervals; Respondents aged 18 years and older; n/r (Not Reportable) -
Represents cell size restriction of unweighted count < 50; n/a (Not Available) - Not asked of a subset of respondents*

Year: 2001

Island	Yes			No			Estimated Adult Population
	#	%	C.I. (95%)	#	%	C.I. (95%)	#
Hawaii	12,036	14.2	10.9 - 17.4	73,020	85.8	82.6 - 89.1	85,056
Kauai	4,377	13.2	8.8 - 17.6	28,778	86.8	82.4 - 91.2	33,155
Maui	7,972	10.6	7.4 - 13.7	67,527	89.4	86.3 - 92.6	75,499
Lanai	46	2.4	.0 - 6.0	1,846	97.6	94.0 - 100.0	1,892
Molokai	366	9.9	.0 - 19.9	3,327	90.1	80.1 - 100.0	3,693
Oahu	83,553	15.8	13.6 - 18.0	445,052	84.2	82.0 - 86.4	528,605

**Talked to Doctor, Nurse, or Other Health Professional about Preventing Sexually Transmitted Diseases through Condom Use
(Among Adults Age 18-64) by Year Total, County, BRFSS Age Group, DOH Race-Ethnicity, Gender, County and Community,
Education Level, Employment Status (Grouped), Household Income, Island, Marital Status (Grouped), Poverty Level, for the
Year(s) - 2001, 2002, 2003, 2004**

*Note: Weighted numbers (#), percentages and 95% confidence intervals; Respondents aged 18 years and older; n/r (Not Reportable) -
Represents cell size restriction of unweighted count < 50; n/a (Not Available) - Not asked of a subset of respondents*

Year: 2001

Marital Status (Grouped)	Yes			No			Estimated Adult Population
	#	%	C.I. (95%)	#	%	C.I. (95%)	#
Married	41,113	9.9	8.0 - 11.7	375,006	90.1	88.3 - 92.0	416,119
Unmarried Couple	n/r	n/r	n/r	n/r	n/r	n/r	n/r
Widowed	459	3.8	.0 - 7.8	11,544	96.2	92.2 - 100.0	12,003
Other	67,941	21.8	18.8 - 24.8	243,214	78.2	75.2 - 81.2	311,155

**Talked to Doctor, Nurse, or Other Health Professional about Preventing Sexually Transmitted Diseases through Condom Use
(Among Adults Age 18-64) by Year Total, County, BRFSS Age Group, DOH Race-Ethnicity, Gender, County and Community,
Education Level, Employment Status (Grouped), Household Income, Island, Marital Status (Grouped), Poverty Level, for the
Year(s) - 2001, 2002, 2003, 2004**

*Note: Weighted numbers (#), percentages and 95% confidence intervals; Respondents aged 18 years and older; n/r (Not Reportable) -
Represents cell size restriction of unweighted count < 50; n/a (Not Available) - Not asked of a subset of respondents*

Year: 2001

Poverty Level	Yes			No			Estimated Adult Population
	#	%	C.I. (95%)	#	%	C.I. (95%)	#
1-50%	8,880	28.4	16.5 - 40.3	22,380	71.6	59.7 - 83.5	31,260
51-100%	9,971	17.9	11.0 - 24.8	45,616	82.1	75.2 - 89.0	55,587
101-120%	2,624	16.1	6.3 - 25.9	13,673	83.9	74.1 - 93.7	16,297
121-130%	3,124	24.8	13.2 - 36.5	9,470	75.2	63.5 - 86.8	12,594
131-150%	3,548	10.4	4.8 - 16.0	30,588	89.6	84.0 - 95.2	34,136
151-170%	6,061	25.8	10.8 - 40.9	17,389	74.2	59.1 - 89.2	23,450
171-180%	8,523	22.4	14.0 - 30.7	29,609	77.6	69.3 - 86.0	38,132
181-185%	n/r	n/r	n/r	n/r	n/r	n/r	n/r
186+%	46,067	13.2	11.0 - 15.3	303,398	86.8	84.7 - 89.0	349,465

**Talked to Doctor, Nurse, or Other Health Professional about Preventing Sexually Transmitted Diseases through Condom Use
(Among Adults Age 18-64) by Year Total, County, BRFSS Age Group, DOH Race-Ethnicity, Gender, County and Community,
Education Level, Employment Status (Grouped), Household Income, Island, Marital Status (Grouped), Poverty Level, for the
Year(s) - 2001, 2002, 2003, 2004**

*Note: Weighted numbers (#), percentages and 95% confidence intervals; Respondents aged 18 years and older; n/r (Not Reportable) -
Represents cell size restriction of unweighted count < 50; n/a (Not Available) - Not asked of a subset of respondents*

Year: 2001

Year: 2002

Year Total	Yes			No			Estimated Adult Population
	#	%	C.I. (95%)	#	%	C.I. (95%)	#
State	70,938	9.3	8.2 - 10.5	687,985	90.7	89.5 - 91.8	758,923

**Talked to Doctor, Nurse, or Other Health Professional about Preventing Sexually Transmitted Diseases through Condom Use
(Among Adults Age 18-64) by Year Total, County, BRFSS Age Group, DOH Race-Ethnicity, Gender, County and Community,
Education Level, Employment Status (Grouped), Household Income, Island, Marital Status (Grouped), Poverty Level, for the
Year(s) - 2001, 2002, 2003, 2004**

*Note: Weighted numbers (#), percentages and 95% confidence intervals; Respondents aged 18 years and older; n/r (Not Reportable) -
Represents cell size restriction of unweighted count < 50; n/a (Not Available) - Not asked of a subset of respondents*

Year: 2002

County	Yes			No			Estimated Adult Population
	#	%	C.I. (95%)	#	%	C.I. (95%)	#
Hawaii	9,701	10.8	8.1 - 13.5	80,220	89.2	86.5 - 91.9	89,921
Honolulu	51,279	9.6	8.0 - 11.1	484,888	90.4	88.9 - 92.0	536,167
Kauai	2,036	6.0	3.3 - 8.7	32,026	94.0	91.3 - 96.7	34,062
Maui	6,594	8.2	6.0 - 10.5	73,501	91.8	89.5 - 94.0	80,095

**Talked to Doctor, Nurse, or Other Health Professional about Preventing Sexually Transmitted Diseases through Condom Use
(Among Adults Age 18-64) by Year Total, County, BRFSS Age Group, DOH Race-Ethnicity, Gender, County and Community,
Education Level, Employment Status (Grouped), Household Income, Island, Marital Status (Grouped), Poverty Level, for the
Year(s) - 2001, 2002, 2003, 2004**

*Note: Weighted numbers (#), percentages and 95% confidence intervals; Respondents aged 18 years and older; n/r (Not Reportable) -
Represents cell size restriction of unweighted count < 50; n/a (Not Available) - Not asked of a subset of respondents*

Year: 2002

BRFSS Age Group	Yes			No			Estimated Adult Population
	#	%	C.I. (95%)	#	%	C.I. (95%)	#
18-24	28,091	24.0	19.2 - 28.8	88,969	76.0	71.2 - 80.8	117,060
25-34	22,039	13.2	10.4 - 16.0	144,919	86.8	84.0 - 89.6	166,958
35-44	14,593	7.8	5.6 - 10.1	171,600	92.2	89.9 - 94.4	186,193
45-54	4,312	2.5	1.4 - 3.5	169,422	97.5	96.5 - 98.6	173,734
55-64	1,904	1.7	.7 - 2.6	113,075	98.3	97.4 - 99.3	114,979
65-74	n/r	n/r	n/r	n/r	n/r	n/r	n/r
75+	n/r	n/r	n/r	n/r	n/r	n/r	n/r

**Talked to Doctor, Nurse, or Other Health Professional about Preventing Sexually Transmitted Diseases through Condom Use
(Among Adults Age 18-64) by Year Total, County, BRFSS Age Group, DOH Race-Ethnicity, Gender, County and Community,
Education Level, Employment Status (Grouped), Household Income, Island, Marital Status (Grouped), Poverty Level, for the
Year(s) - 2001, 2002, 2003, 2004**

*Note: Weighted numbers (#), percentages and 95% confidence intervals; Respondents aged 18 years and older; n/r (Not Reportable) -
Represents cell size restriction of unweighted count < 50; n/a (Not Available) - Not asked of a subset of respondents*

Year: 2002

DOH Race-Ethnicity	Yes			No			Estimated Adult Population
	#	%	C.I. (95%)	#	%	C.I. (95%)	#
White	23,309	8.5	6.7 - 10.3	251,852	91.5	89.7 - 93.3	275,161
Native Hawaiian	11,847	11.7	8.2 - 15.3	89,153	88.3	84.7 - 91.8	101,000
Chinese	6,576	12.6	6.6 - 18.6	45,440	87.4	81.4 - 93.4	52,016
Filipino	9,359	8.1	5.5 - 10.7	106,556	91.9	89.3 - 94.5	115,915
Japanese	6,501	5.0	3.0 - 7.0	123,050	95.0	93.0 - 97.0	129,551
Black	2,133	13.1	5.2 - 21.0	14,138	86.9	79.0 - 94.8	16,271
Other Pacific Islander	2,817	13.3	2.9 - 23.7	18,358	86.7	76.3 - 97.1	21,175
Other Asian	3,133	16.6	6.7 - 26.5	15,726	83.4	73.5 - 93.3	18,859
Native Alaskan/ American Indian	n/r	n/r	n/r	n/r	n/r	n/r	n/r
Other	5,263	23.0	13.2 - 32.9	17,586	77.0	67.1 - 86.8	22,849

**Talked to Doctor, Nurse, or Other Health Professional about Preventing Sexually Transmitted Diseases through Condom Use
(Among Adults Age 18-64) by Year Total, County, BRFSS Age Group, DOH Race-Ethnicity, Gender, County and Community,
Education Level, Employment Status (Grouped), Household Income, Island, Marital Status (Grouped), Poverty Level, for the
Year(s) - 2001, 2002, 2003, 2004**

*Note: Weighted numbers (#), percentages and 95% confidence intervals; Respondents aged 18 years and older; n/r (Not Reportable) -
Represents cell size restriction of unweighted count < 50; n/a (Not Available) - Not asked of a subset of respondents*

Year: 2002

Gender	Yes			No			Estimated Adult Population
	#	%	C.I. (95%)	#	%	C.I. (95%)	#
Female	38,137	10.3	8.7 - 11.9	333,252	89.7	88.1 - 91.3	371,389
Male	32,801	8.5	6.7 - 10.2	354,733	91.5	89.8 - 93.3	387,534

County and Community	Yes			No			Estimated Adult Population
	#	%	C.I. (95%)	#	%	C.I. (95%)	#
Hawaii-Hilo	2,823	10.1	5.4 - 14.8	25,099	89.9	85.2 - 94.6	27,922
Hawaii-Kona	2,959	12.4	6.7 - 18.0	20,999	87.6	82.0 - 93.3	23,958
Hawaii-N.Hawaii	2,174	11.4	5.2 - 17.7	16,859	88.6	82.3 - 94.8	19,033
Hawaii-Puna/ Kau	1,744	9.2	4.1 - 14.2	17,264	90.8	85.8 - 95.9	19,008
Honolulu-Aiea/ Pearl City	1,966	3.8	.8 - 6.8	49,498	96.2	93.2 - 99.2	51,464
Honolulu-Ala Moana	4,158	14.0	5.9 - 22.1	25,543	86.0	77.9 - 94.1	29,701
Honolulu-Kaaawa/ Kahaluu/ Kaneohe	2,631	8.6	3.1 - 14.0	28,041	91.4	86.0 - 96.9	30,672
Honolulu-Kailua/ Waimanalo	3,471	9.0	3.0 - 15.0	35,120	91.0	85.0 - 97.0	38,591

**Talked to Doctor, Nurse, or Other Health Professional about Preventing Sexually Transmitted Diseases through Condom Use
(Among Adults Age 18-64) by Year Total, County, BRFSS Age Group, DOH Race-Ethnicity, Gender, County and Community,
Education Level, Employment Status (Grouped), Household Income, Island, Marital Status (Grouped), Poverty Level, for the
Year(s) - 2001, 2002, 2003, 2004**

*Note: Weighted numbers (#), percentages and 95% confidence intervals; Respondents aged 18 years and older; n/r (Not Reportable) -
Represents cell size restriction of unweighted count < 50; n/a (Not Available) - Not asked of a subset of respondents*

Year: 2002

County and Community	Yes			No			Estimated Adult Population
	#	%	C.I. (95%)	#	%	C.I. (95%)	#
Honolulu-Kaimuki/ Palolo/ Waikiki	5,130	10.6	6.0 - 15.2	43,191	89.4	84.8 - 94.0	48,321
Honolulu-Manoa/ Upper Makiki	3,944	8.9	4.0 - 13.8	40,386	91.1	86.2 - 96.0	44,330
Honolulu-Mililani/ Wahiawa	6,575	12.1	6.3 - 17.9	47,788	87.9	82.1 - 93.7	54,363
Honolulu-Nanakuli/ Waianae	3,731	16.8	6.5 - 27.1	18,470	83.2	72.9 - 93.5	22,201
Honolulu-N.Shore/ Laie	1,254	7.4	1.0 - 13.8	15,730	92.6	86.2 - 99.0	16,984
Honolulu-Nuuanu/ Kalihi/ Moanalua	3,623	6.8	2.7 - 10.9	49,695	93.2	89.1 - 97.3	53,318
Honolulu-Salt Lake/ Foster Village	6,254	18.6	10.7 - 26.5	27,288	81.4	73.5 - 89.3	33,542
Honolulu-Waiialae/ Kahala/ Hawaii Kai	1,047	2.8	.0 - 6.0	36,612	97.2	94.0 - 100.0	37,659
Honolulu-Waipahu/ Kapolei/ Ewa	7,495	10.0	5.5 - 14.4	67,526	90.0	85.6 - 94.5	75,021
Kauai-Hanalei/ Kapaa	1,176	7.7	3.1 - 12.3	14,017	92.3	87.7 - 96.9	15,193
Kauai-Lihue-Waimea	860	4.6	1.3 - 7.8	18,009	95.4	92.2 - 98.7	18,869
Maui-Kahului	2,651	10.7	6.1 - 15.3	22,083	89.3	84.7 - 93.9	24,734
Maui-Lanai	178	6.6	1.9 - 11.4	2,507	93.4	88.6 - 98.1	2,685

**Talked to Doctor, Nurse, or Other Health Professional about Preventing Sexually Transmitted Diseases through Condom Use
(Among Adults Age 18-64) by Year Total, County, BRFSS Age Group, DOH Race-Ethnicity, Gender, County and Community,
Education Level, Employment Status (Grouped), Household Income, Island, Marital Status (Grouped), Poverty Level, for the
Year(s) - 2001, 2002, 2003, 2004**

*Note: Weighted numbers (#), percentages and 95% confidence intervals; Respondents aged 18 years and older; n/r (Not Reportable) -
Represents cell size restriction of unweighted count < 50; n/a (Not Available) - Not asked of a subset of respondents*

Year: 2002

County and Community	Yes			No			Estimated Adult Population
	#	%	C.I. (95%)	#	%	C.I. (95%)	#
Maui-Lahaina/ Wailuku	1,972	8.2	4.2 - 12.2	22,054	91.8	87.8 - 95.8	24,026
Maui-Molokai	80	1.4	.0 - 2.9	5,813	98.6	97.1 - 100.0	5,893
Maui-Upcountry/ Hana	1,713	7.5	3.4 - 11.7	21,044	92.5	88.3 - 96.6	22,757

Education Level	Yes			No			Estimated Adult Population
	#	%	C.I. (95%)	#	%	C.I. (95%)	#
Grades 9 thru 11 (Some High School)	2,715	14.0	7.1 - 20.8	16,710	86.0	79.2 - 92.9	19,425
Grades 12 or GED (High School Grad)	29,748	11.6	9.3 - 13.9	226,958	88.4	86.1 - 90.7	256,706
College 1 to 3 years (Some College/ Tech)	24,080	10.4	8.1 - 12.6	208,564	89.6	87.4 - 91.9	232,644
College 4 years or more (College Grad)	14,086	5.8	4.3 - 7.3	228,073	94.2	92.7 - 95.7	242,159
Never attended school/ Only Kindergarten to Grades 8	n/r	n/r	n/r	n/r	n/r	n/r	n/r

**Talked to Doctor, Nurse, or Other Health Professional about Preventing Sexually Transmitted Diseases through Condom Use
(Among Adults Age 18-64) by Year Total, County, BRFSS Age Group, DOH Race-Ethnicity, Gender, County and Community,
Education Level, Employment Status (Grouped), Household Income, Island, Marital Status (Grouped), Poverty Level, for the
Year(s) - 2001, 2002, 2003, 2004**

*Note: Weighted numbers (#), percentages and 95% confidence intervals; Respondents aged 18 years and older; n/r (Not Reportable) -
Represents cell size restriction of unweighted count < 50; n/a (Not Available) - Not asked of a subset of respondents*

Year: 2002

Employment Status (Grouped)	Yes			No			Estimated Adult Population
	#	%	C.I. (95%)	#	%	C.I. (95%)	#
Employed	52,430	9.1	7.8 - 10.4	524,624	90.9	89.6 - 92.2	577,054
Unemployed	4,829	12.0	5.9 - 18.1	35,460	88.0	81.9 - 94.1	40,289
Student/Homemaker	11,213	12.1	8.5 - 15.8	81,178	87.9	84.2 - 91.5	92,391
Retired/Unable to work	2,466	5.1	1.5 - 8.7	46,067	94.9	91.3 - 98.5	48,533

**Talked to Doctor, Nurse, or Other Health Professional about Preventing Sexually Transmitted Diseases through Condom Use
(Among Adults Age 18-64) by Year Total, County, BRFSS Age Group, DOH Race-Ethnicity, Gender, County and Community,
Education Level, Employment Status (Grouped), Household Income, Island, Marital Status (Grouped), Poverty Level, for the
Year(s) - 2001, 2002, 2003, 2004**

*Note: Weighted numbers (#), percentages and 95% confidence intervals; Respondents aged 18 years and older; n/r (Not Reportable) -
Represents cell size restriction of unweighted count < 50; n/a (Not Available) - Not asked of a subset of respondents*

Year: 2002

Household Income	Yes			No			Estimated Adult Population
	#	%	C.I. (95%)	#	%	C.I. (95%)	#
Less than \$10,000	5,100	19.1	12.0 - 26.2	21,552	80.9	73.8 - 88.0	26,652
\$10,000 to \$14,999	4,150	14.8	8.3 - 21.4	23,809	85.2	78.6 - 91.7	27,959
\$15,000 to \$19,999	4,723	12.9	6.9 - 18.9	31,881	87.1	81.1 - 93.1	36,604
\$20,000 to \$24,999	4,654	12.8	7.4 - 18.2	31,752	87.2	81.8 - 92.6	36,406
\$25,000 to \$34,999	7,021	10.7	6.5 - 15.0	58,308	89.3	85.0 - 93.5	65,329
\$35,000 to \$49,999	13,500	12.5	8.8 - 16.1	94,760	87.5	83.9 - 91.2	108,260
\$50,000 to \$74,999	7,565	6.8	4.4 - 9.3	103,392	93.2	90.7 - 95.6	110,957
\$75,000 or more	6,958	5.7	3.5 - 7.8	115,400	94.3	92.2 - 96.5	122,358

**Talked to Doctor, Nurse, or Other Health Professional about Preventing Sexually Transmitted Diseases through Condom Use
(Among Adults Age 18-64) by Year Total, County, BRFSS Age Group, DOH Race-Ethnicity, Gender, County and Community,
Education Level, Employment Status (Grouped), Household Income, Island, Marital Status (Grouped), Poverty Level, for the
Year(s) - 2001, 2002, 2003, 2004**

*Note: Weighted numbers (#), percentages and 95% confidence intervals; Respondents aged 18 years and older; n/r (Not Reportable) -
Represents cell size restriction of unweighted count < 50; n/a (Not Available) - Not asked of a subset of respondents*

Year: 2002

Island	Yes			No			Estimated Adult Population
	#	%	C.I. (95%)	#	%	C.I. (95%)	#
Hawaii	9,701	10.8	8.1 - 13.5	80,220	89.2	86.5 - 91.9	89,921
Kauai	2,036	6.0	3.3 - 8.7	32,026	94.0	91.3 - 96.7	34,062
Maui	6,336	8.9	6.4 - 11.3	65,181	91.1	88.7 - 93.6	71,517
Lanai	178	6.6	1.9 - 11.4	2,507	93.4	88.6 - 98.1	2,685
Molokai	80	1.4	.0 - 2.9	5,813	98.6	97.1 - 100.0	5,893
Oahu	51,279	9.6	8.0 - 11.1	484,888	90.4	88.9 - 92.0	536,167

**Talked to Doctor, Nurse, or Other Health Professional about Preventing Sexually Transmitted Diseases through Condom Use
(Among Adults Age 18-64) by Year Total, County, BRFSS Age Group, DOH Race-Ethnicity, Gender, County and Community,
Education Level, Employment Status (Grouped), Household Income, Island, Marital Status (Grouped), Poverty Level, for the
Year(s) - 2001, 2002, 2003, 2004**

*Note: Weighted numbers (#), percentages and 95% confidence intervals; Respondents aged 18 years and older; n/r (Not Reportable) -
Represents cell size restriction of unweighted count < 50; n/a (Not Available) - Not asked of a subset of respondents*

Year: 2002

Marital Status (Grouped)	Yes			No			Estimated Adult Population
	#	%	C.I. (95%)	#	%	C.I. (95%)	#
Married	26,069	5.9	4.7 - 7.2	413,110	94.1	92.8 - 95.3	439,179
Unmarried Couple	3,601	16.3	6.7 - 26.0	18,469	83.7	74.0 - 93.3	22,070
Widowed	618	4.8	.3 - 9.4	12,162	95.2	90.6 - 99.7	12,780
Other	40,650	14.3	11.9 - 16.6	244,244	85.7	83.4 - 88.1	284,894

**Talked to Doctor, Nurse, or Other Health Professional about Preventing Sexually Transmitted Diseases through Condom Use
(Among Adults Age 18-64) by Year Total, County, BRFSS Age Group, DOH Race-Ethnicity, Gender, County and Community,
Education Level, Employment Status (Grouped), Household Income, Island, Marital Status (Grouped), Poverty Level, for the
Year(s) - 2001, 2002, 2003, 2004**

*Note: Weighted numbers (#), percentages and 95% confidence intervals; Respondents aged 18 years and older; n/r (Not Reportable) -
Represents cell size restriction of unweighted count < 50; n/a (Not Available) - Not asked of a subset of respondents*

Year: 2002

Poverty Level	Yes			No			Estimated Adult Population
	#	%	C.I. (95%)	#	%	C.I. (95%)	#
1-50%	5,228	16.7	10.4 - 23.0	26,010	83.3	77.0 - 89.6	31,238
51-100%	7,014	14.7	8.9 - 20.5	40,725	85.3	79.5 - 91.1	47,739
101-120%	1,719	9.9	3.0 - 16.7	15,709	90.1	83.3 - 97.0	17,428
121-130%	3,468	14.5	7.2 - 21.8	20,412	85.5	78.2 - 92.8	23,880
131-150%	2,251	12.0	3.7 - 20.4	16,436	88.0	79.6 - 96.3	18,687
151-170%	1,904	13.1	4.6 - 21.6	12,631	86.9	78.4 - 95.4	14,535
171-180%	2,190	8.4	2.7 - 14.2	23,784	91.6	85.8 - 97.3	25,974
186+%	29,896	8.4	6.8 - 10.0	325,147	91.6	90.0 - 93.2	355,043

**Talked to Doctor, Nurse, or Other Health Professional about Preventing Sexually Transmitted Diseases through Condom Use
(Among Adults Age 18-64) by Year Total, County, BRFSS Age Group, DOH Race-Ethnicity, Gender, County and Community,
Education Level, Employment Status (Grouped), Household Income, Island, Marital Status (Grouped), Poverty Level, for the
Year(s) - 2001, 2002, 2003, 2004**

*Note: Weighted numbers (#), percentages and 95% confidence intervals; Respondents aged 18 years and older; n/r (Not Reportable) -
Represents cell size restriction of unweighted count < 50; n/a (Not Available) - Not asked of a subset of respondents*

Year: 2002

Year: 2003

Year Total	Yes			No			Estimated Adult Population
	#	%	C.I. (95%)	#	%	C.I. (95%)	#
State	93,136	12.0	10.5 - 13.5	683,551	88.0	86.5 - 89.5	776,687

**Talked to Doctor, Nurse, or Other Health Professional about Preventing Sexually Transmitted Diseases through Condom Use
(Among Adults Age 18-64) by Year Total, County, BRFSS Age Group, DOH Race-Ethnicity, Gender, County and Community,
Education Level, Employment Status (Grouped), Household Income, Island, Marital Status (Grouped), Poverty Level, for the
Year(s) - 2001, 2002, 2003, 2004**

*Note: Weighted numbers (#), percentages and 95% confidence intervals; Respondents aged 18 years and older; n/r (Not Reportable) -
Represents cell size restriction of unweighted count < 50; n/a (Not Available) - Not asked of a subset of respondents*

Year: 2003

County	Yes			No			Estimated Adult Population
	#	%	C.I. (95%)	#	%	C.I. (95%)	#
Hawaii	6,110	6.6	3.9 - 9.2	86,670	93.4	90.8 - 96.1	92,780
Honolulu	74,060	13.7	11.7 - 15.6	468,467	86.3	84.4 - 88.3	542,527
Kauai	2,878	8.1	4.3 - 11.8	32,804	91.9	88.2 - 95.7	35,682
Maui	8,789	10.5	7.0 - 14.1	74,526	89.5	85.9 - 93.0	83,315

**Talked to Doctor, Nurse, or Other Health Professional about Preventing Sexually Transmitted Diseases through Condom Use
(Among Adults Age 18-64) by Year Total, County, BRFSS Age Group, DOH Race-Ethnicity, Gender, County and Community,
Education Level, Employment Status (Grouped), Household Income, Island, Marital Status (Grouped), Poverty Level, for the
Year(s) - 2001, 2002, 2003, 2004**

*Note: Weighted numbers (#), percentages and 95% confidence intervals; Respondents aged 18 years and older; n/r (Not Reportable) -
Represents cell size restriction of unweighted count < 50; n/a (Not Available) - Not asked of a subset of respondents*

Year: 2003

BRFSS Age Group	Yes			No			Estimated Adult Population
	#	%	C.I. (95%)	#	%	C.I. (95%)	#
18-24	42,257	35.3	29.1 - 41.6	77,332	64.7	58.4 - 70.9	119,589
25-34	21,878	13.1	10.1 - 16.2	144,621	86.9	83.8 - 89.9	166,499
35-44	14,331	7.7	5.5 - 9.9	171,589	92.3	90.1 - 94.5	185,920
45-54	11,852	6.6	4.3 - 9.0	167,206	93.4	91.0 - 95.7	179,058
55-64	2,817	2.2	.8 - 3.7	122,802	97.8	96.3 - 99.2	125,619
65-74	n/r	n/r	n/r	n/r	n/r	n/r	n/r
75+	n/r	n/r	n/r	n/r	n/r	n/r	n/r

**Talked to Doctor, Nurse, or Other Health Professional about Preventing Sexually Transmitted Diseases through Condom Use
(Among Adults Age 18-64) by Year Total, County, BRFSS Age Group, DOH Race-Ethnicity, Gender, County and Community,
Education Level, Employment Status (Grouped), Household Income, Island, Marital Status (Grouped), Poverty Level, for the
Year(s) - 2001, 2002, 2003, 2004**

*Note: Weighted numbers (#), percentages and 95% confidence intervals; Respondents aged 18 years and older; n/r (Not Reportable) -
Represents cell size restriction of unweighted count < 50; n/a (Not Available) - Not asked of a subset of respondents*

Year: 2003

DOH Race-Ethnicity	Yes			No			Estimated Adult Population
	#	%	C.I. (95%)	#	%	C.I. (95%)	#
White	38,659	13.0	10.6 - 15.3	259,863	87.0	84.7 - 89.4	298,522
Native Hawaiian	7,911	11.3	6.4 - 16.3	61,871	88.7	83.7 - 93.6	69,782
Chinese	10,739	11.9	7.1 - 16.7	79,602	88.1	83.3 - 92.9	90,341
Filipino	15,845	12.7	8.9 - 16.6	108,666	87.3	83.4 - 91.1	124,511
Japanese	4,314	3.5	1.5 - 5.6	118,232	96.5	94.4 - 98.5	122,546
Black	2,701	21.4	7.4 - 35.5	9,896	78.6	64.5 - 92.6	12,597
Other Pacific Islander	n/r	n/r	n/r	n/r	n/r	n/r	n/r
Other Asian	n/r	n/r	n/r	n/r	n/r	n/r	n/r
Native Alaskan/ American Indian	n/r	n/r	n/r	n/r	n/r	n/r	n/r
Other	6,551	28.8	16.2 - 41.4	16,178	71.2	58.6 - 83.8	22,729

**Talked to Doctor, Nurse, or Other Health Professional about Preventing Sexually Transmitted Diseases through Condom Use
(Among Adults Age 18-64) by Year Total, County, BRFSS Age Group, DOH Race-Ethnicity, Gender, County and Community,
Education Level, Employment Status (Grouped), Household Income, Island, Marital Status (Grouped), Poverty Level, for the
Year(s) - 2001, 2002, 2003, 2004**

*Note: Weighted numbers (#), percentages and 95% confidence intervals; Respondents aged 18 years and older; n/r (Not Reportable) -
Represents cell size restriction of unweighted count < 50; n/a (Not Available) - Not asked of a subset of respondents*

Year: 2003

Gender	Yes			No			Estimated Adult Population
	#	%	C.I. (95%)	#	%	C.I. (95%)	#
Female	46,197	12.2	10.3 - 14.1	333,157	87.8	85.9 - 89.7	379,354
Male	46,939	11.8	9.6 - 14.1	350,394	88.2	85.9 - 90.4	397,333

County and Community	Yes			No			Estimated Adult Population
	#	%	C.I. (95%)	#	%	C.I. (95%)	#
Hawaii-Hilo	2,791	9.9	4.0 - 15.9	25,323	90.1	84.1 - 96.0	28,114
Hawaii-Kona	1,310	5.7	1.4 - 9.9	21,875	94.4	90.1 - 98.6	23,185
Hawaii-N.Hawaii	1,330	6.8	.0 - 13.5	18,298	93.2	86.5 - 100.0	19,628
Hawaii-Puna/ Kau	679	3.1	.3 - 5.9	21,174	96.9	94.1 - 99.7	21,853
Honolulu-Aiea/ Pearl City	8,339	20.2	11.6 - 28.9	32,893	79.8	71.1 - 88.4	41,232
Honolulu-Ala Moana	2,653	11.6	4.0 - 19.2	20,129	88.4	80.8 - 96.0	22,782
Honolulu-Kaaawa/ Kahaluu/ Kaneohe	6,132	15.9	8.2 - 23.7	32,383	84.1	76.3 - 91.8	38,515
Honolulu-Kailua/ Waimanalo	5,747	14.2	7.8 - 20.6	34,640	85.8	79.4 - 92.2	40,387

**Talked to Doctor, Nurse, or Other Health Professional about Preventing Sexually Transmitted Diseases through Condom Use
(Among Adults Age 18-64) by Year Total, County, BRFSS Age Group, DOH Race-Ethnicity, Gender, County and Community,
Education Level, Employment Status (Grouped), Household Income, Island, Marital Status (Grouped), Poverty Level, for the
Year(s) - 2001, 2002, 2003, 2004**

*Note: Weighted numbers (#), percentages and 95% confidence intervals; Respondents aged 18 years and older; n/r (Not Reportable) -
Represents cell size restriction of unweighted count < 50; n/a (Not Available) - Not asked of a subset of respondents*

Year: 2003

County and Community	Yes			No			Estimated Adult Population
	#	%	C.I. (95%)	#	%	C.I. (95%)	#
Honolulu-Kaimuki/ Palolo/ Waikiki	3,581	7.6	3.1 - 12.1	43,605	92.4	87.9 - 96.9	47,186
Honolulu-Manoa/ Upper Makiki	5,651	13.0	5.4 - 20.6	37,823	87.0	79.4 - 94.6	43,474
Honolulu-Mililani/ Wahiawa	8,999	14.6	8.2 - 21.1	52,540	85.4	78.9 - 91.8	61,539
Honolulu-Nanakuli/ Waianae	3,705	16.2	6.0 - 26.4	19,132	83.8	73.6 - 94.0	22,837
Honolulu-N.Shore/ Laie	2,360	12.2	1.7 - 22.6	17,058	87.8	77.4 - 98.3	19,418
Honolulu-Nuuanu/ Kalihi/ Moanalua	4,714	8.7	3.5 - 13.9	49,614	91.3	86.1 - 96.5	54,328
Honolulu-Salt Lake/ Foster Village	7,980	19.3	11.2 - 27.5	33,288	80.7	72.5 - 88.8	41,268
Honolulu-Waiialae/ Kahala/ Hawaii Kai	3,308	12.8	4.2 - 21.5	22,458	87.2	78.5 - 95.8	25,766
Honolulu-Waipahu/ Kapolei/ Ewa	10,892	13.0	8.0 - 18.0	72,907	87.0	82.0 - 92.0	83,799
Kauai-Hanalei/ Kapaa	797	5.5	1.7 - 9.3	13,725	94.5	90.7 - 98.3	14,522
Kauai-Lihue-Waimea	2,081	9.8	4.2 - 15.5	19,079	90.2	84.5 - 95.8	21,160
Maui-Kahului	2,051	7.3	2.6 - 11.9	26,213	92.7	88.1 - 97.4	28,264
Maui-Lanai	n/r	n/r	n/r	n/r	n/r	n/r	n/r

**Talked to Doctor, Nurse, or Other Health Professional about Preventing Sexually Transmitted Diseases through Condom Use
(Among Adults Age 18-64) by Year Total, County, BRFSS Age Group, DOH Race-Ethnicity, Gender, County and Community,
Education Level, Employment Status (Grouped), Household Income, Island, Marital Status (Grouped), Poverty Level, for the
Year(s) - 2001, 2002, 2003, 2004**

*Note: Weighted numbers (#), percentages and 95% confidence intervals; Respondents aged 18 years and older; n/r (Not Reportable) -
Represents cell size restriction of unweighted count < 50; n/a (Not Available) - Not asked of a subset of respondents*

Year: 2003

County and Community	Yes			No			Estimated Adult Population
	#	%	C.I. (95%)	#	%	C.I. (95%)	#
Maui-Lahaina/ Wailuku	3,514	15.2	5.7 - 24.7	19,633	84.8	75.3 - 94.3	23,147
Maui-Molokai	739	14.1	3.8 - 24.3	4,513	85.9	75.7 - 96.2	5,252
Maui-Upcountry/ Hana	2,254	9.1	4.3 - 13.8	22,610	90.9	86.2 - 95.7	24,864

Education Level	Yes			No			Estimated Adult Population
	#	%	C.I. (95%)	#	%	C.I. (95%)	#
Grades 9 thru 11 (Some High School)	2,654	11.3	3.7 - 18.8	20,891	88.7	81.2 - 96.3	23,545
Grades 12 or GED (High School Grad)	33,723	14.9	11.7 - 18.0	192,882	85.1	82.0 - 88.3	226,605
College 1 to 3 years (Some College/ Tech)	32,931	14.0	11.0 - 17.0	202,285	86.0	83.0 - 89.0	235,216
College 4 years or more (College Grad)	22,935	8.1	6.3 - 9.9	260,827	91.9	90.1 - 93.7	283,762
Never attended school/ Only Kindergarten to Grades 8	n/r	n/r	n/r	n/r	n/r	n/r	n/r

**Talked to Doctor, Nurse, or Other Health Professional about Preventing Sexually Transmitted Diseases through Condom Use
(Among Adults Age 18-64) by Year Total, County, BRFSS Age Group, DOH Race-Ethnicity, Gender, County and Community,
Education Level, Employment Status (Grouped), Household Income, Island, Marital Status (Grouped), Poverty Level, for the
Year(s) - 2001, 2002, 2003, 2004**

*Note: Weighted numbers (#), percentages and 95% confidence intervals; Respondents aged 18 years and older; n/r (Not Reportable) -
Represents cell size restriction of unweighted count < 50; n/a (Not Available) - Not asked of a subset of respondents*

Year: 2003

Employment Status (Grouped)	Yes			No			Estimated Adult Population
	#	%	C.I. (95%)	#	%	C.I. (95%)	#
Employed	70,618	11.9	10.2 - 13.6	524,882	88.1	86.4 - 89.8	595,500
Unemployed	4,833	14.7	6.6 - 22.8	27,936	85.3	77.2 - 93.4	32,769
Student/Homemaker	15,573	17.2	12.2 - 22.1	75,129	82.8	77.9 - 87.8	90,702
Retired/Unable to work	2,112	3.7	1.1 - 6.3	54,883	96.3	93.7 - 98.9	56,995

**Talked to Doctor, Nurse, or Other Health Professional about Preventing Sexually Transmitted Diseases through Condom Use
(Among Adults Age 18-64) by Year Total, County, BRFSS Age Group, DOH Race-Ethnicity, Gender, County and Community,
Education Level, Employment Status (Grouped), Household Income, Island, Marital Status (Grouped), Poverty Level, for the
Year(s) - 2001, 2002, 2003, 2004**

*Note: Weighted numbers (#), percentages and 95% confidence intervals; Respondents aged 18 years and older; n/r (Not Reportable) -
Represents cell size restriction of unweighted count < 50; n/a (Not Available) - Not asked of a subset of respondents*

Year: 2003

Household Income	Yes			No			Estimated Adult Population
	#	%	C.I. (95%)	#	%	C.I. (95%)	#
Less than \$10,000	10,114	27.4	18.7 - 36.1	26,773	72.6	63.9 - 81.3	36,887
\$10,000 to \$14,999	4,527	12.3	4.5 - 20.0	32,426	87.7	80.0 - 95.5	36,953
\$15,000 to \$19,999	9,252	22.6	13.4 - 31.8	31,667	77.4	68.2 - 86.6	40,919
\$20,000 to \$24,999	8,184	16.9	10.5 - 23.2	40,381	83.1	76.8 - 89.5	48,565
\$25,000 to \$34,999	9,104	13.3	8.5 - 18.2	59,138	86.7	81.8 - 91.5	68,242
\$35,000 to \$49,999	14,229	11.5	7.8 - 15.3	109,274	88.5	84.7 - 92.2	123,503
\$50,000 to \$74,999	13,865	11.1	7.4 - 14.9	110,600	88.9	85.1 - 92.6	124,465
\$75,000 or more	7,079	4.9	2.9 - 7.0	136,341	95.1	93.0 - 97.1	143,420

**Talked to Doctor, Nurse, or Other Health Professional about Preventing Sexually Transmitted Diseases through Condom Use
(Among Adults Age 18-64) by Year Total, County, BRFSS Age Group, DOH Race-Ethnicity, Gender, County and Community,
Education Level, Employment Status (Grouped), Household Income, Island, Marital Status (Grouped), Poverty Level, for the
Year(s) - 2001, 2002, 2003, 2004**

*Note: Weighted numbers (#), percentages and 95% confidence intervals; Respondents aged 18 years and older; n/r (Not Reportable) -
Represents cell size restriction of unweighted count < 50; n/a (Not Available) - Not asked of a subset of respondents*

Year: 2003

Island	Yes			No			Estimated Adult Population
	#	%	C.I. (95%)	#	%	C.I. (95%)	#
Hawaii	6,110	6.6	3.9 - 9.2	86,670	93.4	90.8 - 96.1	92,780
Kauai	2,878	8.1	4.4 - 11.8	32,804	91.9	88.2 - 95.6	35,682
Maui	7,819	10.3	6.5 - 14.0	68,456	89.7	86.0 - 93.5	76,275
Lanai	n/r	n/r	n/r	n/r	n/r	n/r	n/r
Molokai	739	14.1	3.9 - 24.3	4,513	85.9	75.7 - 96.1	5,252
Oahu	74,060	13.7	11.7 - 15.6	468,467	86.3	84.4 - 88.3	542,527

**Talked to Doctor, Nurse, or Other Health Professional about Preventing Sexually Transmitted Diseases through Condom Use
(Among Adults Age 18-64) by Year Total, County, BRFSS Age Group, DOH Race-Ethnicity, Gender, County and Community,
Education Level, Employment Status (Grouped), Household Income, Island, Marital Status (Grouped), Poverty Level, for the
Year(s) - 2001, 2002, 2003, 2004**

*Note: Weighted numbers (#), percentages and 95% confidence intervals; Respondents aged 18 years and older; n/r (Not Reportable) -
Represents cell size restriction of unweighted count < 50; n/a (Not Available) - Not asked of a subset of respondents*

Year: 2003

Marital Status (Grouped)	Yes			No			Estimated Adult Population
	#	%	C.I. (95%)	#	%	C.I. (95%)	#
Married	33,964	7.7	6.1 - 9.2	408,818	92.3	90.8 - 93.9	442,782
Unmarried Couple	3,334	17.7	6.4 - 29.0	15,494	82.3	71.0 - 93.6	18,828
Widowed	348	2.1	.0 - 4.8	16,414	97.9	95.2 - 100.0	16,762
Other	55,490	18.6	15.7 - 21.5	242,824	81.4	78.5 - 84.3	298,314

**Talked to Doctor, Nurse, or Other Health Professional about Preventing Sexually Transmitted Diseases through Condom Use
(Among Adults Age 18-64) by Year Total, County, BRFSS Age Group, DOH Race-Ethnicity, Gender, County and Community,
Education Level, Employment Status (Grouped), Household Income, Island, Marital Status (Grouped), Poverty Level, for the
Year(s) - 2001, 2002, 2003, 2004**

*Note: Weighted numbers (#), percentages and 95% confidence intervals; Respondents aged 18 years and older; n/r (Not Reportable) -
Represents cell size restriction of unweighted count < 50; n/a (Not Available) - Not asked of a subset of respondents*

Year: 2003

Poverty Level	Yes			No			Estimated Adult Population
	#	%	C.I. (95%)	#	%	C.I. (95%)	#
1-50%	10,499	25.1	17.1 - 33.1	31,364	74.9	66.9 - 82.9	41,863
51-100%	13,589	18.9	11.8 - 25.9	58,420	81.1	74.1 - 88.2	72,009
101-120%	n/r	n/r	n/r	n/r	n/r	n/r	n/r
121-130%	3,505	12.9	5.5 - 20.3	23,746	87.1	79.7 - 94.5	27,251
131-150%	2,163	8.5	1.7 - 15.4	23,139	91.5	84.6 - 98.3	25,302
151-170%	3,747	19.0	10.1 - 27.9	15,990	81.0	72.1 - 89.9	19,737
171-180%	4,897	18.1	7.8 - 28.5	22,113	81.9	71.5 - 92.2	27,010
186+%	35,426	9.0	7.3 - 10.7	357,843	91.0	89.3 - 92.7	393,269

**Talked to Doctor, Nurse, or Other Health Professional about Preventing Sexually Transmitted Diseases through Condom Use
(Among Adults Age 18-64) by Year Total, County, BRFSS Age Group, DOH Race-Ethnicity, Gender, County and Community,
Education Level, Employment Status (Grouped), Household Income, Island, Marital Status (Grouped), Poverty Level, for the
Year(s) - 2001, 2002, 2003, 2004**

*Note: Weighted numbers (#), percentages and 95% confidence intervals; Respondents aged 18 years and older; n/r (Not Reportable) -
Represents cell size restriction of unweighted count < 50; n/a (Not Available) - Not asked of a subset of respondents*

Year: 2003

Year: 2004

Year Total	Yes			No			Estimated Adult Population
	#	%	C.I. (95%)	#	%	C.I. (95%)	#
State	103,922	13.9	11.4 - 16.3	644,925	86.1	83.7 - 88.6	748,847

**Talked to Doctor, Nurse, or Other Health Professional about Preventing Sexually Transmitted Diseases through Condom Use
(Among Adults Age 18-64) by Year Total, County, BRFSS Age Group, DOH Race-Ethnicity, Gender, County and Community,
Education Level, Employment Status (Grouped), Household Income, Island, Marital Status (Grouped), Poverty Level, for the
Year(s) - 2001, 2002, 2003, 2004**

*Note: Weighted numbers (#), percentages and 95% confidence intervals; Respondents aged 18 years and older; n/r (Not Reportable) -
Represents cell size restriction of unweighted count < 50; n/a (Not Available) - Not asked of a subset of respondents*

Year: 2004

County	Yes			No			Estimated Adult Population
	#	%	C.I. (95%)	#	%	C.I. (95%)	#
Hawaii	11,296	10.8	7.2 - 14.4	93,545	89.2	85.6 - 92.8	104,841
Honolulu	80,475	15.7	12.3 - 19.1	432,907	84.3	80.9 - 87.7	513,382
Kauai	2,406	7.4	3.6 - 11.2	30,215	92.6	88.8 - 96.4	32,621
Maui	8,829	10.4	4.9 - 16.0	75,711	89.6	84.0 - 95.1	84,540

**Talked to Doctor, Nurse, or Other Health Professional about Preventing Sexually Transmitted Diseases through Condom Use
(Among Adults Age 18-64) by Year Total, County, BRFSS Age Group, DOH Race-Ethnicity, Gender, County and Community,
Education Level, Employment Status (Grouped), Household Income, Island, Marital Status (Grouped), Poverty Level, for the
Year(s) - 2001, 2002, 2003, 2004**

*Note: Weighted numbers (#), percentages and 95% confidence intervals; Respondents aged 18 years and older; n/r (Not Reportable) -
Represents cell size restriction of unweighted count < 50; n/a (Not Available) - Not asked of a subset of respondents*

Year: 2004

BRFSS Age Group	Yes			No			Estimated Adult Population
	#	%	C.I. (95%)	#	%	C.I. (95%)	#
18-24	41,090	38.9	28.0 - 49.9	64,431	61.1	50.1 - 72.0	105,521
25-34	37,412	21.8	15.7 - 27.8	134,555	78.2	72.2 - 84.3	171,967
35-44	14,915	8.3	4.2 - 12.5	164,000	91.7	87.5 - 95.8	178,915
45-54	5,130	3.1	1.3 - 4.8	162,277	96.9	95.2 - 98.7	167,407
55-64	5,374	4.3	1.6 - 7.0	119,662	95.7	93.0 - 98.4	125,036
65-74	n/r	n/r	n/r	n/r	n/r	n/r	n/r
75+	n/r	n/r	n/r	n/r	n/r	n/r	n/r

**Talked to Doctor, Nurse, or Other Health Professional about Preventing Sexually Transmitted Diseases through Condom Use
(Among Adults Age 18-64) by Year Total, County, BRFSS Age Group, DOH Race-Ethnicity, Gender, County and Community,
Education Level, Employment Status (Grouped), Household Income, Island, Marital Status (Grouped), Poverty Level, for the
Year(s) - 2001, 2002, 2003, 2004**

*Note: Weighted numbers (#), percentages and 95% confidence intervals; Respondents aged 18 years and older; n/r (Not Reportable) -
Represents cell size restriction of unweighted count < 50; n/a (Not Available) - Not asked of a subset of respondents*

Year: 2004

DOH Race-Ethnicity	Yes			No			Estimated Adult Population
	#	%	C.I. (95%)	#	%	C.I. (95%)	#
White	37,326	15.2	11.3 - 19.1	208,234	84.8	80.9 - 88.7	245,560
Native Hawaiian	16,175	14.5	7.7 - 21.2	95,758	85.5	78.8 - 92.3	111,933
Chinese	1,647	4.8	.0 - 11.5	32,359	95.2	88.5 - 100.0	34,006
Filipino	22,287	18.3	11.2 - 25.4	99,652	81.7	74.6 - 88.8	121,939
Japanese	9,941	7.5	2.7 - 12.4	121,937	92.5	87.6 - 97.3	131,878
Black	n/r	n/r	n/r	n/r	n/r	n/r	n/r
Other Pacific Islander	n/r	n/r	n/r	n/r	n/r	n/r	n/r
Other Asian	n/r	n/r	n/r	n/r	n/r	n/r	n/r
Native Alaskan/ American Indian	n/r	n/r	n/r	n/r	n/r	n/r	n/r
Other	n/r	n/r	n/r	n/r	n/r	n/r	n/r

**Talked to Doctor, Nurse, or Other Health Professional about Preventing Sexually Transmitted Diseases through Condom Use
(Among Adults Age 18-64) by Year Total, County, BRFSS Age Group, DOH Race-Ethnicity, Gender, County and Community,
Education Level, Employment Status (Grouped), Household Income, Island, Marital Status (Grouped), Poverty Level, for the
Year(s) - 2001, 2002, 2003, 2004**

*Note: Weighted numbers (#), percentages and 95% confidence intervals; Respondents aged 18 years and older; n/r (Not Reportable) -
Represents cell size restriction of unweighted count < 50; n/a (Not Available) - Not asked of a subset of respondents*

Year: 2004

Gender	Yes			No			Estimated Adult Population
	#	%	C.I. (95%)	#	%	C.I. (95%)	#
Female	59,091	15.8	12.3 - 19.4	314,187	84.2	80.6 - 87.7	373,278
Male	44,830	11.9	8.5 - 15.3	330,738	88.1	84.7 - 91.5	375,568

County and Community	Yes			No			Estimated Adult Population
	#	%	C.I. (95%)	#	%	C.I. (95%)	#
Hawaii-Hilo	4,472	15.4	7.8 - 23.0	24,534	84.6	77.0 - 92.2	29,006
Hawaii-Kona	2,855	12.9	4.1 - 21.7	19,293	87.1	78.3 - 95.9	22,148
Hawaii-N.Hawaii	675	3.9	.0 - 8.2	16,462	96.1	91.8 - 100.0	17,137
Hawaii-Puna/ Kau	3,294	9.0	3.0 - 15.0	33,255	91.0	85.0 - 97.0	36,549
Honolulu-Aiea/ Pearl City	6,029	13.3	3.3 - 23.2	39,468	86.7	76.8 - 96.7	45,497
Honolulu-Ala Moana	n/r	n/r	n/r	n/r	n/r	n/r	n/r
Honolulu-Kaaawa/ Kahaluu/ Kaneohe	n/r	n/r	n/r	n/r	n/r	n/r	n/r
Honolulu-Kailua/ Waimanalo	10,826	28.1	13.6 - 42.7	27,676	71.9	57.3 - 86.4	38,502

**Talked to Doctor, Nurse, or Other Health Professional about Preventing Sexually Transmitted Diseases through Condom Use
(Among Adults Age 18-64) by Year Total, County, BRFSS Age Group, DOH Race-Ethnicity, Gender, County and Community,
Education Level, Employment Status (Grouped), Household Income, Island, Marital Status (Grouped), Poverty Level, for the
Year(s) - 2001, 2002, 2003, 2004**

*Note: Weighted numbers (#), percentages and 95% confidence intervals; Respondents aged 18 years and older; n/r (Not Reportable) -
Represents cell size restriction of unweighted count < 50; n/a (Not Available) - Not asked of a subset of respondents*

Year: 2004

County and Community	Yes			No			Estimated Adult Population
	#	%	C.I. (95%)	#	%	C.I. (95%)	#
Honolulu-Kaimuki/ Palolo/ Waikiki	6,275	16.9	4.4 - 29.5	30,764	83.1	70.5 - 95.6	37,039
Honolulu-Manoa/ Upper Makiki	3,643	9.0	.8 - 17.1	36,864	91.0	82.9 - 99.2	40,507
Honolulu-Mililani/ Wahiawa	8,949	16.8	6.5 - 27.1	44,311	83.2	72.9 - 93.5	53,260
Honolulu-Nanakuli/ Waianae	n/r	n/r	n/r	n/r	n/r	n/r	n/r
Honolulu-N.Shore/ Laie	n/r	n/r	n/r	n/r	n/r	n/r	n/r
Honolulu-Nuuanu/ Kalihi/ Moanalua	6,426	13.0	3.4 - 22.6	43,023	87.0	77.4 - 96.6	49,449
Honolulu-Salt Lake/ Foster Village	n/r	n/r	n/r	n/r	n/r	n/r	n/r
Honolulu-Waiialae/ Kahala/ Hawaii Kai	n/r	n/r	n/r	n/r	n/r	n/r	n/r
Honolulu-Waipahu/ Kapolei/ Ewa	15,411	16.2	7.3 - 25.1	79,737	83.8	74.9 - 92.7	95,148
Kauai-Hanalei/ Kapaa	1,008	7.2	1.8 - 12.6	12,998	92.8	87.4 - 98.2	14,006
Kauai-Lihue-Waimea	1,398	7.5	2.3 - 12.7	17,218	92.5	87.3 - 97.7	18,616
Maui-Kahului	2,969	11.0	1.5 - 20.5	23,957	89.0	79.5 - 98.5	26,926
Maui-Lanai	n/r	n/r	n/r	n/r	n/r	n/r	n/r

**Talked to Doctor, Nurse, or Other Health Professional about Preventing Sexually Transmitted Diseases through Condom Use
(Among Adults Age 18-64) by Year Total, County, BRFSS Age Group, DOH Race-Ethnicity, Gender, County and Community,
Education Level, Employment Status (Grouped), Household Income, Island, Marital Status (Grouped), Poverty Level, for the
Year(s) - 2001, 2002, 2003, 2004**

*Note: Weighted numbers (#), percentages and 95% confidence intervals; Respondents aged 18 years and older; n/r (Not Reportable) -
Represents cell size restriction of unweighted count < 50; n/a (Not Available) - Not asked of a subset of respondents*

Year: 2004

County and Community	Yes			No			Estimated Adult Population
	#	%	C.I. (95%)	#	%	C.I. (95%)	#
Maui-Lahaina/ Wailuku	654	2.7	.0 - 6.0	23,669	97.3	94.0 - 100.0	24,323
Maui-Molokai	n/r	n/r	n/r	n/r	n/r	n/r	n/r
Maui-Upcountry/ Hana	4,141	15.3	2.3 - 28.3	22,945	84.7	71.7 - 97.7	27,086

Education Level	Yes			No			Estimated Adult Population
	#	%	C.I. (95%)	#	%	C.I. (95%)	#
Grades 9 thru 11 (Some High School)	n/r	n/r	n/r	n/r	n/r	n/r	n/r
Grades 12 or GED (High School Grad)	31,575	14.0	9.2 - 18.7	194,448	86.0	81.3 - 90.8	226,023
College 1 to 3 years (Some College/ Tech)	37,329	15.3	10.8 - 19.8	206,682	84.7	80.2 - 89.2	244,011
College 4 years or more (College Grad)	29,358	11.6	7.9 - 15.4	222,722	88.4	84.6 - 92.1	252,080
Never attended school/ Only Kindergarten to Grades 8	n/r	n/r	n/r	n/r	n/r	n/r	n/r

**Talked to Doctor, Nurse, or Other Health Professional about Preventing Sexually Transmitted Diseases through Condom Use
(Among Adults Age 18-64) by Year Total, County, BRFSS Age Group, DOH Race-Ethnicity, Gender, County and Community,
Education Level, Employment Status (Grouped), Household Income, Island, Marital Status (Grouped), Poverty Level, for the
Year(s) - 2001, 2002, 2003, 2004**

*Note: Weighted numbers (#), percentages and 95% confidence intervals; Respondents aged 18 years and older; n/r (Not Reportable) -
Represents cell size restriction of unweighted count < 50; n/a (Not Available) - Not asked of a subset of respondents*

Year: 2004

Employment Status (Grouped)	Yes			No			Estimated Adult Population
	#	%	C.I. (95%)	#	%	C.I. (95%)	#
Employed	69,657	12.3	9.7 - 15.0	494,891	87.7	85.0 - 90.3	564,548
Unemployed	4,209	16.3	1.0 - 31.5	21,689	83.7	68.5 - 99.0	25,898
Student/Homemaker	20,194	21.8	13.7 - 29.9	72,478	78.2	70.1 - 86.3	92,672
Retired/Unable to work	8,981	13.9	4.3 - 23.4	55,866	86.1	76.6 - 95.7	64,847

**Talked to Doctor, Nurse, or Other Health Professional about Preventing Sexually Transmitted Diseases through Condom Use
(Among Adults Age 18-64) by Year Total, County, BRFSS Age Group, DOH Race-Ethnicity, Gender, County and Community,
Education Level, Employment Status (Grouped), Household Income, Island, Marital Status (Grouped), Poverty Level, for the
Year(s) - 2001, 2002, 2003, 2004**

*Note: Weighted numbers (#), percentages and 95% confidence intervals; Respondents aged 18 years and older; n/r (Not Reportable) -
Represents cell size restriction of unweighted count < 50; n/a (Not Available) - Not asked of a subset of respondents*

Year: 2004

Household Income	Yes			No			Estimated Adult Population
	#	%	C.I. (95%)	#	%	C.I. (95%)	#
Less than \$10,000	n/r	n/r	n/r	n/r	n/r	n/r	n/r
\$10,000 to \$14,999	1,874	10.0	1.2 - 18.9	16,782	90.0	81.1 - 98.8	18,656
\$15,000 to \$19,999	12,535	33.9	17.4 - 50.4	24,418	66.1	49.6 - 82.6	36,953
\$20,000 to \$24,999	8,278	15.5	7.2 - 23.7	45,255	84.5	76.3 - 92.8	53,533
\$25,000 to \$34,999	13,703	14.2	7.2 - 21.3	82,499	85.8	78.7 - 92.8	96,202
\$35,000 to \$49,999	15,476	13.1	7.5 - 18.6	103,077	86.9	81.4 - 92.5	118,553
\$50,000 to \$74,999	36,239	15.9	10.9 - 20.8	191,972	84.1	79.2 - 89.1	228,211
\$75,000 or more	12,225	6.7	3.3 - 10.1	170,028	93.3	89.9 - 96.7	182,253

**Talked to Doctor, Nurse, or Other Health Professional about Preventing Sexually Transmitted Diseases through Condom Use
(Among Adults Age 18-64) by Year Total, County, BRFSS Age Group, DOH Race-Ethnicity, Gender, County and Community,
Education Level, Employment Status (Grouped), Household Income, Island, Marital Status (Grouped), Poverty Level, for the
Year(s) - 2001, 2002, 2003, 2004**

*Note: Weighted numbers (#), percentages and 95% confidence intervals; Respondents aged 18 years and older; n/r (Not Reportable) -
Represents cell size restriction of unweighted count < 50; n/a (Not Available) - Not asked of a subset of respondents*

Year: 2004

Island	Yes			No			Estimated Adult Population
	#	%	C.I. (95%)	#	%	C.I. (95%)	#
Hawaii	11,296	10.8	7.2 - 14.4	93,545	89.2	85.6 - 92.8	104,841
Kauai	2,406	7.4	3.6 - 11.1	30,215	92.6	88.9 - 96.4	32,621
Maui	7,764	9.9	4.0 - 15.8	70,571	90.1	84.2 - 96.0	78,335
Lanai	n/r	n/r	n/r	n/r	n/r	n/r	n/r
Molokai	n/r	n/r	n/r	n/r	n/r	n/r	n/r
Oahu	80,475	15.7	12.3 - 19.1	432,907	84.3	80.9 - 87.7	513,382

**Talked to Doctor, Nurse, or Other Health Professional about Preventing Sexually Transmitted Diseases through Condom Use
(Among Adults Age 18-64) by Year Total, County, BRFSS Age Group, DOH Race-Ethnicity, Gender, County and Community,
Education Level, Employment Status (Grouped), Household Income, Island, Marital Status (Grouped), Poverty Level, for the
Year(s) - 2001, 2002, 2003, 2004**

*Note: Weighted numbers (#), percentages and 95% confidence intervals; Respondents aged 18 years and older; n/r (Not Reportable) -
Represents cell size restriction of unweighted count < 50; n/a (Not Available) - Not asked of a subset of respondents*

Year: 2004

Marital Status (Grouped)	Yes			No			Estimated Adult Population
	#	%	C.I. (95%)	#	%	C.I. (95%)	#
Married	43,544	9.9	7.1 - 12.6	397,953	90.1	87.4 - 92.9	441,497
Unmarried Couple	7,686	32.4	14.5 - 50.4	16,015	67.6	49.6 - 85.5	23,701
Widowed	n/r	n/r	n/r	n/r	n/r	n/r	n/r
Other	51,181	18.7	14.0 - 23.4	222,305	81.3	76.6 - 86.0	273,486

**Talked to Doctor, Nurse, or Other Health Professional about Preventing Sexually Transmitted Diseases through Condom Use
(Among Adults Age 18-64) by Year Total, County, BRFSS Age Group, DOH Race-Ethnicity, Gender, County and Community,
Education Level, Employment Status (Grouped), Household Income, Island, Marital Status (Grouped), Poverty Level, for the
Year(s) - 2001, 2002, 2003, 2004**

*Note: Weighted numbers (#), percentages and 95% confidence intervals; Respondents aged 18 years and older; n/r (Not Reportable) -
Represents cell size restriction of unweighted count < 50; n/a (Not Available) - Not asked of a subset of respondents*

Year: 2004

Poverty Level	Yes			No			Estimated Adult Population
	#	%	C.I. (95%)	#	%	C.I. (95%)	#
1-50%	9,113	32.8	12.5 - 53.1	18,694	67.2	46.9 - 87.5	27,807
51-100%	9,165	16.1	6.5 - 25.6	47,916	83.9	74.4 - 93.5	57,081
101-120%	3,176	9.2	1.3 - 17.0	31,437	90.8	83.0 - 98.7	34,613
121-130%	n/r	n/r	n/r	n/r	n/r	n/r	n/r
131-150%	4,612	13.2	2.2 - 24.2	30,243	86.8	75.8 - 97.8	34,855
151-170%	10,420	15.7	6.3 - 25.1	55,959	84.3	74.9 - 93.7	66,379
171-180%	n/r	n/r	n/r	n/r	n/r	n/r	n/r
186+%	63,662	12.4	9.7 - 15.2	448,478	87.6	84.8 - 90.3	512,140

Talked to Doctor, Nurse, or Other Health Professional about Preventing Sexually Transmitted Diseases through Condom Use (Among Adults Age 18-64) by Year Total, County, BRFSS Age Group, DOH Race-Ethnicity, Gender, County and Community, Education Level, Employment Status (Grouped), Household Income, Island, Marital Status (Grouped), Poverty Level, for the Year(s) - 2001, 2002, 2003, 2004

Note: Weighted numbers (#), percentages and 95% confidence intervals; Respondents aged 18 years and older; n/r (Not Reportable) - Represents cell size restriction of unweighted count < 50; n/a (Not Available) - Not asked of a subset of respondents

Year: 2004