

HIV - ever been tested (18-64) by State, County, Island, Community, BRFSS Age Group, DOH Race-Ethnicity, Gender, Education Level, Employment Status (Grouped), Household Income, Poverty Level, Marital Status (Grouped), Married, Health Care Coverage, for the Year(s) - 2000, 2001, 2002, 2003, 2004, 2005, 2006, 2007, 2008, 2009, 2010

Note: Weighted numbers (#), percentages and 95% confidence intervals; Respondents aged 18 years and older; n/r (Not Reportable) - If the unweighted total responses for a dimension (row) is <50 that row will not be shown; n/a (Not Available) - Not asked of a subset of respondents

The trend analysis report shows the trend for the selected health variable over selected years in a table and a graph. Estimated Population: This number is a weighted representation of the population who responded to a particular question in the survey. For most questions the eligible population will be the entire adult population. For some secondary questions only a subset of the population was asked the question. For example, all survey participants were asked if they had diabetes, but only those who answered yes were asked if they use insulin. If a dimension value is unknown for a particular survey record, that record will not be included in the counts for that particular dimension.

For documentation on other terms and coding in this report, please go to the following links

[Click here to access BRFSS documentation](#)

[Click here to access DOH Race-Ethnicity coding](#)

[Click here to access The Hawai'i Data Guide](#)

[Click here to access Poverty Level Methodology](#)

**For questions about this report, please contact
The Hawaii Health Data Warehouse**

profiles@hhdw.org

(855) 946-5899 x15

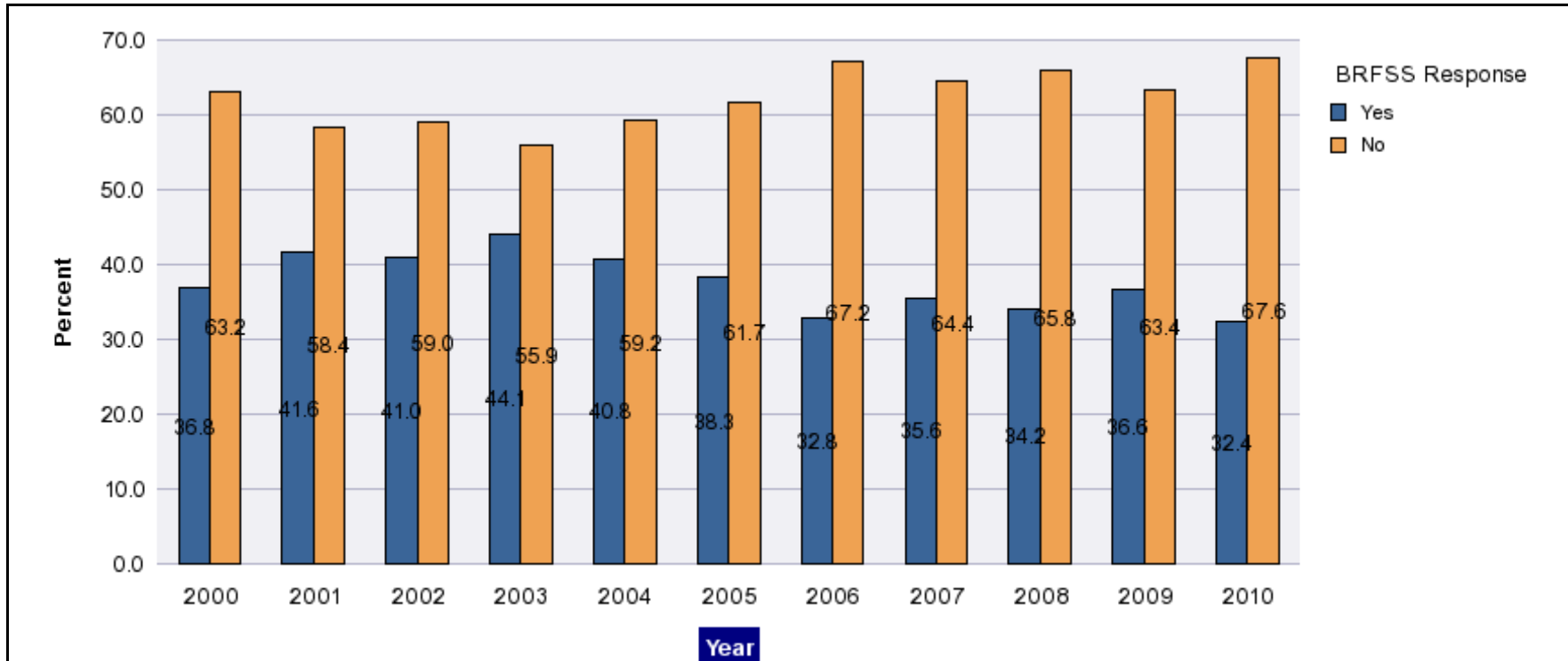
HIV - ever been tested (18-64) by State, County, Island, Community, BRFSS Age Group, DOH Race-Ethnicity, Gender, Education Level, Employment Status (Grouped), Household Income, Poverty Level, Marital Status (Grouped), Married, Health Care Coverage, for the Year(s) - 2000, 2001, 2002, 2003, 2004, 2005, 2006, 2007, 2008, 2009, 2010

Note: Weighted numbers (#), percentages and 95% confidence intervals; Respondents aged 18 years and older; n/r (Not Reportable) - If the unweighted total responses for a dimension (row) is <50 that row will not be shown; n/a (Not Available) - Not asked of a subset of respondents

Year	Yes			No			Estimated Population
	#	%	C.I.(95%)	#	%	C.I.(95%)	#
2000	200,500	36.8	34.8 - 38.9	343,700	63.2	61.1 - 65.2	544,200
2001	296,100	41.6	39.3 - 43.8	416,400	58.4	56.2 - 60.7	712,500
2002	300,000	41.0	39.1 - 43.0	431,000	59.0	57.0 - 60.9	730,900
2003	330,700	44.1	41.9 - 46.2	419,600	55.9	53.8 - 58.1	750,300
2004	297,100	40.8	37.4 - 44.2	431,300	59.2	55.8 - 62.6	728,400
2005	292,400	38.3	36.4 - 40.2	471,600	61.7	59.8 - 63.6	764,000
2006	248,600	32.8	31.0 - 34.6	509,400	67.2	65.4 - 69.0	758,000
2007	274,600	35.6	33.7 - 37.4	497,500	64.4	62.6 - 66.3	772,100
2008	266,200	34.2	32.3 - 36.1	513,000	65.8	63.9 - 67.7	779,200
2009	278,000	36.6	34.6 - 38.7	480,900	63.4	61.3 - 65.4	758,900
2010	247,800	32.4	30.3 - 34.4	518,100	67.6	65.6 - 69.7	765,900

HIV - ever been tested (18-64) by State, County, Island, Community, BRFSS Age Group, DOH Race-Ethnicity, Gender, Education Level, Employment Status (Grouped), Household Income, Poverty Level, Marital Status (Grouped), Married, Health Care Coverage, for the Year(s) - 2000, 2001, 2002, 2003, 2004, 2005, 2006, 2007, 2008, 2009, 2010

Note: Weighted numbers (#), percentages and 95% confidence intervals; Respondents aged 18 years and older; n/r (Not Reportable) - If the unweighted total responses for a dimension (row) is <50 that row will not be shown; n/a (Not Available) - Not asked of a subset of respondents



HIV - ever been tested (18-64) by State, County, Island, Community, BRFSS Age Group, DOH Race-Ethnicity, Gender, Education Level, Employment Status (Grouped), Household Income, Poverty Level, Marital Status (Grouped), Married, Health Care Coverage, for the Year(s) - 2000, 2001, 2002, 2003, 2004, 2005, 2006, 2007, 2008, 2009, 2010

Note: Weighted numbers (#), percentages and 95% confidence intervals; Respondents aged 18 years and older; n/r (Not Reportable) - If the unweighted total responses for a dimension (row) is <50 that row will not be shown; n/a (Not Available) - Not asked of a subset of respondents

Year: 2010

State	Yes			No			Estimated Population
	#	%	C.I. (95%)	#	%	C.I. (95%)	#
Hawaii State	247,800	32.4	30.3 - 34.4	518,100	67.6	65.6 - 69.7	765,900

County	Yes			No			Estimated Population
	#	%	C.I. (95%)	#	%	C.I. (95%)	#
Hawaii	37,800	34.1	30.2 - 38.1	72,900	65.9	61.9 - 69.8	110,700
Honolulu	168,600	31.9	29.2 - 34.6	359,800	68.1	65.4 - 70.8	528,500
Kauai	12,300	33.0	26.8 - 39.2	24,900	67.0	60.8 - 73.2	37,200
Maui	29,100	32.5	28.1 - 36.9	60,400	67.5	63.1 - 71.9	89,500

HIV - ever been tested (18-64) by State, County, Island, Community, BRFSS Age Group, DOH Race-Ethnicity, Gender, Education Level, Employment Status (Grouped), Household Income, Poverty Level, Marital Status (Grouped), Married, Health Care Coverage, for the Year(s) - 2000, 2001, 2002, 2003, 2004, 2005, 2006, 2007, 2008, 2009, 2010

Note: Weighted numbers (#), percentages and 95% confidence intervals; Respondents aged 18 years and older; n/r (Not Reportable) - If the unweighted total responses for a dimension (row) is <50 that row will not be shown; n/a (Not Available) - Not asked of a subset of respondents

Year: 2010

Island	Yes			No			Estimated Population
	#	%	C.I. (95%)	#	%	C.I. (95%)	#
Hawaii	37,800	34.1	30.2 - 38.1	72,900	65.9	61.9 - 69.8	110,700
Kauai	12,300	33.0	26.8 - 39.2	24,900	67.0	60.8 - 73.2	37,200
Lanai	300	23.0	9.5 - 36.5	1,000	77.0	63.5 - 90.5	1,300
Maui	26,800	32.5	27.8 - 37.2	55,600	67.5	62.8 - 72.2	82,500
Molokai	2,000	34.3	25.3 - 43.3	3,800	65.7	56.7 - 74.7	5,800
Oahu	168,600	31.9	29.2 - 34.6	359,800	68.1	65.4 - 70.8	528,500

Community	Yes			No			Estimated Population
	#	%	C.I. (95%)	#	%	C.I. (95%)	#
Aiea/ Pearl City	11,300	23.8	15.7 - 31.8	36,300	76.2	68.2 - 84.3	47,600

HIV - ever been tested (18-64) by State, County, Island, Community, BRFSS Age Group, DOH Race-Ethnicity, Gender, Education Level, Employment Status (Grouped), Household Income, Poverty Level, Marital Status (Grouped), Married, Health Care Coverage, for the Year(s) - 2000, 2001, 2002, 2003, 2004, 2005, 2006, 2007, 2008, 2009, 2010

Note: Weighted numbers (#), percentages and 95% confidence intervals; Respondents aged 18 years and older; n/r (Not Reportable) - If the unweighted total responses for a dimension (row) is <50 that row will not be shown; n/a (Not Available) - Not asked of a subset of respondents

Year: 2010

Community	Yes			No			Estimated Population
	#	%	C.I. (95%)	#	%	C.I. (95%)	#
Ala Moana	4,400	33.0	20.2 - 45.8	9,000	67.0	54.2 - 79.8	13,400
Hanalei/ Kapaa	6,000	38.7	29.9 - 47.5	9,500	61.3	52.5 - 70.1	15,400
Hilo	10,900	33.2	25.9 - 40.5	22,000	66.8	59.5 - 74.1	33,000
Kaaawa/ Kahaluu/ Kaneohe	10,500	26.7	17.6 - 35.7	28,800	73.3	64.3 - 82.4	39,200
Kahului	8,400	31.2	23.0 - 39.4	18,600	68.8	60.6 - 77.0	27,000
Kailua/ Waimanalo	14,800	41.3	30.8 - 51.9	21,000	58.7	48.1 - 69.2	35,800
Kaimuki/ Palolo/ Waikiki	10,900	28.4	19.8 - 37.1	27,400	71.6	62.9 - 80.2	38,200
Kona	8,000	34.2	26.2 - 42.3	15,400	65.8	57.7 - 73.8	23,400
Lahaina/ Wailuku	9,000	34.5	25.2 - 43.8	17,100	65.5	56.2 - 74.8	26,100

HIV - ever been tested (18-64) by State, County, Island, Community, BRFSS Age Group, DOH Race-Ethnicity, Gender, Education Level, Employment Status (Grouped), Household Income, Poverty Level, Marital Status (Grouped), Married, Health Care Coverage, for the Year(s) - 2000, 2001, 2002, 2003, 2004, 2005, 2006, 2007, 2008, 2009, 2010

Note: Weighted numbers (#), percentages and 95% confidence intervals; Respondents aged 18 years and older; n/r (Not Reportable) - If the unweighted total responses for a dimension (row) is <50 that row will not be shown; n/a (Not Available) - Not asked of a subset of respondents

Year: 2010

Community	Yes			No			Estimated Population
	#	%	C.I. (95%)	#	%	C.I. (95%)	#
Lanai	300	23.0	9.5 - 36.5	1,000	77.0	63.5 - 90.5	1,300
Lihue-Waimea	6,300	29.0	20.4 - 37.5	15,500	71.0	62.5 - 79.6	21,800
Manoa/ Upper Makiki	12,500	32.1	22.5 - 41.7	26,400	67.9	58.3 - 77.5	38,900
Mililani/ Wahiawa	24,900	43.0	34.9 - 51.1	33,100	57.0	48.9 - 65.1	58,100
Molokai	2,000	34.3	25.3 - 43.3	3,800	65.7	56.7 - 74.7	5,800
Nanakuli/ Waianae	11,100	30.8	17.3 - 44.3	25,000	69.2	55.7 - 82.7	36,100
N.Hawaii	6,000	30.9	21.6 - 40.2	13,500	69.1	59.8 - 78.4	19,500
N.Shore/ Laie	5,600	28.5	13.5 - 43.4	13,900	71.5	56.6 - 86.5	19,500
Nuuanu/ Kalihi/ Moanalua	12,000	25.4	16.1 - 34.7	35,400	74.6	65.3 - 83.9	47,400

HIV - ever been tested (18-64) by State, County, Island, Community, BRFSS Age Group, DOH Race-Ethnicity, Gender, Education Level, Employment Status (Grouped), Household Income, Poverty Level, Marital Status (Grouped), Married, Health Care Coverage, for the Year(s) - 2000, 2001, 2002, 2003, 2004, 2005, 2006, 2007, 2008, 2009, 2010

Note: Weighted numbers (#), percentages and 95% confidence intervals; Respondents aged 18 years and older; n/r (Not Reportable) - If the unweighted total responses for a dimension (row) is <50 that row will not be shown; n/a (Not Available) - Not asked of a subset of respondents

Year: 2010

Community	Yes			No			Estimated Population
	#	%	C.I. (95%)	#	%	C.I. (95%)	#
Puna/ Kau	12,800	36.8	29.5 - 44.0	22,000	63.2	56.0 - 70.5	34,800
Salt Lake/ Foster Village	16,100	56.8	45.1 - 68.4	12,300	43.2	31.6 - 54.9	28,400
Upcountry/ Hana	9,400	32.0	25.0 - 39.0	20,000	68.0	61.0 - 75.0	29,400
Waialae/ Kahala/ Hawaii Kai	5,100	19.7	11.0 - 28.4	20,600	80.3	71.6 - 89.0	25,700
Waipahu/ Kapolei/ Ewa	29,500	29.4	23.2 - 35.6	70,700	70.6	64.4 - 76.8	100,200

HIV - ever been tested (18-64) by State, County, Island, Community, BRFSS Age Group, DOH Race-Ethnicity, Gender, Education Level, Employment Status (Grouped), Household Income, Poverty Level, Marital Status (Grouped), Married, Health Care Coverage, for the Year(s) - 2000, 2001, 2002, 2003, 2004, 2005, 2006, 2007, 2008, 2009, 2010

Note: Weighted numbers (#), percentages and 95% confidence intervals; Respondents aged 18 years and older; n/r (Not Reportable) - If the unweighted total responses for a dimension (row) is <50 that row will not be shown; n/a (Not Available) - Not asked of a subset of respondents

Year: 2010

BRFSS Age Group	Yes			No			Estimated Population
	#	%	C.I. (95%)	#	%	C.I. (95%)	#
18-24	21,200	18.7	13.1 - 24.3	92,200	81.3	75.7 - 86.9	113,500
25-34	68,200	39.7	34.1 - 45.3	103,600	60.3	54.7 - 65.9	171,700
35-44	76,600	46.1	41.6 - 50.7	89,500	53.9	49.3 - 58.4	166,100
45-54	50,500	29.9	26.5 - 33.2	118,600	70.1	66.8 - 73.5	169,100
55-64	31,200	21.5	18.9 - 24.0	114,200	78.5	76.0 - 81.1	145,400

HIV - ever been tested (18-64) by State, County, Island, Community, BRFSS Age Group, DOH Race-Ethnicity, Gender, Education Level, Employment Status (Grouped), Household Income, Poverty Level, Marital Status (Grouped), Married, Health Care Coverage, for the Year(s) - 2000, 2001, 2002, 2003, 2004, 2005, 2006, 2007, 2008, 2009, 2010

Note: Weighted numbers (#), percentages and 95% confidence intervals; Respondents aged 18 years and older; n/r (Not Reportable) - If the unweighted total responses for a dimension (row) is <50 that row will not be shown; n/a (Not Available) - Not asked of a subset of respondents

Year: 2010

DOH Race-Ethnicity	Yes			No			Estimated Population
	#	%	C.I. (95%)	#	%	C.I. (95%)	#
Caucasian	116,200	49.4	46.0 - 52.7	119,200	50.6	47.3 - 54.0	235,400
Native Hawaiian	32,100	30.9	25.3 - 36.5	71,700	69.1	63.5 - 74.7	103,700
Chinese	5,200	12.3	7.0 - 17.7	36,700	87.7	82.3 - 93.0	41,800
Filipino	23,000	17.2	12.8 - 21.5	111,000	82.8	78.5 - 87.2	134,100
Japanese	35,800	22.5	18.4 - 26.6	123,400	77.5	73.4 - 81.6	159,200
Black	9,300	72.9	57.1 - 88.7	3,500	27.1	11.3 - 42.9	12,800
Other Asian	3,500	16.5	4.2 - 28.8	17,500	83.5	71.2 - 95.8	21,000
Other Pacific Islander	11,000	33.9	19.6 - 48.1	21,400	66.1	51.9 - 80.4	32,400
Other	9,300	46.6	31.4 - 61.8	10,600	53.4	38.2 - 68.6	19,900

HIV - ever been tested (18-64) by State, County, Island, Community, BRFSS Age Group, DOH Race-Ethnicity, Gender, Education Level, Employment Status (Grouped), Household Income, Poverty Level, Marital Status (Grouped), Married, Health Care Coverage, for the Year(s) - 2000, 2001, 2002, 2003, 2004, 2005, 2006, 2007, 2008, 2009, 2010

Note: Weighted numbers (#), percentages and 95% confidence intervals; Respondents aged 18 years and older; n/r (Not Reportable) - If the unweighted total responses for a dimension (row) is <50 that row will not be shown; n/a (Not Available) - Not asked of a subset of respondents

Year: 2010

Gender	Yes			No			Estimated Population
	#	%	C.I. (95%)	#	%	C.I. (95%)	#
Male	129,500	32.8	29.7 - 36.0	264,800	67.2	64.0 - 70.3	394,300
Female	118,300	31.8	29.2 - 34.5	253,200	68.2	65.5 - 70.8	371,600

Education Level	Yes			No			Estimated Population
	#	%	C.I. (95%)	#	%	C.I. (95%)	#
Grades 9 thru 11 (Some High School)	8,500	29.2	16.4 - 41.9	20,600	70.8	58.1 - 83.6	29,000
Grades 12 or GED (High School Grad)	56,300	26.1	22.1 - 30.0	159,600	73.9	70.0 - 77.9	215,900
College 1 to 3 years (Some College/ Tech)	74,300	33.2	29.3 - 37.1	149,600	66.8	62.9 - 70.7	223,800
College 4 years or more (College Grad)	107,100	36.7	33.7 - 39.8	184,300	63.3	60.2 - 66.3	291,400

HIV - ever been tested (18-64) by State, County, Island, Community, BRFSS Age Group, DOH Race-Ethnicity, Gender, Education Level, Employment Status (Grouped), Household Income, Poverty Level, Marital Status (Grouped), Married, Health Care Coverage, for the Year(s) - 2000, 2001, 2002, 2003, 2004, 2005, 2006, 2007, 2008, 2009, 2010

Note: Weighted numbers (#), percentages and 95% confidence intervals; Respondents aged 18 years and older; n/r (Not Reportable) - If the unweighted total responses for a dimension (row) is <50 that row will not be shown; n/a (Not Available) - Not asked of a subset of respondents

Year: 2010

Employment Status (Grouped)	Yes			No			Estimated Population
	#	%	C.I. (95%)	#	%	C.I. (95%)	#
Employed	178,800	33.4	31.0 - 35.9	355,800	66.6	64.1 - 69.0	534,700
Unemployed	17,300	27.1	20.1 - 34.1	46,600	72.9	65.9 - 79.9	64,000
Retired/Unable to work	20,100	32.6	26.8 - 38.4	41,600	67.4	61.6 - 73.2	61,700
Student/Homemaker	31,500	29.9	24.1 - 35.8	73,900	70.1	64.2 - 75.9	105,400

HIV - ever been tested (18-64) by State, County, Island, Community, BRFSS Age Group, DOH Race-Ethnicity, Gender, Education Level, Employment Status (Grouped), Household Income, Poverty Level, Marital Status (Grouped), Married, Health Care Coverage, for the Year(s) - 2000, 2001, 2002, 2003, 2004, 2005, 2006, 2007, 2008, 2009, 2010

Note: Weighted numbers (#), percentages and 95% confidence intervals; Respondents aged 18 years and older; n/r (Not Reportable) - If the unweighted total responses for a dimension (row) is <50 that row will not be shown; n/a (Not Available) - Not asked of a subset of respondents

Year: 2010

Household Income	Yes			No			Estimated Population
	#	%	C.I. (95%)	#	%	C.I. (95%)	#
Less than \$10,000	8,600	27.1	16.9 - 37.4	23,000	72.9	62.6 - 83.1	31,500
\$10,000 to \$14,999	4,600	25.9	13.8 - 37.9	13,200	74.1	62.1 - 86.2	17,700
\$15,000 to \$19,999	13,400	34.3	24.3 - 44.3	25,600	65.7	55.7 - 75.7	39,000
\$20,000 to \$24,999	13,400	29.8	21.6 - 38.1	31,500	70.2	61.9 - 78.4	44,800
\$25,000 to \$34,999	19,700	27.1	20.9 - 33.4	53,000	72.9	66.6 - 79.1	72,700
\$35,000 to \$49,999	30,400	28.4	23.3 - 33.4	76,800	71.6	66.6 - 76.7	107,200
\$50,000 to \$74,999	41,200	35.5	30.4 - 40.5	75,000	64.5	59.5 - 69.6	116,200
\$75,000 or more	99,300	37.9	34.5 - 41.4	162,600	62.1	58.6 - 65.5	261,900

HIV - ever been tested (18-64) by State, County, Island, Community, BRFSS Age Group, DOH Race-Ethnicity, Gender, Education Level, Employment Status (Grouped), Household Income, Poverty Level, Marital Status (Grouped), Married, Health Care Coverage, for the Year(s) - 2000, 2001, 2002, 2003, 2004, 2005, 2006, 2007, 2008, 2009, 2010

Note: Weighted numbers (#), percentages and 95% confidence intervals; Respondents aged 18 years and older; n/r (Not Reportable) - If the unweighted total responses for a dimension (row) is <50 that row will not be shown; n/a (Not Available) - Not asked of a subset of respondents

Year: 2010

Poverty Level	Yes			No			Estimated Population
	#	%	C.I. (95%)	#	%	C.I. (95%)	#
0-130%	48,800	26.2	21.8 - 30.5	137,700	73.8	69.5 - 78.2	186,500
131-185%	31,900	31.9	26.6 - 37.1	68,200	68.1	62.9 - 73.4	100,100
186+%	149,900	37.0	34.4 - 39.7	254,800	63.0	60.3 - 65.6	404,600

HIV - ever been tested (18-64) by State, County, Island, Community, BRFSS Age Group, DOH Race-Ethnicity, Gender, Education Level, Employment Status (Grouped), Household Income, Poverty Level, Marital Status (Grouped), Married, Health Care Coverage, for the Year(s) - 2000, 2001, 2002, 2003, 2004, 2005, 2006, 2007, 2008, 2009, 2010

Note: Weighted numbers (#), percentages and 95% confidence intervals; Respondents aged 18 years and older; n/r (Not Reportable) - If the unweighted total responses for a dimension (row) is <50 that row will not be shown; n/a (Not Available) - Not asked of a subset of respondents

Year: 2010

Marital Status (Grouped)	Yes			No			Estimated Population
	#	%	C.I. (95%)	#	%	C.I. (95%)	#
Married	151,300	34.7	32.2 - 37.2	284,600	65.3	62.8 - 67.8	435,900
Unmarried Couple	13,100	40.0	27.6 - 52.5	19,600	60.0	47.5 - 72.4	32,600
Widowed	2,000	20.5	10.8 - 30.2	7,900	79.5	69.8 - 89.2	10,000
Other	81,400	28.3	24.8 - 31.9	206,000	71.7	68.1 - 75.2	287,400

Married	Yes			No			Estimated Population
	#	%	C.I. (95%)	#	%	C.I. (95%)	#
Yes	156,500	35.1	32.6 - 37.6	289,700	64.9	62.4 - 67.4	446,300
No	91,200	28.6	25.2 - 32.0	227,800	71.4	68.0 - 74.8	319,100

HIV - ever been tested (18-64) by State, County, Island, Community, BRFSS Age Group, DOH Race-Ethnicity, Gender, Education Level, Employment Status (Grouped), Household Income, Poverty Level, Marital Status (Grouped), Married, Health Care Coverage, for the Year(s) - 2000, 2001, 2002, 2003, 2004, 2005, 2006, 2007, 2008, 2009, 2010

Note: Weighted numbers (#), percentages and 95% confidence intervals; Respondents aged 18 years and older; n/r (Not Reportable) - If the unweighted total responses for a dimension (row) is <50 that row will not be shown; n/a (Not Available) - Not asked of a subset of respondents

Year: 2010

Health Care Coverage	Yes			No			Estimated Population
	#	%	C.I. (95%)	#	%	C.I. (95%)	#
Yes	229,300	32.7	30.6 - 34.8	472,400	67.3	65.2 - 69.4	701,800
No	18,500	29.5	21.7 - 37.4	44,100	70.5	62.6 - 78.3	62,600

HIV - ever been tested (18-64) by State, County, Island, Community, BRFSS Age Group, DOH Race-Ethnicity, Gender, Education Level, Employment Status (Grouped), Household Income, Poverty Level, Marital Status (Grouped), Married, Health Care Coverage, for the Year(s) - 2000, 2001, 2002, 2003, 2004, 2005, 2006, 2007, 2008, 2009, 2010

Note: Weighted numbers (#), percentages and 95% confidence intervals; Respondents aged 18 years and older; n/r (Not Reportable) - If the unweighted total responses for a dimension (row) is <50 that row will not be shown; n/a (Not Available) - Not asked of a subset of respondents

Year: 2009

State	Yes			No			Estimated Population
	#	%	C.I. (95%)	#	%	C.I. (95%)	#
Hawaii State	278,000	36.6	34.6 - 38.7	480,900	63.4	61.3 - 65.4	758,900

County	Yes			No			Estimated Population
	#	%	C.I. (95%)	#	%	C.I. (95%)	#
Hawaii	40,200	38.3	34.5 - 42.0	64,800	61.7	58.0 - 65.5	104,900
Honolulu	192,000	36.0	33.3 - 38.8	340,600	64.0	61.2 - 66.7	532,600
Kauai	12,300	34.2	28.0 - 40.3	23,700	65.8	59.7 - 72.0	36,100
Maui	33,500	39.3	35.0 - 43.7	51,700	60.7	56.3 - 65.0	85,300

HIV - ever been tested (18-64) by State, County, Island, Community, BRFSS Age Group, DOH Race-Ethnicity, Gender, Education Level, Employment Status (Grouped), Household Income, Poverty Level, Marital Status (Grouped), Married, Health Care Coverage, for the Year(s) - 2000, 2001, 2002, 2003, 2004, 2005, 2006, 2007, 2008, 2009, 2010

Note: Weighted numbers (#), percentages and 95% confidence intervals; Respondents aged 18 years and older; n/r (Not Reportable) - If the unweighted total responses for a dimension (row) is <50 that row will not be shown; n/a (Not Available) - Not asked of a subset of respondents

Year: 2009

Island	Yes			No			Estimated Population
	#	%	C.I. (95%)	#	%	C.I. (95%)	#
Hawaii	40,200	38.3	34.5 - 42.0	64,800	61.7	58.0 - 65.5	104,900
Kauai	12,300	34.2	28.0 - 40.3	23,700	65.8	59.7 - 72.0	36,100
Lanai	300	23.6	14.9 - 32.3	900	76.4	67.7 - 85.1	1,200
Maui	31,200	40.1	35.4 - 44.8	46,600	59.9	55.2 - 64.6	77,800
Molokai	2,100	33.2	24.6 - 41.7	4,200	66.8	58.3 - 75.4	6,300
Oahu	192,000	36.0	33.3 - 38.8	340,600	64.0	61.2 - 66.7	532,600

Community	Yes			No			Estimated Population
	#	%	C.I. (95%)	#	%	C.I. (95%)	#
Aiea/ Pearl City	11,800	28.0	18.5 - 37.5	30,300	72.0	62.5 - 81.5	42,100

HIV - ever been tested (18-64) by State, County, Island, Community, BRFSS Age Group, DOH Race-Ethnicity, Gender, Education Level, Employment Status (Grouped), Household Income, Poverty Level, Marital Status (Grouped), Married, Health Care Coverage, for the Year(s) - 2000, 2001, 2002, 2003, 2004, 2005, 2006, 2007, 2008, 2009, 2010

Note: Weighted numbers (#), percentages and 95% confidence intervals; Respondents aged 18 years and older; n/r (Not Reportable) - If the unweighted total responses for a dimension (row) is <50 that row will not be shown; n/a (Not Available) - Not asked of a subset of respondents

Year: 2009

Community	Yes			No			Estimated Population
	#	%	C.I. (95%)	#	%	C.I. (95%)	#
Ala Moana	5,700	29.1	16.8 - 41.3	13,900	70.9	58.7 - 83.2	19,500
Hanalei/ Kapaa	6,900	46.1	37.1 - 55.0	8,000	53.9	45.0 - 62.9	14,900
Hilo	12,200	39.3	32.3 - 46.3	18,900	60.7	53.7 - 67.7	31,100
Kaaawa/ Kahaluu/ Kaneohe	13,200	38.8	28.6 - 48.9	20,900	61.2	51.1 - 71.4	34,100
Kahului	10,300	38.6	30.3 - 46.8	16,400	61.4	53.2 - 69.7	26,700
Kailua/ Waimanalo	14,200	37.1	27.1 - 47.2	24,100	62.9	52.8 - 72.9	38,300
Kaimuki/ Palolo/ Waikiki	13,600	36.9	27.8 - 46.1	23,200	63.1	53.9 - 72.2	36,700
Kona	6,900	32.3	24.7 - 39.9	14,400	67.7	60.1 - 75.3	21,300
Lahaina/ Wailuku	8,800	35.7	26.5 - 44.9	15,900	64.3	55.1 - 73.5	24,700

HIV - ever been tested (18-64) by State, County, Island, Community, BRFSS Age Group, DOH Race-Ethnicity, Gender, Education Level, Employment Status (Grouped), Household Income, Poverty Level, Marital Status (Grouped), Married, Health Care Coverage, for the Year(s) - 2000, 2001, 2002, 2003, 2004, 2005, 2006, 2007, 2008, 2009, 2010

Note: Weighted numbers (#), percentages and 95% confidence intervals; Respondents aged 18 years and older; n/r (Not Reportable) - If the unweighted total responses for a dimension (row) is <50 that row will not be shown; n/a (Not Available) - Not asked of a subset of respondents

Year: 2009

Community	Yes			No			Estimated Population
	#	%	C.I. (95%)	#	%	C.I. (95%)	#
Lanai	300	23.6	14.9 - 32.3	900	76.4	67.7 - 85.1	1,200
Lihue-Waimea	5,500	25.9	17.8 - 34.0	15,700	74.1	66.0 - 82.2	21,200
Manoa/ Upper Makiki	11,600	37.2	27.3 - 47.1	19,600	62.8	52.9 - 72.7	31,200
Mililani/ Wahiawa	28,400	41.4	33.7 - 49.2	40,200	58.6	50.8 - 66.3	68,700
Molokai	2,100	33.2	24.6 - 41.7	4,200	66.8	58.3 - 75.4	6,300
Nanakuli/ Waianae	6,600	28.8	16.1 - 41.5	16,300	71.2	58.5 - 83.9	22,800
N.Hawaii	8,100	38.6	30.2 - 47.1	12,900	61.4	52.9 - 69.8	21,000
N.Shore/ Laie	5,300	35.5	20.1 - 50.9	9,600	64.5	49.1 - 79.9	15,000
Nuuanu/ Kalihi/ Moanalua	14,500	27.4	18.3 - 36.5	38,400	72.6	63.5 - 81.7	52,900

HIV - ever been tested (18-64) by State, County, Island, Community, BRFSS Age Group, DOH Race-Ethnicity, Gender, Education Level, Employment Status (Grouped), Household Income, Poverty Level, Marital Status (Grouped), Married, Health Care Coverage, for the Year(s) - 2000, 2001, 2002, 2003, 2004, 2005, 2006, 2007, 2008, 2009, 2010

Note: Weighted numbers (#), percentages and 95% confidence intervals; Respondents aged 18 years and older; n/r (Not Reportable) - If the unweighted total responses for a dimension (row) is <50 that row will not be shown; n/a (Not Available) - Not asked of a subset of respondents

Year: 2009

Community	Yes			No			Estimated Population
	#	%	C.I. (95%)	#	%	C.I. (95%)	#
Puna/ Kau	13,000	41.1	34.0 - 48.1	18,600	58.9	51.9 - 66.0	31,600
Salt Lake/ Foster Village	18,900	57.1	45.2 - 69.1	14,200	42.9	30.9 - 54.8	33,100
Upcountry/ Hana	12,100	45.7	38.7 - 52.8	14,300	54.3	47.2 - 61.3	26,400
Waialae/ Kahala/ Hawaii Kai	13,000	33.0	23.4 - 42.7	26,300	67.0	57.3 - 76.6	39,300
Waipahu/ Kapolei/ Ewa	35,300	35.6	29.2 - 42.0	63,800	64.4	58.0 - 70.8	99,000

HIV - ever been tested (18-64) by State, County, Island, Community, BRFSS Age Group, DOH Race-Ethnicity, Gender, Education Level, Employment Status (Grouped), Household Income, Poverty Level, Marital Status (Grouped), Married, Health Care Coverage, for the Year(s) - 2000, 2001, 2002, 2003, 2004, 2005, 2006, 2007, 2008, 2009, 2010

Note: Weighted numbers (#), percentages and 95% confidence intervals; Respondents aged 18 years and older; n/r (Not Reportable) - If the unweighted total responses for a dimension (row) is <50 that row will not be shown; n/a (Not Available) - Not asked of a subset of respondents

Year: 2009

BRFSS Age Group	Yes			No			Estimated Population
	#	%	C.I. (95%)	#	%	C.I. (95%)	#
18-24	29,200	25.8	19.5 - 32.1	83,900	74.2	67.9 - 80.5	113,100
25-34	89,800	53.7	48.4 - 59.1	77,300	46.3	40.9 - 51.6	167,000
35-44	77,900	48.1	43.7 - 52.5	84,100	51.9	47.5 - 56.3	162,000
45-54	50,500	29.6	26.5 - 32.7	120,200	70.4	67.3 - 73.5	170,700
55-64	30,600	21.0	18.4 - 23.6	115,400	79.0	76.4 - 81.6	146,000

HIV - ever been tested (18-64) by State, County, Island, Community, BRFSS Age Group, DOH Race-Ethnicity, Gender, Education Level, Employment Status (Grouped), Household Income, Poverty Level, Marital Status (Grouped), Married, Health Care Coverage, for the Year(s) - 2000, 2001, 2002, 2003, 2004, 2005, 2006, 2007, 2008, 2009, 2010

Note: Weighted numbers (#), percentages and 95% confidence intervals; Respondents aged 18 years and older; n/r (Not Reportable) - If the unweighted total responses for a dimension (row) is <50 that row will not be shown; n/a (Not Available) - Not asked of a subset of respondents

Year: 2009

DOH Race-Ethnicity	Yes			No			Estimated Population
	#	%	C.I. (95%)	#	%	C.I. (95%)	#
Caucasian	117,300	49.5	46.3 - 52.7	119,800	50.5	47.3 - 53.7	237,100
Native Hawaiian	33,100	33.3	27.6 - 39.1	66,200	66.7	60.9 - 72.4	99,200
Chinese	13,400	30.9	21.8 - 39.9	30,100	69.1	60.1 - 78.2	43,600
Filipino	30,200	22.5	17.7 - 27.4	103,900	77.5	72.6 - 82.3	134,000
Japanese	37,800	23.8	19.7 - 27.9	120,800	76.2	72.1 - 80.3	158,600
Black	10,800	77.4	63.7 - 91.1	3,200	22.6	8.9 - 36.3	14,000
Other Asian	11,100	53.8	39.9 - 67.7	9,600	46.2	32.3 - 60.1	20,700
Other Pacific Islander	11,300	38.6	24.5 - 52.7	18,000	61.4	47.3 - 75.5	29,300
Other	9,500	56.5	42.7 - 70.4	7,300	43.5	29.6 - 57.3	16,700

HIV - ever been tested (18-64) by State, County, Island, Community, BRFSS Age Group, DOH Race-Ethnicity, Gender, Education Level, Employment Status (Grouped), Household Income, Poverty Level, Marital Status (Grouped), Married, Health Care Coverage, for the Year(s) - 2000, 2001, 2002, 2003, 2004, 2005, 2006, 2007, 2008, 2009, 2010

Note: Weighted numbers (#), percentages and 95% confidence intervals; Respondents aged 18 years and older; n/r (Not Reportable) - If the unweighted total responses for a dimension (row) is <50 that row will not be shown; n/a (Not Available) - Not asked of a subset of respondents

Year: 2009

Gender	Yes			No			Estimated Population
	#	%	C.I. (95%)	#	%	C.I. (95%)	#
Male	141,000	36.0	33.0 - 39.1	250,100	64.0	60.9 - 67.0	391,100
Female	137,100	37.3	34.5 - 40.0	230,700	62.7	60.0 - 65.5	367,800

Education Level	Yes			No			Estimated Population
	#	%	C.I. (95%)	#	%	C.I. (95%)	#
Grades 9 thru 11 (Some High School)	8,700	34.9	22.0 - 47.7	16,200	65.1	52.3 - 78.0	24,900
Grades 12 or GED (High School Grad)	66,400	32.1	28.1 - 36.1	140,600	67.9	63.9 - 71.9	207,000
College 1 to 3 years (Some College/ Tech)	89,200	39.0	35.0 - 43.0	139,600	61.0	57.0 - 65.0	228,800
College 4 years or more (College Grad)	112,300	38.3	35.3 - 41.3	181,000	61.7	58.7 - 64.7	293,300

HIV - ever been tested (18-64) by State, County, Island, Community, BRFSS Age Group, DOH Race-Ethnicity, Gender, Education Level, Employment Status (Grouped), Household Income, Poverty Level, Marital Status (Grouped), Married, Health Care Coverage, for the Year(s) - 2000, 2001, 2002, 2003, 2004, 2005, 2006, 2007, 2008, 2009, 2010

Note: Weighted numbers (#), percentages and 95% confidence intervals; Respondents aged 18 years and older; n/r (Not Reportable) - If the unweighted total responses for a dimension (row) is <50 that row will not be shown; n/a (Not Available) - Not asked of a subset of respondents

Year: 2009

Employment Status (Grouped)	Yes			No			Estimated Population
	#	%	C.I. (95%)	#	%	C.I. (95%)	#
Employed	202,100	36.6	34.2 - 38.9	350,700	63.4	61.1 - 65.8	552,800
Unemployed	24,200	38.6	30.8 - 46.4	38,500	61.4	53.6 - 69.2	62,700
Retired/Unable to work	16,800	31.2	24.9 - 37.5	37,100	68.8	62.5 - 75.1	53,900
Student/Homemaker	34,700	39.1	32.3 - 45.9	54,100	60.9	54.1 - 67.7	88,900

HIV - ever been tested (18-64) by State, County, Island, Community, BRFSS Age Group, DOH Race-Ethnicity, Gender, Education Level, Employment Status (Grouped), Household Income, Poverty Level, Marital Status (Grouped), Married, Health Care Coverage, for the Year(s) - 2000, 2001, 2002, 2003, 2004, 2005, 2006, 2007, 2008, 2009, 2010

Note: Weighted numbers (#), percentages and 95% confidence intervals; Respondents aged 18 years and older; n/r (Not Reportable) - If the unweighted total responses for a dimension (row) is <50 that row will not be shown; n/a (Not Available) - Not asked of a subset of respondents

Year: 2009

Household Income	Yes			No			Estimated Population
	#	%	C.I. (95%)	#	%	C.I. (95%)	#
Less than \$10,000	7,300	37.6	27.3 - 48.0	12,100	62.4	52.0 - 72.7	19,400
\$10,000 to \$14,999	8,100	56.4	41.3 - 71.4	6,300	43.6	28.6 - 58.7	14,400
\$15,000 to \$19,999	14,000	43.7	33.3 - 54.1	18,000	56.3	45.9 - 66.7	31,900
\$20,000 to \$24,999	13,600	35.5	26.6 - 44.4	24,800	64.5	55.6 - 73.4	38,500
\$25,000 to \$34,999	24,200	35.3	28.6 - 42.0	44,300	64.7	58.0 - 71.4	68,500
\$35,000 to \$49,999	38,100	34.1	29.2 - 39.0	73,500	65.9	61.0 - 70.8	111,600
\$50,000 to \$74,999	55,600	38.7	33.8 - 43.6	88,100	61.3	56.4 - 66.2	143,600
\$75,000 or more	100,600	38.8	35.4 - 42.3	158,700	61.2	57.7 - 64.6	259,300

HIV - ever been tested (18-64) by State, County, Island, Community, BRFSS Age Group, DOH Race-Ethnicity, Gender, Education Level, Employment Status (Grouped), Household Income, Poverty Level, Marital Status (Grouped), Married, Health Care Coverage, for the Year(s) - 2000, 2001, 2002, 2003, 2004, 2005, 2006, 2007, 2008, 2009, 2010

Note: Weighted numbers (#), percentages and 95% confidence intervals; Respondents aged 18 years and older; n/r (Not Reportable) - If the unweighted total responses for a dimension (row) is <50 that row will not be shown; n/a (Not Available) - Not asked of a subset of respondents

Year: 2009

Poverty Level	Yes			No			Estimated Population
	#	%	C.I. (95%)	#	%	C.I. (95%)	#
0-130%	58,500	39.0	34.0 - 43.9	91,600	61.0	56.1 - 66.0	150,100
131-185%	37,400	34.6	29.0 - 40.3	70,500	65.4	59.7 - 71.0	107,900
186+%	165,600	38.6	36.0 - 41.2	263,600	61.4	58.8 - 64.0	429,200

HIV - ever been tested (18-64) by State, County, Island, Community, BRFSS Age Group, DOH Race-Ethnicity, Gender, Education Level, Employment Status (Grouped), Household Income, Poverty Level, Marital Status (Grouped), Married, Health Care Coverage, for the Year(s) - 2000, 2001, 2002, 2003, 2004, 2005, 2006, 2007, 2008, 2009, 2010

Note: Weighted numbers (#), percentages and 95% confidence intervals; Respondents aged 18 years and older; n/r (Not Reportable) - If the unweighted total responses for a dimension (row) is <50 that row will not be shown; n/a (Not Available) - Not asked of a subset of respondents

Year: 2009

Marital Status (Grouped)	Yes			No			Estimated Population
	#	%	C.I. (95%)	#	%	C.I. (95%)	#
Married	163,100	36.8	34.3 - 39.3	279,700	63.2	60.7 - 65.7	442,800
Unmarried Couple	17,200	56.3	44.7 - 67.9	13,400	43.7	32.1 - 55.3	30,600
Widowed	2,800	28.7	17.7 - 39.7	6,900	71.3	60.3 - 82.3	9,700
Other	94,900	34.4	30.7 - 38.1	180,900	65.6	61.9 - 69.3	275,800

Married	Yes			No			Estimated Population
	#	%	C.I. (95%)	#	%	C.I. (95%)	#
Yes	168,000	37.2	34.7 - 39.7	283,500	62.8	60.3 - 65.3	451,500
No	109,600	35.8	32.2 - 39.3	196,900	64.2	60.7 - 67.8	306,500

HIV - ever been tested (18-64) by State, County, Island, Community, BRFSS Age Group, DOH Race-Ethnicity, Gender, Education Level, Employment Status (Grouped), Household Income, Poverty Level, Marital Status (Grouped), Married, Health Care Coverage, for the Year(s) - 2000, 2001, 2002, 2003, 2004, 2005, 2006, 2007, 2008, 2009, 2010

Note: Weighted numbers (#), percentages and 95% confidence intervals; Respondents aged 18 years and older; n/r (Not Reportable) - If the unweighted total responses for a dimension (row) is <50 that row will not be shown; n/a (Not Available) - Not asked of a subset of respondents

Year: 2009

Health Care Coverage	Yes			No			Estimated Population
	#	%	C.I. (95%)	#	%	C.I. (95%)	#
Yes	254,200	36.9	34.8 - 39.0	434,400	63.1	61.0 - 65.2	688,600
No	22,900	34.3	26.5 - 42.0	44,100	65.7	58.0 - 73.5	67,000

HIV - ever been tested (18-64) by State, County, Island, Community, BRFSS Age Group, DOH Race-Ethnicity, Gender, Education Level, Employment Status (Grouped), Household Income, Poverty Level, Marital Status (Grouped), Married, Health Care Coverage, for the Year(s) - 2000, 2001, 2002, 2003, 2004, 2005, 2006, 2007, 2008, 2009, 2010

Note: Weighted numbers (#), percentages and 95% confidence intervals; Respondents aged 18 years and older; n/r (Not Reportable) - If the unweighted total responses for a dimension (row) is <50 that row will not be shown; n/a (Not Available) - Not asked of a subset of respondents

Year: 2008

State	Yes			No			Estimated Population
	#	%	C.I. (95%)	#	%	C.I. (95%)	#
Hawaii State	266,200	34.2	32.3 - 36.1	513,000	65.8	63.9 - 67.7	779,200

County	Yes			No			Estimated Population
	#	%	C.I. (95%)	#	%	C.I. (95%)	#
Hawaii	37,900	35.4	31.7 - 39.2	69,000	64.6	60.8 - 68.3	106,900
Honolulu	184,200	33.8	31.3 - 36.3	361,100	66.2	63.7 - 68.7	545,300
Kauai	12,100	32.4	26.8 - 37.9	25,400	67.6	62.1 - 73.2	37,500
Maui	31,900	35.7	31.7 - 39.7	57,500	64.3	60.3 - 68.3	89,500

HIV - ever been tested (18-64) by State, County, Island, Community, BRFSS Age Group, DOH Race-Ethnicity, Gender, Education Level, Employment Status (Grouped), Household Income, Poverty Level, Marital Status (Grouped), Married, Health Care Coverage, for the Year(s) - 2000, 2001, 2002, 2003, 2004, 2005, 2006, 2007, 2008, 2009, 2010

Note: Weighted numbers (#), percentages and 95% confidence intervals; Respondents aged 18 years and older; n/r (Not Reportable) - If the unweighted total responses for a dimension (row) is <50 that row will not be shown; n/a (Not Available) - Not asked of a subset of respondents

Year: 2008

Island	Yes			No			Estimated Population
	#	%	C.I. (95%)	#	%	C.I. (95%)	#
Hawaii	37,900	35.4	31.7 - 39.2	69,000	64.6	60.8 - 68.3	106,900
Kauai	12,100	32.4	26.8 - 37.9	25,400	67.6	62.1 - 73.2	37,500
Lanai	600	39.1	27.9 - 50.4	1,000	60.9	49.6 - 72.1	1,600
Maui	28,900	35.6	31.3 - 39.9	52,300	64.4	60.1 - 68.7	81,200
Molokai	2,400	36.1	26.7 - 45.4	4,200	63.9	54.6 - 73.3	6,600
Oahu	184,200	33.8	31.3 - 36.3	361,100	66.2	63.7 - 68.7	545,300

Community	Yes			No			Estimated Population
	#	%	C.I. (95%)	#	%	C.I. (95%)	#
Aiea/ Pearl City	15,900	35.1	26.6 - 43.6	29,400	64.9	56.4 - 73.4	45,300

HIV - ever been tested (18-64) by State, County, Island, Community, BRFSS Age Group, DOH Race-Ethnicity, Gender, Education Level, Employment Status (Grouped), Household Income, Poverty Level, Marital Status (Grouped), Married, Health Care Coverage, for the Year(s) - 2000, 2001, 2002, 2003, 2004, 2005, 2006, 2007, 2008, 2009, 2010

Note: Weighted numbers (#), percentages and 95% confidence intervals; Respondents aged 18 years and older; n/r (Not Reportable) - If the unweighted total responses for a dimension (row) is <50 that row will not be shown; n/a (Not Available) - Not asked of a subset of respondents

Year: 2008

Community	Yes			No			Estimated Population
	#	%	C.I. (95%)	#	%	C.I. (95%)	#
Ala Moana	8,600	35.2	24.5 - 46.0	15,800	64.8	54.0 - 75.5	24,400
Hanalei/ Kapaa	5,700	36.2	27.6 - 44.7	10,100	63.8	55.3 - 72.4	15,800
Hilo	10,800	33.2	26.0 - 40.3	21,700	66.8	59.7 - 74.0	32,500
Kaaawa/ Kahaluu/ Kaneohe	7,900	20.7	13.2 - 28.2	30,100	79.3	71.8 - 86.8	38,000
Kahului	9,300	34.1	26.1 - 42.1	17,900	65.9	57.9 - 73.9	27,100
Kailua/ Waimanalo	16,000	41.3	32.1 - 50.5	22,700	58.7	49.5 - 67.9	38,700
Kaimuki/ Palolo/ Waikiki	15,400	38.0	29.5 - 46.5	25,100	62.0	53.5 - 70.5	40,600
Kona	8,800	42.5	34.6 - 50.5	11,900	57.5	49.5 - 65.4	20,700
Lahaina/ Wailuku	9,700	35.2	27.8 - 42.6	17,900	64.8	57.4 - 72.2	27,600

HIV - ever been tested (18-64) by State, County, Island, Community, BRFSS Age Group, DOH Race-Ethnicity, Gender, Education Level, Employment Status (Grouped), Household Income, Poverty Level, Marital Status (Grouped), Married, Health Care Coverage, for the Year(s) - 2000, 2001, 2002, 2003, 2004, 2005, 2006, 2007, 2008, 2009, 2010

Note: Weighted numbers (#), percentages and 95% confidence intervals; Respondents aged 18 years and older; n/r (Not Reportable) - If the unweighted total responses for a dimension (row) is <50 that row will not be shown; n/a (Not Available) - Not asked of a subset of respondents

Year: 2008

Community	Yes			No			Estimated Population
	#	%	C.I. (95%)	#	%	C.I. (95%)	#
Lanai	600	39.1	27.9 - 50.4	1,000	60.9	49.6 - 72.1	1,600
Lihue-Waimea	6,400	29.6	22.4 - 36.8	15,300	70.4	63.2 - 77.6	21,700
Manoa/ Upper Makiki	10,400	30.7	21.8 - 39.6	23,500	69.3	60.4 - 78.2	33,900
Mililani/ Wahiawa	23,600	38.7	31.3 - 46.1	37,500	61.3	53.9 - 68.7	61,100
Molokai	2,400	36.1	26.7 - 45.4	4,200	63.9	54.6 - 73.3	6,600
Nanakuli/ Waianae	7,200	24.9	13.0 - 36.8	21,800	75.1	63.2 - 87.0	29,000
N.Hawaii	7,200	31.6	23.5 - 39.6	15,600	68.4	60.4 - 76.5	22,800
N.Shore/ Laie	6,200	30.9	15.9 - 45.9	13,900	69.1	54.1 - 84.1	20,100
Nuuanu/ Kalihi/ Moanalua	11,700	23.5	15.8 - 31.1	38,200	76.5	68.9 - 84.2	50,000

HIV - ever been tested (18-64) by State, County, Island, Community, BRFSS Age Group, DOH Race-Ethnicity, Gender, Education Level, Employment Status (Grouped), Household Income, Poverty Level, Marital Status (Grouped), Married, Health Care Coverage, for the Year(s) - 2000, 2001, 2002, 2003, 2004, 2005, 2006, 2007, 2008, 2009, 2010

Note: Weighted numbers (#), percentages and 95% confidence intervals; Respondents aged 18 years and older; n/r (Not Reportable) - If the unweighted total responses for a dimension (row) is <50 that row will not be shown; n/a (Not Available) - Not asked of a subset of respondents

Year: 2008

Community	Yes			No			Estimated Population
	#	%	C.I. (95%)	#	%	C.I. (95%)	#
Puna/ Kau	11,100	35.9	29.3 - 42.6	19,800	64.1	57.4 - 70.7	30,900
Salt Lake/ Foster Village	15,400	52.8	41.7 - 64.0	13,700	47.2	36.0 - 58.3	29,100
Upcountry/ Hana	9,900	37.5	30.6 - 44.4	16,600	62.5	55.6 - 69.4	26,500
Waialae/ Kahala/ Hawaii Kai	10,400	32.4	22.5 - 42.3	21,700	67.6	57.7 - 77.5	32,100
Waipahu/ Kapolei/ Ewa	35,500	34.4	28.3 - 40.6	67,500	65.6	59.4 - 71.7	103,000

HIV - ever been tested (18-64) by State, County, Island, Community, BRFSS Age Group, DOH Race-Ethnicity, Gender, Education Level, Employment Status (Grouped), Household Income, Poverty Level, Marital Status (Grouped), Married, Health Care Coverage, for the Year(s) - 2000, 2001, 2002, 2003, 2004, 2005, 2006, 2007, 2008, 2009, 2010

Note: Weighted numbers (#), percentages and 95% confidence intervals; Respondents aged 18 years and older; n/r (Not Reportable) - If the unweighted total responses for a dimension (row) is <50 that row will not be shown; n/a (Not Available) - Not asked of a subset of respondents

Year: 2008

BRFSS Age Group	Yes			No			Estimated Population
	#	%	C.I. (95%)	#	%	C.I. (95%)	#
18-24	24,800	20.5	15.1 - 25.9	96,200	79.5	74.1 - 84.9	121,100
25-34	87,300	50.5	45.3 - 55.7	85,500	49.5	44.3 - 54.7	172,800
35-44	74,200	42.8	39.0 - 46.7	99,000	57.2	53.3 - 61.0	173,200
45-54	49,100	29.3	26.1 - 32.5	118,600	70.7	67.5 - 73.9	167,700
55-64	30,800	21.3	18.5 - 24.1	113,700	78.7	75.9 - 81.5	144,400

HIV - ever been tested (18-64) by State, County, Island, Community, BRFSS Age Group, DOH Race-Ethnicity, Gender, Education Level, Employment Status (Grouped), Household Income, Poverty Level, Marital Status (Grouped), Married, Health Care Coverage, for the Year(s) - 2000, 2001, 2002, 2003, 2004, 2005, 2006, 2007, 2008, 2009, 2010

Note: Weighted numbers (#), percentages and 95% confidence intervals; Respondents aged 18 years and older; n/r (Not Reportable) - If the unweighted total responses for a dimension (row) is <50 that row will not be shown; n/a (Not Available) - Not asked of a subset of respondents

Year: 2008

DOH Race-Ethnicity	Yes			No			Estimated Population
	#	%	C.I. (95%)	#	%	C.I. (95%)	#
Caucasian	122,700	48.1	45.0 - 51.3	132,300	51.9	48.7 - 55.0	255,000
Native Hawaiian	35,700	30.3	25.1 - 35.4	82,300	69.7	64.6 - 74.9	118,000
Chinese	11,900	24.0	17.1 - 30.9	37,800	76.0	69.1 - 82.9	49,700
Filipino	30,200	25.3	20.2 - 30.3	89,500	74.7	69.7 - 79.8	119,800
Japanese	33,400	21.7	17.9 - 25.4	120,800	78.3	74.6 - 82.1	154,300
Black	9,000	70.8	58.1 - 83.5	3,700	29.2	16.5 - 41.9	12,800
Other Asian	6,000	29.1	16.8 - 41.5	14,600	70.9	58.5 - 83.2	20,600
Other Pacific Islander	6,200	27.2	14.5 - 39.8	16,500	72.8	60.2 - 85.5	22,700
Other	7,700	39.8	26.8 - 52.9	11,600	60.2	47.1 - 73.2	19,300

HIV - ever been tested (18-64) by State, County, Island, Community, BRFSS Age Group, DOH Race-Ethnicity, Gender, Education Level, Employment Status (Grouped), Household Income, Poverty Level, Marital Status (Grouped), Married, Health Care Coverage, for the Year(s) - 2000, 2001, 2002, 2003, 2004, 2005, 2006, 2007, 2008, 2009, 2010

Note: Weighted numbers (#), percentages and 95% confidence intervals; Respondents aged 18 years and older; n/r (Not Reportable) - If the unweighted total responses for a dimension (row) is <50 that row will not be shown; n/a (Not Available) - Not asked of a subset of respondents

Year: 2008

Gender	Yes			No			Estimated Population
	#	%	C.I. (95%)	#	%	C.I. (95%)	#
Male	128,400	32.2	29.4 - 35.1	269,700	67.8	64.9 - 70.6	398,000
Female	137,800	36.2	33.7 - 38.7	243,300	63.8	61.3 - 66.3	381,200

Education Level	Yes			No			Estimated Population
	#	%	C.I. (95%)	#	%	C.I. (95%)	#
Grades 9 thru 11 (Some High School)	7,000	26.9	17.1 - 36.7	19,000	73.1	63.3 - 82.9	26,000
Grades 12 or GED (High School Grad)	63,600	28.5	24.8 - 32.2	160,000	71.5	67.8 - 75.2	223,700
College 1 to 3 years (Some College/ Tech)	83,800	35.7	32.2 - 39.3	150,600	64.3	60.7 - 67.8	234,400
College 4 years or more (College Grad)	111,100	38.1	35.1 - 41.0	180,700	61.9	59.0 - 64.9	291,800

HIV - ever been tested (18-64) by State, County, Island, Community, BRFSS Age Group, DOH Race-Ethnicity, Gender, Education Level, Employment Status (Grouped), Household Income, Poverty Level, Marital Status (Grouped), Married, Health Care Coverage, for the Year(s) - 2000, 2001, 2002, 2003, 2004, 2005, 2006, 2007, 2008, 2009, 2010

Note: Weighted numbers (#), percentages and 95% confidence intervals; Respondents aged 18 years and older; n/r (Not Reportable) - If the unweighted total responses for a dimension (row) is <50 that row will not be shown; n/a (Not Available) - Not asked of a subset of respondents

Year: 2008

Employment Status (Grouped)	Yes			No			Estimated Population
	#	%	C.I. (95%)	#	%	C.I. (95%)	#
Employed	199,700	34.4	32.2 - 36.6	381,200	65.6	63.4 - 67.8	580,900
Unemployed	13,100	31.4	21.9 - 40.9	28,600	68.6	59.1 - 78.1	41,700
Retired/Unable to work	21,900	31.1	25.5 - 36.6	48,500	68.9	63.4 - 74.5	70,400
Student/Homemaker	31,400	36.5	30.4 - 42.6	54,500	63.5	57.4 - 69.6	85,900

HIV - ever been tested (18-64) by State, County, Island, Community, BRFSS Age Group, DOH Race-Ethnicity, Gender, Education Level, Employment Status (Grouped), Household Income, Poverty Level, Marital Status (Grouped), Married, Health Care Coverage, for the Year(s) - 2000, 2001, 2002, 2003, 2004, 2005, 2006, 2007, 2008, 2009, 2010

Note: Weighted numbers (#), percentages and 95% confidence intervals; Respondents aged 18 years and older; n/r (Not Reportable) - If the unweighted total responses for a dimension (row) is <50 that row will not be shown; n/a (Not Available) - Not asked of a subset of respondents

Year: 2008

Household Income	Yes			No			Estimated Population
	#	%	C.I. (95%)	#	%	C.I. (95%)	#
Less than \$10,000	7,500	37.7	26.8 - 48.5	12,400	62.3	51.5 - 73.2	20,000
\$10,000 to \$14,999	5,000	39.8	26.3 - 53.3	7,600	60.2	46.7 - 73.7	12,600
\$15,000 to \$19,999	8,900	31.3	21.7 - 40.9	19,600	68.7	59.1 - 78.3	28,500
\$20,000 to \$24,999	14,600	39.3	30.3 - 48.2	22,600	60.7	51.8 - 69.7	37,200
\$25,000 to \$34,999	27,500	36.4	29.7 - 43.2	48,000	63.6	56.8 - 70.3	75,500
\$35,000 to \$49,999	35,000	31.8	27.1 - 36.6	75,100	68.2	63.4 - 72.9	110,100
\$50,000 to \$74,999	51,000	34.1	29.8 - 38.4	98,500	65.9	61.6 - 70.2	149,500
\$75,000 or more	99,600	35.9	32.7 - 39.1	178,000	64.1	60.9 - 67.3	277,600

HIV - ever been tested (18-64) by State, County, Island, Community, BRFSS Age Group, DOH Race-Ethnicity, Gender, Education Level, Employment Status (Grouped), Household Income, Poverty Level, Marital Status (Grouped), Married, Health Care Coverage, for the Year(s) - 2000, 2001, 2002, 2003, 2004, 2005, 2006, 2007, 2008, 2009, 2010

Note: Weighted numbers (#), percentages and 95% confidence intervals; Respondents aged 18 years and older; n/r (Not Reportable) - If the unweighted total responses for a dimension (row) is <50 that row will not be shown; n/a (Not Available) - Not asked of a subset of respondents

Year: 2008

Poverty Level	Yes			No			Estimated Population
	#	%	C.I. (95%)	#	%	C.I. (95%)	#
0-130%	52,400	35.8	30.8 - 40.9	93,700	64.2	59.1 - 69.2	146,100
131-185%	25,900	27.8	22.4 - 33.2	67,400	72.2	66.8 - 77.6	93,400
186+%	170,500	36.2	33.9 - 38.5	300,600	63.8	61.5 - 66.1	471,100

HIV - ever been tested (18-64) by State, County, Island, Community, BRFSS Age Group, DOH Race-Ethnicity, Gender, Education Level, Employment Status (Grouped), Household Income, Poverty Level, Marital Status (Grouped), Married, Health Care Coverage, for the Year(s) - 2000, 2001, 2002, 2003, 2004, 2005, 2006, 2007, 2008, 2009, 2010

Note: Weighted numbers (#), percentages and 95% confidence intervals; Respondents aged 18 years and older; n/r (Not Reportable) - If the unweighted total responses for a dimension (row) is <50 that row will not be shown; n/a (Not Available) - Not asked of a subset of respondents

Year: 2008

Marital Status (Grouped)	Yes			No			Estimated Population
	#	%	C.I. (95%)	#	%	C.I. (95%)	#
Married	163,700	35.8	33.4 - 38.1	293,900	64.2	61.9 - 66.6	457,600
Unmarried Couple	13,600	53.3	42.3 - 64.3	11,900	46.7	35.7 - 57.7	25,500
Widowed	3,100	30.2	15.7 - 44.7	7,100	69.8	55.3 - 84.3	10,100
Other	85,800	30.0	26.7 - 33.4	200,100	70.0	66.6 - 73.3	285,900

Married	Yes			No			Estimated Population
	#	%	C.I. (95%)	#	%	C.I. (95%)	#
Yes	167,300	35.8	33.4 - 38.1	300,300	64.2	61.9 - 66.6	467,600
No	98,600	31.7	28.5 - 35.0	211,900	68.3	65.0 - 71.5	310,500

HIV - ever been tested (18-64) by State, County, Island, Community, BRFSS Age Group, DOH Race-Ethnicity, Gender, Education Level, Employment Status (Grouped), Household Income, Poverty Level, Marital Status (Grouped), Married, Health Care Coverage, for the Year(s) - 2000, 2001, 2002, 2003, 2004, 2005, 2006, 2007, 2008, 2009, 2010

Note: Weighted numbers (#), percentages and 95% confidence intervals; Respondents aged 18 years and older; n/r (Not Reportable) - If the unweighted total responses for a dimension (row) is <50 that row will not be shown; n/a (Not Available) - Not asked of a subset of respondents

Year: 2008

Health Care Coverage	Yes			No			Estimated Population
	#	%	C.I. (95%)	#	%	C.I. (95%)	#
Yes	245,500	34.2	32.2 - 36.1	473,100	65.8	63.9 - 67.8	718,600
No	20,300	34.4	26.7 - 42.0	38,800	65.6	58.0 - 73.3	59,200

HIV - ever been tested (18-64) by State, County, Island, Community, BRFSS Age Group, DOH Race-Ethnicity, Gender, Education Level, Employment Status (Grouped), Household Income, Poverty Level, Marital Status (Grouped), Married, Health Care Coverage, for the Year(s) - 2000, 2001, 2002, 2003, 2004, 2005, 2006, 2007, 2008, 2009, 2010

Note: Weighted numbers (#), percentages and 95% confidence intervals; Respondents aged 18 years and older; n/r (Not Reportable) - If the unweighted total responses for a dimension (row) is <50 that row will not be shown; n/a (Not Available) - Not asked of a subset of respondents

Year: 2007

State	Yes			No			Estimated Population
	#	%	C.I. (95%)	#	%	C.I. (95%)	#
Hawaii State	274,600	35.6	33.7 - 37.4	497,500	64.4	62.6 - 66.3	772,100

County	Yes			No			Estimated Population
	#	%	C.I. (95%)	#	%	C.I. (95%)	#
Hawaii	37,100	36.5	33.1 - 40.0	64,400	63.5	60.0 - 66.9	101,400
Honolulu	193,000	35.3	32.8 - 37.7	353,800	64.7	62.3 - 67.2	546,800
Kauai	13,100	35.6	30.1 - 41.2	23,600	64.4	58.8 - 69.9	36,700
Maui	31,500	36.1	32.2 - 40.0	55,700	63.9	60.0 - 67.8	87,300

HIV - ever been tested (18-64) by State, County, Island, Community, BRFSS Age Group, DOH Race-Ethnicity, Gender, Education Level, Employment Status (Grouped), Household Income, Poverty Level, Marital Status (Grouped), Married, Health Care Coverage, for the Year(s) - 2000, 2001, 2002, 2003, 2004, 2005, 2006, 2007, 2008, 2009, 2010

Note: Weighted numbers (#), percentages and 95% confidence intervals; Respondents aged 18 years and older; n/r (Not Reportable) - If the unweighted total responses for a dimension (row) is <50 that row will not be shown; n/a (Not Available) - Not asked of a subset of respondents

Year: 2007

Island	Yes			No			Estimated Population
	#	%	C.I. (95%)	#	%	C.I. (95%)	#
Hawaii	37,100	36.5	33.1 - 40.0	64,400	63.5	60.0 - 66.9	101,400
Kauai	13,100	35.6	30.1 - 41.2	23,600	64.4	58.8 - 69.9	36,700
Lanai	500	32.0	22.9 - 41.1	1,000	68.0	58.9 - 77.1	1,500
Maui	28,400	35.9	31.7 - 40.2	50,500	64.1	59.8 - 68.3	78,900
Molokai	2,700	39.1	31.1 - 47.0	4,200	60.9	53.0 - 68.9	6,900
Oahu	193,000	35.3	32.8 - 37.7	353,800	64.7	62.3 - 67.2	546,800

Community	Yes			No			Estimated Population
	#	%	C.I. (95%)	#	%	C.I. (95%)	#
Aiea/ Pearl City	18,700	35.6	27.3 - 43.8	33,900	64.4	56.2 - 72.7	52,700

HIV - ever been tested (18-64) by State, County, Island, Community, BRFSS Age Group, DOH Race-Ethnicity, Gender, Education Level, Employment Status (Grouped), Household Income, Poverty Level, Marital Status (Grouped), Married, Health Care Coverage, for the Year(s) - 2000, 2001, 2002, 2003, 2004, 2005, 2006, 2007, 2008, 2009, 2010

Note: Weighted numbers (#), percentages and 95% confidence intervals; Respondents aged 18 years and older; n/r (Not Reportable) - If the unweighted total responses for a dimension (row) is <50 that row will not be shown; n/a (Not Available) - Not asked of a subset of respondents

Year: 2007

Community	Yes			No			Estimated Population
	#	%	C.I. (95%)	#	%	C.I. (95%)	#
Ala Moana	4,800	24.3	13.8 - 34.8	14,900	75.7	65.2 - 86.2	19,700
Hanalei/ Kapaa	6,200	41.1	32.3 - 50.0	8,800	58.9	50.0 - 67.7	15,000
Hilo	7,600	29.4	23.0 - 35.8	18,200	70.6	64.2 - 77.0	25,800
Kaaawa/ Kahaluu/ Kaneohe	15,900	39.9	30.7 - 49.0	24,000	60.1	51.0 - 69.3	39,900
Kahului	9,400	38.3	30.7 - 45.9	15,200	61.7	54.1 - 69.3	24,600
Kailua/ Waimanalo	12,800	33.6	25.4 - 41.7	25,300	66.4	58.3 - 74.6	38,000
Kaimuki/ Palolo/ Waikiki	10,700	29.0	21.1 - 37.0	26,100	71.0	63.0 - 78.9	36,700
Kona	8,200	36.0	29.0 - 43.0	14,500	64.0	57.0 - 71.0	22,700
Lahaina/ Wailuku	8,100	31.6	23.8 - 39.4	17,500	68.4	60.6 - 76.2	25,500

HIV - ever been tested (18-64) by State, County, Island, Community, BRFSS Age Group, DOH Race-Ethnicity, Gender, Education Level, Employment Status (Grouped), Household Income, Poverty Level, Marital Status (Grouped), Married, Health Care Coverage, for the Year(s) - 2000, 2001, 2002, 2003, 2004, 2005, 2006, 2007, 2008, 2009, 2010

Note: Weighted numbers (#), percentages and 95% confidence intervals; Respondents aged 18 years and older; n/r (Not Reportable) - If the unweighted total responses for a dimension (row) is <50 that row will not be shown; n/a (Not Available) - Not asked of a subset of respondents

Year: 2007

Community	Yes			No			Estimated Population
	#	%	C.I. (95%)	#	%	C.I. (95%)	#
Lanai	500	32.0	22.9 - 41.1	1,000	68.0	58.9 - 77.1	1,500
Lihue-Waimea	6,900	31.9	25.0 - 38.7	14,800	68.1	61.3 - 75.0	21,700
Manoa/ Upper Makiki	9,300	30.1	21.9 - 38.3	21,600	69.9	61.7 - 78.1	30,900
Mililani/ Wahiawa	29,300	44.5	37.3 - 51.7	36,500	55.5	48.3 - 62.7	65,800
Molokai	2,700	39.1	31.1 - 47.0	4,200	60.9	53.0 - 68.9	6,900
Nanakuli/ Waianae	9,200	29.9	18.2 - 41.5	21,600	70.1	58.5 - 81.8	30,800
N.Hawaii	9,000	39.2	31.6 - 46.8	13,900	60.8	53.2 - 68.4	22,800
N.Shore/ Laie	4,800	27.7	14.1 - 41.3	12,500	72.3	58.7 - 85.9	17,300
Nuuanu/ Kalihi/ Moanalua	17,400	32.9	24.3 - 41.5	35,600	67.1	58.5 - 75.7	53,000

HIV - ever been tested (18-64) by State, County, Island, Community, BRFSS Age Group, DOH Race-Ethnicity, Gender, Education Level, Employment Status (Grouped), Household Income, Poverty Level, Marital Status (Grouped), Married, Health Care Coverage, for the Year(s) - 2000, 2001, 2002, 2003, 2004, 2005, 2006, 2007, 2008, 2009, 2010

Note: Weighted numbers (#), percentages and 95% confidence intervals; Respondents aged 18 years and older; n/r (Not Reportable) - If the unweighted total responses for a dimension (row) is <50 that row will not be shown; n/a (Not Available) - Not asked of a subset of respondents

Year: 2007

Community	Yes			No			Estimated Population
	#	%	C.I. (95%)	#	%	C.I. (95%)	#
Puna/ Kau	12,300	41.1	34.3 - 47.8	17,700	58.9	52.2 - 65.7	30,000
Salt Lake/ Foster Village	10,800	43.0	32.1 - 53.9	14,400	57.0	46.1 - 67.9	25,200
Upcountry/ Hana	10,900	37.8	31.3 - 44.2	17,900	62.2	55.8 - 68.7	28,800
Waialae/ Kahala/ Hawaii Kai	9,200	33.6	23.7 - 43.6	18,100	66.4	56.4 - 76.3	27,200
Waipahu/ Kapolei/ Ewa	40,100	36.6	30.8 - 42.4	69,400	63.4	57.6 - 69.2	109,500

HIV - ever been tested (18-64) by State, County, Island, Community, BRFSS Age Group, DOH Race-Ethnicity, Gender, Education Level, Employment Status (Grouped), Household Income, Poverty Level, Marital Status (Grouped), Married, Health Care Coverage, for the Year(s) - 2000, 2001, 2002, 2003, 2004, 2005, 2006, 2007, 2008, 2009, 2010

Note: Weighted numbers (#), percentages and 95% confidence intervals; Respondents aged 18 years and older; n/r (Not Reportable) - If the unweighted total responses for a dimension (row) is <50 that row will not be shown; n/a (Not Available) - Not asked of a subset of respondents

Year: 2007

BRFSS Age Group	Yes			No			Estimated Population
	#	%	C.I. (95%)	#	%	C.I. (95%)	#
18-24	35,400	29.1	23.0 - 35.1	86,300	70.9	64.9 - 77.0	121,600
25-34	75,500	48.5	43.7 - 53.4	80,100	51.5	46.6 - 56.3	155,600
35-44	76,400	45.7	41.8 - 49.6	90,700	54.3	50.4 - 58.2	167,100
45-54	58,100	32.6	29.4 - 35.7	120,300	67.4	64.3 - 70.6	178,400
55-64	29,200	19.6	16.9 - 22.2	120,100	80.4	77.8 - 83.1	149,400

HIV - ever been tested (18-64) by State, County, Island, Community, BRFSS Age Group, DOH Race-Ethnicity, Gender, Education Level, Employment Status (Grouped), Household Income, Poverty Level, Marital Status (Grouped), Married, Health Care Coverage, for the Year(s) - 2000, 2001, 2002, 2003, 2004, 2005, 2006, 2007, 2008, 2009, 2010

Note: Weighted numbers (#), percentages and 95% confidence intervals; Respondents aged 18 years and older; n/r (Not Reportable) - If the unweighted total responses for a dimension (row) is <50 that row will not be shown; n/a (Not Available) - Not asked of a subset of respondents

Year: 2007

DOH Race-Ethnicity	Yes			No			Estimated Population
	#	%	C.I. (95%)	#	%	C.I. (95%)	#
Caucasian	120,300	49.3	46.3 - 52.3	123,800	50.7	47.7 - 53.7	244,000
Native Hawaiian	36,000	31.1	26.4 - 35.7	79,900	68.9	64.3 - 73.6	115,900
Chinese	9,600	25.0	17.2 - 32.8	28,900	75.0	67.2 - 82.8	38,500
Filipino	34,500	23.9	19.5 - 28.4	109,600	76.1	71.6 - 80.5	144,000
Japanese	34,900	23.7	20.0 - 27.5	112,100	76.3	72.5 - 80.0	147,000
Black	10,700	68.3	52.6 - 83.9	5,000	31.7	16.1 - 47.4	15,700
Other Asian	6,700	35.2	23.4 - 47.1	12,300	64.8	52.9 - 76.6	18,900
Other Pacific Islander	8,100	38.7	23.6 - 53.7	12,800	61.3	46.3 - 76.4	20,900
Other	8,700	44.9	31.5 - 58.4	10,700	55.1	41.6 - 68.5	19,400

HIV - ever been tested (18-64) by State, County, Island, Community, BRFSS Age Group, DOH Race-Ethnicity, Gender, Education Level, Employment Status (Grouped), Household Income, Poverty Level, Marital Status (Grouped), Married, Health Care Coverage, for the Year(s) - 2000, 2001, 2002, 2003, 2004, 2005, 2006, 2007, 2008, 2009, 2010

Note: Weighted numbers (#), percentages and 95% confidence intervals; Respondents aged 18 years and older; n/r (Not Reportable) - If the unweighted total responses for a dimension (row) is <50 that row will not be shown; n/a (Not Available) - Not asked of a subset of respondents

Year: 2007

Gender	Yes			No			Estimated Population
	#	%	C.I. (95%)	#	%	C.I. (95%)	#
Male	132,100	33.3	30.6 - 36.1	264,000	66.7	63.9 - 69.4	396,000
Female	142,500	37.9	35.4 - 40.4	233,600	62.1	59.6 - 64.6	376,100

Education Level	Yes			No			Estimated Population
	#	%	C.I. (95%)	#	%	C.I. (95%)	#
Grades 9 thru 11 (Some High School)	8,300	34.5	23.0 - 46.0	15,800	65.5	54.0 - 77.0	24,100
Grades 12 or GED (High School Grad)	71,300	29.6	26.1 - 33.1	169,400	70.4	66.9 - 73.9	240,700
College 1 to 3 years (Some College/ Tech)	92,500	38.6	35.2 - 42.1	146,900	61.4	57.9 - 64.8	239,500
College 4 years or more (College Grad)	102,100	38.8	35.9 - 41.7	161,000	61.2	58.3 - 64.1	263,100

HIV - ever been tested (18-64) by State, County, Island, Community, BRFSS Age Group, DOH Race-Ethnicity, Gender, Education Level, Employment Status (Grouped), Household Income, Poverty Level, Marital Status (Grouped), Married, Health Care Coverage, for the Year(s) - 2000, 2001, 2002, 2003, 2004, 2005, 2006, 2007, 2008, 2009, 2010

Note: Weighted numbers (#), percentages and 95% confidence intervals; Respondents aged 18 years and older; n/r (Not Reportable) - If the unweighted total responses for a dimension (row) is <50 that row will not be shown; n/a (Not Available) - Not asked of a subset of respondents

Year: 2007

Employment Status (Grouped)	Yes			No			Estimated Population
	#	%	C.I. (95%)	#	%	C.I. (95%)	#
Employed	210,200	35.9	33.7 - 38.0	376,200	64.1	62.0 - 66.3	586,400
Unemployed	9,500	31.0	21.4 - 40.5	21,100	69.0	59.5 - 78.6	30,500
Retired/Unable to work	22,100	31.2	25.7 - 36.7	48,800	68.8	63.3 - 74.3	70,900
Student/Homemaker	32,600	38.8	32.6 - 45.0	51,500	61.2	55.0 - 67.4	84,100

HIV - ever been tested (18-64) by State, County, Island, Community, BRFSS Age Group, DOH Race-Ethnicity, Gender, Education Level, Employment Status (Grouped), Household Income, Poverty Level, Marital Status (Grouped), Married, Health Care Coverage, for the Year(s) - 2000, 2001, 2002, 2003, 2004, 2005, 2006, 2007, 2008, 2009, 2010

Note: Weighted numbers (#), percentages and 95% confidence intervals; Respondents aged 18 years and older; n/r (Not Reportable) - If the unweighted total responses for a dimension (row) is <50 that row will not be shown; n/a (Not Available) - Not asked of a subset of respondents

Year: 2007

Household Income	Yes			No			Estimated Population
	#	%	C.I. (95%)	#	%	C.I. (95%)	#
Less than \$10,000	9,100	42.3	30.5 - 54.1	12,500	57.7	45.9 - 69.5	21,600
\$10,000 to \$14,999	6,200	30.9	19.0 - 42.8	14,000	69.1	57.2 - 81.0	20,200
\$15,000 to \$19,999	9,500	33.5	25.0 - 42.1	18,900	66.5	57.9 - 75.0	28,400
\$20,000 to \$24,999	15,600	36.8	28.9 - 44.7	26,900	63.2	55.3 - 71.1	42,500
\$25,000 to \$34,999	33,400	38.6	32.5 - 44.6	53,100	61.4	55.4 - 67.5	86,500
\$35,000 to \$49,999	42,900	33.7	29.0 - 38.3	84,400	66.3	61.7 - 71.0	127,200
\$50,000 to \$74,999	46,700	32.9	28.8 - 37.0	95,300	67.1	63.0 - 71.2	142,000
\$75,000 or more	94,500	38.7	35.5 - 41.9	149,900	61.3	58.1 - 64.5	244,400

HIV - ever been tested (18-64) by State, County, Island, Community, BRFSS Age Group, DOH Race-Ethnicity, Gender, Education Level, Employment Status (Grouped), Household Income, Poverty Level, Marital Status (Grouped), Married, Health Care Coverage, for the Year(s) - 2000, 2001, 2002, 2003, 2004, 2005, 2006, 2007, 2008, 2009, 2010

Note: Weighted numbers (#), percentages and 95% confidence intervals; Respondents aged 18 years and older; n/r (Not Reportable) - If the unweighted total responses for a dimension (row) is <50 that row will not be shown; n/a (Not Available) - Not asked of a subset of respondents

Year: 2007

Poverty Level	Yes			No			Estimated Population
	#	%	C.I. (95%)	#	%	C.I. (95%)	#
0-130%	58,700	36.4	31.7 - 41.0	102,600	63.6	59.0 - 68.3	161,300
131-185%	31,300	33.6	27.7 - 39.4	62,000	66.4	60.6 - 72.3	93,300
186+%	168,000	36.6	34.5 - 38.8	290,300	63.4	61.2 - 65.5	458,300

HIV - ever been tested (18-64) by State, County, Island, Community, BRFSS Age Group, DOH Race-Ethnicity, Gender, Education Level, Employment Status (Grouped), Household Income, Poverty Level, Marital Status (Grouped), Married, Health Care Coverage, for the Year(s) - 2000, 2001, 2002, 2003, 2004, 2005, 2006, 2007, 2008, 2009, 2010

Note: Weighted numbers (#), percentages and 95% confidence intervals; Respondents aged 18 years and older; n/r (Not Reportable) - If the unweighted total responses for a dimension (row) is <50 that row will not be shown; n/a (Not Available) - Not asked of a subset of respondents

Year: 2007

Marital Status (Grouped)	Yes			No			Estimated Population
	#	%	C.I. (95%)	#	%	C.I. (95%)	#
Married	166,800	36.4	34.2 - 38.7	291,100	63.6	61.3 - 65.8	457,900
Unmarried Couple	12,900	49.2	38.0 - 60.4	13,300	50.8	39.6 - 62.0	26,100
Widowed	2,300	21.3	11.5 - 31.2	8,400	78.7	68.8 - 88.5	10,700
Other	92,700	33.4	29.9 - 36.9	184,800	66.6	63.1 - 70.1	277,500

Married	Yes			No			Estimated Population
	#	%	C.I. (95%)	#	%	C.I. (95%)	#
Yes	170,800	36.6	34.4 - 38.8	295,800	63.4	61.2 - 65.6	466,600
No	103,800	34.0	30.7 - 37.3	201,500	66.0	62.7 - 69.3	305,300

HIV - ever been tested (18-64) by State, County, Island, Community, BRFSS Age Group, DOH Race-Ethnicity, Gender, Education Level, Employment Status (Grouped), Household Income, Poverty Level, Marital Status (Grouped), Married, Health Care Coverage, for the Year(s) - 2000, 2001, 2002, 2003, 2004, 2005, 2006, 2007, 2008, 2009, 2010

Note: Weighted numbers (#), percentages and 95% confidence intervals; Respondents aged 18 years and older; n/r (Not Reportable) - If the unweighted total responses for a dimension (row) is <50 that row will not be shown; n/a (Not Available) - Not asked of a subset of respondents

Year: 2007

Health Care Coverage	Yes			No			Estimated Population
	#	%	C.I. (95%)	#	%	C.I. (95%)	#
Yes	254,600	35.5	33.5 - 37.4	463,100	64.5	62.6 - 66.5	717,700
No	20,000	37.3	29.7 - 44.9	33,600	62.7	55.1 - 70.3	53,600

HIV - ever been tested (18-64) by State, County, Island, Community, BRFSS Age Group, DOH Race-Ethnicity, Gender, Education Level, Employment Status (Grouped), Household Income, Poverty Level, Marital Status (Grouped), Married, Health Care Coverage, for the Year(s) - 2000, 2001, 2002, 2003, 2004, 2005, 2006, 2007, 2008, 2009, 2010

Note: Weighted numbers (#), percentages and 95% confidence intervals; Respondents aged 18 years and older; n/r (Not Reportable) - If the unweighted total responses for a dimension (row) is <50 that row will not be shown; n/a (Not Available) - Not asked of a subset of respondents

Year: 2006

State	Yes			No			Estimated Population
	#	%	C.I. (95%)	#	%	C.I. (95%)	#
Hawaii State	248,600	32.8	31.0 - 34.6	509,400	67.2	65.4 - 69.0	758,000

County	Yes			No			Estimated Population
	#	%	C.I. (95%)	#	%	C.I. (95%)	#
Hawaii	30,100	31.3	27.9 - 34.7	66,100	68.7	65.3 - 72.1	96,200
Honolulu	178,200	33.1	30.6 - 35.5	361,000	66.9	64.5 - 69.4	539,300
Kauai	12,300	33.0	27.9 - 38.0	25,000	67.0	62.0 - 72.1	37,300
Maui	28,000	32.8	29.0 - 36.6	57,200	67.2	63.4 - 71.0	85,200

HIV - ever been tested (18-64) by State, County, Island, Community, BRFSS Age Group, DOH Race-Ethnicity, Gender, Education Level, Employment Status (Grouped), Household Income, Poverty Level, Marital Status (Grouped), Married, Health Care Coverage, for the Year(s) - 2000, 2001, 2002, 2003, 2004, 2005, 2006, 2007, 2008, 2009, 2010

Note: Weighted numbers (#), percentages and 95% confidence intervals; Respondents aged 18 years and older; n/r (Not Reportable) - If the unweighted total responses for a dimension (row) is <50 that row will not be shown; n/a (Not Available) - Not asked of a subset of respondents

Year: 2006

Island	Yes			No			Estimated Population
	#	%	C.I. (95%)	#	%	C.I. (95%)	#
Hawaii	30,100	31.3	27.9 - 34.7	66,100	68.7	65.3 - 72.1	96,200
Kauai	12,300	33.0	27.9 - 38.0	25,000	67.0	62.0 - 72.1	37,300
Lanai	500	26.6	18.3 - 34.8	1,400	73.4	65.2 - 81.7	1,900
Maui	26,200	33.5	29.4 - 37.6	52,000	66.5	62.4 - 70.6	78,200
Molokai	1,300	24.9	16.7 - 33.2	3,900	75.1	66.8 - 83.3	5,200
Oahu	178,200	33.1	30.6 - 35.5	361,000	66.9	64.5 - 69.4	539,300

Community	Yes			No			Estimated Population
	#	%	C.I. (95%)	#	%	C.I. (95%)	#
Aiea/ Pearl City	16,700	34.4	26.0 - 42.9	31,800	65.6	57.1 - 74.0	48,500

HIV - ever been tested (18-64) by State, County, Island, Community, BRFSS Age Group, DOH Race-Ethnicity, Gender, Education Level, Employment Status (Grouped), Household Income, Poverty Level, Marital Status (Grouped), Married, Health Care Coverage, for the Year(s) - 2000, 2001, 2002, 2003, 2004, 2005, 2006, 2007, 2008, 2009, 2010

Note: Weighted numbers (#), percentages and 95% confidence intervals; Respondents aged 18 years and older; n/r (Not Reportable) - If the unweighted total responses for a dimension (row) is <50 that row will not be shown; n/a (Not Available) - Not asked of a subset of respondents

Year: 2006

Community	Yes			No			Estimated Population
	#	%	C.I. (95%)	#	%	C.I. (95%)	#
Ala Moana	6,600	28.5	19.0 - 38.0	16,500	71.5	62.0 - 81.0	23,100
Hanalei/ Kapaa	6,300	38.1	30.4 - 45.8	10,200	61.9	54.2 - 69.6	16,500
Hilo	7,600	29.7	23.2 - 36.2	17,900	70.3	63.8 - 76.8	25,500
Kaaawa/ Kahaluu/ Kaneohe	12,600	36.9	26.0 - 47.7	21,500	63.1	52.3 - 74.0	34,100
Kahului	9,300	35.6	28.1 - 43.2	16,800	64.4	56.8 - 71.9	26,000
Kailua/ Waimanalo	12,300	35.5	26.6 - 44.4	22,300	64.5	55.6 - 73.4	34,600
Kaimuki/ Palolo/ Waikiki	14,200	37.0	28.4 - 45.6	24,200	63.0	54.4 - 71.6	38,400
Kona	7,200	31.2	24.6 - 37.9	15,800	68.8	62.1 - 75.4	23,000
Lahaina/ Wailuku	7,300	28.1	21.4 - 34.8	18,600	71.9	65.2 - 78.6	25,900

HIV - ever been tested (18-64) by State, County, Island, Community, BRFSS Age Group, DOH Race-Ethnicity, Gender, Education Level, Employment Status (Grouped), Household Income, Poverty Level, Marital Status (Grouped), Married, Health Care Coverage, for the Year(s) - 2000, 2001, 2002, 2003, 2004, 2005, 2006, 2007, 2008, 2009, 2010

Note: Weighted numbers (#), percentages and 95% confidence intervals; Respondents aged 18 years and older; n/r (Not Reportable) - If the unweighted total responses for a dimension (row) is <50 that row will not be shown; n/a (Not Available) - Not asked of a subset of respondents

Year: 2006

Community	Yes			No			Estimated Population
	#	%	C.I. (95%)	#	%	C.I. (95%)	#
Lanai	500	26.6	18.3 - 34.8	1,400	73.4	65.2 - 81.7	1,900
Lihue-Waimea	6,000	28.9	22.3 - 35.5	14,800	71.1	64.5 - 77.7	20,800
Manoa/ Upper Makiki	12,700	38.3	28.2 - 48.4	20,400	61.7	51.6 - 71.8	33,000
Mililani/ Wahiawa	18,300	32.4	25.4 - 39.3	38,200	67.6	60.7 - 74.6	56,400
Molokai	1,300	24.9	16.7 - 33.2	3,900	75.1	66.8 - 83.3	5,200
Nanakuli/ Waianae	5,600	23.3	11.7 - 34.8	18,400	76.7	65.2 - 88.3	24,000
N.Hawaii	5,800	27.3	20.3 - 34.3	15,500	72.7	65.7 - 79.7	21,300
N.Shore/ Laie	5,100	25.7	15.3 - 36.1	14,800	74.3	63.9 - 84.7	20,000
Nuuanu/ Kalihi/ Moanalua	13,600	23.8	16.8 - 30.7	43,800	76.2	69.3 - 83.2	57,400

HIV - ever been tested (18-64) by State, County, Island, Community, BRFSS Age Group, DOH Race-Ethnicity, Gender, Education Level, Employment Status (Grouped), Household Income, Poverty Level, Marital Status (Grouped), Married, Health Care Coverage, for the Year(s) - 2000, 2001, 2002, 2003, 2004, 2005, 2006, 2007, 2008, 2009, 2010

Note: Weighted numbers (#), percentages and 95% confidence intervals; Respondents aged 18 years and older; n/r (Not Reportable) - If the unweighted total responses for a dimension (row) is <50 that row will not be shown; n/a (Not Available) - Not asked of a subset of respondents

Year: 2006

Community	Yes			No			Estimated Population
	#	%	C.I. (95%)	#	%	C.I. (95%)	#
Puna/ Kau	9,500	36.1	29.1 - 43.1	16,800	63.9	56.9 - 70.9	26,300
Salt Lake/ Foster Village	20,100	61.9	52.0 - 71.8	12,400	38.1	28.2 - 48.0	32,500
Upcountry/ Hana	9,600	36.7	29.6 - 43.8	16,600	63.3	56.2 - 70.4	26,300
Waialae/ Kahala/ Hawaii Kai	10,300	33.3	23.9 - 42.7	20,700	66.7	57.3 - 76.1	31,100
Waipahu/ Kapolei/ Ewa	30,200	28.4	23.1 - 33.7	76,000	71.6	66.3 - 76.9	106,200

HIV - ever been tested (18-64) by State, County, Island, Community, BRFSS Age Group, DOH Race-Ethnicity, Gender, Education Level, Employment Status (Grouped), Household Income, Poverty Level, Marital Status (Grouped), Married, Health Care Coverage, for the Year(s) - 2000, 2001, 2002, 2003, 2004, 2005, 2006, 2007, 2008, 2009, 2010

Note: Weighted numbers (#), percentages and 95% confidence intervals; Respondents aged 18 years and older; n/r (Not Reportable) - If the unweighted total responses for a dimension (row) is <50 that row will not be shown; n/a (Not Available) - Not asked of a subset of respondents

Year: 2006

BRFSS Age Group	Yes			No			Estimated Population
	#	%	C.I. (95%)	#	%	C.I. (95%)	#
18-24	29,500	24.7	19.1 - 30.4	89,800	75.3	69.6 - 80.9	119,300
25-34	77,500	49.1	44.4 - 53.8	80,300	50.9	46.2 - 55.6	157,800
35-44	69,100	40.6	36.9 - 44.4	101,000	59.4	55.6 - 63.1	170,000
45-54	48,700	28.5	25.5 - 31.5	122,200	71.5	68.5 - 74.5	171,000
55-64	23,800	17.0	14.4 - 19.7	116,000	83.0	80.3 - 85.6	139,800

DOH Race-Ethnicity	Yes			No			Estimated Population
	#	%	C.I. (95%)	#	%	C.I. (95%)	#
Caucasian	114,500	45.6	42.6 - 48.5	136,800	54.4	51.5 - 57.4	251,300
Native Hawaiian	28,100	27.8	22.9 - 32.8	73,000	72.2	67.2 - 77.1	101,100

HIV - ever been tested (18-64) by State, County, Island, Community, BRFSS Age Group, DOH Race-Ethnicity, Gender, Education Level, Employment Status (Grouped), Household Income, Poverty Level, Marital Status (Grouped), Married, Health Care Coverage, for the Year(s) - 2000, 2001, 2002, 2003, 2004, 2005, 2006, 2007, 2008, 2009, 2010

Note: Weighted numbers (#), percentages and 95% confidence intervals; Respondents aged 18 years and older; n/r (Not Reportable) - If the unweighted total responses for a dimension (row) is <50 that row will not be shown; n/a (Not Available) - Not asked of a subset of respondents

Year: 2006

DOH Race-Ethnicity	Yes			No			Estimated Population
	#	%	C.I. (95%)	#	%	C.I. (95%)	#
Chinese	6,000	19.1	11.5 - 26.6	25,700	80.9	73.4 - 88.5	31,700
Filipino	24,800	19.3	15.0 - 23.5	103,800	80.7	76.5 - 85.0	128,600
Japanese	32,600	23.8	19.7 - 27.9	104,300	76.2	72.1 - 80.3	136,900
Black	9,600	70.8	57.4 - 84.2	4,000	29.2	15.8 - 42.6	13,600
Other Asian	8,900	37.1	25.8 - 48.5	15,100	62.9	51.5 - 74.2	24,000
Other Pacific Islander	6,800	29.2	17.2 - 41.1	16,500	70.8	58.9 - 82.8	23,300
Mixed Ethnicity	7,100	33.7	21.9 - 45.5	13,900	66.3	54.5 - 78.1	21,000
Other	7,400	37.0	23.8 - 50.3	12,700	63.0	49.7 - 76.2	20,100

HIV - ever been tested (18-64) by State, County, Island, Community, BRFSS Age Group, DOH Race-Ethnicity, Gender, Education Level, Employment Status (Grouped), Household Income, Poverty Level, Marital Status (Grouped), Married, Health Care Coverage, for the Year(s) - 2000, 2001, 2002, 2003, 2004, 2005, 2006, 2007, 2008, 2009, 2010

Note: Weighted numbers (#), percentages and 95% confidence intervals; Respondents aged 18 years and older; n/r (Not Reportable) - If the unweighted total responses for a dimension (row) is <50 that row will not be shown; n/a (Not Available) - Not asked of a subset of respondents

Year: 2006

Gender	Yes			No			Estimated Population
	#	%	C.I. (95%)	#	%	C.I. (95%)	#
Male	129,500	33.3	30.5 - 36.2	258,900	66.7	63.8 - 69.5	388,400
Female	119,100	32.2	29.9 - 34.5	250,500	67.8	65.5 - 70.1	369,600

Education Level	Yes			No			Estimated Population
	#	%	C.I. (95%)	#	%	C.I. (95%)	#
Grades 9 thru 11 (Some High School)	5,400	19.8	12.3 - 27.3	21,700	80.2	72.7 - 87.7	27,000
Grades 12 or GED (High School Grad)	60,600	27.1	23.6 - 30.7	162,800	72.9	69.3 - 76.4	223,400
College 1 to 3 years (Some College/ Tech)	82,200	35.8	32.3 - 39.2	147,600	64.2	60.8 - 67.7	229,700
College 4 years or more (College Grad)	99,300	36.5	33.6 - 39.4	172,700	63.5	60.6 - 66.4	271,900

HIV - ever been tested (18-64) by State, County, Island, Community, BRFSS Age Group, DOH Race-Ethnicity, Gender, Education Level, Employment Status (Grouped), Household Income, Poverty Level, Marital Status (Grouped), Married, Health Care Coverage, for the Year(s) - 2000, 2001, 2002, 2003, 2004, 2005, 2006, 2007, 2008, 2009, 2010

Note: Weighted numbers (#), percentages and 95% confidence intervals; Respondents aged 18 years and older; n/r (Not Reportable) - If the unweighted total responses for a dimension (row) is <50 that row will not be shown; n/a (Not Available) - Not asked of a subset of respondents

Year: 2006

Employment Status (Grouped)	Yes			No			Estimated Population
	#	%	C.I. (95%)	#	%	C.I. (95%)	#
Employed	193,000	33.5	31.4 - 35.6	383,400	66.5	64.4 - 68.6	576,400
Unemployed	9,800	29.7	20.4 - 39.0	23,100	70.3	61.0 - 79.6	32,900
Retired/Unable to work	17,800	26.7	21.7 - 31.7	48,800	73.3	68.3 - 78.3	66,600
Student/Homemaker	27,700	34.0	28.1 - 40.0	53,800	66.0	60.0 - 71.9	81,500

HIV - ever been tested (18-64) by State, County, Island, Community, BRFSS Age Group, DOH Race-Ethnicity, Gender, Education Level, Employment Status (Grouped), Household Income, Poverty Level, Marital Status (Grouped), Married, Health Care Coverage, for the Year(s) - 2000, 2001, 2002, 2003, 2004, 2005, 2006, 2007, 2008, 2009, 2010

Note: Weighted numbers (#), percentages and 95% confidence intervals; Respondents aged 18 years and older; n/r (Not Reportable) - If the unweighted total responses for a dimension (row) is <50 that row will not be shown; n/a (Not Available) - Not asked of a subset of respondents

Year: 2006

Household Income	Yes			No			Estimated Population
	#	%	C.I. (95%)	#	%	C.I. (95%)	#
Less than \$10,000	5,500	28.7	19.2 - 38.3	13,700	71.3	61.7 - 80.8	19,200
\$10,000 to \$14,999	5,700	34.7	24.1 - 45.4	10,800	65.3	54.6 - 75.9	16,500
\$15,000 to \$19,999	10,300	36.2	26.4 - 45.9	18,100	63.8	54.1 - 73.6	28,400
\$20,000 to \$24,999	16,400	33.7	25.5 - 41.9	32,300	66.3	58.1 - 74.5	48,700
\$25,000 to \$34,999	28,100	35.1	29.0 - 41.2	51,900	64.9	58.8 - 71.0	80,000
\$35,000 to \$49,999	34,500	32.3	27.7 - 36.9	72,400	67.7	63.1 - 72.3	107,000
\$50,000 to \$74,999	39,800	30.1	26.1 - 34.1	92,300	69.9	65.9 - 73.9	132,100
\$75,000 or more	78,700	37.6	34.1 - 41.1	130,400	62.4	58.9 - 65.9	209,000

HIV - ever been tested (18-64) by State, County, Island, Community, BRFSS Age Group, DOH Race-Ethnicity, Gender, Education Level, Employment Status (Grouped), Household Income, Poverty Level, Marital Status (Grouped), Married, Health Care Coverage, for the Year(s) - 2000, 2001, 2002, 2003, 2004, 2005, 2006, 2007, 2008, 2009, 2010

Note: Weighted numbers (#), percentages and 95% confidence intervals; Respondents aged 18 years and older; n/r (Not Reportable) - If the unweighted total responses for a dimension (row) is <50 that row will not be shown; n/a (Not Available) - Not asked of a subset of respondents

Year: 2006

Poverty Level	Yes			No			Estimated Population
	#	%	C.I. (95%)	#	%	C.I. (95%)	#
0-130%	43,900	31.9	27.0 - 36.7	94,000	68.1	63.3 - 73.0	137,900
131-185%	32,000	33.7	28.3 - 39.2	62,700	66.3	60.8 - 71.7	94,700
186+%	143,100	35.0	32.8 - 37.3	265,200	65.0	62.7 - 67.2	408,300

HIV - ever been tested (18-64) by State, County, Island, Community, BRFSS Age Group, DOH Race-Ethnicity, Gender, Education Level, Employment Status (Grouped), Household Income, Poverty Level, Marital Status (Grouped), Married, Health Care Coverage, for the Year(s) - 2000, 2001, 2002, 2003, 2004, 2005, 2006, 2007, 2008, 2009, 2010

Note: Weighted numbers (#), percentages and 95% confidence intervals; Respondents aged 18 years and older; n/r (Not Reportable) - If the unweighted total responses for a dimension (row) is <50 that row will not be shown; n/a (Not Available) - Not asked of a subset of respondents

Year: 2006

Marital Status (Grouped)	Yes			No			Estimated Population
	#	%	C.I. (95%)	#	%	C.I. (95%)	#
Married	145,600	32.9	30.6 - 35.2	297,100	67.1	64.8 - 69.4	442,700
Unmarried Couple	13,300	42.7	31.7 - 53.7	17,800	57.3	46.3 - 68.3	31,100
Widowed	2,400	20.0	11.4 - 28.5	9,600	80.0	71.5 - 88.6	12,100
Other	87,300	32.1	28.8 - 35.3	184,800	67.9	64.7 - 71.2	272,100

Married	Yes			No			Estimated Population
	#	%	C.I. (95%)	#	%	C.I. (95%)	#
Yes	148,600	33.0	30.7 - 35.2	302,300	67.0	64.8 - 69.3	450,900
No	99,900	32.6	29.5 - 35.7	206,800	67.4	64.3 - 70.5	306,700

HIV - ever been tested (18-64) by State, County, Island, Community, BRFSS Age Group, DOH Race-Ethnicity, Gender, Education Level, Employment Status (Grouped), Household Income, Poverty Level, Marital Status (Grouped), Married, Health Care Coverage, for the Year(s) - 2000, 2001, 2002, 2003, 2004, 2005, 2006, 2007, 2008, 2009, 2010

Note: Weighted numbers (#), percentages and 95% confidence intervals; Respondents aged 18 years and older; n/r (Not Reportable) - If the unweighted total responses for a dimension (row) is <50 that row will not be shown; n/a (Not Available) - Not asked of a subset of respondents

Year: 2006

Health Care Coverage	Yes			No			Estimated Population
	#	%	C.I. (95%)	#	%	C.I. (95%)	#
Yes	223,900	32.9	30.9 - 34.8	457,500	67.1	65.2 - 69.1	681,400
No	24,800	33.2	26.7 - 39.7	49,900	66.8	60.3 - 73.3	74,600

HIV - ever been tested (18-64) by State, County, Island, Community, BRFSS Age Group, DOH Race-Ethnicity, Gender, Education Level, Employment Status (Grouped), Household Income, Poverty Level, Marital Status (Grouped), Married, Health Care Coverage, for the Year(s) - 2000, 2001, 2002, 2003, 2004, 2005, 2006, 2007, 2008, 2009, 2010

Note: Weighted numbers (#), percentages and 95% confidence intervals; Respondents aged 18 years and older; n/r (Not Reportable) - If the unweighted total responses for a dimension (row) is <50 that row will not be shown; n/a (Not Available) - Not asked of a subset of respondents

Year: 2005

State	Yes			No			Estimated Population
	#	%	C.I. (95%)	#	%	C.I. (95%)	#
Hawaii State	292,400	38.3	36.4 - 40.2	471,600	61.7	59.8 - 63.6	764,000

County	Yes			No			Estimated Population
	#	%	C.I. (95%)	#	%	C.I. (95%)	#
Hawaii	33,500	35.4	32.1 - 38.7	61,000	64.6	61.3 - 67.9	94,500
Honolulu	214,800	39.0	36.5 - 41.5	336,400	61.0	58.5 - 63.5	551,200
Kauai	13,500	39.2	33.3 - 45.2	21,000	60.8	54.8 - 66.7	34,500
Maui	30,600	36.5	32.3 - 40.7	53,200	63.5	59.3 - 67.7	83,800

HIV - ever been tested (18-64) by State, County, Island, Community, BRFSS Age Group, DOH Race-Ethnicity, Gender, Education Level, Employment Status (Grouped), Household Income, Poverty Level, Marital Status (Grouped), Married, Health Care Coverage, for the Year(s) - 2000, 2001, 2002, 2003, 2004, 2005, 2006, 2007, 2008, 2009, 2010

Note: Weighted numbers (#), percentages and 95% confidence intervals; Respondents aged 18 years and older; n/r (Not Reportable) - If the unweighted total responses for a dimension (row) is <50 that row will not be shown; n/a (Not Available) - Not asked of a subset of respondents

Year: 2005

Island	Yes			No			Estimated Population
	#	%	C.I. (95%)	#	%	C.I. (95%)	#
Hawaii	33,500	35.4	32.1 - 38.7	61,000	64.6	61.3 - 67.9	94,500
Kauai	13,500	39.2	33.3 - 45.2	21,000	60.8	54.8 - 66.7	34,500
Lanai	400	20.3	12.3 - 28.2	1,600	79.7	71.8 - 87.7	1,900
Maui	28,800	37.1	32.6 - 41.6	48,800	62.9	58.4 - 67.4	77,700
Molokai	1,300	31.9	21.2 - 42.6	2,800	68.1	57.4 - 78.8	4,200
Oahu	214,800	39.0	36.5 - 41.5	336,400	61.0	58.5 - 63.5	551,200

Community	Yes			No			Estimated Population
	#	%	C.I. (95%)	#	%	C.I. (95%)	#
Aiea/ Pearl City	16,700	32.4	24.8 - 40.1	34,900	67.6	59.9 - 75.2	51,700

HIV - ever been tested (18-64) by State, County, Island, Community, BRFSS Age Group, DOH Race-Ethnicity, Gender, Education Level, Employment Status (Grouped), Household Income, Poverty Level, Marital Status (Grouped), Married, Health Care Coverage, for the Year(s) - 2000, 2001, 2002, 2003, 2004, 2005, 2006, 2007, 2008, 2009, 2010

Note: Weighted numbers (#), percentages and 95% confidence intervals; Respondents aged 18 years and older; n/r (Not Reportable) - If the unweighted total responses for a dimension (row) is <50 that row will not be shown; n/a (Not Available) - Not asked of a subset of respondents

Year: 2005

Community	Yes			No			Estimated Population
	#	%	C.I. (95%)	#	%	C.I. (95%)	#
Ala Moana	8,600	33.8	23.6 - 44.1	16,800	66.2	55.9 - 76.4	25,500
Hanalei/ Kapaa	5,800	41.6	33.4 - 49.9	8,100	58.4	50.1 - 66.6	13,800
Hilo	9,600	35.1	28.7 - 41.6	17,700	64.9	58.4 - 71.3	27,300
Kaaawa/ Kahaluu/ Kaneohe	16,300	38.8	29.4 - 48.1	25,800	61.2	51.9 - 70.6	42,200
Kahului	9,800	37.7	29.7 - 45.6	16,200	62.3	54.4 - 70.3	25,900
Kailua/ Waimanalo	17,100	46.1	36.5 - 55.8	20,000	53.9	44.2 - 63.5	37,100
Kaimuki/ Palolo/ Waikiki	19,500	41.2	33.3 - 49.1	27,800	58.8	50.9 - 66.7	47,400
Kona	7,800	36.1	28.9 - 43.2	13,900	63.9	56.8 - 71.1	21,700
Lahaina/ Wailuku	9,100	34.9	27.6 - 42.2	16,900	65.1	57.8 - 72.4	26,000

HIV - ever been tested (18-64) by State, County, Island, Community, BRFSS Age Group, DOH Race-Ethnicity, Gender, Education Level, Employment Status (Grouped), Household Income, Poverty Level, Marital Status (Grouped), Married, Health Care Coverage, for the Year(s) - 2000, 2001, 2002, 2003, 2004, 2005, 2006, 2007, 2008, 2009, 2010

Note: Weighted numbers (#), percentages and 95% confidence intervals; Respondents aged 18 years and older; n/r (Not Reportable) - If the unweighted total responses for a dimension (row) is <50 that row will not be shown; n/a (Not Available) - Not asked of a subset of respondents

Year: 2005

Community	Yes			No			Estimated Population
	#	%	C.I. (95%)	#	%	C.I. (95%)	#
Lanai	400	20.3	12.3 - 28.2	1,600	79.7	71.8 - 87.7	1,900
Lihue-Waimea	7,800	37.7	29.3 - 46.0	12,900	62.3	54.0 - 70.7	20,700
Manoa/ Upper Makiki	9,800	30.1	21.0 - 39.2	22,700	69.9	60.8 - 79.0	32,500
Mililani/ Wahiawa	29,100	49.9	42.5 - 57.3	29,300	50.1	42.7 - 57.5	58,400
Molokai	1,300	31.9	21.2 - 42.6	2,800	68.1	57.4 - 78.8	4,200
Nanakuli/ Waianae	7,400	26.9	16.1 - 37.8	20,100	73.1	62.2 - 83.9	27,600
N.Hawaii	7,000	35.5	29.5 - 41.5	12,700	64.5	58.5 - 70.5	19,700
N.Shore/ Laie	5,300	34.1	21.2 - 47.0	10,200	65.9	53.0 - 78.8	15,500
Nuuanu/ Kalihi/ Moanalua	18,200	34.4	25.2 - 43.7	34,700	65.6	56.3 - 74.8	52,900

HIV - ever been tested (18-64) by State, County, Island, Community, BRFSS Age Group, DOH Race-Ethnicity, Gender, Education Level, Employment Status (Grouped), Household Income, Poverty Level, Marital Status (Grouped), Married, Health Care Coverage, for the Year(s) - 2000, 2001, 2002, 2003, 2004, 2005, 2006, 2007, 2008, 2009, 2010

Note: Weighted numbers (#), percentages and 95% confidence intervals; Respondents aged 18 years and older; n/r (Not Reportable) - If the unweighted total responses for a dimension (row) is <50 that row will not be shown; n/a (Not Available) - Not asked of a subset of respondents

Year: 2005

Community	Yes			No			Estimated Population
	#	%	C.I. (95%)	#	%	C.I. (95%)	#
Puna/ Kau	9,100	35.1	28.4 - 41.8	16,800	64.9	58.2 - 71.6	25,800
Salt Lake/ Foster Village	16,700	57.7	45.6 - 69.9	12,200	42.3	30.1 - 54.4	29,000
Upcountry/ Hana	10,000	38.8	30.7 - 46.9	15,700	61.2	53.1 - 69.3	25,700
Waialae/ Kahala/ Hawaii Kai	10,300	35.0	24.7 - 45.3	19,200	65.0	54.7 - 75.3	29,600
Waipahu/ Kapolei/ Ewa	39,500	38.7	33.1 - 44.4	62,500	61.3	55.6 - 66.9	102,000

HIV - ever been tested (18-64) by State, County, Island, Community, BRFSS Age Group, DOH Race-Ethnicity, Gender, Education Level, Employment Status (Grouped), Household Income, Poverty Level, Marital Status (Grouped), Married, Health Care Coverage, for the Year(s) - 2000, 2001, 2002, 2003, 2004, 2005, 2006, 2007, 2008, 2009, 2010

Note: Weighted numbers (#), percentages and 95% confidence intervals; Respondents aged 18 years and older; n/r (Not Reportable) - If the unweighted total responses for a dimension (row) is <50 that row will not be shown; n/a (Not Available) - Not asked of a subset of respondents

Year: 2005

BRFSS Age Group	Yes			No			Estimated Population
	#	%	C.I. (95%)	#	%	C.I. (95%)	#
18-24	32,200	28.1	22.3 - 33.9	82,300	71.9	66.1 - 77.7	114,500
25-34	96,200	59.5	55.0 - 64.0	65,500	40.5	36.0 - 45.0	161,700
35-44	83,900	47.3	43.5 - 51.1	93,500	52.7	48.9 - 56.5	177,400
45-54	53,300	30.4	27.2 - 33.6	121,900	69.6	66.4 - 72.8	175,100
55-64	26,900	19.8	16.8 - 22.9	108,500	80.2	77.1 - 83.2	135,300

HIV - ever been tested (18-64) by State, County, Island, Community, BRFSS Age Group, DOH Race-Ethnicity, Gender, Education Level, Employment Status (Grouped), Household Income, Poverty Level, Marital Status (Grouped), Married, Health Care Coverage, for the Year(s) - 2000, 2001, 2002, 2003, 2004, 2005, 2006, 2007, 2008, 2009, 2010

Note: Weighted numbers (#), percentages and 95% confidence intervals; Respondents aged 18 years and older; n/r (Not Reportable) - If the unweighted total responses for a dimension (row) is <50 that row will not be shown; n/a (Not Available) - Not asked of a subset of respondents

Year: 2005

DOH Race-Ethnicity	Yes			No			Estimated Population
	#	%	C.I. (95%)	#	%	C.I. (95%)	#
Caucasian	135,800	51.5	48.5 - 54.5	127,700	48.5	45.5 - 51.5	263,500
Native Hawaiian	30,300	31.1	26.0 - 36.2	67,200	68.9	63.8 - 74.0	97,500
Chinese	10,400	25.3	17.4 - 33.3	30,600	74.7	66.7 - 82.6	41,000
Filipino	31,900	24.7	19.8 - 29.5	97,500	75.3	70.5 - 80.2	129,400
Japanese	39,000	27.9	23.7 - 32.2	100,600	72.1	67.8 - 76.3	139,700
Black	13,000	70.6	58.0 - 83.2	5,400	29.4	16.8 - 42.0	18,400
Other Asian	4,400	27.9	16.6 - 39.3	11,400	72.1	60.7 - 83.4	15,900
Other Pacific Islander	9,200	38.4	25.5 - 51.2	14,700	61.6	48.8 - 74.5	23,900
Other	15,300	53.9	44.1 - 63.6	13,100	46.1	36.4 - 55.9	28,500

HIV - ever been tested (18-64) by State, County, Island, Community, BRFSS Age Group, DOH Race-Ethnicity, Gender, Education Level, Employment Status (Grouped), Household Income, Poverty Level, Marital Status (Grouped), Married, Health Care Coverage, for the Year(s) - 2000, 2001, 2002, 2003, 2004, 2005, 2006, 2007, 2008, 2009, 2010

Note: Weighted numbers (#), percentages and 95% confidence intervals; Respondents aged 18 years and older; n/r (Not Reportable) - If the unweighted total responses for a dimension (row) is <50 that row will not be shown; n/a (Not Available) - Not asked of a subset of respondents

Year: 2005

Gender	Yes			No			Estimated Population
	#	%	C.I. (95%)	#	%	C.I. (95%)	#
Male	154,200	39.6	36.6 - 42.6	235,200	60.4	57.4 - 63.4	389,400
Female	138,200	36.9	34.6 - 39.2	236,500	63.1	60.8 - 65.4	374,700

HIV - ever been tested (18-64) by State, County, Island, Community, BRFSS Age Group, DOH Race-Ethnicity, Gender, Education Level, Employment Status (Grouped), Household Income, Poverty Level, Marital Status (Grouped), Married, Health Care Coverage, for the Year(s) - 2000, 2001, 2002, 2003, 2004, 2005, 2006, 2007, 2008, 2009, 2010

Note: Weighted numbers (#), percentages and 95% confidence intervals; Respondents aged 18 years and older; n/r (Not Reportable) - If the unweighted total responses for a dimension (row) is <50 that row will not be shown; n/a (Not Available) - Not asked of a subset of respondents

Year: 2005

Education Level	Yes			No			Estimated Population
	#	%	C.I. (95%)	#	%	C.I. (95%)	#
Never attended school/ Only Kindergarten to Grades 8	2,200	19.1	0.0 - 38.1	9,200	80.9	61.9 - 100.0	11,300
Grades 9 thru 11 (Some High School)	8,500	39.1	27.3 - 50.8	13,200	60.9	49.2 - 72.7	21,700
Grades 12 or GED (High School Grad)	64,500	31.1	27.6 - 34.6	143,000	68.9	65.4 - 72.4	207,600
College 1 to 3 years (Some College/ Tech)	91,800	39.4	35.8 - 42.9	141,300	60.6	57.1 - 64.2	233,100
College 4 years or more (College Grad)	125,100	43.2	40.2 - 46.2	164,500	56.8	53.8 - 59.8	289,600

HIV - ever been tested (18-64) by State, County, Island, Community, BRFSS Age Group, DOH Race-Ethnicity, Gender, Education Level, Employment Status (Grouped), Household Income, Poverty Level, Marital Status (Grouped), Married, Health Care Coverage, for the Year(s) - 2000, 2001, 2002, 2003, 2004, 2005, 2006, 2007, 2008, 2009, 2010

Note: Weighted numbers (#), percentages and 95% confidence intervals; Respondents aged 18 years and older; n/r (Not Reportable) - If the unweighted total responses for a dimension (row) is <50 that row will not be shown; n/a (Not Available) - Not asked of a subset of respondents

Year: 2005

Employment Status (Grouped)	Yes			No			Estimated Population
	#	%	C.I. (95%)	#	%	C.I. (95%)	#
Employed	229,500	39.6	37.4 - 41.9	349,400	60.4	58.1 - 62.6	578,900
Unemployed	5,800	34.5	23.6 - 45.5	11,100	65.5	54.5 - 76.4	16,900
Retired/Unable to work	23,900	29.9	25.0 - 34.8	56,200	70.1	65.2 - 75.0	80,100
Student/Homemaker	33,000	37.6	31.8 - 43.5	54,800	62.4	56.5 - 68.2	87,800

HIV - ever been tested (18-64) by State, County, Island, Community, BRFSS Age Group, DOH Race-Ethnicity, Gender, Education Level, Employment Status (Grouped), Household Income, Poverty Level, Marital Status (Grouped), Married, Health Care Coverage, for the Year(s) - 2000, 2001, 2002, 2003, 2004, 2005, 2006, 2007, 2008, 2009, 2010

Note: Weighted numbers (#), percentages and 95% confidence intervals; Respondents aged 18 years and older; n/r (Not Reportable) - If the unweighted total responses for a dimension (row) is <50 that row will not be shown; n/a (Not Available) - Not asked of a subset of respondents

Year: 2005

Household Income	Yes			No			Estimated Population
	#	%	C.I. (95%)	#	%	C.I. (95%)	#
Less than \$10,000	10,300	52.6	40.7 - 64.6	9,300	47.4	35.4 - 59.3	19,600
\$10,000 to \$14,999	6,700	37.4	24.2 - 50.6	11,200	62.6	49.4 - 75.8	17,800
\$15,000 to \$19,999	10,200	29.5	20.9 - 38.1	24,500	70.5	61.9 - 79.1	34,800
\$20,000 to \$24,999	16,900	39.2	31.5 - 46.9	26,200	60.8	53.1 - 68.5	43,000
\$25,000 to \$34,999	29,600	37.9	31.9 - 43.8	48,700	62.1	56.2 - 68.1	78,300
\$35,000 to \$49,999	44,200	36.5	31.8 - 41.2	76,800	63.5	58.8 - 68.2	121,000
\$50,000 to \$74,999	58,200	37.9	33.6 - 42.2	95,400	62.1	57.8 - 66.4	153,700
\$75,000 or more	84,100	41.7	38.1 - 45.2	117,700	58.3	54.8 - 61.9	201,800

HIV - ever been tested (18-64) by State, County, Island, Community, BRFSS Age Group, DOH Race-Ethnicity, Gender, Education Level, Employment Status (Grouped), Household Income, Poverty Level, Marital Status (Grouped), Married, Health Care Coverage, for the Year(s) - 2000, 2001, 2002, 2003, 2004, 2005, 2006, 2007, 2008, 2009, 2010

Note: Weighted numbers (#), percentages and 95% confidence intervals; Respondents aged 18 years and older; n/r (Not Reportable) - If the unweighted total responses for a dimension (row) is <50 that row will not be shown; n/a (Not Available) - Not asked of a subset of respondents

Year: 2005

Poverty Level	Yes			No			Estimated Population
	#	%	C.I. (95%)	#	%	C.I. (95%)	#
0-130%	46,800	36.2	31.0 - 41.3	82,600	63.8	58.7 - 69.0	129,500
131-185%	28,100	39.3	32.2 - 46.5	43,300	60.7	53.5 - 67.8	71,300
186+%	185,400	39.5	37.3 - 41.8	283,700	60.5	58.2 - 62.7	469,100

HIV - ever been tested (18-64) by State, County, Island, Community, BRFSS Age Group, DOH Race-Ethnicity, Gender, Education Level, Employment Status (Grouped), Household Income, Poverty Level, Marital Status (Grouped), Married, Health Care Coverage, for the Year(s) - 2000, 2001, 2002, 2003, 2004, 2005, 2006, 2007, 2008, 2009, 2010

Note: Weighted numbers (#), percentages and 95% confidence intervals; Respondents aged 18 years and older; n/r (Not Reportable) - If the unweighted total responses for a dimension (row) is <50 that row will not be shown; n/a (Not Available) - Not asked of a subset of respondents

Year: 2005

Marital Status (Grouped)	Yes			No			Estimated Population
	#	%	C.I. (95%)	#	%	C.I. (95%)	#
Married	178,100	38.8	36.4 - 41.2	280,500	61.2	58.8 - 63.6	458,700
Unmarried Couple	9,400	39.4	29.3 - 49.5	14,400	60.6	50.5 - 70.7	23,700
Widowed	3,500	26.7	16.8 - 36.7	9,500	73.3	63.3 - 83.2	13,000
Other	101,400	37.8	34.3 - 41.2	167,200	62.2	58.8 - 65.7	268,600

Married	Yes			No			Estimated Population
	#	%	C.I. (95%)	#	%	C.I. (95%)	#
Yes	182,700	38.9	36.6 - 41.3	286,500	61.1	58.7 - 63.4	469,100
No	109,600	37.2	34.0 - 40.4	185,100	62.8	59.6 - 66.0	294,700

HIV - ever been tested (18-64) by State, County, Island, Community, BRFSS Age Group, DOH Race-Ethnicity, Gender, Education Level, Employment Status (Grouped), Household Income, Poverty Level, Marital Status (Grouped), Married, Health Care Coverage, for the Year(s) - 2000, 2001, 2002, 2003, 2004, 2005, 2006, 2007, 2008, 2009, 2010

Note: Weighted numbers (#), percentages and 95% confidence intervals; Respondents aged 18 years and older; n/r (Not Reportable) - If the unweighted total responses for a dimension (row) is <50 that row will not be shown; n/a (Not Available) - Not asked of a subset of respondents

Year: 2005

Health Care Coverage	Yes			No			Estimated Population
	#	%	C.I. (95%)	#	%	C.I. (95%)	#
Yes	268,500	38.8	36.8 - 40.8	423,600	61.2	59.2 - 63.2	692,200
No	23,000	32.8	26.8 - 38.7	47,200	67.2	61.3 - 73.2	70,200

HIV - ever been tested (18-64) by State, County, Island, Community, BRFSS Age Group, DOH Race-Ethnicity, Gender, Education Level, Employment Status (Grouped), Household Income, Poverty Level, Marital Status (Grouped), Married, Health Care Coverage, for the Year(s) - 2000, 2001, 2002, 2003, 2004, 2005, 2006, 2007, 2008, 2009, 2010

Note: Weighted numbers (#), percentages and 95% confidence intervals; Respondents aged 18 years and older; n/r (Not Reportable) - If the unweighted total responses for a dimension (row) is <50 that row will not be shown; n/a (Not Available) - Not asked of a subset of respondents

Year: 2004

State	Yes			No			Estimated Population
	#	%	C.I. (95%)	#	%	C.I. (95%)	#
Hawaii State	297,100	40.8	37.4 - 44.2	431,300	59.2	55.8 - 62.6	728,400

County	Yes			No			Estimated Population
	#	%	C.I. (95%)	#	%	C.I. (95%)	#
Hawaii	41,900	40.6	34.6 - 46.6	61,300	59.4	53.4 - 65.4	103,100
Honolulu	209,400	41.1	36.6 - 45.6	300,200	58.9	54.4 - 63.4	509,600
Kauai	14,800	46.4	38.2 - 54.6	17,100	53.6	45.4 - 61.8	32,000
Maui	31,000	37.0	29.7 - 44.4	52,700	63.0	55.6 - 70.3	83,700

HIV - ever been tested (18-64) by State, County, Island, Community, BRFSS Age Group, DOH Race-Ethnicity, Gender, Education Level, Employment Status (Grouped), Household Income, Poverty Level, Marital Status (Grouped), Married, Health Care Coverage, for the Year(s) - 2000, 2001, 2002, 2003, 2004, 2005, 2006, 2007, 2008, 2009, 2010

Note: Weighted numbers (#), percentages and 95% confidence intervals; Respondents aged 18 years and older; n/r (Not Reportable) - If the unweighted total responses for a dimension (row) is <50 that row will not be shown; n/a (Not Available) - Not asked of a subset of respondents

Year: 2004

Island	Yes			No			Estimated Population
	#	%	C.I. (95%)	#	%	C.I. (95%)	#
Hawaii	41,900	40.6	34.6 - 46.6	61,300	59.4	53.4 - 65.4	103,100
Kauai	14,800	46.4	38.2 - 54.6	17,100	53.6	45.4 - 61.8	32,000
Maui	29,000	37.3	29.5 - 45.2	48,600	62.7	54.8 - 70.5	77,600
Oahu	209,400	41.1	36.6 - 45.6	300,200	58.9	54.4 - 63.4	509,600

Community	Yes			No			Estimated Population
	#	%	C.I. (95%)	#	%	C.I. (95%)	#
Aiea/ Pearl City	19,000	41.4	27.1 - 55.7	26,900	58.6	44.3 - 72.9	45,800
Hanalei/ Kapaa	6,600	47.8	35.4 - 60.1	7,200	52.2	39.9 - 64.6	13,800
Hilo	11,000	39.1	28.2 - 50.0	17,200	60.9	50.0 - 71.8	28,200

HIV - ever been tested (18-64) by State, County, Island, Community, BRFSS Age Group, DOH Race-Ethnicity, Gender, Education Level, Employment Status (Grouped), Household Income, Poverty Level, Marital Status (Grouped), Married, Health Care Coverage, for the Year(s) - 2000, 2001, 2002, 2003, 2004, 2005, 2006, 2007, 2008, 2009, 2010

Note: Weighted numbers (#), percentages and 95% confidence intervals; Respondents aged 18 years and older; n/r (Not Reportable) - If the unweighted total responses for a dimension (row) is <50 that row will not be shown; n/a (Not Available) - Not asked of a subset of respondents

Year: 2004

Community	Yes			No			Estimated Population
	#	%	C.I. (95%)	#	%	C.I. (95%)	#
Kahului	10,600	39.8	25.4 - 54.2	16,100	60.2	45.8 - 74.6	26,800
Kailua/ Waimanalo	21,300	55.4	40.8 - 69.9	17,200	44.6	30.1 - 59.2	38,500
Kaimuki/ Palolo/ Waikiki	16,700	46.3	29.9 - 62.7	19,400	53.7	37.3 - 70.1	36,100
Kona	9,400	44.7	32.4 - 57.0	11,600	55.3	43.0 - 67.6	21,000
Lahaina/ Wailuku	7,400	30.8	17.1 - 44.4	16,600	69.2	55.6 - 82.9	24,000
Lihue-Waimea	8,200	45.4	34.4 - 56.3	9,900	54.6	43.7 - 65.6	18,100
Manoa/ Upper Makiki	12,100	30.1	17.2 - 42.9	28,100	69.9	57.1 - 82.8	40,200
Mililani/ Wahiawa	20,900	39.1	24.5 - 53.6	32,600	60.9	46.4 - 75.5	53,600
N.Hawaii	5,100	29.7	18.6 - 40.8	12,000	70.3	59.2 - 81.4	17,100

HIV - ever been tested (18-64) by State, County, Island, Community, BRFSS Age Group, DOH Race-Ethnicity, Gender, Education Level, Employment Status (Grouped), Household Income, Poverty Level, Marital Status (Grouped), Married, Health Care Coverage, for the Year(s) - 2000, 2001, 2002, 2003, 2004, 2005, 2006, 2007, 2008, 2009, 2010

Note: Weighted numbers (#), percentages and 95% confidence intervals; Respondents aged 18 years and older; n/r (Not Reportable) - If the unweighted total responses for a dimension (row) is <50 that row will not be shown; n/a (Not Available) - Not asked of a subset of respondents

Year: 2004

Community	Yes			No			Estimated Population
	#	%	C.I. (95%)	#	%	C.I. (95%)	#
Nuuanu/ Kalihi/ Moanalua	16,800	34.2	20.7 - 47.7	32,400	65.8	52.3 - 79.3	49,300
Puna/ Kau	16,400	44.5	33.2 - 55.8	20,500	55.5	44.2 - 66.8	36,800
Upcountry/ Hana	10,900	40.8	28.6 - 53.0	15,900	59.2	47.0 - 71.4	26,800
Waipahu/ Kapolei/ Ewa	35,500	36.9	26.4 - 47.3	60,800	63.1	52.7 - 73.6	96,200

HIV - ever been tested (18-64) by State, County, Island, Community, BRFSS Age Group, DOH Race-Ethnicity, Gender, Education Level, Employment Status (Grouped), Household Income, Poverty Level, Marital Status (Grouped), Married, Health Care Coverage, for the Year(s) - 2000, 2001, 2002, 2003, 2004, 2005, 2006, 2007, 2008, 2009, 2010

Note: Weighted numbers (#), percentages and 95% confidence intervals; Respondents aged 18 years and older; n/r (Not Reportable) - If the unweighted total responses for a dimension (row) is <50 that row will not be shown; n/a (Not Available) - Not asked of a subset of respondents

Year: 2004

BRFSS Age Group	Yes			No			Estimated Population
	#	%	C.I. (95%)	#	%	C.I. (95%)	#
18-24	41,900	39.6	28.4 - 50.7	64,000	60.4	49.3 - 71.6	105,900
25-34	95,700	58.2	50.5 - 66.0	68,700	41.8	34.0 - 49.5	164,400
35-44	88,900	51.2	44.2 - 58.1	84,900	48.8	41.9 - 55.8	173,700
45-54	45,900	27.6	22.6 - 32.7	120,200	72.4	67.3 - 77.4	166,100
55-64	24,700	20.9	15.7 - 26.0	93,600	79.1	74.0 - 84.3	118,200

HIV - ever been tested (18-64) by State, County, Island, Community, BRFSS Age Group, DOH Race-Ethnicity, Gender, Education Level, Employment Status (Grouped), Household Income, Poverty Level, Marital Status (Grouped), Married, Health Care Coverage, for the Year(s) - 2000, 2001, 2002, 2003, 2004, 2005, 2006, 2007, 2008, 2009, 2010

Note: Weighted numbers (#), percentages and 95% confidence intervals; Respondents aged 18 years and older; n/r (Not Reportable) - If the unweighted total responses for a dimension (row) is <50 that row will not be shown; n/a (Not Available) - Not asked of a subset of respondents

Year: 2004

DOH Race-Ethnicity	Yes			No			Estimated Population
	#	%	C.I. (95%)	#	%	C.I. (95%)	#
Caucasian	134,900	56.7	51.5 - 62.0	102,900	43.3	38.0 - 48.5	237,800
Native Hawaiian	35,800	32.7	24.4 - 40.9	73,700	67.3	59.1 - 75.6	109,500
Chinese	11,300	35.4	18.9 - 52.0	20,700	64.6	48.0 - 81.1	32,000
Filipino	33,900	27.2	19.4 - 35.0	90,700	72.8	65.0 - 80.6	124,500
Japanese	29,900	23.4	16.8 - 30.0	97,900	76.6	70.0 - 83.2	127,800

HIV - ever been tested (18-64) by State, County, Island, Community, BRFSS Age Group, DOH Race-Ethnicity, Gender, Education Level, Employment Status (Grouped), Household Income, Poverty Level, Marital Status (Grouped), Married, Health Care Coverage, for the Year(s) - 2000, 2001, 2002, 2003, 2004, 2005, 2006, 2007, 2008, 2009, 2010

Note: Weighted numbers (#), percentages and 95% confidence intervals; Respondents aged 18 years and older; n/r (Not Reportable) - If the unweighted total responses for a dimension (row) is <50 that row will not be shown; n/a (Not Available) - Not asked of a subset of respondents

Year: 2004

Gender	Yes			No			Estimated Population
	#	%	C.I. (95%)	#	%	C.I. (95%)	#
Male	145,100	40.0	34.9 - 45.1	217,700	60.0	54.9 - 65.1	362,800
Female	152,000	41.6	37.2 - 45.9	213,600	58.4	54.1 - 62.8	365,600

Education Level	Yes			No			Estimated Population
	#	%	C.I. (95%)	#	%	C.I. (95%)	#
Grades 12 or GED (High School Grad)	85,200	38.5	32.0 - 45.1	135,900	61.5	54.9 - 68.0	221,100
College 1 to 3 years (Some College/ Tech)	108,200	45.1	39.1 - 51.2	131,500	54.9	48.8 - 60.9	239,700
College 4 years or more (College Grad)	97,500	40.2	35.0 - 45.4	144,900	59.8	54.6 - 65.0	242,400

HIV - ever been tested (18-64) by State, County, Island, Community, BRFSS Age Group, DOH Race-Ethnicity, Gender, Education Level, Employment Status (Grouped), Household Income, Poverty Level, Marital Status (Grouped), Married, Health Care Coverage, for the Year(s) - 2000, 2001, 2002, 2003, 2004, 2005, 2006, 2007, 2008, 2009, 2010

Note: Weighted numbers (#), percentages and 95% confidence intervals; Respondents aged 18 years and older; n/r (Not Reportable) - If the unweighted total responses for a dimension (row) is <50 that row will not be shown; n/a (Not Available) - Not asked of a subset of respondents

Year: 2004

Employment Status (Grouped)	Yes			No			Estimated Population
	#	%	C.I. (95%)	#	%	C.I. (95%)	#
Employed	221,300	40.3	36.5 - 44.2	327,500	59.7	55.8 - 63.5	548,800
Unemployed	9,100	37.0	18.2 - 55.9	15,500	63.0	44.1 - 81.8	24,700
Retired/Unable to work	22,500	35.9	25.5 - 46.4	40,100	64.1	53.6 - 74.5	62,600
Student/Homemaker	43,300	47.3	37.4 - 57.3	48,200	52.7	42.7 - 62.6	91,500

HIV - ever been tested (18-64) by State, County, Island, Community, BRFSS Age Group, DOH Race-Ethnicity, Gender, Education Level, Employment Status (Grouped), Household Income, Poverty Level, Marital Status (Grouped), Married, Health Care Coverage, for the Year(s) - 2000, 2001, 2002, 2003, 2004, 2005, 2006, 2007, 2008, 2009, 2010

Note: Weighted numbers (#), percentages and 95% confidence intervals; Respondents aged 18 years and older; n/r (Not Reportable) - If the unweighted total responses for a dimension (row) is <50 that row will not be shown; n/a (Not Available) - Not asked of a subset of respondents

Year: 2004

Household Income	Yes			No			Estimated Population
	#	%	C.I. (95%)	#	%	C.I. (95%)	#
\$10,000 to \$14,999	6,300	33.4	17.0 - 49.8	12,600	66.6	50.2 - 83.0	18,900
\$15,000 to \$19,999	13,400	37.1	21.2 - 53.0	22,800	62.9	47.0 - 78.8	36,200
\$20,000 to \$24,999	21,300	39.8	28.3 - 51.3	32,300	60.2	48.7 - 71.7	53,600
\$25,000 to \$34,999	33,900	35.9	27.0 - 44.8	60,400	64.1	55.2 - 73.0	94,300
\$35,000 to \$49,999	45,800	40.3	31.8 - 48.8	67,900	59.7	51.2 - 68.2	113,700
\$50,000 to \$74,999	99,800	45.4	38.9 - 51.9	120,200	54.6	48.1 - 61.1	220,000
\$75,000 or more	74,300	41.9	35.3 - 48.5	103,100	58.1	51.5 - 64.7	177,400

HIV - ever been tested (18-64) by State, County, Island, Community, BRFSS Age Group, DOH Race-Ethnicity, Gender, Education Level, Employment Status (Grouped), Household Income, Poverty Level, Marital Status (Grouped), Married, Health Care Coverage, for the Year(s) - 2000, 2001, 2002, 2003, 2004, 2005, 2006, 2007, 2008, 2009, 2010

Note: Weighted numbers (#), percentages and 95% confidence intervals; Respondents aged 18 years and older; n/r (Not Reportable) - If the unweighted total responses for a dimension (row) is <50 that row will not be shown; n/a (Not Available) - Not asked of a subset of respondents

Year: 2004

Poverty Level	Yes			No			Estimated Population
	#	%	C.I. (95%)	#	%	C.I. (95%)	#
0-130%	40,400	30.9	23.3 - 38.4	90,400	69.1	61.6 - 76.7	130,800
131-185%	36,000	35.0	25.1 - 44.9	66,900	65.0	55.1 - 74.9	102,900
186+%	220,700	44.6	40.8 - 48.5	274,000	55.4	51.5 - 59.2	494,700

Marital Status (Grouped)	Yes			No			Estimated Population
	#	%	C.I. (95%)	#	%	C.I. (95%)	#
Married	174,000	40.8	36.5 - 45.1	252,600	59.2	54.9 - 63.5	426,600
Unmarried Couple	8,700	40.2	23.8 - 56.6	13,000	59.8	43.4 - 76.2	21,700
Other	111,900	41.4	35.6 - 47.3	158,100	58.6	52.7 - 64.4	270,000

HIV - ever been tested (18-64) by State, County, Island, Community, BRFSS Age Group, DOH Race-Ethnicity, Gender, Education Level, Employment Status (Grouped), Household Income, Poverty Level, Marital Status (Grouped), Married, Health Care Coverage, for the Year(s) - 2000, 2001, 2002, 2003, 2004, 2005, 2006, 2007, 2008, 2009, 2010

Note: Weighted numbers (#), percentages and 95% confidence intervals; Respondents aged 18 years and older; n/r (Not Reportable) - If the unweighted total responses for a dimension (row) is <50 that row will not be shown; n/a (Not Available) - Not asked of a subset of respondents

Year: 2004

Married	Yes			No			Estimated Population
	#	%	C.I. (95%)	#	%	C.I. (95%)	#
Yes	178,800	41.1	36.8 - 45.3	256,800	58.9	54.7 - 63.2	435,600
No	117,800	40.6	35.0 - 46.1	172,700	59.4	53.9 - 65.0	290,500

Health Care Coverage	Yes			No			Estimated Population
	#	%	C.I. (95%)	#	%	C.I. (95%)	#
Yes	264,500	41.0	37.4 - 44.6	380,800	59.0	55.4 - 62.6	645,200
No	32,600	41.0	30.6 - 51.3	47,000	59.0	48.7 - 69.4	79,600

HIV - ever been tested (18-64) by State, County, Island, Community, BRFSS Age Group, DOH Race-Ethnicity, Gender, Education Level, Employment Status (Grouped), Household Income, Poverty Level, Marital Status (Grouped), Married, Health Care Coverage, for the Year(s) - 2000, 2001, 2002, 2003, 2004, 2005, 2006, 2007, 2008, 2009, 2010

Note: Weighted numbers (#), percentages and 95% confidence intervals; Respondents aged 18 years and older; n/r (Not Reportable) - If the unweighted total responses for a dimension (row) is <50 that row will not be shown; n/a (Not Available) - Not asked of a subset of respondents

Year: 2003

State	Yes			No			Estimated Population
	#	%	C.I. (95%)	#	%	C.I. (95%)	#
Hawaii State	330,700	44.1	41.9 - 46.2	419,600	55.9	53.8 - 58.1	750,300

County	Yes			No			Estimated Population
	#	%	C.I. (95%)	#	%	C.I. (95%)	#
Hawaii	37,000	40.4	36.0 - 44.8	54,600	59.6	55.2 - 64.0	91,600
Honolulu	242,600	44.9	42.1 - 47.7	297,800	55.1	52.3 - 57.9	540,400
Kauai	14,400	40.7	34.4 - 47.0	21,000	59.3	53.0 - 65.6	35,400
Maui	36,800	44.4	39.1 - 49.6	46,100	55.6	50.4 - 60.9	82,900

HIV - ever been tested (18-64) by State, County, Island, Community, BRFSS Age Group, DOH Race-Ethnicity, Gender, Education Level, Employment Status (Grouped), Household Income, Poverty Level, Marital Status (Grouped), Married, Health Care Coverage, for the Year(s) - 2000, 2001, 2002, 2003, 2004, 2005, 2006, 2007, 2008, 2009, 2010

Note: Weighted numbers (#), percentages and 95% confidence intervals; Respondents aged 18 years and older; n/r (Not Reportable) - If the unweighted total responses for a dimension (row) is <50 that row will not be shown; n/a (Not Available) - Not asked of a subset of respondents

Year: 2003

Island	Yes			No			Estimated Population
	#	%	C.I. (95%)	#	%	C.I. (95%)	#
Hawaii	37,000	40.4	36.0 - 44.8	54,600	59.6	55.2 - 64.0	91,600
Kauai	14,400	40.7	34.4 - 47.0	21,000	59.3	53.0 - 65.6	35,400
Maui	34,500	45.5	39.9 - 51.1	41,300	54.5	48.9 - 60.1	75,800
Molokai	1,600	30.0	17.0 - 43.1	3,700	70.0	56.9 - 83.0	5,300
Oahu	242,600	44.9	42.1 - 47.7	297,800	55.1	52.3 - 57.9	540,400

Community	Yes			No			Estimated Population
	#	%	C.I. (95%)	#	%	C.I. (95%)	#
Aiea/ Pearl City	17,800	43.4	33.1 - 53.7	23,200	56.6	46.3 - 66.9	41,100
Ala Moana	10,000	44.1	31.4 - 56.8	12,700	55.9	43.2 - 68.6	22,800

HIV - ever been tested (18-64) by State, County, Island, Community, BRFSS Age Group, DOH Race-Ethnicity, Gender, Education Level, Employment Status (Grouped), Household Income, Poverty Level, Marital Status (Grouped), Married, Health Care Coverage, for the Year(s) - 2000, 2001, 2002, 2003, 2004, 2005, 2006, 2007, 2008, 2009, 2010

Note: Weighted numbers (#), percentages and 95% confidence intervals; Respondents aged 18 years and older; n/r (Not Reportable) - If the unweighted total responses for a dimension (row) is <50 that row will not be shown; n/a (Not Available) - Not asked of a subset of respondents

Year: 2003

Community	Yes			No			Estimated Population
	#	%	C.I. (95%)	#	%	C.I. (95%)	#
Hanalei/ Kapaa	5,400	37.0	28.0 - 46.0	9,100	63.0	54.0 - 72.0	14,500
Hilo	8,900	31.9	24.1 - 39.7	19,000	68.1	60.3 - 75.9	28,000
Kaaawa/ Kahaluu/ Kaneohe	14,700	37.9	27.9 - 48.0	24,100	62.1	52.0 - 72.1	38,700
Kahului	12,300	44.1	34.7 - 53.5	15,700	55.9	46.5 - 65.3	28,000
Kailua/ Waimanalo	17,200	43.0	33.7 - 52.3	22,800	57.0	47.7 - 66.3	40,000
Kaimuki/ Palolo/ Waikiki	19,100	41.8	32.5 - 51.0	26,600	58.2	49.0 - 67.5	45,700
Kona	10,300	46.1	37.7 - 54.5	12,100	53.9	45.5 - 62.3	22,400
Lahaina/ Wailuku	10,600	46.1	35.1 - 57.2	12,400	53.9	42.8 - 64.9	23,100
Lihue-Waimea	9,000	43.2	34.6 - 51.8	11,900	56.8	48.2 - 65.4	20,900

HIV - ever been tested (18-64) by State, County, Island, Community, BRFSS Age Group, DOH Race-Ethnicity, Gender, Education Level, Employment Status (Grouped), Household Income, Poverty Level, Marital Status (Grouped), Married, Health Care Coverage, for the Year(s) - 2000, 2001, 2002, 2003, 2004, 2005, 2006, 2007, 2008, 2009, 2010

Note: Weighted numbers (#), percentages and 95% confidence intervals; Respondents aged 18 years and older; n/r (Not Reportable) - If the unweighted total responses for a dimension (row) is <50 that row will not be shown; n/a (Not Available) - Not asked of a subset of respondents

Year: 2003

Community	Yes			No			Estimated Population
	#	%	C.I. (95%)	#	%	C.I. (95%)	#
Manoa/ Upper Makiki	20,200	46.9	36.5 - 57.3	22,800	53.1	42.7 - 63.5	42,900
Mililani/ Wahiawa	34,300	55.3	47.3 - 63.2	27,800	44.7	36.8 - 52.7	62,100
Molokai	1,600	30.0	17.0 - 43.1	3,700	70.0	56.9 - 83.0	5,300
Nanakuli/ Waianae	11,600	51.3	36.7 - 65.8	11,100	48.7	34.2 - 63.3	22,700
N.Hawaii	7,500	38.5	29.8 - 47.2	12,000	61.5	52.8 - 70.2	19,600
N.Shore/ Laie	8,600	43.6	29.4 - 57.7	11,100	56.4	42.3 - 70.6	19,700
Nuuanu/ Kalihi/ Moanalua	17,500	32.4	24.4 - 40.4	36,600	67.6	59.6 - 75.6	54,100
Puna/ Kau	10,200	47.1	37.7 - 56.5	11,500	52.9	43.5 - 62.3	21,600
Salt Lake/ Foster Village	26,100	63.7	54.2 - 73.3	14,800	36.3	26.7 - 45.8	40,900

HIV - ever been tested (18-64) by State, County, Island, Community, BRFSS Age Group, DOH Race-Ethnicity, Gender, Education Level, Employment Status (Grouped), Household Income, Poverty Level, Marital Status (Grouped), Married, Health Care Coverage, for the Year(s) - 2000, 2001, 2002, 2003, 2004, 2005, 2006, 2007, 2008, 2009, 2010

Note: Weighted numbers (#), percentages and 95% confidence intervals; Respondents aged 18 years and older; n/r (Not Reportable) - If the unweighted total responses for a dimension (row) is <50 that row will not be shown; n/a (Not Available) - Not asked of a subset of respondents

Year: 2003

Community	Yes			No			Estimated Population
	#	%	C.I. (95%)	#	%	C.I. (95%)	#
Upcountry/ Hana	11,500	46.5	37.8 - 55.2	13,200	53.5	44.8 - 62.2	24,700
Waialae/ Kahala/ Hawaii Kai	8,400	32.7	20.7 - 44.7	17,300	67.3	55.3 - 79.3	25,800
Waipahu/ Kapolei/ Ewa	37,000	44.1	36.8 - 51.4	46,900	55.9	48.6 - 63.2	84,000

HIV - ever been tested (18-64) by State, County, Island, Community, BRFSS Age Group, DOH Race-Ethnicity, Gender, Education Level, Employment Status (Grouped), Household Income, Poverty Level, Marital Status (Grouped), Married, Health Care Coverage, for the Year(s) - 2000, 2001, 2002, 2003, 2004, 2005, 2006, 2007, 2008, 2009, 2010

Note: Weighted numbers (#), percentages and 95% confidence intervals; Respondents aged 18 years and older; n/r (Not Reportable) - If the unweighted total responses for a dimension (row) is <50 that row will not be shown; n/a (Not Available) - Not asked of a subset of respondents

Year: 2003

BRFSS Age Group	Yes			No			Estimated Population
	#	%	C.I. (95%)	#	%	C.I. (95%)	#
18-24	46,200	40.3	33.8 - 46.9	68,300	59.7	53.1 - 66.2	114,500
25-34	96,700	59.6	55.0 - 64.2	65,500	40.4	35.8 - 45.0	162,200
35-44	95,700	53.1	48.8 - 57.4	84,400	46.9	42.6 - 51.2	180,100
45-54	62,800	36.3	32.2 - 40.3	110,500	63.7	59.7 - 67.8	173,300
55-64	29,300	24.4	19.9 - 28.9	90,900	75.6	71.1 - 80.1	120,200

HIV - ever been tested (18-64) by State, County, Island, Community, BRFSS Age Group, DOH Race-Ethnicity, Gender, Education Level, Employment Status (Grouped), Household Income, Poverty Level, Marital Status (Grouped), Married, Health Care Coverage, for the Year(s) - 2000, 2001, 2002, 2003, 2004, 2005, 2006, 2007, 2008, 2009, 2010

Note: Weighted numbers (#), percentages and 95% confidence intervals; Respondents aged 18 years and older; n/r (Not Reportable) - If the unweighted total responses for a dimension (row) is <50 that row will not be shown; n/a (Not Available) - Not asked of a subset of respondents

Year: 2003

DOH Race-Ethnicity	Yes			No			Estimated Population
	#	%	C.I. (95%)	#	%	C.I. (95%)	#
Caucasian	167,800	58.5	55.2 - 61.7	119,200	41.5	38.3 - 44.8	286,900
Native Hawaiian	28,900	43.1	36.2 - 50.1	38,100	56.9	49.9 - 63.8	67,000
Chinese	24,600	29.1	23.0 - 35.2	60,000	70.9	64.8 - 77.0	84,700
Filipino	41,100	33.7	28.2 - 39.1	80,900	66.3	60.9 - 71.8	121,900
Japanese	28,600	23.8	18.9 - 28.7	91,400	76.2	71.3 - 81.1	120,000
Black	10,000	81.9	70.0 - 93.9	2,200	18.1	6.1 - 30.0	12,200
Other	13,100	57.5	45.2 - 69.8	9,600	42.5	30.2 - 54.8	22,700

HIV - ever been tested (18-64) by State, County, Island, Community, BRFSS Age Group, DOH Race-Ethnicity, Gender, Education Level, Employment Status (Grouped), Household Income, Poverty Level, Marital Status (Grouped), Married, Health Care Coverage, for the Year(s) - 2000, 2001, 2002, 2003, 2004, 2005, 2006, 2007, 2008, 2009, 2010

Note: Weighted numbers (#), percentages and 95% confidence intervals; Respondents aged 18 years and older; n/r (Not Reportable) - If the unweighted total responses for a dimension (row) is <50 that row will not be shown; n/a (Not Available) - Not asked of a subset of respondents

Year: 2003

Gender	Yes			No			Estimated Population
	#	%	C.I. (95%)	#	%	C.I. (95%)	#
Male	179,000	46.7	43.4 - 50.1	204,200	53.3	49.9 - 56.6	383,200
Female	151,700	41.3	38.6 - 44.0	215,400	58.7	56.0 - 61.4	367,100

Education Level	Yes			No			Estimated Population
	#	%	C.I. (95%)	#	%	C.I. (95%)	#
Grades 9 thru 11 (Some High School)	8,500	39.3	26.4 - 52.1	13,100	60.7	47.9 - 73.6	21,600
Grades 12 or GED (High School Grad)	86,400	39.6	35.5 - 43.7	131,800	60.4	56.3 - 64.5	218,100
College 1 to 3 years (Some College/ Tech)	109,200	47.7	43.7 - 51.6	119,900	52.3	48.4 - 56.3	229,100
College 4 years or more (College Grad)	126,300	45.8	42.4 - 49.3	149,200	54.2	50.7 - 57.6	275,500

HIV - ever been tested (18-64) by State, County, Island, Community, BRFSS Age Group, DOH Race-Ethnicity, Gender, Education Level, Employment Status (Grouped), Household Income, Poverty Level, Marital Status (Grouped), Married, Health Care Coverage, for the Year(s) - 2000, 2001, 2002, 2003, 2004, 2005, 2006, 2007, 2008, 2009, 2010

Note: Weighted numbers (#), percentages and 95% confidence intervals; Respondents aged 18 years and older; n/r (Not Reportable) - If the unweighted total responses for a dimension (row) is <50 that row will not be shown; n/a (Not Available) - Not asked of a subset of respondents

Year: 2003

Employment Status (Grouped)	Yes			No			Estimated Population
	#	%	C.I. (95%)	#	%	C.I. (95%)	#
Employed	261,700	45.5	43.0 - 48.0	313,800	54.5	52.0 - 57.0	575,500
Unemployed	13,700	44.8	33.7 - 56.0	16,800	55.2	44.0 - 66.3	30,500
Retired/Unable to work	16,300	30.4	23.4 - 37.3	37,500	69.6	62.7 - 76.6	53,800
Student/Homemaker	38,800	43.0	36.8 - 49.2	51,300	57.0	50.8 - 63.2	90,000

HIV - ever been tested (18-64) by State, County, Island, Community, BRFSS Age Group, DOH Race-Ethnicity, Gender, Education Level, Employment Status (Grouped), Household Income, Poverty Level, Marital Status (Grouped), Married, Health Care Coverage, for the Year(s) - 2000, 2001, 2002, 2003, 2004, 2005, 2006, 2007, 2008, 2009, 2010

Note: Weighted numbers (#), percentages and 95% confidence intervals; Respondents aged 18 years and older; n/r (Not Reportable) - If the unweighted total responses for a dimension (row) is <50 that row will not be shown; n/a (Not Available) - Not asked of a subset of respondents

Year: 2003

Household Income	Yes			No			Estimated Population
	#	%	C.I. (95%)	#	%	C.I. (95%)	#
Less than \$10,000	15,500	44.9	35.2 - 54.7	19,000	55.1	45.3 - 64.8	34,400
\$10,000 to \$14,999	15,900	44.4	33.8 - 55.0	19,900	55.6	45.0 - 66.2	35,700
\$15,000 to \$19,999	15,500	39.2	29.0 - 49.3	24,000	60.8	50.7 - 71.0	39,500
\$20,000 to \$24,999	18,200	39.4	31.0 - 47.8	28,100	60.6	52.2 - 69.0	46,300
\$25,000 to \$34,999	34,000	50.7	43.4 - 58.0	33,000	49.3	42.0 - 56.6	66,900
\$35,000 to \$49,999	63,100	51.6	46.2 - 56.9	59,200	48.4	43.1 - 53.8	122,300
\$50,000 to \$74,999	56,500	46.0	40.8 - 51.3	66,100	54.0	48.7 - 59.2	122,600
\$75,000 or more	64,000	45.3	40.4 - 50.2	77,300	54.7	49.8 - 59.6	141,300

HIV - ever been tested (18-64) by State, County, Island, Community, BRFSS Age Group, DOH Race-Ethnicity, Gender, Education Level, Employment Status (Grouped), Household Income, Poverty Level, Marital Status (Grouped), Married, Health Care Coverage, for the Year(s) - 2000, 2001, 2002, 2003, 2004, 2005, 2006, 2007, 2008, 2009, 2010

Note: Weighted numbers (#), percentages and 95% confidence intervals; Respondents aged 18 years and older; n/r (Not Reportable) - If the unweighted total responses for a dimension (row) is <50 that row will not be shown; n/a (Not Available) - Not asked of a subset of respondents

Year: 2003

Poverty Level	Yes			No			Estimated Population
	#	%	C.I. (95%)	#	%	C.I. (95%)	#
0-130%	65,900	43.7	38.4 - 49.0	84,800	56.3	51.0 - 61.6	150,600
131-185%	31,800	44.9	37.3 - 52.5	39,000	55.1	47.5 - 62.7	70,800
186+%	184,800	47.7	44.8 - 50.5	202,900	52.3	49.5 - 55.2	387,700

HIV - ever been tested (18-64) by State, County, Island, Community, BRFSS Age Group, DOH Race-Ethnicity, Gender, Education Level, Employment Status (Grouped), Household Income, Poverty Level, Marital Status (Grouped), Married, Health Care Coverage, for the Year(s) - 2000, 2001, 2002, 2003, 2004, 2005, 2006, 2007, 2008, 2009, 2010

Note: Weighted numbers (#), percentages and 95% confidence intervals; Respondents aged 18 years and older; n/r (Not Reportable) - If the unweighted total responses for a dimension (row) is <50 that row will not be shown; n/a (Not Available) - Not asked of a subset of respondents

Year: 2003

Marital Status (Grouped)	Yes			No			Estimated Population
	#	%	C.I. (95%)	#	%	C.I. (95%)	#
Married	192,400	44.5	41.7 - 47.3	239,900	55.5	52.7 - 58.3	432,400
Unmarried Couple	9,800	56.4	41.8 - 71.1	7,500	43.6	28.9 - 58.2	17,300
Widowed	3,500	21.8	12.0 - 31.7	12,700	78.2	68.3 - 88.0	16,200
Other	125,000	44.0	40.4 - 47.5	159,400	56.0	52.5 - 59.6	284,400

Married	Yes			No			Estimated Population
	#	%	C.I. (95%)	#	%	C.I. (95%)	#
Yes	199,000	44.9	42.1 - 47.7	243,800	55.1	52.3 - 57.9	442,800
No	131,600	42.9	39.5 - 46.3	175,400	57.1	53.7 - 60.5	307,000

HIV - ever been tested (18-64) by State, County, Island, Community, BRFSS Age Group, DOH Race-Ethnicity, Gender, Education Level, Employment Status (Grouped), Household Income, Poverty Level, Marital Status (Grouped), Married, Health Care Coverage, for the Year(s) - 2000, 2001, 2002, 2003, 2004, 2005, 2006, 2007, 2008, 2009, 2010

Note: Weighted numbers (#), percentages and 95% confidence intervals; Respondents aged 18 years and older; n/r (Not Reportable) - If the unweighted total responses for a dimension (row) is <50 that row will not be shown; n/a (Not Available) - Not asked of a subset of respondents

Year: 2003

Health Care Coverage	Yes			No			Estimated Population
	#	%	C.I. (95%)	#	%	C.I. (95%)	#
Yes	301,800	44.6	42.3 - 46.9	375,200	55.4	53.1 - 57.7	677,000
No	28,600	39.6	32.7 - 46.5	43,700	60.4	53.5 - 67.3	72,300

HIV - ever been tested (18-64) by State, County, Island, Community, BRFSS Age Group, DOH Race-Ethnicity, Gender, Education Level, Employment Status (Grouped), Household Income, Poverty Level, Marital Status (Grouped), Married, Health Care Coverage, for the Year(s) - 2000, 2001, 2002, 2003, 2004, 2005, 2006, 2007, 2008, 2009, 2010

Note: Weighted numbers (#), percentages and 95% confidence intervals; Respondents aged 18 years and older; n/r (Not Reportable) - If the unweighted total responses for a dimension (row) is <50 that row will not be shown; n/a (Not Available) - Not asked of a subset of respondents

Year: 2002

State	Yes			No			Estimated Population
	#	%	C.I. (95%)	#	%	C.I. (95%)	#
Hawaii State	300,000	41.0	39.1 - 43.0	431,000	59.0	57.0 - 60.9	730,900

County	Yes			No			Estimated Population
	#	%	C.I. (95%)	#	%	C.I. (95%)	#
Hawaii	35,000	39.8	36.1 - 43.4	53,000	60.2	56.6 - 63.9	88,000
Honolulu	223,000	42.0	39.5 - 44.5	307,900	58.0	55.5 - 60.5	530,900
Kauai	10,400	31.5	26.5 - 36.5	22,500	68.5	63.5 - 73.5	32,900
Maui	31,600	40.0	36.1 - 43.8	47,500	60.0	56.2 - 63.9	79,100

HIV - ever been tested (18-64) by State, County, Island, Community, BRFSS Age Group, DOH Race-Ethnicity, Gender, Education Level, Employment Status (Grouped), Household Income, Poverty Level, Marital Status (Grouped), Married, Health Care Coverage, for the Year(s) - 2000, 2001, 2002, 2003, 2004, 2005, 2006, 2007, 2008, 2009, 2010

Note: Weighted numbers (#), percentages and 95% confidence intervals; Respondents aged 18 years and older; n/r (Not Reportable) - If the unweighted total responses for a dimension (row) is <50 that row will not be shown; n/a (Not Available) - Not asked of a subset of respondents

Year: 2002

Island	Yes			No			Estimated Population
	#	%	C.I. (95%)	#	%	C.I. (95%)	#
Hawaii	35,000	39.8	36.1 - 43.4	53,000	60.2	56.6 - 63.9	88,000
Kauai	10,400	31.5	26.5 - 36.5	22,500	68.5	63.5 - 73.5	32,900
Lanai	400	16.6	9.3 - 23.8	2,300	83.4	76.2 - 90.7	2,700
Maui	29,100	41.3	37.1 - 45.5	41,400	58.7	54.5 - 62.9	70,500
Molokai	2,100	35.3	24.9 - 45.6	3,800	64.7	54.4 - 75.1	5,900
Oahu	223,000	42.0	39.5 - 44.5	307,900	58.0	55.5 - 60.5	530,900

Community	Yes			No			Estimated Population
	#	%	C.I. (95%)	#	%	C.I. (95%)	#
Aiea/ Pearl City	18,200	35.4	27.5 - 43.3	33,200	64.6	56.7 - 72.5	51,300

HIV - ever been tested (18-64) by State, County, Island, Community, BRFSS Age Group, DOH Race-Ethnicity, Gender, Education Level, Employment Status (Grouped), Household Income, Poverty Level, Marital Status (Grouped), Married, Health Care Coverage, for the Year(s) - 2000, 2001, 2002, 2003, 2004, 2005, 2006, 2007, 2008, 2009, 2010

Note: Weighted numbers (#), percentages and 95% confidence intervals; Respondents aged 18 years and older; n/r (Not Reportable) - If the unweighted total responses for a dimension (row) is <50 that row will not be shown; n/a (Not Available) - Not asked of a subset of respondents

Year: 2002

Community	Yes			No			Estimated Population
	#	%	C.I. (95%)	#	%	C.I. (95%)	#
Ala Moana	9,100	30.9	22.6 - 39.1	20,300	69.1	60.9 - 77.4	29,400
Hanalei/ Kapaa	5,800	39.1	31.1 - 47.0	9,100	60.9	53.0 - 68.9	15,000
Hilo	9,500	35.3	28.7 - 41.9	17,400	64.7	58.1 - 71.3	26,800
Kaaawa/ Kahaluu/ Kaneohe	12,900	42.3	32.1 - 52.4	17,600	57.7	47.6 - 67.9	30,500
Kahului	9,800	39.9	32.9 - 47.0	14,800	60.1	53.0 - 67.1	24,600
Kailua/ Waimanalo	18,600	49.6	40.2 - 59.0	18,900	50.4	41.0 - 59.8	37,500
Kaimuki/ Palolo/ Waikiki	22,800	48.1	40.8 - 55.5	24,500	51.9	44.5 - 59.2	47,300
Kona	10,600	45.1	38.1 - 52.2	12,800	54.9	47.8 - 61.9	23,400
Lahaina/ Wailuku	9,200	39.3	31.6 - 47.0	14,200	60.7	53.0 - 68.4	23,400

HIV - ever been tested (18-64) by State, County, Island, Community, BRFSS Age Group, DOH Race-Ethnicity, Gender, Education Level, Employment Status (Grouped), Household Income, Poverty Level, Marital Status (Grouped), Married, Health Care Coverage, for the Year(s) - 2000, 2001, 2002, 2003, 2004, 2005, 2006, 2007, 2008, 2009, 2010

Note: Weighted numbers (#), percentages and 95% confidence intervals; Respondents aged 18 years and older; n/r (Not Reportable) - If the unweighted total responses for a dimension (row) is <50 that row will not be shown; n/a (Not Available) - Not asked of a subset of respondents

Year: 2002

Community	Yes			No			Estimated Population
	#	%	C.I. (95%)	#	%	C.I. (95%)	#
Lanai	400	16.6	9.3 - 23.8	2,300	83.4	76.2 - 90.7	2,700
Lihue-Waimea	4,500	25.2	19.1 - 31.2	13,400	74.8	68.8 - 80.9	17,900
Manoa/ Upper Makiki	16,200	36.8	28.3 - 45.3	27,800	63.2	54.7 - 71.7	43,900
Mililani/ Wahiawa	29,800	54.9	46.3 - 63.5	24,500	45.1	36.5 - 53.7	54,300
Molokai	2,100	35.3	24.9 - 45.6	3,800	64.7	54.4 - 75.1	5,900
Nanakuli/ Waianae	9,000	41.9	29.9 - 53.9	12,500	58.1	46.1 - 70.1	21,500
N.Hawaii	8,100	42.4	34.4 - 50.5	10,900	57.6	49.5 - 65.6	19,000
N.Shore/ Laie	5,400	32.0	19.5 - 44.5	11,500	68.0	55.5 - 80.5	17,000
Nuuanu/ Kalihi/ Moanalua	14,300	27.7	20.5 - 34.8	37,500	72.3	65.2 - 79.5	51,800

HIV - ever been tested (18-64) by State, County, Island, Community, BRFSS Age Group, DOH Race-Ethnicity, Gender, Education Level, Employment Status (Grouped), Household Income, Poverty Level, Marital Status (Grouped), Married, Health Care Coverage, for the Year(s) - 2000, 2001, 2002, 2003, 2004, 2005, 2006, 2007, 2008, 2009, 2010

Note: Weighted numbers (#), percentages and 95% confidence intervals; Respondents aged 18 years and older; n/r (Not Reportable) - If the unweighted total responses for a dimension (row) is <50 that row will not be shown; n/a (Not Available) - Not asked of a subset of respondents

Year: 2002

Community	Yes			No			Estimated Population
	#	%	C.I. (95%)	#	%	C.I. (95%)	#
Puna/ Kau	6,900	36.7	29.4 - 44.0	11,900	63.3	56.0 - 70.6	18,800
Salt Lake/ Foster Village	20,500	61.2	51.3 - 71.0	13,000	38.8	29.0 - 48.7	33,500
Upcountry/ Hana	10,100	44.8	37.7 - 51.8	12,400	55.2	48.2 - 62.3	22,500
Waialae/ Kahala/ Hawaii Kai	13,000	34.5	25.7 - 43.4	24,600	65.5	56.6 - 74.3	37,500
Waipahu/ Kapolei/ Ewa	33,200	44.1	37.3 - 51.0	42,100	55.9	49.0 - 62.7	75,300

HIV - ever been tested (18-64) by State, County, Island, Community, BRFSS Age Group, DOH Race-Ethnicity, Gender, Education Level, Employment Status (Grouped), Household Income, Poverty Level, Marital Status (Grouped), Married, Health Care Coverage, for the Year(s) - 2000, 2001, 2002, 2003, 2004, 2005, 2006, 2007, 2008, 2009, 2010

Note: Weighted numbers (#), percentages and 95% confidence intervals; Respondents aged 18 years and older; n/r (Not Reportable) - If the unweighted total responses for a dimension (row) is <50 that row will not be shown; n/a (Not Available) - Not asked of a subset of respondents

Year: 2002

BRFSS Age Group	Yes			No			Estimated Population
	#	%	C.I. (95%)	#	%	C.I. (95%)	#
18-24	45,600	40.4	34.6 - 46.1	67,300	59.6	53.9 - 65.4	112,900
25-34	88,600	55.2	50.9 - 59.5	72,000	44.8	40.5 - 49.1	160,600
35-44	88,500	49.3	45.5 - 53.0	91,200	50.7	47.0 - 54.5	179,800
45-54	50,700	29.9	26.7 - 33.1	118,900	70.1	66.9 - 73.3	169,600
55-64	26,500	24.5	20.0 - 29.0	81,500	75.5	71.0 - 80.0	108,000

HIV - ever been tested (18-64) by State, County, Island, Community, BRFSS Age Group, DOH Race-Ethnicity, Gender, Education Level, Employment Status (Grouped), Household Income, Poverty Level, Marital Status (Grouped), Married, Health Care Coverage, for the Year(s) - 2000, 2001, 2002, 2003, 2004, 2005, 2006, 2007, 2008, 2009, 2010

Note: Weighted numbers (#), percentages and 95% confidence intervals; Respondents aged 18 years and older; n/r (Not Reportable) - If the unweighted total responses for a dimension (row) is <50 that row will not be shown; n/a (Not Available) - Not asked of a subset of respondents

Year: 2002

DOH Race-Ethnicity	Yes			No			Estimated Population
	#	%	C.I. (95%)	#	%	C.I. (95%)	#
Caucasian	139,500	53.0	50.0 - 56.1	123,600	47.0	43.9 - 50.0	263,100
Native Hawaiian	35,200	36.3	31.1 - 41.6	61,700	63.7	58.4 - 68.9	96,900
Chinese	16,600	32.8	25.3 - 40.3	34,000	67.2	59.7 - 74.7	50,600
Filipino	35,100	31.0	26.2 - 35.8	78,100	69.0	64.2 - 73.8	113,200
Japanese	31,700	25.1	21.0 - 29.2	94,600	74.9	70.8 - 79.0	126,200
Black	12,600	77.9	66.7 - 89.1	3,600	22.1	10.9 - 33.3	16,200
Other Asian	5,400	30.4	18.2 - 42.6	12,400	69.6	57.4 - 81.8	17,800
Other Pacific Islander	4,700	24.1	11.2 - 37.0	14,700	75.9	63.0 - 88.8	19,300
Other	15,800	70.5	60.8 - 80.2	6,600	29.5	19.8 - 39.2	22,500

HIV - ever been tested (18-64) by State, County, Island, Community, BRFSS Age Group, DOH Race-Ethnicity, Gender, Education Level, Employment Status (Grouped), Household Income, Poverty Level, Marital Status (Grouped), Married, Health Care Coverage, for the Year(s) - 2000, 2001, 2002, 2003, 2004, 2005, 2006, 2007, 2008, 2009, 2010

Note: Weighted numbers (#), percentages and 95% confidence intervals; Respondents aged 18 years and older; n/r (Not Reportable) - If the unweighted total responses for a dimension (row) is <50 that row will not be shown; n/a (Not Available) - Not asked of a subset of respondents

Year: 2002

Gender	Yes			No			Estimated Population
	#	%	C.I. (95%)	#	%	C.I. (95%)	#
Male	158,300	42.7	39.8 - 45.7	212,100	57.3	54.3 - 60.2	370,400
Female	141,600	39.3	36.8 - 41.7	218,900	60.7	58.3 - 63.2	360,600

Education Level	Yes			No			Estimated Population
	#	%	C.I. (95%)	#	%	C.I. (95%)	#
Grades 9 thru 11 (Some High School)	7,000	38.5	27.6 - 49.5	11,200	61.5	50.5 - 72.4	18,200
Grades 12 or GED (High School Grad)	93,300	37.9	34.6 - 41.2	152,900	62.1	58.8 - 65.4	246,200
College 1 to 3 years (Some College/ Tech)	93,800	41.6	38.0 - 45.2	131,900	58.4	54.8 - 62.0	225,700
College 4 years or more (College Grad)	104,300	44.6	41.3 - 47.9	129,400	55.4	52.1 - 58.7	233,700

HIV - ever been tested (18-64) by State, County, Island, Community, BRFSS Age Group, DOH Race-Ethnicity, Gender, Education Level, Employment Status (Grouped), Household Income, Poverty Level, Marital Status (Grouped), Married, Health Care Coverage, for the Year(s) - 2000, 2001, 2002, 2003, 2004, 2005, 2006, 2007, 2008, 2009, 2010

Note: Weighted numbers (#), percentages and 95% confidence intervals; Respondents aged 18 years and older; n/r (Not Reportable) - If the unweighted total responses for a dimension (row) is <50 that row will not be shown; n/a (Not Available) - Not asked of a subset of respondents

Year: 2002

Employment Status (Grouped)	Yes			No			Estimated Population
	#	%	C.I. (95%)	#	%	C.I. (95%)	#
Employed	237,800	42.8	40.7 - 45.0	317,300	57.2	55.0 - 59.3	555,100
Unemployed	12,800	33.1	24.3 - 41.9	25,800	66.9	58.1 - 75.7	38,600
Retired/Unable to work	17,100	36.4	28.5 - 44.3	29,900	63.6	55.7 - 71.5	47,000
Student/Homemaker	31,700	35.4	29.8 - 40.9	58,000	64.6	59.1 - 70.2	89,700

HIV - ever been tested (18-64) by State, County, Island, Community, BRFSS Age Group, DOH Race-Ethnicity, Gender, Education Level, Employment Status (Grouped), Household Income, Poverty Level, Marital Status (Grouped), Married, Health Care Coverage, for the Year(s) - 2000, 2001, 2002, 2003, 2004, 2005, 2006, 2007, 2008, 2009, 2010

Note: Weighted numbers (#), percentages and 95% confidence intervals; Respondents aged 18 years and older; n/r (Not Reportable) - If the unweighted total responses for a dimension (row) is <50 that row will not be shown; n/a (Not Available) - Not asked of a subset of respondents

Year: 2002

Household Income	Yes			No			Estimated Population
	#	%	C.I. (95%)	#	%	C.I. (95%)	#
Less than \$10,000	14,100	53.7	44.4 - 63.1	12,200	46.3	36.9 - 55.6	26,300
\$10,000 to \$14,999	12,900	48.7	39.6 - 57.8	13,500	51.3	42.2 - 60.4	26,400
\$15,000 to \$19,999	18,800	52.6	41.6 - 63.5	16,900	47.4	36.5 - 58.4	35,700
\$20,000 to \$24,999	18,400	52.5	44.6 - 60.4	16,600	47.5	39.6 - 55.4	35,000
\$25,000 to \$34,999	33,200	51.7	45.7 - 57.7	31,000	48.3	42.3 - 54.3	64,200
\$35,000 to \$49,999	53,400	50.4	45.5 - 55.3	52,600	49.6	44.7 - 54.5	106,100
\$50,000 to \$74,999	44,000	40.7	35.9 - 45.6	64,000	59.3	54.4 - 64.1	108,000
\$75,000 or more	55,900	46.9	42.1 - 51.7	63,400	53.1	48.3 - 57.9	119,300

HIV - ever been tested (18-64) by State, County, Island, Community, BRFSS Age Group, DOH Race-Ethnicity, Gender, Education Level, Employment Status (Grouped), Household Income, Poverty Level, Marital Status (Grouped), Married, Health Care Coverage, for the Year(s) - 2000, 2001, 2002, 2003, 2004, 2005, 2006, 2007, 2008, 2009, 2010

Note: Weighted numbers (#), percentages and 95% confidence intervals; Respondents aged 18 years and older; n/r (Not Reportable) - If the unweighted total responses for a dimension (row) is <50 that row will not be shown; n/a (Not Available) - Not asked of a subset of respondents

Year: 2002

Poverty Level	Yes			No			Estimated Population
	#	%	C.I. (95%)	#	%	C.I. (95%)	#
0-130%	62,500	53.2	48.1 - 58.3	54,900	46.8	41.7 - 51.9	117,400
131-185%	27,500	48.2	41.8 - 54.5	29,600	51.8	45.5 - 58.2	57,100
186+%	160,700	46.4	43.7 - 49.1	185,800	53.6	50.9 - 56.3	346,400

HIV - ever been tested (18-64) by State, County, Island, Community, BRFSS Age Group, DOH Race-Ethnicity, Gender, Education Level, Employment Status (Grouped), Household Income, Poverty Level, Marital Status (Grouped), Married, Health Care Coverage, for the Year(s) - 2000, 2001, 2002, 2003, 2004, 2005, 2006, 2007, 2008, 2009, 2010

Note: Weighted numbers (#), percentages and 95% confidence intervals; Respondents aged 18 years and older; n/r (Not Reportable) - If the unweighted total responses for a dimension (row) is <50 that row will not be shown; n/a (Not Available) - Not asked of a subset of respondents

Year: 2002

Marital Status (Grouped)	Yes			No			Estimated Population
	#	%	C.I. (95%)	#	%	C.I. (95%)	#
Married	168,800	39.8	37.4 - 42.2	255,100	60.2	57.8 - 62.6	423,900
Unmarried Couple	8,800	40.7	29.3 - 52.0	12,800	59.3	48.0 - 70.7	21,600
Widowed	6,100	52.6	38.2 - 67.1	5,500	47.4	32.9 - 61.8	11,700
Other	116,200	42.5	39.1 - 45.8	157,600	57.5	54.2 - 60.9	273,800

Married	Yes			No			Estimated Population
	#	%	C.I. (95%)	#	%	C.I. (95%)	#
Yes	173,700	40.0	37.7 - 42.4	260,000	60.0	57.6 - 62.3	433,700
No	126,200	42.5	39.3 - 45.7	170,400	57.5	54.3 - 60.7	296,600

HIV - ever been tested (18-64) by State, County, Island, Community, BRFSS Age Group, DOH Race-Ethnicity, Gender, Education Level, Employment Status (Grouped), Household Income, Poverty Level, Marital Status (Grouped), Married, Health Care Coverage, for the Year(s) - 2000, 2001, 2002, 2003, 2004, 2005, 2006, 2007, 2008, 2009, 2010

Note: Weighted numbers (#), percentages and 95% confidence intervals; Respondents aged 18 years and older; n/r (Not Reportable) - If the unweighted total responses for a dimension (row) is <50 that row will not be shown; n/a (Not Available) - Not asked of a subset of respondents

Year: 2002

Health Care Coverage	Yes			No			Estimated Population
	#	%	C.I. (95%)	#	%	C.I. (95%)	#
Yes	273,000	41.7	39.7 - 43.8	381,600	58.3	56.2 - 60.3	654,600
No	26,700	35.4	29.7 - 41.2	48,600	64.6	58.8 - 70.3	75,300

HIV - ever been tested (18-64) by State, County, Island, Community, BRFSS Age Group, DOH Race-Ethnicity, Gender, Education Level, Employment Status (Grouped), Household Income, Poverty Level, Marital Status (Grouped), Married, Health Care Coverage, for the Year(s) - 2000, 2001, 2002, 2003, 2004, 2005, 2006, 2007, 2008, 2009, 2010

Note: Weighted numbers (#), percentages and 95% confidence intervals; Respondents aged 18 years and older; n/r (Not Reportable) - If the unweighted total responses for a dimension (row) is <50 that row will not be shown; n/a (Not Available) - Not asked of a subset of respondents

Year: 2001

State	Yes			No			Estimated Population
	#	%	C.I. (95%)	#	%	C.I. (95%)	#
Hawaii State	296,100	41.6	39.3 - 43.8	416,400	58.4	56.2 - 60.7	712,500

County	Yes			No			Estimated Population
	#	%	C.I. (95%)	#	%	C.I. (95%)	#
Hawaii	33,100	39.3	35.2 - 43.3	51,200	60.7	56.7 - 64.8	84,300
Honolulu	217,700	42.2	39.2 - 45.1	298,800	57.8	54.9 - 60.8	516,500
Kauai	12,200	37.5	32.0 - 42.9	20,300	62.5	57.1 - 68.0	32,500
Maui	33,100	41.8	35.9 - 47.7	46,000	58.2	52.3 - 64.1	79,100

HIV - ever been tested (18-64) by State, County, Island, Community, BRFSS Age Group, DOH Race-Ethnicity, Gender, Education Level, Employment Status (Grouped), Household Income, Poverty Level, Marital Status (Grouped), Married, Health Care Coverage, for the Year(s) - 2000, 2001, 2002, 2003, 2004, 2005, 2006, 2007, 2008, 2009, 2010

Note: Weighted numbers (#), percentages and 95% confidence intervals; Respondents aged 18 years and older; n/r (Not Reportable) - If the unweighted total responses for a dimension (row) is <50 that row will not be shown; n/a (Not Available) - Not asked of a subset of respondents

Year: 2001

Island	Yes			No			Estimated Population
	#	%	C.I. (95%)	#	%	C.I. (95%)	#
Hawaii	33,100	39.3	35.2 - 43.3	51,200	60.7	56.7 - 64.8	84,300
Kauai	12,200	37.5	32.0 - 42.9	20,300	62.5	57.1 - 68.0	32,500
Lanai	700	39.1	25.1 - 53.2	1,200	60.9	46.8 - 74.9	1,900
Maui	31,300	42.5	36.2 - 48.8	42,300	57.5	51.2 - 63.8	73,500
Molokai	1,100	29.1	16.3 - 41.8	2,600	70.9	58.2 - 83.7	3,700
Oahu	217,700	42.2	39.2 - 45.1	298,800	57.8	54.9 - 60.8	516,500

Community	Yes			No			Estimated Population
	#	%	C.I. (95%)	#	%	C.I. (95%)	#
Aiea/ Pearl City	16,600	36.2	27.1 - 45.3	29,300	63.8	54.7 - 72.9	45,900

HIV - ever been tested (18-64) by State, County, Island, Community, BRFSS Age Group, DOH Race-Ethnicity, Gender, Education Level, Employment Status (Grouped), Household Income, Poverty Level, Marital Status (Grouped), Married, Health Care Coverage, for the Year(s) - 2000, 2001, 2002, 2003, 2004, 2005, 2006, 2007, 2008, 2009, 2010

Note: Weighted numbers (#), percentages and 95% confidence intervals; Respondents aged 18 years and older; n/r (Not Reportable) - If the unweighted total responses for a dimension (row) is <50 that row will not be shown; n/a (Not Available) - Not asked of a subset of respondents

Year: 2001

Community	Yes			No			Estimated Population
	#	%	C.I. (95%)	#	%	C.I. (95%)	#
Ala Moana	7,700	41.2	28.8 - 53.6	11,000	58.8	46.4 - 71.2	18,700
Hanalei/ Kapaa	5,700	39.2	30.8 - 47.7	8,800	60.8	52.3 - 69.2	14,500
Hilo	7,900	34.2	26.9 - 41.5	15,200	65.8	58.5 - 73.1	23,200
Kaaawa/ Kahaluu/ Kaneohe	13,400	41.6	29.6 - 53.5	18,900	58.4	46.5 - 70.4	32,300
Kahului	14,700	54.0	41.9 - 66.1	12,500	46.0	33.9 - 58.1	27,200
Kailua/ Waimanalo	20,200	52.3	42.3 - 62.4	18,400	47.7	37.6 - 57.7	38,600
Kaimuki/ Palolo/ Waikiki	22,300	39.9	31.3 - 48.6	33,500	60.1	51.4 - 68.7	55,800
Kona	10,400	41.0	33.4 - 48.7	15,000	59.0	51.3 - 66.6	25,400
Lahaina/ Wailuku	7,700	33.0	25.5 - 40.5	15,600	67.0	59.5 - 74.5	23,200

HIV - ever been tested (18-64) by State, County, Island, Community, BRFSS Age Group, DOH Race-Ethnicity, Gender, Education Level, Employment Status (Grouped), Household Income, Poverty Level, Marital Status (Grouped), Married, Health Care Coverage, for the Year(s) - 2000, 2001, 2002, 2003, 2004, 2005, 2006, 2007, 2008, 2009, 2010

Note: Weighted numbers (#), percentages and 95% confidence intervals; Respondents aged 18 years and older; n/r (Not Reportable) - If the unweighted total responses for a dimension (row) is <50 that row will not be shown; n/a (Not Available) - Not asked of a subset of respondents

Year: 2001

Community	Yes			No			Estimated Population
	#	%	C.I. (95%)	#	%	C.I. (95%)	#
Lanai	700	39.1	25.1 - 53.2	1,200	60.9	46.8 - 74.9	1,900
Lihue-Waimea	6,500	36.1	29.0 - 43.1	11,500	63.9	56.9 - 71.0	18,000
Manoa/ Upper Makiki	18,400	43.8	33.3 - 54.3	23,600	56.2	45.7 - 66.7	41,900
Mililani/ Wahiawa	25,700	51.2	41.8 - 60.6	24,500	48.8	39.4 - 58.2	50,100
Molokai	1,100	29.1	16.3 - 41.8	2,600	70.9	58.2 - 83.7	3,700
Nanakuli/ Waianae	9,700	40.1	24.7 - 55.4	14,500	59.9	44.6 - 75.3	24,200
N.Hawaii	8,100	42.9	33.7 - 52.1	10,800	57.1	47.9 - 66.3	18,800
N.Shore/ Laie	7,100	36.0	20.6 - 51.3	12,600	64.0	48.7 - 79.4	19,700
Nuuanu/ Kalihi/ Moanalua	14,200	28.4	19.1 - 37.7	35,800	71.6	62.3 - 80.9	50,000

HIV - ever been tested (18-64) by State, County, Island, Community, BRFSS Age Group, DOH Race-Ethnicity, Gender, Education Level, Employment Status (Grouped), Household Income, Poverty Level, Marital Status (Grouped), Married, Health Care Coverage, for the Year(s) - 2000, 2001, 2002, 2003, 2004, 2005, 2006, 2007, 2008, 2009, 2010

Note: Weighted numbers (#), percentages and 95% confidence intervals; Respondents aged 18 years and older; n/r (Not Reportable) - If the unweighted total responses for a dimension (row) is <50 that row will not be shown; n/a (Not Available) - Not asked of a subset of respondents

Year: 2001

Community	Yes			No			Estimated Population
	#	%	C.I. (95%)	#	%	C.I. (95%)	#
Puna/ Kau	6,700	39.6	31.1 - 48.0	10,300	60.4	52.0 - 68.9	17,000
Salt Lake/ Foster Village	20,700	65.7	54.1 - 77.3	10,800	34.3	22.7 - 45.9	31,400
Upcountry/ Hana	8,900	38.5	31.0 - 46.1	14,200	61.5	53.9 - 69.0	23,200
Waialae/ Kahala/ Hawaii Kai	10,900	42.0	29.4 - 54.6	15,000	58.0	45.4 - 70.6	25,800
Waipahu/ Kapolei/ Ewa	31,000	37.8	30.5 - 45.1	51,000	62.2	54.9 - 69.5	82,000

HIV - ever been tested (18-64) by State, County, Island, Community, BRFSS Age Group, DOH Race-Ethnicity, Gender, Education Level, Employment Status (Grouped), Household Income, Poverty Level, Marital Status (Grouped), Married, Health Care Coverage, for the Year(s) - 2000, 2001, 2002, 2003, 2004, 2005, 2006, 2007, 2008, 2009, 2010

Note: Weighted numbers (#), percentages and 95% confidence intervals; Respondents aged 18 years and older; n/r (Not Reportable) - If the unweighted total responses for a dimension (row) is <50 that row will not be shown; n/a (Not Available) - Not asked of a subset of respondents

Year: 2001

BRFSS Age Group	Yes			No			Estimated Population
	#	%	C.I. (95%)	#	%	C.I. (95%)	#
18-24	47,800	45.9	38.6 - 53.3	56,300	54.1	46.7 - 61.4	104,200
25-34	89,600	54.4	49.8 - 59.1	74,900	45.6	40.9 - 50.2	164,500
35-44	80,400	45.0	40.6 - 49.4	98,200	55.0	50.6 - 59.4	178,600
45-54	50,900	34.1	29.8 - 38.3	98,600	65.9	61.7 - 70.2	149,400
55-64	27,500	23.7	18.7 - 28.7	88,400	76.3	71.3 - 81.3	115,900

HIV - ever been tested (18-64) by State, County, Island, Community, BRFSS Age Group, DOH Race-Ethnicity, Gender, Education Level, Employment Status (Grouped), Household Income, Poverty Level, Marital Status (Grouped), Married, Health Care Coverage, for the Year(s) - 2000, 2001, 2002, 2003, 2004, 2005, 2006, 2007, 2008, 2009, 2010

Note: Weighted numbers (#), percentages and 95% confidence intervals; Respondents aged 18 years and older; n/r (Not Reportable) - If the unweighted total responses for a dimension (row) is <50 that row will not be shown; n/a (Not Available) - Not asked of a subset of respondents

Year: 2001

DOH Race-Ethnicity	Yes			No			Estimated Population
	#	%	C.I. (95%)	#	%	C.I. (95%)	#
Caucasian	139,600	55.7	52.2 - 59.1	111,100	44.3	40.9 - 47.8	250,700
Native Hawaiian	42,700	43.0	36.8 - 49.2	56,700	57.0	50.8 - 63.2	99,400
Chinese	10,300	26.8	18.4 - 35.1	28,100	73.2	64.9 - 81.6	38,300
Filipino	31,100	29.9	23.0 - 36.8	72,700	70.1	63.2 - 77.0	103,800
Japanese	28,600	22.5	18.1 - 26.9	98,300	77.5	73.1 - 81.9	126,900
Black	12,000	74.7	59.3 - 90.1	4,100	25.3	9.9 - 40.7	16,000
Other Asian	5,700	26.9	12.9 - 41.0	15,500	73.1	59.0 - 87.1	21,100
Other Pacific Islander	6,800	37.8	21.9 - 53.7	11,200	62.2	46.3 - 78.1	18,000
Other	15,200	49.1	37.1 - 61.1	15,800	50.9	38.9 - 62.9	31,000

HIV - ever been tested (18-64) by State, County, Island, Community, BRFSS Age Group, DOH Race-Ethnicity, Gender, Education Level, Employment Status (Grouped), Household Income, Poverty Level, Marital Status (Grouped), Married, Health Care Coverage, for the Year(s) - 2000, 2001, 2002, 2003, 2004, 2005, 2006, 2007, 2008, 2009, 2010

Note: Weighted numbers (#), percentages and 95% confidence intervals; Respondents aged 18 years and older; n/r (Not Reportable) - If the unweighted total responses for a dimension (row) is <50 that row will not be shown; n/a (Not Available) - Not asked of a subset of respondents

Year: 2001

Gender	Yes			No			Estimated Population
	#	%	C.I. (95%)	#	%	C.I. (95%)	#
Male	149,800	40.9	37.5 - 44.3	216,200	59.1	55.7 - 62.5	366,000
Female	146,300	42.2	39.2 - 45.2	200,200	57.8	54.8 - 60.8	346,500

Education Level	Yes			No			Estimated Population
	#	%	C.I. (95%)	#	%	C.I. (95%)	#
Grades 9 thru 11 (Some High School)	5,400	24.7	14.8 - 34.7	16,500	75.3	65.3 - 85.2	21,900
Grades 12 or GED (High School Grad)	92,500	39.6	35.6 - 43.7	140,900	60.4	56.3 - 64.4	233,400
College 1 to 3 years (Some College/ Tech)	103,100	45.7	41.4 - 50.0	122,500	54.3	50.0 - 58.6	225,600
College 4 years or more (College Grad)	93,500	41.5	37.9 - 45.2	131,700	58.5	54.8 - 62.1	225,200

HIV - ever been tested (18-64) by State, County, Island, Community, BRFSS Age Group, DOH Race-Ethnicity, Gender, Education Level, Employment Status (Grouped), Household Income, Poverty Level, Marital Status (Grouped), Married, Health Care Coverage, for the Year(s) - 2000, 2001, 2002, 2003, 2004, 2005, 2006, 2007, 2008, 2009, 2010

Note: Weighted numbers (#), percentages and 95% confidence intervals; Respondents aged 18 years and older; n/r (Not Reportable) - If the unweighted total responses for a dimension (row) is <50 that row will not be shown; n/a (Not Available) - Not asked of a subset of respondents

Year: 2001

Employment Status (Grouped)	Yes			No			Estimated Population
	#	%	C.I. (95%)	#	%	C.I. (95%)	#
Employed	237,600	42.9	40.3 - 45.5	316,000	57.1	54.5 - 59.7	553,600
Unemployed	10,600	37.3	26.1 - 48.5	17,800	62.7	51.5 - 73.9	28,400
Retired/Unable to work	14,100	27.7	20.6 - 34.7	36,900	72.3	65.3 - 79.4	51,100
Student/Homemaker	33,600	42.5	35.2 - 49.7	45,500	57.5	50.3 - 64.8	79,000

HIV - ever been tested (18-64) by State, County, Island, Community, BRFSS Age Group, DOH Race-Ethnicity, Gender, Education Level, Employment Status (Grouped), Household Income, Poverty Level, Marital Status (Grouped), Married, Health Care Coverage, for the Year(s) - 2000, 2001, 2002, 2003, 2004, 2005, 2006, 2007, 2008, 2009, 2010

Note: Weighted numbers (#), percentages and 95% confidence intervals; Respondents aged 18 years and older; n/r (Not Reportable) - If the unweighted total responses for a dimension (row) is <50 that row will not be shown; n/a (Not Available) - Not asked of a subset of respondents

Year: 2001

Household Income	Yes			No			Estimated Population
	#	%	C.I. (95%)	#	%	C.I. (95%)	#
Less than \$10,000	13,400	44.0	32.2 - 55.7	17,100	56.0	44.3 - 67.8	30,500
\$10,000 to \$14,999	14,800	50.6	39.3 - 62.0	14,500	49.4	38.0 - 60.7	29,300
\$15,000 to \$19,999	15,500	54.4	44.0 - 64.7	13,000	45.6	35.3 - 56.0	28,500
\$20,000 to \$24,999	21,800	44.7	33.2 - 56.2	27,000	55.3	43.8 - 66.8	48,800
\$25,000 to \$34,999	36,300	49.5	42.8 - 56.1	37,100	50.5	43.9 - 57.2	73,500
\$35,000 to \$49,999	49,500	43.5	38.0 - 48.9	64,400	56.5	51.1 - 62.0	113,900
\$50,000 to \$74,999	49,300	45.7	40.0 - 51.4	58,600	54.3	48.6 - 60.0	108,000
\$75,000 or more	44,100	40.9	35.2 - 46.5	63,800	59.1	53.5 - 64.8	107,900

HIV - ever been tested (18-64) by State, County, Island, Community, BRFSS Age Group, DOH Race-Ethnicity, Gender, Education Level, Employment Status (Grouped), Household Income, Poverty Level, Marital Status (Grouped), Married, Health Care Coverage, for the Year(s) - 2000, 2001, 2002, 2003, 2004, 2005, 2006, 2007, 2008, 2009, 2010

Note: Weighted numbers (#), percentages and 95% confidence intervals; Respondents aged 18 years and older; n/r (Not Reportable) - If the unweighted total responses for a dimension (row) is <50 that row will not be shown; n/a (Not Available) - Not asked of a subset of respondents

Year: 2001

Poverty Level	Yes			No			Estimated Population
	#	%	C.I. (95%)	#	%	C.I. (95%)	#
0-130%	51,900	46.0	39.4 - 52.7	60,900	54.0	47.3 - 60.6	112,800
131-185%	43,800	47.9	41.1 - 54.7	47,600	52.1	45.3 - 58.9	91,400
186+%	149,100	44.4	41.3 - 47.5	187,000	55.6	52.5 - 58.7	336,100

Marital Status (Grouped)	Yes			No			Estimated Population
	#	%	C.I. (95%)	#	%	C.I. (95%)	#
Married	160,700	40.6	37.5 - 43.7	235,500	59.4	56.3 - 62.5	396,300
Widowed	3,000	30.6	15.5 - 45.7	6,700	69.4	54.3 - 84.5	9,600
Other	127,100	42.7	39.2 - 46.2	170,500	57.3	53.8 - 60.8	297,700

HIV - ever been tested (18-64) by State, County, Island, Community, BRFSS Age Group, DOH Race-Ethnicity, Gender, Education Level, Employment Status (Grouped), Household Income, Poverty Level, Marital Status (Grouped), Married, Health Care Coverage, for the Year(s) - 2000, 2001, 2002, 2003, 2004, 2005, 2006, 2007, 2008, 2009, 2010

Note: Weighted numbers (#), percentages and 95% confidence intervals; Respondents aged 18 years and older; n/r (Not Reportable) - If the unweighted total responses for a dimension (row) is <50 that row will not be shown; n/a (Not Available) - Not asked of a subset of respondents

Year: 2001

Married	Yes			No			Estimated Population
	#	%	C.I. (95%)	#	%	C.I. (95%)	#
Yes	168,700	40.9	37.8 - 43.9	244,000	59.1	56.1 - 62.2	412,700
No	127,100	42.5	39.0 - 45.9	172,100	57.5	54.1 - 61.0	299,200

Health Care Coverage	Yes			No			Estimated Population
	#	%	C.I. (95%)	#	%	C.I. (95%)	#
Yes	272,600	42.1	39.7 - 44.5	375,400	57.9	55.5 - 60.3	648,000
No	23,500	37.0	29.5 - 44.6	40,000	63.0	55.4 - 70.5	63,500

HIV - ever been tested (18-64) by State, County, Island, Community, BRFSS Age Group, DOH Race-Ethnicity, Gender, Education Level, Employment Status (Grouped), Household Income, Poverty Level, Marital Status (Grouped), Married, Health Care Coverage, for the Year(s) - 2000, 2001, 2002, 2003, 2004, 2005, 2006, 2007, 2008, 2009, 2010

Note: Weighted numbers (#), percentages and 95% confidence intervals; Respondents aged 18 years and older; n/r (Not Reportable) - If the unweighted total responses for a dimension (row) is <50 that row will not be shown; n/a (Not Available) - Not asked of a subset of respondents

Year: 2000

State	Yes			No			Estimated Population
	#	%	C.I. (95%)	#	%	C.I. (95%)	#
Hawaii State	200,500	36.8	34.8 - 38.9	343,700	63.2	61.1 - 65.2	544,200

County	Yes			No			Estimated Population
	#	%	C.I. (95%)	#	%	C.I. (95%)	#
Hawaii	27,400	41.2	37.3 - 45.1	39,200	58.8	54.9 - 62.7	66,600
Honolulu	137,000	34.8	32.1 - 37.5	256,200	65.2	62.5 - 67.9	393,200
Kauai	11,300	42.9	36.9 - 48.9	15,100	57.1	51.1 - 63.1	26,400
Maui	24,800	42.7	38.2 - 47.3	33,200	57.3	52.7 - 61.8	58,000

HIV - ever been tested (18-64) by State, County, Island, Community, BRFSS Age Group, DOH Race-Ethnicity, Gender, Education Level, Employment Status (Grouped), Household Income, Poverty Level, Marital Status (Grouped), Married, Health Care Coverage, for the Year(s) - 2000, 2001, 2002, 2003, 2004, 2005, 2006, 2007, 2008, 2009, 2010

Note: Weighted numbers (#), percentages and 95% confidence intervals; Respondents aged 18 years and older; n/r (Not Reportable) - If the unweighted total responses for a dimension (row) is <50 that row will not be shown; n/a (Not Available) - Not asked of a subset of respondents

Year: 2000

Island	Yes			No			Estimated Population
	#	%	C.I. (95%)	#	%	C.I. (95%)	#
Hawaii	27,400	41.2	37.3 - 45.1	39,200	58.8	54.9 - 62.7	66,600
Kauai	11,300	42.9	36.9 - 48.9	15,100	57.1	51.1 - 63.1	26,400
Lanai	400	27.8	16.7 - 38.9	1,100	72.2	61.1 - 83.3	1,600
Maui	23,200	43.6	38.7 - 48.4	30,100	56.4	51.6 - 61.3	53,200
Molokai	1,200	36.3	25.3 - 47.2	2,000	63.7	52.8 - 74.7	3,200
Oahu	137,000	34.8	32.1 - 37.5	256,200	65.2	62.5 - 67.9	393,200

Community	Yes			No			Estimated Population
	#	%	C.I. (95%)	#	%	C.I. (95%)	#
Aiea/ Pearl City	10,900	30.8	22.1 - 39.4	24,500	69.2	60.6 - 77.9	35,300

HIV - ever been tested (18-64) by State, County, Island, Community, BRFSS Age Group, DOH Race-Ethnicity, Gender, Education Level, Employment Status (Grouped), Household Income, Poverty Level, Marital Status (Grouped), Married, Health Care Coverage, for the Year(s) - 2000, 2001, 2002, 2003, 2004, 2005, 2006, 2007, 2008, 2009, 2010

Note: Weighted numbers (#), percentages and 95% confidence intervals; Respondents aged 18 years and older; n/r (Not Reportable) - If the unweighted total responses for a dimension (row) is <50 that row will not be shown; n/a (Not Available) - Not asked of a subset of respondents

Year: 2000

Community	Yes			No			Estimated Population
	#	%	C.I. (95%)	#	%	C.I. (95%)	#
Ala Moana	6,500	34.1	22.5 - 45.7	12,500	65.9	54.3 - 77.5	19,000
Hanalei/ Kapaa	5,200	45.1	36.6 - 53.6	6,300	54.9	46.4 - 63.4	11,500
Hilo	8,200	39.9	33.4 - 46.5	12,400	60.1	53.5 - 66.6	20,600
Kaaawa/ Kahaluu/ Kaneohe	7,900	33.8	22.2 - 45.3	15,400	66.2	54.7 - 77.8	23,300
Kahului	8,800	44.1	35.9 - 52.3	11,100	55.9	47.7 - 64.1	19,900
Kailua/ Waimanalo	9,500	41.1	30.9 - 51.3	13,600	58.9	48.7 - 69.1	23,100
Kaimuki/ Palolo/ Waikiki	10,300	31.5	23.4 - 39.7	22,300	68.5	60.3 - 76.6	32,600
Kona	8,800	46.9	38.3 - 55.6	10,000	53.1	44.4 - 61.7	18,800
Lahaina/ Wailuku	8,100	45.0	36.3 - 53.8	9,900	55.0	46.2 - 63.7	18,000

HIV - ever been tested (18-64) by State, County, Island, Community, BRFSS Age Group, DOH Race-Ethnicity, Gender, Education Level, Employment Status (Grouped), Household Income, Poverty Level, Marital Status (Grouped), Married, Health Care Coverage, for the Year(s) - 2000, 2001, 2002, 2003, 2004, 2005, 2006, 2007, 2008, 2009, 2010

Note: Weighted numbers (#), percentages and 95% confidence intervals; Respondents aged 18 years and older; n/r (Not Reportable) - If the unweighted total responses for a dimension (row) is <50 that row will not be shown; n/a (Not Available) - Not asked of a subset of respondents

Year: 2000

Community	Yes			No			Estimated Population
	#	%	C.I. (95%)	#	%	C.I. (95%)	#
Lanai	400	27.8	16.7 - 38.9	1,100	72.2	61.1 - 83.3	1,600
Lihue-Waimea	6,100	41.2	32.8 - 49.6	8,800	58.8	50.4 - 67.2	14,900
Manoa/ Upper Makiki	11,100	34.7	23.8 - 45.5	20,900	65.3	54.5 - 76.2	32,000
Mililani/ Wahiawa	17,400	46.9	38.0 - 55.7	19,700	53.1	44.3 - 62.0	37,100
Molokai	1,200	36.3	25.3 - 47.2	2,000	63.7	52.8 - 74.7	3,200
Nanakuli/ Waianae	8,100	42.9	29.0 - 56.9	10,700	57.1	43.1 - 71.0	18,800
N.Hawaii	5,300	38.2	30.0 - 46.3	8,600	61.8	53.7 - 70.0	13,900
N.Shore/ Laie	6,400	42.4	27.6 - 57.2	8,600	57.6	42.8 - 72.4	15,000
Nuuanu/ Kalihi/ Moanalua	10,400	22.9	15.9 - 29.9	35,000	77.1	70.1 - 84.1	45,500

HIV - ever been tested (18-64) by State, County, Island, Community, BRFSS Age Group, DOH Race-Ethnicity, Gender, Education Level, Employment Status (Grouped), Household Income, Poverty Level, Marital Status (Grouped), Married, Health Care Coverage, for the Year(s) - 2000, 2001, 2002, 2003, 2004, 2005, 2006, 2007, 2008, 2009, 2010

Note: Weighted numbers (#), percentages and 95% confidence intervals; Respondents aged 18 years and older; n/r (Not Reportable) - If the unweighted total responses for a dimension (row) is <50 that row will not be shown; n/a (Not Available) - Not asked of a subset of respondents

Year: 2000

Community	Yes			No			Estimated Population
	#	%	C.I. (95%)	#	%	C.I. (95%)	#
Puna/ Kau	5,100	38.2	30.7 - 45.7	8,200	61.8	54.3 - 69.3	13,300
Salt Lake/ Foster Village	11,600	47.2	36.3 - 58.1	13,000	52.8	41.9 - 63.7	24,500
Upcountry/ Hana	6,300	41.1	32.9 - 49.3	9,100	58.9	50.7 - 67.1	15,400
Waialae/ Kahala/ Hawaii Kai	7,100	27.5	18.3 - 36.8	18,800	72.5	63.2 - 81.7	25,900
Waipahu/ Kapolei/ Ewa	20,000	32.7	25.8 - 39.5	41,200	67.3	60.5 - 74.2	61,100

HIV - ever been tested (18-64) by State, County, Island, Community, BRFSS Age Group, DOH Race-Ethnicity, Gender, Education Level, Employment Status (Grouped), Household Income, Poverty Level, Marital Status (Grouped), Married, Health Care Coverage, for the Year(s) - 2000, 2001, 2002, 2003, 2004, 2005, 2006, 2007, 2008, 2009, 2010

Note: Weighted numbers (#), percentages and 95% confidence intervals; Respondents aged 18 years and older; n/r (Not Reportable) - If the unweighted total responses for a dimension (row) is <50 that row will not be shown; n/a (Not Available) - Not asked of a subset of respondents

Year: 2000

BRFSS Age Group	Yes			No			Estimated Population
	#	%	C.I. (95%)	#	%	C.I. (95%)	#
18-24	32,800	39.9	33.7 - 46.1	49,400	60.1	53.9 - 66.3	82,200
25-34	59,300	50.4	45.7 - 55.2	58,300	49.6	44.8 - 54.3	117,600
35-44	53,000	39.4	35.4 - 43.4	81,500	60.6	56.6 - 64.6	134,500
45-54	37,700	32.6	28.7 - 36.5	77,800	67.4	63.5 - 71.3	115,500
55-64	17,700	18.8	14.8 - 22.8	76,700	81.2	77.2 - 85.2	94,400

HIV - ever been tested (18-64) by State, County, Island, Community, BRFSS Age Group, DOH Race-Ethnicity, Gender, Education Level, Employment Status (Grouped), Household Income, Poverty Level, Marital Status (Grouped), Married, Health Care Coverage, for the Year(s) - 2000, 2001, 2002, 2003, 2004, 2005, 2006, 2007, 2008, 2009, 2010

Note: Weighted numbers (#), percentages and 95% confidence intervals; Respondents aged 18 years and older; n/r (Not Reportable) - If the unweighted total responses for a dimension (row) is <50 that row will not be shown; n/a (Not Available) - Not asked of a subset of respondents

Year: 2000

DOH Race-Ethnicity	Yes			No			Estimated Population
	#	%	C.I. (95%)	#	%	C.I. (95%)	#
Caucasian	80,600	53.0	49.3 - 56.6	71,600	47.0	43.4 - 50.7	152,100
Native Hawaiian	34,500	35.8	30.6 - 40.9	62,000	64.2	59.1 - 69.4	96,500
Chinese	5,900	21.8	13.6 - 30.0	21,100	78.2	70.0 - 86.4	27,000
Filipino	25,900	26.1	21.0 - 31.3	73,100	73.9	68.7 - 79.0	99,000
Japanese	25,100	23.0	18.9 - 27.1	83,900	77.0	72.9 - 81.1	109,000
Other Asian	2,800	24.3	12.5 - 36.0	8,600	75.7	64.0 - 87.5	11,400
Mixed Ethnicity	8,000	55.5	43.5 - 67.5	6,400	44.5	32.5 - 56.5	14,500
Other	6,400	41.5	29.1 - 53.9	9,000	58.5	46.1 - 70.9	15,500

HIV - ever been tested (18-64) by State, County, Island, Community, BRFSS Age Group, DOH Race-Ethnicity, Gender, Education Level, Employment Status (Grouped), Household Income, Poverty Level, Marital Status (Grouped), Married, Health Care Coverage, for the Year(s) - 2000, 2001, 2002, 2003, 2004, 2005, 2006, 2007, 2008, 2009, 2010

Note: Weighted numbers (#), percentages and 95% confidence intervals; Respondents aged 18 years and older; n/r (Not Reportable) - If the unweighted total responses for a dimension (row) is <50 that row will not be shown; n/a (Not Available) - Not asked of a subset of respondents

Year: 2000

Gender	Yes			No			Estimated Population
	#	%	C.I. (95%)	#	%	C.I. (95%)	#
Male	97,500	37.3	34.1 - 40.5	164,100	62.7	59.5 - 65.9	261,600
Female	103,000	36.4	33.7 - 39.2	179,600	63.6	60.8 - 66.3	282,600

Education Level	Yes			No			Estimated Population
	#	%	C.I. (95%)	#	%	C.I. (95%)	#
Grades 9 thru 11 (Some High School)	8,700	29.3	19.0 - 39.5	21,000	70.7	60.5 - 81.0	29,700
Grades 12 or GED (High School Grad)	61,200	33.4	29.8 - 36.9	122,200	66.6	63.1 - 70.2	183,400
College 1 to 3 years (Some College/ Tech)	66,200	39.9	36.2 - 43.7	99,600	60.1	56.3 - 63.8	165,900
College 4 years or more (College Grad)	62,200	39.4	35.7 - 43.1	95,700	60.6	56.9 - 64.3	157,900

HIV - ever been tested (18-64) by State, County, Island, Community, BRFSS Age Group, DOH Race-Ethnicity, Gender, Education Level, Employment Status (Grouped), Household Income, Poverty Level, Marital Status (Grouped), Married, Health Care Coverage, for the Year(s) - 2000, 2001, 2002, 2003, 2004, 2005, 2006, 2007, 2008, 2009, 2010

Note: Weighted numbers (#), percentages and 95% confidence intervals; Respondents aged 18 years and older; n/r (Not Reportable) - If the unweighted total responses for a dimension (row) is <50 that row will not be shown; n/a (Not Available) - Not asked of a subset of respondents

Year: 2000

Employment Status (Grouped)	Yes			No			Estimated Population
	#	%	C.I. (95%)	#	%	C.I. (95%)	#
Employed	157,700	37.6	35.2 - 40.0	262,000	62.4	60.0 - 64.8	419,700
Unemployed	8,300	33.8	23.1 - 44.4	16,200	66.2	55.6 - 76.9	24,500
Retired/Unable to work	10,300	23.6	17.8 - 29.5	33,200	76.4	70.5 - 82.2	43,400
Student/Homemaker	24,300	43.3	36.8 - 49.9	31,800	56.7	50.1 - 63.2	56,200

HIV - ever been tested (18-64) by State, County, Island, Community, BRFSS Age Group, DOH Race-Ethnicity, Gender, Education Level, Employment Status (Grouped), Household Income, Poverty Level, Marital Status (Grouped), Married, Health Care Coverage, for the Year(s) - 2000, 2001, 2002, 2003, 2004, 2005, 2006, 2007, 2008, 2009, 2010

Note: Weighted numbers (#), percentages and 95% confidence intervals; Respondents aged 18 years and older; n/r (Not Reportable) - If the unweighted total responses for a dimension (row) is <50 that row will not be shown; n/a (Not Available) - Not asked of a subset of respondents

Year: 2000

Household Income	Yes			No			Estimated Population
	#	%	C.I. (95%)	#	%	C.I. (95%)	#
Less than \$10,000	12,600	46.2	37.0 - 55.4	14,700	53.8	44.6 - 63.0	27,300
\$10,000 to \$14,999	15,000	50.3	40.9 - 59.6	14,900	49.7	40.4 - 59.1	29,900
\$15,000 to \$19,999	13,100	49.0	39.5 - 58.5	13,600	51.0	41.5 - 60.5	26,700
\$20,000 to \$24,999	14,000	37.9	30.1 - 45.8	22,900	62.1	54.2 - 69.9	37,000
\$25,000 to \$34,999	29,000	42.9	37.1 - 48.8	38,600	57.1	51.2 - 62.9	67,600
\$35,000 to \$49,999	33,300	34.6	29.7 - 39.5	62,800	65.4	60.5 - 70.3	96,100
\$50,000 to \$74,999	30,900	37.5	32.3 - 42.6	51,600	62.5	57.4 - 67.7	82,500
\$75,000 or more	28,300	36.2	30.7 - 41.7	49,800	63.8	58.3 - 69.3	78,100

HIV - ever been tested (18-64) by State, County, Island, Community, BRFSS Age Group, DOH Race-Ethnicity, Gender, Education Level, Employment Status (Grouped), Household Income, Poverty Level, Marital Status (Grouped), Married, Health Care Coverage, for the Year(s) - 2000, 2001, 2002, 2003, 2004, 2005, 2006, 2007, 2008, 2009, 2010

Note: Weighted numbers (#), percentages and 95% confidence intervals; Respondents aged 18 years and older; n/r (Not Reportable) - If the unweighted total responses for a dimension (row) is <50 that row will not be shown; n/a (Not Available) - Not asked of a subset of respondents

Year: 2000

Poverty Level	Yes			No			Estimated Population
	#	%	C.I. (95%)	#	%	C.I. (95%)	#
0-130%	33,900	45.8	39.2 - 52.4	40,200	54.2	47.6 - 60.8	74,100
131-185%	25,300	37.6	32.0 - 43.1	42,100	62.4	56.9 - 68.0	67,400
186+%	116,900	38.5	35.8 - 41.2	186,700	61.5	58.8 - 64.2	303,700

HIV - ever been tested (18-64) by State, County, Island, Community, BRFSS Age Group, DOH Race-Ethnicity, Gender, Education Level, Employment Status (Grouped), Household Income, Poverty Level, Marital Status (Grouped), Married, Health Care Coverage, for the Year(s) - 2000, 2001, 2002, 2003, 2004, 2005, 2006, 2007, 2008, 2009, 2010

Note: Weighted numbers (#), percentages and 95% confidence intervals; Respondents aged 18 years and older; n/r (Not Reportable) - If the unweighted total responses for a dimension (row) is <50 that row will not be shown; n/a (Not Available) - Not asked of a subset of respondents

Year: 2000

Marital Status (Grouped)	Yes			No			Estimated Population
	#	%	C.I. (95%)	#	%	C.I. (95%)	#
Married	108,200	36.0	33.3 - 38.7	192,500	64.0	61.3 - 66.7	300,700
Unmarried Couple	5,400	69.0	55.0 - 83.0	2,400	31.0	17.0 - 45.0	7,900
Widowed	2,400	18.9	10.1 - 27.7	10,200	81.1	72.3 - 89.9	12,500
Other	84,600	37.9	34.4 - 41.4	138,500	62.1	58.6 - 65.6	223,100

Married	Yes			No			Estimated Population
	#	%	C.I. (95%)	#	%	C.I. (95%)	#
Yes	112,700	36.6	33.9 - 39.2	195,600	63.4	60.8 - 66.1	308,300
No	87,600	37.2	33.9 - 40.5	147,800	62.8	59.5 - 66.1	235,400

HIV - ever been tested (18-64) by State, County, Island, Community, BRFSS Age Group, DOH Race-Ethnicity, Gender, Education Level, Employment Status (Grouped), Household Income, Poverty Level, Marital Status (Grouped), Married, Health Care Coverage, for the Year(s) - 2000, 2001, 2002, 2003, 2004, 2005, 2006, 2007, 2008, 2009, 2010

Note: Weighted numbers (#), percentages and 95% confidence intervals; Respondents aged 18 years and older; n/r (Not Reportable) - If the unweighted total responses for a dimension (row) is <50 that row will not be shown; n/a (Not Available) - Not asked of a subset of respondents

Year: 2000

Health Care Coverage	Yes			No			Estimated Population
	#	%	C.I. (95%)	#	%	C.I. (95%)	#
Yes	179,300	36.4	34.2 - 38.6	313,700	63.6	61.4 - 65.8	493,100
No	21,200	41.7	34.5 - 48.9	29,700	58.3	51.1 - 65.5	50,900