

**Awareness of Treatment to Reduce Chances of an HIV Positive Pregnant Woman Passing the Virus on to Her Baby (Among Adults Age 18-64) by Year Total, County, BRFSS Age Group, DOH Race-Ethnicity, Gender, County and Community, Education Level, Employment Status (Grouped), Household Income, Island, Marital Status (Grouped), Poverty Level, for the Year(s) - 2001, 2002, 2003, 2004**

*Note: Weighted numbers (#), percentages and 95% confidence intervals; Respondents aged 18 years and older;  
n/r (Not Reportable) - Represents cell size restriction of unweighted count < 50;  
n/a (Not Available) - Not asked of a subset of respondents*

*The trend analysis report shows the trend for the selected health variable over selected years in a table and a graph; Estimated Adult Population: This number is a weighted representation of the adult population who responded to a particular question in the survey. For most questions the estimated adult population will be the entire adult population. For some secondary questions only a subset of the population was asked the question. For example, all survey participants were asked if they had diabetes, but only those who answered yes were asked if they use insulin. If a dimension value is unknown for a particular survey record, that record will not be included in the counts for that particular dimension.*

*For documentation on other terms and coding in this report, please go to the following links*

[Click here to access BRFSS documentation](#)

[Click here to access DOH Race-Ethnicity coding](#)

[Click here to access The Hawai'i Data Guide](#)

[Click here to access Poverty Level Methodology](#)

**For questions about this report, please contact  
The Hawaii Health Data Warehouse**

[profiles@hhdw.org](mailto:profiles@hhdw.org)

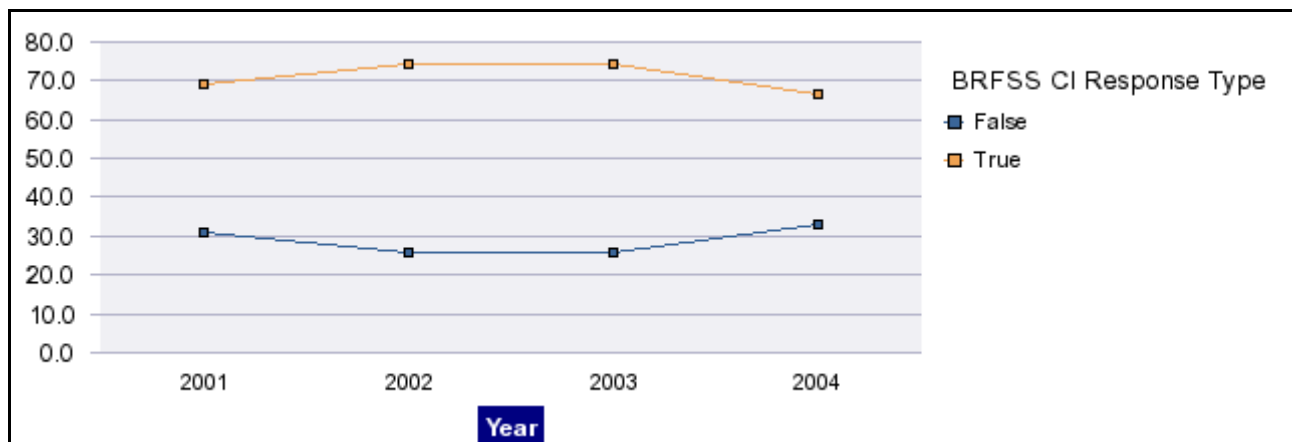
**(808) 946-5899 x15**

**Awareness of Treatment to Reduce Chances of an HIV Positive Pregnant Woman Passing the Virus on to Her Baby (Among Adults Age 18-64) by Year Total, County, BRFSS Age Group, DOH Race-Ethnicity, Gender, County and Community, Education Level, Employment Status (Grouped), Household Income, Island, Marital Status (Grouped), Poverty Level, for the Year(s) - 2001, 2002, 2003, 2004**

*Note: Weighted numbers (#), percentages and 95% confidence intervals; Respondents aged 18 years and older; n/r (Not Reportable) - Represents cell size restriction of unweighted count < 50; n/a (Not Available) - Not asked of a subset of respondents*

	False			True			Estimated Adult Population
	#	%	C.I.(95%)	#	%	C.I.(95%)	#
<b>2001</b>	162,838	30.8	28.3 - 33.4	365,067	69.2	66.6 - 71.7	527,905
<b>2002</b>	136,533	25.8	23.8 - 27.8	392,611	74.2	72.2 - 76.2	529,144
<b>2003</b>	139,215	25.7	23.4 - 28.1	401,578	74.3	71.9 - 76.6	540,793
<b>2004</b>	177,291	33.3	29.3 - 37.2	355,707	66.7	62.8 - 70.7	532,998

**Awareness of Treatment to Reduce Chances of an HIV Positive Pregnant Woman Passing the Virus on to Her Baby (Among Adults Age 18-64), for the Year(s) - 2001, 2002, 2003, 2004**



**Awareness of Treatment to Reduce Chances of an HIV Positive Pregnant Woman Passing the Virus on to Her Baby (Among Adults Age 18-64) by Year Total, County, BRFSS Age Group, DOH Race-Ethnicity, Gender, County and Community, Education Level, Employment Status (Grouped), Household Income, Island, Marital Status (Grouped), Poverty Level, for the Year(s) - 2001, 2002, 2003, 2004**

*Note: Weighted numbers (#), percentages and 95% confidence intervals; Respondents aged 18 years and older; n/r (Not Reportable) - Represents cell size restriction of unweighted count < 50; n/a (Not Available) - Not asked of a subset of respondents*

**Year: 2001**

Year Total	False			True			Estimated Adult Population
	#	%	C.I. (95%)	#	%	C.I. (95%)	#
State	162,838	30.8	28.3 - 33.4	365,067	69.2	66.6 - 71.7	527,905

County	False			True			Estimated Adult Population
	#	%	C.I. (95%)	#	%	C.I. (95%)	#
Hawaii	17,956	30.5	25.7 - 35.3	40,908	69.5	64.7 - 74.3	58,864
Honolulu	110,646	29.5	26.4 - 32.6	264,400	70.5	67.4 - 73.6	375,046
Kauai	6,746	29.5	23.1 - 35.9	16,122	70.5	64.1 - 76.9	22,868
Maui	22,697	39.0	31.3 - 46.8	35,455	61.0	53.2 - 68.7	58,152

**Awareness of Treatment to Reduce Chances of an HIV Positive Pregnant Woman Passing the Virus on to Her Baby (Among Adults Age 18-64) by Year Total, County, BRFSS Age Group, DOH Race-Ethnicity, Gender, County and Community, Education Level, Employment Status (Grouped), Household Income, Island, Marital Status (Grouped), Poverty Level, for the Year(s) - 2001, 2002, 2003, 2004**

*Note: Weighted numbers (#), percentages and 95% confidence intervals; Respondents aged 18 years and older; n/r (Not Reportable) - Represents cell size restriction of unweighted count < 50; n/a (Not Available) - Not asked of a subset of respondents*

**Year: 2001**

BRFSS Age Group	False			True			Estimated Adult Population
	#	%	C.I. (95%)	#	%	C.I. (95%)	#
18-24	26,583	34.2	25.6 - 42.7	51,218	65.8	57.3 - 74.4	77,801
25-34	43,077	32.9	28.0 - 37.8	87,868	67.1	62.2 - 72.0	130,945
35-44	47,159	34.1	29.1 - 39.1	91,239	65.9	60.9 - 70.9	138,398
45-54	30,946	28.8	23.9 - 33.8	76,339	71.2	66.2 - 76.1	107,285
55-64	15,073	20.5	15.0 - 26.0	58,403	79.5	74.0 - 85.0	73,476
65-74	n/r	n/r	n/r	n/r	n/r	n/r	n/r
75+	n/r	n/r	n/r	n/r	n/r	n/r	n/r

**Awareness of Treatment to Reduce Chances of an HIV Positive Pregnant Woman Passing the Virus on to Her Baby (Among Adults Age 18-64) by Year Total, County, BRFSS Age Group, DOH Race-Ethnicity, Gender, County and Community, Education Level, Employment Status (Grouped), Household Income, Island, Marital Status (Grouped), Poverty Level, for the Year(s) - 2001, 2002, 2003, 2004**

*Note: Weighted numbers (#), percentages and 95% confidence intervals; Respondents aged 18 years and older; n/r (Not Reportable) - Represents cell size restriction of unweighted count < 50; n/a (Not Available) - Not asked of a subset of respondents*

**Year: 2001**

DOH Race-Ethnicity	False			True			Estimated Adult Population
	#	%	C.I. (95%)	#	%	C.I. (95%)	#
White	50,446	26.9	23.3 - 30.5	137,009	73.1	69.5 - 76.7	187,455
Native Hawaiian	23,509	34.3	27.7 - 40.9	45,045	65.7	59.1 - 72.3	68,554
Chinese	8,904	33.5	21.8 - 45.2	17,665	66.5	54.8 - 78.2	26,569
Filipino	23,320	30.4	22.1 - 38.6	53,470	69.6	61.4 - 77.9	76,790
Japanese	30,774	33.0	26.4 - 39.5	62,620	67.0	60.5 - 73.6	93,394
Black	n/r	n/r	n/r	n/r	n/r	n/r	n/r
Other Pacific Islander	n/r	n/r	n/r	n/r	n/r	n/r	n/r
Other Asian	n/r	n/r	n/r	n/r	n/r	n/r	n/r
Native Alaskan/ American Indian	n/r	n/r	n/r	n/r	n/r	n/r	n/r
Other	9,076	34.0	21.0 - 47.1	17,591	66.0	52.9 - 79.0	26,667

**Awareness of Treatment to Reduce Chances of an HIV Positive Pregnant Woman Passing the Virus on to Her Baby (Among Adults Age 18-64) by Year Total, County, BRFSS Age Group, DOH Race-Ethnicity, Gender, County and Community, Education Level, Employment Status (Grouped), Household Income, Island, Marital Status (Grouped), Poverty Level, for the Year(s) - 2001, 2002, 2003, 2004**

*Note: Weighted numbers (#), percentages and 95% confidence intervals; Respondents aged 18 years and older; n/r (Not Reportable) - Represents cell size restriction of unweighted count < 50; n/a (Not Available) - Not asked of a subset of respondents*

**Year: 2001**

Gender	False			True			Estimated Adult Population
	#	%	C.I. (95%)	#	%	C.I. (95%)	#
Female	71,217	27.4	24.2 - 30.7	188,268	72.6	69.3 - 75.8	259,485
Male	91,620	34.1	30.2 - 38.0	176,799	65.9	62.0 - 69.8	268,419

County and Community	False			True			Estimated Adult Population
	#	%	C.I. (95%)	#	%	C.I. (95%)	#
Hawaii-Hilo	4,733	27.5	19.0 - 36.1	12,456	72.5	63.9 - 81.0	17,189
Hawaii-Kona	5,500	32.7	23.0 - 42.5	11,300	67.3	57.5 - 77.0	16,800
Hawaii-N.Hawaii	4,009	30.5	20.8 - 40.2	9,146	69.5	59.8 - 79.2	13,155
Hawaii-Puna/ Kau	3,714	31.7	21.4 - 42.0	8,006	68.3	58.0 - 78.6	11,720
Honolulu-Aiea/ Pearl City	9,675	32.8	21.2 - 44.4	19,802	67.2	55.6 - 78.8	29,477
Honolulu-Ala Moana	5,000	31.1	18.1 - 44.1	11,090	68.9	55.9 - 81.9	16,090
Honolulu-Kaaawa/ Kahaluu/ Kaneohe	8,695	36.9	23.4 - 50.3	14,894	63.1	49.7 - 76.6	23,589
Honolulu-Kailua/ Waimanalo	9,158	31.9	21.2 - 42.6	19,552	68.1	57.4 - 78.8	28,710

**Awareness of Treatment to Reduce Chances of an HIV Positive Pregnant Woman Passing the Virus on to Her Baby (Among Adults Age 18-64) by Year Total, County, BRFSS Age Group, DOH Race-Ethnicity, Gender, County and Community, Education Level, Employment Status (Grouped), Household Income, Island, Marital Status (Grouped), Poverty Level, for the Year(s) - 2001, 2002, 2003, 2004**

*Note: Weighted numbers (#), percentages and 95% confidence intervals; Respondents aged 18 years and older; n/r (Not Reportable) - Represents cell size restriction of unweighted count < 50; n/a (Not Available) - Not asked of a subset of respondents*

**Year: 2001**

County and Community	False			True			Estimated Adult Population
	#	%	C.I. (95%)	#	%	C.I. (95%)	#
Honolulu-Kaimuki/ Palolo/ Waikiki	12,856	32.4	22.4 - 42.4	26,831	67.6	57.6 - 77.6	39,687
Honolulu-Manoa/ Upper Makiki	3,508	11.7	5.2 - 18.2	26,459	88.3	81.8 - 94.8	29,967
Honolulu-Mililani/ Wahiawa	13,963	37.1	26.6 - 47.7	23,637	62.9	52.3 - 73.4	37,600
Honolulu-Nanakuli/ Waianae	n/r	n/r	n/r	n/r	n/r	n/r	n/r
Honolulu-N.Shore/ Laie	n/r	n/r	n/r	n/r	n/r	n/r	n/r
Honolulu-Nuuanu/ Kalihi/ Moanalua	10,721	33.8	22.3 - 45.4	20,962	66.2	54.6 - 77.7	31,683
Honolulu-Salt Lake/ Foster Village	5,401	22.6	11.5 - 33.7	18,520	77.4	66.3 - 88.5	23,921
Honolulu-Waiialae/ Kahala/ Hawaii Kai	4,840	22.4	10.8 - 33.9	16,802	77.6	66.1 - 89.2	21,642
Honolulu-Waipahu/ Kapolei/ Ewa	20,031	33.2	24.9 - 41.5	40,281	66.8	58.5 - 75.1	60,312
Kauai-Hanalei/ Kapaa	2,823	28.6	19.3 - 37.8	7,063	71.4	62.2 - 80.7	9,886
Kauai-Lihue-Waimea	3,923	30.2	21.6 - 38.9	9,059	69.8	61.1 - 78.4	12,982
Maui-Kahului	9,198	43.9	26.5 - 61.2	11,768	56.1	38.8 - 73.5	20,966
Maui-Lanai	n/r	n/r	n/r	n/r	n/r	n/r	n/r

**Awareness of Treatment to Reduce Chances of an HIV Positive Pregnant Woman Passing the Virus on to Her Baby (Among Adults Age 18-64) by Year Total, County, BRFSS Age Group, DOH Race-Ethnicity, Gender, County and Community, Education Level, Employment Status (Grouped), Household Income, Island, Marital Status (Grouped), Poverty Level, for the Year(s) - 2001, 2002, 2003, 2004**

*Note: Weighted numbers (#), percentages and 95% confidence intervals; Respondents aged 18 years and older; n/r (Not Reportable) - Represents cell size restriction of unweighted count < 50; n/a (Not Available) - Not asked of a subset of respondents*

**Year: 2001**

County and Community	False			True			Estimated Adult Population
	#	%	C.I. (95%)	#	%	C.I. (95%)	#
Maui-Lahaina/ Wailuku	5,660	34.8	24.5 - 45.0	10,625	65.2	55.0 - 75.5	16,285
Maui-Molokai	n/r	n/r	n/r	n/r	n/r	n/r	n/r
Maui-Upcountry/ Hana	6,355	38.0	29.2 - 46.7	10,384	62.0	53.3 - 70.8	16,739

Education Level	False			True			Estimated Adult Population
	#	%	C.I. (95%)	#	%	C.I. (95%)	#
Grades 9 thru 11 (Some High School)	4,707	29.9	16.3 - 43.6	11,026	70.1	56.4 - 83.7	15,733
Grades 12 or GED (High School Grad)	61,926	36.2	31.4 - 41.1	109,005	63.8	58.9 - 68.6	170,931
College 1 to 3 years (Some College/ Tech)	51,151	30.9	26.0 - 35.8	114,432	69.1	64.2 - 74.0	165,583
College 4 years or more (College Grad)	43,645	25.5	21.8 - 29.2	127,528	74.5	70.8 - 78.2	171,173
Never attended school/ Only Kindergarten to Grades 8	n/r	n/r	n/r	n/r	n/r	n/r	n/r



**Awareness of Treatment to Reduce Chances of an HIV Positive Pregnant Woman Passing the Virus on to Her Baby (Among Adults Age 18-64) by Year Total, County, BRFSS Age Group, DOH Race-Ethnicity, Gender, County and Community, Education Level, Employment Status (Grouped), Household Income, Island, Marital Status (Grouped), Poverty Level, for the Year(s) - 2001, 2002, 2003, 2004**

*Note: Weighted numbers (#), percentages and 95% confidence intervals; Respondents aged 18 years and older; n/r (Not Reportable) - Represents cell size restriction of unweighted count < 50; n/a (Not Available) - Not asked of a subset of respondents*

**Year: 2001**

Employment Status (Grouped)	False			True			Estimated Adult Population
	#	%	C.I. (95%)	#	%	C.I. (95%)	#
<b>Employed</b>	132,655	32.3	29.4 - 35.2	277,778	67.7	64.8 - 70.6	410,433
<b>Unemployed</b>	7,301	31.8	19.3 - 44.4	15,654	68.2	55.6 - 80.7	22,955
<b>Student/Homemaker</b>	16,929	26.6	18.6 - 34.7	46,714	73.4	65.3 - 81.4	63,643
<b>Retired/Unable to work</b>	5,952	19.5	11.6 - 27.5	24,513	80.5	72.5 - 88.4	30,465

**Awareness of Treatment to Reduce Chances of an HIV Positive Pregnant Woman Passing the Virus on to Her Baby (Among Adults Age 18-64) by Year Total, County, BRFSS Age Group, DOH Race-Ethnicity, Gender, County and Community, Education Level, Employment Status (Grouped), Household Income, Island, Marital Status (Grouped), Poverty Level, for the Year(s) - 2001, 2002, 2003, 2004**

*Note: Weighted numbers (#), percentages and 95% confidence intervals; Respondents aged 18 years and older; n/r (Not Reportable) - Represents cell size restriction of unweighted count < 50; n/a (Not Available) - Not asked of a subset of respondents*

**Year: 2001**

Household Income	False			True			Estimated Adult Population
	#	%	C.I. (95%)	#	%	C.I. (95%)	#
Less than \$10,000	6,551	32.2	19.1 - 45.4	13,768	67.8	54.6 - 80.9	20,319
\$10,000 to \$14,999	5,921	27.1	16.2 - 38.0	15,959	72.9	62.0 - 83.8	21,880
\$15,000 to \$19,999	6,535	32.3	20.7 - 44.0	13,683	67.7	56.0 - 79.3	20,218
\$20,000 to \$24,999	13,967	37.4	22.3 - 52.4	23,418	62.6	47.6 - 77.7	37,385
\$25,000 to \$34,999	17,121	29.8	23.0 - 36.6	40,275	70.2	63.4 - 77.0	57,396
\$35,000 to \$49,999	29,193	34.6	28.2 - 40.9	55,226	65.4	59.1 - 71.8	84,419
\$50,000 to \$74,999	22,257	27.7	21.7 - 33.6	58,175	72.3	66.4 - 78.3	80,432
\$75,000 or more	21,634	28.3	22.1 - 34.4	54,927	71.7	65.6 - 77.9	76,561

**Awareness of Treatment to Reduce Chances of an HIV Positive Pregnant Woman Passing the Virus on to Her Baby (Among Adults Age 18-64) by Year Total, County, BRFSS Age Group, DOH Race-Ethnicity, Gender, County and Community, Education Level, Employment Status (Grouped), Household Income, Island, Marital Status (Grouped), Poverty Level, for the Year(s) - 2001, 2002, 2003, 2004**

*Note: Weighted numbers (#), percentages and 95% confidence intervals; Respondents aged 18 years and older; n/r (Not Reportable) - Represents cell size restriction of unweighted count < 50; n/a (Not Available) - Not asked of a subset of respondents*

**Year: 2001**

Island	False			True			Estimated Adult Population
	#	%	C.I. (95%)	#	%	C.I. (95%)	#
Hawaii	17,956	30.5	25.7 - 35.3	40,908	69.5	64.7 - 74.3	58,864
Kauai	6,746	29.5	23.2 - 35.8	16,122	70.5	64.2 - 76.8	22,868
Maui	21,213	39.3	31.0 - 47.5	32,778	60.7	52.5 - 69.0	53,991
Lanai	n/r	n/r	n/r	n/r	n/r	n/r	n/r
Molokai	n/r	n/r	n/r	n/r	n/r	n/r	n/r
Oahu	110,646	29.5	26.4 - 32.6	264,400	70.5	67.4 - 73.6	375,046

**Awareness of Treatment to Reduce Chances of an HIV Positive Pregnant Woman Passing the Virus on to Her Baby (Among Adults Age 18-64) by Year Total, County, BRFSS Age Group, DOH Race-Ethnicity, Gender, County and Community, Education Level, Employment Status (Grouped), Household Income, Island, Marital Status (Grouped), Poverty Level, for the Year(s) - 2001, 2002, 2003, 2004**

*Note: Weighted numbers (#), percentages and 95% confidence intervals; Respondents aged 18 years and older; n/r (Not Reportable) - Represents cell size restriction of unweighted count < 50; n/a (Not Available) - Not asked of a subset of respondents*

**Year: 2001**

Marital Status (Grouped)	False			True			Estimated Adult Population
	#	%	C.I. (95%)	#	%	C.I. (95%)	#
<b>Married</b>	94,378	32.1	28.5 - 35.7	199,533	67.9	64.3 - 71.5	293,911
<b>Unmarried Couple</b>	n/r	n/r	n/r	n/r	n/r	n/r	n/r
<b>Widowed</b>	3,091	35.3	18.6 - 52.1	5,659	64.7	47.9 - 81.4	8,750
<b>Other</b>	63,538	29.2	25.5 - 32.8	154,298	70.8	67.2 - 74.5	217,836

**Awareness of Treatment to Reduce Chances of an HIV Positive Pregnant Woman Passing the Virus on to Her Baby (Among Adults Age 18-64) by Year Total, County, BRFSS Age Group, DOH Race-Ethnicity, Gender, County and Community, Education Level, Employment Status (Grouped), Household Income, Island, Marital Status (Grouped), Poverty Level, for the Year(s) - 2001, 2002, 2003, 2004**

*Note: Weighted numbers (#), percentages and 95% confidence intervals; Respondents aged 18 years and older; n/r (Not Reportable) - Represents cell size restriction of unweighted count < 50; n/a (Not Available) - Not asked of a subset of respondents*

**Year: 2001**

Poverty Level	False			True			Estimated Adult Population
	#	%	C.I. (95%)	#	%	C.I. (95%)	#
1-50%	6,470	30.2	16.5 - 43.8	14,969	69.8	56.2 - 83.5	21,439
51-100%	14,069	34.8	22.0 - 47.7	26,302	65.2	52.3 - 78.0	40,371
101-120%	n/r	n/r	n/r	n/r	n/r	n/r	n/r
121-130%	2,228	24.9	12.4 - 37.4	6,735	75.1	62.6 - 87.6	8,963
131-150%	9,404	36.3	21.4 - 51.1	16,529	63.7	48.9 - 78.6	25,933
151-170%	3,645	24.7	5.3 - 44.2	11,084	75.3	55.8 - 94.7	14,729
171-180%	8,748	31.0	20.5 - 41.5	19,435	69.0	58.5 - 79.5	28,183
181-185%	n/r	n/r	n/r	n/r	n/r	n/r	n/r
186+%	74,685	29.9	26.6 - 33.3	174,726	70.1	66.7 - 73.4	249,411

**Awareness of Treatment to Reduce Chances of an HIV Positive Pregnant Woman Passing the Virus on to Her Baby (Among Adults Age 18-64) by Year Total, County, BRFSS Age Group, DOH Race-Ethnicity, Gender, County and Community, Education Level, Employment Status (Grouped), Household Income, Island, Marital Status (Grouped), Poverty Level, for the Year(s) - 2001, 2002, 2003, 2004**

*Note: Weighted numbers (#), percentages and 95% confidence intervals; Respondents aged 18 years and older; n/r (Not Reportable) - Represents cell size restriction of unweighted count < 50; n/a (Not Available) - Not asked of a subset of respondents*

**Year: 2001**

**Year: 2002**

Year Total	False			True			Estimated Adult Population
	#	%	C.I. (95%)	#	%	C.I. (95%)	#
<b>State</b>	136,533	25.8	23.8 - 27.8	392,611	74.2	72.2 - 76.2	529,144

**Awareness of Treatment to Reduce Chances of an HIV Positive Pregnant Woman Passing the Virus on to Her Baby (Among Adults Age 18-64) by Year Total, County, BRFSS Age Group, DOH Race-Ethnicity, Gender, County and Community, Education Level, Employment Status (Grouped), Household Income, Island, Marital Status (Grouped), Poverty Level, for the Year(s) - 2001, 2002, 2003, 2004**

*Note: Weighted numbers (#), percentages and 95% confidence intervals; Respondents aged 18 years and older; n/r (Not Reportable) - Represents cell size restriction of unweighted count < 50; n/a (Not Available) - Not asked of a subset of respondents*

**Year: 2002**

County	False			True			Estimated Adult Population
	#	%	C.I. (95%)	#	%	C.I. (95%)	#
Hawaii	17,474	28.9	24.9 - 32.9	43,007	71.1	67.1 - 75.1	60,481
Honolulu	91,911	24.4	21.8 - 26.9	285,538	75.6	73.1 - 78.2	377,449
Kauai	6,130	25.9	20.1 - 31.7	17,509	74.1	68.3 - 79.9	23,639
Maui	17,886	32.8	28.3 - 37.4	36,573	67.2	62.6 - 71.7	54,459

**Awareness of Treatment to Reduce Chances of an HIV Positive Pregnant Woman Passing the Virus on to Her Baby (Among Adults Age 18-64) by Year Total, County, BRFSS Age Group, DOH Race-Ethnicity, Gender, County and Community, Education Level, Employment Status (Grouped), Household Income, Island, Marital Status (Grouped), Poverty Level, for the Year(s) - 2001, 2002, 2003, 2004**

*Note: Weighted numbers (#), percentages and 95% confidence intervals; Respondents aged 18 years and older; n/r (Not Reportable) - Represents cell size restriction of unweighted count < 50; n/a (Not Available) - Not asked of a subset of respondents*

**Year: 2002**

BRFSS Age Group	False			True			Estimated Adult Population
	#	%	C.I. (95%)	#	%	C.I. (95%)	#
18-24	26,000	29.3	23.2 - 35.4	62,754	70.7	64.6 - 76.8	88,754
25-34	31,728	26.0	21.8 - 30.3	90,098	74.0	69.7 - 78.2	121,826
35-44	38,591	28.6	24.5 - 32.6	96,555	71.4	67.4 - 75.5	135,146
45-54	27,144	24.2	20.7 - 27.7	85,031	75.8	72.3 - 79.3	112,175
55-64	13,070	18.3	14.1 - 22.6	58,173	81.7	77.4 - 85.9	71,243
65-74	n/r	n/r	n/r	n/r	n/r	n/r	n/r
75+	n/r	n/r	n/r	n/r	n/r	n/r	n/r



**Awareness of Treatment to Reduce Chances of an HIV Positive Pregnant Woman Passing the Virus on to Her Baby (Among Adults Age 18-64) by Year Total, County, BRFSS Age Group, DOH Race-Ethnicity, Gender, County and Community, Education Level, Employment Status (Grouped), Household Income, Island, Marital Status (Grouped), Poverty Level, for the Year(s) - 2001, 2002, 2003, 2004**

*Note: Weighted numbers (#), percentages and 95% confidence intervals; Respondents aged 18 years and older; n/r (Not Reportable) - Represents cell size restriction of unweighted count < 50; n/a (Not Available) - Not asked of a subset of respondents*

**Year: 2002**

DOH Race-Ethnicity	False			True			Estimated Adult Population
	#	%	C.I. (95%)	#	%	C.I. (95%)	#
White	37,406	17.8	15.3 - 20.3	172,815	82.2	79.7 - 84.7	210,221
Native Hawaiian	24,051	37.8	31.5 - 44.1	39,560	62.2	55.9 - 68.5	63,611
Chinese	8,464	24.0	16.2 - 31.7	26,852	76.0	68.3 - 83.8	35,316
Filipino	23,404	34.0	27.9 - 40.1	45,446	66.0	59.9 - 72.1	68,850
Japanese	27,653	30.2	25.0 - 35.3	63,945	69.8	64.7 - 75.0	91,598
Black	3,380	27.2	14.4 - 40.1	9,027	72.8	59.9 - 85.6	12,407
Other Pacific Islander	n/r	n/r	n/r	n/r	n/r	n/r	n/r
Other Asian	2,360	18.9	7.0 - 30.9	10,109	81.1	69.1 - 93.0	12,469
Native Alaskan/ American Indian	n/r	n/r	n/r	n/r	n/r	n/r	n/r
Other	3,939	22.2	12.7 - 31.6	13,831	77.8	68.4 - 87.3	17,770

**Awareness of Treatment to Reduce Chances of an HIV Positive Pregnant Woman Passing the Virus on to Her Baby (Among Adults Age 18-64) by Year Total, County, BRFSS Age Group, DOH Race-Ethnicity, Gender, County and Community, Education Level, Employment Status (Grouped), Household Income, Island, Marital Status (Grouped), Poverty Level, for the Year(s) - 2001, 2002, 2003, 2004**

*Note: Weighted numbers (#), percentages and 95% confidence intervals; Respondents aged 18 years and older; n/r (Not Reportable) - Represents cell size restriction of unweighted count < 50; n/a (Not Available) - Not asked of a subset of respondents*

**Year: 2002**

Gender	False			True			Estimated Adult Population
	#	%	C.I. (95%)	#	%	C.I. (95%)	#
Female	56,612	21.7	19.3 - 24.1	204,010	78.3	75.9 - 80.7	260,622
Male	79,921	29.8	26.6 - 32.9	188,601	70.2	67.1 - 73.4	268,522

County and Community	False			True			Estimated Adult Population
	#	%	C.I. (95%)	#	%	C.I. (95%)	#
Hawaii-Hilo	6,588	33.4	25.9 - 41.0	13,108	66.6	59.0 - 74.1	19,696
Hawaii-Kona	4,405	28.3	21.0 - 35.6	11,153	71.7	64.4 - 79.0	15,558
Hawaii-N.Hawaii	3,702	27.3	18.2 - 36.5	9,842	72.7	63.5 - 81.8	13,544
Hawaii-Puna/ Kau	2,778	23.8	15.9 - 31.6	8,903	76.2	68.4 - 84.1	11,681
Honolulu-Aiea/ Pearl City	10,637	29.8	20.9 - 38.6	25,098	70.2	61.4 - 79.1	35,735
Honolulu-Ala Moana	5,986	25.9	15.6 - 36.2	17,135	74.1	63.8 - 84.4	23,121
Honolulu-Kaaawa/ Kahaluu/ Kaneohe	5,804	28.6	16.4 - 40.8	14,468	71.4	59.2 - 83.6	20,272
Honolulu-Kailua/ Waimanalo	4,705	16.8	8.3 - 25.2	23,326	83.2	74.8 - 91.7	28,031

**Awareness of Treatment to Reduce Chances of an HIV Positive Pregnant Woman Passing the Virus on to Her Baby (Among Adults Age 18-64) by Year Total, County, BRFSS Age Group, DOH Race-Ethnicity, Gender, County and Community, Education Level, Employment Status (Grouped), Household Income, Island, Marital Status (Grouped), Poverty Level, for the Year(s) - 2001, 2002, 2003, 2004**

*Note: Weighted numbers (#), percentages and 95% confidence intervals; Respondents aged 18 years and older; n/r (Not Reportable) - Represents cell size restriction of unweighted count < 50; n/a (Not Available) - Not asked of a subset of respondents*

**Year: 2002**

County and Community	False			True			Estimated Adult Population
	#	%	C.I. (95%)	#	%	C.I. (95%)	#
Honolulu-Kaimuki/ Palolo/ Waikiki	7,175	19.5	12.7 - 26.2	29,710	80.5	73.8 - 87.3	36,885
Honolulu-Manoa/ Upper Makiki	9,453	28.5	19.3 - 37.7	23,738	71.5	62.3 - 80.7	33,191
Honolulu-Mililani/ Wahiawa	6,580	17.3	10.5 - 24.1	31,462	82.7	75.9 - 89.5	38,042
Honolulu-Nanakuli/ Waianae	4,256	33.2	19.6 - 46.9	8,548	66.8	53.1 - 80.4	12,804
Honolulu-N.Shore/ Laie	n/r	n/r	n/r	n/r	n/r	n/r	n/r
Honolulu-Nuuanu/ Kalihi/ Moanalua	8,446	25.6	16.8 - 34.4	24,565	74.4	65.6 - 83.2	33,011
Honolulu-Salt Lake/ Foster Village	7,895	33.3	22.5 - 44.1	15,814	66.7	55.9 - 77.5	23,709
Honolulu-Waiialae/ Kahala/ Hawaii Kai	6,737	20.5	10.7 - 30.3	26,118	79.5	69.7 - 89.3	32,855
Honolulu-Waipahu/ Kapolei/ Ewa	11,787	23.9	16.9 - 30.8	37,568	76.1	69.2 - 83.1	49,355
Kauai-Hanalei/ Kapaa	3,051	29.0	19.9 - 38.1	7,466	71.0	61.9 - 80.1	10,517
Kauai-Lihue-Waimea	3,079	23.5	16.1 - 30.8	10,043	76.5	69.2 - 83.9	13,122
Maui-Kahului	5,408	34.2	25.7 - 42.6	10,424	65.8	57.4 - 74.3	15,832
Maui-Lanai	258	15.6	1.4 - 29.8	1,398	84.4	70.2 - 98.6	1,656

**Awareness of Treatment to Reduce Chances of an HIV Positive Pregnant Woman Passing the Virus on to Her Baby (Among Adults Age 18-64) by Year Total, County, BRFSS Age Group, DOH Race-Ethnicity, Gender, County and Community, Education Level, Employment Status (Grouped), Household Income, Island, Marital Status (Grouped), Poverty Level, for the Year(s) - 2001, 2002, 2003, 2004**

*Note: Weighted numbers (#), percentages and 95% confidence intervals; Respondents aged 18 years and older; n/r (Not Reportable) - Represents cell size restriction of unweighted count < 50; n/a (Not Available) - Not asked of a subset of respondents*

**Year: 2002**

County and Community	False			True			Estimated Adult Population
	#	%	C.I. (95%)	#	%	C.I. (95%)	#
Maui-Lahaina/ Wailuku	4,898	30.6	21.6 - 39.5	11,129	69.4	60.5 - 78.4	16,027
Maui-Molokai	1,463	36.8	23.7 - 50.0	2,510	63.2	50.0 - 76.3	3,973
Maui-Upcountry/ Hana	5,859	34.5	26.3 - 42.7	11,111	65.5	57.3 - 73.7	16,970

Education Level	False			True			Estimated Adult Population
	#	%	C.I. (95%)	#	%	C.I. (95%)	#
Grades 9 thru 11 (Some High School)	2,871	22.1	10.5 - 33.7	10,130	77.9	66.3 - 89.5	13,001
Grades 12 or GED (High School Grad)	51,694	30.9	27.0 - 34.7	115,668	69.1	65.3 - 73.0	167,362
College 1 to 3 years (Some College/ Tech)	40,385	23.2	19.9 - 26.6	133,335	76.8	73.4 - 80.1	173,720
College 4 years or more (College Grad)	40,620	23.6	20.3 - 26.8	131,695	76.4	73.2 - 79.7	172,315
Never attended school/ Only Kindergarten to Grades 8	n/r	n/r	n/r	n/r	n/r	n/r	n/r

**Awareness of Treatment to Reduce Chances of an HIV Positive Pregnant Woman Passing the Virus on to Her Baby (Among Adults Age 18-64) by Year Total, County, BRFSS Age Group, DOH Race-Ethnicity, Gender, County and Community, Education Level, Employment Status (Grouped), Household Income, Island, Marital Status (Grouped), Poverty Level, for the Year(s) - 2001, 2002, 2003, 2004**

*Note: Weighted numbers (#), percentages and 95% confidence intervals; Respondents aged 18 years and older; n/r (Not Reportable) - Represents cell size restriction of unweighted count < 50; n/a (Not Available) - Not asked of a subset of respondents*

**Year: 2002**

Employment Status (Grouped)	False			True			Estimated Adult Population
	#	%	C.I. (95%)	#	%	C.I. (95%)	#
<b>Employed</b>	107,850	26.2	24.0 - 28.4	303,727	73.8	71.6 - 76.0	411,577
<b>Unemployed</b>	7,054	32.0	21.0 - 42.9	15,015	68.0	57.1 - 79.0	22,069
<b>Student/Homemaker</b>	14,447	21.5	15.4 - 27.6	52,680	78.5	72.4 - 84.6	67,127
<b>Retired/Unable to work</b>	7,182	25.6	17.7 - 33.5	20,864	74.4	66.5 - 82.3	28,046

**Awareness of Treatment to Reduce Chances of an HIV Positive Pregnant Woman Passing the Virus on to Her Baby (Among Adults Age 18-64) by Year Total, County, BRFSS Age Group, DOH Race-Ethnicity, Gender, County and Community, Education Level, Employment Status (Grouped), Household Income, Island, Marital Status (Grouped), Poverty Level, for the Year(s) - 2001, 2002, 2003, 2004**

*Note: Weighted numbers (#), percentages and 95% confidence intervals; Respondents aged 18 years and older; n/r (Not Reportable) - Represents cell size restriction of unweighted count < 50; n/a (Not Available) - Not asked of a subset of respondents*

**Year: 2002**

Household Income	False			True			Estimated Adult Population
	#	%	C.I. (95%)	#	%	C.I. (95%)	#
Less than \$10,000	5,493	30.9	20.5 - 41.2	12,303	69.1	58.8 - 79.5	17,796
\$10,000 to \$14,999	4,321	25.4	15.5 - 35.2	12,716	74.6	64.8 - 84.5	17,037
\$15,000 to \$19,999	5,831	23.3	14.2 - 32.4	19,218	76.7	67.6 - 85.8	25,049
\$20,000 to \$24,999	8,032	31.3	22.0 - 40.6	17,637	68.7	59.4 - 78.0	25,669
\$25,000 to \$34,999	10,581	23.4	17.8 - 29.0	34,571	76.6	71.0 - 82.2	45,152
\$35,000 to \$49,999	19,472	25.2	20.5 - 29.9	57,829	74.8	70.1 - 79.5	77,301
\$50,000 to \$74,999	25,031	31.3	26.0 - 36.6	54,929	68.7	63.4 - 74.0	79,960
\$75,000 or more	24,319	29.0	23.6 - 34.4	59,491	71.0	65.6 - 76.4	83,810

**Awareness of Treatment to Reduce Chances of an HIV Positive Pregnant Woman Passing the Virus on to Her Baby (Among Adults Age 18-64) by Year Total, County, BRFSS Age Group, DOH Race-Ethnicity, Gender, County and Community, Education Level, Employment Status (Grouped), Household Income, Island, Marital Status (Grouped), Poverty Level, for the Year(s) - 2001, 2002, 2003, 2004**

*Note: Weighted numbers (#), percentages and 95% confidence intervals; Respondents aged 18 years and older; n/r (Not Reportable) - Represents cell size restriction of unweighted count < 50; n/a (Not Available) - Not asked of a subset of respondents*

**Year: 2002**

Island	False			True			Estimated Adult Population
	#	%	C.I. (95%)	#	%	C.I. (95%)	#
Hawaii	17,474	28.9	24.9 - 32.9	43,007	71.1	67.1 - 75.1	60,481
Kauai	6,130	25.9	20.2 - 31.7	17,509	74.1	68.3 - 79.8	23,639
Maui	16,165	33.1	28.2 - 38.0	32,664	66.9	62.0 - 71.8	48,829
Lanai	258	15.6	1.4 - 29.7	1,398	84.4	70.3 - 98.6	1,656
Molokai	1,463	36.8	23.7 - 49.9	2,510	63.2	50.1 - 76.3	3,973
Oahu	91,911	24.4	21.8 - 26.9	285,538	75.6	73.1 - 78.2	377,449

**Awareness of Treatment to Reduce Chances of an HIV Positive Pregnant Woman Passing the Virus on to Her Baby (Among Adults Age 18-64) by Year Total, County, BRFSS Age Group, DOH Race-Ethnicity, Gender, County and Community, Education Level, Employment Status (Grouped), Household Income, Island, Marital Status (Grouped), Poverty Level, for the Year(s) - 2001, 2002, 2003, 2004**

*Note: Weighted numbers (#), percentages and 95% confidence intervals; Respondents aged 18 years and older; n/r (Not Reportable) - Represents cell size restriction of unweighted count < 50; n/a (Not Available) - Not asked of a subset of respondents*

**Year: 2002**

Marital Status (Grouped)	False			True			Estimated Adult Population
	#	%	C.I. (95%)	#	%	C.I. (95%)	#
<b>Married</b>	73,281	24.3	21.8 - 26.8	228,616	75.7	73.2 - 78.2	301,897
<b>Unmarried Couple</b>	2,835	17.7	9.2 - 26.1	13,215	82.3	73.9 - 90.8	16,050
<b>Widowed</b>	2,790	38.6	19.9 - 57.3	4,439	61.4	42.7 - 80.1	7,229
<b>Other</b>	57,628	28.3	24.8 - 31.7	146,340	71.7	68.3 - 75.2	203,968



**Awareness of Treatment to Reduce Chances of an HIV Positive Pregnant Woman Passing the Virus on to Her Baby (Among Adults Age 18-64) by Year Total, County, BRFSS Age Group, DOH Race-Ethnicity, Gender, County and Community, Education Level, Employment Status (Grouped), Household Income, Island, Marital Status (Grouped), Poverty Level, for the Year(s) - 2001, 2002, 2003, 2004**

*Note: Weighted numbers (#), percentages and 95% confidence intervals; Respondents aged 18 years and older; n/r (Not Reportable) - Represents cell size restriction of unweighted count < 50; n/a (Not Available) - Not asked of a subset of respondents*

**Year: 2002**

Poverty Level	False			True			Estimated Adult Population
	#	%	C.I. (95%)	#	%	C.I. (95%)	#
<b>1-50%</b>	6,468	33.0	22.6 - 43.4	13,140	67.0	56.6 - 77.4	19,608
<b>51-100%</b>	7,063	22.3	13.9 - 30.7	24,589	77.7	69.3 - 86.1	31,652
<b>101-120%</b>	2,830	27.2	12.4 - 41.9	7,595	72.9	58.1 - 87.6	10,425
<b>121-130%</b>	4,219	24.2	14.8 - 33.6	13,211	75.8	66.4 - 85.2	17,430
<b>131-150%</b>	3,455	25.1	14.0 - 36.2	10,297	74.9	63.8 - 86.0	13,752
<b>151-170%</b>	2,792	24.7	12.1 - 37.2	8,532	75.3	62.8 - 87.9	11,324
<b>171-180%</b>	5,091	28.0	17.7 - 38.4	13,069	72.0	61.6 - 82.3	18,160
<b>186+%</b>	71,160	28.5	25.6 - 31.4	178,263	71.5	68.6 - 74.4	249,423

**Awareness of Treatment to Reduce Chances of an HIV Positive Pregnant Woman Passing the Virus on to Her Baby (Among Adults Age 18-64) by Year Total, County, BRFSS Age Group, DOH Race-Ethnicity, Gender, County and Community, Education Level, Employment Status (Grouped), Household Income, Island, Marital Status (Grouped), Poverty Level, for the Year(s) - 2001, 2002, 2003, 2004**

*Note: Weighted numbers (#), percentages and 95% confidence intervals; Respondents aged 18 years and older; n/r (Not Reportable) - Represents cell size restriction of unweighted count < 50; n/a (Not Available) - Not asked of a subset of respondents*

**Year: 2002**

**Year: 2003**

Year Total	False			True			Estimated Adult Population
	#	%	C.I. (95%)	#	%	C.I. (95%)	#
<b>State</b>	139,215	25.7	23.4 - 28.1	401,578	74.3	71.9 - 76.6	540,793

**Awareness of Treatment to Reduce Chances of an HIV Positive Pregnant Woman Passing the Virus on to Her Baby (Among Adults Age 18-64) by Year Total, County, BRFSS Age Group, DOH Race-Ethnicity, Gender, County and Community, Education Level, Employment Status (Grouped), Household Income, Island, Marital Status (Grouped), Poverty Level, for the Year(s) - 2001, 2002, 2003, 2004**

*Note: Weighted numbers (#), percentages and 95% confidence intervals; Respondents aged 18 years and older; n/r (Not Reportable) - Represents cell size restriction of unweighted count < 50; n/a (Not Available) - Not asked of a subset of respondents*

**Year: 2003**

County	False			True			Estimated Adult Population
	#	%	C.I. (95%)	#	%	C.I. (95%)	#
Hawaii	17,183	26.6	21.9 - 31.3	47,374	73.4	68.7 - 78.1	64,557
Honolulu	97,807	25.6	22.6 - 28.6	283,778	74.4	71.4 - 77.4	381,585
Kauai	5,522	23.7	17.1 - 30.3	17,825	76.3	69.7 - 82.9	23,347
Maui	16,038	28.2	22.2 - 34.2	40,782	71.8	65.8 - 77.8	56,820

**Awareness of Treatment to Reduce Chances of an HIV Positive Pregnant Woman Passing the Virus on to Her Baby (Among Adults Age 18-64) by Year Total, County, BRFSS Age Group, DOH Race-Ethnicity, Gender, County and Community, Education Level, Employment Status (Grouped), Household Income, Island, Marital Status (Grouped), Poverty Level, for the Year(s) - 2001, 2002, 2003, 2004**

*Note: Weighted numbers (#), percentages and 95% confidence intervals; Respondents aged 18 years and older; n/r (Not Reportable) - Represents cell size restriction of unweighted count < 50; n/a (Not Available) - Not asked of a subset of respondents*

**Year: 2003**

BRFSS Age Group	False			True			Estimated Adult Population
	#	%	C.I. (95%)	#	%	C.I. (95%)	#
18-24	25,544	30.2	22.7 - 37.7	58,934	69.8	62.3 - 77.3	84,478
25-34	27,642	23.0	18.5 - 27.5	92,671	77.0	72.5 - 81.5	120,313
35-44	39,040	29.7	25.0 - 34.4	92,247	70.3	65.6 - 75.0	131,287
45-54	27,163	22.6	18.6 - 26.6	92,886	77.4	73.4 - 81.4	120,049
55-64	19,825	23.4	17.6 - 29.2	64,841	76.6	70.8 - 82.4	84,666
65-74	n/r	n/r	n/r	n/r	n/r	n/r	n/r
75+	n/r	n/r	n/r	n/r	n/r	n/r	n/r

**Awareness of Treatment to Reduce Chances of an HIV Positive Pregnant Woman Passing the Virus on to Her Baby (Among Adults Age 18-64) by Year Total, County, BRFSS Age Group, DOH Race-Ethnicity, Gender, County and Community, Education Level, Employment Status (Grouped), Household Income, Island, Marital Status (Grouped), Poverty Level, for the Year(s) - 2001, 2002, 2003, 2004**

*Note: Weighted numbers (#), percentages and 95% confidence intervals; Respondents aged 18 years and older; n/r (Not Reportable) - Represents cell size restriction of unweighted count < 50; n/a (Not Available) - Not asked of a subset of respondents*

**Year: 2003**

DOH Race-Ethnicity	False			True			Estimated Adult Population
	#	%	C.I. (95%)	#	%	C.I. (95%)	#
White	44,748	20.1	17.0 - 23.2	177,467	79.9	76.8 - 83.0	222,215
Native Hawaiian	11,675	25.8	18.9 - 32.6	33,664	74.2	67.4 - 81.1	45,339
Chinese	14,558	24.1	16.8 - 31.5	45,753	75.9	68.5 - 83.2	60,311
Filipino	22,931	30.0	23.2 - 36.8	53,443	70.0	63.2 - 76.8	76,374
Japanese	29,657	35.4	28.5 - 42.2	54,236	64.6	57.8 - 71.5	83,893
Black	n/r	n/r	n/r	n/r	n/r	n/r	n/r
Other Pacific Islander	n/r	n/r	n/r	n/r	n/r	n/r	n/r
Other Asian	n/r	n/r	n/r	n/r	n/r	n/r	n/r
Native Alaskan/ American Indian	n/r	n/r	n/r	n/r	n/r	n/r	n/r
Other	4,105	23.2	12.0 - 34.4	13,605	76.8	65.6 - 88.0	17,710

**Awareness of Treatment to Reduce Chances of an HIV Positive Pregnant Woman Passing the Virus on to Her Baby (Among Adults Age 18-64) by Year Total, County, BRFSS Age Group, DOH Race-Ethnicity, Gender, County and Community, Education Level, Employment Status (Grouped), Household Income, Island, Marital Status (Grouped), Poverty Level, for the Year(s) - 2001, 2002, 2003, 2004**

*Note: Weighted numbers (#), percentages and 95% confidence intervals; Respondents aged 18 years and older; n/r (Not Reportable) - Represents cell size restriction of unweighted count < 50; n/a (Not Available) - Not asked of a subset of respondents*

**Year: 2003**

Gender	False			True			Estimated Adult Population
	#	%	C.I. (95%)	#	%	C.I. (95%)	#
Female	55,765	20.9	18.3 - 23.6	210,544	79.1	76.4 - 81.7	266,309
Male	83,450	30.4	26.7 - 34.1	191,035	69.6	65.9 - 73.3	274,485

County and Community	False			True			Estimated Adult Population
	#	%	C.I. (95%)	#	%	C.I. (95%)	#
Hawaii-Hilo	7,046	34.4	24.2 - 44.5	13,448	65.6	55.5 - 75.8	20,494
Hawaii-Kona	3,206	19.7	12.8 - 26.6	13,092	80.3	73.4 - 87.2	16,298
Hawaii-N.Hawaii	3,713	28.4	18.3 - 38.5	9,371	71.6	61.5 - 81.7	13,084
Hawaii-Puna/ Kau	3,218	21.9	13.5 - 30.3	11,464	78.1	69.7 - 86.5	14,682
Honolulu-Aiea/ Pearl City	8,167	28.6	17.1 - 40.2	20,349	71.4	59.8 - 82.9	28,516
Honolulu-Ala Moana	4,897	32.2	17.1 - 47.3	10,311	67.8	52.7 - 82.9	15,208
Honolulu-Kaaawa/ Kahaluu/ Kaneohe	8,982	31.6	19.2 - 43.9	19,481	68.4	56.1 - 80.8	28,463
Honolulu-Kailua/ Waimanalo	7,299	24.2	14.8 - 33.6	22,901	75.8	66.4 - 85.2	30,200

**Awareness of Treatment to Reduce Chances of an HIV Positive Pregnant Woman Passing the Virus on to Her Baby (Among Adults Age 18-64) by Year Total, County, BRFSS Age Group, DOH Race-Ethnicity, Gender, County and Community, Education Level, Employment Status (Grouped), Household Income, Island, Marital Status (Grouped), Poverty Level, for the Year(s) - 2001, 2002, 2003, 2004**

*Note: Weighted numbers (#), percentages and 95% confidence intervals; Respondents aged 18 years and older; n/r (Not Reportable) - Represents cell size restriction of unweighted count < 50; n/a (Not Available) - Not asked of a subset of respondents*

**Year: 2003**

County and Community	False			True			Estimated Adult Population
	#	%	C.I. (95%)	#	%	C.I. (95%)	#
Honolulu-Kaimuki/ Palolo/ Waikiki	8,180	25.5	15.6 - 35.5	23,857	74.5	64.5 - 84.4	32,037
Honolulu-Manoa/ Upper Makiki	8,411	26.2	14.2 - 38.3	23,667	73.8	61.7 - 85.8	32,078
Honolulu-Mililani/ Wahiawa	9,923	21.1	13.7 - 28.6	37,011	78.9	71.4 - 86.3	46,934
Honolulu-Nanakuli/ Waianae	n/r	n/r	n/r	n/r	n/r	n/r	n/r
Honolulu-N.Shore/ Laie	3,409	22.2	8.5 - 36.0	11,925	77.8	64.0 - 91.5	15,334
Honolulu-Nuuanu/ Kalihi/ Moanalua	10,612	28.5	18.3 - 38.6	26,669	71.5	61.4 - 81.7	37,281
Honolulu-Salt Lake/ Foster Village	2,949	10.8	4.2 - 17.5	24,233	89.2	82.5 - 95.8	27,182
Honolulu-Waiialae/ Kahala/ Hawaii Kai	5,502	26.6	12.5 - 40.8	15,152	73.4	59.2 - 87.5	20,654
Honolulu-Waipahu/ Kapolei/ Ewa	16,901	30.8	22.5 - 39.2	37,886	69.2	60.8 - 77.5	54,787
Kauai-Hanalei/ Kapaa	1,947	21.1	11.9 - 30.4	7,276	78.9	69.6 - 88.1	9,223
Kauai-Lihue-Waimea	3,575	25.3	16.3 - 34.4	10,549	74.7	65.6 - 83.7	14,124
Maui-Kahului	5,512	29.1	18.5 - 39.7	13,403	70.9	60.3 - 81.5	18,915
Maui-Lanai	n/r	n/r	n/r	n/r	n/r	n/r	n/r

**Awareness of Treatment to Reduce Chances of an HIV Positive Pregnant Woman Passing the Virus on to Her Baby (Among Adults Age 18-64) by Year Total, County, BRFSS Age Group, DOH Race-Ethnicity, Gender, County and Community, Education Level, Employment Status (Grouped), Household Income, Island, Marital Status (Grouped), Poverty Level, for the Year(s) - 2001, 2002, 2003, 2004**

*Note: Weighted numbers (#), percentages and 95% confidence intervals; Respondents aged 18 years and older; n/r (Not Reportable) - Represents cell size restriction of unweighted count < 50; n/a (Not Available) - Not asked of a subset of respondents*

**Year: 2003**

County and Community	False			True			Estimated Adult Population
	#	%	C.I. (95%)	#	%	C.I. (95%)	#
Maui-Lahaina/ Wailuku	5,077	31.3	18.0 - 44.7	11,122	68.7	55.3 - 82.0	16,199
Maui-Molokai	n/r	n/r	n/r	n/r	n/r	n/r	n/r
Maui-Upcountry/ Hana	3,627	21.1	12.7 - 29.4	13,602	78.9	70.6 - 87.3	17,229

Education Level	False			True			Estimated Adult Population
	#	%	C.I. (95%)	#	%	C.I. (95%)	#
Grades 9 thru 11 (Some High School)	4,473	30.8	17.4 - 44.1	10,073	69.2	55.9 - 82.6	14,546
Grades 12 or GED (High School Grad)	45,073	30.7	25.8 - 35.5	101,854	69.3	64.5 - 74.2	146,927
College 1 to 3 years (Some College/ Tech)	43,892	26.0	22.0 - 30.0	124,762	74.0	70.0 - 78.0	168,654
College 4 years or more (College Grad)	45,339	21.9	18.3 - 25.5	161,543	78.1	74.5 - 81.7	206,882
Never attended school/ Only Kindergarten to Grades 8	n/r	n/r	n/r	n/r	n/r	n/r	n/r



**Awareness of Treatment to Reduce Chances of an HIV Positive Pregnant Woman Passing the Virus on to Her Baby (Among Adults Age 18-64) by Year Total, County, BRFSS Age Group, DOH Race-Ethnicity, Gender, County and Community, Education Level, Employment Status (Grouped), Household Income, Island, Marital Status (Grouped), Poverty Level, for the Year(s) - 2001, 2002, 2003, 2004**

*Note: Weighted numbers (#), percentages and 95% confidence intervals; Respondents aged 18 years and older; n/r (Not Reportable) - Represents cell size restriction of unweighted count < 50; n/a (Not Available) - Not asked of a subset of respondents*

**Year: 2003**

Employment Status (Grouped)	False			True			Estimated Adult Population
	#	%	C.I. (95%)	#	%	C.I. (95%)	#
<b>Employed</b>	110,207	26.3	23.6 - 28.9	309,486	73.7	71.1 - 76.4	419,693
<b>Unemployed</b>	10,151	44.8	31.3 - 58.4	12,493	55.2	41.6 - 68.7	22,644
<b>Student/Homemaker</b>	10,195	16.3	10.7 - 21.9	52,348	83.7	78.1 - 89.3	62,543
<b>Retired/Unable to work</b>	8,341	23.6	15.7 - 31.6	26,931	76.4	68.4 - 84.3	35,272

**Awareness of Treatment to Reduce Chances of an HIV Positive Pregnant Woman Passing the Virus on to Her Baby (Among Adults Age 18-64) by Year Total, County, BRFSS Age Group, DOH Race-Ethnicity, Gender, County and Community, Education Level, Employment Status (Grouped), Household Income, Island, Marital Status (Grouped), Poverty Level, for the Year(s) - 2001, 2002, 2003, 2004**

*Note: Weighted numbers (#), percentages and 95% confidence intervals; Respondents aged 18 years and older; n/r (Not Reportable) - Represents cell size restriction of unweighted count < 50; n/a (Not Available) - Not asked of a subset of respondents*

**Year: 2003**

Household Income	False			True			Estimated Adult Population
	#	%	C.I. (95%)	#	%	C.I. (95%)	#
Less than \$10,000	6,823	26.7	17.0 - 36.4	18,739	73.3	63.6 - 83.0	25,562
\$10,000 to \$14,999	5,688	23.5	13.5 - 33.5	18,509	76.5	66.5 - 86.5	24,197
\$15,000 to \$19,999	4,092	15.3	7.1 - 23.4	22,689	84.7	76.6 - 92.9	26,781
\$20,000 to \$24,999	9,138	28.7	18.8 - 38.6	22,691	71.3	61.4 - 81.2	31,829
\$25,000 to \$34,999	10,318	22.9	14.2 - 31.5	34,824	77.1	68.5 - 85.8	45,142
\$35,000 to \$49,999	26,504	30.3	24.1 - 36.5	60,953	69.7	63.5 - 75.9	87,457
\$50,000 to \$74,999	23,037	25.5	20.1 - 30.9	67,280	74.5	69.1 - 79.9	90,317
\$75,000 or more	24,702	23.2	18.2 - 28.2	81,938	76.8	71.8 - 81.8	106,640

**Awareness of Treatment to Reduce Chances of an HIV Positive Pregnant Woman Passing the Virus on to Her Baby (Among Adults Age 18-64) by Year Total, County, BRFSS Age Group, DOH Race-Ethnicity, Gender, County and Community, Education Level, Employment Status (Grouped), Household Income, Island, Marital Status (Grouped), Poverty Level, for the Year(s) - 2001, 2002, 2003, 2004**

*Note: Weighted numbers (#), percentages and 95% confidence intervals; Respondents aged 18 years and older; n/r (Not Reportable) - Represents cell size restriction of unweighted count < 50; n/a (Not Available) - Not asked of a subset of respondents*

**Year: 2003**

Island	False			True			Estimated Adult Population
	#	%	C.I. (95%)	#	%	C.I. (95%)	#
Hawaii	17,183	26.6	21.9 - 31.3	47,374	73.4	68.7 - 78.1	64,557
Kauai	5,522	23.7	17.1 - 30.2	17,825	76.3	69.8 - 82.9	23,347
Maui	14,216	27.2	20.8 - 33.5	38,126	72.8	66.5 - 79.2	52,342
Lanai	n/r	n/r	n/r	n/r	n/r	n/r	n/r
Molokai	n/r	n/r	n/r	n/r	n/r	n/r	n/r
Oahu	97,807	25.6	22.6 - 28.6	283,778	74.4	71.4 - 77.4	381,585

**Awareness of Treatment to Reduce Chances of an HIV Positive Pregnant Woman Passing the Virus on to Her Baby (Among Adults Age 18-64) by Year Total, County, BRFSS Age Group, DOH Race-Ethnicity, Gender, County and Community, Education Level, Employment Status (Grouped), Household Income, Island, Marital Status (Grouped), Poverty Level, for the Year(s) - 2001, 2002, 2003, 2004**

*Note: Weighted numbers (#), percentages and 95% confidence intervals; Respondents aged 18 years and older; n/r (Not Reportable) - Represents cell size restriction of unweighted count < 50; n/a (Not Available) - Not asked of a subset of respondents*

**Year: 2003**

Marital Status (Grouped)	False			True			Estimated Adult Population
	#	%	C.I. (95%)	#	%	C.I. (95%)	#
<b>Married</b>	75,806	24.5	21.5 - 27.4	233,875	75.5	72.6 - 78.5	309,681
<b>Unmarried Couple</b>	2,416	15.6	4.3 - 26.9	13,080	84.4	73.1 - 95.7	15,496
<b>Widowed</b>	2,094	18.6	8.7 - 28.4	9,191	81.4	71.6 - 91.3	11,285
<b>Other</b>	58,899	28.8	24.8 - 32.8	145,432	71.2	67.2 - 75.2	204,331

**Awareness of Treatment to Reduce Chances of an HIV Positive Pregnant Woman Passing the Virus on to Her Baby (Among Adults Age 18-64) by Year Total, County, BRFSS Age Group, DOH Race-Ethnicity, Gender, County and Community, Education Level, Employment Status (Grouped), Household Income, Island, Marital Status (Grouped), Poverty Level, for the Year(s) - 2001, 2002, 2003, 2004**

*Note: Weighted numbers (#), percentages and 95% confidence intervals; Respondents aged 18 years and older; n/r (Not Reportable) - Represents cell size restriction of unweighted count < 50; n/a (Not Available) - Not asked of a subset of respondents*

**Year: 2003**

Poverty Level	False			True			Estimated Adult Population
	#	%	C.I. (95%)	#	%	C.I. (95%)	#
1-50%	7,223	25.9	16.6 - 35.1	20,690	74.1	64.9 - 83.4	27,913
51-100%	12,461	24.4	15.2 - 33.6	38,620	75.6	66.4 - 84.8	51,081
101-120%	n/r	n/r	n/r	n/r	n/r	n/r	n/r
121-130%	4,008	22.0	10.0 - 33.9	14,238	78.0	66.1 - 90.0	18,246
131-150%	6,456	35.8	18.4 - 53.2	11,578	64.2	46.8 - 81.6	18,034
151-170%	3,063	23.2	11.3 - 35.1	10,140	76.8	64.9 - 88.7	13,203
171-180%	5,421	30.8	16.0 - 45.7	12,179	69.2	54.3 - 84.0	17,600
186+%	69,770	24.6	21.7 - 27.5	213,690	75.4	72.5 - 78.3	283,460

**Awareness of Treatment to Reduce Chances of an HIV Positive Pregnant Woman Passing the Virus on to Her Baby (Among Adults Age 18-64) by Year Total, County, BRFSS Age Group, DOH Race-Ethnicity, Gender, County and Community, Education Level, Employment Status (Grouped), Household Income, Island, Marital Status (Grouped), Poverty Level, for the Year(s) - 2001, 2002, 2003, 2004**

*Note: Weighted numbers (#), percentages and 95% confidence intervals; Respondents aged 18 years and older; n/r (Not Reportable) - Represents cell size restriction of unweighted count < 50; n/a (Not Available) - Not asked of a subset of respondents*

**Year: 2003**

**Year: 2004**

Year Total	False			True			Estimated Adult Population
	#	%	C.I. (95%)	#	%	C.I. (95%)	#
<b>State</b>	177,291	33.3	29.3 - 37.2	355,707	66.7	62.8 - 70.7	532,998

**Awareness of Treatment to Reduce Chances of an HIV Positive Pregnant Woman Passing the Virus on to Her Baby (Among Adults Age 18-64) by Year Total, County, BRFSS Age Group, DOH Race-Ethnicity, Gender, County and Community, Education Level, Employment Status (Grouped), Household Income, Island, Marital Status (Grouped), Poverty Level, for the Year(s) - 2001, 2002, 2003, 2004**

*Note: Weighted numbers (#), percentages and 95% confidence intervals; Respondents aged 18 years and older; n/r (Not Reportable) - Represents cell size restriction of unweighted count < 50; n/a (Not Available) - Not asked of a subset of respondents*

**Year: 2004**

County	False			True			Estimated Adult Population
	#	%	C.I. (95%)	#	%	C.I. (95%)	#
Hawaii	25,649	33.1	26.1 - 40.1	51,885	66.9	59.9 - 73.9	77,534
Honolulu	119,482	32.9	27.6 - 38.2	243,449	67.1	61.8 - 72.4	362,931
Kauai	7,331	31.1	21.8 - 40.5	16,209	68.9	59.5 - 78.2	23,540
Maui	20,221	36.0	25.8 - 46.2	35,905	64.0	53.8 - 74.2	56,126

**Awareness of Treatment to Reduce Chances of an HIV Positive Pregnant Woman Passing the Virus on to Her Baby (Among Adults Age 18-64) by Year Total, County, BRFSS Age Group, DOH Race-Ethnicity, Gender, County and Community, Education Level, Employment Status (Grouped), Household Income, Island, Marital Status (Grouped), Poverty Level, for the Year(s) - 2001, 2002, 2003, 2004**

*Note: Weighted numbers (#), percentages and 95% confidence intervals; Respondents aged 18 years and older; n/r (Not Reportable) - Represents cell size restriction of unweighted count < 50; n/a (Not Available) - Not asked of a subset of respondents*

**Year: 2004**

BRFSS Age Group	False			True			Estimated Adult Population
	#	%	C.I. (95%)	#	%	C.I. (95%)	#
18-24	28,224	34.2	21.8 - 46.5	54,325	65.8	53.5 - 78.2	82,549
25-34	39,305	30.4	22.1 - 38.7	90,021	69.6	61.3 - 77.9	129,326
35-44	52,292	40.2	32.3 - 48.1	77,748	59.8	51.9 - 67.7	130,040
45-54	40,343	34.8	26.9 - 42.7	75,707	65.2	57.3 - 73.1	116,050
55-64	17,127	22.8	15.1 - 30.5	57,906	77.2	69.5 - 84.9	75,033
65-74	n/r	n/r	n/r	n/r	n/r	n/r	n/r
75+	n/r	n/r	n/r	n/r	n/r	n/r	n/r



**Awareness of Treatment to Reduce Chances of an HIV Positive Pregnant Woman Passing the Virus on to Her Baby (Among Adults Age 18-64) by Year Total, County, BRFSS Age Group, DOH Race-Ethnicity, Gender, County and Community, Education Level, Employment Status (Grouped), Household Income, Island, Marital Status (Grouped), Poverty Level, for the Year(s) - 2001, 2002, 2003, 2004**

*Note: Weighted numbers (#), percentages and 95% confidence intervals; Respondents aged 18 years and older; n/r (Not Reportable) - Represents cell size restriction of unweighted count < 50; n/a (Not Available) - Not asked of a subset of respondents*

**Year: 2004**

DOH Race-Ethnicity	False			True			Estimated Adult Population
	#	%	C.I. (95%)	#	%	C.I. (95%)	#
White	42,886	24.3	19.1 - 29.6	133,453	75.7	70.4 - 80.9	176,339
Native Hawaiian	35,650	46.8	35.4 - 58.2	40,468	53.2	41.8 - 64.6	76,118
Chinese	n/r	n/r	n/r	n/r	n/r	n/r	n/r
Filipino	37,082	40.7	29.3 - 52.1	54,033	59.3	47.9 - 70.7	91,115
Japanese	29,192	31.1	22.8 - 39.5	64,564	68.9	60.5 - 77.2	93,756
Black	n/r	n/r	n/r	n/r	n/r	n/r	n/r
Other Pacific Islander	n/r	n/r	n/r	n/r	n/r	n/r	n/r
Other Asian	n/r	n/r	n/r	n/r	n/r	n/r	n/r
Native Alaskan/ American Indian	n/r	n/r	n/r	n/r	n/r	n/r	n/r
Other	n/r	n/r	n/r	n/r	n/r	n/r	n/r

**Awareness of Treatment to Reduce Chances of an HIV Positive Pregnant Woman Passing the Virus on to Her Baby (Among Adults Age 18-64) by Year Total, County, BRFSS Age Group, DOH Race-Ethnicity, Gender, County and Community, Education Level, Employment Status (Grouped), Household Income, Island, Marital Status (Grouped), Poverty Level, for the Year(s) - 2001, 2002, 2003, 2004**

*Note: Weighted numbers (#), percentages and 95% confidence intervals; Respondents aged 18 years and older; n/r (Not Reportable) - Represents cell size restriction of unweighted count < 50; n/a (Not Available) - Not asked of a subset of respondents*

**Year: 2004**

Gender	False			True			Estimated Adult Population
	#	%	C.I. (95%)	#	%	C.I. (95%)	#
Female	73,255	28.0	22.9 - 33.1	188,352	72.0	66.9 - 77.1	261,607
Male	104,036	38.3	32.3 - 44.4	167,355	61.7	55.6 - 67.7	271,391

County and Community	False			True			Estimated Adult Population
	#	%	C.I. (95%)	#	%	C.I. (95%)	#
Hawaii-Hilo	7,908	33.9	22.5 - 45.3	15,421	66.1	54.7 - 77.5	23,329
Hawaii-Kona	3,868	25.1	12.3 - 37.9	11,515	74.9	62.1 - 87.7	15,383
Hawaii-N.Hawaii	3,431	27.9	12.8 - 43.0	8,849	72.1	57.0 - 87.2	12,280
Hawaii-Puna/ Kau	10,441	39.3	25.2 - 53.5	16,100	60.7	46.5 - 74.8	26,541
Honolulu-Aiea/ Pearl City	n/r	n/r	n/r	n/r	n/r	n/r	n/r
Honolulu-Ala Moana	n/r	n/r	n/r	n/r	n/r	n/r	n/r
Honolulu-Kaaawa/ Kahaluu/ Kaneohe	n/r	n/r	n/r	n/r	n/r	n/r	n/r
Honolulu-Kailua/ Waimanalo	n/r	n/r	n/r	n/r	n/r	n/r	n/r

**Awareness of Treatment to Reduce Chances of an HIV Positive Pregnant Woman Passing the Virus on to Her Baby (Among Adults Age 18-64) by Year Total, County, BRFSS Age Group, DOH Race-Ethnicity, Gender, County and Community, Education Level, Employment Status (Grouped), Household Income, Island, Marital Status (Grouped), Poverty Level, for the Year(s) - 2001, 2002, 2003, 2004**

*Note: Weighted numbers (#), percentages and 95% confidence intervals; Respondents aged 18 years and older; n/r (Not Reportable) - Represents cell size restriction of unweighted count < 50; n/a (Not Available) - Not asked of a subset of respondents*

**Year: 2004**

County and Community	False			True			Estimated Adult Population
	#	%	C.I. (95%)	#	%	C.I. (95%)	#
Honolulu-Kaimuki/ Palolo/ Waikiki	n/r	n/r	n/r	n/r	n/r	n/r	n/r
Honolulu-Manoa/ Upper Makiki	n/r	n/r	n/r	n/r	n/r	n/r	n/r
Honolulu-Mililani/ Wahiawa	10,240	25.3	9.5 - 41.1	30,192	74.7	58.9 - 90.5	40,432
Honolulu-Nanakuli/ Waianae	n/r	n/r	n/r	n/r	n/r	n/r	n/r
Honolulu-N.Shore/ Laie	n/r	n/r	n/r	n/r	n/r	n/r	n/r
Honolulu-Nuuanu/ Kalihi/ Moanalua	n/r	n/r	n/r	n/r	n/r	n/r	n/r
Honolulu-Salt Lake/ Foster Village	n/r	n/r	n/r	n/r	n/r	n/r	n/r
Honolulu-Waiialae/ Kahala/ Hawaii Kai	n/r	n/r	n/r	n/r	n/r	n/r	n/r
Honolulu-Waipahu/ Kapolei/ Ewa	27,896	40.0	26.6 - 53.4	41,885	60.0	46.6 - 73.4	69,781
Kauai-Hanalei/ Kapaa	2,976	31.1	16.5 - 45.7	6,581	68.9	54.3 - 83.5	9,557
Kauai-Lihue-Waimea	4,356	31.1	19.0 - 43.3	9,628	68.9	56.7 - 81.0	13,984
Maui-Kahului	7,433	34.5	18.3 - 50.7	14,137	65.5	49.3 - 81.7	21,570
Maui-Lanai	n/r	n/r	n/r	n/r	n/r	n/r	n/r

**Awareness of Treatment to Reduce Chances of an HIV Positive Pregnant Woman Passing the Virus on to Her Baby (Among Adults Age 18-64) by Year Total, County, BRFSS Age Group, DOH Race-Ethnicity, Gender, County and Community, Education Level, Employment Status (Grouped), Household Income, Island, Marital Status (Grouped), Poverty Level, for the Year(s) - 2001, 2002, 2003, 2004**

*Note: Weighted numbers (#), percentages and 95% confidence intervals; Respondents aged 18 years and older; n/r (Not Reportable) - Represents cell size restriction of unweighted count < 50; n/a (Not Available) - Not asked of a subset of respondents*

**Year: 2004**

County and Community	False			True			Estimated Adult Population
	#	%	C.I. (95%)	#	%	C.I. (95%)	#
Maui-Lahaina/ Wailuku	n/r	n/r	n/r	n/r	n/r	n/r	n/r
Maui-Molokai	n/r	n/r	n/r	n/r	n/r	n/r	n/r
Maui-Upcountry/ Hana	3,050	19.0	7.8 - 30.2	12,996	81.0	69.8 - 92.2	16,046

Education Level	False			True			Estimated Adult Population
	#	%	C.I. (95%)	#	%	C.I. (95%)	#
Grades 9 thru 11 (Some High School)	n/r	n/r	n/r	n/r	n/r	n/r	n/r
Grades 12 or GED (High School Grad)	55,018	35.8	27.5 - 44.0	98,736	64.2	56.0 - 72.5	153,754
College 1 to 3 years (Some College/ Tech)	69,731	38.5	31.5 - 45.5	111,317	61.5	54.5 - 68.5	181,048
College 4 years or more (College Grad)	47,630	26.5	20.5 - 32.5	132,169	73.5	67.5 - 79.5	179,799
Never attended school/ Only Kindergarten to Grades 8	n/r	n/r	n/r	n/r	n/r	n/r	n/r

**Awareness of Treatment to Reduce Chances of an HIV Positive Pregnant Woman Passing the Virus on to Her Baby (Among Adults Age 18-64) by Year Total, County, BRFSS Age Group, DOH Race-Ethnicity, Gender, County and Community, Education Level, Employment Status (Grouped), Household Income, Island, Marital Status (Grouped), Poverty Level, for the Year(s) - 2001, 2002, 2003, 2004**

*Note: Weighted numbers (#), percentages and 95% confidence intervals; Respondents aged 18 years and older; n/r (Not Reportable) - Represents cell size restriction of unweighted count < 50; n/a (Not Available) - Not asked of a subset of respondents*

**Year: 2004**

Employment Status (Grouped)	False			True			Estimated Adult Population
	#	%	C.I. (95%)	#	%	C.I. (95%)	#
<b>Employed</b>	135,808	34.4	29.7 - 39.0	259,315	65.6	61.0 - 70.3	395,123
<b>Unemployed</b>	n/r	n/r	n/r	n/r	n/r	n/r	n/r
<b>Student/Homemaker</b>	20,877	27.9	18.3 - 37.6	53,903	72.1	62.4 - 81.7	74,780
<b>Retired/Unable to work</b>	12,869	31.8	17.0 - 46.6	27,610	68.2	53.4 - 83.0	40,479

**Awareness of Treatment to Reduce Chances of an HIV Positive Pregnant Woman Passing the Virus on to Her Baby (Among Adults Age 18-64) by Year Total, County, BRFSS Age Group, DOH Race-Ethnicity, Gender, County and Community, Education Level, Employment Status (Grouped), Household Income, Island, Marital Status (Grouped), Poverty Level, for the Year(s) - 2001, 2002, 2003, 2004**

*Note: Weighted numbers (#), percentages and 95% confidence intervals; Respondents aged 18 years and older; n/r (Not Reportable) - Represents cell size restriction of unweighted count < 50; n/a (Not Available) - Not asked of a subset of respondents*

**Year: 2004**

Household Income	False			True			Estimated Adult Population
	#	%	C.I. (95%)	#	%	C.I. (95%)	#
Less than \$10,000	n/r	n/r	n/r	n/r	n/r	n/r	n/r
\$10,000 to \$14,999	n/r	n/r	n/r	n/r	n/r	n/r	n/r
\$15,000 to \$19,999	4,929	19.3	.8 - 37.8	20,602	80.7	62.2 - 99.2	25,531
\$20,000 to \$24,999	16,613	42.4	27.1 - 57.8	22,559	57.6	42.2 - 72.9	39,172
\$25,000 to \$34,999	21,704	31.0	19.7 - 42.3	48,386	69.0	57.7 - 80.3	70,090
\$35,000 to \$49,999	38,008	43.9	33.5 - 54.4	48,494	56.1	45.6 - 66.5	86,502
\$50,000 to \$74,999	43,006	27.2	20.5 - 33.9	115,095	72.8	66.1 - 79.5	158,101
\$75,000 or more	46,330	35.4	27.9 - 43.0	84,377	64.6	57.0 - 72.1	130,707

**Awareness of Treatment to Reduce Chances of an HIV Positive Pregnant Woman Passing the Virus on to Her Baby (Among Adults Age 18-64) by Year Total, County, BRFSS Age Group, DOH Race-Ethnicity, Gender, County and Community, Education Level, Employment Status (Grouped), Household Income, Island, Marital Status (Grouped), Poverty Level, for the Year(s) - 2001, 2002, 2003, 2004**

*Note: Weighted numbers (#), percentages and 95% confidence intervals; Respondents aged 18 years and older; n/r (Not Reportable) - Represents cell size restriction of unweighted count < 50; n/a (Not Available) - Not asked of a subset of respondents*

**Year: 2004**

Island	False			True			Estimated Adult Population
	#	%	C.I. (95%)	#	%	C.I. (95%)	#
Hawaii	25,649	33.1	26.1 - 40.1	51,885	66.9	59.9 - 73.9	77,534
Kauai	7,331	31.1	21.9 - 40.4	16,209	68.9	59.6 - 78.1	23,540
Maui	18,378	35.4	24.5 - 46.3	33,560	64.6	53.7 - 75.5	51,938
Lanai	n/r	n/r	n/r	n/r	n/r	n/r	n/r
Molokai	n/r	n/r	n/r	n/r	n/r	n/r	n/r
Oahu	119,482	32.9	27.6 - 38.2	243,449	67.1	61.8 - 72.4	362,931

**Awareness of Treatment to Reduce Chances of an HIV Positive Pregnant Woman Passing the Virus on to Her Baby (Among Adults Age 18-64) by Year Total, County, BRFSS Age Group, DOH Race-Ethnicity, Gender, County and Community, Education Level, Employment Status (Grouped), Household Income, Island, Marital Status (Grouped), Poverty Level, for the Year(s) - 2001, 2002, 2003, 2004**

*Note: Weighted numbers (#), percentages and 95% confidence intervals; Respondents aged 18 years and older; n/r (Not Reportable) - Represents cell size restriction of unweighted count < 50; n/a (Not Available) - Not asked of a subset of respondents*

**Year: 2004**

Marital Status (Grouped)	False			True			Estimated Adult Population
	#	%	C.I. (95%)	#	%	C.I. (95%)	#
<b>Married</b>	103,534	33.4	28.3 - 38.5	206,155	66.6	61.5 - 71.7	309,689
<b>Unmarried Couple</b>	6,415	35.8	16.8 - 54.9	11,484	64.2	45.1 - 83.2	17,899
<b>Widowed</b>	n/r	n/r	n/r	n/r	n/r	n/r	n/r
<b>Other</b>	65,636	32.9	26.1 - 39.7	133,843	67.1	60.3 - 73.9	199,479



**Awareness of Treatment to Reduce Chances of an HIV Positive Pregnant Woman Passing the Virus on to Her Baby (Among Adults Age 18-64) by Year Total, County, BRFSS Age Group, DOH Race-Ethnicity, Gender, County and Community, Education Level, Employment Status (Grouped), Household Income, Island, Marital Status (Grouped), Poverty Level, for the Year(s) - 2001, 2002, 2003, 2004**

*Note: Weighted numbers (#), percentages and 95% confidence intervals; Respondents aged 18 years and older; n/r (Not Reportable) - Represents cell size restriction of unweighted count < 50; n/a (Not Available) - Not asked of a subset of respondents*

**Year: 2004**

Poverty Level	False			True			Estimated Adult Population
	#	%	C.I. (95%)	#	%	C.I. (95%)	#
1-50%	n/r	n/r	n/r	n/r	n/r	n/r	n/r
51-100%	12,791	27.9	13.0 - 42.8	33,015	72.1	57.2 - 87.0	45,806
101-120%	9,710	39.6	18.3 - 60.9	14,809	60.4	39.1 - 81.7	24,519
121-130%	n/r	n/r	n/r	n/r	n/r	n/r	n/r
131-150%	n/r	n/r	n/r	n/r	n/r	n/r	n/r
151-170%	23,961	45.6	29.5 - 61.8	28,555	54.4	38.2 - 70.5	52,516
171-180%	n/r	n/r	n/r	n/r	n/r	n/r	n/r
186+%	111,475	31.0	26.8 - 35.3	247,892	69.0	64.7 - 73.2	359,367

**Awareness of Treatment to Reduce Chances of an HIV Positive Pregnant Woman Passing the Virus on to Her Baby (Among Adults Age 18-64) by Year Total, County, BRFSS Age Group, DOH Race-Ethnicity, Gender, County and Community, Education Level, Employment Status (Grouped), Household Income, Island, Marital Status (Grouped), Poverty Level, for the Year(s) - 2001, 2002, 2003, 2004**

*Note: Weighted numbers (#), percentages and 95% confidence intervals; Respondents aged 18 years and older; n/r (Not Reportable) - Represents cell size restriction of unweighted count < 50; n/a (Not Available) - Not asked of a subset of respondents*

**Year: 2004**