

Main Reason for Last HIV Test (Among Adults 18-64) by Year Total, County, BRFSS Age Group, DOH Race-Ethnicity, Gender, County and Community, Education Level, Employment Status (Grouped), Household Income, Island, Marital Status (Grouped), Poverty Level, for the Year(s) - 2000, 2001, 2002, 2003, 2004

*Note: Weighted numbers (#), percentages and 95% confidence intervals; Respondents aged 18 years and older;
n/r (Not Reportable) - Represents cell size restriction of unweighted count < 50;
n/a (Not Available) - Not asked of a subset of respondents*

The trend analysis report shows the trend for the selected health variable over selected years in a table and a graph; Estimated Adult Population: This number is a weighted representation of the adult population who responded to a particular question in the survey. For most questions the estimated adult population will be the entire adult population. For some secondary questions only a subset of the population was asked the question. For example, all survey participants were asked if they had diabetes, but only those who answered yes were asked if they use insulin. If a dimension value is unknown for a particular survey record, that record will not be included in the counts for that particular dimension.

For documentation on other terms and coding in this report, please go to the following links

[Click here to access BRFSS documentation](#)

[Click here to access DOH Race-Ethnicity coding](#)

[Click here to access The Hawai'i Data Guide](#)

[Click here to access Poverty Level Methodology](#)

**For questions about this report, please contact
The Hawaii Health Data Warehouse**

profiles@hhdw.org

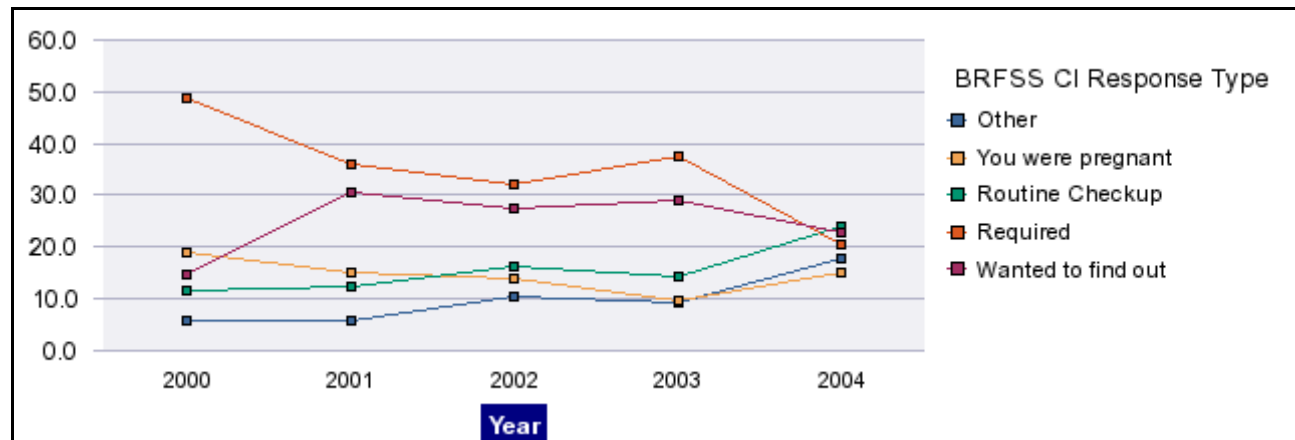
(808) 946-5899 x15

Main Reason for Last HIV Test (Among Adults 18-64) by Year Total, County, BRFSS Age Group, DOH Race-Ethnicity, Gender, County and Community, Education Level, Employment Status (Grouped), Household Income, Island, Marital Status (Grouped), Poverty Level, for the Year(s) - 2000, 2001, 2002, 2003, 2004

Note: Weighted numbers (#), percentages and 95% confidence intervals; Respondents aged 18 years and older; n/r (Not Reportable) - Represents cell size restriction of unweighted count < 50; n/a (Not Available) - Not asked of a subset of respondents

	Other			You were pregnant			Routine Checkup			Required			Wanted to find out			Estimated Adult Population
	#	%	C.I.(95%)	#	%	C.I.(95%)	#	%	C.I.(95%)	#	%	C.I.(95%)	#	%	C.I.(95%)	#
2000	6,808	5.7	3.7 - 7.7	22,829	19.0	15.0 - 23.1	13,951	11.6	8.6 - 14.6	58,510	48.8	43.9 - 53.7	17,773	14.8	11.5 - 18.2	119,871
2001	16,888	5.8	4.1 - 7.4	44,816	15.3	12.8 - 17.8	36,774	12.6	10.3 - 14.8	105,246	35.9	32.6 - 39.3	89,140	30.4	27.0 - 33.8	292,864
2002	31,672	10.5	8.7 - 12.2	41,868	13.8	11.8 - 15.8	49,304	16.3	14.1 - 18.5	96,805	32.0	29.1 - 34.9	83,052	27.4	24.6 - 30.3	302,701
2003	31,010	9.3	7.4 - 11.1	33,059	9.9	8.1 - 11.7	47,595	14.2	11.9 - 16.5	125,484	37.5	34.4 - 40.6	97,694	29.2	26.2 - 32.1	334,842
2004	53,025	17.7	13.6 - 21.8	45,014	15.1	11.5 - 18.6	72,000	24.1	19.8 - 28.3	61,072	20.4	16.2 - 24.6	67,888	22.7	18.3 - 27.1	298,999

Main Reason for Last HIV Test (Among Adults 18-64), for the Year(s) - 2000, 2001, 2002, 2003, 2004



Main Reason for Last HIV Test (Among Adults 18-64) by Year Total, County, BRFSS Age Group, DOH Race-Ethnicity, Gender, County and Community, Education Level, Employment Status (Grouped), Household Income, Island, Marital Status (Grouped), Poverty Level, for the Year(s) - 2000, 2001, 2002, 2003, 2004

Note: Weighted numbers (#), percentages and 95% confidence intervals; Respondents aged 18 years and older; n/r (Not Reportable) - Represents cell size restriction of unweighted count < 50; n/a (Not Available) - Not asked of a subset of respondents

Year: 2000

Year Total	Other			You were pregnant			Routine Checkup			Required			Wanted to find out			Estimated Adult Population
	#	%	C.I. (95%)	#	%	C.I. (95%)	#	%	C.I. (95%)	#	%	C.I. (95%)	#	%	C.I. (95%)	#
State	6,808	5.7	3.7 - 7.7	22,829	19.0	15.0 - 23.1	13,951	11.6	8.6 - 14.6	58,510	48.8	43.9 - 53.7	17,773	14.8	11.5 - 18.2	119,871

County	Other			You were pregnant			Routine Checkup			Required			Wanted to find out			Estimated Adult Population
	#	%	C.I. (95%)	#	%	C.I. (95%)	#	%	C.I. (95%)	#	%	C.I. (95%)	#	%	C.I. (95%)	#
Hawaii	974	10.2	4.2 - 16.2	1,624	17.0	8.8 - 25.3	1,523	16.0	7.7 - 24.3	2,976	31.2	18.6 - 43.9	2,432	25.5	16.3 - 34.7	9,529
Honolulu	4,526	4.8	2.4 - 7.3	18,579	19.9	14.9 - 24.9	9,707	10.4	6.8 - 14.0	50,674	54.3	48.3 - 60.2	9,893	10.6	7.0 - 14.2	93,379
Kauai	n/r	n/r	n/r	n/r	n/r	n/r	n/r	n/r	n/r	n/r	n/r	n/r	n/r	n/r	n/r	n/r
Maui	782	7.2	2.5 - 11.9	2,138	19.7	11.6 - 27.7	1,973	18.1	9.8 - 26.5	2,709	24.9	14.5 - 35.4	3,273	30.1	19.1 - 41.1	10,875

Main Reason for Last HIV Test (Among Adults 18-64) by Year Total, County, BRFSS Age Group, DOH Race-Ethnicity, Gender, County and Community, Education Level, Employment Status (Grouped), Household Income, Island, Marital Status (Grouped), Poverty Level, for the Year(s) - 2000, 2001, 2002, 2003, 2004

Note: Weighted numbers (#), percentages and 95% confidence intervals; Respondents aged 18 years and older; n/r (Not Reportable) - Represents cell size restriction of unweighted count < 50; n/a (Not Available) - Not asked of a subset of respondents

Year: 2000

BRFSS Age Group	Other			You were pregnant			Routine Checkup			Required			Wanted to find out			Estimated Adult Population
	#	%	C.I. (95%)	#	%	C.I. (95%)	#	%	C.I. (95%)	#	%	C.I. (95%)	#	%	C.I. (95%)	#
18-24	245	.8	.0 - 1.9	6,341	19.9	12.6 - 27.2	4,249	13.3	6.0 - 20.7	15,431	48.5	37.7 - 59.2	5,574	17.5	8.4 - 26.6	31,840
25-34	1,595	3.9	1.1 - 6.8	10,817	26.6	19.1 - 34.1	3,249	8.0	3.6 - 12.4	18,979	46.7	38.5 - 54.9	5,994	14.8	9.6 - 19.9	40,634
35-44	1,932	7.6	2.8 - 12.4	5,671	22.3	11.8 - 32.7	2,462	9.7	4.9 - 14.5	12,002	47.2	37.3 - 57.0	3,372	13.3	8.3 - 18.3	25,439
45-54	2,543	15.3	6.4 - 24.2	n/a		n/a	3,582	21.5	12.2 - 30.9	8,410	50.6	38.7 - 62.5	2,089	12.6	6.4 - 18.7	16,624
55-64	n/r	n/r	n/r	n/r	n/r	n/r	n/r	n/r	n/r	n/r	n/r	n/r	n/r	n/r	n/r	n/r
65-74	n/r	n/r	n/r	n/r	n/r	n/r	n/r	n/r	n/r	n/r	n/r	n/r	n/r	n/r	n/r	n/r
75+	n/r	n/r	n/r	n/r	n/r	n/r	n/r	n/r	n/r	n/r	n/r	n/r	n/r	n/r	n/r	n/r

Main Reason for Last HIV Test (Among Adults 18-64) by Year Total, County, BRFSS Age Group, DOH Race-Ethnicity, Gender, County and Community, Education Level, Employment Status (Grouped), Household Income, Island, Marital Status (Grouped), Poverty Level, for the Year(s) - 2000, 2001, 2002, 2003, 2004

Note: Weighted numbers (#), percentages and 95% confidence intervals; Respondents aged 18 years and older; n/r (Not Reportable) - Represents cell size restriction of unweighted count < 50; n/a (Not Available) - Not asked of a subset of respondents

Year: 2000

DOH Race-Ethnicity	Other			You were pregnant			Routine Checkup			Required			Wanted to find out			Estimated Adult Population
	#	%	C.I. (95%)	#	%	C.I. (95%)	#	%	C.I. (95%)	#	%	C.I. (95%)	#	%	C.I. (95%)	#
White	3,111	5.8	2.9 - 8.6	11,391	21.2	14.8 - 27.6	3,818	7.1	4.2 - 9.9	27,023	50.2	43.1 - 57.3	8,484	15.8	10.7 - 20.8	53,827
Native Hawaiian	862	5.3	1.3 - 9.3	3,562	22.0	12.2 - 31.7	3,842	23.7	12.9 - 34.5	4,443	27.4	15.6 - 39.2	3,513	21.7	9.3 - 34.0	16,222
Chinese	n/r	n/r	n/r	n/r	n/r	n/r	n/r	n/r	n/r	n/r	n/r	n/r	n/r	n/r	n/r	n/r
Filipino	1,193	9.4	1.1 - 17.7	2,327	18.4	3.2 - 33.5	1,414	11.2	.0 - 22.5	5,919	46.7	30.2 - 63.3	1,812	14.3	5.8 - 22.8	12,665
Japanese	805	8.0	.0 - 19.2	2,004	19.9	5.2 - 34.6	2,141	21.3	5.2 - 37.4	4,065	40.4	22.9 - 57.8	1,053	10.5	.0 - 21.4	10,068
Black	n/r	n/r	n/r	n/r	n/r	n/r	n/r	n/r	n/r	n/r	n/r	n/r	n/r	n/r	n/r	n/r
Other Pacific Islander	n/r	n/r	n/r	n/r	n/r	n/r	n/r	n/r	n/r	n/r	n/r	n/r	n/r	n/r	n/r	n/r
Other Asian	n/r	n/r	n/r	n/r	n/r	n/r	n/r	n/r	n/r	n/r	n/r	n/r	n/r	n/r	n/r	n/r
Native Alaskan/ American Indian	n/r	n/r	n/r	n/r	n/r	n/r	n/r	n/r	n/r	n/r	n/r	n/r	n/r	n/r	n/r	n/r
Other	n/r	n/r	n/r	n/r	n/r	n/r	n/r	n/r	n/r	n/r	n/r	n/r	n/r	n/r	n/r	n/r
Mixed Ethnicity	n/r	n/r	n/r	n/r	n/r	n/r	n/r	n/r	n/r	n/r	n/r	n/r	n/r	n/r	n/r	n/r

Main Reason for Last HIV Test (Among Adults 18-64) by Year Total, County, BRFSS Age Group, DOH Race-Ethnicity, Gender, County and Community, Education Level, Employment Status (Grouped), Household Income, Island, Marital Status (Grouped), Poverty Level, for the Year(s) - 2000, 2001, 2002, 2003, 2004

Note: Weighted numbers (#), percentages and 95% confidence intervals; Respondents aged 18 years and older; n/r (Not Reportable) - Represents cell size restriction of unweighted count < 50; n/a (Not Available) - Not asked of a subset of respondents

Year: 2000

Gender	Other			You were pregnant			Routine Checkup			Required			Wanted to find out			Estimated Adult Population
	#	%	C.I. (95%)	#	%	C.I. (95%)	#	%	C.I. (95%)	#	%	C.I. (95%)	#	%	C.I. (95%)	#
Female	2,935	5.6	2.6 - 8.5	21,563	41.0	33.9 - 48.0	5,847	11.1	7.4 - 14.8	14,960	28.4	21.9 - 34.9	7,340	13.9	9.9 - 17.9	52,645
Male	3,873	5.8	3.0 - 8.5	1,265	1.9	.0 - 4.8	8,104	12.1	7.6 - 16.6	43,551	64.8	58.2 - 71.4	10,433	15.5	10.4 - 20.6	67,226

County and Community	Other			You were pregnant			Routine Checkup			Required			Wanted to find out			Estimated Adult Population
	#	%	C.I. (95%)	#	%	C.I. (95%)	#	%	C.I. (95%)	#	%	C.I. (95%)	#	%	C.I. (95%)	#
Hawaii-Hilo	n/r	n/r	n/r	n/r	n/r	n/r	n/r	n/r	n/r	n/r	n/r	n/r	n/r	n/r	n/r	n/r
Hawaii-Kona	n/r	n/r	n/r	n/r	n/r	n/r	n/r	n/r	n/r	n/r	n/r	n/r	n/r	n/r	n/r	n/r
Hawaii-N.Hawaii	n/r	n/r	n/r	n/r	n/r	n/r	n/r	n/r	n/r	n/r	n/r	n/r	n/r	n/r	n/r	n/r
Hawaii-Puna/ Kau	n/r	n/r	n/r	n/r	n/r	n/r	n/r	n/r	n/r	n/r	n/r	n/r	n/r	n/r	n/r	n/r
Honolulu-Aiea/ Pearl City	n/r	n/r	n/r	n/r	n/r	n/r	n/r	n/r	n/r	n/r	n/r	n/r	n/r	n/r	n/r	n/r
Honolulu-Ala Moana	n/r	n/r	n/r	n/r	n/r	n/r	n/r	n/r	n/r	n/r	n/r	n/r	n/r	n/r	n/r	n/r
Honolulu-Kaaawa/ Kahaluu/ Kaneohe	n/r	n/r	n/r	n/r	n/r	n/r	n/r	n/r	n/r	n/r	n/r	n/r	n/r	n/r	n/r	n/r
Honolulu-Kailua/ Waimanalo	n/r	n/r	n/r	n/r	n/r	n/r	n/r	n/r	n/r	n/r	n/r	n/r	n/r	n/r	n/r	n/r

Main Reason for Last HIV Test (Among Adults 18-64) by Year Total, County, BRFSS Age Group, DOH Race-Ethnicity, Gender, County and Community, Education Level, Employment Status (Grouped), Household Income, Island, Marital Status (Grouped), Poverty Level, for the Year(s) - 2000, 2001, 2002, 2003, 2004

Note: Weighted numbers (#), percentages and 95% confidence intervals; Respondents aged 18 years and older; n/r (Not Reportable) - Represents cell size restriction of unweighted count < 50; n/a (Not Available) - Not asked of a subset of respondents

Year: 2000

County and Community	Other			You were pregnant			Routine Checkup			Required			Wanted to find out			Estimated Adult Population
	#	%	C.I. (95%)	#	%	C.I. (95%)	#	%	C.I. (95%)	#	%	C.I. (95%)	#	%	C.I. (95%)	#
Honolulu-Kaimuki/ Palolo/ Waikiki	n/r	n/r	n/r	n/r	n/r	n/r	n/r	n/r	n/r	n/r	n/r	n/r	n/r	n/r	n/r	n/r
Honolulu-Manoa/ Upper Makiki	n/r	n/r	n/r	n/r	n/r	n/r	n/r	n/r	n/r	n/r	n/r	n/r	n/r	n/r	n/r	n/r
Honolulu-Mililani/ Wahiawa	634	4.2	.0 - 10.1	2,952	19.6	9.8 - 29.4	1,039	6.9	.3 - 13.5	9,900	65.7	53.1 - 78.3	537	3.6	.0 - 7.3	15,062
Honolulu-Nanakuli/ Waianae	n/r	n/r	n/r	n/r	n/r	n/r	n/r	n/r	n/r	n/r	n/r	n/r	n/r	n/r	n/r	n/r
Honolulu-N.Shore/ Laie	n/r	n/r	n/r	n/r	n/r	n/r	n/r	n/r	n/r	n/r	n/r	n/r	n/r	n/r	n/r	n/r
Honolulu-Nuuanu/ Kalihi/ Moanalua	n/r	n/r	n/r	n/r	n/r	n/r	n/r	n/r	n/r	n/r	n/r	n/r	n/r	n/r	n/r	n/r
Honolulu-Salt Lake/ Foster Village	206	1.4	.0 - 4.3	2,934	20.5	8.4 - 32.7	1,182	8.3	1.5 - 15.1	9,765	68.3	55.4 - 81.3	201	1.4	.0 - 4.2	14,288
Honolulu-Waiialae/ Kahala/ Hawaii Kai	n/r	n/r	n/r	n/r	n/r	n/r	n/r	n/r	n/r	n/r	n/r	n/r	n/r	n/r	n/r	n/r
Honolulu-Waipahu/ Kapolei/ Ewa	1,397	11.4	1.4 - 21.5	1,997	16.3	6.2 - 26.5	568	4.6	.0 - 9.3	7,733	63.3	49.5 - 77.1	526	4.3	.0 - 9.0	12,221
Kauai-Hanalei/ Kapaa	n/r	n/r	n/r	n/r	n/r	n/r	n/r	n/r	n/r	n/r	n/r	n/r	n/r	n/r	n/r	n/r
Kauai-Lihue-Waimea	n/r	n/r	n/r	n/r	n/r	n/r	n/r	n/r	n/r	n/r	n/r	n/r	n/r	n/r	n/r	n/r
Maui-Kahului	n/r	n/r	n/r	n/r	n/r	n/r	n/r	n/r	n/r	n/r	n/r	n/r	n/r	n/r	n/r	n/r
Maui-Lanai	n/r	n/r	n/r	n/r	n/r	n/r	n/r	n/r	n/r	n/r	n/r	n/r	n/r	n/r	n/r	n/r

Main Reason for Last HIV Test (Among Adults 18-64) by Year Total, County, BRFSS Age Group, DOH Race-Ethnicity, Gender, County and Community, Education Level, Employment Status (Grouped), Household Income, Island, Marital Status (Grouped), Poverty Level, for the Year(s) - 2000, 2001, 2002, 2003, 2004

Note: Weighted numbers (#), percentages and 95% confidence intervals; Respondents aged 18 years and older; n/r (Not Reportable) - Represents cell size restriction of unweighted count < 50; n/a (Not Available) - Not asked of a subset of respondents

Year: 2000

County and Community	Other			You were pregnant			Routine Checkup			Required			Wanted to find out			Estimated Adult Population
	#	%	C.I. (95%)	#	%	C.I. (95%)	#	%	C.I. (95%)	#	%	C.I. (95%)	#	%	C.I. (95%)	#
Maui-Lahaina/ Wailuku	n/r	n/r	n/r	n/r	n/r	n/r	n/r	n/r	n/r	n/r	n/r	n/r	n/r	n/r	n/r	n/r
Maui-Molokai	n/r	n/r	n/r	n/r	n/r	n/r	n/r	n/r	n/r	n/r	n/r	n/r	n/r	n/r	n/r	n/r
Maui-Upcountry/ Hana	n/r	n/r	n/r	n/r	n/r	n/r	n/r	n/r	n/r	n/r	n/r	n/r	n/r	n/r	n/r	n/r

Education Level	Other			You were pregnant			Routine Checkup			Required			Wanted to find out			Estimated Adult Population
	#	%	C.I. (95%)	#	%	C.I. (95%)	#	%	C.I. (95%)	#	%	C.I. (95%)	#	%	C.I. (95%)	#
Grades 9 thru 11 (Some High School)	n/r	n/r	n/r	n/r	n/r	n/r	n/r	n/r	n/r	n/r	n/r	n/r	n/r	n/r	n/r	n/r
Grades 12 or GED (High School Grad)	2,002	5.6	1.9 - 9.2	5,972	16.6	10.1 - 23.0	5,067	14.1	7.5 - 20.6	18,427	51.1	42.2 - 60.0	4,589	12.7	6.4 - 19.0	36,057
College 1 to 3 years (Some College/ Tech)	1,606	3.8	1.7 - 6.0	7,888	18.9	11.9 - 25.9	4,700	11.2	6.7 - 15.8	21,102	50.5	42.0 - 59.1	6,485	15.5	9.3 - 21.8	41,781
College 4 years or more (College Grad)	2,304	6.2	2.1 - 10.4	7,166	19.4	12.2 - 26.5	3,766	10.2	5.2 - 15.2	17,732	48.0	39.4 - 56.5	6,008	16.2	10.7 - 21.8	36,976
Never attended school/ Only Kindergarten to Grades 8	n/r	n/r	n/r	n/r	n/r	n/r	n/r	n/r	n/r	n/r	n/r	n/r	n/r	n/r	n/r	n/r

Main Reason for Last HIV Test (Among Adults 18-64) by Year Total, County, BRFSS Age Group, DOH Race-Ethnicity, Gender, County and Community, Education Level, Employment Status (Grouped), Household Income, Island, Marital Status (Grouped), Poverty Level, for the Year(s) - 2000, 2001, 2002, 2003, 2004

Note: Weighted numbers (#), percentages and 95% confidence intervals; Respondents aged 18 years and older; n/r (Not Reportable) - Represents cell size restriction of unweighted count < 50; n/a (Not Available) - Not asked of a subset of respondents

Year: 2000

Employment Status (Grouped)	Other			You were pregnant			Routine Checkup			Required			Wanted to find out			Estimated Adult Population
	#	%	C.I. (95%)	#	%	C.I. (95%)	#	%	C.I. (95%)	#	%	C.I. (95%)	#	%	C.I. (95%)	#
Employed	5,789	6.0	3.6 - 8.4	12,927	13.4	9.4 - 17.3	11,758	12.2	8.7 - 15.7	52,338	54.1	48.7 - 59.6	13,853	14.3	10.5 - 18.1	96,665
Unemployed	n/r	n/r	n/r	n/r	n/r	n/r	n/r	n/r	n/r	n/r	n/r	n/r	n/r	n/r	n/r	n/r
Student/Homemaker	161	1.1	.0 - 2.6	8,016	53.6	40.0 - 67.1	1,500	10.0	2.5 - 17.5	3,340	22.3	10.1 - 34.5	1,942	13.0	5.3 - 20.7	14,959
Retired/Unable to work	n/r	n/r	n/r	n/r	n/r	n/r	n/r	n/r	n/r	n/r	n/r	n/r	n/r	n/r	n/r	n/r

Main Reason for Last HIV Test (Among Adults 18-64) by Year Total, County, BRFSS Age Group, DOH Race-Ethnicity, Gender, County and Community, Education Level, Employment Status (Grouped), Household Income, Island, Marital Status (Grouped), Poverty Level, for the Year(s) - 2000, 2001, 2002, 2003, 2004

Note: Weighted numbers (#), percentages and 95% confidence intervals; Respondents aged 18 years and older; n/r (Not Reportable) - Represents cell size restriction of unweighted count < 50; n/a (Not Available) - Not asked of a subset of respondents

Year: 2000

Household Income	Other			You were pregnant			Routine Checkup			Required			Wanted to find out			Estimated Adult Population
	#	%	C.I. (95%)	#	%	C.I. (95%)	#	%	C.I. (95%)	#	%	C.I. (95%)	#	%	C.I. (95%)	#
Less than \$10,000	1,002	13.9	3.6 - 24.3	853	11.9	2.4 - 21.3	651	9.1	.0 - 18.2	1,532	21.3	5.9 - 36.7	3,151	43.8	22.8 - 64.9	7,189
\$10,000 to \$14,999	n/r	n/r	n/r	n/r	n/r	n/r	n/r	n/r	n/r	n/r	n/r	n/r	n/r	n/r	n/r	n/r
\$15,000 to \$19,999	131	1.5	.0 - 3.7	755	8.5	.7 - 16.3	806	9.0	1.6 - 16.5	5,645	63.4	48.2 - 78.5	1,573	17.7	5.3 - 30.0	8,910
\$20,000 to \$24,999	494	5.2	.0 - 13.6	1,409	14.9	4.3 - 25.5	1,278	13.5	.0 - 27.1	5,446	57.7	40.0 - 75.3	818	8.7	.1 - 17.2	9,445
\$25,000 to \$34,999	923	3.9	.3 - 7.4	4,752	19.9	9.5 - 30.4	1,597	6.7	1.9 - 11.5	12,327	51.7	40.4 - 63.1	4,231	17.8	8.5 - 27.0	23,830
\$35,000 to \$49,999	1,034	4.7	.8 - 8.5	4,515	20.4	10.8 - 30.0	2,878	13.0	4.5 - 21.5	11,692	52.7	41.0 - 64.4	2,055	9.3	3.8 - 14.8	22,174
\$50,000 to \$74,999	2,228	12.7	3.7 - 21.6	2,462	14.0	2.3 - 25.8	2,213	12.6	4.1 - 21.1	8,517	48.5	35.4 - 61.7	2,127	12.1	5.5 - 18.8	17,547
\$75,000 or more	440	3.6	.0 - 7.8	2,491	20.5	10.1 - 31.0	2,272	18.7	8.5 - 29.0	6,124	50.5	36.5 - 64.5	802	6.6	.9 - 12.3	12,129

Main Reason for Last HIV Test (Among Adults 18-64) by Year Total, County, BRFSS Age Group, DOH Race-Ethnicity, Gender, County and Community, Education Level, Employment Status (Grouped), Household Income, Island, Marital Status (Grouped), Poverty Level, for the Year(s) - 2000, 2001, 2002, 2003, 2004

Note: Weighted numbers (#), percentages and 95% confidence intervals; Respondents aged 18 years and older; n/r (Not Reportable) - Represents cell size restriction of unweighted count < 50; n/a (Not Available) - Not asked of a subset of respondents

Year: 2000

Island	Other			You were pregnant			Routine Checkup			Required			Wanted to find out			Estimated Adult Population
	#	%	C.I. (95%)	#	%	C.I. (95%)	#	%	C.I. (95%)	#	%	C.I. (95%)	#	%	C.I. (95%)	#
Hawaii	974	10.2	4.3 - 16.2	1,624	17.0	8.8 - 25.2	1,523	16.0	7.7 - 24.2	2,976	31.2	18.7 - 43.8	2,432	25.5	16.4 - 34.7	9,529
Kauai	n/r	n/r	n/r	n/r	n/r	n/r	n/r	n/r	n/r	n/r	n/r	n/r	n/r	n/r	n/r	n/r
Maui	599	6.0	1.2 - 10.8	2,016	20.3	11.6 - 29.0	1,785	18.0	9.1 - 26.8	2,495	25.1	13.9 - 36.3	3,048	30.7	18.9 - 42.4	9,943
Lanai	n/r	n/r	n/r	n/r	n/r	n/r	n/r	n/r	n/r	n/r	n/r	n/r	n/r	n/r	n/r	n/r
Molokai	n/r	n/r	n/r	n/r	n/r	n/r	n/r	n/r	n/r	n/r	n/r	n/r	n/r	n/r	n/r	n/r
Oahu	4,526	4.8	2.4 - 7.3	18,579	19.9	14.9 - 24.9	9,707	10.4	6.8 - 14.0	50,674	54.3	48.4 - 60.2	9,893	10.6	7.0 - 14.2	93,379

Main Reason for Last HIV Test (Among Adults 18-64) by Year Total, County, BRFSS Age Group, DOH Race-Ethnicity, Gender, County and Community, Education Level, Employment Status (Grouped), Household Income, Island, Marital Status (Grouped), Poverty Level, for the Year(s) - 2000, 2001, 2002, 2003, 2004

Note: Weighted numbers (#), percentages and 95% confidence intervals; Respondents aged 18 years and older; n/r (Not Reportable) - Represents cell size restriction of unweighted count < 50; n/a (Not Available) - Not asked of a subset of respondents

Year: 2000

Marital Status (Grouped)	Other			You were pregnant			Routine Checkup			Required			Wanted to find out			Estimated Adult Population
	#	%	C.I. (95%)	#	%	C.I. (95%)	#	%	C.I. (95%)	#	%	C.I. (95%)	#	%	C.I. (95%)	#
Married	3,353	4.9	2.2 - 7.5	17,345	25.2	19.3 - 31.1	5,768	8.4	5.3 - 11.4	37,305	54.1	47.7 - 60.6	5,153	7.5	4.0 - 11.0	68,924
Unmarried Couple	n/r	n/r	n/r	n/r	n/r	n/r	n/r	n/r	n/r	n/r	n/r	n/r	n/r	n/r	n/r	n/r
Widowed	n/r	n/r	n/r	n/r	n/r	n/r	n/r	n/r	n/r	n/r	n/r	n/r	n/r	n/r	n/r	n/r
Other	3,441	7.4	4.0 - 10.7	4,143	8.9	4.3 - 13.4	7,353	15.7	9.8 - 21.7	19,874	42.5	34.4 - 50.6	11,927	25.5	18.9 - 32.2	46,738

Main Reason for Last HIV Test (Among Adults 18-64) by Year Total, County, BRFSS Age Group, DOH Race-Ethnicity, Gender, County and Community, Education Level, Employment Status (Grouped), Household Income, Island, Marital Status (Grouped), Poverty Level, for the Year(s) - 2000, 2001, 2002, 2003, 2004

Note: Weighted numbers (#), percentages and 95% confidence intervals; Respondents aged 18 years and older; n/r (Not Reportable) - Represents cell size restriction of unweighted count < 50; n/a (Not Available) - Not asked of a subset of respondents

Year: 2000

Poverty Level	Other			You were pregnant			Routine Checkup			Required			Wanted to find out			Estimated Adult Population
	#	%	C.I. (95%)	#	%	C.I. (95%)	#	%	C.I. (95%)	#	%	C.I. (95%)	#	%	C.I. (95%)	#
1-50%	n/r	n/r	n/r	n/r	n/r	n/r	n/r	n/r	n/r	n/r	n/r	n/r	n/r	n/r	n/r	n/r
51-100%	853	8.2	2.0 - 14.3	3,036	29.1	11.1 - 47.1	792	7.6	.0 - 19.1	3,476	33.3	14.3 - 52.4	2,274	21.8	8.6 - 35.0	10,431
101-120%	n/r	n/r	n/r	n/r	n/r	n/r	n/r	n/r	n/r	n/r	n/r	n/r	n/r	n/r	n/r	n/r
121-130%	n/r	n/r	n/r	n/r	n/r	n/r	n/r	n/r	n/r	n/r	n/r	n/r	n/r	n/r	n/r	n/r
131-150%	n/r	n/r	n/r	n/r	n/r	n/r	n/r	n/r	n/r	n/r	n/r	n/r	n/r	n/r	n/r	n/r
151-170%	n/r	n/r	n/r	n/r	n/r	n/r	n/r	n/r	n/r	n/r	n/r	n/r	n/r	n/r	n/r	n/r
171-180%	n/r	n/r	n/r	n/r	n/r	n/r	n/r	n/r	n/r	n/r	n/r	n/r	n/r	n/r	n/r	n/r
181-185%	n/r	n/r	n/r	n/r	n/r	n/r	n/r	n/r	n/r	n/r	n/r	n/r	n/r	n/r	n/r	n/r
186+%	4,301	6.2	3.4 - 8.9	13,212	18.9	13.5 - 24.3	7,809	11.2	7.5 - 14.8	37,721	54.0	47.8 - 60.1	6,872	9.8	6.9 - 12.7	69,915

Main Reason for Last HIV Test (Among Adults 18-64) by Year Total, County, BRFSS Age Group, DOH Race-Ethnicity, Gender, County and Community, Education Level, Employment Status (Grouped), Household Income, Island, Marital Status (Grouped), Poverty Level, for the Year(s) - 2000, 2001, 2002, 2003, 2004

Note: Weighted numbers (#), percentages and 95% confidence intervals; Respondents aged 18 years and older; n/r (Not Reportable) - Represents cell size restriction of unweighted count < 50; n/a (Not Available) - Not asked of a subset of respondents

Year: 2000

Year: 2001

Year Total	Other			You were pregnant			Routine Checkup			Required			Wanted to find out			Estimated Adult Population
	#	%	C.I. (95%)	#	%	C.I. (95%)	#	%	C.I. (95%)	#	%	C.I. (95%)	#	%	C.I. (95%)	#
State	16,888	5.8	4.1 - 7.4	44,816	15.3	12.8 - 17.8	36,774	12.6	10.3 - 14.8	105,246	35.9	32.6 - 39.3	89,140	30.4	27.0 - 33.8	292,864

Main Reason for Last HIV Test (Among Adults 18-64) by Year Total, County, BRFSS Age Group, DOH Race-Ethnicity, Gender, County and Community, Education Level, Employment Status (Grouped), Household Income, Island, Marital Status (Grouped), Poverty Level, for the Year(s) - 2000, 2001, 2002, 2003, 2004

Note: Weighted numbers (#), percentages and 95% confidence intervals; Respondents aged 18 years and older; n/r (Not Reportable) - Represents cell size restriction of unweighted count < 50; n/a (Not Available) - Not asked of a subset of respondents

Year: 2001

County	Other			You were pregnant			Routine Checkup			Required			Wanted to find out			Estimated Adult Population
	#	%	C.I. (95%)	#	%	C.I. (95%)	#	%	C.I. (95%)	#	%	C.I. (95%)	#	%	C.I. (95%)	#
Hawaii	3,053	9.6	5.7 - 13.4	6,042	18.9	13.7 - 24.1	4,476	14.0	9.7 - 18.3	7,588	23.7	18.4 - 29.1	10,809	33.8	27.9 - 39.7	31,968
Honolulu	11,050	5.3	3.1 - 7.4	31,322	15.0	11.8 - 18.1	24,206	11.6	8.7 - 14.4	86,252	41.2	36.8 - 45.6	56,563	27.0	22.9 - 31.1	209,393
Kauai	524	4.4	1.3 - 7.5	1,629	13.7	7.6 - 19.8	1,725	14.5	8.4 - 20.6	4,017	33.8	24.7 - 42.8	3,999	33.6	25.2 - 42.0	11,894
Maui	1,860	5.8	2.7 - 8.8	5,044	15.6	9.4 - 21.8	5,291	16.4	11.1 - 21.6	5,426	16.8	11.3 - 22.3	14,701	45.5	33.9 - 57.1	32,322

Main Reason for Last HIV Test (Among Adults 18-64) by Year Total, County, BRFSS Age Group, DOH Race-Ethnicity, Gender, County and Community, Education Level, Employment Status (Grouped), Household Income, Island, Marital Status (Grouped), Poverty Level, for the Year(s) - 2000, 2001, 2002, 2003, 2004

Note: Weighted numbers (#), percentages and 95% confidence intervals; Respondents aged 18 years and older; n/r (Not Reportable) - Represents cell size restriction of unweighted count < 50; n/a (Not Available) - Not asked of a subset of respondents

Year: 2001

BRFSS Age Group	Other			You were pregnant			Routine Checkup			Required			Wanted to find out			Estimated Adult Population
	#	%	C.I. (95%)	#	%	C.I. (95%)	#	%	C.I. (95%)	#	%	C.I. (95%)	#	%	C.I. (95%)	#
18-24	2,652	5.5	.0 - 11.1	11,510	24.1	15.8 - 32.3	3,243	6.8	2.9 - 10.7	10,762	22.5	14.7 - 30.3	19,663	41.1	29.3 - 53.0	47,830
25-34	3,395	3.7	1.8 - 5.6	20,901	23.0	17.8 - 28.2	11,424	12.6	8.2 - 17.0	31,885	35.1	29.1 - 41.0	23,353	25.7	20.7 - 30.6	90,958
35-44	5,030	6.5	3.6 - 9.3	10,489	13.5	9.2 - 17.8	8,692	11.2	7.1 - 15.2	34,448	44.2	38.0 - 50.5	19,192	24.7	19.6 - 29.7	77,851
45-54	4,728	9.3	4.4 - 14.3	1,917	3.8	.9 - 6.7	8,330	16.4	11.6 - 21.2	18,262	36.0	28.6 - 43.4	17,523	34.5	27.4 - 41.7	50,760
55-64	1,083	4.3	.3 - 8.2	n/a		n/a	5,085	20.0	10.5 - 29.4	9,890	38.8	26.8 - 50.9	9,408	36.9	24.8 - 49.1	25,466
65-74	n/r	n/r	n/r	n/r	n/r	n/r	n/r	n/r	n/r	n/r	n/r	n/r	n/r	n/r	n/r	n/r
75+	n/r	n/r	n/r	n/r	n/r	n/r	n/r	n/r	n/r	n/r	n/r	n/r	n/r	n/r	n/r	n/r

Main Reason for Last HIV Test (Among Adults 18-64) by Year Total, County, BRFSS Age Group, DOH Race-Ethnicity, Gender, County and Community, Education Level, Employment Status (Grouped), Household Income, Island, Marital Status (Grouped), Poverty Level, for the Year(s) - 2000, 2001, 2002, 2003, 2004

Note: Weighted numbers (#), percentages and 95% confidence intervals; Respondents aged 18 years and older; n/r (Not Reportable) - Represents cell size restriction of unweighted count < 50; n/a (Not Available) - Not asked of a subset of respondents

Year: 2001

DOH Race-Ethnicity	Other			You were pregnant			Routine Checkup			Required			Wanted to find out			Estimated Adult Population
	#	%	C.I. (95%)	#	%	C.I. (95%)	#	%	C.I. (95%)	#	%	C.I. (95%)	#	%	C.I. (95%)	#
White	8,709	6.3	3.5 - 9.1	16,878	12.2	9.0 - 15.5	15,370	11.1	8.7 - 13.6	53,407	38.7	34.2 - 43.2	43,784	31.7	27.5 - 35.9	138,148
Native Hawaiian	2,101	5.1	1.9 - 8.3	9,059	22.0	15.0 - 29.0	6,979	17.0	10.1 - 23.8	10,315	25.1	17.0 - 33.2	12,678	30.8	21.7 - 39.9	41,132
Chinese	n/r	n/r	n/r	n/r	n/r	n/r	n/r	n/r	n/r	n/r	n/r	n/r	n/r	n/r	n/r	n/r
Filipino	1,589	5.0	.8 - 9.2	6,466	20.4	10.9 - 29.9	3,545	11.2	2.9 - 19.5	10,572	33.4	21.3 - 45.4	9,506	30.0	14.2 - 45.8	31,678
Japanese	418	1.5	.1 - 3.0	6,097	22.5	14.0 - 31.0	3,804	14.0	6.0 - 22.1	10,274	37.9	26.6 - 49.2	6,523	24.1	15.2 - 33.0	27,116
Black	n/r	n/r	n/r	n/r	n/r	n/r	n/r	n/r	n/r	n/r	n/r	n/r	n/r	n/r	n/r	n/r
Other Pacific Islander	n/r	n/r	n/r	n/r	n/r	n/r	n/r	n/r	n/r	n/r	n/r	n/r	n/r	n/r	n/r	n/r
Other Asian	n/r	n/r	n/r	n/r	n/r	n/r	n/r	n/r	n/r	n/r	n/r	n/r	n/r	n/r	n/r	n/r
Native Alaskan/ American Indian	n/r	n/r	n/r	n/r	n/r	n/r	n/r	n/r	n/r	n/r	n/r	n/r	n/r	n/r	n/r	n/r
Other	470	3.0	.0 - 8.2	1,228	7.8	.3 - 15.3	1,152	7.3	.2 - 14.4	7,584	48.0	30.3 - 65.7	5,367	34.0	16.7 - 51.3	15,801

Main Reason for Last HIV Test (Among Adults 18-64) by Year Total, County, BRFSS Age Group, DOH Race-Ethnicity, Gender, County and Community, Education Level, Employment Status (Grouped), Household Income, Island, Marital Status (Grouped), Poverty Level, for the Year(s) - 2000, 2001, 2002, 2003, 2004

Note: Weighted numbers (#), percentages and 95% confidence intervals; Respondents aged 18 years and older; n/r (Not Reportable) - Represents cell size restriction of unweighted count < 50; n/a (Not Available) - Not asked of a subset of respondents

Year: 2001

Gender	Other			You were pregnant			Routine Checkup			Required			Wanted to find out			Estimated Adult Population
	#	%	C.I. (95%)	#	%	C.I. (95%)	#	%	C.I. (95%)	#	%	C.I. (95%)	#	%	C.I. (95%)	#
Female	8,091	5.7	3.8 - 7.5	44,007	30.8	26.3 - 35.2	14,598	10.2	7.4 - 13.0	36,249	25.3	21.2 - 29.4	40,095	28.0	23.9 - 32.1	143,040
Male	8,797	5.9	3.2 - 8.5	810	.5	.0 - 1.2	22,176	14.8	11.4 - 18.2	68,997	46.1	40.8 - 51.3	49,045	32.7	27.4 - 38.1	149,825

County and Community	Other			You were pregnant			Routine Checkup			Required			Wanted to find out			Estimated Adult Population
	#	%	C.I. (95%)	#	%	C.I. (95%)	#	%	C.I. (95%)	#	%	C.I. (95%)	#	%	C.I. (95%)	#
Hawaii-Hilo	1,397	18.6	6.7 - 30.5	1,385	18.4	8.2 - 28.7	1,234	16.4	5.9 - 27.0	1,687	22.5	12.0 - 32.9	1,811	24.1	13.2 - 35.0	7,514
Hawaii-Kona	782	7.7	2.3 - 13.1	1,909	18.8	10.5 - 27.1	1,562	15.4	8.2 - 22.6	2,279	22.5	13.6 - 31.3	3,610	35.6	25.6 - 45.5	10,142
Hawaii-N.Hawaii	620	8.0	2.1 - 14.0	1,415	18.3	6.0 - 30.7	828	10.7	1.8 - 19.7	1,962	25.4	13.5 - 37.4	2,886	37.4	24.4 - 50.4	7,711
Hawaii-Puna/ Kau	254	3.8	.0 - 9.1	1,334	20.2	8.7 - 31.7	852	12.9	5.4 - 20.4	1,660	25.1	12.8 - 37.5	2,502	37.9	24.4 - 51.4	6,602
Honolulu-Aiea/ Pearl City	n/a		n/a	2,940	18.3	3.9 - 32.8	1,460	9.1	1.1 - 17.1	9,303	58.0	42.3 - 73.7	2,337	14.6	3.6 - 25.5	16,040
Honolulu-Ala Moana	n/r	n/r	n/r	n/r	n/r	n/r	n/r	n/r	n/r	n/r	n/r	n/r	n/r	n/r	n/r	n/r
Honolulu-Kaaawa/ Kahaluu/ Kaneohe	n/r	n/r	n/r	n/r	n/r	n/r	n/r	n/r	n/r	n/r	n/r	n/r	n/r	n/r	n/r	n/r
Honolulu-Kailua/ Waimanalo	1,546	8.1	.8 - 15.5	3,568	18.8	6.7 - 30.9	1,394	7.3	.9 - 13.7	6,172	32.5	19.9 - 45.0	6,323	33.3	19.9 - 46.6	19,003

Main Reason for Last HIV Test (Among Adults 18-64) by Year Total, County, BRFSS Age Group, DOH Race-Ethnicity, Gender, County and Community, Education Level, Employment Status (Grouped), Household Income, Island, Marital Status (Grouped), Poverty Level, for the Year(s) - 2000, 2001, 2002, 2003, 2004

Note: Weighted numbers (#), percentages and 95% confidence intervals; Respondents aged 18 years and older; n/r (Not Reportable) - Represents cell size restriction of unweighted count < 50; n/a (Not Available) - Not asked of a subset of respondents

Year: 2001

County and Community	Other			You were pregnant			Routine Checkup			Required			Wanted to find out			Estimated Adult Population
	#	%	C.I. (95%)	#	%	C.I. (95%)	#	%	C.I. (95%)	#	%	C.I. (95%)	#	%	C.I. (95%)	#
Honolulu-Kaimuki/ Palolo/ Waikiki	351	1.7	.0 - 4.9	954	4.5	.0 - 9.9	4,804	22.9	11.2 - 34.6	5,421	25.8	14.4 - 37.3	9,455	45.1	31.1 - 59.0	20,985
Honolulu-Manoa/ Upper Makiki	2,016	11.1	.0 - 22.7	2,583	14.2	1.4 - 27.1	2,606	14.4	1.8 - 26.9	5,399	29.7	14.5 - 45.0	5,550	30.6	15.7 - 45.4	18,154
Honolulu-Mililani/ Wahiawa	554	2.3	.0 - 5.7	5,515	23.3	13.2 - 33.4	1,155	4.9	.0 - 9.8	14,085	59.4	47.1 - 71.8	2,385	10.1	2.4 - 17.8	23,694
Honolulu-Nanakuli/ Waianae	n/r	n/r	n/r	n/r	n/r	n/r	n/r	n/r	n/r	n/r	n/r	n/r	n/r	n/r	n/r	n/r
Honolulu-N.Shore/ Laie	n/r	n/r	n/r	n/r	n/r	n/r	n/r	n/r	n/r	n/r	n/r	n/r	n/r	n/r	n/r	n/r
Honolulu-Nuuanu/ Kalihi/ Moanalua	n/r	n/r	n/r	n/r	n/r	n/r	n/r	n/r	n/r	n/r	n/r	n/r	n/r	n/r	n/r	n/r
Honolulu-Salt Lake/ Foster Village	1,100	5.3	.0 - 10.6	3,499	16.9	8.0 - 25.9	1,138	5.5	.5 - 10.5	12,111	58.6	45.9 - 71.4	2,807	13.6	3.9 - 23.3	20,655
Honolulu-Waiialae/ Kahala/ Hawaii Kai	n/r	n/r	n/r	n/r	n/r	n/r	n/r	n/r	n/r	n/r	n/r	n/r	n/r	n/r	n/r	n/r
Honolulu-Waipahu/ Kapolei/ Ewa	1,359	4.4	.0 - 8.9	5,565	18.1	9.1 - 27.1	2,341	7.6	.0 - 15.5	14,644	47.6	35.8 - 59.3	6,866	22.3	12.6 - 32.0	30,775
Kauai-Hanalei/ Kapaa	362	6.5	1.1 - 11.8	433	7.7	1.8 - 13.6	958	17.1	7.6 - 26.5	1,655	29.5	15.4 - 43.6	2,202	39.3	26.0 - 52.5	5,610
Kauai-Lihue-Waimea	162	2.6	.0 - 5.9	1,197	19.0	9.2 - 28.9	767	12.2	4.3 - 20.1	2,362	37.6	25.7 - 49.4	1,796	28.6	18.2 - 39.0	6,284
Maui-Kahului	1,209	8.4	2.0 - 14.7	1,664	11.5	.7 - 22.4	2,350	16.3	7.1 - 25.4	1,487	10.3	3.3 - 17.3	7,734	53.5	32.5 - 74.6	14,444
Maui-Lanai	n/r	n/r	n/r	n/r	n/r	n/r	n/r	n/r	n/r	n/r	n/r	n/r	n/r	n/r	n/r	n/r

Main Reason for Last HIV Test (Among Adults 18-64) by Year Total, County, BRFSS Age Group, DOH Race-Ethnicity, Gender, County and Community, Education Level, Employment Status (Grouped), Household Income, Island, Marital Status (Grouped), Poverty Level, for the Year(s) - 2000, 2001, 2002, 2003, 2004

Note: Weighted numbers (#), percentages and 95% confidence intervals; Respondents aged 18 years and older; n/r (Not Reportable) - Represents cell size restriction of unweighted count < 50; n/a (Not Available) - Not asked of a subset of respondents

Year: 2001

County and Community	Other			You were pregnant			Routine Checkup			Required			Wanted to find out			Estimated Adult Population
	#	%	C.I. (95%)	#	%	C.I. (95%)	#	%	C.I. (95%)	#	%	C.I. (95%)	#	%	C.I. (95%)	#
Maui-Lahaina/ Wailuku	168	2.3	.0 - 4.6	1,672	22.8	11.1 - 34.5	1,655	22.6	12.2 - 33.0	1,217	16.6	7.7 - 25.5	2,617	35.7	24.2 - 47.2	7,329
Maui-Molokai	n/r	n/r	n/r	n/r	n/r	n/r	n/r	n/r	n/r	n/r	n/r	n/r	n/r	n/r	n/r	n/r
Maui-Upcountry/ Hana	391	4.5	.0 - 9.2	1,050	12.0	5.1 - 18.9	1,025	11.7	4.1 - 19.4	2,384	27.3	16.0 - 38.5	3,890	44.5	31.5 - 57.5	8,740

Education Level	Other			You were pregnant			Routine Checkup			Required			Wanted to find out			Estimated Adult Population
	#	%	C.I. (95%)	#	%	C.I. (95%)	#	%	C.I. (95%)	#	%	C.I. (95%)	#	%	C.I. (95%)	#
Grades 9 thru 11 (Some High School)	n/r	n/r	n/r	n/r	n/r	n/r	n/r	n/r	n/r	n/r	n/r	n/r	n/r	n/r	n/r	n/r
Grades 12 or GED (High School Grad)	4,721	5.1	2.3 - 7.9	18,201	19.6	14.4 - 24.7	7,904	8.5	5.5 - 11.5	32,862	35.4	29.2 - 41.6	29,229	31.5	25.4 - 37.6	92,917
College 1 to 3 years (Some College/ Tech)	6,285	6.3	3.1 - 9.5	14,161	14.2	9.9 - 18.4	12,417	12.4	8.0 - 16.8	36,799	36.8	30.8 - 42.8	30,307	30.3	23.7 - 37.0	99,969
College 4 years or more (College Grad)	4,753	5.2	2.9 - 7.4	11,082	12.0	8.6 - 15.4	14,780	16.0	12.0 - 20.0	34,576	37.5	32.0 - 43.0	27,075	29.3	24.3 - 34.4	92,266
Never attended school/ Only Kindergarten to Grades 8	n/r	n/r	n/r	n/r	n/r	n/r	n/r	n/r	n/r	n/r	n/r	n/r	n/r	n/r	n/r	n/r

Main Reason for Last HIV Test (Among Adults 18-64) by Year Total, County, BRFSS Age Group, DOH Race-Ethnicity, Gender, County and Community, Education Level, Employment Status (Grouped), Household Income, Island, Marital Status (Grouped), Poverty Level, for the Year(s) - 2000, 2001, 2002, 2003, 2004

Note: Weighted numbers (#), percentages and 95% confidence intervals; Respondents aged 18 years and older; n/r (Not Reportable) - Represents cell size restriction of unweighted count < 50; n/a (Not Available) - Not asked of a subset of respondents

Year: 2001

Employment Status (Grouped)	Other			You were pregnant			Routine Checkup			Required			Wanted to find out			Estimated Adult Population
	#	%	C.I. (95%)	#	%	C.I. (95%)	#	%	C.I. (95%)	#	%	C.I. (95%)	#	%	C.I. (95%)	#
Employed	13,045	5.6	3.7 - 7.4	25,490	10.9	8.6 - 13.1	29,057	12.4	9.9 - 14.9	93,351	39.8	35.9 - 43.6	73,869	31.5	27.6 - 35.3	234,812
Unemployed	915	8.4	.6 - 16.2	470	4.3	.0 - 9.9	2,061	19.0	7.7 - 30.2	2,144	19.7	6.4 - 33.1	5,269	48.5	30.3 - 66.8	10,859
Student/Homemaker	1,346	4.0	.8 - 7.3	17,790	53.3	42.7 - 63.8	2,970	8.9	3.4 - 14.4	3,424	10.2	5.0 - 15.5	7,877	23.6	14.4 - 32.7	33,407
Retired/Unable to work	1,583	11.7	3.6 - 19.7	1,065	7.8	.0 - 15.9	2,685	19.8	9.0 - 30.5	6,327	46.6	32.1 - 61.1	1,920	14.1	7.1 - 21.2	13,580

Main Reason for Last HIV Test (Among Adults 18-64) by Year Total, County, BRFSS Age Group, DOH Race-Ethnicity, Gender, County and Community, Education Level, Employment Status (Grouped), Household Income, Island, Marital Status (Grouped), Poverty Level, for the Year(s) - 2000, 2001, 2002, 2003, 2004

Note: Weighted numbers (#), percentages and 95% confidence intervals; Respondents aged 18 years and older; n/r (Not Reportable) - Represents cell size restriction of unweighted count < 50; n/a (Not Available) - Not asked of a subset of respondents

Year: 2001

Household Income	Other			You were pregnant			Routine Checkup			Required			Wanted to find out			Estimated Adult Population
	#	%	C.I. (95%)	#	%	C.I. (95%)	#	%	C.I. (95%)	#	%	C.I. (95%)	#	%	C.I. (95%)	#
Less than \$10,000	782	6.1	.0 - 13.0	4,291	33.5	15.4 - 51.5	1,614	12.6	3.4 - 21.8	2,533	19.8	7.5 - 32.0	3,604	28.1	14.1 - 42.1	12,824
\$10,000 to \$14,999	526	3.6	.0 - 7.4	3,341	22.8	7.5 - 38.2	2,946	20.1	9.6 - 30.7	2,857	19.5	5.4 - 33.7	4,974	34.0	19.8 - 48.2	14,644
\$15,000 to \$19,999	878	5.6	.0 - 11.2	3,048	19.3	8.7 - 30.0	1,788	11.3	.0 - 23.8	4,153	26.3	13.9 - 38.8	5,894	37.4	24.0 - 50.8	15,761
\$20,000 to \$24,999	737	3.5	.0 - 7.4	1,907	9.1	2.5 - 15.7	2,452	11.7	.4 - 23.0	7,683	36.6	19.9 - 53.3	8,190	39.1	18.5 - 59.6	20,969
\$25,000 to \$34,999	2,147	6.0	1.8 - 10.3	5,278	14.8	8.1 - 21.4	3,423	9.6	3.5 - 15.7	15,922	44.6	35.3 - 53.9	8,941	25.0	17.7 - 32.3	35,711
\$35,000 to \$49,999	5,443	11.0	4.1 - 17.8	5,918	11.9	7.2 - 16.7	6,517	13.2	8.0 - 18.3	17,798	35.9	28.1 - 43.7	13,862	28.0	20.7 - 35.2	49,538
\$50,000 to \$74,999	1,964	4.1	1.7 - 6.6	9,460	20.0	13.2 - 26.8	5,540	11.7	6.4 - 17.0	17,958	37.9	29.8 - 46.1	12,433	26.3	18.7 - 33.8	47,355
\$75,000 or more	2,418	5.5	1.8 - 9.2	3,795	8.6	4.6 - 12.6	7,007	15.8	9.9 - 21.8	20,703	46.8	38.2 - 55.4	10,299	23.3	15.8 - 30.7	44,222

Main Reason for Last HIV Test (Among Adults 18-64) by Year Total, County, BRFSS Age Group, DOH Race-Ethnicity, Gender, County and Community, Education Level, Employment Status (Grouped), Household Income, Island, Marital Status (Grouped), Poverty Level, for the Year(s) - 2000, 2001, 2002, 2003, 2004

Note: Weighted numbers (#), percentages and 95% confidence intervals; Respondents aged 18 years and older; n/r (Not Reportable) - Represents cell size restriction of unweighted count < 50; n/a (Not Available) - Not asked of a subset of respondents

Year: 2001

Island	Other			You were pregnant			Routine Checkup			Required			Wanted to find out			Estimated Adult Population
	#	%	C.I. (95%)	#	%	C.I. (95%)	#	%	C.I. (95%)	#	%	C.I. (95%)	#	%	C.I. (95%)	#
Hawaii	3,053	9.6	5.7 - 13.4	6,042	18.9	13.7 - 24.1	4,476	14.0	9.7 - 18.3	7,588	23.7	18.4 - 29.1	10,809	33.8	27.9 - 39.7	31,968
Kauai	524	4.4	1.4 - 7.5	1,629	13.7	7.7 - 19.7	1,725	14.5	8.4 - 20.5	4,017	33.8	24.8 - 42.8	3,999	33.6	25.3 - 42.0	11,894
Maui	1,768	5.8	2.6 - 9.0	4,387	14.4	8.0 - 20.7	5,029	16.5	11.0 - 22.0	5,088	16.7	10.9 - 22.4	14,241	46.7	34.7 - 58.7	30,513
Lanai	n/r	n/r	n/r	n/r	n/r	n/r	n/r	n/r	n/r	n/r	n/r	n/r	n/r	n/r	n/r	n/r
Molokai	n/r	n/r	n/r	n/r	n/r	n/r	n/r	n/r	n/r	n/r	n/r	n/r	n/r	n/r	n/r	n/r
Oahu	11,050	5.3	3.1 - 7.4	31,322	15.0	11.8 - 18.1	24,206	11.6	8.7 - 14.4	86,252	41.2	36.8 - 45.6	56,563	27.0	23.0 - 31.1	209,393

Main Reason for Last HIV Test (Among Adults 18-64) by Year Total, County, BRFSS Age Group, DOH Race-Ethnicity, Gender, County and Community, Education Level, Employment Status (Grouped), Household Income, Island, Marital Status (Grouped), Poverty Level, for the Year(s) - 2000, 2001, 2002, 2003, 2004

Note: Weighted numbers (#), percentages and 95% confidence intervals; Respondents aged 18 years and older; n/r (Not Reportable) - Represents cell size restriction of unweighted count < 50; n/a (Not Available) - Not asked of a subset of respondents

Year: 2001

Marital Status (Grouped)	Other			You were pregnant			Routine Checkup			Required			Wanted to find out			Estimated Adult Population
	#	%	C.I. (95%)	#	%	C.I. (95%)	#	%	C.I. (95%)	#	%	C.I. (95%)	#	%	C.I. (95%)	#
Married	7,490	4.8	3.0 - 6.5	32,081	20.4	16.6 - 24.3	16,211	10.3	7.7 - 12.9	72,866	46.4	41.4 - 51.3	28,510	18.1	13.6 - 22.7	157,158
Unmarried Couple	n/r	n/r	n/r	n/r	n/r	n/r	n/r	n/r	n/r	n/r	n/r	n/r	n/r	n/r	n/r	n/r
Widowed	n/r	n/r	n/r	n/r	n/r	n/r	n/r	n/r	n/r	n/r	n/r	n/r	n/r	n/r	n/r	n/r
Other	9,060	7.1	4.0 - 10.1	11,868	9.3	6.3 - 12.3	19,175	15.0	11.4 - 18.6	30,427	23.8	19.7 - 28.0	57,193	44.8	39.6 - 49.9	127,723

Main Reason for Last HIV Test (Among Adults 18-64) by Year Total, County, BRFSS Age Group, DOH Race-Ethnicity, Gender, County and Community, Education Level, Employment Status (Grouped), Household Income, Island, Marital Status (Grouped), Poverty Level, for the Year(s) - 2000, 2001, 2002, 2003, 2004

Note: Weighted numbers (#), percentages and 95% confidence intervals; Respondents aged 18 years and older; n/r (Not Reportable) - Represents cell size restriction of unweighted count < 50; n/a (Not Available) - Not asked of a subset of respondents

Year: 2001

Poverty Level	Other			You were pregnant			Routine Checkup			Required			Wanted to find out			Estimated Adult Population
	#	%	C.I. (95%)	#	%	C.I. (95%)	#	%	C.I. (95%)	#	%	C.I. (95%)	#	%	C.I. (95%)	#
1-50%	738	5.9	.0 - 13.0	4,603	36.7	18.1 - 55.2	1,515	12.1	2.7 - 21.5	3,080	24.5	9.3 - 39.8	2,618	20.9	7.2 - 34.5	12,554
51-100%	715	3.0	.0 - 6.2	4,178	17.5	6.3 - 28.7	2,960	12.4	2.4 - 22.3	5,535	23.1	10.9 - 35.4	10,523	44.0	26.1 - 62.0	23,911
101-120%	n/r	n/r	n/r	n/r	n/r	n/r	n/r	n/r	n/r	n/r	n/r	n/r	n/r	n/r	n/r	n/r
121-130%	n/r	n/r	n/r	n/r	n/r	n/r	n/r	n/r	n/r	n/r	n/r	n/r	n/r	n/r	n/r	n/r
131-150%	1,721	10.6	.0 - 25.6	3,518	21.6	9.7 - 33.6	1,868	11.5	.0 - 24.7	5,828	35.8	20.8 - 50.8	3,331	20.5	9.5 - 31.5	16,266
151-170%	n/r	n/r	n/r	n/r	n/r	n/r	n/r	n/r	n/r	n/r	n/r	n/r	n/r	n/r	n/r	n/r
171-180%	870	5.0	.0 - 10.0	3,217	18.3	8.8 - 27.9	1,841	10.5	2.3 - 18.7	8,185	46.7	33.4 - 60.0	3,423	19.5	9.7 - 29.3	17,536
181-185%	n/r	n/r	n/r	n/r	n/r	n/r	n/r	n/r	n/r	n/r	n/r	n/r	n/r	n/r	n/r	n/r
186+%	8,539	5.8	3.9 - 7.7	17,460	11.8	8.9 - 14.7	20,330	13.8	10.8 - 16.8	59,085	40.1	35.6 - 44.6	42,029	28.5	24.3 - 32.7	147,443

Main Reason for Last HIV Test (Among Adults 18-64) by Year Total, County, BRFSS Age Group, DOH Race-Ethnicity, Gender, County and Community, Education Level, Employment Status (Grouped), Household Income, Island, Marital Status (Grouped), Poverty Level, for the Year(s) - 2000, 2001, 2002, 2003, 2004

Note: Weighted numbers (#), percentages and 95% confidence intervals; Respondents aged 18 years and older; n/r (Not Reportable) - Represents cell size restriction of unweighted count < 50; n/a (Not Available) - Not asked of a subset of respondents

Year: 2001

Year: 2002

Year Total	Other			You were pregnant			Routine Checkup			Required			Wanted to find out			Estimated Adult Population
	#	%	C.I. (95%)	#	%	C.I. (95%)	#	%	C.I. (95%)	#	%	C.I. (95%)	#	%	C.I. (95%)	#
State	31,672	10.5	8.7 - 12.2	41,868	13.8	11.8 - 15.8	49,304	16.3	14.1 - 18.5	96,805	32.0	29.1 - 34.9	83,052	27.4	24.6 - 30.3	302,701

Main Reason for Last HIV Test (Among Adults 18-64) by Year Total, County, BRFSS Age Group, DOH Race-Ethnicity, Gender, County and Community, Education Level, Employment Status (Grouped), Household Income, Island, Marital Status (Grouped), Poverty Level, for the Year(s) - 2000, 2001, 2002, 2003, 2004

Note: Weighted numbers (#), percentages and 95% confidence intervals; Respondents aged 18 years and older; n/r (Not Reportable) - Represents cell size restriction of unweighted count < 50; n/a (Not Available) - Not asked of a subset of respondents

Year: 2002

County	Other			You were pregnant			Routine Checkup			Required			Wanted to find out			Estimated Adult Population
	#	%	C.I. (95%)	#	%	C.I. (95%)	#	%	C.I. (95%)	#	%	C.I. (95%)	#	%	C.I. (95%)	#
Hawaii	4,467	13.0	9.0 - 17.0	5,859	17.0	12.7 - 21.3	5,651	16.4	12.1 - 20.7	7,694	22.3	17.1 - 27.5	10,768	31.3	25.9 - 36.7	34,439
Honolulu	22,128	9.9	7.8 - 12.1	30,165	13.6	11.0 - 16.1	34,119	15.3	12.5 - 18.2	78,940	35.5	31.7 - 39.3	57,094	25.7	22.0 - 29.3	222,446
Kauai	1,206	11.8	6.0 - 17.6	733	7.2	2.1 - 12.3	2,015	19.7	12.0 - 27.4	2,136	20.8	13.4 - 28.3	4,154	40.5	30.9 - 50.2	10,244
Maui	3,441	10.9	6.9 - 14.9	4,923	15.6	11.0 - 20.2	6,358	20.1	15.4 - 24.8	6,448	20.4	15.1 - 25.7	10,423	33.0	27.1 - 38.9	31,593

Main Reason for Last HIV Test (Among Adults 18-64) by Year Total, County, BRFSS Age Group, DOH Race-Ethnicity, Gender, County and Community, Education Level, Employment Status (Grouped), Household Income, Island, Marital Status (Grouped), Poverty Level, for the Year(s) - 2000, 2001, 2002, 2003, 2004

Note: Weighted numbers (#), percentages and 95% confidence intervals; Respondents aged 18 years and older; n/r (Not Reportable) - Represents cell size restriction of unweighted count < 50; n/a (Not Available) - Not asked of a subset of respondents

Year: 2002

BRFSS Age Group	Other			You were pregnant			Routine Checkup			Required			Wanted to find out			Estimated Adult Population
	#	%	C.I. (95%)	#	%	C.I. (95%)	#	%	C.I. (95%)	#	%	C.I. (95%)	#	%	C.I. (95%)	#
18-24	3,766	8.0	4.0 - 12.1	8,183	17.5	10.0 - 24.9	6,165	13.2	6.5 - 19.8	15,100	32.2	23.7 - 40.7	13,656	29.1	21.2 - 37.1	46,870
25-34	6,841	7.7	4.7 - 10.6	17,699	19.8	15.8 - 23.8	11,099	12.4	9.1 - 15.7	27,499	30.8	25.4 - 36.1	26,278	29.4	23.3 - 35.5	89,416
35-44	9,723	11.0	7.8 - 14.1	12,711	14.3	11.0 - 17.7	13,232	14.9	10.9 - 19.0	31,800	35.9	30.4 - 41.4	21,123	23.8	19.6 - 28.1	88,589
45-54	7,393	14.5	10.0 - 19.1	2,958	5.8	3.2 - 8.4	12,267	24.1	18.3 - 29.9	14,868	29.2	23.5 - 35.0	13,360	26.3	21.2 - 31.4	50,846
55-64	3,950	14.6	7.6 - 21.7	317	1.2	.0 - 3.1	6,540	24.2	16.1 - 32.3	7,538	27.9	18.7 - 37.2	8,635	32.0	20.9 - 43.1	26,980
65-74	n/r	n/r	n/r	n/r	n/r	n/r	n/r	n/r	n/r	n/r	n/r	n/r	n/r	n/r	n/r	n/r
75+	n/r	n/r	n/r	n/r	n/r	n/r	n/r	n/r	n/r	n/r	n/r	n/r	n/r	n/r	n/r	n/r

Main Reason for Last HIV Test (Among Adults 18-64) by Year Total, County, BRFSS Age Group, DOH Race-Ethnicity, Gender, County and Community, Education Level, Employment Status (Grouped), Household Income, Island, Marital Status (Grouped), Poverty Level, for the Year(s) - 2000, 2001, 2002, 2003, 2004

Note: Weighted numbers (#), percentages and 95% confidence intervals; Respondents aged 18 years and older; n/r (Not Reportable) - Represents cell size restriction of unweighted count < 50; n/a (Not Available) - Not asked of a subset of respondents

Year: 2002

DOH Race-Ethnicity	Other			You were pregnant			Routine Checkup			Required			Wanted to find out			Estimated Adult Population
	#	%	C.I. (95%)	#	%	C.I. (95%)	#	%	C.I. (95%)	#	%	C.I. (95%)	#	%	C.I. (95%)	#
White	15,865	11.2	8.6 - 13.9	17,403	12.3	9.3 - 15.3	23,251	16.5	13.5 - 19.5	46,383	32.9	28.7 - 37.0	38,255	27.1	23.2 - 31.0	141,157
Native Hawaiian	1,661	4.7	1.8 - 7.5	5,904	16.6	11.0 - 22.3	4,696	13.2	8.3 - 18.2	8,123	22.9	15.2 - 30.6	15,143	42.6	33.1 - 52.1	35,527
Chinese	2,936	17.8	8.2 - 27.4	1,054	6.4	.0 - 13.1	4,034	24.5	9.6 - 39.4	4,261	25.9	13.2 - 38.6	4,184	25.4	13.8 - 37.0	16,469
Filipino	2,768	7.8	3.5 - 12.1	5,073	14.3	8.8 - 19.9	6,438	18.2	10.6 - 25.8	13,444	38.0	28.9 - 47.1	7,680	21.7	13.8 - 29.6	35,403
Japanese	6,051	19.1	11.6 - 26.5	5,931	18.7	12.1 - 25.3	4,730	14.9	9.1 - 20.7	5,764	18.2	11.0 - 25.3	9,263	29.2	19.3 - 39.0	31,739
Black	520	4.1	.0 - 11.0	1,821	14.5	4.5 - 24.5	2,147	17.1	7.7 - 26.5	6,506	51.9	37.4 - 66.4	1,548	12.3	1.4 - 23.3	12,542
Other Pacific Islander	n/r	n/r	n/r	n/r	n/r	n/r	n/r	n/r	n/r	n/r	n/r	n/r	n/r	n/r	n/r	n/r
Other Asian	n/r	n/r	n/r	n/r	n/r	n/r	n/r	n/r	n/r	n/r	n/r	n/r	n/r	n/r	n/r	n/r
Native Alaskan/ American Indian	n/r	n/r	n/r	n/r	n/r	n/r	n/r	n/r	n/r	n/r	n/r	n/r	n/r	n/r	n/r	n/r
Other	1,143	7.2	1.2 - 13.1	2,139	13.4	6.0 - 20.8	1,060	6.6	1.4 - 11.8	7,489	46.9	32.3 - 61.4	4,145	25.9	14.1 - 37.8	15,976

Main Reason for Last HIV Test (Among Adults 18-64) by Year Total, County, BRFSS Age Group, DOH Race-Ethnicity, Gender, County and Community, Education Level, Employment Status (Grouped), Household Income, Island, Marital Status (Grouped), Poverty Level, for the Year(s) - 2000, 2001, 2002, 2003, 2004

Note: Weighted numbers (#), percentages and 95% confidence intervals; Respondents aged 18 years and older; n/r (Not Reportable) - Represents cell size restriction of unweighted count < 50; n/a (Not Available) - Not asked of a subset of respondents

Year: 2002

Gender	Other			You were pregnant			Routine Checkup			Required			Wanted to find out			Estimated Adult Population
	#	%	C.I. (95%)	#	%	C.I. (95%)	#	%	C.I. (95%)	#	%	C.I. (95%)	#	%	C.I. (95%)	#
Female	17,158	12.1	9.5 - 14.6	41,868	29.5	25.7 - 33.2	20,935	14.7	11.7 - 17.7	27,520	19.4	16.3 - 22.4	34,611	24.4	21.1 - 27.6	142,092
Male	14,514	9.0	6.6 - 11.4	n/a		n/a	28,369	17.7	14.4 - 21.0	69,285	43.1	38.5 - 47.7	48,441	30.2	25.7 - 34.7	160,609

County and Community	Other			You were pregnant			Routine Checkup			Required			Wanted to find out			Estimated Adult Population
	#	%	C.I. (95%)	#	%	C.I. (95%)	#	%	C.I. (95%)	#	%	C.I. (95%)	#	%	C.I. (95%)	#
Hawaii-Hilo	1,012	10.8	2.8 - 18.9	1,362	14.6	7.5 - 21.7	2,247	24.0	12.8 - 35.3	2,165	23.2	13.0 - 33.4	2,556	27.4	17.5 - 37.2	9,342
Hawaii-Kona	1,623	15.9	7.5 - 24.3	1,448	14.2	6.7 - 21.7	1,354	13.3	6.7 - 19.8	1,904	18.6	10.3 - 26.9	3,884	38.0	27.7 - 48.3	10,213
Hawaii-N.Hawaii	974	12.1	5.1 - 19.2	1,537	19.2	10.0 - 28.3	778	9.7	4.5 - 14.9	2,187	27.3	14.6 - 40.0	2,546	31.7	19.5 - 44.0	8,022
Hawaii-Puna/ Kau	858	12.5	5.1 - 19.9	1,512	22.0	11.1 - 32.9	1,273	18.5	9.9 - 27.2	1,438	21.0	10.8 - 31.1	1,783	26.0	15.8 - 36.1	6,864
Honolulu-Aiea/ Pearl City	2,214	12.2	2.8 - 21.5	2,283	12.6	5.0 - 20.2	3,357	18.5	8.9 - 28.1	6,939	38.2	24.7 - 51.7	3,366	18.5	4.8 - 32.3	18,159
Honolulu-Ala Moana	484	5.3	.0 - 12.8	1,855	20.5	8.4 - 32.5	1,617	17.8	5.4 - 30.3	2,069	22.8	9.7 - 35.9	3,040	33.5	19.5 - 47.6	9,065
Honolulu-Kaaawa/ Kahaluu/ Kaneohe	779	6.0	.0 - 13.0	1,788	13.9	4.5 - 23.3	1,364	10.6	3.3 - 17.9	5,170	40.1	24.6 - 55.5	3,796	29.4	14.2 - 44.6	12,897
Honolulu-Kailua/ Waimanalo	2,505	13.5	3.6 - 23.3	2,425	13.0	5.2 - 20.9	3,019	16.2	5.4 - 27.1	5,998	32.2	19.9 - 44.6	4,657	25.0	13.8 - 36.3	18,604

Main Reason for Last HIV Test (Among Adults 18-64) by Year Total, County, BRFSS Age Group, DOH Race-Ethnicity, Gender, County and Community, Education Level, Employment Status (Grouped), Household Income, Island, Marital Status (Grouped), Poverty Level, for the Year(s) - 2000, 2001, 2002, 2003, 2004

Note: Weighted numbers (#), percentages and 95% confidence intervals; Respondents aged 18 years and older; n/r (Not Reportable) - Represents cell size restriction of unweighted count < 50; n/a (Not Available) - Not asked of a subset of respondents

Year: 2002

County and Community	Other			You were pregnant			Routine Checkup			Required			Wanted to find out			Estimated Adult Population
	#	%	C.I. (95%)	#	%	C.I. (95%)	#	%	C.I. (95%)	#	%	C.I. (95%)	#	%	C.I. (95%)	#
Honolulu-Kaimuki/ Palolo/ Waikiki	5,225	22.9	14.1 - 31.8	1,629	7.2	2.1 - 12.2	3,052	13.4	6.3 - 20.5	3,785	16.6	9.2 - 24.1	9,080	39.9	28.7 - 51.0	22,771
Honolulu-Manoa/ Upper Makiki	1,454	9.0	1.5 - 16.5	2,386	14.8	5.5 - 24.1	1,450	9.0	1.7 - 16.2	2,370	14.7	6.2 - 23.1	8,503	52.6	38.6 - 66.6	16,163
Honolulu-Mililani/ Wahiawa	1,355	4.6	1.1 - 8.1	5,893	19.9	9.0 - 30.8	3,230	10.9	4.6 - 17.2	12,906	43.6	30.8 - 56.3	6,251	21.1	7.7 - 34.5	29,635
Honolulu-Nanakuli/ Waianae	n/r	n/r	n/r	n/r	n/r	n/r	n/r	n/r	n/r	n/r	n/r	n/r	n/r	n/r	n/r	n/r
Honolulu-N.Shore/ Laie	n/r	n/r	n/r	n/r	n/r	n/r	n/r	n/r	n/r	n/r	n/r	n/r	n/r	n/r	n/r	n/r
Honolulu-Nuuanu/ Kalihi/ Moanalua	1,196	8.3	.5 - 16.2	1,558	10.9	3.2 - 18.5	1,340	9.3	1.1 - 17.6	7,220	50.4	35.6 - 65.2	3,020	21.1	9.3 - 32.9	14,334
Honolulu-Salt Lake/ Foster Village	708	3.5	.0 - 7.1	3,217	15.7	7.3 - 24.1	2,616	12.8	5.6 - 19.9	11,542	56.3	43.9 - 68.6	2,429	11.8	3.3 - 20.4	20,512
Honolulu-Waiialae/ Kahala/ Hawaii Kai	1,669	13.1	2.5 - 23.6	1,628	12.7	4.2 - 21.2	4,129	32.3	15.4 - 49.3	2,986	23.4	8.8 - 38.0	2,367	18.5	7.6 - 29.4	12,779
Honolulu-Waipahu/ Kapolei/ Ewa	3,358	10.1	4.2 - 16.0	3,391	10.2	4.9 - 15.5	7,481	22.5	12.6 - 32.5	15,000	45.1	34.7 - 55.6	4,000	12.0	5.7 - 18.4	33,230
Kauai-Hanalei/ Kapaa	569	9.7	3.0 - 16.4	132	2.3	.0 - 5.5	1,182	20.2	10.1 - 30.4	1,161	19.9	9.8 - 29.9	2,800	47.9	34.5 - 61.3	5,844
Kauai-Lihue-Waimea	637	14.5	4.4 - 24.5	601	13.7	3.1 - 24.2	833	18.9	7.0 - 30.8	975	22.2	11.1 - 33.2	1,354	30.8	18.7 - 42.8	4,400
Maui-Kahului	1,072	10.9	4.5 - 17.4	1,258	12.8	5.8 - 19.9	1,904	19.4	11.3 - 27.6	2,423	24.8	14.1 - 35.4	3,133	32.0	21.4 - 42.6	9,790
Maui-Lanai	n/r	n/r	n/r	n/r	n/r	n/r	n/r	n/r	n/r	n/r	n/r	n/r	n/r	n/r	n/r	n/r

Main Reason for Last HIV Test (Among Adults 18-64) by Year Total, County, BRFSS Age Group, DOH Race-Ethnicity, Gender, County and Community, Education Level, Employment Status (Grouped), Household Income, Island, Marital Status (Grouped), Poverty Level, for the Year(s) - 2000, 2001, 2002, 2003, 2004

Note: Weighted numbers (#), percentages and 95% confidence intervals; Respondents aged 18 years and older; n/r (Not Reportable) - Represents cell size restriction of unweighted count < 50; n/a (Not Available) - Not asked of a subset of respondents

Year: 2002

County and Community	Other			You were pregnant			Routine Checkup			Required			Wanted to find out			Estimated Adult Population
	#	%	C.I. (95%)	#	%	C.I. (95%)	#	%	C.I. (95%)	#	%	C.I. (95%)	#	%	C.I. (95%)	#
Maui-Lahaina/ Wailuku	1,401	15.2	4.9 - 25.5	1,461	15.9	6.2 - 25.6	1,420	15.4	7.2 - 23.7	2,019	21.9	11.3 - 32.6	2,899	31.5	19.3 - 43.7	9,200
Maui-Molokai	n/r	n/r	n/r	n/r	n/r	n/r	n/r	n/r	n/r	n/r	n/r	n/r	n/r	n/r	n/r	n/r
Maui-Upcountry/ Hana	773	7.7	2.6 - 12.7	1,556	15.5	7.3 - 23.6	2,590	25.7	16.5 - 35.0	1,558	15.5	7.5 - 23.4	3,585	35.6	25.8 - 45.4	10,062

Education Level	Other			You were pregnant			Routine Checkup			Required			Wanted to find out			Estimated Adult Population
	#	%	C.I. (95%)	#	%	C.I. (95%)	#	%	C.I. (95%)	#	%	C.I. (95%)	#	%	C.I. (95%)	#
Grades 9 thru 11 (Some High School)	n/r	n/r	n/r	n/r	n/r	n/r	n/r	n/r	n/r	n/r	n/r	n/r	n/r	n/r	n/r	n/r
Grades 12 or GED (High School Grad)	8,375	8.9	5.9 - 11.9	14,505	15.4	11.9 - 18.9	13,233	14.0	10.2 - 17.9	31,445	33.4	27.9 - 38.8	26,701	28.3	23.3 - 33.3	94,259
College 1 to 3 years (Some College/ Tech)	9,366	9.9	6.8 - 13.0	14,683	15.5	11.3 - 19.8	16,793	17.8	13.5 - 22.0	28,330	30.0	24.7 - 35.3	25,292	26.8	21.3 - 32.2	94,464
College 4 years or more (College Grad)	13,293	12.6	9.5 - 15.7	11,393	10.8	8.1 - 13.5	17,574	16.7	12.9 - 20.4	34,984	33.2	28.4 - 38.0	28,140	26.7	22.1 - 31.3	105,384
Never attended school/ Only Kindergarten to Grades 8	n/r	n/r	n/r	n/r	n/r	n/r	n/r	n/r	n/r	n/r	n/r	n/r	n/r	n/r	n/r	n/r

Main Reason for Last HIV Test (Among Adults 18-64) by Year Total, County, BRFSS Age Group, DOH Race-Ethnicity, Gender, County and Community, Education Level, Employment Status (Grouped), Household Income, Island, Marital Status (Grouped), Poverty Level, for the Year(s) - 2000, 2001, 2002, 2003, 2004

Note: Weighted numbers (#), percentages and 95% confidence intervals; Respondents aged 18 years and older; n/r (Not Reportable) - Represents cell size restriction of unweighted count < 50; n/a (Not Available) - Not asked of a subset of respondents

Year: 2002

Employment Status (Grouped)	Other			You were pregnant			Routine Checkup			Required			Wanted to find out			Estimated Adult Population
	#	%	C.I. (95%)	#	%	C.I. (95%)	#	%	C.I. (95%)	#	%	C.I. (95%)	#	%	C.I. (95%)	#
Employed	25,930	10.8	8.8 - 12.8	25,972	10.8	9.0 - 12.6	39,530	16.5	13.9 - 19.0	84,311	35.1	31.8 - 38.4	64,484	26.8	23.7 - 30.0	240,227
Unemployed	1,490	11.4	3.4 - 19.5	586	4.5	.5 - 8.5	975	7.5	.7 - 14.3	4,500	34.5	19.1 - 50.0	5,482	42.1	26.4 - 57.8	13,033
Student/Homemaker	1,832	5.8	2.2 - 9.3	14,294	45.0	35.3 - 54.7	5,137	16.2	9.7 - 22.7	4,957	15.6	8.5 - 22.7	5,545	17.5	11.3 - 23.6	31,765
Retired/Unable to work	2,420	14.2	5.4 - 22.9	851	5.0	.7 - 9.3	3,580	20.9	11.9 - 29.9	2,706	15.8	6.6 - 25.1	7,542	44.1	28.8 - 59.4	17,099

Main Reason for Last HIV Test (Among Adults 18-64) by Year Total, County, BRFSS Age Group, DOH Race-Ethnicity, Gender, County and Community, Education Level, Employment Status (Grouped), Household Income, Island, Marital Status (Grouped), Poverty Level, for the Year(s) - 2000, 2001, 2002, 2003, 2004

Note: Weighted numbers (#), percentages and 95% confidence intervals; Respondents aged 18 years and older; n/r (Not Reportable) - Represents cell size restriction of unweighted count < 50; n/a (Not Available) - Not asked of a subset of respondents

Year: 2002

Household Income	Other			You were pregnant			Routine Checkup			Required			Wanted to find out			Estimated Adult Population
	#	%	C.I. (95%)	#	%	C.I. (95%)	#	%	C.I. (95%)	#	%	C.I. (95%)	#	%	C.I. (95%)	#
Less than \$10,000	1,065	7.6	1.2 - 14.0	1,829	13.0	4.8 - 21.3	2,693	19.2	6.5 - 31.9	4,164	29.7	15.6 - 43.8	4,268	30.4	19.5 - 41.3	14,019
\$10,000 to \$14,999	1,381	10.6	2.3 - 18.9	2,137	16.4	7.8 - 24.9	2,059	15.8	8.0 - 23.5	3,196	24.5	13.6 - 35.3	4,292	32.9	20.7 - 45.0	13,065
\$15,000 to \$19,999	2,086	10.8	4.0 - 17.6	1,147	5.9	1.6 - 10.2	2,392	12.3	4.7 - 20.0	4,768	24.6	12.3 - 36.9	8,982	46.4	29.2 - 63.5	19,375
\$20,000 to \$24,999	1,951	10.3	2.2 - 18.4	3,307	17.5	9.6 - 25.4	1,980	10.5	4.3 - 16.7	5,868	31.0	20.0 - 42.0	5,818	30.7	20.5 - 41.0	18,924
\$25,000 to \$34,999	3,156	9.4	4.9 - 14.0	4,053	12.1	6.6 - 17.6	3,813	11.4	6.4 - 16.5	13,077	39.1	30.2 - 48.1	9,314	27.9	20.5 - 35.2	33,413
\$35,000 to \$49,999	5,026	9.3	5.3 - 13.3	8,700	16.1	11.5 - 20.7	6,595	12.2	8.2 - 16.2	19,820	36.7	29.6 - 43.8	13,921	25.7	19.4 - 32.1	54,062
\$50,000 to \$74,999	3,932	8.9	5.3 - 12.6	7,724	17.6	10.1 - 25.1	7,786	17.7	11.5 - 23.9	14,532	33.0	25.6 - 40.5	9,997	22.7	16.3 - 29.1	43,971
\$75,000 or more	8,841	15.9	10.7 - 21.1	5,311	9.5	6.0 - 13.0	11,386	20.4	14.4 - 26.5	18,604	33.4	26.5 - 40.3	11,558	20.8	15.1 - 26.4	55,700

Main Reason for Last HIV Test (Among Adults 18-64) by Year Total, County, BRFSS Age Group, DOH Race-Ethnicity, Gender, County and Community, Education Level, Employment Status (Grouped), Household Income, Island, Marital Status (Grouped), Poverty Level, for the Year(s) - 2000, 2001, 2002, 2003, 2004

Note: Weighted numbers (#), percentages and 95% confidence intervals; Respondents aged 18 years and older; n/r (Not Reportable) - Represents cell size restriction of unweighted count < 50; n/a (Not Available) - Not asked of a subset of respondents

Year: 2002

Island	Other			You were pregnant			Routine Checkup			Required			Wanted to find out			Estimated Adult Population
	#	%	C.I. (95%)	#	%	C.I. (95%)	#	%	C.I. (95%)	#	%	C.I. (95%)	#	%	C.I. (95%)	#
Hawaii	4,467	13.0	9.0 - 17.0	5,859	17.0	12.7 - 21.3	5,651	16.4	12.1 - 20.7	7,694	22.3	17.1 - 27.5	10,768	31.3	25.9 - 36.7	34,439
Kauai	1,206	11.8	6.0 - 17.5	733	7.2	2.1 - 12.2	2,015	19.7	12.0 - 27.3	2,136	20.8	13.4 - 28.3	4,154	40.5	31.0 - 50.1	10,244
Maui	3,246	11.2	6.8 - 15.5	4,275	14.7	9.9 - 19.5	5,914	20.4	15.3 - 25.4	6,000	20.7	15.0 - 26.3	9,617	33.1	26.9 - 39.3	29,052
Lanai	n/r	n/r	n/r	n/r	n/r	n/r	n/r	n/r	n/r	n/r	n/r	n/r	n/r	n/r	n/r	n/r
Molokai	n/r	n/r	n/r	n/r	n/r	n/r	n/r	n/r	n/r	n/r	n/r	n/r	n/r	n/r	n/r	n/r
Oahu	22,128	9.9	7.8 - 12.1	30,165	13.6	11.0 - 16.1	34,119	15.3	12.5 - 18.2	78,940	35.5	31.7 - 39.3	57,094	25.7	22.0 - 29.3	222,446

Main Reason for Last HIV Test (Among Adults 18-64) by Year Total, County, BRFSS Age Group, DOH Race-Ethnicity, Gender, County and Community, Education Level, Employment Status (Grouped), Household Income, Island, Marital Status (Grouped), Poverty Level, for the Year(s) - 2000, 2001, 2002, 2003, 2004

Note: Weighted numbers (#), percentages and 95% confidence intervals; Respondents aged 18 years and older; n/r (Not Reportable) - Represents cell size restriction of unweighted count < 50; n/a (Not Available) - Not asked of a subset of respondents

Year: 2002

Marital Status (Grouped)	Other			You were pregnant			Routine Checkup			Required			Wanted to find out			Estimated Adult Population
	#	%	C.I. (95%)	#	%	C.I. (95%)	#	%	C.I. (95%)	#	%	C.I. (95%)	#	%	C.I. (95%)	#
Married	17,518	10.3	8.0 - 12.6	30,612	18.0	15.2 - 20.7	28,218	16.6	13.6 - 19.5	67,177	39.4	35.5 - 43.4	26,881	15.8	12.8 - 18.8	170,406
Unmarried Couple	582	6.7	.0 - 13.6	1,439	16.5	5.8 - 27.1	1,258	14.4	3.0 - 25.8	1,515	17.3	5.4 - 29.3	3,951	45.2	26.9 - 63.5	8,745
Widowed	n/r	n/r	n/r	n/r	n/r	n/r	n/r	n/r	n/r	n/r	n/r	n/r	n/r	n/r	n/r	n/r
Other	12,641	10.8	8.0 - 13.6	9,818	8.4	5.1 - 11.6	17,753	15.1	11.7 - 18.5	26,110	22.2	17.9 - 26.5	51,088	43.5	38.3 - 48.7	117,410

Main Reason for Last HIV Test (Among Adults 18-64) by Year Total, County, BRFSS Age Group, DOH Race-Ethnicity, Gender, County and Community, Education Level, Employment Status (Grouped), Household Income, Island, Marital Status (Grouped), Poverty Level, for the Year(s) - 2000, 2001, 2002, 2003, 2004

Note: Weighted numbers (#), percentages and 95% confidence intervals; Respondents aged 18 years and older; n/r (Not Reportable) - Represents cell size restriction of unweighted count < 50; n/a (Not Available) - Not asked of a subset of respondents

Year: 2002

Poverty Level	Other			You were pregnant			Routine Checkup			Required			Wanted to find out			Estimated Adult Population
	#	%	C.I. (95%)	#	%	C.I. (95%)	#	%	C.I. (95%)	#	%	C.I. (95%)	#	%	C.I. (95%)	#
1-50%	1,505	10.1	2.0 - 18.2	2,110	14.2	5.8 - 22.6	2,693	18.1	6.0 - 30.2	4,293	28.9	15.3 - 42.4	4,268	28.7	18.4 - 39.0	14,869
51-100%	2,301	9.0	2.6 - 15.5	4,552	17.9	10.0 - 25.7	2,559	10.0	4.5 - 15.6	5,090	20.0	10.3 - 29.6	10,999	43.1	28.4 - 57.9	25,501
101-120%	982	10.4	2.1 - 18.7	2,391	25.3	11.8 - 38.7	1,759	18.6	5.9 - 31.3	2,959	31.3	15.2 - 47.3	1,372	14.5	4.3 - 24.7	9,463
121-130%	1,483	11.2	2.8 - 19.6	1,334	10.1	2.8 - 17.4	1,689	12.8	4.8 - 20.7	4,720	35.7	22.4 - 48.9	3,999	30.2	18.8 - 41.7	13,225
131-150%	983	10.7	.0 - 21.5	1,831	19.9	8.0 - 31.9	581	6.3	.0 - 13.9	2,550	27.8	13.1 - 42.5	3,239	35.3	20.0 - 50.5	9,184
151-170%	n/r	n/r	n/r	n/r	n/r	n/r	n/r	n/r	n/r	n/r	n/r	n/r	n/r	n/r	n/r	n/r
171-180%	1,764	13.2	3.5 - 22.9	2,390	17.9	8.1 - 27.7	1,819	13.6	5.3 - 21.9	4,266	31.9	18.8 - 45.1	3,116	23.3	12.9 - 33.8	13,355
186+%	18,237	11.3	8.9 - 13.8	19,253	11.9	9.2 - 14.7	27,129	16.8	13.8 - 19.9	57,652	35.8	31.7 - 39.8	38,926	24.1	20.7 - 27.6	161,197

Main Reason for Last HIV Test (Among Adults 18-64) by Year Total, County, BRFSS Age Group, DOH Race-Ethnicity, Gender, County and Community, Education Level, Employment Status (Grouped), Household Income, Island, Marital Status (Grouped), Poverty Level, for the Year(s) - 2000, 2001, 2002, 2003, 2004

Note: Weighted numbers (#), percentages and 95% confidence intervals; Respondents aged 18 years and older; n/r (Not Reportable) - Represents cell size restriction of unweighted count < 50; n/a (Not Available) - Not asked of a subset of respondents

Year: 2002

Year: 2003

Year Total	Other			You were pregnant			Routine Checkup			Required			Wanted to find out			Estimated Adult Population
	#	%	C.I. (95%)	#	%	C.I. (95%)	#	%	C.I. (95%)	#	%	C.I. (95%)	#	%	C.I. (95%)	#
State	31,010	9.3	7.4 - 11.1	33,059	9.9	8.1 - 11.7	47,595	14.2	11.9 - 16.5	125,484	37.5	34.4 - 40.6	97,694	29.2	26.2 - 32.1	334,842

Main Reason for Last HIV Test (Among Adults 18-64) by Year Total, County, BRFSS Age Group, DOH Race-Ethnicity, Gender, County and Community, Education Level, Employment Status (Grouped), Household Income, Island, Marital Status (Grouped), Poverty Level, for the Year(s) - 2000, 2001, 2002, 2003, 2004

Note: Weighted numbers (#), percentages and 95% confidence intervals; Respondents aged 18 years and older; n/r (Not Reportable) - Represents cell size restriction of unweighted count < 50; n/a (Not Available) - Not asked of a subset of respondents

Year: 2003

County	Other			You were pregnant			Routine Checkup			Required			Wanted to find out			Estimated Adult Population
	#	%	C.I. (95%)	#	%	C.I. (95%)	#	%	C.I. (95%)	#	%	C.I. (95%)	#	%	C.I. (95%)	#
Hawaii	4,042	11.0	6.7 - 15.3	4,693	12.8	7.8 - 17.7	5,272	14.4	9.7 - 19.0	9,695	26.4	20.2 - 32.6	13,036	35.5	28.9 - 42.1	36,738
Honolulu	22,112	9.2	6.8 - 11.5	22,842	9.5	7.2 - 11.7	34,335	14.2	11.3 - 17.1	99,183	41.1	37.1 - 45.0	63,130	26.1	22.4 - 29.9	241,602
Kauai	1,177	8.3	2.4 - 14.2	1,039	7.3	2.5 - 12.1	1,025	7.2	2.8 - 11.6	4,457	31.3	21.6 - 41.1	6,521	45.9	35.5 - 56.2	14,219
Maui	2,470	6.9	3.6 - 10.2	4,278	12.0	7.0 - 17.0	5,796	16.2	9.5 - 23.0	9,748	27.3	20.7 - 33.8	13,456	37.6	29.9 - 45.4	35,748

Main Reason for Last HIV Test (Among Adults 18-64) by Year Total, County, BRFSS Age Group, DOH Race-Ethnicity, Gender, County and Community, Education Level, Employment Status (Grouped), Household Income, Island, Marital Status (Grouped), Poverty Level, for the Year(s) - 2000, 2001, 2002, 2003, 2004

Note: Weighted numbers (#), percentages and 95% confidence intervals; Respondents aged 18 years and older; n/r (Not Reportable) - Represents cell size restriction of unweighted count < 50; n/a (Not Available) - Not asked of a subset of respondents

Year: 2003

BRFSS Age Group	Other			You were pregnant			Routine Checkup			Required			Wanted to find out			Estimated Adult Population
	#	%	C.I. (95%)	#	%	C.I. (95%)	#	%	C.I. (95%)	#	%	C.I. (95%)	#	%	C.I. (95%)	#
18-24	2,866	6.0	1.4 - 10.6	5,212	10.9	5.2 - 16.6	5,844	12.2	5.6 - 18.9	18,166	38.0	28.4 - 47.7	15,673	32.8	22.9 - 42.7	47,761
25-34	7,638	7.9	4.6 - 11.1	14,055	14.5	10.7 - 18.2	13,404	13.8	9.7 - 17.9	35,701	36.7	31.0 - 42.4	26,377	27.1	21.9 - 32.4	97,175
35-44	9,448	9.7	6.3 - 13.2	11,892	12.2	8.4 - 16.1	12,384	12.7	9.1 - 16.4	42,088	43.3	37.6 - 49.0	21,349	22.0	17.4 - 26.6	97,161
45-54	7,238	11.4	6.9 - 15.9	1,688	2.7	.5 - 4.8	9,046	14.2	9.5 - 19.0	20,944	33.0	26.5 - 39.5	24,566	38.7	31.8 - 45.6	63,482
55-64	3,819	13.1	7.0 - 19.1	212	.7	.0 - 1.7	6,917	23.6	13.2 - 34.1	8,584	29.3	20.2 - 38.4	9,729	33.2	23.6 - 42.9	29,261
65-74	n/r	n/r	n/r	n/r	n/r	n/r	n/r	n/r	n/r	n/r	n/r	n/r	n/r	n/r	n/r	n/r
75+	n/r	n/r	n/r	n/r	n/r	n/r	n/r	n/r	n/r	n/r	n/r	n/r	n/r	n/r	n/r	n/r

Main Reason for Last HIV Test (Among Adults 18-64) by Year Total, County, BRFSS Age Group, DOH Race-Ethnicity, Gender, County and Community, Education Level, Employment Status (Grouped), Household Income, Island, Marital Status (Grouped), Poverty Level, for the Year(s) - 2000, 2001, 2002, 2003, 2004

Note: Weighted numbers (#), percentages and 95% confidence intervals; Respondents aged 18 years and older; n/r (Not Reportable) - Represents cell size restriction of unweighted count < 50; n/a (Not Available) - Not asked of a subset of respondents

Year: 2003

DOH Race-Ethnicity	Other			You were pregnant			Routine Checkup			Required			Wanted to find out			Estimated Adult Population
	#	%	C.I. (95%)	#	%	C.I. (95%)	#	%	C.I. (95%)	#	%	C.I. (95%)	#	%	C.I. (95%)	#
White	13,775	8.1	5.9 - 10.3	14,238	8.4	6.2 - 10.5	24,937	14.7	11.6 - 17.8	68,385	40.2	36.0 - 44.5	48,693	28.6	24.8 - 32.5	170,028
Native Hawaiian	3,815	13.2	4.6 - 21.7	3,317	11.5	5.1 - 17.8	3,488	12.0	5.7 - 18.4	7,754	26.8	17.6 - 35.9	10,589	36.6	25.7 - 47.5	28,963
Chinese	2,617	10.2	3.1 - 17.4	4,653	18.2	7.6 - 28.7	1,631	6.4	.9 - 11.8	9,298	36.3	24.7 - 47.9	7,411	28.9	18.2 - 39.7	25,610
Filipino	4,947	12.0	5.8 - 18.2	3,481	8.4	3.6 - 13.2	3,254	7.9	3.2 - 12.5	17,174	41.6	31.9 - 51.2	12,466	30.2	20.8 - 39.6	41,322
Japanese	2,967	10.3	4.8 - 15.8	1,579	5.5	1.5 - 9.5	6,243	21.8	11.2 - 32.4	8,762	30.5	20.2 - 40.9	9,135	31.8	20.6 - 43.1	28,686
Black	n/r	n/r	n/r	n/r	n/r	n/r	n/r	n/r	n/r	n/r	n/r	n/r	n/r	n/r	n/r	n/r
Other Pacific Islander	n/r	n/r	n/r	n/r	n/r	n/r	n/r	n/r	n/r	n/r	n/r	n/r	n/r	n/r	n/r	n/r
Other Asian	n/r	n/r	n/r	n/r	n/r	n/r	n/r	n/r	n/r	n/r	n/r	n/r	n/r	n/r	n/r	n/r
Native Alaskan/ American Indian	n/r	n/r	n/r	n/r	n/r	n/r	n/r	n/r	n/r	n/r	n/r	n/r	n/r	n/r	n/r	n/r
Other	664	5.1	.0 - 11.3	2,039	15.6	5.2 - 26.1	1,635	12.5	2.8 - 22.3	4,331	33.2	17.7 - 48.7	4,382	33.6	16.6 - 50.5	13,051

Main Reason for Last HIV Test (Among Adults 18-64) by Year Total, County, BRFSS Age Group, DOH Race-Ethnicity, Gender, County and Community, Education Level, Employment Status (Grouped), Household Income, Island, Marital Status (Grouped), Poverty Level, for the Year(s) - 2000, 2001, 2002, 2003, 2004

Note: Weighted numbers (#), percentages and 95% confidence intervals; Respondents aged 18 years and older; n/r (Not Reportable) - Represents cell size restriction of unweighted count < 50; n/a (Not Available) - Not asked of a subset of respondents

Year: 2003

Gender	Other			You were pregnant			Routine Checkup			Required			Wanted to find out			Estimated Adult Population
	#	%	C.I. (95%)	#	%	C.I. (95%)	#	%	C.I. (95%)	#	%	C.I. (95%)	#	%	C.I. (95%)	#
Female	13,396	8.8	6.6 - 10.9	33,059	21.7	18.1 - 25.3	18,874	12.4	9.6 - 15.1	46,358	30.4	26.6 - 34.2	40,876	26.8	23.3 - 30.3	152,563
Male	17,614	9.7	6.8 - 12.5	n/a		n/a	28,721	15.8	12.3 - 19.2	79,126	43.4	38.7 - 48.1	56,819	31.2	26.6 - 35.7	182,280

County and Community	Other			You were pregnant			Routine Checkup			Required			Wanted to find out			Estimated Adult Population
	#	%	C.I. (95%)	#	%	C.I. (95%)	#	%	C.I. (95%)	#	%	C.I. (95%)	#	%	C.I. (95%)	#
Hawaii-Hilo	884	9.9	3.2 - 16.6	1,120	12.6	.7 - 24.4	708	7.9	.8 - 15.1	2,397	26.9	14.9 - 38.8	3,807	42.7	28.7 - 56.7	8,916
Hawaii-Kona	1,643	16.0	4.4 - 27.5	828	8.1	2.5 - 13.6	2,001	19.5	9.3 - 29.7	2,927	28.5	17.2 - 39.7	2,883	28.0	17.3 - 38.8	10,282
Hawaii-N.Hawaii	757	10.2	2.1 - 18.2	937	12.6	3.9 - 21.3	1,127	15.1	5.0 - 25.3	2,126	28.6	15.7 - 41.4	2,494	33.5	20.9 - 46.1	7,441
Hawaii-Puna/ Kau	757	7.5	2.3 - 12.7	1,808	17.9	6.4 - 29.4	1,436	14.2	5.3 - 23.1	2,245	22.2	8.7 - 35.8	3,852	38.1	24.0 - 52.2	10,098
Honolulu-Aiea/ Pearl City	783	4.4	.0 - 10.3	1,235	7.0	.8 - 13.1	3,103	17.5	6.7 - 28.3	7,069	39.9	26.0 - 53.8	5,509	31.1	16.4 - 45.9	17,699
Honolulu-Ala Moana	n/r	n/r	n/r	n/r	n/r	n/r	n/r	n/r	n/r	n/r	n/r	n/r	n/r	n/r	n/r	n/r
Honolulu-Kaaawa/ Kahaluu/ Kaneohe	n/r	n/r	n/r	n/r	n/r	n/r	n/r	n/r	n/r	n/r	n/r	n/r	n/r	n/r	n/r	n/r
Honolulu-Kailua/ Waimanalo	595	3.5	.0 - 7.4	2,565	14.9	6.1 - 23.7	1,365	7.9	.3 - 15.6	8,842	51.4	37.5 - 65.2	3,850	22.4	10.6 - 34.1	17,217

Main Reason for Last HIV Test (Among Adults 18-64) by Year Total, County, BRFSS Age Group, DOH Race-Ethnicity, Gender, County and Community, Education Level, Employment Status (Grouped), Household Income, Island, Marital Status (Grouped), Poverty Level, for the Year(s) - 2000, 2001, 2002, 2003, 2004

Note: Weighted numbers (#), percentages and 95% confidence intervals; Respondents aged 18 years and older; n/r (Not Reportable) - Represents cell size restriction of unweighted count < 50; n/a (Not Available) - Not asked of a subset of respondents

Year: 2003

County and Community	Other			You were pregnant			Routine Checkup			Required			Wanted to find out			Estimated Adult Population
	#	%	C.I. (95%)	#	%	C.I. (95%)	#	%	C.I. (95%)	#	%	C.I. (95%)	#	%	C.I. (95%)	#
Honolulu-Kaimuki/ Palolo/ Waikiki	1,904	10.0	2.8 - 17.2	1,585	8.4	.2 - 16.6	2,257	11.9	2.4 - 21.4	3,550	18.7	9.1 - 28.4	9,670	51.0	36.3 - 65.7	18,966
Honolulu-Manoa/ Upper Makiki	2,503	12.4	3.6 - 21.3	702	3.5	.0 - 8.6	3,795	18.8	5.3 - 32.4	4,630	23.0	11.7 - 34.3	8,530	42.3	27.3 - 57.3	20,160
Honolulu-Mililani/ Wahiawa	1,294	3.8	.3 - 7.3	4,566	13.4	6.0 - 20.8	6,818	20.0	11.2 - 28.8	15,746	46.2	35.4 - 57.0	5,638	16.6	7.9 - 25.2	34,062
Honolulu-Nanakuli/ Waianae	n/r	n/r	n/r	n/r	n/r	n/r	n/r	n/r	n/r	n/r	n/r	n/r	n/r	n/r	n/r	n/r
Honolulu-N.Shore/ Laie	n/r	n/r	n/r	n/r	n/r	n/r	n/r	n/r	n/r	n/r	n/r	n/r	n/r	n/r	n/r	n/r
Honolulu-Nuuanu/ Kalihi/ Moanalua	858	4.9	.0 - 10.1	1,168	6.7	1.1 - 12.3	2,673	15.3	5.6 - 25.1	6,456	37.1	23.0 - 51.2	6,263	36.0	21.4 - 50.5	17,418
Honolulu-Salt Lake/ Foster Village	1,723	6.7	.2 - 13.1	2,527	9.8	3.3 - 16.2	2,688	10.4	2.3 - 18.5	17,343	67.0	55.4 - 78.6	1,596	6.2	.5 - 11.9	25,877
Honolulu-Waiialae/ Kahala/ Hawaii Kai	n/r	n/r	n/r	n/r	n/r	n/r	n/r	n/r	n/r	n/r	n/r	n/r	n/r	n/r	n/r	n/r
Honolulu-Waipahu/ Kapolei/ Ewa	3,432	9.3	3.8 - 14.8	2,307	6.2	.7 - 11.8	3,956	10.7	4.6 - 16.7	17,951	48.5	37.6 - 59.3	9,393	25.4	15.6 - 35.1	37,039
Kauai-Hanalei/ Kapaa	357	6.7	1.2 - 12.1	554	10.3	2.0 - 18.7	258	4.8	.0 - 9.7	1,600	29.9	15.8 - 43.9	2,590	48.3	33.7 - 63.0	5,359
Kauai-Lihue-Waimea	820	9.3	.4 - 18.1	485	5.5	.0 - 11.3	768	8.7	2.2 - 15.1	2,857	32.2	19.1 - 45.4	3,931	44.4	30.3 - 58.5	8,861
Maui-Kahului	635	5.5	.4 - 10.6	1,656	14.3	3.4 - 25.1	2,042	17.6	7.3 - 27.9	3,096	26.7	14.5 - 38.8	4,178	36.0	22.6 - 49.4	11,607
Maui-Lanai	n/r	n/r	n/r	n/r	n/r	n/r	n/r	n/r	n/r	n/r	n/r	n/r	n/r	n/r	n/r	n/r

Main Reason for Last HIV Test (Among Adults 18-64) by Year Total, County, BRFSS Age Group, DOH Race-Ethnicity, Gender, County and Community, Education Level, Employment Status (Grouped), Household Income, Island, Marital Status (Grouped), Poverty Level, for the Year(s) - 2000, 2001, 2002, 2003, 2004

Note: Weighted numbers (#), percentages and 95% confidence intervals; Respondents aged 18 years and older; n/r (Not Reportable) - Represents cell size restriction of unweighted count < 50; n/a (Not Available) - Not asked of a subset of respondents

Year: 2003

County and Community	Other			You were pregnant			Routine Checkup			Required			Wanted to find out			Estimated Adult Population
	#	%	C.I. (95%)	#	%	C.I. (95%)	#	%	C.I. (95%)	#	%	C.I. (95%)	#	%	C.I. (95%)	#
Maui-Lahaina/ Wailuku	783	7.4	.2 - 14.5	438	4.1	.0 - 9.3	2,070	19.5	2.8 - 36.1	2,329	21.9	10.4 - 33.4	5,017	47.2	30.0 - 64.3	10,637
Maui-Molokai	n/r	n/r	n/r	n/r	n/r	n/r	n/r	n/r	n/r	n/r	n/r	n/r	n/r	n/r	n/r	n/r
Maui-Upcountry/ Hana	809	7.2	1.9 - 12.5	1,864	16.5	7.4 - 25.7	1,658	14.7	5.3 - 24.1	3,388	30.1	19.2 - 40.9	3,553	31.5	20.5 - 42.5	11,272

Education Level	Other			You were pregnant			Routine Checkup			Required			Wanted to find out			Estimated Adult Population
	#	%	C.I. (95%)	#	%	C.I. (95%)	#	%	C.I. (95%)	#	%	C.I. (95%)	#	%	C.I. (95%)	#
Grades 9 thru 11 (Some High School)	n/r	n/r	n/r	n/r	n/r	n/r	n/r	n/r	n/r	n/r	n/r	n/r	n/r	n/r	n/r	n/r
Grades 12 or GED (High School Grad)	6,813	7.7	4.4 - 11.1	8,850	10.1	6.5 - 13.7	11,296	12.8	8.6 - 17.1	28,662	32.6	26.5 - 38.6	32,359	36.8	30.2 - 43.4	87,980
College 1 to 3 years (Some College/ Tech)	11,221	10.1	6.6 - 13.7	12,707	11.5	8.0 - 14.9	17,480	15.8	11.5 - 20.0	42,210	38.1	32.5 - 43.6	27,275	24.6	19.8 - 29.4	110,893
College 4 years or more (College Grad)	12,420	9.8	7.0 - 12.5	10,257	8.1	5.4 - 10.7	17,964	14.1	10.6 - 17.7	51,865	40.7	35.9 - 45.6	34,796	27.3	23.0 - 31.7	127,302
Never attended school/ Only Kindergarten to Grades 8	n/r	n/r	n/r	n/r	n/r	n/r	n/r	n/r	n/r	n/r	n/r	n/r	n/r	n/r	n/r	n/r

Main Reason for Last HIV Test (Among Adults 18-64) by Year Total, County, BRFSS Age Group, DOH Race-Ethnicity, Gender, County and Community, Education Level, Employment Status (Grouped), Household Income, Island, Marital Status (Grouped), Poverty Level, for the Year(s) - 2000, 2001, 2002, 2003, 2004

Note: Weighted numbers (#), percentages and 95% confidence intervals; Respondents aged 18 years and older; n/r (Not Reportable) - Represents cell size restriction of unweighted count < 50; n/a (Not Available) - Not asked of a subset of respondents

Year: 2003

Employment Status (Grouped)	Other			You were pregnant			Routine Checkup			Required			Wanted to find out			Estimated Adult Population
	#	%	C.I. (95%)	#	%	C.I. (95%)	#	%	C.I. (95%)	#	%	C.I. (95%)	#	%	C.I. (95%)	#
Employed	26,411	9.9	7.8 - 12.1	18,283	6.9	5.2 - 8.5	38,190	14.4	11.8 - 16.9	105,741	39.8	36.2 - 43.3	77,156	29.0	25.7 - 32.4	265,781
Unemployed	236	1.7	.0 - 4.4	1,295	9.4	.7 - 18.2	3,717	27.1	11.2 - 43.1	3,651	26.6	12.4 - 40.9	4,808	35.1	20.7 - 49.5	13,707
Student/Homemaker	2,424	6.3	2.6 - 9.9	13,305	34.5	25.8 - 43.2	2,871	7.4	2.8 - 12.1	10,735	27.8	19.9 - 35.7	9,244	24.0	16.1 - 31.8	38,579
Retired/Unable to work	1,938	11.7	1.1 - 22.4	176	1.1	.0 - 2.6	2,817	17.0	5.9 - 28.2	5,108	30.9	18.4 - 43.5	6,486	39.2	26.6 - 51.9	16,525

Main Reason for Last HIV Test (Among Adults 18-64) by Year Total, County, BRFSS Age Group, DOH Race-Ethnicity, Gender, County and Community, Education Level, Employment Status (Grouped), Household Income, Island, Marital Status (Grouped), Poverty Level, for the Year(s) - 2000, 2001, 2002, 2003, 2004

Note: Weighted numbers (#), percentages and 95% confidence intervals; Respondents aged 18 years and older; n/r (Not Reportable) - Represents cell size restriction of unweighted count < 50; n/a (Not Available) - Not asked of a subset of respondents

Year: 2003

Household Income	Other			You were pregnant			Routine Checkup			Required			Wanted to find out			Estimated Adult Population
	#	%	C.I. (95%)	#	%	C.I. (95%)	#	%	C.I. (95%)	#	%	C.I. (95%)	#	%	C.I. (95%)	#
Less than \$10,000	1,738	10.5	3.2 - 17.8	1,457	8.8	.7 - 16.8	1,497	9.0	2.1 - 16.0	5,670	34.2	19.8 - 48.7	6,214	37.5	25.0 - 49.9	16,576
\$10,000 to \$14,999	376	2.3	.0 - 5.2	1,123	6.8	.5 - 13.1	2,252	13.7	2.3 - 25.0	5,226	31.7	17.7 - 45.7	7,519	45.6	30.7 - 60.5	16,496
\$15,000 to \$19,999	1,941	12.3	.0 - 25.4	434	2.8	.0 - 6.2	464	2.9	.0 - 6.1	6,074	38.5	22.4 - 54.7	6,849	43.5	26.3 - 60.6	15,762
\$20,000 to \$24,999	1,958	10.5	2.4 - 18.6	1,166	6.3	2.1 - 10.5	3,750	20.1	8.5 - 31.8	4,882	26.2	14.3 - 38.2	6,872	36.9	23.5 - 50.3	18,628
\$25,000 to \$34,999	1,566	4.6	1.0 - 8.1	4,491	13.1	5.7 - 20.4	4,730	13.8	6.4 - 21.1	13,936	40.5	30.7 - 50.4	9,649	28.1	19.3 - 36.8	34,372
\$35,000 to \$49,999	4,899	7.8	4.0 - 11.6	7,992	12.7	7.6 - 17.8	9,194	14.6	9.2 - 20.0	27,567	43.8	36.5 - 51.1	13,296	21.1	15.2 - 27.0	62,948
\$50,000 to \$74,999	3,531	6.3	3.3 - 9.2	6,035	10.7	6.3 - 15.2	6,627	11.8	7.1 - 16.4	23,181	41.2	33.6 - 48.7	16,946	30.1	23.2 - 37.0	56,320
\$75,000 or more	7,423	11.7	7.1 - 16.3	4,086	6.4	3.8 - 9.0	11,011	17.3	11.6 - 23.1	23,759	37.4	30.4 - 44.3	17,310	27.2	20.5 - 33.9	63,589

Main Reason for Last HIV Test (Among Adults 18-64) by Year Total, County, BRFSS Age Group, DOH Race-Ethnicity, Gender, County and Community, Education Level, Employment Status (Grouped), Household Income, Island, Marital Status (Grouped), Poverty Level, for the Year(s) - 2000, 2001, 2002, 2003, 2004

Note: Weighted numbers (#), percentages and 95% confidence intervals; Respondents aged 18 years and older; n/r (Not Reportable) - Represents cell size restriction of unweighted count < 50; n/a (Not Available) - Not asked of a subset of respondents

Year: 2003

Island	Other			You were pregnant			Routine Checkup			Required			Wanted to find out			Estimated Adult Population
	#	%	C.I. (95%)	#	%	C.I. (95%)	#	%	C.I. (95%)	#	%	C.I. (95%)	#	%	C.I. (95%)	#
Hawaii	4,042	11.0	6.7 - 15.3	4,693	12.8	7.9 - 17.7	5,272	14.4	9.7 - 19.0	9,695	26.4	20.2 - 32.6	13,036	35.5	28.9 - 42.0	36,738
Kauai	1,177	8.3	2.4 - 14.1	1,039	7.3	2.5 - 12.1	1,025	7.2	2.8 - 11.6	4,457	31.3	21.7 - 41.0	6,521	45.9	35.6 - 56.1	14,219
Maui	2,227	6.6	3.3 - 10.0	3,958	11.8	6.6 - 17.0	5,770	17.2	10.1 - 24.4	8,813	26.3	19.6 - 33.0	12,747	38.0	29.9 - 46.2	33,515
Lanai	n/r	n/r	n/r	n/r	n/r	n/r	n/r	n/r	n/r	n/r	n/r	n/r	n/r	n/r	n/r	n/r
Molokai	n/r	n/r	n/r	n/r	n/r	n/r	n/r	n/r	n/r	n/r	n/r	n/r	n/r	n/r	n/r	n/r
Oahu	22,112	9.2	6.8 - 11.5	22,842	9.5	7.2 - 11.7	34,335	14.2	11.3 - 17.1	99,183	41.1	37.1 - 45.0	63,130	26.1	22.4 - 29.9	241,602

Main Reason for Last HIV Test (Among Adults 18-64) by Year Total, County, BRFSS Age Group, DOH Race-Ethnicity, Gender, County and Community, Education Level, Employment Status (Grouped), Household Income, Island, Marital Status (Grouped), Poverty Level, for the Year(s) - 2000, 2001, 2002, 2003, 2004

Note: Weighted numbers (#), percentages and 95% confidence intervals; Respondents aged 18 years and older; n/r (Not Reportable) - Represents cell size restriction of unweighted count < 50; n/a (Not Available) - Not asked of a subset of respondents

Year: 2003

Marital Status (Grouped)	Other			You were pregnant			Routine Checkup			Required			Wanted to find out			Estimated Adult Population
	#	%	C.I. (95%)	#	%	C.I. (95%)	#	%	C.I. (95%)	#	%	C.I. (95%)	#	%	C.I. (95%)	#
Married	18,324	9.5	7.1 - 11.9	24,110	12.4	9.8 - 15.1	28,718	14.8	11.7 - 17.9	82,290	42.5	38.3 - 46.7	40,219	20.8	17.3 - 24.2	193,661
Unmarried Couple	n/r	n/r	n/r	n/r	n/r	n/r	n/r	n/r	n/r	n/r	n/r	n/r	n/r	n/r	n/r	n/r
Widowed	n/r	n/r	n/r	n/r	n/r	n/r	n/r	n/r	n/r	n/r	n/r	n/r	n/r	n/r	n/r	n/r
Other	10,877	8.5	5.8 - 11.2	7,521	5.9	3.5 - 8.3	17,453	13.6	10.1 - 17.2	39,143	30.6	25.9 - 35.2	53,002	41.4	36.2 - 46.6	127,996

Main Reason for Last HIV Test (Among Adults 18-64) by Year Total, County, BRFSS Age Group, DOH Race-Ethnicity, Gender, County and Community, Education Level, Employment Status (Grouped), Household Income, Island, Marital Status (Grouped), Poverty Level, for the Year(s) - 2000, 2001, 2002, 2003, 2004

Note: Weighted numbers (#), percentages and 95% confidence intervals; Respondents aged 18 years and older; n/r (Not Reportable) - Represents cell size restriction of unweighted count < 50; n/a (Not Available) - Not asked of a subset of respondents

Year: 2003

Poverty Level	Other			You were pregnant			Routine Checkup			Required			Wanted to find out			Estimated Adult Population
	#	%	C.I. (95%)	#	%	C.I. (95%)	#	%	C.I. (95%)	#	%	C.I. (95%)	#	%	C.I. (95%)	#
1-50%	1,738	9.5	2.9 - 16.1	1,872	10.2	1.9 - 18.5	1,991	10.9	2.9 - 18.8	6,246	34.0	20.4 - 47.7	6,506	35.4	23.8 - 47.1	18,353
51-100%	1,365	4.6	.0 - 11.1	2,416	8.1	1.5 - 14.7	4,368	14.6	4.9 - 24.3	9,845	32.9	21.2 - 44.7	11,901	39.8	27.1 - 52.5	29,895
101-120%	n/r	n/r	n/r	n/r	n/r	n/r	n/r	n/r	n/r	n/r	n/r	n/r	n/r	n/r	n/r	n/r
121-130%	1,300	9.7	.7 - 18.6	1,252	9.3	.0 - 19.2	244	1.8	.0 - 4.4	3,980	29.6	15.7 - 43.4	6,692	49.7	33.2 - 66.2	13,468
131-150%	n/r	n/r	n/r	n/r	n/r	n/r	n/r	n/r	n/r	n/r	n/r	n/r	n/r	n/r	n/r	n/r
151-170%	n/r	n/r	n/r	n/r	n/r	n/r	n/r	n/r	n/r	n/r	n/r	n/r	n/r	n/r	n/r	n/r
171-180%	626	4.9	.0 - 11.0	2,521	19.6	7.7 - 31.6	1,014	7.9	.0 - 17.7	5,867	45.7	29.1 - 62.3	2,810	21.9	7.0 - 36.8	12,838
186+%	15,875	8.6	6.5 - 10.8	13,753	7.5	5.6 - 9.4	27,628	15.0	12.0 - 18.0	76,307	41.5	37.4 - 45.5	50,529	27.4	23.8 - 31.1	184,092

Main Reason for Last HIV Test (Among Adults 18-64) by Year Total, County, BRFSS Age Group, DOH Race-Ethnicity, Gender, County and Community, Education Level, Employment Status (Grouped), Household Income, Island, Marital Status (Grouped), Poverty Level, for the Year(s) - 2000, 2001, 2002, 2003, 2004

Note: Weighted numbers (#), percentages and 95% confidence intervals; Respondents aged 18 years and older; n/r (Not Reportable) - Represents cell size restriction of unweighted count < 50; n/a (Not Available) - Not asked of a subset of respondents

Year: 2003

Year: 2004

Year Total	Other			You were pregnant			Routine Checkup			Required			Wanted to find out			Estimated Adult Population
	#	%	C.I. (95%)	#	%	C.I. (95%)	#	%	C.I. (95%)	#	%	C.I. (95%)	#	%	C.I. (95%)	#
State	53,025	17.7	13.6 - 21.8	45,014	15.1	11.5 - 18.6	72,000	24.1	19.8 - 28.3	61,072	20.4	16.2 - 24.6	67,888	22.7	18.3 - 27.1	298,999

Main Reason for Last HIV Test (Among Adults 18-64) by Year Total, County, BRFSS Age Group, DOH Race-Ethnicity, Gender, County and Community, Education Level, Employment Status (Grouped), Household Income, Island, Marital Status (Grouped), Poverty Level, for the Year(s) - 2000, 2001, 2002, 2003, 2004

Note: Weighted numbers (#), percentages and 95% confidence intervals; Respondents aged 18 years and older; n/r (Not Reportable) - Represents cell size restriction of unweighted count < 50; n/a (Not Available) - Not asked of a subset of respondents

Year: 2004

County	Other			You were pregnant			Routine Checkup			Required			Wanted to find out			Estimated Adult Population
	#	%	C.I. (95%)	#	%	C.I. (95%)	#	%	C.I. (95%)	#	%	C.I. (95%)	#	%	C.I. (95%)	#
Hawaii	11,019	26.4	17.9 - 34.9	6,592	15.8	9.5 - 22.1	9,279	22.2	13.2 - 31.3	4,291	10.3	4.5 - 16.0	10,546	25.3	17.5 - 33.1	41,727
Honolulu	34,290	16.6	11.1 - 22.2	30,558	14.8	10.1 - 19.6	51,592	25.0	19.3 - 30.7	47,370	23.0	17.3 - 28.7	42,447	20.6	14.9 - 26.3	206,257
Kauai	2,054	13.9	6.2 - 21.5	1,895	12.8	5.5 - 20.1	4,687	31.6	19.9 - 43.3	2,971	20.0	8.9 - 31.2	3,222	21.7	12.2 - 31.3	14,829
Maui	5,662	18.5	10.6 - 26.5	4,174	13.6	6.0 - 21.3	5,411	17.7	9.9 - 25.5	5,673	18.5	9.3 - 27.8	9,670	31.6	19.1 - 44.1	30,590

Main Reason for Last HIV Test (Among Adults 18-64) by Year Total, County, BRFSS Age Group, DOH Race-Ethnicity, Gender, County and Community, Education Level, Employment Status (Grouped), Household Income, Island, Marital Status (Grouped), Poverty Level, for the Year(s) - 2000, 2001, 2002, 2003, 2004

Note: Weighted numbers (#), percentages and 95% confidence intervals; Respondents aged 18 years and older; n/r (Not Reportable) - Represents cell size restriction of unweighted count < 50; n/a (Not Available) - Not asked of a subset of respondents

Year: 2004

BRFSS Age Group	Other			You were pregnant			Routine Checkup			Required			Wanted to find out			Estimated Adult Population
	#	%	C.I. (95%)	#	%	C.I. (95%)	#	%	C.I. (95%)	#	%	C.I. (95%)	#	%	C.I. (95%)	#
18-24	7,230	17.2	3.5 - 31.0	11,807	28.2	13.5 - 42.8	6,709	16.0	4.8 - 27.2	8,143	19.4	6.7 - 32.1	8,053	19.2	3.4 - 35.0	41,942
25-34	8,783	9.0	3.4 - 14.5	20,466	20.9	13.7 - 28.0	22,143	22.6	15.0 - 30.2	25,157	25.7	17.4 - 33.9	21,485	21.9	14.0 - 29.8	98,034
35-44	20,009	22.6	13.7 - 31.6	11,919	13.5	8.2 - 18.7	21,203	24.0	15.5 - 32.5	18,716	21.2	13.4 - 28.9	16,524	18.7	12.0 - 25.4	88,371
45-54	11,046	23.6	15.8 - 31.3	822	1.8	.0 - 4.0	15,465	33.0	24.2 - 41.8	5,860	12.5	6.1 - 18.9	13,680	29.2	19.7 - 38.6	46,873
55-64	5,957	25.1	13.6 - 36.5	n/a		n/a	6,479	27.2	15.6 - 38.9	3,195	13.4	5.3 - 21.6	8,146	34.3	20.3 - 48.2	23,777
65-74	n/r	n/r	n/r	n/r	n/r	n/r	n/r	n/r	n/r	n/r	n/r	n/r	n/r	n/r	n/r	n/r
75+	n/r	n/r	n/r	n/r	n/r	n/r	n/r	n/r	n/r	n/r	n/r	n/r	n/r	n/r	n/r	n/r

Main Reason for Last HIV Test (Among Adults 18-64) by Year Total, County, BRFSS Age Group, DOH Race-Ethnicity, Gender, County and Community, Education Level, Employment Status (Grouped), Household Income, Island, Marital Status (Grouped), Poverty Level, for the Year(s) - 2000, 2001, 2002, 2003, 2004

Note: Weighted numbers (#), percentages and 95% confidence intervals; Respondents aged 18 years and older; n/r (Not Reportable) - Represents cell size restriction of unweighted count < 50; n/a (Not Available) - Not asked of a subset of respondents

Year: 2004

DOH Race-Ethnicity	Other			You were pregnant			Routine Checkup			Required			Wanted to find out			Estimated Adult Population
	#	%	C.I. (95%)	#	%	C.I. (95%)	#	%	C.I. (95%)	#	%	C.I. (95%)	#	%	C.I. (95%)	#
White	26,132	19.2	13.7 - 24.8	16,853	12.4	8.0 - 16.8	40,267	29.7	23.1 - 36.2	28,479	21.0	15.2 - 26.7	24,076	17.7	13.0 - 22.5	135,807
Native Hawaiian	8,007	22.4	8.1 - 36.6	9,131	25.5	12.5 - 38.6	5,837	16.3	6.0 - 26.7	4,028	11.3	3.4 - 19.2	8,750	24.5	12.9 - 36.0	35,753
Chinese	n/r	n/r	n/r	n/r	n/r	n/r	n/r	n/r	n/r	n/r	n/r	n/r	n/r	n/r	n/r	n/r
Filipino	3,356	9.9	.9 - 18.9	5,706	16.9	3.9 - 29.8	6,974	20.6	9.5 - 31.7	8,432	24.9	10.7 - 39.1	9,389	27.7	13.5 - 42.0	33,857
Japanese	5,777	18.3	5.1 - 31.4	6,007	19.0	6.3 - 31.7	4,863	15.4	5.9 - 24.9	6,955	22.0	7.7 - 36.3	8,021	25.4	11.6 - 39.2	31,623
Black	n/r	n/r	n/r	n/r	n/r	n/r	n/r	n/r	n/r	n/r	n/r	n/r	n/r	n/r	n/r	n/r
Other Pacific Islander	n/r	n/r	n/r	n/r	n/r	n/r	n/r	n/r	n/r	n/r	n/r	n/r	n/r	n/r	n/r	n/r
Other Asian	n/r	n/r	n/r	n/r	n/r	n/r	n/r	n/r	n/r	n/r	n/r	n/r	n/r	n/r	n/r	n/r
Native Alaskan/ American Indian	n/r	n/r	n/r	n/r	n/r	n/r	n/r	n/r	n/r	n/r	n/r	n/r	n/r	n/r	n/r	n/r
Other	n/r	n/r	n/r	n/r	n/r	n/r	n/r	n/r	n/r	n/r	n/r	n/r	n/r	n/r	n/r	n/r

Main Reason for Last HIV Test (Among Adults 18-64) by Year Total, County, BRFSS Age Group, DOH Race-Ethnicity, Gender, County and Community, Education Level, Employment Status (Grouped), Household Income, Island, Marital Status (Grouped), Poverty Level, for the Year(s) - 2000, 2001, 2002, 2003, 2004

Note: Weighted numbers (#), percentages and 95% confidence intervals; Respondents aged 18 years and older; n/r (Not Reportable) - Represents cell size restriction of unweighted count < 50; n/a (Not Available) - Not asked of a subset of respondents

Year: 2004

Gender	Other			You were pregnant			Routine Checkup			Required			Wanted to find out			Estimated Adult Population
	#	%	C.I. (95%)	#	%	C.I. (95%)	#	%	C.I. (95%)	#	%	C.I. (95%)	#	%	C.I. (95%)	#
Female	25,815	17.0	11.6 - 22.4	45,014	29.6	23.4 - 35.7	32,484	21.3	16.1 - 26.6	18,790	12.3	8.5 - 16.2	30,179	19.8	14.8 - 24.9	152,282
Male	27,210	18.5	12.3 - 24.8	n/a		n/a	39,516	26.9	20.2 - 33.6	42,282	28.8	21.6 - 36.1	37,709	25.7	18.6 - 32.8	146,717

County and Community	Other			You were pregnant			Routine Checkup			Required			Wanted to find out			Estimated Adult Population
	#	%	C.I. (95%)	#	%	C.I. (95%)	#	%	C.I. (95%)	#	%	C.I. (95%)	#	%	C.I. (95%)	#
Hawaii-Hilo	n/r	n/r	n/r	n/r	n/r	n/r	n/r	n/r	n/r	n/r	n/r	n/r	n/r	n/r	n/r	n/r
Hawaii-Kona	n/r	n/r	n/r	n/r	n/r	n/r	n/r	n/r	n/r	n/r	n/r	n/r	n/r	n/r	n/r	n/r
Hawaii-N.Hawaii	n/r	n/r	n/r	n/r	n/r	n/r	n/r	n/r	n/r	n/r	n/r	n/r	n/r	n/r	n/r	n/r
Hawaii-Puna/ Kau	3,282	20.0	7.6 - 32.5	3,042	18.6	6.2 - 30.9	5,443	33.2	15.0 - 51.5	201	1.2	.0 - 3.0	4,406	26.9	12.6 - 41.2	16,374
Honolulu-Aiea/ Pearl City	n/r	n/r	n/r	n/r	n/r	n/r	n/r	n/r	n/r	n/r	n/r	n/r	n/r	n/r	n/r	n/r
Honolulu-Ala Moana	n/r	n/r	n/r	n/r	n/r	n/r	n/r	n/r	n/r	n/r	n/r	n/r	n/r	n/r	n/r	n/r
Honolulu-Kaaawa/ Kahaluu/ Kaneohe	n/r	n/r	n/r	n/r	n/r	n/r	n/r	n/r	n/r	n/r	n/r	n/r	n/r	n/r	n/r	n/r
Honolulu-Kailua/ Waimanalo	n/r	n/r	n/r	n/r	n/r	n/r	n/r	n/r	n/r	n/r	n/r	n/r	n/r	n/r	n/r	n/r

Main Reason for Last HIV Test (Among Adults 18-64) by Year Total, County, BRFSS Age Group, DOH Race-Ethnicity, Gender, County and Community, Education Level, Employment Status (Grouped), Household Income, Island, Marital Status (Grouped), Poverty Level, for the Year(s) - 2000, 2001, 2002, 2003, 2004

Note: Weighted numbers (#), percentages and 95% confidence intervals; Respondents aged 18 years and older; n/r (Not Reportable) - Represents cell size restriction of unweighted count < 50; n/a (Not Available) - Not asked of a subset of respondents

Year: 2004

County and Community	Other			You were pregnant			Routine Checkup			Required			Wanted to find out			Estimated Adult Population
	#	%	C.I. (95%)	#	%	C.I. (95%)	#	%	C.I. (95%)	#	%	C.I. (95%)	#	%	C.I. (95%)	#
Honolulu-Kaimuki/ Palolo/ Waikiki	n/r	n/r	n/r	n/r	n/r	n/r	n/r	n/r	n/r	n/r	n/r	n/r	n/r	n/r	n/r	n/r
Honolulu-Manoa/ Upper Makiki	n/r	n/r	n/r	n/r	n/r	n/r	n/r	n/r	n/r	n/r	n/r	n/r	n/r	n/r	n/r	n/r
Honolulu-Mililani/ Wahiawa	n/r	n/r	n/r	n/r	n/r	n/r	n/r	n/r	n/r	n/r	n/r	n/r	n/r	n/r	n/r	n/r
Honolulu-Nanakuli/ Waianae	n/r	n/r	n/r	n/r	n/r	n/r	n/r	n/r	n/r	n/r	n/r	n/r	n/r	n/r	n/r	n/r
Honolulu-N.Shore/ Laie	n/r	n/r	n/r	n/r	n/r	n/r	n/r	n/r	n/r	n/r	n/r	n/r	n/r	n/r	n/r	n/r
Honolulu-Nuuanu/ Kalihi/ Moanalua	n/r	n/r	n/r	n/r	n/r	n/r	n/r	n/r	n/r	n/r	n/r	n/r	n/r	n/r	n/r	n/r
Honolulu-Salt Lake/ Foster Village	n/r	n/r	n/r	n/r	n/r	n/r	n/r	n/r	n/r	n/r	n/r	n/r	n/r	n/r	n/r	n/r
Honolulu-Waiialae/ Kahala/ Hawaii Kai	n/r	n/r	n/r	n/r	n/r	n/r	n/r	n/r	n/r	n/r	n/r	n/r	n/r	n/r	n/r	n/r
Honolulu-Waipahu/ Kapolei/ Ewa	n/r	n/r	n/r	n/r	n/r	n/r	n/r	n/r	n/r	n/r	n/r	n/r	n/r	n/r	n/r	n/r
Kauai-Hanalei/ Kapaa	n/r	n/r	n/r	n/r	n/r	n/r	n/r	n/r	n/r	n/r	n/r	n/r	n/r	n/r	n/r	n/r
Kauai-Lihue-Waimea	n/r	n/r	n/r	n/r	n/r	n/r	n/r	n/r	n/r	n/r	n/r	n/r	n/r	n/r	n/r	n/r
Maui-Kahului	n/r	n/r	n/r	n/r	n/r	n/r	n/r	n/r	n/r	n/r	n/r	n/r	n/r	n/r	n/r	n/r
Maui-Lanai	n/r	n/r	n/r	n/r	n/r	n/r	n/r	n/r	n/r	n/r	n/r	n/r	n/r	n/r	n/r	n/r

Main Reason for Last HIV Test (Among Adults 18-64) by Year Total, County, BRFSS Age Group, DOH Race-Ethnicity, Gender, County and Community, Education Level, Employment Status (Grouped), Household Income, Island, Marital Status (Grouped), Poverty Level, for the Year(s) - 2000, 2001, 2002, 2003, 2004

Note: Weighted numbers (#), percentages and 95% confidence intervals; Respondents aged 18 years and older; n/r (Not Reportable) - Represents cell size restriction of unweighted count < 50; n/a (Not Available) - Not asked of a subset of respondents

Year: 2004

County and Community	Other			You were pregnant			Routine Checkup			Required			Wanted to find out			Estimated Adult Population
	#	%	C.I. (95%)	#	%	C.I. (95%)	#	%	C.I. (95%)	#	%	C.I. (95%)	#	%	C.I. (95%)	#
Maui-Lahaina/ Wailuku	n/r	n/r	n/r	n/r	n/r	n/r	n/r	n/r	n/r	n/r	n/r	n/r	n/r	n/r	n/r	n/r
Maui-Molokai	n/r	n/r	n/r	n/r	n/r	n/r	n/r	n/r	n/r	n/r	n/r	n/r	n/r	n/r	n/r	n/r
Maui-Upcountry/ Hana	n/r	n/r	n/r	n/r	n/r	n/r	n/r	n/r	n/r	n/r	n/r	n/r	n/r	n/r	n/r	n/r

Education Level	Other			You were pregnant			Routine Checkup			Required			Wanted to find out			Estimated Adult Population
	#	%	C.I. (95%)	#	%	C.I. (95%)	#	%	C.I. (95%)	#	%	C.I. (95%)	#	%	C.I. (95%)	#
Grades 9 thru 11 (Some High School)	n/r	n/r	n/r	n/r	n/r	n/r	n/r	n/r	n/r	n/r	n/r	n/r	n/r	n/r	n/r	n/r
Grades 12 or GED (High School Grad)	13,802	16.0	7.7 - 24.3	19,181	22.2	14.4 - 30.1	18,632	21.6	13.0 - 30.2	15,055	17.5	9.6 - 25.3	19,559	22.7	13.5 - 31.9	86,229
College 1 to 3 years (Some College/ Tech)	19,491	18.0	10.9 - 25.1	14,033	13.0	6.8 - 19.2	30,561	28.2	20.9 - 35.5	23,142	21.4	14.0 - 28.7	21,068	19.5	12.8 - 26.1	108,295
College 4 years or more (College Grad)	19,454	20.0	13.4 - 26.5	10,098	10.4	6.1 - 14.7	20,055	20.6	14.2 - 27.0	22,204	22.8	16.0 - 29.6	25,559	26.2	18.8 - 33.7	97,370
Never attended school/ Only Kindergarten to Grades 8	n/r	n/r	n/r	n/r	n/r	n/r	n/r	n/r	n/r	n/r	n/r	n/r	n/r	n/r	n/r	n/r

Main Reason for Last HIV Test (Among Adults 18-64) by Year Total, County, BRFSS Age Group, DOH Race-Ethnicity, Gender, County and Community, Education Level, Employment Status (Grouped), Household Income, Island, Marital Status (Grouped), Poverty Level, for the Year(s) - 2000, 2001, 2002, 2003, 2004

Note: Weighted numbers (#), percentages and 95% confidence intervals; Respondents aged 18 years and older; n/r (Not Reportable) - Represents cell size restriction of unweighted count < 50; n/a (Not Available) - Not asked of a subset of respondents

Year: 2004

Employment Status (Grouped)	Other			You were pregnant			Routine Checkup			Required			Wanted to find out			Estimated Adult Population
	#	%	C.I. (95%)	#	%	C.I. (95%)	#	%	C.I. (95%)	#	%	C.I. (95%)	#	%	C.I. (95%)	#
Employed	36,712	16.6	12.2 - 21.0	23,102	10.4	6.9 - 13.9	57,961	26.2	21.0 - 31.3	52,183	23.6	18.4 - 28.8	51,539	23.3	18.1 - 28.5	221,497
Unemployed	n/r	n/r	n/r	n/r	n/r	n/r	n/r	n/r	n/r	n/r	n/r	n/r	n/r	n/r	n/r	n/r
Student/Homemaker	7,609	16.9	5.1 - 28.8	19,044	42.3	29.5 - 55.2	5,941	13.2	6.4 - 20.0	4,611	10.3	2.7 - 17.8	7,769	17.3	8.2 - 26.3	44,974
Retired/Unable to work	6,774	30.1	10.6 - 49.6	2,714	12.1	2.0 - 22.1	5,976	26.6	10.8 - 42.3	2,795	12.4	2.7 - 22.1	4,246	18.9	5.5 - 32.2	22,505

Main Reason for Last HIV Test (Among Adults 18-64) by Year Total, County, BRFSS Age Group, DOH Race-Ethnicity, Gender, County and Community, Education Level, Employment Status (Grouped), Household Income, Island, Marital Status (Grouped), Poverty Level, for the Year(s) - 2000, 2001, 2002, 2003, 2004

Note: Weighted numbers (#), percentages and 95% confidence intervals; Respondents aged 18 years and older; n/r (Not Reportable) - Represents cell size restriction of unweighted count < 50; n/a (Not Available) - Not asked of a subset of respondents

Year: 2004

Household Income	Other			You were pregnant			Routine Checkup			Required			Wanted to find out			Estimated Adult Population	
	#	%	C.I. (95%)	#	%	C.I. (95%)	#	%	C.I. (95%)	#	%	C.I. (95%)	#	%	C.I. (95%)	#	
Less than \$10,000	n/r	n/r	n/r	n/r	n/r	n/r	n/r	n/r	n/r	n/r	n/r	n/r	n/r	n/r	n/r	n/r	n/r
\$10,000 to \$14,999	n/r	n/r	n/r	n/r	n/r	n/r	n/r	n/r	n/r	n/r	n/r	n/r	n/r	n/r	n/r	n/r	n/r
\$15,000 to \$19,999	n/r	n/r	n/r	n/r	n/r	n/r	n/r	n/r	n/r	n/r	n/r	n/r	n/r	n/r	n/r	n/r	n/r
\$20,000 to \$24,999	1,848	8.3	2.0 - 14.6	4,254	19.1	7.0 - 31.2	6,206	27.9	14.0 - 41.8	3,942	17.7	4.1 - 31.3	6,006	27.0	12.5 - 41.4	22,256	
\$25,000 to \$34,999	4,067	12.1	4.2 - 20.1	9,288	27.7	14.1 - 41.4	9,829	29.4	16.0 - 42.7	4,077	12.2	3.1 - 21.2	6,222	18.6	8.4 - 28.7	33,483	
\$35,000 to \$49,999	7,823	16.9	7.3 - 26.5	7,589	16.4	6.2 - 26.7	12,866	27.8	17.5 - 38.2	9,440	20.4	9.2 - 31.7	8,494	18.4	9.0 - 27.7	46,212	
\$50,000 to \$74,999	18,213	18.4	10.7 - 26.1	16,863	17.0	10.4 - 23.6	18,002	18.2	11.4 - 24.9	21,873	22.1	14.1 - 30.0	24,222	24.4	15.9 - 33.0	99,173	
\$75,000 or more	13,815	18.4	10.5 - 26.3	5,545	7.4	3.0 - 11.8	21,448	28.5	18.9 - 38.2	18,011	24.0	15.5 - 32.4	16,326	21.7	12.8 - 30.7	75,145	

Main Reason for Last HIV Test (Among Adults 18-64) by Year Total, County, BRFSS Age Group, DOH Race-Ethnicity, Gender, County and Community, Education Level, Employment Status (Grouped), Household Income, Island, Marital Status (Grouped), Poverty Level, for the Year(s) - 2000, 2001, 2002, 2003, 2004

Note: Weighted numbers (#), percentages and 95% confidence intervals; Respondents aged 18 years and older; n/r (Not Reportable) - Represents cell size restriction of unweighted count < 50; n/a (Not Available) - Not asked of a subset of respondents

Year: 2004

Island	Other			You were pregnant			Routine Checkup			Required			Wanted to find out			Estimated Adult Population
	#	%	C.I. (95%)	#	%	C.I. (95%)	#	%	C.I. (95%)	#	%	C.I. (95%)	#	%	C.I. (95%)	#
Hawaii	11,019	26.4	18.0 - 34.9	6,592	15.8	9.5 - 22.1	9,279	22.2	13.3 - 31.2	4,291	10.3	4.6 - 16.0	10,546	25.3	17.5 - 33.0	41,727
Kauai	2,054	13.9	6.3 - 21.4	1,895	12.8	5.5 - 20.0	4,687	31.6	20.0 - 43.2	2,971	20.0	9.0 - 31.0	3,222	21.7	12.3 - 31.1	14,829
Maui	5,367	18.8	10.4 - 27.2	3,866	13.5	5.5 - 21.6	4,860	17.0	8.9 - 25.2	5,539	19.4	9.6 - 29.2	8,917	31.2	18.0 - 44.4	28,549
Lanai	n/r	n/r	n/r	n/r	n/r	n/r	n/r	n/r	n/r	n/r	n/r	n/r	n/r	n/r	n/r	n/r
Molokai	n/r	n/r	n/r	n/r	n/r	n/r	n/r	n/r	n/r	n/r	n/r	n/r	n/r	n/r	n/r	n/r
Oahu	34,290	16.6	11.1 - 22.2	30,558	14.8	10.1 - 19.6	51,592	25.0	19.4 - 30.7	47,370	23.0	17.3 - 28.7	42,447	20.6	14.9 - 26.3	206,257

Main Reason for Last HIV Test (Among Adults 18-64) by Year Total, County, BRFSS Age Group, DOH Race-Ethnicity, Gender, County and Community, Education Level, Employment Status (Grouped), Household Income, Island, Marital Status (Grouped), Poverty Level, for the Year(s) - 2000, 2001, 2002, 2003, 2004

Note: Weighted numbers (#), percentages and 95% confidence intervals; Respondents aged 18 years and older; n/r (Not Reportable) - Represents cell size restriction of unweighted count < 50; n/a (Not Available) - Not asked of a subset of respondents

Year: 2004

Marital Status (Grouped)	Other			You were pregnant			Routine Checkup			Required			Wanted to find out			Estimated Adult Population
	#	%	C.I. (95%)	#	%	C.I. (95%)	#	%	C.I. (95%)	#	%	C.I. (95%)	#	%	C.I. (95%)	#
Married	34,478	19.4	13.7 - 25.1	35,117	19.8	14.6 - 24.9	41,092	23.1	17.6 - 28.7	42,940	24.2	18.4 - 30.0	24,103	13.6	9.4 - 17.7	177,730
Unmarried Couple	n/r	n/r	n/r	n/r	n/r	n/r	n/r	n/r	n/r	n/r	n/r	n/r	n/r	n/r	n/r	n/r
Widowed	n/r	n/r	n/r	n/r	n/r	n/r	n/r	n/r	n/r	n/r	n/r	n/r	n/r	n/r	n/r	n/r
Other	16,767	15.3	9.1 - 21.4	7,362	6.7	2.3 - 11.1	28,525	26.0	18.9 - 33.0	17,303	15.7	9.6 - 21.9	39,906	36.3	27.6 - 45.0	109,863

Main Reason for Last HIV Test (Among Adults 18-64) by Year Total, County, BRFSS Age Group, DOH Race-Ethnicity, Gender, County and Community, Education Level, Employment Status (Grouped), Household Income, Island, Marital Status (Grouped), Poverty Level, for the Year(s) - 2000, 2001, 2002, 2003, 2004

Note: Weighted numbers (#), percentages and 95% confidence intervals; Respondents aged 18 years and older; n/r (Not Reportable) - Represents cell size restriction of unweighted count < 50; n/a (Not Available) - Not asked of a subset of respondents

Year: 2004

Poverty Level	Other			You were pregnant			Routine Checkup			Required			Wanted to find out			Estimated Adult Population
	#	%	C.I. (95%)	#	%	C.I. (95%)	#	%	C.I. (95%)	#	%	C.I. (95%)	#	%	C.I. (95%)	#
1-50%	n/r	n/r	n/r	n/r	n/r	n/r	n/r	n/r	n/r	n/r	n/r	n/r	n/r	n/r	n/r	n/r
51-100%	n/r	n/r	n/r	n/r	n/r	n/r	n/r	n/r	n/r	n/r	n/r	n/r	n/r	n/r	n/r	n/r
101-120%	n/r	n/r	n/r	n/r	n/r	n/r	n/r	n/r	n/r	n/r	n/r	n/r	n/r	n/r	n/r	n/r
121-130%	n/r	n/r	n/r	n/r	n/r	n/r	n/r	n/r	n/r	n/r	n/r	n/r	n/r	n/r	n/r	n/r
131-150%	n/r	n/r	n/r	n/r	n/r	n/r	n/r	n/r	n/r	n/r	n/r	n/r	n/r	n/r	n/r	n/r
151-170%	5,263	19.9	7.3 - 32.5	6,824	25.8	8.9 - 42.7	6,690	25.3	10.4 - 40.2	4,292	16.2	3.8 - 28.7	3,385	12.8	3.4 - 22.2	26,454
171-180%	n/r	n/r	n/r	n/r	n/r	n/r	n/r	n/r	n/r	n/r	n/r	n/r	n/r	n/r	n/r	n/r
186+%	39,514	17.9	13.1 - 22.6	25,342	11.5	7.9 - 15.0	57,506	26.0	20.9 - 31.1	47,259	21.4	16.4 - 26.3	51,708	23.4	18.0 - 28.7	221,329

Main Reason for Last HIV Test (Among Adults 18-64) by Year Total, County, BRFSS Age Group, DOH Race-Ethnicity, Gender, County and Community, Education Level, Employment Status (Grouped), Household Income, Island, Marital Status (Grouped), Poverty Level, for the Year(s) - 2000, 2001, 2002, 2003, 2004

Note: Weighted numbers (#), percentages and 95% confidence intervals; Respondents aged 18 years and older; n/r (Not Reportable) - Represents cell size restriction of unweighted count < 50; n/a (Not Available) - Not asked of a subset of respondents

Year: 2004