

**HIV test - within past 2 years (18-64) by State, County, Island, Community, BRFSS Age Group, DOH Race-Ethnicity, Gender, Education Level, Employment Status (Grouped), Household Income, Poverty Level, Marital Status (Grouped), Married, Health Care Coverage, for the Year(s) - 2001, 2002, 2003, 2004, 2005, 2006, 2007, 2008, 2009, 2010**

*Note: Weighted numbers (#) rounded to nearest 100, percentages and 95% confidence intervals; Respondents aged 18 years and older; n/r (Not Reportable) - If the unweighted total responses for a dimension (row) is <50 that row will not be shown; n/a (Not Available) - Not asked of a subset of respondents*

*The trend analysis report shows the trend for the selected health variable over selected years in a table and a graph. Estimated Population: This number is a weighted representation of the population who responded to a particular question in the survey. For most questions the eligible population will be the entire adult population. For some secondary questions only a subset of the population was asked the question. For example, all survey participants were asked if they had diabetes, but only those who answered yes were asked if they use insulin. If a dimension value is unknown for a particular survey record, that record will not be included in the counts for that particular dimension.*

*For documentation on other terms and coding in this report, please go to the following links*

[Click here to access BRFSS documentation](#)

[Click here to access DOH Race-Ethnicity coding](#)

[Click here to access The Hawai'i Data Guide](#)

[Click here to access Poverty Level Methodology](#)

**For questions about this report, please contact  
The Hawaii Health Data Warehouse**

[profiles@hhdw.org](mailto:profiles@hhdw.org)

**(855) 946-5899 x15**

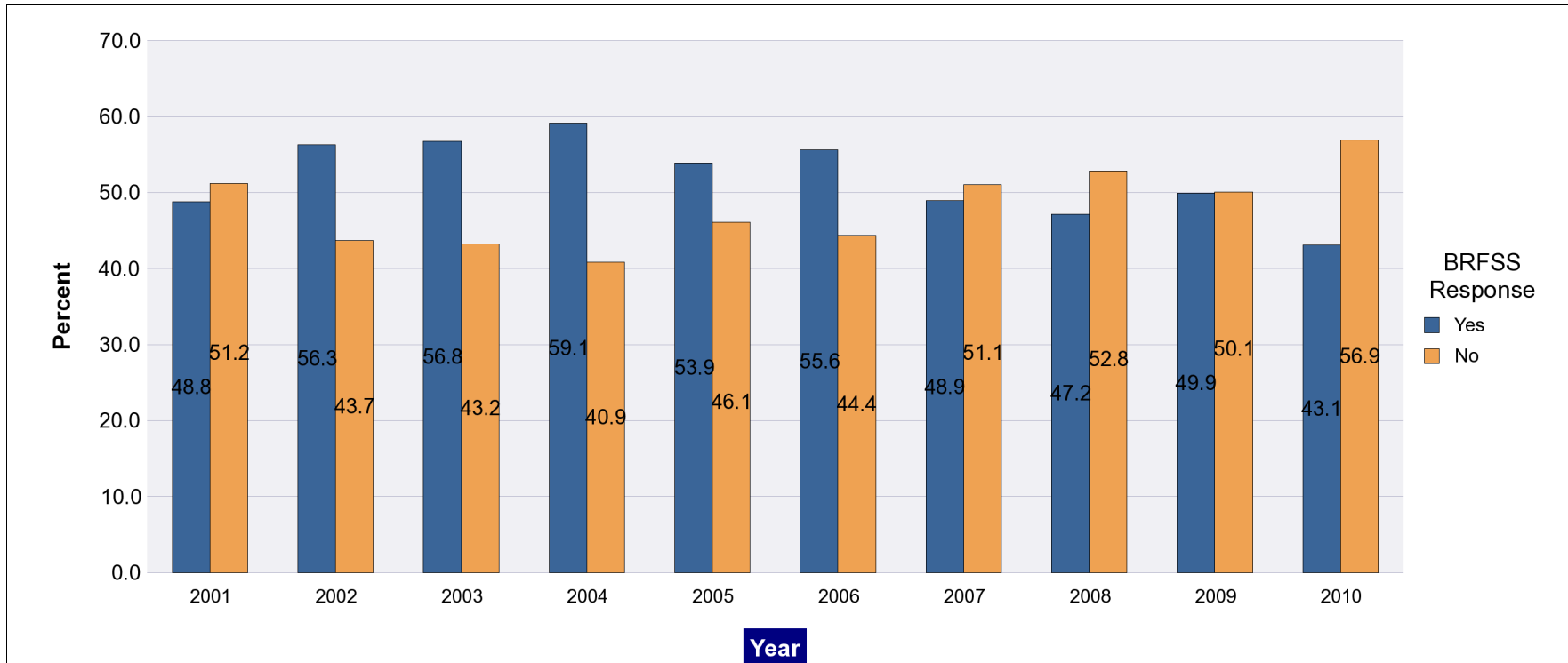
**HIV test - within past 2 years (18-64) by State, County, Island, Community, BRFSS Age Group, DOH Race-Ethnicity, Gender, Education Level, Employment Status (Grouped), Household Income, Poverty Level, Marital Status (Grouped), Married, Health Care Coverage, for the Year(s) - 2001, 2002, 2003, 2004, 2005, 2006, 2007, 2008, 2009, 2010**

*Note: Weighted numbers (#) rounded to nearest 100, percentages and 95% confidence intervals; Respondents aged 18 years and older; n/r (Not Reportable) - If the unweighted total responses for a dimension (row) is <50 that row will not be shown; n/a (Not Available) - Not asked of a subset of respondents*

Year	Yes			No			Estimated Population
	#	%	C.I.(95%)	#	%	C.I.(95%)	#
2001	144,600	48.8	45.3 - 52.4	151,500	51.2	47.6 - 54.7	296,100
2002	149,200	56.3	53.1 - 59.6	115,600	43.7	40.4 - 46.9	264,800
2003	157,100	56.8	53.3 - 60.2	119,600	43.2	39.8 - 46.7	276,700
2004	159,800	59.1	53.9 - 64.4	110,500	40.9	35.6 - 46.1	270,300
2005	146,700	53.9	50.7 - 57.0	125,600	46.1	43.0 - 49.3	272,300
2006	97,600	55.6	51.7 - 59.6	77,800	44.4	40.4 - 48.3	175,400
2007	124,300	48.9	45.6 - 52.2	129,900	51.1	47.8 - 54.4	254,200
2008	117,800	47.2	43.7 - 50.7	131,900	52.8	49.3 - 56.3	249,700
2009	129,400	49.9	46.3 - 53.5	129,900	50.1	46.5 - 53.7	259,400
2010	98,900	43.1	39.2 - 47.0	130,600	56.9	53.0 - 60.8	229,600

**HIV test - within past 2 years (18-64) by State, County, Island, Community, BRFSS Age Group, DOH Race-Ethnicity, Gender, Education Level, Employment Status (Grouped), Household Income, Poverty Level, Marital Status (Grouped), Married, Health Care Coverage, for the Year(s) - 2001, 2002, 2003, 2004, 2005, 2006, 2007, 2008, 2009, 2010**

*Note: Weighted numbers (#) rounded to nearest 100, percentages and 95% confidence intervals; Respondents aged 18 years and older; n/r (Not Reportable) - If the unweighted total responses for a dimension (row) is <50 that row will not be shown; n/a (Not Available) - Not asked of a subset of respondents*



**HIV test - within past 2 years (18-64) by State, County, Island, Community, BRFSS Age Group, DOH Race-Ethnicity, Gender, Education Level, Employment Status (Grouped), Household Income, Poverty Level, Marital Status (Grouped), Married, Health Care Coverage, for the Year(s) - 2001, 2002, 2003, 2004, 2005, 2006, 2007, 2008, 2009, 2010**

*Note: Weighted numbers (#) rounded to nearest 100, percentages and 95% confidence intervals; Respondents aged 18 years and older; n/r (Not Reportable) - If the unweighted total responses for a dimension (row) is <50 that row will not be shown; n/a (Not Available) - Not asked of a subset of respondents*

**Year: 2010**

State	Yes			No			Estimated Population
	#	%	C.I. (95%)	#	%	C.I. (95%)	#
Hawaii State	98,900	43.1	39.2 - 47.0	130,600	56.9	53.0 - 60.8	229,600

County	Yes			No			Estimated Population
	#	%	C.I. (95%)	#	%	C.I. (95%)	#
Hawaii	11,200	32.8	25.9 - 39.8	23,000	67.2	60.2 - 74.1	34,300
Honolulu	75,600	48.1	43.0 - 53.3	81,500	51.9	46.7 - 57.0	157,000
Kauai	3,300	28.0	16.9 - 39.0	8,400	72.0	61.0 - 83.1	11,700
Maui	8,900	33.3	25.0 - 41.6	17,700	66.7	58.4 - 75.0	26,600

**HIV test - within past 2 years (18-64) by State, County, Island, Community, BRFSS Age Group, DOH Race-Ethnicity, Gender, Education Level, Employment Status (Grouped), Household Income, Poverty Level, Marital Status (Grouped), Married, Health Care Coverage, for the Year(s) - 2001, 2002, 2003, 2004, 2005, 2006, 2007, 2008, 2009, 2010**

*Note: Weighted numbers (#) rounded to nearest 100, percentages and 95% confidence intervals; Respondents aged 18 years and older; n/r (Not Reportable) - If the unweighted total responses for a dimension (row) is <50 that row will not be shown; n/a (Not Available) - Not asked of a subset of respondents*

**Year: 2010**

Island	Yes			No			Estimated Population
	#	%	C.I. (95%)	#	%	C.I. (95%)	#
Hawaii	11,200	32.8	25.9 - 39.8	23,000	67.2	60.2 - 74.1	34,300
Kauai	3,300	28.0	16.9 - 39.0	8,400	72.0	61.0 - 83.1	11,700
Maui	8,100	33.0	24.1 - 41.9	16,500	67.0	58.1 - 75.9	24,600
Oahu	75,600	48.1	43.0 - 53.3	81,500	51.9	46.7 - 57.0	157,000

Community	Yes			No			Estimated Population
	#	%	C.I. (95%)	#	%	C.I. (95%)	#
Hanalei/ Kapaa	1,500	26.6	14.6 - 38.6	4,000	73.4	61.4 - 85.4	5,500
Hilo	3,600	36.4	22.4 - 50.4	6,300	63.6	49.6 - 77.6	9,900
Kahului	1,700	24.3	9.9 - 38.6	5,400	75.7	61.4 - 90.1	7,200
Kailua/ Waimanalo	7,100	49.0	32.0 - 66.0	7,400	51.0	34.0 - 68.0	14,500

**HIV test - within past 2 years (18-64) by State, County, Island, Community, BRFSS Age Group, DOH Race-Ethnicity, Gender, Education Level, Employment Status (Grouped), Household Income, Poverty Level, Marital Status (Grouped), Married, Health Care Coverage, for the Year(s) - 2001, 2002, 2003, 2004, 2005, 2006, 2007, 2008, 2009, 2010**

*Note: Weighted numbers (#) rounded to nearest 100, percentages and 95% confidence intervals; Respondents aged 18 years and older; n/r (Not Reportable) - If the unweighted total responses for a dimension (row) is <50 that row will not be shown; n/a (Not Available) - Not asked of a subset of respondents*

**Year: 2010**

Community	Yes			No			Estimated Population
	#	%	C.I. (95%)	#	%	C.I. (95%)	#
Kona	2,200	29.0	16.6 - 41.4	5,300	71.0	58.6 - 83.4	7,500
Lahaina/ Wailuku	4,100	48.3	31.4 - 65.2	4,400	51.7	34.8 - 68.6	8,500
Lihue-Waimea	1,800	29.1	11.4 - 46.9	4,400	70.9	53.1 - 88.6	6,200
Manoa/ Upper Makiki	1,800	15.1	4.3 - 26.0	10,200	84.9	74.0 - 95.7	12,000
Mililani/ Wahiawa	15,100	62.4	50.1 - 74.7	9,100	37.6	25.3 - 49.9	24,300
N.Hawaii	1,700	28.5	13.2 - 43.8	4,200	71.5	56.2 - 86.8	5,800
Puna/ Kau	3,800	34.5	21.9 - 47.1	7,200	65.5	52.9 - 78.1	11,000
Salt Lake/ Foster Village	9,700	62.7	48.4 - 77.0	5,800	37.3	23.0 - 51.6	15,400
Upcountry/ Hana	2,300	25.6	14.2 - 37.1	6,600	74.4	62.9 - 85.8	8,900
Waipahu/ Kapolei/ Ewa	13,300	49.4	37.1 - 61.7	13,700	50.6	38.3 - 62.9	27,000

**HIV test - within past 2 years (18-64) by State, County, Island, Community, BRFSS Age Group, DOH Race-Ethnicity, Gender, Education Level, Employment Status (Grouped), Household Income, Poverty Level, Marital Status (Grouped), Married, Health Care Coverage, for the Year(s) - 2001, 2002, 2003, 2004, 2005, 2006, 2007, 2008, 2009, 2010**

*Note: Weighted numbers (#) rounded to nearest 100, percentages and 95% confidence intervals; Respondents aged 18 years and older; n/r (Not Reportable) - If the unweighted total responses for a dimension (row) is <50 that row will not be shown; n/a (Not Available) - Not asked of a subset of respondents*

**Year: 2010**

BRFSS Age Group	Yes			No			Estimated Population
	#	%	C.I. (95%)	#	%	C.I. (95%)	#
<b>18-24</b>	16,800	86.2	76.2 - 96.3	2,700	13.8	3.7 - 23.8	19,500
<b>25-34</b>	38,300	59.8	51.3 - 68.3	25,700	40.2	31.7 - 48.7	64,000
<b>35-44</b>	24,900	35.4	29.0 - 41.8	45,500	64.6	58.2 - 71.0	70,500
<b>45-54</b>	12,400	26.3	20.6 - 32.1	34,600	73.7	67.9 - 79.4	46,900
<b>55-64</b>	6,500	22.8	17.3 - 28.3	22,100	77.2	71.7 - 82.7	28,700

**HIV test - within past 2 years (18-64) by State, County, Island, Community, BRFSS Age Group, DOH Race-Ethnicity, Gender, Education Level, Employment Status (Grouped), Household Income, Poverty Level, Marital Status (Grouped), Married, Health Care Coverage, for the Year(s) - 2001, 2002, 2003, 2004, 2005, 2006, 2007, 2008, 2009, 2010**

*Note: Weighted numbers (#) rounded to nearest 100, percentages and 95% confidence intervals; Respondents aged 18 years and older; n/r (Not Reportable) - If the unweighted total responses for a dimension (row) is <50 that row will not be shown; n/a (Not Available) - Not asked of a subset of respondents*

**Year: 2010**

DOH Race-Ethnicity	Yes			No			Estimated Population
	#	%	C.I. (95%)	#	%	C.I. (95%)	#
Caucasian	46,600	42.8	37.6 - 48.1	62,200	57.2	51.9 - 62.4	108,800
Native Hawaiian	12,200	41.8	31.4 - 52.2	17,000	58.2	47.8 - 68.6	29,200
Filipino	9,600	43.6	29.3 - 57.8	12,400	56.4	42.2 - 70.7	22,000
Japanese	10,200	32.2	22.1 - 42.4	21,500	67.8	57.6 - 77.9	31,700

Gender	Yes			No			Estimated Population
	#	%	C.I. (95%)	#	%	C.I. (95%)	#
Male	53,200	45.2	39.4 - 51.0	64,600	54.8	49.0 - 60.6	117,800
Female	45,700	40.9	35.8 - 46.0	66,100	59.1	54.0 - 64.2	111,800



**HIV test - within past 2 years (18-64) by State, County, Island, Community, BRFSS Age Group, DOH Race-Ethnicity, Gender, Education Level, Employment Status (Grouped), Household Income, Poverty Level, Marital Status (Grouped), Married, Health Care Coverage, for the Year(s) - 2001, 2002, 2003, 2004, 2005, 2006, 2007, 2008, 2009, 2010**

*Note: Weighted numbers (#) rounded to nearest 100, percentages and 95% confidence intervals; Respondents aged 18 years and older; n/r (Not Reportable) - If the unweighted total responses for a dimension (row) is <50 that row will not be shown; n/a (Not Available) - Not asked of a subset of respondents*

**Year: 2010**

Education Level	Yes			No			Estimated Population
	#	%	C.I. (95%)	#	%	C.I. (95%)	#
Grades 12 or GED (High School Grad)	25,600	50.8	41.6 - 60.0	24,800	49.2	40.0 - 58.4	50,400
College 1 to 3 years (Some College/ Tech)	30,900	44.3	37.0 - 51.6	38,900	55.7	48.4 - 63.0	69,800
College 4 years or more (College Grad)	38,600	38.2	32.9 - 43.4	62,500	61.8	56.6 - 67.1	101,100

Employment Status (Grouped)	Yes			No			Estimated Population
	#	%	C.I. (95%)	#	%	C.I. (95%)	#
Employed	67,800	40.8	36.2 - 45.4	98,300	59.2	54.6 - 63.8	166,100
Unemployed	7,400	44.9	29.3 - 60.5	9,100	55.1	39.5 - 70.7	16,600
Retired/Unable to work	5,900	35.6	25.2 - 46.0	10,700	64.4	54.0 - 74.8	16,700
Student/Homemaker	17,800	58.9	48.3 - 69.4	12,400	41.1	30.6 - 51.7	30,200

**HIV test - within past 2 years (18-64) by State, County, Island, Community, BRFSS Age Group, DOH Race-Ethnicity, Gender, Education Level, Employment Status (Grouped), Household Income, Poverty Level, Marital Status (Grouped), Married, Health Care Coverage, for the Year(s) - 2001, 2002, 2003, 2004, 2005, 2006, 2007, 2008, 2009, 2010**

*Note: Weighted numbers (#) rounded to nearest 100, percentages and 95% confidence intervals; Respondents aged 18 years and older; n/r (Not Reportable) - If the unweighted total responses for a dimension (row) is <50 that row will not be shown; n/a (Not Available) - Not asked of a subset of respondents*

**Year: 2010**

Household Income	Yes			No			Estimated Population
	#	%	C.I. (95%)	#	%	C.I. (95%)	#
Less than \$10,000	4,300	58.5	38.4 - 78.6	3,000	41.5	21.4 - 61.6	7,300
\$15,000 to \$19,999	6,500	57.5	39.6 - 75.3	4,800	42.5	24.7 - 60.4	11,300
\$20,000 to \$24,999	5,500	41.7	27.0 - 56.4	7,600	58.3	43.6 - 73.0	13,100
\$25,000 to \$34,999	7,100	38.8	24.8 - 52.7	11,200	61.2	47.3 - 75.2	18,300
\$35,000 to \$49,999	14,700	50.2	39.6 - 60.7	14,600	49.8	39.3 - 60.4	29,400
\$50,000 to \$74,999	16,500	44.0	34.9 - 53.0	21,000	56.0	47.0 - 65.1	37,500
\$75,000 or more	35,200	37.5	31.7 - 43.3	58,800	62.5	56.7 - 68.3	94,000

**HIV test - within past 2 years (18-64) by State, County, Island, Community, BRFSS Age Group, DOH Race-Ethnicity, Gender, Education Level, Employment Status (Grouped), Household Income, Poverty Level, Marital Status (Grouped), Married, Health Care Coverage, for the Year(s) - 2001, 2002, 2003, 2004, 2005, 2006, 2007, 2008, 2009, 2010**

*Note: Weighted numbers (#) rounded to nearest 100, percentages and 95% confidence intervals; Respondents aged 18 years and older; n/r (Not Reportable) - If the unweighted total responses for a dimension (row) is <50 that row will not be shown; n/a (Not Available) - Not asked of a subset of respondents*

**Year: 2010**

Poverty Level	Yes			No			Estimated Population
	#	%	C.I. (95%)	#	%	C.I. (95%)	#
<b>0-130%</b>	22,900	51.4	41.7 - 61.2	21,600	48.6	38.8 - 58.3	44,500
<b>131-185%</b>	14,700	48.1	38.2 - 58.0	15,900	51.9	42.0 - 61.8	30,600
<b>186+%</b>	54,600	39.0	34.4 - 43.6	85,400	61.0	56.4 - 65.6	140,000

Marital Status (Grouped)	Yes			No			Estimated Population
	#	%	C.I. (95%)	#	%	C.I. (95%)	#
<b>Married</b>	54,800	38.6	33.9 - 43.2	87,200	61.4	56.8 - 66.1	142,000
<b>Unmarried Couple</b>	4,100	33.7	15.5 - 51.8	8,000	66.3	48.2 - 84.5	12,000
<b>Other</b>	39,600	53.7	46.5 - 60.9	34,100	46.3	39.1 - 53.5	73,700

**HIV test - within past 2 years (18-64) by State, County, Island, Community, BRFSS Age Group, DOH Race-Ethnicity, Gender, Education Level, Employment Status (Grouped), Household Income, Poverty Level, Marital Status (Grouped), Married, Health Care Coverage, for the Year(s) - 2001, 2002, 2003, 2004, 2005, 2006, 2007, 2008, 2009, 2010**

*Note: Weighted numbers (#) rounded to nearest 100, percentages and 95% confidence intervals; Respondents aged 18 years and older; n/r (Not Reportable) - If the unweighted total responses for a dimension (row) is <50 that row will not be shown; n/a (Not Available) - Not asked of a subset of respondents*

**Year: 2010**

<b>Married</b>	<b>Yes</b>			<b>No</b>			<b>Estimated Population</b>
	<b>#</b>	<b>%</b>	<b>C.I. (95%)</b>	<b>#</b>	<b>%</b>	<b>C.I. (95%)</b>	<b>#</b>
<b>Yes</b>	57,200	38.9	34.3 - 43.4	89,900	61.1	56.6 - 65.7	147,100
<b>No</b>	41,800	50.7	43.7 - 57.6	40,700	49.3	42.4 - 56.3	82,400

<b>Health Care Coverage</b>	<b>Yes</b>			<b>No</b>			<b>Estimated Population</b>
	<b>#</b>	<b>%</b>	<b>C.I. (95%)</b>	<b>#</b>	<b>%</b>	<b>C.I. (95%)</b>	<b>#</b>
<b>Yes</b>	91,100	43.0	39.0 - 47.0	120,700	57.0	53.0 - 61.0	211,800
<b>No</b>	7,800	44.1	28.3 - 59.9	9,900	55.9	40.1 - 71.7	17,800

**HIV test - within past 2 years (18-64) by State, County, Island, Community, BRFSS Age Group, DOH Race-Ethnicity, Gender, Education Level, Employment Status (Grouped), Household Income, Poverty Level, Marital Status (Grouped), Married, Health Care Coverage, for the Year(s) - 2001, 2002, 2003, 2004, 2005, 2006, 2007, 2008, 2009, 2010**

*Note: Weighted numbers (#) rounded to nearest 100, percentages and 95% confidence intervals; Respondents aged 18 years and older; n/r (Not Reportable) - If the unweighted total responses for a dimension (row) is <50 that row will not be shown; n/a (Not Available) - Not asked of a subset of respondents*

**Year: 2009**

State	Yes			No			Estimated Population
	#	%	C.I. (95%)	#	%	C.I. (95%)	#
Hawaii State	129,400	49.9	46.3 - 53.5	129,900	50.1	46.5 - 53.7	259,400

County	Yes			No			Estimated Population
	#	%	C.I. (95%)	#	%	C.I. (95%)	#
Hawaii	14,200	37.8	31.6 - 43.9	23,500	62.2	56.1 - 68.4	37,700
Honolulu	98,400	54.9	50.1 - 59.6	81,000	45.1	40.4 - 49.9	179,400
Kauai	4,000	36.5	23.7 - 49.4	6,900	63.5	50.6 - 76.3	10,900
Maui	12,800	40.7	32.8 - 48.7	18,600	59.3	51.3 - 67.2	31,300

**HIV test - within past 2 years (18-64) by State, County, Island, Community, BRFSS Age Group, DOH Race-Ethnicity, Gender, Education Level, Employment Status (Grouped), Household Income, Poverty Level, Marital Status (Grouped), Married, Health Care Coverage, for the Year(s) - 2001, 2002, 2003, 2004, 2005, 2006, 2007, 2008, 2009, 2010**

*Note: Weighted numbers (#) rounded to nearest 100, percentages and 95% confidence intervals; Respondents aged 18 years and older; n/r (Not Reportable) - If the unweighted total responses for a dimension (row) is <50 that row will not be shown; n/a (Not Available) - Not asked of a subset of respondents*

**Year: 2009**

Island	Yes			No			Estimated Population
	#	%	C.I. (95%)	#	%	C.I. (95%)	#
Hawaii	14,200	37.8	31.6 - 43.9	23,500	62.2	56.1 - 68.4	37,700
Kauai	4,000	36.5	23.7 - 49.4	6,900	63.5	50.6 - 76.3	10,900
Maui	12,100	41.5	33.1 - 50.0	17,100	58.5	50.0 - 66.9	29,200
Molokai	500	28.8	15.2 - 42.4	1,300	71.2	57.6 - 84.8	1,900
Oahu	98,400	54.9	50.1 - 59.6	81,000	45.1	40.4 - 49.9	179,400

Community	Yes			No			Estimated Population
	#	%	C.I. (95%)	#	%	C.I. (95%)	#
Hanalei/ Kapaa	1,900	31.0	17.0 - 45.0	4,200	69.0	55.0 - 83.0	6,100
Hilo	5,400	45.6	33.8 - 57.5	6,400	54.4	42.5 - 66.2	11,800
Kahului	3,800	41.4	27.6 - 55.1	5,400	58.6	44.9 - 72.4	9,300

**HIV test - within past 2 years (18-64) by State, County, Island, Community, BRFSS Age Group, DOH Race-Ethnicity, Gender, Education Level, Employment Status (Grouped), Household Income, Poverty Level, Marital Status (Grouped), Married, Health Care Coverage, for the Year(s) - 2001, 2002, 2003, 2004, 2005, 2006, 2007, 2008, 2009, 2010**

*Note: Weighted numbers (#) rounded to nearest 100, percentages and 95% confidence intervals; Respondents aged 18 years and older; n/r (Not Reportable) - If the unweighted total responses for a dimension (row) is <50 that row will not be shown; n/a (Not Available) - Not asked of a subset of respondents*

**Year: 2009**

Community	Yes			No			Estimated Population
	#	%	C.I. (95%)	#	%	C.I. (95%)	#
Kaimuki/ Palolo/ Waikiki	6,300	48.3	32.4 - 64.3	6,700	51.7	35.7 - 67.6	13,000
Kona	1,900	30.4	16.8 - 44.0	4,400	69.6	56.0 - 83.2	6,400
Lahaina/ Wailuku	3,600	43.8	24.7 - 62.9	4,600	56.2	37.1 - 75.3	8,100
Lihue-Waimea	2,100	43.5	22.1 - 65.0	2,700	56.5	35.0 - 77.9	4,800
Mililani/ Wahiawa	19,100	68.3	57.0 - 79.6	8,900	31.7	20.4 - 43.0	27,900
Molokai	500	28.8	15.2 - 42.4	1,300	71.2	57.6 - 84.8	1,900
N.Hawaii	2,400	31.8	18.4 - 45.2	5,200	68.2	54.8 - 81.6	7,700
Puna/ Kau	4,500	37.7	27.5 - 48.0	7,400	62.3	52.0 - 72.5	11,800
Salt Lake/ Foster Village	14,400	76.0	65.4 - 86.5	4,500	24.0	13.5 - 34.6	18,900
Upcountry/ Hana	4,700	40.1	28.3 - 52.0	7,000	59.9	48.0 - 71.7	11,800
Waipahu/ Kapolei/ Ewa	17,500	55.3	43.8 - 66.7	14,200	44.7	33.3 - 56.2	31,600

**HIV test - within past 2 years (18-64) by State, County, Island, Community, BRFSS Age Group, DOH Race-Ethnicity, Gender, Education Level, Employment Status (Grouped), Household Income, Poverty Level, Marital Status (Grouped), Married, Health Care Coverage, for the Year(s) - 2001, 2002, 2003, 2004, 2005, 2006, 2007, 2008, 2009, 2010**

*Note: Weighted numbers (#) rounded to nearest 100, percentages and 95% confidence intervals; Respondents aged 18 years and older; n/r (Not Reportable) - If the unweighted total responses for a dimension (row) is <50 that row will not be shown; n/a (Not Available) - Not asked of a subset of respondents*

**Year: 2009**

BRFSS Age Group	Yes			No			Estimated Population
	#	%	C.I. (95%)	#	%	C.I. (95%)	#
<b>18-24</b>	18,900	74.7	61.7 - 87.7	6,400	25.3	12.3 - 38.3	25,300
<b>25-34</b>	58,600	65.8	59.3 - 72.4	30,400	34.2	27.6 - 40.7	89,000
<b>35-44</b>	32,000	43.6	37.0 - 50.1	41,400	56.4	49.9 - 63.0	73,400
<b>45-54</b>	13,900	31.0	24.9 - 37.1	31,000	69.0	62.9 - 75.1	44,900
<b>55-64</b>	6,000	22.5	16.3 - 28.8	20,700	77.5	71.2 - 83.7	26,700



**HIV test - within past 2 years (18-64) by State, County, Island, Community, BRFSS Age Group, DOH Race-Ethnicity, Gender, Education Level, Employment Status (Grouped), Household Income, Poverty Level, Marital Status (Grouped), Married, Health Care Coverage, for the Year(s) - 2001, 2002, 2003, 2004, 2005, 2006, 2007, 2008, 2009, 2010**

*Note: Weighted numbers (#) rounded to nearest 100, percentages and 95% confidence intervals; Respondents aged 18 years and older; n/r (Not Reportable) - If the unweighted total responses for a dimension (row) is <50 that row will not be shown; n/a (Not Available) - Not asked of a subset of respondents*

**Year: 2009**

DOH Race-Ethnicity	Yes			No			Estimated Population
	#	%	C.I. (95%)	#	%	C.I. (95%)	#
Caucasian	50,400	45.6	40.8 - 50.5	60,100	54.4	49.5 - 59.2	110,400
Native Hawaiian	16,900	56.7	45.8 - 67.6	12,900	43.3	32.4 - 54.2	29,700
Filipino	12,700	46.6	33.6 - 59.6	14,500	53.4	40.4 - 66.4	27,200
Japanese	13,300	38.4	27.6 - 49.1	21,400	61.6	50.9 - 72.4	34,700

Gender	Yes			No			Estimated Population
	#	%	C.I. (95%)	#	%	C.I. (95%)	#
Male	73,700	56.8	51.5 - 62.1	56,100	43.2	37.9 - 48.5	129,800
Female	55,700	43.0	38.2 - 47.8	73,800	57.0	52.2 - 61.8	129,500

**HIV test - within past 2 years (18-64) by State, County, Island, Community, BRFSS Age Group, DOH Race-Ethnicity, Gender, Education Level, Employment Status (Grouped), Household Income, Poverty Level, Marital Status (Grouped), Married, Health Care Coverage, for the Year(s) - 2001, 2002, 2003, 2004, 2005, 2006, 2007, 2008, 2009, 2010**

*Note: Weighted numbers (#) rounded to nearest 100, percentages and 95% confidence intervals; Respondents aged 18 years and older; n/r (Not Reportable) - If the unweighted total responses for a dimension (row) is <50 that row will not be shown; n/a (Not Available) - Not asked of a subset of respondents*

**Year: 2009**

Education Level	Yes			No			Estimated Population
	#	%	C.I. (95%)	#	%	C.I. (95%)	#
Grades 12 or GED (High School Grad)	32,700	53.7	45.9 - 61.6	28,100	46.3	38.4 - 54.1	60,800
College 1 to 3 years (Some College/ Tech)	47,700	55.9	49.5 - 62.3	37,600	44.1	37.7 - 50.5	85,300
College 4 years or more (College Grad)	43,500	41.9	36.6 - 47.1	60,300	58.1	52.9 - 63.4	103,800

Employment Status (Grouped)	Yes			No			Estimated Population
	#	%	C.I. (95%)	#	%	C.I. (95%)	#
Employed	92,000	48.7	44.4 - 53.0	96,900	51.3	47.0 - 55.6	188,900
Unemployed	13,200	56.0	43.6 - 68.5	10,400	44.0	31.5 - 56.4	23,500
Retired/Unable to work	4,800	35.3	22.1 - 48.6	8,700	64.7	51.4 - 77.9	13,500
Student/Homemaker	19,400	58.4	48.5 - 68.2	13,800	41.6	31.8 - 51.5	33,300

**HIV test - within past 2 years (18-64) by State, County, Island, Community, BRFSS Age Group, DOH Race-Ethnicity, Gender, Education Level, Employment Status (Grouped), Household Income, Poverty Level, Marital Status (Grouped), Married, Health Care Coverage, for the Year(s) - 2001, 2002, 2003, 2004, 2005, 2006, 2007, 2008, 2009, 2010**

*Note: Weighted numbers (#) rounded to nearest 100, percentages and 95% confidence intervals; Respondents aged 18 years and older; n/r (Not Reportable) - If the unweighted total responses for a dimension (row) is <50 that row will not be shown; n/a (Not Available) - Not asked of a subset of respondents*

**Year: 2009**

Household Income	Yes			No			Estimated Population
	#	%	C.I. (95%)	#	%	C.I. (95%)	#
Less than \$10,000	4,100	60.3	45.2 - 75.3	2,700	39.7	24.7 - 54.8	6,900
\$10,000 to \$14,999	3,400	43.4	18.9 - 68.0	4,400	56.6	32.0 - 81.1	7,800
\$15,000 to \$19,999	6,900	53.6	35.3 - 71.9	5,900	46.4	28.1 - 64.7	12,800
\$20,000 to \$24,999	6,300	47.9	31.6 - 64.2	6,900	52.1	35.8 - 68.4	13,200
\$25,000 to \$34,999	11,500	51.8	39.9 - 63.7	10,700	48.2	36.3 - 60.1	22,200
\$35,000 to \$49,999	18,100	48.7	39.9 - 57.5	19,000	51.3	42.5 - 60.1	37,100
\$50,000 to \$74,999	29,000	56.1	47.8 - 64.4	22,700	43.9	35.6 - 52.2	51,600
\$75,000 or more	42,100	44.3	38.4 - 50.2	52,900	55.7	49.8 - 61.6	94,900

**HIV test - within past 2 years (18-64) by State, County, Island, Community, BRFSS Age Group, DOH Race-Ethnicity, Gender, Education Level, Employment Status (Grouped), Household Income, Poverty Level, Marital Status (Grouped), Married, Health Care Coverage, for the Year(s) - 2001, 2002, 2003, 2004, 2005, 2006, 2007, 2008, 2009, 2010**

*Note: Weighted numbers (#) rounded to nearest 100, percentages and 95% confidence intervals; Respondents aged 18 years and older; n/r (Not Reportable) - If the unweighted total responses for a dimension (row) is <50 that row will not be shown; n/a (Not Available) - Not asked of a subset of respondents*

**Year: 2009**

Poverty Level	Yes			No			Estimated Population
	#	%	C.I. (95%)	#	%	C.I. (95%)	#
<b>0-130%</b>	28,100	51.1	42.7 - 59.5	26,900	48.9	40.5 - 57.3	55,000
<b>131-185%</b>	21,400	59.6	50.2 - 69.0	14,500	40.4	31.0 - 49.8	35,900
<b>186+%</b>	71,700	46.1	41.6 - 50.7	83,800	53.9	49.3 - 58.4	155,500

Marital Status (Grouped)	Yes			No			Estimated Population
	#	%	C.I. (95%)	#	%	C.I. (95%)	#
<b>Married</b>	73,500	47.5	43.0 - 52.1	81,200	52.5	47.9 - 57.0	154,700
<b>Unmarried Couple</b>	6,300	40.6	23.0 - 58.1	9,200	59.4	41.9 - 77.0	15,500
<b>Other</b>	49,200	56.8	50.5 - 63.2	37,400	43.2	36.8 - 49.5	86,600

**HIV test - within past 2 years (18-64) by State, County, Island, Community, BRFSS Age Group, DOH Race-Ethnicity, Gender, Education Level, Employment Status (Grouped), Household Income, Poverty Level, Marital Status (Grouped), Married, Health Care Coverage, for the Year(s) - 2001, 2002, 2003, 2004, 2005, 2006, 2007, 2008, 2009, 2010**

*Note: Weighted numbers (#) rounded to nearest 100, percentages and 95% confidence intervals; Respondents aged 18 years and older; n/r (Not Reportable) - If the unweighted total responses for a dimension (row) is <50 that row will not be shown; n/a (Not Available) - Not asked of a subset of respondents*

**Year: 2009**

<b>Married</b>	<b>Yes</b>			<b>No</b>			<b>Estimated Population</b>
	<b>#</b>	<b>%</b>	<b>C.I. (95%)</b>	<b>#</b>	<b>%</b>	<b>C.I. (95%)</b>	<b>#</b>
<b>Yes</b>	74,700	47.2	42.7 - 51.7	83,500	52.8	48.3 - 57.3	158,300
<b>No</b>	54,600	54.1	48.0 - 60.1	46,400	45.9	39.9 - 52.0	101,000

<b>Health Care Coverage</b>	<b>Yes</b>			<b>No</b>			<b>Estimated Population</b>
	<b>#</b>	<b>%</b>	<b>C.I. (95%)</b>	<b>#</b>	<b>%</b>	<b>C.I. (95%)</b>	<b>#</b>
<b>Yes</b>	119,000	49.9	46.2 - 53.7	119,300	50.1	46.3 - 53.8	238,300
<b>No</b>	9,600	47.9	34.2 - 61.6	10,500	52.1	38.4 - 65.8	20,100

**HIV test - within past 2 years (18-64) by State, County, Island, Community, BRFSS Age Group, DOH Race-Ethnicity, Gender, Education Level, Employment Status (Grouped), Household Income, Poverty Level, Marital Status (Grouped), Married, Health Care Coverage, for the Year(s) - 2001, 2002, 2003, 2004, 2005, 2006, 2007, 2008, 2009, 2010**

*Note: Weighted numbers (#) rounded to nearest 100, percentages and 95% confidence intervals; Respondents aged 18 years and older; n/r (Not Reportable) - If the unweighted total responses for a dimension (row) is <50 that row will not be shown; n/a (Not Available) - Not asked of a subset of respondents*

**Year: 2008**

State	Yes			No			Estimated Population
	#	%	C.I. (95%)	#	%	C.I. (95%)	#
Hawaii State	117,800	47.2	43.7 - 50.7	131,900	52.8	49.3 - 56.3	249,700

County	Yes			No			Estimated Population
	#	%	C.I. (95%)	#	%	C.I. (95%)	#
Hawaii	12,800	35.5	28.9 - 42.1	23,300	64.5	57.9 - 71.1	36,100
Honolulu	89,700	52.0	47.4 - 56.7	82,700	48.0	43.3 - 52.6	172,400
Kauai	5,000	44.5	33.5 - 55.4	6,300	55.5	44.6 - 66.5	11,300
Maui	10,200	34.2	27.8 - 40.7	19,700	65.8	59.3 - 72.2	29,900

**HIV test - within past 2 years (18-64) by State, County, Island, Community, BRFSS Age Group, DOH Race-Ethnicity, Gender, Education Level, Employment Status (Grouped), Household Income, Poverty Level, Marital Status (Grouped), Married, Health Care Coverage, for the Year(s) - 2001, 2002, 2003, 2004, 2005, 2006, 2007, 2008, 2009, 2010**

*Note: Weighted numbers (#) rounded to nearest 100, percentages and 95% confidence intervals; Respondents aged 18 years and older; n/r (Not Reportable) - If the unweighted total responses for a dimension (row) is <50 that row will not be shown; n/a (Not Available) - Not asked of a subset of respondents*

**Year: 2008**

Island	Yes			No			Estimated Population
	#	%	C.I. (95%)	#	%	C.I. (95%)	#
Hawaii	12,800	35.5	28.9 - 42.1	23,300	64.5	57.9 - 71.1	36,100
Kauai	5,000	44.5	33.5 - 55.4	6,300	55.5	44.6 - 66.5	11,300
Maui	9,300	34.2	27.3 - 41.1	17,900	65.8	58.9 - 72.7	27,200
Molokai	800	35.5	18.0 - 53.1	1,400	64.5	46.9 - 82.0	2,100
Oahu	89,700	52.0	47.4 - 56.7	82,700	48.0	43.3 - 52.6	172,400

Community	Yes			No			Estimated Population
	#	%	C.I. (95%)	#	%	C.I. (95%)	#
Aiea/ Pearl City	8,300	57.4	43.0 - 71.7	6,200	42.6	28.3 - 57.0	14,500
Hanalei/ Kapaa	1,800	34.5	18.8 - 50.3	3,400	65.5	49.7 - 81.2	5,200
Hilo	5,200	50.5	37.3 - 63.7	5,100	49.5	36.3 - 62.7	10,400

**HIV test - within past 2 years (18-64) by State, County, Island, Community, BRFSS Age Group, DOH Race-Ethnicity, Gender, Education Level, Employment Status (Grouped), Household Income, Poverty Level, Marital Status (Grouped), Married, Health Care Coverage, for the Year(s) - 2001, 2002, 2003, 2004, 2005, 2006, 2007, 2008, 2009, 2010**

*Note: Weighted numbers (#) rounded to nearest 100, percentages and 95% confidence intervals; Respondents aged 18 years and older; n/r (Not Reportable) - If the unweighted total responses for a dimension (row) is <50 that row will not be shown; n/a (Not Available) - Not asked of a subset of respondents*

**Year: 2008**

Community	Yes			No			Estimated Population
	#	%	C.I. (95%)	#	%	C.I. (95%)	#
Kahului	2,900	34.6	21.1 - 48.1	5,400	65.4	51.9 - 78.9	8,300
Kailua/ Waimanalo	6,200	42.2	28.1 - 56.2	8,500	57.8	43.8 - 71.9	14,700
Kaimuki/ Palolo/ Waikiki	5,700	39.3	25.3 - 53.3	8,800	60.7	46.7 - 74.7	14,500
Kona	2,300	29.0	17.2 - 40.9	5,700	71.0	59.1 - 82.8	8,000
Lahaina/ Wailuku	3,800	40.7	28.1 - 53.3	5,500	59.3	46.7 - 71.9	9,300
Lihue-Waimea	3,200	53.1	38.5 - 67.7	2,800	46.9	32.3 - 61.5	6,000
Mililani/ Wahiawa	12,200	52.8	40.2 - 65.3	10,900	47.2	34.7 - 59.8	23,000
Molokai	800	35.5	18.0 - 53.1	1,400	64.5	46.9 - 82.0	2,100
N.Hawaii	2,400	33.9	17.3 - 50.5	4,600	66.1	49.5 - 82.7	6,900
Puna/ Kau	2,900	27.0	17.0 - 36.9	7,900	73.0	63.1 - 83.0	10,800
Upcountry/ Hana	2,600	27.5	17.8 - 37.1	6,900	72.5	62.9 - 82.2	9,500



**HIV test - within past 2 years (18-64) by State, County, Island, Community, BRFSS Age Group, DOH Race-Ethnicity, Gender, Education Level, Employment Status (Grouped), Household Income, Poverty Level, Marital Status (Grouped), Married, Health Care Coverage, for the Year(s) - 2001, 2002, 2003, 2004, 2005, 2006, 2007, 2008, 2009, 2010**

*Note: Weighted numbers (#) rounded to nearest 100, percentages and 95% confidence intervals; Respondents aged 18 years and older; n/r (Not Reportable) - If the unweighted total responses for a dimension (row) is <50 that row will not be shown; n/a (Not Available) - Not asked of a subset of respondents*

**Year: 2008**

Community	Yes			No			Estimated Population
	#	%	C.I. (95%)	#	%	C.I. (95%)	#
Waipahu/ Kapolei/ Ewa	18,700	55.7	44.3 - 67.2	14,900	44.3	32.8 - 55.7	33,600

BRFSS Age Group	Yes			No			Estimated Population
	#	%	C.I. (95%)	#	%	C.I. (95%)	#
18-24	18,600	79.7	68.4 - 90.9	4,800	20.3	9.1 - 31.6	23,400
25-34	48,100	56.8	50.1 - 63.6	36,500	43.2	36.4 - 49.9	84,700
35-44	27,900	40.0	34.3 - 45.8	41,900	60.0	54.2 - 65.7	69,800
45-54	14,000	31.3	24.9 - 37.8	30,600	68.7	62.2 - 75.1	44,600
55-64	9,100	33.5	25.5 - 41.5	18,100	66.5	58.5 - 74.5	27,300

**HIV test - within past 2 years (18-64) by State, County, Island, Community, BRFSS Age Group, DOH Race-Ethnicity, Gender, Education Level, Employment Status (Grouped), Household Income, Poverty Level, Marital Status (Grouped), Married, Health Care Coverage, for the Year(s) - 2001, 2002, 2003, 2004, 2005, 2006, 2007, 2008, 2009, 2010**

*Note: Weighted numbers (#) rounded to nearest 100, percentages and 95% confidence intervals; Respondents aged 18 years and older; n/r (Not Reportable) - If the unweighted total responses for a dimension (row) is <50 that row will not be shown; n/a (Not Available) - Not asked of a subset of respondents*

**Year: 2008**

DOH Race-Ethnicity	Yes			No			Estimated Population
	#	%	C.I. (95%)	#	%	C.I. (95%)	#
Caucasian	52,600	45.4	40.7 - 50.0	63,300	54.6	50.0 - 59.3	115,900
Native Hawaiian	16,400	48.4	38.3 - 58.6	17,400	51.6	41.4 - 61.7	33,800
Chinese	7,100	61.7	46.0 - 77.4	4,400	38.3	22.6 - 54.0	11,500
Filipino	14,700	52.3	40.2 - 64.5	13,400	47.7	35.5 - 59.8	28,200
Japanese	11,700	39.7	29.1 - 50.3	17,800	60.3	49.7 - 70.9	29,400

Gender	Yes			No			Estimated Population
	#	%	C.I. (95%)	#	%	C.I. (95%)	#
Male	60,400	51.1	45.6 - 56.5	57,800	48.9	43.5 - 54.4	118,200
Female	57,400	43.7	39.2 - 48.2	74,000	56.3	51.8 - 60.8	131,500

**HIV test - within past 2 years (18-64) by State, County, Island, Community, BRFSS Age Group, DOH Race-Ethnicity, Gender, Education Level, Employment Status (Grouped), Household Income, Poverty Level, Marital Status (Grouped), Married, Health Care Coverage, for the Year(s) - 2001, 2002, 2003, 2004, 2005, 2006, 2007, 2008, 2009, 2010**

*Note: Weighted numbers (#) rounded to nearest 100, percentages and 95% confidence intervals; Respondents aged 18 years and older; n/r (Not Reportable) - If the unweighted total responses for a dimension (row) is <50 that row will not be shown; n/a (Not Available) - Not asked of a subset of respondents*

**Year: 2008**

Education Level	Yes			No			Estimated Population
	#	%	C.I. (95%)	#	%	C.I. (95%)	#
Grades 12 or GED (High School Grad)	30,100	50.2	42.4 - 58.0	29,800	49.8	42.0 - 57.6	59,900
College 1 to 3 years (Some College/ Tech)	39,400	49.8	43.4 - 56.1	39,800	50.3	43.9 - 56.6	79,200
College 4 years or more (College Grad)	45,700	44.2	39.2 - 49.3	57,600	55.8	50.7 - 60.8	103,200

Employment Status (Grouped)	Yes			No			Estimated Population
	#	%	C.I. (95%)	#	%	C.I. (95%)	#
Employed	89,200	47.8	43.7 - 51.8	97,600	52.2	48.2 - 56.3	186,800
Unemployed	4,200	34.9	19.5 - 50.2	7,900	65.1	49.8 - 80.5	12,200
Retired/Unable to work	8,700	44.2	32.4 - 56.0	11,000	55.8	44.0 - 67.6	19,700
Student/Homemaker	15,600	50.6	40.7 - 60.5	15,200	49.4	39.5 - 59.3	30,800

**HIV test - within past 2 years (18-64) by State, County, Island, Community, BRFSS Age Group, DOH Race-Ethnicity, Gender, Education Level, Employment Status (Grouped), Household Income, Poverty Level, Marital Status (Grouped), Married, Health Care Coverage, for the Year(s) - 2001, 2002, 2003, 2004, 2005, 2006, 2007, 2008, 2009, 2010**

*Note: Weighted numbers (#) rounded to nearest 100, percentages and 95% confidence intervals; Respondents aged 18 years and older; n/r (Not Reportable) - If the unweighted total responses for a dimension (row) is <50 that row will not be shown; n/a (Not Available) - Not asked of a subset of respondents*

**Year: 2008**

Household Income	Yes			No			Estimated Population
	#	%	C.I. (95%)	#	%	C.I. (95%)	#
Less than \$10,000	3,600	49.1	32.1 - 66.2	3,700	50.9	33.8 - 67.9	7,400
\$15,000 to \$19,999	4,600	57.7	39.6 - 75.7	3,300	42.3	24.3 - 60.4	7,900
\$20,000 to \$24,999	6,600	46.5	32.0 - 61.0	7,600	53.5	39.0 - 68.0	14,200
\$25,000 to \$34,999	13,200	52.7	40.0 - 65.3	11,900	47.3	34.7 - 60.0	25,100
\$35,000 to \$49,999	13,900	42.2	33.3 - 51.1	19,000	57.8	48.9 - 66.7	32,900
\$50,000 to \$74,999	23,100	47.6	39.5 - 55.6	25,400	52.4	44.4 - 60.5	48,500
\$75,000 or more	42,000	45.2	39.6 - 50.8	50,900	54.8	49.2 - 60.4	92,800

**HIV test - within past 2 years (18-64) by State, County, Island, Community, BRFSS Age Group, DOH Race-Ethnicity, Gender, Education Level, Employment Status (Grouped), Household Income, Poverty Level, Marital Status (Grouped), Married, Health Care Coverage, for the Year(s) - 2001, 2002, 2003, 2004, 2005, 2006, 2007, 2008, 2009, 2010**

*Note: Weighted numbers (#) rounded to nearest 100, percentages and 95% confidence intervals; Respondents aged 18 years and older; n/r (Not Reportable) - If the unweighted total responses for a dimension (row) is <50 that row will not be shown; n/a (Not Available) - Not asked of a subset of respondents*

**Year: 2008**

Poverty Level	Yes			No			Estimated Population
	#	%	C.I. (95%)	#	%	C.I. (95%)	#
<b>0-130%</b>	25,000	51.4	42.4 - 60.4	23,700	48.6	39.6 - 57.6	48,700
<b>131-185%</b>	11,100	43.7	33.1 - 54.4	14,300	56.3	45.6 - 66.9	25,300
<b>186+%</b>	72,400	45.5	41.4 - 49.7	86,600	54.5	50.3 - 58.6	159,000

Marital Status (Grouped)	Yes			No			Estimated Population
	#	%	C.I. (95%)	#	%	C.I. (95%)	#
<b>Married</b>	66,300	43.2	39.0 - 47.5	87,000	56.8	52.5 - 61.0	153,300
<b>Unmarried Couple</b>	5,100	42.5	29.0 - 55.9	6,900	57.5	44.1 - 71.0	12,000
<b>Other</b>	44,800	55.0	48.4 - 61.5	36,700	45.0	38.5 - 51.6	81,400

**HIV test - within past 2 years (18-64) by State, County, Island, Community, BRFSS Age Group, DOH Race-Ethnicity, Gender, Education Level, Employment Status (Grouped), Household Income, Poverty Level, Marital Status (Grouped), Married, Health Care Coverage, for the Year(s) - 2001, 2002, 2003, 2004, 2005, 2006, 2007, 2008, 2009, 2010**

*Note: Weighted numbers (#) rounded to nearest 100, percentages and 95% confidence intervals; Respondents aged 18 years and older; n/r (Not Reportable) - If the unweighted total responses for a dimension (row) is <50 that row will not be shown; n/a (Not Available) - Not asked of a subset of respondents*

**Year: 2008**

<b>Married</b>	<b>Yes</b>			<b>No</b>			<b>Estimated Population</b>
	<b>#</b>	<b>%</b>	<b>C.I. (95%)</b>	<b>#</b>	<b>%</b>	<b>C.I. (95%)</b>	<b>#</b>
<b>Yes</b>	67,200	43.0	38.8 - 47.2	89,100	57.0	52.8 - 61.2	156,400
<b>No</b>	50,600	54.3	48.4 - 60.3	42,500	45.7	39.7 - 51.6	93,000

<b>Health Care Coverage</b>	<b>Yes</b>			<b>No</b>			<b>Estimated Population</b>
	<b>#</b>	<b>%</b>	<b>C.I. (95%)</b>	<b>#</b>	<b>%</b>	<b>C.I. (95%)</b>	<b>#</b>
<b>Yes</b>	111,200	48.3	44.7 - 51.9	119,000	51.7	48.1 - 55.3	230,200
<b>No</b>	6,400	33.4	20.8 - 46.1	12,700	66.6	53.9 - 79.2	19,100

**HIV test - within past 2 years (18-64) by State, County, Island, Community, BRFSS Age Group, DOH Race-Ethnicity, Gender, Education Level, Employment Status (Grouped), Household Income, Poverty Level, Marital Status (Grouped), Married, Health Care Coverage, for the Year(s) - 2001, 2002, 2003, 2004, 2005, 2006, 2007, 2008, 2009, 2010**

*Note: Weighted numbers (#) rounded to nearest 100, percentages and 95% confidence intervals; Respondents aged 18 years and older; n/r (Not Reportable) - If the unweighted total responses for a dimension (row) is <50 that row will not be shown; n/a (Not Available) - Not asked of a subset of respondents*

**Year: 2007**

State	Yes			No			Estimated Population
	#	%	C.I. (95%)	#	%	C.I. (95%)	#
Hawaii State	124,300	48.9	45.6 - 52.2	129,900	51.1	47.8 - 54.4	254,200

County	Yes			No			Estimated Population
	#	%	C.I. (95%)	#	%	C.I. (95%)	#
Hawaii	13,700	39.7	33.7 - 45.8	20,800	60.3	54.2 - 66.3	34,500
Honolulu	92,700	51.8	47.4 - 56.1	86,400	48.2	43.9 - 52.6	179,100
Kauai	5,300	44.8	34.1 - 55.5	6,500	55.2	44.5 - 65.9	11,800
Maui	12,700	43.9	37.2 - 50.6	16,200	56.1	49.4 - 62.8	28,900

**HIV test - within past 2 years (18-64) by State, County, Island, Community, BRFSS Age Group, DOH Race-Ethnicity, Gender, Education Level, Employment Status (Grouped), Household Income, Poverty Level, Marital Status (Grouped), Married, Health Care Coverage, for the Year(s) - 2001, 2002, 2003, 2004, 2005, 2006, 2007, 2008, 2009, 2010**

*Note: Weighted numbers (#) rounded to nearest 100, percentages and 95% confidence intervals; Respondents aged 18 years and older; n/r (Not Reportable) - If the unweighted total responses for a dimension (row) is <50 that row will not be shown; n/a (Not Available) - Not asked of a subset of respondents*

**Year: 2007**

Island	Yes			No			Estimated Population
	#	%	C.I. (95%)	#	%	C.I. (95%)	#
Hawaii	13,700	39.7	33.7 - 45.8	20,800	60.3	54.2 - 66.3	34,500
Kauai	5,300	44.8	34.1 - 55.5	6,500	55.2	44.5 - 65.9	11,800
Maui	11,200	43.0	35.7 - 50.3	14,800	57.0	49.7 - 64.3	26,000
Molokai	1,300	54.2	40.4 - 67.9	1,100	45.8	32.1 - 59.6	2,400
Oahu	92,700	51.8	47.4 - 56.1	86,400	48.2	43.9 - 52.6	179,100

Community	Yes			No			Estimated Population
	#	%	C.I. (95%)	#	%	C.I. (95%)	#
Aiea/ Pearl City	10,200	58.7	44.3 - 73.1	7,200	41.3	26.9 - 55.7	17,400
Hanalei/ Kapaa	2,500	43.9	27.4 - 60.4	3,200	56.1	39.6 - 72.6	5,700
Hilo	2,900	41.9	28.8 - 54.9	4,000	58.1	45.1 - 71.2	7,000



**HIV test - within past 2 years (18-64) by State, County, Island, Community, BRFSS Age Group, DOH Race-Ethnicity, Gender, Education Level, Employment Status (Grouped), Household Income, Poverty Level, Marital Status (Grouped), Married, Health Care Coverage, for the Year(s) - 2001, 2002, 2003, 2004, 2005, 2006, 2007, 2008, 2009, 2010**

*Note: Weighted numbers (#) rounded to nearest 100, percentages and 95% confidence intervals; Respondents aged 18 years and older; n/r (Not Reportable) - If the unweighted total responses for a dimension (row) is <50 that row will not be shown; n/a (Not Available) - Not asked of a subset of respondents*

**Year: 2007**

Community	Yes			No			Estimated Population
	#	%	C.I. (95%)	#	%	C.I. (95%)	#
<b>Kaaawa/ Kahaluu/ Kaneohe</b>	8,100	54.0	38.8 - 69.3	6,900	46.0	30.7 - 61.2	15,000
<b>Kahului</b>	3,600	40.3	27.0 - 53.7	5,300	59.7	46.3 - 73.0	8,900
<b>Kailua/ Waimanalo</b>	6,300	51.1	37.0 - 65.2	6,100	48.9	34.8 - 63.0	12,400
<b>Kaimuki/ Palolo/ Waikiki</b>	4,100	41.6	25.0 - 58.2	5,800	58.4	41.8 - 75.0	9,900
<b>Kona</b>	2,300	30.3	18.8 - 41.8	5,200	69.7	58.2 - 81.2	7,500
<b>Lahaina/ Wailuku</b>	3,300	48.4	33.6 - 63.3	3,500	51.6	36.7 - 66.4	6,900
<b>Lihue-Waimea</b>	2,800	45.7	31.7 - 59.7	3,300	54.3	40.3 - 68.3	6,100
<b>Mililani/ Wahiawa</b>	16,100	56.8	45.9 - 67.7	12,200	43.2	32.3 - 54.1	28,300
<b>Molokai</b>	1,300	54.2	40.4 - 67.9	1,100	45.8	32.1 - 59.6	2,400
<b>N.Hawaii</b>	3,300	38.8	25.9 - 51.7	5,200	61.2	48.3 - 74.1	8,500
<b>Nuuanu/ Kalihi/ Moanalua</b>	5,600	37.3	21.0 - 53.6	9,500	62.7	46.4 - 79.0	15,100

**HIV test - within past 2 years (18-64) by State, County, Island, Community, BRFSS Age Group, DOH Race-Ethnicity, Gender, Education Level, Employment Status (Grouped), Household Income, Poverty Level, Marital Status (Grouped), Married, Health Care Coverage, for the Year(s) - 2001, 2002, 2003, 2004, 2005, 2006, 2007, 2008, 2009, 2010**

*Note: Weighted numbers (#) rounded to nearest 100, percentages and 95% confidence intervals; Respondents aged 18 years and older; n/r (Not Reportable) - If the unweighted total responses for a dimension (row) is <50 that row will not be shown; n/a (Not Available) - Not asked of a subset of respondents*

**Year: 2007**

Community	Yes			No			Estimated Population
	#	%	C.I. (95%)	#	%	C.I. (95%)	#
Puna/ Kau	5,200	45.3	34.5 - 56.0	6,300	54.7	44.0 - 65.5	11,500
Upcountry/ Hana	4,300	41.6	31.2 - 52.0	6,000	58.4	48.0 - 68.8	10,300
Waipahu/ Kapolei/ Ewa	20,300	53.8	44.2 - 63.4	17,400	46.2	36.6 - 55.8	37,700

BRFSS Age Group	Yes			No			Estimated Population
	#	%	C.I. (95%)	#	%	C.I. (95%)	#
18-24	28,300	82.3	71.9 - 92.6	6,100	17.7	7.4 - 28.1	34,400
25-34	43,400	59.7	53.3 - 66.0	29,300	40.3	34.0 - 46.7	72,700
35-44	27,500	37.4	31.8 - 43.1	46,000	62.6	56.9 - 68.2	73,500
45-54	16,500	33.8	28.0 - 39.6	32,300	66.2	60.4 - 72.0	48,900
55-64	8,700	34.9	27.4 - 42.5	16,100	65.1	57.5 - 72.6	24,800

**HIV test - within past 2 years (18-64) by State, County, Island, Community, BRFSS Age Group, DOH Race-Ethnicity, Gender, Education Level, Employment Status (Grouped), Household Income, Poverty Level, Marital Status (Grouped), Married, Health Care Coverage, for the Year(s) - 2001, 2002, 2003, 2004, 2005, 2006, 2007, 2008, 2009, 2010**

*Note: Weighted numbers (#) rounded to nearest 100, percentages and 95% confidence intervals; Respondents aged 18 years and older; n/r (Not Reportable) - If the unweighted total responses for a dimension (row) is <50 that row will not be shown; n/a (Not Available) - Not asked of a subset of respondents*

**Year: 2007**

DOH Race-Ethnicity	Yes			No			Estimated Population
	#	%	C.I. (95%)	#	%	C.I. (95%)	#
Caucasian	52,500	47.0	42.6 - 51.4	59,100	53.0	48.6 - 57.4	111,500
Native Hawaiian	14,300	43.6	34.6 - 52.7	18,400	56.4	47.3 - 65.4	32,700
Filipino	16,100	49.7	38.8 - 60.5	16,300	50.3	39.5 - 61.2	32,400
Japanese	13,600	43.0	33.3 - 52.7	18,100	57.0	47.3 - 66.7	31,700
Black	7,700	73.9	60.1 - 87.7	2,700	26.1	12.3 - 39.9	10,400

Gender	Yes			No			Estimated Population
	#	%	C.I. (95%)	#	%	C.I. (95%)	#
Male	68,500	56.3	51.4 - 61.2	53,200	43.7	38.8 - 48.6	121,700
Female	55,900	42.2	37.8 - 46.5	76,600	57.8	53.5 - 62.2	132,500

**HIV test - within past 2 years (18-64) by State, County, Island, Community, BRFSS Age Group, DOH Race-Ethnicity, Gender, Education Level, Employment Status (Grouped), Household Income, Poverty Level, Marital Status (Grouped), Married, Health Care Coverage, for the Year(s) - 2001, 2002, 2003, 2004, 2005, 2006, 2007, 2008, 2009, 2010**

*Note: Weighted numbers (#) rounded to nearest 100, percentages and 95% confidence intervals; Respondents aged 18 years and older; n/r (Not Reportable) - If the unweighted total responses for a dimension (row) is <50 that row will not be shown; n/a (Not Available) - Not asked of a subset of respondents*

**Year: 2007**

Education Level	Yes			No			Estimated Population
	#	%	C.I. (95%)	#	%	C.I. (95%)	#
Grades 12 or GED (High School Grad)	37,700	58.4	51.7 - 65.1	26,800	41.6	34.9 - 48.3	64,500
College 1 to 3 years (Some College/ Tech)	43,400	49.7	44.0 - 55.4	43,900	50.3	44.6 - 56.0	87,400
College 4 years or more (College Grad)	40,000	42.5	37.5 - 47.4	54,200	57.5	52.6 - 62.5	94,200

Employment Status (Grouped)	Yes			No			Estimated Population
	#	%	C.I. (95%)	#	%	C.I. (95%)	#
Employed	94,900	48.6	44.9 - 52.4	100,200	51.4	47.6 - 55.1	195,200
Unemployed	3,400	44.4	26.1 - 62.6	4,300	55.6	37.4 - 73.9	7,700
Retired/Unable to work	9,700	49.0	37.2 - 60.8	10,100	51.0	39.2 - 62.8	19,800
Student/Homemaker	16,100	51.4	41.6 - 61.2	15,200	48.6	38.8 - 58.4	31,400

**HIV test - within past 2 years (18-64) by State, County, Island, Community, BRFSS Age Group, DOH Race-Ethnicity, Gender, Education Level, Employment Status (Grouped), Household Income, Poverty Level, Marital Status (Grouped), Married, Health Care Coverage, for the Year(s) - 2001, 2002, 2003, 2004, 2005, 2006, 2007, 2008, 2009, 2010**

*Note: Weighted numbers (#) rounded to nearest 100, percentages and 95% confidence intervals; Respondents aged 18 years and older; n/r (Not Reportable) - If the unweighted total responses for a dimension (row) is <50 that row will not be shown; n/a (Not Available) - Not asked of a subset of respondents*

**Year: 2007**

Household Income	Yes			No			Estimated Population
	#	%	C.I. (95%)	#	%	C.I. (95%)	#
Less than \$10,000	4,200	57.3	38.6 - 76.0	3,100	42.7	24.0 - 61.4	7,400
\$10,000 to \$14,999	3,200	51.9	29.5 - 74.3	3,000	48.1	25.7 - 70.5	6,100
\$15,000 to \$19,999	5,300	61.0	46.9 - 75.1	3,400	39.0	24.9 - 53.1	8,700
\$20,000 to \$24,999	6,100	44.1	30.7 - 57.4	7,700	55.9	42.6 - 69.3	13,800
\$25,000 to \$34,999	17,400	53.4	43.0 - 63.7	15,200	46.6	36.3 - 57.0	32,600
\$35,000 to \$49,999	19,700	49.7	41.1 - 58.3	19,900	50.3	41.7 - 58.9	39,500
\$50,000 to \$74,999	19,200	44.2	36.5 - 51.8	24,300	55.8	48.2 - 63.5	43,500
\$75,000 or more	38,600	43.8	38.6 - 49.1	49,400	56.2	50.9 - 61.4	87,900

**HIV test - within past 2 years (18-64) by State, County, Island, Community, BRFSS Age Group, DOH Race-Ethnicity, Gender, Education Level, Employment Status (Grouped), Household Income, Poverty Level, Marital Status (Grouped), Married, Health Care Coverage, for the Year(s) - 2001, 2002, 2003, 2004, 2005, 2006, 2007, 2008, 2009, 2010**

*Note: Weighted numbers (#) rounded to nearest 100, percentages and 95% confidence intervals; Respondents aged 18 years and older; n/r (Not Reportable) - If the unweighted total responses for a dimension (row) is <50 that row will not be shown; n/a (Not Available) - Not asked of a subset of respondents*

**Year: 2007**

Poverty Level	Yes			No			Estimated Population
	#	%	C.I. (95%)	#	%	C.I. (95%)	#
<b>0-130%</b>	28,600	52.7	44.4 - 60.9	25,700	47.3	39.1 - 55.6	54,300
<b>131-185%</b>	14,300	48.5	38.2 - 58.8	15,100	51.5	41.2 - 61.8	29,400
<b>186+%</b>	70,800	45.4	41.5 - 49.2	85,200	54.6	50.8 - 58.5	156,000

Marital Status (Grouped)	Yes			No			Estimated Population
	#	%	C.I. (95%)	#	%	C.I. (95%)	#
<b>Married</b>	69,900	45.3	41.3 - 49.3	84,400	54.7	50.7 - 58.7	154,300
<b>Unmarried Couple</b>	6,800	55.9	41.4 - 70.3	5,400	44.1	29.7 - 58.6	12,200
<b>Other</b>	47,200	55.0	48.7 - 61.2	38,700	45.0	38.8 - 51.3	85,900

**HIV test - within past 2 years (18-64) by State, County, Island, Community, BRFSS Age Group, DOH Race-Ethnicity, Gender, Education Level, Employment Status (Grouped), Household Income, Poverty Level, Marital Status (Grouped), Married, Health Care Coverage, for the Year(s) - 2001, 2002, 2003, 2004, 2005, 2006, 2007, 2008, 2009, 2010**

*Note: Weighted numbers (#) rounded to nearest 100, percentages and 95% confidence intervals; Respondents aged 18 years and older; n/r (Not Reportable) - If the unweighted total responses for a dimension (row) is <50 that row will not be shown; n/a (Not Available) - Not asked of a subset of respondents*

**Year: 2007**

<b>Married</b>	<b>Yes</b>			<b>No</b>			<b>Estimated Population</b>
	<b>#</b>	<b>%</b>	<b>C.I. (95%)</b>	<b>#</b>	<b>%</b>	<b>C.I. (95%)</b>	<b>#</b>
<b>Yes</b>	71,900	45.5	41.5 - 49.4	86,200	54.5	50.6 - 58.5	158,100
<b>No</b>	52,400	54.6	48.8 - 60.4	43,600	45.4	39.6 - 51.2	96,100

<b>Health Care Coverage</b>	<b>Yes</b>			<b>No</b>			<b>Estimated Population</b>
	<b>#</b>	<b>%</b>	<b>C.I. (95%)</b>	<b>#</b>	<b>%</b>	<b>C.I. (95%)</b>	<b>#</b>
<b>Yes</b>	116,000	49.2	45.8 - 52.6	119,800	50.8	47.4 - 54.2	235,800
<b>No</b>	8,400	45.4	32.7 - 58.2	10,000	54.6	41.8 - 67.3	18,400

**HIV test - within past 2 years (18-64) by State, County, Island, Community, BRFSS Age Group, DOH Race-Ethnicity, Gender, Education Level, Employment Status (Grouped), Household Income, Poverty Level, Marital Status (Grouped), Married, Health Care Coverage, for the Year(s) - 2001, 2002, 2003, 2004, 2005, 2006, 2007, 2008, 2009, 2010**

*Note: Weighted numbers (#) rounded to nearest 100, percentages and 95% confidence intervals; Respondents aged 18 years and older; n/r (Not Reportable) - If the unweighted total responses for a dimension (row) is <50 that row will not be shown; n/a (Not Available) - Not asked of a subset of respondents*

**Year: 2006**

State	Yes			No			Estimated Population
	#	%	C.I. (95%)	#	%	C.I. (95%)	#
Hawaii State	97,600	55.6	51.7 - 59.6	77,800	44.4	40.4 - 48.3	175,400

County	Yes			No			Estimated Population
	#	%	C.I. (95%)	#	%	C.I. (95%)	#
Hawaii	8,900	48.2	39.9 - 56.6	9,600	51.8	43.4 - 60.1	18,500
Honolulu	74,700	58.5	53.5 - 63.6	52,900	41.5	36.4 - 46.5	127,600
Kauai	3,900	47.1	36.4 - 57.7	4,400	52.9	42.3 - 63.6	8,300
Maui	10,000	47.8	39.4 - 56.2	10,900	52.2	43.8 - 60.6	21,000



**HIV test - within past 2 years (18-64) by State, County, Island, Community, BRFSS Age Group, DOH Race-Ethnicity, Gender, Education Level, Employment Status (Grouped), Household Income, Poverty Level, Marital Status (Grouped), Married, Health Care Coverage, for the Year(s) - 2001, 2002, 2003, 2004, 2005, 2006, 2007, 2008, 2009, 2010**

*Note: Weighted numbers (#) rounded to nearest 100, percentages and 95% confidence intervals; Respondents aged 18 years and older; n/r (Not Reportable) - If the unweighted total responses for a dimension (row) is <50 that row will not be shown; n/a (Not Available) - Not asked of a subset of respondents*

**Year: 2006**

Island	Yes			No			Estimated Population
	#	%	C.I. (95%)	#	%	C.I. (95%)	#
Hawaii	8,900	48.2	39.9 - 56.6	9,600	51.8	43.4 - 60.1	18,500
Kauai	3,900	47.1	36.4 - 57.7	4,400	52.9	42.3 - 63.6	8,300
Maui	9,400	47.7	38.8 - 56.5	10,300	52.3	43.5 - 61.2	19,700
Oahu	74,700	58.5	53.5 - 63.6	52,900	41.5	36.4 - 46.5	127,600

**HIV test - within past 2 years (18-64) by State, County, Island, Community, BRFSS Age Group, DOH Race-Ethnicity, Gender, Education Level, Employment Status (Grouped), Household Income, Poverty Level, Marital Status (Grouped), Married, Health Care Coverage, for the Year(s) - 2001, 2002, 2003, 2004, 2005, 2006, 2007, 2008, 2009, 2010**

*Note: Weighted numbers (#) rounded to nearest 100, percentages and 95% confidence intervals; Respondents aged 18 years and older; n/r (Not Reportable) - If the unweighted total responses for a dimension (row) is <50 that row will not be shown; n/a (Not Available) - Not asked of a subset of respondents*

**Year: 2006**

Community	Yes			No			Estimated Population
	#	%	C.I. (95%)	#	%	C.I. (95%)	#
Hanalei/ Kapaa	1,800	46.7	32.0 - 61.3	2,100	53.3	38.7 - 68.0	4,000
Kahului	4,400	63.8	50.5 - 77.1	2,500	36.2	22.9 - 49.5	6,900
Lahaina/ Wailuku	2,300	36.1	21.1 - 51.1	4,000	63.9	48.9 - 78.9	6,200
Lihue-Waimea	2,100	47.4	32.0 - 62.8	2,300	52.6	37.2 - 68.0	4,300
Mililani/ Wahiawa	7,400	55.6	40.0 - 71.2	5,900	44.4	28.8 - 60.0	13,200
Puna/ Kau	3,100	45.6	31.4 - 59.7	3,700	54.4	40.3 - 68.6	6,700
Salt Lake/ Foster Village	10,400	68.0	54.5 - 81.5	4,900	32.0	18.5 - 45.5	15,300
Upcountry/ Hana	2,800	41.9	26.0 - 57.8	3,900	58.1	42.2 - 74.0	6,700
Waipahu/ Kapolei/ Ewa	13,900	61.0	49.6 - 72.4	8,900	39.0	27.6 - 50.4	22,700

**HIV test - within past 2 years (18-64) by State, County, Island, Community, BRFSS Age Group, DOH Race-Ethnicity, Gender, Education Level, Employment Status (Grouped), Household Income, Poverty Level, Marital Status (Grouped), Married, Health Care Coverage, for the Year(s) - 2001, 2002, 2003, 2004, 2005, 2006, 2007, 2008, 2009, 2010**

*Note: Weighted numbers (#) rounded to nearest 100, percentages and 95% confidence intervals; Respondents aged 18 years and older; n/r (Not Reportable) - If the unweighted total responses for a dimension (row) is <50 that row will not be shown; n/a (Not Available) - Not asked of a subset of respondents*

**Year: 2006**

BRFSS Age Group	Yes			No			Estimated Population
	#	%	C.I. (95%)	#	%	C.I. (95%)	#
<b>18-24</b>	17,900	82.7	71.9 - 93.5	3,800	17.3	6.5 - 28.1	21,700
<b>25-34</b>	40,400	66.5	59.4 - 73.5	20,400	33.5	26.5 - 40.6	60,800
<b>35-44</b>	22,000	45.0	38.1 - 51.9	26,900	55.0	48.1 - 61.9	48,900
<b>45-54</b>	11,400	37.3	29.7 - 44.8	19,200	62.7	55.2 - 70.3	30,700
<b>55-64</b>	5,800	43.5	30.8 - 56.3	7,600	56.5	43.7 - 69.2	13,400

**HIV test - within past 2 years (18-64) by State, County, Island, Community, BRFSS Age Group, DOH Race-Ethnicity, Gender, Education Level, Employment Status (Grouped), Household Income, Poverty Level, Marital Status (Grouped), Married, Health Care Coverage, for the Year(s) - 2001, 2002, 2003, 2004, 2005, 2006, 2007, 2008, 2009, 2010**

*Note: Weighted numbers (#) rounded to nearest 100, percentages and 95% confidence intervals; Respondents aged 18 years and older; n/r (Not Reportable) - If the unweighted total responses for a dimension (row) is <50 that row will not be shown; n/a (Not Available) - Not asked of a subset of respondents*

**Year: 2006**

DOH Race-Ethnicity	Yes			No			Estimated Population
	#	%	C.I. (95%)	#	%	C.I. (95%)	#
Caucasian	45,600	54.1	49.0 - 59.2	38,700	45.9	40.8 - 51.0	84,300
Native Hawaiian	10,000	53.0	40.6 - 65.3	8,900	47.0	34.7 - 59.4	19,000
Filipino	12,700	70.0	58.5 - 81.5	5,500	30.0	18.5 - 41.5	18,200
Japanese	6,900	35.7	24.2 - 47.2	12,400	64.3	52.8 - 75.8	19,200

Gender	Yes			No			Estimated Population
	#	%	C.I. (95%)	#	%	C.I. (95%)	#
Male	57,100	61.4	55.5 - 67.3	35,900	38.6	32.7 - 44.5	93,000
Female	40,400	49.1	44.0 - 54.2	42,000	50.9	45.8 - 56.0	82,400

**HIV test - within past 2 years (18-64) by State, County, Island, Community, BRFSS Age Group, DOH Race-Ethnicity, Gender, Education Level, Employment Status (Grouped), Household Income, Poverty Level, Marital Status (Grouped), Married, Health Care Coverage, for the Year(s) - 2001, 2002, 2003, 2004, 2005, 2006, 2007, 2008, 2009, 2010**

*Note: Weighted numbers (#) rounded to nearest 100, percentages and 95% confidence intervals; Respondents aged 18 years and older; n/r (Not Reportable) - If the unweighted total responses for a dimension (row) is <50 that row will not be shown; n/a (Not Available) - Not asked of a subset of respondents*

**Year: 2006**

Education Level	Yes			No			Estimated Population
	#	%	C.I. (95%)	#	%	C.I. (95%)	#
Grades 12 or GED (High School Grad)	23,800	61.4	52.5 - 70.2	15,000	38.6	29.8 - 47.5	38,800
College 1 to 3 years (Some College/ Tech)	31,800	54.8	47.8 - 61.8	26,300	45.2	38.2 - 52.2	58,100
College 4 years or more (College Grad)	39,900	53.5	47.6 - 59.4	34,600	46.5	40.6 - 52.4	74,500

Employment Status (Grouped)	Yes			No			Estimated Population
	#	%	C.I. (95%)	#	%	C.I. (95%)	#
Employed	77,700	57.2	52.7 - 61.8	58,000	42.8	38.2 - 47.3	135,700
Retired/Unable to work	5,000	44.5	29.3 - 59.7	6,200	55.5	40.3 - 70.7	11,200
Student/Homemaker	11,400	51.4	40.4 - 62.3	10,800	48.6	37.7 - 59.6	22,200

**HIV test - within past 2 years (18-64) by State, County, Island, Community, BRFSS Age Group, DOH Race-Ethnicity, Gender, Education Level, Employment Status (Grouped), Household Income, Poverty Level, Marital Status (Grouped), Married, Health Care Coverage, for the Year(s) - 2001, 2002, 2003, 2004, 2005, 2006, 2007, 2008, 2009, 2010**

*Note: Weighted numbers (#) rounded to nearest 100, percentages and 95% confidence intervals; Respondents aged 18 years and older; n/r (Not Reportable) - If the unweighted total responses for a dimension (row) is <50 that row will not be shown; n/a (Not Available) - Not asked of a subset of respondents*

**Year: 2006**

Household Income	Yes			No			Estimated Population
	#	%	C.I. (95%)	#	%	C.I. (95%)	#
<b>\$20,000 to \$24,999</b>	6,900	60.6	44.0 - 77.1	4,500	39.4	22.9 - 56.0	11,300
<b>\$25,000 to \$34,999</b>	11,200	58.9	45.5 - 72.3	7,900	41.1	27.7 - 54.5	19,100
<b>\$35,000 to \$49,999</b>	13,200	54.8	45.3 - 64.3	10,900	45.2	35.7 - 54.7	24,000
<b>\$50,000 to \$74,999</b>	13,900	51.5	42.4 - 60.5	13,100	48.5	39.5 - 57.6	27,000
<b>\$75,000 or more</b>	32,000	53.3	46.5 - 60.1	28,000	46.7	39.9 - 53.5	60,100

Poverty Level	Yes			No			Estimated Population
	#	%	C.I. (95%)	#	%	C.I. (95%)	#
<b>0-130%</b>	17,400	55.4	44.4 - 66.4	14,000	44.6	33.6 - 55.6	31,400
<b>131-185%</b>	14,100	62.3	51.7 - 73.0	8,500	37.7	27.0 - 48.3	22,700
<b>186+%</b>	54,100	52.4	47.7 - 57.2	49,100	47.6	42.8 - 52.3	103,300

**HIV test - within past 2 years (18-64) by State, County, Island, Community, BRFSS Age Group, DOH Race-Ethnicity, Gender, Education Level, Employment Status (Grouped), Household Income, Poverty Level, Marital Status (Grouped), Married, Health Care Coverage, for the Year(s) - 2001, 2002, 2003, 2004, 2005, 2006, 2007, 2008, 2009, 2010**

*Note: Weighted numbers (#) rounded to nearest 100, percentages and 95% confidence intervals; Respondents aged 18 years and older; n/r (Not Reportable) - If the unweighted total responses for a dimension (row) is <50 that row will not be shown; n/a (Not Available) - Not asked of a subset of respondents*

**Year: 2006**

<b>Marital Status (Grouped)</b>	<b>Yes</b>			<b>No</b>			<b>Estimated Population</b>
	<b>#</b>	<b>%</b>	<b>C.I. (95%)</b>	<b>#</b>	<b>%</b>	<b>C.I. (95%)</b>	<b>#</b>
<b>Married</b>	55,300	53.9	48.8 - 59.0	47,300	46.1	41.0 - 51.2	102,600
<b>Unmarried Couple</b>	4,200	40.3	22.0 - 58.5	6,200	59.7	41.5 - 78.0	10,400
<b>Other</b>	37,300	61.1	54.3 - 67.8	23,700	38.9	32.2 - 45.7	61,000

<b>Married</b>	<b>Yes</b>			<b>No</b>			<b>Estimated Population</b>
	<b>#</b>	<b>%</b>	<b>C.I. (95%)</b>	<b>#</b>	<b>%</b>	<b>C.I. (95%)</b>	<b>#</b>
<b>Yes</b>	55,900	53.7	48.7 - 58.8	48,100	46.3	41.2 - 51.3	104,000
<b>No</b>	41,700	58.4	52.0 - 64.8	29,700	41.6	35.2 - 48.0	71,400

**HIV test - within past 2 years (18-64) by State, County, Island, Community, BRFSS Age Group, DOH Race-Ethnicity, Gender, Education Level, Employment Status (Grouped), Household Income, Poverty Level, Marital Status (Grouped), Married, Health Care Coverage, for the Year(s) - 2001, 2002, 2003, 2004, 2005, 2006, 2007, 2008, 2009, 2010**

*Note: Weighted numbers (#) rounded to nearest 100, percentages and 95% confidence intervals; Respondents aged 18 years and older; n/r (Not Reportable) - If the unweighted total responses for a dimension (row) is <50 that row will not be shown; n/a (Not Available) - Not asked of a subset of respondents*

**Year: 2006**

Health Care Coverage	Yes			No			Estimated Population
	#	%	C.I. (95%)	#	%	C.I. (95%)	#
<b>Yes</b>	88,600	56.6	52.5 - 60.8	67,800	43.4	39.2 - 47.5	156,400
<b>No</b>	9,000	47.4	34.3 - 60.4	10,000	52.6	39.6 - 65.7	19,100



**HIV test - within past 2 years (18-64) by State, County, Island, Community, BRFSS Age Group, DOH Race-Ethnicity, Gender, Education Level, Employment Status (Grouped), Household Income, Poverty Level, Marital Status (Grouped), Married, Health Care Coverage, for the Year(s) - 2001, 2002, 2003, 2004, 2005, 2006, 2007, 2008, 2009, 2010**

*Note: Weighted numbers (#) rounded to nearest 100, percentages and 95% confidence intervals; Respondents aged 18 years and older; n/r (Not Reportable) - If the unweighted total responses for a dimension (row) is <50 that row will not be shown; n/a (Not Available) - Not asked of a subset of respondents*

**Year: 2005**

State	Yes			No			Estimated Population
	#	%	C.I. (95%)	#	%	C.I. (95%)	#
Hawaii State	146,700	53.9	50.7 - 57.0	125,600	46.1	43.0 - 49.3	272,300

County	Yes			No			Estimated Population
	#	%	C.I. (95%)	#	%	C.I. (95%)	#
Hawaii	14,000	45.3	39.6 - 51.0	16,900	54.7	49.0 - 60.4	31,000
Honolulu	113,900	57.0	53.0 - 61.0	85,900	43.0	39.0 - 47.0	199,800
Kauai	5,800	47.1	36.4 - 57.9	6,500	52.9	42.1 - 63.6	12,300
Maui	13,000	44.4	36.9 - 51.9	16,300	55.6	48.1 - 63.1	29,200

**HIV test - within past 2 years (18-64) by State, County, Island, Community, BRFSS Age Group, DOH Race-Ethnicity, Gender, Education Level, Employment Status (Grouped), Household Income, Poverty Level, Marital Status (Grouped), Married, Health Care Coverage, for the Year(s) - 2001, 2002, 2003, 2004, 2005, 2006, 2007, 2008, 2009, 2010**

*Note: Weighted numbers (#) rounded to nearest 100, percentages and 95% confidence intervals; Respondents aged 18 years and older; n/r (Not Reportable) - If the unweighted total responses for a dimension (row) is <50 that row will not be shown; n/a (Not Available) - Not asked of a subset of respondents*

**Year: 2005**

Island	Yes			No			Estimated Population
	#	%	C.I. (95%)	#	%	C.I. (95%)	#
Hawaii	14,000	45.3	39.6 - 51.0	16,900	54.7	49.0 - 60.4	31,000
Kauai	5,800	47.1	36.4 - 57.9	6,500	52.9	42.1 - 63.6	12,300
Maui	12,200	44.3	36.4 - 52.2	15,400	55.7	47.8 - 63.6	27,600
Oahu	113,900	57.0	53.0 - 61.0	85,900	43.0	39.0 - 47.0	199,800

Community	Yes			No			Estimated Population
	#	%	C.I. (95%)	#	%	C.I. (95%)	#
Aiea/ Pearl City	8,300	52.6	38.3 - 66.9	7,500	47.4	33.1 - 61.7	15,800
Hanalei/ Kapaa	2,700	49.7	36.5 - 62.9	2,800	50.3	37.1 - 63.5	5,500
Hilo	4,400	49.4	37.8 - 60.9	4,500	50.6	39.1 - 62.2	8,900
Kaaawa/ Kahaluu/ Kaneohe	7,000	51.5	35.5 - 67.4	6,600	48.5	32.6 - 64.5	13,600

**HIV test - within past 2 years (18-64) by State, County, Island, Community, BRFSS Age Group, DOH Race-Ethnicity, Gender, Education Level, Employment Status (Grouped), Household Income, Poverty Level, Marital Status (Grouped), Married, Health Care Coverage, for the Year(s) - 2001, 2002, 2003, 2004, 2005, 2006, 2007, 2008, 2009, 2010**

*Note: Weighted numbers (#) rounded to nearest 100, percentages and 95% confidence intervals; Respondents aged 18 years and older; n/r (Not Reportable) - If the unweighted total responses for a dimension (row) is <50 that row will not be shown; n/a (Not Available) - Not asked of a subset of respondents*

**Year: 2005**

Community	Yes			No			Estimated Population
	#	%	C.I. (95%)	#	%	C.I. (95%)	#
Kahului	5,100	55.4	42.5 - 68.3	4,100	44.6	31.7 - 57.5	9,300
Kailua/ Waimanalo	8,500	51.4	37.7 - 65.1	8,000	48.6	34.9 - 62.3	16,500
Kaimuki/ Palolo/ Waikiki	8,800	46.4	34.7 - 58.1	10,100	53.6	41.9 - 65.3	18,900
Kona	3,400	46.6	34.8 - 58.4	3,900	53.4	41.6 - 65.2	7,400
Lahaina/ Wailuku	4,000	45.8	32.6 - 58.9	4,700	54.2	41.1 - 67.4	8,700
Lihue-Waimea	3,100	45.0	28.6 - 61.5	3,700	55.0	38.5 - 71.4	6,800
Mililani/ Wahiawa	18,300	64.1	54.6 - 73.6	10,300	35.9	26.4 - 45.4	28,600
N.Hawaii	2,200	34.3	24.7 - 43.9	4,200	65.7	56.1 - 75.3	6,400
Nuuanu/ Kalihi/ Moanalua	11,400	66.8	51.5 - 82.1	5,700	33.2	17.9 - 48.5	17,100
Puna/ Kau	4,000	48.2	36.9 - 59.6	4,300	51.8	40.4 - 63.1	8,300
Salt Lake/ Foster Village	12,800	80.4	69.1 - 91.8	3,100	19.6	8.2 - 30.9	15,900

**HIV test - within past 2 years (18-64) by State, County, Island, Community, BRFSS Age Group, DOH Race-Ethnicity, Gender, Education Level, Employment Status (Grouped), Household Income, Poverty Level, Marital Status (Grouped), Married, Health Care Coverage, for the Year(s) - 2001, 2002, 2003, 2004, 2005, 2006, 2007, 2008, 2009, 2010**

*Note: Weighted numbers (#) rounded to nearest 100, percentages and 95% confidence intervals; Respondents aged 18 years and older; n/r (Not Reportable) - If the unweighted total responses for a dimension (row) is <50 that row will not be shown; n/a (Not Available) - Not asked of a subset of respondents*

**Year: 2005**

Community	Yes			No			Estimated Population
	#	%	C.I. (95%)	#	%	C.I. (95%)	#
Upcountry/ Hana	3,100	32.2	16.7 - 47.7	6,500	67.8	52.3 - 83.3	9,600
Waipahu/ Kapolei/ Ewa	23,500	65.0	56.6 - 73.5	12,700	35.0	26.5 - 43.4	36,200

BRFSS Age Group	Yes			No			Estimated Population
	#	%	C.I. (95%)	#	%	C.I. (95%)	#
18-24	27,500	89.8	83.5 - 96.0	3,100	10.2	4.0 - 16.5	30,700
25-34	55,700	61.2	55.5 - 67.0	35,300	38.8	33.0 - 44.5	91,000
35-44	36,100	46.4	40.9 - 51.9	41,700	53.6	48.1 - 59.1	77,700
45-54	18,400	38.1	31.6 - 44.5	29,900	61.9	55.5 - 68.4	48,200
55-64	9,000	36.6	27.7 - 45.5	15,600	63.4	54.5 - 72.3	24,600

**HIV test - within past 2 years (18-64) by State, County, Island, Community, BRFSS Age Group, DOH Race-Ethnicity, Gender, Education Level, Employment Status (Grouped), Household Income, Poverty Level, Marital Status (Grouped), Married, Health Care Coverage, for the Year(s) - 2001, 2002, 2003, 2004, 2005, 2006, 2007, 2008, 2009, 2010**

*Note: Weighted numbers (#) rounded to nearest 100, percentages and 95% confidence intervals; Respondents aged 18 years and older; n/r (Not Reportable) - If the unweighted total responses for a dimension (row) is <50 that row will not be shown; n/a (Not Available) - Not asked of a subset of respondents*

**Year: 2005**

DOH Race-Ethnicity	Yes			No			Estimated Population
	#	%	C.I. (95%)	#	%	C.I. (95%)	#
Caucasian	69,800	53.7	49.5 - 57.8	60,200	46.3	42.2 - 50.5	130,000
Native Hawaiian	13,200	49.0	39.7 - 58.3	13,700	51.0	41.7 - 60.3	26,900
Filipino	18,100	60.5	49.8 - 71.3	11,800	39.5	28.7 - 50.2	29,900
Japanese	15,700	45.7	35.7 - 55.7	18,600	54.3	44.3 - 64.3	34,300
Black	8,300	66.5	51.6 - 81.4	4,200	33.5	18.6 - 48.4	12,500
Other	8,900	61.2	46.9 - 75.5	5,600	38.8	24.5 - 53.1	14,500

Gender	Yes			No			Estimated Population
	#	%	C.I. (95%)	#	%	C.I. (95%)	#
Male	85,700	59.7	54.9 - 64.4	57,900	40.3	35.6 - 45.1	143,600
Female	61,000	47.4	43.4 - 51.4	67,600	52.6	48.6 - 56.6	128,600

**HIV test - within past 2 years (18-64) by State, County, Island, Community, BRFSS Age Group, DOH Race-Ethnicity, Gender, Education Level, Employment Status (Grouped), Household Income, Poverty Level, Marital Status (Grouped), Married, Health Care Coverage, for the Year(s) - 2001, 2002, 2003, 2004, 2005, 2006, 2007, 2008, 2009, 2010**

*Note: Weighted numbers (#) rounded to nearest 100, percentages and 95% confidence intervals; Respondents aged 18 years and older; n/r (Not Reportable) - If the unweighted total responses for a dimension (row) is <50 that row will not be shown; n/a (Not Available) - Not asked of a subset of respondents*

**Year: 2005**

Education Level	Yes			No			Estimated Population
	#	%	C.I. (95%)	#	%	C.I. (95%)	#
Grades 9 thru 11 (Some High School)	3,700	46.8	28.2 - 65.4	4,200	53.2	34.6 - 71.8	8,000
Grades 12 or GED (High School Grad)	35,300	58.8	52.2 - 65.5	24,700	41.2	34.5 - 47.8	59,900
College 1 to 3 years (Some College/ Tech)	49,500	58.7	53.2 - 64.1	34,900	41.3	35.9 - 46.8	84,400
College 4 years or more (College Grad)	56,600	48.1	43.2 - 52.9	61,200	51.9	47.1 - 56.8	117,900

Employment Status (Grouped)	Yes			No			Estimated Population
	#	%	C.I. (95%)	#	%	C.I. (95%)	#
Employed	115,700	54.0	50.3 - 57.6	98,700	46.0	42.4 - 49.7	214,500
Retired/Unable to work	11,300	49.7	39.6 - 59.8	11,400	50.3	40.2 - 60.4	22,700
Student/Homemaker	15,900	52.9	44.0 - 61.8	14,200	47.1	38.2 - 56.0	30,000

**HIV test - within past 2 years (18-64) by State, County, Island, Community, BRFSS Age Group, DOH Race-Ethnicity, Gender, Education Level, Employment Status (Grouped), Household Income, Poverty Level, Marital Status (Grouped), Married, Health Care Coverage, for the Year(s) - 2001, 2002, 2003, 2004, 2005, 2006, 2007, 2008, 2009, 2010**

*Note: Weighted numbers (#) rounded to nearest 100, percentages and 95% confidence intervals; Respondents aged 18 years and older; n/r (Not Reportable) - If the unweighted total responses for a dimension (row) is <50 that row will not be shown; n/a (Not Available) - Not asked of a subset of respondents*

**Year: 2005**

Household Income	Yes			No			Estimated Population
	#	%	C.I. (95%)	#	%	C.I. (95%)	#
Less than \$10,000	3,700	50.0	33.3 - 66.6	3,700	50.0	33.4 - 66.7	7,300
\$10,000 to \$14,999	3,900	65.3	46.5 - 84.1	2,100	34.7	15.9 - 53.5	6,000
\$15,000 to \$19,999	6,500	67.5	53.4 - 81.6	3,100	32.5	18.4 - 46.6	9,700
\$20,000 to \$24,999	9,300	59.7	47.2 - 72.1	6,300	40.3	27.9 - 52.8	15,600
\$25,000 to \$34,999	15,200	53.2	43.1 - 63.4	13,400	46.8	36.6 - 56.9	28,600
\$35,000 to \$49,999	22,400	53.0	44.9 - 61.1	19,800	47.0	38.9 - 55.1	42,200
\$50,000 to \$74,999	29,400	53.8	46.7 - 60.9	25,200	46.2	39.1 - 53.3	54,600
\$75,000 or more	37,700	47.5	42.0 - 53.1	41,600	52.5	46.9 - 58.0	79,300

**HIV test - within past 2 years (18-64) by State, County, Island, Community, BRFSS Age Group, DOH Race-Ethnicity, Gender, Education Level, Employment Status (Grouped), Household Income, Poverty Level, Marital Status (Grouped), Married, Health Care Coverage, for the Year(s) - 2001, 2002, 2003, 2004, 2005, 2006, 2007, 2008, 2009, 2010**

*Note: Weighted numbers (#) rounded to nearest 100, percentages and 95% confidence intervals; Respondents aged 18 years and older; n/r (Not Reportable) - If the unweighted total responses for a dimension (row) is <50 that row will not be shown; n/a (Not Available) - Not asked of a subset of respondents*

**Year: 2005**

Poverty Level	Yes			No			Estimated Population
	#	%	C.I. (95%)	#	%	C.I. (95%)	#
<b>0-130%</b>	22,700	54.3	45.7 - 63.0	19,100	45.7	37.0 - 54.3	41,800
<b>131-185%</b>	17,200	63.9	52.9 - 74.9	9,700	36.1	25.1 - 47.1	26,900
<b>186+%</b>	88,300	50.5	46.8 - 54.2	86,500	49.5	45.8 - 53.2	174,800

Marital Status (Grouped)	Yes			No			Estimated Population
	#	%	C.I. (95%)	#	%	C.I. (95%)	#
<b>Married</b>	84,500	50.4	46.4 - 54.4	83,100	49.6	45.6 - 53.6	167,500
<b>Unmarried Couple</b>	5,700	61.0	47.6 - 74.5	3,600	39.0	25.5 - 52.4	9,300
<b>Other</b>	55,100	59.7	54.2 - 65.2	37,300	40.3	34.8 - 45.8	92,400



**HIV test - within past 2 years (18-64) by State, County, Island, Community, BRFSS Age Group, DOH Race-Ethnicity, Gender, Education Level, Employment Status (Grouped), Household Income, Poverty Level, Marital Status (Grouped), Married, Health Care Coverage, for the Year(s) - 2001, 2002, 2003, 2004, 2005, 2006, 2007, 2008, 2009, 2010**

*Note: Weighted numbers (#) rounded to nearest 100, percentages and 95% confidence intervals; Respondents aged 18 years and older; n/r (Not Reportable) - If the unweighted total responses for a dimension (row) is <50 that row will not be shown; n/a (Not Available) - Not asked of a subset of respondents*

**Year: 2005**

<b>Married</b>	<b>Yes</b>			<b>No</b>			<b>Estimated Population</b>
	<b>#</b>	<b>%</b>	<b>C.I. (95%)</b>	<b>#</b>	<b>%</b>	<b>C.I. (95%)</b>	<b>#</b>
<b>Yes</b>	87,500	50.8	46.9 - 54.8	84,600	49.2	45.2 - 53.1	172,100
<b>No</b>	59,200	59.1	53.9 - 64.3	40,900	40.9	35.7 - 46.1	100,100

<b>Health Care Coverage</b>	<b>Yes</b>			<b>No</b>			<b>Estimated Population</b>
	<b>#</b>	<b>%</b>	<b>C.I. (95%)</b>	<b>#</b>	<b>%</b>	<b>C.I. (95%)</b>	<b>#</b>
<b>Yes</b>	135,200	54.0	50.7 - 57.4	114,900	46.0	42.6 - 49.3	250,100
<b>No</b>	11,400	52.3	41.7 - 62.9	10,400	47.7	37.1 - 58.3	21,700

**HIV test - within past 2 years (18-64) by State, County, Island, Community, BRFSS Age Group, DOH Race-Ethnicity, Gender, Education Level, Employment Status (Grouped), Household Income, Poverty Level, Marital Status (Grouped), Married, Health Care Coverage, for the Year(s) - 2001, 2002, 2003, 2004, 2005, 2006, 2007, 2008, 2009, 2010**

*Note: Weighted numbers (#) rounded to nearest 100, percentages and 95% confidence intervals; Respondents aged 18 years and older; n/r (Not Reportable) - If the unweighted total responses for a dimension (row) is <50 that row will not be shown; n/a (Not Available) - Not asked of a subset of respondents*

**Year: 2004**

State	Yes			No			Estimated Population
	#	%	C.I. (95%)	#	%	C.I. (95%)	#
Hawaii State	159,800	59.1	53.9 - 64.4	110,500	40.9	35.6 - 46.1	270,300

County	Yes			No			Estimated Population
	#	%	C.I. (95%)	#	%	C.I. (95%)	#
Hawaii	16,700	45.6	35.9 - 55.4	19,900	54.4	44.6 - 64.1	36,500
Honolulu	123,600	63.4	56.6 - 70.2	71,400	36.6	29.8 - 43.4	195,000
Kauai	5,500	43.8	30.8 - 56.9	7,000	56.2	43.1 - 69.2	12,500
Maui	14,000	53.4	40.7 - 66.0	12,300	46.6	34.0 - 59.3	26,300

**HIV test - within past 2 years (18-64) by State, County, Island, Community, BRFSS Age Group, DOH Race-Ethnicity, Gender, Education Level, Employment Status (Grouped), Household Income, Poverty Level, Marital Status (Grouped), Married, Health Care Coverage, for the Year(s) - 2001, 2002, 2003, 2004, 2005, 2006, 2007, 2008, 2009, 2010**

*Note: Weighted numbers (#) rounded to nearest 100, percentages and 95% confidence intervals; Respondents aged 18 years and older; n/r (Not Reportable) - If the unweighted total responses for a dimension (row) is <50 that row will not be shown; n/a (Not Available) - Not asked of a subset of respondents*

**Year: 2004**

Island	Yes			No			Estimated Population
	#	%	C.I. (95%)	#	%	C.I. (95%)	#
Hawaii	16,700	45.6	35.9 - 55.4	19,900	54.4	44.6 - 64.1	36,500
Kauai	5,500	43.8	30.8 - 56.9	7,000	56.2	43.1 - 69.2	12,500
Maui	13,500	54.8	41.5 - 68.0	11,100	45.2	32.0 - 58.5	24,700
Oahu	123,600	63.4	56.6 - 70.2	71,400	36.6	29.8 - 43.4	195,000

Community	Yes			No			Estimated Population
	#	%	C.I. (95%)	#	%	C.I. (95%)	#
Puna/ Kau	5,600	45.1	26.3 - 63.8	6,900	54.9	36.2 - 73.7	12,500

**HIV test - within past 2 years (18-64) by State, County, Island, Community, BRFSS Age Group, DOH Race-Ethnicity, Gender, Education Level, Employment Status (Grouped), Household Income, Poverty Level, Marital Status (Grouped), Married, Health Care Coverage, for the Year(s) - 2001, 2002, 2003, 2004, 2005, 2006, 2007, 2008, 2009, 2010**

*Note: Weighted numbers (#) rounded to nearest 100, percentages and 95% confidence intervals; Respondents aged 18 years and older; n/r (Not Reportable) - If the unweighted total responses for a dimension (row) is <50 that row will not be shown; n/a (Not Available) - Not asked of a subset of respondents*

**Year: 2004**

BRFSS Age Group	Yes			No			Estimated Population
	#	%	C.I. (95%)	#	%	C.I. (95%)	#
<b>18-24</b>	39,800	95.0	89.0 - 100.0	2,100	5.0	0.0 - 11.0	41,900
<b>25-34</b>	61,900	69.9	61.3 - 78.6	26,600	30.1	21.4 - 38.7	88,600
<b>35-44</b>	34,300	42.3	32.5 - 52.0	46,900	57.7	48.0 - 67.5	81,200
<b>45-54</b>	17,400	45.7	35.2 - 56.2	20,700	54.3	43.8 - 64.8	38,100
<b>55-64</b>	6,300	30.8	17.1 - 44.5	14,200	69.2	55.5 - 82.9	20,500

**HIV test - within past 2 years (18-64) by State, County, Island, Community, BRFSS Age Group, DOH Race-Ethnicity, Gender, Education Level, Employment Status (Grouped), Household Income, Poverty Level, Marital Status (Grouped), Married, Health Care Coverage, for the Year(s) - 2001, 2002, 2003, 2004, 2005, 2006, 2007, 2008, 2009, 2010**

*Note: Weighted numbers (#) rounded to nearest 100, percentages and 95% confidence intervals; Respondents aged 18 years and older; n/r (Not Reportable) - If the unweighted total responses for a dimension (row) is <50 that row will not be shown; n/a (Not Available) - Not asked of a subset of respondents*

**Year: 2004**

DOH Race-Ethnicity	Yes			No			Estimated Population
	#	%	C.I. (95%)	#	%	C.I. (95%)	#
Caucasian	65,900	53.4	46.1 - 60.7	57,500	46.6	39.3 - 53.9	123,300
Native Hawaiian	19,200	55.4	40.3 - 70.6	15,400	44.6	29.4 - 59.7	34,600
Filipino	16,700	55.2	38.3 - 72.2	13,500	44.8	27.8 - 61.7	30,200
Japanese	17,000	62.4	46.6 - 78.2	10,200	37.6	21.8 - 53.4	27,200

Gender	Yes			No			Estimated Population
	#	%	C.I. (95%)	#	%	C.I. (95%)	#
Male	83,300	63.5	55.6 - 71.3	47,900	36.5	28.7 - 44.4	131,200
Female	76,500	55.0	48.1 - 61.9	62,600	45.0	38.1 - 51.9	139,100

**HIV test - within past 2 years (18-64) by State, County, Island, Community, BRFSS Age Group, DOH Race-Ethnicity, Gender, Education Level, Employment Status (Grouped), Household Income, Poverty Level, Marital Status (Grouped), Married, Health Care Coverage, for the Year(s) - 2001, 2002, 2003, 2004, 2005, 2006, 2007, 2008, 2009, 2010**

*Note: Weighted numbers (#) rounded to nearest 100, percentages and 95% confidence intervals; Respondents aged 18 years and older; n/r (Not Reportable) - If the unweighted total responses for a dimension (row) is <50 that row will not be shown; n/a (Not Available) - Not asked of a subset of respondents*

**Year: 2004**

Education Level	Yes			No			Estimated Population
	#	%	C.I. (95%)	#	%	C.I. (95%)	#
Grades 12 or GED (High School Grad)	48,800	61.1	50.7 - 71.6	31,000	38.9	28.4 - 49.3	79,800
College 1 to 3 years (Some College/ Tech)	57,200	57.8	48.9 - 66.6	41,800	42.2	33.4 - 51.1	99,000
College 4 years or more (College Grad)	48,500	56.8	48.3 - 65.2	37,000	43.2	34.8 - 51.7	85,500

Employment Status (Grouped)	Yes			No			Estimated Population
	#	%	C.I. (95%)	#	%	C.I. (95%)	#
Employed	113,700	57.2	51.0 - 63.3	85,100	42.8	36.7 - 49.0	198,800
Retired/Unable to work	10,900	55.4	34.4 - 76.4	8,800	44.6	23.6 - 65.6	19,700
Student/Homemaker	28,600	67.4	55.7 - 79.1	13,800	32.6	20.9 - 44.3	42,400

**HIV test - within past 2 years (18-64) by State, County, Island, Community, BRFSS Age Group, DOH Race-Ethnicity, Gender, Education Level, Employment Status (Grouped), Household Income, Poverty Level, Marital Status (Grouped), Married, Health Care Coverage, for the Year(s) - 2001, 2002, 2003, 2004, 2005, 2006, 2007, 2008, 2009, 2010**

*Note: Weighted numbers (#) rounded to nearest 100, percentages and 95% confidence intervals; Respondents aged 18 years and older; n/r (Not Reportable) - If the unweighted total responses for a dimension (row) is <50 that row will not be shown; n/a (Not Available) - Not asked of a subset of respondents*

**Year: 2004**

Household Income	Yes			No			Estimated Population
	#	%	C.I. (95%)	#	%	C.I. (95%)	#
<b>\$20,000 to \$24,999</b>	12,900	62.9	47.6 - 78.3	7,600	37.1	21.7 - 52.4	20,500
<b>\$25,000 to \$34,999</b>	20,000	64.8	50.3 - 79.3	10,900	35.2	20.7 - 49.7	30,800
<b>\$35,000 to \$49,999</b>	23,900	56.7	43.5 - 69.9	18,200	43.3	30.1 - 56.5	42,100
<b>\$50,000 to \$74,999</b>	58,600	65.6	56.8 - 74.5	30,700	34.4	25.5 - 43.2	89,300
<b>\$75,000 or more</b>	35,500	53.3	42.4 - 64.3	31,000	46.7	35.7 - 57.6	66,500

Poverty Level	Yes			No			Estimated Population
	#	%	C.I. (95%)	#	%	C.I. (95%)	#
<b>0-130%</b>	17,000	43.8	30.1 - 57.4	21,900	56.2	42.6 - 69.9	38,900
<b>131-185%</b>	20,900	62.1	47.5 - 76.8	12,700	37.9	23.2 - 52.5	33,600
<b>186+%</b>	121,900	61.6	55.6 - 67.6	75,900	38.4	32.4 - 44.4	197,800

**HIV test - within past 2 years (18-64) by State, County, Island, Community, BRFSS Age Group, DOH Race-Ethnicity, Gender, Education Level, Employment Status (Grouped), Household Income, Poverty Level, Marital Status (Grouped), Married, Health Care Coverage, for the Year(s) - 2001, 2002, 2003, 2004, 2005, 2006, 2007, 2008, 2009, 2010**

*Note: Weighted numbers (#) rounded to nearest 100, percentages and 95% confidence intervals; Respondents aged 18 years and older; n/r (Not Reportable) - If the unweighted total responses for a dimension (row) is <50 that row will not be shown; n/a (Not Available) - Not asked of a subset of respondents*

**Year: 2004**

<b>Marital Status (Grouped)</b>	<b>Yes</b>			<b>No</b>			<b>Estimated Population</b>
	<b>#</b>	<b>%</b>	<b>C.I. (95%)</b>	<b>#</b>	<b>%</b>	<b>C.I. (95%)</b>	<b>#</b>
<b>Married</b>	84,100	53.0	45.9 - 60.1	74,500	47.0	39.9 - 54.1	158,600
<b>Other</b>	72,200	71.2	64.0 - 78.4	29,200	28.8	21.6 - 36.0	101,400

<b>Married</b>	<b>Yes</b>			<b>No</b>			<b>Estimated Population</b>
	<b>#</b>	<b>%</b>	<b>C.I. (95%)</b>	<b>#</b>	<b>%</b>	<b>C.I. (95%)</b>	<b>#</b>
<b>Yes</b>	85,500	52.6	45.6 - 59.6	77,100	47.4	40.4 - 54.4	162,600
<b>No</b>	74,300	69.0	61.7 - 76.2	33,500	31.0	23.8 - 38.3	107,800



**HIV test - within past 2 years (18-64) by State, County, Island, Community, BRFSS Age Group, DOH Race-Ethnicity, Gender, Education Level, Employment Status (Grouped), Household Income, Poverty Level, Marital Status (Grouped), Married, Health Care Coverage, for the Year(s) - 2001, 2002, 2003, 2004, 2005, 2006, 2007, 2008, 2009, 2010**

*Note: Weighted numbers (#) rounded to nearest 100, percentages and 95% confidence intervals; Respondents aged 18 years and older; n/r (Not Reportable) - If the unweighted total responses for a dimension (row) is <50 that row will not be shown; n/a (Not Available) - Not asked of a subset of respondents*

**Year: 2004**

Health Care Coverage	Yes			No			Estimated Population
	#	%	C.I. (95%)	#	%	C.I. (95%)	#
<b>Yes</b>	142,600	59.0	53.5 - 64.6	99,000	41.0	35.4 - 46.5	241,600
<b>No</b>	17,200	59.9	44.2 - 75.6	11,500	40.1	24.4 - 55.8	28,700

**HIV test - within past 2 years (18-64) by State, County, Island, Community, BRFSS Age Group, DOH Race-Ethnicity, Gender, Education Level, Employment Status (Grouped), Household Income, Poverty Level, Marital Status (Grouped), Married, Health Care Coverage, for the Year(s) - 2001, 2002, 2003, 2004, 2005, 2006, 2007, 2008, 2009, 2010**

*Note: Weighted numbers (#) rounded to nearest 100, percentages and 95% confidence intervals; Respondents aged 18 years and older; n/r (Not Reportable) - If the unweighted total responses for a dimension (row) is <50 that row will not be shown; n/a (Not Available) - Not asked of a subset of respondents*

**Year: 2003**

State	Yes			No			Estimated Population
	#	%	C.I. (95%)	#	%	C.I. (95%)	#
Hawaii State	157,100	56.8	53.3 - 60.2	119,600	43.2	39.8 - 46.7	276,700

County	Yes			No			Estimated Population
	#	%	C.I. (95%)	#	%	C.I. (95%)	#
Hawaii	13,800	44.0	36.2 - 51.8	17,600	56.0	48.2 - 63.8	31,500
Honolulu	127,300	62.4	58.1 - 66.6	76,800	37.6	33.4 - 41.9	204,100
Kauai	4,600	39.6	28.7 - 50.5	7,100	60.4	49.5 - 71.3	11,700
Maui	11,400	38.5	30.2 - 46.9	18,100	61.5	53.1 - 69.8	29,500

**HIV test - within past 2 years (18-64) by State, County, Island, Community, BRFSS Age Group, DOH Race-Ethnicity, Gender, Education Level, Employment Status (Grouped), Household Income, Poverty Level, Marital Status (Grouped), Married, Health Care Coverage, for the Year(s) - 2001, 2002, 2003, 2004, 2005, 2006, 2007, 2008, 2009, 2010**

*Note: Weighted numbers (#) rounded to nearest 100, percentages and 95% confidence intervals; Respondents aged 18 years and older; n/r (Not Reportable) - If the unweighted total responses for a dimension (row) is <50 that row will not be shown; n/a (Not Available) - Not asked of a subset of respondents*

**Year: 2003**

Island	Yes			No			Estimated Population
	#	%	C.I. (95%)	#	%	C.I. (95%)	#
Hawaii	13,800	44.0	36.2 - 51.8	17,600	56.0	48.2 - 63.8	31,500
Kauai	4,600	39.6	28.7 - 50.5	7,100	60.4	49.5 - 71.3	11,700
Maui	10,700	38.9	30.1 - 47.8	16,800	61.1	52.2 - 69.9	27,400
Oahu	127,300	62.4	58.1 - 66.6	76,800	37.6	33.4 - 41.9	204,100

Community	Yes			No			Estimated Population
	#	%	C.I. (95%)	#	%	C.I. (95%)	#
Hanalei/ Kapaa	2,300	48.1	32.7 - 63.6	2,400	51.9	36.4 - 67.3	4,700
Hilo	3,000	40.0	23.6 - 56.3	4,600	60.0	43.7 - 76.4	7,600
Kahului	3,600	38.4	23.2 - 53.5	5,900	61.6	46.5 - 76.8	9,500
Kailua/ Waimanalo	8,300	62.5	48.0 - 77.1	5,000	37.5	22.9 - 52.0	13,200

**HIV test - within past 2 years (18-64) by State, County, Island, Community, BRFSS Age Group, DOH Race-Ethnicity, Gender, Education Level, Employment Status (Grouped), Household Income, Poverty Level, Marital Status (Grouped), Married, Health Care Coverage, for the Year(s) - 2001, 2002, 2003, 2004, 2005, 2006, 2007, 2008, 2009, 2010**

*Note: Weighted numbers (#) rounded to nearest 100, percentages and 95% confidence intervals; Respondents aged 18 years and older; n/r (Not Reportable) - If the unweighted total responses for a dimension (row) is <50 that row will not be shown; n/a (Not Available) - Not asked of a subset of respondents*

**Year: 2003**

Community	Yes			No			Estimated Population
	#	%	C.I. (95%)	#	%	C.I. (95%)	#
Kaimuki/ Palolo/ Waikiki	8,900	59.7	42.8 - 76.5	6,000	40.3	23.5 - 57.2	15,000
Kona	4,100	43.6	29.8 - 57.3	5,300	56.4	42.7 - 70.2	9,400
Lihue-Waimea	2,400	33.9	19.3 - 48.6	4,600	66.1	51.4 - 80.7	7,000
Manoa/ Upper Makiki	10,100	56.9	40.7 - 73.2	7,600	43.1	26.8 - 59.3	17,700
Mililani/ Wahiawa	21,500	72.7	62.9 - 82.5	8,100	27.3	17.5 - 37.1	29,600
N.Hawaii	1,500	24.6	12.3 - 37.0	4,600	75.4	63.0 - 87.7	6,100
Puna/ Kau	5,200	62.1	46.8 - 77.3	3,200	37.9	22.7 - 53.2	8,400
Salt Lake/ Foster Village	16,200	65.3	53.5 - 77.1	8,600	34.7	22.9 - 46.5	24,800
Upcountry/ Hana	3,900	40.1	27.5 - 52.7	5,800	59.9	47.3 - 72.5	9,600
Waipahu/ Kapolei/ Ewa	21,100	72.5	62.6 - 82.5	8,000	27.5	17.5 - 37.4	29,100

**HIV test - within past 2 years (18-64) by State, County, Island, Community, BRFSS Age Group, DOH Race-Ethnicity, Gender, Education Level, Employment Status (Grouped), Household Income, Poverty Level, Marital Status (Grouped), Married, Health Care Coverage, for the Year(s) - 2001, 2002, 2003, 2004, 2005, 2006, 2007, 2008, 2009, 2010**

*Note: Weighted numbers (#) rounded to nearest 100, percentages and 95% confidence intervals; Respondents aged 18 years and older; n/r (Not Reportable) - If the unweighted total responses for a dimension (row) is <50 that row will not be shown; n/a (Not Available) - Not asked of a subset of respondents*

**Year: 2003**

BRFSS Age Group	Yes			No			Estimated Population
	#	%	C.I. (95%)	#	%	C.I. (95%)	#
<b>18-24</b>	34,300	81.8	73.9 - 89.8	7,600	18.2	10.2 - 26.1	42,000
<b>25-34</b>	53,000	62.4	56.4 - 68.4	31,900	37.6	31.6 - 43.6	85,000
<b>35-44</b>	38,800	49.5	43.1 - 55.8	39,600	50.5	44.2 - 56.9	78,400
<b>45-54</b>	23,500	46.2	38.2 - 54.2	27,400	53.8	45.8 - 61.8	50,900
<b>55-64</b>	7,500	36.3	23.6 - 49.1	13,100	63.7	50.9 - 76.4	20,500

**HIV test - within past 2 years (18-64) by State, County, Island, Community, BRFSS Age Group, DOH Race-Ethnicity, Gender, Education Level, Employment Status (Grouped), Household Income, Poverty Level, Marital Status (Grouped), Married, Health Care Coverage, for the Year(s) - 2001, 2002, 2003, 2004, 2005, 2006, 2007, 2008, 2009, 2010**

*Note: Weighted numbers (#) rounded to nearest 100, percentages and 95% confidence intervals; Respondents aged 18 years and older; n/r (Not Reportable) - If the unweighted total responses for a dimension (row) is <50 that row will not be shown; n/a (Not Available) - Not asked of a subset of respondents*

**Year: 2003**

DOH Race-Ethnicity	Yes			No			Estimated Population
	#	%	C.I. (95%)	#	%	C.I. (95%)	#
Caucasian	80,200	55.5	50.9 - 60.1	64,300	44.5	39.9 - 49.1	144,400
Native Hawaiian	14,200	57.1	45.4 - 68.8	10,700	42.9	31.2 - 54.6	24,900
Chinese	8,400	52.6	37.8 - 67.5	7,600	47.4	32.5 - 62.2	16,000
Filipino	19,900	60.4	49.4 - 71.3	13,100	39.6	28.7 - 50.6	33,000
Japanese	10,900	47.0	34.0 - 60.0	12,300	53.0	40.0 - 66.0	23,200

Gender	Yes			No			Estimated Population
	#	%	C.I. (95%)	#	%	C.I. (95%)	#
Male	89,100	59.2	54.0 - 64.4	61,400	40.8	35.6 - 46.0	150,500
Female	68,000	53.9	49.5 - 58.3	58,200	46.1	41.7 - 50.5	126,200

**HIV test - within past 2 years (18-64) by State, County, Island, Community, BRFSS Age Group, DOH Race-Ethnicity, Gender, Education Level, Employment Status (Grouped), Household Income, Poverty Level, Marital Status (Grouped), Married, Health Care Coverage, for the Year(s) - 2001, 2002, 2003, 2004, 2005, 2006, 2007, 2008, 2009, 2010**

*Note: Weighted numbers (#) rounded to nearest 100, percentages and 95% confidence intervals; Respondents aged 18 years and older; n/r (Not Reportable) - If the unweighted total responses for a dimension (row) is <50 that row will not be shown; n/a (Not Available) - Not asked of a subset of respondents*

**Year: 2003**

Education Level	Yes			No			Estimated Population
	#	%	C.I. (95%)	#	%	C.I. (95%)	#
Grades 12 or GED (High School Grad)	39,900	55.8	48.6 - 63.0	31,600	44.2	37.0 - 51.4	71,600
College 1 to 3 years (Some College/ Tech)	55,400	59.1	53.1 - 65.1	38,400	40.9	34.9 - 46.9	93,800
College 4 years or more (College Grad)	57,300	54.6	49.2 - 60.0	47,700	45.4	40.0 - 50.8	105,000

Employment Status (Grouped)	Yes			No			Estimated Population
	#	%	C.I. (95%)	#	%	C.I. (95%)	#
Employed	126,900	57.6	53.7 - 61.5	93,500	42.4	38.5 - 46.3	220,400
Retired/Unable to work	5,200	43.1	26.7 - 59.5	6,900	56.9	40.5 - 73.3	12,100
Student/Homemaker	19,500	60.0	50.8 - 69.1	13,000	40.0	30.9 - 49.2	32,500

**HIV test - within past 2 years (18-64) by State, County, Island, Community, BRFSS Age Group, DOH Race-Ethnicity, Gender, Education Level, Employment Status (Grouped), Household Income, Poverty Level, Marital Status (Grouped), Married, Health Care Coverage, for the Year(s) - 2001, 2002, 2003, 2004, 2005, 2006, 2007, 2008, 2009, 2010**

*Note: Weighted numbers (#) rounded to nearest 100, percentages and 95% confidence intervals; Respondents aged 18 years and older; n/r (Not Reportable) - If the unweighted total responses for a dimension (row) is <50 that row will not be shown; n/a (Not Available) - Not asked of a subset of respondents*

**Year: 2003**

Household Income	Yes			No			Estimated Population
	#	%	C.I. (95%)	#	%	C.I. (95%)	#
Less than \$10,000	7,100	56.2	40.7 - 71.6	5,600	43.8	28.4 - 59.3	12,700
\$10,000 to \$14,999	7,300	55.3	39.7 - 70.8	5,900	44.7	29.2 - 60.3	13,200
\$15,000 to \$19,999	10,000	71.3	55.1 - 87.5	4,000	28.7	12.5 - 44.9	14,000
\$20,000 to \$24,999	9,900	62.0	47.8 - 76.3	6,000	38.0	23.7 - 52.2	15,900
\$25,000 to \$34,999	15,600	55.0	44.2 - 65.9	12,700	45.0	34.1 - 55.8	28,300
\$35,000 to \$49,999	32,000	58.7	51.0 - 66.4	22,500	41.3	33.6 - 49.0	54,500
\$50,000 to \$74,999	24,200	53.1	44.8 - 61.4	21,400	46.9	38.6 - 55.2	45,600
\$75,000 or more	27,700	52.0	44.0 - 60.0	25,500	48.0	40.0 - 56.0	53,200



**HIV test - within past 2 years (18-64) by State, County, Island, Community, BRFSS Age Group, DOH Race-Ethnicity, Gender, Education Level, Employment Status (Grouped), Household Income, Poverty Level, Marital Status (Grouped), Married, Health Care Coverage, for the Year(s) - 2001, 2002, 2003, 2004, 2005, 2006, 2007, 2008, 2009, 2010**

*Note: Weighted numbers (#) rounded to nearest 100, percentages and 95% confidence intervals; Respondents aged 18 years and older; n/r (Not Reportable) - If the unweighted total responses for a dimension (row) is <50 that row will not be shown; n/a (Not Available) - Not asked of a subset of respondents*

**Year: 2003**

Poverty Level	Yes			No			Estimated Population
	#	%	C.I. (95%)	#	%	C.I. (95%)	#
<b>0-130%</b>	33,000	57.3	49.0 - 65.7	24,600	42.7	34.3 - 51.0	57,600
<b>131-185%</b>	14,800	57.8	46.2 - 69.5	10,800	42.2	30.5 - 53.8	25,600
<b>186+%</b>	86,000	55.7	51.3 - 60.1	68,400	44.3	39.9 - 48.7	154,300

Marital Status (Grouped)	Yes			No			Estimated Population
	#	%	C.I. (95%)	#	%	C.I. (95%)	#
<b>Married</b>	88,900	54.8	50.3 - 59.4	73,200	45.2	40.6 - 49.7	162,100
<b>Other</b>	62,600	60.8	55.2 - 66.4	40,400	39.2	33.6 - 44.8	103,000

**HIV test - within past 2 years (18-64) by State, County, Island, Community, BRFSS Age Group, DOH Race-Ethnicity, Gender, Education Level, Employment Status (Grouped), Household Income, Poverty Level, Marital Status (Grouped), Married, Health Care Coverage, for the Year(s) - 2001, 2002, 2003, 2004, 2005, 2006, 2007, 2008, 2009, 2010**

*Note: Weighted numbers (#) rounded to nearest 100, percentages and 95% confidence intervals; Respondents aged 18 years and older; n/r (Not Reportable) - If the unweighted total responses for a dimension (row) is <50 that row will not be shown; n/a (Not Available) - Not asked of a subset of respondents*

**Year: 2003**

<b>Married</b>	<b>Yes</b>			<b>No</b>			<b>Estimated Population</b>
	<b>#</b>	<b>%</b>	<b>C.I. (95%)</b>	<b>#</b>	<b>%</b>	<b>C.I. (95%)</b>	<b>#</b>
<b>Yes</b>	92,100	55.3	50.8 - 59.7	74,500	44.7	40.3 - 49.2	166,600
<b>No</b>	64,900	59.0	53.5 - 64.5	45,100	41.0	35.5 - 46.5	110,000

<b>Health Care Coverage</b>	<b>Yes</b>			<b>No</b>			<b>Estimated Population</b>
	<b>#</b>	<b>%</b>	<b>C.I. (95%)</b>	<b>#</b>	<b>%</b>	<b>C.I. (95%)</b>	<b>#</b>
<b>Yes</b>	145,100	57.4	53.8 - 61.0	107,800	42.6	39.0 - 46.2	252,900
<b>No</b>	12,000	50.4	39.3 - 61.4	11,800	49.6	38.6 - 60.7	23,800

**HIV test - within past 2 years (18-64) by State, County, Island, Community, BRFSS Age Group, DOH Race-Ethnicity, Gender, Education Level, Employment Status (Grouped), Household Income, Poverty Level, Marital Status (Grouped), Married, Health Care Coverage, for the Year(s) - 2001, 2002, 2003, 2004, 2005, 2006, 2007, 2008, 2009, 2010**

*Note: Weighted numbers (#) rounded to nearest 100, percentages and 95% confidence intervals; Respondents aged 18 years and older; n/r (Not Reportable) - If the unweighted total responses for a dimension (row) is <50 that row will not be shown; n/a (Not Available) - Not asked of a subset of respondents*

**Year: 2002**

State	Yes			No			Estimated Population
	#	%	C.I. (95%)	#	%	C.I. (95%)	#
Hawaii State	149,200	56.3	53.1 - 59.6	115,600	43.7	40.4 - 46.9	264,800

County	Yes			No			Estimated Population
	#	%	C.I. (95%)	#	%	C.I. (95%)	#
Hawaii	14,600	49.6	43.2 - 56.0	14,900	50.4	44.0 - 56.8	29,500
Honolulu	116,600	58.5	54.5 - 62.6	82,500	41.5	37.4 - 45.5	199,100
Kauai	3,500	46.9	35.4 - 58.4	3,900	53.1	41.6 - 64.6	7,400
Maui	14,500	50.3	43.7 - 56.9	14,300	49.7	43.1 - 56.3	28,800

**HIV test - within past 2 years (18-64) by State, County, Island, Community, BRFSS Age Group, DOH Race-Ethnicity, Gender, Education Level, Employment Status (Grouped), Household Income, Poverty Level, Marital Status (Grouped), Married, Health Care Coverage, for the Year(s) - 2001, 2002, 2003, 2004, 2005, 2006, 2007, 2008, 2009, 2010**

*Note: Weighted numbers (#) rounded to nearest 100, percentages and 95% confidence intervals; Respondents aged 18 years and older; n/r (Not Reportable) - If the unweighted total responses for a dimension (row) is <50 that row will not be shown; n/a (Not Available) - Not asked of a subset of respondents*

**Year: 2002**

Island	Yes			No			Estimated Population
	#	%	C.I. (95%)	#	%	C.I. (95%)	#
Hawaii	14,600	49.6	43.2 - 56.0	14,900	50.4	44.0 - 56.8	29,500
Kauai	3,500	46.9	35.4 - 58.4	3,900	53.1	41.6 - 64.6	7,400
Maui	13,500	51.0	43.9 - 58.0	13,000	49.0	42.0 - 56.1	26,500
Oahu	116,600	58.5	54.5 - 62.6	82,500	41.5	37.4 - 45.5	199,100

Community	Yes			No			Estimated Population
	#	%	C.I. (95%)	#	%	C.I. (95%)	#
Aiea/ Pearl City	9,200	57.1	42.8 - 71.5	6,900	42.9	28.5 - 57.2	16,100
Hanalei/ Kapaa	1,700	42.1	26.0 - 58.3	2,300	57.9	41.7 - 74.0	4,000
Hilo	3,100	38.7	26.2 - 51.1	4,900	61.3	48.9 - 73.8	7,900
Kahului	4,700	52.1	40.2 - 64.0	4,300	47.9	36.0 - 59.8	8,900

**HIV test - within past 2 years (18-64) by State, County, Island, Community, BRFSS Age Group, DOH Race-Ethnicity, Gender, Education Level, Employment Status (Grouped), Household Income, Poverty Level, Marital Status (Grouped), Married, Health Care Coverage, for the Year(s) - 2001, 2002, 2003, 2004, 2005, 2006, 2007, 2008, 2009, 2010**

*Note: Weighted numbers (#) rounded to nearest 100, percentages and 95% confidence intervals; Respondents aged 18 years and older; n/r (Not Reportable) - If the unweighted total responses for a dimension (row) is <50 that row will not be shown; n/a (Not Available) - Not asked of a subset of respondents*

**Year: 2002**

Community	Yes			No			Estimated Population
	#	%	C.I. (95%)	#	%	C.I. (95%)	#
Kailua/ Waimanalo	8,500	53.2	39.2 - 67.3	7,500	46.8	32.7 - 60.8	16,000
Kaimuki/ Palolo/ Waikiki	9,900	49.2	37.5 - 61.0	10,200	50.8	39.0 - 62.5	20,100
Kona	5,200	59.2	48.1 - 70.3	3,600	40.8	29.7 - 51.9	8,800
Lahaina/ Wailuku	4,600	54.8	41.4 - 68.2	3,800	45.2	31.8 - 58.6	8,400
Lihue-Waimea	1,800	52.6	36.9 - 68.3	1,600	47.4	31.7 - 63.1	3,300
Manoa/ Upper Makiki	8,200	56.0	40.6 - 71.4	6,400	44.0	28.6 - 59.4	14,600
Mililani/ Wahiawa	21,500	76.3	67.0 - 85.6	6,700	23.7	14.4 - 33.0	28,100
N.Hawaii	3,100	43.8	29.7 - 57.9	3,900	56.2	42.1 - 70.3	7,000
Nuuanu/ Kalihi/ Moanalua	7,100	54.1	38.7 - 69.6	6,000	45.9	30.4 - 61.3	13,200
Puna/ Kau	3,300	56.9	43.8 - 69.9	2,500	43.1	30.1 - 56.2	5,800
Salt Lake/ Foster Village	15,500	79.3	69.4 - 89.2	4,100	20.7	10.8 - 30.6	19,600

**HIV test - within past 2 years (18-64) by State, County, Island, Community, BRFSS Age Group, DOH Race-Ethnicity, Gender, Education Level, Employment Status (Grouped), Household Income, Poverty Level, Marital Status (Grouped), Married, Health Care Coverage, for the Year(s) - 2001, 2002, 2003, 2004, 2005, 2006, 2007, 2008, 2009, 2010**

*Note: Weighted numbers (#) rounded to nearest 100, percentages and 95% confidence intervals; Respondents aged 18 years and older; n/r (Not Reportable) - If the unweighted total responses for a dimension (row) is <50 that row will not be shown; n/a (Not Available) - Not asked of a subset of respondents*

**Year: 2002**

Community	Yes			No			Estimated Population
	#	%	C.I. (95%)	#	%	C.I. (95%)	#
Upcountry/ Hana	4,200	46.4	35.2 - 57.5	4,900	53.6	42.5 - 64.8	9,200
Waipahu/ Kapolei/ Ewa	14,400	51.1	40.3 - 61.9	13,800	48.9	38.1 - 59.7	28,200

BRFSS Age Group	Yes			No			Estimated Population
	#	%	C.I. (95%)	#	%	C.I. (95%)	#
18-24	34,300	82.1	75.0 - 89.2	7,500	17.9	10.8 - 25.0	41,700
25-34	54,000	65.3	59.6 - 71.0	28,700	34.7	29.0 - 40.4	82,700
35-44	34,900	44.6	38.6 - 50.5	43,300	55.4	49.5 - 61.4	78,200
45-54	17,900	43.8	37.0 - 50.5	23,100	56.2	49.5 - 63.0	41,000
55-64	8,100	38.1	26.0 - 50.3	13,100	61.9	49.7 - 74.0	21,100

**HIV test - within past 2 years (18-64) by State, County, Island, Community, BRFSS Age Group, DOH Race-Ethnicity, Gender, Education Level, Employment Status (Grouped), Household Income, Poverty Level, Marital Status (Grouped), Married, Health Care Coverage, for the Year(s) - 2001, 2002, 2003, 2004, 2005, 2006, 2007, 2008, 2009, 2010**

*Note: Weighted numbers (#) rounded to nearest 100, percentages and 95% confidence intervals; Respondents aged 18 years and older; n/r (Not Reportable) - If the unweighted total responses for a dimension (row) is <50 that row will not be shown; n/a (Not Available) - Not asked of a subset of respondents*

**Year: 2002**

DOH Race-Ethnicity	Yes			No			Estimated Population
	#	%	C.I. (95%)	#	%	C.I. (95%)	#
<b>Caucasian</b>	68,000	55.8	51.2 - 60.4	53,900	44.2	39.6 - 48.8	121,900
<b>Native Hawaiian</b>	16,600	50.7	40.9 - 60.5	16,100	49.3	39.5 - 59.1	32,700
<b>Chinese</b>	5,600	50.8	34.2 - 67.4	5,500	49.2	32.6 - 65.8	11,100
<b>Filipino</b>	17,100	56.5	46.6 - 66.4	13,200	43.5	33.6 - 53.4	30,200
<b>Japanese</b>	14,600	50.8	40.5 - 61.1	14,100	49.2	38.9 - 59.5	28,700
<b>Black</b>	9,800	78.3	66.8 - 89.8	2,700	21.7	10.2 - 33.2	12,500
<b>Other</b>	9,700	63.7	50.1 - 77.3	5,600	36.3	22.7 - 49.9	15,300

**HIV test - within past 2 years (18-64) by State, County, Island, Community, BRFSS Age Group, DOH Race-Ethnicity, Gender, Education Level, Employment Status (Grouped), Household Income, Poverty Level, Marital Status (Grouped), Married, Health Care Coverage, for the Year(s) - 2001, 2002, 2003, 2004, 2005, 2006, 2007, 2008, 2009, 2010**

*Note: Weighted numbers (#) rounded to nearest 100, percentages and 95% confidence intervals; Respondents aged 18 years and older; n/r (Not Reportable) - If the unweighted total responses for a dimension (row) is <50 that row will not be shown; n/a (Not Available) - Not asked of a subset of respondents*

**Year: 2002**

Gender	Yes			No			Estimated Population
	#	%	C.I. (95%)	#	%	C.I. (95%)	#
Male	88,200	62.5	57.8 - 67.3	52,900	37.5	32.7 - 42.2	141,100
Female	60,900	49.3	45.1 - 53.5	62,700	50.7	46.5 - 54.9	123,700

Education Level	Yes			No			Estimated Population
	#	%	C.I. (95%)	#	%	C.I. (95%)	#
Grades 12 or GED (High School Grad)	47,200	57.9	52.1 - 63.8	34,300	42.1	36.2 - 47.9	81,400
College 1 to 3 years (Some College/ Tech)	48,800	57.5	51.7 - 63.3	36,100	42.5	36.7 - 48.3	84,900
College 4 years or more (College Grad)	48,200	53.0	47.5 - 58.5	42,800	47.0	41.5 - 52.5	91,000



**HIV test - within past 2 years (18-64) by State, County, Island, Community, BRFSS Age Group, DOH Race-Ethnicity, Gender, Education Level, Employment Status (Grouped), Household Income, Poverty Level, Marital Status (Grouped), Married, Health Care Coverage, for the Year(s) - 2001, 2002, 2003, 2004, 2005, 2006, 2007, 2008, 2009, 2010**

*Note: Weighted numbers (#) rounded to nearest 100, percentages and 95% confidence intervals; Respondents aged 18 years and older; n/r (Not Reportable) - If the unweighted total responses for a dimension (row) is <50 that row will not be shown; n/a (Not Available) - Not asked of a subset of respondents*

**Year: 2002**

Employment Status (Grouped)	Yes			No			Estimated Population
	#	%	C.I. (95%)	#	%	C.I. (95%)	#
<b>Employed</b>	113,200	54.4	50.7 - 58.0	95,000	45.6	42.0 - 49.3	208,200
<b>Unemployed</b>	6,200	52.5	35.6 - 69.4	5,600	47.5	30.6 - 64.4	11,700
<b>Retired/Unable to work</b>	8,400	59.1	43.1 - 75.1	5,800	40.9	24.9 - 56.9	14,200
<b>Student/Homemaker</b>	21,300	70.4	62.3 - 78.6	8,900	29.6	21.4 - 37.7	30,200

**HIV test - within past 2 years (18-64) by State, County, Island, Community, BRFSS Age Group, DOH Race-Ethnicity, Gender, Education Level, Employment Status (Grouped), Household Income, Poverty Level, Marital Status (Grouped), Married, Health Care Coverage, for the Year(s) - 2001, 2002, 2003, 2004, 2005, 2006, 2007, 2008, 2009, 2010**

*Note: Weighted numbers (#) rounded to nearest 100, percentages and 95% confidence intervals; Respondents aged 18 years and older; n/r (Not Reportable) - If the unweighted total responses for a dimension (row) is <50 that row will not be shown; n/a (Not Available) - Not asked of a subset of respondents*

**Year: 2002**

Household Income	Yes			No			Estimated Population
	#	%	C.I. (95%)	#	%	C.I. (95%)	#
Less than \$10,000	7,900	67.3	54.2 - 80.4	3,900	32.7	19.6 - 45.8	11,800
\$10,000 to \$14,999	6,900	60.7	47.6 - 73.8	4,500	39.3	26.2 - 52.4	11,400
\$15,000 to \$19,999	9,900	56.0	38.6 - 73.4	7,700	44.0	26.6 - 61.4	17,600
\$20,000 to \$24,999	10,400	63.9	52.1 - 75.7	5,900	36.1	24.3 - 47.9	16,200
\$25,000 to \$34,999	17,200	57.2	48.1 - 66.3	12,900	42.8	33.7 - 51.9	30,100
\$35,000 to \$49,999	28,600	56.6	49.5 - 63.8	21,900	43.4	36.2 - 50.5	50,500
\$50,000 to \$74,999	20,000	53.2	44.6 - 61.9	17,600	46.8	38.1 - 55.4	37,600
\$75,000 or more	24,000	50.0	42.1 - 57.8	24,000	50.0	42.2 - 57.9	48,000

**HIV test - within past 2 years (18-64) by State, County, Island, Community, BRFSS Age Group, DOH Race-Ethnicity, Gender, Education Level, Employment Status (Grouped), Household Income, Poverty Level, Marital Status (Grouped), Married, Health Care Coverage, for the Year(s) - 2001, 2002, 2003, 2004, 2005, 2006, 2007, 2008, 2009, 2010**

*Note: Weighted numbers (#) rounded to nearest 100, percentages and 95% confidence intervals; Respondents aged 18 years and older; n/r (Not Reportable) - If the unweighted total responses for a dimension (row) is <50 that row will not be shown; n/a (Not Available) - Not asked of a subset of respondents*

**Year: 2002**

Poverty Level	Yes			No			Estimated Population
	#	%	C.I. (95%)	#	%	C.I. (95%)	#
<b>0-130%</b>	32,100	57.8	49.9 - 65.6	23,500	42.2	34.4 - 50.1	55,600
<b>131-185%</b>	13,800	56.7	46.7 - 66.6	10,600	43.3	33.4 - 53.3	24,400
<b>186+%</b>	79,000	55.1	50.8 - 59.4	64,400	44.9	40.6 - 49.2	143,400

Marital Status (Grouped)	Yes			No			Estimated Population
	#	%	C.I. (95%)	#	%	C.I. (95%)	#
<b>Married</b>	78,300	52.8	48.5 - 57.1	70,100	47.2	42.9 - 51.5	148,400
<b>Other</b>	63,100	60.6	55.4 - 65.8	41,000	39.4	34.2 - 44.6	104,100

**HIV test - within past 2 years (18-64) by State, County, Island, Community, BRFSS Age Group, DOH Race-Ethnicity, Gender, Education Level, Employment Status (Grouped), Household Income, Poverty Level, Marital Status (Grouped), Married, Health Care Coverage, for the Year(s) - 2001, 2002, 2003, 2004, 2005, 2006, 2007, 2008, 2009, 2010**

*Note: Weighted numbers (#) rounded to nearest 100, percentages and 95% confidence intervals; Respondents aged 18 years and older; n/r (Not Reportable) - If the unweighted total responses for a dimension (row) is <50 that row will not be shown; n/a (Not Available) - Not asked of a subset of respondents*

**Year: 2002**

<b>Married</b>	<b>Yes</b>			<b>No</b>			<b>Estimated Population</b>
	<b>#</b>	<b>%</b>	<b>C.I. (95%)</b>	<b>#</b>	<b>%</b>	<b>C.I. (95%)</b>	<b>#</b>
<b>Yes</b>	81,500	53.1	49.0 - 57.3	71,800	46.9	42.7 - 51.0	153,300
<b>No</b>	67,600	60.7	55.6 - 65.7	43,800	39.3	34.3 - 44.4	111,400

<b>Health Care Coverage</b>	<b>Yes</b>			<b>No</b>			<b>Estimated Population</b>
	<b>#</b>	<b>%</b>	<b>C.I. (95%)</b>	<b>#</b>	<b>%</b>	<b>C.I. (95%)</b>	<b>#</b>
<b>Yes</b>	136,400	56.6	53.2 - 60.0	104,700	43.4	40.0 - 46.8	241,100
<b>No</b>	12,600	53.8	43.3 - 64.3	10,800	46.2	35.7 - 56.7	23,400

**HIV test - within past 2 years (18-64) by State, County, Island, Community, BRFSS Age Group, DOH Race-Ethnicity, Gender, Education Level, Employment Status (Grouped), Household Income, Poverty Level, Marital Status (Grouped), Married, Health Care Coverage, for the Year(s) - 2001, 2002, 2003, 2004, 2005, 2006, 2007, 2008, 2009, 2010**

*Note: Weighted numbers (#) rounded to nearest 100, percentages and 95% confidence intervals; Respondents aged 18 years and older; n/r (Not Reportable) - If the unweighted total responses for a dimension (row) is <50 that row will not be shown; n/a (Not Available) - Not asked of a subset of respondents*

**Year: 2001**

State	Yes			No			Estimated Population
	#	%	C.I. (95%)	#	%	C.I. (95%)	#
Hawaii State	144,600	48.8	45.3 - 52.4	151,500	51.2	47.6 - 54.7	296,100

County	Yes			No			Estimated Population
	#	%	C.I. (95%)	#	%	C.I. (95%)	#
Hawaii	14,100	42.5	36.3 - 48.6	19,100	57.5	51.4 - 63.7	33,100
Honolulu	112,100	51.5	47.1 - 55.9	105,600	48.5	44.1 - 52.9	217,700
Kauai	4,000	33.1	24.3 - 41.8	8,200	66.9	58.2 - 75.7	12,200
Maui	14,400	43.5	33.6 - 53.5	18,700	56.5	46.5 - 66.4	33,100

**HIV test - within past 2 years (18-64) by State, County, Island, Community, BRFSS Age Group, DOH Race-Ethnicity, Gender, Education Level, Employment Status (Grouped), Household Income, Poverty Level, Marital Status (Grouped), Married, Health Care Coverage, for the Year(s) - 2001, 2002, 2003, 2004, 2005, 2006, 2007, 2008, 2009, 2010**

*Note: Weighted numbers (#) rounded to nearest 100, percentages and 95% confidence intervals; Respondents aged 18 years and older; n/r (Not Reportable) - If the unweighted total responses for a dimension (row) is <50 that row will not be shown; n/a (Not Available) - Not asked of a subset of respondents*

**Year: 2001**

Island	Yes			No			Estimated Population
	#	%	C.I. (95%)	#	%	C.I. (95%)	#
Hawaii	14,100	42.5	36.3 - 48.6	19,100	57.5	51.4 - 63.7	33,100
Kauai	4,000	33.1	24.3 - 41.8	8,200	66.9	58.2 - 75.7	12,200
Maui	13,700	43.7	33.3 - 54.2	17,600	56.3	45.8 - 66.7	31,300
Oahu	112,100	51.5	47.1 - 55.9	105,600	48.5	44.1 - 52.9	217,700

Community	Yes			No			Estimated Population
	#	%	C.I. (95%)	#	%	C.I. (95%)	#
Aiea/ Pearl City	8,700	52.5	37.4 - 67.6	7,900	47.5	32.4 - 62.6	16,600
Hanalei/ Kapaa	1,800	32.5	18.6 - 46.4	3,800	67.5	53.6 - 81.4	5,700
Hilo	3,400	43.4	30.6 - 56.2	4,500	56.6	43.8 - 69.4	7,900
Kahului	5,200	35.6	18.4 - 52.9	9,400	64.4	47.1 - 81.6	14,700

**HIV test - within past 2 years (18-64) by State, County, Island, Community, BRFSS Age Group, DOH Race-Ethnicity, Gender, Education Level, Employment Status (Grouped), Household Income, Poverty Level, Marital Status (Grouped), Married, Health Care Coverage, for the Year(s) - 2001, 2002, 2003, 2004, 2005, 2006, 2007, 2008, 2009, 2010**

*Note: Weighted numbers (#) rounded to nearest 100, percentages and 95% confidence intervals; Respondents aged 18 years and older; n/r (Not Reportable) - If the unweighted total responses for a dimension (row) is <50 that row will not be shown; n/a (Not Available) - Not asked of a subset of respondents*

**Year: 2001**

Community	Yes			No			Estimated Population
	#	%	C.I. (95%)	#	%	C.I. (95%)	#
Kailua/ Waimanalo	8,600	42.3	29.1 - 55.5	11,700	57.7	44.5 - 70.9	20,200
Kaimuki/ Palolo/ Waikiki	9,900	44.5	31.1 - 57.9	12,400	55.5	42.1 - 68.9	22,300
Kona	4,200	40.3	30.4 - 50.3	6,200	59.7	49.7 - 69.6	10,400
Lahaina/ Wailuku	4,100	53.8	41.8 - 65.9	3,500	46.2	34.1 - 58.2	7,700
Lihue-Waimea	2,200	33.6	22.4 - 44.7	4,300	66.4	55.3 - 77.6	6,500
Manoa/ Upper Makiki	10,100	55.0	38.4 - 71.5	8,300	45.0	28.5 - 61.6	18,400
Mililani/ Wahiawa	17,900	69.6	58.7 - 80.4	7,800	30.4	19.6 - 41.3	25,700
N.Hawaii	3,500	43.8	30.3 - 57.3	4,500	56.2	42.7 - 69.7	8,100
Puna/ Kau	2,900	43.0	29.4 - 56.7	3,800	57.0	43.3 - 70.6	6,700
Salt Lake/ Foster Village	13,400	64.6	51.9 - 77.4	7,300	35.4	22.6 - 48.1	20,700
Upcountry/ Hana	4,300	48.3	35.5 - 61.0	4,600	51.7	39.0 - 64.5	8,900

**HIV test - within past 2 years (18-64) by State, County, Island, Community, BRFSS Age Group, DOH Race-Ethnicity, Gender, Education Level, Employment Status (Grouped), Household Income, Poverty Level, Marital Status (Grouped), Married, Health Care Coverage, for the Year(s) - 2001, 2002, 2003, 2004, 2005, 2006, 2007, 2008, 2009, 2010**

*Note: Weighted numbers (#) rounded to nearest 100, percentages and 95% confidence intervals; Respondents aged 18 years and older; n/r (Not Reportable) - If the unweighted total responses for a dimension (row) is <50 that row will not be shown; n/a (Not Available) - Not asked of a subset of respondents*

**Year: 2001**

Community	Yes			No			Estimated Population
	#	%	C.I. (95%)	#	%	C.I. (95%)	#
Waipahu/ Kapolei/ Ewa	15,200	49.2	37.5 - 60.9	15,700	50.8	39.1 - 62.5	31,000

BRFSS Age Group	Yes			No			Estimated Population
	#	%	C.I. (95%)	#	%	C.I. (95%)	#
18-24	34,300	71.8	60.0 - 83.6	13,500	28.2	16.4 - 40.0	47,800
25-34	48,400	54.1	47.9 - 60.2	41,100	45.9	39.8 - 52.1	89,600
35-44	37,400	46.6	40.1 - 53.0	42,900	53.4	47.0 - 59.9	80,400
45-54	17,700	34.7	27.4 - 42.0	33,200	65.3	58.0 - 72.6	50,900
55-64	6,800	24.6	15.1 - 34.2	20,700	75.4	65.8 - 84.9	27,500



**HIV test - within past 2 years (18-64) by State, County, Island, Community, BRFSS Age Group, DOH Race-Ethnicity, Gender, Education Level, Employment Status (Grouped), Household Income, Poverty Level, Marital Status (Grouped), Married, Health Care Coverage, for the Year(s) - 2001, 2002, 2003, 2004, 2005, 2006, 2007, 2008, 2009, 2010**

*Note: Weighted numbers (#) rounded to nearest 100, percentages and 95% confidence intervals; Respondents aged 18 years and older; n/r (Not Reportable) - If the unweighted total responses for a dimension (row) is <50 that row will not be shown; n/a (Not Available) - Not asked of a subset of respondents*

**Year: 2001**

DOH Race-Ethnicity	Yes			No			Estimated Population
	#	%	C.I. (95%)	#	%	C.I. (95%)	#
Caucasian	72,000	51.6	47.0 - 56.2	67,500	48.4	43.8 - 53.0	139,600
Native Hawaiian	19,900	46.6	36.8 - 56.4	22,800	53.4	43.6 - 63.2	42,700
Filipino	12,100	39.1	26.1 - 52.0	19,000	60.9	48.0 - 73.9	31,100
Japanese	11,700	41.1	30.3 - 51.9	16,800	58.9	48.1 - 69.7	28,600
Other	10,000	65.7	50.0 - 81.3	5,200	34.3	18.7 - 50.0	15,200

Gender	Yes			No			Estimated Population
	#	%	C.I. (95%)	#	%	C.I. (95%)	#
Male	83,500	55.8	50.4 - 61.1	66,300	44.2	38.9 - 49.6	149,800
Female	61,100	41.7	37.3 - 46.2	85,200	58.3	53.8 - 62.7	146,300

**HIV test - within past 2 years (18-64) by State, County, Island, Community, BRFSS Age Group, DOH Race-Ethnicity, Gender, Education Level, Employment Status (Grouped), Household Income, Poverty Level, Marital Status (Grouped), Married, Health Care Coverage, for the Year(s) - 2001, 2002, 2003, 2004, 2005, 2006, 2007, 2008, 2009, 2010**

*Note: Weighted numbers (#) rounded to nearest 100, percentages and 95% confidence intervals; Respondents aged 18 years and older; n/r (Not Reportable) - If the unweighted total responses for a dimension (row) is <50 that row will not be shown; n/a (Not Available) - Not asked of a subset of respondents*

**Year: 2001**

Education Level	Yes			No			Estimated Population
	#	%	C.I. (95%)	#	%	C.I. (95%)	#
Grades 12 or GED (High School Grad)	51,600	55.8	49.4 - 62.2	40,900	44.2	37.8 - 50.6	92,500
College 1 to 3 years (Some College/ Tech)	47,900	46.5	39.9 - 53.1	55,200	53.5	46.9 - 60.1	103,100
College 4 years or more (College Grad)	41,600	44.5	39.0 - 50.0	51,900	55.5	50.0 - 61.0	93,500

Employment Status (Grouped)	Yes			No			Estimated Population
	#	%	C.I. (95%)	#	%	C.I. (95%)	#
Employed	114,600	48.2	44.2 - 52.2	123,000	51.8	47.8 - 55.8	237,600
Unemployed	7,100	67.3	52.3 - 82.2	3,500	32.7	17.8 - 47.7	10,600
Retired/Unable to work	4,900	35.0	21.4 - 48.5	9,200	65.0	51.5 - 78.6	14,100
Student/Homemaker	18,000	53.5	42.8 - 64.2	15,600	46.5	35.8 - 57.2	33,600

**HIV test - within past 2 years (18-64) by State, County, Island, Community, BRFSS Age Group, DOH Race-Ethnicity, Gender, Education Level, Employment Status (Grouped), Household Income, Poverty Level, Marital Status (Grouped), Married, Health Care Coverage, for the Year(s) - 2001, 2002, 2003, 2004, 2005, 2006, 2007, 2008, 2009, 2010**

*Note: Weighted numbers (#) rounded to nearest 100, percentages and 95% confidence intervals; Respondents aged 18 years and older; n/r (Not Reportable) - If the unweighted total responses for a dimension (row) is <50 that row will not be shown; n/a (Not Available) - Not asked of a subset of respondents*

**Year: 2001**

Household Income	Yes			No			Estimated Population
	#	%	C.I. (95%)	#	%	C.I. (95%)	#
Less than \$10,000	4,300	32.4	18.1 - 46.8	9,100	67.6	53.2 - 81.9	13,400
\$10,000 to \$14,999	6,100	41.4	26.2 - 56.5	8,700	58.6	43.5 - 73.8	14,800
\$15,000 to \$19,999	9,600	61.9	48.7 - 75.1	5,900	38.1	24.9 - 51.3	15,500
\$20,000 to \$24,999	11,500	52.8	33.1 - 72.6	10,300	47.2	27.4 - 66.9	21,800
\$25,000 to \$34,999	20,400	56.2	47.3 - 65.1	15,900	43.8	34.9 - 52.7	36,300
\$35,000 to \$49,999	29,800	60.1	52.3 - 67.9	19,700	39.9	32.1 - 47.7	49,500
\$50,000 to \$74,999	22,600	45.8	37.6 - 54.0	26,800	54.2	46.0 - 62.4	49,300
\$75,000 or more	15,000	34.1	26.2 - 42.1	29,100	65.9	57.9 - 73.8	44,100

**HIV test - within past 2 years (18-64) by State, County, Island, Community, BRFSS Age Group, DOH Race-Ethnicity, Gender, Education Level, Employment Status (Grouped), Household Income, Poverty Level, Marital Status (Grouped), Married, Health Care Coverage, for the Year(s) - 2001, 2002, 2003, 2004, 2005, 2006, 2007, 2008, 2009, 2010**

*Note: Weighted numbers (#) rounded to nearest 100, percentages and 95% confidence intervals; Respondents aged 18 years and older; n/r (Not Reportable) - If the unweighted total responses for a dimension (row) is <50 that row will not be shown; n/a (Not Available) - Not asked of a subset of respondents*

**Year: 2001**

Poverty Level	Yes			No			Estimated Population
	#	%	C.I. (95%)	#	%	C.I. (95%)	#
<b>0-130%</b>	22,600	43.5	34.0 - 53.0	29,400	56.5	47.0 - 66.0	51,900
<b>131-185%</b>	27,300	62.4	53.1 - 71.7	16,500	37.6	28.3 - 46.9	43,800
<b>186+%</b>	69,500	46.6	42.1 - 51.1	79,600	53.4	48.9 - 57.9	149,100

Marital Status (Grouped)	Yes			No			Estimated Population
	#	%	C.I. (95%)	#	%	C.I. (95%)	#
<b>Married</b>	72,100	44.9	39.9 - 49.8	88,600	55.1	50.2 - 60.1	160,700
<b>Other</b>	69,000	54.3	49.2 - 59.4	58,100	45.7	40.6 - 50.8	127,100

**HIV test - within past 2 years (18-64) by State, County, Island, Community, BRFSS Age Group, DOH Race-Ethnicity, Gender, Education Level, Employment Status (Grouped), Household Income, Poverty Level, Marital Status (Grouped), Married, Health Care Coverage, for the Year(s) - 2001, 2002, 2003, 2004, 2005, 2006, 2007, 2008, 2009, 2010**

*Note: Weighted numbers (#) rounded to nearest 100, percentages and 95% confidence intervals; Respondents aged 18 years and older; n/r (Not Reportable) - If the unweighted total responses for a dimension (row) is <50 that row will not be shown; n/a (Not Available) - Not asked of a subset of respondents*

**Year: 2001**

<b>Married</b>	<b>Yes</b>			<b>No</b>			<b>Estimated Population</b>
	<b>#</b>	<b>%</b>	<b>C.I. (95%)</b>	<b>#</b>	<b>%</b>	<b>C.I. (95%)</b>	<b>#</b>
<b>Yes</b>	75,300	44.6	39.8 - 49.4	93,400	55.4	50.6 - 60.2	168,700
<b>No</b>	69,400	54.5	49.5 - 59.6	57,800	45.5	40.4 - 50.5	127,100

<b>Health Care Coverage</b>	<b>Yes</b>			<b>No</b>			<b>Estimated Population</b>
	<b>#</b>	<b>%</b>	<b>C.I. (95%)</b>	<b>#</b>	<b>%</b>	<b>C.I. (95%)</b>	<b>#</b>
<b>Yes</b>	132,600	48.7	44.9 - 52.4	140,000	51.3	47.6 - 55.1	272,600
<b>No</b>	12,000	51.0	38.8 - 63.1	11,500	49.0	36.9 - 61.2	23,500