

**Flu - had shot in past 12 mons by State, County, Island, Community, BRFSS Age Group, DOH Race-Ethnicity, Gender, Education Level, Employment Status (Grouped), Household Income, Poverty Level, Marital Status (Grouped), Married, Health Care Coverage, for the Year(s) - 2001-2003, 2002-2004, 2003-2005, 2004-2006, 2005-2007, 2006-2008, 2007-2009, 2008-2010**

*Note: Weighted numbers (#) represent 3-yr averages, percentages and 95% confidence intervals; Respondents aged 18 years and older; n/r (Not Reportable) - If the unweighted total responses for a dimension (row) is <50 that row will not be shown; n/a (Not Available) - Not asked of a subset of respondents*

*The trend analysis report shows the trend for the selected health variable over selected years in a table and a graph. Estimated Population: This number is a weighted representation of the population who responded to a particular question in the survey. For most questions the eligible population will be the entire adult population. For some secondary questions only a subset of the population was asked the question. For example, all survey participants were asked if they had diabetes, but only those who answered yes were asked if they use insulin. If a dimension value is unknown for a particular survey record, that record will not be included in the counts for that particular dimension.*

*For documentation on other terms and coding in this report, please go to the following links*

[Click here to access BRFSS documentation](#)

[Click here to access DOH Race-Ethnicity coding](#)

[Click here to access The Hawai'i Data Guide](#)

[Click here to access Poverty Level Methodology](#)

**For questions about this report, please contact  
The Hawaii Health Data Warehouse**

[profiles@hhdw.org](mailto:profiles@hhdw.org)

**(855) 946-5899 x15**

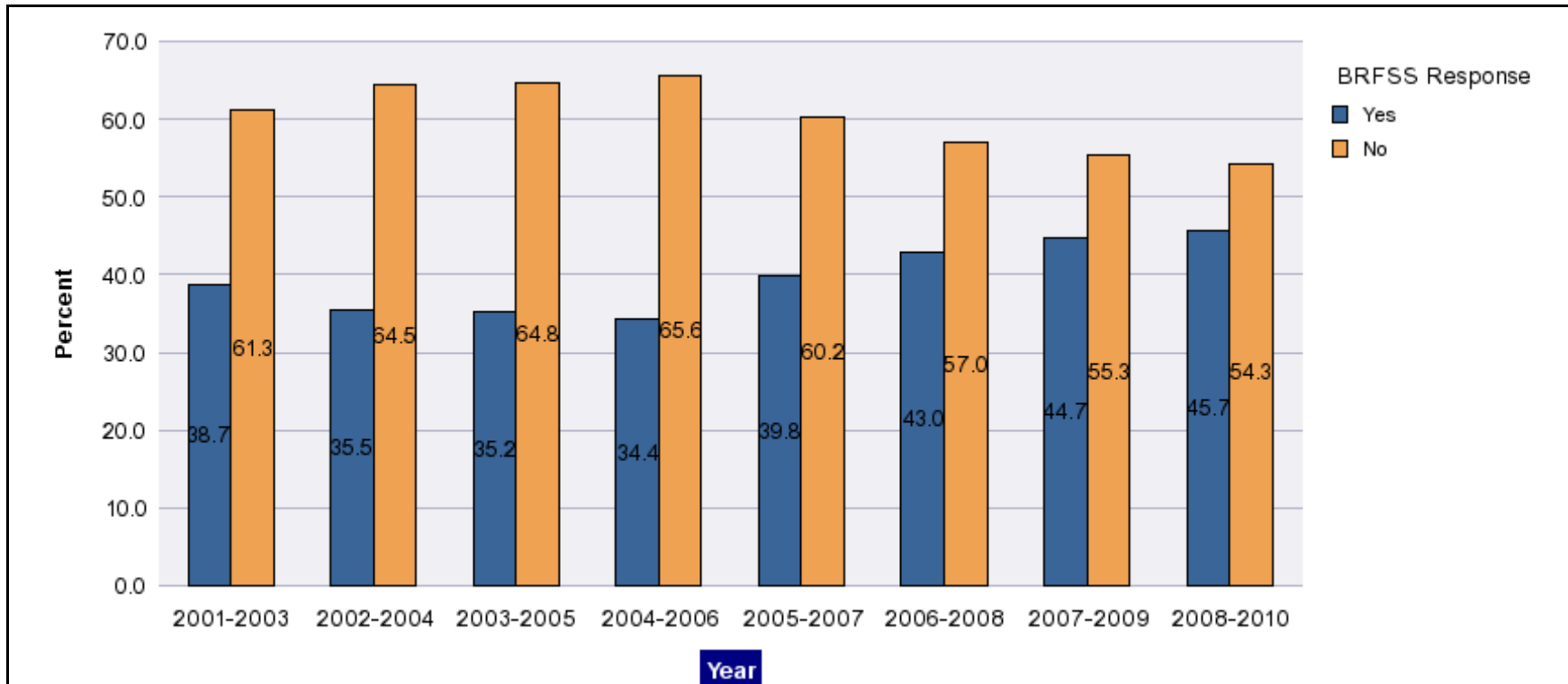
**Flu - had shot in past 12 mons by State, County, Island, Community, BRFSS Age Group, DOH Race-Ethnicity, Gender, Education Level, Employment Status (Grouped), Household Income, Poverty Level, Marital Status (Grouped), Married, Health Care Coverage, for the Year(s) - 2001-2003, 2002-2004, 2003-2005, 2004-2006, 2005-2007, 2006-2008, 2007-2009, 2008-2010**

*Note: Weighted numbers (#) represent 3-yr averages, percentages and 95% confidence intervals; Respondents aged 18 years and older; n/r (Not Reportable) - If the unweighted total responses for a dimension (row) is <50 that row will not be shown; n/a (Not Available) - Not asked of a subset of respondents*

Year	Yes			No			Estimated Population (3-Yr Avg)
	#	%	C.I.(95%)	#	%	C.I.(95%)	#
<b>2001-2003</b>	350,100	38.7	37.6 - 39.8	555,000	61.3	60.2 - 62.4	905,000
<b>2002-2004</b>	323,000	35.5	34.2 - 36.8	586,800	64.5	63.2 - 65.8	909,800
<b>2003-2005</b>	328,000	35.2	33.9 - 36.4	603,900	64.8	63.6 - 66.1	931,800
<b>2004-2006</b>	325,000	34.4	33.2 - 35.6	619,600	65.6	64.4 - 66.8	944,600
<b>2005-2007</b>	385,600	39.8	38.8 - 40.7	583,400	60.2	59.3 - 61.2	969,000
<b>2006-2008</b>	418,900	43.0	42.0 - 43.9	556,000	57.0	56.1 - 58.0	974,900
<b>2007-2009</b>	438,800	44.7	43.7 - 45.7	543,000	55.3	54.3 - 56.3	981,800
<b>2008-2010</b>	450,400	45.7	44.7 - 46.7	535,000	54.3	53.3 - 55.3	985,400

**Flu - had shot in past 12 mons by State, County, Island, Community, BRFSS Age Group, DOH Race-Ethnicity, Gender, Education Level, Employment Status (Grouped), Household Income, Poverty Level, Marital Status (Grouped), Married, Health Care Coverage, for the Year(s) - 2001-2003, 2002-2004, 2003-2005, 2004-2006, 2005-2007, 2006-2008, 2007-2009, 2008-2010**

*Note: Weighted numbers (#) represent 3-yr averages, percentages and 95% confidence intervals; Respondents aged 18 years and older; n/r (Not Reportable) - If the unweighted total responses for a dimension (row) is <50 that row will not be shown; n/a (Not Available) - Not asked of a subset of respondents*



**Flu - had shot in past 12 mons by State, County, Island, Community, BRFSS Age Group, DOH Race-Ethnicity, Gender, Education Level, Employment Status (Grouped), Household Income, Poverty Level, Marital Status (Grouped), Married, Health Care Coverage, for the Year(s) - 2001-2003, 2002-2004, 2003-2005, 2004-2006, 2005-2007, 2006-2008, 2007-2009, 2008-2010**

*Note: Weighted numbers (#) represent 3-yr averages, percentages and 95% confidence intervals; Respondents aged 18 years and older; n/r (Not Reportable) - If the unweighted total responses for a dimension (row) is <50 that row will not be shown; n/a (Not Available) - Not asked of a subset of respondents*

**Year: 2008-2010**

State	Yes			No			Estimated Population (3-Yr Avg)
	#	%	C.I. (95%)	#	%	C.I. (95%)	#
Hawaii State	450,400	45.7	44.7 - 46.7	535,000	54.3	53.3 - 55.3	985,400

County	Yes			No			Estimated Population (3-Yr Avg)
	#	%	C.I. (95%)	#	%	C.I. (95%)	#
Hawaii	52,600	38.6	36.7 - 40.4	83,800	61.4	59.6 - 63.3	136,300
Honolulu	336,700	48.7	47.3 - 50.0	355,100	51.3	50.0 - 52.7	691,800
Kauai	18,500	38.4	35.5 - 41.3	29,600	61.6	58.7 - 64.5	48,000
Maui	42,700	39.1	37.0 - 41.3	66,500	60.9	58.7 - 63.0	109,200

**Flu - had shot in past 12 mons by State, County, Island, Community, BRFSS Age Group, DOH Race-Ethnicity, Gender, Education Level, Employment Status (Grouped), Household Income, Poverty Level, Marital Status (Grouped), Married, Health Care Coverage, for the Year(s) - 2001-2003, 2002-2004, 2003-2005, 2004-2006, 2005-2007, 2006-2008, 2007-2009, 2008-2010**

*Note: Weighted numbers (#) represent 3-yr averages, percentages and 95% confidence intervals; Respondents aged 18 years and older; n/r (Not Reportable) - If the unweighted total responses for a dimension (row) is <50 that row will not be shown; n/a (Not Available) - Not asked of a subset of respondents*

**Year: 2008-2010**

Island	Yes			No			Estimated Population (3-Yr Avg)
	#	%	C.I. (95%)	#	%	C.I. (95%)	#
Hawaii	52,600	38.6	36.7 - 40.4	83,800	61.4	59.6 - 63.3	136,300
Kauai	18,500	38.4	35.5 - 41.3	29,600	61.6	58.7 - 64.5	48,000
Lanai	700	39.4	33.8 - 45.1	1,000	60.6	54.9 - 66.2	1,700
Maui	38,500	38.5	36.2 - 40.8	61,300	61.5	59.2 - 63.8	99,800
Molokai	3,600	46.6	41.8 - 51.4	4,100	53.4	48.6 - 58.2	7,700
Oahu	336,700	48.7	47.3 - 50.0	355,100	51.3	50.0 - 52.7	691,800

Community	Yes			No			Estimated Population (3-Yr Avg)
	#	%	C.I. (95%)	#	%	C.I. (95%)	#
Aiea/ Pearl City	32,800	52.1	47.6 - 56.6	30,200	47.9	43.4 - 52.4	63,100
Ala Moana	12,100	45.8	39.9 - 51.6	14,400	54.2	48.4 - 60.1	26,500

**Flu - had shot in past 12 mons by State, County, Island, Community, BRFSS Age Group, DOH Race-Ethnicity, Gender, Education Level, Employment Status (Grouped), Household Income, Poverty Level, Marital Status (Grouped), Married, Health Care Coverage, for the Year(s) - 2001-2003, 2002-2004, 2003-2005, 2004-2006, 2005-2007, 2006-2008, 2007-2009, 2008-2010**

*Note: Weighted numbers (#) represent 3-yr averages, percentages and 95% confidence intervals; Respondents aged 18 years and older; n/r (Not Reportable) - If the unweighted total responses for a dimension (row) is <50 that row will not be shown; n/a (Not Available) - Not asked of a subset of respondents*

**Year: 2008-2010**

Community	Yes			No			Estimated Population (3-Yr Avg)
	#	%	C.I. (95%)	#	%	C.I. (95%)	#
Hanalei/ Kapaa	6,900	34.6	30.7 - 38.5	13,000	65.4	61.5 - 69.3	19,900
Hilo	18,800	45.4	41.8 - 49.0	22,600	54.6	51.0 - 58.2	41,400
Kaaawa/ Kahaluu/ Kaneohe	24,200	49.0	44.1 - 53.8	25,200	51.0	46.2 - 55.9	49,400
Kahului	13,800	40.6	36.5 - 44.7	20,200	59.4	55.3 - 63.5	34,000
Kailua/ Waimanalo	24,100	47.9	43.2 - 52.6	26,200	52.1	47.4 - 56.8	50,300
Kaimuki/ Palolo/ Waikiki	30,600	53.9	49.7 - 58.1	26,200	46.1	41.9 - 50.3	56,700
Kona	10,800	36.9	33.2 - 40.7	18,400	63.1	59.3 - 66.8	29,200
Lahaina/ Wailuku	13,300	41.1	36.8 - 45.4	19,100	58.9	54.6 - 63.2	32,400
Lanai	700	39.4	33.8 - 45.1	1,000	60.6	54.9 - 66.2	1,700
Lihue-Waimea	11,600	41.1	37.1 - 45.2	16,600	58.9	54.8 - 62.9	28,200
Manoa/ Upper Makiki	26,200	54.1	49.5 - 58.8	22,200	45.9	41.2 - 50.5	48,500
Millilani/ Wahiawa	36,700	49.8	45.8 - 53.7	37,100	50.2	46.3 - 54.2	73,900

**Flu - had shot in past 12 mons by State, County, Island, Community, BRFSS Age Group, DOH Race-Ethnicity, Gender, Education Level, Employment Status (Grouped), Household Income, Poverty Level, Marital Status (Grouped), Married, Health Care Coverage, for the Year(s) - 2001-2003, 2002-2004, 2003-2005, 2004-2006, 2005-2007, 2006-2008, 2007-2009, 2008-2010**

*Note: Weighted numbers (#) represent 3-yr averages, percentages and 95% confidence intervals; Respondents aged 18 years and older; n/r (Not Reportable) - If the unweighted total responses for a dimension (row) is <50 that row will not be shown; n/a (Not Available) - Not asked of a subset of respondents*

**Year: 2008-2010**

Community	Yes			No			Estimated Population (3-Yr Avg)
	#	%	C.I. (95%)	#	%	C.I. (95%)	#
Molokai	3,600	46.6	41.8 - 51.4	4,100	53.4	48.6 - 58.2	7,700
Nanakuli/ Waianae	14,800	42.3	34.9 - 49.7	20,100	57.7	50.3 - 65.1	34,900
N.Hawaii	9,100	34.4	30.2 - 38.5	17,500	65.6	61.5 - 69.8	26,600
N.Shore/ Laie	8,900	40.3	32.6 - 48.0	13,200	59.7	52.0 - 67.4	22,200
Nuuanu/ Kalihi/ Moanalua	32,000	47.6	42.9 - 52.3	35,200	52.4	47.7 - 57.1	67,200
Puna/ Kau	13,800	35.4	31.9 - 38.8	25,200	64.6	61.2 - 68.1	39,000
Salt Lake/ Foster Village	16,100	44.8	38.9 - 50.6	19,800	55.2	49.4 - 61.1	35,900
Upcountry/ Hana	11,300	33.9	30.6 - 37.3	22,000	66.1	62.7 - 69.4	33,300
Waialae/ Kahala/ Hawaii Kai	24,600	54.6	49.7 - 59.4	20,500	45.4	40.6 - 50.3	45,100
Waipahu/ Kapolei/ Ewa	53,500	45.3	41.8 - 48.7	64,600	54.7	51.3 - 58.2	118,100

**Flu - had shot in past 12 mons by State, County, Island, Community, BRFSS Age Group, DOH Race-Ethnicity, Gender, Education Level, Employment Status (Grouped), Household Income, Poverty Level, Marital Status (Grouped), Married, Health Care Coverage, for the Year(s) - 2001-2003, 2002-2004, 2003-2005, 2004-2006, 2005-2007, 2006-2008, 2007-2009, 2008-2010**

*Note: Weighted numbers (#) represent 3-yr averages, percentages and 95% confidence intervals; Respondents aged 18 years and older; n/r (Not Reportable) - If the unweighted total responses for a dimension (row) is <50 that row will not be shown; n/a (Not Available) - Not asked of a subset of respondents*

**Year: 2008-2010**

BRFSS Age Group	Yes			No			Estimated Population (3-Yr Avg)
	#	%	C.I. (95%)	#	%	C.I. (95%)	#
18-24	34,900	29.7	25.9 - 33.4	82,700	70.3	66.6 - 74.1	117,700
25-34	56,400	31.9	29.0 - 34.8	120,500	68.1	65.2 - 71.0	176,900
35-44	61,200	35.4	33.0 - 37.7	111,900	64.6	62.3 - 67.0	173,100
45-54	73,900	42.0	39.9 - 44.0	102,100	58.0	56.0 - 60.1	176,000
55-64	82,400	54.8	53.0 - 56.7	67,900	45.2	43.3 - 47.0	150,300
65-74	64,800	71.2	69.2 - 73.2	26,200	28.8	26.8 - 30.8	91,000
75+	73,800	77.2	75.2 - 79.1	21,800	22.8	20.9 - 24.8	95,700



**Flu - had shot in past 12 mons by State, County, Island, Community, BRFSS Age Group, DOH Race-Ethnicity, Gender, Education Level, Employment Status (Grouped), Household Income, Poverty Level, Marital Status (Grouped), Married, Health Care Coverage, for the Year(s) - 2001-2003, 2002-2004, 2003-2005, 2004-2006, 2005-2007, 2006-2008, 2007-2009, 2008-2010**

*Note: Weighted numbers (#) represent 3-yr averages, percentages and 95% confidence intervals; Respondents aged 18 years and older; n/r (Not Reportable) - If the unweighted total responses for a dimension (row) is <50 that row will not be shown; n/a (Not Available) - Not asked of a subset of respondents*

**Year: 2008-2010**

DOH Race-Ethnicity	Yes			No			Estimated Population (3-Yr Avg)
	#	%	C.I. (95%)	#	%	C.I. (95%)	#
Caucasian	133,600	42.5	41.0 - 44.0	180,800	57.5	56.0 - 59.0	314,400
Native Hawaiian	52,600	41.2	38.2 - 44.1	75,200	58.8	55.9 - 61.8	127,800
Chinese	33,200	53.9	49.8 - 58.0	28,400	46.1	42.0 - 50.2	61,600
Filipino	68,300	44.0	41.0 - 47.0	87,000	56.0	53.0 - 59.0	155,300
Japanese	126,200	54.9	52.8 - 57.0	103,500	45.1	43.0 - 47.2	229,700
Black	5,200	36.1	28.0 - 44.2	9,200	63.9	55.8 - 72.0	14,500
Native Alaskan/ American Indian	1,300	27.7	16.4 - 39.0	3,500	72.3	61.0 - 83.6	4,800
Other Asian	10,900	44.3	37.1 - 51.6	13,700	55.7	48.4 - 62.9	24,700
Other Pacific Islander	9,600	33.6	25.6 - 41.5	19,000	66.4	58.5 - 74.4	28,500
Other	8,100	38.3	31.4 - 45.3	13,100	61.7	54.7 - 68.6	21,200

**Flu - had shot in past 12 mons by State, County, Island, Community, BRFSS Age Group, DOH Race-Ethnicity, Gender, Education Level, Employment Status (Grouped), Household Income, Poverty Level, Marital Status (Grouped), Married, Health Care Coverage, for the Year(s) - 2001-2003, 2002-2004, 2003-2005, 2004-2006, 2005-2007, 2006-2008, 2007-2009, 2008-2010**

*Note: Weighted numbers (#) represent 3-yr averages, percentages and 95% confidence intervals; Respondents aged 18 years and older; n/r (Not Reportable) - If the unweighted total responses for a dimension (row) is <50 that row will not be shown; n/a (Not Available) - Not asked of a subset of respondents*

**Year: 2008-2010**

Gender	Yes			No			Estimated Population (3-Yr Avg)
	#	%	C.I. (95%)	#	%	C.I. (95%)	#
Male	205,100	42.0	40.4 - 43.5	283,700	58.0	56.5 - 59.6	488,800
Female	245,300	49.4	48.1 - 50.7	251,300	50.6	49.3 - 51.9	496,700

Education Level	Yes			No			Estimated Population (3-Yr Avg)
	#	%	C.I. (95%)	#	%	C.I. (95%)	#
Never attended school/ Only Kindergarten to Grades 8	6,700	58.9	50.5 - 67.4	4,700	41.1	32.6 - 49.5	11,400
Grades 9 thru 11 (Some High School)	16,400	42.5	36.7 - 48.4	22,100	57.5	51.6 - 63.3	38,500
Grades 12 or GED (High School Grad)	119,300	42.1	40.1 - 44.0	164,300	57.9	56.0 - 59.9	283,600
College 1 to 3 years (Some College/ Tech)	121,300	42.9	40.9 - 44.8	161,500	57.1	55.2 - 59.1	282,900
College 4 years or more (College Grad)	186,200	50.6	49.0 - 52.1	182,000	49.4	47.9 - 51.0	368,200

**Flu - had shot in past 12 mons by State, County, Island, Community, BRFSS Age Group, DOH Race-Ethnicity, Gender, Education Level, Employment Status (Grouped), Household Income, Poverty Level, Marital Status (Grouped), Married, Health Care Coverage, for the Year(s) - 2001-2003, 2002-2004, 2003-2005, 2004-2006, 2005-2007, 2006-2008, 2007-2009, 2008-2010**

*Note: Weighted numbers (#) represent 3-yr averages, percentages and 95% confidence intervals; Respondents aged 18 years and older; n/r (Not Reportable) - If the unweighted total responses for a dimension (row) is <50 that row will not be shown; n/a (Not Available) - Not asked of a subset of respondents*

**Year: 2008-2010**

Employment Status (Grouped)	Yes			No			Estimated Population (3-Yr Avg)
	#	%	C.I. (95%)	#	%	C.I. (95%)	#
<b>Employed</b>	250,700	41.3	40.0 - 42.6	356,500	58.7	57.4 - 60.0	607,200
<b>Unemployed</b>	18,100	30.1	25.8 - 34.4	42,000	69.9	65.6 - 74.2	60,100
<b>Retired/Unable to work</b>	145,000	68.1	66.4 - 69.7	68,000	31.9	30.3 - 33.6	213,100
<b>Student/Homemaker</b>	36,500	35.0	31.6 - 38.5	67,700	65.0	61.5 - 68.4	104,300

**Flu - had shot in past 12 mons by State, County, Island, Community, BRFSS Age Group, DOH Race-Ethnicity, Gender, Education Level, Employment Status (Grouped), Household Income, Poverty Level, Marital Status (Grouped), Married, Health Care Coverage, for the Year(s) - 2001-2003, 2002-2004, 2003-2005, 2004-2006, 2005-2007, 2006-2008, 2007-2009, 2008-2010**

*Note: Weighted numbers (#) represent 3-yr averages, percentages and 95% confidence intervals; Respondents aged 18 years and older; n/r (Not Reportable) - If the unweighted total responses for a dimension (row) is <50 that row will not be shown; n/a (Not Available) - Not asked of a subset of respondents*

**Year: 2008-2010**

Household Income	Yes			No			Estimated Population (3-Yr Avg)
	#	%	C.I. (95%)	#	%	C.I. (95%)	#
Less than \$10,000	10,600	34.4	29.2 - 39.6	20,200	65.6	60.4 - 70.8	30,800
\$10,000 to \$14,999	11,000	44.6	38.2 - 51.0	13,700	55.4	49.0 - 61.8	24,700
\$15,000 to \$19,999	20,400	43.1	38.6 - 47.6	26,900	56.9	52.4 - 61.4	47,400
\$20,000 to \$24,999	28,800	48.2	44.0 - 52.5	30,900	51.8	47.5 - 56.0	59,600
\$25,000 to \$34,999	45,700	46.3	43.1 - 49.5	53,000	53.7	50.5 - 56.9	98,700
\$35,000 to \$49,999	65,000	44.8	42.3 - 47.4	80,000	55.2	52.6 - 57.7	145,100
\$50,000 to \$74,999	78,400	46.0	43.6 - 48.4	92,000	54.0	51.6 - 56.4	170,400
\$75,000 or more	149,500	47.8	46.0 - 49.6	163,300	52.2	50.4 - 54.0	312,800

**Flu - had shot in past 12 mons by State, County, Island, Community, BRFSS Age Group, DOH Race-Ethnicity, Gender, Education Level, Employment Status (Grouped), Household Income, Poverty Level, Marital Status (Grouped), Married, Health Care Coverage, for the Year(s) - 2001-2003, 2002-2004, 2003-2005, 2004-2006, 2005-2007, 2006-2008, 2007-2009, 2008-2010**

*Note: Weighted numbers (#) represent 3-yr averages, percentages and 95% confidence intervals; Respondents aged 18 years and older; n/r (Not Reportable) - If the unweighted total responses for a dimension (row) is <50 that row will not be shown; n/a (Not Available) - Not asked of a subset of respondents*

**Year: 2008-2010**

Poverty Level	Yes			No			Estimated Population (3-Yr Avg)
	#	%	C.I. (95%)	#	%	C.I. (95%)	#
<b>0-130%</b>	79,300	39.2	36.7 - 41.8	122,900	60.8	58.2 - 63.3	202,200
<b>131-185%</b>	60,500	45.1	42.3 - 47.9	73,600	54.9	52.1 - 57.7	134,100
<b>186+%</b>	269,700	48.8	47.5 - 50.0	283,300	51.2	50.0 - 52.5	553,000

Marital Status (Grouped)	Yes			No			Estimated Population (3-Yr Avg)
	#	%	C.I. (95%)	#	%	C.I. (95%)	#
<b>Married</b>	283,600	49.1	47.9 - 50.4	293,700	50.9	49.6 - 52.1	577,300
<b>Unmarried Couple</b>	12,000	38.4	31.8 - 45.0	19,200	61.6	55.0 - 68.2	31,200
<b>Widowed</b>	40,600	71.0	68.4 - 73.6	16,600	29.0	26.4 - 31.6	57,100
<b>Other</b>	114,300	35.8	33.8 - 37.7	205,400	64.2	62.3 - 66.2	319,800

**Flu - had shot in past 12 mons by State, County, Island, Community, BRFSS Age Group, DOH Race-Ethnicity, Gender, Education Level, Employment Status (Grouped), Household Income, Poverty Level, Marital Status (Grouped), Married, Health Care Coverage, for the Year(s) - 2001-2003, 2002-2004, 2003-2005, 2004-2006, 2005-2007, 2006-2008, 2007-2009, 2008-2010**

*Note: Weighted numbers (#) represent 3-yr averages, percentages and 95% confidence intervals; Respondents aged 18 years and older; n/r (Not Reportable) - If the unweighted total responses for a dimension (row) is <50 that row will not be shown; n/a (Not Available) - Not asked of a subset of respondents*

**Year: 2008-2010**

<b>Married</b>	<b>Yes</b>			<b>No</b>			<b>Estimated Population (3-Yr Avg)</b>
	<b>#</b>	<b>%</b>	<b>C.I. (95%)</b>	<b>#</b>	<b>%</b>	<b>C.I. (95%)</b>	<b>#</b>
<b>Yes</b>	288,100	49.0	47.7 - 50.2	300,300	51.0	49.8 - 52.3	588,400
<b>No</b>	161,500	40.9	39.2 - 42.6	233,600	59.1	57.4 - 60.8	395,100

<b>Health Care Coverage</b>	<b>Yes</b>			<b>No</b>			<b>Estimated Population (3-Yr Avg)</b>
	<b>#</b>	<b>%</b>	<b>C.I. (95%)</b>	<b>#</b>	<b>%</b>	<b>C.I. (95%)</b>	<b>#</b>
<b>Yes</b>	438,400	47.8	46.7 - 48.8	479,000	52.2	51.2 - 53.3	917,300
<b>No</b>	11,300	17.2	13.2 - 21.1	54,500	82.8	78.9 - 86.8	65,800

**Flu - had shot in past 12 mons by State, County, Island, Community, BRFSS Age Group, DOH Race-Ethnicity, Gender, Education Level, Employment Status (Grouped), Household Income, Poverty Level, Marital Status (Grouped), Married, Health Care Coverage, for the Year(s) - 2001-2003, 2002-2004, 2003-2005, 2004-2006, 2005-2007, 2006-2008, 2007-2009, 2008-2010**

*Note: Weighted numbers (#) represent 3-yr averages, percentages and 95% confidence intervals; Respondents aged 18 years and older; n/r (Not Reportable) - If the unweighted total responses for a dimension (row) is <50 that row will not be shown; n/a (Not Available) - Not asked of a subset of respondents*

**Year: 2007-2009**

State	Yes			No			Estimated Population (3-Yr Avg)
	#	%	C.I. (95%)	#	%	C.I. (95%)	#
Hawaii State	438,800	44.7	43.7 - 45.7	543,000	55.3	54.3 - 56.3	981,800

County	Yes			No			Estimated Population (3-Yr Avg)
	#	%	C.I. (95%)	#	%	C.I. (95%)	#
Hawaii	50,000	37.8	36.0 - 39.6	82,400	62.2	60.4 - 64.0	132,400
Honolulu	328,100	47.3	46.0 - 48.6	366,100	52.7	51.4 - 54.0	694,100
Kauai	18,600	39.2	36.4 - 42.0	29,000	60.8	58.0 - 63.6	47,600
Maui	42,100	39.1	37.0 - 41.1	65,600	60.9	58.9 - 63.0	107,700

**Flu - had shot in past 12 mons by State, County, Island, Community, BRFSS Age Group, DOH Race-Ethnicity, Gender, Education Level, Employment Status (Grouped), Household Income, Poverty Level, Marital Status (Grouped), Married, Health Care Coverage, for the Year(s) - 2001-2003, 2002-2004, 2003-2005, 2004-2006, 2005-2007, 2006-2008, 2007-2009, 2008-2010**

*Note: Weighted numbers (#) represent 3-yr averages, percentages and 95% confidence intervals; Respondents aged 18 years and older; n/r (Not Reportable) - If the unweighted total responses for a dimension (row) is <50 that row will not be shown; n/a (Not Available) - Not asked of a subset of respondents*

**Year: 2007-2009**

Island	Yes			No			Estimated Population (3-Yr Avg)
	#	%	C.I. (95%)	#	%	C.I. (95%)	#
Hawaii	50,000	37.8	36.0 - 39.6	82,400	62.2	60.4 - 64.0	132,400
Kauai	18,600	39.2	36.4 - 42.0	29,000	60.8	58.0 - 63.6	47,600
Lanai	700	38.1	33.1 - 43.1	1,100	61.9	56.9 - 66.9	1,800
Maui	37,500	38.3	36.1 - 40.5	60,300	61.7	59.5 - 63.9	97,800
Molokai	3,900	48.6	43.9 - 53.3	4,100	51.4	46.7 - 56.1	8,000
Oahu	328,100	47.3	46.0 - 48.6	366,100	52.7	51.4 - 54.0	694,100

Community	Yes			No			Estimated Population (3-Yr Avg)
	#	%	C.I. (95%)	#	%	C.I. (95%)	#
Aiea/ Pearl City	30,700	48.3	43.9 - 52.7	32,900	51.7	47.3 - 56.1	63,600
Ala Moana	13,800	46.6	41.0 - 52.2	15,800	53.4	47.8 - 59.0	29,500



**Flu - had shot in past 12 mons by State, County, Island, Community, BRFSS Age Group, DOH Race-Ethnicity, Gender, Education Level, Employment Status (Grouped), Household Income, Poverty Level, Marital Status (Grouped), Married, Health Care Coverage, for the Year(s) - 2001-2003, 2002-2004, 2003-2005, 2004-2006, 2005-2007, 2006-2008, 2007-2009, 2008-2010**

*Note: Weighted numbers (#) represent 3-yr averages, percentages and 95% confidence intervals; Respondents aged 18 years and older; n/r (Not Reportable) - If the unweighted total responses for a dimension (row) is <50 that row will not be shown; n/a (Not Available) - Not asked of a subset of respondents*

**Year: 2007-2009**

Community	Yes			No			Estimated Population (3-Yr Avg)
	#	%	C.I. (95%)	#	%	C.I. (95%)	#
Hanalei/ Kapaa	7,100	35.9	31.8 - 39.9	12,700	64.1	60.1 - 68.2	19,700
Hilo	17,400	43.9	40.5 - 47.3	22,200	56.1	52.7 - 59.5	39,500
Kaaawa/ Kahaluu/ Kaneohe	24,200	50.3	45.6 - 55.1	23,800	49.7	44.9 - 54.4	48,000
Kahului	14,000	41.7	37.7 - 45.7	19,500	58.3	54.3 - 62.3	33,500
Kailua/ Waimanalo	24,500	47.9	43.3 - 52.5	26,600	52.1	47.5 - 56.7	51,100
Kaimuki/ Palolo/ Waikiki	28,500	50.1	46.1 - 54.2	28,300	49.9	45.8 - 53.9	56,800
Kona	9,800	34.6	31.1 - 38.2	18,500	65.4	61.8 - 68.9	28,300
Lahaina/ Wailuku	12,400	39.4	35.4 - 43.4	19,000	60.6	56.6 - 64.6	31,400
Lanai	700	38.1	33.1 - 43.1	1,100	61.9	56.9 - 66.9	1,800
Lihue-Waimea	11,600	41.5	37.7 - 45.3	16,300	58.5	54.7 - 62.3	27,900
Manoa/ Upper Makiki	22,700	49.8	45.3 - 54.2	22,900	50.2	45.8 - 54.7	45,500
Mililani/ Wahiawa	36,200	47.8	43.9 - 51.7	39,500	52.2	48.3 - 56.1	75,600

**Flu - had shot in past 12 mons by State, County, Island, Community, BRFSS Age Group, DOH Race-Ethnicity, Gender, Education Level, Employment Status (Grouped), Household Income, Poverty Level, Marital Status (Grouped), Married, Health Care Coverage, for the Year(s) - 2001-2003, 2002-2004, 2003-2005, 2004-2006, 2005-2007, 2006-2008, 2007-2009, 2008-2010**

*Note: Weighted numbers (#) represent 3-yr averages, percentages and 95% confidence intervals; Respondents aged 18 years and older; n/r (Not Reportable) - If the unweighted total responses for a dimension (row) is <50 that row will not be shown; n/a (Not Available) - Not asked of a subset of respondents*

**Year: 2007-2009**

Community	Yes			No			Estimated Population (3-Yr Avg)
	#	%	C.I. (95%)	#	%	C.I. (95%)	#
Molokai	3,900	48.6	43.9 - 53.3	4,100	51.4	46.7 - 56.1	8,000
Nanakuli/ Waianae	14,900	44.7	37.7 - 51.8	18,400	55.3	48.2 - 62.3	33,400
N.Hawaii	9,800	35.4	31.3 - 39.6	17,900	64.6	60.4 - 68.7	27,700
N.Shore/ Laie	8,100	38.1	30.7 - 45.4	13,200	61.9	54.6 - 69.3	21,300
Nuuanu/ Kalihi/ Moanalua	31,800	46.8	42.2 - 51.5	36,100	53.2	48.5 - 57.8	67,900
Puna/ Kau	13,000	35.3	31.9 - 38.7	23,900	64.7	61.3 - 68.1	36,900
Salt Lake/ Foster Village	15,200	44.6	38.7 - 50.5	18,900	55.4	49.5 - 61.3	34,100
Upcountry/ Hana	11,100	33.8	30.5 - 37.1	21,800	66.2	62.9 - 69.5	32,900
Waialae/ Kahala/ Hawaii Kai	24,000	52.5	47.7 - 57.2	21,800	47.5	42.8 - 52.3	45,800
Waipahu/ Kapolei/ Ewa	53,600	44.1	40.8 - 47.4	67,800	55.9	52.6 - 59.2	121,400

**Flu - had shot in past 12 mons by State, County, Island, Community, BRFSS Age Group, DOH Race-Ethnicity, Gender, Education Level, Employment Status (Grouped), Household Income, Poverty Level, Marital Status (Grouped), Married, Health Care Coverage, for the Year(s) - 2001-2003, 2002-2004, 2003-2005, 2004-2006, 2005-2007, 2006-2008, 2007-2009, 2008-2010**

*Note: Weighted numbers (#) represent 3-yr averages, percentages and 95% confidence intervals; Respondents aged 18 years and older; n/r (Not Reportable) - If the unweighted total responses for a dimension (row) is <50 that row will not be shown; n/a (Not Available) - Not asked of a subset of respondents*

**Year: 2007-2009**

BRFSS Age Group	Yes			No			Estimated Population (3-Yr Avg)
	#	%	C.I. (95%)	#	%	C.I. (95%)	#
18-24	33,000	27.7	24.1 - 31.4	86,100	72.3	68.6 - 75.9	119,100
25-34	51,900	30.5	27.8 - 33.2	117,900	69.5	66.8 - 72.2	169,800
35-44	58,800	33.7	31.5 - 35.9	115,700	66.3	64.1 - 68.5	174,500
45-54	72,900	40.7	38.7 - 42.6	106,400	59.3	57.4 - 61.3	179,300
55-64	81,100	53.3	51.3 - 55.3	71,100	46.7	44.7 - 48.7	152,200
65-74	63,200	72.2	70.1 - 74.3	24,300	27.8	25.7 - 29.9	87,500
75+	75,500	79.6	77.6 - 81.6	19,300	20.4	18.4 - 22.4	94,800

**Flu - had shot in past 12 mons by State, County, Island, Community, BRFSS Age Group, DOH Race-Ethnicity, Gender, Education Level, Employment Status (Grouped), Household Income, Poverty Level, Marital Status (Grouped), Married, Health Care Coverage, for the Year(s) - 2001-2003, 2002-2004, 2003-2005, 2004-2006, 2005-2007, 2006-2008, 2007-2009, 2008-2010**

*Note: Weighted numbers (#) represent 3-yr averages, percentages and 95% confidence intervals; Respondents aged 18 years and older; n/r (Not Reportable) - If the unweighted total responses for a dimension (row) is <50 that row will not be shown; n/a (Not Available) - Not asked of a subset of respondents*

**Year: 2007-2009**

DOH Race-Ethnicity	Yes			No			Estimated Population (3-Yr Avg)
	#	%	C.I. (95%)	#	%	C.I. (95%)	#
Caucasian	129,600	41.0	39.5 - 42.5	186,600	59.0	57.5 - 60.5	316,200
Native Hawaiian	51,200	39.7	36.9 - 42.4	77,900	60.3	57.6 - 63.1	129,000
Chinese	31,000	51.0	46.9 - 55.2	29,800	49.0	44.8 - 53.1	60,800
Filipino	71,400	44.9	42.0 - 47.8	87,700	55.1	52.2 - 58.0	159,100
Japanese	121,100	54.1	52.0 - 56.1	103,000	45.9	43.9 - 48.0	224,100
Black	5,200	34.0	26.3 - 41.7	10,100	66.0	58.3 - 73.7	15,300
Native Alaskan/ American Indian	1,800	32.3	21.1 - 43.5	3,800	67.7	56.5 - 78.9	5,600
Other Asian	9,600	41.3	34.3 - 48.4	13,600	58.7	51.6 - 65.7	23,200
Other Pacific Islander	8,700	35.8	27.9 - 43.7	15,600	64.2	56.3 - 72.1	24,200
Other	7,800	37.1	30.4 - 43.7	13,200	62.9	56.3 - 69.6	21,000

**Flu - had shot in past 12 mons by State, County, Island, Community, BRFSS Age Group, DOH Race-Ethnicity, Gender, Education Level, Employment Status (Grouped), Household Income, Poverty Level, Marital Status (Grouped), Married, Health Care Coverage, for the Year(s) - 2001-2003, 2002-2004, 2003-2005, 2004-2006, 2005-2007, 2006-2008, 2007-2009, 2008-2010**

*Note: Weighted numbers (#) represent 3-yr averages, percentages and 95% confidence intervals; Respondents aged 18 years and older; n/r (Not Reportable) - If the unweighted total responses for a dimension (row) is <50 that row will not be shown; n/a (Not Available) - Not asked of a subset of respondents*

**Year: 2007-2009**

Gender	Yes			No			Estimated Population (3-Yr Avg)
	#	%	C.I. (95%)	#	%	C.I. (95%)	#
Male	202,800	41.7	40.2 - 43.2	283,000	58.3	56.8 - 59.8	485,800
Female	236,000	47.6	46.3 - 48.9	260,000	52.4	51.1 - 53.7	496,000

Education Level	Yes			No			Estimated Population (3-Yr Avg)
	#	%	C.I. (95%)	#	%	C.I. (95%)	#
Never attended school/ Only Kindergarten to Grades 8	8,200	65.2	57.0 - 73.4	4,400	34.8	26.6 - 43.0	12,600
Grades 9 thru 11 (Some High School)	16,700	44.8	39.6 - 50.1	20,600	55.2	49.9 - 60.4	37,300
Grades 12 or GED (High School Grad)	120,700	41.5	39.6 - 43.4	170,200	58.5	56.6 - 60.4	290,900
College 1 to 3 years (Some College/ Tech)	122,500	43.0	41.1 - 44.9	162,400	57.0	55.1 - 58.9	284,800
College 4 years or more (College Grad)	170,300	48.0	46.4 - 49.5	184,800	52.0	50.5 - 53.6	355,100

**Flu - had shot in past 12 mons by State, County, Island, Community, BRFSS Age Group, DOH Race-Ethnicity, Gender, Education Level, Employment Status (Grouped), Household Income, Poverty Level, Marital Status (Grouped), Married, Health Care Coverage, for the Year(s) - 2001-2003, 2002-2004, 2003-2005, 2004-2006, 2005-2007, 2006-2008, 2007-2009, 2008-2010**

*Note: Weighted numbers (#) represent 3-yr averages, percentages and 95% confidence intervals; Respondents aged 18 years and older; n/r (Not Reportable) - If the unweighted total responses for a dimension (row) is <50 that row will not be shown; n/a (Not Available) - Not asked of a subset of respondents*

**Year: 2007-2009**

Employment Status (Grouped)	Yes			No			Estimated Population (3-Yr Avg)
	#	%	C.I. (95%)	#	%	C.I. (95%)	#
<b>Employed</b>	243,700	39.1	37.9 - 40.4	379,500	60.9	59.6 - 62.1	623,300
<b>Unemployed</b>	14,900	31.7	26.8 - 36.6	32,200	68.3	63.4 - 73.2	47,100
<b>Retired/Unable to work</b>	150,800	69.4	67.8 - 71.1	66,400	30.6	28.9 - 32.2	217,200
<b>Student/Homemaker</b>	29,200	31.2	27.9 - 34.6	64,300	68.8	65.4 - 72.1	93,500

**Flu - had shot in past 12 mons by State, County, Island, Community, BRFSS Age Group, DOH Race-Ethnicity, Gender, Education Level, Employment Status (Grouped), Household Income, Poverty Level, Marital Status (Grouped), Married, Health Care Coverage, for the Year(s) - 2001-2003, 2002-2004, 2003-2005, 2004-2006, 2005-2007, 2006-2008, 2007-2009, 2008-2010**

*Note: Weighted numbers (#) represent 3-yr averages, percentages and 95% confidence intervals; Respondents aged 18 years and older; n/r (Not Reportable) - If the unweighted total responses for a dimension (row) is <50 that row will not be shown; n/a (Not Available) - Not asked of a subset of respondents*

**Year: 2007-2009**

Household Income	Yes			No			Estimated Population (3-Yr Avg)
	#	%	C.I. (95%)	#	%	C.I. (95%)	#
Less than \$10,000	9,900	37.6	32.2 - 43.1	16,400	62.4	56.9 - 67.8	26,300
\$10,000 to \$14,999	11,000	43.0	37.2 - 48.8	14,500	57.0	51.2 - 62.8	25,500
\$15,000 to \$19,999	19,500	44.6	40.3 - 48.9	24,200	55.4	51.1 - 59.7	43,700
\$20,000 to \$24,999	27,100	47.1	43.2 - 51.1	30,400	52.9	48.9 - 56.8	57,600
\$25,000 to \$34,999	47,900	46.2	43.2 - 49.2	55,800	53.8	50.8 - 56.8	103,800
\$35,000 to \$49,999	70,400	45.9	43.4 - 48.4	82,900	54.1	51.6 - 56.6	153,300
\$50,000 to \$74,999	76,900	43.7	41.4 - 46.0	99,000	56.3	54.0 - 58.6	175,900
\$75,000 or more	135,300	44.5	42.8 - 46.3	168,600	55.5	53.7 - 57.2	304,000

**Flu - had shot in past 12 mons by State, County, Island, Community, BRFSS Age Group, DOH Race-Ethnicity, Gender, Education Level, Employment Status (Grouped), Household Income, Poverty Level, Marital Status (Grouped), Married, Health Care Coverage, for the Year(s) - 2001-2003, 2002-2004, 2003-2005, 2004-2006, 2005-2007, 2006-2008, 2007-2009, 2008-2010**

*Note: Weighted numbers (#) represent 3-yr averages, percentages and 95% confidence intervals; Respondents aged 18 years and older; n/r (Not Reportable) - If the unweighted total responses for a dimension (row) is <50 that row will not be shown; n/a (Not Available) - Not asked of a subset of respondents*

**Year: 2007-2009**

Poverty Level	Yes			No			Estimated Population (3-Yr Avg)
	#	%	C.I. (95%)	#	%	C.I. (95%)	#
<b>0-130%</b>	76,500	39.8	37.4 - 42.3	115,700	60.2	57.7 - 62.6	192,200
<b>131-185%</b>	54,700	43.5	40.6 - 46.5	71,000	56.5	53.5 - 59.4	125,600
<b>186+%</b>	266,800	46.6	45.5 - 47.8	305,100	53.4	52.2 - 54.5	571,900

Marital Status (Grouped)	Yes			No			Estimated Population (3-Yr Avg)
	#	%	C.I. (95%)	#	%	C.I. (95%)	#
<b>Married</b>	276,600	47.6	46.4 - 48.8	304,800	52.4	51.2 - 53.6	581,500
<b>Unmarried Couple</b>	8,800	30.9	25.1 - 36.6	19,800	69.1	63.4 - 74.9	28,600
<b>Widowed</b>	41,400	72.3	69.6 - 74.9	15,900	27.7	25.1 - 30.4	57,400
<b>Other</b>	111,900	35.6	33.7 - 37.5	202,500	64.4	62.5 - 66.3	314,400



**Flu - had shot in past 12 mons by State, County, Island, Community, BRFSS Age Group, DOH Race-Ethnicity, Gender, Education Level, Employment Status (Grouped), Household Income, Poverty Level, Marital Status (Grouped), Married, Health Care Coverage, for the Year(s) - 2001-2003, 2002-2004, 2003-2005, 2004-2006, 2005-2007, 2006-2008, 2007-2009, 2008-2010**

*Note: Weighted numbers (#) represent 3-yr averages, percentages and 95% confidence intervals; Respondents aged 18 years and older; n/r (Not Reportable) - If the unweighted total responses for a dimension (row) is <50 that row will not be shown; n/a (Not Available) - Not asked of a subset of respondents*

**Year: 2007-2009**

Married	Yes			No			Estimated Population (3-Yr Avg)
	#	%	C.I. (95%)	#	%	C.I. (95%)	#
Yes	280,700	47.4	46.2 - 48.6	311,100	52.6	51.4 - 53.8	591,800
No	157,400	40.5	38.9 - 42.2	230,800	59.5	57.8 - 61.1	388,200

Health Care Coverage	Yes			No			Estimated Population (3-Yr Avg)
	#	%	C.I. (95%)	#	%	C.I. (95%)	#
Yes	428,400	46.7	45.7 - 47.7	488,700	53.3	52.3 - 54.3	917,100
No	10,000	15.9	12.4 - 19.5	52,800	84.1	80.5 - 87.6	62,800

**Flu - had shot in past 12 mons by State, County, Island, Community, BRFSS Age Group, DOH Race-Ethnicity, Gender, Education Level, Employment Status (Grouped), Household Income, Poverty Level, Marital Status (Grouped), Married, Health Care Coverage, for the Year(s) - 2001-2003, 2002-2004, 2003-2005, 2004-2006, 2005-2007, 2006-2008, 2007-2009, 2008-2010**

*Note: Weighted numbers (#) represent 3-yr averages, percentages and 95% confidence intervals; Respondents aged 18 years and older; n/r (Not Reportable) - If the unweighted total responses for a dimension (row) is <50 that row will not be shown; n/a (Not Available) - Not asked of a subset of respondents*

**Year: 2006-2008**

State	Yes			No			Estimated Population (3-Yr Avg)
	#	%	C.I. (95%)	#	%	C.I. (95%)	#
Hawaii State	418,900	43.0	42.0 - 43.9	556,000	57.0	56.1 - 58.0	974,900

County	Yes			No			Estimated Population (3-Yr Avg)
	#	%	C.I. (95%)	#	%	C.I. (95%)	#
Hawaii	44,800	35.2	33.4 - 36.9	82,500	64.8	63.1 - 66.6	127,300
Honolulu	318,500	45.9	44.6 - 47.2	375,600	54.1	52.8 - 55.4	694,000
Kauai	18,000	38.0	35.3 - 40.7	29,300	62.0	59.3 - 64.7	47,300
Maui	37,700	35.4	33.5 - 37.4	68,700	64.6	62.6 - 66.5	106,400

**Flu - had shot in past 12 mons by State, County, Island, Community, BRFSS Age Group, DOH Race-Ethnicity, Gender, Education Level, Employment Status (Grouped), Household Income, Poverty Level, Marital Status (Grouped), Married, Health Care Coverage, for the Year(s) - 2001-2003, 2002-2004, 2003-2005, 2004-2006, 2005-2007, 2006-2008, 2007-2009, 2008-2010**

*Note: Weighted numbers (#) represent 3-yr averages, percentages and 95% confidence intervals; Respondents aged 18 years and older; n/r (Not Reportable) - If the unweighted total responses for a dimension (row) is <50 that row will not be shown; n/a (Not Available) - Not asked of a subset of respondents*

**Year: 2006-2008**

Island	Yes			No			Estimated Population (3-Yr Avg)
	#	%	C.I. (95%)	#	%	C.I. (95%)	#
Hawaii	44,800	35.2	33.4 - 36.9	82,500	64.8	63.1 - 66.6	127,300
Kauai	18,000	38.0	35.3 - 40.7	29,300	62.0	59.3 - 64.7	47,300
Lanai	700	34.9	30.2 - 39.6	1,400	65.1	60.4 - 69.8	2,100
Maui	33,600	34.7	32.6 - 36.8	63,200	65.3	63.2 - 67.4	96,800
Molokai	3,300	44.8	40.1 - 49.4	4,100	55.2	50.6 - 59.9	7,500
Oahu	318,500	45.9	44.6 - 47.2	375,600	54.1	52.8 - 55.4	694,000

Community	Yes			No			Estimated Population (3-Yr Avg)
	#	%	C.I. (95%)	#	%	C.I. (95%)	#
Aiea/ Pearl City	32,000	48.4	44.2 - 52.5	34,200	51.6	47.5 - 55.8	66,200
Ala Moana	14,600	46.4	41.2 - 51.6	16,800	53.6	48.4 - 58.8	31,400

**Flu - had shot in past 12 mons by State, County, Island, Community, BRFSS Age Group, DOH Race-Ethnicity, Gender, Education Level, Employment Status (Grouped), Household Income, Poverty Level, Marital Status (Grouped), Married, Health Care Coverage, for the Year(s) - 2001-2003, 2002-2004, 2003-2005, 2004-2006, 2005-2007, 2006-2008, 2007-2009, 2008-2010**

*Note: Weighted numbers (#) represent 3-yr averages, percentages and 95% confidence intervals; Respondents aged 18 years and older; n/r (Not Reportable) - If the unweighted total responses for a dimension (row) is <50 that row will not be shown; n/a (Not Available) - Not asked of a subset of respondents*

**Year: 2006-2008**

Community	Yes			No			Estimated Population (3-Yr Avg)
	#	%	C.I. (95%)	#	%	C.I. (95%)	#
Hanalei/ Kapaa	6,600	33.1	29.1 - 37.0	13,300	66.9	63.0 - 70.9	19,900
Hilo	15,800	42.1	38.7 - 45.5	21,800	57.9	54.5 - 61.3	37,600
Kaaawa/ Kahaluu/ Kaneohe	22,500	46.9	42.2 - 51.7	25,400	53.1	48.3 - 57.8	47,900
Kahului	12,300	38.2	34.3 - 42.1	19,900	61.8	57.9 - 65.7	32,200
Kailua/ Waimanalo	24,100	47.5	43.1 - 51.9	26,600	52.5	48.1 - 56.9	50,700
Kaimuki/ Palolo/ Waikiki	27,800	48.6	44.5 - 52.6	29,500	51.4	47.4 - 55.5	57,300
Kona	8,900	31.7	28.4 - 35.1	19,100	68.3	64.9 - 71.6	28,000
Lahaina/ Wailuku	11,500	35.8	32.0 - 39.5	20,700	64.2	60.5 - 68.0	32,200
Lanai	700	34.9	30.2 - 39.6	1,400	65.1	60.4 - 69.8	2,100
Lihue-Waimea	11,400	41.6	37.8 - 45.3	16,000	58.4	54.7 - 62.2	27,400
Manoa/ Upper Makiki	21,700	46.6	42.2 - 50.9	24,900	53.4	49.1 - 57.8	46,500
Mililani/ Wahiawa	31,600	45.2	41.3 - 49.1	38,300	54.8	50.9 - 58.7	69,800

**Flu - had shot in past 12 mons by State, County, Island, Community, BRFSS Age Group, DOH Race-Ethnicity, Gender, Education Level, Employment Status (Grouped), Household Income, Poverty Level, Marital Status (Grouped), Married, Health Care Coverage, for the Year(s) - 2001-2003, 2002-2004, 2003-2005, 2004-2006, 2005-2007, 2006-2008, 2007-2009, 2008-2010**

*Note: Weighted numbers (#) represent 3-yr averages, percentages and 95% confidence intervals; Respondents aged 18 years and older; n/r (Not Reportable) - If the unweighted total responses for a dimension (row) is <50 that row will not be shown; n/a (Not Available) - Not asked of a subset of respondents*

**Year: 2006-2008**

Community	Yes			No			Estimated Population (3-Yr Avg)
	#	%	C.I. (95%)	#	%	C.I. (95%)	#
Molokai	3,300	44.8	40.1 - 49.4	4,100	55.2	50.6 - 59.9	7,500
Nanakuli/ Waianae	14,700	43.8	36.9 - 50.7	18,800	56.2	49.3 - 63.1	33,500
N.Hawaii	9,000	32.8	28.9 - 36.7	18,300	67.2	63.3 - 71.1	27,300
N.Shore/ Laie	8,700	37.3	30.3 - 44.2	14,700	62.7	55.8 - 69.7	23,400
Nuuanu/ Kalihi/ Moanalua	30,100	44.4	39.9 - 48.9	37,700	55.6	51.1 - 60.1	67,800
Puna/ Kau	11,100	32.3	28.9 - 35.7	23,300	67.7	64.3 - 71.1	34,400
Salt Lake/ Foster Village	16,200	48.0	42.2 - 53.8	17,600	52.0	46.2 - 57.8	33,800
Upcountry/ Hana	9,800	30.2	26.9 - 33.4	22,600	69.8	66.6 - 73.1	32,400
Waiialae/ Kahala/ Hawaii Kai	20,900	49.8	45.0 - 54.6	21,000	50.2	45.4 - 55.0	41,900
Waipahu/ Kapolei/ Ewa	53,600	43.3	40.0 - 46.6	70,100	56.7	53.4 - 60.0	123,700

**Flu - had shot in past 12 mons by State, County, Island, Community, BRFSS Age Group, DOH Race-Ethnicity, Gender, Education Level, Employment Status (Grouped), Household Income, Poverty Level, Marital Status (Grouped), Married, Health Care Coverage, for the Year(s) - 2001-2003, 2002-2004, 2003-2005, 2004-2006, 2005-2007, 2006-2008, 2007-2009, 2008-2010**

*Note: Weighted numbers (#) represent 3-yr averages, percentages and 95% confidence intervals; Respondents aged 18 years and older; n/r (Not Reportable) - If the unweighted total responses for a dimension (row) is <50 that row will not be shown; n/a (Not Available) - Not asked of a subset of respondents*

**Year: 2006-2008**

BRFSS Age Group	Yes			No			Estimated Population (3-Yr Avg)
	#	%	C.I. (95%)	#	%	C.I. (95%)	#
18-24	31,800	26.4	22.8 - 30.0	88,700	73.6	70.0 - 77.2	120,500
25-34	48,900	29.6	27.0 - 32.2	116,400	70.4	67.8 - 73.0	165,200
35-44	55,100	31.4	29.3 - 33.5	120,300	68.6	66.5 - 70.7	175,400
45-54	66,300	37.1	35.2 - 39.0	112,400	62.9	61.0 - 64.8	178,800
55-64	75,600	50.4	48.3 - 52.5	74,400	49.6	47.5 - 51.7	150,000
65-74	62,100	73.3	71.1 - 75.5	22,600	26.7	24.5 - 28.9	84,700
75+	75,900	80.5	78.5 - 82.5	18,400	19.5	17.5 - 21.5	94,200

**Flu - had shot in past 12 mons by State, County, Island, Community, BRFSS Age Group, DOH Race-Ethnicity, Gender, Education Level, Employment Status (Grouped), Household Income, Poverty Level, Marital Status (Grouped), Married, Health Care Coverage, for the Year(s) - 2001-2003, 2002-2004, 2003-2005, 2004-2006, 2005-2007, 2006-2008, 2007-2009, 2008-2010**

*Note: Weighted numbers (#) represent 3-yr averages, percentages and 95% confidence intervals; Respondents aged 18 years and older; n/r (Not Reportable) - If the unweighted total responses for a dimension (row) is <50 that row will not be shown; n/a (Not Available) - Not asked of a subset of respondents*

**Year: 2006-2008**

DOH Race-Ethnicity	Yes			No			Estimated Population (3-Yr Avg)
	#	%	C.I. (95%)	#	%	C.I. (95%)	#
Caucasian	125,900	39.6	38.1 - 41.0	192,300	60.4	59.0 - 61.9	318,200
Native Hawaiian	47,900	37.1	34.4 - 39.8	81,100	62.9	60.2 - 65.6	129,000
Chinese	28,300	50.8	46.5 - 55.0	27,500	49.2	45.0 - 53.5	55,800
Filipino	69,200	44.6	41.7 - 47.5	86,000	55.4	52.5 - 58.3	155,100
Japanese	111,900	52.1	50.0 - 54.1	103,000	47.9	45.9 - 50.0	214,900
Black	5,200	34.8	26.8 - 42.7	9,700	65.2	57.3 - 73.2	14,900
Native Alaskan/ American Indian	1,900	33.8	22.5 - 45.0	3,800	66.2	55.0 - 77.5	5,700
Other Asian	9,800	39.7	33.2 - 46.2	14,800	60.3	53.8 - 66.8	24,600
Other Pacific Islander	7,500	32.3	25.0 - 39.7	15,600	67.7	60.3 - 75.0	23,100
Mixed Ethnicity	3,000	37.6	26.5 - 48.8	5,000	62.4	51.2 - 73.5	8,000
Other	7,000	32.4	26.1 - 38.7	14,500	67.6	61.3 - 73.9	21,500

**Flu - had shot in past 12 mons by State, County, Island, Community, BRFSS Age Group, DOH Race-Ethnicity, Gender, Education Level, Employment Status (Grouped), Household Income, Poverty Level, Marital Status (Grouped), Married, Health Care Coverage, for the Year(s) - 2001-2003, 2002-2004, 2003-2005, 2004-2006, 2005-2007, 2006-2008, 2007-2009, 2008-2010**

*Note: Weighted numbers (#) represent 3-yr averages, percentages and 95% confidence intervals; Respondents aged 18 years and older; n/r (Not Reportable) - If the unweighted total responses for a dimension (row) is <50 that row will not be shown; n/a (Not Available) - Not asked of a subset of respondents*

**Year: 2006-2008**

Gender	Yes			No			Estimated Population (3-Yr Avg)
	#	%	C.I. (95%)	#	%	C.I. (95%)	#
Male	193,900	40.3	38.8 - 41.8	287,300	59.7	58.2 - 61.2	481,200
Female	225,000	45.6	44.3 - 46.8	268,800	54.4	53.2 - 55.7	493,800

Education Level	Yes			No			Estimated Population (3-Yr Avg)
	#	%	C.I. (95%)	#	%	C.I. (95%)	#
Never attended school/ Only Kindergarten to Grades 8	9,300	68.2	61.3 - 75.1	4,300	31.8	24.9 - 38.7	13,700
Grades 9 thru 11 (Some High School)	16,400	42.4	37.5 - 47.3	22,300	57.6	52.7 - 62.5	38,800
Grades 12 or GED (High School Grad)	120,000	40.8	38.9 - 42.7	174,300	59.2	57.3 - 61.1	294,300
College 1 to 3 years (Some College/ Tech)	117,700	41.8	40.0 - 43.6	163,800	58.2	56.4 - 60.0	281,500
College 4 years or more (College Grad)	155,000	44.9	43.4 - 46.4	190,500	55.1	53.6 - 56.6	345,500



**Flu - had shot in past 12 mons by State, County, Island, Community, BRFSS Age Group, DOH Race-Ethnicity, Gender, Education Level, Employment Status (Grouped), Household Income, Poverty Level, Marital Status (Grouped), Married, Health Care Coverage, for the Year(s) - 2001-2003, 2002-2004, 2003-2005, 2004-2006, 2005-2007, 2006-2008, 2007-2009, 2008-2010**

*Note: Weighted numbers (#) represent 3-yr averages, percentages and 95% confidence intervals; Respondents aged 18 years and older; n/r (Not Reportable) - If the unweighted total responses for a dimension (row) is <50 that row will not be shown; n/a (Not Available) - Not asked of a subset of respondents*

**Year: 2006-2008**

Employment Status (Grouped)	Yes			No			Estimated Population (3-Yr Avg)
	#	%	C.I. (95%)	#	%	C.I. (95%)	#
<b>Employed</b>	227,000	36.3	35.1 - 37.5	398,700	63.7	62.5 - 64.9	625,600
<b>Unemployed</b>	11,000	30.5	25.0 - 36.0	25,100	69.5	64.0 - 75.0	36,100
<b>Retired/Unable to work</b>	154,200	69.3	67.7 - 70.9	68,300	30.7	29.1 - 32.3	222,500
<b>Student/Homemaker</b>	26,400	29.4	26.0 - 32.7	63,400	70.6	67.3 - 74.0	89,800

**Flu - had shot in past 12 mons by State, County, Island, Community, BRFSS Age Group, DOH Race-Ethnicity, Gender, Education Level, Employment Status (Grouped), Household Income, Poverty Level, Marital Status (Grouped), Married, Health Care Coverage, for the Year(s) - 2001-2003, 2002-2004, 2003-2005, 2004-2006, 2005-2007, 2006-2008, 2007-2009, 2008-2010**

*Note: Weighted numbers (#) represent 3-yr averages, percentages and 95% confidence intervals; Respondents aged 18 years and older; n/r (Not Reportable) - If the unweighted total responses for a dimension (row) is <50 that row will not be shown; n/a (Not Available) - Not asked of a subset of respondents*

**Year: 2006-2008**

Household Income	Yes			No			Estimated Population (3-Yr Avg)
	#	%	C.I. (95%)	#	%	C.I. (95%)	#
Less than \$10,000	10,400	40.2	34.7 - 45.8	15,500	59.8	54.2 - 65.3	25,900
\$10,000 to \$14,999	10,500	40.6	35.1 - 46.2	15,400	59.4	53.8 - 64.9	25,800
\$15,000 to \$19,999	19,600	46.2	41.8 - 50.5	22,800	53.8	49.5 - 58.2	42,400
\$20,000 to \$24,999	26,300	43.8	39.9 - 47.8	33,700	56.2	52.2 - 60.1	60,100
\$25,000 to \$34,999	48,400	45.2	42.2 - 48.2	58,700	54.8	51.8 - 57.8	107,100
\$35,000 to \$49,999	64,600	44.0	41.5 - 46.5	82,100	56.0	53.5 - 58.5	146,700
\$50,000 to \$74,999	68,000	40.2	37.9 - 42.5	101,100	59.8	57.5 - 62.1	169,000
\$75,000 or more	118,900	42.3	40.5 - 44.0	162,400	57.7	56.0 - 59.5	281,300

**Flu - had shot in past 12 mons by State, County, Island, Community, BRFSS Age Group, DOH Race-Ethnicity, Gender, Education Level, Employment Status (Grouped), Household Income, Poverty Level, Marital Status (Grouped), Married, Health Care Coverage, for the Year(s) - 2001-2003, 2002-2004, 2003-2005, 2004-2006, 2005-2007, 2006-2008, 2007-2009, 2008-2010**

*Note: Weighted numbers (#) represent 3-yr averages, percentages and 95% confidence intervals; Respondents aged 18 years and older; n/r (Not Reportable) - If the unweighted total responses for a dimension (row) is <50 that row will not be shown; n/a (Not Available) - Not asked of a subset of respondents*

**Year: 2006-2008**

Poverty Level	Yes			No			Estimated Population (3-Yr Avg)
	#	%	C.I. (95%)	#	%	C.I. (95%)	#
<b>0-130%</b>	73,200	39.8	37.3 - 42.3	110,700	60.2	57.7 - 62.7	183,800
<b>131-185%</b>	44,900	39.2	36.2 - 42.2	69,800	60.8	57.8 - 63.8	114,700
<b>186+%</b>	248,600	44.4	43.3 - 45.6	311,000	55.6	54.4 - 56.7	559,700

Marital Status (Grouped)	Yes			No			Estimated Population (3-Yr Avg)
	#	%	C.I. (95%)	#	%	C.I. (95%)	#
<b>Married</b>	264,800	45.8	44.6 - 47.0	313,600	54.2	53.0 - 55.4	578,400
<b>Unmarried Couple</b>	6,800	24.1	18.7 - 29.4	21,500	75.9	70.6 - 81.3	28,300
<b>Widowed</b>	39,800	70.9	68.1 - 73.6	16,400	29.1	26.4 - 31.9	56,200
<b>Other</b>	107,400	34.4	32.6 - 36.3	204,600	65.6	63.7 - 67.4	312,000

**Flu - had shot in past 12 mons by State, County, Island, Community, BRFSS Age Group, DOH Race-Ethnicity, Gender, Education Level, Employment Status (Grouped), Household Income, Poverty Level, Marital Status (Grouped), Married, Health Care Coverage, for the Year(s) - 2001-2003, 2002-2004, 2003-2005, 2004-2006, 2005-2007, 2006-2008, 2007-2009, 2008-2010**

*Note: Weighted numbers (#) represent 3-yr averages, percentages and 95% confidence intervals; Respondents aged 18 years and older; n/r (Not Reportable) - If the unweighted total responses for a dimension (row) is <50 that row will not be shown; n/a (Not Available) - Not asked of a subset of respondents*

**Year: 2006-2008**

Married	Yes			No			Estimated Population (3-Yr Avg)
	#	%	C.I. (95%)	#	%	C.I. (95%)	#
Yes	269,100	45.7	44.5 - 46.9	319,700	54.3	53.1 - 55.5	588,900
No	149,300	38.9	37.2 - 40.5	235,000	61.1	59.5 - 62.8	384,300

Health Care Coverage	Yes			No			Estimated Population (3-Yr Avg)
	#	%	C.I. (95%)	#	%	C.I. (95%)	#
Yes	408,500	45.0	44.0 - 46.0	498,800	55.0	54.0 - 56.0	907,300
No	10,000	15.2	11.9 - 18.4	55,900	84.8	81.6 - 88.1	65,900

**Flu - had shot in past 12 mons by State, County, Island, Community, BRFSS Age Group, DOH Race-Ethnicity, Gender, Education Level, Employment Status (Grouped), Household Income, Poverty Level, Marital Status (Grouped), Married, Health Care Coverage, for the Year(s) - 2001-2003, 2002-2004, 2003-2005, 2004-2006, 2005-2007, 2006-2008, 2007-2009, 2008-2010**

*Note: Weighted numbers (#) represent 3-yr averages, percentages and 95% confidence intervals; Respondents aged 18 years and older; n/r (Not Reportable) - If the unweighted total responses for a dimension (row) is <50 that row will not be shown; n/a (Not Available) - Not asked of a subset of respondents*

**Year: 2005-2007**

State	Yes			No			Estimated Population (3-Yr Avg)
	#	%	C.I. (95%)	#	%	C.I. (95%)	#
Hawaii State	385,600	39.8	38.8 - 40.7	583,400	60.2	59.3 - 61.2	969,000

County	Yes			No			Estimated Population (3-Yr Avg)
	#	%	C.I. (95%)	#	%	C.I. (95%)	#
Hawaii	39,500	32.2	30.6 - 33.9	83,200	67.8	66.1 - 69.4	122,700
Honolulu	296,200	42.6	41.4 - 43.9	398,500	57.4	56.1 - 58.6	694,700
Kauai	16,000	34.3	31.6 - 37.0	30,700	65.7	63.0 - 68.4	46,700
Maui	33,900	32.3	30.4 - 34.2	71,100	67.7	65.8 - 69.6	105,000

**Flu - had shot in past 12 mons by State, County, Island, Community, BRFSS Age Group, DOH Race-Ethnicity, Gender, Education Level, Employment Status (Grouped), Household Income, Poverty Level, Marital Status (Grouped), Married, Health Care Coverage, for the Year(s) - 2001-2003, 2002-2004, 2003-2005, 2004-2006, 2005-2007, 2006-2008, 2007-2009, 2008-2010**

*Note: Weighted numbers (#) represent 3-yr averages, percentages and 95% confidence intervals; Respondents aged 18 years and older; n/r (Not Reportable) - If the unweighted total responses for a dimension (row) is <50 that row will not be shown; n/a (Not Available) - Not asked of a subset of respondents*

**Year: 2005-2007**

Island	Yes			No			Estimated Population (3-Yr Avg)
	#	%	C.I. (95%)	#	%	C.I. (95%)	#
Hawaii	39,500	32.2	30.6 - 33.9	83,200	67.8	66.1 - 69.4	122,700
Kauai	16,000	34.3	31.6 - 37.0	30,700	65.7	63.0 - 68.4	46,700
Lanai	700	29.7	25.2 - 34.3	1,600	70.3	65.7 - 74.8	2,200
Maui	30,300	31.5	29.5 - 33.5	65,800	68.5	66.5 - 70.5	96,100
Molokai	3,000	44.9	40.0 - 49.7	3,700	55.1	50.3 - 60.0	6,700
Oahu	296,200	42.6	41.4 - 43.9	398,500	57.4	56.1 - 58.6	694,700

Community	Yes			No			Estimated Population (3-Yr Avg)
	#	%	C.I. (95%)	#	%	C.I. (95%)	#
Aiea/ Pearl City	31,400	46.0	41.9 - 50.0	36,900	54.0	50.0 - 58.1	68,300
Ala Moana	13,400	42.1	37.1 - 47.1	18,400	57.9	52.9 - 62.9	31,800

**Flu - had shot in past 12 mons by State, County, Island, Community, BRFSS Age Group, DOH Race-Ethnicity, Gender, Education Level, Employment Status (Grouped), Household Income, Poverty Level, Marital Status (Grouped), Married, Health Care Coverage, for the Year(s) - 2001-2003, 2002-2004, 2003-2005, 2004-2006, 2005-2007, 2006-2008, 2007-2009, 2008-2010**

*Note: Weighted numbers (#) represent 3-yr averages, percentages and 95% confidence intervals; Respondents aged 18 years and older; n/r (Not Reportable) - If the unweighted total responses for a dimension (row) is <50 that row will not be shown; n/a (Not Available) - Not asked of a subset of respondents*

**Year: 2005-2007**

Community	Yes			No			Estimated Population (3-Yr Avg)
	#	%	C.I. (95%)	#	%	C.I. (95%)	#
Hanalei/ Kapaa	6,200	31.4	27.4 - 35.3	13,500	68.6	64.7 - 72.6	19,700
Hilo	13,700	38.8	35.6 - 41.9	21,600	61.2	58.1 - 64.4	35,300
Kaaawa/ Kahaluu/ Kaneohe	21,400	43.4	38.7 - 48.0	27,900	56.6	52.0 - 61.3	49,300
Kahului	11,000	33.9	30.3 - 37.5	21,500	66.1	62.5 - 69.7	32,600
Kailua/ Waimanalo	22,200	44.2	39.8 - 48.6	28,000	55.8	51.4 - 60.2	50,200
Kaimuki/ Palolo/ Waikiki	25,000	41.9	38.0 - 45.8	34,700	58.1	54.2 - 62.0	59,600
Kona	8,100	28.3	25.2 - 31.5	20,400	71.7	68.5 - 74.8	28,500
Lahaina/ Wailuku	10,300	32.7	29.0 - 36.3	21,300	67.3	63.7 - 71.0	31,600
Lanai	700	29.7	25.2 - 34.3	1,600	70.3	65.7 - 74.8	2,200
Lihue-Waimea	9,800	36.4	32.8 - 40.1	17,100	63.6	59.9 - 67.2	26,900
Manoa/ Upper Makiki	18,900	41.4	37.0 - 45.8	26,800	58.6	54.2 - 63.0	45,700
Mililani/ Wahiawa	29,900	43.0	39.2 - 46.8	39,700	57.0	53.2 - 60.8	69,600

**Flu - had shot in past 12 mons by State, County, Island, Community, BRFSS Age Group, DOH Race-Ethnicity, Gender, Education Level, Employment Status (Grouped), Household Income, Poverty Level, Marital Status (Grouped), Married, Health Care Coverage, for the Year(s) - 2001-2003, 2002-2004, 2003-2005, 2004-2006, 2005-2007, 2006-2008, 2007-2009, 2008-2010**

*Note: Weighted numbers (#) represent 3-yr averages, percentages and 95% confidence intervals; Respondents aged 18 years and older; n/r (Not Reportable) - If the unweighted total responses for a dimension (row) is <50 that row will not be shown; n/a (Not Available) - Not asked of a subset of respondents*

**Year: 2005-2007**

Community	Yes			No			Estimated Population (3-Yr Avg)
	#	%	C.I. (95%)	#	%	C.I. (95%)	#
Molokai	3,000	44.9	40.0 - 49.7	3,700	55.1	50.3 - 60.0	6,700
Nanakuli/ Waianae	13,700	42.6	35.8 - 49.5	18,500	57.4	50.5 - 64.2	32,300
N.Hawaii	8,200	31.1	27.5 - 34.8	18,100	68.9	65.2 - 72.5	26,200
N.Shore/ Laie	8,700	39.1	32.2 - 45.9	13,600	60.9	54.1 - 67.8	22,300
Nuuanu/ Kalihi/ Moanalua	29,500	42.5	38.1 - 46.8	39,900	57.5	53.2 - 61.9	69,400
Puna/ Kau	9,600	29.4	26.1 - 32.6	23,100	70.6	67.4 - 73.9	32,700
Salt Lake/ Foster Village	15,100	46.3	40.4 - 52.3	17,400	53.7	47.7 - 59.6	32,500
Upcountry/ Hana	8,900	27.9	24.6 - 31.2	23,000	72.1	68.8 - 75.4	31,900
Waialae/ Kahala/ Hawaii Kai	18,400	44.6	39.8 - 49.5	22,800	55.4	50.5 - 60.2	41,200
Waipahu/ Kapolei/ Ewa	48,700	39.7	36.5 - 42.9	74,000	60.3	57.1 - 63.5	122,600



**Flu - had shot in past 12 mons by State, County, Island, Community, BRFSS Age Group, DOH Race-Ethnicity, Gender, Education Level, Employment Status (Grouped), Household Income, Poverty Level, Marital Status (Grouped), Married, Health Care Coverage, for the Year(s) - 2001-2003, 2002-2004, 2003-2005, 2004-2006, 2005-2007, 2006-2008, 2007-2009, 2008-2010**

*Note: Weighted numbers (#) represent 3-yr averages, percentages and 95% confidence intervals; Respondents aged 18 years and older; n/r (Not Reportable) - If the unweighted total responses for a dimension (row) is <50 that row will not be shown; n/a (Not Available) - Not asked of a subset of respondents*

**Year: 2005-2007**

BRFSS Age Group	Yes			No			Estimated Population (3-Yr Avg)
	#	%	C.I. (95%)	#	%	C.I. (95%)	#
18-24	32,300	26.9	23.4 - 30.5	87,600	73.1	69.5 - 76.6	119,900
25-34	44,500	27.5	25.0 - 30.0	117,100	72.5	70.0 - 75.0	161,600
35-44	49,100	27.7	25.7 - 29.7	128,300	72.3	70.3 - 74.3	177,500
45-54	57,100	31.5	29.6 - 33.4	124,100	68.5	66.6 - 70.4	181,300
55-64	67,000	45.7	43.5 - 47.8	79,800	54.3	52.2 - 56.5	146,800
65-74	59,300	70.8	68.4 - 73.2	24,500	29.2	26.8 - 31.6	83,800
75+	73,600	79.7	77.6 - 81.9	18,700	20.3	18.1 - 22.4	92,300

**Flu - had shot in past 12 mons by State, County, Island, Community, BRFSS Age Group, DOH Race-Ethnicity, Gender, Education Level, Employment Status (Grouped), Household Income, Poverty Level, Marital Status (Grouped), Married, Health Care Coverage, for the Year(s) - 2001-2003, 2002-2004, 2003-2005, 2004-2006, 2005-2007, 2006-2008, 2007-2009, 2008-2010**

*Note: Weighted numbers (#) represent 3-yr averages, percentages and 95% confidence intervals; Respondents aged 18 years and older; n/r (Not Reportable) - If the unweighted total responses for a dimension (row) is <50 that row will not be shown; n/a (Not Available) - Not asked of a subset of respondents*

**Year: 2005-2007**

DOH Race-Ethnicity	Yes			No			Estimated Population (3-Yr Avg)
	#	%	C.I. (95%)	#	%	C.I. (95%)	#
Caucasian	115,800	36.4	35.0 - 37.9	202,200	63.6	62.1 - 65.0	318,000
Native Hawaiian	43,900	35.7	33.0 - 38.3	79,200	64.3	61.7 - 67.0	123,100
Chinese	25,000	48.1	43.8 - 52.5	26,900	51.9	47.5 - 56.2	51,900
Filipino	64,800	40.7	37.9 - 43.6	94,300	59.3	56.4 - 62.1	159,100
Japanese	98,600	47.1	45.1 - 49.1	110,800	52.9	50.9 - 54.9	209,400
Black	6,300	37.1	29.3 - 44.9	10,600	62.9	55.1 - 70.7	16,900
Native Alaskan/ American Indian	1,900	35.2	24.4 - 46.0	3,500	64.8	54.0 - 75.6	5,400
Other Asian	8,800	37.7	31.0 - 44.5	14,500	62.3	55.5 - 69.0	23,300
Other Pacific Islander	8,600	35.4	28.1 - 42.7	15,600	64.6	57.3 - 71.9	24,200
Mixed Ethnicity	3,000	37.6	26.5 - 48.8	5,000	62.4	51.2 - 73.5	8,000
Other	7,500	29.5	24.1 - 35.0	17,900	70.5	65.0 - 75.9	25,400

**Flu - had shot in past 12 mons by State, County, Island, Community, BRFSS Age Group, DOH Race-Ethnicity, Gender, Education Level, Employment Status (Grouped), Household Income, Poverty Level, Marital Status (Grouped), Married, Health Care Coverage, for the Year(s) - 2001-2003, 2002-2004, 2003-2005, 2004-2006, 2005-2007, 2006-2008, 2007-2009, 2008-2010**

*Note: Weighted numbers (#) represent 3-yr averages, percentages and 95% confidence intervals; Respondents aged 18 years and older; n/r (Not Reportable) - If the unweighted total responses for a dimension (row) is <50 that row will not be shown; n/a (Not Available) - Not asked of a subset of respondents*

**Year: 2005-2007**

Gender	Yes			No			Estimated Population (3-Yr Avg)
	#	%	C.I. (95%)	#	%	C.I. (95%)	#
Male	182,200	38.0	36.6 - 39.5	296,700	62.0	60.5 - 63.4	478,900
Female	203,400	41.5	40.3 - 42.7	286,700	58.5	57.3 - 59.7	490,100

Education Level	Yes			No			Estimated Population (3-Yr Avg)
	#	%	C.I. (95%)	#	%	C.I. (95%)	#
Never attended school/ Only Kindergarten to Grades 8	10,200	58.6	51.0 - 66.3	7,200	41.4	33.7 - 49.0	17,300
Grades 9 thru 11 (Some High School)	16,800	42.7	37.8 - 47.6	22,500	57.3	52.4 - 62.2	39,200
Grades 12 or GED (High School Grad)	115,600	39.8	37.9 - 41.6	175,100	60.2	58.4 - 62.1	290,700
College 1 to 3 years (Some College/ Tech)	106,200	37.8	36.0 - 39.6	174,800	62.2	60.4 - 64.0	281,000
College 4 years or more (College Grad)	136,400	40.2	38.7 - 41.7	202,800	59.8	58.3 - 61.3	339,200

**Flu - had shot in past 12 mons by State, County, Island, Community, BRFSS Age Group, DOH Race-Ethnicity, Gender, Education Level, Employment Status (Grouped), Household Income, Poverty Level, Marital Status (Grouped), Married, Health Care Coverage, for the Year(s) - 2001-2003, 2002-2004, 2003-2005, 2004-2006, 2005-2007, 2006-2008, 2007-2009, 2008-2010**

*Note: Weighted numbers (#) represent 3-yr averages, percentages and 95% confidence intervals; Respondents aged 18 years and older; n/r (Not Reportable) - If the unweighted total responses for a dimension (row) is <50 that row will not be shown; n/a (Not Available) - Not asked of a subset of respondents*

**Year: 2005-2007**

Employment Status (Grouped)	Yes			No			Estimated Population (3-Yr Avg)
	#	%	C.I. (95%)	#	%	C.I. (95%)	#
<b>Employed</b>	203,400	32.5	31.3 - 33.7	421,900	67.5	66.3 - 68.7	625,300
<b>Unemployed</b>	7,900	28.4	22.8 - 34.0	20,000	71.6	66.0 - 77.2	27,900
<b>Retired/Unable to work</b>	148,600	66.2	64.6 - 67.8	75,900	33.8	32.2 - 35.4	224,500
<b>Student/Homemaker</b>	25,100	27.9	24.6 - 31.2	64,800	72.1	68.8 - 75.4	89,900

**Flu - had shot in past 12 mons by State, County, Island, Community, BRFSS Age Group, DOH Race-Ethnicity, Gender, Education Level, Employment Status (Grouped), Household Income, Poverty Level, Marital Status (Grouped), Married, Health Care Coverage, for the Year(s) - 2001-2003, 2002-2004, 2003-2005, 2004-2006, 2005-2007, 2006-2008, 2007-2009, 2008-2010**

*Note: Weighted numbers (#) represent 3-yr averages, percentages and 95% confidence intervals; Respondents aged 18 years and older; n/r (Not Reportable) - If the unweighted total responses for a dimension (row) is <50 that row will not be shown; n/a (Not Available) - Not asked of a subset of respondents*

**Year: 2005-2007**

Household Income	Yes			No			Estimated Population (3-Yr Avg)
	#	%	C.I. (95%)	#	%	C.I. (95%)	#
Less than \$10,000	10,900	40.5	34.9 - 46.2	16,000	59.5	53.8 - 65.1	26,900
\$10,000 to \$14,999	11,600	41.8	36.1 - 47.4	16,200	58.2	52.6 - 63.9	27,900
\$15,000 to \$19,999	20,100	43.7	39.4 - 47.9	25,900	56.3	52.1 - 60.6	46,000
\$20,000 to \$24,999	26,400	42.5	38.7 - 46.2	35,800	57.5	53.8 - 61.3	62,200
\$25,000 to \$34,999	44,900	42.1	39.2 - 45.0	61,800	57.9	55.0 - 60.8	106,700
\$35,000 to \$49,999	59,100	39.7	37.3 - 42.1	89,800	60.3	57.9 - 62.7	148,900
\$50,000 to \$74,999	60,300	36.0	33.8 - 38.2	107,300	64.0	61.8 - 66.2	167,600
\$75,000 or more	95,800	38.1	36.3 - 39.9	155,600	61.9	60.1 - 63.7	251,400

**Flu - had shot in past 12 mons by State, County, Island, Community, BRFSS Age Group, DOH Race-Ethnicity, Gender, Education Level, Employment Status (Grouped), Household Income, Poverty Level, Marital Status (Grouped), Married, Health Care Coverage, for the Year(s) - 2001-2003, 2002-2004, 2003-2005, 2004-2006, 2005-2007, 2006-2008, 2007-2009, 2008-2010**

*Note: Weighted numbers (#) represent 3-yr averages, percentages and 95% confidence intervals; Respondents aged 18 years and older; n/r (Not Reportable) - If the unweighted total responses for a dimension (row) is <50 that row will not be shown; n/a (Not Available) - Not asked of a subset of respondents*

**Year: 2005-2007**

Poverty Level	Yes			No			Estimated Population (3-Yr Avg)
	#	%	C.I. (95%)	#	%	C.I. (95%)	#
<b>0-130%</b>	71,600	39.7	37.2 - 42.2	108,900	60.3	57.8 - 62.8	180,400
<b>131-185%</b>	41,500	38.9	35.8 - 42.0	65,200	61.1	58.0 - 64.2	106,700
<b>186+%</b>	216,100	39.3	38.1 - 40.4	334,300	60.7	59.6 - 61.9	550,300

Marital Status (Grouped)	Yes			No			Estimated Population (3-Yr Avg)
	#	%	C.I. (95%)	#	%	C.I. (95%)	#
<b>Married</b>	244,000	42.3	41.1 - 43.5	333,000	57.7	56.5 - 58.9	576,900
<b>Unmarried Couple</b>	5,300	18.9	13.8 - 24.0	22,800	81.1	76.0 - 86.2	28,100
<b>Widowed</b>	38,400	67.7	64.7 - 70.6	18,400	32.3	29.4 - 35.3	56,800
<b>Other</b>	97,900	31.9	30.1 - 33.7	209,300	68.1	66.3 - 69.9	307,200

**Flu - had shot in past 12 mons by State, County, Island, Community, BRFSS Age Group, DOH Race-Ethnicity, Gender, Education Level, Employment Status (Grouped), Household Income, Poverty Level, Marital Status (Grouped), Married, Health Care Coverage, for the Year(s) - 2001-2003, 2002-2004, 2003-2005, 2004-2006, 2005-2007, 2006-2008, 2007-2009, 2008-2010**

*Note: Weighted numbers (#) represent 3-yr averages, percentages and 95% confidence intervals; Respondents aged 18 years and older; n/r (Not Reportable) - If the unweighted total responses for a dimension (row) is <50 that row will not be shown; n/a (Not Available) - Not asked of a subset of respondents*

**Year: 2005-2007**

<b>Married</b>	<b>Yes</b>			<b>No</b>			<b>Estimated Population (3-Yr Avg)</b>
	<b>#</b>	<b>%</b>	<b>C.I. (95%)</b>	<b>#</b>	<b>%</b>	<b>C.I. (95%)</b>	<b>#</b>
<b>Yes</b>	247,700	42.2	41.0 - 43.3	339,700	57.8	56.7 - 59.0	587,400
<b>No</b>	137,500	36.2	34.6 - 37.8	242,600	63.8	62.2 - 65.4	380,100

<b>Health Care Coverage</b>	<b>Yes</b>			<b>No</b>			<b>Estimated Population (3-Yr Avg)</b>
	<b>#</b>	<b>%</b>	<b>C.I. (95%)</b>	<b>#</b>	<b>%</b>	<b>C.I. (95%)</b>	<b>#</b>
<b>Yes</b>	374,200	41.7	40.7 - 42.7	522,500	58.3	57.3 - 59.3	896,800
<b>No</b>	11,100	15.7	12.7 - 18.7	59,400	84.3	81.3 - 87.3	70,500

**Flu - had shot in past 12 mons by State, County, Island, Community, BRFSS Age Group, DOH Race-Ethnicity, Gender, Education Level, Employment Status (Grouped), Household Income, Poverty Level, Marital Status (Grouped), Married, Health Care Coverage, for the Year(s) - 2001-2003, 2002-2004, 2003-2005, 2004-2006, 2005-2007, 2006-2008, 2007-2009, 2008-2010**

*Note: Weighted numbers (#) represent 3-yr averages, percentages and 95% confidence intervals; Respondents aged 18 years and older; n/r (Not Reportable) - If the unweighted total responses for a dimension (row) is <50 that row will not be shown; n/a (Not Available) - Not asked of a subset of respondents*

**Year: 2004-2006**

State	Yes			No			Estimated Population (3-Yr Avg)
	#	%	C.I. (95%)	#	%	C.I. (95%)	#
Hawaii State	325,000	34.4	33.2 - 35.6	619,600	65.6	64.4 - 66.8	944,600

County	Yes			No			Estimated Population (3-Yr Avg)
	#	%	C.I. (95%)	#	%	C.I. (95%)	#
Hawaii	33,100	26.9	25.0 - 28.8	90,100	73.1	71.2 - 75.0	123,200
Honolulu	251,500	37.2	35.7 - 38.8	423,800	62.8	61.2 - 64.3	675,300
Kauai	12,700	28.6	25.8 - 31.4	31,700	71.4	68.6 - 74.2	44,500
Maui	27,700	27.2	24.8 - 29.6	74,000	72.8	70.4 - 75.2	101,600



**Flu - had shot in past 12 mons by State, County, Island, Community, BRFSS Age Group, DOH Race-Ethnicity, Gender, Education Level, Employment Status (Grouped), Household Income, Poverty Level, Marital Status (Grouped), Married, Health Care Coverage, for the Year(s) - 2001-2003, 2002-2004, 2003-2005, 2004-2006, 2005-2007, 2006-2008, 2007-2009, 2008-2010**

*Note: Weighted numbers (#) represent 3-yr averages, percentages and 95% confidence intervals; Respondents aged 18 years and older; n/r (Not Reportable) - If the unweighted total responses for a dimension (row) is <50 that row will not be shown; n/a (Not Available) - Not asked of a subset of respondents*

**Year: 2004-2006**

Island	Yes			No			Estimated Population (3-Yr Avg)
	#	%	C.I. (95%)	#	%	C.I. (95%)	#
Hawaii	33,100	26.9	25.0 - 28.8	90,100	73.1	71.2 - 75.0	123,200
Kauai	12,700	28.6	25.8 - 31.4	31,700	71.4	68.6 - 74.2	44,500
Lanai	500	24.8	20.0 - 29.6	1,500	75.2	70.4 - 80.0	2,000
Maui	25,100	26.7	24.2 - 29.3	68,600	73.3	70.7 - 75.8	93,700
Molokai	2,100	35.6	29.0 - 42.1	3,800	64.4	57.9 - 71.0	5,900
Oahu	251,500	37.2	35.7 - 38.8	423,800	62.8	61.2 - 64.3	675,300

Community	Yes			No			Estimated Population (3-Yr Avg)
	#	%	C.I. (95%)	#	%	C.I. (95%)	#
Aiea/ Pearl City	29,200	44.5	39.3 - 49.6	36,500	55.5	50.4 - 60.7	65,700
Ala Moana	11,400	35.3	28.3 - 42.3	20,900	64.7	57.7 - 71.7	32,300

**Flu - had shot in past 12 mons by State, County, Island, Community, BRFSS Age Group, DOH Race-Ethnicity, Gender, Education Level, Employment Status (Grouped), Household Income, Poverty Level, Marital Status (Grouped), Married, Health Care Coverage, for the Year(s) - 2001-2003, 2002-2004, 2003-2005, 2004-2006, 2005-2007, 2006-2008, 2007-2009, 2008-2010**

*Note: Weighted numbers (#) represent 3-yr averages, percentages and 95% confidence intervals; Respondents aged 18 years and older; n/r (Not Reportable) - If the unweighted total responses for a dimension (row) is <50 that row will not be shown; n/a (Not Available) - Not asked of a subset of respondents*

**Year: 2004-2006**

Community	Yes			No			Estimated Population (3-Yr Avg)
	#	%	C.I. (95%)	#	%	C.I. (95%)	#
Hanalei/ Kapaa	4,500	24.6	20.6 - 28.6	13,900	75.4	71.4 - 79.4	18,500
Hilo	10,400	30.3	26.8 - 33.8	24,000	69.7	66.2 - 73.2	34,400
Kaaawa/ Kahaluu/ Kaneohe	17,500	37.5	31.6 - 43.3	29,200	62.5	56.7 - 68.4	46,700
Kahului	9,300	28.8	24.3 - 33.4	23,000	71.2	66.6 - 75.7	32,300
Kailua/ Waimanalo	17,800	38.3	32.8 - 43.7	28,800	61.7	56.3 - 67.2	46,700
Kaimuki/ Palolo/ Waikiki	21,700	35.6	31.0 - 40.3	39,300	64.4	59.7 - 69.0	61,000
Kona	7,000	25.0	21.4 - 28.5	21,100	75.0	71.5 - 78.6	28,100
Lahaina/ Wailuku	9,100	29.6	24.7 - 34.4	21,600	70.4	65.6 - 75.3	30,600
Lanai	500	24.8	20.0 - 29.6	1,500	75.2	70.4 - 80.0	2,000
Lihue-Waimea	8,200	31.5	27.6 - 35.4	17,800	68.5	64.6 - 72.4	26,000
Manoa/ Upper Makiki	15,900	34.6	29.3 - 39.9	30,100	65.4	60.1 - 70.7	46,000
Mililani/ Wahiawa	23,400	36.1	30.4 - 41.8	41,400	63.9	58.2 - 69.6	64,800

**Flu - had shot in past 12 mons by State, County, Island, Community, BRFSS Age Group, DOH Race-Ethnicity, Gender, Education Level, Employment Status (Grouped), Household Income, Poverty Level, Marital Status (Grouped), Married, Health Care Coverage, for the Year(s) - 2001-2003, 2002-2004, 2003-2005, 2004-2006, 2005-2007, 2006-2008, 2007-2009, 2008-2010**

*Note: Weighted numbers (#) represent 3-yr averages, percentages and 95% confidence intervals; Respondents aged 18 years and older; n/r (Not Reportable) - If the unweighted total responses for a dimension (row) is <50 that row will not be shown; n/a (Not Available) - Not asked of a subset of respondents*

**Year: 2004-2006**

Community	Yes			No			Estimated Population (3-Yr Avg)
	#	%	C.I. (95%)	#	%	C.I. (95%)	#
Molokai	2,100	35.6	29.0 - 42.1	3,800	64.4	57.9 - 71.0	5,900
Nanakuli/ Waianae	12,200	38.4	29.9 - 46.8	19,700	61.6	53.2 - 70.1	31,900
N.Hawaii	6,500	26.4	22.2 - 30.6	18,100	73.6	69.4 - 77.8	24,500
N.Shore/ Laie	7,400	34.0	25.9 - 42.1	14,300	66.0	57.9 - 74.1	21,600
Nuuanu/ Kalihi/ Moanalua	24,600	36.0	31.1 - 41.0	43,700	64.0	59.0 - 68.9	68,300
Puna/ Kau	9,200	25.4	21.5 - 29.3	26,900	74.6	70.7 - 78.5	36,100
Salt Lake/ Foster Village	12,700	37.1	30.4 - 43.9	21,400	62.9	56.1 - 69.6	34,100
Upcountry/ Hana	6,700	21.8	18.1 - 25.4	24,000	78.2	74.6 - 81.9	30,700
Waialae/ Kahala/ Hawaii Kai	16,300	40.9	34.8 - 47.0	23,600	59.1	53.0 - 65.2	39,900
Waipahu/ Kapolei/ Ewa	41,300	35.5	31.3 - 39.6	75,000	64.5	60.4 - 68.7	116,300

**Flu - had shot in past 12 mons by State, County, Island, Community, BRFSS Age Group, DOH Race-Ethnicity, Gender, Education Level, Employment Status (Grouped), Household Income, Poverty Level, Marital Status (Grouped), Married, Health Care Coverage, for the Year(s) - 2001-2003, 2002-2004, 2003-2005, 2004-2006, 2005-2007, 2006-2008, 2007-2009, 2008-2010**

*Note: Weighted numbers (#) represent 3-yr averages, percentages and 95% confidence intervals; Respondents aged 18 years and older; n/r (Not Reportable) - If the unweighted total responses for a dimension (row) is <50 that row will not be shown; n/a (Not Available) - Not asked of a subset of respondents*

**Year: 2004-2006**

BRFSS Age Group	Yes			No			Estimated Population (3-Yr Avg)
	#	%	C.I. (95%)	#	%	C.I. (95%)	#
18-24	30,400	26.5	21.7 - 31.3	84,500	73.5	68.7 - 78.3	114,900
25-34	38,100	23.1	20.3 - 25.9	126,700	76.9	74.1 - 79.7	164,800
35-44	40,000	22.5	20.1 - 24.8	138,100	77.5	75.2 - 79.9	178,100
45-54	44,000	25.1	22.8 - 27.5	131,100	74.9	72.5 - 77.2	175,200
55-64	52,800	38.8	36.0 - 41.5	83,400	61.2	58.5 - 64.0	136,100
65-74	54,000	64.9	61.3 - 68.5	29,200	35.1	31.5 - 38.7	83,200
75+	62,600	73.9	70.5 - 77.2	22,100	26.1	22.8 - 29.5	84,700

**Flu - had shot in past 12 mons by State, County, Island, Community, BRFSS Age Group, DOH Race-Ethnicity, Gender, Education Level, Employment Status (Grouped), Household Income, Poverty Level, Marital Status (Grouped), Married, Health Care Coverage, for the Year(s) - 2001-2003, 2002-2004, 2003-2005, 2004-2006, 2005-2007, 2006-2008, 2007-2009, 2008-2010**

*Note: Weighted numbers (#) represent 3-yr averages, percentages and 95% confidence intervals; Respondents aged 18 years and older; n/r (Not Reportable) - If the unweighted total responses for a dimension (row) is <50 that row will not be shown; n/a (Not Available) - Not asked of a subset of respondents*

**Year: 2004-2006**

DOH Race-Ethnicity	Yes			No			Estimated Population (3-Yr Avg)
	#	%	C.I. (95%)	#	%	C.I. (95%)	#
Caucasian	100,500	32.3	30.5 - 34.0	211,100	67.7	66.0 - 69.5	311,600
Native Hawaiian	36,000	30.1	26.8 - 33.4	83,400	69.9	66.6 - 73.2	119,400
Chinese	18,000	36.0	31.0 - 41.0	32,100	64.0	59.0 - 69.0	50,100
Filipino	53,400	35.6	32.0 - 39.1	96,800	64.4	60.9 - 68.0	150,200
Japanese	81,200	40.5	38.0 - 43.0	119,200	59.5	57.0 - 62.0	200,400
Black	4,500	31.4	23.0 - 39.9	9,900	68.6	60.1 - 77.0	14,400
Native Alaskan/ American Indian	1,300	25.1	13.5 - 36.7	3,900	74.9	63.3 - 86.5	5,200
Other Asian	8,600	36.9	27.2 - 46.6	14,700	63.1	53.4 - 72.8	23,300
Other Pacific Islander	8,500	33.7	21.5 - 46.0	16,700	66.3	54.0 - 78.5	25,200
Mixed Ethnicity	3,000	37.6	26.5 - 48.8	5,000	62.4	51.2 - 73.5	8,000
Other	7,700	30.3	23.8 - 36.7	17,600	69.7	63.3 - 76.2	25,300

**Flu - had shot in past 12 mons by State, County, Island, Community, BRFSS Age Group, DOH Race-Ethnicity, Gender, Education Level, Employment Status (Grouped), Household Income, Poverty Level, Marital Status (Grouped), Married, Health Care Coverage, for the Year(s) - 2001-2003, 2002-2004, 2003-2005, 2004-2006, 2005-2007, 2006-2008, 2007-2009, 2008-2010**

*Note: Weighted numbers (#) represent 3-yr averages, percentages and 95% confidence intervals; Respondents aged 18 years and older; n/r (Not Reportable) - If the unweighted total responses for a dimension (row) is <50 that row will not be shown; n/a (Not Available) - Not asked of a subset of respondents*

**Year: 2004-2006**

Gender	Yes			No			Estimated Population (3-Yr Avg)
	#	%	C.I. (95%)	#	%	C.I. (95%)	#
Male	154,200	33.2	31.3 - 35.0	310,600	66.8	65.0 - 68.7	464,700
Female	170,800	35.6	34.1 - 37.1	309,000	64.4	62.9 - 65.9	479,800

Education Level	Yes			No			Estimated Population (3-Yr Avg)
	#	%	C.I. (95%)	#	%	C.I. (95%)	#
Never attended school/ Only Kindergarten to Grades 8	8,400	53.5	44.9 - 62.0	7,300	46.5	38.0 - 55.1	15,700
Grades 9 thru 11 (Some High School)	13,800	37.3	31.3 - 43.2	23,200	62.7	56.8 - 68.7	37,000
Grades 12 or GED (High School Grad)	101,000	35.9	33.5 - 38.3	180,300	64.1	61.7 - 66.5	281,300
College 1 to 3 years (Some College/ Tech)	88,300	31.3	29.1 - 33.6	193,600	68.7	66.4 - 70.9	281,900
College 4 years or more (College Grad)	113,200	34.6	32.7 - 36.4	214,200	65.4	63.6 - 67.3	327,400

**Flu - had shot in past 12 mons by State, County, Island, Community, BRFSS Age Group, DOH Race-Ethnicity, Gender, Education Level, Employment Status (Grouped), Household Income, Poverty Level, Marital Status (Grouped), Married, Health Care Coverage, for the Year(s) - 2001-2003, 2002-2004, 2003-2005, 2004-2006, 2005-2007, 2006-2008, 2007-2009, 2008-2010**

*Note: Weighted numbers (#) represent 3-yr averages, percentages and 95% confidence intervals; Respondents aged 18 years and older; n/r (Not Reportable) - If the unweighted total responses for a dimension (row) is <50 that row will not be shown; n/a (Not Available) - Not asked of a subset of respondents*

**Year: 2004-2006**

Employment Status (Grouped)	Yes			No			Estimated Population (3-Yr Avg)
	#	%	C.I. (95%)	#	%	C.I. (95%)	#
<b>Employed</b>	166,300	27.3	25.9 - 28.8	442,200	72.7	71.2 - 74.1	608,400
<b>Unemployed</b>	5,400	20.3	14.7 - 25.9	21,200	79.7	74.1 - 85.3	26,600
<b>Retired/Unable to work</b>	128,500	60.1	57.8 - 62.4	85,300	39.9	37.6 - 42.2	213,800
<b>Student/Homemaker</b>	24,000	25.5	21.5 - 29.5	70,000	74.5	70.5 - 78.5	94,000

**Flu - had shot in past 12 mons by State, County, Island, Community, BRFSS Age Group, DOH Race-Ethnicity, Gender, Education Level, Employment Status (Grouped), Household Income, Poverty Level, Marital Status (Grouped), Married, Health Care Coverage, for the Year(s) - 2001-2003, 2002-2004, 2003-2005, 2004-2006, 2005-2007, 2006-2008, 2007-2009, 2008-2010**

*Note: Weighted numbers (#) represent 3-yr averages, percentages and 95% confidence intervals; Respondents aged 18 years and older; n/r (Not Reportable) - If the unweighted total responses for a dimension (row) is <50 that row will not be shown; n/a (Not Available) - Not asked of a subset of respondents*

**Year: 2004-2006**

Household Income	Yes			No			Estimated Population (3-Yr Avg)
	#	%	C.I. (95%)	#	%	C.I. (95%)	#
Less than \$10,000	8,700	37.8	30.7 - 44.9	14,400	62.2	55.1 - 69.3	23,100
\$10,000 to \$14,999	10,200	38.2	31.9 - 44.5	16,500	61.8	55.5 - 68.1	26,600
\$15,000 to \$19,999	18,400	39.4	33.8 - 45.0	28,300	60.6	55.0 - 66.2	46,700
\$20,000 to \$24,999	23,000	35.2	30.8 - 39.5	42,400	64.8	60.5 - 69.2	65,400
\$25,000 to \$34,999	40,300	37.5	33.8 - 41.2	67,100	62.5	58.8 - 66.2	107,400
\$35,000 to \$49,999	46,300	32.7	29.8 - 35.7	95,200	67.3	64.3 - 70.2	141,500
\$50,000 to \$74,999	64,300	31.3	28.3 - 34.2	141,300	68.7	65.8 - 71.7	205,600
\$75,000 or more	72,100	31.9	29.7 - 34.2	153,600	68.1	65.8 - 70.3	225,700



**Flu - had shot in past 12 mons by State, County, Island, Community, BRFSS Age Group, DOH Race-Ethnicity, Gender, Education Level, Employment Status (Grouped), Household Income, Poverty Level, Marital Status (Grouped), Married, Health Care Coverage, for the Year(s) - 2001-2003, 2002-2004, 2003-2005, 2004-2006, 2005-2007, 2006-2008, 2007-2009, 2008-2010**

*Note: Weighted numbers (#) represent 3-yr averages, percentages and 95% confidence intervals; Respondents aged 18 years and older; n/r (Not Reportable) - If the unweighted total responses for a dimension (row) is <50 that row will not be shown; n/a (Not Available) - Not asked of a subset of respondents*

**Year: 2004-2006**

Poverty Level	Yes			No			Estimated Population (3-Yr Avg)
	#	%	C.I. (95%)	#	%	C.I. (95%)	#
<b>0-130%</b>	59,300	35.7	32.5 - 38.8	107,000	64.3	61.2 - 67.5	166,300
<b>131-185%</b>	36,400	33.7	29.3 - 38.0	71,800	66.3	62.0 - 70.7	108,200
<b>186+%</b>	187,500	33.0	31.6 - 34.5	379,900	67.0	65.5 - 68.4	567,400

Marital Status (Grouped)	Yes			No			Estimated Population (3-Yr Avg)
	#	%	C.I. (95%)	#	%	C.I. (95%)	#
<b>Married</b>	201,400	36.1	34.6 - 37.6	357,100	63.9	62.4 - 65.4	558,600
<b>Unmarried Couple</b>	5,300	19.7	12.9 - 26.4	21,700	80.3	73.6 - 87.1	27,000
<b>Widowed</b>	34,700	62.8	58.5 - 67.0	20,600	37.2	33.0 - 41.5	55,300
<b>Other</b>	83,500	27.5	25.2 - 29.8	220,200	72.5	70.2 - 74.8	303,700

**Flu - had shot in past 12 mons by State, County, Island, Community, BRFSS Age Group, DOH Race-Ethnicity, Gender, Education Level, Employment Status (Grouped), Household Income, Poverty Level, Marital Status (Grouped), Married, Health Care Coverage, for the Year(s) - 2001-2003, 2002-2004, 2003-2005, 2004-2006, 2005-2007, 2006-2008, 2007-2009, 2008-2010**

*Note: Weighted numbers (#) represent 3-yr averages, percentages and 95% confidence intervals; Respondents aged 18 years and older; n/r (Not Reportable) - If the unweighted total responses for a dimension (row) is <50 that row will not be shown; n/a (Not Available) - Not asked of a subset of respondents*

**Year: 2004-2006**

<b>Married</b>	<b>Yes</b>			<b>No</b>			<b>Estimated Population (3-Yr Avg)</b>
	<b>#</b>	<b>%</b>	<b>C.I. (95%)</b>	<b>#</b>	<b>%</b>	<b>C.I. (95%)</b>	<b>#</b>
<b>Yes</b>	204,500	35.9	34.4 - 37.4	364,500	64.1	62.6 - 65.6	569,000
<b>No</b>	120,100	32.2	30.2 - 34.2	253,200	67.8	65.8 - 69.8	373,300

<b>Health Care Coverage</b>	<b>Yes</b>			<b>No</b>			<b>Estimated Population (3-Yr Avg)</b>
	<b>#</b>	<b>%</b>	<b>C.I. (95%)</b>	<b>#</b>	<b>%</b>	<b>C.I. (95%)</b>	<b>#</b>
<b>Yes</b>	312,100	36.2	34.9 - 37.5	550,100	63.8	62.5 - 65.1	862,200
<b>No</b>	12,400	15.6	11.5 - 19.7	67,100	84.4	80.3 - 88.5	79,500

**Flu - had shot in past 12 mons by State, County, Island, Community, BRFSS Age Group, DOH Race-Ethnicity, Gender, Education Level, Employment Status (Grouped), Household Income, Poverty Level, Marital Status (Grouped), Married, Health Care Coverage, for the Year(s) - 2001-2003, 2002-2004, 2003-2005, 2004-2006, 2005-2007, 2006-2008, 2007-2009, 2008-2010**

*Note: Weighted numbers (#) represent 3-yr averages, percentages and 95% confidence intervals; Respondents aged 18 years and older; n/r (Not Reportable) - If the unweighted total responses for a dimension (row) is <50 that row will not be shown; n/a (Not Available) - Not asked of a subset of respondents*

**Year: 2003-2005**

State	Yes			No			Estimated Population (3-Yr Avg)
	#	%	C.I. (95%)	#	%	C.I. (95%)	#
Hawaii State	328,000	35.2	33.9 - 36.4	603,900	64.8	63.6 - 66.1	931,800

County	Yes			No			Estimated Population (3-Yr Avg)
	#	%	C.I. (95%)	#	%	C.I. (95%)	#
Hawaii	34,400	28.3	26.2 - 30.3	87,400	71.7	69.7 - 73.8	121,800
Honolulu	253,800	38.1	36.4 - 39.7	412,800	61.9	60.3 - 63.6	666,500
Kauai	12,100	27.8	24.9 - 30.7	31,400	72.2	69.3 - 75.1	43,500
Maui	27,700	27.7	25.0 - 30.3	72,300	72.3	69.7 - 75.0	100,000

**Flu - had shot in past 12 mons by State, County, Island, Community, BRFSS Age Group, DOH Race-Ethnicity, Gender, Education Level, Employment Status (Grouped), Household Income, Poverty Level, Marital Status (Grouped), Married, Health Care Coverage, for the Year(s) - 2001-2003, 2002-2004, 2003-2005, 2004-2006, 2005-2007, 2006-2008, 2007-2009, 2008-2010**

*Note: Weighted numbers (#) represent 3-yr averages, percentages and 95% confidence intervals; Respondents aged 18 years and older; n/r (Not Reportable) - If the unweighted total responses for a dimension (row) is <50 that row will not be shown; n/a (Not Available) - Not asked of a subset of respondents*

**Year: 2003-2005**

Island	Yes			No			Estimated Population (3-Yr Avg)
	#	%	C.I. (95%)	#	%	C.I. (95%)	#
Hawaii	34,400	28.3	26.2 - 30.3	87,400	71.7	69.7 - 73.8	121,800
Kauai	12,100	27.8	24.9 - 30.7	31,400	72.2	69.3 - 75.1	43,500
Lanai	500	23.5	17.3 - 29.8	1,600	76.5	70.2 - 82.7	2,100
Maui	25,000	27.2	24.4 - 30.0	67,000	72.8	70.0 - 75.6	92,000
Molokai	2,100	36.2	28.7 - 43.8	3,800	63.8	56.2 - 71.3	5,900
Oahu	253,800	38.1	36.4 - 39.7	412,800	61.9	60.3 - 63.6	666,500

Community	Yes			No			Estimated Population (3-Yr Avg)
	#	%	C.I. (95%)	#	%	C.I. (95%)	#
Aiea/ Pearl City	28,500	46.2	40.6 - 51.8	33,100	53.8	48.2 - 59.4	61,600
Ala Moana	10,200	32.5	25.2 - 39.8	21,200	67.5	60.2 - 74.8	31,400

**Flu - had shot in past 12 mons by State, County, Island, Community, BRFSS Age Group, DOH Race-Ethnicity, Gender, Education Level, Employment Status (Grouped), Household Income, Poverty Level, Marital Status (Grouped), Married, Health Care Coverage, for the Year(s) - 2001-2003, 2002-2004, 2003-2005, 2004-2006, 2005-2007, 2006-2008, 2007-2009, 2008-2010**

*Note: Weighted numbers (#) represent 3-yr averages, percentages and 95% confidence intervals; Respondents aged 18 years and older; n/r (Not Reportable) - If the unweighted total responses for a dimension (row) is <50 that row will not be shown; n/a (Not Available) - Not asked of a subset of respondents*

**Year: 2003-2005**

Community	Yes			No			Estimated Population (3-Yr Avg)
	#	%	C.I. (95%)	#	%	C.I. (95%)	#
Hanalei/ Kapaa	4,200	23.5	19.3 - 27.7	13,600	76.5	72.3 - 80.7	17,800
Hilo	10,500	30.1	26.3 - 33.8	24,300	69.9	66.2 - 73.7	34,800
Kaaawa/ Kahaluu/ Kaneohe	17,200	37.3	31.2 - 43.3	29,000	62.7	56.7 - 68.8	46,200
Kahului	10,500	31.9	26.9 - 37.0	22,400	68.1	63.0 - 73.1	33,000
Kailua/ Waimanalo	19,100	40.6	34.9 - 46.2	27,900	59.4	53.8 - 65.1	47,000
Kaimuki/ Palolo/ Waikiki	21,500	33.7	29.0 - 38.3	42,300	66.3	61.7 - 71.0	63,700
Kona	7,500	26.4	22.6 - 30.3	20,900	73.6	69.7 - 77.4	28,400
Lahaina/ Wailuku	8,100	27.7	22.5 - 32.9	21,100	72.3	67.1 - 77.5	29,200
Lanai	500	23.5	17.3 - 29.8	1,600	76.5	70.2 - 82.7	2,100
Lihue-Waimea	7,900	30.8	26.8 - 34.8	17,800	69.2	65.2 - 73.2	25,700
Manoa/ Upper Makiki	17,500	36.3	30.6 - 42.0	30,700	63.7	58.0 - 69.4	48,200
Mililani/ Wahiawa	24,900	37.6	31.9 - 43.4	41,300	62.4	56.6 - 68.1	66,200

**Flu - had shot in past 12 mons by State, County, Island, Community, BRFSS Age Group, DOH Race-Ethnicity, Gender, Education Level, Employment Status (Grouped), Household Income, Poverty Level, Marital Status (Grouped), Married, Health Care Coverage, for the Year(s) - 2001-2003, 2002-2004, 2003-2005, 2004-2006, 2005-2007, 2006-2008, 2007-2009, 2008-2010**

*Note: Weighted numbers (#) represent 3-yr averages, percentages and 95% confidence intervals; Respondents aged 18 years and older; n/r (Not Reportable) - If the unweighted total responses for a dimension (row) is <50 that row will not be shown; n/a (Not Available) - Not asked of a subset of respondents*

**Year: 2003-2005**

Community	Yes			No			Estimated Population (3-Yr Avg)
	#	%	C.I. (95%)	#	%	C.I. (95%)	#
Molokai	2,100	36.2	28.7 - 43.8	3,800	63.8	56.2 - 71.3	5,900
Nanakuli/ Waianae	13,600	42.9	34.2 - 51.6	18,200	57.1	48.4 - 65.8	31,800
N.Hawaii	7,200	30.2	25.2 - 35.1	16,700	69.8	64.9 - 74.8	23,900
N.Shore/ Laie	7,100	32.6	24.2 - 41.1	14,700	67.4	58.9 - 75.8	21,800
Nuuanu/ Kalihi/ Moanalua	23,700	35.0	30.1 - 39.9	44,000	65.0	60.1 - 69.9	67,700
Puna/ Kau	9,200	26.7	22.5 - 30.8	25,400	73.3	69.2 - 77.5	34,700
Salt Lake/ Foster Village	14,800	40.1	33.4 - 46.8	22,100	59.9	53.2 - 66.6	36,900
Upcountry/ Hana	6,400	21.5	17.3 - 25.6	23,400	78.5	74.4 - 82.7	29,800
Waiialae/ Kahala/ Hawaii Kai	16,300	42.9	36.3 - 49.5	21,600	57.1	50.5 - 63.7	37,900
Waipahu/ Kapolei/ Ewa	39,400	37.1	32.7 - 41.6	66,700	62.9	58.4 - 67.3	106,200

**Flu - had shot in past 12 mons by State, County, Island, Community, BRFSS Age Group, DOH Race-Ethnicity, Gender, Education Level, Employment Status (Grouped), Household Income, Poverty Level, Marital Status (Grouped), Married, Health Care Coverage, for the Year(s) - 2001-2003, 2002-2004, 2003-2005, 2004-2006, 2005-2007, 2006-2008, 2007-2009, 2008-2010**

*Note: Weighted numbers (#) represent 3-yr averages, percentages and 95% confidence intervals; Respondents aged 18 years and older; n/r (Not Reportable) - If the unweighted total responses for a dimension (row) is <50 that row will not be shown; n/a (Not Available) - Not asked of a subset of respondents*

**Year: 2003-2005**

BRFSS Age Group	Yes			No			Estimated Population (3-Yr Avg)
	#	%	C.I. (95%)	#	%	C.I. (95%)	#
18-24	35,300	31.2	26.3 - 36.1	78,000	68.8	63.9 - 73.7	113,300
25-34	39,000	23.5	20.7 - 26.3	126,500	76.5	73.7 - 79.3	165,500
35-44	40,100	22.3	19.9 - 24.8	139,500	77.7	75.2 - 80.1	179,600
45-54	46,100	26.3	23.9 - 28.8	128,900	73.7	71.2 - 76.1	174,900
55-64	51,200	39.8	36.7 - 42.8	77,500	60.2	57.2 - 63.3	128,700
65-74	55,800	66.3	62.6 - 70.0	28,400	33.7	30.0 - 37.4	84,100
75+	58,300	73.0	69.4 - 76.7	21,500	27.0	23.3 - 30.6	79,800

**Flu - had shot in past 12 mons by State, County, Island, Community, BRFSS Age Group, DOH Race-Ethnicity, Gender, Education Level, Employment Status (Grouped), Household Income, Poverty Level, Marital Status (Grouped), Married, Health Care Coverage, for the Year(s) - 2001-2003, 2002-2004, 2003-2005, 2004-2006, 2005-2007, 2006-2008, 2007-2009, 2008-2010**

*Note: Weighted numbers (#) represent 3-yr averages, percentages and 95% confidence intervals; Respondents aged 18 years and older; n/r (Not Reportable) - If the unweighted total responses for a dimension (row) is <50 that row will not be shown; n/a (Not Available) - Not asked of a subset of respondents*

**Year: 2003-2005**

DOH Race-Ethnicity	Yes			No			Estimated Population (3-Yr Avg)
	#	%	C.I. (95%)	#	%	C.I. (95%)	#
Caucasian	108,900	34.0	32.1 - 35.8	211,500	66.0	64.2 - 67.9	320,400
Native Hawaiian	33,100	31.0	27.3 - 34.6	73,800	69.0	65.4 - 72.7	106,800
Chinese	26,400	37.1	32.8 - 41.5	44,700	62.9	58.5 - 67.2	71,200
Filipino	52,700	35.8	32.2 - 39.4	94,500	64.2	60.6 - 67.8	147,100
Japanese	75,200	39.8	37.1 - 42.5	113,800	60.2	57.5 - 62.9	189,000
Black	5,100	37.2	28.0 - 46.4	8,600	62.8	53.6 - 72.0	13,700
Native Alaskan/ American Indian	1,300	25.3	11.0 - 39.7	3,800	74.7	60.3 - 89.0	5,100
Other Asian	6,300	32.6	21.2 - 44.0	13,000	67.4	56.0 - 78.8	19,200
Other Pacific Islander	8,100	38.8	24.9 - 52.7	12,900	61.2	47.3 - 75.1	21,000
Other	8,400	32.3	25.5 - 39.0	17,700	67.7	61.0 - 74.5	26,100



**Flu - had shot in past 12 mons by State, County, Island, Community, BRFSS Age Group, DOH Race-Ethnicity, Gender, Education Level, Employment Status (Grouped), Household Income, Poverty Level, Marital Status (Grouped), Married, Health Care Coverage, for the Year(s) - 2001-2003, 2002-2004, 2003-2005, 2004-2006, 2005-2007, 2006-2008, 2007-2009, 2008-2010**

*Note: Weighted numbers (#) represent 3-yr averages, percentages and 95% confidence intervals; Respondents aged 18 years and older; n/r (Not Reportable) - If the unweighted total responses for a dimension (row) is <50 that row will not be shown; n/a (Not Available) - Not asked of a subset of respondents*

**Year: 2003-2005**

Gender	Yes			No			Estimated Population (3-Yr Avg)
	#	%	C.I. (95%)	#	%	C.I. (95%)	#
Male	162,000	35.3	33.3 - 37.2	297,400	64.7	62.8 - 66.7	459,400
Female	165,900	35.1	33.5 - 36.7	306,400	64.9	63.3 - 66.5	472,400

Education Level	Yes			No			Estimated Population (3-Yr Avg)
	#	%	C.I. (95%)	#	%	C.I. (95%)	#
Never attended school/ Only Kindergarten to Grades 8	7,400	49.8	40.6 - 59.0	7,500	50.2	41.0 - 59.4	14,900
Grades 9 thru 11 (Some High School)	14,600	41.6	34.9 - 48.3	20,500	58.4	51.7 - 65.1	35,100
Grades 12 or GED (High School Grad)	101,400	36.5	34.1 - 39.0	176,100	63.5	61.0 - 65.9	277,500
College 1 to 3 years (Some College/ Tech)	90,400	32.4	30.0 - 34.7	189,100	67.6	65.3 - 70.0	279,500
College 4 years or more (College Grad)	113,600	35.2	33.2 - 37.1	209,600	64.8	62.9 - 66.8	323,300

**Flu - had shot in past 12 mons by State, County, Island, Community, BRFSS Age Group, DOH Race-Ethnicity, Gender, Education Level, Employment Status (Grouped), Household Income, Poverty Level, Marital Status (Grouped), Married, Health Care Coverage, for the Year(s) - 2001-2003, 2002-2004, 2003-2005, 2004-2006, 2005-2007, 2006-2008, 2007-2009, 2008-2010**

*Note: Weighted numbers (#) represent 3-yr averages, percentages and 95% confidence intervals; Respondents aged 18 years and older; n/r (Not Reportable) - If the unweighted total responses for a dimension (row) is <50 that row will not be shown; n/a (Not Available) - Not asked of a subset of respondents*

**Year: 2003-2005**

Employment Status (Grouped)	Yes			No			Estimated Population (3-Yr Avg)
	#	%	C.I. (95%)	#	%	C.I. (95%)	#
<b>Employed</b>	172,200	28.6	27.1 - 30.1	429,800	71.4	69.9 - 72.9	602,000
<b>Unemployed</b>	4,600	18.2	12.6 - 23.8	20,700	81.8	76.2 - 87.4	25,300
<b>Retired/Unable to work</b>	127,200	61.3	58.8 - 63.7	80,400	38.7	36.3 - 41.2	207,600
<b>Student/Homemaker</b>	23,200	24.3	20.4 - 28.2	72,200	75.7	71.8 - 79.6	95,400

**Flu - had shot in past 12 mons by State, County, Island, Community, BRFSS Age Group, DOH Race-Ethnicity, Gender, Education Level, Employment Status (Grouped), Household Income, Poverty Level, Marital Status (Grouped), Married, Health Care Coverage, for the Year(s) - 2001-2003, 2002-2004, 2003-2005, 2004-2006, 2005-2007, 2006-2008, 2007-2009, 2008-2010**

*Note: Weighted numbers (#) represent 3-yr averages, percentages and 95% confidence intervals; Respondents aged 18 years and older; n/r (Not Reportable) - If the unweighted total responses for a dimension (row) is <50 that row will not be shown; n/a (Not Available) - Not asked of a subset of respondents*

**Year: 2003-2005**

Household Income	Yes			No			Estimated Population (3-Yr Avg)
	#	%	C.I. (95%)	#	%	C.I. (95%)	#
Less than \$10,000	11,700	38.6	32.3 - 44.9	18,600	61.4	55.1 - 67.7	30,300
\$10,000 to \$14,999	15,500	44.1	37.9 - 50.2	19,700	55.9	49.8 - 62.1	35,200
\$15,000 to \$19,999	19,100	39.0	33.4 - 44.6	29,900	61.0	55.4 - 66.6	49,000
\$20,000 to \$24,999	20,700	33.3	28.8 - 37.7	41,400	66.7	62.3 - 71.2	62,100
\$25,000 to \$34,999	37,700	37.7	33.7 - 41.7	62,400	62.3	58.3 - 66.3	100,200
\$35,000 to \$49,999	47,700	32.9	29.9 - 35.9	97,300	67.1	64.1 - 70.1	144,900
\$50,000 to \$74,999	64,400	32.2	29.1 - 35.3	135,500	67.8	64.7 - 70.9	199,900
\$75,000 or more	64,000	32.1	29.6 - 34.7	135,100	67.9	65.3 - 70.4	199,100

**Flu - had shot in past 12 mons by State, County, Island, Community, BRFSS Age Group, DOH Race-Ethnicity, Gender, Education Level, Employment Status (Grouped), Household Income, Poverty Level, Marital Status (Grouped), Married, Health Care Coverage, for the Year(s) - 2001-2003, 2002-2004, 2003-2005, 2004-2006, 2005-2007, 2006-2008, 2007-2009, 2008-2010**

*Note: Weighted numbers (#) represent 3-yr averages, percentages and 95% confidence intervals; Respondents aged 18 years and older; n/r (Not Reportable) - If the unweighted total responses for a dimension (row) is <50 that row will not be shown; n/a (Not Available) - Not asked of a subset of respondents*

**Year: 2003-2005**

Poverty Level	Yes			No			Estimated Population (3-Yr Avg)
	#	%	C.I. (95%)	#	%	C.I. (95%)	#
<b>0-130%</b>	63,700	37.1	33.9 - 40.3	108,000	62.9	59.7 - 66.1	171,800
<b>131-185%</b>	32,800	33.5	28.7 - 38.3	65,100	66.5	61.7 - 71.3	97,900
<b>186+%</b>	184,300	33.4	31.9 - 35.0	366,800	66.6	65.0 - 68.1	551,100

Marital Status (Grouped)	Yes			No			Estimated Population (3-Yr Avg)
	#	%	C.I. (95%)	#	%	C.I. (95%)	#
<b>Married</b>	200,000	36.6	35.0 - 38.2	346,300	63.4	61.8 - 65.0	546,300
<b>Unmarried Couple</b>	4,600	20.4	13.1 - 27.7	17,900	79.6	72.3 - 86.9	22,500
<b>Widowed</b>	37,100	62.4	58.1 - 66.6	22,400	37.6	33.4 - 41.9	59,400
<b>Other</b>	86,300	28.4	26.1 - 30.8	217,300	71.6	69.2 - 73.9	303,600

**Flu - had shot in past 12 mons by State, County, Island, Community, BRFSS Age Group, DOH Race-Ethnicity, Gender, Education Level, Employment Status (Grouped), Household Income, Poverty Level, Marital Status (Grouped), Married, Health Care Coverage, for the Year(s) - 2001-2003, 2002-2004, 2003-2005, 2004-2006, 2005-2007, 2006-2008, 2007-2009, 2008-2010**

*Note: Weighted numbers (#) represent 3-yr averages, percentages and 95% confidence intervals; Respondents aged 18 years and older; n/r (Not Reportable) - If the unweighted total responses for a dimension (row) is <50 that row will not be shown; n/a (Not Available) - Not asked of a subset of respondents*

**Year: 2003-2005**

<b>Married</b>	<b>Yes</b>			<b>No</b>			<b>Estimated Population (3-Yr Avg)</b>
	<b>#</b>	<b>%</b>	<b>C.I. (95%)</b>	<b>#</b>	<b>%</b>	<b>C.I. (95%)</b>	<b>#</b>
<b>Yes</b>	202,400	36.3	34.8 - 37.9	354,600	63.7	62.1 - 65.2	557,000
<b>No</b>	125,200	33.6	31.5 - 35.6	247,600	66.4	64.4 - 68.5	372,800

<b>Health Care Coverage</b>	<b>Yes</b>			<b>No</b>			<b>Estimated Population (3-Yr Avg)</b>
	<b>#</b>	<b>%</b>	<b>C.I. (95%)</b>	<b>#</b>	<b>%</b>	<b>C.I. (95%)</b>	<b>#</b>
<b>Yes</b>	314,600	36.9	35.6 - 38.2	537,900	63.1	61.8 - 64.4	852,500
<b>No</b>	13,000	16.8	12.5 - 21.1	64,000	83.2	78.9 - 87.5	77,000

**Flu - had shot in past 12 mons by State, County, Island, Community, BRFSS Age Group, DOH Race-Ethnicity, Gender, Education Level, Employment Status (Grouped), Household Income, Poverty Level, Marital Status (Grouped), Married, Health Care Coverage, for the Year(s) - 2001-2003, 2002-2004, 2003-2005, 2004-2006, 2005-2007, 2006-2008, 2007-2009, 2008-2010**

*Note: Weighted numbers (#) represent 3-yr averages, percentages and 95% confidence intervals; Respondents aged 18 years and older; n/r (Not Reportable) - If the unweighted total responses for a dimension (row) is <50 that row will not be shown; n/a (Not Available) - Not asked of a subset of respondents*

**Year: 2002-2004**

State	Yes			No			Estimated Population (3-Yr Avg)
	#	%	C.I. (95%)	#	%	C.I. (95%)	#
Hawaii State	323,000	35.5	34.2 - 36.8	586,800	64.5	63.2 - 65.8	909,800

County	Yes			No			Estimated Population (3-Yr Avg)
	#	%	C.I. (95%)	#	%	C.I. (95%)	#
Hawaii	34,300	28.9	26.8 - 31.1	84,200	71.1	68.9 - 73.2	118,500
Honolulu	249,900	38.3	36.7 - 40.0	402,100	61.7	60.0 - 63.3	652,000
Kauai	12,400	29.4	26.4 - 32.3	29,800	70.6	67.7 - 73.6	42,200
Maui	26,500	27.2	24.6 - 29.9	70,700	72.8	70.1 - 75.4	97,100

**Flu - had shot in past 12 mons by State, County, Island, Community, BRFSS Age Group, DOH Race-Ethnicity, Gender, Education Level, Employment Status (Grouped), Household Income, Poverty Level, Marital Status (Grouped), Married, Health Care Coverage, for the Year(s) - 2001-2003, 2002-2004, 2003-2005, 2004-2006, 2005-2007, 2006-2008, 2007-2009, 2008-2010**

*Note: Weighted numbers (#) represent 3-yr averages, percentages and 95% confidence intervals; Respondents aged 18 years and older; n/r (Not Reportable) - If the unweighted total responses for a dimension (row) is <50 that row will not be shown; n/a (Not Available) - Not asked of a subset of respondents*

**Year: 2002-2004**

Island	Yes			No			Estimated Population (3-Yr Avg)
	#	%	C.I. (95%)	#	%	C.I. (95%)	#
Hawaii	34,300	28.9	26.8 - 31.1	84,200	71.1	68.9 - 73.2	118,500
Kauai	12,400	29.4	26.4 - 32.3	29,800	70.6	67.7 - 73.6	42,200
Lanai	700	28.8	21.5 - 36.0	1,800	71.2	64.0 - 78.5	2,500
Maui	23,400	26.6	23.8 - 29.5	64,500	73.4	70.5 - 76.2	87,900
Molokai	2,400	35.0	28.0 - 42.0	4,400	65.0	58.0 - 72.0	6,700
Oahu	249,900	38.3	36.7 - 40.0	402,100	61.7	60.0 - 63.3	652,000

Community	Yes			No			Estimated Population (3-Yr Avg)
	#	%	C.I. (95%)	#	%	C.I. (95%)	#
Aiea/ Pearl City	29,100	48.3	42.6 - 53.9	31,200	51.7	46.1 - 57.4	60,300
Ala Moana	10,200	32.0	24.9 - 39.2	21,600	68.0	60.8 - 75.1	31,700

**Flu - had shot in past 12 mons by State, County, Island, Community, BRFSS Age Group, DOH Race-Ethnicity, Gender, Education Level, Employment Status (Grouped), Household Income, Poverty Level, Marital Status (Grouped), Married, Health Care Coverage, for the Year(s) - 2001-2003, 2002-2004, 2003-2005, 2004-2006, 2005-2007, 2006-2008, 2007-2009, 2008-2010**

*Note: Weighted numbers (#) represent 3-yr averages, percentages and 95% confidence intervals; Respondents aged 18 years and older; n/r (Not Reportable) - If the unweighted total responses for a dimension (row) is <50 that row will not be shown; n/a (Not Available) - Not asked of a subset of respondents*

**Year: 2002-2004**

Community	Yes			No			Estimated Population (3-Yr Avg)
	#	%	C.I. (95%)	#	%	C.I. (95%)	#
Hanalei/ Kapaa	4,200	23.9	19.8 - 28.1	13,200	76.1	71.9 - 80.2	17,400
Hilo	10,600	30.5	26.7 - 34.3	24,000	69.5	65.7 - 73.3	34,600
Kaaawa/ Kahaluu/ Kaneohe	16,000	38.0	31.6 - 44.3	26,100	62.0	55.7 - 68.4	42,000
Kahului	10,000	32.3	27.1 - 37.5	20,900	67.7	62.5 - 72.9	30,900
Kailua/ Waimanalo	18,300	39.2	33.5 - 44.9	28,300	60.8	55.1 - 66.5	46,600
Kaimuki/ Palolo/ Waikiki	22,700	35.3	30.7 - 39.9	41,600	64.7	60.1 - 69.3	64,300
Kona	7,300	25.5	21.8 - 29.3	21,400	74.5	70.7 - 78.2	28,700
Lahaina/ Wailuku	7,700	27.3	22.0 - 32.5	20,400	72.7	67.5 - 78.0	28,100
Lanai	700	28.8	21.5 - 36.0	1,800	71.2	64.0 - 78.5	2,500
Lihue-Waimea	8,200	33.2	29.1 - 37.3	16,500	66.8	62.7 - 70.9	24,700
Manoa/ Upper Makiki	19,200	36.4	31.1 - 41.8	33,500	63.6	58.2 - 68.9	52,600
Millilani/ Wahiawa	24,000	37.9	31.7 - 44.1	39,400	62.1	55.9 - 68.3	63,400



**Flu - had shot in past 12 mons by State, County, Island, Community, BRFSS Age Group, DOH Race-Ethnicity, Gender, Education Level, Employment Status (Grouped), Household Income, Poverty Level, Marital Status (Grouped), Married, Health Care Coverage, for the Year(s) - 2001-2003, 2002-2004, 2003-2005, 2004-2006, 2005-2007, 2006-2008, 2007-2009, 2008-2010**

*Note: Weighted numbers (#) represent 3-yr averages, percentages and 95% confidence intervals; Respondents aged 18 years and older; n/r (Not Reportable) - If the unweighted total responses for a dimension (row) is <50 that row will not be shown; n/a (Not Available) - Not asked of a subset of respondents*

**Year: 2002-2004**

Community	Yes			No			Estimated Population (3-Yr Avg)
	#	%	C.I. (95%)	#	%	C.I. (95%)	#
Molokai	2,400	35.0	28.0 - 42.0	4,400	65.0	58.0 - 72.0	6,700
Nanakuli/ Waianae	12,000	40.7	31.9 - 49.5	17,600	59.3	50.5 - 68.1	29,600
N.Hawaii	7,500	32.1	27.0 - 37.3	15,800	67.9	62.7 - 73.0	23,300
N.Shore/ Laie	6,500	30.8	22.2 - 39.4	14,500	69.2	60.6 - 77.8	21,000
Nuuanu/ Kalihi/ Moanalua	23,400	35.0	30.1 - 39.8	43,500	65.0	60.2 - 69.9	66,800
Puna/ Kau	8,900	28.0	23.5 - 32.5	23,000	72.0	67.5 - 76.5	31,900
Salt Lake/ Foster Village	16,500	42.8	36.2 - 49.4	22,000	57.2	50.6 - 63.8	38,500
Upcountry/ Hana	5,700	19.9	15.8 - 23.9	23,100	80.1	76.1 - 84.2	28,800
Waialae/ Kahala/ Hawaii Kai	16,300	41.6	35.2 - 48.1	22,900	58.4	51.9 - 64.8	39,200
Waipahu/ Kapolei/ Ewa	35,800	37.4	32.6 - 42.2	60,000	62.6	57.8 - 67.4	95,800

**Flu - had shot in past 12 mons by State, County, Island, Community, BRFSS Age Group, DOH Race-Ethnicity, Gender, Education Level, Employment Status (Grouped), Household Income, Poverty Level, Marital Status (Grouped), Married, Health Care Coverage, for the Year(s) - 2001-2003, 2002-2004, 2003-2005, 2004-2006, 2005-2007, 2006-2008, 2007-2009, 2008-2010**

*Note: Weighted numbers (#) represent 3-yr averages, percentages and 95% confidence intervals; Respondents aged 18 years and older; n/r (Not Reportable) - If the unweighted total responses for a dimension (row) is <50 that row will not be shown; n/a (Not Available) - Not asked of a subset of respondents*

**Year: 2002-2004**

BRFSS Age Group	Yes			No			Estimated Population (3-Yr Avg)
	#	%	C.I. (95%)	#	%	C.I. (95%)	#
18-24	34,700	31.0	26.2 - 35.9	77,100	69.0	64.1 - 73.8	111,800
25-34	37,300	22.7	20.0 - 25.5	126,900	77.3	74.5 - 80.0	164,200
35-44	42,300	23.5	21.0 - 26.0	137,600	76.5	74.0 - 79.0	179,800
45-54	46,400	27.0	24.5 - 29.5	125,300	73.0	70.5 - 75.5	171,800
55-64	49,500	41.5	38.3 - 44.8	69,600	58.5	55.2 - 61.7	119,100
65-74	53,500	65.2	61.4 - 69.1	28,500	34.8	30.9 - 38.6	82,100
75+	57,200	75.4	71.6 - 79.1	18,700	24.6	20.9 - 28.4	75,900

**Flu - had shot in past 12 mons by State, County, Island, Community, BRFSS Age Group, DOH Race-Ethnicity, Gender, Education Level, Employment Status (Grouped), Household Income, Poverty Level, Marital Status (Grouped), Married, Health Care Coverage, for the Year(s) - 2001-2003, 2002-2004, 2003-2005, 2004-2006, 2005-2007, 2006-2008, 2007-2009, 2008-2010**

*Note: Weighted numbers (#) represent 3-yr averages, percentages and 95% confidence intervals; Respondents aged 18 years and older; n/r (Not Reportable) - If the unweighted total responses for a dimension (row) is <50 that row will not be shown; n/a (Not Available) - Not asked of a subset of respondents*

**Year: 2002-2004**

DOH Race-Ethnicity	Yes			No			Estimated Population (3-Yr Avg)
	#	%	C.I. (95%)	#	%	C.I. (95%)	#
Caucasian	105,900	33.5	31.6 - 35.4	210,000	66.5	64.6 - 68.4	315,900
Native Hawaiian	31,600	29.9	26.3 - 33.6	74,000	70.1	66.4 - 73.7	105,600
Chinese	27,600	36.8	32.7 - 41.0	47,300	63.2	59.0 - 67.3	74,900
Filipino	52,300	37.0	33.3 - 40.7	89,000	63.0	59.3 - 66.7	141,300
Japanese	76,300	42.1	39.2 - 44.9	105,100	57.9	55.1 - 60.8	181,400
Black	4,400	34.8	25.8 - 43.8	8,200	65.2	56.2 - 74.2	12,600
Native Alaskan/ American Indian	1,000	20.9	5.5 - 36.2	3,600	79.1	63.8 - 94.5	4,600
Other Asian	6,500	33.1	22.2 - 44.1	13,000	66.9	55.9 - 77.8	19,500
Other Pacific Islander	6,400	32.8	17.5 - 48.1	13,100	67.2	51.9 - 82.5	19,500
Other	8,800	38.0	30.3 - 45.7	14,300	62.0	54.3 - 69.7	23,100

**Flu - had shot in past 12 mons by State, County, Island, Community, BRFSS Age Group, DOH Race-Ethnicity, Gender, Education Level, Employment Status (Grouped), Household Income, Poverty Level, Marital Status (Grouped), Married, Health Care Coverage, for the Year(s) - 2001-2003, 2002-2004, 2003-2005, 2004-2006, 2005-2007, 2006-2008, 2007-2009, 2008-2010**

*Note: Weighted numbers (#) represent 3-yr averages, percentages and 95% confidence intervals; Respondents aged 18 years and older; n/r (Not Reportable) - If the unweighted total responses for a dimension (row) is <50 that row will not be shown; n/a (Not Available) - Not asked of a subset of respondents*

**Year: 2002-2004**

Gender	Yes			No			Estimated Population (3-Yr Avg)
	#	%	C.I. (95%)	#	%	C.I. (95%)	#
Male	160,400	35.8	33.8 - 37.7	287,900	64.2	62.3 - 66.2	448,200
Female	162,700	35.2	33.6 - 36.9	298,900	64.8	63.1 - 66.4	461,600

Education Level	Yes			No			Estimated Population (3-Yr Avg)
	#	%	C.I. (95%)	#	%	C.I. (95%)	#
Never attended school/ Only Kindergarten to Grades 8	8,600	59.9	50.9 - 68.9	5,700	40.1	31.1 - 49.1	14,300
Grades 9 thru 11 (Some High School)	15,300	46.1	39.0 - 53.1	17,900	53.9	46.9 - 61.0	33,200
Grades 12 or GED (High School Grad)	103,700	35.9	33.5 - 38.3	185,200	64.1	61.7 - 66.5	288,900
College 1 to 3 years (Some College/ Tech)	88,000	32.1	29.8 - 34.4	186,200	67.9	65.6 - 70.2	274,200
College 4 years or more (College Grad)	107,000	35.9	33.8 - 38.0	191,000	64.1	62.0 - 66.2	298,100

**Flu - had shot in past 12 mons by State, County, Island, Community, BRFSS Age Group, DOH Race-Ethnicity, Gender, Education Level, Employment Status (Grouped), Household Income, Poverty Level, Marital Status (Grouped), Married, Health Care Coverage, for the Year(s) - 2001-2003, 2002-2004, 2003-2005, 2004-2006, 2005-2007, 2006-2008, 2007-2009, 2008-2010**

*Note: Weighted numbers (#) represent 3-yr averages, percentages and 95% confidence intervals; Respondents aged 18 years and older; n/r (Not Reportable) - If the unweighted total responses for a dimension (row) is <50 that row will not be shown; n/a (Not Available) - Not asked of a subset of respondents*

**Year: 2002-2004**

Employment Status (Grouped)	Yes			No			Estimated Population (3-Yr Avg)
	#	%	C.I. (95%)	#	%	C.I. (95%)	#
<b>Employed</b>	169,800	28.8	27.3 - 30.4	418,900	71.2	69.6 - 72.7	588,700
<b>Unemployed</b>	6,200	19.2	14.1 - 24.3	26,100	80.8	75.7 - 85.9	32,400
<b>Retired/Unable to work</b>	123,300	64.6	62.0 - 67.2	67,400	35.4	32.8 - 38.0	190,700
<b>Student/Homemaker</b>	23,300	24.0	20.2 - 27.8	73,800	76.0	72.2 - 79.8	97,100

**Flu - had shot in past 12 mons by State, County, Island, Community, BRFSS Age Group, DOH Race-Ethnicity, Gender, Education Level, Employment Status (Grouped), Household Income, Poverty Level, Marital Status (Grouped), Married, Health Care Coverage, for the Year(s) - 2001-2003, 2002-2004, 2003-2005, 2004-2006, 2005-2007, 2006-2008, 2007-2009, 2008-2010**

*Note: Weighted numbers (#) represent 3-yr averages, percentages and 95% confidence intervals; Respondents aged 18 years and older; n/r (Not Reportable) - If the unweighted total responses for a dimension (row) is <50 that row will not be shown; n/a (Not Available) - Not asked of a subset of respondents*

**Year: 2002-2004**

Household Income	Yes			No			Estimated Population (3-Yr Avg)
	#	%	C.I. (95%)	#	%	C.I. (95%)	#
Less than \$10,000	12,600	38.1	32.4 - 43.9	20,400	61.9	56.1 - 67.6	33,000
\$10,000 to \$14,999	15,800	42.0	36.3 - 47.7	21,800	58.0	52.3 - 63.7	37,600
\$15,000 to \$19,999	17,500	38.2	32.0 - 44.4	28,300	61.8	55.6 - 68.0	45,800
\$20,000 to \$24,999	17,600	31.5	26.8 - 36.3	38,100	68.5	63.7 - 73.2	55,700
\$25,000 to \$34,999	33,700	36.7	32.5 - 40.9	58,100	63.3	59.1 - 67.5	91,800
\$35,000 to \$49,999	46,800	34.5	31.3 - 37.7	88,900	65.5	62.3 - 68.7	135,700
\$50,000 to \$74,999	61,300	33.7	30.4 - 37.0	120,600	66.3	63.0 - 69.6	181,900
\$75,000 or more	55,900	33.5	30.5 - 36.5	110,900	66.5	63.5 - 69.5	166,800

**Flu - had shot in past 12 mons by State, County, Island, Community, BRFSS Age Group, DOH Race-Ethnicity, Gender, Education Level, Employment Status (Grouped), Household Income, Poverty Level, Marital Status (Grouped), Married, Health Care Coverage, for the Year(s) - 2001-2003, 2002-2004, 2003-2005, 2004-2006, 2005-2007, 2006-2008, 2007-2009, 2008-2010**

*Note: Weighted numbers (#) represent 3-yr averages, percentages and 95% confidence intervals; Respondents aged 18 years and older; n/r (Not Reportable) - If the unweighted total responses for a dimension (row) is <50 that row will not be shown; n/a (Not Available) - Not asked of a subset of respondents*

**Year: 2002-2004**

Poverty Level	Yes			No			Estimated Population (3-Yr Avg)
	#	%	C.I. (95%)	#	%	C.I. (95%)	#
<b>0-130%</b>	59,500	36.6	33.4 - 39.9	102,900	63.4	60.1 - 66.6	162,300
<b>131-185%</b>	28,000	31.1	26.1 - 36.1	62,100	68.9	63.9 - 73.9	90,100
<b>186+%</b>	173,700	35.0	33.3 - 36.7	322,100	65.0	63.3 - 66.7	495,800

Marital Status (Grouped)	Yes			No			Estimated Population (3-Yr Avg)
	#	%	C.I. (95%)	#	%	C.I. (95%)	#
<b>Married</b>	196,200	37.0	35.4 - 38.6	334,200	63.0	61.4 - 64.6	530,400
<b>Unmarried Couple</b>	3,400	16.2	8.7 - 23.7	17,700	83.8	76.3 - 91.3	21,100
<b>Widowed</b>	38,200	65.0	60.7 - 69.4	20,600	35.0	30.6 - 39.3	58,700
<b>Other</b>	85,200	28.5	26.1 - 30.8	214,300	71.5	69.2 - 73.9	299,500

**Flu - had shot in past 12 mons by State, County, Island, Community, BRFSS Age Group, DOH Race-Ethnicity, Gender, Education Level, Employment Status (Grouped), Household Income, Poverty Level, Marital Status (Grouped), Married, Health Care Coverage, for the Year(s) - 2001-2003, 2002-2004, 2003-2005, 2004-2006, 2005-2007, 2006-2008, 2007-2009, 2008-2010**

*Note: Weighted numbers (#) represent 3-yr averages, percentages and 95% confidence intervals; Respondents aged 18 years and older; n/r (Not Reportable) - If the unweighted total responses for a dimension (row) is <50 that row will not be shown; n/a (Not Available) - Not asked of a subset of respondents*

**Year: 2002-2004**

Married	Yes			No			Estimated Population (3-Yr Avg)
	#	%	C.I. (95%)	#	%	C.I. (95%)	#
Yes	199,000	36.8	35.2 - 38.4	342,000	63.2	61.6 - 64.8	541,000
No	123,600	33.7	31.6 - 35.8	243,500	66.3	64.2 - 68.4	367,100

Health Care Coverage	Yes			No			Estimated Population (3-Yr Avg)
	#	%	C.I. (95%)	#	%	C.I. (95%)	#
Yes	310,600	37.5	36.1 - 38.8	518,800	62.5	61.2 - 63.9	829,400
No	11,900	15.2	11.0 - 19.3	66,400	84.8	80.7 - 89.0	78,300



**Flu - had shot in past 12 mons by State, County, Island, Community, BRFSS Age Group, DOH Race-Ethnicity, Gender, Education Level, Employment Status (Grouped), Household Income, Poverty Level, Marital Status (Grouped), Married, Health Care Coverage, for the Year(s) - 2001-2003, 2002-2004, 2003-2005, 2004-2006, 2005-2007, 2006-2008, 2007-2009, 2008-2010**

*Note: Weighted numbers (#) represent 3-yr averages, percentages and 95% confidence intervals; Respondents aged 18 years and older; n/r (Not Reportable) - If the unweighted total responses for a dimension (row) is <50 that row will not be shown; n/a (Not Available) - Not asked of a subset of respondents*

**Year: 2001-2003**

State	Yes			No			Estimated Population (3-Yr Avg)
	#	%	C.I. (95%)	#	%	C.I. (95%)	#
Hawaii State	350,100	38.7	37.6 - 39.8	555,000	61.3	60.2 - 62.4	905,000

County	Yes			No			Estimated Population (3-Yr Avg)
	#	%	C.I. (95%)	#	%	C.I. (95%)	#
Hawaii	36,100	32.5	30.6 - 34.5	75,000	67.5	65.5 - 69.4	111,100
Honolulu	270,800	41.4	40.0 - 42.8	383,700	58.6	57.2 - 60.0	654,500
Kauai	14,300	33.9	31.0 - 36.7	27,900	66.1	63.3 - 69.0	42,300
Maui	28,800	29.7	27.1 - 32.2	68,300	70.3	67.8 - 72.9	97,200

**Flu - had shot in past 12 mons by State, County, Island, Community, BRFSS Age Group, DOH Race-Ethnicity, Gender, Education Level, Employment Status (Grouped), Household Income, Poverty Level, Marital Status (Grouped), Married, Health Care Coverage, for the Year(s) - 2001-2003, 2002-2004, 2003-2005, 2004-2006, 2005-2007, 2006-2008, 2007-2009, 2008-2010**

*Note: Weighted numbers (#) represent 3-yr averages, percentages and 95% confidence intervals; Respondents aged 18 years and older; n/r (Not Reportable) - If the unweighted total responses for a dimension (row) is <50 that row will not be shown; n/a (Not Available) - Not asked of a subset of respondents*

**Year: 2001-2003**

Island	Yes			No			Estimated Population (3-Yr Avg)
	#	%	C.I. (95%)	#	%	C.I. (95%)	#
Hawaii	36,100	32.5	30.6 - 34.5	75,000	67.5	65.5 - 69.4	111,100
Kauai	14,300	33.9	31.0 - 36.7	27,900	66.1	63.3 - 69.0	42,300
Lanai	900	29.6	22.7 - 36.5	2,100	70.4	63.5 - 77.3	2,900
Maui	25,400	28.9	26.1 - 31.7	62,500	71.1	68.3 - 73.9	87,900
Molokai	2,600	40.4	33.7 - 47.1	3,800	59.6	52.9 - 66.3	6,300
Oahu	270,800	41.4	40.0 - 42.8	383,700	58.6	57.2 - 60.0	654,500

Community	Yes			No			Estimated Population (3-Yr Avg)
	#	%	C.I. (95%)	#	%	C.I. (95%)	#
Aiea/ Pearl City	30,100	49.5	44.7 - 54.3	30,700	50.5	45.7 - 55.3	60,800
Ala Moana	10,800	35.8	30.5 - 41.0	19,500	64.2	59.0 - 69.5	30,300

**Flu - had shot in past 12 mons by State, County, Island, Community, BRFSS Age Group, DOH Race-Ethnicity, Gender, Education Level, Employment Status (Grouped), Household Income, Poverty Level, Marital Status (Grouped), Married, Health Care Coverage, for the Year(s) - 2001-2003, 2002-2004, 2003-2005, 2004-2006, 2005-2007, 2006-2008, 2007-2009, 2008-2010**

*Note: Weighted numbers (#) represent 3-yr averages, percentages and 95% confidence intervals; Respondents aged 18 years and older; n/r (Not Reportable) - If the unweighted total responses for a dimension (row) is <50 that row will not be shown; n/a (Not Available) - Not asked of a subset of respondents*

**Year: 2001-2003**

Community	Yes			No			Estimated Population (3-Yr Avg)
	#	%	C.I. (95%)	#	%	C.I. (95%)	#
Hanalei/ Kapaa	4,700	26.6	22.6 - 30.6	13,000	73.4	69.4 - 77.4	17,700
Hilo	12,300	36.3	32.7 - 39.9	21,600	63.7	60.1 - 67.3	33,900
Kaaawa/ Kahaluu/ Kaneohe	16,100	38.5	33.1 - 44.0	25,700	61.5	56.0 - 66.9	41,800
Kahului	10,900	34.7	28.9 - 40.4	20,600	65.3	59.6 - 71.1	31,500
Kailua/ Waimanalo	20,700	42.0	37.2 - 46.8	28,600	58.0	53.2 - 62.8	49,200
Kaimuki/ Palolo/ Waikiki	26,300	38.6	34.7 - 42.5	41,900	61.4	57.5 - 65.3	68,200
Kona	8,300	27.7	24.1 - 31.3	21,700	72.3	68.7 - 75.9	30,100
Lahaina/ Wailuku	7,900	27.6	23.5 - 31.7	20,700	72.4	68.3 - 76.5	28,600
Lanai	900	29.6	22.7 - 36.5	2,100	70.4	63.5 - 77.3	2,900
Lihue-Waimea	9,600	39.1	35.2 - 43.0	15,000	60.9	57.0 - 64.8	24,600
Manoa/ Upper Makiki	24,300	43.4	38.6 - 48.3	31,600	56.6	51.7 - 61.4	55,900
Mililani/ Wahiawa	24,500	39.5	34.8 - 44.2	37,600	60.5	55.8 - 65.2	62,100

**Flu - had shot in past 12 mons by State, County, Island, Community, BRFSS Age Group, DOH Race-Ethnicity, Gender, Education Level, Employment Status (Grouped), Household Income, Poverty Level, Marital Status (Grouped), Married, Health Care Coverage, for the Year(s) - 2001-2003, 2002-2004, 2003-2005, 2004-2006, 2005-2007, 2006-2008, 2007-2009, 2008-2010**

*Note: Weighted numbers (#) represent 3-yr averages, percentages and 95% confidence intervals; Respondents aged 18 years and older; n/r (Not Reportable) - If the unweighted total responses for a dimension (row) is <50 that row will not be shown; n/a (Not Available) - Not asked of a subset of respondents*

**Year: 2001-2003**

Community	Yes			No			Estimated Population (3-Yr Avg)
	#	%	C.I. (95%)	#	%	C.I. (95%)	#
Molokai	2,600	40.4	33.7 - 47.1	3,800	59.6	52.9 - 66.3	6,300
Nanakuli/ Waianae	10,600	38.5	31.1 - 46.0	17,000	61.5	54.0 - 68.9	27,600
N.Hawaii	8,600	36.7	32.1 - 41.3	14,900	63.3	58.7 - 67.9	23,500
N.Shore/ Laie	6,500	28.5	21.8 - 35.3	16,400	71.5	64.7 - 78.2	22,900
Nuuanu/ Kalihi/ Moanalua	27,500	40.8	36.3 - 45.2	40,000	59.2	54.8 - 63.7	67,500
Puna/ Kau	6,900	29.1	25.1 - 33.1	16,700	70.9	66.9 - 74.9	23,600
Salt Lake/ Foster Village	19,200	49.1	43.4 - 54.8	19,900	50.9	45.2 - 56.6	39,000
Upcountry/ Hana	6,600	23.7	19.9 - 27.4	21,200	76.3	72.6 - 80.1	27,800
Waialae/ Kahala/ Hawaii Kai	17,700	44.7	39.2 - 50.2	21,800	55.3	49.8 - 60.8	39,500
Waipahu/ Kapolei/ Ewa	36,400	40.6	36.7 - 44.5	53,200	59.4	55.5 - 63.3	89,600

**Flu - had shot in past 12 mons by State, County, Island, Community, BRFSS Age Group, DOH Race-Ethnicity, Gender, Education Level, Employment Status (Grouped), Household Income, Poverty Level, Marital Status (Grouped), Married, Health Care Coverage, for the Year(s) - 2001-2003, 2002-2004, 2003-2005, 2004-2006, 2005-2007, 2006-2008, 2007-2009, 2008-2010**

*Note: Weighted numbers (#) represent 3-yr averages, percentages and 95% confidence intervals; Respondents aged 18 years and older; n/r (Not Reportable) - If the unweighted total responses for a dimension (row) is <50 that row will not be shown; n/a (Not Available) - Not asked of a subset of respondents*

**Year: 2001-2003**

BRFSS Age Group	Yes			No			Estimated Population (3-Yr Avg)
	#	%	C.I. (95%)	#	%	C.I. (95%)	#
18-24	33,500	30.0	26.3 - 33.7	78,100	70.0	66.3 - 73.7	111,600
25-34	42,700	26.0	23.6 - 28.4	121,300	74.0	71.6 - 76.4	164,000
35-44	48,200	26.4	24.2 - 28.6	134,200	73.6	71.4 - 75.8	182,400
45-54	50,100	29.8	27.6 - 32.0	118,300	70.2	68.0 - 72.4	168,400
55-64	54,200	45.8	42.8 - 48.9	64,100	54.2	51.1 - 57.2	118,300
65-74	61,300	72.9	70.1 - 75.8	22,700	27.1	24.2 - 29.9	84,000
75+	58,400	81.1	78.4 - 83.8	13,600	18.9	16.2 - 21.6	72,000

**Flu - had shot in past 12 mons by State, County, Island, Community, BRFSS Age Group, DOH Race-Ethnicity, Gender, Education Level, Employment Status (Grouped), Household Income, Poverty Level, Marital Status (Grouped), Married, Health Care Coverage, for the Year(s) - 2001-2003, 2002-2004, 2003-2005, 2004-2006, 2005-2007, 2006-2008, 2007-2009, 2008-2010**

*Note: Weighted numbers (#) represent 3-yr averages, percentages and 95% confidence intervals; Respondents aged 18 years and older; n/r (Not Reportable) - If the unweighted total responses for a dimension (row) is <50 that row will not be shown; n/a (Not Available) - Not asked of a subset of respondents*

**Year: 2001-2003**

DOH Race-Ethnicity	Yes			No			Estimated Population (3-Yr Avg)
	#	%	C.I. (95%)	#	%	C.I. (95%)	#
Caucasian	111,400	35.0	33.3 - 36.6	207,200	65.0	63.4 - 66.7	318,600
Native Hawaiian	34,100	33.0	29.9 - 36.1	69,300	67.0	63.9 - 70.1	103,400
Chinese	32,300	41.9	38.1 - 45.8	44,700	58.1	54.2 - 61.9	77,000
Filipino	56,100	41.3	38.1 - 44.5	79,700	58.7	55.5 - 61.9	135,700
Japanese	83,900	46.6	44.1 - 49.0	96,400	53.4	51.0 - 55.9	180,300
Black	7,000	46.3	37.9 - 54.8	8,200	53.7	45.2 - 62.1	15,200
Native Alaskan/ American Indian	1,100	27.5	12.1 - 42.8	3,000	72.5	57.2 - 87.9	4,100
Other Asian	7,200	33.9	27.0 - 40.7	14,100	66.1	59.3 - 73.0	21,300
Other Pacific Islander	5,900	33.1	24.0 - 42.2	11,800	66.9	57.8 - 76.0	17,700
Other	9,600	35.4	28.7 - 42.1	17,500	64.6	57.9 - 71.3	27,000

**Flu - had shot in past 12 mons by State, County, Island, Community, BRFSS Age Group, DOH Race-Ethnicity, Gender, Education Level, Employment Status (Grouped), Household Income, Poverty Level, Marital Status (Grouped), Married, Health Care Coverage, for the Year(s) - 2001-2003, 2002-2004, 2003-2005, 2004-2006, 2005-2007, 2006-2008, 2007-2009, 2008-2010**

*Note: Weighted numbers (#) represent 3-yr averages, percentages and 95% confidence intervals; Respondents aged 18 years and older; n/r (Not Reportable) - If the unweighted total responses for a dimension (row) is <50 that row will not be shown; n/a (Not Available) - Not asked of a subset of respondents*

**Year: 2001-2003**

Gender	Yes			No			Estimated Population (3-Yr Avg)
	#	%	C.I. (95%)	#	%	C.I. (95%)	#
Male	176,000	39.0	37.4 - 40.7	275,100	61.0	59.3 - 62.6	451,100
Female	174,100	38.4	37.0 - 39.7	279,800	61.6	60.3 - 63.0	453,900

Education Level	Yes			No			Estimated Population (3-Yr Avg)
	#	%	C.I. (95%)	#	%	C.I. (95%)	#
Never attended school/ Only Kindergarten to Grades 8	9,900	60.9	53.2 - 68.6	6,400	39.1	31.4 - 46.8	16,300
Grades 9 thru 11 (Some High School)	18,300	51.3	45.4 - 57.3	17,400	48.7	42.7 - 54.6	35,600
Grades 12 or GED (High School Grad)	112,700	38.3	36.3 - 40.2	182,000	61.7	59.8 - 63.7	294,700
College 1 to 3 years (Some College/ Tech)	98,300	36.5	34.5 - 38.5	170,900	63.5	61.5 - 65.5	269,200
College 4 years or more (College Grad)	110,200	38.3	36.5 - 40.1	177,400	61.7	59.9 - 63.5	287,600

**Flu - had shot in past 12 mons by State, County, Island, Community, BRFSS Age Group, DOH Race-Ethnicity, Gender, Education Level, Employment Status (Grouped), Household Income, Poverty Level, Marital Status (Grouped), Married, Health Care Coverage, for the Year(s) - 2001-2003, 2002-2004, 2003-2005, 2004-2006, 2005-2007, 2006-2008, 2007-2009, 2008-2010**

*Note: Weighted numbers (#) represent 3-yr averages, percentages and 95% confidence intervals; Respondents aged 18 years and older; n/r (Not Reportable) - If the unweighted total responses for a dimension (row) is <50 that row will not be shown; n/a (Not Available) - Not asked of a subset of respondents*

**Year: 2001-2003**

Employment Status (Grouped)	Yes			No			Estimated Population (3-Yr Avg)
	#	%	C.I. (95%)	#	%	C.I. (95%)	#
Employed	187,700	31.8	30.5 - 33.1	403,100	68.2	66.9 - 69.5	590,800
Unemployed	6,900	20.6	15.8 - 25.3	26,500	79.4	74.7 - 84.2	33,300
Retired/Unable to work	133,400	70.9	68.9 - 72.9	54,600	29.1	27.1 - 31.1	188,100
Student/Homemaker	21,900	23.7	20.7 - 26.8	70,400	76.3	73.2 - 79.3	92,300



**Flu - had shot in past 12 mons by State, County, Island, Community, BRFSS Age Group, DOH Race-Ethnicity, Gender, Education Level, Employment Status (Grouped), Household Income, Poverty Level, Marital Status (Grouped), Married, Health Care Coverage, for the Year(s) - 2001-2003, 2002-2004, 2003-2005, 2004-2006, 2005-2007, 2006-2008, 2007-2009, 2008-2010**

*Note: Weighted numbers (#) represent 3-yr averages, percentages and 95% confidence intervals; Respondents aged 18 years and older; n/r (Not Reportable) - If the unweighted total responses for a dimension (row) is <50 that row will not be shown; n/a (Not Available) - Not asked of a subset of respondents*

**Year: 2001-2003**

Household Income	Yes			No			Estimated Population (3-Yr Avg)
	#	%	C.I. (95%)	#	%	C.I. (95%)	#
Less than \$10,000	14,800	36.7	31.9 - 41.6	25,400	63.3	58.4 - 68.1	40,200
\$10,000 to \$14,999	19,300	44.8	39.7 - 49.9	23,800	55.2	50.1 - 60.3	43,100
\$15,000 to \$19,999	18,200	41.9	36.3 - 47.5	25,200	58.1	52.5 - 63.7	43,300
\$20,000 to \$24,999	19,500	37.4	32.4 - 42.4	32,700	62.6	57.6 - 67.6	52,200
\$25,000 to \$34,999	31,500	38.0	34.6 - 41.5	51,300	62.0	58.5 - 65.4	82,700
\$35,000 to \$49,999	52,100	38.9	36.1 - 41.7	81,700	61.1	58.3 - 63.9	133,800
\$50,000 to \$74,999	46,300	35.9	33.1 - 38.7	82,800	64.1	61.3 - 66.9	129,100
\$75,000 or more	52,900	38.3	35.6 - 41.1	85,200	61.7	58.9 - 64.4	138,200

**Flu - had shot in past 12 mons by State, County, Island, Community, BRFSS Age Group, DOH Race-Ethnicity, Gender, Education Level, Employment Status (Grouped), Household Income, Poverty Level, Marital Status (Grouped), Married, Health Care Coverage, for the Year(s) - 2001-2003, 2002-2004, 2003-2005, 2004-2006, 2005-2007, 2006-2008, 2007-2009, 2008-2010**

*Note: Weighted numbers (#) represent 3-yr averages, percentages and 95% confidence intervals; Respondents aged 18 years and older; n/r (Not Reportable) - If the unweighted total responses for a dimension (row) is <50 that row will not be shown; n/a (Not Available) - Not asked of a subset of respondents*

**Year: 2001-2003**

Poverty Level	Yes			No			Estimated Population (3-Yr Avg)
	#	%	C.I. (95%)	#	%	C.I. (95%)	#
<b>0-130%</b>	61,300	38.8	35.9 - 41.8	96,400	61.2	58.2 - 64.1	157,700
<b>131-185%</b>	31,300	36.0	32.4 - 39.6	55,500	64.0	60.4 - 67.6	86,800
<b>186+%</b>	162,000	38.7	37.2 - 40.3	256,100	61.3	59.7 - 62.8	418,100

Marital Status (Grouped)	Yes			No			Estimated Population (3-Yr Avg)
	#	%	C.I. (95%)	#	%	C.I. (95%)	#
<b>Married</b>	218,000	41.6	40.2 - 43.1	305,400	58.4	56.9 - 59.8	523,400
<b>Unmarried Couple</b>	2,500	15.3	9.3 - 21.4	13,800	84.7	78.6 - 90.7	16,300
<b>Widowed</b>	39,400	69.1	65.5 - 72.7	17,600	30.9	27.3 - 34.5	56,900
<b>Other</b>	90,200	29.3	27.5 - 31.1	218,100	70.7	68.9 - 72.5	308,400

**Flu - had shot in past 12 mons by State, County, Island, Community, BRFSS Age Group, DOH Race-Ethnicity, Gender, Education Level, Employment Status (Grouped), Household Income, Poverty Level, Marital Status (Grouped), Married, Health Care Coverage, for the Year(s) - 2001-2003, 2002-2004, 2003-2005, 2004-2006, 2005-2007, 2006-2008, 2007-2009, 2008-2010**

*Note: Weighted numbers (#) represent 3-yr averages, percentages and 95% confidence intervals; Respondents aged 18 years and older; n/r (Not Reportable) - If the unweighted total responses for a dimension (row) is <50 that row will not be shown; n/a (Not Available) - Not asked of a subset of respondents*

**Year: 2001-2003**

Married	Yes			No			Estimated Population (3-Yr Avg)
	#	%	C.I. (95%)	#	%	C.I. (95%)	#
Yes	222,000	41.4	40.0 - 42.8	314,600	58.6	57.2 - 60.0	536,600
No	127,600	34.7	33.1 - 36.4	239,800	65.3	63.6 - 66.9	367,500

Health Care Coverage	Yes			No			Estimated Population (3-Yr Avg)
	#	%	C.I. (95%)	#	%	C.I. (95%)	#
Yes	339,800	40.8	39.7 - 42.0	492,000	59.2	58.0 - 60.3	831,700
No	10,000	13.8	10.9 - 16.8	62,200	86.2	83.2 - 89.1	72,200