

**Flu - had shot in year (65+) by State, County, Island, Community, DOH Race-Ethnicity, Gender, Education Level, Employment Status (Grouped), Household Income, Poverty Level, Marital Status (Grouped), Married, Health Care Coverage, for the Year(s) - 2001-2003, 2002-2004, 2003-2005, 2004-2006, 2005-2007, 2006-2008, 2007-2009, 2008-2010**

*Note: Weighted numbers (#) represent 3-yr averages, percentages and 95% confidence intervals; Respondents aged 18 years and older; n/r (Not Reportable) - If the unweighted total responses for a dimension (row) is <50 that row will not be shown; n/a (Not Available) - Not asked of a subset of respondents*

*The trend analysis report shows the trend for the selected health variable over selected years in a table and a graph. Estimated Population: This number is a weighted representation of the population who responded to a particular question in the survey. For most questions the eligible population will be the entire adult population. For some secondary questions only a subset of the population was asked the question. For example, all survey participants were asked if they had diabetes, but only those who answered yes were asked if they use insulin. If a dimension value is unknown for a particular survey record, that record will not be included in the counts for that particular dimension.*

*For documentation on other terms and coding in this report, please go to the following links*

[Click here to access BRFSS documentation](#)

[Click here to access DOH Race-Ethnicity coding](#)

[Click here to access The Hawai'i Data Guide](#)

[Click here to access Poverty Level Methodology](#)

**For questions about this report, please contact  
The Hawaii Health Data Warehouse**

[profiles@hhdw.org](mailto:profiles@hhdw.org)

**(855) 946-5899 x15**

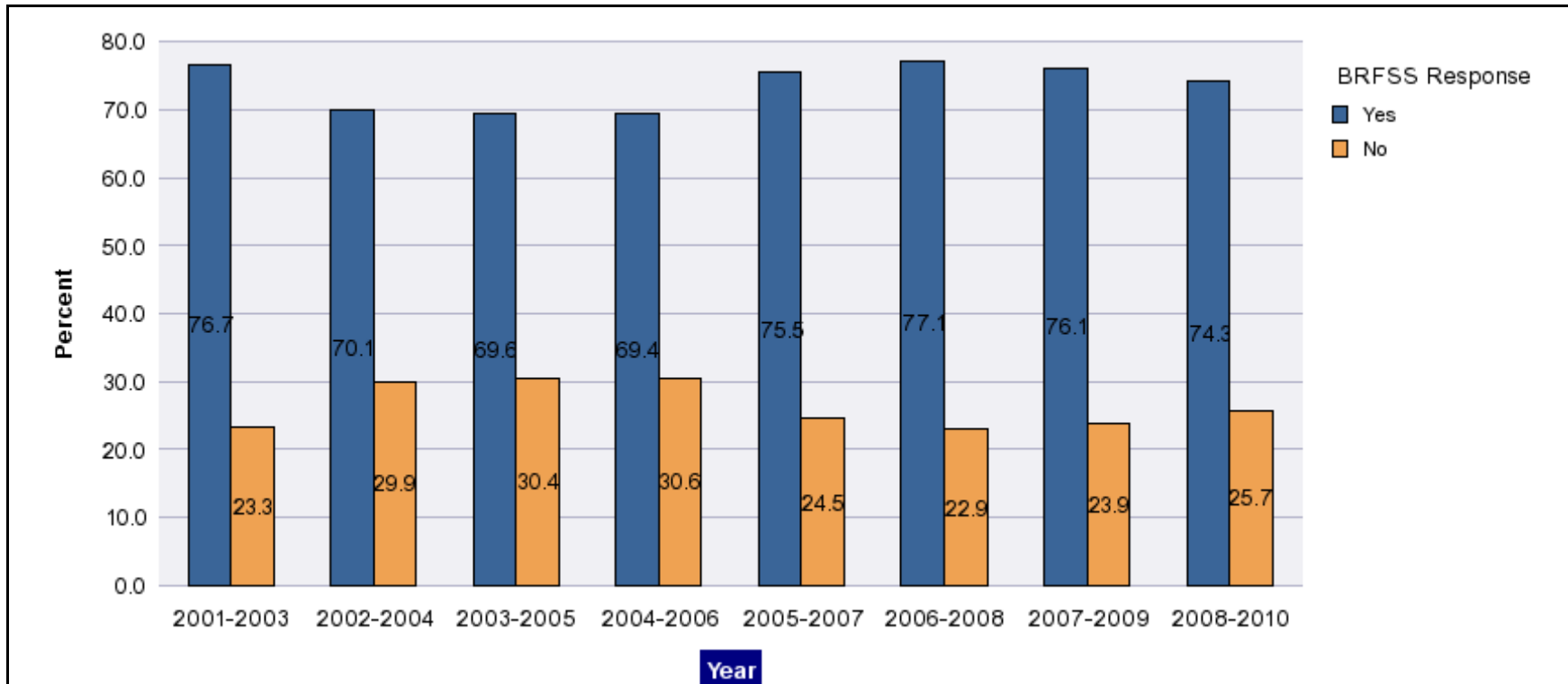
**Flu - had shot in year (65+) by State, County, Island, Community, DOH Race-Ethnicity, Gender, Education Level, Employment Status (Grouped), Household Income, Poverty Level, Marital Status (Grouped), Married, Health Care Coverage, for the Year(s) - 2001-2003, 2002-2004, 2003-2005, 2004-2006, 2005-2007, 2006-2008, 2007-2009, 2008-2010**

*Note: Weighted numbers (#) represent 3-yr averages, percentages and 95% confidence intervals; Respondents aged 18 years and older; n/r (Not Reportable) - If the unweighted total responses for a dimension (row) is <50 that row will not be shown; n/a (Not Available) - Not asked of a subset of respondents*

Year	Yes			No			Estimated Population (3-Yr Avg)
	#	%	C.I.(95%)	#	%	C.I.(95%)	#
2001-2003	119,700	76.7	74.7 - 78.7	36,400	23.3	21.3 - 25.3	156,000
2002-2004	110,700	70.1	67.4 - 72.8	47,200	29.9	27.2 - 32.6	157,900
2003-2005	114,100	69.6	67.0 - 72.2	49,900	30.4	27.8 - 33.0	163,900
2004-2006	116,600	69.4	67.0 - 71.9	51,300	30.6	28.1 - 33.0	167,900
2005-2007	132,900	75.5	73.9 - 77.1	43,200	24.5	22.9 - 26.1	176,100
2006-2008	138,000	77.1	75.6 - 78.6	41,000	22.9	21.4 - 24.4	179,000
2007-2009	138,700	76.1	74.6 - 77.5	43,700	23.9	22.5 - 25.4	182,400
2008-2010	138,700	74.3	72.9 - 75.7	48,000	25.7	24.3 - 27.1	186,700

**Flu - had shot in year (65+) by State, County, Island, Community, DOH Race-Ethnicity, Gender, Education Level, Employment Status (Grouped), Household Income, Poverty Level, Marital Status (Grouped), Married, Health Care Coverage, for the Year(s) - 2001-2003, 2002-2004, 2003-2005, 2004-2006, 2005-2007, 2006-2008, 2007-2009, 2008-2010**

*Note: Weighted numbers (#) represent 3-yr averages, percentages and 95% confidence intervals; Respondents aged 18 years and older; n/r (Not Reportable) - If the unweighted total responses for a dimension (row) is <50 that row will not be shown; n/a (Not Available) - Not asked of a subset of respondents*



**Flu - had shot in year (65+) by State, County, Island, Community, DOH Race-Ethnicity, Gender, Education Level, Employment Status (Grouped), Household Income, Poverty Level, Marital Status (Grouped), Married, Health Care Coverage, for the Year(s) - 2001-2003, 2002-2004, 2003-2005, 2004-2006, 2005-2007, 2006-2008, 2007-2009, 2008-2010**

*Note: Weighted numbers (#) represent 3-yr averages, percentages and 95% confidence intervals; Respondents aged 18 years and older; n/r (Not Reportable) - If the unweighted total responses for a dimension (row) is <50 that row will not be shown; n/a (Not Available) - Not asked of a subset of respondents*

**Year: 2008-2010**

State	Yes			No			Estimated Population (3-Yr Avg)
	#	%	C.I. (95%)	#	%	C.I. (95%)	#
Hawaii State	138,700	74.3	72.9 - 75.7	48,000	25.7	24.3 - 27.1	186,700

County	Yes			No			Estimated Population (3-Yr Avg)
	#	%	C.I. (95%)	#	%	C.I. (95%)	#
Hawaii	17,000	69.9	66.9 - 72.8	7,300	30.1	27.2 - 33.1	24,300
Honolulu	103,000	76.0	74.2 - 77.8	32,500	24.0	22.2 - 25.8	135,500
Kauai	6,800	72.5	68.2 - 76.7	2,600	27.5	23.3 - 31.8	9,300
Maui	12,000	68.2	64.8 - 71.5	5,600	31.8	28.5 - 35.2	17,600

**Flu - had shot in year (65+) by State, County, Island, Community, DOH Race-Ethnicity, Gender, Education Level, Employment Status (Grouped), Household Income, Poverty Level, Marital Status (Grouped), Married, Health Care Coverage, for the Year(s) - 2001-2003, 2002-2004, 2003-2005, 2004-2006, 2005-2007, 2006-2008, 2007-2009, 2008-2010**

*Note: Weighted numbers (#) represent 3-yr averages, percentages and 95% confidence intervals; Respondents aged 18 years and older; n/r (Not Reportable) - If the unweighted total responses for a dimension (row) is <50 that row will not be shown; n/a (Not Available) - Not asked of a subset of respondents*

**Year: 2008-2010**

Island	Yes			No			Estimated Population (3-Yr Avg)
	#	%	C.I. (95%)	#	%	C.I. (95%)	#
Hawaii	17,000	69.9	66.9 - 72.8	7,300	30.1	27.2 - 33.1	24,300
Kauai	6,800	72.5	68.2 - 76.7	2,600	27.5	23.3 - 31.8	9,300
Lanai	200	71.5	63.9 - 79.2	100	28.5	20.8 - 36.1	300
Maui	10,900	67.8	64.2 - 71.4	5,200	32.2	28.6 - 35.8	16,100
Molokai	800	72.1	64.5 - 79.6	300	27.9	20.4 - 35.5	1,100
Oahu	103,000	76.0	74.2 - 77.8	32,500	24.0	22.2 - 25.8	135,500

Community	Yes			No			Estimated Population (3-Yr Avg)
	#	%	C.I. (95%)	#	%	C.I. (95%)	#
Aiea/ Pearl City	11,800	81.1	76.2 - 85.9	2,800	18.9	14.1 - 23.8	14,600
Ala Moana	4,700	70.8	63.4 - 78.2	1,900	29.2	21.8 - 36.6	6,700

**Flu - had shot in year (65+) by State, County, Island, Community, DOH Race-Ethnicity, Gender, Education Level, Employment Status (Grouped), Household Income, Poverty Level, Marital Status (Grouped), Married, Health Care Coverage, for the Year(s) - 2001-2003, 2002-2004, 2003-2005, 2004-2006, 2005-2007, 2006-2008, 2007-2009, 2008-2010**

*Note: Weighted numbers (#) represent 3-yr averages, percentages and 95% confidence intervals; Respondents aged 18 years and older; n/r (Not Reportable) - If the unweighted total responses for a dimension (row) is <50 that row will not be shown; n/a (Not Available) - Not asked of a subset of respondents*

**Year: 2008-2010**

Community	Yes			No			Estimated Population (3-Yr Avg)
	#	%	C.I. (95%)	#	%	C.I. (95%)	#
Hanalei/ Kapaa	2,300	65.9	58.6 - 73.1	1,200	34.1	26.9 - 41.4	3,500
Hilo	6,300	78.2	73.4 - 83.0	1,800	21.8	17.0 - 26.6	8,100
Kaaawa/ Kahaluu/ Kaneohe	8,100	75.1	68.7 - 81.5	2,700	24.9	18.5 - 31.3	10,900
Kahului	3,900	67.2	61.4 - 72.9	1,900	32.8	27.1 - 38.6	5,800
Kailua/ Waimanalo	8,500	74.2	67.6 - 80.8	3,000	25.8	19.2 - 32.4	11,500
Kaimuki/ Palolo/ Waikiki	13,000	77.0	72.4 - 81.6	3,900	23.0	18.4 - 27.6	16,800
Kona	4,100	65.3	59.2 - 71.4	2,200	34.7	28.6 - 40.8	6,300
Lahaina/ Wailuku	3,700	71.3	64.9 - 77.7	1,500	28.7	22.3 - 35.1	5,200
Lanai	200	71.5	63.9 - 79.2	100	28.5	20.8 - 36.1	300
Lihue-Waimea	4,500	76.4	71.4 - 81.4	1,400	23.6	18.6 - 28.6	5,800
Manoa/ Upper Makiki	9,700	76.8	71.2 - 82.4	2,900	23.2	17.6 - 28.8	12,700
Mililani/ Wahiawa	6,900	78.2	71.6 - 84.8	1,900	21.8	15.2 - 28.4	8,900

**Flu - had shot in year (65+) by State, County, Island, Community, DOH Race-Ethnicity, Gender, Education Level, Employment Status (Grouped), Household Income, Poverty Level, Marital Status (Grouped), Married, Health Care Coverage, for the Year(s) - 2001-2003, 2002-2004, 2003-2005, 2004-2006, 2005-2007, 2006-2008, 2007-2009, 2008-2010**

*Note: Weighted numbers (#) represent 3-yr averages, percentages and 95% confidence intervals; Respondents aged 18 years and older; n/r (Not Reportable) - If the unweighted total responses for a dimension (row) is <50 that row will not be shown; n/a (Not Available) - Not asked of a subset of respondents*

**Year: 2008-2010**

Community	Yes			No			Estimated Population (3-Yr Avg)
	#	%	C.I. (95%)	#	%	C.I. (95%)	#
Molokai	800	72.1	64.5 - 79.6	300	27.9	20.4 - 35.5	1,100
Nanakuli/ Waianae	4,200	76.5	66.0 - 87.0	1,300	23.5	13.0 - 34.0	5,400
N.Hawaii	3,000	69.4	62.5 - 76.4	1,300	30.6	23.6 - 37.5	4,300
N.Shore/ Laie	2,700	72.4	60.9 - 83.9	1,000	27.6	16.1 - 39.1	3,700
Nuuanu/ Kalihi/ Moanalua	10,400	72.1	66.2 - 78.0	4,000	27.9	22.0 - 33.8	14,500
Puna/ Kau	3,600	63.3	56.7 - 69.8	2,100	36.7	30.2 - 43.3	5,600
Salt Lake/ Foster Village	3,200	82.9	73.9 - 92.0	700	17.1	8.0 - 26.1	3,800
Upcountry/ Hana	3,300	65.0	58.3 - 71.6	1,800	35.0	28.4 - 41.7	5,000
Waialae/ Kahala/ Hawaii Kai	9,900	79.6	74.3 - 85.0	2,500	20.4	15.0 - 25.7	12,400
Waipahu/ Kapolei/ Ewa	9,800	71.4	64.6 - 78.3	3,900	28.6	21.7 - 35.4	13,700

**Flu - had shot in year (65+) by State, County, Island, Community, DOH Race-Ethnicity, Gender, Education Level, Employment Status (Grouped), Household Income, Poverty Level, Marital Status (Grouped), Married, Health Care Coverage, for the Year(s) - 2001-2003, 2002-2004, 2003-2005, 2004-2006, 2005-2007, 2006-2008, 2007-2009, 2008-2010**

*Note: Weighted numbers (#) represent 3-yr averages, percentages and 95% confidence intervals; Respondents aged 18 years and older; n/r (Not Reportable) - If the unweighted total responses for a dimension (row) is <50 that row will not be shown; n/a (Not Available) - Not asked of a subset of respondents*

**Year: 2008-2010**

DOH Race-Ethnicity	Yes			No			Estimated Population (3-Yr Avg)
	#	%	C.I. (95%)	#	%	C.I. (95%)	#
Caucasian	43,800	69.9	67.7 - 72.2	18,900	30.1	27.8 - 32.3	62,700
Native Hawaiian	12,500	69.9	64.6 - 75.2	5,400	30.1	24.8 - 35.4	17,900
Chinese	11,000	76.0	70.8 - 81.3	3,500	24.0	18.7 - 29.2	14,500
Filipino	14,100	74.8	69.4 - 80.1	4,800	25.2	19.9 - 30.6	18,900
Japanese	52,600	80.1	77.9 - 82.4	13,100	19.9	17.6 - 22.1	65,600
Other Asian	2,000	67.7	54.7 - 80.7	900	32.3	19.3 - 45.3	2,900
Other	1,500	69.3	57.8 - 80.7	700	30.7	19.3 - 42.2	2,200



**Flu - had shot in year (65+) by State, County, Island, Community, DOH Race-Ethnicity, Gender, Education Level, Employment Status (Grouped), Household Income, Poverty Level, Marital Status (Grouped), Married, Health Care Coverage, for the Year(s) - 2001-2003, 2002-2004, 2003-2005, 2004-2006, 2005-2007, 2006-2008, 2007-2009, 2008-2010**

*Note: Weighted numbers (#) represent 3-yr averages, percentages and 95% confidence intervals; Respondents aged 18 years and older; n/r (Not Reportable) - If the unweighted total responses for a dimension (row) is <50 that row will not be shown; n/a (Not Available) - Not asked of a subset of respondents*

**Year: 2008-2010**

Gender	Yes			No			Estimated Population (3-Yr Avg)
	#	%	C.I. (95%)	#	%	C.I. (95%)	#
Male	58,600	72.6	70.3 - 74.9	22,100	27.4	25.1 - 29.7	80,700
Female	80,000	75.6	73.8 - 77.4	25,900	24.4	22.6 - 26.2	105,900

Education Level	Yes			No			Estimated Population (3-Yr Avg)
	#	%	C.I. (95%)	#	%	C.I. (95%)	#
Never attended school/ Only Kindergarten to Grades 8	5,000	74.9	66.9 - 82.9	1,700	25.1	17.1 - 33.1	6,600
Grades 9 thru 11 (Some High School)	7,700	68.7	61.9 - 75.5	3,500	31.3	24.5 - 38.1	11,200
Grades 12 or GED (High School Grad)	45,000	72.8	70.2 - 75.5	16,800	27.2	24.5 - 29.8	61,700
College 1 to 3 years (Some College/ Tech)	32,600	73.8	70.9 - 76.7	11,600	26.2	23.3 - 29.1	44,200
College 4 years or more (College Grad)	48,300	76.9	74.7 - 79.0	14,500	23.1	21.0 - 25.3	62,800

**Flu - had shot in year (65+) by State, County, Island, Community, DOH Race-Ethnicity, Gender, Education Level, Employment Status (Grouped), Household Income, Poverty Level, Marital Status (Grouped), Married, Health Care Coverage, for the Year(s) - 2001-2003, 2002-2004, 2003-2005, 2004-2006, 2005-2007, 2006-2008, 2007-2009, 2008-2010**

*Note: Weighted numbers (#) represent 3-yr averages, percentages and 95% confidence intervals; Respondents aged 18 years and older; n/r (Not Reportable) - If the unweighted total responses for a dimension (row) is <50 that row will not be shown; n/a (Not Available) - Not asked of a subset of respondents*

**Year: 2008-2010**

Employment Status (Grouped)	Yes			No			Estimated Population (3-Yr Avg)
	#	%	C.I. (95%)	#	%	C.I. (95%)	#
<b>Employed</b>	20,500	69.2	65.6 - 72.8	9,100	30.8	27.2 - 34.4	29,600
<b>Unemployed</b>	1,200	62.3	48.1 - 76.4	700	37.7	23.6 - 51.9	1,900
<b>Retired/Unable to work</b>	110,600	75.6	74.0 - 77.2	35,700	24.4	22.8 - 26.0	146,300
<b>Student/Homemaker</b>	6,500	72.6	65.7 - 79.4	2,400	27.4	20.6 - 34.3	8,900

**Flu - had shot in year (65+) by State, County, Island, Community, DOH Race-Ethnicity, Gender, Education Level, Employment Status (Grouped), Household Income, Poverty Level, Marital Status (Grouped), Married, Health Care Coverage, for the Year(s) - 2001-2003, 2002-2004, 2003-2005, 2004-2006, 2005-2007, 2006-2008, 2007-2009, 2008-2010**

*Note: Weighted numbers (#) represent 3-yr averages, percentages and 95% confidence intervals; Respondents aged 18 years and older; n/r (Not Reportable) - If the unweighted total responses for a dimension (row) is <50 that row will not be shown; n/a (Not Available) - Not asked of a subset of respondents*

**Year: 2008-2010**

Household Income	Yes			No			Estimated Population (3-Yr Avg)
	#	%	C.I. (95%)	#	%	C.I. (95%)	#
Less than \$10,000	3,900	63.9	55.6 - 72.2	2,200	36.1	27.8 - 44.4	6,200
\$10,000 to \$14,999	5,900	67.9	61.5 - 74.3	2,800	32.1	25.7 - 38.5	8,600
\$15,000 to \$19,999	9,400	70.4	64.8 - 75.9	4,000	29.6	24.1 - 35.2	13,400
\$20,000 to \$24,999	12,600	74.0	69.3 - 78.8	4,400	26.0	21.2 - 30.7	17,000
\$25,000 to \$34,999	18,000	74.3	70.4 - 78.3	6,200	25.7	21.7 - 29.6	24,200
\$35,000 to \$49,999	23,300	75.7	72.2 - 79.3	7,500	24.3	20.7 - 27.8	30,800
\$50,000 to \$74,999	22,600	76.0	72.5 - 79.6	7,100	24.0	20.4 - 27.5	29,700
\$75,000 or more	28,600	78.8	76.0 - 81.6	7,700	21.2	18.4 - 24.0	36,300

**Flu - had shot in year (65+) by State, County, Island, Community, DOH Race-Ethnicity, Gender, Education Level, Employment Status (Grouped), Household Income, Poverty Level, Marital Status (Grouped), Married, Health Care Coverage, for the Year(s) - 2001-2003, 2002-2004, 2003-2005, 2004-2006, 2005-2007, 2006-2008, 2007-2009, 2008-2010**

*Note: Weighted numbers (#) represent 3-yr averages, percentages and 95% confidence intervals; Respondents aged 18 years and older; n/r (Not Reportable) - If the unweighted total responses for a dimension (row) is <50 that row will not be shown; n/a (Not Available) - Not asked of a subset of respondents*

**Year: 2008-2010**

Poverty Level	Yes			No			Estimated Population (3-Yr Avg)
	#	%	C.I. (95%)	#	%	C.I. (95%)	#
<b>0-130%</b>	23,300	68.0	64.0 - 71.9	11,000	32.0	28.1 - 36.0	34,300
<b>131-185%</b>	22,800	76.3	73.0 - 79.6	7,100	23.7	20.4 - 27.0	29,800
<b>186+%</b>	78,200	76.7	74.9 - 78.4	23,800	23.3	21.6 - 25.1	102,000

Marital Status (Grouped)	Yes			No			Estimated Population (3-Yr Avg)
	#	%	C.I. (95%)	#	%	C.I. (95%)	#
<b>Married</b>	84,100	75.8	73.9 - 77.7	26,800	24.2	22.3 - 26.1	110,900
<b>Widowed</b>	35,200	75.6	73.0 - 78.3	11,300	24.4	21.7 - 27.0	46,500
<b>Other</b>	18,600	65.9	62.4 - 69.5	9,600	34.1	30.5 - 37.6	28,200

**Flu - had shot in year (65+) by State, County, Island, Community, DOH Race-Ethnicity, Gender, Education Level, Employment Status (Grouped), Household Income, Poverty Level, Marital Status (Grouped), Married, Health Care Coverage, for the Year(s) - 2001-2003, 2002-2004, 2003-2005, 2004-2006, 2005-2007, 2006-2008, 2007-2009, 2008-2010**

*Note: Weighted numbers (#) represent 3-yr averages, percentages and 95% confidence intervals; Respondents aged 18 years and older; n/r (Not Reportable) - If the unweighted total responses for a dimension (row) is <50 that row will not be shown; n/a (Not Available) - Not asked of a subset of respondents*

**Year: 2008-2010**

<b>Married</b>	<b>Yes</b>			<b>No</b>			<b>Estimated Population (3-Yr Avg)</b>
	<b>#</b>	<b>%</b>	<b>C.I. (95%)</b>	<b>#</b>	<b>%</b>	<b>C.I. (95%)</b>	<b>#</b>
<b>Yes</b>	85,000	75.8	73.9 - 77.7	27,100	24.2	22.3 - 26.1	112,100
<b>No</b>	53,600	72.0	69.8 - 74.1	20,800	28.0	25.9 - 30.2	74,400

<b>Health Care Coverage</b>	<b>Yes</b>			<b>No</b>			<b>Estimated Population (3-Yr Avg)</b>
	<b>#</b>	<b>%</b>	<b>C.I. (95%)</b>	<b>#</b>	<b>%</b>	<b>C.I. (95%)</b>	<b>#</b>
<b>Yes</b>	138,000	74.4	73.0 - 75.8	47,500	25.6	24.2 - 27.0	185,500

**Flu - had shot in year (65+) by State, County, Island, Community, DOH Race-Ethnicity, Gender, Education Level, Employment Status (Grouped), Household Income, Poverty Level, Marital Status (Grouped), Married, Health Care Coverage, for the Year(s) - 2001-2003, 2002-2004, 2003-2005, 2004-2006, 2005-2007, 2006-2008, 2007-2009, 2008-2010**

*Note: Weighted numbers (#) represent 3-yr averages, percentages and 95% confidence intervals; Respondents aged 18 years and older; n/r (Not Reportable) - If the unweighted total responses for a dimension (row) is <50 that row will not be shown; n/a (Not Available) - Not asked of a subset of respondents*

**Year: 2007-2009**

State	Yes			No			Estimated Population (3-Yr Avg)
	#	%	C.I. (95%)	#	%	C.I. (95%)	#
Hawaii State	138,700	76.1	74.6 - 77.5	43,700	23.9	22.5 - 25.4	182,400

County	Yes			No			Estimated Population (3-Yr Avg)
	#	%	C.I. (95%)	#	%	C.I. (95%)	#
Hawaii	17,400	73.0	70.1 - 76.0	6,400	27.0	24.0 - 29.9	23,800
Honolulu	102,400	77.3	75.4 - 79.2	30,100	22.7	20.8 - 24.6	132,500
Kauai	6,800	74.7	70.4 - 79.1	2,300	25.3	20.9 - 29.6	9,000
Maui	12,200	71.4	67.9 - 74.9	4,900	28.6	25.1 - 32.1	17,100

**Flu - had shot in year (65+) by State, County, Island, Community, DOH Race-Ethnicity, Gender, Education Level, Employment Status (Grouped), Household Income, Poverty Level, Marital Status (Grouped), Married, Health Care Coverage, for the Year(s) - 2001-2003, 2002-2004, 2003-2005, 2004-2006, 2005-2007, 2006-2008, 2007-2009, 2008-2010**

*Note: Weighted numbers (#) represent 3-yr averages, percentages and 95% confidence intervals; Respondents aged 18 years and older; n/r (Not Reportable) - If the unweighted total responses for a dimension (row) is <50 that row will not be shown; n/a (Not Available) - Not asked of a subset of respondents*

**Year: 2007-2009**

Island	Yes			No			Estimated Population (3-Yr Avg)
	#	%	C.I. (95%)	#	%	C.I. (95%)	#
Hawaii	17,400	73.0	70.1 - 76.0	6,400	27.0	24.0 - 29.9	23,800
Kauai	6,800	74.7	70.4 - 79.1	2,300	25.3	20.9 - 29.6	9,000
Lanai	300	72.2	63.8 - 80.5	100	27.8	19.5 - 36.2	400
Maui	11,200	71.3	67.6 - 75.1	4,500	28.7	24.9 - 32.4	15,700
Molokai	800	72.8	64.3 - 81.2	300	27.2	18.8 - 35.7	1,100
Oahu	102,400	77.3	75.4 - 79.2	30,100	22.7	20.8 - 24.6	132,500

Community	Yes			No			Estimated Population (3-Yr Avg)
	#	%	C.I. (95%)	#	%	C.I. (95%)	#
Aiea/ Pearl City	12,000	83.5	78.7 - 88.4	2,400	16.5	11.6 - 21.3	14,300
Ala Moana	5,800	76.8	70.2 - 83.5	1,800	23.2	16.5 - 29.8	7,600

**Flu - had shot in year (65+) by State, County, Island, Community, DOH Race-Ethnicity, Gender, Education Level, Employment Status (Grouped), Household Income, Poverty Level, Marital Status (Grouped), Married, Health Care Coverage, for the Year(s) - 2001-2003, 2002-2004, 2003-2005, 2004-2006, 2005-2007, 2006-2008, 2007-2009, 2008-2010**

*Note: Weighted numbers (#) represent 3-yr averages, percentages and 95% confidence intervals; Respondents aged 18 years and older; n/r (Not Reportable) - If the unweighted total responses for a dimension (row) is <50 that row will not be shown; n/a (Not Available) - Not asked of a subset of respondents*

**Year: 2007-2009**

Community	Yes			No			Estimated Population (3-Yr Avg)
	#	%	C.I. (95%)	#	%	C.I. (95%)	#
Hanalei/ Kapaa	2,700	72.0	64.9 - 79.2	1,000	28.0	20.8 - 35.1	3,700
Hilo	6,900	81.9	77.2 - 86.5	1,500	18.1	13.5 - 22.8	8,500
Kaaawa/ Kahaluu/ Kaneohe	8,000	80.0	73.8 - 86.1	2,000	20.0	13.9 - 26.2	9,900
Kahului	4,200	71.3	65.6 - 77.0	1,700	28.7	23.0 - 34.4	5,900
Kailua/ Waimanalo	8,700	77.0	70.3 - 83.7	2,600	23.0	16.3 - 29.7	11,300
Kaimuki/ Palolo/ Waikiki	12,800	76.6	71.6 - 81.7	3,900	23.4	18.3 - 28.4	16,700
Kona	3,900	65.2	58.8 - 71.5	2,100	34.8	28.5 - 41.2	5,900
Lahaina/ Wailuku	3,500	70.1	63.2 - 77.0	1,500	29.9	23.0 - 36.8	5,000
Lanai	300	72.2	63.8 - 80.5	100	27.8	19.5 - 36.2	400
Lihue-Waimea	4,100	76.7	71.2 - 82.2	1,200	23.3	17.8 - 28.8	5,300
Manoa/ Upper Makiki	9,100	73.6	67.3 - 79.9	3,200	26.4	20.1 - 32.7	12,300
Millilani/ Wahiawa	6,700	80.5	73.6 - 87.4	1,600	19.5	12.6 - 26.4	8,300



**Flu - had shot in year (65+) by State, County, Island, Community, DOH Race-Ethnicity, Gender, Education Level, Employment Status (Grouped), Household Income, Poverty Level, Marital Status (Grouped), Married, Health Care Coverage, for the Year(s) - 2001-2003, 2002-2004, 2003-2005, 2004-2006, 2005-2007, 2006-2008, 2007-2009, 2008-2010**

*Note: Weighted numbers (#) represent 3-yr averages, percentages and 95% confidence intervals; Respondents aged 18 years and older; n/r (Not Reportable) - If the unweighted total responses for a dimension (row) is <50 that row will not be shown; n/a (Not Available) - Not asked of a subset of respondents*

**Year: 2007-2009**

Community	Yes			No			Estimated Population (3-Yr Avg)
	#	%	C.I. (95%)	#	%	C.I. (95%)	#
Molokai	800	72.8	64.3 - 81.2	300	27.2	18.8 - 35.7	1,100
Nanakuli/ Waianae	4,300	73.8	63.3 - 84.3	1,500	26.2	15.7 - 36.7	5,800
N.Hawaii	3,100	73.7	67.3 - 80.2	1,100	26.3	19.8 - 32.7	4,200
N.Shore/ Laie	2,300	65.2	52.8 - 77.6	1,200	34.8	22.4 - 47.2	3,500
Nuuanu/ Kalihi/ Moanalua	10,200	73.4	67.0 - 79.7	3,700	26.6	20.3 - 33.0	13,900
Puna/ Kau	3,500	66.9	60.5 - 73.3	1,700	33.1	26.7 - 39.5	5,200
Salt Lake/ Foster Village	2,600	78.9	67.3 - 90.5	700	21.1	9.5 - 32.7	3,300
Upcountry/ Hana	3,500	72.6	65.5 - 79.6	1,300	27.4	20.4 - 34.5	4,900
Waiialae/ Kahala/ Hawaii Kai	9,600	79.0	73.0 - 84.9	2,500	21.0	15.1 - 27.0	12,100
Waipahu/ Kapolei/ Ewa	10,500	78.3	72.0 - 84.7	2,900	21.7	15.3 - 28.0	13,400

**Flu - had shot in year (65+) by State, County, Island, Community, DOH Race-Ethnicity, Gender, Education Level, Employment Status (Grouped), Household Income, Poverty Level, Marital Status (Grouped), Married, Health Care Coverage, for the Year(s) - 2001-2003, 2002-2004, 2003-2005, 2004-2006, 2005-2007, 2006-2008, 2007-2009, 2008-2010**

*Note: Weighted numbers (#) represent 3-yr averages, percentages and 95% confidence intervals; Respondents aged 18 years and older; n/r (Not Reportable) - If the unweighted total responses for a dimension (row) is <50 that row will not be shown; n/a (Not Available) - Not asked of a subset of respondents*

**Year: 2007-2009**

DOH Race-Ethnicity	Yes			No			Estimated Population (3-Yr Avg)
	#	%	C.I. (95%)	#	%	C.I. (95%)	#
Caucasian	43,900	71.8	69.4 - 74.1	17,300	28.2	25.9 - 30.6	61,200
Native Hawaiian	11,300	69.1	63.3 - 74.9	5,000	30.9	25.1 - 36.7	16,300
Chinese	11,400	76.4	70.9 - 82.0	3,500	23.6	18.0 - 29.1	14,900
Filipino	15,200	78.8	73.7 - 83.9	4,100	21.2	16.1 - 26.3	19,300
Japanese	52,300	81.8	79.5 - 84.1	11,600	18.2	15.9 - 20.5	63,900
Other Asian	1,800	70.1	56.1 - 84.2	800	29.9	15.8 - 43.9	2,500
Other	1,500	67.6	54.4 - 80.9	700	32.4	19.1 - 45.6	2,200

**Flu - had shot in year (65+) by State, County, Island, Community, DOH Race-Ethnicity, Gender, Education Level, Employment Status (Grouped), Household Income, Poverty Level, Marital Status (Grouped), Married, Health Care Coverage, for the Year(s) - 2001-2003, 2002-2004, 2003-2005, 2004-2006, 2005-2007, 2006-2008, 2007-2009, 2008-2010**

*Note: Weighted numbers (#) represent 3-yr averages, percentages and 95% confidence intervals; Respondents aged 18 years and older; n/r (Not Reportable) - If the unweighted total responses for a dimension (row) is <50 that row will not be shown; n/a (Not Available) - Not asked of a subset of respondents*

**Year: 2007-2009**

Gender	Yes			No			Estimated Population (3-Yr Avg)
	#	%	C.I. (95%)	#	%	C.I. (95%)	#
Male	58,700	75.2	72.9 - 77.5	19,300	24.8	22.5 - 27.1	78,000
Female	80,100	76.7	74.8 - 78.6	24,300	23.3	21.4 - 25.2	104,400

Education Level	Yes			No			Estimated Population (3-Yr Avg)
	#	%	C.I. (95%)	#	%	C.I. (95%)	#
Never attended school/ Only Kindergarten to Grades 8	6,300	77.6	69.8 - 85.3	1,800	22.4	14.7 - 30.2	8,100
Grades 9 thru 11 (Some High School)	8,300	70.2	63.2 - 77.1	3,500	29.8	22.9 - 36.8	11,800
Grades 12 or GED (High School Grad)	44,200	74.9	72.2 - 77.6	14,800	25.1	22.4 - 27.8	59,000
College 1 to 3 years (Some College/ Tech)	32,700	77.2	74.3 - 80.1	9,700	22.8	19.9 - 25.7	42,400
College 4 years or more (College Grad)	47,100	77.3	75.0 - 79.6	13,800	22.7	20.4 - 25.0	60,900

**Flu - had shot in year (65+) by State, County, Island, Community, DOH Race-Ethnicity, Gender, Education Level, Employment Status (Grouped), Household Income, Poverty Level, Marital Status (Grouped), Married, Health Care Coverage, for the Year(s) - 2001-2003, 2002-2004, 2003-2005, 2004-2006, 2005-2007, 2006-2008, 2007-2009, 2008-2010**

*Note: Weighted numbers (#) represent 3-yr averages, percentages and 95% confidence intervals; Respondents aged 18 years and older; n/r (Not Reportable) - If the unweighted total responses for a dimension (row) is <50 that row will not be shown; n/a (Not Available) - Not asked of a subset of respondents*

**Year: 2007-2009**

Employment Status (Grouped)	Yes			No			Estimated Population (3-Yr Avg)
	#	%	C.I. (95%)	#	%	C.I. (95%)	#
Employed	18,700	68.9	64.9 - 72.9	8,400	31.1	27.1 - 35.1	27,100
Retired/Unable to work	114,700	77.6	76.0 - 79.2	33,200	22.4	20.8 - 24.0	147,900
Student/Homemaker	4,700	73.2	65.1 - 81.3	1,700	26.8	18.7 - 34.9	6,500

**Flu - had shot in year (65+) by State, County, Island, Community, DOH Race-Ethnicity, Gender, Education Level, Employment Status (Grouped), Household Income, Poverty Level, Marital Status (Grouped), Married, Health Care Coverage, for the Year(s) - 2001-2003, 2002-2004, 2003-2005, 2004-2006, 2005-2007, 2006-2008, 2007-2009, 2008-2010**

*Note: Weighted numbers (#) represent 3-yr averages, percentages and 95% confidence intervals; Respondents aged 18 years and older; n/r (Not Reportable) - If the unweighted total responses for a dimension (row) is <50 that row will not be shown; n/a (Not Available) - Not asked of a subset of respondents*

**Year: 2007-2009**

Household Income	Yes			No			Estimated Population (3-Yr Avg)
	#	%	C.I. (95%)	#	%	C.I. (95%)	#
Less than \$10,000	3,300	66.8	57.5 - 76.1	1,700	33.2	23.9 - 42.5	5,000
\$10,000 to \$14,999	6,200	68.7	61.8 - 75.5	2,800	31.3	24.5 - 38.2	9,000
\$15,000 to \$19,999	9,400	72.2	66.5 - 77.9	3,600	27.8	22.1 - 33.5	13,000
\$20,000 to \$24,999	12,700	75.4	70.5 - 80.3	4,200	24.6	19.7 - 29.5	16,900
\$25,000 to \$34,999	18,300	75.6	71.5 - 79.7	5,900	24.4	20.3 - 28.5	24,200
\$35,000 to \$49,999	25,100	77.8	74.4 - 81.2	7,200	22.2	18.8 - 25.6	32,300
\$50,000 to \$74,999	21,000	80.5	76.8 - 84.1	5,100	19.5	15.9 - 23.2	26,000
\$75,000 or more	27,100	77.2	73.9 - 80.5	8,000	22.8	19.5 - 26.1	35,100

**Flu - had shot in year (65+) by State, County, Island, Community, DOH Race-Ethnicity, Gender, Education Level, Employment Status (Grouped), Household Income, Poverty Level, Marital Status (Grouped), Married, Health Care Coverage, for the Year(s) - 2001-2003, 2002-2004, 2003-2005, 2004-2006, 2005-2007, 2006-2008, 2007-2009, 2008-2010**

*Note: Weighted numbers (#) represent 3-yr averages, percentages and 95% confidence intervals; Respondents aged 18 years and older; n/r (Not Reportable) - If the unweighted total responses for a dimension (row) is <50 that row will not be shown; n/a (Not Available) - Not asked of a subset of respondents*

**Year: 2007-2009**

Poverty Level	Yes			No			Estimated Population (3-Yr Avg)
	#	%	C.I. (95%)	#	%	C.I. (95%)	#
<b>0-130%</b>	23,500	70.3	66.1 - 74.4	10,000	29.7	25.6 - 33.9	33,500
<b>131-185%</b>	18,400	75.5	71.5 - 79.5	6,000	24.5	20.5 - 28.5	24,400
<b>186+%</b>	81,100	78.3	76.5 - 80.1	22,500	21.7	19.9 - 23.5	103,600

Marital Status (Grouped)	Yes			No			Estimated Population (3-Yr Avg)
	#	%	C.I. (95%)	#	%	C.I. (95%)	#
<b>Married</b>	84,000	77.5	75.6 - 79.5	24,300	22.5	20.5 - 24.4	108,300
<b>Widowed</b>	35,900	77.2	74.4 - 79.9	10,600	22.8	20.1 - 25.6	46,500
<b>Other</b>	18,400	68.6	64.9 - 72.3	8,400	31.4	27.7 - 35.1	26,800

**Flu - had shot in year (65+) by State, County, Island, Community, DOH Race-Ethnicity, Gender, Education Level, Employment Status (Grouped), Household Income, Poverty Level, Marital Status (Grouped), Married, Health Care Coverage, for the Year(s) - 2001-2003, 2002-2004, 2003-2005, 2004-2006, 2005-2007, 2006-2008, 2007-2009, 2008-2010**

*Note: Weighted numbers (#) represent 3-yr averages, percentages and 95% confidence intervals; Respondents aged 18 years and older; n/r (Not Reportable) - If the unweighted total responses for a dimension (row) is <50 that row will not be shown; n/a (Not Available) - Not asked of a subset of respondents*

**Year: 2007-2009**

<b>Married</b>	<b>Yes</b>			<b>No</b>			<b>Estimated Population (3-Yr Avg)</b>
	<b>#</b>	<b>%</b>	<b>C.I. (95%)</b>	<b>#</b>	<b>%</b>	<b>C.I. (95%)</b>	<b>#</b>
<b>Yes</b>	84,600	77.6	75.6 - 79.5	24,500	22.4	20.5 - 24.4	109,100
<b>No</b>	53,900	73.8	71.6 - 76.0	19,100	26.2	24.0 - 28.4	73,000

<b>Health Care Coverage</b>	<b>Yes</b>			<b>No</b>			<b>Estimated Population (3-Yr Avg)</b>
	<b>#</b>	<b>%</b>	<b>C.I. (95%)</b>	<b>#</b>	<b>%</b>	<b>C.I. (95%)</b>	<b>#</b>
<b>Yes</b>	138,000	76.2	74.7 - 77.7	43,100	23.8	22.3 - 25.3	181,100

**Flu - had shot in year (65+) by State, County, Island, Community, DOH Race-Ethnicity, Gender, Education Level, Employment Status (Grouped), Household Income, Poverty Level, Marital Status (Grouped), Married, Health Care Coverage, for the Year(s) - 2001-2003, 2002-2004, 2003-2005, 2004-2006, 2005-2007, 2006-2008, 2007-2009, 2008-2010**

*Note: Weighted numbers (#) represent 3-yr averages, percentages and 95% confidence intervals; Respondents aged 18 years and older; n/r (Not Reportable) - If the unweighted total responses for a dimension (row) is <50 that row will not be shown; n/a (Not Available) - Not asked of a subset of respondents*

**Year: 2006-2008**

State	Yes			No			Estimated Population (3-Yr Avg)
	#	%	C.I. (95%)	#	%	C.I. (95%)	#
Hawaii State	138,000	77.1	75.6 - 78.6	41,000	22.9	21.4 - 24.4	179,000

County	Yes			No			Estimated Population (3-Yr Avg)
	#	%	C.I. (95%)	#	%	C.I. (95%)	#
Hawaii	16,800	72.5	69.5 - 75.5	6,400	27.5	24.5 - 30.5	23,200
Honolulu	102,300	78.6	76.7 - 80.5	27,900	21.4	19.5 - 23.3	130,200
Kauai	7,000	77.7	73.2 - 82.2	2,000	22.3	17.8 - 26.8	8,900
Maui	11,900	71.7	68.0 - 75.4	4,700	28.3	24.6 - 32.0	16,600



**Flu - had shot in year (65+) by State, County, Island, Community, DOH Race-Ethnicity, Gender, Education Level, Employment Status (Grouped), Household Income, Poverty Level, Marital Status (Grouped), Married, Health Care Coverage, for the Year(s) - 2001-2003, 2002-2004, 2003-2005, 2004-2006, 2005-2007, 2006-2008, 2007-2009, 2008-2010**

*Note: Weighted numbers (#) represent 3-yr averages, percentages and 95% confidence intervals; Respondents aged 18 years and older; n/r (Not Reportable) - If the unweighted total responses for a dimension (row) is <50 that row will not be shown; n/a (Not Available) - Not asked of a subset of respondents*

**Year: 2006-2008**

Island	Yes			No			Estimated Population (3-Yr Avg)
	#	%	C.I. (95%)	#	%	C.I. (95%)	#
Hawaii	16,800	72.5	69.5 - 75.5	6,400	27.5	24.5 - 30.5	23,200
Kauai	7,000	77.7	73.2 - 82.2	2,000	22.3	17.8 - 26.8	8,900
Lanai	200	67.2	57.6 - 76.9	100	32.8	23.1 - 42.4	400
Maui	10,900	71.6	67.6 - 75.7	4,300	28.4	24.3 - 32.4	15,200
Molokai	800	73.7	65.7 - 81.8	300	26.3	18.2 - 34.3	1,100
Oahu	102,300	78.6	76.7 - 80.5	27,900	21.4	19.5 - 23.3	130,200

Community	Yes			No			Estimated Population (3-Yr Avg)
	#	%	C.I. (95%)	#	%	C.I. (95%)	#
Aiea/ Pearl City	13,200	84.6	79.7 - 89.5	2,400	15.4	10.5 - 20.3	15,700
Ala Moana	6,500	77.1	70.4 - 83.9	1,900	22.9	16.1 - 29.6	8,400

**Flu - had shot in year (65+) by State, County, Island, Community, DOH Race-Ethnicity, Gender, Education Level, Employment Status (Grouped), Household Income, Poverty Level, Marital Status (Grouped), Married, Health Care Coverage, for the Year(s) - 2001-2003, 2002-2004, 2003-2005, 2004-2006, 2005-2007, 2006-2008, 2007-2009, 2008-2010**

*Note: Weighted numbers (#) represent 3-yr averages, percentages and 95% confidence intervals; Respondents aged 18 years and older; n/r (Not Reportable) - If the unweighted total responses for a dimension (row) is <50 that row will not be shown; n/a (Not Available) - Not asked of a subset of respondents*

**Year: 2006-2008**

Community	Yes			No			Estimated Population (3-Yr Avg)
	#	%	C.I. (95%)	#	%	C.I. (95%)	#
Hanalei/ Kapaa	2,700	73.1	65.5 - 80.8	1,000	26.9	19.2 - 34.5	3,700
Hilo	7,000	79.3	74.6 - 84.1	1,800	20.7	15.9 - 25.4	8,900
Kaaawa/ Kahaluu/ Kaneohe	7,800	81.0	74.1 - 87.8	1,800	19.0	12.2 - 25.9	9,600
Kahului	3,800	71.4	65.2 - 77.7	1,500	28.6	22.3 - 34.8	5,400
Kailua/ Waimanalo	9,500	79.1	72.9 - 85.3	2,500	20.9	14.7 - 27.1	12,000
Kaimuki/ Palolo/ Waikiki	12,500	75.9	70.6 - 81.2	4,000	24.1	18.8 - 29.4	16,500
Kona	3,700	66.6	59.9 - 73.3	1,800	33.4	26.7 - 40.1	5,500
Lahaina/ Wailuku	3,600	70.6	63.3 - 77.9	1,500	29.4	22.1 - 36.7	5,000
Lanai	200	67.2	57.6 - 76.9	100	32.8	23.1 - 42.4	400
Lihue-Waimea	4,300	80.9	75.5 - 86.4	1,000	19.1	13.6 - 24.5	5,300
Manoa/ Upper Makiki	9,200	73.9	67.5 - 80.4	3,300	26.1	19.6 - 32.5	12,500
Mililani/ Wahiawa	5,800	78.2	70.3 - 86.1	1,600	21.8	13.9 - 29.7	7,400

**Flu - had shot in year (65+) by State, County, Island, Community, DOH Race-Ethnicity, Gender, Education Level, Employment Status (Grouped), Household Income, Poverty Level, Marital Status (Grouped), Married, Health Care Coverage, for the Year(s) - 2001-2003, 2002-2004, 2003-2005, 2004-2006, 2005-2007, 2006-2008, 2007-2009, 2008-2010**

*Note: Weighted numbers (#) represent 3-yr averages, percentages and 95% confidence intervals; Respondents aged 18 years and older; n/r (Not Reportable) - If the unweighted total responses for a dimension (row) is <50 that row will not be shown; n/a (Not Available) - Not asked of a subset of respondents*

**Year: 2006-2008**

Community	Yes			No			Estimated Population (3-Yr Avg)
	#	%	C.I. (95%)	#	%	C.I. (95%)	#
Molokai	800	73.7	65.7 - 81.8	300	26.3	18.2 - 34.3	1,100
Nanakuli/ Waianae	4,300	81.1	71.4 - 90.9	1,000	18.9	9.1 - 28.6	5,300
N.Hawaii	3,100	73.9	67.5 - 80.3	1,100	26.1	19.7 - 32.5	4,200
N.Shore/ Laie	2,700	69.1	57.1 - 81.1	1,200	30.9	18.9 - 42.9	3,900
Nuuanu/ Kalihi/ Moanalua	9,700	76.4	69.9 - 82.9	3,000	23.6	17.1 - 30.1	12,700
Puna/ Kau	3,000	64.9	58.1 - 71.6	1,600	35.1	28.4 - 41.9	4,600
Salt Lake/ Foster Village	2,300	79.3	67.3 - 91.3	600	20.7	8.7 - 32.7	2,900
Upcountry/ Hana	3,500	73.0	65.6 - 80.4	1,300	27.0	19.6 - 34.4	4,800
Waiialae/ Kahala/ Hawaii Kai	8,300	78.4	71.9 - 85.0	2,300	21.6	15.0 - 28.1	10,600
Waipahu/ Kapolei/ Ewa	10,400	81.8	75.7 - 87.9	2,300	18.2	12.1 - 24.3	12,800

**Flu - had shot in year (65+) by State, County, Island, Community, DOH Race-Ethnicity, Gender, Education Level, Employment Status (Grouped), Household Income, Poverty Level, Marital Status (Grouped), Married, Health Care Coverage, for the Year(s) - 2001-2003, 2002-2004, 2003-2005, 2004-2006, 2005-2007, 2006-2008, 2007-2009, 2008-2010**

*Note: Weighted numbers (#) represent 3-yr averages, percentages and 95% confidence intervals; Respondents aged 18 years and older; n/r (Not Reportable) - If the unweighted total responses for a dimension (row) is <50 that row will not be shown; n/a (Not Available) - Not asked of a subset of respondents*

**Year: 2006-2008**

DOH Race-Ethnicity	Yes			No			Estimated Population (3-Yr Avg)
	#	%	C.I. (95%)	#	%	C.I. (95%)	#
Caucasian	42,900	72.4	69.9 - 74.8	16,400	27.6	25.2 - 30.1	59,200
Native Hawaiian	11,800	74.3	69.0 - 79.7	4,100	25.7	20.3 - 31.0	15,900
Chinese	11,200	79.7	74.3 - 85.1	2,800	20.3	14.9 - 25.7	14,100
Filipino	14,100	76.7	71.0 - 82.4	4,300	23.3	17.6 - 29.0	18,300
Japanese	52,400	82.2	79.8 - 84.5	11,400	17.8	15.5 - 20.2	63,800
Other Asian	2,100	74.1	61.1 - 87.1	700	25.9	12.9 - 38.9	2,800
Other	1,200	70.7	55.9 - 85.5	500	29.3	14.5 - 44.1	1,700

**Flu - had shot in year (65+) by State, County, Island, Community, DOH Race-Ethnicity, Gender, Education Level, Employment Status (Grouped), Household Income, Poverty Level, Marital Status (Grouped), Married, Health Care Coverage, for the Year(s) - 2001-2003, 2002-2004, 2003-2005, 2004-2006, 2005-2007, 2006-2008, 2007-2009, 2008-2010**

*Note: Weighted numbers (#) represent 3-yr averages, percentages and 95% confidence intervals; Respondents aged 18 years and older; n/r (Not Reportable) - If the unweighted total responses for a dimension (row) is <50 that row will not be shown; n/a (Not Available) - Not asked of a subset of respondents*

**Year: 2006-2008**

Gender	Yes			No			Estimated Population (3-Yr Avg)
	#	%	C.I. (95%)	#	%	C.I. (95%)	#
Male	58,000	76.6	74.2 - 79.0	17,700	23.4	21.0 - 25.8	75,700
Female	80,000	77.5	75.5 - 79.4	23,300	22.5	20.6 - 24.5	103,300

Education Level	Yes			No			Estimated Population (3-Yr Avg)
	#	%	C.I. (95%)	#	%	C.I. (95%)	#
Never attended school/ Only Kindergarten to Grades 8	7,300	81.4	74.6 - 88.3	1,700	18.6	11.7 - 25.4	9,000
Grades 9 thru 11 (Some High School)	9,700	75.4	69.0 - 81.9	3,200	24.6	18.1 - 31.0	12,900
Grades 12 or GED (High School Grad)	45,100	76.9	74.2 - 79.6	13,500	23.1	20.4 - 25.8	58,600
College 1 to 3 years (Some College/ Tech)	30,200	75.8	72.6 - 79.0	9,600	24.2	21.0 - 27.4	39,800
College 4 years or more (College Grad)	45,600	77.8	75.4 - 80.3	13,000	22.2	19.7 - 24.6	58,600

**Flu - had shot in year (65+) by State, County, Island, Community, DOH Race-Ethnicity, Gender, Education Level, Employment Status (Grouped), Household Income, Poverty Level, Marital Status (Grouped), Married, Health Care Coverage, for the Year(s) - 2001-2003, 2002-2004, 2003-2005, 2004-2006, 2005-2007, 2006-2008, 2007-2009, 2008-2010**

*Note: Weighted numbers (#) represent 3-yr averages, percentages and 95% confidence intervals; Respondents aged 18 years and older; n/r (Not Reportable) - If the unweighted total responses for a dimension (row) is <50 that row will not be shown; n/a (Not Available) - Not asked of a subset of respondents*

**Year: 2006-2008**

Employment Status (Grouped)	Yes			No			Estimated Population (3-Yr Avg)
	#	%	C.I. (95%)	#	%	C.I. (95%)	#
Employed	17,000	69.7	65.6 - 73.9	7,400	30.3	26.1 - 34.4	24,400
Retired/Unable to work	116,600	78.2	76.6 - 79.9	32,400	21.8	20.1 - 23.4	149,000
Student/Homemaker	4,000	78.4	69.5 - 87.2	1,100	21.6	12.8 - 30.5	5,100

**Flu - had shot in year (65+) by State, County, Island, Community, DOH Race-Ethnicity, Gender, Education Level, Employment Status (Grouped), Household Income, Poverty Level, Marital Status (Grouped), Married, Health Care Coverage, for the Year(s) - 2001-2003, 2002-2004, 2003-2005, 2004-2006, 2005-2007, 2006-2008, 2007-2009, 2008-2010**

*Note: Weighted numbers (#) represent 3-yr averages, percentages and 95% confidence intervals; Respondents aged 18 years and older; n/r (Not Reportable) - If the unweighted total responses for a dimension (row) is <50 that row will not be shown; n/a (Not Available) - Not asked of a subset of respondents*

**Year: 2006-2008**

Household Income	Yes			No			Estimated Population (3-Yr Avg)
	#	%	C.I. (95%)	#	%	C.I. (95%)	#
Less than \$10,000	3,800	75.2	67.3 - 83.1	1,200	24.8	16.9 - 32.7	5,000
\$10,000 to \$14,999	6,500	72.5	65.5 - 79.5	2,500	27.5	20.5 - 34.5	9,000
\$15,000 to \$19,999	9,900	73.6	68.1 - 79.2	3,500	26.4	20.8 - 31.9	13,400
\$20,000 to \$24,999	11,800	73.1	67.7 - 78.5	4,400	26.9	21.5 - 32.3	16,200
\$25,000 to \$34,999	18,600	77.8	73.7 - 81.8	5,300	22.2	18.2 - 26.3	23,900
\$35,000 to \$49,999	22,700	77.6	73.9 - 81.3	6,600	22.4	18.7 - 26.1	29,300
\$50,000 to \$74,999	18,700	80.9	77.1 - 84.7	4,400	19.1	15.3 - 22.9	23,100
\$75,000 or more	24,400	78.0	74.4 - 81.5	6,900	22.0	18.5 - 25.6	31,300

**Flu - had shot in year (65+) by State, County, Island, Community, DOH Race-Ethnicity, Gender, Education Level, Employment Status (Grouped), Household Income, Poverty Level, Marital Status (Grouped), Married, Health Care Coverage, for the Year(s) - 2001-2003, 2002-2004, 2003-2005, 2004-2006, 2005-2007, 2006-2008, 2007-2009, 2008-2010**

*Note: Weighted numbers (#) represent 3-yr averages, percentages and 95% confidence intervals; Respondents aged 18 years and older; n/r (Not Reportable) - If the unweighted total responses for a dimension (row) is <50 that row will not be shown; n/a (Not Available) - Not asked of a subset of respondents*

**Year: 2006-2008**

Poverty Level	Yes			No			Estimated Population (3-Yr Avg)
	#	%	C.I. (95%)	#	%	C.I. (95%)	#
0-130%	23,900	75.3	71.2 - 79.4	7,800	24.7	20.6 - 28.8	31,700
131-185%	13,900	71.7	66.8 - 76.6	5,500	28.3	23.4 - 33.2	19,400
186+%	78,700	78.5	76.7 - 80.4	21,500	21.5	19.6 - 23.3	100,200

Marital Status (Grouped)	Yes			No			Estimated Population (3-Yr Avg)
	#	%	C.I. (95%)	#	%	C.I. (95%)	#
Married	85,000	78.7	76.7 - 80.7	23,000	21.3	19.3 - 23.3	108,000
Widowed	34,000	76.6	73.7 - 79.5	10,400	23.4	20.5 - 26.3	44,400
Other	18,600	71.5	67.8 - 75.1	7,400	28.5	24.9 - 32.2	26,000



**Flu - had shot in year (65+) by State, County, Island, Community, DOH Race-Ethnicity, Gender, Education Level, Employment Status (Grouped), Household Income, Poverty Level, Marital Status (Grouped), Married, Health Care Coverage, for the Year(s) - 2001-2003, 2002-2004, 2003-2005, 2004-2006, 2005-2007, 2006-2008, 2007-2009, 2008-2010**

*Note: Weighted numbers (#) represent 3-yr averages, percentages and 95% confidence intervals; Respondents aged 18 years and older; n/r (Not Reportable) - If the unweighted total responses for a dimension (row) is <50 that row will not be shown; n/a (Not Available) - Not asked of a subset of respondents*

**Year: 2006-2008**

<b>Married</b>	<b>Yes</b>			<b>No</b>			<b>Estimated Population (3-Yr Avg)</b>
	<b>#</b>	<b>%</b>	<b>C.I. (95%)</b>	<b>#</b>	<b>%</b>	<b>C.I. (95%)</b>	<b>#</b>
<b>Yes</b>	85,800	78.8	76.8 - 80.7	23,100	21.2	19.3 - 23.2	109,000
<b>No</b>	52,000	74.6	72.3 - 76.9	17,700	25.4	23.1 - 27.7	69,700

<b>Health Care Coverage</b>	<b>Yes</b>			<b>No</b>			<b>Estimated Population (3-Yr Avg)</b>
	<b>#</b>	<b>%</b>	<b>C.I. (95%)</b>	<b>#</b>	<b>%</b>	<b>C.I. (95%)</b>	<b>#</b>
<b>Yes</b>	137,300	77.3	75.9 - 78.8	40,200	22.7	21.2 - 24.1	177,500

**Flu - had shot in year (65+) by State, County, Island, Community, DOH Race-Ethnicity, Gender, Education Level, Employment Status (Grouped), Household Income, Poverty Level, Marital Status (Grouped), Married, Health Care Coverage, for the Year(s) - 2001-2003, 2002-2004, 2003-2005, 2004-2006, 2005-2007, 2006-2008, 2007-2009, 2008-2010**

*Note: Weighted numbers (#) represent 3-yr averages, percentages and 95% confidence intervals; Respondents aged 18 years and older; n/r (Not Reportable) - If the unweighted total responses for a dimension (row) is <50 that row will not be shown; n/a (Not Available) - Not asked of a subset of respondents*

**Year: 2005-2007**

State	Yes			No			Estimated Population (3-Yr Avg)
	#	%	C.I. (95%)	#	%	C.I. (95%)	#
Hawaii State	132,900	75.5	73.9 - 77.1	43,200	24.5	22.9 - 26.1	176,100

County	Yes			No			Estimated Population (3-Yr Avg)
	#	%	C.I. (95%)	#	%	C.I. (95%)	#
Hawaii	16,000	70.5	67.5 - 73.6	6,700	29.5	26.4 - 32.5	22,700
Honolulu	98,500	76.8	74.7 - 78.8	29,800	23.2	21.2 - 25.3	128,300
Kauai	6,800	76.4	71.8 - 81.0	2,100	23.6	19.0 - 28.2	8,900
Maui	11,600	71.5	67.5 - 75.5	4,600	28.5	24.5 - 32.5	16,300

**Flu - had shot in year (65+) by State, County, Island, Community, DOH Race-Ethnicity, Gender, Education Level, Employment Status (Grouped), Household Income, Poverty Level, Marital Status (Grouped), Married, Health Care Coverage, for the Year(s) - 2001-2003, 2002-2004, 2003-2005, 2004-2006, 2005-2007, 2006-2008, 2007-2009, 2008-2010**

*Note: Weighted numbers (#) represent 3-yr averages, percentages and 95% confidence intervals; Respondents aged 18 years and older; n/r (Not Reportable) - If the unweighted total responses for a dimension (row) is <50 that row will not be shown; n/a (Not Available) - Not asked of a subset of respondents*

**Year: 2005-2007**

Island	Yes			No			Estimated Population (3-Yr Avg)
	#	%	C.I. (95%)	#	%	C.I. (95%)	#
Hawaii	16,000	70.5	67.5 - 73.6	6,700	29.5	26.4 - 32.5	22,700
Kauai	6,800	76.4	71.8 - 81.0	2,100	23.6	19.0 - 28.2	8,900
Lanai	300	66.6	56.3 - 77.0	100	33.4	23.0 - 43.7	400
Maui	10,600	72.0	67.6 - 76.3	4,100	28.0	23.7 - 32.4	14,800
Molokai	700	66.9	57.8 - 76.0	400	33.1	24.0 - 42.2	1,100
Oahu	98,500	76.8	74.7 - 78.8	29,800	23.2	21.2 - 25.3	128,300

Community	Yes			No			Estimated Population (3-Yr Avg)
	#	%	C.I. (95%)	#	%	C.I. (95%)	#
Aiea/ Pearl City	12,500	83.1	77.9 - 88.2	2,500	16.9	11.8 - 22.1	15,000
Ala Moana	6,100	76.9	69.9 - 83.9	1,800	23.1	16.1 - 30.1	8,000

**Flu - had shot in year (65+) by State, County, Island, Community, DOH Race-Ethnicity, Gender, Education Level, Employment Status (Grouped), Household Income, Poverty Level, Marital Status (Grouped), Married, Health Care Coverage, for the Year(s) - 2001-2003, 2002-2004, 2003-2005, 2004-2006, 2005-2007, 2006-2008, 2007-2009, 2008-2010**

*Note: Weighted numbers (#) represent 3-yr averages, percentages and 95% confidence intervals; Respondents aged 18 years and older; n/r (Not Reportable) - If the unweighted total responses for a dimension (row) is <50 that row will not be shown; n/a (Not Available) - Not asked of a subset of respondents*

**Year: 2005-2007**

Community	Yes			No			Estimated Population (3-Yr Avg)
	#	%	C.I. (95%)	#	%	C.I. (95%)	#
Hanalei/ Kapaa	2,900	74.1	66.8 - 81.4	1,000	25.9	18.6 - 33.2	3,900
Hilo	6,500	77.8	73.0 - 82.6	1,900	22.2	17.4 - 27.0	8,400
Kaaawa/ Kahaluu/ Kaneohe	7,200	74.6	66.7 - 82.4	2,400	25.4	17.6 - 33.3	9,600
Kahului	4,100	71.0	64.4 - 77.5	1,700	29.0	22.5 - 35.6	5,800
Kailua/ Waimanalo	9,100	76.4	69.9 - 82.9	2,800	23.6	17.1 - 30.1	11,900
Kaimuki/ Palolo/ Waikiki	11,800	73.6	67.9 - 79.2	4,200	26.4	20.8 - 32.1	16,000
Kona	3,600	64.8	58.1 - 71.5	2,000	35.2	28.5 - 41.9	5,600
Lahaina/ Wailuku	3,400	72.3	64.3 - 80.4	1,300	27.7	19.6 - 35.7	4,800
Lanai	300	66.6	56.3 - 77.0	100	33.4	23.0 - 43.7	400
Lihue-Waimea	3,900	78.2	72.3 - 84.1	1,100	21.8	15.9 - 27.7	5,000
Manoa/ Upper Makiki	8,300	70.7	63.6 - 77.8	3,500	29.3	22.2 - 36.4	11,800
Millilani/ Wahiawa	6,000	74.9	65.8 - 84.1	2,000	25.1	15.9 - 34.2	8,000

**Flu - had shot in year (65+) by State, County, Island, Community, DOH Race-Ethnicity, Gender, Education Level, Employment Status (Grouped), Household Income, Poverty Level, Marital Status (Grouped), Married, Health Care Coverage, for the Year(s) - 2001-2003, 2002-2004, 2003-2005, 2004-2006, 2005-2007, 2006-2008, 2007-2009, 2008-2010**

*Note: Weighted numbers (#) represent 3-yr averages, percentages and 95% confidence intervals; Respondents aged 18 years and older; n/r (Not Reportable) - If the unweighted total responses for a dimension (row) is <50 that row will not be shown; n/a (Not Available) - Not asked of a subset of respondents*

**Year: 2005-2007**

Community	Yes			No			Estimated Population (3-Yr Avg)
	#	%	C.I. (95%)	#	%	C.I. (95%)	#
Molokai	700	66.9	57.8 - 76.0	400	33.1	24.0 - 42.2	1,100
Nanakuli/ Waianae	3,800	81.8	70.4 - 93.3	800	18.2	6.7 - 29.6	4,600
N.Hawaii	3,000	71.2	64.8 - 77.5	1,200	28.8	22.5 - 35.2	4,200
N.Shore/ Laie	3,200	74.3	63.2 - 85.3	1,100	25.7	14.7 - 36.8	4,200
Nuuanu/ Kalihi/ Moanalua	10,000	73.9	66.9 - 80.9	3,500	26.1	19.1 - 33.1	13,600
Puna/ Kau	2,800	63.5	56.3 - 70.6	1,600	36.5	29.4 - 43.7	4,500
Upcountry/ Hana	3,000	72.9	64.5 - 81.3	1,100	27.1	18.7 - 35.5	4,200
Waialae/ Kahala/ Hawaii Kai	8,600	81.3	75.3 - 87.3	2,000	18.7	12.7 - 24.7	10,600
Waipahu/ Kapolei/ Ewa	10,200	81.4	74.7 - 88.2	2,300	18.6	11.8 - 25.3	12,500

**Flu - had shot in year (65+) by State, County, Island, Community, DOH Race-Ethnicity, Gender, Education Level, Employment Status (Grouped), Household Income, Poverty Level, Marital Status (Grouped), Married, Health Care Coverage, for the Year(s) - 2001-2003, 2002-2004, 2003-2005, 2004-2006, 2005-2007, 2006-2008, 2007-2009, 2008-2010**

*Note: Weighted numbers (#) represent 3-yr averages, percentages and 95% confidence intervals; Respondents aged 18 years and older; n/r (Not Reportable) - If the unweighted total responses for a dimension (row) is <50 that row will not be shown; n/a (Not Available) - Not asked of a subset of respondents*

**Year: 2005-2007**

DOH Race-Ethnicity	Yes			No			Estimated Population (3-Yr Avg)
	#	%	C.I. (95%)	#	%	C.I. (95%)	#
Caucasian	40,500	71.9	69.3 - 74.5	15,800	28.1	25.5 - 30.7	56,300
Native Hawaiian	11,300	70.3	64.6 - 75.9	4,800	29.7	24.1 - 35.4	16,000
Chinese	11,000	83.0	77.7 - 88.4	2,300	17.0	11.6 - 22.3	13,300
Filipino	13,800	71.6	65.1 - 78.1	5,500	28.4	21.9 - 34.9	19,300
Japanese	49,700	79.3	76.7 - 81.8	13,000	20.7	18.2 - 23.3	62,700
Other Asian	2,300	78.3	65.8 - 90.8	600	21.7	9.2 - 34.2	3,000
Other	1,600	72.3	58.6 - 86.1	600	27.7	13.9 - 41.4	2,200

**Flu - had shot in year (65+) by State, County, Island, Community, DOH Race-Ethnicity, Gender, Education Level, Employment Status (Grouped), Household Income, Poverty Level, Marital Status (Grouped), Married, Health Care Coverage, for the Year(s) - 2001-2003, 2002-2004, 2003-2005, 2004-2006, 2005-2007, 2006-2008, 2007-2009, 2008-2010**

*Note: Weighted numbers (#) represent 3-yr averages, percentages and 95% confidence intervals; Respondents aged 18 years and older; n/r (Not Reportable) - If the unweighted total responses for a dimension (row) is <50 that row will not be shown; n/a (Not Available) - Not asked of a subset of respondents*

**Year: 2005-2007**

Gender	Yes			No			Estimated Population (3-Yr Avg)
	#	%	C.I. (95%)	#	%	C.I. (95%)	#
Male	56,300	75.4	72.8 - 77.9	18,400	24.6	22.1 - 27.2	74,700
Female	76,600	75.5	73.5 - 77.6	24,800	24.5	22.4 - 26.5	101,400

Education Level	Yes			No			Estimated Population (3-Yr Avg)
	#	%	C.I. (95%)	#	%	C.I. (95%)	#
Never attended school/ Only Kindergarten to Grades 8	7,900	81.0	73.8 - 88.1	1,900	19.0	11.9 - 26.2	9,800
Grades 9 thru 11 (Some High School)	10,000	71.8	64.9 - 78.7	3,900	28.2	21.3 - 35.1	13,900
Grades 12 or GED (High School Grad)	44,100	75.6	72.8 - 78.3	14,300	24.4	21.7 - 27.2	58,400
College 1 to 3 years (Some College/ Tech)	29,000	72.3	68.8 - 75.8	11,100	27.7	24.2 - 31.2	40,100
College 4 years or more (College Grad)	41,600	77.6	75.1 - 80.2	12,000	22.4	19.8 - 24.9	53,600

**Flu - had shot in year (65+) by State, County, Island, Community, DOH Race-Ethnicity, Gender, Education Level, Employment Status (Grouped), Household Income, Poverty Level, Marital Status (Grouped), Married, Health Care Coverage, for the Year(s) - 2001-2003, 2002-2004, 2003-2005, 2004-2006, 2005-2007, 2006-2008, 2007-2009, 2008-2010**

*Note: Weighted numbers (#) represent 3-yr averages, percentages and 95% confidence intervals; Respondents aged 18 years and older; n/r (Not Reportable) - If the unweighted total responses for a dimension (row) is <50 that row will not be shown; n/a (Not Available) - Not asked of a subset of respondents*

**Year: 2005-2007**

Employment Status (Grouped)	Yes			No			Estimated Population (3-Yr Avg)
	#	%	C.I. (95%)	#	%	C.I. (95%)	#
Employed	15,600	66.6	62.1 - 71.2	7,800	33.4	28.8 - 37.9	23,400
Retired/Unable to work	113,600	76.9	75.1 - 78.6	34,200	23.1	21.4 - 24.9	147,900
Student/Homemaker	3,100	74.0	63.2 - 84.8	1,100	26.0	15.2 - 36.8	4,200



**Flu - had shot in year (65+) by State, County, Island, Community, DOH Race-Ethnicity, Gender, Education Level, Employment Status (Grouped), Household Income, Poverty Level, Marital Status (Grouped), Married, Health Care Coverage, for the Year(s) - 2001-2003, 2002-2004, 2003-2005, 2004-2006, 2005-2007, 2006-2008, 2007-2009, 2008-2010**

*Note: Weighted numbers (#) represent 3-yr averages, percentages and 95% confidence intervals; Respondents aged 18 years and older; n/r (Not Reportable) - If the unweighted total responses for a dimension (row) is <50 that row will not be shown; n/a (Not Available) - Not asked of a subset of respondents*

**Year: 2005-2007**

Household Income	Yes			No			Estimated Population (3-Yr Avg)
	#	%	C.I. (95%)	#	%	C.I. (95%)	#
Less than \$10,000	4,500	75.2	66.9 - 83.4	1,500	24.8	16.6 - 33.1	6,000
\$10,000 to \$14,999	6,200	71.0	63.4 - 78.6	2,500	29.0	21.4 - 36.6	8,700
\$15,000 to \$19,999	10,400	74.4	69.0 - 79.8	3,600	25.6	20.2 - 31.0	14,000
\$20,000 to \$24,999	11,600	71.5	66.0 - 77.0	4,600	28.5	23.0 - 34.0	16,200
\$25,000 to \$34,999	17,300	75.6	71.1 - 80.0	5,600	24.4	20.0 - 28.9	22,900
\$35,000 to \$49,999	21,800	77.4	73.8 - 81.0	6,400	22.6	19.0 - 26.2	28,100
\$50,000 to \$74,999	15,700	76.5	71.8 - 81.1	4,800	23.5	18.9 - 28.2	20,500
\$75,000 or more	20,900	76.0	72.0 - 80.1	6,600	24.0	19.9 - 28.0	27,500

**Flu - had shot in year (65+) by State, County, Island, Community, DOH Race-Ethnicity, Gender, Education Level, Employment Status (Grouped), Household Income, Poverty Level, Marital Status (Grouped), Married, Health Care Coverage, for the Year(s) - 2001-2003, 2002-2004, 2003-2005, 2004-2006, 2005-2007, 2006-2008, 2007-2009, 2008-2010**

*Note: Weighted numbers (#) represent 3-yr averages, percentages and 95% confidence intervals; Respondents aged 18 years and older; n/r (Not Reportable) - If the unweighted total responses for a dimension (row) is <50 that row will not be shown; n/a (Not Available) - Not asked of a subset of respondents*

**Year: 2005-2007**

Poverty Level	Yes			No			Estimated Population (3-Yr Avg)
	#	%	C.I. (95%)	#	%	C.I. (95%)	#
0-130%	24,500	75.6	71.5 - 79.7	7,900	24.4	20.3 - 28.5	32,500
131-185%	12,700	69.5	64.4 - 74.6	5,600	30.5	25.4 - 35.6	18,300
186+%	71,100	76.3	74.3 - 78.3	22,100	23.7	21.7 - 25.7	93,200

Marital Status (Grouped)	Yes			No			Estimated Population (3-Yr Avg)
	#	%	C.I. (95%)	#	%	C.I. (95%)	#
Married	81,700	76.9	74.7 - 79.0	24,600	23.1	21.0 - 25.3	106,300
Widowed	33,400	75.6	72.5 - 78.6	10,800	24.4	21.4 - 27.5	44,100
Other	17,600	69.7	66.0 - 73.5	7,600	30.3	26.5 - 34.0	25,300

**Flu - had shot in year (65+) by State, County, Island, Community, DOH Race-Ethnicity, Gender, Education Level, Employment Status (Grouped), Household Income, Poverty Level, Marital Status (Grouped), Married, Health Care Coverage, for the Year(s) - 2001-2003, 2002-2004, 2003-2005, 2004-2006, 2005-2007, 2006-2008, 2007-2009, 2008-2010**

*Note: Weighted numbers (#) represent 3-yr averages, percentages and 95% confidence intervals; Respondents aged 18 years and older; n/r (Not Reportable) - If the unweighted total responses for a dimension (row) is <50 that row will not be shown; n/a (Not Available) - Not asked of a subset of respondents*

**Year: 2005-2007**

<b>Married</b>	<b>Yes</b>			<b>No</b>			<b>Estimated Population (3-Yr Avg)</b>
	<b>#</b>	<b>%</b>	<b>C.I. (95%)</b>	<b>#</b>	<b>%</b>	<b>C.I. (95%)</b>	<b>#</b>
<b>Yes</b>	82,500	76.9	74.8 - 79.0	24,800	23.1	21.0 - 25.2	107,300
<b>No</b>	50,200	73.4	71.0 - 75.8	18,200	26.6	24.2 - 29.0	68,400

<b>Health Care Coverage</b>	<b>Yes</b>			<b>No</b>			<b>Estimated Population (3-Yr Avg)</b>
	<b>#</b>	<b>%</b>	<b>C.I. (95%)</b>	<b>#</b>	<b>%</b>	<b>C.I. (95%)</b>	<b>#</b>
<b>Yes</b>	131,900	75.8	74.2 - 77.4	42,200	24.2	22.6 - 25.8	174,100
<b>No</b>	900	48.3	31.5 - 65.0	1,000	51.7	35.0 - 68.5	1,900

**Flu - had shot in year (65+) by State, County, Island, Community, DOH Race-Ethnicity, Gender, Education Level, Employment Status (Grouped), Household Income, Poverty Level, Marital Status (Grouped), Married, Health Care Coverage, for the Year(s) - 2001-2003, 2002-2004, 2003-2005, 2004-2006, 2005-2007, 2006-2008, 2007-2009, 2008-2010**

*Note: Weighted numbers (#) represent 3-yr averages, percentages and 95% confidence intervals; Respondents aged 18 years and older; n/r (Not Reportable) - If the unweighted total responses for a dimension (row) is <50 that row will not be shown; n/a (Not Available) - Not asked of a subset of respondents*

**Year: 2004-2006**

State	Yes			No			Estimated Population (3-Yr Avg)
	#	%	C.I. (95%)	#	%	C.I. (95%)	#
Hawaii State	116,600	69.4	67.0 - 71.9	51,300	30.6	28.1 - 33.0	167,900

County	Yes			No			Estimated Population (3-Yr Avg)
	#	%	C.I. (95%)	#	%	C.I. (95%)	#
Hawaii	15,000	65.7	61.5 - 69.9	7,800	34.3	30.1 - 38.5	22,900
Honolulu	85,300	70.0	66.8 - 73.2	36,600	30.0	26.8 - 33.2	121,900
Kauai	6,100	72.5	66.3 - 78.7	2,300	27.5	21.3 - 33.7	8,400
Maui	10,100	69.0	63.7 - 74.2	4,600	31.0	25.8 - 36.3	14,700

**Flu - had shot in year (65+) by State, County, Island, Community, DOH Race-Ethnicity, Gender, Education Level, Employment Status (Grouped), Household Income, Poverty Level, Marital Status (Grouped), Married, Health Care Coverage, for the Year(s) - 2001-2003, 2002-2004, 2003-2005, 2004-2006, 2005-2007, 2006-2008, 2007-2009, 2008-2010**

*Note: Weighted numbers (#) represent 3-yr averages, percentages and 95% confidence intervals; Respondents aged 18 years and older; n/r (Not Reportable) - If the unweighted total responses for a dimension (row) is <50 that row will not be shown; n/a (Not Available) - Not asked of a subset of respondents*

**Year: 2004-2006**

Island	Yes			No			Estimated Population (3-Yr Avg)
	#	%	C.I. (95%)	#	%	C.I. (95%)	#
Hawaii	15,000	65.7	61.5 - 69.9	7,800	34.3	30.1 - 38.5	22,900
Kauai	6,100	72.5	66.3 - 78.7	2,300	27.5	21.3 - 33.7	8,400
Lanai	200	67.1	54.9 - 79.2	100	32.9	20.8 - 45.1	300
Maui	9,200	68.9	63.1 - 74.6	4,100	31.1	25.4 - 36.9	13,300
Molokai	700	70.5	60.2 - 80.8	300	29.5	19.2 - 39.8	1,000
Oahu	85,300	70.0	66.8 - 73.2	36,600	30.0	26.8 - 33.2	121,900

Community	Yes			No			Estimated Population (3-Yr Avg)
	#	%	C.I. (95%)	#	%	C.I. (95%)	#
Aiea/ Pearl City	12,300	81.2	73.9 - 88.5	2,800	18.8	11.5 - 26.1	15,100
Ala Moana	4,200	64.9	53.8 - 76.0	2,200	35.1	24.0 - 46.2	6,400

**Flu - had shot in year (65+) by State, County, Island, Community, DOH Race-Ethnicity, Gender, Education Level, Employment Status (Grouped), Household Income, Poverty Level, Marital Status (Grouped), Married, Health Care Coverage, for the Year(s) - 2001-2003, 2002-2004, 2003-2005, 2004-2006, 2005-2007, 2006-2008, 2007-2009, 2008-2010**

*Note: Weighted numbers (#) represent 3-yr averages, percentages and 95% confidence intervals; Respondents aged 18 years and older; n/r (Not Reportable) - If the unweighted total responses for a dimension (row) is <50 that row will not be shown; n/a (Not Available) - Not asked of a subset of respondents*

**Year: 2004-2006**

Community	Yes			No			Estimated Population (3-Yr Avg)
	#	%	C.I. (95%)	#	%	C.I. (95%)	#
Hanalei/ Kapaa	2,200	70.9	61.8 - 79.9	900	29.1	20.1 - 38.2	3,100
Hilo	5,000	72.0	65.9 - 78.1	2,000	28.0	21.9 - 34.1	7,000
Kaaawa/ Kahaluu/ Kaneohe	7,200	67.8	56.7 - 79.0	3,400	32.2	21.0 - 43.3	10,600
Kahului	3,600	71.2	62.9 - 79.5	1,500	28.8	20.5 - 37.1	5,100
Kailua/ Waimanalo	6,200	69.7	60.3 - 79.1	2,700	30.3	20.9 - 39.7	8,900
Kaimuki/ Palolo/ Waikiki	11,200	64.0	55.6 - 72.5	6,300	36.0	27.5 - 44.4	17,500
Kona	3,300	62.0	53.9 - 70.2	2,000	38.0	29.8 - 46.1	5,400
Lahaina/ Wailuku	3,200	70.7	60.8 - 80.6	1,300	29.3	19.4 - 39.2	4,500
Lanai	200	67.1	54.9 - 79.2	100	32.9	20.8 - 45.1	300
Lihue-Waimea	3,900	73.5	65.2 - 81.8	1,400	26.5	18.2 - 34.8	5,400
Manoa/ Upper Makiki	7,500	77.1	69.5 - 84.7	2,200	22.9	15.3 - 30.5	9,700
Mililani/ Wahiawa	4,800	63.5	49.2 - 77.8	2,800	36.5	22.2 - 50.8	7,600

**Flu - had shot in year (65+) by State, County, Island, Community, DOH Race-Ethnicity, Gender, Education Level, Employment Status (Grouped), Household Income, Poverty Level, Marital Status (Grouped), Married, Health Care Coverage, for the Year(s) - 2001-2003, 2002-2004, 2003-2005, 2004-2006, 2005-2007, 2006-2008, 2007-2009, 2008-2010**

*Note: Weighted numbers (#) represent 3-yr averages, percentages and 95% confidence intervals; Respondents aged 18 years and older; n/r (Not Reportable) - If the unweighted total responses for a dimension (row) is <50 that row will not be shown; n/a (Not Available) - Not asked of a subset of respondents*

**Year: 2004-2006**

Community	Yes			No			Estimated Population (3-Yr Avg)
	#	%	C.I. (95%)	#	%	C.I. (95%)	#
Molokai	700	70.5	60.2 - 80.8	300	29.5	19.2 - 39.8	1,000
N.Hawaii	2,900	59.9	49.8 - 70.1	1,900	40.1	29.9 - 50.2	4,800
N.Shore/ Laie	3,000	64.2	45.0 - 83.3	1,700	35.8	16.7 - 55.0	4,600
Nuuanu/ Kalihi/ Moanalua	9,000	69.3	59.3 - 79.2	4,000	30.7	20.8 - 40.7	13,000
Puna/ Kau	3,800	66.3	56.8 - 75.7	1,900	33.7	24.3 - 43.2	5,700
Upcountry/ Hana	2,400	63.6	51.5 - 75.7	1,400	36.4	24.3 - 48.5	3,800
Waialae/ Kahala/ Hawaii Kai	7,400	80.0	70.5 - 89.4	1,800	20.0	10.6 - 29.5	9,200
Waipahu/ Kapolei/ Ewa	7,500	67.8	55.3 - 80.4	3,500	32.2	19.6 - 44.7	11,000

**Flu - had shot in year (65+) by State, County, Island, Community, DOH Race-Ethnicity, Gender, Education Level, Employment Status (Grouped), Household Income, Poverty Level, Marital Status (Grouped), Married, Health Care Coverage, for the Year(s) - 2001-2003, 2002-2004, 2003-2005, 2004-2006, 2005-2007, 2006-2008, 2007-2009, 2008-2010**

*Note: Weighted numbers (#) represent 3-yr averages, percentages and 95% confidence intervals; Respondents aged 18 years and older; n/r (Not Reportable) - If the unweighted total responses for a dimension (row) is <50 that row will not be shown; n/a (Not Available) - Not asked of a subset of respondents*

**Year: 2004-2006**

DOH Race-Ethnicity	Yes			No			Estimated Population (3-Yr Avg)
	#	%	C.I. (95%)	#	%	C.I. (95%)	#
Caucasian	35,800	66.4	62.5 - 70.3	18,100	33.6	29.7 - 37.5	53,800
Native Hawaiian	10,200	67.7	59.7 - 75.7	4,900	32.3	24.3 - 40.3	15,100
Chinese	9,600	71.2	61.2 - 81.3	3,900	28.8	18.7 - 38.8	13,500
Filipino	11,200	64.6	55.5 - 73.8	6,200	35.4	26.2 - 44.5	17,400
Japanese	43,600	73.3	69.2 - 77.5	15,900	26.7	22.5 - 30.8	59,500

Gender	Yes			No			Estimated Population (3-Yr Avg)
	#	%	C.I. (95%)	#	%	C.I. (95%)	#
Male	49,200	67.9	63.8 - 71.9	23,300	32.1	28.1 - 36.2	72,500
Female	67,400	70.6	67.6 - 73.7	28,000	29.4	26.3 - 32.4	95,400



**Flu - had shot in year (65+) by State, County, Island, Community, DOH Race-Ethnicity, Gender, Education Level, Employment Status (Grouped), Household Income, Poverty Level, Marital Status (Grouped), Married, Health Care Coverage, for the Year(s) - 2001-2003, 2002-2004, 2003-2005, 2004-2006, 2005-2007, 2006-2008, 2007-2009, 2008-2010**

*Note: Weighted numbers (#) represent 3-yr averages, percentages and 95% confidence intervals; Respondents aged 18 years and older; n/r (Not Reportable) - If the unweighted total responses for a dimension (row) is <50 that row will not be shown; n/a (Not Available) - Not asked of a subset of respondents*

**Year: 2004-2006**

Education Level	Yes			No			Estimated Population (3-Yr Avg)
	#	%	C.I. (95%)	#	%	C.I. (95%)	#
Never attended school/ Only Kindergarten to Grades 8	6,600	75.0	64.5 - 85.6	2,200	25.0	14.4 - 35.5	8,800
Grades 9 thru 11 (Some High School)	9,200	74.9	67.7 - 82.2	3,100	25.1	17.8 - 32.3	12,300
Grades 12 or GED (High School Grad)	38,700	69.4	65.0 - 73.8	17,100	30.6	26.2 - 35.0	55,700
College 1 to 3 years (Some College/ Tech)	25,900	62.6	57.2 - 67.9	15,500	37.4	32.1 - 42.8	41,300
College 4 years or more (College Grad)	35,900	72.8	68.6 - 77.0	13,400	27.2	23.0 - 31.4	49,400

Employment Status (Grouped)	Yes			No			Estimated Population (3-Yr Avg)
	#	%	C.I. (95%)	#	%	C.I. (95%)	#
Employed	13,700	59.1	52.3 - 65.8	9,500	40.9	34.2 - 47.7	23,200
Retired/Unable to work	99,600	71.1	68.4 - 73.8	40,600	28.9	26.2 - 31.6	140,100
Student/Homemaker	2,800	70.6	56.9 - 84.2	1,200	29.4	15.8 - 43.1	4,000

**Flu - had shot in year (65+) by State, County, Island, Community, DOH Race-Ethnicity, Gender, Education Level, Employment Status (Grouped), Household Income, Poverty Level, Marital Status (Grouped), Married, Health Care Coverage, for the Year(s) - 2001-2003, 2002-2004, 2003-2005, 2004-2006, 2005-2007, 2006-2008, 2007-2009, 2008-2010**

*Note: Weighted numbers (#) represent 3-yr averages, percentages and 95% confidence intervals; Respondents aged 18 years and older; n/r (Not Reportable) - If the unweighted total responses for a dimension (row) is <50 that row will not be shown; n/a (Not Available) - Not asked of a subset of respondents*

**Year: 2004-2006**

Household Income	Yes			No			Estimated Population (3-Yr Avg)
	#	%	C.I. (95%)	#	%	C.I. (95%)	#
Less than \$10,000	3,600	74.2	64.7 - 83.7	1,200	25.8	16.3 - 35.3	4,800
\$10,000 to \$14,999	5,300	70.5	61.8 - 79.3	2,200	29.5	20.7 - 38.2	7,500
\$15,000 to \$19,999	9,100	72.0	65.2 - 78.8	3,500	28.0	21.2 - 34.8	12,700
\$20,000 to \$24,999	9,800	64.9	56.6 - 73.2	5,300	35.1	26.8 - 43.4	15,100
\$25,000 to \$34,999	15,800	73.6	67.9 - 79.4	5,700	26.4	20.6 - 32.1	21,500
\$35,000 to \$49,999	17,700	71.0	64.5 - 77.5	7,200	29.0	22.5 - 35.5	24,900
\$50,000 to \$74,999	20,300	64.9	58.0 - 71.7	11,000	35.1	28.3 - 42.0	31,300
\$75,000 or more	16,300	65.4	57.7 - 73.0	8,600	34.6	27.0 - 42.3	25,000

**Flu - had shot in year (65+) by State, County, Island, Community, DOH Race-Ethnicity, Gender, Education Level, Employment Status (Grouped), Household Income, Poverty Level, Marital Status (Grouped), Married, Health Care Coverage, for the Year(s) - 2001-2003, 2002-2004, 2003-2005, 2004-2006, 2005-2007, 2006-2008, 2007-2009, 2008-2010**

*Note: Weighted numbers (#) represent 3-yr averages, percentages and 95% confidence intervals; Respondents aged 18 years and older; n/r (Not Reportable) - If the unweighted total responses for a dimension (row) is <50 that row will not be shown; n/a (Not Available) - Not asked of a subset of respondents*

**Year: 2004-2006**

Poverty Level	Yes			No			Estimated Population (3-Yr Avg)
	#	%	C.I. (95%)	#	%	C.I. (95%)	#
<b>0-130%</b>	21,100	72.6	66.8 - 78.5	8,000	27.4	21.5 - 33.2	29,000
<b>131-185%</b>	10,600	65.6	58.6 - 72.5	5,600	34.4	27.5 - 41.4	16,200
<b>186+%</b>	66,200	67.9	64.4 - 71.4	31,300	32.1	28.6 - 35.6	97,500

Marital Status (Grouped)	Yes			No			Estimated Population (3-Yr Avg)
	#	%	C.I. (95%)	#	%	C.I. (95%)	#
<b>Married</b>	71,600	71.0	67.8 - 74.3	29,200	29.0	25.7 - 32.2	100,800
<b>Widowed</b>	29,900	70.2	65.3 - 75.0	12,700	29.8	25.0 - 34.7	42,700
<b>Other</b>	14,800	62.0	56.2 - 67.8	9,100	38.0	32.2 - 43.8	23,900

**Flu - had shot in year (65+) by State, County, Island, Community, DOH Race-Ethnicity, Gender, Education Level, Employment Status (Grouped), Household Income, Poverty Level, Marital Status (Grouped), Married, Health Care Coverage, for the Year(s) - 2001-2003, 2002-2004, 2003-2005, 2004-2006, 2005-2007, 2006-2008, 2007-2009, 2008-2010**

*Note: Weighted numbers (#) represent 3-yr averages, percentages and 95% confidence intervals; Respondents aged 18 years and older; n/r (Not Reportable) - If the unweighted total responses for a dimension (row) is <50 that row will not be shown; n/a (Not Available) - Not asked of a subset of respondents*

**Year: 2004-2006**

<b>Married</b>	<b>Yes</b>			<b>No</b>			<b>Estimated Population (3-Yr Avg)</b>
	<b>#</b>	<b>%</b>	<b>C.I. (95%)</b>	<b>#</b>	<b>%</b>	<b>C.I. (95%)</b>	<b>#</b>
<b>Yes</b>	72,400	71.1	67.9 - 74.3	29,500	28.9	25.7 - 32.1	101,900
<b>No</b>	44,100	67.1	63.3 - 70.9	21,700	32.9	29.1 - 36.7	65,800

<b>Health Care Coverage</b>	<b>Yes</b>			<b>No</b>			<b>Estimated Population (3-Yr Avg)</b>
	<b>#</b>	<b>%</b>	<b>C.I. (95%)</b>	<b>#</b>	<b>%</b>	<b>C.I. (95%)</b>	<b>#</b>
<b>Yes</b>	115,700	69.7	67.3 - 72.2	50,200	30.3	27.8 - 32.7	165,800

**Flu - had shot in year (65+) by State, County, Island, Community, DOH Race-Ethnicity, Gender, Education Level, Employment Status (Grouped), Household Income, Poverty Level, Marital Status (Grouped), Married, Health Care Coverage, for the Year(s) - 2001-2003, 2002-2004, 2003-2005, 2004-2006, 2005-2007, 2006-2008, 2007-2009, 2008-2010**

*Note: Weighted numbers (#) represent 3-yr averages, percentages and 95% confidence intervals; Respondents aged 18 years and older; n/r (Not Reportable) - If the unweighted total responses for a dimension (row) is <50 that row will not be shown; n/a (Not Available) - Not asked of a subset of respondents*

**Year: 2003-2005**

State	Yes			No			Estimated Population (3-Yr Avg)
	#	%	C.I. (95%)	#	%	C.I. (95%)	#
Hawaii State	114,100	69.6	67.0 - 72.2	49,900	30.4	27.8 - 33.0	163,900

County	Yes			No			Estimated Population (3-Yr Avg)
	#	%	C.I. (95%)	#	%	C.I. (95%)	#
Hawaii	15,700	68.5	64.1 - 72.8	7,200	31.5	27.2 - 35.9	22,900
Honolulu	82,700	69.6	66.2 - 73.0	36,100	30.4	27.0 - 33.8	118,800
Kauai	5,600	70.2	63.5 - 77.0	2,400	29.8	23.0 - 36.5	7,900
Maui	10,000	70.5	64.7 - 76.3	4,200	29.5	23.7 - 35.3	14,200

**Flu - had shot in year (65+) by State, County, Island, Community, DOH Race-Ethnicity, Gender, Education Level, Employment Status (Grouped), Household Income, Poverty Level, Marital Status (Grouped), Married, Health Care Coverage, for the Year(s) - 2001-2003, 2002-2004, 2003-2005, 2004-2006, 2005-2007, 2006-2008, 2007-2009, 2008-2010**

*Note: Weighted numbers (#) represent 3-yr averages, percentages and 95% confidence intervals; Respondents aged 18 years and older; n/r (Not Reportable) - If the unweighted total responses for a dimension (row) is <50 that row will not be shown; n/a (Not Available) - Not asked of a subset of respondents*

**Year: 2003-2005**

Island	Yes			No			Estimated Population (3-Yr Avg)
	#	%	C.I. (95%)	#	%	C.I. (95%)	#
Hawaii	15,700	68.5	64.1 - 72.8	7,200	31.5	27.2 - 35.9	22,900
Kauai	5,600	70.2	63.5 - 77.0	2,400	29.8	23.0 - 36.5	7,900
Lanai	300	63.1	44.9 - 81.3	200	36.9	18.7 - 55.1	400
Maui	8,900	69.9	63.6 - 76.3	3,800	30.1	23.7 - 36.4	12,800
Molokai	800	80.8	70.3 - 91.4	200	19.2	8.6 - 29.7	1,000
Oahu	82,700	69.6	66.2 - 73.0	36,100	30.4	27.0 - 33.8	118,800

Community	Yes			No			Estimated Population (3-Yr Avg)
	#	%	C.I. (95%)	#	%	C.I. (95%)	#
Aiea/ Pearl City	11,100	80.0	71.8 - 88.2	2,800	20.0	11.8 - 28.2	13,900
Ala Moana	3,500	58.2	45.5 - 70.9	2,500	41.8	29.1 - 54.5	6,000

**Flu - had shot in year (65+) by State, County, Island, Community, DOH Race-Ethnicity, Gender, Education Level, Employment Status (Grouped), Household Income, Poverty Level, Marital Status (Grouped), Married, Health Care Coverage, for the Year(s) - 2001-2003, 2002-2004, 2003-2005, 2004-2006, 2005-2007, 2006-2008, 2007-2009, 2008-2010**

*Note: Weighted numbers (#) represent 3-yr averages, percentages and 95% confidence intervals; Respondents aged 18 years and older; n/r (Not Reportable) - If the unweighted total responses for a dimension (row) is <50 that row will not be shown; n/a (Not Available) - Not asked of a subset of respondents*

**Year: 2003-2005**

Community	Yes			No			Estimated Population (3-Yr Avg)
	#	%	C.I. (95%)	#	%	C.I. (95%)	#
Hanalei/ Kapaa	2,100	71.7	62.5 - 81.0	800	28.3	19.0 - 37.5	2,900
Hilo	4,600	72.3	65.4 - 79.2	1,800	27.7	20.8 - 34.6	6,400
Kaaawa/ Kahaluu/ Kaneohe	5,900	63.5	50.8 - 76.2	3,400	36.5	23.8 - 49.2	9,300
Kahului	3,600	72.1	63.1 - 81.1	1,400	27.9	18.9 - 36.9	5,000
Kailua/ Waimanalo	5,800	72.1	61.4 - 82.7	2,200	27.9	17.3 - 38.6	8,000
Kaimuki/ Palolo/ Waikiki	11,300	63.3	54.5 - 72.1	6,600	36.7	27.9 - 45.5	17,900
Kona	3,700	66.7	58.3 - 75.1	1,900	33.3	24.9 - 41.7	5,600
Lahaina/ Wailuku	3,000	69.4	58.5 - 80.4	1,300	30.6	19.6 - 41.5	4,300
Lanai	300	63.1	44.9 - 81.3	200	36.9	18.7 - 55.1	400
Lihue-Waimea	3,500	69.3	60.1 - 78.5	1,500	30.7	21.5 - 39.9	5,000
Manoa/ Upper Makiki	7,400	81.4	74.4 - 88.3	1,700	18.6	11.7 - 25.6	9,100
Mililani/ Wahiawa	4,700	65.6	50.2 - 81.1	2,400	34.4	18.9 - 49.8	7,100

**Flu - had shot in year (65+) by State, County, Island, Community, DOH Race-Ethnicity, Gender, Education Level, Employment Status (Grouped), Household Income, Poverty Level, Marital Status (Grouped), Married, Health Care Coverage, for the Year(s) - 2001-2003, 2002-2004, 2003-2005, 2004-2006, 2005-2007, 2006-2008, 2007-2009, 2008-2010**

*Note: Weighted numbers (#) represent 3-yr averages, percentages and 95% confidence intervals; Respondents aged 18 years and older; n/r (Not Reportable) - If the unweighted total responses for a dimension (row) is <50 that row will not be shown; n/a (Not Available) - Not asked of a subset of respondents*

**Year: 2003-2005**

Community	Yes			No			Estimated Population (3-Yr Avg)
	#	%	C.I. (95%)	#	%	C.I. (95%)	#
Molokai	800	80.8	70.3 - 91.4	200	19.2	8.6 - 29.7	1,000
N.Hawaii	3,200	65.2	54.4 - 76.0	1,700	34.8	24.0 - 45.6	4,900
N.Shore/ Laie	3,000	61.2	42.7 - 79.7	1,900	38.8	20.3 - 57.3	4,900
Nuuanu/ Kalihi/ Moanalua	9,900	68.8	58.8 - 78.7	4,500	31.2	21.3 - 41.2	14,400
Puna/ Kau	4,100	68.7	59.5 - 78.0	1,900	31.3	22.0 - 40.5	6,000
Upcountry/ Hana	2,300	67.5	53.4 - 81.7	1,100	32.5	18.3 - 46.6	3,500
Waialae/ Kahala/ Hawaii Kai	7,700	80.9	70.9 - 90.9	1,800	19.1	9.1 - 29.1	9,600
Waipahu/ Kapolei/ Ewa	6,400	66.6	52.6 - 80.6	3,200	33.4	19.4 - 47.4	9,600



**Flu - had shot in year (65+) by State, County, Island, Community, DOH Race-Ethnicity, Gender, Education Level, Employment Status (Grouped), Household Income, Poverty Level, Marital Status (Grouped), Married, Health Care Coverage, for the Year(s) - 2001-2003, 2002-2004, 2003-2005, 2004-2006, 2005-2007, 2006-2008, 2007-2009, 2008-2010**

*Note: Weighted numbers (#) represent 3-yr averages, percentages and 95% confidence intervals; Respondents aged 18 years and older; n/r (Not Reportable) - If the unweighted total responses for a dimension (row) is <50 that row will not be shown; n/a (Not Available) - Not asked of a subset of respondents*

**Year: 2003-2005**

DOH Race-Ethnicity	Yes			No			Estimated Population (3-Yr Avg)
	#	%	C.I. (95%)	#	%	C.I. (95%)	#
Caucasian	35,100	66.7	62.6 - 70.9	17,500	33.3	29.1 - 37.4	52,600
Native Hawaiian	9,200	65.4	56.3 - 74.6	4,800	34.6	25.4 - 43.7	14,000
Chinese	12,900	74.4	65.7 - 83.0	4,400	25.6	17.0 - 34.3	17,300
Filipino	12,800	68.6	59.7 - 77.4	5,900	31.4	22.6 - 40.3	18,600
Japanese	39,200	72.3	67.7 - 76.9	15,000	27.7	23.1 - 32.3	54,200

Gender	Yes			No			Estimated Population (3-Yr Avg)
	#	%	C.I. (95%)	#	%	C.I. (95%)	#
Male	48,900	68.0	63.8 - 72.3	23,000	32.0	27.7 - 36.2	71,900
Female	65,100	70.8	67.5 - 74.0	26,900	29.2	26.0 - 32.5	92,000

**Flu - had shot in year (65+) by State, County, Island, Community, DOH Race-Ethnicity, Gender, Education Level, Employment Status (Grouped), Household Income, Poverty Level, Marital Status (Grouped), Married, Health Care Coverage, for the Year(s) - 2001-2003, 2002-2004, 2003-2005, 2004-2006, 2005-2007, 2006-2008, 2007-2009, 2008-2010**

*Note: Weighted numbers (#) represent 3-yr averages, percentages and 95% confidence intervals; Respondents aged 18 years and older; n/r (Not Reportable) - If the unweighted total responses for a dimension (row) is <50 that row will not be shown; n/a (Not Available) - Not asked of a subset of respondents*

**Year: 2003-2005**

Education Level	Yes			No			Estimated Population (3-Yr Avg)
	#	%	C.I. (95%)	#	%	C.I. (95%)	#
Never attended school/ Only Kindergarten to Grades 8	5,700	67.6	56.5 - 78.7	2,700	32.4	21.3 - 43.5	8,400
Grades 9 thru 11 (Some High School)	9,100	73.2	64.9 - 81.6	3,300	26.8	18.4 - 35.1	12,500
Grades 12 or GED (High School Grad)	39,800	71.7	67.2 - 76.3	15,700	28.3	23.7 - 32.8	55,500
College 1 to 3 years (Some College/ Tech)	25,100	62.4	56.8 - 67.9	15,200	37.6	32.1 - 43.2	40,300
College 4 years or more (College Grad)	33,900	72.5	67.9 - 77.1	12,900	27.5	22.9 - 32.1	46,700

Employment Status (Grouped)	Yes			No			Estimated Population (3-Yr Avg)
	#	%	C.I. (95%)	#	%	C.I. (95%)	#
Employed	12,800	59.8	52.3 - 67.3	8,600	40.2	32.7 - 47.7	21,300
Retired/Unable to work	98,600	71.1	68.3 - 73.9	40,100	28.9	26.1 - 31.7	138,700
Student/Homemaker	2,300	66.0	49.7 - 82.3	1,200	34.0	17.7 - 50.3	3,500

**Flu - had shot in year (65+) by State, County, Island, Community, DOH Race-Ethnicity, Gender, Education Level, Employment Status (Grouped), Household Income, Poverty Level, Marital Status (Grouped), Married, Health Care Coverage, for the Year(s) - 2001-2003, 2002-2004, 2003-2005, 2004-2006, 2005-2007, 2006-2008, 2007-2009, 2008-2010**

*Note: Weighted numbers (#) represent 3-yr averages, percentages and 95% confidence intervals; Respondents aged 18 years and older; n/r (Not Reportable) - If the unweighted total responses for a dimension (row) is <50 that row will not be shown; n/a (Not Available) - Not asked of a subset of respondents*

**Year: 2003-2005**

Household Income	Yes			No			Estimated Population (3-Yr Avg)
	#	%	C.I. (95%)	#	%	C.I. (95%)	#
Less than \$10,000	5,000	68.9	58.9 - 78.9	2,300	31.1	21.1 - 41.1	7,300
\$10,000 to \$14,999	6,500	68.3	59.3 - 77.3	3,000	31.7	22.7 - 40.7	9,500
\$15,000 to \$19,999	8,000	68.9	61.1 - 76.8	3,600	31.1	23.2 - 38.9	11,500
\$20,000 to \$24,999	8,600	66.2	56.7 - 75.6	4,400	33.8	24.4 - 43.3	13,000
\$25,000 to \$34,999	14,200	73.1	66.7 - 79.5	5,200	26.9	20.5 - 33.3	19,500
\$35,000 to \$49,999	17,000	73.3	66.2 - 80.4	6,200	26.7	19.6 - 33.8	23,200
\$50,000 to \$74,999	19,100	64.9	57.6 - 72.2	10,300	35.1	27.8 - 42.4	29,400
\$75,000 or more	13,700	62.5	53.7 - 71.3	8,200	37.5	28.7 - 46.3	21,900

**Flu - had shot in year (65+) by State, County, Island, Community, DOH Race-Ethnicity, Gender, Education Level, Employment Status (Grouped), Household Income, Poverty Level, Marital Status (Grouped), Married, Health Care Coverage, for the Year(s) - 2001-2003, 2002-2004, 2003-2005, 2004-2006, 2005-2007, 2006-2008, 2007-2009, 2008-2010**

*Note: Weighted numbers (#) represent 3-yr averages, percentages and 95% confidence intervals; Respondents aged 18 years and older; n/r (Not Reportable) - If the unweighted total responses for a dimension (row) is <50 that row will not be shown; n/a (Not Available) - Not asked of a subset of respondents*

**Year: 2003-2005**

Poverty Level	Yes			No			Estimated Population (3-Yr Avg)
	#	%	C.I. (95%)	#	%	C.I. (95%)	#
0-130%	21,900	69.7	63.9 - 75.6	9,500	30.3	24.4 - 36.1	31,300
131-185%	9,900	68.5	60.6 - 76.4	4,500	31.5	23.6 - 39.4	14,400
186+%	60,400	67.4	63.6 - 71.2	29,200	32.6	28.8 - 36.4	89,700

Marital Status (Grouped)	Yes			No			Estimated Population (3-Yr Avg)
	#	%	C.I. (95%)	#	%	C.I. (95%)	#
Married	68,800	71.7	68.2 - 75.2	27,200	28.3	24.8 - 31.8	96,000
Widowed	31,500	69.3	64.4 - 74.1	13,900	30.7	25.9 - 35.6	45,400
Other	13,700	62.3	55.9 - 68.7	8,300	37.7	31.3 - 44.1	22,000

**Flu - had shot in year (65+) by State, County, Island, Community, DOH Race-Ethnicity, Gender, Education Level, Employment Status (Grouped), Household Income, Poverty Level, Marital Status (Grouped), Married, Health Care Coverage, for the Year(s) - 2001-2003, 2002-2004, 2003-2005, 2004-2006, 2005-2007, 2006-2008, 2007-2009, 2008-2010**

*Note: Weighted numbers (#) represent 3-yr averages, percentages and 95% confidence intervals; Respondents aged 18 years and older; n/r (Not Reportable) - If the unweighted total responses for a dimension (row) is <50 that row will not be shown; n/a (Not Available) - Not asked of a subset of respondents*

**Year: 2003-2005**

<b>Married</b>	<b>Yes</b>			<b>No</b>			<b>Estimated Population (3-Yr Avg)</b>
	<b>#</b>	<b>%</b>	<b>C.I. (95%)</b>	<b>#</b>	<b>%</b>	<b>C.I. (95%)</b>	<b>#</b>
<b>Yes</b>	69,300	71.6	68.1 - 75.1	27,500	28.4	24.9 - 31.9	96,800
<b>No</b>	44,700	66.7	62.8 - 70.6	22,300	33.3	29.4 - 37.2	67,100

<b>Health Care Coverage</b>	<b>Yes</b>			<b>No</b>			<b>Estimated Population (3-Yr Avg)</b>
	<b>#</b>	<b>%</b>	<b>C.I. (95%)</b>	<b>#</b>	<b>%</b>	<b>C.I. (95%)</b>	<b>#</b>
<b>Yes</b>	113,100	69.8	67.2 - 72.4	48,900	30.2	27.6 - 32.8	162,100

**Flu - had shot in year (65+) by State, County, Island, Community, DOH Race-Ethnicity, Gender, Education Level, Employment Status (Grouped), Household Income, Poverty Level, Marital Status (Grouped), Married, Health Care Coverage, for the Year(s) - 2001-2003, 2002-2004, 2003-2005, 2004-2006, 2005-2007, 2006-2008, 2007-2009, 2008-2010**

*Note: Weighted numbers (#) represent 3-yr averages, percentages and 95% confidence intervals; Respondents aged 18 years and older; n/r (Not Reportable) - If the unweighted total responses for a dimension (row) is <50 that row will not be shown; n/a (Not Available) - Not asked of a subset of respondents*

**Year: 2002-2004**

State	Yes			No			Estimated Population (3-Yr Avg)
	#	%	C.I. (95%)	#	%	C.I. (95%)	#
Hawaii State	110,700	70.1	67.4 - 72.8	47,200	29.9	27.2 - 32.6	157,900

County	Yes			No			Estimated Population (3-Yr Avg)
	#	%	C.I. (95%)	#	%	C.I. (95%)	#
Hawaii	15,200	69.3	64.8 - 73.7	6,800	30.7	26.3 - 35.2	22,000
Honolulu	80,500	70.3	66.8 - 73.8	34,000	29.7	26.2 - 33.2	114,500
Kauai	5,500	70.8	63.8 - 77.9	2,200	29.2	22.1 - 36.2	7,700
Maui	9,600	69.5	63.6 - 75.5	4,200	30.5	24.5 - 36.4	13,800

**Flu - had shot in year (65+) by State, County, Island, Community, DOH Race-Ethnicity, Gender, Education Level, Employment Status (Grouped), Household Income, Poverty Level, Marital Status (Grouped), Married, Health Care Coverage, for the Year(s) - 2001-2003, 2002-2004, 2003-2005, 2004-2006, 2005-2007, 2006-2008, 2007-2009, 2008-2010**

*Note: Weighted numbers (#) represent 3-yr averages, percentages and 95% confidence intervals; Respondents aged 18 years and older; n/r (Not Reportable) - If the unweighted total responses for a dimension (row) is <50 that row will not be shown; n/a (Not Available) - Not asked of a subset of respondents*

**Year: 2002-2004**

Island	Yes			No			Estimated Population (3-Yr Avg)
	#	%	C.I. (95%)	#	%	C.I. (95%)	#
Hawaii	15,200	69.3	64.8 - 73.7	6,800	30.7	26.3 - 35.2	22,000
Kauai	5,500	70.8	63.8 - 77.9	2,200	29.2	22.1 - 36.2	7,700
Lanai	500	69.5	54.9 - 84.1	200	30.5	15.9 - 45.1	700
Maui	8,100	68.0	61.2 - 74.8	3,800	32.0	25.2 - 38.8	11,900
Molokai	1,000	84.6	75.2 - 94.0	200	15.4	6.0 - 24.8	1,200
Oahu	80,500	70.3	66.8 - 73.8	34,000	29.7	26.2 - 33.2	114,500

Community	Yes			No			Estimated Population (3-Yr Avg)
	#	%	C.I. (95%)	#	%	C.I. (95%)	#
Aiea/ Pearl City	11,100	80.6	72.1 - 89.0	2,700	19.4	11.0 - 27.9	13,700
Ala Moana	2,800	54.6	40.6 - 68.7	2,300	45.4	31.3 - 59.4	5,200

**Flu - had shot in year (65+) by State, County, Island, Community, DOH Race-Ethnicity, Gender, Education Level, Employment Status (Grouped), Household Income, Poverty Level, Marital Status (Grouped), Married, Health Care Coverage, for the Year(s) - 2001-2003, 2002-2004, 2003-2005, 2004-2006, 2005-2007, 2006-2008, 2007-2009, 2008-2010**

*Note: Weighted numbers (#) represent 3-yr averages, percentages and 95% confidence intervals; Respondents aged 18 years and older; n/r (Not Reportable) - If the unweighted total responses for a dimension (row) is <50 that row will not be shown; n/a (Not Available) - Not asked of a subset of respondents*

**Year: 2002-2004**

Community	Yes			No			Estimated Population (3-Yr Avg)
	#	%	C.I. (95%)	#	%	C.I. (95%)	#
Hanalei/ Kapaa	2,000	73.0	63.4 - 82.6	700	27.0	17.4 - 36.6	2,700
Hilo	4,700	74.0	67.3 - 80.7	1,600	26.0	19.3 - 32.7	6,300
Kaaawa/ Kahaluu/ Kaneohe	5,800	64.5	51.5 - 77.6	3,200	35.5	22.4 - 48.5	9,100
Kahului	2,800	72.7	62.2 - 83.2	1,100	27.3	16.8 - 37.8	3,900
Kailua/ Waimanalo	5,100	68.0	56.5 - 79.5	2,400	32.0	20.5 - 43.5	7,600
Kaimuki/ Palolo/ Waikiki	11,900	62.6	54.0 - 71.2	7,100	37.4	28.8 - 46.0	18,900
Kona	3,500	65.9	57.2 - 74.7	1,800	34.1	25.3 - 42.8	5,200
Lahaina/ Wailuku	2,900	68.2	57.0 - 79.5	1,300	31.8	20.5 - 43.0	4,200
Lanai	500	69.5	54.9 - 84.1	200	30.5	15.9 - 45.1	700
Lihue-Waimea	3,500	69.6	60.1 - 79.1	1,500	30.4	20.9 - 39.9	5,000
Manoa/ Upper Makiki	8,400	86.9	81.4 - 92.4	1,300	13.1	7.6 - 18.6	9,600
Millilani/ Wahiawa	4,600	70.2	53.1 - 87.2	1,900	29.8	12.8 - 46.9	6,500



**Flu - had shot in year (65+) by State, County, Island, Community, DOH Race-Ethnicity, Gender, Education Level, Employment Status (Grouped), Household Income, Poverty Level, Marital Status (Grouped), Married, Health Care Coverage, for the Year(s) - 2001-2003, 2002-2004, 2003-2005, 2004-2006, 2005-2007, 2006-2008, 2007-2009, 2008-2010**

*Note: Weighted numbers (#) represent 3-yr averages, percentages and 95% confidence intervals; Respondents aged 18 years and older; n/r (Not Reportable) - If the unweighted total responses for a dimension (row) is <50 that row will not be shown; n/a (Not Available) - Not asked of a subset of respondents*

**Year: 2002-2004**

Community	Yes			No			Estimated Population (3-Yr Avg)
	#	%	C.I. (95%)	#	%	C.I. (95%)	#
Molokai	1,000	84.6	75.2 - 94.0	200	15.4	6.0 - 24.8	1,200
N.Hawaii	3,000	65.8	54.3 - 77.2	1,600	34.2	22.8 - 45.7	4,600
Nuuanu/ Kalihi/ Moanalua	9,500	71.3	60.9 - 81.6	3,900	28.7	18.4 - 39.1	13,400
Puna/ Kau	4,100	69.9	60.6 - 79.3	1,700	30.1	20.7 - 39.4	5,800
Upcountry/ Hana	2,400	62.9	49.4 - 76.3	1,400	37.1	23.7 - 50.6	3,800
Waialae/ Kahala/ Hawaii Kai	6,600	78.9	67.4 - 90.4	1,800	21.1	9.6 - 32.6	8,400
Waipahu/ Kapolei/ Ewa	6,300	68.3	53.7 - 82.8	2,900	31.7	17.2 - 46.3	9,200

**Flu - had shot in year (65+) by State, County, Island, Community, DOH Race-Ethnicity, Gender, Education Level, Employment Status (Grouped), Household Income, Poverty Level, Marital Status (Grouped), Married, Health Care Coverage, for the Year(s) - 2001-2003, 2002-2004, 2003-2005, 2004-2006, 2005-2007, 2006-2008, 2007-2009, 2008-2010**

*Note: Weighted numbers (#) represent 3-yr averages, percentages and 95% confidence intervals; Respondents aged 18 years and older; n/r (Not Reportable) - If the unweighted total responses for a dimension (row) is <50 that row will not be shown; n/a (Not Available) - Not asked of a subset of respondents*

**Year: 2002-2004**

DOH Race-Ethnicity	Yes			No			Estimated Population (3-Yr Avg)
	#	%	C.I. (95%)	#	%	C.I. (95%)	#
Caucasian	31,800	64.1	59.6 - 68.5	17,800	35.9	31.5 - 40.4	49,700
Native Hawaiian	9,000	67.9	58.2 - 77.6	4,300	32.1	22.4 - 41.8	13,300
Chinese	12,800	71.3	62.9 - 79.7	5,200	28.7	20.3 - 37.1	18,000
Filipino	14,000	73.6	65.4 - 81.8	5,000	26.4	18.2 - 34.6	19,000
Japanese	39,300	75.2	70.4 - 80.0	13,000	24.8	20.0 - 29.6	52,300

Gender	Yes			No			Estimated Population (3-Yr Avg)
	#	%	C.I. (95%)	#	%	C.I. (95%)	#
Male	47,600	68.4	64.0 - 72.8	22,000	31.6	27.2 - 36.0	69,600
Female	63,100	71.5	68.1 - 74.8	25,200	28.5	25.2 - 31.9	88,400

**Flu - had shot in year (65+) by State, County, Island, Community, DOH Race-Ethnicity, Gender, Education Level, Employment Status (Grouped), Household Income, Poverty Level, Marital Status (Grouped), Married, Health Care Coverage, for the Year(s) - 2001-2003, 2002-2004, 2003-2005, 2004-2006, 2005-2007, 2006-2008, 2007-2009, 2008-2010**

*Note: Weighted numbers (#) represent 3-yr averages, percentages and 95% confidence intervals; Respondents aged 18 years and older; n/r (Not Reportable) - If the unweighted total responses for a dimension (row) is <50 that row will not be shown; n/a (Not Available) - Not asked of a subset of respondents*

**Year: 2002-2004**

Education Level	Yes			No			Estimated Population (3-Yr Avg)
	#	%	C.I. (95%)	#	%	C.I. (95%)	#
Never attended school/ Only Kindergarten to Grades 8	6,600	71.2	61.1 - 81.3	2,700	28.8	18.7 - 38.9	9,300
Grades 9 thru 11 (Some High School)	9,700	79.3	71.7 - 86.9	2,500	20.7	13.1 - 28.3	12,300
Grades 12 or GED (High School Grad)	40,800	72.6	68.0 - 77.1	15,400	27.4	22.9 - 32.0	56,200
College 1 to 3 years (Some College/ Tech)	24,400	64.1	58.2 - 69.9	13,700	35.9	30.1 - 41.8	38,000
College 4 years or more (College Grad)	29,000	69.3	64.1 - 74.5	12,800	30.7	25.5 - 35.9	41,800

Employment Status (Grouped)	Yes			No			Estimated Population (3-Yr Avg)
	#	%	C.I. (95%)	#	%	C.I. (95%)	#
Employed	10,900	55.7	47.4 - 64.0	8,600	44.3	36.0 - 52.6	19,500
Retired/Unable to work	96,600	72.2	69.3 - 75.1	37,200	27.8	24.9 - 30.7	133,800
Student/Homemaker	3,100	70.6	57.2 - 84.0	1,300	29.4	16.0 - 42.8	4,400

**Flu - had shot in year (65+) by State, County, Island, Community, DOH Race-Ethnicity, Gender, Education Level, Employment Status (Grouped), Household Income, Poverty Level, Marital Status (Grouped), Married, Health Care Coverage, for the Year(s) - 2001-2003, 2002-2004, 2003-2005, 2004-2006, 2005-2007, 2006-2008, 2007-2009, 2008-2010**

*Note: Weighted numbers (#) represent 3-yr averages, percentages and 95% confidence intervals; Respondents aged 18 years and older; n/r (Not Reportable) - If the unweighted total responses for a dimension (row) is <50 that row will not be shown; n/a (Not Available) - Not asked of a subset of respondents*

**Year: 2002-2004**

Household Income	Yes			No			Estimated Population (3-Yr Avg)
	#	%	C.I. (95%)	#	%	C.I. (95%)	#
Less than \$10,000	5,100	66.3	56.6 - 76.1	2,600	33.7	23.9 - 43.4	7,800
\$10,000 to \$14,999	6,500	68.4	59.5 - 77.2	3,000	31.6	22.8 - 40.5	9,500
\$15,000 to \$19,999	5,500	64.3	54.3 - 74.3	3,000	35.7	25.7 - 45.7	8,500
\$20,000 to \$24,999	6,400	64.6	52.9 - 76.4	3,500	35.4	23.6 - 47.1	9,800
\$25,000 to \$34,999	12,300	75.2	68.1 - 82.3	4,100	24.8	17.7 - 31.9	16,400
\$35,000 to \$49,999	14,400	74.2	66.0 - 82.4	5,000	25.8	17.6 - 34.0	19,400
\$50,000 to \$74,999	18,200	66.4	58.6 - 74.2	9,200	33.6	25.8 - 41.4	27,500
\$75,000 or more	10,400	57.1	46.7 - 67.4	7,800	42.9	32.6 - 53.3	18,200

**Flu - had shot in year (65+) by State, County, Island, Community, DOH Race-Ethnicity, Gender, Education Level, Employment Status (Grouped), Household Income, Poverty Level, Marital Status (Grouped), Married, Health Care Coverage, for the Year(s) - 2001-2003, 2002-2004, 2003-2005, 2004-2006, 2005-2007, 2006-2008, 2007-2009, 2008-2010**

*Note: Weighted numbers (#) represent 3-yr averages, percentages and 95% confidence intervals; Respondents aged 18 years and older; n/r (Not Reportable) - If the unweighted total responses for a dimension (row) is <50 that row will not be shown; n/a (Not Available) - Not asked of a subset of respondents*

**Year: 2002-2004**

Poverty Level	Yes			No			Estimated Population (3-Yr Avg)
	#	%	C.I. (95%)	#	%	C.I. (95%)	#
<b>0-130%</b>	18,400	67.0	60.5 - 73.4	9,100	33.0	26.6 - 39.5	27,500
<b>131-185%</b>	8,400	69.6	60.3 - 78.8	3,700	30.4	21.2 - 39.7	12,100
<b>186+%</b>	51,900	67.1	62.8 - 71.4	25,500	32.9	28.6 - 37.2	77,400

Marital Status (Grouped)	Yes			No			Estimated Population (3-Yr Avg)
	#	%	C.I. (95%)	#	%	C.I. (95%)	#
<b>Married</b>	67,400	71.9	68.3 - 75.5	26,300	28.1	24.5 - 31.7	93,800
<b>Widowed</b>	31,900	70.8	65.8 - 75.7	13,200	29.2	24.3 - 34.2	45,100
<b>Other</b>	11,400	61.1	53.6 - 68.5	7,200	38.9	31.5 - 46.4	18,600

**Flu - had shot in year (65+) by State, County, Island, Community, DOH Race-Ethnicity, Gender, Education Level, Employment Status (Grouped), Household Income, Poverty Level, Marital Status (Grouped), Married, Health Care Coverage, for the Year(s) - 2001-2003, 2002-2004, 2003-2005, 2004-2006, 2005-2007, 2006-2008, 2007-2009, 2008-2010**

*Note: Weighted numbers (#) represent 3-yr averages, percentages and 95% confidence intervals; Respondents aged 18 years and older; n/r (Not Reportable) - If the unweighted total responses for a dimension (row) is <50 that row will not be shown; n/a (Not Available) - Not asked of a subset of respondents*

**Year: 2002-2004**

<b>Married</b>	<b>Yes</b>			<b>No</b>			<b>Estimated Population (3-Yr Avg)</b>
	<b>#</b>	<b>%</b>	<b>C.I. (95%)</b>	<b>#</b>	<b>%</b>	<b>C.I. (95%)</b>	<b>#</b>
<b>Yes</b>	67,700	71.7	68.2 - 75.2	26,700	28.3	24.8 - 31.8	94,500
<b>No</b>	43,000	67.7	63.6 - 71.9	20,500	32.3	28.1 - 36.4	63,400

<b>Health Care Coverage</b>	<b>Yes</b>			<b>No</b>			<b>Estimated Population (3-Yr Avg)</b>
	<b>#</b>	<b>%</b>	<b>C.I. (95%)</b>	<b>#</b>	<b>%</b>	<b>C.I. (95%)</b>	<b>#</b>
<b>Yes</b>	110,000	70.3	67.6 - 73.0	46,400	29.7	27.0 - 32.4	156,400

**Flu - had shot in year (65+) by State, County, Island, Community, DOH Race-Ethnicity, Gender, Education Level, Employment Status (Grouped), Household Income, Poverty Level, Marital Status (Grouped), Married, Health Care Coverage, for the Year(s) - 2001-2003, 2002-2004, 2003-2005, 2004-2006, 2005-2007, 2006-2008, 2007-2009, 2008-2010**

*Note: Weighted numbers (#) represent 3-yr averages, percentages and 95% confidence intervals; Respondents aged 18 years and older; n/r (Not Reportable) - If the unweighted total responses for a dimension (row) is <50 that row will not be shown; n/a (Not Available) - Not asked of a subset of respondents*

**Year: 2001-2003**

State	Yes			No			Estimated Population (3-Yr Avg)
	#	%	C.I. (95%)	#	%	C.I. (95%)	#
Hawaii State	119,700	76.7	74.7 - 78.7	36,400	23.3	21.3 - 25.3	156,000

County	Yes			No			Estimated Population (3-Yr Avg)
	#	%	C.I. (95%)	#	%	C.I. (95%)	#
Hawaii	14,900	71.9	68.1 - 75.7	5,800	28.1	24.3 - 31.9	20,700
Honolulu	88,300	78.4	75.8 - 80.9	24,400	21.6	19.1 - 24.2	112,600
Kauai	6,000	78.4	72.9 - 83.8	1,700	21.6	16.2 - 27.1	7,700
Maui	10,500	70.1	65.0 - 75.1	4,500	29.9	24.9 - 35.0	15,000

**Flu - had shot in year (65+) by State, County, Island, Community, DOH Race-Ethnicity, Gender, Education Level, Employment Status (Grouped), Household Income, Poverty Level, Marital Status (Grouped), Married, Health Care Coverage, for the Year(s) - 2001-2003, 2002-2004, 2003-2005, 2004-2006, 2005-2007, 2006-2008, 2007-2009, 2008-2010**

*Note: Weighted numbers (#) represent 3-yr averages, percentages and 95% confidence intervals; Respondents aged 18 years and older; n/r (Not Reportable) - If the unweighted total responses for a dimension (row) is <50 that row will not be shown; n/a (Not Available) - Not asked of a subset of respondents*

**Year: 2001-2003**

Island	Yes			No			Estimated Population (3-Yr Avg)
	#	%	C.I. (95%)	#	%	C.I. (95%)	#
Hawaii	14,900	71.9	68.1 - 75.7	5,800	28.1	24.3 - 31.9	20,700
Kauai	6,000	78.4	72.9 - 83.8	1,700	21.6	16.2 - 27.1	7,700
Lanai	500	67.7	53.5 - 82.0	200	32.3	18.0 - 46.5	800
Maui	8,900	69.0	63.2 - 74.7	4,000	31.0	25.3 - 36.8	12,900
Molokai	1,100	82.1	72.7 - 91.5	200	17.9	8.5 - 27.3	1,300
Oahu	88,300	78.4	75.8 - 80.9	24,400	21.6	19.1 - 24.2	112,600

Community	Yes			No			Estimated Population (3-Yr Avg)
	#	%	C.I. (95%)	#	%	C.I. (95%)	#
Aiea/ Pearl City	11,500	84.1	77.5 - 90.7	2,200	15.9	9.3 - 22.5	13,700
Ala Moana	3,800	66.2	54.7 - 77.6	1,900	33.8	22.4 - 45.3	5,700



**Flu - had shot in year (65+) by State, County, Island, Community, DOH Race-Ethnicity, Gender, Education Level, Employment Status (Grouped), Household Income, Poverty Level, Marital Status (Grouped), Married, Health Care Coverage, for the Year(s) - 2001-2003, 2002-2004, 2003-2005, 2004-2006, 2005-2007, 2006-2008, 2007-2009, 2008-2010**

*Note: Weighted numbers (#) represent 3-yr averages, percentages and 95% confidence intervals; Respondents aged 18 years and older; n/r (Not Reportable) - If the unweighted total responses for a dimension (row) is <50 that row will not be shown; n/a (Not Available) - Not asked of a subset of respondents*

**Year: 2001-2003**

Community	Yes			No			Estimated Population (3-Yr Avg)
	#	%	C.I. (95%)	#	%	C.I. (95%)	#
Hanalei/ Kapaa	2,100	75.3	66.5 - 84.1	700	24.7	15.9 - 33.5	2,800
Hilo	5,500	75.3	69.2 - 81.4	1,800	24.7	18.6 - 30.8	7,300
Kaaawa/ Kahaluu/ Kaneohe	4,900	67.7	56.4 - 79.0	2,300	32.3	21.0 - 43.6	7,200
Kahului	3,000	69.3	59.5 - 79.1	1,300	30.7	20.9 - 40.5	4,300
Kailua/ Waimanalo	6,800	74.7	65.9 - 83.5	2,300	25.3	16.5 - 34.1	9,100
Kaimuki/ Palolo/ Waikiki	12,000	73.6	66.6 - 80.6	4,300	26.4	19.4 - 33.4	16,300
Kona	3,400	66.1	58.0 - 74.3	1,800	33.9	25.7 - 42.0	5,200
Lahaina/ Wailuku	3,400	70.7	61.3 - 80.2	1,400	29.3	19.8 - 38.7	4,800
Lanai	500	67.7	53.5 - 82.0	200	32.3	18.0 - 46.5	800
Lihue-Waimea	3,900	80.1	73.2 - 87.0	1,000	19.9	13.0 - 26.8	4,900
Manoa/ Upper Makiki	10,500	88.2	83.7 - 92.8	1,400	11.8	7.2 - 16.3	11,900
Mililani/ Wahiawa	5,200	82.7	73.1 - 92.4	1,100	17.3	7.6 - 26.9	6,200

**Flu - had shot in year (65+) by State, County, Island, Community, DOH Race-Ethnicity, Gender, Education Level, Employment Status (Grouped), Household Income, Poverty Level, Marital Status (Grouped), Married, Health Care Coverage, for the Year(s) - 2001-2003, 2002-2004, 2003-2005, 2004-2006, 2005-2007, 2006-2008, 2007-2009, 2008-2010**

*Note: Weighted numbers (#) represent 3-yr averages, percentages and 95% confidence intervals; Respondents aged 18 years and older; n/r (Not Reportable) - If the unweighted total responses for a dimension (row) is <50 that row will not be shown; n/a (Not Available) - Not asked of a subset of respondents*

**Year: 2001-2003**

Community	Yes			No			Estimated Population (3-Yr Avg)
	#	%	C.I. (95%)	#	%	C.I. (95%)	#
Molokai	1,100	82.1	72.7 - 91.5	200	17.9	8.5 - 27.3	1,300
N.Hawaii	3,200	78.1	70.0 - 86.2	900	21.9	13.8 - 30.0	4,200
Nuuanu/ Kalihi/ Moanalua	10,100	72.4	63.6 - 81.1	3,900	27.6	18.9 - 36.4	14,000
Puna/ Kau	2,700	66.6	57.9 - 75.3	1,300	33.4	24.7 - 42.1	4,000
Upcountry/ Hana	2,600	66.4	55.6 - 77.3	1,300	33.6	22.7 - 44.4	3,900
Waialae/ Kahala/ Hawaii Kai	7,500	78.3	69.5 - 87.1	2,100	21.7	12.9 - 30.5	9,600
Waipahu/ Kapolei/ Ewa	6,600	80.7	70.8 - 90.6	1,600	19.3	9.4 - 29.2	8,200

**Flu - had shot in year (65+) by State, County, Island, Community, DOH Race-Ethnicity, Gender, Education Level, Employment Status (Grouped), Household Income, Poverty Level, Marital Status (Grouped), Married, Health Care Coverage, for the Year(s) - 2001-2003, 2002-2004, 2003-2005, 2004-2006, 2005-2007, 2006-2008, 2007-2009, 2008-2010**

*Note: Weighted numbers (#) represent 3-yr averages, percentages and 95% confidence intervals; Respondents aged 18 years and older; n/r (Not Reportable) - If the unweighted total responses for a dimension (row) is <50 that row will not be shown; n/a (Not Available) - Not asked of a subset of respondents*

**Year: 2001-2003**

DOH Race-Ethnicity	Yes			No			Estimated Population (3-Yr Avg)
	#	%	C.I. (95%)	#	%	C.I. (95%)	#
Caucasian	32,500	69.4	65.9 - 72.9	14,400	30.6	27.1 - 34.1	46,900
Native Hawaiian	9,300	68.5	60.7 - 76.3	4,300	31.5	23.7 - 39.3	13,600
Chinese	14,800	80.3	74.7 - 85.9	3,600	19.7	14.1 - 25.3	18,400
Filipino	15,400	78.8	71.9 - 85.6	4,100	21.2	14.4 - 28.1	19,500
Japanese	43,000	82.9	79.8 - 85.9	8,900	17.1	14.1 - 20.2	51,900

Gender	Yes			No			Estimated Population (3-Yr Avg)
	#	%	C.I. (95%)	#	%	C.I. (95%)	#
Male	52,900	76.0	72.9 - 79.2	16,700	24.0	20.8 - 27.1	69,500
Female	66,800	77.2	74.7 - 79.8	19,700	22.8	20.2 - 25.3	86,500

**Flu - had shot in year (65+) by State, County, Island, Community, DOH Race-Ethnicity, Gender, Education Level, Employment Status (Grouped), Household Income, Poverty Level, Marital Status (Grouped), Married, Health Care Coverage, for the Year(s) - 2001-2003, 2002-2004, 2003-2005, 2004-2006, 2005-2007, 2006-2008, 2007-2009, 2008-2010**

*Note: Weighted numbers (#) represent 3-yr averages, percentages and 95% confidence intervals; Respondents aged 18 years and older; n/r (Not Reportable) - If the unweighted total responses for a dimension (row) is <50 that row will not be shown; n/a (Not Available) - Not asked of a subset of respondents*

**Year: 2001-2003**

Education Level	Yes			No			Estimated Population (3-Yr Avg)
	#	%	C.I. (95%)	#	%	C.I. (95%)	#
Never attended school/ Only Kindergarten to Grades 8	7,800	77.7	71.2 - 84.3	2,300	22.3	15.7 - 28.8	10,100
Grades 9 thru 11 (Some High School)	11,600	80.7	73.8 - 87.5	2,800	19.3	12.5 - 26.2	14,400
Grades 12 or GED (High School Grad)	46,200	79.8	76.8 - 82.9	11,700	20.2	17.1 - 23.2	57,900
College 1 to 3 years (Some College/ Tech)	26,000	71.7	67.2 - 76.2	10,300	28.3	23.8 - 32.8	36,300
College 4 years or more (College Grad)	27,600	74.7	70.7 - 78.7	9,300	25.3	21.3 - 29.3	36,900

Employment Status (Grouped)	Yes			No			Estimated Population (3-Yr Avg)
	#	%	C.I. (95%)	#	%	C.I. (95%)	#
Employed	10,600	64.7	57.6 - 71.8	5,800	35.3	28.2 - 42.4	16,300
Retired/Unable to work	105,900	78.4	76.4 - 80.5	29,100	21.6	19.5 - 23.6	135,000
Student/Homemaker	3,100	68.5	55.0 - 81.9	1,400	31.5	18.1 - 45.0	4,500

**Flu - had shot in year (65+) by State, County, Island, Community, DOH Race-Ethnicity, Gender, Education Level, Employment Status (Grouped), Household Income, Poverty Level, Marital Status (Grouped), Married, Health Care Coverage, for the Year(s) - 2001-2003, 2002-2004, 2003-2005, 2004-2006, 2005-2007, 2006-2008, 2007-2009, 2008-2010**

*Note: Weighted numbers (#) represent 3-yr averages, percentages and 95% confidence intervals; Respondents aged 18 years and older; n/r (Not Reportable) - If the unweighted total responses for a dimension (row) is <50 that row will not be shown; n/a (Not Available) - Not asked of a subset of respondents*

**Year: 2001-2003**

Household Income	Yes			No			Estimated Population (3-Yr Avg)
	#	%	C.I. (95%)	#	%	C.I. (95%)	#
Less than \$10,000	6,100	66.3	57.4 - 75.2	3,100	33.7	24.8 - 42.6	9,200
\$10,000 to \$14,999	8,400	71.5	63.7 - 79.3	3,400	28.5	20.7 - 36.3	11,800
\$15,000 to \$19,999	6,700	77.7	69.2 - 86.3	1,900	22.3	13.7 - 30.8	8,700
\$20,000 to \$24,999	5,800	72.5	64.3 - 80.6	2,200	27.5	19.4 - 35.7	8,100
\$25,000 to \$34,999	10,200	73.5	66.7 - 80.3	3,700	26.5	19.7 - 33.3	13,900
\$35,000 to \$49,999	14,800	83.7	78.7 - 88.8	2,900	16.3	11.2 - 21.3	17,700
\$50,000 to \$74,999	11,000	79.1	72.3 - 85.9	2,900	20.9	14.1 - 27.7	13,900
\$75,000 or more	9,400	73.3	65.9 - 80.8	3,400	26.7	19.2 - 34.1	12,800

**Flu - had shot in year (65+) by State, County, Island, Community, DOH Race-Ethnicity, Gender, Education Level, Employment Status (Grouped), Household Income, Poverty Level, Marital Status (Grouped), Married, Health Care Coverage, for the Year(s) - 2001-2003, 2002-2004, 2003-2005, 2004-2006, 2005-2007, 2006-2008, 2007-2009, 2008-2010**

*Note: Weighted numbers (#) represent 3-yr averages, percentages and 95% confidence intervals; Respondents aged 18 years and older; n/r (Not Reportable) - If the unweighted total responses for a dimension (row) is <50 that row will not be shown; n/a (Not Available) - Not asked of a subset of respondents*

**Year: 2001-2003**

Poverty Level	Yes			No			Estimated Population (3-Yr Avg)
	#	%	C.I. (95%)	#	%	C.I. (95%)	#
<b>0-130%</b>	20,400	71.9	66.6 - 77.2	8,000	28.1	22.8 - 33.4	28,300
<b>131-185%</b>	9,800	76.4	69.3 - 83.6	3,000	23.6	16.4 - 30.7	12,800
<b>186+%</b>	42,300	77.2	74.0 - 80.4	12,500	22.8	19.6 - 26.0	54,800

Marital Status (Grouped)	Yes			No			Estimated Population (3-Yr Avg)
	#	%	C.I. (95%)	#	%	C.I. (95%)	#
<b>Married</b>	74,600	78.8	76.2 - 81.3	20,100	21.2	18.7 - 23.8	94,700
<b>Widowed</b>	32,900	76.1	72.4 - 79.8	10,300	23.9	20.2 - 27.6	43,200
<b>Other</b>	12,100	67.9	62.2 - 73.6	5,700	32.1	26.4 - 37.8	17,800

**Flu - had shot in year (65+) by State, County, Island, Community, DOH Race-Ethnicity, Gender, Education Level, Employment Status (Grouped), Household Income, Poverty Level, Marital Status (Grouped), Married, Health Care Coverage, for the Year(s) - 2001-2003, 2002-2004, 2003-2005, 2004-2006, 2005-2007, 2006-2008, 2007-2009, 2008-2010**

*Note: Weighted numbers (#) represent 3-yr averages, percentages and 95% confidence intervals; Respondents aged 18 years and older; n/r (Not Reportable) - If the unweighted total responses for a dimension (row) is <50 that row will not be shown; n/a (Not Available) - Not asked of a subset of respondents*

**Year: 2001-2003**

<b>Married</b>	<b>Yes</b>			<b>No</b>			<b>Estimated Population (3-Yr Avg)</b>
	<b>#</b>	<b>%</b>	<b>C.I. (95%)</b>	<b>#</b>	<b>%</b>	<b>C.I. (95%)</b>	<b>#</b>
<b>Yes</b>	75,100	78.6	76.0 - 81.1	20,500	21.4	18.9 - 24.0	95,600
<b>No</b>	44,600	73.7	70.6 - 76.9	15,900	26.3	23.1 - 29.4	60,500

<b>Health Care Coverage</b>	<b>Yes</b>			<b>No</b>			<b>Estimated Population (3-Yr Avg)</b>
	<b>#</b>	<b>%</b>	<b>C.I. (95%)</b>	<b>#</b>	<b>%</b>	<b>C.I. (95%)</b>	<b>#</b>
<b>Yes</b>	119,100	77.0	75.0 - 79.0	35,600	23.0	21.0 - 25.0	154,700