

Pneumonia - ever had shot by State, County, Island, Community, BRFSS Age Group, DOH Race-Ethnicity, Gender, Education Level, Employment Status (Grouped), Household Income, Poverty Level, Marital Status (Grouped), Married, Health Care Coverage, for the Year(s) - 2001-2003, 2002-2004, 2003-2005, 2004-2006, 2005-2007, 2006-2008, 2007-2009, 2008-2010

Note: Weighted numbers (#) represent 3-yr averages, percentages and 95% confidence intervals; Respondents aged 18 years and older; n/r (Not Reportable) - If the unweighted total responses for a dimension (row) is <50 that row will not be shown; n/a (Not Available) - Not asked of a subset of respondents

The trend analysis report shows the trend for the selected health variable over selected years in a table and a graph. Estimated Population: This number is a weighted representation of the population who responded to a particular question in the survey. For most questions the eligible population will be the entire adult population. For some secondary questions only a subset of the population was asked the question. For example, all survey participants were asked if they had diabetes, but only those who answered yes were asked if they use insulin. If a dimension value is unknown for a particular survey record, that record will not be included in the counts for that particular dimension.

For documentation on other terms and coding in this report, please go to the following links

[Click here to access BRFSS documentation](#)

[Click here to access DOH Race-Ethnicity coding](#)

[Click here to access The Hawai'i Data Guide](#)

[Click here to access Poverty Level Methodology](#)

**For questions about this report, please contact
The Hawaii Health Data Warehouse**

profiles@hhdw.org

(855) 946-5899 x15

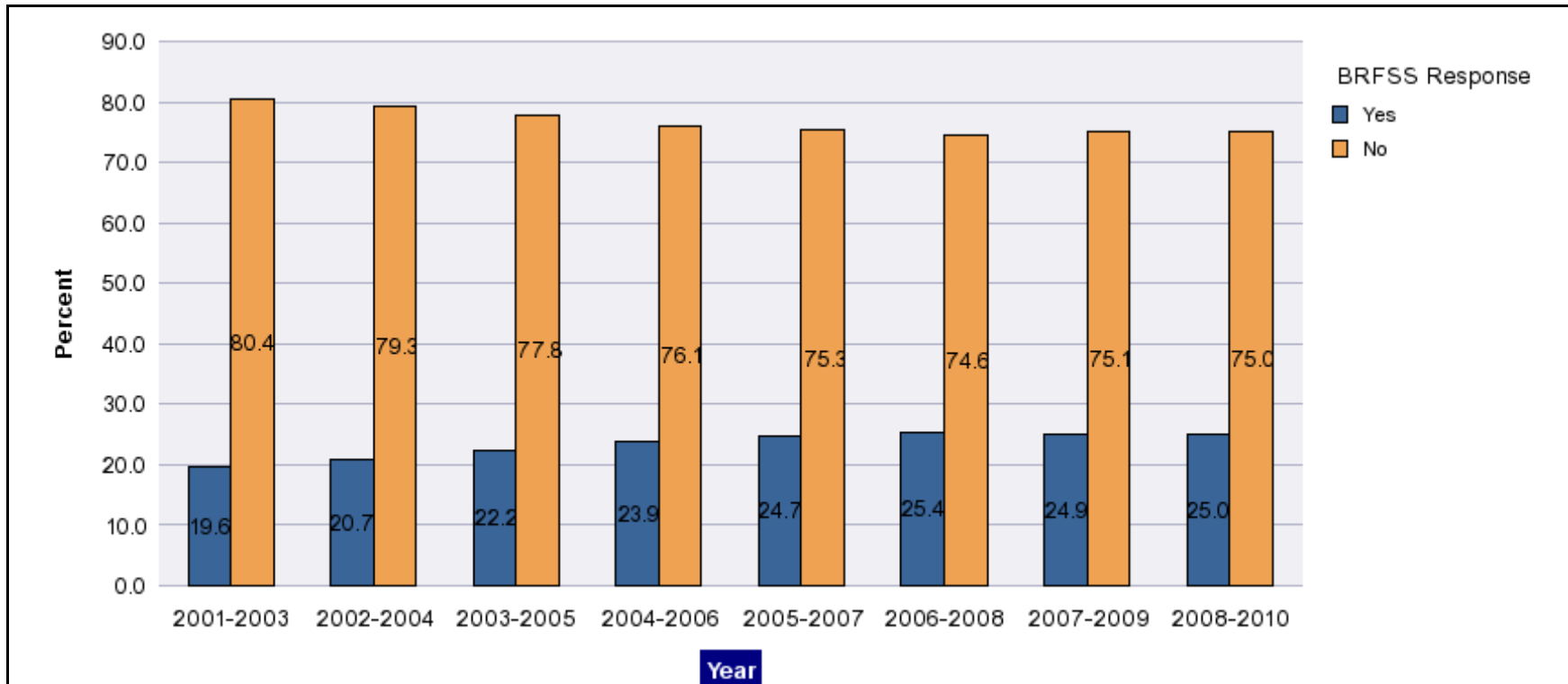
Pneumonia - ever had shot by State, County, Island, Community, BRFSS Age Group, DOH Race-Ethnicity, Gender, Education Level, Employment Status (Grouped), Household Income, Poverty Level, Marital Status (Grouped), Married, Health Care Coverage, for the Year(s) - 2001-2003, 2002-2004, 2003-2005, 2004-2006, 2005-2007, 2006-2008, 2007-2009, 2008-2010

Note: Weighted numbers (#) represent 3-yr averages, percentages and 95% confidence intervals; Respondents aged 18 years and older; n/r (Not Reportable) - If the unweighted total responses for a dimension (row) is <50 that row will not be shown; n/a (Not Available) - Not asked of a subset of respondents

Year	Yes			No			Estimated Population (3-Yr Avg)
	#	%	C.I.(95%)	#	%	C.I.(95%)	#
2001-2003	173,200	19.6	18.7 - 20.5	712,200	80.4	79.5 - 81.3	885,500
2002-2004	182,400	20.7	19.6 - 21.8	698,100	79.3	78.2 - 80.4	880,500
2003-2005	196,800	22.2	21.1 - 23.4	688,200	77.8	76.6 - 78.9	885,000
2004-2006	207,800	23.9	22.8 - 25.0	661,900	76.1	75.0 - 77.2	869,700
2005-2007	216,700	24.7	23.8 - 25.5	661,800	75.3	74.5 - 76.2	878,500
2006-2008	221,500	25.4	24.5 - 26.2	651,700	74.6	73.8 - 75.5	873,200
2007-2009	219,800	24.9	24.1 - 25.8	661,600	75.1	74.2 - 75.9	881,400
2008-2010	220,700	25.0	24.2 - 25.9	661,900	75.0	74.1 - 75.8	882,600

Pneumonia - ever had shot by State, County, Island, Community, BRFSS Age Group, DOH Race-Ethnicity, Gender, Education Level, Employment Status (Grouped), Household Income, Poverty Level, Marital Status (Grouped), Married, Health Care Coverage, for the Year(s) - 2001-2003, 2002-2004, 2003-2005, 2004-2006, 2005-2007, 2006-2008, 2007-2009, 2008-2010

Note: Weighted numbers (#) represent 3-yr averages, percentages and 95% confidence intervals; Respondents aged 18 years and older; n/r (Not Reportable) - If the unweighted total responses for a dimension (row) is <50 that row will not be shown; n/a (Not Available) - Not asked of a subset of respondents



Pneumonia - ever had shot by State, County, Island, Community, BRFSS Age Group, DOH Race-Ethnicity, Gender, Education Level, Employment Status (Grouped), Household Income, Poverty Level, Marital Status (Grouped), Married, Health Care Coverage, for the Year(s) - 2001-2003, 2002-2004, 2003-2005, 2004-2006, 2005-2007, 2006-2008, 2007-2009, 2008-2010

Note: Weighted numbers (#) represent 3-yr averages, percentages and 95% confidence intervals; Respondents aged 18 years and older; n/r (Not Reportable) - If the unweighted total responses for a dimension (row) is <50 that row will not be shown; n/a (Not Available) - Not asked of a subset of respondents

Year: 2008-2010

State	Yes			No			Estimated Population (3-Yr Avg)
	#	%	C.I. (95%)	#	%	C.I. (95%)	#
Hawaii State	220,700	25.0	24.2 - 25.9	661,900	75.0	74.1 - 75.8	882,600

County	Yes			No			Estimated Population (3-Yr Avg)
	#	%	C.I. (95%)	#	%	C.I. (95%)	#
Hawaii	29,300	23.9	22.3 - 25.5	93,300	76.1	74.5 - 77.7	122,600
Honolulu	157,900	25.5	24.4 - 26.7	460,400	74.5	73.3 - 75.6	618,200
Kauai	10,800	24.8	22.2 - 27.4	32,800	75.2	72.6 - 77.8	43,600
Maui	22,700	23.1	21.3 - 24.9	75,500	76.9	75.1 - 78.7	98,200

Pneumonia - ever had shot by State, County, Island, Community, BRFSS Age Group, DOH Race-Ethnicity, Gender, Education Level, Employment Status (Grouped), Household Income, Poverty Level, Marital Status (Grouped), Married, Health Care Coverage, for the Year(s) - 2001-2003, 2002-2004, 2003-2005, 2004-2006, 2005-2007, 2006-2008, 2007-2009, 2008-2010

Note: Weighted numbers (#) represent 3-yr averages, percentages and 95% confidence intervals; Respondents aged 18 years and older; n/r (Not Reportable) - If the unweighted total responses for a dimension (row) is <50 that row will not be shown; n/a (Not Available) - Not asked of a subset of respondents

Year: 2008-2010

Island	Yes			No			Estimated Population (3-Yr Avg)
	#	%	C.I. (95%)	#	%	C.I. (95%)	#
Hawaii	29,300	23.9	22.3 - 25.5	93,300	76.1	74.5 - 77.7	122,600
Kauai	10,800	24.8	22.2 - 27.4	32,800	75.2	72.6 - 77.8	43,600
Lanai	300	22.4	17.9 - 26.9	1,200	77.6	73.1 - 82.1	1,500
Maui	20,900	23.3	21.3 - 25.3	68,900	76.7	74.7 - 78.7	89,800
Molokai	1,500	21.2	17.6 - 24.8	5,500	78.8	75.2 - 82.4	7,000
Oahu	157,900	25.5	24.4 - 26.7	460,400	74.5	73.3 - 75.6	618,200

Community	Yes			No			Estimated Population (3-Yr Avg)
	#	%	C.I. (95%)	#	%	C.I. (95%)	#
Aiea/ Pearl City	16,600	29.9	25.9 - 33.9	39,000	70.1	66.1 - 74.1	55,700
Ala Moana	6,600	28.2	23.4 - 33.1	16,900	71.8	66.9 - 76.6	23,500

Pneumonia - ever had shot by State, County, Island, Community, BRFSS Age Group, DOH Race-Ethnicity, Gender, Education Level, Employment Status (Grouped), Household Income, Poverty Level, Marital Status (Grouped), Married, Health Care Coverage, for the Year(s) - 2001-2003, 2002-2004, 2003-2005, 2004-2006, 2005-2007, 2006-2008, 2007-2009, 2008-2010

Note: Weighted numbers (#) represent 3-yr averages, percentages and 95% confidence intervals; Respondents aged 18 years and older; n/r (Not Reportable) - If the unweighted total responses for a dimension (row) is <50 that row will not be shown; n/a (Not Available) - Not asked of a subset of respondents

Year: 2008-2010

Community	Yes			No			Estimated Population (3-Yr Avg)
	#	%	C.I. (95%)	#	%	C.I. (95%)	#
Hanalei/ Kapaa	3,700	20.6	17.5 - 23.8	14,300	79.4	76.2 - 82.5	18,000
Hilo	8,900	24.1	21.1 - 27.0	28,000	75.9	73.0 - 78.9	36,900
Kaaawa/ Kahaluu/ Kaneohe	10,400	23.7	20.0 - 27.4	33,700	76.3	72.6 - 80.0	44,100
Kahului	7,700	25.1	21.6 - 28.7	22,800	74.9	71.3 - 78.4	30,500
Kailua/ Waimanalo	12,700	28.0	23.8 - 32.2	32,500	72.0	67.8 - 76.2	45,200
Kaimuki/ Palolo/ Waikiki	15,400	30.5	26.8 - 34.2	35,100	69.5	65.8 - 73.2	50,500
Kona	6,200	22.9	19.9 - 25.9	20,800	77.1	74.1 - 80.1	26,900
Lahaina/ Wailuku	6,800	23.4	19.8 - 27.1	22,300	76.6	72.9 - 80.2	29,100
Lanai	300	22.4	17.9 - 26.9	1,200	77.6	73.1 - 82.1	1,500
Lihue-Waimea	7,100	27.8	24.0 - 31.5	18,400	72.2	68.5 - 76.0	25,500
Manoa/ Upper Makiki	12,600	29.3	25.3 - 33.2	30,500	70.7	66.8 - 74.7	43,100
Millilani/ Wahiawa	15,900	23.9	20.5 - 27.3	50,600	76.1	72.7 - 79.5	66,500

Pneumonia - ever had shot by State, County, Island, Community, BRFSS Age Group, DOH Race-Ethnicity, Gender, Education Level, Employment Status (Grouped), Household Income, Poverty Level, Marital Status (Grouped), Married, Health Care Coverage, for the Year(s) - 2001-2003, 2002-2004, 2003-2005, 2004-2006, 2005-2007, 2006-2008, 2007-2009, 2008-2010

Note: Weighted numbers (#) represent 3-yr averages, percentages and 95% confidence intervals; Respondents aged 18 years and older; n/r (Not Reportable) - If the unweighted total responses for a dimension (row) is <50 that row will not be shown; n/a (Not Available) - Not asked of a subset of respondents

Year: 2008-2010

Community	Yes			No			Estimated Population (3-Yr Avg)
	#	%	C.I. (95%)	#	%	C.I. (95%)	#
Molokai	1,500	21.2	17.6 - 24.8	5,500	78.8	75.2 - 82.4	7,000
Nanakuli/ Waianae	6,300	19.4	14.0 - 24.7	26,200	80.6	75.3 - 86.0	32,500
N.Hawaii	6,100	25.4	21.1 - 29.6	18,100	74.6	70.4 - 78.9	24,200
N.Shore/ Laie	3,400	16.1	11.1 - 21.2	17,900	83.9	78.8 - 88.9	21,400
Nuuanu/ Kalihi/ Moanalua	15,300	26.0	22.1 - 29.9	43,500	74.0	70.1 - 77.9	58,800
Puna/ Kau	8,100	23.5	20.5 - 26.5	26,400	76.5	73.5 - 79.5	34,500
Salt Lake/ Foster Village	7,500	24.4	19.4 - 29.4	23,200	75.6	70.6 - 80.6	30,700
Upcountry/ Hana	6,400	21.3	18.3 - 24.3	23,800	78.7	75.7 - 81.7	30,200
Waiialae/ Kahala/ Hawaii Kai	12,400	30.9	26.7 - 35.1	27,700	69.1	64.9 - 73.3	40,100
Waipahu/ Kapolei/ Ewa	22,600	21.3	18.5 - 24.1	83,500	78.7	75.9 - 81.5	106,100

Pneumonia - ever had shot by State, County, Island, Community, BRFSS Age Group, DOH Race-Ethnicity, Gender, Education Level, Employment Status (Grouped), Household Income, Poverty Level, Marital Status (Grouped), Married, Health Care Coverage, for the Year(s) - 2001-2003, 2002-2004, 2003-2005, 2004-2006, 2005-2007, 2006-2008, 2007-2009, 2008-2010

Note: Weighted numbers (#) represent 3-yr averages, percentages and 95% confidence intervals; Respondents aged 18 years and older; n/r (Not Reportable) - If the unweighted total responses for a dimension (row) is <50 that row will not be shown; n/a (Not Available) - Not asked of a subset of respondents

Year: 2008-2010

BRFSS Age Group	Yes			No			Estimated Population (3-Yr Avg)
	#	%	C.I. (95%)	#	%	C.I. (95%)	#
18-24	13,300	13.4	10.5 - 16.4	85,600	86.6	83.6 - 89.5	98,800
25-34	18,100	12.2	10.0 - 14.4	130,900	87.8	85.6 - 90.0	149,100
35-44	19,600	12.8	11.0 - 14.6	134,000	87.2	85.4 - 89.0	153,600
45-54	22,700	14.1	12.6 - 15.6	138,000	85.9	84.4 - 87.4	160,600
55-64	30,200	21.6	20.0 - 23.1	109,900	78.4	76.9 - 80.0	140,100
65-74	51,000	59.3	57.0 - 61.6	35,000	40.7	38.4 - 43.0	86,000
75+	64,500	71.7	69.4 - 74.0	25,500	28.3	26.0 - 30.6	90,000

Pneumonia - ever had shot by State, County, Island, Community, BRFSS Age Group, DOH Race-Ethnicity, Gender, Education Level, Employment Status (Grouped), Household Income, Poverty Level, Marital Status (Grouped), Married, Health Care Coverage, for the Year(s) - 2001-2003, 2002-2004, 2003-2005, 2004-2006, 2005-2007, 2006-2008, 2007-2009, 2008-2010

Note: Weighted numbers (#) represent 3-yr averages, percentages and 95% confidence intervals; Respondents aged 18 years and older; n/r (Not Reportable) - If the unweighted total responses for a dimension (row) is <50 that row will not be shown; n/a (Not Available) - Not asked of a subset of respondents

Year: 2008-2010

DOH Race-Ethnicity	Yes			No			Estimated Population (3-Yr Avg)
	#	%	C.I. (95%)	#	%	C.I. (95%)	#
Caucasian	77,100	27.3	25.9 - 28.7	205,400	72.7	71.3 - 74.1	282,500
Native Hawaiian	24,300	21.3	18.8 - 23.8	89,700	78.7	76.2 - 81.2	114,000
Chinese	14,900	28.1	24.6 - 31.5	38,300	71.9	68.5 - 75.4	53,200
Filipino	24,000	17.2	15.0 - 19.4	115,800	82.8	80.6 - 85.0	139,900
Japanese	65,500	31.7	29.9 - 33.6	140,700	68.3	66.4 - 70.1	206,200
Black	2,700	21.9	14.4 - 29.3	9,800	78.1	70.7 - 85.6	12,500
Native Alaskan/ American Indian	800	19.7	10.4 - 29.0	3,400	80.3	71.0 - 89.6	4,300
Other Asian	3,700	17.2	11.4 - 23.1	17,800	82.8	76.9 - 88.6	21,500
Other Pacific Islander	3,600	13.9	8.1 - 19.6	22,400	86.1	80.4 - 91.9	26,000
Other	3,700	18.7	13.6 - 23.9	16,100	81.3	76.1 - 86.4	19,800

Pneumonia - ever had shot by State, County, Island, Community, BRFSS Age Group, DOH Race-Ethnicity, Gender, Education Level, Employment Status (Grouped), Household Income, Poverty Level, Marital Status (Grouped), Married, Health Care Coverage, for the Year(s) - 2001-2003, 2002-2004, 2003-2005, 2004-2006, 2005-2007, 2006-2008, 2007-2009, 2008-2010

Note: Weighted numbers (#) represent 3-yr averages, percentages and 95% confidence intervals; Respondents aged 18 years and older; n/r (Not Reportable) - If the unweighted total responses for a dimension (row) is <50 that row will not be shown; n/a (Not Available) - Not asked of a subset of respondents

Year: 2008-2010

Gender	Yes			No			Estimated Population (3-Yr Avg)
	#	%	C.I. (95%)	#	%	C.I. (95%)	#
Male	98,800	23.2	22.0 - 24.5	326,600	76.8	75.5 - 78.0	425,400
Female	121,800	26.6	25.5 - 27.8	335,400	73.4	72.2 - 74.5	457,200

Education Level	Yes			No			Estimated Population (3-Yr Avg)
	#	%	C.I. (95%)	#	%	C.I. (95%)	#
Never attended school/ Only Kindergarten to Grades 8	3,500	32.7	25.3 - 40.0	7,200	67.3	60.0 - 74.7	10,700
Grades 9 thru 11 (Some High School)	10,800	30.5	25.1 - 35.9	24,600	69.5	64.1 - 74.9	35,400
Grades 12 or GED (High School Grad)	62,900	24.6	23.0 - 26.2	193,200	75.4	73.8 - 77.0	256,100
College 1 to 3 years (Some College/ Tech)	63,000	25.1	23.4 - 26.8	188,000	74.9	73.2 - 76.6	250,900
College 4 years or more (College Grad)	80,400	24.4	23.2 - 25.7	248,500	75.6	74.3 - 76.8	328,800

Pneumonia - ever had shot by State, County, Island, Community, BRFSS Age Group, DOH Race-Ethnicity, Gender, Education Level, Employment Status (Grouped), Household Income, Poverty Level, Marital Status (Grouped), Married, Health Care Coverage, for the Year(s) - 2001-2003, 2002-2004, 2003-2005, 2004-2006, 2005-2007, 2006-2008, 2007-2009, 2008-2010

Note: Weighted numbers (#) represent 3-yr averages, percentages and 95% confidence intervals; Respondents aged 18 years and older; n/r (Not Reportable) - If the unweighted total responses for a dimension (row) is <50 that row will not be shown; n/a (Not Available) - Not asked of a subset of respondents

Year: 2008-2010

Employment Status (Grouped)	Yes			No			Estimated Population (3-Yr Avg)
	#	%	C.I. (95%)	#	%	C.I. (95%)	#
Employed	81,000	15.1	14.1 - 16.0	457,000	84.9	84.0 - 85.9	537,900
Unemployed	9,300	17.3	13.5 - 21.0	44,500	82.7	79.0 - 86.5	53,800
Retired/Unable to work	111,400	55.9	54.2 - 57.7	87,700	44.1	42.3 - 45.8	199,100
Student/Homemaker	19,000	20.8	17.9 - 23.8	72,100	79.2	76.2 - 82.1	91,100

Pneumonia - ever had shot by State, County, Island, Community, BRFSS Age Group, DOH Race-Ethnicity, Gender, Education Level, Employment Status (Grouped), Household Income, Poverty Level, Marital Status (Grouped), Married, Health Care Coverage, for the Year(s) - 2001-2003, 2002-2004, 2003-2005, 2004-2006, 2005-2007, 2006-2008, 2007-2009, 2008-2010

Note: Weighted numbers (#) represent 3-yr averages, percentages and 95% confidence intervals; Respondents aged 18 years and older; n/r (Not Reportable) - If the unweighted total responses for a dimension (row) is <50 that row will not be shown; n/a (Not Available) - Not asked of a subset of respondents

Year: 2008-2010

Household Income	Yes			No			Estimated Population (3-Yr Avg)
	#	%	C.I. (95%)	#	%	C.I. (95%)	#
Less than \$10,000	6,100	22.2	17.7 - 26.8	21,500	77.8	73.2 - 82.3	27,600
\$10,000 to \$14,999	7,600	33.0	27.5 - 38.5	15,400	67.0	61.5 - 72.5	23,000
\$15,000 to \$19,999	12,400	28.5	24.6 - 32.5	31,000	71.5	67.5 - 75.4	43,400
\$20,000 to \$24,999	16,500	30.7	27.0 - 34.3	37,400	69.3	65.7 - 73.0	53,900
\$25,000 to \$34,999	23,800	26.3	23.7 - 29.0	66,600	73.7	71.0 - 76.3	90,400
\$35,000 to \$49,999	38,000	29.0	26.7 - 31.4	92,900	71.0	68.6 - 73.3	130,900
\$50,000 to \$74,999	36,500	24.2	22.2 - 26.2	114,400	75.8	73.8 - 77.8	150,900
\$75,000 or more	58,600	21.0	19.6 - 22.4	220,400	79.0	77.6 - 80.4	279,100

Pneumonia - ever had shot by State, County, Island, Community, BRFSS Age Group, DOH Race-Ethnicity, Gender, Education Level, Employment Status (Grouped), Household Income, Poverty Level, Marital Status (Grouped), Married, Health Care Coverage, for the Year(s) - 2001-2003, 2002-2004, 2003-2005, 2004-2006, 2005-2007, 2006-2008, 2007-2009, 2008-2010

Note: Weighted numbers (#) represent 3-yr averages, percentages and 95% confidence intervals; Respondents aged 18 years and older; n/r (Not Reportable) - If the unweighted total responses for a dimension (row) is <50 that row will not be shown; n/a (Not Available) - Not asked of a subset of respondents

Year: 2008-2010

Poverty Level	Yes			No			Estimated Population (3-Yr Avg)
	#	%	C.I. (95%)	#	%	C.I. (95%)	#
0-130%	41,100	22.4	20.3 - 24.4	142,700	77.6	75.6 - 79.7	183,700
131-185%	31,800	26.4	24.0 - 28.8	88,800	73.6	71.2 - 76.0	120,600
186+%	126,700	25.6	24.6 - 26.7	368,000	74.4	73.3 - 75.4	494,700

Marital Status (Grouped)	Yes			No			Estimated Population (3-Yr Avg)
	#	%	C.I. (95%)	#	%	C.I. (95%)	#
Married	128,400	24.7	23.6 - 25.7	392,300	75.3	74.3 - 76.4	520,600
Unmarried Couple	4,500	17.2	11.9 - 22.5	21,600	82.8	77.5 - 88.1	26,100
Widowed	33,300	61.7	58.6 - 64.7	20,700	38.3	35.3 - 41.4	53,900
Other	54,500	19.4	17.8 - 20.9	227,300	80.6	79.1 - 82.2	281,900

Pneumonia - ever had shot by State, County, Island, Community, BRFSS Age Group, DOH Race-Ethnicity, Gender, Education Level, Employment Status (Grouped), Household Income, Poverty Level, Marital Status (Grouped), Married, Health Care Coverage, for the Year(s) - 2001-2003, 2002-2004, 2003-2005, 2004-2006, 2005-2007, 2006-2008, 2007-2009, 2008-2010

Note: Weighted numbers (#) represent 3-yr averages, percentages and 95% confidence intervals; Respondents aged 18 years and older; n/r (Not Reportable) - If the unweighted total responses for a dimension (row) is <50 that row will not be shown; n/a (Not Available) - Not asked of a subset of respondents

Year: 2008-2010

Married	Yes			No			Estimated Population (3-Yr Avg)
	#	%	C.I. (95%)	#	%	C.I. (95%)	#
Yes	130,200	24.5	23.5 - 25.6	400,600	75.5	74.4 - 76.5	530,700
No	90,300	25.8	24.3 - 27.3	259,800	74.2	72.7 - 75.7	350,000

Health Care Coverage	Yes			No			Estimated Population (3-Yr Avg)
	#	%	C.I. (95%)	#	%	C.I. (95%)	#
Yes	214,300	26.0	25.1 - 26.9	610,800	74.0	73.1 - 74.9	825,100
No	6,100	11.0	7.8 - 14.1	49,800	89.0	85.9 - 92.2	55,900

Pneumonia - ever had shot by State, County, Island, Community, BRFSS Age Group, DOH Race-Ethnicity, Gender, Education Level, Employment Status (Grouped), Household Income, Poverty Level, Marital Status (Grouped), Married, Health Care Coverage, for the Year(s) - 2001-2003, 2002-2004, 2003-2005, 2004-2006, 2005-2007, 2006-2008, 2007-2009, 2008-2010

Note: Weighted numbers (#) represent 3-yr averages, percentages and 95% confidence intervals; Respondents aged 18 years and older; n/r (Not Reportable) - If the unweighted total responses for a dimension (row) is <50 that row will not be shown; n/a (Not Available) - Not asked of a subset of respondents

Year: 2007-2009

State	Yes			No			Estimated Population (3-Yr Avg)
	#	%	C.I. (95%)	#	%	C.I. (95%)	#
Hawaii State	219,800	24.9	24.1 - 25.8	661,600	75.1	74.2 - 75.9	881,400

County	Yes			No			Estimated Population (3-Yr Avg)
	#	%	C.I. (95%)	#	%	C.I. (95%)	#
Hawaii	29,100	24.1	22.5 - 25.7	91,700	75.9	74.3 - 77.5	120,800
Honolulu	157,900	25.5	24.4 - 26.6	461,900	74.5	73.4 - 75.6	619,800
Kauai	10,900	25.2	22.7 - 27.7	32,400	74.8	72.3 - 77.3	43,300
Maui	21,800	22.4	20.7 - 24.2	75,600	77.6	75.8 - 79.3	97,400

Pneumonia - ever had shot by State, County, Island, Community, BRFSS Age Group, DOH Race-Ethnicity, Gender, Education Level, Employment Status (Grouped), Household Income, Poverty Level, Marital Status (Grouped), Married, Health Care Coverage, for the Year(s) - 2001-2003, 2002-2004, 2003-2005, 2004-2006, 2005-2007, 2006-2008, 2007-2009, 2008-2010

Note: Weighted numbers (#) represent 3-yr averages, percentages and 95% confidence intervals; Respondents aged 18 years and older; n/r (Not Reportable) - If the unweighted total responses for a dimension (row) is <50 that row will not be shown; n/a (Not Available) - Not asked of a subset of respondents

Year: 2007-2009

Island	Yes			No			Estimated Population (3-Yr Avg)
	#	%	C.I. (95%)	#	%	C.I. (95%)	#
Hawaii	29,100	24.1	22.5 - 25.7	91,700	75.9	74.3 - 77.5	120,800
Kauai	10,900	25.2	22.7 - 27.7	32,400	74.8	72.3 - 77.3	43,300
Lanai	400	22.4	18.5 - 26.4	1,200	77.6	73.6 - 81.5	1,600
Maui	19,900	22.5	20.6 - 24.4	68,700	77.5	75.6 - 79.4	88,600
Molokai	1,600	21.8	18.2 - 25.3	5,600	78.2	74.7 - 81.8	7,200
Oahu	157,900	25.5	24.4 - 26.6	461,900	74.5	73.4 - 75.6	619,800

Community	Yes			No			Estimated Population (3-Yr Avg)
	#	%	C.I. (95%)	#	%	C.I. (95%)	#
Aiea/ Pearl City	16,300	29.0	25.1 - 32.9	39,900	71.0	67.1 - 74.9	56,100
Ala Moana	7,900	30.3	25.4 - 35.2	18,100	69.7	64.8 - 74.6	26,000

Pneumonia - ever had shot by State, County, Island, Community, BRFSS Age Group, DOH Race-Ethnicity, Gender, Education Level, Employment Status (Grouped), Household Income, Poverty Level, Marital Status (Grouped), Married, Health Care Coverage, for the Year(s) - 2001-2003, 2002-2004, 2003-2005, 2004-2006, 2005-2007, 2006-2008, 2007-2009, 2008-2010

Note: Weighted numbers (#) represent 3-yr averages, percentages and 95% confidence intervals; Respondents aged 18 years and older; n/r (Not Reportable) - If the unweighted total responses for a dimension (row) is <50 that row will not be shown; n/a (Not Available) - Not asked of a subset of respondents

Year: 2007-2009

Community	Yes			No			Estimated Population (3-Yr Avg)
	#	%	C.I. (95%)	#	%	C.I. (95%)	#
Hanalei/ Kapaa	4,200	23.7	20.1 - 27.2	13,700	76.3	72.8 - 79.9	17,900
Hilo	9,200	25.5	22.6 - 28.4	26,900	74.5	71.6 - 77.4	36,100
Kaaawa/ Kahaluu/ Kaneohe	10,900	24.6	20.8 - 28.5	33,200	75.4	71.5 - 79.2	44,100
Kahului	7,200	23.8	20.5 - 27.1	22,900	76.2	72.9 - 79.5	30,000
Kailua/ Waimanalo	12,800	28.7	24.5 - 32.9	31,700	71.3	67.1 - 75.5	44,500
Kaimuki/ Palolo/ Waikiki	15,400	30.3	26.7 - 33.9	35,400	69.7	66.1 - 73.3	50,700
Kona	6,100	23.3	20.3 - 26.3	20,100	76.7	73.7 - 79.7	26,200
Lahaina/ Wailuku	6,700	23.4	19.6 - 27.3	21,900	76.6	72.7 - 80.4	28,600
Lanai	400	22.4	18.5 - 26.4	1,200	77.6	73.6 - 81.5	1,600
Lihue-Waimea	6,700	26.2	22.8 - 29.7	18,700	73.8	70.3 - 77.2	25,400
Manoa/ Upper Makiki	11,600	28.3	24.6 - 32.1	29,400	71.7	67.9 - 75.4	41,100
Mililani/ Wahiawa	15,800	23.4	20.0 - 26.8	51,900	76.6	73.2 - 80.0	67,700

Pneumonia - ever had shot by State, County, Island, Community, BRFSS Age Group, DOH Race-Ethnicity, Gender, Education Level, Employment Status (Grouped), Household Income, Poverty Level, Marital Status (Grouped), Married, Health Care Coverage, for the Year(s) - 2001-2003, 2002-2004, 2003-2005, 2004-2006, 2005-2007, 2006-2008, 2007-2009, 2008-2010

Note: Weighted numbers (#) represent 3-yr averages, percentages and 95% confidence intervals; Respondents aged 18 years and older; n/r (Not Reportable) - If the unweighted total responses for a dimension (row) is <50 that row will not be shown; n/a (Not Available) - Not asked of a subset of respondents

Year: 2007-2009

Community	Yes			No			Estimated Population (3-Yr Avg)
	#	%	C.I. (95%)	#	%	C.I. (95%)	#
Molokai	1,600	21.8	18.2 - 25.3	5,600	78.2	74.7 - 81.8	7,200
Nanakuli/ Waianae	7,600	23.4	17.7 - 29.1	24,900	76.6	70.9 - 82.3	32,500
N.Hawaii	6,300	24.6	20.6 - 28.6	19,200	75.4	71.4 - 79.4	25,500
N.Shore/ Laie	3,600	17.5	12.4 - 22.5	17,100	82.5	77.5 - 87.6	20,700
Nuuanu/ Kalihi/ Moanalua	16,100	27.1	23.1 - 31.1	43,300	72.9	68.9 - 76.9	59,500
Puna/ Kau	7,600	22.9	19.9 - 25.9	25,500	77.1	74.1 - 80.1	33,000
Salt Lake/ Foster Village	6,100	20.9	16.0 - 25.8	23,000	79.1	74.2 - 84.0	29,100
Upcountry/ Hana	6,100	20.2	17.5 - 23.0	23,900	79.8	77.0 - 82.5	30,000
Waialae/ Kahala/ Hawaii Kai	12,400	30.5	26.1 - 34.8	28,200	69.5	65.2 - 73.9	40,600
Waipahu/ Kapolei/ Ewa	21,400	20.0	17.4 - 22.6	85,700	80.0	77.4 - 82.6	107,100

Pneumonia - ever had shot by State, County, Island, Community, BRFSS Age Group, DOH Race-Ethnicity, Gender, Education Level, Employment Status (Grouped), Household Income, Poverty Level, Marital Status (Grouped), Married, Health Care Coverage, for the Year(s) - 2001-2003, 2002-2004, 2003-2005, 2004-2006, 2005-2007, 2006-2008, 2007-2009, 2008-2010

Note: Weighted numbers (#) represent 3-yr averages, percentages and 95% confidence intervals; Respondents aged 18 years and older; n/r (Not Reportable) - If the unweighted total responses for a dimension (row) is <50 that row will not be shown; n/a (Not Available) - Not asked of a subset of respondents

Year: 2007-2009

BRFSS Age Group	Yes			No			Estimated Population (3-Yr Avg)
	#	%	C.I. (95%)	#	%	C.I. (95%)	#
18-24	15,700	15.6	12.3 - 18.9	84,700	84.4	81.1 - 87.7	100,400
25-34	16,300	11.4	9.5 - 13.4	126,500	88.6	86.6 - 90.5	142,800
35-44	18,900	12.2	10.5 - 13.8	136,700	87.8	86.2 - 89.5	155,700
45-54	23,100	14.0	12.6 - 15.5	141,500	86.0	84.5 - 87.4	164,600
55-64	29,700	21.1	19.5 - 22.7	111,300	78.9	77.3 - 80.5	140,900
65-74	49,600	59.6	57.1 - 62.0	33,700	40.4	38.0 - 42.9	83,300
75+	65,300	72.8	70.4 - 75.2	24,400	27.2	24.8 - 29.6	89,700

Pneumonia - ever had shot by State, County, Island, Community, BRFSS Age Group, DOH Race-Ethnicity, Gender, Education Level, Employment Status (Grouped), Household Income, Poverty Level, Marital Status (Grouped), Married, Health Care Coverage, for the Year(s) - 2001-2003, 2002-2004, 2003-2005, 2004-2006, 2005-2007, 2006-2008, 2007-2009, 2008-2010

Note: Weighted numbers (#) represent 3-yr averages, percentages and 95% confidence intervals; Respondents aged 18 years and older; n/r (Not Reportable) - If the unweighted total responses for a dimension (row) is <50 that row will not be shown; n/a (Not Available) - Not asked of a subset of respondents

Year: 2007-2009

DOH Race-Ethnicity	Yes			No			Estimated Population (3-Yr Avg)
	#	%	C.I. (95%)	#	%	C.I. (95%)	#
Caucasian	75,600	26.5	25.2 - 27.8	209,800	73.5	72.2 - 74.8	285,400
Native Hawaiian	23,100	20.2	17.8 - 22.5	91,600	79.8	77.5 - 82.2	114,700
Chinese	15,700	29.3	25.7 - 33.0	37,800	70.7	67.0 - 74.3	53,500
Filipino	25,300	17.7	15.5 - 19.9	117,500	82.3	80.1 - 84.5	142,900
Japanese	66,000	32.7	30.8 - 34.6	135,700	67.3	65.4 - 69.2	201,700
Black	3,200	24.3	16.6 - 31.9	10,100	75.7	68.1 - 83.4	13,300
Native Alaskan/ American Indian	1,200	25.4	15.3 - 35.4	3,500	74.6	64.6 - 84.7	4,700
Other Asian	3,000	14.9	9.9 - 19.9	17,100	85.1	80.1 - 90.1	20,100
Other Pacific Islander	2,700	12.2	7.1 - 17.3	19,700	87.8	82.7 - 92.9	22,400
Other	3,600	18.3	13.4 - 23.3	16,000	81.7	76.7 - 86.6	19,600

Pneumonia - ever had shot by State, County, Island, Community, BRFSS Age Group, DOH Race-Ethnicity, Gender, Education Level, Employment Status (Grouped), Household Income, Poverty Level, Marital Status (Grouped), Married, Health Care Coverage, for the Year(s) - 2001-2003, 2002-2004, 2003-2005, 2004-2006, 2005-2007, 2006-2008, 2007-2009, 2008-2010

Note: Weighted numbers (#) represent 3-yr averages, percentages and 95% confidence intervals; Respondents aged 18 years and older; n/r (Not Reportable) - If the unweighted total responses for a dimension (row) is <50 that row will not be shown; n/a (Not Available) - Not asked of a subset of respondents

Year: 2007-2009

Gender	Yes			No			Estimated Population (3-Yr Avg)
	#	%	C.I. (95%)	#	%	C.I. (95%)	#
Male	98,900	23.3	22.0 - 24.5	326,400	76.7	75.5 - 78.0	425,300
Female	120,900	26.5	25.4 - 27.6	335,200	73.5	72.4 - 74.6	456,100

Education Level	Yes			No			Estimated Population (3-Yr Avg)
	#	%	C.I. (95%)	#	%	C.I. (95%)	#
Never attended school/ Only Kindergarten to Grades 8	4,300	36.0	28.2 - 43.8	7,700	64.0	56.2 - 71.8	12,000
Grades 9 thru 11 (Some High School)	10,100	30.6	25.8 - 35.3	23,000	69.4	64.7 - 74.2	33,200
Grades 12 or GED (High School Grad)	63,800	24.3	22.7 - 26.0	198,300	75.7	74.0 - 77.3	262,100
College 1 to 3 years (Some College/ Tech)	63,000	24.7	23.1 - 26.3	191,800	75.3	73.7 - 76.9	254,800
College 4 years or more (College Grad)	78,400	24.6	23.4 - 25.9	240,000	75.4	74.1 - 76.6	318,400

Pneumonia - ever had shot by State, County, Island, Community, BRFSS Age Group, DOH Race-Ethnicity, Gender, Education Level, Employment Status (Grouped), Household Income, Poverty Level, Marital Status (Grouped), Married, Health Care Coverage, for the Year(s) - 2001-2003, 2002-2004, 2003-2005, 2004-2006, 2005-2007, 2006-2008, 2007-2009, 2008-2010

Note: Weighted numbers (#) represent 3-yr averages, percentages and 95% confidence intervals; Respondents aged 18 years and older; n/r (Not Reportable) - If the unweighted total responses for a dimension (row) is <50 that row will not be shown; n/a (Not Available) - Not asked of a subset of respondents

Year: 2007-2009

Employment Status (Grouped)	Yes			No			Estimated Population (3-Yr Avg)
	#	%	C.I. (95%)	#	%	C.I. (95%)	#
Employed	85,000	15.4	14.4 - 16.3	467,600	84.6	83.7 - 85.6	552,500
Unemployed	6,300	14.8	11.1 - 18.5	36,300	85.2	81.5 - 88.9	42,600
Retired/Unable to work	113,600	55.9	54.1 - 57.6	89,800	44.1	42.4 - 45.9	203,400
Student/Homemaker	14,800	18.1	15.3 - 20.8	67,200	81.9	79.2 - 84.7	82,100

Pneumonia - ever had shot by State, County, Island, Community, BRFSS Age Group, DOH Race-Ethnicity, Gender, Education Level, Employment Status (Grouped), Household Income, Poverty Level, Marital Status (Grouped), Married, Health Care Coverage, for the Year(s) - 2001-2003, 2002-2004, 2003-2005, 2004-2006, 2005-2007, 2006-2008, 2007-2009, 2008-2010

Note: Weighted numbers (#) represent 3-yr averages, percentages and 95% confidence intervals; Respondents aged 18 years and older; n/r (Not Reportable) - If the unweighted total responses for a dimension (row) is <50 that row will not be shown; n/a (Not Available) - Not asked of a subset of respondents

Year: 2007-2009

Household Income	Yes			No			Estimated Population (3-Yr Avg)
	#	%	C.I. (95%)	#	%	C.I. (95%)	#
Less than \$10,000	5,100	21.7	17.7 - 25.8	18,500	78.3	74.2 - 82.3	23,700
\$10,000 to \$14,999	7,300	31.4	26.2 - 36.5	16,000	68.6	63.5 - 73.8	23,300
\$15,000 to \$19,999	11,800	29.0	25.1 - 32.8	29,000	71.0	67.2 - 74.9	40,900
\$20,000 to \$24,999	16,800	31.9	28.2 - 35.5	35,800	68.1	64.5 - 71.8	52,600
\$25,000 to \$34,999	26,100	27.7	25.1 - 30.3	68,000	72.3	69.7 - 74.9	94,100
\$35,000 to \$49,999	40,300	29.4	27.1 - 31.7	96,600	70.6	68.3 - 72.9	136,900
\$50,000 to \$74,999	34,300	21.7	19.9 - 23.6	123,500	78.3	76.4 - 80.1	157,800
\$75,000 or more	55,500	20.5	19.1 - 22.0	214,700	79.5	78.0 - 80.9	270,200

Pneumonia - ever had shot by State, County, Island, Community, BRFSS Age Group, DOH Race-Ethnicity, Gender, Education Level, Employment Status (Grouped), Household Income, Poverty Level, Marital Status (Grouped), Married, Health Care Coverage, for the Year(s) - 2001-2003, 2002-2004, 2003-2005, 2004-2006, 2005-2007, 2006-2008, 2007-2009, 2008-2010

Note: Weighted numbers (#) represent 3-yr averages, percentages and 95% confidence intervals; Respondents aged 18 years and older; n/r (Not Reportable) - If the unweighted total responses for a dimension (row) is <50 that row will not be shown; n/a (Not Available) - Not asked of a subset of respondents

Year: 2007-2009

Poverty Level	Yes			No			Estimated Population (3-Yr Avg)
	#	%	C.I. (95%)	#	%	C.I. (95%)	#
0-130%	40,700	23.3	21.2 - 25.3	134,300	76.7	74.7 - 78.8	174,900
131-185%	26,400	23.7	21.3 - 26.1	85,000	76.3	73.9 - 78.7	111,400
186+%	130,100	25.4	24.3 - 26.4	382,900	74.6	73.6 - 75.7	513,000

Marital Status (Grouped)	Yes			No			Estimated Population (3-Yr Avg)
	#	%	C.I. (95%)	#	%	C.I. (95%)	#
Married	128,600	24.4	23.4 - 25.5	397,600	75.6	74.5 - 76.6	526,200
Unmarried Couple	4,000	16.6	11.5 - 21.6	20,000	83.4	78.4 - 88.5	24,000
Widowed	33,100	61.3	58.2 - 64.3	21,000	38.7	35.7 - 41.8	54,100
Other	54,100	19.5	17.9 - 21.1	223,000	80.5	78.9 - 82.1	277,100

Pneumonia - ever had shot by State, County, Island, Community, BRFSS Age Group, DOH Race-Ethnicity, Gender, Education Level, Employment Status (Grouped), Household Income, Poverty Level, Marital Status (Grouped), Married, Health Care Coverage, for the Year(s) - 2001-2003, 2002-2004, 2003-2005, 2004-2006, 2005-2007, 2006-2008, 2007-2009, 2008-2010

Note: Weighted numbers (#) represent 3-yr averages, percentages and 95% confidence intervals; Respondents aged 18 years and older; n/r (Not Reportable) - If the unweighted total responses for a dimension (row) is <50 that row will not be shown; n/a (Not Available) - Not asked of a subset of respondents

Year: 2007-2009

Married	Yes			No			Estimated Population (3-Yr Avg)
	#	%	C.I. (95%)	#	%	C.I. (95%)	#
Yes	129,700	24.2	23.2 - 25.2	405,800	75.8	74.8 - 76.8	535,600
No	89,800	26.1	24.6 - 27.6	254,300	73.9	72.4 - 75.4	344,100

Health Care Coverage	Yes			No			Estimated Population (3-Yr Avg)
	#	%	C.I. (95%)	#	%	C.I. (95%)	#
Yes	213,200	25.9	25.0 - 26.7	611,400	74.1	73.3 - 75.0	824,600
No	6,400	11.6	8.3 - 14.8	48,800	88.4	85.2 - 91.7	55,200

Pneumonia - ever had shot by State, County, Island, Community, BRFSS Age Group, DOH Race-Ethnicity, Gender, Education Level, Employment Status (Grouped), Household Income, Poverty Level, Marital Status (Grouped), Married, Health Care Coverage, for the Year(s) - 2001-2003, 2002-2004, 2003-2005, 2004-2006, 2005-2007, 2006-2008, 2007-2009, 2008-2010

Note: Weighted numbers (#) represent 3-yr averages, percentages and 95% confidence intervals; Respondents aged 18 years and older; n/r (Not Reportable) - If the unweighted total responses for a dimension (row) is <50 that row will not be shown; n/a (Not Available) - Not asked of a subset of respondents

Year: 2006-2008

State	Yes			No			Estimated Population (3-Yr Avg)
	#	%	C.I. (95%)	#	%	C.I. (95%)	#
Hawaii State	221,500	25.4	24.5 - 26.2	651,700	74.6	73.8 - 75.5	873,200

County	Yes			No			Estimated Population (3-Yr Avg)
	#	%	C.I. (95%)	#	%	C.I. (95%)	#
Hawaii	29,200	25.3	23.7 - 27.0	86,100	74.7	73.0 - 76.3	115,300
Honolulu	160,000	25.9	24.8 - 27.0	457,900	74.1	73.0 - 75.2	617,800
Kauai	10,700	24.7	22.3 - 27.1	32,700	75.3	72.9 - 77.7	43,400
Maui	21,600	22.4	20.6 - 24.1	75,000	77.6	75.9 - 79.4	96,600

Pneumonia - ever had shot by State, County, Island, Community, BRFSS Age Group, DOH Race-Ethnicity, Gender, Education Level, Employment Status (Grouped), Household Income, Poverty Level, Marital Status (Grouped), Married, Health Care Coverage, for the Year(s) - 2001-2003, 2002-2004, 2003-2005, 2004-2006, 2005-2007, 2006-2008, 2007-2009, 2008-2010

Note: Weighted numbers (#) represent 3-yr averages, percentages and 95% confidence intervals; Respondents aged 18 years and older; n/r (Not Reportable) - If the unweighted total responses for a dimension (row) is <50 that row will not be shown; n/a (Not Available) - Not asked of a subset of respondents

Year: 2006-2008

Island	Yes			No			Estimated Population (3-Yr Avg)
	#	%	C.I. (95%)	#	%	C.I. (95%)	#
Hawaii	29,200	25.3	23.7 - 27.0	86,100	74.7	73.0 - 76.3	115,300
Kauai	10,700	24.7	22.3 - 27.1	32,700	75.3	72.9 - 77.7	43,400
Lanai	400	21.3	17.4 - 25.3	1,400	78.7	74.7 - 82.6	1,800
Maui	19,600	22.3	20.3 - 24.2	68,400	77.7	75.8 - 79.7	88,000
Molokai	1,600	23.7	19.7 - 27.7	5,200	76.3	72.3 - 80.3	6,800
Oahu	160,000	25.9	24.8 - 27.0	457,900	74.1	73.0 - 75.2	617,800

Community	Yes			No			Estimated Population (3-Yr Avg)
	#	%	C.I. (95%)	#	%	C.I. (95%)	#
Aiea/ Pearl City	17,300	29.2	25.4 - 33.1	41,900	70.8	66.9 - 74.6	59,200
Ala Moana	9,500	34.4	29.4 - 39.3	18,200	65.6	60.7 - 70.6	27,700

Pneumonia - ever had shot by State, County, Island, Community, BRFSS Age Group, DOH Race-Ethnicity, Gender, Education Level, Employment Status (Grouped), Household Income, Poverty Level, Marital Status (Grouped), Married, Health Care Coverage, for the Year(s) - 2001-2003, 2002-2004, 2003-2005, 2004-2006, 2005-2007, 2006-2008, 2007-2009, 2008-2010

Note: Weighted numbers (#) represent 3-yr averages, percentages and 95% confidence intervals; Respondents aged 18 years and older; n/r (Not Reportable) - If the unweighted total responses for a dimension (row) is <50 that row will not be shown; n/a (Not Available) - Not asked of a subset of respondents

Year: 2006-2008

Community	Yes			No			Estimated Population (3-Yr Avg)
	#	%	C.I. (95%)	#	%	C.I. (95%)	#
Hanalei/ Kapaa	4,500	24.8	21.1 - 28.5	13,700	75.2	71.5 - 78.9	18,300
Hilo	9,700	28.0	24.9 - 31.0	24,900	72.0	69.0 - 75.1	34,500
Kaaawa/ Kahaluu/ Kaneohe	10,600	24.3	20.4 - 28.3	32,900	75.7	71.7 - 79.6	43,500
Kahului	6,500	22.3	19.1 - 25.4	22,500	77.7	74.6 - 80.9	29,000
Kailua/ Waimanalo	12,700	28.5	24.4 - 32.6	32,000	71.5	67.4 - 75.6	44,700
Kaimuki/ Palolo/ Waikiki	16,700	32.2	28.4 - 36.1	35,200	67.8	63.9 - 71.6	52,000
Kona	6,100	23.7	20.5 - 26.8	19,600	76.3	73.2 - 79.5	25,700
Lahaina/ Wailuku	7,100	24.3	20.5 - 28.2	22,000	75.7	71.8 - 79.5	29,100
Lanai	400	21.3	17.4 - 25.3	1,400	78.7	74.7 - 82.6	1,800
Lihue-Waimea	6,200	24.6	21.5 - 27.7	18,900	75.4	72.3 - 78.5	25,100
Manoa/ Upper Makiki	12,300	29.3	25.5 - 33.2	29,600	70.7	66.8 - 74.5	41,900
Mililani/ Wahiawa	14,100	22.7	19.3 - 26.1	48,000	77.3	73.9 - 80.7	62,100

Pneumonia - ever had shot by State, County, Island, Community, BRFSS Age Group, DOH Race-Ethnicity, Gender, Education Level, Employment Status (Grouped), Household Income, Poverty Level, Marital Status (Grouped), Married, Health Care Coverage, for the Year(s) - 2001-2003, 2002-2004, 2003-2005, 2004-2006, 2005-2007, 2006-2008, 2007-2009, 2008-2010

Note: Weighted numbers (#) represent 3-yr averages, percentages and 95% confidence intervals; Respondents aged 18 years and older; n/r (Not Reportable) - If the unweighted total responses for a dimension (row) is <50 that row will not be shown; n/a (Not Available) - Not asked of a subset of respondents

Year: 2006-2008

Community	Yes			No			Estimated Population (3-Yr Avg)
	#	%	C.I. (95%)	#	%	C.I. (95%)	#
Molokai	1,600	23.7	19.7 - 27.7	5,200	76.3	72.3 - 80.3	6,800
Nanakuli/ Waianae	7,400	23.5	17.8 - 29.2	24,100	76.5	70.8 - 82.2	31,500
N.Hawaii	6,400	26.2	22.1 - 30.2	18,200	73.8	69.8 - 77.9	24,600
N.Shore/ Laie	4,400	19.8	14.4 - 25.1	18,000	80.2	74.9 - 85.6	22,400
Nuuanu/ Kalihi/ Moanalua	15,800	26.3	22.4 - 30.3	44,200	73.7	69.7 - 77.6	60,000
Puna/ Kau	7,000	23.1	20.0 - 26.3	23,400	76.9	73.7 - 80.0	30,500
Salt Lake/ Foster Village	6,000	21.3	16.4 - 26.3	22,200	78.7	73.7 - 83.6	28,200
Upcountry/ Hana	6,100	20.3	17.2 - 23.3	23,900	79.7	76.7 - 82.8	30,000
Waiialae/ Kahala/ Hawaii Kai	11,800	31.4	26.9 - 36.0	25,700	68.6	64.0 - 73.1	37,500
Waipahu/ Kapolei/ Ewa	21,300	19.8	17.1 - 22.5	86,000	80.2	77.5 - 82.9	107,300

Pneumonia - ever had shot by State, County, Island, Community, BRFSS Age Group, DOH Race-Ethnicity, Gender, Education Level, Employment Status (Grouped), Household Income, Poverty Level, Marital Status (Grouped), Married, Health Care Coverage, for the Year(s) - 2001-2003, 2002-2004, 2003-2005, 2004-2006, 2005-2007, 2006-2008, 2007-2009, 2008-2010

Note: Weighted numbers (#) represent 3-yr averages, percentages and 95% confidence intervals; Respondents aged 18 years and older; n/r (Not Reportable) - If the unweighted total responses for a dimension (row) is <50 that row will not be shown; n/a (Not Available) - Not asked of a subset of respondents

Year: 2006-2008

BRFSS Age Group	Yes			No			Estimated Population (3-Yr Avg)
	#	%	C.I. (95%)	#	%	C.I. (95%)	#
18-24	17,700	17.3	14.0 - 20.7	84,500	82.7	79.3 - 86.0	102,200
25-34	17,800	13.0	11.0 - 15.1	118,700	87.0	84.9 - 89.0	136,500
35-44	17,900	11.4	10.0 - 12.9	138,600	88.6	87.1 - 90.0	156,500
45-54	22,100	13.5	12.0 - 14.9	142,200	86.5	85.1 - 88.0	164,400
55-64	29,400	21.2	19.5 - 22.9	109,300	78.8	77.1 - 80.5	138,700
65-74	49,600	61.4	58.9 - 64.0	31,100	38.6	36.0 - 41.1	80,700
75+	65,600	73.7	71.3 - 76.1	23,400	26.3	23.9 - 28.7	89,000

Pneumonia - ever had shot by State, County, Island, Community, BRFSS Age Group, DOH Race-Ethnicity, Gender, Education Level, Employment Status (Grouped), Household Income, Poverty Level, Marital Status (Grouped), Married, Health Care Coverage, for the Year(s) - 2001-2003, 2002-2004, 2003-2005, 2004-2006, 2005-2007, 2006-2008, 2007-2009, 2008-2010

Note: Weighted numbers (#) represent 3-yr averages, percentages and 95% confidence intervals; Respondents aged 18 years and older; n/r (Not Reportable) - If the unweighted total responses for a dimension (row) is <50 that row will not be shown; n/a (Not Available) - Not asked of a subset of respondents

Year: 2006-2008

DOH Race-Ethnicity	Yes			No			Estimated Population (3-Yr Avg)
	#	%	C.I. (95%)	#	%	C.I. (95%)	#
Caucasian	74,700	26.1	24.8 - 27.4	211,100	73.9	72.6 - 75.2	285,800
Native Hawaiian	23,300	20.4	18.0 - 22.7	90,900	79.6	77.3 - 82.0	114,200
Chinese	15,500	31.0	27.2 - 34.8	34,400	69.0	65.2 - 72.8	49,900
Filipino	27,000	19.5	17.2 - 21.9	111,100	80.5	78.1 - 82.8	138,100
Japanese	63,700	32.8	30.9 - 34.7	130,600	67.2	65.3 - 69.1	194,300
Black	2,900	22.6	14.8 - 30.3	10,100	77.4	69.7 - 85.2	13,000
Native Alaskan/ American Indian	1,400	29.2	18.5 - 39.9	3,300	70.8	60.1 - 81.5	4,700
Other Asian	3,300	15.6	11.0 - 20.3	18,000	84.4	79.7 - 89.0	21,300
Other Pacific Islander	3,300	15.2	8.7 - 21.7	18,300	84.8	78.3 - 91.3	21,600
Mixed Ethnicity	2,000	30.3	18.6 - 41.9	4,600	69.7	58.1 - 81.4	6,500
Other	3,900	19.7	14.2 - 25.2	16,100	80.3	74.8 - 85.8	20,000

Pneumonia - ever had shot by State, County, Island, Community, BRFSS Age Group, DOH Race-Ethnicity, Gender, Education Level, Employment Status (Grouped), Household Income, Poverty Level, Marital Status (Grouped), Married, Health Care Coverage, for the Year(s) - 2001-2003, 2002-2004, 2003-2005, 2004-2006, 2005-2007, 2006-2008, 2007-2009, 2008-2010

Note: Weighted numbers (#) represent 3-yr averages, percentages and 95% confidence intervals; Respondents aged 18 years and older; n/r (Not Reportable) - If the unweighted total responses for a dimension (row) is <50 that row will not be shown; n/a (Not Available) - Not asked of a subset of respondents

Year: 2006-2008

Gender	Yes			No			Estimated Population (3-Yr Avg)
	#	%	C.I. (95%)	#	%	C.I. (95%)	#
Male	102,600	24.4	23.1 - 25.8	317,300	75.6	74.2 - 76.9	419,900
Female	118,900	26.2	25.2 - 27.3	334,400	73.8	72.7 - 74.8	453,300

Education Level	Yes			No			Estimated Population (3-Yr Avg)
	#	%	C.I. (95%)	#	%	C.I. (95%)	#
Never attended school/ Only Kindergarten to Grades 8	5,500	43.7	36.1 - 51.3	7,100	56.3	48.7 - 63.9	12,600
Grades 9 thru 11 (Some High School)	10,200	29.5	25.2 - 33.9	24,200	70.5	66.1 - 74.8	34,400
Grades 12 or GED (High School Grad)	65,000	24.6	22.9 - 26.3	199,700	75.4	73.7 - 77.1	264,800
College 1 to 3 years (Some College/ Tech)	63,300	25.2	23.6 - 26.8	187,900	74.8	73.2 - 76.4	251,200
College 4 years or more (College Grad)	77,400	25.0	23.7 - 26.3	231,800	75.0	73.7 - 76.3	309,100

Pneumonia - ever had shot by State, County, Island, Community, BRFSS Age Group, DOH Race-Ethnicity, Gender, Education Level, Employment Status (Grouped), Household Income, Poverty Level, Marital Status (Grouped), Married, Health Care Coverage, for the Year(s) - 2001-2003, 2002-2004, 2003-2005, 2004-2006, 2005-2007, 2006-2008, 2007-2009, 2008-2010

Note: Weighted numbers (#) represent 3-yr averages, percentages and 95% confidence intervals; Respondents aged 18 years and older; n/r (Not Reportable) - If the unweighted total responses for a dimension (row) is <50 that row will not be shown; n/a (Not Available) - Not asked of a subset of respondents

Year: 2006-2008

Employment Status (Grouped)	Yes			No			Estimated Population (3-Yr Avg)
	#	%	C.I. (95%)	#	%	C.I. (95%)	#
Employed	86,400	15.6	14.6 - 16.6	467,200	84.4	83.4 - 85.4	553,500
Unemployed	5,200	15.9	11.6 - 20.2	27,700	84.1	79.8 - 88.4	33,000
Retired/Unable to work	117,800	56.5	54.8 - 58.3	90,600	43.5	41.7 - 45.2	208,400
Student/Homemaker	11,900	15.4	12.8 - 17.9	65,500	84.6	82.1 - 87.2	77,400

Pneumonia - ever had shot by State, County, Island, Community, BRFSS Age Group, DOH Race-Ethnicity, Gender, Education Level, Employment Status (Grouped), Household Income, Poverty Level, Marital Status (Grouped), Married, Health Care Coverage, for the Year(s) - 2001-2003, 2002-2004, 2003-2005, 2004-2006, 2005-2007, 2006-2008, 2007-2009, 2008-2010

Note: Weighted numbers (#) represent 3-yr averages, percentages and 95% confidence intervals; Respondents aged 18 years and older; n/r (Not Reportable) - If the unweighted total responses for a dimension (row) is <50 that row will not be shown; n/a (Not Available) - Not asked of a subset of respondents

Year: 2006-2008

Household Income	Yes			No			Estimated Population (3-Yr Avg)
	#	%	C.I. (95%)	#	%	C.I. (95%)	#
Less than \$10,000	6,100	26.1	21.2 - 31.0	17,300	73.9	69.0 - 78.8	23,400
\$10,000 to \$14,999	7,300	31.1	26.0 - 36.2	16,100	68.9	63.8 - 74.0	23,400
\$15,000 to \$19,999	13,300	33.5	29.4 - 37.5	26,300	66.5	62.5 - 70.6	39,600
\$20,000 to \$24,999	15,600	28.7	25.2 - 32.2	38,800	71.3	67.8 - 74.8	54,400
\$25,000 to \$34,999	28,000	29.3	26.5 - 32.0	67,700	70.7	68.0 - 73.5	95,800
\$35,000 to \$49,999	37,700	28.5	26.2 - 30.8	94,400	71.5	69.2 - 73.8	132,100
\$50,000 to \$74,999	33,000	21.8	19.9 - 23.7	118,300	78.2	76.3 - 80.1	151,300
\$75,000 or more	50,400	20.2	18.8 - 21.7	198,400	79.8	78.3 - 81.2	248,700

Pneumonia - ever had shot by State, County, Island, Community, BRFSS Age Group, DOH Race-Ethnicity, Gender, Education Level, Employment Status (Grouped), Household Income, Poverty Level, Marital Status (Grouped), Married, Health Care Coverage, for the Year(s) - 2001-2003, 2002-2004, 2003-2005, 2004-2006, 2005-2007, 2006-2008, 2007-2009, 2008-2010

Note: Weighted numbers (#) represent 3-yr averages, percentages and 95% confidence intervals; Respondents aged 18 years and older; n/r (Not Reportable) - If the unweighted total responses for a dimension (row) is <50 that row will not be shown; n/a (Not Available) - Not asked of a subset of respondents

Year: 2006-2008

Poverty Level	Yes			No			Estimated Population (3-Yr Avg)
	#	%	C.I. (95%)	#	%	C.I. (95%)	#
0-130%	41,700	25.0	22.8 - 27.2	125,200	75.0	72.8 - 77.2	166,900
131-185%	21,900	21.5	19.0 - 23.9	80,200	78.5	76.1 - 81.0	102,200
186+%	127,600	25.6	24.5 - 26.6	371,800	74.4	73.4 - 75.5	499,400

Marital Status (Grouped)	Yes			No			Estimated Population (3-Yr Avg)
	#	%	C.I. (95%)	#	%	C.I. (95%)	#
Married	128,600	24.7	23.7 - 25.7	391,900	75.3	74.3 - 76.3	520,600
Unmarried Couple	4,200	17.4	11.4 - 23.5	19,900	82.6	76.5 - 88.6	24,200
Widowed	32,700	61.6	58.5 - 64.7	20,400	38.4	35.3 - 41.5	53,100
Other	56,000	20.3	18.7 - 22.0	219,400	79.7	78.0 - 81.3	275,300

Pneumonia - ever had shot by State, County, Island, Community, BRFSS Age Group, DOH Race-Ethnicity, Gender, Education Level, Employment Status (Grouped), Household Income, Poverty Level, Marital Status (Grouped), Married, Health Care Coverage, for the Year(s) - 2001-2003, 2002-2004, 2003-2005, 2004-2006, 2005-2007, 2006-2008, 2007-2009, 2008-2010

Note: Weighted numbers (#) represent 3-yr averages, percentages and 95% confidence intervals; Respondents aged 18 years and older; n/r (Not Reportable) - If the unweighted total responses for a dimension (row) is <50 that row will not be shown; n/a (Not Available) - Not asked of a subset of respondents

Year: 2006-2008

Married	Yes			No			Estimated Population (3-Yr Avg)
	#	%	C.I. (95%)	#	%	C.I. (95%)	#
Yes	129,800	24.5	23.5 - 25.5	400,400	75.5	74.5 - 76.5	530,200
No	91,400	26.8	25.3 - 28.3	249,900	73.2	71.7 - 74.7	341,300

Health Care Coverage	Yes			No			Estimated Population (3-Yr Avg)
	#	%	C.I. (95%)	#	%	C.I. (95%)	#
Yes	212,600	26.2	25.3 - 27.1	599,300	73.8	72.9 - 74.7	811,800
No	8,700	14.5	11.1 - 17.9	51,300	85.5	82.1 - 88.9	60,000

Pneumonia - ever had shot by State, County, Island, Community, BRFSS Age Group, DOH Race-Ethnicity, Gender, Education Level, Employment Status (Grouped), Household Income, Poverty Level, Marital Status (Grouped), Married, Health Care Coverage, for the Year(s) - 2001-2003, 2002-2004, 2003-2005, 2004-2006, 2005-2007, 2006-2008, 2007-2009, 2008-2010

Note: Weighted numbers (#) represent 3-yr averages, percentages and 95% confidence intervals; Respondents aged 18 years and older; n/r (Not Reportable) - If the unweighted total responses for a dimension (row) is <50 that row will not be shown; n/a (Not Available) - Not asked of a subset of respondents

Year: 2005-2007

State	Yes			No			Estimated Population (3-Yr Avg)
	#	%	C.I. (95%)	#	%	C.I. (95%)	#
Hawaii State	216,700	24.7	23.8 - 25.5	661,800	75.3	74.5 - 76.2	878,500

County	Yes			No			Estimated Population (3-Yr Avg)
	#	%	C.I. (95%)	#	%	C.I. (95%)	#
Hawaii	27,900	25.0	23.4 - 26.6	83,700	75.0	73.4 - 76.6	111,600
Honolulu	157,600	25.1	24.0 - 26.2	470,100	74.9	73.8 - 76.0	627,800
Kauai	10,400	24.2	21.8 - 26.6	32,500	75.8	73.4 - 78.2	42,900
Maui	20,700	21.5	19.8 - 23.3	75,500	78.5	76.7 - 80.2	96,300

Pneumonia - ever had shot by State, County, Island, Community, BRFSS Age Group, DOH Race-Ethnicity, Gender, Education Level, Employment Status (Grouped), Household Income, Poverty Level, Marital Status (Grouped), Married, Health Care Coverage, for the Year(s) - 2001-2003, 2002-2004, 2003-2005, 2004-2006, 2005-2007, 2006-2008, 2007-2009, 2008-2010

Note: Weighted numbers (#) represent 3-yr averages, percentages and 95% confidence intervals; Respondents aged 18 years and older; n/r (Not Reportable) - If the unweighted total responses for a dimension (row) is <50 that row will not be shown; n/a (Not Available) - Not asked of a subset of respondents

Year: 2005-2007

Island	Yes			No			Estimated Population (3-Yr Avg)
	#	%	C.I. (95%)	#	%	C.I. (95%)	#
Hawaii	27,900	25.0	23.4 - 26.6	83,700	75.0	73.4 - 76.6	111,600
Kauai	10,400	24.2	21.8 - 26.6	32,500	75.8	73.4 - 78.2	42,900
Lanai	400	20.6	16.5 - 24.8	1,600	79.4	75.2 - 83.5	2,000
Maui	18,800	21.3	19.4 - 23.2	69,300	78.7	76.8 - 80.6	88,100
Molokai	1,600	25.1	20.8 - 29.4	4,600	74.9	70.6 - 79.2	6,200
Oahu	157,600	25.1	24.0 - 26.2	470,100	74.9	73.8 - 76.0	627,800

Community	Yes			No			Estimated Population (3-Yr Avg)
	#	%	C.I. (95%)	#	%	C.I. (95%)	#
Aiea/ Pearl City	16,000	25.9	22.3 - 29.5	45,900	74.1	70.5 - 77.7	61,900
Ala Moana	9,600	33.8	28.9 - 38.7	18,800	66.2	61.3 - 71.1	28,500

Pneumonia - ever had shot by State, County, Island, Community, BRFSS Age Group, DOH Race-Ethnicity, Gender, Education Level, Employment Status (Grouped), Household Income, Poverty Level, Marital Status (Grouped), Married, Health Care Coverage, for the Year(s) - 2001-2003, 2002-2004, 2003-2005, 2004-2006, 2005-2007, 2006-2008, 2007-2009, 2008-2010

Note: Weighted numbers (#) represent 3-yr averages, percentages and 95% confidence intervals; Respondents aged 18 years and older; n/r (Not Reportable) - If the unweighted total responses for a dimension (row) is <50 that row will not be shown; n/a (Not Available) - Not asked of a subset of respondents

Year: 2005-2007

Community	Yes			No			Estimated Population (3-Yr Avg)
	#	%	C.I. (95%)	#	%	C.I. (95%)	#
Hanalei/ Kapaa	4,500	24.5	20.9 - 28.2	13,800	75.5	71.8 - 79.1	18,200
Hilo	9,700	29.6	26.5 - 32.6	23,000	70.4	67.4 - 73.5	32,700
Kaaawa/ Kahaluu/ Kaneohe	11,300	24.9	21.0 - 28.8	34,100	75.1	71.2 - 79.0	45,400
Kahului	6,400	21.5	18.4 - 24.5	23,400	78.5	75.5 - 81.6	29,800
Kailua/ Waimanalo	12,000	26.7	22.9 - 30.6	32,900	73.3	69.4 - 77.1	44,900
Kaimuki/ Palolo/ Waikiki	16,300	29.3	25.7 - 32.9	39,300	70.7	67.1 - 74.3	55,700
Kona	6,400	24.4	21.2 - 27.6	19,900	75.6	72.4 - 78.8	26,400
Lahaina/ Wailuku	6,400	22.4	18.6 - 26.1	22,200	77.6	73.9 - 81.4	28,600
Lanai	400	20.6	16.5 - 24.8	1,600	79.4	75.2 - 83.5	2,000
Lihue-Waimea	5,900	24.0	20.9 - 27.2	18,700	76.0	72.8 - 79.1	24,600
Manoa/ Upper Makiki	11,700	28.6	24.3 - 32.8	29,300	71.4	67.2 - 75.7	41,000
Mililani/ Wahiawa	14,700	23.7	20.2 - 27.1	47,300	76.3	72.9 - 79.8	62,000

Pneumonia - ever had shot by State, County, Island, Community, BRFSS Age Group, DOH Race-Ethnicity, Gender, Education Level, Employment Status (Grouped), Household Income, Poverty Level, Marital Status (Grouped), Married, Health Care Coverage, for the Year(s) - 2001-2003, 2002-2004, 2003-2005, 2004-2006, 2005-2007, 2006-2008, 2007-2009, 2008-2010

Note: Weighted numbers (#) represent 3-yr averages, percentages and 95% confidence intervals; Respondents aged 18 years and older; n/r (Not Reportable) - If the unweighted total responses for a dimension (row) is <50 that row will not be shown; n/a (Not Available) - Not asked of a subset of respondents

Year: 2005-2007

Community	Yes			No			Estimated Population (3-Yr Avg)
	#	%	C.I. (95%)	#	%	C.I. (95%)	#
Molokai	1,600	25.1	20.8 - 29.4	4,600	74.9	70.6 - 79.2	6,200
Nanakuli/ Waianae	7,900	26.1	19.5 - 32.7	22,400	73.9	67.3 - 80.5	30,300
N.Hawaii	5,500	23.4	20.1 - 26.8	18,000	76.6	73.2 - 79.9	23,500
N.Shore/ Laie	5,200	24.8	18.7 - 30.8	15,700	75.2	69.2 - 81.3	20,800
Nuuanu/ Kalihi/ Moanalua	17,700	27.5	23.4 - 31.6	46,500	72.5	68.4 - 76.6	64,200
Puna/ Kau	6,400	21.8	18.8 - 24.8	22,800	78.2	75.2 - 81.2	29,200
Salt Lake/ Foster Village	4,600	17.2	12.7 - 21.7	22,300	82.8	78.3 - 87.3	26,900
Upcountry/ Hana	6,000	20.1	17.0 - 23.3	23,700	79.9	76.7 - 83.0	29,700
Waialae/ Kahala/ Hawaii Kai	10,600	28.2	23.7 - 32.6	27,000	71.8	67.4 - 76.3	37,600
Waipahu/ Kapolei/ Ewa	20,000	18.4	15.7 - 21.1	88,600	81.6	78.9 - 84.3	108,500

Pneumonia - ever had shot by State, County, Island, Community, BRFSS Age Group, DOH Race-Ethnicity, Gender, Education Level, Employment Status (Grouped), Household Income, Poverty Level, Marital Status (Grouped), Married, Health Care Coverage, for the Year(s) - 2001-2003, 2002-2004, 2003-2005, 2004-2006, 2005-2007, 2006-2008, 2007-2009, 2008-2010

Note: Weighted numbers (#) represent 3-yr averages, percentages and 95% confidence intervals; Respondents aged 18 years and older; n/r (Not Reportable) - If the unweighted total responses for a dimension (row) is <50 that row will not be shown; n/a (Not Available) - Not asked of a subset of respondents

Year: 2005-2007

BRFSS Age Group	Yes			No			Estimated Population (3-Yr Avg)
	#	%	C.I. (95%)	#	%	C.I. (95%)	#
18-24	18,200	18.3	14.8 - 21.8	81,400	81.7	78.2 - 85.2	99,600
25-34	18,400	13.3	11.0 - 15.5	120,200	86.7	84.5 - 89.0	138,600
35-44	15,500	9.7	8.4 - 11.0	144,500	90.3	89.0 - 91.6	160,000
45-54	21,400	12.6	11.3 - 14.0	148,000	87.4	86.0 - 88.7	169,500
55-64	27,800	20.2	18.4 - 21.9	110,000	79.8	78.1 - 81.6	137,800
65-74	50,100	62.9	60.3 - 65.5	29,500	37.1	34.5 - 39.7	79,600
75+	64,200	72.7	70.2 - 75.2	24,100	27.3	24.8 - 29.8	88,300

Pneumonia - ever had shot by State, County, Island, Community, BRFSS Age Group, DOH Race-Ethnicity, Gender, Education Level, Employment Status (Grouped), Household Income, Poverty Level, Marital Status (Grouped), Married, Health Care Coverage, for the Year(s) - 2001-2003, 2002-2004, 2003-2005, 2004-2006, 2005-2007, 2006-2008, 2007-2009, 2008-2010

Note: Weighted numbers (#) represent 3-yr averages, percentages and 95% confidence intervals; Respondents aged 18 years and older; n/r (Not Reportable) - If the unweighted total responses for a dimension (row) is <50 that row will not be shown; n/a (Not Available) - Not asked of a subset of respondents

Year: 2005-2007

DOH Race-Ethnicity	Yes			No			Estimated Population (3-Yr Avg)
	#	%	C.I. (95%)	#	%	C.I. (95%)	#
Caucasian	72,700	25.3	24.0 - 26.7	214,300	74.7	73.3 - 76.0	287,000
Native Hawaiian	22,200	20.4	18.1 - 22.7	86,900	79.6	77.3 - 81.9	109,200
Chinese	13,400	28.4	24.6 - 32.2	33,900	71.6	67.8 - 75.4	47,300
Filipino	28,200	19.3	16.9 - 21.7	118,300	80.7	78.3 - 83.1	146,500
Japanese	61,100	31.9	30.0 - 33.8	130,600	68.1	66.2 - 70.0	191,800
Black	3,700	25.3	17.7 - 33.0	11,000	74.7	67.0 - 82.3	14,700
Native Alaskan/ American Indian	1,500	32.4	21.5 - 43.4	3,200	67.6	56.6 - 78.5	4,700
Other Asian	3,900	18.9	12.8 - 24.9	16,600	81.1	75.1 - 87.2	20,400
Other Pacific Islander	4,000	17.4	10.9 - 23.9	18,800	82.6	76.1 - 89.1	22,700
Mixed Ethnicity	2,000	30.3	18.6 - 41.9	4,600	69.7	58.1 - 81.4	6,500
Other	3,300	14.2	10.0 - 18.4	20,300	85.8	81.6 - 90.0	23,600

Pneumonia - ever had shot by State, County, Island, Community, BRFSS Age Group, DOH Race-Ethnicity, Gender, Education Level, Employment Status (Grouped), Household Income, Poverty Level, Marital Status (Grouped), Married, Health Care Coverage, for the Year(s) - 2001-2003, 2002-2004, 2003-2005, 2004-2006, 2005-2007, 2006-2008, 2007-2009, 2008-2010

Note: Weighted numbers (#) represent 3-yr averages, percentages and 95% confidence intervals; Respondents aged 18 years and older; n/r (Not Reportable) - If the unweighted total responses for a dimension (row) is <50 that row will not be shown; n/a (Not Available) - Not asked of a subset of respondents

Year: 2005-2007

Gender	Yes			No			Estimated Population (3-Yr Avg)
	#	%	C.I. (95%)	#	%	C.I. (95%)	#
Male	102,600	24.0	22.6 - 25.3	325,100	76.0	74.7 - 77.4	427,800
Female	114,100	25.3	24.2 - 26.4	336,700	74.7	73.6 - 75.8	450,800

Education Level	Yes			No			Estimated Population (3-Yr Avg)
	#	%	C.I. (95%)	#	%	C.I. (95%)	#
Never attended school/ Only Kindergarten to Grades 8	6,800	41.0	33.5 - 48.5	9,800	59.0	51.5 - 66.5	16,600
Grades 9 thru 11 (Some High School)	11,100	31.2	26.6 - 35.7	24,400	68.8	64.3 - 73.4	35,400
Grades 12 or GED (High School Grad)	66,900	25.3	23.6 - 27.1	197,200	74.7	72.9 - 76.4	264,100
College 1 to 3 years (Some College/ Tech)	58,600	23.2	21.6 - 24.7	194,400	76.8	75.3 - 78.4	253,000
College 4 years or more (College Grad)	73,200	23.8	22.4 - 25.1	234,800	76.2	74.9 - 77.6	307,900

Pneumonia - ever had shot by State, County, Island, Community, BRFSS Age Group, DOH Race-Ethnicity, Gender, Education Level, Employment Status (Grouped), Household Income, Poverty Level, Marital Status (Grouped), Married, Health Care Coverage, for the Year(s) - 2001-2003, 2002-2004, 2003-2005, 2004-2006, 2005-2007, 2006-2008, 2007-2009, 2008-2010

Note: Weighted numbers (#) represent 3-yr averages, percentages and 95% confidence intervals; Respondents aged 18 years and older; n/r (Not Reportable) - If the unweighted total responses for a dimension (row) is <50 that row will not be shown; n/a (Not Available) - Not asked of a subset of respondents

Year: 2005-2007

Employment Status (Grouped)	Yes			No			Estimated Population (3-Yr Avg)
	#	%	C.I. (95%)	#	%	C.I. (95%)	#
Employed	82,800	14.7	13.7 - 15.7	479,200	85.3	84.3 - 86.3	561,900
Unemployed	4,300	17.2	12.5 - 22.0	20,600	82.8	78.0 - 87.5	24,900
Retired/Unable to work	117,600	55.3	53.5 - 57.1	95,100	44.7	42.9 - 46.5	212,700
Student/Homemaker	11,800	15.2	12.5 - 17.9	65,900	84.8	82.1 - 87.5	77,700

Pneumonia - ever had shot by State, County, Island, Community, BRFSS Age Group, DOH Race-Ethnicity, Gender, Education Level, Employment Status (Grouped), Household Income, Poverty Level, Marital Status (Grouped), Married, Health Care Coverage, for the Year(s) - 2001-2003, 2002-2004, 2003-2005, 2004-2006, 2005-2007, 2006-2008, 2007-2009, 2008-2010

Note: Weighted numbers (#) represent 3-yr averages, percentages and 95% confidence intervals; Respondents aged 18 years and older; n/r (Not Reportable) - If the unweighted total responses for a dimension (row) is <50 that row will not be shown; n/a (Not Available) - Not asked of a subset of respondents

Year: 2005-2007

Household Income	Yes			No			Estimated Population (3-Yr Avg)
	#	%	C.I. (95%)	#	%	C.I. (95%)	#
Less than \$10,000	6,800	27.6	22.6 - 32.5	17,800	72.4	67.5 - 77.4	24,600
\$10,000 to \$14,999	7,900	31.0	26.0 - 36.1	17,500	69.0	63.9 - 74.0	25,400
\$15,000 to \$19,999	14,500	34.1	30.0 - 38.2	28,000	65.9	61.8 - 70.0	42,600
\$20,000 to \$24,999	15,700	27.4	24.1 - 30.8	41,400	72.6	69.2 - 75.9	57,100
\$25,000 to \$34,999	26,800	27.7	25.0 - 30.5	69,800	72.3	69.5 - 75.0	96,600
\$35,000 to \$49,999	37,300	27.6	25.3 - 29.8	98,100	72.4	70.2 - 74.7	135,400
\$50,000 to \$74,999	31,200	20.3	18.4 - 22.2	122,300	79.7	77.8 - 81.6	153,600
\$75,000 or more	43,400	19.2	17.6 - 20.7	182,900	80.8	79.3 - 82.4	226,300

Pneumonia - ever had shot by State, County, Island, Community, BRFS Age Group, DOH Race-Ethnicity, Gender, Education Level, Employment Status (Grouped), Household Income, Poverty Level, Marital Status (Grouped), Married, Health Care Coverage, for the Year(s) - 2001-2003, 2002-2004, 2003-2005, 2004-2006, 2005-2007, 2006-2008, 2007-2009, 2008-2010

Note: Weighted numbers (#) represent 3-yr averages, percentages and 95% confidence intervals; Respondents aged 18 years and older; n/r (Not Reportable) - If the unweighted total responses for a dimension (row) is <50 that row will not be shown; n/a (Not Available) - Not asked of a subset of respondents

Year: 2005-2007

Poverty Level	Yes			No			Estimated Population (3-Yr Avg)
	#	%	C.I. (95%)	#	%	C.I. (95%)	#
0-130%	42,900	25.9	23.7 - 28.2	122,400	74.1	71.8 - 76.3	165,200
131-185%	21,400	22.3	19.5 - 25.1	74,700	77.7	74.9 - 80.5	96,200
186+%	119,200	23.8	22.8 - 24.8	380,900	76.2	75.2 - 77.2	500,100

Marital Status (Grouped)	Yes			No			Estimated Population (3-Yr Avg)
	#	%	C.I. (95%)	#	%	C.I. (95%)	#
Married	127,200	24.1	23.0 - 25.1	401,100	75.9	74.9 - 77.0	528,300
Unmarried Couple	3,600	14.7	9.0 - 20.4	21,000	85.3	79.6 - 91.0	24,700
Widowed	31,900	59.4	56.3 - 62.6	21,800	40.6	37.4 - 43.7	53,700
Other	54,000	19.9	18.2 - 21.5	217,900	80.1	78.5 - 81.8	271,900

Pneumonia - ever had shot by State, County, Island, Community, BRFSS Age Group, DOH Race-Ethnicity, Gender, Education Level, Employment Status (Grouped), Household Income, Poverty Level, Marital Status (Grouped), Married, Health Care Coverage, for the Year(s) - 2001-2003, 2002-2004, 2003-2005, 2004-2006, 2005-2007, 2006-2008, 2007-2009, 2008-2010

Note: Weighted numbers (#) represent 3-yr averages, percentages and 95% confidence intervals; Respondents aged 18 years and older; n/r (Not Reportable) - If the unweighted total responses for a dimension (row) is <50 that row will not be shown; n/a (Not Available) - Not asked of a subset of respondents

Year: 2005-2007

Married	Yes			No			Estimated Population (3-Yr Avg)
	#	%	C.I. (95%)	#	%	C.I. (95%)	#
Yes	128,500	23.9	22.8 - 24.9	409,400	76.1	75.1 - 77.2	537,900
No	87,800	25.9	24.4 - 27.4	251,300	74.1	72.6 - 75.6	339,100

Health Care Coverage	Yes			No			Estimated Population (3-Yr Avg)
	#	%	C.I. (95%)	#	%	C.I. (95%)	#
Yes	207,900	25.6	24.7 - 26.5	605,000	74.4	73.5 - 75.3	812,900
No	8,700	13.4	10.2 - 16.7	55,900	86.6	83.3 - 89.8	64,500

Pneumonia - ever had shot by State, County, Island, Community, BRFSS Age Group, DOH Race-Ethnicity, Gender, Education Level, Employment Status (Grouped), Household Income, Poverty Level, Marital Status (Grouped), Married, Health Care Coverage, for the Year(s) - 2001-2003, 2002-2004, 2003-2005, 2004-2006, 2005-2007, 2006-2008, 2007-2009, 2008-2010

Note: Weighted numbers (#) represent 3-yr averages, percentages and 95% confidence intervals; Respondents aged 18 years and older; n/r (Not Reportable) - If the unweighted total responses for a dimension (row) is <50 that row will not be shown; n/a (Not Available) - Not asked of a subset of respondents

Year: 2004-2006

State	Yes			No			Estimated Population (3-Yr Avg)
	#	%	C.I. (95%)	#	%	C.I. (95%)	#
Hawaii State	207,800	23.9	22.8 - 25.0	661,900	76.1	75.0 - 77.2	869,700

County	Yes			No			Estimated Population (3-Yr Avg)
	#	%	C.I. (95%)	#	%	C.I. (95%)	#
Hawaii	26,600	23.6	21.7 - 25.5	86,200	76.4	74.5 - 78.3	112,700
Honolulu	152,600	24.6	23.1 - 26.1	468,300	75.4	73.9 - 76.9	620,800
Kauai	9,700	23.7	20.9 - 26.5	31,200	76.3	73.5 - 79.1	40,900
Maui	18,900	19.9	17.6 - 22.2	76,200	80.1	77.8 - 82.4	95,200

Pneumonia - ever had shot by State, County, Island, Community, BRFSS Age Group, DOH Race-Ethnicity, Gender, Education Level, Employment Status (Grouped), Household Income, Poverty Level, Marital Status (Grouped), Married, Health Care Coverage, for the Year(s) - 2001-2003, 2002-2004, 2003-2005, 2004-2006, 2005-2007, 2006-2008, 2007-2009, 2008-2010

Note: Weighted numbers (#) represent 3-yr averages, percentages and 95% confidence intervals; Respondents aged 18 years and older; n/r (Not Reportable) - If the unweighted total responses for a dimension (row) is <50 that row will not be shown; n/a (Not Available) - Not asked of a subset of respondents

Year: 2004-2006

Island	Yes			No			Estimated Population (3-Yr Avg)
	#	%	C.I. (95%)	#	%	C.I. (95%)	#
Hawaii	26,600	23.6	21.7 - 25.5	86,200	76.4	74.5 - 78.3	112,700
Kauai	9,700	23.7	20.9 - 26.5	31,200	76.3	73.5 - 79.1	40,900
Lanai	300	18.3	13.9 - 22.6	1,500	81.7	77.4 - 86.1	1,900
Maui	17,100	19.5	17.0 - 21.9	70,700	80.5	78.1 - 83.0	87,800
Molokai	1,500	26.6	20.3 - 33.0	4,000	73.4	67.0 - 79.7	5,500
Oahu	152,600	24.6	23.1 - 26.1	468,300	75.4	73.9 - 76.9	620,800

Community	Yes			No			Estimated Population (3-Yr Avg)
	#	%	C.I. (95%)	#	%	C.I. (95%)	#
Aiea/ Pearl City	14,800	24.2	19.8 - 28.5	46,200	75.8	71.5 - 80.2	61,000
Ala Moana	7,800	26.3	20.8 - 31.7	21,800	73.7	68.3 - 79.2	29,600

Pneumonia - ever had shot by State, County, Island, Community, BRFSS Age Group, DOH Race-Ethnicity, Gender, Education Level, Employment Status (Grouped), Household Income, Poverty Level, Marital Status (Grouped), Married, Health Care Coverage, for the Year(s) - 2001-2003, 2002-2004, 2003-2005, 2004-2006, 2005-2007, 2006-2008, 2007-2009, 2008-2010

Note: Weighted numbers (#) represent 3-yr averages, percentages and 95% confidence intervals; Respondents aged 18 years and older; n/r (Not Reportable) - If the unweighted total responses for a dimension (row) is <50 that row will not be shown; n/a (Not Available) - Not asked of a subset of respondents

Year: 2004-2006

Community	Yes			No			Estimated Population (3-Yr Avg)
	#	%	C.I. (95%)	#	%	C.I. (95%)	#
Hanalei/ Kapaa	3,400	20.2	16.4 - 23.9	13,500	79.8	76.1 - 83.6	16,900
Hilo	8,400	26.1	22.6 - 29.5	23,800	73.9	70.5 - 77.4	32,200
Kaaawa/ Kahaluu/ Kaneohe	12,300	27.9	22.2 - 33.6	31,900	72.1	66.4 - 77.8	44,300
Kahului	6,300	20.8	16.8 - 24.8	24,100	79.2	75.2 - 83.2	30,400
Kailua/ Waimanalo	9,600	22.4	18.0 - 26.7	33,500	77.6	73.3 - 82.0	43,100
Kaimuki/ Palolo/ Waikiki	17,200	29.7	24.9 - 34.4	40,800	70.3	65.6 - 75.1	58,100
Kona	6,500	24.8	20.8 - 28.8	19,800	75.2	71.2 - 79.2	26,300
Lahaina/ Wailuku	4,900	17.6	14.1 - 21.0	23,100	82.4	79.0 - 85.9	28,000
Lanai	300	18.3	13.9 - 22.6	1,500	81.7	77.4 - 86.1	1,900
Lihue-Waimea	6,300	26.2	22.3 - 30.1	17,700	73.8	69.9 - 77.7	24,000
Manoa/ Upper Makiki	10,900	25.3	20.2 - 30.3	32,300	74.7	69.7 - 79.8	43,300
Mililani/ Wahiawa	15,400	26.0	19.8 - 32.1	44,000	74.0	67.9 - 80.2	59,400

Pneumonia - ever had shot by State, County, Island, Community, BRFSS Age Group, DOH Race-Ethnicity, Gender, Education Level, Employment Status (Grouped), Household Income, Poverty Level, Marital Status (Grouped), Married, Health Care Coverage, for the Year(s) - 2001-2003, 2002-2004, 2003-2005, 2004-2006, 2005-2007, 2006-2008, 2007-2009, 2008-2010

Note: Weighted numbers (#) represent 3-yr averages, percentages and 95% confidence intervals; Respondents aged 18 years and older; n/r (Not Reportable) - If the unweighted total responses for a dimension (row) is <50 that row will not be shown; n/a (Not Available) - Not asked of a subset of respondents

Year: 2004-2006

Community	Yes			No			Estimated Population (3-Yr Avg)
	#	%	C.I. (95%)	#	%	C.I. (95%)	#
Molokai	1,500	26.6	20.3 - 33.0	4,000	73.4	67.0 - 79.7	5,500
Nanakuli/ Waianae	9,500	32.7	23.6 - 41.7	19,600	67.3	58.3 - 76.4	29,100
N.Hawaii	4,900	22.7	18.7 - 26.8	16,800	77.3	73.2 - 81.3	21,700
N.Shore/ Laie	4,400	21.6	14.3 - 28.8	15,800	78.4	71.2 - 85.7	20,200
Nuuanu/ Kalihi/ Moanalua	15,700	24.9	20.3 - 29.6	47,100	75.1	70.4 - 79.7	62,800
Puna/ Kau	6,700	20.7	16.9 - 24.6	25,800	79.3	75.4 - 83.1	32,500
Salt Lake/ Foster Village	5,300	18.3	12.3 - 24.4	23,700	81.7	75.6 - 87.7	29,000
Upcountry/ Hana	5,900	20.0	15.0 - 25.0	23,500	80.0	75.0 - 85.0	29,400
Waialae/ Kahala/ Hawaii Kai	9,700	26.0	20.5 - 31.6	27,500	74.0	68.4 - 79.5	37,200
Waipahu/ Kapolei/ Ewa	19,900	19.2	15.6 - 22.9	83,800	80.8	77.1 - 84.4	103,800

Pneumonia - ever had shot by State, County, Island, Community, BRFSS Age Group, DOH Race-Ethnicity, Gender, Education Level, Employment Status (Grouped), Household Income, Poverty Level, Marital Status (Grouped), Married, Health Care Coverage, for the Year(s) - 2001-2003, 2002-2004, 2003-2005, 2004-2006, 2005-2007, 2006-2008, 2007-2009, 2008-2010

Note: Weighted numbers (#) represent 3-yr averages, percentages and 95% confidence intervals; Respondents aged 18 years and older; n/r (Not Reportable) - If the unweighted total responses for a dimension (row) is <50 that row will not be shown; n/a (Not Available) - Not asked of a subset of respondents

Year: 2004-2006

BRFSS Age Group	Yes			No			Estimated Population (3-Yr Avg)
	#	%	C.I. (95%)	#	%	C.I. (95%)	#
18-24	17,000	17.9	13.2 - 22.6	78,300	82.1	77.4 - 86.8	95,400
25-34	19,500	13.6	10.8 - 16.3	124,100	86.4	83.7 - 89.2	143,600
35-44	16,300	10.0	7.9 - 12.0	147,300	90.0	88.0 - 92.1	163,600
45-54	19,600	11.7	10.0 - 13.4	147,500	88.3	86.6 - 90.0	167,200
55-64	26,200	20.1	17.8 - 22.4	104,200	79.9	77.6 - 82.2	130,400
65-74	48,200	60.3	56.5 - 64.0	31,800	39.7	36.0 - 43.5	80,100
75+	59,500	72.1	68.7 - 75.5	23,000	27.9	24.5 - 31.3	82,500

Pneumonia - ever had shot by State, County, Island, Community, BRFSS Age Group, DOH Race-Ethnicity, Gender, Education Level, Employment Status (Grouped), Household Income, Poverty Level, Marital Status (Grouped), Married, Health Care Coverage, for the Year(s) - 2001-2003, 2002-2004, 2003-2005, 2004-2006, 2005-2007, 2006-2008, 2007-2009, 2008-2010

Note: Weighted numbers (#) represent 3-yr averages, percentages and 95% confidence intervals; Respondents aged 18 years and older; n/r (Not Reportable) - If the unweighted total responses for a dimension (row) is <50 that row will not be shown; n/a (Not Available) - Not asked of a subset of respondents

Year: 2004-2006

DOH Race-Ethnicity	Yes			No			Estimated Population (3-Yr Avg)
	#	%	C.I. (95%)	#	%	C.I. (95%)	#
Caucasian	69,800	24.4	22.7 - 26.1	216,400	75.6	73.9 - 77.3	286,200
Native Hawaiian	24,200	22.3	19.0 - 25.7	84,300	77.7	74.3 - 81.0	108,500
Chinese	11,600	25.5	20.9 - 30.1	33,900	74.5	69.9 - 79.1	45,500
Filipino	24,800	17.8	14.9 - 20.7	114,500	82.2	79.3 - 85.1	139,300
Japanese	55,400	29.6	27.2 - 31.9	132,000	70.4	68.1 - 72.8	187,400
Black	3,000	24.3	15.4 - 33.1	9,400	75.7	66.9 - 84.6	12,400
Native Alaskan/ American Indian	1,000	20.5	10.2 - 30.8	4,000	79.5	69.2 - 89.8	5,000
Other Asian	4,400	21.2	13.4 - 29.0	16,200	78.8	71.0 - 86.6	20,500
Other Pacific Islander	5,400	22.4	9.3 - 35.5	18,700	77.6	64.5 - 90.7	24,100
Mixed Ethnicity	2,000	30.3	18.6 - 41.9	4,600	69.7	58.1 - 81.4	6,500
Other	4,200	18.1	11.7 - 24.5	19,000	81.9	75.5 - 88.3	23,200

Pneumonia - ever had shot by State, County, Island, Community, BRFSS Age Group, DOH Race-Ethnicity, Gender, Education Level, Employment Status (Grouped), Household Income, Poverty Level, Marital Status (Grouped), Married, Health Care Coverage, for the Year(s) - 2001-2003, 2002-2004, 2003-2005, 2004-2006, 2005-2007, 2006-2008, 2007-2009, 2008-2010

Note: Weighted numbers (#) represent 3-yr averages, percentages and 95% confidence intervals; Respondents aged 18 years and older; n/r (Not Reportable) - If the unweighted total responses for a dimension (row) is <50 that row will not be shown; n/a (Not Available) - Not asked of a subset of respondents

Year: 2004-2006

Gender	Yes			No			Estimated Population (3-Yr Avg)
	#	%	C.I. (95%)	#	%	C.I. (95%)	#
Male	97,500	23.1	21.4 - 24.9	323,800	76.9	75.1 - 78.6	421,300
Female	110,300	24.6	23.2 - 26.0	338,100	75.4	74.0 - 76.8	448,400

Education Level	Yes			No			Estimated Population (3-Yr Avg)
	#	%	C.I. (95%)	#	%	C.I. (95%)	#
Never attended school/ Only Kindergarten to Grades 8	6,700	44.7	36.1 - 53.4	8,300	55.3	46.6 - 63.9	15,000
Grades 9 thru 11 (Some High School)	11,900	34.4	28.1 - 40.6	22,700	65.6	59.4 - 71.9	34,600
Grades 12 or GED (High School Grad)	66,400	25.3	23.1 - 27.6	195,900	74.7	72.4 - 76.9	262,300
College 1 to 3 years (Some College/ Tech)	55,700	21.7	19.5 - 23.8	201,300	78.3	76.2 - 80.5	257,000
College 4 years or more (College Grad)	66,900	22.3	20.7 - 24.0	232,600	77.7	76.0 - 79.3	299,500

Pneumonia - ever had shot by State, County, Island, Community, BRFSS Age Group, DOH Race-Ethnicity, Gender, Education Level, Employment Status (Grouped), Household Income, Poverty Level, Marital Status (Grouped), Married, Health Care Coverage, for the Year(s) - 2001-2003, 2002-2004, 2003-2005, 2004-2006, 2005-2007, 2006-2008, 2007-2009, 2008-2010

Note: Weighted numbers (#) represent 3-yr averages, percentages and 95% confidence intervals; Respondents aged 18 years and older; n/r (Not Reportable) - If the unweighted total responses for a dimension (row) is <50 that row will not be shown; n/a (Not Available) - Not asked of a subset of respondents

Year: 2004-2006

Employment Status (Grouped)	Yes			No			Estimated Population (3-Yr Avg)
	#	%	C.I. (95%)	#	%	C.I. (95%)	#
Employed	79,100	14.2	12.9 - 15.5	477,100	85.8	84.5 - 87.1	556,200
Unemployed	4,400	18.0	11.4 - 24.6	19,900	82.0	75.4 - 88.6	24,300
Retired/Unable to work	110,900	54.2	51.8 - 56.6	93,800	45.8	43.4 - 48.2	204,700
Student/Homemaker	13,200	16.0	12.5 - 19.5	69,600	84.0	80.5 - 87.5	82,800

Pneumonia - ever had shot by State, County, Island, Community, BRFSS Age Group, DOH Race-Ethnicity, Gender, Education Level, Employment Status (Grouped), Household Income, Poverty Level, Marital Status (Grouped), Married, Health Care Coverage, for the Year(s) - 2001-2003, 2002-2004, 2003-2005, 2004-2006, 2005-2007, 2006-2008, 2007-2009, 2008-2010

Note: Weighted numbers (#) represent 3-yr averages, percentages and 95% confidence intervals; Respondents aged 18 years and older; n/r (Not Reportable) - If the unweighted total responses for a dimension (row) is <50 that row will not be shown; n/a (Not Available) - Not asked of a subset of respondents

Year: 2004-2006

Household Income	Yes			No			Estimated Population (3-Yr Avg)
	#	%	C.I. (95%)	#	%	C.I. (95%)	#
Less than \$10,000	6,200	28.9	22.7 - 35.1	15,400	71.1	64.9 - 77.3	21,600
\$10,000 to \$14,999	7,300	29.2	23.5 - 34.9	17,600	70.8	65.1 - 76.5	24,900
\$15,000 to \$19,999	17,200	39.4	33.5 - 45.4	26,500	60.6	54.6 - 66.5	43,700
\$20,000 to \$24,999	14,800	24.4	20.5 - 28.3	45,900	75.6	71.7 - 79.5	60,800
\$25,000 to \$34,999	24,000	24.7	21.4 - 27.9	73,400	75.3	72.1 - 78.6	97,400
\$35,000 to \$49,999	32,100	24.3	21.4 - 27.1	99,900	75.7	72.9 - 78.6	132,000
\$50,000 to \$74,999	42,100	22.2	19.4 - 25.0	147,300	77.8	75.0 - 80.6	189,400
\$75,000 or more	39,500	18.9	16.8 - 21.0	169,700	81.1	79.0 - 83.2	209,200

Pneumonia - ever had shot by State, County, Island, Community, BRFSS Age Group, DOH Race-Ethnicity, Gender, Education Level, Employment Status (Grouped), Household Income, Poverty Level, Marital Status (Grouped), Married, Health Care Coverage, for the Year(s) - 2001-2003, 2002-2004, 2003-2005, 2004-2006, 2005-2007, 2006-2008, 2007-2009, 2008-2010

Note: Weighted numbers (#) represent 3-yr averages, percentages and 95% confidence intervals; Respondents aged 18 years and older; n/r (Not Reportable) - If the unweighted total responses for a dimension (row) is <50 that row will not be shown; n/a (Not Available) - Not asked of a subset of respondents

Year: 2004-2006

Poverty Level	Yes			No			Estimated Population (3-Yr Avg)
	#	%	C.I. (95%)	#	%	C.I. (95%)	#
0-130%	40,200	26.0	23.1 - 29.0	114,000	74.0	71.0 - 76.9	154,200
131-185%	22,700	22.8	18.5 - 27.2	76,700	77.2	72.8 - 81.5	99,500
186+%	120,400	22.9	21.6 - 24.3	405,000	77.1	75.7 - 78.4	525,400

Marital Status (Grouped)	Yes			No			Estimated Population (3-Yr Avg)
	#	%	C.I. (95%)	#	%	C.I. (95%)	#
Married	120,000	23.1	21.8 - 24.5	398,600	76.9	75.5 - 78.2	518,600
Unmarried Couple	3,800	16.1	9.8 - 22.5	19,800	83.9	77.5 - 90.2	23,700
Widowed	32,100	59.2	54.8 - 63.6	22,100	40.8	36.4 - 45.2	54,300
Other	51,800	19.0	16.9 - 21.1	221,300	81.0	78.9 - 83.1	273,100

Pneumonia - ever had shot by State, County, Island, Community, BRFSS Age Group, DOH Race-Ethnicity, Gender, Education Level, Employment Status (Grouped), Household Income, Poverty Level, Marital Status (Grouped), Married, Health Care Coverage, for the Year(s) - 2001-2003, 2002-2004, 2003-2005, 2004-2006, 2005-2007, 2006-2008, 2007-2009, 2008-2010

Note: Weighted numbers (#) represent 3-yr averages, percentages and 95% confidence intervals; Respondents aged 18 years and older; n/r (Not Reportable) - If the unweighted total responses for a dimension (row) is <50 that row will not be shown; n/a (Not Available) - Not asked of a subset of respondents

Year: 2004-2006

Married	Yes			No			Estimated Population (3-Yr Avg)
	#	%	C.I. (95%)	#	%	C.I. (95%)	#
Yes	121,100	22.9	21.6 - 24.3	406,900	77.1	75.7 - 78.4	528,000
No	86,300	25.4	23.5 - 27.4	253,200	74.6	72.6 - 76.5	339,400

Health Care Coverage	Yes			No			Estimated Population (3-Yr Avg)
	#	%	C.I. (95%)	#	%	C.I. (95%)	#
Yes	198,400	24.9	23.7 - 26.1	597,400	75.1	73.9 - 76.3	795,800
No	9,100	12.7	9.3 - 16.1	62,400	87.3	83.9 - 90.7	71,500

Pneumonia - ever had shot by State, County, Island, Community, BRFSS Age Group, DOH Race-Ethnicity, Gender, Education Level, Employment Status (Grouped), Household Income, Poverty Level, Marital Status (Grouped), Married, Health Care Coverage, for the Year(s) - 2001-2003, 2002-2004, 2003-2005, 2004-2006, 2005-2007, 2006-2008, 2007-2009, 2008-2010

Note: Weighted numbers (#) represent 3-yr averages, percentages and 95% confidence intervals; Respondents aged 18 years and older; n/r (Not Reportable) - If the unweighted total responses for a dimension (row) is <50 that row will not be shown; n/a (Not Available) - Not asked of a subset of respondents

Year: 2003-2005

State	Yes			No			Estimated Population (3-Yr Avg)
	#	%	C.I. (95%)	#	%	C.I. (95%)	#
Hawaii State	196,800	22.2	21.1 - 23.4	688,200	77.8	76.6 - 78.9	885,000

County	Yes			No			Estimated Population (3-Yr Avg)
	#	%	C.I. (95%)	#	%	C.I. (95%)	#
Hawaii	25,300	22.0	20.0 - 24.0	89,700	78.0	76.0 - 80.0	115,000
Honolulu	144,800	22.8	21.4 - 24.3	489,200	77.2	75.7 - 78.6	634,000
Kauai	8,800	21.8	18.9 - 24.6	31,700	78.2	75.4 - 81.1	40,600
Maui	17,900	18.7	16.3 - 21.1	77,600	81.3	78.9 - 83.7	95,400

Pneumonia - ever had shot by State, County, Island, Community, BRFSS Age Group, DOH Race-Ethnicity, Gender, Education Level, Employment Status (Grouped), Household Income, Poverty Level, Marital Status (Grouped), Married, Health Care Coverage, for the Year(s) - 2001-2003, 2002-2004, 2003-2005, 2004-2006, 2005-2007, 2006-2008, 2007-2009, 2008-2010

Note: Weighted numbers (#) represent 3-yr averages, percentages and 95% confidence intervals; Respondents aged 18 years and older; n/r (Not Reportable) - If the unweighted total responses for a dimension (row) is <50 that row will not be shown; n/a (Not Available) - Not asked of a subset of respondents

Year: 2003-2005

Island	Yes			No			Estimated Population (3-Yr Avg)
	#	%	C.I. (95%)	#	%	C.I. (95%)	#
Hawaii	25,300	22.0	20.0 - 24.0	89,700	78.0	76.0 - 80.0	115,000
Kauai	8,800	21.8	18.9 - 24.6	31,700	78.2	75.4 - 81.1	40,600
Lanai	400	18.8	12.3 - 25.2	1,600	81.2	74.8 - 87.7	2,000
Maui	16,100	18.4	15.8 - 20.9	71,700	81.6	79.1 - 84.2	87,900
Molokai	1,300	24.2	17.2 - 31.3	4,200	75.8	68.7 - 82.8	5,500
Oahu	144,800	22.8	21.4 - 24.3	489,200	77.2	75.7 - 78.6	634,000

Community	Yes			No			Estimated Population (3-Yr Avg)
	#	%	C.I. (95%)	#	%	C.I. (95%)	#
Aiea/ Pearl City	14,400	24.4	19.7 - 29.1	44,700	75.6	70.9 - 80.3	59,100
Ala Moana	6,200	20.5	15.6 - 25.4	24,000	79.5	74.6 - 84.4	30,100

Pneumonia - ever had shot by State, County, Island, Community, BRFSS Age Group, DOH Race-Ethnicity, Gender, Education Level, Employment Status (Grouped), Household Income, Poverty Level, Marital Status (Grouped), Married, Health Care Coverage, for the Year(s) - 2001-2003, 2002-2004, 2003-2005, 2004-2006, 2005-2007, 2006-2008, 2007-2009, 2008-2010

Note: Weighted numbers (#) represent 3-yr averages, percentages and 95% confidence intervals; Respondents aged 18 years and older; n/r (Not Reportable) - If the unweighted total responses for a dimension (row) is <50 that row will not be shown; n/a (Not Available) - Not asked of a subset of respondents

Year: 2003-2005

Community	Yes			No			Estimated Population (3-Yr Avg)
	#	%	C.I. (95%)	#	%	C.I. (95%)	#
Hanalei/ Kapaa	3,000	17.8	14.0 - 21.6	13,700	82.2	78.4 - 86.0	16,700
Hilo	7,700	23.2	19.7 - 26.6	25,700	76.8	73.4 - 80.3	33,500
Kaaawa/ Kahaluu/ Kaneohe	11,100	24.5	18.9 - 30.1	34,200	75.5	69.9 - 81.1	45,200
Kahului	6,300	19.8	15.6 - 23.9	25,400	80.2	76.1 - 84.4	31,700
Kailua/ Waimanalo	8,700	19.3	15.1 - 23.5	36,200	80.7	76.5 - 84.9	44,900
Kaimuki/ Palolo/ Waikiki	15,600	25.3	20.9 - 29.8	46,000	74.7	70.2 - 79.1	61,600
Kona	5,900	21.6	17.8 - 25.4	21,400	78.4	74.6 - 82.2	27,300
Lahaina/ Wailuku	4,600	16.7	13.1 - 20.4	22,800	83.3	79.6 - 86.9	27,400
Lanai	400	18.8	12.3 - 25.2	1,600	81.2	74.8 - 87.7	2,000
Lihue-Waimea	5,900	24.6	20.5 - 28.6	18,000	75.4	71.4 - 79.5	23,900
Manoa/ Upper Makiki	10,600	22.8	17.8 - 27.8	36,000	77.2	72.2 - 82.2	46,600
Mililani/ Wahiawa	15,500	24.7	18.8 - 30.7	47,200	75.3	69.3 - 81.2	62,700

Pneumonia - ever had shot by State, County, Island, Community, BRFSS Age Group, DOH Race-Ethnicity, Gender, Education Level, Employment Status (Grouped), Household Income, Poverty Level, Marital Status (Grouped), Married, Health Care Coverage, for the Year(s) - 2001-2003, 2002-2004, 2003-2005, 2004-2006, 2005-2007, 2006-2008, 2007-2009, 2008-2010

Note: Weighted numbers (#) represent 3-yr averages, percentages and 95% confidence intervals; Respondents aged 18 years and older; n/r (Not Reportable) - If the unweighted total responses for a dimension (row) is <50 that row will not be shown; n/a (Not Available) - Not asked of a subset of respondents

Year: 2003-2005

Community	Yes			No			Estimated Population (3-Yr Avg)
	#	%	C.I. (95%)	#	%	C.I. (95%)	#
Molokai	1,300	24.2	17.2 - 31.3	4,200	75.8	68.7 - 82.8	5,500
Nanakuli/ Waianae	10,200	33.7	24.7 - 42.8	20,000	66.3	57.2 - 75.3	30,200
N.Hawaii	5,300	23.9	19.2 - 28.6	16,800	76.1	71.4 - 80.8	22,100
N.Shore/ Laie	4,200	19.9	12.8 - 27.0	16,800	80.1	73.0 - 87.2	20,900
Nuuanu/ Kalihi/ Moanalua	15,900	24.8	20.1 - 29.5	48,100	75.2	70.5 - 79.9	63,900
Puna/ Kau	6,400	19.8	15.9 - 23.7	25,800	80.2	76.3 - 84.1	32,200
Salt Lake/ Foster Village	4,600	13.5	8.4 - 18.6	29,200	86.5	81.4 - 91.6	33,800
Upcountry/ Hana	5,300	18.4	13.1 - 23.6	23,500	81.6	76.4 - 86.9	28,800
Waialae/ Kahala/ Hawaii Kai	9,700	26.5	20.5 - 32.5	26,900	73.5	67.5 - 79.5	36,600
Waipahu/ Kapolei/ Ewa	18,300	18.6	14.9 - 22.3	80,000	81.4	77.7 - 85.1	98,300

Pneumonia - ever had shot by State, County, Island, Community, BRFSS Age Group, DOH Race-Ethnicity, Gender, Education Level, Employment Status (Grouped), Household Income, Poverty Level, Marital Status (Grouped), Married, Health Care Coverage, for the Year(s) - 2001-2003, 2002-2004, 2003-2005, 2004-2006, 2005-2007, 2006-2008, 2007-2009, 2008-2010

Note: Weighted numbers (#) represent 3-yr averages, percentages and 95% confidence intervals; Respondents aged 18 years and older; n/r (Not Reportable) - If the unweighted total responses for a dimension (row) is <50 that row will not be shown; n/a (Not Available) - Not asked of a subset of respondents

Year: 2003-2005

BRFSS Age Group	Yes			No			Estimated Population (3-Yr Avg)
	#	%	C.I. (95%)	#	%	C.I. (95%)	#
18-24	14,600	14.7	10.3 - 19.1	85,000	85.3	80.9 - 89.7	99,600
25-34	17,500	11.5	9.0 - 14.0	134,800	88.5	86.0 - 91.0	152,300
35-44	13,700	8.0	6.1 - 10.0	156,900	92.0	90.0 - 93.9	170,600
45-54	18,500	10.8	9.1 - 12.6	152,300	89.2	87.4 - 90.9	170,800
55-64	24,300	19.4	16.8 - 21.9	101,300	80.6	78.1 - 83.2	125,600
65-74	49,800	61.1	57.2 - 65.1	31,700	38.9	34.9 - 42.8	81,500
75+	57,300	72.4	68.8 - 76.0	21,800	27.6	24.0 - 31.2	79,100

Pneumonia - ever had shot by State, County, Island, Community, BRFSS Age Group, DOH Race-Ethnicity, Gender, Education Level, Employment Status (Grouped), Household Income, Poverty Level, Marital Status (Grouped), Married, Health Care Coverage, for the Year(s) - 2001-2003, 2002-2004, 2003-2005, 2004-2006, 2005-2007, 2006-2008, 2007-2009, 2008-2010

Note: Weighted numbers (#) represent 3-yr averages, percentages and 95% confidence intervals; Respondents aged 18 years and older; n/r (Not Reportable) - If the unweighted total responses for a dimension (row) is <50 that row will not be shown; n/a (Not Available) - Not asked of a subset of respondents

Year: 2003-2005

DOH Race-Ethnicity	Yes			No			Estimated Population (3-Yr Avg)
	#	%	C.I. (95%)	#	%	C.I. (95%)	#
Caucasian	67,400	22.1	20.5 - 23.8	237,400	77.9	76.2 - 79.5	304,900
Native Hawaiian	21,600	21.7	18.1 - 25.2	78,000	78.3	74.8 - 81.9	99,600
Chinese	14,800	22.0	18.3 - 25.7	52,600	78.0	74.3 - 81.7	67,400
Filipino	24,300	17.2	14.3 - 20.2	116,800	82.8	79.8 - 85.7	141,100
Japanese	51,100	28.3	25.7 - 30.8	129,700	71.7	69.2 - 74.3	180,700
Black	3,000	24.8	16.2 - 33.4	9,200	75.2	66.6 - 83.8	12,300
Native Alaskan/ American Indian	500	10.7	3.6 - 17.9	4,400	89.3	82.1 - 96.4	5,000
Other Asian	3,900	21.8	13.0 - 30.5	13,800	78.2	69.5 - 87.0	17,700
Other Pacific Islander	4,600	22.4	7.5 - 37.3	15,900	77.6	62.7 - 92.5	20,400
Other	3,700	15.5	9.3 - 21.7	20,300	84.5	78.3 - 90.7	24,100

Pneumonia - ever had shot by State, County, Island, Community, BRFSS Age Group, DOH Race-Ethnicity, Gender, Education Level, Employment Status (Grouped), Household Income, Poverty Level, Marital Status (Grouped), Married, Health Care Coverage, for the Year(s) - 2001-2003, 2002-2004, 2003-2005, 2004-2006, 2005-2007, 2006-2008, 2007-2009, 2008-2010

Note: Weighted numbers (#) represent 3-yr averages, percentages and 95% confidence intervals; Respondents aged 18 years and older; n/r (Not Reportable) - If the unweighted total responses for a dimension (row) is <50 that row will not be shown; n/a (Not Available) - Not asked of a subset of respondents

Year: 2003-2005

Gender	Yes			No			Estimated Population (3-Yr Avg)
	#	%	C.I. (95%)	#	%	C.I. (95%)	#
Male	92,400	21.4	19.6 - 23.1	340,300	78.6	76.9 - 80.4	432,700
Female	104,400	23.1	21.6 - 24.5	347,900	76.9	75.5 - 78.4	452,400

Education Level	Yes			No			Estimated Population (3-Yr Avg)
	#	%	C.I. (95%)	#	%	C.I. (95%)	#
Never attended school/ Only Kindergarten to Grades 8	6,200	42.0	32.7 - 51.4	8,500	58.0	48.6 - 67.3	14,600
Grades 9 thru 11 (Some High School)	12,300	36.4	29.6 - 43.1	21,600	63.6	56.9 - 70.4	33,900
Grades 12 or GED (High School Grad)	64,200	24.1	21.9 - 26.3	201,800	75.9	73.7 - 78.1	266,000
College 1 to 3 years (Some College/ Tech)	52,800	20.0	17.8 - 22.1	211,400	80.0	77.9 - 82.2	264,200
College 4 years or more (College Grad)	60,900	20.0	18.3 - 21.7	243,800	80.0	78.3 - 81.7	304,700

Pneumonia - ever had shot by State, County, Island, Community, BRFSS Age Group, DOH Race-Ethnicity, Gender, Education Level, Employment Status (Grouped), Household Income, Poverty Level, Marital Status (Grouped), Married, Health Care Coverage, for the Year(s) - 2001-2003, 2002-2004, 2003-2005, 2004-2006, 2005-2007, 2006-2008, 2007-2009, 2008-2010

Note: Weighted numbers (#) represent 3-yr averages, percentages and 95% confidence intervals; Respondents aged 18 years and older; n/r (Not Reportable) - If the unweighted total responses for a dimension (row) is <50 that row will not be shown; n/a (Not Available) - Not asked of a subset of respondents

Year: 2003-2005

Employment Status (Grouped)	Yes			No			Estimated Population (3-Yr Avg)
	#	%	C.I. (95%)	#	%	C.I. (95%)	#
Employed	70,200	12.3	11.1 - 13.6	499,600	87.7	86.4 - 88.9	569,800
Unemployed	3,600	15.2	8.5 - 21.8	20,100	84.8	78.2 - 91.5	23,700
Retired/Unable to work	109,700	54.3	51.8 - 56.8	92,300	45.7	43.2 - 48.2	202,000
Student/Homemaker	13,100	14.9	11.5 - 18.3	74,900	85.1	81.7 - 88.5	88,100

Pneumonia - ever had shot by State, County, Island, Community, BRFSS Age Group, DOH Race-Ethnicity, Gender, Education Level, Employment Status (Grouped), Household Income, Poverty Level, Marital Status (Grouped), Married, Health Care Coverage, for the Year(s) - 2001-2003, 2002-2004, 2003-2005, 2004-2006, 2005-2007, 2006-2008, 2007-2009, 2008-2010

Note: Weighted numbers (#) represent 3-yr averages, percentages and 95% confidence intervals; Respondents aged 18 years and older; n/r (Not Reportable) - If the unweighted total responses for a dimension (row) is <50 that row will not be shown; n/a (Not Available) - Not asked of a subset of respondents

Year: 2003-2005

Household Income	Yes			No			Estimated Population (3-Yr Avg)
	#	%	C.I. (95%)	#	%	C.I. (95%)	#
Less than \$10,000	7,200	24.4	19.6 - 29.3	22,200	75.6	70.7 - 80.4	29,400
\$10,000 to \$14,999	10,500	30.8	25.1 - 36.5	23,700	69.2	63.5 - 74.9	34,200
\$15,000 to \$19,999	15,800	33.7	27.9 - 39.5	31,100	66.3	60.5 - 72.1	46,900
\$20,000 to \$24,999	12,900	21.6	17.7 - 25.4	47,000	78.4	74.6 - 82.3	59,900
\$25,000 to \$34,999	21,500	22.9	19.6 - 26.2	72,400	77.1	73.8 - 80.4	93,900
\$35,000 to \$49,999	30,400	22.0	19.2 - 24.8	107,400	78.0	75.2 - 80.8	137,700
\$50,000 to \$74,999	39,200	20.8	17.9 - 23.6	149,300	79.2	76.4 - 82.1	188,500
\$75,000 or more	32,400	17.0	14.7 - 19.3	158,000	83.0	80.7 - 85.3	190,400

Pneumonia - ever had shot by State, County, Island, Community, BRFS Age Group, DOH Race-Ethnicity, Gender, Education Level, Employment Status (Grouped), Household Income, Poverty Level, Marital Status (Grouped), Married, Health Care Coverage, for the Year(s) - 2001-2003, 2002-2004, 2003-2005, 2004-2006, 2005-2007, 2006-2008, 2007-2009, 2008-2010

Note: Weighted numbers (#) represent 3-yr averages, percentages and 95% confidence intervals; Respondents aged 18 years and older; n/r (Not Reportable) - If the unweighted total responses for a dimension (row) is <50 that row will not be shown; n/a (Not Available) - Not asked of a subset of respondents

Year: 2003-2005

Poverty Level	Yes			No			Estimated Population (3-Yr Avg)
	#	%	C.I. (95%)	#	%	C.I. (95%)	#
0-130%	39,400	23.9	21.1 - 26.7	125,300	76.1	73.3 - 78.9	164,700
131-185%	21,200	23.1	18.3 - 27.8	70,700	76.9	72.2 - 81.7	91,900
186+%	109,300	20.8	19.5 - 22.2	415,200	79.2	77.8 - 80.5	524,500

Marital Status (Grouped)	Yes			No			Estimated Population (3-Yr Avg)
	#	%	C.I. (95%)	#	%	C.I. (95%)	#
Married	114,200	21.9	20.4 - 23.3	408,500	78.1	76.7 - 79.6	522,700
Unmarried Couple	2,000	9.9	5.5 - 14.3	18,200	90.1	85.7 - 94.5	20,200
Widowed	33,500	57.0	52.6 - 61.4	25,300	43.0	38.6 - 47.4	58,700
Other	47,100	16.6	14.6 - 18.7	236,300	83.4	81.3 - 85.4	283,400

Pneumonia - ever had shot by State, County, Island, Community, BRFSS Age Group, DOH Race-Ethnicity, Gender, Education Level, Employment Status (Grouped), Household Income, Poverty Level, Marital Status (Grouped), Married, Health Care Coverage, for the Year(s) - 2001-2003, 2002-2004, 2003-2005, 2004-2006, 2005-2007, 2006-2008, 2007-2009, 2008-2010

Note: Weighted numbers (#) represent 3-yr averages, percentages and 95% confidence intervals; Respondents aged 18 years and older; n/r (Not Reportable) - If the unweighted total responses for a dimension (row) is <50 that row will not be shown; n/a (Not Available) - Not asked of a subset of respondents

Year: 2003-2005

Married	Yes			No			Estimated Population (3-Yr Avg)
	#	%	C.I. (95%)	#	%	C.I. (95%)	#
Yes	115,100	21.6	20.2 - 23.0	417,500	78.4	77.0 - 79.8	532,600
No	81,400	23.2	21.3 - 25.1	269,100	76.8	74.9 - 78.7	350,500

Health Care Coverage	Yes			No			Estimated Population (3-Yr Avg)
	#	%	C.I. (95%)	#	%	C.I. (95%)	#
Yes	189,400	23.3	22.1 - 24.5	622,100	76.7	75.5 - 77.9	811,500
No	7,200	10.0	6.8 - 13.3	64,400	90.0	86.7 - 93.2	71,600

Pneumonia - ever had shot by State, County, Island, Community, BRFSS Age Group, DOH Race-Ethnicity, Gender, Education Level, Employment Status (Grouped), Household Income, Poverty Level, Marital Status (Grouped), Married, Health Care Coverage, for the Year(s) - 2001-2003, 2002-2004, 2003-2005, 2004-2006, 2005-2007, 2006-2008, 2007-2009, 2008-2010

Note: Weighted numbers (#) represent 3-yr averages, percentages and 95% confidence intervals; Respondents aged 18 years and older; n/r (Not Reportable) - If the unweighted total responses for a dimension (row) is <50 that row will not be shown; n/a (Not Available) - Not asked of a subset of respondents

Year: 2002-2004

State	Yes			No			Estimated Population (3-Yr Avg)
	#	%	C.I. (95%)	#	%	C.I. (95%)	#
Hawaii State	182,400	20.7	19.6 - 21.8	698,100	79.3	78.2 - 80.4	880,500

County	Yes			No			Estimated Population (3-Yr Avg)
	#	%	C.I. (95%)	#	%	C.I. (95%)	#
Hawaii	22,500	19.8	17.8 - 21.7	91,400	80.2	78.3 - 82.2	113,900
Honolulu	135,300	21.4	19.9 - 22.9	496,800	78.6	77.1 - 80.1	632,100
Kauai	8,300	20.6	17.8 - 23.4	32,000	79.4	76.6 - 82.2	40,300
Maui	16,300	17.3	14.9 - 19.7	77,900	82.7	80.3 - 85.1	94,300

Pneumonia - ever had shot by State, County, Island, Community, BRFSS Age Group, DOH Race-Ethnicity, Gender, Education Level, Employment Status (Grouped), Household Income, Poverty Level, Marital Status (Grouped), Married, Health Care Coverage, for the Year(s) - 2001-2003, 2002-2004, 2003-2005, 2004-2006, 2005-2007, 2006-2008, 2007-2009, 2008-2010

Note: Weighted numbers (#) represent 3-yr averages, percentages and 95% confidence intervals; Respondents aged 18 years and older; n/r (Not Reportable) - If the unweighted total responses for a dimension (row) is <50 that row will not be shown; n/a (Not Available) - Not asked of a subset of respondents

Year: 2002-2004

Island	Yes			No			Estimated Population (3-Yr Avg)
	#	%	C.I. (95%)	#	%	C.I. (95%)	#
Hawaii	22,500	19.8	17.8 - 21.7	91,400	80.2	78.3 - 82.2	113,900
Kauai	8,300	20.6	17.8 - 23.4	32,000	79.4	76.6 - 82.2	40,300
Lanai	400	14.9	9.0 - 20.7	2,000	85.1	79.3 - 91.0	2,400
Maui	14,500	17.0	14.4 - 19.5	71,000	83.0	80.5 - 85.6	85,500
Molokai	1,400	22.5	15.9 - 29.1	5,000	77.5	70.9 - 84.1	6,400
Oahu	135,300	21.4	19.9 - 22.9	496,800	78.6	77.1 - 80.1	632,100

Community	Yes			No			Estimated Population (3-Yr Avg)
	#	%	C.I. (95%)	#	%	C.I. (95%)	#
Aiea/ Pearl City	14,700	25.1	20.2 - 29.9	44,000	74.9	70.1 - 79.8	58,700
Ala Moana	5,400	17.5	12.9 - 22.0	25,300	82.5	78.0 - 87.1	30,600

Pneumonia - ever had shot by State, County, Island, Community, BRFSS Age Group, DOH Race-Ethnicity, Gender, Education Level, Employment Status (Grouped), Household Income, Poverty Level, Marital Status (Grouped), Married, Health Care Coverage, for the Year(s) - 2001-2003, 2002-2004, 2003-2005, 2004-2006, 2005-2007, 2006-2008, 2007-2009, 2008-2010

Note: Weighted numbers (#) represent 3-yr averages, percentages and 95% confidence intervals; Respondents aged 18 years and older; n/r (Not Reportable) - If the unweighted total responses for a dimension (row) is <50 that row will not be shown; n/a (Not Available) - Not asked of a subset of respondents

Year: 2002-2004

Community	Yes			No			Estimated Population (3-Yr Avg)
	#	%	C.I. (95%)	#	%	C.I. (95%)	#
Hanalei/ Kapaa	2,700	16.3	12.5 - 20.0	13,800	83.7	80.0 - 87.5	16,500
Hilo	6,300	18.8	15.6 - 22.0	27,400	81.2	78.0 - 84.4	33,800
Kaaawa/ Kahaluu/ Kaneohe	9,900	23.5	17.6 - 29.4	32,300	76.5	70.6 - 82.4	42,200
Kahului	5,700	18.7	14.5 - 22.9	24,600	81.3	77.1 - 85.5	30,300
Kailua/ Waimanalo	8,400	18.5	14.2 - 22.8	37,000	81.5	77.2 - 85.8	45,400
Kaimuki/ Palolo/ Waikiki	16,100	25.7	21.3 - 30.1	46,800	74.3	69.9 - 78.7	62,900
Kona	5,300	19.1	15.5 - 22.7	22,500	80.9	77.3 - 84.5	27,800
Lahaina/ Wailuku	3,900	14.4	11.0 - 17.9	23,100	85.6	82.1 - 89.0	27,000
Lanai	400	14.9	9.0 - 20.7	2,000	85.1	79.3 - 91.0	2,400
Lihue-Waimea	5,600	23.6	19.6 - 27.5	18,200	76.4	72.5 - 80.4	23,800
Manoa/ Upper Makiki	10,300	19.9	15.7 - 24.1	41,700	80.1	75.9 - 84.3	52,000
Mililani/ Wahiawa	14,000	22.9	16.7 - 29.1	47,200	77.1	70.9 - 83.3	61,200

Pneumonia - ever had shot by State, County, Island, Community, BRFSS Age Group, DOH Race-Ethnicity, Gender, Education Level, Employment Status (Grouped), Household Income, Poverty Level, Marital Status (Grouped), Married, Health Care Coverage, for the Year(s) - 2001-2003, 2002-2004, 2003-2005, 2004-2006, 2005-2007, 2006-2008, 2007-2009, 2008-2010

Note: Weighted numbers (#) represent 3-yr averages, percentages and 95% confidence intervals; Respondents aged 18 years and older; n/r (Not Reportable) - If the unweighted total responses for a dimension (row) is <50 that row will not be shown; n/a (Not Available) - Not asked of a subset of respondents

Year: 2002-2004

Community	Yes			No			Estimated Population (3-Yr Avg)
	#	%	C.I. (95%)	#	%	C.I. (95%)	#
Molokai	1,400	22.5	15.9 - 29.1	5,000	77.5	70.9 - 84.1	6,400
Nanakuli/ Waianae	8,600	30.6	21.6 - 39.7	19,600	69.4	60.3 - 78.4	28,300
N.Hawaii	5,000	22.6	17.9 - 27.4	17,200	77.4	72.6 - 82.1	22,200
N.Shore/ Laie	3,300	16.0	9.3 - 22.6	17,300	84.0	77.4 - 90.7	20,600
Nuuanu/ Kalihi/ Moanalua	13,500	21.0	16.7 - 25.4	50,800	79.0	74.6 - 83.3	64,400
Puna/ Kau	5,800	19.3	15.3 - 23.4	24,300	80.7	76.6 - 84.7	30,100
Salt Lake/ Foster Village	4,800	13.2	8.4 - 17.9	32,000	86.8	82.1 - 91.6	36,800
Upcountry/ Hana	5,000	17.6	12.3 - 22.9	23,200	82.4	77.1 - 87.7	28,200
Waialae/ Kahala/ Hawaii Kai	9,500	24.8	18.9 - 30.7	28,800	75.2	69.3 - 81.1	38,400
Waipahu/ Kapolei/ Ewa	16,500	18.2	14.3 - 22.1	74,000	81.8	77.9 - 85.7	90,500

Pneumonia - ever had shot by State, County, Island, Community, BRFSS Age Group, DOH Race-Ethnicity, Gender, Education Level, Employment Status (Grouped), Household Income, Poverty Level, Marital Status (Grouped), Married, Health Care Coverage, for the Year(s) - 2001-2003, 2002-2004, 2003-2005, 2004-2006, 2005-2007, 2006-2008, 2007-2009, 2008-2010

Note: Weighted numbers (#) represent 3-yr averages, percentages and 95% confidence intervals; Respondents aged 18 years and older; n/r (Not Reportable) - If the unweighted total responses for a dimension (row) is <50 that row will not be shown; n/a (Not Available) - Not asked of a subset of respondents

Year: 2002-2004

BRFSS Age Group	Yes			No			Estimated Population (3-Yr Avg)
	#	%	C.I. (95%)	#	%	C.I. (95%)	#
18-24	12,900	12.4	8.3 - 16.5	91,200	87.6	83.5 - 91.7	104,100
25-34	15,500	9.9	7.6 - 12.1	141,400	90.1	87.9 - 92.4	156,800
35-44	13,700	7.9	5.9 - 9.8	160,400	92.1	90.2 - 94.1	174,100
45-54	15,700	9.2	7.6 - 10.9	153,900	90.8	89.1 - 92.4	169,600
55-64	23,700	20.3	17.5 - 23.1	93,100	79.7	76.9 - 82.5	116,800
65-74	47,500	59.2	55.2 - 63.2	32,800	40.8	36.8 - 44.8	80,300
75+	52,600	71.2	67.3 - 75.0	21,300	28.8	25.0 - 32.7	73,900

Pneumonia - ever had shot by State, County, Island, Community, BRFSS Age Group, DOH Race-Ethnicity, Gender, Education Level, Employment Status (Grouped), Household Income, Poverty Level, Marital Status (Grouped), Married, Health Care Coverage, for the Year(s) - 2001-2003, 2002-2004, 2003-2005, 2004-2006, 2005-2007, 2006-2008, 2007-2009, 2008-2010

Note: Weighted numbers (#) represent 3-yr averages, percentages and 95% confidence intervals; Respondents aged 18 years and older; n/r (Not Reportable) - If the unweighted total responses for a dimension (row) is <50 that row will not be shown; n/a (Not Available) - Not asked of a subset of respondents

Year: 2002-2004

DOH Race-Ethnicity	Yes			No			Estimated Population (3-Yr Avg)
	#	%	C.I. (95%)	#	%	C.I. (95%)	#
Caucasian	61,300	19.9	18.3 - 21.5	246,600	80.1	78.5 - 81.7	307,900
Native Hawaiian	19,700	19.3	15.8 - 22.8	82,200	80.7	77.2 - 84.2	101,900
Chinese	16,100	22.2	18.6 - 25.7	56,500	77.8	74.3 - 81.4	72,600
Filipino	22,700	16.8	13.9 - 19.7	112,700	83.2	80.3 - 86.1	135,400
Japanese	47,400	26.9	24.4 - 29.5	128,700	73.1	70.5 - 75.6	176,100
Black	2,600	21.9	13.6 - 30.2	9,200	78.1	69.8 - 86.4	11,800
Native Alaskan/ American Indian	200	4.9	0.6 - 9.1	4,300	95.1	90.9 - 99.4	4,600
Other Asian	3,400	19.1	11.3 - 26.8	14,400	80.9	73.2 - 88.7	17,900
Other Pacific Islander	3,700	19.3	3.3 - 35.3	15,600	80.7	64.7 - 96.7	19,300
Other	3,400	15.5	8.9 - 22.1	18,600	84.5	77.9 - 91.1	22,000

Pneumonia - ever had shot by State, County, Island, Community, BRFSS Age Group, DOH Race-Ethnicity, Gender, Education Level, Employment Status (Grouped), Household Income, Poverty Level, Marital Status (Grouped), Married, Health Care Coverage, for the Year(s) - 2001-2003, 2002-2004, 2003-2005, 2004-2006, 2005-2007, 2006-2008, 2007-2009, 2008-2010

Note: Weighted numbers (#) represent 3-yr averages, percentages and 95% confidence intervals; Respondents aged 18 years and older; n/r (Not Reportable) - If the unweighted total responses for a dimension (row) is <50 that row will not be shown; n/a (Not Available) - Not asked of a subset of respondents

Year: 2002-2004

Gender	Yes			No			Estimated Population (3-Yr Avg)
	#	%	C.I. (95%)	#	%	C.I. (95%)	#
Male	85,200	19.7	18.0 - 21.5	346,500	80.3	78.5 - 82.0	431,700
Female	97,200	21.7	20.2 - 23.1	351,700	78.3	76.9 - 79.8	448,900

Education Level	Yes			No			Estimated Population (3-Yr Avg)
	#	%	C.I. (95%)	#	%	C.I. (95%)	#
Never attended school/ Only Kindergarten to Grades 8	6,600	46.9	37.9 - 56.0	7,400	53.1	44.0 - 62.1	14,000
Grades 9 thru 11 (Some High School)	10,600	33.7	26.8 - 40.7	20,900	66.3	59.3 - 73.2	31,500
Grades 12 or GED (High School Grad)	61,600	21.8	19.7 - 23.8	221,000	78.2	76.2 - 80.3	282,600
College 1 to 3 years (Some College/ Tech)	49,400	18.7	16.5 - 20.8	215,200	81.3	79.2 - 83.5	264,600
College 4 years or more (College Grad)	53,900	18.8	17.1 - 20.5	232,900	81.2	79.5 - 82.9	286,800

Pneumonia - ever had shot by State, County, Island, Community, BRFSS Age Group, DOH Race-Ethnicity, Gender, Education Level, Employment Status (Grouped), Household Income, Poverty Level, Marital Status (Grouped), Married, Health Care Coverage, for the Year(s) - 2001-2003, 2002-2004, 2003-2005, 2004-2006, 2005-2007, 2006-2008, 2007-2009, 2008-2010

Note: Weighted numbers (#) represent 3-yr averages, percentages and 95% confidence intervals; Respondents aged 18 years and older; n/r (Not Reportable) - If the unweighted total responses for a dimension (row) is <50 that row will not be shown; n/a (Not Available) - Not asked of a subset of respondents

Year: 2002-2004

Employment Status (Grouped)	Yes			No			Estimated Population (3-Yr Avg)
	#	%	C.I. (95%)	#	%	C.I. (95%)	#
Employed	64,100	11.2	10.0 - 12.4	506,000	88.8	87.6 - 90.0	570,000
Unemployed	3,500	11.1	5.9 - 16.3	28,100	88.9	83.7 - 94.1	31,600
Retired/Unable to work	104,000	56.0	53.3 - 58.7	81,600	44.0	41.3 - 46.7	185,600
Student/Homemaker	10,800	11.7	8.6 - 14.8	81,500	88.3	85.2 - 91.4	92,300

Pneumonia - ever had shot by State, County, Island, Community, BRFSS Age Group, DOH Race-Ethnicity, Gender, Education Level, Employment Status (Grouped), Household Income, Poverty Level, Marital Status (Grouped), Married, Health Care Coverage, for the Year(s) - 2001-2003, 2002-2004, 2003-2005, 2004-2006, 2005-2007, 2006-2008, 2007-2009, 2008-2010

Note: Weighted numbers (#) represent 3-yr averages, percentages and 95% confidence intervals; Respondents aged 18 years and older; n/r (Not Reportable) - If the unweighted total responses for a dimension (row) is <50 that row will not be shown; n/a (Not Available) - Not asked of a subset of respondents

Year: 2002-2004

Household Income	Yes			No			Estimated Population (3-Yr Avg)
	#	%	C.I. (95%)	#	%	C.I. (95%)	#
Less than \$10,000	7,100	21.8	17.5 - 26.1	25,300	78.2	73.9 - 82.5	32,400
\$10,000 to \$14,999	10,600	28.8	23.4 - 34.1	26,200	71.2	65.9 - 76.6	36,800
\$15,000 to \$19,999	13,400	29.9	23.8 - 36.0	31,400	70.1	64.0 - 76.2	44,800
\$20,000 to \$24,999	10,400	19.2	15.3 - 23.2	43,800	80.8	76.8 - 84.7	54,200
\$25,000 to \$34,999	18,600	21.3	17.9 - 24.8	68,700	78.7	75.2 - 82.1	87,400
\$35,000 to \$49,999	26,000	19.7	16.9 - 22.6	105,600	80.3	77.4 - 83.1	131,500
\$50,000 to \$74,999	36,000	20.8	17.8 - 23.9	136,900	79.2	76.1 - 82.2	173,000
\$75,000 or more	27,500	16.8	14.3 - 19.3	135,900	83.2	80.7 - 85.7	163,400

Pneumonia - ever had shot by State, County, Island, Community, BRFSS Age Group, DOH Race-Ethnicity, Gender, Education Level, Employment Status (Grouped), Household Income, Poverty Level, Marital Status (Grouped), Married, Health Care Coverage, for the Year(s) - 2001-2003, 2002-2004, 2003-2005, 2004-2006, 2005-2007, 2006-2008, 2007-2009, 2008-2010

Note: Weighted numbers (#) represent 3-yr averages, percentages and 95% confidence intervals; Respondents aged 18 years and older; n/r (Not Reportable) - If the unweighted total responses for a dimension (row) is <50 that row will not be shown; n/a (Not Available) - Not asked of a subset of respondents

Year: 2002-2004

Poverty Level	Yes			No			Estimated Population (3-Yr Avg)
	#	%	C.I. (95%)	#	%	C.I. (95%)	#
0-130%	34,500	21.9	19.1 - 24.7	123,000	78.1	75.3 - 80.9	157,500
131-185%	18,400	21.3	16.5 - 26.1	67,900	78.7	73.9 - 83.5	86,300
186+%	96,700	20.2	18.7 - 21.6	383,000	79.8	78.4 - 81.3	479,700

Marital Status (Grouped)	Yes			No			Estimated Population (3-Yr Avg)
	#	%	C.I. (95%)	#	%	C.I. (95%)	#
Married	105,700	20.5	19.1 - 21.9	409,300	79.5	78.1 - 80.9	515,000
Unmarried Couple	1,500	7.8	3.7 - 11.9	18,200	92.2	88.1 - 96.3	19,800
Widowed	33,300	57.8	53.2 - 62.4	24,300	42.2	37.6 - 46.8	57,500
Other	41,900	14.5	12.6 - 16.5	246,300	85.5	83.5 - 87.4	288,200

Pneumonia - ever had shot by State, County, Island, Community, BRFSS Age Group, DOH Race-Ethnicity, Gender, Education Level, Employment Status (Grouped), Household Income, Poverty Level, Marital Status (Grouped), Married, Health Care Coverage, for the Year(s) - 2001-2003, 2002-2004, 2003-2005, 2004-2006, 2005-2007, 2006-2008, 2007-2009, 2008-2010

Note: Weighted numbers (#) represent 3-yr averages, percentages and 95% confidence intervals; Respondents aged 18 years and older; n/r (Not Reportable) - If the unweighted total responses for a dimension (row) is <50 that row will not be shown; n/a (Not Available) - Not asked of a subset of respondents

Year: 2002-2004

Married	Yes			No			Estimated Population (3-Yr Avg)
	#	%	C.I. (95%)	#	%	C.I. (95%)	#
Yes	106,700	20.3	18.9 - 21.7	418,200	79.7	78.3 - 81.1	524,900
No	75,500	21.3	19.5 - 23.2	278,400	78.7	76.8 - 80.5	353,900

Health Care Coverage	Yes			No			Estimated Population (3-Yr Avg)
	#	%	C.I. (95%)	#	%	C.I. (95%)	#
Yes	175,000	21.8	20.6 - 23.0	629,000	78.2	77.0 - 79.4	804,000
No	7,200	9.6	6.5 - 12.7	67,500	90.4	87.3 - 93.5	74,600

Pneumonia - ever had shot by State, County, Island, Community, BRFSS Age Group, DOH Race-Ethnicity, Gender, Education Level, Employment Status (Grouped), Household Income, Poverty Level, Marital Status (Grouped), Married, Health Care Coverage, for the Year(s) - 2001-2003, 2002-2004, 2003-2005, 2004-2006, 2005-2007, 2006-2008, 2007-2009, 2008-2010

Note: Weighted numbers (#) represent 3-yr averages, percentages and 95% confidence intervals; Respondents aged 18 years and older; n/r (Not Reportable) - If the unweighted total responses for a dimension (row) is <50 that row will not be shown; n/a (Not Available) - Not asked of a subset of respondents

Year: 2001-2003

State	Yes			No			Estimated Population (3-Yr Avg)
	#	%	C.I. (95%)	#	%	C.I. (95%)	#
Hawaii State	173,200	19.6	18.7 - 20.5	712,200	80.4	79.5 - 81.3	885,500

County	Yes			No			Estimated Population (3-Yr Avg)
	#	%	C.I. (95%)	#	%	C.I. (95%)	#
Hawaii	20,800	19.2	17.5 - 20.9	87,600	80.8	79.1 - 82.5	108,400
Honolulu	128,400	20.0	18.9 - 21.2	512,300	80.0	78.8 - 81.1	640,700
Kauai	7,900	19.3	16.9 - 21.7	33,100	80.7	78.3 - 83.1	41,100
Maui	16,100	16.8	14.4 - 19.3	79,300	83.2	80.7 - 85.6	95,300

Pneumonia - ever had shot by State, County, Island, Community, BRFSS Age Group, DOH Race-Ethnicity, Gender, Education Level, Employment Status (Grouped), Household Income, Poverty Level, Marital Status (Grouped), Married, Health Care Coverage, for the Year(s) - 2001-2003, 2002-2004, 2003-2005, 2004-2006, 2005-2007, 2006-2008, 2007-2009, 2008-2010

Note: Weighted numbers (#) represent 3-yr averages, percentages and 95% confidence intervals; Respondents aged 18 years and older; n/r (Not Reportable) - If the unweighted total responses for a dimension (row) is <50 that row will not be shown; n/a (Not Available) - Not asked of a subset of respondents

Year: 2001-2003

Island	Yes			No			Estimated Population (3-Yr Avg)
	#	%	C.I. (95%)	#	%	C.I. (95%)	#
Hawaii	20,800	19.2	17.5 - 20.9	87,600	80.8	79.1 - 82.5	108,400
Kauai	7,900	19.3	16.9 - 21.7	33,100	80.7	78.3 - 83.1	41,100
Lanai	400	14.2	8.9 - 19.5	2,400	85.8	80.5 - 91.1	2,800
Maui	14,400	16.7	14.0 - 19.3	72,000	83.3	80.7 - 86.0	86,400
Molokai	1,300	20.7	14.9 - 26.4	4,900	79.3	73.6 - 85.1	6,200
Oahu	128,400	20.0	18.9 - 21.2	512,300	80.0	78.8 - 81.1	640,700

Community	Yes			No			Estimated Population (3-Yr Avg)
	#	%	C.I. (95%)	#	%	C.I. (95%)	#
Aiea/ Pearl City	16,400	27.6	23.0 - 32.1	43,100	72.4	67.9 - 77.0	59,500
Ala Moana	6,200	20.8	16.5 - 25.1	23,700	79.2	74.9 - 83.5	29,900

Pneumonia - ever had shot by State, County, Island, Community, BRFSS Age Group, DOH Race-Ethnicity, Gender, Education Level, Employment Status (Grouped), Household Income, Poverty Level, Marital Status (Grouped), Married, Health Care Coverage, for the Year(s) - 2001-2003, 2002-2004, 2003-2005, 2004-2006, 2005-2007, 2006-2008, 2007-2009, 2008-2010

Note: Weighted numbers (#) represent 3-yr averages, percentages and 95% confidence intervals; Respondents aged 18 years and older; n/r (Not Reportable) - If the unweighted total responses for a dimension (row) is <50 that row will not be shown; n/a (Not Available) - Not asked of a subset of respondents

Year: 2001-2003

Community	Yes			No			Estimated Population (3-Yr Avg)
	#	%	C.I. (95%)	#	%	C.I. (95%)	#
Hanalei/ Kapaa	3,000	17.6	14.0 - 21.3	14,200	82.4	78.7 - 86.0	17,200
Hilo	6,700	20.3	17.3 - 23.4	26,300	79.7	76.6 - 82.7	33,000
Kaaawa/ Kahaluu/ Kaneohe	7,800	18.9	14.5 - 23.4	33,400	81.1	76.6 - 85.5	41,200
Kahului	6,100	19.6	13.6 - 25.5	24,900	80.4	74.5 - 86.4	31,000
Kailua/ Waimanalo	10,400	21.5	17.5 - 25.5	37,900	78.5	74.5 - 82.5	48,200
Kaimuki/ Palolo/ Waikiki	16,000	24.1	20.6 - 27.5	50,500	75.9	72.5 - 79.4	66,400
Kona	5,200	17.7	14.6 - 20.9	24,000	82.3	79.1 - 85.4	29,200
Lahaina/ Wailuku	4,200	15.0	12.0 - 18.0	23,800	85.0	82.0 - 88.0	28,100
Lanai	400	14.2	8.9 - 19.5	2,400	85.8	80.5 - 91.1	2,800
Lihue-Waimea	4,900	20.6	17.4 - 23.7	19,000	79.4	76.3 - 82.6	23,900
Manoa/ Upper Makiki	11,400	21.2	17.4 - 25.0	42,600	78.8	75.0 - 82.6	54,100
Millilani/ Wahiawa	11,500	19.1	15.3 - 22.9	48,900	80.9	77.1 - 84.7	60,500

Pneumonia - ever had shot by State, County, Island, Community, BRFSS Age Group, DOH Race-Ethnicity, Gender, Education Level, Employment Status (Grouped), Household Income, Poverty Level, Marital Status (Grouped), Married, Health Care Coverage, for the Year(s) - 2001-2003, 2002-2004, 2003-2005, 2004-2006, 2005-2007, 2006-2008, 2007-2009, 2008-2010

Note: Weighted numbers (#) represent 3-yr averages, percentages and 95% confidence intervals; Respondents aged 18 years and older; n/r (Not Reportable) - If the unweighted total responses for a dimension (row) is <50 that row will not be shown; n/a (Not Available) - Not asked of a subset of respondents

Year: 2001-2003

Community	Yes			No			Estimated Population (3-Yr Avg)
	#	%	C.I. (95%)	#	%	C.I. (95%)	#
Molokai	1,300	20.7	14.9 - 26.4	4,900	79.3	73.6 - 85.1	6,200
Nanakuli/ Waianae	5,700	21.3	14.8 - 27.7	21,000	78.7	72.3 - 85.2	26,700
N.Hawaii	5,000	21.8	17.6 - 25.9	18,000	78.2	74.1 - 82.4	23,000
N.Shore/ Laie	3,400	14.8	9.8 - 19.7	19,400	85.2	80.3 - 90.2	22,700
Nuuanu/ Kalihi/ Moanalua	13,200	19.7	16.1 - 23.4	53,600	80.3	76.6 - 83.9	66,800
Puna/ Kau	3,900	16.9	13.7 - 20.1	19,200	83.1	79.9 - 86.3	23,100
Salt Lake/ Foster Village	4,900	13.0	9.2 - 16.7	32,900	87.0	83.3 - 90.8	37,800
Upcountry/ Hana	4,100	15.0	11.5 - 18.6	23,200	85.0	81.4 - 88.5	27,400
Waiialae/ Kahala/ Hawaii Kai	9,000	23.2	18.4 - 27.9	29,700	76.8	72.1 - 81.6	38,700
Waipahu/ Kapolei/ Ewa	12,600	14.3	11.6 - 17.0	75,600	85.7	83.0 - 88.4	88,200

Pneumonia - ever had shot by State, County, Island, Community, BRFSS Age Group, DOH Race-Ethnicity, Gender, Education Level, Employment Status (Grouped), Household Income, Poverty Level, Marital Status (Grouped), Married, Health Care Coverage, for the Year(s) - 2001-2003, 2002-2004, 2003-2005, 2004-2006, 2005-2007, 2006-2008, 2007-2009, 2008-2010

Note: Weighted numbers (#) represent 3-yr averages, percentages and 95% confidence intervals; Respondents aged 18 years and older; n/r (Not Reportable) - If the unweighted total responses for a dimension (row) is <50 that row will not be shown; n/a (Not Available) - Not asked of a subset of respondents

Year: 2001-2003

BRFSS Age Group	Yes			No			Estimated Population (3-Yr Avg)
	#	%	C.I. (95%)	#	%	C.I. (95%)	#
18-24	12,600	11.7	8.7 - 14.7	95,300	88.3	85.3 - 91.3	107,900
25-34	12,900	8.0	6.5 - 9.5	147,400	92.0	90.5 - 93.5	160,200
35-44	11,700	6.5	5.3 - 7.7	167,800	93.5	92.3 - 94.7	179,500
45-54	14,900	9.0	7.6 - 10.4	150,800	91.0	89.6 - 92.4	165,700
55-64	21,900	18.8	16.3 - 21.3	94,800	81.2	78.7 - 83.7	116,700
65-74	51,700	62.8	59.5 - 66.1	30,600	37.2	33.9 - 40.5	82,400
75+	46,900	67.8	64.4 - 71.2	22,300	32.2	28.8 - 35.6	69,300

Pneumonia - ever had shot by State, County, Island, Community, BRFSS Age Group, DOH Race-Ethnicity, Gender, Education Level, Employment Status (Grouped), Household Income, Poverty Level, Marital Status (Grouped), Married, Health Care Coverage, for the Year(s) - 2001-2003, 2002-2004, 2003-2005, 2004-2006, 2005-2007, 2006-2008, 2007-2009, 2008-2010

Note: Weighted numbers (#) represent 3-yr averages, percentages and 95% confidence intervals; Respondents aged 18 years and older; n/r (Not Reportable) - If the unweighted total responses for a dimension (row) is <50 that row will not be shown; n/a (Not Available) - Not asked of a subset of respondents

Year: 2001-2003

DOH Race-Ethnicity	Yes			No			Estimated Population (3-Yr Avg)
	#	%	C.I. (95%)	#	%	C.I. (95%)	#
Caucasian	58,200	18.7	17.3 - 20.0	253,700	81.3	80.0 - 82.7	311,900
Native Hawaiian	14,800	14.6	12.4 - 16.8	86,400	85.4	83.2 - 87.6	101,100
Chinese	17,200	22.8	19.5 - 26.1	58,300	77.2	73.9 - 80.5	75,500
Filipino	22,300	16.8	14.0 - 19.6	110,200	83.2	80.4 - 86.0	132,500
Japanese	48,100	27.2	25.0 - 29.3	128,800	72.8	70.7 - 75.0	176,900
Black	3,200	22.0	14.2 - 29.7	11,500	78.0	70.3 - 85.8	14,700
Native Alaskan/ American Indian	500	12.5	3.9 - 21.0	3,500	87.5	79.0 - 96.1	4,000
Other Asian	3,400	16.7	11.4 - 22.0	17,100	83.3	78.0 - 88.6	20,500
Other Pacific Islander	2,300	13.0	5.8 - 20.3	15,200	87.0	79.7 - 94.2	17,500
Other	3,000	11.3	7.0 - 15.7	23,400	88.7	84.3 - 93.0	26,400

Pneumonia - ever had shot by State, County, Island, Community, BRFSS Age Group, DOH Race-Ethnicity, Gender, Education Level, Employment Status (Grouped), Household Income, Poverty Level, Marital Status (Grouped), Married, Health Care Coverage, for the Year(s) - 2001-2003, 2002-2004, 2003-2005, 2004-2006, 2005-2007, 2006-2008, 2007-2009, 2008-2010

Note: Weighted numbers (#) represent 3-yr averages, percentages and 95% confidence intervals; Respondents aged 18 years and older; n/r (Not Reportable) - If the unweighted total responses for a dimension (row) is <50 that row will not be shown; n/a (Not Available) - Not asked of a subset of respondents

Year: 2001-2003

Gender	Yes			No			Estimated Population (3-Yr Avg)
	#	%	C.I. (95%)	#	%	C.I. (95%)	#
Male	84,000	19.1	17.8 - 20.5	355,100	80.9	79.5 - 82.2	439,100
Female	89,200	20.0	18.8 - 21.1	357,200	80.0	78.9 - 81.2	446,400

Education Level	Yes			No			Estimated Population (3-Yr Avg)
	#	%	C.I. (95%)	#	%	C.I. (95%)	#
Never attended school/ Only Kindergarten to Grades 8	6,500	41.2	33.7 - 48.6	9,300	58.8	51.4 - 66.3	15,800
Grades 9 thru 11 (Some High School)	10,700	31.1	25.0 - 37.2	23,700	68.9	62.8 - 75.0	34,400
Grades 12 or GED (High School Grad)	59,200	20.5	18.9 - 22.1	229,200	79.5	77.9 - 81.1	288,400
College 1 to 3 years (Some College/ Tech)	47,600	18.1	16.4 - 19.8	215,300	81.9	80.2 - 83.6	262,900
College 4 years or more (College Grad)	48,900	17.3	15.9 - 18.7	233,400	82.7	81.3 - 84.1	282,300

Pneumonia - ever had shot by State, County, Island, Community, BRFSS Age Group, DOH Race-Ethnicity, Gender, Education Level, Employment Status (Grouped), Household Income, Poverty Level, Marital Status (Grouped), Married, Health Care Coverage, for the Year(s) - 2001-2003, 2002-2004, 2003-2005, 2004-2006, 2005-2007, 2006-2008, 2007-2009, 2008-2010

Note: Weighted numbers (#) represent 3-yr averages, percentages and 95% confidence intervals; Respondents aged 18 years and older; n/r (Not Reportable) - If the unweighted total responses for a dimension (row) is <50 that row will not be shown; n/a (Not Available) - Not asked of a subset of respondents

Year: 2001-2003

Employment Status (Grouped)	Yes			No			Estimated Population (3-Yr Avg)
	#	%	C.I. (95%)	#	%	C.I. (95%)	#
Employed	59,900	10.3	9.4 - 11.3	519,500	89.7	88.7 - 90.6	579,400
Unemployed	2,800	8.5	5.1 - 11.9	29,800	91.5	88.1 - 94.9	32,600
Retired/Unable to work	101,700	55.4	53.1 - 57.7	81,800	44.6	42.3 - 46.9	183,500
Student/Homemaker	8,800	9.9	7.6 - 12.2	80,600	90.1	87.8 - 92.4	89,400

Pneumonia - ever had shot by State, County, Island, Community, BRFSS Age Group, DOH Race-Ethnicity, Gender, Education Level, Employment Status (Grouped), Household Income, Poverty Level, Marital Status (Grouped), Married, Health Care Coverage, for the Year(s) - 2001-2003, 2002-2004, 2003-2005, 2004-2006, 2005-2007, 2006-2008, 2007-2009, 2008-2010

Note: Weighted numbers (#) represent 3-yr averages, percentages and 95% confidence intervals; Respondents aged 18 years and older; n/r (Not Reportable) - If the unweighted total responses for a dimension (row) is <50 that row will not be shown; n/a (Not Available) - Not asked of a subset of respondents

Year: 2001-2003

Household Income	Yes			No			Estimated Population (3-Yr Avg)
	#	%	C.I. (95%)	#	%	C.I. (95%)	#
Less than \$10,000	7,800	19.8	16.1 - 23.6	31,600	80.2	76.4 - 83.9	39,400
\$10,000 to \$14,999	11,900	28.4	23.6 - 33.1	29,900	71.6	66.9 - 76.4	41,800
\$15,000 to \$19,999	10,200	24.1	19.1 - 29.1	32,100	75.9	70.9 - 80.9	42,300
\$20,000 to \$24,999	10,000	19.4	14.9 - 23.8	41,400	80.6	76.2 - 85.1	51,400
\$25,000 to \$34,999	16,800	20.6	17.8 - 23.5	64,700	79.4	76.5 - 82.2	81,500
\$35,000 to \$49,999	22,700	17.3	15.2 - 19.5	108,200	82.7	80.5 - 84.8	130,900
\$50,000 to \$74,999	19,700	15.6	13.5 - 17.7	106,600	84.4	82.3 - 86.5	126,200
\$75,000 or more	20,500	15.1	13.0 - 17.2	115,400	84.9	82.8 - 87.0	135,900

Pneumonia - ever had shot by State, County, Island, Community, BRFSS Age Group, DOH Race-Ethnicity, Gender, Education Level, Employment Status (Grouped), Household Income, Poverty Level, Marital Status (Grouped), Married, Health Care Coverage, for the Year(s) - 2001-2003, 2002-2004, 2003-2005, 2004-2006, 2005-2007, 2006-2008, 2007-2009, 2008-2010

Note: Weighted numbers (#) represent 3-yr averages, percentages and 95% confidence intervals; Respondents aged 18 years and older; n/r (Not Reportable) - If the unweighted total responses for a dimension (row) is <50 that row will not be shown; n/a (Not Available) - Not asked of a subset of respondents

Year: 2001-2003

Poverty Level	Yes			No			Estimated Population (3-Yr Avg)
	#	%	C.I. (95%)	#	%	C.I. (95%)	#
0-130%	31,100	20.1	17.6 - 22.6	123,300	79.9	77.4 - 82.4	154,400
131-185%	16,100	18.8	15.9 - 21.7	69,400	81.2	78.3 - 84.1	85,500
186+%	72,400	17.7	16.5 - 18.9	337,100	82.3	81.1 - 83.5	409,500

Marital Status (Grouped)	Yes			No			Estimated Population (3-Yr Avg)
	#	%	C.I. (95%)	#	%	C.I. (95%)	#
Married	103,400	20.1	18.9 - 21.3	410,500	79.9	78.7 - 81.1	513,900
Unmarried Couple	900	5.9	1.1 - 10.6	15,100	94.1	89.4 - 98.9	16,000
Widowed	30,400	55.4	51.4 - 59.5	24,500	44.6	40.5 - 48.6	54,900
Other	38,500	12.8	11.5 - 14.1	262,200	87.2	85.9 - 88.5	300,700

Pneumonia - ever had shot by State, County, Island, Community, BRFSS Age Group, DOH Race-Ethnicity, Gender, Education Level, Employment Status (Grouped), Household Income, Poverty Level, Marital Status (Grouped), Married, Health Care Coverage, for the Year(s) - 2001-2003, 2002-2004, 2003-2005, 2004-2006, 2005-2007, 2006-2008, 2007-2009, 2008-2010

Note: Weighted numbers (#) represent 3-yr averages, percentages and 95% confidence intervals; Respondents aged 18 years and older; n/r (Not Reportable) - If the unweighted total responses for a dimension (row) is <50 that row will not be shown; n/a (Not Available) - Not asked of a subset of respondents

Year: 2001-2003

Married	Yes			No			Estimated Population (3-Yr Avg)
	#	%	C.I. (95%)	#	%	C.I. (95%)	#
Yes	104,800	19.9	18.7 - 21.1	422,000	80.1	78.9 - 81.3	526,800
No	68,400	19.1	17.8 - 20.5	289,400	80.9	79.5 - 82.2	357,800

Health Care Coverage	Yes			No			Estimated Population (3-Yr Avg)
	#	%	C.I. (95%)	#	%	C.I. (95%)	#
Yes	167,500	20.6	19.6 - 21.5	646,300	79.4	78.5 - 80.4	813,800
No	5,700	8.1	5.6 - 10.5	65,000	91.9	89.5 - 94.4	70,700