

Pneumonia - ever had shot (65+) by State, County, Island, Community, DOH Race-Ethnicity, Gender, Education Level, Employment Status (Grouped), Household Income, Poverty Level, Marital Status (Grouped), Married, Health Care Coverage, for the Year(s) - 2001-2003, 2002-2004, 2003-2005, 2004-2006, 2005-2007, 2006-2008, 2007-2009, 2008-2010

Note: Weighted numbers (#) represent 3-yr averages, percentages and 95% confidence intervals; Respondents aged 18 years and older; n/r (Not Reportable) - If the unweighted total responses for a dimension (row) is <50 that row will not be shown; n/a (Not Available) - Not asked of a subset of respondents

The trend analysis report shows the trend for the selected health variable over selected years in a table and a graph. Estimated Population: This number is a weighted representation of the population who responded to a particular question in the survey. For most questions the eligible population will be the entire adult population. For some secondary questions only a subset of the population was asked the question. For example, all survey participants were asked if they had diabetes, but only those who answered yes were asked if they use insulin. If a dimension value is unknown for a particular survey record, that record will not be included in the counts for that particular dimension.

For documentation on other terms and coding in this report, please go to the following links

[Click here to access BRFSS documentation](#)

[Click here to access DOH Race-Ethnicity coding](#)

[Click here to access The Hawai'i Data Guide](#)

[Click here to access Poverty Level Methodology](#)

**For questions about this report, please contact
The Hawaii Health Data Warehouse**

profiles@hhdw.org

(855) 946-5899 x15

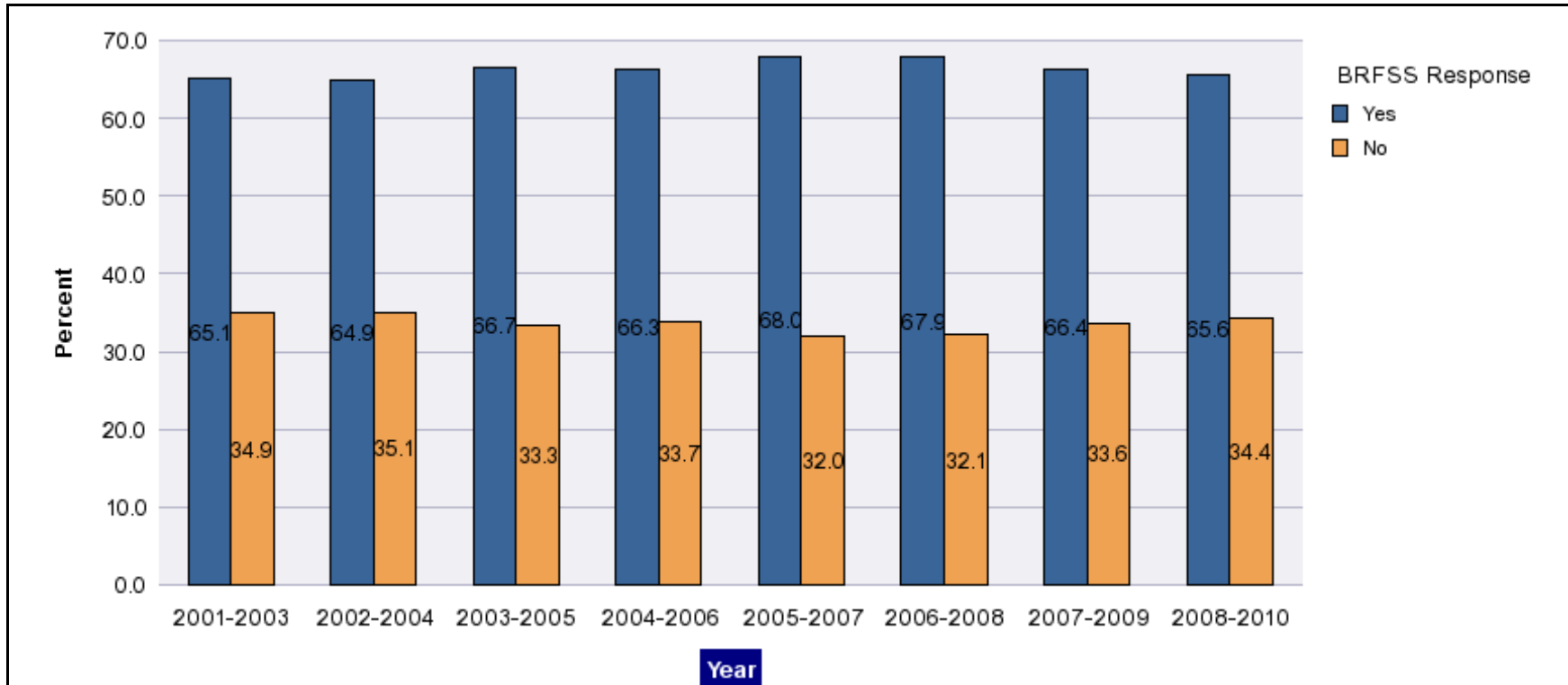
Pneumonia - ever had shot (65+) by State, County, Island, Community, DOH Race-Ethnicity, Gender, Education Level, Employment Status (Grouped), Household Income, Poverty Level, Marital Status (Grouped), Married, Health Care Coverage, for the Year(s) - 2001-2003, 2002-2004, 2003-2005, 2004-2006, 2005-2007, 2006-2008, 2007-2009, 2008-2010

Note: Weighted numbers (#) represent 3-yr averages, percentages and 95% confidence intervals; Respondents aged 18 years and older; n/r (Not Reportable) - If the unweighted total responses for a dimension (row) is <50 that row will not be shown; n/a (Not Available) - Not asked of a subset of respondents

Year	Yes			No			Estimated Population (3-Yr Avg)
	#	%	C.I.(95%)	#	%	C.I.(95%)	#
2001-2003	98,700	65.1	62.7 - 67.4	53,000	34.9	32.6 - 37.3	151,600
2002-2004	100,100	64.9	62.1 - 67.8	54,100	35.1	32.2 - 37.9	154,200
2003-2005	107,100	66.7	64.0 - 69.4	53,500	33.3	30.6 - 36.0	160,600
2004-2006	107,700	66.3	63.7 - 68.8	54,800	33.7	31.2 - 36.3	162,500
2005-2007	114,200	68.0	66.2 - 69.9	53,700	32.0	30.1 - 33.8	167,900
2006-2008	115,200	67.9	66.1 - 69.7	54,500	32.1	30.3 - 33.9	169,700
2007-2009	114,900	66.4	64.7 - 68.2	58,100	33.6	31.8 - 35.3	173,000
2008-2010	115,500	65.6	64.0 - 67.3	60,500	34.4	32.7 - 36.0	176,100

Pneumonia - ever had shot (65+) by State, County, Island, Community, DOH Race-Ethnicity, Gender, Education Level, Employment Status (Grouped), Household Income, Poverty Level, Marital Status (Grouped), Married, Health Care Coverage, for the Year(s) - 2001-2003, 2002-2004, 2003-2005, 2004-2006, 2005-2007, 2006-2008, 2007-2009, 2008-2010

Note: Weighted numbers (#) represent 3-yr averages, percentages and 95% confidence intervals; Respondents aged 18 years and older; n/r (Not Reportable) - If the unweighted total responses for a dimension (row) is <50 that row will not be shown; n/a (Not Available) - Not asked of a subset of respondents



Pneumonia - ever had shot (65+) by State, County, Island, Community, DOH Race-Ethnicity, Gender, Education Level, Employment Status (Grouped), Household Income, Poverty Level, Marital Status (Grouped), Married, Health Care Coverage, for the Year(s) - 2001-2003, 2002-2004, 2003-2005, 2004-2006, 2005-2007, 2006-2008, 2007-2009, 2008-2010

Note: Weighted numbers (#) represent 3-yr averages, percentages and 95% confidence intervals; Respondents aged 18 years and older; n/r (Not Reportable) - If the unweighted total responses for a dimension (row) is <50 that row will not be shown; n/a (Not Available) - Not asked of a subset of respondents

Year: 2008-2010

State	Yes			No			Estimated Population (3-Yr Avg)
	#	%	C.I. (95%)	#	%	C.I. (95%)	#
Hawaii State	115,500	65.6	64.0 - 67.3	60,500	34.4	32.7 - 36.0	176,100

County	Yes			No			Estimated Population (3-Yr Avg)
	#	%	C.I. (95%)	#	%	C.I. (95%)	#
Hawaii	14,500	64.4	61.2 - 67.6	8,000	35.6	32.4 - 38.8	22,500
Honolulu	84,400	66.0	63.9 - 68.1	43,500	34.0	31.9 - 36.1	127,900
Kauai	6,000	67.6	63.0 - 72.2	2,900	32.4	27.8 - 37.0	8,900
Maui	10,600	63.3	59.7 - 66.9	6,100	36.7	33.1 - 40.3	16,700

Pneumonia - ever had shot (65+) by State, County, Island, Community, DOH Race-Ethnicity, Gender, Education Level, Employment Status (Grouped), Household Income, Poverty Level, Marital Status (Grouped), Married, Health Care Coverage, for the Year(s) - 2001-2003, 2002-2004, 2003-2005, 2004-2006, 2005-2007, 2006-2008, 2007-2009, 2008-2010

Note: Weighted numbers (#) represent 3-yr averages, percentages and 95% confidence intervals; Respondents aged 18 years and older; n/r (Not Reportable) - If the unweighted total responses for a dimension (row) is <50 that row will not be shown; n/a (Not Available) - Not asked of a subset of respondents

Year: 2008-2010

Island	Yes			No			Estimated Population (3-Yr Avg)
	#	%	C.I. (95%)	#	%	C.I. (95%)	#
Hawaii	14,500	64.4	61.2 - 67.6	8,000	35.6	32.4 - 38.8	22,500
Kauai	6,000	67.6	63.0 - 72.2	2,900	32.4	27.8 - 37.0	8,900
Lanai	200	62.7	53.6 - 71.9	100	37.3	28.1 - 46.4	300
Maui	9,700	63.4	59.5 - 67.2	5,600	36.6	32.8 - 40.5	15,400
Molokai	700	62.4	53.4 - 71.4	400	37.6	28.6 - 46.6	1,100
Oahu	84,400	66.0	63.9 - 68.1	43,500	34.0	31.9 - 36.1	127,900

Community	Yes			No			Estimated Population (3-Yr Avg)
	#	%	C.I. (95%)	#	%	C.I. (95%)	#
Aiea/ Pearl City	9,400	70.3	63.8 - 76.9	4,000	29.7	23.1 - 36.2	13,400
Ala Moana	4,400	69.0	61.3 - 76.8	2,000	31.0	23.2 - 38.7	6,400

Pneumonia - ever had shot (65+) by State, County, Island, Community, DOH Race-Ethnicity, Gender, Education Level, Employment Status (Grouped), Household Income, Poverty Level, Marital Status (Grouped), Married, Health Care Coverage, for the Year(s) - 2001-2003, 2002-2004, 2003-2005, 2004-2006, 2005-2007, 2006-2008, 2007-2009, 2008-2010

Note: Weighted numbers (#) represent 3-yr averages, percentages and 95% confidence intervals; Respondents aged 18 years and older; n/r (Not Reportable) - If the unweighted total responses for a dimension (row) is <50 that row will not be shown; n/a (Not Available) - Not asked of a subset of respondents

Year: 2008-2010

Community	Yes			No			Estimated Population (3-Yr Avg)
	#	%	C.I. (95%)	#	%	C.I. (95%)	#
Hanalei/ Kapaa	2,000	59.6	52.0 - 67.2	1,400	40.4	32.8 - 48.0	3,400
Hilo	4,900	66.6	61.2 - 72.0	2,500	33.4	28.0 - 38.8	7,400
Kaaawa/ Kahaluu/ Kaneohe	6,300	61.3	53.8 - 68.8	4,000	38.7	31.2 - 46.2	10,300
Kahului	3,500	64.2	58.0 - 70.4	2,000	35.8	29.6 - 42.0	5,500
Kailua/ Waimanalo	6,700	62.8	55.1 - 70.4	4,000	37.2	29.6 - 44.9	10,600
Kaimuki/ Palolo/ Waikiki	10,600	66.7	60.9 - 72.4	5,300	33.3	27.6 - 39.1	15,900
Kona	3,800	64.7	58.2 - 71.1	2,100	35.3	28.9 - 41.8	5,800
Lahaina/ Wailuku	3,300	64.0	57.3 - 70.8	1,900	36.0	29.2 - 42.7	5,200
Lanai	200	62.7	53.6 - 71.9	100	37.3	28.1 - 46.4	300
Lihue-Waimea	4,000	72.5	66.8 - 78.1	1,500	27.5	21.9 - 33.2	5,600
Manoa/ Upper Makiki	8,300	70.4	64.3 - 76.5	3,500	29.6	23.5 - 35.7	11,800
Mililani/ Wahiawa	5,800	70.1	62.3 - 77.8	2,500	29.9	22.2 - 37.7	8,300

Report Source: The Hawaii Health Data Warehouse;
Data Source: State of Hawaii, Department of Health,
Behavioral Risk Factor Surveillance System (BRFSS)

Pneumonia - ever had shot (65+) by State, County, Island, Community, DOH Race-Ethnicity, Gender, Education Level, Employment Status (Grouped), Household Income, Poverty Level, Marital Status (Grouped), Married, Health Care Coverage, for the Year(s) - 2001-2003, 2002-2004, 2003-2005, 2004-2006, 2005-2007, 2006-2008, 2007-2009, 2008-2010

Note: Weighted numbers (#) represent 3-yr averages, percentages and 95% confidence intervals; Respondents aged 18 years and older; n/r (Not Reportable) - If the unweighted total responses for a dimension (row) is <50 that row will not be shown; n/a (Not Available) - Not asked of a subset of respondents

Year: 2008-2010

Community	Yes			No			Estimated Population (3-Yr Avg)
	#	%	C.I. (95%)	#	%	C.I. (95%)	#
Molokai	700	62.4	53.4 - 71.4	400	37.6	28.6 - 46.6	1,100
Nanakuli/ Waianae	2,500	49.5	37.3 - 61.6	2,600	50.5	38.4 - 62.7	5,100
N.Hawaii	2,400	60.5	53.2 - 67.8	1,600	39.5	32.2 - 46.8	4,000
N.Shore/ Laie	1,800	53.3	38.9 - 67.7	1,600	46.7	32.3 - 61.1	3,500
Nuuanu/ Kalihi/ Moanalua	8,800	63.1	56.4 - 69.9	5,200	36.9	30.1 - 43.6	14,000
Puna/ Kau	3,400	64.1	57.4 - 70.8	1,900	35.9	29.2 - 42.6	5,400
Salt Lake/ Foster Village	3,100	83.4	73.7 - 93.0	600	16.6	7.0 - 26.3	3,700
Upcountry/ Hana	2,900	61.7	54.6 - 68.8	1,800	38.3	31.2 - 45.4	4,700
Waialae/ Kahala/ Hawaii Kai	8,400	70.6	64.3 - 76.9	3,500	29.4	23.1 - 35.7	11,900
Waipahu/ Kapolei/ Ewa	8,100	62.6	55.1 - 70.1	4,900	37.4	29.9 - 44.9	13,000

Pneumonia - ever had shot (65+) by State, County, Island, Community, DOH Race-Ethnicity, Gender, Education Level, Employment Status (Grouped), Household Income, Poverty Level, Marital Status (Grouped), Married, Health Care Coverage, for the Year(s) - 2001-2003, 2002-2004, 2003-2005, 2004-2006, 2005-2007, 2006-2008, 2007-2009, 2008-2010

Note: Weighted numbers (#) represent 3-yr averages, percentages and 95% confidence intervals; Respondents aged 18 years and older; n/r (Not Reportable) - If the unweighted total responses for a dimension (row) is <50 that row will not be shown; n/a (Not Available) - Not asked of a subset of respondents

Year: 2008-2010

DOH Race-Ethnicity	Yes			No			Estimated Population (3-Yr Avg)
	#	%	C.I. (95%)	#	%	C.I. (95%)	#
Caucasian	39,300	66.1	63.6 - 68.5	20,200	33.9	31.5 - 36.4	59,500
Native Hawaiian	8,800	53.0	47.0 - 59.1	7,800	47.0	40.9 - 53.0	16,700
Chinese	9,400	68.4	62.4 - 74.4	4,300	31.6	25.6 - 37.6	13,800
Filipino	9,100	51.1	44.8 - 57.4	8,700	48.9	42.6 - 55.2	17,800
Japanese	45,400	73.5	70.8 - 76.1	16,400	26.5	23.9 - 29.2	61,700
Other Asian	1,600	57.1	43.1 - 71.1	1,200	42.9	28.9 - 56.9	2,700
Other	1,100	53.4	39.5 - 67.2	1,000	46.6	32.8 - 60.5	2,100

Pneumonia - ever had shot (65+) by State, County, Island, Community, DOH Race-Ethnicity, Gender, Education Level, Employment Status (Grouped), Household Income, Poverty Level, Marital Status (Grouped), Married, Health Care Coverage, for the Year(s) - 2001-2003, 2002-2004, 2003-2005, 2004-2006, 2005-2007, 2006-2008, 2007-2009, 2008-2010

Note: Weighted numbers (#) represent 3-yr averages, percentages and 95% confidence intervals; Respondents aged 18 years and older; n/r (Not Reportable) - If the unweighted total responses for a dimension (row) is <50 that row will not be shown; n/a (Not Available) - Not asked of a subset of respondents

Year: 2008-2010

Gender	Yes			No			Estimated Population (3-Yr Avg)
	#	%	C.I. (95%)	#	%	C.I. (95%)	#
Male	44,000	59.4	56.8 - 62.1	30,100	40.6	37.9 - 43.2	74,100
Female	71,500	70.1	68.1 - 72.2	30,500	29.9	27.8 - 31.9	102,000

Education Level	Yes			No			Estimated Population (3-Yr Avg)
	#	%	C.I. (95%)	#	%	C.I. (95%)	#
Never attended school/ Only Kindergarten to Grades 8	2,900	48.8	38.6 - 59.1	3,000	51.2	40.9 - 61.4	5,900
Grades 9 thru 11 (Some High School)	6,500	60.8	53.2 - 68.4	4,200	39.2	31.6 - 46.8	10,600
Grades 12 or GED (High School Grad)	36,600	62.4	59.4 - 65.4	22,100	37.6	34.6 - 40.6	58,700
College 1 to 3 years (Some College/ Tech)	29,100	70.0	66.8 - 73.2	12,500	30.0	26.8 - 33.2	41,500
College 4 years or more (College Grad)	40,400	68.3	65.7 - 70.8	18,800	31.7	29.2 - 34.3	59,200

Pneumonia - ever had shot (65+) by State, County, Island, Community, DOH Race-Ethnicity, Gender, Education Level, Employment Status (Grouped), Household Income, Poverty Level, Marital Status (Grouped), Married, Health Care Coverage, for the Year(s) - 2001-2003, 2002-2004, 2003-2005, 2004-2006, 2005-2007, 2006-2008, 2007-2009, 2008-2010

Note: Weighted numbers (#) represent 3-yr averages, percentages and 95% confidence intervals; Respondents aged 18 years and older; n/r (Not Reportable) - If the unweighted total responses for a dimension (row) is <50 that row will not be shown; n/a (Not Available) - Not asked of a subset of respondents

Year: 2008-2010

Employment Status (Grouped)	Yes			No			Estimated Population (3-Yr Avg)
	#	%	C.I. (95%)	#	%	C.I. (95%)	#
Employed	14,100	51.9	47.7 - 56.1	13,000	48.1	43.9 - 52.3	27,100
Unemployed	500	30.5	17.1 - 43.9	1,200	69.5	56.1 - 82.9	1,800
Retired/Unable to work	95,000	68.5	66.7 - 70.3	43,700	31.5	29.7 - 33.3	138,600
Student/Homemaker	5,900	69.6	62.3 - 77.0	2,600	30.4	23.0 - 37.7	8,500

Pneumonia - ever had shot (65+) by State, County, Island, Community, DOH Race-Ethnicity, Gender, Education Level, Employment Status (Grouped), Household Income, Poverty Level, Marital Status (Grouped), Married, Health Care Coverage, for the Year(s) - 2001-2003, 2002-2004, 2003-2005, 2004-2006, 2005-2007, 2006-2008, 2007-2009, 2008-2010

Note: Weighted numbers (#) represent 3-yr averages, percentages and 95% confidence intervals; Respondents aged 18 years and older; n/r (Not Reportable) - If the unweighted total responses for a dimension (row) is <50 that row will not be shown; n/a (Not Available) - Not asked of a subset of respondents

Year: 2008-2010

Household Income	Yes			No			Estimated Population (3-Yr Avg)
	#	%	C.I. (95%)	#	%	C.I. (95%)	#
Less than \$10,000	2,700	46.2	36.7 - 55.6	3,100	53.8	44.4 - 63.3	5,800
\$10,000 to \$14,999	5,000	59.7	52.3 - 67.1	3,400	40.3	32.9 - 47.7	8,400
\$15,000 to \$19,999	7,500	59.9	53.6 - 66.1	5,000	40.1	33.9 - 46.4	12,500
\$20,000 to \$24,999	10,200	63.1	57.4 - 68.8	6,000	36.9	31.2 - 42.6	16,200
\$25,000 to \$34,999	13,600	60.2	55.5 - 64.8	9,000	39.8	35.2 - 44.5	22,600
\$35,000 to \$49,999	21,100	73.4	69.7 - 77.2	7,600	26.6	22.8 - 30.3	28,800
\$50,000 to \$74,999	19,100	68.6	64.6 - 72.7	8,700	31.4	27.3 - 35.4	27,800
\$75,000 or more	23,300	67.5	64.0 - 71.0	11,200	32.5	29.0 - 36.0	34,500

Pneumonia - ever had shot (65+) by State, County, Island, Community, DOH Race-Ethnicity, Gender, Education Level, Employment Status (Grouped), Household Income, Poverty Level, Marital Status (Grouped), Married, Health Care Coverage, for the Year(s) - 2001-2003, 2002-2004, 2003-2005, 2004-2006, 2005-2007, 2006-2008, 2007-2009, 2008-2010

Note: Weighted numbers (#) represent 3-yr averages, percentages and 95% confidence intervals; Respondents aged 18 years and older; n/r (Not Reportable) - If the unweighted total responses for a dimension (row) is <50 that row will not be shown; n/a (Not Available) - Not asked of a subset of respondents

Year: 2008-2010

Poverty Level	Yes			No			Estimated Population (3-Yr Avg)
	#	%	C.I. (95%)	#	%	C.I. (95%)	#
0-130%	17,900	55.4	50.8 - 60.0	14,400	44.6	40.0 - 49.2	32,200
131-185%	17,900	63.9	59.9 - 68.0	10,100	36.1	32.0 - 40.1	28,000
186+%	66,700	69.3	67.3 - 71.3	29,600	30.7	28.7 - 32.7	96,300

Marital Status (Grouped)	Yes			No			Estimated Population (3-Yr Avg)
	#	%	C.I. (95%)	#	%	C.I. (95%)	#
Married	67,700	64.8	62.5 - 67.0	36,800	35.2	33.0 - 37.5	104,600
Widowed	30,900	70.2	67.1 - 73.3	13,100	29.8	26.7 - 32.9	44,100
Other	16,300	61.3	57.6 - 65.1	10,300	38.7	34.9 - 42.4	26,500

Pneumonia - ever had shot (65+) by State, County, Island, Community, DOH Race-Ethnicity, Gender, Education Level, Employment Status (Grouped), Household Income, Poverty Level, Marital Status (Grouped), Married, Health Care Coverage, for the Year(s) - 2001-2003, 2002-2004, 2003-2005, 2004-2006, 2005-2007, 2006-2008, 2007-2009, 2008-2010

Note: Weighted numbers (#) represent 3-yr averages, percentages and 95% confidence intervals; Respondents aged 18 years and older; n/r (Not Reportable) - If the unweighted total responses for a dimension (row) is <50 that row will not be shown; n/a (Not Available) - Not asked of a subset of respondents

Year: 2008-2010

Married	Yes			No			Estimated Population (3-Yr Avg)
	#	%	C.I. (95%)	#	%	C.I. (95%)	#
Yes	68,400	64.7	62.5 - 67.0	37,200	35.3	33.0 - 37.5	105,600
No	47,100	67.0	64.5 - 69.4	23,200	33.0	30.6 - 35.5	70,300

Health Care Coverage	Yes			No			Estimated Population (3-Yr Avg)
	#	%	C.I. (95%)	#	%	C.I. (95%)	#
Yes	115,000	65.7	64.1 - 67.4	60,000	34.3	32.6 - 35.9	175,000

Pneumonia - ever had shot (65+) by State, County, Island, Community, DOH Race-Ethnicity, Gender, Education Level, Employment Status (Grouped), Household Income, Poverty Level, Marital Status (Grouped), Married, Health Care Coverage, for the Year(s) - 2001-2003, 2002-2004, 2003-2005, 2004-2006, 2005-2007, 2006-2008, 2007-2009, 2008-2010

Note: Weighted numbers (#) represent 3-yr averages, percentages and 95% confidence intervals; Respondents aged 18 years and older; n/r (Not Reportable) - If the unweighted total responses for a dimension (row) is <50 that row will not be shown; n/a (Not Available) - Not asked of a subset of respondents

Year: 2007-2009

State	Yes			No			Estimated Population (3-Yr Avg)
	#	%	C.I. (95%)	#	%	C.I. (95%)	#
Hawaii State	114,900	66.4	64.7 - 68.2	58,100	33.6	31.8 - 35.3	173,000

County	Yes			No			Estimated Population (3-Yr Avg)
	#	%	C.I. (95%)	#	%	C.I. (95%)	#
Hawaii	14,700	66.1	62.9 - 69.3	7,600	33.9	30.7 - 37.1	22,300
Honolulu	84,100	67.0	64.8 - 69.2	41,400	33.0	30.8 - 35.2	125,600
Kauai	5,800	66.5	61.4 - 71.6	2,900	33.5	28.4 - 38.6	8,800
Maui	10,300	62.5	58.6 - 66.4	6,200	37.5	33.6 - 41.4	16,400

Pneumonia - ever had shot (65+) by State, County, Island, Community, DOH Race-Ethnicity, Gender, Education Level, Employment Status (Grouped), Household Income, Poverty Level, Marital Status (Grouped), Married, Health Care Coverage, for the Year(s) - 2001-2003, 2002-2004, 2003-2005, 2004-2006, 2005-2007, 2006-2008, 2007-2009, 2008-2010

Note: Weighted numbers (#) represent 3-yr averages, percentages and 95% confidence intervals; Respondents aged 18 years and older; n/r (Not Reportable) - If the unweighted total responses for a dimension (row) is <50 that row will not be shown; n/a (Not Available) - Not asked of a subset of respondents

Year: 2007-2009

Island	Yes			No			Estimated Population (3-Yr Avg)
	#	%	C.I. (95%)	#	%	C.I. (95%)	#
Hawaii	14,700	66.1	62.9 - 69.3	7,600	33.9	30.7 - 37.1	22,300
Kauai	5,800	66.5	61.4 - 71.6	2,900	33.5	28.4 - 38.6	8,800
Lanai	200	61.3	51.3 - 71.3	100	38.7	28.7 - 48.7	300
Maui	9,500	62.7	58.5 - 66.9	5,600	37.3	33.1 - 41.5	15,100
Molokai	600	60.0	50.0 - 70.1	400	40.0	29.9 - 50.0	1,000
Oahu	84,100	67.0	64.8 - 69.2	41,400	33.0	30.8 - 35.2	125,600

Community	Yes			No			Estimated Population (3-Yr Avg)
	#	%	C.I. (95%)	#	%	C.I. (95%)	#
Aiea/ Pearl City	9,400	71.7	64.8 - 78.6	3,700	28.3	21.4 - 35.2	13,200
Ala Moana	5,200	71.2	63.3 - 79.0	2,100	28.8	21.0 - 36.7	7,400

Pneumonia - ever had shot (65+) by State, County, Island, Community, DOH Race-Ethnicity, Gender, Education Level, Employment Status (Grouped), Household Income, Poverty Level, Marital Status (Grouped), Married, Health Care Coverage, for the Year(s) - 2001-2003, 2002-2004, 2003-2005, 2004-2006, 2005-2007, 2006-2008, 2007-2009, 2008-2010

Note: Weighted numbers (#) represent 3-yr averages, percentages and 95% confidence intervals; Respondents aged 18 years and older; n/r (Not Reportable) - If the unweighted total responses for a dimension (row) is <50 that row will not be shown; n/a (Not Available) - Not asked of a subset of respondents

Year: 2007-2009

Community	Yes			No			Estimated Population (3-Yr Avg)
	#	%	C.I. (95%)	#	%	C.I. (95%)	#
Hanalei/ Kapaa	2,300	63.0	54.7 - 71.3	1,300	37.0	28.7 - 45.3	3,600
Hilo	5,300	68.7	63.3 - 74.0	2,400	31.3	26.0 - 36.7	7,700
Kaaawa/ Kahaluu/ Kaneohe	6,300	66.6	59.0 - 74.1	3,200	33.4	25.9 - 41.0	9,500
Kahului	3,400	60.1	53.4 - 66.8	2,200	39.9	33.2 - 46.6	5,600
Kailua/ Waimanalo	7,000	67.1	59.5 - 74.6	3,400	32.9	25.4 - 40.5	10,400
Kaimuki/ Palolo/ Waikiki	10,700	67.5	61.6 - 73.3	5,200	32.5	26.7 - 38.4	15,800
Kona	3,500	61.5	54.6 - 68.3	2,200	38.5	31.7 - 45.4	5,700
Lahaina/ Wailuku	3,300	67.3	60.2 - 74.4	1,600	32.7	25.6 - 39.8	4,800
Lanai	200	61.3	51.3 - 71.3	100	38.7	28.7 - 48.7	300
Lihue-Waimea	3,600	68.9	62.6 - 75.2	1,600	31.1	24.8 - 37.4	5,200
Manoa/ Upper Makiki	8,100	69.5	62.8 - 76.1	3,500	30.5	23.9 - 37.2	11,600
Millilani/ Wahiawa	5,300	67.4	58.7 - 76.0	2,600	32.6	24.0 - 41.3	7,800

Pneumonia - ever had shot (65+) by State, County, Island, Community, DOH Race-Ethnicity, Gender, Education Level, Employment Status (Grouped), Household Income, Poverty Level, Marital Status (Grouped), Married, Health Care Coverage, for the Year(s) - 2001-2003, 2002-2004, 2003-2005, 2004-2006, 2005-2007, 2006-2008, 2007-2009, 2008-2010

Note: Weighted numbers (#) represent 3-yr averages, percentages and 95% confidence intervals; Respondents aged 18 years and older; n/r (Not Reportable) - If the unweighted total responses for a dimension (row) is <50 that row will not be shown; n/a (Not Available) - Not asked of a subset of respondents

Year: 2007-2009

Community	Yes			No			Estimated Population (3-Yr Avg)
	#	%	C.I. (95%)	#	%	C.I. (95%)	#
Molokai	600	60.0	50.0 - 70.1	400	40.0	29.9 - 50.0	1,000
Nanakuli/ Waianae	2,700	48.3	35.9 - 60.7	2,900	51.7	39.3 - 64.1	5,600
N.Hawaii	2,700	68.3	61.3 - 75.2	1,300	31.7	24.8 - 38.7	4,000
N.Shore/ Laie	1,700	49.4	35.8 - 63.0	1,700	50.6	37.0 - 64.2	3,400
Nuuanu/ Kalihi/ Moanalua	8,900	65.7	58.6 - 72.8	4,700	34.3	27.2 - 41.4	13,600
Puna/ Kau	3,200	65.5	59.0 - 72.0	1,700	34.5	28.0 - 41.0	4,900
Salt Lake/ Foster Village	2,600	83.7	73.8 - 93.5	500	16.3	6.5 - 26.2	3,100
Upcountry/ Hana	2,800	60.9	52.9 - 69.0	1,800	39.1	31.0 - 47.1	4,700
Waialae/ Kahala/ Hawaii Kai	8,200	69.8	62.9 - 76.8	3,500	30.2	23.2 - 37.1	11,700
Waipahu/ Kapolei/ Ewa	8,100	64.7	56.8 - 72.6	4,400	35.3	27.4 - 43.2	12,500

Pneumonia - ever had shot (65+) by State, County, Island, Community, DOH Race-Ethnicity, Gender, Education Level, Employment Status (Grouped), Household Income, Poverty Level, Marital Status (Grouped), Married, Health Care Coverage, for the Year(s) - 2001-2003, 2002-2004, 2003-2005, 2004-2006, 2005-2007, 2006-2008, 2007-2009, 2008-2010

Note: Weighted numbers (#) represent 3-yr averages, percentages and 95% confidence intervals; Respondents aged 18 years and older; n/r (Not Reportable) - If the unweighted total responses for a dimension (row) is <50 that row will not be shown; n/a (Not Available) - Not asked of a subset of respondents

Year: 2007-2009

DOH Race-Ethnicity	Yes			No			Estimated Population (3-Yr Avg)
	#	%	C.I. (95%)	#	%	C.I. (95%)	#
Caucasian	39,100	67.3	64.7 - 69.8	19,000	32.7	30.2 - 35.3	58,100
Native Hawaiian	7,900	51.3	45.0 - 57.6	7,500	48.7	42.4 - 55.0	15,400
Chinese	10,300	71.6	65.5 - 77.8	4,100	28.4	22.2 - 34.5	14,300
Filipino	9,400	51.5	44.9 - 58.1	8,900	48.5	41.9 - 55.1	18,300
Japanese	44,500	73.5	70.7 - 76.3	16,100	26.5	23.7 - 29.3	60,500
Other Asian	1,500	59.4	44.3 - 74.5	1,000	40.6	25.5 - 55.7	2,500
Other	1,200	59.9	45.5 - 74.4	800	40.1	25.6 - 54.5	2,100

Pneumonia - ever had shot (65+) by State, County, Island, Community, DOH Race-Ethnicity, Gender, Education Level, Employment Status (Grouped), Household Income, Poverty Level, Marital Status (Grouped), Married, Health Care Coverage, for the Year(s) - 2001-2003, 2002-2004, 2003-2005, 2004-2006, 2005-2007, 2006-2008, 2007-2009, 2008-2010

Note: Weighted numbers (#) represent 3-yr averages, percentages and 95% confidence intervals; Respondents aged 18 years and older; n/r (Not Reportable) - If the unweighted total responses for a dimension (row) is <50 that row will not be shown; n/a (Not Available) - Not asked of a subset of respondents

Year: 2007-2009

Gender	Yes			No			Estimated Population (3-Yr Avg)
	#	%	C.I. (95%)	#	%	C.I. (95%)	#
Male	44,400	61.0	58.2 - 63.8	28,300	39.0	36.2 - 41.8	72,700
Female	70,500	70.3	68.2 - 72.5	29,700	29.7	27.5 - 31.8	100,300

Education Level	Yes			No			Estimated Population (3-Yr Avg)
	#	%	C.I. (95%)	#	%	C.I. (95%)	#
Never attended school/ Only Kindergarten to Grades 8	3,700	49.6	39.2 - 59.9	3,800	50.4	40.1 - 60.8	7,600
Grades 9 thru 11 (Some High School)	6,700	61.7	54.4 - 68.9	4,200	38.3	31.1 - 45.6	10,900
Grades 12 or GED (High School Grad)	36,000	63.6	60.4 - 66.9	20,600	36.4	33.1 - 39.6	56,500
College 1 to 3 years (Some College/ Tech)	28,500	71.2	67.9 - 74.5	11,500	28.8	25.5 - 32.1	40,000
College 4 years or more (College Grad)	39,900	68.9	66.2 - 71.6	18,000	31.1	28.4 - 33.8	57,900

Pneumonia - ever had shot (65+) by State, County, Island, Community, DOH Race-Ethnicity, Gender, Education Level, Employment Status (Grouped), Household Income, Poverty Level, Marital Status (Grouped), Married, Health Care Coverage, for the Year(s) - 2001-2003, 2002-2004, 2003-2005, 2004-2006, 2005-2007, 2006-2008, 2007-2009, 2008-2010

Note: Weighted numbers (#) represent 3-yr averages, percentages and 95% confidence intervals; Respondents aged 18 years and older; n/r (Not Reportable) - If the unweighted total responses for a dimension (row) is <50 that row will not be shown; n/a (Not Available) - Not asked of a subset of respondents

Year: 2007-2009

Employment Status (Grouped)	Yes			No			Estimated Population (3-Yr Avg)
	#	%	C.I. (95%)	#	%	C.I. (95%)	#
Employed	13,300	53.2	48.7 - 57.7	11,700	46.8	42.3 - 51.3	25,000
Retired/Unable to work	96,800	68.7	66.8 - 70.6	44,100	31.3	29.4 - 33.2	140,900
Student/Homemaker	4,500	71.2	62.7 - 79.7	1,800	28.8	20.3 - 37.3	6,300

Pneumonia - ever had shot (65+) by State, County, Island, Community, DOH Race-Ethnicity, Gender, Education Level, Employment Status (Grouped), Household Income, Poverty Level, Marital Status (Grouped), Married, Health Care Coverage, for the Year(s) - 2001-2003, 2002-2004, 2003-2005, 2004-2006, 2005-2007, 2006-2008, 2007-2009, 2008-2010

Note: Weighted numbers (#) represent 3-yr averages, percentages and 95% confidence intervals; Respondents aged 18 years and older; n/r (Not Reportable) - If the unweighted total responses for a dimension (row) is <50 that row will not be shown; n/a (Not Available) - Not asked of a subset of respondents

Year: 2007-2009

Household Income	Yes			No			Estimated Population (3-Yr Avg)
	#	%	C.I. (95%)	#	%	C.I. (95%)	#
Less than \$10,000	2,300	50.4	40.0 - 60.7	2,300	49.6	39.3 - 60.0	4,600
\$10,000 to \$14,999	5,000	58.5	50.9 - 66.2	3,600	41.5	33.8 - 49.1	8,600
\$15,000 to \$19,999	7,500	61.7	55.2 - 68.1	4,700	38.3	31.9 - 44.8	12,200
\$20,000 to \$24,999	9,700	60.2	54.3 - 66.1	6,400	39.8	33.9 - 45.7	16,100
\$25,000 to \$34,999	14,300	62.7	57.9 - 67.4	8,500	37.3	32.6 - 42.1	22,800
\$35,000 to \$49,999	22,700	74.2	70.6 - 77.9	7,900	25.8	22.1 - 29.4	30,500
\$50,000 to \$74,999	17,800	70.8	66.4 - 75.2	7,300	29.2	24.8 - 33.6	25,200
\$75,000 or more	22,200	66.5	62.7 - 70.3	11,200	33.5	29.7 - 37.3	33,300

Pneumonia - ever had shot (65+) by State, County, Island, Community, DOH Race-Ethnicity, Gender, Education Level, Employment Status (Grouped), Household Income, Poverty Level, Marital Status (Grouped), Married, Health Care Coverage, for the Year(s) - 2001-2003, 2002-2004, 2003-2005, 2004-2006, 2005-2007, 2006-2008, 2007-2009, 2008-2010

Note: Weighted numbers (#) represent 3-yr averages, percentages and 95% confidence intervals; Respondents aged 18 years and older; n/r (Not Reportable) - If the unweighted total responses for a dimension (row) is <50 that row will not be shown; n/a (Not Available) - Not asked of a subset of respondents

Year: 2007-2009

Poverty Level	Yes			No			Estimated Population (3-Yr Avg)
	#	%	C.I. (95%)	#	%	C.I. (95%)	#
0-130%	18,000	57.4	52.6 - 62.1	13,300	42.6	37.9 - 47.4	31,300
131-185%	14,000	60.6	55.8 - 65.5	9,100	39.4	34.5 - 44.2	23,000
186+%	69,600	70.3	68.2 - 72.3	29,400	29.7	27.7 - 31.8	99,000

Marital Status (Grouped)	Yes			No			Estimated Population (3-Yr Avg)
	#	%	C.I. (95%)	#	%	C.I. (95%)	#
Married	67,700	65.7	63.4 - 68.1	35,400	34.3	31.9 - 36.6	103,100
Widowed	31,100	70.5	67.3 - 73.7	13,000	29.5	26.3 - 32.7	44,100
Other	15,700	62.5	58.5 - 66.5	9,400	37.5	33.5 - 41.5	25,100

Pneumonia - ever had shot (65+) by State, County, Island, Community, DOH Race-Ethnicity, Gender, Education Level, Employment Status (Grouped), Household Income, Poverty Level, Marital Status (Grouped), Married, Health Care Coverage, for the Year(s) - 2001-2003, 2002-2004, 2003-2005, 2004-2006, 2005-2007, 2006-2008, 2007-2009, 2008-2010

Note: Weighted numbers (#) represent 3-yr averages, percentages and 95% confidence intervals; Respondents aged 18 years and older; n/r (Not Reportable) - If the unweighted total responses for a dimension (row) is <50 that row will not be shown; n/a (Not Available) - Not asked of a subset of respondents

Year: 2007-2009

Married	Yes			No			Estimated Population (3-Yr Avg)
	#	%	C.I. (95%)	#	%	C.I. (95%)	#
Yes	68,100	65.6	63.3 - 68.0	35,700	34.4	32.0 - 36.7	103,800
No	46,700	67.7	65.2 - 70.2	22,300	32.3	29.8 - 34.8	69,000

Health Care Coverage	Yes			No			Estimated Population (3-Yr Avg)
	#	%	C.I. (95%)	#	%	C.I. (95%)	#
Yes	114,400	66.6	64.8 - 68.3	57,400	33.4	31.7 - 35.2	171,800

Pneumonia - ever had shot (65+) by State, County, Island, Community, DOH Race-Ethnicity, Gender, Education Level, Employment Status (Grouped), Household Income, Poverty Level, Marital Status (Grouped), Married, Health Care Coverage, for the Year(s) - 2001-2003, 2002-2004, 2003-2005, 2004-2006, 2005-2007, 2006-2008, 2007-2009, 2008-2010

Note: Weighted numbers (#) represent 3-yr averages, percentages and 95% confidence intervals; Respondents aged 18 years and older; n/r (Not Reportable) - If the unweighted total responses for a dimension (row) is <50 that row will not be shown; n/a (Not Available) - Not asked of a subset of respondents

Year: 2006-2008

State	Yes			No			Estimated Population (3-Yr Avg)
	#	%	C.I. (95%)	#	%	C.I. (95%)	#
Hawaii State	115,200	67.9	66.1 - 69.7	54,500	32.1	30.3 - 33.9	169,700

County	Yes			No			Estimated Population (3-Yr Avg)
	#	%	C.I. (95%)	#	%	C.I. (95%)	#
Hawaii	14,400	65.6	62.3 - 68.9	7,500	34.4	31.1 - 37.7	22,000
Honolulu	84,600	68.7	66.4 - 71.0	38,500	31.3	29.0 - 33.6	123,100
Kauai	6,100	70.4	65.0 - 75.7	2,600	29.6	24.3 - 35.0	8,700
Maui	10,100	63.2	59.1 - 67.3	5,900	36.8	32.7 - 40.9	16,000

Pneumonia - ever had shot (65+) by State, County, Island, Community, DOH Race-Ethnicity, Gender, Education Level, Employment Status (Grouped), Household Income, Poverty Level, Marital Status (Grouped), Married, Health Care Coverage, for the Year(s) - 2001-2003, 2002-2004, 2003-2005, 2004-2006, 2005-2007, 2006-2008, 2007-2009, 2008-2010

Note: Weighted numbers (#) represent 3-yr averages, percentages and 95% confidence intervals; Respondents aged 18 years and older; n/r (Not Reportable) - If the unweighted total responses for a dimension (row) is <50 that row will not be shown; n/a (Not Available) - Not asked of a subset of respondents

Year: 2006-2008

Island	Yes			No			Estimated Population (3-Yr Avg)
	#	%	C.I. (95%)	#	%	C.I. (95%)	#
Hawaii	14,400	65.6	62.3 - 68.9	7,500	34.4	31.1 - 37.7	22,000
Kauai	6,100	70.4	65.0 - 75.7	2,600	29.6	24.3 - 35.0	8,700
Lanai	200	57.6	47.0 - 68.2	100	42.4	31.8 - 53.0	300
Maui	9,200	63.1	58.7 - 67.6	5,400	36.9	32.4 - 41.3	14,600
Molokai	700	65.3	55.7 - 74.9	400	34.7	25.1 - 44.3	1,000
Oahu	84,600	68.7	66.4 - 71.0	38,500	31.3	29.0 - 33.6	123,100

Community	Yes			No			Estimated Population (3-Yr Avg)
	#	%	C.I. (95%)	#	%	C.I. (95%)	#
Aiea/ Pearl City	10,600	72.0	65.0 - 79.0	4,100	28.0	21.0 - 35.0	14,700
Ala Moana	5,800	72.3	64.6 - 80.0	2,200	27.7	20.0 - 35.4	8,000

Pneumonia - ever had shot (65+) by State, County, Island, Community, DOH Race-Ethnicity, Gender, Education Level, Employment Status (Grouped), Household Income, Poverty Level, Marital Status (Grouped), Married, Health Care Coverage, for the Year(s) - 2001-2003, 2002-2004, 2003-2005, 2004-2006, 2005-2007, 2006-2008, 2007-2009, 2008-2010

Note: Weighted numbers (#) represent 3-yr averages, percentages and 95% confidence intervals; Respondents aged 18 years and older; n/r (Not Reportable) - If the unweighted total responses for a dimension (row) is <50 that row will not be shown; n/a (Not Available) - Not asked of a subset of respondents

Year: 2006-2008

Community	Yes			No			Estimated Population (3-Yr Avg)
	#	%	C.I. (95%)	#	%	C.I. (95%)	#
Hanalei/ Kapaa	2,300	68.9	60.3 - 77.6	1,100	31.1	22.4 - 39.7	3,400
Hilo	5,600	68.2	62.8 - 73.5	2,600	31.8	26.5 - 37.2	8,200
Kaaawa/ Kahaluu/ Kaneohe	5,800	63.6	54.9 - 72.4	3,300	36.4	27.6 - 45.1	9,100
Kahului	3,200	61.0	53.9 - 68.2	2,000	39.0	31.8 - 46.1	5,200
Kailua/ Waimanalo	7,700	70.9	63.7 - 78.1	3,200	29.1	21.9 - 36.3	10,900
Kaimuki/ Palolo/ Waikiki	11,100	69.8	63.8 - 75.7	4,800	30.2	24.3 - 36.2	15,900
Kona	3,200	61.2	53.9 - 68.4	2,100	38.8	31.6 - 46.1	5,300
Lahaina/ Wailuku	3,200	64.6	56.8 - 72.4	1,700	35.4	27.6 - 43.2	4,900
Lanai	200	57.6	47.0 - 68.2	100	42.4	31.8 - 53.0	300
Lihue-Waimea	3,800	71.3	64.5 - 78.2	1,500	28.7	21.8 - 35.5	5,300
Manoa/ Upper Makiki	9,000	75.3	69.2 - 81.4	2,900	24.7	18.6 - 30.8	11,900
Millilani/ Wahiawa	4,600	66.4	57.0 - 75.9	2,300	33.6	24.1 - 43.0	7,000

Pneumonia - ever had shot (65+) by State, County, Island, Community, DOH Race-Ethnicity, Gender, Education Level, Employment Status (Grouped), Household Income, Poverty Level, Marital Status (Grouped), Married, Health Care Coverage, for the Year(s) - 2001-2003, 2002-2004, 2003-2005, 2004-2006, 2005-2007, 2006-2008, 2007-2009, 2008-2010

Note: Weighted numbers (#) represent 3-yr averages, percentages and 95% confidence intervals; Respondents aged 18 years and older; n/r (Not Reportable) - If the unweighted total responses for a dimension (row) is <50 that row will not be shown; n/a (Not Available) - Not asked of a subset of respondents

Year: 2006-2008

Community	Yes			No			Estimated Population (3-Yr Avg)
	#	%	C.I. (95%)	#	%	C.I. (95%)	#
Molokai	700	65.3	55.7 - 74.9	400	34.7	25.1 - 44.3	1,000
Nanakuli/ Waianae	2,400	50.3	36.7 - 63.9	2,400	49.7	36.1 - 63.3	4,800
N.Hawaii	2,800	67.8	60.7 - 75.0	1,300	32.2	25.0 - 39.3	4,100
N.Shore/ Laie	2,100	55.0	41.0 - 68.9	1,700	45.0	31.1 - 59.0	3,800
Nuuanu/ Kalihi/ Moanalua	7,900	65.2	57.5 - 72.8	4,200	34.8	27.2 - 42.5	12,100
Puna/ Kau	2,800	64.2	57.2 - 71.2	1,600	35.8	28.8 - 42.8	4,400
Salt Lake/ Foster Village	2,100	78.2	66.5 - 90.0	600	21.8	10.0 - 33.5	2,700
Upcountry/ Hana	2,900	63.9	55.8 - 72.0	1,600	36.1	28.0 - 44.2	4,600
Waialae/ Kahala/ Hawaii Kai	7,300	71.6	64.1 - 79.0	2,900	28.4	21.0 - 35.9	10,100
Waipahu/ Kapolei/ Ewa	8,200	68.4	60.6 - 76.3	3,800	31.6	23.7 - 39.4	12,000

Pneumonia - ever had shot (65+) by State, County, Island, Community, DOH Race-Ethnicity, Gender, Education Level, Employment Status (Grouped), Household Income, Poverty Level, Marital Status (Grouped), Married, Health Care Coverage, for the Year(s) - 2001-2003, 2002-2004, 2003-2005, 2004-2006, 2005-2007, 2006-2008, 2007-2009, 2008-2010

Note: Weighted numbers (#) represent 3-yr averages, percentages and 95% confidence intervals; Respondents aged 18 years and older; n/r (Not Reportable) - If the unweighted total responses for a dimension (row) is <50 that row will not be shown; n/a (Not Available) - Not asked of a subset of respondents

Year: 2006-2008

DOH Race-Ethnicity	Yes			No			Estimated Population (3-Yr Avg)
	#	%	C.I. (95%)	#	%	C.I. (95%)	#
Caucasian	38,600	69.0	66.3 - 71.6	17,400	31.0	28.4 - 33.7	56,000
Native Hawaiian	8,300	55.9	49.6 - 62.2	6,500	44.1	37.8 - 50.4	14,800
Chinese	10,300	75.9	69.8 - 81.9	3,300	24.1	18.1 - 30.2	13,600
Filipino	9,600	54.8	47.8 - 61.9	7,900	45.2	38.1 - 52.2	17,400
Japanese	44,000	72.5	69.6 - 75.5	16,700	27.5	24.5 - 30.4	60,700
Other Asian	1,400	55.1	40.4 - 69.8	1,200	44.9	30.2 - 59.6	2,600
Other	1,000	55.7	39.6 - 71.8	800	44.3	28.2 - 60.4	1,700

Pneumonia - ever had shot (65+) by State, County, Island, Community, DOH Race-Ethnicity, Gender, Education Level, Employment Status (Grouped), Household Income, Poverty Level, Marital Status (Grouped), Married, Health Care Coverage, for the Year(s) - 2001-2003, 2002-2004, 2003-2005, 2004-2006, 2005-2007, 2006-2008, 2007-2009, 2008-2010

Note: Weighted numbers (#) represent 3-yr averages, percentages and 95% confidence intervals; Respondents aged 18 years and older; n/r (Not Reportable) - If the unweighted total responses for a dimension (row) is <50 that row will not be shown; n/a (Not Available) - Not asked of a subset of respondents

Year: 2006-2008

Gender	Yes			No			Estimated Population (3-Yr Avg)
	#	%	C.I. (95%)	#	%	C.I. (95%)	#
Male	44,800	63.4	60.6 - 66.3	25,800	36.6	33.7 - 39.4	70,600
Female	70,400	71.0	68.8 - 73.3	28,700	29.0	26.7 - 31.2	99,100

Education Level	Yes			No			Estimated Population (3-Yr Avg)
	#	%	C.I. (95%)	#	%	C.I. (95%)	#
Never attended school/ Only Kindergarten to Grades 8	4,400	54.9	45.1 - 64.8	3,600	45.1	35.2 - 54.9	8,000
Grades 9 thru 11 (Some High School)	7,700	64.8	57.7 - 71.8	4,200	35.2	28.2 - 42.3	11,900
Grades 12 or GED (High School Grad)	36,000	64.5	61.2 - 67.8	19,800	35.5	32.2 - 38.8	55,800
College 1 to 3 years (Some College/ Tech)	26,500	70.1	66.6 - 73.7	11,300	29.9	26.3 - 33.4	37,700
College 4 years or more (College Grad)	40,500	72.3	69.6 - 75.0	15,500	27.7	25.0 - 30.4	56,000

Pneumonia - ever had shot (65+) by State, County, Island, Community, DOH Race-Ethnicity, Gender, Education Level, Employment Status (Grouped), Household Income, Poverty Level, Marital Status (Grouped), Married, Health Care Coverage, for the Year(s) - 2001-2003, 2002-2004, 2003-2005, 2004-2006, 2005-2007, 2006-2008, 2007-2009, 2008-2010

Note: Weighted numbers (#) represent 3-yr averages, percentages and 95% confidence intervals; Respondents aged 18 years and older; n/r (Not Reportable) - If the unweighted total responses for a dimension (row) is <50 that row will not be shown; n/a (Not Available) - Not asked of a subset of respondents

Year: 2006-2008

Employment Status (Grouped)	Yes			No			Estimated Population (3-Yr Avg)
	#	%	C.I. (95%)	#	%	C.I. (95%)	#
Employed	12,600	54.9	50.0 - 59.8	10,300	45.1	40.2 - 50.0	22,900
Retired/Unable to work	99,000	69.9	68.0 - 71.8	42,600	30.1	28.2 - 32.0	141,600
Student/Homemaker	3,300	68.4	57.5 - 79.4	1,500	31.6	20.6 - 42.5	4,900

Pneumonia - ever had shot (65+) by State, County, Island, Community, DOH Race-Ethnicity, Gender, Education Level, Employment Status (Grouped), Household Income, Poverty Level, Marital Status (Grouped), Married, Health Care Coverage, for the Year(s) - 2001-2003, 2002-2004, 2003-2005, 2004-2006, 2005-2007, 2006-2008, 2007-2009, 2008-2010

Note: Weighted numbers (#) represent 3-yr averages, percentages and 95% confidence intervals; Respondents aged 18 years and older; n/r (Not Reportable) - If the unweighted total responses for a dimension (row) is <50 that row will not be shown; n/a (Not Available) - Not asked of a subset of respondents

Year: 2006-2008

Household Income	Yes			No			Estimated Population (3-Yr Avg)
	#	%	C.I. (95%)	#	%	C.I. (95%)	#
Less than \$10,000	3,000	64.2	55.5 - 73.0	1,600	35.8	27.0 - 44.5	4,600
\$10,000 to \$14,999	5,400	64.2	56.1 - 72.3	3,000	35.8	27.7 - 43.9	8,300
\$15,000 to \$19,999	8,300	65.6	59.4 - 71.8	4,300	34.4	28.2 - 40.6	12,600
\$20,000 to \$24,999	9,200	58.9	52.7 - 65.2	6,400	41.1	34.8 - 47.3	15,600
\$25,000 to \$34,999	14,500	64.2	59.2 - 69.2	8,100	35.8	30.8 - 40.8	22,500
\$35,000 to \$49,999	20,600	73.6	69.7 - 77.5	7,400	26.4	22.5 - 30.3	27,900
\$50,000 to \$74,999	16,200	72.7	67.9 - 77.4	6,100	27.3	22.6 - 32.1	22,300
\$75,000 or more	20,200	67.9	63.7 - 72.0	9,600	32.1	28.0 - 36.3	29,800

Pneumonia - ever had shot (65+) by State, County, Island, Community, DOH Race-Ethnicity, Gender, Education Level, Employment Status (Grouped), Household Income, Poverty Level, Marital Status (Grouped), Married, Health Care Coverage, for the Year(s) - 2001-2003, 2002-2004, 2003-2005, 2004-2006, 2005-2007, 2006-2008, 2007-2009, 2008-2010

Note: Weighted numbers (#) represent 3-yr averages, percentages and 95% confidence intervals; Respondents aged 18 years and older; n/r (Not Reportable) - If the unweighted total responses for a dimension (row) is <50 that row will not be shown; n/a (Not Available) - Not asked of a subset of respondents

Year: 2006-2008

Poverty Level	Yes			No			Estimated Population (3-Yr Avg)
	#	%	C.I. (95%)	#	%	C.I. (95%)	#
0-130%	18,500	62.4	57.5 - 67.3	11,200	37.6	32.7 - 42.5	29,700
131-185%	10,500	57.2	51.5 - 63.0	7,800	42.8	37.0 - 48.5	18,300
186+%	68,200	71.3	69.2 - 73.4	27,500	28.7	26.6 - 30.8	95,700

Marital Status (Grouped)	Yes			No			Estimated Population (3-Yr Avg)
	#	%	C.I. (95%)	#	%	C.I. (95%)	#
Married	68,900	67.0	64.6 - 69.4	34,000	33.0	30.6 - 35.4	102,900
Widowed	30,200	71.5	68.4 - 74.7	12,000	28.5	25.3 - 31.6	42,200
Other	15,900	65.5	61.5 - 69.6	8,300	34.5	30.4 - 38.5	24,200

Pneumonia - ever had shot (65+) by State, County, Island, Community, DOH Race-Ethnicity, Gender, Education Level, Employment Status (Grouped), Household Income, Poverty Level, Marital Status (Grouped), Married, Health Care Coverage, for the Year(s) - 2001-2003, 2002-2004, 2003-2005, 2004-2006, 2005-2007, 2006-2008, 2007-2009, 2008-2010

Note: Weighted numbers (#) represent 3-yr averages, percentages and 95% confidence intervals; Respondents aged 18 years and older; n/r (Not Reportable) - If the unweighted total responses for a dimension (row) is <50 that row will not be shown; n/a (Not Available) - Not asked of a subset of respondents

Year: 2006-2008

Married	Yes			No			Estimated Population (3-Yr Avg)
	#	%	C.I. (95%)	#	%	C.I. (95%)	#
Yes	69,400	67.0	64.6 - 69.4	34,300	33.0	30.6 - 35.4	103,700
No	45,600	69.3	66.8 - 71.8	20,200	30.7	28.2 - 33.2	65,800

Health Care Coverage	Yes			No			Estimated Population (3-Yr Avg)
	#	%	C.I. (95%)	#	%	C.I. (95%)	#
Yes	114,700	68.1	66.3 - 69.9	53,700	31.9	30.1 - 33.7	168,500

Pneumonia - ever had shot (65+) by State, County, Island, Community, DOH Race-Ethnicity, Gender, Education Level, Employment Status (Grouped), Household Income, Poverty Level, Marital Status (Grouped), Married, Health Care Coverage, for the Year(s) - 2001-2003, 2002-2004, 2003-2005, 2004-2006, 2005-2007, 2006-2008, 2007-2009, 2008-2010

Note: Weighted numbers (#) represent 3-yr averages, percentages and 95% confidence intervals; Respondents aged 18 years and older; n/r (Not Reportable) - If the unweighted total responses for a dimension (row) is <50 that row will not be shown; n/a (Not Available) - Not asked of a subset of respondents

Year: 2005-2007

State	Yes			No			Estimated Population (3-Yr Avg)
	#	%	C.I. (95%)	#	%	C.I. (95%)	#
Hawaii State	114,200	68.0	66.2 - 69.9	53,700	32.0	30.1 - 33.8	167,900

County	Yes			No			Estimated Population (3-Yr Avg)
	#	%	C.I. (95%)	#	%	C.I. (95%)	#
Hawaii	14,200	65.5	62.2 - 68.8	7,500	34.5	31.2 - 37.8	21,700
Honolulu	83,800	68.8	66.4 - 71.1	38,000	31.2	28.9 - 33.6	121,800
Kauai	6,000	70.2	64.7 - 75.6	2,500	29.8	24.4 - 35.3	8,500
Maui	10,300	64.6	60.2 - 69.0	5,600	35.4	31.0 - 39.8	15,900

Pneumonia - ever had shot (65+) by State, County, Island, Community, DOH Race-Ethnicity, Gender, Education Level, Employment Status (Grouped), Household Income, Poverty Level, Marital Status (Grouped), Married, Health Care Coverage, for the Year(s) - 2001-2003, 2002-2004, 2003-2005, 2004-2006, 2005-2007, 2006-2008, 2007-2009, 2008-2010

Note: Weighted numbers (#) represent 3-yr averages, percentages and 95% confidence intervals; Respondents aged 18 years and older; n/r (Not Reportable) - If the unweighted total responses for a dimension (row) is <50 that row will not be shown; n/a (Not Available) - Not asked of a subset of respondents

Year: 2005-2007

Island	Yes			No			Estimated Population (3-Yr Avg)
	#	%	C.I. (95%)	#	%	C.I. (95%)	#
Hawaii	14,200	65.5	62.2 - 68.8	7,500	34.5	31.2 - 37.8	21,700
Kauai	6,000	70.2	64.7 - 75.6	2,500	29.8	24.4 - 35.3	8,500
Lanai	200	59.3	48.0 - 70.6	100	40.7	29.4 - 52.0	400
Maui	9,300	64.5	59.8 - 69.2	5,100	35.5	30.8 - 40.2	14,500
Molokai	700	67.5	58.4 - 76.6	300	32.5	23.4 - 41.6	1,100
Oahu	83,800	68.8	66.4 - 71.1	38,000	31.2	28.9 - 33.6	121,800

Community	Yes			No			Estimated Population (3-Yr Avg)
	#	%	C.I. (95%)	#	%	C.I. (95%)	#
Aiea/ Pearl City	10,200	69.8	62.8 - 76.9	4,400	30.2	23.1 - 37.2	14,600
Ala Moana	5,400	70.2	62.1 - 78.2	2,300	29.8	21.8 - 37.9	7,700

Pneumonia - ever had shot (65+) by State, County, Island, Community, DOH Race-Ethnicity, Gender, Education Level, Employment Status (Grouped), Household Income, Poverty Level, Marital Status (Grouped), Married, Health Care Coverage, for the Year(s) - 2001-2003, 2002-2004, 2003-2005, 2004-2006, 2005-2007, 2006-2008, 2007-2009, 2008-2010

Note: Weighted numbers (#) represent 3-yr averages, percentages and 95% confidence intervals; Respondents aged 18 years and older; n/r (Not Reportable) - If the unweighted total responses for a dimension (row) is <50 that row will not be shown; n/a (Not Available) - Not asked of a subset of respondents

Year: 2005-2007

Community	Yes			No			Estimated Population (3-Yr Avg)
	#	%	C.I. (95%)	#	%	C.I. (95%)	#
Hanalei/ Kapaa	2,500	70.0	61.7 - 78.4	1,100	30.0	21.6 - 38.3	3,500
Hilo	5,500	68.5	63.0 - 73.9	2,500	31.5	26.1 - 37.0	8,000
Kaaawa/ Kahaluu/ Kaneohe	5,900	65.3	56.4 - 74.3	3,200	34.7	25.7 - 43.6	9,100
Kahului	3,600	63.2	55.9 - 70.5	2,100	36.8	29.5 - 44.1	5,700
Kailua/ Waimanalo	8,200	74.6	67.3 - 82.0	2,800	25.4	18.0 - 32.7	11,000
Kaimuki/ Palolo/ Waikiki	10,800	70.1	64.2 - 75.9	4,600	29.9	24.1 - 35.8	15,500
Kona	3,400	63.2	56.3 - 70.2	2,000	36.8	29.8 - 43.7	5,300
Lahaina/ Wailuku	3,100	65.5	57.0 - 74.0	1,600	34.5	26.0 - 43.0	4,700
Lanai	200	59.3	48.0 - 70.6	100	40.7	29.4 - 52.0	400
Lihue-Waimea	3,500	70.2	63.1 - 77.4	1,500	29.8	22.6 - 36.9	4,900
Manoa/ Upper Makiki	8,100	72.6	65.6 - 79.6	3,100	27.4	20.4 - 34.4	11,200
Mililani/ Wahiawa	5,400	71.7	62.1 - 81.4	2,100	28.3	18.6 - 37.9	7,500

Pneumonia - ever had shot (65+) by State, County, Island, Community, DOH Race-Ethnicity, Gender, Education Level, Employment Status (Grouped), Household Income, Poverty Level, Marital Status (Grouped), Married, Health Care Coverage, for the Year(s) - 2001-2003, 2002-2004, 2003-2005, 2004-2006, 2005-2007, 2006-2008, 2007-2009, 2008-2010

Note: Weighted numbers (#) represent 3-yr averages, percentages and 95% confidence intervals; Respondents aged 18 years and older; n/r (Not Reportable) - If the unweighted total responses for a dimension (row) is <50 that row will not be shown; n/a (Not Available) - Not asked of a subset of respondents

Year: 2005-2007

Community	Yes			No			Estimated Population (3-Yr Avg)
	#	%	C.I. (95%)	#	%	C.I. (95%)	#
Molokai	700	67.5	58.4 - 76.6	300	32.5	23.4 - 41.6	1,100
Nanakuli/ Waianae	2,400	59.9	44.2 - 75.6	1,600	40.1	24.4 - 55.8	4,100
N.Hawaii	2,800	67.2	60.3 - 74.2	1,400	32.8	25.8 - 39.7	4,100
N.Shore/ Laie	2,500	60.1	46.8 - 73.4	1,700	39.9	26.6 - 53.2	4,200
Nuuanu/ Kalihi/ Moanalua	7,900	61.1	53.2 - 69.0	5,000	38.9	31.0 - 46.8	12,900
Puna/ Kau	2,600	61.2	53.8 - 68.5	1,600	38.8	31.5 - 46.2	4,200
Upcountry/ Hana	2,700	65.2	56.2 - 74.2	1,400	34.8	25.8 - 43.8	4,100
Waialae/ Kahala/ Hawaii Kai	7,100	70.7	63.0 - 78.4	3,000	29.3	21.6 - 37.0	10,100
Waipahu/ Kapolei/ Ewa	8,100	68.8	60.7 - 77.0	3,700	31.2	23.0 - 39.3	11,800

Pneumonia - ever had shot (65+) by State, County, Island, Community, DOH Race-Ethnicity, Gender, Education Level, Employment Status (Grouped), Household Income, Poverty Level, Marital Status (Grouped), Married, Health Care Coverage, for the Year(s) - 2001-2003, 2002-2004, 2003-2005, 2004-2006, 2005-2007, 2006-2008, 2007-2009, 2008-2010

Note: Weighted numbers (#) represent 3-yr averages, percentages and 95% confidence intervals; Respondents aged 18 years and older; n/r (Not Reportable) - If the unweighted total responses for a dimension (row) is <50 that row will not be shown; n/a (Not Available) - Not asked of a subset of respondents

Year: 2005-2007

DOH Race-Ethnicity	Yes			No			Estimated Population (3-Yr Avg)
	#	%	C.I. (95%)	#	%	C.I. (95%)	#
Caucasian	37,400	69.9	67.2 - 72.6	16,100	30.1	27.4 - 32.8	53,500
Native Hawaiian	8,300	55.7	49.4 - 62.1	6,600	44.3	37.9 - 50.6	14,900
Chinese	9,500	74.6	68.3 - 80.9	3,200	25.4	19.1 - 31.7	12,700
Filipino	10,300	55.1	48.0 - 62.1	8,400	44.9	37.9 - 52.0	18,800
Japanese	43,400	72.3	69.3 - 75.3	16,700	27.7	24.7 - 30.7	60,100
Other Asian	1,800	65.3	48.0 - 82.6	1,000	34.7	17.4 - 52.0	2,800
Other	1,200	53.3	37.1 - 69.6	1,000	46.7	30.4 - 62.9	2,200

Pneumonia - ever had shot (65+) by State, County, Island, Community, DOH Race-Ethnicity, Gender, Education Level, Employment Status (Grouped), Household Income, Poverty Level, Marital Status (Grouped), Married, Health Care Coverage, for the Year(s) - 2001-2003, 2002-2004, 2003-2005, 2004-2006, 2005-2007, 2006-2008, 2007-2009, 2008-2010

Note: Weighted numbers (#) represent 3-yr averages, percentages and 95% confidence intervals; Respondents aged 18 years and older; n/r (Not Reportable) - If the unweighted total responses for a dimension (row) is <50 that row will not be shown; n/a (Not Available) - Not asked of a subset of respondents

Year: 2005-2007

Gender	Yes			No			Estimated Population (3-Yr Avg)
	#	%	C.I. (95%)	#	%	C.I. (95%)	#
Male	45,300	64.5	61.5 - 67.5	25,000	35.5	32.5 - 38.5	70,300
Female	68,900	70.6	68.3 - 72.9	28,700	29.4	27.1 - 31.7	97,600

Education Level	Yes			No			Estimated Population (3-Yr Avg)
	#	%	C.I. (95%)	#	%	C.I. (95%)	#
Never attended school/ Only Kindergarten to Grades 8	5,300	58.5	49.0 - 68.0	3,800	41.5	32.0 - 51.0	9,100
Grades 9 thru 11 (Some High School)	8,100	62.4	55.0 - 69.8	4,900	37.6	30.2 - 45.0	13,000
Grades 12 or GED (High School Grad)	36,700	65.9	62.6 - 69.3	18,900	34.1	30.7 - 37.4	55,600
College 1 to 3 years (Some College/ Tech)	26,000	67.8	64.1 - 71.5	12,300	32.2	28.5 - 35.9	38,300
College 4 years or more (College Grad)	37,900	73.6	70.7 - 76.4	13,600	26.4	23.6 - 29.3	51,600

Pneumonia - ever had shot (65+) by State, County, Island, Community, DOH Race-Ethnicity, Gender, Education Level, Employment Status (Grouped), Household Income, Poverty Level, Marital Status (Grouped), Married, Health Care Coverage, for the Year(s) - 2001-2003, 2002-2004, 2003-2005, 2004-2006, 2005-2007, 2006-2008, 2007-2009, 2008-2010

Note: Weighted numbers (#) represent 3-yr averages, percentages and 95% confidence intervals; Respondents aged 18 years and older; n/r (Not Reportable) - If the unweighted total responses for a dimension (row) is <50 that row will not be shown; n/a (Not Available) - Not asked of a subset of respondents

Year: 2005-2007

Employment Status (Grouped)	Yes			No			Estimated Population (3-Yr Avg)
	#	%	C.I. (95%)	#	%	C.I. (95%)	#
Employed	12,000	54.8	49.6 - 60.0	9,900	45.2	40.0 - 50.4	22,000
Retired/Unable to work	99,200	70.2	68.2 - 72.1	42,200	29.8	27.9 - 31.8	141,400
Student/Homemaker	2,500	63.6	51.1 - 76.0	1,400	36.4	24.0 - 48.9	3,900

Pneumonia - ever had shot (65+) by State, County, Island, Community, DOH Race-Ethnicity, Gender, Education Level, Employment Status (Grouped), Household Income, Poverty Level, Marital Status (Grouped), Married, Health Care Coverage, for the Year(s) - 2001-2003, 2002-2004, 2003-2005, 2004-2006, 2005-2007, 2006-2008, 2007-2009, 2008-2010

Note: Weighted numbers (#) represent 3-yr averages, percentages and 95% confidence intervals; Respondents aged 18 years and older; n/r (Not Reportable) - If the unweighted total responses for a dimension (row) is <50 that row will not be shown; n/a (Not Available) - Not asked of a subset of respondents

Year: 2005-2007

Household Income	Yes			No			Estimated Population (3-Yr Avg)
	#	%	C.I. (95%)	#	%	C.I. (95%)	#
Less than \$10,000	3,700	65.9	56.6 - 75.2	1,900	34.1	24.8 - 43.4	5,500
\$10,000 to \$14,999	5,100	63.6	55.5 - 71.6	2,900	36.4	28.4 - 44.5	8,100
\$15,000 to \$19,999	8,900	66.8	60.6 - 73.0	4,400	33.2	27.0 - 39.4	13,300
\$20,000 to \$24,999	9,600	61.6	55.5 - 67.7	6,000	38.4	32.3 - 44.5	15,500
\$25,000 to \$34,999	14,400	66.4	61.2 - 71.6	7,300	33.6	28.4 - 38.8	21,700
\$35,000 to \$49,999	20,100	73.7	69.6 - 77.8	7,200	26.3	22.2 - 30.4	27,300
\$50,000 to \$74,999	14,400	73.4	68.3 - 78.5	5,200	26.6	21.5 - 31.7	19,700
\$75,000 or more	17,800	67.5	62.8 - 72.1	8,600	32.5	27.9 - 37.2	26,500

Pneumonia - ever had shot (65+) by State, County, Island, Community, DOH Race-Ethnicity, Gender, Education Level, Employment Status (Grouped), Household Income, Poverty Level, Marital Status (Grouped), Married, Health Care Coverage, for the Year(s) - 2001-2003, 2002-2004, 2003-2005, 2004-2006, 2005-2007, 2006-2008, 2007-2009, 2008-2010

Note: Weighted numbers (#) represent 3-yr averages, percentages and 95% confidence intervals; Respondents aged 18 years and older; n/r (Not Reportable) - If the unweighted total responses for a dimension (row) is <50 that row will not be shown; n/a (Not Available) - Not asked of a subset of respondents

Year: 2005-2007

Poverty Level	Yes			No			Estimated Population (3-Yr Avg)
	#	%	C.I. (95%)	#	%	C.I. (95%)	#
0-130%	19,900	64.8	60.1 - 69.6	10,800	35.2	30.4 - 39.9	30,700
131-185%	10,000	57.5	51.6 - 63.4	7,400	42.5	36.6 - 48.4	17,300
186+%	64,200	71.7	69.4 - 73.9	25,400	28.3	26.1 - 30.6	89,600

Marital Status (Grouped)	Yes			No			Estimated Population (3-Yr Avg)
	#	%	C.I. (95%)	#	%	C.I. (95%)	#
Married	69,300	67.8	65.3 - 70.3	33,000	32.2	29.7 - 34.7	102,200
Widowed	29,300	70.2	66.9 - 73.5	12,500	29.8	26.5 - 33.1	41,800
Other	15,400	65.7	61.6 - 69.8	8,000	34.3	30.2 - 38.4	23,500

Pneumonia - ever had shot (65+) by State, County, Island, Community, DOH Race-Ethnicity, Gender, Education Level, Employment Status (Grouped), Household Income, Poverty Level, Marital Status (Grouped), Married, Health Care Coverage, for the Year(s) - 2001-2003, 2002-2004, 2003-2005, 2004-2006, 2005-2007, 2006-2008, 2007-2009, 2008-2010

Note: Weighted numbers (#) represent 3-yr averages, percentages and 95% confidence intervals; Respondents aged 18 years and older; n/r (Not Reportable) - If the unweighted total responses for a dimension (row) is <50 that row will not be shown; n/a (Not Available) - Not asked of a subset of respondents

Year: 2005-2007

Married	Yes			No			Estimated Population (3-Yr Avg)
	#	%	C.I. (95%)	#	%	C.I. (95%)	#
Yes	69,900	67.7	65.2 - 70.2	33,300	32.3	29.8 - 34.8	103,100
No	44,100	68.5	65.9 - 71.1	20,300	31.5	28.9 - 34.1	64,400

Health Care Coverage	Yes			No			Estimated Population (3-Yr Avg)
	#	%	C.I. (95%)	#	%	C.I. (95%)	#
Yes	113,600	68.4	66.6 - 70.3	52,400	31.6	29.7 - 33.4	166,000
No	600	32.0	13.9 - 50.1	1,200	68.0	49.9 - 86.1	1,800

Pneumonia - ever had shot (65+) by State, County, Island, Community, DOH Race-Ethnicity, Gender, Education Level, Employment Status (Grouped), Household Income, Poverty Level, Marital Status (Grouped), Married, Health Care Coverage, for the Year(s) - 2001-2003, 2002-2004, 2003-2005, 2004-2006, 2005-2007, 2006-2008, 2007-2009, 2008-2010

Note: Weighted numbers (#) represent 3-yr averages, percentages and 95% confidence intervals; Respondents aged 18 years and older; n/r (Not Reportable) - If the unweighted total responses for a dimension (row) is <50 that row will not be shown; n/a (Not Available) - Not asked of a subset of respondents

Year: 2004-2006

State	Yes			No			Estimated Population (3-Yr Avg)
	#	%	C.I. (95%)	#	%	C.I. (95%)	#
Hawaii State	107,700	66.3	63.7 - 68.8	54,800	33.7	31.2 - 36.3	162,500

County	Yes			No			Estimated Population (3-Yr Avg)
	#	%	C.I. (95%)	#	%	C.I. (95%)	#
Hawaii	13,800	62.9	58.4 - 67.4	8,100	37.1	32.6 - 41.6	21,900
Honolulu	78,800	66.7	63.3 - 70.0	39,400	33.3	30.0 - 36.7	118,200
Kauai	6,000	75.0	69.3 - 80.6	2,000	25.0	19.4 - 30.7	8,000
Maui	9,200	63.3	57.7 - 68.9	5,300	36.7	31.1 - 42.3	14,500

Pneumonia - ever had shot (65+) by State, County, Island, Community, DOH Race-Ethnicity, Gender, Education Level, Employment Status (Grouped), Household Income, Poverty Level, Marital Status (Grouped), Married, Health Care Coverage, for the Year(s) - 2001-2003, 2002-2004, 2003-2005, 2004-2006, 2005-2007, 2006-2008, 2007-2009, 2008-2010

Note: Weighted numbers (#) represent 3-yr averages, percentages and 95% confidence intervals; Respondents aged 18 years and older; n/r (Not Reportable) - If the unweighted total responses for a dimension (row) is <50 that row will not be shown; n/a (Not Available) - Not asked of a subset of respondents

Year: 2004-2006

Island	Yes			No			Estimated Population (3-Yr Avg)
	#	%	C.I. (95%)	#	%	C.I. (95%)	#
Hawaii	13,800	62.9	58.4 - 67.4	8,100	37.1	32.6 - 41.6	21,900
Kauai	6,000	75.0	69.3 - 80.6	2,000	25.0	19.4 - 30.7	8,000
Lanai	200	60.6	47.7 - 73.4	100	39.4	26.6 - 52.3	300
Maui	8,300	62.8	56.7 - 69.0	4,900	37.2	31.0 - 43.3	13,200
Molokai	700	70.4	59.7 - 81.2	300	29.6	18.8 - 40.3	1,000
Oahu	78,800	66.7	63.3 - 70.0	39,400	33.3	30.0 - 36.7	118,200

Community	Yes			No			Estimated Population (3-Yr Avg)
	#	%	C.I. (95%)	#	%	C.I. (95%)	#
Aiea/ Pearl City	10,300	69.1	59.0 - 79.1	4,600	30.9	20.9 - 41.0	14,900
Ala Moana	4,100	67.3	56.8 - 77.8	2,000	32.7	22.2 - 43.2	6,100

Pneumonia - ever had shot (65+) by State, County, Island, Community, DOH Race-Ethnicity, Gender, Education Level, Employment Status (Grouped), Household Income, Poverty Level, Marital Status (Grouped), Married, Health Care Coverage, for the Year(s) - 2001-2003, 2002-2004, 2003-2005, 2004-2006, 2005-2007, 2006-2008, 2007-2009, 2008-2010

Note: Weighted numbers (#) represent 3-yr averages, percentages and 95% confidence intervals; Respondents aged 18 years and older; n/r (Not Reportable) - If the unweighted total responses for a dimension (row) is <50 that row will not be shown; n/a (Not Available) - Not asked of a subset of respondents

Year: 2004-2006

Community	Yes			No			Estimated Population (3-Yr Avg)
	#	%	C.I. (95%)	#	%	C.I. (95%)	#
Hanalei/ Kapaa	2,000	72.5	63.4 - 81.7	800	27.5	18.3 - 36.6	2,800
Hilo	4,500	66.0	59.5 - 72.5	2,300	34.0	27.5 - 40.5	6,800
Kaaawa/ Kahaluu/ Kaneohe	5,800	53.6	40.3 - 66.9	5,000	46.4	33.1 - 59.7	10,800
Kahului	3,200	65.3	56.1 - 74.5	1,700	34.7	25.5 - 43.9	4,900
Kailua/ Waimanalo	5,400	65.7	55.2 - 76.2	2,800	34.3	23.8 - 44.8	8,300
Kaimuki/ Palolo/ Waikiki	12,100	70.1	62.3 - 77.9	5,200	29.9	22.1 - 37.7	17,200
Kona	3,500	68.1	60.3 - 75.9	1,600	31.9	24.1 - 39.7	5,100
Lahaina/ Wailuku	2,900	64.2	53.6 - 74.7	1,600	35.8	25.3 - 46.4	4,600
Lanai	200	60.6	47.7 - 73.4	100	39.4	26.6 - 52.3	300
Lihue-Waimea	4,000	76.3	69.1 - 83.4	1,200	23.7	16.6 - 30.9	5,200
Manoa/ Upper Makiki	7,300	78.5	71.1 - 85.8	2,000	21.5	14.2 - 28.9	9,300
Mililani/ Wahiawa	5,600	78.5	68.0 - 89.0	1,500	21.5	11.0 - 32.0	7,200

Pneumonia - ever had shot (65+) by State, County, Island, Community, DOH Race-Ethnicity, Gender, Education Level, Employment Status (Grouped), Household Income, Poverty Level, Marital Status (Grouped), Married, Health Care Coverage, for the Year(s) - 2001-2003, 2002-2004, 2003-2005, 2004-2006, 2005-2007, 2006-2008, 2007-2009, 2008-2010

Note: Weighted numbers (#) represent 3-yr averages, percentages and 95% confidence intervals; Respondents aged 18 years and older; n/r (Not Reportable) - If the unweighted total responses for a dimension (row) is <50 that row will not be shown; n/a (Not Available) - Not asked of a subset of respondents

Year: 2004-2006

Community	Yes			No			Estimated Population (3-Yr Avg)
	#	%	C.I. (95%)	#	%	C.I. (95%)	#
Molokai	700	70.4	59.7 - 81.2	300	29.6	18.8 - 40.3	1,000
N.Hawaii	2,700	58.9	47.9 - 69.9	1,900	41.1	30.1 - 52.1	4,500
N.Shore/ Laie	2,000	44.2	26.0 - 62.5	2,500	55.8	37.5 - 74.0	4,500
Nuuanu/ Kalihi/ Moanalua	6,900	55.1	44.7 - 65.6	5,600	44.9	34.4 - 55.3	12,400
Puna/ Kau	3,200	57.7	47.0 - 68.4	2,300	42.3	31.6 - 53.0	5,500
Upcountry/ Hana	2,200	58.0	45.7 - 70.3	1,600	42.0	29.7 - 54.3	3,700
Waialae/ Kahala/ Hawaii Kai	6,700	74.4	65.7 - 83.2	2,300	25.6	16.8 - 34.3	8,900
Waipahu/ Kapolei/ Ewa	7,800	72.1	61.0 - 83.3	3,000	27.9	16.7 - 39.0	10,800

Pneumonia - ever had shot (65+) by State, County, Island, Community, DOH Race-Ethnicity, Gender, Education Level, Employment Status (Grouped), Household Income, Poverty Level, Marital Status (Grouped), Married, Health Care Coverage, for the Year(s) - 2001-2003, 2002-2004, 2003-2005, 2004-2006, 2005-2007, 2006-2008, 2007-2009, 2008-2010

Note: Weighted numbers (#) represent 3-yr averages, percentages and 95% confidence intervals; Respondents aged 18 years and older; n/r (Not Reportable) - If the unweighted total responses for a dimension (row) is <50 that row will not be shown; n/a (Not Available) - Not asked of a subset of respondents

Year: 2004-2006

DOH Race-Ethnicity	Yes			No			Estimated Population (3-Yr Avg)
	#	%	C.I. (95%)	#	%	C.I. (95%)	#
Caucasian	36,000	69.6	65.8 - 73.4	15,700	30.4	26.6 - 34.2	51,700
Native Hawaiian	7,900	56.5	47.9 - 65.1	6,100	43.5	34.9 - 52.1	14,000
Chinese	8,900	64.8	53.8 - 75.7	4,900	35.2	24.3 - 46.2	13,800
Filipino	9,900	57.2	47.7 - 66.6	7,400	42.8	33.4 - 52.3	17,400
Japanese	40,000	69.4	65.1 - 73.7	17,600	30.6	26.3 - 34.9	57,600

Gender	Yes			No			Estimated Population (3-Yr Avg)
	#	%	C.I. (95%)	#	%	C.I. (95%)	#
Male	42,600	61.5	57.2 - 65.8	26,700	38.5	34.2 - 42.8	69,300
Female	65,100	69.8	66.7 - 72.9	28,200	30.2	27.1 - 33.3	93,300

Pneumonia - ever had shot (65+) by State, County, Island, Community, DOH Race-Ethnicity, Gender, Education Level, Employment Status (Grouped), Household Income, Poverty Level, Marital Status (Grouped), Married, Health Care Coverage, for the Year(s) - 2001-2003, 2002-2004, 2003-2005, 2004-2006, 2005-2007, 2006-2008, 2007-2009, 2008-2010

Note: Weighted numbers (#) represent 3-yr averages, percentages and 95% confidence intervals; Respondents aged 18 years and older; n/r (Not Reportable) - If the unweighted total responses for a dimension (row) is <50 that row will not be shown; n/a (Not Available) - Not asked of a subset of respondents

Year: 2004-2006

Education Level	Yes			No			Estimated Population (3-Yr Avg)
	#	%	C.I. (95%)	#	%	C.I. (95%)	#
Never attended school/ Only Kindergarten to Grades 8	5,200	63.0	52.3 - 73.6	3,100	37.0	26.4 - 47.7	8,300
Grades 9 thru 11 (Some High School)	7,700	64.6	55.2 - 74.1	4,200	35.4	25.9 - 44.8	11,800
Grades 12 or GED (High School Grad)	36,800	67.8	63.4 - 72.1	17,500	32.2	27.9 - 36.6	54,300
College 1 to 3 years (Some College/ Tech)	24,300	60.8	55.3 - 66.3	15,700	39.2	33.7 - 44.7	40,000
College 4 years or more (College Grad)	33,600	70.1	65.5 - 74.7	14,300	29.9	25.3 - 34.5	47,900

Employment Status (Grouped)	Yes			No			Estimated Population (3-Yr Avg)
	#	%	C.I. (95%)	#	%	C.I. (95%)	#
Employed	11,800	52.5	45.6 - 59.5	10,700	47.5	40.5 - 54.4	22,500
Retired/Unable to work	93,400	68.7	65.9 - 71.5	42,500	31.3	28.5 - 34.1	135,900
Student/Homemaker	2,100	57.8	41.1 - 74.5	1,500	42.2	25.5 - 58.9	3,700

Pneumonia - ever had shot (65+) by State, County, Island, Community, DOH Race-Ethnicity, Gender, Education Level, Employment Status (Grouped), Household Income, Poverty Level, Marital Status (Grouped), Married, Health Care Coverage, for the Year(s) - 2001-2003, 2002-2004, 2003-2005, 2004-2006, 2005-2007, 2006-2008, 2007-2009, 2008-2010

Note: Weighted numbers (#) represent 3-yr averages, percentages and 95% confidence intervals; Respondents aged 18 years and older; n/r (Not Reportable) - If the unweighted total responses for a dimension (row) is <50 that row will not be shown; n/a (Not Available) - Not asked of a subset of respondents

Year: 2004-2006

Household Income	Yes			No			Estimated Population (3-Yr Avg)
	#	%	C.I. (95%)	#	%	C.I. (95%)	#
Less than \$10,000	3,000	65.5	54.9 - 76.2	1,600	34.5	23.8 - 45.1	4,600
\$10,000 to \$14,999	4,500	64.8	55.1 - 74.4	2,500	35.2	25.6 - 44.9	7,000
\$15,000 to \$19,999	8,800	72.6	65.8 - 79.4	3,300	27.4	20.6 - 34.2	12,100
\$20,000 to \$24,999	9,700	66.1	58.6 - 73.7	5,000	33.9	26.3 - 41.4	14,700
\$25,000 to \$34,999	13,500	65.0	57.9 - 72.1	7,300	35.0	27.9 - 42.1	20,700
\$35,000 to \$49,999	17,300	71.8	65.5 - 78.1	6,800	28.2	21.9 - 34.5	24,100
\$50,000 to \$74,999	19,800	63.8	56.5 - 71.0	11,200	36.2	29.0 - 43.5	31,000
\$75,000 or more	15,300	62.4	54.6 - 70.2	9,200	37.6	29.8 - 45.4	24,500

Pneumonia - ever had shot (65+) by State, County, Island, Community, DOH Race-Ethnicity, Gender, Education Level, Employment Status (Grouped), Household Income, Poverty Level, Marital Status (Grouped), Married, Health Care Coverage, for the Year(s) - 2001-2003, 2002-2004, 2003-2005, 2004-2006, 2005-2007, 2006-2008, 2007-2009, 2008-2010

Note: Weighted numbers (#) represent 3-yr averages, percentages and 95% confidence intervals; Respondents aged 18 years and older; n/r (Not Reportable) - If the unweighted total responses for a dimension (row) is <50 that row will not be shown; n/a (Not Available) - Not asked of a subset of respondents

Year: 2004-2006

Poverty Level	Yes			No			Estimated Population (3-Yr Avg)
	#	%	C.I. (95%)	#	%	C.I. (95%)	#
0-130%	19,400	69.2	63.3 - 75.1	8,600	30.8	24.9 - 36.7	28,000
131-185%	8,900	57.7	49.9 - 65.5	6,600	42.3	34.5 - 50.1	15,500
186+%	63,600	66.7	63.1 - 70.3	31,700	33.3	29.7 - 36.9	95,200

Marital Status (Grouped)	Yes			No			Estimated Population (3-Yr Avg)
	#	%	C.I. (95%)	#	%	C.I. (95%)	#
Married	63,900	65.5	62.0 - 69.0	33,600	34.5	31.0 - 38.0	97,600
Widowed	28,800	68.7	63.8 - 73.5	13,200	31.3	26.5 - 36.2	42,000
Other	14,500	64.6	58.7 - 70.4	8,000	35.4	29.6 - 41.3	22,500

Pneumonia - ever had shot (65+) by State, County, Island, Community, DOH Race-Ethnicity, Gender, Education Level, Employment Status (Grouped), Household Income, Poverty Level, Marital Status (Grouped), Married, Health Care Coverage, for the Year(s) - 2001-2003, 2002-2004, 2003-2005, 2004-2006, 2005-2007, 2006-2008, 2007-2009, 2008-2010

Note: Weighted numbers (#) represent 3-yr averages, percentages and 95% confidence intervals; Respondents aged 18 years and older; n/r (Not Reportable) - If the unweighted total responses for a dimension (row) is <50 that row will not be shown; n/a (Not Available) - Not asked of a subset of respondents

Year: 2004-2006

Married	Yes			No			Estimated Population (3-Yr Avg)
	#	%	C.I. (95%)	#	%	C.I. (95%)	#
Yes	64,400	65.4	61.9 - 68.9	34,100	34.6	31.1 - 38.1	98,500
No	43,100	67.5	63.7 - 71.3	20,800	32.5	28.7 - 36.3	63,800

Health Care Coverage	Yes			No			Estimated Population (3-Yr Avg)
	#	%	C.I. (95%)	#	%	C.I. (95%)	#
Yes	107,000	66.6	64.0 - 69.2	53,600	33.4	30.8 - 36.0	160,600

Pneumonia - ever had shot (65+) by State, County, Island, Community, DOH Race-Ethnicity, Gender, Education Level, Employment Status (Grouped), Household Income, Poverty Level, Marital Status (Grouped), Married, Health Care Coverage, for the Year(s) - 2001-2003, 2002-2004, 2003-2005, 2004-2006, 2005-2007, 2006-2008, 2007-2009, 2008-2010

Note: Weighted numbers (#) represent 3-yr averages, percentages and 95% confidence intervals; Respondents aged 18 years and older; n/r (Not Reportable) - If the unweighted total responses for a dimension (row) is <50 that row will not be shown; n/a (Not Available) - Not asked of a subset of respondents

Year: 2003-2005

State	Yes			No			Estimated Population (3-Yr Avg)
	#	%	C.I. (95%)	#	%	C.I. (95%)	#
Hawaii State	107,100	66.7	64.0 - 69.4	53,500	33.3	30.6 - 36.0	160,600

County	Yes			No			Estimated Population (3-Yr Avg)
	#	%	C.I. (95%)	#	%	C.I. (95%)	#
Hawaii	14,100	63.5	58.7 - 68.3	8,100	36.5	31.7 - 41.3	22,200
Honolulu	78,400	67.2	63.7 - 70.7	38,300	32.8	29.3 - 36.3	116,700
Kauai	5,400	71.4	64.9 - 77.9	2,200	28.6	22.1 - 35.1	7,600
Maui	9,200	64.8	58.5 - 71.2	5,000	35.2	28.8 - 41.5	14,200

Pneumonia - ever had shot (65+) by State, County, Island, Community, DOH Race-Ethnicity, Gender, Education Level, Employment Status (Grouped), Household Income, Poverty Level, Marital Status (Grouped), Married, Health Care Coverage, for the Year(s) - 2001-2003, 2002-2004, 2003-2005, 2004-2006, 2005-2007, 2006-2008, 2007-2009, 2008-2010

Note: Weighted numbers (#) represent 3-yr averages, percentages and 95% confidence intervals; Respondents aged 18 years and older; n/r (Not Reportable) - If the unweighted total responses for a dimension (row) is <50 that row will not be shown; n/a (Not Available) - Not asked of a subset of respondents

Year: 2003-2005

Island	Yes			No			Estimated Population (3-Yr Avg)
	#	%	C.I. (95%)	#	%	C.I. (95%)	#
Hawaii	14,100	63.5	58.7 - 68.3	8,100	36.5	31.7 - 41.3	22,200
Kauai	5,400	71.4	64.9 - 77.9	2,200	28.6	22.1 - 35.1	7,600
Lanai	300	63.9	48.0 - 79.9	200	36.1	20.1 - 52.0	400
Maui	8,100	63.9	57.0 - 70.9	4,600	36.1	29.1 - 43.0	12,700
Molokai	800	76.7	64.8 - 88.7	200	23.3	11.3 - 35.2	1,000
Oahu	78,400	67.2	63.7 - 70.7	38,300	32.8	29.3 - 36.3	116,700

Community	Yes			No			Estimated Population (3-Yr Avg)
	#	%	C.I. (95%)	#	%	C.I. (95%)	#
Aiea/ Pearl City	9,900	71.3	60.4 - 82.2	4,000	28.7	17.8 - 39.6	13,900
Ala Moana	3,600	60.4	48.0 - 72.9	2,300	39.6	27.1 - 52.0	5,900

Pneumonia - ever had shot (65+) by State, County, Island, Community, DOH Race-Ethnicity, Gender, Education Level, Employment Status (Grouped), Household Income, Poverty Level, Marital Status (Grouped), Married, Health Care Coverage, for the Year(s) - 2001-2003, 2002-2004, 2003-2005, 2004-2006, 2005-2007, 2006-2008, 2007-2009, 2008-2010

Note: Weighted numbers (#) represent 3-yr averages, percentages and 95% confidence intervals; Respondents aged 18 years and older; n/r (Not Reportable) - If the unweighted total responses for a dimension (row) is <50 that row will not be shown; n/a (Not Available) - Not asked of a subset of respondents

Year: 2003-2005

Community	Yes			No			Estimated Population (3-Yr Avg)
	#	%	C.I. (95%)	#	%	C.I. (95%)	#
Hanalei/ Kapaa	1,900	68.6	58.3 - 78.9	900	31.4	21.1 - 41.7	2,800
Hilo	4,000	64.6	57.1 - 72.1	2,200	35.4	27.9 - 42.9	6,300
Kaaawa/ Kahaluu/ Kaneohe	5,600	57.1	42.3 - 71.9	4,200	42.9	28.1 - 57.7	9,800
Kahului	2,900	60.2	49.7 - 70.7	1,900	39.8	29.3 - 50.3	4,800
Kailua/ Waimanalo	4,900	62.5	50.4 - 74.6	2,900	37.5	25.4 - 49.6	7,800
Kaimuki/ Palolo/ Waikiki	12,000	68.6	60.3 - 76.8	5,500	31.4	23.2 - 39.7	17,500
Kona	3,600	66.5	57.7 - 75.3	1,800	33.5	24.7 - 42.3	5,500
Lahaina/ Wailuku	3,200	71.4	60.4 - 82.5	1,300	28.6	17.5 - 39.6	4,500
Lanai	300	63.9	48.0 - 79.9	200	36.1	20.1 - 52.0	400
Lihue-Waimea	3,500	73.0	64.7 - 81.3	1,300	27.0	18.7 - 35.3	4,800
Manoa/ Upper Makiki	6,800	77.6	69.7 - 85.5	2,000	22.4	14.5 - 30.3	8,800
Mililani/ Wahiawa	5,600	83.2	72.9 - 93.5	1,100	16.8	6.5 - 27.1	6,700

Pneumonia - ever had shot (65+) by State, County, Island, Community, DOH Race-Ethnicity, Gender, Education Level, Employment Status (Grouped), Household Income, Poverty Level, Marital Status (Grouped), Married, Health Care Coverage, for the Year(s) - 2001-2003, 2002-2004, 2003-2005, 2004-2006, 2005-2007, 2006-2008, 2007-2009, 2008-2010

Note: Weighted numbers (#) represent 3-yr averages, percentages and 95% confidence intervals; Respondents aged 18 years and older; n/r (Not Reportable) - If the unweighted total responses for a dimension (row) is <50 that row will not be shown; n/a (Not Available) - Not asked of a subset of respondents

Year: 2003-2005

Community	Yes			No			Estimated Population (3-Yr Avg)
	#	%	C.I. (95%)	#	%	C.I. (95%)	#
Molokai	800	76.7	64.8 - 88.7	200	23.3	11.3 - 35.2	1,000
N.Hawaii	3,100	65.2	53.4 - 77.0	1,600	34.8	23.0 - 46.6	4,700
N.Shore/ Laie	2,100	42.4	25.1 - 59.7	2,800	57.6	40.3 - 74.9	4,900
Nuuanu/ Kalihi/ Moanalua	8,300	60.0	49.6 - 70.5	5,500	40.0	29.5 - 50.4	13,900
Puna/ Kau	3,300	58.1	47.4 - 68.7	2,400	41.9	31.3 - 52.6	5,700
Upcountry/ Hana	2,100	59.5	44.4 - 74.5	1,400	40.5	25.5 - 55.6	3,500
Waialae/ Kahala/ Hawaii Kai	7,100	75.6	66.9 - 84.3	2,300	24.4	15.7 - 33.1	9,300
Waipahu/ Kapolei/ Ewa	7,100	75.0	62.8 - 87.3	2,400	25.0	12.7 - 37.2	9,500

Pneumonia - ever had shot (65+) by State, County, Island, Community, DOH Race-Ethnicity, Gender, Education Level, Employment Status (Grouped), Household Income, Poverty Level, Marital Status (Grouped), Married, Health Care Coverage, for the Year(s) - 2001-2003, 2002-2004, 2003-2005, 2004-2006, 2005-2007, 2006-2008, 2007-2009, 2008-2010

Note: Weighted numbers (#) represent 3-yr averages, percentages and 95% confidence intervals; Respondents aged 18 years and older; n/r (Not Reportable) - If the unweighted total responses for a dimension (row) is <50 that row will not be shown; n/a (Not Available) - Not asked of a subset of respondents

Year: 2003-2005

DOH Race-Ethnicity	Yes			No			Estimated Population (3-Yr Avg)
	#	%	C.I. (95%)	#	%	C.I. (95%)	#
Caucasian	35,000	67.8	63.7 - 71.9	16,600	32.2	28.1 - 36.3	51,600
Native Hawaiian	7,500	55.9	46.1 - 65.6	5,900	44.1	34.4 - 53.9	13,400
Chinese	11,700	67.0	57.4 - 76.5	5,800	33.0	23.5 - 42.6	17,400
Filipino	11,300	61.6	52.4 - 70.9	7,000	38.4	29.1 - 47.6	18,400
Japanese	37,800	71.3	66.6 - 76.0	15,200	28.7	24.0 - 33.4	52,900

Gender	Yes			No			Estimated Population (3-Yr Avg)
	#	%	C.I. (95%)	#	%	C.I. (95%)	#
Male	43,100	61.9	57.4 - 66.4	26,600	38.1	33.6 - 42.6	69,700
Female	64,000	70.4	67.1 - 73.7	26,900	29.6	26.3 - 32.9	90,900

Pneumonia - ever had shot (65+) by State, County, Island, Community, DOH Race-Ethnicity, Gender, Education Level, Employment Status (Grouped), Household Income, Poverty Level, Marital Status (Grouped), Married, Health Care Coverage, for the Year(s) - 2001-2003, 2002-2004, 2003-2005, 2004-2006, 2005-2007, 2006-2008, 2007-2009, 2008-2010

Note: Weighted numbers (#) represent 3-yr averages, percentages and 95% confidence intervals; Respondents aged 18 years and older; n/r (Not Reportable) - If the unweighted total responses for a dimension (row) is <50 that row will not be shown; n/a (Not Available) - Not asked of a subset of respondents

Year: 2003-2005

Education Level	Yes			No			Estimated Population (3-Yr Avg)
	#	%	C.I. (95%)	#	%	C.I. (95%)	#
Never attended school/ Only Kindergarten to Grades 8	4,900	59.6	48.4 - 70.8	3,300	40.4	29.2 - 51.6	8,200
Grades 9 thru 11 (Some High School)	7,200	58.7	48.4 - 69.1	5,000	41.3	30.9 - 51.6	12,200
Grades 12 or GED (High School Grad)	38,800	70.6	66.1 - 75.0	16,200	29.4	25.0 - 33.9	55,000
College 1 to 3 years (Some College/ Tech)	24,200	61.4	55.7 - 67.1	15,200	38.6	32.9 - 44.3	39,500
College 4 years or more (College Grad)	31,700	69.9	64.9 - 74.9	13,700	30.1	25.1 - 35.1	45,400

Employment Status (Grouped)	Yes			No			Estimated Population (3-Yr Avg)
	#	%	C.I. (95%)	#	%	C.I. (95%)	#
Employed	11,000	53.3	45.6 - 61.1	9,600	46.7	38.9 - 54.4	20,600
Retired/Unable to work	93,800	68.9	66.0 - 71.9	42,300	31.1	28.1 - 34.0	136,100
Student/Homemaker	2,000	57.7	39.7 - 75.6	1,500	42.3	24.4 - 60.3	3,500

Pneumonia - ever had shot (65+) by State, County, Island, Community, DOH Race-Ethnicity, Gender, Education Level, Employment Status (Grouped), Household Income, Poverty Level, Marital Status (Grouped), Married, Health Care Coverage, for the Year(s) - 2001-2003, 2002-2004, 2003-2005, 2004-2006, 2005-2007, 2006-2008, 2007-2009, 2008-2010

Note: Weighted numbers (#) represent 3-yr averages, percentages and 95% confidence intervals; Respondents aged 18 years and older; n/r (Not Reportable) - If the unweighted total responses for a dimension (row) is <50 that row will not be shown; n/a (Not Available) - Not asked of a subset of respondents

Year: 2003-2005

Household Income	Yes			No			Estimated Population (3-Yr Avg)
	#	%	C.I. (95%)	#	%	C.I. (95%)	#
Less than \$10,000	4,400	60.6	50.1 - 71.1	2,800	39.4	28.9 - 49.9	7,200
\$10,000 to \$14,999	5,800	62.0	52.2 - 71.8	3,500	38.0	28.2 - 47.8	9,300
\$15,000 to \$19,999	8,100	72.5	65.3 - 79.7	3,100	27.5	20.3 - 34.7	11,200
\$20,000 to \$24,999	8,200	64.8	55.8 - 73.7	4,500	35.2	26.3 - 44.2	12,700
\$25,000 to \$34,999	12,800	66.7	59.1 - 74.2	6,400	33.3	25.8 - 40.9	19,300
\$35,000 to \$49,999	16,600	72.9	66.0 - 79.8	6,200	27.1	20.2 - 34.0	22,700
\$50,000 to \$74,999	18,500	63.0	55.3 - 70.7	10,800	37.0	29.3 - 44.7	29,300
\$75,000 or more	13,400	62.3	53.4 - 71.2	8,100	37.7	28.8 - 46.6	21,500

Pneumonia - ever had shot (65+) by State, County, Island, Community, DOH Race-Ethnicity, Gender, Education Level, Employment Status (Grouped), Household Income, Poverty Level, Marital Status (Grouped), Married, Health Care Coverage, for the Year(s) - 2001-2003, 2002-2004, 2003-2005, 2004-2006, 2005-2007, 2006-2008, 2007-2009, 2008-2010

Note: Weighted numbers (#) represent 3-yr averages, percentages and 95% confidence intervals; Respondents aged 18 years and older; n/r (Not Reportable) - If the unweighted total responses for a dimension (row) is <50 that row will not be shown; n/a (Not Available) - Not asked of a subset of respondents

Year: 2003-2005

Poverty Level	Yes			No			Estimated Population (3-Yr Avg)
	#	%	C.I. (95%)	#	%	C.I. (95%)	#
0-130%	20,400	66.1	60.1 - 72.1	10,500	33.9	27.9 - 39.9	30,900
131-185%	8,600	62.0	53.1 - 70.9	5,300	38.0	29.1 - 46.9	13,800
186+%	58,800	66.4	62.5 - 70.3	29,700	33.6	29.7 - 37.5	88,500

Marital Status (Grouped)	Yes			No			Estimated Population (3-Yr Avg)
	#	%	C.I. (95%)	#	%	C.I. (95%)	#
Married	63,200	67.2	63.4 - 70.9	30,900	32.8	29.1 - 36.6	94,100
Widowed	30,400	67.6	62.7 - 72.4	14,600	32.4	27.6 - 37.3	45,000
Other	13,100	62.6	56.2 - 69.1	7,800	37.4	30.9 - 43.8	20,900

Pneumonia - ever had shot (65+) by State, County, Island, Community, DOH Race-Ethnicity, Gender, Education Level, Employment Status (Grouped), Household Income, Poverty Level, Marital Status (Grouped), Married, Health Care Coverage, for the Year(s) - 2001-2003, 2002-2004, 2003-2005, 2004-2006, 2005-2007, 2006-2008, 2007-2009, 2008-2010

Note: Weighted numbers (#) represent 3-yr averages, percentages and 95% confidence intervals; Respondents aged 18 years and older; n/r (Not Reportable) - If the unweighted total responses for a dimension (row) is <50 that row will not be shown; n/a (Not Available) - Not asked of a subset of respondents

Year: 2003-2005

Married	Yes			No			Estimated Population (3-Yr Avg)
	#	%	C.I. (95%)	#	%	C.I. (95%)	#
Yes	63,500	67.0	63.3 - 70.7	31,300	33.0	29.3 - 36.7	94,900
No	43,400	66.2	62.3 - 70.1	22,200	33.8	29.9 - 37.7	65,600

Health Care Coverage	Yes			No			Estimated Population (3-Yr Avg)
	#	%	C.I. (95%)	#	%	C.I. (95%)	#
Yes	106,300	66.9	64.2 - 69.7	52,500	33.1	30.3 - 35.8	158,800

Pneumonia - ever had shot (65+) by State, County, Island, Community, DOH Race-Ethnicity, Gender, Education Level, Employment Status (Grouped), Household Income, Poverty Level, Marital Status (Grouped), Married, Health Care Coverage, for the Year(s) - 2001-2003, 2002-2004, 2003-2005, 2004-2006, 2005-2007, 2006-2008, 2007-2009, 2008-2010

Note: Weighted numbers (#) represent 3-yr averages, percentages and 95% confidence intervals; Respondents aged 18 years and older; n/r (Not Reportable) - If the unweighted total responses for a dimension (row) is <50 that row will not be shown; n/a (Not Available) - Not asked of a subset of respondents

Year: 2002-2004

State	Yes			No			Estimated Population (3-Yr Avg)
	#	%	C.I. (95%)	#	%	C.I. (95%)	#
Hawaii State	100,100	64.9	62.1 - 67.8	54,100	35.1	32.2 - 37.9	154,200

County	Yes			No			Estimated Population (3-Yr Avg)
	#	%	C.I. (95%)	#	%	C.I. (95%)	#
Hawaii	12,900	61.6	56.5 - 66.6	8,000	38.4	33.4 - 43.5	20,900
Honolulu	74,200	65.8	62.2 - 69.5	38,500	34.2	30.5 - 37.8	112,800
Kauai	4,900	66.7	59.5 - 73.8	2,400	33.3	26.2 - 40.5	7,300
Maui	8,100	61.4	54.7 - 68.1	5,100	38.6	31.9 - 45.3	13,200

Pneumonia - ever had shot (65+) by State, County, Island, Community, DOH Race-Ethnicity, Gender, Education Level, Employment Status (Grouped), Household Income, Poverty Level, Marital Status (Grouped), Married, Health Care Coverage, for the Year(s) - 2001-2003, 2002-2004, 2003-2005, 2004-2006, 2005-2007, 2006-2008, 2007-2009, 2008-2010

Note: Weighted numbers (#) represent 3-yr averages, percentages and 95% confidence intervals; Respondents aged 18 years and older; n/r (Not Reportable) - If the unweighted total responses for a dimension (row) is <50 that row will not be shown; n/a (Not Available) - Not asked of a subset of respondents

Year: 2002-2004

Island	Yes			No			Estimated Population (3-Yr Avg)
	#	%	C.I. (95%)	#	%	C.I. (95%)	#
Hawaii	12,900	61.6	56.5 - 66.6	8,000	38.4	33.4 - 43.5	20,900
Kauai	4,900	66.7	59.5 - 73.8	2,400	33.3	26.2 - 40.5	7,300
Lanai	300	50.0	33.8 - 66.1	300	50.0	33.9 - 66.2	500
Maui	7,000	61.0	53.5 - 68.5	4,500	39.0	31.5 - 46.5	11,500
Molokai	800	70.0	56.9 - 83.2	400	30.0	16.8 - 43.1	1,200
Oahu	74,200	65.8	62.2 - 69.5	38,500	34.2	30.5 - 37.8	112,800

Community	Yes			No			Estimated Population (3-Yr Avg)
	#	%	C.I. (95%)	#	%	C.I. (95%)	#
Aiea/ Pearl City	9,900	72.5	61.6 - 83.5	3,800	27.5	16.5 - 38.4	13,700
Ala Moana	3,100	60.3	46.5 - 74.0	2,100	39.7	26.0 - 53.5	5,200

Pneumonia - ever had shot (65+) by State, County, Island, Community, DOH Race-Ethnicity, Gender, Education Level, Employment Status (Grouped), Household Income, Poverty Level, Marital Status (Grouped), Married, Health Care Coverage, for the Year(s) - 2001-2003, 2002-2004, 2003-2005, 2004-2006, 2005-2007, 2006-2008, 2007-2009, 2008-2010

Note: Weighted numbers (#) represent 3-yr averages, percentages and 95% confidence intervals; Respondents aged 18 years and older; n/r (Not Reportable) - If the unweighted total responses for a dimension (row) is <50 that row will not be shown; n/a (Not Available) - Not asked of a subset of respondents

Year: 2002-2004

Community	Yes			No			Estimated Population (3-Yr Avg)
	#	%	C.I. (95%)	#	%	C.I. (95%)	#
Hanalei/ Kapaa	1,600	62.2	50.7 - 73.7	900	37.8	26.3 - 49.3	2,500
Hilo	3,600	60.8	52.9 - 68.7	2,300	39.2	31.3 - 47.1	5,900
Kaaawa/ Kahaluu/ Kaneohe	5,200	54.3	39.4 - 69.3	4,400	45.7	30.7 - 60.6	9,600
Kahului	2,200	61.6	49.0 - 74.3	1,400	38.4	25.7 - 51.0	3,600
Kailua/ Waimanalo	4,300	57.9	45.7 - 70.1	3,100	42.1	29.9 - 54.3	7,400
Kaimuki/ Palolo/ Waikiki	12,500	67.1	59.0 - 75.3	6,100	32.9	24.7 - 41.0	18,600
Kona	3,200	62.9	53.8 - 72.1	1,900	37.1	27.9 - 46.2	5,100
Lahaina/ Wailuku	2,700	63.6	51.5 - 75.7	1,500	36.4	24.3 - 48.5	4,200
Lanai	300	50.0	33.8 - 66.1	300	50.0	33.9 - 66.2	500
Lihue-Waimea	3,300	69.1	60.0 - 78.1	1,500	30.9	21.9 - 40.0	4,800
Manoa/ Upper Makiki	7,300	77.9	70.7 - 85.1	2,100	22.1	14.9 - 29.3	9,400
Milliani/ Wahiawa	5,200	85.9	76.1 - 95.7	900	14.1	4.3 - 23.9	6,100

Pneumonia - ever had shot (65+) by State, County, Island, Community, DOH Race-Ethnicity, Gender, Education Level, Employment Status (Grouped), Household Income, Poverty Level, Marital Status (Grouped), Married, Health Care Coverage, for the Year(s) - 2001-2003, 2002-2004, 2003-2005, 2004-2006, 2005-2007, 2006-2008, 2007-2009, 2008-2010

Note: Weighted numbers (#) represent 3-yr averages, percentages and 95% confidence intervals; Respondents aged 18 years and older; n/r (Not Reportable) - If the unweighted total responses for a dimension (row) is <50 that row will not be shown; n/a (Not Available) - Not asked of a subset of respondents

Year: 2002-2004

Community	Yes			No			Estimated Population (3-Yr Avg)
	#	%	C.I. (95%)	#	%	C.I. (95%)	#
Molokai	800	70.0	56.9 - 83.2	400	30.0	16.8 - 43.1	1,200
N.Hawaii	2,800	63.1	50.4 - 75.7	1,600	36.9	24.3 - 49.6	4,400
Nuuanu/ Kalihi/ Moanalua	7,300	56.0	45.0 - 67.0	5,700	44.0	33.0 - 55.0	12,900
Puna/ Kau	3,300	59.9	48.9 - 70.9	2,200	40.1	29.1 - 51.1	5,500
Upcountry/ Hana	2,100	57.4	42.9 - 71.9	1,600	42.6	28.1 - 57.1	3,700
Waialae/ Kahala/ Hawaii Kai	6,200	76.6	67.5 - 85.7	1,900	23.4	14.3 - 32.5	8,100
Waipahu/ Kapolei/ Ewa	6,100	67.4	53.7 - 81.1	3,000	32.6	18.9 - 46.3	9,000

Pneumonia - ever had shot (65+) by State, County, Island, Community, DOH Race-Ethnicity, Gender, Education Level, Employment Status (Grouped), Household Income, Poverty Level, Marital Status (Grouped), Married, Health Care Coverage, for the Year(s) - 2001-2003, 2002-2004, 2003-2005, 2004-2006, 2005-2007, 2006-2008, 2007-2009, 2008-2010

Note: Weighted numbers (#) represent 3-yr averages, percentages and 95% confidence intervals; Respondents aged 18 years and older; n/r (Not Reportable) - If the unweighted total responses for a dimension (row) is <50 that row will not be shown; n/a (Not Available) - Not asked of a subset of respondents

Year: 2002-2004

DOH Race-Ethnicity	Yes			No			Estimated Population (3-Yr Avg)
	#	%	C.I. (95%)	#	%	C.I. (95%)	#
Caucasian	32,200	65.7	61.3 - 70.0	16,800	34.3	30.0 - 38.7	49,100
Native Hawaiian	7,500	57.9	47.5 - 68.3	5,400	42.1	31.7 - 52.5	12,900
Chinese	12,000	66.7	57.4 - 76.0	6,000	33.3	24.0 - 42.6	18,000
Filipino	10,700	59.0	49.5 - 68.5	7,400	41.0	31.5 - 50.5	18,100
Japanese	35,100	68.8	63.9 - 73.7	15,900	31.2	26.3 - 36.1	51,000

Gender	Yes			No			Estimated Population (3-Yr Avg)
	#	%	C.I. (95%)	#	%	C.I. (95%)	#
Male	39,500	58.6	54.0 - 63.3	27,900	41.4	36.7 - 46.0	67,400
Female	60,600	69.8	66.4 - 73.3	26,200	30.2	26.7 - 33.6	86,800

Pneumonia - ever had shot (65+) by State, County, Island, Community, DOH Race-Ethnicity, Gender, Education Level, Employment Status (Grouped), Household Income, Poverty Level, Marital Status (Grouped), Married, Health Care Coverage, for the Year(s) - 2001-2003, 2002-2004, 2003-2005, 2004-2006, 2005-2007, 2006-2008, 2007-2009, 2008-2010

Note: Weighted numbers (#) represent 3-yr averages, percentages and 95% confidence intervals; Respondents aged 18 years and older; n/r (Not Reportable) - If the unweighted total responses for a dimension (row) is <50 that row will not be shown; n/a (Not Available) - Not asked of a subset of respondents

Year: 2002-2004

Education Level	Yes			No			Estimated Population (3-Yr Avg)
	#	%	C.I. (95%)	#	%	C.I. (95%)	#
Never attended school/ Only Kindergarten to Grades 8	5,500	61.7	51.3 - 72.1	3,400	38.3	27.9 - 48.7	9,000
Grades 9 thru 11 (Some High School)	6,400	58.0	47.0 - 69.0	4,600	42.0	31.0 - 53.0	11,100
Grades 12 or GED (High School Grad)	37,200	66.9	62.3 - 71.5	18,400	33.1	28.5 - 37.7	55,500
College 1 to 3 years (Some College/ Tech)	22,700	60.9	54.9 - 66.8	14,600	39.1	33.2 - 45.1	37,300
College 4 years or more (College Grad)	28,000	68.3	62.8 - 73.8	13,000	31.7	26.2 - 37.2	41,000

Employment Status (Grouped)	Yes			No			Estimated Population (3-Yr Avg)
	#	%	C.I. (95%)	#	%	C.I. (95%)	#
Employed	9,700	50.7	42.3 - 59.1	9,500	49.3	40.9 - 57.7	19,200
Retired/Unable to work	88,800	67.8	64.8 - 70.9	42,100	32.2	29.1 - 35.2	130,900
Student/Homemaker	1,600	40.7	22.8 - 58.6	2,300	59.3	41.4 - 77.2	3,900

Pneumonia - ever had shot (65+) by State, County, Island, Community, DOH Race-Ethnicity, Gender, Education Level, Employment Status (Grouped), Household Income, Poverty Level, Marital Status (Grouped), Married, Health Care Coverage, for the Year(s) - 2001-2003, 2002-2004, 2003-2005, 2004-2006, 2005-2007, 2006-2008, 2007-2009, 2008-2010

Note: Weighted numbers (#) represent 3-yr averages, percentages and 95% confidence intervals; Respondents aged 18 years and older; n/r (Not Reportable) - If the unweighted total responses for a dimension (row) is <50 that row will not be shown; n/a (Not Available) - Not asked of a subset of respondents

Year: 2002-2004

Household Income	Yes			No			Estimated Population (3-Yr Avg)
	#	%	C.I. (95%)	#	%	C.I. (95%)	#
Less than \$10,000	4,300	56.6	46.5 - 66.7	3,300	43.4	33.3 - 53.5	7,600
\$10,000 to \$14,999	5,900	63.7	54.1 - 73.4	3,400	36.3	26.6 - 45.9	9,300
\$15,000 to \$19,999	6,400	75.8	67.7 - 83.8	2,000	24.2	16.2 - 32.3	8,400
\$20,000 to \$24,999	6,500	66.3	55.5 - 77.1	3,300	33.7	22.9 - 44.5	9,800
\$25,000 to \$34,999	11,500	70.3	61.9 - 78.7	4,800	29.7	21.3 - 38.1	16,300
\$35,000 to \$49,999	13,600	71.7	63.8 - 79.7	5,400	28.3	20.3 - 36.2	19,000
\$50,000 to \$74,999	17,600	63.2	55.1 - 71.4	10,200	36.8	28.6 - 44.9	27,900
\$75,000 or more	11,000	61.1	50.7 - 71.4	7,000	38.9	28.6 - 49.3	18,000

Pneumonia - ever had shot (65+) by State, County, Island, Community, DOH Race-Ethnicity, Gender, Education Level, Employment Status (Grouped), Household Income, Poverty Level, Marital Status (Grouped), Married, Health Care Coverage, for the Year(s) - 2001-2003, 2002-2004, 2003-2005, 2004-2006, 2005-2007, 2006-2008, 2007-2009, 2008-2010

Note: Weighted numbers (#) represent 3-yr averages, percentages and 95% confidence intervals; Respondents aged 18 years and older; n/r (Not Reportable) - If the unweighted total responses for a dimension (row) is <50 that row will not be shown; n/a (Not Available) - Not asked of a subset of respondents

Year: 2002-2004

Poverty Level	Yes			No			Estimated Population (3-Yr Avg)
	#	%	C.I. (95%)	#	%	C.I. (95%)	#
0-130%	17,900	65.6	59.1 - 72.0	9,400	34.4	28.0 - 40.9	27,300
131-185%	8,200	68.6	58.6 - 78.7	3,700	31.4	21.3 - 41.4	11,900
186+%	50,700	65.8	61.4 - 70.2	26,300	34.2	29.8 - 38.6	77,000

Marital Status (Grouped)	Yes			No			Estimated Population (3-Yr Avg)
	#	%	C.I. (95%)	#	%	C.I. (95%)	#
Married	58,900	64.3	60.5 - 68.1	32,700	35.7	31.9 - 39.5	91,500
Widowed	30,000	67.9	62.9 - 72.9	14,200	32.1	27.1 - 37.1	44,200
Other	10,900	60.8	53.4 - 68.3	7,000	39.2	31.7 - 46.6	18,000

Pneumonia - ever had shot (65+) by State, County, Island, Community, DOH Race-Ethnicity, Gender, Education Level, Employment Status (Grouped), Household Income, Poverty Level, Marital Status (Grouped), Married, Health Care Coverage, for the Year(s) - 2001-2003, 2002-2004, 2003-2005, 2004-2006, 2005-2007, 2006-2008, 2007-2009, 2008-2010

Note: Weighted numbers (#) represent 3-yr averages, percentages and 95% confidence intervals; Respondents aged 18 years and older; n/r (Not Reportable) - If the unweighted total responses for a dimension (row) is <50 that row will not be shown; n/a (Not Available) - Not asked of a subset of respondents

Year: 2002-2004

Married	Yes			No			Estimated Population (3-Yr Avg)
	#	%	C.I. (95%)	#	%	C.I. (95%)	#
Yes	59,200	64.1	60.3 - 67.9	33,100	35.9	32.1 - 39.7	92,300
No	40,900	66.1	61.9 - 70.3	21,000	33.9	29.7 - 38.1	61,900

Health Care Coverage	Yes			No			Estimated Population (3-Yr Avg)
	#	%	C.I. (95%)	#	%	C.I. (95%)	#
Yes	99,400	65.1	62.2 - 67.9	53,300	34.9	32.1 - 37.8	152,700

Pneumonia - ever had shot (65+) by State, County, Island, Community, DOH Race-Ethnicity, Gender, Education Level, Employment Status (Grouped), Household Income, Poverty Level, Marital Status (Grouped), Married, Health Care Coverage, for the Year(s) - 2001-2003, 2002-2004, 2003-2005, 2004-2006, 2005-2007, 2006-2008, 2007-2009, 2008-2010

Note: Weighted numbers (#) represent 3-yr averages, percentages and 95% confidence intervals; Respondents aged 18 years and older; n/r (Not Reportable) - If the unweighted total responses for a dimension (row) is <50 that row will not be shown; n/a (Not Available) - Not asked of a subset of respondents

Year: 2001-2003

State	Yes			No			Estimated Population (3-Yr Avg)
	#	%	C.I. (95%)	#	%	C.I. (95%)	#
Hawaii State	98,700	65.1	62.7 - 67.4	53,000	34.9	32.6 - 37.3	151,600

County	Yes			No			Estimated Population (3-Yr Avg)
	#	%	C.I. (95%)	#	%	C.I. (95%)	#
Hawaii	12,400	62.7	58.4 - 67.0	7,400	37.3	33.0 - 41.6	19,800
Honolulu	73,300	66.7	63.6 - 69.7	36,700	33.3	30.3 - 36.4	110,000
Kauai	4,400	59.3	52.0 - 66.5	3,000	40.7	33.5 - 48.0	7,400
Maui	8,500	59.2	53.4 - 65.0	5,900	40.8	35.0 - 46.6	14,400

Pneumonia - ever had shot (65+) by State, County, Island, Community, DOH Race-Ethnicity, Gender, Education Level, Employment Status (Grouped), Household Income, Poverty Level, Marital Status (Grouped), Married, Health Care Coverage, for the Year(s) - 2001-2003, 2002-2004, 2003-2005, 2004-2006, 2005-2007, 2006-2008, 2007-2009, 2008-2010

Note: Weighted numbers (#) represent 3-yr averages, percentages and 95% confidence intervals; Respondents aged 18 years and older; n/r (Not Reportable) - If the unweighted total responses for a dimension (row) is <50 that row will not be shown; n/a (Not Available) - Not asked of a subset of respondents

Year: 2001-2003

Island	Yes			No			Estimated Population (3-Yr Avg)
	#	%	C.I. (95%)	#	%	C.I. (95%)	#
Hawaii	12,400	62.7	58.4 - 67.0	7,400	37.3	33.0 - 41.6	19,800
Kauai	4,400	59.3	52.0 - 66.5	3,000	40.7	33.5 - 48.0	7,400
Lanai	300	41.7	25.9 - 57.4	400	58.3	42.6 - 74.1	600
Maui	7,400	59.2	52.7 - 65.7	5,100	40.8	34.3 - 47.3	12,500
Molokai	900	67.3	54.7 - 80.0	400	32.7	20.0 - 45.3	1,300
Oahu	73,300	66.7	63.6 - 69.7	36,700	33.3	30.3 - 36.4	110,000

Community	Yes			No			Estimated Population (3-Yr Avg)
	#	%	C.I. (95%)	#	%	C.I. (95%)	#
Aiea/ Pearl City	10,400	76.2	68.0 - 84.3	3,300	23.8	15.7 - 32.0	13,600
Ala Moana	3,500	59.3	47.9 - 70.8	2,400	40.7	29.2 - 52.1	5,900

Pneumonia - ever had shot (65+) by State, County, Island, Community, DOH Race-Ethnicity, Gender, Education Level, Employment Status (Grouped), Household Income, Poverty Level, Marital Status (Grouped), Married, Health Care Coverage, for the Year(s) - 2001-2003, 2002-2004, 2003-2005, 2004-2006, 2005-2007, 2006-2008, 2007-2009, 2008-2010

Note: Weighted numbers (#) represent 3-yr averages, percentages and 95% confidence intervals; Respondents aged 18 years and older; n/r (Not Reportable) - If the unweighted total responses for a dimension (row) is <50 that row will not be shown; n/a (Not Available) - Not asked of a subset of respondents

Year: 2001-2003

Community	Yes			No			Estimated Population (3-Yr Avg)
	#	%	C.I. (95%)	#	%	C.I. (95%)	#
Hanalei/ Kapaa	1,500	57.5	46.3 - 68.6	1,100	42.5	31.4 - 53.7	2,700
Hilo	4,200	61.4	54.2 - 68.5	2,700	38.6	31.5 - 45.8	6,900
Kaaawa/ Kahaluu/ Kaneohe	4,900	67.8	56.7 - 79.0	2,300	32.2	21.0 - 43.3	7,200
Kahului	2,500	59.6	48.6 - 70.6	1,700	40.4	29.4 - 51.4	4,100
Kailua/ Waimanalo	6,000	67.3	57.1 - 77.6	2,900	32.7	22.4 - 42.9	8,900
Kaimuki/ Palolo/ Waikiki	10,800	67.4	60.1 - 74.7	5,200	32.6	25.3 - 39.9	16,100
Kona	2,900	58.7	49.8 - 67.6	2,100	41.3	32.4 - 50.2	5,000
Lahaina/ Wailuku	2,800	61.4	50.8 - 72.1	1,800	38.6	27.9 - 49.2	4,600
Lanai	300	41.7	25.9 - 57.4	400	58.3	42.6 - 74.1	600
Lihue-Waimea	2,900	60.3	50.9 - 69.7	1,900	39.7	30.3 - 49.1	4,700
Manoa/ Upper Makiki	7,800	69.0	60.7 - 77.3	3,500	31.0	22.7 - 39.3	11,300
Millilani/ Wahiawa	4,900	83.6	74.1 - 93.2	1,000	16.4	6.8 - 25.9	5,800

Pneumonia - ever had shot (65+) by State, County, Island, Community, DOH Race-Ethnicity, Gender, Education Level, Employment Status (Grouped), Household Income, Poverty Level, Marital Status (Grouped), Married, Health Care Coverage, for the Year(s) - 2001-2003, 2002-2004, 2003-2005, 2004-2006, 2005-2007, 2006-2008, 2007-2009, 2008-2010

Note: Weighted numbers (#) represent 3-yr averages, percentages and 95% confidence intervals; Respondents aged 18 years and older; n/r (Not Reportable) - If the unweighted total responses for a dimension (row) is <50 that row will not be shown; n/a (Not Available) - Not asked of a subset of respondents

Year: 2001-2003

Community	Yes			No			Estimated Population (3-Yr Avg)
	#	%	C.I. (95%)	#	%	C.I. (95%)	#
Molokai	900	67.3	54.7 - 80.0	400	32.7	20.0 - 45.3	1,300
N.Hawaii	2,900	69.9	60.7 - 79.1	1,200	30.1	20.9 - 39.3	4,100
Nuuanu/ Kalihi/ Moanalua	7,400	54.3	44.8 - 63.9	6,200	45.7	36.1 - 55.2	13,600
Puna/ Kau	2,400	62.5	53.2 - 71.7	1,400	37.5	28.3 - 46.8	3,800
Upcountry/ Hana	2,100	55.9	43.3 - 68.5	1,600	44.1	31.5 - 56.7	3,700
Waialae/ Kahala/ Hawaii Kai	6,200	66.4	56.8 - 75.9	3,100	33.6	24.1 - 43.2	9,300
Waipahu/ Kapolei/ Ewa	5,100	62.8	51.0 - 74.6	3,000	37.2	25.4 - 49.0	8,100

Pneumonia - ever had shot (65+) by State, County, Island, Community, DOH Race-Ethnicity, Gender, Education Level, Employment Status (Grouped), Household Income, Poverty Level, Marital Status (Grouped), Married, Health Care Coverage, for the Year(s) - 2001-2003, 2002-2004, 2003-2005, 2004-2006, 2005-2007, 2006-2008, 2007-2009, 2008-2010

Note: Weighted numbers (#) represent 3-yr averages, percentages and 95% confidence intervals; Respondents aged 18 years and older; n/r (Not Reportable) - If the unweighted total responses for a dimension (row) is <50 that row will not be shown; n/a (Not Available) - Not asked of a subset of respondents

Year: 2001-2003

DOH Race-Ethnicity	Yes			No			Estimated Population (3-Yr Avg)
	#	%	C.I. (95%)	#	%	C.I. (95%)	#
Caucasian	29,400	63.2	59.3 - 67.2	17,100	36.8	32.8 - 40.7	46,500
Native Hawaiian	7,200	55.2	46.4 - 63.9	5,900	44.8	36.1 - 53.6	13,100
Chinese	12,200	68.7	61.9 - 75.6	5,500	31.3	24.4 - 38.1	17,700
Filipino	10,600	57.2	48.4 - 66.0	8,000	42.8	34.0 - 51.6	18,600
Japanese	36,200	71.4	67.7 - 75.0	14,500	28.6	25.0 - 32.3	50,700

Gender	Yes			No			Estimated Population (3-Yr Avg)
	#	%	C.I. (95%)	#	%	C.I. (95%)	#
Male	40,900	61.1	57.3 - 64.9	26,000	38.9	35.1 - 42.7	66,900
Female	57,800	68.2	65.2 - 71.2	26,900	31.8	28.8 - 34.8	84,700

Pneumonia - ever had shot (65+) by State, County, Island, Community, DOH Race-Ethnicity, Gender, Education Level, Employment Status (Grouped), Household Income, Poverty Level, Marital Status (Grouped), Married, Health Care Coverage, for the Year(s) - 2001-2003, 2002-2004, 2003-2005, 2004-2006, 2005-2007, 2006-2008, 2007-2009, 2008-2010

Note: Weighted numbers (#) represent 3-yr averages, percentages and 95% confidence intervals; Respondents aged 18 years and older; n/r (Not Reportable) - If the unweighted total responses for a dimension (row) is <50 that row will not be shown; n/a (Not Available) - Not asked of a subset of respondents

Year: 2001-2003

Education Level	Yes			No			Estimated Population (3-Yr Avg)
	#	%	C.I. (95%)	#	%	C.I. (95%)	#
Never attended school/ Only Kindergarten to Grades 8	5,600	58.4	49.5 - 67.3	4,000	41.6	32.7 - 50.5	9,700
Grades 9 thru 11 (Some High School)	7,900	60.0	49.9 - 70.0	5,300	40.0	30.0 - 50.1	13,300
Grades 12 or GED (High School Grad)	37,000	65.8	61.9 - 69.6	19,300	34.2	30.4 - 38.1	56,300
College 1 to 3 years (Some College/ Tech)	22,600	63.4	58.4 - 68.4	13,000	36.6	31.6 - 41.6	35,600
College 4 years or more (College Grad)	25,100	69.3	65.0 - 73.6	11,100	30.7	26.4 - 35.0	36,300

Employment Status (Grouped)	Yes			No			Estimated Population (3-Yr Avg)
	#	%	C.I. (95%)	#	%	C.I. (95%)	#
Employed	8,300	51.9	44.3 - 59.4	7,700	48.1	40.6 - 55.7	16,100
Retired/Unable to work	88,500	67.4	64.9 - 69.9	42,800	32.6	30.1 - 35.1	131,300
Student/Homemaker	1,800	44.2	29.9 - 58.5	2,200	55.8	41.5 - 70.1	4,000

Pneumonia - ever had shot (65+) by State, County, Island, Community, DOH Race-Ethnicity, Gender, Education Level, Employment Status (Grouped), Household Income, Poverty Level, Marital Status (Grouped), Married, Health Care Coverage, for the Year(s) - 2001-2003, 2002-2004, 2003-2005, 2004-2006, 2005-2007, 2006-2008, 2007-2009, 2008-2010

Note: Weighted numbers (#) represent 3-yr averages, percentages and 95% confidence intervals; Respondents aged 18 years and older; n/r (Not Reportable) - If the unweighted total responses for a dimension (row) is <50 that row will not be shown; n/a (Not Available) - Not asked of a subset of respondents

Year: 2001-2003

Household Income	Yes			No			Estimated Population (3-Yr Avg)
	#	%	C.I. (95%)	#	%	C.I. (95%)	#
Less than \$10,000	4,900	54.6	45.3 - 64.0	4,000	45.4	36.0 - 54.7	8,900
\$10,000 to \$14,999	7,000	61.5	52.8 - 70.2	4,400	38.5	29.8 - 47.2	11,400
\$15,000 to \$19,999	5,800	69.0	59.1 - 79.0	2,600	31.0	21.0 - 40.9	8,500
\$20,000 to \$24,999	4,800	59.7	49.8 - 69.6	3,200	40.3	30.4 - 50.2	8,000
\$25,000 to \$34,999	9,800	71.4	64.3 - 78.5	3,900	28.6	21.5 - 35.7	13,700
\$35,000 to \$49,999	12,100	69.1	61.8 - 76.3	5,400	30.9	23.7 - 38.2	17,600
\$50,000 to \$74,999	9,100	65.6	57.4 - 73.7	4,800	34.4	26.3 - 42.6	13,900
\$75,000 or more	8,700	69.0	61.3 - 76.8	3,900	31.0	23.2 - 38.7	12,600

Pneumonia - ever had shot (65+) by State, County, Island, Community, DOH Race-Ethnicity, Gender, Education Level, Employment Status (Grouped), Household Income, Poverty Level, Marital Status (Grouped), Married, Health Care Coverage, for the Year(s) - 2001-2003, 2002-2004, 2003-2005, 2004-2006, 2005-2007, 2006-2008, 2007-2009, 2008-2010

Note: Weighted numbers (#) represent 3-yr averages, percentages and 95% confidence intervals; Respondents aged 18 years and older; n/r (Not Reportable) - If the unweighted total responses for a dimension (row) is <50 that row will not be shown; n/a (Not Available) - Not asked of a subset of respondents

Year: 2001-2003

Poverty Level	Yes			No			Estimated Population (3-Yr Avg)
	#	%	C.I. (95%)	#	%	C.I. (95%)	#
0-130%	16,000	58.0	51.6 - 64.3	11,600	42.0	35.7 - 48.4	27,500
131-185%	8,600	68.0	59.9 - 76.2	4,100	32.0	23.8 - 40.1	12,700
186+%	37,600	69.3	65.7 - 72.9	16,700	30.7	27.1 - 34.3	54,300

Marital Status (Grouped)	Yes			No			Estimated Population (3-Yr Avg)
	#	%	C.I. (95%)	#	%	C.I. (95%)	#
Married	61,100	65.9	62.8 - 69.0	31,600	34.1	31.0 - 37.2	92,600
Widowed	27,700	66.8	62.4 - 71.2	13,800	33.2	28.8 - 37.6	41,500
Other	9,800	57.1	50.9 - 63.3	7,400	42.9	36.7 - 49.1	17,200

Pneumonia - ever had shot (65+) by State, County, Island, Community, DOH Race-Ethnicity, Gender, Education Level, Employment Status (Grouped), Household Income, Poverty Level, Marital Status (Grouped), Married, Health Care Coverage, for the Year(s) - 2001-2003, 2002-2004, 2003-2005, 2004-2006, 2005-2007, 2006-2008, 2007-2009, 2008-2010

Note: Weighted numbers (#) represent 3-yr averages, percentages and 95% confidence intervals; Respondents aged 18 years and older; n/r (Not Reportable) - If the unweighted total responses for a dimension (row) is <50 that row will not be shown; n/a (Not Available) - Not asked of a subset of respondents

Year: 2001-2003

Married	Yes			No			Estimated Population (3-Yr Avg)
	#	%	C.I. (95%)	#	%	C.I. (95%)	#
Yes	61,400	65.7	62.6 - 68.8	32,000	34.3	31.2 - 37.4	93,400
No	37,300	64.0	60.4 - 67.6	20,900	36.0	32.4 - 39.6	58,200

Health Care Coverage	Yes			No			Estimated Population (3-Yr Avg)
	#	%	C.I. (95%)	#	%	C.I. (95%)	#
Yes	98,100	65.3	62.9 - 67.6	52,200	34.7	32.4 - 37.1	150,300