

**Pneumonia - ever had shot (65+) by State, County, Island, Community, Adult Age Group, DOH Race-Ethnicity, Gender, Education Level, Employment Status (Grouped), Household Income, Poverty Level, Marital Status (Grouped), Married, Health Care Coverage, for the Year(s) - 2001-2005, 2002-2006, 2003-2007, 2004-2008, 2005-2009, 2006-2010**

*Note: Weighted numbers (#) represent 5-yr averages, percentages and 95% confidence intervals; Respondents aged 18 years and older; n/r (Not Reportable) - If the unweighted total responses for a dimension (row) is <50 that row will not be shown; n/a (Not Available) - Not asked of a subset of respondents*

*The trend analysis report shows the trend for the selected health variable over selected years in a table and a graph. Estimated Population: This number is a weighted representation of the population who responded to a particular question in the survey. For most questions the eligible population will be the entire adult population. For some secondary questions only a subset of the population was asked the question. For example, all survey participants were asked if they had diabetes, but only those who answered yes were asked if they use insulin. If a dimension value is unknown for a particular survey record, that record will not be included in the counts for that particular dimension.*

*For documentation on other terms and coding in this report, please go to the following links*

[Click here to access BRFSS documentation](#)

[Click here to access DOH Race-Ethnicity coding](#)

[Click here to access The Hawai'i Data Guide](#)

[Click here to access Poverty Level Methodology](#)

**For questions about this report, please contact  
The Hawaii Health Data Warehouse**

[profiles@hhdw.org](mailto:profiles@hhdw.org)

**(855) 946-5899 x15**

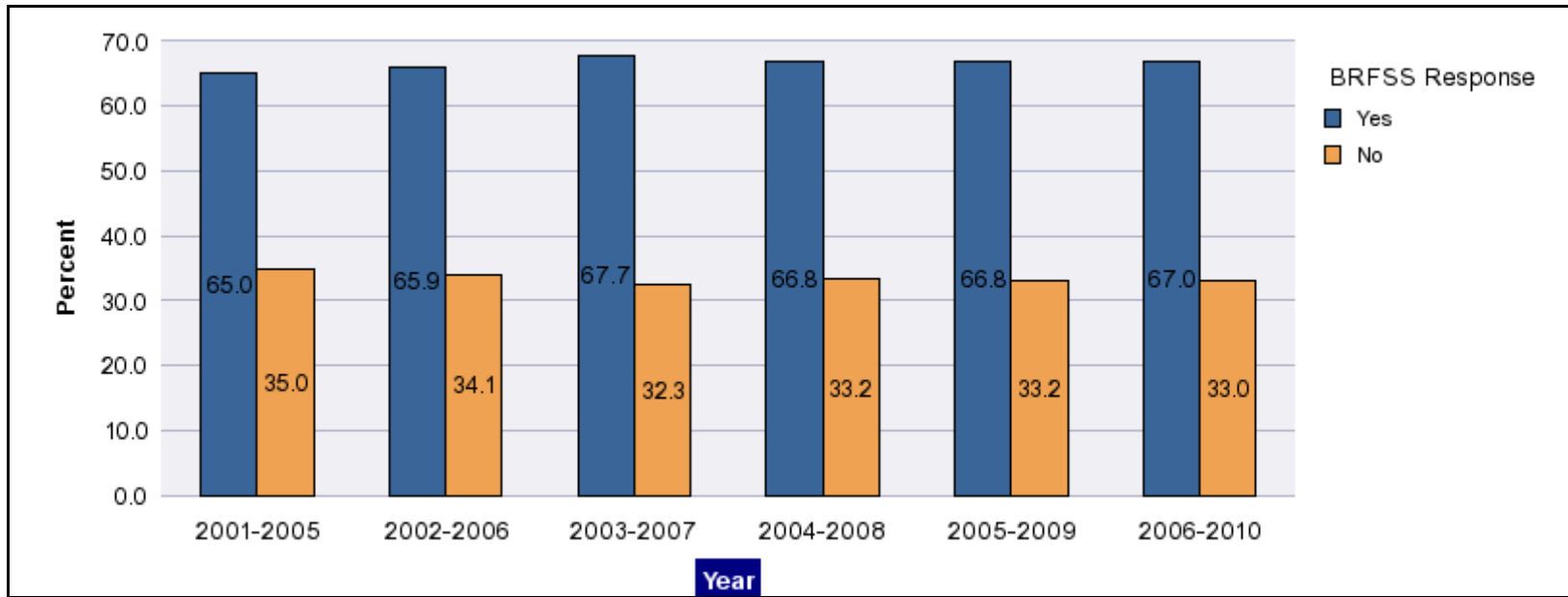
**Pneumonia - ever had shot (65+) by State, County, Island, Community, Adult Age Group, DOH Race-Ethnicity, Gender, Education Level, Employment Status (Grouped), Household Income, Poverty Level, Marital Status (Grouped), Married, Health Care Coverage, for the Year(s) - 2001-2005, 2002-2006, 2003-2007, 2004-2008, 2005-2009, 2006-2010**

*Note: Weighted numbers (#) represent 5-yr averages, percentages and 95% confidence intervals; Respondents aged 18 years and older; n/r (Not Reportable) - If the unweighted total responses for a dimension (row) is <50 that row will not be shown; n/a (Not Available) - Not asked of a subset of respondents*

Year	Yes			No			Estimated Population (5-yr Avg)
	#	%	C.I.(95%)	#	%	C.I.(95%)	#
<b>2001-2005</b>	101,000	65.0	63.0 - 67.0	54,300	35.0	33.0 - 37.0	155,400
<b>2002-2006</b>	104,900	65.9	64.0 - 67.8	54,200	34.1	32.2 - 36.0	159,000
<b>2003-2007</b>	110,800	67.7	65.8 - 69.5	52,900	32.3	30.5 - 34.2	163,700
<b>2004-2008</b>	111,000	66.8	65.0 - 68.5	55,300	33.2	31.5 - 35.0	166,200
<b>2005-2009</b>	113,800	66.8	65.4 - 68.2	56,600	33.2	31.8 - 34.6	170,300
<b>2006-2010</b>	115,800	67.0	65.6 - 68.3	57,100	33.0	31.7 - 34.4	173,000

**Pneumonia - ever had shot (65+) by State, County, Island, Community, Adult Age Group, DOH Race-Ethnicity, Gender, Education Level, Employment Status (Grouped), Household Income, Poverty Level, Marital Status (Grouped), Married, Health Care Coverage, for the Year(s) - 2001-2005, 2002-2006, 2003-2007, 2004-2008, 2005-2009, 2006-2010**

*Note: Weighted numbers (#) represent 5-yr averages, percentages and 95% confidence intervals; Respondents aged 18 years and older; n/r (Not Reportable) - If the unweighted total responses for a dimension (row) is <50 that row will not be shown; n/a (Not Available) - Not asked of a subset of respondents*



**Pneumonia - ever had shot (65+) by State, County, Island, Community, Adult Age Group, DOH Race-Ethnicity, Gender, Education Level, Employment Status (Grouped), Household Income, Poverty Level, Marital Status (Grouped), Married, Health Care Coverage, for the Year(s) - 2001-2005, 2002-2006, 2003-2007, 2004-2008, 2005-2009, 2006-2010**

*Note: Weighted numbers (#) represent 5-yr averages, percentages and 95% confidence intervals; Respondents aged 18 years and older; n/r (Not Reportable) - If the unweighted total responses for a dimension (row) is <50 that row will not be shown; n/a (Not Available) - Not asked of a subset of respondents*

**Year: 2006-2010**

State	Yes			No			Estimated Population (5-yr Avg)
	#	%	C.I. (95%)	#	%	C.I. (95%)	#
Hawaii State	115,800	67.0	65.6 - 68.3	57,100	33.0	31.7 - 34.4	173,000

County	Yes			No			Estimated Population (5-yr Avg)
	#	%	C.I. (95%)	#	%	C.I. (95%)	#
Hawaii	14,500	65.0	62.5 - 67.5	7,800	35.0	32.5 - 37.5	22,200
Honolulu	84,900	67.6	65.9 - 69.3	40,700	32.4	30.7 - 34.1	125,600
Kauai	6,000	68.7	64.8 - 72.5	2,700	31.3	27.5 - 35.2	8,800
Maui	10,500	63.8	60.9 - 66.8	5,900	36.2	33.2 - 39.1	16,400

**Pneumonia - ever had shot (65+) by State, County, Island, Community, Adult Age Group, DOH Race-Ethnicity, Gender, Education Level, Employment Status (Grouped), Household Income, Poverty Level, Marital Status (Grouped), Married, Health Care Coverage, for the Year(s) - 2001-2005, 2002-2006, 2003-2007, 2004-2008, 2005-2009, 2006-2010**

*Note: Weighted numbers (#) represent 5-yr averages, percentages and 95% confidence intervals; Respondents aged 18 years and older; n/r (Not Reportable) - If the unweighted total responses for a dimension (row) is <50 that row will not be shown; n/a (Not Available) - Not asked of a subset of respondents*

**Year: 2006-2010**

Island	Yes			No			Estimated Population (5-yr Avg)
	#	%	C.I. (95%)	#	%	C.I. (95%)	#
Hawaii	14,500	65.0	62.5 - 67.5	7,800	35.0	32.5 - 37.5	22,200
Kauai	6,000	68.7	64.8 - 72.5	2,700	31.3	27.5 - 35.2	8,800
Lanai	200	60.0	52.0 - 68.1	100	40.0	31.9 - 48.0	300
Maui	9,600	63.8	60.6 - 67.0	5,400	36.2	33.0 - 39.4	15,000
Molokai	700	64.9	58.0 - 71.9	400	35.1	28.1 - 42.0	1,100
Oahu	84,900	67.6	65.9 - 69.3	40,700	32.4	30.7 - 34.1	125,600

Community	Yes			No			Estimated Population (5-yr Avg)
	#	%	C.I. (95%)	#	%	C.I. (95%)	#
Aiea/ Pearl City	9,900	70.5	65.3 - 75.8	4,100	29.5	24.2 - 34.7	14,000

**Pneumonia - ever had shot (65+) by State, County, Island, Community, Adult Age Group, DOH Race-Ethnicity, Gender, Education Level, Employment Status (Grouped), Household Income, Poverty Level, Marital Status (Grouped), Married, Health Care Coverage, for the Year(s) - 2001-2005, 2002-2006, 2003-2007, 2004-2008, 2005-2009, 2006-2010**

*Note: Weighted numbers (#) represent 5-yr averages, percentages and 95% confidence intervals; Respondents aged 18 years and older; n/r (Not Reportable) - If the unweighted total responses for a dimension (row) is <50 that row will not be shown; n/a (Not Available) - Not asked of a subset of respondents*

**Year: 2006-2010**

Community	Yes			No			Estimated Population (5-yr Avg)
	#	%	C.I. (95%)	#	%	C.I. (95%)	#
Ala Moana	5,200	71.4	65.4 - 77.4	2,100	28.6	22.6 - 34.6	7,200
Hanalei/ Kapaa	2,200	63.3	57.0 - 69.6	1,300	36.7	30.4 - 43.0	3,500
Hilo	5,200	67.2	63.0 - 71.3	2,500	32.8	28.7 - 37.0	7,700
Kaaawa/ Kahaluu/ Kaneohe	6,100	62.0	55.7 - 68.2	3,700	38.0	31.8 - 44.3	9,800
Kahului	3,500	64.4	59.2 - 69.5	1,900	35.6	30.5 - 40.8	5,400
Kailua/ Waimanalo	7,600	69.3	63.7 - 74.8	3,400	30.7	25.2 - 36.3	11,000
Kaimuki/ Palolo/ Waikiki	10,800	67.9	63.4 - 72.4	5,100	32.1	27.6 - 36.6	15,800
Kona	3,500	63.1	58.0 - 68.3	2,000	36.9	31.7 - 42.0	5,500
Lahaina/ Wailuku	3,200	64.0	58.4 - 69.7	1,800	36.0	30.3 - 41.6	5,000
Lanai	200	60.0	52.0 - 68.1	100	40.0	31.9 - 48.0	300
Lihue-Waimea	3,800	72.2	67.4 - 77.1	1,500	27.8	22.9 - 32.6	5,300

**Pneumonia - ever had shot (65+) by State, County, Island, Community, Adult Age Group, DOH Race-Ethnicity, Gender, Education Level, Employment Status (Grouped), Household Income, Poverty Level, Marital Status (Grouped), Married, Health Care Coverage, for the Year(s) - 2001-2005, 2002-2006, 2003-2007, 2004-2008, 2005-2009, 2006-2010**

*Note: Weighted numbers (#) represent 5-yr averages, percentages and 95% confidence intervals; Respondents aged 18 years and older; n/r (Not Reportable) - If the unweighted total responses for a dimension (row) is <50 that row will not be shown; n/a (Not Available) - Not asked of a subset of respondents*

**Year: 2006-2010**

Community	Yes			No			Estimated Population (5-yr Avg)
	#	%	C.I. (95%)	#	%	C.I. (95%)	#
Manoa/ Upper Makiki	8,600	72.9	68.1 - 77.6	3,200	27.1	22.4 - 31.9	11,800
Mililani/ Wahiawa	5,300	69.6	63.1 - 76.2	2,300	30.4	23.8 - 36.9	7,600
Molokai	700	64.9	58.0 - 71.9	400	35.1	28.1 - 42.0	1,100
Nanakuli/ Waianae	2,400	52.4	42.1 - 62.7	2,200	47.6	37.3 - 57.9	4,600
N.Hawaii	2,600	63.7	58.1 - 69.4	1,500	36.3	30.6 - 41.9	4,000
N.Shore/ Laie	2,100	57.7	46.9 - 68.5	1,600	42.3	31.5 - 53.1	3,700
Nuuanu/ Kalihi/ Moanalua	8,400	63.4	57.9 - 69.0	4,800	36.6	31.0 - 42.1	13,300
Puna/ Kau	3,200	64.7	59.4 - 70.0	1,800	35.3	30.0 - 40.6	5,000
Salt Lake/ Foster Village	2,400	79.9	71.3 - 88.6	600	20.1	11.4 - 28.7	3,000
Upcountry/ Hana	2,900	62.9	57.0 - 68.8	1,700	37.1	31.2 - 43.0	4,600
Waiialae/ Kahala/ Hawaii Kai	7,700	71.5	66.2 - 76.8	3,100	28.5	23.2 - 33.8	10,800

**Pneumonia - ever had shot (65+) by State, County, Island, Community, Adult Age Group, DOH Race-Ethnicity, Gender, Education Level, Employment Status (Grouped), Household Income, Poverty Level, Marital Status (Grouped), Married, Health Care Coverage, for the Year(s) - 2001-2005, 2002-2006, 2003-2007, 2004-2008, 2005-2009, 2006-2010**

*Note: Weighted numbers (#) represent 5-yr averages, percentages and 95% confidence intervals; Respondents aged 18 years and older; n/r (Not Reportable) - If the unweighted total responses for a dimension (row) is <50 that row will not be shown; n/a (Not Available) - Not asked of a subset of respondents*

**Year: 2006-2010**

Community	Yes			No			Estimated Population (5-yr Avg)
	#	%	C.I. (95%)	#	%	C.I. (95%)	#
Waipahu/ Kapolei/ Ewa	8,400	65.1	59.2 - 71.0	4,500	34.9	29.0 - 40.8	12,900



**Pneumonia - ever had shot (65+) by State, County, Island, Community, Adult Age Group, DOH Race-Ethnicity, Gender, Education Level, Employment Status (Grouped), Household Income, Poverty Level, Marital Status (Grouped), Married, Health Care Coverage, for the Year(s) - 2001-2005, 2002-2006, 2003-2007, 2004-2008, 2005-2009, 2006-2010**

*Note: Weighted numbers (#) represent 5-yr averages, percentages and 95% confidence intervals; Respondents aged 18 years and older; n/r (Not Reportable) - If the unweighted total responses for a dimension (row) is <50 that row will not be shown; n/a (Not Available) - Not asked of a subset of respondents*

**Year: 2006-2010**

DOH Race-Ethnicity	Yes			No			Estimated Population (5-yr Avg)
	#	%	C.I. (95%)	#	%	C.I. (95%)	#
Caucasian	39,000	67.8	65.8 - 69.7	18,600	32.2	30.3 - 34.2	57,600
Native Hawaiian	8,700	55.0	50.2 - 59.8	7,100	45.0	40.2 - 49.8	15,800
Chinese	9,700	72.5	67.8 - 77.2	3,700	27.5	22.8 - 32.2	13,400
Filipino	9,500	52.6	47.5 - 57.7	8,500	47.4	42.3 - 52.5	18,000
Japanese	44,600	73.0	70.8 - 75.2	16,500	27.0	24.8 - 29.2	61,100
Other Asian	1,500	59.6	48.5 - 70.8	1,000	40.4	29.2 - 51.5	2,500
Other	1,100	56.0	44.7 - 67.2	900	44.0	32.8 - 55.3	2,000

**Pneumonia - ever had shot (65+) by State, County, Island, Community, Adult Age Group, DOH Race-Ethnicity, Gender, Education Level, Employment Status (Grouped), Household Income, Poverty Level, Marital Status (Grouped), Married, Health Care Coverage, for the Year(s) - 2001-2005, 2002-2006, 2003-2007, 2004-2008, 2005-2009, 2006-2010**

*Note: Weighted numbers (#) represent 5-yr averages, percentages and 95% confidence intervals; Respondents aged 18 years and older; n/r (Not Reportable) - If the unweighted total responses for a dimension (row) is <50 that row will not be shown; n/a (Not Available) - Not asked of a subset of respondents*

**Year: 2006-2010**

Gender	Yes			No			Estimated Population (5-yr Avg)
	#	%	C.I. (95%)	#	%	C.I. (95%)	#
Male	44,400	61.5	59.4 - 63.7	27,800	38.5	36.3 - 40.6	72,200
Female	71,400	70.9	69.2 - 72.5	29,400	29.1	27.5 - 30.8	100,700

Education Level	Yes			No			Estimated Population (5-yr Avg)
	#	%	C.I. (95%)	#	%	C.I. (95%)	#
Never attended school/ Only Kindergarten to Grades 8	4,000	54.8	46.9 - 62.7	3,300	45.2	37.3 - 53.1	7,300
Grades 9 thru 11 (Some High School)	6,800	61.1	55.3 - 66.9	4,300	38.9	33.1 - 44.7	11,100
Grades 12 or GED (High School Grad)	36,400	63.8	61.3 - 66.2	20,600	36.2	33.8 - 38.7	57,000
College 1 to 3 years (Some College/ Tech)	28,300	70.5	67.9 - 73.0	11,900	29.5	27.0 - 32.1	40,200
College 4 years or more (College Grad)	40,300	70.4	68.3 - 72.4	17,000	29.6	27.6 - 31.7	57,300

**Pneumonia - ever had shot (65+) by State, County, Island, Community, Adult Age Group, DOH Race-Ethnicity, Gender, Education Level, Employment Status (Grouped), Household Income, Poverty Level, Marital Status (Grouped), Married, Health Care Coverage, for the Year(s) - 2001-2005, 2002-2006, 2003-2007, 2004-2008, 2005-2009, 2006-2010**

*Note: Weighted numbers (#) represent 5-yr averages, percentages and 95% confidence intervals; Respondents aged 18 years and older; n/r (Not Reportable) - If the unweighted total responses for a dimension (row) is <50 that row will not be shown; n/a (Not Available) - Not asked of a subset of respondents*

**Year: 2006-2010**

Employment Status (Grouped)	Yes			No			Estimated Population (5-yr Avg)
	#	%	C.I. (95%)	#	%	C.I. (95%)	#
<b>Employed</b>	13,400	53.5	50.0 - 57.0	11,700	46.5	43.0 - 50.0	25,000
<b>Unemployed</b>	400	32.7	19.8 - 45.7	800	67.3	54.3 - 80.2	1,200
<b>Retired/Unable to work</b>	97,500	69.6	68.2 - 71.1	42,600	30.4	28.9 - 31.8	140,000
<b>Student/Homemaker</b>	4,500	68.1	61.3 - 74.9	2,100	31.9	25.1 - 38.7	6,600

**Pneumonia - ever had shot (65+) by State, County, Island, Community, Adult Age Group, DOH Race-Ethnicity, Gender, Education Level, Employment Status (Grouped), Household Income, Poverty Level, Marital Status (Grouped), Married, Health Care Coverage, for the Year(s) - 2001-2005, 2002-2006, 2003-2007, 2004-2008, 2005-2009, 2006-2010**

*Note: Weighted numbers (#) represent 5-yr averages, percentages and 95% confidence intervals; Respondents aged 18 years and older; n/r (Not Reportable) - If the unweighted total responses for a dimension (row) is <50 that row will not be shown; n/a (Not Available) - Not asked of a subset of respondents*

**Year: 2006-2010**

Household Income	Yes			No			Estimated Population (5-yr Avg)
	#	%	C.I. (95%)	#	%	C.I. (95%)	#
Less than \$10,000	2,900	54.0	46.4 - 61.5	2,500	46.0	38.5 - 53.6	5,500
\$10,000 to \$14,999	5,300	62.9	57.0 - 68.7	3,100	37.1	31.3 - 43.0	8,400
\$15,000 to \$19,999	8,100	63.2	58.4 - 68.1	4,700	36.8	31.9 - 41.6	12,800
\$20,000 to \$24,999	9,800	61.9	57.3 - 66.5	6,000	38.1	33.5 - 42.7	15,800
\$25,000 to \$34,999	14,300	63.2	59.5 - 67.0	8,300	36.8	33.0 - 40.5	22,600
\$35,000 to \$49,999	20,800	73.6	70.7 - 76.6	7,400	26.4	23.4 - 29.3	28,200
\$50,000 to \$74,999	17,200	70.8	67.4 - 74.1	7,100	29.2	25.9 - 32.6	24,400
\$75,000 or more	21,700	67.7	64.7 - 70.6	10,400	32.3	29.4 - 35.3	32,100

**Pneumonia - ever had shot (65+) by State, County, Island, Community, Adult Age Group, DOH Race-Ethnicity, Gender, Education Level, Employment Status (Grouped), Household Income, Poverty Level, Marital Status (Grouped), Married, Health Care Coverage, for the Year(s) - 2001-2005, 2002-2006, 2003-2007, 2004-2008, 2005-2009, 2006-2010**

*Note: Weighted numbers (#) represent 5-yr averages, percentages and 95% confidence intervals; Respondents aged 18 years and older; n/r (Not Reportable) - If the unweighted total responses for a dimension (row) is <50 that row will not be shown; n/a (Not Available) - Not asked of a subset of respondents*

**Year: 2006-2010**

Poverty Level	Yes			No			Estimated Population (5-yr Avg)
	#	%	C.I. (95%)	#	%	C.I. (95%)	#
<b>0-130%</b>	18,800	59.4	55.7 - 63.0	12,900	40.6	37.0 - 44.3	31,700
<b>131-185%</b>	14,800	62.2	58.6 - 65.7	9,000	37.8	34.3 - 41.4	23,800
<b>186+%</b>	66,500	70.6	69.0 - 72.2	27,700	29.4	27.8 - 31.0	94,300

Marital Status (Grouped)	Yes			No			Estimated Population (5-yr Avg)
	#	%	C.I. (95%)	#	%	C.I. (95%)	#
<b>Married</b>	68,700	66.1	64.3 - 67.9	35,200	33.9	32.1 - 35.7	104,000
<b>Widowed</b>	30,700	71.2	68.7 - 73.6	12,400	28.8	26.4 - 31.3	43,100
<b>Other</b>	16,000	63.5	60.5 - 66.6	9,200	36.5	33.4 - 39.5	25,200

**Pneumonia - ever had shot (65+) by State, County, Island, Community, Adult Age Group, DOH Race-Ethnicity, Gender, Education Level, Employment Status (Grouped), Household Income, Poverty Level, Marital Status (Grouped), Married, Health Care Coverage, for the Year(s) - 2001-2005, 2002-2006, 2003-2007, 2004-2008, 2005-2009, 2006-2010**

*Note: Weighted numbers (#) represent 5-yr averages, percentages and 95% confidence intervals; Respondents aged 18 years and older; n/r (Not Reportable) - If the unweighted total responses for a dimension (row) is <50 that row will not be shown; n/a (Not Available) - Not asked of a subset of respondents*

**Year: 2006-2010**

<b>Married</b>	<b>Yes</b>			<b>No</b>			<b>Estimated Population (5-yr Avg)</b>
	<b>#</b>	<b>%</b>	<b>C.I. (95%)</b>	<b>#</b>	<b>%</b>	<b>C.I. (95%)</b>	<b>#</b>
<b>Yes</b>	69,400	66.1	64.3 - 67.9	35,600	33.9	32.1 - 35.7	105,000
<b>No</b>	46,300	68.3	66.4 - 70.2	21,500	31.7	29.8 - 33.6	67,800

<b>Health Care Coverage</b>	<b>Yes</b>			<b>No</b>			<b>Estimated Population (5-yr Avg)</b>
	<b>#</b>	<b>%</b>	<b>C.I. (95%)</b>	<b>#</b>	<b>%</b>	<b>C.I. (95%)</b>	<b>#</b>
<b>Yes</b>	115,300	67.2	65.8 - 68.5	56,400	32.8	31.5 - 34.2	171,700
<b>No</b>	500	39.9	25.4 - 54.4	700	60.1	45.6 - 74.6	1,200

**Pneumonia - ever had shot (65+) by State, County, Island, Community, Adult Age Group, DOH Race-Ethnicity, Gender, Education Level, Employment Status (Grouped), Household Income, Poverty Level, Marital Status (Grouped), Married, Health Care Coverage, for the Year(s) - 2001-2005, 2002-2006, 2003-2007, 2004-2008, 2005-2009, 2006-2010**

*Note: Weighted numbers (#) represent 5-yr averages, percentages and 95% confidence intervals; Respondents aged 18 years and older; n/r (Not Reportable) - If the unweighted total responses for a dimension (row) is <50 that row will not be shown; n/a (Not Available) - Not asked of a subset of respondents*

**Year: 2005-2009**

State	Yes			No			Estimated Population (5-yr Avg)
	#	%	C.I. (95%)	#	%	C.I. (95%)	#
Hawaii State	113,800	66.8	65.4 - 68.2	56,600	33.2	31.8 - 34.6	170,300

County	Yes			No			Estimated Population (5-yr Avg)
	#	%	C.I. (95%)	#	%	C.I. (95%)	#
Hawaii	14,300	65.1	62.6 - 67.6	7,700	34.9	32.4 - 37.4	21,900
Honolulu	83,400	67.4	65.6 - 69.2	40,300	32.6	30.8 - 34.4	123,700
Kauai	5,900	68.8	64.7 - 72.8	2,700	31.2	27.2 - 35.3	8,600
Maui	10,200	63.4	60.2 - 66.6	5,900	36.6	33.4 - 39.8	16,100

**Pneumonia - ever had shot (65+) by State, County, Island, Community, Adult Age Group, DOH Race-Ethnicity, Gender, Education Level, Employment Status (Grouped), Household Income, Poverty Level, Marital Status (Grouped), Married, Health Care Coverage, for the Year(s) - 2001-2005, 2002-2006, 2003-2007, 2004-2008, 2005-2009, 2006-2010**

*Note: Weighted numbers (#) represent 5-yr averages, percentages and 95% confidence intervals; Respondents aged 18 years and older; n/r (Not Reportable) - If the unweighted total responses for a dimension (row) is <50 that row will not be shown; n/a (Not Available) - Not asked of a subset of respondents*

**Year: 2005-2009**

Island	Yes			No			Estimated Population (5-yr Avg)
	#	%	C.I. (95%)	#	%	C.I. (95%)	#
Hawaii	14,300	65.1	62.6 - 67.6	7,700	34.9	32.4 - 37.4	21,900
Kauai	5,900	68.8	64.7 - 72.8	2,700	31.2	27.2 - 35.3	8,600
Lanai	200	60.3	52.1 - 68.4	100	39.7	31.6 - 47.9	300
Maui	9,300	63.5	60.0 - 66.9	5,400	36.5	33.1 - 40.0	14,700
Molokai	700	64.2	56.7 - 71.7	400	35.8	28.3 - 43.3	1,000
Oahu	83,400	67.4	65.6 - 69.2	40,300	32.6	30.8 - 34.4	123,700

Community	Yes			No			Estimated Population (5-yr Avg)
	#	%	C.I. (95%)	#	%	C.I. (95%)	#
Aiea/ Pearl City	9,700	70.6	65.1 - 76.0	4,100	29.4	24.0 - 34.9	13,800



**Pneumonia - ever had shot (65+) by State, County, Island, Community, Adult Age Group, DOH Race-Ethnicity, Gender, Education Level, Employment Status (Grouped), Household Income, Poverty Level, Marital Status (Grouped), Married, Health Care Coverage, for the Year(s) - 2001-2005, 2002-2006, 2003-2007, 2004-2008, 2005-2009, 2006-2010**

*Note: Weighted numbers (#) represent 5-yr averages, percentages and 95% confidence intervals; Respondents aged 18 years and older; n/r (Not Reportable) - If the unweighted total responses for a dimension (row) is <50 that row will not be shown; n/a (Not Available) - Not asked of a subset of respondents*

**Year: 2005-2009**

Community	Yes			No			Estimated Population (5-yr Avg)
	#	%	C.I. (95%)	#	%	C.I. (95%)	#
Ala Moana	5,100	69.5	63.4 - 75.6	2,200	30.5	24.4 - 36.6	7,300
Hanalei/ Kapaa	2,300	66.7	60.2 - 73.1	1,100	33.3	26.9 - 39.8	3,400
Hilo	5,200	67.5	63.3 - 71.8	2,500	32.5	28.2 - 36.7	7,800
Kaaawa/ Kahaluu/ Kaneohe	6,100	63.6	57.2 - 70.0	3,500	36.4	30.0 - 42.8	9,500
Kahului	3,500	62.5	57.1 - 67.9	2,100	37.5	32.1 - 42.9	5,500
Kailua/ Waimanalo	7,200	68.6	62.7 - 74.5	3,300	31.4	25.5 - 37.3	10,500
Kaimuki/ Palolo/ Waikiki	10,900	68.7	64.2 - 73.2	4,900	31.3	26.8 - 35.8	15,800
Kona	3,500	62.6	57.3 - 67.9	2,100	37.4	32.1 - 42.7	5,600
Lahaina/ Wailuku	3,200	65.7	59.6 - 71.7	1,700	34.3	28.3 - 40.4	4,900
Lanai	200	60.3	52.1 - 68.4	100	39.7	31.6 - 47.9	300
Lihue-Waimea	3,600	70.1	65.0 - 75.3	1,600	29.9	24.7 - 35.0	5,200

**Pneumonia - ever had shot (65+) by State, County, Island, Community, Adult Age Group, DOH Race-Ethnicity, Gender, Education Level, Employment Status (Grouped), Household Income, Poverty Level, Marital Status (Grouped), Married, Health Care Coverage, for the Year(s) - 2001-2005, 2002-2006, 2003-2007, 2004-2008, 2005-2009, 2006-2010**

*Note: Weighted numbers (#) represent 5-yr averages, percentages and 95% confidence intervals; Respondents aged 18 years and older; n/r (Not Reportable) - If the unweighted total responses for a dimension (row) is <50 that row will not be shown; n/a (Not Available) - Not asked of a subset of respondents*

**Year: 2005-2009**

Community	Yes			No			Estimated Population (5-yr Avg)
	#	%	C.I. (95%)	#	%	C.I. (95%)	#
Manoa/ Upper Makiki	8,000	70.6	65.3 - 75.9	3,300	29.4	24.1 - 34.7	11,300
Mililani/ Wahiawa	5,500	70.1	63.0 - 77.1	2,400	30.0	22.9 - 37.0	7,800
Molokai	700	64.2	56.7 - 71.7	400	35.8	28.3 - 43.3	1,000
Nanakuli/ Waianae	2,500	54.1	43.3 - 65.0	2,200	45.9	35.0 - 56.7	4,700
N.Hawaii	2,600	65.7	60.1 - 71.2	1,400	34.3	28.8 - 39.9	4,000
N.Shore/ Laie	2,000	54.2	43.3 - 65.0	1,700	45.8	35.0 - 56.7	3,700
Nuuanu/ Kalihi/ Moanalua	8,300	62.1	56.3 - 67.9	5,100	37.9	32.1 - 43.7	13,400
Puna/ Kau	2,900	63.5	58.1 - 68.9	1,700	36.5	31.1 - 41.9	4,500
Salt Lake/ Foster Village	2,200	81.3	73.1 - 89.5	500	18.7	10.5 - 26.9	2,700
Upcountry/ Hana	2,700	62.1	55.6 - 68.7	1,600	37.9	31.3 - 44.4	4,300
Waiialae/ Kahala/ Hawaii Kai	7,800	69.9	64.4 - 75.4	3,400	30.1	24.6 - 35.6	11,200

**Pneumonia - ever had shot (65+) by State, County, Island, Community, Adult Age Group, DOH Race-Ethnicity, Gender, Education Level, Employment Status (Grouped), Household Income, Poverty Level, Marital Status (Grouped), Married, Health Care Coverage, for the Year(s) - 2001-2005, 2002-2006, 2003-2007, 2004-2008, 2005-2009, 2006-2010**

*Note: Weighted numbers (#) represent 5-yr averages, percentages and 95% confidence intervals; Respondents aged 18 years and older; n/r (Not Reportable) - If the unweighted total responses for a dimension (row) is <50 that row will not be shown; n/a (Not Available) - Not asked of a subset of respondents*

**Year: 2005-2009**

Community	Yes			No			Estimated Population (5-yr Avg)
	#	%	C.I. (95%)	#	%	C.I. (95%)	#
Waipahu/ Kapolei/ Ewa	7,900	67.6	61.4 - 73.8	3,800	32.4	26.2 - 38.6	11,800

**Pneumonia - ever had shot (65+) by State, County, Island, Community, Adult Age Group, DOH Race-Ethnicity, Gender, Education Level, Employment Status (Grouped), Household Income, Poverty Level, Marital Status (Grouped), Married, Health Care Coverage, for the Year(s) - 2001-2005, 2002-2006, 2003-2007, 2004-2008, 2005-2009, 2006-2010**

*Note: Weighted numbers (#) represent 5-yr averages, percentages and 95% confidence intervals; Respondents aged 18 years and older; n/r (Not Reportable) - If the unweighted total responses for a dimension (row) is <50 that row will not be shown; n/a (Not Available) - Not asked of a subset of respondents*

**Year: 2005-2009**

DOH Race-Ethnicity	Yes			No			Estimated Population (5-yr Avg)
	#	%	C.I. (95%)	#	%	C.I. (95%)	#
Caucasian	38,100	68.2	66.2 - 70.2	17,700	31.8	29.8 - 33.8	55,800
Native Hawaiian	8,100	52.8	47.9 - 57.7	7,200	47.2	42.3 - 52.1	15,300
Chinese	9,600	71.2	66.3 - 76.0	3,900	28.8	24.0 - 33.7	13,500
Filipino	9,600	53.6	48.3 - 59.0	8,300	46.4	41.0 - 51.7	17,900
Japanese	43,900	72.4	70.2 - 74.7	16,700	27.6	25.3 - 29.8	60,600
Other Asian	1,700	61.6	48.6 - 74.7	1,100	38.4	25.3 - 51.4	2,800
Other	1,100	56.6	44.3 - 68.8	900	43.4	31.2 - 55.7	2,000

**Pneumonia - ever had shot (65+) by State, County, Island, Community, Adult Age Group, DOH Race-Ethnicity, Gender, Education Level, Employment Status (Grouped), Household Income, Poverty Level, Marital Status (Grouped), Married, Health Care Coverage, for the Year(s) - 2001-2005, 2002-2006, 2003-2007, 2004-2008, 2005-2009, 2006-2010**

*Note: Weighted numbers (#) represent 5-yr averages, percentages and 95% confidence intervals; Respondents aged 18 years and older; n/r (Not Reportable) - If the unweighted total responses for a dimension (row) is <50 that row will not be shown; n/a (Not Available) - Not asked of a subset of respondents*

**Year: 2005-2009**

Gender	Yes			No			Estimated Population (5-yr Avg)
	#	%	C.I. (95%)	#	%	C.I. (95%)	#
Male	44,600	62.3	60.1 - 64.5	27,000	37.7	35.5 - 39.9	71,600
Female	69,200	70.1	68.3 - 71.8	29,600	29.9	28.2 - 31.7	98,800

Education Level	Yes			No			Estimated Population (5-yr Avg)
	#	%	C.I. (95%)	#	%	C.I. (95%)	#
Never attended school/ Only Kindergarten to Grades 8	4,300	53.8	46.1 - 61.5	3,700	46.2	38.5 - 53.9	7,900
Grades 9 thru 11 (Some High School)	7,600	62.8	57.2 - 68.5	4,500	37.2	31.5 - 42.8	12,100
Grades 12 or GED (High School Grad)	36,200	64.4	61.9 - 66.9	20,000	35.6	33.1 - 38.1	56,300
College 1 to 3 years (Some College/ Tech)	26,800	68.4	65.6 - 71.1	12,400	31.6	28.9 - 34.4	39,200
College 4 years or more (College Grad)	38,700	70.8	68.7 - 73.0	15,900	29.2	27.0 - 31.3	54,700

**Pneumonia - ever had shot (65+) by State, County, Island, Community, Adult Age Group, DOH Race-Ethnicity, Gender, Education Level, Employment Status (Grouped), Household Income, Poverty Level, Marital Status (Grouped), Married, Health Care Coverage, for the Year(s) - 2001-2005, 2002-2006, 2003-2007, 2004-2008, 2005-2009, 2006-2010**

*Note: Weighted numbers (#) represent 5-yr averages, percentages and 95% confidence intervals; Respondents aged 18 years and older; n/r (Not Reportable) - If the unweighted total responses for a dimension (row) is <50 that row will not be shown; n/a (Not Available) - Not asked of a subset of respondents*

**Year: 2005-2009**

Employment Status (Grouped)	Yes			No			Estimated Population (5-yr Avg)
	#	%	C.I. (95%)	#	%	C.I. (95%)	#
<b>Employed</b>	13,000	53.7	50.0 - 57.4	11,200	46.3	42.6 - 50.0	24,100
<b>Retired/Unable to work</b>	96,800	69.1	67.6 - 70.5	43,400	30.9	29.5 - 32.4	140,100
<b>Student/Homemaker</b>	3,600	67.8	60.0 - 75.7	1,700	32.2	24.3 - 40.0	5,300

**Pneumonia - ever had shot (65+) by State, County, Island, Community, Adult Age Group, DOH Race-Ethnicity, Gender, Education Level, Employment Status (Grouped), Household Income, Poverty Level, Marital Status (Grouped), Married, Health Care Coverage, for the Year(s) - 2001-2005, 2002-2006, 2003-2007, 2004-2008, 2005-2009, 2006-2010**

*Note: Weighted numbers (#) represent 5-yr averages, percentages and 95% confidence intervals; Respondents aged 18 years and older; n/r (Not Reportable) - If the unweighted total responses for a dimension (row) is <50 that row will not be shown; n/a (Not Available) - Not asked of a subset of respondents*

**Year: 2005-2009**

Household Income	Yes			No			Estimated Population (5-yr Avg)
	#	%	C.I. (95%)	#	%	C.I. (95%)	#
Less than \$10,000	3,000	57.8	49.8 - 65.8	2,200	42.2	34.2 - 50.2	5,100
\$10,000 to \$14,999	4,900	59.7	53.5 - 65.9	3,300	40.3	34.1 - 46.5	8,200
\$15,000 to \$19,999	8,100	64.3	59.4 - 69.2	4,500	35.7	30.8 - 40.6	12,600
\$20,000 to \$24,999	9,700	61.2	56.6 - 65.8	6,100	38.8	34.2 - 43.4	15,800
\$25,000 to \$34,999	14,100	64.0	60.1 - 67.9	7,900	36.0	32.1 - 39.9	22,000
\$35,000 to \$49,999	20,800	73.4	70.3 - 76.5	7,500	26.6	23.5 - 29.7	28,300
\$50,000 to \$74,999	16,100	70.6	67.0 - 74.3	6,700	29.4	25.7 - 33.0	22,800
\$75,000 or more	19,600	66.8	63.5 - 70.1	9,700	33.2	29.9 - 36.5	29,400

**Pneumonia - ever had shot (65+) by State, County, Island, Community, Adult Age Group, DOH Race-Ethnicity, Gender, Education Level, Employment Status (Grouped), Household Income, Poverty Level, Marital Status (Grouped), Married, Health Care Coverage, for the Year(s) - 2001-2005, 2002-2006, 2003-2007, 2004-2008, 2005-2009, 2006-2010**

*Note: Weighted numbers (#) represent 5-yr averages, percentages and 95% confidence intervals; Respondents aged 18 years and older; n/r (Not Reportable) - If the unweighted total responses for a dimension (row) is <50 that row will not be shown; n/a (Not Available) - Not asked of a subset of respondents*

**Year: 2005-2009**

Poverty Level	Yes			No			Estimated Population (5-yr Avg)
	#	%	C.I. (95%)	#	%	C.I. (95%)	#
<b>0-130%</b>	18,500	60.5	56.8 - 64.3	12,100	39.5	35.7 - 43.2	30,600
<b>131-185%</b>	12,400	60.2	56.1 - 64.2	8,200	39.8	35.8 - 43.9	20,600
<b>186+%</b>	65,300	70.2	68.5 - 71.9	27,700	29.8	28.1 - 31.5	93,000

Marital Status (Grouped)	Yes			No			Estimated Population (5-yr Avg)
	#	%	C.I. (95%)	#	%	C.I. (95%)	#
<b>Married</b>	68,000	66.4	64.5 - 68.3	34,400	33.6	31.7 - 35.5	102,400
<b>Widowed</b>	29,800	69.5	67.0 - 72.1	13,000	30.5	27.9 - 33.0	42,800
<b>Other</b>	15,700	63.8	60.7 - 66.9	8,900	36.2	33.1 - 39.3	24,600



**Pneumonia - ever had shot (65+) by State, County, Island, Community, Adult Age Group, DOH Race-Ethnicity, Gender, Education Level, Employment Status (Grouped), Household Income, Poverty Level, Marital Status (Grouped), Married, Health Care Coverage, for the Year(s) - 2001-2005, 2002-2006, 2003-2007, 2004-2008, 2005-2009, 2006-2010**

*Note: Weighted numbers (#) represent 5-yr averages, percentages and 95% confidence intervals; Respondents aged 18 years and older; n/r (Not Reportable) - If the unweighted total responses for a dimension (row) is <50 that row will not be shown; n/a (Not Available) - Not asked of a subset of respondents*

**Year: 2005-2009**

<b>Married</b>	<b>Yes</b>			<b>No</b>			<b>Estimated Population (5-yr Avg)</b>
	<b>#</b>	<b>%</b>	<b>C.I. (95%)</b>	<b>#</b>	<b>%</b>	<b>C.I. (95%)</b>	<b>#</b>
<b>Yes</b>	68,500	66.4	64.5 - 68.2	34,700	33.6	31.8 - 35.5	103,200
<b>No</b>	45,100	67.4	65.5 - 69.4	21,800	32.6	30.6 - 34.5	66,900

<b>Health Care Coverage</b>	<b>Yes</b>			<b>No</b>			<b>Estimated Population (5-yr Avg)</b>
	<b>#</b>	<b>%</b>	<b>C.I. (95%)</b>	<b>#</b>	<b>%</b>	<b>C.I. (95%)</b>	<b>#</b>
<b>Yes</b>	113,200	67.0	65.7 - 68.4	55,600	33.0	31.6 - 34.3	168,800
<b>No</b>	600	39.0	24.6 - 53.5	900	61.0	46.5 - 75.4	1,400

**Pneumonia - ever had shot (65+) by State, County, Island, Community, Adult Age Group, DOH Race-Ethnicity, Gender, Education Level, Employment Status (Grouped), Household Income, Poverty Level, Marital Status (Grouped), Married, Health Care Coverage, for the Year(s) - 2001-2005, 2002-2006, 2003-2007, 2004-2008, 2005-2009, 2006-2010**

*Note: Weighted numbers (#) represent 5-yr averages, percentages and 95% confidence intervals; Respondents aged 18 years and older; n/r (Not Reportable) - If the unweighted total responses for a dimension (row) is <50 that row will not be shown; n/a (Not Available) - Not asked of a subset of respondents*

**Year: 2004-2008**

State	Yes			No			Estimated Population (5-yr Avg)
	#	%	C.I. (95%)	#	%	C.I. (95%)	#
Hawaii State	111,000	66.8	65.0 - 68.5	55,300	33.2	31.5 - 35.0	166,200

County	Yes			No			Estimated Population (5-yr Avg)
	#	%	C.I. (95%)	#	%	C.I. (95%)	#
Hawaii	14,200	64.6	61.5 - 67.8	7,800	35.4	32.2 - 38.5	22,000
Honolulu	81,200	67.3	65.0 - 69.5	39,500	32.7	30.5 - 35.0	120,700
Kauai	6,000	72.1	67.9 - 76.4	2,300	27.9	23.6 - 32.1	8,300
Maui	9,500	62.8	59.0 - 66.7	5,700	37.2	33.3 - 41.0	15,200

**Pneumonia - ever had shot (65+) by State, County, Island, Community, Adult Age Group, DOH Race-Ethnicity, Gender, Education Level, Employment Status (Grouped), Household Income, Poverty Level, Marital Status (Grouped), Married, Health Care Coverage, for the Year(s) - 2001-2005, 2002-2006, 2003-2007, 2004-2008, 2005-2009, 2006-2010**

*Note: Weighted numbers (#) represent 5-yr averages, percentages and 95% confidence intervals; Respondents aged 18 years and older; n/r (Not Reportable) - If the unweighted total responses for a dimension (row) is <50 that row will not be shown; n/a (Not Available) - Not asked of a subset of respondents*

**Year: 2004-2008**

Island	Yes			No			Estimated Population (5-yr Avg)
	#	%	C.I. (95%)	#	%	C.I. (95%)	#
Hawaii	14,200	64.6	61.5 - 67.8	7,800	35.4	32.2 - 38.5	22,000
Kauai	6,000	72.1	67.9 - 76.4	2,300	27.9	23.6 - 32.1	8,300
Lanai	200	60.2	51.2 - 69.3	100	39.8	30.7 - 48.8	300
Maui	8,700	62.6	58.5 - 66.8	5,200	37.4	33.2 - 41.5	13,900
Molokai	600	66.4	57.9 - 74.9	300	33.6	25.1 - 42.1	1,000
Oahu	81,200	67.3	65.0 - 69.5	39,500	32.7	30.5 - 35.0	120,700

Community	Yes			No			Estimated Population (5-yr Avg)
	#	%	C.I. (95%)	#	%	C.I. (95%)	#
Aiea/ Pearl City	10,400	70.6	63.6 - 77.5	4,300	29.4	22.5 - 36.4	14,700

**Pneumonia - ever had shot (65+) by State, County, Island, Community, Adult Age Group, DOH Race-Ethnicity, Gender, Education Level, Employment Status (Grouped), Household Income, Poverty Level, Marital Status (Grouped), Married, Health Care Coverage, for the Year(s) - 2001-2005, 2002-2006, 2003-2007, 2004-2008, 2005-2009, 2006-2010**

*Note: Weighted numbers (#) represent 5-yr averages, percentages and 95% confidence intervals; Respondents aged 18 years and older; n/r (Not Reportable) - If the unweighted total responses for a dimension (row) is <50 that row will not be shown; n/a (Not Available) - Not asked of a subset of respondents*

**Year: 2004-2008**

Community	Yes			No			Estimated Population (5-yr Avg)
	#	%	C.I. (95%)	#	%	C.I. (95%)	#
Ala Moana	4,700	69.6	62.3 - 76.8	2,100	30.4	23.2 - 37.7	6,800
Hanalei/ Kapaa	2,200	70.2	63.2 - 77.2	900	29.8	22.8 - 36.8	3,100
Hilo	5,000	68.2	63.6 - 72.9	2,300	31.8	27.1 - 36.4	7,300
Kaaawa/ Kahaluu/ Kaneohe	5,900	59.9	50.1 - 69.7	4,000	40.1	30.3 - 49.9	9,900
Kahului	3,100	61.2	54.8 - 67.6	2,000	38.8	32.4 - 45.2	5,100
Kailua/ Waimanalo	6,200	67.1	60.0 - 74.3	3,000	32.9	25.7 - 40.0	9,200
Kaimuki/ Palolo/ Waikiki	11,600	69.7	64.1 - 75.3	5,000	30.3	24.7 - 35.9	16,600
Kona	3,400	65.4	59.5 - 71.4	1,800	34.6	28.6 - 40.5	5,200
Lahaina/ Wailuku	3,100	65.7	58.5 - 72.9	1,600	34.3	27.1 - 41.5	4,700
Lanai	200	60.2	51.2 - 69.3	100	39.8	30.7 - 48.8	300
Lihue-Waimea	3,800	73.3	67.9 - 78.7	1,400	26.7	21.3 - 32.1	5,200

**Pneumonia - ever had shot (65+) by State, County, Island, Community, Adult Age Group, DOH Race-Ethnicity, Gender, Education Level, Employment Status (Grouped), Household Income, Poverty Level, Marital Status (Grouped), Married, Health Care Coverage, for the Year(s) - 2001-2005, 2002-2006, 2003-2007, 2004-2008, 2005-2009, 2006-2010**

*Note: Weighted numbers (#) represent 5-yr averages, percentages and 95% confidence intervals; Respondents aged 18 years and older; n/r (Not Reportable) - If the unweighted total responses for a dimension (row) is <50 that row will not be shown; n/a (Not Available) - Not asked of a subset of respondents*

**Year: 2004-2008**

Community	Yes			No			Estimated Population (5-yr Avg)
	#	%	C.I. (95%)	#	%	C.I. (95%)	#
Manoa/ Upper Makiki	7,800	75.9	70.5 - 81.4	2,500	24.1	18.6 - 29.5	10,300
Mililani/ Wahiawa	5,200	72.7	64.8 - 80.7	2,000	27.3	19.3 - 35.2	7,200
Molokai	600	66.4	57.9 - 74.9	300	33.6	25.1 - 42.1	1,000
Nanakuli/ Waianae	3,300	62.6	50.2 - 75.1	2,000	37.4	24.9 - 49.8	5,200
N.Hawaii	2,800	63.9	56.3 - 71.5	1,600	36.1	28.5 - 43.7	4,400
N.Shore/ Laie	1,900	45.8	32.5 - 59.1	2,300	54.2	40.9 - 67.5	4,200
Nuuanu/ Kalihi/ Moanalua	7,500	60.7	53.3 - 68.0	4,800	39.3	32.0 - 46.7	12,300
Puna/ Kau	3,000	59.3	51.8 - 66.8	2,100	40.7	33.2 - 48.2	5,100
Salt Lake/ Foster Village	1,800	55.8	39.1 - 72.4	1,400	44.2	27.6 - 60.9	3,200
Upcountry/ Hana	2,500	60.9	52.8 - 69.1	1,600	39.1	30.9 - 47.2	4,100
Waiialae/ Kahala/ Hawaii Kai	7,000	72.7	66.3 - 79.0	2,700	27.3	21.0 - 33.7	9,700

**Pneumonia - ever had shot (65+) by State, County, Island, Community, Adult Age Group, DOH Race-Ethnicity, Gender, Education Level, Employment Status (Grouped), Household Income, Poverty Level, Marital Status (Grouped), Married, Health Care Coverage, for the Year(s) - 2001-2005, 2002-2006, 2003-2007, 2004-2008, 2005-2009, 2006-2010**

*Note: Weighted numbers (#) represent 5-yr averages, percentages and 95% confidence intervals; Respondents aged 18 years and older; n/r (Not Reportable) - If the unweighted total responses for a dimension (row) is <50 that row will not be shown; n/a (Not Available) - Not asked of a subset of respondents*

**Year: 2004-2008**

Community	Yes			No			Estimated Population (5-yr Avg)
	#	%	C.I. (95%)	#	%	C.I. (95%)	#
Waipahu/ Kapolei/ Ewa	7,900	69.0	61.3 - 76.7	3,500	31.0	23.3 - 38.7	11,400

**Pneumonia - ever had shot (65+) by State, County, Island, Community, Adult Age Group, DOH Race-Ethnicity, Gender, Education Level, Employment Status (Grouped), Household Income, Poverty Level, Marital Status (Grouped), Married, Health Care Coverage, for the Year(s) - 2001-2005, 2002-2006, 2003-2007, 2004-2008, 2005-2009, 2006-2010**

*Note: Weighted numbers (#) represent 5-yr averages, percentages and 95% confidence intervals; Respondents aged 18 years and older; n/r (Not Reportable) - If the unweighted total responses for a dimension (row) is <50 that row will not be shown; n/a (Not Available) - Not asked of a subset of respondents*

**Year: 2004-2008**

DOH Race-Ethnicity	Yes			No			Estimated Population (5-yr Avg)
	#	%	C.I. (95%)	#	%	C.I. (95%)	#
Caucasian	37,100	68.9	66.3 - 71.5	16,700	31.1	28.5 - 33.7	53,800
Native Hawaiian	8,000	55.5	49.5 - 61.5	6,400	44.5	38.5 - 50.5	14,400
Chinese	9,700	69.4	62.0 - 76.7	4,300	30.6	23.3 - 38.0	14,000
Filipino	9,900	55.5	49.0 - 62.0	8,000	44.5	38.0 - 51.0	17,900
Japanese	41,800	71.3	68.4 - 74.2	16,800	28.7	25.8 - 31.6	58,700
Other Asian	1,800	62.9	49.4 - 76.4	1,100	37.1	23.6 - 50.6	2,900
Other	800	48.9	35.2 - 62.6	900	51.1	37.4 - 64.8	1,700

**Pneumonia - ever had shot (65+) by State, County, Island, Community, Adult Age Group, DOH Race-Ethnicity, Gender, Education Level, Employment Status (Grouped), Household Income, Poverty Level, Marital Status (Grouped), Married, Health Care Coverage, for the Year(s) - 2001-2005, 2002-2006, 2003-2007, 2004-2008, 2005-2009, 2006-2010**

*Note: Weighted numbers (#) represent 5-yr averages, percentages and 95% confidence intervals; Respondents aged 18 years and older; n/r (Not Reportable) - If the unweighted total responses for a dimension (row) is <50 that row will not be shown; n/a (Not Available) - Not asked of a subset of respondents*

**Year: 2004-2008**

Gender	Yes			No			Estimated Population (5-yr Avg)
	#	%	C.I. (95%)	#	%	C.I. (95%)	#
Male	43,700	62.0	59.1 - 64.9	26,700	38.0	35.1 - 40.9	70,400
Female	67,300	70.2	68.1 - 72.4	28,600	29.8	27.6 - 31.9	95,900

Education Level	Yes			No			Estimated Population (5-yr Avg)
	#	%	C.I. (95%)	#	%	C.I. (95%)	#
Never attended school/ Only Kindergarten to Grades 8	4,700	57.8	49.6 - 66.0	3,400	42.2	34.0 - 50.4	8,100
Grades 9 thru 11 (Some High School)	7,700	64.7	58.0 - 71.4	4,200	35.3	28.6 - 42.0	11,900
Grades 12 or GED (High School Grad)	36,700	66.3	63.2 - 69.4	18,600	33.7	30.6 - 36.8	55,300
College 1 to 3 years (Some College/ Tech)	25,400	65.0	61.2 - 68.8	13,700	35.0	31.2 - 38.8	39,200
College 4 years or more (College Grad)	36,400	70.4	67.5 - 73.4	15,300	29.6	26.6 - 32.5	51,600



**Pneumonia - ever had shot (65+) by State, County, Island, Community, Adult Age Group, DOH Race-Ethnicity, Gender, Education Level, Employment Status (Grouped), Household Income, Poverty Level, Marital Status (Grouped), Married, Health Care Coverage, for the Year(s) - 2001-2005, 2002-2006, 2003-2007, 2004-2008, 2005-2009, 2006-2010**

*Note: Weighted numbers (#) represent 5-yr averages, percentages and 95% confidence intervals; Respondents aged 18 years and older; n/r (Not Reportable) - If the unweighted total responses for a dimension (row) is <50 that row will not be shown; n/a (Not Available) - Not asked of a subset of respondents*

**Year: 2004-2008**

Employment Status (Grouped)	Yes			No			Estimated Population (5-yr Avg)
	#	%	C.I. (95%)	#	%	C.I. (95%)	#
<b>Employed</b>	11,900	53.0	48.2 - 57.8	10,600	47.0	42.2 - 51.8	22,500
<b>Retired/Unable to work</b>	95,800	69.0	67.0 - 70.9	43,100	31.0	29.1 - 33.0	138,900
<b>Student/Homemaker</b>	2,900	65.6	55.7 - 75.5	1,500	34.4	24.5 - 44.3	4,400

**Pneumonia - ever had shot (65+) by State, County, Island, Community, Adult Age Group, DOH Race-Ethnicity, Gender, Education Level, Employment Status (Grouped), Household Income, Poverty Level, Marital Status (Grouped), Married, Health Care Coverage, for the Year(s) - 2001-2005, 2002-2006, 2003-2007, 2004-2008, 2005-2009, 2006-2010**

*Note: Weighted numbers (#) represent 5-yr averages, percentages and 95% confidence intervals; Respondents aged 18 years and older; n/r (Not Reportable) - If the unweighted total responses for a dimension (row) is <50 that row will not be shown; n/a (Not Available) - Not asked of a subset of respondents*

**Year: 2004-2008**

Household Income	Yes			No			Estimated Population (5-yr Avg)
	#	%	C.I. (95%)	#	%	C.I. (95%)	#
Less than \$10,000	2,800	63.6	55.7 - 71.4	1,600	36.4	28.6 - 44.3	4,500
\$10,000 to \$14,999	4,900	63.6	56.6 - 70.5	2,800	36.4	29.5 - 43.4	7,600
\$15,000 to \$19,999	8,300	68.5	63.3 - 73.7	3,800	31.5	26.3 - 36.7	12,200
\$20,000 to \$24,999	9,600	62.8	57.3 - 68.2	5,700	37.2	31.8 - 42.7	15,300
\$25,000 to \$34,999	13,800	63.7	58.9 - 68.5	7,800	36.3	31.5 - 41.1	21,600
\$35,000 to \$49,999	19,500	73.2	69.2 - 77.2	7,200	26.8	22.8 - 30.8	26,700
\$50,000 to \$74,999	19,000	67.1	61.9 - 72.3	9,300	32.9	27.7 - 38.1	28,400
\$75,000 or more	17,900	64.8	60.0 - 69.6	9,700	35.2	30.4 - 40.0	27,700

**Pneumonia - ever had shot (65+) by State, County, Island, Community, Adult Age Group, DOH Race-Ethnicity, Gender, Education Level, Employment Status (Grouped), Household Income, Poverty Level, Marital Status (Grouped), Married, Health Care Coverage, for the Year(s) - 2001-2005, 2002-2006, 2003-2007, 2004-2008, 2005-2009, 2006-2010**

*Note: Weighted numbers (#) represent 5-yr averages, percentages and 95% confidence intervals; Respondents aged 18 years and older; n/r (Not Reportable) - If the unweighted total responses for a dimension (row) is <50 that row will not be shown; n/a (Not Available) - Not asked of a subset of respondents*

**Year: 2004-2008**

Poverty Level	Yes			No			Estimated Population (5-yr Avg)
	#	%	C.I. (95%)	#	%	C.I. (95%)	#
<b>0-130%</b>	18,800	65.3	61.0 - 69.5	10,000	34.7	30.5 - 39.0	28,900
<b>131-185%</b>	9,600	56.6	51.3 - 62.0	7,300	43.4	38.0 - 48.7	16,900
<b>186+%</b>	67,500	68.8	66.4 - 71.1	30,700	31.2	28.9 - 33.6	98,200

Marital Status (Grouped)	Yes			No			Estimated Population (5-yr Avg)
	#	%	C.I. (95%)	#	%	C.I. (95%)	#
<b>Married</b>	65,800	65.9	63.6 - 68.3	34,000	34.1	31.7 - 36.4	99,900
<b>Widowed</b>	29,700	69.9	66.7 - 73.2	12,800	30.1	26.8 - 33.3	42,500
<b>Other</b>	15,000	64.3	60.3 - 68.3	8,300	35.7	31.7 - 39.7	23,300

**Pneumonia - ever had shot (65+) by State, County, Island, Community, Adult Age Group, DOH Race-Ethnicity, Gender, Education Level, Employment Status (Grouped), Household Income, Poverty Level, Marital Status (Grouped), Married, Health Care Coverage, for the Year(s) - 2001-2005, 2002-2006, 2003-2007, 2004-2008, 2005-2009, 2006-2010**

*Note: Weighted numbers (#) represent 5-yr averages, percentages and 95% confidence intervals; Respondents aged 18 years and older; n/r (Not Reportable) - If the unweighted total responses for a dimension (row) is <50 that row will not be shown; n/a (Not Available) - Not asked of a subset of respondents*

**Year: 2004-2008**

<b>Married</b>	<b>Yes</b>			<b>No</b>			<b>Estimated Population (5-yr Avg)</b>
	<b>#</b>	<b>%</b>	<b>C.I. (95%)</b>	<b>#</b>	<b>%</b>	<b>C.I. (95%)</b>	<b>#</b>
<b>Yes</b>	66,200	65.8	63.4 - 68.2	34,400	34.2	31.8 - 36.6	100,700
<b>No</b>	44,600	68.2	65.6 - 70.8	20,800	31.8	29.2 - 34.4	65,300

<b>Health Care Coverage</b>	<b>Yes</b>			<b>No</b>			<b>Estimated Population (5-yr Avg)</b>
	<b>#</b>	<b>%</b>	<b>C.I. (95%)</b>	<b>#</b>	<b>%</b>	<b>C.I. (95%)</b>	<b>#</b>
<b>Yes</b>	110,400	67.0	65.3 - 68.8	54,300	33.0	31.2 - 34.7	164,600
<b>No</b>	600	39.4	22.3 - 56.4	900	60.6	43.6 - 77.7	1,500

**Pneumonia - ever had shot (65+) by State, County, Island, Community, Adult Age Group, DOH Race-Ethnicity, Gender, Education Level, Employment Status (Grouped), Household Income, Poverty Level, Marital Status (Grouped), Married, Health Care Coverage, for the Year(s) - 2001-2005, 2002-2006, 2003-2007, 2004-2008, 2005-2009, 2006-2010**

*Note: Weighted numbers (#) represent 5-yr averages, percentages and 95% confidence intervals; Respondents aged 18 years and older; n/r (Not Reportable) - If the unweighted total responses for a dimension (row) is <50 that row will not be shown; n/a (Not Available) - Not asked of a subset of respondents*

**Year: 2003-2007**

State	Yes			No			Estimated Population (5-yr Avg)
	#	%	C.I. (95%)	#	%	C.I. (95%)	#
Hawaii State	110,800	67.7	65.8 - 69.5	52,900	32.3	30.5 - 34.2	163,700

County	Yes			No			Estimated Population (5-yr Avg)
	#	%	C.I. (95%)	#	%	C.I. (95%)	#
Hawaii	14,200	64.5	61.1 - 67.8	7,800	35.5	32.2 - 38.9	22,000
Honolulu	81,300	68.4	66.0 - 70.8	37,600	31.6	29.2 - 34.0	118,900
Kauai	5,600	70.9	66.2 - 75.7	2,300	29.1	24.3 - 33.8	8,000
Maui	9,600	64.7	60.5 - 69.0	5,200	35.3	31.0 - 39.5	14,900

**Pneumonia - ever had shot (65+) by State, County, Island, Community, Adult Age Group, DOH Race-Ethnicity, Gender, Education Level, Employment Status (Grouped), Household Income, Poverty Level, Marital Status (Grouped), Married, Health Care Coverage, for the Year(s) - 2001-2005, 2002-2006, 2003-2007, 2004-2008, 2005-2009, 2006-2010**

*Note: Weighted numbers (#) represent 5-yr averages, percentages and 95% confidence intervals; Respondents aged 18 years and older; n/r (Not Reportable) - If the unweighted total responses for a dimension (row) is <50 that row will not be shown; n/a (Not Available) - Not asked of a subset of respondents*

**Year: 2003-2007**

Island	Yes			No			Estimated Population (5-yr Avg)
	#	%	C.I. (95%)	#	%	C.I. (95%)	#
Hawaii	14,200	64.5	61.1 - 67.8	7,800	35.5	32.2 - 38.9	22,000
Kauai	5,600	70.9	66.2 - 75.7	2,300	29.1	24.3 - 33.8	8,000
Lanai	200	61.5	49.6 - 73.3	200	38.5	26.7 - 50.4	400
Maui	8,600	64.2	59.6 - 68.8	4,800	35.8	31.2 - 40.4	13,400
Molokai	700	73.4	65.0 - 81.8	300	26.6	18.2 - 35.0	1,000
Oahu	81,300	68.4	66.0 - 70.8	37,600	31.6	29.2 - 34.0	118,900

Community	Yes			No			Estimated Population (5-yr Avg)
	#	%	C.I. (95%)	#	%	C.I. (95%)	#
Aiea/ Pearl City	10,100	71.1	63.8 - 78.4	4,100	28.9	21.6 - 36.2	14,300

**Pneumonia - ever had shot (65+) by State, County, Island, Community, Adult Age Group, DOH Race-Ethnicity, Gender, Education Level, Employment Status (Grouped), Household Income, Poverty Level, Marital Status (Grouped), Married, Health Care Coverage, for the Year(s) - 2001-2005, 2002-2006, 2003-2007, 2004-2008, 2005-2009, 2006-2010**

*Note: Weighted numbers (#) represent 5-yr averages, percentages and 95% confidence intervals; Respondents aged 18 years and older; n/r (Not Reportable) - If the unweighted total responses for a dimension (row) is <50 that row will not be shown; n/a (Not Available) - Not asked of a subset of respondents*

**Year: 2003-2007**

Community	Yes			No			Estimated Population (5-yr Avg)
	#	%	C.I. (95%)	#	%	C.I. (95%)	#
Ala Moana	4,700	67.1	59.1 - 75.0	2,300	32.9	25.0 - 40.9	7,000
Hanalei/ Kapaa	2,100	68.5	61.1 - 75.9	1,000	31.5	24.1 - 38.9	3,100
Hilo	4,700	66.2	61.2 - 71.2	2,400	33.8	28.8 - 38.8	7,100
Kaaawa/ Kahaluu/ Kaneohe	5,700	59.4	49.2 - 69.6	3,900	40.6	30.4 - 50.8	9,600
Kahului	3,100	62.1	55.0 - 69.2	1,900	37.9	30.8 - 45.0	5,000
Kailua/ Waimanalo	6,600	70.3	62.8 - 77.8	2,800	29.7	22.2 - 37.2	9,300
Kaimuki/ Palolo/ Waikiki	11,600	69.1	63.2 - 74.9	5,200	30.9	25.1 - 36.8	16,800
Kona	3,400	64.2	57.8 - 70.6	1,900	35.8	29.4 - 42.2	5,300
Lahaina/ Wailuku	3,100	68.4	60.7 - 76.1	1,400	31.6	23.9 - 39.3	4,500
Lanai	200	61.5	49.6 - 73.3	200	38.5	26.7 - 50.4	400
Lihue-Waimea	3,500	72.5	66.4 - 78.6	1,300	27.5	21.4 - 33.6	4,800

**Pneumonia - ever had shot (65+) by State, County, Island, Community, Adult Age Group, DOH Race-Ethnicity, Gender, Education Level, Employment Status (Grouped), Household Income, Poverty Level, Marital Status (Grouped), Married, Health Care Coverage, for the Year(s) - 2001-2005, 2002-2006, 2003-2007, 2004-2008, 2005-2009, 2006-2010**

*Note: Weighted numbers (#) represent 5-yr averages, percentages and 95% confidence intervals; Respondents aged 18 years and older; n/r (Not Reportable) - If the unweighted total responses for a dimension (row) is <50 that row will not be shown; n/a (Not Available) - Not asked of a subset of respondents*

**Year: 2003-2007**

Community	Yes			No			Estimated Population (5-yr Avg)
	#	%	C.I. (95%)	#	%	C.I. (95%)	#
Manoa/ Upper Makiki	7,700	77.1	71.6 - 82.6	2,300	22.9	17.4 - 28.4	10,000
Mililani/ Wahiawa	5,200	77.5	69.5 - 85.4	1,500	22.5	14.6 - 30.5	6,700
Molokai	700	73.4	65.0 - 81.8	300	26.6	18.2 - 35.0	1,000
Nanakuli/ Waianae	3,200	69.9	56.9 - 83.0	1,400	30.1	17.0 - 43.1	4,600
N.Hawaii	3,000	66.4	58.3 - 74.6	1,500	33.6	25.4 - 41.7	4,400
N.Shore/ Laie	2,300	49.9	36.6 - 63.2	2,300	50.1	36.8 - 63.4	4,600
Nuuanu/ Kalihi/ Moanalua	8,100	61.5	54.0 - 69.0	5,100	38.5	31.0 - 46.0	13,200
Puna/ Kau	3,100	60.7	53.0 - 68.3	2,000	39.3	31.7 - 47.0	5,200
Salt Lake/ Foster Village	1,500	51.6	34.0 - 69.1	1,400	48.4	30.9 - 66.0	2,900
Upcountry/ Hana	2,400	61.9	52.6 - 71.3	1,500	38.1	28.7 - 47.4	3,900
Waiialae/ Kahala/ Hawaii Kai	6,900	74.7	68.1 - 81.3	2,300	25.3	18.7 - 31.9	9,200



**Pneumonia - ever had shot (65+) by State, County, Island, Community, Adult Age Group, DOH Race-Ethnicity, Gender, Education Level, Employment Status (Grouped), Household Income, Poverty Level, Marital Status (Grouped), Married, Health Care Coverage, for the Year(s) - 2001-2005, 2002-2006, 2003-2007, 2004-2008, 2005-2009, 2006-2010**

*Note: Weighted numbers (#) represent 5-yr averages, percentages and 95% confidence intervals; Respondents aged 18 years and older; n/r (Not Reportable) - If the unweighted total responses for a dimension (row) is <50 that row will not be shown; n/a (Not Available) - Not asked of a subset of respondents*

**Year: 2003-2007**

Community	Yes			No			Estimated Population (5-yr Avg)
	#	%	C.I. (95%)	#	%	C.I. (95%)	#
Waipahu/ Kapolei/ Ewa	7,800	72.1	64.2 - 80.1	3,000	27.9	19.9 - 35.8	10,800

**Pneumonia - ever had shot (65+) by State, County, Island, Community, Adult Age Group, DOH Race-Ethnicity, Gender, Education Level, Employment Status (Grouped), Household Income, Poverty Level, Marital Status (Grouped), Married, Health Care Coverage, for the Year(s) - 2001-2005, 2002-2006, 2003-2007, 2004-2008, 2005-2009, 2006-2010**

*Note: Weighted numbers (#) represent 5-yr averages, percentages and 95% confidence intervals; Respondents aged 18 years and older; n/r (Not Reportable) - If the unweighted total responses for a dimension (row) is <50 that row will not be shown; n/a (Not Available) - Not asked of a subset of respondents*

**Year: 2003-2007**

DOH Race-Ethnicity	Yes			No			Estimated Population (5-yr Avg)
	#	%	C.I. (95%)	#	%	C.I. (95%)	#
Caucasian	36,400	69.0	66.2 - 71.7	16,400	31.0	28.3 - 33.8	52,800
Native Hawaiian	7,900	56.9	50.4 - 63.5	6,000	43.1	36.5 - 49.6	13,900
Chinese	11,100	71.0	64.1 - 77.9	4,500	29.0	22.1 - 35.9	15,700
Filipino	10,800	58.9	52.4 - 65.5	7,500	41.1	34.5 - 47.6	18,400
Japanese	40,100	71.8	68.6 - 74.9	15,800	28.2	25.1 - 31.4	55,900
Other Asian	1,800	70.8	57.6 - 84.1	700	29.2	15.9 - 42.4	2,500
Other	900	50.9	36.7 - 65.2	800	49.1	34.8 - 63.3	1,700

**Pneumonia - ever had shot (65+) by State, County, Island, Community, Adult Age Group, DOH Race-Ethnicity, Gender, Education Level, Employment Status (Grouped), Household Income, Poverty Level, Marital Status (Grouped), Married, Health Care Coverage, for the Year(s) - 2001-2005, 2002-2006, 2003-2007, 2004-2008, 2005-2009, 2006-2010**

*Note: Weighted numbers (#) represent 5-yr averages, percentages and 95% confidence intervals; Respondents aged 18 years and older; n/r (Not Reportable) - If the unweighted total responses for a dimension (row) is <50 that row will not be shown; n/a (Not Available) - Not asked of a subset of respondents*

**Year: 2003-2007**

Gender	Yes			No			Estimated Population (5-yr Avg)
	#	%	C.I. (95%)	#	%	C.I. (95%)	#
Male	43,900	63.1	60.0 - 66.1	25,700	36.9	33.9 - 40.0	69,600
Female	66,800	71.1	68.8 - 73.3	27,200	28.9	26.7 - 31.2	94,100

Education Level	Yes			No			Estimated Population (5-yr Avg)
	#	%	C.I. (95%)	#	%	C.I. (95%)	#
Never attended school/ Only Kindergarten to Grades 8	5,200	59.9	51.8 - 68.0	3,500	40.1	32.0 - 48.2	8,700
Grades 9 thru 11 (Some High School)	7,200	59.8	52.5 - 67.0	4,800	40.2	33.0 - 47.5	12,000
Grades 12 or GED (High School Grad)	37,700	68.8	65.6 - 71.9	17,100	31.2	28.1 - 34.4	54,800
College 1 to 3 years (Some College/ Tech)	25,400	65.2	61.4 - 69.1	13,500	34.8	30.9 - 38.6	38,900
College 4 years or more (College Grad)	35,100	71.6	68.4 - 74.8	13,900	28.4	25.2 - 31.6	49,000

**Pneumonia - ever had shot (65+) by State, County, Island, Community, Adult Age Group, DOH Race-Ethnicity, Gender, Education Level, Employment Status (Grouped), Household Income, Poverty Level, Marital Status (Grouped), Married, Health Care Coverage, for the Year(s) - 2001-2005, 2002-2006, 2003-2007, 2004-2008, 2005-2009, 2006-2010**

*Note: Weighted numbers (#) represent 5-yr averages, percentages and 95% confidence intervals; Respondents aged 18 years and older; n/r (Not Reportable) - If the unweighted total responses for a dimension (row) is <50 that row will not be shown; n/a (Not Available) - Not asked of a subset of respondents*

**Year: 2003-2007**

Employment Status (Grouped)	Yes			No			Estimated Population (5-yr Avg)
	#	%	C.I. (95%)	#	%	C.I. (95%)	#
<b>Employed</b>	11,500	54.6	49.4 - 59.8	9,600	45.4	40.2 - 50.6	21,100
<b>Retired/Unable to work</b>	96,800	69.9	67.9 - 71.8	41,700	30.1	28.2 - 32.1	138,500
<b>Student/Homemaker</b>	2,200	59.9	47.6 - 72.2	1,500	40.1	27.8 - 52.4	3,600

**Pneumonia - ever had shot (65+) by State, County, Island, Community, Adult Age Group, DOH Race-Ethnicity, Gender, Education Level, Employment Status (Grouped), Household Income, Poverty Level, Marital Status (Grouped), Married, Health Care Coverage, for the Year(s) - 2001-2005, 2002-2006, 2003-2007, 2004-2008, 2005-2009, 2006-2010**

*Note: Weighted numbers (#) represent 5-yr averages, percentages and 95% confidence intervals; Respondents aged 18 years and older; n/r (Not Reportable) - If the unweighted total responses for a dimension (row) is <50 that row will not be shown; n/a (Not Available) - Not asked of a subset of respondents*

**Year: 2003-2007**

Household Income	Yes			No			Estimated Population (5-yr Avg)
	#	%	C.I. (95%)	#	%	C.I. (95%)	#
Less than \$10,000	4,000	62.8	54.8 - 70.8	2,300	37.2	29.2 - 45.2	6,300
\$10,000 to \$14,999	5,700	64.1	57.1 - 71.2	3,200	35.9	28.8 - 42.9	8,900
\$15,000 to \$19,999	8,500	70.5	65.2 - 75.8	3,600	29.5	24.2 - 34.8	12,000
\$20,000 to \$24,999	8,600	62.7	56.6 - 68.7	5,100	37.3	31.3 - 43.4	13,700
\$25,000 to \$34,999	13,800	67.2	62.2 - 72.2	6,800	32.8	27.8 - 37.8	20,600
\$35,000 to \$49,999	18,000	73.3	69.0 - 77.7	6,600	26.7	22.3 - 31.0	24,600
\$50,000 to \$74,999	16,900	66.8	61.1 - 72.5	8,400	33.2	27.5 - 38.9	25,300
\$75,000 or more	15,800	65.0	59.6 - 70.4	8,500	35.0	29.6 - 40.4	24,300

**Pneumonia - ever had shot (65+) by State, County, Island, Community, Adult Age Group, DOH Race-Ethnicity, Gender, Education Level, Employment Status (Grouped), Household Income, Poverty Level, Marital Status (Grouped), Married, Health Care Coverage, for the Year(s) - 2001-2005, 2002-2006, 2003-2007, 2004-2008, 2005-2009, 2006-2010**

*Note: Weighted numbers (#) represent 5-yr averages, percentages and 95% confidence intervals; Respondents aged 18 years and older; n/r (Not Reportable) - If the unweighted total responses for a dimension (row) is <50 that row will not be shown; n/a (Not Available) - Not asked of a subset of respondents*

**Year: 2003-2007**

Poverty Level	Yes			No			Estimated Population (5-yr Avg)
	#	%	C.I. (95%)	#	%	C.I. (95%)	#
0-130%	20,300	65.9	61.6 - 70.2	10,500	34.1	29.8 - 38.4	30,900
131-185%	9,200	60.1	54.3 - 65.9	6,100	39.9	34.1 - 45.7	15,300
186+%	61,800	69.0	66.4 - 71.5	27,800	31.0	28.5 - 33.6	89,600

Marital Status (Grouped)	Yes			No			Estimated Population (5-yr Avg)
	#	%	C.I. (95%)	#	%	C.I. (95%)	#
Married	66,000	67.6	65.1 - 70.1	31,700	32.4	29.9 - 34.9	97,700
Widowed	30,400	69.5	66.2 - 72.9	13,300	30.5	27.1 - 33.8	43,700
Other	14,100	64.6	60.3 - 68.9	7,700	35.4	31.1 - 39.7	21,800

**Pneumonia - ever had shot (65+) by State, County, Island, Community, Adult Age Group, DOH Race-Ethnicity, Gender, Education Level, Employment Status (Grouped), Household Income, Poverty Level, Marital Status (Grouped), Married, Health Care Coverage, for the Year(s) - 2001-2005, 2002-2006, 2003-2007, 2004-2008, 2005-2009, 2006-2010**

*Note: Weighted numbers (#) represent 5-yr averages, percentages and 95% confidence intervals; Respondents aged 18 years and older; n/r (Not Reportable) - If the unweighted total responses for a dimension (row) is <50 that row will not be shown; n/a (Not Available) - Not asked of a subset of respondents*

**Year: 2003-2007**

<b>Married</b>	<b>Yes</b>			<b>No</b>			<b>Estimated Population (5-yr Avg)</b>
	<b>#</b>	<b>%</b>	<b>C.I. (95%)</b>	<b>#</b>	<b>%</b>	<b>C.I. (95%)</b>	<b>#</b>
<b>Yes</b>	66,500	67.5	65.0 - 70.0	32,000	32.5	30.0 - 35.0	98,500
<b>No</b>	44,100	67.9	65.2 - 70.6	20,900	32.1	29.4 - 34.8	65,000

<b>Health Care Coverage</b>	<b>Yes</b>			<b>No</b>			<b>Estimated Population (5-yr Avg)</b>
	<b>#</b>	<b>%</b>	<b>C.I. (95%)</b>	<b>#</b>	<b>%</b>	<b>C.I. (95%)</b>	<b>#</b>
<b>Yes</b>	110,100	68.0	66.1 - 69.8	51,900	32.0	30.2 - 33.9	162,000
<b>No</b>	700	41.2	23.4 - 59.0	900	58.8	41.0 - 76.6	1,600

**Pneumonia - ever had shot (65+) by State, County, Island, Community, Adult Age Group, DOH Race-Ethnicity, Gender, Education Level, Employment Status (Grouped), Household Income, Poverty Level, Marital Status (Grouped), Married, Health Care Coverage, for the Year(s) - 2001-2005, 2002-2006, 2003-2007, 2004-2008, 2005-2009, 2006-2010**

*Note: Weighted numbers (#) represent 5-yr averages, percentages and 95% confidence intervals; Respondents aged 18 years and older; n/r (Not Reportable) - If the unweighted total responses for a dimension (row) is <50 that row will not be shown; n/a (Not Available) - Not asked of a subset of respondents*

**Year: 2002-2006**

State	Yes			No			Estimated Population (5-yr Avg)
	#	%	C.I. (95%)	#	%	C.I. (95%)	#
Hawaii State	104,900	65.9	64.0 - 67.8	54,200	34.1	32.2 - 36.0	159,000

County	Yes			No			Estimated Population (5-yr Avg)
	#	%	C.I. (95%)	#	%	C.I. (95%)	#
Hawaii	13,200	62.4	59.0 - 65.8	7,900	37.6	34.2 - 41.0	21,100
Honolulu	77,400	66.7	64.3 - 69.2	38,600	33.3	30.8 - 35.7	116,000
Kauai	5,400	69.1	64.2 - 74.0	2,400	30.9	26.0 - 35.8	7,700
Maui	8,900	62.9	58.5 - 67.4	5,300	37.1	32.6 - 41.5	14,200



**Pneumonia - ever had shot (65+) by State, County, Island, Community, Adult Age Group, DOH Race-Ethnicity, Gender, Education Level, Employment Status (Grouped), Household Income, Poverty Level, Marital Status (Grouped), Married, Health Care Coverage, for the Year(s) - 2001-2005, 2002-2006, 2003-2007, 2004-2008, 2005-2009, 2006-2010**

*Note: Weighted numbers (#) represent 5-yr averages, percentages and 95% confidence intervals; Respondents aged 18 years and older; n/r (Not Reportable) - If the unweighted total responses for a dimension (row) is <50 that row will not be shown; n/a (Not Available) - Not asked of a subset of respondents*

**Year: 2002-2006**

Island	Yes			No			Estimated Population (5-yr Avg)
	#	%	C.I. (95%)	#	%	C.I. (95%)	#
Hawaii	13,200	62.4	59.0 - 65.8	7,900	37.6	34.2 - 41.0	21,100
Kauai	5,400	69.1	64.2 - 74.0	2,400	30.9	26.0 - 35.8	7,700
Lanai	200	52.8	41.2 - 64.5	200	47.2	35.5 - 58.8	500
Maui	7,900	62.7	57.7 - 67.6	4,700	37.3	32.4 - 42.3	12,600
Molokai	800	69.8	60.7 - 78.9	400	30.2	21.1 - 39.3	1,200
Oahu	77,400	66.7	64.3 - 69.2	38,600	33.3	30.8 - 35.7	116,000

Community	Yes			No			Estimated Population (5-yr Avg)
	#	%	C.I. (95%)	#	%	C.I. (95%)	#
Aiea/ Pearl City	10,000	71.1	63.7 - 78.4	4,100	28.9	21.6 - 36.3	14,100

**Pneumonia - ever had shot (65+) by State, County, Island, Community, Adult Age Group, DOH Race-Ethnicity, Gender, Education Level, Employment Status (Grouped), Household Income, Poverty Level, Marital Status (Grouped), Married, Health Care Coverage, for the Year(s) - 2001-2005, 2002-2006, 2003-2007, 2004-2008, 2005-2009, 2006-2010**

*Note: Weighted numbers (#) represent 5-yr averages, percentages and 95% confidence intervals; Respondents aged 18 years and older; n/r (Not Reportable) - If the unweighted total responses for a dimension (row) is <50 that row will not be shown; n/a (Not Available) - Not asked of a subset of respondents*

**Year: 2002-2006**

Community	Yes			No			Estimated Population (5-yr Avg)
	#	%	C.I. (95%)	#	%	C.I. (95%)	#
Ala Moana	3,800	63.5	54.9 - 72.1	2,200	36.5	27.9 - 45.1	6,000
Hanalei/ Kapaa	1,900	67.1	59.4 - 74.8	900	32.9	25.2 - 40.6	2,800
Hilo	4,200	63.2	57.9 - 68.4	2,500	36.8	31.6 - 42.1	6,700
Kaaawa/ Kahaluu/ Kaneohe	5,400	56.3	46.2 - 66.4	4,200	43.7	33.6 - 53.8	9,700
Kahului	2,800	64.0	56.2 - 71.7	1,600	36.0	28.3 - 43.8	4,300
Kailua/ Waimanalo	5,600	64.2	56.2 - 72.1	3,100	35.8	27.9 - 43.8	8,700
Kaimuki/ Palolo/ Waikiki	12,000	68.4	62.6 - 74.2	5,500	31.6	25.8 - 37.4	17,500
Kona	3,400	63.5	57.2 - 69.9	1,900	36.5	30.1 - 42.8	5,300
Lahaina/ Wailuku	2,900	63.4	55.2 - 71.7	1,600	36.6	28.3 - 44.8	4,500
Lanai	200	52.8	41.2 - 64.5	200	47.2	35.5 - 58.8	500
Lihue-Waimea	3,500	70.3	63.9 - 76.6	1,500	29.7	23.4 - 36.1	5,000

**Pneumonia - ever had shot (65+) by State, County, Island, Community, Adult Age Group, DOH Race-Ethnicity, Gender, Education Level, Employment Status (Grouped), Household Income, Poverty Level, Marital Status (Grouped), Married, Health Care Coverage, for the Year(s) - 2001-2005, 2002-2006, 2003-2007, 2004-2008, 2005-2009, 2006-2010**

*Note: Weighted numbers (#) represent 5-yr averages, percentages and 95% confidence intervals; Respondents aged 18 years and older; n/r (Not Reportable) - If the unweighted total responses for a dimension (row) is <50 that row will not be shown; n/a (Not Available) - Not asked of a subset of respondents*

**Year: 2002-2006**

Community	Yes			No			Estimated Population (5-yr Avg)
	#	%	C.I. (95%)	#	%	C.I. (95%)	#
Manoa/ Upper Makiki	7,500	75.5	70.0 - 81.1	2,400	24.5	18.9 - 30.0	10,000
Mililani/ Wahiawa	5,500	80.4	72.5 - 88.3	1,300	19.6	11.7 - 27.5	6,800
Molokai	800	69.8	60.7 - 78.9	400	30.2	21.1 - 39.3	1,200
Nanakuli/ Waianae	3,000	72.1	58.2 - 85.9	1,200	27.9	14.1 - 41.8	4,200
N.Hawaii	2,700	62.6	54.0 - 71.1	1,600	37.4	28.9 - 46.0	4,300
N.Shore/ Laie	2,000	49.2	34.5 - 63.8	2,000	50.8	36.2 - 65.5	4,000
Nuuanu/ Kalihi/ Moanalua	7,300	56.3	48.6 - 63.9	5,700	43.7	36.1 - 51.4	13,000
Puna/ Kau	2,900	59.9	51.9 - 67.9	2,000	40.1	32.1 - 48.1	4,900
Salt Lake/ Foster Village	1,800	56.5	39.2 - 73.7	1,400	43.5	26.3 - 60.8	3,200
Upcountry/ Hana	2,200	60.3	50.6 - 70.0	1,500	39.7	30.0 - 49.4	3,700
Waiialae/ Kahala/ Hawaii Kai	6,700	73.5	66.9 - 80.1	2,400	26.5	19.9 - 33.1	9,100

**Pneumonia - ever had shot (65+) by State, County, Island, Community, Adult Age Group, DOH Race-Ethnicity, Gender, Education Level, Employment Status (Grouped), Household Income, Poverty Level, Marital Status (Grouped), Married, Health Care Coverage, for the Year(s) - 2001-2005, 2002-2006, 2003-2007, 2004-2008, 2005-2009, 2006-2010**

*Note: Weighted numbers (#) represent 5-yr averages, percentages and 95% confidence intervals; Respondents aged 18 years and older; n/r (Not Reportable) - If the unweighted total responses for a dimension (row) is <50 that row will not be shown; n/a (Not Available) - Not asked of a subset of respondents*

**Year: 2002-2006**

Community	Yes			No			Estimated Population (5-yr Avg)
	#	%	C.I. (95%)	#	%	C.I. (95%)	#
Waipahu/ Kapolei/ Ewa	6,700	69.7	61.0 - 78.4	2,900	30.3	21.6 - 39.0	9,700

**Pneumonia - ever had shot (65+) by State, County, Island, Community, Adult Age Group, DOH Race-Ethnicity, Gender, Education Level, Employment Status (Grouped), Household Income, Poverty Level, Marital Status (Grouped), Married, Health Care Coverage, for the Year(s) - 2001-2005, 2002-2006, 2003-2007, 2004-2008, 2005-2009, 2006-2010**

*Note: Weighted numbers (#) represent 5-yr averages, percentages and 95% confidence intervals; Respondents aged 18 years and older; n/r (Not Reportable) - If the unweighted total responses for a dimension (row) is <50 that row will not be shown; n/a (Not Available) - Not asked of a subset of respondents*

**Year: 2002-2006**

DOH Race-Ethnicity	Yes			No			Estimated Population (5-yr Avg)
	#	%	C.I. (95%)	#	%	C.I. (95%)	#
Caucasian	34,000	67.4	64.5 - 70.3	16,400	32.6	29.7 - 35.5	50,400
Native Hawaiian	7,800	56.7	50.0 - 63.4	6,000	43.3	36.6 - 50.0	13,800
Chinese	10,600	67.8	61.0 - 74.7	5,000	32.2	25.3 - 39.0	15,700
Filipino	10,300	58.2	51.4 - 65.0	7,400	41.8	35.0 - 48.6	17,700
Japanese	38,300	69.7	66.5 - 72.9	16,600	30.3	27.1 - 33.5	54,900
Other Asian	1,700	69.1	55.4 - 82.8	800	30.9	17.2 - 44.6	2,500
Other	700	48.7	33.3 - 64.0	700	51.3	36.0 - 66.7	1,400

**Pneumonia - ever had shot (65+) by State, County, Island, Community, Adult Age Group, DOH Race-Ethnicity, Gender, Education Level, Employment Status (Grouped), Household Income, Poverty Level, Marital Status (Grouped), Married, Health Care Coverage, for the Year(s) - 2001-2005, 2002-2006, 2003-2007, 2004-2008, 2005-2009, 2006-2010**

*Note: Weighted numbers (#) represent 5-yr averages, percentages and 95% confidence intervals; Respondents aged 18 years and older; n/r (Not Reportable) - If the unweighted total responses for a dimension (row) is <50 that row will not be shown; n/a (Not Available) - Not asked of a subset of respondents*

**Year: 2002-2006**

Gender	Yes			No			Estimated Population (5-yr Avg)
	#	%	C.I. (95%)	#	%	C.I. (95%)	#
Male	41,600	60.9	57.8 - 64.0	26,700	39.1	36.0 - 42.2	68,400
Female	63,200	69.7	67.4 - 72.1	27,400	30.3	27.9 - 32.6	90,700

Education Level	Yes			No			Estimated Population (5-yr Avg)
	#	%	C.I. (95%)	#	%	C.I. (95%)	#
Never attended school/ Only Kindergarten to Grades 8	5,300	60.9	53.1 - 68.6	3,400	39.1	31.4 - 46.9	8,800
Grades 9 thru 11 (Some High School)	7,400	60.8	53.5 - 68.1	4,800	39.2	31.9 - 46.5	12,100
Grades 12 or GED (High School Grad)	36,900	66.3	63.1 - 69.6	18,700	33.7	30.4 - 36.9	55,700
College 1 to 3 years (Some College/ Tech)	23,400	62.1	58.1 - 66.2	14,200	37.9	33.8 - 41.9	37,600
College 4 years or more (College Grad)	31,600	71.0	67.6 - 74.4	12,900	29.0	25.6 - 32.4	44,500

**Pneumonia - ever had shot (65+) by State, County, Island, Community, Adult Age Group, DOH Race-Ethnicity, Gender, Education Level, Employment Status (Grouped), Household Income, Poverty Level, Marital Status (Grouped), Married, Health Care Coverage, for the Year(s) - 2001-2005, 2002-2006, 2003-2007, 2004-2008, 2005-2009, 2006-2010**

*Note: Weighted numbers (#) represent 5-yr averages, percentages and 95% confidence intervals; Respondents aged 18 years and older; n/r (Not Reportable) - If the unweighted total responses for a dimension (row) is <50 that row will not be shown; n/a (Not Available) - Not asked of a subset of respondents*

**Year: 2002-2006**

Employment Status (Grouped)	Yes			No			Estimated Population (5-yr Avg)
	#	%	C.I. (95%)	#	%	C.I. (95%)	#
<b>Employed</b>	10,800	52.4	46.9 - 57.8	9,800	47.6	42.2 - 53.1	20,700
<b>Retired/Unable to work</b>	92,000	68.6	66.5 - 70.6	42,200	31.4	29.4 - 33.5	134,100
<b>Student/Homemaker</b>	1,800	47.9	35.5 - 60.3	2,000	52.1	39.7 - 64.5	3,800

**Pneumonia - ever had shot (65+) by State, County, Island, Community, Adult Age Group, DOH Race-Ethnicity, Gender, Education Level, Employment Status (Grouped), Household Income, Poverty Level, Marital Status (Grouped), Married, Health Care Coverage, for the Year(s) - 2001-2005, 2002-2006, 2003-2007, 2004-2008, 2005-2009, 2006-2010**

*Note: Weighted numbers (#) represent 5-yr averages, percentages and 95% confidence intervals; Respondents aged 18 years and older; n/r (Not Reportable) - If the unweighted total responses for a dimension (row) is <50 that row will not be shown; n/a (Not Available) - Not asked of a subset of respondents*

**Year: 2002-2006**

Household Income	Yes			No			Estimated Population (5-yr Avg)
	#	%	C.I. (95%)	#	%	C.I. (95%)	#
Less than \$10,000	4,100	60.0	52.2 - 67.8	2,800	40.0	32.2 - 47.8	6,900
\$10,000 to \$14,999	5,500	63.0	55.8 - 70.3	3,200	37.0	29.7 - 44.2	8,700
\$15,000 to \$19,999	7,400	71.7	66.1 - 77.3	2,900	28.3	22.7 - 33.9	10,400
\$20,000 to \$24,999	7,700	64.4	58.0 - 70.9	4,300	35.6	29.1 - 42.0	12,000
\$25,000 to \$34,999	12,400	68.4	62.9 - 73.9	5,700	31.6	26.1 - 37.1	18,100
\$35,000 to \$49,999	15,300	71.8	66.8 - 76.7	6,000	28.2	23.3 - 33.2	21,300
\$50,000 to \$74,999	16,000	65.5	59.5 - 71.4	8,400	34.5	28.6 - 40.5	24,400
\$75,000 or more	12,900	64.0	57.8 - 70.3	7,200	36.0	29.7 - 42.2	20,100



**Pneumonia - ever had shot (65+) by State, County, Island, Community, Adult Age Group, DOH Race-Ethnicity, Gender, Education Level, Employment Status (Grouped), Household Income, Poverty Level, Marital Status (Grouped), Married, Health Care Coverage, for the Year(s) - 2001-2005, 2002-2006, 2003-2007, 2004-2008, 2005-2009, 2006-2010**

*Note: Weighted numbers (#) represent 5-yr averages, percentages and 95% confidence intervals; Respondents aged 18 years and older; n/r (Not Reportable) - If the unweighted total responses for a dimension (row) is <50 that row will not be shown; n/a (Not Available) - Not asked of a subset of respondents*

**Year: 2002-2006**

Poverty Level	Yes			No			Estimated Population (5-yr Avg)
	#	%	C.I. (95%)	#	%	C.I. (95%)	#
0-130%	18,500	65.6	61.1 - 70.1	9,700	34.4	29.9 - 38.9	28,200
131-185%	8,900	64.0	57.7 - 70.3	5,000	36.0	29.7 - 42.3	13,900
186+%	54,000	67.6	64.8 - 70.4	25,900	32.4	29.6 - 35.2	79,900

Marital Status (Grouped)	Yes			No			Estimated Population (5-yr Avg)
	#	%	C.I. (95%)	#	%	C.I. (95%)	#
Married	62,700	65.7	63.1 - 68.2	32,800	34.3	31.8 - 36.9	95,400
Widowed	29,100	67.9	64.4 - 71.4	13,800	32.1	28.6 - 35.6	42,900
Other	12,800	63.1	58.5 - 67.7	7,500	36.9	32.3 - 41.5	20,300

**Pneumonia - ever had shot (65+) by State, County, Island, Community, Adult Age Group, DOH Race-Ethnicity, Gender, Education Level, Employment Status (Grouped), Household Income, Poverty Level, Marital Status (Grouped), Married, Health Care Coverage, for the Year(s) - 2001-2005, 2002-2006, 2003-2007, 2004-2008, 2005-2009, 2006-2010**

*Note: Weighted numbers (#) represent 5-yr averages, percentages and 95% confidence intervals; Respondents aged 18 years and older; n/r (Not Reportable) - If the unweighted total responses for a dimension (row) is <50 that row will not be shown; n/a (Not Available) - Not asked of a subset of respondents*

**Year: 2002-2006**

<b>Married</b>	<b>Yes</b>			<b>No</b>			<b>Estimated Population (5-yr Avg)</b>
	<b>#</b>	<b>%</b>	<b>C.I. (95%)</b>	<b>#</b>	<b>%</b>	<b>C.I. (95%)</b>	<b>#</b>
<b>Yes</b>	63,100	65.6	63.0 - 68.1	33,200	34.4	31.9 - 37.0	96,300
<b>No</b>	41,600	66.5	63.7 - 69.3	21,000	33.5	30.7 - 36.3	62,600

<b>Health Care Coverage</b>	<b>Yes</b>			<b>No</b>			<b>Estimated Population (5-yr Avg)</b>
	<b>#</b>	<b>%</b>	<b>C.I. (95%)</b>	<b>#</b>	<b>%</b>	<b>C.I. (95%)</b>	<b>#</b>
<b>Yes</b>	104,200	66.2	64.3 - 68.1	53,200	33.8	31.9 - 35.7	157,300
<b>No</b>	700	43.6	25.8 - 61.4	900	56.4	38.6 - 74.2	1,600

**Pneumonia - ever had shot (65+) by State, County, Island, Community, Adult Age Group, DOH Race-Ethnicity, Gender, Education Level, Employment Status (Grouped), Household Income, Poverty Level, Marital Status (Grouped), Married, Health Care Coverage, for the Year(s) - 2001-2005, 2002-2006, 2003-2007, 2004-2008, 2005-2009, 2006-2010**

*Note: Weighted numbers (#) represent 5-yr averages, percentages and 95% confidence intervals; Respondents aged 18 years and older; n/r (Not Reportable) - If the unweighted total responses for a dimension (row) is <50 that row will not be shown; n/a (Not Available) - Not asked of a subset of respondents*

**Year: 2001-2005**

State	Yes			No			Estimated Population (5-yr Avg)
	#	%	C.I. (95%)	#	%	C.I. (95%)	#
Hawaii State	101,000	65.0	63.0 - 67.0	54,300	35.0	33.0 - 37.0	155,400

County	Yes			No			Estimated Population (5-yr Avg)
	#	%	C.I. (95%)	#	%	C.I. (95%)	#
Hawaii	13,000	62.9	59.3 - 66.5	7,700	37.1	33.5 - 40.7	20,700
Honolulu	74,400	66.0	63.3 - 68.6	38,400	34.0	31.4 - 36.7	112,900
Kauai	5,000	65.8	60.4 - 71.1	2,600	34.2	28.9 - 39.6	7,500
Maui	8,600	60.4	55.7 - 65.0	5,600	39.6	35.0 - 44.3	14,200

**Pneumonia - ever had shot (65+) by State, County, Island, Community, Adult Age Group, DOH Race-Ethnicity, Gender, Education Level, Employment Status (Grouped), Household Income, Poverty Level, Marital Status (Grouped), Married, Health Care Coverage, for the Year(s) - 2001-2005, 2002-2006, 2003-2007, 2004-2008, 2005-2009, 2006-2010**

*Note: Weighted numbers (#) represent 5-yr averages, percentages and 95% confidence intervals; Respondents aged 18 years and older; n/r (Not Reportable) - If the unweighted total responses for a dimension (row) is <50 that row will not be shown; n/a (Not Available) - Not asked of a subset of respondents*

**Year: 2001-2005**

Island	Yes			No			Estimated Population (5-yr Avg)
	#	%	C.I. (95%)	#	%	C.I. (95%)	#
Hawaii	13,000	62.9	59.3 - 66.5	7,700	37.1	33.5 - 40.7	20,700
Kauai	5,000	65.8	60.4 - 71.1	2,600	34.2	28.9 - 39.6	7,500
Lanai	200	47.6	35.2 - 59.9	300	52.4	40.1 - 64.8	500
Maui	7,600	60.2	55.1 - 65.4	5,000	39.8	34.6 - 44.9	12,600
Molokai	800	67.6	57.6 - 77.7	400	32.4	22.3 - 42.4	1,100
Oahu	74,400	66.0	63.3 - 68.6	38,400	34.0	31.4 - 36.7	112,900

Community	Yes			No			Estimated Population (5-yr Avg)
	#	%	C.I. (95%)	#	%	C.I. (95%)	#
Aiea/ Pearl City	10,300	72.9	65.4 - 80.5	3,800	27.1	19.5 - 34.6	14,100

**Pneumonia - ever had shot (65+) by State, County, Island, Community, Adult Age Group, DOH Race-Ethnicity, Gender, Education Level, Employment Status (Grouped), Household Income, Poverty Level, Marital Status (Grouped), Married, Health Care Coverage, for the Year(s) - 2001-2005, 2002-2006, 2003-2007, 2004-2008, 2005-2009, 2006-2010**

*Note: Weighted numbers (#) represent 5-yr averages, percentages and 95% confidence intervals; Respondents aged 18 years and older; n/r (Not Reportable) - If the unweighted total responses for a dimension (row) is <50 that row will not be shown; n/a (Not Available) - Not asked of a subset of respondents*

**Year: 2001-2005**

Community	Yes			No			Estimated Population (5-yr Avg)
	#	%	C.I. (95%)	#	%	C.I. (95%)	#
Ala Moana	3,300	60.7	51.2 - 70.1	2,200	39.3	29.9 - 48.8	5,500
Hanalei/ Kapaa	1,700	63.6	55.3 - 71.8	1,000	36.4	28.2 - 44.7	2,700
Hilo	4,200	63.9	58.4 - 69.5	2,300	36.1	30.5 - 41.6	6,500
Kaaawa/ Kahaluu/ Kaneohe	5,400	61.5	50.2 - 72.8	3,400	38.5	27.2 - 49.8	8,800
Kahului	2,700	60.4	52.3 - 68.5	1,800	39.6	31.5 - 47.7	4,500
Kailua/ Waimanalo	5,100	64.2	55.4 - 73.0	2,900	35.8	27.0 - 44.6	8,000
Kaimuki/ Palolo/ Waikiki	11,400	68.4	62.2 - 74.5	5,300	31.6	25.5 - 37.8	16,700
Kona	3,200	64.1	57.4 - 70.8	1,800	35.9	29.2 - 42.6	5,000
Lahaina/ Wailuku	2,900	63.8	55.2 - 72.3	1,600	36.2	27.7 - 44.8	4,500
Lanai	200	47.6	35.2 - 59.9	300	52.4	40.1 - 64.8	500
Lihue-Waimea	3,300	67.0	60.1 - 73.8	1,600	33.0	26.2 - 39.9	4,900

**Pneumonia - ever had shot (65+) by State, County, Island, Community, Adult Age Group, DOH Race-Ethnicity, Gender, Education Level, Employment Status (Grouped), Household Income, Poverty Level, Marital Status (Grouped), Married, Health Care Coverage, for the Year(s) - 2001-2005, 2002-2006, 2003-2007, 2004-2008, 2005-2009, 2006-2010**

*Note: Weighted numbers (#) represent 5-yr averages, percentages and 95% confidence intervals; Respondents aged 18 years and older; n/r (Not Reportable) - If the unweighted total responses for a dimension (row) is <50 that row will not be shown; n/a (Not Available) - Not asked of a subset of respondents*

**Year: 2001-2005**

Community	Yes			No			Estimated Population (5-yr Avg)
	#	%	C.I. (95%)	#	%	C.I. (95%)	#
Manoa/ Upper Makiki	7,200	71.6	64.8 - 78.5	2,800	28.4	21.5 - 35.2	10,000
Mililani/ Wahiawa	5,400	82.7	74.7 - 90.6	1,100	17.3	9.4 - 25.3	6,500
Molokai	800	67.6	57.6 - 77.7	400	32.4	22.3 - 42.4	1,100
Nanakuli/ Waianae	3,100	67.5	52.1 - 83.0	1,500	32.5	17.0 - 47.9	4,500
N.Hawaii	2,900	65.1	56.6 - 73.5	1,600	34.9	26.5 - 43.4	4,400
N.Shore/ Laie	1,900	48.5	33.8 - 63.2	2,100	51.5	36.8 - 66.2	4,000
Nuuanu/ Kalihi/ Moanalua	7,200	54.3	46.4 - 62.2	6,000	45.7	37.8 - 53.6	13,200
Puna/ Kau	2,800	58.1	49.8 - 66.5	2,000	41.9	33.5 - 50.2	4,800
Salt Lake/ Foster Village	1,800	54.3	37.3 - 71.3	1,500	45.7	28.7 - 62.7	3,400
Upcountry/ Hana	2,000	55.6	45.3 - 65.9	1,600	44.4	34.1 - 54.7	3,600
Waiialae/ Kahala/ Hawaii Kai	6,400	69.6	62.1 - 77.0	2,800	30.4	23.0 - 37.9	9,200

**Pneumonia - ever had shot (65+) by State, County, Island, Community, Adult Age Group, DOH Race-Ethnicity, Gender, Education Level, Employment Status (Grouped), Household Income, Poverty Level, Marital Status (Grouped), Married, Health Care Coverage, for the Year(s) - 2001-2005, 2002-2006, 2003-2007, 2004-2008, 2005-2009, 2006-2010**

*Note: Weighted numbers (#) represent 5-yr averages, percentages and 95% confidence intervals; Respondents aged 18 years and older; n/r (Not Reportable) - If the unweighted total responses for a dimension (row) is <50 that row will not be shown; n/a (Not Available) - Not asked of a subset of respondents*

**Year: 2001-2005**

Community	Yes			No			Estimated Population (5-yr Avg)
	#	%	C.I. (95%)	#	%	C.I. (95%)	#
Waipahu/ Kapolei/ Ewa	6,000	66.1	56.3 - 76.0	3,100	33.9	24.0 - 43.7	9,000

**Pneumonia - ever had shot (65+) by State, County, Island, Community, Adult Age Group, DOH Race-Ethnicity, Gender, Education Level, Employment Status (Grouped), Household Income, Poverty Level, Marital Status (Grouped), Married, Health Care Coverage, for the Year(s) - 2001-2005, 2002-2006, 2003-2007, 2004-2008, 2005-2009, 2006-2010**

*Note: Weighted numbers (#) represent 5-yr averages, percentages and 95% confidence intervals; Respondents aged 18 years and older; n/r (Not Reportable) - If the unweighted total responses for a dimension (row) is <50 that row will not be shown; n/a (Not Available) - Not asked of a subset of respondents*

**Year: 2001-2005**

DOH Race-Ethnicity	Yes			No			Estimated Population (5-yr Avg)
	#	%	C.I. (95%)	#	%	C.I. (95%)	#
Caucasian	31,500	65.6	62.4 - 68.8	16,500	34.4	31.2 - 37.6	48,100
Native Hawaiian	7,300	55.0	47.9 - 62.1	6,000	45.0	37.9 - 52.1	13,400
Chinese	10,800	65.7	58.8 - 72.7	5,600	34.3	27.3 - 41.2	16,500
Filipino	10,600	56.9	49.7 - 64.0	8,000	43.1	36.0 - 50.3	18,600
Japanese	37,100	70.5	67.2 - 73.8	15,500	29.5	26.2 - 32.8	52,600
Other Asian	1,900	68.9	54.9 - 82.9	900	31.1	17.1 - 45.1	2,800
Other	600	45.1	29.0 - 61.2	700	54.9	38.8 - 71.0	1,300



**Pneumonia - ever had shot (65+) by State, County, Island, Community, Adult Age Group, DOH Race-Ethnicity, Gender, Education Level, Employment Status (Grouped), Household Income, Poverty Level, Marital Status (Grouped), Married, Health Care Coverage, for the Year(s) - 2001-2005, 2002-2006, 2003-2007, 2004-2008, 2005-2009, 2006-2010**

*Note: Weighted numbers (#) represent 5-yr averages, percentages and 95% confidence intervals; Respondents aged 18 years and older; n/r (Not Reportable) - If the unweighted total responses for a dimension (row) is <50 that row will not be shown; n/a (Not Available) - Not asked of a subset of respondents*

**Year: 2001-2005**

Gender	Yes			No			Estimated Population (5-yr Avg)
	#	%	C.I. (95%)	#	%	C.I. (95%)	#
Male	41,300	60.6	57.3 - 63.9	26,800	39.4	36.1 - 42.7	68,100
Female	59,700	68.5	66.0 - 71.0	27,500	31.5	29.0 - 34.0	87,200

Education Level	Yes			No			Estimated Population (5-yr Avg)
	#	%	C.I. (95%)	#	%	C.I. (95%)	#
Never attended school/ Only Kindergarten to Grades 8	5,400	59.7	52.1 - 67.3	3,700	40.3	32.7 - 47.9	9,100
Grades 9 thru 11 (Some High School)	7,800	61.7	53.8 - 69.6	4,800	38.3	30.4 - 46.2	12,700
Grades 12 or GED (High School Grad)	37,300	67.0	63.8 - 70.3	18,300	33.0	29.7 - 36.2	55,600
College 1 to 3 years (Some College/ Tech)	23,100	61.0	56.8 - 65.3	14,800	39.0	34.7 - 43.2	37,900
College 4 years or more (College Grad)	27,100	68.3	64.4 - 72.1	12,600	31.7	27.9 - 35.6	39,800

**Pneumonia - ever had shot (65+) by State, County, Island, Community, Adult Age Group, DOH Race-Ethnicity, Gender, Education Level, Employment Status (Grouped), Household Income, Poverty Level, Marital Status (Grouped), Married, Health Care Coverage, for the Year(s) - 2001-2005, 2002-2006, 2003-2007, 2004-2008, 2005-2009, 2006-2010**

*Note: Weighted numbers (#) represent 5-yr averages, percentages and 95% confidence intervals; Respondents aged 18 years and older; n/r (Not Reportable) - If the unweighted total responses for a dimension (row) is <50 that row will not be shown; n/a (Not Available) - Not asked of a subset of respondents*

**Year: 2001-2005**

Employment Status (Grouped)	Yes			No			Estimated Population (5-yr Avg)
	#	%	C.I. (95%)	#	%	C.I. (95%)	#
<b>Employed</b>	9,400	51.0	45.0 - 57.1	9,000	49.0	42.9 - 55.0	18,400
<b>Retired/Unable to work</b>	89,500	67.4	65.2 - 69.6	43,200	32.6	30.4 - 34.8	132,700
<b>Student/Homemaker</b>	2,000	50.4	38.0 - 62.8	1,900	49.6	37.2 - 62.0	3,900

**Pneumonia - ever had shot (65+) by State, County, Island, Community, Adult Age Group, DOH Race-Ethnicity, Gender, Education Level, Employment Status (Grouped), Household Income, Poverty Level, Marital Status (Grouped), Married, Health Care Coverage, for the Year(s) - 2001-2005, 2002-2006, 2003-2007, 2004-2008, 2005-2009, 2006-2010**

*Note: Weighted numbers (#) represent 5-yr averages, percentages and 95% confidence intervals; Respondents aged 18 years and older; n/r (Not Reportable) - If the unweighted total responses for a dimension (row) is <50 that row will not be shown; n/a (Not Available) - Not asked of a subset of respondents*

**Year: 2001-2005**

Household Income	Yes			No			Estimated Population (5-yr Avg)
	#	%	C.I. (95%)	#	%	C.I. (95%)	#
Less than \$10,000	4,000	56.5	48.6 - 64.5	3,100	43.5	35.5 - 51.4	7,100
\$10,000 to \$14,999	5,900	61.7	54.5 - 69.0	3,600	38.3	31.0 - 45.5	9,500
\$15,000 to \$19,999	6,900	71.0	64.4 - 77.6	2,800	29.0	22.4 - 35.6	9,700
\$20,000 to \$24,999	7,000	64.7	57.6 - 71.8	3,800	35.3	28.2 - 42.4	10,800
\$25,000 to \$34,999	11,000	67.2	61.2 - 73.2	5,300	32.8	26.8 - 38.8	16,300
\$35,000 to \$49,999	14,500	70.7	65.2 - 76.3	6,000	29.3	23.7 - 34.8	20,500
\$50,000 to \$74,999	14,800	63.3	57.0 - 69.6	8,600	36.7	30.4 - 43.0	23,400
\$75,000 or more	11,000	63.5	56.4 - 70.7	6,300	36.5	29.3 - 43.6	17,400

**Pneumonia - ever had shot (65+) by State, County, Island, Community, Adult Age Group, DOH Race-Ethnicity, Gender, Education Level, Employment Status (Grouped), Household Income, Poverty Level, Marital Status (Grouped), Married, Health Care Coverage, for the Year(s) - 2001-2005, 2002-2006, 2003-2007, 2004-2008, 2005-2009, 2006-2010**

*Note: Weighted numbers (#) represent 5-yr averages, percentages and 95% confidence intervals; Respondents aged 18 years and older; n/r (Not Reportable) - If the unweighted total responses for a dimension (row) is <50 that row will not be shown; n/a (Not Available) - Not asked of a subset of respondents*

**Year: 2001-2005**

Poverty Level	Yes			No			Estimated Population (5-yr Avg)
	#	%	C.I. (95%)	#	%	C.I. (95%)	#
0-130%	17,300	62.7	57.7 - 67.7	10,300	37.3	32.3 - 42.3	27,600
131-185%	8,500	62.5	55.8 - 69.3	5,100	37.5	30.7 - 44.2	13,600
186+%	49,100	67.0	63.9 - 70.1	24,200	33.0	29.9 - 36.1	73,300

Marital Status (Grouped)	Yes			No			Estimated Population (5-yr Avg)
	#	%	C.I. (95%)	#	%	C.I. (95%)	#
Married	61,100	65.2	62.5 - 67.9	32,600	34.8	32.1 - 37.5	93,700
Widowed	28,300	67.1	63.4 - 70.8	13,900	32.9	29.2 - 36.6	42,100
Other	11,400	59.5	54.5 - 64.5	7,800	40.5	35.5 - 45.5	19,100

**Pneumonia - ever had shot (65+) by State, County, Island, Community, Adult Age Group, DOH Race-Ethnicity, Gender, Education Level, Employment Status (Grouped), Household Income, Poverty Level, Marital Status (Grouped), Married, Health Care Coverage, for the Year(s) - 2001-2005, 2002-2006, 2003-2007, 2004-2008, 2005-2009, 2006-2010**

*Note: Weighted numbers (#) represent 5-yr averages, percentages and 95% confidence intervals; Respondents aged 18 years and older; n/r (Not Reportable) - If the unweighted total responses for a dimension (row) is <50 that row will not be shown; n/a (Not Available) - Not asked of a subset of respondents*

**Year: 2001-2005**

<b>Married</b>	<b>Yes</b>			<b>No</b>			<b>Estimated Population (5-yr Avg)</b>
	<b>#</b>	<b>%</b>	<b>C.I. (95%)</b>	<b>#</b>	<b>%</b>	<b>C.I. (95%)</b>	<b>#</b>
<b>Yes</b>	61,400	65.0	62.3 - 67.7	33,100	35.0	32.3 - 37.7	94,500
<b>No</b>	39,600	65.1	62.0 - 68.1	21,200	34.9	31.9 - 38.0	60,800

<b>Health Care Coverage</b>	<b>Yes</b>			<b>No</b>			<b>Estimated Population (5-yr Avg)</b>
	<b>#</b>	<b>%</b>	<b>C.I. (95%)</b>	<b>#</b>	<b>%</b>	<b>C.I. (95%)</b>	<b>#</b>
<b>Yes</b>	100,400	65.3	63.3 - 67.3	53,400	34.7	32.7 - 36.7	153,800