

Flu - had shot in past 12 mons by State, County, Island, Community, BRFSS Age Group, DOH Race-Ethnicity, Gender, Education Level, Employment Status (Grouped), Household Income, Poverty Level, Marital Status (Grouped), Married, Health Care Coverage, for the Year(s) - 2001-2005, 2002-2006, 2003-2007, 2004-2008, 2005-2009, 2006-2010

Note: Weighted numbers (#) represent 5-yr averages, percentages and 95% confidence intervals; Respondents aged 18 years and older; n/r (Not Reportable) - If the unweighted total responses for a dimension (row) is <50 that row will not be shown; n/a (Not Available) - Not asked of a subset of respondents

The trend analysis report shows the trend for the selected health variable over selected years in a table and a graph. Estimated Population: This number is a weighted representation of the population who responded to a particular question in the survey. For most questions the eligible population will be the entire adult population. For some secondary questions only a subset of the population was asked the question. For example, all survey participants were asked if they had diabetes, but only those who answered yes were asked if they use insulin. If a dimension value is unknown for a particular survey record, that record will not be included in the counts for that particular dimension.

For documentation on other terms and coding in this report, please go to the following links

[Click here to access BRFSS documentation](#)

[Click here to access DOH Race-Ethnicity coding](#)

[Click here to access The Hawai'i Data Guide](#)

[Click here to access Poverty Level Methodology](#)

**For questions about this report, please contact
The Hawaii Health Data Warehouse**

profiles@hhdw.org

(855) 946-5899 x15

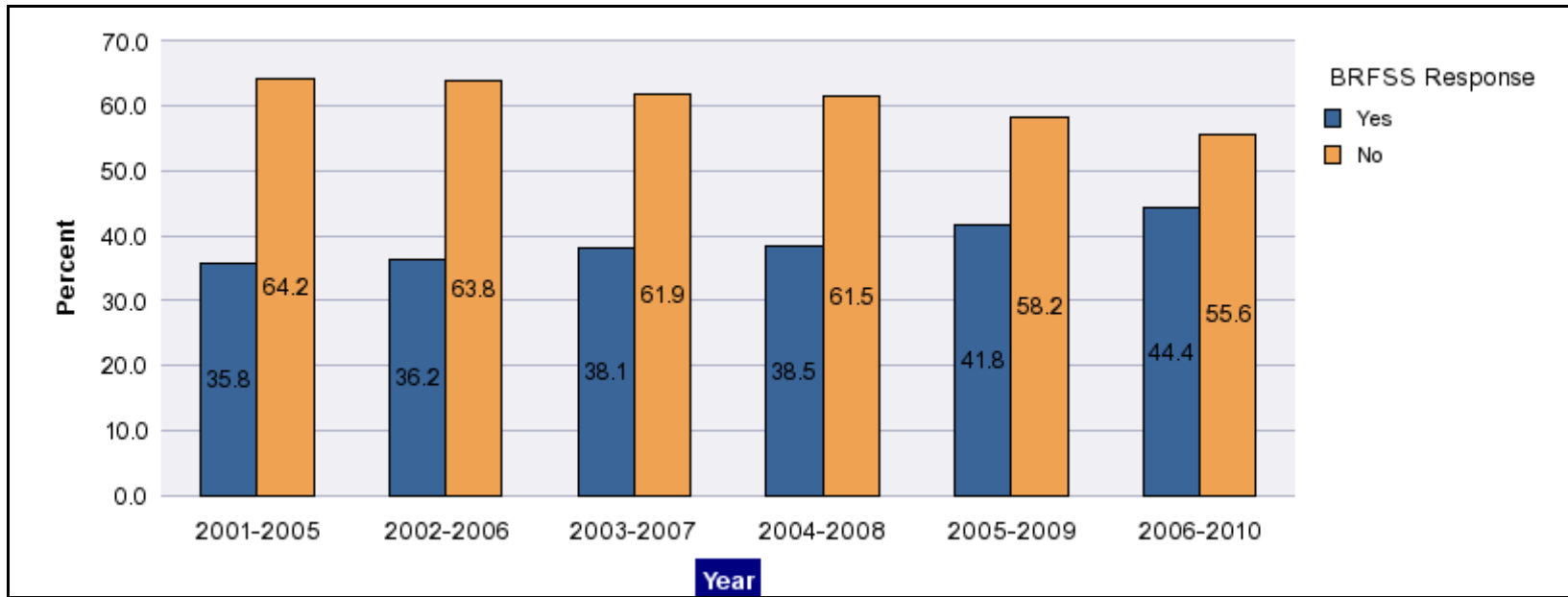
Flu - had shot in past 12 mons by State, County, Island, Community, BRFSS Age Group, DOH Race-Ethnicity, Gender, Education Level, Employment Status (Grouped), Household Income, Poverty Level, Marital Status (Grouped), Married, Health Care Coverage, for the Year(s) - 2001-2005, 2002-2006, 2003-2007, 2004-2008, 2005-2009, 2006-2010

Note: Weighted numbers (#) represent 5-yr averages, percentages and 95% confidence intervals; Respondents aged 18 years and older; n/r (Not Reportable) - If the unweighted total responses for a dimension (row) is <50 that row will not be shown; n/a (Not Available) - Not asked of a subset of respondents

Year	Yes			No			Estimated Population (5-yr Avg)
	#	%	C.I.(95%)	#	%	C.I.(95%)	#
2001-2005	328,600	35.8	34.9 - 36.7	589,600	64.2	63.3 - 65.1	918,100
2002-2006	337,500	36.2	35.4 - 37.1	593,900	63.8	62.9 - 64.6	931,300
2003-2007	360,900	38.1	37.2 - 39.0	585,800	61.9	61.0 - 62.8	946,700
2004-2008	369,800	38.5	37.7 - 39.4	590,200	61.5	60.6 - 62.3	960,100
2005-2009	406,900	41.8	41.0 - 42.5	567,600	58.2	57.5 - 59.0	974,600
2006-2010	434,400	44.4	43.6 - 45.2	544,400	55.6	54.8 - 56.4	978,800

Flu - had shot in past 12 mons by State, County, Island, Community, BRFSS Age Group, DOH Race-Ethnicity, Gender, Education Level, Employment Status (Grouped), Household Income, Poverty Level, Marital Status (Grouped), Married, Health Care Coverage, for the Year(s) - 2001-2005, 2002-2006, 2003-2007, 2004-2008, 2005-2009, 2006-2010

Note: Weighted numbers (#) represent 5-yr averages, percentages and 95% confidence intervals; Respondents aged 18 years and older; n/r (Not Reportable) - If the unweighted total responses for a dimension (row) is <50 that row will not be shown; n/a (Not Available) - Not asked of a subset of respondents



Flu - had shot in past 12 mons by State, County, Island, Community, BRFSS Age Group, DOH Race-Ethnicity, Gender, Education Level, Employment Status (Grouped), Household Income, Poverty Level, Marital Status (Grouped), Married, Health Care Coverage, for the Year(s) - 2001-2005, 2002-2006, 2003-2007, 2004-2008, 2005-2009, 2006-2010

Note: Weighted numbers (#) represent 5-yr averages, percentages and 95% confidence intervals; Respondents aged 18 years and older; n/r (Not Reportable) - If the unweighted total responses for a dimension (row) is <50 that row will not be shown; n/a (Not Available) - Not asked of a subset of respondents

Year: 2006-2010

State	Yes			No			Estimated Population (5-yr Avg)
	#	%	C.I. (95%)	#	%	C.I. (95%)	#
Hawaii State	434,400	44.4	43.6 - 45.2	544,400	55.6	54.8 - 56.4	978,800

County	Yes			No			Estimated Population (5-yr Avg)
	#	%	C.I. (95%)	#	%	C.I. (95%)	#
Hawaii	48,800	37.1	35.7 - 38.5	82,700	62.9	61.5 - 64.3	131,500
Honolulu	327,400	47.3	46.3 - 48.3	364,800	52.7	51.7 - 53.7	692,200
Kauai	18,200	38.2	36.1 - 40.4	29,400	61.8	59.6 - 63.9	47,600
Maui	40,100	37.3	35.7 - 38.8	67,500	62.7	61.2 - 64.3	107,600

Flu - had shot in past 12 mons by State, County, Island, Community, BRFSS Age Group, DOH Race-Ethnicity, Gender, Education Level, Employment Status (Grouped), Household Income, Poverty Level, Marital Status (Grouped), Married, Health Care Coverage, for the Year(s) - 2001-2005, 2002-2006, 2003-2007, 2004-2008, 2005-2009, 2006-2010

Note: Weighted numbers (#) represent 5-yr averages, percentages and 95% confidence intervals; Respondents aged 18 years and older; n/r (Not Reportable) - If the unweighted total responses for a dimension (row) is <50 that row will not be shown; n/a (Not Available) - Not asked of a subset of respondents

Year: 2006-2010

Island	Yes			No			Estimated Population (5-yr Avg)
	#	%	C.I. (95%)	#	%	C.I. (95%)	#
Hawaii	48,800	37.1	35.7 - 38.5	82,700	62.9	61.5 - 64.3	131,500
Kauai	18,200	38.2	36.1 - 40.4	29,400	61.8	59.6 - 63.9	47,600
Lanai	700	35.1	31.2 - 39.1	1,200	64.9	60.9 - 68.8	1,900
Maui	35,900	36.6	34.9 - 38.3	62,300	63.4	61.7 - 65.1	98,200
Molokai	3,500	46.5	42.8 - 50.1	4,100	53.5	49.9 - 57.2	7,600
Oahu	327,400	47.3	46.3 - 48.3	364,800	52.7	51.7 - 53.7	692,200

Community	Yes			No			Estimated Population (5-yr Avg)
	#	%	C.I. (95%)	#	%	C.I. (95%)	#
Aiea/ Pearl City	32,900	50.8	47.4 - 54.1	31,900	49.2	45.9 - 52.6	64,800

Flu - had shot in past 12 mons by State, County, Island, Community, BRFSS Age Group, DOH Race-Ethnicity, Gender, Education Level, Employment Status (Grouped), Household Income, Poverty Level, Marital Status (Grouped), Married, Health Care Coverage, for the Year(s) - 2001-2005, 2002-2006, 2003-2007, 2004-2008, 2005-2009, 2006-2010

Note: Weighted numbers (#) represent 5-yr averages, percentages and 95% confidence intervals; Respondents aged 18 years and older; n/r (Not Reportable) - If the unweighted total responses for a dimension (row) is <50 that row will not be shown; n/a (Not Available) - Not asked of a subset of respondents

Year: 2006-2010

Community	Yes			No			Estimated Population (5-yr Avg)
	#	%	C.I. (95%)	#	%	C.I. (95%)	#
Ala Moana	13,300	47.0	42.8 - 51.3	15,000	53.0	48.7 - 57.2	28,300
Hanalei/ Kapaa	6,900	34.9	31.8 - 37.9	13,000	65.1	62.1 - 68.2	19,900
Hilo	17,100	43.9	41.2 - 46.6	21,800	56.1	53.4 - 58.8	38,900
Kaaawa/ Kahaluu/ Kaneohe	23,500	48.2	44.5 - 51.9	25,300	51.8	48.1 - 55.5	48,800
Kahului	13,100	39.5	36.4 - 42.6	20,000	60.5	57.4 - 63.6	33,100
Kailua/ Waimanalo	24,000	47.5	43.9 - 51.0	26,600	52.5	49.0 - 56.1	50,600
Kaimuki/ Palolo/ Waikiki	29,000	51.3	48.0 - 54.5	27,600	48.7	45.5 - 52.0	56,700
Kona	10,000	34.5	31.7 - 37.2	18,900	65.5	62.8 - 68.3	28,900
Lahaina/ Wailuku	12,400	38.8	35.6 - 42.0	19,600	61.2	58.0 - 64.4	32,000
Lanai	700	35.1	31.2 - 39.1	1,200	64.9	60.9 - 68.8	1,900
Lihue-Waimea	11,200	40.7	37.6 - 43.7	16,400	59.3	56.3 - 62.4	27,600

Flu - had shot in past 12 mons by State, County, Island, Community, BRFSS Age Group, DOH Race-Ethnicity, Gender, Education Level, Employment Status (Grouped), Household Income, Poverty Level, Marital Status (Grouped), Married, Health Care Coverage, for the Year(s) - 2001-2005, 2002-2006, 2003-2007, 2004-2008, 2005-2009, 2006-2010

Note: Weighted numbers (#) represent 5-yr averages, percentages and 95% confidence intervals; Respondents aged 18 years and older; n/r (Not Reportable) - If the unweighted total responses for a dimension (row) is <50 that row will not be shown; n/a (Not Available) - Not asked of a subset of respondents

Year: 2006-2010

Community	Yes			No			Estimated Population (5-yr Avg)
	#	%	C.I. (95%)	#	%	C.I. (95%)	#
Manoa/ Upper Makiki	24,000	50.3	46.7 - 53.8	23,700	49.7	46.2 - 53.3	47,700
Mililani/ Wahiawa	34,400	47.9	44.8 - 50.9	37,500	52.1	49.1 - 55.2	71,900
Molokai	3,500	46.5	42.8 - 50.1	4,100	53.5	49.9 - 57.2	7,600
Nanakuli/ Waianae	14,300	42.2	36.7 - 47.8	19,500	57.8	52.2 - 63.3	33,800
N.Hawaii	9,100	33.9	30.8 - 37.0	17,700	66.1	63.0 - 69.2	26,800
N.Shore/ Laie	9,100	40.2	34.5 - 45.9	13,500	59.8	54.1 - 65.5	22,600
Nuuanu/ Kalihi/ Moanalua	31,700	46.4	42.9 - 50.0	36,500	53.6	50.0 - 57.1	68,200
Puna/ Kau	12,600	34.3	31.6 - 37.0	24,200	65.7	63.0 - 68.4	36,800
Salt Lake/ Foster Village	16,100	46.7	42.2 - 51.2	18,400	53.3	48.8 - 57.8	34,500
Upcountry/ Hana	10,400	31.5	29.0 - 34.1	22,700	68.5	65.9 - 71.0	33,100
Waiialae/ Kahala/ Hawaii Kai	22,400	51.9	48.1 - 55.7	20,800	48.1	44.3 - 51.9	43,200

Flu - had shot in past 12 mons by State, County, Island, Community, BRFSS Age Group, DOH Race-Ethnicity, Gender, Education Level, Employment Status (Grouped), Household Income, Poverty Level, Marital Status (Grouped), Married, Health Care Coverage, for the Year(s) - 2001-2005, 2002-2006, 2003-2007, 2004-2008, 2005-2009, 2006-2010

Note: Weighted numbers (#) represent 5-yr averages, percentages and 95% confidence intervals; Respondents aged 18 years and older; n/r (Not Reportable) - If the unweighted total responses for a dimension (row) is <50 that row will not be shown; n/a (Not Available) - Not asked of a subset of respondents

Year: 2006-2010

Community	Yes			No			Estimated Population (5-yr Avg)
	#	%	C.I. (95%)	#	%	C.I. (95%)	#
Waipahu/ Kapolei/ Ewa	52,700	43.5	40.9 - 46.1	68,500	56.5	53.9 - 59.1	121,100

Flu - had shot in past 12 mons by State, County, Island, Community, BRFSS Age Group, DOH Race-Ethnicity, Gender, Education Level, Employment Status (Grouped), Household Income, Poverty Level, Marital Status (Grouped), Married, Health Care Coverage, for the Year(s) - 2001-2005, 2002-2006, 2003-2007, 2004-2008, 2005-2009, 2006-2010

Note: Weighted numbers (#) represent 5-yr averages, percentages and 95% confidence intervals; Respondents aged 18 years and older; n/r (Not Reportable) - If the unweighted total responses for a dimension (row) is <50 that row will not be shown; n/a (Not Available) - Not asked of a subset of respondents

Year: 2006-2010

BRFSS Age Group	Yes			No			Estimated Population (5-yr Avg)
	#	%	C.I. (95%)	#	%	C.I. (95%)	#
18-24	33,700	28.4	25.5 - 31.2	85,200	71.6	68.8 - 74.5	118,900
25-34	52,300	30.8	28.7 - 33.0	117,400	69.2	67.0 - 71.3	169,700
35-44	58,100	33.4	31.7 - 35.1	115,800	66.6	64.9 - 68.3	174,000
45-54	70,300	39.5	38.0 - 41.1	107,600	60.5	58.9 - 62.0	177,900
55-64	79,100	52.7	51.1 - 54.2	71,100	47.3	45.8 - 48.9	150,200
65-74	62,900	71.7	70.1 - 73.3	24,800	28.3	26.7 - 29.9	87,800
75+	75,000	78.8	77.2 - 80.3	20,200	21.2	19.7 - 22.8	95,300

Flu - had shot in past 12 mons by State, County, Island, Community, BRFSS Age Group, DOH Race-Ethnicity, Gender, Education Level, Employment Status (Grouped), Household Income, Poverty Level, Marital Status (Grouped), Married, Health Care Coverage, for the Year(s) - 2001-2005, 2002-2006, 2003-2007, 2004-2008, 2005-2009, 2006-2010

Note: Weighted numbers (#) represent 5-yr averages, percentages and 95% confidence intervals; Respondents aged 18 years and older; n/r (Not Reportable) - If the unweighted total responses for a dimension (row) is <50 that row will not be shown; n/a (Not Available) - Not asked of a subset of respondents

Year: 2006-2010

DOH Race-Ethnicity	Yes			No			Estimated Population (5-yr Avg)
	#	%	C.I. (95%)	#	%	C.I. (95%)	#
Caucasian	128,800	41.0	39.8 - 42.1	185,500	59.0	57.9 - 60.2	314,400
Native Hawaiian	50,300	39.6	37.4 - 41.7	76,800	60.4	58.3 - 62.6	127,100
Chinese	30,600	53.6	50.3 - 56.9	26,500	46.4	43.1 - 49.7	57,100
Filipino	69,300	43.9	41.7 - 46.2	88,400	56.1	53.8 - 58.3	157,600
Japanese	118,300	53.4	51.8 - 55.0	103,300	46.6	45.0 - 48.2	221,600
Black	5,100	34.4	28.2 - 40.5	9,700	65.6	59.5 - 71.8	14,800
Native Alaskan/ American Indian	1,600	31.0	22.2 - 39.7	3,500	69.0	60.3 - 77.8	5,100
Other Asian	10,500	42.5	37.1 - 47.8	14,200	57.5	52.2 - 62.9	24,700
Other Pacific Islander	9,000	34.0	27.9 - 40.0	17,600	66.0	60.0 - 72.1	26,600
Mixed Ethnicity	1,800	37.6	26.5 - 48.8	3,000	62.4	51.2 - 73.5	4,800
Other	7,700	35.9	30.7 - 41.1	13,700	64.1	58.9 - 69.3	21,400

Flu - had shot in past 12 mons by State, County, Island, Community, BRFSS Age Group, DOH Race-Ethnicity, Gender, Education Level, Employment Status (Grouped), Household Income, Poverty Level, Marital Status (Grouped), Married, Health Care Coverage, for the Year(s) - 2001-2005, 2002-2006, 2003-2007, 2004-2008, 2005-2009, 2006-2010

Note: Weighted numbers (#) represent 5-yr averages, percentages and 95% confidence intervals; Respondents aged 18 years and older; n/r (Not Reportable) - If the unweighted total responses for a dimension (row) is <50 that row will not be shown; n/a (Not Available) - Not asked of a subset of respondents

Year: 2006-2010

Gender	Yes			No			Estimated Population (5-yr Avg)
	#	%	C.I. (95%)	#	%	C.I. (95%)	#
Male	198,600	41.0	39.8 - 42.2	285,700	59.0	57.8 - 60.2	484,300
Female	235,800	47.7	46.7 - 48.7	258,700	52.3	51.3 - 53.3	494,500

Education Level	Yes			No			Estimated Population (5-yr Avg)
	#	%	C.I. (95%)	#	%	C.I. (95%)	#
Never attended school/ Only Kindergarten to Grades 8	8,400	63.9	57.9 - 69.8	4,800	36.1	30.2 - 42.1	13,200
Grades 9 thru 11 (Some High School)	16,500	42.6	38.3 - 46.8	22,200	57.4	53.2 - 61.7	38,700
Grades 12 or GED (High School Grad)	119,800	41.5	40.0 - 43.0	169,200	58.5	57.0 - 60.0	289,000
College 1 to 3 years (Some College/ Tech)	119,300	42.3	40.8 - 43.7	163,000	57.7	56.3 - 59.2	282,400
College 4 years or more (College Grad)	169,900	47.9	46.7 - 49.1	184,700	52.1	50.9 - 53.3	354,600

Flu - had shot in past 12 mons by State, County, Island, Community, BRFSS Age Group, DOH Race-Ethnicity, Gender, Education Level, Employment Status (Grouped), Household Income, Poverty Level, Marital Status (Grouped), Married, Health Care Coverage, for the Year(s) - 2001-2005, 2002-2006, 2003-2007, 2004-2008, 2005-2009, 2006-2010

Note: Weighted numbers (#) represent 5-yr averages, percentages and 95% confidence intervals; Respondents aged 18 years and older; n/r (Not Reportable) - If the unweighted total responses for a dimension (row) is <50 that row will not be shown; n/a (Not Available) - Not asked of a subset of respondents

Year: 2006-2010

Employment Status (Grouped)	Yes			No			Estimated Population (5-yr Avg)
	#	%	C.I. (95%)	#	%	C.I. (95%)	#
Employed	238,100	38.7	37.8 - 39.7	376,500	61.3	60.3 - 62.2	614,600
Unemployed	14,800	30.1	26.5 - 33.8	34,300	69.9	66.2 - 73.5	49,100
Retired/Unable to work	148,900	68.8	67.5 - 70.0	67,700	31.2	30.0 - 32.5	216,600
Student/Homemaker	32,400	33.1	30.5 - 35.8	65,400	66.9	64.2 - 69.5	97,700

Flu - had shot in past 12 mons by State, County, Island, Community, BRFSS Age Group, DOH Race-Ethnicity, Gender, Education Level, Employment Status (Grouped), Household Income, Poverty Level, Marital Status (Grouped), Married, Health Care Coverage, for the Year(s) - 2001-2005, 2002-2006, 2003-2007, 2004-2008, 2005-2009, 2006-2010

Note: Weighted numbers (#) represent 5-yr averages, percentages and 95% confidence intervals; Respondents aged 18 years and older; n/r (Not Reportable) - If the unweighted total responses for a dimension (row) is <50 that row will not be shown; n/a (Not Available) - Not asked of a subset of respondents

Year: 2006-2010

Household Income	Yes			No			Estimated Population (5-yr Avg)
	#	%	C.I. (95%)	#	%	C.I. (95%)	#
Less than \$10,000	10,600	36.3	32.2 - 40.5	18,600	63.7	59.5 - 67.8	29,200
\$10,000 to \$14,999	11,200	43.4	38.7 - 48.0	14,700	56.6	52.0 - 61.3	25,900
\$15,000 to \$19,999	20,100	43.8	40.4 - 47.2	25,800	56.2	52.8 - 59.6	45,900
\$20,000 to \$24,999	28,100	46.4	43.2 - 49.6	32,500	53.6	50.4 - 56.8	60,700
\$25,000 to \$34,999	46,800	45.4	43.0 - 47.8	56,300	54.6	52.2 - 57.0	103,100
\$35,000 to \$49,999	64,800	44.4	42.4 - 46.3	81,300	55.6	53.7 - 57.6	146,100
\$50,000 to \$74,999	72,200	43.3	41.5 - 45.1	94,600	56.7	54.9 - 58.5	166,700
\$75,000 or more	132,600	45.3	43.9 - 46.7	159,900	54.7	53.3 - 56.1	292,400

Flu - had shot in past 12 mons by State, County, Island, Community, BRFSS Age Group, DOH Race-Ethnicity, Gender, Education Level, Employment Status (Grouped), Household Income, Poverty Level, Marital Status (Grouped), Married, Health Care Coverage, for the Year(s) - 2001-2005, 2002-2006, 2003-2007, 2004-2008, 2005-2009, 2006-2010

Note: Weighted numbers (#) represent 5-yr averages, percentages and 95% confidence intervals; Respondents aged 18 years and older; n/r (Not Reportable) - If the unweighted total responses for a dimension (row) is <50 that row will not be shown; n/a (Not Available) - Not asked of a subset of respondents

Year: 2006-2010

Poverty Level	Yes			No			Estimated Population (5-yr Avg)
	#	%	C.I. (95%)	#	%	C.I. (95%)	#
0-130%	77,700	39.6	37.7 - 41.6	118,300	60.4	58.4 - 62.3	196,000
131-185%	53,800	42.7	40.5 - 44.9	72,200	57.3	55.1 - 59.5	126,000
186+%	254,900	46.5	45.6 - 47.5	293,100	53.5	52.5 - 54.4	548,000

Marital Status (Grouped)	Yes			No			Estimated Population (5-yr Avg)
	#	%	C.I. (95%)	#	%	C.I. (95%)	#
Married	274,600	47.6	46.7 - 48.6	302,100	52.4	51.4 - 53.3	576,700
Unmarried Couple	9,400	31.1	26.2 - 36.0	20,900	68.9	64.0 - 73.8	30,400
Widowed	40,000	70.5	68.4 - 72.6	16,800	29.5	27.4 - 31.6	56,800
Other	110,300	35.0	33.6 - 36.5	204,600	65.0	63.5 - 66.4	314,900

Flu - had shot in past 12 mons by State, County, Island, Community, BRFSS Age Group, DOH Race-Ethnicity, Gender, Education Level, Employment Status (Grouped), Household Income, Poverty Level, Marital Status (Grouped), Married, Health Care Coverage, for the Year(s) - 2001-2005, 2002-2006, 2003-2007, 2004-2008, 2005-2009, 2006-2010

Note: Weighted numbers (#) represent 5-yr averages, percentages and 95% confidence intervals; Respondents aged 18 years and older; n/r (Not Reportable) - If the unweighted total responses for a dimension (row) is <50 that row will not be shown; n/a (Not Available) - Not asked of a subset of respondents

Year: 2006-2010

Married	Yes			No			Estimated Population (5-yr Avg)
	#	%	C.I. (95%)	#	%	C.I. (95%)	#
Yes	278,900	47.5	46.5 - 48.4	308,500	52.5	51.6 - 53.5	587,400
No	154,800	39.7	38.4 - 41.0	234,900	60.3	59.0 - 61.6	389,800

Health Care Coverage	Yes			No			Estimated Population (5-yr Avg)
	#	%	C.I. (95%)	#	%	C.I. (95%)	#
Yes	423,000	46.5	45.7 - 47.3	487,000	53.5	52.7 - 54.3	909,900
No	10,900	16.2	13.4 - 19.0	56,000	83.8	81.0 - 86.6	66,900

Flu - had shot in past 12 mons by State, County, Island, Community, BRFSS Age Group, DOH Race-Ethnicity, Gender, Education Level, Employment Status (Grouped), Household Income, Poverty Level, Marital Status (Grouped), Married, Health Care Coverage, for the Year(s) - 2001-2005, 2002-2006, 2003-2007, 2004-2008, 2005-2009, 2006-2010

Note: Weighted numbers (#) represent 5-yr averages, percentages and 95% confidence intervals; Respondents aged 18 years and older; n/r (Not Reportable) - If the unweighted total responses for a dimension (row) is <50 that row will not be shown; n/a (Not Available) - Not asked of a subset of respondents

Year: 2005-2009

State	Yes			No			Estimated Population (5-yr Avg)
	#	%	C.I. (95%)	#	%	C.I. (95%)	#
Hawaii State	406,900	41.8	41.0 - 42.5	567,600	58.2	57.5 - 59.0	974,600

County	Yes			No			Estimated Population (5-yr Avg)
	#	%	C.I. (95%)	#	%	C.I. (95%)	#
Hawaii	43,900	34.4	33.1 - 35.7	83,600	65.6	64.3 - 66.9	127,500
Honolulu	308,900	44.5	43.5 - 45.5	384,900	55.5	54.5 - 56.5	693,800
Kauai	17,100	36.3	34.2 - 38.5	30,000	63.7	61.5 - 65.8	47,100
Maui	37,100	34.9	33.4 - 36.4	69,100	65.1	63.6 - 66.6	106,100

Flu - had shot in past 12 mons by State, County, Island, Community, BRFSS Age Group, DOH Race-Ethnicity, Gender, Education Level, Employment Status (Grouped), Household Income, Poverty Level, Marital Status (Grouped), Married, Health Care Coverage, for the Year(s) - 2001-2005, 2002-2006, 2003-2007, 2004-2008, 2005-2009, 2006-2010

Note: Weighted numbers (#) represent 5-yr averages, percentages and 95% confidence intervals; Respondents aged 18 years and older; n/r (Not Reportable) - If the unweighted total responses for a dimension (row) is <50 that row will not be shown; n/a (Not Available) - Not asked of a subset of respondents

Year: 2005-2009

Island	Yes			No			Estimated Population (5-yr Avg)
	#	%	C.I. (95%)	#	%	C.I. (95%)	#
Hawaii	43,900	34.4	33.1 - 35.7	83,600	65.6	64.3 - 66.9	127,500
Kauai	17,100	36.3	34.2 - 38.5	30,000	63.7	61.5 - 65.8	47,100
Lanai	700	33.0	29.3 - 36.7	1,400	67.0	63.3 - 70.7	2,100
Maui	33,100	34.1	32.5 - 35.8	63,800	65.9	64.2 - 67.5	96,900
Molokai	3,300	46.1	42.3 - 49.9	3,900	53.9	50.1 - 57.7	7,200
Oahu	308,900	44.5	43.5 - 45.5	384,900	55.5	54.5 - 56.5	693,800

Community	Yes			No			Estimated Population (5-yr Avg)
	#	%	C.I. (95%)	#	%	C.I. (95%)	#
Aiea/ Pearl City	30,600	46.8	43.5 - 50.1	34,700	53.2	49.9 - 56.5	65,300

Flu - had shot in past 12 mons by State, County, Island, Community, BRFSS Age Group, DOH Race-Ethnicity, Gender, Education Level, Employment Status (Grouped), Household Income, Poverty Level, Marital Status (Grouped), Married, Health Care Coverage, for the Year(s) - 2001-2005, 2002-2006, 2003-2007, 2004-2008, 2005-2009, 2006-2010

Note: Weighted numbers (#) represent 5-yr averages, percentages and 95% confidence intervals; Respondents aged 18 years and older; n/r (Not Reportable) - If the unweighted total responses for a dimension (row) is <50 that row will not be shown; n/a (Not Available) - Not asked of a subset of respondents

Year: 2005-2009

Community	Yes			No			Estimated Population (5-yr Avg)
	#	%	C.I. (95%)	#	%	C.I. (95%)	#
Ala Moana	13,200	42.6	38.5 - 46.7	17,800	57.4	53.3 - 61.5	31,000
Hanalei/ Kapaa	6,400	32.8	29.7 - 35.8	13,200	67.2	64.2 - 70.3	19,700
Hilo	15,300	40.7	38.1 - 43.3	22,300	59.3	56.7 - 61.9	37,600
Kaaawa/ Kahaluu/ Kaneohe	22,300	45.9	42.2 - 49.5	26,400	54.1	50.5 - 57.8	48,700
Kahului	12,100	36.5	33.6 - 39.5	21,100	63.5	60.5 - 66.4	33,200
Kailua/ Waimanalo	22,600	45.0	41.5 - 48.5	27,600	55.0	51.5 - 58.5	50,200
Kaimuki/ Palolo/ Waikiki	26,500	45.1	42.1 - 48.2	32,200	54.9	51.8 - 57.9	58,700
Kona	9,000	31.3	28.7 - 34.0	19,600	68.7	66.0 - 71.3	28,600
Lahaina/ Wailuku	11,200	35.4	32.4 - 38.3	20,500	64.6	61.7 - 67.6	31,600
Lanai	700	33.0	29.3 - 36.7	1,400	67.0	63.3 - 70.7	2,100
Lihue-Waimea	10,700	38.9	36.0 - 41.8	16,800	61.1	58.2 - 64.0	27,400

Flu - had shot in past 12 mons by State, County, Island, Community, BRFSS Age Group, DOH Race-Ethnicity, Gender, Education Level, Employment Status (Grouped), Household Income, Poverty Level, Marital Status (Grouped), Married, Health Care Coverage, for the Year(s) - 2001-2005, 2002-2006, 2003-2007, 2004-2008, 2005-2009, 2006-2010

Note: Weighted numbers (#) represent 5-yr averages, percentages and 95% confidence intervals; Respondents aged 18 years and older; n/r (Not Reportable) - If the unweighted total responses for a dimension (row) is <50 that row will not be shown; n/a (Not Available) - Not asked of a subset of respondents

Year: 2005-2009

Community	Yes			No			Estimated Population (5-yr Avg)
	#	%	C.I. (95%)	#	%	C.I. (95%)	#
Manoa/ Upper Makiki	20,900	45.9	42.4 - 49.3	24,700	54.1	50.7 - 57.6	45,600
Mililani/ Wahiawa	32,400	44.9	41.9 - 47.9	39,800	55.1	52.1 - 58.1	72,200
Molokai	3,300	46.1	42.3 - 49.9	3,900	53.9	50.1 - 57.7	7,200
Nanakuli/ Waianae	13,700	42.9	37.5 - 48.3	18,300	57.1	51.7 - 62.5	32,000
N.Hawaii	8,700	32.5	29.5 - 35.5	18,000	67.5	64.5 - 70.5	26,700
N.Shore/ Laie	8,000	36.8	31.5 - 42.2	13,700	63.2	57.8 - 68.5	21,700
Nuuanu/ Kalihi/ Moanalua	30,900	44.7	41.2 - 48.1	38,200	55.3	51.9 - 58.8	69,100
Puna/ Kau	10,900	31.5	29.0 - 34.1	23,700	68.5	65.9 - 71.0	34,600
Salt Lake/ Foster Village	15,200	44.4	39.8 - 48.9	19,000	55.6	51.1 - 60.2	34,200
Upcountry/ Hana	9,800	30.5	27.9 - 33.0	22,300	69.5	67.0 - 72.1	32,100
Waiialae/ Kahala/ Hawaii Kai	21,900	49.2	45.5 - 52.9	22,600	50.8	47.1 - 54.5	44,500

Flu - had shot in past 12 mons by State, County, Island, Community, BRFSS Age Group, DOH Race-Ethnicity, Gender, Education Level, Employment Status (Grouped), Household Income, Poverty Level, Marital Status (Grouped), Married, Health Care Coverage, for the Year(s) - 2001-2005, 2002-2006, 2003-2007, 2004-2008, 2005-2009, 2006-2010

Note: Weighted numbers (#) represent 5-yr averages, percentages and 95% confidence intervals; Respondents aged 18 years and older; n/r (Not Reportable) - If the unweighted total responses for a dimension (row) is <50 that row will not be shown; n/a (Not Available) - Not asked of a subset of respondents

Year: 2005-2009

Community	Yes			No			Estimated Population (5-yr Avg)
	#	%	C.I. (95%)	#	%	C.I. (95%)	#
Waipahu/ Kapolei/ Ewa	50,700	42.1	39.5 - 44.6	69,800	57.9	55.4 - 60.5	120,500

Flu - had shot in past 12 mons by State, County, Island, Community, BRFSS Age Group, DOH Race-Ethnicity, Gender, Education Level, Employment Status (Grouped), Household Income, Poverty Level, Marital Status (Grouped), Married, Health Care Coverage, for the Year(s) - 2001-2005, 2002-2006, 2003-2007, 2004-2008, 2005-2009, 2006-2010

Note: Weighted numbers (#) represent 5-yr averages, percentages and 95% confidence intervals; Respondents aged 18 years and older; n/r (Not Reportable) - If the unweighted total responses for a dimension (row) is <50 that row will not be shown; n/a (Not Available) - Not asked of a subset of respondents

Year: 2005-2009

BRFSS Age Group	Yes			No			Estimated Population (5-yr Avg)
	#	%	C.I. (95%)	#	%	C.I. (95%)	#
18-24	31,600	26.6	23.8 - 29.3	87,300	73.4	70.7 - 76.2	119,000
25-34	48,200	28.8	26.8 - 30.8	119,000	71.2	69.2 - 73.2	167,200
35-44	53,400	30.3	28.7 - 31.9	122,800	69.7	68.1 - 71.3	176,200
45-54	63,500	35.4	33.9 - 36.9	115,800	64.6	63.1 - 66.1	179,300
55-64	72,900	49.1	47.5 - 50.8	75,500	50.9	49.2 - 52.5	148,400
65-74	61,300	71.2	69.5 - 73.0	24,800	28.8	27.0 - 30.5	86,000
75+	73,400	78.9	77.3 - 80.5	19,600	21.1	19.5 - 22.7	93,000

Flu - had shot in past 12 mons by State, County, Island, Community, BRFSS Age Group, DOH Race-Ethnicity, Gender, Education Level, Employment Status (Grouped), Household Income, Poverty Level, Marital Status (Grouped), Married, Health Care Coverage, for the Year(s) - 2001-2005, 2002-2006, 2003-2007, 2004-2008, 2005-2009, 2006-2010

Note: Weighted numbers (#) represent 5-yr averages, percentages and 95% confidence intervals; Respondents aged 18 years and older; n/r (Not Reportable) - If the unweighted total responses for a dimension (row) is <50 that row will not be shown; n/a (Not Available) - Not asked of a subset of respondents

Year: 2005-2009

DOH Race-Ethnicity	Yes			No			Estimated Population (5-yr Avg)
	#	%	C.I. (95%)	#	%	C.I. (95%)	#
Caucasian	121,700	38.3	37.2 - 39.4	196,300	61.7	60.6 - 62.8	318,000
Native Hawaiian	46,600	37.4	35.3 - 39.5	78,100	62.6	60.5 - 64.7	124,700
Chinese	27,400	48.3	45.0 - 51.6	29,300	51.7	48.4 - 55.0	56,700
Filipino	66,000	42.2	39.9 - 44.4	90,500	57.8	55.6 - 60.1	156,500
Japanese	108,600	50.1	48.5 - 51.6	108,400	49.9	48.4 - 51.5	217,000
Black	5,800	36.1	30.1 - 42.1	10,200	63.9	57.9 - 69.9	16,000
Native Alaskan/ American Indian	1,700	33.1	24.5 - 41.6	3,500	66.9	58.4 - 75.5	5,200
Other Asian	9,500	40.3	35.0 - 45.7	14,100	59.7	54.3 - 65.0	23,600
Other Pacific Islander	8,500	34.5	28.6 - 40.3	16,100	65.5	59.7 - 71.4	24,600
Mixed Ethnicity	1,800	37.6	26.5 - 48.8	3,000	62.4	51.2 - 73.5	4,800
Other	7,900	33.9	29.2 - 38.6	15,500	66.1	61.4 - 70.8	23,400

Flu - had shot in past 12 mons by State, County, Island, Community, BRFSS Age Group, DOH Race-Ethnicity, Gender, Education Level, Employment Status (Grouped), Household Income, Poverty Level, Marital Status (Grouped), Married, Health Care Coverage, for the Year(s) - 2001-2005, 2002-2006, 2003-2007, 2004-2008, 2005-2009, 2006-2010

Note: Weighted numbers (#) represent 5-yr averages, percentages and 95% confidence intervals; Respondents aged 18 years and older; n/r (Not Reportable) - If the unweighted total responses for a dimension (row) is <50 that row will not be shown; n/a (Not Available) - Not asked of a subset of respondents

Year: 2005-2009

Gender	Yes			No			Estimated Population (5-yr Avg)
	#	%	C.I. (95%)	#	%	C.I. (95%)	#
Male	190,800	39.6	38.4 - 40.7	291,300	60.4	59.3 - 61.6	482,100
Female	216,200	43.9	42.9 - 44.9	276,300	56.1	55.1 - 57.1	492,500

Education Level	Yes			No			Estimated Population (5-yr Avg)
	#	%	C.I. (95%)	#	%	C.I. (95%)	#
Never attended school/ Only Kindergarten to Grades 8	8,900	59.7	53.4 - 65.9	6,000	40.3	34.1 - 46.6	14,900
Grades 9 thru 11 (Some High School)	16,600	43.1	39.2 - 47.0	21,800	56.9	53.0 - 60.8	38,400
Grades 12 or GED (High School Grad)	116,100	40.4	39.0 - 41.9	171,300	59.6	58.1 - 61.0	287,400
College 1 to 3 years (Some College/ Tech)	111,500	39.5	38.1 - 40.9	170,700	60.5	59.1 - 61.9	282,100
College 4 years or more (College Grad)	153,500	43.8	42.6 - 45.0	197,000	56.2	55.0 - 57.4	350,500

Flu - had shot in past 12 mons by State, County, Island, Community, BRFSS Age Group, DOH Race-Ethnicity, Gender, Education Level, Employment Status (Grouped), Household Income, Poverty Level, Marital Status (Grouped), Married, Health Care Coverage, for the Year(s) - 2001-2005, 2002-2006, 2003-2007, 2004-2008, 2005-2009, 2006-2010

Note: Weighted numbers (#) represent 5-yr averages, percentages and 95% confidence intervals; Respondents aged 18 years and older; n/r (Not Reportable) - If the unweighted total responses for a dimension (row) is <50 that row will not be shown; n/a (Not Available) - Not asked of a subset of respondents

Year: 2005-2009

Employment Status (Grouped)	Yes			No			Estimated Population (5-yr Avg)
	#	%	C.I. (95%)	#	%	C.I. (95%)	#
Employed	221,400	35.6	34.6 - 36.5	401,200	64.4	63.5 - 65.4	622,600
Unemployed	11,400	29.3	25.4 - 33.2	27,500	70.7	66.8 - 74.6	38,900
Retired/Unable to work	146,800	66.9	65.6 - 68.2	72,600	33.1	31.8 - 34.4	219,400
Student/Homemaker	26,900	29.1	26.6 - 31.7	65,500	70.9	68.3 - 73.4	92,400

Flu - had shot in past 12 mons by State, County, Island, Community, BRFSS Age Group, DOH Race-Ethnicity, Gender, Education Level, Employment Status (Grouped), Household Income, Poverty Level, Marital Status (Grouped), Married, Health Care Coverage, for the Year(s) - 2001-2005, 2002-2006, 2003-2007, 2004-2008, 2005-2009, 2006-2010

Note: Weighted numbers (#) represent 5-yr averages, percentages and 95% confidence intervals; Respondents aged 18 years and older; n/r (Not Reportable) - If the unweighted total responses for a dimension (row) is <50 that row will not be shown; n/a (Not Available) - Not asked of a subset of respondents

Year: 2005-2009

Household Income	Yes			No			Estimated Population (5-yr Avg)
	#	%	C.I. (95%)	#	%	C.I. (95%)	#
Less than \$10,000	10,100	38.5	34.2 - 42.8	16,200	61.5	57.2 - 65.8	26,400
\$10,000 to \$14,999	11,100	42.6	38.2 - 47.0	14,900	57.4	53.0 - 61.8	26,000
\$15,000 to \$19,999	19,900	44.3	40.9 - 47.6	25,100	55.7	52.4 - 59.1	45,000
\$20,000 to \$24,999	26,700	44.5	41.5 - 47.5	33,300	55.5	52.5 - 58.5	60,000
\$25,000 to \$34,999	45,000	43.6	41.2 - 45.9	58,400	56.4	54.1 - 58.8	103,400
\$35,000 to \$49,999	62,400	42.0	40.1 - 43.9	86,200	58.0	56.1 - 59.9	148,600
\$50,000 to \$74,999	68,000	39.5	37.7 - 41.2	104,300	60.5	58.8 - 62.3	172,300
\$75,000 or more	114,200	41.4	40.0 - 42.7	162,000	58.7	57.3 - 60.0	276,200

Flu - had shot in past 12 mons by State, County, Island, Community, BRFSS Age Group, DOH Race-Ethnicity, Gender, Education Level, Employment Status (Grouped), Household Income, Poverty Level, Marital Status (Grouped), Married, Health Care Coverage, for the Year(s) - 2001-2005, 2002-2006, 2003-2007, 2004-2008, 2005-2009, 2006-2010

Note: Weighted numbers (#) represent 5-yr averages, percentages and 95% confidence intervals; Respondents aged 18 years and older; n/r (Not Reportable) - If the unweighted total responses for a dimension (row) is <50 that row will not be shown; n/a (Not Available) - Not asked of a subset of respondents

Year: 2005-2009

Poverty Level	Yes			No			Estimated Population (5-yr Avg)
	#	%	C.I. (95%)	#	%	C.I. (95%)	#
0-130%	72,400	39.4	37.5 - 41.4	111,100	60.6	58.6 - 62.5	183,500
131-185%	47,900	41.1	38.7 - 43.4	68,700	58.9	56.6 - 61.3	116,500
186+%	237,200	42.5	41.6 - 43.4	320,600	57.5	56.6 - 58.4	557,800

Marital Status (Grouped)	Yes			No			Estimated Population (5-yr Avg)
	#	%	C.I. (95%)	#	%	C.I. (95%)	#
Married	257,000	44.5	43.5 - 45.4	321,100	55.5	54.6 - 56.5	578,100
Unmarried Couple	7,600	26.6	22.2 - 31.0	21,000	73.4	69.0 - 77.8	28,700
Widowed	39,500	69.4	67.2 - 71.5	17,400	30.6	28.5 - 32.8	56,900
Other	102,800	33.1	31.6 - 34.5	208,100	66.9	65.5 - 68.4	310,900

Flu - had shot in past 12 mons by State, County, Island, Community, BRFSS Age Group, DOH Race-Ethnicity, Gender, Education Level, Employment Status (Grouped), Household Income, Poverty Level, Marital Status (Grouped), Married, Health Care Coverage, for the Year(s) - 2001-2005, 2002-2006, 2003-2007, 2004-2008, 2005-2009, 2006-2010

Note: Weighted numbers (#) represent 5-yr averages, percentages and 95% confidence intervals; Respondents aged 18 years and older; n/r (Not Reportable) - If the unweighted total responses for a dimension (row) is <50 that row will not be shown; n/a (Not Available) - Not asked of a subset of respondents

Year: 2005-2009

Married	Yes			No			Estimated Population (5-yr Avg)
	#	%	C.I. (95%)	#	%	C.I. (95%)	#
Yes	261,100	44.4	43.4 - 45.3	327,500	55.6	54.7 - 56.6	588,600
No	145,300	37.8	36.6 - 39.1	238,900	62.2	60.9 - 63.4	384,200

Health Care Coverage	Yes			No			Estimated Population (5-yr Avg)
	#	%	C.I. (95%)	#	%	C.I. (95%)	#
Yes	396,000	43.8	43.0 - 44.6	507,800	56.2	55.4 - 57.0	903,800
No	10,500	15.3	12.9 - 17.8	58,100	84.7	82.2 - 87.1	68,700

Flu - had shot in past 12 mons by State, County, Island, Community, BRFSS Age Group, DOH Race-Ethnicity, Gender, Education Level, Employment Status (Grouped), Household Income, Poverty Level, Marital Status (Grouped), Married, Health Care Coverage, for the Year(s) - 2001-2005, 2002-2006, 2003-2007, 2004-2008, 2005-2009, 2006-2010

Note: Weighted numbers (#) represent 5-yr averages, percentages and 95% confidence intervals; Respondents aged 18 years and older; n/r (Not Reportable) - If the unweighted total responses for a dimension (row) is <50 that row will not be shown; n/a (Not Available) - Not asked of a subset of respondents

Year: 2004-2008

State	Yes			No			Estimated Population (5-yr Avg)
	#	%	C.I. (95%)	#	%	C.I. (95%)	#
Hawaii State	369,800	38.5	37.7 - 39.4	590,200	61.5	60.6 - 62.3	960,100

County	Yes			No			Estimated Population (5-yr Avg)
	#	%	C.I. (95%)	#	%	C.I. (95%)	#
Hawaii	39,300	31.2	29.7 - 32.6	86,900	68.8	67.4 - 70.3	126,200
Honolulu	282,300	41.3	40.1 - 42.4	401,700	58.7	57.6 - 59.9	684,000
Kauai	15,000	32.7	30.5 - 34.9	30,800	67.3	65.1 - 69.5	45,800
Maui	33,200	31.9	30.2 - 33.7	70,900	68.1	66.3 - 69.8	104,100

Flu - had shot in past 12 mons by State, County, Island, Community, BRFSS Age Group, DOH Race-Ethnicity, Gender, Education Level, Employment Status (Grouped), Household Income, Poverty Level, Marital Status (Grouped), Married, Health Care Coverage, for the Year(s) - 2001-2005, 2002-2006, 2003-2007, 2004-2008, 2005-2009, 2006-2010

Note: Weighted numbers (#) represent 5-yr averages, percentages and 95% confidence intervals; Respondents aged 18 years and older; n/r (Not Reportable) - If the unweighted total responses for a dimension (row) is <50 that row will not be shown; n/a (Not Available) - Not asked of a subset of respondents

Year: 2004-2008

Island	Yes			No			Estimated Population (5-yr Avg)
	#	%	C.I. (95%)	#	%	C.I. (95%)	#
Hawaii	39,300	31.2	29.7 - 32.6	86,900	68.8	67.4 - 70.3	126,200
Kauai	15,000	32.7	30.5 - 34.9	30,800	67.3	65.1 - 69.5	45,800
Lanai	600	31.2	27.3 - 35.1	1,400	68.8	64.9 - 72.7	2,000
Maui	29,900	31.3	29.5 - 33.2	65,500	68.7	66.8 - 70.5	95,400
Molokai	2,700	40.6	36.2 - 45.0	4,000	59.4	55.0 - 63.8	6,700
Oahu	282,300	41.3	40.1 - 42.4	401,700	58.7	57.6 - 59.9	684,000

Community	Yes			No			Estimated Population (5-yr Avg)
	#	%	C.I. (95%)	#	%	C.I. (95%)	#
Aiea/ Pearl City	30,300	45.8	42.1 - 49.5	35,800	54.2	50.5 - 57.9	66,000

Flu - had shot in past 12 mons by State, County, Island, Community, BRFSS Age Group, DOH Race-Ethnicity, Gender, Education Level, Employment Status (Grouped), Household Income, Poverty Level, Marital Status (Grouped), Married, Health Care Coverage, for the Year(s) - 2001-2005, 2002-2006, 2003-2007, 2004-2008, 2005-2009, 2006-2010

Note: Weighted numbers (#) represent 5-yr averages, percentages and 95% confidence intervals; Respondents aged 18 years and older; n/r (Not Reportable) - If the unweighted total responses for a dimension (row) is <50 that row will not be shown; n/a (Not Available) - Not asked of a subset of respondents

Year: 2004-2008

Community	Yes			No			Estimated Population (5-yr Avg)
	#	%	C.I. (95%)	#	%	C.I. (95%)	#
Ala Moana	12,600	39.9	35.0 - 44.9	19,000	60.1	55.1 - 65.0	31,600
Hanalei/ Kapaa	5,400	28.2	25.1 - 31.3	13,700	71.8	68.7 - 74.9	19,000
Hilo	13,300	36.4	33.7 - 39.2	23,100	63.6	60.8 - 66.3	36,400
Kaaawa/ Kahaluu/ Kaneohe	20,000	42.3	38.0 - 46.5	27,300	57.7	53.5 - 62.0	47,200
Kahului	11,100	34.1	30.6 - 37.5	21,400	65.9	62.5 - 69.4	32,500
Kailua/ Waimanalo	21,000	43.3	39.3 - 47.2	27,600	56.7	52.8 - 60.7	48,600
Kaimuki/ Palolo/ Waikiki	24,600	41.3	37.8 - 44.9	34,900	58.7	55.1 - 62.2	59,500
Kona	7,800	28.1	25.4 - 30.9	20,000	71.9	69.1 - 74.6	27,900
Lahaina/ Wailuku	10,400	33.1	29.6 - 36.5	20,900	66.9	63.5 - 70.4	31,300
Lanai	600	31.2	27.3 - 35.1	1,400	68.8	64.9 - 72.7	2,000
Lihue-Waimea	9,600	35.9	32.9 - 38.9	17,100	64.1	61.1 - 67.1	26,700

Flu - had shot in past 12 mons by State, County, Island, Community, BRFSS Age Group, DOH Race-Ethnicity, Gender, Education Level, Employment Status (Grouped), Household Income, Poverty Level, Marital Status (Grouped), Married, Health Care Coverage, for the Year(s) - 2001-2005, 2002-2006, 2003-2007, 2004-2008, 2005-2009, 2006-2010

Note: Weighted numbers (#) represent 5-yr averages, percentages and 95% confidence intervals; Respondents aged 18 years and older; n/r (Not Reportable) - If the unweighted total responses for a dimension (row) is <50 that row will not be shown; n/a (Not Available) - Not asked of a subset of respondents

Year: 2004-2008

Community	Yes			No			Estimated Population (5-yr Avg)
	#	%	C.I. (95%)	#	%	C.I. (95%)	#
Manoa/ Upper Makiki	18,300	39.8	35.9 - 43.7	27,700	60.2	56.3 - 64.1	46,000
Mililani/ Wahiawa	27,900	40.9	37.1 - 44.7	40,300	59.1	55.3 - 62.9	68,200
Molokai	2,700	40.6	36.2 - 45.0	4,000	59.4	55.0 - 63.8	6,700
Nanakuli/ Waianae	14,200	42.2	36.2 - 48.2	19,500	57.8	51.8 - 63.8	33,700
N.Hawaii	7,700	29.9	26.7 - 33.1	18,100	70.1	66.9 - 73.3	25,900
N.Shore/ Laie	8,000	36.2	30.1 - 42.3	14,100	63.8	57.7 - 69.9	22,100
Nuuanu/ Kalihi/ Moanalua	26,300	39.2	35.4 - 42.9	40,800	60.8	57.1 - 64.6	67,100
Puna/ Kau	10,500	29.1	26.2 - 32.0	25,600	70.9	68.0 - 73.8	36,000
Salt Lake/ Foster Village	13,800	41.3	36.2 - 46.3	19,700	58.7	53.7 - 63.8	33,500
Upcountry/ Hana	8,500	26.8	24.0 - 29.6	23,100	73.2	70.4 - 76.0	31,600
Waiialae/ Kahala/ Hawaii Kai	18,200	44.8	40.5 - 49.2	22,500	55.2	50.8 - 59.5	40,700

Flu - had shot in past 12 mons by State, County, Island, Community, BRFSS Age Group, DOH Race-Ethnicity, Gender, Education Level, Employment Status (Grouped), Household Income, Poverty Level, Marital Status (Grouped), Married, Health Care Coverage, for the Year(s) - 2001-2005, 2002-2006, 2003-2007, 2004-2008, 2005-2009, 2006-2010

Note: Weighted numbers (#) represent 5-yr averages, percentages and 95% confidence intervals; Respondents aged 18 years and older; n/r (Not Reportable) - If the unweighted total responses for a dimension (row) is <50 that row will not be shown; n/a (Not Available) - Not asked of a subset of respondents

Year: 2004-2008

Community	Yes			No			Estimated Population (5-yr Avg)
	#	%	C.I. (95%)	#	%	C.I. (95%)	#
Waipahu/ Kapolei/ Ewa	47,000	39.3	36.4 - 42.2	72,600	60.7	57.8 - 63.6	119,600

Flu - had shot in past 12 mons by State, County, Island, Community, BRFSS Age Group, DOH Race-Ethnicity, Gender, Education Level, Employment Status (Grouped), Household Income, Poverty Level, Marital Status (Grouped), Married, Health Care Coverage, for the Year(s) - 2001-2005, 2002-2006, 2003-2007, 2004-2008, 2005-2009, 2006-2010

Note: Weighted numbers (#) represent 5-yr averages, percentages and 95% confidence intervals; Respondents aged 18 years and older; n/r (Not Reportable) - If the unweighted total responses for a dimension (row) is <50 that row will not be shown; n/a (Not Available) - Not asked of a subset of respondents

Year: 2004-2008

BRFSS Age Group	Yes			No			Estimated Population (5-yr Avg)
	#	%	C.I. (95%)	#	%	C.I. (95%)	#
18-24	32,100	27.4	24.0 - 30.7	85,200	72.6	69.3 - 76.0	117,300
25-34	43,300	26.1	23.9 - 28.2	122,800	73.9	71.8 - 76.1	166,100
35-44	47,000	26.6	24.8 - 28.3	129,900	73.4	71.7 - 75.2	176,900
45-54	54,700	30.9	29.2 - 32.6	122,300	69.1	67.4 - 70.8	177,100
55-64	63,300	44.4	42.5 - 46.3	79,300	55.6	53.7 - 57.5	142,700
65-74	57,900	68.6	66.2 - 71.0	26,500	31.4	29.0 - 33.8	84,400
75+	68,400	77.0	74.8 - 79.2	20,400	23.0	20.8 - 25.2	88,900

Flu - had shot in past 12 mons by State, County, Island, Community, BRFSS Age Group, DOH Race-Ethnicity, Gender, Education Level, Employment Status (Grouped), Household Income, Poverty Level, Marital Status (Grouped), Married, Health Care Coverage, for the Year(s) - 2001-2005, 2002-2006, 2003-2007, 2004-2008, 2005-2009, 2006-2010

Note: Weighted numbers (#) represent 5-yr averages, percentages and 95% confidence intervals; Respondents aged 18 years and older; n/r (Not Reportable) - If the unweighted total responses for a dimension (row) is <50 that row will not be shown; n/a (Not Available) - Not asked of a subset of respondents

Year: 2004-2008

DOH Race-Ethnicity	Yes			No			Estimated Population (5-yr Avg)
	#	%	C.I. (95%)	#	%	C.I. (95%)	#
Caucasian	112,700	35.8	34.5 - 37.1	202,000	64.2	62.9 - 65.5	314,600
Native Hawaiian	42,100	33.6	31.3 - 36.0	83,100	66.4	64.0 - 68.7	125,200
Chinese	23,400	43.0	39.3 - 46.7	31,000	57.0	53.3 - 60.7	54,300
Filipino	61,000	39.8	37.3 - 42.4	92,100	60.2	57.6 - 62.7	153,100
Japanese	96,500	46.3	44.5 - 48.1	111,900	53.7	51.9 - 55.5	208,400
Black	4,900	33.7	27.3 - 40.1	9,700	66.3	59.9 - 72.7	14,700
Native Alaskan/ American Indian	1,600	29.0	19.8 - 38.1	4,000	71.0	61.9 - 80.2	5,700
Other Asian	8,600	37.2	30.5 - 43.9	14,500	62.8	56.1 - 69.5	23,100
Other Pacific Islander	8,100	34.1	25.6 - 42.5	15,800	65.9	57.5 - 74.4	23,900
Mixed Ethnicity	1,800	37.6	26.5 - 48.8	3,000	62.4	51.2 - 73.5	4,800
Other	7,200	30.2	25.3 - 35.1	16,600	69.8	64.9 - 74.7	23,800

Flu - had shot in past 12 mons by State, County, Island, Community, BRFSS Age Group, DOH Race-Ethnicity, Gender, Education Level, Employment Status (Grouped), Household Income, Poverty Level, Marital Status (Grouped), Married, Health Care Coverage, for the Year(s) - 2001-2005, 2002-2006, 2003-2007, 2004-2008, 2005-2009, 2006-2010

Note: Weighted numbers (#) represent 5-yr averages, percentages and 95% confidence intervals; Respondents aged 18 years and older; n/r (Not Reportable) - If the unweighted total responses for a dimension (row) is <50 that row will not be shown; n/a (Not Available) - Not asked of a subset of respondents

Year: 2004-2008

Gender	Yes			No			Estimated Population (5-yr Avg)
	#	%	C.I. (95%)	#	%	C.I. (95%)	#
Male	173,500	36.7	35.3 - 38.0	299,700	63.3	62.0 - 64.7	473,200
Female	196,400	40.3	39.2 - 41.4	290,500	59.7	58.6 - 60.8	486,800

Education Level	Yes			No			Estimated Population (5-yr Avg)
	#	%	C.I. (95%)	#	%	C.I. (95%)	#
Never attended school/ Only Kindergarten to Grades 8	8,400	58.4	51.8 - 65.0	6,000	41.6	35.0 - 48.2	14,400
Grades 9 thru 11 (Some High School)	15,000	40.2	35.8 - 44.5	22,400	59.8	55.5 - 64.2	37,400
Grades 12 or GED (High School Grad)	110,000	38.2	36.5 - 39.9	178,100	61.8	60.1 - 63.5	288,100
College 1 to 3 years (Some College/ Tech)	102,800	36.4	34.7 - 38.0	179,900	63.6	62.0 - 65.3	282,700
College 4 years or more (College Grad)	133,300	39.7	38.3 - 41.0	202,800	60.3	59.0 - 61.7	336,100

Flu - had shot in past 12 mons by State, County, Island, Community, BRFSS Age Group, DOH Race-Ethnicity, Gender, Education Level, Employment Status (Grouped), Household Income, Poverty Level, Marital Status (Grouped), Married, Health Care Coverage, for the Year(s) - 2001-2005, 2002-2006, 2003-2007, 2004-2008, 2005-2009, 2006-2010

Note: Weighted numbers (#) represent 5-yr averages, percentages and 95% confidence intervals; Respondents aged 18 years and older; n/r (Not Reportable) - If the unweighted total responses for a dimension (row) is <50 that row will not be shown; n/a (Not Available) - Not asked of a subset of respondents

Year: 2004-2008

Employment Status (Grouped)	Yes			No			Estimated Population (5-yr Avg)
	#	%	C.I. (95%)	#	%	C.I. (95%)	#
Employed	195,100	31.6	30.6 - 32.7	421,600	68.4	67.3 - 69.4	616,800
Unemployed	8,200	26.8	22.2 - 31.4	22,400	73.2	68.6 - 77.8	30,600
Retired/Unable to work	140,500	64.3	62.7 - 65.9	78,100	35.7	34.1 - 37.3	218,600
Student/Homemaker	25,400	27.4	24.5 - 30.3	67,300	72.6	69.7 - 75.5	92,700

Flu - had shot in past 12 mons by State, County, Island, Community, BRFSS Age Group, DOH Race-Ethnicity, Gender, Education Level, Employment Status (Grouped), Household Income, Poverty Level, Marital Status (Grouped), Married, Health Care Coverage, for the Year(s) - 2001-2005, 2002-2006, 2003-2007, 2004-2008, 2005-2009, 2006-2010

Note: Weighted numbers (#) represent 5-yr averages, percentages and 95% confidence intervals; Respondents aged 18 years and older; n/r (Not Reportable) - If the unweighted total responses for a dimension (row) is <50 that row will not be shown; n/a (Not Available) - Not asked of a subset of respondents

Year: 2004-2008

Household Income	Yes			No			Estimated Population (5-yr Avg)
	#	%	C.I. (95%)	#	%	C.I. (95%)	#
Less than \$10,000	9,600	39.5	34.5 - 44.6	14,600	60.5	55.4 - 65.5	24,200
\$10,000 to \$14,999	10,300	38.8	34.1 - 43.5	16,200	61.2	56.5 - 65.9	26,400
\$15,000 to \$19,999	18,800	42.0	38.0 - 46.0	26,000	58.0	54.0 - 62.0	44,800
\$20,000 to \$24,999	24,100	38.7	35.4 - 42.0	38,100	61.3	58.0 - 64.6	62,200
\$25,000 to \$34,999	44,500	41.4	38.7 - 44.1	63,100	58.6	55.9 - 61.3	107,700
\$35,000 to \$49,999	56,100	38.3	36.1 - 40.4	90,500	61.7	59.6 - 63.9	146,600
\$50,000 to \$74,999	68,500	35.3	33.2 - 37.4	125,500	64.7	62.6 - 66.8	194,100
\$75,000 or more	96,200	37.5	35.9 - 39.1	160,200	62.5	60.9 - 64.1	256,400

Flu - had shot in past 12 mons by State, County, Island, Community, BRFSS Age Group, DOH Race-Ethnicity, Gender, Education Level, Employment Status (Grouped), Household Income, Poverty Level, Marital Status (Grouped), Married, Health Care Coverage, for the Year(s) - 2001-2005, 2002-2006, 2003-2007, 2004-2008, 2005-2009, 2006-2010

Note: Weighted numbers (#) represent 5-yr averages, percentages and 95% confidence intervals; Respondents aged 18 years and older; n/r (Not Reportable) - If the unweighted total responses for a dimension (row) is <50 that row will not be shown; n/a (Not Available) - Not asked of a subset of respondents

Year: 2004-2008

Poverty Level	Yes			No			Estimated Population (5-yr Avg)
	#	%	C.I. (95%)	#	%	C.I. (95%)	#
0-130%	65,800	37.5	35.3 - 39.7	109,700	62.5	60.3 - 64.7	175,500
131-185%	41,100	37.0	34.0 - 40.0	70,000	63.0	60.0 - 66.0	111,100
186+%	221,100	38.4	37.4 - 39.4	354,600	61.6	60.6 - 62.6	575,700

Marital Status (Grouped)	Yes			No			Estimated Population (5-yr Avg)
	#	%	C.I. (95%)	#	%	C.I. (95%)	#
Married	230,600	40.5	39.5 - 41.6	338,200	59.5	58.4 - 60.5	568,800
Unmarried Couple	5,900	21.8	17.2 - 26.5	21,000	78.2	73.5 - 82.8	26,800
Widowed	37,500	66.9	64.1 - 69.8	18,500	33.1	30.2 - 35.9	56,000
Other	95,900	31.1	29.4 - 32.7	212,600	68.9	67.3 - 70.6	308,400

Flu - had shot in past 12 mons by State, County, Island, Community, BRFSS Age Group, DOH Race-Ethnicity, Gender, Education Level, Employment Status (Grouped), Household Income, Poverty Level, Marital Status (Grouped), Married, Health Care Coverage, for the Year(s) - 2001-2005, 2002-2006, 2003-2007, 2004-2008, 2005-2009, 2006-2010

Note: Weighted numbers (#) represent 5-yr averages, percentages and 95% confidence intervals; Respondents aged 18 years and older; n/r (Not Reportable) - If the unweighted total responses for a dimension (row) is <50 that row will not be shown; n/a (Not Available) - Not asked of a subset of respondents

Year: 2004-2008

Married	Yes			No			Estimated Population (5-yr Avg)
	#	%	C.I. (95%)	#	%	C.I. (95%)	#
Yes	234,100	40.4	39.3 - 41.5	345,200	59.6	58.5 - 60.7	579,300
No	135,300	35.7	34.3 - 37.2	243,300	64.3	62.8 - 65.7	378,700

Health Care Coverage	Yes			No			Estimated Population (5-yr Avg)
	#	%	C.I. (95%)	#	%	C.I. (95%)	#
Yes	357,900	40.4	39.5 - 41.3	528,700	59.6	58.7 - 60.5	886,600
No	11,500	16.1	13.0 - 19.2	59,700	83.9	80.8 - 87.0	71,100

Flu - had shot in past 12 mons by State, County, Island, Community, BRFSS Age Group, DOH Race-Ethnicity, Gender, Education Level, Employment Status (Grouped), Household Income, Poverty Level, Marital Status (Grouped), Married, Health Care Coverage, for the Year(s) - 2001-2005, 2002-2006, 2003-2007, 2004-2008, 2005-2009, 2006-2010

Note: Weighted numbers (#) represent 5-yr averages, percentages and 95% confidence intervals; Respondents aged 18 years and older; n/r (Not Reportable) - If the unweighted total responses for a dimension (row) is <50 that row will not be shown; n/a (Not Available) - Not asked of a subset of respondents

Year: 2003-2007

State	Yes			No			Estimated Population (5-yr Avg)
	#	%	C.I. (95%)	#	%	C.I. (95%)	#
Hawaii State	360,900	38.1	37.2 - 39.0	585,800	61.9	61.0 - 62.8	946,700

County	Yes			No			Estimated Population (5-yr Avg)
	#	%	C.I. (95%)	#	%	C.I. (95%)	#
Hawaii	37,900	30.9	29.4 - 32.4	84,900	69.1	67.6 - 70.6	122,700
Honolulu	277,600	41.0	39.8 - 42.2	399,400	59.0	57.8 - 60.2	677,000
Kauai	14,400	32.1	29.8 - 34.3	30,500	67.9	65.7 - 70.2	44,800
Maui	31,100	30.4	28.6 - 32.2	71,100	69.6	67.8 - 71.4	102,100

Flu - had shot in past 12 mons by State, County, Island, Community, BRFSS Age Group, DOH Race-Ethnicity, Gender, Education Level, Employment Status (Grouped), Household Income, Poverty Level, Marital Status (Grouped), Married, Health Care Coverage, for the Year(s) - 2001-2005, 2002-2006, 2003-2007, 2004-2008, 2005-2009, 2006-2010

Note: Weighted numbers (#) represent 5-yr averages, percentages and 95% confidence intervals; Respondents aged 18 years and older; n/r (Not Reportable) - If the unweighted total responses for a dimension (row) is <50 that row will not be shown; n/a (Not Available) - Not asked of a subset of respondents

Year: 2003-2007

Island	Yes			No			Estimated Population (5-yr Avg)
	#	%	C.I. (95%)	#	%	C.I. (95%)	#
Hawaii	37,900	30.9	29.4 - 32.4	84,900	69.1	67.6 - 70.6	122,700
Kauai	14,400	32.1	29.8 - 34.3	30,500	67.9	65.7 - 70.2	44,800
Lanai	500	26.1	21.7 - 30.5	1,500	73.9	69.5 - 78.3	2,100
Maui	27,900	29.8	27.8 - 31.7	65,700	70.2	68.3 - 72.2	93,500
Molokai	2,600	40.8	35.9 - 45.7	3,800	59.2	54.3 - 64.1	6,500
Oahu	277,600	41.0	39.8 - 42.2	399,400	59.0	57.8 - 60.2	677,000

Community	Yes			No			Estimated Population (5-yr Avg)
	#	%	C.I. (95%)	#	%	C.I. (95%)	#
Aiea/ Pearl City	30,300	47.4	43.5 - 51.2	33,600	52.6	48.8 - 56.5	63,900

Flu - had shot in past 12 mons by State, County, Island, Community, BRFSS Age Group, DOH Race-Ethnicity, Gender, Education Level, Employment Status (Grouped), Household Income, Poverty Level, Marital Status (Grouped), Married, Health Care Coverage, for the Year(s) - 2001-2005, 2002-2006, 2003-2007, 2004-2008, 2005-2009, 2006-2010

Note: Weighted numbers (#) represent 5-yr averages, percentages and 95% confidence intervals; Respondents aged 18 years and older; n/r (Not Reportable) - If the unweighted total responses for a dimension (row) is <50 that row will not be shown; n/a (Not Available) - Not asked of a subset of respondents

Year: 2003-2007

Community	Yes			No			Estimated Population (5-yr Avg)
	#	%	C.I. (95%)	#	%	C.I. (95%)	#
Ala Moana	12,200	38.9	33.9 - 43.9	19,100	61.1	56.1 - 66.1	31,300
Hanalei/ Kapaa	5,300	28.5	25.3 - 31.8	13,300	71.5	68.2 - 74.7	18,700
Hilo	12,100	34.5	31.8 - 37.3	22,900	65.5	62.7 - 68.2	34,900
Kaaawa/ Kahaluu/ Kaneohe	19,300	41.2	36.9 - 45.5	27,600	58.8	54.5 - 63.1	46,900
Kahului	11,100	34.2	30.7 - 37.8	21,300	65.8	62.2 - 69.3	32,400
Kailua/ Waimanalo	21,000	43.2	39.3 - 47.2	27,600	56.8	52.8 - 60.7	48,600
Kaimuki/ Palolo/ Waikiki	23,600	38.8	35.3 - 42.3	37,300	61.2	57.7 - 64.7	60,900
Kona	8,000	28.1	25.3 - 30.9	20,400	71.9	69.1 - 74.7	28,400
Lahaina/ Wailuku	9,300	30.8	27.2 - 34.4	20,800	69.2	65.6 - 72.8	30,100
Lanai	500	26.1	21.7 - 30.5	1,500	73.9	69.5 - 78.3	2,100
Lihue-Waimea	9,100	34.6	31.6 - 37.6	17,100	65.4	62.4 - 68.4	26,200

Flu - had shot in past 12 mons by State, County, Island, Community, BRFSS Age Group, DOH Race-Ethnicity, Gender, Education Level, Employment Status (Grouped), Household Income, Poverty Level, Marital Status (Grouped), Married, Health Care Coverage, for the Year(s) - 2001-2005, 2002-2006, 2003-2007, 2004-2008, 2005-2009, 2006-2010

Note: Weighted numbers (#) represent 5-yr averages, percentages and 95% confidence intervals; Respondents aged 18 years and older; n/r (Not Reportable) - If the unweighted total responses for a dimension (row) is <50 that row will not be shown; n/a (Not Available) - Not asked of a subset of respondents

Year: 2003-2007

Community	Yes			No			Estimated Population (5-yr Avg)
	#	%	C.I. (95%)	#	%	C.I. (95%)	#
Manoa/ Upper Makiki	18,700	39.4	35.4 - 43.5	28,800	60.6	56.5 - 64.6	47,500
Mililani/ Wahiawa	27,300	40.6	36.7 - 44.5	40,000	59.4	55.5 - 63.3	67,300
Molokai	2,600	40.8	35.9 - 45.7	3,800	59.2	54.3 - 64.1	6,500
Nanakuli/ Waianae	13,600	42.5	36.4 - 48.7	18,400	57.5	51.3 - 63.6	32,000
N.Hawaii	7,900	31.5	28.0 - 35.0	17,300	68.5	65.0 - 72.0	25,200
N.Shore/ Laie	8,000	35.7	29.6 - 41.8	14,400	64.3	58.2 - 70.4	22,300
Nuuanu/ Kalihi/ Moanalua	26,700	39.0	35.3 - 42.6	41,800	61.0	57.4 - 64.7	68,500
Puna/ Kau	9,900	28.9	25.9 - 32.0	24,300	71.1	68.0 - 74.1	34,200
Salt Lake/ Foster Village	15,300	43.8	38.7 - 48.8	19,700	56.2	51.2 - 61.3	35,100
Upcountry/ Hana	7,500	24.2	21.3 - 27.1	23,500	75.8	72.9 - 78.7	31,000
Waiialae/ Kahala/ Hawaii Kai	17,400	44.8	40.2 - 49.4	21,400	55.2	50.6 - 59.8	38,800

Flu - had shot in past 12 mons by State, County, Island, Community, BRFSS Age Group, DOH Race-Ethnicity, Gender, Education Level, Employment Status (Grouped), Household Income, Poverty Level, Marital Status (Grouped), Married, Health Care Coverage, for the Year(s) - 2001-2005, 2002-2006, 2003-2007, 2004-2008, 2005-2009, 2006-2010

Note: Weighted numbers (#) represent 5-yr averages, percentages and 95% confidence intervals; Respondents aged 18 years and older; n/r (Not Reportable) - If the unweighted total responses for a dimension (row) is <50 that row will not be shown; n/a (Not Available) - Not asked of a subset of respondents

Year: 2003-2007

Community	Yes			No			Estimated Population (5-yr Avg)
	#	%	C.I. (95%)	#	%	C.I. (95%)	#
Waipahu/ Kapolei/ Ewa	44,200	38.8	35.8 - 41.8	69,800	61.2	58.2 - 64.2	114,000

Flu - had shot in past 12 mons by State, County, Island, Community, BRFSS Age Group, DOH Race-Ethnicity, Gender, Education Level, Employment Status (Grouped), Household Income, Poverty Level, Marital Status (Grouped), Married, Health Care Coverage, for the Year(s) - 2001-2005, 2002-2006, 2003-2007, 2004-2008, 2005-2009, 2006-2010

Note: Weighted numbers (#) represent 5-yr averages, percentages and 95% confidence intervals; Respondents aged 18 years and older; n/r (Not Reportable) - If the unweighted total responses for a dimension (row) is <50 that row will not be shown; n/a (Not Available) - Not asked of a subset of respondents

Year: 2003-2007

BRFSS Age Group	Yes			No			Estimated Population (5-yr Avg)
	#	%	C.I. (95%)	#	%	C.I. (95%)	#
18-24	34,000	29.2	25.8 - 32.7	82,300	70.8	67.3 - 74.2	116,300
25-34	41,800	25.7	23.6 - 27.8	121,000	74.3	72.2 - 76.4	162,800
35-44	45,500	25.6	23.8 - 27.3	132,400	74.4	72.7 - 76.2	177,900
45-54	53,600	30.2	28.5 - 32.0	123,700	69.8	68.0 - 71.5	177,300
55-64	60,400	44.0	41.9 - 46.0	76,900	56.0	54.0 - 58.1	137,200
65-74	57,500	68.7	66.2 - 71.3	26,100	31.3	28.7 - 33.8	83,600
75+	65,700	76.6	74.3 - 79.0	20,000	23.4	21.0 - 25.7	85,700

Flu - had shot in past 12 mons by State, County, Island, Community, BRFSS Age Group, DOH Race-Ethnicity, Gender, Education Level, Employment Status (Grouped), Household Income, Poverty Level, Marital Status (Grouped), Married, Health Care Coverage, for the Year(s) - 2001-2005, 2002-2006, 2003-2007, 2004-2008, 2005-2009, 2006-2010

Note: Weighted numbers (#) represent 5-yr averages, percentages and 95% confidence intervals; Respondents aged 18 years and older; n/r (Not Reportable) - If the unweighted total responses for a dimension (row) is <50 that row will not be shown; n/a (Not Available) - Not asked of a subset of respondents

Year: 2003-2007

DOH Race-Ethnicity	Yes			No			Estimated Population (5-yr Avg)
	#	%	C.I. (95%)	#	%	C.I. (95%)	#
Caucasian	114,000	35.8	34.5 - 37.2	204,000	64.2	62.8 - 65.5	317,900
Native Hawaiian	38,500	33.7	31.2 - 36.2	76,000	66.3	63.8 - 68.8	114,500
Chinese	26,500	42.2	38.7 - 45.7	36,300	57.8	54.3 - 61.3	62,900
Filipino	59,900	39.2	36.6 - 41.8	92,900	60.8	58.2 - 63.4	152,800
Japanese	87,700	44.5	42.6 - 46.4	109,500	55.5	53.6 - 57.4	197,200
Black	5,000	35.0	28.3 - 41.6	9,400	65.0	58.4 - 71.7	14,400
Native Alaskan/ American Indian	1,500	29.5	19.3 - 39.8	3,700	70.5	60.2 - 80.7	5,200
Other Asian	7,700	35.9	28.8 - 42.9	13,800	64.1	57.1 - 71.2	21,500
Other Pacific Islander	8,200	37.0	28.1 - 45.9	13,900	63.0	54.1 - 71.9	22,100
Mixed Ethnicity	1,800	37.6	26.5 - 48.8	3,000	62.4	51.2 - 73.5	4,800
Other	7,900	32.3	27.2 - 37.4	16,500	67.7	62.6 - 72.8	24,400

Flu - had shot in past 12 mons by State, County, Island, Community, BRFSS Age Group, DOH Race-Ethnicity, Gender, Education Level, Employment Status (Grouped), Household Income, Poverty Level, Marital Status (Grouped), Married, Health Care Coverage, for the Year(s) - 2001-2005, 2002-2006, 2003-2007, 2004-2008, 2005-2009, 2006-2010

Note: Weighted numbers (#) represent 5-yr averages, percentages and 95% confidence intervals; Respondents aged 18 years and older; n/r (Not Reportable) - If the unweighted total responses for a dimension (row) is <50 that row will not be shown; n/a (Not Available) - Not asked of a subset of respondents

Year: 2003-2007

Gender	Yes			No			Estimated Population (5-yr Avg)
	#	%	C.I. (95%)	#	%	C.I. (95%)	#
Male	172,800	37.0	35.7 - 38.4	294,000	63.0	61.6 - 64.3	466,700
Female	188,200	39.2	38.1 - 40.3	291,800	60.8	59.7 - 61.9	479,900

Education Level	Yes			No			Estimated Population (5-yr Avg)
	#	%	C.I. (95%)	#	%	C.I. (95%)	#
Never attended school/ Only Kindergarten to Grades 8	8,800	57.8	51.2 - 64.4	6,400	42.2	35.6 - 48.8	15,200
Grades 9 thru 11 (Some High School)	15,400	42.0	37.4 - 46.7	21,200	58.0	53.3 - 62.6	36,700
Grades 12 or GED (High School Grad)	109,100	38.2	36.5 - 40.0	176,300	61.8	60.0 - 63.5	285,300
College 1 to 3 years (Some College/ Tech)	100,800	36.0	34.3 - 37.6	179,600	64.0	62.4 - 65.7	280,400
College 4 years or more (College Grad)	126,400	38.6	37.2 - 39.9	201,300	61.4	60.1 - 62.8	327,700

Flu - had shot in past 12 mons by State, County, Island, Community, BRFSS Age Group, DOH Race-Ethnicity, Gender, Education Level, Employment Status (Grouped), Household Income, Poverty Level, Marital Status (Grouped), Married, Health Care Coverage, for the Year(s) - 2001-2005, 2002-2006, 2003-2007, 2004-2008, 2005-2009, 2006-2010

Note: Weighted numbers (#) represent 5-yr averages, percentages and 95% confidence intervals; Respondents aged 18 years and older; n/r (Not Reportable) - If the unweighted total responses for a dimension (row) is <50 that row will not be shown; n/a (Not Available) - Not asked of a subset of respondents

Year: 2003-2007

Employment Status (Grouped)	Yes			No			Estimated Population (5-yr Avg)
	#	%	C.I. (95%)	#	%	C.I. (95%)	#
Employed	191,000	31.2	30.1 - 32.3	420,500	68.8	67.7 - 69.9	611,400
Unemployed	6,700	23.7	19.3 - 28.1	21,500	76.3	71.9 - 80.7	28,300
Retired/Unable to work	138,200	64.8	63.2 - 66.5	75,000	35.2	33.5 - 36.8	213,300
Student/Homemaker	24,400	26.4	23.5 - 29.3	68,000	73.6	70.7 - 76.5	92,400

Flu - had shot in past 12 mons by State, County, Island, Community, BRFSS Age Group, DOH Race-Ethnicity, Gender, Education Level, Employment Status (Grouped), Household Income, Poverty Level, Marital Status (Grouped), Married, Health Care Coverage, for the Year(s) - 2001-2005, 2002-2006, 2003-2007, 2004-2008, 2005-2009, 2006-2010

Note: Weighted numbers (#) represent 5-yr averages, percentages and 95% confidence intervals; Respondents aged 18 years and older; n/r (Not Reportable) - If the unweighted total responses for a dimension (row) is <50 that row will not be shown; n/a (Not Available) - Not asked of a subset of respondents

Year: 2003-2007

Household Income	Yes			No			Estimated Population (5-yr Avg)
	#	%	C.I. (95%)	#	%	C.I. (95%)	#
Less than \$10,000	11,300	39.0	34.3 - 43.6	17,600	61.0	56.4 - 65.7	28,900
\$10,000 to \$14,999	13,900	43.2	38.6 - 47.9	18,300	56.8	52.1 - 61.4	32,200
\$15,000 to \$19,999	19,300	41.2	37.1 - 45.2	27,600	58.8	54.8 - 62.9	46,900
\$20,000 to \$24,999	23,300	37.5	34.1 - 40.8	38,900	62.5	59.2 - 65.9	62,200
\$25,000 to \$34,999	42,000	40.4	37.6 - 43.2	62,000	59.6	56.8 - 62.4	104,000
\$35,000 to \$49,999	54,400	37.2	35.0 - 39.4	91,600	62.8	60.6 - 65.0	146,000
\$50,000 to \$74,999	63,800	34.6	32.4 - 36.8	120,700	65.4	63.2 - 67.6	184,500
\$75,000 or more	81,300	36.3	34.5 - 38.0	142,900	63.7	62.0 - 65.5	224,200

Flu - had shot in past 12 mons by State, County, Island, Community, BRFSS Age Group, DOH Race-Ethnicity, Gender, Education Level, Employment Status (Grouped), Household Income, Poverty Level, Marital Status (Grouped), Married, Health Care Coverage, for the Year(s) - 2001-2005, 2002-2006, 2003-2007, 2004-2008, 2005-2009, 2006-2010

Note: Weighted numbers (#) represent 5-yr averages, percentages and 95% confidence intervals; Respondents aged 18 years and older; n/r (Not Reportable) - If the unweighted total responses for a dimension (row) is <50 that row will not be shown; n/a (Not Available) - Not asked of a subset of respondents

Year: 2003-2007

Poverty Level	Yes			No			Estimated Population (5-yr Avg)
	#	%	C.I. (95%)	#	%	C.I. (95%)	#
0-130%	68,300	38.5	36.2 - 40.7	109,400	61.5	59.3 - 63.8	177,700
131-185%	37,200	35.7	32.6 - 38.8	67,100	64.3	61.2 - 67.4	104,300
186+%	203,700	37.2	36.2 - 38.3	343,200	62.8	61.7 - 63.8	546,800

Marital Status (Grouped)	Yes			No			Estimated Population (5-yr Avg)
	#	%	C.I. (95%)	#	%	C.I. (95%)	#
Married	224,400	40.2	39.1 - 41.3	333,700	59.8	58.7 - 60.9	558,100
Unmarried Couple	5,000	20.0	15.0 - 24.9	20,200	80.0	75.1 - 85.0	25,200
Widowed	37,900	65.2	62.3 - 68.2	20,200	34.8	31.8 - 37.7	58,200
Other	93,600	30.6	29.0 - 32.3	211,700	69.4	67.7 - 71.0	305,200

Flu - had shot in past 12 mons by State, County, Island, Community, BRFSS Age Group, DOH Race-Ethnicity, Gender, Education Level, Employment Status (Grouped), Household Income, Poverty Level, Marital Status (Grouped), Married, Health Care Coverage, for the Year(s) - 2001-2005, 2002-2006, 2003-2007, 2004-2008, 2005-2009, 2006-2010

Note: Weighted numbers (#) represent 5-yr averages, percentages and 95% confidence intervals; Respondents aged 18 years and older; n/r (Not Reportable) - If the unweighted total responses for a dimension (row) is <50 that row will not be shown; n/a (Not Available) - Not asked of a subset of respondents

Year: 2003-2007

Married	Yes			No			Estimated Population (5-yr Avg)
	#	%	C.I. (95%)	#	%	C.I. (95%)	#
Yes	227,500	40.0	38.9 - 41.1	341,100	60.0	58.9 - 61.1	568,500
No	133,100	35.3	33.9 - 36.8	243,400	64.7	63.2 - 66.1	376,400

Health Care Coverage	Yes			No			Estimated Population (5-yr Avg)
	#	%	C.I. (95%)	#	%	C.I. (95%)	#
Yes	348,700	40.0	39.1 - 41.0	522,300	60.0	59.0 - 60.9	871,000
No	11,900	16.1	13.1 - 19.2	61,700	83.9	80.8 - 86.9	73,600

Flu - had shot in past 12 mons by State, County, Island, Community, BRFSS Age Group, DOH Race-Ethnicity, Gender, Education Level, Employment Status (Grouped), Household Income, Poverty Level, Marital Status (Grouped), Married, Health Care Coverage, for the Year(s) - 2001-2005, 2002-2006, 2003-2007, 2004-2008, 2005-2009, 2006-2010

Note: Weighted numbers (#) represent 5-yr averages, percentages and 95% confidence intervals; Respondents aged 18 years and older; n/r (Not Reportable) - If the unweighted total responses for a dimension (row) is <50 that row will not be shown; n/a (Not Available) - Not asked of a subset of respondents

Year: 2002-2006

State	Yes			No			Estimated Population (5-yr Avg)
	#	%	C.I. (95%)	#	%	C.I. (95%)	#
Hawaii State	337,500	36.2	35.4 - 37.1	593,900	63.8	62.9 - 64.6	931,300

County	Yes			No			Estimated Population (5-yr Avg)
	#	%	C.I. (95%)	#	%	C.I. (95%)	#
Hawaii	34,500	28.9	27.4 - 30.4	84,700	71.1	69.6 - 72.6	119,200
Honolulu	261,900	39.2	38.0 - 40.3	406,600	60.8	59.7 - 62.0	668,500
Kauai	13,400	30.5	28.3 - 32.7	30,500	69.5	67.3 - 71.7	43,900
Maui	27,700	27.8	26.0 - 29.6	72,100	72.2	70.4 - 74.0	99,800

Flu - had shot in past 12 mons by State, County, Island, Community, BRFSS Age Group, DOH Race-Ethnicity, Gender, Education Level, Employment Status (Grouped), Household Income, Poverty Level, Marital Status (Grouped), Married, Health Care Coverage, for the Year(s) - 2001-2005, 2002-2006, 2003-2007, 2004-2008, 2005-2009, 2006-2010

Note: Weighted numbers (#) represent 5-yr averages, percentages and 95% confidence intervals; Respondents aged 18 years and older; n/r (Not Reportable) - If the unweighted total responses for a dimension (row) is <50 that row will not be shown; n/a (Not Available) - Not asked of a subset of respondents

Year: 2002-2006

Island	Yes			No			Estimated Population (5-yr Avg)
	#	%	C.I. (95%)	#	%	C.I. (95%)	#
Hawaii	34,500	28.9	27.4 - 30.4	84,700	71.1	69.6 - 72.6	119,200
Kauai	13,400	30.5	28.3 - 32.7	30,500	69.5	67.3 - 71.7	43,900
Lanai	700	28.1	23.2 - 33.0	1,800	71.9	67.0 - 76.8	2,500
Maui	24,600	27.1	25.2 - 29.0	66,300	72.9	71.0 - 74.8	90,900
Molokai	2,400	37.3	32.3 - 42.3	4,000	62.7	57.7 - 67.7	6,400
Oahu	261,900	39.2	38.0 - 40.3	406,600	60.8	59.7 - 62.0	668,500

Community	Yes			No			Estimated Population (5-yr Avg)
	#	%	C.I. (95%)	#	%	C.I. (95%)	#
Aiea/ Pearl City	29,600	46.7	42.9 - 50.6	33,700	53.3	49.4 - 57.1	63,300

Flu - had shot in past 12 mons by State, County, Island, Community, BRFSS Age Group, DOH Race-Ethnicity, Gender, Education Level, Employment Status (Grouped), Household Income, Poverty Level, Marital Status (Grouped), Married, Health Care Coverage, for the Year(s) - 2001-2005, 2002-2006, 2003-2007, 2004-2008, 2005-2009, 2006-2010

Note: Weighted numbers (#) represent 5-yr averages, percentages and 95% confidence intervals; Respondents aged 18 years and older; n/r (Not Reportable) - If the unweighted total responses for a dimension (row) is <50 that row will not be shown; n/a (Not Available) - Not asked of a subset of respondents

Year: 2002-2006

Community	Yes			No			Estimated Population (5-yr Avg)
	#	%	C.I. (95%)	#	%	C.I. (95%)	#
Ala Moana	11,000	34.2	29.3 - 39.0	21,300	65.8	61.0 - 70.7	32,300
Hanalei/ Kapaa	4,700	25.7	22.6 - 28.8	13,600	74.3	71.2 - 77.4	18,300
Hilo	11,200	32.4	29.7 - 35.2	23,400	67.6	64.8 - 70.3	34,700
Kaaawa/ Kahaluu/ Kaneohe	17,400	38.6	34.2 - 42.9	27,700	61.4	57.1 - 65.8	45,100
Kahului	9,700	30.7	27.2 - 34.2	21,900	69.3	65.8 - 72.8	31,700
Kailua/ Waimanalo	18,900	39.7	35.7 - 43.7	28,700	60.3	56.3 - 64.3	47,500
Kaimuki/ Palolo/ Waikiki	23,000	36.5	33.1 - 39.8	40,100	63.5	60.2 - 66.9	63,200
Kona	7,500	25.9	23.2 - 28.6	21,400	74.1	71.4 - 76.8	28,900
Lahaina/ Wailuku	8,400	28.2	24.7 - 31.7	21,300	71.8	68.3 - 75.3	29,700
Lanai	700	28.1	23.2 - 33.0	1,800	71.9	67.0 - 76.8	2,500
Lihue-Waimea	8,700	33.9	30.9 - 36.9	16,900	66.1	63.1 - 69.1	25,600

Flu - had shot in past 12 mons by State, County, Island, Community, BRFSS Age Group, DOH Race-Ethnicity, Gender, Education Level, Employment Status (Grouped), Household Income, Poverty Level, Marital Status (Grouped), Married, Health Care Coverage, for the Year(s) - 2001-2005, 2002-2006, 2003-2007, 2004-2008, 2005-2009, 2006-2010

Note: Weighted numbers (#) represent 5-yr averages, percentages and 95% confidence intervals; Respondents aged 18 years and older; n/r (Not Reportable) - If the unweighted total responses for a dimension (row) is <50 that row will not be shown; n/a (Not Available) - Not asked of a subset of respondents

Year: 2002-2006

Community	Yes			No			Estimated Population (5-yr Avg)
	#	%	C.I. (95%)	#	%	C.I. (95%)	#
Manoa/ Upper Makiki	18,800	37.7	33.8 - 41.7	31,100	62.3	58.3 - 66.2	49,900
Mililani/ Wahiawa	25,100	38.7	34.6 - 42.8	39,800	61.3	57.2 - 65.4	64,900
Molokai	2,400	37.3	32.3 - 42.3	4,000	62.7	57.7 - 67.7	6,400
Nanakuli/ Waianae	12,000	40.3	34.0 - 46.6	17,700	59.7	53.4 - 66.0	29,700
N.Hawaii	7,300	30.3	26.8 - 33.7	16,800	69.7	66.3 - 73.2	24,100
N.Shore/ Laie	7,000	32.6	26.6 - 38.5	14,500	67.4	61.5 - 73.4	21,600
Nuuanu/ Kalihi/ Moanalua	25,800	37.7	34.1 - 41.3	42,600	62.3	58.7 - 65.9	68,400
Puna/ Kau	8,400	26.7	23.7 - 29.8	23,100	73.3	70.2 - 76.3	31,600
Salt Lake/ Foster Village	16,000	43.3	38.4 - 48.2	20,900	56.7	51.8 - 61.6	36,900
Upcountry/ Hana	6,500	22.0	19.2 - 24.9	23,100	78.0	75.1 - 80.8	29,600
Waiialae/ Kahala/ Hawaii Kai	17,300	42.6	38.1 - 47.1	23,300	57.4	52.9 - 61.9	40,500

Flu - had shot in past 12 mons by State, County, Island, Community, BRFSS Age Group, DOH Race-Ethnicity, Gender, Education Level, Employment Status (Grouped), Household Income, Poverty Level, Marital Status (Grouped), Married, Health Care Coverage, for the Year(s) - 2001-2005, 2002-2006, 2003-2007, 2004-2008, 2005-2009, 2006-2010

Note: Weighted numbers (#) represent 5-yr averages, percentages and 95% confidence intervals; Respondents aged 18 years and older; n/r (Not Reportable) - If the unweighted total responses for a dimension (row) is <50 that row will not be shown; n/a (Not Available) - Not asked of a subset of respondents

Year: 2002-2006

Community	Yes			No			Estimated Population (5-yr Avg)
	#	%	C.I. (95%)	#	%	C.I. (95%)	#
Waipahu/ Kapolei/ Ewa	40,000	38.1	34.9 - 41.2	65,100	61.9	58.8 - 65.1	105,100

Flu - had shot in past 12 mons by State, County, Island, Community, BRFSS Age Group, DOH Race-Ethnicity, Gender, Education Level, Employment Status (Grouped), Household Income, Poverty Level, Marital Status (Grouped), Married, Health Care Coverage, for the Year(s) - 2001-2005, 2002-2006, 2003-2007, 2004-2008, 2005-2009, 2006-2010

Note: Weighted numbers (#) represent 5-yr averages, percentages and 95% confidence intervals; Respondents aged 18 years and older; n/r (Not Reportable) - If the unweighted total responses for a dimension (row) is <50 that row will not be shown; n/a (Not Available) - Not asked of a subset of respondents

Year: 2002-2006

BRFSS Age Group	Yes			No			Estimated Population (5-yr Avg)
	#	%	C.I. (95%)	#	%	C.I. (95%)	#
18-24	32,600	28.5	25.1 - 31.8	82,000	71.5	68.2 - 74.9	114,600
25-34	39,400	24.1	22.0 - 26.1	124,400	75.9	73.9 - 78.0	163,800
35-44	43,500	24.2	22.5 - 26.0	135,900	75.8	74.0 - 77.5	179,400
45-54	47,700	27.3	25.5 - 29.0	127,100	72.7	71.0 - 74.5	174,800
55-64	53,900	42.0	39.8 - 44.1	74,600	58.0	55.9 - 60.2	128,600
65-74	55,500	67.0	64.4 - 69.6	27,300	33.0	30.4 - 35.6	82,700
75+	62,400	76.5	74.0 - 78.9	19,200	23.5	21.1 - 26.0	81,600

Flu - had shot in past 12 mons by State, County, Island, Community, BRFSS Age Group, DOH Race-Ethnicity, Gender, Education Level, Employment Status (Grouped), Household Income, Poverty Level, Marital Status (Grouped), Married, Health Care Coverage, for the Year(s) - 2001-2005, 2002-2006, 2003-2007, 2004-2008, 2005-2009, 2006-2010

Note: Weighted numbers (#) represent 5-yr averages, percentages and 95% confidence intervals; Respondents aged 18 years and older; n/r (Not Reportable) - If the unweighted total responses for a dimension (row) is <50 that row will not be shown; n/a (Not Available) - Not asked of a subset of respondents

Year: 2002-2006

DOH Race-Ethnicity	Yes			No			Estimated Population (5-yr Avg)
	#	%	C.I. (95%)	#	%	C.I. (95%)	#
Caucasian	107,500	33.8	32.5 - 35.2	210,300	66.2	64.8 - 67.5	317,800
Native Hawaiian	34,900	31.5	29.0 - 34.0	75,800	68.5	66.0 - 71.0	110,700
Chinese	25,300	38.9	35.6 - 42.1	39,900	61.1	57.9 - 64.4	65,200
Filipino	54,500	37.4	34.8 - 40.0	91,300	62.6	60.0 - 65.2	145,800
Japanese	81,700	42.7	40.8 - 44.6	109,700	57.3	55.4 - 59.2	191,400
Black	5,300	36.7	30.2 - 43.3	9,100	63.3	56.7 - 69.8	14,400
Native Alaskan/ American Indian	1,200	26.4	15.7 - 37.1	3,400	73.6	62.9 - 84.3	4,600
Other Asian	7,600	35.7	28.7 - 42.7	13,700	64.3	57.3 - 71.3	21,300
Other Pacific Islander	7,100	32.7	23.5 - 41.8	14,600	67.3	58.2 - 76.5	21,800
Mixed Ethnicity	1,800	37.6	26.5 - 48.8	3,000	62.4	51.2 - 73.5	4,800
Other	8,500	34.6	29.4 - 39.8	16,100	65.4	60.2 - 70.6	24,700

Flu - had shot in past 12 mons by State, County, Island, Community, BRFSS Age Group, DOH Race-Ethnicity, Gender, Education Level, Employment Status (Grouped), Household Income, Poverty Level, Marital Status (Grouped), Married, Health Care Coverage, for the Year(s) - 2001-2005, 2002-2006, 2003-2007, 2004-2008, 2005-2009, 2006-2010

Note: Weighted numbers (#) represent 5-yr averages, percentages and 95% confidence intervals; Respondents aged 18 years and older; n/r (Not Reportable) - If the unweighted total responses for a dimension (row) is <50 that row will not be shown; n/a (Not Available) - Not asked of a subset of respondents

Year: 2002-2006

Gender	Yes			No			Estimated Population (5-yr Avg)
	#	%	C.I. (95%)	#	%	C.I. (95%)	#
Male	165,300	36.0	34.6 - 37.3	294,200	64.0	62.7 - 65.4	459,500
Female	172,200	36.5	35.4 - 37.6	299,600	63.5	62.4 - 64.6	471,800

Education Level	Yes			No			Estimated Population (5-yr Avg)
	#	%	C.I. (95%)	#	%	C.I. (95%)	#
Never attended school/ Only Kindergarten to Grades 8	9,100	57.2	50.7 - 63.7	6,800	42.8	36.3 - 49.3	15,900
Grades 9 thru 11 (Some High School)	15,700	43.7	39.0 - 48.4	20,200	56.3	51.6 - 61.0	36,000
Grades 12 or GED (High School Grad)	106,000	37.0	35.3 - 38.7	180,200	63.0	61.3 - 64.7	286,200
College 1 to 3 years (Some College/ Tech)	90,800	32.9	31.3 - 34.6	185,000	67.1	65.4 - 68.7	275,700
College 4 years or more (College Grad)	115,500	36.5	35.1 - 37.9	200,700	63.5	62.1 - 64.9	316,300

Flu - had shot in past 12 mons by State, County, Island, Community, BRFSS Age Group, DOH Race-Ethnicity, Gender, Education Level, Employment Status (Grouped), Household Income, Poverty Level, Marital Status (Grouped), Married, Health Care Coverage, for the Year(s) - 2001-2005, 2002-2006, 2003-2007, 2004-2008, 2005-2009, 2006-2010

Note: Weighted numbers (#) represent 5-yr averages, percentages and 95% confidence intervals; Respondents aged 18 years and older; n/r (Not Reportable) - If the unweighted total responses for a dimension (row) is <50 that row will not be shown; n/a (Not Available) - Not asked of a subset of respondents

Year: 2002-2006

Employment Status (Grouped)	Yes			No			Estimated Population (5-yr Avg)
	#	%	C.I. (95%)	#	%	C.I. (95%)	#
Employed	177,100	29.4	28.3 - 30.5	424,800	70.6	69.5 - 71.7	601,900
Unemployed	6,200	20.5	16.6 - 24.5	23,900	79.5	75.5 - 83.4	30,000
Retired/Unable to work	130,300	64.0	62.3 - 65.7	73,300	36.0	34.3 - 37.7	203,500
Student/Homemaker	23,400	24.7	21.9 - 27.5	71,200	75.3	72.5 - 78.1	94,600

Flu - had shot in past 12 mons by State, County, Island, Community, BRFSS Age Group, DOH Race-Ethnicity, Gender, Education Level, Employment Status (Grouped), Household Income, Poverty Level, Marital Status (Grouped), Married, Health Care Coverage, for the Year(s) - 2001-2005, 2002-2006, 2003-2007, 2004-2008, 2005-2009, 2006-2010

Note: Weighted numbers (#) represent 5-yr averages, percentages and 95% confidence intervals; Respondents aged 18 years and older; n/r (Not Reportable) - If the unweighted total responses for a dimension (row) is <50 that row will not be shown; n/a (Not Available) - Not asked of a subset of respondents

Year: 2002-2006

Household Income	Yes			No			Estimated Population (5-yr Avg)
	#	%	C.I. (95%)	#	%	C.I. (95%)	#
Less than \$10,000	11,800	38.7	34.2 - 43.1	18,700	61.3	56.9 - 65.8	30,400
\$10,000 to \$14,999	14,000	42.0	37.5 - 46.5	19,300	58.0	53.5 - 62.5	33,300
\$15,000 to \$19,999	18,700	40.5	36.2 - 44.7	27,500	59.5	55.3 - 63.8	46,200
\$20,000 to \$24,999	21,000	35.6	32.3 - 39.0	37,900	64.4	61.0 - 67.7	58,900
\$25,000 to \$34,999	36,500	37.9	35.1 - 40.8	59,800	62.1	59.2 - 64.9	96,300
\$35,000 to \$49,999	48,200	34.9	32.7 - 37.2	89,800	65.1	62.8 - 67.3	138,000
\$50,000 to \$74,999	58,600	33.3	31.0 - 35.6	117,300	66.7	64.4 - 69.0	175,900
\$75,000 or more	66,500	34.3	32.4 - 36.2	127,300	65.7	63.8 - 67.6	193,900

Flu - had shot in past 12 mons by State, County, Island, Community, BRFSS Age Group, DOH Race-Ethnicity, Gender, Education Level, Employment Status (Grouped), Household Income, Poverty Level, Marital Status (Grouped), Married, Health Care Coverage, for the Year(s) - 2001-2005, 2002-2006, 2003-2007, 2004-2008, 2005-2009, 2006-2010

Note: Weighted numbers (#) represent 5-yr averages, percentages and 95% confidence intervals; Respondents aged 18 years and older; n/r (Not Reportable) - If the unweighted total responses for a dimension (row) is <50 that row will not be shown; n/a (Not Available) - Not asked of a subset of respondents

Year: 2002-2006

Poverty Level	Yes			No			Estimated Population (5-yr Avg)
	#	%	C.I. (95%)	#	%	C.I. (95%)	#
0-130%	62,100	37.5	35.2 - 39.8	103,400	62.5	60.2 - 64.8	165,600
131-185%	31,800	33.5	30.2 - 36.7	63,300	66.5	63.3 - 69.8	95,200
186+%	181,400	35.4	34.3 - 36.6	330,700	64.6	63.4 - 65.7	512,100

Marital Status (Grouped)	Yes			No			Estimated Population (5-yr Avg)
	#	%	C.I. (95%)	#	%	C.I. (95%)	#
Married	208,800	38.1	37.0 - 39.3	338,700	61.9	60.7 - 63.0	547,500
Unmarried Couple	4,400	18.1	13.0 - 23.2	19,800	81.9	76.8 - 87.0	24,200
Widowed	37,500	65.0	62.0 - 68.0	20,200	35.0	32.0 - 38.0	57,700
Other	86,800	28.8	27.1 - 30.4	215,100	71.2	69.6 - 72.9	302,000

Flu - had shot in past 12 mons by State, County, Island, Community, BRFSS Age Group, DOH Race-Ethnicity, Gender, Education Level, Employment Status (Grouped), Household Income, Poverty Level, Marital Status (Grouped), Married, Health Care Coverage, for the Year(s) - 2001-2005, 2002-2006, 2003-2007, 2004-2008, 2005-2009, 2006-2010

Note: Weighted numbers (#) represent 5-yr averages, percentages and 95% confidence intervals; Respondents aged 18 years and older; n/r (Not Reportable) - If the unweighted total responses for a dimension (row) is <50 that row will not be shown; n/a (Not Available) - Not asked of a subset of respondents

Year: 2002-2006

Married	Yes			No			Estimated Population (5-yr Avg)
	#	%	C.I. (95%)	#	%	C.I. (95%)	#
Yes	212,100	38.0	36.9 - 39.1	346,100	62.0	60.9 - 63.1	558,100
No	125,100	33.7	32.2 - 35.1	246,500	66.3	64.9 - 67.8	371,500

Health Care Coverage	Yes			No			Estimated Population (5-yr Avg)
	#	%	C.I. (95%)	#	%	C.I. (95%)	#
Yes	325,400	38.2	37.3 - 39.2	525,900	61.8	60.8 - 62.7	851,200
No	11,600	14.9	12.1 - 17.8	66,300	85.1	82.2 - 87.9	78,000

Flu - had shot in past 12 mons by State, County, Island, Community, BRFSS Age Group, DOH Race-Ethnicity, Gender, Education Level, Employment Status (Grouped), Household Income, Poverty Level, Marital Status (Grouped), Married, Health Care Coverage, for the Year(s) - 2001-2005, 2002-2006, 2003-2007, 2004-2008, 2005-2009, 2006-2010

Note: Weighted numbers (#) represent 5-yr averages, percentages and 95% confidence intervals; Respondents aged 18 years and older; n/r (Not Reportable) - If the unweighted total responses for a dimension (row) is <50 that row will not be shown; n/a (Not Available) - Not asked of a subset of respondents

Year: 2001-2005

State	Yes			No			Estimated Population (5-yr Avg)
	#	%	C.I. (95%)	#	%	C.I. (95%)	#
Hawaii State	328,600	35.8	34.9 - 36.7	589,600	64.2	63.3 - 65.1	918,100

County	Yes			No			Estimated Population (5-yr Avg)
	#	%	C.I. (95%)	#	%	C.I. (95%)	#
Hawaii	34,200	29.3	27.8 - 30.9	82,300	70.7	69.1 - 72.2	116,500
Honolulu	253,700	38.4	37.2 - 39.6	406,600	61.6	60.4 - 62.8	660,300
Kauai	12,800	29.9	27.7 - 32.1	30,000	70.1	67.9 - 72.3	42,700
Maui	27,900	28.3	26.3 - 30.4	70,600	71.7	69.6 - 73.7	98,600

Flu - had shot in past 12 mons by State, County, Island, Community, BRFSS Age Group, DOH Race-Ethnicity, Gender, Education Level, Employment Status (Grouped), Household Income, Poverty Level, Marital Status (Grouped), Married, Health Care Coverage, for the Year(s) - 2001-2005, 2002-2006, 2003-2007, 2004-2008, 2005-2009, 2006-2010

Note: Weighted numbers (#) represent 5-yr averages, percentages and 95% confidence intervals; Respondents aged 18 years and older; n/r (Not Reportable) - If the unweighted total responses for a dimension (row) is <50 that row will not be shown; n/a (Not Available) - Not asked of a subset of respondents

Year: 2001-2005

Island	Yes			No			Estimated Population (5-yr Avg)
	#	%	C.I. (95%)	#	%	C.I. (95%)	#
Hawaii	34,200	29.3	27.8 - 30.9	82,300	70.7	69.1 - 72.2	116,500
Kauai	12,800	29.9	27.7 - 32.1	30,000	70.1	67.9 - 72.3	42,700
Lanai	700	28.2	23.1 - 33.4	1,800	71.8	66.6 - 76.9	2,500
Maui	25,000	27.7	25.5 - 29.9	65,100	72.3	70.1 - 74.5	90,000
Molokai	2,300	37.4	31.9 - 42.8	3,800	62.6	57.2 - 68.1	6,000
Oahu	253,700	38.4	37.2 - 39.6	406,600	61.6	60.4 - 62.8	660,300

Community	Yes			No			Estimated Population (5-yr Avg)
	#	%	C.I. (95%)	#	%	C.I. (95%)	#
Aiea/ Pearl City	29,100	46.4	42.4 - 50.4	33,700	53.6	49.6 - 57.6	62,800

Flu - had shot in past 12 mons by State, County, Island, Community, BRFSS Age Group, DOH Race-Ethnicity, Gender, Education Level, Employment Status (Grouped), Household Income, Poverty Level, Marital Status (Grouped), Married, Health Care Coverage, for the Year(s) - 2001-2005, 2002-2006, 2003-2007, 2004-2008, 2005-2009, 2006-2010

Note: Weighted numbers (#) represent 5-yr averages, percentages and 95% confidence intervals; Respondents aged 18 years and older; n/r (Not Reportable) - If the unweighted total responses for a dimension (row) is <50 that row will not be shown; n/a (Not Available) - Not asked of a subset of respondents

Year: 2001-2005

Community	Yes			No			Estimated Population (5-yr Avg)
	#	%	C.I. (95%)	#	%	C.I. (95%)	#
Ala Moana	10,400	33.5	28.5 - 38.6	20,600	66.5	61.4 - 71.5	30,900
Hanalei/ Kapaa	4,200	24.0	20.9 - 27.1	13,500	76.0	72.9 - 79.1	17,700
Hilo	11,100	32.6	29.8 - 35.4	23,000	67.4	64.6 - 70.2	34,200
Kaaawa/ Kahaluu/ Kaneohe	16,100	37.1	32.5 - 41.6	27,400	62.9	58.4 - 67.5	43,500
Kahului	10,300	31.9	27.6 - 36.2	21,900	68.1	63.8 - 72.4	32,100
Kailua/ Waimanalo	19,000	39.7	35.6 - 43.9	28,700	60.3	56.1 - 64.4	47,700
Kaimuki/ Palolo/ Waikiki	23,700	35.9	32.5 - 39.2	42,400	64.1	60.8 - 67.5	66,100
Kona	7,500	25.8	22.9 - 28.6	21,600	74.2	71.4 - 77.1	29,100
Lahaina/ Wailuku	8,200	28.1	24.4 - 31.7	20,900	71.9	68.3 - 75.6	29,100
Lanai	700	28.2	23.1 - 33.4	1,800	71.8	66.6 - 76.9	2,500
Lihue-Waimea	8,500	34.1	31.0 - 37.2	16,500	65.9	62.8 - 69.0	25,000

Flu - had shot in past 12 mons by State, County, Island, Community, BRFSS Age Group, DOH Race-Ethnicity, Gender, Education Level, Employment Status (Grouped), Household Income, Poverty Level, Marital Status (Grouped), Married, Health Care Coverage, for the Year(s) - 2001-2005, 2002-2006, 2003-2007, 2004-2008, 2005-2009, 2006-2010

Note: Weighted numbers (#) represent 5-yr averages, percentages and 95% confidence intervals; Respondents aged 18 years and older; n/r (Not Reportable) - If the unweighted total responses for a dimension (row) is <50 that row will not be shown; n/a (Not Available) - Not asked of a subset of respondents

Year: 2001-2005

Community	Yes			No			Estimated Population (5-yr Avg)
	#	%	C.I. (95%)	#	%	C.I. (95%)	#
Manoa/ Upper Makiki	19,900	38.5	34.5 - 42.6	31,800	61.5	57.4 - 65.5	51,700
Mililani/ Wahiawa	23,700	37.2	33.0 - 41.4	39,900	62.8	58.6 - 67.0	63,600
Molokai	2,300	37.4	31.9 - 42.8	3,800	62.6	57.2 - 68.1	6,000
Nanakuli/ Waianae	11,800	39.1	32.7 - 45.5	18,400	60.9	54.5 - 67.3	30,200
N.Hawaii	7,600	32.0	28.4 - 35.6	16,100	68.0	64.4 - 71.6	23,600
N.Shore/ Laie	6,700	30.7	24.7 - 36.7	15,100	69.3	63.3 - 75.3	21,900
Nuuanu/ Kalihi/ Moanalua	24,700	36.9	33.2 - 40.6	42,200	63.1	59.4 - 66.8	66,900
Puna/ Kau	7,900	26.9	23.6 - 30.1	21,600	73.1	69.9 - 76.4	29,600
Salt Lake/ Foster Village	15,600	42.5	37.6 - 47.5	21,100	57.5	52.5 - 62.4	36,700
Upcountry/ Hana	6,600	22.7	19.7 - 25.8	22,300	77.3	74.2 - 80.3	28,800
Waiialae/ Kahala/ Hawaii Kai	16,300	41.6	36.9 - 46.2	22,900	58.4	53.8 - 63.1	39,200

Flu - had shot in past 12 mons by State, County, Island, Community, BRFSS Age Group, DOH Race-Ethnicity, Gender, Education Level, Employment Status (Grouped), Household Income, Poverty Level, Marital Status (Grouped), Married, Health Care Coverage, for the Year(s) - 2001-2005, 2002-2006, 2003-2007, 2004-2008, 2005-2009, 2006-2010

Note: Weighted numbers (#) represent 5-yr averages, percentages and 95% confidence intervals; Respondents aged 18 years and older; n/r (Not Reportable) - If the unweighted total responses for a dimension (row) is <50 that row will not be shown; n/a (Not Available) - Not asked of a subset of respondents

Year: 2001-2005

Community	Yes			No			Estimated Population (5-yr Avg)
	#	%	C.I. (95%)	#	%	C.I. (95%)	#
Waipahu/ Kapolei/ Ewa	36,700	37.0	33.7 - 40.3	62,500	63.0	59.7 - 66.3	99,200

Flu - had shot in past 12 mons by State, County, Island, Community, BRFSS Age Group, DOH Race-Ethnicity, Gender, Education Level, Employment Status (Grouped), Household Income, Poverty Level, Marital Status (Grouped), Married, Health Care Coverage, for the Year(s) - 2001-2005, 2002-2006, 2003-2007, 2004-2008, 2005-2009, 2006-2010

Note: Weighted numbers (#) represent 5-yr averages, percentages and 95% confidence intervals; Respondents aged 18 years and older; n/r (Not Reportable) - If the unweighted total responses for a dimension (row) is <50 that row will not be shown; n/a (Not Available) - Not asked of a subset of respondents

Year: 2001-2005

BRFSS Age Group	Yes			No			Estimated Population (5-yr Avg)
	#	%	C.I. (95%)	#	%	C.I. (95%)	#
18-24	33,100	29.6	26.1 - 33.0	78,900	70.4	67.0 - 73.9	112,000
25-34	39,600	23.9	21.9 - 26.0	125,800	76.1	74.0 - 78.1	165,400
35-44	42,900	23.7	21.9 - 25.5	138,300	76.3	74.5 - 78.1	181,200
45-54	45,000	26.4	24.6 - 28.2	125,800	73.6	71.8 - 75.4	170,800
55-64	50,500	40.8	38.5 - 43.2	73,200	59.2	56.8 - 61.5	123,700
65-74	57,400	68.4	65.7 - 71.0	26,500	31.6	29.0 - 34.3	83,900
75+	57,900	76.7	74.1 - 79.4	17,600	23.3	20.6 - 25.9	75,500

Flu - had shot in past 12 mons by State, County, Island, Community, BRFSS Age Group, DOH Race-Ethnicity, Gender, Education Level, Employment Status (Grouped), Household Income, Poverty Level, Marital Status (Grouped), Married, Health Care Coverage, for the Year(s) - 2001-2005, 2002-2006, 2003-2007, 2004-2008, 2005-2009, 2006-2010

Note: Weighted numbers (#) represent 5-yr averages, percentages and 95% confidence intervals; Respondents aged 18 years and older; n/r (Not Reportable) - If the unweighted total responses for a dimension (row) is <50 that row will not be shown; n/a (Not Available) - Not asked of a subset of respondents

Year: 2001-2005

DOH Race-Ethnicity	Yes			No			Estimated Population (5-yr Avg)
	#	%	C.I. (95%)	#	%	C.I. (95%)	#
Caucasian	103,900	33.0	31.6 - 34.4	210,900	67.0	65.6 - 68.4	314,900
Native Hawaiian	33,800	30.8	28.2 - 33.4	76,000	69.2	66.6 - 71.8	109,800
Chinese	25,700	38.4	35.1 - 41.7	41,300	61.6	58.3 - 64.9	67,000
Filipino	53,100	37.5	34.8 - 40.3	88,300	62.5	59.7 - 65.2	141,500
Japanese	79,700	42.5	40.5 - 44.5	107,900	57.5	55.5 - 59.5	187,700
Black	6,100	40.8	34.0 - 47.5	8,800	59.2	52.5 - 66.0	14,900
Native Alaskan/ American Indian	1,200	24.7	14.2 - 35.2	3,600	75.3	64.8 - 85.8	4,700
Other Asian	7,100	33.5	26.3 - 40.6	14,100	66.5	59.4 - 73.7	21,200
Other Pacific Islander	7,200	34.7	25.1 - 44.3	13,500	65.3	55.7 - 74.9	20,700
Other	8,800	32.3	27.2 - 37.4	18,400	67.7	62.6 - 72.8	27,100

Flu - had shot in past 12 mons by State, County, Island, Community, BRFSS Age Group, DOH Race-Ethnicity, Gender, Education Level, Employment Status (Grouped), Household Income, Poverty Level, Marital Status (Grouped), Married, Health Care Coverage, for the Year(s) - 2001-2005, 2002-2006, 2003-2007, 2004-2008, 2005-2009, 2006-2010

Note: Weighted numbers (#) represent 5-yr averages, percentages and 95% confidence intervals; Respondents aged 18 years and older; n/r (Not Reportable) - If the unweighted total responses for a dimension (row) is <50 that row will not be shown; n/a (Not Available) - Not asked of a subset of respondents

Year: 2001-2005

Gender	Yes			No			Estimated Population (5-yr Avg)
	#	%	C.I. (95%)	#	%	C.I. (95%)	#
Male	162,800	35.8	34.3 - 37.2	292,400	64.2	62.8 - 65.7	455,200
Female	165,800	35.8	34.6 - 37.0	297,100	64.2	63.0 - 65.4	462,900

Education Level	Yes			No			Estimated Population (5-yr Avg)
	#	%	C.I. (95%)	#	%	C.I. (95%)	#
Never attended school/ Only Kindergarten to Grades 8	8,800	54.9	48.4 - 61.4	7,200	45.1	38.6 - 51.6	16,000
Grades 9 thru 11 (Some High School)	16,100	45.4	40.4 - 50.5	19,400	54.6	49.5 - 59.6	35,500
Grades 12 or GED (High School Grad)	105,600	36.6	34.9 - 38.4	182,700	63.4	61.6 - 65.1	288,300
College 1 to 3 years (Some College/ Tech)	91,100	33.1	31.4 - 34.8	184,200	66.9	65.2 - 68.6	275,300
College 4 years or more (College Grad)	106,400	35.3	33.8 - 36.8	195,000	64.7	63.2 - 66.2	301,400

Flu - had shot in past 12 mons by State, County, Island, Community, BRFSS Age Group, DOH Race-Ethnicity, Gender, Education Level, Employment Status (Grouped), Household Income, Poverty Level, Marital Status (Grouped), Married, Health Care Coverage, for the Year(s) - 2001-2005, 2002-2006, 2003-2007, 2004-2008, 2005-2009, 2006-2010

Note: Weighted numbers (#) represent 5-yr averages, percentages and 95% confidence intervals; Respondents aged 18 years and older; n/r (Not Reportable) - If the unweighted total responses for a dimension (row) is <50 that row will not be shown; n/a (Not Available) - Not asked of a subset of respondents

Year: 2001-2005

Employment Status (Grouped)	Yes			No			Estimated Population (5-yr Avg)
	#	%	C.I. (95%)	#	%	C.I. (95%)	#
Employed	171,600	28.8	27.7 - 29.9	424,300	71.2	70.1 - 72.3	595,800
Unemployed	5,700	19.7	15.7 - 23.8	23,200	80.3	76.2 - 84.3	29,000
Retired/Unable to work	128,100	64.7	62.9 - 66.5	69,900	35.3	33.5 - 37.1	198,000
Student/Homemaker	22,700	24.1	21.3 - 26.9	71,500	75.9	73.1 - 78.7	94,200

Flu - had shot in past 12 mons by State, County, Island, Community, BRFSS Age Group, DOH Race-Ethnicity, Gender, Education Level, Employment Status (Grouped), Household Income, Poverty Level, Marital Status (Grouped), Married, Health Care Coverage, for the Year(s) - 2001-2005, 2002-2006, 2003-2007, 2004-2008, 2005-2009, 2006-2010

Note: Weighted numbers (#) represent 5-yr averages, percentages and 95% confidence intervals; Respondents aged 18 years and older; n/r (Not Reportable) - If the unweighted total responses for a dimension (row) is <50 that row will not be shown; n/a (Not Available) - Not asked of a subset of respondents

Year: 2001-2005

Household Income	Yes			No			Estimated Population (5-yr Avg)
	#	%	C.I. (95%)	#	%	C.I. (95%)	#
Less than \$10,000	12,200	37.1	32.7 - 41.6	20,600	62.9	58.4 - 67.3	32,800
\$10,000 to \$14,999	15,500	42.3	37.9 - 46.6	21,200	57.7	53.4 - 62.1	36,800
\$15,000 to \$19,999	18,000	39.6	35.1 - 44.1	27,400	60.4	55.9 - 64.9	45,400
\$20,000 to \$24,999	20,000	34.8	31.1 - 38.6	37,500	65.2	61.4 - 68.9	57,500
\$25,000 to \$34,999	34,400	36.9	34.0 - 39.9	58,700	63.1	60.1 - 66.0	93,100
\$35,000 to \$49,999	48,600	35.0	32.7 - 37.3	90,300	65.0	62.7 - 67.3	138,800
\$50,000 to \$74,999	55,600	32.7	30.3 - 35.0	114,500	67.3	65.0 - 69.7	170,100
\$75,000 or more	56,600	33.2	31.1 - 35.3	113,900	66.8	64.7 - 68.9	170,500

Flu - had shot in past 12 mons by State, County, Island, Community, BRFSS Age Group, DOH Race-Ethnicity, Gender, Education Level, Employment Status (Grouped), Household Income, Poverty Level, Marital Status (Grouped), Married, Health Care Coverage, for the Year(s) - 2001-2005, 2002-2006, 2003-2007, 2004-2008, 2005-2009, 2006-2010

Note: Weighted numbers (#) represent 5-yr averages, percentages and 95% confidence intervals; Respondents aged 18 years and older; n/r (Not Reportable) - If the unweighted total responses for a dimension (row) is <50 that row will not be shown; n/a (Not Available) - Not asked of a subset of respondents

Year: 2001-2005

Poverty Level	Yes			No			Estimated Population (5-yr Avg)
	#	%	C.I. (95%)	#	%	C.I. (95%)	#
0-130%	58,700	36.7	34.3 - 39.2	101,100	63.3	60.8 - 65.7	159,800
131-185%	32,900	34.9	31.5 - 38.3	61,400	65.1	61.7 - 68.5	94,300
186+%	169,100	34.5	33.3 - 35.7	321,600	65.5	64.3 - 66.7	490,700

Marital Status (Grouped)	Yes			No			Estimated Population (5-yr Avg)
	#	%	C.I. (95%)	#	%	C.I. (95%)	#
Married	202,500	37.8	36.6 - 39.0	333,300	62.2	61.0 - 63.4	535,800
Unmarried Couple	3,300	16.7	11.3 - 22.1	16,400	83.3	77.9 - 88.7	19,700
Widowed	37,200	65.9	62.7 - 69.1	19,200	34.1	30.9 - 37.3	56,500
Other	85,600	27.9	26.3 - 29.6	220,700	72.1	70.4 - 73.7	306,200

Flu - had shot in past 12 mons by State, County, Island, Community, BRFSS Age Group, DOH Race-Ethnicity, Gender, Education Level, Employment Status (Grouped), Household Income, Poverty Level, Marital Status (Grouped), Married, Health Care Coverage, for the Year(s) - 2001-2005, 2002-2006, 2003-2007, 2004-2008, 2005-2009, 2006-2010

Note: Weighted numbers (#) represent 5-yr averages, percentages and 95% confidence intervals; Respondents aged 18 years and older; n/r (Not Reportable) - If the unweighted total responses for a dimension (row) is <50 that row will not be shown; n/a (Not Available) - Not asked of a subset of respondents

Year: 2001-2005

Married	Yes			No			Estimated Population (5-yr Avg)
	#	%	C.I. (95%)	#	%	C.I. (95%)	#
Yes	205,800	37.6	36.4 - 38.7	342,100	62.4	61.3 - 63.6	547,900
No	122,300	33.2	31.7 - 34.7	246,200	66.8	65.3 - 68.3	368,600

Health Care Coverage	Yes			No			Estimated Population (5-yr Avg)
	#	%	C.I. (95%)	#	%	C.I. (95%)	#
Yes	316,700	37.6	36.7 - 38.6	524,600	62.4	61.4 - 63.3	841,300
No	11,500	15.3	12.4 - 18.3	63,500	84.7	81.7 - 87.6	74,900