

**Visited dentist in the past year by State, County, Island, Community, BRFSS Age Group, DOH Race-Ethnicity, Gender, Education Level, Employment Status (Grouped), Household Income, Poverty Level, Marital Status (Grouped), Married, Health Care Coverage, for the Year(s) - 2002, 2004, 2006, 2008, 2010**

*Note: Weighted numbers (#), percentages and 95% confidence intervals; Respondents aged 18 years and older; n/r (Not Reportable) - If the unweighted total responses for a dimension (row) is <50 that row will not be shown; n/a (Not Available) - Not asked of a subset of respondents*

*The trend analysis report shows the trend for the selected health variable over selected years in a table and a graph. Estimated Population: This number is a weighted representation of the population who responded to a particular question in the survey. For most questions the eligible population will be the entire adult population. For some secondary questions only a subset of the population was asked the question. For example, all survey participants were asked if they had diabetes, but only those who answered yes were asked if they use insulin. If a dimension value is unknown for a particular survey record, that record will not be included in the counts for that particular dimension.*

*For documentation on other terms and coding in this report, please go to the following links*

[Click here to access BRFSS documentation](#)

[Click here to access DOH Race-Ethnicity coding](#)

[Click here to access The Hawai'i Data Guide](#)

[Click here to access Poverty Level Methodology](#)

**For questions about this report, please contact  
The Hawaii Health Data Warehouse**

[profiles@hhdw.org](mailto:profiles@hhdw.org)

**(855) 946-5899 x15**

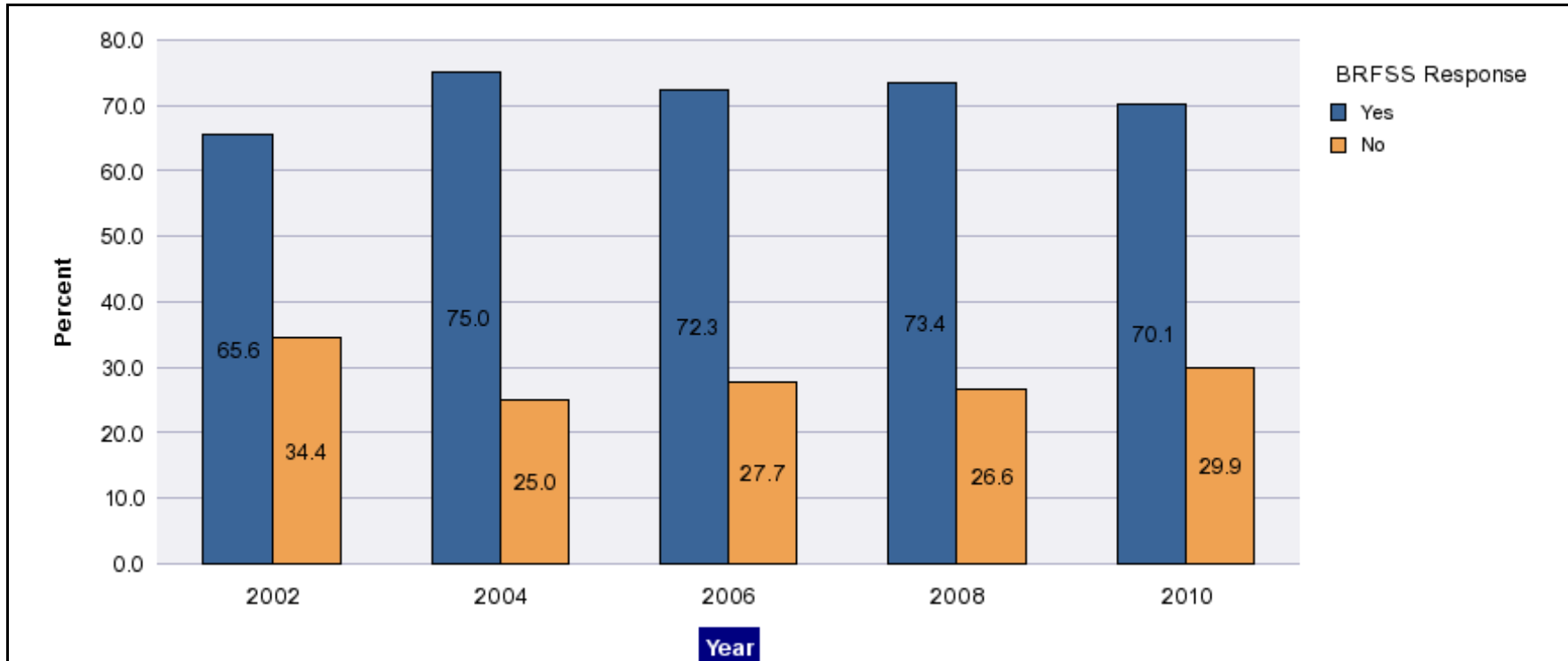
**Visited dentist in the past year by State, County, Island, Community, BRFSS Age Group, DOH Race-Ethnicity, Gender, Education Level, Employment Status (Grouped), Household Income, Poverty Level, Marital Status (Grouped), Married, Health Care Coverage, for the Year(s) - 2002, 2004, 2006, 2008, 2010**

*Note: Weighted numbers (#), percentages and 95% confidence intervals; Respondents aged 18 years and older; n/r (Not Reportable) - If the unweighted total responses for a dimension (row) is <50 that row will not be shown; n/a (Not Available) - Not asked of a subset of respondents*

Year	Yes			No			Estimated Population
	#	%	C.I.(95%)	#	%	C.I.(95%)	#
2002	591,700	65.6	63.9 - 67.2	311,000	34.4	32.8 - 36.1	902,700
2004	680,900	75.0	72.3 - 77.7	226,500	25.0	22.3 - 27.7	907,400
2006	703,200	72.3	70.7 - 73.9	269,400	27.7	26.1 - 29.3	972,700
2008	733,100	73.4	71.9 - 75.0	265,400	26.6	25.0 - 28.1	998,500
2010	704,900	70.1	68.3 - 71.9	300,700	29.9	28.1 - 31.7	1,005,600

**Visited dentist in the past year by State, County, Island, Community, BRFSS Age Group, DOH Race-Ethnicity, Gender, Education Level, Employment Status (Grouped), Household Income, Poverty Level, Marital Status (Grouped), Married, Health Care Coverage, for the Year(s) - 2002, 2004, 2006, 2008, 2010**

*Note: Weighted numbers (#), percentages and 95% confidence intervals; Respondents aged 18 years and older; n/r (Not Reportable) - If the unweighted total responses for a dimension (row) is <50 that row will not be shown; n/a (Not Available) - Not asked of a subset of respondents*



**Visited dentist in the past year by State, County, Island, Community, BRFSS Age Group, DOH Race-Ethnicity, Gender, Education Level, Employment Status (Grouped), Household Income, Poverty Level, Marital Status (Grouped), Married, Health Care Coverage, for the Year(s) - 2002, 2004, 2006, 2008, 2010**

*Note: Weighted numbers (#), percentages and 95% confidence intervals; Respondents aged 18 years and older; n/r (Not Reportable) - If the unweighted total responses for a dimension (row) is <50 that row will not be shown; n/a (Not Available) - Not asked of a subset of respondents*

**Year: 2010**

State	Yes			No			Estimated Population
	#	%	C.I. (95%)	#	%	C.I. (95%)	#
Hawaii State	704,900	70.1	68.3 - 71.9	300,700	29.9	28.1 - 31.7	1,005,600

County	Yes			No			Estimated Population
	#	%	C.I. (95%)	#	%	C.I. (95%)	#
Hawaii	88,600	62.9	59.3 - 66.4	52,300	37.1	33.6 - 40.7	140,900
Honolulu	502,000	71.4	69.1 - 73.8	200,700	28.6	26.2 - 30.9	702,700
Kauai	32,900	66.7	61.0 - 72.4	16,400	33.3	27.6 - 39.0	49,300
Maui	81,400	72.2	68.6 - 75.8	31,300	27.8	24.2 - 31.4	112,700

**Visited dentist in the past year by State, County, Island, Community, BRFSS Age Group, DOH Race-Ethnicity, Gender, Education Level, Employment Status (Grouped), Household Income, Poverty Level, Marital Status (Grouped), Married, Health Care Coverage, for the Year(s) - 2002, 2004, 2006, 2008, 2010**

*Note: Weighted numbers (#), percentages and 95% confidence intervals; Respondents aged 18 years and older; n/r (Not Reportable) - If the unweighted total responses for a dimension (row) is <50 that row will not be shown; n/a (Not Available) - Not asked of a subset of respondents*

**Year: 2010**

Island	Yes			No			Estimated Population
	#	%	C.I. (95%)	#	%	C.I. (95%)	#
Hawaii	88,600	62.9	59.3 - 66.4	52,300	37.1	33.6 - 40.7	140,900
Kauai	32,900	66.7	61.0 - 72.4	16,400	33.3	27.6 - 39.0	49,300
Lanai	800	51.0	39.1 - 62.9	700	49.0	37.1 - 60.9	1,500
Maui	75,600	72.8	69.0 - 76.7	28,200	27.2	23.3 - 31.0	103,800
Molokai	5,000	68.4	61.0 - 75.7	2,300	31.6	24.3 - 39.0	7,400
Oahu	502,000	71.4	69.1 - 73.8	200,700	28.6	26.2 - 30.9	702,700

Community	Yes			No			Estimated Population
	#	%	C.I. (95%)	#	%	C.I. (95%)	#
Aiea/ Pearl City	52,900	77.1	70.6 - 83.5	15,700	22.9	16.5 - 29.4	68,600

**Visited dentist in the past year by State, County, Island, Community, BRFSS Age Group, DOH Race-Ethnicity, Gender, Education Level, Employment Status (Grouped), Household Income, Poverty Level, Marital Status (Grouped), Married, Health Care Coverage, for the Year(s) - 2002, 2004, 2006, 2008, 2010**

*Note: Weighted numbers (#), percentages and 95% confidence intervals; Respondents aged 18 years and older; n/r (Not Reportable) - If the unweighted total responses for a dimension (row) is <50 that row will not be shown; n/a (Not Available) - Not asked of a subset of respondents*

**Year: 2010**

Community	Yes			No			Estimated Population
	#	%	C.I. (95%)	#	%	C.I. (95%)	#
Ala Moana	14,900	72.9	64.0 - 81.8	5,500	27.1	18.2 - 36.0	20,500
Hanalei/ Kapaa	14,500	70.1	61.9 - 78.4	6,200	29.9	21.6 - 38.1	20,600
Hilo	26,500	62.6	55.9 - 69.4	15,800	37.4	30.6 - 44.1	42,200
Kaaawa/ Kahaluu/ Kaneohe	41,500	77.8	70.0 - 85.6	11,800	22.2	14.4 - 30.0	53,300
Kahului	24,100	71.3	64.2 - 78.3	9,700	28.7	21.7 - 35.8	33,900
Kailua/ Waimanalo	35,500	70.5	61.9 - 79.0	14,900	29.5	21.0 - 38.1	50,400
Kaimuki/ Palolo/ Waikiki	39,800	71.0	63.4 - 78.5	16,300	29.0	21.5 - 36.6	56,100
Kona	19,600	63.8	56.1 - 71.4	11,100	36.2	28.6 - 43.9	30,700
Lahaina/ Wailuku	25,900	74.8	68.0 - 81.7	8,700	25.2	18.3 - 32.0	34,600
Lanai	800	51.0	39.1 - 62.9	700	49.0	37.1 - 60.9	1,500

**Visited dentist in the past year by State, County, Island, Community, BRFSS Age Group, DOH Race-Ethnicity, Gender, Education Level, Employment Status (Grouped), Household Income, Poverty Level, Marital Status (Grouped), Married, Health Care Coverage, for the Year(s) - 2002, 2004, 2006, 2008, 2010**

*Note: Weighted numbers (#), percentages and 95% confidence intervals; Respondents aged 18 years and older; n/r (Not Reportable) - If the unweighted total responses for a dimension (row) is <50 that row will not be shown; n/a (Not Available) - Not asked of a subset of respondents*

**Year: 2010**

Community	Yes			No			Estimated Population
	#	%	C.I. (95%)	#	%	C.I. (95%)	#
Lihue-Waimea	18,400	64.3	56.4 - 72.1	10,200	35.7	27.9 - 43.6	28,600
Manoa/ Upper Makiki	38,500	69.8	61.6 - 78.1	16,600	30.2	21.9 - 38.4	55,100
Mililani/ Wahiawa	51,700	72.6	65.8 - 79.4	19,500	27.4	20.6 - 34.2	71,200
Molokai	5,000	68.4	61.0 - 75.7	2,300	31.6	24.3 - 39.0	7,400
Nanakuli/ Waianae	16,800	40.1	27.6 - 52.6	25,100	59.9	47.4 - 72.4	41,900
N.Hawaii	17,700	69.8	61.9 - 77.6	7,700	30.2	22.4 - 38.1	25,300
N.Shore/ Laie	15,800	63.3	49.1 - 77.5	9,100	36.7	22.5 - 50.9	24,900
Nuuanu/ Kalihi/ Moanalua	47,800	73.2	65.7 - 80.7	17,500	26.8	19.3 - 34.3	65,300
Puna/ Kau	24,800	58.4	51.9 - 64.8	17,700	41.6	35.2 - 48.1	42,600
Salt Lake/ Foster Village	27,500	79.3	71.5 - 87.2	7,200	20.7	12.8 - 28.5	34,700

Report Source: The Hawaii Health Data Warehouse;  
 Data Source: State of Hawaii, Department of Health,  
 Behavioral Risk Factor Surveillance System (BRFSS)

**Visited dentist in the past year by State, County, Island, Community, BRFSS Age Group, DOH Race-Ethnicity, Gender, Education Level, Employment Status (Grouped), Household Income, Poverty Level, Marital Status (Grouped), Married, Health Care Coverage, for the Year(s) - 2002, 2004, 2006, 2008, 2010**

*Note: Weighted numbers (#), percentages and 95% confidence intervals; Respondents aged 18 years and older; n/r (Not Reportable) - If the unweighted total responses for a dimension (row) is <50 that row will not be shown; n/a (Not Available) - Not asked of a subset of respondents*

**Year: 2010**

Community	Yes			No			Estimated Population
	#	%	C.I. (95%)	#	%	C.I. (95%)	#
Upcountry/ Hana	25,500	72.3	66.2 - 78.4	9,800	27.7	21.6 - 33.8	35,300
Waialae/ Kahala/ Hawaii Kai	31,300	82.4	74.5 - 90.4	6,700	17.6	9.6 - 25.5	37,900
Waipahu/ Kapolei/ Ewa	88,100	71.8	66.1 - 77.5	34,700	28.2	22.5 - 33.9	122,800



**Visited dentist in the past year by State, County, Island, Community, BRFSS Age Group, DOH Race-Ethnicity, Gender, Education Level, Employment Status (Grouped), Household Income, Poverty Level, Marital Status (Grouped), Married, Health Care Coverage, for the Year(s) - 2002, 2004, 2006, 2008, 2010**

*Note: Weighted numbers (#), percentages and 95% confidence intervals; Respondents aged 18 years and older; n/r (Not Reportable) - If the unweighted total responses for a dimension (row) is <50 that row will not be shown; n/a (Not Available) - Not asked of a subset of respondents*

**Year: 2010**

BRFSS Age Group	Yes			No			Estimated Population
	#	%	C.I. (95%)	#	%	C.I. (95%)	#
<b>18-24</b>	75,800	63.5	56.3 - 70.7	43,600	36.5	29.3 - 43.7	119,400
<b>25-34</b>	107,800	59.4	53.6 - 65.1	73,800	40.6	34.9 - 46.4	181,600
<b>35-44</b>	122,600	70.6	66.4 - 74.7	51,100	29.4	25.3 - 33.6	173,700
<b>45-54</b>	128,800	72.1	68.6 - 75.6	49,900	27.9	24.4 - 31.4	178,700
<b>55-64</b>	117,700	77.4	74.7 - 80.2	34,300	22.6	19.8 - 25.3	152,100
<b>65-74</b>	73,500	77.0	73.9 - 80.1	22,000	23.0	19.9 - 26.1	95,500
<b>75+</b>	74,700	74.6	71.0 - 78.1	25,500	25.4	21.9 - 29.0	100,100

**Visited dentist in the past year by State, County, Island, Community, BRFSS Age Group, DOH Race-Ethnicity, Gender, Education Level, Employment Status (Grouped), Household Income, Poverty Level, Marital Status (Grouped), Married, Health Care Coverage, for the Year(s) - 2002, 2004, 2006, 2008, 2010**

*Note: Weighted numbers (#), percentages and 95% confidence intervals; Respondents aged 18 years and older; n/r (Not Reportable) - If the unweighted total responses for a dimension (row) is <50 that row will not be shown; n/a (Not Available) - Not asked of a subset of respondents*

**Year: 2010**

DOH Race-Ethnicity	Yes			No			Estimated Population
	#	%	C.I. (95%)	#	%	C.I. (95%)	#
<b>Caucasian</b>	232,500	74.1	71.6 - 76.6	81,200	25.9	23.4 - 28.4	313,700
<b>Native Hawaiian</b>	73,200	56.2	50.6 - 61.8	57,100	43.8	38.2 - 49.4	130,300
<b>Chinese</b>	48,200	84.5	79.5 - 89.5	8,800	15.5	10.5 - 20.5	57,000
<b>Filipino</b>	105,800	64.7	59.6 - 69.7	57,900	35.3	30.3 - 40.4	163,700
<b>Japanese</b>	182,300	77.4	74.1 - 80.8	53,100	22.6	19.2 - 25.9	235,400
<b>Black</b>	9,800	66.8	52.9 - 80.7	4,900	33.2	19.3 - 47.1	14,700
<b>Other Asian</b>	18,300	70.5	58.9 - 82.1	7,700	29.5	17.9 - 41.1	25,900
<b>Other Pacific Islander</b>	17,500	49.4	34.6 - 64.1	18,000	50.6	35.9 - 65.4	35,500
<b>Other</b>	12,200	53.8	39.8 - 67.8	10,500	46.2	32.2 - 60.2	22,700

**Visited dentist in the past year by State, County, Island, Community, BRFSS Age Group, DOH Race-Ethnicity, Gender, Education Level, Employment Status (Grouped), Household Income, Poverty Level, Marital Status (Grouped), Married, Health Care Coverage, for the Year(s) - 2002, 2004, 2006, 2008, 2010**

*Note: Weighted numbers (#), percentages and 95% confidence intervals; Respondents aged 18 years and older; n/r (Not Reportable) - If the unweighted total responses for a dimension (row) is <50 that row will not be shown; n/a (Not Available) - Not asked of a subset of respondents*

**Year: 2010**

Gender	Yes			No			Estimated Population
	#	%	C.I. (95%)	#	%	C.I. (95%)	#
Male	334,600	66.7	63.8 - 69.5	167,400	33.3	30.5 - 36.2	502,000
Female	370,300	73.5	71.4 - 75.6	133,300	26.5	24.4 - 28.6	503,600

Education Level	Yes			No			Estimated Population
	#	%	C.I. (95%)	#	%	C.I. (95%)	#
Never attended school/ Only Kindergarten to Grades 8	6,200	52.1	38.8 - 65.4	5,700	47.9	34.6 - 61.2	11,900
Grades 9 thru 11 (Some High School)	19,800	47.9	36.1 - 59.8	21,500	52.1	40.2 - 63.9	41,300
Grades 12 or GED (High School Grad)	177,800	61.0	57.3 - 64.7	113,600	39.0	35.3 - 42.7	291,400
College 1 to 3 years (Some College/ Tech)	202,500	70.7	67.4 - 74.0	84,000	29.3	26.0 - 32.6	286,500
College 4 years or more (College Grad)	298,300	79.8	77.4 - 82.1	75,700	20.2	17.9 - 22.6	374,000

**Visited dentist in the past year by State, County, Island, Community, BRFSS Age Group, DOH Race-Ethnicity, Gender, Education Level, Employment Status (Grouped), Household Income, Poverty Level, Marital Status (Grouped), Married, Health Care Coverage, for the Year(s) - 2002, 2004, 2006, 2008, 2010**

*Note: Weighted numbers (#), percentages and 95% confidence intervals; Respondents aged 18 years and older; n/r (Not Reportable) - If the unweighted total responses for a dimension (row) is <50 that row will not be shown; n/a (Not Available) - Not asked of a subset of respondents*

**Year: 2010**

Employment Status (Grouped)	Yes			No			Estimated Population
	#	%	C.I. (95%)	#	%	C.I. (95%)	#
<b>Employed</b>	416,100	69.8	67.4 - 72.2	180,200	30.2	27.8 - 32.6	596,200
<b>Unemployed</b>	39,700	56.2	48.2 - 64.2	31,000	43.8	35.8 - 51.8	70,700
<b>Retired/Unable to work</b>	164,300	75.7	73.3 - 78.1	52,800	24.3	21.9 - 26.7	217,000
<b>Student/Homemaker</b>	84,600	69.7	63.7 - 75.7	36,800	30.3	24.3 - 36.3	121,500

**Visited dentist in the past year by State, County, Island, Community, BRFSS Age Group, DOH Race-Ethnicity, Gender, Education Level, Employment Status (Grouped), Household Income, Poverty Level, Marital Status (Grouped), Married, Health Care Coverage, for the Year(s) - 2002, 2004, 2006, 2008, 2010**

*Note: Weighted numbers (#), percentages and 95% confidence intervals; Respondents aged 18 years and older; n/r (Not Reportable) - If the unweighted total responses for a dimension (row) is <50 that row will not be shown; n/a (Not Available) - Not asked of a subset of respondents*

**Year: 2010**

Household Income	Yes			No			Estimated Population
	#	%	C.I. (95%)	#	%	C.I. (95%)	#
<b>Less than \$10,000</b>	19,700	47.5	37.6 - 57.3	21,800	52.5	42.7 - 62.4	41,400
<b>\$10,000 to \$14,999</b>	13,700	48.5	36.9 - 60.0	14,600	51.5	40.0 - 63.1	28,400
<b>\$15,000 to \$19,999</b>	30,100	54.2	46.0 - 62.3	25,500	45.8	37.7 - 54.0	55,600
<b>\$20,000 to \$24,999</b>	39,000	58.8	51.1 - 66.4	27,300	41.2	33.6 - 48.9	66,300
<b>\$25,000 to \$34,999</b>	60,900	60.6	55.0 - 66.2	39,700	39.4	33.8 - 45.0	100,600
<b>\$35,000 to \$49,999</b>	94,200	66.4	61.6 - 71.3	47,600	33.6	28.7 - 38.4	141,800
<b>\$50,000 to \$74,999</b>	119,900	76.7	72.7 - 80.8	36,400	23.3	19.2 - 27.3	156,300
<b>\$75,000 or more</b>	259,500	82.4	79.8 - 85.1	55,300	17.6	14.9 - 20.2	314,800

**Visited dentist in the past year by State, County, Island, Community, BRFSS Age Group, DOH Race-Ethnicity, Gender, Education Level, Employment Status (Grouped), Household Income, Poverty Level, Marital Status (Grouped), Married, Health Care Coverage, for the Year(s) - 2002, 2004, 2006, 2008, 2010**

*Note: Weighted numbers (#), percentages and 95% confidence intervals; Respondents aged 18 years and older; n/r (Not Reportable) - If the unweighted total responses for a dimension (row) is <50 that row will not be shown; n/a (Not Available) - Not asked of a subset of respondents*

**Year: 2010**

Poverty Level	Yes			No			Estimated Population
	#	%	C.I. (95%)	#	%	C.I. (95%)	#
<b>0-130%</b>	126,700	54.1	49.5 - 58.6	107,600	45.9	41.4 - 50.5	234,300
<b>131-185%</b>	89,400	62.7	58.2 - 67.1	53,300	37.3	32.9 - 41.8	142,700
<b>186+%</b>	420,900	79.7	77.7 - 81.7	107,200	20.3	18.3 - 22.3	528,200

Marital Status (Grouped)	Yes			No			Estimated Population
	#	%	C.I. (95%)	#	%	C.I. (95%)	#
<b>Married</b>	442,500	76.2	74.3 - 78.2	137,900	23.8	21.8 - 25.7	580,300
<b>Unmarried Couple</b>	20,800	59.6	46.6 - 72.5	14,100	40.4	27.5 - 53.4	34,800
<b>Widowed</b>	42,600	72.8	68.1 - 77.6	15,900	27.2	22.4 - 31.9	58,400
<b>Other</b>	199,100	60.0	56.2 - 63.7	132,900	40.0	36.3 - 43.8	332,000

**Visited dentist in the past year by State, County, Island, Community, BRFSS Age Group, DOH Race-Ethnicity, Gender, Education Level, Employment Status (Grouped), Household Income, Poverty Level, Marital Status (Grouped), Married, Health Care Coverage, for the Year(s) - 2002, 2004, 2006, 2008, 2010**

*Note: Weighted numbers (#), percentages and 95% confidence intervals; Respondents aged 18 years and older; n/r (Not Reportable) - If the unweighted total responses for a dimension (row) is <50 that row will not be shown; n/a (Not Available) - Not asked of a subset of respondents*

**Year: 2010**

<b>Married</b>	<b>Yes</b>			<b>No</b>			<b>Estimated Population</b>
	<b>#</b>	<b>%</b>	<b>C.I. (95%)</b>	<b>#</b>	<b>%</b>	<b>C.I. (95%)</b>	<b>#</b>
<b>Yes</b>	449,400	75.8	73.8 - 77.7	143,800	24.2	22.3 - 26.2	593,200
<b>No</b>	254,400	61.9	58.7 - 65.2	156,400	38.1	34.8 - 41.3	410,800

<b>Health Care Coverage</b>	<b>Yes</b>			<b>No</b>			<b>Estimated Population</b>
	<b>#</b>	<b>%</b>	<b>C.I. (95%)</b>	<b>#</b>	<b>%</b>	<b>C.I. (95%)</b>	<b>#</b>
<b>Yes</b>	675,400	72.2	70.4 - 73.9	260,600	27.8	26.1 - 29.6	936,100
<b>No</b>	28,000	41.1	32.6 - 49.6	40,100	58.9	50.4 - 67.4	68,000

**Visited dentist in the past year by State, County, Island, Community, BRFSS Age Group, DOH Race-Ethnicity, Gender, Education Level, Employment Status (Grouped), Household Income, Poverty Level, Marital Status (Grouped), Married, Health Care Coverage, for the Year(s) - 2002, 2004, 2006, 2008, 2010**

*Note: Weighted numbers (#), percentages and 95% confidence intervals; Respondents aged 18 years and older; n/r (Not Reportable) - If the unweighted total responses for a dimension (row) is <50 that row will not be shown; n/a (Not Available) - Not asked of a subset of respondents*

**Year: 2008**

State	Yes			No			Estimated Population
	#	%	C.I. (95%)	#	%	C.I. (95%)	#
Hawaii State	733,100	73.4	71.9 - 75.0	265,400	26.6	25.0 - 28.1	998,500

County	Yes			No			Estimated Population
	#	%	C.I. (95%)	#	%	C.I. (95%)	#
Hawaii	90,900	67.4	64.1 - 70.7	44,000	32.6	29.3 - 35.9	134,900
Honolulu	534,800	75.9	73.9 - 77.9	170,000	24.1	22.1 - 26.1	704,900
Kauai	32,800	67.4	62.4 - 72.4	15,800	32.6	27.6 - 37.6	48,600
Maui	74,600	67.7	64.0 - 71.5	35,600	32.3	28.5 - 36.0	110,200



**Visited dentist in the past year by State, County, Island, Community, BRFSS Age Group, DOH Race-Ethnicity, Gender, Education Level, Employment Status (Grouped), Household Income, Poverty Level, Marital Status (Grouped), Married, Health Care Coverage, for the Year(s) - 2002, 2004, 2006, 2008, 2010**

*Note: Weighted numbers (#), percentages and 95% confidence intervals; Respondents aged 18 years and older; n/r (Not Reportable) - If the unweighted total responses for a dimension (row) is <50 that row will not be shown; n/a (Not Available) - Not asked of a subset of respondents*

**Year: 2008**

Island	Yes			No			Estimated Population
	#	%	C.I. (95%)	#	%	C.I. (95%)	#
Hawaii	90,900	67.4	64.1 - 70.7	44,000	32.6	29.3 - 35.9	134,900
Kauai	32,800	67.4	62.4 - 72.4	15,800	32.6	27.6 - 37.6	48,600
Lanai	1,300	60.7	51.2 - 70.3	800	39.3	29.7 - 48.8	2,100
Maui	68,400	68.1	64.1 - 72.2	32,000	31.9	27.8 - 35.9	100,300
Molokai	5,000	64.2	55.8 - 72.6	2,800	35.8	27.4 - 44.2	7,800
Oahu	534,800	75.9	73.9 - 77.9	170,000	24.1	22.1 - 26.1	704,900

Community	Yes			No			Estimated Population
	#	%	C.I. (95%)	#	%	C.I. (95%)	#
Aiea/ Pearl City	51,500	79.9	74.2 - 85.7	12,900	20.1	14.3 - 25.8	64,400

**Visited dentist in the past year by State, County, Island, Community, BRFSS Age Group, DOH Race-Ethnicity, Gender, Education Level, Employment Status (Grouped), Household Income, Poverty Level, Marital Status (Grouped), Married, Health Care Coverage, for the Year(s) - 2002, 2004, 2006, 2008, 2010**

*Note: Weighted numbers (#), percentages and 95% confidence intervals; Respondents aged 18 years and older; n/r (Not Reportable) - If the unweighted total responses for a dimension (row) is <50 that row will not be shown; n/a (Not Available) - Not asked of a subset of respondents*

**Year: 2008**

Community	Yes			No			Estimated Population
	#	%	C.I. (95%)	#	%	C.I. (95%)	#
Ala Moana	25,100	78.0	70.0 - 85.9	7,100	22.0	14.1 - 30.0	32,200
Hanalei/ Kapaa	12,300	62.1	54.1 - 70.1	7,500	37.9	29.9 - 45.9	19,700
Hilo	28,800	68.0	61.9 - 74.1	13,600	32.0	25.9 - 38.1	42,400
Kaaawa/ Kahaluu/ Kaneohe	37,400	76.8	69.3 - 84.3	11,300	23.2	15.7 - 30.7	48,700
Kahului	22,200	65.4	57.5 - 73.2	11,800	34.6	26.8 - 42.5	34,000
Kailua/ Waimanalo	39,900	79.2	72.1 - 86.3	10,500	20.8	13.7 - 27.9	50,300
Kaimuki/ Palolo/ Waikiki	42,800	72.5	66.0 - 79.1	16,200	27.5	20.9 - 34.0	59,000
Kona	21,000	75.9	69.8 - 82.0	6,700	24.1	18.0 - 30.2	27,600
Lahaina/ Wailuku	23,800	69.6	63.0 - 76.2	10,400	30.4	23.8 - 37.0	34,200
Lanai	1,300	60.7	51.2 - 70.3	800	39.3	29.7 - 48.8	2,100

**Visited dentist in the past year by State, County, Island, Community, BRFSS Age Group, DOH Race-Ethnicity, Gender, Education Level, Employment Status (Grouped), Household Income, Poverty Level, Marital Status (Grouped), Married, Health Care Coverage, for the Year(s) - 2002, 2004, 2006, 2008, 2010**

*Note: Weighted numbers (#), percentages and 95% confidence intervals; Respondents aged 18 years and older; n/r (Not Reportable) - If the unweighted total responses for a dimension (row) is <50 that row will not be shown; n/a (Not Available) - Not asked of a subset of respondents*

**Year: 2008**

Community	Yes			No			Estimated Population
	#	%	C.I. (95%)	#	%	C.I. (95%)	#
Lihue-Waimea	20,500	71.1	64.8 - 77.3	8,400	28.9	22.7 - 35.2	28,900
Manoa/ Upper Makiki	37,500	79.5	73.1 - 86.0	9,600	20.5	14.0 - 26.9	47,100
Mililani/ Wahiawa	59,000	81.4	76.0 - 86.8	13,500	18.6	13.2 - 24.0	72,500
Molokai	5,000	64.2	55.8 - 72.6	2,800	35.8	27.4 - 44.2	7,800
Nanakuli/ Waianae	20,500	55.7	43.4 - 68.1	16,300	44.3	31.9 - 56.6	36,700
N.Hawaii	19,200	68.1	60.7 - 75.6	9,000	31.9	24.4 - 39.3	28,100
N.Shore/ Laie	15,500	65.1	51.8 - 78.4	8,300	34.9	21.6 - 48.2	23,800
Nuuanu/ Kalihi/ Moanalua	45,800	69.2	61.0 - 77.3	20,400	30.8	22.7 - 39.0	66,200
Puna/ Kau	21,900	59.7	53.4 - 66.0	14,800	40.3	34.0 - 46.6	36,700
Salt Lake/ Foster Village	30,300	82.2	74.7 - 89.8	6,600	17.8	10.2 - 25.3	36,900

**Visited dentist in the past year by State, County, Island, Community, BRFSS Age Group, DOH Race-Ethnicity, Gender, Education Level, Employment Status (Grouped), Household Income, Poverty Level, Marital Status (Grouped), Married, Health Care Coverage, for the Year(s) - 2002, 2004, 2006, 2008, 2010**

*Note: Weighted numbers (#), percentages and 95% confidence intervals; Respondents aged 18 years and older; n/r (Not Reportable) - If the unweighted total responses for a dimension (row) is <50 that row will not be shown; n/a (Not Available) - Not asked of a subset of respondents*

**Year: 2008**

Community	Yes			No			Estimated Population
	#	%	C.I. (95%)	#	%	C.I. (95%)	#
Upcountry/ Hana	22,300	69.5	63.1 - 75.9	9,800	30.5	24.1 - 36.9	32,200
Waialae/ Kahala/ Hawaii Kai	40,400	88.3	82.7 - 93.8	5,400	11.7	6.2 - 17.3	45,800
Waipahu/ Kapolei/ Ewa	89,300	73.6	68.4 - 78.8	32,000	26.4	21.2 - 31.6	121,300

**Visited dentist in the past year by State, County, Island, Community, BRFSS Age Group, DOH Race-Ethnicity, Gender, Education Level, Employment Status (Grouped), Household Income, Poverty Level, Marital Status (Grouped), Married, Health Care Coverage, for the Year(s) - 2002, 2004, 2006, 2008, 2010**

*Note: Weighted numbers (#), percentages and 95% confidence intervals; Respondents aged 18 years and older; n/r (Not Reportable) - If the unweighted total responses for a dimension (row) is <50 that row will not be shown; n/a (Not Available) - Not asked of a subset of respondents*

**Year: 2008**

BRFSS Age Group	Yes			No			Estimated Population
	#	%	C.I. (95%)	#	%	C.I. (95%)	#
<b>18-24</b>	88,100	71.2	65.3 - 77.2	35,500	28.8	22.8 - 34.7	123,600
<b>25-34</b>	117,800	65.7	60.8 - 70.7	61,400	34.3	29.3 - 39.2	179,100
<b>35-44</b>	131,300	73.5	70.0 - 77.0	47,400	26.5	23.0 - 30.0	178,700
<b>45-54</b>	133,100	75.3	72.2 - 78.3	43,700	24.7	21.7 - 27.8	176,900
<b>55-64</b>	115,500	76.6	73.7 - 79.6	35,200	23.4	20.4 - 26.3	150,700
<b>65-74</b>	71,200	80.0	76.6 - 83.4	17,800	20.0	16.6 - 23.4	89,000
<b>75+</b>	70,300	74.8	71.1 - 78.6	23,600	25.2	21.4 - 28.9	94,000

**Visited dentist in the past year by State, County, Island, Community, BRFSS Age Group, DOH Race-Ethnicity, Gender, Education Level, Employment Status (Grouped), Household Income, Poverty Level, Marital Status (Grouped), Married, Health Care Coverage, for the Year(s) - 2002, 2004, 2006, 2008, 2010**

*Note: Weighted numbers (#), percentages and 95% confidence intervals; Respondents aged 18 years and older; n/r (Not Reportable) - If the unweighted total responses for a dimension (row) is <50 that row will not be shown; n/a (Not Available) - Not asked of a subset of respondents*

**Year: 2008**

DOH Race-Ethnicity	Yes			No			Estimated Population
	#	%	C.I. (95%)	#	%	C.I. (95%)	#
<b>Caucasian</b>	258,600	78.5	76.4 - 80.7	70,700	21.5	19.3 - 23.6	329,300
<b>Native Hawaiian</b>	85,100	61.6	56.6 - 66.6	53,100	38.4	33.4 - 43.4	138,200
<b>Chinese</b>	55,700	83.2	78.4 - 88.0	11,200	16.8	12.0 - 21.6	66,900
<b>Filipino</b>	91,100	63.1	58.0 - 68.3	53,200	36.9	31.7 - 42.0	144,300
<b>Japanese</b>	181,600	80.0	77.1 - 82.8	45,500	20.0	17.2 - 22.9	227,100
<b>Black</b>	11,700	84.8	75.9 - 93.6	2,100	15.2	6.4 - 24.1	13,700
<b>Other Asian</b>	18,500	75.1	66.0 - 84.3	6,100	24.9	15.7 - 34.0	24,600
<b>Other Pacific Islander</b>	10,700	44.6	30.6 - 58.7	13,300	55.4	41.3 - 69.4	24,000
<b>Other</b>	14,500	69.1	58.5 - 79.7	6,500	30.9	20.3 - 41.5	21,000

**Visited dentist in the past year by State, County, Island, Community, BRFSS Age Group, DOH Race-Ethnicity, Gender, Education Level, Employment Status (Grouped), Household Income, Poverty Level, Marital Status (Grouped), Married, Health Care Coverage, for the Year(s) - 2002, 2004, 2006, 2008, 2010**

*Note: Weighted numbers (#), percentages and 95% confidence intervals; Respondents aged 18 years and older; n/r (Not Reportable) - If the unweighted total responses for a dimension (row) is <50 that row will not be shown; n/a (Not Available) - Not asked of a subset of respondents*

**Year: 2008**

Gender	Yes			No			Estimated Population
	#	%	C.I. (95%)	#	%	C.I. (95%)	#
Male	352,700	71.4	68.9 - 73.9	141,400	28.6	26.1 - 31.1	494,000
Female	380,400	75.4	73.5 - 77.4	124,100	24.6	22.6 - 26.5	504,500

Education Level	Yes			No			Estimated Population
	#	%	C.I. (95%)	#	%	C.I. (95%)	#
Never attended school/ Only Kindergarten to Grades 8	5,200	55.2	42.0 - 68.3	4,200	44.8	31.7 - 58.0	9,500
Grades 9 thru 11 (Some High School)	20,600	52.3	43.3 - 61.4	18,700	47.7	38.6 - 56.7	39,300
Grades 12 or GED (High School Grad)	191,200	65.2	61.9 - 68.5	102,000	34.8	31.5 - 38.1	293,100
College 1 to 3 years (Some College/ Tech)	206,900	72.3	69.3 - 75.3	79,400	27.7	24.7 - 30.7	286,200
College 4 years or more (College Grad)	308,200	83.5	81.4 - 85.5	61,000	16.5	14.5 - 18.6	369,200

**Visited dentist in the past year by State, County, Island, Community, BRFSS Age Group, DOH Race-Ethnicity, Gender, Education Level, Employment Status (Grouped), Household Income, Poverty Level, Marital Status (Grouped), Married, Health Care Coverage, for the Year(s) - 2002, 2004, 2006, 2008, 2010**

*Note: Weighted numbers (#), percentages and 95% confidence intervals; Respondents aged 18 years and older; n/r (Not Reportable) - If the unweighted total responses for a dimension (row) is <50 that row will not be shown; n/a (Not Available) - Not asked of a subset of respondents*

**Year: 2008**

Employment Status (Grouped)	Yes			No			Estimated Population
	#	%	C.I. (95%)	#	%	C.I. (95%)	#
<b>Employed</b>	469,800	74.3	72.3 - 76.3	162,600	25.7	23.7 - 27.7	632,500
<b>Unemployed</b>	27,500	62.7	53.1 - 72.4	16,300	37.3	27.6 - 46.9	43,800
<b>Retired/Unable to work</b>	170,200	75.7	73.1 - 78.2	54,700	24.3	21.8 - 26.9	225,000
<b>Student/Homemaker</b>	63,700	66.8	60.7 - 72.8	31,700	33.2	27.2 - 39.3	95,300



**Visited dentist in the past year by State, County, Island, Community, BRFSS Age Group, DOH Race-Ethnicity, Gender, Education Level, Employment Status (Grouped), Household Income, Poverty Level, Marital Status (Grouped), Married, Health Care Coverage, for the Year(s) - 2002, 2004, 2006, 2008, 2010**

*Note: Weighted numbers (#), percentages and 95% confidence intervals; Respondents aged 18 years and older; n/r (Not Reportable) - If the unweighted total responses for a dimension (row) is <50 that row will not be shown; n/a (Not Available) - Not asked of a subset of respondents*

**Year: 2008**

Household Income	Yes			No			Estimated Population
	#	%	C.I. (95%)	#	%	C.I. (95%)	#
<b>Less than \$10,000</b>	9,100	36.8	27.5 - 46.1	15,600	63.2	53.9 - 72.5	24,700
<b>\$10,000 to \$14,999</b>	10,800	49.0	38.6 - 59.5	11,200	51.0	40.5 - 61.4	22,000
<b>\$15,000 to \$19,999</b>	24,300	59.0	51.2 - 66.7	16,900	41.0	33.3 - 48.8	41,100
<b>\$20,000 to \$24,999</b>	31,800	57.0	50.0 - 64.0	24,000	43.0	36.0 - 50.0	55,800
<b>\$25,000 to \$34,999</b>	62,600	61.3	56.0 - 66.6	39,500	38.7	33.4 - 44.0	102,000
<b>\$35,000 to \$49,999</b>	109,300	74.2	70.2 - 78.1	38,000	25.8	21.9 - 29.8	147,300
<b>\$50,000 to \$74,999</b>	145,900	77.9	74.4 - 81.4	41,400	22.1	18.6 - 25.6	187,300
<b>\$75,000 or more</b>	270,500	84.1	81.8 - 86.4	51,100	15.9	13.6 - 18.2	321,600

**Visited dentist in the past year by State, County, Island, Community, BRFSS Age Group, DOH Race-Ethnicity, Gender, Education Level, Employment Status (Grouped), Household Income, Poverty Level, Marital Status (Grouped), Married, Health Care Coverage, for the Year(s) - 2002, 2004, 2006, 2008, 2010**

*Note: Weighted numbers (#), percentages and 95% confidence intervals; Respondents aged 18 years and older; n/r (Not Reportable) - If the unweighted total responses for a dimension (row) is <50 that row will not be shown; n/a (Not Available) - Not asked of a subset of respondents*

**Year: 2008**

Poverty Level	Yes			No			Estimated Population
	#	%	C.I. (95%)	#	%	C.I. (95%)	#
<b>0-130%</b>	97,300	53.9	49.3 - 58.5	83,200	46.1	41.5 - 50.7	180,500
<b>131-185%</b>	81,700	69.0	64.0 - 73.9	36,700	31.0	26.1 - 36.0	118,400
<b>186+%</b>	485,200	80.5	78.9 - 82.2	117,400	19.5	17.8 - 21.1	602,600

Marital Status (Grouped)	Yes			No			Estimated Population
	#	%	C.I. (95%)	#	%	C.I. (95%)	#
<b>Married</b>	463,600	78.6	76.8 - 80.4	126,000	21.4	19.6 - 23.2	589,700
<b>Unmarried Couple</b>	16,600	61.3	50.9 - 71.7	10,500	38.7	28.3 - 49.1	27,000
<b>Widowed</b>	39,000	68.9	64.2 - 73.7	17,600	31.1	26.3 - 35.8	56,600
<b>Other</b>	213,900	65.8	62.5 - 69.0	111,300	34.2	31.0 - 37.5	325,200

**Visited dentist in the past year by State, County, Island, Community, BRFSS Age Group, DOH Race-Ethnicity, Gender, Education Level, Employment Status (Grouped), Household Income, Poverty Level, Marital Status (Grouped), Married, Health Care Coverage, for the Year(s) - 2002, 2004, 2006, 2008, 2010**

*Note: Weighted numbers (#), percentages and 95% confidence intervals; Respondents aged 18 years and older; n/r (Not Reportable) - If the unweighted total responses for a dimension (row) is <50 that row will not be shown; n/a (Not Available) - Not asked of a subset of respondents*

**Year: 2008**

<b>Married</b>	<b>Yes</b>			<b>No</b>			<b>Estimated Population</b>
	<b>#</b>	<b>%</b>	<b>C.I. (95%)</b>	<b>#</b>	<b>%</b>	<b>C.I. (95%)</b>	<b>#</b>
<b>Yes</b>	470,500	78.3	76.5 - 80.1	130,600	21.7	19.9 - 23.5	601,100
<b>No</b>	260,500	66.0	63.1 - 68.8	134,400	34.0	31.2 - 36.9	394,900

<b>Health Care Coverage</b>	<b>Yes</b>			<b>No</b>			<b>Estimated Population</b>
	<b>#</b>	<b>%</b>	<b>C.I. (95%)</b>	<b>#</b>	<b>%</b>	<b>C.I. (95%)</b>	<b>#</b>
<b>Yes</b>	702,700	75.2	73.7 - 76.8	231,600	24.8	23.2 - 26.3	934,300
<b>No</b>	29,300	46.7	38.5 - 54.9	33,400	53.3	45.1 - 61.5	62,600

**Visited dentist in the past year by State, County, Island, Community, BRFSS Age Group, DOH Race-Ethnicity, Gender, Education Level, Employment Status (Grouped), Household Income, Poverty Level, Marital Status (Grouped), Married, Health Care Coverage, for the Year(s) - 2002, 2004, 2006, 2008, 2010**

*Note: Weighted numbers (#), percentages and 95% confidence intervals; Respondents aged 18 years and older; n/r (Not Reportable) - If the unweighted total responses for a dimension (row) is <50 that row will not be shown; n/a (Not Available) - Not asked of a subset of respondents*

**Year: 2006**

State	Yes			No			Estimated Population
	#	%	C.I. (95%)	#	%	C.I. (95%)	#
Hawaii State	703,200	72.3	70.7 - 73.9	269,400	27.7	26.1 - 29.3	972,700

County	Yes			No			Estimated Population
	#	%	C.I. (95%)	#	%	C.I. (95%)	#
Hawaii	80,900	66.5	63.3 - 69.8	40,700	33.5	30.2 - 36.7	121,600
Honolulu	515,500	73.9	71.9 - 75.9	181,900	26.1	24.1 - 28.1	697,500
Kauai	33,300	69.9	65.2 - 74.5	14,400	30.1	25.5 - 34.8	47,700
Maui	73,500	69.4	66.0 - 72.7	32,500	30.6	27.3 - 34.0	105,900

**Visited dentist in the past year by State, County, Island, Community, BRFSS Age Group, DOH Race-Ethnicity, Gender, Education Level, Employment Status (Grouped), Household Income, Poverty Level, Marital Status (Grouped), Married, Health Care Coverage, for the Year(s) - 2002, 2004, 2006, 2008, 2010**

*Note: Weighted numbers (#), percentages and 95% confidence intervals; Respondents aged 18 years and older; n/r (Not Reportable) - If the unweighted total responses for a dimension (row) is <50 that row will not be shown; n/a (Not Available) - Not asked of a subset of respondents*

**Year: 2006**

Island	Yes			No			Estimated Population
	#	%	C.I. (95%)	#	%	C.I. (95%)	#
Hawaii	80,900	66.5	63.3 - 69.8	40,700	33.5	30.2 - 36.7	121,600
Kauai	33,300	69.9	65.2 - 74.5	14,400	30.1	25.5 - 34.8	47,700
Lanai	1,400	60.7	52.8 - 68.7	900	39.3	31.3 - 47.2	2,300
Maui	67,600	69.7	66.0 - 73.4	29,400	30.3	26.6 - 34.0	97,000
Molokai	4,400	67.4	59.7 - 75.1	2,100	32.6	24.9 - 40.3	6,600
Oahu	515,500	73.9	71.9 - 75.9	181,900	26.1	24.1 - 28.1	697,500

Community	Yes			No			Estimated Population
	#	%	C.I. (95%)	#	%	C.I. (95%)	#
Aiea/ Pearl City	49,700	74.7	68.2 - 81.1	16,900	25.3	18.9 - 31.8	66,600

**Visited dentist in the past year by State, County, Island, Community, BRFSS Age Group, DOH Race-Ethnicity, Gender, Education Level, Employment Status (Grouped), Household Income, Poverty Level, Marital Status (Grouped), Married, Health Care Coverage, for the Year(s) - 2002, 2004, 2006, 2008, 2010**

*Note: Weighted numbers (#), percentages and 95% confidence intervals; Respondents aged 18 years and older; n/r (Not Reportable) - If the unweighted total responses for a dimension (row) is <50 that row will not be shown; n/a (Not Available) - Not asked of a subset of respondents*

**Year: 2006**

Community	Yes			No			Estimated Population
	#	%	C.I. (95%)	#	%	C.I. (95%)	#
Ala Moana	22,700	68.1	60.1 - 76.1	10,600	31.9	23.9 - 39.9	33,300
Hanalei/ Kapaa	13,800	67.0	59.8 - 74.2	6,800	33.0	25.8 - 40.2	20,600
Hilo	24,400	70.2	64.5 - 75.8	10,300	29.8	24.2 - 35.5	34,700
Kaaawa/ Kahaluu/ Kaneohe	37,500	78.5	71.6 - 85.3	10,300	21.5	14.7 - 28.4	47,700
Kahului	22,900	70.0	63.6 - 76.4	9,800	30.0	23.6 - 36.4	32,700
Kailua/ Waimanalo	40,200	81.3	75.3 - 87.2	9,300	18.7	12.8 - 24.7	49,500
Kaimuki/ Palolo/ Waikiki	45,200	79.2	73.0 - 85.4	11,900	20.8	14.6 - 27.0	57,000
Kona	20,000	68.0	61.4 - 74.6	9,400	32.0	25.4 - 38.6	29,500
Lahaina/ Wailuku	23,200	71.5	65.4 - 77.6	9,200	28.5	22.4 - 34.6	32,400
Lanai	1,400	60.7	52.8 - 68.7	900	39.3	31.3 - 47.2	2,300

**Visited dentist in the past year by State, County, Island, Community, BRFSS Age Group, DOH Race-Ethnicity, Gender, Education Level, Employment Status (Grouped), Household Income, Poverty Level, Marital Status (Grouped), Married, Health Care Coverage, for the Year(s) - 2002, 2004, 2006, 2008, 2010**

*Note: Weighted numbers (#), percentages and 95% confidence intervals; Respondents aged 18 years and older; n/r (Not Reportable) - If the unweighted total responses for a dimension (row) is <50 that row will not be shown; n/a (Not Available) - Not asked of a subset of respondents*

**Year: 2006**

Community	Yes			No			Estimated Population
	#	%	C.I. (95%)	#	%	C.I. (95%)	#
Lihue-Waimea	19,500	72.0	65.9 - 78.2	7,600	28.0	21.8 - 34.1	27,000
Manoa/ Upper Makiki	36,300	75.6	68.1 - 83.2	11,700	24.4	16.8 - 31.9	48,000
Mililani/ Wahiawa	50,700	76.9	70.7 - 83.1	15,300	23.1	16.9 - 29.3	66,000
Molokai	4,400	67.4	59.7 - 75.1	2,100	32.6	24.9 - 40.3	6,600
Nanakuli/ Waianae	15,100	53.8	42.1 - 65.6	13,000	46.2	34.4 - 57.9	28,100
N.Hawaii	17,900	68.7	61.6 - 75.7	8,200	31.3	24.3 - 38.4	26,100
N.Shore/ Laie	15,500	63.6	52.3 - 74.9	8,900	36.4	25.1 - 47.7	24,300
Nuuanu/ Kalihi/ Moanalua	50,800	68.2	61.0 - 75.3	23,700	31.8	24.7 - 39.0	74,500
Puna/ Kau	18,600	59.4	52.8 - 65.9	12,800	40.6	34.1 - 47.2	31,400
Salt Lake/ Foster Village	27,800	76.0	67.7 - 84.3	8,800	24.0	15.7 - 32.3	36,600

Report Source: The Hawaii Health Data Warehouse;  
Data Source: State of Hawaii, Department of Health,  
Behavioral Risk Factor Surveillance System (BRFSS)

**Visited dentist in the past year by State, County, Island, Community, BRFSS Age Group, DOH Race-Ethnicity, Gender, Education Level, Employment Status (Grouped), Household Income, Poverty Level, Marital Status (Grouped), Married, Health Care Coverage, for the Year(s) - 2002, 2004, 2006, 2008, 2010**

*Note: Weighted numbers (#), percentages and 95% confidence intervals; Respondents aged 18 years and older; n/r (Not Reportable) - If the unweighted total responses for a dimension (row) is <50 that row will not be shown; n/a (Not Available) - Not asked of a subset of respondents*

**Year: 2006**

Community	Yes			No			Estimated Population
	#	%	C.I. (95%)	#	%	C.I. (95%)	#
Upcountry/ Hana	21,500	67.5	61.0 - 74.0	10,400	32.5	26.0 - 39.0	31,900
Waialae/ Kahala/ Hawaii Kai	37,400	87.4	82.0 - 92.8	5,400	12.6	7.2 - 18.0	42,800
Waipahu/ Kapolei/ Ewa	86,700	70.5	65.0 - 76.0	36,300	29.5	24.0 - 35.0	123,000



**Visited dentist in the past year by State, County, Island, Community, BRFSS Age Group, DOH Race-Ethnicity, Gender, Education Level, Employment Status (Grouped), Household Income, Poverty Level, Marital Status (Grouped), Married, Health Care Coverage, for the Year(s) - 2002, 2004, 2006, 2008, 2010**

*Note: Weighted numbers (#), percentages and 95% confidence intervals; Respondents aged 18 years and older; n/r (Not Reportable) - If the unweighted total responses for a dimension (row) is <50 that row will not be shown; n/a (Not Available) - Not asked of a subset of respondents*

**Year: 2006**

BRFSS Age Group	Yes			No			Estimated Population
	#	%	C.I. (95%)	#	%	C.I. (95%)	#
<b>18-24</b>	75,700	61.2	54.6 - 67.8	48,000	38.8	32.2 - 45.4	123,700
<b>25-34</b>	114,400	70.6	66.5 - 74.7	47,700	29.4	25.3 - 33.5	162,100
<b>35-44</b>	128,900	72.7	69.3 - 76.1	48,500	27.3	23.9 - 30.7	177,400
<b>45-54</b>	132,100	73.7	70.6 - 76.7	47,100	26.3	23.3 - 29.4	179,200
<b>55-64</b>	115,200	78.5	75.3 - 81.7	31,600	21.5	18.3 - 24.7	146,800
<b>65-74</b>	62,500	75.4	71.2 - 79.6	20,300	24.6	20.4 - 28.8	82,800
<b>75+</b>	68,500	73.8	69.7 - 77.9	24,300	26.2	22.1 - 30.3	92,800

**Visited dentist in the past year by State, County, Island, Community, BRFSS Age Group, DOH Race-Ethnicity, Gender, Education Level, Employment Status (Grouped), Household Income, Poverty Level, Marital Status (Grouped), Married, Health Care Coverage, for the Year(s) - 2002, 2004, 2006, 2008, 2010**

*Note: Weighted numbers (#), percentages and 95% confidence intervals; Respondents aged 18 years and older; n/r (Not Reportable) - If the unweighted total responses for a dimension (row) is <50 that row will not be shown; n/a (Not Available) - Not asked of a subset of respondents*

**Year: 2006**

DOH Race-Ethnicity	Yes			No			Estimated Population
	#	%	C.I. (95%)	#	%	C.I. (95%)	#
Caucasian	240,800	75.3	73.0 - 77.5	79,100	24.7	22.5 - 27.0	319,900
Native Hawaiian	73,000	60.5	55.5 - 65.5	47,700	39.5	34.5 - 44.5	120,700
Chinese	39,000	83.2	77.5 - 88.9	7,900	16.8	11.1 - 22.5	46,800
Filipino	101,800	66.6	61.7 - 71.5	51,200	33.4	28.5 - 38.3	153,000
Japanese	165,100	79.5	76.7 - 82.4	42,500	20.5	17.6 - 23.3	207,600
Black	11,300	78.0	63.9 - 92.1	3,200	22.0	7.9 - 36.1	14,500
Other Asian	19,700	67.7	57.3 - 78.2	9,400	32.3	21.8 - 42.7	29,000
Other Pacific Islander	14,100	55.7	42.7 - 68.6	11,200	44.3	31.4 - 57.3	25,200
Mixed Ethnicity	18,200	75.4	65.5 - 85.3	5,900	24.6	14.7 - 34.5	24,200
Other	13,000	59.8	47.2 - 72.5	8,700	40.2	27.5 - 52.8	21,700

Report Source: The Hawaii Health Data Warehouse;  
Data Source: State of Hawaii, Department of Health,  
Behavioral Risk Factor Surveillance System (BRFSS)

**Visited dentist in the past year by State, County, Island, Community, BRFSS Age Group, DOH Race-Ethnicity, Gender, Education Level, Employment Status (Grouped), Household Income, Poverty Level, Marital Status (Grouped), Married, Health Care Coverage, for the Year(s) - 2002, 2004, 2006, 2008, 2010**

*Note: Weighted numbers (#), percentages and 95% confidence intervals; Respondents aged 18 years and older; n/r (Not Reportable) - If the unweighted total responses for a dimension (row) is <50 that row will not be shown; n/a (Not Available) - Not asked of a subset of respondents*

**Year: 2006**

Gender	Yes			No			Estimated Population
	#	%	C.I. (95%)	#	%	C.I. (95%)	#
Male	338,400	70.5	68.1 - 72.9	141,600	29.5	27.1 - 31.9	480,000
Female	364,900	74.1	72.1 - 76.0	127,800	25.9	24.0 - 27.9	492,700

**Visited dentist in the past year by State, County, Island, Community, BRFSS Age Group, DOH Race-Ethnicity, Gender, Education Level, Employment Status (Grouped), Household Income, Poverty Level, Marital Status (Grouped), Married, Health Care Coverage, for the Year(s) - 2002, 2004, 2006, 2008, 2010**

*Note: Weighted numbers (#), percentages and 95% confidence intervals; Respondents aged 18 years and older; n/r (Not Reportable) - If the unweighted total responses for a dimension (row) is <50 that row will not be shown; n/a (Not Available) - Not asked of a subset of respondents*

**Year: 2006**

Education Level	Yes			No			Estimated Population
	#	%	C.I. (95%)	#	%	C.I. (95%)	#
Never attended school/ Only Kindergarten to Grades 8	6,900	42.4	31.4 - 53.4	9,300	57.6	46.6 - 68.6	16,200
Grades 9 thru 11 (Some High School)	19,700	48.6	40.1 - 57.2	20,800	51.4	42.8 - 59.9	40,400
Grades 12 or GED (High School Grad)	181,600	62.5	59.1 - 65.9	108,900	37.5	34.1 - 40.9	290,500
College 1 to 3 years (Some College/ Tech)	211,500	75.2	72.5 - 77.8	69,900	24.8	22.2 - 27.5	281,500
College 4 years or more (College Grad)	282,900	82.5	80.5 - 84.5	60,200	17.5	15.5 - 19.5	343,100

**Visited dentist in the past year by State, County, Island, Community, BRFSS Age Group, DOH Race-Ethnicity, Gender, Education Level, Employment Status (Grouped), Household Income, Poverty Level, Marital Status (Grouped), Married, Health Care Coverage, for the Year(s) - 2002, 2004, 2006, 2008, 2010**

*Note: Weighted numbers (#), percentages and 95% confidence intervals; Respondents aged 18 years and older; n/r (Not Reportable) - If the unweighted total responses for a dimension (row) is <50 that row will not be shown; n/a (Not Available) - Not asked of a subset of respondents*

**Year: 2006**

Employment Status (Grouped)	Yes			No			Estimated Population
	#	%	C.I. (95%)	#	%	C.I. (95%)	#
<b>Employed</b>	457,300	72.9	70.9 - 74.9	169,900	27.1	25.1 - 29.1	627,200
<b>Unemployed</b>	17,800	50.0	40.1 - 59.8	17,800	50.0	40.2 - 59.9	35,700
<b>Retired/Unable to work</b>	161,400	74.2	71.6 - 76.7	56,200	25.8	23.3 - 28.4	217,700
<b>Student/Homemaker</b>	65,700	72.5	66.6 - 78.4	24,900	27.5	21.6 - 33.4	90,600

**Visited dentist in the past year by State, County, Island, Community, BRFSS Age Group, DOH Race-Ethnicity, Gender, Education Level, Employment Status (Grouped), Household Income, Poverty Level, Marital Status (Grouped), Married, Health Care Coverage, for the Year(s) - 2002, 2004, 2006, 2008, 2010**

*Note: Weighted numbers (#), percentages and 95% confidence intervals; Respondents aged 18 years and older; n/r (Not Reportable) - If the unweighted total responses for a dimension (row) is <50 that row will not be shown; n/a (Not Available) - Not asked of a subset of respondents*

**Year: 2006**

Household Income	Yes			No			Estimated Population
	#	%	C.I. (95%)	#	%	C.I. (95%)	#
<b>Less than \$10,000</b>	13,100	50.0	40.3 - 59.6	13,100	50.0	40.4 - 59.7	26,200
<b>\$10,000 to \$14,999</b>	13,000	50.7	41.3 - 60.0	12,600	49.3	40.0 - 58.7	25,600
<b>\$15,000 to \$19,999</b>	25,900	59.1	51.6 - 66.5	18,000	40.9	33.5 - 48.4	43,900
<b>\$20,000 to \$24,999</b>	43,100	65.5	59.0 - 72.0	22,700	34.5	28.0 - 41.0	65,700
<b>\$25,000 to \$34,999</b>	70,700	67.5	62.3 - 72.6	34,100	32.5	27.4 - 37.7	104,900
<b>\$35,000 to \$49,999</b>	95,300	71.3	67.3 - 75.3	38,400	28.7	24.7 - 32.7	133,700
<b>\$50,000 to \$74,999</b>	123,900	79.5	76.1 - 82.8	32,000	20.5	17.2 - 23.9	155,900
<b>\$75,000 or more</b>	205,100	84.6	82.1 - 87.1	37,300	15.4	12.9 - 17.9	242,400

**Visited dentist in the past year by State, County, Island, Community, BRFSS Age Group, DOH Race-Ethnicity, Gender, Education Level, Employment Status (Grouped), Household Income, Poverty Level, Marital Status (Grouped), Married, Health Care Coverage, for the Year(s) - 2002, 2004, 2006, 2008, 2010**

*Note: Weighted numbers (#), percentages and 95% confidence intervals; Respondents aged 18 years and older; n/r (Not Reportable) - If the unweighted total responses for a dimension (row) is <50 that row will not be shown; n/a (Not Available) - Not asked of a subset of respondents*

**Year: 2006**

Poverty Level	Yes			No			Estimated Population
	#	%	C.I. (95%)	#	%	C.I. (95%)	#
<b>0-130%</b>	99,900	57.3	52.9 - 61.8	74,300	42.7	38.2 - 47.1	174,200
<b>131-185%</b>	77,800	68.0	63.1 - 72.9	36,600	32.0	27.1 - 36.9	114,300
<b>186+%</b>	412,600	80.9	79.2 - 82.6	97,300	19.1	17.4 - 20.8	509,900

Marital Status (Grouped)	Yes			No			Estimated Population
	#	%	C.I. (95%)	#	%	C.I. (95%)	#
<b>Married</b>	449,300	78.2	76.4 - 80.0	125,300	21.8	20.0 - 23.6	574,600
<b>Unmarried Couple</b>	17,400	54.2	42.9 - 65.5	14,700	45.8	34.5 - 57.1	32,000
<b>Widowed</b>	35,700	65.7	60.3 - 71.0	18,700	34.3	29.0 - 39.7	54,500
<b>Other</b>	200,800	64.4	61.2 - 67.6	110,800	35.6	32.4 - 38.8	311,600

**Visited dentist in the past year by State, County, Island, Community, BRFSS Age Group, DOH Race-Ethnicity, Gender, Education Level, Employment Status (Grouped), Household Income, Poverty Level, Marital Status (Grouped), Married, Health Care Coverage, for the Year(s) - 2002, 2004, 2006, 2008, 2010**

*Note: Weighted numbers (#), percentages and 95% confidence intervals; Respondents aged 18 years and older; n/r (Not Reportable) - If the unweighted total responses for a dimension (row) is <50 that row will not be shown; n/a (Not Available) - Not asked of a subset of respondents*

**Year: 2006**

<b>Married</b>	<b>Yes</b>			<b>No</b>			<b>Estimated Population</b>
	<b>#</b>	<b>%</b>	<b>C.I. (95%)</b>	<b>#</b>	<b>%</b>	<b>C.I. (95%)</b>	<b>#</b>
<b>Yes</b>	456,000	78.0	76.2 - 79.7	128,700	22.0	20.3 - 23.8	584,700
<b>No</b>	245,900	63.7	60.8 - 66.5	140,400	36.3	33.5 - 39.2	386,300

<b>Health Care Coverage</b>	<b>Yes</b>			<b>No</b>			<b>Estimated Population</b>
	<b>#</b>	<b>%</b>	<b>C.I. (95%)</b>	<b>#</b>	<b>%</b>	<b>C.I. (95%)</b>	<b>#</b>
<b>Yes</b>	664,200	74.7	73.1 - 76.2	225,000	25.3	23.8 - 26.9	889,200
<b>No</b>	37,400	46.4	39.6 - 53.2	43,100	53.6	46.8 - 60.4	80,500



**Visited dentist in the past year by State, County, Island, Community, BRFSS Age Group, DOH Race-Ethnicity, Gender, Education Level, Employment Status (Grouped), Household Income, Poverty Level, Marital Status (Grouped), Married, Health Care Coverage, for the Year(s) - 2002, 2004, 2006, 2008, 2010**

*Note: Weighted numbers (#), percentages and 95% confidence intervals; Respondents aged 18 years and older; n/r (Not Reportable) - If the unweighted total responses for a dimension (row) is <50 that row will not be shown; n/a (Not Available) - Not asked of a subset of respondents*

**Year: 2004**

State	Yes			No			Estimated Population
	#	%	C.I. (95%)	#	%	C.I. (95%)	#
Hawaii State	680,900	75.0	72.3 - 77.7	226,500	25.0	22.3 - 27.7	907,400

County	Yes			No			Estimated Population
	#	%	C.I. (95%)	#	%	C.I. (95%)	#
Hawaii	94,800	72.7	68.1 - 77.4	35,600	27.3	22.6 - 31.9	130,300
Honolulu	481,100	75.2	71.7 - 78.8	158,300	24.8	21.2 - 28.3	639,400
Kauai	28,000	69.2	62.4 - 76.1	12,500	30.8	23.9 - 37.6	40,500
Maui	77,000	79.2	73.5 - 85.0	20,200	20.8	15.0 - 26.5	97,200

**Visited dentist in the past year by State, County, Island, Community, BRFSS Age Group, DOH Race-Ethnicity, Gender, Education Level, Employment Status (Grouped), Household Income, Poverty Level, Marital Status (Grouped), Married, Health Care Coverage, for the Year(s) - 2002, 2004, 2006, 2008, 2010**

*Note: Weighted numbers (#), percentages and 95% confidence intervals; Respondents aged 18 years and older; n/r (Not Reportable) - If the unweighted total responses for a dimension (row) is <50 that row will not be shown; n/a (Not Available) - Not asked of a subset of respondents*

**Year: 2004**

Island	Yes			No			Estimated Population
	#	%	C.I. (95%)	#	%	C.I. (95%)	#
Hawaii	94,800	72.7	68.1 - 77.4	35,600	27.3	22.6 - 31.9	130,300
Kauai	28,000	69.2	62.4 - 76.1	12,500	30.8	23.9 - 37.6	40,500
Lanai	1,000	79.9	68.8 - 91.0	300	20.1	9.0 - 31.2	1,300
Maui	71,300	79.2	73.1 - 85.4	18,700	20.8	14.6 - 26.9	90,000
Molokai	4,700	79.1	64.6 - 93.7	1,200	20.9	6.3 - 35.4	5,900
Oahu	481,100	75.2	71.7 - 78.8	158,300	24.8	21.2 - 28.3	639,400

Community	Yes			No			Estimated Population
	#	%	C.I. (95%)	#	%	C.I. (95%)	#
Aiea/ Pearl City	50,800	82.2	72.5 - 91.8	11,000	17.8	8.2 - 27.5	61,800

**Visited dentist in the past year by State, County, Island, Community, BRFSS Age Group, DOH Race-Ethnicity, Gender, Education Level, Employment Status (Grouped), Household Income, Poverty Level, Marital Status (Grouped), Married, Health Care Coverage, for the Year(s) - 2002, 2004, 2006, 2008, 2010**

*Note: Weighted numbers (#), percentages and 95% confidence intervals; Respondents aged 18 years and older; n/r (Not Reportable) - If the unweighted total responses for a dimension (row) is <50 that row will not be shown; n/a (Not Available) - Not asked of a subset of respondents*

**Year: 2004**

Community	Yes			No			Estimated Population
	#	%	C.I. (95%)	#	%	C.I. (95%)	#
Ala Moana	22,000	71.5	56.7 - 86.2	8,800	28.5	13.8 - 43.3	30,800
Hanalei/ Kapaa	11,300	69.2	58.1 - 80.3	5,000	30.8	19.7 - 41.9	16,300
Hilo	25,100	74.5	65.4 - 83.6	8,600	25.5	16.4 - 34.6	33,800
Kaaawa/ Kahaluu/ Kaneohe	26,100	61.7	46.2 - 77.1	16,200	38.3	22.9 - 53.8	42,400
Kahului	25,700	82.0	73.4 - 90.5	5,600	18.0	9.5 - 26.6	31,300
Kailua/ Waimanalo	35,300	83.8	73.5 - 94.0	6,800	16.2	6.0 - 26.5	42,100
Kaimuki/ Palolo/ Waikiki	47,800	81.1	72.2 - 90.0	11,100	18.9	10.0 - 27.8	58,900
Kona	19,200	72.7	62.9 - 82.5	7,200	27.3	17.5 - 37.1	26,500
Lahaina/ Wailuku	23,600	84.1	74.2 - 94.1	4,500	15.9	5.9 - 25.8	28,100
Lanai	1,000	79.9	68.8 - 91.0	300	20.1	9.0 - 31.2	1,300

**Visited dentist in the past year by State, County, Island, Community, BRFSS Age Group, DOH Race-Ethnicity, Gender, Education Level, Employment Status (Grouped), Household Income, Poverty Level, Marital Status (Grouped), Married, Health Care Coverage, for the Year(s) - 2002, 2004, 2006, 2008, 2010**

*Note: Weighted numbers (#), percentages and 95% confidence intervals; Respondents aged 18 years and older; n/r (Not Reportable) - If the unweighted total responses for a dimension (row) is <50 that row will not be shown; n/a (Not Available) - Not asked of a subset of respondents*

**Year: 2004**

Community	Yes			No			Estimated Population
	#	%	C.I. (95%)	#	%	C.I. (95%)	#
Lihue-Waimea	16,800	69.3	60.6 - 78.0	7,400	30.7	22.0 - 39.4	24,200
Manoa/ Upper Makiki	37,400	80.2	69.7 - 90.6	9,200	19.8	9.4 - 30.3	46,600
Mililani/ Wahiawa	41,400	68.6	52.6 - 84.6	19,000	31.4	15.4 - 47.4	60,400
Molokai	4,700	79.1	64.6 - 93.7	1,200	20.9	6.3 - 35.4	5,900
N.Hawaii	16,500	71.5	61.2 - 81.7	6,600	28.5	18.3 - 38.8	23,200
Nuuanu/ Kalihi/ Moanalua	44,600	71.6	59.3 - 83.9	17,700	28.4	16.1 - 40.7	62,300
Puna/ Kau	33,900	72.1	63.8 - 80.4	13,100	27.9	19.6 - 36.2	47,000
Upcountry/ Hana	22,000	71.9	59.8 - 84.0	8,600	28.1	16.0 - 40.2	30,600
Waialae/ Kahala/ Hawaii Kai	28,900	83.9	72.7 - 95.1	5,500	16.1	4.9 - 27.3	34,500
Waipahu/ Kapolei/ Ewa	90,600	82.0	74.1 - 89.9	19,900	18.0	10.1 - 25.9	110,500

Report Source: The Hawaii Health Data Warehouse;  
Data Source: State of Hawaii, Department of Health,  
Behavioral Risk Factor Surveillance System (BRFSS)

**Visited dentist in the past year by State, County, Island, Community, BRFSS Age Group, DOH Race-Ethnicity, Gender, Education Level, Employment Status (Grouped), Household Income, Poverty Level, Marital Status (Grouped), Married, Health Care Coverage, for the Year(s) - 2002, 2004, 2006, 2008, 2010**

*Note: Weighted numbers (#), percentages and 95% confidence intervals; Respondents aged 18 years and older; n/r (Not Reportable) - If the unweighted total responses for a dimension (row) is <50 that row will not be shown; n/a (Not Available) - Not asked of a subset of respondents*

**Year: 2004**

BRFSS Age Group	Yes			No			Estimated Population
	#	%	C.I. (95%)	#	%	C.I. (95%)	#
<b>18-24</b>	71,600	66.7	54.9 - 78.4	35,800	33.3	21.6 - 45.1	107,400
<b>25-34</b>	126,900	75.6	69.4 - 81.9	40,900	24.4	18.1 - 30.6	167,800
<b>35-44</b>	134,000	76.3	70.4 - 82.2	41,600	23.7	17.8 - 29.6	175,600
<b>45-54</b>	125,700	74.7	69.2 - 80.3	42,500	25.3	19.7 - 30.8	168,100
<b>55-64</b>	99,300	81.3	76.0 - 86.6	22,900	18.7	13.4 - 24.0	122,200
<b>65-74</b>	63,600	77.1	70.0 - 84.3	18,900	22.9	15.7 - 30.0	82,400
<b>75+</b>	51,600	69.4	60.6 - 78.3	22,700	30.6	21.7 - 39.4	74,300

**Visited dentist in the past year by State, County, Island, Community, BRFSS Age Group, DOH Race-Ethnicity, Gender, Education Level, Employment Status (Grouped), Household Income, Poverty Level, Marital Status (Grouped), Married, Health Care Coverage, for the Year(s) - 2002, 2004, 2006, 2008, 2010**

*Note: Weighted numbers (#), percentages and 95% confidence intervals; Respondents aged 18 years and older; n/r (Not Reportable) - If the unweighted total responses for a dimension (row) is <50 that row will not be shown; n/a (Not Available) - Not asked of a subset of respondents*

**Year: 2004**

DOH Race-Ethnicity	Yes			No			Estimated Population
	#	%	C.I. (95%)	#	%	C.I. (95%)	#
<b>Caucasian</b>	231,300	78.8	75.1 - 82.6	62,200	21.2	17.4 - 24.9	293,500
<b>Native Hawaiian</b>	80,000	65.8	57.6 - 73.9	41,700	34.2	26.1 - 42.4	121,700
<b>Chinese</b>	41,800	82.0	71.5 - 92.4	9,200	18.0	7.6 - 28.5	51,100
<b>Filipino</b>	103,800	71.4	63.5 - 79.2	41,600	28.6	20.8 - 36.5	145,500
<b>Japanese</b>	148,400	79.5	74.6 - 84.4	38,300	20.5	15.6 - 25.4	186,700
<b>Other</b>	16,800	77.2	64.6 - 89.8	5,000	22.8	10.2 - 35.4	21,800

**Visited dentist in the past year by State, County, Island, Community, BRFSS Age Group, DOH Race-Ethnicity, Gender, Education Level, Employment Status (Grouped), Household Income, Poverty Level, Marital Status (Grouped), Married, Health Care Coverage, for the Year(s) - 2002, 2004, 2006, 2008, 2010**

*Note: Weighted numbers (#), percentages and 95% confidence intervals; Respondents aged 18 years and older; n/r (Not Reportable) - If the unweighted total responses for a dimension (row) is <50 that row will not be shown; n/a (Not Available) - Not asked of a subset of respondents*

**Year: 2004**

Gender	Yes			No			Estimated Population
	#	%	C.I. (95%)	#	%	C.I. (95%)	#
Male	319,800	72.3	67.9 - 76.7	122,400	27.7	23.3 - 32.1	442,200
Female	361,100	77.6	74.5 - 80.8	104,100	22.4	19.2 - 25.5	465,200

Education Level	Yes			No			Estimated Population
	#	%	C.I. (95%)	#	%	C.I. (95%)	#
Grades 9 thru 11 (Some High School)	16,800	54.6	37.1 - 72.0	13,900	45.4	28.0 - 62.9	30,700
Grades 12 or GED (High School Grad)	200,500	71.2	65.9 - 76.5	81,000	28.8	23.5 - 34.1	281,500
College 1 to 3 years (Some College/ Tech)	220,000	76.1	71.1 - 81.2	68,900	23.9	18.8 - 28.9	288,900
College 4 years or more (College Grad)	236,700	80.3	76.4 - 84.2	58,200	19.7	15.8 - 23.6	295,000

**Visited dentist in the past year by State, County, Island, Community, BRFSS Age Group, DOH Race-Ethnicity, Gender, Education Level, Employment Status (Grouped), Household Income, Poverty Level, Marital Status (Grouped), Married, Health Care Coverage, for the Year(s) - 2002, 2004, 2006, 2008, 2010**

*Note: Weighted numbers (#), percentages and 95% confidence intervals; Respondents aged 18 years and older; n/r (Not Reportable) - If the unweighted total responses for a dimension (row) is <50 that row will not be shown; n/a (Not Available) - Not asked of a subset of respondents*

**Year: 2004**

Employment Status (Grouped)	Yes			No			Estimated Population
	#	%	C.I. (95%)	#	%	C.I. (95%)	#
<b>Employed</b>	443,700	76.2	72.7 - 79.7	138,700	23.8	20.3 - 27.3	582,400
<b>Unemployed</b>	11,700	44.1	25.6 - 62.6	14,800	55.9	37.4 - 74.4	26,500
<b>Retired/Unable to work</b>	151,000	76.8	72.2 - 81.4	45,700	23.2	18.6 - 27.8	196,700
<b>Student/Homemaker</b>	73,000	72.8	64.3 - 81.3	27,300	27.2	18.7 - 35.7	100,300



**Visited dentist in the past year by State, County, Island, Community, BRFSS Age Group, DOH Race-Ethnicity, Gender, Education Level, Employment Status (Grouped), Household Income, Poverty Level, Marital Status (Grouped), Married, Health Care Coverage, for the Year(s) - 2002, 2004, 2006, 2008, 2010**

*Note: Weighted numbers (#), percentages and 95% confidence intervals; Respondents aged 18 years and older; n/r (Not Reportable) - If the unweighted total responses for a dimension (row) is <50 that row will not be shown; n/a (Not Available) - Not asked of a subset of respondents*

**Year: 2004**

Household Income	Yes			No			Estimated Population
	#	%	C.I. (95%)	#	%	C.I. (95%)	#
<b>Less than \$10,000</b>	11,100	68.5	52.6 - 84.4	5,100	31.5	15.6 - 47.4	16,200
<b>\$10,000 to \$14,999</b>	14,400	54.9	40.7 - 69.1	11,800	45.1	30.9 - 59.3	26,200
<b>\$15,000 to \$19,999</b>	29,300	63.2	50.1 - 76.3	17,100	36.8	23.7 - 49.9	46,400
<b>\$20,000 to \$24,999</b>	41,900	60.9	50.0 - 71.8	26,900	39.1	28.2 - 50.0	68,800
<b>\$25,000 to \$34,999</b>	82,500	71.1	63.3 - 79.0	33,400	28.9	21.0 - 36.7	115,900
<b>\$35,000 to \$49,999</b>	105,900	75.9	69.2 - 82.6	33,600	24.1	17.4 - 30.8	139,600
<b>\$50,000 to \$74,999</b>	217,900	76.4	71.2 - 81.6	67,400	23.6	18.4 - 28.8	285,400
<b>\$75,000 or more</b>	177,900	85.1	80.9 - 89.4	31,100	14.9	10.6 - 19.1	209,000

**Visited dentist in the past year by State, County, Island, Community, BRFSS Age Group, DOH Race-Ethnicity, Gender, Education Level, Employment Status (Grouped), Household Income, Poverty Level, Marital Status (Grouped), Married, Health Care Coverage, for the Year(s) - 2002, 2004, 2006, 2008, 2010**

*Note: Weighted numbers (#), percentages and 95% confidence intervals; Respondents aged 18 years and older; n/r (Not Reportable) - If the unweighted total responses for a dimension (row) is <50 that row will not be shown; n/a (Not Available) - Not asked of a subset of respondents*

**Year: 2004**

Poverty Level	Yes			No			Estimated Population
	#	%	C.I. (95%)	#	%	C.I. (95%)	#
<b>0-130%</b>	98,500	62.3	54.7 - 69.9	59,700	37.7	30.1 - 45.3	158,200
<b>131-185%</b>	85,300	71.9	61.9 - 81.9	33,400	28.1	18.1 - 38.1	118,700
<b>186+%</b>	497,000	78.8	76.1 - 81.6	133,400	21.2	18.4 - 23.9	630,500

Marital Status (Grouped)	Yes			No			Estimated Population
	#	%	C.I. (95%)	#	%	C.I. (95%)	#
<b>Married</b>	421,400	79.6	76.4 - 82.7	108,300	20.4	17.3 - 23.6	529,600
<b>Unmarried Couple</b>	15,500	66.3	48.6 - 83.9	7,900	33.7	16.1 - 51.4	23,300
<b>Widowed</b>	40,900	74.1	65.5 - 82.7	14,300	25.9	17.3 - 34.5	55,200
<b>Other</b>	203,200	67.9	62.4 - 73.4	96,000	32.1	26.6 - 37.6	299,200

**Visited dentist in the past year by State, County, Island, Community, BRFSS Age Group, DOH Race-Ethnicity, Gender, Education Level, Employment Status (Grouped), Household Income, Poverty Level, Marital Status (Grouped), Married, Health Care Coverage, for the Year(s) - 2002, 2004, 2006, 2008, 2010**

*Note: Weighted numbers (#), percentages and 95% confidence intervals; Respondents aged 18 years and older; n/r (Not Reportable) - If the unweighted total responses for a dimension (row) is <50 that row will not be shown; n/a (Not Available) - Not asked of a subset of respondents*

**Year: 2004**

<b>Married</b>	<b>Yes</b>			<b>No</b>			<b>Estimated Population</b>
	<b>#</b>	<b>%</b>	<b>C.I. (95%)</b>	<b>#</b>	<b>%</b>	<b>C.I. (95%)</b>	<b>#</b>
<b>Yes</b>	426,600	79.1	75.9 - 82.2	112,800	20.9	17.8 - 24.1	539,400
<b>No</b>	250,900	68.8	64.1 - 73.6	113,700	31.2	26.4 - 35.9	364,600

<b>Health Care Coverage</b>	<b>Yes</b>			<b>No</b>			<b>Estimated Population</b>
	<b>#</b>	<b>%</b>	<b>C.I. (95%)</b>	<b>#</b>	<b>%</b>	<b>C.I. (95%)</b>	<b>#</b>
<b>Yes</b>	633,000	77.2	74.5 - 80.0	186,600	22.8	20.0 - 25.5	819,500
<b>No</b>	44,100	53.0	42.6 - 63.4	39,100	47.0	36.6 - 57.4	83,300

**Visited dentist in the past year by State, County, Island, Community, BRFSS Age Group, DOH Race-Ethnicity, Gender, Education Level, Employment Status (Grouped), Household Income, Poverty Level, Marital Status (Grouped), Married, Health Care Coverage, for the Year(s) - 2002, 2004, 2006, 2008, 2010**

*Note: Weighted numbers (#), percentages and 95% confidence intervals; Respondents aged 18 years and older; n/r (Not Reportable) - If the unweighted total responses for a dimension (row) is <50 that row will not be shown; n/a (Not Available) - Not asked of a subset of respondents*

**Year: 2002**

State	Yes			No			Estimated Population
	#	%	C.I. (95%)	#	%	C.I. (95%)	#
Hawaii State	591,700	65.6	63.9 - 67.2	311,000	34.4	32.8 - 36.1	902,700

County	Yes			No			Estimated Population
	#	%	C.I. (95%)	#	%	C.I. (95%)	#
Hawaii	69,000	62.7	59.6 - 65.9	41,000	37.3	34.1 - 40.4	110,000
Honolulu	438,000	66.9	64.7 - 69.0	217,200	33.1	31.0 - 35.3	655,200
Kauai	25,400	60.1	55.3 - 64.9	16,800	39.9	35.1 - 44.7	42,200
Maui	59,400	62.3	58.8 - 65.7	36,000	37.7	34.3 - 41.2	95,400

**Visited dentist in the past year by State, County, Island, Community, BRFSS Age Group, DOH Race-Ethnicity, Gender, Education Level, Employment Status (Grouped), Household Income, Poverty Level, Marital Status (Grouped), Married, Health Care Coverage, for the Year(s) - 2002, 2004, 2006, 2008, 2010**

*Note: Weighted numbers (#), percentages and 95% confidence intervals; Respondents aged 18 years and older; n/r (Not Reportable) - If the unweighted total responses for a dimension (row) is <50 that row will not be shown; n/a (Not Available) - Not asked of a subset of respondents*

**Year: 2002**

Island	Yes			No			Estimated Population
	#	%	C.I. (95%)	#	%	C.I. (95%)	#
Hawaii	69,000	62.7	59.6 - 65.9	41,000	37.3	34.1 - 40.4	110,000
Kauai	25,400	60.1	55.3 - 64.9	16,800	39.9	35.1 - 44.7	42,200
Lanai	1,200	32.4	23.0 - 41.8	2,600	67.6	58.2 - 77.0	3,800
Maui	53,700	64.2	60.4 - 67.9	30,000	35.8	32.1 - 39.6	83,800
Molokai	4,400	56.8	47.4 - 66.1	3,400	43.2	33.9 - 52.6	7,800
Oahu	438,000	66.9	64.7 - 69.0	217,200	33.1	31.0 - 35.3	655,200

Community	Yes			No			Estimated Population
	#	%	C.I. (95%)	#	%	C.I. (95%)	#
Aiea/ Pearl City	46,600	70.8	64.4 - 77.2	19,200	29.2	22.8 - 35.6	65,800

**Visited dentist in the past year by State, County, Island, Community, BRFSS Age Group, DOH Race-Ethnicity, Gender, Education Level, Employment Status (Grouped), Household Income, Poverty Level, Marital Status (Grouped), Married, Health Care Coverage, for the Year(s) - 2002, 2004, 2006, 2008, 2010**

*Note: Weighted numbers (#), percentages and 95% confidence intervals; Respondents aged 18 years and older; n/r (Not Reportable) - If the unweighted total responses for a dimension (row) is <50 that row will not be shown; n/a (Not Available) - Not asked of a subset of respondents*

**Year: 2002**

Community	Yes			No			Estimated Population
	#	%	C.I. (95%)	#	%	C.I. (95%)	#
Ala Moana	19,300	56.1	47.6 - 64.6	15,100	43.9	35.4 - 52.4	34,400
Hanalei/ Kapaa	11,100	61.5	54.3 - 68.8	6,900	38.5	31.2 - 45.7	18,000
Hilo	21,900	62.5	56.9 - 68.1	13,200	37.5	31.9 - 43.1	35,100
Kaaawa/ Kahaluu/ Kaneohe	28,300	72.8	64.9 - 80.6	10,600	27.2	19.4 - 35.1	38,900
Kahului	18,600	66.4	60.1 - 72.8	9,400	33.6	27.2 - 39.9	28,100
Kailua/ Waimanalo	30,300	63.7	55.8 - 71.6	17,200	36.3	28.4 - 44.2	47,500
Kaimuki/ Palolo/ Waikiki	44,800	66.3	60.3 - 72.2	22,800	33.7	27.8 - 39.7	67,600
Kona	18,100	61.1	55.0 - 67.1	11,500	38.9	32.9 - 45.0	29,600
Lahaina/ Wailuku	17,300	60.7	53.8 - 67.6	11,200	39.3	32.4 - 46.2	28,500
Lanai	1,200	32.4	23.0 - 41.8	2,600	67.6	58.2 - 77.0	3,800

**Visited dentist in the past year by State, County, Island, Community, BRFSS Age Group, DOH Race-Ethnicity, Gender, Education Level, Employment Status (Grouped), Household Income, Poverty Level, Marital Status (Grouped), Married, Health Care Coverage, for the Year(s) - 2002, 2004, 2006, 2008, 2010**

*Note: Weighted numbers (#), percentages and 95% confidence intervals; Respondents aged 18 years and older; n/r (Not Reportable) - If the unweighted total responses for a dimension (row) is <50 that row will not be shown; n/a (Not Available) - Not asked of a subset of respondents*

**Year: 2002**

Community	Yes			No			Estimated Population
	#	%	C.I. (95%)	#	%	C.I. (95%)	#
Lihue-Waimea	14,300	59.1	52.7 - 65.4	9,900	40.9	34.6 - 47.3	24,200
Manoa/ Upper Makiki	39,800	69.0	62.0 - 76.1	17,800	31.0	23.9 - 38.0	57,600
Mililani/ Wahiawa	46,100	73.2	66.1 - 80.2	16,900	26.8	19.8 - 33.9	63,000
Molokai	4,400	56.8	47.4 - 66.1	3,400	43.2	33.9 - 52.6	7,800
Nanakuli/ Waianae	13,900	54.4	42.7 - 66.0	11,700	45.6	34.0 - 57.3	25,600
N.Hawaii	14,900	65.6	58.6 - 72.6	7,800	34.4	27.4 - 41.4	22,700
N.Shore/ Laie	14,500	78.1	68.5 - 87.7	4,100	21.9	12.3 - 31.5	18,500
Nuuanu/ Kalihi/ Moanalua	40,400	61.3	53.9 - 68.7	25,500	38.7	31.3 - 46.1	65,900
Puna/ Kau	14,000	62.3	55.6 - 69.0	8,500	37.7	31.0 - 44.4	22,500
Salt Lake/ Foster Village	29,500	78.5	71.0 - 86.1	8,100	21.5	13.9 - 29.0	37,500

**Visited dentist in the past year by State, County, Island, Community, BRFSS Age Group, DOH Race-Ethnicity, Gender, Education Level, Employment Status (Grouped), Household Income, Poverty Level, Marital Status (Grouped), Married, Health Care Coverage, for the Year(s) - 2002, 2004, 2006, 2008, 2010**

*Note: Weighted numbers (#), percentages and 95% confidence intervals; Respondents aged 18 years and older; n/r (Not Reportable) - If the unweighted total responses for a dimension (row) is <50 that row will not be shown; n/a (Not Available) - Not asked of a subset of respondents*

**Year: 2002**

Community	Yes			No			Estimated Population
	#	%	C.I. (95%)	#	%	C.I. (95%)	#
Upcountry/ Hana	17,800	65.4	59.3 - 71.6	9,400	34.6	28.4 - 40.7	27,200
Waialae/ Kahala/ Hawaii Kai	28,600	60.3	52.9 - 67.8	18,800	39.7	32.2 - 47.1	47,400
Waipahu/ Kapolei/ Ewa	56,000	65.6	59.6 - 71.6	29,300	34.4	28.4 - 40.4	85,300



**Visited dentist in the past year by State, County, Island, Community, BRFSS Age Group, DOH Race-Ethnicity, Gender, Education Level, Employment Status (Grouped), Household Income, Poverty Level, Marital Status (Grouped), Married, Health Care Coverage, for the Year(s) - 2002, 2004, 2006, 2008, 2010**

*Note: Weighted numbers (#), percentages and 95% confidence intervals; Respondents aged 18 years and older; n/r (Not Reportable) - If the unweighted total responses for a dimension (row) is <50 that row will not be shown; n/a (Not Available) - Not asked of a subset of respondents*

**Year: 2002**

BRFSS Age Group	Yes			No			Estimated Population
	#	%	C.I. (95%)	#	%	C.I. (95%)	#
<b>18-24</b>	75,100	65.6	60.1 - 71.2	39,300	34.4	28.8 - 39.9	114,400
<b>25-34</b>	101,900	62.7	58.7 - 66.8	60,600	37.3	33.2 - 41.3	162,500
<b>35-44</b>	128,400	70.3	67.0 - 73.5	54,300	29.7	26.5 - 33.0	182,700
<b>45-54</b>	109,200	63.3	59.8 - 66.8	63,300	36.7	33.2 - 40.2	172,600
<b>55-64</b>	80,000	71.7	67.3 - 76.1	31,600	28.3	23.9 - 32.7	111,700
<b>65-74</b>	53,600	67.6	62.5 - 72.6	25,700	32.4	27.4 - 37.5	79,300
<b>75+</b>	40,700	53.7	48.3 - 59.2	35,000	46.3	40.8 - 51.7	75,700

**Visited dentist in the past year by State, County, Island, Community, BRFSS Age Group, DOH Race-Ethnicity, Gender, Education Level, Employment Status (Grouped), Household Income, Poverty Level, Marital Status (Grouped), Married, Health Care Coverage, for the Year(s) - 2002, 2004, 2006, 2008, 2010**

*Note: Weighted numbers (#), percentages and 95% confidence intervals; Respondents aged 18 years and older; n/r (Not Reportable) - If the unweighted total responses for a dimension (row) is <50 that row will not be shown; n/a (Not Available) - Not asked of a subset of respondents*

**Year: 2002**

DOH Race-Ethnicity	Yes			No			Estimated Population
	#	%	C.I. (95%)	#	%	C.I. (95%)	#
Caucasian	213,800	68.3	65.8 - 70.8	99,300	31.7	29.2 - 34.2	313,000
Native Hawaiian	61,700	54.4	49.3 - 59.4	51,800	45.6	40.6 - 50.7	113,600
Chinese	49,300	73.9	68.2 - 79.6	17,400	26.1	20.4 - 31.8	66,700
Filipino	86,000	63.1	58.4 - 67.7	50,400	36.9	32.3 - 41.6	136,500
Japanese	123,400	66.5	63.1 - 69.9	62,200	33.5	30.1 - 36.9	185,600
Black	11,900	73.1	61.4 - 84.8	4,400	26.9	15.2 - 38.6	16,300
Other Asian	13,000	62.5	51.0 - 74.0	7,800	37.5	26.0 - 49.0	20,900
Other Pacific Islander	10,200	50.0	35.9 - 64.0	10,200	50.0	36.0 - 64.1	20,500
Other	17,100	72.1	62.7 - 81.6	6,600	27.9	18.4 - 37.3	23,700

**Visited dentist in the past year by State, County, Island, Community, BRFSS Age Group, DOH Race-Ethnicity, Gender, Education Level, Employment Status (Grouped), Household Income, Poverty Level, Marital Status (Grouped), Married, Health Care Coverage, for the Year(s) - 2002, 2004, 2006, 2008, 2010**

*Note: Weighted numbers (#), percentages and 95% confidence intervals; Respondents aged 18 years and older; n/r (Not Reportable) - If the unweighted total responses for a dimension (row) is <50 that row will not be shown; n/a (Not Available) - Not asked of a subset of respondents*

**Year: 2002**

Gender	Yes			No			Estimated Population
	#	%	C.I. (95%)	#	%	C.I. (95%)	#
Male	285,500	63.7	61.2 - 66.2	162,700	36.3	33.8 - 38.8	448,300
Female	306,200	67.4	65.3 - 69.5	148,200	32.6	30.5 - 34.7	454,400

Education Level	Yes			No			Estimated Population
	#	%	C.I. (95%)	#	%	C.I. (95%)	#
Never attended school/ Only Kindergarten to Grades 8	10,600	57.6	45.2 - 70.1	7,800	42.4	29.9 - 54.8	18,500
Grades 9 thru 11 (Some High School)	15,300	45.4	36.9 - 53.9	18,400	54.6	46.1 - 63.1	33,800
Grades 12 or GED (High School Grad)	177,000	56.7	53.8 - 59.7	135,100	43.3	40.3 - 46.2	312,000
College 1 to 3 years (Some College/ Tech)	172,400	65.4	62.4 - 68.4	91,200	34.6	31.6 - 37.6	263,600
College 4 years or more (College Grad)	215,500	78.7	76.2 - 81.2	58,400	21.3	18.8 - 23.8	273,900

**Visited dentist in the past year by State, County, Island, Community, BRFSS Age Group, DOH Race-Ethnicity, Gender, Education Level, Employment Status (Grouped), Household Income, Poverty Level, Marital Status (Grouped), Married, Health Care Coverage, for the Year(s) - 2002, 2004, 2006, 2008, 2010**

*Note: Weighted numbers (#), percentages and 95% confidence intervals; Respondents aged 18 years and older; n/r (Not Reportable) - If the unweighted total responses for a dimension (row) is <50 that row will not be shown; n/a (Not Available) - Not asked of a subset of respondents*

**Year: 2002**

Employment Status (Grouped)	Yes			No			Estimated Population
	#	%	C.I. (95%)	#	%	C.I. (95%)	#
<b>Employed</b>	397,000	67.9	65.9 - 69.8	187,900	32.1	30.2 - 34.1	584,900
<b>Unemployed</b>	18,300	46.5	37.2 - 55.8	21,000	53.5	44.2 - 62.8	39,400
<b>Retired/Unable to work</b>	114,700	64.2	60.6 - 67.7	64,100	35.8	32.3 - 39.4	178,800
<b>Student/Homemaker</b>	60,900	61.7	56.4 - 67.0	37,800	38.3	33.0 - 43.6	98,800

**Visited dentist in the past year by State, County, Island, Community, BRFSS Age Group, DOH Race-Ethnicity, Gender, Education Level, Employment Status (Grouped), Household Income, Poverty Level, Marital Status (Grouped), Married, Health Care Coverage, for the Year(s) - 2002, 2004, 2006, 2008, 2010**

*Note: Weighted numbers (#), percentages and 95% confidence intervals; Respondents aged 18 years and older; n/r (Not Reportable) - If the unweighted total responses for a dimension (row) is <50 that row will not be shown; n/a (Not Available) - Not asked of a subset of respondents*

**Year: 2002**

Household Income	Yes			No			Estimated Population
	#	%	C.I. (95%)	#	%	C.I. (95%)	#
<b>Less than \$10,000</b>	20,200	57.2	49.6 - 64.8	15,100	42.8	35.2 - 50.4	35,300
<b>\$10,000 to \$14,999</b>	21,600	60.6	52.7 - 68.6	14,000	39.4	31.4 - 47.3	35,700
<b>\$15,000 to \$19,999</b>	25,900	62.3	53.1 - 71.5	15,600	37.7	28.5 - 46.9	41,500
<b>\$20,000 to \$24,999</b>	32,000	74.9	68.9 - 80.9	10,700	25.1	19.1 - 31.1	42,800
<b>\$25,000 to \$34,999</b>	52,300	68.9	63.5 - 74.2	23,600	31.1	25.8 - 36.5	75,900
<b>\$35,000 to \$49,999</b>	92,000	74.5	70.8 - 78.2	31,400	25.5	21.8 - 29.2	123,400
<b>\$50,000 to \$74,999</b>	101,200	80.3	76.6 - 84.0	24,800	19.7	16.0 - 23.4	126,000
<b>\$75,000 or more</b>	112,600	84.8	81.7 - 87.9	20,200	15.2	12.1 - 18.3	132,800

**Visited dentist in the past year by State, County, Island, Community, BRFSS Age Group, DOH Race-Ethnicity, Gender, Education Level, Employment Status (Grouped), Household Income, Poverty Level, Marital Status (Grouped), Married, Health Care Coverage, for the Year(s) - 2002, 2004, 2006, 2008, 2010**

*Note: Weighted numbers (#), percentages and 95% confidence intervals; Respondents aged 18 years and older; n/r (Not Reportable) - If the unweighted total responses for a dimension (row) is <50 that row will not be shown; n/a (Not Available) - Not asked of a subset of respondents*

**Year: 2002**

Poverty Level	Yes			No			Estimated Population
	#	%	C.I. (95%)	#	%	C.I. (95%)	#
<b>0-130%</b>	86,000	61.2	56.8 - 65.5	54,600	38.8	34.5 - 43.2	140,600
<b>131-185%</b>	50,100	72.8	67.2 - 78.3	18,800	27.2	21.7 - 32.8	68,900
<b>186+%</b>	321,700	79.6	77.7 - 81.6	82,200	20.4	18.4 - 22.3	403,900

Marital Status (Grouped)	Yes			No			Estimated Population
	#	%	C.I. (95%)	#	%	C.I. (95%)	#
<b>Married</b>	361,600	68.1	66.0 - 70.1	169,700	31.9	29.9 - 34.0	531,300
<b>Unmarried Couple</b>	8,700	39.6	28.4 - 50.8	13,200	60.4	49.2 - 71.6	21,900
<b>Widowed</b>	31,100	55.7	49.3 - 62.1	24,700	44.3	37.9 - 50.7	55,800
<b>Other</b>	190,400	64.8	61.8 - 67.8	103,300	35.2	32.2 - 38.2	293,700

**Visited dentist in the past year by State, County, Island, Community, BRFSS Age Group, DOH Race-Ethnicity, Gender, Education Level, Employment Status (Grouped), Household Income, Poverty Level, Marital Status (Grouped), Married, Health Care Coverage, for the Year(s) - 2002, 2004, 2006, 2008, 2010**

*Note: Weighted numbers (#), percentages and 95% confidence intervals; Respondents aged 18 years and older; n/r (Not Reportable) - If the unweighted total responses for a dimension (row) is <50 that row will not be shown; n/a (Not Available) - Not asked of a subset of respondents*

**Year: 2002**

<b>Married</b>	<b>Yes</b>			<b>No</b>			<b>Estimated Population</b>
	<b>#</b>	<b>%</b>	<b>C.I. (95%)</b>	<b>#</b>	<b>%</b>	<b>C.I. (95%)</b>	<b>#</b>
<b>Yes</b>	369,200	68.1	66.1 - 70.1	172,900	31.9	29.9 - 33.9	542,200
<b>No</b>	221,600	61.6	58.9 - 64.4	137,900	38.4	35.6 - 41.1	359,400

<b>Health Care Coverage</b>	<b>Yes</b>			<b>No</b>			<b>Estimated Population</b>
	<b>#</b>	<b>%</b>	<b>C.I. (95%)</b>	<b>#</b>	<b>%</b>	<b>C.I. (95%)</b>	<b>#</b>
<b>Yes</b>	557,300	67.7	66.0 - 69.3	266,300	32.3	30.7 - 34.0	823,600
<b>No</b>	33,500	42.9	37.0 - 48.8	44,500	57.1	51.2 - 63.0	78,000