

**Leisure time physical activity by State, County, Island, Community, BRFSS Age Group, DOH Race-Ethnicity, Gender, Education Level, Employment Status (Grouped), Household Income, Poverty Level, Marital Status (Grouped), Married, Health Care Coverage, for the Year(s) - 2000-2002, 2001-2003, 2002-2004, 2003-2005, 2004-2006, 2005-2007, 2006-2008, 2007-2009, 2008-2010**

*Note: Weighted numbers (#) represent 3-yr averages, percentages and 95% confidence intervals; Respondents aged 18 years and older; n/r (Not Reportable) - If the unweighted total responses for a dimension (row) is <50 that row will not be shown; n/a (Not Available) - Not asked of a subset of respondents*

*The trend analysis report shows the trend for the selected health variable over selected years in a table and a graph. Estimated Population: This number is a weighted representation of the population who responded to a particular question in the survey. For most questions the eligible population will be the entire adult population. For some secondary questions only a subset of the population was asked the question. For example, all survey participants were asked if they had diabetes, but only those who answered yes were asked if they use insulin. If a dimension value is unknown for a particular survey record, that record will not be included in the counts for that particular dimension.*

*For documentation on other terms and coding in this report, please go to the following links*

[Click here to access BRFSS documentation](#)

[Click here to access DOH Race-Ethnicity coding](#)

[Click here to access The Hawai'i Data Guide](#)

[Click here to access Poverty Level Methodology](#)

**For questions about this report, please contact  
The Hawaii Health Data Warehouse**

[profiles@hhdw.org](mailto:profiles@hhdw.org)

**(855) 946-5899 x15**

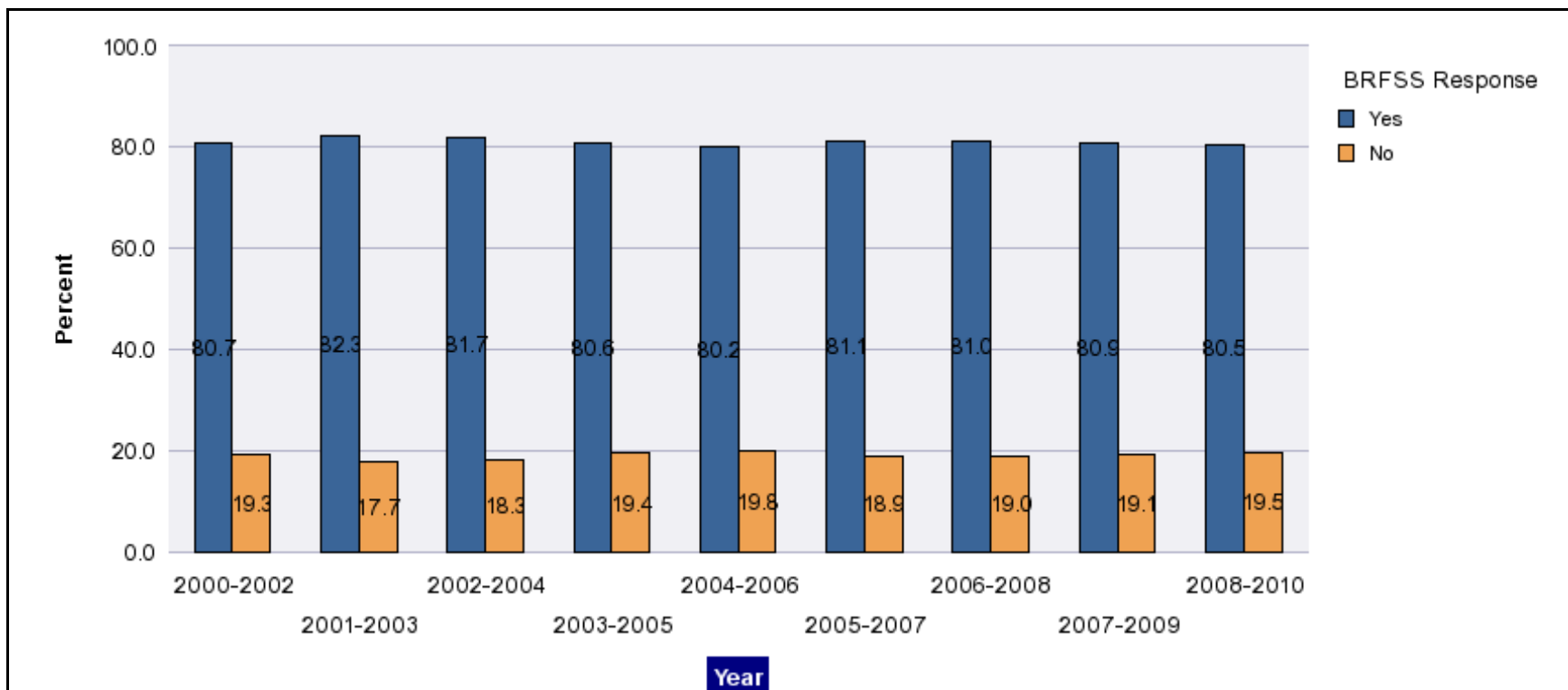
**Leisure time physical activity by State, County, Island, Community, BRFSS Age Group, DOH Race-Ethnicity, Gender, Education Level, Employment Status (Grouped), Household Income, Poverty Level, Marital Status (Grouped), Married, Health Care Coverage, for the Year(s) - 2000-2002, 2001-2003, 2002-2004, 2003-2005, 2004-2006, 2005-2007, 2006-2008, 2007-2009, 2008-2010**

*Note: Weighted numbers (#) represent 3-yr averages, percentages and 95% confidence intervals; Respondents aged 18 years and older; n/r (Not Reportable) - If the unweighted total responses for a dimension (row) is <50 that row will not be shown; n/a (Not Available) - Not asked of a subset of respondents*

Year	Yes			No			Estimated Population (3-Yr Avg)
	#	%	C.I.(95%)	#	%	C.I.(95%)	#
<b>2000-2002</b>	719,500	80.7	79.8 - 81.5	172,400	19.3	18.5 - 20.2	891,900
<b>2001-2003</b>	747,000	82.3	81.5 - 83.2	160,300	17.7	16.8 - 18.5	907,300
<b>2002-2004</b>	745,900	81.7	80.7 - 82.8	166,700	18.3	17.2 - 19.3	912,600
<b>2003-2005</b>	754,800	80.6	79.6 - 81.6	181,600	19.4	18.4 - 20.4	936,300
<b>2004-2006</b>	765,200	80.2	79.2 - 81.2	188,800	19.8	18.8 - 20.8	953,900
<b>2005-2007</b>	794,700	81.1	80.3 - 81.8	185,400	18.9	18.2 - 19.7	980,100
<b>2006-2008</b>	800,700	81.0	80.3 - 81.8	187,400	19.0	18.2 - 19.7	988,100
<b>2007-2009</b>	807,500	80.9	80.1 - 81.7	190,600	19.1	18.3 - 19.9	998,100
<b>2008-2010</b>	809,400	80.5	79.7 - 81.3	195,700	19.5	18.7 - 20.3	1,005,100

**Leisure time physical activity by State, County, Island, Community, BRFSS Age Group, DOH Race-Ethnicity, Gender, Education Level, Employment Status (Grouped), Household Income, Poverty Level, Marital Status (Grouped), Married, Health Care Coverage, for the Year(s) - 2000-2002, 2001-2003, 2002-2004, 2003-2005, 2004-2006, 2005-2007, 2006-2008, 2007-2009, 2008-2010**

*Note: Weighted numbers (#) represent 3-yr averages, percentages and 95% confidence intervals; Respondents aged 18 years and older; n/r (Not Reportable) - If the unweighted total responses for a dimension (row) is <50 that row will not be shown; n/a (Not Available) - Not asked of a subset of respondents*



**Leisure time physical activity by State, County, Island, Community, BRFSS Age Group, DOH Race-Ethnicity, Gender, Education Level, Employment Status (Grouped), Household Income, Poverty Level, Marital Status (Grouped), Married, Health Care Coverage, for the Year(s) - 2000-2002, 2001-2003, 2002-2004, 2003-2005, 2004-2006, 2005-2007, 2006-2008, 2007-2009, 2008-2010**

*Note: Weighted numbers (#) represent 3-yr averages, percentages and 95% confidence intervals; Respondents aged 18 years and older; n/r (Not Reportable) - If the unweighted total responses for a dimension (row) is <50 that row will not be shown; n/a (Not Available) - Not asked of a subset of respondents*

**Year: 2008-2010**

State	Yes			No			Estimated Population (3-Yr Avg)
	#	%	C.I. (95%)	#	%	C.I. (95%)	#
Hawaii State	809,400	80.5	79.7 - 81.3	195,700	19.5	18.7 - 20.3	1,005,100

County	Yes			No			Estimated Population (3-Yr Avg)
	#	%	C.I. (95%)	#	%	C.I. (95%)	#
Hawaii	110,400	79.9	78.3 - 81.6	27,700	20.1	18.4 - 21.7	138,100
Honolulu	565,200	80.0	79.0 - 81.1	141,100	20.0	18.9 - 21.0	706,300
Kauai	41,000	83.8	81.6 - 86.1	7,900	16.2	13.9 - 18.4	49,000
Maui	92,800	83.0	81.4 - 84.6	19,000	17.0	15.4 - 18.6	111,800

**Leisure time physical activity by State, County, Island, Community, BRFSS Age Group, DOH Race-Ethnicity, Gender, Education Level, Employment Status (Grouped), Household Income, Poverty Level, Marital Status (Grouped), Married, Health Care Coverage, for the Year(s) - 2000-2002, 2001-2003, 2002-2004, 2003-2005, 2004-2006, 2005-2007, 2006-2008, 2007-2009, 2008-2010**

*Note: Weighted numbers (#) represent 3-yr averages, percentages and 95% confidence intervals; Respondents aged 18 years and older; n/r (Not Reportable) - If the unweighted total responses for a dimension (row) is <50 that row will not be shown; n/a (Not Available) - Not asked of a subset of respondents*

**Year: 2008-2010**

Island	Yes			No			Estimated Population (3-Yr Avg)
	#	%	C.I. (95%)	#	%	C.I. (95%)	#
Hawaii	110,400	79.9	78.3 - 81.6	27,700	20.1	18.4 - 21.7	138,100
Kauai	41,000	83.8	81.6 - 86.1	7,900	16.2	13.9 - 18.4	49,000
Lanai	1,400	80.1	75.7 - 84.5	300	19.9	15.5 - 24.3	1,700
Maui	85,000	83.1	81.4 - 84.9	17,200	16.9	15.1 - 18.6	102,200
Molokai	6,400	81.5	78.0 - 85.0	1,400	18.5	15.0 - 22.0	7,800
Oahu	565,200	80.0	79.0 - 81.1	141,100	20.0	18.9 - 21.0	706,300

Community	Yes			No			Estimated Population (3-Yr Avg)
	#	%	C.I. (95%)	#	%	C.I. (95%)	#
Aiea/ Pearl City	49,800	77.7	74.1 - 81.2	14,300	22.3	18.8 - 25.9	64,100
Ala Moana	21,600	80.6	76.2 - 85.0	5,200	19.4	15.0 - 23.8	26,800

**Leisure time physical activity by State, County, Island, Community, BRFSS Age Group, DOH Race-Ethnicity, Gender, Education Level, Employment Status (Grouped), Household Income, Poverty Level, Marital Status (Grouped), Married, Health Care Coverage, for the Year(s) - 2000-2002, 2001-2003, 2002-2004, 2003-2005, 2004-2006, 2005-2007, 2006-2008, 2007-2009, 2008-2010**

*Note: Weighted numbers (#) represent 3-yr averages, percentages and 95% confidence intervals; Respondents aged 18 years and older; n/r (Not Reportable) - If the unweighted total responses for a dimension (row) is <50 that row will not be shown; n/a (Not Available) - Not asked of a subset of respondents*

**Year: 2008-2010**

Community	Yes			No			Estimated Population (3-Yr Avg)
	#	%	C.I. (95%)	#	%	C.I. (95%)	#
Hanalei/ Kapaa	17,200	85.2	82.1 - 88.2	3,000	14.8	11.8 - 17.9	20,200
Hilo	33,600	80.6	77.9 - 83.4	8,100	19.4	16.6 - 22.1	41,700
Kaaawa/ Kahaluu/ Kaneohe	40,900	81.1	77.1 - 85.1	9,500	18.9	14.9 - 22.9	50,400
Kahului	28,800	83.1	80.2 - 86.0	5,900	16.9	14.0 - 19.8	34,700
Kailua/ Waimanalo	44,200	86.8	83.9 - 89.7	6,700	13.2	10.3 - 16.1	50,900
Kaimuki/ Palolo/ Waikiki	45,100	78.8	75.2 - 82.3	12,100	21.2	17.7 - 24.8	57,200
Kona	23,600	79.8	76.4 - 83.3	6,000	20.2	16.7 - 23.6	29,600
Lahaina/ Wailuku	27,400	81.6	78.4 - 84.8	6,200	18.4	15.2 - 21.6	33,600
Lanai	1,400	80.1	75.7 - 84.5	300	19.9	15.5 - 24.3	1,700
Lihue-Waimea	23,900	82.9	79.7 - 86.0	4,900	17.1	14.0 - 20.3	28,800
Manoa/ Upper Makiki	42,600	86.0	83.2 - 88.8	6,900	14.0	11.2 - 16.8	49,500
Mililani/ Wahiawa	62,000	82.2	79.2 - 85.2	13,400	17.8	14.8 - 20.8	75,500

**Leisure time physical activity by State, County, Island, Community, BRFSS Age Group, DOH Race-Ethnicity, Gender, Education Level, Employment Status (Grouped), Household Income, Poverty Level, Marital Status (Grouped), Married, Health Care Coverage, for the Year(s) - 2000-2002, 2001-2003, 2002-2004, 2003-2005, 2004-2006, 2005-2007, 2006-2008, 2007-2009, 2008-2010**

*Note: Weighted numbers (#) represent 3-yr averages, percentages and 95% confidence intervals; Respondents aged 18 years and older; n/r (Not Reportable) - If the unweighted total responses for a dimension (row) is <50 that row will not be shown; n/a (Not Available) - Not asked of a subset of respondents*

**Year: 2008-2010**

Community	Yes			No			Estimated Population (3-Yr Avg)
	#	%	C.I. (95%)	#	%	C.I. (95%)	#
Molokai	6,400	81.5	78.0 - 85.0	1,400	18.5	15.0 - 22.0	7,800
Nanakuli/ Waianae	27,400	77.2	71.5 - 82.9	8,100	22.8	17.1 - 28.5	35,500
N.Hawaii	22,700	83.6	80.1 - 87.0	4,500	16.4	13.0 - 19.9	27,100
N.Shore/ Laie	18,500	81.9	75.3 - 88.5	4,100	18.1	11.5 - 24.7	22,500
Nuuanu/ Kalihi/ Moanalua	48,500	69.5	65.1 - 73.9	21,300	30.5	26.1 - 34.9	69,700
Puna/ Kau	30,400	76.8	73.5 - 80.2	9,200	23.2	19.8 - 26.5	39,600
Salt Lake/ Foster Village	31,100	84.9	80.9 - 88.9	5,500	15.1	11.1 - 19.1	36,600
Upcountry/ Hana	28,800	84.7	81.8 - 87.6	5,200	15.3	12.4 - 18.2	34,000
Waialae/ Kahala/ Hawaii Kai	39,300	84.5	81.0 - 88.0	7,200	15.5	12.0 - 19.0	46,500
Waipahu/ Kapolei/ Ewa	94,300	78.0	75.2 - 80.8	26,600	22.0	19.2 - 24.8	121,000

**Leisure time physical activity by State, County, Island, Community, BRFSS Age Group, DOH Race-Ethnicity, Gender, Education Level, Employment Status (Grouped), Household Income, Poverty Level, Marital Status (Grouped), Married, Health Care Coverage, for the Year(s) - 2000-2002, 2001-2003, 2002-2004, 2003-2005, 2004-2006, 2005-2007, 2006-2008, 2007-2009, 2008-2010**

*Note: Weighted numbers (#) represent 3-yr averages, percentages and 95% confidence intervals; Respondents aged 18 years and older; n/r (Not Reportable) - If the unweighted total responses for a dimension (row) is <50 that row will not be shown; n/a (Not Available) - Not asked of a subset of respondents*

**Year: 2008-2010**

BRFSS Age Group	Yes			No			Estimated Population (3-Yr Avg)
	#	%	C.I. (95%)	#	%	C.I. (95%)	#
18-24	103,500	84.9	81.9 - 87.9	18,400	15.1	12.1 - 18.1	121,900
25-34	147,800	82.2	79.9 - 84.6	31,900	17.8	15.4 - 20.1	179,700
35-44	143,400	81.0	79.2 - 82.9	33,500	19.0	17.1 - 20.8	176,900
45-54	144,900	80.9	79.3 - 82.6	34,100	19.1	17.4 - 20.7	179,100
55-64	119,000	78.0	76.4 - 79.7	33,500	22.0	20.3 - 23.6	152,600
65-74	75,300	81.4	79.6 - 83.3	17,200	18.6	16.7 - 20.4	92,500
75+	71,900	73.7	71.5 - 75.9	25,700	26.3	24.1 - 28.5	97,700



**Leisure time physical activity by State, County, Island, Community, BRFSS Age Group, DOH Race-Ethnicity, Gender, Education Level, Employment Status (Grouped), Household Income, Poverty Level, Marital Status (Grouped), Married, Health Care Coverage, for the Year(s) - 2000-2002, 2001-2003, 2002-2004, 2003-2005, 2004-2006, 2005-2007, 2006-2008, 2007-2009, 2008-2010**

*Note: Weighted numbers (#) represent 3-yr averages, percentages and 95% confidence intervals; Respondents aged 18 years and older; n/r (Not Reportable) - If the unweighted total responses for a dimension (row) is <50 that row will not be shown; n/a (Not Available) - Not asked of a subset of respondents*

**Year: 2008-2010**

DOH Race-Ethnicity	Yes			No			Estimated Population (3-Yr Avg)
	#	%	C.I. (95%)	#	%	C.I. (95%)	#
Caucasian	274,200	85.5	84.4 - 86.5	46,600	14.5	13.5 - 15.6	320,800
Native Hawaiian	105,300	80.6	78.3 - 82.9	25,400	19.4	17.1 - 21.7	130,700
Chinese	51,700	82.7	79.6 - 85.8	10,800	17.3	14.2 - 20.4	62,400
Filipino	117,100	73.6	71.0 - 76.3	41,900	26.4	23.7 - 29.0	159,000
Japanese	183,400	78.6	77.0 - 80.3	49,800	21.4	19.7 - 23.0	233,200
Black	12,800	86.2	80.5 - 91.9	2,000	13.8	8.1 - 19.5	14,800
Native Alaskan/ American Indian	4,000	84.1	74.6 - 93.5	800	15.9	6.5 - 25.4	4,800
Other Asian	20,600	82.8	78.2 - 87.3	4,300	17.2	12.7 - 21.8	24,900
Other Pacific Islander	22,100	73.3	66.5 - 80.1	8,000	26.7	19.9 - 33.5	30,100
Other	16,000	75.0	68.8 - 81.3	5,300	25.0	18.7 - 31.2	21,300

**Leisure time physical activity by State, County, Island, Community, BRFSS Age Group, DOH Race-Ethnicity, Gender, Education Level, Employment Status (Grouped), Household Income, Poverty Level, Marital Status (Grouped), Married, Health Care Coverage, for the Year(s) - 2000-2002, 2001-2003, 2002-2004, 2003-2005, 2004-2006, 2005-2007, 2006-2008, 2007-2009, 2008-2010**

*Note: Weighted numbers (#) represent 3-yr averages, percentages and 95% confidence intervals; Respondents aged 18 years and older; n/r (Not Reportable) - If the unweighted total responses for a dimension (row) is <50 that row will not be shown; n/a (Not Available) - Not asked of a subset of respondents*

**Year: 2008-2010**

Gender	Yes			No			Estimated Population (3-Yr Avg)
	#	%	C.I. (95%)	#	%	C.I. (95%)	#
Male	421,500	84.3	83.2 - 85.5	78,300	15.7	14.5 - 16.8	499,800
Female	387,800	76.8	75.6 - 77.9	117,400	23.2	22.1 - 24.4	505,300

Education Level	Yes			No			Estimated Population (3-Yr Avg)
	#	%	C.I. (95%)	#	%	C.I. (95%)	#
Never attended school/ Only Kindergarten to Grades 8	7,900	66.5	58.0 - 75.1	4,000	33.5	24.9 - 42.0	11,800
Grades 9 thru 11 (Some High School)	28,200	71.2	66.1 - 76.4	11,400	28.8	23.6 - 33.9	39,700
Grades 12 or GED (High School Grad)	219,400	75.3	73.6 - 77.1	71,800	24.7	22.9 - 26.4	291,100
College 1 to 3 years (Some College/ Tech)	233,300	80.8	79.3 - 82.3	55,500	19.2	17.7 - 20.7	288,800
College 4 years or more (College Grad)	320,200	85.9	84.9 - 86.9	52,600	14.1	13.1 - 15.1	372,800

**Leisure time physical activity by State, County, Island, Community, BRFSS Age Group, DOH Race-Ethnicity, Gender, Education Level, Employment Status (Grouped), Household Income, Poverty Level, Marital Status (Grouped), Married, Health Care Coverage, for the Year(s) - 2000-2002, 2001-2003, 2002-2004, 2003-2005, 2004-2006, 2005-2007, 2006-2008, 2007-2009, 2008-2010**

*Note: Weighted numbers (#) represent 3-yr averages, percentages and 95% confidence intervals; Respondents aged 18 years and older; n/r (Not Reportable) - If the unweighted total responses for a dimension (row) is <50 that row will not be shown; n/a (Not Available) - Not asked of a subset of respondents*

**Year: 2008-2010**

Employment Status (Grouped)	Yes			No			Estimated Population (3-Yr Avg)
	#	%	C.I. (95%)	#	%	C.I. (95%)	#
<b>Employed</b>	502,900	81.2	80.2 - 82.3	116,100	18.8	17.7 - 19.8	619,000
<b>Unemployed</b>	49,900	81.3	77.6 - 85.0	11,500	18.7	15.0 - 22.4	61,400
<b>Retired/Unable to work</b>	166,100	76.7	75.3 - 78.2	50,400	23.3	21.8 - 24.7	216,600
<b>Student/Homemaker</b>	89,800	83.9	81.3 - 86.5	17,200	16.1	13.5 - 18.7	107,000

**Leisure time physical activity by State, County, Island, Community, BRFSS Age Group, DOH Race-Ethnicity, Gender, Education Level, Employment Status (Grouped), Household Income, Poverty Level, Marital Status (Grouped), Married, Health Care Coverage, for the Year(s) - 2000-2002, 2001-2003, 2002-2004, 2003-2005, 2004-2006, 2005-2007, 2006-2008, 2007-2009, 2008-2010**

*Note: Weighted numbers (#) represent 3-yr averages, percentages and 95% confidence intervals; Respondents aged 18 years and older; n/r (Not Reportable) - If the unweighted total responses for a dimension (row) is <50 that row will not be shown; n/a (Not Available) - Not asked of a subset of respondents*

**Year: 2008-2010**

Household Income	Yes			No			Estimated Population (3-Yr Avg)
	#	%	C.I. (95%)	#	%	C.I. (95%)	#
Less than \$10,000	22,500	72.2	67.2 - 77.2	8,700	27.8	22.8 - 32.8	31,200
\$10,000 to \$14,999	18,700	74.4	69.5 - 79.4	6,400	25.6	20.6 - 30.5	25,100
\$15,000 to \$19,999	35,900	74.1	70.2 - 77.9	12,600	25.9	22.1 - 29.8	48,500
\$20,000 to \$24,999	45,800	75.5	71.9 - 79.0	14,900	24.5	21.0 - 28.1	60,600
\$25,000 to \$34,999	77,300	76.4	73.6 - 79.1	23,900	23.6	20.9 - 26.4	101,100
\$35,000 to \$49,999	115,700	78.3	76.2 - 80.5	32,000	21.7	19.5 - 23.8	147,700
\$50,000 to \$74,999	142,100	81.6	79.7 - 83.4	32,100	18.4	16.6 - 20.3	174,200
\$75,000 or more	273,900	86.6	85.3 - 87.8	42,500	13.4	12.2 - 14.7	316,500

**Leisure time physical activity by State, County, Island, Community, BRFSS Age Group, DOH Race-Ethnicity, Gender, Education Level, Employment Status (Grouped), Household Income, Poverty Level, Marital Status (Grouped), Married, Health Care Coverage, for the Year(s) - 2000-2002, 2001-2003, 2002-2004, 2003-2005, 2004-2006, 2005-2007, 2006-2008, 2007-2009, 2008-2010**

*Note: Weighted numbers (#) represent 3-yr averages, percentages and 95% confidence intervals; Respondents aged 18 years and older; n/r (Not Reportable) - If the unweighted total responses for a dimension (row) is <50 that row will not be shown; n/a (Not Available) - Not asked of a subset of respondents*

**Year: 2008-2010**

Poverty Level	Yes			No			Estimated Population (3-Yr Avg)
	#	%	C.I. (95%)	#	%	C.I. (95%)	#
<b>0-130%</b>	152,700	73.8	71.6 - 76.0	54,300	26.2	24.0 - 28.4	207,000
<b>131-185%</b>	106,400	77.7	75.4 - 79.9	30,600	22.3	20.1 - 24.6	136,900
<b>186+%</b>	472,800	84.3	83.4 - 85.2	88,000	15.7	14.8 - 16.6	560,800

Marital Status (Grouped)	Yes			No			Estimated Population (3-Yr Avg)
	#	%	C.I. (95%)	#	%	C.I. (95%)	#
<b>Married</b>	475,700	81.1	80.0 - 82.1	111,200	18.9	17.9 - 20.0	586,900
<b>Unmarried Couple</b>	26,000	82.2	77.5 - 86.9	5,600	17.8	13.1 - 22.5	31,700
<b>Widowed</b>	43,300	73.8	71.1 - 76.6	15,300	26.2	23.4 - 28.9	58,600
<b>Other</b>	264,400	80.6	79.1 - 82.2	63,500	19.4	17.8 - 20.9	327,900

**Leisure time physical activity by State, County, Island, Community, BRFSS Age Group, DOH Race-Ethnicity, Gender, Education Level, Employment Status (Grouped), Household Income, Poverty Level, Marital Status (Grouped), Married, Health Care Coverage, for the Year(s) - 2000-2002, 2001-2003, 2002-2004, 2003-2005, 2004-2006, 2005-2007, 2006-2008, 2007-2009, 2008-2010**

*Note: Weighted numbers (#) represent 3-yr averages, percentages and 95% confidence intervals; Respondents aged 18 years and older; n/r (Not Reportable) - If the unweighted total responses for a dimension (row) is <50 that row will not be shown; n/a (Not Available) - Not asked of a subset of respondents*

**Year: 2008-2010**

<b>Married</b>	<b>Yes</b>			<b>No</b>			<b>Estimated Population (3-Yr Avg)</b>
	<b>#</b>	<b>%</b>	<b>C.I. (95%)</b>	<b>#</b>	<b>%</b>	<b>C.I. (95%)</b>	<b>#</b>
<b>Yes</b>	484,400	81.0	80.0 - 81.9	114,000	19.0	18.1 - 20.0	598,400
<b>No</b>	323,600	79.9	78.6 - 81.3	81,200	20.1	18.7 - 21.4	404,800

<b>Health Care Coverage</b>	<b>Yes</b>			<b>No</b>			<b>Estimated Population (3-Yr Avg)</b>
	<b>#</b>	<b>%</b>	<b>C.I. (95%)</b>	<b>#</b>	<b>%</b>	<b>C.I. (95%)</b>	<b>#</b>
<b>Yes</b>	750,900	80.3	79.5 - 81.2	183,800	19.7	18.8 - 20.5	934,700
<b>No</b>	56,900	83.6	80.3 - 86.8	11,200	16.4	13.2 - 19.7	68,100

**Leisure time physical activity by State, County, Island, Community, BRFSS Age Group, DOH Race-Ethnicity, Gender, Education Level, Employment Status (Grouped), Household Income, Poverty Level, Marital Status (Grouped), Married, Health Care Coverage, for the Year(s) - 2000-2002, 2001-2003, 2002-2004, 2003-2005, 2004-2006, 2005-2007, 2006-2008, 2007-2009, 2008-2010**

*Note: Weighted numbers (#) represent 3-yr averages, percentages and 95% confidence intervals; Respondents aged 18 years and older; n/r (Not Reportable) - If the unweighted total responses for a dimension (row) is <50 that row will not be shown; n/a (Not Available) - Not asked of a subset of respondents*

**Year: 2007-2009**

State	Yes			No			Estimated Population (3-Yr Avg)
	#	%	C.I. (95%)	#	%	C.I. (95%)	#
Hawaii State	807,500	80.9	80.1 - 81.7	190,600	19.1	18.3 - 19.9	998,100

County	Yes			No			Estimated Population (3-Yr Avg)
	#	%	C.I. (95%)	#	%	C.I. (95%)	#
Hawaii	108,200	80.7	79.2 - 82.2	25,900	19.3	17.8 - 20.8	134,100
Honolulu	569,000	80.6	79.6 - 81.6	136,900	19.4	18.4 - 20.4	705,900
Kauai	40,500	84.1	81.9 - 86.2	7,700	15.9	13.8 - 18.1	48,200
Maui	89,800	81.7	80.0 - 83.4	20,100	18.3	16.6 - 20.0	109,900

**Leisure time physical activity by State, County, Island, Community, BRFSS Age Group, DOH Race-Ethnicity, Gender, Education Level, Employment Status (Grouped), Household Income, Poverty Level, Marital Status (Grouped), Married, Health Care Coverage, for the Year(s) - 2000-2002, 2001-2003, 2002-2004, 2003-2005, 2004-2006, 2005-2007, 2006-2008, 2007-2009, 2008-2010**

*Note: Weighted numbers (#) represent 3-yr averages, percentages and 95% confidence intervals; Respondents aged 18 years and older; n/r (Not Reportable) - If the unweighted total responses for a dimension (row) is <50 that row will not be shown; n/a (Not Available) - Not asked of a subset of respondents*

**Year: 2007-2009**

Island	Yes			No			Estimated Population (3-Yr Avg)
	#	%	C.I. (95%)	#	%	C.I. (95%)	#
Hawaii	108,200	80.7	79.2 - 82.2	25,900	19.3	17.8 - 20.8	134,100
Kauai	40,500	84.1	81.9 - 86.2	7,700	15.9	13.8 - 18.1	48,200
Lanai	1,500	79.2	75.1 - 83.4	400	20.8	16.6 - 24.9	1,900
Maui	81,800	81.8	80.0 - 83.6	18,200	18.2	16.4 - 20.0	99,900
Molokai	6,600	81.2	77.8 - 84.7	1,500	18.8	15.3 - 22.2	8,100
Oahu	569,000	80.6	79.6 - 81.6	136,900	19.4	18.4 - 20.4	705,900

Community	Yes			No			Estimated Population (3-Yr Avg)
	#	%	C.I. (95%)	#	%	C.I. (95%)	#
Aiea/ Pearl City	50,300	78.3	74.9 - 81.7	13,900	21.7	18.3 - 25.1	64,200
Ala Moana	24,000	80.7	76.4 - 85.0	5,700	19.3	15.0 - 23.6	29,700



**Leisure time physical activity by State, County, Island, Community, BRFSS Age Group, DOH Race-Ethnicity, Gender, Education Level, Employment Status (Grouped), Household Income, Poverty Level, Marital Status (Grouped), Married, Health Care Coverage, for the Year(s) - 2000-2002, 2001-2003, 2002-2004, 2003-2005, 2004-2006, 2005-2007, 2006-2008, 2007-2009, 2008-2010**

*Note: Weighted numbers (#) represent 3-yr averages, percentages and 95% confidence intervals; Respondents aged 18 years and older; n/r (Not Reportable) - If the unweighted total responses for a dimension (row) is <50 that row will not be shown; n/a (Not Available) - Not asked of a subset of respondents*

**Year: 2007-2009**

Community	Yes			No			Estimated Population (3-Yr Avg)
	#	%	C.I. (95%)	#	%	C.I. (95%)	#
Hanalei/ Kapaa	17,500	87.8	85.1 - 90.4	2,400	12.2	9.6 - 14.9	19,900
Hilo	32,500	81.8	79.3 - 84.4	7,200	18.2	15.6 - 20.7	39,700
Kaaawa/ Kahaluu/ Kaneohe	40,500	82.4	78.6 - 86.2	8,700	17.6	13.8 - 21.4	49,200
Kahului	27,600	80.7	77.6 - 83.8	6,600	19.3	16.2 - 22.4	34,200
Kailua/ Waimanalo	45,300	87.8	85.1 - 90.4	6,300	12.2	9.6 - 14.9	51,600
Kaimuki/ Palolo/ Waikiki	46,400	81.2	78.0 - 84.5	10,700	18.8	15.5 - 22.0	57,200
Kona	23,800	83.2	80.3 - 86.0	4,800	16.8	14.0 - 19.7	28,700
Lahaina/ Wailuku	25,900	80.5	76.9 - 84.2	6,300	19.5	15.8 - 23.1	32,200
Lanai	1,500	79.2	75.1 - 83.4	400	20.8	16.6 - 24.9	1,900
Lihue-Waimea	23,000	81.5	78.3 - 84.6	5,200	18.5	15.4 - 21.7	28,300
Manoa/ Upper Makiki	40,300	87.0	84.2 - 89.8	6,000	13.0	10.2 - 15.8	46,300
Millilani/ Wahiawa	62,800	82.0	79.0 - 84.9	13,800	18.0	15.1 - 21.0	76,600

**Leisure time physical activity by State, County, Island, Community, BRFSS Age Group, DOH Race-Ethnicity, Gender, Education Level, Employment Status (Grouped), Household Income, Poverty Level, Marital Status (Grouped), Married, Health Care Coverage, for the Year(s) - 2000-2002, 2001-2003, 2002-2004, 2003-2005, 2004-2006, 2005-2007, 2006-2008, 2007-2009, 2008-2010**

*Note: Weighted numbers (#) represent 3-yr averages, percentages and 95% confidence intervals; Respondents aged 18 years and older; n/r (Not Reportable) - If the unweighted total responses for a dimension (row) is <50 that row will not be shown; n/a (Not Available) - Not asked of a subset of respondents*

**Year: 2007-2009**

Community	Yes			No			Estimated Population (3-Yr Avg)
	#	%	C.I. (95%)	#	%	C.I. (95%)	#
Molokai	6,600	81.2	77.8 - 84.7	1,500	18.8	15.3 - 22.2	8,100
Nanakuli/ Waianae	26,700	76.8	71.5 - 82.1	8,000	23.2	17.9 - 28.5	34,700
N.Hawaii	23,600	83.6	80.4 - 86.9	4,600	16.4	13.1 - 19.6	28,200
N.Shore/ Laie	16,900	77.8	70.7 - 84.9	4,800	22.2	15.1 - 29.3	21,700
Nuuanu/ Kalihi/ Moanalua	49,500	70.7	66.5 - 74.9	20,500	29.3	25.1 - 33.5	70,000
Puna/ Kau	28,300	75.4	72.0 - 78.7	9,300	24.6	21.3 - 28.0	37,600
Salt Lake/ Foster Village	29,000	83.8	79.6 - 87.9	5,600	16.2	12.1 - 20.4	34,600
Upcountry/ Hana	28,300	84.2	81.5 - 86.9	5,300	15.8	13.1 - 18.5	33,600
Waialae/ Kahala/ Hawaii Kai	40,600	87.0	83.9 - 90.1	6,100	13.0	9.9 - 16.1	46,700
Waipahu/ Kapolei/ Ewa	96,700	78.5	75.7 - 81.2	26,500	21.5	18.8 - 24.3	123,300

**Leisure time physical activity by State, County, Island, Community, BRFSS Age Group, DOH Race-Ethnicity, Gender, Education Level, Employment Status (Grouped), Household Income, Poverty Level, Marital Status (Grouped), Married, Health Care Coverage, for the Year(s) - 2000-2002, 2001-2003, 2002-2004, 2003-2005, 2004-2006, 2005-2007, 2006-2008, 2007-2009, 2008-2010**

*Note: Weighted numbers (#) represent 3-yr averages, percentages and 95% confidence intervals; Respondents aged 18 years and older; n/r (Not Reportable) - If the unweighted total responses for a dimension (row) is <50 that row will not be shown; n/a (Not Available) - Not asked of a subset of respondents*

**Year: 2007-2009**

BRFSS Age Group	Yes			No			Estimated Population (3-Yr Avg)
	#	%	C.I. (95%)	#	%	C.I. (95%)	#
18-24	105,800	85.5	82.7 - 88.3	17,900	14.5	11.7 - 17.3	123,700
25-34	140,500	81.4	79.1 - 83.7	32,100	18.6	16.3 - 20.9	172,600
35-44	144,600	81.6	79.8 - 83.4	32,700	18.4	16.6 - 20.2	177,300
45-54	148,300	81.8	80.2 - 83.4	32,900	18.2	16.6 - 19.8	181,300
55-64	121,700	79.3	77.6 - 80.9	31,800	20.7	19.1 - 22.4	153,500
65-74	72,200	81.5	79.6 - 83.4	16,400	18.5	16.6 - 20.4	88,600
75+	71,100	73.7	71.4 - 76.0	25,300	26.3	24.0 - 28.6	96,400

**Leisure time physical activity by State, County, Island, Community, BRFSS Age Group, DOH Race-Ethnicity, Gender, Education Level, Employment Status (Grouped), Household Income, Poverty Level, Marital Status (Grouped), Married, Health Care Coverage, for the Year(s) - 2000-2002, 2001-2003, 2002-2004, 2003-2005, 2004-2006, 2005-2007, 2006-2008, 2007-2009, 2008-2010**

*Note: Weighted numbers (#) represent 3-yr averages, percentages and 95% confidence intervals; Respondents aged 18 years and older; n/r (Not Reportable) - If the unweighted total responses for a dimension (row) is <50 that row will not be shown; n/a (Not Available) - Not asked of a subset of respondents*

**Year: 2007-2009**

DOH Race-Ethnicity	Yes			No			Estimated Population (3-Yr Avg)
	#	%	C.I. (95%)	#	%	C.I. (95%)	#
Caucasian	277,300	86.5	85.5 - 87.5	43,200	13.5	12.5 - 14.5	320,500
Native Hawaiian	106,200	80.2	78.1 - 82.4	26,200	19.8	17.6 - 21.9	132,400
Chinese	49,900	81.1	77.8 - 84.5	11,600	18.9	15.5 - 22.2	61,500
Filipino	120,600	74.3	71.8 - 76.9	41,600	25.7	23.1 - 28.2	162,200
Japanese	179,500	79.2	77.6 - 80.9	47,100	20.8	19.1 - 22.4	226,500
Black	13,100	85.1	78.6 - 91.7	2,300	14.9	8.3 - 21.4	15,400
Native Alaskan/ American Indian	4,800	83.9	75.5 - 92.3	900	16.1	7.7 - 24.5	5,700
Other Asian	19,200	81.8	76.9 - 86.6	4,300	18.2	13.4 - 23.1	23,500
Other Pacific Islander	18,600	71.8	64.7 - 78.9	7,300	28.2	21.1 - 35.3	25,800
Other	15,900	74.9	68.6 - 81.2	5,300	25.1	18.8 - 31.4	21,200

**Leisure time physical activity by State, County, Island, Community, BRFSS Age Group, DOH Race-Ethnicity, Gender, Education Level, Employment Status (Grouped), Household Income, Poverty Level, Marital Status (Grouped), Married, Health Care Coverage, for the Year(s) - 2000-2002, 2001-2003, 2002-2004, 2003-2005, 2004-2006, 2005-2007, 2006-2008, 2007-2009, 2008-2010**

*Note: Weighted numbers (#) represent 3-yr averages, percentages and 95% confidence intervals; Respondents aged 18 years and older; n/r (Not Reportable) - If the unweighted total responses for a dimension (row) is <50 that row will not be shown; n/a (Not Available) - Not asked of a subset of respondents*

**Year: 2007-2009**

Gender	Yes			No			Estimated Population (3-Yr Avg)
	#	%	C.I. (95%)	#	%	C.I. (95%)	#
Male	419,000	84.7	83.6 - 85.8	75,500	15.3	14.2 - 16.4	494,500
Female	388,500	77.2	76.1 - 78.3	115,100	22.8	21.7 - 23.9	503,600

Education Level	Yes			No			Estimated Population (3-Yr Avg)
	#	%	C.I. (95%)	#	%	C.I. (95%)	#
Never attended school/ Only Kindergarten to Grades 8	8,500	65.8	57.6 - 74.0	4,400	34.2	26.0 - 42.4	13,000
Grades 9 thru 11 (Some High School)	26,500	68.9	64.1 - 73.8	11,900	31.1	26.2 - 35.9	38,400
Grades 12 or GED (High School Grad)	226,000	76.0	74.4 - 77.6	71,400	24.0	22.4 - 25.6	297,400
College 1 to 3 years (Some College/ Tech)	236,200	81.5	80.0 - 83.0	53,800	18.5	17.0 - 20.0	290,000
College 4 years or more (College Grad)	309,500	86.4	85.4 - 87.5	48,600	13.6	12.5 - 14.6	358,100

**Leisure time physical activity by State, County, Island, Community, BRFSS Age Group, DOH Race-Ethnicity, Gender, Education Level, Employment Status (Grouped), Household Income, Poverty Level, Marital Status (Grouped), Married, Health Care Coverage, for the Year(s) - 2000-2002, 2001-2003, 2002-2004, 2003-2005, 2004-2006, 2005-2007, 2006-2008, 2007-2009, 2008-2010**

*Note: Weighted numbers (#) represent 3-yr averages, percentages and 95% confidence intervals; Respondents aged 18 years and older; n/r (Not Reportable) - If the unweighted total responses for a dimension (row) is <50 that row will not be shown; n/a (Not Available) - Not asked of a subset of respondents*

**Year: 2007-2009**

Employment Status (Grouped)	Yes			No			Estimated Population (3-Yr Avg)
	#	%	C.I. (95%)	#	%	C.I. (95%)	#
<b>Employed</b>	517,400	81.9	80.9 - 82.9	114,300	18.1	17.1 - 19.1	631,700
<b>Unemployed</b>	38,100	78.5	74.1 - 82.8	10,500	21.5	17.2 - 25.9	48,600
<b>Retired/Unable to work</b>	169,900	77.2	75.7 - 78.6	50,300	22.8	21.4 - 24.3	220,200
<b>Student/Homemaker</b>	81,400	84.5	81.9 - 87.0	15,000	15.5	13.0 - 18.1	96,400

**Leisure time physical activity by State, County, Island, Community, BRFSS Age Group, DOH Race-Ethnicity, Gender, Education Level, Employment Status (Grouped), Household Income, Poverty Level, Marital Status (Grouped), Married, Health Care Coverage, for the Year(s) - 2000-2002, 2001-2003, 2002-2004, 2003-2005, 2004-2006, 2005-2007, 2006-2008, 2007-2009, 2008-2010**

*Note: Weighted numbers (#) represent 3-yr averages, percentages and 95% confidence intervals; Respondents aged 18 years and older; n/r (Not Reportable) - If the unweighted total responses for a dimension (row) is <50 that row will not be shown; n/a (Not Available) - Not asked of a subset of respondents*

**Year: 2007-2009**

Household Income	Yes			No			Estimated Population (3-Yr Avg)
	#	%	C.I. (95%)	#	%	C.I. (95%)	#
Less than \$10,000	18,900	70.8	65.6 - 75.9	7,800	29.2	24.1 - 34.4	26,700
\$10,000 to \$14,999	17,600	68.6	62.8 - 74.3	8,100	31.4	25.7 - 37.2	25,700
\$15,000 to \$19,999	32,400	72.3	68.5 - 76.2	12,400	27.7	23.8 - 31.5	44,800
\$20,000 to \$24,999	43,400	74.3	70.8 - 77.7	15,100	25.7	22.3 - 29.2	58,500
\$25,000 to \$34,999	82,400	78.0	75.5 - 80.6	23,200	22.0	19.4 - 24.5	105,600
\$35,000 to \$49,999	123,900	79.7	77.6 - 81.7	31,700	20.3	18.3 - 22.4	155,600
\$50,000 to \$74,999	146,100	81.8	80.0 - 83.6	32,600	18.2	16.4 - 20.0	178,700
\$75,000 or more	269,000	87.7	86.5 - 88.8	37,900	12.3	11.2 - 13.5	306,900

**Leisure time physical activity by State, County, Island, Community, BRFSS Age Group, DOH Race-Ethnicity, Gender, Education Level, Employment Status (Grouped), Household Income, Poverty Level, Marital Status (Grouped), Married, Health Care Coverage, for the Year(s) - 2000-2002, 2001-2003, 2002-2004, 2003-2005, 2004-2006, 2005-2007, 2006-2008, 2007-2009, 2008-2010**

*Note: Weighted numbers (#) represent 3-yr averages, percentages and 95% confidence intervals; Respondents aged 18 years and older; n/r (Not Reportable) - If the unweighted total responses for a dimension (row) is <50 that row will not be shown; n/a (Not Available) - Not asked of a subset of respondents*

**Year: 2007-2009**

Poverty Level	Yes			No			Estimated Population (3-Yr Avg)
	#	%	C.I. (95%)	#	%	C.I. (95%)	#
<b>0-130%</b>	143,100	72.9	70.7 - 75.1	53,100	27.1	24.9 - 29.3	196,200
<b>131-185%</b>	100,900	78.8	76.4 - 81.1	27,200	21.2	18.9 - 23.6	128,200
<b>186+%</b>	489,800	84.7	83.9 - 85.6	88,200	15.3	14.4 - 16.1	578,000

Marital Status (Grouped)	Yes			No			Estimated Population (3-Yr Avg)
	#	%	C.I. (95%)	#	%	C.I. (95%)	#
<b>Married</b>	479,300	81.4	80.4 - 82.4	109,400	18.6	17.6 - 19.6	588,700
<b>Unmarried Couple</b>	24,300	83.9	79.6 - 88.1	4,700	16.1	11.9 - 20.4	29,000
<b>Widowed</b>	43,000	73.4	70.7 - 76.1	15,500	26.6	23.9 - 29.3	58,500
<b>Other</b>	261,000	81.1	79.6 - 82.6	60,900	18.9	17.4 - 20.4	321,900



**Leisure time physical activity by State, County, Island, Community, BRFSS Age Group, DOH Race-Ethnicity, Gender, Education Level, Employment Status (Grouped), Household Income, Poverty Level, Marital Status (Grouped), Married, Health Care Coverage, for the Year(s) - 2000-2002, 2001-2003, 2002-2004, 2003-2005, 2004-2006, 2005-2007, 2006-2008, 2007-2009, 2008-2010**

*Note: Weighted numbers (#) represent 3-yr averages, percentages and 95% confidence intervals; Respondents aged 18 years and older; n/r (Not Reportable) - If the unweighted total responses for a dimension (row) is <50 that row will not be shown; n/a (Not Available) - Not asked of a subset of respondents*

**Year: 2007-2009**

<b>Married</b>	<b>Yes</b>			<b>No</b>			<b>Estimated Population (3-Yr Avg)</b>
	<b>#</b>	<b>%</b>	<b>C.I. (95%)</b>	<b>#</b>	<b>%</b>	<b>C.I. (95%)</b>	<b>#</b>
<b>Yes</b>	487,100	81.3	80.3 - 82.3	112,000	18.7	17.7 - 19.7	599,100
<b>No</b>	319,000	80.3	79.0 - 81.6	78,100	19.7	18.4 - 21.0	397,100

<b>Health Care Coverage</b>	<b>Yes</b>			<b>No</b>			<b>Estimated Population (3-Yr Avg)</b>
	<b>#</b>	<b>%</b>	<b>C.I. (95%)</b>	<b>#</b>	<b>%</b>	<b>C.I. (95%)</b>	<b>#</b>
<b>Yes</b>	752,500	80.8	80.0 - 81.6	178,600	19.2	18.4 - 20.0	931,100
<b>No</b>	53,900	82.8	79.5 - 86.1	11,200	17.2	13.9 - 20.5	65,000

**Leisure time physical activity by State, County, Island, Community, BRFSS Age Group, DOH Race-Ethnicity, Gender, Education Level, Employment Status (Grouped), Household Income, Poverty Level, Marital Status (Grouped), Married, Health Care Coverage, for the Year(s) - 2000-2002, 2001-2003, 2002-2004, 2003-2005, 2004-2006, 2005-2007, 2006-2008, 2007-2009, 2008-2010**

*Note: Weighted numbers (#) represent 3-yr averages, percentages and 95% confidence intervals; Respondents aged 18 years and older; n/r (Not Reportable) - If the unweighted total responses for a dimension (row) is <50 that row will not be shown; n/a (Not Available) - Not asked of a subset of respondents*

**Year: 2006-2008**

State	Yes			No			Estimated Population (3-Yr Avg)
	#	%	C.I. (95%)	#	%	C.I. (95%)	#
Hawaii State	800,700	81.0	80.3 - 81.8	187,400	19.0	18.2 - 19.7	988,100

County	Yes			No			Estimated Population (3-Yr Avg)
	#	%	C.I. (95%)	#	%	C.I. (95%)	#
Hawaii	104,500	81.1	79.7 - 82.6	24,300	18.9	17.4 - 20.3	128,800
Honolulu	567,700	80.8	79.7 - 81.8	135,300	19.2	18.2 - 20.3	703,100
Kauai	40,000	83.4	81.2 - 85.5	8,000	16.6	14.5 - 18.8	48,000
Maui	88,500	81.7	80.0 - 83.5	19,800	18.3	16.5 - 20.0	108,300

**Leisure time physical activity by State, County, Island, Community, BRFSS Age Group, DOH Race-Ethnicity, Gender, Education Level, Employment Status (Grouped), Household Income, Poverty Level, Marital Status (Grouped), Married, Health Care Coverage, for the Year(s) - 2000-2002, 2001-2003, 2002-2004, 2003-2005, 2004-2006, 2005-2007, 2006-2008, 2007-2009, 2008-2010**

*Note: Weighted numbers (#) represent 3-yr averages, percentages and 95% confidence intervals; Respondents aged 18 years and older; n/r (Not Reportable) - If the unweighted total responses for a dimension (row) is <50 that row will not be shown; n/a (Not Available) - Not asked of a subset of respondents*

**Year: 2006-2008**

Island	Yes			No			Estimated Population (3-Yr Avg)
	#	%	C.I. (95%)	#	%	C.I. (95%)	#
Hawaii	104,500	81.1	79.7 - 82.6	24,300	18.9	17.4 - 20.3	128,800
Kauai	40,000	83.4	81.2 - 85.5	8,000	16.6	14.5 - 18.8	48,000
Lanai	1,800	82.6	78.7 - 86.5	400	17.4	13.5 - 21.3	2,100
Maui	80,700	81.8	79.9 - 83.6	18,000	18.2	16.4 - 20.1	98,600
Molokai	6,100	80.9	77.5 - 84.4	1,400	19.1	15.6 - 22.5	7,500
Oahu	567,700	80.8	79.7 - 81.8	135,300	19.2	18.2 - 20.3	703,100

Community	Yes			No			Estimated Population (3-Yr Avg)
	#	%	C.I. (95%)	#	%	C.I. (95%)	#
Aiea/ Pearl City	52,800	79.1	76.0 - 82.3	13,900	20.9	17.7 - 24.0	66,700
Ala Moana	25,000	79.0	74.8 - 83.2	6,600	21.0	16.8 - 25.2	31,700

**Leisure time physical activity by State, County, Island, Community, BRFSS Age Group, DOH Race-Ethnicity, Gender, Education Level, Employment Status (Grouped), Household Income, Poverty Level, Marital Status (Grouped), Married, Health Care Coverage, for the Year(s) - 2000-2002, 2001-2003, 2002-2004, 2003-2005, 2004-2006, 2005-2007, 2006-2008, 2007-2009, 2008-2010**

*Note: Weighted numbers (#) represent 3-yr averages, percentages and 95% confidence intervals; Respondents aged 18 years and older; n/r (Not Reportable) - If the unweighted total responses for a dimension (row) is <50 that row will not be shown; n/a (Not Available) - Not asked of a subset of respondents*

**Year: 2006-2008**

Community	Yes			No			Estimated Population (3-Yr Avg)
	#	%	C.I. (95%)	#	%	C.I. (95%)	#
Hanalei/ Kapaa	17,600	86.5	83.6 - 89.4	2,700	13.5	10.6 - 16.4	20,300
Hilo	30,900	81.7	79.1 - 84.2	7,000	18.3	15.8 - 20.9	37,900
Kaaawa/ Kahaluu/ Kaneohe	39,700	81.1	77.1 - 85.0	9,300	18.9	15.0 - 22.9	48,900
Kahului	26,300	79.5	76.2 - 82.9	6,800	20.5	17.1 - 23.8	33,100
Kailua/ Waimanalo	44,200	87.0	84.3 - 89.7	6,600	13.0	10.3 - 15.7	50,900
Kaimuki/ Palolo/ Waikiki	47,900	83.4	80.3 - 86.4	9,600	16.6	13.6 - 19.7	57,500
Kona	23,600	83.1	80.2 - 85.9	4,800	16.9	14.1 - 19.8	28,400
Lahaina/ Wailuku	26,400	80.7	77.1 - 84.2	6,300	19.3	15.8 - 22.9	32,700
Lanai	1,800	82.6	78.7 - 86.5	400	17.4	13.5 - 21.3	2,100
Lihue-Waimea	22,500	81.1	78.1 - 84.1	5,200	18.9	15.9 - 21.9	27,700
Manoa/ Upper Makiki	40,600	86.2	83.3 - 89.2	6,500	13.8	10.8 - 16.7	47,000
Mililani/ Wahiawa	57,000	80.2	77.1 - 83.3	14,100	19.8	16.7 - 22.9	71,000

**Leisure time physical activity by State, County, Island, Community, BRFSS Age Group, DOH Race-Ethnicity, Gender, Education Level, Employment Status (Grouped), Household Income, Poverty Level, Marital Status (Grouped), Married, Health Care Coverage, for the Year(s) - 2000-2002, 2001-2003, 2002-2004, 2003-2005, 2004-2006, 2005-2007, 2006-2008, 2007-2009, 2008-2010**

*Note: Weighted numbers (#) represent 3-yr averages, percentages and 95% confidence intervals; Respondents aged 18 years and older; n/r (Not Reportable) - If the unweighted total responses for a dimension (row) is <50 that row will not be shown; n/a (Not Available) - Not asked of a subset of respondents*

**Year: 2006-2008**

Community	Yes			No			Estimated Population (3-Yr Avg)
	#	%	C.I. (95%)	#	%	C.I. (95%)	#
Molokai	6,100	80.9	77.5 - 84.4	1,400	19.1	15.6 - 22.5	7,500
Nanakuli/ Waianae	26,000	74.6	68.9 - 80.2	8,900	25.4	19.8 - 31.1	34,800
N.Hawaii	23,100	83.6	80.7 - 86.5	4,500	16.4	13.5 - 19.3	27,600
N.Shore/ Laie	18,400	78.1	71.4 - 84.9	5,100	21.9	15.1 - 28.6	23,500
Nuuanu/ Kalihi/ Moanalua	49,900	71.8	67.7 - 75.9	19,600	28.2	24.1 - 32.3	69,500
Puna/ Kau	26,900	77.1	73.9 - 80.2	8,000	22.9	19.8 - 26.1	34,900
Salt Lake/ Foster Village	28,200	83.0	78.6 - 87.5	5,800	17.0	12.5 - 21.4	34,000
Upcountry/ Hana	27,900	85.1	82.4 - 87.8	4,900	14.9	12.2 - 17.6	32,800
Waialae/ Kahala/ Hawaii Kai	37,700	88.9	85.9 - 91.9	4,700	11.1	8.1 - 14.1	42,400
Waipahu/ Kapolei/ Ewa	100,400	80.3	77.7 - 82.8	24,700	19.7	17.2 - 22.3	125,100

**Leisure time physical activity by State, County, Island, Community, BRFSS Age Group, DOH Race-Ethnicity, Gender, Education Level, Employment Status (Grouped), Household Income, Poverty Level, Marital Status (Grouped), Married, Health Care Coverage, for the Year(s) - 2000-2002, 2001-2003, 2002-2004, 2003-2005, 2004-2006, 2005-2007, 2006-2008, 2007-2009, 2008-2010**

*Note: Weighted numbers (#) represent 3-yr averages, percentages and 95% confidence intervals; Respondents aged 18 years and older; n/r (Not Reportable) - If the unweighted total responses for a dimension (row) is <50 that row will not be shown; n/a (Not Available) - Not asked of a subset of respondents*

**Year: 2006-2008**

BRFSS Age Group	Yes			No			Estimated Population (3-Yr Avg)
	#	%	C.I. (95%)	#	%	C.I. (95%)	#
18-24	104,900	84.3	81.6 - 87.1	19,500	15.7	12.9 - 18.4	124,400
25-34	137,200	82.1	79.9 - 84.3	29,900	17.9	15.7 - 20.1	167,100
35-44	144,100	81.3	79.5 - 83.0	33,200	18.7	17.0 - 20.5	177,300
45-54	147,800	81.7	80.1 - 83.3	33,100	18.3	16.7 - 19.9	180,900
55-64	120,300	79.5	77.7 - 81.3	31,000	20.5	18.7 - 22.3	151,300
65-74	69,700	81.4	79.4 - 83.4	15,900	18.6	16.6 - 20.6	85,600
75+	72,100	75.7	73.4 - 78.0	23,200	24.3	22.0 - 26.6	95,200

**Leisure time physical activity by State, County, Island, Community, BRFSS Age Group, DOH Race-Ethnicity, Gender, Education Level, Employment Status (Grouped), Household Income, Poverty Level, Marital Status (Grouped), Married, Health Care Coverage, for the Year(s) - 2000-2002, 2001-2003, 2002-2004, 2003-2005, 2004-2006, 2005-2007, 2006-2008, 2007-2009, 2008-2010**

*Note: Weighted numbers (#) represent 3-yr averages, percentages and 95% confidence intervals; Respondents aged 18 years and older; n/r (Not Reportable) - If the unweighted total responses for a dimension (row) is <50 that row will not be shown; n/a (Not Available) - Not asked of a subset of respondents*

**Year: 2006-2008**

DOH Race-Ethnicity	Yes			No			Estimated Population (3-Yr Avg)
	#	%	C.I. (95%)	#	%	C.I. (95%)	#
Caucasian	279,900	87.1	86.2 - 88.1	41,300	12.9	11.9 - 13.8	321,200
Native Hawaiian	105,000	79.7	77.5 - 81.9	26,700	20.3	18.1 - 22.5	131,700
Chinese	46,200	82.0	78.7 - 85.4	10,100	18.0	14.6 - 21.3	56,300
Filipino	115,800	73.4	70.8 - 75.9	42,000	26.6	24.1 - 29.2	157,800
Japanese	171,900	79.1	77.4 - 80.7	45,500	20.9	19.3 - 22.6	217,400
Black	12,600	84.4	77.7 - 91.1	2,300	15.6	8.9 - 22.3	14,900
Native Alaskan/ American Indian	5,000	87.0	79.5 - 94.5	700	13.0	5.5 - 20.5	5,800
Other Asian	20,500	81.3	76.6 - 86.0	4,700	18.7	14.0 - 23.4	25,200
Other Pacific Islander	17,300	71.8	65.0 - 78.7	6,800	28.2	21.3 - 35.0	24,100
Mixed Ethnicity	6,700	84.1	76.5 - 91.6	1,300	15.9	8.4 - 23.5	8,000
Other	16,700	76.8	70.8 - 82.9	5,000	23.2	17.1 - 29.2	21,700

**Leisure time physical activity by State, County, Island, Community, BRFSS Age Group, DOH Race-Ethnicity, Gender, Education Level, Employment Status (Grouped), Household Income, Poverty Level, Marital Status (Grouped), Married, Health Care Coverage, for the Year(s) - 2000-2002, 2001-2003, 2002-2004, 2003-2005, 2004-2006, 2005-2007, 2006-2008, 2007-2009, 2008-2010**

*Note: Weighted numbers (#) represent 3-yr averages, percentages and 95% confidence intervals; Respondents aged 18 years and older; n/r (Not Reportable) - If the unweighted total responses for a dimension (row) is <50 that row will not be shown; n/a (Not Available) - Not asked of a subset of respondents*

**Year: 2006-2008**

Gender	Yes			No			Estimated Population (3-Yr Avg)
	#	%	C.I. (95%)	#	%	C.I. (95%)	#
Male	415,500	85.1	84.0 - 86.2	72,800	14.9	13.8 - 16.0	488,200
Female	385,300	77.1	76.0 - 78.2	114,600	22.9	21.8 - 24.0	499,900

Education Level	Yes			No			Estimated Population (3-Yr Avg)
	#	%	C.I. (95%)	#	%	C.I. (95%)	#
Never attended school/ Only Kindergarten to Grades 8	9,300	67.8	61.1 - 74.5	4,400	32.2	25.5 - 38.9	13,800
Grades 9 thru 11 (Some High School)	27,200	68.9	64.1 - 73.6	12,300	31.1	26.4 - 35.9	39,500
Grades 12 or GED (High School Grad)	226,200	75.6	74.0 - 77.2	73,000	24.4	22.8 - 26.0	299,200
College 1 to 3 years (Some College/ Tech)	232,800	81.3	79.8 - 82.8	53,500	18.7	17.2 - 20.2	286,300
College 4 years or more (College Grad)	304,500	87.5	86.5 - 88.5	43,600	12.5	11.5 - 13.5	348,100



**Leisure time physical activity by State, County, Island, Community, BRFSS Age Group, DOH Race-Ethnicity, Gender, Education Level, Employment Status (Grouped), Household Income, Poverty Level, Marital Status (Grouped), Married, Health Care Coverage, for the Year(s) - 2000-2002, 2001-2003, 2002-2004, 2003-2005, 2004-2006, 2005-2007, 2006-2008, 2007-2009, 2008-2010**

*Note: Weighted numbers (#) represent 3-yr averages, percentages and 95% confidence intervals; Respondents aged 18 years and older; n/r (Not Reportable) - If the unweighted total responses for a dimension (row) is <50 that row will not be shown; n/a (Not Available) - Not asked of a subset of respondents*

**Year: 2006-2008**

Employment Status (Grouped)	Yes			No			Estimated Population (3-Yr Avg)
	#	%	C.I. (95%)	#	%	C.I. (95%)	#
<b>Employed</b>	522,100	82.6	81.6 - 83.5	110,300	17.4	16.5 - 18.4	632,400
<b>Unemployed</b>	26,500	71.2	65.6 - 76.7	10,700	28.8	23.3 - 34.4	37,300
<b>Retired/Unable to work</b>	174,300	77.5	76.0 - 78.9	50,700	22.5	21.1 - 24.0	224,900
<b>Student/Homemaker</b>	77,000	83.5	80.9 - 86.0	15,300	16.5	14.0 - 19.1	92,200

**Leisure time physical activity by State, County, Island, Community, BRFSS Age Group, DOH Race-Ethnicity, Gender, Education Level, Employment Status (Grouped), Household Income, Poverty Level, Marital Status (Grouped), Married, Health Care Coverage, for the Year(s) - 2000-2002, 2001-2003, 2002-2004, 2003-2005, 2004-2006, 2005-2007, 2006-2008, 2007-2009, 2008-2010**

*Note: Weighted numbers (#) represent 3-yr averages, percentages and 95% confidence intervals; Respondents aged 18 years and older; n/r (Not Reportable) - If the unweighted total responses for a dimension (row) is <50 that row will not be shown; n/a (Not Available) - Not asked of a subset of respondents*

**Year: 2006-2008**

Household Income	Yes			No			Estimated Population (3-Yr Avg)
	#	%	C.I. (95%)	#	%	C.I. (95%)	#
Less than \$10,000	19,600	74.1	69.4 - 78.9	6,800	25.9	21.1 - 30.6	26,400
\$10,000 to \$14,999	17,700	67.6	61.8 - 73.3	8,500	32.4	26.7 - 38.2	26,200
\$15,000 to \$19,999	30,900	71.4	67.5 - 75.3	12,400	28.6	24.7 - 32.5	43,300
\$20,000 to \$24,999	45,000	74.3	70.8 - 77.7	15,600	25.7	22.3 - 29.2	60,700
\$25,000 to \$34,999	82,300	76.5	73.9 - 79.1	25,300	23.5	20.9 - 26.1	107,600
\$35,000 to \$49,999	119,700	80.4	78.4 - 82.4	29,200	19.6	17.6 - 21.6	148,900
\$50,000 to \$74,999	142,200	83.1	81.3 - 84.8	28,900	16.9	15.2 - 18.7	171,100
\$75,000 or more	251,600	88.7	87.6 - 89.9	32,000	11.3	10.1 - 12.4	283,600

**Leisure time physical activity by State, County, Island, Community, BRFSS Age Group, DOH Race-Ethnicity, Gender, Education Level, Employment Status (Grouped), Household Income, Poverty Level, Marital Status (Grouped), Married, Health Care Coverage, for the Year(s) - 2000-2002, 2001-2003, 2002-2004, 2003-2005, 2004-2006, 2005-2007, 2006-2008, 2007-2009, 2008-2010**

*Note: Weighted numbers (#) represent 3-yr averages, percentages and 95% confidence intervals; Respondents aged 18 years and older; n/r (Not Reportable) - If the unweighted total responses for a dimension (row) is <50 that row will not be shown; n/a (Not Available) - Not asked of a subset of respondents*

**Year: 2006-2008**

Poverty Level	Yes			No			Estimated Population (3-Yr Avg)
	#	%	C.I. (95%)	#	%	C.I. (95%)	#
<b>0-130%</b>	135,400	72.7	70.4 - 75.0	50,900	27.3	25.0 - 29.6	186,300
<b>131-185%</b>	91,600	78.5	76.1 - 80.9	25,100	21.5	19.1 - 23.9	116,700
<b>186+%</b>	482,100	85.4	84.5 - 86.2	82,600	14.6	13.8 - 15.5	564,700

Marital Status (Grouped)	Yes			No			Estimated Population (3-Yr Avg)
	#	%	C.I. (95%)	#	%	C.I. (95%)	#
<b>Married</b>	478,700	81.8	80.9 - 82.8	106,300	18.2	17.2 - 19.1	585,000
<b>Unmarried Couple</b>	23,800	83.1	78.8 - 87.4	4,800	16.9	12.6 - 21.2	28,600
<b>Widowed</b>	42,700	74.9	72.1 - 77.7	14,300	25.1	22.3 - 27.9	57,000
<b>Other</b>	255,600	80.5	79.0 - 82.0	61,900	19.5	18.0 - 21.0	317,500

**Leisure time physical activity by State, County, Island, Community, BRFSS Age Group, DOH Race-Ethnicity, Gender, Education Level, Employment Status (Grouped), Household Income, Poverty Level, Marital Status (Grouped), Married, Health Care Coverage, for the Year(s) - 2000-2002, 2001-2003, 2002-2004, 2003-2005, 2004-2006, 2005-2007, 2006-2008, 2007-2009, 2008-2010**

*Note: Weighted numbers (#) represent 3-yr averages, percentages and 95% confidence intervals; Respondents aged 18 years and older; n/r (Not Reportable) - If the unweighted total responses for a dimension (row) is <50 that row will not be shown; n/a (Not Available) - Not asked of a subset of respondents*

**Year: 2006-2008**

<b>Married</b>	<b>Yes</b>			<b>No</b>			<b>Estimated Population (3-Yr Avg)</b>
	<b>#</b>	<b>%</b>	<b>C.I. (95%)</b>	<b>#</b>	<b>%</b>	<b>C.I. (95%)</b>	<b>#</b>
<b>Yes</b>	486,600	81.7	80.8 - 82.7	108,900	18.3	17.3 - 19.2	595,500
<b>No</b>	312,900	80.1	78.8 - 81.4	77,900	19.9	18.6 - 21.2	390,800

<b>Health Care Coverage</b>	<b>Yes</b>			<b>No</b>			<b>Estimated Population (3-Yr Avg)</b>
	<b>#</b>	<b>%</b>	<b>C.I. (95%)</b>	<b>#</b>	<b>%</b>	<b>C.I. (95%)</b>	<b>#</b>
<b>Yes</b>	746,500	81.2	80.4 - 82.0	172,400	18.8	18.0 - 19.6	918,900
<b>No</b>	53,100	78.8	75.3 - 82.3	14,300	21.2	17.7 - 24.7	67,400

**Leisure time physical activity by State, County, Island, Community, BRFSS Age Group, DOH Race-Ethnicity, Gender, Education Level, Employment Status (Grouped), Household Income, Poverty Level, Marital Status (Grouped), Married, Health Care Coverage, for the Year(s) - 2000-2002, 2001-2003, 2002-2004, 2003-2005, 2004-2006, 2005-2007, 2006-2008, 2007-2009, 2008-2010**

*Note: Weighted numbers (#) represent 3-yr averages, percentages and 95% confidence intervals; Respondents aged 18 years and older; n/r (Not Reportable) - If the unweighted total responses for a dimension (row) is <50 that row will not be shown; n/a (Not Available) - Not asked of a subset of respondents*

**Year: 2005-2007**

State	Yes			No			Estimated Population (3-Yr Avg)
	#	%	C.I. (95%)	#	%	C.I. (95%)	#
Hawaii State	794,700	81.1	80.3 - 81.8	185,400	18.9	18.2 - 19.7	980,100

County	Yes			No			Estimated Population (3-Yr Avg)
	#	%	C.I. (95%)	#	%	C.I. (95%)	#
Hawaii	100,100	80.7	79.3 - 82.2	23,900	19.3	17.8 - 20.7	124,000
Honolulu	568,800	81.0	80.0 - 82.0	133,600	19.0	18.0 - 20.0	702,400
Kauai	39,600	84.0	81.9 - 86.0	7,600	16.0	14.0 - 18.1	47,200
Maui	86,100	80.9	79.0 - 82.7	20,400	19.1	17.3 - 21.0	106,500

**Leisure time physical activity by State, County, Island, Community, BRFSS Age Group, DOH Race-Ethnicity, Gender, Education Level, Employment Status (Grouped), Household Income, Poverty Level, Marital Status (Grouped), Married, Health Care Coverage, for the Year(s) - 2000-2002, 2001-2003, 2002-2004, 2003-2005, 2004-2006, 2005-2007, 2006-2008, 2007-2009, 2008-2010**

*Note: Weighted numbers (#) represent 3-yr averages, percentages and 95% confidence intervals; Respondents aged 18 years and older; n/r (Not Reportable) - If the unweighted total responses for a dimension (row) is <50 that row will not be shown; n/a (Not Available) - Not asked of a subset of respondents*

**Year: 2005-2007**

Island	Yes			No			Estimated Population (3-Yr Avg)
	#	%	C.I. (95%)	#	%	C.I. (95%)	#
Hawaii	100,100	80.7	79.3 - 82.2	23,900	19.3	17.8 - 20.7	124,000
Kauai	39,600	84.0	81.9 - 86.0	7,600	16.0	14.0 - 18.1	47,200
Lanai	1,900	82.7	78.8 - 86.5	400	17.3	13.5 - 21.2	2,300
Maui	79,000	81.0	79.0 - 83.0	18,500	19.0	17.0 - 21.0	97,500
Molokai	5,300	78.3	74.5 - 82.2	1,500	21.7	17.8 - 25.5	6,700
Oahu	568,800	81.0	80.0 - 82.0	133,600	19.0	18.0 - 20.0	702,400

Community	Yes			No			Estimated Population (3-Yr Avg)
	#	%	C.I. (95%)	#	%	C.I. (95%)	#
Aiea/ Pearl City	55,500	80.6	77.6 - 83.7	13,300	19.4	16.3 - 22.4	68,800
Ala Moana	24,900	77.9	73.8 - 82.1	7,100	22.1	17.9 - 26.2	32,000

**Leisure time physical activity by State, County, Island, Community, BRFSS Age Group, DOH Race-Ethnicity, Gender, Education Level, Employment Status (Grouped), Household Income, Poverty Level, Marital Status (Grouped), Married, Health Care Coverage, for the Year(s) - 2000-2002, 2001-2003, 2002-2004, 2003-2005, 2004-2006, 2005-2007, 2006-2008, 2007-2009, 2008-2010**

*Note: Weighted numbers (#) represent 3-yr averages, percentages and 95% confidence intervals; Respondents aged 18 years and older; n/r (Not Reportable) - If the unweighted total responses for a dimension (row) is <50 that row will not be shown; n/a (Not Available) - Not asked of a subset of respondents*

**Year: 2005-2007**

Community	Yes			No			Estimated Population (3-Yr Avg)
	#	%	C.I. (95%)	#	%	C.I. (95%)	#
Hanalei/ Kapaa	17,300	86.2	83.4 - 89.1	2,800	13.8	10.9 - 16.6	20,100
Hilo	28,800	80.9	78.4 - 83.4	6,800	19.1	16.6 - 21.6	35,500
Kaaawa/ Kahaluu/ Kaneohe	41,200	82.0	78.3 - 85.7	9,100	18.0	14.3 - 21.7	50,300
Kahului	26,000	78.1	74.4 - 81.8	7,300	21.9	18.2 - 25.6	33,300
Kailua/ Waimanalo	43,400	86.2	83.3 - 89.1	6,900	13.8	10.9 - 16.7	50,300
Kaimuki/ Palolo/ Waikiki	50,000	83.4	80.5 - 86.2	10,000	16.6	13.8 - 19.5	60,000
Kona	23,700	81.9	78.9 - 84.8	5,200	18.1	15.2 - 21.1	28,900
Lahaina/ Wailuku	26,100	81.9	78.4 - 85.4	5,800	18.1	14.6 - 21.6	31,900
Lanai	1,900	82.7	78.8 - 86.5	400	17.3	13.5 - 21.2	2,300
Lihue-Waimea	22,300	82.3	79.4 - 85.2	4,800	17.7	14.8 - 20.6	27,100
Manoa/ Upper Makiki	39,300	85.6	82.6 - 88.6	6,600	14.4	11.4 - 17.4	45,900
Mililani/ Wahiawa	56,700	80.0	76.9 - 83.0	14,200	20.0	17.0 - 23.1	70,900

**Leisure time physical activity by State, County, Island, Community, BRFSS Age Group, DOH Race-Ethnicity, Gender, Education Level, Employment Status (Grouped), Household Income, Poverty Level, Marital Status (Grouped), Married, Health Care Coverage, for the Year(s) - 2000-2002, 2001-2003, 2002-2004, 2003-2005, 2004-2006, 2005-2007, 2006-2008, 2007-2009, 2008-2010**

*Note: Weighted numbers (#) represent 3-yr averages, percentages and 95% confidence intervals; Respondents aged 18 years and older; n/r (Not Reportable) - If the unweighted total responses for a dimension (row) is <50 that row will not be shown; n/a (Not Available) - Not asked of a subset of respondents*

**Year: 2005-2007**

Community	Yes			No			Estimated Population (3-Yr Avg)
	#	%	C.I. (95%)	#	%	C.I. (95%)	#
Molokai	5,300	78.3	74.5 - 82.2	1,500	21.7	17.8 - 25.5	6,700
Nanakuli/ Waianae	24,300	72.3	66.3 - 78.2	9,300	27.7	21.8 - 33.7	33,600
N.Hawaii	21,800	82.4	79.6 - 85.2	4,700	17.6	14.8 - 20.4	26,500
N.Shore/ Laie	17,500	78.0	71.5 - 84.5	4,900	22.0	15.5 - 28.5	22,400
Nuuanu/ Kalihi/ Moanalua	52,000	73.6	69.8 - 77.4	18,700	26.4	22.6 - 30.2	70,700
Puna/ Kau	25,800	78.2	75.1 - 81.3	7,200	21.8	18.7 - 24.9	33,000
Salt Lake/ Foster Village	27,200	83.3	79.0 - 87.6	5,500	16.7	12.4 - 21.0	32,700
Upcountry/ Hana	26,900	83.0	80.0 - 86.1	5,500	17.0	13.9 - 20.0	32,300
Waialae/ Kahala/ Hawaii Kai	37,500	90.3	87.7 - 92.8	4,000	9.7	7.2 - 12.3	41,500
Waipahu/ Kapolei/ Ewa	99,300	80.5	78.0 - 83.0	24,100	19.5	17.0 - 22.0	123,400



**Leisure time physical activity by State, County, Island, Community, BRFSS Age Group, DOH Race-Ethnicity, Gender, Education Level, Employment Status (Grouped), Household Income, Poverty Level, Marital Status (Grouped), Married, Health Care Coverage, for the Year(s) - 2000-2002, 2001-2003, 2002-2004, 2003-2005, 2004-2006, 2005-2007, 2006-2008, 2007-2009, 2008-2010**

*Note: Weighted numbers (#) represent 3-yr averages, percentages and 95% confidence intervals; Respondents aged 18 years and older; n/r (Not Reportable) - If the unweighted total responses for a dimension (row) is <50 that row will not be shown; n/a (Not Available) - Not asked of a subset of respondents*

**Year: 2005-2007**

BRFSS Age Group	Yes			No			Estimated Population (3-Yr Avg)
	#	%	C.I. (95%)	#	%	C.I. (95%)	#
18-24	105,100	85.0	82.4 - 87.7	18,500	15.0	12.3 - 17.6	123,600
25-34	135,600	83.0	81.0 - 85.0	27,800	17.0	15.0 - 19.0	163,400
35-44	147,400	82.5	80.9 - 84.2	31,200	17.5	15.8 - 19.1	178,500
45-54	148,400	81.2	79.6 - 82.8	34,300	18.8	17.2 - 20.4	182,800
55-64	118,100	79.6	77.8 - 81.5	30,200	20.4	18.5 - 22.2	148,200
65-74	67,300	79.6	77.5 - 81.8	17,200	20.4	18.2 - 22.5	84,500
75+	68,200	73.3	70.8 - 75.7	24,900	26.7	24.3 - 29.2	93,100

**Leisure time physical activity by State, County, Island, Community, BRFSS Age Group, DOH Race-Ethnicity, Gender, Education Level, Employment Status (Grouped), Household Income, Poverty Level, Marital Status (Grouped), Married, Health Care Coverage, for the Year(s) - 2000-2002, 2001-2003, 2002-2004, 2003-2005, 2004-2006, 2005-2007, 2006-2008, 2007-2009, 2008-2010**

*Note: Weighted numbers (#) represent 3-yr averages, percentages and 95% confidence intervals; Respondents aged 18 years and older; n/r (Not Reportable) - If the unweighted total responses for a dimension (row) is <50 that row will not be shown; n/a (Not Available) - Not asked of a subset of respondents*

**Year: 2005-2007**

DOH Race-Ethnicity	Yes			No			Estimated Population (3-Yr Avg)
	#	%	C.I. (95%)	#	%	C.I. (95%)	#
Caucasian	279,300	87.3	86.3 - 88.2	40,800	12.7	11.8 - 13.7	320,100
Native Hawaiian	98,400	78.9	76.6 - 81.1	26,400	21.1	18.9 - 23.4	124,800
Chinese	43,200	82.4	79.2 - 85.6	9,200	17.6	14.4 - 20.8	52,400
Filipino	119,600	73.7	71.3 - 76.2	42,600	26.3	23.8 - 28.7	162,300
Japanese	167,700	79.2	77.6 - 80.8	43,900	20.8	19.2 - 22.4	211,600
Black	14,000	82.7	76.1 - 89.3	2,900	17.3	10.7 - 23.9	16,900
Native Alaskan/ American Indian	4,500	83.4	74.9 - 91.9	900	16.6	8.1 - 25.1	5,400
Other Asian	19,100	80.2	75.2 - 85.2	4,700	19.8	14.8 - 24.8	23,800
Other Pacific Islander	17,200	70.0	63.0 - 76.9	7,400	30.0	23.1 - 37.0	24,600
Mixed Ethnicity	6,700	84.1	76.5 - 91.6	1,300	15.9	8.4 - 23.5	8,000
Other	21,100	82.1	77.5 - 86.7	4,600	17.9	13.3 - 22.5	25,600

**Leisure time physical activity by State, County, Island, Community, BRFSS Age Group, DOH Race-Ethnicity, Gender, Education Level, Employment Status (Grouped), Household Income, Poverty Level, Marital Status (Grouped), Married, Health Care Coverage, for the Year(s) - 2000-2002, 2001-2003, 2002-2004, 2003-2005, 2004-2006, 2005-2007, 2006-2008, 2007-2009, 2008-2010**

*Note: Weighted numbers (#) represent 3-yr averages, percentages and 95% confidence intervals; Respondents aged 18 years and older; n/r (Not Reportable) - If the unweighted total responses for a dimension (row) is <50 that row will not be shown; n/a (Not Available) - Not asked of a subset of respondents*

**Year: 2005-2007**

Gender	Yes			No			Estimated Population (3-Yr Avg)
	#	%	C.I. (95%)	#	%	C.I. (95%)	#
Male	409,000	84.3	83.2 - 85.4	76,000	15.7	14.6 - 16.8	485,100
Female	385,700	77.9	76.8 - 79.0	109,400	22.1	21.0 - 23.2	495,100

Education Level	Yes			No			Estimated Population (3-Yr Avg)
	#	%	C.I. (95%)	#	%	C.I. (95%)	#
Never attended school/ Only Kindergarten to Grades 8	11,700	67.0	60.1 - 73.9	5,800	33.0	26.1 - 39.9	17,400
Grades 9 thru 11 (Some High School)	26,600	67.3	62.5 - 72.1	12,900	32.7	27.9 - 37.5	39,400
Grades 12 or GED (High School Grad)	220,500	74.9	73.3 - 76.5	74,000	25.1	23.5 - 26.7	294,500
College 1 to 3 years (Some College/ Tech)	234,500	82.2	80.9 - 83.6	50,600	17.8	16.4 - 19.1	285,200
College 4 years or more (College Grad)	300,300	87.8	86.8 - 88.9	41,600	12.2	11.1 - 13.2	341,900

**Leisure time physical activity by State, County, Island, Community, BRFSS Age Group, DOH Race-Ethnicity, Gender, Education Level, Employment Status (Grouped), Household Income, Poverty Level, Marital Status (Grouped), Married, Health Care Coverage, for the Year(s) - 2000-2002, 2001-2003, 2002-2004, 2003-2005, 2004-2006, 2005-2007, 2006-2008, 2007-2009, 2008-2010**

*Note: Weighted numbers (#) represent 3-yr averages, percentages and 95% confidence intervals; Respondents aged 18 years and older; n/r (Not Reportable) - If the unweighted total responses for a dimension (row) is <50 that row will not be shown; n/a (Not Available) - Not asked of a subset of respondents*

**Year: 2005-2007**

Employment Status (Grouped)	Yes			No			Estimated Population (3-Yr Avg)
	#	%	C.I. (95%)	#	%	C.I. (95%)	#
<b>Employed</b>	523,200	82.9	82.0 - 83.8	107,900	17.1	16.2 - 18.0	631,100
<b>Unemployed</b>	20,400	70.6	64.7 - 76.5	8,500	29.4	23.5 - 35.3	28,900
<b>Retired/Unable to work</b>	172,400	76.2	74.7 - 77.7	53,900	23.8	22.3 - 25.3	226,400
<b>Student/Homemaker</b>	77,600	84.1	81.6 - 86.7	14,600	15.9	13.3 - 18.4	92,200

**Leisure time physical activity by State, County, Island, Community, BRFSS Age Group, DOH Race-Ethnicity, Gender, Education Level, Employment Status (Grouped), Household Income, Poverty Level, Marital Status (Grouped), Married, Health Care Coverage, for the Year(s) - 2000-2002, 2001-2003, 2002-2004, 2003-2005, 2004-2006, 2005-2007, 2006-2008, 2007-2009, 2008-2010**

*Note: Weighted numbers (#) represent 3-yr averages, percentages and 95% confidence intervals; Respondents aged 18 years and older; n/r (Not Reportable) - If the unweighted total responses for a dimension (row) is <50 that row will not be shown; n/a (Not Available) - Not asked of a subset of respondents*

**Year: 2005-2007**

Household Income	Yes			No			Estimated Population (3-Yr Avg)
	#	%	C.I. (95%)	#	%	C.I. (95%)	#
Less than \$10,000	19,000	69.5	64.1 - 74.9	8,300	30.5	25.1 - 35.9	27,400
\$10,000 to \$14,999	19,300	68.5	62.9 - 74.0	8,900	31.5	26.0 - 37.1	28,200
\$15,000 to \$19,999	33,700	72.4	68.6 - 76.3	12,800	27.6	23.7 - 31.4	46,500
\$20,000 to \$24,999	47,200	75.4	72.1 - 78.6	15,400	24.6	21.4 - 27.9	62,700
\$25,000 to \$34,999	83,200	77.6	75.1 - 80.1	24,000	22.4	19.9 - 24.9	107,100
\$35,000 to \$49,999	121,700	80.8	78.9 - 82.7	29,000	19.2	17.3 - 21.1	150,600
\$50,000 to \$74,999	143,700	84.8	83.2 - 86.4	25,700	15.2	13.6 - 16.8	169,400
\$75,000 or more	225,200	88.9	87.8 - 90.1	28,100	11.1	9.9 - 12.2	253,300

**Leisure time physical activity by State, County, Island, Community, BRFSS Age Group, DOH Race-Ethnicity, Gender, Education Level, Employment Status (Grouped), Household Income, Poverty Level, Marital Status (Grouped), Married, Health Care Coverage, for the Year(s) - 2000-2002, 2001-2003, 2002-2004, 2003-2005, 2004-2006, 2005-2007, 2006-2008, 2007-2009, 2008-2010**

*Note: Weighted numbers (#) represent 3-yr averages, percentages and 95% confidence intervals; Respondents aged 18 years and older; n/r (Not Reportable) - If the unweighted total responses for a dimension (row) is <50 that row will not be shown; n/a (Not Available) - Not asked of a subset of respondents*

**Year: 2005-2007**

Poverty Level	Yes			No			Estimated Population (3-Yr Avg)
	#	%	C.I. (95%)	#	%	C.I. (95%)	#
<b>0-130%</b>	132,800	72.9	70.7 - 75.1	49,400	27.1	24.9 - 29.3	182,100
<b>131-185%</b>	84,100	77.8	75.4 - 80.3	23,900	22.2	19.7 - 24.6	108,000
<b>186+%</b>	476,100	85.8	85.0 - 86.6	78,900	14.2	13.4 - 15.0	555,000

Marital Status (Grouped)	Yes			No			Estimated Population (3-Yr Avg)
	#	%	C.I. (95%)	#	%	C.I. (95%)	#
<b>Married</b>	476,800	81.9	80.9 - 82.8	105,700	18.1	17.2 - 19.1	582,500
<b>Unmarried Couple</b>	24,400	86.0	82.3 - 89.7	4,000	14.0	10.3 - 17.7	28,300
<b>Widowed</b>	42,000	73.6	70.8 - 76.4	15,100	26.4	23.6 - 29.2	57,100
<b>Other</b>	251,500	80.6	79.1 - 82.1	60,700	19.4	17.9 - 20.9	312,200

**Leisure time physical activity by State, County, Island, Community, BRFSS Age Group, DOH Race-Ethnicity, Gender, Education Level, Employment Status (Grouped), Household Income, Poverty Level, Marital Status (Grouped), Married, Health Care Coverage, for the Year(s) - 2000-2002, 2001-2003, 2002-2004, 2003-2005, 2004-2006, 2005-2007, 2006-2008, 2007-2009, 2008-2010**

*Note: Weighted numbers (#) represent 3-yr averages, percentages and 95% confidence intervals; Respondents aged 18 years and older; n/r (Not Reportable) - If the unweighted total responses for a dimension (row) is <50 that row will not be shown; n/a (Not Available) - Not asked of a subset of respondents*

**Year: 2005-2007**

<b>Married</b>	<b>Yes</b>			<b>No</b>			<b>Estimated Population (3-Yr Avg)</b>
	<b>#</b>	<b>%</b>	<b>C.I. (95%)</b>	<b>#</b>	<b>%</b>	<b>C.I. (95%)</b>	<b>#</b>
<b>Yes</b>	484,400	81.7	80.8 - 82.6	108,500	18.3	17.4 - 19.2	592,900
<b>No</b>	309,000	80.1	78.8 - 81.4	76,600	19.9	18.6 - 21.2	385,600

<b>Health Care Coverage</b>	<b>Yes</b>			<b>No</b>			<b>Estimated Population (3-Yr Avg)</b>
	<b>#</b>	<b>%</b>	<b>C.I. (95%)</b>	<b>#</b>	<b>%</b>	<b>C.I. (95%)</b>	<b>#</b>
<b>Yes</b>	738,200	81.5	80.7 - 82.2	168,100	18.5	17.8 - 19.3	906,300
<b>No</b>	55,200	76.8	73.3 - 80.3	16,700	23.2	19.7 - 26.7	71,900

**Leisure time physical activity by State, County, Island, Community, BRFSS Age Group, DOH Race-Ethnicity, Gender, Education Level, Employment Status (Grouped), Household Income, Poverty Level, Marital Status (Grouped), Married, Health Care Coverage, for the Year(s) - 2000-2002, 2001-2003, 2002-2004, 2003-2005, 2004-2006, 2005-2007, 2006-2008, 2007-2009, 2008-2010**

*Note: Weighted numbers (#) represent 3-yr averages, percentages and 95% confidence intervals; Respondents aged 18 years and older; n/r (Not Reportable) - If the unweighted total responses for a dimension (row) is <50 that row will not be shown; n/a (Not Available) - Not asked of a subset of respondents*

**Year: 2004-2006**

State	Yes			No			Estimated Population (3-Yr Avg)
	#	%	C.I. (95%)	#	%	C.I. (95%)	#
Hawaii State	765,200	80.2	79.2 - 81.2	188,800	19.8	18.8 - 20.8	953,900

County	Yes			No			Estimated Population (3-Yr Avg)
	#	%	C.I. (95%)	#	%	C.I. (95%)	#
Hawaii	98,800	79.4	77.6 - 81.3	25,600	20.6	18.7 - 22.4	124,400
Honolulu	544,400	79.9	78.6 - 81.2	137,200	20.1	18.8 - 21.4	681,600
Kauai	37,300	83.0	80.6 - 85.3	7,700	17.0	14.7 - 19.4	45,000
Maui	84,600	82.2	80.0 - 84.3	18,400	17.8	15.7 - 20.0	103,000



**Leisure time physical activity by State, County, Island, Community, BRFSS Age Group, DOH Race-Ethnicity, Gender, Education Level, Employment Status (Grouped), Household Income, Poverty Level, Marital Status (Grouped), Married, Health Care Coverage, for the Year(s) - 2000-2002, 2001-2003, 2002-2004, 2003-2005, 2004-2006, 2005-2007, 2006-2008, 2007-2009, 2008-2010**

*Note: Weighted numbers (#) represent 3-yr averages, percentages and 95% confidence intervals; Respondents aged 18 years and older; n/r (Not Reportable) - If the unweighted total responses for a dimension (row) is <50 that row will not be shown; n/a (Not Available) - Not asked of a subset of respondents*

**Year: 2004-2006**

Island	Yes			No			Estimated Population (3-Yr Avg)
	#	%	C.I. (95%)	#	%	C.I. (95%)	#
Hawaii	98,800	79.4	77.6 - 81.3	25,600	20.6	18.7 - 22.4	124,400
Kauai	37,300	83.0	80.6 - 85.3	7,700	17.0	14.7 - 19.4	45,000
Lanai	1,700	80.2	75.3 - 85.1	400	19.8	14.9 - 24.7	2,100
Maui	78,300	82.4	80.1 - 84.7	16,700	17.6	15.3 - 19.9	95,000
Molokai	4,700	78.7	73.0 - 84.4	1,300	21.3	15.6 - 27.0	6,000
Oahu	544,400	79.9	78.6 - 81.2	137,200	20.1	18.8 - 21.4	681,600

Community	Yes			No			Estimated Population (3-Yr Avg)
	#	%	C.I. (95%)	#	%	C.I. (95%)	#
Aiea/ Pearl City	51,200	77.7	73.5 - 82.0	14,700	22.3	18.0 - 26.5	65,900
Ala Moana	25,300	77.9	72.6 - 83.1	7,200	22.1	16.9 - 27.4	32,500

**Leisure time physical activity by State, County, Island, Community, BRFSS Age Group, DOH Race-Ethnicity, Gender, Education Level, Employment Status (Grouped), Household Income, Poverty Level, Marital Status (Grouped), Married, Health Care Coverage, for the Year(s) - 2000-2002, 2001-2003, 2002-2004, 2003-2005, 2004-2006, 2005-2007, 2006-2008, 2007-2009, 2008-2010**

*Note: Weighted numbers (#) represent 3-yr averages, percentages and 95% confidence intervals; Respondents aged 18 years and older; n/r (Not Reportable) - If the unweighted total responses for a dimension (row) is <50 that row will not be shown; n/a (Not Available) - Not asked of a subset of respondents*

**Year: 2004-2006**

Community	Yes			No			Estimated Population (3-Yr Avg)
	#	%	C.I. (95%)	#	%	C.I. (95%)	#
Hanalei/ Kapaa	15,700	83.7	80.1 - 87.3	3,100	16.3	12.7 - 19.9	18,800
Hilo	27,200	78.4	75.0 - 81.7	7,500	21.6	18.3 - 25.0	34,700
Kaaawa/ Kahaluu/ Kaneohe	38,600	80.7	75.4 - 85.9	9,200	19.3	14.1 - 24.6	47,800
Kahului	25,900	78.7	74.2 - 83.3	7,000	21.3	16.7 - 25.8	33,000
Kailua/ Waimanalo	39,600	84.7	80.9 - 88.6	7,100	15.3	11.4 - 19.1	46,800
Kaimuki/ Palolo/ Waikiki	49,100	80.1	76.1 - 84.1	12,200	19.9	15.9 - 23.9	61,300
Kona	23,400	82.2	79.0 - 85.5	5,100	17.8	14.5 - 21.0	28,400
Lahaina/ Wailuku	25,700	83.0	79.1 - 86.9	5,300	17.0	13.1 - 20.9	31,000
Lanai	1,700	80.2	75.3 - 85.1	400	19.8	14.9 - 24.7	2,100
Lihue-Waimea	21,600	82.4	79.3 - 85.5	4,600	17.6	14.5 - 20.7	26,200
Manoa/ Upper Makiki	38,900	84.2	80.4 - 88.1	7,300	15.8	11.9 - 19.6	46,200
Mililani/ Wahiawa	54,100	81.8	78.2 - 85.4	12,000	18.2	14.6 - 21.8	66,100

**Leisure time physical activity by State, County, Island, Community, BRFSS Age Group, DOH Race-Ethnicity, Gender, Education Level, Employment Status (Grouped), Household Income, Poverty Level, Marital Status (Grouped), Married, Health Care Coverage, for the Year(s) - 2000-2002, 2001-2003, 2002-2004, 2003-2005, 2004-2006, 2005-2007, 2006-2008, 2007-2009, 2008-2010**

*Note: Weighted numbers (#) represent 3-yr averages, percentages and 95% confidence intervals; Respondents aged 18 years and older; n/r (Not Reportable) - If the unweighted total responses for a dimension (row) is <50 that row will not be shown; n/a (Not Available) - Not asked of a subset of respondents*

**Year: 2004-2006**

Community	Yes			No			Estimated Population (3-Yr Avg)
	#	%	C.I. (95%)	#	%	C.I. (95%)	#
Molokai	4,700	78.7	73.0 - 84.4	1,300	21.3	15.6 - 27.0	6,000
Nanakuli/ Waianae	23,400	72.1	64.6 - 79.6	9,000	27.9	20.4 - 35.4	32,400
N.Hawaii	19,800	80.1	76.2 - 84.1	4,900	19.9	15.9 - 23.8	24,700
N.Shore/ Laie	17,200	79.3	70.9 - 87.8	4,500	20.7	12.2 - 29.1	21,600
Nuuanu/ Kalihi/ Moanalua	50,200	72.4	67.6 - 77.2	19,100	27.6	22.8 - 32.4	69,400
Puna/ Kau	28,500	77.8	73.7 - 82.0	8,100	22.2	18.0 - 26.3	36,600
Salt Lake/ Foster Village	27,500	80.3	73.6 - 87.0	6,800	19.7	13.0 - 26.4	34,300
Upcountry/ Hana	26,700	85.8	82.5 - 89.0	4,400	14.2	11.0 - 17.5	31,100
Waiialae/ Kahala/ Hawaii Kai	35,000	87.0	82.5 - 91.6	5,200	13.0	8.4 - 17.5	40,200
Waipahu/ Kapolei/ Ewa	94,300	80.5	77.1 - 83.9	22,800	19.5	16.1 - 22.9	117,100

**Leisure time physical activity by State, County, Island, Community, BRFSS Age Group, DOH Race-Ethnicity, Gender, Education Level, Employment Status (Grouped), Household Income, Poverty Level, Marital Status (Grouped), Married, Health Care Coverage, for the Year(s) - 2000-2002, 2001-2003, 2002-2004, 2003-2005, 2004-2006, 2005-2007, 2006-2008, 2007-2009, 2008-2010**

*Note: Weighted numbers (#) represent 3-yr averages, percentages and 95% confidence intervals; Respondents aged 18 years and older; n/r (Not Reportable) - If the unweighted total responses for a dimension (row) is <50 that row will not be shown; n/a (Not Available) - Not asked of a subset of respondents*

**Year: 2004-2006**

BRFSS Age Group	Yes			No			Estimated Population (3-Yr Avg)
	#	%	C.I. (95%)	#	%	C.I. (95%)	#
18-24	99,900	85.5	82.3 - 88.6	17,000	14.5	11.4 - 17.7	116,900
25-34	139,000	83.8	81.3 - 86.3	26,900	16.2	13.7 - 18.7	165,900
35-44	144,800	80.9	78.7 - 83.2	34,100	19.1	16.8 - 21.3	179,000
45-54	140,600	79.5	77.1 - 81.8	36,300	20.5	18.2 - 22.9	176,900
55-64	108,000	78.6	76.3 - 80.9	29,300	21.4	19.1 - 23.7	137,300
65-74	65,300	77.7	74.6 - 80.8	18,700	22.3	19.2 - 25.4	84,000
75+	61,600	71.6	68.1 - 75.1	24,500	28.4	24.9 - 31.9	86,100

**Leisure time physical activity by State, County, Island, Community, BRFSS Age Group, DOH Race-Ethnicity, Gender, Education Level, Employment Status (Grouped), Household Income, Poverty Level, Marital Status (Grouped), Married, Health Care Coverage, for the Year(s) - 2000-2002, 2001-2003, 2002-2004, 2003-2005, 2004-2006, 2005-2007, 2006-2008, 2007-2009, 2008-2010**

*Note: Weighted numbers (#) represent 3-yr averages, percentages and 95% confidence intervals; Respondents aged 18 years and older; n/r (Not Reportable) - If the unweighted total responses for a dimension (row) is <50 that row will not be shown; n/a (Not Available) - Not asked of a subset of respondents*

**Year: 2004-2006**

DOH Race-Ethnicity	Yes			No			Estimated Population (3-Yr Avg)
	#	%	C.I. (95%)	#	%	C.I. (95%)	#
Caucasian	271,600	86.5	85.2 - 87.8	42,500	13.5	12.2 - 14.8	314,000
Native Hawaiian	96,600	80.4	77.6 - 83.3	23,500	19.6	16.7 - 22.4	120,100
Chinese	40,700	79.7	75.0 - 84.3	10,400	20.3	15.7 - 25.0	51,100
Filipino	109,200	71.5	68.1 - 74.8	43,600	28.5	25.2 - 31.9	152,800
Japanese	157,200	77.9	75.7 - 80.0	44,700	22.1	20.0 - 24.3	201,800
Black	12,400	86.1	79.8 - 92.4	2,000	13.9	7.6 - 20.2	14,400
Native Alaskan/ American Indian	4,200	80.2	68.6 - 91.7	1,000	19.8	8.3 - 31.4	5,200
Other Asian	19,300	81.3	74.9 - 87.6	4,400	18.7	12.4 - 25.1	23,700
Other Pacific Islander	17,900	70.4	61.5 - 79.3	7,500	29.6	20.7 - 38.5	25,500
Mixed Ethnicity	6,700	84.1	76.5 - 91.6	1,300	15.9	8.4 - 23.5	8,000
Other	19,300	76.1	69.7 - 82.6	6,100	23.9	17.4 - 30.3	25,400

**Leisure time physical activity by State, County, Island, Community, BRFSS Age Group, DOH Race-Ethnicity, Gender, Education Level, Employment Status (Grouped), Household Income, Poverty Level, Marital Status (Grouped), Married, Health Care Coverage, for the Year(s) - 2000-2002, 2001-2003, 2002-2004, 2003-2005, 2004-2006, 2005-2007, 2006-2008, 2007-2009, 2008-2010**

*Note: Weighted numbers (#) represent 3-yr averages, percentages and 95% confidence intervals; Respondents aged 18 years and older; n/r (Not Reportable) - If the unweighted total responses for a dimension (row) is <50 that row will not be shown; n/a (Not Available) - Not asked of a subset of respondents*

**Year: 2004-2006**

Gender	Yes			No			Estimated Population (3-Yr Avg)
	#	%	C.I. (95%)	#	%	C.I. (95%)	#
Male	393,500	83.7	82.3 - 85.1	76,900	16.3	14.9 - 17.7	470,400
Female	371,600	76.9	75.4 - 78.3	111,900	23.1	21.7 - 24.6	483,500

Education Level	Yes			No			Estimated Population (3-Yr Avg)
	#	%	C.I. (95%)	#	%	C.I. (95%)	#
Never attended school/ Only Kindergarten to Grades 8	10,100	64.1	55.8 - 72.5	5,700	35.9	27.5 - 44.2	15,800
Grades 9 thru 11 (Some High School)	25,800	69.5	63.7 - 75.3	11,300	30.5	24.7 - 36.3	37,100
Grades 12 or GED (High School Grad)	211,300	74.2	72.1 - 76.3	73,500	25.8	23.7 - 27.9	284,800
College 1 to 3 years (Some College/ Tech)	233,700	82.0	80.2 - 83.8	51,500	18.0	16.2 - 19.8	285,200
College 4 years or more (College Grad)	283,500	86.0	84.6 - 87.4	46,100	14.0	12.6 - 15.4	329,600

**Leisure time physical activity by State, County, Island, Community, BRFSS Age Group, DOH Race-Ethnicity, Gender, Education Level, Employment Status (Grouped), Household Income, Poverty Level, Marital Status (Grouped), Married, Health Care Coverage, for the Year(s) - 2000-2002, 2001-2003, 2002-2004, 2003-2005, 2004-2006, 2005-2007, 2006-2008, 2007-2009, 2008-2010**

*Note: Weighted numbers (#) represent 3-yr averages, percentages and 95% confidence intervals; Respondents aged 18 years and older; n/r (Not Reportable) - If the unweighted total responses for a dimension (row) is <50 that row will not be shown; n/a (Not Available) - Not asked of a subset of respondents*

**Year: 2004-2006**

Employment Status (Grouped)	Yes			No			Estimated Population (3-Yr Avg)
	#	%	C.I. (95%)	#	%	C.I. (95%)	#
<b>Employed</b>	503,400	82.1	80.8 - 83.3	109,900	17.9	16.7 - 19.2	613,200
<b>Unemployed</b>	19,900	73.5	66.6 - 80.3	7,200	26.5	19.7 - 33.4	27,100
<b>Retired/Unable to work</b>	162,400	75.1	73.0 - 77.1	54,000	24.9	22.9 - 27.0	216,300
<b>Student/Homemaker</b>	78,300	82.1	78.8 - 85.4	17,100	17.9	14.6 - 21.2	95,400

**Leisure time physical activity by State, County, Island, Community, BRFSS Age Group, DOH Race-Ethnicity, Gender, Education Level, Employment Status (Grouped), Household Income, Poverty Level, Marital Status (Grouped), Married, Health Care Coverage, for the Year(s) - 2000-2002, 2001-2003, 2002-2004, 2003-2005, 2004-2006, 2005-2007, 2006-2008, 2007-2009, 2008-2010**

*Note: Weighted numbers (#) represent 3-yr averages, percentages and 95% confidence intervals; Respondents aged 18 years and older; n/r (Not Reportable) - If the unweighted total responses for a dimension (row) is <50 that row will not be shown; n/a (Not Available) - Not asked of a subset of respondents*

**Year: 2004-2006**

Household Income	Yes			No			Estimated Population (3-Yr Avg)
	#	%	C.I. (95%)	#	%	C.I. (95%)	#
Less than \$10,000	16,100	68.9	61.9 - 75.9	7,200	31.1	24.1 - 38.1	23,300
\$10,000 to \$14,999	17,600	65.9	59.5 - 72.3	9,100	34.1	27.7 - 40.5	26,800
\$15,000 to \$19,999	34,200	72.3	67.3 - 77.4	13,100	27.7	22.6 - 32.7	47,200
\$20,000 to \$24,999	48,600	74.0	69.5 - 78.5	17,100	26.0	21.5 - 30.5	65,700
\$25,000 to \$34,999	81,300	75.4	72.0 - 78.8	26,500	24.6	21.2 - 28.0	107,800
\$35,000 to \$49,999	115,800	81.2	78.7 - 83.7	26,800	18.8	16.3 - 21.3	142,600
\$50,000 to \$74,999	173,400	83.6	81.4 - 85.8	34,000	16.4	14.2 - 18.6	207,400
\$75,000 or more	198,900	87.4	85.7 - 89.1	28,600	12.6	10.9 - 14.3	227,500



**Leisure time physical activity by State, County, Island, Community, BRFSS Age Group, DOH Race-Ethnicity, Gender, Education Level, Employment Status (Grouped), Household Income, Poverty Level, Marital Status (Grouped), Married, Health Care Coverage, for the Year(s) - 2000-2002, 2001-2003, 2002-2004, 2003-2005, 2004-2006, 2005-2007, 2006-2008, 2007-2009, 2008-2010**

*Note: Weighted numbers (#) represent 3-yr averages, percentages and 95% confidence intervals; Respondents aged 18 years and older; n/r (Not Reportable) - If the unweighted total responses for a dimension (row) is <50 that row will not be shown; n/a (Not Available) - Not asked of a subset of respondents*

**Year: 2004-2006**

Poverty Level	Yes			No			Estimated Population (3-Yr Avg)
	#	%	C.I. (95%)	#	%	C.I. (95%)	#
<b>0-130%</b>	118,000	70.5	67.4 - 73.5	49,500	29.5	26.5 - 32.6	167,400
<b>131-185%</b>	86,900	79.8	76.8 - 82.8	22,000	20.2	17.2 - 23.2	108,800
<b>186+%</b>	481,000	84.1	82.9 - 85.3	91,000	15.9	14.7 - 17.1	572,000

Marital Status (Grouped)	Yes			No			Estimated Population (3-Yr Avg)
	#	%	C.I. (95%)	#	%	C.I. (95%)	#
<b>Married</b>	457,900	81.2	80.0 - 82.5	105,800	18.8	17.5 - 20.0	563,700
<b>Unmarried Couple</b>	23,200	85.5	80.8 - 90.3	3,900	14.5	9.7 - 19.2	27,200
<b>Widowed</b>	39,900	71.1	66.8 - 75.4	16,200	28.9	24.6 - 33.2	56,200
<b>Other</b>	244,100	79.5	77.6 - 81.4	62,800	20.5	18.6 - 22.4	306,900

**Leisure time physical activity by State, County, Island, Community, BRFSS Age Group, DOH Race-Ethnicity, Gender, Education Level, Employment Status (Grouped), Household Income, Poverty Level, Marital Status (Grouped), Married, Health Care Coverage, for the Year(s) - 2000-2002, 2001-2003, 2002-2004, 2003-2005, 2004-2006, 2005-2007, 2006-2008, 2007-2009, 2008-2010**

*Note: Weighted numbers (#) represent 3-yr averages, percentages and 95% confidence intervals; Respondents aged 18 years and older; n/r (Not Reportable) - If the unweighted total responses for a dimension (row) is <50 that row will not be shown; n/a (Not Available) - Not asked of a subset of respondents*

**Year: 2004-2006**

<b>Married</b>	<b>Yes</b>			<b>No</b>			<b>Estimated Population (3-Yr Avg)</b>
	<b>#</b>	<b>%</b>	<b>C.I. (95%)</b>	<b>#</b>	<b>%</b>	<b>C.I. (95%)</b>	<b>#</b>
<b>Yes</b>	464,800	81.0	79.7 - 82.2	109,300	19.0	17.8 - 20.3	574,100
<b>No</b>	298,600	79.1	77.4 - 80.8	78,800	20.9	19.2 - 22.6	377,400

<b>Health Care Coverage</b>	<b>Yes</b>			<b>No</b>			<b>Estimated Population (3-Yr Avg)</b>
	<b>#</b>	<b>%</b>	<b>C.I. (95%)</b>	<b>#</b>	<b>%</b>	<b>C.I. (95%)</b>	<b>#</b>
<b>Yes</b>	701,800	80.5	79.5 - 81.6	169,500	19.5	18.4 - 20.5	871,300
<b>No</b>	61,300	76.6	72.5 - 80.7	18,800	23.4	19.3 - 27.5	80,100

**Leisure time physical activity by State, County, Island, Community, BRFSS Age Group, DOH Race-Ethnicity, Gender, Education Level, Employment Status (Grouped), Household Income, Poverty Level, Marital Status (Grouped), Married, Health Care Coverage, for the Year(s) - 2000-2002, 2001-2003, 2002-2004, 2003-2005, 2004-2006, 2005-2007, 2006-2008, 2007-2009, 2008-2010**

*Note: Weighted numbers (#) represent 3-yr averages, percentages and 95% confidence intervals; Respondents aged 18 years and older; n/r (Not Reportable) - If the unweighted total responses for a dimension (row) is <50 that row will not be shown; n/a (Not Available) - Not asked of a subset of respondents*

**Year: 2003-2005**

State	Yes			No			Estimated Population (3-Yr Avg)
	#	%	C.I. (95%)	#	%	C.I. (95%)	#
Hawaii State	754,800	80.6	79.6 - 81.6	181,600	19.4	18.4 - 20.4	936,300

County	Yes			No			Estimated Population (3-Yr Avg)
	#	%	C.I. (95%)	#	%	C.I. (95%)	#
Hawaii	98,400	80.4	78.4 - 82.3	24,000	19.6	17.7 - 21.6	122,500
Honolulu	539,100	80.5	79.1 - 81.8	130,800	19.5	18.2 - 20.9	669,900
Kauai	35,700	82.0	79.5 - 84.5	7,800	18.0	15.5 - 20.5	43,500
Maui	81,600	81.2	78.9 - 83.6	18,900	18.8	16.4 - 21.1	100,400

**Leisure time physical activity by State, County, Island, Community, BRFSS Age Group, DOH Race-Ethnicity, Gender, Education Level, Employment Status (Grouped), Household Income, Poverty Level, Marital Status (Grouped), Married, Health Care Coverage, for the Year(s) - 2000-2002, 2001-2003, 2002-2004, 2003-2005, 2004-2006, 2005-2007, 2006-2008, 2007-2009, 2008-2010**

*Note: Weighted numbers (#) represent 3-yr averages, percentages and 95% confidence intervals; Respondents aged 18 years and older; n/r (Not Reportable) - If the unweighted total responses for a dimension (row) is <50 that row will not be shown; n/a (Not Available) - Not asked of a subset of respondents*

**Year: 2003-2005**

Island	Yes			No			Estimated Population (3-Yr Avg)
	#	%	C.I. (95%)	#	%	C.I. (95%)	#
Hawaii	98,400	80.4	78.4 - 82.3	24,000	19.6	17.7 - 21.6	122,500
Kauai	35,700	82.0	79.5 - 84.5	7,800	18.0	15.5 - 20.5	43,500
Lanai	1,700	79.4	73.2 - 85.7	400	20.6	14.3 - 26.8	2,100
Maui	75,200	81.3	78.8 - 83.9	17,200	18.7	16.1 - 21.2	92,400
Molokai	4,700	79.9	73.5 - 86.3	1,200	20.1	13.7 - 26.5	5,900
Oahu	539,100	80.5	79.1 - 81.8	130,800	19.5	18.2 - 20.9	669,900

Community	Yes			No			Estimated Population (3-Yr Avg)
	#	%	C.I. (95%)	#	%	C.I. (95%)	#
Aiea/ Pearl City	49,200	80.1	75.7 - 84.6	12,200	19.9	15.4 - 24.3	61,400
Ala Moana	24,200	76.5	70.8 - 82.2	7,400	23.5	17.8 - 29.2	31,600

**Leisure time physical activity by State, County, Island, Community, BRFSS Age Group, DOH Race-Ethnicity, Gender, Education Level, Employment Status (Grouped), Household Income, Poverty Level, Marital Status (Grouped), Married, Health Care Coverage, for the Year(s) - 2000-2002, 2001-2003, 2002-2004, 2003-2005, 2004-2006, 2005-2007, 2006-2008, 2007-2009, 2008-2010**

*Note: Weighted numbers (#) represent 3-yr averages, percentages and 95% confidence intervals; Respondents aged 18 years and older; n/r (Not Reportable) - If the unweighted total responses for a dimension (row) is <50 that row will not be shown; n/a (Not Available) - Not asked of a subset of respondents*

**Year: 2003-2005**

Community	Yes			No			Estimated Population (3-Yr Avg)
	#	%	C.I. (95%)	#	%	C.I. (95%)	#
Hanalei/ Kapaa	15,000	84.3	80.6 - 88.0	2,800	15.7	12.0 - 19.4	17,800
Hilo	27,600	79.2	75.7 - 82.7	7,200	20.8	17.3 - 24.3	34,800
Kaaawa/ Kahaluu/ Kaneohe	37,800	80.2	74.8 - 85.7	9,300	19.8	14.3 - 25.2	47,200
Kahului	26,200	79.2	74.5 - 83.9	6,900	20.8	16.1 - 25.5	33,000
Kailua/ Waimanalo	39,500	83.8	79.6 - 87.9	7,700	16.2	12.1 - 20.4	47,200
Kaimuki/ Palolo/ Waikiki	49,600	77.6	73.5 - 81.8	14,300	22.4	18.2 - 26.5	63,900
Kona	24,200	84.5	81.3 - 87.7	4,400	15.5	12.3 - 18.7	28,600
Lahaina/ Wailuku	23,800	81.2	76.7 - 85.6	5,500	18.8	14.4 - 23.3	29,400
Lanai	1,700	79.4	73.2 - 85.7	400	20.6	14.3 - 26.8	2,100
Lihue-Waimea	20,700	80.4	77.0 - 83.8	5,000	19.6	16.2 - 23.0	25,700
Manoa/ Upper Makiki	41,200	85.2	81.3 - 89.1	7,100	14.8	10.9 - 18.7	48,300
Mililani/ Wahiawa	56,600	84.9	81.6 - 88.3	10,000	15.1	11.7 - 18.4	66,600

**Leisure time physical activity by State, County, Island, Community, BRFSS Age Group, DOH Race-Ethnicity, Gender, Education Level, Employment Status (Grouped), Household Income, Poverty Level, Marital Status (Grouped), Married, Health Care Coverage, for the Year(s) - 2000-2002, 2001-2003, 2002-2004, 2003-2005, 2004-2006, 2005-2007, 2006-2008, 2007-2009, 2008-2010**

*Note: Weighted numbers (#) represent 3-yr averages, percentages and 95% confidence intervals; Respondents aged 18 years and older; n/r (Not Reportable) - If the unweighted total responses for a dimension (row) is <50 that row will not be shown; n/a (Not Available) - Not asked of a subset of respondents*

**Year: 2003-2005**

Community	Yes			No			Estimated Population (3-Yr Avg)
	#	%	C.I. (95%)	#	%	C.I. (95%)	#
Molokai	4,700	79.9	73.5 - 86.3	1,200	20.1	13.7 - 26.5	5,900
Nanakuli/ Waianae	23,700	74.0	66.4 - 81.6	8,300	26.0	18.4 - 33.6	32,000
N.Hawaii	19,600	81.5	77.0 - 85.9	4,500	18.5	14.1 - 23.0	24,000
N.Shore/ Laie	17,200	79.0	70.3 - 87.7	4,600	21.0	12.3 - 29.7	21,800
Nuuanu/ Kalihi/ Moanalua	51,200	74.9	70.2 - 79.6	17,200	25.1	20.4 - 29.8	68,400
Puna/ Kau	27,100	77.4	73.0 - 81.8	7,900	22.6	18.2 - 27.0	35,000
Salt Lake/ Foster Village	30,500	82.3	76.0 - 88.6	6,600	17.7	11.4 - 24.0	37,100
Upcountry/ Hana	25,100	83.8	80.0 - 87.7	4,800	16.2	12.3 - 20.0	30,000
Waialae/ Kahala/ Hawaii Kai	33,300	87.8	83.0 - 92.5	4,600	12.2	7.5 - 17.0	37,900
Waipahu/ Kapolei/ Ewa	85,000	79.8	76.1 - 83.5	21,500	20.2	16.5 - 23.9	106,500

**Leisure time physical activity by State, County, Island, Community, BRFSS Age Group, DOH Race-Ethnicity, Gender, Education Level, Employment Status (Grouped), Household Income, Poverty Level, Marital Status (Grouped), Married, Health Care Coverage, for the Year(s) - 2000-2002, 2001-2003, 2002-2004, 2003-2005, 2004-2006, 2005-2007, 2006-2008, 2007-2009, 2008-2010**

*Note: Weighted numbers (#) represent 3-yr averages, percentages and 95% confidence intervals; Respondents aged 18 years and older; n/r (Not Reportable) - If the unweighted total responses for a dimension (row) is <50 that row will not be shown; n/a (Not Available) - Not asked of a subset of respondents*

**Year: 2003-2005**

BRFSS Age Group	Yes			No			Estimated Population (3-Yr Avg)
	#	%	C.I. (95%)	#	%	C.I. (95%)	#
18-24	98,500	86.2	83.0 - 89.4	15,800	13.8	10.6 - 17.0	114,300
25-34	141,300	85.0	82.6 - 87.4	24,900	15.0	12.6 - 17.4	166,300
35-44	146,800	81.6	79.3 - 83.8	33,200	18.4	16.2 - 20.7	179,900
45-54	141,000	80.3	77.9 - 82.7	34,500	19.7	17.3 - 22.1	175,500
55-64	101,400	78.6	76.0 - 81.1	27,700	21.4	18.9 - 24.0	129,100
65-74	64,700	76.7	73.4 - 80.0	19,700	23.3	20.0 - 26.6	84,400
75+	56,900	70.3	66.5 - 74.1	24,000	29.7	25.9 - 33.5	80,900

**Leisure time physical activity by State, County, Island, Community, BRFSS Age Group, DOH Race-Ethnicity, Gender, Education Level, Employment Status (Grouped), Household Income, Poverty Level, Marital Status (Grouped), Married, Health Care Coverage, for the Year(s) - 2000-2002, 2001-2003, 2002-2004, 2003-2005, 2004-2006, 2005-2007, 2006-2008, 2007-2009, 2008-2010**

*Note: Weighted numbers (#) represent 3-yr averages, percentages and 95% confidence intervals; Respondents aged 18 years and older; n/r (Not Reportable) - If the unweighted total responses for a dimension (row) is <50 that row will not be shown; n/a (Not Available) - Not asked of a subset of respondents*

**Year: 2003-2005**

DOH Race-Ethnicity	Yes			No			Estimated Population (3-Yr Avg)
	#	%	C.I. (95%)	#	%	C.I. (95%)	#
Caucasian	279,900	86.9	85.6 - 88.2	42,100	13.1	11.8 - 14.4	322,000
Native Hawaiian	86,100	80.5	77.4 - 83.6	20,800	19.5	16.4 - 22.6	107,000
Chinese	56,000	77.3	73.4 - 81.2	16,400	22.7	18.8 - 26.6	72,500
Filipino	107,400	72.5	69.1 - 75.9	40,800	27.5	24.1 - 30.9	148,200
Japanese	147,700	78.1	75.8 - 80.4	41,500	21.9	19.6 - 24.2	189,200
Black	11,900	86.6	80.2 - 93.1	1,800	13.4	6.9 - 19.8	13,700
Native Alaskan/ American Indian	3,800	75.4	61.6 - 89.1	1,200	24.6	10.9 - 38.4	5,100
Other Asian	15,700	81.3	73.7 - 88.8	3,600	18.7	11.2 - 26.3	19,300
Other Pacific Islander	16,000	75.2	65.6 - 84.8	5,300	24.8	15.2 - 34.4	21,200
Other	19,900	76.2	69.8 - 82.6	6,200	23.8	17.4 - 30.2	26,100



**Leisure time physical activity by State, County, Island, Community, BRFSS Age Group, DOH Race-Ethnicity, Gender, Education Level, Employment Status (Grouped), Household Income, Poverty Level, Marital Status (Grouped), Married, Health Care Coverage, for the Year(s) - 2000-2002, 2001-2003, 2002-2004, 2003-2005, 2004-2006, 2005-2007, 2006-2008, 2007-2009, 2008-2010**

*Note: Weighted numbers (#) represent 3-yr averages, percentages and 95% confidence intervals; Respondents aged 18 years and older; n/r (Not Reportable) - If the unweighted total responses for a dimension (row) is <50 that row will not be shown; n/a (Not Available) - Not asked of a subset of respondents*

**Year: 2003-2005**

Gender	Yes			No			Estimated Population (3-Yr Avg)
	#	%	C.I. (95%)	#	%	C.I. (95%)	#
Male	386,500	83.6	82.1 - 85.1	75,800	16.4	14.9 - 17.9	462,200
Female	368,300	77.7	76.2 - 79.1	105,800	22.3	20.9 - 23.8	474,100

Education Level	Yes			No			Estimated Population (3-Yr Avg)
	#	%	C.I. (95%)	#	%	C.I. (95%)	#
Never attended school/ Only Kindergarten to Grades 8	9,400	62.7	53.7 - 71.7	5,600	37.3	28.3 - 46.3	15,000
Grades 9 thru 11 (Some High School)	24,200	68.7	62.4 - 75.1	11,000	31.3	24.9 - 37.6	35,300
Grades 12 or GED (High School Grad)	209,200	74.8	72.6 - 77.0	70,400	25.2	23.0 - 27.4	279,700
College 1 to 3 years (Some College/ Tech)	232,200	82.7	80.9 - 84.5	48,600	17.3	15.5 - 19.1	280,800
College 4 years or more (College Grad)	278,900	86.1	84.6 - 87.6	45,100	13.9	12.4 - 15.4	324,000

**Leisure time physical activity by State, County, Island, Community, BRFSS Age Group, DOH Race-Ethnicity, Gender, Education Level, Employment Status (Grouped), Household Income, Poverty Level, Marital Status (Grouped), Married, Health Care Coverage, for the Year(s) - 2000-2002, 2001-2003, 2002-2004, 2003-2005, 2004-2006, 2005-2007, 2006-2008, 2007-2009, 2008-2010**

*Note: Weighted numbers (#) represent 3-yr averages, percentages and 95% confidence intervals; Respondents aged 18 years and older; n/r (Not Reportable) - If the unweighted total responses for a dimension (row) is <50 that row will not be shown; n/a (Not Available) - Not asked of a subset of respondents*

**Year: 2003-2005**

Employment Status (Grouped)	Yes			No			Estimated Population (3-Yr Avg)
	#	%	C.I. (95%)	#	%	C.I. (95%)	#
<b>Employed</b>	498,500	82.5	81.3 - 83.8	105,500	17.5	16.2 - 18.7	603,900
<b>Unemployed</b>	20,700	81.1	74.8 - 87.4	4,800	18.9	12.6 - 25.2	25,500
<b>Retired/Unable to work</b>	155,300	74.3	72.1 - 76.5	53,600	25.7	23.5 - 27.9	209,000
<b>Student/Homemaker</b>	79,300	82.3	79.0 - 85.5	17,100	17.7	14.5 - 21.0	96,300

**Leisure time physical activity by State, County, Island, Community, BRFSS Age Group, DOH Race-Ethnicity, Gender, Education Level, Employment Status (Grouped), Household Income, Poverty Level, Marital Status (Grouped), Married, Health Care Coverage, for the Year(s) - 2000-2002, 2001-2003, 2002-2004, 2003-2005, 2004-2006, 2005-2007, 2006-2008, 2007-2009, 2008-2010**

*Note: Weighted numbers (#) represent 3-yr averages, percentages and 95% confidence intervals; Respondents aged 18 years and older; n/r (Not Reportable) - If the unweighted total responses for a dimension (row) is <50 that row will not be shown; n/a (Not Available) - Not asked of a subset of respondents*

**Year: 2003-2005**

Household Income	Yes			No			Estimated Population (3-Yr Avg)
	#	%	C.I. (95%)	#	%	C.I. (95%)	#
Less than \$10,000	20,700	67.7	61.5 - 73.9	9,900	32.3	26.1 - 38.5	30,500
\$10,000 to \$14,999	24,200	68.6	62.8 - 74.5	11,000	31.4	25.5 - 37.2	35,200
\$15,000 to \$19,999	36,200	73.1	68.0 - 78.2	13,300	26.9	21.8 - 32.0	49,500
\$20,000 to \$24,999	46,900	75.3	70.7 - 80.0	15,400	24.7	20.0 - 29.3	62,200
\$25,000 to \$34,999	77,700	77.2	73.8 - 80.7	22,900	22.8	19.3 - 26.2	100,600
\$35,000 to \$49,999	120,000	82.5	80.0 - 85.0	25,500	17.5	15.0 - 20.0	145,400
\$50,000 to \$74,999	166,600	82.9	80.6 - 85.2	34,400	17.1	14.8 - 19.4	200,900
\$75,000 or more	175,100	87.6	85.7 - 89.5	24,700	12.4	10.5 - 14.3	199,800

**Leisure time physical activity by State, County, Island, Community, BRFSS Age Group, DOH Race-Ethnicity, Gender, Education Level, Employment Status (Grouped), Household Income, Poverty Level, Marital Status (Grouped), Married, Health Care Coverage, for the Year(s) - 2000-2002, 2001-2003, 2002-2004, 2003-2005, 2004-2006, 2005-2007, 2006-2008, 2007-2009, 2008-2010**

*Note: Weighted numbers (#) represent 3-yr averages, percentages and 95% confidence intervals; Respondents aged 18 years and older; n/r (Not Reportable) - If the unweighted total responses for a dimension (row) is <50 that row will not be shown; n/a (Not Available) - Not asked of a subset of respondents*

**Year: 2003-2005**

Poverty Level	Yes			No			Estimated Population (3-Yr Avg)
	#	%	C.I. (95%)	#	%	C.I. (95%)	#
<b>0-130%</b>	123,400	71.6	68.6 - 74.6	49,000	28.4	25.4 - 31.4	172,400
<b>131-185%</b>	79,200	80.5	77.2 - 83.9	19,100	19.5	16.1 - 22.8	98,300
<b>186+%</b>	464,600	83.9	82.7 - 85.2	88,900	16.1	14.8 - 17.3	553,500

Marital Status (Grouped)	Yes			No			Estimated Population (3-Yr Avg)
	#	%	C.I. (95%)	#	%	C.I. (95%)	#
<b>Married</b>	446,400	81.4	80.1 - 82.7	102,200	18.6	17.3 - 19.9	548,500
<b>Unmarried Couple</b>	19,700	87.3	82.1 - 92.5	2,900	12.7	7.5 - 17.9	22,600
<b>Widowed</b>	42,100	70.1	65.9 - 74.3	18,000	29.9	25.7 - 34.1	60,100
<b>Other</b>	246,500	80.8	78.9 - 82.7	58,600	19.2	17.3 - 21.1	305,100

**Leisure time physical activity by State, County, Island, Community, BRFSS Age Group, DOH Race-Ethnicity, Gender, Education Level, Employment Status (Grouped), Household Income, Poverty Level, Marital Status (Grouped), Married, Health Care Coverage, for the Year(s) - 2000-2002, 2001-2003, 2002-2004, 2003-2005, 2004-2006, 2005-2007, 2006-2008, 2007-2009, 2008-2010**

*Note: Weighted numbers (#) represent 3-yr averages, percentages and 95% confidence intervals; Respondents aged 18 years and older; n/r (Not Reportable) - If the unweighted total responses for a dimension (row) is <50 that row will not be shown; n/a (Not Available) - Not asked of a subset of respondents*

**Year: 2003-2005**

<b>Married</b>	<b>Yes</b>			<b>No</b>			<b>Estimated Population (3-Yr Avg)</b>
	<b>#</b>	<b>%</b>	<b>C.I. (95%)</b>	<b>#</b>	<b>%</b>	<b>C.I. (95%)</b>	<b>#</b>
<b>Yes</b>	453,900	81.2	79.8 - 82.5	105,400	18.8	17.5 - 20.2	559,300
<b>No</b>	299,200	79.8	78.1 - 81.5	75,800	20.2	18.5 - 21.9	375,000

<b>Health Care Coverage</b>	<b>Yes</b>			<b>No</b>			<b>Estimated Population (3-Yr Avg)</b>
	<b>#</b>	<b>%</b>	<b>C.I. (95%)</b>	<b>#</b>	<b>%</b>	<b>C.I. (95%)</b>	<b>#</b>
<b>Yes</b>	692,900	80.9	79.8 - 82.0	163,500	19.1	18.0 - 20.2	856,400
<b>No</b>	60,100	77.1	72.9 - 81.3	17,800	22.9	18.7 - 27.1	78,000

**Leisure time physical activity by State, County, Island, Community, BRFSS Age Group, DOH Race-Ethnicity, Gender, Education Level, Employment Status (Grouped), Household Income, Poverty Level, Marital Status (Grouped), Married, Health Care Coverage, for the Year(s) - 2000-2002, 2001-2003, 2002-2004, 2003-2005, 2004-2006, 2005-2007, 2006-2008, 2007-2009, 2008-2010**

*Note: Weighted numbers (#) represent 3-yr averages, percentages and 95% confidence intervals; Respondents aged 18 years and older; n/r (Not Reportable) - If the unweighted total responses for a dimension (row) is <50 that row will not be shown; n/a (Not Available) - Not asked of a subset of respondents*

**Year: 2002-2004**

State	Yes			No			Estimated Population (3-Yr Avg)
	#	%	C.I. (95%)	#	%	C.I. (95%)	#
Hawaii State	745,900	81.7	80.7 - 82.8	166,700	18.3	17.2 - 19.3	912,600

County	Yes			No			Estimated Population (3-Yr Avg)
	#	%	C.I. (95%)	#	%	C.I. (95%)	#
Hawaii	96,700	81.3	79.3 - 83.3	22,300	18.7	16.7 - 20.7	119,000
Honolulu	536,100	82.0	80.6 - 83.3	117,900	18.0	16.7 - 19.4	654,000
Kauai	34,000	80.6	77.9 - 83.3	8,200	19.4	16.7 - 22.1	42,200
Maui	79,000	81.2	78.9 - 83.5	18,300	18.8	16.5 - 21.1	97,400

**Leisure time physical activity by State, County, Island, Community, BRFSS Age Group, DOH Race-Ethnicity, Gender, Education Level, Employment Status (Grouped), Household Income, Poverty Level, Marital Status (Grouped), Married, Health Care Coverage, for the Year(s) - 2000-2002, 2001-2003, 2002-2004, 2003-2005, 2004-2006, 2005-2007, 2006-2008, 2007-2009, 2008-2010**

*Note: Weighted numbers (#) represent 3-yr averages, percentages and 95% confidence intervals; Respondents aged 18 years and older; n/r (Not Reportable) - If the unweighted total responses for a dimension (row) is <50 that row will not be shown; n/a (Not Available) - Not asked of a subset of respondents*

**Year: 2002-2004**

Island	Yes			No			Estimated Population (3-Yr Avg)
	#	%	C.I. (95%)	#	%	C.I. (95%)	#
Hawaii	96,700	81.3	79.3 - 83.3	22,300	18.7	16.7 - 20.7	119,000
Kauai	34,000	80.6	77.9 - 83.3	8,200	19.4	16.7 - 22.1	42,200
Lanai	2,000	79.3	72.8 - 85.7	500	20.7	14.3 - 27.2	2,500
Maui	71,600	81.3	78.8 - 83.8	16,400	18.7	16.2 - 21.2	88,100
Molokai	5,400	79.8	73.8 - 85.9	1,400	20.2	14.1 - 26.2	6,700
Oahu	536,100	82.0	80.6 - 83.3	117,900	18.0	16.7 - 19.4	654,000

Community	Yes			No			Estimated Population (3-Yr Avg)
	#	%	C.I. (95%)	#	%	C.I. (95%)	#
Aiea/ Pearl City	48,500	80.9	76.5 - 85.3	11,400	19.1	14.7 - 23.5	59,900
Ala Moana	25,500	79.8	74.4 - 85.3	6,400	20.2	14.7 - 25.6	32,000

**Leisure time physical activity by State, County, Island, Community, BRFSS Age Group, DOH Race-Ethnicity, Gender, Education Level, Employment Status (Grouped), Household Income, Poverty Level, Marital Status (Grouped), Married, Health Care Coverage, for the Year(s) - 2000-2002, 2001-2003, 2002-2004, 2003-2005, 2004-2006, 2005-2007, 2006-2008, 2007-2009, 2008-2010**

*Note: Weighted numbers (#) represent 3-yr averages, percentages and 95% confidence intervals; Respondents aged 18 years and older; n/r (Not Reportable) - If the unweighted total responses for a dimension (row) is <50 that row will not be shown; n/a (Not Available) - Not asked of a subset of respondents*

**Year: 2002-2004**

Community	Yes			No			Estimated Population (3-Yr Avg)
	#	%	C.I. (95%)	#	%	C.I. (95%)	#
Hanalei/ Kapaa	14,700	84.4	80.5 - 88.3	2,700	15.6	11.7 - 19.5	17,400
Hilo	28,000	80.6	77.1 - 84.1	6,700	19.4	15.9 - 22.9	34,700
Kaaawa/ Kahaluu/ Kaneohe	35,600	83.3	77.8 - 88.9	7,100	16.7	11.1 - 22.2	42,700
Kahului	24,400	78.7	74.1 - 83.3	6,600	21.3	16.7 - 25.9	31,000
Kailua/ Waimanalo	40,500	86.5	82.6 - 90.5	6,300	13.5	9.5 - 17.4	46,800
Kaimuki/ Palolo/ Waikiki	51,500	80.0	76.0 - 84.0	12,900	20.0	16.0 - 24.0	64,300
Kona	24,900	86.7	83.9 - 89.6	3,800	13.3	10.4 - 16.1	28,800
Lahaina/ Wailuku	22,300	79.3	74.6 - 84.0	5,800	20.7	16.0 - 25.4	28,200
Lanai	2,000	79.3	72.8 - 85.7	500	20.7	14.3 - 27.2	2,500
Lihue-Waimea	19,300	77.9	74.3 - 81.6	5,500	22.1	18.4 - 25.7	24,800
Manoa/ Upper Makiki	45,100	85.4	81.6 - 89.1	7,700	14.6	10.9 - 18.4	52,900
Mililani/ Wahiawa	54,500	85.7	82.1 - 89.3	9,100	14.3	10.7 - 17.9	63,600



**Leisure time physical activity by State, County, Island, Community, BRFSS Age Group, DOH Race-Ethnicity, Gender, Education Level, Employment Status (Grouped), Household Income, Poverty Level, Marital Status (Grouped), Married, Health Care Coverage, for the Year(s) - 2000-2002, 2001-2003, 2002-2004, 2003-2005, 2004-2006, 2005-2007, 2006-2008, 2007-2009, 2008-2010**

*Note: Weighted numbers (#) represent 3-yr averages, percentages and 95% confidence intervals; Respondents aged 18 years and older; n/r (Not Reportable) - If the unweighted total responses for a dimension (row) is <50 that row will not be shown; n/a (Not Available) - Not asked of a subset of respondents*

**Year: 2002-2004**

Community	Yes			No			Estimated Population (3-Yr Avg)
	#	%	C.I. (95%)	#	%	C.I. (95%)	#
Molokai	5,400	79.8	73.8 - 85.9	1,400	20.2	14.1 - 26.2	6,700
Nanakuli/ Waianae	22,500	75.8	68.1 - 83.5	7,200	24.2	16.5 - 31.9	29,600
N.Hawaii	18,800	80.4	75.6 - 85.2	4,600	19.6	14.8 - 24.4	23,300
N.Shore/ Laie	17,000	80.4	71.6 - 89.2	4,100	19.6	10.8 - 28.4	21,100
Nuuanu/ Kalihi/ Moanalua	51,600	76.8	72.1 - 81.5	15,600	23.2	18.5 - 27.9	67,100
Puna/ Kau	25,000	77.8	73.1 - 82.4	7,200	22.2	17.6 - 26.9	32,200
Salt Lake/ Foster Village	31,800	82.2	76.1 - 88.3	6,900	17.8	11.7 - 23.9	38,600
Upcountry/ Hana	24,900	86.2	82.6 - 89.8	4,000	13.8	10.2 - 17.4	28,900
Waialae/ Kahala/ Hawaii Kai	35,000	88.9	84.3 - 93.6	4,400	11.1	6.4 - 15.7	39,300
Waipahu/ Kapolei/ Ewa	77,200	80.4	76.5 - 84.4	18,800	19.6	15.6 - 23.5	96,000

**Leisure time physical activity by State, County, Island, Community, BRFSS Age Group, DOH Race-Ethnicity, Gender, Education Level, Employment Status (Grouped), Household Income, Poverty Level, Marital Status (Grouped), Married, Health Care Coverage, for the Year(s) - 2000-2002, 2001-2003, 2002-2004, 2003-2005, 2004-2006, 2005-2007, 2006-2008, 2007-2009, 2008-2010**

*Note: Weighted numbers (#) represent 3-yr averages, percentages and 95% confidence intervals; Respondents aged 18 years and older; n/r (Not Reportable) - If the unweighted total responses for a dimension (row) is <50 that row will not be shown; n/a (Not Available) - Not asked of a subset of respondents*

**Year: 2002-2004**

BRFSS Age Group	Yes			No			Estimated Population (3-Yr Avg)
	#	%	C.I. (95%)	#	%	C.I. (95%)	#
18-24	97,800	87.3	84.1 - 90.4	14,200	12.7	9.6 - 15.9	112,000
25-34	141,500	85.8	83.5 - 88.1	23,400	14.2	11.9 - 16.5	164,900
35-44	147,200	81.8	79.6 - 84.0	32,700	18.2	16.0 - 20.4	180,000
45-54	140,300	81.5	79.0 - 83.9	31,900	18.5	16.1 - 21.0	172,300
55-64	95,400	80.0	77.3 - 82.6	23,900	20.0	17.4 - 22.7	119,300
65-74	63,400	77.1	73.7 - 80.6	18,800	22.9	19.4 - 26.3	82,200
75+	56,700	73.8	69.9 - 77.7	20,100	26.2	22.3 - 30.1	76,700

**Leisure time physical activity by State, County, Island, Community, BRFSS Age Group, DOH Race-Ethnicity, Gender, Education Level, Employment Status (Grouped), Household Income, Poverty Level, Marital Status (Grouped), Married, Health Care Coverage, for the Year(s) - 2000-2002, 2001-2003, 2002-2004, 2003-2005, 2004-2006, 2005-2007, 2006-2008, 2007-2009, 2008-2010**

*Note: Weighted numbers (#) represent 3-yr averages, percentages and 95% confidence intervals; Respondents aged 18 years and older; n/r (Not Reportable) - If the unweighted total responses for a dimension (row) is <50 that row will not be shown; n/a (Not Available) - Not asked of a subset of respondents*

**Year: 2002-2004**

DOH Race-Ethnicity	Yes			No			Estimated Population (3-Yr Avg)
	#	%	C.I. (95%)	#	%	C.I. (95%)	#
Caucasian	279,000	87.9	86.6 - 89.2	38,500	12.1	10.8 - 13.4	317,500
Native Hawaiian	88,000	83.1	80.1 - 86.1	17,900	16.9	13.9 - 19.9	105,800
Chinese	58,800	77.2	73.4 - 80.9	17,400	22.8	19.1 - 26.6	76,200
Filipino	101,500	71.8	68.3 - 75.3	39,900	28.2	24.7 - 31.7	141,400
Japanese	145,200	80.2	77.9 - 82.5	35,800	19.8	17.5 - 22.1	181,000
Black	11,700	93.0	88.6 - 97.4	900	7.0	2.6 - 11.4	12,600
Native Alaskan/ American Indian	3,700	79.9	66.4 - 93.3	900	20.1	6.7 - 33.6	4,600
Other Asian	15,400	78.9	71.0 - 86.7	4,100	21.1	13.3 - 29.0	19,500
Other Pacific Islander	15,200	77.8	68.4 - 87.3	4,300	22.2	12.7 - 31.6	19,500
Other	17,900	77.3	70.5 - 84.2	5,200	22.7	15.8 - 29.5	23,100

**Leisure time physical activity by State, County, Island, Community, BRFSS Age Group, DOH Race-Ethnicity, Gender, Education Level, Employment Status (Grouped), Household Income, Poverty Level, Marital Status (Grouped), Married, Health Care Coverage, for the Year(s) - 2000-2002, 2001-2003, 2002-2004, 2003-2005, 2004-2006, 2005-2007, 2006-2008, 2007-2009, 2008-2010**

*Note: Weighted numbers (#) represent 3-yr averages, percentages and 95% confidence intervals; Respondents aged 18 years and older; n/r (Not Reportable) - If the unweighted total responses for a dimension (row) is <50 that row will not be shown; n/a (Not Available) - Not asked of a subset of respondents*

**Year: 2002-2004**

Gender	Yes			No			Estimated Population (3-Yr Avg)
	#	%	C.I. (95%)	#	%	C.I. (95%)	#
Male	382,900	85.1	83.6 - 86.5	67,200	14.9	13.5 - 16.4	450,100
Female	363,000	78.5	77.0 - 80.0	99,500	21.5	20.0 - 23.0	462,500

Education Level	Yes			No			Estimated Population (3-Yr Avg)
	#	%	C.I. (95%)	#	%	C.I. (95%)	#
Never attended school/ Only Kindergarten to Grades 8	8,700	60.5	51.5 - 69.5	5,600	39.5	30.5 - 48.5	14,300
Grades 9 thru 11 (Some High School)	23,600	70.7	64.4 - 76.9	9,800	29.3	23.1 - 35.6	33,400
Grades 12 or GED (High School Grad)	226,600	78.0	75.9 - 80.0	64,100	22.0	20.0 - 24.1	290,700
College 1 to 3 years (Some College/ Tech)	229,200	83.5	81.7 - 85.3	45,300	16.5	14.7 - 18.3	274,500
College 4 years or more (College Grad)	257,300	86.1	84.6 - 87.7	41,400	13.9	12.3 - 15.4	298,600

**Leisure time physical activity by State, County, Island, Community, BRFSS Age Group, DOH Race-Ethnicity, Gender, Education Level, Employment Status (Grouped), Household Income, Poverty Level, Marital Status (Grouped), Married, Health Care Coverage, for the Year(s) - 2000-2002, 2001-2003, 2002-2004, 2003-2005, 2004-2006, 2005-2007, 2006-2008, 2007-2009, 2008-2010**

*Note: Weighted numbers (#) represent 3-yr averages, percentages and 95% confidence intervals; Respondents aged 18 years and older; n/r (Not Reportable) - If the unweighted total responses for a dimension (row) is <50 that row will not be shown; n/a (Not Available) - Not asked of a subset of respondents*

**Year: 2002-2004**

Employment Status (Grouped)	Yes			No			Estimated Population (3-Yr Avg)
	#	%	C.I. (95%)	#	%	C.I. (95%)	#
<b>Employed</b>	492,600	83.5	82.3 - 84.8	97,200	16.5	15.2 - 17.7	589,800
<b>Unemployed</b>	26,300	81.4	75.8 - 87.0	6,000	18.6	13.0 - 24.2	32,400
<b>Retired/Unable to work</b>	145,900	76.1	73.8 - 78.4	45,900	23.9	21.6 - 26.2	191,800
<b>Student/Homemaker</b>	80,300	82.2	79.0 - 85.4	17,400	17.8	14.6 - 21.0	97,700

**Leisure time physical activity by State, County, Island, Community, BRFSS Age Group, DOH Race-Ethnicity, Gender, Education Level, Employment Status (Grouped), Household Income, Poverty Level, Marital Status (Grouped), Married, Health Care Coverage, for the Year(s) - 2000-2002, 2001-2003, 2002-2004, 2003-2005, 2004-2006, 2005-2007, 2006-2008, 2007-2009, 2008-2010**

*Note: Weighted numbers (#) represent 3-yr averages, percentages and 95% confidence intervals; Respondents aged 18 years and older; n/r (Not Reportable) - If the unweighted total responses for a dimension (row) is <50 that row will not be shown; n/a (Not Available) - Not asked of a subset of respondents*

**Year: 2002-2004**

Household Income	Yes			No			Estimated Population (3-Yr Avg)
	#	%	C.I. (95%)	#	%	C.I. (95%)	#
Less than \$10,000	23,200	70.1	64.6 - 75.6	9,900	29.9	24.4 - 35.4	33,100
\$10,000 to \$14,999	27,000	71.8	66.4 - 77.1	10,600	28.2	22.9 - 33.6	37,600
\$15,000 to \$19,999	35,300	76.1	70.9 - 81.2	11,100	23.9	18.8 - 29.1	46,300
\$20,000 to \$24,999	42,500	76.0	71.0 - 81.0	13,400	24.0	19.0 - 29.0	55,900
\$25,000 to \$34,999	71,400	77.4	73.7 - 81.0	20,900	22.6	19.0 - 26.3	92,300
\$35,000 to \$49,999	113,200	83.4	80.8 - 86.1	22,500	16.6	13.9 - 19.2	135,600
\$50,000 to \$74,999	151,600	83.2	80.7 - 85.7	30,700	16.8	14.3 - 19.3	182,200
\$75,000 or more	148,200	88.5	86.3 - 90.6	19,400	11.5	9.4 - 13.7	167,600

**Leisure time physical activity by State, County, Island, Community, BRFSS Age Group, DOH Race-Ethnicity, Gender, Education Level, Employment Status (Grouped), Household Income, Poverty Level, Marital Status (Grouped), Married, Health Care Coverage, for the Year(s) - 2000-2002, 2001-2003, 2002-2004, 2003-2005, 2004-2006, 2005-2007, 2006-2008, 2007-2009, 2008-2010**

*Note: Weighted numbers (#) represent 3-yr averages, percentages and 95% confidence intervals; Respondents aged 18 years and older; n/r (Not Reportable) - If the unweighted total responses for a dimension (row) is <50 that row will not be shown; n/a (Not Available) - Not asked of a subset of respondents*

**Year: 2002-2004**

Poverty Level	Yes			No			Estimated Population (3-Yr Avg)
	#	%	C.I. (95%)	#	%	C.I. (95%)	#
<b>0-130%</b>	118,500	72.7	69.6 - 75.7	44,600	27.3	24.3 - 30.4	163,100
<b>131-185%</b>	74,000	81.8	78.3 - 85.2	16,500	18.2	14.8 - 21.7	90,400
<b>186+%</b>	419,900	84.4	83.1 - 85.8	77,300	15.6	14.2 - 16.9	497,200

Marital Status (Grouped)	Yes			No			Estimated Population (3-Yr Avg)
	#	%	C.I. (95%)	#	%	C.I. (95%)	#
<b>Married</b>	436,900	82.2	80.8 - 83.5	94,900	17.8	16.5 - 19.2	531,800
<b>Unmarried Couple</b>	18,600	88.0	82.5 - 93.5	2,500	12.0	6.5 - 17.5	21,200
<b>Widowed</b>	43,200	72.6	68.3 - 76.9	16,300	27.4	23.1 - 31.7	59,500
<b>Other</b>	247,200	82.3	80.5 - 84.2	53,000	17.7	15.8 - 19.5	300,200

**Leisure time physical activity by State, County, Island, Community, BRFSS Age Group, DOH Race-Ethnicity, Gender, Education Level, Employment Status (Grouped), Household Income, Poverty Level, Marital Status (Grouped), Married, Health Care Coverage, for the Year(s) - 2000-2002, 2001-2003, 2002-2004, 2003-2005, 2004-2006, 2005-2007, 2006-2008, 2007-2009, 2008-2010**

*Note: Weighted numbers (#) represent 3-yr averages, percentages and 95% confidence intervals; Respondents aged 18 years and older; n/r (Not Reportable) - If the unweighted total responses for a dimension (row) is <50 that row will not be shown; n/a (Not Available) - Not asked of a subset of respondents*

**Year: 2002-2004**

<b>Married</b>	<b>Yes</b>			<b>No</b>			<b>Estimated Population (3-Yr Avg)</b>
	<b>#</b>	<b>%</b>	<b>C.I. (95%)</b>	<b>#</b>	<b>%</b>	<b>C.I. (95%)</b>	<b>#</b>
<b>Yes</b>	444,800	82.0	80.7 - 83.3	97,500	18.0	16.7 - 19.3	542,300
<b>No</b>	299,700	81.3	79.7 - 83.0	68,800	18.7	17.0 - 20.3	368,500

<b>Health Care Coverage</b>	<b>Yes</b>			<b>No</b>			<b>Estimated Population (3-Yr Avg)</b>
	<b>#</b>	<b>%</b>	<b>C.I. (95%)</b>	<b>#</b>	<b>%</b>	<b>C.I. (95%)</b>	<b>#</b>
<b>Yes</b>	682,500	82.0	80.9 - 83.1	149,700	18.0	16.9 - 19.1	832,200
<b>No</b>	61,800	78.5	74.5 - 82.6	16,900	21.5	17.4 - 25.5	78,700



**Leisure time physical activity by State, County, Island, Community, BRFSS Age Group, DOH Race-Ethnicity, Gender, Education Level, Employment Status (Grouped), Household Income, Poverty Level, Marital Status (Grouped), Married, Health Care Coverage, for the Year(s) - 2000-2002, 2001-2003, 2002-2004, 2003-2005, 2004-2006, 2005-2007, 2006-2008, 2007-2009, 2008-2010**

*Note: Weighted numbers (#) represent 3-yr averages, percentages and 95% confidence intervals; Respondents aged 18 years and older; n/r (Not Reportable) - If the unweighted total responses for a dimension (row) is <50 that row will not be shown; n/a (Not Available) - Not asked of a subset of respondents*

**Year: 2001-2003**

State	Yes			No			Estimated Population (3-Yr Avg)
	#	%	C.I. (95%)	#	%	C.I. (95%)	#
Hawaii State	747,000	82.3	81.5 - 83.2	160,300	17.7	16.8 - 18.5	907,300

County	Yes			No			Estimated Population (3-Yr Avg)
	#	%	C.I. (95%)	#	%	C.I. (95%)	#
Hawaii	90,600	81.4	79.8 - 83.1	20,700	18.6	16.9 - 20.2	111,200
Honolulu	543,900	82.9	81.8 - 83.9	112,400	17.1	16.1 - 18.2	656,400
Kauai	34,400	81.3	78.9 - 83.7	7,900	18.7	16.3 - 21.1	42,300
Maui	78,000	80.2	78.2 - 82.2	19,300	19.8	17.8 - 21.8	97,300

**Leisure time physical activity by State, County, Island, Community, BRFSS Age Group, DOH Race-Ethnicity, Gender, Education Level, Employment Status (Grouped), Household Income, Poverty Level, Marital Status (Grouped), Married, Health Care Coverage, for the Year(s) - 2000-2002, 2001-2003, 2002-2004, 2003-2005, 2004-2006, 2005-2007, 2006-2008, 2007-2009, 2008-2010**

*Note: Weighted numbers (#) represent 3-yr averages, percentages and 95% confidence intervals; Respondents aged 18 years and older; n/r (Not Reportable) - If the unweighted total responses for a dimension (row) is <50 that row will not be shown; n/a (Not Available) - Not asked of a subset of respondents*

**Year: 2001-2003**

Island	Yes			No			Estimated Population (3-Yr Avg)
	#	%	C.I. (95%)	#	%	C.I. (95%)	#
Hawaii	90,600	81.4	79.8 - 83.1	20,700	18.6	16.9 - 20.2	111,200
Kauai	34,400	81.3	78.9 - 83.7	7,900	18.7	16.3 - 21.1	42,300
Lanai	2,400	81.2	75.5 - 87.0	600	18.8	13.0 - 24.5	2,900
Maui	70,500	80.1	78.0 - 82.2	17,500	19.9	17.8 - 22.0	88,100
Molokai	5,100	80.9	75.6 - 86.3	1,200	19.1	13.7 - 24.4	6,300
Oahu	543,900	82.9	81.8 - 83.9	112,400	17.1	16.1 - 18.2	656,400

Community	Yes			No			Estimated Population (3-Yr Avg)
	#	%	C.I. (95%)	#	%	C.I. (95%)	#
Aiea/ Pearl City	50,900	83.8	80.6 - 87.0	9,900	16.2	13.0 - 19.4	60,800
Ala Moana	24,400	80.1	75.6 - 84.6	6,100	19.9	15.4 - 24.4	30,400

**Leisure time physical activity by State, County, Island, Community, BRFSS Age Group, DOH Race-Ethnicity, Gender, Education Level, Employment Status (Grouped), Household Income, Poverty Level, Marital Status (Grouped), Married, Health Care Coverage, for the Year(s) - 2000-2002, 2001-2003, 2002-2004, 2003-2005, 2004-2006, 2005-2007, 2006-2008, 2007-2009, 2008-2010**

*Note: Weighted numbers (#) represent 3-yr averages, percentages and 95% confidence intervals; Respondents aged 18 years and older; n/r (Not Reportable) - If the unweighted total responses for a dimension (row) is <50 that row will not be shown; n/a (Not Available) - Not asked of a subset of respondents*

**Year: 2001-2003**

Community	Yes			No			Estimated Population (3-Yr Avg)
	#	%	C.I. (95%)	#	%	C.I. (95%)	#
Hanalei/ Kapaa	14,800	83.8	80.4 - 87.3	2,900	16.2	12.7 - 19.6	17,700
Hilo	27,600	81.1	78.2 - 83.9	6,400	18.9	16.1 - 21.8	34,100
Kaaawa/ Kahaluu/ Kaneohe	35,800	85.7	81.9 - 89.5	6,000	14.3	10.5 - 18.1	41,800
Kahului	25,100	79.4	75.6 - 83.2	6,500	20.6	16.8 - 24.4	31,600
Kailua/ Waimanalo	41,500	84.0	80.3 - 87.8	7,900	16.0	12.2 - 19.7	49,400
Kaimuki/ Palolo/ Waikiki	56,600	83.0	79.9 - 86.0	11,600	17.0	14.0 - 20.1	68,200
Kona	25,600	85.2	82.3 - 88.0	4,500	14.8	12.0 - 17.7	30,100
Lahaina/ Wailuku	22,600	78.9	75.2 - 82.6	6,000	21.1	17.4 - 24.8	28,600
Lanai	2,400	81.2	75.5 - 87.0	600	18.8	13.0 - 24.5	2,900
Lihue-Waimea	19,600	79.5	76.2 - 82.8	5,000	20.5	17.2 - 23.8	24,600
Manoa/ Upper Makiki	47,200	84.1	80.6 - 87.6	8,900	15.9	12.4 - 19.4	56,200
Millilani/ Wahiawa	52,600	84.5	81.0 - 87.9	9,700	15.5	12.1 - 19.0	62,300

**Leisure time physical activity by State, County, Island, Community, BRFSS Age Group, DOH Race-Ethnicity, Gender, Education Level, Employment Status (Grouped), Household Income, Poverty Level, Marital Status (Grouped), Married, Health Care Coverage, for the Year(s) - 2000-2002, 2001-2003, 2002-2004, 2003-2005, 2004-2006, 2005-2007, 2006-2008, 2007-2009, 2008-2010**

*Note: Weighted numbers (#) represent 3-yr averages, percentages and 95% confidence intervals; Respondents aged 18 years and older; n/r (Not Reportable) - If the unweighted total responses for a dimension (row) is <50 that row will not be shown; n/a (Not Available) - Not asked of a subset of respondents*

**Year: 2001-2003**

Community	Yes			No			Estimated Population (3-Yr Avg)
	#	%	C.I. (95%)	#	%	C.I. (95%)	#
Molokai	5,100	80.9	75.6 - 86.3	1,200	19.1	13.7 - 24.4	6,300
Nanakuli/ Waianae	21,100	76.4	69.9 - 83.0	6,500	23.6	17.0 - 30.1	27,600
N.Hawaii	19,000	81.0	76.8 - 85.1	4,500	19.0	14.9 - 23.2	23,500
N.Shore/ Laie	19,400	84.0	78.3 - 89.7	3,700	16.0	10.3 - 21.7	23,100
Nuuanu/ Kalihi/ Moanalua	53,700	79.2	75.5 - 82.9	14,100	20.8	17.1 - 24.5	67,800
Puna/ Kau	18,300	77.7	74.0 - 81.3	5,300	22.3	18.7 - 26.0	23,600
Salt Lake/ Foster Village	33,600	85.7	81.8 - 89.7	5,600	14.3	10.3 - 18.2	39,100
Upcountry/ Hana	22,800	82.2	78.6 - 85.7	5,000	17.8	14.3 - 21.4	27,800
Waialae/ Kahala/ Hawaii Kai	35,100	88.5	85.0 - 92.1	4,500	11.5	7.9 - 15.0	39,700
Waipahu/ Kapolei/ Ewa	72,000	80.0	76.9 - 83.2	17,900	20.0	16.8 - 23.1	89,900

**Leisure time physical activity by State, County, Island, Community, BRFSS Age Group, DOH Race-Ethnicity, Gender, Education Level, Employment Status (Grouped), Household Income, Poverty Level, Marital Status (Grouped), Married, Health Care Coverage, for the Year(s) - 2000-2002, 2001-2003, 2002-2004, 2003-2005, 2004-2006, 2005-2007, 2006-2008, 2007-2009, 2008-2010**

*Note: Weighted numbers (#) represent 3-yr averages, percentages and 95% confidence intervals; Respondents aged 18 years and older; n/r (Not Reportable) - If the unweighted total responses for a dimension (row) is <50 that row will not be shown; n/a (Not Available) - Not asked of a subset of respondents*

**Year: 2001-2003**

BRFSS Age Group	Yes			No			Estimated Population (3-Yr Avg)
	#	%	C.I. (95%)	#	%	C.I. (95%)	#
18-24	97,600	86.9	84.4 - 89.5	14,700	13.1	10.5 - 15.6	112,300
25-34	139,900	84.8	83.0 - 86.7	25,000	15.2	13.3 - 17.0	165,000
35-44	150,300	82.4	80.6 - 84.2	32,200	17.6	15.8 - 19.4	182,500
45-54	138,100	81.9	80.1 - 83.8	30,400	18.1	16.2 - 19.9	168,500
55-64	94,300	79.5	77.0 - 82.1	24,200	20.5	17.9 - 23.0	118,500
65-74	67,900	80.8	78.1 - 83.4	16,200	19.2	16.6 - 21.9	84,100
75+	55,600	77.0	74.1 - 79.9	16,600	23.0	20.1 - 25.9	72,200

**Leisure time physical activity by State, County, Island, Community, BRFSS Age Group, DOH Race-Ethnicity, Gender, Education Level, Employment Status (Grouped), Household Income, Poverty Level, Marital Status (Grouped), Married, Health Care Coverage, for the Year(s) - 2000-2002, 2001-2003, 2002-2004, 2003-2005, 2004-2006, 2005-2007, 2006-2008, 2007-2009, 2008-2010**

*Note: Weighted numbers (#) represent 3-yr averages, percentages and 95% confidence intervals; Respondents aged 18 years and older; n/r (Not Reportable) - If the unweighted total responses for a dimension (row) is <50 that row will not be shown; n/a (Not Available) - Not asked of a subset of respondents*

**Year: 2001-2003**

DOH Race-Ethnicity	Yes			No			Estimated Population (3-Yr Avg)
	#	%	C.I. (95%)	#	%	C.I. (95%)	#
Caucasian	280,300	87.7	86.6 - 88.8	39,400	12.3	11.2 - 13.4	319,700
Native Hawaiian	85,300	82.2	79.7 - 84.6	18,500	17.8	15.4 - 20.3	103,800
Chinese	62,200	80.1	77.1 - 83.1	15,500	19.9	16.9 - 22.9	77,700
Filipino	99,500	73.3	70.6 - 76.1	36,200	26.7	23.9 - 29.4	135,700
Japanese	145,900	80.8	79.0 - 82.7	34,600	19.2	17.3 - 21.0	180,400
Black	13,400	88.3	82.3 - 94.3	1,800	11.7	5.7 - 17.7	15,200
Native Alaskan/ American Indian	3,400	83.4	73.1 - 93.7	700	16.6	6.3 - 26.9	4,100
Other Asian	16,900	79.5	73.8 - 85.2	4,400	20.5	14.8 - 26.2	21,300
Other Pacific Islander	13,500	76.5	69.1 - 83.9	4,100	23.5	16.1 - 30.9	17,600
Other	22,500	83.3	78.9 - 87.8	4,500	16.7	12.2 - 21.1	27,000

**Leisure time physical activity by State, County, Island, Community, BRFSS Age Group, DOH Race-Ethnicity, Gender, Education Level, Employment Status (Grouped), Household Income, Poverty Level, Marital Status (Grouped), Married, Health Care Coverage, for the Year(s) - 2000-2002, 2001-2003, 2002-2004, 2003-2005, 2004-2006, 2005-2007, 2006-2008, 2007-2009, 2008-2010**

*Note: Weighted numbers (#) represent 3-yr averages, percentages and 95% confidence intervals; Respondents aged 18 years and older; n/r (Not Reportable) - If the unweighted total responses for a dimension (row) is <50 that row will not be shown; n/a (Not Available) - Not asked of a subset of respondents*

**Year: 2001-2003**

Gender	Yes			No			Estimated Population (3-Yr Avg)
	#	%	C.I. (95%)	#	%	C.I. (95%)	#
Male	385,400	85.2	84.0 - 86.4	67,000	14.8	13.6 - 16.0	452,400
Female	361,600	79.5	78.3 - 80.6	93,300	20.5	19.4 - 21.7	454,900

Education Level	Yes			No			Estimated Population (3-Yr Avg)
	#	%	C.I. (95%)	#	%	C.I. (95%)	#
Never attended school/ Only Kindergarten to Grades 8	10,900	67.1	59.8 - 74.4	5,400	32.9	25.6 - 40.2	16,300
Grades 9 thru 11 (Some High School)	25,100	70.1	64.7 - 75.6	10,700	29.9	24.4 - 35.3	35,800
Grades 12 or GED (High School Grad)	230,400	77.9	76.3 - 79.5	65,300	22.1	20.5 - 23.7	295,700
College 1 to 3 years (Some College/ Tech)	227,600	84.5	83.1 - 86.0	41,700	15.5	14.0 - 16.9	269,300
College 4 years or more (College Grad)	251,900	87.3	86.1 - 88.6	36,600	12.7	11.4 - 13.9	288,500

**Leisure time physical activity by State, County, Island, Community, BRFSS Age Group, DOH Race-Ethnicity, Gender, Education Level, Employment Status (Grouped), Household Income, Poverty Level, Marital Status (Grouped), Married, Health Care Coverage, for the Year(s) - 2000-2002, 2001-2003, 2002-2004, 2003-2005, 2004-2006, 2005-2007, 2006-2008, 2007-2009, 2008-2010**

*Note: Weighted numbers (#) represent 3-yr averages, percentages and 95% confidence intervals; Respondents aged 18 years and older; n/r (Not Reportable) - If the unweighted total responses for a dimension (row) is <50 that row will not be shown; n/a (Not Available) - Not asked of a subset of respondents*

**Year: 2001-2003**

Employment Status (Grouped)	Yes			No			Estimated Population (3-Yr Avg)
	#	%	C.I. (95%)	#	%	C.I. (95%)	#
<b>Employed</b>	495,700	83.7	82.7 - 84.7	96,300	16.3	15.3 - 17.3	592,000
<b>Unemployed</b>	25,600	76.8	71.6 - 82.0	7,700	23.2	18.0 - 28.4	33,300
<b>Retired/Unable to work</b>	147,900	78.5	76.7 - 80.3	40,500	21.5	19.7 - 23.3	188,400
<b>Student/Homemaker</b>	77,300	83.2	80.4 - 85.9	15,600	16.8	14.1 - 19.6	92,900



**Leisure time physical activity by State, County, Island, Community, BRFSS Age Group, DOH Race-Ethnicity, Gender, Education Level, Employment Status (Grouped), Household Income, Poverty Level, Marital Status (Grouped), Married, Health Care Coverage, for the Year(s) - 2000-2002, 2001-2003, 2002-2004, 2003-2005, 2004-2006, 2005-2007, 2006-2008, 2007-2009, 2008-2010**

*Note: Weighted numbers (#) represent 3-yr averages, percentages and 95% confidence intervals; Respondents aged 18 years and older; n/r (Not Reportable) - If the unweighted total responses for a dimension (row) is <50 that row will not be shown; n/a (Not Available) - Not asked of a subset of respondents*

**Year: 2001-2003**

Household Income	Yes			No			Estimated Population (3-Yr Avg)
	#	%	C.I. (95%)	#	%	C.I. (95%)	#
Less than \$10,000	28,300	70.1	65.4 - 74.9	12,000	29.9	25.1 - 34.6	40,300
\$10,000 to \$14,999	32,700	75.9	71.4 - 80.4	10,400	24.1	19.6 - 28.6	43,100
\$15,000 to \$19,999	34,900	79.7	75.8 - 83.5	8,900	20.3	16.5 - 24.2	43,800
\$20,000 to \$24,999	41,700	79.6	75.9 - 83.4	10,700	20.4	16.6 - 24.1	52,400
\$25,000 to \$34,999	66,000	79.3	76.6 - 82.1	17,200	20.7	17.9 - 23.4	83,300
\$35,000 to \$49,999	111,200	83.1	80.9 - 85.2	22,600	16.9	14.8 - 19.1	133,800
\$50,000 to \$74,999	109,100	84.4	82.3 - 86.6	20,100	15.6	13.4 - 17.7	129,200
\$75,000 or more	124,600	89.9	88.3 - 91.6	14,000	10.1	8.4 - 11.7	138,600

**Leisure time physical activity by State, County, Island, Community, BRFSS Age Group, DOH Race-Ethnicity, Gender, Education Level, Employment Status (Grouped), Household Income, Poverty Level, Marital Status (Grouped), Married, Health Care Coverage, for the Year(s) - 2000-2002, 2001-2003, 2002-2004, 2003-2005, 2004-2006, 2005-2007, 2006-2008, 2007-2009, 2008-2010**

*Note: Weighted numbers (#) represent 3-yr averages, percentages and 95% confidence intervals; Respondents aged 18 years and older; n/r (Not Reportable) - If the unweighted total responses for a dimension (row) is <50 that row will not be shown; n/a (Not Available) - Not asked of a subset of respondents*

**Year: 2001-2003**

Poverty Level	Yes			No			Estimated Population (3-Yr Avg)
	#	%	C.I. (95%)	#	%	C.I. (95%)	#
<b>0-130%</b>	120,700	76.2	73.9 - 78.6	37,700	23.8	21.4 - 26.1	158,400
<b>131-185%</b>	67,900	78.0	74.9 - 81.1	19,200	22.0	18.9 - 25.1	87,100
<b>186+%</b>	359,800	85.9	84.8 - 87.0	59,100	14.1	13.0 - 15.2	418,900

Marital Status (Grouped)	Yes			No			Estimated Population (3-Yr Avg)
	#	%	C.I. (95%)	#	%	C.I. (95%)	#
<b>Married</b>	431,900	82.4	81.3 - 83.5	92,300	17.6	16.5 - 18.7	524,300
<b>Unmarried Couple</b>	14,700	89.3	84.9 - 93.7	1,800	10.7	6.3 - 15.1	16,400
<b>Widowed</b>	44,100	77.3	74.2 - 80.5	12,900	22.7	19.5 - 25.8	57,000
<b>Other</b>	256,300	82.8	81.4 - 84.2	53,300	17.2	15.8 - 18.6	309,600

**Leisure time physical activity by State, County, Island, Community, BRFSS Age Group, DOH Race-Ethnicity, Gender, Education Level, Employment Status (Grouped), Household Income, Poverty Level, Marital Status (Grouped), Married, Health Care Coverage, for the Year(s) - 2000-2002, 2001-2003, 2002-2004, 2003-2005, 2004-2006, 2005-2007, 2006-2008, 2007-2009, 2008-2010**

*Note: Weighted numbers (#) represent 3-yr averages, percentages and 95% confidence intervals; Respondents aged 18 years and older; n/r (Not Reportable) - If the unweighted total responses for a dimension (row) is <50 that row will not be shown; n/a (Not Available) - Not asked of a subset of respondents*

**Year: 2001-2003**

<b>Married</b>	<b>Yes</b>			<b>No</b>			<b>Estimated Population (3-Yr Avg)</b>
	<b>#</b>	<b>%</b>	<b>C.I. (95%)</b>	<b>#</b>	<b>%</b>	<b>C.I. (95%)</b>	<b>#</b>
<b>Yes</b>	443,100	82.4	81.4 - 83.5	94,400	17.6	16.5 - 18.6	537,500
<b>No</b>	303,100	82.2	80.9 - 83.5	65,700	17.8	16.5 - 19.1	368,800

<b>Health Care Coverage</b>	<b>Yes</b>			<b>No</b>			<b>Estimated Population (3-Yr Avg)</b>
	<b>#</b>	<b>%</b>	<b>C.I. (95%)</b>	<b>#</b>	<b>%</b>	<b>C.I. (95%)</b>	<b>#</b>
<b>Yes</b>	688,300	82.6	81.7 - 83.4	145,100	17.4	16.6 - 18.3	833,400
<b>No</b>	57,700	79.5	76.0 - 82.9	14,900	20.5	17.1 - 24.0	72,600

**Leisure time physical activity by State, County, Island, Community, BRFSS Age Group, DOH Race-Ethnicity, Gender, Education Level, Employment Status (Grouped), Household Income, Poverty Level, Marital Status (Grouped), Married, Health Care Coverage, for the Year(s) - 2000-2002, 2001-2003, 2002-2004, 2003-2005, 2004-2006, 2005-2007, 2006-2008, 2007-2009, 2008-2010**

*Note: Weighted numbers (#) represent 3-yr averages, percentages and 95% confidence intervals; Respondents aged 18 years and older; n/r (Not Reportable) - If the unweighted total responses for a dimension (row) is <50 that row will not be shown; n/a (Not Available) - Not asked of a subset of respondents*

**Year: 2000-2002**

State	Yes			No			Estimated Population (3-Yr Avg)
	#	%	C.I. (95%)	#	%	C.I. (95%)	#
Hawaii State	719,500	80.7	79.8 - 81.5	172,400	19.3	18.5 - 20.2	891,900

County	Yes			No			Estimated Population (3-Yr Avg)
	#	%	C.I. (95%)	#	%	C.I. (95%)	#
Hawaii	83,900	78.3	76.7 - 79.9	23,200	21.7	20.1 - 23.3	107,100
Honolulu	527,100	81.1	80.1 - 82.2	122,600	18.9	17.8 - 19.9	649,700
Kauai	33,900	81.6	79.4 - 83.9	7,600	18.4	16.1 - 20.6	41,500
Maui	74,600	79.7	77.9 - 81.5	19,000	20.3	18.5 - 22.1	93,600

**Leisure time physical activity by State, County, Island, Community, BRFSS Age Group, DOH Race-Ethnicity, Gender, Education Level, Employment Status (Grouped), Household Income, Poverty Level, Marital Status (Grouped), Married, Health Care Coverage, for the Year(s) - 2000-2002, 2001-2003, 2002-2004, 2003-2005, 2004-2006, 2005-2007, 2006-2008, 2007-2009, 2008-2010**

*Note: Weighted numbers (#) represent 3-yr averages, percentages and 95% confidence intervals; Respondents aged 18 years and older; n/r (Not Reportable) - If the unweighted total responses for a dimension (row) is <50 that row will not be shown; n/a (Not Available) - Not asked of a subset of respondents*

**Year: 2000-2002**

Island	Yes			No			Estimated Population (3-Yr Avg)
	#	%	C.I. (95%)	#	%	C.I. (95%)	#
Hawaii	83,900	78.3	76.7 - 79.9	23,200	21.7	20.1 - 23.3	107,100
Kauai	33,900	81.6	79.4 - 83.9	7,600	18.4	16.1 - 20.6	41,500
Lanai	2,300	78.8	73.2 - 84.3	600	21.2	15.7 - 26.8	2,900
Maui	67,600	79.7	77.7 - 81.7	17,200	20.3	18.3 - 22.3	84,800
Molokai	4,800	80.7	76.1 - 85.4	1,100	19.3	14.6 - 23.9	6,000
Oahu	527,100	81.1	80.1 - 82.2	122,600	18.9	17.8 - 19.9	649,700

Community	Yes			No			Estimated Population (3-Yr Avg)
	#	%	C.I. (95%)	#	%	C.I. (95%)	#
Aiea/ Pearl City	51,300	80.7	77.4 - 84.0	12,300	19.3	16.0 - 22.6	63,600
Ala Moana	24,300	80.2	75.9 - 84.6	6,000	19.8	15.4 - 24.1	30,300

**Leisure time physical activity by State, County, Island, Community, BRFSS Age Group, DOH Race-Ethnicity, Gender, Education Level, Employment Status (Grouped), Household Income, Poverty Level, Marital Status (Grouped), Married, Health Care Coverage, for the Year(s) - 2000-2002, 2001-2003, 2002-2004, 2003-2005, 2004-2006, 2005-2007, 2006-2008, 2007-2009, 2008-2010**

*Note: Weighted numbers (#) represent 3-yr averages, percentages and 95% confidence intervals; Respondents aged 18 years and older; n/r (Not Reportable) - If the unweighted total responses for a dimension (row) is <50 that row will not be shown; n/a (Not Available) - Not asked of a subset of respondents*

**Year: 2000-2002**

Community	Yes			No			Estimated Population (3-Yr Avg)
	#	%	C.I. (95%)	#	%	C.I. (95%)	#
Hanalei/ Kapaa	14,400	82.2	78.8 - 85.5	3,100	17.8	14.5 - 21.2	17,500
Hilo	26,500	78.3	75.6 - 81.0	7,300	21.7	19.0 - 24.4	33,800
Kaaawa/ Kahaluu/ Kaneohe	32,900	81.7	77.5 - 86.0	7,400	18.3	14.0 - 22.5	40,300
Kahului	23,700	78.5	74.9 - 82.1	6,500	21.5	17.9 - 25.1	30,200
Kailua/ Waimanalo	39,800	82.4	78.7 - 86.1	8,500	17.6	13.9 - 21.3	48,300
Kaimuki/ Palolo/ Waikiki	55,500	84.6	81.8 - 87.4	10,100	15.4	12.6 - 18.2	65,600
Kona	24,000	81.0	77.9 - 84.2	5,600	19.0	15.8 - 22.1	29,600
Lahaina/ Wailuku	22,300	78.7	75.2 - 82.1	6,000	21.3	17.9 - 24.8	28,300
Lanai	2,300	78.8	73.2 - 84.3	600	21.2	15.7 - 26.8	2,900
Lihue-Waimea	19,500	81.2	78.3 - 84.2	4,500	18.8	15.8 - 21.7	24,000
Manoa/ Upper Makiki	46,700	82.1	78.7 - 85.4	10,200	17.9	14.6 - 21.3	56,900
Mililani/ Wahiawa	49,400	81.7	78.1 - 85.2	11,100	18.3	14.8 - 21.9	60,500

**Leisure time physical activity by State, County, Island, Community, BRFSS Age Group, DOH Race-Ethnicity, Gender, Education Level, Employment Status (Grouped), Household Income, Poverty Level, Marital Status (Grouped), Married, Health Care Coverage, for the Year(s) - 2000-2002, 2001-2003, 2002-2004, 2003-2005, 2004-2006, 2005-2007, 2006-2008, 2007-2009, 2008-2010**

*Note: Weighted numbers (#) represent 3-yr averages, percentages and 95% confidence intervals; Respondents aged 18 years and older; n/r (Not Reportable) - If the unweighted total responses for a dimension (row) is <50 that row will not be shown; n/a (Not Available) - Not asked of a subset of respondents*

**Year: 2000-2002**

Community	Yes			No			Estimated Population (3-Yr Avg)
	#	%	C.I. (95%)	#	%	C.I. (95%)	#
Molokai	4,800	80.7	76.1 - 85.4	1,100	19.3	14.6 - 23.9	6,000
Nanakuli/ Waianae	21,800	77.5	71.8 - 83.2	6,300	22.5	16.8 - 28.2	28,100
N.Hawaii	17,500	78.4	74.8 - 82.1	4,800	21.6	17.9 - 25.2	22,300
N.Shore/ Laie	19,000	86.3	81.1 - 91.5	3,000	13.7	8.5 - 18.9	22,100
Nuuanu/ Kalihi/ Moanalua	49,900	75.6	71.5 - 79.7	16,100	24.4	20.3 - 28.5	66,000
Puna/ Kau	15,900	74.4	70.7 - 78.0	5,500	25.6	22.0 - 29.3	21,400
Salt Lake/ Foster Village	30,900	82.9	78.9 - 86.8	6,400	17.1	13.2 - 21.1	37,200
Upcountry/ Hana	21,600	82.2	79.0 - 85.3	4,700	17.8	14.7 - 21.0	26,300
Waiialae/ Kahala/ Hawaii Kai	36,500	87.1	83.6 - 90.6	5,400	12.9	9.4 - 16.4	41,900
Waipahu/ Kapolei/ Ewa	69,100	77.7	74.4 - 80.9	19,900	22.3	19.1 - 25.6	89,000

**Leisure time physical activity by State, County, Island, Community, BRFSS Age Group, DOH Race-Ethnicity, Gender, Education Level, Employment Status (Grouped), Household Income, Poverty Level, Marital Status (Grouped), Married, Health Care Coverage, for the Year(s) - 2000-2002, 2001-2003, 2002-2004, 2003-2005, 2004-2006, 2005-2007, 2006-2008, 2007-2009, 2008-2010**

*Note: Weighted numbers (#) represent 3-yr averages, percentages and 95% confidence intervals; Respondents aged 18 years and older; n/r (Not Reportable) - If the unweighted total responses for a dimension (row) is <50 that row will not be shown; n/a (Not Available) - Not asked of a subset of respondents*

**Year: 2000-2002**

BRFSS Age Group	Yes			No			Estimated Population (3-Yr Avg)
	#	%	C.I. (95%)	#	%	C.I. (95%)	#
18-24	94,100	86.2	83.7 - 88.6	15,100	13.8	11.4 - 16.3	109,200
25-34	137,100	82.1	80.2 - 84.0	29,900	17.9	16.0 - 19.8	167,000
35-44	147,100	79.9	78.1 - 81.7	37,000	20.1	18.3 - 21.9	184,100
45-54	126,800	78.9	76.9 - 80.8	34,000	21.1	19.2 - 23.1	160,800
55-64	91,000	78.6	75.9 - 81.3	24,800	21.4	18.7 - 24.1	115,700
65-74	69,700	80.2	77.8 - 82.6	17,200	19.8	17.4 - 22.2	86,900
75+	50,000	78.5	75.7 - 81.3	13,700	21.5	18.7 - 24.3	63,700



**Leisure time physical activity by State, County, Island, Community, BRFSS Age Group, DOH Race-Ethnicity, Gender, Education Level, Employment Status (Grouped), Household Income, Poverty Level, Marital Status (Grouped), Married, Health Care Coverage, for the Year(s) - 2000-2002, 2001-2003, 2002-2004, 2003-2005, 2004-2006, 2005-2007, 2006-2008, 2007-2009, 2008-2010**

*Note: Weighted numbers (#) represent 3-yr averages, percentages and 95% confidence intervals; Respondents aged 18 years and older; n/r (Not Reportable) - If the unweighted total responses for a dimension (row) is <50 that row will not be shown; n/a (Not Available) - Not asked of a subset of respondents*

**Year: 2000-2002**

DOH Race-Ethnicity	Yes			No			Estimated Population (3-Yr Avg)
	#	%	C.I. (95%)	#	%	C.I. (95%)	#
Caucasian	253,400	86.2	85.0 - 87.4	40,600	13.8	12.6 - 15.0	294,000
Native Hawaiian	98,500	79.8	77.6 - 82.0	24,900	20.2	18.0 - 22.4	123,400
Chinese	46,000	82.2	79.0 - 85.4	10,000	17.8	14.6 - 21.0	55,900
Filipino	94,300	70.6	67.8 - 73.5	39,200	29.4	26.5 - 32.2	133,500
Japanese	150,600	79.5	77.7 - 81.2	38,900	20.5	18.8 - 22.3	189,600
Black	13,700	86.8	81.0 - 92.7	2,100	13.2	7.3 - 19.0	15,800
Native Alaskan/ American Indian	2,900	81.5	72.4 - 90.6	700	18.5	9.4 - 27.6	3,600
Other Asian	16,800	77.9	72.3 - 83.6	4,700	22.1	16.4 - 27.7	21,500
Other Pacific Islander	12,200	72.1	64.5 - 79.8	4,700	27.9	20.2 - 35.5	16,900
Mixed Ethnicity	6,200	83.2	75.9 - 90.4	1,300	16.8	9.6 - 24.1	7,500
Other	21,800	81.4	76.7 - 86.1	5,000	18.6	13.9 - 23.3	26,800

**Leisure time physical activity by State, County, Island, Community, BRFSS Age Group, DOH Race-Ethnicity, Gender, Education Level, Employment Status (Grouped), Household Income, Poverty Level, Marital Status (Grouped), Married, Health Care Coverage, for the Year(s) - 2000-2002, 2001-2003, 2002-2004, 2003-2005, 2004-2006, 2005-2007, 2006-2008, 2007-2009, 2008-2010**

*Note: Weighted numbers (#) represent 3-yr averages, percentages and 95% confidence intervals; Respondents aged 18 years and older; n/r (Not Reportable) - If the unweighted total responses for a dimension (row) is <50 that row will not be shown; n/a (Not Available) - Not asked of a subset of respondents*

**Year: 2000-2002**

Gender	Yes			No			Estimated Population (3-Yr Avg)
	#	%	C.I. (95%)	#	%	C.I. (95%)	#
Male	376,300	84.2	83.1 - 85.4	70,500	15.8	14.6 - 16.9	446,800
Female	343,200	77.1	75.9 - 78.3	101,900	22.9	21.7 - 24.1	445,100

Education Level	Yes			No			Estimated Population (3-Yr Avg)
	#	%	C.I. (95%)	#	%	C.I. (95%)	#
Never attended school/ Only Kindergarten to Grades 8	13,200	69.7	63.1 - 76.3	5,700	30.3	23.7 - 36.9	18,900
Grades 9 thru 11 (Some High School)	26,800	68.2	62.8 - 73.6	12,500	31.8	26.4 - 37.2	39,200
Grades 12 or GED (High School Grad)	227,600	76.3	74.7 - 77.8	70,800	23.7	22.2 - 25.3	298,300
College 1 to 3 years (Some College/ Tech)	218,400	82.6	81.1 - 84.1	46,000	17.4	15.9 - 18.9	264,500
College 4 years or more (College Grad)	232,600	86.3	85.1 - 87.5	37,000	13.7	12.5 - 14.9	269,600

**Leisure time physical activity by State, County, Island, Community, BRFSS Age Group, DOH Race-Ethnicity, Gender, Education Level, Employment Status (Grouped), Household Income, Poverty Level, Marital Status (Grouped), Married, Health Care Coverage, for the Year(s) - 2000-2002, 2001-2003, 2002-2004, 2003-2005, 2004-2006, 2005-2007, 2006-2008, 2007-2009, 2008-2010**

*Note: Weighted numbers (#) represent 3-yr averages, percentages and 95% confidence intervals; Respondents aged 18 years and older; n/r (Not Reportable) - If the unweighted total responses for a dimension (row) is <50 that row will not be shown; n/a (Not Available) - Not asked of a subset of respondents*

**Year: 2000-2002**

Employment Status (Grouped)	Yes			No			Estimated Population (3-Yr Avg)
	#	%	C.I. (95%)	#	%	C.I. (95%)	#
<b>Employed</b>	479,600	81.3	80.2 - 82.3	110,600	18.7	17.7 - 19.8	590,200
<b>Unemployed</b>	24,000	74.1	68.7 - 79.5	8,400	25.9	20.5 - 31.3	32,400
<b>Retired/Unable to work</b>	143,500	79.3	77.6 - 81.0	37,500	20.7	19.0 - 22.4	181,000
<b>Student/Homemaker</b>	71,900	82.1	79.3 - 84.9	15,600	17.9	15.1 - 20.7	87,600

**Leisure time physical activity by State, County, Island, Community, BRFSS Age Group, DOH Race-Ethnicity, Gender, Education Level, Employment Status (Grouped), Household Income, Poverty Level, Marital Status (Grouped), Married, Health Care Coverage, for the Year(s) - 2000-2002, 2001-2003, 2002-2004, 2003-2005, 2004-2006, 2005-2007, 2006-2008, 2007-2009, 2008-2010**

*Note: Weighted numbers (#) represent 3-yr averages, percentages and 95% confidence intervals; Respondents aged 18 years and older; n/r (Not Reportable) - If the unweighted total responses for a dimension (row) is <50 that row will not be shown; n/a (Not Available) - Not asked of a subset of respondents*

**Year: 2000-2002**

Household Income	Yes			No			Estimated Population (3-Yr Avg)
	#	%	C.I. (95%)	#	%	C.I. (95%)	#
Less than \$10,000	26,200	68.4	63.8 - 73.0	12,100	31.6	27.0 - 36.2	38,400
\$10,000 to \$14,999	31,300	75.8	71.9 - 79.8	10,000	24.2	20.2 - 28.1	41,300
\$15,000 to \$19,999	31,600	77.4	73.4 - 81.4	9,200	22.6	18.6 - 26.6	40,900
\$20,000 to \$24,999	42,000	76.1	72.3 - 79.8	13,200	23.9	20.2 - 27.7	55,300
\$25,000 to \$34,999	73,100	78.6	76.1 - 81.2	19,800	21.4	18.8 - 23.9	92,900
\$35,000 to \$49,999	111,500	81.1	78.8 - 83.3	26,100	18.9	16.7 - 21.2	137,500
\$50,000 to \$74,999	104,500	83.5	81.4 - 85.6	20,700	16.5	14.4 - 18.6	125,200
\$75,000 or more	113,600	88.2	86.5 - 90.0	15,100	11.8	10.0 - 13.5	128,800

**Leisure time physical activity by State, County, Island, Community, BRFSS Age Group, DOH Race-Ethnicity, Gender, Education Level, Employment Status (Grouped), Household Income, Poverty Level, Marital Status (Grouped), Married, Health Care Coverage, for the Year(s) - 2000-2002, 2001-2003, 2002-2004, 2003-2005, 2004-2006, 2005-2007, 2006-2008, 2007-2009, 2008-2010**

*Note: Weighted numbers (#) represent 3-yr averages, percentages and 95% confidence intervals; Respondents aged 18 years and older; n/r (Not Reportable) - If the unweighted total responses for a dimension (row) is <50 that row will not be shown; n/a (Not Available) - Not asked of a subset of respondents*

**Year: 2000-2002**

Poverty Level	Yes			No			Estimated Population (3-Yr Avg)
	#	%	C.I. (95%)	#	%	C.I. (95%)	#
<b>0-130%</b>	98,100	74.3	71.8 - 76.9	33,900	25.7	23.1 - 28.2	131,900
<b>131-185%</b>	73,200	74.9	72.2 - 77.7	24,500	25.1	22.3 - 27.8	97,600
<b>186+%</b>	362,600	84.2	83.1 - 85.3	68,000	15.8	14.7 - 16.9	430,600

Marital Status (Grouped)	Yes			No			Estimated Population (3-Yr Avg)
	#	%	C.I. (95%)	#	%	C.I. (95%)	#
<b>Married</b>	414,800	80.3	79.2 - 81.4	101,900	19.7	18.6 - 20.8	516,700
<b>Unmarried Couple</b>	11,800	85.3	80.1 - 90.6	2,000	14.7	9.4 - 19.9	13,900
<b>Widowed</b>	39,100	77.9	74.8 - 81.0	11,100	22.1	19.0 - 25.2	50,200
<b>Other</b>	253,700	81.5	80.2 - 82.9	57,400	18.5	17.1 - 19.8	311,100

**Leisure time physical activity by State, County, Island, Community, BRFSS Age Group, DOH Race-Ethnicity, Gender, Education Level, Employment Status (Grouped), Household Income, Poverty Level, Marital Status (Grouped), Married, Health Care Coverage, for the Year(s) - 2000-2002, 2001-2003, 2002-2004, 2003-2005, 2004-2006, 2005-2007, 2006-2008, 2007-2009, 2008-2010**

*Note: Weighted numbers (#) represent 3-yr averages, percentages and 95% confidence intervals; Respondents aged 18 years and older; n/r (Not Reportable) - If the unweighted total responses for a dimension (row) is <50 that row will not be shown; n/a (Not Available) - Not asked of a subset of respondents*

**Year: 2000-2002**

<b>Married</b>	<b>Yes</b>			<b>No</b>			<b>Estimated Population (3-Yr Avg)</b>
	<b>#</b>	<b>%</b>	<b>C.I. (95%)</b>	<b>#</b>	<b>%</b>	<b>C.I. (95%)</b>	<b>#</b>
<b>Yes</b>	425,600	80.3	79.2 - 81.4	104,400	19.7	18.6 - 20.8	530,000
<b>No</b>	293,000	81.2	79.9 - 82.5	67,800	18.8	17.5 - 20.1	360,700

<b>Health Care Coverage</b>	<b>Yes</b>			<b>No</b>			<b>Estimated Population (3-Yr Avg)</b>
	<b>#</b>	<b>%</b>	<b>C.I. (95%)</b>	<b>#</b>	<b>%</b>	<b>C.I. (95%)</b>	<b>#</b>
<b>Yes</b>	665,100	80.9	80.0 - 81.7	157,500	19.1	18.3 - 20.0	822,500
<b>No</b>	53,600	78.5	75.2 - 81.8	14,700	21.5	18.2 - 24.8	68,200