

Have Any Leisure Time, Exercise, or Physical Activity in the Past 30 Days by Year Total, County, BRFSS Age Group, DOH Race-Ethnicity, Gender, County and Community, Education Level, Employment Status (Grouped), Household Income, Island, Marital Status (Grouped), Poverty Level, for the Year(s) - 2000, 2001, 2002, 2003, 2004, 2005, 2006, 2007

*Note: Weighted numbers (#), percentages and 95% confidence intervals; Respondents aged 18 years and older;
n/r (Not Reportable) - Represents cell size restriction of unweighted count < 50;
n/a (Not Available) - Not asked of a subset of respondents*

The trend analysis report shows the trend for the selected health variable over selected years in a table and a graph; Estimated Adult Population: This number is a weighted representation of the adult population who responded to a particular question in the survey. For most questions the estimated adult population will be the entire adult population. For some secondary questions only a subset of the population was asked the question. For example, all survey participants were asked if they had diabetes, but only those who answered yes were asked if they use insulin. If a dimension value is unknown for a particular survey record, that record will not be included in the counts for that particular dimension.

For documentation on other terms and coding in this report, please go to the following links

[Click here to access BRFSS documentation](#)

[Click here to access DOH Race-Ethnicity coding](#)

[Click here to access The Hawai'i Data Guide](#)

[Click here to access Poverty Level Methodology](#)

**For questions about this report, please contact
The Hawaii Health Data Warehouse**

profiles@hhdw.org

(808) 946-5899 x15

Have Any Leisure Time, Exercise, or Physical Activity in the Past 30 Days by Year Total, County, BRFSS Age Group, DOH Race-Ethnicity, Gender, County and Community, Education Level, Employment Status (Grouped), Household Income, Island, Marital Status (Grouped), Poverty Level, for the Year(s) - 2000, 2001, 2002, 2003, 2004, 2005, 2006, 2007

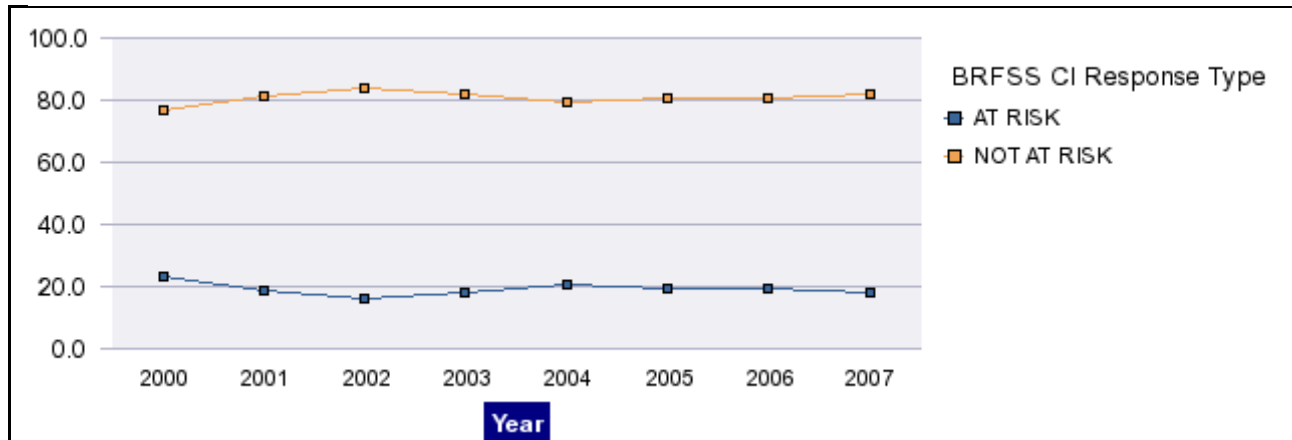
Note: Weighted numbers (#), percentages and 95% confidence intervals; Respondents aged 18 years and older; n/r (Not Reportable) - Represents cell size restriction of unweighted count < 50; n/a (Not Available) - Not asked of a subset of respondents

	AT RISK			NOT AT RISK			Estimated Adult Population
	#	%	C.I.(95%)	#	%	C.I.(95%)	#
2000	208,335	23.2	21.7 - 24.7	689,493	76.8	75.3 - 78.3	897,828
2001	174,702	18.9	17.4 - 20.5	747,768	81.1	79.5 - 82.6	922,470
2002	150,314	16.1	14.9 - 17.3	782,442	83.9	82.7 - 85.1	932,756
2003	175,846	18.3	16.8 - 19.8	784,386	81.7	80.2 - 83.2	960,232
2004	199,075	20.7	18.3 - 23.0	764,920	79.3	77.0 - 81.7	963,995
2005	190,072	19.5	18.1 - 20.8	786,613	80.5	79.2 - 81.9	976,685
2006	188,083	19.3	17.9 - 20.6	788,097	80.7	79.4 - 82.1	976,180
2007	178,191	18.0	16.7 - 19.3	809,307	82.0	80.7 - 83.3	987,498

Have Any Leisure Time, Exercise, or Physical Activity in the Past 30 Days, for the Year(s) - 2000, 2001, 2002, 2003, 2004, 2005, 2006, 2007

Have Any Leisure Time, Exercise, or Physical Activity in the Past 30 Days by Year Total, County, BRFSS Age Group, DOH Race-Ethnicity, Gender, County and Community, Education Level, Employment Status (Grouped), Household Income, Island, Marital Status (Grouped), Poverty Level, for the Year(s) - 2000, 2001, 2002, 2003, 2004, 2005, 2006, 2007

Note: Weighted numbers (#), percentages and 95% confidence intervals; Respondents aged 18 years and older; n/r (Not Reportable) - Represents cell size restriction of unweighted count < 50; n/a (Not Available) - Not asked of a subset of respondents



Have Any Leisure Time, Exercise, or Physical Activity in the Past 30 Days by Year Total, County, BRFSS Age Group, DOH Race-Ethnicity, Gender, County and Community, Education Level, Employment Status (Grouped), Household Income, Island, Marital Status (Grouped), Poverty Level, for the Year(s) - 2000, 2001, 2002, 2003, 2004, 2005, 2006, 2007

Note: Weighted numbers (#), percentages and 95% confidence intervals; Respondents aged 18 years and older; n/r (Not Reportable) - Represents cell size restriction of unweighted count < 50; n/a (Not Available) - Not asked of a subset of respondents

Year: 2000

Year Total	AT RISK			NOT AT RISK			Estimated Adult Population
	#	%	C.I. (95%)	#	%	C.I. (95%)	#
State	208,335	23.2	21.7 - 24.7	689,493	76.8	75.3 - 78.3	897,828

County	AT RISK			NOT AT RISK			Estimated Adult Population
	#	%	C.I. (95%)	#	%	C.I. (95%)	#
Hawaii	26,767	25.8	23.0 - 28.6	76,911	74.2	71.4 - 77.0	103,678
Honolulu	148,406	23.0	21.1 - 24.9	496,328	77.0	75.1 - 78.9	644,734
Kauai	7,798	18.9	15.4 - 22.5	33,374	81.1	77.5 - 84.6	41,172
Maui	19,870	22.7	19.5 - 25.8	67,748	77.3	74.2 - 80.5	87,618

Have Any Leisure Time, Exercise, or Physical Activity in the Past 30 Days by Year Total, County, BRFSS Age Group, DOH Race-Ethnicity, Gender, County and Community, Education Level, Employment Status (Grouped), Household Income, Island, Marital Status (Grouped), Poverty Level, for the Year(s) - 2000, 2001, 2002, 2003, 2004, 2005, 2006, 2007

Note: Weighted numbers (#), percentages and 95% confidence intervals; Respondents aged 18 years and older; n/r (Not Reportable) - Represents cell size restriction of unweighted count < 50; n/a (Not Available) - Not asked of a subset of respondents

Year: 2000

BRFSS Age Group	AT RISK			NOT AT RISK			Estimated Adult Population
	#	%	C.I. (95%)	#	%	C.I. (95%)	#
18-24	17,657	16.3	12.0 - 20.5	90,971	83.7	79.5 - 88.0	108,628
25-34	36,487	21.2	18.1 - 24.3	135,505	78.8	75.7 - 81.9	171,992
35-44	46,864	25.0	21.9 - 28.0	140,956	75.0	72.0 - 78.1	187,820
45-54	40,497	25.9	22.4 - 29.3	116,120	74.1	70.7 - 77.6	156,617
55-64	29,128	24.8	19.7 - 29.9	88,202	75.2	70.1 - 80.3	117,330
65-74	22,685	23.9	19.7 - 28.0	72,419	76.1	72.0 - 80.3	95,104
75+	14,197	25.3	20.4 - 30.2	41,897	74.7	69.8 - 79.6	56,094

Have Any Leisure Time, Exercise, or Physical Activity in the Past 30 Days by Year Total, County, BRFSS Age Group, DOH Race-Ethnicity, Gender, County and Community, Education Level, Employment Status (Grouped), Household Income, Island, Marital Status (Grouped), Poverty Level, for the Year(s) - 2000, 2001, 2002, 2003, 2004, 2005, 2006, 2007

Note: Weighted numbers (#), percentages and 95% confidence intervals; Respondents aged 18 years and older; n/r (Not Reportable) - Represents cell size restriction of unweighted count < 50; n/a (Not Available) - Not asked of a subset of respondents

Year: 2000

DOH Race-Ethnicity	AT RISK			NOT AT RISK			Estimated Adult Population
	#	%	C.I. (95%)	#	%	C.I. (95%)	#
White	45,186	16.6	14.5 - 18.7	227,334	83.4	81.3 - 85.5	272,520
Native Hawaiian	35,368	24.5	20.7 - 28.3	108,948	75.5	71.7 - 79.3	144,316
Chinese	8,507	18.5	12.6 - 24.4	37,522	81.5	75.6 - 87.4	46,029
Filipino	46,188	34.0	29.0 - 39.0	89,700	66.0	61.0 - 71.0	135,888
Japanese	50,157	24.8	21.9 - 27.8	151,739	75.2	72.2 - 78.1	201,896
Black	2,656	17.8	7.9 - 27.6	12,292	82.2	72.4 - 92.1	14,948
Other Pacific Islander	4,448	36.7	21.0 - 52.5	7,667	63.3	47.5 - 79.0	12,115
Other Asian	4,303	26.0	15.5 - 36.4	12,263	74.0	63.6 - 84.5	16,566
Native Alaskan/ American Indian	n/r	n/r	n/r	n/r	n/r	n/r	n/r
Other	6,460	26.8	17.5 - 36.2	17,602	73.2	63.8 - 82.5	24,062
Mixed Ethnicity	3,781	16.4	9.3 - 23.5	19,268	83.6	76.5 - 90.7	23,049

Have Any Leisure Time, Exercise, or Physical Activity in the Past 30 Days by Year Total, County, BRFSS Age Group, DOH Race-Ethnicity, Gender, County and Community, Education Level, Employment Status (Grouped), Household Income, Island, Marital Status (Grouped), Poverty Level, for the Year(s) - 2000, 2001, 2002, 2003, 2004, 2005, 2006, 2007

Note: Weighted numbers (#), percentages and 95% confidence intervals; Respondents aged 18 years and older; n/r (Not Reportable) - Represents cell size restriction of unweighted count < 50; n/a (Not Available) - Not asked of a subset of respondents

Year: 2000

Gender	AT RISK			NOT AT RISK			Estimated Adult Population
	#	%	C.I. (95%)	#	%	C.I. (95%)	#
Female	125,248	28.2	26.1 - 30.3	318,767	71.8	69.7 - 73.9	444,015
Male	83,088	18.3	16.4 - 20.3	370,725	81.7	79.7 - 83.6	453,813

County and Community	AT RISK			NOT AT RISK			Estimated Adult Population
	#	%	C.I. (95%)	#	%	C.I. (95%)	#
Hawaii-Hilo	9,258	26.9	22.2 - 31.5	25,201	73.1	68.5 - 77.8	34,459
Hawaii-Kona	6,731	23.6	17.6 - 29.5	21,814	76.4	70.5 - 82.4	28,545
Hawaii-N.Hawaii	4,766	23.2	17.6 - 28.7	15,814	76.8	71.3 - 82.4	20,580
Hawaii-Puna/ Kau	6,013	29.9	23.9 - 36.0	14,082	70.1	64.0 - 76.1	20,095
Honolulu-Aiea/ Pearl City	13,990	22.7	16.6 - 28.7	47,731	77.3	71.3 - 83.4	61,721
Honolulu-Ala Moana	7,597	25.2	17.1 - 33.3	22,565	74.8	66.7 - 82.9	30,162
Honolulu-Kaaawa/ Kahaluu/ Kaneohe	11,677	28.1	19.9 - 36.3	29,874	71.9	63.7 - 80.1	41,551
Honolulu-Kailua/ Waimanalo	10,876	22.9	16.5 - 29.4	36,551	77.1	70.6 - 83.5	47,427

Have Any Leisure Time, Exercise, or Physical Activity in the Past 30 Days by Year Total, County, BRFSS Age Group, DOH Race-Ethnicity, Gender, County and Community, Education Level, Employment Status (Grouped), Household Income, Island, Marital Status (Grouped), Poverty Level, for the Year(s) - 2000, 2001, 2002, 2003, 2004, 2005, 2006, 2007

Note: Weighted numbers (#), percentages and 95% confidence intervals; Respondents aged 18 years and older; n/r (Not Reportable) - Represents cell size restriction of unweighted count < 50; n/a (Not Available) - Not asked of a subset of respondents

Year: 2000

County and Community	AT RISK			NOT AT RISK			Estimated Adult Population
	#	%	C.I. (95%)	#	%	C.I. (95%)	#
Honolulu-Kaimuki/ Palolo/ Waikiki	10,023	17.4	12.5 - 22.3	47,490	82.6	77.7 - 87.5	57,513
Honolulu-Manoa/ Upper Makiki	12,277	21.7	15.9 - 27.4	44,342	78.3	72.6 - 84.1	56,619
Honolulu-Mililani/ Wahiawa	13,384	21.6	15.9 - 27.2	48,685	78.4	72.8 - 84.1	62,069
Honolulu-Nanakuli/ Waianae	6,233	21.8	13.5 - 30.1	22,326	78.2	69.9 - 86.5	28,559
Honolulu-N.Shore/ Laie	2,564	11.8	3.9 - 19.7	19,217	88.2	80.3 - 96.1	21,781
Honolulu-Nuuanu/ Kalihi/ Moanalua	22,789	34.3	26.4 - 42.2	43,733	65.7	57.8 - 73.6	66,522
Honolulu-Salt Lake/ Foster Village	7,778	19.9	13.7 - 26.1	31,279	80.1	73.9 - 86.3	39,057
Honolulu-Waiialae/ Kahala/ Hawaii Kai	5,477	12.9	7.8 - 17.9	37,096	87.1	82.1 - 92.2	42,573
Honolulu-Waipahu/ Kapolei/ Ewa	23,740	26.6	20.9 - 32.4	65,440	73.4	67.6 - 79.1	89,180
Kauai-Hanalei/ Kapaa	3,217	18.6	13.3 - 24.0	14,055	81.4	76.0 - 86.7	17,272
Kauai-Lihue-Waimea	4,581	19.2	14.5 - 23.9	19,319	80.8	76.1 - 85.5	23,900
Maui-Kahului	6,753	23.3	17.5 - 29.1	22,220	76.7	70.9 - 82.5	28,973
Maui-Lanai	560	24.3	15.3 - 33.2	1,747	75.7	66.8 - 84.7	2,307

Have Any Leisure Time, Exercise, or Physical Activity in the Past 30 Days by Year Total, County, BRFSS Age Group, DOH Race-Ethnicity, Gender, County and Community, Education Level, Employment Status (Grouped), Household Income, Island, Marital Status (Grouped), Poverty Level, for the Year(s) - 2000, 2001, 2002, 2003, 2004, 2005, 2006, 2007

Note: Weighted numbers (#), percentages and 95% confidence intervals; Respondents aged 18 years and older; n/r (Not Reportable) - Represents cell size restriction of unweighted count < 50; n/a (Not Available) - Not asked of a subset of respondents

Year: 2000

County and Community	AT RISK			NOT AT RISK			Estimated Adult Population
	#	%	C.I. (95%)	#	%	C.I. (95%)	#
Maui-Lahaina/ Wailuku	6,845	25.4	18.9 - 31.9	20,092	74.6	68.1 - 81.1	26,937
Maui-Molokai	922	17.1	10.9 - 23.2	4,484	82.9	76.8 - 89.1	5,406
Maui-Upcountry/ Hana	4,791	20.0	14.7 - 25.2	19,204	80.0	74.8 - 85.3	23,995

Education Level	AT RISK			NOT AT RISK			Estimated Adult Population
	#	%	C.I. (95%)	#	%	C.I. (95%)	#
Grades 9 thru 11 (Some High School)	18,554	38.6	29.1 - 48.0	29,575	61.4	52.0 - 70.9	48,129
Grades 12 or GED (High School Grad)	84,229	29.0	26.2 - 31.8	206,428	71.0	68.2 - 73.8	290,657
College 1 to 3 years (Some College/ Tech)	57,747	22.3	19.6 - 25.0	201,206	77.7	75.0 - 80.4	258,953
College 4 years or more (College Grad)	40,834	14.9	13.0 - 16.8	233,285	85.1	83.2 - 87.0	274,119
Never attended school/ Only Kindergarten to Grades 8	6,726	27.5	18.3 - 36.8	17,696	72.5	63.2 - 81.7	24,422

Have Any Leisure Time, Exercise, or Physical Activity in the Past 30 Days by Year Total, County, BRFSS Age Group, DOH Race-Ethnicity, Gender, County and Community, Education Level, Employment Status (Grouped), Household Income, Island, Marital Status (Grouped), Poverty Level, for the Year(s) - 2000, 2001, 2002, 2003, 2004, 2005, 2006, 2007

Note: Weighted numbers (#), percentages and 95% confidence intervals; Respondents aged 18 years and older; n/r (Not Reportable) - Represents cell size restriction of unweighted count < 50; n/a (Not Available) - Not asked of a subset of respondents

Year: 2000

Employment Status (Grouped)	AT RISK			NOT AT RISK			Estimated Adult Population
	#	%	C.I. (95%)	#	%	C.I. (95%)	#
Employed	140,911	23.2	21.4 - 25.1	465,373	76.8	74.9 - 78.6	606,284
Unemployed	7,450	25.6	16.6 - 34.6	21,624	74.4	65.4 - 83.4	29,074
Student/Homemaker	16,679	21.3	16.6 - 26.0	61,615	78.7	74.0 - 83.4	78,294
Retired/Unable to work	42,534	23.3	20.3 - 26.2	140,358	76.7	73.8 - 79.7	182,892

Have Any Leisure Time, Exercise, or Physical Activity in the Past 30 Days by Year Total, County, BRFSS Age Group, DOH Race-Ethnicity, Gender, County and Community, Education Level, Employment Status (Grouped), Household Income, Island, Marital Status (Grouped), Poverty Level, for the Year(s) - 2000, 2001, 2002, 2003, 2004, 2005, 2006, 2007

Note: Weighted numbers (#), percentages and 95% confidence intervals; Respondents aged 18 years and older; n/r (Not Reportable) - Represents cell size restriction of unweighted count < 50; n/a (Not Available) - Not asked of a subset of respondents

Year: 2000

Household Income	AT RISK			NOT AT RISK			Estimated Adult Population
	#	%	C.I. (95%)	#	%	C.I. (95%)	#
Less than \$10,000	14,984	33.4	26.3 - 40.4	29,944	66.6	59.6 - 73.7	44,928
\$10,000 to \$14,999	12,739	26.8	21.1 - 32.5	34,730	73.2	67.5 - 78.9	47,469
\$15,000 to \$19,999	14,107	32.3	25.1 - 39.5	29,506	67.7	60.5 - 74.9	43,613
\$20,000 to \$24,999	19,134	29.2	23.5 - 34.9	46,397	70.8	65.1 - 76.5	65,531
\$25,000 to \$34,999	26,619	23.1	19.2 - 27.1	88,498	76.9	72.9 - 80.8	115,117
\$35,000 to \$49,999	32,888	21.2	17.2 - 25.2	121,949	78.8	74.8 - 82.8	154,837
\$50,000 to \$74,999	24,378	19.3	16.0 - 22.7	101,744	80.7	77.3 - 84.0	126,122
\$75,000 or more	18,043	13.8	10.8 - 16.8	112,558	86.2	83.2 - 89.2	130,601

Have Any Leisure Time, Exercise, or Physical Activity in the Past 30 Days by Year Total, County, BRFSS Age Group, DOH Race-Ethnicity, Gender, County and Community, Education Level, Employment Status (Grouped), Household Income, Island, Marital Status (Grouped), Poverty Level, for the Year(s) - 2000, 2001, 2002, 2003, 2004, 2005, 2006, 2007

Note: Weighted numbers (#), percentages and 95% confidence intervals; Respondents aged 18 years and older; n/r (Not Reportable) - Represents cell size restriction of unweighted count < 50; n/a (Not Available) - Not asked of a subset of respondents

Year: 2000

Island	AT RISK			NOT AT RISK			Estimated Adult Population
	#	%	C.I. (95%)	#	%	C.I. (95%)	#
Hawaii	26,767	25.8	23.0 - 28.6	76,911	74.2	71.4 - 77.0	103,678
Kauai	7,798	18.9	15.4 - 22.5	33,374	81.1	77.5 - 84.6	41,172
Maui	18,389	23.0	19.6 - 26.4	61,516	77.0	73.6 - 80.4	79,905
Lanai	560	24.3	15.3 - 33.2	1,747	75.7	66.8 - 84.7	2,307
Molokai	922	17.1	10.9 - 23.2	4,484	82.9	76.8 - 89.1	5,406
Oahu	148,406	23.0	21.1 - 24.9	496,328	77.0	75.1 - 78.9	644,734

Have Any Leisure Time, Exercise, or Physical Activity in the Past 30 Days by Year Total, County, BRFSS Age Group, DOH Race-Ethnicity, Gender, County and Community, Education Level, Employment Status (Grouped), Household Income, Island, Marital Status (Grouped), Poverty Level, for the Year(s) - 2000, 2001, 2002, 2003, 2004, 2005, 2006, 2007

Note: Weighted numbers (#), percentages and 95% confidence intervals; Respondents aged 18 years and older; n/r (Not Reportable) - Represents cell size restriction of unweighted count < 50; n/a (Not Available) - Not asked of a subset of respondents

Year: 2000

Marital Status (Grouped)	AT RISK			NOT AT RISK			Estimated Adult Population
	#	%	C.I. (95%)	#	%	C.I. (95%)	#
Married	127,244	24.4	22.4 - 26.4	393,615	75.6	73.6 - 77.6	520,859
Unmarried Couple	2,660	24.8	12.7 - 36.8	8,085	75.2	63.2 - 87.3	10,745
Widowed	13,847	28.7	23.2 - 34.3	34,376	71.3	65.7 - 76.8	48,223
Other	64,584	20.3	18.0 - 22.6	253,417	79.7	77.4 - 82.0	318,001

Have Any Leisure Time, Exercise, or Physical Activity in the Past 30 Days by Year Total, County, BRFSS Age Group, DOH Race-Ethnicity, Gender, County and Community, Education Level, Employment Status (Grouped), Household Income, Island, Marital Status (Grouped), Poverty Level, for the Year(s) - 2000, 2001, 2002, 2003, 2004, 2005, 2006, 2007

Note: Weighted numbers (#), percentages and 95% confidence intervals; Respondents aged 18 years and older; n/r (Not Reportable) - Represents cell size restriction of unweighted count < 50; n/a (Not Available) - Not asked of a subset of respondents

Year: 2000

Poverty Level	AT RISK			NOT AT RISK			Estimated Adult Population
	#	%	C.I. (95%)	#	%	C.I. (95%)	#
1-50%	11,452	35.6	26.2 - 45.1	20,703	64.4	54.9 - 73.8	32,155
51-100%	19,954	31.8	25.3 - 38.3	42,756	68.2	61.7 - 74.7	62,710
101-120%	4,885	24.7	12.4 - 37.1	14,866	75.3	62.9 - 87.6	19,751
121-130%	n/r	n/r	n/r	n/r	n/r	n/r	n/r
131-150%	15,053	31.9	25.4 - 38.4	32,140	68.1	61.6 - 74.6	47,193
151-170%	n/r	n/r	n/r	n/r	n/r	n/r	n/r
171-180%	9,286	30.4	22.8 - 38.1	21,217	69.6	61.9 - 77.2	30,503
181-185%	7,826	30.3	21.7 - 38.9	18,022	69.7	61.1 - 78.3	25,848
186+%	90,307	18.3	16.5 - 20.0	403,625	81.7	80.0 - 83.5	493,932

Have Any Leisure Time, Exercise, or Physical Activity in the Past 30 Days by Year Total, County, BRFSS Age Group, DOH Race-Ethnicity, Gender, County and Community, Education Level, Employment Status (Grouped), Household Income, Island, Marital Status (Grouped), Poverty Level, for the Year(s) - 2000, 2001, 2002, 2003, 2004, 2005, 2006, 2007

Note: Weighted numbers (#), percentages and 95% confidence intervals; Respondents aged 18 years and older; n/r (Not Reportable) - Represents cell size restriction of unweighted count < 50; n/a (Not Available) - Not asked of a subset of respondents

Year: 2000

Year: 2001

Year Total	AT RISK			NOT AT RISK			Estimated Adult Population
	#	%	C.I. (95%)	#	%	C.I. (95%)	#
State	174,702	18.9	17.4 - 20.5	747,768	81.1	79.5 - 82.6	922,470

Have Any Leisure Time, Exercise, or Physical Activity in the Past 30 Days by Year Total, County, BRFSS Age Group, DOH Race-Ethnicity, Gender, County and Community, Education Level, Employment Status (Grouped), Household Income, Island, Marital Status (Grouped), Poverty Level, for the Year(s) - 2000, 2001, 2002, 2003, 2004, 2005, 2006, 2007

Note: Weighted numbers (#), percentages and 95% confidence intervals; Respondents aged 18 years and older; n/r (Not Reportable) - Represents cell size restriction of unweighted count < 50; n/a (Not Available) - Not asked of a subset of respondents

Year: 2001

County	AT RISK			NOT AT RISK			Estimated Adult Population
	#	%	C.I. (95%)	#	%	C.I. (95%)	#
Hawaii	23,320	21.8	18.7 - 24.8	83,877	78.2	75.2 - 81.3	107,197
Honolulu	119,812	18.5	16.5 - 20.5	527,771	81.5	79.5 - 83.5	647,583
Kauai	7,000	17.1	13.3 - 20.9	33,904	82.9	79.1 - 86.7	40,904
Maui	18,824	19.3	15.9 - 22.7	78,622	80.7	77.3 - 84.1	97,446

Have Any Leisure Time, Exercise, or Physical Activity in the Past 30 Days by Year Total, County, BRFSS Age Group, DOH Race-Ethnicity, Gender, County and Community, Education Level, Employment Status (Grouped), Household Income, Island, Marital Status (Grouped), Poverty Level, for the Year(s) - 2000, 2001, 2002, 2003, 2004, 2005, 2006, 2007

Note: Weighted numbers (#), percentages and 95% confidence intervals; Respondents aged 18 years and older; n/r (Not Reportable) - Represents cell size restriction of unweighted count < 50; n/a (Not Available) - Not asked of a subset of respondents

Year: 2001

BRFSS Age Group	AT RISK			NOT AT RISK			Estimated Adult Population
	#	%	C.I. (95%)	#	%	C.I. (95%)	#
18-24	14,904	13.7	9.2 - 18.2	94,095	86.3	81.8 - 90.8	108,999
25-34	31,777	18.4	14.7 - 22.1	140,595	81.6	77.9 - 85.3	172,372
35-44	34,249	18.1	14.8 - 21.4	155,246	81.9	78.6 - 85.2	189,495
45-54	36,158	22.4	18.7 - 26.1	125,405	77.6	73.9 - 81.3	161,563
55-64	27,913	22.4	17.6 - 27.2	96,711	77.6	72.8 - 82.4	124,624
65-74	14,060	15.5	11.5 - 19.5	76,664	84.5	80.5 - 88.5	90,724
75+	14,458	22.0	16.8 - 27.3	51,179	78.0	72.7 - 83.2	65,637

Have Any Leisure Time, Exercise, or Physical Activity in the Past 30 Days by Year Total, County, BRFSS Age Group, DOH Race-Ethnicity, Gender, County and Community, Education Level, Employment Status (Grouped), Household Income, Island, Marital Status (Grouped), Poverty Level, for the Year(s) - 2000, 2001, 2002, 2003, 2004, 2005, 2006, 2007

Note: Weighted numbers (#), percentages and 95% confidence intervals; Respondents aged 18 years and older; n/r (Not Reportable) - Represents cell size restriction of unweighted count < 50; n/a (Not Available) - Not asked of a subset of respondents

Year: 2001

DOH Race-Ethnicity	AT RISK			NOT AT RISK			Estimated Adult Population
	#	%	C.I. (95%)	#	%	C.I. (95%)	#
White	46,551	14.9	12.7 - 17.1	265,433	85.1	82.9 - 87.3	311,984
Native Hawaiian	22,775	19.1	14.8 - 23.4	96,379	80.9	76.6 - 85.2	119,154
Chinese	9,252	16.6	10.5 - 22.7	46,418	83.4	77.3 - 89.5	55,670
Filipino	36,227	27.3	21.9 - 32.6	96,697	72.7	67.4 - 78.1	132,924
Japanese	40,591	21.4	17.9 - 24.9	149,167	78.6	75.1 - 82.1	189,758
Black	3,116	17.7	5.1 - 30.3	14,485	82.3	69.7 - 94.9	17,601
Other Pacific Islander	3,971	19.2	7.8 - 30.6	16,718	80.8	69.4 - 92.2	20,689
Other Asian	4,042	14.7	7.2 - 22.1	23,543	85.3	77.9 - 92.8	27,585
Native Alaskan/ American Indian	n/r	n/r	n/r	n/r	n/r	n/r	n/r
Other	6,572	18.9	11.1 - 26.7	28,227	81.1	73.3 - 88.9	34,799

Have Any Leisure Time, Exercise, or Physical Activity in the Past 30 Days by Year Total, County, BRFSS Age Group, DOH Race-Ethnicity, Gender, County and Community, Education Level, Employment Status (Grouped), Household Income, Island, Marital Status (Grouped), Poverty Level, for the Year(s) - 2000, 2001, 2002, 2003, 2004, 2005, 2006, 2007

Note: Weighted numbers (#), percentages and 95% confidence intervals; Respondents aged 18 years and older; n/r (Not Reportable) - Represents cell size restriction of unweighted count < 50; n/a (Not Available) - Not asked of a subset of respondents

Year: 2001

Gender	AT RISK			NOT AT RISK			Estimated Adult Population
	#	%	C.I. (95%)	#	%	C.I. (95%)	#
Female	101,471	22.2	19.9 - 24.4	356,350	77.8	75.6 - 80.1	457,821
Male	73,231	15.8	13.6 - 17.9	391,418	84.2	82.1 - 86.4	464,649

County and Community	AT RISK			NOT AT RISK			Estimated Adult Population
	#	%	C.I. (95%)	#	%	C.I. (95%)	#
Hawaii-Hilo	6,997	22.0	16.8 - 27.1	24,827	78.0	72.9 - 83.2	31,824
Hawaii-Kona	5,615	18.5	12.6 - 24.4	24,756	81.5	75.6 - 87.4	30,371
Hawaii-N.Hawaii	4,724	19.9	13.4 - 26.4	19,005	80.1	73.6 - 86.6	23,729
Hawaii-Puna/ Kau	5,985	28.1	20.9 - 35.4	15,289	71.9	64.6 - 79.1	21,274
Honolulu-Aiea/ Pearl City	11,210	17.8	11.8 - 23.9	51,639	82.2	76.1 - 88.2	62,849
Honolulu-Ala Moana	5,001	19.1	10.6 - 27.6	21,214	80.9	72.4 - 89.4	26,215
Honolulu-Kaaawa/ Kahaluu/ Kaneohe	6,348	16.0	8.4 - 23.6	33,367	84.0	76.4 - 91.6	39,715
Honolulu-Kailua/ Waimanalo	11,201	22.4	14.8 - 30.0	38,783	77.6	70.0 - 85.2	49,984

Have Any Leisure Time, Exercise, or Physical Activity in the Past 30 Days by Year Total, County, BRFSS Age Group, DOH Race-Ethnicity, Gender, County and Community, Education Level, Employment Status (Grouped), Household Income, Island, Marital Status (Grouped), Poverty Level, for the Year(s) - 2000, 2001, 2002, 2003, 2004, 2005, 2006, 2007

Note: Weighted numbers (#), percentages and 95% confidence intervals; Respondents aged 18 years and older; n/r (Not Reportable) - Represents cell size restriction of unweighted count < 50; n/a (Not Available) - Not asked of a subset of respondents

Year: 2001

County and Community	AT RISK			NOT AT RISK			Estimated Adult Population
	#	%	C.I. (95%)	#	%	C.I. (95%)	#
Honolulu-Kaimuki/ Palolo/ Waikiki	10,491	14.7	9.3 - 20.0	61,120	85.3	80.0 - 90.7	71,611
Honolulu-Manoa/ Upper Makiki	9,718	17.2	10.4 - 24.0	46,793	82.8	76.0 - 89.6	56,511
Honolulu-Mililani/ Wahiawa	9,023	16.0	9.2 - 22.8	47,454	84.0	77.2 - 90.8	56,477
Honolulu-Nanakuli/ Waianae	7,004	23.4	11.4 - 35.3	22,965	76.6	64.7 - 88.6	29,969
Honolulu-N.Shore/ Laie	4,254	16.5	6.6 - 26.3	21,607	83.5	73.7 - 93.4	25,861
Honolulu-Nuuanu/ Kalihi/ Moanalua	13,807	21.1	14.5 - 27.7	51,625	78.9	72.3 - 85.5	65,432
Honolulu-Salt Lake/ Foster Village	5,476	15.6	8.2 - 23.1	29,526	84.4	76.9 - 91.8	35,002
Honolulu-Waiialae/ Kahala/ Hawaii Kai	6,880	19.4	10.5 - 28.2	28,670	80.6	71.8 - 89.5	35,550
Honolulu-Waipahu/ Kapolei/ Ewa	19,397	21.0	14.9 - 27.0	73,008	79.0	73.0 - 85.1	92,405
Kauai-Hanalei/ Kapaa	3,221	18.8	12.8 - 24.8	13,918	81.2	75.2 - 87.2	17,139
Kauai-Lihue-Waimea	3,780	15.9	10.9 - 20.9	19,986	84.1	79.1 - 89.1	23,766
Maui-Kahului	6,282	18.9	12.2 - 25.5	26,998	81.1	74.5 - 87.8	33,280
Maui-Lanai	509	20.8	10.7 - 31.0	1,931	79.2	69.0 - 89.3	2,440

Have Any Leisure Time, Exercise, or Physical Activity in the Past 30 Days by Year Total, County, BRFSS Age Group, DOH Race-Ethnicity, Gender, County and Community, Education Level, Employment Status (Grouped), Household Income, Island, Marital Status (Grouped), Poverty Level, for the Year(s) - 2000, 2001, 2002, 2003, 2004, 2005, 2006, 2007

Note: Weighted numbers (#), percentages and 95% confidence intervals; Respondents aged 18 years and older; n/r (Not Reportable) - Represents cell size restriction of unweighted count < 50; n/a (Not Available) - Not asked of a subset of respondents

Year: 2001

County and Community	AT RISK			NOT AT RISK			Estimated Adult Population
	#	%	C.I. (95%)	#	%	C.I. (95%)	#
Maui-Lahaina/ Wailuku	5,469	18.5	13.0 - 23.9	24,162	81.5	76.1 - 87.0	29,631
Maui-Molokai	666	14.2	4.5 - 24.0	4,018	85.8	76.0 - 95.5	4,684
Maui-Upcountry/ Hana	5,898	21.5	15.2 - 27.9	21,513	78.5	72.1 - 84.8	27,411

Education Level	AT RISK			NOT AT RISK			Estimated Adult Population
	#	%	C.I. (95%)	#	%	C.I. (95%)	#
Grades 9 thru 11 (Some High School)	11,084	28.1	18.6 - 37.6	28,373	71.9	62.4 - 81.4	39,457
Grades 12 or GED (High School Grad)	76,106	24.8	21.8 - 27.8	230,955	75.2	72.2 - 78.2	307,061
College 1 to 3 years (Some College/ Tech)	43,227	15.4	12.8 - 18.0	237,755	84.6	82.0 - 87.2	280,982
College 4 years or more (College Grad)	38,464	14.1	11.7 - 16.5	234,742	85.9	83.5 - 88.3	273,206
Never attended school/ Only Kindergarten to Grades 8	4,756	25.4	15.8 - 35.0	13,972	74.6	65.0 - 84.2	18,728

Have Any Leisure Time, Exercise, or Physical Activity in the Past 30 Days by Year Total, County, BRFSS Age Group, DOH Race-Ethnicity, Gender, County and Community, Education Level, Employment Status (Grouped), Household Income, Island, Marital Status (Grouped), Poverty Level, for the Year(s) - 2000, 2001, 2002, 2003, 2004, 2005, 2006, 2007

Note: Weighted numbers (#), percentages and 95% confidence intervals; Respondents aged 18 years and older; n/r (Not Reportable) - Represents cell size restriction of unweighted count < 50; n/a (Not Available) - Not asked of a subset of respondents

Year: 2001

Employment Status (Grouped)	AT RISK			NOT AT RISK			Estimated Adult Population
	#	%	C.I. (95%)	#	%	C.I. (95%)	#
Employed	111,762	18.5	16.5 - 20.4	493,920	81.5	79.6 - 83.5	605,682
Unemployed	10,259	32.7	22.0 - 43.4	21,112	67.3	56.6 - 78.0	31,371
Student/Homemaker	14,108	15.6	10.5 - 20.8	76,058	84.4	79.2 - 89.5	90,166
Retired/Unable to work	38,573	19.8	16.7 - 22.9	156,218	80.2	77.1 - 83.3	194,791

Have Any Leisure Time, Exercise, or Physical Activity in the Past 30 Days by Year Total, County, BRFSS Age Group, DOH Race-Ethnicity, Gender, County and Community, Education Level, Employment Status (Grouped), Household Income, Island, Marital Status (Grouped), Poverty Level, for the Year(s) - 2000, 2001, 2002, 2003, 2004, 2005, 2006, 2007

Note: Weighted numbers (#), percentages and 95% confidence intervals; Respondents aged 18 years and older; n/r (Not Reportable) - Represents cell size restriction of unweighted count < 50; n/a (Not Available) - Not asked of a subset of respondents

Year: 2001

Household Income	AT RISK			NOT AT RISK			Estimated Adult Population
	#	%	C.I. (95%)	#	%	C.I. (95%)	#
Less than \$10,000	11,430	29.8	20.3 - 39.2	26,961	70.2	60.8 - 79.7	38,391
\$10,000 to \$14,999	12,320	28.3	20.0 - 36.7	31,152	71.7	63.3 - 80.0	43,472
\$15,000 to \$19,999	7,118	17.8	11.6 - 23.9	32,925	82.2	76.1 - 88.4	40,043
\$20,000 to \$24,999	11,303	18.1	11.4 - 24.8	51,116	81.9	75.2 - 88.6	62,419
\$25,000 to \$34,999	20,183	22.5	17.3 - 27.6	69,693	77.5	72.4 - 82.7	89,876
\$35,000 to \$49,999	27,707	20.0	15.8 - 24.2	110,684	80.0	75.8 - 84.2	138,391
\$50,000 to \$74,999	19,430	15.4	11.6 - 19.3	106,608	84.6	80.7 - 88.4	126,038
\$75,000 or more	13,836	11.0	7.6 - 14.4	111,812	89.0	85.6 - 92.4	125,648

Have Any Leisure Time, Exercise, or Physical Activity in the Past 30 Days by Year Total, County, BRFSS Age Group, DOH Race-Ethnicity, Gender, County and Community, Education Level, Employment Status (Grouped), Household Income, Island, Marital Status (Grouped), Poverty Level, for the Year(s) - 2000, 2001, 2002, 2003, 2004, 2005, 2006, 2007

Note: Weighted numbers (#), percentages and 95% confidence intervals; Respondents aged 18 years and older; n/r (Not Reportable) - Represents cell size restriction of unweighted count < 50; n/a (Not Available) - Not asked of a subset of respondents

Year: 2001

Island	AT RISK			NOT AT RISK			Estimated Adult Population
	#	%	C.I. (95%)	#	%	C.I. (95%)	#
Hawaii	23,320	21.8	18.7 - 24.8	83,877	78.2	75.2 - 81.3	107,197
Kauai	7,000	17.1	13.3 - 20.9	33,904	82.9	79.1 - 86.7	40,904
Maui	17,650	19.5	15.9 - 23.1	72,673	80.5	76.9 - 84.1	90,323
Lanai	509	20.8	10.7 - 31.0	1,931	79.2	69.0 - 89.3	2,440
Molokai	666	14.2	4.5 - 23.9	4,018	85.8	76.1 - 95.5	4,684
Oahu	119,812	18.5	16.5 - 20.5	527,771	81.5	79.5 - 83.5	647,583

Have Any Leisure Time, Exercise, or Physical Activity in the Past 30 Days by Year Total, County, BRFSS Age Group, DOH Race-Ethnicity, Gender, County and Community, Education Level, Employment Status (Grouped), Household Income, Island, Marital Status (Grouped), Poverty Level, for the Year(s) - 2000, 2001, 2002, 2003, 2004, 2005, 2006, 2007

Note: Weighted numbers (#), percentages and 95% confidence intervals; Respondents aged 18 years and older; n/r (Not Reportable) - Represents cell size restriction of unweighted count < 50; n/a (Not Available) - Not asked of a subset of respondents

Year: 2001

Marital Status (Grouped)	AT RISK			NOT AT RISK			Estimated Adult Population
	#	%	C.I. (95%)	#	%	C.I. (95%)	#
Married	98,378	18.8	16.7 - 20.9	424,781	81.2	79.1 - 83.3	523,159
Unmarried Couple	1,660	17.8	4.9 - 30.8	7,651	82.2	69.2 - 95.1	9,311
Widowed	9,331	18.0	12.5 - 23.4	42,573	82.0	76.6 - 87.5	51,904
Other	65,333	19.3	16.8 - 21.9	272,762	80.7	78.1 - 83.2	338,095

Have Any Leisure Time, Exercise, or Physical Activity in the Past 30 Days by Year Total, County, BRFSS Age Group, DOH Race-Ethnicity, Gender, County and Community, Education Level, Employment Status (Grouped), Household Income, Island, Marital Status (Grouped), Poverty Level, for the Year(s) - 2000, 2001, 2002, 2003, 2004, 2005, 2006, 2007

Note: Weighted numbers (#), percentages and 95% confidence intervals; Respondents aged 18 years and older; n/r (Not Reportable) - Represents cell size restriction of unweighted count < 50; n/a (Not Available) - Not asked of a subset of respondents

Year: 2001

Poverty Level	AT RISK			NOT AT RISK			Estimated Adult Population
	#	%	C.I. (95%)	#	%	C.I. (95%)	#
1-50%	10,862	29.7	19.5 - 40.0	25,667	70.3	60.0 - 80.5	36,529
51-100%	15,650	22.1	15.1 - 29.0	55,284	77.9	71.0 - 84.9	70,934
101-120%	2,430	11.3	3.8 - 18.7	19,129	88.7	81.3 - 96.2	21,559
121-130%	5,786	33.5	21.8 - 45.2	11,474	66.5	54.8 - 78.2	17,260
131-150%	11,483	29.0	19.5 - 38.5	28,137	71.0	61.5 - 80.5	39,620
151-170%	6,175	22.1	11.3 - 32.8	21,816	77.9	67.2 - 88.7	27,991
171-180%	9,811	22.1	14.3 - 29.9	34,606	77.9	70.1 - 85.7	44,417
181-185%	n/r	n/r	n/r	n/r	n/r	n/r	n/r
186+%	60,845	15.0	13.0 - 17.0	344,312	85.0	83.0 - 87.0	405,157

Have Any Leisure Time, Exercise, or Physical Activity in the Past 30 Days by Year Total, County, BRFSS Age Group, DOH Race-Ethnicity, Gender, County and Community, Education Level, Employment Status (Grouped), Household Income, Island, Marital Status (Grouped), Poverty Level, for the Year(s) - 2000, 2001, 2002, 2003, 2004, 2005, 2006, 2007

Note: Weighted numbers (#), percentages and 95% confidence intervals; Respondents aged 18 years and older; n/r (Not Reportable) - Represents cell size restriction of unweighted count < 50; n/a (Not Available) - Not asked of a subset of respondents

Year: 2001

Year: 2002

Year Total	AT RISK			NOT AT RISK			Estimated Adult Population
	#	%	C.I. (95%)	#	%	C.I. (95%)	#
State	150,314	16.1	14.9 - 17.3	782,442	83.9	82.7 - 85.1	932,756

Have Any Leisure Time, Exercise, or Physical Activity in the Past 30 Days by Year Total, County, BRFSS Age Group, DOH Race-Ethnicity, Gender, County and Community, Education Level, Employment Status (Grouped), Household Income, Island, Marital Status (Grouped), Poverty Level, for the Year(s) - 2000, 2001, 2002, 2003, 2004, 2005, 2006, 2007

Note: Weighted numbers (#), percentages and 95% confidence intervals; Respondents aged 18 years and older; n/r (Not Reportable) - Represents cell size restriction of unweighted count < 50; n/a (Not Available) - Not asked of a subset of respondents

Year: 2002

County	AT RISK			NOT AT RISK			Estimated Adult Population
	#	%	C.I. (95%)	#	%	C.I. (95%)	#
Hawaii	19,579	17.7	15.2 - 20.2	90,832	82.3	79.8 - 84.8	110,411
Honolulu	99,624	15.2	13.6 - 16.7	557,178	84.8	83.3 - 86.4	656,802
Kauai	8,066	19.0	14.9 - 23.1	34,393	81.0	76.9 - 85.1	42,459
Maui	18,228	19.0	16.2 - 21.9	77,530	81.0	78.1 - 83.8	95,758

Have Any Leisure Time, Exercise, or Physical Activity in the Past 30 Days by Year Total, County, BRFSS Age Group, DOH Race-Ethnicity, Gender, County and Community, Education Level, Employment Status (Grouped), Household Income, Island, Marital Status (Grouped), Poverty Level, for the Year(s) - 2000, 2001, 2002, 2003, 2004, 2005, 2006, 2007

Note: Weighted numbers (#), percentages and 95% confidence intervals; Respondents aged 18 years and older; n/r (Not Reportable) - Represents cell size restriction of unweighted count < 50; n/a (Not Available) - Not asked of a subset of respondents

Year: 2002

BRFSS Age Group	AT RISK			NOT AT RISK			Estimated Adult Population
	#	%	C.I. (95%)	#	%	C.I. (95%)	#
18-24	14,251	12.0	8.0 - 15.9	104,953	88.0	84.1 - 92.0	119,204
25-34	22,530	13.4	10.7 - 16.2	145,072	86.6	83.8 - 89.3	167,602
35-44	32,126	17.1	14.5 - 19.8	155,435	82.9	80.2 - 85.5	187,561
45-54	27,253	15.6	13.0 - 18.1	147,880	84.4	81.9 - 87.0	175,133
55-64	21,164	18.2	14.6 - 21.8	95,245	81.8	78.2 - 85.4	116,409
65-74	15,691	19.2	15.2 - 23.2	66,081	80.8	76.8 - 84.8	81,772
75+	15,791	19.8	15.8 - 23.8	64,018	80.2	76.2 - 84.2	79,809

Have Any Leisure Time, Exercise, or Physical Activity in the Past 30 Days by Year Total, County, BRFSS Age Group, DOH Race-Ethnicity, Gender, County and Community, Education Level, Employment Status (Grouped), Household Income, Island, Marital Status (Grouped), Poverty Level, for the Year(s) - 2000, 2001, 2002, 2003, 2004, 2005, 2006, 2007

Note: Weighted numbers (#), percentages and 95% confidence intervals; Respondents aged 18 years and older; n/r (Not Reportable) - Represents cell size restriction of unweighted count < 50; n/a (Not Available) - Not asked of a subset of respondents

Year: 2002

DOH Race-Ethnicity	AT RISK			NOT AT RISK			Estimated Adult Population
	#	%	C.I. (95%)	#	%	C.I. (95%)	#
White	34,667	10.7	9.0 - 12.3	290,138	89.3	87.7 - 91.0	324,805
Native Hawaiian	19,294	16.4	13.0 - 19.8	98,277	83.6	80.2 - 87.0	117,571
Chinese	12,505	18.4	13.7 - 23.1	55,445	81.6	76.9 - 86.3	67,950
Filipino	37,850	26.9	22.9 - 30.9	102,854	73.1	69.1 - 77.1	140,704
Japanese	28,796	15.2	12.7 - 17.6	160,955	84.8	82.4 - 87.3	189,751
Black	716	4.3	.0 - 8.7	15,757	95.7	91.3 - 100.0	16,473
Other Pacific Islander	6,707	30.5	18.6 - 42.4	15,281	69.5	57.6 - 81.4	21,988
Other Asian	5,884	27.3	16.6 - 38.0	15,690	72.7	62.0 - 83.4	21,574
Native Alaskan/ American Indian	n/r	n/r	n/r	n/r	n/r	n/r	n/r
Other	2,841	11.6	5.5 - 17.7	21,633	88.4	82.3 - 94.5	24,474

Have Any Leisure Time, Exercise, or Physical Activity in the Past 30 Days by Year Total, County, BRFSS Age Group, DOH Race-Ethnicity, Gender, County and Community, Education Level, Employment Status (Grouped), Household Income, Island, Marital Status (Grouped), Poverty Level, for the Year(s) - 2000, 2001, 2002, 2003, 2004, 2005, 2006, 2007

Note: Weighted numbers (#), percentages and 95% confidence intervals; Respondents aged 18 years and older; n/r (Not Reportable) - Represents cell size restriction of unweighted count < 50; n/a (Not Available) - Not asked of a subset of respondents

Year: 2002

Gender	AT RISK			NOT AT RISK			Estimated Adult Population
	#	%	C.I. (95%)	#	%	C.I. (95%)	#
Female	85,813	18.3	16.6 - 20.0	382,412	81.7	80.0 - 83.4	468,225
Male	64,500	13.9	12.2 - 15.6	400,030	86.1	84.4 - 87.8	464,530

County and Community	AT RISK			NOT AT RISK			Estimated Adult Population
	#	%	C.I. (95%)	#	%	C.I. (95%)	#
Hawaii-Hilo	5,735	16.3	12.1 - 20.5	29,491	83.7	79.5 - 87.9	35,226
Hawaii-Kona	4,470	15.0	10.8 - 19.2	25,305	85.0	80.8 - 89.2	29,775
Hawaii-N.Hawaii	4,960	21.8	15.2 - 28.5	17,766	78.2	71.5 - 84.8	22,726
Hawaii-Puna/ Kau	4,415	19.5	13.9 - 25.0	18,270	80.5	75.0 - 86.1	22,685
Honolulu-Aiea/ Pearl City	11,599	17.5	12.7 - 22.4	54,544	82.5	77.6 - 87.3	66,143
Honolulu-Ala Moana	5,337	15.5	9.5 - 21.6	29,046	84.5	78.4 - 90.5	34,383
Honolulu-Kaaawa/ Kahaluu/ Kaneohe	4,048	10.2	5.0 - 15.4	35,473	89.8	84.6 - 95.0	39,521
Honolulu-Kailua/ Waimanalo	3,483	7.3	3.2 - 11.4	44,056	92.7	88.6 - 96.8	47,539

Have Any Leisure Time, Exercise, or Physical Activity in the Past 30 Days by Year Total, County, BRFSS Age Group, DOH Race-Ethnicity, Gender, County and Community, Education Level, Employment Status (Grouped), Household Income, Island, Marital Status (Grouped), Poverty Level, for the Year(s) - 2000, 2001, 2002, 2003, 2004, 2005, 2006, 2007

Note: Weighted numbers (#), percentages and 95% confidence intervals; Respondents aged 18 years and older; n/r (Not Reportable) - Represents cell size restriction of unweighted count < 50; n/a (Not Available) - Not asked of a subset of respondents

Year: 2002

County and Community	AT RISK			NOT AT RISK			Estimated Adult Population
	#	%	C.I. (95%)	#	%	C.I. (95%)	#
Honolulu-Kaimuki/ Palolo/ Waikiki	9,753	14.4	10.3 - 18.6	57,889	85.6	81.4 - 89.7	67,642
Honolulu-Manoa/ Upper Makiki	8,630	15.0	10.1 - 19.9	48,969	85.0	80.1 - 89.9	57,599
Honolulu-Mililani/ Wahiawa	10,879	17.3	11.1 - 23.4	52,143	82.7	76.6 - 88.9	63,022
Honolulu-Nanakuli/ Waianae	5,789	22.4	14.0 - 30.7	20,097	77.6	69.3 - 86.0	25,886
Honolulu-N.Shore/ Laie	2,244	12.1	3.5 - 20.7	16,285	87.9	79.3 - 96.5	18,529
Honolulu-Nuuanu/ Kalihi/ Moanalua	11,689	17.7	11.8 - 23.6	54,450	82.3	76.4 - 88.2	66,139
Honolulu-Salt Lake/ Foster Village	5,867	15.6	8.7 - 22.5	31,802	84.4	77.5 - 91.3	37,669
Honolulu-Waiialae/ Kahala/ Hawaii Kai	3,846	8.1	3.8 - 12.4	43,589	91.9	87.6 - 96.2	47,435
Honolulu-Waipahu/ Kapolei/ Ewa	16,462	19.3	14.5 - 24.1	68,835	80.7	75.9 - 85.5	85,297
Kauai-Hanalei/ Kapaa	2,936	16.2	10.0 - 22.3	15,243	83.8	77.7 - 90.0	18,179
Kauai-Lihue-Waimea	5,131	21.1	15.5 - 26.7	19,150	78.9	73.3 - 84.5	24,281
Maui-Kahului	6,459	22.7	17.0 - 28.4	22,003	77.3	71.6 - 83.0	28,462
Maui-Lanai	760	19.7	10.7 - 28.7	3,099	80.3	71.3 - 89.3	3,859

Have Any Leisure Time, Exercise, or Physical Activity in the Past 30 Days by Year Total, County, BRFSS Age Group, DOH Race-Ethnicity, Gender, County and Community, Education Level, Employment Status (Grouped), Household Income, Island, Marital Status (Grouped), Poverty Level, for the Year(s) - 2000, 2001, 2002, 2003, 2004, 2005, 2006, 2007

Note: Weighted numbers (#), percentages and 95% confidence intervals; Respondents aged 18 years and older; n/r (Not Reportable) - Represents cell size restriction of unweighted count < 50; n/a (Not Available) - Not asked of a subset of respondents

Year: 2002

County and Community	AT RISK			NOT AT RISK			Estimated Adult Population
	#	%	C.I. (95%)	#	%	C.I. (95%)	#
Maui-Lahaina/ Wailuku	5,788	20.5	14.7 - 26.2	22,502	79.5	73.8 - 85.3	28,290
Maui-Molokai	1,853	23.8	16.1 - 31.6	5,919	76.2	68.4 - 83.9	7,772
Maui-Upcountry/ Hana	3,370	12.3	7.9 - 16.8	24,007	87.7	83.2 - 92.1	27,377

Education Level	AT RISK			NOT AT RISK			Estimated Adult Population
	#	%	C.I. (95%)	#	%	C.I. (95%)	#
Grades 9 thru 11 (Some High School)	10,221	28.2	21.1 - 35.3	26,050	71.8	64.7 - 78.9	36,271
Grades 12 or GED (High School Grad)	59,733	18.4	16.2 - 20.5	265,278	81.6	79.5 - 83.8	325,011
College 1 to 3 years (Some College/ Tech)	39,310	14.5	12.3 - 16.7	231,923	85.5	83.3 - 87.7	271,233
College 4 years or more (College Grad)	33,464	12.0	10.1 - 13.8	245,798	88.0	86.2 - 89.9	279,262
Never attended school/ Only Kindergarten to Grades 8	7,222	37.0	24.8 - 49.3	12,280	63.0	50.7 - 75.2	19,502

Have Any Leisure Time, Exercise, or Physical Activity in the Past 30 Days by Year Total, County, BRFSS Age Group, DOH Race-Ethnicity, Gender, County and Community, Education Level, Employment Status (Grouped), Household Income, Island, Marital Status (Grouped), Poverty Level, for the Year(s) - 2000, 2001, 2002, 2003, 2004, 2005, 2006, 2007

Note: Weighted numbers (#), percentages and 95% confidence intervals; Respondents aged 18 years and older; n/r (Not Reportable) - Represents cell size restriction of unweighted count < 50; n/a (Not Available) - Not asked of a subset of respondents

Year: 2002

Employment Status (Grouped)	AT RISK			NOT AT RISK			Estimated Adult Population
	#	%	C.I. (95%)	#	%	C.I. (95%)	#
Employed	87,206	14.5	13.0 - 15.9	515,471	85.5	84.1 - 87.0	602,677
Unemployed	9,053	21.7	14.0 - 29.4	32,670	78.3	70.6 - 86.0	41,723
Student/Homemaker	17,041	16.7	12.4 - 21.1	84,894	83.3	78.9 - 87.6	101,935
Retired/Unable to work	36,925	19.9	17.3 - 22.5	148,442	80.1	77.5 - 82.7	185,367

Have Any Leisure Time, Exercise, or Physical Activity in the Past 30 Days by Year Total, County, BRFSS Age Group, DOH Race-Ethnicity, Gender, County and Community, Education Level, Employment Status (Grouped), Household Income, Island, Marital Status (Grouped), Poverty Level, for the Year(s) - 2000, 2001, 2002, 2003, 2004, 2005, 2006, 2007

Note: Weighted numbers (#), percentages and 95% confidence intervals; Respondents aged 18 years and older; n/r (Not Reportable) - Represents cell size restriction of unweighted count < 50; n/a (Not Available) - Not asked of a subset of respondents

Year: 2002

Household Income	AT RISK			NOT AT RISK			Estimated Adult Population
	#	%	C.I. (95%)	#	%	C.I. (95%)	#
Less than \$10,000	10,387	28.1	21.2 - 35.1	26,531	71.9	64.9 - 78.8	36,918
\$10,000 to \$14,999	6,491	17.9	12.7 - 23.0	29,827	82.1	77.0 - 87.3	36,318
\$15,000 to \$19,999	7,605	17.8	12.1 - 23.5	35,064	82.2	76.5 - 87.9	42,669
\$20,000 to \$24,999	9,583	21.5	15.8 - 27.1	35,045	78.5	72.9 - 84.2	44,628
\$25,000 to \$34,999	14,422	18.7	14.7 - 22.6	62,805	81.3	77.4 - 85.3	77,227
\$35,000 to \$49,999	19,657	15.7	12.6 - 18.8	105,273	84.3	81.2 - 87.4	124,930
\$50,000 to \$74,999	18,869	14.8	11.1 - 18.4	108,877	85.2	81.6 - 88.9	127,746
\$75,000 or more	13,746	10.1	7.5 - 12.7	122,157	89.9	87.3 - 92.5	135,903

Have Any Leisure Time, Exercise, or Physical Activity in the Past 30 Days by Year Total, County, BRFSS Age Group, DOH Race-Ethnicity, Gender, County and Community, Education Level, Employment Status (Grouped), Household Income, Island, Marital Status (Grouped), Poverty Level, for the Year(s) - 2000, 2001, 2002, 2003, 2004, 2005, 2006, 2007

Note: Weighted numbers (#), percentages and 95% confidence intervals; Respondents aged 18 years and older; n/r (Not Reportable) - Represents cell size restriction of unweighted count < 50; n/a (Not Available) - Not asked of a subset of respondents

Year: 2002

Island	AT RISK			NOT AT RISK			Estimated Adult Population
	#	%	C.I. (95%)	#	%	C.I. (95%)	#
Hawaii	19,579	17.7	15.2 - 20.2	90,832	82.3	79.8 - 84.8	110,411
Kauai	8,066	19.0	14.9 - 23.1	34,393	81.0	76.9 - 85.1	42,459
Maui	15,616	18.6	15.5 - 21.7	68,512	81.4	78.3 - 84.5	84,128
Lanai	760	19.7	10.7 - 28.6	3,099	80.3	71.4 - 89.3	3,859
Molokai	1,853	23.8	16.1 - 31.6	5,919	76.2	68.4 - 83.9	7,772
Oahu	99,624	15.2	13.6 - 16.7	557,178	84.8	83.3 - 86.4	656,802

Have Any Leisure Time, Exercise, or Physical Activity in the Past 30 Days by Year Total, County, BRFSS Age Group, DOH Race-Ethnicity, Gender, County and Community, Education Level, Employment Status (Grouped), Household Income, Island, Marital Status (Grouped), Poverty Level, for the Year(s) - 2000, 2001, 2002, 2003, 2004, 2005, 2006, 2007

Note: Weighted numbers (#), percentages and 95% confidence intervals; Respondents aged 18 years and older; n/r (Not Reportable) - Represents cell size restriction of unweighted count < 50; n/a (Not Available) - Not asked of a subset of respondents

Year: 2002

Marital Status (Grouped)	AT RISK			NOT AT RISK			Estimated Adult Population
	#	%	C.I. (95%)	#	%	C.I. (95%)	#
Married	88,318	16.2	14.6 - 17.8	456,536	83.8	82.2 - 85.4	544,854
Unmarried Couple	2,074	9.3	3.9 - 14.8	20,139	90.7	85.2 - 96.1	22,213
Widowed	12,171	20.8	16.2 - 25.3	46,382	79.2	74.7 - 83.8	58,553
Other	47,751	15.5	13.4 - 17.7	259,386	84.5	82.3 - 86.6	307,137

Have Any Leisure Time, Exercise, or Physical Activity in the Past 30 Days by Year Total, County, BRFSS Age Group, DOH Race-Ethnicity, Gender, County and Community, Education Level, Employment Status (Grouped), Household Income, Island, Marital Status (Grouped), Poverty Level, for the Year(s) - 2000, 2001, 2002, 2003, 2004, 2005, 2006, 2007

Note: Weighted numbers (#), percentages and 95% confidence intervals; Respondents aged 18 years and older; n/r (Not Reportable) - Represents cell size restriction of unweighted count < 50; n/a (Not Available) - Not asked of a subset of respondents

Year: 2002

Poverty Level	AT RISK			NOT AT RISK			Estimated Adult Population
	#	%	C.I. (95%)	#	%	C.I. (95%)	#
1-50%	11,165	27.0	20.3 - 33.7	30,161	73.0	66.3 - 79.7	41,326
51-100%	8,290	15.4	10.3 - 20.5	45,539	84.6	79.5 - 89.7	53,829
101-120%	5,060	27.6	17.9 - 37.3	13,258	72.4	62.7 - 82.1	18,318
121-130%	7,054	23.0	16.5 - 29.5	23,637	77.0	70.5 - 83.5	30,691
131-150%	3,508	16.0	8.4 - 23.6	18,443	84.0	76.4 - 91.6	21,951
151-170%	4,122	21.3	12.7 - 29.9	15,198	78.7	70.1 - 87.3	19,320
171-180%	5,323	18.0	12.2 - 23.8	24,289	82.0	76.2 - 87.8	29,612
186+%	56,239	13.7	12.0 - 15.4	355,054	86.3	84.6 - 88.0	411,293

Have Any Leisure Time, Exercise, or Physical Activity in the Past 30 Days by Year Total, County, BRFSS Age Group, DOH Race-Ethnicity, Gender, County and Community, Education Level, Employment Status (Grouped), Household Income, Island, Marital Status (Grouped), Poverty Level, for the Year(s) - 2000, 2001, 2002, 2003, 2004, 2005, 2006, 2007

Note: Weighted numbers (#), percentages and 95% confidence intervals; Respondents aged 18 years and older; n/r (Not Reportable) - Represents cell size restriction of unweighted count < 50; n/a (Not Available) - Not asked of a subset of respondents

Year: 2002

Year: 2003

Year Total	AT RISK			NOT AT RISK			Estimated Adult Population
	#	%	C.I. (95%)	#	%	C.I. (95%)	#
State	175,846	18.3	16.8 - 19.8	784,386	81.7	80.2 - 83.2	960,232

Have Any Leisure Time, Exercise, or Physical Activity in the Past 30 Days by Year Total, County, BRFSS Age Group, DOH Race-Ethnicity, Gender, County and Community, Education Level, Employment Status (Grouped), Household Income, Island, Marital Status (Grouped), Poverty Level, for the Year(s) - 2000, 2001, 2002, 2003, 2004, 2005, 2006, 2007

Note: Weighted numbers (#), percentages and 95% confidence intervals; Respondents aged 18 years and older; n/r (Not Reportable) - Represents cell size restriction of unweighted count < 50; n/a (Not Available) - Not asked of a subset of respondents

Year: 2003

County	AT RISK			NOT AT RISK			Estimated Adult Population
	#	%	C.I. (95%)	#	%	C.I. (95%)	#
Hawaii	19,071	16.4	13.4 - 19.4	97,062	83.6	80.6 - 86.6	116,133
Honolulu	117,853	17.7	15.8 - 19.6	546,871	82.3	80.4 - 84.2	664,724
Kauai	8,673	19.9	15.3 - 24.4	35,005	80.1	75.6 - 84.7	43,678
Maui	20,782	21.0	17.1 - 25.0	77,973	79.0	75.0 - 82.9	98,755

Have Any Leisure Time, Exercise, or Physical Activity in the Past 30 Days by Year Total, County, BRFSS Age Group, DOH Race-Ethnicity, Gender, County and Community, Education Level, Employment Status (Grouped), Household Income, Island, Marital Status (Grouped), Poverty Level, for the Year(s) - 2000, 2001, 2002, 2003, 2004, 2005, 2006, 2007

Note: Weighted numbers (#), percentages and 95% confidence intervals; Respondents aged 18 years and older; n/r (Not Reportable) - Represents cell size restriction of unweighted count < 50; n/a (Not Available) - Not asked of a subset of respondents

Year: 2003

BRFSS Age Group	AT RISK			NOT AT RISK			Estimated Adult Population
	#	%	C.I. (95%)	#	%	C.I. (95%)	#
18-24	15,357	12.8	8.5 - 17.2	104,232	87.2	82.8 - 91.5	119,589
25-34	22,276	13.3	10.5 - 16.2	144,631	86.7	83.8 - 89.5	166,907
35-44	33,310	17.8	14.5 - 21.1	153,869	82.2	78.9 - 85.5	187,179
45-54	30,872	17.2	14.1 - 20.3	148,959	82.8	79.7 - 85.9	179,831
55-64	27,594	21.7	17.2 - 26.3	99,346	78.3	73.7 - 82.8	126,940
65-74	22,045	24.2	18.6 - 29.8	69,032	75.8	70.2 - 81.4	91,077
75+	23,546	28.0	22.8 - 33.1	60,643	72.0	66.9 - 77.2	84,189

Have Any Leisure Time, Exercise, or Physical Activity in the Past 30 Days by Year Total, County, BRFSS Age Group, DOH Race-Ethnicity, Gender, County and Community, Education Level, Employment Status (Grouped), Household Income, Island, Marital Status (Grouped), Poverty Level, for the Year(s) - 2000, 2001, 2002, 2003, 2004, 2005, 2006, 2007

Note: Weighted numbers (#), percentages and 95% confidence intervals; Respondents aged 18 years and older; n/r (Not Reportable) - Represents cell size restriction of unweighted count < 50; n/a (Not Available) - Not asked of a subset of respondents

Year: 2003

DOH Race-Ethnicity	AT RISK			NOT AT RISK			Estimated Adult Population
	#	%	C.I. (95%)	#	%	C.I. (95%)	#
White	42,569	11.9	10.1 - 13.7	314,623	88.1	86.3 - 89.9	357,192
Native Hawaiian	15,517	18.1	13.3 - 23.0	70,088	81.9	77.0 - 86.7	85,605
Chinese	30,199	25.1	20.1 - 30.1	90,212	74.9	69.9 - 79.9	120,411
Filipino	37,210	25.6	20.8 - 30.4	108,010	74.4	69.6 - 79.2	145,220
Japanese	36,165	20.9	17.4 - 24.5	136,513	79.1	75.5 - 82.6	172,678
Black	1,487	11.5	1.3 - 21.8	11,406	88.5	78.2 - 98.7	12,893
Other Pacific Islander	n/r	n/r	n/r	n/r	n/r	n/r	n/r
Other Asian	3,152	19.8	8.4 - 31.2	12,737	80.2	68.8 - 91.6	15,889
Native Alaskan/ American Indian	n/r	n/r	n/r	n/r	n/r	n/r	n/r
Other	4,587	19.1	10.5 - 27.7	19,378	80.9	72.3 - 89.5	23,965

Have Any Leisure Time, Exercise, or Physical Activity in the Past 30 Days by Year Total, County, BRFSS Age Group, DOH Race-Ethnicity, Gender, County and Community, Education Level, Employment Status (Grouped), Household Income, Island, Marital Status (Grouped), Poverty Level, for the Year(s) - 2000, 2001, 2002, 2003, 2004, 2005, 2006, 2007

Note: Weighted numbers (#), percentages and 95% confidence intervals; Respondents aged 18 years and older; n/r (Not Reportable) - Represents cell size restriction of unweighted count < 50; n/a (Not Available) - Not asked of a subset of respondents

Year: 2003

Gender	AT RISK			NOT AT RISK			Estimated Adult Population
	#	%	C.I. (95%)	#	%	C.I. (95%)	#
Female	102,763	21.4	19.4 - 23.3	378,457	78.6	76.7 - 80.6	481,220
Male	73,083	15.3	13.1 - 17.4	405,929	84.7	82.6 - 86.9	479,012

County and Community	AT RISK			NOT AT RISK			Estimated Adult Population
	#	%	C.I. (95%)	#	%	C.I. (95%)	#
Hawaii-Hilo	6,608	18.8	13.3 - 24.3	28,521	81.2	75.7 - 86.7	35,129
Hawaii-Kona	3,305	11.0	6.7 - 15.3	26,743	89.0	84.7 - 93.3	30,048
Hawaii-N.Hawaii	3,738	15.5	7.2 - 23.9	20,367	84.5	76.1 - 92.8	24,105
Hawaii-Puna/ Kau	5,419	20.2	14.0 - 26.3	21,431	79.8	73.7 - 86.0	26,850
Honolulu-Aiea/ Pearl City	6,783	12.7	7.1 - 18.3	46,597	87.3	81.7 - 92.9	53,380
Honolulu-Ala Moana	7,818	25.4	16.4 - 34.5	22,908	74.6	65.5 - 83.6	30,726
Honolulu-Kaaawa/ Kahaluu/ Kaneohe	7,556	16.4	9.6 - 23.1	38,658	83.6	76.9 - 90.4	46,214
Honolulu-Kailua/ Waimanalo	9,004	17.8	11.0 - 24.5	41,675	82.2	75.5 - 89.0	50,679

Have Any Leisure Time, Exercise, or Physical Activity in the Past 30 Days by Year Total, County, BRFSS Age Group, DOH Race-Ethnicity, Gender, County and Community, Education Level, Employment Status (Grouped), Household Income, Island, Marital Status (Grouped), Poverty Level, for the Year(s) - 2000, 2001, 2002, 2003, 2004, 2005, 2006, 2007

Note: Weighted numbers (#), percentages and 95% confidence intervals; Respondents aged 18 years and older; n/r (Not Reportable) - Represents cell size restriction of unweighted count < 50; n/a (Not Available) - Not asked of a subset of respondents

Year: 2003

County and Community	AT RISK			NOT AT RISK			Estimated Adult Population
	#	%	C.I. (95%)	#	%	C.I. (95%)	#
Honolulu-Kaimuki/ Palolo/ Waikiki	14,602	22.3	16.2 - 28.4	50,807	77.7	71.6 - 83.8	65,409
Honolulu-Manoa/ Upper Makiki	8,495	15.6	9.3 - 21.9	45,887	84.4	78.1 - 90.7	54,382
Honolulu-Mililani/ Wahiawa	9,123	13.6	8.6 - 18.5	58,166	86.4	81.5 - 91.4	67,289
Honolulu-Nanakuli/ Waianae	6,774	25.0	12.3 - 37.7	20,316	75.0	62.3 - 87.7	27,090
Honolulu-N.Shore/ Laie	4,536	18.3	8.1 - 28.6	20,236	81.7	71.4 - 91.9	24,772
Honolulu-Nuuanu/ Kalihi/ Moanalua	16,877	23.5	17.0 - 29.9	55,093	76.5	70.1 - 83.0	71,970
Honolulu-Salt Lake/ Foster Village	5,408	12.1	5.8 - 18.4	39,361	87.9	81.6 - 94.2	44,769
Honolulu-Waiialae/ Kahala/ Hawaii Kai	2,908	8.1	3.1 - 13.1	33,087	91.9	86.9 - 96.9	35,995
Honolulu-Waipahu/ Kapolei/ Ewa	17,967	19.5	14.1 - 25.0	74,079	80.5	75.0 - 85.9	92,046
Kauai-Hanalei/ Kapaa	2,436	13.7	7.9 - 19.4	15,365	86.3	80.6 - 92.1	17,801
Kauai-Lihue-Waimea	6,237	24.1	17.7 - 30.5	19,640	75.9	69.5 - 82.3	25,877
Maui-Kahului	6,837	20.6	13.6 - 27.6	26,327	79.4	72.4 - 86.4	33,164
Maui-Lanai	n/r	n/r	n/r	n/r	n/r	n/r	n/r

Have Any Leisure Time, Exercise, or Physical Activity in the Past 30 Days by Year Total, County, BRFSS Age Group, DOH Race-Ethnicity, Gender, County and Community, Education Level, Employment Status (Grouped), Household Income, Island, Marital Status (Grouped), Poverty Level, for the Year(s) - 2000, 2001, 2002, 2003, 2004, 2005, 2006, 2007

Note: Weighted numbers (#), percentages and 95% confidence intervals; Respondents aged 18 years and older; n/r (Not Reportable) - Represents cell size restriction of unweighted count < 50; n/a (Not Available) - Not asked of a subset of respondents

Year: 2003

County and Community	AT RISK			NOT AT RISK			Estimated Adult Population
	#	%	C.I. (95%)	#	%	C.I. (95%)	#
Maui-Lahaina/ Wailuku	6,866	24.6	16.7 - 32.4	21,095	75.4	67.6 - 83.3	27,961
Maui-Molokai	1,104	16.9	6.5 - 27.3	5,418	83.1	72.7 - 93.5	6,522
Maui-Upcountry/ Hana	5,591	19.5	12.3 - 26.8	23,008	80.5	73.2 - 87.7	28,599

Education Level	AT RISK			NOT AT RISK			Estimated Adult Population
	#	%	C.I. (95%)	#	%	C.I. (95%)	#
Grades 9 thru 11 (Some High School)	14,576	37.3	27.1 - 47.5	24,480	62.7	52.5 - 72.9	39,056
Grades 12 or GED (High School Grad)	67,421	23.4	20.4 - 26.3	221,263	76.6	73.7 - 79.6	288,684
College 1 to 3 years (Some College/ Tech)	45,370	16.5	14.0 - 18.9	230,356	83.5	81.1 - 86.0	275,726
College 4 years or more (College Grad)	40,757	12.1	10.1 - 14.2	295,327	87.9	85.8 - 89.9	336,084
Never attended school/ Only Kindergarten to Grades 8	6,945	39.4	23.8 - 55.0	10,670	60.6	45.0 - 76.2	17,615

Have Any Leisure Time, Exercise, or Physical Activity in the Past 30 Days by Year Total, County, BRFSS Age Group, DOH Race-Ethnicity, Gender, County and Community, Education Level, Employment Status (Grouped), Household Income, Island, Marital Status (Grouped), Poverty Level, for the Year(s) - 2000, 2001, 2002, 2003, 2004, 2005, 2006, 2007

Note: Weighted numbers (#), percentages and 95% confidence intervals; Respondents aged 18 years and older; n/r (Not Reportable) - Represents cell size restriction of unweighted count < 50; n/a (Not Available) - Not asked of a subset of respondents

Year: 2003

Employment Status (Grouped)	AT RISK			NOT AT RISK			Estimated Adult Population
	#	%	C.I. (95%)	#	%	C.I. (95%)	#
Employed	100,788	16.2	14.4 - 18.0	520,966	83.8	82.0 - 85.6	621,754
Unemployed	6,219	18.5	9.8 - 27.3	27,371	81.5	72.7 - 90.2	33,590
Student/Homemaker	16,239	17.2	12.7 - 21.7	78,383	82.8	78.3 - 87.3	94,622
Retired/Unable to work	52,600	25.2	21.9 - 28.5	156,462	74.8	71.5 - 78.1	209,062

Have Any Leisure Time, Exercise, or Physical Activity in the Past 30 Days by Year Total, County, BRFSS Age Group, DOH Race-Ethnicity, Gender, County and Community, Education Level, Employment Status (Grouped), Household Income, Island, Marital Status (Grouped), Poverty Level, for the Year(s) - 2000, 2001, 2002, 2003, 2004, 2005, 2006, 2007

Note: Weighted numbers (#), percentages and 95% confidence intervals; Respondents aged 18 years and older; n/r (Not Reportable) - Represents cell size restriction of unweighted count < 50; n/a (Not Available) - Not asked of a subset of respondents

Year: 2003

Household Income	AT RISK			NOT AT RISK			Estimated Adult Population
	#	%	C.I. (95%)	#	%	C.I. (95%)	#
Less than \$10,000	15,113	29.2	22.0 - 36.5	36,576	70.8	63.5 - 78.0	51,689
\$10,000 to \$14,999	13,136	25.0	17.3 - 32.6	39,474	75.0	67.4 - 82.7	52,610
\$15,000 to \$19,999	13,058	25.3	18.1 - 32.4	38,652	74.7	67.6 - 81.9	51,710
\$20,000 to \$24,999	12,418	21.0	15.0 - 27.0	46,686	79.0	73.0 - 85.0	59,104
\$25,000 to \$34,999	18,338	21.3	16.5 - 26.0	67,861	78.7	74.0 - 83.5	86,199
\$35,000 to \$49,999	22,603	15.8	12.0 - 19.5	120,827	84.2	80.5 - 88.0	143,430
\$50,000 to \$74,999	22,403	16.2	12.5 - 19.9	115,990	83.8	80.1 - 87.5	138,393
\$75,000 or more	14,534	9.0	6.5 - 11.6	146,501	91.0	88.4 - 93.5	161,035

Have Any Leisure Time, Exercise, or Physical Activity in the Past 30 Days by Year Total, County, BRFSS Age Group, DOH Race-Ethnicity, Gender, County and Community, Education Level, Employment Status (Grouped), Household Income, Island, Marital Status (Grouped), Poverty Level, for the Year(s) - 2000, 2001, 2002, 2003, 2004, 2005, 2006, 2007

Note: Weighted numbers (#), percentages and 95% confidence intervals; Respondents aged 18 years and older; n/r (Not Reportable) - Represents cell size restriction of unweighted count < 50; n/a (Not Available) - Not asked of a subset of respondents

Year: 2003

Island	AT RISK			NOT AT RISK			Estimated Adult Population
	#	%	C.I. (95%)	#	%	C.I. (95%)	#
Hawaii	19,071	16.4	13.4 - 19.4	97,062	83.6	80.6 - 86.6	116,133
Kauai	8,673	19.9	15.4 - 24.4	35,005	80.1	75.6 - 84.6	43,678
Maui	19,295	21.5	17.3 - 25.7	70,430	78.5	74.3 - 82.7	89,725
Lanai	n/r	n/r	n/r	n/r	n/r	n/r	n/r
Molokai	1,104	16.9	6.5 - 27.3	5,418	83.1	72.7 - 93.5	6,522
Oahu	117,853	17.7	15.8 - 19.6	546,871	82.3	80.4 - 84.2	664,724

Have Any Leisure Time, Exercise, or Physical Activity in the Past 30 Days by Year Total, County, BRFSS Age Group, DOH Race-Ethnicity, Gender, County and Community, Education Level, Employment Status (Grouped), Household Income, Island, Marital Status (Grouped), Poverty Level, for the Year(s) - 2000, 2001, 2002, 2003, 2004, 2005, 2006, 2007

Note: Weighted numbers (#), percentages and 95% confidence intervals; Respondents aged 18 years and older; n/r (Not Reportable) - Represents cell size restriction of unweighted count < 50; n/a (Not Available) - Not asked of a subset of respondents

Year: 2003

Marital Status (Grouped)	AT RISK			NOT AT RISK			Estimated Adult Population
	#	%	C.I. (95%)	#	%	C.I. (95%)	#
Married	100,823	18.4	16.4 - 20.4	447,782	81.6	79.6 - 83.6	548,605
Unmarried Couple	1,809	9.3	2.1 - 16.4	17,744	90.7	83.6 - 97.9	19,553
Widowed	19,705	27.8	22.4 - 33.3	51,073	72.2	66.7 - 77.6	70,778
Other	53,509	16.7	14.2 - 19.2	267,787	83.3	80.8 - 85.8	321,296

Have Any Leisure Time, Exercise, or Physical Activity in the Past 30 Days by Year Total, County, BRFSS Age Group, DOH Race-Ethnicity, Gender, County and Community, Education Level, Employment Status (Grouped), Household Income, Island, Marital Status (Grouped), Poverty Level, for the Year(s) - 2000, 2001, 2002, 2003, 2004, 2005, 2006, 2007

Note: Weighted numbers (#), percentages and 95% confidence intervals; Respondents aged 18 years and older; n/r (Not Reportable) - Represents cell size restriction of unweighted count < 50; n/a (Not Available) - Not asked of a subset of respondents

Year: 2003

Poverty Level	AT RISK			NOT AT RISK			Estimated Adult Population
	#	%	C.I. (95%)	#	%	C.I. (95%)	#
1-50%	17,125	29.7	22.5 - 36.9	40,510	70.3	63.1 - 77.5	57,635
51-100%	18,976	22.5	16.4 - 28.6	65,383	77.5	71.4 - 83.6	84,359
101-120%	n/r	n/r	n/r	n/r	n/r	n/r	n/r
121-130%	9,834	24.7	17.1 - 32.2	30,057	75.3	67.8 - 82.9	39,891
131-150%	6,465	24.0	11.4 - 36.6	20,442	76.0	63.4 - 88.6	26,907
151-170%	5,511	19.9	12.6 - 27.3	22,155	80.1	72.7 - 87.4	27,666
171-180%	6,703	22.0	12.8 - 31.2	23,754	78.0	68.8 - 87.2	30,457
186+%	63,415	13.8	12.0 - 15.5	396,846	86.2	84.5 - 88.0	460,261

Have Any Leisure Time, Exercise, or Physical Activity in the Past 30 Days by Year Total, County, BRFSS Age Group, DOH Race-Ethnicity, Gender, County and Community, Education Level, Employment Status (Grouped), Household Income, Island, Marital Status (Grouped), Poverty Level, for the Year(s) - 2000, 2001, 2002, 2003, 2004, 2005, 2006, 2007

Note: Weighted numbers (#), percentages and 95% confidence intervals; Respondents aged 18 years and older; n/r (Not Reportable) - Represents cell size restriction of unweighted count < 50; n/a (Not Available) - Not asked of a subset of respondents

Year: 2003

Year: 2004

Year Total	AT RISK			NOT AT RISK			Estimated Adult Population
	#	%	C.I. (95%)	#	%	C.I. (95%)	#
State	199,075	20.7	18.3 - 23.0	764,920	79.3	77.0 - 81.7	963,995

Have Any Leisure Time, Exercise, or Physical Activity in the Past 30 Days by Year Total, County, BRFSS Age Group, DOH Race-Ethnicity, Gender, County and Community, Education Level, Employment Status (Grouped), Household Income, Island, Marital Status (Grouped), Poverty Level, for the Year(s) - 2000, 2001, 2002, 2003, 2004, 2005, 2006, 2007

Note: Weighted numbers (#), percentages and 95% confidence intervals; Respondents aged 18 years and older; n/r (Not Reportable) - Represents cell size restriction of unweighted count < 50; n/a (Not Available) - Not asked of a subset of respondents

Year: 2004

County	AT RISK			NOT AT RISK			Estimated Adult Population
	#	%	C.I. (95%)	#	%	C.I. (95%)	#
Hawaii	28,186	21.6	17.3 - 25.9	102,259	78.4	74.1 - 82.7	130,445
Honolulu	136,224	21.3	18.0 - 24.5	504,172	78.7	75.5 - 82.0	640,396
Kauai	7,855	19.4	14.0 - 24.7	32,725	80.6	75.3 - 86.0	40,580
Maui	15,964	16.4	11.4 - 21.3	81,592	83.6	78.7 - 88.6	97,556

Have Any Leisure Time, Exercise, or Physical Activity in the Past 30 Days by Year Total, County, BRFSS Age Group, DOH Race-Ethnicity, Gender, County and Community, Education Level, Employment Status (Grouped), Household Income, Island, Marital Status (Grouped), Poverty Level, for the Year(s) - 2000, 2001, 2002, 2003, 2004, 2005, 2006, 2007

Note: Weighted numbers (#), percentages and 95% confidence intervals; Respondents aged 18 years and older; n/r (Not Reportable) - Represents cell size restriction of unweighted count < 50; n/a (Not Available) - Not asked of a subset of respondents

Year: 2004

BRFSS Age Group	AT RISK			NOT AT RISK			Estimated Adult Population
	#	%	C.I. (95%)	#	%	C.I. (95%)	#
18-24	13,347	12.0	4.8 - 19.2	97,840	88.0	80.8 - 95.2	111,187
25-34	27,482	15.6	10.3 - 20.9	148,992	84.4	79.1 - 89.7	176,474
35-44	39,072	20.6	15.5 - 25.7	150,545	79.4	74.3 - 84.5	189,617
45-54	41,232	23.5	17.7 - 29.4	134,045	76.5	70.6 - 82.3	175,277
55-64	26,598	20.3	15.2 - 25.4	104,481	79.7	74.6 - 84.8	131,079
65-74	23,352	26.9	19.2 - 34.6	63,446	73.1	65.4 - 80.8	86,798
75+	24,267	29.5	20.5 - 38.4	58,079	70.5	61.6 - 79.5	82,346

Have Any Leisure Time, Exercise, or Physical Activity in the Past 30 Days by Year Total, County, BRFSS Age Group, DOH Race-Ethnicity, Gender, County and Community, Education Level, Employment Status (Grouped), Household Income, Island, Marital Status (Grouped), Poverty Level, for the Year(s) - 2000, 2001, 2002, 2003, 2004, 2005, 2006, 2007

Note: Weighted numbers (#), percentages and 95% confidence intervals; Respondents aged 18 years and older; n/r (Not Reportable) - Represents cell size restriction of unweighted count < 50; n/a (Not Available) - Not asked of a subset of respondents

Year: 2004

DOH Race-Ethnicity	AT RISK			NOT AT RISK			Estimated Adult Population
	#	%	C.I. (95%)	#	%	C.I. (95%)	#
White	44,329	14.3	11.2 - 17.5	264,606	85.7	82.5 - 88.8	308,935
Native Hawaiian	23,266	17.7	11.6 - 23.8	108,199	82.3	76.2 - 88.4	131,465
Chinese	14,731	26.8	15.6 - 38.0	40,208	73.2	62.0 - 84.4	54,939
Filipino	48,803	31.6	23.8 - 39.4	105,682	68.4	60.6 - 76.2	154,485
Japanese	45,037	22.8	17.7 - 27.8	152,872	77.2	72.2 - 82.3	197,909
Black	n/r	n/r	n/r	n/r	n/r	n/r	n/r
Other Pacific Islander	n/r	n/r	n/r	n/r	n/r	n/r	n/r
Other Asian	n/r	n/r	n/r	n/r	n/r	n/r	n/r
Native Alaskan/ American Indian	n/r	n/r	n/r	n/r	n/r	n/r	n/r
Other	8,781	38.5	22.0 - 54.9	14,047	61.5	45.1 - 78.0	22,828

Have Any Leisure Time, Exercise, or Physical Activity in the Past 30 Days by Year Total, County, BRFSS Age Group, DOH Race-Ethnicity, Gender, County and Community, Education Level, Employment Status (Grouped), Household Income, Island, Marital Status (Grouped), Poverty Level, for the Year(s) - 2000, 2001, 2002, 2003, 2004, 2005, 2006, 2007

Note: Weighted numbers (#), percentages and 95% confidence intervals; Respondents aged 18 years and older; n/r (Not Reportable) - Represents cell size restriction of unweighted count < 50; n/a (Not Available) - Not asked of a subset of respondents

Year: 2004

Gender	AT RISK			NOT AT RISK			Estimated Adult Population
	#	%	C.I. (95%)	#	%	C.I. (95%)	#
Female	122,001	25.2	21.8 - 28.6	362,523	74.8	71.4 - 78.2	484,524
Male	77,073	16.1	12.9 - 19.3	402,397	83.9	80.7 - 87.1	479,470

County and Community	AT RISK			NOT AT RISK			Estimated Adult Population
	#	%	C.I. (95%)	#	%	C.I. (95%)	#
Hawaii-Hilo	7,839	23.2	15.3 - 31.1	25,918	76.8	68.9 - 84.7	33,757
Hawaii-Kona	3,667	13.9	7.4 - 20.3	22,796	86.1	79.7 - 92.6	26,463
Hawaii-N.Hawaii	5,025	21.7	11.9 - 31.6	18,126	78.3	68.4 - 88.1	23,151
Hawaii-Puna/ Kau	11,654	24.8	16.3 - 33.2	35,420	75.2	66.8 - 83.7	47,074
Honolulu-Aiea/ Pearl City	15,932	26.5	15.7 - 37.3	44,257	73.5	62.7 - 84.3	60,189
Honolulu-Ala Moana	6,169	20.0	7.4 - 32.6	24,614	80.0	67.4 - 92.6	30,783
Honolulu-Kaaawa/ Kahaluu/ Kaneohe	9,736	23.0	9.0 - 36.9	32,660	77.0	63.1 - 91.0	42,396
Honolulu-Kailua/ Waimanalo	6,420	15.2	6.1 - 24.4	35,706	84.8	75.6 - 93.9	42,126

Have Any Leisure Time, Exercise, or Physical Activity in the Past 30 Days by Year Total, County, BRFSS Age Group, DOH Race-Ethnicity, Gender, County and Community, Education Level, Employment Status (Grouped), Household Income, Island, Marital Status (Grouped), Poverty Level, for the Year(s) - 2000, 2001, 2002, 2003, 2004, 2005, 2006, 2007

Note: Weighted numbers (#), percentages and 95% confidence intervals; Respondents aged 18 years and older; n/r (Not Reportable) - Represents cell size restriction of unweighted count < 50; n/a (Not Available) - Not asked of a subset of respondents

Year: 2004

County and Community	AT RISK			NOT AT RISK			Estimated Adult Population
	#	%	C.I. (95%)	#	%	C.I. (95%)	#
Honolulu-Kaimuki/ Palolo/ Waikiki	14,266	23.8	13.9 - 33.6	45,701	76.2	66.4 - 86.1	59,967
Honolulu-Manoa/ Upper Makiki	6,092	13.1	4.8 - 21.3	40,511	86.9	78.7 - 95.2	46,603
Honolulu-Mililani/ Wahiawa	7,306	12.1	4.6 - 19.6	53,067	87.9	80.4 - 95.4	60,373
Honolulu-Nanakuli/ Waianae	n/r	n/r	n/r	n/r	n/r	n/r	n/r
Honolulu-N.Shore/ Laie	n/r	n/r	n/r	n/r	n/r	n/r	n/r
Honolulu-Nuuanu/ Kalihi/ Moanalua	18,107	28.6	17.3 - 40.0	45,157	71.4	60.0 - 82.7	63,264
Honolulu-Salt Lake/ Foster Village	n/r	n/r	n/r	n/r	n/r	n/r	n/r
Honolulu-Waiialae/ Kahala/ Hawaii Kai	6,301	18.3	5.0 - 31.6	28,173	81.7	68.4 - 95.0	34,474
Honolulu-Waipahu/ Kapolei/ Ewa	21,967	19.8	11.4 - 28.3	88,752	80.2	71.7 - 88.6	110,719
Kauai-Hanalei/ Kapaa	2,782	17.1	8.6 - 25.5	13,515	82.9	74.5 - 91.4	16,297
Kauai-Lihue-Waimea	5,073	20.9	14.0 - 27.8	19,210	79.1	72.2 - 86.0	24,283
Maui-Kahului	6,550	20.8	10.6 - 31.1	24,923	79.2	68.9 - 89.4	31,473
Maui-Lanai	443	34.6	19.7 - 49.6	838	65.4	50.4 - 80.3	1,281

Have Any Leisure Time, Exercise, or Physical Activity in the Past 30 Days by Year Total, County, BRFSS Age Group, DOH Race-Ethnicity, Gender, County and Community, Education Level, Employment Status (Grouped), Household Income, Island, Marital Status (Grouped), Poverty Level, for the Year(s) - 2000, 2001, 2002, 2003, 2004, 2005, 2006, 2007

Note: Weighted numbers (#), percentages and 95% confidence intervals; Respondents aged 18 years and older; n/r (Not Reportable) - Represents cell size restriction of unweighted count < 50; n/a (Not Available) - Not asked of a subset of respondents

Year: 2004

County and Community	AT RISK			NOT AT RISK			Estimated Adult Population
	#	%	C.I. (95%)	#	%	C.I. (95%)	#
Maui-Lahaina/ Wailuku	4,856	17.2	7.0 - 27.3	23,442	82.8	72.7 - 93.0	28,298
Maui-Molokai	1,111	18.9	5.1 - 32.6	4,774	81.1	67.4 - 94.9	5,885
Maui-Upcountry/ Hana	3,005	9.8	3.7 - 16.0	27,615	90.2	84.0 - 96.3	30,620

Education Level	AT RISK			NOT AT RISK			Estimated Adult Population
	#	%	C.I. (95%)	#	%	C.I. (95%)	#
Grades 9 thru 11 (Some High School)	7,520	23.7	10.6 - 36.9	24,163	76.3	63.1 - 89.4	31,683
Grades 12 or GED (High School Grad)	75,489	25.2	20.4 - 30.0	224,069	74.8	70.0 - 79.6	299,558
College 1 to 3 years (Some College/ Tech)	55,773	18.3	14.3 - 22.3	249,508	81.7	77.7 - 85.7	305,281
College 4 years or more (College Grad)	53,323	17.3	13.7 - 20.9	254,771	82.7	79.1 - 86.3	308,094
Never attended school/ Only Kindergarten to Grades 8	n/r	n/r	n/r	n/r	n/r	n/r	n/r

Have Any Leisure Time, Exercise, or Physical Activity in the Past 30 Days by Year Total, County, BRFSS Age Group, DOH Race-Ethnicity, Gender, County and Community, Education Level, Employment Status (Grouped), Household Income, Island, Marital Status (Grouped), Poverty Level, for the Year(s) - 2000, 2001, 2002, 2003, 2004, 2005, 2006, 2007

Note: Weighted numbers (#), percentages and 95% confidence intervals; Respondents aged 18 years and older; n/r (Not Reportable) - Represents cell size restriction of unweighted count < 50; n/a (Not Available) - Not asked of a subset of respondents

Year: 2004

Employment Status (Grouped)	AT RISK			NOT AT RISK			Estimated Adult Population
	#	%	C.I. (95%)	#	%	C.I. (95%)	#
Employed	116,939	19.0	16.0 - 21.9	499,360	81.0	78.1 - 84.0	616,299
Unemployed	5,697	20.7	6.1 - 35.3	21,803	79.3	64.7 - 93.9	27,500
Student/Homemaker	19,256	18.4	11.4 - 25.3	85,485	81.6	74.7 - 88.6	104,741
Retired/Unable to work	55,488	26.3	21.3 - 31.3	155,476	73.7	68.7 - 78.7	210,964

Have Any Leisure Time, Exercise, or Physical Activity in the Past 30 Days by Year Total, County, BRFSS Age Group, DOH Race-Ethnicity, Gender, County and Community, Education Level, Employment Status (Grouped), Household Income, Island, Marital Status (Grouped), Poverty Level, for the Year(s) - 2000, 2001, 2002, 2003, 2004, 2005, 2006, 2007

Note: Weighted numbers (#), percentages and 95% confidence intervals; Respondents aged 18 years and older; n/r (Not Reportable) - Represents cell size restriction of unweighted count < 50; n/a (Not Available) - Not asked of a subset of respondents

Year: 2004

Household Income	AT RISK			NOT AT RISK			Estimated Adult Population
	#	%	C.I. (95%)	#	%	C.I. (95%)	#
Less than \$10,000	5,622	32.3	13.4 - 51.2	11,786	67.7	48.8 - 86.6	17,408
\$10,000 to \$14,999	13,497	45.1	31.6 - 58.7	16,405	54.9	41.3 - 68.4	29,902
\$15,000 to \$19,999	14,147	29.4	17.7 - 41.1	33,991	70.6	58.9 - 82.3	48,138
\$20,000 to \$24,999	19,340	25.9	16.2 - 35.6	55,351	74.1	64.4 - 83.8	74,691
\$25,000 to \$34,999	31,771	26.5	19.0 - 33.9	88,269	73.5	66.1 - 81.0	120,040
\$35,000 to \$49,999	27,175	18.2	12.5 - 24.0	121,852	81.8	76.0 - 87.5	149,027
\$50,000 to \$74,999	54,783	18.0	14.0 - 22.0	249,974	82.0	78.0 - 86.0	304,757
\$75,000 or more	31,532	14.6	10.3 - 18.9	185,049	85.4	81.1 - 89.7	216,581

Have Any Leisure Time, Exercise, or Physical Activity in the Past 30 Days by Year Total, County, BRFSS Age Group, DOH Race-Ethnicity, Gender, County and Community, Education Level, Employment Status (Grouped), Household Income, Island, Marital Status (Grouped), Poverty Level, for the Year(s) - 2000, 2001, 2002, 2003, 2004, 2005, 2006, 2007

Note: Weighted numbers (#), percentages and 95% confidence intervals; Respondents aged 18 years and older; n/r (Not Reportable) - Represents cell size restriction of unweighted count < 50; n/a (Not Available) - Not asked of a subset of respondents

Year: 2004

Island	AT RISK			NOT AT RISK			Estimated Adult Population
	#	%	C.I. (95%)	#	%	C.I. (95%)	#
Hawaii	28,186	21.6	17.3 - 25.9	102,259	78.4	74.1 - 82.7	130,445
Kauai	7,855	19.4	14.1 - 24.7	32,725	80.6	75.3 - 85.9	40,580
Maui	14,410	15.9	10.7 - 21.2	75,980	84.1	78.8 - 89.3	90,390
Lanai	443	34.6	19.7 - 49.5	838	65.4	50.5 - 80.3	1,281
Molokai	1,111	18.9	5.2 - 32.6	4,774	81.1	67.4 - 94.8	5,885
Oahu	136,224	21.3	18.0 - 24.5	504,172	78.7	75.5 - 82.0	640,396

Have Any Leisure Time, Exercise, or Physical Activity in the Past 30 Days by Year Total, County, BRFSS Age Group, DOH Race-Ethnicity, Gender, County and Community, Education Level, Employment Status (Grouped), Household Income, Island, Marital Status (Grouped), Poverty Level, for the Year(s) - 2000, 2001, 2002, 2003, 2004, 2005, 2006, 2007

Note: Weighted numbers (#), percentages and 95% confidence intervals; Respondents aged 18 years and older; n/r (Not Reportable) - Represents cell size restriction of unweighted count < 50; n/a (Not Available) - Not asked of a subset of respondents

Year: 2004

Marital Status (Grouped)	AT RISK			NOT AT RISK			Estimated Adult Population
	#	%	C.I. (95%)	#	%	C.I. (95%)	#
Married	108,989	19.4	16.4 - 22.4	453,062	80.6	77.6 - 83.6	562,051
Unmarried Couple	3,907	15.3	3.8 - 26.9	21,607	84.7	73.1 - 96.2	25,514
Widowed	19,145	31.7	21.5 - 42.0	41,162	68.3	58.0 - 78.5	60,307
Other	67,033	21.2	16.9 - 25.5	249,089	78.8	74.5 - 83.1	316,122

Have Any Leisure Time, Exercise, or Physical Activity in the Past 30 Days by Year Total, County, BRFSS Age Group, DOH Race-Ethnicity, Gender, County and Community, Education Level, Employment Status (Grouped), Household Income, Island, Marital Status (Grouped), Poverty Level, for the Year(s) - 2000, 2001, 2002, 2003, 2004, 2005, 2006, 2007

Note: Weighted numbers (#), percentages and 95% confidence intervals; Respondents aged 18 years and older; n/r (Not Reportable) - Represents cell size restriction of unweighted count < 50; n/a (Not Available) - Not asked of a subset of respondents

Year: 2004

Poverty Level	AT RISK			NOT AT RISK			Estimated Adult Population
	#	%	C.I. (95%)	#	%	C.I. (95%)	#
1-50%	10,521	33.3	17.8 - 48.8	21,062	66.7	51.2 - 82.2	31,583
51-100%	24,702	33.8	22.1 - 45.5	48,330	66.2	54.5 - 77.9	73,032
101-120%	17,802	39.8	25.5 - 54.0	26,951	60.2	46.0 - 74.5	44,753
121-130%	3,661	19.4	7.5 - 31.2	15,243	80.6	68.8 - 92.5	18,904
131-150%	4,753	12.2	2.5 - 21.9	34,071	87.8	78.1 - 97.5	38,824
151-170%	15,655	19.8	11.6 - 27.9	63,523	80.2	72.1 - 88.4	79,178
171-180%	n/r	n/r	n/r	n/r	n/r	n/r	n/r
186+%	120,774	18.1	15.5 - 20.6	548,053	81.9	79.4 - 84.5	668,827

Have Any Leisure Time, Exercise, or Physical Activity in the Past 30 Days by Year Total, County, BRFSS Age Group, DOH Race-Ethnicity, Gender, County and Community, Education Level, Employment Status (Grouped), Household Income, Island, Marital Status (Grouped), Poverty Level, for the Year(s) - 2000, 2001, 2002, 2003, 2004, 2005, 2006, 2007

Note: Weighted numbers (#), percentages and 95% confidence intervals; Respondents aged 18 years and older; n/r (Not Reportable) - Represents cell size restriction of unweighted count < 50; n/a (Not Available) - Not asked of a subset of respondents

Year: 2004

Year: 2005

Year Total	AT RISK			NOT AT RISK			Estimated Adult Population
	#	%	C.I. (95%)	#	%	C.I. (95%)	#
State	190,072	19.5	18.1 - 20.8	786,613	80.5	79.2 - 81.9	976,685

Have Any Leisure Time, Exercise, or Physical Activity in the Past 30 Days by Year Total, County, BRFSS Age Group, DOH Race-Ethnicity, Gender, County and Community, Education Level, Employment Status (Grouped), Household Income, Island, Marital Status (Grouped), Poverty Level, for the Year(s) - 2000, 2001, 2002, 2003, 2004, 2005, 2006, 2007

Note: Weighted numbers (#), percentages and 95% confidence intervals; Respondents aged 18 years and older; n/r (Not Reportable) - Represents cell size restriction of unweighted count < 50; n/a (Not Available) - Not asked of a subset of respondents

Year: 2005

County	AT RISK			NOT AT RISK			Estimated Adult Population
	#	%	C.I. (95%)	#	%	C.I. (95%)	#
Hawaii	24,888	20.6	18.1 - 23.1	95,984	79.4	76.9 - 81.9	120,872
Honolulu	138,351	19.6	17.9 - 21.4	566,151	80.4	78.6 - 82.1	704,502
Kauai	6,978	15.1	11.8 - 18.4	39,327	84.9	81.6 - 88.2	46,305
Maui	19,854	18.9	15.6 - 22.3	85,152	81.1	77.7 - 84.4	105,006

Have Any Leisure Time, Exercise, or Physical Activity in the Past 30 Days by Year Total, County, BRFSS Age Group, DOH Race-Ethnicity, Gender, County and Community, Education Level, Employment Status (Grouped), Household Income, Island, Marital Status (Grouped), Poverty Level, for the Year(s) - 2000, 2001, 2002, 2003, 2004, 2005, 2006, 2007

Note: Weighted numbers (#), percentages and 95% confidence intervals; Respondents aged 18 years and older; n/r (Not Reportable) - Represents cell size restriction of unweighted count < 50; n/a (Not Available) - Not asked of a subset of respondents

Year: 2005

BRFSS Age Group	AT RISK			NOT AT RISK			Estimated Adult Population
	#	%	C.I. (95%)	#	%	C.I. (95%)	#
18-24	18,581	15.3	10.8 - 19.9	102,756	84.7	80.1 - 89.2	121,337
25-34	26,928	16.0	12.5 - 19.6	140,953	84.0	80.4 - 87.5	167,881
35-44	32,301	17.7	14.8 - 20.5	150,399	82.3	79.5 - 85.2	182,700
45-54	34,893	19.1	16.3 - 21.9	147,675	80.9	78.1 - 83.7	182,568
55-64	31,188	22.0	18.6 - 25.4	110,451	78.0	74.6 - 81.4	141,639
65-74	17,829	20.7	17.1 - 24.4	68,204	79.3	75.6 - 82.9	86,033
75+	26,855	30.3	25.9 - 34.8	61,637	69.7	65.2 - 74.1	88,492

Have Any Leisure Time, Exercise, or Physical Activity in the Past 30 Days by Year Total, County, BRFSS Age Group, DOH Race-Ethnicity, Gender, County and Community, Education Level, Employment Status (Grouped), Household Income, Island, Marital Status (Grouped), Poverty Level, for the Year(s) - 2000, 2001, 2002, 2003, 2004, 2005, 2006, 2007

Note: Weighted numbers (#), percentages and 95% confidence intervals; Respondents aged 18 years and older; n/r (Not Reportable) - Represents cell size restriction of unweighted count < 50; n/a (Not Available) - Not asked of a subset of respondents

Year: 2005

DOH Race-Ethnicity	AT RISK			NOT AT RISK			Estimated Adult Population
	#	%	C.I. (95%)	#	%	C.I. (95%)	#
White	43,915	13.4	11.7 - 15.2	282,804	86.6	84.8 - 88.3	326,719
Native Hawaiian	27,475	23.4	19.1 - 27.7	90,068	76.6	72.3 - 80.9	117,543
Chinese	9,525	17.2	12.1 - 22.2	45,995	82.8	77.8 - 87.9	55,520
Filipino	40,039	25.4	21.2 - 29.5	117,889	74.6	70.5 - 78.8	157,928
Japanese	44,915	21.3	18.5 - 24.2	165,877	78.7	75.8 - 81.5	210,792
Black	3,579	18.1	7.5 - 28.7	16,162	81.9	71.3 - 92.5	19,741
Other Pacific Islander	8,827	34.5	22.1 - 47.0	16,723	65.5	53.0 - 77.9	25,550
Other Asian	4,354	21.3	11.9 - 30.8	16,053	78.7	69.2 - 88.1	20,407
Native Alaskan/ American Indian	n/r	n/r	n/r	n/r	n/r	n/r	n/r
Other	5,290	16.2	9.8 - 22.5	27,453	83.8	77.5 - 90.2	32,743

Have Any Leisure Time, Exercise, or Physical Activity in the Past 30 Days by Year Total, County, BRFSS Age Group, DOH Race-Ethnicity, Gender, County and Community, Education Level, Employment Status (Grouped), Household Income, Island, Marital Status (Grouped), Poverty Level, for the Year(s) - 2000, 2001, 2002, 2003, 2004, 2005, 2006, 2007

Note: Weighted numbers (#), percentages and 95% confidence intervals; Respondents aged 18 years and older; n/r (Not Reportable) - Represents cell size restriction of unweighted count < 50; n/a (Not Available) - Not asked of a subset of respondents

Year: 2005

Gender	AT RISK			NOT AT RISK			Estimated Adult Population
	#	%	C.I. (95%)	#	%	C.I. (95%)	#
Female	103,140	21.0	19.3 - 22.7	387,848	79.0	77.3 - 80.7	490,988
Male	86,932	17.9	15.8 - 20.0	398,765	82.1	80.0 - 84.2	485,697

County and Community	AT RISK			NOT AT RISK			Estimated Adult Population
	#	%	C.I. (95%)	#	%	C.I. (95%)	#
Hawaii-Hilo	7,275	20.4	15.9 - 25.0	28,335	79.6	75.0 - 84.1	35,610
Hawaii-Kona	6,335	21.6	16.1 - 27.1	23,001	78.4	72.9 - 83.9	29,336
Hawaii-N.Hawaii	4,599	18.6	14.1 - 23.0	20,187	81.4	77.0 - 85.9	24,786
Hawaii-Puna/ Kau	6,679	21.4	16.4 - 26.5	24,462	78.6	73.5 - 83.6	31,141
Honolulu-Aiea/ Pearl City	13,861	19.6	14.4 - 24.9	56,788	80.4	75.1 - 85.6	70,649
Honolulu-Ala Moana	8,323	24.9	17.5 - 32.3	25,095	75.1	67.7 - 82.5	33,418
Honolulu-Kaaawa/ Kahaluu/ Kaneohe	10,705	20.3	13.1 - 27.4	42,151	79.7	72.6 - 86.9	52,856
Honolulu-Kailua/ Waimanalo	7,568	15.5	9.6 - 21.4	41,227	84.5	78.6 - 90.4	48,795

Have Any Leisure Time, Exercise, or Physical Activity in the Past 30 Days by Year Total, County, BRFSS Age Group, DOH Race-Ethnicity, Gender, County and Community, Education Level, Employment Status (Grouped), Household Income, Island, Marital Status (Grouped), Poverty Level, for the Year(s) - 2000, 2001, 2002, 2003, 2004, 2005, 2006, 2007

Note: Weighted numbers (#), percentages and 95% confidence intervals; Respondents aged 18 years and older; n/r (Not Reportable) - Represents cell size restriction of unweighted count < 50; n/a (Not Available) - Not asked of a subset of respondents

Year: 2005

County and Community	AT RISK			NOT AT RISK			Estimated Adult Population
	#	%	C.I. (95%)	#	%	C.I. (95%)	#
Honolulu-Kaimuki/ Palolo/ Waikiki	14,011	21.1	15.8 - 26.4	52,350	78.9	73.6 - 84.2	66,361
Honolulu-Manoa/ Upper Makiki	6,837	15.5	10.3 - 20.7	37,191	84.5	79.3 - 89.7	44,028
Honolulu-Mililani/ Wahiawa	13,634	18.9	13.9 - 23.9	58,444	81.1	76.1 - 86.1	72,078
Honolulu-Nanakuli/ Waianae	9,258	28.0	17.8 - 38.3	23,766	72.0	61.7 - 82.2	33,024
Honolulu-N.Shore/ Laie	3,527	17.2	6.9 - 27.6	16,926	82.8	72.4 - 93.1	20,453
Honolulu-Nuuanu/ Kalihi/ Moanalua	16,488	23.6	17.3 - 29.8	53,483	76.4	70.2 - 82.7	69,971
Honolulu-Salt Lake/ Foster Village	4,926	14.9	7.9 - 21.9	28,049	85.1	78.1 - 92.1	32,975
Honolulu-Waiialae/ Kahala/ Hawaii Kai	4,721	10.9	6.5 - 15.3	38,553	89.1	84.7 - 93.5	43,274
Honolulu-Waipahu/ Kapolei/ Ewa	24,492	21.0	16.4 - 25.6	92,128	79.0	74.4 - 83.6	116,620
Kauai-Hanalei/ Kapaa	3,160	16.4	11.3 - 21.6	16,092	83.6	78.4 - 88.7	19,252
Kauai-Lihue-Waimea	3,818	14.1	9.8 - 18.4	23,235	85.9	81.6 - 90.2	27,053
Maui-Kahului	7,205	20.9	13.8 - 28.0	27,288	79.1	72.0 - 86.2	34,493
Maui-Lanai	474	18.7	11.5 - 25.9	2,062	81.3	74.1 - 88.5	2,536

Have Any Leisure Time, Exercise, or Physical Activity in the Past 30 Days by Year Total, County, BRFSS Age Group, DOH Race-Ethnicity, Gender, County and Community, Education Level, Employment Status (Grouped), Household Income, Island, Marital Status (Grouped), Poverty Level, for the Year(s) - 2000, 2001, 2002, 2003, 2004, 2005, 2006, 2007

Note: Weighted numbers (#), percentages and 95% confidence intervals; Respondents aged 18 years and older; n/r (Not Reportable) - Represents cell size restriction of unweighted count < 50; n/a (Not Available) - Not asked of a subset of respondents

Year: 2005

County and Community	AT RISK			NOT AT RISK			Estimated Adult Population
	#	%	C.I. (95%)	#	%	C.I. (95%)	#
Maui-Lahaina/ Wailuku	4,879	15.3	10.4 - 20.2	26,972	84.7	79.8 - 89.6	31,851
Maui-Molokai	1,362	25.2	16.9 - 33.5	4,038	74.8	66.5 - 83.1	5,400
Maui-Upcountry/ Hana	5,935	19.3	13.2 - 25.4	24,792	80.7	74.6 - 86.8	30,727

Education Level	AT RISK			NOT AT RISK			Estimated Adult Population
	#	%	C.I. (95%)	#	%	C.I. (95%)	#
Grades 9 thru 11 (Some High School)	13,227	33.4	24.9 - 41.9	26,379	66.6	58.1 - 75.1	39,606
Grades 12 or GED (High School Grad)	76,250	27.2	24.5 - 30.0	203,645	72.8	70.0 - 75.5	279,895
College 1 to 3 years (Some College/ Tech)	48,627	17.2	14.8 - 19.6	234,604	82.8	80.4 - 85.2	283,231
College 4 years or more (College Grad)	44,135	12.6	10.7 - 14.4	306,790	87.4	85.6 - 89.3	350,925
Never attended school/ Only Kindergarten to Grades 8	6,649	32.3	19.8 - 44.8	13,921	67.7	55.2 - 80.2	20,570

Have Any Leisure Time, Exercise, or Physical Activity in the Past 30 Days by Year Total, County, BRFSS Age Group, DOH Race-Ethnicity, Gender, County and Community, Education Level, Employment Status (Grouped), Household Income, Island, Marital Status (Grouped), Poverty Level, for the Year(s) - 2000, 2001, 2002, 2003, 2004, 2005, 2006, 2007

Note: Weighted numbers (#), percentages and 95% confidence intervals; Respondents aged 18 years and older; n/r (Not Reportable) - Represents cell size restriction of unweighted count < 50; n/a (Not Available) - Not asked of a subset of respondents

Year: 2005

Employment Status (Grouped)	AT RISK			NOT AT RISK			Estimated Adult Population
	#	%	C.I. (95%)	#	%	C.I. (95%)	#
Employed	109,784	17.5	15.8 - 19.1	519,246	82.5	80.9 - 84.2	629,030
Unemployed	4,665	24.7	15.6 - 33.7	14,248	75.3	66.3 - 84.4	18,913
Student/Homemaker	15,784	16.6	11.9 - 21.2	79,471	83.4	78.8 - 88.1	95,255
Retired/Unable to work	58,756	25.5	22.8 - 28.1	172,005	74.5	71.9 - 77.2	230,761

Have Any Leisure Time, Exercise, or Physical Activity in the Past 30 Days by Year Total, County, BRFSS Age Group, DOH Race-Ethnicity, Gender, County and Community, Education Level, Employment Status (Grouped), Household Income, Island, Marital Status (Grouped), Poverty Level, for the Year(s) - 2000, 2001, 2002, 2003, 2004, 2005, 2006, 2007

Note: Weighted numbers (#), percentages and 95% confidence intervals; Respondents aged 18 years and older; n/r (Not Reportable) - Represents cell size restriction of unweighted count < 50; n/a (Not Available) - Not asked of a subset of respondents

Year: 2005

Household Income	AT RISK			NOT AT RISK			Estimated Adult Population
	#	%	C.I. (95%)	#	%	C.I. (95%)	#
Less than \$10,000	10,068	36.5	26.1 - 46.9	17,514	63.5	53.1 - 73.9	27,582
\$10,000 to \$14,999	7,481	26.5	17.8 - 35.1	20,795	73.5	64.9 - 82.2	28,276
\$15,000 to \$19,999	13,874	27.2	20.4 - 34.1	37,068	72.8	65.9 - 79.6	50,942
\$20,000 to \$24,999	15,364	24.8	19.4 - 30.3	46,486	75.2	69.7 - 80.6	61,850
\$25,000 to \$34,999	19,870	19.7	15.9 - 23.5	81,030	80.3	76.5 - 84.1	100,900
\$35,000 to \$49,999	28,006	18.3	15.2 - 21.5	124,749	81.7	78.5 - 84.8	152,755
\$50,000 to \$74,999	29,698	16.3	13.4 - 19.2	152,646	83.7	80.8 - 86.6	182,344
\$75,000 or more	29,777	12.9	10.6 - 15.2	200,999	87.1	84.8 - 89.4	230,776

Have Any Leisure Time, Exercise, or Physical Activity in the Past 30 Days by Year Total, County, BRFSS Age Group, DOH Race-Ethnicity, Gender, County and Community, Education Level, Employment Status (Grouped), Household Income, Island, Marital Status (Grouped), Poverty Level, for the Year(s) - 2000, 2001, 2002, 2003, 2004, 2005, 2006, 2007

Note: Weighted numbers (#), percentages and 95% confidence intervals; Respondents aged 18 years and older; n/r (Not Reportable) - Represents cell size restriction of unweighted count < 50; n/a (Not Available) - Not asked of a subset of respondents

Year: 2005

Island	AT RISK			NOT AT RISK			Estimated Adult Population
	#	%	C.I. (95%)	#	%	C.I. (95%)	#
Hawaii	24,888	20.6	18.1 - 23.1	95,984	79.4	76.9 - 81.9	120,872
Kauai	6,978	15.1	11.8 - 18.4	39,327	84.9	81.6 - 88.2	46,305
Maui	18,019	18.6	15.0 - 22.2	79,052	81.4	77.8 - 85.0	97,071
Lanai	474	18.7	11.5 - 25.9	2,062	81.3	74.1 - 88.5	2,536
Molokai	1,362	25.2	16.9 - 33.5	4,038	74.8	66.5 - 83.1	5,400
Oahu	138,351	19.6	17.9 - 21.4	566,151	80.4	78.6 - 82.1	704,502

Have Any Leisure Time, Exercise, or Physical Activity in the Past 30 Days by Year Total, County, BRFSS Age Group, DOH Race-Ethnicity, Gender, County and Community, Education Level, Employment Status (Grouped), Household Income, Island, Marital Status (Grouped), Poverty Level, for the Year(s) - 2000, 2001, 2002, 2003, 2004, 2005, 2006, 2007

Note: Weighted numbers (#), percentages and 95% confidence intervals; Respondents aged 18 years and older; n/r (Not Reportable) - Represents cell size restriction of unweighted count < 50; n/a (Not Available) - Not asked of a subset of respondents

Year: 2005

Marital Status (Grouped)	AT RISK			NOT AT RISK			Estimated Adult Population
	#	%	C.I. (95%)	#	%	C.I. (95%)	#
Married	108,126	18.6	16.9 - 20.2	474,749	81.4	79.8 - 83.1	582,875
Unmarried Couple	2,869	11.0	5.9 - 16.1	23,263	89.0	83.9 - 94.1	26,132
Widowed	16,550	28.5	23.7 - 33.3	41,473	71.5	66.7 - 76.3	58,023
Other	62,527	20.2	17.5 - 22.9	247,129	79.8	77.1 - 82.5	309,656

Have Any Leisure Time, Exercise, or Physical Activity in the Past 30 Days by Year Total, County, BRFSS Age Group, DOH Race-Ethnicity, Gender, County and Community, Education Level, Employment Status (Grouped), Household Income, Island, Marital Status (Grouped), Poverty Level, for the Year(s) - 2000, 2001, 2002, 2003, 2004, 2005, 2006, 2007

Note: Weighted numbers (#), percentages and 95% confidence intervals; Respondents aged 18 years and older; n/r (Not Reportable) - Represents cell size restriction of unweighted count < 50; n/a (Not Available) - Not asked of a subset of respondents

Year: 2005

Poverty Level	AT RISK			NOT AT RISK			Estimated Adult Population
	#	%	C.I. (95%)	#	%	C.I. (95%)	#
1-50%	13,654	34.1	24.6 - 43.7	26,340	65.9	56.3 - 75.4	39,994
51-100%	15,893	26.4	19.8 - 33.0	44,290	73.6	67.0 - 80.2	60,183
101-120%	11,031	21.4	15.4 - 27.4	40,552	78.6	72.6 - 84.6	51,583
121-130%	3,692	22.0	12.3 - 31.7	13,103	78.0	68.3 - 87.7	16,795
131-150%	5,590	20.6	12.3 - 28.9	21,535	79.4	71.1 - 87.7	27,125
151-170%	14,711	22.7	17.5 - 28.0	50,037	77.3	72.0 - 82.5	64,748
181-185%	n/r	n/r	n/r	n/r	n/r	n/r	n/r
186+%	89,566	15.6	14.1 - 17.1	484,838	84.4	82.9 - 85.9	574,404

Have Any Leisure Time, Exercise, or Physical Activity in the Past 30 Days by Year Total, County, BRFSS Age Group, DOH Race-Ethnicity, Gender, County and Community, Education Level, Employment Status (Grouped), Household Income, Island, Marital Status (Grouped), Poverty Level, for the Year(s) - 2000, 2001, 2002, 2003, 2004, 2005, 2006, 2007

Note: Weighted numbers (#), percentages and 95% confidence intervals; Respondents aged 18 years and older; n/r (Not Reportable) - Represents cell size restriction of unweighted count < 50; n/a (Not Available) - Not asked of a subset of respondents

Year: 2005

Year: 2006

Year Total	AT RISK			NOT AT RISK			Estimated Adult Population
	#	%	C.I. (95%)	#	%	C.I. (95%)	#
State	188,083	19.3	17.9 - 20.6	788,097	80.7	79.4 - 82.1	976,180

Have Any Leisure Time, Exercise, or Physical Activity in the Past 30 Days by Year Total, County, BRFSS Age Group, DOH Race-Ethnicity, Gender, County and Community, Education Level, Employment Status (Grouped), Household Income, Island, Marital Status (Grouped), Poverty Level, for the Year(s) - 2000, 2001, 2002, 2003, 2004, 2005, 2006, 2007

Note: Weighted numbers (#), percentages and 95% confidence intervals; Respondents aged 18 years and older; n/r (Not Reportable) - Represents cell size restriction of unweighted count < 50; n/a (Not Available) - Not asked of a subset of respondents

Year: 2006

County	AT RISK			NOT AT RISK			Estimated Adult Population
	#	%	C.I. (95%)	#	%	C.I. (95%)	#
Hawaii	23,614	19.4	16.9 - 21.9	98,225	80.6	78.1 - 83.1	121,839
Honolulu	137,004	19.6	17.8 - 21.3	562,820	80.4	78.7 - 82.2	699,824
Kauai	8,146	17.0	13.3 - 20.6	39,855	83.0	79.4 - 86.7	48,001
Maui	19,319	18.1	15.3 - 21.0	87,198	81.9	79.0 - 84.7	106,517

Have Any Leisure Time, Exercise, or Physical Activity in the Past 30 Days by Year Total, County, BRFSS Age Group, DOH Race-Ethnicity, Gender, County and Community, Education Level, Employment Status (Grouped), Household Income, Island, Marital Status (Grouped), Poverty Level, for the Year(s) - 2000, 2001, 2002, 2003, 2004, 2005, 2006, 2007

Note: Weighted numbers (#), percentages and 95% confidence intervals; Respondents aged 18 years and older; n/r (Not Reportable) - Represents cell size restriction of unweighted count < 50; n/a (Not Available) - Not asked of a subset of respondents

Year: 2006

BRFSS Age Group	AT RISK			NOT AT RISK			Estimated Adult Population
	#	%	C.I. (95%)	#	%	C.I. (95%)	#
18-24	19,061	15.4	11.1 - 19.7	104,625	84.6	80.3 - 88.9	123,686
25-34	27,419	16.9	13.5 - 20.4	134,529	83.1	79.6 - 86.5	161,948
35-44	34,493	19.4	16.3 - 22.5	143,117	80.6	77.5 - 83.7	177,610
45-54	34,704	19.3	16.6 - 22.0	145,346	80.7	78.0 - 83.4	180,050
55-64	31,686	21.5	18.0 - 25.0	115,821	78.5	75.0 - 82.0	147,507
65-74	16,798	20.1	16.4 - 23.9	66,610	79.9	76.1 - 83.6	83,408
75+	22,705	24.2	20.1 - 28.3	71,208	75.8	71.7 - 79.9	93,913

Have Any Leisure Time, Exercise, or Physical Activity in the Past 30 Days by Year Total, County, BRFSS Age Group, DOH Race-Ethnicity, Gender, County and Community, Education Level, Employment Status (Grouped), Household Income, Island, Marital Status (Grouped), Poverty Level, for the Year(s) - 2000, 2001, 2002, 2003, 2004, 2005, 2006, 2007

Note: Weighted numbers (#), percentages and 95% confidence intervals; Respondents aged 18 years and older; n/r (Not Reportable) - Represents cell size restriction of unweighted count < 50; n/a (Not Available) - Not asked of a subset of respondents

Year: 2006

DOH Race-Ethnicity	AT RISK			NOT AT RISK			Estimated Adult Population
	#	%	C.I. (95%)	#	%	C.I. (95%)	#
White	41,830	13.1	11.5 - 14.6	278,621	86.9	85.4 - 88.5	320,451
Native Hawaiian	22,749	18.8	15.1 - 22.6	98,168	81.2	77.4 - 84.9	120,917
Chinese	6,938	14.8	10.1 - 19.5	39,894	85.2	80.5 - 89.9	46,832
Filipino	45,288	29.2	24.6 - 33.8	109,753	70.8	66.2 - 75.4	155,041
Japanese	45,205	21.7	18.9 - 24.6	162,918	78.3	75.4 - 81.1	208,123
Black	1,970	13.6	3.4 - 23.8	12,501	86.4	76.2 - 96.6	14,471
Other Pacific Islander	9,299	36.4	24.0 - 48.9	16,225	63.6	51.1 - 76.0	25,524
Other Asian	5,647	19.5	11.9 - 27.0	23,380	80.5	73.0 - 88.1	29,027
Native Alaskan/ American Indian	n/r	n/r	n/r	n/r	n/r	n/r	n/r
Other	4,112	19.0	10.7 - 27.2	17,572	81.0	72.8 - 89.3	21,684
Mixed Ethnicity	3,832	15.9	8.4 - 23.5	20,195	84.1	76.5 - 91.6	24,027

Have Any Leisure Time, Exercise, or Physical Activity in the Past 30 Days by Year Total, County, BRFSS Age Group, DOH Race-Ethnicity, Gender, County and Community, Education Level, Employment Status (Grouped), Household Income, Island, Marital Status (Grouped), Poverty Level, for the Year(s) - 2000, 2001, 2002, 2003, 2004, 2005, 2006, 2007

Note: Weighted numbers (#), percentages and 95% confidence intervals; Respondents aged 18 years and older; n/r (Not Reportable) - Represents cell size restriction of unweighted count < 50; n/a (Not Available) - Not asked of a subset of respondents

Year: 2006

Gender	AT RISK			NOT AT RISK			Estimated Adult Population
	#	%	C.I. (95%)	#	%	C.I. (95%)	#
Female	115,880	23.5	21.5 - 25.4	378,185	76.5	74.6 - 78.5	494,065
Male	72,203	15.0	13.2 - 16.7	409,912	85.0	83.3 - 86.8	482,115

County and Community	AT RISK			NOT AT RISK			Estimated Adult Population
	#	%	C.I. (95%)	#	%	C.I. (95%)	#
Hawaii-Hilo	7,364	21.3	16.7 - 25.8	27,280	78.7	74.2 - 83.3	34,644
Hawaii-Kona	5,149	17.4	12.7 - 22.2	24,363	82.6	77.8 - 87.3	29,512
Hawaii-N.Hawaii	5,123	19.6	14.0 - 25.1	21,068	80.4	74.9 - 86.0	26,191
Hawaii-Puna/ Kau	5,979	19.0	14.0 - 24.0	25,514	81.0	76.0 - 86.0	31,493
Honolulu-Aiea/ Pearl City	14,199	21.3	15.5 - 27.0	52,577	78.7	73.0 - 84.5	66,776
Honolulu-Ala Moana	7,108	21.3	14.7 - 28.0	26,227	78.7	72.0 - 85.3	33,335
Honolulu-Kaaawa/ Kahaluu/ Kaneohe	7,301	15.1	9.5 - 20.7	40,947	84.9	79.3 - 90.5	48,248
Honolulu-Kailua/ Waimanalo	7,448	15.1	10.2 - 19.9	42,006	84.9	80.1 - 89.8	49,454

Have Any Leisure Time, Exercise, or Physical Activity in the Past 30 Days by Year Total, County, BRFSS Age Group, DOH Race-Ethnicity, Gender, County and Community, Education Level, Employment Status (Grouped), Household Income, Island, Marital Status (Grouped), Poverty Level, for the Year(s) - 2000, 2001, 2002, 2003, 2004, 2005, 2006, 2007

Note: Weighted numbers (#), percentages and 95% confidence intervals; Respondents aged 18 years and older; n/r (Not Reportable) - Represents cell size restriction of unweighted count < 50; n/a (Not Available) - Not asked of a subset of respondents

Year: 2006

County and Community	AT RISK			NOT AT RISK			Estimated Adult Population
	#	%	C.I. (95%)	#	%	C.I. (95%)	#
Honolulu-Kaimuki/ Palolo/ Waikiki	8,328	14.5	10.0 - 19.0	49,112	85.5	81.0 - 90.0	57,440
Honolulu-Manoa/ Upper Makiki	8,904	18.6	12.5 - 24.7	39,062	81.4	75.3 - 87.5	47,966
Honolulu-Mililani/ Wahiawa	15,159	23.0	17.5 - 28.5	50,803	77.0	71.5 - 82.5	65,962
Honolulu-Nanakuli/ Waianae	8,885	31.5	19.9 - 43.1	19,317	68.5	56.9 - 80.1	28,202
Honolulu-N.Shore/ Laie	4,252	17.5	9.0 - 25.9	20,082	82.5	74.1 - 91.0	24,334
Honolulu-Nuuanu/ Kalihi/ Moanalua	22,811	30.4	23.4 - 37.5	52,104	69.6	62.5 - 76.6	74,915
Honolulu-Salt Lake/ Foster Village	6,004	16.5	8.8 - 24.1	30,436	83.5	75.9 - 91.2	36,440
Honolulu-Waiialae/ Kahala/ Hawaii Kai	4,587	10.7	6.2 - 15.3	38,183	89.3	84.7 - 93.8	42,770
Honolulu-Waipahu/ Kapolei/ Ewa	22,018	17.8	13.7 - 21.9	101,964	82.2	78.1 - 86.3	123,982
Kauai-Hanalei/ Kapaa	3,250	15.6	10.4 - 20.8	17,597	84.4	79.2 - 89.6	20,847
Kauai-Lihue-Waimea	4,896	18.0	13.0 - 23.0	22,257	82.0	77.0 - 87.0	27,153
Maui-Kahului	7,267	22.1	15.9 - 28.2	25,635	77.9	71.8 - 84.1	32,902
Maui-Lanai	310	13.0	7.2 - 18.8	2,079	87.0	81.2 - 92.8	2,389

Have Any Leisure Time, Exercise, or Physical Activity in the Past 30 Days by Year Total, County, BRFSS Age Group, DOH Race-Ethnicity, Gender, County and Community, Education Level, Employment Status (Grouped), Household Income, Island, Marital Status (Grouped), Poverty Level, for the Year(s) - 2000, 2001, 2002, 2003, 2004, 2005, 2006, 2007

Note: Weighted numbers (#), percentages and 95% confidence intervals; Respondents aged 18 years and older; n/r (Not Reportable) - Represents cell size restriction of unweighted count < 50; n/a (Not Available) - Not asked of a subset of respondents

Year: 2006

County and Community	AT RISK			NOT AT RISK			Estimated Adult Population
	#	%	C.I. (95%)	#	%	C.I. (95%)	#
Maui-Lahaina/ Wailuku	6,058	18.5	13.4 - 23.7	26,667	81.5	76.3 - 86.6	32,725
Maui-Molokai	1,334	20.3	13.5 - 27.0	5,243	79.7	73.0 - 86.5	6,577
Maui-Upcountry/ Hana	4,350	13.6	9.4 - 17.8	27,574	86.4	82.2 - 90.6	31,924

Education Level	AT RISK			NOT AT RISK			Estimated Adult Population
	#	%	C.I. (95%)	#	%	C.I. (95%)	#
Grades 9 thru 11 (Some High School)	13,218	32.4	24.3 - 40.5	27,601	67.6	59.5 - 75.7	40,819
Grades 12 or GED (High School Grad)	74,268	25.4	22.5 - 28.3	218,144	74.6	71.7 - 77.5	292,412
College 1 to 3 years (Some College/ Tech)	52,692	18.7	16.3 - 21.1	229,359	81.3	78.9 - 83.7	282,051
College 4 years or more (College Grad)	42,123	12.3	10.5 - 14.0	301,523	87.7	86.0 - 89.5	343,646
Never attended school/ Only Kindergarten to Grades 8	5,321	32.8	21.8 - 43.8	10,896	67.2	56.2 - 78.2	16,217

Have Any Leisure Time, Exercise, or Physical Activity in the Past 30 Days by Year Total, County, BRFSS Age Group, DOH Race-Ethnicity, Gender, County and Community, Education Level, Employment Status (Grouped), Household Income, Island, Marital Status (Grouped), Poverty Level, for the Year(s) - 2000, 2001, 2002, 2003, 2004, 2005, 2006, 2007

Note: Weighted numbers (#), percentages and 95% confidence intervals; Respondents aged 18 years and older; n/r (Not Reportable) - Represents cell size restriction of unweighted count < 50; n/a (Not Available) - Not asked of a subset of respondents

Year: 2006

Employment Status (Grouped)	AT RISK			NOT AT RISK			Estimated Adult Population
	#	%	C.I. (95%)	#	%	C.I. (95%)	#
Employed	108,943	17.3	15.7 - 18.9	519,456	82.7	81.1 - 84.3	628,399
Unemployed	12,140	34.0	24.3 - 43.7	23,563	66.0	56.3 - 75.7	35,703
Student/Homemaker	16,201	17.9	13.1 - 22.6	74,515	82.1	77.4 - 86.9	90,716
Retired/Unable to work	50,404	22.9	20.4 - 25.5	169,374	77.1	74.5 - 79.6	219,778

Have Any Leisure Time, Exercise, or Physical Activity in the Past 30 Days by Year Total, County, BRFSS Age Group, DOH Race-Ethnicity, Gender, County and Community, Education Level, Employment Status (Grouped), Household Income, Island, Marital Status (Grouped), Poverty Level, for the Year(s) - 2000, 2001, 2002, 2003, 2004, 2005, 2006, 2007

Note: Weighted numbers (#), percentages and 95% confidence intervals; Respondents aged 18 years and older; n/r (Not Reportable) - Represents cell size restriction of unweighted count < 50; n/a (Not Available) - Not asked of a subset of respondents

Year: 2006

Household Income	AT RISK			NOT AT RISK			Estimated Adult Population
	#	%	C.I. (95%)	#	%	C.I. (95%)	#
Less than \$10,000	6,603	25.3	16.9 - 33.6	19,511	74.7	66.4 - 83.1	26,114
\$10,000 to \$14,999	7,457	28.9	20.1 - 37.7	18,365	71.1	62.3 - 79.9	25,822
\$15,000 to \$19,999	11,905	27.0	20.4 - 33.7	32,116	73.0	66.3 - 79.6	44,021
\$20,000 to \$24,999	16,646	25.1	19.2 - 31.0	49,572	74.9	69.0 - 80.8	66,218
\$25,000 to \$34,999	28,764	27.1	22.1 - 32.1	77,341	72.9	67.9 - 77.9	106,105
\$35,000 to \$49,999	26,111	19.5	16.3 - 22.8	107,505	80.5	77.2 - 83.7	133,616
\$50,000 to \$74,999	21,397	13.7	11.1 - 16.4	134,538	86.3	83.6 - 88.9	155,935
\$75,000 or more	26,050	10.7	8.8 - 12.7	216,450	89.3	87.3 - 91.2	242,500

Have Any Leisure Time, Exercise, or Physical Activity in the Past 30 Days by Year Total, County, BRFSS Age Group, DOH Race-Ethnicity, Gender, County and Community, Education Level, Employment Status (Grouped), Household Income, Island, Marital Status (Grouped), Poverty Level, for the Year(s) - 2000, 2001, 2002, 2003, 2004, 2005, 2006, 2007

Note: Weighted numbers (#), percentages and 95% confidence intervals; Respondents aged 18 years and older; n/r (Not Reportable) - Represents cell size restriction of unweighted count < 50; n/a (Not Available) - Not asked of a subset of respondents

Year: 2006

Island	AT RISK			NOT AT RISK			Estimated Adult Population
	#	%	C.I. (95%)	#	%	C.I. (95%)	#
Hawaii	23,614	19.4	16.9 - 21.8	98,225	80.6	78.2 - 83.1	121,839
Kauai	8,146	17.0	13.4 - 20.6	39,855	83.0	79.4 - 86.6	48,001
Maui	17,675	18.1	15.1 - 21.2	79,877	81.9	78.8 - 84.9	97,552
Lanai	310	13.0	7.2 - 18.8	2,079	87.0	81.2 - 92.8	2,389
Molokai	1,334	20.3	13.5 - 27.0	5,243	79.7	73.0 - 86.5	6,577
Oahu	137,004	19.6	17.8 - 21.3	562,820	80.4	78.7 - 82.2	699,824

Have Any Leisure Time, Exercise, or Physical Activity in the Past 30 Days by Year Total, County, BRFSS Age Group, DOH Race-Ethnicity, Gender, County and Community, Education Level, Employment Status (Grouped), Household Income, Island, Marital Status (Grouped), Poverty Level, for the Year(s) - 2000, 2001, 2002, 2003, 2004, 2005, 2006, 2007

Note: Weighted numbers (#), percentages and 95% confidence intervals; Respondents aged 18 years and older; n/r (Not Reportable) - Represents cell size restriction of unweighted count < 50; n/a (Not Available) - Not asked of a subset of respondents

Year: 2006

Marital Status (Grouped)	AT RISK			NOT AT RISK			Estimated Adult Population
	#	%	C.I. (95%)	#	%	C.I. (95%)	#
Married	106,234	18.4	16.7 - 20.1	471,138	81.6	79.9 - 83.3	577,372
Unmarried Couple	5,010	15.6	8.8 - 22.5	27,020	84.4	77.5 - 91.2	32,030
Widowed	13,615	24.8	19.6 - 30.0	41,313	75.2	70.0 - 80.4	54,928
Other	63,224	20.3	17.8 - 22.8	248,627	79.7	77.2 - 82.2	311,851

Have Any Leisure Time, Exercise, or Physical Activity in the Past 30 Days by Year Total, County, BRFSS Age Group, DOH Race-Ethnicity, Gender, County and Community, Education Level, Employment Status (Grouped), Household Income, Island, Marital Status (Grouped), Poverty Level, for the Year(s) - 2000, 2001, 2002, 2003, 2004, 2005, 2006, 2007

Note: Weighted numbers (#), percentages and 95% confidence intervals; Respondents aged 18 years and older; n/r (Not Reportable) - Represents cell size restriction of unweighted count < 50; n/a (Not Available) - Not asked of a subset of respondents

Year: 2006

Poverty Level	AT RISK			NOT AT RISK			Estimated Adult Population
	#	%	C.I. (95%)	#	%	C.I. (95%)	#
1-50%	9,648	27.0	19.0 - 35.1	26,042	73.0	64.9 - 81.0	35,690
51-100%	27,590	29.8	23.5 - 36.0	65,062	70.2	64.0 - 76.5	92,652
101-120%	11,940	27.1	20.3 - 34.0	32,087	72.9	66.0 - 79.7	44,027
121-130%	n/r	n/r	n/r	n/r	n/r	n/r	n/r
131-150%	8,985	22.6	16.1 - 29.1	30,747	77.4	70.9 - 83.9	39,732
151-170%	10,526	25.0	18.4 - 31.6	31,563	75.0	68.4 - 81.6	42,089
171-180%	n/r	n/r	n/r	n/r	n/r	n/r	n/r
181-185%	6,076	23.0	14.1 - 31.9	20,331	77.0	68.1 - 85.9	26,407
186+%	69,172	13.6	12.2 - 14.9	441,055	86.4	85.1 - 87.8	510,227

Have Any Leisure Time, Exercise, or Physical Activity in the Past 30 Days by Year Total, County, BRFSS Age Group, DOH Race-Ethnicity, Gender, County and Community, Education Level, Employment Status (Grouped), Household Income, Island, Marital Status (Grouped), Poverty Level, for the Year(s) - 2000, 2001, 2002, 2003, 2004, 2005, 2006, 2007

Note: Weighted numbers (#), percentages and 95% confidence intervals; Respondents aged 18 years and older; n/r (Not Reportable) - Represents cell size restriction of unweighted count < 50; n/a (Not Available) - Not asked of a subset of respondents

Year: 2006

Year: 2007

Year Total	AT RISK			NOT AT RISK			Estimated Adult Population
	#	%	C.I. (95%)	#	%	C.I. (95%)	#
State	178,191	18.0	16.7 - 19.3	809,307	82.0	80.7 - 83.3	987,498

Have Any Leisure Time, Exercise, or Physical Activity in the Past 30 Days by Year Total, County, BRFSS Age Group, DOH Race-Ethnicity, Gender, County and Community, Education Level, Employment Status (Grouped), Household Income, Island, Marital Status (Grouped), Poverty Level, for the Year(s) - 2000, 2001, 2002, 2003, 2004, 2005, 2006, 2007

Note: Weighted numbers (#), percentages and 95% confidence intervals; Respondents aged 18 years and older; n/r (Not Reportable) - Represents cell size restriction of unweighted count < 50; n/a (Not Available) - Not asked of a subset of respondents

Year: 2007

County	AT RISK			NOT AT RISK			Estimated Adult Population
	#	%	C.I. (95%)	#	%	C.I. (95%)	#
Hawaii	23,161	17.9	15.4 - 20.4	106,086	82.1	79.6 - 84.6	129,247
Honolulu	125,481	17.9	16.2 - 19.5	577,492	82.1	80.5 - 83.8	702,973
Kauai	7,553	16.0	12.2 - 19.7	39,733	84.0	80.3 - 87.8	47,286
Maui	21,996	20.4	17.0 - 23.7	85,995	79.6	76.3 - 83.0	107,991

Have Any Leisure Time, Exercise, or Physical Activity in the Past 30 Days by Year Total, County, BRFSS Age Group, DOH Race-Ethnicity, Gender, County and Community, Education Level, Employment Status (Grouped), Household Income, Island, Marital Status (Grouped), Poverty Level, for the Year(s) - 2000, 2001, 2002, 2003, 2004, 2005, 2006, 2007

Note: Weighted numbers (#), percentages and 95% confidence intervals; Respondents aged 18 years and older; n/r (Not Reportable) - Represents cell size restriction of unweighted count < 50; n/a (Not Available) - Not asked of a subset of respondents

Year: 2007

BRFSS Age Group	AT RISK			NOT AT RISK			Estimated Adult Population
	#	%	C.I. (95%)	#	%	C.I. (95%)	#
18-24	17,900	14.2	9.4 - 19.0	107,916	85.8	81.0 - 90.6	125,816
25-34	28,955	18.1	14.5 - 21.6	131,359	81.9	78.4 - 85.5	160,314
35-44	26,721	15.2	12.6 - 17.9	148,603	84.8	82.1 - 87.4	175,324
45-54	33,430	18.0	15.2 - 20.8	152,252	82.0	79.2 - 84.8	185,682
55-64	27,631	17.8	15.0 - 20.5	127,915	82.2	79.5 - 85.0	155,546
65-74	16,956	20.2	16.7 - 23.7	66,989	79.8	76.3 - 83.3	83,945
75+	25,055	25.9	21.7 - 30.1	71,759	74.1	69.9 - 78.3	96,814

Have Any Leisure Time, Exercise, or Physical Activity in the Past 30 Days by Year Total, County, BRFSS Age Group, DOH Race-Ethnicity, Gender, County and Community, Education Level, Employment Status (Grouped), Household Income, Island, Marital Status (Grouped), Poverty Level, for the Year(s) - 2000, 2001, 2002, 2003, 2004, 2005, 2006, 2007

Note: Weighted numbers (#), percentages and 95% confidence intervals; Respondents aged 18 years and older; n/r (Not Reportable) - Represents cell size restriction of unweighted count < 50; n/a (Not Available) - Not asked of a subset of respondents

Year: 2007

DOH Race-Ethnicity	AT RISK			NOT AT RISK			Estimated Adult Population
	#	%	C.I. (95%)	#	%	C.I. (95%)	#
White	36,542	11.7	10.1 - 13.3	276,578	88.3	86.7 - 89.9	313,120
Native Hawaiian	28,900	21.3	17.6 - 25.0	107,048	78.7	75.0 - 82.4	135,948
Chinese	11,239	20.4	14.2 - 26.7	43,725	79.6	73.3 - 85.8	54,964
Filipino	42,568	24.5	20.5 - 28.5	131,272	75.5	71.5 - 79.5	173,840
Japanese	41,711	19.3	16.7 - 21.9	174,230	80.7	78.1 - 83.3	215,941
Black	3,206	19.5	6.5 - 32.6	13,219	80.5	67.4 - 93.5	16,425
Other Pacific Islander	4,045	17.8	8.5 - 27.1	18,680	82.2	72.9 - 91.5	22,725
Other Asian	4,119	18.8	9.6 - 28.0	17,790	81.2	72.0 - 90.4	21,909
Native Alaskan/ American Indian	n/r	n/r	n/r	n/r	n/r	n/r	n/r
Other	4,352	19.3	9.6 - 29.1	18,142	80.7	70.9 - 90.4	22,494

Have Any Leisure Time, Exercise, or Physical Activity in the Past 30 Days by Year Total, County, BRFSS Age Group, DOH Race-Ethnicity, Gender, County and Community, Education Level, Employment Status (Grouped), Household Income, Island, Marital Status (Grouped), Poverty Level, for the Year(s) - 2000, 2001, 2002, 2003, 2004, 2005, 2006, 2007

Note: Weighted numbers (#), percentages and 95% confidence intervals; Respondents aged 18 years and older; n/r (Not Reportable) - Represents cell size restriction of unweighted count < 50; n/a (Not Available) - Not asked of a subset of respondents

Year: 2007

Gender	AT RISK			NOT AT RISK			Estimated Adult Population
	#	%	C.I. (95%)	#	%	C.I. (95%)	#
Female	109,216	21.8	20.0 - 23.7	390,921	78.2	76.3 - 80.0	500,137
Male	68,975	14.2	12.3 - 16.0	418,386	85.8	84.0 - 87.7	487,361

County and Community	AT RISK			NOT AT RISK			Estimated Adult Population
	#	%	C.I. (95%)	#	%	C.I. (95%)	#
Hawaii-Hilo	5,727	15.7	11.7 - 19.7	30,662	84.3	80.3 - 88.3	36,389
Hawaii-Kona	4,255	15.2	10.1 - 20.4	23,674	84.8	79.6 - 89.9	27,929
Hawaii-N.Hawaii	4,254	14.9	10.5 - 19.4	24,266	85.1	80.6 - 89.5	28,520
Hawaii-Puna/ Kau	8,924	24.5	18.8 - 30.2	27,485	75.5	69.8 - 81.2	36,409
Honolulu-Aiea/ Pearl City	11,904	17.2	12.4 - 22.0	57,147	82.8	78.0 - 87.6	69,051
Honolulu-Ala Moana	5,723	19.6	12.1 - 27.2	23,406	80.4	72.8 - 87.9	29,129
Honolulu-Kaaawa/ Kahaluu/ Kaneohe	9,156	18.4	12.2 - 24.6	40,539	81.6	75.4 - 87.8	49,695
Honolulu-Kailua/ Waimanalo	5,768	10.9	6.6 - 15.2	46,971	89.1	84.8 - 93.4	52,739

Have Any Leisure Time, Exercise, or Physical Activity in the Past 30 Days by Year Total, County, BRFSS Age Group, DOH Race-Ethnicity, Gender, County and Community, Education Level, Employment Status (Grouped), Household Income, Island, Marital Status (Grouped), Poverty Level, for the Year(s) - 2000, 2001, 2002, 2003, 2004, 2005, 2006, 2007

Note: Weighted numbers (#), percentages and 95% confidence intervals; Respondents aged 18 years and older; n/r (Not Reportable) - Represents cell size restriction of unweighted count < 50; n/a (Not Available) - Not asked of a subset of respondents

Year: 2007

County and Community	AT RISK			NOT AT RISK			Estimated Adult Population
	#	%	C.I. (95%)	#	%	C.I. (95%)	#
Honolulu-Kaimuki/ Palolo/ Waikiki	7,604	13.6	9.1 - 18.0	48,499	86.4	82.0 - 90.9	56,103
Honolulu-Manoa/ Upper Makiki	4,103	9.0	5.1 - 12.9	41,560	91.0	87.1 - 94.9	45,663
Honolulu-Mililani/ Wahiawa	13,760	18.5	13.2 - 23.7	60,791	81.5	76.3 - 86.8	74,551
Honolulu-Nanakuli/ Waianae	9,804	24.8	15.5 - 34.2	29,699	75.2	65.8 - 84.5	39,503
Honolulu-N.Shore/ Laie	6,992	31.1	17.6 - 44.6	15,490	68.9	55.4 - 82.4	22,482
Honolulu-Nuuanu/ Kalihi/ Moanalua	16,690	24.8	18.7 - 31.0	50,483	75.2	69.0 - 81.3	67,173
Honolulu-Salt Lake/ Foster Village	5,422	18.9	11.3 - 26.5	23,241	81.1	73.5 - 88.7	28,663
Honolulu-Waiialae/ Kahala/ Hawaii Kai	2,832	7.3	3.3 - 11.4	35,738	92.7	88.6 - 96.7	38,570
Honolulu-Waipahu/ Kapolei/ Ewa	25,724	19.8	15.6 - 24.1	103,929	80.2	75.9 - 84.4	129,653
Kauai-Hanalei/ Kapaa	1,878	9.3	4.9 - 13.7	18,262	90.7	86.3 - 95.1	20,140
Kauai-Lihue-Waimea	5,676	20.9	15.4 - 26.4	21,471	79.1	73.6 - 84.6	27,147
Maui-Kahului	7,382	22.7	16.9 - 28.5	25,132	77.3	71.5 - 83.1	32,514
Maui-Lanai	398	21.0	14.2 - 27.8	1,497	79.0	72.2 - 85.8	1,895

Have Any Leisure Time, Exercise, or Physical Activity in the Past 30 Days by Year Total, County, BRFSS Age Group, DOH Race-Ethnicity, Gender, County and Community, Education Level, Employment Status (Grouped), Household Income, Island, Marital Status (Grouped), Poverty Level, for the Year(s) - 2000, 2001, 2002, 2003, 2004, 2005, 2006, 2007

Note: Weighted numbers (#), percentages and 95% confidence intervals; Respondents aged 18 years and older; n/r (Not Reportable) - Represents cell size restriction of unweighted count < 50; n/a (Not Available) - Not asked of a subset of respondents

Year: 2007

County and Community	AT RISK			NOT AT RISK			Estimated Adult Population
	#	%	C.I. (95%)	#	%	C.I. (95%)	#
Maui-Lahaina/ Wailuku	6,376	20.5	12.6 - 28.4	24,676	79.5	71.6 - 87.4	31,052
Maui-Molokai	1,662	20.4	14.7 - 26.1	6,487	79.6	73.9 - 85.3	8,149
Maui-Upcountry/ Hana	6,177	18.0	12.6 - 23.4	28,203	82.0	76.6 - 87.4	34,380

Education Level	AT RISK			NOT AT RISK			Estimated Adult Population
	#	%	C.I. (95%)	#	%	C.I. (95%)	#
Grades 9 thru 11 (Some High School)	12,250	32.3	24.0 - 40.6	25,672	67.7	59.4 - 76.0	37,922
Grades 12 or GED (High School Grad)	71,402	22.9	20.3 - 25.6	239,741	77.1	74.4 - 79.7	311,143
College 1 to 3 years (Some College/ Tech)	50,603	17.4	15.0 - 19.9	239,629	82.6	80.1 - 85.0	290,232
College 4 years or more (College Grad)	38,393	11.6	9.9 - 13.3	292,658	88.4	86.7 - 90.1	331,051
Never attended school/ Only Kindergarten to Grades 8	5,291	34.1	22.2 - 46.0	10,225	65.9	54.0 - 77.8	15,516

Have Any Leisure Time, Exercise, or Physical Activity in the Past 30 Days by Year Total, County, BRFSS Age Group, DOH Race-Ethnicity, Gender, County and Community, Education Level, Employment Status (Grouped), Household Income, Island, Marital Status (Grouped), Poverty Level, for the Year(s) - 2000, 2001, 2002, 2003, 2004, 2005, 2006, 2007

Note: Weighted numbers (#), percentages and 95% confidence intervals; Respondents aged 18 years and older; n/r (Not Reportable) - Represents cell size restriction of unweighted count < 50; n/a (Not Available) - Not asked of a subset of respondents

Year: 2007

Employment Status (Grouped)	AT RISK			NOT AT RISK			Estimated Adult Population
	#	%	C.I. (95%)	#	%	C.I. (95%)	#
Employed	104,950	16.5	14.9 - 18.1	530,819	83.5	81.9 - 85.1	635,769
Unemployed	8,738	27.2	16.8 - 37.5	23,441	72.8	62.5 - 83.2	32,179
Student/Homemaker	11,864	13.1	9.3 - 16.9	78,695	86.9	83.1 - 90.7	90,559
Retired/Unable to work	52,640	23.0	20.4 - 25.6	175,881	77.0	74.4 - 79.6	228,521

Have Any Leisure Time, Exercise, or Physical Activity in the Past 30 Days by Year Total, County, BRFSS Age Group, DOH Race-Ethnicity, Gender, County and Community, Education Level, Employment Status (Grouped), Household Income, Island, Marital Status (Grouped), Poverty Level, for the Year(s) - 2000, 2001, 2002, 2003, 2004, 2005, 2006, 2007

Note: Weighted numbers (#), percentages and 95% confidence intervals; Respondents aged 18 years and older; n/r (Not Reportable) - Represents cell size restriction of unweighted count < 50; n/a (Not Available) - Not asked of a subset of respondents

Year: 2007

Household Income	AT RISK			NOT AT RISK			Estimated Adult Population
	#	%	C.I. (95%)	#	%	C.I. (95%)	#
Less than \$10,000	8,340	29.4	20.8 - 38.0	20,044	70.6	62.0 - 79.2	28,384
\$10,000 to \$14,999	11,691	38.5	28.2 - 48.7	18,682	61.5	51.3 - 71.8	30,373
\$15,000 to \$19,999	12,668	28.4	22.0 - 34.8	31,916	71.6	65.2 - 78.0	44,584
\$20,000 to \$24,999	14,305	23.9	18.2 - 29.5	45,594	76.1	70.5 - 81.8	59,899
\$25,000 to \$34,999	23,270	20.3	16.4 - 24.3	91,166	79.7	75.7 - 83.6	114,436
\$35,000 to \$49,999	32,795	19.8	16.4 - 23.2	132,718	80.2	76.8 - 83.6	165,513
\$50,000 to \$74,999	26,141	15.4	12.6 - 18.2	143,788	84.6	81.8 - 87.4	169,929
\$75,000 or more	28,403	9.9	8.2 - 11.6	258,174	90.1	88.4 - 91.8	286,577

Have Any Leisure Time, Exercise, or Physical Activity in the Past 30 Days by Year Total, County, BRFSS Age Group, DOH Race-Ethnicity, Gender, County and Community, Education Level, Employment Status (Grouped), Household Income, Island, Marital Status (Grouped), Poverty Level, for the Year(s) - 2000, 2001, 2002, 2003, 2004, 2005, 2006, 2007

Note: Weighted numbers (#), percentages and 95% confidence intervals; Respondents aged 18 years and older; n/r (Not Reportable) - Represents cell size restriction of unweighted count < 50; n/a (Not Available) - Not asked of a subset of respondents

Year: 2007

Island	AT RISK			NOT AT RISK			Estimated Adult Population
	#	%	C.I. (95%)	#	%	C.I. (95%)	#
Hawaii	23,161	17.9	15.4 - 20.4	106,086	82.1	79.6 - 84.6	129,247
Kauai	7,553	16.0	12.2 - 19.7	39,733	84.0	80.3 - 87.8	47,286
Maui	19,935	20.4	16.7 - 24.0	78,012	79.6	76.0 - 83.3	97,947
Lanai	398	21.0	14.2 - 27.8	1,497	79.0	72.2 - 85.8	1,895
Molokai	1,662	20.4	14.7 - 26.1	6,487	79.6	73.9 - 85.3	8,149
Oahu	125,481	17.9	16.2 - 19.5	577,492	82.1	80.5 - 83.8	702,973

Have Any Leisure Time, Exercise, or Physical Activity in the Past 30 Days by Year Total, County, BRFSS Age Group, DOH Race-Ethnicity, Gender, County and Community, Education Level, Employment Status (Grouped), Household Income, Island, Marital Status (Grouped), Poverty Level, for the Year(s) - 2000, 2001, 2002, 2003, 2004, 2005, 2006, 2007

Note: Weighted numbers (#), percentages and 95% confidence intervals; Respondents aged 18 years and older; n/r (Not Reportable) - Represents cell size restriction of unweighted count < 50; n/a (Not Available) - Not asked of a subset of respondents

Year: 2007

Marital Status (Grouped)	AT RISK			NOT AT RISK			Estimated Adult Population
	#	%	C.I. (95%)	#	%	C.I. (95%)	#
Married	102,719	17.5	15.9 - 19.1	484,411	82.5	80.9 - 84.1	587,130
Unmarried Couple	4,053	15.1	8.3 - 21.9	22,794	84.9	78.1 - 91.7	26,847
Widowed	15,062	25.8	21.2 - 30.5	43,248	74.2	69.5 - 78.8	58,310
Other	56,358	17.9	15.3 - 20.5	258,854	82.1	79.5 - 84.7	315,212

Have Any Leisure Time, Exercise, or Physical Activity in the Past 30 Days by Year Total, County, BRFSS Age Group, DOH Race-Ethnicity, Gender, County and Community, Education Level, Employment Status (Grouped), Household Income, Island, Marital Status (Grouped), Poverty Level, for the Year(s) - 2000, 2001, 2002, 2003, 2004, 2005, 2006, 2007

Note: Weighted numbers (#), percentages and 95% confidence intervals; Respondents aged 18 years and older; n/r (Not Reportable) - Represents cell size restriction of unweighted count < 50; n/a (Not Available) - Not asked of a subset of respondents

Year: 2007

Poverty Level	AT RISK			NOT AT RISK			Estimated Adult Population
	#	%	C.I. (95%)	#	%	C.I. (95%)	#
1-50%	14,048	33.4	24.5 - 42.4	27,965	66.6	57.6 - 75.5	42,013
51-100%	25,026	28.4	22.5 - 34.3	63,188	71.6	65.7 - 77.5	88,214
101-120%	12,180	23.7	18.2 - 29.2	39,217	76.3	70.8 - 81.8	51,397
121-130%	3,161	15.0	6.1 - 23.8	17,964	85.0	76.2 - 93.9	21,125
131-150%	8,887	22.8	15.2 - 30.4	30,117	77.2	69.6 - 84.8	39,004
151-170%	9,703	21.3	14.2 - 28.3	35,914	78.7	71.7 - 85.8	45,617
171-180%	6,543	20.5	12.5 - 28.5	25,373	79.5	71.5 - 87.5	31,916
186+%	78,066	13.5	12.1 - 14.8	502,344	86.5	85.2 - 87.9	580,410

Have Any Leisure Time, Exercise, or Physical Activity in the Past 30 Days by Year Total, County, BRFSS Age Group, DOH Race-Ethnicity, Gender, County and Community, Education Level, Employment Status (Grouped), Household Income, Island, Marital Status (Grouped), Poverty Level, for the Year(s) - 2000, 2001, 2002, 2003, 2004, 2005, 2006, 2007

Note: Weighted numbers (#), percentages and 95% confidence intervals; Respondents aged 18 years and older; n/r (Not Reportable) - Represents cell size restriction of unweighted count < 50; n/a (Not Available) - Not asked of a subset of respondents

Year: 2007