

Flu - had shot in past 12 mons by State, County, Island, Community, BRFSS Age Group, DOH Race-Ethnicity, Gender, Education Level, Employment Status (Grouped), Household Income, Poverty Level, Marital Status (Grouped), Married, Health Care Coverage, for the Year(s) - 2001, 2002, 2003, 2004, 2005, 2006, 2007, 2008, 2009, 2010

Note: Weighted numbers (#), percentages and 95% confidence intervals; Respondents aged 18 years and older; n/r (Not Reportable) - If the unweighted total responses for a dimension (row) is <50 that row will not be shown; n/a (Not Available) - Not asked of a subset of respondents

The trend analysis report shows the trend for the selected health variable over selected years in a table and a graph. Estimated Population: This number is a weighted representation of the population who responded to a particular question in the survey. For most questions the eligible population will be the entire adult population. For some secondary questions only a subset of the population was asked the question. For example, all survey participants were asked if they had diabetes, but only those who answered yes were asked if they use insulin. If a dimension value is unknown for a particular survey record, that record will not be included in the counts for that particular dimension.

For documentation on other terms and coding in this report, please go to the following links

[Click here to access BRFSS documentation](#)

[Click here to access DOH Race-Ethnicity coding](#)

[Click here to access The Hawai'i Data Guide](#)

[Click here to access Poverty Level Methodology](#)

**For questions about this report, please contact
The Hawaii Health Data Warehouse**

profiles@hhdw.org

(855) 946-5899 x15

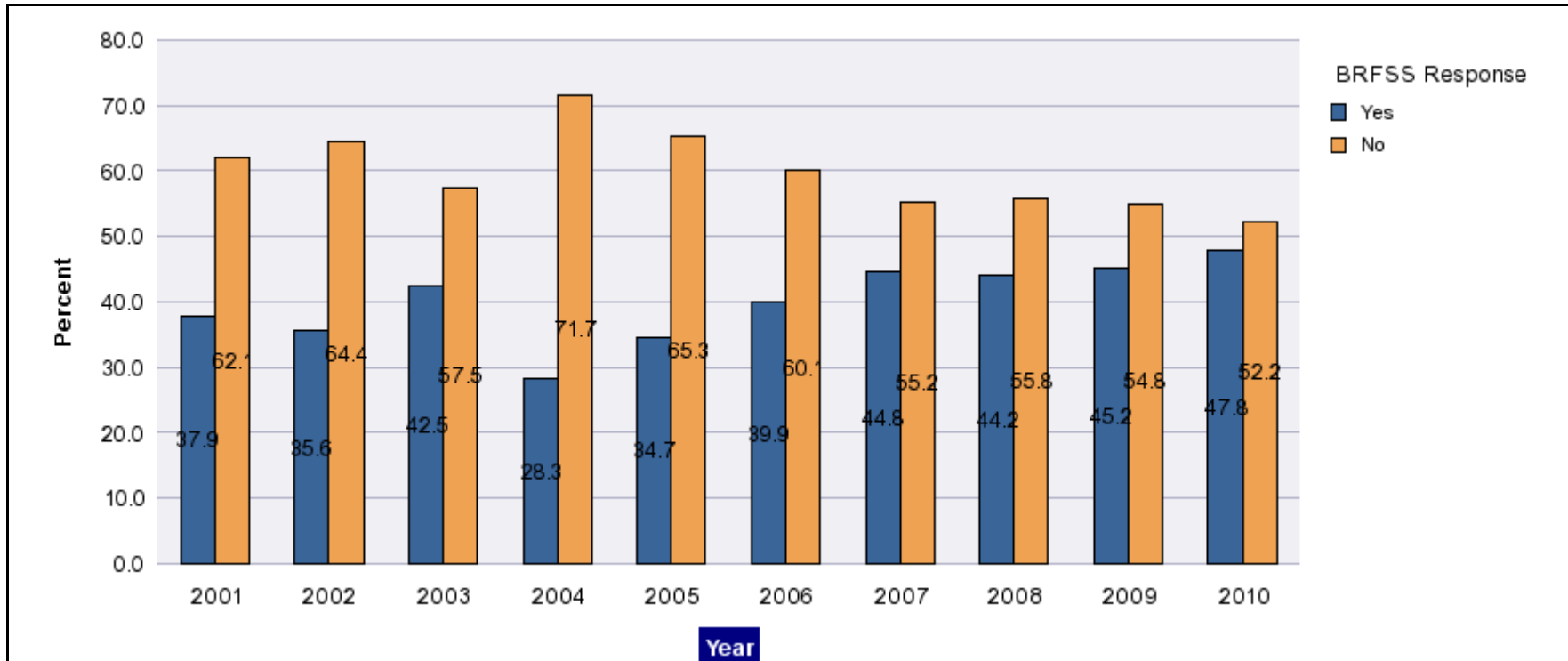
Flu - had shot in past 12 mons by State, County, Island, Community, BRFSS Age Group, DOH Race-Ethnicity, Gender, Education Level, Employment Status (Grouped), Household Income, Poverty Level, Marital Status (Grouped), Married, Health Care Coverage, for the Year(s) - 2001, 2002, 2003, 2004, 2005, 2006, 2007, 2008, 2009, 2010

Note: Weighted numbers (#), percentages and 95% confidence intervals; Respondents aged 18 years and older; n/r (Not Reportable) - If the unweighted total responses for a dimension (row) is <50 that row will not be shown; n/a (Not Available) - Not asked of a subset of respondents

Year	Yes			No			Estimated Population
	#	%	C.I.(95%)	#	%	C.I.(95%)	#
2001	337,700	37.9	35.8 - 39.9	554,400	62.1	60.1 - 64.2	892,200
2002	321,200	35.6	33.9 - 37.2	581,800	64.4	62.8 - 66.1	903,000
2003	391,300	42.5	40.6 - 44.5	528,700	57.5	55.5 - 59.4	920,000
2004	256,600	28.3	25.5 - 31.1	649,800	71.7	68.9 - 74.5	906,400
2005	336,000	34.7	33.0 - 36.3	633,100	65.3	63.7 - 67.0	969,100
2006	382,400	39.9	38.3 - 41.6	575,800	60.1	58.4 - 61.7	958,200
2007	438,500	44.8	43.1 - 46.4	541,300	55.2	53.6 - 56.9	979,800
2008	435,800	44.2	42.5 - 45.9	551,000	55.8	54.1 - 57.5	986,800
2009	442,100	45.2	43.4 - 46.9	536,800	54.8	53.1 - 56.6	978,900
2010	473,400	47.8	46.0 - 49.6	517,100	52.2	50.4 - 54.0	990,500

Flu - had shot in past 12 mons by State, County, Island, Community, BRFSS Age Group, DOH Race-Ethnicity, Gender, Education Level, Employment Status (Grouped), Household Income, Poverty Level, Marital Status (Grouped), Married, Health Care Coverage, for the Year(s) - 2001, 2002, 2003, 2004, 2005, 2006, 2007, 2008, 2009, 2010

Note: Weighted numbers (#), percentages and 95% confidence intervals; Respondents aged 18 years and older; n/r (Not Reportable) - If the unweighted total responses for a dimension (row) is <50 that row will not be shown; n/a (Not Available) - Not asked of a subset of respondents



Flu - had shot in past 12 mons by State, County, Island, Community, BRFSS Age Group, DOH Race-Ethnicity, Gender, Education Level, Employment Status (Grouped), Household Income, Poverty Level, Marital Status (Grouped), Married, Health Care Coverage, for the Year(s) - 2001, 2002, 2003, 2004, 2005, 2006, 2007, 2008, 2009, 2010

Note: Weighted numbers (#), percentages and 95% confidence intervals; Respondents aged 18 years and older; n/r (Not Reportable) - If the unweighted total responses for a dimension (row) is <50 that row will not be shown; n/a (Not Available) - Not asked of a subset of respondents

Year: 2010

State	Yes			No			Estimated Population
	#	%	C.I. (95%)	#	%	C.I. (95%)	#
Hawaii State	473,400	47.8	46.0 - 49.6	517,100	52.2	50.4 - 54.0	990,500

County	Yes			No			Estimated Population
	#	%	C.I. (95%)	#	%	C.I. (95%)	#
Hawaii	56,900	40.7	37.4 - 44.1	82,700	59.3	55.9 - 62.6	139,600
Honolulu	354,200	51.3	48.8 - 53.8	336,300	48.7	46.2 - 51.2	690,600
Kauai	17,700	36.6	31.4 - 41.8	30,700	63.4	58.2 - 68.6	48,500
Maui	44,500	39.8	35.8 - 43.9	67,300	60.2	56.1 - 64.2	111,800

Flu - had shot in past 12 mons by State, County, Island, Community, BRFSS Age Group, DOH Race-Ethnicity, Gender, Education Level, Employment Status (Grouped), Household Income, Poverty Level, Marital Status (Grouped), Married, Health Care Coverage, for the Year(s) - 2001, 2002, 2003, 2004, 2005, 2006, 2007, 2008, 2009, 2010

Note: Weighted numbers (#), percentages and 95% confidence intervals; Respondents aged 18 years and older; n/r (Not Reportable) - If the unweighted total responses for a dimension (row) is <50 that row will not be shown; n/a (Not Available) - Not asked of a subset of respondents

Year: 2010

Island	Yes			No			Estimated Population
	#	%	C.I. (95%)	#	%	C.I. (95%)	#
Hawaii	56,900	40.7	37.4 - 44.1	82,700	59.3	55.9 - 62.6	139,600
Kauai	17,700	36.6	31.4 - 41.8	30,700	63.4	58.2 - 68.6	48,500
Lanai	600	40.5	28.9 - 52.1	900	59.5	47.9 - 71.1	1,500
Maui	40,700	39.5	35.2 - 43.8	62,300	60.5	56.2 - 64.8	103,000
Molokai	3,200	44.2	36.5 - 51.8	4,100	55.8	48.2 - 63.5	7,300
Oahu	354,200	51.3	48.8 - 53.8	336,300	48.7	46.2 - 51.2	690,600

Community	Yes			No			Estimated Population
	#	%	C.I. (95%)	#	%	C.I. (95%)	#
Aiea/ Pearl City	39,800	59.1	51.6 - 66.6	27,600	40.9	33.4 - 48.4	67,400

Flu - had shot in past 12 mons by State, County, Island, Community, BRFSS Age Group, DOH Race-Ethnicity, Gender, Education Level, Employment Status (Grouped), Household Income, Poverty Level, Marital Status (Grouped), Married, Health Care Coverage, for the Year(s) - 2001, 2002, 2003, 2004, 2005, 2006, 2007, 2008, 2009, 2010

Note: Weighted numbers (#), percentages and 95% confidence intervals; Respondents aged 18 years and older; n/r (Not Reportable) - If the unweighted total responses for a dimension (row) is <50 that row will not be shown; n/a (Not Available) - Not asked of a subset of respondents

Year: 2010

Community	Yes			No			Estimated Population
	#	%	C.I. (95%)	#	%	C.I. (95%)	#
Ala Moana	10,600	52.6	41.9 - 63.4	9,600	47.4	36.6 - 58.1	20,200
Hanalei/ Kapaa	7,000	34.1	27.5 - 40.8	13,500	65.9	59.2 - 72.5	20,400
Hilo	20,800	49.7	43.0 - 56.4	21,100	50.3	43.6 - 57.0	41,900
Kaaawa/ Kahaluu/ Kaneohe	25,000	47.6	39.0 - 56.3	27,500	52.4	43.7 - 61.0	52,500
Kahului	13,900	41.1	33.8 - 48.4	19,900	58.9	51.6 - 66.2	33,800
Kailua/ Waimanalo	25,900	51.4	43.0 - 59.9	24,500	48.6	40.1 - 57.0	50,400
Kaimuki/ Palolo/ Waikiki	34,200	61.4	53.7 - 69.2	21,400	38.6	30.8 - 46.3	55,600
Kona	11,900	39.0	32.3 - 45.8	18,500	61.0	54.2 - 67.7	30,400
Lahaina/ Wailuku	15,000	44.3	35.8 - 52.9	18,800	55.7	47.1 - 64.2	33,800

Flu - had shot in past 12 mons by State, County, Island, Community, BRFSS Age Group, DOH Race-Ethnicity, Gender, Education Level, Employment Status (Grouped), Household Income, Poverty Level, Marital Status (Grouped), Married, Health Care Coverage, for the Year(s) - 2001, 2002, 2003, 2004, 2005, 2006, 2007, 2008, 2009, 2010

Note: Weighted numbers (#), percentages and 95% confidence intervals; Respondents aged 18 years and older; n/r (Not Reportable) - If the unweighted total responses for a dimension (row) is <50 that row will not be shown; n/a (Not Available) - Not asked of a subset of respondents

Year: 2010

Community	Yes			No			Estimated Population
	#	%	C.I. (95%)	#	%	C.I. (95%)	#
Lanai	600	40.5	28.9 - 52.1	900	59.5	47.9 - 71.1	1,500
Lihue-Waimea	10,800	38.4	31.0 - 45.8	17,300	61.6	54.2 - 69.0	28,100
Manoa/ Upper Makiki	30,800	56.6	48.2 - 65.0	23,600	43.4	35.0 - 51.8	54,400
Mililani/ Wahiawa	38,000	54.8	47.7 - 62.0	31,300	45.2	38.0 - 52.3	69,200
Molokai	3,200	44.2	36.5 - 51.8	4,100	55.8	48.2 - 63.5	7,300
Nanakuli/ Waianae	17,000	40.9	27.8 - 54.0	24,500	59.1	46.0 - 72.2	41,500
N.Hawaii	8,500	34.0	26.8 - 41.2	16,500	66.0	58.8 - 73.2	25,000
N.Shore/ Laie	12,900	52.3	38.0 - 66.7	11,700	47.7	33.3 - 62.0	24,600
Nuuanu/ Kalihi/ Moanalua	30,000	46.7	38.5 - 54.8	34,300	53.3	45.2 - 61.5	64,300

Flu - had shot in past 12 mons by State, County, Island, Community, BRFSS Age Group, DOH Race-Ethnicity, Gender, Education Level, Employment Status (Grouped), Household Income, Poverty Level, Marital Status (Grouped), Married, Health Care Coverage, for the Year(s) - 2001, 2002, 2003, 2004, 2005, 2006, 2007, 2008, 2009, 2010

Note: Weighted numbers (#), percentages and 95% confidence intervals; Respondents aged 18 years and older; n/r (Not Reportable) - If the unweighted total responses for a dimension (row) is <50 that row will not be shown; n/a (Not Available) - Not asked of a subset of respondents

Year: 2010

Community	Yes			No			Estimated Population
	#	%	C.I. (95%)	#	%	C.I. (95%)	#
Puna/ Kau	15,700	37.0	30.9 - 43.2	26,600	63.0	56.8 - 69.1	42,300
Salt Lake/ Foster Village	17,500	51.1	40.9 - 61.4	16,700	48.9	38.6 - 59.1	34,200
Upcountry/ Hana	11,800	33.4	27.4 - 39.4	23,600	66.6	60.6 - 72.6	35,400
Waialae/ Kahala/ Hawaii Kai	19,500	53.5	44.3 - 62.6	16,900	46.5	37.4 - 55.7	36,400
Waipahu/ Kapolei/ Ewa	53,100	44.3	38.2 - 50.5	66,700	55.7	49.5 - 61.8	119,700

Flu - had shot in past 12 mons by State, County, Island, Community, BRFSS Age Group, DOH Race-Ethnicity, Gender, Education Level, Employment Status (Grouped), Household Income, Poverty Level, Marital Status (Grouped), Married, Health Care Coverage, for the Year(s) - 2001, 2002, 2003, 2004, 2005, 2006, 2007, 2008, 2009, 2010

Note: Weighted numbers (#), percentages and 95% confidence intervals; Respondents aged 18 years and older; n/r (Not Reportable) - If the unweighted total responses for a dimension (row) is <50 that row will not be shown; n/a (Not Available) - Not asked of a subset of respondents

Year: 2010

BRFSS Age Group	Yes			No			Estimated Population
	#	%	C.I. (95%)	#	%	C.I. (95%)	#
18-24	43,500	36.9	29.8 - 44.0	74,300	63.1	56.0 - 70.2	117,800
25-34	61,800	34.4	28.9 - 39.8	117,900	65.6	60.2 - 71.1	179,700
35-44	64,200	37.6	33.2 - 42.0	106,600	62.4	58.0 - 66.8	170,800
45-54	75,300	43.0	39.3 - 46.8	99,700	57.0	53.2 - 60.7	175,000
55-64	83,800	56.1	53.0 - 59.2	65,600	43.9	40.8 - 47.0	149,400
65-74	66,000	70.1	66.7 - 73.5	28,200	29.9	26.5 - 33.3	94,200
75+	75,500	76.1	72.9 - 79.3	23,700	23.9	20.7 - 27.1	99,200

Flu - had shot in past 12 mons by State, County, Island, Community, BRFSS Age Group, DOH Race-Ethnicity, Gender, Education Level, Employment Status (Grouped), Household Income, Poverty Level, Marital Status (Grouped), Married, Health Care Coverage, for the Year(s) - 2001, 2002, 2003, 2004, 2005, 2006, 2007, 2008, 2009, 2010

Note: Weighted numbers (#), percentages and 95% confidence intervals; Respondents aged 18 years and older; n/r (Not Reportable) - If the unweighted total responses for a dimension (row) is <50 that row will not be shown; n/a (Not Available) - Not asked of a subset of respondents

Year: 2010

DOH Race-Ethnicity	Yes			No			Estimated Population
	#	%	C.I. (95%)	#	%	C.I. (95%)	#
Caucasian	139,600	45.4	42.7 - 48.2	167,700	54.6	51.8 - 57.3	307,200
Native Hawaiian	56,600	43.8	38.4 - 49.2	72,600	56.2	50.8 - 61.6	129,200
Chinese	37,700	66.2	59.5 - 72.8	19,300	33.8	27.2 - 40.5	57,000
Filipino	69,300	43.2	37.9 - 48.4	91,200	56.8	51.6 - 62.1	160,500
Japanese	131,200	56.5	52.9 - 60.2	100,800	43.5	39.8 - 47.1	232,000
Black	5,500	39.7	24.7 - 54.8	8,400	60.3	45.2 - 75.3	13,900
Other Asian	11,700	44.8	31.8 - 57.8	14,400	55.2	42.2 - 68.2	26,000
Other Pacific Islander	12,000	34.2	20.5 - 48.0	23,200	65.8	52.0 - 79.5	35,200
Other	7,100	31.5	20.4 - 42.6	15,500	68.5	57.4 - 79.6	22,700

Flu - had shot in past 12 mons by State, County, Island, Community, BRFSS Age Group, DOH Race-Ethnicity, Gender, Education Level, Employment Status (Grouped), Household Income, Poverty Level, Marital Status (Grouped), Married, Health Care Coverage, for the Year(s) - 2001, 2002, 2003, 2004, 2005, 2006, 2007, 2008, 2009, 2010

Note: Weighted numbers (#), percentages and 95% confidence intervals; Respondents aged 18 years and older; n/r (Not Reportable) - If the unweighted total responses for a dimension (row) is <50 that row will not be shown; n/a (Not Available) - Not asked of a subset of respondents

Year: 2010

Gender	Yes			No			Estimated Population
	#	%	C.I. (95%)	#	%	C.I. (95%)	#
Male	207,900	42.2	39.4 - 45.0	284,600	57.8	55.0 - 60.6	492,600
Female	265,500	53.3	51.0 - 55.7	232,500	46.7	44.3 - 49.0	498,000

Flu - had shot in past 12 mons by State, County, Island, Community, BRFSS Age Group, DOH Race-Ethnicity, Gender, Education Level, Employment Status (Grouped), Household Income, Poverty Level, Marital Status (Grouped), Married, Health Care Coverage, for the Year(s) - 2001, 2002, 2003, 2004, 2005, 2006, 2007, 2008, 2009, 2010

Note: Weighted numbers (#), percentages and 95% confidence intervals; Respondents aged 18 years and older; n/r (Not Reportable) - If the unweighted total responses for a dimension (row) is <50 that row will not be shown; n/a (Not Available) - Not asked of a subset of respondents

Year: 2010

Education Level	Yes			No			Estimated Population
	#	%	C.I. (95%)	#	%	C.I. (95%)	#
Never attended school/ Only Kindergarten to Grades 8	6,300	53.0	39.5 - 66.4	5,600	47.0	33.6 - 60.5	12,000
Grades 9 thru 11 (Some High School)	16,600	40.3	28.7 - 51.9	24,600	59.7	48.1 - 71.3	41,300
Grades 12 or GED (High School Grad)	124,100	43.4	39.9 - 46.9	161,800	56.6	53.1 - 60.1	285,900
College 1 to 3 years (Some College/ Tech)	125,200	44.6	41.1 - 48.0	155,700	55.4	52.0 - 58.9	280,900
College 4 years or more (College Grad)	200,500	54.2	51.5 - 57.0	169,200	45.8	43.0 - 48.5	369,800

Flu - had shot in past 12 mons by State, County, Island, Community, BRFSS Age Group, DOH Race-Ethnicity, Gender, Education Level, Employment Status (Grouped), Household Income, Poverty Level, Marital Status (Grouped), Married, Health Care Coverage, for the Year(s) - 2001, 2002, 2003, 2004, 2005, 2006, 2007, 2008, 2009, 2010

Note: Weighted numbers (#), percentages and 95% confidence intervals; Respondents aged 18 years and older; n/r (Not Reportable) - If the unweighted total responses for a dimension (row) is <50 that row will not be shown; n/a (Not Available) - Not asked of a subset of respondents

Year: 2010

Employment Status (Grouped)	Yes			No			Estimated Population
	#	%	C.I. (95%)	#	%	C.I. (95%)	#
Employed	255,200	43.6	41.2 - 46.1	329,600	56.4	53.9 - 58.8	584,800
Unemployed	21,100	30.3	23.2 - 37.3	48,500	69.7	62.7 - 76.8	69,600
Retired/Unable to work	146,900	68.2	65.4 - 70.9	68,600	31.8	29.1 - 34.6	215,400
Student/Homemaker	50,300	41.7	35.6 - 47.9	70,300	58.3	52.1 - 64.4	120,600

Flu - had shot in past 12 mons by State, County, Island, Community, BRFSS Age Group, DOH Race-Ethnicity, Gender, Education Level, Employment Status (Grouped), Household Income, Poverty Level, Marital Status (Grouped), Married, Health Care Coverage, for the Year(s) - 2001, 2002, 2003, 2004, 2005, 2006, 2007, 2008, 2009, 2010

Note: Weighted numbers (#), percentages and 95% confidence intervals; Respondents aged 18 years and older; n/r (Not Reportable) - If the unweighted total responses for a dimension (row) is <50 that row will not be shown; n/a (Not Available) - Not asked of a subset of respondents

Year: 2010

Household Income	Yes			No			Estimated Population
	#	%	C.I. (95%)	#	%	C.I. (95%)	#
Less than \$10,000	13,800	33.4	25.0 - 41.9	27,600	66.6	58.1 - 75.0	41,400
\$10,000 to \$14,999	12,600	45.4	33.3 - 57.5	15,200	54.6	42.5 - 66.7	27,800
\$15,000 to \$19,999	21,900	39.9	32.2 - 47.5	33,100	60.1	52.5 - 67.8	55,000
\$20,000 to \$24,999	31,900	48.7	40.8 - 56.6	33,600	51.3	43.4 - 59.2	65,400
\$25,000 to \$34,999	46,600	47.1	41.4 - 52.8	52,400	52.9	47.2 - 58.6	99,000
\$35,000 to \$49,999	60,500	43.6	38.9 - 48.2	78,400	56.4	51.8 - 61.1	138,900
\$50,000 to \$74,999	76,200	50.0	45.7 - 54.3	76,100	50.0	45.7 - 54.3	152,400
\$75,000 or more	164,800	52.9	49.7 - 56.1	146,600	47.1	43.9 - 50.3	311,400

Flu - had shot in past 12 mons by State, County, Island, Community, BRFSS Age Group, DOH Race-Ethnicity, Gender, Education Level, Employment Status (Grouped), Household Income, Poverty Level, Marital Status (Grouped), Married, Health Care Coverage, for the Year(s) - 2001, 2002, 2003, 2004, 2005, 2006, 2007, 2008, 2009, 2010

Note: Weighted numbers (#), percentages and 95% confidence intervals; Respondents aged 18 years and older; n/r (Not Reportable) - If the unweighted total responses for a dimension (row) is <50 that row will not be shown; n/a (Not Available) - Not asked of a subset of respondents

Year: 2010

Poverty Level	Yes			No			Estimated Population
	#	%	C.I. (95%)	#	%	C.I. (95%)	#
0-130%	90,700	39.4	34.9 - 43.8	139,700	60.6	56.2 - 65.1	230,400
131-185%	66,700	47.6	43.1 - 52.2	73,200	52.4	47.8 - 56.9	139,900
186+%	271,100	52.0	49.7 - 54.3	250,000	48.0	45.7 - 50.3	521,100

Flu - had shot in past 12 mons by State, County, Island, Community, BRFSS Age Group, DOH Race-Ethnicity, Gender, Education Level, Employment Status (Grouped), Household Income, Poverty Level, Marital Status (Grouped), Married, Health Care Coverage, for the Year(s) - 2001, 2002, 2003, 2004, 2005, 2006, 2007, 2008, 2009, 2010

Note: Weighted numbers (#), percentages and 95% confidence intervals; Respondents aged 18 years and older; n/r (Not Reportable) - If the unweighted total responses for a dimension (row) is <50 that row will not be shown; n/a (Not Available) - Not asked of a subset of respondents

Year: 2010

Marital Status (Grouped)	Yes			No			Estimated Population
	#	%	C.I. (95%)	#	%	C.I. (95%)	#
Married	297,500	52.0	49.8 - 54.2	274,800	48.0	45.8 - 50.2	572,300
Unmarried Couple	13,700	39.8	27.2 - 52.4	20,800	60.2	47.6 - 72.8	34,500
Widowed	39,700	69.1	64.4 - 73.8	17,800	30.9	26.2 - 35.6	57,500
Other	122,500	37.5	34.0 - 41.1	203,700	62.5	58.9 - 66.0	326,200

Married	Yes			No			Estimated Population
	#	%	C.I. (95%)	#	%	C.I. (95%)	#
Yes	301,800	51.7	49.5 - 53.9	282,400	48.3	46.1 - 50.5	584,100
No	170,500	42.1	39.0 - 45.2	234,300	57.9	54.8 - 61.0	404,800

Flu - had shot in past 12 mons by State, County, Island, Community, BRFSS Age Group, DOH Race-Ethnicity, Gender, Education Level, Employment Status (Grouped), Household Income, Poverty Level, Marital Status (Grouped), Married, Health Care Coverage, for the Year(s) - 2001, 2002, 2003, 2004, 2005, 2006, 2007, 2008, 2009, 2010

Note: Weighted numbers (#), percentages and 95% confidence intervals; Respondents aged 18 years and older; n/r (Not Reportable) - If the unweighted total responses for a dimension (row) is <50 that row will not be shown; n/a (Not Available) - Not asked of a subset of respondents

Year: 2010

Health Care Coverage	Yes			No			Estimated Population
	#	%	C.I. (95%)	#	%	C.I. (95%)	#
Yes	457,700	49.6	47.7 - 51.5	465,300	50.4	48.5 - 52.3	923,100
No	14,500	22.1	13.9 - 30.3	51,100	77.9	69.7 - 86.1	65,700

Flu - had shot in past 12 mons by State, County, Island, Community, BRFSS Age Group, DOH Race-Ethnicity, Gender, Education Level, Employment Status (Grouped), Household Income, Poverty Level, Marital Status (Grouped), Married, Health Care Coverage, for the Year(s) - 2001, 2002, 2003, 2004, 2005, 2006, 2007, 2008, 2009, 2010

Note: Weighted numbers (#), percentages and 95% confidence intervals; Respondents aged 18 years and older; n/r (Not Reportable) - If the unweighted total responses for a dimension (row) is <50 that row will not be shown; n/a (Not Available) - Not asked of a subset of respondents

Year: 2009

State	Yes			No			Estimated Population
	#	%	C.I. (95%)	#	%	C.I. (95%)	#
Hawaii State	442,100	45.2	43.4 - 46.9	536,800	54.8	53.1 - 56.6	978,900

County	Yes			No			Estimated Population
	#	%	C.I. (95%)	#	%	C.I. (95%)	#
Hawaii	52,600	38.7	35.6 - 41.9	83,300	61.3	58.1 - 64.4	135,900
Honolulu	327,300	47.6	45.2 - 49.9	360,900	52.4	50.1 - 54.8	688,200
Kauai	19,300	40.6	35.6 - 45.7	28,200	59.4	54.3 - 64.4	47,400
Maui	42,900	40.0	36.5 - 43.5	64,400	60.0	56.5 - 63.5	107,400

Flu - had shot in past 12 mons by State, County, Island, Community, BRFSS Age Group, DOH Race-Ethnicity, Gender, Education Level, Employment Status (Grouped), Household Income, Poverty Level, Marital Status (Grouped), Married, Health Care Coverage, for the Year(s) - 2001, 2002, 2003, 2004, 2005, 2006, 2007, 2008, 2009, 2010

Note: Weighted numbers (#), percentages and 95% confidence intervals; Respondents aged 18 years and older; n/r (Not Reportable) - If the unweighted total responses for a dimension (row) is <50 that row will not be shown; n/a (Not Available) - Not asked of a subset of respondents

Year: 2009

Island	Yes			No			Estimated Population
	#	%	C.I. (95%)	#	%	C.I. (95%)	#
Hawaii	52,600	38.7	35.6 - 41.9	83,300	61.3	58.1 - 64.4	135,900
Kauai	19,300	40.6	35.6 - 45.7	28,200	59.4	54.3 - 64.4	47,400
Lanai	500	30.9	22.9 - 38.8	1,100	69.1	61.2 - 77.1	1,500
Maui	38,100	39.0	35.3 - 42.8	59,500	61.0	57.2 - 64.7	97,700
Molokai	4,300	53.2	44.9 - 61.5	3,800	46.8	38.5 - 55.1	8,200
Oahu	327,300	47.6	45.2 - 49.9	360,900	52.4	50.1 - 54.8	688,200

Community	Yes			No			Estimated Population
	#	%	C.I. (95%)	#	%	C.I. (95%)	#
Aiea/ Pearl City	28,600	49.4	40.8 - 58.1	29,300	50.6	41.9 - 59.2	57,800

Flu - had shot in past 12 mons by State, County, Island, Community, BRFSS Age Group, DOH Race-Ethnicity, Gender, Education Level, Employment Status (Grouped), Household Income, Poverty Level, Marital Status (Grouped), Married, Health Care Coverage, for the Year(s) - 2001, 2002, 2003, 2004, 2005, 2006, 2007, 2008, 2009, 2010

Note: Weighted numbers (#), percentages and 95% confidence intervals; Respondents aged 18 years and older; n/r (Not Reportable) - If the unweighted total responses for a dimension (row) is <50 that row will not be shown; n/a (Not Available) - Not asked of a subset of respondents

Year: 2009

Community	Yes			No			Estimated Population
	#	%	C.I. (95%)	#	%	C.I. (95%)	#
Ala Moana	12,300	45.0	34.6 - 55.5	15,000	55.0	44.5 - 65.4	27,200
Hanalei/ Kapaa	8,000	41.2	33.9 - 48.4	11,400	58.8	51.6 - 66.1	19,400
Hilo	17,000	42.7	37.0 - 48.4	22,900	57.3	51.6 - 63.0	39,900
Kaaawa/ Kahaluu/ Kaneohe	25,100	52.5	44.6 - 60.4	22,700	47.5	39.6 - 55.4	47,900
Kahului	14,500	41.5	34.7 - 48.3	20,500	58.5	51.7 - 65.3	35,000
Kailua/ Waimanalo	21,900	43.5	35.3 - 51.6	28,500	56.5	48.4 - 64.7	50,400
Kaimuki/ Palolo/ Waikiki	27,600	49.4	42.4 - 56.5	28,200	50.6	43.5 - 57.6	55,700
Kona	11,300	37.5	31.1 - 44.0	18,700	62.5	56.0 - 68.9	30,000
Lahaina/ Wailuku	12,500	42.2	35.3 - 49.2	17,100	57.8	50.8 - 64.7	29,600

Flu - had shot in past 12 mons by State, County, Island, Community, BRFSS Age Group, DOH Race-Ethnicity, Gender, Education Level, Employment Status (Grouped), Household Income, Poverty Level, Marital Status (Grouped), Married, Health Care Coverage, for the Year(s) - 2001, 2002, 2003, 2004, 2005, 2006, 2007, 2008, 2009, 2010

Note: Weighted numbers (#), percentages and 95% confidence intervals; Respondents aged 18 years and older; n/r (Not Reportable) - If the unweighted total responses for a dimension (row) is <50 that row will not be shown; n/a (Not Available) - Not asked of a subset of respondents

Year: 2009

Community	Yes			No			Estimated Population
	#	%	C.I. (95%)	#	%	C.I. (95%)	#
Lanai	500	30.9	22.9 - 38.8	1,100	69.1	61.2 - 77.1	1,500
Lihue-Waimea	11,300	40.3	33.4 - 47.2	16,700	59.7	52.8 - 66.6	28,000
Manoa/ Upper Makiki	24,000	54.1	46.0 - 62.3	20,400	45.9	37.7 - 54.0	44,400
Mililani/ Wahiawa	39,300	48.8	42.0 - 55.7	41,200	51.2	44.3 - 58.0	80,500
Molokai	4,300	53.2	44.9 - 61.5	3,800	46.8	38.5 - 55.1	8,200
Nanakuli/ Waianae	10,400	38.2	26.3 - 50.1	16,800	61.8	49.9 - 73.7	27,100
N.Hawaii	10,100	37.2	29.6 - 44.7	17,100	62.8	55.3 - 70.4	27,300
N.Shore/ Laie	6,300	34.9	23.0 - 46.8	11,800	65.1	53.2 - 77.0	18,200
Nuuanu/ Kalihi/ Moanalua	38,000	51.8	43.7 - 59.9	35,300	48.2	40.1 - 56.3	73,300

Flu - had shot in past 12 mons by State, County, Island, Community, BRFSS Age Group, DOH Race-Ethnicity, Gender, Education Level, Employment Status (Grouped), Household Income, Poverty Level, Marital Status (Grouped), Married, Health Care Coverage, for the Year(s) - 2001, 2002, 2003, 2004, 2005, 2006, 2007, 2008, 2009, 2010

Note: Weighted numbers (#), percentages and 95% confidence intervals; Respondents aged 18 years and older; n/r (Not Reportable) - If the unweighted total responses for a dimension (row) is <50 that row will not be shown; n/a (Not Available) - Not asked of a subset of respondents

Year: 2009

Community	Yes			No			Estimated Population
	#	%	C.I. (95%)	#	%	C.I. (95%)	#
Puna/ Kau	14,200	36.6	30.6 - 42.6	24,600	63.4	57.4 - 69.4	38,700
Salt Lake/ Foster Village	14,500	39.0	29.0 - 49.0	22,600	61.0	51.0 - 71.0	37,000
Upcountry/ Hana	11,100	33.5	28.1 - 39.0	21,900	66.5	61.0 - 71.9	33,000
Waialae/ Kahala/ Hawaii Kai	29,900	55.8	47.7 - 63.9	23,700	44.2	36.1 - 52.3	53,600
Waipahu/ Kapolei/ Ewa	49,400	43.0	37.1 - 48.9	65,500	57.0	51.1 - 62.9	115,000

Flu - had shot in past 12 mons by State, County, Island, Community, BRFSS Age Group, DOH Race-Ethnicity, Gender, Education Level, Employment Status (Grouped), Household Income, Poverty Level, Marital Status (Grouped), Married, Health Care Coverage, for the Year(s) - 2001, 2002, 2003, 2004, 2005, 2006, 2007, 2008, 2009, 2010

Note: Weighted numbers (#), percentages and 95% confidence intervals; Respondents aged 18 years and older; n/r (Not Reportable) - If the unweighted total responses for a dimension (row) is <50 that row will not be shown; n/a (Not Available) - Not asked of a subset of respondents

Year: 2009

BRFSS Age Group	Yes			No			Estimated Population
	#	%	C.I. (95%)	#	%	C.I. (95%)	#
18-24	29,700	25.8	19.4 - 32.2	85,500	74.2	67.8 - 80.6	115,200
25-34	53,100	30.7	26.0 - 35.4	119,900	69.3	64.6 - 74.0	173,000
35-44	61,100	35.4	31.3 - 39.5	111,700	64.6	60.5 - 68.7	172,900
45-54	77,100	43.3	39.8 - 46.7	101,100	56.7	53.3 - 60.2	178,200
55-64	84,900	56.0	52.8 - 59.3	66,700	44.0	40.7 - 47.2	151,600
65-74	62,200	68.8	65.2 - 72.5	28,200	31.2	27.5 - 34.8	90,400
75+	72,000	76.4	72.8 - 79.9	22,300	23.6	20.1 - 27.2	94,300

Flu - had shot in past 12 mons by State, County, Island, Community, BRFSS Age Group, DOH Race-Ethnicity, Gender, Education Level, Employment Status (Grouped), Household Income, Poverty Level, Marital Status (Grouped), Married, Health Care Coverage, for the Year(s) - 2001, 2002, 2003, 2004, 2005, 2006, 2007, 2008, 2009, 2010

Note: Weighted numbers (#), percentages and 95% confidence intervals; Respondents aged 18 years and older; n/r (Not Reportable) - If the unweighted total responses for a dimension (row) is <50 that row will not be shown; n/a (Not Available) - Not asked of a subset of respondents

Year: 2009

DOH Race-Ethnicity	Yes			No			Estimated Population
	#	%	C.I. (95%)	#	%	C.I. (95%)	#
Caucasian	126,800	40.9	38.4 - 43.5	183,200	59.1	56.5 - 61.6	310,000
Native Hawaiian	51,000	42.8	37.7 - 47.9	68,200	57.2	52.1 - 62.3	119,200
Chinese	30,400	49.7	42.5 - 56.9	30,700	50.3	43.1 - 57.5	61,100
Filipino	69,600	42.9	37.9 - 47.8	92,800	57.1	52.2 - 62.1	162,400
Japanese	124,500	53.8	50.2 - 57.5	106,800	46.2	42.5 - 49.8	231,300
Black	4,400	28.4	16.1 - 40.7	11,200	71.6	59.3 - 83.9	15,600
Other Asian	11,500	48.4	35.7 - 61.1	12,300	51.6	38.9 - 64.3	23,800
Other Pacific Islander	10,800	37.6	23.8 - 51.4	17,900	62.4	48.6 - 76.2	28,700
Other	10,400	52.2	40.1 - 64.3	9,500	47.8	35.7 - 59.9	19,900

Flu - had shot in past 12 mons by State, County, Island, Community, BRFSS Age Group, DOH Race-Ethnicity, Gender, Education Level, Employment Status (Grouped), Household Income, Poverty Level, Marital Status (Grouped), Married, Health Care Coverage, for the Year(s) - 2001, 2002, 2003, 2004, 2005, 2006, 2007, 2008, 2009, 2010

Note: Weighted numbers (#), percentages and 95% confidence intervals; Respondents aged 18 years and older; n/r (Not Reportable) - If the unweighted total responses for a dimension (row) is <50 that row will not be shown; n/a (Not Available) - Not asked of a subset of respondents

Year: 2009

Gender	Yes			No			Estimated Population
	#	%	C.I. (95%)	#	%	C.I. (95%)	#
Male	203,600	41.9	39.3 - 44.5	282,100	58.1	55.5 - 60.7	485,700
Female	238,500	48.4	46.1 - 50.7	254,700	51.6	49.3 - 53.9	493,200

Flu - had shot in past 12 mons by State, County, Island, Community, BRFSS Age Group, DOH Race-Ethnicity, Gender, Education Level, Employment Status (Grouped), Household Income, Poverty Level, Marital Status (Grouped), Married, Health Care Coverage, for the Year(s) - 2001, 2002, 2003, 2004, 2005, 2006, 2007, 2008, 2009, 2010

Note: Weighted numbers (#), percentages and 95% confidence intervals; Respondents aged 18 years and older; n/r (Not Reportable) - If the unweighted total responses for a dimension (row) is <50 that row will not be shown; n/a (Not Available) - Not asked of a subset of respondents

Year: 2009

Education Level	Yes			No			Estimated Population
	#	%	C.I. (95%)	#	%	C.I. (95%)	#
Never attended school/ Only Kindergarten to Grades 8	7,800	60.1	44.4 - 75.9	5,200	39.9	24.1 - 55.6	12,900
Grades 9 thru 11 (Some High School)	16,500	45.7	36.0 - 55.4	19,600	54.3	44.6 - 64.0	36,000
Grades 12 or GED (High School Grad)	114,900	41.7	38.4 - 44.9	161,000	58.3	55.1 - 61.6	275,900
College 1 to 3 years (Some College/ Tech)	118,400	41.3	38.0 - 44.7	168,100	58.7	55.3 - 62.0	286,500
College 4 years or more (College Grad)	184,100	50.2	47.5 - 52.8	182,900	49.8	47.2 - 52.5	367,100

Flu - had shot in past 12 mons by State, County, Island, Community, BRFSS Age Group, DOH Race-Ethnicity, Gender, Education Level, Employment Status (Grouped), Household Income, Poverty Level, Marital Status (Grouped), Married, Health Care Coverage, for the Year(s) - 2001, 2002, 2003, 2004, 2005, 2006, 2007, 2008, 2009, 2010

Note: Weighted numbers (#), percentages and 95% confidence intervals; Respondents aged 18 years and older; n/r (Not Reportable) - If the unweighted total responses for a dimension (row) is <50 that row will not be shown; n/a (Not Available) - Not asked of a subset of respondents

Year: 2009

Employment Status (Grouped)	Yes			No			Estimated Population
	#	%	C.I. (95%)	#	%	C.I. (95%)	#
Employed	254,300	41.6	39.4 - 43.8	357,000	58.4	56.2 - 60.6	611,200
Unemployed	20,000	29.5	22.9 - 36.0	47,900	70.5	64.0 - 77.1	67,900
Retired/Unable to work	135,200	67.6	64.6 - 70.6	64,900	32.4	29.4 - 35.4	200,100
Student/Homemaker	32,500	32.9	27.0 - 38.9	66,300	67.1	61.1 - 73.0	98,800

Flu - had shot in past 12 mons by State, County, Island, Community, BRFSS Age Group, DOH Race-Ethnicity, Gender, Education Level, Employment Status (Grouped), Household Income, Poverty Level, Marital Status (Grouped), Married, Health Care Coverage, for the Year(s) - 2001, 2002, 2003, 2004, 2005, 2006, 2007, 2008, 2009, 2010

Note: Weighted numbers (#), percentages and 95% confidence intervals; Respondents aged 18 years and older; n/r (Not Reportable) - If the unweighted total responses for a dimension (row) is <50 that row will not be shown; n/a (Not Available) - Not asked of a subset of respondents

Year: 2009

Household Income	Yes			No			Estimated Population
	#	%	C.I. (95%)	#	%	C.I. (95%)	#
Less than \$10,000	7,900	29.4	21.2 - 37.7	19,000	70.6	62.3 - 78.8	26,900
\$10,000 to \$14,999	12,000	49.9	39.4 - 60.4	12,100	50.1	39.6 - 60.6	24,100
\$15,000 to \$19,999	19,700	41.8	34.2 - 49.4	27,400	58.2	50.6 - 65.8	47,100
\$20,000 to \$24,999	29,900	51.6	44.7 - 58.5	28,000	48.4	41.5 - 55.3	57,900
\$25,000 to \$34,999	42,000	44.1	38.7 - 49.5	53,200	55.9	50.5 - 61.3	95,200
\$35,000 to \$49,999	69,800	46.0	41.7 - 50.3	81,900	54.0	49.7 - 58.3	151,700
\$50,000 to \$74,999	80,900	46.4	42.2 - 50.6	93,400	53.6	49.4 - 57.8	174,300
\$75,000 or more	141,300	46.1	43.0 - 49.2	165,500	53.9	50.8 - 57.0	306,800

Flu - had shot in past 12 mons by State, County, Island, Community, BRFSS Age Group, DOH Race-Ethnicity, Gender, Education Level, Employment Status (Grouped), Household Income, Poverty Level, Marital Status (Grouped), Married, Health Care Coverage, for the Year(s) - 2001, 2002, 2003, 2004, 2005, 2006, 2007, 2008, 2009, 2010

Note: Weighted numbers (#), percentages and 95% confidence intervals; Respondents aged 18 years and older; n/r (Not Reportable) - If the unweighted total responses for a dimension (row) is <50 that row will not be shown; n/a (Not Available) - Not asked of a subset of respondents

Year: 2009

Poverty Level	Yes			No			Estimated Population
	#	%	C.I. (95%)	#	%	C.I. (95%)	#
0-130%	78,400	39.6	35.4 - 43.7	119,700	60.4	56.3 - 64.6	198,000
131-185%	67,700	46.4	41.6 - 51.1	78,300	53.6	48.9 - 58.4	146,000
186+%	257,500	47.7	45.5 - 49.9	282,400	52.3	50.1 - 54.5	539,900

Flu - had shot in past 12 mons by State, County, Island, Community, BRFSS Age Group, DOH Race-Ethnicity, Gender, Education Level, Employment Status (Grouped), Household Income, Poverty Level, Marital Status (Grouped), Married, Health Care Coverage, for the Year(s) - 2001, 2002, 2003, 2004, 2005, 2006, 2007, 2008, 2009, 2010

Note: Weighted numbers (#), percentages and 95% confidence intervals; Respondents aged 18 years and older; n/r (Not Reportable) - If the unweighted total responses for a dimension (row) is <50 that row will not be shown; n/a (Not Available) - Not asked of a subset of respondents

Year: 2009

Marital Status (Grouped)	Yes			No			Estimated Population
	#	%	C.I. (95%)	#	%	C.I. (95%)	#
Married	281,000	48.8	46.7 - 50.9	295,100	51.2	49.1 - 53.3	576,100
Unmarried Couple	13,100	40.3	29.3 - 51.3	19,400	59.7	48.7 - 70.7	32,500
Widowed	40,900	70.7	66.2 - 75.3	16,900	29.3	24.7 - 33.8	57,900
Other	107,000	34.3	31.0 - 37.5	205,400	65.7	62.5 - 69.0	312,500

Married	Yes			No			Estimated Population
	#	%	C.I. (95%)	#	%	C.I. (95%)	#
Yes	285,100	48.6	46.5 - 50.7	301,000	51.4	49.3 - 53.5	586,000
No	155,700	39.8	36.9 - 42.7	235,500	60.2	57.3 - 63.1	391,200

Flu - had shot in past 12 mons by State, County, Island, Community, BRFSS Age Group, DOH Race-Ethnicity, Gender, Education Level, Employment Status (Grouped), Household Income, Poverty Level, Marital Status (Grouped), Married, Health Care Coverage, for the Year(s) - 2001, 2002, 2003, 2004, 2005, 2006, 2007, 2008, 2009, 2010

Note: Weighted numbers (#), percentages and 95% confidence intervals; Respondents aged 18 years and older; n/r (Not Reportable) - If the unweighted total responses for a dimension (row) is <50 that row will not be shown; n/a (Not Available) - Not asked of a subset of respondents

Year: 2009

Health Care Coverage	Yes			No			Estimated Population
	#	%	C.I. (95%)	#	%	C.I. (95%)	#
Yes	431,700	47.7	45.9 - 49.5	472,900	52.3	50.5 - 54.1	904,600
No	9,800	13.8	8.3 - 19.4	61,200	86.2	80.6 - 91.7	71,000

Flu - had shot in past 12 mons by State, County, Island, Community, BRFSS Age Group, DOH Race-Ethnicity, Gender, Education Level, Employment Status (Grouped), Household Income, Poverty Level, Marital Status (Grouped), Married, Health Care Coverage, for the Year(s) - 2001, 2002, 2003, 2004, 2005, 2006, 2007, 2008, 2009, 2010

Note: Weighted numbers (#), percentages and 95% confidence intervals; Respondents aged 18 years and older; n/r (Not Reportable) - If the unweighted total responses for a dimension (row) is <50 that row will not be shown; n/a (Not Available) - Not asked of a subset of respondents

Year: 2008

State	Yes			No			Estimated Population
	#	%	C.I. (95%)	#	%	C.I. (95%)	#
Hawaii State	435,800	44.2	42.5 - 45.9	551,000	55.8	54.1 - 57.5	986,800

County	Yes			No			Estimated Population
	#	%	C.I. (95%)	#	%	C.I. (95%)	#
Hawaii	48,200	36.1	33.0 - 39.2	85,300	63.9	60.8 - 67.0	133,500
Honolulu	328,600	47.2	44.9 - 49.4	368,100	52.8	50.6 - 55.1	696,700
Kauai	18,300	38.1	33.3 - 42.8	29,900	61.9	57.2 - 66.7	48,200
Maui	40,700	37.5	34.0 - 41.1	67,800	62.5	58.9 - 66.0	108,500

Flu - had shot in past 12 mons by State, County, Island, Community, BRFSS Age Group, DOH Race-Ethnicity, Gender, Education Level, Employment Status (Grouped), Household Income, Poverty Level, Marital Status (Grouped), Married, Health Care Coverage, for the Year(s) - 2001, 2002, 2003, 2004, 2005, 2006, 2007, 2008, 2009, 2010

Note: Weighted numbers (#), percentages and 95% confidence intervals; Respondents aged 18 years and older; n/r (Not Reportable) - If the unweighted total responses for a dimension (row) is <50 that row will not be shown; n/a (Not Available) - Not asked of a subset of respondents

Year: 2008

Island	Yes			No			Estimated Population
	#	%	C.I. (95%)	#	%	C.I. (95%)	#
Hawaii	48,200	36.1	33.0 - 39.2	85,300	63.9	60.8 - 67.0	133,500
Kauai	18,300	38.1	33.3 - 42.8	29,900	61.9	57.2 - 66.7	48,200
Lanai	900	45.0	35.8 - 54.3	1,100	55.0	45.7 - 64.2	2,100
Maui	36,500	37.0	33.2 - 40.8	62,100	63.0	59.2 - 66.8	98,600
Molokai	3,300	41.9	33.5 - 50.3	4,500	58.1	49.7 - 66.5	7,800
Oahu	328,600	47.2	44.9 - 49.4	368,100	52.8	50.6 - 55.1	696,700

Community	Yes			No			Estimated Population
	#	%	C.I. (95%)	#	%	C.I. (95%)	#
Aiea/ Pearl City	30,100	47.1	40.0 - 54.2	33,800	52.9	45.8 - 60.0	63,900

Flu - had shot in past 12 mons by State, County, Island, Community, BRFSS Age Group, DOH Race-Ethnicity, Gender, Education Level, Employment Status (Grouped), Household Income, Poverty Level, Marital Status (Grouped), Married, Health Care Coverage, for the Year(s) - 2001, 2002, 2003, 2004, 2005, 2006, 2007, 2008, 2009, 2010

Note: Weighted numbers (#), percentages and 95% confidence intervals; Respondents aged 18 years and older; n/r (Not Reportable) - If the unweighted total responses for a dimension (row) is <50 that row will not be shown; n/a (Not Available) - Not asked of a subset of respondents

Year: 2008

Community	Yes			No			Estimated Population
	#	%	C.I. (95%)	#	%	C.I. (95%)	#
Ala Moana	13,600	42.1	32.9 - 51.3	18,700	57.9	48.7 - 67.1	32,200
Hanalei/ Kapaa	5,700	28.6	22.4 - 34.8	14,100	71.4	65.2 - 77.6	19,800
Hilo	18,600	43.6	37.4 - 49.9	24,000	56.4	50.1 - 62.6	42,500
Kaaawa/ Kahaluu/ Kaneohe	22,500	46.9	38.5 - 55.4	25,400	53.1	44.6 - 61.5	47,900
Kahului	13,000	39.0	31.7 - 46.4	20,300	61.0	53.6 - 68.3	33,300
Kailua/ Waimanalo	24,500	48.8	40.9 - 56.7	25,700	51.2	43.3 - 59.1	50,200
Kaimuki/ Palolo/ Waikiki	30,000	50.9	44.0 - 57.8	28,900	49.1	42.2 - 56.0	58,900
Kona	9,300	33.9	27.7 - 40.1	18,100	66.1	59.9 - 72.3	27,400
Lahaina/ Wailuku	12,500	36.9	30.5 - 43.3	21,400	63.1	56.7 - 69.5	33,800

Flu - had shot in past 12 mons by State, County, Island, Community, BRFSS Age Group, DOH Race-Ethnicity, Gender, Education Level, Employment Status (Grouped), Household Income, Poverty Level, Marital Status (Grouped), Married, Health Care Coverage, for the Year(s) - 2001, 2002, 2003, 2004, 2005, 2006, 2007, 2008, 2009, 2010

Note: Weighted numbers (#), percentages and 95% confidence intervals; Respondents aged 18 years and older; n/r (Not Reportable) - If the unweighted total responses for a dimension (row) is <50 that row will not be shown; n/a (Not Available) - Not asked of a subset of respondents

Year: 2008

Community	Yes			No			Estimated Population
	#	%	C.I. (95%)	#	%	C.I. (95%)	#
Lanai	900	45.0	35.8 - 54.3	1,100	55.0	45.7 - 64.2	2,100
Lihue-Waimea	12,700	44.6	38.0 - 51.3	15,700	55.4	48.7 - 62.0	28,400
Manoa/ Upper Makiki	23,800	51.2	43.6 - 58.8	22,700	48.8	41.2 - 56.4	46,500
Mililani/ Wahiawa	33,000	45.9	39.2 - 52.5	38,900	54.1	47.5 - 60.8	71,900
Molokai	3,300	41.9	33.5 - 50.3	4,500	58.1	49.7 - 66.5	7,800
Nanakuli/ Waianae	16,900	47.0	34.4 - 59.6	19,100	53.0	40.4 - 65.6	36,000
N.Hawaii	8,800	31.9	25.1 - 38.6	18,800	68.1	61.4 - 74.9	27,600
N.Shore/ Laie	7,600	32.0	20.3 - 43.8	16,200	68.0	56.2 - 79.7	23,800
Nuuanu/ Kalihi/ Moanalua	27,900	43.7	35.6 - 51.8	36,000	56.3	48.2 - 64.4	63,900

Flu - had shot in past 12 mons by State, County, Island, Community, BRFSS Age Group, DOH Race-Ethnicity, Gender, Education Level, Employment Status (Grouped), Household Income, Poverty Level, Marital Status (Grouped), Married, Health Care Coverage, for the Year(s) - 2001, 2002, 2003, 2004, 2005, 2006, 2007, 2008, 2009, 2010

Note: Weighted numbers (#), percentages and 95% confidence intervals; Respondents aged 18 years and older; n/r (Not Reportable) - If the unweighted total responses for a dimension (row) is <50 that row will not be shown; n/a (Not Available) - Not asked of a subset of respondents

Year: 2008

Community	Yes			No			Estimated Population
	#	%	C.I. (95%)	#	%	C.I. (95%)	#
Puna/ Kau	11,600	32.1	26.4 - 37.8	24,500	67.9	62.2 - 73.6	36,100
Salt Lake/ Foster Village	16,300	44.6	34.9 - 54.3	20,300	55.4	45.7 - 65.1	36,600
Upcountry/ Hana	11,000	35.0	28.9 - 41.0	20,500	65.0	59.0 - 71.1	31,500
Waialae/ Kahala/ Hawaii Kai	24,400	54.0	45.9 - 62.0	20,800	46.0	38.0 - 54.1	45,300
Waipahu/ Kapolei/ Ewa	57,900	48.4	42.6 - 54.2	61,700	51.6	45.8 - 57.4	119,600

Flu - had shot in past 12 mons by State, County, Island, Community, BRFSS Age Group, DOH Race-Ethnicity, Gender, Education Level, Employment Status (Grouped), Household Income, Poverty Level, Marital Status (Grouped), Married, Health Care Coverage, for the Year(s) - 2001, 2002, 2003, 2004, 2005, 2006, 2007, 2008, 2009, 2010

Note: Weighted numbers (#), percentages and 95% confidence intervals; Respondents aged 18 years and older; n/r (Not Reportable) - If the unweighted total responses for a dimension (row) is <50 that row will not be shown; n/a (Not Available) - Not asked of a subset of respondents

Year: 2008

BRFSS Age Group	Yes			No			Estimated Population
	#	%	C.I. (95%)	#	%	C.I. (95%)	#
18-24	31,700	26.4	20.5 - 32.2	88,400	73.6	67.8 - 79.5	120,100
25-34	54,300	30.5	25.7 - 35.3	123,800	69.5	64.7 - 74.3	178,100
35-44	58,400	33.2	29.5 - 37.0	117,300	66.8	63.0 - 70.5	175,700
45-54	69,200	39.6	36.2 - 43.1	105,400	60.4	56.9 - 63.8	174,600
55-64	78,600	52.4	49.0 - 55.9	71,400	47.6	44.1 - 51.0	149,900
65-74	66,200	74.8	71.4 - 78.3	22,200	25.2	21.7 - 28.6	88,400
75+	74,000	79.2	75.7 - 82.7	19,500	20.8	17.3 - 24.3	93,500

Flu - had shot in past 12 mons by State, County, Island, Community, BRFSS Age Group, DOH Race-Ethnicity, Gender, Education Level, Employment Status (Grouped), Household Income, Poverty Level, Marital Status (Grouped), Married, Health Care Coverage, for the Year(s) - 2001, 2002, 2003, 2004, 2005, 2006, 2007, 2008, 2009, 2010

Note: Weighted numbers (#), percentages and 95% confidence intervals; Respondents aged 18 years and older; n/r (Not Reportable) - If the unweighted total responses for a dimension (row) is <50 that row will not be shown; n/a (Not Available) - Not asked of a subset of respondents

Year: 2008

DOH Race-Ethnicity	Yes			No			Estimated Population
	#	%	C.I. (95%)	#	%	C.I. (95%)	#
Caucasian	134,500	41.2	38.7 - 43.8	191,600	58.8	56.2 - 61.3	326,100
Native Hawaiian	50,200	37.2	32.4 - 42.0	84,700	62.8	58.0 - 67.6	135,000
Chinese	31,600	47.4	40.6 - 54.1	35,200	52.6	45.9 - 59.4	66,800
Filipino	66,000	46.2	41.0 - 51.4	76,900	53.8	48.6 - 59.0	142,900
Japanese	122,900	54.4	50.9 - 57.9	103,000	45.6	42.1 - 49.1	225,800
Black	5,700	41.2	27.2 - 55.1	8,100	58.8	44.9 - 72.8	13,800
Other Asian	9,600	39.8	28.3 - 51.2	14,500	60.2	48.8 - 71.7	24,100
Other Pacific Islander	5,900	27.1	14.7 - 39.5	15,900	72.9	60.5 - 85.3	21,800
Other	6,800	32.5	21.2 - 43.8	14,200	67.5	56.2 - 78.8	21,000

Flu - had shot in past 12 mons by State, County, Island, Community, BRFSS Age Group, DOH Race-Ethnicity, Gender, Education Level, Employment Status (Grouped), Household Income, Poverty Level, Marital Status (Grouped), Married, Health Care Coverage, for the Year(s) - 2001, 2002, 2003, 2004, 2005, 2006, 2007, 2008, 2009, 2010

Note: Weighted numbers (#), percentages and 95% confidence intervals; Respondents aged 18 years and older; n/r (Not Reportable) - If the unweighted total responses for a dimension (row) is <50 that row will not be shown; n/a (Not Available) - Not asked of a subset of respondents

Year: 2008

Gender	Yes			No			Estimated Population
	#	%	C.I. (95%)	#	%	C.I. (95%)	#
Male	203,800	41.8	39.1 - 44.4	284,200	58.2	55.6 - 60.9	488,000
Female	232,000	46.5	44.3 - 48.7	266,800	53.5	51.3 - 55.7	498,800

Flu - had shot in past 12 mons by State, County, Island, Community, BRFSS Age Group, DOH Race-Ethnicity, Gender, Education Level, Employment Status (Grouped), Household Income, Poverty Level, Marital Status (Grouped), Married, Health Care Coverage, for the Year(s) - 2001, 2002, 2003, 2004, 2005, 2006, 2007, 2008, 2009, 2010

Note: Weighted numbers (#), percentages and 95% confidence intervals; Respondents aged 18 years and older; n/r (Not Reportable) - If the unweighted total responses for a dimension (row) is <50 that row will not be shown; n/a (Not Available) - Not asked of a subset of respondents

Year: 2008

Education Level	Yes			No			Estimated Population
	#	%	C.I. (95%)	#	%	C.I. (95%)	#
Never attended school/ Only Kindergarten to Grades 8	6,100	64.8	51.9 - 77.8	3,300	35.2	22.2 - 48.1	9,400
Grades 9 thru 11 (Some High School)	16,100	41.9	33.4 - 50.5	22,200	58.1	49.5 - 66.6	38,300
Grades 12 or GED (High School Grad)	118,900	41.2	37.8 - 44.5	170,000	58.8	55.5 - 62.2	289,000
College 1 to 3 years (Some College/ Tech)	120,400	42.8	39.5 - 46.1	160,800	57.2	53.9 - 60.5	281,200
College 4 years or more (College Grad)	174,000	47.3	44.7 - 49.9	193,700	52.7	50.1 - 55.3	367,800

Flu - had shot in past 12 mons by State, County, Island, Community, BRFSS Age Group, DOH Race-Ethnicity, Gender, Education Level, Employment Status (Grouped), Household Income, Poverty Level, Marital Status (Grouped), Married, Health Care Coverage, for the Year(s) - 2001, 2002, 2003, 2004, 2005, 2006, 2007, 2008, 2009, 2010

Note: Weighted numbers (#), percentages and 95% confidence intervals; Respondents aged 18 years and older; n/r (Not Reportable) - If the unweighted total responses for a dimension (row) is <50 that row will not be shown; n/a (Not Available) - Not asked of a subset of respondents

Year: 2008

Employment Status (Grouped)	Yes			No			Estimated Population
	#	%	C.I. (95%)	#	%	C.I. (95%)	#
Employed	242,800	38.8	36.6 - 41.0	383,000	61.2	59.0 - 63.4	625,800
Unemployed	13,200	30.8	21.3 - 40.4	29,600	69.2	59.6 - 78.7	42,700
Retired/Unable to work	152,900	68.4	65.7 - 71.1	70,700	31.6	28.9 - 34.3	223,700
Student/Homemaker	26,800	28.6	23.2 - 34.0	66,700	71.4	66.0 - 76.8	93,500

Flu - had shot in past 12 mons by State, County, Island, Community, BRFSS Age Group, DOH Race-Ethnicity, Gender, Education Level, Employment Status (Grouped), Household Income, Poverty Level, Marital Status (Grouped), Married, Health Care Coverage, for the Year(s) - 2001, 2002, 2003, 2004, 2005, 2006, 2007, 2008, 2009, 2010

Note: Weighted numbers (#), percentages and 95% confidence intervals; Respondents aged 18 years and older; n/r (Not Reportable) - If the unweighted total responses for a dimension (row) is <50 that row will not be shown; n/a (Not Available) - Not asked of a subset of respondents

Year: 2008

Household Income	Yes			No			Estimated Population
	#	%	C.I. (95%)	#	%	C.I. (95%)	#
Less than \$10,000	10,100	41.6	31.7 - 51.5	14,100	58.4	48.5 - 68.3	24,200
\$10,000 to \$14,999	8,400	37.9	28.3 - 47.5	13,800	62.1	52.5 - 71.7	22,200
\$15,000 to \$19,999	19,700	49.2	41.3 - 57.1	20,300	50.8	42.9 - 58.7	40,000
\$20,000 to \$24,999	24,500	44.1	37.2 - 51.0	31,000	55.9	49.0 - 62.8	55,500
\$25,000 to \$34,999	48,500	47.5	42.2 - 52.9	53,500	52.5	47.1 - 57.8	101,900
\$35,000 to \$49,999	64,800	44.8	40.4 - 49.2	79,800	55.2	50.8 - 59.6	144,600
\$50,000 to \$74,999	78,100	42.3	38.4 - 46.3	106,400	57.7	53.7 - 61.6	184,500
\$75,000 or more	142,200	44.4	41.4 - 47.4	177,800	55.6	52.6 - 58.6	320,000

Flu - had shot in past 12 mons by State, County, Island, Community, BRFSS Age Group, DOH Race-Ethnicity, Gender, Education Level, Employment Status (Grouped), Household Income, Poverty Level, Marital Status (Grouped), Married, Health Care Coverage, for the Year(s) - 2001, 2002, 2003, 2004, 2005, 2006, 2007, 2008, 2009, 2010

Note: Weighted numbers (#), percentages and 95% confidence intervals; Respondents aged 18 years and older; n/r (Not Reportable) - If the unweighted total responses for a dimension (row) is <50 that row will not be shown; n/a (Not Available) - Not asked of a subset of respondents

Year: 2008

Poverty Level	Yes			No			Estimated Population
	#	%	C.I. (95%)	#	%	C.I. (95%)	#
0-130%	68,900	38.7	34.1 - 43.2	109,300	61.3	56.8 - 65.9	178,200
131-185%	47,000	40.4	35.1 - 45.7	69,300	59.6	54.3 - 64.9	116,400
186+%	280,400	46.9	44.9 - 48.9	317,600	53.1	51.1 - 55.1	598,000

Flu - had shot in past 12 mons by State, County, Island, Community, BRFSS Age Group, DOH Race-Ethnicity, Gender, Education Level, Employment Status (Grouped), Household Income, Poverty Level, Marital Status (Grouped), Married, Health Care Coverage, for the Year(s) - 2001, 2002, 2003, 2004, 2005, 2006, 2007, 2008, 2009, 2010

Note: Weighted numbers (#), percentages and 95% confidence intervals; Respondents aged 18 years and older; n/r (Not Reportable) - If the unweighted total responses for a dimension (row) is <50 that row will not be shown; n/a (Not Available) - Not asked of a subset of respondents

Year: 2008

Marital Status (Grouped)	Yes			No			Estimated Population
	#	%	C.I. (95%)	#	%	C.I. (95%)	#
Married	272,200	46.6	44.5 - 48.7	311,400	53.4	51.3 - 55.5	583,600
Unmarried Couple	9,100	34.3	24.7 - 43.9	17,400	65.7	56.1 - 75.3	26,500
Widowed	41,000	73.2	68.9 - 77.5	15,000	26.8	22.5 - 31.1	56,100
Other	113,500	35.4	32.1 - 38.6	207,200	64.6	61.4 - 67.9	320,600

Married	Yes			No			Estimated Population
	#	%	C.I. (95%)	#	%	C.I. (95%)	#
Yes	277,400	46.6	44.5 - 48.7	317,700	53.4	51.3 - 55.5	595,000
No	158,400	40.7	37.8 - 43.5	231,000	59.3	56.5 - 62.2	389,300

Flu - had shot in past 12 mons by State, County, Island, Community, BRFSS Age Group, DOH Race-Ethnicity, Gender, Education Level, Employment Status (Grouped), Household Income, Poverty Level, Marital Status (Grouped), Married, Health Care Coverage, for the Year(s) - 2001, 2002, 2003, 2004, 2005, 2006, 2007, 2008, 2009, 2010

Note: Weighted numbers (#), percentages and 95% confidence intervals; Respondents aged 18 years and older; n/r (Not Reportable) - If the unweighted total responses for a dimension (row) is <50 that row will not be shown; n/a (Not Available) - Not asked of a subset of respondents

Year: 2008

Health Care Coverage	Yes			No			Estimated Population
	#	%	C.I. (95%)	#	%	C.I. (95%)	#
Yes	425,700	46.1	44.3 - 47.8	498,700	53.9	52.2 - 55.7	924,300
No	9,600	15.8	9.3 - 22.2	51,300	84.2	77.8 - 90.7	60,800

Flu - had shot in past 12 mons by State, County, Island, Community, BRFSS Age Group, DOH Race-Ethnicity, Gender, Education Level, Employment Status (Grouped), Household Income, Poverty Level, Marital Status (Grouped), Married, Health Care Coverage, for the Year(s) - 2001, 2002, 2003, 2004, 2005, 2006, 2007, 2008, 2009, 2010

Note: Weighted numbers (#), percentages and 95% confidence intervals; Respondents aged 18 years and older; n/r (Not Reportable) - If the unweighted total responses for a dimension (row) is <50 that row will not be shown; n/a (Not Available) - Not asked of a subset of respondents

Year: 2007

State	Yes			No			Estimated Population
	#	%	C.I. (95%)	#	%	C.I. (95%)	#
Hawaii State	438,500	44.8	43.1 - 46.4	541,300	55.2	53.6 - 56.9	979,800

County	Yes			No			Estimated Population
	#	%	C.I. (95%)	#	%	C.I. (95%)	#
Hawaii	49,200	38.5	35.4 - 41.6	78,700	61.5	58.4 - 64.6	127,900
Honolulu	328,400	47.1	44.9 - 49.3	369,100	52.9	50.7 - 55.1	697,500
Kauai	18,300	38.8	34.0 - 43.5	28,900	61.2	56.5 - 66.0	47,200
Maui	42,500	39.7	36.2 - 43.2	64,600	60.3	56.8 - 63.8	107,200

Flu - had shot in past 12 mons by State, County, Island, Community, BRFSS Age Group, DOH Race-Ethnicity, Gender, Education Level, Employment Status (Grouped), Household Income, Poverty Level, Marital Status (Grouped), Married, Health Care Coverage, for the Year(s) - 2001, 2002, 2003, 2004, 2005, 2006, 2007, 2008, 2009, 2010

Note: Weighted numbers (#), percentages and 95% confidence intervals; Respondents aged 18 years and older; n/r (Not Reportable) - If the unweighted total responses for a dimension (row) is <50 that row will not be shown; n/a (Not Available) - Not asked of a subset of respondents

Year: 2007

Island	Yes			No			Estimated Population
	#	%	C.I. (95%)	#	%	C.I. (95%)	#
Hawaii	49,200	38.5	35.4 - 41.6	78,700	61.5	58.4 - 64.6	127,900
Kauai	18,300	38.8	34.0 - 43.5	28,900	61.2	56.5 - 66.0	47,200
Lanai	700	36.4	28.2 - 44.6	1,200	63.6	55.4 - 71.8	1,900
Maui	37,800	38.9	35.1 - 42.6	59,400	61.1	57.4 - 64.9	97,200
Molokai	4,100	50.3	42.9 - 57.7	4,000	49.7	42.3 - 57.1	8,100
Oahu	328,400	47.1	44.9 - 49.3	369,100	52.9	50.7 - 55.1	697,500

Community	Yes			No			Estimated Population
	#	%	C.I. (95%)	#	%	C.I. (95%)	#
Aiea/ Pearl City	33,500	48.5	41.4 - 55.7	35,500	51.5	44.3 - 58.6	69,100

Flu - had shot in past 12 mons by State, County, Island, Community, BRFSS Age Group, DOH Race-Ethnicity, Gender, Education Level, Employment Status (Grouped), Household Income, Poverty Level, Marital Status (Grouped), Married, Health Care Coverage, for the Year(s) - 2001, 2002, 2003, 2004, 2005, 2006, 2007, 2008, 2009, 2010

Note: Weighted numbers (#), percentages and 95% confidence intervals; Respondents aged 18 years and older; n/r (Not Reportable) - If the unweighted total responses for a dimension (row) is <50 that row will not be shown; n/a (Not Available) - Not asked of a subset of respondents

Year: 2007

Community	Yes			No			Estimated Population
	#	%	C.I. (95%)	#	%	C.I. (95%)	#
Ala Moana	15,400	52.9	43.7 - 62.2	13,700	47.1	37.8 - 56.3	29,100
Hanalei/ Kapaa	7,600	37.9	30.6 - 45.2	12,400	62.1	54.8 - 69.4	20,000
Hilo	16,500	45.5	39.9 - 51.1	19,700	54.5	48.9 - 60.1	36,200
Kaaawa/ Kahaluu/ Kaneohe	24,900	51.6	43.6 - 59.5	23,300	48.4	40.5 - 56.4	48,200
Kahului	14,400	44.7	38.2 - 51.2	17,800	55.3	48.8 - 61.8	32,200
Kailua/ Waimanalo	27,000	51.3	43.7 - 58.8	25,700	48.7	41.2 - 56.3	52,700
Kaimuki/ Palolo/ Waikiki	27,900	50.0	42.7 - 57.2	28,000	50.0	42.8 - 57.3	55,900
Kona	8,800	32.2	26.2 - 38.1	18,600	67.8	61.9 - 73.8	27,500
Lahaina/ Wailuku	12,100	39.4	32.1 - 46.6	18,600	60.6	53.4 - 67.9	30,700

Flu - had shot in past 12 mons by State, County, Island, Community, BRFSS Age Group, DOH Race-Ethnicity, Gender, Education Level, Employment Status (Grouped), Household Income, Poverty Level, Marital Status (Grouped), Married, Health Care Coverage, for the Year(s) - 2001, 2002, 2003, 2004, 2005, 2006, 2007, 2008, 2009, 2010

Note: Weighted numbers (#), percentages and 95% confidence intervals; Respondents aged 18 years and older; n/r (Not Reportable) - If the unweighted total responses for a dimension (row) is <50 that row will not be shown; n/a (Not Available) - Not asked of a subset of respondents

Year: 2007

Community	Yes			No			Estimated Population
	#	%	C.I. (95%)	#	%	C.I. (95%)	#
Lanai	700	36.4	28.2 - 44.6	1,200	63.6	55.4 - 71.8	1,900
Lihue-Waimea	10,700	39.5	33.2 - 45.8	16,400	60.5	54.2 - 66.8	27,100
Manoa/ Upper Makiki	20,100	44.0	36.8 - 51.3	25,500	56.0	48.7 - 63.2	45,600
Mililani/ Wahiawa	36,200	48.6	41.9 - 55.2	38,400	51.5	44.8 - 58.1	74,600
Molokai	4,100	50.3	42.9 - 57.7	4,000	49.7	42.3 - 57.1	8,100
Nanakuli/ Waianae	17,500	47.3	35.9 - 58.8	19,500	52.7	41.2 - 64.1	37,000
N.Hawaii	10,500	37.2	30.2 - 44.2	17,800	62.8	55.8 - 69.8	28,300
N.Shore/ Laie	10,400	47.1	34.0 - 60.3	11,600	52.9	39.7 - 66.0	22,000
Nuuanu/ Kalihi/ Moanalua	29,500	44.4	36.6 - 52.2	37,000	55.6	47.8 - 63.4	66,400

Flu - had shot in past 12 mons by State, County, Island, Community, BRFSS Age Group, DOH Race-Ethnicity, Gender, Education Level, Employment Status (Grouped), Household Income, Poverty Level, Marital Status (Grouped), Married, Health Care Coverage, for the Year(s) - 2001, 2002, 2003, 2004, 2005, 2006, 2007, 2008, 2009, 2010

Note: Weighted numbers (#), percentages and 95% confidence intervals; Respondents aged 18 years and older; n/r (Not Reportable) - If the unweighted total responses for a dimension (row) is <50 that row will not be shown; n/a (Not Available) - Not asked of a subset of respondents

Year: 2007

Community	Yes			No			Estimated Population
	#	%	C.I. (95%)	#	%	C.I. (95%)	#
Puna/ Kau	13,400	37.3	31.3 - 43.3	22,500	62.7	56.7 - 68.7	35,900
Salt Lake/ Foster Village	14,800	51.7	41.3 - 62.1	13,800	48.3	37.9 - 58.7	28,700
Upcountry/ Hana	11,300	32.9	27.2 - 38.6	23,000	67.1	61.4 - 72.8	34,300
Waialae/ Kahala/ Hawaii Kai	17,800	46.1	37.4 - 54.7	20,800	53.9	45.3 - 62.6	38,600
Waipahu/ Kapolei/ Ewa	53,400	41.2	35.7 - 46.6	76,300	58.8	53.4 - 64.3	129,700

Flu - had shot in past 12 mons by State, County, Island, Community, BRFSS Age Group, DOH Race-Ethnicity, Gender, Education Level, Employment Status (Grouped), Household Income, Poverty Level, Marital Status (Grouped), Married, Health Care Coverage, for the Year(s) - 2001, 2002, 2003, 2004, 2005, 2006, 2007, 2008, 2009, 2010

Note: Weighted numbers (#), percentages and 95% confidence intervals; Respondents aged 18 years and older; n/r (Not Reportable) - If the unweighted total responses for a dimension (row) is <50 that row will not be shown; n/a (Not Available) - Not asked of a subset of respondents

Year: 2007

BRFSS Age Group	Yes			No			Estimated Population
	#	%	C.I. (95%)	#	%	C.I. (95%)	#
18-24	37,700	30.9	24.3 - 37.6	84,300	69.1	62.4 - 75.7	122,000
25-34	48,200	30.4	26.1 - 34.8	110,100	69.6	65.2 - 73.9	158,300
35-44	56,700	32.4	28.8 - 36.0	118,100	67.6	64.0 - 71.2	174,800
45-54	72,400	39.1	35.8 - 42.4	112,700	60.9	57.6 - 64.2	185,100
55-64	79,800	51.5	47.9 - 55.1	75,200	48.5	44.9 - 52.1	155,000
65-74	61,300	73.1	69.3 - 76.9	22,500	26.9	23.1 - 30.7	83,800
75+	80,400	83.2	79.8 - 86.7	16,200	16.8	13.3 - 20.2	96,700

Flu - had shot in past 12 mons by State, County, Island, Community, BRFSS Age Group, DOH Race-Ethnicity, Gender, Education Level, Employment Status (Grouped), Household Income, Poverty Level, Marital Status (Grouped), Married, Health Care Coverage, for the Year(s) - 2001, 2002, 2003, 2004, 2005, 2006, 2007, 2008, 2009, 2010

Note: Weighted numbers (#), percentages and 95% confidence intervals; Respondents aged 18 years and older; n/r (Not Reportable) - If the unweighted total responses for a dimension (row) is <50 that row will not be shown; n/a (Not Available) - Not asked of a subset of respondents

Year: 2007

DOH Race-Ethnicity	Yes			No			Estimated Population
	#	%	C.I. (95%)	#	%	C.I. (95%)	#
Caucasian	127,400	40.8	38.2 - 43.3	185,100	59.2	56.7 - 61.8	312,400
Native Hawaiian	52,300	39.3	34.8 - 43.9	80,600	60.7	56.1 - 65.2	132,900
Chinese	31,100	57.1	49.7 - 64.4	23,400	42.9	35.6 - 50.3	54,500
Filipino	78,700	45.7	40.9 - 50.5	93,400	54.3	49.5 - 59.1	172,100
Japanese	116,000	53.9	50.4 - 57.4	99,200	46.1	42.6 - 49.6	215,200
Black	5,500	33.3	20.1 - 46.6	11,000	66.7	53.4 - 79.9	16,400
Other Asian	7,700	35.4	23.5 - 47.2	14,100	64.6	52.8 - 76.5	21,800
Other Pacific Islander	9,300	41.9	28.0 - 55.7	13,000	58.1	44.3 - 72.0	22,300
Other	6,200	27.8	18.1 - 37.6	16,100	72.2	62.4 - 81.9	22,200

Flu - had shot in past 12 mons by State, County, Island, Community, BRFSS Age Group, DOH Race-Ethnicity, Gender, Education Level, Employment Status (Grouped), Household Income, Poverty Level, Marital Status (Grouped), Married, Health Care Coverage, for the Year(s) - 2001, 2002, 2003, 2004, 2005, 2006, 2007, 2008, 2009, 2010

Note: Weighted numbers (#), percentages and 95% confidence intervals; Respondents aged 18 years and older; n/r (Not Reportable) - If the unweighted total responses for a dimension (row) is <50 that row will not be shown; n/a (Not Available) - Not asked of a subset of respondents

Year: 2007

Gender	Yes			No			Estimated Population
	#	%	C.I. (95%)	#	%	C.I. (95%)	#
Male	201,100	41.6	39.0 - 44.1	282,700	58.4	55.9 - 61.0	483,800
Female	237,400	47.9	45.7 - 50.0	258,600	52.1	50.0 - 54.3	496,000

Flu - had shot in past 12 mons by State, County, Island, Community, BRFSS Age Group, DOH Race-Ethnicity, Gender, Education Level, Employment Status (Grouped), Household Income, Poverty Level, Marital Status (Grouped), Married, Health Care Coverage, for the Year(s) - 2001, 2002, 2003, 2004, 2005, 2006, 2007, 2008, 2009, 2010

Note: Weighted numbers (#), percentages and 95% confidence intervals; Respondents aged 18 years and older; n/r (Not Reportable) - If the unweighted total responses for a dimension (row) is <50 that row will not be shown; n/a (Not Available) - Not asked of a subset of respondents

Year: 2007

Education Level	Yes			No			Estimated Population
	#	%	C.I. (95%)	#	%	C.I. (95%)	#
Never attended school/ Only Kindergarten to Grades 8	10,800	69.6	56.9 - 82.2	4,700	30.4	17.8 - 43.1	15,500
Grades 9 thru 11 (Some High School)	17,600	47.0	38.2 - 55.7	19,900	53.0	44.3 - 61.8	37,500
Grades 12 or GED (High School Grad)	128,100	41.6	38.3 - 44.9	179,700	58.4	55.1 - 61.7	307,800
College 1 to 3 years (Some College/ Tech)	128,700	44.9	41.8 - 48.0	158,100	55.1	52.0 - 58.2	286,800
College 4 years or more (College Grad)	152,800	46.2	43.6 - 48.8	177,800	53.8	51.2 - 56.4	330,600

Flu - had shot in past 12 mons by State, County, Island, Community, BRFSS Age Group, DOH Race-Ethnicity, Gender, Education Level, Employment Status (Grouped), Household Income, Poverty Level, Marital Status (Grouped), Married, Health Care Coverage, for the Year(s) - 2001, 2002, 2003, 2004, 2005, 2006, 2007, 2008, 2009, 2010

Note: Weighted numbers (#), percentages and 95% confidence intervals; Respondents aged 18 years and older; n/r (Not Reportable) - If the unweighted total responses for a dimension (row) is <50 that row will not be shown; n/a (Not Available) - Not asked of a subset of respondents

Year: 2007

Employment Status (Grouped)	Yes			No			Estimated Population
	#	%	C.I. (95%)	#	%	C.I. (95%)	#
Employed	234,200	37.0	34.9 - 39.1	398,600	63.0	60.9 - 65.1	632,800
Unemployed	11,600	37.8	27.1 - 48.6	19,100	62.2	51.4 - 72.9	30,600
Retired/Unable to work	164,200	72.1	69.4 - 74.8	63,600	27.9	25.2 - 30.6	227,800
Student/Homemaker	28,200	32.0	26.0 - 38.0	59,900	68.0	62.0 - 74.0	88,100

Flu - had shot in past 12 mons by State, County, Island, Community, BRFSS Age Group, DOH Race-Ethnicity, Gender, Education Level, Employment Status (Grouped), Household Income, Poverty Level, Marital Status (Grouped), Married, Health Care Coverage, for the Year(s) - 2001, 2002, 2003, 2004, 2005, 2006, 2007, 2008, 2009, 2010

Note: Weighted numbers (#), percentages and 95% confidence intervals; Respondents aged 18 years and older; n/r (Not Reportable) - If the unweighted total responses for a dimension (row) is <50 that row will not be shown; n/a (Not Available) - Not asked of a subset of respondents

Year: 2007

Household Income	Yes			No			Estimated Population
	#	%	C.I. (95%)	#	%	C.I. (95%)	#
Less than \$10,000	11,700	42.1	32.3 - 51.9	16,000	57.9	48.1 - 67.7	27,700
\$10,000 to \$14,999	12,400	41.3	31.6 - 51.0	17,600	58.7	49.0 - 68.4	30,000
\$15,000 to \$19,999	19,200	43.4	36.4 - 50.5	25,000	56.6	49.5 - 63.6	44,200
\$20,000 to \$24,999	27,000	45.6	38.9 - 52.3	32,200	54.4	47.7 - 61.1	59,200
\$25,000 to \$34,999	53,300	46.7	41.7 - 51.7	60,900	53.3	48.3 - 58.3	114,200
\$35,000 to \$49,999	76,600	46.8	42.6 - 51.0	87,100	53.2	49.0 - 57.4	163,700
\$50,000 to \$74,999	71,700	42.4	38.4 - 46.4	97,300	57.6	53.6 - 61.6	168,900
\$75,000 or more	122,400	42.9	40.0 - 45.9	162,600	57.1	54.1 - 60.0	285,000

Flu - had shot in past 12 mons by State, County, Island, Community, BRFSS Age Group, DOH Race-Ethnicity, Gender, Education Level, Employment Status (Grouped), Household Income, Poverty Level, Marital Status (Grouped), Married, Health Care Coverage, for the Year(s) - 2001, 2002, 2003, 2004, 2005, 2006, 2007, 2008, 2009, 2010

Note: Weighted numbers (#), percentages and 95% confidence intervals; Respondents aged 18 years and older; n/r (Not Reportable) - If the unweighted total responses for a dimension (row) is <50 that row will not be shown; n/a (Not Available) - Not asked of a subset of respondents

Year: 2007

Poverty Level	Yes			No			Estimated Population
	#	%	C.I. (95%)	#	%	C.I. (95%)	#
0-130%	82,400	41.1	37.0 - 45.2	118,100	58.9	54.8 - 63.0	200,400
131-185%	49,300	43.1	37.7 - 48.5	65,200	56.9	51.5 - 62.3	114,600
186+%	262,500	45.4	43.4 - 47.4	315,400	54.6	52.6 - 56.6	577,900

Flu - had shot in past 12 mons by State, County, Island, Community, BRFSS Age Group, DOH Race-Ethnicity, Gender, Education Level, Employment Status (Grouped), Household Income, Poverty Level, Marital Status (Grouped), Married, Health Care Coverage, for the Year(s) - 2001, 2002, 2003, 2004, 2005, 2006, 2007, 2008, 2009, 2010

Note: Weighted numbers (#), percentages and 95% confidence intervals; Respondents aged 18 years and older; n/r (Not Reportable) - If the unweighted total responses for a dimension (row) is <50 that row will not be shown; n/a (Not Available) - Not asked of a subset of respondents

Year: 2007

Marital Status (Grouped)	Yes			No			Estimated Population
	#	%	C.I. (95%)	#	%	C.I. (95%)	#
Married	276,600	47.3	45.3 - 49.4	308,000	52.7	50.6 - 54.7	584,700
Unmarried Couple	4,300	16.1	9.5 - 22.7	22,500	83.9	77.3 - 90.5	26,800
Widowed	42,300	72.9	68.2 - 77.5	15,800	27.1	22.5 - 31.8	58,100
Other	115,200	37.1	33.8 - 40.5	195,000	62.9	59.5 - 66.2	310,200

Married	Yes			No			Estimated Population
	#	%	C.I. (95%)	#	%	C.I. (95%)	#
Yes	279,800	47.1	45.0 - 49.1	314,700	52.9	50.9 - 55.0	594,500
No	158,000	41.1	38.2 - 44.1	226,000	58.9	55.9 - 61.8	384,100

Flu - had shot in past 12 mons by State, County, Island, Community, BRFSS Age Group, DOH Race-Ethnicity, Gender, Education Level, Employment Status (Grouped), Household Income, Poverty Level, Marital Status (Grouped), Married, Health Care Coverage, for the Year(s) - 2001, 2002, 2003, 2004, 2005, 2006, 2007, 2008, 2009, 2010

Note: Weighted numbers (#), percentages and 95% confidence intervals; Respondents aged 18 years and older; n/r (Not Reportable) - If the unweighted total responses for a dimension (row) is <50 that row will not be shown; n/a (Not Available) - Not asked of a subset of respondents

Year: 2007

Health Care Coverage	Yes			No			Estimated Population
	#	%	C.I. (95%)	#	%	C.I. (95%)	#
Yes	427,800	46.4	44.6 - 48.1	494,600	53.6	51.9 - 55.4	922,300
No	10,600	18.8	12.5 - 25.1	45,900	81.2	74.9 - 87.5	56,500

Flu - had shot in past 12 mons by State, County, Island, Community, BRFSS Age Group, DOH Race-Ethnicity, Gender, Education Level, Employment Status (Grouped), Household Income, Poverty Level, Marital Status (Grouped), Married, Health Care Coverage, for the Year(s) - 2001, 2002, 2003, 2004, 2005, 2006, 2007, 2008, 2009, 2010

Note: Weighted numbers (#), percentages and 95% confidence intervals; Respondents aged 18 years and older; n/r (Not Reportable) - If the unweighted total responses for a dimension (row) is <50 that row will not be shown; n/a (Not Available) - Not asked of a subset of respondents

Year: 2006

State	Yes			No			Estimated Population
	#	%	C.I. (95%)	#	%	C.I. (95%)	#
Hawaii State	382,400	39.9	38.3 - 41.6	575,800	60.1	58.4 - 61.7	958,200

County	Yes			No			Estimated Population
	#	%	C.I. (95%)	#	%	C.I. (95%)	#
Hawaii	36,900	30.7	27.9 - 33.5	83,500	69.3	66.5 - 72.1	120,400
Honolulu	298,400	43.4	41.2 - 45.6	389,500	56.6	54.4 - 58.8	687,900
Kauai	17,300	37.1	32.4 - 41.8	29,200	62.9	58.2 - 67.6	46,500
Maui	29,800	28.8	25.8 - 31.8	73,600	71.2	68.2 - 74.2	103,400

Flu - had shot in past 12 mons by State, County, Island, Community, BRFSS Age Group, DOH Race-Ethnicity, Gender, Education Level, Employment Status (Grouped), Household Income, Poverty Level, Marital Status (Grouped), Married, Health Care Coverage, for the Year(s) - 2001, 2002, 2003, 2004, 2005, 2006, 2007, 2008, 2009, 2010

Note: Weighted numbers (#), percentages and 95% confidence intervals; Respondents aged 18 years and older; n/r (Not Reportable) - If the unweighted total responses for a dimension (row) is <50 that row will not be shown; n/a (Not Available) - Not asked of a subset of respondents

Year: 2006

Island	Yes			No			Estimated Population
	#	%	C.I. (95%)	#	%	C.I. (95%)	#
Hawaii	36,900	30.7	27.9 - 33.5	83,500	69.3	66.5 - 72.1	120,400
Kauai	17,300	37.1	32.4 - 41.8	29,200	62.9	58.2 - 67.6	46,500
Lanai	600	24.5	17.7 - 31.3	1,700	75.5	68.7 - 82.3	2,300
Maui	26,500	28.0	24.9 - 31.2	68,100	72.0	68.8 - 75.1	94,600
Molokai	2,700	41.3	33.0 - 49.6	3,800	58.7	50.4 - 67.0	6,500
Oahu	298,400	43.4	41.2 - 45.6	389,500	56.6	54.4 - 58.8	687,900

Community	Yes			No			Estimated Population
	#	%	C.I. (95%)	#	%	C.I. (95%)	#
Aiea/ Pearl City	32,400	49.4	42.2 - 56.6	33,200	50.6	43.4 - 57.8	65,700

Flu - had shot in past 12 mons by State, County, Island, Community, BRFSS Age Group, DOH Race-Ethnicity, Gender, Education Level, Employment Status (Grouped), Household Income, Poverty Level, Marital Status (Grouped), Married, Health Care Coverage, for the Year(s) - 2001, 2002, 2003, 2004, 2005, 2006, 2007, 2008, 2009, 2010

Note: Weighted numbers (#), percentages and 95% confidence intervals; Respondents aged 18 years and older; n/r (Not Reportable) - If the unweighted total responses for a dimension (row) is <50 that row will not be shown; n/a (Not Available) - Not asked of a subset of respondents

Year: 2006

Community	Yes			No			Estimated Population
	#	%	C.I. (95%)	#	%	C.I. (95%)	#
Ala Moana	14,800	44.9	36.5 - 53.3	18,200	55.1	46.7 - 63.5	33,000
Hanalei/ Kapaa	6,500	32.6	26.1 - 39.1	13,400	67.4	60.9 - 73.9	19,900
Hilo	12,500	36.7	31.3 - 42.1	21,600	63.3	57.9 - 68.7	34,100
Kaaawa/ Kahaluu/ Kaneohe	20,100	42.2	34.1 - 50.3	27,600	57.8	49.7 - 65.9	47,700
Kahului	9,500	30.6	24.7 - 36.5	21,500	69.4	63.5 - 75.3	31,000
Kailua/ Waimanalo	20,800	42.2	34.8 - 49.6	28,500	57.8	50.4 - 65.2	49,300
Kaimuki/ Palolo/ Waikiki	25,600	44.8	37.9 - 51.6	31,600	55.2	48.4 - 62.1	57,200
Kona	8,500	29.2	23.9 - 34.5	20,600	70.8	65.5 - 76.1	29,200
Lahaina/ Wailuku	10,000	31.1	25.4 - 36.9	22,200	68.9	63.1 - 74.6	32,200

Flu - had shot in past 12 mons by State, County, Island, Community, BRFSS Age Group, DOH Race-Ethnicity, Gender, Education Level, Employment Status (Grouped), Household Income, Poverty Level, Marital Status (Grouped), Married, Health Care Coverage, for the Year(s) - 2001, 2002, 2003, 2004, 2005, 2006, 2007, 2008, 2009, 2010

Note: Weighted numbers (#), percentages and 95% confidence intervals; Respondents aged 18 years and older; n/r (Not Reportable) - If the unweighted total responses for a dimension (row) is <50 that row will not be shown; n/a (Not Available) - Not asked of a subset of respondents

Year: 2006

Community	Yes			No			Estimated Population
	#	%	C.I. (95%)	#	%	C.I. (95%)	#
Lanai	600	24.5	17.7 - 31.3	1,700	75.5	68.7 - 82.3	2,300
Lihue-Waimea	10,800	40.5	33.9 - 47.0	15,800	59.5	53.0 - 66.1	26,600
Manoa/ Upper Makiki	21,100	44.4	36.7 - 52.1	26,400	55.6	47.9 - 63.3	47,400
Mililani/ Wahiawa	25,600	40.5	33.8 - 47.2	37,500	59.5	52.8 - 66.2	63,100
Molokai	2,700	41.3	33.0 - 49.6	3,800	58.7	50.4 - 67.0	6,500
Nanakuli/ Waianae	9,500	34.9	23.6 - 46.2	17,800	65.1	53.8 - 76.4	27,400
N.Hawaii	7,500	28.9	22.8 - 35.1	18,500	71.1	64.9 - 77.2	26,000
N.Shore/ Laie	8,200	33.5	23.3 - 43.7	16,200	66.5	56.3 - 76.7	24,300
Nuuanu/ Kalihi/ Moanalua	32,900	45.1	37.7 - 52.5	40,100	54.9	47.5 - 62.3	73,000

Flu - had shot in past 12 mons by State, County, Island, Community, BRFSS Age Group, DOH Race-Ethnicity, Gender, Education Level, Employment Status (Grouped), Household Income, Poverty Level, Marital Status (Grouped), Married, Health Care Coverage, for the Year(s) - 2001, 2002, 2003, 2004, 2005, 2006, 2007, 2008, 2009, 2010

Note: Weighted numbers (#), percentages and 95% confidence intervals; Respondents aged 18 years and older; n/r (Not Reportable) - If the unweighted total responses for a dimension (row) is <50 that row will not be shown; n/a (Not Available) - Not asked of a subset of respondents

Year: 2006

Community	Yes			No			Estimated Population
	#	%	C.I. (95%)	#	%	C.I. (95%)	#
Puna/ Kau	8,300	26.8	21.3 - 32.3	22,800	73.2	67.7 - 78.7	31,100
Salt Lake/ Foster Village	17,500	48.5	38.7 - 58.3	18,600	51.5	41.7 - 61.3	36,100
Upcountry/ Hana	7,000	22.3	17.6 - 27.0	24,400	77.7	73.0 - 82.4	31,400
Waialae/ Kahala/ Hawaii Kai	20,400	48.7	40.4 - 57.0	21,500	51.3	43.0 - 59.6	42,000
Waipahu/ Kapolei/ Ewa	49,500	40.6	34.9 - 46.4	72,300	59.4	53.6 - 65.1	121,800

Flu - had shot in past 12 mons by State, County, Island, Community, BRFSS Age Group, DOH Race-Ethnicity, Gender, Education Level, Employment Status (Grouped), Household Income, Poverty Level, Marital Status (Grouped), Married, Health Care Coverage, for the Year(s) - 2001, 2002, 2003, 2004, 2005, 2006, 2007, 2008, 2009, 2010

Note: Weighted numbers (#), percentages and 95% confidence intervals; Respondents aged 18 years and older; n/r (Not Reportable) - If the unweighted total responses for a dimension (row) is <50 that row will not be shown; n/a (Not Available) - Not asked of a subset of respondents

Year: 2006

BRFSS Age Group	Yes			No			Estimated Population
	#	%	C.I. (95%)	#	%	C.I. (95%)	#
18-24	26,100	21.8	15.9 - 27.7	93,300	78.2	72.3 - 84.1	119,400
25-34	44,200	27.7	23.4 - 32.1	115,200	72.3	67.9 - 76.6	159,300
35-44	50,200	28.6	25.1 - 32.1	125,400	71.4	67.9 - 74.9	175,600
45-54	57,400	32.5	29.2 - 35.8	119,200	67.5	64.2 - 70.8	176,600
55-64	68,500	47.2	43.4 - 51.0	76,600	52.8	49.0 - 56.6	145,100
65-74	58,900	71.9	67.8 - 75.9	23,100	28.1	24.1 - 32.2	82,000
75+	73,100	79.0	75.4 - 82.7	19,400	21.0	17.3 - 24.6	92,500

DOH Race-Ethnicity	Yes			No			Estimated Population
	#	%	C.I. (95%)	#	%	C.I. (95%)	#

Flu - had shot in past 12 mons by State, County, Island, Community, BRFSS Age Group, DOH Race-Ethnicity, Gender, Education Level, Employment Status (Grouped), Household Income, Poverty Level, Marital Status (Grouped), Married, Health Care Coverage, for the Year(s) - 2001, 2002, 2003, 2004, 2005, 2006, 2007, 2008, 2009, 2010

Note: Weighted numbers (#), percentages and 95% confidence intervals; Respondents aged 18 years and older; n/r (Not Reportable) - If the unweighted total responses for a dimension (row) is <50 that row will not be shown; n/a (Not Available) - Not asked of a subset of respondents

Year: 2006

DOH Race-Ethnicity	Yes			No			Estimated Population
	#	%	C.I. (95%)	#	%	C.I. (95%)	#
Caucasian	115,900	36.7	34.2 - 39.1	200,200	63.3	60.9 - 65.8	316,100
Native Hawaiian	41,200	34.6	30.0 - 39.1	78,000	65.4	60.9 - 70.0	119,200
Chinese	22,300	48.2	40.8 - 55.6	24,000	51.8	44.4 - 59.2	46,300
Filipino	62,800	41.7	36.5 - 47.0	87,600	58.3	53.0 - 63.5	150,300
Japanese	96,900	47.5	44.0 - 51.1	106,900	52.5	48.9 - 56.0	203,800
Black	4,400	30.3	17.0 - 43.7	10,000	69.7	56.3 - 83.0	14,400
Other Asian	12,000	43.1	32.4 - 53.7	15,900	56.9	46.3 - 67.6	27,800
Other Pacific Islander	7,100	28.3	16.9 - 39.8	18,100	71.7	60.2 - 83.1	25,200
Mixed Ethnicity	9,000	37.6	26.5 - 48.8	15,000	62.4	51.2 - 73.5	24,000

Flu - had shot in past 12 mons by State, County, Island, Community, BRFSS Age Group, DOH Race-Ethnicity, Gender, Education Level, Employment Status (Grouped), Household Income, Poverty Level, Marital Status (Grouped), Married, Health Care Coverage, for the Year(s) - 2001, 2002, 2003, 2004, 2005, 2006, 2007, 2008, 2009, 2010

Note: Weighted numbers (#), percentages and 95% confidence intervals; Respondents aged 18 years and older; n/r (Not Reportable) - If the unweighted total responses for a dimension (row) is <50 that row will not be shown; n/a (Not Available) - Not asked of a subset of respondents

Year: 2006

DOH Race-Ethnicity	Yes			No			Estimated Population
	#	%	C.I. (95%)	#	%	C.I. (95%)	#
Other	7,900	37.1	25.4 - 48.8	13,400	62.9	51.2 - 74.6	21,200

Gender	Yes			No			Estimated Population
	#	%	C.I. (95%)	#	%	C.I. (95%)	#
Male	176,700	37.5	34.9 - 40.0	294,900	62.5	60.0 - 65.1	471,600
Female	205,700	42.3	40.1 - 44.4	280,900	57.7	55.6 - 59.9	486,600

Flu - had shot in past 12 mons by State, County, Island, Community, BRFSS Age Group, DOH Race-Ethnicity, Gender, Education Level, Employment Status (Grouped), Household Income, Poverty Level, Marital Status (Grouped), Married, Health Care Coverage, for the Year(s) - 2001, 2002, 2003, 2004, 2005, 2006, 2007, 2008, 2009, 2010

Note: Weighted numbers (#), percentages and 95% confidence intervals; Respondents aged 18 years and older; n/r (Not Reportable) - If the unweighted total responses for a dimension (row) is <50 that row will not be shown; n/a (Not Available) - Not asked of a subset of respondents

Year: 2006

Education Level	Yes			No			Estimated Population
	#	%	C.I. (95%)	#	%	C.I. (95%)	#
Never attended school/ Only Kindergarten to Grades 8	11,100	68.9	58.6 - 79.2	5,000	31.1	20.8 - 41.4	16,100
Grades 9 thru 11 (Some High School)	15,700	38.6	30.7 - 46.5	24,900	61.4	53.5 - 69.3	40,600
Grades 12 or GED (High School Grad)	113,000	39.5	36.2 - 42.8	173,300	60.5	57.2 - 63.8	286,300
College 1 to 3 years (Some College/ Tech)	104,100	37.6	34.5 - 40.8	172,400	62.4	59.2 - 65.5	276,500
College 4 years or more (College Grad)	138,200	40.9	38.3 - 43.4	199,800	59.1	56.6 - 61.7	338,000

Flu - had shot in past 12 mons by State, County, Island, Community, BRFSS Age Group, DOH Race-Ethnicity, Gender, Education Level, Employment Status (Grouped), Household Income, Poverty Level, Marital Status (Grouped), Married, Health Care Coverage, for the Year(s) - 2001, 2002, 2003, 2004, 2005, 2006, 2007, 2008, 2009, 2010

Note: Weighted numbers (#), percentages and 95% confidence intervals; Respondents aged 18 years and older; n/r (Not Reportable) - If the unweighted total responses for a dimension (row) is <50 that row will not be shown; n/a (Not Available) - Not asked of a subset of respondents

Year: 2006

Employment Status (Grouped)	Yes			No			Estimated Population
	#	%	C.I. (95%)	#	%	C.I. (95%)	#
Employed	204,000	33.0	30.9 - 35.0	414,400	67.0	65.0 - 69.1	618,400
Unemployed	8,200	23.5	15.7 - 31.3	26,600	76.5	68.7 - 84.3	34,800
Retired/Unable to work	145,400	67.3	64.6 - 70.0	70,600	32.7	30.0 - 35.4	216,000
Student/Homemaker	24,100	27.5	21.6 - 33.4	63,700	72.5	66.6 - 78.4	87,800

Flu - had shot in past 12 mons by State, County, Island, Community, BRFSS Age Group, DOH Race-Ethnicity, Gender, Education Level, Employment Status (Grouped), Household Income, Poverty Level, Marital Status (Grouped), Married, Health Care Coverage, for the Year(s) - 2001, 2002, 2003, 2004, 2005, 2006, 2007, 2008, 2009, 2010

Note: Weighted numbers (#), percentages and 95% confidence intervals; Respondents aged 18 years and older; n/r (Not Reportable) - If the unweighted total responses for a dimension (row) is <50 that row will not be shown; n/a (Not Available) - Not asked of a subset of respondents

Year: 2006

Household Income	Yes			No			Estimated Population
	#	%	C.I. (95%)	#	%	C.I. (95%)	#
Less than \$10,000	9,500	36.9	27.9 - 46.0	16,300	63.1	54.0 - 72.1	25,800
\$10,000 to \$14,999	10,700	42.2	33.0 - 51.4	14,600	57.8	48.6 - 67.0	25,300
\$15,000 to \$19,999	19,900	46.2	38.5 - 54.0	23,100	53.8	46.0 - 61.5	43,000
\$20,000 to \$24,999	27,500	42.0	35.2 - 48.8	37,900	58.0	51.2 - 64.8	65,400
\$25,000 to \$34,999	43,500	41.3	36.1 - 46.5	61,700	58.7	53.5 - 63.9	105,200
\$35,000 to \$49,999	52,400	39.8	35.5 - 44.0	79,400	60.2	56.0 - 64.5	131,800
\$50,000 to \$74,999	54,100	35.2	31.4 - 39.0	99,600	64.8	61.0 - 68.6	153,600
\$75,000 or more	92,100	38.6	35.4 - 41.7	146,800	61.4	58.3 - 64.6	238,900

Flu - had shot in past 12 mons by State, County, Island, Community, BRFSS Age Group, DOH Race-Ethnicity, Gender, Education Level, Employment Status (Grouped), Household Income, Poverty Level, Marital Status (Grouped), Married, Health Care Coverage, for the Year(s) - 2001, 2002, 2003, 2004, 2005, 2006, 2007, 2008, 2009, 2010

Note: Weighted numbers (#), percentages and 95% confidence intervals; Respondents aged 18 years and older; n/r (Not Reportable) - If the unweighted total responses for a dimension (row) is <50 that row will not be shown; n/a (Not Available) - Not asked of a subset of respondents

Year: 2006

Poverty Level	Yes			No			Estimated Population
	#	%	C.I. (95%)	#	%	C.I. (95%)	#
0-130%	68,200	39.5	35.0 - 43.9	104,600	60.5	56.1 - 65.0	172,900
131-185%	38,500	34.0	29.1 - 38.9	74,700	66.0	61.1 - 70.9	113,200
186+%	202,900	40.3	38.3 - 42.4	300,100	59.7	57.6 - 61.7	503,000

Flu - had shot in past 12 mons by State, County, Island, Community, BRFSS Age Group, DOH Race-Ethnicity, Gender, Education Level, Employment Status (Grouped), Household Income, Poverty Level, Marital Status (Grouped), Married, Health Care Coverage, for the Year(s) - 2001, 2002, 2003, 2004, 2005, 2006, 2007, 2008, 2009, 2010

Note: Weighted numbers (#), percentages and 95% confidence intervals; Respondents aged 18 years and older; n/r (Not Reportable) - If the unweighted total responses for a dimension (row) is <50 that row will not be shown; n/a (Not Available) - Not asked of a subset of respondents

Year: 2006

Marital Status (Grouped)	Yes			No			Estimated Population
	#	%	C.I. (95%)	#	%	C.I. (95%)	#
Married	245,700	43.3	41.3 - 45.4	321,400	56.7	54.6 - 58.7	567,000
Unmarried Couple	7,000	22.2	11.8 - 32.7	24,600	77.8	67.3 - 88.2	31,600
Widowed	36,100	66.3	61.0 - 71.7	18,300	33.7	28.3 - 39.0	54,400
Other	93,600	30.7	27.6 - 33.7	211,600	69.3	66.3 - 72.4	305,200

Married	Yes			No			Estimated Population
	#	%	C.I. (95%)	#	%	C.I. (95%)	#
Yes	250,300	43.4	41.3 - 45.4	326,800	56.6	54.6 - 58.7	577,100
No	131,600	34.7	32.0 - 37.4	247,900	65.3	62.6 - 68.0	379,500

Flu - had shot in past 12 mons by State, County, Island, Community, BRFSS Age Group, DOH Race-Ethnicity, Gender, Education Level, Employment Status (Grouped), Household Income, Poverty Level, Marital Status (Grouped), Married, Health Care Coverage, for the Year(s) - 2001, 2002, 2003, 2004, 2005, 2006, 2007, 2008, 2009, 2010

Note: Weighted numbers (#), percentages and 95% confidence intervals; Respondents aged 18 years and older; n/r (Not Reportable) - If the unweighted total responses for a dimension (row) is <50 that row will not be shown; n/a (Not Available) - Not asked of a subset of respondents

Year: 2006

Health Care Coverage	Yes			No			Estimated Population
	#	%	C.I. (95%)	#	%	C.I. (95%)	#
Yes	372,000	42.5	40.8 - 44.2	503,300	57.5	55.8 - 59.2	875,300
No	9,700	12.1	7.5 - 16.7	70,600	87.9	83.3 - 92.5	80,300

Flu - had shot in past 12 mons by State, County, Island, Community, BRFSS Age Group, DOH Race-Ethnicity, Gender, Education Level, Employment Status (Grouped), Household Income, Poverty Level, Marital Status (Grouped), Married, Health Care Coverage, for the Year(s) - 2001, 2002, 2003, 2004, 2005, 2006, 2007, 2008, 2009, 2010

Note: Weighted numbers (#), percentages and 95% confidence intervals; Respondents aged 18 years and older; n/r (Not Reportable) - If the unweighted total responses for a dimension (row) is <50 that row will not be shown; n/a (Not Available) - Not asked of a subset of respondents

Year: 2005

State	Yes			No			Estimated Population
	#	%	C.I. (95%)	#	%	C.I. (95%)	#
Hawaii State	336,000	34.7	33.0 - 36.3	633,100	65.3	63.7 - 67.0	969,100

County	Yes			No			Estimated Population
	#	%	C.I. (95%)	#	%	C.I. (95%)	#
Hawaii	32,400	27.1	24.5 - 29.6	87,300	72.9	70.4 - 75.5	119,800
Honolulu	261,700	37.5	35.3 - 39.6	437,000	62.5	60.4 - 64.7	698,800
Kauai	12,400	26.9	22.5 - 31.2	33,900	73.1	68.8 - 77.5	46,300
Maui	29,400	28.2	24.9 - 31.5	74,900	71.8	68.5 - 75.1	104,300

Flu - had shot in past 12 mons by State, County, Island, Community, BRFSS Age Group, DOH Race-Ethnicity, Gender, Education Level, Employment Status (Grouped), Household Income, Poverty Level, Marital Status (Grouped), Married, Health Care Coverage, for the Year(s) - 2001, 2002, 2003, 2004, 2005, 2006, 2007, 2008, 2009, 2010

Note: Weighted numbers (#), percentages and 95% confidence intervals; Respondents aged 18 years and older; n/r (Not Reportable) - If the unweighted total responses for a dimension (row) is <50 that row will not be shown; n/a (Not Available) - Not asked of a subset of respondents

Year: 2005

Island	Yes			No			Estimated Population
	#	%	C.I. (95%)	#	%	C.I. (95%)	#
Hawaii	32,400	27.1	24.5 - 29.6	87,300	72.9	70.4 - 75.5	119,800
Kauai	12,400	26.9	22.5 - 31.2	33,900	73.1	68.8 - 77.5	46,300
Lanai	700	29.5	21.3 - 37.8	1,800	70.5	62.2 - 78.7	2,500
Maui	26,500	27.4	23.9 - 31.0	70,000	72.6	69.0 - 76.1	96,500
Molokai	2,200	40.9	30.9 - 51.0	3,200	59.1	49.0 - 69.1	5,400
Oahu	261,700	37.5	35.3 - 39.6	437,000	62.5	60.4 - 64.7	698,800

Community	Yes			No			Estimated Population
	#	%	C.I. (95%)	#	%	C.I. (95%)	#
Aiea/ Pearl City	28,200	40.3	33.5 - 47.0	41,900	59.7	53.0 - 66.5	70,100

Flu - had shot in past 12 mons by State, County, Island, Community, BRFSS Age Group, DOH Race-Ethnicity, Gender, Education Level, Employment Status (Grouped), Household Income, Poverty Level, Marital Status (Grouped), Married, Health Care Coverage, for the Year(s) - 2001, 2002, 2003, 2004, 2005, 2006, 2007, 2008, 2009, 2010

Note: Weighted numbers (#), percentages and 95% confidence intervals; Respondents aged 18 years and older; n/r (Not Reportable) - If the unweighted total responses for a dimension (row) is <50 that row will not be shown; n/a (Not Available) - Not asked of a subset of respondents

Year: 2005

Community	Yes			No			Estimated Population
	#	%	C.I. (95%)	#	%	C.I. (95%)	#
Ala Moana	9,900	29.8	21.8 - 37.8	23,400	70.2	62.2 - 78.2	33,300
Hanalei/ Kapaa	4,500	23.3	17.0 - 29.6	14,800	76.7	70.4 - 83.0	19,300
Hilo	12,000	33.9	28.7 - 39.1	23,400	66.1	60.9 - 71.3	35,500
Kaaawa/ Kahaluu/ Kaneohe	19,100	36.8	28.8 - 44.7	32,800	63.2	55.3 - 71.2	52,000
Kahului	9,200	26.7	20.9 - 32.4	25,300	73.3	67.6 - 79.1	34,500
Kailua/ Waimanalo	18,700	38.6	30.8 - 46.4	29,800	61.4	53.6 - 69.2	48,500
Kaimuki/ Palolo/ Waikiki	21,400	32.5	26.5 - 38.6	44,400	67.5	61.4 - 73.5	65,800
Kona	6,900	23.8	18.7 - 28.9	22,000	76.2	71.1 - 81.3	28,900
Lahaina/ Wailuku	8,800	27.7	21.6 - 33.8	23,000	72.3	66.2 - 78.4	31,900

Flu - had shot in past 12 mons by State, County, Island, Community, BRFSS Age Group, DOH Race-Ethnicity, Gender, Education Level, Employment Status (Grouped), Household Income, Poverty Level, Marital Status (Grouped), Married, Health Care Coverage, for the Year(s) - 2001, 2002, 2003, 2004, 2005, 2006, 2007, 2008, 2009, 2010

Note: Weighted numbers (#), percentages and 95% confidence intervals; Respondents aged 18 years and older; n/r (Not Reportable) - If the unweighted total responses for a dimension (row) is <50 that row will not be shown; n/a (Not Available) - Not asked of a subset of respondents

Year: 2005

Community	Yes			No			Estimated Population
	#	%	C.I. (95%)	#	%	C.I. (95%)	#
Lanai	700	29.5	21.3 - 37.8	1,800	70.5	62.2 - 78.7	2,500
Lihue-Waimea	8,000	29.4	23.5 - 35.4	19,100	70.6	64.6 - 76.5	27,100
Manoa/ Upper Makiki	15,600	35.3	27.3 - 43.3	28,500	64.7	56.7 - 72.7	44,000
Mililani/ Wahiawa	28,000	39.4	32.9 - 45.9	43,100	60.6	54.1 - 67.1	71,100
Molokai	2,200	40.9	30.9 - 51.0	3,200	59.1	49.0 - 69.1	5,400
Nanakuli/ Waianae	14,200	43.8	31.4 - 56.1	18,200	56.2	43.9 - 68.6	32,400
N.Hawaii	6,500	26.4	21.6 - 31.3	18,000	73.6	68.7 - 78.4	24,400
N.Shore/ Laie	7,600	37.0	25.5 - 48.5	12,900	63.0	51.5 - 74.5	20,500
Nuuanu/ Kalihi/ Moanalua	26,000	37.9	30.5 - 45.3	42,600	62.1	54.7 - 69.5	68,600

Flu - had shot in past 12 mons by State, County, Island, Community, BRFSS Age Group, DOH Race-Ethnicity, Gender, Education Level, Employment Status (Grouped), Household Income, Poverty Level, Marital Status (Grouped), Married, Health Care Coverage, for the Year(s) - 2001, 2002, 2003, 2004, 2005, 2006, 2007, 2008, 2009, 2010

Note: Weighted numbers (#), percentages and 95% confidence intervals; Respondents aged 18 years and older; n/r (Not Reportable) - If the unweighted total responses for a dimension (row) is <50 that row will not be shown; n/a (Not Available) - Not asked of a subset of respondents

Year: 2005

Community	Yes			No			Estimated Population
	#	%	C.I. (95%)	#	%	C.I. (95%)	#
Puna/ Kau	7,100	22.8	17.9 - 27.6	23,900	77.2	72.4 - 82.1	31,000
Salt Lake/ Foster Village	12,900	39.3	29.1 - 49.4	19,900	60.7	50.6 - 70.9	32,700
Upcountry/ Hana	8,500	28.1	21.6 - 34.6	21,700	71.9	65.4 - 78.4	30,100
Waialae/ Kahala/ Hawaii Kai	17,000	39.3	31.1 - 47.5	26,200	60.7	52.5 - 68.9	43,200
Waipahu/ Kapolei/ Ewa	43,200	37.1	31.8 - 42.4	73,300	62.9	57.6 - 68.2	116,500

Flu - had shot in past 12 mons by State, County, Island, Community, BRFSS Age Group, DOH Race-Ethnicity, Gender, Education Level, Employment Status (Grouped), Household Income, Poverty Level, Marital Status (Grouped), Married, Health Care Coverage, for the Year(s) - 2001, 2002, 2003, 2004, 2005, 2006, 2007, 2008, 2009, 2010

Note: Weighted numbers (#), percentages and 95% confidence intervals; Respondents aged 18 years and older; n/r (Not Reportable) - If the unweighted total responses for a dimension (row) is <50 that row will not be shown; n/a (Not Available) - Not asked of a subset of respondents

Year: 2005

BRFSS Age Group	Yes			No			Estimated Population
	#	%	C.I. (95%)	#	%	C.I. (95%)	#
18-24	33,100	28.0	22.1 - 33.8	85,200	72.0	66.2 - 77.9	118,300
25-34	41,100	24.6	20.3 - 28.9	126,100	75.4	71.1 - 79.7	167,100
35-44	40,500	22.3	19.1 - 25.5	141,500	77.7	74.5 - 80.9	182,000
45-54	41,600	22.8	19.7 - 26.0	140,500	77.2	74.0 - 80.3	182,100
55-64	52,700	37.6	33.6 - 41.5	87,600	62.4	58.5 - 66.4	140,400
65-74	57,800	67.5	63.1 - 71.9	27,800	32.5	28.1 - 36.9	85,500
75+	67,200	76.6	72.7 - 80.6	20,500	23.4	19.4 - 27.3	87,700

Flu - had shot in past 12 mons by State, County, Island, Community, BRFSS Age Group, DOH Race-Ethnicity, Gender, Education Level, Employment Status (Grouped), Household Income, Poverty Level, Marital Status (Grouped), Married, Health Care Coverage, for the Year(s) - 2001, 2002, 2003, 2004, 2005, 2006, 2007, 2008, 2009, 2010

Note: Weighted numbers (#), percentages and 95% confidence intervals; Respondents aged 18 years and older; n/r (Not Reportable) - If the unweighted total responses for a dimension (row) is <50 that row will not be shown; n/a (Not Available) - Not asked of a subset of respondents

Year: 2005

DOH Race-Ethnicity	Yes			No			Estimated Population
	#	%	C.I. (95%)	#	%	C.I. (95%)	#
Caucasian	104,100	32.0	29.5 - 34.5	221,200	68.0	65.5 - 70.5	325,300
Native Hawaiian	38,300	32.7	28.0 - 37.4	78,900	67.3	62.6 - 72.0	117,200
Chinese	21,600	39.2	31.9 - 46.5	33,400	60.8	53.5 - 68.1	55,000
Filipino	52,900	34.2	29.4 - 38.9	102,000	65.8	61.1 - 70.6	155,000
Japanese	82,900	39.6	36.2 - 43.1	126,200	60.4	56.9 - 63.8	209,100
Black	8,900	45.1	32.4 - 57.8	10,800	54.9	42.2 - 67.6	19,700
Other Asian	6,700	32.9	19.7 - 46.2	13,600	67.1	53.8 - 80.3	20,200
Other Pacific Islander	9,200	36.8	24.4 - 49.3	15,700	63.2	50.7 - 75.6	24,900
Other	8,500	25.8	18.4 - 33.3	24,300	74.2	66.7 - 81.6	32,800

Flu - had shot in past 12 mons by State, County, Island, Community, BRFSS Age Group, DOH Race-Ethnicity, Gender, Education Level, Employment Status (Grouped), Household Income, Poverty Level, Marital Status (Grouped), Married, Health Care Coverage, for the Year(s) - 2001, 2002, 2003, 2004, 2005, 2006, 2007, 2008, 2009, 2010

Note: Weighted numbers (#), percentages and 95% confidence intervals; Respondents aged 18 years and older; n/r (Not Reportable) - If the unweighted total responses for a dimension (row) is <50 that row will not be shown; n/a (Not Available) - Not asked of a subset of respondents

Year: 2005

Gender	Yes			No			Estimated Population
	#	%	C.I. (95%)	#	%	C.I. (95%)	#
Male	168,800	35.1	32.5 - 37.6	312,600	64.9	62.4 - 67.5	481,400
Female	167,200	34.3	32.3 - 36.3	320,600	65.7	63.7 - 67.7	487,800

Flu - had shot in past 12 mons by State, County, Island, Community, BRFSS Age Group, DOH Race-Ethnicity, Gender, Education Level, Employment Status (Grouped), Household Income, Poverty Level, Marital Status (Grouped), Married, Health Care Coverage, for the Year(s) - 2001, 2002, 2003, 2004, 2005, 2006, 2007, 2008, 2009, 2010

Note: Weighted numbers (#), percentages and 95% confidence intervals; Respondents aged 18 years and older; n/r (Not Reportable) - If the unweighted total responses for a dimension (row) is <50 that row will not be shown; n/a (Not Available) - Not asked of a subset of respondents

Year: 2005

Education Level	Yes			No			Estimated Population
	#	%	C.I. (95%)	#	%	C.I. (95%)	#
Never attended school/ Only Kindergarten to Grades 8	8,600	42.2	29.5 - 55.0	11,800	57.8	45.0 - 70.5	20,400
Grades 9 thru 11 (Some High School)	17,000	43.0	34.4 - 51.5	22,600	57.0	48.5 - 65.6	39,600
Grades 12 or GED (High School Grad)	105,700	38.0	34.9 - 41.2	172,300	62.0	58.8 - 65.1	278,000
College 1 to 3 years (Some College/ Tech)	85,800	30.7	27.7 - 33.7	193,900	69.3	66.3 - 72.3	279,700
College 4 years or more (College Grad)	118,300	33.9	31.3 - 36.5	230,800	66.1	63.5 - 68.7	349,100

Flu - had shot in past 12 mons by State, County, Island, Community, BRFSS Age Group, DOH Race-Ethnicity, Gender, Education Level, Employment Status (Grouped), Household Income, Poverty Level, Marital Status (Grouped), Married, Health Care Coverage, for the Year(s) - 2001, 2002, 2003, 2004, 2005, 2006, 2007, 2008, 2009, 2010

Note: Weighted numbers (#), percentages and 95% confidence intervals; Respondents aged 18 years and older; n/r (Not Reportable) - If the unweighted total responses for a dimension (row) is <50 that row will not be shown; n/a (Not Available) - Not asked of a subset of respondents

Year: 2005

Employment Status (Grouped)	Yes			No			Estimated Population
	#	%	C.I. (95%)	#	%	C.I. (95%)	#
Employed	171,900	27.5	25.5 - 29.5	452,800	72.5	70.5 - 74.5	624,700
Unemployed	4,000	22.0	12.6 - 31.3	14,300	78.0	68.7 - 87.4	18,300
Retired/Unable to work	136,200	59.3	56.3 - 62.3	93,400	40.7	37.7 - 43.7	229,600
Student/Homemaker	22,900	24.4	19.1 - 29.7	70,900	75.6	70.3 - 80.9	93,800

Flu - had shot in past 12 mons by State, County, Island, Community, BRFSS Age Group, DOH Race-Ethnicity, Gender, Education Level, Employment Status (Grouped), Household Income, Poverty Level, Marital Status (Grouped), Married, Health Care Coverage, for the Year(s) - 2001, 2002, 2003, 2004, 2005, 2006, 2007, 2008, 2009, 2010

Note: Weighted numbers (#), percentages and 95% confidence intervals; Respondents aged 18 years and older; n/r (Not Reportable) - If the unweighted total responses for a dimension (row) is <50 that row will not be shown; n/a (Not Available) - Not asked of a subset of respondents

Year: 2005

Household Income	Yes			No			Estimated Population
	#	%	C.I. (95%)	#	%	C.I. (95%)	#
Less than \$10,000	11,500	42.3	32.1 - 52.5	15,700	57.7	47.5 - 67.9	27,200
\$10,000 to \$14,999	11,800	41.9	31.7 - 52.1	16,400	58.1	47.9 - 68.3	28,300
\$15,000 to \$19,999	21,100	41.6	34.3 - 49.0	29,600	58.4	51.0 - 65.7	50,600
\$20,000 to \$24,999	24,700	40.0	33.9 - 46.1	37,100	60.0	53.9 - 66.1	61,900
\$25,000 to \$34,999	38,000	37.7	32.7 - 42.8	62,700	62.3	57.2 - 67.3	100,700
\$35,000 to \$49,999	48,400	32.0	28.2 - 35.7	103,000	68.0	64.3 - 71.8	151,300
\$50,000 to \$74,999	55,100	30.6	26.9 - 34.3	125,000	69.4	65.7 - 73.1	180,200
\$75,000 or more	72,900	31.7	28.5 - 34.9	157,300	68.3	65.1 - 71.5	230,200

Flu - had shot in past 12 mons by State, County, Island, Community, BRFSS Age Group, DOH Race-Ethnicity, Gender, Education Level, Employment Status (Grouped), Household Income, Poverty Level, Marital Status (Grouped), Married, Health Care Coverage, for the Year(s) - 2001, 2002, 2003, 2004, 2005, 2006, 2007, 2008, 2009, 2010

Note: Weighted numbers (#), percentages and 95% confidence intervals; Respondents aged 18 years and older; n/r (Not Reportable) - If the unweighted total responses for a dimension (row) is <50 that row will not be shown; n/a (Not Available) - Not asked of a subset of respondents

Year: 2005

Poverty Level	Yes			No			Estimated Population
	#	%	C.I. (95%)	#	%	C.I. (95%)	#
0-130%	64,100	38.2	33.8 - 42.6	103,900	61.8	57.4 - 66.2	168,000
131-185%	36,800	39.8	33.8 - 45.8	55,700	60.2	54.2 - 66.2	92,500
186+%	182,700	32.1	30.2 - 33.9	387,300	67.9	66.1 - 69.8	570,000

Flu - had shot in past 12 mons by State, County, Island, Community, BRFSS Age Group, DOH Race-Ethnicity, Gender, Education Level, Employment Status (Grouped), Household Income, Poverty Level, Marital Status (Grouped), Married, Health Care Coverage, for the Year(s) - 2001, 2002, 2003, 2004, 2005, 2006, 2007, 2008, 2009, 2010

Note: Weighted numbers (#), percentages and 95% confidence intervals; Respondents aged 18 years and older; n/r (Not Reportable) - If the unweighted total responses for a dimension (row) is <50 that row will not be shown; n/a (Not Available) - Not asked of a subset of respondents

Year: 2005

Marital Status (Grouped)	Yes			No			Estimated Population
	#	%	C.I. (95%)	#	%	C.I. (95%)	#
Married	209,600	36.2	34.1 - 38.3	369,600	63.8	61.7 - 65.9	579,100
Unmarried Couple	4,600	17.7	10.3 - 25.1	21,400	82.3	74.9 - 89.7	26,000
Widowed	36,900	63.7	58.6 - 68.8	21,000	36.3	31.2 - 41.4	57,900
Other	84,900	27.7	24.7 - 30.7	221,200	72.3	69.3 - 75.3	306,100

Married	Yes			No			Estimated Population
	#	%	C.I. (95%)	#	%	C.I. (95%)	#
Yes	212,900	36.1	34.0 - 38.1	377,600	63.9	61.9 - 66.0	590,500
No	122,700	32.6	30.0 - 35.2	253,900	67.4	64.8 - 70.0	376,600

Flu - had shot in past 12 mons by State, County, Island, Community, BRFSS Age Group, DOH Race-Ethnicity, Gender, Education Level, Employment Status (Grouped), Household Income, Poverty Level, Marital Status (Grouped), Married, Health Care Coverage, for the Year(s) - 2001, 2002, 2003, 2004, 2005, 2006, 2007, 2008, 2009, 2010

Note: Weighted numbers (#), percentages and 95% confidence intervals; Respondents aged 18 years and older; n/r (Not Reportable) - If the unweighted total responses for a dimension (row) is <50 that row will not be shown; n/a (Not Available) - Not asked of a subset of respondents

Year: 2005

Health Care Coverage	Yes			No			Estimated Population
	#	%	C.I. (95%)	#	%	C.I. (95%)	#
Yes	322,900	36.2	34.5 - 37.9	569,800	63.8	62.1 - 65.5	892,700
No	12,900	17.3	12.2 - 22.3	61,800	82.7	77.7 - 87.8	74,700

Flu - had shot in past 12 mons by State, County, Island, Community, BRFSS Age Group, DOH Race-Ethnicity, Gender, Education Level, Employment Status (Grouped), Household Income, Poverty Level, Marital Status (Grouped), Married, Health Care Coverage, for the Year(s) - 2001, 2002, 2003, 2004, 2005, 2006, 2007, 2008, 2009, 2010

Note: Weighted numbers (#), percentages and 95% confidence intervals; Respondents aged 18 years and older; n/r (Not Reportable) - If the unweighted total responses for a dimension (row) is <50 that row will not be shown; n/a (Not Available) - Not asked of a subset of respondents

Year: 2004

State	Yes			No			Estimated Population
	#	%	C.I. (95%)	#	%	C.I. (95%)	#
Hawaii State	256,600	28.3	25.5 - 31.1	649,800	71.7	68.9 - 74.5	906,400

County	Yes			No			Estimated Population
	#	%	C.I. (95%)	#	%	C.I. (95%)	#
Hawaii	30,000	23.2	19.0 - 27.3	99,500	76.8	72.7 - 81.0	129,500
Honolulu	194,300	30.4	26.6 - 34.2	444,900	69.6	65.8 - 73.4	639,200
Kauai	8,500	20.9	15.6 - 26.2	32,100	79.1	73.8 - 84.4	40,600
Maui	23,800	24.5	18.8 - 30.2	73,300	75.5	69.8 - 81.2	97,100

Flu - had shot in past 12 mons by State, County, Island, Community, BRFSS Age Group, DOH Race-Ethnicity, Gender, Education Level, Employment Status (Grouped), Household Income, Poverty Level, Marital Status (Grouped), Married, Health Care Coverage, for the Year(s) - 2001, 2002, 2003, 2004, 2005, 2006, 2007, 2008, 2009, 2010

Note: Weighted numbers (#), percentages and 95% confidence intervals; Respondents aged 18 years and older; n/r (Not Reportable) - If the unweighted total responses for a dimension (row) is <50 that row will not be shown; n/a (Not Available) - Not asked of a subset of respondents

Year: 2004

Island	Yes			No			Estimated Population
	#	%	C.I. (95%)	#	%	C.I. (95%)	#
Hawaii	30,000	23.2	19.0 - 27.3	99,500	76.8	72.7 - 81.0	129,500
Kauai	8,500	20.9	15.6 - 26.2	32,100	79.1	73.8 - 84.4	40,600
Lanai	200	16.2	6.1 - 26.4	1,100	83.8	73.6 - 93.9	1,300
Maui	22,200	24.6	18.5 - 30.8	67,800	75.4	69.2 - 81.5	90,000
Molokai	1,400	24.3	10.6 - 37.9	4,500	75.7	62.1 - 89.4	5,900
Oahu	194,300	30.4	26.6 - 34.2	444,900	69.6	65.8 - 73.4	639,200

Community	Yes			No			Estimated Population
	#	%	C.I. (95%)	#	%	C.I. (95%)	#
Aiea/ Pearl City	27,000	44.0	31.5 - 56.5	34,400	56.0	43.5 - 68.5	61,400

Flu - had shot in past 12 mons by State, County, Island, Community, BRFSS Age Group, DOH Race-Ethnicity, Gender, Education Level, Employment Status (Grouped), Household Income, Poverty Level, Marital Status (Grouped), Married, Health Care Coverage, for the Year(s) - 2001, 2002, 2003, 2004, 2005, 2006, 2007, 2008, 2009, 2010

Note: Weighted numbers (#), percentages and 95% confidence intervals; Respondents aged 18 years and older; n/r (Not Reportable) - If the unweighted total responses for a dimension (row) is <50 that row will not be shown; n/a (Not Available) - Not asked of a subset of respondents

Year: 2004

Community	Yes			No			Estimated Population
	#	%	C.I. (95%)	#	%	C.I. (95%)	#
Ala Moana	9,400	30.9	12.4 - 49.4	21,100	69.1	50.6 - 87.6	30,500
Hanalei/ Kapaa	2,700	16.3	8.9 - 23.7	13,600	83.7	76.3 - 91.1	16,300
Hilo	6,800	20.1	13.1 - 27.0	27,000	79.9	73.0 - 86.9	33,800
Kaaawa/ Kahaluu/ Kaneohe	13,300	32.8	18.4 - 47.2	27,100	67.2	52.8 - 81.6	40,400
Kahului	9,300	29.4	18.3 - 40.6	22,200	70.6	59.4 - 81.7	31,500
Kailua/ Waimanalo	14,000	33.2	20.3 - 46.2	28,100	66.8	53.8 - 79.7	42,100
Kaimuki/ Palolo/ Waikiki	18,200	30.3	19.7 - 41.0	41,800	69.7	59.0 - 80.3	60,000
Kona	5,700	21.5	13.5 - 29.4	20,700	78.5	70.6 - 86.5	26,400
Lahaina/ Wailuku	8,300	29.9	17.2 - 42.6	19,500	70.1	57.4 - 82.8	27,900

Flu - had shot in past 12 mons by State, County, Island, Community, BRFSS Age Group, DOH Race-Ethnicity, Gender, Education Level, Employment Status (Grouped), Household Income, Poverty Level, Marital Status (Grouped), Married, Health Care Coverage, for the Year(s) - 2001, 2002, 2003, 2004, 2005, 2006, 2007, 2008, 2009, 2010

Note: Weighted numbers (#), percentages and 95% confidence intervals; Respondents aged 18 years and older; n/r (Not Reportable) - If the unweighted total responses for a dimension (row) is <50 that row will not be shown; n/a (Not Available) - Not asked of a subset of respondents

Year: 2004

Community	Yes			No			Estimated Population
	#	%	C.I. (95%)	#	%	C.I. (95%)	#
Lanai	200	16.2	6.1 - 26.4	1,100	83.8	73.6 - 93.9	1,300
Lihue-Waimea	5,800	24.0	16.7 - 31.3	18,500	76.0	68.7 - 83.3	24,300
Manoa/ Upper Makiki	11,100	23.9	13.1 - 34.7	35,500	76.1	65.3 - 86.9	46,600
Mililani/ Wahiawa	16,700	27.6	12.1 - 43.2	43,700	72.4	56.8 - 87.9	60,400
Molokai	1,400	24.3	10.6 - 37.9	4,500	75.7	62.1 - 89.4	5,900
N.Hawaii	5,400	23.5	13.0 - 34.0	17,700	76.5	66.0 - 87.0	23,200
Nuuanu/ Kalihi/ Moanalua	15,000	23.7	13.9 - 33.4	48,300	76.3	66.6 - 86.1	63,300
Puna/ Kau	12,100	26.2	18.6 - 33.8	34,100	73.8	66.2 - 81.4	46,100
Upcountry/ Hana	4,600	15.0	7.6 - 22.3	26,000	85.0	77.7 - 92.4	30,600

Flu - had shot in past 12 mons by State, County, Island, Community, BRFSS Age Group, DOH Race-Ethnicity, Gender, Education Level, Employment Status (Grouped), Household Income, Poverty Level, Marital Status (Grouped), Married, Health Care Coverage, for the Year(s) - 2001, 2002, 2003, 2004, 2005, 2006, 2007, 2008, 2009, 2010

Note: Weighted numbers (#), percentages and 95% confidence intervals; Respondents aged 18 years and older; n/r (Not Reportable) - If the unweighted total responses for a dimension (row) is <50 that row will not be shown; n/a (Not Available) - Not asked of a subset of respondents

Year: 2004

Community	Yes			No			Estimated Population
	#	%	C.I. (95%)	#	%	C.I. (95%)	#
Waialae/ Kahala/ Hawaii Kai	11,500	33.5	17.7 - 49.2	22,900	66.5	50.8 - 82.3	34,500
Waipahu/ Kapolei/ Ewa	31,200	28.2	18.1 - 38.2	79,500	71.8	61.8 - 81.9	110,700

Flu - had shot in past 12 mons by State, County, Island, Community, BRFSS Age Group, DOH Race-Ethnicity, Gender, Education Level, Employment Status (Grouped), Household Income, Poverty Level, Marital Status (Grouped), Married, Health Care Coverage, for the Year(s) - 2001, 2002, 2003, 2004, 2005, 2006, 2007, 2008, 2009, 2010

Note: Weighted numbers (#), percentages and 95% confidence intervals; Respondents aged 18 years and older; n/r (Not Reportable) - If the unweighted total responses for a dimension (row) is <50 that row will not be shown; n/a (Not Available) - Not asked of a subset of respondents

Year: 2004

BRFSS Age Group	Yes			No			Estimated Population
	#	%	C.I. (95%)	#	%	C.I. (95%)	#
18-24	32,100	30.0	17.8 - 42.2	74,900	70.0	57.8 - 82.2	107,000
25-34	28,900	17.2	11.6 - 22.9	138,900	82.8	77.1 - 88.4	167,800
35-44	29,300	16.6	11.3 - 21.9	147,300	83.4	78.1 - 88.7	176,600
45-54	33,200	19.9	14.5 - 25.3	133,700	80.1	74.7 - 85.5	166,900
55-64	37,000	30.1	23.8 - 36.4	85,900	69.9	63.6 - 76.2	122,900
65-74	45,300	55.2	46.5 - 64.0	36,700	44.8	36.0 - 53.5	82,100
75+	47,400	64.2	54.9 - 73.5	26,400	35.8	26.5 - 45.1	73,800

Flu - had shot in past 12 mons by State, County, Island, Community, BRFSS Age Group, DOH Race-Ethnicity, Gender, Education Level, Employment Status (Grouped), Household Income, Poverty Level, Marital Status (Grouped), Married, Health Care Coverage, for the Year(s) - 2001, 2002, 2003, 2004, 2005, 2006, 2007, 2008, 2009, 2010

Note: Weighted numbers (#), percentages and 95% confidence intervals; Respondents aged 18 years and older; n/r (Not Reportable) - If the unweighted total responses for a dimension (row) is <50 that row will not be shown; n/a (Not Available) - Not asked of a subset of respondents

Year: 2004

DOH Race-Ethnicity	Yes			No			Estimated Population
	#	%	C.I. (95%)	#	%	C.I. (95%)	#
Caucasian	81,400	27.8	23.6 - 31.9	211,800	72.2	68.1 - 76.4	293,200
Native Hawaiian	28,400	23.3	16.1 - 30.5	93,300	76.7	69.5 - 83.9	121,700
Chinese	10,200	20.8	10.6 - 31.0	38,800	79.2	69.0 - 89.4	49,000
Filipino	44,500	30.6	22.5 - 38.8	100,700	69.4	61.2 - 77.5	145,200
Japanese	63,800	33.9	28.0 - 39.8	124,400	66.1	60.2 - 72.0	188,200
Other	6,600	30.3	14.7 - 46.0	15,200	69.7	54.0 - 85.3	21,800

Flu - had shot in past 12 mons by State, County, Island, Community, BRFSS Age Group, DOH Race-Ethnicity, Gender, Education Level, Employment Status (Grouped), Household Income, Poverty Level, Marital Status (Grouped), Married, Health Care Coverage, for the Year(s) - 2001, 2002, 2003, 2004, 2005, 2006, 2007, 2008, 2009, 2010

Note: Weighted numbers (#), percentages and 95% confidence intervals; Respondents aged 18 years and older; n/r (Not Reportable) - If the unweighted total responses for a dimension (row) is <50 that row will not be shown; n/a (Not Available) - Not asked of a subset of respondents

Year: 2004

Gender	Yes			No			Estimated Population
	#	%	C.I. (95%)	#	%	C.I. (95%)	#
Male	117,000	26.5	22.2 - 30.9	324,200	73.5	69.1 - 77.8	441,200
Female	139,600	30.0	26.4 - 33.6	325,600	70.0	66.4 - 73.6	465,200

Education Level	Yes			No			Estimated Population
	#	%	C.I. (95%)	#	%	C.I. (95%)	#
Grades 9 thru 11 (Some High School)	8,700	28.3	14.5 - 42.0	22,200	71.7	58.0 - 85.5	30,900
Grades 12 or GED (High School Grad)	84,300	30.2	24.5 - 35.8	195,300	69.8	64.2 - 75.5	279,600
College 1 to 3 years (Some College/ Tech)	75,000	25.9	20.8 - 31.0	214,500	74.1	69.0 - 79.2	289,400
College 4 years or more (College Grad)	83,100	28.2	23.8 - 32.5	212,000	71.8	67.5 - 76.2	295,100

Flu - had shot in past 12 mons by State, County, Island, Community, BRFSS Age Group, DOH Race-Ethnicity, Gender, Education Level, Employment Status (Grouped), Household Income, Poverty Level, Marital Status (Grouped), Married, Health Care Coverage, for the Year(s) - 2001, 2002, 2003, 2004, 2005, 2006, 2007, 2008, 2009, 2010

Note: Weighted numbers (#), percentages and 95% confidence intervals; Respondents aged 18 years and older; n/r (Not Reportable) - If the unweighted total responses for a dimension (row) is <50 that row will not be shown; n/a (Not Available) - Not asked of a subset of respondents

Year: 2004

Employment Status (Grouped)	Yes			No			Estimated Population
	#	%	C.I. (95%)	#	%	C.I. (95%)	#
Employed	122,900	21.1	17.7 - 24.5	459,300	78.9	75.5 - 82.3	582,100
Unemployed	4,000	15.0	3.8 - 26.3	22,600	85.0	73.7 - 96.2	26,500
Retired/Unable to work	103,900	53.0	47.1 - 59.0	92,000	47.0	41.0 - 52.9	196,000
Student/Homemaker	24,900	24.9	16.1 - 33.6	75,300	75.1	66.4 - 83.9	100,300

Flu - had shot in past 12 mons by State, County, Island, Community, BRFSS Age Group, DOH Race-Ethnicity, Gender, Education Level, Employment Status (Grouped), Household Income, Poverty Level, Marital Status (Grouped), Married, Health Care Coverage, for the Year(s) - 2001, 2002, 2003, 2004, 2005, 2006, 2007, 2008, 2009, 2010

Note: Weighted numbers (#), percentages and 95% confidence intervals; Respondents aged 18 years and older; n/r (Not Reportable) - If the unweighted total responses for a dimension (row) is <50 that row will not be shown; n/a (Not Available) - Not asked of a subset of respondents

Year: 2004

Household Income	Yes			No			Estimated Population
	#	%	C.I. (95%)	#	%	C.I. (95%)	#
Less than \$10,000	5,100	31.5	11.4 - 51.7	11,100	68.5	48.3 - 88.6	16,200
\$10,000 to \$14,999	8,000	30.3	17.8 - 42.8	18,300	69.7	57.2 - 82.2	26,300
\$15,000 to \$19,999	14,200	30.7	17.6 - 43.8	32,100	69.3	56.2 - 82.4	46,300
\$20,000 to \$24,999	16,800	24.3	15.7 - 32.9	52,200	75.7	67.1 - 84.3	69,000
\$25,000 to \$34,999	39,500	33.9	25.9 - 41.9	76,900	66.1	58.1 - 74.1	116,300
\$35,000 to \$49,999	38,200	27.0	20.3 - 33.8	103,200	73.0	66.2 - 79.7	141,400
\$50,000 to \$74,999	83,700	29.6	23.9 - 35.2	199,300	70.4	64.8 - 76.1	283,000
\$75,000 or more	51,200	24.6	19.2 - 30.0	156,700	75.4	70.0 - 80.8	207,900

Flu - had shot in past 12 mons by State, County, Island, Community, BRFSS Age Group, DOH Race-Ethnicity, Gender, Education Level, Employment Status (Grouped), Household Income, Poverty Level, Marital Status (Grouped), Married, Health Care Coverage, for the Year(s) - 2001, 2002, 2003, 2004, 2005, 2006, 2007, 2008, 2009, 2010

Note: Weighted numbers (#), percentages and 95% confidence intervals; Respondents aged 18 years and older; n/r (Not Reportable) - If the unweighted total responses for a dimension (row) is <50 that row will not be shown; n/a (Not Available) - Not asked of a subset of respondents

Year: 2004

Poverty Level	Yes			No			Estimated Population
	#	%	C.I. (95%)	#	%	C.I. (95%)	#
0-130%	45,700	28.9	21.7 - 36.1	112,500	71.1	63.9 - 78.3	158,200
131-185%	34,100	28.6	18.7 - 38.6	84,900	71.4	61.4 - 81.3	119,000
186+%	176,900	28.1	25.0 - 31.2	452,400	71.9	68.8 - 75.0	629,300

Flu - had shot in past 12 mons by State, County, Island, Community, BRFSS Age Group, DOH Race-Ethnicity, Gender, Education Level, Employment Status (Grouped), Household Income, Poverty Level, Marital Status (Grouped), Married, Health Care Coverage, for the Year(s) - 2001, 2002, 2003, 2004, 2005, 2006, 2007, 2008, 2009, 2010

Note: Weighted numbers (#), percentages and 95% confidence intervals; Respondents aged 18 years and older; n/r (Not Reportable) - If the unweighted total responses for a dimension (row) is <50 that row will not be shown; n/a (Not Available) - Not asked of a subset of respondents

Year: 2004

Marital Status (Grouped)	Yes			No			Estimated Population
	#	%	C.I. (95%)	#	%	C.I. (95%)	#
Married	149,100	28.2	24.7 - 31.6	380,400	71.8	68.4 - 75.3	529,500
Unmarried Couple	4,300	18.3	1.7 - 35.0	19,100	81.7	65.0 - 98.3	23,300
Widowed	31,100	58.1	47.4 - 68.8	22,500	41.9	31.2 - 52.6	53,600
Other	72,100	24.0	18.6 - 29.5	227,800	76.0	70.5 - 81.4	300,000

Married	Yes			No			Estimated Population
	#	%	C.I. (95%)	#	%	C.I. (95%)	#
Yes	150,100	27.8	24.4 - 31.3	389,100	72.2	68.7 - 75.6	539,200
No	106,000	29.1	24.3 - 34.0	257,800	70.9	66.0 - 75.7	363,700

Flu - had shot in past 12 mons by State, County, Island, Community, BRFSS Age Group, DOH Race-Ethnicity, Gender, Education Level, Employment Status (Grouped), Household Income, Poverty Level, Marital Status (Grouped), Married, Health Care Coverage, for the Year(s) - 2001, 2002, 2003, 2004, 2005, 2006, 2007, 2008, 2009, 2010

Note: Weighted numbers (#), percentages and 95% confidence intervals; Respondents aged 18 years and older; n/r (Not Reportable) - If the unweighted total responses for a dimension (row) is <50 that row will not be shown; n/a (Not Available) - Not asked of a subset of respondents

Year: 2004

Health Care Coverage	Yes			No			Estimated Population
	#	%	C.I. (95%)	#	%	C.I. (95%)	#
Yes	241,400	29.5	26.5 - 32.5	577,100	70.5	67.5 - 73.5	818,500
No	14,600	17.4	7.7 - 27.2	68,800	82.6	72.8 - 92.3	83,400

Flu - had shot in past 12 mons by State, County, Island, Community, BRFSS Age Group, DOH Race-Ethnicity, Gender, Education Level, Employment Status (Grouped), Household Income, Poverty Level, Marital Status (Grouped), Married, Health Care Coverage, for the Year(s) - 2001, 2002, 2003, 2004, 2005, 2006, 2007, 2008, 2009, 2010

Note: Weighted numbers (#), percentages and 95% confidence intervals; Respondents aged 18 years and older; n/r (Not Reportable) - If the unweighted total responses for a dimension (row) is <50 that row will not be shown; n/a (Not Available) - Not asked of a subset of respondents

Year: 2003

State	Yes			No			Estimated Population
	#	%	C.I. (95%)	#	%	C.I. (95%)	#
Hawaii State	391,300	42.5	40.6 - 44.5	528,700	57.5	55.5 - 59.4	920,000

County	Yes			No			Estimated Population
	#	%	C.I. (95%)	#	%	C.I. (95%)	#
Hawaii	40,900	35.2	31.5 - 38.9	75,300	64.8	61.1 - 68.5	116,200
Honolulu	305,200	46.1	43.7 - 48.6	356,400	53.9	51.4 - 56.3	661,600
Kauai	15,400	35.2	29.8 - 40.6	28,300	64.8	59.4 - 70.2	43,600
Maui	29,800	30.2	25.9 - 34.6	68,700	69.8	65.4 - 74.1	98,500

Flu - had shot in past 12 mons by State, County, Island, Community, BRFSS Age Group, DOH Race-Ethnicity, Gender, Education Level, Employment Status (Grouped), Household Income, Poverty Level, Marital Status (Grouped), Married, Health Care Coverage, for the Year(s) - 2001, 2002, 2003, 2004, 2005, 2006, 2007, 2008, 2009, 2010

Note: Weighted numbers (#), percentages and 95% confidence intervals; Respondents aged 18 years and older; n/r (Not Reportable) - If the unweighted total responses for a dimension (row) is <50 that row will not be shown; n/a (Not Available) - Not asked of a subset of respondents

Year: 2003

Island	Yes			No			Estimated Population
	#	%	C.I. (95%)	#	%	C.I. (95%)	#
Hawaii	40,900	35.2	31.5 - 38.9	75,300	64.8	61.1 - 68.5	116,200
Kauai	15,400	35.2	29.8 - 40.6	28,300	64.8	59.4 - 70.2	43,600
Maui	26,400	29.5	24.8 - 34.2	63,100	70.5	65.8 - 75.2	89,500
Molokai	2,800	43.2	29.8 - 56.5	3,700	56.8	43.5 - 70.2	6,500
Oahu	305,200	46.1	43.7 - 48.6	356,400	53.9	51.4 - 56.3	661,600

Community	Yes			No			Estimated Population
	#	%	C.I. (95%)	#	%	C.I. (95%)	#
Aiea/ Pearl City	30,200	56.5	47.3 - 65.7	23,200	43.5	34.3 - 52.7	53,400
Ala Moana	11,200	37.0	27.1 - 46.9	19,100	63.0	53.1 - 72.9	30,400

Flu - had shot in past 12 mons by State, County, Island, Community, BRFSS Age Group, DOH Race-Ethnicity, Gender, Education Level, Employment Status (Grouped), Household Income, Poverty Level, Marital Status (Grouped), Married, Health Care Coverage, for the Year(s) - 2001, 2002, 2003, 2004, 2005, 2006, 2007, 2008, 2009, 2010

Note: Weighted numbers (#), percentages and 95% confidence intervals; Respondents aged 18 years and older; n/r (Not Reportable) - If the unweighted total responses for a dimension (row) is <50 that row will not be shown; n/a (Not Available) - Not asked of a subset of respondents

Year: 2003

Community	Yes			No			Estimated Population
	#	%	C.I. (95%)	#	%	C.I. (95%)	#
Hanalei/ Kapaa	5,400	30.2	22.3 - 38.1	12,400	69.8	61.9 - 77.7	17,800
Hilo	12,600	35.7	28.8 - 42.7	22,600	64.3	57.3 - 71.2	35,100
Kaaawa/ Kahaluu/ Kaneohe	19,200	41.7	32.6 - 50.7	26,900	58.3	49.3 - 67.4	46,200
Kahului	13,200	39.9	31.4 - 48.4	19,800	60.1	51.6 - 68.6	33,000
Kailua/ Waimanalo	24,400	48.7	40.3 - 57.0	25,800	51.3	43.0 - 59.7	50,200
Kaimuki/ Palolo/ Waikiki	24,800	37.9	30.8 - 45.1	40,600	62.1	54.9 - 69.2	65,400
Kona	10,000	33.3	26.8 - 39.9	20,000	66.7	60.1 - 73.2	30,000
Lahaina/ Wailuku	7,100	25.6	17.9 - 33.2	20,800	74.4	66.8 - 82.1	28,000
Lihue-Waimea	10,000	38.7	31.4 - 46.0	15,800	61.3	54.0 - 68.6	25,800

Flu - had shot in past 12 mons by State, County, Island, Community, BRFSS Age Group, DOH Race-Ethnicity, Gender, Education Level, Employment Status (Grouped), Household Income, Poverty Level, Marital Status (Grouped), Married, Health Care Coverage, for the Year(s) - 2001, 2002, 2003, 2004, 2005, 2006, 2007, 2008, 2009, 2010

Note: Weighted numbers (#), percentages and 95% confidence intervals; Respondents aged 18 years and older; n/r (Not Reportable) - If the unweighted total responses for a dimension (row) is <50 that row will not be shown; n/a (Not Available) - Not asked of a subset of respondents

Year: 2003

Community	Yes			No			Estimated Population
	#	%	C.I. (95%)	#	%	C.I. (95%)	#
Manoa/ Upper Makiki	25,900	47.9	38.9 - 56.8	28,200	52.1	43.2 - 61.1	54,100
Mililani/ Wahiawa	30,100	44.8	37.1 - 52.5	37,100	55.2	47.5 - 62.9	67,300
Molokai	2,800	43.2	29.8 - 56.5	3,700	56.8	43.5 - 70.2	6,500
Nanakuli/ Waianae	13,700	50.7	37.6 - 63.8	13,400	49.3	36.2 - 62.4	27,100
N.Hawaii	9,700	40.3	31.3 - 49.3	14,400	59.7	50.7 - 68.7	24,200
N.Shore/ Laie	7,400	29.9	18.0 - 41.8	17,400	70.1	58.2 - 82.0	24,800
Nuuanu/ Kalihi/ Moanalua	30,100	42.3	34.8 - 49.8	41,000	57.7	50.2 - 65.2	71,100
Puna/ Kau	8,600	32.0	24.4 - 39.5	18,300	68.0	60.5 - 75.6	26,900
Salt Lake/ Foster Village	23,900	53.8	44.4 - 63.2	20,500	46.2	36.8 - 55.6	44,500

Flu - had shot in past 12 mons by State, County, Island, Community, BRFSS Age Group, DOH Race-Ethnicity, Gender, Education Level, Employment Status (Grouped), Household Income, Poverty Level, Marital Status (Grouped), Married, Health Care Coverage, for the Year(s) - 2001, 2002, 2003, 2004, 2005, 2006, 2007, 2008, 2009, 2010

Note: Weighted numbers (#), percentages and 95% confidence intervals; Respondents aged 18 years and older; n/r (Not Reportable) - If the unweighted total responses for a dimension (row) is <50 that row will not be shown; n/a (Not Available) - Not asked of a subset of respondents

Year: 2003

Community	Yes			No			Estimated Population
	#	%	C.I. (95%)	#	%	C.I. (95%)	#
Upcountry/ Hana	6,100	21.5	14.0 - 29.0	22,500	78.5	71.0 - 86.0	28,600
Waialae/ Kahala/ Hawaii Kai	20,300	56.3	45.7 - 66.9	15,700	43.7	33.1 - 54.3	36,000
Waipahu/ Kapolei/ Ewa	43,900	48.1	41.2 - 55.0	47,400	51.9	45.0 - 58.8	91,300

Flu - had shot in past 12 mons by State, County, Island, Community, BRFSS Age Group, DOH Race-Ethnicity, Gender, Education Level, Employment Status (Grouped), Household Income, Poverty Level, Marital Status (Grouped), Married, Health Care Coverage, for the Year(s) - 2001, 2002, 2003, 2004, 2005, 2006, 2007, 2008, 2009, 2010

Note: Weighted numbers (#), percentages and 95% confidence intervals; Respondents aged 18 years and older; n/r (Not Reportable) - If the unweighted total responses for a dimension (row) is <50 that row will not be shown; n/a (Not Available) - Not asked of a subset of respondents

Year: 2003

BRFSS Age Group	Yes			No			Estimated Population
	#	%	C.I. (95%)	#	%	C.I. (95%)	#
18-24	40,800	35.6	28.9 - 42.4	73,800	64.4	57.6 - 71.1	114,700
25-34	46,900	29.0	24.8 - 33.3	114,500	71.0	66.7 - 75.2	161,400
35-44	50,600	28.1	24.2 - 31.9	129,700	71.9	68.1 - 75.8	180,300
45-54	63,500	36.1	32.0 - 40.2	112,400	63.9	59.8 - 68.0	175,900
55-64	63,700	51.9	46.6 - 57.1	59,100	48.1	42.9 - 53.4	122,800
65-74	64,200	75.7	70.7 - 80.7	20,600	24.3	19.3 - 29.3	84,800
75+	60,300	77.4	72.5 - 82.3	17,600	22.6	17.7 - 27.5	77,900

Flu - had shot in past 12 mons by State, County, Island, Community, BRFSS Age Group, DOH Race-Ethnicity, Gender, Education Level, Employment Status (Grouped), Household Income, Poverty Level, Marital Status (Grouped), Married, Health Care Coverage, for the Year(s) - 2001, 2002, 2003, 2004, 2005, 2006, 2007, 2008, 2009, 2010

Note: Weighted numbers (#), percentages and 95% confidence intervals; Respondents aged 18 years and older; n/r (Not Reportable) - If the unweighted total responses for a dimension (row) is <50 that row will not be shown; n/a (Not Available) - Not asked of a subset of respondents

Year: 2003

DOH Race-Ethnicity	Yes			No			Estimated Population
	#	%	C.I. (95%)	#	%	C.I. (95%)	#
Caucasian	141,100	41.2	38.3 - 44.1	201,600	58.8	55.9 - 61.7	342,600
Native Hawaiian	32,500	39.9	33.6 - 46.2	49,000	60.1	53.8 - 66.4	81,600
Chinese	47,400	43.4	37.6 - 49.1	62,000	56.6	50.9 - 62.4	109,400
Filipino	60,700	42.9	37.5 - 48.4	80,600	57.1	51.6 - 62.5	141,300
Japanese	78,900	46.5	41.8 - 51.1	90,900	53.5	48.9 - 58.2	169,800
Black	6,200	49.2	33.5 - 64.9	6,400	50.8	35.1 - 66.5	12,500
Other Asian	5,000	31.9	18.4 - 45.5	10,700	68.1	54.5 - 81.6	15,700
Other	10,200	42.9	30.5 - 55.2	13,600	57.1	44.8 - 69.5	23,800

Flu - had shot in past 12 mons by State, County, Island, Community, BRFSS Age Group, DOH Race-Ethnicity, Gender, Education Level, Employment Status (Grouped), Household Income, Poverty Level, Marital Status (Grouped), Married, Health Care Coverage, for the Year(s) - 2001, 2002, 2003, 2004, 2005, 2006, 2007, 2008, 2009, 2010

Note: Weighted numbers (#), percentages and 95% confidence intervals; Respondents aged 18 years and older; n/r (Not Reportable) - If the unweighted total responses for a dimension (row) is <50 that row will not be shown; n/a (Not Available) - Not asked of a subset of respondents

Year: 2003

Gender	Yes			No			Estimated Population
	#	%	C.I. (95%)	#	%	C.I. (95%)	#
Male	200,200	43.9	40.9 - 46.9	255,500	56.1	53.1 - 59.1	455,700
Female	191,100	41.2	38.8 - 43.6	273,200	58.8	56.4 - 61.2	464,200

Flu - had shot in past 12 mons by State, County, Island, Community, BRFSS Age Group, DOH Race-Ethnicity, Gender, Education Level, Employment Status (Grouped), Household Income, Poverty Level, Marital Status (Grouped), Married, Health Care Coverage, for the Year(s) - 2001, 2002, 2003, 2004, 2005, 2006, 2007, 2008, 2009, 2010

Note: Weighted numbers (#), percentages and 95% confidence intervals; Respondents aged 18 years and older; n/r (Not Reportable) - If the unweighted total responses for a dimension (row) is <50 that row will not be shown; n/a (Not Available) - Not asked of a subset of respondents

Year: 2003

Education Level	Yes			No			Estimated Population
	#	%	C.I. (95%)	#	%	C.I. (95%)	#
Never attended school/ Only Kindergarten to Grades 8	8,200	59.7	44.3 - 75.0	5,500	40.3	25.0 - 55.7	13,700
Grades 9 thru 11 (Some High School)	18,000	51.9	41.5 - 62.4	16,700	48.1	37.6 - 58.5	34,800
Grades 12 or GED (High School Grad)	114,200	41.5	37.9 - 45.2	160,700	58.5	54.8 - 62.1	274,900
College 1 to 3 years (Some College/ Tech)	110,500	41.0	37.5 - 44.5	158,900	59.0	55.5 - 62.5	269,400
College 4 years or more (College Grad)	139,500	42.8	39.7 - 46.0	186,100	57.2	54.0 - 60.3	325,600

Flu - had shot in past 12 mons by State, County, Island, Community, BRFSS Age Group, DOH Race-Ethnicity, Gender, Education Level, Employment Status (Grouped), Household Income, Poverty Level, Marital Status (Grouped), Married, Health Care Coverage, for the Year(s) - 2001, 2002, 2003, 2004, 2005, 2006, 2007, 2008, 2009, 2010

Note: Weighted numbers (#), percentages and 95% confidence intervals; Respondents aged 18 years and older; n/r (Not Reportable) - If the unweighted total responses for a dimension (row) is <50 that row will not be shown; n/a (Not Available) - Not asked of a subset of respondents

Year: 2003

Employment Status (Grouped)	Yes			No			Estimated Population
	#	%	C.I. (95%)	#	%	C.I. (95%)	#
Employed	221,900	37.0	34.6 - 39.4	377,400	63.0	60.6 - 65.4	599,200
Unemployed	5,800	18.6	10.8 - 26.4	25,200	81.4	73.6 - 89.2	31,000
Retired/Unable to work	141,500	71.8	68.4 - 75.2	55,600	28.2	24.8 - 31.6	197,100
Student/Homemaker	21,700	23.6	18.3 - 28.9	70,400	76.4	71.1 - 81.7	92,100

Flu - had shot in past 12 mons by State, County, Island, Community, BRFSS Age Group, DOH Race-Ethnicity, Gender, Education Level, Employment Status (Grouped), Household Income, Poverty Level, Marital Status (Grouped), Married, Health Care Coverage, for the Year(s) - 2001, 2002, 2003, 2004, 2005, 2006, 2007, 2008, 2009, 2010

Note: Weighted numbers (#), percentages and 95% confidence intervals; Respondents aged 18 years and older; n/r (Not Reportable) - If the unweighted total responses for a dimension (row) is <50 that row will not be shown; n/a (Not Available) - Not asked of a subset of respondents

Year: 2003

Household Income	Yes			No			Estimated Population
	#	%	C.I. (95%)	#	%	C.I. (95%)	#
Less than \$10,000	18,500	38.9	31.1 - 46.8	29,000	61.1	53.2 - 68.9	47,400
\$10,000 to \$14,999	26,700	52.4	43.7 - 61.1	24,300	47.6	38.9 - 56.3	51,000
\$15,000 to \$19,999	22,100	44.1	35.6 - 52.5	28,100	55.9	47.5 - 64.4	50,200
\$20,000 to \$24,999	20,500	37.0	29.7 - 44.3	35,000	63.0	55.7 - 70.3	55,500
\$25,000 to \$34,999	35,800	42.9	36.5 - 49.3	47,700	57.1	50.7 - 63.5	83,400
\$35,000 to \$49,999	56,400	39.7	34.9 - 44.5	85,600	60.3	55.5 - 65.1	142,000
\$50,000 to \$74,999	54,400	39.8	34.9 - 44.8	82,200	60.2	55.2 - 65.1	136,600
\$75,000 or more	67,800	42.6	38.1 - 47.2	91,300	57.4	52.8 - 61.9	159,100

Flu - had shot in past 12 mons by State, County, Island, Community, BRFSS Age Group, DOH Race-Ethnicity, Gender, Education Level, Employment Status (Grouped), Household Income, Poverty Level, Marital Status (Grouped), Married, Health Care Coverage, for the Year(s) - 2001, 2002, 2003, 2004, 2005, 2006, 2007, 2008, 2009, 2010

Note: Weighted numbers (#), percentages and 95% confidence intervals; Respondents aged 18 years and older; n/r (Not Reportable) - If the unweighted total responses for a dimension (row) is <50 that row will not be shown; n/a (Not Available) - Not asked of a subset of respondents

Year: 2003

Poverty Level	Yes			No			Estimated Population
	#	%	C.I. (95%)	#	%	C.I. (95%)	#
0-130%	81,400	43.0	38.4 - 47.6	107,700	57.0	52.4 - 61.6	189,100
131-185%	27,500	33.5	27.1 - 39.8	54,700	66.5	60.2 - 72.9	82,300
186+%	193,300	42.6	40.0 - 45.2	260,600	57.4	54.8 - 60.0	453,900

Flu - had shot in past 12 mons by State, County, Island, Community, BRFSS Age Group, DOH Race-Ethnicity, Gender, Education Level, Employment Status (Grouped), Household Income, Poverty Level, Marital Status (Grouped), Married, Health Care Coverage, for the Year(s) - 2001, 2002, 2003, 2004, 2005, 2006, 2007, 2008, 2009, 2010

Note: Weighted numbers (#), percentages and 95% confidence intervals; Respondents aged 18 years and older; n/r (Not Reportable) - If the unweighted total responses for a dimension (row) is <50 that row will not be shown; n/a (Not Available) - Not asked of a subset of respondents

Year: 2003

Marital Status (Grouped)	Yes			No			Estimated Population
	#	%	C.I. (95%)	#	%	C.I. (95%)	#
Married	241,300	45.5	42.9 - 48.1	289,000	54.5	51.9 - 57.1	530,300
Unmarried Couple	4,900	27.0	13.9 - 40.0	13,300	73.0	60.0 - 86.1	18,200
Widowed	43,100	64.7	58.7 - 70.6	23,600	35.4	29.4 - 41.3	66,700
Other	102,000	33.5	30.1 - 36.8	202,800	66.5	63.2 - 69.9	304,700

Married	Yes			No			Estimated Population
	#	%	C.I. (95%)	#	%	C.I. (95%)	#
Yes	244,200	45.1	42.6 - 47.6	297,100	54.9	52.4 - 57.4	541,400
No	146,900	38.9	35.9 - 41.8	231,100	61.1	58.2 - 64.1	378,100

Flu - had shot in past 12 mons by State, County, Island, Community, BRFSS Age Group, DOH Race-Ethnicity, Gender, Education Level, Employment Status (Grouped), Household Income, Poverty Level, Marital Status (Grouped), Married, Health Care Coverage, for the Year(s) - 2001, 2002, 2003, 2004, 2005, 2006, 2007, 2008, 2009, 2010

Note: Weighted numbers (#), percentages and 95% confidence intervals; Respondents aged 18 years and older; n/r (Not Reportable) - If the unweighted total responses for a dimension (row) is <50 that row will not be shown; n/a (Not Available) - Not asked of a subset of respondents

Year: 2003

Health Care Coverage	Yes			No			Estimated Population
	#	%	C.I. (95%)	#	%	C.I. (95%)	#
Yes	379,500	44.8	42.8 - 46.8	466,900	55.2	53.2 - 57.2	846,400
No	11,400	15.7	9.8 - 21.6	61,500	84.3	78.4 - 90.2	72,900

Flu - had shot in past 12 mons by State, County, Island, Community, BRFSS Age Group, DOH Race-Ethnicity, Gender, Education Level, Employment Status (Grouped), Household Income, Poverty Level, Marital Status (Grouped), Married, Health Care Coverage, for the Year(s) - 2001, 2002, 2003, 2004, 2005, 2006, 2007, 2008, 2009, 2010

Note: Weighted numbers (#), percentages and 95% confidence intervals; Respondents aged 18 years and older; n/r (Not Reportable) - If the unweighted total responses for a dimension (row) is <50 that row will not be shown; n/a (Not Available) - Not asked of a subset of respondents

Year: 2002

State	Yes			No			Estimated Population
	#	%	C.I. (95%)	#	%	C.I. (95%)	#
Hawaii State	321,200	35.6	33.9 - 37.2	581,800	64.4	62.8 - 66.1	903,000

County	Yes			No			Estimated Population
	#	%	C.I. (95%)	#	%	C.I. (95%)	#
Hawaii	32,100	29.2	26.4 - 32.0	77,900	70.8	68.0 - 73.6	109,900
Honolulu	250,000	38.2	36.0 - 40.3	405,000	61.8	59.7 - 64.0	655,000
Kauai	13,300	31.4	27.0 - 35.8	29,000	68.6	64.2 - 73.0	42,300
Maui	25,800	27.0	23.9 - 30.0	69,900	73.0	70.0 - 76.1	95,700

Flu - had shot in past 12 mons by State, County, Island, Community, BRFSS Age Group, DOH Race-Ethnicity, Gender, Education Level, Employment Status (Grouped), Household Income, Poverty Level, Marital Status (Grouped), Married, Health Care Coverage, for the Year(s) - 2001, 2002, 2003, 2004, 2005, 2006, 2007, 2008, 2009, 2010

Note: Weighted numbers (#), percentages and 95% confidence intervals; Respondents aged 18 years and older; n/r (Not Reportable) - If the unweighted total responses for a dimension (row) is <50 that row will not be shown; n/a (Not Available) - Not asked of a subset of respondents

Year: 2002

Island	Yes			No			Estimated Population
	#	%	C.I. (95%)	#	%	C.I. (95%)	#
Hawaii	32,100	29.2	26.4 - 32.0	77,900	70.8	68.0 - 73.6	109,900
Kauai	13,300	31.4	27.0 - 35.8	29,000	68.6	64.2 - 73.0	42,300
Lanai	1,500	37.7	26.6 - 48.8	2,400	62.3	51.2 - 73.4	3,900
Maui	21,500	25.6	22.3 - 28.9	62,600	74.4	71.1 - 77.7	84,100
Molokai	2,800	36.3	27.2 - 45.4	4,900	63.7	54.6 - 72.8	7,800
Oahu	250,000	38.2	36.0 - 40.3	405,000	61.8	59.7 - 64.0	655,000

Community	Yes			No			Estimated Population
	#	%	C.I. (95%)	#	%	C.I. (95%)	#
Aiea/ Pearl City	30,200	45.6	38.6 - 52.6	36,000	54.4	47.4 - 61.4	66,200

Flu - had shot in past 12 mons by State, County, Island, Community, BRFSS Age Group, DOH Race-Ethnicity, Gender, Education Level, Employment Status (Grouped), Household Income, Poverty Level, Marital Status (Grouped), Married, Health Care Coverage, for the Year(s) - 2001, 2002, 2003, 2004, 2005, 2006, 2007, 2008, 2009, 2010

Note: Weighted numbers (#), percentages and 95% confidence intervals; Respondents aged 18 years and older; n/r (Not Reportable) - If the unweighted total responses for a dimension (row) is <50 that row will not be shown; n/a (Not Available) - Not asked of a subset of respondents

Year: 2002

Community	Yes			No			Estimated Population
	#	%	C.I. (95%)	#	%	C.I. (95%)	#
Ala Moana	9,800	28.6	21.5 - 35.7	24,500	71.4	64.3 - 78.5	34,300
Hanalei/ Kapaa	4,500	24.6	18.8 - 30.4	13,700	75.4	69.6 - 81.2	18,200
Hilo	12,300	35.3	30.0 - 40.7	22,500	64.7	59.3 - 70.0	34,800
Kaaawa/ Kahaluu/ Kaneohe	15,400	38.9	30.3 - 47.5	24,200	61.1	52.5 - 69.7	39,500
Kahului	7,600	26.7	20.7 - 32.7	20,800	73.3	67.3 - 79.3	28,300
Kailua/ Waimanalo	16,400	34.5	26.7 - 42.2	31,100	65.5	57.8 - 73.3	47,500
Kaimuki/ Palolo/ Waikiki	25,200	37.3	31.5 - 43.0	42,400	62.7	57.0 - 68.5	67,500
Kona	6,300	21.2	16.6 - 25.9	23,500	78.8	74.1 - 83.4	29,800
Lahaina/ Wailuku	7,500	26.4	20.6 - 32.3	20,900	73.6	67.7 - 79.4	28,500

Flu - had shot in past 12 mons by State, County, Island, Community, BRFSS Age Group, DOH Race-Ethnicity, Gender, Education Level, Employment Status (Grouped), Household Income, Poverty Level, Marital Status (Grouped), Married, Health Care Coverage, for the Year(s) - 2001, 2002, 2003, 2004, 2005, 2006, 2007, 2008, 2009, 2010

Note: Weighted numbers (#), percentages and 95% confidence intervals; Respondents aged 18 years and older; n/r (Not Reportable) - If the unweighted total responses for a dimension (row) is <50 that row will not be shown; n/a (Not Available) - Not asked of a subset of respondents

Year: 2002

Community	Yes			No			Estimated Population
	#	%	C.I. (95%)	#	%	C.I. (95%)	#
Lanai	1,500	37.7	26.6 - 48.8	2,400	62.3	51.2 - 73.4	3,900
Lihue-Waimea	8,800	36.5	30.3 - 42.8	15,300	63.5	57.2 - 69.7	24,100
Manoa/ Upper Makiki	20,500	35.8	28.9 - 42.7	36,800	64.2	57.3 - 71.1	57,300
Mililani/ Wahiawa	25,300	40.3	31.9 - 48.7	37,400	59.7	51.3 - 68.1	62,700
Molokai	2,800	36.3	27.2 - 45.4	4,900	63.7	54.6 - 72.8	7,800
Nanakuli/ Waianae	9,400	36.4	25.4 - 47.5	16,400	63.6	52.5 - 74.6	25,700
N.Hawaii	7,300	32.2	25.8 - 38.6	15,400	67.8	61.4 - 74.2	22,600
N.Shore/ Laie	5,700	31.2	19.3 - 43.1	12,500	68.8	56.9 - 80.7	18,200
Nuuanu/ Kalihi/ Moanalua	25,100	37.9	30.9 - 44.9	41,100	62.1	55.1 - 69.1	66,100

Flu - had shot in past 12 mons by State, County, Island, Community, BRFSS Age Group, DOH Race-Ethnicity, Gender, Education Level, Employment Status (Grouped), Household Income, Poverty Level, Marital Status (Grouped), Married, Health Care Coverage, for the Year(s) - 2001, 2002, 2003, 2004, 2005, 2006, 2007, 2008, 2009, 2010

Note: Weighted numbers (#), percentages and 95% confidence intervals; Respondents aged 18 years and older; n/r (Not Reportable) - If the unweighted total responses for a dimension (row) is <50 that row will not be shown; n/a (Not Available) - Not asked of a subset of respondents

Year: 2002

Community	Yes			No			Estimated Population
	#	%	C.I. (95%)	#	%	C.I. (95%)	#
Puna/ Kau	6,100	27.0	21.2 - 32.9	16,600	73.0	67.1 - 78.8	22,700
Salt Lake/ Foster Village	17,900	47.5	38.1 - 56.9	19,800	52.5	43.1 - 61.9	37,700
Upcountry/ Hana	6,500	23.7	18.4 - 29.0	20,900	76.3	71.0 - 81.6	27,300
Waialae/ Kahala/ Hawaii Kai	17,100	36.3	28.4 - 44.3	29,900	63.7	55.7 - 71.6	47,000
Waipahu/ Kapolei/ Ewa	32,300	37.9	31.7 - 44.0	53,000	62.1	56.0 - 68.3	85,300

Flu - had shot in past 12 mons by State, County, Island, Community, BRFSS Age Group, DOH Race-Ethnicity, Gender, Education Level, Employment Status (Grouped), Household Income, Poverty Level, Marital Status (Grouped), Married, Health Care Coverage, for the Year(s) - 2001, 2002, 2003, 2004, 2005, 2006, 2007, 2008, 2009, 2010

Note: Weighted numbers (#), percentages and 95% confidence intervals; Respondents aged 18 years and older; n/r (Not Reportable) - If the unweighted total responses for a dimension (row) is <50 that row will not be shown; n/a (Not Available) - Not asked of a subset of respondents

Year: 2002

BRFSS Age Group	Yes			No			Estimated Population
	#	%	C.I. (95%)	#	%	C.I. (95%)	#
18-24	31,100	27.3	22.1 - 32.6	82,600	72.7	67.4 - 77.9	113,700
25-34	36,100	22.1	18.2 - 26.1	127,200	77.9	73.9 - 81.8	163,300
35-44	47,000	25.7	22.2 - 29.2	135,700	74.3	70.8 - 77.8	182,600
45-54	42,700	24.7	21.6 - 27.8	130,000	75.3	72.2 - 78.4	172,600
55-64	47,700	42.7	37.9 - 47.5	63,900	57.3	52.5 - 62.1	111,600
65-74	51,100	64.4	59.5 - 69.4	28,200	35.6	30.6 - 40.5	79,300
75+	63,900	84.1	80.4 - 87.8	12,100	15.9	12.2 - 19.6	75,900

Flu - had shot in past 12 mons by State, County, Island, Community, BRFSS Age Group, DOH Race-Ethnicity, Gender, Education Level, Employment Status (Grouped), Household Income, Poverty Level, Marital Status (Grouped), Married, Health Care Coverage, for the Year(s) - 2001, 2002, 2003, 2004, 2005, 2006, 2007, 2008, 2009, 2010

Note: Weighted numbers (#), percentages and 95% confidence intervals; Respondents aged 18 years and older; n/r (Not Reportable) - If the unweighted total responses for a dimension (row) is <50 that row will not be shown; n/a (Not Available) - Not asked of a subset of respondents

Year: 2002

DOH Race-Ethnicity	Yes			No			Estimated Population
	#	%	C.I. (95%)	#	%	C.I. (95%)	#
Caucasian	95,200	30.5	27.8 - 33.2	216,600	69.5	66.8 - 72.2	311,700
Native Hawaiian	33,900	29.9	25.3 - 34.4	79,700	70.1	65.6 - 74.7	113,600
Chinese	25,100	37.9	31.8 - 44.0	41,100	62.1	56.0 - 68.2	66,200
Filipino	51,700	37.6	33.0 - 42.2	85,800	62.4	57.8 - 67.0	137,400
Japanese	86,200	46.3	42.6 - 49.9	100,100	53.7	50.1 - 57.4	186,300
Black	6,700	41.2	28.6 - 53.8	9,600	58.8	46.2 - 71.4	16,400
Other Asian	7,300	34.5	23.6 - 45.5	13,800	65.5	54.5 - 76.4	21,100
Other Pacific Islander	4,000	19.4	7.4 - 31.4	16,600	80.6	68.6 - 92.6	20,600
Other	9,500	40.2	28.8 - 51.6	14,200	59.8	48.4 - 71.2	23,700

Flu - had shot in past 12 mons by State, County, Island, Community, BRFSS Age Group, DOH Race-Ethnicity, Gender, Education Level, Employment Status (Grouped), Household Income, Poverty Level, Marital Status (Grouped), Married, Health Care Coverage, for the Year(s) - 2001, 2002, 2003, 2004, 2005, 2006, 2007, 2008, 2009, 2010

Note: Weighted numbers (#), percentages and 95% confidence intervals; Respondents aged 18 years and older; n/r (Not Reportable) - If the unweighted total responses for a dimension (row) is <50 that row will not be shown; n/a (Not Available) - Not asked of a subset of respondents

Year: 2002

Gender	Yes			No			Estimated Population
	#	%	C.I. (95%)	#	%	C.I. (95%)	#
Male	163,800	36.6	34.0 - 39.2	283,900	63.4	60.8 - 66.0	447,700
Female	157,300	34.6	32.5 - 36.7	297,900	65.4	63.3 - 67.5	455,300

Flu - had shot in past 12 mons by State, County, Island, Community, BRFSS Age Group, DOH Race-Ethnicity, Gender, Education Level, Employment Status (Grouped), Household Income, Poverty Level, Marital Status (Grouped), Married, Health Care Coverage, for the Year(s) - 2001, 2002, 2003, 2004, 2005, 2006, 2007, 2008, 2009, 2010

Note: Weighted numbers (#), percentages and 95% confidence intervals; Respondents aged 18 years and older; n/r (Not Reportable) - If the unweighted total responses for a dimension (row) is <50 that row will not be shown; n/a (Not Available) - Not asked of a subset of respondents

Year: 2002

Education Level	Yes			No			Estimated Population
	#	%	C.I. (95%)	#	%	C.I. (95%)	#
Never attended school/ Only Kindergarten to Grades 8	12,000	64.8	52.3 - 77.3	6,500	35.2	22.7 - 47.7	18,600
Grades 9 thru 11 (Some High School)	19,100	56.3	47.9 - 64.7	14,800	43.7	35.3 - 52.1	34,000
Grades 12 or GED (High School Grad)	112,700	36.1	33.2 - 39.0	199,600	63.9	61.0 - 66.8	312,300
College 1 to 3 years (Some College/ Tech)	78,600	29.8	26.7 - 32.9	185,200	70.2	67.1 - 73.3	263,700
College 4 years or more (College Grad)	98,500	36.0	33.1 - 39.0	174,900	64.0	61.0 - 66.9	273,500

Flu - had shot in past 12 mons by State, County, Island, Community, BRFSS Age Group, DOH Race-Ethnicity, Gender, Education Level, Employment Status (Grouped), Household Income, Poverty Level, Marital Status (Grouped), Married, Health Care Coverage, for the Year(s) - 2001, 2002, 2003, 2004, 2005, 2006, 2007, 2008, 2009, 2010

Note: Weighted numbers (#), percentages and 95% confidence intervals; Respondents aged 18 years and older; n/r (Not Reportable) - If the unweighted total responses for a dimension (row) is <50 that row will not be shown; n/a (Not Available) - Not asked of a subset of respondents

Year: 2002

Employment Status (Grouped)	Yes			No			Estimated Population
	#	%	C.I. (95%)	#	%	C.I. (95%)	#
Employed	164,700	28.2	26.2 - 30.1	420,100	71.8	69.9 - 73.8	584,800
Unemployed	8,900	22.5	14.7 - 30.3	30,700	77.5	69.7 - 85.3	39,600
Retired/Unable to work	124,400	69.5	66.3 - 72.6	54,700	30.5	27.4 - 33.7	179,100
Student/Homemaker	23,200	23.4	18.6 - 28.2	75,700	76.6	71.8 - 81.4	98,900

Flu - had shot in past 12 mons by State, County, Island, Community, BRFSS Age Group, DOH Race-Ethnicity, Gender, Education Level, Employment Status (Grouped), Household Income, Poverty Level, Marital Status (Grouped), Married, Health Care Coverage, for the Year(s) - 2001, 2002, 2003, 2004, 2005, 2006, 2007, 2008, 2009, 2010

Note: Weighted numbers (#), percentages and 95% confidence intervals; Respondents aged 18 years and older; n/r (Not Reportable) - If the unweighted total responses for a dimension (row) is <50 that row will not be shown; n/a (Not Available) - Not asked of a subset of respondents

Year: 2002

Household Income	Yes			No			Estimated Population
	#	%	C.I. (95%)	#	%	C.I. (95%)	#
Less than \$10,000	14,200	40.1	32.1 - 48.2	21,200	59.9	51.8 - 67.9	35,400
\$10,000 to \$14,999	12,700	35.8	28.3 - 43.2	22,800	64.2	56.8 - 71.7	35,500
\$15,000 to \$19,999	16,200	39.7	29.4 - 49.9	24,600	60.3	50.1 - 70.6	40,800
\$20,000 to \$24,999	15,400	36.2	29.4 - 43.0	27,200	63.8	57.0 - 70.6	42,600
\$25,000 to \$34,999	26,000	34.2	28.6 - 39.9	49,800	65.8	60.1 - 71.4	75,800
\$35,000 to \$49,999	45,800	37.1	32.6 - 41.5	77,800	62.9	58.5 - 67.4	123,600
\$50,000 to \$74,999	45,800	36.3	32.0 - 40.7	80,200	63.7	59.3 - 68.0	126,000
\$75,000 or more	48,600	36.5	32.0 - 41.0	84,700	63.5	59.0 - 68.0	133,300

Flu - had shot in past 12 mons by State, County, Island, Community, BRFSS Age Group, DOH Race-Ethnicity, Gender, Education Level, Employment Status (Grouped), Household Income, Poverty Level, Marital Status (Grouped), Married, Health Care Coverage, for the Year(s) - 2001, 2002, 2003, 2004, 2005, 2006, 2007, 2008, 2009, 2010

Note: Weighted numbers (#), percentages and 95% confidence intervals; Respondents aged 18 years and older; n/r (Not Reportable) - If the unweighted total responses for a dimension (row) is <50 that row will not be shown; n/a (Not Available) - Not asked of a subset of respondents

Year: 2002

Poverty Level	Yes			No			Estimated Population
	#	%	C.I. (95%)	#	%	C.I. (95%)	#
0-130%	51,400	36.8	32.2 - 41.4	88,400	63.2	58.6 - 67.8	139,700
131-185%	22,400	32.4	26.5 - 38.3	46,700	67.6	61.7 - 73.5	69,100
186+%	151,000	37.3	34.9 - 39.8	253,300	62.7	60.2 - 65.1	404,300

Flu - had shot in past 12 mons by State, County, Island, Community, BRFSS Age Group, DOH Race-Ethnicity, Gender, Education Level, Employment Status (Grouped), Household Income, Poverty Level, Marital Status (Grouped), Married, Health Care Coverage, for the Year(s) - 2001, 2002, 2003, 2004, 2005, 2006, 2007, 2008, 2009, 2010

Note: Weighted numbers (#), percentages and 95% confidence intervals; Respondents aged 18 years and older; n/r (Not Reportable) - If the unweighted total responses for a dimension (row) is <50 that row will not be shown; n/a (Not Available) - Not asked of a subset of respondents

Year: 2002

Marital Status (Grouped)	Yes			No			Estimated Population
	#	%	C.I. (95%)	#	%	C.I. (95%)	#
Married	198,200	37.3	35.2 - 39.4	333,300	62.7	60.6 - 64.8	531,500
Unmarried Couple	1,100	4.9	1.1 - 8.7	20,700	95.1	91.3 - 98.9	21,700
Widowed	40,300	72.1	66.7 - 77.4	15,600	27.9	22.6 - 33.3	55,900
Other	81,600	27.8	24.8 - 30.8	212,300	72.2	69.2 - 75.2	293,900

Married	Yes			No			Estimated Population
	#	%	C.I. (95%)	#	%	C.I. (95%)	#
Yes	202,700	37.4	35.3 - 39.5	339,600	62.6	60.5 - 64.7	542,300
No	118,000	32.8	30.1 - 35.5	241,600	67.2	64.5 - 69.9	359,600

Flu - had shot in past 12 mons by State, County, Island, Community, BRFSS Age Group, DOH Race-Ethnicity, Gender, Education Level, Employment Status (Grouped), Household Income, Poverty Level, Marital Status (Grouped), Married, Health Care Coverage, for the Year(s) - 2001, 2002, 2003, 2004, 2005, 2006, 2007, 2008, 2009, 2010

Note: Weighted numbers (#), percentages and 95% confidence intervals; Respondents aged 18 years and older; n/r (Not Reportable) - If the unweighted total responses for a dimension (row) is <50 that row will not be shown; n/a (Not Available) - Not asked of a subset of respondents

Year: 2002

Health Care Coverage	Yes			No			Estimated Population
	#	%	C.I. (95%)	#	%	C.I. (95%)	#
Yes	311,100	37.8	36.0 - 39.5	512,300	62.2	60.5 - 64.0	823,400
No	9,600	12.2	8.3 - 16.1	68,900	87.8	83.9 - 91.7	78,500

Flu - had shot in past 12 mons by State, County, Island, Community, BRFSS Age Group, DOH Race-Ethnicity, Gender, Education Level, Employment Status (Grouped), Household Income, Poverty Level, Marital Status (Grouped), Married, Health Care Coverage, for the Year(s) - 2001, 2002, 2003, 2004, 2005, 2006, 2007, 2008, 2009, 2010

Note: Weighted numbers (#), percentages and 95% confidence intervals; Respondents aged 18 years and older; n/r (Not Reportable) - If the unweighted total responses for a dimension (row) is <50 that row will not be shown; n/a (Not Available) - Not asked of a subset of respondents

Year: 2001

State	Yes			No			Estimated Population
	#	%	C.I. (95%)	#	%	C.I. (95%)	#
Hawaii State	337,700	37.9	35.8 - 39.9	554,400	62.1	60.1 - 64.2	892,200

County	Yes			No			Estimated Population
	#	%	C.I. (95%)	#	%	C.I. (95%)	#
Hawaii	35,400	33.1	29.6 - 36.6	71,700	66.9	63.4 - 70.4	107,100
Honolulu	257,200	39.8	37.2 - 42.3	389,800	60.2	57.7 - 62.8	647,000
Kauai	14,300	34.9	30.0 - 39.9	26,600	65.1	60.1 - 70.0	40,900
Maui	30,900	31.8	26.3 - 37.2	66,300	68.2	62.8 - 73.7	97,200

Flu - had shot in past 12 mons by State, County, Island, Community, BRFSS Age Group, DOH Race-Ethnicity, Gender, Education Level, Employment Status (Grouped), Household Income, Poverty Level, Marital Status (Grouped), Married, Health Care Coverage, for the Year(s) - 2001, 2002, 2003, 2004, 2005, 2006, 2007, 2008, 2009, 2010

Note: Weighted numbers (#), percentages and 95% confidence intervals; Respondents aged 18 years and older; n/r (Not Reportable) - If the unweighted total responses for a dimension (row) is <50 that row will not be shown; n/a (Not Available) - Not asked of a subset of respondents

Year: 2001

Island	Yes			No			Estimated Population
	#	%	C.I. (95%)	#	%	C.I. (95%)	#
Hawaii	35,400	33.1	29.6 - 36.6	71,700	66.9	63.4 - 70.4	107,100
Kauai	14,300	34.9	30.0 - 39.9	26,600	65.1	60.1 - 70.0	40,900
Lanai	600	25.2	14.0 - 36.5	1,800	74.8	63.5 - 86.0	2,400
Maui	28,200	31.3	25.5 - 37.2	61,900	68.7	62.8 - 74.5	90,100
Molokai	2,000	43.3	30.3 - 56.4	2,700	56.7	43.6 - 69.7	4,700
Oahu	257,200	39.8	37.2 - 42.3	389,800	60.2	57.7 - 62.8	647,000

Community	Yes			No			Estimated Population
	#	%	C.I. (95%)	#	%	C.I. (95%)	#
Aiea/ Pearl City	30,000	47.8	38.8 - 56.7	32,800	52.2	43.3 - 61.2	62,800

Flu - had shot in past 12 mons by State, County, Island, Community, BRFSS Age Group, DOH Race-Ethnicity, Gender, Education Level, Employment Status (Grouped), Household Income, Poverty Level, Marital Status (Grouped), Married, Health Care Coverage, for the Year(s) - 2001, 2002, 2003, 2004, 2005, 2006, 2007, 2008, 2009, 2010

Note: Weighted numbers (#), percentages and 95% confidence intervals; Respondents aged 18 years and older; n/r (Not Reportable) - If the unweighted total responses for a dimension (row) is <50 that row will not be shown; n/a (Not Available) - Not asked of a subset of respondents

Year: 2001

Community	Yes			No			Estimated Population
	#	%	C.I. (95%)	#	%	C.I. (95%)	#
Ala Moana	11,500	43.7	33.4 - 54.0	14,700	56.3	46.0 - 66.6	26,200
Hanalei/ Kapaa	4,300	24.9	18.2 - 31.6	12,800	75.1	68.4 - 81.8	17,100
Hilo	12,100	38.0	31.7 - 44.2	19,700	62.0	55.8 - 68.3	31,800
Kaaawa/ Kahaluu/ Kaneohe	13,700	34.6	23.8 - 45.3	26,000	65.4	54.7 - 76.2	39,700
Kahului	12,100	36.3	23.6 - 48.9	21,200	63.7	51.1 - 76.4	33,300
Kailua/ Waimanalo	21,200	42.4	33.7 - 51.1	28,800	57.6	48.9 - 66.3	50,000
Kaimuki/ Palolo/ Waikiki	29,000	40.5	33.1 - 47.8	42,600	59.5	52.2 - 66.9	71,600
Kona	8,600	28.4	21.3 - 35.5	21,800	71.6	64.5 - 78.7	30,400
Lahaina/ Wailuku	9,000	30.7	23.2 - 38.1	20,400	69.3	61.9 - 76.8	29,400

Flu - had shot in past 12 mons by State, County, Island, Community, BRFSS Age Group, DOH Race-Ethnicity, Gender, Education Level, Employment Status (Grouped), Household Income, Poverty Level, Marital Status (Grouped), Married, Health Care Coverage, for the Year(s) - 2001, 2002, 2003, 2004, 2005, 2006, 2007, 2008, 2009, 2010

Note: Weighted numbers (#), percentages and 95% confidence intervals; Respondents aged 18 years and older; n/r (Not Reportable) - If the unweighted total responses for a dimension (row) is <50 that row will not be shown; n/a (Not Available) - Not asked of a subset of respondents

Year: 2001

Community	Yes			No			Estimated Population
	#	%	C.I. (95%)	#	%	C.I. (95%)	#
Lanai	600	25.2	14.0 - 36.5	1,800	74.8	63.5 - 86.0	2,400
Lihue-Waimea	10,000	42.2	35.4 - 48.9	13,700	57.8	51.1 - 64.6	23,800
Manoa/ Upper Makiki	26,500	47.0	38.2 - 55.8	29,900	53.0	44.2 - 61.8	56,300
Mililani/ Wahiawa	18,200	32.3	24.1 - 40.4	38,300	67.7	59.6 - 75.9	56,500
Molokai	2,000	43.3	30.3 - 56.4	2,700	56.7	43.6 - 69.7	4,700
Nanakuli/ Waianae	8,800	29.3	16.3 - 42.4	21,200	70.7	57.6 - 83.7	30,000
N.Hawaii	8,900	37.4	29.5 - 45.3	14,800	62.6	54.7 - 70.5	23,700
N.Shore/ Laie	6,500	25.4	14.6 - 36.1	19,200	74.6	63.9 - 85.4	25,700
Nuuanu/ Kalihi/ Moanalua	27,500	42.0	33.4 - 50.6	38,000	58.0	49.4 - 66.6	65,400

Flu - had shot in past 12 mons by State, County, Island, Community, BRFSS Age Group, DOH Race-Ethnicity, Gender, Education Level, Employment Status (Grouped), Household Income, Poverty Level, Marital Status (Grouped), Married, Health Care Coverage, for the Year(s) - 2001, 2002, 2003, 2004, 2005, 2006, 2007, 2008, 2009, 2010

Note: Weighted numbers (#), percentages and 95% confidence intervals; Respondents aged 18 years and older; n/r (Not Reportable) - If the unweighted total responses for a dimension (row) is <50 that row will not be shown; n/a (Not Available) - Not asked of a subset of respondents

Year: 2001

Community	Yes			No			Estimated Population
	#	%	C.I. (95%)	#	%	C.I. (95%)	#
Puna/ Kau	5,900	27.7	20.7 - 34.8	15,400	72.3	65.2 - 79.3	21,300
Salt Lake/ Foster Village	15,700	44.8	34.1 - 55.6	19,300	55.2	44.4 - 65.9	35,000
Upcountry/ Hana	7,100	26.0	19.6 - 32.4	20,300	74.0	67.6 - 80.4	27,400
Waialae/ Kahala/ Hawaii Kai	15,700	44.1	33.5 - 54.6	19,900	55.9	45.4 - 66.5	35,600
Waipahu/ Kapolei/ Ewa	33,000	35.8	28.8 - 42.7	59,200	64.2	57.3 - 71.2	92,100

Flu - had shot in past 12 mons by State, County, Island, Community, BRFSS Age Group, DOH Race-Ethnicity, Gender, Education Level, Employment Status (Grouped), Household Income, Poverty Level, Marital Status (Grouped), Married, Health Care Coverage, for the Year(s) - 2001, 2002, 2003, 2004, 2005, 2006, 2007, 2008, 2009, 2010

Note: Weighted numbers (#), percentages and 95% confidence intervals; Respondents aged 18 years and older; n/r (Not Reportable) - If the unweighted total responses for a dimension (row) is <50 that row will not be shown; n/a (Not Available) - Not asked of a subset of respondents

Year: 2001

BRFSS Age Group	Yes			No			Estimated Population
	#	%	C.I. (95%)	#	%	C.I. (95%)	#
18-24	28,600	26.8	20.0 - 33.6	78,000	73.2	66.4 - 80.0	106,500
25-34	44,900	26.9	22.6 - 31.1	122,300	73.1	68.9 - 77.4	167,300
35-44	47,000	25.5	21.5 - 29.5	137,300	74.5	70.5 - 78.5	184,200
45-54	44,300	28.2	24.1 - 32.4	112,500	71.8	67.6 - 75.9	156,700
55-64	51,400	42.6	36.8 - 48.3	69,300	57.4	51.7 - 63.2	120,600
65-74	68,600	78.0	73.3 - 82.6	19,400	22.0	17.4 - 26.7	88,000
75+	51,000	82.0	76.4 - 87.6	11,200	18.0	12.4 - 23.6	62,200

Flu - had shot in past 12 mons by State, County, Island, Community, BRFSS Age Group, DOH Race-Ethnicity, Gender, Education Level, Employment Status (Grouped), Household Income, Poverty Level, Marital Status (Grouped), Married, Health Care Coverage, for the Year(s) - 2001, 2002, 2003, 2004, 2005, 2006, 2007, 2008, 2009, 2010

Note: Weighted numbers (#), percentages and 95% confidence intervals; Respondents aged 18 years and older; n/r (Not Reportable) - If the unweighted total responses for a dimension (row) is <50 that row will not be shown; n/a (Not Available) - Not asked of a subset of respondents

Year: 2001

DOH Race-Ethnicity	Yes			No			Estimated Population
	#	%	C.I. (95%)	#	%	C.I. (95%)	#
Caucasian	97,900	32.5	29.5 - 35.4	203,500	67.5	64.6 - 70.5	301,400
Native Hawaiian	35,800	31.2	25.7 - 36.6	79,100	68.8	63.4 - 74.3	114,900
Chinese	24,400	44.0	35.7 - 52.3	31,000	56.0	47.7 - 64.3	55,400
Filipino	55,800	43.5	36.9 - 50.0	72,600	56.5	50.0 - 63.1	128,400
Japanese	86,800	46.9	42.6 - 51.3	98,200	53.1	48.7 - 57.4	184,900
Black	8,200	49.2	33.5 - 64.9	8,500	50.8	35.1 - 66.5	16,700
Other Asian	9,300	34.5	23.2 - 45.8	17,700	65.5	54.2 - 76.8	27,100
Other Pacific Islander	7,500	37.8	21.3 - 54.2	12,400	62.2	45.8 - 78.7	19,900
Other	8,900	26.7	16.3 - 37.1	24,600	73.3	62.9 - 83.7	33,500

Flu - had shot in past 12 mons by State, County, Island, Community, BRFSS Age Group, DOH Race-Ethnicity, Gender, Education Level, Employment Status (Grouped), Household Income, Poverty Level, Marital Status (Grouped), Married, Health Care Coverage, for the Year(s) - 2001, 2002, 2003, 2004, 2005, 2006, 2007, 2008, 2009, 2010

Note: Weighted numbers (#), percentages and 95% confidence intervals; Respondents aged 18 years and older; n/r (Not Reportable) - If the unweighted total responses for a dimension (row) is <50 that row will not be shown; n/a (Not Available) - Not asked of a subset of respondents

Year: 2001

Gender	Yes			No			Estimated Population
	#	%	C.I. (95%)	#	%	C.I. (95%)	#
Male	163,900	36.4	33.4 - 39.4	286,000	63.6	60.6 - 66.6	449,900
Female	173,800	39.3	36.6 - 42.0	268,400	60.7	58.0 - 63.4	442,300

Flu - had shot in past 12 mons by State, County, Island, Community, BRFSS Age Group, DOH Race-Ethnicity, Gender, Education Level, Employment Status (Grouped), Household Income, Poverty Level, Marital Status (Grouped), Married, Health Care Coverage, for the Year(s) - 2001, 2002, 2003, 2004, 2005, 2006, 2007, 2008, 2009, 2010

Note: Weighted numbers (#), percentages and 95% confidence intervals; Respondents aged 18 years and older; n/r (Not Reportable) - If the unweighted total responses for a dimension (row) is <50 that row will not be shown; n/a (Not Available) - Not asked of a subset of respondents

Year: 2001

Education Level	Yes			No			Estimated Population
	#	%	C.I. (95%)	#	%	C.I. (95%)	#
Never attended school/ Only Kindergarten to Grades 8	9,500	57.6	45.1 - 70.2	7,000	42.4	29.8 - 54.9	16,600
Grades 9 thru 11 (Some High School)	17,700	46.3	34.7 - 57.9	20,500	53.7	42.1 - 65.3	38,200
Grades 12 or GED (High School Grad)	111,300	37.5	34.0 - 41.0	185,500	62.5	59.0 - 66.0	296,800
College 1 to 3 years (Some College/ Tech)	105,700	38.5	34.6 - 42.4	168,700	61.5	57.6 - 65.4	274,400
College 4 years or more (College Grad)	92,700	35.1	31.8 - 38.5	171,000	64.9	61.5 - 68.2	263,700

Flu - had shot in past 12 mons by State, County, Island, Community, BRFSS Age Group, DOH Race-Ethnicity, Gender, Education Level, Employment Status (Grouped), Household Income, Poverty Level, Marital Status (Grouped), Married, Health Care Coverage, for the Year(s) - 2001, 2002, 2003, 2004, 2005, 2006, 2007, 2008, 2009, 2010

Note: Weighted numbers (#), percentages and 95% confidence intervals; Respondents aged 18 years and older; n/r (Not Reportable) - If the unweighted total responses for a dimension (row) is <50 that row will not be shown; n/a (Not Available) - Not asked of a subset of respondents

Year: 2001

Employment Status (Grouped)	Yes			No			Estimated Population
	#	%	C.I. (95%)	#	%	C.I. (95%)	#
Employed	176,600	30.0	27.6 - 32.4	411,700	70.0	67.6 - 72.4	588,300
Unemployed	5,900	20.1	11.2 - 29.0	23,500	79.9	71.0 - 88.8	29,400
Retired/Unable to work	134,400	71.5	67.7 - 75.3	53,600	28.5	24.7 - 32.3	188,000
Student/Homemaker	20,800	24.2	18.4 - 30.0	65,200	75.8	70.0 - 81.6	86,000

Flu - had shot in past 12 mons by State, County, Island, Community, BRFSS Age Group, DOH Race-Ethnicity, Gender, Education Level, Employment Status (Grouped), Household Income, Poverty Level, Marital Status (Grouped), Married, Health Care Coverage, for the Year(s) - 2001, 2002, 2003, 2004, 2005, 2006, 2007, 2008, 2009, 2010

Note: Weighted numbers (#), percentages and 95% confidence intervals; Respondents aged 18 years and older; n/r (Not Reportable) - If the unweighted total responses for a dimension (row) is <50 that row will not be shown; n/a (Not Available) - Not asked of a subset of respondents

Year: 2001

Household Income	Yes			No			Estimated Population
	#	%	C.I. (95%)	#	%	C.I. (95%)	#
Less than \$10,000	11,600	30.7	21.6 - 39.8	26,100	69.3	60.2 - 78.4	37,700
\$10,000 to \$14,999	18,400	43.2	34.2 - 52.1	24,200	56.8	47.9 - 65.8	42,700
\$15,000 to \$19,999	16,200	41.6	30.9 - 52.2	22,800	58.4	47.8 - 69.1	39,000
\$20,000 to \$24,999	22,700	38.7	28.5 - 48.9	35,900	61.3	51.1 - 71.5	58,500
\$25,000 to \$34,999	32,700	36.7	31.0 - 42.5	56,300	63.3	57.5 - 69.0	89,000
\$35,000 to \$49,999	54,000	39.8	34.7 - 44.8	81,800	60.2	55.2 - 65.3	135,800
\$50,000 to \$74,999	38,800	31.1	26.1 - 36.1	85,900	68.9	63.9 - 73.9	124,700
\$75,000 or more	42,400	34.7	29.4 - 40.0	79,700	65.3	60.0 - 70.6	122,100

Flu - had shot in past 12 mons by State, County, Island, Community, BRFSS Age Group, DOH Race-Ethnicity, Gender, Education Level, Employment Status (Grouped), Household Income, Poverty Level, Marital Status (Grouped), Married, Health Care Coverage, for the Year(s) - 2001, 2002, 2003, 2004, 2005, 2006, 2007, 2008, 2009, 2010

Note: Weighted numbers (#), percentages and 95% confidence intervals; Respondents aged 18 years and older; n/r (Not Reportable) - If the unweighted total responses for a dimension (row) is <50 that row will not be shown; n/a (Not Available) - Not asked of a subset of respondents

Year: 2001

Poverty Level	Yes			No			Estimated Population
	#	%	C.I. (95%)	#	%	C.I. (95%)	#
0-130%	51,000	35.4	29.5 - 41.3	93,200	64.6	58.7 - 70.5	144,200
131-185%	43,900	40.3	34.3 - 46.3	65,100	59.7	53.7 - 65.7	109,000
186+%	141,800	35.8	33.0 - 38.5	254,500	64.2	61.5 - 67.0	396,200

Marital Status (Grouped)	Yes			No			Estimated Population
	#	%	C.I. (95%)	#	%	C.I. (95%)	#
Married	214,400	42.2	39.4 - 44.9	294,000	57.8	55.1 - 60.6	508,400
Widowed	34,600	71.9	64.6 - 79.2	13,500	28.1	20.8 - 35.4	48,200
Other	87,200	26.7	23.8 - 29.6	239,300	73.3	70.4 - 76.2	326,500

Flu - had shot in past 12 mons by State, County, Island, Community, BRFSS Age Group, DOH Race-Ethnicity, Gender, Education Level, Employment Status (Grouped), Household Income, Poverty Level, Marital Status (Grouped), Married, Health Care Coverage, for the Year(s) - 2001, 2002, 2003, 2004, 2005, 2006, 2007, 2008, 2009, 2010

Note: Weighted numbers (#), percentages and 95% confidence intervals; Respondents aged 18 years and older; n/r (Not Reportable) - If the unweighted total responses for a dimension (row) is <50 that row will not be shown; n/a (Not Available) - Not asked of a subset of respondents

Year: 2001

Married	Yes			No			Estimated Population
	#	%	C.I. (95%)	#	%	C.I. (95%)	#
Yes	219,000	41.6	38.9 - 44.3	307,000	58.4	55.7 - 61.1	526,000
No	118,000	32.3	29.4 - 35.3	246,800	67.7	64.7 - 70.6	364,700

Health Care Coverage	Yes			No			Estimated Population
	#	%	C.I. (95%)	#	%	C.I. (95%)	#
Yes	328,800	39.8	37.7 - 41.9	496,700	60.2	58.1 - 62.3	825,500
No	9,000	13.8	8.1 - 19.5	56,200	86.2	80.5 - 91.9	65,200